



US007820395B2

(12) **United States Patent**
Ching et al.

(10) **Patent No.:** **US 7,820,395 B2**
(45) **Date of Patent:** ***Oct. 26, 2010**

(54) **ORIENTIA TSUTSUGAMUSHI TRUNCATED RECOMBINANT OUTER MEMBRANE PROTEIN (R47) AND (R56) VACCINES DIAGNOSTICS AND THERAPEUTICS FOR SCRUB TYPHUS**

6,699,674 B2* 3/2004 Ching et al. 435/7.1
7,306,808 B2 12/2007 Ching et al.
7,335,477 B2* 2/2008 Ching et al. 435/7.1

(75) Inventors: **Wei Mei Ching**, Bethesda, MD (US);
Hong Ge, Gaithersburg, MD (US);
Chien-Chung Chao, Bethesda, MD (US)

FOREIGN PATENT DOCUMENTS
WO WO 99/34215 7/1999

(73) Assignees: **The United States of America as represented by the Secretary of the Navy**, Washington, DC (US); **The Henry M. Jackson Foundation for the Advancement of Military Medicine, Inc.**, Arlington, VA (US)

OTHER PUBLICATIONS

(*) Notice: Subject to any disclaimer, the term of this patent is extended or adjusted under 35 U.S.C. 154(b) by 0 days.

This patent is subject to a terminal disclaimer.

La Scola B et al. Laboratory diagnosis of rickettsioses: current approaches to diagnosis of old and new rickettsial diseases. *J. Clin Microbiol.* Nov. 1997; 35(11): 2715-27. Review.
Kelly DJ, Chan CT, Paxton H, et al. Comparative evaluation of a commercial enzyme immunoassay for the detection of human antibody to *Rickettsia typhi*. *Clin Diagn Lab Immunol* 1995;2:356-60.
Ching, WM., M. Carl, and GA. Dasch. Mapping of monoclonal antibody binding sites on CNBr fragments of the S-Layer protein antigens of *Rickettsia typhi* and *R. prowazekii*. *Mol. Immunol.* 1992, 29:95-105.
Dasch, GA., JR. Samms, and JC. Williams. Partial purification and characterization of the major species-specific protein antigens of *Rickettsia typhi* and *rickettsia prowazekii* identified by rocket immunoelectrophoresis. *Infec. Immun.* 1981, 31:276-288.
Seong et al., Neutralization Epitopes on the Antigenic Domain II of the *Orientia tsutsugamuchi* 56-kDa Protein Revealed by Monoclonal Antibodies, *Vaccine*, 2001, vol. 19, pp. 2-9.
Hickman et al. Murine T-cell Response to Native and Recombinant Protein Antigens of *Rickettsia tsutsugamushi*, *Infection and Immunity*, May 1993, vol. 61, No. 5; pp. 1974-1681.
Ching et al., Expression and Refolding of Truncated Recombinant Major Outer Membrane Protein Antigen (r56) of *Orientia tsutsugamushi* and Its Use in Enzyme-Linked Immunosorbent Assays, *Clinical Diagnostic Laboratory Immunology*, Jul. 1998, vol. 5 No. 4, pp. 519-526.
Ching, et al., Early diagnosis of Scrub Typhus with a Rapid Flow Assay Using Recombinant Major Outer Membrane Protein Antigen (r56) of *Orientia tsutsugamushi*, *Clinical and Laboratory Immunology*, Mar 2001, vol. 8, No. 2, pp. 409-414.

(21) Appl. No.: **11/876,997**

(22) Filed: **Oct. 23, 2007**

(65) **Prior Publication Data**
US 2008/0044806 A1 Feb. 21, 2008

Related U.S. Application Data

(62) Division of application No. 10/438,345, filed on May 15, 2003, now Pat. No. 7,306,808.

(60) Provisional application No. 60/380,301, filed on May 15, 2002.

(51) **Int. Cl.**
G01N 33/53 (2006.01)
G01N 33/554 (2006.01)
G01N 33/00 (2006.01)

(52) **U.S. Cl.** **435/7.1; 435/7.2; 435/7.32; 435/7.92**

(58) **Field of Classification Search** None
See application file for complete search history.

(56) **References Cited**

U.S. PATENT DOCUMENTS

6,482,415 B1* 11/2002 Ching et al. 424/234.1

* cited by examiner

Primary Examiner—S. Devi

(74) *Attorney, Agent, or Firm*—Joseph K. Hemby, Jr.; Albert M. Churilla; Ning Yang

(57) **ABSTRACT**

A scrub typhus diagnostic method and vaccine using a composition comprising truncated r47 protein and truncated r56 protein is disclosed. Vaccines composed of r56 protein variants are also disclosed. Methods of reducing HIV viral loads using r47 and r56 proteins and antibodies raised against r47 and r56 are also disclosed.

3 Claims, 6 Drawing Sheets

PCR product of DNA coding for 47-kDa protein and digested plasmids

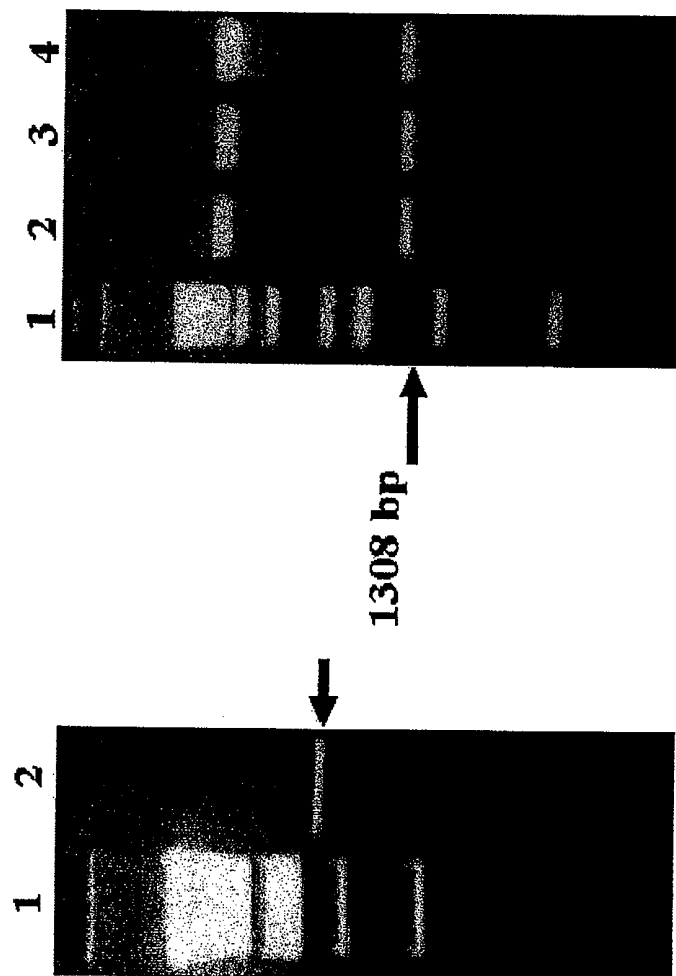


Figure 1A

Lane 1: 1 kb DNA marker
Lane 2-4: individual colony containing correct insert

Figure: 1B

Lane 1: 1 kb DNA marker
Lane 2: PCR product

Figure 2

Induction of r47 protein with IPTG and Fractionation of r47 from crude extract

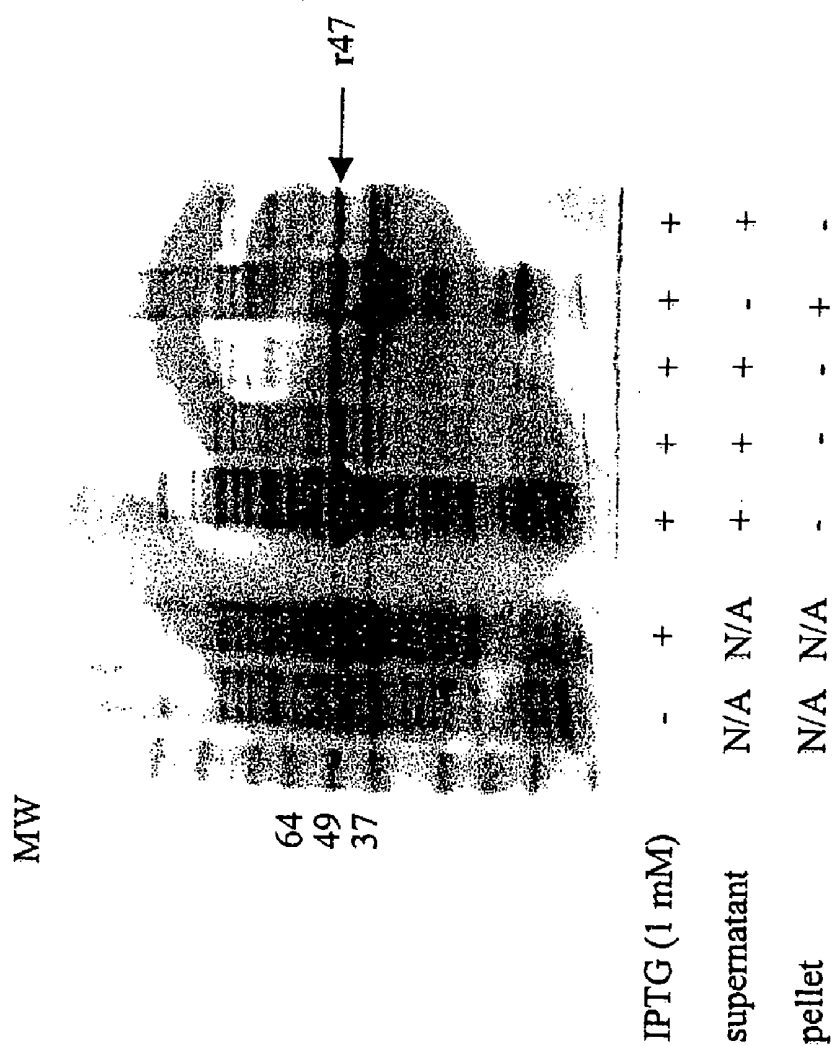


Figure 3

Fractionation of r47 protein on DEAE anion exchange column (pH 8.0)

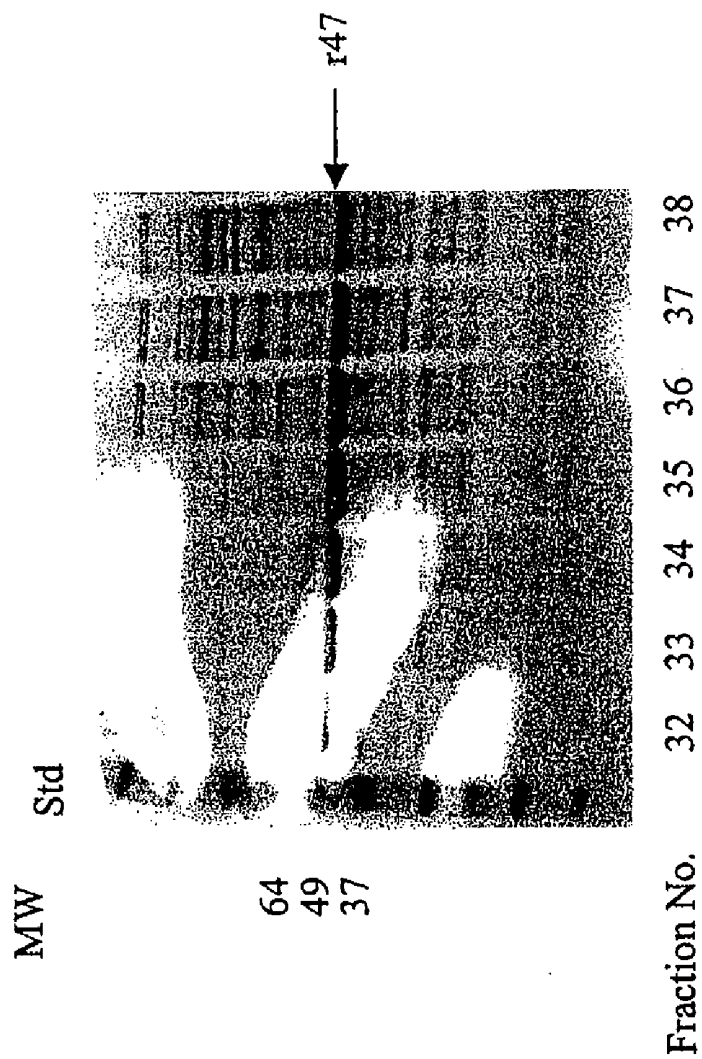


Figure 4

Fractionation of r47 protein on DEAE anion exchange column (pH 7.0)

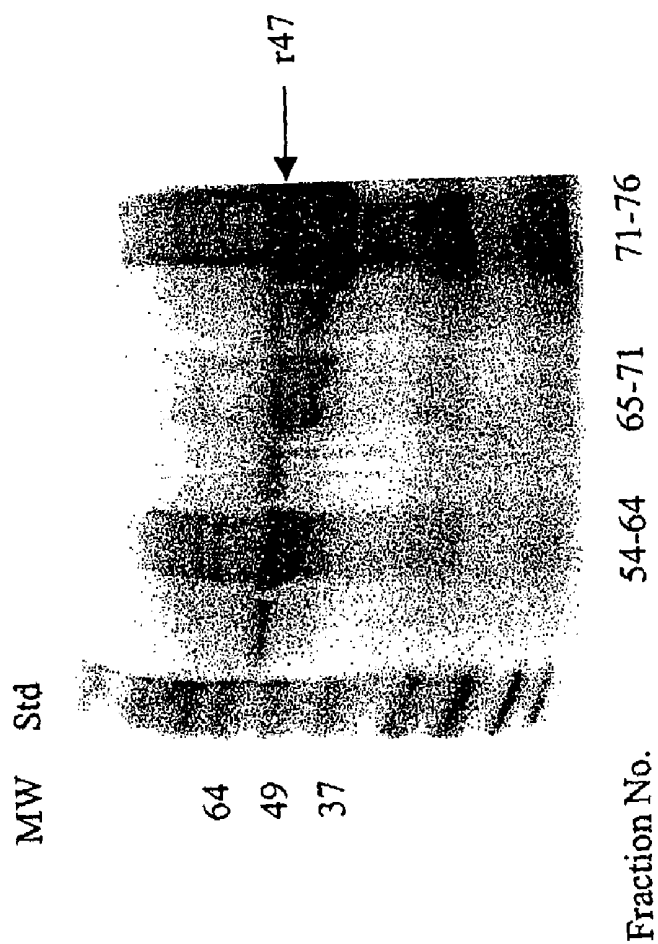


Figure 5

BLAST Search of r47 protein sequence

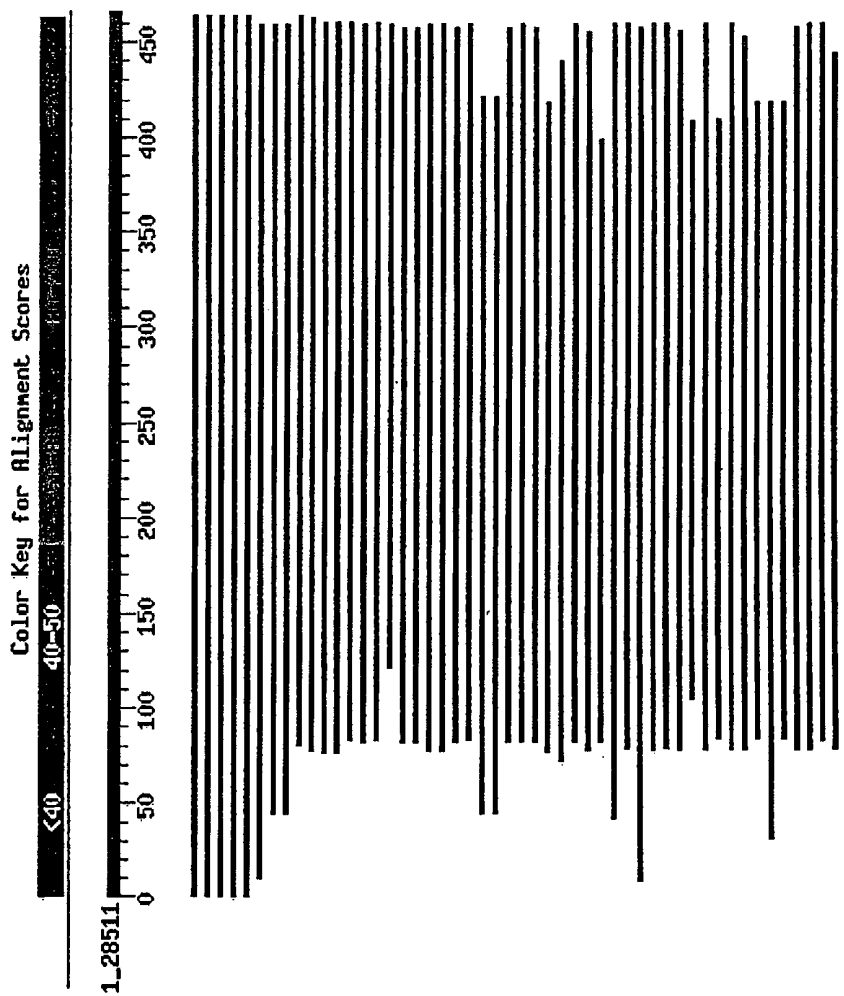
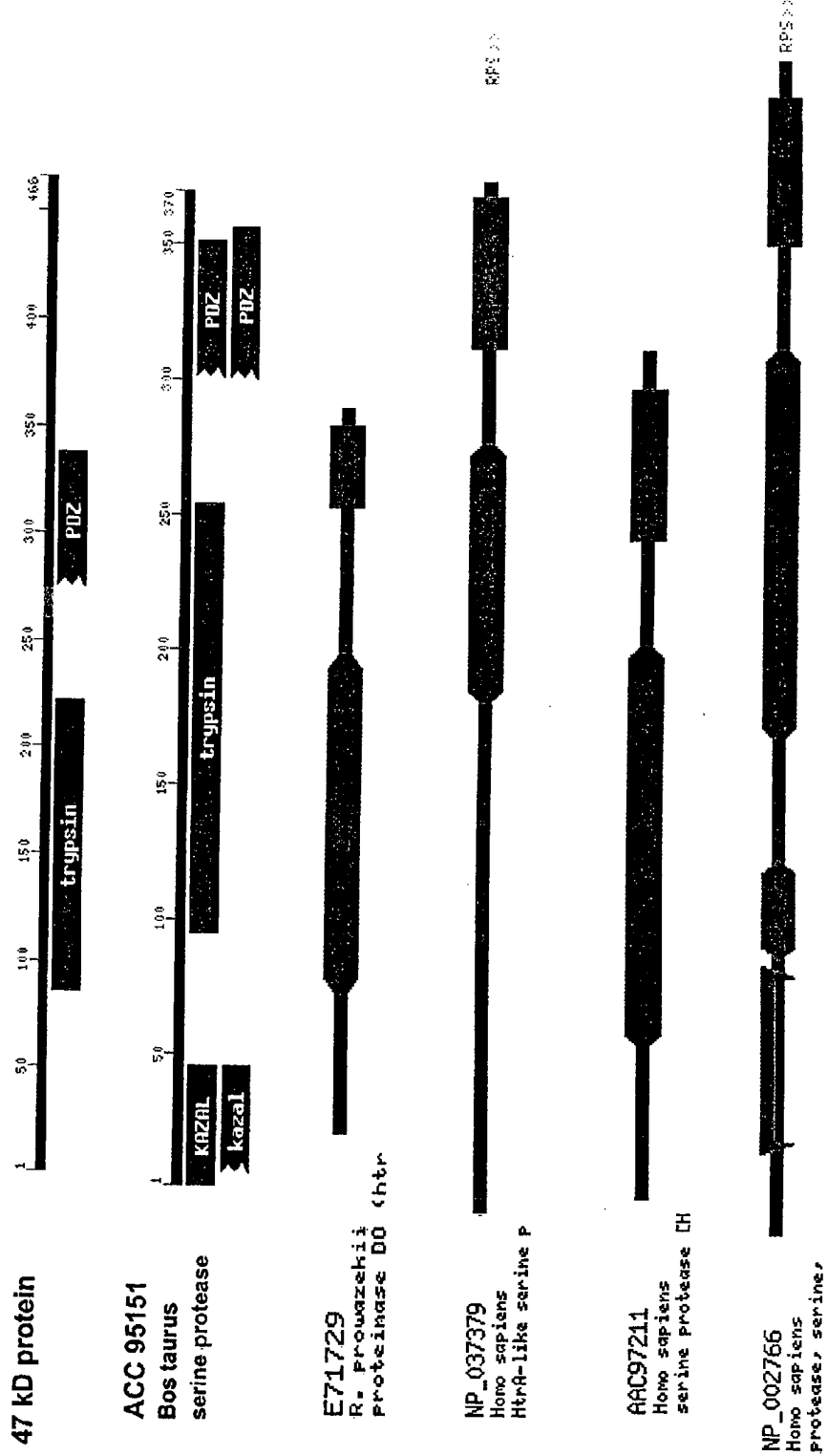


Figure 6
Comparison of Conserved Domains among r47 and Serine Proteases



**ORIENTIA TSUTSUGAMUSHI TRUNCATED
RECOMBINANT OUTER MEMBRANE
PROTEIN (R47) AND (R56) VACCINES
DIAGNOSTICS AND THERAPEUTICS FOR
SCRUB TYPHUS**

CROSS-REFERENCE TO RELATED
APPLICATIONS

This application is a divisional application of application 10 Ser. No. 10/438,345, filed May 15, 2003, now U.S. Pat. No. 7,306,808, which claims priority to the provisional application No. 60/380,301, filed May 15, 2002.

SEQUENCE LISTING

I hereby state that the information recorded in computer readable form is identical to the written sequence listing.

FIELD OF THE INVENTION

The present invention relates to a 47 kDa and a 56 kDa surface protein antigen of *Orientia tsutsugamushi* which are useful as diagnostic antigens as well as immunizing agents. The invention further relates to a therapeutic method of 25 reducing the HIV viral load in a patient.

DESCRIPTION OF THE PRIOR ART

Scrub typhus infection is caused by the obligated intracellular, gram-negative bacterium *O. tsutsugamushi*. It accounts for up to 23% of all febrile episodes in areas of the Asia-Pacific region where scrub typhus is endemic and can cause up to a third of mortality if left untreated. Symptoms may include pneumonitis, meningitis, rash, and headache. Differentiating scrub typhus from other acute febrile illness, such as leptospirosis, murine typhus, malaria, can be difficult because of the similarities in signs and symptoms. Sera from 95-99% of patients with scrub typhus recognize a 56-kDa protein of *O. tsutsugamushi* which comprises 10-15% of the total rickettsial cellular protein content. This 56-kDa protein has both conserved and unique sequences among different strains, has been developed and used for early diagnosis and a potential vaccine candidate. 40

Whole-organism vaccines have been previously developed and their protections have been short-lived and lack of cross strain protection. The major surface protein antigen, the variable 56-kDa protein which account for the antigenic variation, has been shown to induce protective immunity against the homologous strain but not the heterologous strains. The fact that other antigens, such as 110, 47 and 22 kDa have also been identified with high seroreactivity suggests that a combination of several of these antigens may provide better protection against various stains of *O. tsutsugamushi* infection. Recently, it has been demonstrated that the infusion of plasma from scrub typhus infected patients into HIV infected patients led to the decrease of HIV virus load burden determined 2 months after the initial infusion, suggesting the pharmaceutical effect of the scrub typhus patients' plasma. 45

SUMMARY OF THE INVENTION

In this report, we have demonstrated the cloning of 47-kDa protein gene, NCBI accession number L31934.1, and the attempt to obtain pure r47, in an effort leading to the production of sufficient quantity and high purity recombinant 47-kDa protein to use in combination with r56 protein as a 65

vaccine candidate to afford broader protection. In addition, the sequence search of this outer membrane protein showed similarity with serine proteases, suggesting r47 protein itself may function as a protease.

Western blot results revealed that plasma from scrub typhus patients showed strong antigenic response to the r47 protein, suggesting a potential protective role of r47 against HIV infection. It is possible that this inhibitory effect was due to the antibody response toward r47 protein. Alternatively, the homology between serine protease and r47 protein indicating a potential protease activity associated with r47 which may result in interference with HIV processing.

A search of the NCBI protein database for short, nearly exact matches revealed a 10-amino-acid match (8 identical and 2 conserved) between the *O. tsutsugamushi* Karp strain 47 kDa antigen (accession number gi/1220501) 47 kDa and HIV envelope protein (accession number gi/2250974) HIVgp120. 15

Pattern: TLR+IVTN (SEQ ID No. 9)+K (SEQ ID No. 8)

Accordingly, the present inventive subject matter is directed to a scrub typhus immunogenic composition comprising an r47 truncated protein of SEQ ID No.1, an r56 truncated protein selected from the group consisting of SEQ ID No. 2, SEQ ID No. 3, and SEQ ID No. 4 and a pharmaceutically acceptable carrier. The present inventive subject matter is further still directed to a method of treating a patient suffering from scrub typhus, the method comprising administering a pharmaceutically effective dose of antibodies raised against the combination of the truncated r47 protein of SEQ ID No. 1 and the truncated r56 protein selected from the group consisting of SEQ ID No. 2, SEQ ID No. 3 and SEQ ID No. 4 and a pharmaceutically acceptable carrier. Alternatively, the method may be comprised of the administration of antibodies raised against either the truncated r47 or the truncated r56 protein. The present inventive subject matter further contemplates a method for immunizing a subject against scrub typhus comprising administering a pharmaceutically effective amount of a scrub typhus vaccine. 20

The present inventive subject matter also contemplates an assay for detecting antibodies to scrub typhus comprising obtaining a sample from a subject, exposing the sample to r47 protein as a complement to an r56 assay in assay equipment selected from the group consisting of ELISA plates, dot-blot matrices, and hand held chromatographic and flow through assay devices. The present inventive subject matter further contemplates a treatment of an HIV patient which comprises a truncated r47 protein of SEQ ID No.1 and a pharmaceutically acceptable carrier which results in a reduction of the HIV viral load of an HIV patient. 25

The present inventive subject also contemplates a treatment of an HIV patient which comprises an r56 protein selected from the group of SEQ ID No. 2, SEQ ID No. 3, SEQ ID No. 4. 30

The present inventive subject matter further contemplates an HIV vaccine comprising a potential HIV vaccine and a truncated r47 or r56 protein or protein combinations thereof. 35

The foregoing and other features and advantages will become further apparent from the following detailed description of the presently preferred embodiments, when read in conjunction with the accompanying examples and made with reference to the accompanying drawings. It should be understood that the detailed description and examples are illustrative 40

tive rather than limitative, the scope of the present invention being defined by the appended claims and equivalents thereof.

BRIEF DESCRIPTION OF THE DRAWINGS

FIG. 1A is an SDS-PAGE showing the PCR product of DNA coding for the truncated 47-kDa protein;

FIG. 1B is an SDS-PAGE showing the PCR product of DNA coding for the digested plasmids;

FIG. 2 is An SDS-PAGE showing the induction of r47 protein with IPTG and fractionation of r47 from crude extract;

FIG. 3 is an SDS-PAGE showing fractionation of r47 protein on DEAE anion exchange column (pH 8.0);

FIG. 4 is an SDS-PAGE showing fractionation of r47 protein DEAE anion exchange column (pH 7.0);

FIG. 5 is a Blast Search of r47 protein sequence; and

FIG. 6 is a chart comparing conserved domains among r47 and serine proteases.

DETAILED DESCRIPTION OF THE PREFERRED EMBODIMENTS

Scrub typhus of *tsutsugamushi* disease is an acute, febrile disease caused by infection with *Orientia tsutsugamushi*. *O. tsutsugamushi* is a gram-negative bacterium but has neither lipopolysaccharide nor a peptidoglycan layer. *Orientia* isolates are highly variable in their antigenic properties. The major surface protein of *O. tsutsugamushi* is the variable 56-kDa protein. Serotype-specific monoclonal antibodies to *Orientia* react with the 56-kDa protein. Although sera from most patients with scrub typhus recognize this protein, another 47-kDa protein is also recognized, suggesting that both 56-kDa and 47-kDa proteins are good candidates for use as diagnostic antigens and that the combination of these two proteins has potential use as an immunogenic composition.

In accordance with the present invention, there is generally provided a scrub typhus immunogenic composition comprising an r47 truncated protein of SEQ ID No.1, an r56 truncated protein; and a pharmaceutically acceptable carrier.

The 47 kDa antigen is a membrane protein. In order to produce a properly folded r47 protein in aqueous solution, its n-terminus which contains the hydrophobic domain was truncated. Forward primer SEQ ID NO. 5 and reverse primer, SEQ ID NO. 6, were designed to amplify the gene segment of nucleotides 174-1481, SEQ ID NO. 7. The amplified gene segment was cloned into pET24a vector. The expressed protein sequence is in SEQ ID NO. 1.

In embodiments of the inventive subject matter, the scrub typhus immunogenic composition may comprise the r47 truncated protein in combination with one of the following r56 truncated proteins: SEQ ID No. 2, SEQ ID No. 3, or SEQ ID No. 4 and a pharmaceutically acceptable carrier.

Dosing and Administration

The optimum dose of the immunogenic composition is contemplated to be 0.5-20 mg for humans and 0.5-2.5 mg for primates. Administration of the immunogenic composition is done subcutaneously.

The inventive subject matter also provides an assay for detecting antibody to scrub typhus comprising obtaining a sample from a subject, exposing the sample to a truncated r47 protein as represented in SEQ ID No. 1 in assay equipment. Such assay equipment may be selected from the group consisting of ELISA plates, dot-blot matrices, and hand held chromatographic and flow through assay devices. Samples

suitable for such assay methods include blood, oral fluids and urine from which antibodies could be detected and from which antigens could be detected by way of laboratory generated antibodies.

The inventive subject matter further comprise a method of treating a patient suffering from scrub typhus, the method comprising administering a pharmaceutically effective dose of antibodies raised against the combination of truncated proteins of SEQ ID No. 1 and the truncated r56 protein selected from the group consisting of SEQ ID No. 2, SEQ ID No. 3 and SEQ ID No. 4 and a pharmaceutically acceptable carrier.

The inventive subject matter also contemplates a pharmaceutical composition for treatment of an HIV patient comprising antibodies raised against a truncated r56 protein and a pharmaceutically acceptable carrier wherein administration of the composition reduces the patients viral load. Such truncated proteins may be selected from the group consisting of SEQ ID Nos. 2-4 or combinations thereof. The dosing and administration are the same as stated above for the immunogenic compositions.

The present inventive subject matter further contemplates a treatment of an HIV patient which comprises antibodies raised against a truncated r47 protein selected from the group of SEQ ID No.1 and a pharmaceutically acceptable carrier which results in a reduction of the HIV viral load of an HIV patient. Dosing and administration are also as stated above for this embodiment.

The inventive subject matter also contemplates treatment of an HIV patient which comprises administering a pharmaceutical composition comprising antibodies raised against a combination of an r47 truncated protein and a truncated r56 protein and a pharmaceutically acceptable carrier to reduce the patients HIV viral load. Dosing and administration are also as stated above for this embodiment.

The inventive subject matter also contemplates an immunogenic composition against HIV infection comprising a pharmaceutical effective dose of antibodies raised against a truncated r47 protein and a truncated r56 protein of SEQ ID Nos. 2-4 and combinations thereof. Dosing and administration are as stated above for this embodiment.

The following examples are illustrative of preferred embodiments of the invention and are not to be construed as limiting the invention thereto.

EXAMPLES

Example 1

Forward and reverse DNA primers (SEQ ID No. 5-6, respectively) specific for 47-kDa (accession no. L31934.1) were designed with BamHI and NcoI (both from NEB) restriction sites and used for PCR to amplify the gene coding for a truncated 47-kDa protein using DNA purified from Karp strain of *O. tsutsugamushi*. The PCR product (insert) was ligated to plasmid pET24d (Novagen™) digested with BamHI and NcoI. The sequence of insert was confirmed and the ligated plasmid was transformed into BL21 (DE3) cells (Invitrogen™). Colony containing ligated plasmid was grown 2YT medium and induced with 1 mM of IPTG at 37° C. for 3 h for protein expression. To purify this expressed protein, 600 ml of B121 (DE3) cells were grown, induced, centrifuged and cell pellet was lysed with 20 mM Tris-HCL (pH 8.0) containing 5 mM EDTA and 1 mM PMSF according to the method developed by Ching et al., Clin. Diag. Lab. Immuno. 5, 519-526, 1998. After ultrasonic disruption and centrifugation, the expressed protein was mainly associated

with supernatant rather than inclusion body. This fraction was further purified with a 30,000 MW cutoff membrane followed by DEAE anion exchange using 20 mM Tris pH 8.0 and 2M NaCl salt gradient (Agilent 1100 HPLC). Alternatively, the protein was separated on a DEAE anion exchange using 20 mM Tris pH 7.0 and 2M NaCl salt gradient. The protein eluted with salt gradient was collected, analyzed with SDS-PAGE, and stained with coomassie blue to identify the purity of each fraction. In some cases, different fractions were poured together for the SDS-PAGE analysis.

The sequence homology of 47-kDa protein with other known proteins was searched with standard BLAST method and the conserved domain analysis of 47-kDa protein was analyzed using NCBI CDD algorithm. (FIGS. 5-6) In addition, proteins with similar domains as 47-kDa protein were aligned together to analyze the conserved amino acid sequence within the family.

Results

The DNA coding for 47-kDa protein was successfully PCR amplified using DNA purified from *O. tsutsugamushi* Karp strain as template and primers designed specifically for this genes (FIG. 1). The cloning of this PCR product into Pet24d (+) plasmid was confirmed after digestion with BamHI and NcoI (FIG. 1) and DNA sequence was verified with a DNA sequencer.

Expression of the 47-kDa protein was observed after 3 h of 1 mM IPTG induction at 37° C. (FIG. 2). The sequence of this expressed protein was confirmed with protein sequencer. (After sonication and centrifugation, the expressed protein was mainly associated with supernatant after the first centrifugation (FIG. 2) rather than associated with inclusion body as the r56 protein reported by Ching et al. The expressed protein may be associated with the membrane fraction and the addition of detergent (1% of NP40) appears to increase the yield during purification procedure (data not shown). Part of the supernatant containing r47 was first purified with DEAE anion exchange on a HPLC using a Tris buffer at pH 8.0 and protein was eluted with a NaCl gradient (up to 0.8 mM) and the fractions were collected and analyzed with SDS-PAGE (FIG. 3). The other part of the supernatant was purified with HPLC using a Tris buffer at pH 7.0 and eluted with a NaCl gradient (up to 2 M). The resulted fractions were poured and analyzed for r47 (FIG. 4).

The search of similarity of r47 with standard BLAST resulted in homologues with various serine proteases (FIG. 5). When r47 was searched against protein conserved domain database maintained by NCBI, a trypsin-like (77.7% of the conserved domain region (217 residues) was aligned) and PDZ domain (73.3% of the conserved domain region (86 residues) was aligned) were identified. These two domains were also associated with different serine proteases (FIG. 6).

Example 2

Assessment of Homologous Protection Induced by Recombinant 56 kDa Protein from *Orientia Tsutsugamushi* in Combination with 47 kDa Scrub Typhus Antigens

In order to assess the protective effect of r56 and r47 proteins against infection, mice will receive varying doses of r56 and r47 protein components from the Karp strain. Since the immunization with 25 ug or 2 ug of r56 in mice showed a protective role in our previous experiments (Annual Report J2_00_NMRC), we will use the same doses for testing r56 in the present study. For the r47 proteins, we do not know the optimum doses, but we will start with two dosages of 5 ug and

25 ug at this time. Alum and CpG will be used as adjuvants at the ratio of protein: Al+3: CpG=1:25:10. Alum has been approved for human use for a long time. Vaccines prepared by antigens adsorbed onto ALHYDROGEL have several advantages. The antigenic content is easier to standardize and the vaccine has good stability. ALHYDROGEL adsorbed antigens are simple and more convenient to use. In addition, the degree of local reaction following immunization is reduced. CpG induces a Th1-like pattern of cytokine production dominated by IL-12 and IFN-gamma with little secretion of Th2 cytokines.

Female CD1 mice, 4 to 5 weeks old, 13 to 15 grams in weight, will be purchased from Charles River Laboratories (Wilmington, Mass.). Each Study includes 5-7 groups of mice. A minimum of 15-20 mice is needed to down select the 20% difference in protective efficacy at 80-85% confidence level. Each group of 20 mice will be immunized i.m. with the 56 kDa antigen alone or in combination with r47 antigen except for the negative control groups. 15 mice will be challenged 4 weeks later and 5 mice will be sacrificed for measuring T-cell immune responses right before challenge.

Detailed Experimental Designs:

Study 1 (5 groups):

1. Negative control: PBS only
2. 25 ug of r56 only
3. 25 ug of 47 kDa only

Study 2 (7 groups):

1. Negative controls: the same as the group 1 in Study 1
2. 25 ug of r56, plus 5 ug of 47 kDa
3. 25 ug of r56, plus 25 ug of 47 kDa

Study 3 (5 groups):

1. Negative control: PBS only
2. 2 ug of r56 only
3. 4.2 ug of 47 kDa only

Study 4 (7 groups):

1. Negative controls: the same as the group 1 in Study 1
2. 2 ug of r56, plus 5 ug of 47 kDa
3. 2 ug of r56, plus 2 ug of 47 kDa

3) Monitoring the Immune Response:

(a) Antibody Detection: Mouse sera will be drawn immediately before immunization and before challenge. Each serum sample will be assayed in duplicate by enzyme-linked immunosorbent assay (ELISA) for antibodies against each antigen. Anti-mouse IgG and IgM peroxidase-labeled conjugate (Boehringer-Mannheim, Indianapolis, Ind.) will be tested.

(b) Cytokine detection in serum: Cytokines have been studied physiologically and pathologically with a focus on the roles in immune regulation during inflammation. IFN gamma and IL-4 are cytokines for Th1 and Th2 cells, respectively. For many intracellular infections, IL-12 may induce Th1 response, i.e. IFN-gamma production. The levels of IFN gamma and IL-2 were elevated in spleen mononuclear cells from 56 kDa immunized mice. Increased IFN was also detected in spleen cells and lymph nodes cells from mice chronically infected with *Orientia*. It was noted that *Orientia* was susceptible to INF gamma in cultured mouse cells. In the sera of patients with scrub typhus infection, the levels of G-CSF, M-CSF, IFN gamma, and TNF alpha were up regulated. Mice blood will be drawn in heparin before immuniza-

tion, 2, 4, 6, 8, 10, 15, and 30 days after immunization. Sera samples will be assayed in duplicate for cytokine levels of IFN gamma, TNF alpha, IL-4, IL-12, G-CSF, and M-CSF.

(c) Cytokine production by antigen specific T-cells: Spleen mononuclear cells (SMNC), stimulated by recombinant antigens, will be monitored for the productions of IFN gamma and IL-2 at day 1, 2, and 3 post stimulation. The cells will be isolated by FICOLL-HYPAQUE (PHARMACIA™, Uppsala, Sweden) density gradient centrifugation. After washing, the cells will be resuspended to a concentration of 5×10^6 E6 per ml in warm RPMI-10, and 100 ul will be distributed in each well of a 96-well plate as described. Following incubation with corresponding recombinant antigens, culture supernatants will be collected and used in cytokine assays. The supernatants from triplicate SMNC cultures will be pooled, and all samples will be assayed in triplicate. IL-2 activity in the supernatants from antigen-stimulated SMNC will be tested for its ability to support growth of IL-2-dependent CTLL-2 cells in the presence of anti-IL-4 antibody (11B11; 10 ug/ml). For INF-gamma and IL-4, the levels will be measured by enzyme-linked immunosorbent assay kit (GENZYME, Boston, Mass.) according to the manufacturer's instructions. CD4 and CD8 cells will be selected to determine which cells are producing the cytokines using MACS direct MicroBeads (MILTENYI BIOTEC®, Auburn Calif.).

(d) Proliferative response of spleen cells: SMNC will be prepared as described above. After the stimulation by different amounts of recombinant protein or *Orientia* Karp, the cultures will be incubated at 37 C for 72 h under a humidified atmosphere of 5% CO₂. A total of 1 uCi of [3H] thymidine will be added to each well for the another 18 h of culture. Cells will be harvested onto glass fiber filter strips, and incorporation of [3H] thymidine will be counted in a liquid scintillation counter.

Prophetic Example 3

Prophetic examples for the treatment of HIV patient to reduce the virus load with immunoglobulins from subjects immunized by the immunogenic composition.

There is no animal model for HIV infection at the present time. However, transgenic mice carrying the human CD-4 gene can be infected by HIV. This type of mice will be used in the following experiments:

Mice will be infected with HIV. Two months later, one group of mice will be treated with hyper immune plasma from the same type of mice immunized by the said immunogenic composition (group 1). Another group of mice will be treated with normal plasma to serve as the control group (group 2). Blood will be drawn from both groups at one week interval for four times. The HIV load in the blood will be quantitated by real time PCR. Results from group 1 will be compared to group 2 to demonstrate the decreased virus load by the hyper immune plasma.

CONCLUSIONS

The truncated 47-kDa protein was successfully cloned and overexpressed in BL21 cells. The over expressed protein was not in the inclusion body making the purification procedure complicated. The addition of detergent increased the amount of r47 suggesting the association of protein with membrane fraction. Although dialysis of crude extract with 25,000 MW cutoff offered some purification and further purification using pH 8.0 or pH 7.0 buffer and salt gradient on an anion exchange column resulted in further purification, the protein was not yet fully purified. The pI of r47 was predicted to be 8.2 and suggested a cation exchange is more suitable for purification. Experiments will continue to purify r47 with cation exchange followed by gel filtration to achieve desired purity.

The inventive subject matter being thus described, it will be obvious that the same may be varied in many ways. Such variations are not to be regarded as a departure from the spirit and scope of the inventive subject matter, and all such modifications are intended to be within the scope of the following claims.

SEQUENCE LISTING

<160> NUMBER OF SEQ ID NOS: 9

<210> SEQ ID NO 1

<211> LENGTH: 425

<212> TYPE: PRT

<213> ORGANISM: *Orientia tsutsugamushi*

<220> FEATURE:

<221> NAME/KEY: MISC_FEATURE

<223> OTHER INFORMATION: Expressed, truncated protein sequence
(translated from 184-1458 of DNA sequence, boded sequence was confirmed by N-terminal protein sequenceing)

<400> SEQUENCE: 1

Met Val Asn Ser Leu Ser Asp Ile Val Glu Pro Leu Ile Ser Thr Val
1 5 10 15

Val Ser Ile Tyr Ala Val Asp Thr Asn Ile Gly Ile Ser Phe Asn Asn
20 25 30

Lys Val Ser Lys Tyr Gln Gln Glu Val Phe Leu Gly Ser Gly Val Ile
35 40 45

Ile Asp Ser Ser Gly Tyr Ile Val Thr Asn Glu Asn Val Ile Ala Gly

-continued

50	55	60
Ala Glu Asn Ile Lys Val Lys Leu His Asp Gly Ser Glu Leu Ile Ala 65 70 75 80		
Glu Leu Val Gly Ser Asp Asn Lys Ile Asn Ile Ala Leu Leu Lys Ile 85 90 95		
Asn Ser Pro Ala Ala Leu Ser Tyr Ala Thr Phe Gly Asp Ser Asn Gln 100 105 110		
Ser Arg Val Gly Asp Gln Val Ile Ala Ile Gly Ser Pro Phe Gly Leu 115 120 125		
Arg Gly Thr Val Thr Asn Gly Ile Ile Ser Ser Lys Gly Pro Asp Met 130 135 140		
Gly Asn Gly Ile Val Thr Asp Phe Ile Gln Thr Asn Ala Ala Ile His 145 150 155 160		
Met Gly Ser Phe Gly Gly Pro Met Phe Asn Leu Glu Gly Lys Ile Ile 165 170 175		
Gly Ile Asn Ser Ile His Val Ser Tyr Ser Gly Ile Ser Phe Ala Ile 180 185 190		
Pro Ser Asn Thr Val Leu Glu Ala Val Glu Cys Leu Lys Lys Gly Glu 195 200 205		
Lys Ile Arg Arg Gly Met Leu Asn Val Met Leu Asn Glu Leu Thr Pro 210 215 220		
Glu Leu Asn Glu Asn Leu Gly Leu Lys Gln Asp Gln Asn Gly Val Leu 225 230 235 240		
Ile Thr Glu Val Ile Lys Glu Gly Ser Ala Ala Gln Cys Gly Ile Ala 245 250 255		
Pro Gly Asp Val Ile Thr Lys Phe His Asp Lys Glu Ile Lys Thr Gly 260 265 270		
Arg Asp Leu Gln Val Ala Val Ser Ser Thr Met Leu Asn Ser Glu Arg 275 280 285		
Glu Val Glu Leu Leu Arg Asn Gly Lys Ser Met Thr Leu Lys Cys Lys 290 295 300		
Ile Ile Ala Asn Lys Gly Glu Asp Ser Glu Gln Gln Ser Asn Asp Gln 305 310 315 320		
Ser Leu Val Val Asn Gly Val Lys Phe Val Asp Leu Thr Pro Asp Leu 325 330 335		
Val Lys Lys Tyr Asn Ile Thr Ser Ala Asn Asn Asn Gly Leu Phe Val 340 345 350		
Leu Glu Val Ser Pro Asn Ser Ser Trp Gly Arg Tyr Gly Leu Lys Met 355 360 365		
Gly Leu Arg Pro Arg Asp Ile Ile Leu Ser Val Lys Arg Asp Asp Asn 370 375 380		
Lys Lys Asp Ile Ser Val Lys Thr Leu Arg Glu Ile Val Thr Asn Ile 385 390 395 400		
Lys His Asn Glu Ile Phe Phe Thr Val Gln Arg Gly Asp Arg Met Leu 405 410 415		
Tyr Ile Ala Leu Pro Asn Ile Asn Lys 420 425		

<210> SEQ ID NO 2

<211> LENGTH: 376

<212> TYPE: PRT

<213> ORGANISM: Orientia tsutsugamushi

<220> FEATURE:

<221> NAME/KEY: misc_feature

<223> OTHER INFORMATION: r56 Protein Karp (Ching)

-continued

<400> SEQUENCE: 2

```

Thr Ile Ala Pro Gly Phe Arg Ala Glu Ile Gly Val Met Tyr Leu Thr
1           5           10           15
Asn Ile Thr Ala Gln Val Glu Glu Gly Lys Val Lys Ala Asp Ser Val
20           25           30
Gly Glu Thr Lys Ala Asp Ser Val Gly Gly Lys Asp Ala Pro Ile Arg
35           40           45
Lys Arg Phe Lys Leu Thr Pro Pro Gln Pro Thr Ile Met Pro Ile Ser
50           55           60
Ile Ala Val Arg Asp Phe Gly Ile Asp Ile Pro Asn Ile Pro Gln Gln
65           70           75           80
Gln Ala Gln Ala Ala Gln Pro Gln Leu Asn Asp Glu Gln Arg Ala Ala
85           90           95
Ala Arg Ile Ala Trp Leu Lys Asn Cys Ala Gly Ile Asp Tyr Arg Val
100          105          110
Lys Asn Pro Asn Asp Pro Asn Gly Pro Met Val Ile Asn Pro Ile Leu
115          120          125
Leu Asn Ile Pro Gln Gly Asn Pro Asn Pro Val Gly Asn Pro Pro Gln
130          135          140
Arg Ala Asn Pro Pro Ala Gly Phe Ala Ile His Asn His Glu Gln Trp
145          150          155          160
Arg His Leu Val Val Gly Leu Ala Ala Leu Ser Asn Ala Asn Lys Pro
165          170          175
Ser Ala Ser Pro Val Lys Val Leu Ser Asp Lys Ile Thr Gln Ile Tyr
180          185          190
Ser Asp Ile Lys His Leu Ala Asp Ile Ala Gly Ile Asp Val Pro Asp
195          200          205
Thr Ser Leu Pro Asn Ser Ala Ser Val Glu Gln Ile Gln Asn Lys Met
210          215          220
Gln Glu Leu Asn Asp Leu Leu Glu Glu Leu Arg Glu Ser Phe Asp Gly
225          230          235          240
Tyr Leu Gly Gly Asn Ala Phe Ala Asn Gln Ile Gln Leu Asn Phe Val
245          250          255
Met Pro Gln Gln Ala Gln Gln Gln Gly Gln Gly Gln Gln Gln Ala
260          265          270
Gln Ala Thr Ala Gln Glu Ala Val Ala Ala Ala Ala Val Arg Leu Leu
275          280          285
Asn Gly Asn Asp Gln Ile Ala Gln Leu Tyr Lys Asp Leu Val Lys Leu
290          295          300
Gln Arg His Ala Gly Ile Lys Lys Ala Met Glu Lys Leu Ala Ala Gln
305          310          315          320
Gln Glu Glu Asp Ala Lys Asn Gln Gly Glu Gly Asp Cys Lys Gln Gln
325          330          335
Gln Gly Thr Ser Glu Lys Ser Lys Lys Gly Lys Asp Lys Glu Ala Glu
340          345          350
Phe Asp Leu Ser Met Ile Val Gly Gln Val Lys Leu Tyr Ala Asp Val
355          360          365
Met Ile Thr Glu Ser Val Ser Ile
370          375

```

<210> SEQ ID NO 3

<211> LENGTH: 529

<212> TYPE: PRT

-continued

```

<213> ORGANISM: Orientia tsutsugamushi
<220> FEATURE:
<221> NAME/KEY: misc_feature
<223> OTHER INFORMATION: r56 Protein Sequence (Kato)

<400> SEQUENCE: 3

Met Lys Lys Ile Met Leu Ile Ala Ser Ala Met Ser Ala Leu Ser Leu
 1          5          10          15

Pro Phe Ser Ala Ser Ala Ile Glu Leu Gly Asp Glu Gly Gly Leu Glu
 20          25          30

Cys Gly Pro Tyr Ala Lys Val Gly Val Val Gly Gly Met Ile Thr Gly
 35          40          45

Val Glu Ser Thr Arg Leu Asp Pro Ala Asp Ala Gly Gly Lys Lys Gln
 50          55          60

Leu Pro Leu Thr Thr Ser Met Pro Phe Gly Gly Thr Leu Ala Ala Gly
 65          70          75          80

Met Thr Ile Ala Pro Gly Phe Arg Ala Glu Leu Gly Val Met Tyr Leu
 85          90          95

Ala Asn Val Lys Ala Glu Val Glu Ser Gly Lys Thr Gly Ser Asp Ala
 100          105          110

Asp Ile Arg Ser Gly Ala Asp Ser Pro Met Pro Gln Arg Tyr Lys Leu
 115          120          125

Thr Pro Pro Gln Pro Thr Ile Met Pro Ile Ser Ile Ala Asp Arg Asp
 130          135          140

Leu Gly Val Asp Ile Pro Asn Val Pro Gln Gly Gly Ala Asn His Leu
 145          150          155          160

Gly Asp Asn Leu Gly Ala Asn Asp Ile Arg Arg Ala Asp Asp Arg Ile
 165          170          175

Thr Trp Leu Lys Asn Tyr Ala Gly Val Asp Tyr Met Val Pro Asp Pro
 180          185          190

Asn Asn Pro Gln Ala Arg Ile Val Asn Pro Val Leu Leu Asn Ile Pro
 195          200          205

Gln Gly Pro Pro Asn Ala Asn Pro Arg Gln Ala Met Gln Pro Cys Ser
 210          215          220

Ile Leu Asn His Asp His Trp Arg His Leu Val Val Gly Ile Thr Ala
 225          230          235          240

Met Ser Asn Ala Asn Lys Pro Ser Val Ser Pro Ile Lys Val Leu Ser
 245          250          255

Glu Lys Ile Val Gln Ile Tyr Arg Asp Val Lys Pro Phe Ala Arg Val
 260          265          270

Ala Gly Ile Glu Val Pro Ser Asp Pro Leu Pro Asn Ser Ala Ser Val
 275          280          285

Glu Gln Ile Gln Asn Lys Met Gln Glu Leu Asn Asp Ile Leu Asp Glu
 290          295          300

Ile Arg Asp Ser Phe Asp Gly Cys Ile Gly Gly Asn Ala Phe Ala Asn
 305          310          315          320

Gln Ile Gln Leu Asn Phe Arg Ile Pro Gln Ala Gln Gln Gln Gly Gln
 325          330          335

Gly Gln Gln Gln Gln Gln Ala Gln Ala Thr Ala Gln Glu Ala Ala Ala
 340          345          350

Ala Ala Ala Val Arg Val Leu Asn Asn Asn Asp Gln Ile Ile Lys Leu
 355          360          365

Tyr Lys Asp Leu Val Lys Leu Lys Arg His Ala Gly Ile Lys Lys Ala
 370          375          380

```

-continued

```

Met Glu Glu Leu Ala Ala Gln Asp Gly Gly Cys Asn Gly Gly Gly Asp
385          390          395          400

Asn Lys Lys Lys Arg Gly Ala Ser Glu Asp Ser Asp Ala Gly Gly Ala
405          410          415

Ser Lys Gly Gly Lys Gly Lys Glu Thr Lys Glu Thr Glu Phe Asp Leu
420          425          430

Ser Met Ile Val Gly Gln Val Lys Leu Tyr Ala Asp Leu Phe Thr Thr
435          440          445

Glu Ser Phe Ser Ile Tyr Ala Gly Leu Gly Ala Gly Leu Ala Tyr Thr
450          455          460

Ser Gly Lys Ile Asp Gly Val Asp Ile Lys Ala Asn Thr Gly Met Val
465          470          475          480

Ala Ser Gly Ala Leu Gly Val Ala Ile Asn Ala Ala Glu Gly Val Tyr
485          490          495

Val Asp Ile Glu Gly Ser Tyr Met His Ser Phe Ser Lys Ile Glu Glu
500          505          510

Lys Tyr Ser Ile Asn Pro Leu Met Ala Ser Phe Gly Val Arg Tyr Asn
515          520          525

```

Phe

```

<210> SEQ ID NO 4
<211> LENGTH: 524
<212> TYPE: PRT
<213> ORGANISM: Orientia tsutsugamushi
<220> FEATURE:
<221> NAME/KEY: misc_feature
<223> OTHER INFORMATION: r56 Protein (Gilliam)

```

<400> SEQUENCE: 4

```

Met Lys Lys Ile Met Leu Ile Ala Ser Ala Met Ser Ala Leu Ser Leu
1          5          10          15

Pro Phe Ser Ala Ser Ala Ile Glu Leu Gly Glu Glu Gly Gly Leu Glu
20          25          30

Cys Gly Pro Tyr Gly Lys Val Gly Ile Val Gly Gly Met Ile Thr Gly
35          40          45

Ala Glu Ser Thr Arg Leu Asp Ser Thr Asp Ser Glu Gly Lys Lys His
50          55          60

Leu Ser Leu Thr Thr Gly Leu Pro Phe Gly Gly Thr Leu Ala Ala Gly
65          70          75          80

Met Thr Ile Ala Pro Gly Phe Arg Ala Glu Leu Gly Val Met Tyr Leu
85          90          95

Arg Asn Ile Ser Ala Glu Val Glu Val Gly Lys Gly Lys Val Asp Ser
100         105         110

Lys Gly Glu Ile Lys Ala Asp Ser Gly Gly Gly Thr Asp Thr Pro Ile
115         120         125

Arg Lys Arg Phe Lys Leu Thr Pro Pro Gln Pro Thr Ile Met Pro Ile
130         135         140

Ser Ile Ala Asp Arg Asp Val Gly Val Asp Thr Asp Ile Leu Ala Gln
145         150         155         160

Ala Ala Ala Gly Gln Pro Gln Leu Thr Val Glu Gln Arg Ala Ala Asp
165         170         175

Arg Ile Ala Trp Leu Lys Asn Tyr Ala Gly Ile Asp Tyr Met Val Pro
180         185         190

Asp Pro Gln Asn Pro Asn Ala Arg Val Ile Asn Pro Val Leu Leu Asn
195         200         205

```

-continued

```

Ile Thr Gln Gly Pro Pro Asn Val Gln Pro Arg Pro Arg Gln Asn Leu
 210                215                220

Asp Ile Leu Asp His Gly Gln Trp Arg His Leu Val Val Gly Val Thr
 225                230                235                240

Ala Leu Ser His Ala Asn Lys Pro Ser Val Thr Pro Val Lys Val Leu
 245                250                255

Ser Asp Lys Ile Thr Lys Ile Tyr Ser Asp Ile Lys Pro Phe Ala Asp
 260                265                270

Ile Ala Gly Ile Asp Val Pro Asp Thr Gly Leu Pro Asn Ser Ala Ser
 275                280                285

Val Glu Gln Ile Gln Ser Lys Met Gln Glu Leu Asn Asp Val Leu Glu
 290                295                300

Asp Leu Arg Asp Ser Phe Asp Gly Tyr Met Gly Asn Ala Phe Ala Asn
 305                310                315                320

Gln Ile Gln Leu Asn Phe Val Met Pro Gln Gln Ala Gln Gln Gln Gln
 325                330                335

Gly Gln Gly Gln Gln Gln Ala Gln Ala Thr Ala Gln Glu Ala Val
 340                345                350

Ala Ala Ala Ala Val Arg Leu Leu Asn Gly Asn Asp Gln Ile Ala Gln
 355                360                365

Leu Tyr Lys Asp Leu Val Lys Leu Gln Arg His Ala Gly Val Lys Lys
 370                375                380

Ala Met Glu Lys Leu Ala Ala Gln Gln Glu Glu Asp Ala Lys Asn Gln
 385                390                395                400

Gly Glu Gly Asp Cys Lys Gln Gln Gln Gly Ala Ser Glu Lys Ser Lys
 405                410                415

Glu Gly Lys Gly Lys Glu Thr Glu Phe Asp Leu Ser Met Ile Val Gly
 420                425                430

Gln Val Lys Leu Tyr Ala Asp Leu Phe Thr Thr Glu Ser Phe Ser Ile
 435                440                445

Tyr Ala Gly Val Gly Ala Gly Leu Ala His Thr Tyr Gly Lys Ile Asp
 450                455                460

Asp Lys Asp Ile Lys Gly His Thr Gly Met Val Ala Ser Gly Ala Leu
 465                470                475                480

Gly Val Ala Ile Asn Ala Ala Glu Gly Val Tyr Val Asp Leu Glu Gly
 485                490                495

Ser Tyr Met His Ser Phe Ser Lys Ile Glu Glu Lys Tyr Ser Ile Asn
 500                505                510

Pro Leu Met Ala Ser Val Gly Val Arg Tyr Asn Phe
 515                520

```

```

<210> SEQ ID NO 5
<211> LENGTH: 31
<212> TYPE: DNA
<213> ORGANISM: Orientia tsutsugamushi
<220> FEATURE:
<221> NAME/KEY: misc_feature
<223> OTHER INFORMATION: Forward Primers

```

```
<400> SEQUENCE: 5
```

```
tatgcatacc atggtaaata gtttatctga t
```

31

```

<210> SEQ ID NO 6
<211> LENGTH: 35
<212> TYPE: DNA
<213> ORGANISM: Orientia tsutsugamushi
<220> FEATURE:

```

-continued

<221> NAME/KEY: misc_feature

<223> OTHER INFORMATION: Reverse Primers

<400> SEQUENCE: 6

cgccctggatc ctagatttac ttattaatat taggt 35

<210> SEQ ID NO 7

<211> LENGTH: 1307

<212> TYPE: DNA

<213> ORGANISM: Orientia tsutsugamushi

<220> FEATURE:

<221> NAME/KEY: misc_feature

<222> LOCATION: (1)..(1307)

<223> OTHER INFORMATION: PCR amplified sequence: 174-1481 nt.
Expressed DNA sequence: 184-1458 nt, aa 42-466.

<400> SEQUENCE: 7

tatgcatatt atggtaaata gtttatctga tatagttgag ccattaatat ctacagtagt 60

aagtatttat gctgtagata ctaacattgg tattagtttt aataataagg tatctaagta 120

tcagcaagaa gtgttcttag gttctggggg tatcattgat agttctgggt atattgttac 180

taatgagaat gttatagcag gagctgaaaa tataaaagta aagttgcatg atggttcaga 240

actcatagca gaattagttg gtagtgacaa taaaattaat atagctttat taaaaattaa 300

ttctcagca gcattatctt atgcgacttt tggcgactca aatcagtcta gagtaggaga 360

tcagggttatt gcaataggaa gtccttttgg tttaagagga acagtaacaa atggcattat 420

ttcttctaaa ggaccagata tgggtaacgg catagtaact gattttattc aaactaatgc 480

tgctattcat atgggtagct ttgggtgacc gatgtttaat cttgaaggaa aaattattgg 540

aattaattcc attcacgat cttactcagg cataagtttt gctattccat ctaatactgt 600

acttgaagca gttgaatgct taaaaaaagg agaaaaaatt cgctcgtgta tgttaaatgt 660

tatgcttaat gaattaactc cagaattaa tgagaattta ggacttaaac aagatcaaaa 720

tggagttcta ataactgaag ttataaaaga aggatctgca gcacaatgtg gaattgctcc 780

tggagatgta attactaaat ttcatgataa agagatcaaa acagggagag atttacaggt 840

agctgtatct tcaactatgc ttaattctga aagagaagtt gagcttttac gtaatggtaa 900

gtcgtatgact ctaaaaatgta aaattattgc caacaaaggt gaggatagtg agcaacaaag 960

taatgatcaa agccttgtgg ttaattgtgt aaaatttgtt gatcttacac ctgatttagt 1020

gaagaaatat aatattactt cagctaataa taatgggtta tttgtccttg aagtttcgcc 1080

taactcttct tgggggagat atgggtttaa aatggggcta agacctagag atataathtt 1140

atcagttaaa cgtgatgata ataaaaaga tatttctggt aaaactctaa gagaaatagt 1200

gacaaatata aagcataatg aaattttctt tacagtgcaa agaggagata gaatgcttta 1260

cattgcttta cctaataatta ataagtaaat ctagttaaaa ggcgatt 1307

<210> SEQ ID NO 8

<211> LENGTH: 8

<212> TYPE: PRT

<213> ORGANISM: Artificial

<220> FEATURE:

<223> OTHER INFORMATION: Truncated protein sequence, eight identical
amino-acid match between r47 and HIV envelope protein HIVgp 120

<400> SEQUENCE: 8

Thr Leu Arg Ile Val Thr Asn Lys

1

5

-continued

<210> SEQ ID NO 9
 <211> LENGTH: 4
 <212> TYPE: PRT
 <213> ORGANISM: Artificial
 <220> FEATURE:
 <223> OTHER INFORMATION: Truncated protein sequence, four identical
 amino-acid match between r47 and HIV envelope protein HIVgp 120

<400> SEQUENCE: 9

Ile Val Thr Asn

1

What is claimed is:

1. An assay method for detecting scrub typhus in a subject comprising:
 - (a) obtaining a sample from said subject;
 - (b) exposing said sample to a combination of a truncated r47 protein set forth in SEQ ID NO: 1 plus a truncated r56 protein set forth in SEQ ID NO: 2;
 - (c) detecting antibodies to said protein combination in said sample in an assay equipment.

15

2. The assay method of claim 1, wherein said sample comprises blood, urine, or oral fluids.

3. The assay method of claim 1, wherein said assay equipment is selected from the group consisting of ELISA plates, dot-blot matrices, and hand held chromatographic and flow through assay devices.

* * * * *

专利名称(译)	恙虫病东方体截短重组外膜蛋白 (R47) 和 (R56) 疫苗诊断和治疗恙虫病		
公开(公告)号	US7820395	公开(公告)日	2010-10-26
申请号	US11/876997	申请日	2007-10-23
[标]申请(专利权)人(译)	HENRY中号JACKSON发现的军事医学的进步		
申请(专利权)人(译)	AMERICA美国为代表由海军部长亨利M.杰克逊基金会为军事医学，INC进步。 N / A		
当前申请(专利权)人(译)	AMERICA美国为代表由海军部长亨利M.杰克逊基金会为军事医学，INC进步。		
[标]发明人	CHING WEI MEI GE HONG CHAO CHIEN CHUNG		
发明人	CHING, WEI MEI GE, HONG CHAO, CHIEN-CHUNG		
IPC分类号	G01N33/53 G01N33/554 G01N33/00 A61K39/00 A61K39/02 A61K39/395 A61P31/04 A61P31/18 A61P43/00 C07K14/195 C07K14/29 C07K16/12 C12N15/09 G01N33/569		
CPC分类号	A61K39/0233 C07K14/195 C07K16/1246 G01N33/56911 A61K39/00 G01N2333/29 G01N2469/10 G01N2469/20 Y10S530/825 Y02A50/403 Y02A50/59		
优先权	60/380301 2002-05-15 US		
其他公开文献	US20080044806A1		
外部链接	Espacenet USPTO		

摘要(译)

公开了使用包含截短的r47蛋白和截短的r56蛋白的组合物的恙虫病诊断方法和疫苗。还公开了由r56蛋白质变体组成的疫苗。还公开了使用r47和r56蛋白质以及针对r47和r56产生的抗体降低HIV病毒载量的方法。

