



US 20080044806A1

(19) **United States**

(12) **Patent Application Publication**  
**Ching et al.**

(10) **Pub. No.: US 2008/0044806 A1**

(43) **Pub. Date: Feb. 21, 2008**

(54) **ORIENTIA TSUTSUGAMUSHI TRUNCATED RECOMBINANT OUTER MEMBRANE PROTEIN (R47) AND (R56) VACCINES DIAGNOSTICS AND THERAPEUTICS FOR SCRUB TYPHUS**

(60) Provisional application No. 60/380,301, filed on May 15, 2002.

(30) **Foreign Application Priority Data**

May 15, 2003 (US)..... PCT/US03/15072

(76) Inventors: **Wei Mei Ching**, Bethesda, MD (US);  
**Hong Ge**, Gaithersburg, MD (US);  
**Chien-Chung Chao**, N. Bethesda, MD (US)

**Publication Classification**

(51) **Int. Cl.**  
*C12Q* 1/00 (2006.01)  
*G01N* 33/48 (2006.01)

Correspondence Address:  
**NAVAL MEDICAL RESEARCH CENTER**  
**ATTN: (CODE 00L)**  
**503 ROBERT GRANT AVENUE**  
**SILVER SPRING, MD 20910-7500 (US)**

(52) **U.S. Cl.** ..... 435/4; 436/63

(57) **ABSTRACT**

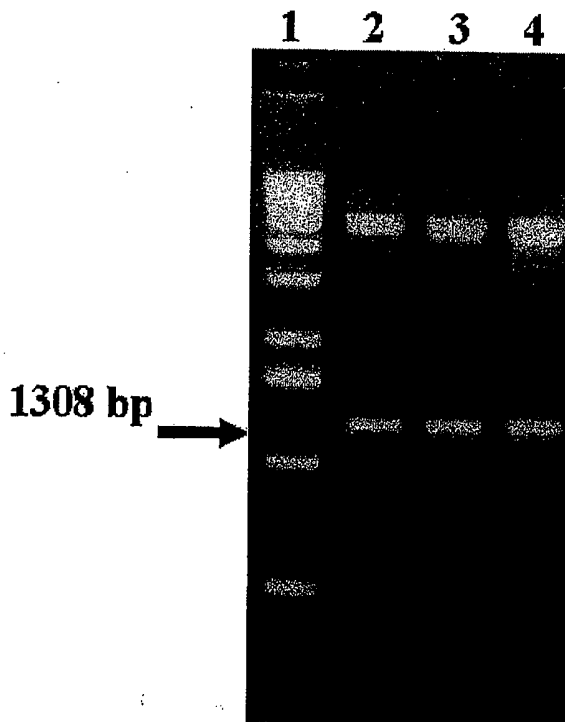
(21) Appl. No.: 11/876,997

(22) Filed: Oct. 23, 2007

**Related U.S. Application Data**

(62) Division of application No. 10/438,345, filed on May 15, 2003, now Pat. No. 7,306,808.

A scrub typhus diagnostic method and vaccine using a composition comprising truncated r47 protein and truncated r56 protein is disclosed. Vaccines composed of r56 protein variants are also disclosed. Methods of reducing HIV viral loads using r47 and r56 proteins and antibodies raised against r47 and r56 are also disclosed.



**Lane 1: 1 kb DNA marker**

**Lane 2-4: individual colony containing correct insert**

# PCR product of DNA coding for 47-kDa protein and digested plasmids

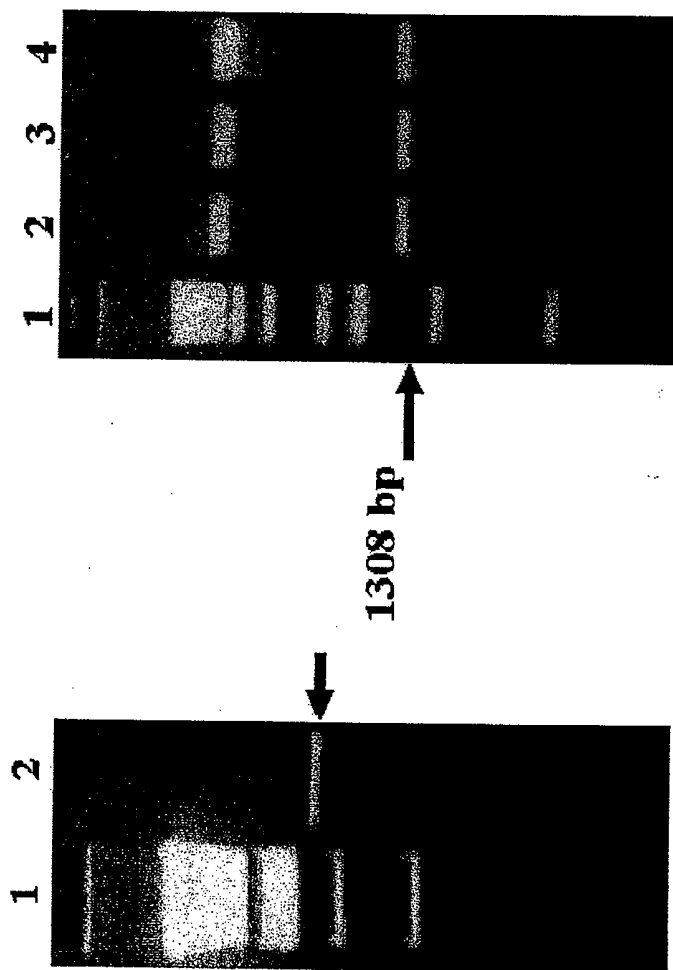


Figure 1B

Lane 1: 1 kb DNA marker

Lane 2: PCR product

Figure 1A

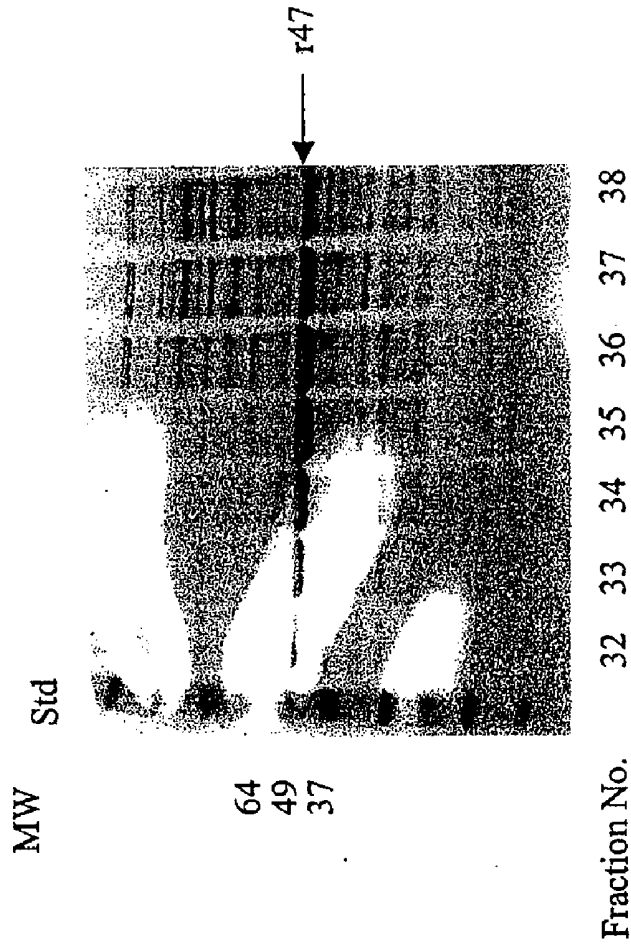
Lane 1: 1 kb DNA marker

Lane 2-4: individual colony containing correct insert



**Figure 3**

**Fractionation of r47 protein on DEAE anion exchange column (pH 8.0)**



**Figure 4**

**Fractionation of r47 protein on DEAE anion exchange column (pH 7.0)**

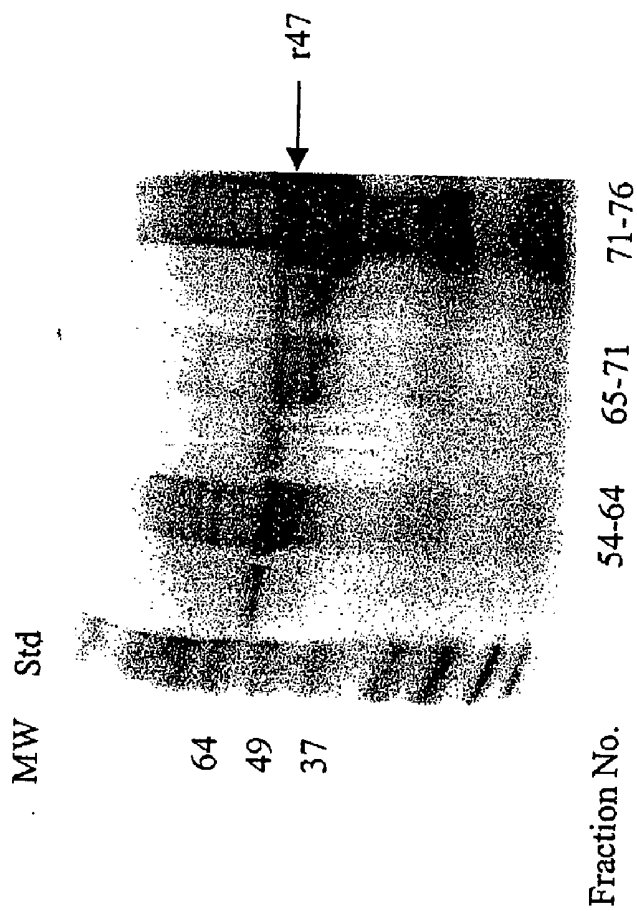


Figure 5

BLAST Search of r47 protein sequence

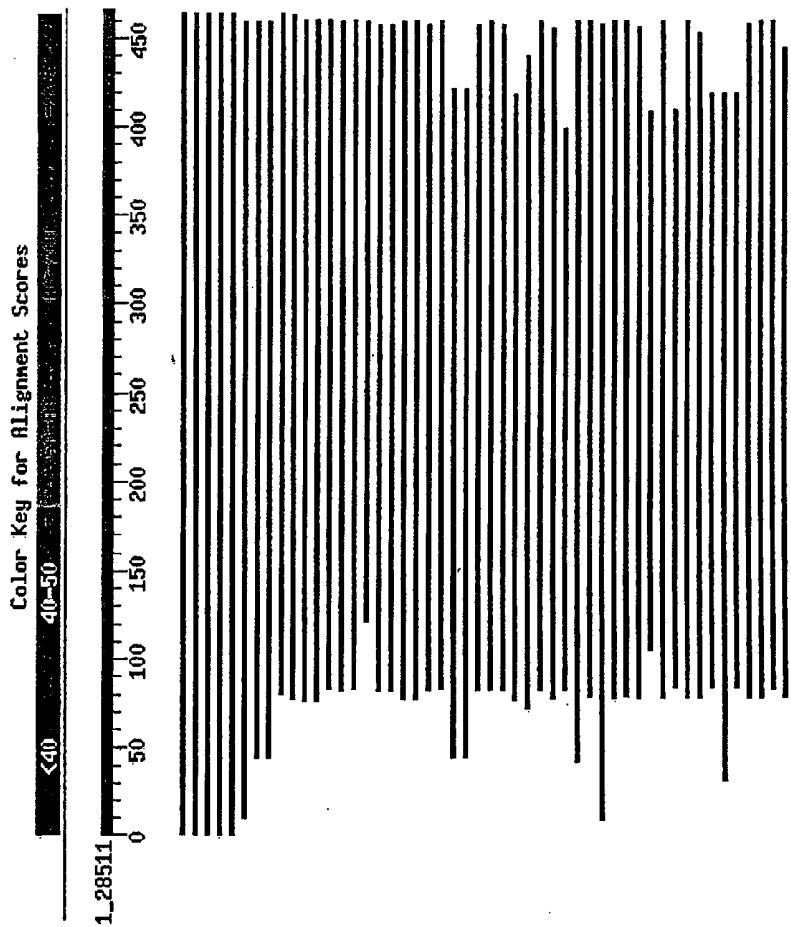
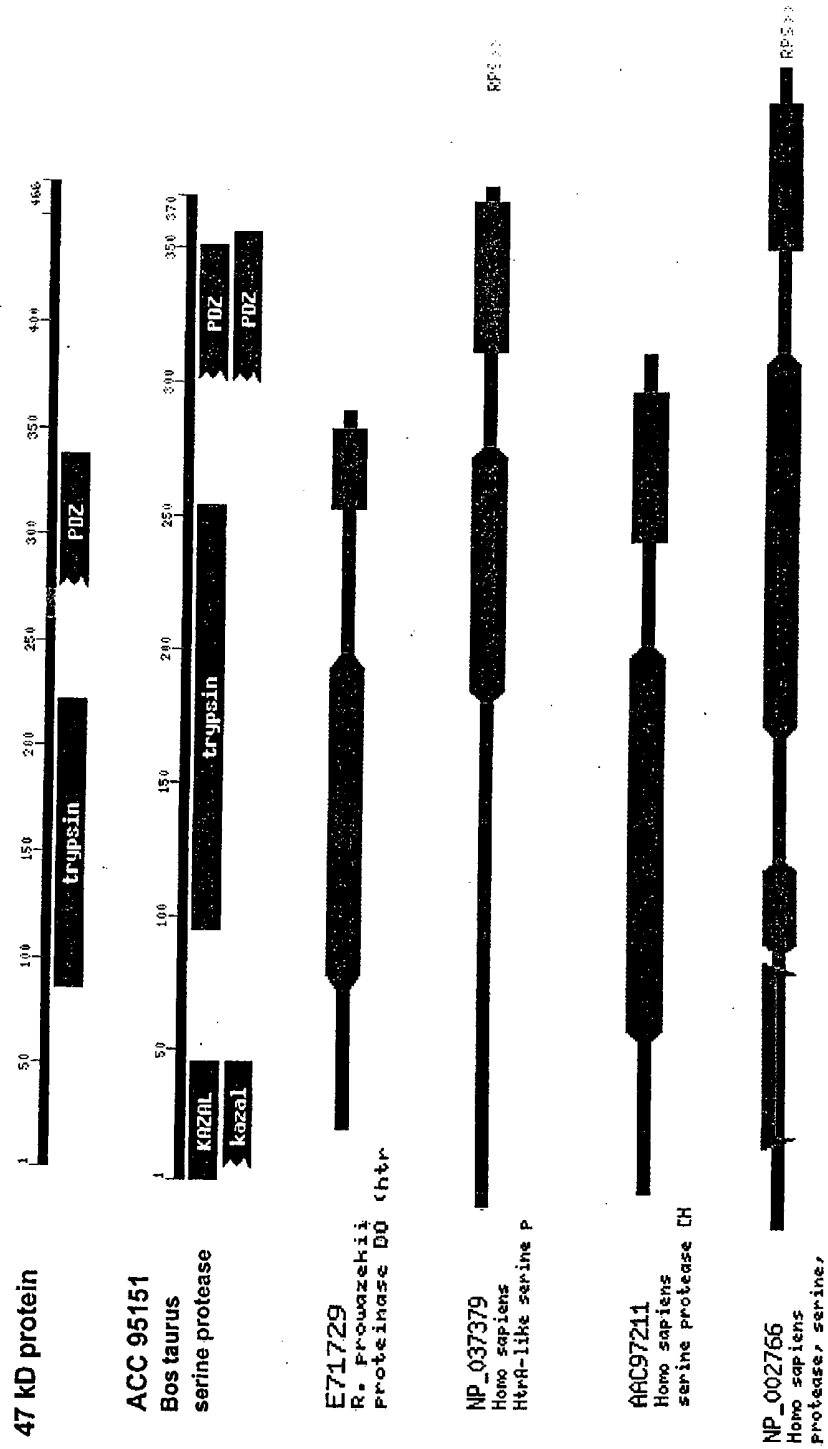


Figure 6

Comparison of Conserved Domains among r47 and Serine Proteases



**ORIENTIA TSUTSUGAMUSHI TRUNCATED  
RECOMBINANT OUTER MEMBRANE PROTEIN  
(R47) AND (R56) VACCINES DIAGNOSTICS AND  
THERAPEUTICS FOR SCRUB TYPHUS**

CROSS-REFERENCE TO RELATED  
APPLICATIONS

[0001] This application claims benefit of U.S. Provisional Application No. 60/380,301, filed on 15 May 2002. Other related applications include U.S. Non-Provisional application Ser. No. 10/438,345, filed on 15 May 2003 and PCT Application No. PCT/US03/15072, filed on 15 May 2002.

SEQUENCE LISTING

[0002] I hereby state that the information recorded in computer readable form is identical to the written sequence listing.

FIELD OF THE INVENTION

[0003] The present invention relates to a 47 kDa and a 56 kDa surface protein antigen of *Orientia tsutsugamushi* which are useful as diagnostic antigens as well as immunizing agents. The invention further relates to a therapeutic method of reducing the HIV viral load in a patient.

DESCRIPTION OF THE PRIOR ART

[0004] Scrub typhus infection is caused by the obligated intracellular, gram-negative bacterium *O. tsutsugamushi*. It accounts for up to 23% of all febrile episodes in areas of the Asia-Pacific region where scrub typhus is endemic and can cause up to a third of mortality if left untreated. Symptoms may include pneumonitis, meningitis, rash, and headache. Differentiating scrub typhus from other acute febrile illness, such as leptospirosis, murine typhus, malaria, can be difficult because of the similarities in signs and symptoms. Sera from 95-99% of patients with scrub typhus recognize a 56-kDa protein of *O. tsutsugamushi* which comprises 10-15% of the total rickettsial cellular protein content. This 56-kDa protein has both conserved and unique sequences among different strains, has been developed and used for early diagnosis and a potential vaccine candidate.

[0005] Whole-organism vaccines have been previously developed and their protections have been short-lived and lack of cross strain protection. The major surface protein antigen, the variable 56-kDa protein which account for the antigenic variation, has been shown to induce protective immunity against the homologous strain but not the heterologous strains. The fact that other antigens, such as 110, 47 and 22 kDa have also been identified with high seroreactivity suggests that a combination of several of these antigens may provide better protection against various stains of *O. tsutsugamushi* infection. Recently, it has been demonstrated that the infusion of plasma from scrub typhus infected patients into HIV infected patients led to the decrease of HIV virus load burden determined 2 months after the initial infusion, suggesting the pharmaceutical effect of the scrub typhus patients' plasma.

SUMMARY OF THE INVENTION

[0006] In this report, we have demonstrated the cloning of 47-kDa protein gene, NCBI accession number L31934.1, and the attempt to obtain pure r47, in an effort leading to the

production of sufficient quantity and high purity recombinant 47-kDa protein to use in combination with r56 protein as a vaccine candidate to afford broader protection. In addition, the sequence search of this outer membrane protein showed similarity with serine proteases, suggesting r47 protein itself may function as a protease.

[0007] Western blot results revealed that plasma from scrub typhus patients showed strong antigenic response to the r47 protein, suggesting a potential protective role of r47 against HIV infection. It is possible that this inhibitory effect was due to the antibody response toward r47 protein. Alternatively, the homology between serine protease and r47 protein indicating a potential protease activity associated with r47 which may result in interference with HIV processing.

[0008] A search of the NCBI protein database for short, nearly exact matches revealed a 10-amino-acid match (8 identical and 2 conserved) between the *O. tsutsugamushi* Karp strain 47 kDa antigen (accession number gi/1220501) 47 kDa and HIV envelope protein (accession number gi/2250974) HIVgp120.

[0009] Pattern: TLR+IVTN+K

[0010] Accordingly, the present inventive subject matter is directed to a scrub typhus immunogenic composition comprising an r47 truncated protein of SEQ ID No.1, an r56 truncated protein selected from the group consisting of SEQ ID No. 2, SEQ ID No. 3, and SEQ ID No. 4 and a pharmaceutically acceptable carrier. The present inventive subject matter is further still directed to a method of treating a patient suffering from scrub typhus, the method comprising administering a pharmaceutically effective dose of antibodies raised against the combination of the truncated r47 protein of SEQ ID No. 1 and the truncated r56 protein selected from the group consisting of SEQ ID No. 2, SEQ ID No. 3 and SEQ ID No. 4 and a pharmaceutically acceptable carrier. Alternatively, the method may be comprised of the administration of antibodies raised against either the truncated r47 or the truncated r56 protein. The present inventive subject matter further contemplates a method for immunizing a subject against scrub typhus comprising administering a pharmaceutically effective amount of a scrub typhus vaccine.

[0011] The present inventive subject matter also contemplates an assay for detecting antibodies to scrub typhus comprising obtaining a sample from a subject, exposing the sample to r47 protein as a complement to an r56 assay in assay equipment selected from the group consisting of ELISA plates, dot-blot matrices, and hand held chromatographic and flow through assay devices. The present inventive subject matter further contemplates a treatment of an HIV patient which comprises a truncated r47 protein of SEQ ID No.1 and a pharmaceutically acceptable carrier which results in a reduction of the HIV viral load of an HIV patient.

[0012] The present inventive subject also contemplates a treatment of an HIV patient which comprises an r56 protein selected from the group of SEQ ID No. 2, SEQ ID No. 3, SEQ and SEQ ID No. 4.

[0013] The present inventive subject matter further contemplates an HIV vaccine comprising a potential HIV vaccine and a truncated r47 or r56 protein or protein combinations thereof.

[0014] The foregoing and other features and advantages will become further apparent from the following detailed description of the presently preferred embodiments, when read in conjunction with the accompanying examples and made with reference to the accompanying drawings. It should be understood that the detailed description and examples are illustrative rather than limitative, the scope of the present invention being defined by the appended claims and equivalents thereof.

#### BRIEF DESCRIPTION OF THE DRAWINGS

[0015] FIG. 1A is an SDS-PAGE showing the PCR product of DNA coding for the truncated 47-kDa protein;

[0016] FIG. 1B is an SDS-PAGE showing the PCR product of DNA coding for the digested plasmids;

[0017] FIG. 2 is An SDS-PAGE showing the induction of r47 protein with IPTG and fractionation of r47 from crude extract;

[0018] FIG. 3 is an SDS-PAGE showing fractionation of r47 protein on DEAE anion exchange column (pH 8.0);

[0019] FIG. 4 is an SDS-PAGE showing fractionation of r47 protein DEAE anion exchange column (pH 7.0);

[0020] FIG. 5 is a Blast Search of r47 protein sequence; and

[0021] FIG. 6 is a chart comparing conserved domains among r47 and serine proteases.

#### DETAILED DESCRIPTION OF THE PREFERRED EMBODIMENTS

[0022] Scrub typhus of *tsutsugamushi* disease is an acute, febrile disease caused by infection with *Orientia tsutsugamushi*. *O. tsutsugamushi* is a gram-negative bacterium but has neither lipopolysaccharide nor a peptidoglycan layer. *Orientia* isolates are highly variable in their antigenic properties. The major surface protein of *O. tsutsugamushi* is the variable 56-kDa protein. Serotype-specific monoclonal antibodies to *Orientia* react with the 56-kDa protein. Although sera from most patients with scrub typhus recognize this protein, another 47-kDa protein is also recognized, suggesting that both 56-kDa and 47-kDa proteins are good candidates for use as diagnostic antigens and that the combination of these two proteins has potential use as an immunogenic composition.

[0023] In accordance with the present invention, there is generally provided a scrub typhus immunogenic composition comprising an r47 truncated protein of SEQ ID No.1, an r56 truncated protein; and a pharmaceutically acceptable carrier.

[0024] The 47 kDa antigen is a membrane protein. In order to produce a properly folded r47 protein in aqueous solution, its n-terminus which contains the hydrophobic domain was truncated. Forward primer SEQ ID NO. 5 and reverse primer, SEQ ID NO. 6, were designed to amplify the gene segment of nucleotides 174-1481, SEQ ID NO. 7. The amplified gene segment was cloned into pET24a vector. The expressed protein sequence is in SEQ ID NO.1.

[0025] In embodiments of the inventive subject matter, the scrub typhus immunogenic composition may comprise the r47 truncated protein in combination with one of the fol-

lowing r56 truncated proteins: SEQ ID No. 2, SEQ ID No. 3, or SEQ ID No. 4 and a pharmaceutically acceptable carrier.

[0026] Dosing and Administration

[0027] The optimum dose of the immunogenic composition is contemplated to be 0.5-20 mg for humans and 0.5-2.5 mg for primates. Administration of the immunogenic composition is done subcutaneously.

[0028] The inventive subject matter also provides an assay for detecting antibody to scrub typhus comprising obtaining a sample from a subject, exposing the sample to a truncated r47 protein as represented in SEQ ID No. 1 in assay equipment. Such assay equipment may be selected from the group consisting of ELISA plates, dot-blot matrices, and hand held chromatographic and flow through assay devices. Samples suitable for such assay methods include blood, oral fluids and urine from which antibodies could be detected and from which antigens could be detected by way of laboratory generated antibodies.

[0029] The inventive subject matter further comprise a method of treating a patient suffering from scrub typhus, the method comprising administering a pharmaceutically effective dose of antibodies raised against the combination of truncated proteins of SEQ ID No. 1 and the truncated r56 protein selected from the group consisting of SEQ ID No. 2, SEQ ID No. 3 and SEQ ID No. 4 and a pharmaceutically acceptable carrier.

[0030] The inventive subject matter also contemplates a pharmaceutical composition for treatment of an HIV patient comprising antibodies raised against a truncated r56 protein and a pharmaceutically acceptable carrier wherein administration of the composition reduces the patients viral load. Such truncated proteins may be selected from the group consisting of SEQ ID Nos. 2-4 or combinations thereof. The dosing and administration are the same as stated above for the immunogenic compositions.

[0031] The present inventive subject matter further contemplates a treatment of an HIV patient which comprises antibodies raised against a truncated r47 protein selected from the group of SEQ ID No.1 and a pharmaceutically acceptable carrier which results in a reduction of the HIV viral load of an HIV patient. Dosing and administration are also as stated above for this embodiment.

[0032] The inventive subject matter also contemplates treatment of an HIV patient which comprises administering a pharmaceutical composition comprising antibodies raised against a combination of an r47 truncated protein and a truncated r56 protein and a pharmaceutically acceptable carrier to reduce the patients HIV viral load. Dosing and administration are also as stated above for this embodiment.

[0033] The inventive subject matter also contemplates an immunogenic composition against HIV infection comprising a pharmaceutical effective dose of antibodies raised against a truncated r47 protein and a truncated r56 protein of SEQ ID Nos. 2-4 and combinations thereof. Dosing and administration are as stated above for this embodiment.

[0034] The following examples are illustrative of preferred embodiments of the invention and are not to be construed as limiting the invention thereto.

## EXAMPLES

## Example 1

[0035] Forward and reverse DNA primers (SEQ ID No. 5-6, respectively) specific for 47-kDa (accession no. L31934.1) were designed with BamHI and NcoI (both from NEB) restriction sites and used for PCR to amplify the gene coding for a truncated 47-kDa protein using DNA purified from Karp strain of *O. tsutsugamushi*. The PCR product (insert) was ligated to plasmid pET24d (Novagen™) digested with BamHI and NcoI. The sequence of insert was confirmed and the ligated plasmid was transformed into BL21 (DE3) cells (Invitrogen™). Colony containing ligated plasmid was grown 2YT medium and induced with 1 mM of IPTG at 37° C. for 3 h for protein expression. To purify this expressed protein, 600 ml of B121 (DE3) cells were grown, induced, centrifuged and cell pellet was lysed with 20 mM Tris-HCL (pH 8.0) containing 5 mM EDTA and 1 mM PMSF according to the method developed by Ching et al., Clin. Diag. Lab. Immuno. 5, 519-526, 1998. After ultrasonic disruption and centrifugation, the expressed protein was mainly associated with supernatant rather than inclusion body. This fraction was further purified with a 30,000 MW cutoff membrane follow by DEAE anion exchange using 20 mM Tris pH 8.0 and 2M NaCl salt gradient (Agilent 1100 HPLC). Alternatively, the protein was separated on a DEAE anion exchange using 20 mM Tris pH 7.0 and 2M NaCl salt gradient. The protein eluted with salt gradient was collected, analyzed with SDS-PAGE, and stained with coomassie blue to identify the purity of each fraction. In some cases, different fractions were poured together for the SDS-PAGE analysis.

[0036] The sequence homology of 47-kDa protein with other known proteins was searched with standard BLAST method and the conserved domain analysis of 47-kDa protein was analyzed using NCBI CDD algorithm. (FIGS. 5-6) In addition, proteins with similar domains as 47-kDa protein were aligned together to analyze the conserved amino acid sequence within the family.

## [0037] Results

[0038] The DNA coding for 47-kDa protein was successfully PCR amplified using DNA purified from *O. tsutsugamushi* Karp strain as template and primers designed specifically for this genes (FIG. 1). The cloning of this PCR product into Pet24d(+) plasmid was confirmed after digestion with BamHI and NcoI (FIG. 1) and DNA sequence was verified with a DNA sequencer.

[0039] Expression of the 47-kDa protein was observed after 3 h of 1 mM IPTG induction at 37° C. (FIG. 2). The sequence of this expressed protein was confirmed with protein sequencer. (After sonication and centrifugation, the expressed protein was mainly associated with supernatant after the first centrifugation (FIG. 2) rather than associated with inclusion body as the r56 protein reported by Ching et al. The expressed protein may be associated with the membrane fraction and the addition of detergent (1% of NP40) appears to increase the yield during purification procedure (data not shown). Part of the supernatant containing r47 was first purified with DEAE anion exchange on a HPLC using a Tris buffer at pH 8.0 and protein was eluted with a NaCl gradient (up to 0.8 mM) and the fractions were collected and analyzed with SDS-PAGE (FIG. 3). The other part of the

supernatant was purified with HPLC using a Tris buffer at pH 7.0 and eluted with a NaCl gradient (up to 2 M). The resulted fractions were poured and analyzed for r47 (FIG. 4).

[0040] The search of similarity of r47 with standard BLAST resulted in homologues with various serine proteases (FIG. 5). When r47 was searched against protein conserved domain database maintained by NCBI, a trypsin-like (77.7% of the conserved domain region (217 residues) was aligned) and PDZ domain (73.3% of the conserved domain region (86 residues) was aligned) were identified. These two domains were also associate with different serine proteases (FIG. 6).

## Example 2

Assessment of Homologous Protection Induced by Recombinant 56 kda Protein from *Orientia Tsutsugamushi* in Combination with 47 kda Scrub Typhus Antigens

[0041] In order to assess the protective effect of r56 and r47 proteins against infection, mice will receive varying doses of r56 and r47 protein components from the Karp strain. Since the immunization with 25 ug or 2 ug of r56 in mice showed a protective role in our previous experiments (Annual Report J2\_00\_NMRC), we will use the same doses for testing r56 in the present study. For the r47 proteins, we do not know the optimum doses, but we will start with two dosages of 5 ug and 25 ug at this time. Alum and CpG will be used as adjuvants at the ratio of protein:Al+3:CpG=1:25:10. Alum has been approved for human use for a long time. Vaccines prepared by antigens adsorbed onto ALHYDROGEL have several advantages. The antigenic content is easier to standardize and the vaccine has good stability. ALHYDROGEL adsorbed antigens are simple and more convenient to use. In addition, the degree of local reaction following immunization is reduced. CpG induces a Th1-like pattern of cytokine production dominated by IL-12 and IFN-gamma with little secretion of Th2 cytokines.

[0042] Female CD1 mice, 4 to 5 weeks old, 13 to 15 grams in weight, will be purchased from Charles River Laboratories (Wilmington, Mass.). Each Study includes 5-7 groups of mice. A minimum of 15-20 mice is needed to down select the 20% difference in protective efficacy at 80-85% confidence level. Each group of 20 mice will be immunized i.m. with the 56 kDa antigen alone or in combination with r47 antigen except for the negative control groups. 15 mice will be challenged 4 weeks later and 5 mice will be sacrificed for measuring T-cell immune responses right before challenge.

## Detailed Experimental Designs:

## Study 1(5 groups):

1. Negative control: PBS only
2. 25 ug of r56 only
3. 25 ug of 47 kDa only

## Study 2 (7 groups):

1. Negative controls: the same as the group 1 in Study 1
2. 25 ug of r56, plus 5 ug of 47 kDa
3. 25 ug of r56, plus 25 ug of 47 kDa

Study 3 (5 groups):

1. Negative control: PBS only
2. 2 ug of r56 only
3. 4.2 ug of 47 kDa only

Study 4 (7 groups):

1. Negative controls: the same as the group 1 in Study 1
2. 2 ug of r56, plus 5 ug of 47 kDa
3. 2 ug of r56, plus 2 ug of 47 kDa

3) Monitoring the Immune Response:

[0043] (a) Antibody Detection: Mouse sera will be drawn immediately before immunization and before challenge. Each serum sample will be assayed in duplicate by enzyme-linked immunosorbent assay (ELISA) for antibodies against each antigen. Anti-mouse IgG and IgM peroxidase-labeled conjugate (Boehringer-Mannheim, Indianapolis, Ind.) will be tested.

[0044] (b) Cytokine detection in serum: Cytokines have been studied physiologically and pathologically with a focus on the roles in immune regulation during inflammation. IFN gamma and IL-4 are cytokines for Th1 and Th2 cells, respectively. For many intracellular infections, IL-12 may induce Th1 response, i.e. IFN-gamma production. The levels of IFN gamma and IL-2 were elevated in spleen mononuclear cells from 56 kDa immunized mice. Increased IFN was also detected in spleen cells and lymph nodes cells from mice chronically infected with *Orientia*. It was noted that *Orientia* was susceptible to INF gamma in cultured mouse cells. In the sera of patients with scrub typhus infection, the levels of G-CSF, M-CSF, IFN gamma, and TNF alpha were up regulated. Mice blood will be drawn in heparin before immunization, 2, 4, 6, 8, 10, 15, and 30 days after immunization. Sera samples will be assayed in duplicate for cytokine levels of IFN gamma, TNF alpha, IL-4, IL-12, G-CSF, and M-CSF.

[0045] (c) Cytokine production by antigen specific T-cells: Spleen mononuclear cells (SMNC), stimulated by recombinant antigens, will be monitored for the productions of IFN gamma and IL-2 at day 1, 2, and 3 post stimulation. The cells will be isolated by FICOLL-HYPAQUE (PHARMACIA™, Uppsala, Sweden) density gradient centrifugation. After washing, the cells will be resuspended to a concentration of  $5 \times 10^6$  per ml in warm RPMI-10, and 100 ul will be distributed in each well of a 96-well plate as described. Following incubation with corresponding recombinant antigens, culture supernatants will be collected and used in cytokine assays. The supernatants from triplicate SMNC cultures will be pooled, and all samples will be assayed in triplicate. IL-2 activity in the supernatants from antigen-stimulated SMNC will be tested for its ability to support growth of IL-2-dependent CTLL-2 cells in the presence of anti-IL-4 antibody (11B11; 10 ug/ml). For INF-gamma and IL-4, the levels will be measured by enzyme-linked immunosorbent assay kit (GENZYME, Boston, Mass.) according to the manufacturer's instructions. CD4 and CD8 cells will

be selected to determine which cells are producing the cytokines using MACS direct MicroBeads (MILTENYI BIOTEC®, Auburn Calif.).

[0046] (d) Proliferative response of spleen cells: SMNC will be prepared as described above. After the stimulation by different amounts of recombinant protein or *Orientia* Karp, the cultures will be incubated at 37 C for 72 h under a humidified atmosphere of 5% CO<sub>2</sub>. A total of 1 uCi of [3H] thymidine will be added to each well for the another 18 h of culture. Cells will be harvested onto glass fiber filter strips, and incorporation of [3H] thymidine will be counted in a liquid scintillation counter.

#### Prophetic Example 3

[0047] Prophetic examples for the treatment of HIV patient to reduce the virus load with immunoglobulins from subjects immunized by the immunogenic composition.

[0048] There is no animal model for HIV infection at the present time. However, transgenic mice carrying the human CD-4 gene can be infected by HIV. This type of mice will be used in the following experiments:

[0049] Mice will be infected with HIV. Two months later, one group of mice will be treated with hyper immune plasma from the same type of mice immunized by the said immunogenic composition (group 1). Another group of mice will be treated with normal plasma to serve as the control group (group 2). Blood will be drawn from both groups at one week interval for four times. The HIV load in the blood will be quantitated by real time PCR. Results from group 1 will be compared to group 2 to demonstrate the decreased virus load by the hyper immune plasma.

#### CONCLUSIONS

[0050] The truncated 47-kDa protein was successfully cloned and overexpressed in BL21 cells. The over expressed protein was not in the inclusion body making the purification procedure complicated. The addition of detergent increased the amount of r47 suggesting the association of protein with membrane fraction. Although dialysis of crude extract with 25,000 MW cutoff offered some purification and further purification using pH 8.0 or pH 7.0 buffer and salt gradient on an anion exchange column resulted in further purification, the protein was not yet fully purified. The pI of r47 was predicted to be 8.2 and suggested a cation exchange is more suitable for purification. Experiments will continue to purify r47 with cation exchange followed by gel filtration to achieve desired purity.

[0051] The inventive subject matter being thus described, it will be obvious that the same may be varied in many ways. Such variations are not to be regarded as a departure from the spirit and scope of the inventive subject matter, and all such modifications are intended to be within the scope of the following claims.

---

 SEQUENCE LISTING
 

---

<160> NUMBER OF SEQ ID NOS: 9

<210> SEQ ID NO 1

<211> LENGTH: 425

<212> TYPE: PRT

<213> ORGANISM: Orientia tsutsugamushi

<220> FEATURE:

<221> NAME/KEY: MISC\_FEATURE

<223> OTHER INFORMATION: Expressed, truncated protein sequence  
(translated from 184-1458 of DNA sequence, boded sequence was confirmed by N-terminal protein sequencing)

<400> SEQUENCE: 1

```

Met Val Asn Ser Leu Ser Asp Ile Val Glu Pro Leu Ile Ser Thr Val
1           5           10           15

Val Ser Ile Tyr Ala Val Asp Thr Asn Ile Gly Ile Ser Phe Asn Asn
20          25          30

Lys Val Ser Lys Tyr Gln Gln Glu Val Phe Leu Gly Ser Gly Val Ile
35          40          45

Ile Asp Ser Ser Gly Tyr Ile Val Thr Asn Glu Asn Val Ile Ala Gly
50          55          60

Ala Glu Asn Ile Lys Val Lys Leu His Asp Gly Ser Glu Leu Ile Ala
65          70          75          80

Glu Leu Val Gly Ser Asp Asn Lys Ile Asn Ile Ala Leu Leu Lys Ile
85          90          95

Asn Ser Pro Ala Ala Leu Ser Tyr Ala Thr Phe Gly Asp Ser Asn Gln
100         105         110

Ser Arg Val Gly Asp Gln Val Ile Ala Ile Gly Ser Pro Phe Gly Leu
115         120         125

Arg Gly Thr Val Thr Asn Gly Ile Ile Ser Ser Lys Gly Pro Asp Met
130         135         140

Gly Asn Gly Ile Val Thr Asp Phe Ile Gln Thr Asn Ala Ala Ile His
145         150         155         160

Met Gly Ser Phe Gly Gly Pro Met Phe Asn Leu Glu Gly Lys Ile Ile
165         170         175

Gly Ile Asn Ser Ile His Val Ser Tyr Ser Gly Ile Ser Phe Ala Ile
180         185         190

Pro Ser Asn Thr Val Leu Glu Ala Val Glu Cys Leu Lys Lys Gly Glu
195         200         205

Lys Ile Arg Arg Gly Met Leu Asn Val Met Leu Asn Glu Leu Thr Pro
210         215         220

Glu Leu Asn Glu Asn Leu Gly Leu Lys Gln Asp Gln Asn Gly Val Leu
225         230         235         240

Ile Thr Glu Val Ile Lys Glu Gly Ser Ala Ala Gln Cys Gly Ile Ala
245         250         255

Pro Gly Asp Val Ile Thr Lys Phe His Asp Lys Glu Ile Lys Thr Gly
260         265         270

Arg Asp Leu Gln Val Ala Val Ser Ser Thr Met Leu Asn Ser Glu Arg
275         280         285

Glu Val Glu Leu Leu Arg Asn Gly Lys Ser Met Thr Leu Lys Cys Lys
290         295         300

Ile Ile Ala Asn Lys Gly Glu Asp Ser Glu Gln Gln Ser Asn Asp Gln
305         310         315         320
  
```

-continued

---

Ser Leu Val Val Asn Gly Val Lys Phe Val Asp Leu Thr Pro Asp Leu  
325 330 335

Val Lys Lys Tyr Asn Ile Thr Ser Ala Asn Asn Asn Gly Leu Phe Val  
340 345 350

Leu Glu Val Ser Pro Asn Ser Ser Trp Gly Arg Tyr Gly Leu Lys Met  
355 360 365

Gly Leu Arg Pro Arg Asp Ile Ile Leu Ser Val Lys Arg Asp Asp Asn  
370 375 380

Lys Lys Asp Ile Ser Val Lys Thr Leu Arg Glu Ile Val Thr Asn Ile  
385 390 395 400

Lys His Asn Glu Ile Phe Phe Thr Val Gln Arg Gly Asp Arg Met Leu  
405 410 415

Tyr Ile Ala Leu Pro Asn Ile Asn Lys  
420 425

<210> SEQ ID NO 2  
 <211> LENGTH: 376  
 <212> TYPE: PRT  
 <213> ORGANISM: Orientia tsutsugamushi  
 <220> FEATURE:  
 <221> NAME/KEY: misc\_feature  
 <223> OTHER INFORMATION: r56 Protein Karp (Ching)

<400> SEQUENCE: 2

Thr Ile Ala Pro Gly Phe Arg Ala Glu Ile Gly Val Met Tyr Leu Thr  
1 5 10 15

Asn Ile Thr Ala Gln Val Glu Glu Gly Lys Val Lys Ala Asp Ser Val  
20 25 30

Gly Glu Thr Lys Ala Asp Ser Val Gly Gly Lys Asp Ala Pro Ile Arg  
35 40 45

Lys Arg Phe Lys Leu Thr Pro Pro Gln Pro Thr Ile Met Pro Ile Ser  
50 55 60

Ile Ala Val Arg Asp Phe Gly Ile Asp Ile Pro Asn Ile Pro Gln Gln  
65 70 75 80

Gln Ala Gln Ala Ala Gln Pro Gln Leu Asn Asp Glu Gln Arg Ala Ala  
85 90 95

Ala Arg Ile Ala Trp Leu Lys Asn Cys Ala Gly Ile Asp Tyr Arg Val  
100 105 110

Lys Asn Pro Asn Asp Pro Asn Gly Pro Met Val Ile Asn Pro Ile Leu  
115 120 125

Leu Asn Ile Pro Gln Gly Asn Pro Asn Pro Val Gly Asn Pro Pro Gln  
130 135 140

Arg Ala Asn Pro Pro Ala Gly Phe Ala Ile His Asn His Glu Gln Trp  
145 150 155 160

Arg His Leu Val Val Gly Leu Ala Ala Leu Ser Asn Ala Asn Lys Pro  
165 170 175

Ser Ala Ser Pro Val Lys Val Leu Ser Asp Lys Ile Thr Gln Ile Tyr  
180 185 190

Ser Asp Ile Lys His Leu Ala Asp Ile Ala Gly Ile Asp Val Pro Asp  
195 200 205

Thr Ser Leu Pro Asn Ser Ala Ser Val Glu Gln Ile Gln Asn Lys Met  
210 215 220

Gln Glu Leu Asn Asp Leu Leu Glu Glu Leu Arg Glu Ser Phe Asp Gly

-continued

---

```

225                230                235                240
Tyr Leu Gly Gly Asn Ala Phe Ala Asn Gln Ile Gln Leu Asn Phe Val
245                250                255

Met Pro Gln Gln Ala Gln Gln Gln Gly Gln Gly Gln Gln Gln Ala
260                265                270

Gln Ala Thr Ala Gln Glu Ala Val Ala Ala Ala Ala Val Arg Leu Leu
275                280                285

Asn Gly Asn Asp Gln Ile Ala Gln Leu Tyr Lys Asp Leu Val Lys Leu
290                295                300

Gln Arg His Ala Gly Ile Lys Lys Ala Met Glu Lys Leu Ala Ala Gln
305                310                315                320

Gln Glu Glu Asp Ala Lys Asn Gln Gly Glu Gly Asp Cys Lys Gln Gln
325                330                335

Gln Gly Thr Ser Glu Lys Ser Lys Lys Gly Lys Asp Lys Glu Ala Glu
340                345                350

Phe Asp Leu Ser Met Ile Val Gly Gln Val Lys Leu Tyr Ala Asp Val
355                360                365

Met Ile Thr Glu Ser Val Ser Ile
370                375

```

```

<210> SEQ ID NO 3
<211> LENGTH: 529
<212> TYPE: PRT
<213> ORGANISM: Orientia tsutsugamushi
<220> FEATURE:
<221> NAME/KEY: misc_feature
<223> OTHER INFORMATION: r56 Protein Sequence (Kato)

```

```

<400> SEQUENCE: 3

```

```

Met Lys Lys Ile Met Leu Ile Ala Ser Ala Met Ser Ala Leu Ser Leu
1          5          10          15

Pro Phe Ser Ala Ser Ala Ile Glu Leu Gly Asp Glu Gly Gly Leu Glu
20          25          30

Cys Gly Pro Tyr Ala Lys Val Gly Val Val Gly Gly Met Ile Thr Gly
35          40          45

Val Glu Ser Thr Arg Leu Asp Pro Ala Asp Ala Gly Gly Lys Lys Gln
50          55          60

Leu Pro Leu Thr Thr Ser Met Pro Phe Gly Gly Thr Leu Ala Ala Gly
65          70          75          80

Met Thr Ile Ala Pro Gly Phe Arg Ala Glu Leu Gly Val Met Tyr Leu
85          90          95

Ala Asn Val Lys Ala Glu Val Glu Ser Gly Lys Thr Gly Ser Asp Ala
100         105         110

Asp Ile Arg Ser Gly Ala Asp Ser Pro Met Pro Gln Arg Tyr Lys Leu
115         120         125

Thr Pro Pro Gln Pro Thr Ile Met Pro Ile Ser Ile Ala Asp Arg Asp
130         135         140

Leu Gly Val Asp Ile Pro Asn Val Pro Gln Gly Gly Ala Asn His Leu
145         150         155         160

Gly Asp Asn Leu Gly Ala Asn Asp Ile Arg Arg Ala Asp Asp Arg Ile
165         170         175

Thr Trp Leu Lys Asn Tyr Ala Gly Val Asp Tyr Met Val Pro Asp Pro
180         185         190

```

-continued

---

```

Asn Asn Pro Gln Ala Arg Ile Val Asn Pro Val Leu Leu Asn Ile Pro
195                200                205

Gln Gly Pro Pro Asn Ala Asn Pro Arg Gln Ala Met Gln Pro Cys Ser
210                215                220

Ile Leu Asn His Asp His Trp Arg His Leu Val Val Gly Ile Thr Ala
225                230                235                240

Met Ser Asn Ala Asn Lys Pro Ser Val Ser Pro Ile Lys Val Leu Ser
245                250                255

Glu Lys Ile Val Gln Ile Tyr Arg Asp Val Lys Pro Phe Ala Arg Val
260                265                270

Ala Gly Ile Glu Val Pro Ser Asp Pro Leu Pro Asn Ser Ala Ser Val
275                280                285

Glu Gln Ile Gln Asn Lys Met Gln Glu Leu Asn Asp Ile Leu Asp Glu
290                295                300

Ile Arg Asp Ser Phe Asp Gly Cys Ile Gly Gly Asn Ala Phe Ala Asn
305                310                315                320

Gln Ile Gln Leu Asn Phe Arg Ile Pro Gln Ala Gln Gln Gln Gly Gln
325                330                335

Gly Gln Gln Gln Gln Gln Ala Gln Ala Thr Ala Gln Glu Ala Ala Ala
340                345                350

Ala Ala Ala Val Arg Val Leu Asn Asn Asn Asp Gln Ile Ile Lys Leu
355                360                365

Tyr Lys Asp Leu Val Lys Leu Lys Arg His Ala Gly Ile Lys Lys Ala
370                375                380

Met Glu Glu Leu Ala Ala Gln Asp Gly Gly Cys Asn Gly Gly Gly Asp
385                390                395                400

Asn Lys Lys Lys Arg Gly Ala Ser Glu Asp Ser Asp Ala Gly Gly Ala
405                410                415

Ser Lys Gly Gly Lys Gly Lys Glu Thr Lys Glu Thr Glu Phe Asp Leu
420                425                430

Ser Met Ile Val Gly Gln Val Lys Leu Tyr Ala Asp Leu Phe Thr Thr
435                440                445

Glu Ser Phe Ser Ile Tyr Ala Gly Leu Gly Ala Gly Leu Ala Tyr Thr
450                455                460

Ser Gly Lys Ile Asp Gly Val Asp Ile Lys Ala Asn Thr Gly Met Val
465                470                475                480

Ala Ser Gly Ala Leu Gly Val Ala Ile Asn Ala Ala Glu Gly Val Tyr
485                490                495

Val Asp Ile Glu Gly Ser Tyr Met His Ser Phe Ser Lys Ile Glu Glu
500                505                510

Lys Tyr Ser Ile Asn Pro Leu Met Ala Ser Phe Gly Val Arg Tyr Asn
515                520                525

```

Phe

```

<210> SEQ ID NO 4
<211> LENGTH: 524
<212> TYPE: PRT
<213> ORGANISM: Orientia tsutsugamushi
<220> FEATURE:
<221> NAME/KEY: misc_feature
<223> OTHER INFORMATION: r56 Protein (Gilliam)

<400> SEQUENCE: 4

```

-continued

---

Met	Lys	Lys	Ile	Met	Leu	Ile	Ala	Ser	Ala	Met	Ser	Ala	Leu	Ser	Leu	1	5	10	15
Pro	Phe	Ser	Ala	Ser	Ala	Ile	Glu	Leu	Gly	Glu	Glu	Gly	Gly	Leu	Glu	20	25	30	
Cys	Gly	Pro	Tyr	Gly	Lys	Val	Gly	Ile	Val	Gly	Gly	Met	Ile	Thr	Gly	35	40	45	
Ala	Glu	Ser	Thr	Arg	Leu	Asp	Ser	Thr	Asp	Ser	Glu	Gly	Lys	Lys	His	50	55	60	
Leu	Ser	Leu	Thr	Thr	Gly	Leu	Pro	Phe	Gly	Gly	Thr	Leu	Ala	Ala	Gly	65	70	75	80
Met	Thr	Ile	Ala	Pro	Gly	Phe	Arg	Ala	Glu	Leu	Gly	Val	Met	Tyr	Leu	85	90	95	
Arg	Asn	Ile	Ser	Ala	Glu	Val	Glu	Val	Gly	Lys	Gly	Lys	Val	Asp	Ser	100	105	110	
Lys	Gly	Glu	Ile	Lys	Ala	Asp	Ser	Gly	Gly	Gly	Thr	Asp	Thr	Pro	Ile	115	120	125	
Arg	Lys	Arg	Phe	Lys	Leu	Thr	Pro	Pro	Gln	Pro	Thr	Ile	Met	Pro	Ile	130	135	140	
Ser	Ile	Ala	Asp	Arg	Asp	Val	Gly	Val	Asp	Thr	Asp	Ile	Leu	Ala	Gln	145	150	155	160
Ala	Ala	Ala	Gly	Gln	Pro	Gln	Leu	Thr	Val	Glu	Gln	Arg	Ala	Ala	Asp	165	170	175	
Arg	Ile	Ala	Trp	Leu	Lys	Asn	Tyr	Ala	Gly	Ile	Asp	Tyr	Met	Val	Pro	180	185	190	
Asp	Pro	Gln	Asn	Pro	Asn	Ala	Arg	Val	Ile	Asn	Pro	Val	Leu	Leu	Asn	195	200	205	
Ile	Thr	Gln	Gly	Pro	Pro	Asn	Val	Gln	Pro	Arg	Pro	Arg	Gln	Asn	Leu	210	215	220	
Asp	Ile	Leu	Asp	His	Gly	Gln	Trp	Arg	His	Leu	Val	Val	Gly	Val	Thr	225	230	235	240
Ala	Leu	Ser	His	Ala	Asn	Lys	Pro	Ser	Val	Thr	Pro	Val	Lys	Val	Leu	245	250	255	
Ser	Asp	Lys	Ile	Thr	Lys	Ile	Tyr	Ser	Asp	Ile	Lys	Pro	Phe	Ala	Asp	260	265	270	
Ile	Ala	Gly	Ile	Asp	Val	Pro	Asp	Thr	Gly	Leu	Pro	Asn	Ser	Ala	Ser	275	280	285	
Val	Glu	Gln	Ile	Gln	Ser	Lys	Met	Gln	Glu	Leu	Asn	Asp	Val	Leu	Glu	290	295	300	
Asp	Leu	Arg	Asp	Ser	Phe	Asp	Gly	Tyr	Met	Gly	Asn	Ala	Phe	Ala	Asn	305	310	315	320
Gln	Ile	Gln	Leu	Asn	Phe	Val	Met	Pro	Gln	Gln	Ala	Gln	Gln	Gln	Gln	325	330	335	
Gly	Gln	Gly	Gln	Gln	Gln	Gln	Ala	Gln	Ala	Thr	Ala	Gln	Glu	Ala	Val	340	345	350	
Ala	Ala	Ala	Ala	Val	Arg	Leu	Leu	Asn	Gly	Asn	Asp	Gln	Ile	Ala	Gln	355	360	365	
Leu	Tyr	Lys	Asp	Leu	Val	Lys	Leu	Gln	Arg	His	Ala	Gly	Val	Lys	Lys	370	375	380	
Ala	Met	Glu	Lys	Leu	Ala	Ala	Gln	Gln	Glu	Glu	Asp	Ala	Lys	Asn	Gln	385	390	395	400
Gly	Glu	Gly	Asp	Cys	Lys	Gln	Gln	Gln	Gly	Ala	Ser	Glu	Lys	Ser	Lys				

-continued

---

405                    410                    415

Glu Gly Lys Gly Lys Glu Thr Glu Phe Asp Leu Ser Met Ile Val Gly  
420                                    425                                    430

Gln Val Lys Leu Tyr Ala Asp Leu Phe Thr Thr Glu Ser Phe Ser Ile  
435                                    440                                    445

Tyr Ala Gly Val Gly Ala Gly Leu Ala His Thr Tyr Gly Lys Ile Asp  
450                                    455                                    460

Asp Lys Asp Ile Lys Gly His Thr Gly Met Val Ala Ser Gly Ala Leu  
465                                    470                                    475                                    480

Gly Val Ala Ile Asn Ala Ala Glu Gly Val Tyr Val Asp Leu Glu Gly  
485                                    490                                    495

Ser Tyr Met His Ser Phe Ser Lys Ile Glu Glu Lys Tyr Ser Ile Asn  
500                                    505                                    510

Pro Leu Met Ala Ser Val Gly Val Arg Tyr Asn Phe  
515                                    520

<210> SEQ ID NO 5  
 <211> LENGTH: 31  
 <212> TYPE: DNA  
 <213> ORGANISM: Orientia tsutsugamushi  
 <220> FEATURE:  
 <221> NAME/KEY: misc\_feature  
 <223> OTHER INFORMATION: Forward Primers

<400> SEQUENCE: 5

tatgcatacc atggtaaata gtttatctga t 31

<210> SEQ ID NO 6  
 <211> LENGTH: 35  
 <212> TYPE: DNA  
 <213> ORGANISM: Orientia tsutsugamushi  
 <220> FEATURE:  
 <221> NAME/KEY: misc\_feature  
 <223> OTHER INFORMATION: Reverse Primers

<400> SEQUENCE: 6

cgcttgatc ctagatttac ttattaatat taggt 35

<210> SEQ ID NO 7  
 <211> LENGTH: 1307  
 <212> TYPE: DNA  
 <213> ORGANISM: Orientia tsutsugamushi  
 <220> FEATURE:  
 <221> NAME/KEY: misc\_feature  
 <222> LOCATION: (1)..(1307)  
 <223> OTHER INFORMATION: PCR amplified sequence: 174-1481 nt.  
 Expressed DNA sequence: 184-1458 nt, aa 42-466.

<400> SEQUENCE: 7

tatgcatatt atggtaaata gtttatctga tatagttgag ccattaatat ctacagtagt 60  
 aagtatttat gctgtagata ctaacattgg tattagtttt aataataagg tatcctaagta 120  
 tcagcaagaa gtgttcttag gttctggggg taccattgat agttctgggt atattgttac 180  
 taatgagaat gttatagcag gagctgaaaa tataaaagta aagttgcatg atggttcaga 240  
 actcatagca gaattagttg gtatgacaaa taaaattaat atagctttat taaaattaa 300  
 ttctccagca gcattatctt atgctgacttt tggcgactca aatcagtcta gagtaggaga 360  
 tcaggttatt gcaataggaa gtccttttgg tttaagagga acagtaacaa atggcattat 420

-continued

---

```

ttcttctaaa ggaccagata tgggtaacgg catagtaact gattttattc aaactaatgc 480
tgctattcat atgggtagct ttggtggacc gatgtttaat cttgaaggaa aaattattgg 540
aattaattcc attcacgtat cttactcagg cataagtttt gctattccat ctaatactgt 600
acttgaagca gttgaatgct taaaaaagg agaaaaaatt cgtcgtggta tgttaaatgt 660
tatgcttaat gaattaactc cagaattaa tgagaattta ggacttaaac aagatcaaaa 720
tggagttcta ataactgaag ttataaaaga aggatctgca gcacaatgtg gaattgctcc 780
tggagatgta attactaaat ttcattgata agagatcaaa acagggagag atttacaggt 840
agctgtatct tcaactatgc ttaattctga aagagaagtt gagcttttac gtaatggtaa 900
gtcgtatgact ctaaaaatga aaattattgc caacaaaggt gaggatagtg agcaacaaag 960
taatgatcaa agccttgggg ttaatgggtg aaaatttgtt gatcttacac ctgatttagt 1020
gaagaaatat aatattactt cagctaataa taatggggtta tttgtccttg aagtctcgcc 1080
taactcttct tgggggagat atgggtttaa aatggggcta agacctagag atataatctt 1140
atcagttaaa cgtgatgata ataaaaaga tatttctggt aaaactctaa gagaaaatag 1200
gacaaatata aagcataatg aaattttctt tacagtgcaa agaggagata gaatgcttta 1260
cattgcttta cctaataatta ataagtaaat ctagttaaaa ggcgatt 1307
    
```

```

<210> SEQ ID NO 8
<211> LENGTH: 8
<212> TYPE: PRT
<213> ORGANISM: Artificial
<220> FEATURE:
<223> OTHER INFORMATION: Truncated protein sequence, eight identical
    amino-acid match between r47 and HIV envelope protein HIVgp 120
    
```

<400> SEQUENCE: 8

```

Thr Leu Arg Ile Val Thr Asn Lys
1           5
    
```

```

<210> SEQ ID NO 9
<211> LENGTH: 4
<212> TYPE: PRT
<213> ORGANISM: Artificial
<220> FEATURE:
<223> OTHER INFORMATION: Truncated protein sequence, four identical
    amino-acid match between r47 and HIV envelope protein HIVgp 120
    
```

<400> SEQUENCE: 9

```

Ile Val Thr Asn
1
    
```

---

What is claimed is:

1. An assay method for detecting scrub typhus comprising:

- a. obtaining a sample from a subject;
- b. exposing said sample to a combination of a truncated r47 protein plus a truncated r56 protein or a laboratory produced antibodies to said combination in assay equipment; and

- c. detecting antibodies to said protein combination in said sample or detecting an antigen to said laboratory antibodies in said sample in said assay equipment.
- 2. The assay method of claim 1, wherein said sample comprises blood, urine, or oral fluids.
- 3. The assay method of claim 1, wherein said assay equipment is selected from the group consisting of ELISA plates, dot-blot matrices, and hand held chromatographic and flow through assay devices

\* \* \* \* \*

专利名称(译)	ORIENTIA TSUTSUGAMUSHI TRUNCATED RECOMBINANT外膜蛋白 ( r47 ) 和 ( r56 ) 疫苗诊断和治疗鲨鱼的治疗方法		
公开(公告)号	<a href="#">US20080044806A1</a>	公开(公告)日	2008-02-21
申请号	US11/876997	申请日	2007-10-23
[标]申请(专利权)人(译)	HENRY中号JACKSON发现的军事医学的进步		
申请(专利权)人(译)	AMERICA美国为代表由海军部长亨利M.杰克逊基金会为军事医学，INC进步。 N / A		
当前申请(专利权)人(译)	AMERICA美国为代表由海军部长亨利M.杰克逊基金会为军事医学，INC进步。 N / A		
[标]发明人	CHING WEI MEI GE HONG CHAO CHIEN CHUNG		
发明人	CHING, WEI MEI GE, HONG CHAO, CHIEN-CHUNG		
IPC分类号	C12Q1/00 G01N33/48 G01N33/53 A61K39/00 A61K39/02 A61K39/395 A61P31/04 A61P31/18 A61P43/00 C07K14/195 C07K14/29 C07K16/12 C12N15/09 G01N33/569		
CPC分类号	A61K39/00 A61K39/0233 C07K14/195 C07K16/1246 G01N33/56911 G01N2333/29 G01N2469/10 G01N2469/20 Y10S530/825 Y02A50/403 Y02A50/59		
优先权	PCT/US2003/015072 2003-05-15 WO 60/380301 2002-05-15 US		
其他公开文献	US7820395		
外部链接	<a href="#">Espacenet</a> <a href="#">USPTO</a>		

摘要(译)

公开了使用包含截短的r47蛋白和截短的r56蛋白的组合物的恙虫病诊断方法和疫苗。还公开了由r56蛋白质变体组成的疫苗。还公开了使用r47和r56蛋白质以及针对r47和r56产生的抗体降低HIV病毒载量的方法。

