



US007291462B2

(12) **United States Patent**  
**O'Brien et al.**

(10) **Patent No.:** **US 7,291,462 B2**  
(45) **Date of Patent:** **\*Nov. 6, 2007**

(54) **TADG-15: AN EXTRACELLULAR SERINE  
PROTEASE OVEREXPRESSED IN  
CARCINOMAS**

*C12N 15/09* (2006.01)  
*C12N 15/63* (2006.01)  
*C12N 15/70* (2006.01)  
*C12N 15/74* (2006.01)  
*A61K 38/00* (2006.01)  
*C07K 14/00* (2006.01)

(75) Inventors: **Timothy J. O'Brien**, Little Rock, AR  
(US); **Hirotohi Tanimoto**, Kagawa  
(JP)

(52) **U.S. Cl.** ..... **435/6**; 435/4; 435/7.21;  
435/7.23; 436/63; 436/64; 436/164; 436/166;  
436/174; 536/1; 536/18.7; 536/22.1; 536/23.1;  
536/23.5; 536/24.3; 536/24.31

(73) Assignee: **The University of Arkansas for  
Medical Sciences**, Little Rock, AR  
(US)

(58) **Field of Classification Search** ..... 436/63,  
436/64, 164, 166, 174; 435/4, 6, 7.21, 7.23;  
536/1, 18.7, 221, 23.1, 23.5, 24.3, 24.31  
See application file for complete search history.

(\* ) Notice: Subject to any disclaimer, the term of this  
patent is extended or adjusted under 35  
U.S.C. 154(b) by 671 days.

This patent is subject to a terminal dis-  
claimer.

(56) **References Cited**

U.S. PATENT DOCUMENTS

5,972,616 A \* 10/1999 O'Brien et al. .... 435/6

(21) Appl. No.: **10/600,187**

\* cited by examiner

(22) Filed: **Jun. 20, 2003**

*Primary Examiner*—Alana M. Harris

(65) **Prior Publication Data**

(74) *Attorney, Agent, or Firm*—Benjamin A. Adler

US 2004/0086910 A1 May 6, 2004

**Related U.S. Application Data**

(57) **ABSTRACT**

(60) Division of application No. 09/654,600, filed on Sep.  
1, 2000, now Pat. No. 6,649,741, which is a division  
of application No. 09/421,213, filed on Oct. 20, 1999,  
now Pat. No. 7,022,821, which is a continuation-in-  
part of application No. 09/027,337, filed on Feb. 20,  
1998, now Pat. No. 5,972,616.

The present invention provides DNA encoding a TADG-15  
protein as well as a TADG-15 protein. Also provided is a  
vector capable of expressing the DNA of the present inven-  
tion adapted for expression in a recombinant cell and  
regulatory elements necessary for expression of the DNA in  
the cell. The present invention further provides for methods  
of inhibiting TADG-15 expression and/or protease activity,  
methods of detecting TADG-15 mRNA and/or protein and  
methods of screening for TADG-15 inhibitors. Additionally,  
the present invention provides for cell-specific targeting via  
TADG-15 and methods of vaccinating an individual against  
TADG-15. The methods described are useful in the diagno-  
sis, treatment and prevention of cancer, particularly breast  
and ovarian cancer.

(51) **Int. Cl.**

**C12Q 1/68** (2006.01)  
**C12Q 1/00** (2006.01)  
**G01N 33/53** (2006.01)  
**G01N 33/574** (2006.01)  
**G01N 33/48** (2006.01)  
**G01N 21/00** (2006.01)  
**G01N 21/75** (2006.01)  
**C12N 15/00** (2006.01)

**10 Claims, 22 Drawing Sheets**

\*

Heps	RIVGGRDTSL	GRWPQVSL.	....RYDG.A	HLCGGSLLSG	DWVLTAAHCF	PE.....RNRV
Tadg15	RVVGGTDADE	GEPWQVSL.	....HALGQG	HICGASLISP	NWLVSAAHCY	IDDRGFRYS
Scce	KIIDGAPCAR	GSHPWQVAL.	....LSGNQL	H.CGGVLVNE	RWVLTAAHC.	.....K
Try	KIVGGYNCEE	NSVPYQVSL.	....NSGYHF	.CGGSLINE	QWVVSAGHC.	.....Y
Chymb	RIVNGEDAVP	GSWPWQVSL.	....QDKTGF	HFCGGSLISE	DQVVTAAHC.	.....GV
Fac7	RIVGGKVCPK	GECPWQVLL.	....LVNG.A	QLCGGTLINT	IWVVSAAHCF	DKIKNWRNLI
Tpa	RIKGGLFADI	ASHPWQAAIF	AKHRRSPGER	FLCGGILISS	CWILSAAHCF	QERFPPHHL.

\*

Heps	LSRWRVFAGA	VAQASPHGLQ	LGVQAVVYHG	GYPFRDPNS	EENSNDIALV	HLSS.PLPLT
Tadg15	PTWETAFLHL	HDQSORSAPG	VQERRLKRRI	SHFFNDFTF	D...YDIALL	ELEK.FAEYS
Scce	MNEYTVHLGS	DTLG..DR.R	AQRKASKSF	RHPGYSTQT.	..HVNDLMLV	KLNS.QARLS
Try	KSRIQVRLGE	HNIEVLEG.N	EQFINAAKII	RHPQYDRKT.	..LNNDIMLI	KLSS.RAVIN
Chymb	RTSDVVVAGE	FDQGSDEE.N	IQVLKIAKVF	KNPKFSILT.	..VNNDITLL	KLAT.PARFS
Fac7	....AVLGE	HDLSEHDGDE	QSRRVAQVII	P...STYVP	GTTNHDIALL	RLHQ.PVULT
Tpa	....TVILGR	.TYRRVVPGEE	EQKFEVEKYI	VHKEFDDDTY	D...NDIALL	QLKSDSSRCA

Heps	EYIQPVCLPA	...AGQALVD	GKICTVTGWG	NTQYYGQQ.A	GVLQEAAVPI	ISNDVCNGAD
Tadg15	SMVRPICLPD	...ASHVFPA	GKAIWVTGWG	HTQYGGTG.A	LILQKGEIRV	INQTTCE..N
Scce	SMVKKVRLPS	...RCE..PP	GTTCTVSGWG	TTTSPDVTFP	SDLMCVDVKL	ISPQDCTKV.
Try	ARVSTISLPT	...APP..AT	GTKCLISGWG	NTASSGADYP	DELQCLDAPV	LSQAKCEAS.
Chymb	QTVSAVCLPS	...ADDDFPA	GTLCAATTGWG	KTKYNANKTP	DKLQQAALPL	LSNAECKKS.
Fac7	DHVVPLCLPE	RTFSERTLAF	VRFSLVSGWG	QLLDRGATAL	ELMVLNVPRL	NTQDCLQQSR
Tpa	QESSVVRTVC	LPPADLQLPD	WTECELSGYG	KHEALSPFYS	ERLKEAHVRL	YPSRRCSTSQH

Fig. 1A

```

*
Heps  FYGN..QIKP  KMFCAGYPEG  G.....IDA  CQGDSSGGPFV  CEDSISRTPR  WRLCGIVSWG
Tadg15  LLPQ..QITP  RMMCVGFLSG  G.....VDS  CQGDSSGGPL.  ..SSVEADGR  IFQAGVVSWSG
Scce   .YKD..LLEN  SMLCAGIPDS  K.....KNA  CNGDSSGGPLV  C....R....  GTLQGLVSWG
Try    .YPG..KITS  NMFCVGFLEG  G.....KDS  CQGDSSGGPVV  C....M....  GQLQGVVSWG
Chymb  .WGR..RITD  VMICAG..AS  G.....VSS  CMGDSSGGPLV  C....QKDGA  WTLVGIWSWG
Fac7   KVGDSPNITE  YMFCAGYSDG  S.....KDS  CKGDSSGGP..  ..HATHYRGT  WYLTGIWSWG
Tpa    LLNRT..VTD  NMLCAGDTRS  GGPQANLHDA  CQGDSSGGPLV  CLN....DGR  MTLVGIWSWG

Heps   T.GCALAQKP  GYTKVSDER  EWIFQAIKTH  SEASGXVTQL  --  (SEQ ID NO: 3)
Tadg15  D.GCAQRNKP  GYTRRLPLFR  DWIKENTGV-  -----  --  (SEQ ID NO: 14)
Scce   TFPCGGQNDP  GYTVQCKET  KWINDTMKKH  R-----  --  (SEQ ID NO: 4)
Try    D.GCAQKNKP  GYTKVYNYV  KWIKNTIAAN  S-----  --  (SEQ ID NO: 5)
Chymb  DSTCS.TSSP  GYARVTKLI  PWVQKILAAAN  -----  --  (SEQ ID NO: 6)
Fac7   Q.GCATVGHF  GYTRVVSQYI  EWLQKLMRSE  PRPGVLLRAP  FP  (SEQ ID NO: 7)
Tpa    .LGCGQKDVP  GYTKVTNYL  DWIRDNMRP-  -----  --  (SEQ ID NO: 8)

```

Fig. 1B

1 TCAAGAGCGGCCCTCGGGGTACCATGGGAGCGATCGGGCCCGCAAGGCGGAGGGGCCCGAAGGACTTCGGCGGC  
M G S D R A R K G G G P K D F G A 18  
76 GGGACTCAAGTACAAC TCCCGGCACGAGAAGTGAATGGCTTGGAGGAAGCGGTGGAGTTCCTGCCAGTCAACAA  
G L K Y N S R H E K V N G L E E G V E F L P V N N 43  
151 CGTCAAGAAGGTGGAAGCATGGCCCGGGCGCTGGGTGGTGGCAGCCGCTGATCGGCCCTCCTCTTGGT  
V K K V E K H G P G R W V V L A A V L I G L L V 68  
226 CTTGCTGGGATCGGCTTCCCTGGTGGCATTTGCAGTACCGGGACGTGCTGCCAGAAAGTCTTCAATGGCTA  
L L G I G F L V W  
301 CATGAGGATCACA AATGAGAATTTGTGGATGCCCTACGAGAACTCCAAC TCCACTGAGTTTGTAAAGCC TGGCCAG  
M R I T N E N F V D A Y E N S N S T E F V S L A S 118  
376 CAAGGTGAAGCGCCTGAAGCTGCTGTACAGCGGAGTCCCATTCC TGGCCCTACCACAAGGAGTGGCTGT  
K V K D A L K L L Y S G V P F L G P Y H K E S A V 143  
451 GACGGCCTCAGCGAGGCGATCGCTACTACTGCTGAGTTCAGCATCCCGCAGCACCC TGGTGGAGGA  
T A F S E G S V I A Y Y W S E F S I P Q H L V E E 168  
526 GGCCGAGCGGCTCATGGCCGAGGAGCGGTAGTCATGTGCCCCCGGGCGGCTCCCTGAAAGTCTTTGTGGT  
A E R V M A E E R V V M L P P R A R S L K S F V V 193  
601 CACCTCAGTGGCTTTCCCCACGGACTCCA A A CAGTACAGAGGACCCAGGACAACAGCTGCAGCTTTGGCCT  
T S V V A F P T D S K T V Q R T Q D N S C S F G L 218  
676 GCACGCCCGGCTGTGGAGCTGATCGGCTTCA C C CAGCCCGGCTTCCCTGACAGCCCTACCCCGCTCATGCCCCG  
H A R G V E L M R G T T P G R P D S P Y P A H A R 243

Fig. 2A

751 CTGCCAGTGGGCCCCCTGGGGGGGACCGCCGACTCAGTGTGAGCCCTCACCTTCCGCCAGCTTTTGACCTTTGCGTCCCTG  
C Q W A L R G D A D S V L S L T F R S F D L A S C 268  
826 CGACGAGCGCGCAGCCTGGTGACGGTGTACAACACCCCTGAGCCCATGGAGCCCCACGCCCCTGGTGCAGTT  
D E R G S D L V T V Y N T L S P M E P H A L V Q L 293  
901 GTGTGGCACCTACCCCTCCCTACAACCTGACCCCTTCCACTCCTCCAGAACGTCTCTCATCACACTGATAAC  
C G T Y P P S Y N L T F H S S Q N V L L I T L I T 318  
976 CAACACTGAGCGCGGCATCCCGGCTTTGAGGCCACCTTCTCCAGCTGCCTAGGATGAGCAGCTGTGGAGGCCG  
N T E F F H P G F E A T F F Q L P R M S S C G G R 343  
1051 CTTACGTAAGCCCGGACATTCACAACAGCCCCCTACTACCCAGGCCACTACCCACCCCAACATTTGACTGCACATG  
L R K A Q G T F N S P Y Y P G H Y P P N I D C T W 368  
1126 GAACATTTGAGGTGCCCAACAACCCAGCATGTGAAGGTGAGCTTCAAAATTTCTTACTGCTGGAGCCCGCGTGCC  
N I E V P N N Q H V K V S F K F Y L L E P G V P 393  
1201 TCGGGCACCTGCCCAAGGACTACGTGGAGATCAATGGGAGAAATACCTGCCGAGAGAGGTCCCAGTTCGTCTGT  
A G T C P K D Y V E I N G E K Y C G E R S Q F V V 418  
1276 CACCAGCAACAGCAAGATCACAGTTTCGCTTCCACTCAGATCAGTCCCTACACCCGACACCCGGCTTCTTAGCTGA  
T S N S N K I T V R F H S D Q S Y T D T G F L A E 443  
1351 ATACCTCTCCTACGACTCCAGTGACCCATGCCCGGCAGTTCACGTGCCGACGGGGGTGTATCCGGAAGGA  
Y L S Y D S S D P C P G Q F T C R T G R C I R K E 468  
1426 GCTGGCTGTGATGGCTGGGCCCGACTGCACCCGACACAGCGATGAGCTCAACTGCAGTTGCGACCGCCGGCCACCA  
L R C D G W A D C T D H S D E L N C S C D A G H Q 493

Fig. 2B

1501 GTTCACGTGCAAGAACAAGTTCTGCAAGCCCTCTTCTGGGTCTGCGACAGTGTGAACGACTGCGGGAGACAACAG  
 F T C K N K F C K P L F W V C D S V N D C G D N S 518  
 1576 CGACGAGCAGGGGTGCAGTTGTCCGGCCAGACCTTCAAGGTGTTCCAATGGGAAGTGCCTCTCGAAAAGCCAGCA  
 D E Q G C S C P A Q T F R C S N G K C L S K S Q Q 543  
 1651 GTGCAATGGGAAGGACGACTGTGGGACGGGTCCGACGAGGCCCTCCTGCCCCCAAGGTGAACGTCGTCACCTTGATC  
 C N G K D D C G D G S D E A S C P K V N V V T C T 568  
 1726 CAAACACACCTACCGCTGCCCTCAATGGGCTCTGCTTGAGCAAGGCAACCCCTGAGTGTGACGGGAAGGAGGACTG  
 K H T Y R C L N G L C L S K G N P E C D G K E D C 593  
 1801 TAGCGACGGCTCAGATGAGAAGGACTGCGGACTGTGGGCTGCGGTTCATTCACGAGACAGGCTCGTGTGTTGGGGG  
 S D G S D E K D C D C G L R S F T R Q A R V V G G 618  
 1876 CACGGATCGGGATGAGGGCGAGTGGCCCTGGCAGGTAAGCCCTGCATGCTTGGGCCAGGGCCACATCTGCCGGTGC  
 T D A D E G E W P Q V S L H A L G Q G H I C G A 643  
 1951 TTCCCTCATCTCCCAACTGGCTGGTCTCTGCCGCACACTGCTACATCGATGACAGAGGATTCAGGTACTCAGA  
 S L I S P N W L V S A A (H) C Y I D D R G F R Y S D 668  
 2026 CCCCACGCAGTGGACGGCCTTCCCTGGGCTTGCACGACCAGAGCCAGCGCCCTGGGGTGCAGGAGCCGAG  
 P T Q W T A F L G L H D Q S Q R S A P G V Q E R R 693  
 2101 GCTCAAGCGCATCATCTCCACCCCTTCTCAATGACTTTCACCTTCGACTATGACATCGCGCTGCTGGAGCTGGA  
 L K R I I S H P F F N D F T F D Y (D) I A L L E L E 718  
 2176 GAAACCGGCAGAGTACAGCTCCATGGTGGGCCCATCTGCCCTGCCGGACGCCCTCCCATGTCTTCCCTGCCCGCAA  
 K P A E Y S S M V R P I C L P D A S H V F P A G K 743

Fig. 2C

2251 GGCCATCTGGGTACGGGCTGGGGACACACCCAGTATGGAGGCACCTGGCGCGCTGATCCTGCAAAAAGGTGAGAT  
 A I W V T G W G H T Q Y G G T G A L I L Q K G E I 768  
 2326 CCGCGTCAACAACAGACCCTGCGAGAACCTCCTGCCGAGCAGATCACGCCGCGCATGATGTCGTGGGCTT  
 R V I N Q T T C E N L L P Q Q I T P R M C V G F 793  
 2401 CCTCAGCGGGCGGTGGACTCCTGCCAGGGTGATTCGGGGGACCCCTGTCCAGCGTGGAGCGGATGGGCGGAT  
 L S G G V D S C Q G D (S) G G P L S S V E A D G R I 818  
 2476 CTTCCAGGCCGGTGTGGTGGAGACGGCTGCGCTCAGAGGAACAAGCCAGGCGTGTACACAAGGCTCCC  
 F Q A F C C S W G D G C A Q R N K P G V Y T R L P 843  
 2551 TCTGTTTCGGGACTGGATCAAAGAGAACAACACTGGGGTATAGGGCCGGGGCCCAAAATGTGTACACCTGCCGGG  
 L F R D W I K E N T G V (SEQ ID NO: 2) 855  
 2626 CCACCCATCGTCCACCCAGTGTGCCACGCTGCAGGCTGGAGACTGGACCGCTGACTGCACCCAGCGCCCCAGAA  
 2701 CATACTGTGAACTCAATCTCCAGGCTCCAAATCTGCCCTAGAAAACCTCTCGCTTCCCTCAGCCTCCAAAAGTGG  
 2776 AGCTGGAGGTAGAAGGGGACACTGGTGGTCTACTGACCCAACTGGGGGCAAAAGTTTGAAGACACAGCCT  
 2851 CCCCCAGCCCAAGCTGGCCGAGCGCGTGTGTATATCTGCCCTCCCTCTGCTGTAAGGAGCAGCGGAA  
 2926 CGGAGCTTCGGAGCCTCCTCAGTGAAGTGGTGGGCTGCCGATCTGGGCTGTGGGCGCTTGGGCCACGCTCT  
 3001 TGAGGAAGCCAGGCTCGGAGGCCCTGGAAAACAGACGGGTCTGAGACTGAAAATTGTTTACCAGCTCCCGGG  
 3076 TGGACTTCAGTGTGTATTTGTAAATGGTAAAACAATTTATTTCTTTTAAAAAATAAAAAAAAAAAAAA  
 (SEQ ID NO: 1)



 : KOZAK'S CONSENSUS SEQUENCE  
 : TRANSMEMBRANE DOMAIN  
 : CONSERVED AMINO ACIDS OF CATALYTIC TRIAD H, D, S

Fig. 2D

```

1  MGSDRARKGG GGPKDFGAGL KYNSRHEKVN GLEEGVEFLP VNNVKKVEKH 1
51  GPGRWVVLAA VLIQLLLVLL GIGFLVWHLQ YRDVRVQKVF NGYMRLTNN 2
101 FVDAYENSNS TEFVSLASKV KDALKLLYSG VPFLGPYHKE SAVTAFSEGS
151 VIAYYWSEFS IPQHLVEEAE RVMAEERVVM LPPRARSLKS FVVTSVVAFP
201 TDSKTVQRTQ DNS*CSEGLHA RGVELMRFTT PGFPDSPYPA HARCQWALRG
251 DADSVLSLTF RSEFLASC*DE RGS*DLVTVYN T*LSPMEPHAL VQL*CGTYPPS
301 YNLTFHSSQN VLLITLITNT ERRHPGFEAT FFQLPRMSS*C GGRLRKAQGT 3
351 FNSPYYPGHY PPNID*TWNI EVPN*NQHVKV SFKFFYLLEP GVPAGT*CPKD
401 YVEINGEKYC* GERSQFVVTS NSNKITVRFH SDQSYTDTGF LAEYLSYDSS
451 DPCPGQFTCR TGR CIRKELR CDGWADCTDH SDE*LNCSCDA GHQFTCKNKF
501 CKPLFWVCDS VNDCGDNSDE* QGCSCPAQTF RCSNGKCLSK SQQCNGKDDC 4
551 GDCSDEASCP KVVVVTCTKH TYRCLNGLCL SKGNPECDGK EDCSDGSDEK
601 DCDCGLRSFT RQARVVGGTD ADEGEWPWQV SLHALGQGHI CGASLISPNW
651 LVSAAHCYID DRGFRYSDPT QWTAFLGLHD QSQRSAPGVQ ERRLKRIISH
701 PFFNDFTFDY OIALLELEKP AEYSSMVRPI CLPDASHVFP AGKAIWVTGW 5
751 GHTQYGGTGA LILQKGEIRV INQTTCCENLL PQQITPRMMC VGFLSGGVDS
801 CQGDSGGPLS SVEADGRIFQ AGVVSWGDGC AQRNKPGVYT RLPLERDWIK
851 ENTGV (SEQ. ID NO: 2)

```

\* : Conserved cysteine residue

<sup>NXT</sup> : Possible N-linked glycosylation site

<sup>SDE</sup> : Conserved SDE motif

<sup>▽</sup> : Potential cleavage site

<sup>O</sup> : Conserved amino acids of catalytic triad H, D, S

1. Cytoplasmic domain

2. Transmembrane domain

3. CUB repeat

4. Ligand-binding repeat (class A motif)  
of LDL receptor like domain

5. Serine protease

Fig. 3

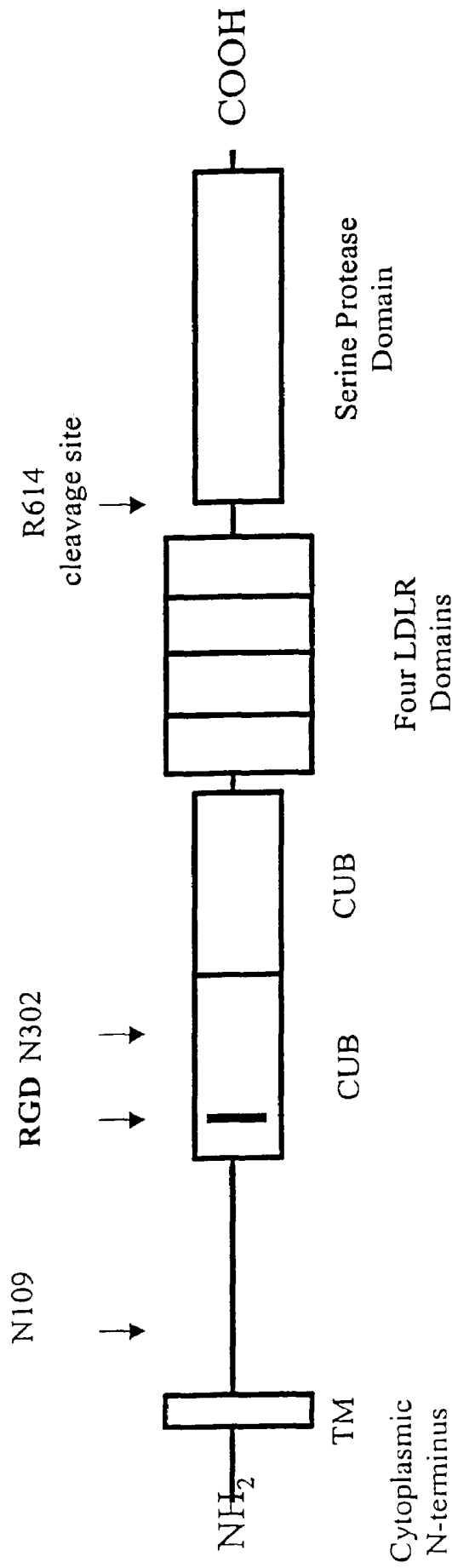


Fig. 4

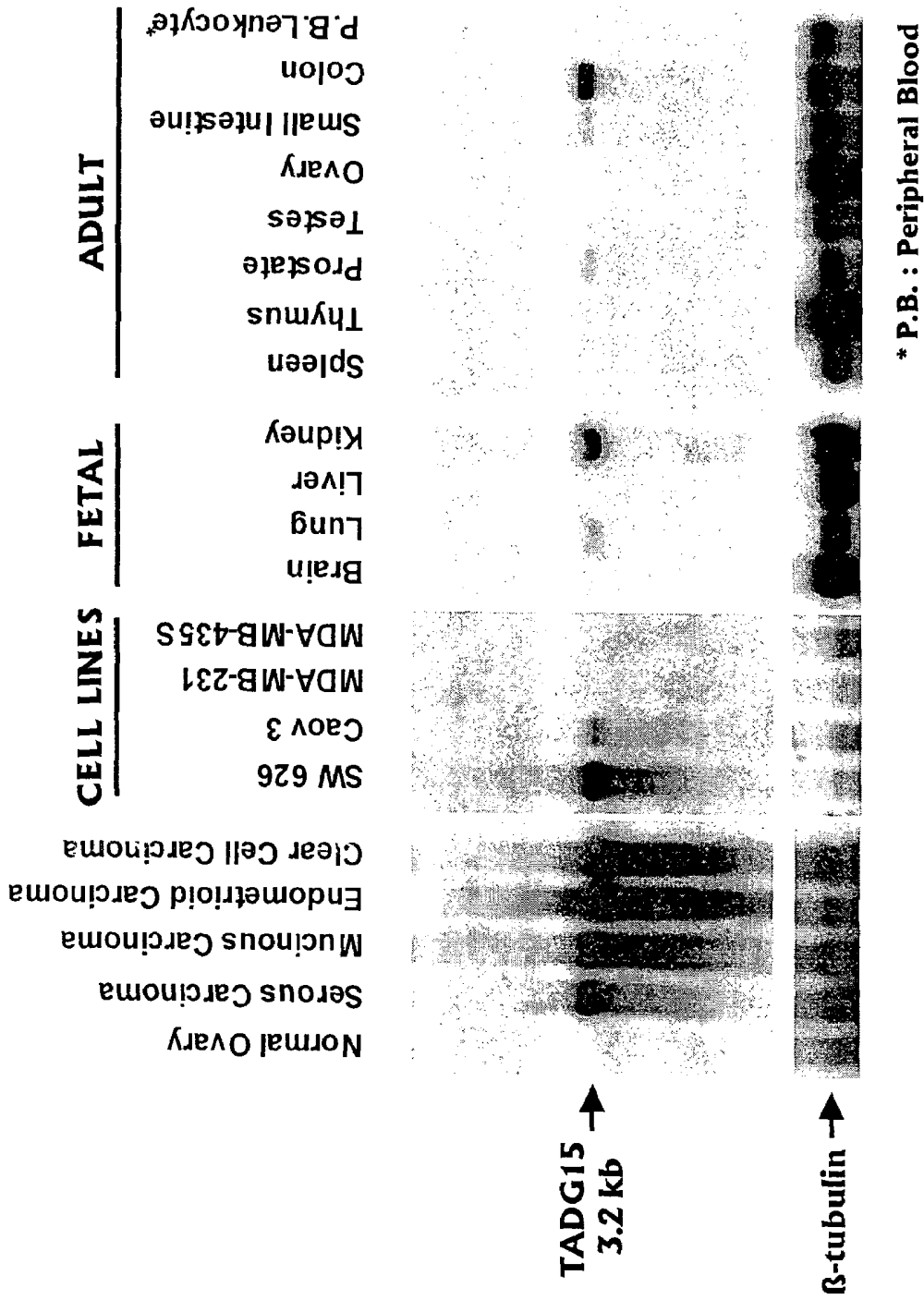


Fig. 5

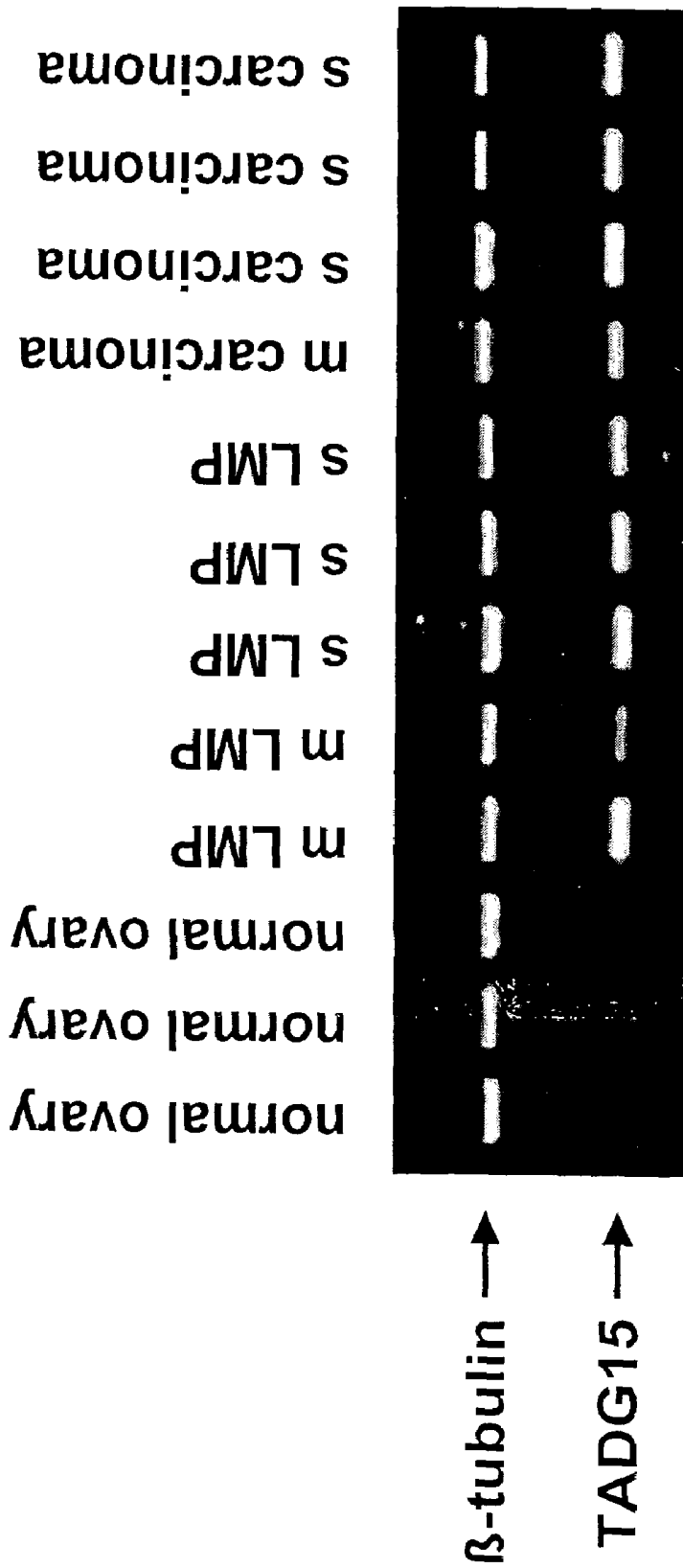


Fig. 6A

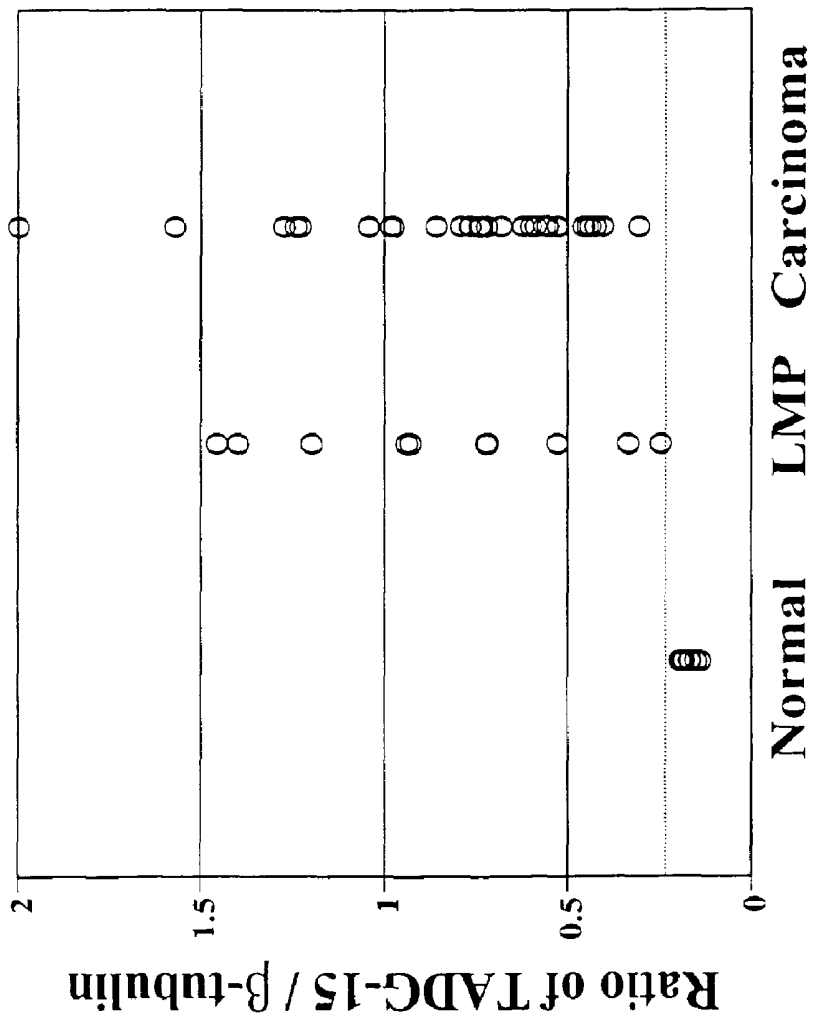


Fig. 6B

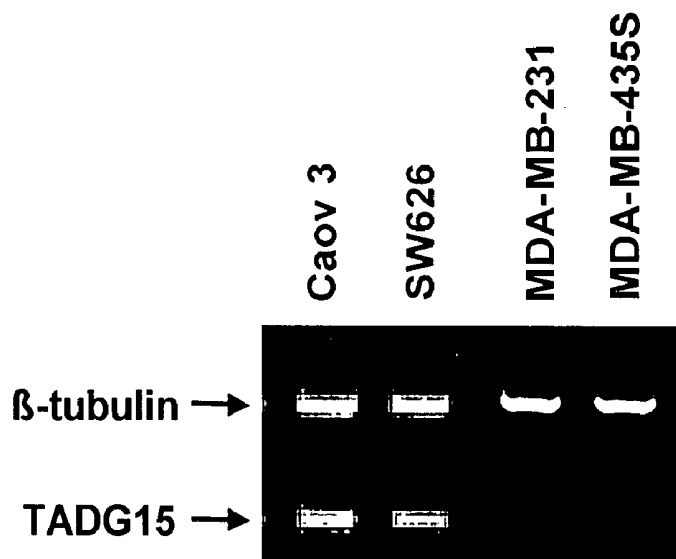


Fig. 7

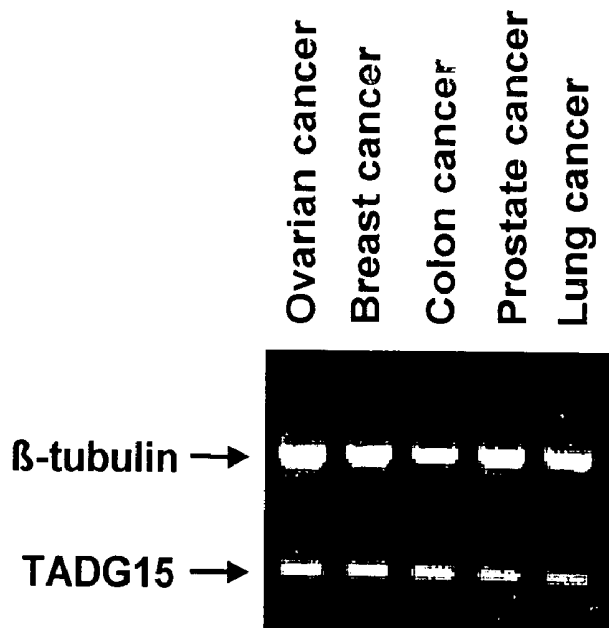


Fig. 8

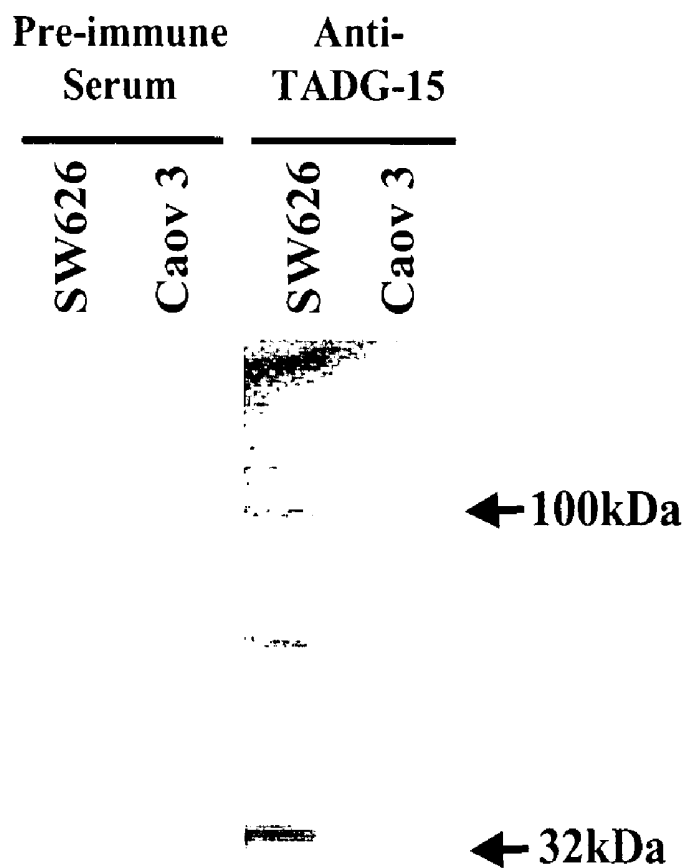


Fig. 9



Fig. 10A



Fig. 10B

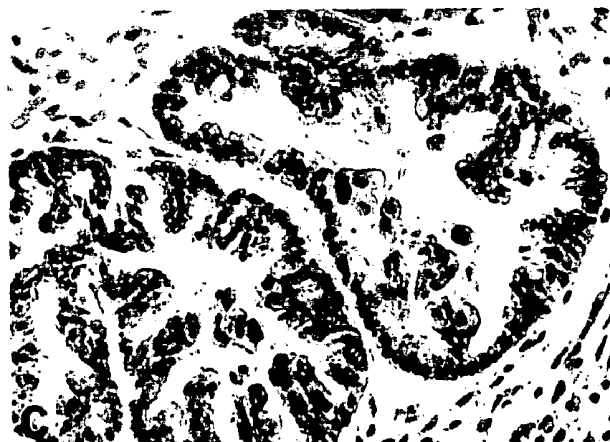


Fig. 10C

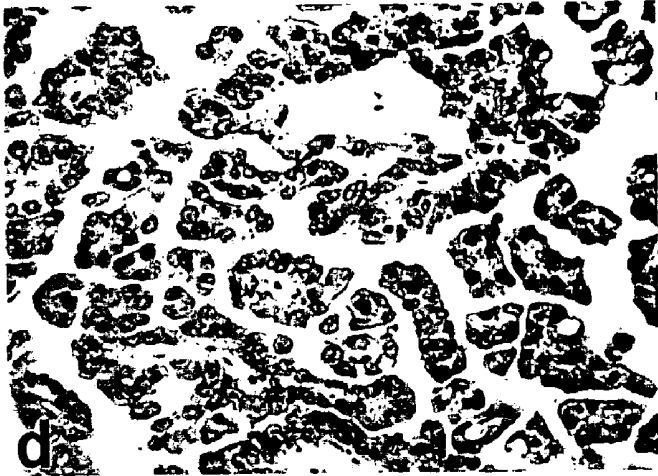


Fig. 10D

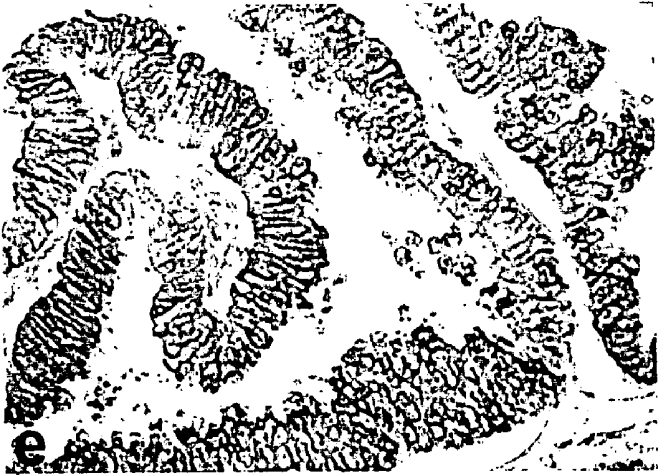


Fig. 10E

```

htADG15  MGSDRARKGG  GGPKDFGAGL  KYNSRHEKVN  GLEEGVEFLP  VNNVKKVEKH  50
mEpithin  ---N-G--A-  --SQ-----  --D--L-NM-  -F-----  A--A-----R
          GPGRWVVLAA  VLIGLLVLL  GIGELVWHLQ  YRDVVRVQKVF  NGYMRITNEN  100
mEpithin  --R-----V-  --FSF--LS-  MA-L-----FH  --N-----  --HL-----I
          FVDAYENSNS  TEFVSLASKV  KDALKLLYSG  VPFLGPHYHKE  SAVTAFSEGS  150
mEpithin  -L-----T-  ---I----Q-  -E-----NE  --V-----K  -----
          VIAYWSEFS  IPQHLVEEAE  RVMAEERVVM  LPPRARSILKS  FVTVSVVAFP  200
mEpithin  -----  --P--A--VD  -A--V----T  -----A---  --L-----
          TDSKTVQRTQ  DNSCSFGLHA  RGVELMRFTT  PGFPDSPYPA  HARCQWALRG  250
mEpithin  I-PRML-----  -----A---  H-AAVT-----  -----N---  -----V---
          DADSVLSLTF  RSEDLASCDE  RGSDDLVTVYN  TILSPMEPHAL  VQLCGTYPPS  300
mEpithin  -----  -----V-P---  H-----D  S-----V  -R-----FS--
          YNLTFHSSQN  VLLITLITNT  ERRHPGFEAT  FFQLPRMSSC  GGRLLRKAQGT  350
mEpithin  -----L---  -F-V-----  G---L-----  -----K---  --V-SDT---
          FNSPYYPGHY  PPNIDCTWNI  EVPNNQHVKV  SEKFFYLLEP  GVPAGTCPKD  400
mEpithin  -S-----  -----N-----  K-----RN---  R--L---VD-  N--V-S-T--
          YVEINGEKYC  GERSQFVVT  NSNKITVRFH  SDQSYTDTF  LAEYLSYDSS  450
mEpithin  -----GS  -----S-  --S-----H--  --H-----  -----N

```

Fig. 11A

```

htADG15  DPCPGQFTCR  TGR CIRKELR  CDGWADCTDH  SDELNCSCDA  GEQFTCKNKF  500
mEpithin  -----M-M-K  -----P-Y  ---RY-R-N-  T-----Q-

htADG15  CKPLFWVCDs  VNDCCDnsDE  QGCsCPAQTF  RCsNGKCLsK  sQcNGKDDC  550
mEpithin  -----G---  E-----GS-  K-----PQ  --K-----N-

htADG15  GDGSDEAsCP  KVNvVtCKH  tYrCLngLCL  sKGNPECDGK  EDCSDGSDEK  600
mEpithin  -----D  S---S---Y  ----Q-----  T-----

htADG15  DCDCGLRsFT  RQARvVGGTD  ADEGEWPQV  sLHALGQGHl  CGAsLlSPNW  650
mEpithin  N-----K  -----N  -----L  -----D-

htADG15  LVsAHcYID  DRGFRYSDPT  QWtAFLGLHD  QsORsAPGVQ  ERRLKRlISH  700
mEpithin  -----FQ-  -KN-K---Y-  M-----L-  --K---S---  -LK-----T-

htADG15  PEFNDtFDY  DIALLELEKp  AEYssMVRPI  CLPDASHVFP  AGKAIWtGW  750
mEpithin  -S-----  -----S  V---TV---  -----T-----

htADG15  GHTQYGGTGA  LILQKGEIRV  INQtCENLL  PQQITPRMmC  VGFLsGGVDS  800
mEpithin  ---KE-----  -----  -----D-M  -----

htADG15  CQGDsGGPLS  sVEADGRIFQ  AGVVsWGDGC  AQRNKPGVYt  RLPLFRDwIK  850
mEpithin  -----  -A-K---M--  -----E--  -----  ---CSSGLDQ

htADG15  ENTGV*
mEpithin  RAHWGIAAWT  DSRPQTPtGM  PDMHtWlQER  NTDDIYAVAs  PFQHNPDCEL  900

htADG15  SEQ ID NO: 2
mEpithin  HP  SEQ ID NO: 10  902

```

Fig. 11B

TADG15: TCAAGAGCGGCCTCGGGGTACCATGGGAGCGATCGGGCCCGAAGGGCCGAGGGGGCCGAAGGACTTCGGCGCGGGACT 81

SNC19: .....

82 CAAGTAACTCCCGGCACGAGAAAAGTGAATGGCTTGGAGGAAGGCGTGGAGTTCCCTGCCAGTCAACAACGTCAAGAAAGGTGAAAAGCATGGCCCCGGGG

.....

182 CGCTGGGTGGTGGCAGCCGTGCTGATCGGCCCTCCTCTTGGTCTTGTGGGATCGGCTTCCCTGGTGTGGCATTTGCACTACCCGGGACGTCGCGTGTCC 281

|||||

1 CGCTGGGTGGTGGCAGCCGTGCTGATCGGCCCTCCTCTTGGTCTTGTGGGATCGGCTTCCCTGGTGTGGCATTTGCACTACCCGGGACGTCGCGTGTCC 100

282 AGAAGTCTTCAATGGCTACATGAGGATCACAAAATGAGAAATTTGTGGATGCCCTACGAGAACTCCAACCTCCACTGAGTTTGTAAAGCCTGGCCAGCAAGGT 381

|||||

101 AGAAGTCTTCAATGGCTACATGAGGATCACAAAATGAGAAATTTGTGGATGCCCTACGAGAACTCCAACCTCCACTGAGTTTGTAAAGCCTGGCCAGCAAGGT 200

382 GAAGGACCGGCTGAAGCTGTACAGCGGAGTCCCATTCCTGGGCCCTACCACAAGGAGTCCGGCTGTGACGGCCCTTCAGCGAGGGCAGCGTCAATCGCC 481

|||||

201 GAAGGACCGGCTGAAGCTGTACAGCGGAGTCCCATTCCTGGGCCCTACCACAAGGAGTCCGGCTGTGACGGCCCTTCAGCGAGGGCAGCGTCAATCGCC 300

482 TACTACTGGTCTGAGTTCAGCATCCCCGACACCTGGTGGAGGAGCCGAGCCGTCATGGCCCGAGGAGCGGTAGTCAATGCTGCCCCCGCGGCGCGCT 581

|||||

301 TACTACTGGTCTGAGTTCAGCATCCCCGACACCTGGTGGAGGAGCCGAGCCGTCATGGCC . AGGAGCGCGTAGTCAATGCTGCCCCCGCGGCGCGCT 399

582 CCCGTGAAGTCCCTTTGTGGTCACTCAGTGGTGGCTTCCCAACGGACTCCAAAACAGTACAGACCACCCAGGACAACAGCTGCAGCTTTGGCCCTGCACGC 681

|||||

400 CCCGTGAAGTCCCTTTGTGGTCACTCAGTGGTGGCTTCCCAACGGACTCCAAAACAGTACAGAGGACCCAGGACAACAGCTGCAGCTTTGGCCCTGCACGC . 498

Fig. 12A



1375 CCCATGCCCGGGCAGTTACAGTCCCGCACGGGGGGGTGTATCCGGAAGGAGCTGCCGTGTGATGGCTGGGCCGACTGCCACCGACCACAGCGATGAGCTC 1474  
|||||  
1182 CCCATGCCCGGGCAGTTACAGTCCCGCACGGGGGGGTGTATCCGGAAGGAGCTGCCGTGTGATGGCTGGG.CGACTGCACCGACCACAGCGATGAGCTC 1290  
1475 AACATGCAGTTGCGACGCCCGCCACCAGTTACCGTGAAGAACAAAGTTCTGCAAGCCCTCTTTCTGGGTCTGCGACAGTGTGAACGACTGCGGAGACAACA 1574  
|||||  
1281 AACATGCAGTTGCGACGCCCGCCACCAGTTACCGTGAAGAACAAAGTTCTGCAAG..CTCTTCTGGGTCTGCGACAGTGTGAACGAGTGGGAGACAACA 1377  
1575 GCGACGAGCAGGGGTGCAGTTGTCGGG.CCCAGACCCTTCAGGTGTTCCAATGGGAAGTGCCTCTCGAAAAGCCAGCAGTGCATGGGAAGGACGACTGTG 1673  
|||||  
1378 GCGACGAGCAGGGGTGCATTTGTCGGACCCAGACCTTCAGGTGTTCCAATGGGAAGTGCCTCTCGAAAAGCCAGCAGTGCATGGGAAGGACGACTGTG 1477  
1674 GGGACGGGTCCGACGAGGCCCTCTGCCCCAAGGTGAACGTGTCACCTGTACCAAAACACACCTTACCCTGCCCTCAATGGGCTCTGCTTGAGCAAGGGCAA 1773  
|||||  
1478 GGGACGGGTCCGACGAGGCCCTCTGCCCCAAGGTGAACGTGTCACCTGTACCAAAACACACCTTACCCTGCCCTCAATGGGCTCTGCTTGAGCAAGGGCAA 1577  
1774 CCCTGAGTGTGACGGGAAGGAGGACTGTAGCGACGGCTCAGATGAGAAGGACTGCGACTGTGGGCTGCGGTCAATTCACGAGACAGGCTCGTGTGTTGGG 1873  
|||||  
1578 CCCTGAGTGTGACGGGAAGGAGGACTGTAGCGACGGCTCAGATGAGAAGGACTGCGACTGTGGGCTGCGGTCAATTCACGAGACAGGCTCGTGTGTTGGG 1677  
1874 GGCACGGATGCCGGATGAGGGCCGTGGCCCTGGCAGGTAAGCCTGCATGCTCTGGGCCAGGGCCACATCTGCGGTGCTTCCCTCATCTCCTCCAACTGGC 1973  
|||||  
1678 GGCACGGATGCCGGATGAGGGCCGTGGCCCTGGCAGGTAAGCCTGCATGCTCTGGGCCAGGGCCACATCTGCGGTGCTTCCCTCATCTCCTCCAACTGGC 1777  
1974 TGGTCTCTGCCCGCACACTGTCTACATCGATGACAGAGGATTCAGGTACTCAGACCCACGACAGTGGACGGCCCTTCCCTGGGCTTGCACGACCAGAGCCAGCG 2073  
|||||  
1778 TGGTCTCTGCCCGCACACTGTCTACATCGATGACAGAGGATTCAGGTACTCAGACCCACGCA..GGACGGCCCTTCCCTGGGCTTGCACGACCAGAGCCAGCG 1875

Fig. 12C





**TADG-15: AN EXTRACELLULAR SERINE  
PROTEASE OVEREXPRESSED IN  
CARCINOMAS**

CROSS-REFERENCE TO RELATED  
APPLICATION

This application is a divisional of U.S. Ser. No. 09/654,600, filed Sep. 1, 2000, now U.S. Pat. No. 6,649,741 which is a divisional of U.S. Ser. No. 09/421,213, filed Oct. 20, 1999, now U.S. Pat. No. 7,022,821 which is a continuation-in-part of U.S. Ser. No. 09/027,337, filed Feb. 20, 1998, now U.S. Pat. No. 5,972,616 and thereby claims the benefit of priority under 35 USC § 120.

BACKGROUND OF THE INVENTION

1. Field of the Invention

The present invention relates generally to the fields of cellular biology and the diagnosis of neoplastic disease. More specifically, the present invention relates to an extracellular serine protease, termed tumor antigen-derived gene 15 (TADG-15), which is overexpressed in carcinomas.

2. Description of the Related Art

Extracellular proteases have been directly associated with tumor growth, shedding of tumor cells and invasion of target organs. Individual classes of proteases are involved in, but not limited to, (a) digestion of stroma surrounding the initial tumor area, (b) digestion of the cellular adhesion molecules to allow dissociation of tumor cells; and (c) invasion of the basement membrane for metastatic growth and activation of both tumor growth factors and angiogenic factors.

In the process of cancer progression and invasion, proteases mediate specific proteolysis and contribute to the removal of extracellular matrix components surrounding tumor cells, the digestion of intercellular adhesion molecules to allow dissociation of malignant cells and the activation of many growth and angiogenic factors.<sup>1-3</sup> Depending on the nature of their catalytic domain, proteases are classified into four families: serine proteases, metalloproteases, aspartic proteases and cysteine proteases.<sup>3</sup> Among these proteases, the metalloproteases have been well studied in relation to tumor growth and progression, and they are known to be capable of degrading the extracellular matrix, thereby enhancing the invasive potential of malignant cells.<sup>1,4,5</sup> For serine proteases, previous studies have demonstrated an increased production of plasminogen activator in tumor cells and a positive correlation between plasminogen activator activity and aggressiveness of cancer.<sup>6,7</sup> Prostate specific antigen (a serine protease) has also been widely used as an indicator of abnormal prostate growth.<sup>8</sup> More recently, several other serine proteases have been reported, viz. hepsin and the stratum corneum chymotryptic enzyme (SCCE), which are overexpressed in ovarian cancer and which may contribute to malignant progression by increasing the extracellular lytic activity of these tumor cells.<sup>9</sup>

The prior art is deficient in the lack of effective means of screening to identify proteases overexpressed in carcinoma. The present invention fulfills this longstanding need and desire in the art.

SUMMARY OF THE INVENTION

The present invention discloses a screening program to identify proteases overexpressed in carcinoma by examining PCR products amplified using differential display in early

stage tumors and metastatic tumors compared to that of normal tissues. The approach herein to identify candidate genes overexpressed in tumor cells has been to utilize the well conserved domains surrounding the triad of amino acids (His-Asp-Ser) prototypical of the catalytic domain of serine proteases. Herein, evidence is presented for a unique form of serine protease not previously described in the literature which is highly expressed in ovarian carcinomas. Through the screening approach using differential PCR amplification of normal, low malignant potential and overt carcinomas, a PCR product present only in carcinoma was subcloned and sequenced, and was found to have a catalytic domain which was consistent with the serine protease family. Reported herein is the complete cloning and sequencing of this transcript and evidence for its expression in ovarian tumor cells.

In one embodiment of the present invention, there is provided a DNA encoding a tumor antigen-derived gene (TADG-15) protein, selected from the following: (a) an isolated DNA which encodes a TADG-15 protein; (b) an isolated DNA which hybridizes under high stringency conditions to the isolated DNA of (a) above and which encodes a TADG-15 protein; and (c) an isolated DNA differing from the isolated DNAs of (a) and (b) above in codon sequence due to the degeneracy of the genetic code, and which encodes a TADG-15 protein. The embodiment further includes a vector comprising the TADG-15 DNA and regulatory elements necessary for expression of the DNA in a cell. Additionally embodied is a vector in which the TADG-15 DNA is positioned in reverse orientation relative to the regulatory elements such that TADG-15 antisense mRNA is produced.

In another embodiment of the present invention, there is provided an isolated and purified TADG-15 protein coded for by DNA selected from the following: (a) an isolated DNA which encodes a TADG-15 protein; (b) an isolated DNA which hybridizes under high stringency conditions to isolated DNA of (a) above and which encodes a TADG-15 protein; and (c) an isolated DNA differing from the isolated DNAs of (a) and (b) above in codon sequence due to the degeneracy of the genetic code, and which encodes a TADG-15 protein.

In yet another embodiment of the present invention, there is provided a method for detecting TADG-15 mRNA in a sample, comprising the steps of: (a) contacting a sample with a probe which is specific for TADG-15; and (b) detecting binding of the probe to TADG-15 mRNA in the sample. In still yet another embodiment of the present invention, there is provided a kit for detecting TADG-15 mRNA, comprising: an oligonucleotide probe specific for TADG-15. A label for detection is further embodied in the kit.

The present invention additionally embodies a method of detecting TADG-15 protein in a sample, comprising the steps of: (a) contacting a sample with an antibody which is specific for TADG-15 or a fragment thereof; and (b) detecting binding of the antibody to TADG-15 protein in the sample. Similarly, the present invention also embodies a kit for detecting TADG-15 protein, comprising: an antibody specific for TADG-15 protein or a fragment thereof. Means for detection of the antibody is further embodied in the kit.

In another embodiment, the present invention provides an antibody specific for the TADG-15 protein or a fragment thereof.

In yet another embodiment, the present invention provides a method of screening for compounds that inhibit TADG-15, comprising the steps of: (a) contacting a sample

comprising TADG-15 protein with a compound; and (b) assaying for TADG-15 protease activity. Typically, a decrease in the TADG-15 protease activity in the presence of the compound relative to TADG-15 protease activity in the absence of the compound is indicative of a compound that inhibits TADG-15.

In still yet another embodiment of the present invention, there is provided a method of inhibiting expression of TADG-15 in a cell, comprising the step of: (a) introducing a vector into a cell, whereupon expression of the vector produces TADG-15 antisense mRNA in the cell which hybridizes to endogenous TADG-15 mRNA, thereby inhibiting expression of TADG-15 in the cell.

Further embodied by the present invention, there is provided a method of inhibiting a TADG-15 protein in a cell, comprising the step of: (a) introducing an antibody specific for a TADG-15 protein or a fragment thereof into a cell, whereupon binding of the antibody to the TADG-15 protein inhibits the TADG-15 protein.

In an embodiment of the present invention, there is provided a method of targeted therapy to an individual, comprising the step of: (a) administering a compound containing a targeting moiety and a therapeutic moiety to an individual, wherein the targeting moiety is specific for TADG-15.

In an embodiment of the present invention, there is provided a method of diagnosing cancer in an individual, comprising the steps of: (a) obtaining a biological sample from an individual; and (b) detecting TADG-15 in the sample, wherein the presence of TADG-15 in the sample is indicative of the presence of carcinoma in the individual and the absence of TADG-15 in the sample is indicative of the absence of carcinoma in the individual.

In another embodiment of the present invention, there is provided a method of vaccinating an individual against TADG-15, comprising the steps of: (a) inoculating an individual with a TADG-15 protein or fragment thereof that lacks TADG-15 protease activity, wherein the inoculation with the TADG-15 protein or fragment thereof elicits an immune response in the individual, thereby vaccinating the individual against TADG-15.

In an embodiment of the present invention, there is provided a method of producing immune-activated cells directed toward TADG-15, comprising the steps of: exposing dendritic cells to a TADG-15 protein or fragment thereof that lacks TADG-15 protease activity, wherein the exposure to said TADG-15 protein or fragment thereof activates the dendritic cells, thereby producing immune-activated cells directed toward TADG-15.

In another embodiment of the present invention, there is provided an immunogenic composition, comprising an immunogenic fragment of a TADG-15 protein and an appropriate adjuvant.

Other and further aspects, features, and advantages of the present invention will be apparent from the following description of the presently preferred embodiments of the invention given for the purpose of disclosure.

#### BRIEF DESCRIPTION OF THE DRAWINGS

So that the matter in which the above-recited features, advantages and objects of the invention, as well as others which will become clear, are attained and can be understood in detail, more particular descriptions of the invention briefly summarized above may be had by reference to certain embodiments thereof which are illustrated in the appended drawings. These drawings form a part of the

specification. It is to be noted, however, that the appended drawings illustrate preferred embodiments of the invention and therefore are not to be considered limiting in their scope.

FIG. 1 shows a comparison of the serine protease catalytic domain of TADG-15 with Hepsin (Heps, SEQ ID No. 3), SCCE (SEQ ID No. 4), Trypsin (Try, SEQ ID No. 5), Chymotrypsin (Chymb, SEQ ID No. 6), Factor 7 (Fac7, SEQ ID No. 7) and Tissue plasminogen activator (Tpa, SEQ ID No. 8). The asterisks indicate conserved amino acids of catalytic triad.

FIG. 2 shows the nucleotide sequence of the TADG-15 cDNA and the derived amino acid sequence of the TADG-15 protein. The putative start codon is located at nucleotides 23-25. The potential transmembrane sequence is underlined. Possible N-linked glycosylation sites are indicated by a broken line. The asterisks indicate conserved cysteine residues of CUB domain. The SDE-motifs of the LDL receptor ligand binding repeat-like domain are boxed. The arrow shows the arginine-valine bond cleaved upon activation. The conserved amino acids of the catalytic triad; histidine, aspartic acid and serine residues are circled.

FIG. 3 shows the amino acid sequence of the TADG-15 protease, including functional sites and domains.

FIG. 4 shows a diagram of the TADG-15 protein. 1; cytoplasmic domain, (aa #1-54), 2; transmembrane domain (aa #55-57), 3; extracellular domain (aa #78-213), 4-5; CUB repeat (aa #214-447), 6-9; LDL receptor ligand binding repeat (class A motif) like domain (aa #453-602), 10; serine protease (aa #615-855).

FIG. 5 shows Northern blot analysis of TADG-15 mRNA expression in normal ovary, ovarian carcinomas, carcinoma cell lines, normal fetal tissues and normal adult tissues. A single intense transcript of the TADG-15 was observed in every sub-type of carcinoma and the two ovarian carcinoma cell lines, SW626 and CAOV3, whereas no visible band was detected in normal ovary or the two breast cancer cell lines. In normal fetal tissues, fetal kidney showed increased transcript and faint expression was detected in fetal lung. In normal adult tissues, the TADG-15 was detected in colon with low expression in small intestine and prostate.

FIG. 6A shows quantitative PCR analysis of TADG-15 expression. Expression levels of TADG-15 relative to  $\beta$ -tubulin are significantly elevated in all LMP tumors and carcinomas compared to that of normal ovaries. m; mucinous, s; serous. FIG. 6B shows the ratio of TADG-15 expression to expression of  $\beta$ -tubulin in normal ovary, LMP tumor and ovarian carcinoma. TADG-15 mRNA expression levels were significantly elevated in both LMP tumor (\*;  $p < 0.001$ ) and carcinoma (\*\*;  $p < 0.0001$ ) compared to that in normal ovary. All 10 samples of normal ovary showed a low level of TADG-15 expression.

FIG. 7 shows the TADG-15 expression in tumor cell lines derived from both ovarian and breast carcinoma tissues.

FIG. 8 shows the overexpression of TADG-15 in other tumor tissues.

FIG. 9 shows SW626 and CAOV3 cell lysates that were separated by SDS-PAGE and immunoblotted. Lanes 1 and 2 were probed with rabbit pre-immune serum as a negative control. Lanes 3 and 4 were probed with polyclonal rabbit antibody generated to a carboxy terminal peptide from TADG-15 protein sequence.

FIG. 10 shows that immunohistochemical staining of normal ovarian epithelium (FIG. 10A) with a polyclonal antibody to a TADG-15 protease peptide shows no staining of the stroma or epithelium. However, antibody staining of carcinomas confirms the presence of TADG-15 expression in the cytoplasm of a serous low malignant potential tumor

(FIG. 10B); a mucinous low malignant potential tumor (FIG. 10C); a serous carcinoma (FIG. 10D); and its presence in both the cytoplasm and cell surface of a n endometrioid carcinoma (FIG. 10E).

FIG. 11 shows an alignment of the human TADG15 protein sequence with that of mouse epithin which demonstrates that the proteins are 84% similar and 81% identical over 843 amino acids. Residues that are identical between the two proteins are indicated by a "-", while the "\*" symbol represents the TADG15 translation termination. The most significant difference between these two proteins lies in the carboxy-termini, which for epithin, includes 47 amino acids that are not present in TADG15.

FIG. 12 shows a nucleotide sequence comparison between TADG-15 and human SNC-19 (GeneBank Accession No. #U20428).

#### DETAILED DESCRIPTION OF THE INVENTION

Proteases have been implicated in the extracellular modulation required for tumor growth and invasion. In an effort to categorize those proteases contributing to ovarian carcinoma progression, redundant primers directed towards conserved amino acid domains surrounding the catalytic triad of His, Asp and Ser were utilized to amplify serine proteases differentially expressed in carcinomas. Using this method, a serine protease named TADG-15 (tumor antigen-derived gene 15) has been identified that is overexpressed in ovarian tumors. TADG-15 appears to be a transmembrane multidomain serine protease. TADG-15 is highly overexpressed in ovarian tumors based on PCR, Northern blot and immunolocalization.

The TADG-15 cDNA is 3147 base pairs long (SEQ ID No. 1) encoding for a 855 amino acid protein (SEQ ID No. 2). The availability of the TADG-15 gene provides numerous utilities. For example, the TADG-15 gene can be used as a diagnostic or therapeutic target in ovarian and other carcinomas, including breast, prostate, lung and colon.

The present invention is directed to DNA encoding a tumor antigen-derived gene (TADG-15) protein, selected from the following: (a) an isolated DNA which encodes a TADG-15 protein; (b) an isolated DNA which hybridizes under high stringency conditions to the isolated DNA of (a) above and which encodes a TADG-15 protein; and (c) an isolated DNA differing from the isolated DNAs of (a) and (b) above in codon sequence due to the degeneracy of the genetic code, and which encodes a TADG-15 protein. It is preferred that the DNA has the sequence shown in SEQ ID No. 1 and the TADG-15 protein has the amino acid sequence shown in SEQ ID No. 2.

The present invention is directed toward a vector comprising the TADG-15 DNA and regulatory elements necessary for expression of the DNA in a cell, or a vector in which the TADG-15 DNA is positioned in reverse orientation relative to the regulatory elements such that TADG-15 antisense mRNA is produced. Generally, the DNA encodes a TADG-15 protein having the amino acid sequence shown in SEQ ID No. 2. The invention is also directed toward host cells transfected with either of the above-described vector(s). Representative host cells are bacterial cells, mammalian cells, plant cells and insect cells. Preferably, the bacterial cell is *E. coli*.

The present invention is directed toward an isolated and purified TADG-15 protein coded for by DNA selected from the following: (a) an isolated DNA which encodes a TADG-15 protein; (b) an isolated DNA which hybridizes under high

stringency conditions to isolated DNA of (a) above and which encodes a TADG-15 protein; and (c) an isolated DNA differing from the isolated DNAs of (a) and (b) above in codon sequence due to the degeneracy of the genetic code and which encodes a TADG-15 protein. Preferably, the protein has the amino acid sequence shown in SEQ ID No. 2.

The present invention is directed toward a method for detecting TADG-15 mRNA in a sample, comprising the steps of: (a) contacting a sample with a probe which is specific for TADG-15; and (b) detecting binding of the probe to TADG-15 mRNA in the sample. The present invention is also directed toward a method of detecting TADG-15 protein in a sample, comprising the steps of: (a) contacting a sample with an antibody which is specific for TADG-15 or a fragment thereof; and (b) detecting binding of the antibody to TADG-15 protein in the sample. Generally, the sample is from an individual; and typically, the individual is suspected of having cancer.

The present invention is directed toward a kit for detecting TADG-15 mRNA, comprising: an oligonucleotide probe, wherein the probe is specific for TADG-15. The kit may further comprise: a label with which to label the probe; and means for detecting the label. The present invention is additionally directed toward a kit for detecting TADG-15 protein, comprising: an antibody which is specific for TADG-15 protein or a fragment thereof. The kit may further comprise: means to detect the antibody.

The present invention is directed toward an antibody which is specific for TADG-15 protein or a fragment thereof.

The present invention is directed toward a method of screening for compounds that inhibit TADG-15, comprising the steps of: (a) contacting a sample containing TADG-15 protein with a compound; and (b) assaying for TADG-15 protease activity. Typically, a decrease in the TADG-15 protease activity in the presence of the compound relative to TADG-15 protease activity in the absence of the compound is indicative of a compound that inhibits TADG-15.

The present invention is directed toward a method of inhibiting expression of TADG-15 in a cell, comprising the step of: (a) introducing a vector expressing TADG-15 antisense mRNA into a cell, which hybridizes to endogenous TADG-15 mRNA, thereby inhibiting expression of TADG-15 in the cell. Generally, the inhibition of TADG-15 expression is for treating cancer.

The present invention is directed toward a method of inhibiting a TADG-15 protein in a cell, comprising the step of: (a) introducing an antibody specific for a TADG-15 protein or a fragment thereof into a cell, which inhibits the TADG-15 protein. Generally, the inhibition of the TADG-15 protein is for treating cancer.

The present invention is directed toward a method of targeted therapy to an individual, comprising the step of: (a) administering a compound having a targeting moiety and a therapeutic moiety to an individual, wherein the targeting moiety is specific for TADG-15. Representative targeting moiety are an antibody specific for TADG-15 and a ligand or ligand binding domain (e.g., CUB, LDLR, protease and extracellular) that binds TADG-15. Likewise, a representative therapeutic moiety is a radioisotope, a toxin, a chemotherapeutic agent and immune stimulants. Typically, the above-described method is useful when the individual suffers from ovarian cancer, breast cancer or cancers of the prostate, lung, colon and cervix.

The present invention is directed toward a method of diagnosing cancer in an individual, comprising the steps of:

(a) obtaining a biological sample from an individual; and (b) detecting TADG-15 in the sample. Generally, the presence of TADG-15 in the sample is indicative of the presence of carcinoma in the individual, and the absence of TADG-15 in the sample is indicative of the absence of carcinoma in the individual. Generally, the biological sample is blood, ascites fluid, urine, tears, saliva or interstitial fluid. Typical means of detecting TADG-15 are by Northern blot, Western blot, PCR, dot blot, ELISA, radioimmunoassay, DNA chips or tumor cell labeling. This method may be useful in diagnosing cancers such as ovarian, breast and other cancers in which TADG-15 is overexpressed, such as lung, prostate and colon cancers.

The present invention is also directed to an antisense oligonucleotide having the nucleotide sequence complementary to a TADG-15 mRNA sequence. The present invention is also directed to a composition comprising such an antisense oligonucleotide according and a physiologically acceptable carrier therefore.

The present invention is also directed to a method of treating a neoplastic state in an individual syndrome in an individual in need of such treatment, comprising the step of administering to said individual an effective dose of an antisense oligonucleotide of. Preferably, the neoplastic state is selected from the group consisting of from ovarian cancer, breast cancer, lung cancer, prostate cancer, colon cancer and other cancers in which TADG-15 is overexpressed. For such therapy, the oligonucleotides alone or in combination with other anti-neoplastic agents can be formulated for a variety of modes of administration, including systemic, topical or localized administration. Techniques and formulations generally can be found in *Remington's Pharmaceutical Sciences*, Mack Publishing Co., Easton, Pa. The oligonucleotide active ingredient is generally combined with a pharmaceutically acceptable carrier such as a diluent or excipient which can include fillers, extenders, binders, wetting agents, disintegrants, surface active agents or lubricants, depending on the nature of the mode of administration and dosage forms. Typical dosage forms include tablets, powders, liquid preparations including suspensions, emulsions, and solutions, granules, capsules and suppositories, as well as liquid preparations for injections, including liposome preparations.

For systemic administration, injection is preferred, including intramuscular, intravenous, intraperitoneal and subcutaneous. For injection, the oligonucleotides of the invention are formulated in liquid solutions, preferably in physiologically compatible buffers. In addition, the oligonucleotides can be formulated in solid form and redissolved or suspended immediately prior to use. Lyophilized forms are also included. Dosages that can be used for systemic administration preferably range from about 0.01 mg/kg to 50 mg/kg administered once or twice per day. However, different dosing schedules can be utilized depending on (1) the potency of an individual oligonucleotide at inhibiting the activity of its target DNA, (2) the severity or extent of the pathological disease state, or (3) the pharmacokinetic behavior of a given oligonucleotide.

The present invention is directed toward a method of vaccinating an individual against TADG-15 overexpression, comprising the steps of: (a) inoculating an individual with a TADG-15 protein or fragment thereof which lacks TADG-15 protease activity. The inoculation with the TADG-15 protein or fragment thereof elicits an immune response in the individual, thereby vaccinating the individual against TADG-15. The vaccination with TADG-15 described herein is intended for an individual who has cancer, is suspected of

having cancer or is at risk of getting cancer. Generally, the TADG-15 fragment useful for vaccinating an individual are 9-residue fragments up to 20-residue fragments, with preferred 9-residue fragments shown in SEQ ID Nos. 2, 19, 20, 21, 29, 39, 49, 50, 59, 79, 80, 81, 82, 83, 84, 89 and 90.

The present invention is directed toward a method of producing immune-activated cells directed toward TADG-15, comprising the steps of: exposing dendritic cells to a TADG-15 protein or fragment thereof that lacks TADG-15 protease activity, wherein exposure to the TADG-15 protein or fragment thereof activates the dendritic cells, thereby producing immune-activated cells directed toward TADG-15. Representative immune-activated cells are B-cells, T-cells and dendrites. Generally, the TADG-15 fragment is a 9-residue fragment up to a 20-residue fragment, with preferable 9-residue fragments shown in SEQ ID Nos. 2, 19, 20, 21, 29, 39, 49, 50, 59, 79, 80, 81, 82, 83, 84, 89 and 90. Preferably, the dendritic cells are isolated from an individual prior to exposure, and the activated dendritic cells reintroduced into the individual subsequent to exposure. Typically, the individual for which this method may apply has cancer, is suspected of having cancer or is at risk of getting cancer.

The present invention is directed toward an immunogenic composition, comprising an immunogenic fragment of a TADG-15 protein and an appropriate adjuvant. Generally, the fragment is a 9-residue fragment up to a 20-residue fragment, with preferred 9-residue fragments shown in SEQ ID Nos. 2, 19, 20, 21, 29, 39, 49, 50, 59, 79, 80, 81, 82, 83, 84, 89 and 90.

In accordance with the present invention there may be employed conventional molecular biology, microbiology, and recombinant DNA techniques within the skill of the art. Such techniques are explained fully in the literature. See, e.g., Maniatis, Fritsch & Sambrook, "Molecular Cloning: A Laboratory Manual" (1982); "DNA Cloning: A Practical Approach," Volumes I and II (D. N. Glover ed. 1985); "Oligonucleotide Synthesis" (M. J. Gait ed. 1984); "Nucleic Acid Hybridization" (B. D. Hames & S. J. Higgins eds. 1985); "Transcription and Translation" (B. D. Hames & S. J. Higgins eds. 1984); "Animal Cell Culture" (R. I. Freshney, ed. 1986); "Immobilized Cells And Enzymes" (IRL Press, 1986); B. Perbal, "A Practical Guide To Molecular Cloning" (1984). Therefore, if appearing herein, the following terms shall have the definitions set out below.

As used herein, the term "cDNA" shall refer to the DNA copy of the mRNA transcript of a gene.

As used herein, the term "derived amino acid sequence" shall mean the amino acid sequence determined by reading the triplet sequence of nucleotide bases in the cDNA.

As used herein the term "screening a library" shall refer to the process of using a labeled probe to check whether, under the appropriate conditions, there is a sequence complementary to the probe present in a particular DNA library. In addition, "screening a library" could be performed by PCR.

As used herein, the term "PCR" refers to the polymerase chain reaction that is the subject of U.S. Pat. Nos. 4,683,195 and 4,683,202 to Mullis, as well as other improvements now known in the art.

The amino acid described herein are preferred to be in the "L" isomeric form. However, residues in the "D" isomeric form can be substituted for any L-amino acid residue, as long as the desired functional property of immunoglobulin-binding is retained by the polypeptide. NH<sub>2</sub> refers to the free amino group present at the amino terminus of a polypeptide. COOH refers to the free carboxy group present at the carboxy terminus of a polypeptide. In keeping with standard

polypeptide nomenclature, *J Biol. Chem.*, 243:3552-59 (1969), abbreviations for amino acid residues are used as in customary in the art.

It should be noted that all amino-acid residue sequences are represented herein by formulae whose left and right orientation is in the conventional direction of amino-terminus to carboxy-terminus. Furthermore, it should be noted that a dash at the beginning or end of an amino acid residue sequence indicates a peptide bond to a further sequence of one or more amino-acid residues.

A "replicon" is any genetic element (e.g., plasmid, chromosome, virus) that functions as an autonomous unit of DNA replication *in vivo*; i.e., capable of replication under its own control.

A "vector" is a replicon, such as plasmid, phage or cosmid, to which another DNA segment may be attached so as to bring about the replication of the attached segment. A "vector" may further be defined as a replicable nucleic acid construct, e.g., a plasmid or viral nucleic acid.

A "DNA molecule" refers to the polymeric form of deoxyribonucleotides (adenine, guanine, thymine, or cytosine) in its either single-stranded form or as a double-stranded helix. This term refers only to the primary and secondary structure of the molecule, and does not limit it to any particular tertiary forms. Thus, this term includes double-stranded DNA found, *inter alia*, in linear DNA molecules (e.g., restriction fragments), viruses, plasmids, and chromosomes. The structure is discussed herein according to the normal convention of giving only the sequence in the 5' to 3' direction along the nontranscribed strand of DNA (i.e., the strand having a sequence homologous to the mRNA).

An expression vector is a replicable construct in which a nucleic acid sequence encoding a polypeptide is operably linked to suitable control sequences capable of effecting expression of the polypeptide in a cell. The need for such control sequences will vary depending upon the cell selected and the transformation method chosen. Generally, control sequences include a transcriptional promoter and/or enhancer, suitable mRNA ribosomal binding sites, and sequences which control the termination of transcription and translation. Methods which are well known to those skilled in the art can be used to construct expression vectors containing appropriate transcriptional and translational control signals. See, for example, techniques described in Sambrook et al., 1989, *Molecular Cloning: A Laboratory Manual* (2nd Ed.), Cold Spring Harbor Press, N.Y. A gene and its transcription control sequences are defined as being "operably linked" if the transcription control sequences effectively control transcription of the gene. Vectors of the invention include, but are not limited to, plasmid vectors and viral vectors. Preferred viral vectors of the invention are those derived from retroviruses, adenovirus, adeno-associated virus, SV40 virus, or herpes viruses. In general, expression vectors contain promoter sequences which facilitate the efficient transcription of the inserted DNA fragment and are used in connection with the host. The expression vector typically contains an origin of replication, promoter(s), terminator(s), as well as specific genes which are capable of providing phenotypic selection in transformed cells. The transformed hosts can be fermented and cultured according to means known in the art to achieve optimal cell growth.

An "origin of replication" refers to those DNA sequences that participate in DNA synthesis.

A DNA "coding sequence" is a double-stranded DNA sequence which is transcribed and translated into a polypeptide *in vivo* when placed under the control of appropriate

regulatory sequences. The boundaries of the coding sequence are determined by a start codon at the 5' (amino) terminus and a translation stop codon at the 3' (carboxyl) terminus. A coding sequence can include, but is not limited to, prokaryotic sequences, cDNA from eukaryotic mRNA, genomic DNA sequences from eukaryotic (e.g., mammalian) DNA, and even synthetic DNA sequences. A polyadenylation signal and transcription termination sequence will usually be located 3' to the coding sequence.

Transcriptional and translational control sequences are DNA regulatory sequences, such as promoters, enhancers, polyadenylation signals, terminators, and the like, that provide for the expression of a coding sequence in a host cell.

A "promoter sequence" is a DNA regulatory region capable of binding RNA polymerase in a cell and initiating transcription of a downstream (3' direction) coding sequence. For purposes of defining the present invention, the promoter sequence is bounded at its 3' terminus by the transcription initiation site and extends upstream (5' direction) to include the minimum number of bases or elements necessary to initiate transcription at levels detectable above background. Within the promoter sequence will be found a transcription initiation site, as well as protein binding domains (consensus sequences) responsible for the binding of RNA polymerase. Eukaryotic promoters often, but not always, contain "TATA" boxes and "CAI" boxes. Prokaryotic promoters typically contain Shine-Dalgarno ribosome-binding sequences in addition to the -10 and -35 consensus sequences.

An "expression control sequence" is a DNA sequence that controls and regulates the transcription and translation of another DNA sequence. A coding sequence is "under the control" of transcriptional and translational control sequences in a cell when RNA polymerase transcribes the coding sequence into mRNA, which is then translated into the protein encoded by the coding sequence.

A "signal sequence" can be included near the coding sequence. This sequence encodes a signal peptide, N-terminal to the polypeptide, that communicates to the host cell to direct the polypeptide to the cell surface or secrete the polypeptide into the media, and this signal peptide is clipped off by the host cell before the protein leaves the cell. Signal sequences can be found associated with a variety of proteins native to prokaryotes and eukaryotes.

As used herein, the terms "restriction endonucleases" and "restriction enzymes" refer to enzymes, each of which cut double-stranded DNA at or near a specific nucleotide sequence.

A cell has been "transformed" by exogenous or heterologous DNA when such DNA has been introduced inside the cell. The transforming DNA may or may not be integrated (covalently linked) into the genome of the cell. In prokaryotes, yeast, and mammalian cells for example, the transforming DNA may be maintained on an episomal element such as a plasmid. With respect to eukaryotic cells, a stably transformed cell is one in which the transforming DNA has become integrated into a chromosome so that it is inherited by daughter cells through chromosome replication. This stability is demonstrated by the ability of the eukaryotic cell to establish cell lines or clones comprised of a population of daughter cells containing the transforming DNA. A "clone" is a population of cells derived from a single cell or ancestor by mitosis. A "cell line" is a clone of a primary cell that is capable of stable growth *in vitro* for many generations.

Two DNA sequences are "substantially homologous" when at least about 75% (preferably at least about 80%, and most preferably at least about 90% or 95%) of the nucle-

otides match over the defined length of the DNA sequences. Sequences that are substantially homologous can be identified by comparing the sequences using standard software available in sequence data banks, or in a Southern hybridization experiment under, for example., stringent conditions as defined for that particular system. Defining appropriate hybridization conditions is within the skill of the art. See, e.g., Maniatis et al., supra; DNA Cloning, Vols. I & II, supra; Nucleic Acid Hybridization, supra.

A "heterologous" region of the DNA construct is a non-identifiable segment of DNA within a larger DNA molecule that is not found in association with the larger molecule in nature. Thus, when the heterologous region encodes a mammalian gene, the gene will usually be flanked by DNA that does not flank the mammalian genomic DNA in the genome of the source organism. In another example, coding sequence is a construct where the coding sequence itself is not found in nature (e.g., a cDNA where the genomic coding sequence contains introns, or synthetic sequences having codons different than the native gene). Allelic variations or naturally-occurring mutational events do not give rise to a heterologous region of DNA as defined herein.

The labels most commonly employed for these studies are radioactive elements, enzymes, chemicals which fluoresce when exposed to ultraviolet light, and others. A number of fluorescent materials are known and can be utilized as labels. These include, for example, fluorescein, rhodamine, auramine, Texas Red, AMCA blue and Lucifer Yellow. A particular detecting material is anti-rabbit antibody prepared in goats and conjugated with fluorescein through an isothiocyanate. Proteins can also be labeled with a radioactive element or with an enzyme. The radioactive label can be detected by any of the currently available counting procedures. The preferred isotope may be selected from  $^3\text{H}$ ,  $^{14}\text{C}$ ,  $^{32}\text{P}$ ,  $^{35}\text{S}$ ,  $^{36}\text{Cl}$ ,  $^{51}\text{Cr}$ ,  $^{57}\text{Co}$ ,  $^{58}\text{Co}$ ,  $^{59}\text{Fe}$ ,  $^{90}\text{Y}$ ,  $^{125}\text{I}$ ,  $^{131}\text{I}$ , and  $^{186}\text{Re}$ . Enzyme labels are likewise useful, and can be detected by any of the presently utilized colorimetric, spectrophotometric, fluorospectrophotometric, amperometric or gasometric techniques. The enzyme is conjugated to the selected particle by reaction with bridging molecules such as carbodiimides, diisocyanates, glutaraldehyde and the like. Many enzymes which can be used in these procedures are known and can be utilized. The preferred are peroxidase,  $\beta$ -glucuronidase,  $\beta$ -D-glucosidase,  $\beta$ -D-galactosidase, urease, glucose oxidase plus peroxidase and alkaline phosphatase. U.S. Pat. Nos. 3,654,090, 3,850,752, and 4,016,043 are referred to by way of example for their disclosure of alternate labeling material and methods.

A particular assay system developed and utilized in the art is known as a receptor assay. In a receptor assay, the material to be assayed is appropriately labeled and then certain cellular test colonies are inoculated with a quantity of both the label after which binding studies are conducted to determine the extent to which the labeled material binds to the cell receptors. In this way, differences in affinity between materials can be ascertained.

An assay useful in the art is known as a "cis/trans" assay. Briefly, this assay employs two genetic constructs, one of which is typically a plasmid that continually expresses a particular receptor of interest when transfected into an appropriate cell line, and the second of which is a plasmid that expresses a reporter such as a luciferase, under the control of a receptor/ligand complex. Thus, for example, if it is desired to evaluate a compound as a ligand for a particular receptor, one of the plasmids would be a construct that results in expression of the receptor in the chosen cell line, while the second plasmid would possess a promoter

linked to the luciferase gene in which the response element to the particular receptor is inserted. If the compound under test is an agonist for the receptor, the ligand will complex with the receptor, and the resulting complex will bind the response element and initiate transcription of the luciferase gene. The resulting chemiluminescence is then measured photometrically, and dose response curves are obtained and compared to those of known ligands. The foregoing protocol is described in detail in U.S. Pat. No. 4,981,784.

As used herein, the term "host" is meant to include not only prokaryotes but also eukaryotes such as yeast, plant and animal cells. A recombinant DNA molecule or gene which encodes a human TADG-15 protein of the present invention can be used to transform a host using any of the techniques commonly known to those of ordinary skill in the art. Especially preferred is the use of a vector containing coding sequences for the gene which encodes a human TADG-15 protein of the present invention for purposes of prokaryote transformation. Prokaryotic hosts may include *E. coli*, *S. typhimurium*, *Serratia marcescens* and *Bacillus subtilis*. Eukaryotic hosts include yeasts such as *Pichia pastoris*, mammalian cells and insect cells.

The invention includes a substantially pure DNA encoding a TADG-15 protein, a DNA strand which will hybridize at high stringency to a probe containing a sequence of at least 15 consecutive nucleotides of (SEQ ID No. 1). The protein encoded by the DNA of this invention may share at least 80% sequence identity (preferably 85%, more preferably 90%, and most preferably 95%) with the amino acids listed in FIGS. 3 and 4 (SEQ ID No. 2). More preferably, the DNA includes the coding sequence of the nucleotides of FIG. 2 (SEQ ID No. 1), or a degenerate variant of such a sequence. This invention also includes a substantially pure DNA containing a sequence of at least 15 consecutive nucleotides (preferably 20, more preferably 30, even more preferably 50, and most preferably all) of the region from nucleotides 1 to 3147 of the nucleotides shown in FIG. 2 (SEQ ID No. 1).

By "substantially pure DNA" is meant DNA that is not part of a milieu in which the DNA naturally occurs, by virtue of separation (partial or total purification) of some or all of the molecules of that milieu, or by virtue of alteration of sequences that flank the claimed DNA. The term therefore includes, for example, a recombinant DNA which is incorporated into a vector, into an autonomously replicating plasmid or virus, or into the genomic DNA of a prokaryote or eukaryote; or which exists as a separate molecule (e.g., a cDNA or a genomic or cDNA fragment produced by polymerase chain reaction (PCR) or restriction endonuclease digestion) independent of other sequences. It also includes a recombinant DNA which is part of a hybrid gene encoding additional polypeptide sequence, e.g., a fusion protein. Also included is a recombinant DNA which includes a portion of the nucleotides listed in FIG. 2 (SEQ ID No. 1) and which encodes an alternative splice variant of TADG-15.

By a "substantially pure protein" is meant a protein which has been separated from at least some of those components which naturally accompany it. Typically, the protein is substantially pure when it is at least 60% (by weight) free from the proteins and other naturally-occurring organic molecules with which it is naturally associated in vivo. Preferably, the purity of the preparation (by weight) is at least 75%, more preferably at least 90%, and most preferably at least 99%. A substantially pure TADG-15 protein may be obtained, for example, by extraction from a natural source; by expression of a recombinant nucleic acid encoding a TADG-15 polypeptide; or by chemically synthesizing

the protein. Purity can be measured by any appropriate method, e.g., column chromatography, such as immunoaffinity chromatography using an antibody specific for TADG-15, polyacrylamide gel electrophoresis, or HPLC analysis. A protein is substantially free of naturally associated components when it is separated from at least some of those contaminants which accompany it in its natural state. Thus, a protein which is chemically synthesized or produced in a cellular system different from the cell from which it naturally originates will be, by definition, substantially free from its naturally associated components. Accordingly, substantially pure proteins include eukaryotic proteins synthesized in *E. coli*, other prokaryotes, or any other organism in which they do not naturally occur.

The term "oligonucleotide", as used herein, is defined as a molecule comprised of two or more ribonucleotides, preferably more than three. Its exact size will depend upon many factors, which, in turn, depend upon the ultimate function and use of the oligonucleotide. The term "primer", as used herein, refers to an oligonucleotide, whether occurring naturally (as in a purified restriction digest) or produced synthetically, and which is capable of initiating synthesis of a strand complementary to a nucleic acid when placed under appropriate conditions, i.e., in the presence of nucleotides and an inducing agent, such as a DNA polymerase, and at a suitable temperature and pH. The primer may be either single-stranded or double-stranded and must be sufficiently long to prime the synthesis of the desired extension product in the presence of the inducing agent. The exact length of the primer will depend upon many factors, including temperature, sequence and/or homology of primer and the method used. For example, in diagnostic applications, the oligonucleotide primer typically contains 15-25 or more nucleotides, depending upon the complexity of the target sequence, although it may contain fewer nucleotides.

The primers herein are selected to be "substantially" complementary to particular target DNA sequences. This means that the primers must be sufficiently complementary to hybridize with their respective strands. Therefore, the primer sequence need not reflect the exact sequence of the template. For example, a non-complementary nucleotide fragment (i.e., containing a restriction site) may be attached to the 5' end of the primer, with the remainder of the primer sequence being complementary to the strand. Alternatively, non-complementary bases or longer sequences can be interspersed into the primer, provided that the primer sequence has sufficient complementary with the sequence to hybridize therewith and form the template for synthesis of the extension product.

The probe to which the DNA of the invention hybridizes preferably consists of a sequence of at least 20 consecutive nucleotides, more preferably 40 nucleotides, even more preferably 50 nucleotides, and most preferably 100 nucleotides or more (up to 100%) of the coding sequence of the nucleotides listed in FIG. 2 (SEQ ID No. 1) or the complement thereof. Such a probe is useful for detecting expression of TADG-15 in a cell by a method including the steps of (a) contacting mRNA obtained from the cell with a labeled TADG-15 hybridization probe; and (b) detecting hybridization of the probe with the mRNA.

By "high stringency" is meant DNA hybridization and wash conditions characterized by high temperature and low salt concentration, e.g., wash conditions of 65° C. at a salt concentration of approximately 0.1×SSC, or the functional equivalent thereof. For example, high stringency conditions may include hybridization at about 42° C. in the presence of about 50% formamide; a first wash at about 65° C. with

about 2×SSC containing 1% SDS; followed by a second wash at about 65° C. with about 0.1×SSC.

The DNA may have at least about 70% sequence identity to the coding sequence of the nucleotides listed in FIG. 2 (SEQ ID No. 1), preferably at least 75% (e.g., at least 80%); and most preferably at least 90%. The identity between two sequences is a direct function of the number of matching or identical positions. When a position in both of the two sequences is occupied by the same monomeric subunit, e.g., if a given position is occupied by an adenine in each of two DNA molecules, then they are identical at that position. For example, if 7 positions in a sequence 10 nucleotides in length are identical to the corresponding positions in a second 10-nucleotide sequence, then the two sequences have 70% sequence identity. The length of comparison sequences will generally be at least 50 nucleotides, preferably at least 60 nucleotides, more preferably at least 75 nucleotides, and most preferably 100 nucleotides. Sequence identity is typically measured using sequence analysis software (e.g., Sequence Analysis Software Package of the Genetics Computer Group (GCG), University of Wisconsin Biotechnology Center, 1710 University Avenue, Madison, Wis. 53705).

The present invention comprises a vector comprising a DNA sequence which encodes a human TADG-15 protein, wherein said vector is capable of replication in a host, and comprises, in operable linkage: a) an origin of replication; b) a promoter; and c) a DNA sequence coding for said TADG-15 protein. Preferably, the vector of the present invention contains a portion of the DNA sequence shown in SEQ ID No. 1. Vectors may be used to amplify and/or express nucleic acid encoding a TADG-15 protein or fragment thereof.

In addition to substantially full-length proteins, the invention also includes fragments (e.g., antigenic fragments) of the TADG-15 protein (SEQ ID No. 2). As used herein, "fragment," as applied to a polypeptide, will ordinarily be at least 6 residues, more typically at least 9-12 residues, and preferably at least 13-20 residues in length, but less than the entire, intact sequence. Alternatively, a fragment may be an individual domain of 20-120 residues from SEQ ID No. 2. Fragments of the TADG-15 protein can be generated by methods known to those skilled in the art, e.g., by enzymatic digestion of naturally occurring or recombinant TADG-15 protein, by recombinant DNA techniques using an expression vector that encodes a defined fragment of TADG-15, or by chemical synthesis. The ability of a candidate fragment to exhibit a characteristic of TADG-15 (e.g., binding to an antibody specific for TADG-15) can be assessed by methods described herein. Purified TADG-15 or antigenic fragments of TADG-15 can be used to generate new antibodies or to test existing antibodies (e.g., as positive controls in a diagnostic assay) by employing standard protocols known to those skilled in the art. Included in this invention is polyclonal antisera generated by using TADG-15 or a fragment of TADG-15 as the immunogen in, e.g., rabbits. Standard protocols for monoclonal and polyclonal antibody production known to those skilled in this art are employed. The monoclonal antibodies generated by this procedure can be screened for the ability to identify recombinant TADG-15 cDNA clones, and to distinguish them from other cDNA clones.

Further included in this invention are TADG-15 proteins which are encoded, at least in part, by portions of SEQ ID No. 2, e.g., products of alternative mRNA splicing or alternative protein processing events, or in which a section of TADG-15 sequence has been deleted. The fragment, or the intact TADG-15 polypeptide, may be covalently linked

to another polypeptide, e.g., one which acts as a label, a ligand or a means to increase antigenicity.

The invention also includes a polyclonal or monoclonal antibody which specifically binds to TADG-15. The invention encompasses not only an intact monoclonal antibody, but also an immunologically-active antibody fragment, e.g., a Fab or (Fab)<sub>2</sub> fragment; an engineered single chain Fv molecule; or a chimeric molecule, e.g., an antibody which contains the binding specificity of one antibody, e.g., of murine origin, and the remaining portions of another antibody, e.g., of human origin.

In one embodiment, the antibody, or a fragment thereof, may be linked to a toxin or to a detectable label, e.g., a radioactive label, non-radioactive isotopic label, fluorescent label, chemiluminescent label, paramagnetic label, enzyme label, or colorimetric label. Examples of suitable toxins include diphtheria toxin, *Pseudomonas* exotoxin A, ricin, and cholera toxin. Examples of suitable enzyme labels include malate hydrogenase, staphylococcal nuclease, delta-5-steroid isomerase, alcohol dehydrogenase, alpha-glycerol phosphate dehydrogenase, triose phosphate isomerase, peroxidase, alkaline phosphatase, asparaginase, glucose oxidase, beta-galactosidase, ribonuclease, urease, catalase, glucose-6-phosphate dehydrogenase, glucoamylase, acetylcholinesterase, etc. Examples of suitable radioisotopic labels include <sup>3</sup>H, <sup>125</sup>I, <sup>131</sup>I, <sup>32</sup>P, <sup>35</sup>S, <sup>14</sup>C, etc.

Paramagnetic isotopes for purposes of in vivo diagnosis can also be used according to the methods of this invention. There are numerous examples of elements that are useful in magnetic resonance imaging. For discussions on in vivo nuclear magnetic resonance imaging, see, for example, Schaefer et al., (1989) *JACC* 14, 472-480; Shreve et al., (1986) *Magn. Reson. Med.* 3, 336-340; Wolf, G. L., (1984) *Physiol. Chem. Phys. Med. NMR* 16, 93-95; Wesbey et al., (1984) *Physiol. Chem. Phys. Med. NMR* 16, 145-155; Runge et al., (1984) *Invest. Radiol.* 19, 408-415. Examples of suitable fluorescent labels include a fluorescein label, an isothiocyanate label, a rhodamine label, a phycoerythrin label, a phycocyanin label, an allophycocyanin label, an ophthaldehyde label, a fluorescamine label, etc. Examples of chemiluminescent labels include a luminal label, an isoluminal label, an aromatic acridinium ester label, an imidazole label, an acridinium salt label, an oxalate ester label, a luciferin label, a luciferase label, an aequorin label, etc.

Those of ordinary skill in the art will know of other suitable labels which may be employed in accordance with the present invention. The binding of these labels to antibodies or fragments thereof can be accomplished using standard techniques commonly known and used by those of ordinary skill in the art. Typical techniques are described by Kennedy et al., (1976) *Clin. Chim. Acta* 70, 1-31; and Schurs et al., (1977) *Clin. Chim. Acta* 81, 1-40. Coupling techniques mentioned in the latter are the glutaraldehyde method, the periodate method, the dimaleimide method, the m-maleimido-benzyl-N-hydroxy-succinimide ester method. All of these methods are incorporated by reference herein.

Also within the invention is a method of detecting TADG-15 protein in a biological sample, which includes the steps of contacting the sample with the labeled antibody, e.g., radioactively tagged antibody specific for TADG-15, and determining whether the antibody binds to a component of the sample. Antibodies to the TADG-15 protein can be used in an immunoassay to detect increased levels of TADG-15 protein expression in tissues suspected of neoplastic transformation. These same uses can be achieved with Northern blot assays and analyses.

As described herein, the invention provides a number of diagnostic advantages and uses. For example, the TADG-15 protein is useful in diagnosing cancer in different tissues since this protein is highly overexpressed in tumor cells. Antibodies (or antigen-binding fragments thereof) which bind to an epitope specific for TADG-15, are useful in a method of detecting TADG-15 protein in a biological sample for diagnosis of cancerous or neoplastic transformation. This method includes the steps of obtaining a biological sample (e.g., cells, blood, plasma, tissue, etc.) from a patient suspected of having cancer, contacting the sample with a labeled antibody (e.g., radioactively tagged antibody) specific for TADG-15, and detecting the TADG-15 protein using standard immunoassay techniques such as an ELISA. Antibody binding to the biological sample indicates that the sample contains a component which specifically binds to an epitope within TADG-15.

Likewise, a standard Northern blot assay can be used to ascertain the relative amounts of TADG-15 mRNA in a cell or tissue obtained from a patient suspected of having cancer, in accordance with conventional Northern hybridization techniques known to those of ordinary skill in the art. This Northern assay uses a hybridization probe, e.g., radiolabelled TADG-15 cDNA, either containing the full-length, single stranded DNA having a sequence complementary to SEQ ID No. 1 (FIG. 2), or a fragment of that DNA sequence at least 20 (preferably at least 30, more preferably at least 50, and most preferably at least 100 consecutive nucleotides in length). The DNA hybridization probe can be labeled by any of the many different methods known to those skilled in this art.

The following examples are given for the purpose of illustrating various embodiments of the invention and are not meant to limit the present invention in any fashion.

#### EXAMPLE 1

##### Tissue Collection and Storage

Upon patient hysterectomy, bilateral salpingo-oophorectomy, or surgical removal of neoplastic tissue, the specimen is retrieved and placed on ice. The specimen was then taken to the resident pathologist for isolation and identification of specific tissue samples. Finally, the sample was frozen in liquid nitrogen, logged into the laboratory record and stored at -80° C.

Additional specimens were frequently obtained from the Cooperative Human Tissue Network (CHTN). These samples were prepared by the CHTN and shipped on dry ice. Upon arrival, these specimens (e.g., blood (serum), urine, saliva, tears and interstitial fluid) were logged into the laboratory record and stored at -80° C. Participation of the following divisions of the Cooperative Human Tissue Network (CHTN) in providing tumor tissues is acknowledged: Western Division, Case Western Reserve University, (Cleveland, Ohio); Midwestern Division, Ohio state University, (Columbus, Ohio); Eastern Division, NDRI, (Philadelphia, Pa.); Pediatric Division, Children's Hospital, (Columbus, Ohio); Southern Division, University of Alabama at Birmingham, (Birmingham, Ala.).

##### mRNA Isolation and cDNA Synthesis

Forty-one ovarian tumors (10 low malignant potential tumors and 31 carcinomas) and 10 normal ovaries were obtained from surgical specimens and frozen in liquid nitrogen. The human ovarian carcinoma cell lines SW626 and

17

CAOV3, and the human breast carcinoma cell lines MDA-MB-231 and MDA-MB-435S, were purchased from the American Type Culture Collection (Rockville, MD). Cells were cultured to sub-confluency in Dulbecco's modified Eagle's medium supplemented with 10% (v/v) fetal bovine serum and antibiotics.

Messenger RNA (mRNA) isolation was performed according to the manufacturer's instructions using the Mini RiboSep™ Ultra mRNA Isolation Kit purchased from Becton Dickinson. In this procedure, polyA<sup>30</sup> mRNA was isolated directly from the tissue lysate using the affinity chromatography media oligo(dT) cellulose. The amount of mRNA recovered was quantified by UV spectrophotometry.

First-strand complementary DNA (cDNA) was synthesized using 5.0 µg of mRNA and either random hexamer or oligo(dT) primers according to the manufacturer's protocol utilizing a first strand synthesis kit obtained from CLONTECH (Palo Alto, Calif.). The purity of the cDNA was evaluated by PCR using primers specific for the p53 gene. These primers span an intron such that pure cDNA can be distinguished from cDNA that is contaminated with genomic DNA.

## EXAMPLE 3

PCR with Redundant Primers, Cloning of TADG-15 cDNA, T-vector Ligation and Transformations and DNA Sequencing

Redundant primers,

forward 5'-TGGGTIGTACIGCIGCICA(C/T)TG-3' (SEQ ID No. 11) and reverse 5'-A(A/G)IGGICCC(C/G)(T/A)(A/G)TCICC-3' (SEQ ID No. 12), corresponding to the amino acids surrounding the catalytic triad for serine proteases, were used to compare the PCR products from normal and carcinoma cDNAs.

The purified PCR products were ligated into the Promega T-vector plasmid and the ligation products used to transform JM109 competent cells according to the manufacturer's instructions (Promega). Positive colonies were cultured for amplification, the III/grade III ovarian adenocarcinoma patient. Three overlapping clones were obtained which spanned 3147 nucleotides.

## EXAMPLE 4

## Northern Blot Analysis

10 µg mRNAs were size separated by electrophoresis through a 1% formaldehyde-agarose gel in 0.02 M MOPS, 0.05 M sodium acetate (pH 7.0), and 0.001 M EDTA. The mRNAs were then blotted to Hybond-N<sup>+</sup> nylon membrane (Amersham) by capillary action in 20×SSPE. The RNAs are fixed to the membrane by baking for 2 hours at 80° C. <sup>32</sup>P-labeled cDNA probes were made by Prime-a-Gene Labeling System (Promega). The PCR products amplified by the same primers described above were used for probes. The blots were prehybridized for 30 min and hybridized for 60 min at 68° C. with <sup>32</sup>P-labeled cDNA probe in ExpressHyb Hybridization Solution (CLONTECH). Control hybridization to determine relative gel loading was performed with a β-tubulin probe.

Normal human tissues; spleen, thymus, prostate, testis, ovary, small intestine, colon and peripheral blood leukocyte, and normal human fetal tissues; brain, lung, liver and kidney (Human Multiple Tissue Northern Blot; CLONTECH) were also examined by the same hybridization procedure. Addi-

18

tional multiple tissue northern (MTN) blots from CLONTECH include the Human MTN blot, the Human MTN II blot, the Human Fetal MTN II blot, and the Human Brain MTN III blot.

## EXAMPLE 5

## Western Blot Analysis

Polyclonal rabbit antibody was generated by immunization with a poly-lysine linked multiple Ag peptide derived from the TADG-15 protein sequence 'LFRDWIKENTGV' (SEQ ID No. 13). Approximately 20 µg of cell lysates were separated on a 15% SDS-PAGE gel and electroblotted to PVDF at 100 V for 40 min at 4° C. The proteins were fixed to the membrane by incubation in 50% MeOH for 10 min. The membrane was blocked overnight in TBS (pH 7.8) containing 0.2% non-fat milk. Primary antibody was added to the membrane at a dilution of 1:100 in 0.2% milk/TBS and incubated for 2 h at room temperature. The blot was washed and incubated with a 1:3000 dilution of alkaline-phosphatase conjugated goat anti-rabbit IgG (BioRad) for 1 h at room temperature. The blot was washed and incubated with a chemiluminescent substrate before a 10 sec exposure to X-ray film for visualization.

## EXAMPLE 6

## Quantitative PCR

The mRNA overexpression of TADG-15 was determined using a quantitative PCR. Quantitative PCR was performed.<sup>11,12</sup> Oligonucleotide primers were used

for TADG-15:

forward 5'-ATGACAGAGGATTCAGGTAC-3' (SEQ ID No. 14) and

reverse 5'-GAAGGTGAAGTCATTGAAGA-3' (SEQ ID No. 15); and

and for β-tubulin:

forward 5'-CGCATCAACGTGTACTACAA-3' (SEQ ID No. 16) and

reverse 5'-TACGAGCTGGTGGACTGAGA-3' (SEQ ID No. 17).

β-tubulin was utilized as an internal control.

The PCR reaction mixture consists of cDNA derived from 50 ng of mRNA, 5 pmol of sense and antisense primers for both the TADG-15 gene and the β-tubulin gene, 200 µmol of dNTPs, 5 µCi of α-<sup>32</sup>PdCTP and 0.25 units of Taq DNA polymerase with reaction buffer (Promega) in a final volume of 25 µl. The target sequences were amplified in parallel with the β-tubulin gene. Thirty cycles of PCR were carried out in a Thermal Cycler (Perkin Elmer Gene Amp 2400; Perkin-Elmer Cetus). Each cycle of PCR included 30 sec of denaturation at 94° C., 30 sec of annealing at 60° C. and 30 sec of extension at 72° C. The annealing temperature varies according to the primers that are used in the PCR reaction. For the reactions involving degenerate primers, an annealing temperature of 48° C. was used. The appropriate annealing temperature for the TADG-15- and β-tubulin-specific primers is 62° C.

A portion of the PCR products were separated on 2% agarose gels and the radioactivity of each PCR product was determined by using a PhosphorImager (Molecular Dynamics). In the present study, the expression ratio (TADG-15/β-tubulin) was used to evaluate gene expression and defined

the value at mean±2SD of normal ovary as the cut-off value to determine overexpression. The student's t test was used for comparison of the mean values of normal ovary and tumors.

EXAMPLE 7

Immunohistochemistry

Immunohistochemical staining was performed using a Vectastain Elite ABC Kit (Vector). Formalin-fixed and paraffin-embedded specimens were routinely deparaffinized and processed using microwave heat treatment in 0.01 M sodium citrate buffer (pH 6.0). The specimens were incubated with normal goat serum in a moist chamber for 30 min. After incubation with biotinylated anti-rabbit IgG for 30 min, the sections were then incubated with ABC reagent (Vector) for 30 min. The final products were visualized using the AEC substrate system (DAKO) and sections were counterstained with hematoxylin before mounting. Negative controls were performed using normal serum instead of the primary antibody.

EXAMPLE 8

Antisense TADG-15

TADG-15 is cloned and expressed in the opposite orientation such that an antisense RNA molecule (SEQ ID No. 18) is produced. For example, the antisense RNA is used to hybridize to the complementary RNA in the cell and thereby inhibit translation of TADG-15 RNA into protein.

EXAMPLE 9

Peptide Ranking

For vaccine or immune stimulation, individual 9-mers to 11-mers were examined to rank the binding of individual peptides to the top 8 haplotypes in the general population (Parker et al., (1994)). The computer program used for this analyses can be found at <[http://www-bimas.dcrn.nih.gov/molbio/hla\\_bind/](http://www-bimas.dcrn.nih.gov/molbio/hla_bind/)>. Table 1 shows the peptide ranking based upon the predicted half-life of each peptide's binding to a particular HLA allele. A larger half-life indicates a stronger association with that peptide and the particular HLA molecule. The TADG-15 peptides that strongly bind to an HLA allele are putative immunogens, and are used to inoculate an individual against TADG-15.

TABLE 1

TADG-15 peptide ranking				
HLA Type & Ranking	Start	Peptide	Predicted Dissociation <sub>1/2</sub>	SEQ ID No.
<u>HLA A0201</u>				
1	68	VLLGIGFLV	2537.396	19
2	126	LLYSGVPFL	1470.075	20
3	644	SLISPNWL	521.640	21
4	379	KVSFKFFYL	396.525	22
5	386	YLLEPGVPA	346.677	23
6	257	SLTFRSFDL	123.902	24
7	762	ILQKGEIRV	118.238	25
8	841	RLPLFRDWI	106.842	26
9	64	GLLLVLLGI	88.783	27
10	57	VLA AVLIGL	83.527	28

TABLE 1-continued

TADG-15 peptide ranking				
HLA Type & Ranking	Start	Peptide	Predicted Dissociation <sub>1/2</sub>	SEQ ID No.
<u>HLA A0205</u>				
5	1	LVLLGIGFL	142.800	29
10	2	KVSFKFFYL	100.800	30
	3	LLYSGVPFL	71.400	31
	4	KVFNQYMRI	36.000	32
	5	TQWTAFLGL	33.600	33
	6	KVKDALKLL	25.200	34
	7	AVLIGLLLV	24.000	35
15	8	LIGLLLVLL	23.800	36
	9	VLA AVLIGL	23.800	37
	10	VLIGLLLVL	23.800	38
<u>HLA A1</u>				
	1	FSEGSVIAY	337.500	39
	2	YIDDRGFRY	125.000	40
20	3	SSDPCPGQF	75.000	41
	4	YVEINGEKY	45.000	42
	5	LLEPGVPAG	18.000	43
	6	GSDEASCPK	15.000	44
	7	TNENFVDAY	11.250	45
	8	STEFVSLAS	11.250	46
25	9	SVEADGRIF	9.000	47
	10	YSDPTQWTA	7.500	48
<u>HLA A24</u>				
	1	DYDIALLEL	220.000	49
	2	KYCGERSQF	200.000	50
30	3	QYGGTGALI	50.000	51
	4	AYYWSEFSI	50.000	52
	5	EYSSMVRPI	50.000	53
	6	GFEATFFQL	36.000	54
	7	TFHSSQNVL	24.000	55
	8	TFDYDIALL	20.000	56
35	9	KYNSRHEKV	16.500	57
	10	RYSDPTQWT	14.400	58
<u>HLA B7</u>				
	1	APGVQERRL	240.000	59
	2	GPKDFGAGL	80.000	60
40	3	DPTQWTAFL	80.000	61
	4	TGRCIRKEL	60.000	62
	5	AAVLIGLLL	36.000	63
	6	KVSFKFFYL	20.000	64
	7	KVKDALKLL	20.000	65
	8	LPQQITPRM	20.000	66
45	9	LVLLGIGFL	20.000	67
	10	SPMEPHALV	18.000	68
<u>HLA B8</u>				
	1	GPKDFGAGL	24.000	69
	2	SLTFRSFDL	8.000	70
50	3	MLPPRARS	8.000	71
	4	GLHARGVEL	8.000	72
	5	MAEERVVML	4.800	73
	6	SCDERGSDL	4.800	74
	7	CTKHTRYRCL	4.000	75
	8	SSMVRPICK	4.000	76
55	9	YCGERSQFV	3.600	77
	10	TCKNKFCCKP	3.200	78
<u>HLA B2702</u>				
	1	VRFHSDQSY	1000.000	79
	2	KRIISHPFF	600.000	80
60	3	FRYSDPTQW	500.000	81
	4	ARGVELMRF	200.000	82
	5	HQFTCKNKF	100.000	83
	6	GRWVLA AV	100.000	84
	7	LRGDADSVL	60.000	85
	8	YRCLNGLCL	60.000	86
65	9	RRLKRIISH	60.000	87
10	10	SRHEKVNGL	60.000	88

TABLE 1-continued

HLA Type & Ranking	TADG-15 peptide ranking			SEQ ID No.
	Start	Peptide	Predicted Dissociation $\frac{1}{2}$	
HLA B4403				
1	147	SEGSVIAYY	360.000	89
2	715	LELEKPAEY	360.000	90
3	105	YENSNSTEF	60.000	91
4	14	KDFGAGLKY	50.625	92
5	129	SGVPFLGPY	36.000	93
6	436	TDTGFLAEY	33.750	94
7	766	GEIRVINQT	30.000	95
8	402	VEINGEKYC	30.000	96
9	482	DELNCSCDA	24.000	97
10	82	RDVRVQKVF	22.500	98

## EXAMPLE 10

## TADG-15 cDNA

A screening strategy to identify proteases which are overexpressed in human cancer has been developed in which RT-PCR amplified specifically in tumors, as compared to normal tissue, are examined.<sup>9</sup> During this effort, candidate genes were identified using redundant sense primers to the conserved amino acid histidine domain at the NH<sub>3</sub> end of the catalytic domain and antisense primers to the downstream conserved amino acid serine domain. Subcloning and sequencing the appropriate 480 base pair band(s) amplified in such a PCR reaction provides the basis for identifying the gene(s) encoding proteases(s). Among these amplified catalytic domains, a new serine protease gene named TADG-15 (tumor antigen-derived gene 15) was identified. The catalytic domain of the newly identified TADG-15 protein is similar to other serine proteases and specifically contains conserved amino acids appropriate for the catalytic domain of the trypsin-like serine protease family.

A computerized search of GenEMBL databases using the FASTA program (Wisconsin Package Version 9.1, GCG, Madison, Wis.) for amino acid sequences homologous to the TADG-15 protease domain revealed that homologies with other known human proteases never exceeds 55%. FIG. 1 shows the alignment of the protease domain of TADG-15 compared with other human serine proteases. Using the BESTFIT program available through GCG, the similarities between TADG-15 and trypsin, chymotrypsin, and tissue-type plasminogen activator are 51%, 46% and 52%, respectively.

From the sequence derived from the TADG-15 catalytic domain, specific primers were synthesized to amplify a TADG-15-specific probe for library screening. After screening an ovarian carcinoma library, one 1785 bp clone was obtained which included the 3' end of the TADG-15 transcript. Upon further screening using the 5' end of the newly detected clone, two additional clones were identified which provided another 1362 bp of the cDNA, including the 5' end of the TADG-15 transcript. The total length of the sequenced cDNA was approximately 3.15 kb. The total nucleotide sequence obtained includes a Kozak's consensus sequence preceding a single open reading frame encoding a predicted protein of 855 amino acids (FIG. 2).

The deduced open reading frame encoded by the TADG-15 nucleotide sequence (FIGS. 2, 3 and 4) contains several distinct domains as follows: an amino terminal cytoplasmic

tail (amino acids (aa) #1-54), a potential transmembrane domain (aa #55-77), an extracellular membrane domain (aa #78-213), two complement subcomponents C1r/C1s, Uegf, and bone morphogenetic protein 1 (CUB) repeats (aa #214-447), four ligand binding repeats of the low density lipoprotein (LDL) receptor-like domain (aa #453-602) and a serine protease domain (aa #615-855). The TADG-15 protein also contains two potential N-linked glycosylation sites (aa #109 and 302) and a potential proteolytic cleavage site upstream from the protease domain (aa #614) which could release and/or activate the protease at the carboxy end of this protein. In addition, TADG-15 contains an RGD motif (aa #249-251) which is commonly found in proteins involved in cell-cell adhesion.

## EXAMPLE 11

## TADG-15 Expression

To examine the size of the transcript for TADG-15 and its pattern of expression in various tissues, Northern blot hybridization was performed for representative histological types of carcinoma and in a series of cell lines, fetal tissues and normal adult tissues (FIG. 5). The transcript size for the TADG-15 message was determined to be approximately 3.2 kb and a single intense transcript appeared to be present in all of the carcinomas examined, whereas no visible band was detected in normal ovary (FIG. 5). This transcript size is also in good agreement with the sequence data predicting a transcript size of 3.15 kb. The ovarian tumor cell lines, SW626 and CAOV3, also showed an abundance of transcript, however little or no transcript was detectable in the breast carcinoma cell lines MDA-MB-231 and MDA-MB-4355. Among normal human fetal tissues, fetal kidney showed an abundance of the TADG-15 transcript and low expression was also detected in fetal lung. In normal adult tissues, TADG-15 was detected in colon with low levels of expression in small intestine and prostate (FIG. 5).

To evaluate mRNA transcript expression of TADG-15 in ovarian tumors and normal ovary, semi-quantitative PCR (FIG. 6) was performed. In a preliminary study, the linearity of this assay<sup>11,12</sup> was confirmed and its efficacy correlated with both Northern blots and immunohistochemistry. The data was quantified using a phosphorimager and compared as a ratio of expression (TADG-15/ $\beta$ -tubulin). Results herein indicate that TADG-15 transcript expression is elevated above the cut-off value (mean for normal ovary $\pm$ 2 SD) in all of the tumor cases examined and is either not detected or detected at extremely low levels in normal ovaries (FIGS. 6A and B). Analysis of ovarian carcinoma subtypes, including early stage and late stage disease, confirms overexpression of TADG-15 in all carcinomas examined (Table 2). All of the carcinomas studied, which included 5 stage I and 3 stage II carcinomas, showed overexpression of the TADG-15 gene.

These data can also be examined with regard to tumor stage and histological sub-type, and results indicated that every carcinoma of every stage and histological sub-type overexpressed the TADG-15 gene. The expression ratio (mean value $\pm$ SD) for normal ovary group was determined as 0.182 $\pm$ 0.024, for LMP tumor group as 0.847 $\pm$ 0.419 and for carcinoma group as 0.771 $\pm$ 0.380 (Table 2). A comparison between the normal ovary group and tumor groups showed that overexpression of the TADG-15 gene is statistically significant in both the LMP tumor group and the carcinoma group (LMP tumor: p<0.001, carcinoma: p<0.0001).

As shown in FIG. 6, TADG-15 transcripts were noted in all ovarian carcinomas, but were not present at detectable levels in any of the following tissues: a) normal ovary, b) fetal liver and brain, c) adult spleen, thymus, testes, ovary and peripheral blood lymphocytes, d) skeletal muscle, liver, brain or heart. This evaluation was extended to a standard panel of about 40 tumors. Using TADG-15-specific primers, the expression was also examined in tumor cell lines derived from both ovarian and breast carcinoma tissues as shown in FIG. 7 and in other tumor tissues as shown in FIG. 8. Expression of TADG-15 was also observed in carcinomas of the breast, colon, prostate and lung.

Polyclonal antibodies developed to a synthetic peptide (a 12-mer) at the carboxy terminus of the protease domain were used to examine TADG-15 expression in cell lines by Western blot and by immunolocalization in normal ovary and ovarian tumors. Western blots of cell extracts from SW626 and CAOV3 cells were probed with both antibody and preimmune sera (FIG. 9). Several bands were detected with the antibody, including bands of approximately 100,000 daltons, approximately 60,000 daltons and 32,000 daltons. The anticipated molecular size of the complete TADG-15 molecule is estimated to be approximately 100,000 daltons, and the protease domain which may be released by proteolytic cleavage at aa #614 is estimated to be approximately 32,000 daltons. Some intermediate proteolytic product may be represented by the 60,000 dalton band.

Antibody staining of tumor cells confirms the presence of the TADG-15 protease in the cytoplasm of a serous LMP tumor, mucinous LMP tumor and serous carcinoma (FIGS. 10B, C & D, respectively). This diffuse staining pattern may be due to detection of TADG15 within the cell as it is being packaged and transported to the cell surface. In endometrioid carcinoma, the antigen is clearly detectable on the surface of tumor cells (FIG. 10E). No staining was detected in normal ovarian epithelium or stromal cells (FIG. 10A). Immunohistochemical staining of a series of 27 tumors indicates the presence of the TADG-15 protein in all the carcinoma subtypes examined, including the low malignant potential group. Strong staining was noted in 7 of 9 low malignant potential tumors and 13 of 18 carcinomas (Table 3).

TABLE 2

Number of cases with overexpression of TADG-15 in normal ovaries and ovarian tumors			
	N	overexpression of TADG-15	expression ratio <sup>a</sup>
Normal	10	0 (0%)	0.182 ± 0.024
LMP	10	10 (100%)	0.847 ± 0.419
serous	6	6 (100%)	0.862 ± 0.419
mucinous	4	4 (100%)	0.825 ± 0.483
Carcinoma	31	31 (100%)	0.771 ± 0.380
serous	18	18 (100%)	0.779 ± 0.332
mucinous	7	7 (100%)	0.907 ± 0.584
endometrioid	3	3 (100%)	0.502 ± 0.083
clear cell	3	3 (100%)	0.672 ± 0.077

<sup>a</sup>The ratio of expression level of TADG-15 to  $\beta$ -tubulin (mean  $\pm$ SD)

TABLE 3

Immunohistochemical staining using TADG-15		
Lab No.	Histology	TADG-15
	Surface epithelium of the ovary	-
H-3194	serous (LMP)	++
H-162	serous (LMP)	++

TABLE 3-continued

Immunohistochemical staining using TADG-15		
Lab No.	Histology	TADG-15
H-1182	serous (LMP)	++
H-4818	serous (LMP)	++
H-4881	serous (LMP)	++
H-675	mucinous (LMP)	+
H-2446	mucinous (LMP)	+
H-0707	mucinous (LMP)	++
H-2042	mucinous (LMP)	++
H-2555	serous carcinoma	++
H-1858	serous carcinoma	++
H-5266	serous carcinoma	++
H-5316	serous carcinoma	+
H-2597	serous carcinoma	+
H-4931	mucinous carcinoma	++
H-1867	mucinous carcinoma	++
H-5998	mucinous carcinoma	++
H-2679	endometrioid adenocarcinoma	+
H-5718	endometrioid adenocarcinoma	++
H-3993	endometrioid adenocarcinoma	+
H-2991	endometrioid adenocarcinoma	++
H-2489	endometrioid adenocarcinoma	++
H-5994	clear cell carcinoma	++
H-6718	clear cell carcinoma	++
H-1661	clear cell carcinoma	++
H-6201	clear cell carcinoma	++
H-5640	clear cell carcinoma	+

- Negative; + Weak Positive; ++ Strong Positive (more than 50% of cell staining)

## EXAMPLE 12

## TADG-15 Homology

Recently, a mouse protein named epithin (GenBank Accession No. AF042822) has been described.<sup>14</sup> Epithin is a 902 amino acid protein which contains a similar structure to TADG-15 in that it has a cytoplasmic domain, transmembrane domain, two CUB domains, four LDLR-like domains and a carboxy terminal serine protease domain. TADG-15 and epithin are 84% similar over 843 amino acids, suggesting that the proteins may be orthologous (FIG. 11). The precise role of epithin remains to be elucidated.

A search of GeneBank for similar previously identified sequences yielded one such sequence with relatively high homology to a portion of the TADG-15 gene. The similarity between the portion of TADG-15 from nucleotide #182 to 3139 and SNC-19 GeneBank Accession No. #U20428) is approximately 97% (FIG. 12). There are however significant differences between SNC-19 and TADG-15. For example, TADG-15 has an open reading frame of 855 amino acids whereas the longest open reading frame of SNC-19 is 173 amino acids. Additionally, SNC-19 does not include a proper start site for the initiation of translation, nor does it include the amino terminal portion of the protein encoded by TADG-15. Moreover, SNC-19 does not include an open reading frame for a functional serine protease because the His, Asp and Ser residues of the catalytic triad that are necessary for function are encoded in different reading frames.

## Implications

The overall structure of the TADG-15 protein is relatively similar to the members of the tollid/BMP-1 family and the complement subcomponents, Clr/Cls. These proteins contain both CUB and protease domains, and complex formation through the ligand binding domain is essential for their

function. Activation of the serine protease domains of Clr and Cls requires proteolytic cleavage of Arg-Gly and Arg-Ile bonds, respectively.<sup>15</sup> Similarly, it might be expected that the TADG-15 protein is synthesized as a zymogen, which is activated by cleavage between Arg<sup>614</sup> and Val<sup>615</sup> and analogous to the activation mechanism of other serine protease zymogens. Western blot analysis of cultured cell lysates confirmed both a 100 kDa and 32 kDa peptide, which correspond to the putative zymogen (whole molecule) and a cleaved protease product of TADG-15 (FIG. 9). These data support a model for proteolytic release and/or activation of TADG-15 as occurs for similar type II serine proteases.

CUB domains were first found in complement subcomponents Clr/Cls<sup>16-18</sup> and are known to be a widespread module in developmentally regulated proteins, such as the bone morphogenetic protein-1 (BMP-1) and the tolloid gene product.<sup>18-20</sup> The role of these repeats remains largely unknown. However, some models suggest that the CUB domain may be involved in protein-protein interactions. The CUB domain of Clr and Cls participates in the assembly of the Cls-Clr-Clr-Cls tetrameric complex in the activation of the classical pathway of complement by providing protein-protein interaction domains.<sup>15</sup> The *Drosophila* decapentaplegic (DPP) protein is essential for dorsal-ventral specification of the embryo, and the *Drosophila* tolloid (TLD) forms a complex with DPP to regulate its activity.<sup>19,20</sup> Missense mutations in the CUB domain of the tolloid protein results in a phenotype that does not allow a protein interaction with the DPP complex.<sup>19</sup>

The TADG-15 protein contains two tandem repeats of CUB-like domains between amino acid residues 214 and 447. Each of these is approximately 110 amino acids long and each has four conserved cysteine residues characteristic of other CUBs (amino acids 214, 244, 268, 294, 340, 366, 397, 410). By analogy, the CUB repeats of the TADG-15 protein may form an interactive domain capable of promoting multimeric complex formation and regulating the activity of the target protein or TADG-15 itself.

The TADG-15 protein also contains the LDL receptor ligand binding repeat (class A motif)-like domain, which consists of four contiguous cysteine-rich repeats (amino acid residues 453 to 602). Each cysteine-rich repeat is approximately 40 amino acids long and contains a conserved, negatively-charged sequence (Ser-Asp-Glu) with six cysteine residues. In the LDL receptor protein, this repeat is thought to function as a protein-binding domain which interacts with the lysine and arginine residues present in lipoproteins.<sup>21,22</sup> In addition, the first repeat of the LDL receptor appears to bind Ca<sup>2+</sup> and not the lipoproteins.<sup>23</sup> By analogy, it is possible that the LDL receptor-like repeat in TADG-15 may act in a similar fashion, interacting with positively charged regions of other proteins and/or as a Ca<sup>2+</sup> binding site. As a result of ligand binding and the formation of receptor-ligand complex, LDL receptor is internalized via clathrin-coated pits.<sup>24</sup> These types of plasma membrane receptors contain a characteristic amino acid sequence in their cytoplasmic domain for binding to clathrin-coated pits.<sup>24</sup> TADG-15 does not contain this motif in its cytosolic region, and furthermore, no similarities with other known protein sequences were found in the cytoplasmic domain of the TADG-15. This finding suggests that TADG-15 functions in a different manner from the endocytic receptors (such as the LDL receptor), although TADG-15 possesses similar ligand-binding repeats in the extracellular matrix.

Although the precise role of TADG-15 is unknown, this gene is clearly overexpressed in ovarian tumors. A variety of proteases, such as type IV collagenase and plasminogen

activator, appear to be involved in the process of tumor invasion and are constituents of a protease cascade in malignant progression. TADG-15 may constitute such an activity and directly digest extracellular matrix components surrounding a tumor, or activate other proteases by cleavage of inactive precursors, indirectly enhancing tumor growth and invasion. It is also possible that TADG-15 may function like a member of the tolloid/BMP-1 family by forming complexes with other growth factors or signal transduction proteins to modulate their activities.

These data raise the possibility that the TADG-15 gene and its translated protein will be a useful marker for the early detection of ovarian carcinoma through release of the protease domain into the extracellular matrix and ultimately the circulation. These data also suggest the possibility of using TADG-15 as a target for therapeutic intervention through delivery systems directed at the CUB/LDLR ligand binding domains.

The following references were cited herein:

1. Liotta, L. A., et al. *Cell*, 64: 327-336, 1991.
2. Duffy, M. J. *Clin. Exp. Metastasis*, 10: 145-155, 1992.
3. Tryggvason, K., et al. *Biochem. Biophys. Acta.*, 907: 191-217, 1987.
4. Levy, A. T., et al. *Cancer Res.*, 51: 439-444, 1991.
5. Monsky, W. L. et al. *Cancer Res.*, 53: 3159-3164, 1993.
6. Duffy, M. J. et al. *Cancer*, 62: 531-533, 1988.
7. Häckel, C., et al. *Cancer*, 79: 53-58, 1997.
8. Watt, K, et al. *Proc. Natl. Acad. Sci. U.S.A.*, 83: 3166-3170, 1986.
9. Tanimoto, H. et al. *Cancer Res.*, 57: 2884-2887, 1997.
11. Shigemasa, K. et al. *J. Soc. Gynecol. Invest.*, 4: 95-102, 1997.
12. Tanimoto, H. et al. *Gynecol. Oncol.*, 66: 308-312, 1997.
13. Maniatis, T., Fritsch, E. F. & Sambrook, J. *Molecular Cloning*, p. 309-361 Cold Spring Harbor Laboratory, New York, 1982.
14. Kim, M. G., et al. *Immunogenetics*, 49(5): 420-428, 1999.
15. Arlaud et al. *Method in Enzymology*, 223: 61-82, 1993.
16. Journet, A. & Tosi, M. *Biochem. J.*, 240: 783-787, 1986.
17. Mackinnon, C. M., et al. *Eur. J. Biochem.*, 169: 547-553, 1987.
18. Bork, P. & Beckmann, G. *J. Mol. Biol.*, 231: 539-545, 1993.
19. Childs, S. R. & O'Connor, M. B. *Dev. Biol.*, 162: 209-220, 1994.
20. Blader, P L, et al. *Science*, 278: 1937-1940, 1997.
21. Yamamoto, T. et al. *Cell*, 39: 27-38, 1984.
22. Daly, N. L., et al. *Proc. Natl. Acad. Sci.*, 92: 6334-6338, 1995.
23. van Driel, I. R., et al. *J. Biol. Chem.*, 262: 17443-17449, 1987.
24. Lodish, H. et al. *Sorting of membrane proteins internalized from the cell surface*. In: *Molecular Cell Biology*, 3rd ed., p.722-733 Scientific American Books, Inc., New York, 1995.
25. Parker, K C et al. *J. Immunol.* 152:163, 1994.

Any patents or publications mentioned in this specification are indicative of the levels of those skilled in the art to which the invention pertains. These patents and publications are herein incorporated by reference to the same extent as if each individual publication was specifically and individually indicated to be incorporated by reference.

One skilled in the art will readily appreciate that the present invention is well adapted to carry out the objects and obtain the ends and advantages mentioned, as well as those

inherent therein. The present examples along with the methods, procedures, treatments, molecules, and specific compounds described herein are presently representative of preferred embodiments, are exemplary, and are not intended

as limitations on the scope of the invention. Changes therein and other uses will occur to those skilled in the art which are encompassed within the spirit of the invention as defined by the scope of the claims.

---

 SEQUENCE LISTING

<160> NUMBER OF SEQ ID NOS: 98

<210> SEQ ID NO 1

<211> LENGTH: 3147

<212> TYPE: DNA

<213> ORGANISM: Homo sapiens

<220> FEATURE:

<223> OTHER INFORMATION: TADG-15

<400> SEQUENCE: 1

```

tcaagagcgg cctcggggta ccatggggag cgatcggggc cgcaagggcg gagggggccc      60
gaagagcttc ggcgcgggac tcaagtacaa ctcccggcac gagaaagtga atggcttgga      120
ggaaggcgtg gagttcctgc cagtcaacaa cgtcaagaag gtgaaaaagc atggcccggg      180
gcgctgggtg gtgctggcag ccgtgctgat cggcctcctc ttggtcttgc tggggatcgg      240
cttcctgggt tggcatttgc agtacgggga cgtgctgtgc cagaaggtct tcaatggcta      300
catgaggatc acaaatgaga attttgtgga tgcctacgag aactccaact ccaactgagtt      360
tgtaaagcct gccagcaagg tgaaggacgc gctgaagctg ctgtacagcg gagtcccatt      420
cctgggcccc taccacaagg agtcggctgt gacggccttc agcgagggca ggcgcacgc      480
ctactactgt tctgagtcca gcatcccga gcacctggtg gaggaggccg agcgcgtcat      540
ggccgaggag cgcgtagtca tgcctgcccc gcgggcgcgc tcctgaagt cctttgtggt      600
cacctcagtg gtggctttcc ccacggactc caaaacagta cagaggacct aggacaacag      660
ctgcagcttt ggcctgcacg cccgcggtgt ggagctgatg cgcttcacca cgcccggctt      720
ccctgacagc ccctaccccc ctcatgcccg ctgccagtgg gccttgcggg gggacgccga      780
ctcagtgtgt agcctcacct tccgcagctt tgaccttgcg tcctgcgacg agcgcggcag      840
cgacctggtg acggtgtaca acacctgag ccccatggag ccccacgccc tgggtgcagtt      900
gtgtggcacc tacctcctct cctacaacct gaccttcac tcctcccaga acgtcctgct      960
catcacactg ataaccaaca ctgagcggcg gcatcccggc ttgaggcca cctttctcca      1020
gctgcctagg atgagcagct gtggaggccg cttacgtaaa gccacgggga cattcaacag      1080
cccctactac ccaggccact acccacccaa cattgactgc acatggaaca ttgaggtgcc      1140
caacaaccag catgtgaagg tgagcttcaa attcttctac ctgctggagc ccggcgtgcc      1200
tgccgggcacc tgcccacaag actacgtgga gatcaatggg gagaaatact gcggagagag      1260
gtcccagttc gtctcacca gcaacagcaa caagatcaca gttcgtctcc actcagatca      1320
gtcctacacc gacaccggct tcttagctga atacctctcc tacgactcca gtgacctatg      1380
cccggggcag ttcactgtcc gcacggggcg gtgtatccgg aaggagctgc gctgtgatgg      1440
ctgggccgac tgcaccgacc acagcgatga gctcaactgc agttgcgacg ccggccacca      1500
gttcaactgc aagaacaagt tctgcaagcc cctcttctgg gtctgcgaca gtgtgaacga      1560
ctgaggagac aacagcgacg agcaggggtg cagttgtccg gccacgacct tcagggtgttc      1620
caatgggaag tgcctctcga aaagccagca gtgcaatggg aaggacgact gtggggacgg      1680
gtccgacgag gcctcctgcc ccaaggtgaa cgtcgtcact tgtacaaaac acacctaccg      1740
ctgcctcaat gggctctgct tgagcaaggg caacctgag tgtgacggga aggaggactg      1800

```

-continued

---

```

tagcgacggc tcagatgaga aggactgcga ctgtgggctg cggtcattca cgagacaggc 1860
tcgtgttgtt gggggcacgg atgcggatga gggcgagtgg cctggcagc taagcctgca 1920
tgctctgggc cagggccaca tctgcggtgc ttccctcacc tctcccaact ggctgggtctc 1980
tgccgcacac tgctacatcg atgcagaggg attcaggtag tcagacccca cgcagtggac 2040
ggccttctctg ggottgcaag accagagcca gcgcagcgcc cctgggggtgc aggagcgcag 2100
gctcaagcgc atcatctccc accccttctt caatgacttc acctcgact atgacatcgc 2160
gctgctggag ctggagaaac cggcagagta cagctccatg gtgcggccca tctgcctgcc 2220
ggacgcctcc catgtcttcc ctgcccggca ggccatctgg gtcacgggct ggggacacac 2280
ccagtatgga ggcactggcg cgctgatcct gcaaaagggt gagatccgcg tcatcaacca 2340
gaccacctgc gagaacctc tgccgcagca gatcacgccc cgcagtatgt gcgtgggctt 2400
cctcagcggc ggcgtggact cctgccaggg tgattccggg ggaccctgt ccagcgtgga 2460
ggcggatggg cggatcttcc aggcgggtgt ggtgagctgg ggagacggct gcgctcagag 2520
gaacaagcca ggcgtgtaca caaggctccc tctgtttcgg gactggatca aagagaacac 2580
tggggtatag gggccggggc caccctaatg tgtacacctg cggggccacc catcgtccac 2640
cccagtgtgc acgcctgcag gctggagact ggaccgctga ctgcaccagc gccccagaa 2700
catacactgt gaactcaatc tccagggtc caaatctgcc tagaaaacct ctgcttctc 2760
cagcctccaa agtggagctg ggaggtagaa ggggaggaca ctggtggttc tactgacca 2820
actgggggca aagtttgaa gacacagcct cccccccag cccaagctg ggcgaggcg 2880
cgtttgtgta tatctgcctc ccctgtctgt aaggagcagc ggaacggag cttcggagcc 2940
tcctcagtga agtggtggg gctgccggat ctgggctgtg gggcccttg gccacgctct 3000
tgaggaagcc caggctcggg ggaccctgga aaacagacgg gtctgagact gaaattgttt 3060
taccagctcc cagggtggac ttcagtgtgt gtatttgtgt aaatgggtaa aacaatttat 3120
ttctttttaa aaaaaaaaa aaaaaaa 3147

```

&lt;210&gt; SEQ ID NO 2

&lt;211&gt; LENGTH: 855

&lt;212&gt; TYPE: PRT

&lt;213&gt; ORGANISM: Homo sapiens

&lt;220&gt; FEATURE:

&lt;223&gt; OTHER INFORMATION: TADG-15

&lt;400&gt; SEQUENCE: 2

```

Met Gly Ser Asp Arg Ala Arg Lys Gly Gly Gly Gly Pro Lys Asp
   5              10              15
Phe Gly Ala Gly Leu Lys Tyr Asn Ser Arg His Glu Lys Val Asn
   20              25              30
Gly Leu Glu Glu Gly Val Glu Phe Leu Pro Val Asn Asn Val Lys
   35              40              45
Lys Val Glu Lys His Gly Pro Gly Arg Trp Val Val Leu Ala Ala
   50              55              60
Val Leu Ile Gly Leu Leu Leu Val Leu Leu Gly Ile Gly Phe Leu
   65              70              75
Val Trp His Leu Gln Tyr Arg Asp Val Arg Val Gln Lys Val Phe
   80              85              90
Asn Gly Tyr Met Arg Ile Thr Asn Glu Asn Phe Val Asp Ala Tyr
   95              100             105
Glu Asn Ser Asn Ser Thr Glu Phe Val Ser Leu Ala Ser Lys Val

```

-continued

---

	110		115		120
Lys Asp Ala Leu	Lys Leu Leu Tyr Ser Gly Val Pro Phe Leu Gly				
	125		130		135
Pro Tyr His Lys	Glu Ser Ala Val Thr Ala Phe Ser Glu Gly Ser				
	140		145		150
Val Ile Ala Tyr	Tyr Trp Ser Glu Phe Ser Ile Pro Gln His Leu				
	155		160		165
Val Glu Glu Ala	Glu Arg Val Met Ala Glu Glu Arg Val Val Met				
	170		175		180
Leu Pro Pro Arg	Ala Arg Ser Leu Lys Ser Phe Val Val Thr Ser				
	185		190		195
Val Val Ala Phe	Pro Thr Asp Ser Lys Thr Val Gln Arg Thr Gln				
	200		205		210
Asp Asn Ser Cys	Ser Phe Gly Leu His Ala Arg Gly Val Glu Leu				
	215		220		225
Met Arg Phe Thr	Thr Pro Gly Phe Pro Asp Ser Pro Tyr Pro Ala				
	230		235		240
His Ala Arg Cys	Gln Trp Ala Leu Arg Gly Asp Ala Asp Ser Val				
	245		250		255
Leu Ser Leu Thr	Phe Arg Ser Phe Asp Leu Ala Ser Cys Asp Glu				
	260		265		270
Arg Gly Ser Asp	Leu Val Thr Val Tyr Asn Thr Leu Ser Pro Met				
	275		280		285
Glu Pro His Ala	Leu Val Gln Leu Cys Gly Thr Tyr Pro Pro Ser				
	290		295		300
Tyr Asn Leu Thr	Phe His Ser Ser Gln Asn Val Leu Leu Ile Thr				
	305		310		315
Leu Ile Thr Asn	Thr Glu Arg Arg His Pro Gly Phe Glu Ala Thr				
	320		325		330
Phe Phe Gln Leu	Pro Arg Met Ser Ser Cys Gly Gly Arg Leu Arg				
	335		340		345
Lys Ala Gln Gly	Thr Phe Asn Ser Pro Tyr Tyr Pro Gly His Tyr				
	350		355		360
Pro Pro Asn Ile	Asp Cys Thr Trp Asn Ile Glu Val Pro Asn Asn				
	365		370		375
Gln His Val Lys	Val Ser Phe Lys Phe Phe Tyr Leu Leu Glu Pro				
	380		385		390
Gly Val Pro Ala	Gly Thr Cys Pro Lys Asp Tyr Val Glu Ile Asn				
	395		400		405
Gly Glu Lys Tyr	Cys Gly Glu Arg Ser Gln Phe Val Val Thr Ser				
	410		415		420
Asn Ser Asn Lys	Ile Thr Val Arg Phe His Ser Asp Gln Ser Tyr				
	425		430		435
Thr Asp Thr Gly	Phe Leu Ala Glu Tyr Leu Ser Tyr Asp Ser Ser				
	440		445		450
Asp Pro Cys Pro	Gly Gln Phe Thr Cys Arg Thr Gly Arg Cys Ile				
	455		460		465
Arg Lys Glu Leu	Arg Cys Asp Gly Trp Ala Asp Cys Thr Asp His				
	470		475		480
Ser Asp Glu Leu	Asn Cys Ser Cys Asp Ala Gly His Gln Phe Thr				
	485		490		495
Cys Lys Asn Lys	Phe Cys Lys Pro Leu Phe Trp Val Cys Asp Ser				
	500		505		510

-continued

---

Val	Asn	Asp	Cys	Gly	Asp	Asn	Ser	Asp	Glu	Gln	Gly	Cys	Ser	Cys	515	520	525
Pro	Ala	Gln	Thr	Phe	Arg	Cys	Ser	Asn	Gly	Lys	Cys	Leu	Ser	Lys	530	535	540
Ser	Gln	Gln	Cys	Asn	Gly	Lys	Asp	Asp	Cys	Gly	Asp	Gly	Ser	Asp	545	550	555
Glu	Ala	Ser	Cys	Pro	Lys	Val	Asn	Val	Val	Thr	Cys	Thr	Lys	His	560	565	570
Thr	Tyr	Arg	Cys	Leu	Asn	Gly	Leu	Cys	Leu	Ser	Lys	Gly	Asn	Pro	575	580	585
Glu	Cys	Asp	Gly	Lys	Glu	Asp	Cys	Ser	Asp	Gly	Ser	Asp	Glu	Lys	590	595	600
Asp	Cys	Asp	Cys	Gly	Leu	Arg	Ser	Phe	Thr	Arg	Gln	Ala	Arg	Val	605	610	615
Val	Gly	Gly	Thr	Asp	Ala	Asp	Glu	Gly	Glu	Trp	Pro	Trp	Gln	Val	620	625	630
Ser	Leu	His	Ala	Leu	Gly	Gln	Gly	His	Ile	Cys	Gly	Ala	Ser	Leu	635	640	645
Ile	Ser	Pro	Asn	Trp	Leu	Val	Ser	Ala	Ala	His	Cys	Tyr	Ile	Asp	650	655	660
Asp	Arg	Gly	Phe	Arg	Tyr	Ser	Asp	Pro	Thr	Gln	Trp	Thr	Ala	Phe	665	670	675
Leu	Gly	Leu	His	Asp	Gln	Ser	Gln	Arg	Ser	Ala	Pro	Gly	Val	Gln	680	685	690
Glu	Arg	Arg	Leu	Lys	Arg	Ile	Ile	Ser	His	Pro	Phe	Phe	Asn	Asp	695	700	705
Phe	Thr	Phe	Asp	Tyr	Asp	Ile	Ala	Leu	Leu	Glu	Leu	Glu	Lys	Pro	710	715	720
Ala	Glu	Tyr	Ser	Ser	Met	Val	Arg	Pro	Ile	Cys	Leu	Pro	Asp	Ala	725	730	735
Ser	His	Val	Phe	Pro	Ala	Gly	Lys	Ala	Ile	Trp	Val	Thr	Gly	Trp	740	745	750
Gly	His	Thr	Gln	Tyr	Gly	Gly	Thr	Gly	Ala	Leu	Ile	Leu	Gln	Lys	755	760	765
Gly	Glu	Ile	Arg	Val	Ile	Asn	Gln	Thr	Thr	Cys	Glu	Asn	Leu	Leu	770	775	780
Pro	Gln	Gln	Ile	Thr	Pro	Arg	Met	Met	Cys	Val	Gly	Phe	Leu	Ser	785	790	795
Gly	Gly	Val	Asp	Ser	Cys	Gln	Gly	Asp	Ser	Gly	Gly	Pro	Leu	Ser	800	805	810
Ser	Val	Glu	Ala	Asp	Gly	Arg	Ile	Phe	Gln	Ala	Gly	Val	Val	Ser	815	820	825
Trp	Gly	Asp	Gly	Cys	Ala	Gln	Arg	Asn	Lys	Pro	Gly	Val	Tyr	Thr	830	835	840
Arg	Leu	Pro	Leu	Phe	Arg	Asp	Trp	Ile	Lys	Glu	Asn	Thr	Gly	Val	845	850	855

&lt;210&gt; SEQ ID NO 3

&lt;211&gt; LENGTH: 256

&lt;212&gt; TYPE: PRT

&lt;213&gt; ORGANISM: Homo sapiens

&lt;220&gt; FEATURE:

&lt;223&gt; OTHER INFORMATION: Hepsin

&lt;400&gt; SEQUENCE: 3

-continued

---

Arg Ile Val Gly Gly Arg Asp Thr Ser Leu Gly Arg Trp Pro Trp  
                   5                                  10                                  15  
 Gln Val Ser Leu Arg Tyr Asp Gly Ala His Leu Cys Gly Gly Ser  
                   20                                  25                                  30  
 Leu Leu Ser Gly Asp Trp Val Leu Thr Ala Ala His Cys Phe Pro  
                   35                                  40                                  45  
 Glu Arg Asn Arg Val Leu Ser Arg Trp Arg Val Phe Ala Gly Ala  
                   50                                  55                                  60  
 Val Ala Gln Ala Ser Pro His Gly Leu Gln Leu Gly Val Gln Ala  
                   65                                  70                                  75  
 Val Val Tyr His Gly Gly Tyr Leu Pro Phe Arg Asp Pro Asn Ser  
                   80                                  85                                  90  
 Glu Glu Asn Ser Asn Asp Ile Ala Leu Val His Leu Ser Ser Pro  
                   95                                  100                                  105  
 Leu Pro Leu Thr Glu Tyr Ile Gln Pro Val Cys Leu Pro Ala Ala  
                   110                                  115                                  120  
 Gly Gln Ala Leu Val Asp Gly Lys Ile Cys Thr Val Thr Gly Trp  
                   125                                  130                                  135  
 Gly Asn Thr Gln Tyr Tyr Gly Gln Gln Ala Gly Val Leu Gln Glu  
                   140                                  145                                  150  
 Ala Arg Val Pro Ile Ile Ser Asn Asp Val Cys Asn Gly Ala Asp  
                   155                                  160                                  165  
 Phe Tyr Gly Asn Gln Ile Lys Pro Lys Met Phe Cys Ala Gly Tyr  
                   170                                  175                                  180  
 Pro Glu Gly Gly Ile Asp Ala Cys Gln Gly Asp Ser Gly Gly Pro  
                   185                                  190                                  195  
 Phe Val Cys Glu Asp Ser Ile Ser Arg Thr Pro Arg Trp Arg Leu  
                   200                                  205                                  210  
 Cys Gly Ile Val Ser Trp Gly Thr Gly Cys Ala Leu Ala Gln Lys  
                   215                                  220                                  225  
 Pro Gly Val Tyr Thr Lys Val Ser Asp Phe Arg Glu Trp Ile Phe  
                   230                                  235                                  240  
 Gln Ala Ile Lys Thr His Ser Glu Ala Ser Gly Met Val Thr Gln  
                   245                                  250                                  255

Leu

<210> SEQ ID NO 4  
 <211> LENGTH: 225  
 <212> TYPE: PRT  
 <213> ORGANISM: Homo sapiens  
 <220> FEATURE:  
 <223> OTHER INFORMATION: SCCE

&lt;400&gt; SEQUENCE: 4

Lys Ile Ile Asp Gly Ala Pro Cys Ala Arg Gly Ser His Pro Trp  
                   5                                  10                                  15  
 Gln Val Ala Leu Leu Ser Gly Asn Gln Leu His Cys Gly Gly Val  
                   20                                  25                                  30  
 Leu Val Asn Glu Arg Trp Val Leu Thr Ala Ala His Cys Lys Met  
                   35                                  40                                  45  
 Asn Glu Tyr Thr Val His Leu Gly Ser Asp Thr Leu Gly Asp Arg  
                   50                                  55                                  60  
 Arg Ala Gln Arg Ile Lys Ala Ser Lys Ser Phe Arg His Pro Gly  
                   65                                  70                                  75

-continued

---

Tyr Ser Thr Gln Thr His Val Asn Asp Leu Met Leu Val Lys Leu  
                   80  85  90  
  
 Asn Ser Gln Ala Arg Leu Ser Ser Met Val Lys Lys Val Arg Leu  
                   95  100  105  
  
 Pro Ser Arg Cys Glu Pro Pro Gly Thr Thr Cys Thr Val Ser Gly  
                   110  115  120  
  
 Trp Gly Thr Thr Thr Ser Pro Asp Val Thr Phe Pro Ser Asp Leu  
                   125  130  135  
  
 Met Cys Val Asp Val Lys Leu Ile Ser Pro Gln Asp Cys Thr Lys  
                   140  145  150  
  
 Val Tyr Lys Asp Leu Leu Glu Asn Ser Met Leu Cys Ala Gly Ile  
                   155  160  165  
  
 Pro Asp Ser Lys Lys Asn Ala Cys Asn Gly Asp Ser Gly Gly Pro  
                   170  175  180  
  
 Leu Val Cys Arg Gly Thr Leu Gln Gly Leu Val Ser Trp Gly Thr  
                   185  190  195  
  
 Phe Pro Cys Gly Gln Pro Asn Asp Pro Gly Val Tyr Thr Gln Val  
                   200  205  210  
  
 Cys Lys Phe Thr Lys Trp Ile Asn Asp Thr Met Lys Lys His Arg  
                   215  220  225

<210> SEQ ID NO 5  
 <211> LENGTH: 225  
 <212> TYPE: PRT  
 <213> ORGANISM: Homo sapiens  
 <220> FEATURE:  
 <223> OTHER INFORMATION: Trypsin

<400> SEQUENCE: 5

Lys Ile Val Gly Gly Tyr Asn Cys Glu Glu Asn Ser Val Pro Tyr  
                   5  10  15  
  
 Gln Val Ser Leu Asn Ser Gly Tyr His Phe Cys Gly Gly Ser Leu  
                   20  25  30  
  
 Ile Asn Glu Gln Trp Val Val Ser Ala Gly His Cys Tyr Lys Ser  
                   35  40  45  
  
 Arg Ile Gln Val Arg Leu Gly Glu His Asn Ile Glu Val Leu Glu  
                   50  55  60  
  
 Gly Asn Glu Gln Phe Ile Asn Ala Ala Lys Ile Ile Arg His Pro  
                   65  70  75  
  
 Gln Tyr Asp Arg Lys Thr Leu Asn Asn Asp Ile Met Leu Ile Lys  
                   80  85  90  
  
 Leu Ser Ser Arg Ala Val Ile Asn Ala Arg Val Ser Thr Ile Ser  
                   95  100  105  
  
 Leu Pro Thr Ala Pro Pro Ala Thr Gly Thr Lys Cys Leu Ile Ser  
                   110  115  120  
  
 Gly Trp Gly Asn Thr Ala Ser Ser Gly Ala Asp Tyr Pro Asp Glu  
                   125  130  135  
  
 Leu Gln Cys Leu Asp Ala Pro Val Leu Ser Gln Ala Lys Cys Glu  
                   140  145  150  
  
 Ala Ser Tyr Pro Gly Lys Ile Thr Ser Asn Met Phe Cys Val Gly  
                   155  160  165  
  
 Phe Leu Glu Gly Gly Lys Asp Ser Cys Gln Gly Asp Ser Gly Gly  
                   170  175  180  
  
 Pro Val Val Cys Asn Gly Gln Leu Gln Gly Val Val Ser Trp Gly  
                   185  190  195

-continued

---

Asp Gly Cys Ala Gln Lys Asn Lys Pro Gly Val Tyr Thr Lys Val  
200 205 210

Tyr Asn Tyr Val Lys Trp Ile Lys Asn Thr Ile Ala Ala Asn Ser  
215 220 225

<210> SEQ ID NO 6  
<211> LENGTH: 231  
<212> TYPE: PRT  
<213> ORGANISM: Homo sapiens  
<220> FEATURE:  
<223> OTHER INFORMATION: Chymotrypsin

<400> SEQUENCE: 6

Arg Ile Val Asn Gly Glu Asp Ala Val Pro Gly Ser Trp Pro Trp  
5 10 15

Gln Val Ser Leu Gln Asp Lys Thr Gly Phe His Phe Cys Gly Gly  
20 25 30

Ser Leu Ile Ser Glu Asp Trp Val Val Thr Ala Ala His Cys Gly  
35 40 45

Val Arg Thr Ser Asp Val Val Val Ala Gly Glu Phe Asp Gln Gly  
50 55 60

Ser Asp Glu Glu Asn Ile Gln Val Leu Lys Ile Ala Lys Val Phe  
65 70 75

Lys Asn Pro Lys Phe Ser Ile Leu Thr Val Asn Asn Asp Ile Thr  
80 85 90

Leu Leu Lys Leu Ala Thr Pro Ala Arg Phe Ser Gln Thr Val Ser  
95 100 105

Ala Val Cys Leu Pro Ser Ala Asp Asp Asp Phe Pro Ala Gly Thr  
110 115 120

Leu Cys Ala Thr Thr Gly Trp Gly Lys Thr Lys Tyr Asn Ala Asn  
125 130 135

Lys Thr Pro Asp Lys Leu Gln Gln Ala Ala Leu Pro Leu Leu Ser  
140 145 150

Asn Ala Glu Cys Lys Lys Ser Trp Gly Arg Arg Ile Thr Asp Val  
155 160 165

Met Ile Cys Ala Gly Ala Ser Gly Val Ser Ser Cys Met Gly Asp  
170 175 180

Ser Gly Gly Pro Leu Val Cys Gln Lys Asp Gly Ala Trp Thr Leu  
185 190 195

Val Gly Ile Val Ser Trp Gly Ser Asp Thr Cys Ser Thr Ser Ser  
200 205 210

Pro Gly Val Tyr Ala Arg Val Thr Lys Leu Ile Pro Trp Val Gln  
215 220 225

Lys Ile Leu Ala Ala Asn  
230

<210> SEQ ID NO 7  
<211> LENGTH: 255  
<212> TYPE: PRT  
<213> ORGANISM: Homo sapiens  
<220> FEATURE:  
<223> OTHER INFORMATION: Factor 7

<400> SEQUENCE: 7

Arg Ile Val Gly Gly Lys Val Cys Pro Lys Gly Glu Cys Pro Trp  
5 10 15

Gln Val Leu Leu Leu Val Asn Gly Ala Gln Leu Cys Gly Gly Thr  
20 25 30

-continued

---

```

Leu Ile Asn Thr Ile Trp Val Val Ser Ala Ala His Cys Phe Asp
      35                      40                      45
Lys Ile Lys Asn Trp Arg Asn Leu Ile Ala Val Leu Gly Glu His
      50                      55                      60
Asp Leu Ser Glu His Asp Gly Asp Glu Gln Ser Arg Arg Val Ala
      65                      70                      75
Gln Val Ile Ile Pro Ser Thr Tyr Val Pro Gly Thr Thr Asn His
      80                      85                      90
Asp Ile Ala Leu Leu Arg Leu His Gln Pro Val Val Leu Thr Asp
      95                      100                     105
His Val Val Pro Leu Cys Leu Pro Glu Arg Thr Phe Ser Glu Arg
      110                     115                     120
Thr Leu Ala Phe Val Arg Phe Ser Leu Val Ser Gly Trp Gly Gln
      125                     130                     135
Leu Leu Asp Arg Gly Ala Thr Ala Leu Glu Leu Met Val Leu Asn
      140                     145                     150
Val Pro Arg Leu Met Thr Gln Asp Cys Leu Gln Gln Ser Arg Lys
      155                     160                     165
Val Gly Asp Ser Pro Asn Ile Thr Glu Tyr Met Phe Cys Ala Gly
      170                     175                     180
Tyr Ser Asp Gly Ser Lys Asp Ser Cys Lys Gly Asp Ser Gly Gly
      185                     190                     195
Pro His Ala Thr His Tyr Arg Gly Thr Trp Tyr Leu Thr Gly Ile
      200                     205                     210
Val Ser Trp Gly Gln Gly Cys Ala Thr Val Gly His Phe Gly Val
      215                     220                     225
Tyr Thr Arg Val Ser Gln Tyr Ile Glu Trp Leu Gln Lys Leu Met
      230                     235                     240
Arg Ser Glu Pro Arg Pro Gly Val Leu Leu Arg Ala Pro Phe Pro
      245                     250                     255

```

```

<210> SEQ ID NO 8
<211> LENGTH: 253
<212> TYPE: PRT
<213> ORGANISM: Homo sapiens
<220> FEATURE:
<223> OTHER INFORMATION: Tissue plasminogen activator

```

```

<400> SEQUENCE: 8

```

```

Arg Ile Lys Gly Gly Leu Phe Ala Asp Ile Ala Ser His Pro Trp
      5                      10                      15
Gln Ala Ala Ile Phe Ala Lys His Arg Arg Ser Pro Gly Glu Arg
      20                      25                      30
Phe Leu Cys Gly Gly Ile Leu Ile Ser Ser Cys Trp Ile Leu Ser
      35                      40                      45
Ala Ala His Cys Phe Gln Glu Arg Phe Pro Pro His His Leu Thr
      50                      55                      60
Val Ile Leu Gly Arg Thr Tyr Arg Val Val Pro Gly Glu Glu Glu
      65                      70                      75
Gln Lys Phe Glu Val Glu Lys Tyr Ile Val His Lys Glu Phe Asp
      80                      85                      90
Asp Asp Thr Tyr Asp Asn Asp Ile Ala Leu Leu Gln Leu Lys Ser
      95                      100                     105
Asp Ser Ser Arg Cys Ala Gln Glu Ser Ser Val Val Arg Thr Val
      110                     115                     120

```

-continued

Cys Leu Pro Pro Ala Asp Leu Gln Leu Pro Asp Trp Thr Glu Cys  
 125 130 135  
 Glu Leu Ser Gly Tyr Gly Lys His Glu Ala Leu Ser Pro Phe Tyr  
 140 145 150  
 Ser Glu Arg Leu Lys Glu Ala His Val Arg Leu Tyr Pro Ser Ser  
 155 160 165  
 Arg Cys Thr Ser Gln His Leu Leu Asn Arg Thr Val Thr Asp Asn  
 170 175 180  
 Met Leu Cys Ala Gly Asp Thr Arg Ser Gly Gly Pro Gln Ala Asn  
 185 190 195  
 Leu His Asp Ala Cys Gln Gly Asp Ser Gly Gly Pro Leu Val Cys  
 200 205 210  
 Leu Asn Asp Gly Arg Met Thr Leu Val Gly Ile Ile Ser Trp Gly  
 215 220 225  
 Leu Gly Cys Gly Gln Lys Asp Val Pro Gly Val Tyr Thr Lys Val  
 230 235 240  
 Thr Asn Tyr Leu Asp Trp Ile Arg Asp Asn Met Arg Pro  
 245 250

<210> SEQ ID NO 9  
 <211> LENGTH: 2900  
 <212> TYPE: DNA  
 <213> ORGANISM: Homo sapiens  
 <220> FEATURE:  
 <223> OTHER INFORMATION: SNC-19; GeneBank Accession No. #U20428

<400> SEQUENCE: 9

cgctgggtgg tgctggcagc cgtgctgac gccctcctct tggctttgct ggggatcggc 60  
 ttctgtgtgt ggcatttgcg gtaccgggac gtgcgtgtcc agaaggtcct caatggctac 120  
 atgaggatca caaatgagaa ttttgtggat gcctacgaga actccaactc cactgagttt 180  
 gtaagcctgg ccagcaaggt gaaggacgcg ctgaagctgc tgtacagcgg agtcccattc 240  
 ctggggccct accacaagga gtccgctgtg acggccttca gcgagggcag cgtcatcgcc 300  
 tactactggt ctgagttcag catcccgcag cacctggttg aggaggccga gcgcgtcatg 360  
 gccaggagcg cgtagtcatt ctgccccgc gggcgcgctc cctgaagtcc tttgtggtea 420  
 cctcagtggt ggcatttccc acggactcca aaacagtaca gaggaccag gacaacagct 480  
 gcagctttgg cctgcacgcc gcggtgtgga gctgatgcgc ttcaccacgc cggcttcocct 540  
 gacagcccct accccgctca tgcccgtgc cagtgggtgc cggggacgcg acgcagtgtc 600  
 gagctactcg agctgactcg cagcttgact gcgcctcgac gagcgcggca gcgacctggt 660  
 gacgtgtaca acacctgag ccccatggag cccacgcct ggtgagtgtg tggcacctac 720  
 cctccctcct acaacctgac cttccactcc ctcccacgaa cgtcctgctc atcacactga 780  
 taaccaacac tgacgcggca tcccggcttt gagggcacct tcttcagct gcctaggatg 840  
 agcagctgtg gaggccgctt acgtaaagcc caggggacat tcaacagccc ctactacca 900  
 ggccactacc caccacaat tgactgcaca tgaaaaattg aggtgcccaa caaccagcat 960  
 gtgaaggtgc gcttcaaat cttctacctg ctggagcccc gcgtgcctgc gggcacctgc 1020  
 cccaaggact acgtggagat caatggggag aaatactgcy gagagaggtc ccagttcgtc 1080  
 gtcaccagca acagcaaaa gatcacagtt cgcttccact cagatcagtc ctacaccgac 1140  
 accggttct tagctgaata cctctcctac gactccagtg acccatgccc ggggcagttc 1200  
 acgtgccgca cggggcgggt taccggaag gagctgcgct gtgatggctg ggcgactgca 1260

-continued

---

```

ccgaccacag cgatgagctc aactgcagtt gcgacgccgg ccaccagttc acgtgcaaga 1320
gcaagttctg caagctcttc tgggtctgcg acagtgtgaa cgagtgcgga gacaacagcg 1380
acgagcaggg ttgcatttgt cgggacccag accttcaggt gttccaatgg gaagtgcctc 1440
tcgaaaagcc agcagtgcaa tgggaaggac gactgtgggg acgggtccga cgaggcctcc 1500
tgccccaagg tgaacgtcgt cacttgtaac aaacacacct accgctgcct caatgggctc 1560
tgcttgagca agggcaaccc tgagtgtgac gggaaaggag actgtagcga cggctcagat 1620
gagaaggact gcgactgtgg gctgcggtca ttcacgagac aggctcgtgt tgttgggggc 1680
acggatgcgg atgagggcga gtggccctgg caggtaagcc tgcagtctct gggccagggc 1740
cacatctgcg gtgcttccct catctctccc aactggctgg tctctgccgc aactgctac 1800
atcgatgaca gaggattcag gtactcagac cccacgcagg acggccttcc tgggcttgca 1860
cgaccagagc cagcgcaggc cctgggggtgc aggagcgag gctcaagcgc atcatctccc 1920
accccttctt caatgacttc accttcgact atgacatcgc gctgctggag ctggagaaac 1980
cggcagagta cagctccatg gtgcggccca tctgcctgcc ggacgcctgc catgtcttcc 2040
ctgccggcaa ggcacatctg gtcacgggct ggggacacac ccagtatgga ggcactggcg 2100
cgctgatcct gcaaaaagggt gagatccgcg tcatcaacca gaccacctgc gagaacctcc 2160
tgccgcagca gatcacgccg cgcagtatgt gcgtgggctt cctcagcggc ggcgtggact 2220
cctgccaggg tgattccggg ggacccctgt ccagcgtgga ggcggatggg cggatcttcc 2280
aggccggtgt ggtgagctgg ggagacgctg cgctcagagg aacaagccag gcgtgtacac 2340
aaggctccct ctgtttcggg aatggatcaa agagaacact ggggtatagg ggcgggggcc 2400
acccaatgt gtacacctgc ggggccaccc atcgtccacc ccagtgtgca cgctgcagg 2460
ctggagactc gcgcaccgtg acctgcacca gcgcccaga acatacactg tgaactcatc 2520
tccaggetca aatctgctag aaaacctctc gcttctctag cctccaaagt ggagctggga 2580
gggtagaagg ggaggaacac tgggtgttct actgacccaa ctggggcaag gtttgaagca 2640
cagctccggc agcccaagtg ggcgaggacg cgtttgtgca tactgccttg ctctatacac 2700
ggaagacctg gatctctagt gagtgtgact gccggatctg gctgtgttcc ttggccacgc 2760
ttcttgagga agcccaggct cggaggaccc tggaaaacag acgggtctga gactgaaaat 2820
ggtttaccag ctcccaggtg acctcagttg gtgtattgtg taaatgagta aaacatttta 2880
tttcttttta aaaaaaaaaa 2900

```

&lt;210&gt; SEQ ID NO 10

&lt;211&gt; LENGTH: 902

&lt;212&gt; TYPE: PRT

&lt;213&gt; ORGANISM: Mus musculus

&lt;220&gt; FEATURE:

&lt;223&gt; OTHER INFORMATION: Epithin

&lt;400&gt; SEQUENCE: 10

```

Met Gly Ser Asn Arg Gly Arg Lys Ala Gly Gly Gly Ser Gln Asp
   5             10             15
Phe Gly Ala Gly Leu Lys Tyr Asp Ser Arg Leu Glu Asn Met Asn
   20             25             30
Gly Phe Glu Glu Gly Val Glu Phe Leu Pro Ala Asn Asn Ala Lys
   35             40             45
Lys Val Glu Lys Arg Gly Pro Arg Arg Trp Val Val Leu Val Ala
   50             55             60

```

-continued

---

Val	Leu	Phe	Ser	Phe	Leu	Leu	Leu	Ser	Leu	Met	Ala	Gly	Leu	Leu		65	70	75
Val	Trp	His	Phe	His	Tyr	Arg	Asn	Val	Arg	Val	Gln	Lys	Val	Phe		80	85	90
Asn	Gly	His	Leu	Arg	Ile	Thr	Asn	Glu	Ile	Phe	Leu	Asp	Ala	Tyr		95	100	105
Glu	Asn	Ser	Thr	Ser	Thr	Glu	Phe	Ile	Ser	Leu	Ala	Ser	Gln	Val		110	115	120
Lys	Glu	Ala	Leu	Lys	Leu	Leu	Tyr	Asn	Glu	Val	Pro	Val	Leu	Gly		125	130	135
Pro	Tyr	His	Lys	Lys	Ser	Ala	Val	Thr	Ala	Phe	Ser	Glu	Gly	Ser		140	145	150
Val	Ile	Ala	Tyr	Tyr	Trp	Ser	Glu	Phe	Ser	Ile	Pro	Pro	His	Leu		155	160	165
Ala	Glu	Glu	Val	Asp	Arg	Ala	Met	Ala	Val	Glu	Arg	Val	Val	Thr		170	175	180
Leu	Pro	Pro	Arg	Ala	Arg	Ala	Leu	Lys	Ser	Phe	Val	Leu	Thr	Ser		185	190	195
Val	Val	Ala	Phe	Pro	Ile	Asp	Pro	Arg	Met	Leu	Gln	Arg	Thr	Gln		200	205	210
Asp	Asn	Ser	Cys	Ser	Phe	Ala	Leu	His	Ala	His	Gly	Ala	Ala	Val		215	220	225
Thr	Arg	Phe	Thr	Thr	Pro	Gly	Phe	Pro	Asn	Ser	Pro	Tyr	Pro	Ala		230	235	240
His	Ala	Arg	Cys	Gln	Trp	Val	Leu	Arg	Gly	Asp	Ala	Asp	Ser	Val		245	250	255
Leu	Ser	Leu	Thr	Phe	Arg	Ser	Phe	Asp	Val	Ala	Pro	Cys	Asp	Glu		260	265	270
His	Gly	Ser	Asp	Leu	Val	Thr	Val	Tyr	Asp	Ser	Leu	Ser	Pro	Met		275	280	285
Glu	Pro	His	Ala	Val	Val	Arg	Leu	Cys	Gly	Thr	Phe	Ser	Pro	Ser		290	295	300
Tyr	Asn	Leu	Thr	Phe	Leu	Ser	Ser	Gln	Asn	Val	Phe	Leu	Val	Thr		305	310	315
Leu	Ile	Thr	Asn	Thr	Gly	Arg	Arg	His	Leu	Gly	Phe	Glu	Ala	Thr		320	325	330
Phe	Phe	Gln	Leu	Pro	Lys	Met	Ser	Ser	Cys	Gly	Gly	Val	Leu	Ser		335	340	345
Asp	Thr	Gln	Gly	Thr	Phe	Ser	Ser	Pro	Tyr	Tyr	Pro	Gly	His	Tyr		350	355	360
Pro	Pro	Asn	Ile	Asn	Cys	Thr	Trp	Asn	Ile	Lys	Val	Pro	Asn	Asn		365	370	375
Arg	Asn	Val	Lys	Val	Arg	Phe	Lys	Leu	Phe	Tyr	Leu	Val	Asp	Pro		380	385	390
Asn	Val	Pro	Val	Gly	Ser	Cys	Thr	Lys	Asp	Tyr	Val	Glu	Ile	Asn		395	400	405
Gly	Glu	Lys	Gly	Ser	Gly	Glu	Arg	Ser	Gln	Phe	Val	Val	Ser	Ser		410	415	420
Asn	Ser	Ser	Lys	Ile	Thr	Val	His	Phe	His	Ser	Asp	His	Ser	Tyr		425	430	435
Thr	Asp	Thr	Gly	Phe	Leu	Ala	Glu	Tyr	Leu	Ser	Tyr	Asp	Ser	Asn		440	445	450
Asp	Pro	Cys	Pro	Gly	Met	Phe	Met	Cys	Lys	Thr	Gly	Arg	Cys	Ile				

-continued

---

	455		460		465
Arg Lys Glu Leu	Arg Cys Asp Gly Trp	Ala Asp Cys Pro Asp Tyr			
	470		475		480
Ser Asp Glu Arg	Tyr Cys Arg Cys Asn	Ala Thr His Gln Phe Thr			
	485		490		495
Cys Lys Asn Gln	Phe Cys Lys Pro Leu	Phe Trp Val Cys Asp Ser			
	500		505		510
Val Asn Asp Cys	Gly Asp Gly Ser Asp	Glu Glu Gly Cys Ser Cys			
	515		520		525
Pro Ala Gly Ser	Phe Lys Cys Ser Asn	Gly Lys Cys Leu Pro Gln			
	530		535		540
Ser Gln Lys Cys	Asn Gly Lys Asp Asn	Cys Gly Asp Gly Ser Asp			
	545		550		555
Glu Ala Ser Cys	Asp Ser Val Asn Val	Val Ser Cys Thr Lys Tyr			
	560		565		570
Thr Tyr Arg Cys	Gln Asn Gly Leu Cys	Leu Ser Lys Gly Asn Pro			
	575		580		585
Glu Cys Asp Gly	Lys Thr Asp Cys Ser	Asp Gly Ser Asp Glu Lys			
	590		595		600
Asn Cys Asp Cys	Gly Leu Arg Ser Phe	Thr Lys Gln Ala Arg Val			
	605		610		615
Val Gly Gly Thr	Asn Ala Asp Glu Gly	Glu Trp Pro Trp Gln Val			
	620		625		630
Ser Leu His Ala	Leu Gly Gln Gly His	Leu Cys Gly Ala Ser Leu			
	635		640		645
Ile Ser Pro Asp	Trp Leu Val Ser Ala	Ala His Cys Phe Gln Asp			
	650		655		660
Asp Lys Asn Phe	Lys Tyr Ser Asp Tyr	Thr Met Trp Thr Ala Phe			
	665		670		675
Leu Gly Leu Leu	Asp Gln Ser Lys Arg	Ser Ala Ser Gly Val Gln			
	680		685		690
Glu Leu Lys Leu	Lys Arg Ile Ile Thr	His Pro Ser Phe Asn Asp			
	695		700		705
Phe Thr Phe Asp	Tyr Asp Ile Ala Leu	Leu Glu Leu Glu Lys Ser			
	710		715		720
Val Glu Tyr Ser	Thr Val Val Arg Pro	Ile Cys Leu Pro Asp Ala			
	725		730		735
Thr His Val Phe	Pro Ala Gly Lys Ala	Ile Trp Val Thr Gly Trp			
	740		745		750
Gly His Thr Lys	Glu Gly Gly Thr Gly	Ala Leu Ile Leu Gln Lys			
	755		760		765
Gly Glu Ile Arg	Val Ile Asn Gln Thr	Thr Cys Glu Asp Leu Met			
	770		775		780
Pro Gln Gln Ile	Thr Pro Arg Met Met	Cys Val Gly Phe Leu Ser			
	785		790		795
Gly Gly Val Asp	Ser Cys Gln Gly Asp	Ser Gly Gly Pro Leu Ser			
	800		805		810
Ser Ala Glu Lys	Asp Gly Arg Met Phe	Gln Ala Gly Val Val Ser			
	815		820		825
Trp Gly Glu Gly	Cys Ala Gln Arg Asn	Lys Pro Gly Val Tyr Thr			
	830		835		840
Arg Leu Pro Cys	Ser Ser Gly Leu Asp	Gln Arg Ala His Trp Gly			
	845		850		855

-continued

Ile Ala Ala Trp Thr Asp Ser Arg Pro Gln Thr Pro Thr Gly Met  
860 865 870

Pro Asp Met His Thr Trp Ile Gln Glu Arg Asn Thr Asp Asp Ile  
875 880 885

Tyr Ala Val Ala Ser Pro Pro Gln His Asn Pro Asp Cys Glu Leu  
890 895 900

His Pro

<210> SEQ ID NO 11  
<211> LENGTH: 23  
<212> TYPE: DNA  
<213> ORGANISM: Artificial sequence  
<220> FEATURE:  
<221> NAME/KEY: n=Inosine  
<222> LOCATION: 6, 9, 12, 15, 18  
<223> OTHER INFORMATION: Degenerate oligonucleotide primer

<400> SEQUENCE: 11

tgggtngtna cngcngcnca ytg

23

<210> SEQ ID NO 12  
<211> LENGTH: 20  
<212> TYPE: DNA  
<213> ORGANISM: Artificial sequence  
<220> FEATURE:  
<221> NAME/KEY: n=Inosine  
<222> LOCATION: 3, 6, 9, 12, 18  
<223> OTHER INFORMATION: Degenerate oligonucleotide primer

<400> SEQUENCE: 12

arnngnccnc cnswrtnccc

20

<210> SEQ ID NO 13  
<211> LENGTH: 12  
<212> TYPE: PRT  
<213> ORGANISM: Homo sapiens  
<220> FEATURE:  
<223> OTHER INFORMATION: Fragment of TADG-15

<400> SEQUENCE: 13

Leu Phe Arg Asp Trp Ile Lys Glu Asn Thr Gly Val  
5 10

<210> SEQ ID NO 14  
<211> LENGTH: 20  
<212> TYPE: DNA  
<213> ORGANISM: Artificial sequence  
<220> FEATURE:  
<223> OTHER INFORMATION: TADG-15 forward oligonucleotide primer

<400> SEQUENCE: 14

atgacagagg attcaggtac

20

<210> SEQ ID NO 15  
<211> LENGTH: 20  
<212> TYPE: DNA  
<213> ORGANISM: Artificial sequence  
<220> FEATURE:  
<223> OTHER INFORMATION: TADG-15 reverse oligonucleotide primer

<400> SEQUENCE: 15

gaaggtgaag tcattgaaga

20

<210> SEQ ID NO 16

-continued

---

<211> LENGTH: 20  
 <212> TYPE: DNA  
 <213> ORGANISM: Artificial sequence  
 <220> FEATURE:  
 <223> OTHER INFORMATION: (-tubulin forward oligonucleotide primer  
  
 <400> SEQUENCE: 16  
  
 cgcacatcaacg tgtactacaa 20

<210> SEQ ID NO 17  
 <211> LENGTH: 20  
 <212> TYPE: DNA  
 <213> ORGANISM: Artificial sequence  
 <220> FEATURE:  
 <223> OTHER INFORMATION: (-tubulin reverse oligonucleotide primer  
  
 <400> SEQUENCE: 17  
  
 tacgagctgg tggactgaga 20

<210> SEQ ID NO 18  
 <211> LENGTH: 3147  
 <212> TYPE: RNA  
 <213> ORGANISM: Artificial sequence  
 <220> FEATURE:  
 <223> OTHER INFORMATION: Antisense of TADG-15  
  
 <400> SEQUENCE: 18  
  
 uuuuuuuuuu uuuuuuuuuu aaaagaaaua aauguuuuuu cccauuuaca 50  
 caaaauacaca cacugaaguc caccucggga gcugguaaaa cauuuucagu 100  
 cucagaccg ucuguuuucc aggguccucc gagccugggc uuccucaaga 150  
 gcguggccca agggccccc agcccagauc cggcagcccc accaccuua 200  
 cugaggaggc uccgaagcuc cguucccgcu gcuccuuaca gacaggggag 250  
 gcagauauac acaaacgcgc cucggcccag cuuggggcug gcgggggagg 300  
 cugugucuuc aaaccuuugc ccccaguugg gucaguagaa ccaccagugu 350  
 ccuccccuuc uaccucccag cuccacuugg gaggcugagg aagcgagagg 400  
 uuuucuaggc agauuuggag cccugggagau ugaguucaca guguauguuc 450  
 uggggggcgc ggugcaguca gcgguccagu cuccagccug caggcgugca 500  
 cacuggggug gacgaugggu ggccccgcag guguacacau uugggguggcc 550  
 ccggccccua uaccccagug uucucuuga uccagucccg aaacagaggg 600  
 agccuugugu acacgccugg cuuguuccuc ugagcgagc cgucuccca 650  
 gcucaccaca ccggccugga agauccgcc auccgccucc acgcuggaca 700  
 gggguccccc ggaauacccc uggcaggagu ccacgccgcc gcugaggaag 750  
 cccacgcaca ucaugcgcgg cgugaucugc ugcggcagga gguucucgca 800  
 gguggucugg uugaugacgc ggaucucacc cuuuugcagg aucagcgcgc 850  
 cagugccucc auacugggug uguccccagc ccgugacca gauggccuug 900  
 ccggcaggga agacauggga ggcguccggc aggcagaugg gccgcaccu 950  
 ggagcuguac ucugccgguu ucuccagcuc cagcagcgcg augucauagu 1000  
 cgaaggugaa gucauuugaag aagggguggg agaugaugcg cuugagccug 1050  
 cgcuccugca ccccaggggc gcugcgcugc cucuggucgu gcaagcccag 1100  
 gaaggccguc cacugcgugg ggucugagua ccugaauccu cugucaucga 1150  
 uguagcagug ugcggcagag accagccagu ugggagagau gagggagca 1200

-continued

---

ccgcagaugu ggcccuggcc cagagcaugc aggcuuaccu gccagggcca	1250
cucgcccuca uccgcauccg ugccccaac aacacgagcc ugucucguga	1300
augaccgag cccacagucg caguccuucu caucugagcc gucgcuaacag	1350
uccuccuucc cgucacacuc aggguuagcc uugcucaagc agagcccacu	1400
gaggcagcgg uagguguguu ugguaacaagu gacgacguuc accuuggggc	1450
aggaggccuc gucggaccgg uccccacagu cguccuucc auugcacugc	1500
uggcuuuucg agaggcacuu cccauuggaa caccugaagg ucugggcccg	1550
acaacugcac cccugcucgu cgcuguuguc uccgagucg uucacacugu	1600
cgcagacca gaagaggggc uugcagaacu uguucugca cguaacugg	1650
uggccggcgu cgcacacugca guugagcuca ucgcuguggu cggugcaguc	1700
ggcccagcca ucacagcgca gcuccuuccg gauacaccgc cccgugcggc	1750
acgugaacug ccccgggcau gggucacugg agucguagga gagguuuca	1800
gcuagaagc cggugucggu guaggacuga ucugagugga agcgaacugu	1850
gaucuuugug cuguugcugg ugacgacgaa cugggaccuc ucuccgcau	1900
auuucuccc auugaucucc acguaguccu uggggcaggu gcccgagggc	1950
acgccgggcu ccagcaggua gaagaauuug aagcucaccu ucacaugcug	2000
guuguugggc accucaaugu uccaugugca gucaauugug gggggguagu	2050
ggccugggua guaggggucg uugaauugcc ccugggcuuu acguaagcgg	2100
ccuccacagc ugcucaucc aggcagcugg aagaaggugg ccucaagcc	2150
gggaugccgc cgcucagugu ugguaucag uguaugagc aggacguucu	2200
gggaggagug gaaggucagg uuguaggagg gaggguaggu gccacacaac	2250
ugcaccaggc cguggggcuc cauggggcuc aggguguugu acaccgucac	2300
caggucgcug ccgcccucgu cgcaggacgc aaggucaaag cugcggaaag	2350
ugaggcucag cacugagucg gcguccccc gcagggccca cuggcagcgg	2400
gcaugagcgg gguaggggcu gucagggag ccgggcgugg ugaagcgcau	2450
caguccaca cccggggcgu gcaggccaaa gcugcagcug uuguccuggg	2500
uccucuguac uguuuuggag uccgugggga aagccaccac ugaggugacc	2550
acaaaggacu ucagggagcg cggcccggg ggcagcauga cuacggcuc	2600
cucggccaug acgcccucg ccuccuccac caggucucg gggaugcuga	2650
acucagacca guaguagcg augacgcug ccucgcugaa ggcgcgaca	2700
gccgacuccu ugugguaggg gccaggaau gggacuccgc uguacagcag	2750
cuucagcgcg uccuucaccu ugucggccag gcuuacaaac ucaguggagu	2800
uggaguucuc guaggcaucc acaaaaucu cauugugau ccucaugua	2850
ccaugaaga ccuucuggac acgcacgucc cgguacugca aaugccacac	2900
caggaagccg auccccagca agaccaagag gaggccgauc agcacggcug	2950
ccagcaccac ccagcggccc gggccaugcu uuuccaccuu cuugacguug	3000
uugacuggca ggaacuccac gccuuccucc aagccauuca cuuucugug	3050
ccgggaguug uacuugaguc ccgcccggaa guccuucggg cccccuccgc	3100
ccuugcgggc ccgaucgcuc cccaugguac cccgagggcg cucuuga	3147

---

-continued

---

<210> SEQ ID NO 19  
<211> LENGTH: 9  
<212> TYPE: PRT  
<213> ORGANISM: Homo sapiens  
<220> FEATURE:  
<223> OTHER INFORMATION: Residues 68-76 of the TADG-15 protein

<400> SEQUENCE: 19

Val Leu Leu Gly Ile Gly Phe Leu Val  
5

<210> SEQ ID NO 20  
<211> LENGTH: 9  
<212> TYPE: PRT  
<213> ORGANISM: Homo sapiens  
<220> FEATURE:  
<223> OTHER INFORMATION: Residues 126-134 of the TADG-15 protein

<400> SEQUENCE: 20

Leu Leu Tyr Ser Gly Val Pro Phe Leu  
5

<210> SEQ ID NO 21  
<211> LENGTH: 9  
<212> TYPE: PRT  
<213> ORGANISM: Homo sapiens  
<220> FEATURE:  
<223> OTHER INFORMATION: Residues 644-652 of the TADG-15 protein

<400> SEQUENCE: 21

Ser Leu Ile Ser Pro Asn Trp Leu Val  
5

<210> SEQ ID NO 22  
<211> LENGTH: 9  
<212> TYPE: PRT  
<213> ORGANISM: Homo sapiens  
<220> FEATURE:  
<223> OTHER INFORMATION: Residues 379-387 of the TADG-15 protein

<400> SEQUENCE: 22

Lys Val Ser Phe Lys Phe Phe Tyr Leu  
5

<210> SEQ ID NO 23  
<211> LENGTH: 9  
<212> TYPE: PRT  
<213> ORGANISM: Homo sapiens  
<220> FEATURE:  
<223> OTHER INFORMATION: Residues 386-394 of the TADG-15 protein

<400> SEQUENCE: 23

Tyr Leu Leu Glu Pro Gly Val Pro Ala  
5

<210> SEQ ID NO 24  
<211> LENGTH: 9  
<212> TYPE: PRT  
<213> ORGANISM: Homo sapiens  
<220> FEATURE:  
<223> OTHER INFORMATION: Residues 257-265 of the TADG-15 protein

<400> SEQUENCE: 24

Ser Leu Thr Phe Arg Ser Phe Asp Leu  
5

-continued

---

<210> SEQ ID NO 25  
<211> LENGTH: 9  
<212> TYPE: PRT  
<213> ORGANISM: Homo sapiens  
<220> FEATURE:  
<223> OTHER INFORMATION: Residues 762-770 of the TADG-15 protein

<400> SEQUENCE: 25

Ile Leu Gln Lys Gly Glu Ile Arg Val  
5

<210> SEQ ID NO 26  
<211> LENGTH: 9  
<212> TYPE: PRT  
<213> ORGANISM: Homo sapiens  
<220> FEATURE:  
<223> OTHER INFORMATION: Residues 841-849 of the TADG-15 protein

<400> SEQUENCE: 26

Arg Leu Pro Leu Phe Arg Asp Trp Ile  
5

<210> SEQ ID NO 27  
<211> LENGTH: 9  
<212> TYPE: PRT  
<213> ORGANISM: Homo sapiens  
<220> FEATURE:  
<223> OTHER INFORMATION: Residues 64-72 of the TADG-15 protein

<400> SEQUENCE: 27

Gly Leu Leu Leu Val Leu Leu Gly Ile  
5

<210> SEQ ID NO 28  
<211> LENGTH: 9  
<212> TYPE: PRT  
<213> ORGANISM: Homo sapiens  
<220> FEATURE:  
<223> OTHER INFORMATION: Residues 57-65 of the TADG-15 protein

<400> SEQUENCE: 28

Val Leu Ala Ala Val Leu Ile Gly Leu  
5

<210> SEQ ID NO 29  
<211> LENGTH: 9  
<212> TYPE: PRT  
<213> ORGANISM: Homo sapiens  
<220> FEATURE:  
<223> OTHER INFORMATION: Residues 67-75 of the TADG-15 protein

<400> SEQUENCE: 29

Leu Val Leu Leu Gly Ile Gly Phe Leu  
5

<210> SEQ ID NO 30  
<211> LENGTH: 9  
<212> TYPE: PRT  
<213> ORGANISM: Homo sapiens  
<220> FEATURE:  
<223> OTHER INFORMATION: Residues 379-387 of the TADG-15 protein

<400> SEQUENCE: 30

Lys Val Ser Phe Lys Phe Phe Tyr Leu  
5

<210> SEQ ID NO 31

-continued

---

<211> LENGTH: 9  
<212> TYPE: PRT  
<213> ORGANISM: Homo sapiens  
<220> FEATURE:  
<223> OTHER INFORMATION: Residues 126-134 of the TADG-15 protein

<400> SEQUENCE: 31

Leu Leu Tyr Ser Gly Val Pro Phe Leu  
5

<210> SEQ ID NO 32  
<211> LENGTH: 9  
<212> TYPE: PRT  
<213> ORGANISM: Homo sapiens  
<220> FEATURE:  
<223> OTHER INFORMATION: Residues 88-96 of the TADG-15 protein

<400> SEQUENCE: 32

Lys Val Phe Asn Gly Tyr Met Arg Ile  
5

<210> SEQ ID NO 33  
<211> LENGTH: 9  
<212> TYPE: PRT  
<213> ORGANISM: Homo sapiens  
<220> FEATURE:  
<223> OTHER INFORMATION: Residues 670-678 of the TADG-15 protein

<400> SEQUENCE: 33

Thr Gln Trp Thr Ala Phe Leu Gly Leu  
5

<210> SEQ ID NO 34  
<211> LENGTH: 9  
<212> TYPE: PRT  
<213> ORGANISM: Homo sapiens  
<220> FEATURE:  
<223> OTHER INFORMATION: Residues 119-127 of the TADG-15 protein

<400> SEQUENCE: 34

Lys Val Lys Asp Ala Leu Lys Leu Leu  
5

<210> SEQ ID NO 35  
<211> LENGTH: 9  
<212> TYPE: PRT  
<213> ORGANISM: Homo sapiens  
<220> FEATURE:  
<223> OTHER INFORMATION: Residues 60-68 of the TADG-15 protein

<400> SEQUENCE: 35

Ala Val Leu Ile Gly Leu Leu Leu Val  
5

<210> SEQ ID NO 36  
<211> LENGTH: 9  
<212> TYPE: PRT  
<213> ORGANISM: Homo sapiens  
<220> FEATURE:  
<223> OTHER INFORMATION: Residues 62-70 of the TADG-15 protein

<400> SEQUENCE: 36

Leu Ile Gly Leu Leu Leu Val Leu Leu  
5

<210> SEQ ID NO 37  
<211> LENGTH: 9

---

-continued

---

<212> TYPE: PRT  
<213> ORGANISM: Homo sapiens  
<220> FEATURE:  
<223> OTHER INFORMATION: Residues 57-65 of the TADG-15 protein

<400> SEQUENCE: 37

Val Leu Ala Ala Val Leu Ile Gly Leu  
5

<210> SEQ ID NO 38  
<211> LENGTH: 9  
<212> TYPE: PRT  
<213> ORGANISM: Homo sapiens  
<220> FEATURE:  
<223> OTHER INFORMATION: Residues 61-69 of the TADG-15 protein

<400> SEQUENCE: 38

Val Leu Ile Gly Leu Leu Val Leu  
5

<210> SEQ ID NO 39  
<211> LENGTH: 9  
<212> TYPE: PRT  
<213> ORGANISM: Homo sapiens  
<220> FEATURE:  
<223> OTHER INFORMATION: Residues 146-154 of the TADG-15 protein

<400> SEQUENCE: 39

Phe Ser Glu Gly Ser Val Ile Ala Tyr  
5

<210> SEQ ID NO 40  
<211> LENGTH: 9  
<212> TYPE: PRT  
<213> ORGANISM: Homo sapiens  
<220> FEATURE:  
<223> OTHER INFORMATION: Residues 658-666 of the TADG-15 protein

<400> SEQUENCE: 40

Tyr Ile Asp Asp Arg Gly Phe Arg Tyr  
5

<210> SEQ ID NO 41  
<211> LENGTH: 9  
<212> TYPE: PRT  
<213> ORGANISM: Homo sapiens  
<220> FEATURE:  
<223> OTHER INFORMATION: Residues 449-457 of the TADG-15 protein

<400> SEQUENCE: 41

Ser Ser Asp Pro Cys Pro Gly Gln Phe  
5

<210> SEQ ID NO 42  
<211> LENGTH: 9  
<212> TYPE: PRT  
<213> ORGANISM: Homo sapiens  
<220> FEATURE:  
<223> OTHER INFORMATION: Residues 401-409 of the TADG-15 protein

<400> SEQUENCE: 42

Tyr Val Glu Ile Asn Gly Glu Lys Tyr  
5

<210> SEQ ID NO 43  
<211> LENGTH: 9  
<212> TYPE: PRT

---

-continued

---

<213> ORGANISM: Homo sapiens  
<220> FEATURE:  
<223> OTHER INFORMATION: Residues 387-395 of the TADG-15 protein

<400> SEQUENCE: 43

Leu Leu Glu Pro Gly Val Pro Ala Gly  
5

<210> SEQ ID NO 44  
<211> LENGTH: 9  
<212> TYPE: PRT  
<213> ORGANISM: Homo sapiens  
<220> FEATURE:  
<223> OTHER INFORMATION: Residues 553-561 of the TADG-15 protein

<400> SEQUENCE: 44

Gly Ser Asp Glu Ala Ser Cys Pro Lys  
5

<210> SEQ ID NO 45  
<211> LENGTH: 9  
<212> TYPE: PRT  
<213> ORGANISM: Homo sapiens  
<220> FEATURE:  
<223> OTHER INFORMATION: Residues 97-105 of the TADG-15 protein

<400> SEQUENCE: 45

Thr Asn Glu Asn Phe Val Asp Ala Tyr  
5

<210> SEQ ID NO 46  
<211> LENGTH: 9  
<212> TYPE: PRT  
<213> ORGANISM: Homo sapiens  
<220> FEATURE:  
<223> OTHER INFORMATION: Residues 110-118 of the TADG-15 protein

<400> SEQUENCE: 46

Ser Thr Glu Phe Val Ser Leu Ala Ser  
5

<210> SEQ ID NO 47  
<211> LENGTH: 9  
<212> TYPE: PRT  
<213> ORGANISM: Homo sapiens  
<220> FEATURE:  
<223> OTHER INFORMATION: Residues 811-819 of the TADG-15 protein

<400> SEQUENCE: 47

Ser Val Glu Ala Asp Gly Arg Ile Phe  
5

<210> SEQ ID NO 48  
<211> LENGTH: 9  
<212> TYPE: PRT  
<213> ORGANISM: Homo sapiens  
<220> FEATURE:  
<223> OTHER INFORMATION: Residues 666-674 of the TADG-15 protein

<400> SEQUENCE: 48

Tyr Ser Asp Pro Thr Gln Trp Thr Ala  
5

<210> SEQ ID NO 49  
<211> LENGTH: 9  
<212> TYPE: PRT  
<213> ORGANISM: Homo sapiens

---

-continued

---

<220> FEATURE:  
<223> OTHER INFORMATION: Residues 709-717 of the TADG-15 protein

<400> SEQUENCE: 49

Asp Tyr Asp Ile Ala Leu Leu Glu Leu  
5

<210> SEQ ID NO 50  
<211> LENGTH: 9  
<212> TYPE: PRT  
<213> ORGANISM: Homo sapiens  
<220> FEATURE:  
<223> OTHER INFORMATION: Residues 408-416 of the TADG-15 protein

<400> SEQUENCE: 50

Lys Tyr Cys Gly Glu Arg Ser Gln Phe  
5

<210> SEQ ID NO 51  
<211> LENGTH: 9  
<212> TYPE: PRT  
<213> ORGANISM: Homo sapiens  
<220> FEATURE:  
<223> OTHER INFORMATION: Residues 754-762 of the TADG-15 protein

<400> SEQUENCE: 51

Gln Tyr Gly Gly Thr Gly Ala Leu Ile  
5

<210> SEQ ID NO 52  
<211> LENGTH: 9  
<212> TYPE: PRT  
<213> ORGANISM: Homo sapiens  
<220> FEATURE:  
<223> OTHER INFORMATION: Residues 153-161 of the TADG-15 protein

<400> SEQUENCE: 52

Ala Tyr Tyr Trp Ser Glu Phe Ser Ile  
5

<210> SEQ ID NO 53  
<211> LENGTH: 9  
<212> TYPE: PRT  
<213> ORGANISM: Homo sapiens  
<220> FEATURE:  
<223> OTHER INFORMATION: Residues 722-730 of the TADG-15 protein

<400> SEQUENCE: 53

Glu Tyr Ser Ser Met Val Arg Pro Ile  
5

<210> SEQ ID NO 54  
<211> LENGTH: 9  
<212> TYPE: PRT  
<213> ORGANISM: Homo sapiens  
<220> FEATURE:  
<223> OTHER INFORMATION: Residues 326-334 of the TADG-15 protein

<400> SEQUENCE: 54

Gly Phe Glu Ala Thr Phe Phe Gln Leu  
5

<210> SEQ ID NO 55  
<211> LENGTH: 9  
<212> TYPE: PRT  
<213> ORGANISM: Homo sapiens  
<220> FEATURE:

-continued

---

<223> OTHER INFORMATION: Residues 304-312 of the TADG-15 protein

<400> SEQUENCE: 55

Thr Phe His Ser Ser Gln Asn Val Leu  
5

<210> SEQ ID NO 56

<211> LENGTH: 9

<212> TYPE: PRT

<213> ORGANISM: Homo sapiens

<220> FEATURE:

<223> OTHER INFORMATION: Residues 707-715 of the TADG-15 protein

<400> SEQUENCE: 56

Thr Phe Asp Tyr Asp Ile Ala Leu Leu  
5

<210> SEQ ID NO 57

<211> LENGTH: 9

<212> TYPE: PRT

<213> ORGANISM: Homo sapiens

<220> FEATURE:

<223> OTHER INFORMATION: Residues 21-29 of the TADG-15 protein

<400> SEQUENCE: 57

Lys Tyr Asn Ser Arg His Glu Lys Val  
5

<210> SEQ ID NO 58

<211> LENGTH: 9

<212> TYPE: PRT

<213> ORGANISM: Homo sapiens

<220> FEATURE:

<223> OTHER INFORMATION: Residues 665-673 of the TADG-15 protein

<400> SEQUENCE: 58

Arg Tyr Ser Asp Pro Thr Gln Trp Thr  
5

<210> SEQ ID NO 59

<211> LENGTH: 9

<212> TYPE: PRT

<213> ORGANISM: Homo sapiens

<220> FEATURE:

<223> OTHER INFORMATION: Residues 686-694 of the TADG-15 protein

<400> SEQUENCE: 59

Ala Pro Gly Val Gln Glu Arg Arg Leu  
5

<210> SEQ ID NO 60

<211> LENGTH: 9

<212> TYPE: PRT

<213> ORGANISM: Homo sapiens

<220> FEATURE:

<223> OTHER INFORMATION: Residues 12-20 of the TADG-15 protein

<400> SEQUENCE: 60

Gly Pro Lys Asp Phe Gly Ala Gly Leu  
5

<210> SEQ ID NO 61

<211> LENGTH: 9

<212> TYPE: PRT

<213> ORGANISM: Homo sapiens

<220> FEATURE:

<223> OTHER INFORMATION: Residues 668-676 of the TADG-15 protein

---

-continued

---

<400> SEQUENCE: 61

Asp Pro Thr Gln Trp Thr Ala Phe Leu  
5

<210> SEQ ID NO 62

<211> LENGTH: 9

<212> TYPE: PRT

<213> ORGANISM: Homo sapiens

<220> FEATURE:

<223> OTHER INFORMATION: Residues 461-469 of the TADG-15 protein

<400> SEQUENCE: 62

Thr Gly Arg Cys Ile Arg Lys Glu Leu  
5

<210> SEQ ID NO 63

<211> LENGTH: 9

<212> TYPE: PRT

<213> ORGANISM: Homo sapiens

<220> FEATURE:

<223> OTHER INFORMATION: Residues 59-67 of the TADG-15 protein

<400> SEQUENCE: 63

Ala Ala Val Leu Ile Gly Leu Leu Leu  
5

<210> SEQ ID NO 64

<211> LENGTH: 9

<212> TYPE: PRT

<213> ORGANISM: Homo sapiens

<220> FEATURE:

<223> OTHER INFORMATION: Residues 379-387 of the TADG-15 protein

<400> SEQUENCE: 64

Lys Val Ser Phe Lys Phe Phe Tyr Leu  
5

<210> SEQ ID NO 65

<211> LENGTH: 9

<212> TYPE: PRT

<213> ORGANISM: Homo sapiens

<220> FEATURE:

<223> OTHER INFORMATION: Residues 119-127 of the TADG-15 protein

<400> SEQUENCE: 65

Lys Val Lys Asp Ala Leu Lys Leu Leu  
5

<210> SEQ ID NO 66

<211> LENGTH: 9

<212> TYPE: PRT

<213> ORGANISM: Homo sapiens

<220> FEATURE:

<223> OTHER INFORMATION: Residues 780-788 of the TADG-15 protein

<400> SEQUENCE: 66

Leu Pro Gln Gln Ile Thr Pro Arg Met  
5

<210> SEQ ID NO 67

<211> LENGTH: 9

<212> TYPE: PRT

<213> ORGANISM: Homo sapiens

<220> FEATURE:

<223> OTHER INFORMATION: Residues 67-75 of the TADG-15 protein

---

-continued

---

<400> SEQUENCE: 67

Leu Val Leu Leu Gly Ile Gly Phe Leu  
5

<210> SEQ ID NO 68

<211> LENGTH: 9

<212> TYPE: PRT

<213> ORGANISM: Homo sapiens

<220> FEATURE:

<223> OTHER INFORMATION: Residues 283-291 of the TADG-15 protein

<400> SEQUENCE: 68

Ser Pro Met Glu Pro His Ala Leu Val  
5

<210> SEQ ID NO 69

<211> LENGTH: 9

<212> TYPE: PRT

<213> ORGANISM: Homo sapiens

<220> FEATURE:

<223> OTHER INFORMATION: Residues 12-20 of the TADG-15 protein

<400> SEQUENCE: 69

Gly Pro Lys Asp Phe Gly Ala Gly Leu  
5

<210> SEQ ID NO 70

<211> LENGTH: 9

<212> TYPE: PRT

<213> ORGANISM: Homo sapiens

<220> FEATURE:

<223> OTHER INFORMATION: Residues 257-265 of the TADG-15 protein

<400> SEQUENCE: 70

Ser Leu Thr Phe Arg Ser Phe Asp Leu  
5

<210> SEQ ID NO 71

<211> LENGTH: 9

<212> TYPE: PRT

<213> ORGANISM: Homo sapiens

<220> FEATURE:

<223> OTHER INFORMATION: Residues 180-188 of the TADG-15 protein

<400> SEQUENCE: 71

Met Leu Pro Pro Arg Ala Arg Ser Leu  
5

<210> SEQ ID NO 72

<211> LENGTH: 9

<212> TYPE: PRT

<213> ORGANISM: Homo sapiens

<220> FEATURE:

<223> OTHER INFORMATION: Residues 217-225 of the TADG-15 protein

<400> SEQUENCE: 72

Gly Leu His Ala Arg Gly Val Glu Leu  
5

<210> SEQ ID NO 73

<211> LENGTH: 9

<212> TYPE: PRT

<213> ORGANISM: Homo sapiens

<220> FEATURE:

<223> OTHER INFORMATION: Residues 173-181 of the TADG-15 protein

<400> SEQUENCE: 73

---

-continued

---

Met Ala Glu Glu Arg Val Val Met Leu  
5

<210> SEQ ID NO 74  
<211> LENGTH: 9  
<212> TYPE: PRT  
<213> ORGANISM: Homo sapiens  
<220> FEATURE:  
<223> OTHER INFORMATION: Residues 267-275 of the TADG-15 protein  
  
<400> SEQUENCE: 74

Ser Cys Asp Glu Arg Gly Ser Asp Leu  
5

<210> SEQ ID NO 75  
<211> LENGTH: 9  
<212> TYPE: PRT  
<213> ORGANISM: Homo sapiens  
<220> FEATURE:  
<223> OTHER INFORMATION: Residues 567-575 of the TADG-15 protein  
  
<400> SEQUENCE: 75

Cys Thr Lys His Thr Tyr Arg Cys Leu  
5

<210> SEQ ID NO 76  
<211> LENGTH: 9  
<212> TYPE: PRT  
<213> ORGANISM: Homo sapiens  
<220> FEATURE:  
<223> OTHER INFORMATION: Residues 724-732 of the TADG-15 protein  
  
<400> SEQUENCE: 76

Ser Ser Met Val Arg Pro Ile Cys Leu  
5

<210> SEQ ID NO 77  
<211> LENGTH: 9  
<212> TYPE: PRT  
<213> ORGANISM: Homo sapiens  
<220> FEATURE:  
<223> OTHER INFORMATION: Residues 409-417 of the TADG-15 protein  
  
<400> SEQUENCE: 77

Tyr Cys Gly Glu Arg Ser Gln Phe Val  
5

<210> SEQ ID NO 78  
<211> LENGTH: 9  
<212> TYPE: PRT  
<213> ORGANISM: Homo sapiens  
<220> FEATURE:  
<223> OTHER INFORMATION: Residues 495-503 of the TADG-15 protein  
  
<400> SEQUENCE: 78

Thr Cys Lys Asn Lys Phe Cys Lys Pro  
5

<210> SEQ ID NO 79  
<211> LENGTH: 9  
<212> TYPE: PRT  
<213> ORGANISM: Homo sapiens  
<220> FEATURE:  
<223> OTHER INFORMATION: Residues 427-435 of the TADG-15 protein  
  
<400> SEQUENCE: 79

-continued

---

Val Arg Phe His Ser Asp Gln Ser Tyr  
5

<210> SEQ ID NO 80  
<211> LENGTH: 9  
<212> TYPE: PRT  
<213> ORGANISM: Homo sapiens  
<220> FEATURE:  
<223> OTHER INFORMATION: Residues 695-703 of the TADG-15 protein  
  
<400> SEQUENCE: 80

Lys Arg Ile Ile Ser His Pro Phe Phe  
5

<210> SEQ ID NO 81  
<211> LENGTH: 9  
<212> TYPE: PRT  
<213> ORGANISM: Homo sapiens  
<220> FEATURE:  
<223> OTHER INFORMATION: Residues 664-672 of the TADG-15 protein  
  
<400> SEQUENCE: 81

Phe Arg Tyr Ser Asp Pro Thr Gln Trp  
5

<210> SEQ ID NO 82  
<211> LENGTH: 9  
<212> TYPE: PRT  
<213> ORGANISM: Homo sapiens  
<220> FEATURE:  
<223> OTHER INFORMATION: Residues 220-228 of the TADG-15 protein  
  
<400> SEQUENCE: 82

Ala Arg Gly Val Glu Leu Met Arg Phe  
5

<210> SEQ ID NO 83  
<211> LENGTH: 9  
<212> TYPE: PRT  
<213> ORGANISM: Homo sapiens  
<220> FEATURE:  
<223> OTHER INFORMATION: Residues 492-500 of the TADG-15 protein  
  
<400> SEQUENCE: 83

His Gln Phe Thr Cys Lys Asn Lys Phe  
5

<210> SEQ ID NO 84  
<211> LENGTH: 9  
<212> TYPE: PRT  
<213> ORGANISM: Homo sapiens  
<220> FEATURE:  
<223> OTHER INFORMATION: Residues 53-61 of the TADG-15 protein  
  
<400> SEQUENCE: 84

Gly Arg Trp Val Val Leu Ala Ala Val  
5

<210> SEQ ID NO 85  
<211> LENGTH: 9  
<212> TYPE: PRT  
<213> ORGANISM: Homo sapiens  
<220> FEATURE:  
<223> OTHER INFORMATION: Residues 248-256 of the TADG-15 protein  
  
<400> SEQUENCE: 85

Leu Arg Gly Asp Ala Asp Ser Val Leu

-continued

5

<210> SEQ ID NO 86  
<211> LENGTH: 9  
<212> TYPE: PRT  
<213> ORGANISM: Homo sapiens  
<220> FEATURE:  
<223> OTHER INFORMATION: Residues 572-580 of the TADG-15 protein  
  
<400> SEQUENCE: 86

Tyr Arg Cys Leu Asn Gly Leu Cys Leu  
5

<210> SEQ ID NO 87  
<211> LENGTH: 9  
<212> TYPE: PRT  
<213> ORGANISM: Homo sapiens  
<220> FEATURE:  
<223> OTHER INFORMATION: Residues 692-700 of the TADG-15 protein  
  
<400> SEQUENCE: 87

Arg Arg Leu Lys Arg Ile Ile Ser His  
5

<210> SEQ ID NO 88  
<211> LENGTH: 9  
<212> TYPE: PRT  
<213> ORGANISM: Homo sapiens  
<220> FEATURE:  
<223> OTHER INFORMATION: Residues 24-32 of the TADG-15 protein  
  
<400> SEQUENCE: 88

Ser Arg His Glu Lys Val Asn Gly Leu  
5

<210> SEQ ID NO 89  
<211> LENGTH: 9  
<212> TYPE: PRT  
<213> ORGANISM: Homo sapiens  
<220> FEATURE:  
<223> OTHER INFORMATION: Residues 147-155 of the TADG-15 protein  
  
<400> SEQUENCE: 89

Ser Glu Gly Ser Val Ile Ala Tyr Tyr  
5

<210> SEQ ID NO 90  
<211> LENGTH: 9  
<212> TYPE: PRT  
<213> ORGANISM: Homo sapiens  
<220> FEATURE:  
<223> OTHER INFORMATION: Residues 715-723 of the TADG-15 protein  
  
<400> SEQUENCE: 90

Leu Glu Leu Glu Lys Pro Ala Glu Tyr  
5

<210> SEQ ID NO 91  
<211> LENGTH: 9  
<212> TYPE: PRT  
<213> ORGANISM: Homo sapiens  
<220> FEATURE:  
<223> OTHER INFORMATION: Residues 105-113 of the TADG-15 protein  
  
<400> SEQUENCE: 91

Tyr Glu Asn Ser Asn Ser Thr Glu Phe  
5

---

-continued

---

<210> SEQ ID NO 92  
<211> LENGTH: 9  
<212> TYPE: PRT  
<213> ORGANISM: Homo sapiens  
<220> FEATURE:  
<223> OTHER INFORMATION: Residues 14-22 of the TADG-15 protein

<400> SEQUENCE: 92

Lys Asp Phe Gly Ala Gly Leu Lys Tyr  
5

<210> SEQ ID NO 93  
<211> LENGTH: 9  
<212> TYPE: PRT  
<213> ORGANISM: Homo sapiens  
<220> FEATURE:  
<223> OTHER INFORMATION: Residues 129-137 of the TADG-15 protein

<400> SEQUENCE: 93

Ser Gly Val Pro Phe Leu Gly Pro Tyr  
5

<210> SEQ ID NO 94  
<211> LENGTH: 9  
<212> TYPE: PRT  
<213> ORGANISM: Homo sapiens  
<220> FEATURE:  
<223> OTHER INFORMATION: Residues 436-444 of the TADG-15 protein

<400> SEQUENCE: 94

Thr Asp Thr Gly Phe Leu Ala Glu Tyr  
5

<210> SEQ ID NO 95  
<211> LENGTH: 9  
<212> TYPE: PRT  
<213> ORGANISM: Homo sapiens  
<220> FEATURE:  
<223> OTHER INFORMATION: Residues 766-774 of the TADG-15 protein

<400> SEQUENCE: 95

Gly Glu Ile Arg Val Ile Asn Gln Thr  
5

<210> SEQ ID NO 96  
<211> LENGTH: 9  
<212> TYPE: PRT  
<213> ORGANISM: Homo sapiens  
<220> FEATURE:  
<223> OTHER INFORMATION: Residues 402-410 of the TADG-15 protein

<400> SEQUENCE: 96

Val Glu Ile Asn Gly Glu Lys Tyr Cys  
5

<210> SEQ ID NO 97  
<211> LENGTH: 9  
<212> TYPE: PRT  
<213> ORGANISM: Homo sapiens  
<220> FEATURE:  
<223> OTHER INFORMATION: Residues 482-490 of the TADG-15 protein

<400> SEQUENCE: 97

Asp Glu Leu Asn Cys Ser Cys Asp Ala  
5

-continued

<210> SEQ ID NO 98  
 <211> LENGTH: 9  
 <212> TYPE: PRT  
 <213> ORGANISM: Homo sapiens  
 <220> FEATURE:  
 <223> OTHER INFORMATION: Residues 82-90 of the TADG-15 protein

<400> SEQUENCE: 98

Arg Asp Val Arg Val Gln Lys Val Phe  
 5

What is claimed is:

1. A method for detecting TADG-15 mRNA in a sample, comprising the steps of:

(a) contacting a sample with a probe, wherein said probe is specific for TADG-15 mRNA transcribed from SEQ ID NO: 1; and

(b) detecting binding of said probe to said TADG-15 mRNA in said sample.

2. The method of claim 1, wherein said sample is a biological sample.

3. The method of claim 2, wherein said biological sample is from an individual.

4. The method of claim 3, wherein said individual is suspected of having cancer.

5. A kit for detecting TADG-15 mRNA, comprising: an oligonucleotide probe, wherein said probe is specific for TADG-15 mRNA transcribed from SEQ ID NO: 1.

6. The kit of claim 5, further comprising: a label with which to label said probe.

7. A method of diagnosing cancer in an individual, comprising the steps of:

(a) obtaining a biological sample from an individual;

(b) detecting TADG-15 DNA of SEQ ID NO: 1 or TADG-15 mRNA transcribed from said TADG-15

DNA in said sample, wherein presence of said TADG-15 DNA or said TADG-15 mRNA in said sample is indicative of the presence of carcinoma in said individual, wherein the absence of said TADG-15 DNA or said TADG-15 mRNA in said sample is indicative of the absence of carcinoma in said individual.

8. The method of claim 7, wherein said biological sample is selected from the group consisting of blood, urine, saliva, tears, interstitial fluid, tumor tissue biopsy and circulating tumor cells.

9. The method of claim 7, wherein said detection of said TADG-15 DNA or said TADG-15 mRNA is by means selected from the group consisting of Northern blot, RT-PCR and DNA array chips.

10. The method of claim 7, wherein said carcinoma is selected from the group consisting of ovarian, breast, lung, colon, prostate and others in which TADG-15 is overexpressed.

\* \* \* \* \*

专利名称(译)	TADG-15 : 在癌中过表达的细胞外丝氨酸蛋白酶		
公开(公告)号	<a href="#">US7291462</a>	公开(公告)日	2007-11-06
申请号	US10/600187	申请日	2003-06-20
[标]申请(专利权)人(译)	OBRIEN TIMOTHY J 谷本博敏		
申请(专利权)人(译)	奥布莱恩TIMOTHY J. 谷本博敏		
当前申请(专利权)人(译)	阿肯色医学科学大学		
[标]发明人	OBRIEN TIMOTHY J TANIMOTO HIROTOSHI		
发明人	O'BRIEN, TIMOTHY J. TANIMOTO, HIROTOSHI		
IPC分类号	C12Q1/68 C12Q1/00 G01N21/00 G01N21/75 G01N33/48 G01N33/53 G01N33/574 A61K38/00 C07K14/00 C12N15/00 C12N15/09 C12N15/63 C12N15/70 C12N15/74 A61K39/00 C12N9/64		
CPC分类号	C12N9/6424 C12Q1/6886 A61K39/00 Y10T436/25 C12Q2600/136 C12Q1/6851		
代理机构(译)	ADLER , BENJAMIN A.		
其他公开文献	US20040086910A1		
外部链接	<a href="#">Espacenet</a> <a href="#">USPTO</a>		

摘要(译)

本发明提供了编码TADG-15蛋白质以及TADG-15蛋白质的DNA。还提供了能够表达适于在重组细胞中表达的本发明的DNA的载体和在细胞中表达DNA所必需的调节元件。本发明还提供抑制TADG-15表达和/或蛋白酶活性的方法，检测TADG-15 mRNA和/或蛋白质的方法以及筛选TADG-15抑制剂的方法。另外，本发明提供了通过TADG-15的细胞特异性靶向和针对TADG-15接种个体的方法。所述方法可用于癌症，特别是乳腺癌和卵巢癌的诊断，治疗和预防。

```

Heps RIVGSDTSL GEPHWQVSL...RVDG-A HLCGGSLIAG DWLITRACF TE...NRVY
Tadg15 RVVGTDADE GEPHWQVSL...RDLGQS HICRSTLIP WLVSNARCY IDDRGERSYD
Sce KIIDGACAR GSHWQVAL...LSSVOL H.CGGVINE RAVLITRAC. ....K
Try KIVGYNCE NSYQVQSL...NSRVEF..CGSSLINE QWVNSAGC. ....Y
Chyb KIVNEDNVP GSHWQVSL...QKRTGF HFQGGSLISE DQVITRAC. ....GV
Fac1 RIVGSDTCK GEPHWQVLL...LVNG-A QLCGGTLIMT IIVVSNARCF DKIKWNRLLI
Tpa RIKGGLEFADI ASHWQVALF AKHNSRPFGR FLGGGSLIAG CWLISARCF QEPPEPHL...
Heps LGRRVFVFGA VAQAPRSLQ LGVQVWVHG GYLPRFRPNS ERNSDIALV HLES.PELET
Tadg15 PTWETRELIHL HDNSQSRAG VQERLAKRLL SHPEFDQTF D...YDIALI ELES.FAPIS
Sce MNETVHLGAS DTUG..DR.F AGRYASRGSF RHEFISTQI...HNDMEVY KEMS.QARLS
Try KSRIQWLEGE ENHEVLEG.N EPTIMAKRLL RHPQDKRT..LINDMILLI KLESS.RAVIN
Chyb RTSUNWVAGE FVAGSDDE.N IGVITAKVVF KMRKESITL...VNDUILLI KLAT.PAGES
Fac1 .....NVIGE HULSEHDEE QSRVAQVII P....STVY GTTHEDRALL RHDQ.PVUI
Tpa .....FVILGR .TIRVPESE EKREVEKXI VHEEFDQPT D...NDIALL QLASDSSKCA
Heps EIVQVCLPA ...ACQALVD GRLCTVHG WQVYVQA.A GVLQENAVPI ISNDVNGAD
Tadg15 SWRETLCEP ...ASHVEFA GRALWVHG HWVQGTG.A LLDGKEIV INQICE..N
Sce SWKXVRLAS ...RCE..PF GTCTVSGWG FTTSQVWFF SOLMCDVRL ISPOQTVY.
Try RVVSTISLPT ...APP..AT GYKGLSNG WYASSAGVYF DELCCLDREY LSKAKCEAS.
Chyb QVVSANCLAS ...ADDFEA GTCAPVHG KIKINAKVPT DMLQQRAGFL LSKMECKRS.
Fac1 DNVVPLCLAE RRESRTLAF VRESLVGNG QLLRGRHAL EIVAVNVPRL NYDCCLOQR
Tpa QSSVWRTIC LPPANLQED WTECELSGVC KHEALSPYS ERLKRNHPL YPSSRCSQGH

```

Fig. 1A