



US 20050164197A1

(19) **United States**

(12) **Patent Application Publication** (10) **Pub. No.: US 2005/0164197 A1**

Kim et al. (43) **Pub. Date: Jul. 28, 2005**

(54) **METHOD FOR MEASURING THE AMOUNT OF BETAIG-H3 PROTEIN AND DIAGNOSTIC KIT USING THE SAME**

(52) **U.S. Cl. 435/6; 435/7.1**

(76) **Inventors: In-San Kim, Soosung-ku (KR); Jong-Sub Bae, Taegu (KR)**

(57) **ABSTRACT**

Correspondence Address:
LICATLA & TYRRELL P.C.
66 E. MAIN STREET
MARLTON, NJ 08053 (US)

The present invention relates to the method for measuring the amount of β ig-h3 protein and diagnostic kit using the same. Particularly, it relates to the method for measuring the amount of β ig-h3 protein in the body fluids by specific binding reaction between β ig-h3 protein or recombinant proteins of fas-1 domain in the β ig-h3 protein (including their fragments or their derivatives) and their ligands and relates to diagnostic kit for the renal diseases, hepatic diseases, rheumatoid arthritis or cardiovascular diseases comprising β ig-h3 protein or recombinant proteins of fas-1 domain in the β ig-h3 protein (including their fragments or their derivatives) and their ligands. The method and kit of the present invention can be effectively used as sensitive diagnostic method for the extent of damage or progress of the renal diseases, hepatic diseases, rheumatoid arthritis or cardiovascular diseases.

(21) **Appl. No.: 10/511,719**

(22) **PCT Filed: Oct. 22, 2002**

(86) **PCT No.: PCT/KR02/01975**

(30) **Foreign Application Priority Data**

Apr. 19, 2002 (KR) 2002/21488

Publication Classification

(51) **Int. Cl.⁷ C12Q 1/68; G01N 33/53**

FIG. 1

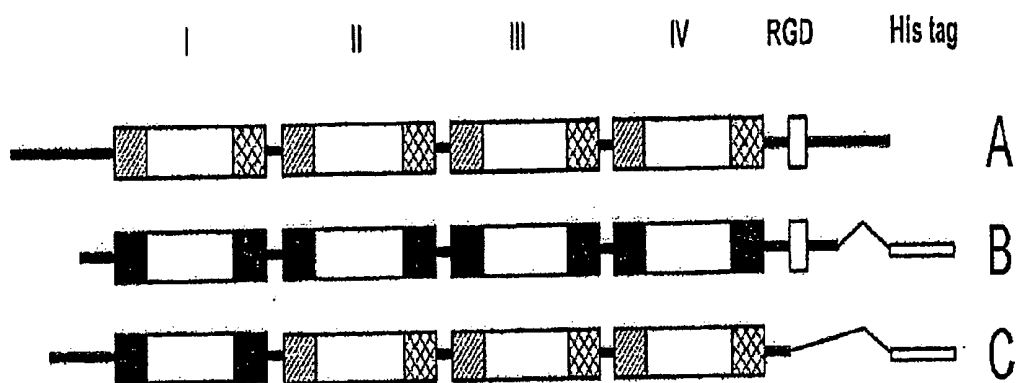


FIG. 2

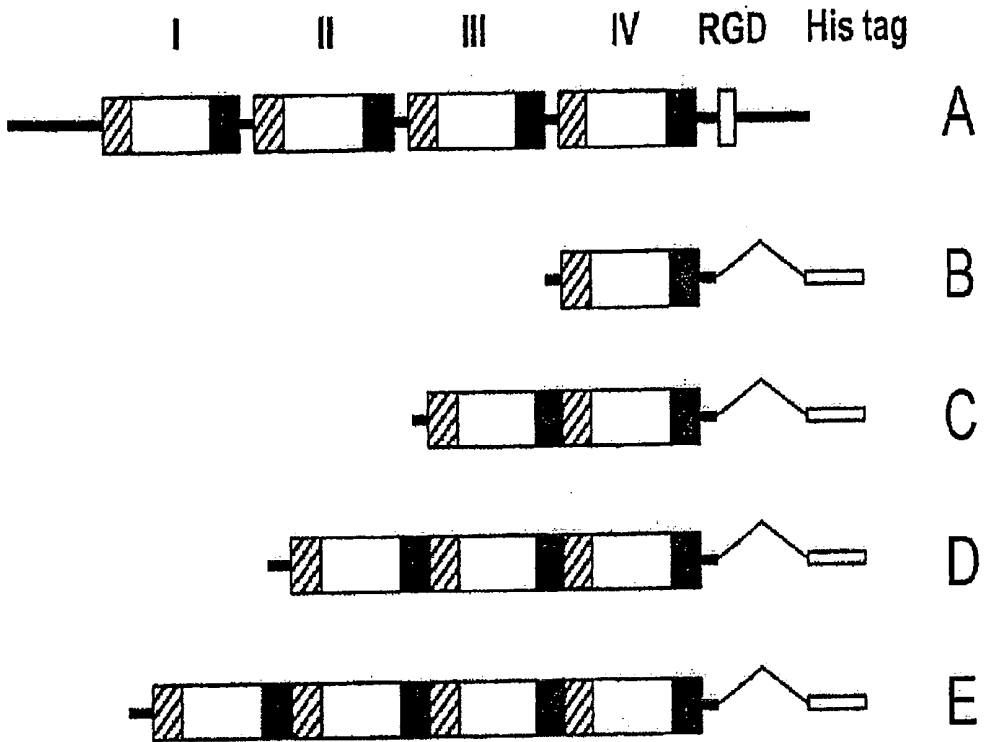


FIG. 3

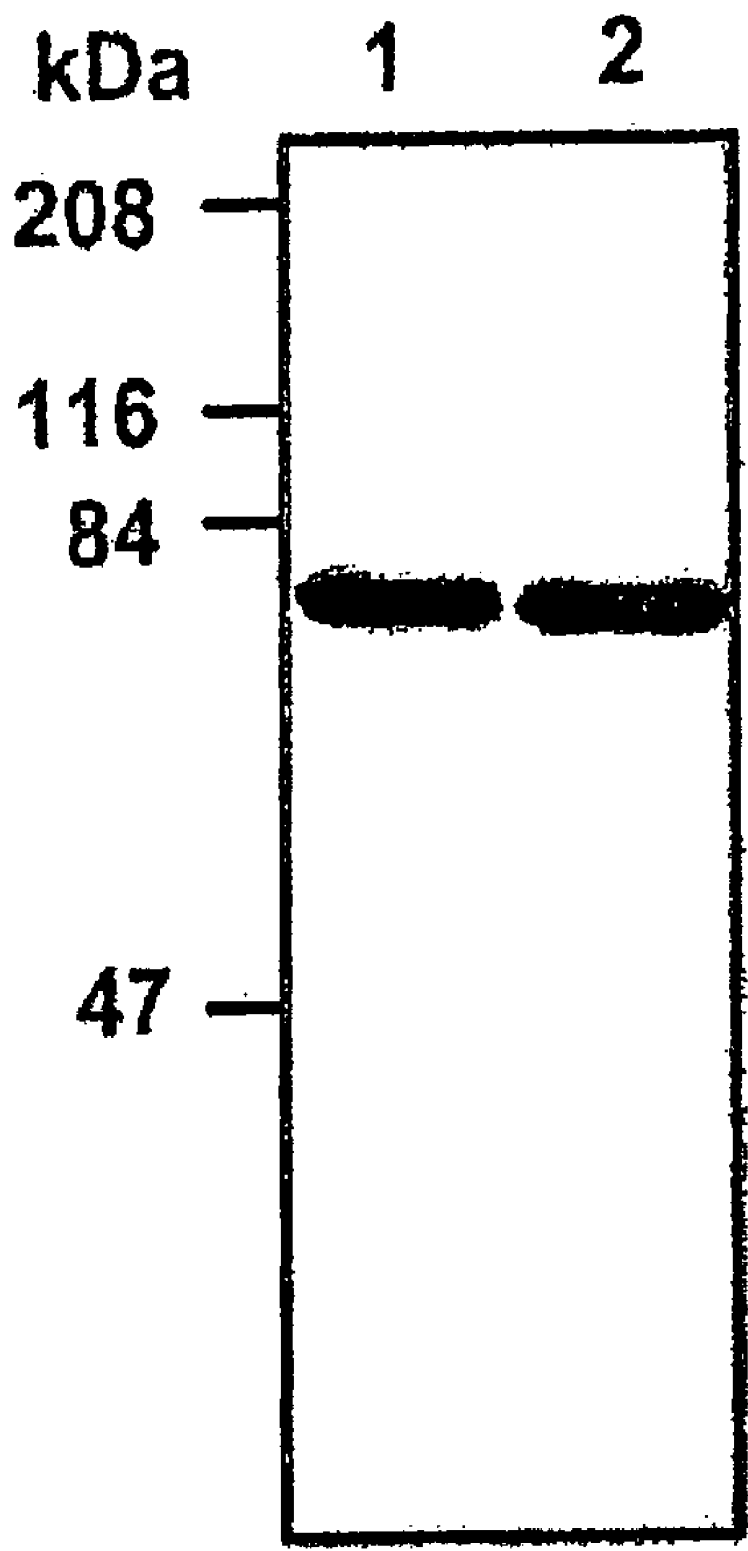


FIG. 4

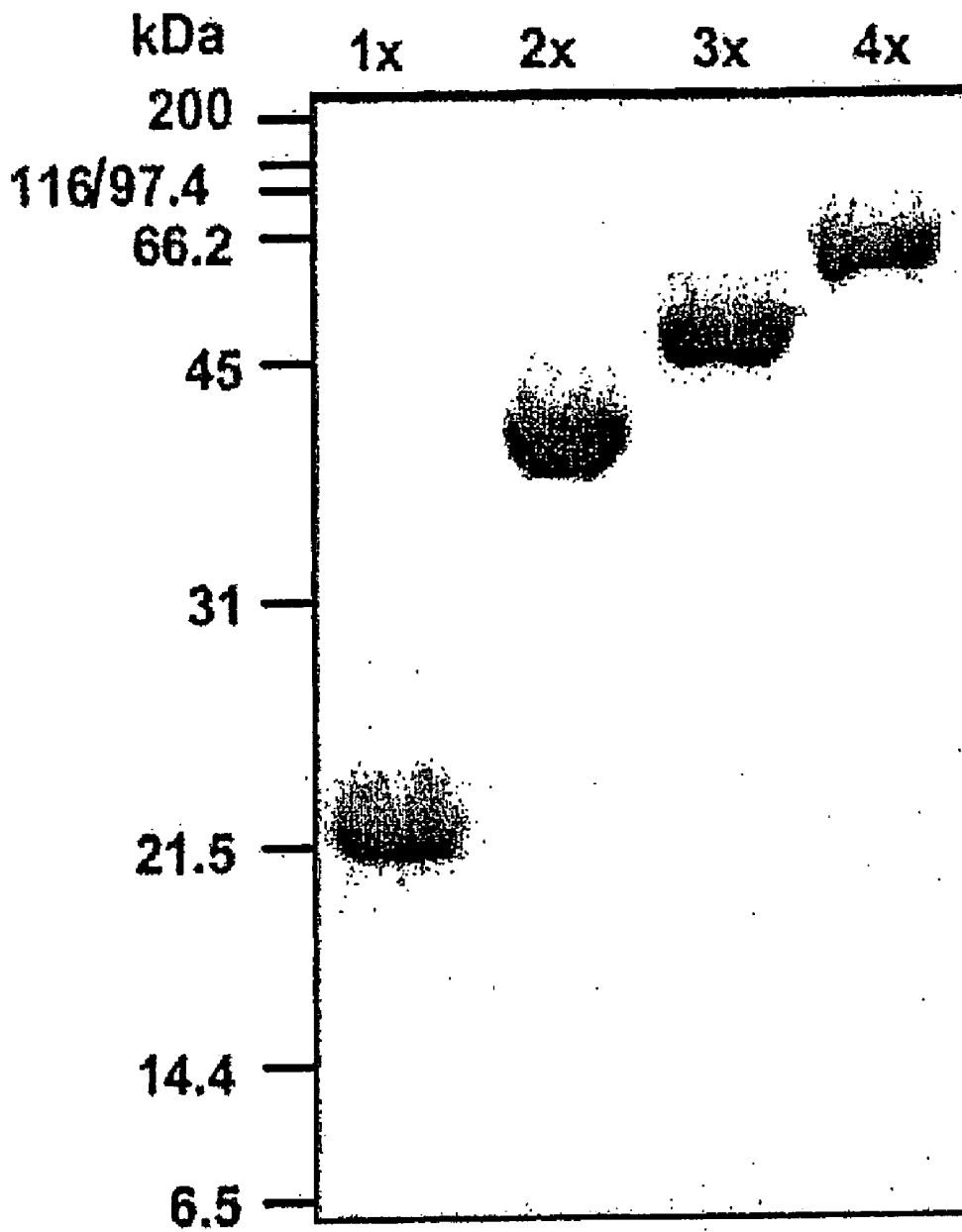


FIG. 5

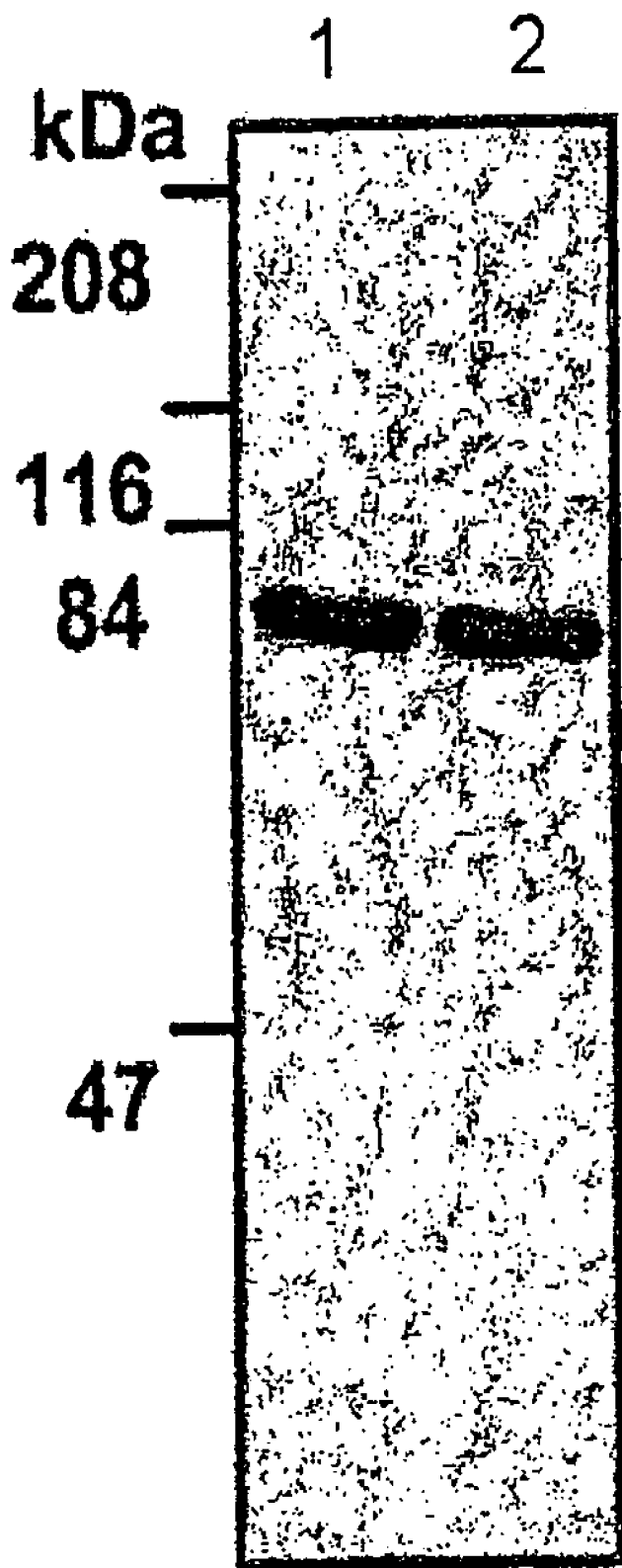


FIG. 6

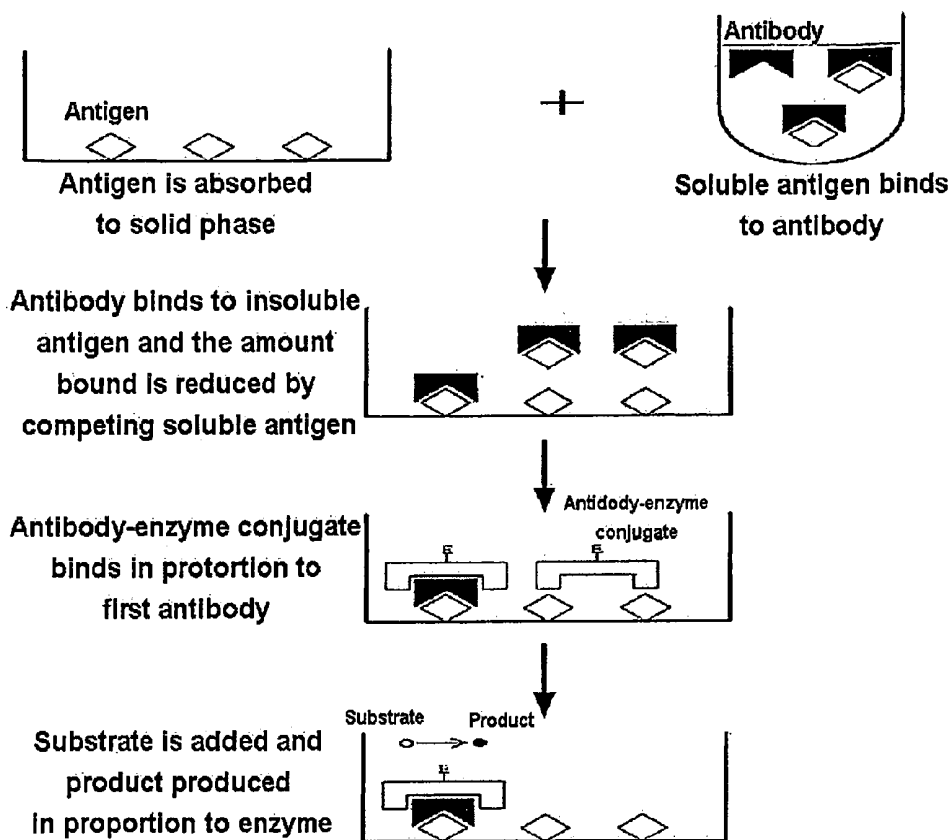


FIG. 7

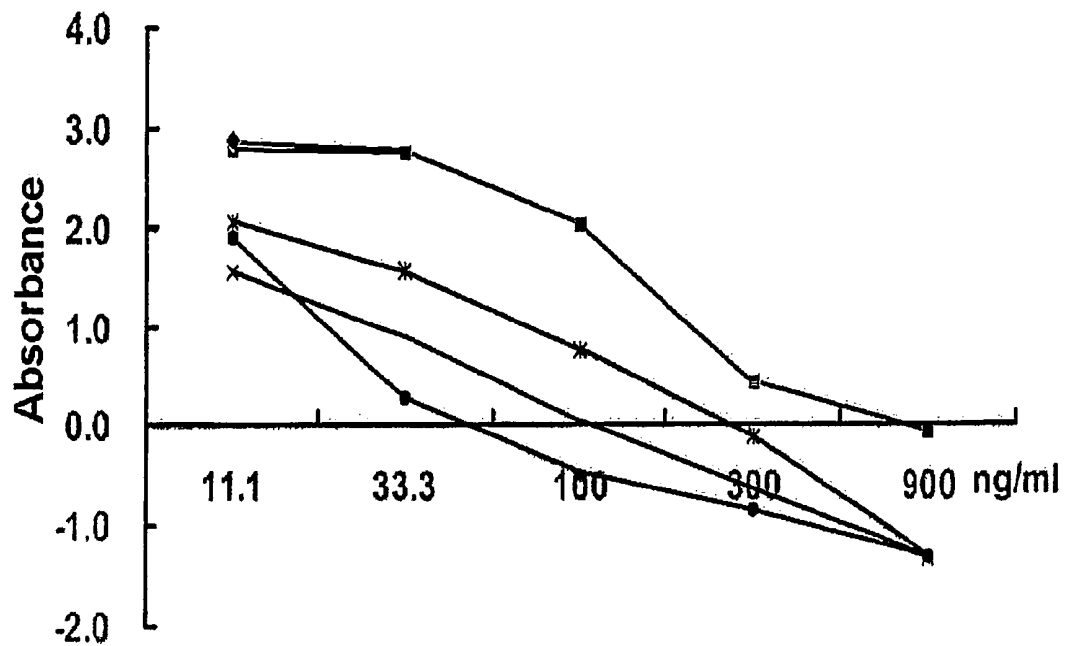


FIG. 8

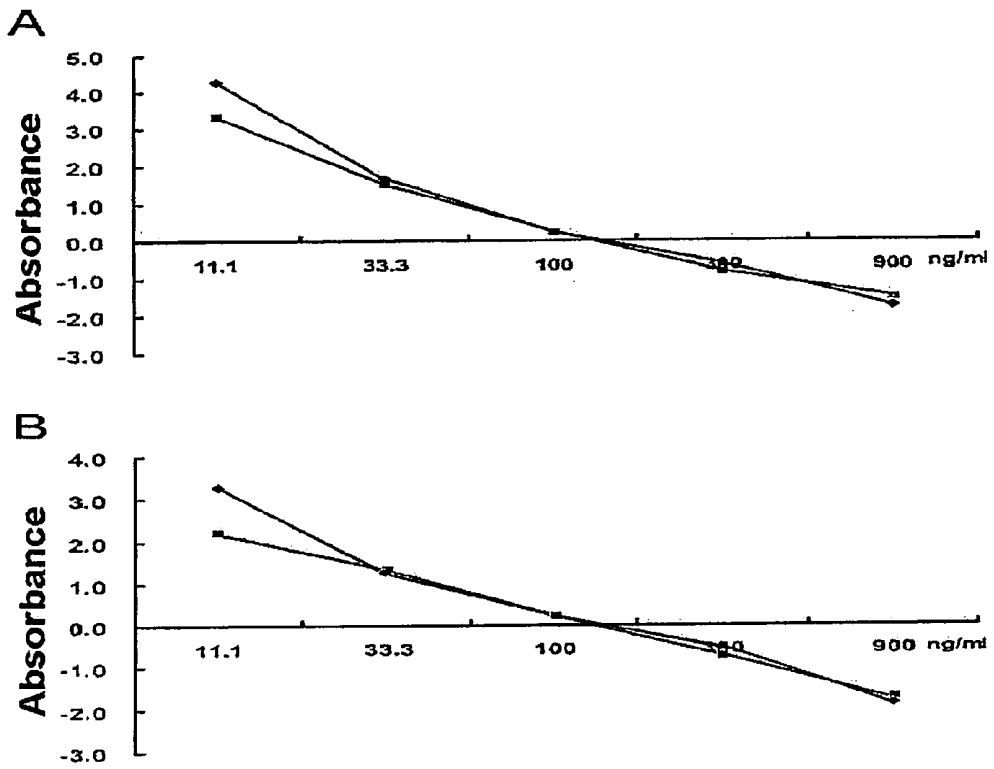


FIG. 9

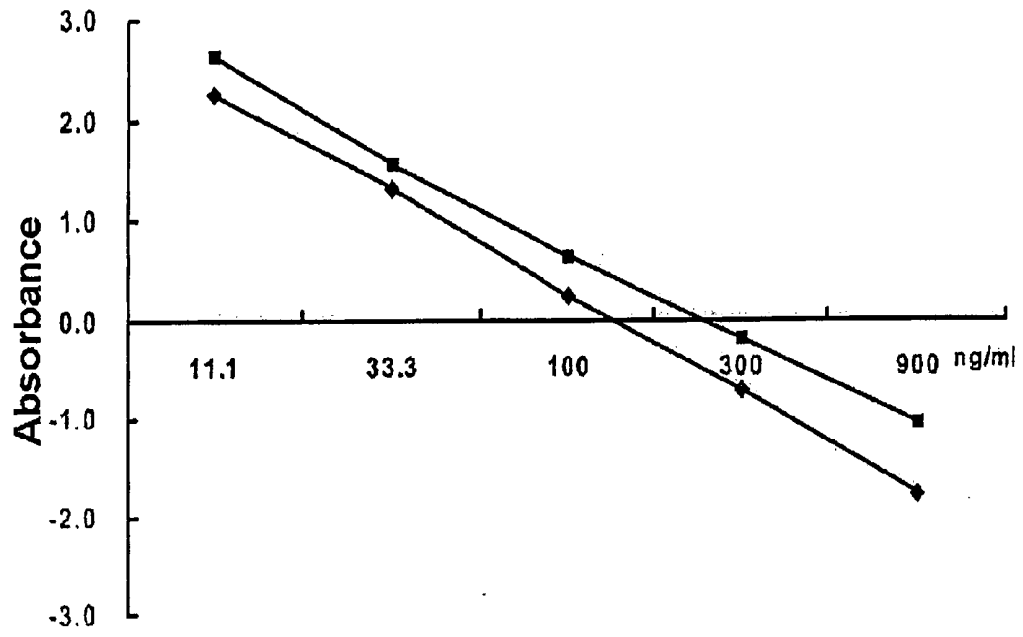


FIG. 10

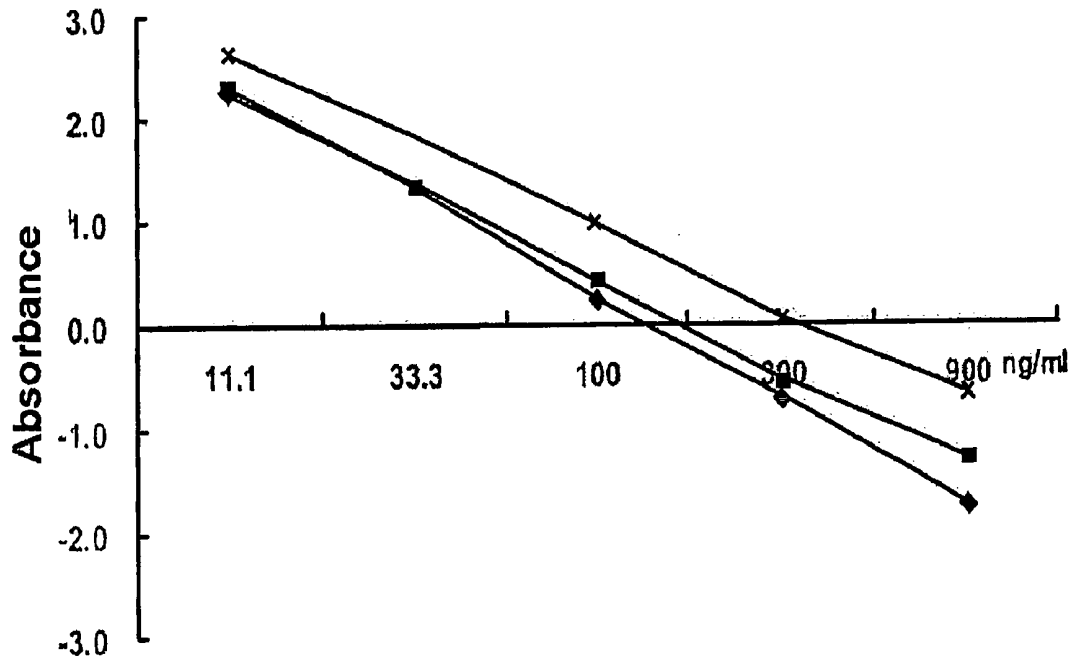


FIG. 11

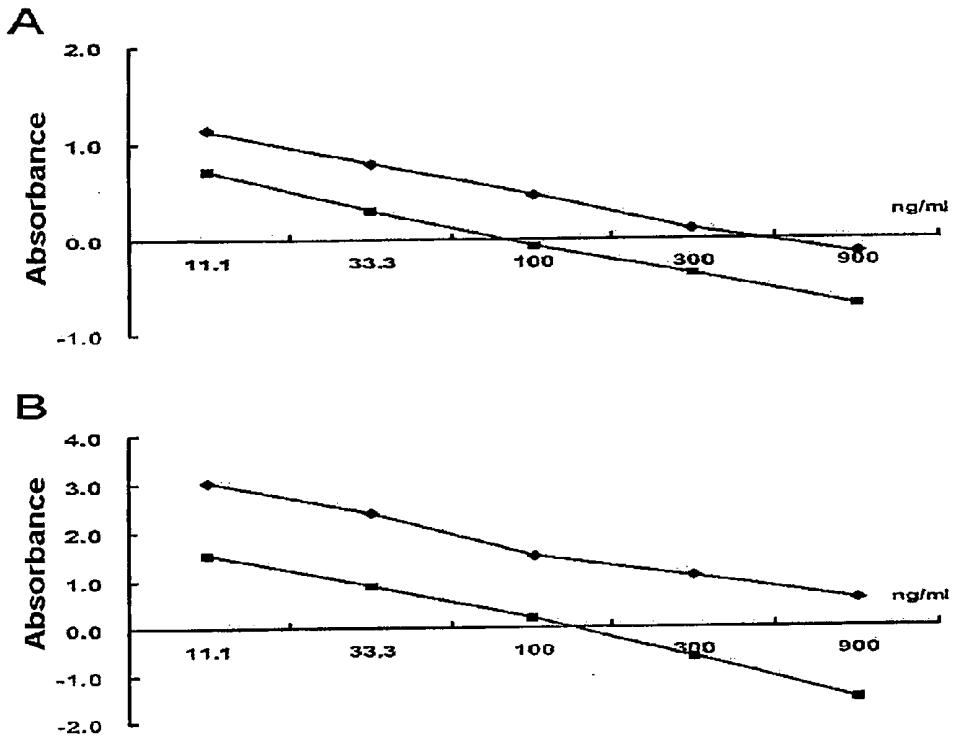


FIG. 12

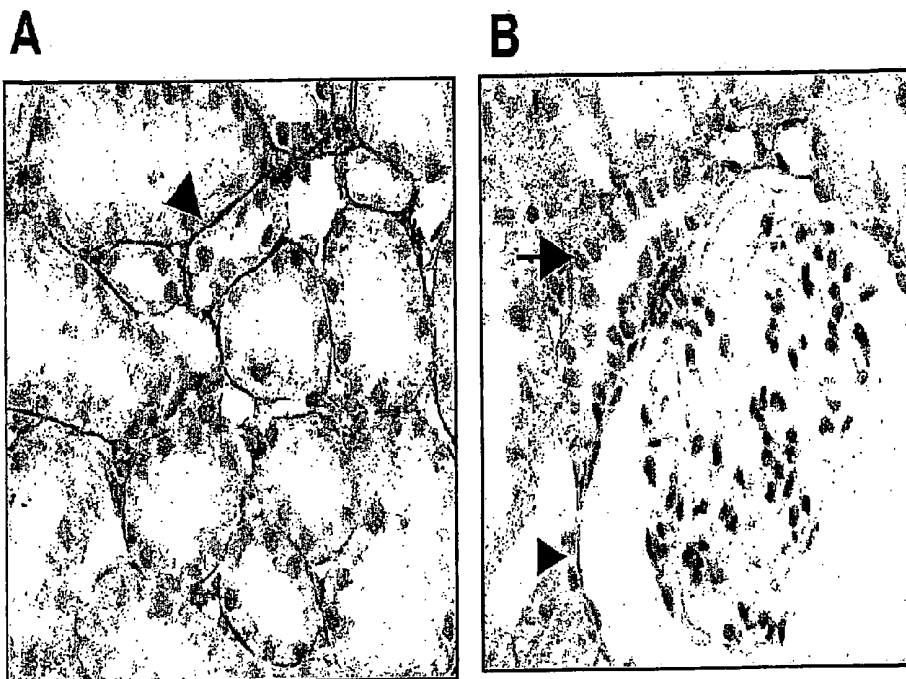


FIG. 13

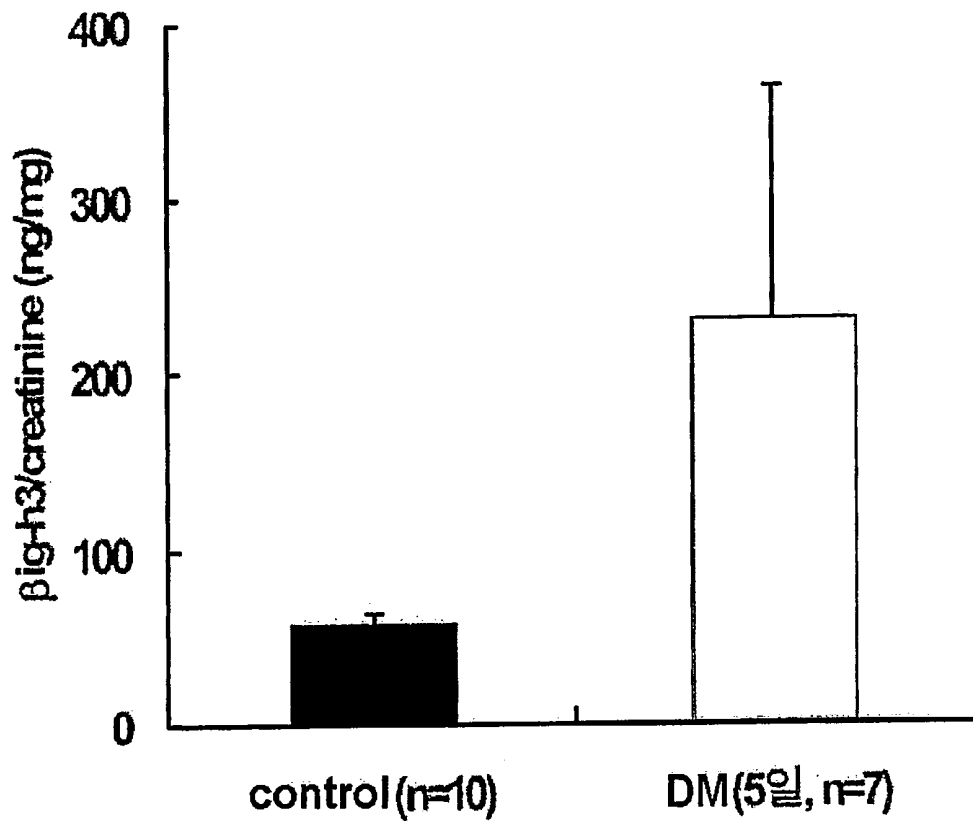


FIG. 14

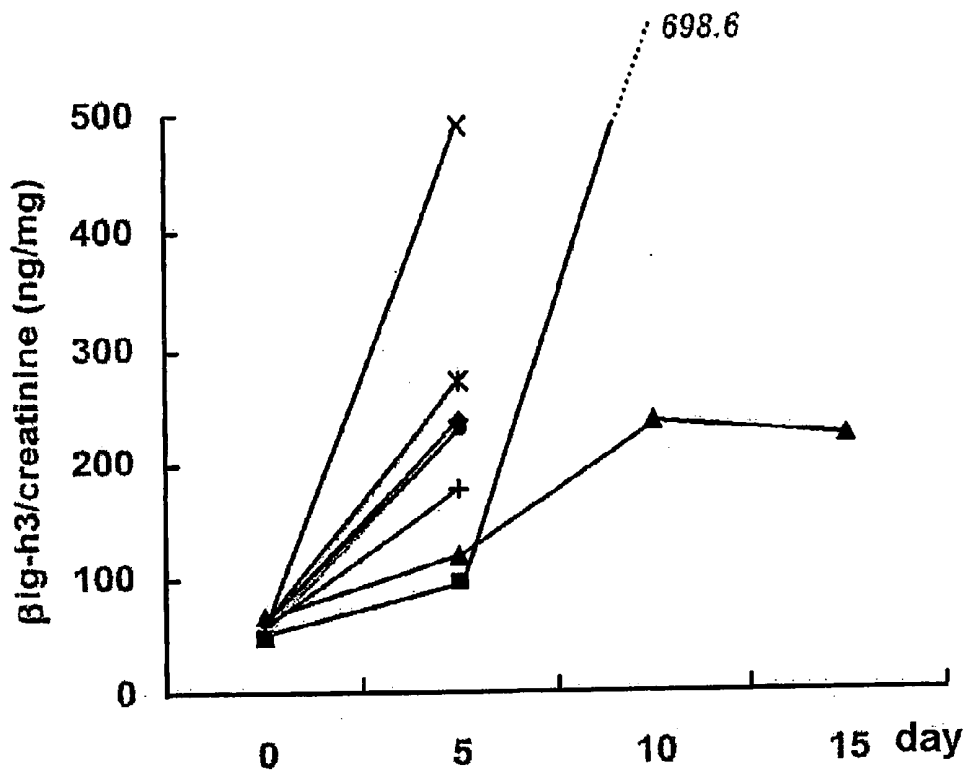


FIG. 15

β ig-h3 (ng/mg creatinine)

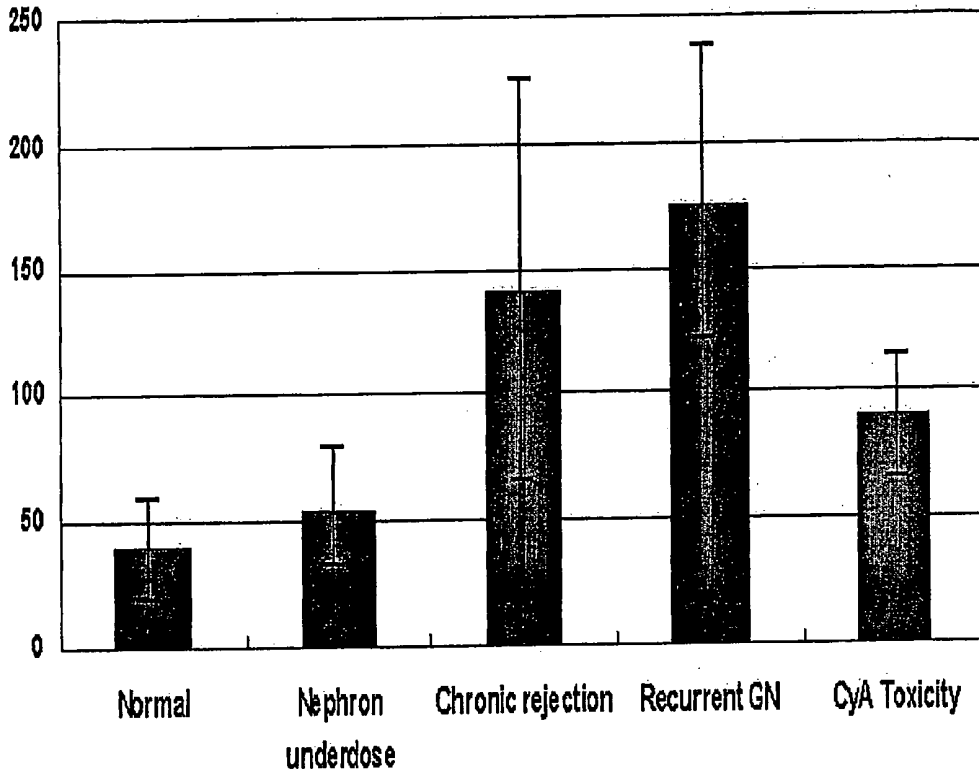


FIG. 16

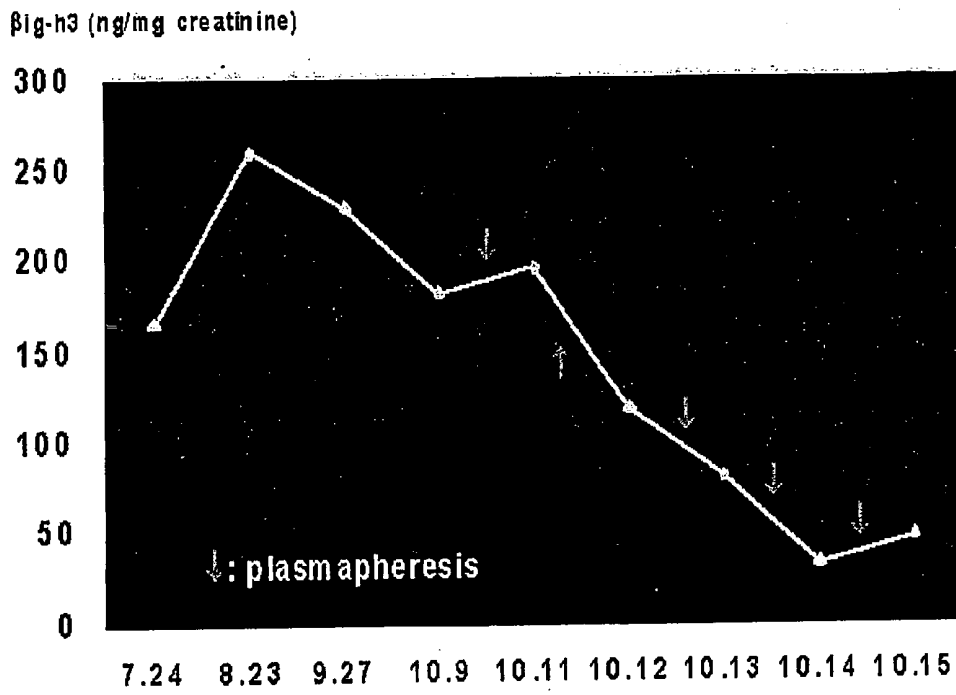


FIG. 17

Kidney Transplantation

— pIg-h3
 — Normal pIg-h3
 — S.creatinine
 — Normal S.creatinine

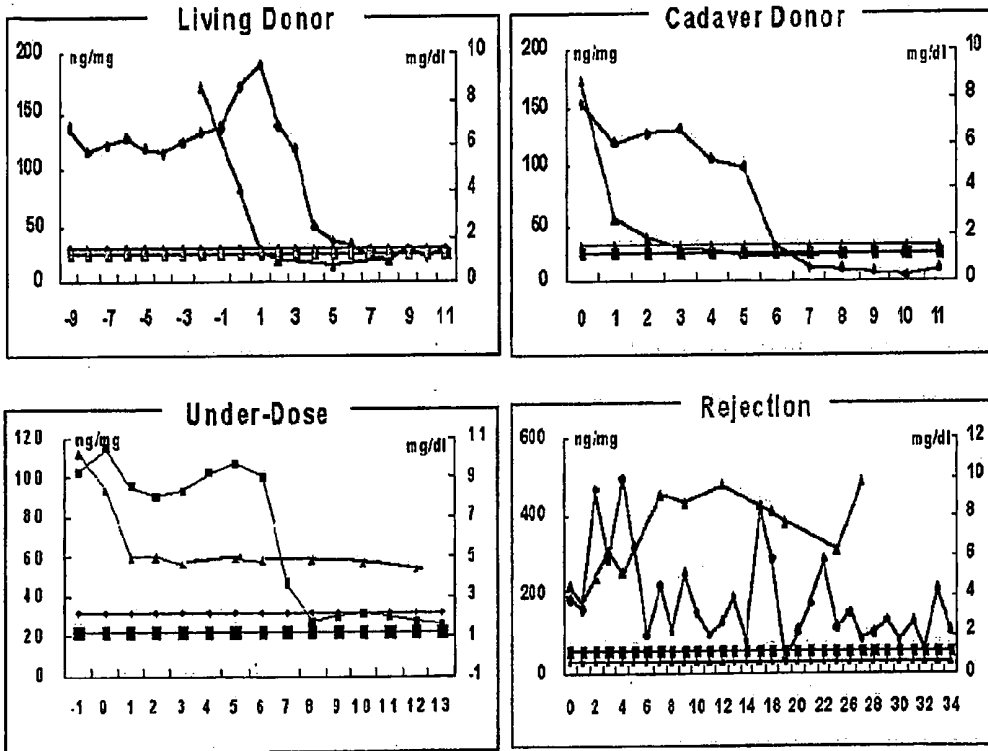


FIG. 18

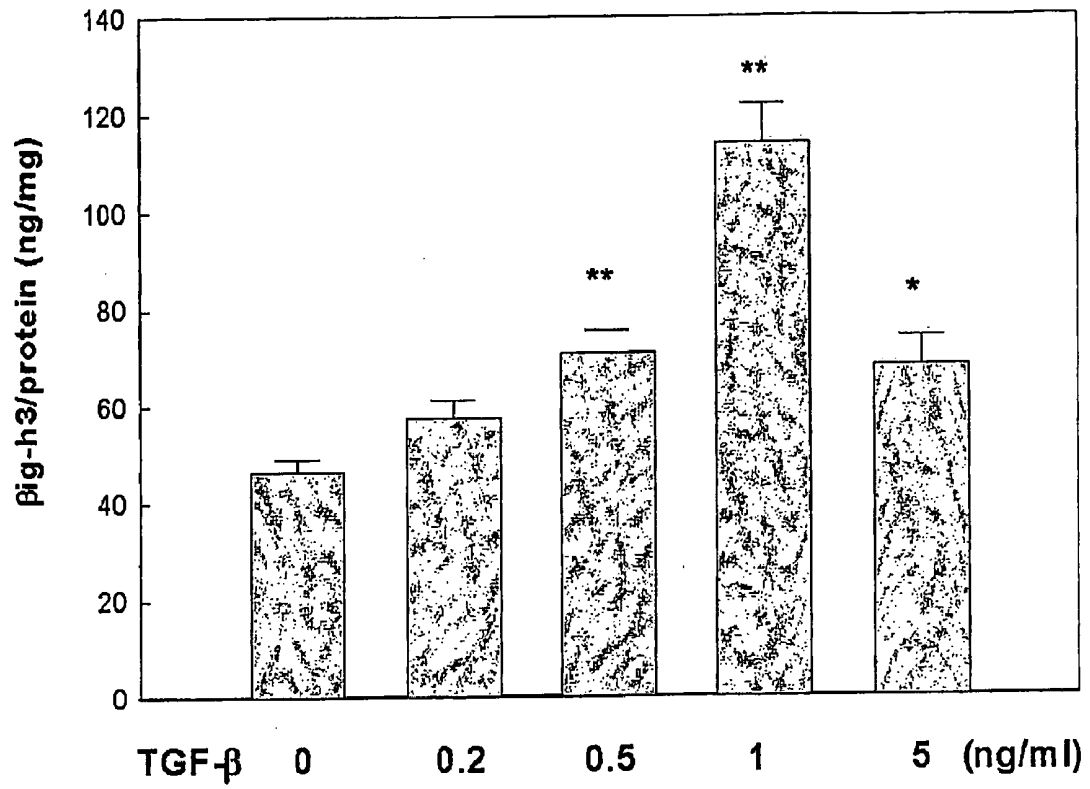


A. Normal tissue (x200)



B. Damaged tissue (x200)

FIG. 19



**METHOD FOR MEASURING THE AMOUNT OF
BETAIG-H3 PROTEIN AND DIAGNOSTIC KIT
USING THE SAME**

FIELD OF THE INVENTION

[0001] The present invention relates to a method for measuring the amount of β ig-h3 protein and diagnostic kit using the same. Particularly, it relates to a method for measuring the amount of β ig-h3 protein in the body fluids by specific binding reaction between β ig-h3, protein or recombinant proteins of fas-1 domain in the β ig-h3 protein (including their fragments or their derivatives) and their ligands and relates to diagnostic kit for the renal diseases, hepatic diseases, rheumatoid arthritis or cardiovascular diseases comprising β ig-h3 protein or recombinant proteins of fas-1 domain in the β ig-h3 protein (including their fragments or their derivatives) and their ligands.

BACKGROUND ART OF THE INVENTION

[0002] β ig-h3 is an extracellular matrix protein induced by TGF- β in many kinds of cells including human melanoma cells, mammary epithelial cells, keratinocytes and lung fibroblasts. TGF- β (transforming growth factor- β) is involved in the growth and differentiation of many kinds of cells and the mammals have three kinds of TGF- β (TGF- β 1, TGF- β 2 and TGF- β 3). The TGF- β has been known to have many sophisticated functions such as growth control, immune response regulation, stimulating bone-formation, inducing cartilage specific macromolecule, stimulating the wounding healing, etc (Bennett, N. T. et al., *Am. J. Surg.* 1993, 165, 728). TGF- α is expressed in epithelial cells during wound-healing, probably in order to stimulate the expression of integrin in keratinocytes during the regeneration of epithelial cells. Recent studies on TGF- β expression disclosed that TGF- β 3 mRNA is expressed both in epithelia of normal skin and in epithelia under recovery from acute or chronic wounds while TGF- β 1 mRNA is expressed only in regenerated epithelia from acute wounds and TGF- β 2 mRNA is not expressed at all (Schmid, P. et al., *J. Pathol.*, 1993, 171, 191). Though the concrete theory on the mechanism of the above has not been established yet, TGF- β is believed to play a key role in regeneration of epithelia.

[0003] β ig-h3, a TGF- β induced gene h3, was first found by Stonier et al. Precisely, the β ig-h3 was found during the search of cDNA library differential screening data from A549 cell line, a human lung adenocarcinoma cell line treated with TGF- β 1 and it was reported that β ig-h3 was 20-fold increased 2 days after TGF- β 1 treatment (Stonier, C. et al., *DNA cell Biol.*, 1992, 11, 511). It was also confirmed by DNA sequencing that β ig-h3 is composed of 683 amino acids represented by SEQ. ID. No 1 having amino-terminal secretory sequence and carboxy-terminal Arg-Gly-Asp (RGD) enabling ligand recognition against some integrins.

[0004] β ig-h3 contains 4 homogeneous internal repeated domains along with RGD motif, which are observed in membrane proteins or secretory proteins of mammals, insects, sea urchin, plants, yeasts and bacteria, etc in a state of well-preserved sequence. Proteins such as periostin, fasciclin I, sea urchin HLC-2, algal-CAM and mycobacterium MPB70 also contain the above preservative sequence (Kawamoto, T. et al., *Biochem. Biophys. Acta.*, 1998, 1395, 288). The homogeneous domain (referred as "fas-1 domain"

hereinafter) preserved well in those proteins is composed of 110-140 amino acids containing two very preservative branches (H1 and H2) composed of 10 amino acids each. β ig-h3, periostin and fasciclin I have 4 fas-1 domains, HCL-2 has 2 and MPB70 has only 1 fas-1 domain. Some of those proteins, as cell adhesion molecules, are known to intermediate the attachment and the detachment of cells although the biological functions of those proteins are not been fully explained yet. For example, β ig-h3, periostin and fasciclin I intervene the attachment of fibroblasts, osteoblasts and nerve cells, respectively and algal-CAM is confirmed to be a cell adhesion molecule residing in embryos of volvox (LeBaron, R. G. et al., *J. Invest. Dermatol.*, 104, 844, 1995; Horiuchi, K. et al., *J. Bone Miner. Res.*, 1999, 14, 1239; Huber, O. et al., *EMBO J.*, 1994, 13, 4212).

[0005] A purified β ig-h3 protein stimulates adhesion and spread of fibroblasts of skin but obstructs adhesion of A549, HeLa and WI-38 cells in serum-free medium. Especially, the β ig-h3 obstructs tumor cell growth, colony formation and appearance. In fact, tumor cell growth in nude mouse prepared by transfecting Chinese hamster ovary cells with β ig-h3 expression vector was remarkably decreased, which was clearly stated in U.S. Pat. No. 5,714,588 and No. 5,599,788. In addition, a method for stimulating spread and adhesion of fibroblasts around the wounded area by contacting required amount of β ig-h3 with the wound was also stated in those patents. Therefore, as a cell adhesion molecule highly induced by TGF- β in many cells, β ig-h3 plays an important role in cell growth, cell differentiation, wound healing, morphogenesis and cell adhesion.

[0006] Although β ig-h3 is an effective useful material, it is not fully supplied since only the minimum β ig-h3 is generated in human body. In order to solve this problem, a method to prepare β ig-h3 by expressing it in eukaryotic cell system using genetic engineering was developed. In that case, though, the growth of cells producing β ig-h3 was much slower than that of other cells, resulting in difficulty in obtaining enough amount of β ig-h3 producing cells. Therefore, the present inventors established a purification method with which mass-expression of recombinant proteins containing whole β ig-h3 protein or some of its domains was possible using *E. coli* as a host, confirmed that those recombinant proteins supported cell adhesion and spread, and applied for a patent (Korea patent Application #2000-25664).

[0007] Cell adhesion activity of β ig-h3, a cell adhesion molecule, was first reported in human dermal fibroblasts and then disclosed in chondrocytes, peritoneal fibroblasts and human MRC5 fibroblasts as well. Cell adhesion activity of β ig-h3 was thought to be mediated by RGD motif residing in carboxyl terminal of β ig-h3 in the early days. But it was reported later that RGD motif was not required for stimulating the spread of chondrocytes and a mature β ig-h3 in which RGD motif was deficient by carboxyl-terminus processing could hinder cell adhesion. Resultingly, it was confirmed that RGD motif was not an indispensable mediator for cell adhesion activity of β ig-h3. Recent studies have further confirmed that β ig-h3 stimulates cell adhesion and spread, especially the spread of fibroblasts, by working with integrin α 1 β 1 independently while RGD motif of β ig-h3 is not required for cell spread mediated by β ig-h3 (Ohno, S., et al., *Biochim. Biophys. Acta.*, 1999, 1451, 196). Besides, H1 and H2 peptides stored in β ig-h3 have been confirmed

not to affect β ig-h3-mediated cell adhesion, suggesting that certain amino acid required for cell adhesion locates not in H1 and H2 but in other sites in β ig-h3. In order to support the above, the homology between repeated fas-1 domain of β ig-h3 and fas-1 domains of other proteins was analyzed by computer, resulting in the confirmation of the fact that there were many other preservative amino acids except H1 and H2 in β ig-h3 that participated in cell adhesion.

[0008] Therefore, the present inventors tried to find out a preservative motif participating in cell adhesion and detachment activity, and to prepare a peptide containing thereof. As a result, the present inventors have prepared peptides NKDIL, EPDIM and their derivatives mediating cell adhesion and detachment by working with a 3β 1 integrin using the second and the forth domains of β ig-h3 which is known as a cell adhesion molecule and have disclosed that two very preservative amino acids, aspartic acid (Asp) and isoleucine (Ile) which are located near H2 region in the second and the forth domains of β ig-h3, are required amino acids for cell adhesion and detachment activity, leading to the application for a patent (Korea Patent Application #2000-25665).

[0009] As of today, there was no report that β ig-h3 directly relates to diseases but β ig-h3 seems to be related with some human cancers. The relation of β ig-h3 expression with the progress of renal diseases, hepatic diseases, rheumatoid arthritis and cardiovascular diseases has not been explained yet and the possibility to take advantage of β ig-h3 protein for a diagnosis of the diseases by measuring the amount of β ig-h3 protein in body fluids has not been reported either.

[0010] Thus, the present inventors developed a method to measure the amount of β ig-h3 using the recombinant protein prepared by linking many β ig-h3 or the forth fas-1 domain of β ig-h3 together as a standard protein and a diagnostic kit using the same. The present inventors completed this invention by confirming that the method and the kit of the present invention can be effectively used as sensitive diagnostic method for the extent of damage or progress of the renal diseases, hepatic diseases, rheumatoid arthritis or cardiovascular diseases.

SUMMARY OF THE INVENTION

[0011] It is an object of the present invention to provide a method to measure the amount of β ig-h3 protein using the β ig-h3 protein or recombinant proteins including fas-1 domains of β ig-h3 and a diagnostic kit using the same.

BRIEF DESCRIPTION OF THE DRAWINGS

[0012] FIG. 1 is a diagram showing the structure of β ig-h3 recombinant protein,

[0013] I, II, III and IV: each domain,

[0014] \emptyset and \emptyset : base sequence preservative area

[0015] A; β ig-h3, B; human β ig-h3, C; mouse β ig-h3

[0016] FIG. 2 is a diagram showing the geometrical structure of β ig-h3 D-IV recombinant proteins prepared by repeating β ig-h3 IV domains,

[0017] A; β ig-h3, B; β ig-h3 D-IV(1 \times),

[0018] C; β ig-h3 D-IV(2 \times),

[0019] D; β ig-h3 D-IV(3 \times), E; β ig-h3 D-IV(4 \times)

[0020] FIG. 3 is an electrophoresis photograph of separated β ig-h3 recombinant protein,

[0021] 1; human β ig-h3, 2; mouse β ig-h3

[0022] FIG. 4 is an electrophoresis photograph of β ig-h3 D-IV (1 \times , 2 \times , 3 \times , 4 \times) proteins,

[0023] 1; β ig-h3 D-IV(1 \times), 2; β ig-h3 D-IV(2 \times),

[0024] 3; β ig-h3 D-IV(3 \times), 4; β ig-h3 D-IV(4 \times)

[0025] FIG. 5 is a photograph showing the result of Western blot using primary antibody, by which human β ig-h3 and mouse β ig-h3 were confirmed, 1; human β ig-h3, 2; mouse β ig-h3

[0026] FIG. 6 is a diagram showing the principle of enzyme-linked immunosorbent assay (ELISA),

[0027] FIG. 7 is a graph showing the quantitative ratios of the primary antibody,

[0028] \blacklozenge ; 1:200, \blacksquare ; 1:400, \blacktriangle ; 1:800,

[0029] \times ; 1:1600, \otimes ; 1:2000, ; 1:3200

[0030] FIG. 8 is a graph showing the quantitative ratios of the secondary antibody,

[0031] A; fixed primary antibody at 1:1600,

[0032] B; fixed primary antibody at 1:2000,

[0033] \blacklozenge ; diluted secondary antibody at 1:1000,

[0034] \blacksquare ; diluted secondary antibody at 1:2000,

[0035] ; diluted secondary antibody at 1:3000

[0036] FIG. 9 is a graph showing the coating concentration of human β ig-h3 protein,

[0037] \blacklozenge ; 0.5 μ g/ml, \blacksquare ; 1.0 μ g/ml

[0038] FIG. 10 is a graph showing that both human β ig-h3 protein and mouse β ig-h3 protein can be used as standard proteins, which was confirmed by cross-test,

[0039] \blacklozenge ; human β ig-h3 protein coating concentration 0.5 μ g/ml, primary anti-human β ig-h3 antibody 1:2000, secondary antibody 1:2000,

[0040] \blacksquare ; human β ig-h3 protein coating concentration 0.5 μ g/ml, primary anti-mouse β ig-h3 antibody 1:2000, secondary antibody 1:2000,

[0041] \blacktriangle ; mouse β ig-h3 protein coating concentration 0.5 μ g/ml, primary anti-human β ig-h3 antibody 1:2000, secondary antibody 1:2000,

[0042] \times ; mouse β ig-h3 protein coating concentration 0.5 μ g/ml, primary anti-mouse β ig-h3 antibody 1:2000, secondary antibody 1:2000

[0043] FIG. 11 is a graph showing that recombinant β ig-h3 D-IV(1 \times) protein and recombinant β ig-h3 D-IV(4 \times) protein can be used as standard proteins, which was confirmed by cross-test,

[0044] \blacklozenge of A; β ig-h3 D-IV(1 \times) coating concentration 0.5 μ g/ml, primary anti-human β ig-h3 antibody 1:2000, secondary antibody 1:2000,

[0045] \blacksquare of A; β ig-h3 D-IV(4 \times) coating concentration 0.5 μ g/ml, primary anti-human β ig-h3 antibody 1:2000, secondary antibody 1:2000,

- [0046] ◆ of B; β ig-h3 D-IV(1x) coating concentration 0.5 μ g/ml, primary anti-mouse μ ig-h3 antibody 1:2000, secondary antibody 1:2000,
- [0047] ■ of B; β ig-h3 D-IV(4x) coating concentration 0.5 μ g/ml, primary anti-mouse μ ig-h3 antibody 1:2000, secondary antibody 1:2000
- [0048] FIG. 12 is a photograph of an immunohistochemical-staining showing the expression pattern of β ig-h3 in renal tissue,
- [0049] ► of A; expression pattern at basal membrane of S3 proximal tubular cell,
- [0050] ► of B; expression pattern at basal membrane of Bowman's capsule of glomerulus,
- [0051] → of B; expression pattern at basal membrane of cortical thick ascending limb cell
- [0052] FIG. 13 is a graph showing the levels of β ig-h3 in urine of diabetes-induced rats,
- [0053] ■; control group,
- [0054] □; diabetes-induced rats by treatment of streptozotocin
- [0055] FIG. 14 is a graph showing the individual level of β ig-h3 in urine of diabetes-induced rats of FIG. 13,
- [0056] FIG. 15 is a graph showing the level of β ig-h3 in urine obtained from each a normal rat, a rat with nephron underdose, a rat with chronic rejection, a rat with recurrent GN and a rat showed CyA toxicity,
- [0057] FIG. 16 is a graph showing the different concentrations of β ig-h3 protein by the day that were measured with urine samples of patients who have been under the treatment of plasmapheresis since focal segmental glomerulosclerosis (FSGS) was re-developed after kidney transplantation,
- [0058] FIG. 17 is a graph showing the concentrations of β ig-h3 protein in urine taken from a living donor, cadaver donor, a patient with underdose and rejection that were measured before and after kidney transplantation,
- [0059] FIG. 18 is a photograph of an immunohistochemical-staining showing the expression pattern of β ig-h3 protein in the injured blood vessels of diabetes-induced mouse,
- [0060] A; normal blood vessels,
- [0061] B; injured blood vessels, L; lumen
- [0062] FIG. 19 is a graph showing the expression pattern of β ig-h3 protein in the culture of vascular smooth muscle cells,
- [0063] *; $p < 0.05$, **; $p < 0.01$

DETAILED DESCRIPTION OF THE INVENTION

- [0064] To achieve the above object, the present invention provides a method for measuring the amount of β ig-h3 protein.
- [0065] The present invention also provides a diagnostic kit for the renal diseases, hepatic diseases, rheumatoid arthritis or cardiovascular diseases using the same.

[0066] Further features of the present invention will appear hereinafter.

[0067] The method for measuring the amount of β ig-h3 of the present invention consists of following steps:

[0068] 1) Preparing β ig-h3 protein or recombinant proteins containing β ig-h3 fas-1 domain, their fragments or derivatives;

[0069] 2) Preparing specific ligands against the above recombinant proteins, their fragments or derivatives of the above step 1; and

[0070] 3) Measuring the amount of β ig-h3 protein of samples with the method using binding reaction of ligands of the above step 2 with the recombinant proteins, their fragments or derivatives of the above step 1.

[0071] In the step 1, β ig-h3 protein is either a human β ig-h3 protein having amino acid sequence represented by SEQ. ID. No 3 or a mouse β ig-h3 protein having amino acid sequence represented by SEQ. ID. No 5. The structural elements of human and mouse β ig-h3 proteins are shown in FIG. 1. Hatched region and cross-hatched region of FIG. 1 show very well preserved sequences of repeated fas-1 domain I, II, III and IV and blank region represents RGD motif.

[0072] β ig-h3 protein has 4 fas-1 domains. For the β ig-h3 fas-1 domain of the above step 1, it is preferable to select one or more than two out of the first through the 4th fas-1 domain of β ig-h3 protein and is more preferable to use the 4th fas-1 domain. The 4th fas-1 domain could be used either individually or as a recombinant protein in which many fas-1 domains are repeatedly linked. For the recombinant protein, 1 to 10 fas-1 domains are required to be combined and using 1 to 4 fas-1 domains is more preferred. In the preferred embodiments of the present invention, the present inventors provided examples of using the 4th fas-1 domain only and recombinant proteins prepared by linking two, three and 4 forth fas-1 domains of β ig-h3 respectively.

[0073] The present inventors prepared proteins each represented by SEQ. ID. No 7, No 8, No 9 and No 10 having one of the 4th fas-1 domains containing 502nd-632nd amino acids of β ig-h3, two, three and four of those respectively and named them " β ig-h3 D-IV(1x)", " β ig-h3 D-IV(2x)", " β ig-h3 D-IV(3x)" and " β ig-h3 D-IV(4x)" (see FIG. 4).

[0074] Epitope of β ig-h3 protein at which specific binding reaction with ligand is occurring and any other part of the protein containing peptides hydrolyzed by protease can be used as fragments of the recombinant protein. Derivatives of the recombinant protein of the present invention can be prepared by covalent bond including phosphorylation or glycosylation, and non-covalent bond including ionic bond, coordinate bond, hydrogen bond, hydrophobic bond or van der Waals' bond. If fragments of the derivatives of the above recombinant proteins could be specifically bound to ligands, they would be included in the category of the proteins of the present invention.

[0075] For the preparation of the standard protein of the present invention, the construction of expression vector and the transformation could be performed by the conventional method.

[0076] In the step 2, ligands that are specifically binding to β ig-h3, β ig-h3 fas-1 domain, fragments or derivatives thereof can be confirmed by observing the binding reaction of ligands with the protein or recombinant protein of the step 1. There are many kinds of ligands such as antibody, RNA, DNA, organic compounds including lipid, protein or organic salts, or inorganic compounds including metal ions or inorganic salts, and preferable ligand is a primary antibody against β ig-h3 or β ig-h3 fas-1 domain of the step 2 made by using the protein or the recombinant protein (fragments or derivatives included) of the step 1 as an antigen. The primary antibody can be prepared by the conventional method and monoclonal antibody or polyclonal antibody can be used.

[0077] In the step 3, the amount of β ig-h3 protein included in sample was measured using the specific binding reaction of ligand with β ig-h3 protein, its fragments or derivatives. Where ligand-binding reaction is occurring, even pieces of those fragments or derivatives can be used. Quantification assay using antigen-antibody binding reaction in which β ig-h3 protein is used as an antigen is preferably used. It is more preferable to select one way from a group consisting of immunoblotting (*Current Protocols in Molecular Biology*, vol 2, chapter 10.8; David et al., *Cells (a Laboratory manual)*, vol 1, chapter 73), immunoprecipitation (*Current Protocols in Molecular Biology*, vol 2, chapter 10.16; *Cells(a Laboratory manual)*, vol 1, chapter 72), ELISA (*Current Protocols in Molecular Biology*, vol 2, chapter 11.2; ELISA Theory and Practice, John R. Crowther; The ELISA Guidebook, John R. Crowther), RIA (Radioimmuno assay) (Nuklearmedizin 1986 August; 25 (4): 125-127, Tumor markers as target substances in the radioimmunologic detection of malignancies. von Kleist S; Mariani G. *Ann Oncol* 1999; 10 Suppl 4: 37-40), protein chip (Daniel Figeys et. al, *Electrophoresis* 2001, 22, 208-216; Albala J.S. *Expert Rev Mol Diagn* 2001 July; 1 (2): 145-152), rapid assay (Kasahara Y and Ashihara Y, *Clinica Chimica Acta* 267 (1997), 87-102; Korea Patent Application #2000-46639) or microarray (Vivian G. cheung et al, *Nature genetics* 1999, 21, 15-19; Robert J. Lipshutz et al, *Nature genetics* 1999, 21, 20-24; Christine Debouck and Peter N. Goodfellow, *Nature genetics* 1999, 21, 48-50; *DNA Microarrays*, M. Schena), and ELISA is the most preferable method. Mass-analysis of samples is also possible using biological microchip and automatic microarray system along with ELISA, and simple self-diagnostic method using urine can be developed therefrom.

[0078] According to the preferable embodiments of the present invention, the method for measuring the amount of β ig-h3 protein with competition assay using ELISA comprises the following steps;

[0079] 1) Coating β ig-h3 protein or recombinant protein containing β ig-h3 fas-1 domain, its fragments or derivatives to matrix;

[0080] 2) Reacting antibody against the protein of the above step 1, its fragments or derivatives with sample;

[0081] 3) Adding the reactant of the above step 2 to the coated protein of step 1 and waiting for reaction, and then washing thereof; and

[0082] 4) Adding the secondary antibody to the reactant of the above step 3 for further reaction, and then measuring OD.

[0083] All kinds of matrix commonly used are good for the matrix of the above step i and especially, nitrocellulose membrane, polyvinyl plate (for example; 96 well plate), polystyrene plate and glass slide can be used as a matrix.

[0084] The secondary antibody of the above step 4 is labeled with coloring enzymes, fluorescent materials, luminous materials, radioisotopes or metal chelates. Every commonly used labeling materials are available for this invention and peroxidase, alkaline phosphatase, β -D-galactosidase, malate dehydrogenase, staphylococcus nuclease, horseradish peroxidase, catalase and acetylcholine esterase are preferable coloring enzymes. As for fluorescent materials, fluorescein isothiocyanate, phycobilin protein, rhodamine, phycoerythrin, phycoyanin, orthophthalic aldehyde, etc are preferably used.

[0085] As another labeling materials for the secondary antibody in addition to coloring enzymes or fluorescent materials, luminous materials such as isoluminol, lucigenin, luminol, acridiniumester, imidasol, acridine salt, luciferin, luciferase and aequorin or radioisotopes such as ^{125}I , ^{127}I , ^{131}I , ^{14}C , ^3H , ^{32}P and ^{35}S are preferably used. Besides, micromolecular heptenes like biotine, dinitrophenyl, pyridoxil or fluoressamine can be also conjugated with antibody.

[0086] In the case of using coloring enzymes in step 4, coloring substrates should be used to measure the activity of the enzyme and every material that are able to develop color of the enzyme bound to the secondary antibody can be used as a coloring substrate. 4-chloro-1-naphtol (4CN), Diaminobenzidine (DAB), Aminoethyl carbazole (AEC), 2,2'-Azino-bis(3-ethylbenzothiazoline-6-sulfonic acid) (ABTS), o-Phenylenediamine (OPD) and Tetramethyl Benzidine (TMB) are preferably used as coloring substrates.

[0087] As for the samples of the above step 2, all kinds of body fluids of patients suffering from β ig-h3 related diseases can be used. Especially, urines, bloods or synovial fluids of patients suffering from renal diseases, hepatic diseases, rheumatoid arthritis or cardiovascular diseases are preferable.

[0088] In order to confirm whether the method for measuring the amount of β ig-h3 protein of the present invention is correct, the present inventors used recombinant protein containing mouse β ig-h3 or the 4th fas-1 domain of β ig-h3 as a standard protein and compared the result with that from using human β ig-h3 as a standard protein.

[0089] The optimum coating concentration of human β ig-h3 protein and the quantitative ratio of antibody were determined for the method for measuring β ig-h3 of the present invention. The best quantitative ratio of the primary anti-human β ig-h3 antibody was 1:1600 and 1:2000 (see **FIG. 7**), and the best quantitative ratio of the secondary antibody was 1:2000 (see **FIG. 8**). The proper concentration of human β ig-h3 protein was 1.0 $\mu\text{g/ml}$ and 0.5 $\mu\text{g/ml}$, but 0.5 $\mu\text{g/ml}$ was more preferable as coating concentration (see **FIG. 9**).

[0090] Therefore, the present inventors decided the optimum coating concentration of human β ig-h3 standard protein to be 0.5 $\mu\text{g/ml}$ and the best diluting ratio of the primary anti-human β ig-h3 antibody and the secondary antibody to be 1:2000, respectively.

[0091] The present inventors also determined protein concentration and the quantitative ratio of the primary antibody

and the secondary antibody using mouse β ig-h3, recombinant β ig-h3 D-IV(1 \times), ig-h3 D-IV(2 \times), ig-h3 D-IV(3 \times) and β ig-h3 D-IV(4 \times). Precisely, made coating concentration of each protein at 0.5 μ g/ml, diluted the primary anti-human β ig-h3 antibody and the secondary antibody at 1:2000 respectively and performed quantitative assay. Diluted the primary anti-mouse β ig-h3 antibody and the secondary antibody at 1:2000, and performed quantitative assay as well.

[0092] As a result, graphs with straight line were made for all the cases, suggesting the ratios were the best and the measuring range of them was between 11 ng/ml-900 ng/ml, meaning there was not much difference in the measuring range among them all (see FIG. 11 and FIG. 12).

[0093] From the above results, it was confirmed that standard protein could be any of human β ig-h3, mouse D ig-h3, recombinant β ig-h3 D-IV(1 \times), ig-h3 D-IV(2 \times), ig-h3 D-IV(3 \times) and β ig-h3 D-IV(4 \times), and either anti-human β ig-h3 antibody or anti-mouse β ig-h3 antibody could be used as the primary antibody.

[0094] In this invention, the preferable coating concentration of standard protein is 0.1-2.0 μ g/ml and 0.5-1.0 μ g/ml is more preferable. The preferable diluting ratio of the primary and the secondary antibody is 1:400-1:3200 and 1:2000 is more preferable.

[0095] The present invention provides a diagnostic kit for renal diseases, hepatic diseases, rheumatoid arthritis or cardiovascular diseases, with which the diseases are diagnosed by measuring the amount of β ig-h3 protein in the body fluids of patients.

[0096] The diagnostic kit of the present invention includes β ig-h3 protein or recombinant proteins of fas-1 domain in the β ig-h3 protein (including their fragments or their derivatives) and their ligands. At this time, as preferable specific ligands, antibodies against β ig-h3 protein or β ig-h3 fas-1 domains are used. The kit can additionally include buffer solution, secondary antibody, washing solution or coloring substrate.

[0097] The diagnostic kit of the present invention is available for the diagnosis of various diseases such as renal diseases, hepatic diseases, rheumatoid arthritis or cardiovascular diseases by measuring the amount of β ig-h3 protein in the body fluids.

[0098] It is possible to diagnose renal diseases by measuring the amount of β ig-h3 protein on the basis of the fact that β ig-h3 expression is induced by TGF- β that plays an important role in the development of renal diseases. For the confirmation of the above, measured the amount of β ig-h3 in urine of diabetic patients. As a result, the amount of β ig-h3 in urine of patients with diabetic renal diseases including microalbuminuria was about five-fold higher than that of normal person. Some diabetic patients without renal diseases also showed higher β ig-h3 amount than normal. Considering the above result, β ig-h3 level in urine seems to reflect the extent of renal damage and high β ig-h3 level of some diabetic patients without renal diseases suggests that their kidneys are already damaged to some degree, though not showing any clinical troubles yet. Therefore, measuring the amount of β ig-h3 in patients' urine is a highly sensitive and important diagnostic method that can reflect the damage of kidneys in the early stage.

[0099] In order to confirm whether the β ig-h3 concentration in a diabetic patient's urine can reflect the damage of a kidney in the early stage, measured the β ig-h3 concentration of a diabetic animal. As a result, the β ig-h3 concentration was 4-fold increased 5 days after inducing diabetes (see FIG. 13). Observed the changes of β ig-h3 concentration in each individual after inducing diabetes, resulting in the great increase of β ig-h3 concentration in urine after inducing diabetes (see FIG. 14). On the 5th day after inducing diabetes, blood urea and creatine were normal and kidney tissues seemed normal. Thus, the great increase of β ig-h3 amount in urine on the fifth day suggests that there was the minimum damage in kidney already, which could not be detected by the traditional test methods.

[0100] The present inventors further confirmed the relation between kidney damage and β ig-h3 concentration by measuring β ig-h3 amount in urine of preoperative and postoperative patients with kidney transplantation. As a result, the high β ig-h3 concentration of a preoperative patient dropped gradually after successful operation. But in the case of No. 5 patient whose kidney function was not recovered even after operation, the β ig-h3 concentration was still great (see FIG. 2). Considering all the above results, it is for sure that the β ig-h3 concentration sensitively reflects the extent of kidney damage.

[0101] The present inventors also measured the β ig-h3 concentration in urine of renal failure patients. As a result, all of those renal failure patients showed great β ig-h3 concentration in their urine. Thus, it was confirmed again that β ig-h3 amount in urine reflects kidney damage sensitively even in the early stage, so that measuring the β ig-h3 amount is very important diagnostic method for various renal diseases (see Table 3).

[0102] Determining if a chronic hepatitis patient is developing to a hepatocirrhosis patient is very important but there is no way to catch that so far. The most crucial factor for the development of hepatocirrhosis is TGF- β . Thus, β ig-h3 whose expression is induced by TGF- β could be possibly increased in blood as hepatocirrhosis goes on. If so, the amount of β ig-h3 can also reflect the extent of hepatocirrhosis. In fact, β ig-h3 expression was confirmed to be greater as hepatocirrhosis became serious by immunohistological test with liver tissues of hepatitis patients. The present inventors subdivided patient's condition into several grades and stages based on the biopsy results of chronic hepatitis patients and investigated blood β ig-h3 concentration of each stage and grade. Chronic hepatitis patients showed higher blood β ig-h3 concentration than normal people. β ig-h3 concentration of lower stage and grade was confirmed to be higher than that of higher stage and grade (see Table 5). Condition of a patient in grade 3 and stage 3 is that hepatocirrhosis has been developed seriously and its activity went through the peak already. Meanwhile, a patient in grade 1 and 2 and stage 1 and 2 shows the condition that inflammatory reaction is developing very actively. Thus, β ig-h3 concentration implies the activity of hepatocirrhosis, so that the development of hepatocirrhosis can be observed by measuring blood β ig-h3 concentration regularly.

[0103] β ig-h3 concentration in synovial fluid of rheumatoid arthritis patients and osteoarthritis patients was also measured. As a result, two-fold higher β ig-h3 concentration in synovial fluid of rheumatoid arthritis patients was

observed, suggesting that measuring β ig-h3 concentration in synovial fluid can be an effective way to diagnose osteoarthritis and rheumatoid arthritis (see Table 6).

[0104] In addition, the expression patterns of β ig-h3 in normal and damaged blood vessels of diabetic mice were investigated by immunohistochemical methods in order to confirm the relation between the expression of β ig-h3 and vascular diseases. As a result, β ig-h3 protein was expressed much greatly in damaged blood vessels of diabetic mice than in normal blood vessels (see FIG. 18). Based on that β ig-h3 expression is induced by TGF- β that plays an important role in the development of vascular diseases, TGF- β 1 inducing β ig-h3 expression in vascular smooth muscle cells forming blood vessels was investigated. As a result, it was confirmed that β ig-h3 expression increases as the amount of TGF- β 1 increases (see FIG. 19).

[0105] The expression of β ig-h3 in blood and tissues reflects the damage of them. Thus, it was confirmed that the method for measuring the amount of β ig-h3 protein of the present invention can be effectively used for the diagnosis of various vascular diseases.

[0106] Therefore, the diagnostic kit measuring the amount of β ig-h3 protein of the present invention is very effective in use since it reflects the extent of damage and progress of renal diseases, hepatic diseases, rheumatoid arthritis or cardiovascular diseases.

EXAMPLES

[0107] Practical and presently preferred embodiments of the present invention are illustrative as shown in the following Examples.

[0108] However, it will be appreciated that those skilled in the art, on consideration of this disclosure, may make modifications and improvements within the spirit and scope of the present invention.

Example 1

Preparation of Standard Proteins and Primary Antibodies

[0109] <1-1> Separation of Human β ig-h3 and Mouse β ig-h3

[0110] The present inventors have prepared human and mouse β ig-h3 proteins. The structural elements of human and mouse β ig-h3 proteins are shown in FIG. 1. Hatched region and cross-hatched region of FIG. 1 show very well preserved sequences of repeated fas-1 domain I, II, III and IV and blank region represents RGD motif. β ig-h3 cDNA (pBS β ig-h3; obtained by cloning cDNA of human skin papilloma cells) having a base sequence represented by SEQ. ID. No 2 cloned in pBluescript SK (-) vector was digested with Nde I and Bgl II, resulting in the preparation of DNA fragments having blunt ends. The above DNA fragments were subcloned into EcoR V and EcoR I sites of pET-29 β vector (purchased from Novagen). The protein having a amino acid sequence of 69-653 amino acids of β ig-h3 represented by SEQ. ID. No 3 was separated and named human β ig-h3.

[0111] Next, β ig-h3 cDNA was digested with BamH I and Xho I, resulting in the preparation of DNA fragments having

a base sequence represented by SEQ. ID. No 4. The above DNA fragments were subcloned into BamH I and Xho I sites of pET-29 β vector. The protein having a amino acid sequence of 23-641 amino acids of β ig-h3 represented by SEQ. ID. No 5 was separated and named mouse β ig-h3.

[0112] In order to express the above human and mouse β ig-h3 proteins, *E. coli* BL21 (DE3) cells were transformed. The transformants were cultured in LB medium containing kanamicine (50 μ g/ml) at 37° C. until their OD₅₉₅ was reached to 0.5-0.6. During the culture, the expression of β ig-h3 protein was induced by treating 1 mM isopropyl- β -D(-)-thiogalactopyranoside (IPTG) at 37° C. for 3 hours.

[0113] Pellets of *E. coli* cells were resuspended in cell lysis buffer (50 mM Tris-HCl, pH 8.0, 100 mM NaCl, 1 mM EDTA, 1% Triton X-100, 1 mM phenylmethane sulfonyl fluoride (referred as "PMSF" hereinafter) and 0.5 mM DTT), and then crushed by ultrasonification. The procedure was repeated 5 times.

[0114] The above solution was centrifuged and the insoluble inclusion bodies containing β ig-h3 were dissolved in 20 mM Tris-HCl buffer solution containing 0.5 M NaCl, 5 mM imidazol and 8 M urea. The proteins were purified by using Ni-NTA resin (Qiagen). The proteins were dialyzed one after another in 20 mM Tris-Cl buffer solution containing 50 mM NaCl with urea starting from high concentration to low concentration for the purification and the results were confirmed by SDS-PAGE.

[0115] As a result, it was confirmed that the human β ig-h3 and the mouse β ig-h3 proteins of the present invention were purified (FIG. 2).

[0116] <1-2> Construction and Separation of β ig-h3 D-IV(1x) and β ig-h3 D-IV(4x)

[0117] The DNA fragment represented by SEQ. ID. No 6 encoding the 4th domain that corresponds to 498th-637th amino acids of human β ig-h3 represented by SEQ. ID. No 1 was amplified by PCR. The PCR product was cloned into pET-29 β vector to construct the expression vector of the 4th domain. The present inventors named the expression vector of the 4th domain " β ig-h3 D-IV".

[0118] Base sequence that corresponds to the 4th domain was synthesized by PCR, and the 3' end of the PCR product was blunted by using klenow fragment. This PCR product was inserted into EcoR V site of the above expression vector p β ig-h3 D-IV, and named p β ig-h3 D-IV(2x). Inserted fragment of p β ig-h3 D-IV(2x) was digested with EcoR V and Xho I, and the 3' end of the fragment was blunted by using klenow fragment. This fragment was inserted into EcoR V site of p β ig-h3 D-IV, and named p β ig-h3 D-IV(3x). The fragment having blunted 3' end was also inserted into EcoR V site of p β ig-h3 D-IV(2x), and named p β ig-h3 D-IV(4x) (FIG. 3). His-tag was made by linking 6 histidine residues to carboxyl terminal of the DNA fragment to purify proteins with Ni-NTA resin (Qiagen).

[0119] *E. coli* BS21(DE3) cells were transformed with the expression vectors. The transformants were cultured in LB medium containing kanamicine (50 μ g/ml). Pellets of *E. coli* cells were resuspended in cell lysis buffer (50 mM Tris-HCl, pH 8.0, 100 mM NaCl, 1 mM EDTA, 1% Triton X-100, 1 mM phenylmethane sulfonyl fluoride (referred as "PMSF" hereinafter) and 0.5 mM DTT), and then crushed by ultra-

sonification. The procedure was repeated 5 times. The above solution was centrifuged to obtain supernatants. The proteins were purified by using Ni-NTA resin (Qiagen) from the supernatants, and confirmed with SDS-PAGE.

[0120] As a result, it was confirmed that β ig-h3 D-IV(1 \times) having an amino acid sequence represented by SEQ. ID. No 7, β ig-h3 D-IV(2 \times) having an amino acid sequence represented by SEQ. ID. No 8, β ig-h3 D-IV(3 \times) having an amino acid sequence represented by SEQ. ID. No 9 and β ig-h3 D-IV(4 \times) having an amino acid sequence represented by SEQ. ID. No 10 proteins were expressed. All the above proteins contained the 4th domain of human β ig-h3 (FIG. 4).

[0121] <1-3> Preparation and Separation of Primary Antibody

[0122] The primary antibody was prepared by using human β ig-h3 and mouse β ig-h3 proteins separated in Example <1-1> as an antigen. The proteins were subcutaneously injected on the back of rabbits. For the first injection, 200 μ g of proteins were mixed with complete Freund's adjuvant and then injected. For the 2nd to 5th injection, 100 μ g of proteins were mixed with incomplete Freund's adjuvant and then injected at 3-week intervals. Venous blood was collected and left at room temperature for 2 hours. Following centrifugation (10,000 \times g, 10 minutes), the supernatants containing the primary antibody were obtained. The supernatants were kept at -20 $^{\circ}$ C. for further usage (FIG. 5).

Example 2

Determination of Coating Concentration of Human β ig-h3 Protein and Quantitative Ratio of Antibody

[0123] <2-1> Determination of Quantitative Ratio of the Primary Antibody

[0124] In order to determine the quantitative ratio of the primary antibody to human β ig-h3 protein, the human β ig-h3 was diluted (0.5 μ g/ml) with 20 mM carbonate-bicarbonate solution (pH 9.6, 0.02% sodium azide contained). The β ig-h3 solution was added in each well of 96-well plate (200 μ l/well) and coated thereof at 4 $^{\circ}$ C. for overnight. The primary anti-human β ig-h3 antibody was serially diluted with diluting solution (saline-phosphate buffer solution/Tween 80) at 1:200, 1:400, 1:800, 1:1600, 1:2000 and 1:3200, and added into the coated 96-well plate. The secondary antibody (1:5000) was also added thereto and reacted thereof at room temperature for 1 and half hours. Substrate solution (prepared by dissolving o-phenyldiamine in methanol (10 mg/ml), diluting with distilled water at 1:100, and mixing with 10 μ l of 30% hydrogen peroxide solution) was also added thereto and reacted thereof at room temperature for 1 hour. The reaction was terminated by adding 50 μ l of 8 N sulfuric acid solution, and ELISA was performed (O.D 492 nm).

[0125] As a result, it was confirmed that the best quantitative ratio of the primary anti-human β ig-h3 antibody was 1:1600 and 1:2000 (FIG. 7).

[0126] <2-2> Determination of Quantitative Ratio of Secondary Antibody

[0127] In order to determine the quantitative ratio of the secondary antibody, the human β ig-h3 protein was coated on the plate (0.5 μ g/ml). Added the primary anti-human β ig-h3

antibody thereto (1:1600 and 1:2000) Added the secondary antibody thereto (1:1000, 1:2000 and 1:3000 respectively) and reacted thereof. ELISA was performed with the same method as the above Example <2-1>.

[0128] As a result, it was confirmed that the best quantitative ratio of the secondary antibody was 1:2000 (FIG. 8).

[0129] <2-3> Determination of Coating Concentration of Human β ig-h3 Protein

[0130] In order to determine the coating concentration of human β ig-h3 protein, the primary anti-human β ig-h3 antibody was diluted at 1:2000, the secondary antibody was diluted at 1:2000, the human β ig-h3 protein was coated on the plate at 0.5 μ g/ml and 1.0 μ g/ml respectively, and then ELISA was performed.

[0131] As a result, it was confirmed that the proper concentration of human β ig-h3 protein was both 1.0 μ g/ml and 0.5 μ g/ml, but 0.5 μ g/ml was more preferable as coating concentration since R² value approaches 1 best with that concentration (FIG. 9).

[0132] From the above results, the present inventors decided the optimum coating concentration of human β ig-h3 standard protein to be 0.5 μ g/ml and the best diluting ratio of the primary anti-human β ig-h3 antibody and the secondary antibody to be 1:2000, respectively.

[0133] The values obtained from the above result were log transformed by Robard formula (Robard, 1971) represented by the below <Mathematical Formula 1>. Resultingly, a line was formed from 11 ng/ml to 900 ng/ml, which was the possible range in measurement. It was also confirmed that measurement was possible even to the range of 10 ng/ml with the above reaction condition (FIG. 10).

$$\log b = \log e^{b(100-b)} \quad \text{<Mathematical Formula 1>}$$

[0134] In the above formula, b represents the percentage to OD of the well that does not include any antigen in each concentration.

Example 3

Measurement of Quantitative Range of Mouse β ig-h3, Recombinant β ig-h3 D-IV(1 \times) and 3 ig-h3 D-IV(4 \times) by Cross-Test

[0135] The present inventors also determined protein concentration and the quantitative ratio of the primary and the secondary antibody using mouse β ig-h3, recombinant β ig-h3 D-IV(1 \times) and β ig-h3 D-IV(4 \times). Particularly, made coating concentration of each protein 0.5 μ g/ml and the quantitative ratio of the primary anti-human β ig-h3 antibody and the secondary antibody to be 1:2000 for the experiments. Regulated the quantitative ratio of the primary anti-mouse β ig-h3 antibody and the secondary antibody to be 1:2000 as well.

[0136] As a result, graphs with straight line were made for all the cases, suggesting the ratio was the best and the ranges of them were between 11 μ g/ml and 900 ng/ml, meaning there were not much differences in the range of measurement (FIG. 11 and FIG. 12).

[0137] From the above results, it was confirmed that standard protein could be any of human β ig-h3, mouse β ig-h3, recombinant β ig-h3 D-IV(1 \times) and β ig-h3 D-IV(4 \times),

and either anti-human β ig-h3 antibody or anti-mouse β ig-h3 antibody could be used as the primary antibody.

Example 4

Relationship Between Renal Diseases and β ig-h3 Expression

[0138] <4-1> Measurement of β ig-h3 in Diabetics

[0139] The present inventors have confirmed the relationship between renal diseases and β ig-h3 expression on the basis of the fact that β ig-h3 expression is induced by TGF- β that plays an important role in the development of renal diseases. For the confirmation, measured the amount of β ig-h3 in urine of diabetics. Particularly, mixed 110 μ l of urine of diabetic and 110 μ l of the primary antibody (1:1000) in a round-bottomed plate, and cultured thereof at 37° C. for 1 hour. Added 200 μ l of the above mixture to β ig-h3-coated plate and reacted thereof at room temperature for 30 minutes. Stopped the reaction by adding secondary antibody-substrate stop solution, and performed ELISA (O.D 492 nm.

TABLE 1

Concentration of β ig-h3 in diabetics' urine	
Samples	β ig-h3 (ng/ml)
Normal	31.0 (n = 93, \pm 8.6)
Type II DM	101.9 (n = 51, \pm 17.1)
Type II DM + microalbuminuria	127.4 (n = 30, \pm 27.7)
Type II DM + overt proteinuria	105.4 (n = 19, \pm 14.9)
Type II DM + CRF	153.6 (n = 93, \pm 28.1)

[0141] <4-2> Measurement of β ig-h3 in Diabetic Animal Model

[0142] In order to confirm whether the β ig-h3 concentration in diabetic's urine can reflect the renal damage in the early stage, the present inventors measured the β ig-h3 amount of diabetic animals.

[0143] Diabetes was induced in Sprague-Dawley (SD) rats by injecting streptozotosin (60 mg/kg), a kind of diabetes-inducing drug, into the peritoneal cavity of the rats. Confirmed that diabetes was induced by measuring the blood-glucose of the rats. Taken urines from the rats on the fifth day after inducing diabetes, and measured the β ig-h3 amount with the same method of Example <4-1>.

[0144] As a result, the β ig-h3 amount was 4-fold increased 5 days after inducing diabetes (56.9 \pm 6.4 ng/creatinine mg:230.4 \pm 131.8 ng/creatinine mg, FIG. 13). Observed the change of β ig-h3 amount in each individual after inducing diabetes, resulting in the great increase of β ig-h3 amount in urine after inducing diabetes (FIG. 14). On the fifth day after inducing diabetes, blood urea and creatine were normal and renal tissues seemed normal. Thus, the great increase of β ig-h3 amount in urine on the fifth day after inducing diabetes suggested that there was the minimum damage in kidney already, which could not be detected by the conventional methods.

[0145] <4-3> Measurement of β ig-h3 in Patients Operated on Kidney Transplantation

[0146] The present inventors confirmed the correlation between renal damage and β ig-h3 amount by measuring β ig-h3 amount in urines of patients before and after kidney transplantation. The results were presented in Table 2.

TABLE 2

Changes of β ig-h3 concentration in patients before and after kidney transplantation														Success or not
Day/ Patients	-6	-5	-4	-3	-2	-1	0	1	2	3	4	5	6	
1				376.9	199.2	105.6	59.1	67.6	84.5	63.1	61.2	39.7	9.9	○
2		149.2	147.3	133.5	159.5	148.3	147.3	96.0	74.0	40.7	20.3	27.9	26.4	○
3	107.8	95.8	101.4	102.3	102.2	106.1	106.6	125.5	83.5	49.4	36.5	33.3	23.2	○
4							298.8	208.1	140.5	169.9	188.4	76.3	24.4	○
5							188.6	160.7	469.3	290.9	494.7	324.4	—	X

[0140] As a result, the amount of β ig-h3 in urine of diabetic renal disease patients including microalbuminuria was about five-fold higher than that of normal. Some diabetic patients without renal diseases also showed higher β ig-h3 amount than normal. Considering the above results, β ig-h3 level in urine seems to reflect the extent of renal damage and high β ig-h3 level of some diabetic patients without renal diseases suggests that their kidneys have already been damaged to some degree, though not showing any clinical troubles yet. Therefore, measuring the amount of β ig-h3 in patients' urine is a highly sensitive and important diagnostic-method that can reflect the damage of kidneys in the early stage.

[0147] As a result, the high β ig-h3 amount of pre-operative patients dropped gradually after successful operation. But in the case of No 5 patient whose renal function was not recovered even after kidney transplantation, the β ig-h3 amount was still great. Considering all the above results, it is for sure that the amount of β ig-h3 sensitively reflects the extent of kidney damage.

[0148] <4-4> Measurement of β ig-h3 in Patients with Renal Failure

[0149] The present inventors measured the β ig-h3 amount in urines of patients with renal failure. As a result, all of those patients showed great β ig-h3 amount in their urines (Table 3).

TABLE 3

Concentrations of β ig-h3 in urines of patients with renal failure	
Samples	β ig-h3 (ng/mg)
Normal	31.0 (n = 93, ± 8.6)
Chronic renal failure	335.4 (n = 9, ± 56.0)

[0150] 4-5> Measurement of β ig-h3 in Patients with Kidney Related Diseases

[0151] In order to investigate whether β ig-h3 was differently expressed in patients with renal diseases, the present inventors measured the β ig-h3 concentration in urines taken from patients who showed normal signs after kidney transplantation, patients whose transplanted kidney was smaller, patients who showed chronic rejection, patients with re-developed pyelitis and patients who had cyclosporine toxicity with the same method of Example <4-1>.

[0152] As a result, patients with normal signs after kidney transplantation showed 39.4 ng/creatinine mg of β ig-h3 concentration at average while patients with chronic rejection, re-developed pyelitis and cyclosporine toxicity showed greatly increased β ig-h3 concentration (140.8, 175.4 and 90.9 ng/creatinine mg, respectively) (FIG. 15, Table 4).

TABLE 4

β ig-h3	Normal after kidney transplantation (n = 47)	Transplanted with small kidney (n = 16)	Chronic rejection (n = 15)	Pyelitis re-developed (n = 6)	Cyclosporine toxicity (n = 6)
	Average	39.4 \pm 18.2	54.7 \pm 23.0	140.8 \pm 81.1	175.4 \pm 65.8
Minimum	9.4	17.9	48.8	83.2	64.6
Maximum	84.7	100.0	374.4	249.8	119.4

[0153] The present inventors also investigated if the increased β ig-h3 concentration in patients with re-developed renal diseases was decreased again as treatment worked. As a result, urine β ig-h3 concentration of patients who had blood plasma exchange to treat re-developed pyelitis after kidney transplantation was gradually decreased, suggesting urine β ig-h3 concentration decreased while treatment was working. Thus, β ig-h3 concentration could be used as a marker of treatment reaction (FIG. 16).

[0154] <4-6> Analysis of Effects of Kidney Transplantation on β ig-h3 Concentration

[0155] In order to investigate the changes of urine β ig-h3 concentration after kidney transplantation, the present inventors measured urine β ig-h3 concentration of patients who had kidney transplantation everyday.

[0156] As a result, urine β ig-h3 concentration of patients who had kidney transplantation successfully, regardless the kidney was given from a living person or a brain death person, was decreased gradually. Precisely, as for receiving kidney from a living person, urine β ig-h3 concentration

came back to normal level within 4-5 days after transplantation and as for receiving kidney from a brain death person, β ig-h3 concentration came back to normal level within 6-7 days (FIG. 17).

[0157] Besides, urine β ig-h3 concentration of patients who received small kidney came back to normal level after transplantation though their blood creatine values were still high, suggesting that the transplanted kidney worked normal although it could not filtrate waste products well enough because of its small size. Anyway, β ig-h3 concentration reflecting the damage of kidney was back to normal (FIG. 17). Meanwhile, urine β ig-h3 concentration of patients who had unsuccessful kidney transplantation fluctuated seriously.

[0158] Based on those results, urine β ig-h3 concentration could be used as an effective marker for diagnosis of renal diseases in the early stages, for detecting progression of renal diseases and for determination of treatment effect since β ig-h3 concentration reflects the damage of kidney well.

[0159] Resultingly, the present inventors confirmed that urine β ig-h3 concentration reflects the damage of kidney in the early stages sensitively and is important and useful for diagnosis of various renal diseases.

Example 5

Relationship Between Hepatic Diseases and β ig-h3 Expression

[0160] Determining if a chronic hepatitis patient is developing to a hepatocirrhosis patient is very important but there is no way to catch that so far. The most crucial factor for the development of hepatocirrhosis is TGF- β . Thus, β ig-h3 whose expression is induced by TGF-could be possibly increased in blood as hepatocirrhosis goes on. If so, the amount of β ig-h3 can also reflect the extent of hepatocirrhosis. In fact, β ig-h3 expression was confirmed to be greater as hepatocirrhosis became serious by immunohistologic test with liver tissues of hepatitis patients. The present inventors subdivided patient's condition into several grades and stages based on the biopsy results of chronic hepatitis patients and investigated blood β ig-h3 concentration of each stage and grade. Particularly, the present inventors collected blood from chronic hepatitis patients and measured the amount of β ig-h3 with the same method of Example <4-1>. The results were presented in Table 5.

TABLE 5

Concentrations of β ig-h3 in blood of chronic hepatitis patients			
Grade	β ig-h3 (ng/mg)	Stage	β ig-h3 (ng/mg)
0 (Normal)	146.2 (n = 172, \pm 28.5)	0 (Normal)	146.2 (n = 172, \pm 28.5)
1	196.6 (n = 16, \pm 30.6)	1	193.4 (n = 20, \pm 30.2)
2	190.0 (n = 43, \pm 72.8)	2	192.2 (n = 36, \pm 79.1)
3	167.5 (n = 7, \pm 21.9)	3	172.5 (n = 10, \pm 21.9)

[0161] As a result, chronic hepatitis patients showed higher blood β ig-h3 concentration than normal people and β ig-h3 concentration of lower stage and grade (1 and 2) was confirmed to be higher than that of higher stage and grade (3). Condition of a patient in grade 3 and stage 3 is that hepatocirrhosis has been developed seriously and its activity went through the peak already. Meanwhile, a patient in grade 1 and 2 and stage 1 and 2 shows the condition that inflammatory reaction is developing very actively. Thus, β ig-h3 concentration implies the activity of hepatocirrhosis, so that the development of hepatocirrhosis can be observed by measuring blood β ig-h3 concentration regularly.

Example 6

Relationship Between Rheumatoid Arthritis and β ig-h3 Expression

[0162] The present inventors confirmed the correlation between rheumatoid arthritis and β ig-h3 expression by measuring β ig-h3 amount in synovial fluids of patients with osteoarthritis and rheumatoid arthritis with the same method of Example <4-1> (Table 6).

TABLE 6

Concentrations of β ig-h3 in synovial fluids	
	β ig-h3 (ng/mg)
Osteoarthritis	11.0 (n = 29, \pm 0.3)
Rheumatoid arthritis	21.0 (n = 20, \pm 2.5)

[0163] As a result, two-fold higher β ig-h3 concentration in synovial fluid of rheumatoid arthritis patients was observed, suggesting that measuring β ig-h3 concentration in synovial fluid can be an effective way to diagnose osteoarthritis and rheumatoid arthritis.

Example 7

Relationship Between Cardiovascular Diseases and β ig-h3 Expression

[0164] <7-1> Measurement of β ig-h3 in Damaged Blood Vessels of Diabetes-Induced Mice

[0165] The present inventors investigated the expression patterns of β ig-h3 in normal and damaged blood vessels of diabetic mice by immunohistochemical methods in order to confirm the relation between the expression of β ig-h3 and cardiovascular diseases.

[0166] As a result, β ig-h3 protein was expressed much greatly in damaged blood vessels of diabetic mice than in normal blood vessels (FIG. 18).

[0167] <7-2> Measurement of β ig-h3 Expression Induced by TGF- β in Vascular Smooth Muscle Cells

[0168] Based on that β ig-h3 expression is induced by TGF- β that plays an important role in the development of vascular diseases, the present inventors tried to confirm the correlation β ig-h3 expression and cardiovascular diseases. Particularly, the present inventors measured the expression pattern of β ig-h3 induced by TGF- β 1 in vascular smooth muscle cells forming blood vessels with the same method of Example <4-1>.

[0169] As a result, it was confirmed that β ig-h3 expression increases as the amount of TGF- β 1 increases (FIG. 19).

[0170] From the above results, it was confirmed that the expression of β ig-h3 in blood and tissues reflects the damage of them. Therefore, the method for measuring the amount of β ig-h3 protein of the present invention can be effectively used for the diagnosis of various cardiovascular diseases.

INDUSTRIAL APPLICABILITY

[0171] As described hereinbefore, the method for measuring the amount of β ig-h3 protein of the present invention in which human β ig-h3, mouse β ig-h3, β ig-h3 D-IV(1 \times) or β ig-h3 D-IV(4 \times) are used as a standard protein is inexpensive and very accurate in measuring β ig-h3 concentration in various body fluids. The amount of β ig-h3 sensitively reflects TGF- β related diseases such as renal diseases, hepatic diseases, rheumatoid arthritis and cardiovascular diseases in the early stages, so that the method of the present invention can be effectively used for the examination of the damage and the progress of those diseases and for the diagnosis thereof.

SEQUENCE LISTING

<160> NUMBER OF SEQ ID NOS: 10

<210> SEQ ID NO 1

<211> LENGTH: 683

<212> TYPE: PRT

<213> ORGANISM: Homo sapiens

<400> SEQUENCE: 1

-continued

Met Ala Leu Phe Val Arg Leu Leu Ala Leu Ala Leu Ala Leu Ala Leu
 1 5 10 15
 Gly Pro Ala Ala Thr Leu Ala Gly Pro Ala Lys Ser Pro Tyr Gln Leu
 20 25 30
 Val Leu Gln His Ser Arg Leu Arg Gly Arg Gln His Gly Pro Asn Val
 35 40 45
 Cys Ala Val Gln Lys Val Ile Gly Thr Asn Arg Lys Tyr Phe Thr Asn
 50 55 60
 Cys Lys Gln Trp Tyr Gln Arg Lys Ile Cys Gly Lys Ser Thr Val Ile
 65 70 75 80
 Ser Tyr Glu Cys Cys Pro Gly Tyr Glu Lys Val Pro Gly Glu Lys Gly
 85 90 95
 Cys Pro Ala Ala Leu Pro Leu Ser Asn Leu Tyr Glu Thr Leu Gly Val
 100 105 110
 Val Gly Ser Thr Thr Thr Gln Leu Tyr Thr Asp Arg Thr Glu Lys Leu
 115 120 125
 Arg Pro Glu Met Glu Gly Pro Gly Ser Phe Thr Ile Phe Ala Pro Ser
 130 135 140
 Asn Glu Ala Trp Ala Ser Leu Pro Ala Glu Val Leu Asp Ser Leu Val
 145 150 155 160
 Ser Asn Val Asn Ile Glu Leu Leu Asn Ala Leu Arg Tyr His Met Val
 165 170 175
 Gly Arg Arg Val Leu Thr Asp Glu Leu Lys His Gly Met Thr Leu Thr
 180 185 190
 Ser Met Tyr Gln Asn Ser Asn Ile Gln Ile His His Tyr Pro Asn Gly
 195 200 205
 Ile Val Thr Val Asn Cys Ala Arg Leu Leu Lys Ala Asp His His Ala
 210 215 220
 Thr Asn Gly Val Val His Leu Ile Asp Lys Val Ile Ser Thr Ile Thr
 225 230 235 240
 Asn Asn Ile Gln Gln Ile Ile Glu Ile Glu Asp Thr Phe Glu Thr Leu
 245 250 255
 Arg Ala Ala Val Ala Ala Ser Gly Leu Asn Thr Met Leu Glu Gly Asn
 260 265 270
 Gly Gln Tyr Thr Leu Leu Ala Pro Thr Asn Glu Ala Phe Glu Lys Ile
 275 280 285
 Pro Ser Glu Thr Leu Asn Arg Ile Leu Gly Asp Pro Glu Ala Leu Arg
 290 295 300
 Asp Leu Leu Asn Asn His Ile Leu Lys Ser Ala Met Cys Ala Glu Ala
 305 310 315 320
 Ile Val Ala Gly Leu Ser Val Glu Thr Leu Glu Gly Thr Thr Leu Glu
 325 330 335
 Val Gly Cys Ser Gly Asp Met Leu Thr Ile Asn Gly Lys Ala Ile Ile
 340 345 350
 Ser Asn Lys Asp Ile Leu Ala Thr Asn Gly Val Ile His Tyr Ile Asp
 355 360 365
 Glu Leu Leu Ile Pro Asp Ser Ala Lys Thr Leu Phe Glu Leu Ala Ala
 370 375 380
 Glu Ser Asp Val Ser Thr Ala Ile Asp Leu Phe Arg Gln Ala Gly Leu
 385 390 395 400

-continued

Gly Asn His Leu Ser Gly Ser Glu Arg Leu Thr Leu Leu Ala Pro Leu
 405 410 415

Asn Ser Val Phe Lys Asp Gly Thr Pro Pro Ile Asp Ala His Thr Arg
 420 425 430

Asn Leu Leu Arg Asn His Ile Ile Lys Asp Gln Leu Ala Ser Lys Tyr
 435 440 445

Leu Tyr His Gly Gln Thr Leu Glu Thr Leu Gly Gly Lys Lys Leu Arg
 450 455 460

Val Phe Val Tyr Arg Asn Ser Leu Cys Ile Glu Asn Ser Cys Ile Ala
 465 470 475 480

Ala His Asp Lys Arg Gly Arg Tyr Gly Thr Leu Phe Thr Met Asp Arg
 485 490 495

Val Leu Thr Pro Pro Met Gly Thr Val Met Asp Val Leu Lys Gly Asp
 500 505 510

Asn Arg Phe Ser Met Leu Val Ala Ala Ile Gln Ser Ala Gly Leu Thr
 515 520 525

Glu Thr Leu Asn Arg Glu Gly Val Tyr Thr Val Phe Ala Pro Thr Asn
 530 535 540

Glu Ala Phe Arg Ala Leu Pro Pro Arg Glu Arg Ser Arg Leu Leu Gly
 545 550 555 560

Asp Ala Lys Glu Leu Ala Asn Ile Leu Lys Tyr His Ile Gly Asp Glu
 565 570 575

Ile Leu Val Ser Gly Gly Ile Gly Ala Leu Val Arg Leu Lys Ser Leu
 580 585 590

Gln Gly Asp Lys Leu Glu Val Ser Leu Lys Asn Asn Val Val Ser Val
 595 600 605

Asn Lys Glu Pro Val Ala Glu Pro Asp Ile Met Ala Thr Asn Gly Val
 610 615 620

Val His Val Ile Thr Asn Val Leu Gln Pro Pro Ala Asn Arg Pro Gln
 625 630 635 640

Glu Arg Gly Asp Glu Leu Ala Asp Ser Ala Leu Glu Ile Phe Lys Gln
 645 650 655

Ala Ser Ala Phe Ser Arg Ala Ser Gln Arg Ser Val Arg Leu Ala Pro
 660 665 670

Val Tyr Gln Lys Leu Leu Glu Arg Met Lys His
 675 680

<210> SEQ ID NO 2
 <211> LENGTH: 2691
 <212> TYPE: DNA
 <213> ORGANISM: Homo sapiens

<400> SEQUENCE: 2

```

gcttgcccgt cggtcgctag ctcgctcggt gcgcgtcgtc ccgctccatg gcgctcttcg    60
tgcgggtgct ggctctcgcc ctggctctgg ccctggggccc cgccgcgacc ctggcggggtc    120
ccgccaagtc gccctaccag ctggtgctgc agcacagcag gctccggggc cgccagcacg    180
gcccacaact gtgtgctgtg cagaaggtta ttggcactaa taggaagtac ttcaccaact    240
gcaagcagtg gtaccaaggg aaaatctgtg gcaaatcaac agtcatcagc tacgagtgtc    300
gtcctggata tgaaaaggtc cctggggaga agggctgtcc agcagcccta ccactctcaa    360
acctttacga gacctggga gtcgttggat ccaccaccac tcagctgtac acggaccgca    420
    
```

-continued

cggagaagct gaggcctgag atggaggggc ccggcagcct caccatcttc gccccctagca	480
acgaggcctg ggccctccttg ccagctgaag tgctggactc cctggtcagc aatgtcaaca	540
ttgagctgct caatgccctc cgctaccata tggtagggcag gcgagtcctg actgatgagc	600
tgaaacacgg catgaccctc acctctatgt accagaatc caacatccag atccaccact	660
atcctaattg gattgtaact gtgaactgtg cccggctcct gaaagccgac caccatgcaa	720
ccaacggggt ggtgcacctc atcgataagg tcactctcac catcaccaac aacatccagc	780
agatcattga gatcgaggac acctttgaga cccttcgggc tgctgtggct gcatcagggc	840
tcaaacacgat gcttgaaggt aacggccagt acacgctttt ggccccgacc aatgaggcct	900
tcgagaagat ccctagttag actttgaacc gtatcctggg cgaccagaa gccctgagag	960
acctgctgaa caaccacatc ttgaagttag ctatgtgtgc tgaagccatc gttgcggggc	1020
tgtctgtaga gaccctggag ggacagacac tggaggtggg ctgcagcggg gacatgctca	1080
ctatcaacgg gaaggcgatc atctccaata aagacatcct agccaccaac ggggtgatcc	1140
actacattga tgagctactc atcccagact cagccaagac actatttgaa ttgctgagc	1200
agtctgatgt gtcccagacc attgacctt tcagacaagc cggcctcggc aatcatctct	1260
ctggaagtga gcggttgacc ctctggctc ccctgaatc tgattcaaa gatggaacct	1320
ctccaattga tgccataca aggaattgc ttcggaacca cataattaa gaccagctgg	1380
cctctaagta tctgtaccat ggacagacc tggaaactct gggcggcaaa aactgagag	1440
tttttgttta tcgtaatagc ctctgcattg agaacagctg catcgcggcc cagacaaga	1500
gggggaggta cgggaccctg ttcacgatgg accgggtgct gacccccca atggggactg	1560
tcatggatgt cctgaaggga gacaatcgct ttagcatgct ggtagctgcc atccagtctg	1620
caggactgac ggagaccctc aaccgggaag gagtctacac agtctttgct cccacaaatg	1680
aagcctccg agccctgcca ccaagagaac ggagcagact cttgggagat gccaaaggac	1740
ttgccaacat cctgaaatac cacattggtg atgaaatcct ggttagcggg ggcacgggg	1800
ccctggtgcg gctaaagtct ctccaagggt acaagctgga agtcagcttg aaaaacaatg	1860
tggtagtgt caacaaggag cctgttgccg agcctgacat catggccaca aatggcgtgg	1920
tccatgtcat caccaatgtt ctgcagcctc cagccaacag acctcaggaa agaggggatg	1980
aacttgacga ctctgcgctt gagatcttca aacaagcatc agcgttttcc agggcttccc	2040
agaggctctg gcgactagcc cctgtctatc aaaagttatt agagaggatg aagcattagc	2100
ttgaagcact acaggaggaa tgcaccacgg cagctctccg ccaatttctc tcagatttcc	2160
acagagactg tttgaatgtt ttcaaaacca agtatcacac tttaatgtac atgggcccga	2220
ccataatgag atgtgagcct tgtgcattgt ggggaggagg gagagagatg tactttttaa	2280
atcatgttcc ccctaaacat ggctgttaac ccaactgcat cagaaacttg gatgtcactg	2340
cctgacattc acttccagag aggaactatc ccaaatgtgg aattgactgc ctatgccaaag	2400
tccttgaaa aggagcttca gtattgtggg gctcataaaa catgaatcaa gcaatccagc	2460
ctcatgggaa gtccctggac agtttttcta aagcccttgc acagctggag aaatggcatc	2520
attataagct atgagttgaa atgttctgtc aaatgtgtct cacatctaca cgtggcttgg	2580
aggcttttat ggggccctgt ccaggtagaa aagaaatgtt atgtagagct tagatttccc	2640
tattgtgaca gagccatggt gtgtttgtaa taataaaacc aaagaacat a	2691

-continued

<210> SEQ ID NO 3
 <211> LENGTH: 585
 <212> TYPE: PRT
 <213> ORGANISM: Homo sapiens
 <220> FEATURE:
 <221> NAME/KEY: PEPTIDE
 <222> LOCATION: (1)..(585)
 <223> OTHER INFORMATION: 69 to 653 amino acid sequence of human ID No.1

<400> SEQUENCE: 3

Tyr Gln Arg Lys Ile Cys Gly Lys Ser Thr Val Ile Ser Tyr Glu Cys
 1 5 10 15
 Cys Pro Gly Tyr Glu Lys Val Pro Gly Glu Lys Gly Cys Pro Ala Ala
 20 25 30
 Leu Pro Leu Ser Asn Leu Tyr Glu Thr Leu Gly Val Val Gly Ser Thr
 35 40 45
 Thr Thr Gln Leu Tyr Thr Asp Arg Thr Glu Lys Leu Arg Pro Glu Met
 50 55 60
 Glu Gly Pro Gly Ser Phe Thr Ile Phe Ala Pro Ser Asn Glu Ala Trp
 65 70 75 80
 Ala Ser Leu Pro Ala Glu Val Leu Asp Ser Leu Val Ser Asn Val Asn
 85 90 95
 Ile Glu Leu Leu Asn Ala Leu Arg Tyr His Met Val Gly Arg Arg Val
 100 105 110
 Leu Thr Asp Glu Leu Lys His Gly Met Thr Leu Thr Ser Met Tyr Gln
 115 120 125
 Asn Ser Asn Ile Gln Ile His His Tyr Pro Asn Gly Ile Val Thr Val
 130 135 140
 Asn Cys Ala Arg Leu Leu Lys Ala Asp His His Ala Thr Asn Gly Val
 145 150 155 160
 Val His Leu Ile Asp Lys Val Ile Ser Thr Ile Thr Asn Asn Ile Gln
 165 170 175
 Gln Ile Ile Glu Ile Glu Asp Thr Phe Glu Thr Leu Arg Ala Ala Val
 180 185 190
 Ala Ala Ser Gly Leu Asn Thr Met Leu Glu Gly Asn Gly Gln Tyr Thr
 195 200 205
 Leu Leu Ala Pro Thr Asn Glu Ala Phe Glu Lys Ile Pro Ser Glu Thr
 210 215 220
 Leu Asn Arg Ile Leu Gly Asp Pro Glu Ala Leu Arg Asp Leu Leu Asn
 225 230 235 240
 Asn His Ile Leu Lys Ser Ala Met Cys Ala Glu Ala Ile Val Ala Gly
 245 250 255
 Leu Ser Val Glu Thr Leu Glu Gly Thr Thr Leu Glu Val Gly Cys Ser
 260 265 270
 Gly Asp Met Leu Thr Ile Asn Gly Lys Ala Ile Ile Ser Asn Lys Asp
 275 280 285
 Ile Leu Ala Thr Asn Gly Val Ile His Tyr Ile Asp Glu Leu Leu Ile
 290 295 300
 Pro Asp Ser Ala Lys Thr Leu Phe Glu Leu Ala Ala Glu Ser Asp Val
 305 310 315 320
 Ser Thr Ala Ile Asp Leu Phe Arg Gln Ala Gly Leu Gly Asn His Leu
 325 330 335
 Ser Gly Ser Glu Arg Leu Thr Leu Leu Ala Pro Leu Asn Ser Val Phe

-continued

340		345		350											
Lys	Asp	Gly	Thr	Pro	Pro	Ile	Asp	Ala	His	Thr	Arg	Asn	Leu	Leu	Arg
	355						360					365			
Asn	His	Ile	Ile	Lys	Asp	Gln	Leu	Ala	Ser	Lys	Tyr	Leu	Tyr	His	Gly
	370					375					380				
Gln	Thr	Leu	Glu	Thr	Leu	Gly	Gly	Lys	Lys	Leu	Arg	Val	Phe	Val	Tyr
385					390					395					400
Arg	Asn	Ser	Leu	Cys	Ile	Glu	Asn	Ser	Cys	Ile	Ala	Ala	His	Asp	Lys
			405						410					415	
Arg	Gly	Arg	Tyr	Gly	Thr	Leu	Phe	Thr	Met	Asp	Arg	Val	Leu	Thr	Pro
			420					425					430		
Pro	Met	Gly	Thr	Val	Met	Asp	Val	Leu	Lys	Gly	Asp	Asn	Arg	Phe	Ser
	435					440					445				
Met	Leu	Val	Ala	Ala	Ile	Gln	Ser	Ala	Gly	Leu	Thr	Glu	Thr	Leu	Asn
	450					455					460				
Arg	Glu	Gly	Val	Tyr	Thr	Val	Phe	Ala	Pro	Thr	Asn	Glu	Ala	Phe	Arg
465					470					475					480
Ala	Leu	Pro	Pro	Arg	Glu	Arg	Ser	Arg	Leu	Leu	Gly	Asp	Ala	Lys	Glu
				485					490					495	
Leu	Ala	Asn	Ile	Leu	Lys	Tyr	His	Ile	Gly	Asp	Glu	Ile	Leu	Val	Ser
			500						505				510		
Gly	Gly	Ile	Gly	Ala	Leu	Val	Arg	Leu	Lys	Ser	Leu	Gln	Gly	Asp	Lys
		515					520					525			
Leu	Glu	Val	Ser	Leu	Lys	Asn	Asn	Val	Val	Ser	Val	Asn	Lys	Glu	Pro
	530					535					540				
Val	Ala	Glu	Pro	Asp	Ile	Met	Ala	Thr	Asn	Gly	Val	Val	His	Val	Ile
545					550					555					560
Thr	Asn	Val	Leu	Gln	Pro	Pro	Ala	Asn	Arg	Pro	Gln	Glu	Arg	Gly	Asp
			565						570					575	
Glu	Leu	Ala	Asp	Ser	Ala	Leu	Glu	Ile							
		580						585							

<210> SEQ ID NO 4
 <211> LENGTH: 1857
 <212> TYPE: DNA
 <213> ORGANISM: Mouse Intracisternal A-particle

<400> SEQUENCE: 4

```

gcagggtccc ccaagtcacc ctaccagctg gtgctgcagc atagccggct ccgggggtcgc      60
cagcacggcc ccaatgtatg tgctgtgcag aaggtcattg gcaccaacaa gaaatacttc      120
accaactgca agcagtggta ccagaggaag atctgcggca agtcgacagt catcagttat      180
gagtgtgtgc ctggatatga aaaggtccca ggagagaaag gttgccccagc agctcttccg      240
ctctcaaate tgtatgagac catgggagtt gtgggatcga ccaccacaca gctgtataca      300
gaccgcacag aaaagctgag gcctgagatg gagggaccgg gaagottcac catctttgct      360
cctagcaatg aggcctggtc ttccttgctc gcggaagtgc tggactccct ggtgagcaac      420
gtcaacatcg aactgctcaa tgctctccgc taccacatgg tggacaggcg ggtcctgacc      480
gatgagctca agcacggcat gaccctcacc tccatgtacc agaattccaa catccagatc      540
catcactatc ccaatgggat tgtaactggt aactgtgccc ggctgctgaa ggctgaccac      600
catgcgacca acggcgtggt gcatctcatt gacaaggta tttccacat caccaacaac      660
    
```

-continued

```

atccagcaga tcattgaaat cgaggacacc tttgagacac ttcgggccgc cgtggctgca 720
tcaggactca ataccgtgct ggagggcgac ggccagtcca cactcttggc cccaaccaac 780
gaggcctttg agaagatccc tgccgagacc ttgaaccgca tcctgggtga cccagaggca 840
ctgagagacc tgctaaacaa ccacatcctg aagtcagcca tgtgtgctga ggccattgta 900
gctggaatgt ccatggagac cctggggggc accacactgg aggtgggctg cagtggggac 960
aagctcacca tcaacgggaa ggctgtcatc tccaacaaag acatcctggc caccaacggt 1020
gtcattcatt tcattgatga gctgcttacc ccagattcag ccaagacact gcttgagctg 1080
gctggggaat ctgacgtctc cactgccatt gacatcctca aacaagctgg cctcgatact 1140
catctctctg ggaagaaca gttgacctc ctggccccc tgaattctgt gttcaaagat 1200
ggtgtccctc gcategacgc ccagatgaag actttgcttc tgaaccacat ggtcaaagaa 1260
cagttggcct ccaagtatct gtactctgga cagacactgg acacgctggg tggcaaaaag 1320
ctgagagctc ttgtttatcg aaatagcctc tgcattgaaa acagctgcat tgtgcccac 1380
gataagaggg gacggtttg gacctgttc accatggacc ggatggtgac accccaatg 1440
gggacagtta tggatgtcct gaagggagac aatcgtttta gcatgctggt ggccgccatc 1500
cagtctcag gactcatgga gatcctcaac cggaagggg tctacactgt tttgtctcc 1560
accaatgaag cgttccaagc catgctcca gaagaactga acaactctt ggcaaatgcc 1620
aaggaactta ccaacatcct gaagtaccac attggtgatg aaatcctggt tagcggaggc 1680
atcggggccc tggtcggct gaagtctctc caaggggaca aactggaagt cagctcgaaa 1740
aacaatgtag tgagtgtcaa taaggagcct gttgccgaaa cggacatcat ggccacaaac 1800
ggtgtgtct atgcatcaa cactgttctg cagccgccag ccaaccgacc acaagaa 1857

```

```

<210> SEQ ID NO 5
<211> LENGTH: 609
<212> TYPE: PRT
<213> ORGANISM: Mouse Intracisternal A-particle
<220> FEATURE:
<221> NAME/KEY: PEPTIDE
<222> LOCATION: (1)..(609)
<223> OTHER INFORMATION: 23 to 641 amino acid sequence of mouse
<400> SEQUENCE: 5

```

```

Ala Gly Pro Ala Lys Ser Pro Tyr Gln Leu Val Leu Gln His Ser Arg
 1             5             10             15
Leu Arg Gly Arg Gln His Gly Pro Asn Val Cys Ala Val Gln Lys Val
          20             25             30
Ile Gly Thr Asn Arg Lys Tyr Phe Thr Asn Cys Lys Gln Trp Tyr Gln
          35             40             45
Arg Lys Ile Cys Gly Lys Ser Thr Val Ile Ser Tyr Glu Cys Cys Pro
          50             55             60
Gly Tyr Glu Lys Val Pro Gly Glu Lys Gly Cys Pro Ala Ala Leu Pro
          65             70             75             80
Leu Ser Asn Leu Tyr Glu Thr Leu Gly Val Val Gly Ser Thr Thr Thr
          85             90             95
Gln Leu Tyr Thr Asp Arg Thr Glu Lys Leu Arg Pro Glu Met Glu Gly
          100            105            110
Pro Gly Ser Phe Thr Ile Phe Ala Pro Ser Asn Glu Ala Trp Ala Ser
          115            120            125

```

-continued

Leu Pro Ala Glu Val Leu Asp Ser Leu Val Ser Asn Val Asn Ile Glu
 130 135 140

Leu Leu Asn Ala Leu Arg Tyr His Met Val Gly Arg Arg Val Leu Thr
 145 150 155 160

Asp Glu Leu Lys His Gly Met Thr Leu Thr Ser Met Tyr Gln Asn Ser
 165 170 175

Asn Ile Gln Ile His His Tyr Pro Asn Gly Ile Val Thr Val Asn Cys
 180 185 190

Ala Arg Leu Leu Lys Ala Asp His His Ala Thr Asn Gly Val Val His
 195 200 205

Leu Ile Asp Lys Val Ile Ser Thr Ile Thr Asn Asn Ile Gln Gln Ile
 210 215 220

Ile Glu Ile Glu Asp Thr Phe Glu Thr Leu Arg Ala Ala Val Ala Ala
 225 230 235 240

Ser Gly Leu Asn Thr Met Leu Glu Gly Asn Gly Gln Tyr Thr Leu Leu
 245 250 255

Ala Pro Thr Asn Glu Ala Phe Glu Lys Ile Pro Ser Glu Thr Leu Asn
 260 265 270

Arg Ile Leu Gly Asp Pro Glu Ala Leu Arg Asp Leu Leu Asn Asn His
 275 280 285

Ile Leu Lys Ser Ala Met Cys Ala Glu Ala Ile Val Ala Gly Leu Ser
 290 295 300

Val Glu Thr Leu Glu Gly Thr Thr Leu Glu Val Gly Cys Ser Gly Asp
 305 310 315 320

Met Leu Thr Ile Asn Gly Lys Ala Ile Ile Ser Asn Lys Asp Ile Leu
 325 330 335

Ala Thr Asn Gly Val Ile His Tyr Ile Asp Glu Leu Leu Ile Pro Asp
 340 345 350

Ser Ala Lys Thr Leu Phe Glu Leu Ala Ala Glu Ser Asp Val Ser Thr
 355 360 365

Ala Ile Asp Leu Phe Arg Gln Ala Gly Leu Gly Asn His Leu Ser Gly
 370 375 380

Ser Glu Arg Leu Thr Leu Leu Ala Pro Leu Asn Ser Val Phe Lys Asp
 385 390 395 400

Gly Thr Pro Pro Ile Asp Ala His Thr Arg Asn Leu Leu Arg Asn His
 405 410 415

Ile Ile Lys Asp Gln Leu Ala Ser Lys Tyr Leu Tyr His Gly Gln Thr
 420 425 430

Leu Glu Thr Leu Gly Gly Lys Lys Leu Arg Val Phe Val Tyr Arg Asn
 435 440 445

Ser Leu Cys Ile Glu Asn Ser Cys Ile Ala Ala His Asp Lys Arg Gly
 450 455 460

Arg Tyr Gly Thr Leu Phe Thr Met Asp Arg Val Leu Thr Pro Pro Met
 465 470 475 480

Gly Thr Val Met Asp Val Leu Lys Gly Asp Asn Arg Phe Ser Met Leu
 485 490 495

Val Ala Ala Ile Gln Ser Ala Gly Leu Thr Glu Thr Leu Asn Arg Glu
 500 505 510

Gly Val Tyr Thr Val Phe Ala Pro Thr Asn Glu Ala Phe Arg Ala Leu
 515 520 525

-continued

Pro Pro Arg Glu Arg Ser Arg Leu Leu Gly Asp Ala Lys Glu Leu Ala
 530 535 540

Asn Ile Leu Lys Tyr His Ile Gly Asp Glu Ile Leu Val Ser Gly Gly
 545 550 555 560

Ile Gly Ala Leu Val Arg Leu Lys Ser Leu Gln Gly Asp Lys Leu Glu
 565 570 575

Val Ser Leu Lys Asn Asn Val Val Ser Val Asn Lys Glu Pro Val Ala
 580 585 590

Glu Pro Asp Ile Met Ala Thr Asn Gly Val Val His Val Ile Thr Asn
 595 600 605

Val

<210> SEQ ID NO 6
 <211> LENGTH: 391
 <212> TYPE: DNA
 <213> ORGANISM: Artificial Sequence
 <220> FEATURE:
 <223> OTHER INFORMATION: aig-h3 D-IV

<400> SEQUENCE: 6

gtttgggacc ctgttcacca tggaccggat gttgacaccc ccaatgggga cagttatgga 60
 tgtcctgaag ggagacaatc gtttagcat gctggtggcc gccatccagt ctgcaggact 120
 catggagatc ctcaaccggg aaggggtota cactgttttt gctcccacca atgaagcgtt 180
 ccaagccatg cctccagaag aactgaacaa actcttgga aatgccaagg aacttaccaa 240
 catcctgaag taccacattg gtgatgaaat cctggttagc ggaggcatcg gggccctggt 300
 gcggtgaag tctctccaag gggacaaact ggaagtcagc tcgaaaaaca atgtagtgag 360
 tgtcaataag gagcctgttg ccgaaccga c 391

<210> SEQ ID NO 7
 <211> LENGTH: 140
 <212> TYPE: PRT
 <213> ORGANISM: Artificial Sequence
 <220> FEATURE:
 <223> OTHER INFORMATION: aig-h3 D-IV(1X) amino acid sequence

<400> SEQUENCE: 7

Leu Thr Pro Pro Met Gly Thr Val Met Asp Val Leu Lys Gly Asp Asn
 1 5 10 15

Arg Phe Ser Met Leu Val Ala Ala Ile Gln Ser Ala Gly Leu Thr Glu
 20 25 30

Thr Leu Asn Arg Glu Gly Val Tyr Thr Val Phe Ala Pro Thr Asn Glu
 35 40 45

Ala Phe Arg Ala Leu Pro Pro Arg Glu Arg Ser Arg Leu Leu Gly Asp
 50 55 60

Ala Lys Glu Leu Ala Asn Ile Leu Lys Tyr His Ile Gly Asp Glu Ile
 65 70 75 80

Leu Val Ser Gly Gly Ile Gly Ala Leu Val Arg Leu Lys Ser Leu Gln
 85 90 95

Gly Asp Lys Leu Glu Val Ser Leu Lys Asn Asn Val Val Ser Val Asn
 100 105 110

Lys Glu Pro Val Ala Glu Pro Asp Ile Met Ala Thr Asn Gly Val Val
 115 120 125

His Val Ile Thr Asn Val Leu Gln Pro Pro Ala Asn

-continued

Leu Thr Pro Pro Met Gly Thr Val Met Asp Val Leu Lys Gly Asp Asn
 1 5 10 15
 Arg Phe Ser Met Leu Val Ala Ala Ile Gln Ser Ala Gly Leu Thr Glu
 20 25 30
 Thr Leu Asn Arg Glu Gly Val Tyr Thr Val Phe Ala Pro Thr Asn Glu
 35 40 45
 Ala Phe Arg Ala Leu Pro Pro Arg Glu Arg Ser Arg Leu Leu Gly Asp
 50 55 60
 Ala Lys Glu Leu Ala Asn Ile Leu Lys Tyr His Ile Gly Asp Glu Ile
 65 70 75 80
 Leu Val Ser Gly Gly Ile Gly Ala Leu Val Arg Leu Lys Ser Leu Gln
 85 90 95
 Gly Asp Lys Leu Glu Val Ser Leu Lys Asn Asn Val Val Ser Val Asn
 100 105 110
 Lys Glu Pro Val Ala Glu Pro Asp Ile Met Ala Thr Asn Gly Val Val
 115 120 125
 His Val Ile Thr Asn Val Leu Gln Pro Pro Ala Asn Leu Thr Pro Pro
 130 135 140
 Met Gly Thr Val Met Asp Val Leu Lys Gly Asp Asn Arg Phe Ser Met
 145 150 155 160
 Leu Val Ala Ala Ile Gln Ser Ala Gly Leu Thr Glu Thr Leu Asn Arg
 165 170 175
 Glu Gly Val Tyr Thr Val Phe Ala Pro Thr Asn Glu Ala Phe Arg Ala
 180 185 190
 Leu Pro Pro Arg Glu Arg Ser Arg Leu Leu Gly Asp Ala Lys Glu Leu
 195 200 205
 Ala Asn Ile Leu Lys Tyr His Ile Gly Asp Glu Ile Leu Val Ser Gly
 210 215 220
 Gly Ile Gly Ala Leu Val Arg Leu Lys Ser Leu Gln Gly Asp Lys Leu
 225 230 235 240
 Glu Val Ser Leu Lys Asn Asn Val Val Ser Val Asn Lys Glu Pro Val
 245 250 255
 Ala Glu Pro Asp Ile Met Ala Thr Asn Gly Val Val His Val Ile Thr
 260 265 270
 Asn Val Leu Gln Pro Pro Ala Asn Leu Thr Pro Pro Met Gly Thr Val
 275 280 285
 Met Asp Val Leu Lys Gly Asp Asn Arg Phe Ser Met Leu Val Ala Ala
 290 295 300
 Ile Gln Ser Ala Gly Leu Thr Glu Thr Leu Asn Arg Glu Gly Val Tyr
 305 310 315 320
 Thr Val Phe Ala Pro Thr Asn Glu Ala Phe Arg Ala Leu Pro Pro Arg
 325 330 335
 Glu Arg Ser Arg Leu Leu Gly Asp Ala Lys Glu Leu Ala Asn Ile Leu
 340 345 350
 Lys Tyr His Ile Gly Asp Glu Ile Leu Val Ser Gly Gly Ile Gly Ala
 355 360 365
 Leu Val Arg Leu Lys Ser Leu Gln Gly Asp Lys Leu Glu Val Ser Leu
 370 375 380
 Lys Asn Asn Val Val Ser Val Asn Lys Glu Pro Val Ala Glu Pro Asp
 385 390 395 400
 Ile Met Ala Thr Asn Gly Val Val His Val Ile Thr Asn Val Leu Gln

-continued

	325		330		335
Glu Arg Ser Arg Leu Leu Gly Asp Ala Lys Glu Leu Ala Asn Ile Leu					
	340		345		350
Lys Tyr His Ile Gly Asp Glu Ile Leu Val Ser Gly Gly Ile Gly Ala					
	355		360		365
Leu Val Arg Leu Lys Ser Leu Gln Gly Asp Lys Leu Glu Val Ser Leu					
	370		375		380
Lys Asn Asn Val Val Ser Val Asn Lys Glu Pro Val Ala Glu Pro Asp					
	385		390		395
Ile Met Ala Thr Asn Gly Val Val His Val Ile Thr Asn Val Leu Gln					
	405		410		415
Pro Pro Ala Asn Leu Thr Pro Pro Met Gly Thr Val Met Asp Val Leu					
	420		425		430
Lys Gly Asp Asn Arg Phe Ser Met Leu Val Ala Ala Ile Gln Ser Ala					
	435		440		445
Gly Leu Thr Glu Thr Leu Asn Arg Glu Gly Val Tyr Thr Val Phe Ala					
	450		455		460
Pro Thr Asn Glu Ala Phe Arg Ala Leu Pro Pro Arg Glu Arg Ser Arg					
	465		470		475
Leu Leu Gly Asp Ala Lys Glu Leu Ala Asn Ile Leu Lys Tyr His Ile					
	485		490		495
Gly Asp Glu Ile Leu Val Ser Gly Gly Ile Gly Ala Leu Val Arg Leu					
	500		505		510
Lys Ser Leu Gln Gly Asp Lys Leu Glu Val Ser Leu Lys Asn Asn Val					
	515		520		525
Val Ser Val Asn Lys Glu Pro Val Ala Glu Pro Asp Ile Met Ala Thr					
	530		535		540
Asn Gly Val Val His Val Ile Thr Asn Val Leu Gln Pro Pro Ala Asn					
	545		550		555
					560

1-16. (canceled)

17. A method for diagnosing renal diseases, hepatic diseases, rheumatoid arthritis or cardiovascular diseases, said method comprising detecting an amount of β ig-h3 protein comprising the following steps:

- (a) preparing recombinant proteins of β ig-h3 or β ig-h3 fas-1 domains, their fragments or derivatives, as standard proteins;
- (b) preparing specific ligands against the above recombinant proteins, their fragments or derivatives of the above step 1; and
- (c) measuring the amount of β ig-h3 protein of samples with the method using binding reaction of ligands of the above step 2 with the recombinant proteins, their fragments or derivatives of the above step 1.

18. The method as set forth in claim 17, wherein the ligands of step 1) are selected from a group consisting of antibodies, RNA, DNA, lipids, proteins, organic compounds and inorganic compounds.

19. The method as set forth in claim 17, wherein the specific binding reaction of step 3) is antigen-antibody reaction.

20. The method as set forth in claim 19, wherein the antigen-antibody reaction is performed by a method selected from a group consisting of immunoblotting, immunoprecipitation, ELISA, RIA, protein chip, rapid assay and microarray.

21. The method as set forth in claim 19, wherein the antigen-antibody reaction of step 3) comprises the following steps:

- (a) coating recombinant proteins of β ig-h3 or β ig-h3 fas-1 domains, their fragments or derivatives to matrix;
- (b) reacting antibody against the protein of the above step 1, its fragments or derivatives with sample;
- (c) adding the reactant of the above step 2 to the coated protein of step 1 and waiting for reaction, and then washing thereof; and
- (d) adding the secondary antibody to the reactant of the above step 3 for further reaction, and then measuring OD.

22. The method as set forth in claim 17, wherein the β ig-h3 protein is human β ig-h3 protein having an amino acid sequence represented by SEQ ID NO:3 or mouse β ig-h3 protein having an amino acid sequence represented by SEQ ID NO:5.

23. The method as set forth in claim 17, wherein the recombinant β ig-h3 proteins comprising 4th fas-1 domains have 1-10 repeatedly-linked fas-1 domains.

24. The method as set forth in claim 23, wherein the fas-1 domain of β ig-h3 is selected from a group consisting of sequences represented by SEQ ID NO:7, SEQ ID NO:8, SEQ ID NO:9 and SEQ ID NO:10.

25. The method as set forth in claim 17, wherein the sample can be any body fluid including urine, blood or synovial fluid.

26. A diagnostic kit for the renal diseases, hepatic diseases, rheumatoid arthritis or cardiovascular diseases comprising β ig-h3 protein or recombinant proteins of fas-1 domain in the β ig-h3 protein or fragments or derivatives thereof and their ligands.

27. The diagnostic kit as set forth in claim 26, wherein the ligand is selected from a group consisting of antibody specifically binding to β ig-h3 protein, fas-1 domain of β ig-h3, their fragments or derivatives, RNA, DNA, lipids, proteins, organic compounds and inorganic compounds.

28. The diagnostic kit as set forth in claim 27, wherein the ligand is antibody.

29. The diagnostic kit as set forth in claim 28, wherein the kit additionally includes buffer solution, secondary antibody, washing solution, stop solution or coloring substrate.

30. The diagnostic kit as set forth in claim 26, wherein the β ig-h3 protein is human β ig-h3 protein having an amino acid sequence represented by SEQ ID NO:3 or mouse β ig-h3 protein having an amino acid sequence represented by SEQ ID NO:5.

31. The diagnostic kit as set forth in claim 26, wherein 1 or 2-10 4th fas-1 domains of β ig-h3 protein are repeatedly linked.

32. The diagnostic kit as set forth in claim 31, wherein the fas-1 domain of β ig-h3 is selected from a group consisting of sequences represented by SEQ ID NO:7, SEQ ID NO:8, SEQ ID NO:9 and SEQ ID NO:10.

* * * * *

专利名称(译)	测量β-h3蛋白量的方法和使用其的诊断试剂盒		
公开(公告)号	US20050164197A1	公开(公告)日	2005-07-28
申请号	US10/511719	申请日	2002-10-22
[标]申请(专利权)人(译)	KIM在San BAE JONG SUB		
申请(专利权)人(译)	KIM IN-SAN BAE JONG-SUB		
当前申请(专利权)人(译)	REGEN BIOTECH , INC.		
[标]发明人	KIM IN SAN BAE JONG SUB		
发明人	KIM, IN-SAN BAE, JONG-SUB		
IPC分类号	G01N33/53 C07K14/705 C12N15/09 G01N33/566 G01N33/68 G01N37/00 C12Q1/68		
CPC分类号	G01N2333/78 G01N33/6887		
优先权	1020020021488 2002-04-19 KR		
外部链接	Espacenet USPTO		

摘要(译)

本发明涉及测量β-h3蛋白量的方法和使用该方法的诊断试剂盒。特别地，它涉及通过betaig-h3蛋白或betaig-h3蛋白中fas-1结构域的重组蛋白（包括它们的片段或其衍生物）之间的特异性结合反应来测量体液中β-h3蛋白量的方法。）及其配体，涉及肾病，肝病，类风湿性关节炎或心血管疾病的诊断试剂盒，包括betaig-h3蛋白或betaig-h3蛋白中fas-1结构域的重组蛋白（包括其片段或其衍生物）和他们的配体。本发明的方法和试剂盒可有效地用作肾病，肝病，类风湿性关节炎或心血管疾病的损伤或进展程度的敏感诊断方法。

