



US010132814B2

(12) **United States Patent**
Pimentel et al.

(10) **Patent No.: US 10,132,814 B2**
(45) **Date of Patent: Nov. 20, 2018**

(54) **METHODS FOR DISTINGUISHING IRRITABLE BOWEL SYNDROME FROM INFLAMMATORY BOWEL DISEASE AND CELIAC DISEASE**

(71) Applicant: **Cedars-Sinai Medical Center**, Los Angeles, CA (US)

(72) Inventors: **Mark Pimentel**, Los Angeles, CA (US); **Christopher Chang**, Los Angeles, CA (US)

(73) Assignee: **Cedars-Sinai Medical Center**, Los Angeles, CA (US)

(*) Notice: Subject to any disclaimer, the term of this patent is extended or adjusted under 35 U.S.C. 154(b) by 0 days.

(21) Appl. No.: **14/878,416**

(22) Filed: **Oct. 8, 2015**

(65) **Prior Publication Data**

US 2016/0103136 A1 Apr. 14, 2016

Related U.S. Application Data

(60) Provisional application No. 62/085,825, filed on Dec. 1, 2014, provisional application No. 62/061,877, filed on Oct. 9, 2014.

(51) **Int. Cl.**
G01N 33/53 (2006.01)
G01N 21/00 (2006.01)
G01N 33/68 (2006.01)

(52) **U.S. Cl.**
CPC ... **G01N 33/6854** (2013.01); **G01N 2333/205** (2013.01); **G01N 2800/065** (2013.01); **G01N 2800/52** (2013.01)

(58) **Field of Classification Search**
None
See application file for complete search history.

(56) **References Cited**

U.S. PATENT DOCUMENTS

5,691,151 A 11/1997 Braun et al.
6,805,852 B2 10/2004 Lin et al.
6,861,053 B1 3/2005 Lin et al.
7,048,906 B2 5/2006 Lin et al.
7,056,686 B2 6/2006 Lin et al.
7,081,239 B2 7/2006 Lin
7,244,412 B2 7/2007 Lin
7,452,857 B2 11/2008 Lin et al.
7,585,838 B2 9/2009 Lin et al.
7,605,240 B2 10/2009 Lin et al.
7,608,245 B2 10/2009 Lin
7,615,207 B2 11/2009 Lin
7,718,608 B2 5/2010 Lin et al.
7,736,622 B2 6/2010 Lin et al.
7,935,799 B2 5/2011 Lin et al.
8,110,177 B2 2/2012 Lin et al.
8,197,805 B2 6/2012 Lin et al.
8,388,935 B2 3/2013 Lin et al.
8,562,952 B2 10/2013 Lin et al.
9,110,081 B2 8/2015 Pimentel et al.

9,851,361 B2 12/2017 Pimentel
9,869,676 B2 1/2018 Pimentel et al.
2003/0170726 A1 9/2003 Fradelizi et al.
2004/0018528 A1 1/2004 Morimoto et al.
2006/0127359 A1 6/2006 Borrelli
2006/0193871 A1 8/2006 Lin
2007/0212691 A1 9/2007 Yamasaki et al.
2009/0298060 A1 12/2009 Lal et al.
2011/0183337 A1 7/2011 Von Stein et al.
2011/0294726 A1 12/2011 Pimentel et al.
2011/0305704 A1 12/2011 Pimentel et al.
2012/0088257 A1 4/2012 Mouthon et al.
2013/0331283 A1 12/2013 McAndrew et al.
2014/0206636 A1 7/2014 Lin et al.
2016/0061837 A1 3/2016 Pimentel et al.
2017/0038393 A1 2/2017 Pimentel et al.
2017/0095543 A1 4/2017 Lin et al.

FOREIGN PATENT DOCUMENTS

AU 2002256254 B2 5/2007
AU 2007201246 A1 3/2009
AU 2010213708 B2 12/2015
AU 2014331841 A1 3/2016
AU 2015330872 A1 4/2017
BR 11 2016 007474-2 A2 9/2017
BR 112016007474-2 A2 9/2017
CA 2923651 A1 4/2015
CA 2962493 A1 4/2016
CA 2444548 C 6/2016
CL 2011-1944 2/2012
CL 2016000820 A1 9/2016
CN 105744956 A1 7/2016
CN 107003308 A 8/2017
CN 107003308 A1 8/2017
CO 16091069 9/2016
EP 1 385 476 2/2004
EP 2 261 665 B1 6/2004
EP 1 200 828 B1 10/2007
EP 2 261 664 A2 12/2010
EP 2 267 445 A1 12/2010
EP 2 305 213 A2 4/2011
EP 1 811 303 B1 6/2011
EP 2 370 435 B1 1/2015
EP 2 256 498 B1 4/2015
EP 2 895 856 7/2015

(Continued)

OTHER PUBLICATIONS

Morales et al., Antibodies to an 18-Residue Peptide of Cdt Are Found in the Serum of Rats in a Model of Post-Infectious IBS. *Gastroenterology*, 140, (5) S-371, 2011.*

(Continued)

Primary Examiner — Elly-Gerald Stoica
(74) *Attorney, Agent, or Firm* — Linda B. Huber; Nixon Peabody LLP

(57) **ABSTRACT**

Described herein are methods and systems for distinguishing irritable bowel syndrome (IBS) from inflammatory bowel disease (IBD) and celiac disease. The methods and systems can utilize the detection of anti-vinculin antibodies and anti-CdtB antibodies to distinguish IBS from IBD and celiac disease. Further described are methods for selecting a therapy to treat IBS, IBD or celiac disease.

10 Claims, 6 Drawing Sheets

Specification includes a Sequence Listing.

(56)

References Cited

FOREIGN PATENT DOCUMENTS

EP	2267445	B1	8/2016
EP	3054977	A1	8/2016
EP	3204771	A1	8/2017
HK	1221898	A1	6/2017
JP	2009-102401		5/2009
JP	4653936		12/2010
JP	2017502253	A	1/2017
KR	20160062161	A	6/2016
KR	20170067795	A	6/2017
MX	2016004167	A	6/2016
PE	08822016	A1	9/2016
SG	11201601733	A	4/2016
SG	11201702395	A	4/2017
WO	WO 01/11077	A2	2/2001
WO	WO 01/11334	A2	2/2001
WO	WO 2002/083926	A2	10/2002
WO	WO 2004/024097	A2	3/2004
WO	WO 2010/093801	A1	8/2010
WO	WO 2012/007913	A2	1/2012
WO	WO 2014/042828	A2	3/2014
WO	WO 2015/054529	A1	4/2015
WO	WO 2016/057772	A1	4/2016

OTHER PUBLICATIONS

Morales et al. Effect of Rifaximin Treatment on Anti-Vinculin Antibodies in IBS with Diarrhea. *Gastroenterology* (2016).150(4). Supplement 1. p. S-695.

Rezaie et al. Assessment of Anti-Vinculin and Anti-CdtB Antibodies in IBS Subtypes. *Gastroenterology* (2016).150(4). Supplement 1. p. S62.

PCT/US2013/005626 International Search Report and Written Opinion dated Aug. 18, 2014; 14 pages.

PCT/US2013/005626 International Preliminary Report on Patentability dated Aug. 18, 2014; 12 pages.

PCT/US2010/023911 International Search Report and Written Opinion dated May 14, 2010; 11 pages.

PCT/US2010/023911 International Preliminary Report on Patentability dated Aug. 16, 2011; 8 pages.

PCT/US2014/059957 International Search Report and Written Opinion dated Jan. 8, 2015; 11 pages.

PCT/US2014/059957 International Preliminary Report on Patentability dated Apr. 21, 2016; 9 pages.

PCT/US2015/054655 International Search Report and Written Opinion dated Feb. 12, 2016; 7 pages.

EP Application No. 10741728.9 Extended Search Report dated Oct. 17, 2014; 7 pages.

EP Application No. 13837424.4 Extended Search Report dated May 9, 2016; 8 pages.

Abuoun et al. Cytolethal Distending Toxin (CDT)-Negative *Campylobacter jejuni* Strains and Anti-CDT Neutralizing Antibodies are Induced during Human Infection but Not during Colonization in Chickens. *Infection and Immunity* (2005). 73(5): 3053-3062.

Bourke, B. *Campylobacter* infection: small bowel and colon. *Current Opinion in Gastroenterology*. (2002). 18:4-9.

Cambridge et al. Anti-neutrophil antibodies in inflammatory bowel disease: prevalence and diagnostic role. *Gut* (2013). 33:668-674.

Carey et al. A prospective evaluation of the pathogenesis of detrusor instability in woman, using electron microscopy and immunohistochemistry. *BJU International* (2000). 86:970-976.

Dunlop et al. Relative Importance of Enterochromaffin Cell Hyperplasia, Anxiety, and Depression in Postinfectious IBS. *Gastroenterology* (2003). 125:1651-1659.

Fox et al. Gastroenteritis in NF-kappaB-deficient mice is produced with wildtype *Campylobacter jejuni* but not with *C. jejuni* lacking cytolethal distending toxin despite persistent colonization with both strains. *Infection & Immunity* (2004). 72(2):1116-25.

Hickey et al. *Campylobacter jejuni* Cytolethal Distending Toxin Mediates Release of Interleukin-8 from Intestinal Epithelial Cells. *Infection and Immunity* (2000). 68(12):6535-6541.

Morales et al. Antibodies to Cytolethal Distending Toxin of *Campylobacter jejuni* Bind to Enteric Neuronal Elements: Further Evidence for Molecular Mimicry. *Gastroenterology* (2012). 142(5): Suppl 1.

Morales et al. Tu2056 Antibodies to Cytolethal Distending Toxin B and Auto-Antibodies to Human Vinculin are Elevated in IBS Subjects. *Gastroenterology* (2013). 144(5): Suppl. 1, p. S-914.

Moss-Morris et al. To "Lump" or to "Split" the Functional Somatic Syndromes: Can Infections and Emotional Risk Factors Differentiate between the Onset of Chronic Fatigue Syndrome and Irritable Bowel Syndrome. *Psychosomatic Medicine* (2006). 68:463-469.

Neal et al. Prevalence of Gastrointestinal Symptoms Six Months after Bacterial Gastroenteritis and Risk Factors for Development of the Irritable Bowel Syndrome: Postal Survey of Patients. *BMJ* (1997). 314:779, 14 pages.

Nelson et al. Vinculin Activators Target Integrins from within the Cell to Increase Melanoma Sensitivity to Chemotherapy. *Molecular Cancer Research* (2011). 9(6):1-12.

Nemeth et al. Altered Cytoskeleton in Smooth Muscle of Aganglionic Bowel. *Arch Pathol Lab Med* (2002). 126:692-696.

Novak, K. A Serologic Test for Irritable Bowel Syndrome and Other News from ACG. *Gastroenterology Press Highlights* (2013); pp. 1-2. Retrieved from: <www.gastrojournal.org/pb/assets/raw/Health%20Advance/journals/ygast/November26_PressHighlight3.pdf> on Feb. 3, 2016.

Peng et al. a-Catenin Uses a Novel Mechanism to Activate Vinculin. *The Journal of Biological Chemistry* (2012). 287(10): 7728-7737.

Pimentel et al. A New Rat Model Links Two Complementary Theories in Irritable Bowel Syndrome. *Digestive Diseases and Sciences* (2007). 53(4):982-989.

Pimentel et al. Development and Validation of a Biomarker for Diarrhea-Predominant Irritable Bowel Syndrome in Human Subjects. *PLoS One* (2015). 10(5): pp. 1-12.

Purdy et al. Characterisation of cytolethal distending toxin (CDT) mutants of *Campylobacter jejuni*. *J. Med. Microbiol.* (2000). 49: pp. 473-479.

Rolle et al. Structural basis of voiding dysfunction in megacystis microcolon intestinal hypoperistalsis syndrome. *Journal of Pediatric Urology* (2006). 2:277-284.

Spiller et al. Increased rectal mucosal enteroendocrine cells, T lymphocytes, and increased gut permeability following acute *Campylobacter* enteritis and in post-dysenteric irritable bowel syndrome. *Gut* (2000). 47:804-811.

Suh et al. Patients with irritable bowel syndrome or constipation have an increased risk for ischaemic colitis. *Alimentary Pharmacology & Therapeutics* (2007). 25:681-692.

Sung et al. Antibody to Cytolethal Distending Toxin of *Campylobacter jejuni* Stains Small Bowel Myenteric Neuromuscular Elements in Control and *C. jejuni* Exposed Rats: A Possible Role of Molecular Mimicry. *Gastroenterology* (2010). 138(5). p. S-770.

Turkay et al. Noninvasive Methods in Evaluation of Inflammatory Bowel Disease: Where Do We Stand Now? An Update. *Clinics* (2010). 65(2):221-31.

Air et al. Mechanism of Antigenic Variation in an Individual Epitope on Influenza Virus N9 Neuraminidase. *Journal of Virology* (1990). 64(12):5797-5803.

Colman, PM. Effects of amino acid sequence changes on antibody-antigen interactions. *Res Immunol* (1994). 145(1):33-6.

EP Application No. 14851688.3 Extended Search Report dated Mar. 10, 2017; 10 pages.

Lenbo et al. Use of serum biomarkers in a diagnostic test for irritable bowel syndrome. *Alimentary Pharmacology & Therapeutics* (2009). 29:834-842.

Mariuzza et al. The structural basis of antigen-antibody recognition. *Annu Rev Biophys Chem* (1987). 16:139-59. Abstract Only.

Pimentel et al. Anti-vinculin antibodies: Multicenter validation of a diagnostic blood test for irritable bowel syndrome. *The American Journal of Gastroenterology* (2013). 108:1887; p. S571. Abstract Only.

Pimentel et al. Autoimmunity to vinculin in humans may be important in the pathophysiology of IBS. *Gastroenterology* (2014). 146(5); suppl 1, Su2020. Abstract Only.

(56)

References Cited

OTHER PUBLICATIONS

Trees et al. Genome Sequences of 228 Shiga Toxin-Producing *Escherichia coli* Isolates and 12 Isolates Representing Other Diarrheagenic *E. coli* Pathotypes. *Genome Announc* (2014). 2(4): 3 pages.

Triantafyllou et al. Evaluating the Role of Cytotoxic Distending Toxin in the Development of Small Intestinal Bacterial Overgrowth in a Rat Model Post-Infectious IBS. *Gastroenterology* (2014). 146(5): suppl 1, Su1424. Abstract Only.

Singapore Application No. 11201601733V Written Opinion dated Apr. 17, 2017; 8 pages.

International Search Report and Written Opinion of PCT/US2018/015723, dated Apr. 24, 2018, 13 Pages.

Extended European Search Report of EP 15849701.6 dated Feb. 8, 2018, 10 Pages.

EP Application No. 17206465.1 Extended Search Report dated Apr. 20, 2018; 13 pages.

Written Opinion of Singapore Application No. 11201702395W, dated Nov. 24, 2017, 8 pages.

Bradesi et al., Novel Therapeutic Approaches in IBS, *Current Opinion in Pharmacology*, 2007, vol. 7(6), pp. 598-604.

Dib et al., Targets of Anti-Endothelial Cell Antibodies in Pulmonary Hypertension and Scleroderma, 2012, *Eur. Respir. J.*, vol. 39, pp. 1405-1414.

Regent et al., Identification of Target Antigens of Anti-Endothelial Cell and Anti-Vascular Smooth Muscle Cell Antibodies in Patients with Giant Cell Arteritis: a Proteomic Approach, 2011, *Arthritis Research & Therapy*, 13: R107, 15 Pages.

Rezaie et al. Assessment of Anti-Vinculin and Anti-Cytotoxic Distending Toxin B Antibodies in Subtypes of Irritable Bowel Syndrome, 2017, *Digestive Diseases and Sciences*, vol. 62(6), pp. 1480-1485.

* cited by examiner

FIG. 1A

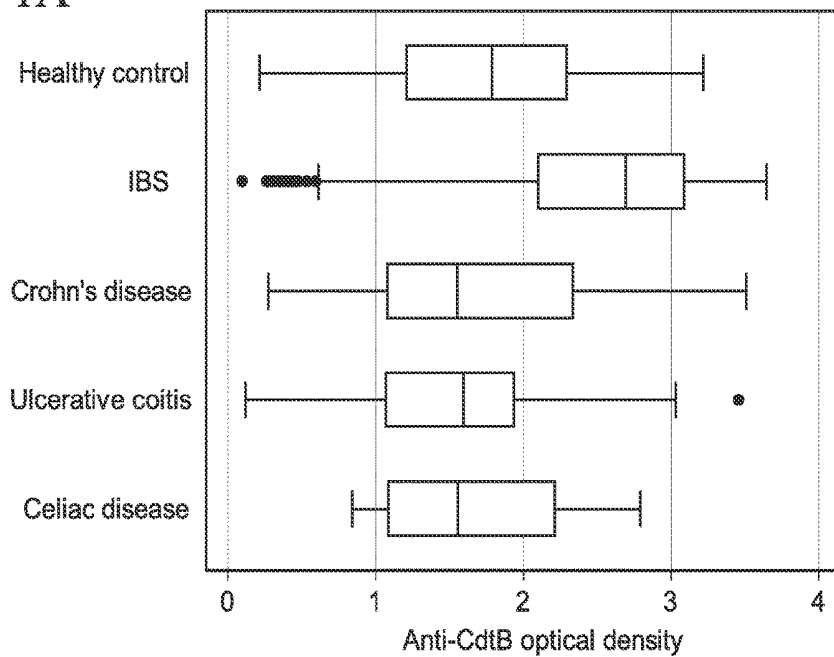


FIG. 1B

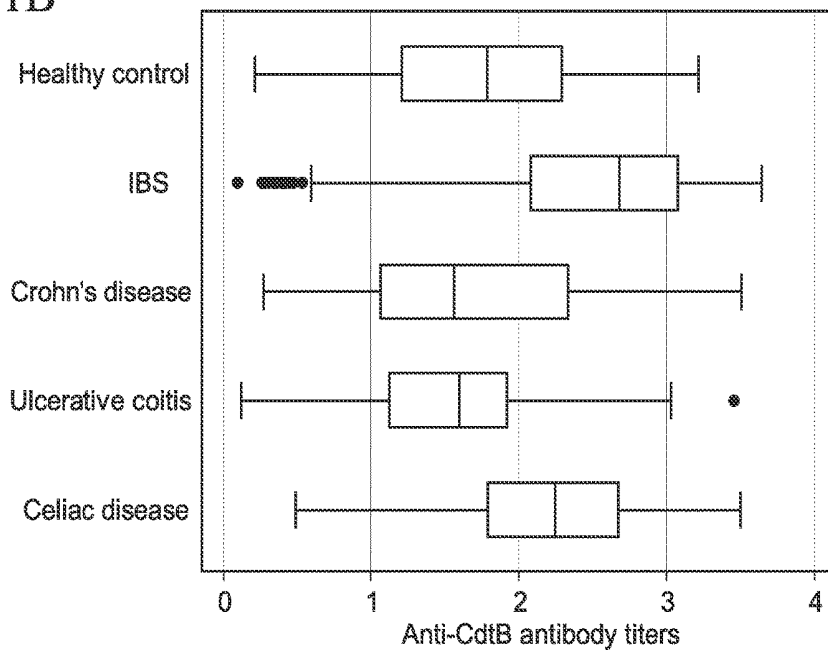


FIG. 2A

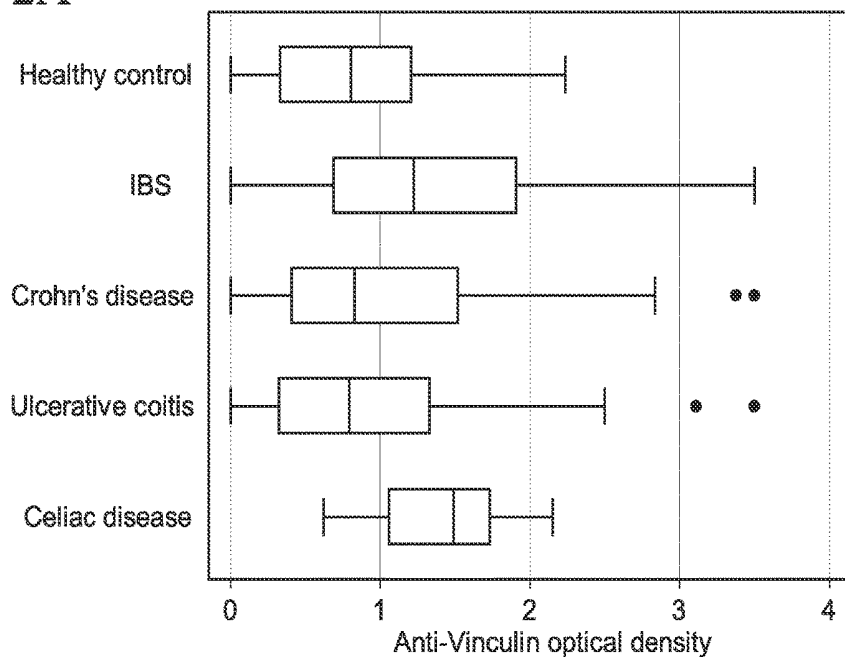


FIG. 2B

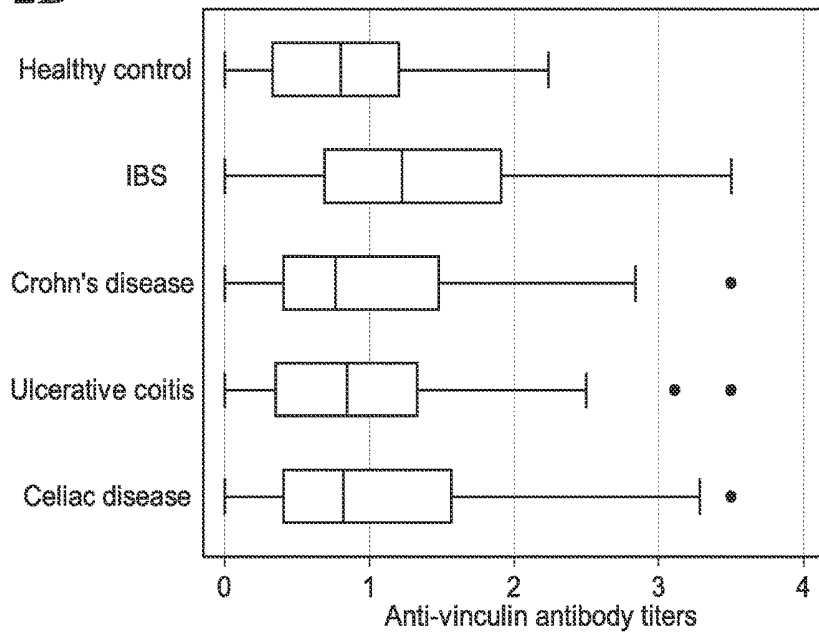


FIG. 3A

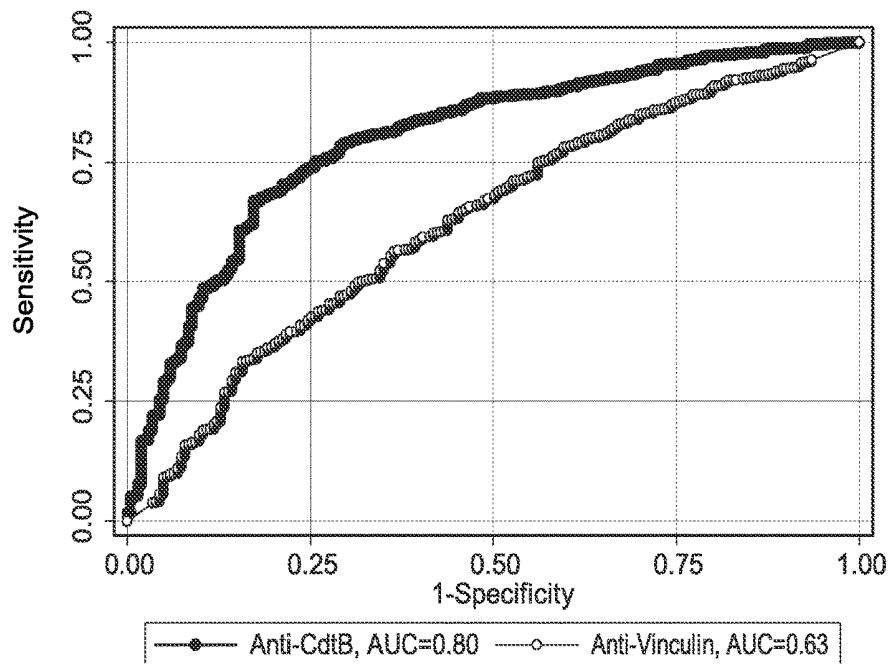


FIG. 3B

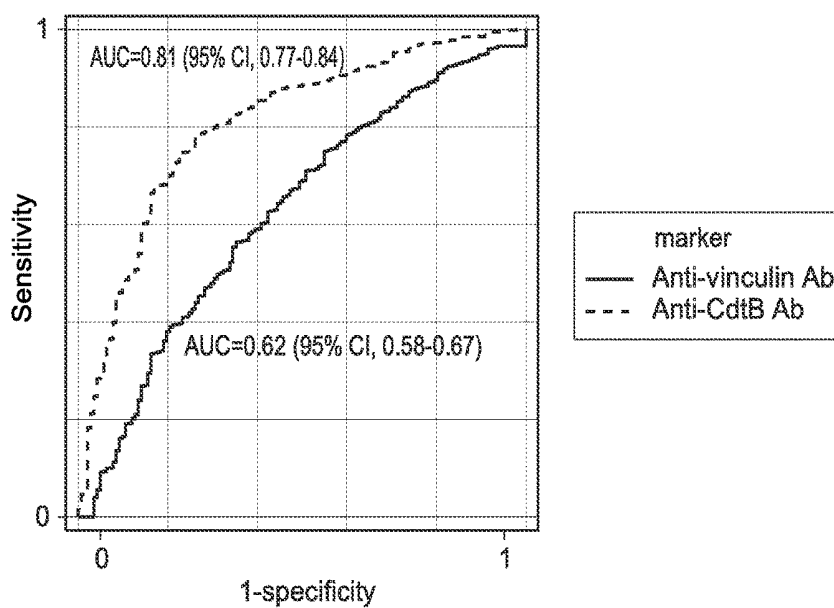


FIG. 3C

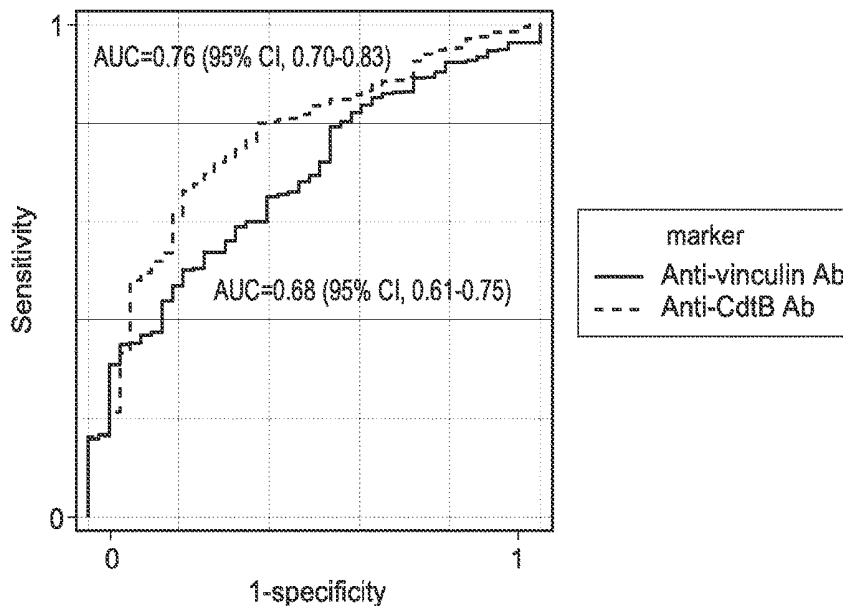


FIG. 4

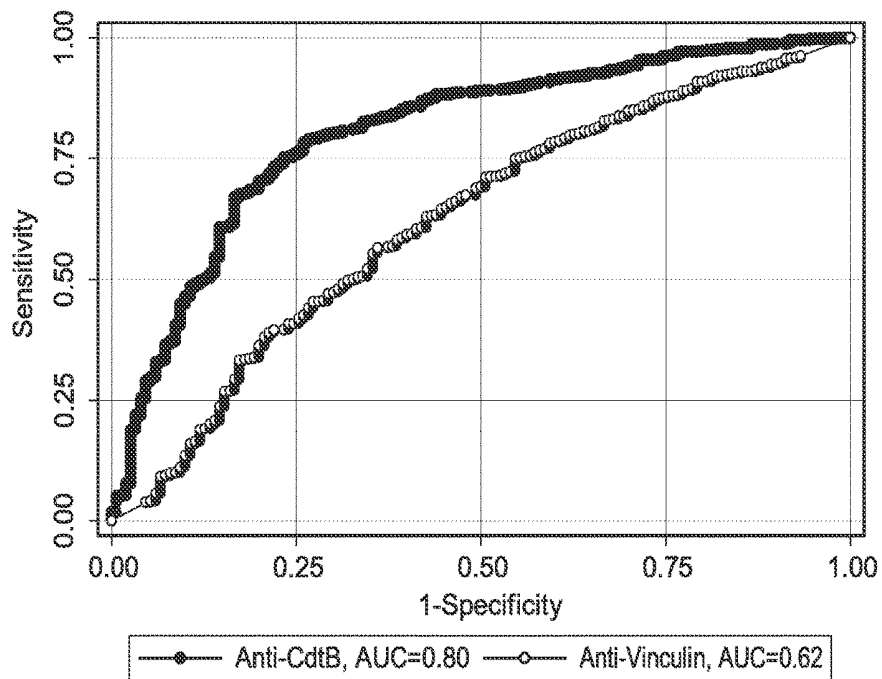


FIG. 5

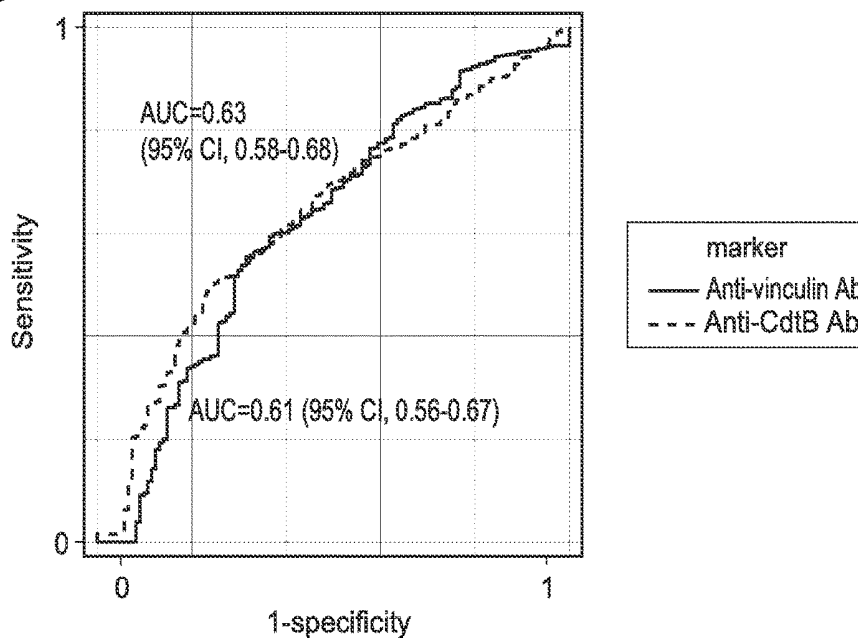


FIG. 6

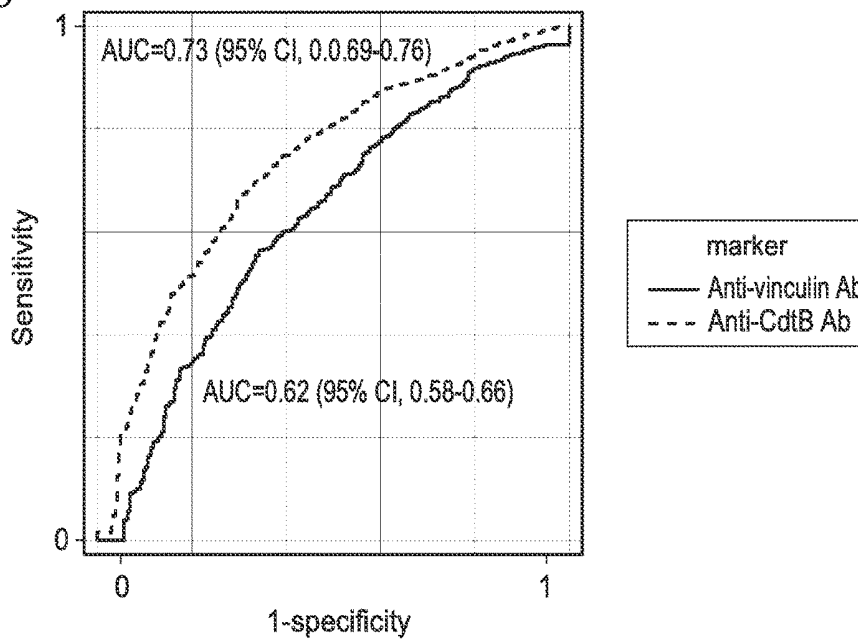


FIG. 7

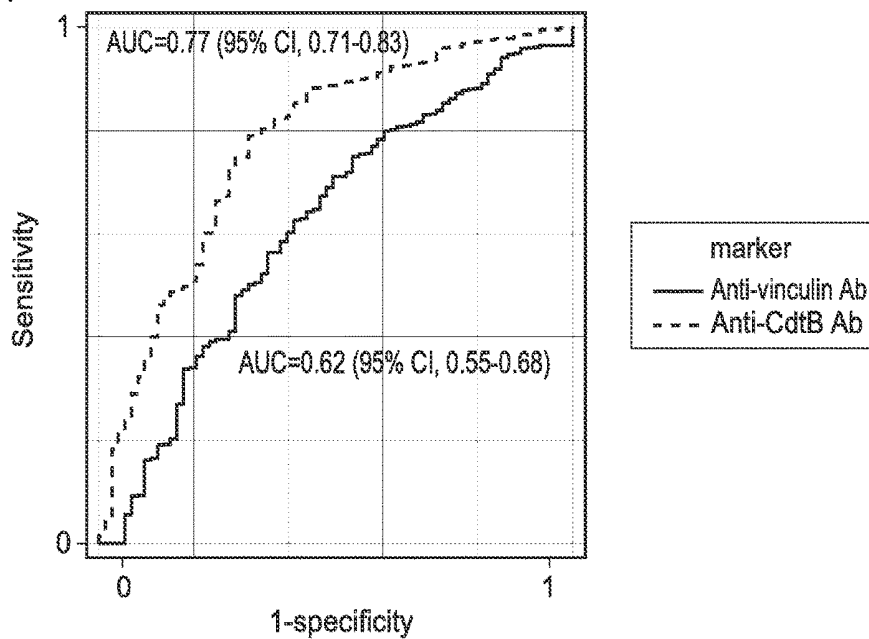
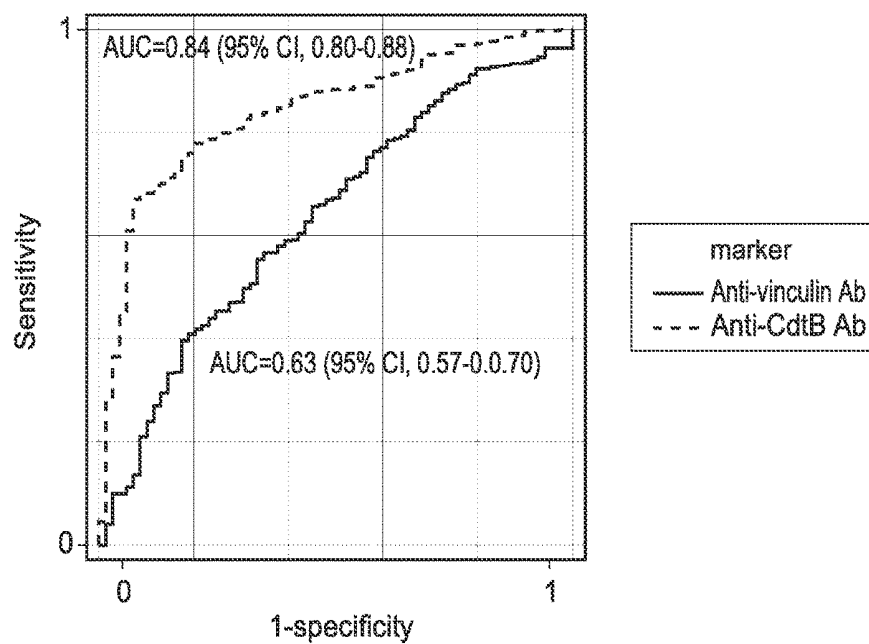


FIG. 8



1

**METHODS FOR DISTINGUISHING
IRRITABLE BOWEL SYNDROME FROM
INFLAMMATORY BOWEL DISEASE AND
CELIAC DISEASE**

CROSS REFERENCE TO RELATED
APPLICATIONS

This application includes a claim of priority under 35 U.S.C. § 119(e) to U.S. provisional patent application No. 62/061,877, filed Oct. 9, 2014, and U.S. provisional patent application No. 62/085,825, filed Dec. 1, 2014, the entirety of which are hereby incorporated by reference.

FIELD OF INVENTION

This invention relates to irritable bowel syndrome, the diagnosis and treatments thereof.

BACKGROUND

All publications herein are incorporated by reference to the same extent as if each individual publication or patent application was specifically and individually indicated to be incorporated by reference. The following description includes information that may be useful in understanding the present invention. It is not an admission that any of the information provided herein is prior art or relevant to the presently claimed invention, or that any publication specifically or implicitly referenced is prior art.

Irritable bowel syndrome (IBS) is the most commonly diagnosed condition in gastroenterology with reported prevalence rates of approximately 15% of the population. Over the last 30 years, the diagnosis of IBS has been based on clinical criteria. This is due to a poor understanding of the pathophysiology of this condition.

Two microbial concepts have emerged in the pathogenesis of IBS. The first suggests that IBS symptoms appear to be related to alterations in small bowel microbial flora. The evidence for this is based on breath testing, small bowel culture, small bowel flora deep sequencing, and the clinical response to the gut-specific antibiotic, rifaximin. The second microbial concept is that a subset of subjects develops IBS following an episode of acute gastroenteritis (AGE). Meta-analyses of classic outbreaks suggest that the rate of IBS developing after AGE is approximately 10%.

IBS is a condition that results in chronic changes in bowel function including diarrhea, constipation and alternating patterns, as well as abdominal symptoms including pain and bloating. Because the symptoms of IBS can overlap with organic diseases such as IBD and celiac disease, the diagnosis of IBS is often made after excluding organic diseases. In a recent multinational initiative, IBS experts agreed that these subjects suffer from significant changes in bowel habit and bloating as principal symptoms. In the absence of a clear pathophysiology of IBS, identification of subjects is based on a "diagnosis of exclusion" approach. This approach involves a great deal of expense and morbidity to patients with IBS, particularly those with D-IBS, including frequent body imaging, endoscopy and blood testing to rule out alternative organic explanations for their symptoms.

While the Rome criteria have been valuable in the standardization of IBS recruitment for clinical trials, these criteria still rely on a "diagnosis of exclusion" approach as they are non-specific. For example, the majority of subjects with Crohn's disease or ulcerative colitis satisfy the Rome Criteria. The Rome II Criteria were further helpful in

2

defining IBS based on predominant bowel pattern such as diarrhea and constipation predominant forms. This approach led to drug pipelines for IBS treatment based on controlling symptoms in IBS. Prokinetics and secretagogues have been developed for C-IBS and anti-kinetics for D-IBS. However, these therapies are not based on causative mechanism of IBS and are instead based on symptom control. As a result, they can result in creating opposite symptoms.

While the diagnosis of celiac disease has been greatly enhanced by the measurement of serum tissue transglutaminase, there remains a need for biomarkers that distinguish IBS from IBD in the workup of chronic diarrhea. There remains a need in the art for methods, assays and systems to diagnose IBS and to distinguish IBS from other GI ailments such as IBD and celiac disease.

SUMMARY OF THE INVENTION

The following embodiments and aspects thereof are described and illustrated in conjunction with compositions and methods which are meant to be exemplary and illustrative, not limiting in scope.

Various embodiments of the present invention prove for a method of distinguishing irritable bowel syndrome (IBS) from inflammatory bowel disease (IBD), celiac disease, or both, comprising: obtaining a biological sample from a subject desiring a diagnosis to distinguish IBS from IBD, celiac disease, or both; detecting in the biological sample, levels of anti-vinculin and anti-CdtB antibodies; and making a diagnosis of IBS if the level of anti-vinculin antibodies is higher than an established control level of anti-vinculin antibodies, the level of anti-CdtB antibodies is higher than an established control level of anti-CdtB antibodies, or both levels of anti-vinculin antibodies and anti-CdtB antibodies are higher than the established control levels of anti-vinculin antibodies and anti-CdtB antibodies, or making a diagnosis of IBD, suspicion of IBD, celiac disease or suspicion of celiac disease if the level of anti-vinculin antibodies is not higher than the established control level of anti-vinculin antibodies and the level of anti-CdtB antibodies is not higher than the established control level of anti-CdtB antibodies.

In various embodiments, the biological sample can be whole blood, serum, or plasma.

In various embodiments, detecting in the biological sample can comprise using enzyme-linked immunosorbent assay (ELISA). In various embodiments, detecting in the biological sample can comprise using immunohistochemistry, flow cytometry, fluorescence in situ hybridization (FISH), radioimmuno assays, or affinity purification.

In various embodiments, the anti-vinculin antibodies can be capable of binding specifically to an epitope on vinculin or SEQ ID NO:7.

In various embodiments, the anti-CdtB antibodies can be capable of binding specifically to an epitope on CdtB of *Campylobacter jejuni* or SEQ ID NO:5.

In certain embodiments, the diagnosis of IBS can be made if the level of anti-vinculin antibodies is higher than the established control level of anti-vinculin antibodies. In certain embodiments, the diagnosis of IBS can be made if the level of anti-CdtB antibodies is higher than the established control level of anti-CdtB antibodies. In various embodiments, the diagnosis of IBS can be made if both levels of anti-vinculin antibodies and anti-CdtB antibodies are higher than the established control levels of anti-vinculin antibodies and anti-CdtB antibodies.

In various embodiments, the established control level of anti-vinculin antibodies, anti-CdtB antibodies, or both can be an optical density measurement.

Various embodiments of the present invention provide for a method of selecting a treatment for irritable bowel syndrome (IBS), inflammatory bowel disease (IBD), or celiac disease, comprising: obtaining a biological sample from a subject desiring a diagnosis to distinguish IBS from IBD, celiac disease, or both; detecting in the biological sample, levels of anti-vinculin and anti-CdtB antibodies; making a diagnosis of IBS if the level of anti-vinculin antibodies is higher than an established control level of anti-vinculin antibodies, the level of anti-CdtB antibodies is higher than an established control level of anti-CdtB antibodies, or both levels of anti-vinculin antibodies and anti-CdtB antibodies are higher than the established control levels of anti-vinculin antibodies and anti-CdtB antibodies, or making a diagnosis of IBD, suspicion of IBD, celiac disease or suspicion of celiac disease if the level of anti-vinculin antibodies is not higher than the established control level of anti-vinculin antibodies and the level of anti-CdtB antibodies is not higher than the established control level of anti-CdtB antibodies; and selecting an IBS treatment if IBS is diagnosed, selecting an IBD treatment if IBD is diagnosed or suspected, or selecting a celiac treatment if celiac disease is diagnosed or suspected.

In various embodiments, the biological sample can be whole blood, serum, or plasma.

In various embodiments, detecting in the biological sample can comprise using enzyme-linked immunosorbent assay (ELISA). In various embodiments, detecting in the biological sample can comprise using immunohistochemistry, flow cytometry, fluorescence in situ hybridization (FISH), radioimmuno assays, or affinity purification.

In various embodiments, the anti-vinculin antibodies can be capable of binding specifically to an epitope on vinculin or SEQ ID NO:7.

In various embodiments, the anti-CdtB antibodies can be capable of binding specifically to an epitope on CdtB of *Campylobacter jejuni* or SEQ ID NO:5.

In various embodiments, the established control level of anti-vinculin antibodies, anti-CdtB antibodies, or both can be an optical density measurement.

In certain embodiments, the diagnosis of IBS can be made if the level of anti-vinculin antibodies is higher than the established control level of anti-vinculin antibodies. In certain embodiments, the diagnosis of IBS can be made if the level of anti-CdtB antibodies is higher than the established control level of anti-CdtB antibodies. In certain embodiments, the diagnosis of IBS can be made if both levels of anti-vinculin antibodies and anti-CdtB antibodies are higher than the established control levels of anti-vinculin antibodies and anti-CdtB antibodies.

Other features and advantages of the invention will become apparent from the following detailed description, taken in conjunction with the accompanying drawings, which illustrate, by way of example, various features of embodiments of the invention.

BRIEF DESCRIPTION OF THE FIGURES

Exemplary embodiments are illustrated in referenced figures. It is intended that the embodiments and figures disclosed herein are to be considered illustrative rather than restrictive.

FIG. 1A depicts comparison of anti-CdtB antibody OD among the groups in accordance with various embodiments of the present invention.

FIG. 1B depicts comparison of optical density (OD) for the anti-CdtB antibody among the groups. Dots represent outlier subjects beyond the whisker plot. Titers were higher in IBS subjects in comparison to any other group ($p < 0.001$). Titers were higher in subjects with celiac disease as compared to healthy controls and IBD subjects ($p < 0.001$).

FIG. 2A depicts comparison of anti-vinculin antibody OD among the groups in accordance with various embodiments of the present invention.

FIG. 2B depicts comparison of optical density (OD) for the anti-vinculin antibody among the groups. Dots represent outlier subjects beyond the whisker plot. Titers were higher in IBS subjects as compared to any other group ($p < 0.001$).

FIG. 3A depicts receiver operator curve (ROC) comparing anti-CdtB and anti-vinculin levels between IBS subjects and all non-IBS subjects in the study in accordance with various embodiments of the present invention. (Anti-CdtB—top line; anti-vinculin—bottom line.)

FIG. 3B depicts receiver operator curve (ROC) comparing anti-CdtB and anti-vinculin levels between IBS subjects and IBD subjects in the study. AUC, Area under the curve; CI, confidence interval. (Anti-CdtB—top line; anti-vinculin—bottom line.)

FIG. 3C depicts receiver operator curve (ROC) comparing anti-CdtB and anti-vinculin levels between IBS subjects and healthy subjects in the study. (Anti-CdtB—top line; anti-vinculin—bottom line.)

FIG. 4 depicts receiver operator curve (ROC) comparing anti-CdtB and anti-vinculin levels between IBS subjects and all IBD subjects in the study in accordance with various embodiments of the present invention. (Anti-CdtB—top line; anti-vinculin—bottom line.)

FIG. 5 depicts receiver operator curve (ROC) comparing anti-CdtB and anti-vinculin levels between IBS and celiac subjects. (Anti-CdtB—top line at the beginning; anti-vinculin—bottom line at the beginning.)

FIG. 6 depicts receiver operator curve (ROC) comparing anti-CdtB and anti-vinculin levels between IBS and non-IBS subjects with chronic diarrhea (i.e., CD, UC and celiac disease). (Anti-CdtB—top line; anti-vinculin—bottom line.)

FIG. 7 depicts receiver operator curve (ROC) comparing anti-CdtB and anti-vinculin levels between IBS and CD subjects. (Anti-CdtB—top line; anti-vinculin—bottom line.)

FIG. 8 depicts receiver operator curve (ROC) comparing anti-CdtB and anti-vinculin levels between IBS and UC subjects. (Anti-CdtB—top line; anti-vinculin—bottom line.)

DESCRIPTION OF THE INVENTION

All references cited herein are incorporated by reference in their entirety as though fully set forth. Unless defined otherwise, technical and scientific terms used herein have the same meaning as commonly understood by one of ordinary skill in the art to which this invention belongs. Singleton et al., *Dictionary of Microbiology and Molecular Biology* 3rd ed., Revised, J. Wiley & Sons (New York, N.Y. 2006); and Sambrook and Russel, *Molecular Cloning: A Laboratory Manual* 4th ed., Cold Spring Harbor Laboratory Press (Cold Spring Harbor, N.Y. 2012), provide one skilled in the art with a general guide to many of the terms used in the present application. For references on how to prepare antibodies, see D. Lane, *Antibodies: A Laboratory Manual* 2nd ed. (Cold Spring Harbor Press, Cold Spring Harbor N.Y., 2013); Kohler and Milstein, (1976) *Eur. J. Immunol.* 6:511;

Queen et al. U.S. Pat. No. 5,585,089; and Riechmann et al., Nature 332:323 (1988); U.S. Pat. No. 4,946,778; Bird, Science 242:423-42 (1988); Huston et al., Proc. Natl. Acad. Sci. USA 85:5879-5883 (1988); Ward et al., Nature 334: 544-54 (1989); Tomlinson I. and Holliger P. (2000) Methods Enzymol, 326, 461-479; Holliger P. (2005) Nat. Biotechnol. September; 23(9):1126-36).

One skilled in the art will recognize many methods and materials similar or equivalent to those described herein, which could be used in the practice of the present invention. Indeed, the present invention is in no way limited to the methods and materials described. For purposes of the present invention, the following terms are defined below.

“Mammal” as used herein refers to any member of the class Mammalia, including, without limitation, humans and nonhuman primates such as chimpanzees, and other apes and monkey species; farm animals such as cattle, sheep, pigs, goats and horses; domestic mammals such as dogs and cats; laboratory animals including rodents such as mice, rats and guinea pigs, and the like. The term does not denote a particular age or sex. Thus adult and newborn subjects, as well as fetuses, whether male or female, are intended to be including within the scope of this term.

“Treatment” and “treating,” as used herein refer to both therapeutic treatment and prophylactic or preventative measures (e.g., to reduce the likelihood of having the condition or disease condition), wherein the object is to prevent or slow down (lessen) the targeted pathologic condition or disorder even if the treatment is ultimately unsuccessful. Those in need of treatment include those already with the condition or disorder as well as those prone to have the condition or disorder or those in whom the condition or disorder is to be prevented (e.g., reducing the likelihood of having the condition or disorder).

“Antibody” or “antibodies” as used herein include polyclonal antibodies, monoclonal antibodies, antibody variants such as single chain (recombinant) Fv, human antibodies, humanized antibodies, chimeric antibodies, and immunologically active fragments of antibodies.

“Binds specifically” as used herein refers to the act of an antibody binding to its antigen and is intended to exclude low-level, non-specific binding that may occur between random proteins. “Binds specifically” as used herein is not intended and does not imply that the antibody will not bind to any protein other than the proteins or polypeptides as disclosed herein since antibodies can cross-react with any protein that includes the relevant epitope.

“Significantly higher” as used herein relating to reference or control amounts refers to a statistically significant amount higher than the reference or control amount.

A newly validated animal model of post-infectious IBS (PI-IBS) based on infection with *Campylobacter jejuni* suggests that AGE precipitates PI-IBS, leading to significant alterations in small bowel microbial colonization. Using this model, it was determined that the development of IBS-like phenotypes in these animals was dependent on a specific toxin, cytolethal distending toxin B (CdtB). Significantly, the development of IBS-like phenotypes in this animal model was mitigated in the absence of CdtB. In a subsequent series of experiments, we found that, through molecular mimicry, host antibodies to CdtB react with the host protein vinculin in the neuromuscular apparatus of the gut. The presence of circulating antibodies to CdtB and vinculin in the animal model is associated with the development of altered gut microbial populations and changes in the gut

neuromuscular apparatus, including significant reductions in the numbers of interstitial cells of Cajal (ICC) in the deep muscular plexus.

Based on these new pathophysiologic mechanisms underlying IBS, we assessed the prevalence of anti-CdtB and anti-vinculin antibodies and CdtB in a large cohort of IBS patients and non-IBS controls to validate biomarkers for IBS based on detection of circulating antibodies to vinculin and CdtB in humans.

Described herein, we describe a biomarker for D-IBS based on, without wishing to be bound by any specific theory, a pathophysiologic mechanism of post-infectious IBS and the subsequent development of autoantibodies to vinculin in the host. The test appears specific not only for diagnosing D-IBS but in the workup of chronic diarrhea, can differentiate D-IBS subjects from those with IBD.

While the rate of developing IBS after a single acute gastroenteritis is approximately 10%, military deployment data and mathematical modeling suggest that PI-IBS could account for a large portion of IBS in the US. PI-IBS occurs primarily, though not exclusively, after bacterial infections such as *Campylobacter jejuni*, *Salmonella*, *E. coli* and *Shigella*. One toxin commonly produced by all four of these organisms is cytolethal distending toxin, a heterotrimeric complex of three subunits, CdtA, CdtB, and CdtC, of which CdtB is the active subunit.

A validated animal model developed using *C. jejuni* 81-176 has been shown to exhibit an IBS-like phenotype. Significantly, these rats exhibit changes in stool form, small intestinal bacterial overgrowth (SIBO) and the increased rectal intra-epithelial lymphocytes characteristic of humans with IBS. In this model the effects appeared to be due to changes in gut neuroanatomy, with a notable reduction in interstitial cells of Cajal. Further, rats infected with a mutant *C. jejuni* strain lacking CdtB exhibited a significantly mitigated IBS-like phenotype compared to those infected with wild-type *C. jejuni*, suggesting that CdtB was important in the development of IBS in this model. Through a series of immunologic experiments in this model, it was determined that CdtB appeared not to simply be acting through direct toxicity but rather through the cross-reaction of antibodies to CdtB with the host protein vinculin. Levels of circulating antibodies to CdtB and vinculin correlated with the development and levels of SIBO in these animals.

Vinculin is a 117-kDa cytoplasmic actin-binding protein that is a key component of both focal adhesions and adherens junctions, forming the link between integrins or cadherins respectively and the actin cytoskeleton. Furthermore, vinculin appears important in neuronal cell motility and contractility and cardiac formation, as evidenced by the neural tube, myocardial and endocardial defects in vinculin knockout mice, as well as stress-induced cardiomyopathy in heterozygous mutants. In a recently published study, Cdt from *Helicobacter pullorum* has been shown to target vinculin in intestinal epithelial cells, triggering an atypical delocalization of vinculin from focal adhesions coupled with decreased cellular adherence. Another study demonstrated that vinculin is used by the IpA toxin of *Shigella* to achieve cell entry.

Based on the pathophysiologic observations in this animal model, we hypothesized that exposure to CdtB led to detectable immunity to CdtB and autoimmunity to vinculin based on molecular mimicry. In this study, we evaluate whether levels of these antibodies serve as a biomarker for D-IBS in humans for the first time using a large number of IBS and non-IBS patients. We observe that plasma antibodies to vinculin and CdtB were elevated in D-IBS compared to

healthy controls, subjects with celiac disease, and subjects with IBD such that the biomarkers appeared to be able to distinguish D-IBS from all non-IBS. Based on ideal cutoff titers, the test has a high specificity for identifying D-IBS compared to IBD. Since tTG is a robust test for celiac disease, in the workup of chronic diarrhea, a real unmet need is a biomarker that could reliably distinguish IBS from IBD. Interestingly anti-CdtB, but not anti-vinculin, was high in celiac disease as well. Another significant unmet need for celiac disease is a test that readily distinguishes functional symptoms from ongoing gluten exposure. Studies suggest that after gluten exposure, IBS is the second most common cause of non-responsive celiac disease, and therefore, a test that could distinguish between these causes of symptoms would be useful clinically.

Based on these results, circulating anti-CdtB and anti-vinculin antibodies are biomarkers for D-IBS and offer some unique perspectives on the pathophysiology of PI-IBS. While not wishing to be bound by any particular theory, first, these are biomarkers based on a mechanism for the development of IBS which may involve alterations to the enteric nervous system and gut motility. Secondly, they represent the first opportunity to make IBS a diagnosis of inclusion rather than a "diagnosis of exclusion". Since not all D-IBS subjects test positive for these biomarkers, it is also possible that these antibodies identify a subgroup of IBS for which a mechanism and therapies could be developed. Finally, it suggests that IBS may have an organic basis. As a biomarker, measurements of anti-vinculin and anti-CdtB antibodies could help to identify D-IBS without excessive investigation and may help to target investigations in those where the test is negative.

While the test has a lower specificity for identifying D-IBS compared to celiac disease, concomitant testing with anti-tTG should compensate for this.

In conclusion, this study validates the presence of anti-vinculin and anti-CdtB as blood based biomarkers that separate D-IBS from IBD and healthy controls using a large scale prospective multicenter trial. Anti-vinculin and anti-CdtB antibodies also appear part of the pathophysiology of post-infectious IBS and may identify a subgroup of D-IBS for directed therapies. Most importantly, this appears to be an important step in determining organic bases for IBS.

Distinguishing IBS from IBD and Celiac Disease

Various embodiments of the present invention provide for methods, assays and systems of distinguishing IBS from IBD and Celiac disease.

The method can comprise providing a biological sample from a subject desiring a diagnosis to distinguish IBS from IBD and Celiac disease, detecting in the biological sample, a presence of anti-vinculin antibodies, and making a diagnosis of IBS if the presence of anti-vinculin antibodies is detected, or making a diagnosis of IBD, suspicion of IBD, Celiac disease or suspicion of Celiac disease if there is an absence of anti-vinculin antibodies. In certain embodiments, the method further comprises analyzing the biological sample for the presence or absence of anti-vinculin antibodies. In certain embodiments, the method further comprises selecting an IBS treatment if IBS is diagnosed, selecting an IBD treatment if IBD is diagnosed or suspected, or selecting a Celiac disease treatment of Celiac disease is diagnosed or suspected.

In various embodiments, the method can comprise providing a biological sample from a subject desiring a diagnosis to distinguish IBS from IBD and Celiac disease,

detecting in the biological sample, a level of anti-vinculin antibodies, and making a diagnosis of IBS if the level of anti-vinculin antibodies is higher than an established control level, or making a diagnosis of IBD, suspicion of IBD, Celiac disease, or suspicion of Celiac disease if the level of anti-vinculin antibodies is equal or lower than the established control level. In various embodiments, the established control level is a level of anti-vinculin antibodies within two standard deviations of anti-vinculin antibody levels from healthy subjects without IBS, IBD, Celiac disease or combinations thereof. In certain embodiments, the method further comprises analyzing the biological sample for a level of anti-vinculin antibodies.

In various embodiments, the method can comprise providing a biological sample from a subject desiring a diagnosis to distinguish IBS from IBD and Celiac disease, detecting in the biological sample, a level of anti-vinculin antibodies, and making a diagnosis of IBS if the level of anti-vinculin antibodies is significantly higher than an established control level, or making a diagnosis of IBD, suspicion of IBD, Celiac disease or suspicion of Celiac disease if the level of anti-vinculin antibodies is not significantly higher than the established control level. In various embodiments, the established control level is a level of anti-vinculin antibodies from subjects without IBS, IBD, Celiac disease or combinations thereof. In certain embodiments, the method further comprises analyzing the biological sample for a level of anti-vinculin antibodies. In certain embodiments, the method further comprises selecting an IBS treatment if IBS is diagnosed, selecting an IBD treatment if IBD is diagnosed or suspected, or selecting a Celiac disease treatment of Celiac disease is diagnosed or suspected.

The method can comprise providing a biological sample from a subject desiring a diagnosis to distinguish IBS from IBD and Celiac disease, detecting in the biological sample, a presence of anti-CdtB antibodies, and making a diagnosis of IBS if the presence of anti-CdtB antibodies is detected, or making a diagnosis of IBD, suspicion of IBD, Celiac disease or suspicion of Celiac disease if there is an absence of anti-CdtB antibodies. In certain embodiments, the method further comprises analyzing the biological sample for the presence or absence of anti-CdtB antibodies. In certain embodiments, the method further comprises selecting an IBS treatment if IBS is diagnosed, selecting an IBD treatment if IBD is diagnosed or suspected, or selecting a Celiac disease treatment if Celiac disease is diagnosed or suspected.

In various embodiments, the method can comprise providing a biological sample from a subject desiring a diagnosis to distinguish IBS from IBD and Celiac disease, detecting in the biological sample, a level of anti-CdtB antibodies, and making a diagnosis of IBS if the level of anti-CdtB antibodies is higher than an established control level, or making a diagnosis of IBD, suspicion of IBD, Celiac disease or suspicion of Celiac disease if the level of anti-CdtB antibodies is equal or lower than the established control level. In various embodiments, the established control level is a level of anti-CdtB antibodies within two standard deviations of anti-CdtB antibody levels from healthy subjects without IBS, IBD, Celiac disease or combinations thereof. In certain embodiments, the method further comprises analyzing the biological sample for a level of anti-CdtB antibodies. In certain embodiments, the method further comprises selecting an IBS treatment if IBS is diagnosed, selecting an IBD treatment if IBD is diagnosed or suspected, or selecting a Celiac disease treatment of Celiac disease is diagnosed or suspected.

In various embodiments, the method can comprise providing a biological sample from a subject desiring a diagnosis to distinguish IBS from IBD and Celiac disease, detecting in the biological sample, a level of anti-CdtB antibodies, and making a diagnosis of IBS if the level of anti-CdtB antibodies is significantly higher than an established control level, or making a diagnosis of IBD, suspicion of IBD, Celiac disease or suspicion of Celiac disease if the level of anti-CdtB antibodies is not significantly higher than the established control level. In various embodiments the established control level is a level of anti-CdtB antibodies from subjects without IBS, IBD, Celiac disease or combinations thereof. In certain embodiments, the method further comprises analyzing the biological sample for a level of anti-CdtB antibodies. In certain embodiments, the method further comprises selecting an IBS treatment if IBS is diagnosed, or selecting an IBD treatment if IBD is diagnosed or suspected.

In various embodiments, the method can comprise providing a biological sample from a subject desiring a diagnosis to distinguish IBS from IBD and Celiac disease, detecting in the biological sample, a presence of anti-vinculin and anti-CdtB antibodies, and making a diagnosis of IBS if the presence of anti-vinculin and anti-CdtB antibodies are detected, or making a diagnosis of IBD, suspicion of IBD, Celiac disease or suspicion of Celiac disease if there are an absence of anti-vinculin and anti-CdtB antibodies. In certain embodiments, the method further comprises analyzing the biological sample for the presence or absence of anti-vinculin and anti-CdtB antibodies. In certain embodiments, the method further comprises selecting an IBS treatment if IBS is diagnosed, selecting an IBD treatment if IBD is diagnosed or suspected, or selecting a Celiac treatment if Celiac disease is diagnosed or suspected.

In various embodiments, the method can comprise providing a biological sample from a subject desiring a diagnosis to distinguish IBS from IBD and Celiac disease, detecting in the biological sample, a level of anti-vinculin and anti-CdtB antibodies, and making a diagnosis of IBS if the levels of anti-vinculin and anti-CdtB antibodies are higher than an established control level, or making a diagnosis of IBD, suspicion of IBD, Celiac disease or suspicion of Celiac disease if the levels of anti-vinculin and anti-CdtB antibodies are equal or lower than the established control levels. In various embodiments, the established control levels are levels of anti-vinculin and anti-CdtB antibodies within two standard deviations of anti-vinculin and anti-CdtB antibody levels from healthy subjects without IBS, IBD, Celiac disease or combinations thereof. In certain embodiments, the method further comprises analyzing the biological sample levels of anti-vinculin and anti-CdtB antibodies. In certain embodiments, the method further comprises selecting an IBS treatment if IBS is diagnosed, selecting an IBD treatment if IBD is diagnosed or suspected, or selecting a Celiac disease treatment if Celiac disease is diagnosed or suspected.

In various embodiments, the method can comprise providing a biological sample from a subject desiring a diagnosis to distinguish between IBS and IBD, detecting in the biological sample, a level of anti-vinculin and anti-CdtB antibodies, and making a diagnosis of IBS if the level of anti-vinculin and anti-CdtB antibodies is significantly higher than an established control level, or making a diagnosis of IBD, suspicion of IBD, Celiac disease or suspicion of Celiac disease if the level of anti-vinculin and anti-CdtB antibodies is not significantly higher than the established control levels. In various embodiments the established control levels are

levels of anti-vinculin and anti-CdtB antibodies from subjects without IBS, IBD, Celiac disease or combinations thereof. In certain embodiments, the method further comprises analyzing the biological sample for levels of anti-vinculin and anti-CdtB antibodies. In certain embodiments, the method further comprises selecting an IBS treatment if IBS is diagnosed, selecting an IBD treatment if IBD is diagnosed or suspected, or selecting a Celiac disease treatment if Celiac disease is diagnosed or suspected.

In various embodiments, the system can comprise an isolated biological sample from a subject desiring distinguishing IBS from IBD and Celiac disease, and an assay for detecting in the biological sample, a presence of an anti-vinculin antibody or a level of anti-vinculin antibody to distinguish IBS from IBD and Celiac disease.

In various embodiments, the IBS can be C-IBS, D-IBS, A-IBS (also known as M-IBS), or post-infectious irritable bowel syndrome (PI-IBS). In particular embodiments, the IBS is D-IBS.

In various embodiments, if a diagnosis or suspicion of IBD is made, it can be further correlated with IBD symptoms to further confirm IBD. In other embodiments, additional IBD testing can be done to further confirm IBD.

In various embodiments, if a diagnosis or suspicion of Celiac disease is made, it can be further correlated with Celiac disease symptoms to further confirm Celiac disease. In other embodiments, additional celiac disease testing can be done to further confirm Celiac disease; for example, measurement of serum tissue transglutaminase.

In various embodiments the assay is an enzyme-linked immunosorbent assay (ELISA), including but not limited to indirect ELISA, sandwich ELISA, competitive ELISA, multiple and portable ELISA.

In various embodiments, the assay comprises a first reagent to react with the biological sample if the biological sample comprises the anti-vinculin antibody (if anti-vinculin antibodies are not present, then the first reagent will not react with the biological sample, but the first reagent is still present in the assay), a second reagent (e.g., secondary antibody) to react with the anti-vinculin antibody or a second reagent to react with the first reagent, and a substrate. In various embodiments, the first reagent is vinculin or a fragment thereof. In various embodiments, the second reagent comprises a label to produce a signal to indicate the presence of the anti-vinculin antibody. In various embodiments, the label is a radiolabel, a chromophore, a fluorophore, a quantum dot, an enzyme, horseradish peroxidase (HRP), an alkaline phosphatase (AP), biotin, or a combination thereof. In various embodiments, the label is an enzyme that will react with the substrate. In various embodiments, the first reagent is on a solid phase (e.g., plate, multi-well plate).

In various embodiments, the assay comprises a first reagent to react with the anti-vinculin antibody. In various embodiments, the first reagent comprises a label to produce a signal to indicate the presence of the anti-vinculin antibody. In various embodiments, the label is a radiolabel, a chromophore, a fluorophore, a quantum dot, an enzyme, horseradish peroxidase (HRP), an alkaline phosphatase (AP), biotin, or a combination thereof. In various embodiments, the reagent is on a solid phase (e.g., plate, multi-well plate).

In various embodiments, the system further comprises a machine for determining a presence or likely presence of IBS if the presence of anti-vinculin antibodies, anti-CdtB antibodies or both is detected, or determining the presence or likely presence of IBD or Celiac disease if there is an absence of anti-vinculin antibodies, anti-CdtB antibodies or

both. In various embodiments, the machine is a computer. In various embodiments, the computer comprises a display element for displaying whether the patient likely has IBS, IBD or Celiac disease.

In various embodiments, the system further comprises a machine for determining a presence or likely presence of IBS if the level of anti-vinculin antibodies, anti-CdtB antibodies, or both is higher than an established control level(s), or determining a presence or likely presence of IBD if the level of anti-vinculin antibodies, anti-CdtB antibodies, or both is equal or lower than the established control level(s). In various embodiments, the established control level is a level of anti-vinculin antibodies, anti-CdtB antibodies, or both within two standard deviations of the level of anti-vinculin antibodies, anti-CdtB antibodies, or both from healthy subjects without IBS, IBD, Celiac disease or combinations thereof. In certain embodiments, the method further comprises analyzing the biological sample for a level of anti-vinculin antibodies.

In various embodiments, the system further comprises a machine for determining a presence or likely presence of IBS if the level of anti-vinculin antibodies, anti-CdtB antibodies, or both is significantly higher than an established control level, or determining a presence or likely presence of IBD if the level of anti-vinculin antibodies, anti-CdtB antibodies, or both is not significantly higher than the established control level. In various embodiments the established control level is a level of anti-vinculin antibodies, anti-CdtB antibodies, or both from healthy subjects without IBS, IBD, Celiac disease or combinations thereof. In certain embodiments, the method further comprises analyzing the biological sample for a level of anti-vinculin antibodies, anti-CdtB antibodies, or both.

In various embodiments, the machine is a computer. In various embodiments, the computer comprises a display element for displaying whether the patient likely has IBS, IBD or Celiac disease.

Various embodiments provide for treating IBS in a subject who may have IBS, IBD or Celiac disease. The method comprises providing an IBS therapy and administering the IBS therapy to a subject diagnosed with IBS using the methods of the present invention. That is, the subject has been diagnosed with IBS via the detection of the presence of anti-vinculin and anti-CdtB antibodies in accordance with the methods of the present invention as discussed herein.

In various embodiments, the IBS therapy is a therapy as described herein. In various embodiments, the IBS therapy comprises administering a course of antibiotic therapy to treat IBS. In various embodiments, the IBS therapy is an available therapy in the prior art. In various embodiments, the IBS therapy is a course of antibiotic therapy as described herein.

In various embodiments, the IBS treated can be C-IBS, D-IBS, A-IBS (also known as M-IBS), or post-infectious irritable bowel syndrome (PI-IBS). In particular embodiments, the IBS is D-IBS.

Distinguishing Between IBS and IBD

Various embodiments of the present invention provide for methods, assays and systems of distinguishing between IBS and IBD.

The method can comprise providing a biological sample from a subject desiring a diagnosis to distinguish between IBS and IBD, detecting in the biological sample, a presence of anti-vinculin antibodies, and making a diagnosis of IBS if the presence of anti-vinculin antibodies is detected, or

making a diagnosis of IBD or suspicion of IBD if there is an absence of anti-vinculin antibodies. In certain embodiments, the method further comprises analyzing the biological sample for the presence or absence of anti-vinculin antibodies. In certain embodiments, the method further comprises selecting an IBS treatment if IBS is diagnosed, or selecting an IBD treatment if IBD is diagnosed or suspected.

In various embodiments, the method can comprise providing a biological sample from a subject desiring a diagnosis to distinguish between IBS and IBD, detecting in the biological sample, a level of anti-vinculin antibodies, and making a diagnosis of IBS if the level of anti-vinculin antibodies is higher than an established control level, or making a diagnosis of IBD or suspicion of IBD if the level of anti-vinculin antibodies is equal or lower than the established control level. In various embodiments, the established control level is a level of anti-vinculin antibodies within two standard deviations of anti-vinculin antibody levels from healthy subjects without IBS, IBD or both. In certain embodiments, the method further comprises analyzing the biological sample for a level of anti-vinculin antibodies.

In various embodiments, the method can comprise providing a biological sample from a subject desiring a diagnosis to distinguish between IBS and IBD, detecting in the biological sample, a level of anti-vinculin antibodies, and making a diagnosis of IBS if the level of anti-vinculin antibodies is significantly higher than an established control level, or making a diagnosis of IBD or suspicion of IBD if the level of anti-vinculin antibodies is not significantly higher than the established control level. In various embodiments, the established control level is a level of anti-vinculin antibodies from subjects without IBS, IBD or both. In certain embodiments, the method further comprises analyzing the biological sample for a level of anti-vinculin antibodies. In certain embodiments, the method further comprises selecting an IBS treatment if IBS is diagnosed, or selecting an IBD treatment if IBD is diagnosed or suspected.

The method can comprise providing a biological sample from a subject desiring a diagnosis to distinguish between IBS and IBD, detecting in the biological sample, a presence of anti-CdtB antibodies, and making a diagnosis of IBS if the presence of anti-CdtB antibodies is detected, or making a diagnosis of IBD or suspicion of IBD if there is an absence of anti-CdtB antibodies. In certain embodiments, the method further comprises analyzing the biological sample for the presence or absence of anti-CdtB antibodies. In certain embodiments, the method further comprises selecting an IBS treatment if IBS is diagnosed, or selecting an IBD treatment if IBD is diagnosed or suspected.

In various embodiments, the method can comprise providing a biological sample from a subject desiring a diagnosis to distinguish between IBS and IBD, detecting in the biological sample, a level of anti-CdtB antibodies, and making a diagnosis of IBS if the level of anti-CdtB antibodies is higher than an established control level, or making a diagnosis of IBD or suspicion of IBD if the level of anti-CdtB antibodies is equal or lower than the established control level. In various embodiments, the established control level is a level of anti-CdtB antibodies within two standard deviations of anti-CdtB antibody levels from healthy subjects without IBS, IBD or both. In certain embodiments, the method further comprises analyzing the biological sample for a level of anti-CdtB antibodies. In certain embodiments, the method further comprises selecting an IBS treatment if IBS is diagnosed, or selecting an IBD treatment if IBD is diagnosed or suspected.

In various embodiments, the method can comprise providing a biological sample from a subject desiring a diagnosis to distinguish between IBS and IBD, detecting in the biological sample, a level of anti-CdtB antibodies, and making a diagnosis of IBS if the level of anti-CdtB antibodies is significantly higher than an established control level, or making a diagnosis of IBD or suspicion of IBD if the level of anti-CdtB antibodies is not significantly higher than the established control level. In various embodiments the established control level is a level of anti-CdtB antibodies from subjects without IBS, IBD or both. In certain embodiments, the method further comprises analyzing the biological sample for a level of anti-CdtB antibodies. In certain embodiments, the method further comprises selecting an IBS treatment if IBS is diagnosed, or selecting an IBD treatment if IBD is diagnosed or suspected.

In various embodiments, the method can comprise providing a biological sample from a subject desiring a diagnosis to distinguish between IBS and IBD, detecting in the biological sample, a presence of anti-vinculin and anti-CdtB antibodies, and making a diagnosis of IBS if the presence of anti-vinculin and anti-CdtB antibodies is detected, or making a diagnosis of IBD or suspicion of IBD if there are an absence of anti-vinculin and anti-CdtB antibodies. In certain embodiments, the method further comprises analyzing the biological sample for the presence or absence of anti-vinculin and anti-CdtB antibodies. In certain embodiments, the method further comprises selecting an IBS treatment if IBS is diagnosed, or selecting an IBD treatment if IBD is diagnosed or suspected.

In various embodiments, the method can comprise providing a biological sample from a subject desiring a diagnosis to distinguish between IBS and IBD, detecting in the biological sample, a level of anti-vinculin and anti-CdtB antibodies, and making a diagnosis of IBS if the levels of anti-vinculin and anti-CdtB antibodies are higher than an established control level, or making a diagnosis of IBD or suspicion of IBD if the levels of anti-vinculin and anti-CdtB antibodies are equal or lower than the established control levels. In various embodiments, the established control levels are levels of anti-vinculin and anti-CdtB antibodies within two standard deviations of anti-vinculin and anti-CdtB antibody levels from healthy subjects without IBS, IBD or both. In certain embodiments, the method further comprises analyzing the biological sample levels of anti-vinculin and anti-CdtB antibodies. In certain embodiments, the method further comprises selecting an IBS treatment if IBS is diagnosed, or selecting an IBD treatment if IBD is diagnosed or suspected.

In various embodiments, the method can comprise providing a biological sample from a subject desiring a diagnosis to distinguish between IBS and IBD, detecting in the biological sample, a level of anti-vinculin and anti-CdtB antibodies, and making a diagnosis of IBS if the level of anti-vinculin and anti-CdtB antibodies is significantly higher than an established control level, or making a diagnosis of IBD or suspicion of IBD if the level of anti-vinculin and anti-CdtB antibodies is not significantly higher than the established control levels. In various embodiments the established control levels are levels of anti-vinculin and anti-CdtB antibodies from subjects without IBS, IBD or both. In certain embodiments, the method further comprises analyzing the biological sample for levels of anti-vinculin and anti-CdtB antibodies. In certain embodiments, the method further comprises selecting an IBS treatment if IBS is diagnosed, or selecting an IBD treatment if IBD is diagnosed or suspected.

In various embodiments, the system can comprise an isolated biological sample from a subject desiring distinguishing between IBS and IBD, and an assay for detecting in the biological sample, a presence of an anti-vinculin antibody or a level of anti-vinculin antibody to distinguish between IBS and IBD.

In various embodiments, the IBS can be C-IBS, D-IBS, A-IBS (also known as M-IBS), or post-infectious irritable bowel syndrome (PI-IBS). In particular embodiments, the IBS is D-IBS.

In various embodiments, if a diagnosis or suspicion of IBD is made, it can be further correlated with IBD symptoms to further confirm IBD. In other embodiments, additional IBD testing can be done to further confirm IBD.

In various embodiments the assay is an enzyme-linked immunosorbent assay (ELISA), including but not limited to indirect ELISA, sandwich ELISA, competitive ELISA, multiple and portable ELISA.

In various embodiments, the assay comprises a first reagent to react with the biological sample if the biological sample comprises the anti-vinculin antibody (if anti-vinculin antibodies are not present, then the first reagent will not react with the biological sample, but the first reagent is still present in the assay), a second reagent (e.g., secondary antibody) to react with the anti-vinculin antibody or a second reagent to react with the first reagent, and a substrate. In various embodiments, the first reagent is vinculin or a fragment thereof. In various embodiments, the second reagent comprises a label to produce a signal to indicate the presence of the anti-vinculin antibody. In various embodiments, the label is a radiolabel, a chromophore, a fluorophore, a quantum dot, an enzyme, horseradish peroxidase (HRP), an alkaline phosphatase (AP), biotin, or a combination thereof. In various embodiments, the label is an enzyme that will react with the substrate. In various embodiments, the first reagent is on a solid phase (e.g., plate, multi-well plate).

In various embodiments, the assay comprises a first reagent to react with the anti-vinculin antibody. In various embodiments, the first reagent comprises a label to produce a signal to indicate the presence of the anti-vinculin antibody. In various embodiments, the label is a radiolabel, a chromophore, a fluorophore, a quantum dot, an enzyme, horseradish peroxidase (HRP), an alkaline phosphatase (AP), biotin, or a combination thereof. In various embodiments, the reagent is on a solid phase (e.g., plate, multi-well plate).

In various embodiments, the system further comprises a machine for determining a presence or likely presence of IBS if the presence of anti-vinculin antibodies, anti-CdtB antibodies or both is detected, or determining the presence or likely presence of IBD if there is an absence of anti-vinculin antibodies, anti-CdtB antibodies or both. In various embodiments, the machine is a computer. In various embodiments, the computer comprises a display element for displaying whether the patient likely has IBS or IBD.

In various embodiments, the system further comprises a machine for determining a presence or likely presence of IBS if the level of anti-vinculin antibodies, anti-CdtB antibodies, or both is higher than an established control level(s), or determining a presence or likely presence of IBD if the level of anti-vinculin antibodies, anti-CdtB antibodies, or both is equal or lower than the established control level(s). In various embodiments, the established control level is a level of anti-vinculin antibodies, anti-CdtB antibodies, or both within two standard deviations of the level of anti-vinculin antibodies, anti-CdtB antibodies, or both from healthy subjects without IBS, IBD or both. In certain

embodiments, the method further comprises analyzing the biological sample for a level of anti-vinculin antibodies.

In various embodiments, the system further comprises a machine for determining a presence or likely presence of IBS if the level of anti-vinculin antibodies, anti-CdtB antibodies, or both is significantly higher than an established control level, or determining a presence or likely presence of IBD if the level of anti-vinculin antibodies, anti-CdtB antibodies, or both is not significantly higher than the established control level. In various embodiments the established control level is a level of anti-vinculin antibodies, anti-CdtB antibodies, or both from healthy subjects without IBS, IBD or both. In certain embodiments, the method further comprises analyzing the biological sample for a level of anti-vinculin antibodies, anti-CdtB antibodies, or both.

In various embodiments, the machine is a computer. In various embodiments, the computer comprises a display element for displaying whether the patient likely has IBS or IBD.

Diagnosis of IBS

Various embodiments provide for methods, assays and systems of diagnosing or identifying IBS in a subject.

In various embodiments, the method comprises: providing a biological sample from a subject desiring diagnosis of IBS, detecting in the biological sample, a presence of anti-vinculin and anti-CdtB antibodies, and determining a presence or likely presence of IBS if the presence of anti-vinculin and anti-CdtB antibodies are detected, or determining an absence or likely absence of IBS if the absence of anti-vinculin and anti-CdtB antibodies are detected. In certain embodiments, the method further comprises analyzing the biological sample for the presence or absence of anti-vinculin and anti-CdtB antibodies.

In various embodiments, the method comprises: providing a biological sample from a subject desiring diagnosis of IBS, detecting in the biological sample, a level of anti-vinculin and anti-CdtB antibodies, and determining a presence or likely presence of IBS if the level of an anti-vinculin and anti-CdtB antibody is higher than an established control level, or determining the absence or likely absence of IBS if the level of anti-vinculin and anti-CdtB antibody is equal or lower than the established control level. In various embodiments, the established control level is a level of anti-vinculin and anti-CdtB antibodies within two standard deviations of anti-vinculin and anti-CdtB antibody levels from subjects without IBS. In certain embodiments, the method further comprises analyzing the biological sample for a level of anti-vinculin and anti-CdtB antibodies.

In various embodiments, the method comprises: providing a biological sample from a subject desiring diagnosis of IBS, detecting in the biological sample, a level of anti-vinculin and anti-CdtB antibodies, and determining a presence or likely presence of IBS if the level of anti-CdtB antibodies is significantly higher than an established control level, or determining the absence or likely absence of IBS if the level of anti-vinculin and anti-CdtB antibodies is not significantly higher than the established control level. In various embodiments the established control level is a level of anti-vinculin and anti-CdtB antibodies from subjects without IBS. In certain embodiments, the method further comprises analyzing the biological sample for a level of anti-vinculin and anti-CdtB antibodies.

In various embodiments, the method comprises: providing a biological sample from a subject desiring diagnosis of IBS, detecting in the biological sample, a presence of

anti-vinculin antibodies, and determining a presence or likely presence of IBS if the presence of anti-vinculin antibodies are detected, or determining an absence or likely absence of IBS if there is an absence of anti-vinculin antibodies. In certain embodiments, the method further comprises analyzing the biological sample for the presence or absence of anti-vinculin antibodies.

In various embodiments, the method comprises: providing a biological sample from a subject desiring diagnosis of IBS, detecting in the biological sample, a level of anti-vinculin antibodies, and determining a presence or likely presence of IBS if the level of an anti-vinculin antibody is higher than an established control level, or determining the absence or likely absence of IBS if the level of an anti-vinculin antibody is equal or lower than the established control level. In various embodiments, the established control level is a level of anti-vinculin antibodies within two standard deviations of anti-vinculin antibody levels from subjects without IBS. In certain embodiments, the method further comprises analyzing the biological sample for a level of anti-vinculin antibodies.

In various embodiments, the method comprises: providing a biological sample from a subject desiring diagnosis of IBS, detecting in the biological sample, a level of anti-vinculin antibodies, and determining a presence or likely presence of IBS if the level of anti-vinculin antibodies is significantly higher than an established control level, or determining the absence or likely absence of IBS if the level of anti-vinculin antibodies is not significantly higher than the established control level. In various embodiments the established control level is a level of anti-vinculin antibodies from subjects without IBS. In certain embodiments, the method further comprises analyzing the biological sample for a level of anti-vinculin antibodies.

In various embodiments, the method comprises: providing a biological sample from a subject desiring diagnosis of IBS, detecting in the biological sample, a presence of anti-CdtB antibodies, and determining a presence or likely presence of IBS if the presence of anti-CdtB antibodies are detected, or determining an absence or likely absence of IBS if there is an absence of anti-CdtB antibodies. In certain embodiments, the method further comprises analyzing the biological sample for the presence or absence of anti-CdtB antibodies.

In various embodiments, the method comprises: providing a biological sample from a subject desiring diagnosis of IBS, detecting in the biological sample, a level of anti-CdtB antibodies, and determining a presence or likely presence of IBS if the level of an anti-CdtB antibody is higher than an established control level, or determining the absence or likely absence of IBS if the level of an anti-CdtB antibody is equal or lower than the established control level. In various embodiments, the established control level is a level of anti-CdtB antibodies within two standard deviations of anti-CdtB antibody levels from subjects without IBS. In certain embodiments, the method further comprises analyzing the biological sample for a level of anti-CdtB antibodies.

In various embodiments, the method comprises: providing a biological sample from a subject desiring diagnosis of IBS, detecting in the biological sample, a level of anti-CdtB antibodies, and determining a presence or likely presence of IBS if the level of anti-CdtB antibodies is significantly higher than an established control level, or determining the absence or likely absence of IBS if the level of anti-CdtB antibodies is not significantly higher than the established control level. In various embodiments the established control level is a level of anti-CdtB antibodies from subjects

without IBS. In certain embodiments, the method further comprises analyzing the biological sample for a level of anti-CdtB antibodies.

Not all subjects with the presence of anti-vinculin antibodies and/or anti-CdtB antibodies will have or develop IBS; however, these methods provide an indication on a likelihood of whether the subject has IBS or will develop IBS. A determination of a likely presence of IBS may be further correlated and/or confirmed by other diagnostic methods for IBS, or with symptoms of IBS known in the art. Further, a determination of a likely absence of IBS may also be further correlated and/or confirmed by other diagnostics methods for IBS or symptoms of IBS known in the art to rule out IBS.

In various embodiments, the IBS can be C-IBS, D-IBS, A-IBS (also known as M-IBS), or post-infectious irritable bowel syndrome (PI-IBS). In particular embodiments, the IBS is D-IBS.

In various embodiments, the system comprises: an isolated biological sample from a subject desiring diagnosis of IBS, and an assay for detecting in the biological sample, a presence or level of anti-vinculin and anti-CdtB antibodies.

In various embodiments, the system comprises: an isolated biological sample from a subject desiring diagnosis of IBS, and an assay for detecting in the biological sample, a presence or level of an anti-vinculin antibody.

In various embodiments, the system comprises: an isolated biological sample from a subject desiring diagnosis of IBS, and an assay for detecting in the biological sample, a presence or level of an anti-CdtB antibody.

In various embodiments the assay is an enzyme-linked immunosorbent assay (ELISA), including but not limited to indirect ELISA, sandwich ELISA, competitive ELISA, multiple and portable ELISA.

In various embodiments, the assay comprises a first reagent to react with the biological sample, a second reagent (e.g., secondary antibody) to react with the anti-vinculin antibody, and a substrate. In various embodiments, the first reagent is vinculin or a fragment thereof, which will react with the anti-vinculin antibody if present in the biological sample. In various embodiments, the second reagent comprises a label to produce a signal to indicate the presence of the anti-vinculin antibody. In various embodiments, the label is a radiolabel, a chromophore, a fluorophore, a quantum dot, an enzyme, horseradish peroxidase (HRP), an alkaline phosphatase (AP), biotin, or a combination thereof. In various embodiments, the label is an enzyme that will react with the substrate. In various embodiments, the first reagent is on a solid phase (e.g., plate, multi-well plate).

In various embodiments, the assay comprises a first reagent to react with the anti-vinculin antibody. In various embodiments, the first reagent comprises a label to produce a signal to indicate the presence of the anti-vinculin antibody. In various embodiments, the label is a radiolabel, a chromophore, a fluorophore, a quantum dot, an enzyme, horseradish peroxidase (HRP), an alkaline phosphatase (AP), biotin, or a combination thereof. In various embodiments, the reagent is on a solid phase (e.g., plate, multi-well plate).

In various embodiments, the system further comprises a machine for determining a presence or likely presence of IBS if the presence of anti-vinculin antibodies is detected, or determining an absence or likely absence of IBS if the absence of anti-vinculin antibodies is detected. In various embodiments, the machine is a computer. In various embodiments, the computer comprises a display element for displaying whether there is a presence or absence of IBS.

In various embodiments, the system further comprises a machine for determining a presence or likely presence of IBS if the level of anti-vinculin antibodies is higher than an established control level, or determining an absence or likely absence of the IBS if the level of anti-vinculin antibodies is equal or lower than the established control level. In various embodiments, the established control level is a level of anti-vinculin antibodies within two standard deviations of anti-vinculin antibody levels from subjects without IBS. In certain embodiments, the method further comprises analyzing the biological sample for a level of anti-vinculin antibodies.

In various embodiments, the system further comprises a machine for determining a presence or likely presence of IBS if the level of anti-vinculin antibodies is significantly higher than an established control level, or determining an absence or likely absence of IBS if the level of anti-vinculin antibodies is not significantly higher than the established control level. In various embodiments the established control level is a level of anti-vinculin antibodies from subjects without IBS. In certain embodiments, the method further comprises analyzing the biological sample for a level of anti-vinculin antibodies.

In various embodiments, the assay comprises a first reagent to react with the biological sample, a second reagent (e.g., secondary antibody) to react with the anti-CdtB antibody, and a substrate. In various embodiments, the first reagent is CdtB or a fragment thereof, which will react with the anti-CdtB antibody if present in the biological sample. In various embodiments, the second reagent comprises a label to produce a signal to indicate the presence of the anti-CdtB antibody. In various embodiments, the label is a radiolabel, a chromophore, a fluorophore, a quantum dot, an enzyme, horseradish peroxidase (HRP), an alkaline phosphatase (AP), biotin, or a combination thereof. In various embodiments, the label is an enzyme that will react with the substrate. In various embodiments, the first reagent is on a solid phase (e.g., plate, multi-well plate).

In various embodiments, the assay comprises a first reagent to react with the anti-CdtB antibody. In various embodiments, the first reagent comprises a label to produce a signal to indicate the presence of the anti-CdtB antibody. In various embodiments, the label is a radiolabel, a chromophore, a fluorophore, a quantum dot, an enzyme, horseradish peroxidase (HRP), an alkaline phosphatase (AP), biotin, or a combination thereof. In various embodiments, the reagent is on a solid phase (e.g., plate, multi-well plate).

In various embodiments, the system further comprises a machine for determining a presence or likely presence of IBS if the presence of anti-CdtB antibodies is detected, or determining an absence or likely absence of IBS if the absence of anti-CdtB antibodies is detected. In various embodiments, the machine is a computer. In various embodiments, the computer comprises a display element for displaying whether there is a presence or absence of IBS.

In various embodiments, the system further comprises a machine for determining a presence or likely presence of IBS if the level of anti-CdtB antibodies is higher than an established control level, or determining an absence or likely absence of the IBS if the level of anti-CdtB antibodies is equal or lower than the established control level. In various embodiments, the established control level is a level of anti-CdtB antibodies within two standard deviations of anti-CdtB antibody levels from subjects without IBS. In certain embodiments, the method further comprises analyzing the biological sample for a level of anti-CdtB antibodies.

In various embodiments, the system further comprises a machine for determining a presence or likely presence of IBS if the level of anti-CdtB antibodies is significantly higher than an established control level, or determining an absence or likely absence of IBS if the level of anti-CdtB antibodies is not significantly higher than the established control level. In various embodiments the established control level is a level of anti-CdtB antibodies from subjects without IBS. In certain embodiments, the method further comprises analyzing the biological sample for a level of anti-CdtB antibodies.

In various embodiments, the assay comprises assays (e.g., as described above) for the detection of the levels of anti-vinculin antibodies and anti-CdtB antibodies.

In various embodiments, the determining the presence or level of anti-vinculin antibodies and/or anti-CdtB antibodies comprises adding vinculin or a fragment thereof as discussed herein and/or CdtB or a fragment thereof as discussed herein to a biological sample from a subject desiring a determination regarding IBS, wherein anti-vinculin and/or anti-CdtB antibodies (if present in the biological sample) specifically binds to the vinculin or the fragment thereof and/or the CdtB or the fragment thereof in the biological sample; measuring the levels the anti-vinculin antibodies and the anti-CdtB antibodies in the biological sample; and identifying that the subject has IBS if the levels of the anti-vinculin antibodies is higher than the levels of the anti-CdtB antibodies.

In various embodiments, the assay comprises adding vinculin or a fragment thereof as discussed herein and/or CdtB or a fragment thereof as discussed herein to a biological sample from a subject desiring a determination regarding IBS, wherein anti-vinculin and/or anti-CdtB antibodies (if present in the biological sample) specifically binds to the vinculin or the fragment thereof and/or the CdtB or the fragment thereof in the biological sample; measuring the levels the anti-vinculin antibodies and the anti-CdtB antibodies in the biological sample; and identifying that the subject has IBS if the levels of the anti-vinculin antibodies is higher than the levels of the anti-CdtB antibodies.

Selecting Treatments and Treatments

Various embodiments provide for a method of selecting a therapy for IBS for a subject in need thereof.

In various embodiments, the method comprises: detecting the presence of anti-vinculin antibodies and anti-CdtB antibodies in a subject who desires a diagnosis to distinguish IBS from IBD, Celiac Disease or both; and selecting a therapy to treat IBS.

In various embodiments, the method comprises: detecting the presence of anti-vinculin antibodies in a subject who desires a diagnosis to distinguish IBS from IBD, Celiac Disease or both; and selecting a therapy to treat IBS.

In various embodiments, the method comprises: detecting the presence of anti-CdtB antibodies in a subject who desires a diagnosis to distinguish IBS from IBD, Celiac Disease or both; and selecting a therapy to treat IBS.

Selecting a therapy as used herein, includes but is not limited to selecting, choosing, prescribing, advising, recommending, instructing, or counseling the subject with respect to the treatment.

In various embodiments, the method further comprises administering the therapy to treat IBS. In various embodiments, the therapy is a therapy as described herein. In various embodiments, the available therapy comprises administering a course of antibiotic therapy to treat IBS. In various embodiments, the therapy is an available therapy in the prior art.

In various embodiments, the method comprises: detecting the presence of anti-vinculin antibodies and anti-CdtB antibodies; and selecting a course of antibiotic therapy to treat IBS. In various embodiments, the method further comprises administering the course of antibiotic therapy treat IBS.

In various embodiments, the method comprises: detecting the presence of anti-vinculin antibodies; and selecting a course of antibiotic therapy to treat IBS. In various embodiments, the method further comprises administering the course of antibiotic therapy treat IBS.

In various embodiments, the method comprises: detecting the presence of anti-CdtB antibodies; and selecting a course of antibiotic therapy to treat IBS. In various embodiments, the method further comprises administering the course of antibiotic therapy treat IBS.

In various embodiments, detecting the presence of anti-vinculin antibodies, anti-CdtB antibodies or both can be performed as described by the methods or systems of the present invention.

In various embodiments, the subject can be a subject presenting one or more symptoms of IBS; for example, as discussed herein.

Examples of antibiotics include but are not limited to aminoglycosides (e.g., amikacin, gentamicin, kanamycin, neomycin, netilmicin, streptomycin, tobramycin, paromomycin), ansamycins (e.g., geldanamycin, herbimycin), carbacephems (e.g., loracarbef), carbapenems (e.g., ertapenem, doripenem, imipenem, cilastatin, meropenem), cephalosporins (e.g., first generation: cefadroxil, cefazolin, cefalotin or cefalothin, cefalexin; second generation: cefaclor, cefamandole, cefoxitin, cefprozil, cefuroxime; third generation: cefixime, cefdinir, cefditoren, cefoperazone, cefotaxime, cefpodoxime, ceftazidime, cefibuten, ceftizoxime, ceftriaxone; fourth generation: cefepime; fifth generation: ceftobiprole), glycopeptides (e.g., teicoplanin, vancomycin), macrolides (e.g., azithromycin, clarithromycin, dirithromycin, erythromycin, roxithromycin, troleandomycin, telithromycin, spectinomycin), monobactams (e.g., aztreonam), penicillins (e.g., amoxicillin, ampicillin, azlocillin, carbenicillin, cloxacillin, dicloxacillin, flucloxacillin, mezlocillin, ticarcillin, nafcillin, oxacillin, penicillin, piperacillin, ticarcillin), antibiotic polypeptides (e.g., bacitracin, colistin, polymyxin b), quinolones (e.g., ciprofloxacin, enoxacin, gatifloxacin, levofloxacin, lomefloxacin, moxifloxacin, norfloxacin, ofloxacin, trovafloxacin), rifamycins (e.g., rifampicin or rifampin, rifabutin, rifapentine, rifaximin), sulfonamides (e.g., mafenide, prontosil, sulfacetamide, sulfamethizole, sulfanilamide, sulfasalazine, sulfisoxazole, trimethoprim, trimethoprim-sulfamethoxazole (co-trimoxazole, "tmp-smx"), and tetracyclines (e.g., demeclocycline, doxycycline, minocycline, oxytetracycline, tetracycline) as well as arsphenamine, chloramphenicol, clindamycin, lincomycin, ethambutol, fosfomycin, fusidic acid, furazolidone, isoniazid, linezolid, metronidazole, mupirocin, nitrofurantoin, platensimycin, pyrazinamide, quinupristin/dalfopristin combination, and tinidazole, or a combination thereof. In various embodiments, the antibiotics are a combination of rifaximin and neomycin. In various embodiments, the antibiotics are a combination of rifaximin and doxycycline. In various embodiments, the antibiotics are a combination of rifaximin and metronidazole.

In various embodiments, the antibiotics are non-absorbable antibiotics. Examples of non-absorbable antibiotics include but are not limited to rifaximin, neomycin, Bacitracin, vancomycin, teicoplanin, ramoplanin, and paramomycin.

In various embodiments, the IBS treated can be C-IBS, D-IBS, A-IBS (also known as M-IBS), or post-infectious irritable bowel syndrome (PI-IBS). In particular embodiments, the IBS is D-IBS.

Various embodiments provide for treating IBS in a subject. The method comprises providing an IBS therapy and administering the IBS therapy to a subject diagnosed with IBS using the methods of the present invention. That is, the subject has been diagnosed with IBS via the detection of the presence of anti-vinculin and anti-CdtB antibodies in accordance with the methods of the present invention as discussed herein.

In various embodiments, the IBS therapy is a therapy as described herein. In various embodiments, the IBS therapy comprises administering a course of antibiotic therapy to treat IBS. In various embodiments, the IBS therapy is an available therapy in the prior art. In various embodiments, the IBS therapy is a course of antibiotic therapy as described herein.

In various embodiments, the IBS treated can be C-IBS, D-IBS, A-IBS (also known as M-IBS), or post-infectious irritable bowel syndrome (PI-IBS). In particular embodiments, the IBS is D-IBS.

Optical Density as a Measurement of Antibody Levels

In certain embodiments, optical density (OD) is used to measure the level of anti-vinculin antibodies and/or anti-CDT antibodies. For example, the optical density serves as the established control level in various embodiments. In certain embodiments, when the OD of anti-vinculin antibodies (OD_V) is greater than 1.62, 1.86 or 2.23 the subject is determined to have IBS. In various embodiments, when the OD of anti-vinculin antibodies (OD_V) is greater than 1.00, 1.25, 1.50, 1.75, 2.00, 2.25, 2.50 2.75 the subject is determined to have IBS. In certain embodiments, these OD numbers are based on a dilution of the biological sample of 1:32 and antigen concentration of 1.2 ug/ml.

In certain embodiments, when the OD of anti-CDT antibodies (OD_{CDT}) is greater than 2.48 or 2.79, the subject is determined to have IBS. In various embodiments, when the OD of anti-CDT antibodies (OD_{CDT}) is greater than 2.00, 2.25, 2.50, 2.75, 3.00, the subject is determined to have IBS. In certain embodiments, these OD numbers are based on a dilution of the biological sample of 1:512 and antigen concentration of 1.2 ug/ml.

In other embodiments, the OD_V and the OD_{CDT} cutoff points can be determined based on different dilutions of the biological sample and the antigens and are included within the embodiments of the present invention.

In further embodiments, the above determinations may be used to direct the treatment for the subject. In one embodiment, a subject with the likely presence of IBS or a likelihood of having IBS may be treated with one or more therapies for IBS.

One of ordinary skill in the art will be able to select an available treatment for IBS based on the diagnosis of IBS. For example, antibiotics such as rifaximin and neomycin can be used to treat IBS. Particularly, rifaximin can be used to treat diarrhea-predominant IBS, and a rifaximin/neomycin combination can be used to treat constipation-predominant IBS.

Anti-Vinculin Antibodies

In various embodiments, the anti-vinculin antibody detected in these methods or systems is an antibody that binds specifically to vinculin.

In various embodiments, the anti-vinculin antibody is an antibody that binds specifically to a 5, 6, 7, 8, 9, 10, 11, 12, 13, 14, 15, 16, 17, 18, 19, 20, 21, or 22 residue peptide that has at least 95%, 96%, 97%, 98%, 99% or 100% homology with 5, 6, 7, 8, 9, 10, 11, 12, 13, 14, 15, 16, 17, 18, 19, 20, 21, or 22 contiguous residues of vinculin.

In another embodiment, the anti-vinculin antibody binds specifically to a polypeptide comprising 5, 6, 7, 8, 9, 10, 11, 12, 13, 14, 15, 16, 17, 18, 19, 20, 21, or 22 residues that has at least 95%, 96%, 97%, 98%, 99% or 100% homology with 5, 6, 7, 8, 9, 10, 11, 12, 13, 14, 15, 16, 17, 18, 19, 20, 21, or 22 contiguous residues of vinculin.

In another embodiment, the anti-vinculin antibody binds specifically to a polypeptide comprising or consisting of 5, 6, 7, 8, 9, 10, 11, 12, 13, 14, 15, 16, 17, 18, 19, 20, 21, or 22 contiguous residues of vinculin.

In various embodiments, the anti-vinculin antibody is an antibody that binds specifically to SEQ ID NO:7.

In various embodiments, the anti-vinculin antibody is an antibody that binds specifically to a 5, 6, 7, 8, 9, 10, 11, 12, 13, 14, 15, 16, 17, 18, 19, 20, 21, or 22 residue peptide that has at least 95%, 96%, 97%, 98%, 99% or 100% homology with 5, 6, 7, 8, 9, 10, 11, 12, 13, 14, 15, 16, 17, 18, 19, 20, 21, or 22 contiguous residues of SEQ ID NO:7.

In another embodiment, the anti-vinculin antibody binds specifically to a polypeptide comprising 5, 6, 7, 8, 9, 10, 11, 12, 13, 14, 15, 16, 17, 18, 19, 20, 21, or 22 residues that has at least 95%, 96%, 97%, 98%, 99% or 100% homology with 5, 6, 7, 8, 9, 10, 11, 12, 13, 14, 15, 16, 17, 18, 19, 20, 21, or 22 contiguous residues of SEQ ID NO:7.

In another embodiment, the anti-vinculin antibody binds specifically to a polypeptide comprising or consisting of 5, 6, 7, 8, 9, 10, 11, 12, 13, 14, 15, 16, 17, 18, 19, 20, 21, or 22 contiguous residues of SEQ ID NO:7.

Contiguous residues of vinculin or SEQ ID NO:7 include those beginning at any amino acid and ending at any amino acid of vinculin or SEQ ID NO:7.

Protein sequence of Vinculin (SEQ ID NO: 7):
 MPVFHTRTIESILEPVAQQIISHLVIMHEEGEVDGKAIPDLTAPVAAVQAA
 VSNLVRVGKETVQTTEDQILKRDMPFAFIKVENACTKLVQAAQMLQSDPY
 SVPARDYLIDGSRGILSGTSDLLLTPEAEVRKIIRVCKGILEYLTVAEV
 VETMEDLVITYTKNLGPGMTKMAKMIDERQQELTHQEHVRLVNSMNTVKE
 LLPVLISAMKIFVTTKNSKIQIGIEALKNRNFTVEKMSAEINEIRVLQL
 TSWDEDAWASKDTEAMKRALASIDSKLNQAKGWLDRPSPASPGDAGEQAIR
 QILDEAGKVGELCAGKERREILGTCKMLGQMTDQVADLRARGQSSPVAM
 QKAQQVSQGLDVLTAQVENAARKLEAMTNSKQSIKAKIDAAQNLADPNG
 GPEGEEQIRGALAEARKIAELCDDPKERDDILRSLGETSALTSKLADLRR
 QGKGDSPPEARALAKQVATALQNLQTKTNRAVANSRPAKAAVHLEGKIEQA
 QRWIDNPTVDDRGVQAAIRGLVAEGHRLANVMGPHYRQDLLAKCDRVDQ
 LTAQLADLAARGESESPQARALASQLQDSLKDLKARMQEAQTQEVSDVFS
 DTTTPIKLLAVAAATAPPDAPNREVEVFDERAANFENHSGKLGATAEKAAAV
 GTANKSTVEGIQASVKTARELTPQVVSAARILLRNPNGQAAEYHFMKKN
 QWIDNVEKMTGLVDEAIDTKSLLDASEEAIKKDLKCKVAMANIQPMQLV
 AGATSIARRANRILLVAKREVENSEDPKPREAVKAADELSEKTIKSPMVM

-continued

AKAVAGNISDPGLQKSFSDSGYRILGAVAKVREAFQPEPDFPPPPDLE
 QLRLTDELAPPKPLPEGEVPPPRPPPEEKDEEFPEQKAGEVINQPMMM
 AARQLHDEARKWSSKGNDI IAAAKRMALLMAEMSRLVRGGSGTKRALIQ
 AKDIAKASDEVTRLAKEVAKQCTDKRIRTNLLQVCERIPTISTQLKILST
 VKATMLGRTNISDEESEQATEMLVHNAQNLMOQSVKQTVREAEAAASIKIRT
 DAGFTLRWRKTPWYQ

In various embodiments, detecting the presence or absence of the antibody is performed on a biological sample obtained from the subject. In another embodiment, detecting the presence or absence of the antibody is performed on a blood, serum, or stool sample obtained from the subject. One of ordinary skill in the art will readily appreciate methods and systems that can be used to detect the presence or absence of an antibody that binds specifically to vinculin, SEQ ID NO: 7 or a fragment thereof. These methods and systems include but are not limited to ELISA, immunohistochemistry, flow cytometry, fluorescence in situ hybridization (FISH), radioimmuno assays, and affinity purification.

In various embodiments, vinculin, SEQ ID NO: 7 or a fragment thereof (as described above) is used as a substrate or reagent (e.g., collector, trap) to bind anti-vinculin antibodies (if present).

In certain embodiments, detecting the presence or absence of an antibody that binds specifically to vinculin, SEQ ID NO: 7 or a fragment thereof may be performed by contacting vinculin, SEQ ID NO: 7 or a fragment thereof to a biological sample obtained from the subject to isolate the antibody that binds specifically to vinculin, SEQ ID NO: 7 or a fragment thereof, wherein the isolation of the antibody that binds

specifically to vinculin, SEQ ID NO: 7 or a fragment thereof indicates the presence of the antibody and the lack of isolation of the antibody that binds specifically to vinculin, SEQ ID NO: 7 or a fragment thereof indicates the lack of the antibody. In various embodiments, the fragment of vinculin or SEQ ID NO: 7 may be the fragments as described herein. As an example, an affinity matrix comprising vinculin, SEQ ID NO: 7 or a fragment thereof can be bound to a solid support; the biological sample can be contacted to the affinity matrix to produce an affinity matrix-antibody complex (if the antibody is present); the affinity matrix-antibody complex can be separated from the remainder of the biological sample; and the antibody can be released from the affinity matrix. In another example, a label (e.g., fluorescent label) can be placed on vinculin, SEQ ID NO: 7 or a fragment thereof the labeled vinculin, SEQ ID NO: 7 or a fragment thereof can be contacted with a biological sample to allow the antibody (if present) to bind specifically to the labeled vinculin, SEQ ID NO: 7 or a fragment thereof. In various embodiments, the labeled vinculin, SEQ ID NO: 7 or a fragment thereof can be separated out and analyzed for its binding to the antibody.

Anti-CdtB Antibodies

In various embodiments, the anti-CdtB antibody is an antibody that binds specifically to CdtB subunit of CDT. An example of a CdtB amino acid sequence is *Campylobacter jejuni* cytolethal distending toxin B, which has the amino acid sequence (SEQ ID NO: 5). Another example of a CdtB amino acid sequence is *Campylobacter coli* cytolethal distending toxin B, which has the amino acid sequence (SEQ ID NO: 1) and nucleic acid sequence (SEQ ID NO:2).

SEQ ID NO: 5:
 MKKIIICFLFSFNLAFFANLENFNVGTWNLQSSAATESKWSVSVRQLVSGANPLDILMIQ
 EAGTLPRATPTGRHVQGGTPIDEYEWNLGTLSRPDRVFIYYSRVVDVGANRVNLAIVS
 RMQAEVIVLPPPTTVSRPIIGIRNGNDAFFNIHALANGGTDVGAIITAVDAHFANMPQV
 NWMIAGDFNRDPSTITSTVDRELANRIRVVFPPTSATQASGGTLDYAITGNSNRQTYTTP
 LLAAILMLASLRSHIVSDHFPVNRKFF

SEQ ID NO: 1:
 MKKIVFLILFSFNVLFAALENYNTGTWNLQSSAATESKWNVSIRQLITGANPMDVLAVQ
 EAGVLPSTAMMTPRQVQPVGVGIPHEYIWNLGSVSRPSSVYIYYSRVVDVGANRVNLAIVS
 VSRVQADEVFVLPPTVASRPIIGIRIGNDAFFNIHALASGGNDAGAVAAVDMFFRNRP
 DINWMLGDFNRESGALVTLDDPDLRARTRVVVPPSSTQTSGRITIDYAITGNSNTAALYN
 PPIVAILALEGLRTFLASDHFPVNRFRP

SEQ ID NO: 2:
 atgaaaaaaaa tagtattttt gattttaagt tttaatgtat tatttgccgc tttagaaaaat 60
 tacaacaccg gaacttgga tttgcaaggc tcatcagctg caactgaaag caaatggaat 120
 gttagtataa gacaactcat aaccggtgca aatcctatgg atgttttagc tgttcaagaa 180
 gcggggggtt tacctagtag agctatgatg actcctagac aggtacaacc cgtgggctgt 240
 ggtattccta tacatgaata catatggaat ttaggctctg tatcaagacc tagctctgtt 300
 tatatatatt attctagagt ggatgtagga gcaaatcgtg tgaatttagc tategttagc 360
 agagtgcaag cggatgaagt tttgtttta cccctccaa cagttgcttc aagacctatt 420
 ataggcatac gcatagggaa tgatgctttt ttcaatatac acgctctagc aagtggggga 480

-continued

aatgacgcag gagccattgt cgctgctgtg gatatgtttt ttagaaatag acctgatatt 540
aattggatga ttttaggcga ttttaataga gaatcaggcg ccttagtaac cttgctagat 600
cctgacttaa gagcacgcac tcgcgtagtt gttccgcctt cttctacgca aacaagtgga 660
agaacgattg attatgctat cactggaaat tccaacactg cagctttata caaccaccca 720
ccgatagttg cgatttttagc tttagaagga ttaagaacct ttttggttc agatcatttt 780
cctgtaaatt ttagaagacc ttag 804

Accordingly, in various embodiments, the antibody binds specifically to SEQ ID NO:5 (CdtB of *C. jejuni*). In various embodiments, the anti-CdtB antibody is an antibody that binds specifically to an amino acid sequence at least 80%, 85%, 90%, 95%, 96%, 97%, 98%, or 99% identical to SEQ ID NO: 5.

In another embodiment, the anti-CdtB antibody is an antibody that binds specifically to SEQ ID NO:1 (CdtB of *C. coli*). In various embodiments, the anti-CdtB antibody is an antibody that binds specifically to an amino acid sequence at least 80%, 85%, 90%, 95%, 96%, 97%, 98%, or 99% identical to SEQ ID NO: 1.

In another embodiment, the anti-CdtB antibody is an antibody that binds specifically to a 17 residue peptide of CdtB (e.g., 17 residues of SEQ. ID NOS: 1 or 5). In one embodiment, the 17 residue peptide has the following sequence: LDYAITGNSNRQQTYTP (SEQ ID NO:3).

In other embodiments, the anti-CdtB antibody is an antibody that binds specifically to a 17 residue peptide that has at least 80%, 85%, 90%, 95%, 96%, 97%, 98%, 99% or 100% homology with 17 contiguous residues of CdtB (e.g., 17 contiguous residues of SEQ. ID NOS: 1 or 5). In one embodiment, the 17 residues of CdtB have the following sequence: LDYAITGNSNRQQTYTP (SEQ ID NO:3).

In other embodiments, the anti-CdtB antibody is an antibody that binds specifically to a polypeptide comprising 17 residues that have at least 80%, 85%, 90%, 95%, 96%, 97%, 98%, 99% or 100% homology with 17 contiguous residues of CdtB (e.g., 17 residues of SEQ. ID NOS: 1 or 5). In one embodiment, the 17 contiguous residues of CdtB have the following sequence: LDYAITGNSNRQQTYTP (SEQ ID NO:3).

In another embodiment, the anti-CdtB antibody is an antibody that binds specifically to an 18 residue peptide having the following sequence: CLDYAITGNSNRQQTYTP (SEQ ID NO:4). The cysteine at the N-terminus was added to SEQ ID NO:3 for purposes of conjugation.

In other embodiments, the anti-CdtB antibody is an antibody that binds specifically to a polypeptide comprising 18 residues that have at least 80%, 85%, 90%, 95%, 96%, 97%, 98%, 99% or 100% homology to CLDYAITGNSNRQQTYTP (SEQ ID NO:4).

In another embodiment, the anti-CdtB antibody is an antibody that binds specifically to a 5, 6, 7, 8, 9, 10, 11, 12, 13, 14, 15, 16, 17, 18, 19, 20, 21, or 22 residue peptide that has at least 80%, 85%, 90%, 95%, 96%, 97%, 98%, 99% or 100% homology with 5, 6, 7, 8, 9, 10, 11, 12, 13, 14, 15, 16, 17, 18, 19, 20, 21, or 22 contiguous residues of CdtB (e.g., 5, 6, 7, 8, 9, 10, 11, 12, 13, 14, 15, 16, 17, 18, 19, 20, 21, or 22 contiguous residues of SEQ ID NOS:1 or 5). In another embodiment, the anti-CdtB antibody is an antibody that binds specifically to a polypeptide comprising 5, 6, 7, 8, 9, 10, 11, 12, 13, 14, 15, 16, 17, 18, 19, 20, 21, or 22 residues that has at least 80%, 85%, 90%, 95%, 96%, 97%, 98%, 99%

or 100% homology with 5, 6, 7, 8, 9, 10, 11, 12, 13, 14, 15, 16, 17, 18, 19, 20, 21, or 22 contiguous residues of CdtB (e.g., 5, 6, 7, 8, 9, 10, 11, 12, 13, 14, 15, 16, 17, 18, 19, 20, 21, or 22 contiguous residues of SEQ ID NOS:1 or 5). Contiguous residues of SEQ ID NO:1 include those beginning at any amino acid and ending at any amino acid of SEQ ID NO:1. Contiguous residues of SEQ ID NO:5 include those beginning at any amino acid and ending at any amino acid of SEQ ID NO:5.

In another embodiment, the anti-CdtB antibody is an antibody that binds specifically to a 5, 6, 7, 8, 9, 10, 11, 12, 13, 14, 15, 16, or 17 residue peptide that has at least 80%, 85%, 90%, 95%, 96%, 97%, 98%, 99% or 100% homology with 5, 6, 7, 8, 9, 10, 11, 12, 13, 14, 15, 16, or 17 contiguous residues of LDYAITGNSNRQQTYTP (SEQ ID NO:3) (e.g., 5, 6, 7, 8, 9, 10, 11, 12, 13, 14, 15, 16, or 17 contiguous residues of SEQ ID NO:3). In another embodiment, the purified antibody binds specifically to a polypeptide comprising 5, 6, 7, 8, 9, 10, 11, 12, 13, 14, 15, 16, or 17 residues that has at least 80%, 85%, 90%, 95%, 96%, 97%, 98%, 99% or 100% homology with 5, 6, 7, 8, 9, 10, 11, 12, 13, 14, 15, 16, or 17 contiguous residues of SEQ ID NO:3 (e.g., 5, 6, 7, 8, 9, 10, 11, 12, 13, 14, 15, 16, or 17 contiguous residues of SEQ ID NO:3). Contiguous residues of SEQ ID NO: 3 include those beginning at any amino acid and ending at any amino acid of SEQ ID NO: 3.

In another embodiment, the anti-CdtB antibody is an antibody that binds specifically to a 17 residue peptide encoded by the CdtB gene sequence. In particular embodiments, the anti-CdtB antibody is an antibody that binds specifically to a 17 residue peptide encoded by SEQ ID NO: 2. In various embodiments, the anti-CdtB antibody is an antibody that binds specifically to a 14, 15, 16, 17, 18, 19, 20, 21, or 22 residue peptide encoded by SEQ ID NO: 2. In various embodiments, the purified antibody binds specifically to a 14, 15, 16, 17, 18, 19, 20, 21, or 22 residue peptide that has at least 80%, 85%, 90%, 95%, 96%, 97%, 98%, 99% or 100% homology to 14, 15, 16, 17, 18, 19, 20, 21, or 22 contiguous residues encoded by SEQ ID NO: 2. In various embodiments, the anti-CdtB antibody is an antibody that binds specifically to a polypeptide comprising 14, 15, 16, 17, 18, 19, 20, 21, or 22 residues that have at least 80%, 85%, 90%, 95%, 96%, 97%, 98%, 99% or 100% homology to 14, 15, 16, 17, 18, 19, 20, 21, or 22 contiguous residues encoded by SEQ ID NO: 2.

In another embodiment, the anti-CdtB antibody is an antibody that binds specifically to a peptide encoded by the nucleic acid sequence having the following sequence: CTTGATTATGCAATTACAGGAAATTCAAATAGA-CAACAAACCTATACTCCA (SEQ ID NO:6), which encodes the 17 amino acid peptide of SEQ ID NO. 3. In another embodiment, the anti-CdtB antibody is an antibody that binds specifically to a polypeptide comprising a peptide encoded by SEQ ID NO:6.

In another embodiment, the anti-CdtB antibody is an antibody that binds specifically to CdtB purified from *E. coli* overexpressing a near full-length CdtB ORF. (See Infection and Immunity, December 2000, p. 6535-6541, Vol. 68, No. 12, herein incorporated by reference in its entirety as though fully set forth.)

In various embodiments, when determining the presence or level of anti-vinculin antibodies, vinculin protein or a fragment thereof as described herein is used as the antigen at about 1.2 µg/ml concentration. In other embodiments, the concentration can be about 0.1, 0.2, 0.3, 0.4, 0.5, 0.6, 0.7, 0.8, 0.9, 1.0, 1.1, 1.3, 1.4, 1.5, 1.6, 1.7, 1.8, 1.9 or 2.0 µg/ml concentration. In various embodiments, an about 1:32 dilution of the biological sample (e.g., plasma) is used in the determination of the presence or level of anti-vinculin antibodies. In other embodiments, an about 1:8, 1:10, 1:12; 1:16, 1:20, 1:24, 1:30, 1:36, 1:48, or 1:64 dilution of the biological sample (e.g., plasma) is used in the determination of the presence or level of anti-vinculin antibodies. In other embodiments, an about 1:8 to 1:64 dilution of the biological sample (e.g., plasma) is used in the determination of the presence or level of anti-vinculin antibodies.

In various embodiments, when determining the presence or level of anti-CdtB antibodies, CdtB protein or a fragment thereof as described herein is used as the antigen at about 1.2 µg/ml concentration. In other embodiments, the concentration can be about 0.1, 0.2, 0.3, 0.4, 0.5, 0.6, 0.7, 0.8, 0.9, 1.0, 1.1, 1.3, 1.4, 1.5, 1.6, 1.7, 1.8, 1.9 or 2.0 µg/ml concentration. In various embodiments, a 1:512 dilution of the biological sample (e.g., plasma) is used in the determination of the presence or level of anti-CdtB antibodies. In other embodiments, an about 1:128, 1:256, 1:768, or 1:1024 dilution of the biological sample (e.g., plasma) is used in the determination of the presence or level of anti-CdtB antibodies. In other embodiments, an about 1:100, 1:150, 1:200, 1:250, 1:300, 1:350, 1:400, 1:500, 1:550; 1:600, 1:650, 1:700, 1:750, 1:800, 1:850, 1:900, 1:950, or 1:1000 dilution of the biological sample (e.g., plasma) is used in the determination of the presence or level of anti-CdtB antibodies. In other embodiments, an about 1:100-1:1000 dilution of the biological sample (e.g., plasma) is used in the determination of the presence or level of anti-CdtB antibodies.

Antigens are immobilized for about 8, 9, 10, 11, 12, 13, 14, 15, 16, 17, 18, 19 or 20 hours (e.g., overnight, >16 hours) at about 4° C. onto high-binding plates (e.g., 96-well plates) in Borate Buffered Saline (BBS) at a pH of 8.2. Wells are alternately coated with antigen or left uncoated in BBS to allow determination of non-specific binding of plasma. Wells are blocked with about 3% bovine serum albumin in 1×PBS for about 1 hour at about room temperature. Coated and uncoated wells are then incubated with a 1:512 dilution of plasma for CdtB and a 1:32 dilution of plasma for vinculin for about 1 hour at room temperature. Antibodies to CdtB and vinculin are used as positive controls. This was followed by about 1 hour incubation with HRP conjugated secondary antibodies. Each step is followed by a series of washes using 0.05% PBS-Tween 20. Finally, a 3,3',5,5'-Tetramethylbenzidine (TMB) substrate solution is used for visualization and immediately read on a plate reader (e.g., BioTek Synergy HT; Winooski, Vt.). The optical densities (OD) are read for about 90 minutes at 370 nm and used to compare levels of anti-CdtB or anti-vinculin. Raw OD values were used for the data analysis.

Types of IBS

In various embodiments, the IBS detected by the methods, assays or systems is constipation predominant IBS (C-IBS),

diarrhea predominant IBS (D-IBS), alternating IBS (A-IBS) (more recently re-named as mixed (M-IBS)), or post-infectious irritable bowel syndrome (PI-IBS). In various embodiments, the IBS is D-IBS.

In certain embodiments, the subject desiring diagnosis of IBS in accordance to the methods, assays, and systems of the present invention may have one or more symptoms indicative of IBS. Examples of IBS symptoms include but are not limited to diarrhea, constipation, bloating, and abdominal pain.

Biological Samples

Examples of biological samples include but are not limited to body fluids, whole blood, plasma, stool, intestinal fluids or aspirate, and stomach fluids or aspirate, serum, cerebral spinal fluid (CSF), urine, sweat, saliva, tears, pulmonary secretions, breast aspirate, prostate fluid, seminal fluid, cervical scraping, amniotic fluid, intraocular fluid, mucous, and moisture in breath. In particular embodiments of the method, the biological sample may be whole blood, blood plasma, blood serum, stool, intestinal fluid or aspirate or stomach fluid or aspirate. In various embodiments, the biological sample may be whole blood. In various embodiments, the biological sample may be serum. In various embodiments, the biological sample may be plasma.

EXAMPLES

The following examples are provided to better illustrate the claimed invention and are not to be interpreted as limiting the scope of the invention. To the extent that specific materials are mentioned, it is merely for purposes of illustration and is not intended to limit the invention. One skilled in the art may develop equivalent means or reactants without the exercise of inventive capacity and without departing from the scope of the invention.

Example 1—Materials and Methods

Subject Groups

For the validation of this serum marker, subjects from a 180 center large scale randomized controlled therapeutic trial in diarrhea-predominant IBS (D-IBS) were recruited (TARGET 3). Subjects with D-IBS were selected based on the presence of Rome III criteria. 6 Healthy controls were recruited from Cedars-Sinai Medical Center and the Beth Israel Deaconess Medical Center. All healthy controls were screened for prior history of gastrointestinal disease and for active gastrointestinal symptoms based on history and completion of a bowel symptom questionnaire. Subjects with inflammatory bowel disease (IBD) and celiac disease were recruited based on the presence of intestinal complaints and histologic confirmation of chronic inflammatory changes in the colon or small intestine consistent with Crohn's disease, ulcerative colitis (UC) or celiac disease.

Subjects were excluded from the study if they had a history of diabetes, HIV, unstable thyroid disease, and chronic narcotic use. For IBS subjects and healthy controls, bowel surgery (excluding cholecystectomy or appendectomy) was also an exclusion criteria.

Patient Data

Patient demographics were obtained for all subjects including age and gender. In the case of IBD, the type of disease (UC or Crohn's disease).

Plasma Collection

Plasma was collected from all subjects. This was collected by venipuncture in a lavender top tube, centrifuged at 3500 rpm for 15 minutes and then stored frozen at -80° C. until the time of testing. In the case of the D-IBS subjects from TARGET 3, plasma was collected prior to treatment in the trial.

ELISA Testing

ELISAs were performed using either a complete recombinant *Campylobacter* CdtB protein (Creative Biomart, Shirley, N.Y.) or full length vinculin protein (Novoprotein, Short Hills, N.J.) as antigens at 1.2 µg/ml concentration. Antigens were immobilized overnight at 4° C. onto high-binding 96-well plates (Grenier Bio-One, Monroe, N.C.) in Borate Buffered Saline (BBS) (*Medicago*, Uppsala, Sweden) at a pH of 8.2. Wells were alternately coated with antigen or left uncoated in BBS to allow determination of non-specific binding of plasma. Wells were blocked with 3% bovine serum albumin in 1xPBS for 1 hour at room temperature. Coated and uncoated wells were then incubated with a 1:512 dilution of plasma for CdtB and a 1:32 dilution of plasma for vinculin for 1 hour at room temperature. Antibodies to CdtB and vinculin were used as positive controls. This was followed by 1 hour incubation with HRP conjugated secondary antibodies (Jackson ImmunoResearch, West Grove, Pa.). Each step was followed by a series of washes using 0.05% PBS-Tween 20. Finally, a 3,3',5,5'-Tetramethylbenzidine (TMB) substrate solution (Pierce, Rockford, Ill.) was used for visualization and immediately read on a BioTek Synergy HT plate reader (Winooski, Vt.). The optical densities (OD) were read for 90 minutes at 370 nm and used to compare levels of anti-CdtB or anti-vinculin. Raw OD values were used for the data analysis.

Statistical Analysis (Data w/o Celiac Patients)

Data were expressed as mean±standard error (SE) and exact 95% confidence intervals (CI). Multiple group comparisons were performed using one-way analysis of variance (ANOVA) after equality of variances was confirmed by Bartlett's test. Normality of the data distribution was assessed using histograms with overlapping Kernel density and normal distributions curves. Distribution of anti-vinculin and anti-CdtB normalized after values were transformed to square roots and squares respectively. Student's t-test was used for comparisons of normally distributed variables between two groups. Pearson's chi-squared test was used for comparison of categorical data. Receiver operating characteristic (ROC) curves were constructed using nonparametric methodology. Confidence intervals for areas under curves (AUC) were computed using DeLong's method. Sensitivity, specificity and likelihood ratios of each independent value of anti-vinculin and anti-CdtB to a precision of 0.01 OD were calculated and were assessed to capture the optimal cut-offs. A P value of <0.05 was considered significant. Analysis was performed using STATA version 11.2 (STATA Corp., Texas, USA)

Statistical Analysis (Data w/ Celiac Patients)

Numerical variables were summarized by mean±standard deviation. Normality of the data distributions was assessed using histograms with overlapping Kernel density and normal distributions curves. The anti-vinculin distribution was normalized by a square root transformation. Homogeneity of variance was assessed by Bartlett's test.

Student's t-test was used for comparisons of normally distributed variables between two groups. Normally distributed variables were compared across more than two groups by one-way ANOVA and Dunnett's post hoc tests with IBS as the reference group. Categorical variables were summa-

rized by frequency and percent. Pearson's chi-square test was used for comparison of categorical data. Receiver operating characteristic (ROC) curves were constructed in the standard fashion. Confidence intervals for areas under curves (AUC) were computed using the method of DeLong et al 21. Sensitivity, specificity and likelihood ratios of anti-vinculin and anti-CdtB to a precision of 0.01 OD were calculated and were assessed to obtain the favorable cut-offs. The 0.05 significance level was used throughout. Statistical analysis was performed using STATA version 11.2 (STATA Corp., Texas, USA) and SAS version 9.3 (SAS Institute, Cary, N.C., USA).

Example 1—Results

Patient Demographics (w/o Analysis Relating to Celiac Patients)

In total, 2767 subjects were recruited (Table 1A). This included 2564 D-IBS subjects, 43 healthy subjects, 10 celiac and 150 IBD subjects (n=78 Crohn's, 72 ulcerative colitis (UC)). There were significantly more females in the healthy volunteers, IBS and celiac cohorts as compared with the IBD cohort (P=0.01). IBS subjects were on average 6.7 years older than non-IBS subjects (P<0.01). Age was not significantly different between the other groups.

TABLE 1A

Patient demographics.			
	Number of subjects	Age	% of females
Healthy controls	43	36.0 ± 9.9	67.4
IBS	2564	46.4 ± 13.6	68.2
CD	78	41.8 ± 13.1	56.4
UC	72	40.2 ± 12.9	55.5
IBD (UC + CD)	150	41.0 ± 13.0	56.0
Celiac disease	10	35.6 ± 10.3	70

Values are given as mean ± SD;
OD—optical density;
CD—Crohn's disease,
UC—ulcerative colitis

Patient Demographics (w/ Analysis Relating to Celiac Patients)

In total, 2681 subjects were recruited (Table 1B). This included 2375 D-IBS subjects, 43 healthy subjects, 121 celiac and 142 IBD subjects (n=73 Crohn's, n=69 ulcerative colitis). IBS subjects were on average 3.9 years older than the non-IBS groups (p<0.001). There were no differences in sex distribution of IBS and non-IBS subjects; however, percentage of females was greater in the healthy controls, IBS and celiac groups as compared with the IBD group (P<0.001).

TABLE 1B

Patient demographics.			
	Number of subjects	Age (range)	% of females
Healthy controls	43	36.0 ± 9.9 (22-62)	67.4
D-IBS	2375	44.4 ± 12.2 (18-65)	67.6
CD	73	40.6 ± 11.3 (18-65)	56.2
UC	69	41.2 ± 12.2 (19-63)	55.1

TABLE 1B-continued

Patient demographics.			
	Number of subjects	Age (range)	% of females
IBD (UC + CD)	142	40.9 ± 11.7 (18-65)	55.6
Celiac disease	121	41.6 ± 12.3 (19-65)	76

Values are given as mean ± standard deviation, CD—Crohn's disease, UC—ulcerative colitis.

ELISA Comparisons Between Groups (w/o Celiac Patients)

Anti-CdtB levels in IBS subjects were significantly higher than in all non-IBS subjects (2.54±0.01 (95% CI 2.52-2.57) compared to 1.68±0.05 (95% CI 1.58-1.79)) (P<0.001) (FIG. 1A). There were no significant differences in anti-CdtB levels among non-IBS subjects (F-test P=0.25).

Anti-*vinculin* levels were significantly higher in IBS subjects when compared to all non-IBS subjects (1.3334±0.02 (95% CI 1.30-1.37) compared to 1.01±0.06 (95% CI 0.89-1.12)) (P<0.001) (FIG. 2A). Differences in anti-*vinculin* levels among non-IBS subjects were not statistically significant (F-test P=0.08).

ELISA Comparisons Between Groups (w/ Celiac Patients)

Using optical density levels, anti-CdtB antibody levels in D-IBS subjects (2.53±0.69) were significantly higher than healthy subjects (1.81±0.73), Crohn's disease (1.72±0.81), ulcerative colitis (1.54±0.68) and celiac disease (2.23±0.70) (P<0.001) (FIG. 1B). There were no differences in anti-CdtB levels between healthy subjects and IBD subjects (p=0.23); however, subjects with celiac disease had higher anti-CdtB levels than all other non-IBS groups (p<0.001).

Anti-*vinculin* levels were also significantly higher in D-IBS subjects (1.34±0.85) when compared to healthy subjects (0.81±0.59), Crohn's disease (1.05±0.91), ulcerative colitis (0.96±0.77) and celiac disease (1.07±0.98) (P<0.0001) (FIG. 2B). Differences in anti-*vinculin* levels among non-IBS subjects were not statistically significant.

Sensitivity and Specificity Analyses (w/o Celiac Patients)

Receiver operating characteristics (ROC) were used to assess the utility of anti-*vinculin* and anti-CdtB levels in differentiating IBS subjects from non-IBS, IBD and healthy individuals. FIGS. 3A and 4 demonstrate the ROC curves for these two tests when comparing IBS subjects to all non-IBS subjects and to IBD subjects, respectively. The anti-CdtB test performed better than anti-*vinculin* and appeared equally discriminating of IBS from all non-IBS subjects and from the IBD group alone. In subgroup analysis, there appeared to be no difference based on the type of IBD (data not shown). The ROC curve for both anti-CdtB and anti-*vinculin* show that D-IBS can be discriminated from healthy subjects based on this test.

The optical density (OD) levels for each test were then used to determine the ideal threshold for identification of D-IBS. Tables 2A and 3A demonstrate some potential optical density thresholds for the identification of IBS based on sensitivity, specificity and likelihood ratio. For D-IBS, a higher specificity even when associated with a lower sensitivity is more desirable. In D-IBS an ideal test would definitively diagnose IBS, thus reducing the need for invasive testing. So specificity and likelihood ratio was deemed more important. Based on the ROC curves, the ideal level for anti-CdtB appeared to be a level of ≥2.48 and for

anti-*vinculin* the optimal level was of ≥1.62 appear to optimize specificity with relatively limited effects on sensitivity.

TABLE 2A

Favorable cutoffs of anti-CdtB for diagnosis of IBS over other causes					
	OD	Specificity %	Sensitivity %	+LR	-LR
5	≥2.48	84.7	60.7	4.0	0.5
10	≥2.79	91.1	44.4	5.0	0.6

OD—optical density, +LR—positive likelihood ratio, -LR—negative likelihood ratio

TABLE 3A

Favorable cutoffs of anti- <i>vinculin</i> for diagnosis of IBS over other causes					
	OD	Specificity %	Sensitivity %	+LR	-LR
20	≥1.62	82.3	35.0	2.0	0.78
25	≥1.86	86.7	26.5	2.0	0.8
30	≥2.23	92.1	15.7	2.0	0.9

OD—optical density, +LR—positive likelihood ratio, -LR—negative likelihood ratio

Sensitivity and Specificity Analyses (w/ Celiac Patients)

Receiver operating characteristics (ROC) were used to assess the utility of anti-*vinculin* and anti-CdtB levels in differentiating D-IBS subjects from IBD subjects. FIG. 3B demonstrates the ROC curves for these two tests when comparing D-IBS subjects to IBD subjects. While both tests were effective at discriminating D-IBS subjects from the IBD group, the area-under-the-curve (AUC) for the diagnosis of D-IBS vs. IBD was higher for anti-CdtB than for anti-*vinculin* (0.81 and 0.62, respectively). In subgroup analysis, there appeared to be no difference based on the type of IBD (data not shown). The ROC curves for D-IBS compared to non-IBS, celiac subjects and healthy controls were also discriminatory.

The optical density (OD) levels for each test were then used to determine the ideal threshold for identification of D-IBS as compared to IBD. Tables 2B and 3B demonstrate some potential optical density thresholds for the identification of D-IBS based on sensitivity, specificity and likelihood ratio. An ideal test would definitively diagnose IBS, thus reducing the need for invasive testing. Therefore, we focused on specificity and positive likelihood ratio. Based on this, the ideal threshold for anti-CdtB to identify D-IBS appeared to be ≥2.80, while for anti-*vinculin* the optimal threshold appeared to be ≥1.68.

TABLE 2B

Favorable cut offs for anti-CdtB for the diagnosis of D-IBS over IBD					
	OD	Specificity %	Sensitivity %	+LR	-LR
60	≥2.49	85.9	60.0	4.3	0.5
65	≥2.80	91.6	43.7	5.2	0.6
70	≥3.04	95.8	28.3	6.7	0.7

OD—optical density, +LR—positive likelihood ratio, -LR—negative likelihood ratio

TABLE 3B

Favorable cut offs for anti-vinculin for the diagnosis of D-IBS over IBD				
OD	Specificity %	Sensitivity %	+LR	-LR
≥1.53	80.3	37.8	1.9	0.8
≥1.68	83.8	32.6	2.0	0.8
≥1.80	84.5	28.9	1.8	0.8

OD—optical density,
 +LR—positive likelihood ratio,
 -LR—negative likelihood ratio

Gender Effect on Biomarker (w/o Celiac Patients)

Anti-CdtB and anti-vinculin levels were also compared in females only and in males only. Despite gender differences between subjects with D-IBS and control groups, both biomarkers could be used to successfully identify D-IBS in both males and females.

Headings used herein are simply for organization and are not intended to limit the disclosure in any manner. The content of any individual section may be equally applicable to all sections.

Various embodiments of the invention are described above in the Detailed Description. While these descriptions directly describe the above embodiments, it is understood that those skilled in the art may conceive modifications and/or variations to the specific embodiments shown and described herein. Any such modifications or variations that fall within the purview of this description are intended to be included therein as well. Unless specifically noted, it is the intention of the inventors that the words and phrases in the

specification and claims be given the ordinary and accustomed meanings to those of ordinary skill in the applicable art(s).

The foregoing description of various embodiments of the invention known to the applicant at this time of filing the application has been presented and is intended for the purposes of illustration and description. The present description is not intended to be exhaustive nor limit the invention to the precise form disclosed and many modifications and variations are possible in the light of the above teachings. The embodiments described serve to explain the principles of the invention and its practical application and to enable others skilled in the art to utilize the invention in various embodiments and with various modifications as are suited to the particular use contemplated. Therefore, it is intended that the invention not be limited to the particular embodiments disclosed for carrying out the invention.

While particular embodiments of the present invention have been shown and described, it will be obvious to those skilled in the art that, based upon the teachings herein, changes and modifications may be made without departing from this invention and its broader aspects and, therefore, the appended claims are to encompass within their scope all such changes and modifications as are within the true spirit and scope of this invention. It will be understood by those within the art that, in general, terms used herein are generally intended as “open” terms (e.g., the term “including” should be interpreted as “including but not limited to,” the term “having” should be interpreted as “having at least,” the term “includes” should be interpreted as “includes but is not limited to,” etc.).

SEQUENCE LISTING

```

<160> NUMBER OF SEQ ID NOS: 7

<210> SEQ ID NO 1
<211> LENGTH: 267
<212> TYPE: PRT
<213> ORGANISM: Campylobacter coli

<400> SEQUENCE: 1

Met Lys Lys Ile Val Phe Leu Ile Leu Ser Phe Asn Val Leu Phe Ala
1                    5                10                15

Ala Leu Glu Asn Tyr Asn Thr Gly Thr Trp Asn Leu Gln Gly Ser Ser
20                    25                30

Ala Ala Thr Glu Ser Lys Trp Asn Val Ser Ile Arg Gln Leu Ile Thr
35                    40                45

Gly Ala Asn Pro Met Asp Val Leu Ala Val Gln Glu Ala Gly Val Leu
50                    55                60

Pro Ser Thr Ala Met Met Thr Pro Arg Gln Val Gln Pro Val Gly Val
65                    70                75                80

Gly Ile Pro Ile His Glu Tyr Ile Trp Asn Leu Gly Ser Val Ser Arg
85                    90                95

Pro Ser Ser Val Tyr Ile Tyr Tyr Ser Arg Val Asp Val Gly Ala Asn
100                   105                110

Arg Val Asn Leu Ala Ile Val Ser Arg Val Gln Ala Asp Glu Val Phe
115                   120                125

Val Leu Pro Pro Pro Thr Val Ala Ser Arg Pro Ile Ile Gly Ile Arg
130                   135                140

Ile Gly Asn Asp Ala Phe Phe Asn Ile His Ala Leu Ala Ser Gly Gly
145                   150                155                160
    
```

-continued

Asn Asp Ala Gly Ala Ile Val Ala Ala Val Asp Met Phe Phe Arg Asn
 165 170 175
 Arg Pro Asp Ile Asn Trp Met Ile Leu Gly Asp Phe Asn Arg Glu Ser
 180 185 190
 Gly Ala Leu Val Thr Leu Leu Asp Pro Asp Leu Arg Ala Arg Thr Arg
 195 200 205
 Val Val Val Pro Pro Ser Ser Thr Gln Thr Ser Gly Arg Thr Ile Asp
 210 215 220
 Tyr Ala Ile Thr Gly Asn Ser Asn Thr Ala Ala Leu Tyr Asn Pro Pro
 225 230 235 240
 Pro Ile Val Ala Ile Leu Ala Leu Glu Gly Leu Arg Thr Phe Leu Ala
 245 250 255
 Ser Asp His Phe Pro Val Asn Phe Arg Arg Pro
 260 265

<210> SEQ ID NO 2
 <211> LENGTH: 804
 <212> TYPE: DNA
 <213> ORGANISM: Campylobacter coli

<400> SEQUENCE: 2

atgaaaaaaa tagtattttt gattttaagt tttaatgtag tatttgccgc ttagaaaaa 60
 tacaacaccg gaacttgaa tttgcaaggc tcatcagctg caactgaaag caaatggaat 120
 gttagtataa gacaactcat aaccggtgca aatcctatgg atgttttagc tgttcaagaa 180
 gcggggggtt tacctagtag agctatgatg actcctagac aggtacaacc cgtgggcgtg 240
 ggtattccta tacatgaata catatggaat ttaggctctg tatcaagacc tagctctgtt 300
 tatatatatt attctagagt ggatgtagga gcaaatcgtg tgaatttagc tatcgttagc 360
 agagtgaag cggatgaaat ttttgtttta cccctccaa cagttgcttc aagacctatt 420
 ataggcatac gcataggcaa tgatgctttt ttcaatatac acgctctagc aagtggggga 480
 aatgacgcag gagccattgt cgctgctgtg gatatgtttt ttagaaatag acctgatatt 540
 aattggatga ttttaggcga ttttaataga gaatcaggcg ccttagtaac cttgctagat 600
 cctgacttaa gagcacgcac tcgcgtagtt gttccgcctt cttctacgca aacaagtgga 660
 agaacgattg attatgctat cactggaat tccaacactg cagctttata caaccacca 720
 ccgatagttg cgatttttagc tttagaagga ttaagaacct ttttgcttc agatcatttt 780
 cctgtaaatt ttagaagacc ttag 804

<210> SEQ ID NO 3
 <211> LENGTH: 17
 <212> TYPE: PRT
 <213> ORGANISM: Campylobacter jejuni

<400> SEQUENCE: 3

Leu Asp Tyr Ala Ile Thr Gly Asn Ser Asn Arg Gln Gln Thr Tyr Thr
 1 5 10 15

Pro

<210> SEQ ID NO 4
 <211> LENGTH: 18
 <212> TYPE: PRT
 <213> ORGANISM: Campylobacter jejuni

<400> SEQUENCE: 4

-continued

Cys Leu Asp Tyr Ala Ile Thr Gly Asn Ser Asn Arg Gln Gln Thr Tyr
 1 5 10 15

Thr Pro

<210> SEQ ID NO 5
 <211> LENGTH: 265
 <212> TYPE: PRT
 <213> ORGANISM: Campylobacter jejuni
 <400> SEQUENCE: 5

Met Lys Lys Ile Ile Cys Leu Phe Leu Ser Phe Asn Leu Ala Phe Ala
 1 5 10 15
 Asn Leu Glu Asn Phe Asn Val Gly Thr Trp Asn Leu Gln Gly Ser Ser
 20 25 30
 Ala Ala Thr Glu Ser Lys Trp Ser Val Ser Val Arg Gln Leu Val Ser
 35 40 45
 Gly Ala Asn Pro Leu Asp Ile Leu Met Ile Gln Glu Ala Gly Thr Leu
 50 55 60
 Pro Arg Thr Ala Thr Pro Thr Gly Arg His Val Gln Gln Gly Gly Thr
 65 70 75 80
 Pro Ile Asp Glu Tyr Glu Trp Asn Leu Gly Thr Leu Ser Arg Pro Asp
 85 90 95
 Arg Val Phe Ile Tyr Tyr Ser Arg Val Asp Val Gly Ala Asn Arg Val
 100 105 110
 Asn Leu Ala Ile Val Ser Arg Met Gln Ala Glu Glu Val Ile Val Leu
 115 120 125
 Pro Pro Pro Thr Thr Val Ser Arg Pro Ile Ile Gly Ile Arg Asn Gly
 130 135 140
 Asn Asp Ala Phe Phe Asn Ile His Ala Leu Ala Asn Gly Gly Thr Asp
 145 150 155 160
 Val Gly Ala Ile Ile Thr Ala Val Asp Ala His Phe Ala Asn Met Pro
 165 170 175
 Gln Val Asn Trp Met Ile Ala Gly Asp Phe Asn Arg Asp Pro Ser Thr
 180 185 190
 Ile Thr Ser Thr Val Asp Arg Glu Leu Ala Asn Arg Ile Arg Val Val
 195 200 205
 Phe Pro Thr Ser Ala Thr Gln Ala Ser Gly Gly Thr Leu Asp Tyr Ala
 210 215 220
 Ile Thr Gly Asn Ser Asn Arg Gln Gln Thr Tyr Thr Pro Pro Leu Leu
 225 230 235 240
 Ala Ala Ile Leu Met Leu Ala Ser Leu Arg Ser His Ile Val Ser Asp
 245 250 255
 His Phe Pro Val Asn Phe Arg Lys Phe
 260 265

<210> SEQ ID NO 6
 <211> LENGTH: 51
 <212> TYPE: DNA
 <213> ORGANISM: Campylobacter jejuni
 <400> SEQUENCE: 6

cttgattatg caattacagg aaattcaaat agacaacaaa cctatactcc a

51

<210> SEQ ID NO 7
 <211> LENGTH: 1066
 <212> TYPE: PRT
 <213> ORGANISM: Homo sapiens

-continued

<400> SEQUENCE: 7

Met Pro Val Phe His Thr Arg Thr Ile Glu Ser Ile Leu Glu Pro Val
 1 5 10 15
 Ala Gln Gln Ile Ser His Leu Val Ile Met His Glu Glu Gly Glu Val
 20 25 30
 Asp Gly Lys Ala Ile Pro Asp Leu Thr Ala Pro Val Ala Ala Val Gln
 35 40 45
 Ala Ala Val Ser Asn Leu Val Arg Val Gly Lys Glu Thr Val Gln Thr
 50 55 60
 Thr Glu Asp Gln Ile Leu Lys Arg Asp Met Pro Pro Ala Phe Ile Lys
 65 70 75 80
 Val Glu Asn Ala Cys Thr Lys Leu Val Gln Ala Ala Gln Met Leu Gln
 85 90 95
 Ser Asp Pro Tyr Ser Val Pro Ala Arg Asp Tyr Leu Ile Asp Gly Ser
 100 105 110
 Arg Gly Ile Leu Ser Gly Thr Ser Asp Leu Leu Leu Thr Phe Asp Glu
 115 120 125
 Ala Glu Val Arg Lys Ile Ile Arg Val Cys Lys Gly Ile Leu Glu Tyr
 130 135 140
 Leu Thr Val Ala Glu Val Val Glu Thr Met Glu Asp Leu Val Thr Tyr
 145 150 155 160
 Thr Lys Asn Leu Gly Pro Gly Met Thr Lys Met Ala Lys Met Ile Asp
 165 170 175
 Glu Arg Gln Gln Glu Leu Thr His Gln Glu His Arg Val Met Leu Val
 180 185 190
 Asn Ser Met Asn Thr Val Lys Glu Leu Leu Pro Val Leu Ile Ser Ala
 195 200 205
 Met Lys Ile Phe Val Thr Thr Lys Asn Ser Lys Asn Gln Gly Ile Glu
 210 215 220
 Glu Ala Leu Lys Asn Arg Asn Phe Thr Val Glu Lys Met Ser Ala Glu
 225 230 235 240
 Ile Asn Glu Ile Ile Arg Val Leu Gln Leu Thr Ser Trp Asp Glu Asp
 245 250 255
 Ala Trp Ala Ser Lys Asp Thr Glu Ala Met Lys Arg Ala Leu Ala Ser
 260 265 270
 Ile Asp Ser Lys Leu Asn Gln Ala Lys Gly Trp Leu Arg Asp Pro Ser
 275 280 285
 Ala Ser Pro Gly Asp Ala Gly Glu Gln Ala Ile Arg Gln Ile Leu Asp
 290 295 300
 Glu Ala Gly Lys Val Gly Glu Leu Cys Ala Gly Lys Glu Arg Arg Glu
 305 310 315 320
 Ile Leu Gly Thr Cys Lys Met Leu Gly Gln Met Thr Asp Gln Val Ala
 325 330 335
 Asp Leu Arg Ala Arg Gly Gln Gly Ser Ser Pro Val Ala Met Gln Lys
 340 345 350
 Ala Gln Gln Val Ser Gln Gly Leu Asp Val Leu Thr Ala Lys Val Glu
 355 360 365
 Asn Ala Ala Arg Lys Leu Glu Ala Met Thr Asn Ser Lys Gln Ser Ile
 370 375 380
 Ala Lys Lys Ile Asp Ala Ala Gln Asn Trp Leu Ala Asp Pro Asn Gly
 385 390 395 400

-continued

Gly Pro Glu Gly Glu Glu Gln Ile Arg Gly Ala Leu Ala Glu Ala Arg
 405 410 415
 Lys Ile Ala Glu Leu Cys Asp Asp Pro Lys Glu Arg Asp Asp Ile Leu
 420 425 430
 Arg Ser Leu Gly Glu Ile Ser Ala Leu Thr Ser Lys Leu Ala Asp Leu
 435 440 445
 Arg Arg Gln Gly Lys Gly Asp Ser Pro Glu Ala Arg Ala Leu Ala Lys
 450 455 460
 Gln Val Ala Thr Ala Leu Gln Asn Leu Gln Thr Lys Thr Asn Arg Ala
 465 470 475 480
 Val Ala Asn Ser Arg Pro Ala Lys Ala Ala Val His Leu Glu Gly Lys
 485 490 495
 Ile Glu Gln Ala Gln Arg Trp Ile Asp Asn Pro Thr Val Asp Asp Arg
 500 505 510
 Gly Val Gly Gln Ala Ala Ile Arg Gly Leu Val Ala Glu Gly His Arg
 515 520 525
 Leu Ala Asn Val Met Met Gly Pro Tyr Arg Gln Asp Leu Leu Ala Lys
 530 535 540
 Cys Asp Arg Val Asp Gln Leu Thr Ala Gln Leu Ala Asp Leu Ala Ala
 545 550 555 560
 Arg Gly Glu Gly Glu Ser Pro Gln Ala Arg Ala Leu Ala Ser Gln Leu
 565 570 575
 Gln Asp Ser Leu Lys Asp Leu Lys Ala Arg Met Gln Glu Ala Met Thr
 580 585 590
 Gln Glu Val Ser Asp Val Phe Ser Asp Thr Thr Thr Pro Ile Lys Leu
 595 600 605
 Leu Ala Val Ala Ala Thr Ala Pro Pro Asp Ala Pro Asn Arg Glu Glu
 610 615 620
 Val Phe Asp Glu Arg Ala Ala Asn Phe Glu Asn His Ser Gly Lys Leu
 625 630 635 640
 Gly Ala Thr Ala Glu Lys Ala Ala Ala Val Gly Thr Ala Asn Lys Ser
 645 650 655
 Thr Val Glu Gly Ile Gln Ala Ser Val Lys Thr Ala Arg Glu Leu Thr
 660 665 670
 Pro Gln Val Val Ser Ala Ala Arg Ile Leu Leu Arg Asn Pro Gly Asn
 675 680 685
 Gln Ala Ala Tyr Glu His Phe Glu Thr Met Lys Asn Gln Trp Ile Asp
 690 695 700
 Asn Val Glu Lys Met Thr Gly Leu Val Asp Glu Ala Ile Asp Thr Lys
 705 710 715 720
 Ser Leu Leu Asp Ala Ser Glu Glu Ala Ile Lys Lys Asp Leu Asp Lys
 725 730 735
 Cys Lys Val Ala Met Ala Asn Ile Gln Pro Gln Met Leu Val Ala Gly
 740 745 750
 Ala Thr Ser Ile Ala Arg Arg Ala Asn Arg Ile Leu Leu Val Ala Lys
 755 760 765
 Arg Glu Val Glu Asn Ser Glu Asp Pro Lys Phe Arg Glu Ala Val Lys
 770 775 780
 Ala Ala Ser Asp Glu Leu Ser Lys Thr Ile Ser Pro Met Val Met Asp
 785 790 795 800
 Ala Lys Ala Val Ala Gly Asn Ile Ser Asp Pro Gly Leu Gln Lys Ser
 805 810 815

-continued

Phe Leu Asp Ser Gly Tyr Arg Ile Leu Gly Ala Val Ala Lys Val Arg
 820 825 830

Glu Ala Phe Gln Pro Gln Glu Pro Asp Phe Pro Pro Pro Pro Pro Asp
 835 840 845

Leu Glu Gln Leu Arg Leu Thr Asp Glu Leu Ala Pro Pro Lys Pro Pro
 850 855 860

Leu Pro Glu Gly Glu Val Pro Pro Pro Arg Pro Pro Pro Pro Glu Glu
 865 870 875 880

Lys Asp Glu Glu Phe Pro Glu Gln Lys Ala Gly Glu Val Ile Asn Gln
 885 890 895

Pro Met Met Met Ala Ala Arg Gln Leu His Asp Glu Ala Arg Lys Trp
 900 905 910

Ser Ser Lys Gly Asn Asp Ile Ile Ala Ala Ala Lys Arg Met Ala Leu
 915 920 925

Leu Met Ala Glu Met Ser Arg Leu Val Arg Gly Gly Ser Gly Thr Lys
 930 935 940

Arg Ala Leu Ile Gln Cys Ala Lys Asp Ile Ala Lys Ala Ser Asp Glu
 945 950 955 960

Val Thr Arg Leu Ala Lys Glu Val Ala Lys Gln Cys Thr Asp Lys Arg
 965 970 975

Ile Arg Thr Asn Leu Leu Gln Val Cys Glu Arg Ile Pro Thr Ile Ser
 980 985 990

Thr Gln Leu Lys Ile Leu Ser Thr Val Lys Ala Thr Met Leu Gly Arg
 995 1000 1005

Thr Asn Ile Ser Asp Glu Glu Ser Glu Gln Ala Thr Glu Met Leu
 1010 1015 1020

Val His Asn Ala Gln Asn Leu Met Gln Ser Val Lys Glu Thr Val
 1025 1030 1035

Arg Glu Ala Glu Ala Ala Ser Ile Lys Ile Arg Thr Asp Ala Gly
 1040 1045 1050

Phe Thr Leu Arg Trp Val Arg Lys Thr Pro Trp Tyr Gln
 1055 1060 1065

What is claimed is:

1. A method of distinguishing irritable bowel syndrome (IBS) from inflammatory bowel disease (IBD), and celiac disease, comprising:

obtaining a biological sample from a subject desiring a diagnosis to distinguish IBS from both IBD and celiac disease;

using one or more enzyme-linked immunosorbent assay (ELISA) to detect in the biological sample, levels of anti-vinculin and anti-cytolethal distending toxin subunit B (CdtB) antibodies by contacting vinculin and CdtB to the biological sample;

using optical density measurement to measure the level of anti-vinculin antibodies and the level of anti-CdtB antibodies; and

making a diagnosis that the subject has IBS, does not have IBD, and does not have celiac disease if the level of anti-vinculin antibodies is significantly higher than an established control level of anti-vinculin antibodies wherein the established control level of anti-vinculin antibodies is a level of anti-vinculin antibodies from subjects without IBS, the level of anti-CdtB antibodies is significantly higher than an established control level of anti-CdtB antibodies wherein the established control level is a level of anti-CdtB antibodies from subjects

without IBS, or both levels of anti-vinculin antibodies and anti-CdtB antibodies are significantly higher than the established control levels of anti-vinculin antibodies and anti-CdtB antibodies, respectively.

2. The method of claim 1, wherein the biological sample is whole blood, serum, or plasma.

3. The method of claim 1, wherein the diagnosis of IBS is made if the level of anti-vinculin antibodies is significantly higher than the established control level of anti-vinculin antibodies.

4. The method of claim 1, wherein the diagnosis of IBS is made if the level of anti-CdtB antibodies is significantly higher than the established control level of anti-CdtB antibodies.

5. The method of claim 1, wherein the diagnosis of IBS is made if both levels of anti-vinculin antibodies and anti-CdtB antibodies are significantly higher than the established control levels of anti-vinculin antibodies and anti-CdtB antibodies, respectively.

6. A method of selecting a treatment for irritable bowel syndrome (IBS), comprising:

obtaining a biological sample from a subject desiring a diagnosis to distinguish IBS from both IBD and celiac disease;

45

using one or more enzyme-linked immunosorbent assay (ELISA) to detect in the biological sample, levels of anti-vinculin and anti-cytolethal distending toxin subunit B (CdtB) antibodies by contacting vinculin and CdtB to the biological sample;
 using optical density measurement to measure the level of anti-vinculin antibodies and the level of anti-CdtB antibodies;
 making a diagnosis that the subject has IBS, does not have IBD, and does not have celiac disease if the level of anti-vinculin antibodies is significantly higher than an established control level of anti-vinculin antibodies wherein the established control level of anti-vinculin antibodies is a level of anti-vinculin antibodies from subjects without IBS, the level of anti-CdtB antibodies is significantly higher than an established control level of anti-CdtB antibodies wherein the established control level of anti-CdtB antibodies is a level of anti-CdtB antibodies from subjects without IBS, or both levels of anti-vinculin antibodies and anti-CdtB antibodies are

46

significantly higher than the established control levels of anti-vinculin antibodies and anti-CdtB antibodies respectively; and
 selecting an IBS treatment for the subject diagnosed with IBS.
 7. The method of claim 6, wherein the biological sample is whole blood, serum, or plasma.
 8. The method of claim 6, wherein the diagnosis of IBS is made if the level of anti-vinculin antibodies is significantly higher than the established control level of anti-vinculin antibodies.
 9. The method of claim 6, wherein the diagnosis of IBS is made if the level of anti-CdtB antibodies is significantly higher than the established control level of anti-CdtB antibodies.
 10. The method of claim 6, wherein the diagnosis of IBS is made if both levels of anti-vinculin antibodies and anti-CdtB antibodies are significantly higher than the established control levels of anti-vinculin antibodies and anti-CdtB antibodies, respectively.

* * * * *

专利名称(译)	用于区分肠易激综合征与炎性肠病和乳糜泻的方法		
公开(公告)号	US10132814	公开(公告)日	2018-11-20
申请号	US14/878416	申请日	2015-10-08
[标]申请(专利权)人(译)	雪松-西奈医学中心		
申请(专利权)人(译)	雪松 - 西奈医疗中心		
当前申请(专利权)人(译)	雪松 - 西奈医疗中心		
[标]发明人	PIMENTEL MARK CHANG CHRISTOPHER		
发明人	PIMENTEL, MARK CHANG, CHRISTOPHER		
IPC分类号	G01N33/53 G01N21/00 G01N33/68		
CPC分类号	G01N33/6854 G01N2800/52 G01N2800/065 G01N2333/205 G01N33/564		
代理机构(译)	尼克松皮博迪律师事务所		
优先权	62/085825 2014-12-01 US 62/061877 2014-10-09 US		
其他公开文献	US20160103136A1		
外部链接	Espacenet		

摘要(译)

本文描述了用于区分肠易激综合征 (IBS) 与炎性肠病 (IBD) 和乳糜泻的方法 and 系统。该方法和系统可利用抗 - 组蛋白抗体和抗 - CdtB 抗体的检测来区分 IBS 与 IBD 和乳糜泻。进一步描述了用于选择治疗 IBS , IBD 或乳糜泻的疗法的方法。

FIG. 1A

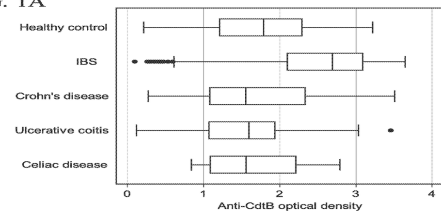


FIG. 1B

