



US 20120027770A1

(19) **United States**

(12) **Patent Application Publication**  
**Jalkanen et al.**

(10) **Pub. No.: US 2012/0027770 A1**

(43) **Pub. Date: Feb. 2, 2012**

(54) **NOVEL CELL AND THERAPEUTICAL AND  
DIAGNOSTICAL METHODS BASED  
THEREON**

(75) Inventors: **Sirpa Jalkanen**, Piispanristi (FI);  
**Marko Salmi**, Turku (FI); **Markku  
Jalkanen**, Piispanristi (FI)

(73) Assignee: **FARON PHARMACEUTICALS  
OY**, Turku (FI)

(21) Appl. No.: **13/262,088**

(22) PCT Filed: **Apr. 6, 2010**

(86) PCT No.: **PCT/FI2010/050266**

§ 371 (c)(1),  
(2), (4) Date: **Sep. 29, 2011**

(30) **Foreign Application Priority Data**

Apr. 22, 2009 (FI) ..... 20090161

**Publication Classification**

(51) **Int. Cl.**

<i>A61K 39/395</i>	(2006.01)
<i>A61P 37/04</i>	(2006.01)
<i>G01N 33/53</i>	(2006.01)
<i>A61K 38/20</i>	(2006.01)
<i>C12N 5/071</i>	(2010.01)
<i>C12Q 1/68</i>	(2006.01)
<i>A61K 39/00</i>	(2006.01)
<i>A61P 35/00</i>	(2006.01)

(52) **U.S. Cl.** ..... **424/155.1**; 424/184.1; 424/277.1;  
424/174.1; 424/85.2; 435/366; 435/6.11;  
435/6.12; 435/7.9

(57) **ABSTRACT**

The invention relates to a novel cell derived from the human body, where said cell comprises a Clever-1 receptor; to a method for affecting the immune system of an individual and for treatment of diseases or conditions related to the function of the immune system and to methods for screening of cancer patients that may respond to an anti-Clever-1 therapy or for diagnosing of a pregnancy complication or for estimating the risk of such complication in a pregnant woman.

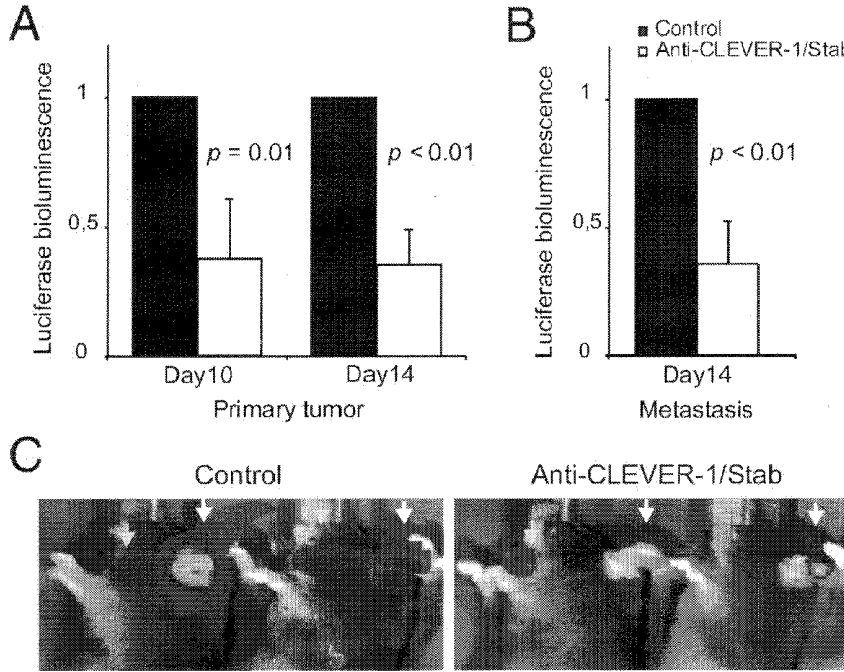


FIG. 1A

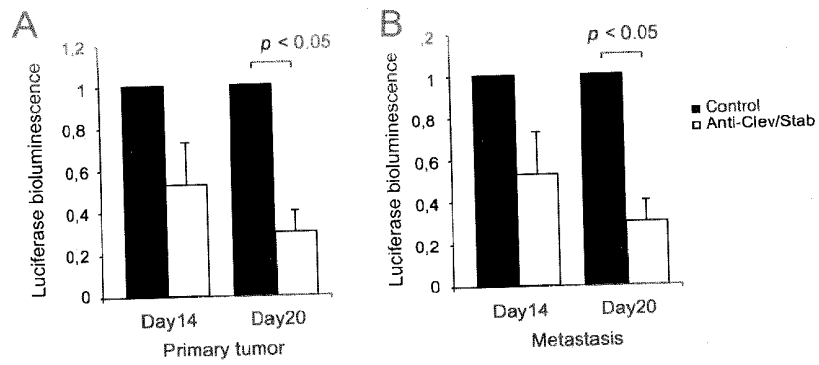


FIG. 1B

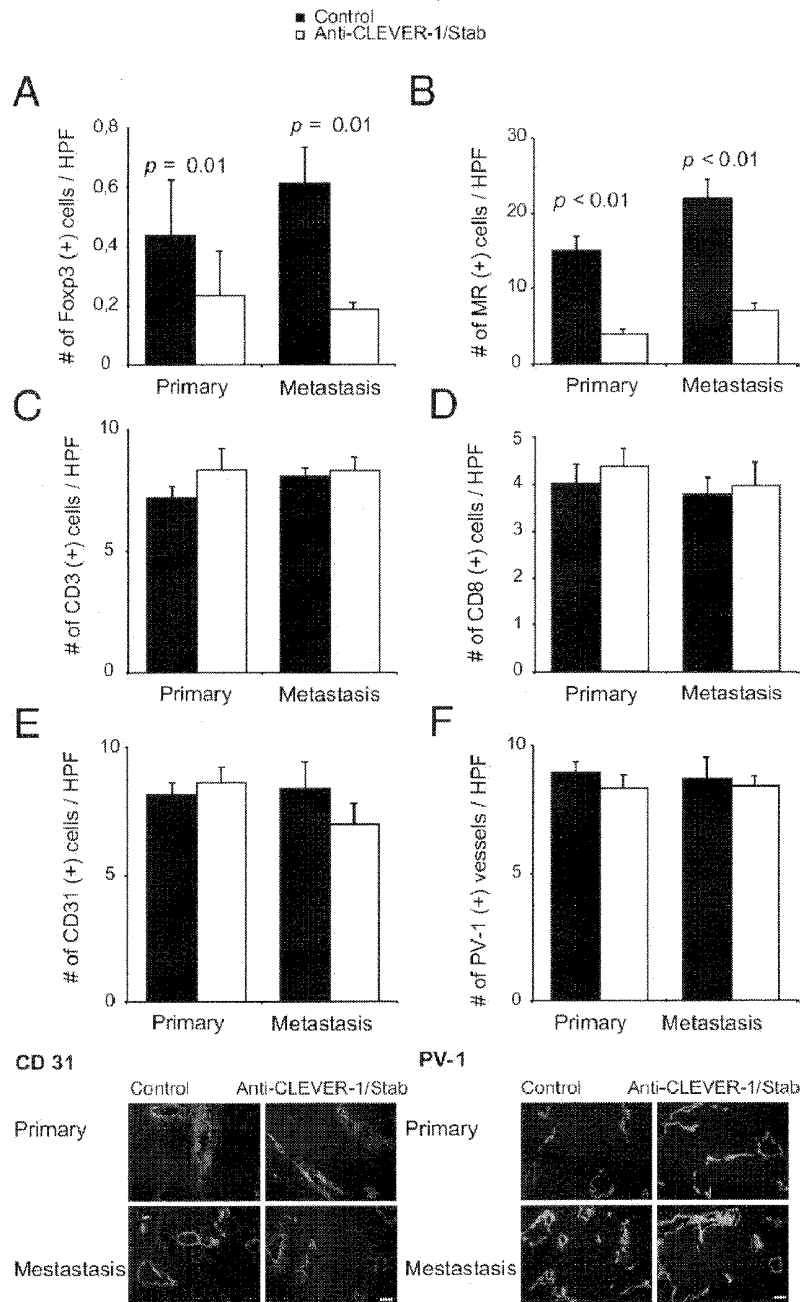


FIG. 2

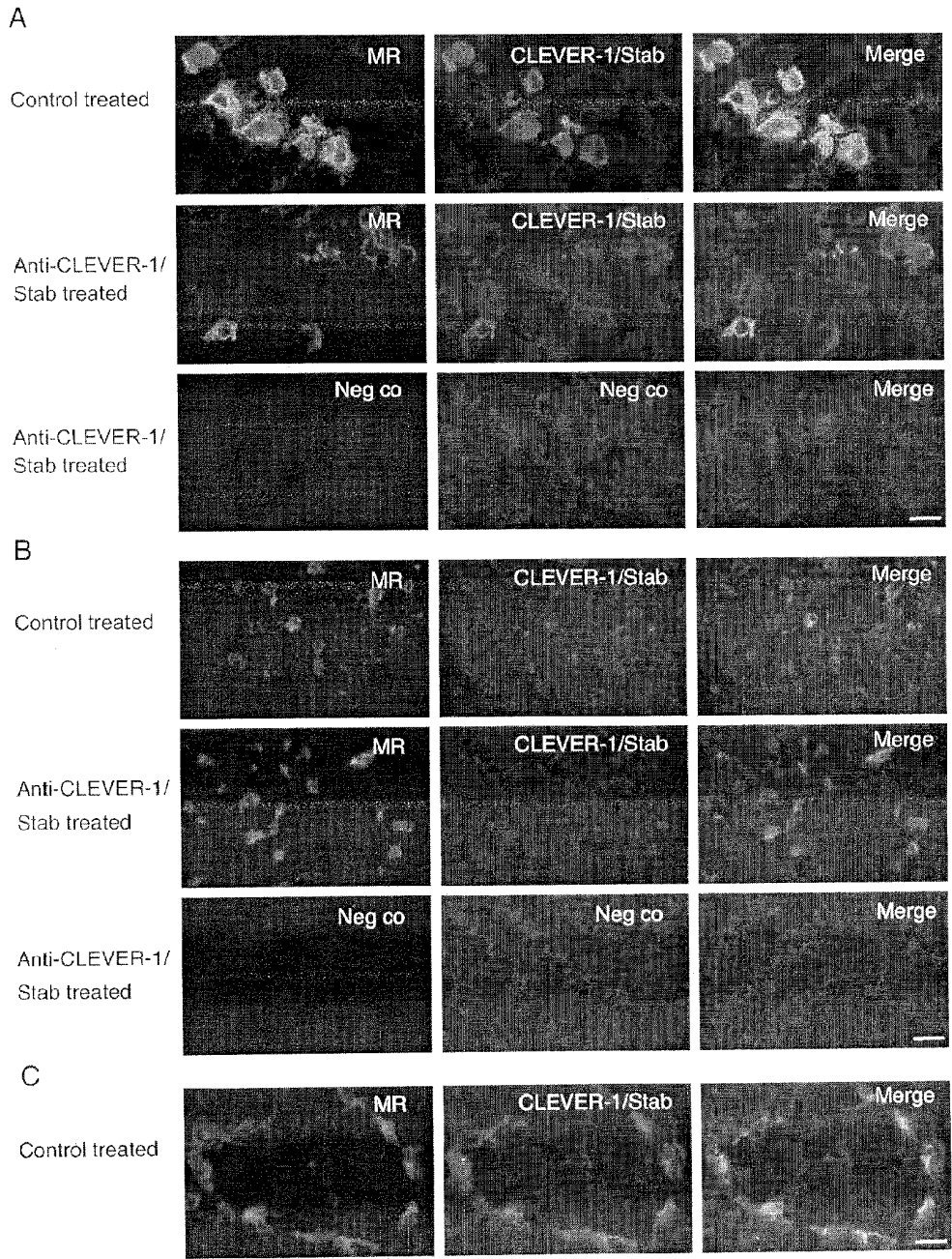


FIG. 3

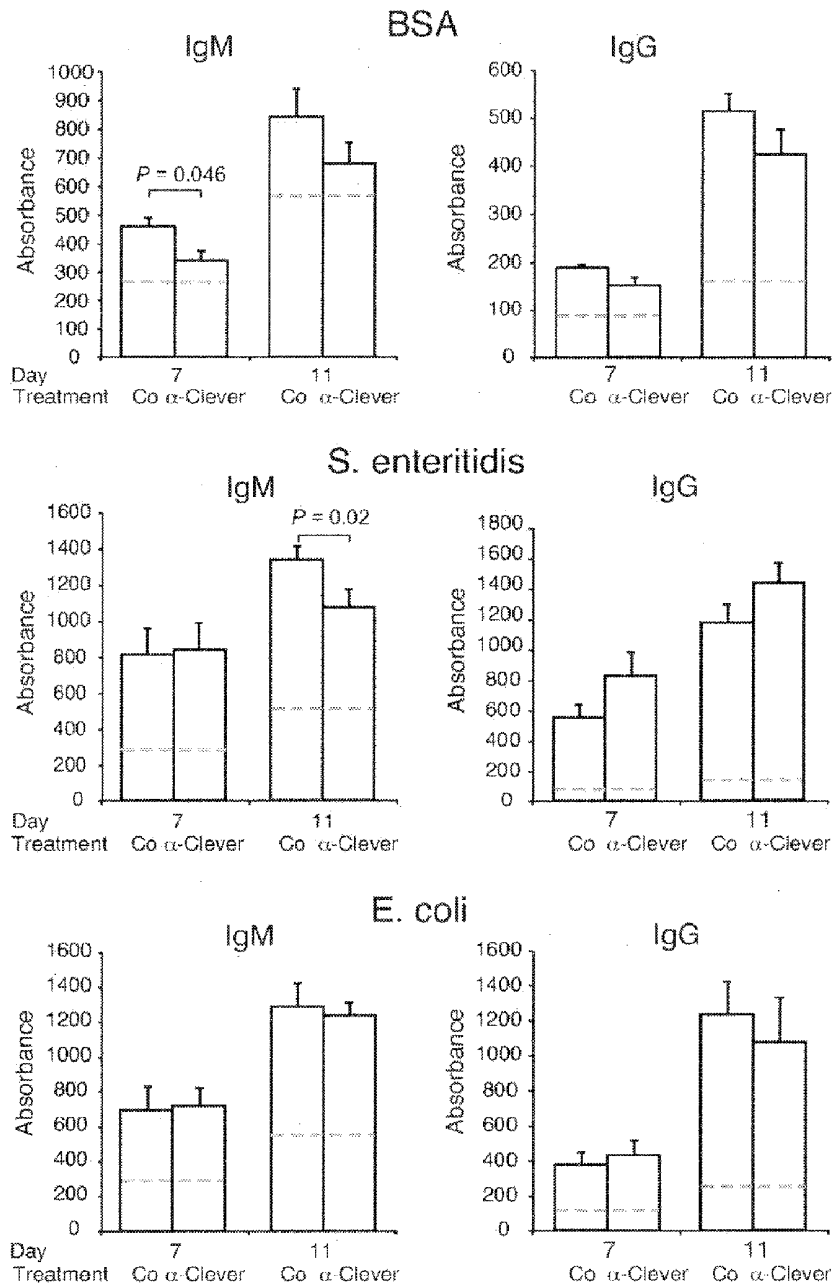


FIG. 4

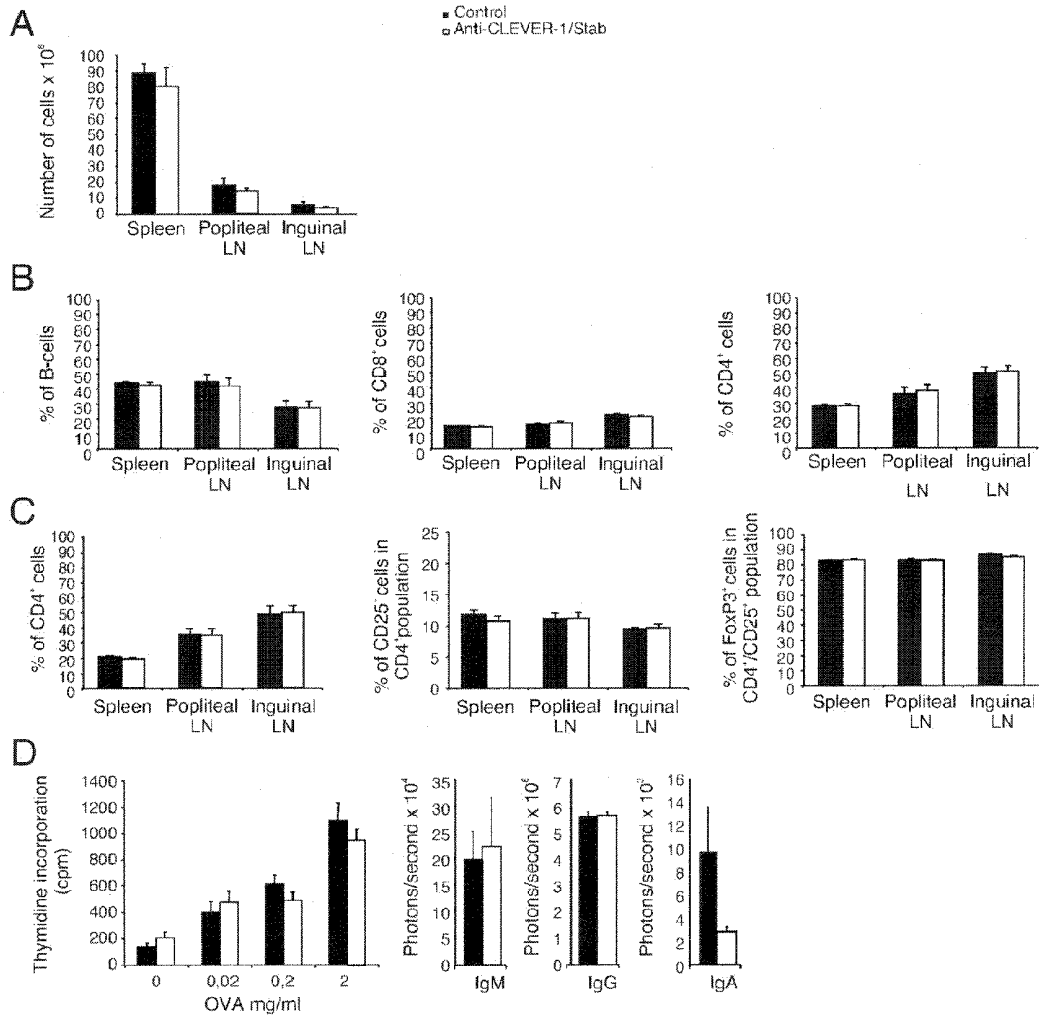
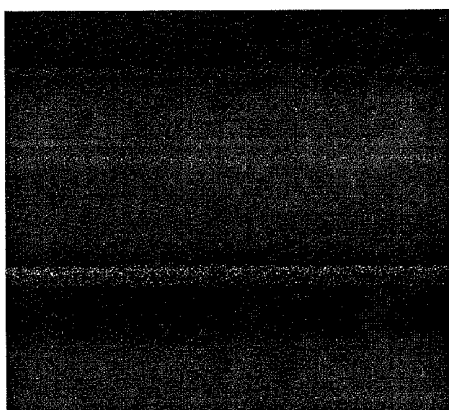
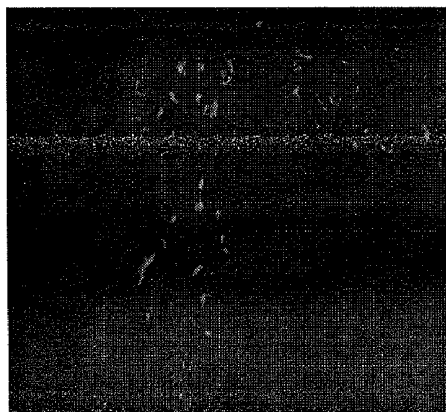


FIG. 5

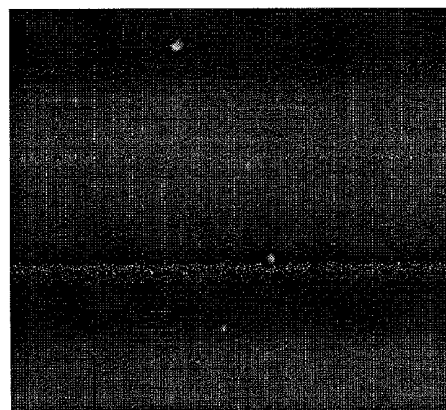
anti-Clever-1



anti-CD14



negat co, NS-1



negat co, 3G6

FIG. 6

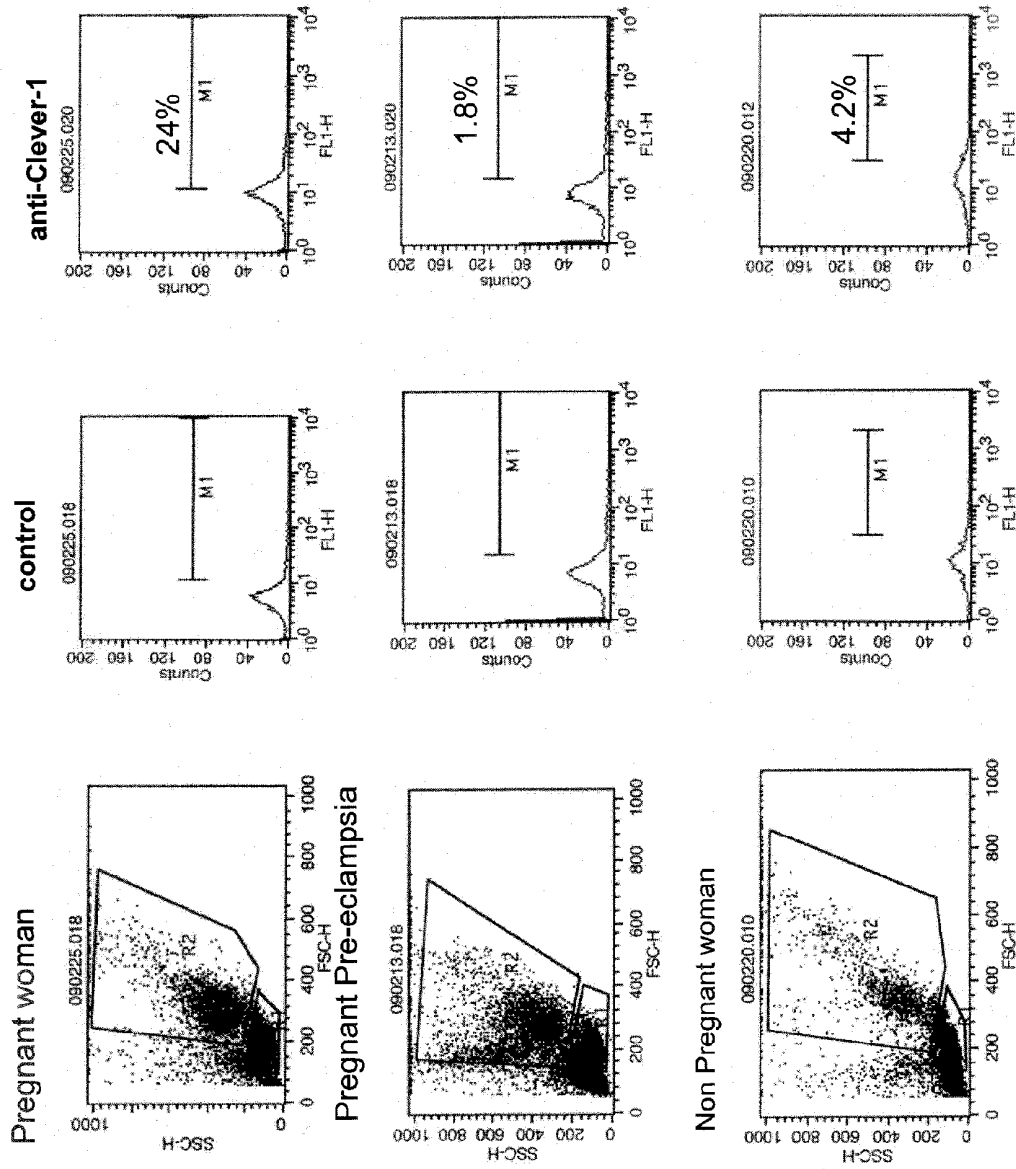


FIG. 7

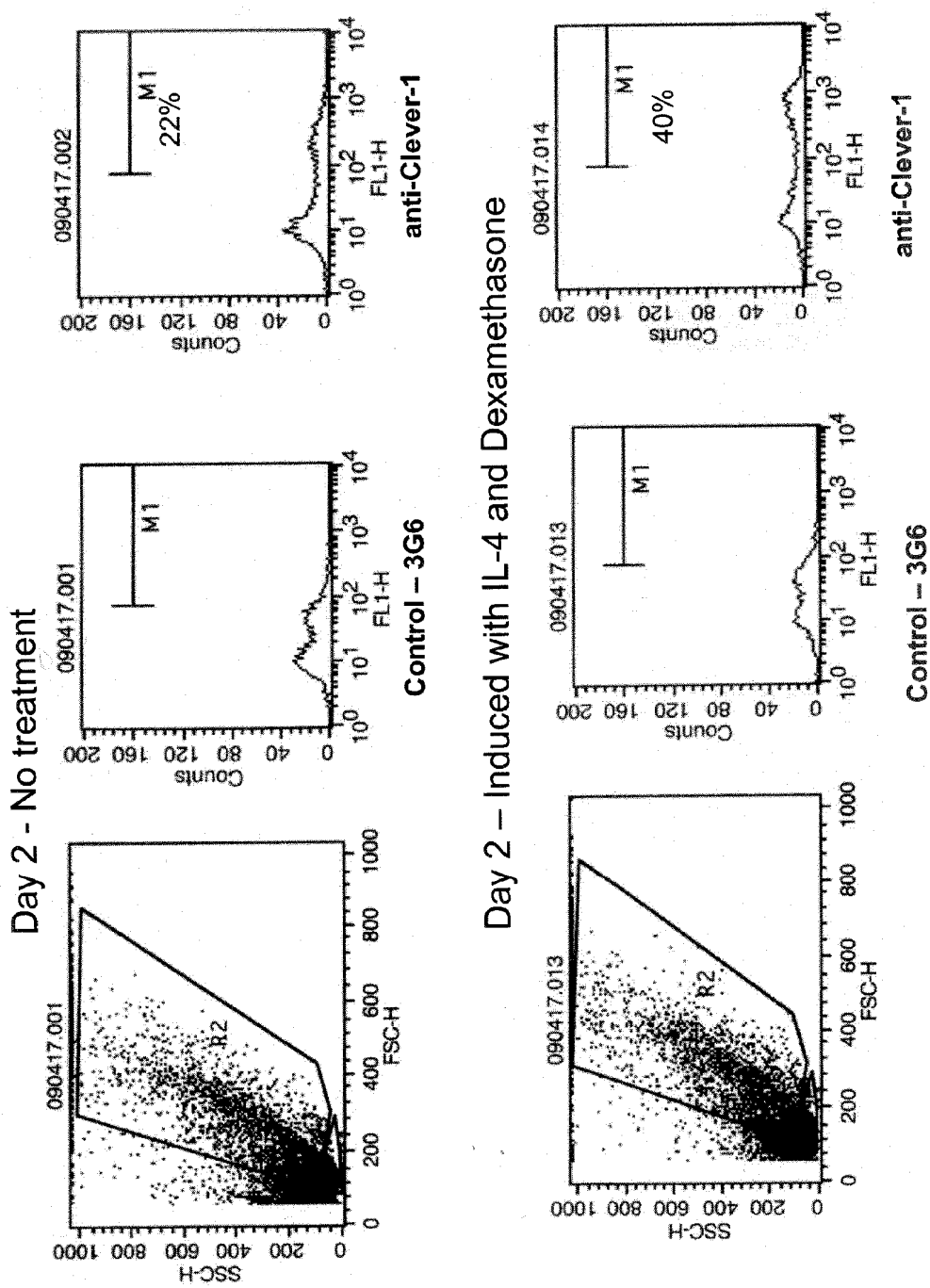
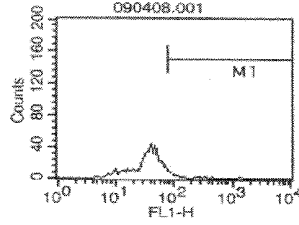
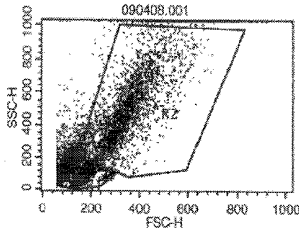
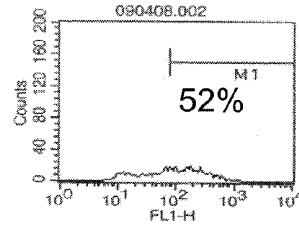


FIG. 8

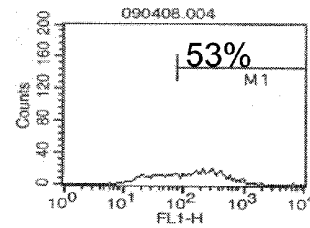
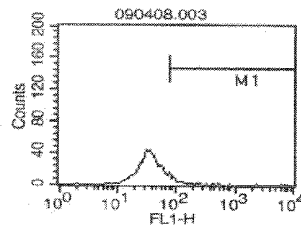
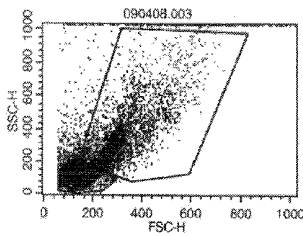
Non transfected cells – Day 2  
Control



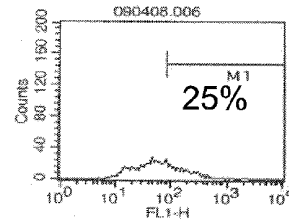
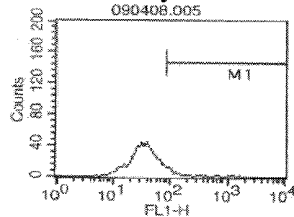
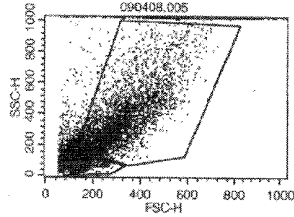
anti-Clever-1



Negative control transfected – Day 2



Clever-1 siRNA transfected – Day 2



Pooled Clever-1 siRNA transfected – Day 2

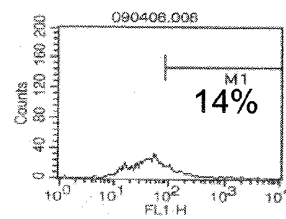
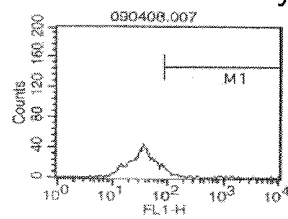
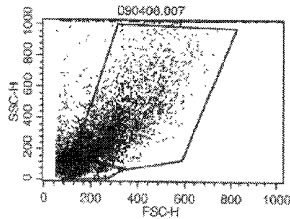


FIG. 9

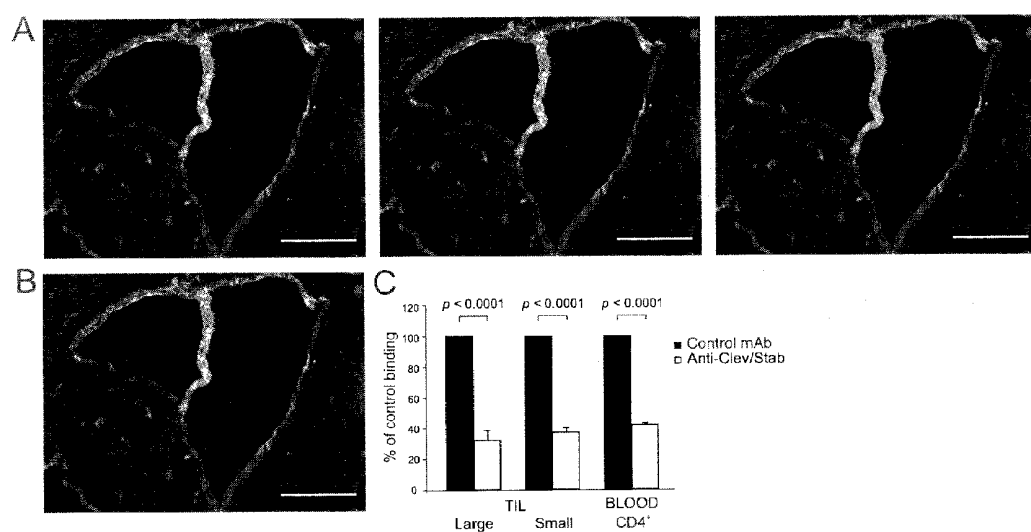


FIG. 10

## NOVEL CELL AND THERAPEUTICAL AND DIAGNOSTICAL METHODS BASED THEREON

### FIELD OF THE INVENTION

**[0001]** This invention relates to a novel cell derived from the human body, where said cell comprises a Clever-1 receptor; to a method for affecting the immune system of an individual and for treatment of diseases or conditions related to the function of the immune system and to methods for screening of cancer patients that may respond to an anti-Clever-1 therapy or for diagnosing of a pregnancy complication or for estimating the risk of such complication in a pregnant woman.

### BACKGROUND OF THE INVENTION

**[0002]** The publications and other materials used herein to illuminate the background of the invention, and in particular, cases to provide additional details respecting the practice, are incorporated by reference.

**[0003]** CLEVER-1 is a protein disclosed in WO 03/057130, Common Lymphatic Endothelial and Vascular Endothelial Receptor-1. It is a binding protein that mediates adhesion of lymphocytes (and malignant tumor cells) to endothelium in both the systemic vasculature and in the lymphatics. By blocking the interaction of Clever-1 and its lymphocyte substrate it is possible to simultaneously control lymphocyte recirculation and lymphocyte migration, and related conditions such as inflammation, at the site of lymphocyte influx into, and efflux from, the tissues. WO 03/057130 also discloses that Clever-1 mediates binding of other types of leukocytes such as monocytes and granulocytes to HEV-like vessels. Thus, by blocking the interaction of Clever-1 and malignant tumor cells it became possible to control metastasis by preventing malignant cells that bind to Clever-1 from being taken up by the lymphatic vessels, and thus to prevent spread of the malignancy into the lymph nodes.

**[0004]** Clever-1 is expressed in lymphatic endothelial cells, certain vascular endothelial cells, but also in a subpopulation of macrophages. On macrophages Clever-1 is known to function as a scavenging receptor, which can mediate endocytic uptake of various molecules such as oxidized-LDL.

**[0005]** Macrophages are traditionally divided into type 1 and type 2 cells. Type 1 macrophages are classical proinflammatory macrophages, which produce large quantities of proinflammatory cytokines and co-stimulatory molecules, and are very efficient in activation of T-cell responses. Type 2 macrophages, in contrast, are immune suppressing cells, which synthesize anti-inflammatory cytokines and induce regulatory T cells and hence profoundly dampen antigen-driven T cell activation. Tumor-associated macrophages are considered harmful as they mature to type 2 macrophages within the tumor environment and suppress anti-tumor immune response (Martinez, F. O. et al. Macrophage activation and polarization. *Front. Biosci.* 13:453-461.) and mediate angiogenic switch, a crucial step in cancer growth (Lin, E. Y., and Pollard, J. W. 2007. Tumor-associated macrophages press the angiogenic switch in breast cancer. *Cancer Res.* 67:5064-5066).

**[0006]** Pregnancy poses a challenge to the immune system, since half of the fetal antigens comes from the paternal origin, which is foreign to the mother. Several immune suppressing

mechanisms are known to operate in the placenta to prevent the rejection of the fetus, which can be regarded as a semi-allograft for the maternal immune system. Among the best known examples are expression of non-classical MHC molecules, inhibition of the NK-cell activity, induction of T regulatory cell activity, induction T cell apoptosis and inhibition of complement activation. The suppression of antigen presenting cell activity can also contribute to the induction of tolerance. Among the antigen presenting cells macrophages are prominently present in the placenta.

### SUMMARY OF THE INVENTION

**[0007]** We have now identified a new subtype of macrophages in tumors, in the placenta, and also in the blood of pregnant women. This new cell can be defined as a type 2 macrophage cell that also expresses a Clever-1 receptor. We have designated this cell as a "type 3 macrophage". This new "type 3 macrophage" is, like type 2 macrophages, an immune suppressing cell. By modulating (counteracting or stimulating, respectively) the Clever-1 receptor on this new cell, we have surprisingly found that this is a method for affecting the immune system in an individual. Counteracting or down-regulation of the receptor reduces the size of malignant tumor and/or malignant tumor growth. Stimulating or upregulating of the receptor is useful in generation of fetomaternal tolerance and for prevention of pregnancy complications.

**[0008]** Thus, according to one aspect, this invention concerns an isolated cell (type 3 macrophage) which is a type 2 macrophage cell that comprises a Clever-1 receptor, wherein said cell is derived from an individual's tumor or placenta, or from the blood of a pregnant woman.

**[0009]** According to another aspect, the invention concerns a method for affecting the immune system of an individual and for treatment of diseases or conditions related to the function of the immune system, said method comprising modulating the Clever-1 receptor on the novel cell (i.e. the "type 3 macrophage") in said individual.

**[0010]** According to a third aspect, the invention concerns a method for screening of cancer patients that may respond to an anti-Clever-1 therapy, said method comprising

- a) detecting or quantifying of the level of Clever-1 protein in a tumor sample derived from said patient,
- b) comparing the result to a control, and
- c) attributing an increased level of Clever-1 protein in the sample to a responsiveness to said therapy.

**[0011]** According to a fourth aspect, the invention concerns a method for diagnosing of a pregnancy complication or for estimating the risk of such complication in a pregnant woman, said method comprising

- a) detecting or quantifying the level of Clever-1 protein in a tissue or body fluid from said woman,
- b) comparing the result to a control, and
- c) attributing a lack of or a decreased level of Clever-1 protein to a pregnancy complication or a risk therefore.

### BRIEF DESCRIPTION OF THE DRAWINGS

**[0012]** FIG. 1A. Anti-Clever-1 treatment is effective in melanoma. B16-luc melanoma cells were injected subcutaneously into the ear. Growth of the primary tumor and development of metastases were followed by IVIS chemiluminescence detection system. (A) Relative size (mean±SEM) of the primary tumor after 10 and 14 days in the two treatment groups. (B) Relative size (mean±SEM) of metastases at the

end of the experiment (day 14). The size of the primary tumor and metastases in the control treated group is 1.0 by definition. (C) Examples of animals treated with anti-Clever-1 or control antibody. White arrows point to the injection site (primary tumor) and yellow arrows point to the neck metastases. Note that one anti-Clever-1 antibody treated mouse does not have a detectable tumor at the site of injection and the other one does not have neck metastases. N=12 in both groups.

[0013] FIG. 1B. The figure shows the development of primary tumor (A) and metastases (B) when the antibody treatment was started three days after the injection of B16 melanoma cells (day 14, n=12 in both groups and day 20, n=6 in both groups).

[0014] FIG. 2. Anti-Clever-1 treatment reduces number of type 2 macrophages and regulatory T cells in tumors but does not affect the vasculature. (A) Number of regulatory T cells. (B) Number of type 2 macrophages. (C) Number of CD3 positive T cells. (D) Number of CD8 positive T cells. (E) Number of CD31 positive vessels and examples of immunofluorescence staining of primary tumors and metastases with anti-CD31 antibody of anti-Clever-1 treated and control antibody treated mice. (F) Number of PV-1 positive vessels detected with anti-MECA-32 antibody and examples of immunofluorescence staining of primary tumors and metastases with anti-MECA-32 antibody of anti-Clever-1 treated and control antibody treated mice. HPF (high power field). Bar 100  $\mu$ m.

[0015] FIG. 3. Tumor associated type 2 macrophages express Clever-1 but they are absent in lymph nodes subsequent to immunization. (A) Immunofluorescence staining of melanoma metastases of anti-Clever-1 and control treated mice. Double staining with anti-MR (green) and anti-Clever-1 (red). (B) Immunohistochemical stainings of macrophages in popliteal lymph nodes after immunization with OVA. MR staining green, Clever-1 staining red. (C) Staining of lymphatic endothelium of the same popliteal lymph nodes after OVA immunization. MR staining green, Clever-1 staining red. Bars, (A) and (B) 50  $\mu$ m, (C) 100  $\mu$ m.

[0016] FIG. 4. Anti-Clever-1 treatment does not significantly impair the antibody response. Rabbits were immunized with BSA, heat killed *Salmonella enteritidis* and *E. coli* LPS and treated either with anti-Clever-1 or control antibody. The antibody titers were measured on days 7 and 11 after primary immunization using ELISA. The dashed line indicates the titers in non-immunized animals (receiving the antibody).

[0017] FIG. 5. Anti-Clever-1 treated mice respond normally to OVA immunization. (A) Number of lymphocytes in the indicated organs. (B) Percentages of B cells, CD4 and CD8 positive T cells. (C) Percentages of regulatory T cells. (D) Proliferation responses and antibody titers to OVA.

[0018] FIG. 6. Expression of Clever-1 in placenta. Frozen sections placenta were stained with anti-Clever-1 antibody (3-372), anti-CD14 (as a macrophage marker) and with negative control antibodies followed appropriate second stage reagents.

[0019] FIG. 7. Cell-surface expression of Clever-1 in blood monocytes during normal pregnancy. Peripheral blood mononuclear cells were isolated from normal, non-pregnant volunteers, from normal pregnant women and from a pregnant women with a mild pre-eclampsia. The mononuclear cells were separated using Ficoll gradient centrifugations and stained with anti-Clever-1 and the control antibody (both at

10  $\mu$ g/ml), and FITC-conjugated anti-mouse Ig. The cells were analyzed using FACS. The cell populations (R2) analyzed are shown on the left panels with forward and side scatters. In the histograms the fluorescence intensity is in a logarithmic scale on the x axis and relative number of cells on y axis. The percentages shown on the right panels are obtained by deducting the percentage of the positive cells stained with the negative control antibody (=background).

[0020] FIG. 8. Interleukin-4 and dexamethasone induce Clever-1 expression in placental macrophages. The forward and side scatters of the cells (R2) analyzed are shown without and with IL-4 and dexamethasone induction (2-days incubation). In the histograms the fluorescence intensity is in a logarithmic scale on the x axis and relative number of cells on y axis. The percentages shown on the right panels are obtained by deducting the percentage of the positive cells stained with the negative control antibody (=background).

[0021] FIG. 9. Clever-1 expression can be downregulated by siRNA treatment. The treatments with a single siRNA species and pooled siRNAs targeting Clever-1 were used. Untreated and treatment with control siRNA are shown as comparison. The forward and side scatters of the cells (R2) analyzed are shown after indicated treatments. In the histograms the fluorescence intensity is in a logarithmic scale on the x axis and relative number of cells on y axis. The percentages shown on the right panels are obtained by deducting the percentage of the positive cells stained with the negative control antibody (=background).

[0022] FIG. 10. Expression of Clever-1/Stabilin-1 is induced on tumor vasculature in melanoma, where it binds tumor infiltrating leukocytes and peripheral blood CD4 positive cells. (A) Two-color staining of Clever-1/Stabilin-1 with biotinylated 1.26 antibody (red, left) and PV-1 with MECA-32 antibody (green, middle) identifying the tumor vessels. A merger of the stainings with 1.26 and Meca-32 is shown on the right. The vessels are pointed out by thin arrows and a type 2 macrophage (positive for Clever-1/Stabilin-1, red) is pointed out by a thick arrow. Bar 100  $\mu$ m (B) Vascular positivity was confirmed with another monoclonal antibody (9-11) against Clever-1/Stabilin-1 (N-terminal 3 kb fragment). Staining with a negative control antibody is shown in the inset. (C) Clever-1/Stabilin-1 on vasculature mediates binding of tumor infiltrating leukocytes. Binding of large and small tumor infiltrating leukocytes (TIL) as well as CD4 positive cells from the blood to vessels in melanomas obtained from mice treated in vivo with anti-Clever-1/Stabilin-1 (n=3) or control antibody (n=3) was analyzed using ex vivo frozen section assays. The results are presented as mean  $\pm$ SEM of binding obtained from melanomas of mice treated with the control antibody (by definition 100%).

## DETAILED DESCRIPTION OF THE INVENTION

### Definitions and Preferred Embodiments

[0023] The term "CLEVER-1" is used to denote the protein disclosed in WO 03/057130, Common Lymphatic Endothelial and Vascular Endothelial Receptor-1, a binding protein that mediates adhesion of lymphocytes (and malignant tumor cells) to endothelium in both the systemic vasculature and in the lymphatics. The nucleotide sequence (7879 nt) and amino acid sequence of Clever-1 is shown in SEQ ID NO. 1. In the nucleotide sequence of Clever-1 there are four nucleotide differences compared to Genbank entry AJ 2752213 (stabilin-1), i.e., nucleotides 1131, 2767, 6629 and 6969.

**[0024]** The term “type 2 macrophage” shall be understood as an immune suppressing macrophage which expresses a mannose receptor.

**[0025]** The term “type 3 macrophage” shall be understood as a subpopulation of type 2 macrophages that in addition to the mannose receptor also expresses the Clever-1 receptor. The Clever-1 receptor on the type 3 macrophage cell can be either the entire sequence (SEQ ID NO. 1), a slight modification thereof (such as Stabilin-1) or a fragment thereof.

**[0026]** The term “treatment” or “treating” shall be understood to include complete curing of a disease or disorder, as well as amelioration or alleviation of said disease or disorder.

**[0027]** The term “prevention” shall be understood to include complete prevention, prophylaxis, as well as lowering the individual’s risk of falling ill with said disease or disorder.

**[0028]** The term “individual” refers to a human or animal subject.

**[0029]** The term “effective amount” is meant to include any amount of an agent according to the present invention that is sufficient to bring about a desired therapeutic result, especially upon administration to an animal or human subject.

**[0030]** The term “inhibiting” or “inhibition” shall be understood to include not only complete inhibition but also any grade of suppression.

**[0031]** In one embodiment, the method for affecting the immune system of an individual by modulating of the Clever-1 receptor on the type 3 macrophage cell can be used for reducing the size of malignant tumor and/or by reducing malignant tumor growth in an individual. In this embodiment, an effective amount of an agent capable of counteracting the influence of or for down-regulating the expression of the Clever-1 protein is administered to the individual.

**[0032]** In another embodiment, the method for affecting the immune system of an individual by modulating of the Clever-1 receptor on the type 3 macrophage cell can be used for maintaining feto-maternal tolerance and/or prevention of a pregnancy complication in a pregnant woman. In this embodiment, to the pregnant woman is administered either i) an effective amount of an agent, which up regulates the expression of the Clever-1 protein or which stimulates said protein, or ii) in vitro cultivated type 3 macrophage cells.

#### Preferred Agents

**[0033]** The term “an agent capable of counteracting the influence of Clever-1” shall be understood to include peptides or proteins (such as soluble Clever-1 or Clever-1 antagonist antibodies) blocking the Clever-1 protein as well as any inhibitors, particularly small molecule inhibitors, useful to inhibit the protein activity. Particularly useful agents are antibodies.

**[0034]** The term “an agent capable of down-regulating the expression of Clever-1” shall be understood to include antisense oligonucleotides, small interfering RNAs (siRNA) as well as ribozymes, or vectors being capable of expressing them, or essential parts thereof, in vivo.

**[0035]** The term “antibody” is used in the broadest sense and specifically covers single monoclonal antibodies (including agonist and antagonist antibodies), polyclonal antibodies, as well as antibody fragments and single chain antibodies (e.g., Fab, F(ab')<sub>2</sub>, Fv), so long as they exhibit the desired biological activity. Papain digestion of antibodies produces two identical antigen binding fragments, called Fab frag-

ments, each with a single antigen binding site, and a residual “Fc” fragment, whose name reflects its ability to crystallize readily. Pepsin treatment yields an F(ab')<sub>2</sub> fragment that has two antigen combining sites and is still capable of cross-linking antigen. Single chain “Fv” is the minimum antibody fragment which contains a complete antigen recognition and binding site. This region consists of a dimer of one heavy and one light chain variable domain in tight, non-covalent association. It is in this configuration that the three CDRs of each variable domain interact to define an antigen binding site on the surface of the V<sub>H</sub>-V<sub>L</sub> dimer. Collectively, the six CDRs confer antigen binding specificity to the antibody. However, even a single variable domain (or half of an Fv comprising only three CDRs specific for an antigen) has the ability to recognize and bind antigen, although at a lower affinity than the entire binding site. See, Ladner et al., U.S. Pat. No. 4,946,778, and Bird, R. E. et al., *Science*, 242:423-426 (1988).

**[0036]** The term “antibody” shall be understood to include also chimeric, humanized or primatized (CDR-grafted) antibodies, as well as chimeric or CDR-grafted single chain antibodies, and the like, comprising portions derived from different species. “Chimeric” antibodies (immunoglobulins) have a portion of the heavy and/or light chain is identical with or homologous to corresponding sequences in antibodies derived from a particular species or belonging to a particular antibody class or subclass, while the remainder of the chain(s) is identical with or homologous to corresponding sequences in antibodies derived from another species or belonging to another antibody class or subclass, as well as fragments of such antibodies, so long as they exhibit the desired biological activity (Cabilly et al., U.S. Pat. No. 4,816,567; Morrison et al., *Proc. Natl. Acad. Sci. USA* 81:6851-6855 (1984). The various portions of these antibodies can be joined together chemically by conventional techniques, or can be prepared as a contiguous protein using genetic engineering techniques. For example, nucleic acids encoding a chimeric or humanized chain can be expressed to produce a contiguous protein. See, e.g., Cabilly et al., U.S. Pat. No. 4,816,567. See also, Newman, R. et al., *BioTechnology* 10: 1455-1460 (1992), regarding primatized antibody.

**[0037]** Particularly preferred Clever-1 antagonist antibodies are the monoclonal antibodies 3-266 (DSM ACC2519) and 3-372 (DSM ACC2590), both deposited under the terms of the Budapest Treaty on the International Recognition of the Deposit of Micro-organisms for the Purposes of Patent Procedure on Aug. 21, 2001, with DSMZ-Deutsche Sammlung von Mikroorganismen und Zellkulturen GmbH, Mascheroder Weg 1b, D-38124 Braunschweig. See WO 03/057130.

**[0038]** For treatment of human individuals, humanized or chimeric or primatized variants of the monoclonal antibodies mentioned above are preferred.

**[0039]** Preferable inhibitors are small molecule inhibitors.

**[0040]** Preferably, the agent capable of down-regulating the expression of Clever-1, is a small interfering RNAs (siRNA) or an expression vector comprising nucleic acid encoding the siRNA duplex or the antisense strand of the duplex in a manner which allows expression of the siRNA duplex or antisense strand within a mammalian cell. Such siRNA duplexes for another protein, VAP-1, are described in WO 2006/134203.

**[0041]** The principle of siRNA is extensively presented in literature. As examples can be mentioned the US patent publications 2003/0143732, 2003/0148507, 2003/0175950, 2003/0190635, 2004/0019001, 2005/0008617 and 2005/

0043266. An siRNA duplex molecule comprises an antisense region and a sense strand wherein said antisense strand comprises sequence complementary to a target region in an mRNA sequence encoding a certain protein, and the sense strand comprises sequence complementary to the said antisense strand. Thus, the siRNA duplex molecule is assembled from two nucleic acid fragments wherein one fragment comprises the antisense strand and the second fragment comprises the sense strand of said siRNA molecule. The sense strand and antisense strand can be covalently connected via a linker molecule, which can be a polynucleotide linker or a non-nucleotide linker. The length of the antisense and sense strands are typically about 19 to 21 nucleotides each. Typically, the antisense strand and the sense strand both comprise a 3'-terminal overhang of a few, typically 2 nucleotides. The 5'-terminal of the antisense is typically a phosphate group (P). The siRNA duplexes having terminal phosphate groups (P) are easier to administrate into the cell than a single stranded antisense. In the cell, an active siRNA antisense strand is formed and it recognizes a target region of the target mRNA. This in turn leads to cleaving of the target RNA by the RISC endonuclease complex (RISC=RNA-induced silencing complex) and also in the synthesis of additional RNA by RNA dependent RNA polymerase (RdRP), which can activate DICER and result in additional siRNA duplex molecules, thereby amplifying the response.

**[0042]** The term "complementary" means that the nucleotide sequence can form hydrogen bonds with the target RNA sequence by Watson-Crick or other base-pair interactions. The term shall be understood to cover also sequences which are not 100% complementary. It is believed that also lower complementarity might work. However, 100% complementarity is preferred.

**[0043]** The siRNA shall, when used as a pharmaceutical, be introduced in a target cell. The delivery can be accomplished in two principally different ways: 1) exogenous delivery of the oligonucleotide or 2) endogenous transcription of a DNA sequence encoding the oligonucleotide, where the DNA sequence is located in a vector.

**[0044]** Normal, unmodified RNA has low stability under physiological conditions because of its degradation by ribonuclease enzymes present in the living cell. If the oligonucleotide shall be administered exogenously, it is highly desirable to modify the molecule according to known methods so as to enhance its stability against chemical and enzymatic degradation.

**[0045]** Modifications of nucleotides to be administered exogenously in vivo are extensively described in the art. Principally, any part of the nucleotide, i.e. the ribose sugar, the base and/or internucleotidic phosphodiester strands can be modified.

**[0046]** It should be stressed that the modifications mentioned above are only non-limiting examples.

**[0047]** A useful target region can easily be identified by using any of the numerous academic or commercially affiliated algorithms that have been developed to assist scientists to locate utilizable siRNA sequences. As examples of such software systems can be mentioned siDirect (<http://design.RNAi.jp/>) (Nucleic Acids Res. 2004 Jul. 1; 32: W124-9); TROD (T7 RNAi Oligo Designer (<http://www.cellbio.unige.ch/RNAi.html>); Nucleic Acids Res. 2004 Jul. 1; 32: W121-3); DEQOR (<http://cluster-1.mpi-cbg.de/Deqor/deqor.html>); Nucleic Acids Res. 2004 Jul. 1; 32: W113-20) or programs available at <http://www.genscript.com>; <http://www.genscript.com/>

[http://www.genscript.com/sirna\\_design.html#design](http://www.genscript.com/sirna_design.html#design); Bioinformatics 2004 Jul. 22; 20(11)1818-20. An essential criterion of the tools is to achieve siRNA:s with maximum target-specificity for mammalian RNA interference where off-target gene silencing is avoided. The usefulness of any sequence identified by such algorithms should thereafter be verified by experiments.

**[0048]** Preferred agents for stimulating the Clever-1 protein are, for example agonist antibodies and small molecule agonists. By "agonist antibody" is meant an antibody which is able to bind to Clever-1 and facilitate adhesion of other tissue.

**[0049]** Preferred small molecule agonists are immune suppressing agents, such as an anti-inflammatory agents, especially interleukins such as, interleukin-4, interleukin-13 or steroid hormones such as dexamethasone, or a combination thereof.

**[0050]** For maintaining feto-maternal tolerance and/or prevention of a pregnancy complication in a pregnant woman, also administration of the type 3 macrophages having been cultivated in vitro, is possible.

#### Diseases Responding to the Treatment

**[0051]** The method for treating or preventing cancer by reducing the size of malignant tumor and/or by reducing malignant tumor growth according to this invention is applicable to all forms of cancers. Thus, any benign or malignant tumor or metastasis of malignant tumor, such as skin cancer and colon cancer can be treated. Also leukemias, lymphomas and multiple myelomas can be treated. Particularly, melanomas and lymphomas respond very well to the treatment.

**[0052]** We believe that the method according to this invention is useful in the treatment or prevention of all kinds of sarcomas, for example fibrosarcoma, liposarcoma, chondrosarcoma, osteosarcoma, angiosarcoma, lymphangiosarcoma, leiomyosarcoma, and rhabdomyosarcoma, mesothelioma, meningioma, leukemias, lymphomas, as well as all kinds of carcinomas, such as squamous cell carcinomas, basal cell carcinoma, adenocarcinomas, papillary carcinomas, cystadenocarcinomas, bronchogenic carcinomas, melanomas, renal cell carcinomas, hepatocellular carcinoma, transitional cell carcinomas, choriocarcinomas, seminomas, and embryonal carcinomas.

**[0053]** By stimulating of Clever-1, it is possible to main feto-maternal tolerance and/or prevent pregnancy complications in a pregnant woman. Pregnancy complications that can be treated are especially risk of spontaneous abortion and pre-eclampsia.

#### Administration Routes, Formulations and Required Dose

**[0054]** The pharmaceutical compositions to be used in the present invention can be administered by any means that achieve their intended purpose. For example, administration can be by parenteral, subcutaneous, intravenous, intraarticular, intrathecal, intramuscular, intraperitoneal, or intradermal injections, or by transdermal, buccal, ocular routes or via inhalation. Alternatively, administration can be by the oral route. Particularly preferred for small molecule inhibitors may be oral administration. In addition to the pharmacologically active compounds, the pharmaceutical preparations of the compounds preferably contain suitable pharmaceutically acceptable carriers comprising excipients and auxiliaries that facilitate processing of the active compounds into preparations that can be used pharmaceutically.

**[0055]** For reducing the size of malignant tumor and/or by reducing malignant tumor growth, intra-tumoral administration may be useful.

**[0056]** For maintaining feto-maternal tolerance and/or prevention of a pregnancy complication in a pregnant woman, intra-placental administration of the effective agent may also be useful.

**[0057]** The siRNA duplex for use in this invention can be administered to the individual by various methods. According to one method, the siRNA may be administered exogenously as such, or in the form of a pharmaceutical composition admixed with a suitable carrier which may be, for example, a liposome, cholesterol, lithocholic acid, lauric acid, a cationic lipid, polyethylenimine (PEI) or its conjugates with polyethylene glycol (PEG) derivatives. However, also other carriers can be used. The siRNA can be administered systemically or locally. As suitable routes of administration can be mentioned intravenous, intramuscular, subcutaneous injection, inhalation, oral, topical, ocular, sublingual, nasal, rectal, intraperitoneal delivery and transdermal delivery systems. The composition containing the siRNA can, instead of using direct injection, also be administered by use of, for example, a catheter, infusion pump or stent.

**[0058]** Another method to achieve high concentrations of the siRNA in cells is to incorporate the siRNA-encoding sequence into an expression vector and to administer such a vector to the individual. In this application, the expression vector could be construed so that either the siRNA duplex or only the antisense strand thereof is expressed, e.g. in the form of short hairpin RNAs. The expression vector can be a DNA sequence, such as a DNA plasmid capable of eukaryotic expression, or a viral vector. Such a viral vector is preferably based on an adenovirus, an alphavirus, an adeno-associated virus or a retrovirus. Preferably, the vector is delivered to the patient in similar manner as the siRNA described above. The delivery of the expression vector can be systemic, such as intravenous, intramuscular or intraperitoneal administration, or local delivery to target tissue or to cells explanted from the patient, followed by reintroduction into the patient. Since intravenous administration of siRNA preferentially targets liver vasculature (Lewis D L and Wolff J A, *Methods Enzymol.* 2005; 392:336-50; Soutschek J et al., *Nature.* 2004 Nov. 11; 432(7014):173-8; and Song E et al., *Nat. Med.* 2003 March; 9(3):347-51), diseases of liver are especially suitable targets for intervention. Especially siRNA:s embedded in liposomes have been reported to be very useful for targeting liver tissue. No toxic side-effects have been reported.

**[0059]** Thus, a typical dose is in the dosage range of about 0.1 microgram/kg to about 300 mg/kg, preferably between 1.0 microgram/kg to 10 mg/kg body weight. Compounds for use in the present invention may be administered in a single daily dose, or the total daily dosage may be administered in divided doses of two, three or four times daily. When siRNA is used, a typical daily dose is in the dosage range of about 1 mg/kg to about 20 mg/kg, preferably about 5 mg/kg body weight. The suitable administration frequency is believed to be 1 to 2 doses daily. When the RNAi is delivered by an expression vector, a single dose (or a single doses repeated at certain intervals, e.g. once in week) is believed to be enough.

#### Diagnostic Methods:

**[0060]** The method for detection or quantification of Clever-1 may be based on detecting or quantifying the level of the Clever-1 protein in a tissue or body fluid by

i) determining the Clever-1 mRNA expression from said tissue or body fluid by RT-PCR, or by a hybridizing technique, or

ii) subjecting the tissue or body fluid expected to contain the Clever-1 protein to a binder (such as antibody, affibody or aptamer) recognizing said Clever-1, and detecting and/or quantifying said binder, or subjecting said tissue or body fluid to analysis by proteomics technique.

**[0061]** The hybridizing technique include, for example DNA hybridization and northern blot. The detection or quantification of the antibody or other binder can be performed according to standard immunoassay protocols, such as label-linked immunosorbent assays, western blot and immunohistochemical methods

**[0062]** The invention will be illuminated by the following non-restrictive Experimental Section.

#### Experimental Section

##### Materials and Methods

**[0063]** Animals. Balb/C and C57B16 mice (6-9 weeks old) and New Zealand white (NZW) rabbits were used in the *in vivo* experiments. The Local Ethical Committee approved the experimental procedures that were used in this study.

**[0064]** Tumor cell lines. KCA, a human lymphoblastoid cell line was a kind gift from E. Engleman (Stanford University, CA). B16-F10-luc-G5 melanoma cell line containing a luciferase construct was purchased from Xenogen (Alameda, Calif.). Tumor cells were cultured in RPMI 1640 (KCA) and MEM/HBSS (B16 melanoma) (HyClone, Logan, Utah) supplemented with 10% FBS (Invitrogen, Gibco), non-essential amino acids (Biological Industries, Haemek, Israel), 200 mM L-glutamine (B10 Whittaker, Walkersville, Md.), 1 mM Sodium pyruvate (Invitrogen, Gibco), and MEM Vitamin solution (Invitrogen, Gibco, Paisley, UK).

**[0065]** Tumor cell migration via lymphatics in rabbits. Rabbits were given 3-372 (anti-Clever-1, n=8) or control antibody (n=9) 2 mg/kg *i.v.* one day before and on the same day as the lymphoma cell transfer. In addition 0.5 mg of antibodies were added to the CFSE-labeled KCA lymphoma cell suspension that was given subcutaneously into the footpads. After 24 hours from the cell transfer, popliteal lymph nodes were collected and cell suspensions were analysed by flow cytometry.

**[0066]** Lymphatic metastasis model. B16-F10-luc-G5 melanoma cells at a dose of 400,000 cells in 30  $\mu$ l of RPMI 1640 (GIBCO) were injected subcutaneously into the left ear of mice. Inoculated tumors can be seen as black nodules through the skin. Tumor growth was measured by luciferase bioluminescence (Marttila-Ichihara, F. et al. *Blood* 112:64-72) twice a week. In brief, mice were anesthetized with 2,5% isoflurane (Becton Dickinson). One hundred fifty mg/kg of substrate D-luciferin sodium salt (Synchem, Kassel, Germany) was injected intraperitoneously to mice 10 min before imaging. A black and white photographic image was taken in the black chamber with a cooled (-70 C) CCD camera (IVIS; Xenogen, Alameda, Calif.). Signal intensity was quantified as the photon counts using the Living Image software (Xenogen). One day before tumor injection, twelve C57B1/6J mice were treated with anti-Clever-1 (Schledzewski, K. et al. *J. Pathol.* 209:67-77) antibody and the same number of mice were treated with NS-1 control antibody with subcutaneous injection of the antibodies at a dose of 50  $\mu$ g into the ear. Intraperitoneal antibody administration at a dose of 100  $\mu$ g

was started one day after tumor injection and then repeated every third day. Mice were sacrificed on day 14.

**[0067]** Immunohistochemistry. Acetone fixed frozen sections of the ear and peripheral lymph node metastases of the mice were stained with rat mAb against macrophage mannose receptor (MR, MR5D3, a marker for type 2 macrophages, kind gift from L. Martinez-Pomares), PV-1 antigen (blood vessel antigen, MECA-32, kind gift from E. Butcher, Stanford University, CA), CD31 (a marker of both blood and lymphatic vessels; BD Pharmingen), CD3 (BD Pharmingen), CD8 (Caltag) or with a negative control mAb (Hermes-1 against human CD44). FITC-conjugated anti-rat Ig (Sigma) diluted in PBS containing 5% normal mouse serum was used as the second stage antibody. Tumor tissues, metastases and lymph node sections were also stained using biotinylated anti-Clever-1 followed by Streptavidin-Alexa Fluor 546. For Foxp3 expression, frozen sections were fixed with 2% paraformaldehyde, stained with anti-Foxp3 (eBioscience) followed by peroxidase-conjugated rabbit anti-rat Ig (Dako, Denmark). 3,3'-diaminobenzidine hydrochloride in PBS containing 0.03% hydrogen peroxide was used as a chromogen and the sections were counterstained with hematoxylin. The sections were analyzed using Olympus BX60 microscope and cell'D version 2.6 software (Soft Imaging Solutions GmbH). SPARC stainings were analyzed using Image J software.

**[0068]** Immunizations. Rabbits were immunized to the footpads with a cocktail (volume 200 µl) containing heat killed *Salmonella enteritidis*, *E. coli* LPS (10 mg) and bovine serum albumin (1 mg). At the same time the rabbits received either anti-Clever-1 antibody (3-372, n=5) or class matched negative control antibody (NS-1, n=5) 2 mg/kg. Non-immunized rabbits were used as controls. The antibody treatments were repeated on day 2, 4, 7 and 9. Immunization was repeated on day 7. Serum samples were collected on day 7 and 11 and antibody titers were analyzed by ELISA. Briefly, polystyrene microtiter plates (Nunc, Roskilde, Denmark) were coated with pretested concentrations of *E. coli* LPS (Difco Laboratories, Detroit, USA), SDS-extract of *Salmonella enteritidis* and BSA (fraction V, ICN Biomedicals, Inc. Ohio, USA). After incubation with serum samples IgM and IgG antibodies in the wells were detected with alkaline-phosphatase-conjugated anti-rabbit IgM (Southern Biotechnology Associates, Birmingham, Ala., USA) and anti-rabbit IgG (Dako Patts A/S, Copenhagen, Denmark). The absorbances were detected with a Victor multilabel counter (Wallac, Turku, Finland) at a wavelength of 405 nm.

**[0069]** Mice were immunized with subcutaneous injection of 50 µg ovalbumin (OVA, grade V; Sigma, St Louis, Mo.) in incomplete Freund's adjuvant into the footpads. Immunizations were repeated three times (on day 0, 7 and 14). Mice were treated one hour before first immunization with subcutaneous injection of anti-Clever-1 or control antibody (NS-1), 50 µg/mouse, n=6+6) and intraperitoneally three times a week (100 µg/mouse). Mice were sacrificed on day 17 and popliteal lymph nodes, inguinal lymph nodes and spleens were collected and cells were isolated for flow cytometric analyses and for proliferation assay. Spleens were homogenized and red cells were lysed using hypotonic saline. T cells ( $0.2 \times 10^6$ ) were co-cultured with increasing concentration (0-2 mg/ml) of OVA in round-bottom 96-well plates. Co-cultures were incubated in HEC-medium for 3 d and pulsed with  $^3\text{H}$ -thymidine (1 µCi [0.037 MBq] per well) for the final 6 h. Cells were harvested using semi-automated plate har-

vester (Tomtech MACH III; Fisher Scientific, Hampton, N.H.) and counted with the 1450 Microbeta counter (Wallac). The antibody titers against OVA were determined by ELISA as described (Stolen, C. M. et al., *Immunity* 22:105-115). The phenotype analyses were carried out as explained above. In addition, FoxP3 positive regulatory T cells were detected using a kit from eBioscience according to the manufacturer's instructions.

## Results

### Antitumor Effect:

**[0070]** Under Clever-1 treatment both primary tumor and metastases of melanoma remain small. To study, whether targeting Clever-1 can have beneficial effects on tumor development we utilized B16 melanoma model in mouse. Both the primary tumors in the ear and the metastases in the draining lymph nodes in the neck reached only about 30% of the size when treated with anti-Clever-1 antibody in comparison to the control treated animals (FIG. 1A, A-C). Because in clinical settings the treatments are started after the malignant growth has been diagnosed, we also made sets of experiments better mimicking the clinical situation. In these experiments, we let the tumors grow three days before starting the antibody therapy and completed the experiment either on day 14 or 20 after the tumor cell injections. Also in these experimental set ups the antibody therapy was effective leading to statistically significant reduction in primary tumors and metastases on day 20 (FIG. 1B, A and B).

**[0071]** Anti-Clever-1 treatment reduces number of type 2 macrophages and regulatory T cells but is not anti-angiogenic. Inhibition of melanoma cell migration via afferent lymphatics into the draining lymph nodes could explain the reduced size of the metastases subsequent to antibody therapy. However, it cannot give explanation for the small size of the primary tumors. Therefore we analyzed the number of different subpopulations of tumor infiltrating leukocytes and vessels. The number of tumor infiltrating leukocytes could reflect the efficacy of anti-tumor immune response and the number of vessels the angiogenic activity that controls tumor growth (Dirkx, A. E. et al. *J. Leukoc. Biol.* 80:1183-1196). The latter aspect is also relevant regarding Clever-1 itself, because it has been reported to contribute to angiogenesis in vitro (Adachi, H., and Tsujimoto, M. 2002. *J. Biol. Chem.* 277:34264-34270). The number of type 2 macrophages and regulatory T cells was greatly diminished both in primary tumors and metastases (FIGS. 2A and 2B). This reduction was selective as the number of CD3 and CD8 positive cells were comparable in both treatment groups (FIGS. 2C and 2D). The number of blood and lymphatic vessels (CD31 and/or PV-1 positive) and their density was the same after anti-Clever-1 and control antibody therapy (FIGS. 2E and 2F). Thus, the number of the regulatory immune cell types is diminished subsequent to targeting Clever-1 but both the blood and lymphatic vasculature seem to remain intact.

**[0072]** Type2 macrophages in melanoma are Clever-1 positive and antibody therapy does not completely eliminate them. A possible explanation for the diminished number of type 2 macrophages subsequent to anti-Clever-1 treatment is that the treatment kills the Clever-1 positive macrophages by complement mediated killing. However, this is not the case as  $50.3 \pm 16.9\%$  of type 2 macrophages in anti-Clever-1 and  $65.9 \pm 16.7\%$  of control antibody treated tumors are Clever-1 positive in primary tumors (FIG. 3A), although their abso-

lutely numbers are greatly diminished due to the antibody treatment (FIG. 2B). In this context, however, it should be noted that Clever-1 positive macrophages were smaller and dimmer after anti-Clever-1 treatment than after control treatment.

**[0073]** Antibody therapy does not significantly impair normal immune response. Since the Clever-1 blockade significantly prevents lymphocyte and tumor cell migration into the draining lymph nodes, it may also affect the normal immune response. We tested this possibility both in the rabbit and mouse models. Rabbits were treated either with anti-Clever-1 or a control antibody and immunized into the footpad with BSA, *Salmonella enteritidis* and *E. coli* LPS (FIG. 4). No statistically significant differences were detected in antibody responses of IgM and IgG classes. The only exceptions were slight decreases in the IgM response at day 7 in BSA and day 11 in *Salmonella enteritidis* in the rabbits treated with anti-Clever-1 antibody. Mice were immunized into the footpads with OVA. Absolute lymphocyte numbers and percentages of different subpopulations in lymph nodes and spleen of both treatment groups were comparable (FIGS. 5A-C) as well as the OVA-specific T and B cell responses (FIG. 5D). In contrast to MR positive type 2 macrophages within the melanoma, the MR positive macrophages were Clever-1 negative in popliteal lymph nodes of the normal and immunized mice while the lymphatic endothelium was Clever-1 positive (FIGS. 3B and 3C). Also the MR positive macrophages within the lymph nodes were markedly smaller than in the tumors suggesting that MR<sup>+</sup>/Clever-1<sup>+</sup> macrophages within the tumor is a unique subtype.

**[0074]** To find a mechanism behind the reduced number of type 2 macrophages in the tumors we tested, whether the entrance of them or their precursors becomes inhibited during the antibody therapy. First, we analyzed Clever-1/Stabilin-1 expression on tumor vasculature. Majority of the vessels within the tumor are enlarged with widely open lumen and unlike normal flat walled vessels they express Clever-1/Stabilin-1. This expression was confirmed using two different antibodies against Clever-1/Stabilin-1 (FIG. 10, A and B). Next, we collected tumors from both anti-Clever-1/Stabilin-1 and control antibody treated animals and tested binding of tumor infiltrating leukocytes and peripheral blood CD4 positive T cells to vessels in those tumors ex vivo. Both tumor infiltrating large leukocytes consisting from macrophages and myeloid cells and tumor infiltrating small lymphocytes bound poorly to tumor vessels of Clever-1/Stabilin-1 treated animals. Also adhesion of CD4 positive blood lymphocytes was reduced (FIG. 10 C). These findings show that Clever-1 blocking therapy prevents monocytes/macrophages and lymphocytes from binding to the vascular system of the tumor. As a result, the development of type 3 macrophages is reduced. Without Clever-1 blocking, type 3 macrophages originating from monocytes entering from the blood stream, will develop and differentiate in the tumor tissue.

#### Fetomaternal Tolerance:

**[0075]** Expression of Clever-1 in placenta. When normal placentas (at term) were immunohistochemically stained for Clever-1, many brightly positive leukocytes were found (FIG. 6). Multicolor FACS analyses further showed that placental NK cells were Clever-1 negative, whereas most CD14 positive macrophages expressed Clever-1 (data not shown).

**[0076]** Expression of Clever-1 in blood. Clever-1 was practically absent or expression was very low on the surface of

blood mononuclear leukocytes in healthy individuals tested (FIG. 7). In contrast, pregnant women had clearly detectable levels of Clever-1 on the surface of blood monocytes. Clever-1 was found at all tested time points of pregnancy (weeks 12-38). Interestingly, one individual suffering from a mild pre-eclampsia had no detectable Clever-1 on the surface of the monocytes (FIG. 7).

**[0077]** Expression of Clever-1 can be upregulated by interleukin-4 and dexamethasone and inhibited by siRNA. Two days incubation of placental monocytes with interleukin-4 and dexamethasone increases percentage of Clever-1 positive macrophages (FIG. 8). In contrast, the expression can be inhibited with Clever-1 specific siRNA but not with control siRNAs (FIG. 9).

**[0078]** Anti-Clever-1 antibodies interfere with normal pregnancy in mice. Mice were treated with a function blocking anti-mouse Clever-1 antibody or with an isotype-matched control antibody starting from day 1 of pregnancy. The treatments were given intravenously (100 µg mAb/injection) every third day until the delivery. When the mice gave birth, the litter-size was smaller in the mice treated with the anti-Clever-1 antibody when compared to the controls (in control 19 pups and in anti-Clever-1 treated mice 10 pups, n=3 mothers in both groups).

## DISCUSSION

#### Antitumor Effect:

**[0079]** Our work shows that anti-Clever-1 antibody therapy targets a unique subset of suppressive macrophages present in the tumors and leads to reduction in the number of regulatory T cells. Importantly, the antibody treatment does not markedly dampen immune response to the various antigens tested. Although the work has been performed using melanoma as a tumor model, our preliminary experiments with EL-4 lymphoma model indicate that the findings reported in this work are not restricted to melanoma.

**[0080]** Only few molecules present on afferent lymphatics such as macrophage mannose receptor, sphingosine-1-phosphate receptor and CCL21 have been shown to mediate lymphocyte traffic via afferent lymphatic vessels (Marttila-Ichihara, F. et al. Blood 112:64-72). Among those Clever-1 is the first one, which is now shown to be involved in and druggable also at the suppressive arm of the anti-cancer immune response.

**[0081]** Tumor associated macrophages differentiate to type 2 macrophages within the tumor environment from the incoming blood monocytes (24). Direct cell-to-cell contact may be required for the differentiation, because peritoneal macrophages (outside the tumor) did not become MR positive in the presence of melanoma within the peritoneal cavity in our experiments (data not shown). About 65% of the MR positive type 2 tumor macrophages express Clever-1. Interestingly, anti-Clever-1 antibody treatment diminished both the number of MR<sup>+</sup>/Clever-1<sup>+</sup> and MR<sup>+</sup>/Clever-1<sup>-</sup> macrophages. Presence of MR<sup>+</sup>/Clever-1<sup>+</sup> macrophages within the tumor after the antibody therapy suggests that the antibody does not lead to complement mediated killing of these cells. Reduction of the number of MR<sup>+</sup>/Clever-1<sup>-</sup> macrophages, on the other hand, may indicate that also these cells express low levels of Clever-1 and targeting of Clever-1 prevents differentiation of these cells. Alternatively, inhibition of Clever-1 could potentially lead to changes in SPARC content within the tumor limiting the number of suppressive macrophages

despite their Clever-1 expression status. SPARC that is endocytosed by Clever-1 has also been demonstrated to be an important component controlling tumor growth and dissemination in several types of cancer (Said, N. et al. *Mol. Cancer Res.* 5:1015-1030; Chlenski, A. et al. *Cancer Res.* 62:7357-7363; Chlenski, A. et al. *Int. J. Cancer* 118:310-316 and Brekken, R. A. et al. *J. Clin. Invest.* 111:487-495) and could also be regulating the tumor growth in our setting.

**[0082]** The role vascular Clever-1 in the entrance of blood borne monocytes into the melanoma may be ruled out, because the blood vasculature of the B16 melanoma does not express Clever-1. Theoretically it is also possible that Clever-1 on monocytes/macrophages is involved in their entrance from the blood into the primary tumors and antibody therapy inhibits that function.

**[0083]** Type 2 macrophages secrete IL-10 that is immunosuppressive and various chemokines, especially CCL17 and CCL22 which attract CCR4 positive regulatory T cells (Sica, A. et al., *Cancer Lett.* 267:204-215). The reduction of regulatory T cells observed in our work can therefore, may be considered as a consequence of the reduction of type 2 macrophages, especially those expressing Clever-1 i.e type 3 macrophages. Their diminished number and functional capacity may also lower antigen specific tumor cell suppression and the over all immune balance switches from protumoral to anti-tumoral.

**[0084]** Importantly, despite the antibody therapy was effective in the tumor treatment, it did not markedly diminish the immune response against various types of antigens. Reasons behind this may be that the antigens get into the lymph nodes in sufficient quantities to create immune response. Moreover, although the therapy presumably reduces lymphocyte trafficking into and out from the lymph node undergoing the immune response, it does not significantly alter the balance between the entrance of lymphocytes via HEV and their exit from the lymph nodes. Antibodies once created seem to circulate independently of Clever-1 in the body. Remarkably, the macrophages within the lymph nodes during the immune response remained Clever-1 negative although many of them brightly expressed MR. This indicates that MR positive macrophages within the tumors and lymph nodes undergoing the immune response belong to different subtypes. This may also explain, why the antibody therapy targeting Clever-1 during immunization does not have any effect on the number of MR positive macrophages and regulatory T cells.

**[0085]** In summary, our results indicate that Clever-1 is involved in different control points determining cancer growth and dissemination. As the successful treatment of cancer patients frequently requires different combinations of

drugs, anti-Clever-1 antibody or another Clever-1 antagonist may be a beneficial addition into the armamentarium used to fight against cancer.

Fetomaternal Tolerance:

**[0086]** We report here that a very prominent population of Clever-1 positive macrophages is present in human placenta. Moreover, Clever-1 is found on the surface of circulating blood monocytes in normal pregnant women, but not (or in very low numbers) in age- and sex-matched control persons. However, in a pre-eclamptic patient, induction of Clever-1 was not seen on the blood monocytes. Finally, an anti-Clever-1 antibody treatment during the course of pregnancy diminished litter-sizes in mice. Together these data suggest that Clever-1 positive cell population is immune suppressive, and that it contributes to the induction of normal tolerance during the pregnancy.

**[0087]** Clever-1 is expressed on a subpopulation of type 2 macrophages in humans and mice. Type 2 macrophages have been shown to be immune suppressing in multiple experimental settings in mice. However, since Clever-1 is not expressed in all type 2 macrophages (normally defined as macrophage mannose receptor positive cells), we propose that a subpopulation of these cells (type 3 macrophages) can be further identified based on Clever-1 expression.

**[0088]** We have shown that type 3 macrophages are normally induced in the placenta and blood circulation during pregnancy. It is known that the induction of Clever-1 can be seen in normal blood monocytes (non-pregnant persons) through stimulation with immune suppressing molecules such as interleukin-4, interleukin-13 or dexamethasone. Probably these, or other anti-inflammatory molecules and steroid hormones, are responsible for Clever-1 induction during pregnancy. We propose that type 3 macrophages are immune suppressing in nature and serve to maintain fetomaternal tolerance in vivo.

**[0089]** Failure to induce Clever-1 in pregnancy may lead to loss of tolerance and manifestations of fetomaternal incompatibility. In early pregnancy this may manifest as spontaneous abortions, and later as conditions like pre-eclampsia. Therefore, induction of Clever-1 on blood monocytes may reflect the level of immune tolerance in the mother, and be useful for early detection of pre-eclampsia. Moreover, therapeutic induction of Clever-1 expressing type 3 macrophages by agents such as interleukins or steroids may be beneficial in boosting tolerance during the pregnancy.

**[0090]** It will be appreciated that the methods of the present invention can be incorporated in the form of a variety of embodiments, only a few of which are disclosed herein. It will be apparent for the expert skilled in the field that other embodiments exist and do not depart from the spirit of the invention. Thus, the described embodiments are illustrative and should not be construed as restrictive.

---

SEQUENCE LISTING

<160> NUMBER OF SEQ ID NOS: 1  
 <210> SEQ ID NO 1  
 <211> LENGTH: 7879  
 <212> TYPE: DNA  
 <213> ORGANISM: Homo sapiens  
 <220> FEATURE:  
 <221> NAME/KEY: exon

-continued

&lt;222&gt; LOCATION: (31)..(7740)

&lt;400&gt; SEQUENCE: 1

actctgtcct ggacagcgtg cccaccagcc atg gcg ggg ccc egg ggc ctc ctc	54
Met Ala Gly Pro Arg Gly Leu Leu	
1 5	
cca ctc tgc ctc ctg gcc ttc tgc ctg gca ggc ttc agc ttc gtc agg	102
Pro Leu Cys Leu Leu Ala Phe Cys Leu Ala Gly Phe Ser Phe Val Arg	
10 15 20	
ggg cag gtg ctg ttc aaa ggc tgt gat gtg aaa acc acg ttt gtc act	150
Gly Gln Val Leu Phe Lys Gly Cys Asp Val Lys Thr Thr Phe Val Thr	
25 30 35 40	
cat gta ccc tgc acc tcg tgc gcg gcc atc aag aag cag acg tgt ccc	198
His Val Pro Cys Thr Ser Cys Ala Ala Ile Lys Lys Gln Thr Cys Pro	
45 50 55	
tca ggc tgg ctg cgg gag ctc ccg gat cag ata acc cag gac tgc cgc	246
Ser Gly Trp Leu Arg Glu Leu Pro Asp Gln Ile Thr Gln Asp Cys Arg	
60 65 70	
tac gaa gta cag ctg ggg ggc tct atg gtg tcc atg agc ggc tgc aga	294
Tyr Glu Val Gln Leu Gly Gly Ser Met Val Ser Met Ser Gly Cys Arg	
75 80 85	
cgg aag tgc cgg aag caa gtg gtg cag aag gcc tgc tgc cct ggc tac	342
Arg Lys Cys Arg Lys Gln Val Gln Lys Ala Cys Cys Pro Gly Tyr	
90 95 100	
tgg ggt tcc cgg tgc cat gaa tgc cct ggg ggc gct gag acc cca tgc	390
Trp Gly Ser Arg Cys His Glu Cys Pro Gly Gly Ala Glu Thr Pro Cys	
105 110 115 120	
aat ggc cac ggg acc tgc ttg gat ggc atg gac agg aat ggg acc tgt	438
Asn Gly His Gly Thr Cys Leu Asp Gly Met Asp Arg Asn Gly Thr Cys	
125 130 135	
gtg tgc cag gaa aac ttc cgc ggc tca gcc tgc cag gag tgc caa gac	486
Val Cys Gln Glu Asn Phe Arg Gly Ser Ala Cys Gln Glu Cys Gln Asp	
140 145 150	
ccc aac cgg ttc ggg cct gac tgc caa tcg gtg tgc agc tgt gtg cac	534
Pro Asn Arg Phe Gly Pro Asp Gln Ser Val Cys Ser Cys Val His	
155 160 165	
gga gtg tgc aac cat ggg cca cgt ggg gat gga agc tgc ctg tgc ttt	582
Gly Val Cys Asn His Gly Pro Arg Gly Asp Gly Ser Cys Leu Cys Phe	
170 175 180	
gct gga tac act ggc ccc cac tgt gat caa gag ctg ccc gtc tgc cag	630
Ala Gly Tyr Thr Gly Pro His Cys Asp Gln Glu Leu Pro Val Cys Gln	
185 190 195 200	
gag ctg cgc tgt ccc cag aac acc cag tgc tcc gca gag gct ccc agc	678
Glu Leu Arg Cys Pro Gln Asn Thr Gln Cys Ser Ala Glu Ala Pro Ser	
205 210 215	
tgc agg tgc ctg ccc ggc tac aca cag cag ggc agt gaa tgc cga gcc	726
Cys Arg Cys Leu Pro Gly Tyr Thr Gln Gln Gly Ser Glu Cys Arg Ala	
220 225 230	
ccc aac ccc tgc tgg cca tca ccc tgc tca ctg ctg gcc cag tgc tcg	774
Pro Asn Pro Cys Trp Pro Ser Pro Cys Ser Leu Leu Ala Gln Cys Ser	
235 240 245	
gtg agc ccc aag ggg cag gct cag tgt cac tgc cct gag aac tac cat	822
Val Ser Pro Lys Gly Gln Ala Gln Cys His Cys Pro Glu Asn Tyr His	
250 255 260	
ggc gat ggg atg gtg tgt ctg ccc aag gac cca tgc act gac aac ctt	870
Gly Asp Gly Met Val Cys Leu Pro Lys Asp Pro Cys Thr Asp Asn Leu	
265 270 275 280	

-continued

ggt ggc tgc ccc agc aac tct act ttg tgt gtg tac cag aag ccg ggc	918
Gly Gly Cys Pro Ser Asn Ser Thr Leu Cys Val Tyr Gln Lys Pro Gly	
285 290 295	
cag gcc ttc tgc acc tgc cgg cca ggc ctg gtc agc atc aac agc aac	966
Gln Ala Phe Cys Thr Cys Arg Pro Gly Leu Val Ser Ile Asn Ser Asn	
300 305 310	
gct tct gcg ggc tgc ttc gcc ttc tgc tcc ccc ttc tcc tgc gac cgg	1014
Ala Ser Ala Gly Cys Phe Ala Phe Cys Ser Pro Phe Ser Cys Asp Arg	
315 320 325	
tct gcc act tgc cag gtg acc gct gat ggg aag acc agc tgt gtg tgc	1062
Ser Ala Thr Cys Gln Val Thr Ala Asp Gly Lys Thr Ser Cys Val Cys	
330 335 340	
agg gaa agc gag gtg ggg gat ggg cgt gcc tgc tac gga cac ctg ctc	1110
Arg Glu Ser Glu Val Gly Asp Gly Arg Ala Cys Tyr Gly His Leu Leu	
345 350 355 360	
cac gag gtg cag aag gcc acg cag aca ggc cgg gtg ttc ctg cag ctg	1158
His Glu Val Gln Lys Ala Thr Gln Thr Gly Arg Val Phe Leu Gln Leu	
365 370 375	
agg gtc gcc gtg gcc atg atg gac cag ggc tgc cgg gaa atc ctt acc	1206
Arg Val Ala Val Ala Met Met Asp Gln Gly Cys Arg Glu Ile Leu Thr	
380 385 390	
aca gcg gcc cct ttc acc gtg ctg gtg cca tcc gtc tcc tcc ttc tcc	1254
Thr Ala Gly Pro Phe Thr Val Leu Val Pro Ser Val Ser Ser Phe Ser	
395 400 405	
tcc agg acc atg aat gca tcc ctt gcc cag cag ctc tgt aga cag cac	1302
Ser Arg Thr Met Asn Ala Ser Leu Ala Gln Gln Leu Cys Arg Gln His	
410 415 420	
atc atc gca ggg cag cac atc ctg gag gac aca agg acc caa caa aca	1350
Ile Ile Ala Gly Gln His Ile Leu Glu Asp Thr Arg Thr Gln Gln Thr	
425 430 435 440	
cga agg tgg tgg acg ctg gcc ggg cag gag atc acc gtc acc ttt aac	1398
Arg Arg Trp Trp Thr Leu Ala Gly Gln Glu Ile Thr Val Thr Phe Asn	
445 450 455	
caa ttc acg aaa tac tcc tac aag tac aaa gac cag ccc cag cag acg	1446
Gln Phe Thr Lys Tyr Ser Tyr Lys Tyr Lys Asp Gln Pro Gln Gln Thr	
460 465 470	
ttc aac atc tac aag gcc aac aac ata gca gct aat ggc gtc ttc cac	1494
Phe Asn Ile Tyr Lys Ala Asn Asn Ile Ala Ala Asn Gly Val Phe His	
475 480 485	
gtg gtc act gcc ctg cgg tgg cag gcc ccc tct ggg acc cct ggg gat	1542
Val Val Thr Gly Leu Arg Trp Gln Ala Pro Ser Gly Thr Pro Gly Asp	
490 495 500	
ccc aag aga act atc gga cag atc ctc gcc tct acc gag gcc ttc agc	1590
Pro Lys Arg Thr Ile Gly Gln Ile Leu Ala Ser Thr Glu Ala Phe Ser	
505 510 515 520	
cgc ttt gaa acc atc ctg gag aac tgt ggg ctg ccc tcc atc ctg gac	1638
Arg Phe Glu Thr Ile Leu Glu Asn Cys Gly Leu Pro Ser Ile Leu Asp	
525 530 535	
gga cct ggg ccc ttc aca gtc ttt gcc cca agc aat gag gct gtg gac	1686
Gly Pro Gly Pro Phe Thr Val Phe Ala Pro Ser Asn Glu Ala Val Asp	
540 545 550	
agc ttg cgt gac ggc cgc ctg atc tac ctc ttc aca gcg ggt ctc tct	1734
Ser Leu Arg Asp Gly Arg Leu Ile Tyr Leu Phe Thr Ala Gly Leu Ser	
555 560 565	
aaa ctg cag gag ttg gtg cgg tac cac atc tac aac cac gcc cag ctg	1782
Lys Leu Gln Glu Leu Val Arg Tyr His Ile Tyr Asn His Gly Gln Leu	
570 575 580	

-continued

acc gtt gag aag ctc atc tcc aag ggt cgg atc ctc acc atg gcg aac	1830
Thr Val Glu Lys Leu Ile Ser Lys Gly Arg Ile Leu Thr Met Ala Asn	
585 590 595 600	
cag gtc ctg gct gtg aac att tct gag gag ggg cgc atc ctg ctg gga	1878
Gln Val Leu Ala Val Asn Ile Ser Glu Glu Gly Arg Ile Leu Leu Gly	
605 610 615	
ccc gag ggg gtc ccg ctg cag agg gta gac gtg atg gcc gcc aat ggt	1926
Pro Glu Gly Val Pro Leu Gln Arg Val Asp Val Met Ala Ala Asn Gly	
620 625 630	
gtg atc cac atg ctg gac ggc atc ctg ctg ccc ccg acc atc ctg ccc	1974
Val Ile His Met Leu Asp Gly Ile Leu Leu Pro Pro Thr Ile Leu Pro	
635 640 645	
atc ctg ccc aag cac tgc agc gag gag cag cac aag att gtg gcg ggc	2022
Ile Leu Pro Lys His Cys Ser Glu Glu Gln His Lys Ile Val Ala Gly	
650 655 660	
tcc tgt gtg gac tgc caa gcc ctg aac acc agc acg tgt ccc ccc aac	2070
Ser Cys Val Asp Cys Gln Ala Leu Asn Thr Ser Thr Cys Pro Pro Asn	
665 670 675 680	
agt gtg aag ctg gac atc ttc ccc aag gag tgt gtc tac atc cat gac	2118
Ser Val Lys Leu Asp Ile Phe Pro Lys Glu Cys Val Tyr Ile His Asp	
685 690 695	
cca acg ggg ctc aat gtg cta aag aag ggc tgt gcc agc tac tgc aac	2166
Pro Thr Gly Leu Asn Val Leu Lys Lys Gly Cys Ala Ser Tyr Cys Asn	
700 705 710	
caa acc atc atg gaa caa ggc tgc tgc aaa ggt ttt ttc ggg cct gac	2214
Gln Thr Ile Met Glu Gln Gly Cys Cys Lys Gly Phe Phe Gly Pro Asp	
715 720 725	
tgc acg cag tgt cct ggg ggc ttc tcc aac ccc tgc tat ggc aaa ggc	2262
Cys Thr Gln Cys Pro Gly Phe Ser Asn Pro Cys Tyr Gly Lys Gly	
730 735 740	
aat tgc agt gat ggg atc cag ggc aat ggg gcc tgc ctc tgc ttc cca	2310
Asn Cys Ser Asp Gly Ile Gln Gly Asn Gly Ala Cys Leu Cys Phe Pro	
745 750 755 760	
gac tac aag ggc atc gcc tgc cac atc tgc tgc aac cca aac aag cat	2358
Asp Tyr Lys Gly Ile Ala Cys His Ile Cys Ser Asn Pro Asn Lys His	
765 770 775	
gga gag caa tgc cag gaa gac tgc ggc tgt gtc cat ggt ctc tgc gac	2406
Gly Glu Gln Cys Gln Glu Asp Cys Gly Cys Val His Gly Leu Cys Asp	
780 785 790	
aac cgc cca ggc agt ggg ggg gtg tgc cag cag ggc acg tgt gcc cct	2454
Asn Arg Pro Gly Ser Gly Val Cys Gln Gln Gly Thr Cys Ala Pro	
795 800 805	
ggc ttc agt ggc cgg ttc tgc aac gag tcc atg ggg gac tgt ggg ccc	2502
Gly Phe Ser Gly Arg Phe Cys Asn Glu Ser Met Gly Asp Cys Gly Pro	
810 815 820	
aca ggg ctg gcc cag cac tgc cac ctg cat gcc cgc tgt gtt agc cag	2550
Thr Gly Leu Ala Gln His Cys His Leu His Ala Arg Cys Val Ser Gln	
825 830 835 840	
gag ggt gtt gcc aga tgt cgc tgt ctt gat ggc ttt gag ggt gat ggc	2598
Glu Gly Val Ala Arg Cys Arg Cys Leu Asp Gly Phe Glu Gly Asp Gly	
845 850 855	
ttc tcc tgc aca cct agc aac ccc tgc tcc cac ccg gac cgt gga ggc	2646
Phe Ser Cys Thr Pro Ser Asn Pro Cys Ser His Pro Asp Arg Gly Gly	
860 865 870	
tgc tca gag aat gct gag tgt gtc cct ggg tcc ctg ggc acc cac cac	2694
Cys Ser Glu Asn Ala Glu Cys Val Pro Gly Ser Leu Gly Thr His His	
875 880 885	

-continued

tgc aca tgc cac aaa ggc tgg agt ggg gat ggc cgc gtc tgt gtg gct Cys Thr Cys His Lys Gly Trp Ser Gly Asp Gly Arg Val Cys Val Ala 890 895 900	2742
att gac gag tgt gag ctg gac gtg aga ggt ggc tgc cac acc gat gcc Ile Asp Glu Cys Glu Leu Asp Val Arg Gly Gly Cys His Thr Asp Ala 905 910 915 920	2790
ctc tgc agc tat gtg ggc ccc ggg cag agc cga tgc acc tgc aag ctg Leu Cys Ser Tyr Val Gly Pro Gly Gln Ser Arg Cys Thr Cys Lys Leu 925 930 935	2838
ggc ttt gcc ggg gat ggc tac cag tgc agc ccc atc gac ccc tgc cgg Gly Phe Ala Gly Asp Gly Tyr Gln Cys Ser Pro Ile Asp Pro Cys Arg 940 945 950	2886
gca ggc aat ggc ggc tgc cac ggc ctg gcc acc tgc cgg gca gtg ggg Ala Gly Asn Gly Gly Cys His Gly Leu Ala Thr Cys Arg Ala Val Gly 955 960 965	2934
gga ggt cag cgg gtc tgc acg tgc ccc cct ggc ttt ggg ggt gat ggc Gly Gly Gln Arg Val Cys Thr Cys Pro Pro Gly Phe Gly Gly Asp Gly 970 975 980	2982
ttc agc tgt tat gga gac atc ttc cgg gag ctg gag gca aat gcc cac Phe Ser Cys Tyr Gly Asp Ile Phe Arg Glu Leu Glu Ala Asn Ala His 985 990 995 1000	3030
ttc tcc atc ttc tac caa tgg ctt aag agt gcc ggc atc acg ctt Phe Ser Ile Phe Tyr Gln Trp Leu Lys Ser Ala Gly Ile Thr Leu 1005 1010 1015	3075
cct gcc gac cgc cga gtc aca gcc ctg gtg ccc tcc gag gct gca Pro Ala Asp Arg Arg Val Thr Ala Leu Val Pro Ser Glu Ala Ala 1020 1025 1030	3120
gtc cgt cag ctg agc ccc gag gac cga gct ttc tgg ctg cag cca Val Arg Gln Leu Ser Pro Glu Asp Arg Ala Phe Trp Leu Gln Pro 1035 1040 1045	3165
agg acg ctg cgg aac ctg gtc agg gcc cat ttt ctc cag ggt gcc Arg Thr Leu Pro Asn Leu Val Arg Ala His Phe Leu Gln Gly Ala 1050 1055 1060	3210
ctc ttc gag gag gag ctg gcc cgg ctg ggt ggg cag gaa gtg gcc Leu Phe Glu Glu Glu Leu Ala Arg Leu Gly Gly Gln Glu Val Ala 1065 1070 1075	3255
acc ctg aac ccc acc aca cgc tgg gag att cgc aac att agt ggg Thr Leu Asn Pro Thr Thr Arg Trp Glu Ile Arg Asn Ile Ser Gly 1080 1085 1090	3300
agg gtc tgg gtg cag aat gcc agc gtg gat gtg gct gac ctc ctt Arg Val Trp Val Gln Asn Ala Ser Val Asp Val Ala Asp Leu Leu 1095 1100 1105	3345
gcc acc aac ggt gtc cta cac atc ctc agc cag gtc tta ctg ccc Ala Thr Asn Gly Val Leu His Ile Leu Ser Gln Val Leu Leu Pro 1110 1115 1120	3390
ccc cga ggg gat gtg ccc ggt ggg cag ggg ttg ctg cag cag ctg Pro Arg Gly Asp Val Pro Gly Gly Gln Gly Leu Leu Gln Gln Leu 1125 1130 1135	3435
gac ttg gtg cct gcc ttc agc ctc ttc cgg gaa ttg ctg cag cac Asp Leu Val Pro Ala Phe Ser Leu Phe Arg Glu Leu Leu Gln His 1140 1145 1150	3480
cat ggg ttg gtg ccc cag att gag gct gcc act gcc tac acc atc His Gly Leu Val Pro Gln Ile Glu Ala Ala Thr Ala Tyr Thr Ile 1155 1160 1165	3525
ttt gtg ccc acc aac cgc tcc ctg gag gcc cag ggc aac agc agt Phe Val Pro Thr Asn Arg Ser Leu Glu Ala Gln Gly Asn Ser Ser 1170 1175 1180	3570

-continued

cac ctg gac gca gac His Leu Asp Ala Asp 1185	aca gtg cgg cac cat Thr Val Arg His His 1190	gtg gtc ctg ggg gag Val Val Leu Gly Glu 1195	3615
gcc ctc tcc atg gaa Ala Leu Ser Met Glu 1200	acc ctg cgg aag ggt Thr Leu Arg Lys Gly 1205	gga cac cgc aac tcc Gly His Arg Asn Ser 1210	3660
ctc ctg ggc cct gcc Leu Leu Gly Pro Ala 1215	cac tgg atc gtc ttc His Trp Ile Val Phe 1220	tac aac cac agt ggc Tyr Asn His Ser Gly 1225	3705
cag cct gag gtg aac Gln Pro Glu Val Asn 1230	cat gtg cca ctg gaa His Val Pro Leu Glu 1235	ggc ccc atg ctg gag Gly Pro Met Leu Glu 1240	3750
gcc cct ggc cgc tcg Ala Pro Gly Arg Ser 1245	ctg att ggt ctg tcg Leu Ile Gly Leu Ser 1250	ggg gtc ctg acg gtg Gly Val Leu Thr Val 1255	3795
ggc tca agt cgc tgc Gly Ser Ser Arg Cys 1260	ctg cat agc cac gct Leu His Ser His Ala 1265	gag gcc ctg cgg gag Glu Ala Leu Arg Glu 1270	3840
aaa tgt gta aac tgc Lys Cys Val Asn Cys 1275	acc agg aga ttc cgc Thr Arg Arg Phe Arg 1280	tgc act cag ggc ttc Cys Thr Gln Gly Phe 1285	3885
cag ctg cag gac aca Gln Leu Gln Asp Thr 1290	ccc agg aag agc tgt Pro Arg Lys Ser Cys 1295	gtc tac cga tct ggc Val Tyr Arg Ser Gly 1300	3930
ttc tcc ttc tcc cgg Phe Ser Phe Ser Arg 1305	ggc tgc tct tac aca Gly Cys Ser Tyr Thr 1310	tgt gcc aag aag atc Cys Ala Lys Lys Ile 1315	3975
cag gtg ccg gac tgc Gln Val Pro Asp Cys 1320	tgc cct ggt ttc ttt Cys Pro Gly Phe Phe 1325	ggc acg ctg tgt gag Gly Thr Leu Cys Glu 1330	4020
cca tgc cca ggg ggt Pro Cys Pro Gly Gly 1335	cta ggg ggg gtg tgc Leu Gly Gly Val Cys 1340	tca gcc cat ggg cag Ser Gly His Gly Gln 1345	4065
tgc cag gac agg ttc Cys Gln Asp Arg Phe 1350	ctg ggc agc ggg gag Leu Gly Ser Gly Glu 1355	tgc cac tgc cac gag Cys His Cys His Glu 1360	4110
ggc ttc cat gga acg Gly Phe His Gly Thr 1365	gcc tgt gag gtg tgt Ala Cys Glu Val Cys 1370	gag ctg ggc cgc tac Glu Leu Gly Arg Tyr 1375	4155
ggg ccc aac tgc acc Gly Pro Asn Cys Thr 1380	gga gtg tgt gac tgt Gly Val Cys Asp Cys 1385	gcc cat ggg ctg tgc Ala His Gly Leu Cys 1390	4200
cag gag ggg ctg caa Gln Glu Gly Leu Gln 1395	ggg gac gga agc tgt Gly Asp Gly Ser Cys 1400	gtc tgt aac gtg ggc Val Cys Asn Val Gly 1405	4245
tgg cag ggc ctc cgc Trp Gln Gly Leu Arg 1410	tgt gac cag aaa atc Cys Asp Gln Lys Ile 1415	acc agc cct cag tgc Thr Ser Pro Gln Cys 1420	4290
cct agg aag tgc gac Pro Arg Lys Cys Asp 1425	ccc aat gcc aac tgc Pro Asn Ala Asn Cys 1430	gtg cag gac tcg gcc Val Gln Asp Ser Ala 1435	4335
gga gcc tcc acc tgc Gly Ala Ser Thr Cys 1440	gcc tgt gct gcg gga Ala Cys Ala Ala Gly 1445	tac tcc ggc aat ggc Tyr Ser Gly Asn Gly 1450	4380
atc ttc tgt tca gag Ile Phe Cys Ser Glu 1455	gtg gac ccc tgc gcc Val Asp Pro Cys Ala 1460	cac ggc cat ggg ggc His Gly His Gly Glu 1465	4425

-continued

tgc tcc cct cat gcc aac tgt acc aag gtg gca cct ggg cag cgg	4470
Cys Ser Pro His Ala Asn Cys Thr Lys Val Ala Pro Gly Gln Arg	
1470 1475 1480	
aca tgc acc tgc cag gat ggc tac atg ggc gac ggg gag ctg tgc	4515
Thr Cys Thr Cys Gln Asp Gly Tyr Met Gly Asp Gly Glu Leu Cys	
1485 1490 1495	
cag gaa att aac agc tgt ctc atc cac cac ggg ggc tgc cac att	4560
Gln Glu Ile Asn Ser Cys Leu Ile His His Gly Gly Cys His Ile	
1500 1505 1510	
cac gcc gag tgc atc ccc act ggc ccc cag cag gtc tcc tgc agc	4605
His Ala Glu Cys Ile Pro Thr Gly Pro Gln Gln Val Ser Cys Ser	
1515 1520 1525	
tgc cgt gag ggt tac agc ggg gat ggc atc cgg acc tgc gag ctc	4650
Cys Arg Glu Gly Tyr Ser Gly Asp Gly Ile Arg Thr Cys Glu Leu	
1530 1535 1540	
ctg gac ccc tgc tct aag aac aat gga gga tgc agc cca tat gcc	4695
Leu Asp Pro Cys Ser Lys Asn Asn Gly Gly Cys Ser Pro Tyr Ala	
1545 1550 1555	
acc tgc aaa agc aca ggg gat ggc cag agg aca tgt acc tgc gac	4740
Thr Cys Lys Ser Thr Gly Asp Gly Gln Arg Thr Cys Thr Cys Asp	
1560 1565 1570	
aca gcc cac acc gtg ggg gac ggc ctc acc tgc cgt gcc cga gtc	4785
Thr Ala His Thr Val Gly Asp Gly Leu Thr Cys Arg Ala Arg Val	
1575 1580 1585	
ggc ctg gag ctc ctg agg gat aag cat gcc tca ttc ttc agc ctc	4830
Gly Leu Glu Leu Leu Arg Asp Lys His Ala Ser Phe Phe Ser Leu	
1590 1595 1600	
cgc ctc ctg gaa tat aag gag ctc aag ggc gat ggg cct ttc acc	4875
Arg Leu Leu Glu Tyr Lys Glu Leu Lys Gly Asp Gly Pro Phe Thr	
1605 1610 1615	
atc ttc gtg ccg cac gca gat cta atg agc aac ctg tcg cag gat	4920
Ile Phe Val Pro His Ala Asp Leu Met Ser Asn Leu Ser Gln Asp	
1620 1625 1630	
gag ctg gcc cgg att cgt gcg cat cgc cag ctg gtg ttt cgc tac	4965
Glu Leu Ala Arg Ile Arg Ala His Arg Gln Leu Val Phe Arg Tyr	
1635 1640 1645	
cac gtg gtt ggc tgt cgg cgg ctg cgg agc gag gac ctg ctg gag	5010
His Val Val Gly Cys Arg Arg Leu Arg Ser Glu Asp Leu Leu Glu	
1650 1655 1660	
cag ggg tac gcc acg gcc ctc tca ggg cac cca ctg cgc ttc agc	5055
Gln Gly Tyr Ala Thr Ala Leu Ser Gly His Pro Leu Arg Phe Ser	
1665 1670 1675	
gag agg gag ggc agc ata tac ctc aat gac ttc gcg cgc gtg gtg	5100
Glu Arg Glu Gly Ser Ile Tyr Leu Asn Asp Phe Ala Arg Val Val	
1680 1685 1690	
agc agc gac cat gag gcc gtg aac ggc atc ctg cac ttc att gac	5145
Ser Ser Asp His Glu Ala Val Asn Gly Ile Leu His Phe Ile Asp	
1695 1700 1705	
cgt gtc ctg ctg ccc ccc gag gcg ctg cac tgg gag cct gat gat	5190
Arg Val Leu Leu Pro Pro Glu Ala Leu His Trp Glu Pro Asp Asp	
1710 1715 1720	
gct ccc atc ccg agg aga aat gtc acc gcc gcc gcc cag ggc ttc	5235
Ala Pro Ile Pro Arg Arg Asn Val Thr Ala Ala Ala Gln Gly Phe	
1725 1730 1735	
ggg tac aag atc ttc agc ggc ctc ctg aag gtg gcc ggc ctc ctg	5280
Gly Tyr Lys Ile Phe Ser Gly Leu Leu Lys Val Ala Gly Leu Leu	
1740 1745 1750	

-continued

ccc ctg ctt cga gag gca tcc cat agg ccc ttc aca atg ctg tgg	5325
Pro Leu Leu Arg Glu Ala Ser His Arg Pro Phe Thr Met Leu Trp	
1755 1760 1765	
ccc aca gac gcc gcc ttt cga gct ctg cct ccg gat cgc cag gcc	5370
Pro Thr Asp Ala Ala Phe Arg Ala Leu Pro Pro Asp Arg Gln Ala	
1770 1775 1780	
tgg ctg tac cat gag gac cac cgt gac aag cta gca gcc att ctg	5415
Trp Leu Tyr His Glu Asp His Arg Asp Lys Leu Ala Ala Ile Leu	
1785 1790 1795	
cgg ggc cac atg att cgc aat gtc gag gcc ttg gca tct gac ctg	5460
Arg Gly His Met Ile Arg Asn Val Glu Ala Leu Ala Ser Asp Leu	
1800 1805 1810	
ccc aac ctg gcc cca ctt cga acc atg cat ggg acc ccc atc tct	5505
Pro Asn Leu Gly Pro Leu Arg Thr Met His Gly Thr Pro Ile Ser	
1815 1820 1825	
ttc tcc tgc agc cga acg cgg ccc ggt gag ctc atg gtg ggt gag	5550
Phe Ser Cys Ser Arg Thr Arg Pro Gly Glu Leu Met Val Gly Glu	
1830 1835 1840	
gat gat gct cgc att gtg cag cgg cac ttg ccc ttt gag ggt gcc	5595
Asp Asp Ala Arg Ile Val Gln Arg His Leu Pro Phe Glu Gly Gly	
1845 1850 1855	
ctg gcc tat gcc atc gac cag ctg ctg gag cca cct gcc ctt ggt	5640
Leu Ala Tyr Gly Ile Asp Gln Leu Leu Glu Pro Pro Gly Leu Gly	
1860 1865 1870	
gct cgc tgt gac cac ttt gag acc cgg ccc ctg cga ctg aac acc	5685
Ala Arg Cys Asp His Phe Glu Thr Arg Pro Leu Arg Leu Asn Thr	
1875 1880 1885	
tgc agc atc tgt ggg ctg gag cca ccc tgt cct gag ggg tca cag	5730
Cys Ser Ile Cys Gly Leu Glu Pro Pro Cys Pro Glu Gly Ser Gln	
1890 1895 1900	
gag cag gcc agc cct gag gcc tgc tgg cgc ttc tac ccg aag ttc	5775
Glu Gln Gly Ser Pro Glu Ala Cys Trp Arg Phe Tyr Pro Lys Phe	
1905 1910 1915	
tgg acg tcc cct ccg ctg cac tct ttg gga tta cgc agc gtc tgg	5820
Trp Thr Ser Pro Pro Leu His Ser Leu Gly Leu Arg Ser Val Trp	
1920 1925 1930	
gtc cac ccc agc ctt tgg ggt agg ccc caa ggc ctg gcc agg gcc	5865
Val His Pro Ser Leu Trp Gly Arg Pro Gln Gly Leu Gly Arg Gly	
1935 1940 1945	
tgc cac cgc aat tgt gtc acc acc acc tgg aag ccc agc tgc tgc	5910
Cys His Arg Asn Cys Val Thr Thr Thr Trp Lys Pro Ser Cys Cys	
1950 1955 1960	
cct ggt cac tat gcc agt gag tgc caa gct tgc cct gcc gcc ccc	5955
Pro Gly His Tyr Gly Ser Glu Cys Gln Ala Cys Pro Gly Gly Pro	
1965 1970 1975	
agc agc cct tgt agt gac cgt gcc gtg tgc atg gac gcc atg agt	6000
Ser Ser Pro Cys Ser Asp Arg Gly Val Cys Met Asp Gly Met Ser	
1980 1985 1990	
ggc agt ggg cag tgt ctg tgc cgt tca ggt ttt gct ggg aca gcc	6045
Gly Ser Gly Gln Cys Leu Cys Arg Ser Gly Phe Ala Gly Thr Ala	
1995 2000 2005	
tgt gaa ctc tgt gct cct ggt gcc ttt ggg ccc cat tgt caa gcc	6090
Cys Glu Leu Cys Ala Pro Gly Ala Phe Gly Pro His Cys Gln Ala	
2010 2015 2020	
tgc cgc tgc act gtg cat ggc cgc tgt gat gag gcc ctt ggg gcc	6135
Cys Arg Cys Thr Val His Gly Arg Cys Asp Glu Gly Leu Gly Gly	
2025 2030 2035	

-continued

tct ggc tcc tgc ttc	tgt gat gaa ggc tgg	act ggg cca cgc tgt	6180
Ser Gly Ser Cys Phe	Cys Asp Glu Gly Trp	Thr Gly Pro Arg Cys	
2040	2045	2050	
gag gtg caa ctg gag	ctg cag cct gtg tgt	acc cca ccc tgt gca	6225
Glu Val Gln Leu Glu	Leu Gln Pro Val Cys	Thr Pro Pro Cys Ala	
2055	2060	2065	
ccc gag gct gtg tgc	cgt gca ggc aac agc	tgt gag tgc agc ctg	6270
Pro Glu Ala Val Cys	Arg Ala Gly Asn Ser	Cys Glu Cys Ser Leu	
2070	2075	2080	
ggc tat gaa ggg gat	ggc cgc gtg tgt aca	gtg gca gac ctg tgc	6315
Gly Tyr Glu Gly Asp	Gly Arg Val Cys Thr	Val Ala Asp Leu Cys	
2085	2090	2095	
cag gac ggg cat ggt	ggc tgc agt gag cac	gcc aac tgt agc cag	6360
Gln Asp Gly His Gly	Gly Cys Ser Glu His	Ala Asn Cys Ser Gln	
2100	2105	2110	
gta gga aca atg gtc	act tgt acc tgc ctg	ccc gac tac gag ggt	6405
Val Gly Thr Met Val	Thr Cys Thr Cys Leu	Pro Asp Tyr Glu Gly	
2115	2120	2125	
gat ggc tgg agc tgc	cgg gcc cgc aac ccc	tgc aca gat ggc cac	6450
Asp Gly Trp Ser Cys	Arg Ala Arg Asn Pro	Cys Thr Asp Gly His	
2130	2135	2140	
cgc ggg ggc tgc agc	gag cac gcc aac tgc	ttg agc acc ggc ctg	6495
Arg Gly Gly Cys Ser	Glu His Ala Asn Cys	Leu Ser Thr Gly Leu	
2145	2150	2155	
aac aca cgg cgc tgt	gag tgc cac gca ggc	tac gta ggc gat gga	6540
Asn Thr Arg Arg Cys	Glu Cys His Ala Gly	Tyr Val Gly Asp Gly	
2160	2165	2170	
ctg cag tgt ctg gag	gag tcg gaa cca cct	gtg gac cgc tgc ttg	6585
Leu Gln Cys Leu Glu	Glu Ser Glu Pro Pro	Val Asp Arg Cys Leu	
2175	2180	2185	
ggc cag cca ccg ccc	tgc cac tca gat gcc	atg tgc act gac ctg	6630
Gly Gln Pro Pro Pro	Cys His Ser Asp Ala	Met Cys Thr Asp Leu	
2190	2195	2200	
cac ttc cag gag aaa	cgg gct ggc gtt ttc	cac ctc cag gcc acc	6675
His Phe Gln Glu Lys	Arg Ala Gly Val Phe	His Leu Gln Ala Thr	
2205	2210	2215	
agc ggc cct tat ggt	ctg aac ttt tcg gag	gct gag gcg gca tgc	6720
Ser Gly Pro Tyr Gly	Leu Asn Phe Ser Glu	Ala Glu Ala Ala Cys	
2220	2225	2230	
gaa gca cag gga gcc	gtc ctt gct tca ttc	cct cag ctc tct gct	6765
Glu Ala Gln Gly Ala	Val Leu Ala Ser Phe	Pro Gln Leu Ser Ala	
2235	2240	2245	
gcc cag cag ctg ggc	ttc cac ctg tgc ctc	atg ggc tgg ctg gcc	6810
Ala Gln Gln Leu Gly	Phe His Leu Cys Leu	Met Gly Trp Leu Ala	
2250	2255	2260	
aat ggc tcc act gcc	cac cct gtg gtt ttc	cct gtg gcg gac tgt	6855
Asn Gly Ser Thr Ala	His Pro Val Val Phe	Pro Val Ala Asp Cys	
2265	2270	2275	
ggc aat ggt cgg gtg	ggc gta gtc agc ctg	ggt gcc cgc aag aac	6900
Gly Asn Gly Arg Val	Gly Val Val Ser Leu	Gly Ala Arg Lys Asn	
2280	2285	2290	
ctc tca gaa cgc tgg	gat gcc tac tgc ttc	cgt gtg caa gat gtg	6945
Leu Ser Glu Arg Trp	Asp Ala Tyr Cys Phe	Arg Val Gln Asp Val	
2295	2300	2305	
gcc tgc cga tgc cga	aat ggc ttc gtg ggt	gac ggg atc agc acg	6990
Ala Cys Arg Cys Arg	Asn Gly Phe Val Gly	Asp Gly Ile Ser Thr	
2310	2315	2320	

-continued

---

tgc aat ggg aag ctg ctg gat gtg ctg gct gcc act gcc aac ttc	7035
Cys Asn Gly Lys Leu Leu Asp Val Leu Ala Ala Thr Ala Asn Phe	
2325 2330 2335	
tcc acc ttc tat ggg atg cta ttg ggc tat gcc aat gcc acc cag	7080
Ser Thr Phe Tyr Gly Met Leu Leu Gly Tyr Ala Asn Ala Thr Gln	
2340 2345 2350	
cgg ggt ctc gac ttc ctg gac ttc ctg gat gat gag ctc acg tat	7125
Arg Gly Leu Asp Phe Leu Asp Phe Leu Asp Asp Glu Leu Thr Tyr	
2355 2360 2365	
aag aca ctc ttc gtc cct gtc aat gaa ggc ttt gtg gac aac atg	7170
Lys Thr Leu Phe Val Pro Val Asn Glu Gly Phe Val Asp Asn Met	
2370 2375 2380	
acg ctg agt ggc cca gac ttg gag ctg cat gcc tcc aac gcc acc	7215
Thr Leu Ser Gly Pro Asp Leu Glu Leu His Ala Ser Asn Ala Thr	
2385 2390 2395	
ctc cta agt gcc aac gcc agc cag ggg aag ttg ctt ccg gcc cac	7260
Leu Leu Ser Ala Asn Ala Ser Gln Gly Lys Leu Leu Pro Ala His	
2400 2405 2410	
tca ggc ctc agc ctc atc atc agt gac gca ggc cct gac aac agt	7305
Ser Gly Leu Ser Leu Ile Ile Ser Asp Ala Gly Pro Asp Asn Ser	
2415 2420 2425	
tcc tgg gcc cct gtg gcc cca ggg aca gtt gtg gtt agc cgt atc	7350
Ser Trp Ala Pro Val Ala Pro Gly Thr Val Val Val Ser Arg Ile	
2430 2435 2440	
att gtg tgg gac atc atg gcc ttc aat ggc atc atc cat gct ctg	7395
Ile Val Trp Asp Ile Met Ala Phe Asn Gly Ile Ile His Ala Leu	
2445 2450 2455	
gcc agc ccc ctc ctg gca ccc cca cag ccc cag gca gtg ctg gcg	7440
Ala Ser Pro Leu Leu Ala Pro Pro Gln Pro Gln Ala Val Leu Ala	
2460 2465 2470	
cct gaa gcc cca cct gtg gcg gca ggc gtg ggg gct gtg ctt gcc	7485
Pro Glu Ala Pro Pro Val Ala Ala Gly Val Gly Ala Val Leu Ala	
2475 2480 2485	
gct gga gca ctg ctt ggc ttg gtg gcc gga gct ctc tac ctc cgt	7530
Ala Gly Ala Leu Leu Gly Leu Val Ala Gly Ala Leu Tyr Leu Arg	
2490 2495 2500	
gcc cga ggc aag ccc acg ggc ttt ggc ttc tct gcc ttc cag gcg	7575
Ala Arg Gly Lys Pro Thr Gly Phe Gly Phe Ser Ala Phe Gln Ala	
2505 2510 2515	
gaa gat gat gct gac gac gac ttc tca ccg tgg caa gaa ggg acc	7620
Glu Asp Asp Ala Asp Asp Asp Phe Ser Pro Trp Gln Glu Gly Thr	
2520 2525 2530	
aac ccc acc ctg gtc tct gtc ccc aac cct gtc ttt ggc agc gac	7665
Asn Pro Thr Leu Val Ser Val Pro Asn Pro Val Phe Gly Ser Asp	
2535 2540 2545	
acc ttt tgt gaa ccc ttc gat gac tca ctg ctg gag gag gac ttc	7710
Thr Phe Cys Glu Pro Phe Asp Asp Ser Leu Leu Glu Glu Asp Phe	
2550 2555 2560	
cct gac acc cag agg atc ctc aca gtc aag tgacgaggct ggggctgaaa	7760
Pro Asp Thr Gln Arg Ile Leu Thr Val Lys	
2565 2570	
gcagaagcat gcacagggag gagaccactt ttattgcttg tctgggtgga tggggcagga	7820
ggggctgagg gectgtccca gacaataaag tgccctcagc ggatgtgggc catgtcacc	7879

---

1. (canceled)
2. The method according to claim 16 for treating or preventing cancer by reducing the size of malignant tumor and/or by reducing malignant tumor growth in an individual, wherein the agent is capable of counteracting the influence of or down-regulating the expression of the Clever-1 protein.
3. The method according to claim 2, wherein the agent is selected from the group consisting of an antagonist antibody, soluble Clever-1, a peptide, an aptamer, a small molecule inhibitor, an antisense oligonucleotide, a small interfering RNA (siRNA), or a ribozyme.
4. The method according to claim 3, wherein the antibody is a monoclonal antibody.
5. The method according to claim 4, wherein the monoclonal antibody is, for example, 3-266 (DSM ACC2519) or 3-372 (DSM ACC2520).
6. The method according to claim 2, wherein the cancer is a sarcoma or a carcinoma, especially melanoma or lymphoma.
7. The method according to claim 16 for maintaining fetomaternal tolerance and/or prevention of a pregnancy complication in a pregnant woman, wherein the agent to be administered to the woman is
  - i) an agent, which up regulates the expression of the Clever-1 protein or which stimulates said protein, or
  - ii) cells according to claim 16, wherein said cells have been cultivated in vitro.
8. The method according to claim 7 wherein the agent is selected from the group consisting of an agonist antibody and a small molecule agonist.
9. The method according to claim 8, wherein the agent is an immune suppressing agent such as an anti-inflammatory agent, especially interleukin-4, interleukin-13 or a steroid hormone such as dexamethasone, or a combination thereof.
10. The method according to claim 7 wherein the pregnancy complication is a spontaneous abortion or pre-eclampsia.
11. An isolated cell (type 3 macrophage) which is a type 2 macrophage cell that comprises a Clever-1 receptor, wherein said cell is derived from an individual's tumor or placenta, or from the blood of a pregnant woman.
12. The cell according to claim 11 where the receptor comprises the entire sequence SEQ ID NO. 1 or a modification thereof or a fragment thereof.
13. The cell according to claim 11 which has been cultivated under in vitro conditions.
14. A method for screening of cancer patients that may respond to an anti-Clever-1 therapy, said method comprising
  - a) detecting or quantifying of the level of Clever-1 protein in a tumor sample derived from said patient,
  - b) comparing the result to a control, and
  - c) attributing an increased level of Clever-1 protein in the sample to a responsiveness to said therapy.
15. A method for diagnosing of a pregnancy complication or for estimating the risk of such complication in a pregnant woman, said method comprising
  - a) detecting or quantifying the level of Clever-1 protein in a tissue or body fluid from said woman,
  - b) comparing the result to a control, and
  - c) attributing a lack of or a decreased level of Clever-1 protein in the sample to a pregnancy complication or a risk therefore.
16. A method of affecting the immune system of an individual in need therefore and of treating a disease or condition related to the function of said immune system comprising administering an agent to the individual in need thereof, wherein the agent modulates the Clever-1 receptor or a type 3 macrophage cell.

\* \* \* \* \*

专利名称(译)	基于此的新细胞和治疗和诊断方法		
公开(公告)号	<a href="#">US20120027770A1</a>	公开(公告)日	2012-02-02
申请号	US13/262088	申请日	2010-04-06
申请(专利权)人(译)	法龙制药OY		
当前申请(专利权)人(译)	法龙制药OY		
[标]发明人	JALKANEN SIRPA SALMI MARKO JALKANEN MARKKU		
发明人	JALKANEN, SIRPA SALMI, MARKO JALKANEN, MARKKU		
IPC分类号	A61K39/395 A61P37/04 G01N33/53 A61K38/20 C12N5/071 C12Q1/68 A61K39/00 A61P35/00		
CPC分类号	A61K2039/505 C07K16/28 C12Q1/6883 C12N15/115 C12N15/1138 A61K38/202 C12Q1/6886 A61K38/17 A61K35/15 A61K31/58 A61K38/2026 A61P15/00 A61P15/06 A61P35/00 A61P37/02 A61P37/04 A61P43/00		
优先权	2009000161 2009-04-22 FI		
其他公开文献	US8722045		
外部链接	<a href="#">Espacenet</a> <a href="#">USPTO</a>		

摘要(译)

本发明涉及一种衍生自人体的新细胞，其中所述细胞包含Clever-1受体；一种影响个体免疫系统的方法和用于治疗与免疫系统功能相关的疾病或病症的方法，以及用于筛选可能对抗Clever-1疗法有反应或用于诊断a的癌症患者的方法。妊娠并发症或估计孕妇出现这种并发症的风险。

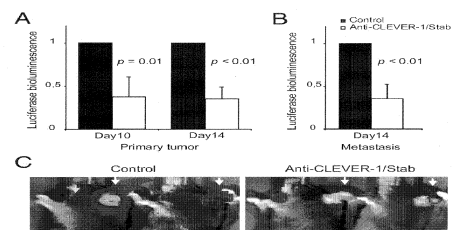


FIG. 1A

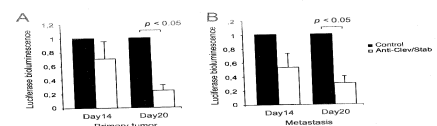


FIG. 1B