



US008722343B2

(12) **United States Patent**
Perego et al.

(10) **Patent No.:** **US 8,722,343 B2**
(45) **Date of Patent:** **May 13, 2014**

(54) **METHODS AND COMPOSITIONS FOR THE DIAGNOSIS AND TREATMENT OF DIABETES**

FOREIGN PATENT DOCUMENTS

EP 0 200 412 A2 11/1986
WO WO 9204632 A1 3/1992

(75) Inventors: **Carla Perego**, Usmake Velate (IT);
Eliana Sara Di Cairano, Milan (IT);
Alberto Davalli, Milan (IT); **Franco Folli**, San Antonio, TX (US)

OTHER PUBLICATIONS

Boston-Howes, W. et al., "Nordihydroguaiaretic acid increases glutamate uptake in vitro and in vivo: Therapeutic implications for amyotrophic lateral sclerosis." *Experimental Neurology*, Academic Press, New York, NY, US, vol. 213, No. 1, Sep. 1, 2008, pp. 229-23, XP024100583, ISSN: 0014-4886.

(73) Assignees: **Carla Perego**, Usmate Velate (IT);
Alberto Davalli, Milan (IT); **Franco Folli**, San Antonio, TX (US)

Winter, William E., et al., "Type 1 diabetes islet autoantibody markers." *Diabetes Technology & Therapeutics* 2002, vol. 4, No. 6, 2002, pp. 817-839, XP002575517, ISSN: 1520-9156.

(*) Notice: Subject to any disclaimer, the term of this patent is extended or adjusted under 35 U.S.C. 154(b) by 11 days.

Schmidt, K. D. et al., "Autoantibodies in Type 1 diabetes." *Clinica Chimica Acta*, Elsevier BV, Amsterdam, NL, vol. 354, No. 1-2, Apr. 1, 2005, pp. 35-40, XP004770124, ISSN: 0009-8981.

(21) Appl. No.: **13/130,196**

Manfras, B. J. et al., "Cloning and characterization of glutamate transporter cDNA from human brain and pancreas." *Biochimica ET Biophysica Acta Biomembranes*, Amsterdam, NL, vol. 1195, No. 1, Oct. 12, 1994, pp. 185-188, XP02335429, ISSN: 0005-2736.

(22) PCT Filed: **Nov. 20, 2009**

Manfras, B. J. et al., "Expression of a glutamate transporter cDNA in human pancreatic islets." *Experimental and Clinical Endocrinology & Diabetes: official Journal, German Society of Endocrinology [and] German Diabetes Association* 1995, vol. 103 Suppl 2, 1995, pp. 95-98, XP8120781, ISSN: 0947-7349.

(86) PCT No.: **PCT/EP2009/008256**

§ 371 (c)(1),
(2), (4) Date: **May 19, 2011**

Boehm B. O., et al., "Lack of L-glutamate transporter transcription in human pancreatic islets." *Diabetologia*, vol. 36, No. Suppl. 1, 1993, p. A80, XP008120776 & 29th Annual Meeting of the European Association for the Study of Diabetes; Istanbul, Turkey; Sep. 6-10, 1993, ISSN: 0012-186X.

(87) PCT Pub. No.: **WO2010/057647**

PCT Pub. Date: **May 27, 2010**

Lee, Seung-Hee et al., "Cytoprotective effects of polyenoylphosphatidylcholine (PPC) on beta-cells during diabetic induction by streptozotocin." *The Journal of Histochemistry and cytochemistry; Official Journal of the Histochemistry Society* Aug. 2003, pp. 1005-1015, XP002575519, ISSN: 0022-1554.

(65) **Prior Publication Data**

US 2011/0244486 A1 Oct. 6, 2011

Toyoda et al., "GLP-1 receptor signaling protects pancreatic beta cells in intraportal islet transplant by inhibiting apoptosis." *Biochemical and Biophysical Research Communications*, Academic Press Inc. Orlando, FL, US, vol. 367, No. 4, Jan. 22, 2008, pp. 793-798, XP022449875, ISSN: 0006-291X.

Related U.S. Application Data

(60) Provisional application No. 61/116,866, filed on Nov. 21, 2008.

Pileggi, A., et al., "Protecting Pancreatic .Beta. -Cells." *IUBMB Life*, Taylor and Francis, London, GB, vol. 56, No. 7, Jan. 1, 2004, pp. 387-394, XP008068163, ISSN: 1521-6543.

(51) **Int. Cl.**
G01N 33/48 (2006.01)
G01N 33/49 (2006.01)
G01N 33/53 (2006.01)

Roisin-Bouffay, C., et al., "Mouse Vanin-1 is cytoprotective for islet beta cells and regulates the development of type 1 diabetes." *Diabetologia; Clinical and Experimental Diabetes and Metabolism*, Springer, Berlin, DE, vol. 51, No. 7, May 8, 2008, pp. 1192-1201, XP019618442, ISSN: 1432-0428.

(52) **U.S. Cl.**
USPC **435/7.1**

Primary Examiner — Michael Pak

(58) **Field of Classification Search**
None
See application file for complete search history.

(74) *Attorney, Agent, or Firm* — Lucas & Mercanti, LLP

(56) **References Cited**

U.S. PATENT DOCUMENTS

6,074,828 A 6/2000 Amara et al.
2007/0218519 A1 9/2007 Urdea et al.

(57) **ABSTRACT**

Methods, assays and compositions for the diagnosis and treatment of diabetes, in which the glutamate transporters and/or receptors expressed in pancreatic islet cells are used as therapeutic targets or tools for the identification or treatment of individuals suffering from or susceptible to diabetes.

4 Claims, 11 Drawing Sheets

FIG. 1A

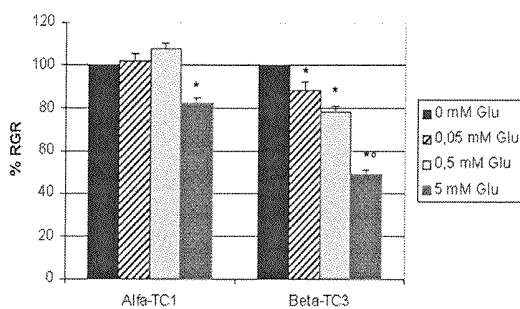


FIG. 1B

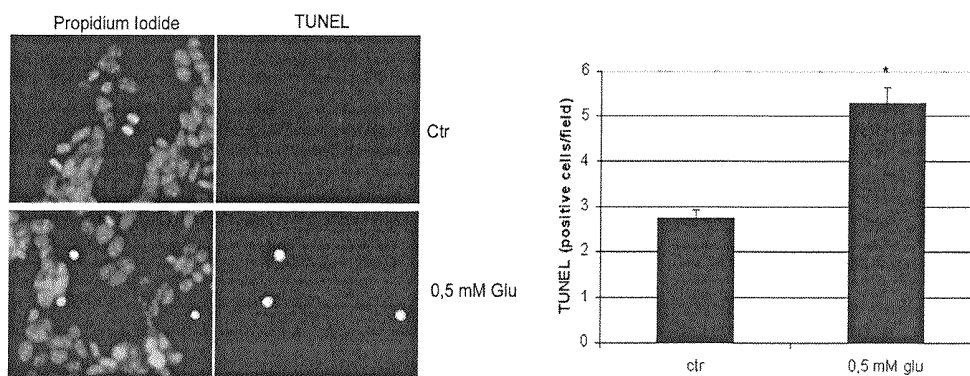


FIG. 1C

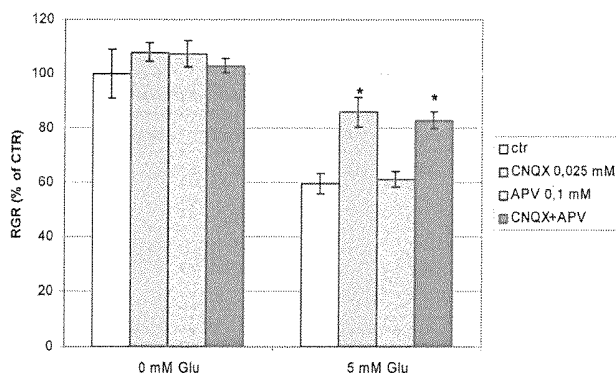


FIG. 2A

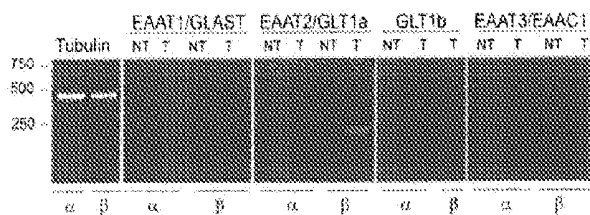


FIG. 2B

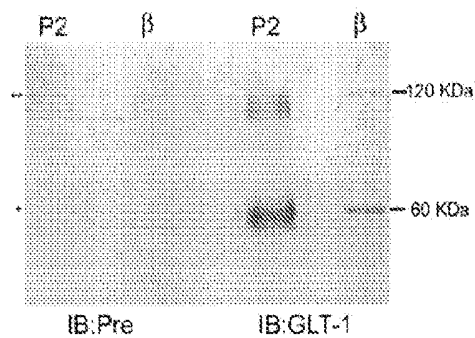


FIG. 2C

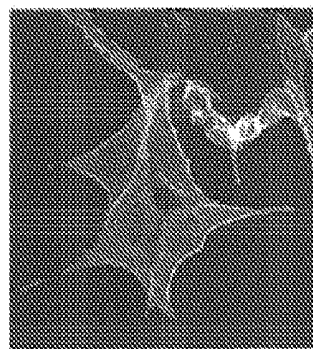


FIG. 2D

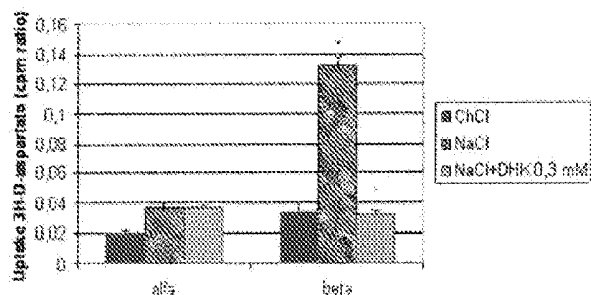


FIG. 3A

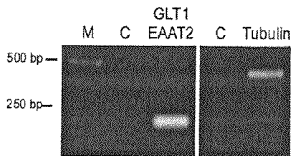


FIG. 3B

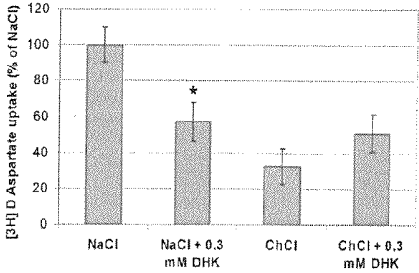


Fig. 3C

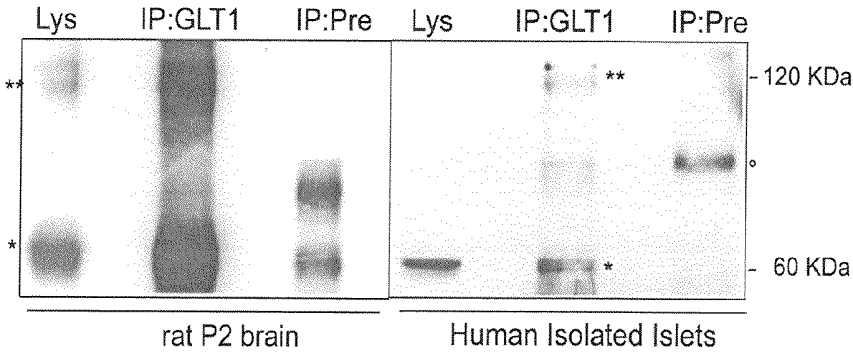


FIG. 4A

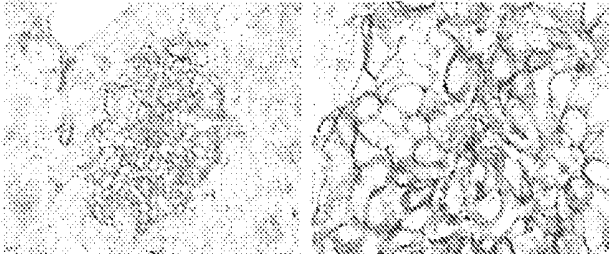


FIG. 4B

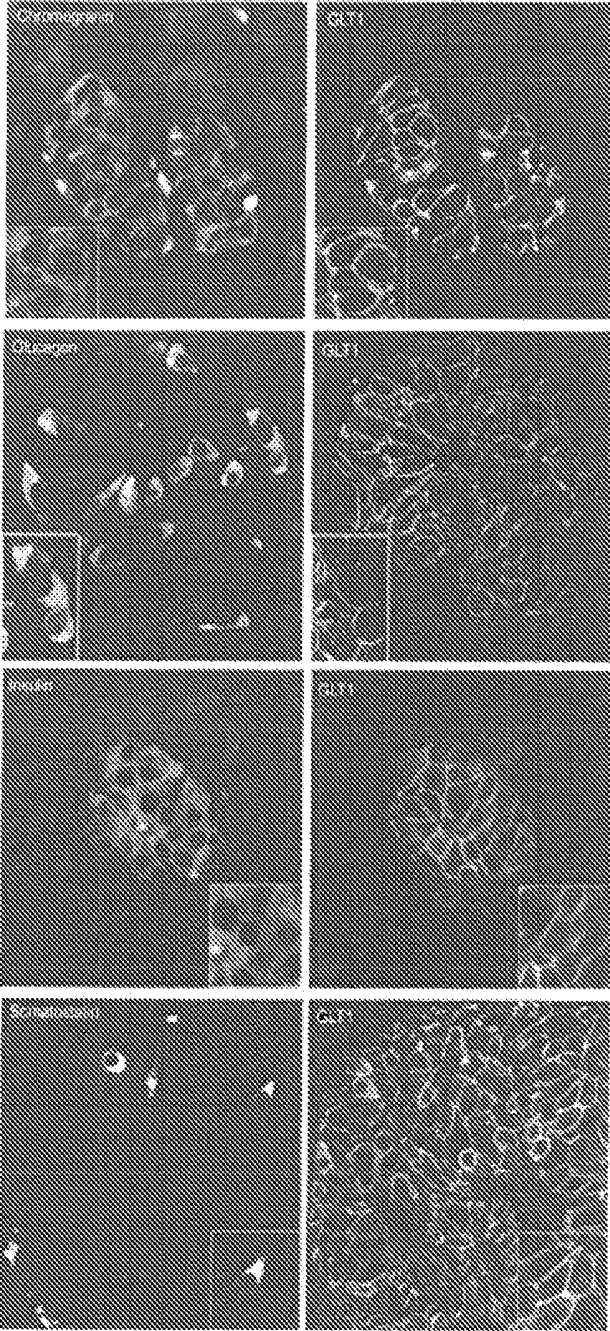


FIG. 5

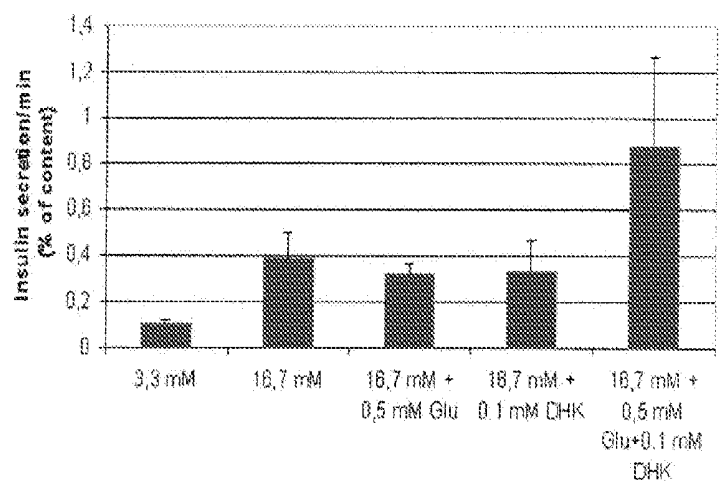


FIG. 6A

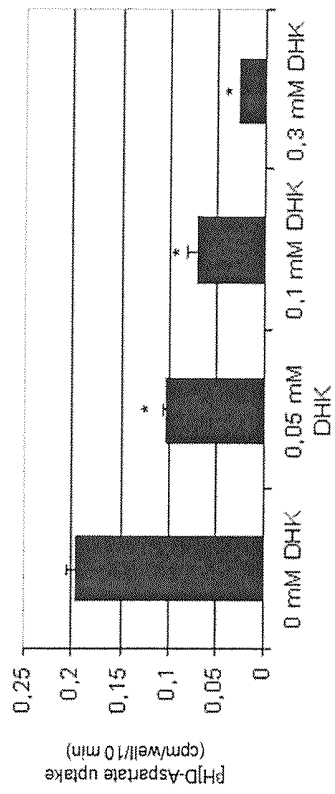


FIG. 6B

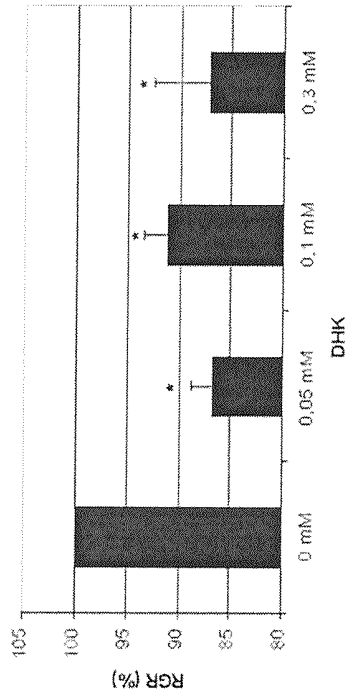


FIG. 6C

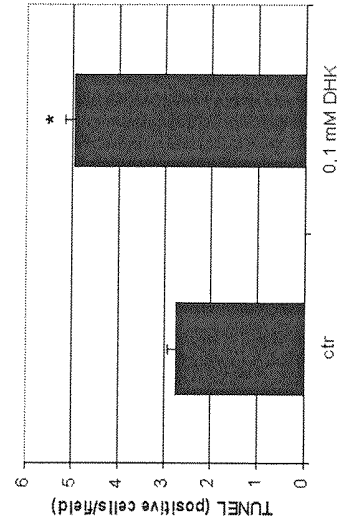
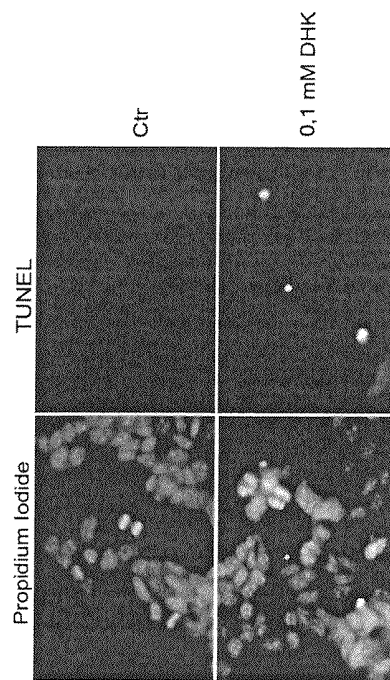


FIG. 6Db

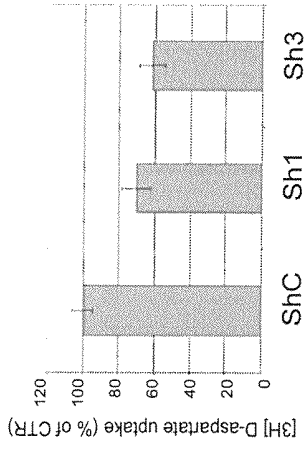


FIG. 6Da

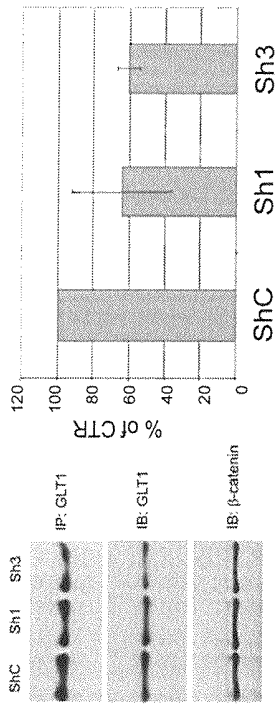


FIG. 6Dc

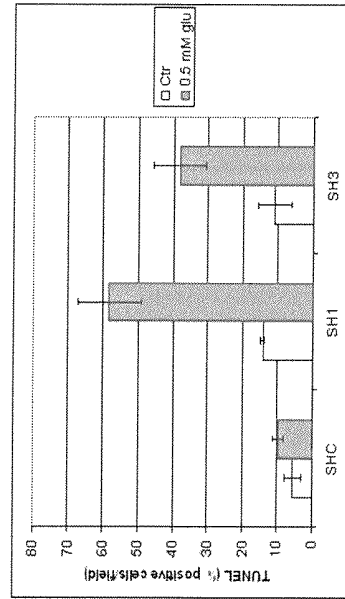
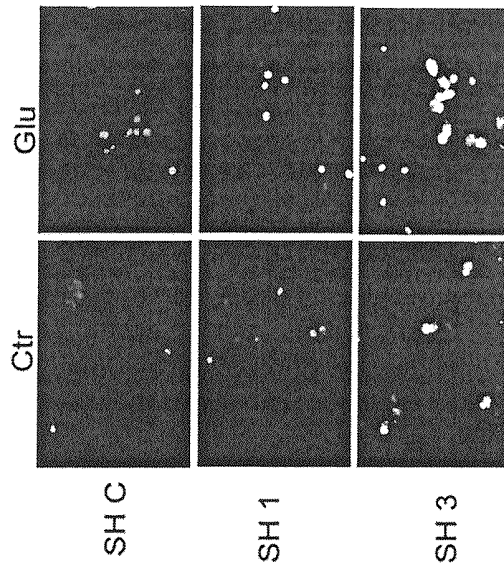


FIG. 7A

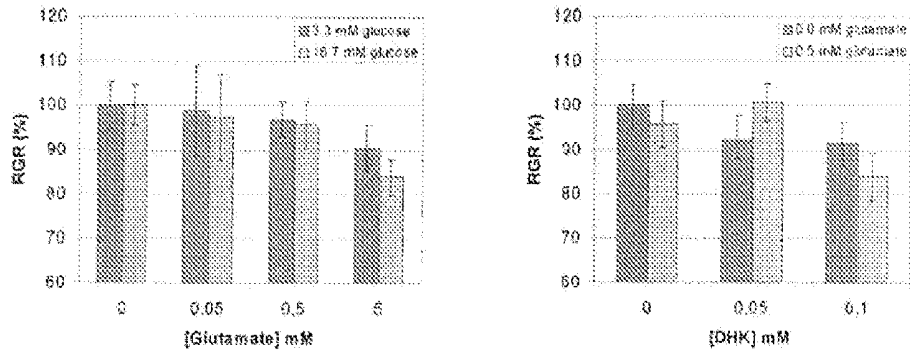


FIG. 7B

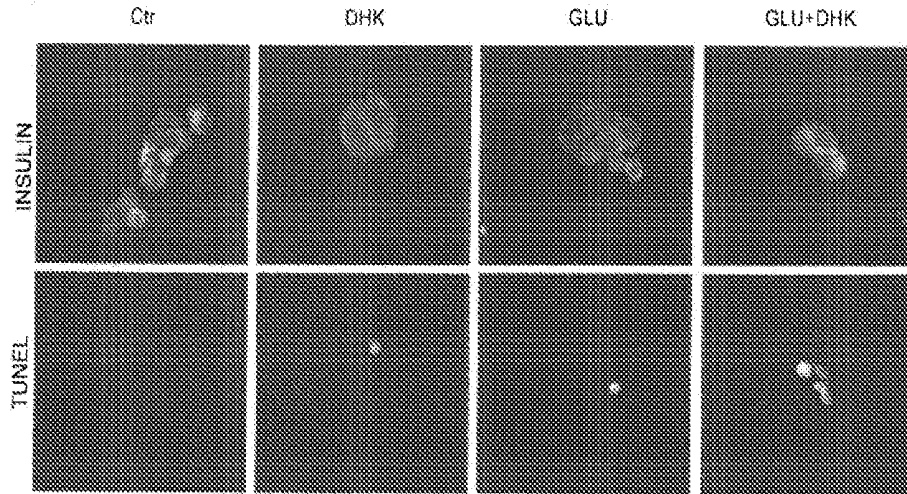


FIG.8A

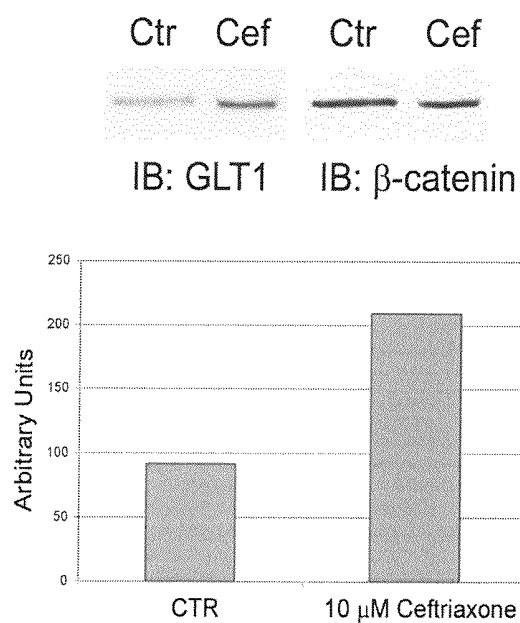


FIG.8B

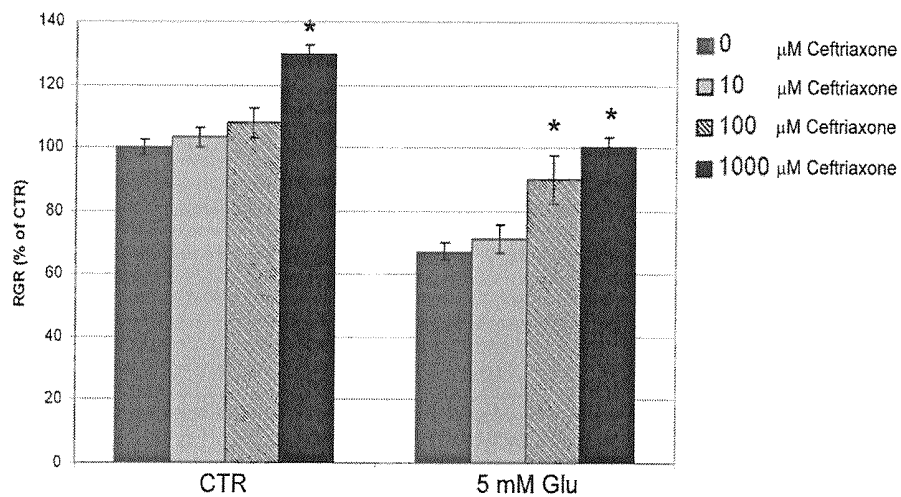


FIG. 9A

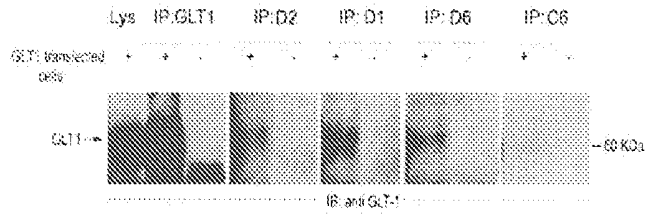


FIG. 9B

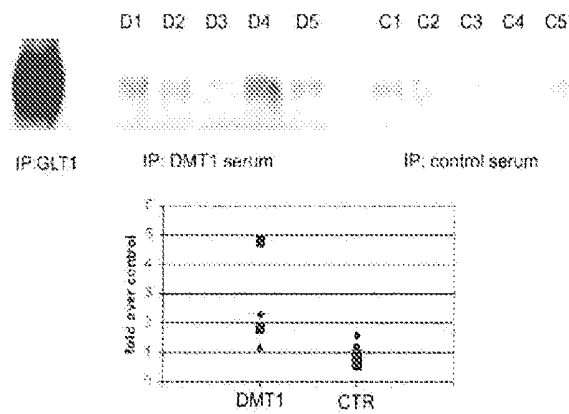


FIG. 9C

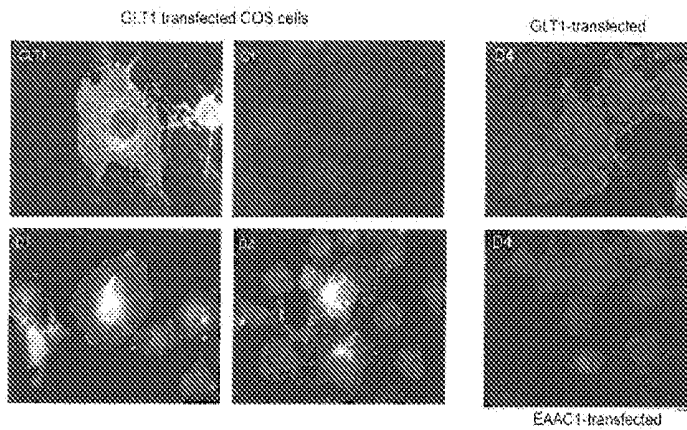


FIG. 9D

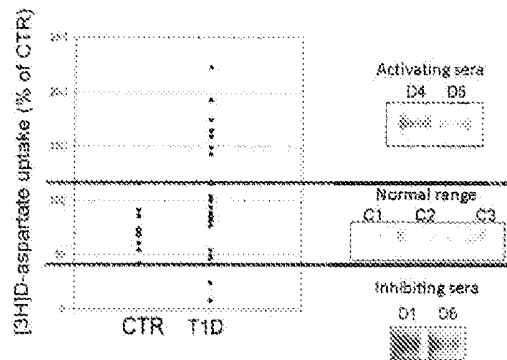
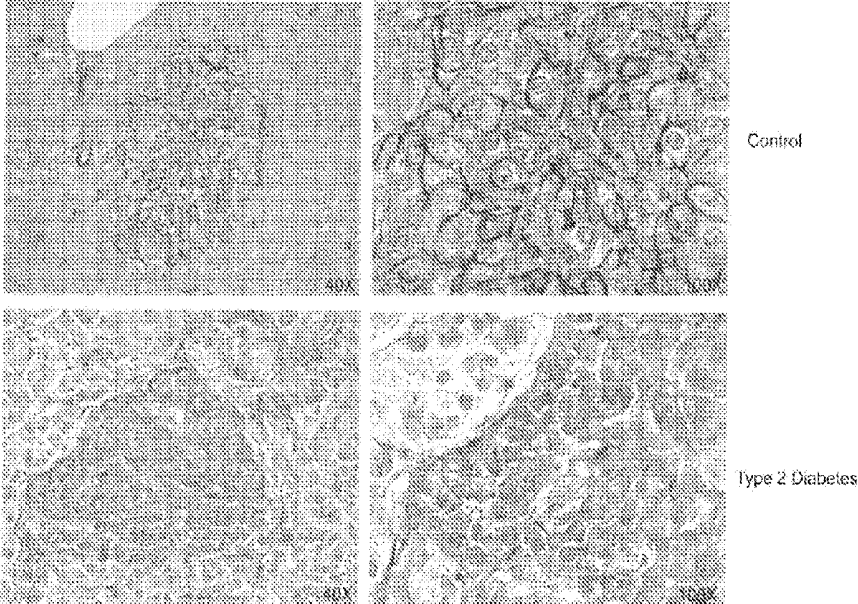


FIG. 10



METHODS AND COMPOSITIONS FOR THE DIAGNOSIS AND TREATMENT OF DIABETES

This application is a U.S. national stage of PCT/EP2009/008256 filed on Nov. 20, 2009 which claims priority to and the benefit of U.S. Provisional Application No. 61/116,866 filed on Nov. 21, 2008, the contents of which are incorporated herein by reference.

The present invention relates to methods, assays and compositions for the diagnosis and treatment of diabetes. More particularly, the invention regards the use of glutamate transporters and/or receptors expressed in pancreatic islet cells as therapeutic tools or targets for the identification or treatment of individuals suffering from or susceptible to diabetes.

BACKGROUND OF THE INVENTION

The pathogenesis of both type 1 (T1DM) and type 2 diabetes mellitus (T2DM) is characterized by the gradual loss of insulin secreting pancreatic beta cells that precedes the onset of hyperglycemia. In T1DM beta cells are destroyed by an autoimmune process. Conversely, in T2DM is the combination of different stressful insults (insulin resistance with chronic insulin hypersecretion, low-grade chronic inflammation, redox stress and hyperglycemia itself) that, progressively, destroy the beta cells, with following hyperglucagonemia. During the preclinical stage, the remaining beta cells tend to compensate for ongoing beta cell loss by increasing insulin secretion and cell replication. These compensatory mechanisms maintain near-normoglycemia but do not arrest unremitting beta cell death. Ultimately, when residual beta cell mass is reduced to about 50% of the original, hyperglycemia occurs. Theoretically, the long preclinical phase present in both T1DM and T2DM, could allow therapeutic interventions aimed at promoting beta cell survival thereby preventing the development of overt diabetes.

The diagnosis of T1DM is commonly done in the presence of fasting hyperglycemia, a positive urine ketone test, and the detection of serological markers of diabetes autoimmunity. These are autoantibodies directed against the beta cell antigens insulin (IAA), glutamic acid decarboxylase (GAD) and insulinoma antigen 2 (IA-2). With the exclusion of insulin, none of these antigens is specific for the beta cell, being expressed also by other islet cell types (IA2) and GABAergic neurons (GAD). A proportion of patients shows autoantibodies directed against unknown cytoplasmic and membrane islet cell antigens (islet cell autoantibodies, ICA and islet cell surface autoantibodies, ICSA). Early reports showed that ICSA are cytotoxic for the beta cells but the actual existence of ICSA has been recently questioned. In subjects at risk of developing T1DM (first degree relatives of patients with T1DM) is the number and titre of the different autoantibodies that predict the development of the disease. Noteworthy, none of the autoantibodies described so far is pathogenic and they appear to be the results of "antigen spreading" consequent to beta death.

The diagnosis of T2DM is often occasional. T2DM patients are usually overweight, if not frankly obese, and insulin resistant. Insulin resistance induces beta cell hypersecretion and stimulates beta cell replication but, in genetically predisposed subjects, these compensatory mechanisms are destined to fail. In these subjects, chronic beta cell overstimulation, low-grade inflammation and redox stress (all features of the insulin resistant metabolic syndrome) progressively destroy the beta cells. Beta cell death is mediated by the accumulation of cytotoxic misfolded islet amyloid pancreatic

polypeptide (IAPP) oligomers. Normally, IAPP is localized on the insulin granules and is co-secreted with insulin. Under stress conditions, IAPP processing by the endoplasmic reticulum become abnormal and misfolded cytotoxic IAPP oligomers accumulate in the cell.

In addition, replicating beta cells are even more susceptible than quiescent beta cells to misfolded IAPP oligomers so that the growth of new beta cells is severely impaired. Eventually, misfolded IAPP form fibrils that precipitates in the so called amyloid deposits which are the pathologic markers of T2DM but are present already before the onset of overt hyperglycemia.

T1DM treatment is based on the administration of exogenous insulin injections. Human recombinant or synthetic insulin analogs are injected before every meal and at bedtime to replace the lack of glucose-stimulated and basal endogenous insulin secretion. Insulin injections are cytoprotective since, by putting at rest the residual beta cells, can slow their functional exhaustion. Moreover, insulin administration restores near-normal glucose levels and reduces the deadly effect that chronic hyperglycemia "per se" exerts on the beta cells (so called glucose-toxicity).

Pharmacological treatment of T2DM is based on the administration of oral hypoglycaemic agents (OHAs) which are divided into insulin sensitizers (metformin and glytazones) and insulin secretagogues (sulphonylureas and glinides). Both class of OHAs are efficacious in restoring near-normoglycemia but none of them can arrest the progressive beta cell death. This is the reason why, over time, exogenous insulin administration is often required also in T2DM patients (so called secondary failure of OHAs). Recently, it has been suggested that insulin sensitizers, by probably reducing the metabolic demand and decreasing beta cell overstimulation, can increase their life span while sulphonylureas, by acting in the opposite way, can actually accelerate beta cell death and the secondary failure to OHAs.

Glutamate is the predominant excitatory neurotransmitter in the mammalian central nervous system (CNS) and is critical for essentially all physiological processes ranging from control of motor and somatosensory functions to information processing and storage. Recent studies highlight the presence of glutamate signal in peripheral tissues, and in particular in the endocrine pancreas (for a review see Skerry et al, 2001; Nedergaard et al, 2002; Hinoi et al, 2004).

At least five Na⁺-dependent high affinity glutamate transporters (EAAT 1-5) have been identified. EAAC1/EAAT3 and EAAT4 are expressed in neuronal cells, GLT1/EAAT2 and GLAST/EAAT1 are restricted to glial cells, whereas EAAT5 is a retina specific glutamate transporter (for a review see Danbolt, 2001). Among these, GLT1 exhibits the highest level of expression and is responsible for most glutamate transport (Rothstein et al, 1996).

An high-affinity glutamate/aspartate transporter has been cloned from pancreas (Manfras et al, 1994), and pharmacological blockade of glutamate transporters with the non-selective TBOA inhibitor has been shown to modulate glucose-stimulated insulin secretion in pancreatic islets of (Weaver et al, 1998). However, it is not yet clear whether glutamate transporters are exclusively present in islet of Langherans, whether different isoforms are expressed in a cell specific-manner, as in the CNS, and their exact physiological relevance.

SUMMARY OF THE INVENTION

The invention is based on the unexpected finding that the glutamate transporter GLT1 is selectively expressed in pan-

creatic beta cells and that suppression of the transporter activity by pharmacological blockade or RNA interference is responsible for beta cells death, suggesting that a dysfunctional glutamate transport at the level of pancreatic cells or antibody-mediated blockage are involved in the pathogenesis of type 1 and type 2 diabetes mellitus (T1D or T2D). This finding is supported by the observations that autoantibodies against GLT1 are present in the serum of T1D patients and that intracellular GLT1 is detected in T2D patients, suggesting a direct role of the transporter in diabetes mellitus pathogenesis or progression.

According to a first embodiment, the invention is directed to a method for the diagnosis of diabetes in a subject, which comprises determining the presence of antibodies reactive to GLT1 in a biological fluid, preferably in a serum sample. Several assay formats can be used, in either liquid or solid phases, preferably through immuno-techniques in which the GLT1 transporter or an immunologically-active fragment thereof (e.g. an epitope-containing peptide) are contacted with a serum sample in conditions allowing the formation of an immune complex which is then detected by immunochemical or immunoenzymatic reactions. Alternatively, the presence of antibodies reactive to GLT1 in a biological fluid, preferably in a serum sample, is detected through a functional assay. A pancreatic cell line selected from beta TC3 or a cell line transfected with the GLT1 cDNA is incubated with a serum sample in conditions allowing the interaction of the antibodies with GLT1, and the modulating effects on GLT1 are determined through uptake experiments using a GLT1 radiolabelled substrate (glutamate or aspartate). The methods and assays according to the invention can be applied to the screening of individuals affected by diabetes or of subjects at risk of developing diabetes or LADA (Latent Autoimmune Diabetes in Adults).

In a further embodiment, the invention provides a method for the identification of compounds modulating the activity, expression or surface localization of GLT1, which comprises incubating the candidate compound with a pancreatic cell line selected from beta TC3 or a cell line transfected with the GLT1 cDNA and determining the GLT1-modulated effects through uptake, immunoprecipitation and western blotting and immunofluorescence experiments (described in materials and methods). Since GLT1 is endogenously expressed in beta-TC3, the latter can be used in cell-based assays for the screening of molecules having potential antidiabetic activity.

As discussed above, the autoimmune response against GLT1 transporter was found to be one of the pathogenic factors involved in diabetes onset/progression. Therefore it may be desirable to induce immunotolerance to GLT1 by administering the protein or an antigenic fragment thereof to a subject affected by or susceptible to diabetes. Thus, in a further embodiment, the invention provides the use of GLT1, an immunogenic fragment or derivative thereof, for the preparation of an immunotherapeutic composition for the treatment of diabetes.

According to a preferred embodiment of the invention, the GLT1 (mouse and rattus)/EAAT2(human) splice variant GLT1a, belonging to the SLC1a2 family (solute carrier family 1 (glial high affinity glutamate transporter), member 2) is the reference GLT1 protein for use in the applications herein provided. The human and mouse GLT1 amino acid sequences are identified in SEQ ID NO:1 and 2, while the corresponding nucleotide sequences are identified in SEQ ID NO:3 and 4, respectively. The invention further includes variants and isoforms of such proteins, which maintain the functionality of glutamate transporter. For the uses herein envisaged, the structure and sequence of the GLT1 protein or peptides can be

modified for such purposes as increasing purification, enhancing therapeutic or preventive efficacy, or stability (e.g. shelf life ex vivo and resistance to proteolytic degradation in vivo).

Compounds increasing GLT1 activity or preventing GLT1 inactivation, internalization or degradation, can be used to prevent beta cells death and develop a cyto-protective therapy. Accordingly, in another embodiment the invention regards the use of molecules positively modulating, particularly increasing the expression or function of GLT1 for the preparation of antidiabetic medicaments. Examples of such molecules include, but are not limited to, growth factors (Figiel M, Maucher T, Rozyczka J, Bayatti N, Engele J (2003) "Regulation of glial glutamate transporter expression by growth factors", *Exp Neurol* 183:124-135), neuroimmunophilin (Ganel R, Ho T, Maragakis N J, Jackson M, Steiner J P, Rothstein J D (2006) "Selective up-regulation of the glial Na-dependent glutamate transporter GLT1 by a neuroimmunophilin ligand results in neuroprotection", *Neurobiol Dis* 21:556-567), cAMP analogs or agents activating adenylylate cyclase (Schlag B D, Vondrasek J R, Munir M, Kalandadze A, Zelenia O A, Rothstein J D, Robinson M B (1998) "Regulation of the glial Na-dependent glutamate transporters by cyclic AMP analogs and neurons" *Mol Pharmacol* 53:355-369), thiazolidinic compounds whose mechanism of action involves the activation of GLT1 transcription, estrogens, neuronal secreted factor(s) including the pituitary adenylylate cyclase activating peptide (Figiel M, Engele J (2000) "Pituitary adenylylate cyclase-activating polypeptide (PACAP), a neuron-derived peptide regulating glial glutamate transport and metabolism" *J Neurosci* 20:3596-3605), beta-lactam antibiotics such as ceftriaxone (Rothstein J D, Patel S, Regan M R, Haenggeli C, Huang Y H, Bergles D E, Jin L, Dykes Hoberg M, Vidensky S, Chung D S, Toan S V, Bruijn L I, Su Z Z, Gupta P, Fisher P B (2005) "Beta-lactam antibiotics offer neuroprotection by increasing glutamate transporter expression"; *Nature* 433:73-77). Ceftriaxone, which is currently used in human therapy, is particularly preferred for increasing GLT1 expression in endocrine pancreas. The data indicate an action of Ceftriaxone also in a beta cell model, therefore also beta lactam-like compounds acting on GLT1 transcriptional activity, but lacking anti-microbial activity and non BBB permeant will provide an ideal tool for the prevention or treatment of diabetes mellitus.

Since the inhibition or suppression of the transporter activity causes the accumulation of extracellular glutamate which produces excitotoxic effects by sustained activation of glutamate receptors, inhibiting the ionotropic glutamate receptors, particularly AMPA and kainate receptors, will provide a valuable therapeutic strategy for protecting beta cells from glutamate toxicity. Accordingly, in a further embodiment, the invention relates to the use of glutamate receptor antagonists, preferably compounds able to inhibit or block AMPA and/or kainate ionotropic glutamate receptors, for the manufacture of medicaments for the prevention or treatment of diabetes.

The compounds modulating glutamate-transporter or glutamate-receptor function/activity can be administered separately or in combination; the amount of each compound will depend on the pharmaceutical form, administration route, potential interactions with other drugs, general conditions of the patient and on the severity of the disease. Generally, an effective amount will allow a partial or total recovery from the disease or the alleviation of its symptoms.

DETAILED DESCRIPTION OF THE INVENTION

Diagnostic Immuno Assay for Screening of DMT1 and LADA

The GLT1 protein is used in immunochemical assays to detect the presence of autoantibodies against the antigen in a serum sample and identify an individual at risk of developing diabetes. The GLT1 protein is incubated with the biological fluid to be tested under conditions which allow the antigen to complex with antibody in the fluid. The detection of complexes formed between the GLT1 protein or peptide and antibody is indicative of the presence of antibody against GLT1 protein in the serum sample.

Immunoprecipitation Assay

In this assay, GLT1 protein, recombinant or endogenously expressed in cells and tissues (brain), is incubated with the sample of biological fluid to be tested. The incubation is performed under conditions which allow the interaction between GLT1 protein and antibodies directed against the protein. The presence of complexes is revealed by immunoprecipitation with protein-A conjugated to beads and resolved by western blotting techniques using anti-GLT1 antibodies as a primary reagent and the appropriate secondary antibody. The detection of complexes formed between the GLT1 protein or peptide and antibody is indicative of the presence of antibody against GLT1 protein in the serum sample. The amount of label associated with the immunocomplex is compared to positive and negative controls to assess the presence or absence of anti-GLT1 antibody. In these assays, an immunoreactive form of the GLT1 protein, native, synthetic or recombinant forms of the whole molecule, or portions immunoreactive with an antibody against GLT1 may be used. In addition, modified GLT1 protein which has an amino acid sequence sufficiently duplicative of the GLT1 amino acid sequence so that they are immunoreactive with an autoantibody against GLT1 and provide an assay of suitable sensitivity and reliability can also be used. Beads formed of glass, polystyrene, polypropylene, dextran, agarose, sepharose, magnetic materials or other materials can be used to absorb protein-A.

Solid Phase Immunometric Assay

In this assay, purified GLT1 protein is immobilized on a solid phase support. The support is incubated with the sample of biological fluid to be tested. The incubation is performed under conditions which allow the interaction between immobilized GLT1 protein and antibodies directed against the protein. The solid phase support is then separated from the sample and a labeled anti-(human IgG) antibody is used to detect human anti-GLT1 antibody bound to the support. The amount of label associated with the support is compared to positive and negative controls to assess the presence or absence of anti-GLT1 antibody. In these assays, an immunoreactive form of the GLT1 protein or peptide are used. Native, synthetic or recombinant purified forms of the whole molecule, or portions immunoreactive with an antibody against GLT1 may be used. In addition, modified GLT1 protein which has an amino acid sequence sufficiently duplicative of the GLT1 amino acid sequence so that they are immunoreactive with an autoantibody against GLT1 and provide an assay of suitable sensitivity and reliability can also be used.

In the solid phase immunometric assay, purified GLT1 antigen can be adsorbed or chemically coupled to a solid phase support. Various solid phase supports can be used, such as beads formed of glass, polystyrene, polypropylene, dextran or other material. Other suitable solid phase supports include tubes or plates formed from or coated with these materials. The GLT1 protein can be either covalently or non-covalently bound to the solid phase support by techniques such as covalent bonding via an amide or ester linkage or adsorption.

The support containing GLT1 protein, functions to selectively insolubilize antibody in the liquid sample tested. In a blood test for anti-GLT1 antibody, the support is incubated with blood plasma or serum. Before incubation, plasma or serum can be diluted with normal animal plasma or serum. The diluent plasma or serum is derived from the same animal species that is the source of the anti-(human IgG) antibody. The preferred anti-(human IgG) antibody is goat anti-(human IgG) antibody. Thus, in the preferred format, the diluent would be goat serum or plasma. The conditions of incubation, e.g., pH and temperature, and the duration of incubation are not crucial. These parameters can be optimized by routine experimentation. Generally, the incubation will be run for 1-2 hours at about 4° C. in a buffer of pH 7-8.

After incubation, the solid phase support and the sample are separated by any conventional technique such as sedimentation or centrifugation. The solid phase support then may be washed free of sample to eliminate any interfering substances.

To assess human antibody bound to the solid phase support, a labeled anti-(human IgG) antibody (tracer) is used. Generally, the solid phase support is incubated with a solution of the labeled anti-(human IgG) antibody which contains a small amount (about 1%) of the serum or plasma of the animal species which serves as the source of the anti-(human IgG) antibody. Anti-(human IgG) antibody can be obtained from any animal source. However, goat anti-(human IgG) antibody is preferred. The anti-(human IgG) antibody can be an antibody against the F_c fragment of human IgG, for example, goat anti-(human IgG) F_c antibody.

The anti-(human IgG) antibody can be labeled with a radioactive material such as ¹²⁵Iodine, with an optical label, such as a fluorescent material, or with an enzyme such as horseradish peroxidase. The antihuman antibody can also be biotinylated and labeled avidin used to detect its binding to the solid phase support.

After incubation with the labeled antibody, the solid phase support is separated from the solution and the amount of label associated with the support is evaluated. The label may be detected by a gamma counter if the label is a radioactive gamma emitter, or by a fluorimeter, if the label is a fluorescent material. In the case of an enzyme, the label may be detected calorimetrically employing a substrate for the enzyme.

The amount of label associated with the support is compared with positive and negative controls in order to determine the presence of anti-GLT1 antibody. The controls are generally run concomitantly with the sample to be tested. A positive control is a serum containing antibody against the GLT1 protein; a negative control is a serum from individuals (e.g., non-prediabetic individuals) which does not contain antibody against the GLT1 protein.

Diagnostic Functional Assay for Screening of DMT1 and LADA

In this assay, a pancreatic cell line selected from beta TC3 or a cell line transfected with wild type or recombinant GLT1 cDNA is incubated with the sample of biological fluid to be tested. The conditions of incubation, e.g., pH and temperature, and the duration of incubation can be optimized by routine experimentation. In a blood test for anti-GLT1 antibody, generally cells are incubated with blood plasma or serum for 2-3 hours at 37° C. Before incubation, plasma or serum is diluted at 20%.

The interaction of the antibodies with GLT1 is determined through uptake experiments using a GLT1 radioactive substrate (glutamate or aspartate).

The modulation (up or down regulation) of uptake values is indicative of the presence of antibodies against GLT1 protein

in the serum sample. The uptake values obtained in the presence of serum samples are corrected for the non-GLT1-mediated glutamate/aspartate uptake and compared to controls to assess the presence or absence of anti-GLT1 antibodies. The controls are uptake values obtained with non pre-diabetic or non diabetic subjects. The non-GLT1-mediated glutamate/aspartate uptake is calculated performing uptake experiments in the presence of 0.3 mM DHK. This method could be useful for routine T1D diagnosis, and presents several advantages: it is sensitive, specific and the results are quantitative and suitable for serial estimations. The assay, performed in 96-well plates, can be automated, allowing high-throughput screening, and resulting in materials, samples and time saving procedures; therefore the costs and the experimental variability can be reduced. It doesn't require any particular radioisotope, so less dangerous radioisotopes can be used for the aminoacid labelling.

Modification of GLT1 Molecule

A modified GLT1 protein or modified peptide can be produced in which the amino acid sequence has been altered, such as by amino acid substitution, deletion, or addition, to modify immunogenicity and/or increase therapeutic effectiveness or to which a component has been added for the same purpose. For example, additional amino acid residues derived from the GLT1 sequence or other sequence can be attached to either the amino terminus, the carboxy terminus, or both the amino terminus and carboxy terminus of the GLT1 protein. Non-GLT1 derived sequences include residues which may increase solubility or facilitate purification, such as a sequence attached to the GLT1 protein to aid purification of protein produced by recombinant technique (STREP-TAG). Site-directed mutagenesis of DNA encoding the GLT1 protein or a peptide thereof can be used to modify the structure of the GLT1 protein or peptide. Such methods may involve PCR (Ho et al., *Gene*, 77:51-59 (1989)) or total synthesis of mutated genes (Hostomsky, Z., et al., *Biochem. Biophys. Res. Comm.*, 161:1056-1063 (1989)).

Antigenic fragments or peptides derived from the GLT1 protein are within the scope of the invention. Fragments within the scope of the invention include those which induce an immune response in mammals, preferably humans, such as the production of IgG and IgM antibodies or elicit a T-cell response such as T-cell proliferation and/or lymphokine secretion and/or the induction of T-cell anergy. Fragments of the nucleic acid sequence coding for the GLT1 protein are also within the scope of the invention. As used herein, a fragment of a nucleic acid sequence coding for the GLT1 protein refers to a nucleotide sequence having fewer bases than the nucleotide sequence coding for the entire amino acid sequence of the GLT1 protein. Nucleic acid sequences used in any embodiment of this invention can be cDNA as described herein, or alternatively, can be any oligodeoxynucleotide sequence having all or a portion of a sequence represented herein, or their functional equivalents. Such oligodeoxynucleotide sequences can be produced chemically or automatically using known techniques.

Given the nucleic acid sequence and deduced amino acid sequence of the GLT1 protein, it is possible to identify peptides which contain T- or B-cell epitopes. An epitope is the basic element or smallest unit of recognition by a receptor where the epitope comprises amino acid residues essential to receptor recognition. For example, peptides containing T cell epitopes associated with interaction with the T-cell receptor (TCR) on helper T-cells can be identified. These T cell epitopes are usually at least 7 amino acid residues in length and, when associated with the MHC II glycoprotein present on the surface of antigen-presenting cells, form a complex

that interacts with the TCR. Relevant peptides comprising at least one T cell epitope of the PM-1 protein can be identified by dividing the GLT1 protein into overlapping or non-overlapping peptides of desired lengths, which may be produced recombinantly or synthetically. The peptides can be cultured in the presence of antigen-presenting cells in a standard T-cell proliferation assay to determine the ability of the peptide to stimulate T-cell proliferation as indicated by, for example, cellular uptake of labeled thymidine. Peptides derived from the GLT1 protein with altered structures can be designed which retain their ability to complex with MHC II glycoprotein but fail to effect reaction with TCR by assessing the ability of these altered peptides to inhibit the T-cell proliferation in the presence of known activators in this assay.

Immunological Therapy

The GLT1 protein can be employed in novel therapeutic methods to treat an autoimmune disease in an individual. The GLT1 protein, or antigenic fragment thereof, can be administered to a diabetic or prediabetic individual to prevent the progression or development of Type I diabetes in the individual. The GLT1 protein, or at least one antigenic fragment, in the form of a therapeutic composition, is administered simultaneously or sequentially to the individual in an amount effective to prevent the progression or development of diabetes in the individual. In addition, the therapeutic composition can be administered under non-immunogenic conditions to tolerize the individual to the GLT1 protein, rather than elicit an immune response. As used herein, tolerization is defined as non-responsiveness or diminution in symptoms upon exposure to the GLT1 protein. Techniques for administration of tolerizing doses of antigens are known in the art, including administration of the GLT1 protein, or fragment thereof, in the absence of adjuvant and/or in soluble form. Administration of a peptide derived from the GLT1 protein comprising at least one T cell epitope may tolerize appropriate T cell subpopulations such that they become unresponsive to the GLT1 protein. Therapeutic methods that utilize antagonist peptides of the GLT1 protein which bind the MHC II glycoprotein but result in a complex which is not interactive with the TCR can also be used.

The GLT1 protein or peptide thereof may be administered alone or in concert with anti-CD4 antibodies or other CD4 blockers. This approach to conferring tolerance is disclosed in U.S. Pat. Nos. 4,681,760 and 4,904,481. In this approach, the antigen and the anti-CD4 antibodies or immunoreactive fragments are administered concomitantly. By "concomitant" administration is meant within a time frame which permits the anti-CD4 component to block the helper T-cell response to the antigen. The nature of "concomitant" in this sense is described in the above-referenced U.S. patents, incorporated herein by reference.

The GLT1 protein or fragment thereof is combined with a pharmaceutically acceptable carrier or diluent to form a therapeutic composition. Pharmaceutically acceptable carriers include polyethylene glycol (Wie et al. *International Archives of Allergy and Applied Immunology* 64:84-99 (1981)) and liposomes (Strejan et al. *Journal of Neuroimmunology* 7:27 (1984)). Pharmaceutically acceptable diluents include saline and aqueous buffer solutions. Such compositions will generally be administered by injection subcutaneously, intravenously or intraperitoneally, oral administration, (e.g., as in the form of a capsule) inhalation, transdermal application or rectal administration.

Pharmacological Therapy

Although T1M and T2M are caused by different mechanisms, both types are characterized by a pronounced reduction in beta-cell mass (more than 50%), in late stages. As

decreases in cell mass can take several years to develop, a cyto-protective therapy may be useful for both types of diabetes. At least two different targets have been identified:

1. Ionotropic glutamate receptors (AMPA, kainate): data from FIG. 1C indicate that the pharmacological inhibition of AMPA, kainate receptors protects beta cells from glutamate toxicity. According to the invention, the following antagonists can be used for the treatment or prevention of diabetes or LADA.

AMPA/Kainate Selective: Antagonists

1) 4-(8-Methyl-9H-1,3-dioxolo[4,5-h][2,3]benzodiazepin-5-yl)-benzenamine hydrochloride

References: Tarnawa et al (1989) Electrophysiological studies with a 2,3-benzodiazepine muscle relaxant: GYKI 52466. *Eur. J. Pharmacol.* 167 193. Donevan and Rogawski (1993) GYKI 52466, a 2,3-benzodiazepine, is a highly selective, non-competitive antagonist of AMPA/kainate receptor responses. *Neuron* 10 51. Paternain et al (1995) Selective antagonism of AMPA receptors unmasks kainate receptor-mediated responses in hippocampal neurons. *Neuron* 14 185. Rzeski et al (2001) Glutamate antagonists limit tumor growth. *Proc. Natl. Acad. Sci. USA* 98 6372. Szabados et al (2001) Comparison of anticonvulsive and acute neuroprotective activity of three 2,3-benzodiazepine compounds, GYKI 52466, GYKI 53405, and GYKI 53655. *Brain Res. Bull.* 55 387.

2) 6-Cyano-7-nitroquinoxaline-2,3-dione

3) 6-Cyano-7-nitroquinoxaline-2,3-dione disodium

References: Honore et al (1988) Quinoxalinediones: potent competitive non-NMDA glutamate receptor antagonists. *Science* 241 701. Watkins et al (1990) Structure-activity relationships in the development of excitatory amino acid receptor agonists and competitive antagonists. *TIPS* 11 25. Long et al (1990) Effect of 6-cyano-2,3-dihydroxy-7-nitroquinoxaline (CNQX) on dorsal root-, NMDA-, kainate and quisqualate-mediated depolarization of rat motoneurons in vitro. *Br. J. Pharmacol.* 100 850. King et al (1992) Antagonism of synaptic potentials in ventral horn neurones by 6-cyano-7-nitroquinoxaline-2,3-dione: a study in the rat spinal cord in vitro. *Br. J. Pharmacol.* 107 375.

4) 6,7-Dinitroquinoxaline-2,3-dione

References: Honore et al (1988) Quinoxalinediones: potent competitive non-NMDA glutamate receptor antagonists. *Science* 241 701. Watkins et al (1990) Structure-activity relationships in the development of excitatory amino acid receptor agonists and competitive antagonists. *TIPS* 11 25.

5) 2,3-Dioxo-6-nitro-1,2,3,4-tetrahydrobenzo[f]quinoxaline-7-sulfonamide

References: Gill et al (1992) The neuroprotective actions of 2,3-dihydroxy-6-nitro-7-sulfamoylbenzo(f)quinoxaline (NBQX) in a rat focal ischaemia model. *Brain Res.* 580 35. Zeman and Lodge (1992) Pharmacological characterization of non-NMDA subtypes of glutamate receptors in the neonatal rat hemisectioned spinal cord in vitro. *Br. J. Pharmacol.* 106 367. Sheardown et al (1993) The pharmacology of AMPA receptors and their antagonists. *Stroke* 24 Suppl 1 146. Namba et al (1994) Antiepileptogenic and anticonvulsant effects of

NBQX, a selective AMPA receptor antagonist, in the rat kindling model of epilepsy. *Brain Res.* 638 36.

6) 2,3-Dioxo-6-nitro-1,2,3,4-tetrahydrobenzo[f]quinoxaline-7-sulfonamide disodium salt

References: Gill et al (1992) The neuroprotective actions of 2,3-dihydroxy-6-nitro-7-sulfamoylbenzo(f)quinoxaline (NBQX) in a rat focal ischaemia model. *Brain Res.* 580 35. Zeman and Lodge (1992) Pharmacological characterization of non-NMDA subtypes of glutamate receptors in the neonatal rat hemisectioned spinal cord in vitro. *Br. J. Pharmacol.* 106 367. Sheardown et al (1993) The pharmacology of AMPA receptors and their antagonists. *Stroke* 24 Suppl 1 146. Namba et al (1994) Antiepileptogenic and anticonvulsant effects of NBQX, a selective AMPA receptor antagonist, in the rat kindling model of epilepsy. *Brain Res.* 638 36.

7) 6,6-[(3,3'-Dimethyl[1,1'-biphenyl]-4,4'-diyl)bis(azo)bis[4-amino-5-hydroxy-1,3-naphthalenedisulphonic acid]tetrasodium salt

References: Merck Index 12 3952. Roseth et al (1995) Uptake of L-glutamate into rat brain synaptic vesicles: effect of inhibitors that bind specifically to the glutamate transporter. *J. Neurochem.* 65 96. Whittenburg et al (1996) P₂-purinoceptor antagonists: II blockade of P₂-purinoceptor subtypes and ecto-nucleotidase by compounds related to Evans blue and trypan blue. *Naunyn-Schmied. Arch. Pharmacol.* 354 491. Price and Raymond (1996) Evans blue antagonizes both α -amino-3-hydroxy-5-methyl-4-isoxazolepropionate and kainate receptors and modulates desensitization. *Mol. Pharmacol.* 50 1665. Schurmann et al (1997) Differential modulation of AMPA receptor mediated currents by Evans Blue in postnatal rat hippocampal neurones. *TIPS* 121 237.

8) (\pm)-4-(4-Aminophenyl)-1,2-dihydro-1-methyl-2-propylcarb amoyl-6,7-methylenedioxyphthalazine

References: Li et al (1996) Kainate-receptor-mediated sensory synaptic transmission in mammalian spinal cord. *Nature* 397 161. Pelletier et al (1996) Substituted 1,2-dihydrophthalazines: potent, selective and non-competitive inhibitors of the AMPA receptor. *J. Med. Chem.* 39 343. Bleakman et al (2002) Kainate receptor agonists, antagonists and allosteric modulators. *Curr. Pharm. Des.* 8 873.

9) (aS)-a-Amino-3-[(4-carboxyphenyl)methyl]-3,4-dihydro-2,4-dioxo-1(2H)-pyrimidinepropanoic acid

References: More et al (2002) The novel antagonist 3-CBW discriminates between kainate receptors expressed on neonatal rat motoneurons and those on dorsal root C-fibres. *Br. J. Pharmacol.* 137 1125. More et al (2003) Structural requirements for novel willardiine derivatives acting as AMPA and kainate receptor antagonists. *Br. J. Pharmacol.* 138 1093.

10) [[3,4-Dihydro-7-(4-morpholinyl)-2,3-dioxo-6-(trifluoromethyl)-1(2H)-quinoxaliny]methyl]phosphonic acid

References: Turski et al (1998) ZK200775: a phosphonate quinoxalinedione AMPA antagonist for neuroprotection in stroke and trauma. *Proc. Natl. Acad. Sci. USA.* 95 10960. Kosowski et al (2004) Nicotine-induced dopamine release in the nucleus accumbens is inhibited by the novel AMPA

antagonist ZK200775 and the NMDA antagonist CGP39551. *P psychopharmacology* 175 114. Elger et al (2005) Novel α -amino-3-hydroxy-5-methyl-4-isoxazole propionate (AMPA) receptor antagonists of 2,3-benzodiazepine type: chemical synthesis, in vitro characterization, and in vivo prevention of acute neurodegeneration. *J. Med. Chem.* 48 4618.
AMPA/Kainate Selective: Desensitization Modulators

11) 2-[2,6-Difluoro-4-[[2-(phenylsulfonyl)amino]ethyl]thio]phenoxy]acetamide

References: Sekiguchi et al (1997) A novel allosteric potentiator of AMPA receptors: 4-[2-(phenylsulfonylamino)ethylthio]-2,6-difluoro-phenoxyacetamide. *J. Neurosci.* 17 5760. Sekiguchi et al (2001) The AMPA receptor allosteric potentiator PEPA ameliorates post-ischemic memory impairment. *Neuroreport* 12 2974. Sekiguchi et al (2002) A desensitization-selective potentiator of AMPA-type glutamate receptors. *Br. J. Pharmacol.* 136 1033.

AMPA/Kainate Selective: Miscellaneous

12) (R)-a-Amino-3-hydroxy-5-methyl-4-isoxazolepropionic acid

References: Hansen et al (1983) Enzymic resolution and binding to rat brain membranes of the glutamic acid agonist α -amino-3-hydroxy-5-methyl-4-isoxazolepropionic acid. *J. Med. Chem.* 26 901. Lauridsen et al (1985) Ibotenic acid analogues. Synthesis, molecular flexibility, and in vitro activity of agonists and antagonists at central glutamic acid receptors. *J. Med. Chem.* 28 668.

AMPA Selective: Antagonist

13) 1-(4'-Aminophenyl)-3,5-dihydro-7,8-dimethoxy-4H-2,3-benzodiazepin-4-one

References: Chimirri et al (1997) 1-Aryl-3,5-dihydro-4H-2,3-benzodiazepin-4-ones: novel AMPA receptor antagonists. *J. Med. Chem.* 40 1258. De Sarro et al (1999) Effects of some AMPA receptor antagonists on the development of tolerance in epilepsy-prone rats and in pentylenetetrazole kindled rats. *Eur. J. Pharmacol.* 368 149. De Sarro et al (1999) Anticonvulsant activity and plasma level of 2,3-benzodiazepin-4-ones (CFMs) in genetically epilepsy-prone rats. *Pharmacol. Biochem. Behav.* 63 621.

14) N,N,N,-Trimethyl-5-[(tricyclo[3.3.1.1^{3,7}]dec-1-ylmethyl)amino]-1-pentanaminiumbromide hydrobromide

References: Magazanik et al (1997) Block of open channels of recombinant AMPA receptors and native AMPA/kainate receptors by adamantane derivatives. *J. Physiol.* 505 655. Buldakova et al (1999) Characterization of AMPA receptor populations in rat brain cells by the use of subunit-specific open channel blocking drug, IEM-1460. *Brain Res.* 846 52. Schlesinger et al (2005) Two mechanisms of action of the adamantane derivative IEM-1460 at human AMPA-type glutamate receptors. *Br. J. Pharmacol.* 145 656.

15) (S)-N-[7-[(4-Aminobutyl)amino]heptyl]-4-hydroxy-a-[(1-oxobutyl)amino]benzenepropanamide dihydrochloride

References: Nilsen and England (2007) A subtype-selective, use-dependent inhibitor of native AMPA receptors. *J. Am. Chem. Soc.* 129 4902.

16) 1,4-Dihydro-6-(1H-imidazol-1-yl)-7-nitro-2,3-quinoxalin edione hydrochloride

References: Ohmori et al (1994) 6-(1H-imidazol-1-yl)-7-nitro-2,3(1H,4H)-quinoxalinedione hydrochloride (YM90K) and related compounds: structure-activity relationships for the AMPA-type non-NMDA receptor. *J. Med. Chem.* 37 467. Umemura et al (1997) Neuroprotective effect of a novel AMPA receptor antagonist, YM90K, in rat focal cerebral ischaemia. *Brain Res.* 773 61. Nakano et al (2001) A potent AMPA/kainate receptor antagonist, YM90K, attenuates the loss of N-acetylaspartate in the hippocampal CA1 area after transient unilateral forebrain ischemia in gerbils. *Life Sci.* 69 1983.

15) Miscellaneous Glutamate:

17) g-D-Glutamylglycine

References: Jones et al (1984). Structure-activity relations of dipeptide antagonists of excitatory amino acids. *Neuroscience* 13 537. Aksenov et al (2005) Glutamate neurotransmission in the cerebellar interposed nuclei: involvement in classical conditioned eyeblinks and neuronal activity. *J. Neurophysiol.* 93 44.

25) 2. Glutamate transporter GLT1: as a further strategy to prevent beta-cell death in diabetic patient according to the present invention, GLT1 expression or localization or function is increased by means of:

drugs known to induce GLT1 expression: growth factors (BDNF, PDGF, FGF, CNGF, IGF); neuroimmunophilin; cAMP analogs or agents activating adenylate cyclase (PACAP, also expressed in pancreas); thiazolidinic compounds, whose mechanism of action involves the activation of GLT1 transcription; estrogen; b-lactam antibiotics such as ceftriaxone

30) drugs known to prevent GLT1 inactivation/internalization/degradation: anti-oxidants, in particular compounds against ROS (reactive oxygen species)

drugs known to increase GLT1 function: riluzole; nordhydroguaiaretic acid (Boston-Howes et al, (2008) Nordhydroguaiaretic acid increases glutamate uptake in vitro and in vivo: therapeutic implications for amyotrophic lateral sclerosis. *Exp. Neurol.* 213, 229) drugs acting on group I or group III metabotropic receptors (agonist or antagonist).

DESCRIPTION OF THE FIGURES

FIG. 1: CHRONIC GLUTAMATE INCUBATION CAUSES SELECTIVE B-CELL DEATH WHICH IS MEDIATED BY IONOTROPIC CHANNEL OVERACTIVATION.

1A: Glutamate induces a dose-dependent beta-cell death. 24 hrs after plating, α TC1 and β TC3 cells were incubated for five days with the indicated glutamate concentrations and viability was assessed by MTT assay. Data are presented as % Relative Growth Rate (RGR) versus controls (100%) and represent the mean \pm SE of at least 7 independent experiments (n=6). * p<0.01 vs ctrl; ° p<0.01 vs Glu 5 mM in α TC1.

1B: Glutamate overstimulation causes increased β -cell apoptosis. 24 hours after plating, β TC3 cells were incubated for five days with 0.5 mM glutamate, and cell apoptosis was assessed by TUNEL assay. The cell nuclei were labelled with PrI. Histograms on the right represent TUNEL positive cells per field, and are the mean \pm SE of two independent experiments performed in duplicate.

1C: β -cell death is prevented by pharmacological inhibition of ionotropic channels. 24 hrs after plating, α TC1 and

β TC3 cells were incubated for five days with 0.025 mM CNQX (left panel) or 0.1 mM APV (right panel), in the presence or the absence of 5 mM glutamate and viability was assessed by MTT assay. Data are presented as % RGR versus control samples (100%) and represent the mean \pm SE of three independent experiments (n=5). * p<0.05

FIG. 2: EXPRESSION OF HIGH-AFFINITY GLUTAMATE TRANSPORTER IN α TC1 AND β TC3

2A: PCR analysis of glutamate transporter types. Total RNA was extracted from β TC3 and α TC1 cells, and RT-PCR was performed with primers specific for the different glutamate transporter types (T) (GLAST, GLT1A, GLT1B and EAAC1) and for tubulin. As a negative control (NT) RT-PCR was performed in the absence of M-MLU reverse transcriptase. Left: DNA Marker.

2B: Immunoblotting of α TC1 and β TC3 lysates with specific anti-glutamate transporters antibodies. 20 μ g of brain P2 fraction or 20 μ g of β TC3 or α TC1 whole lysate extracts were separated onto a 9% SDS-PAGE and the expression of glutamate transporter was detected using specific anti-glutamate transporter antibodies or a pre-immune serum. **oligomer; *monomer

2C: GLT1 immunostaining. β TC3 cells were fixed in methanol and immunostained with an anti-GLT1 antibody followed by a FITC-conjugated anti rabbit IgG. bar=5 μ m

2D: 3H-D-Aspartate uptake. Four days after plating the Na-dependent (NaCl) and Na-independent (ChCl) [3H]-D-Aspartate uptake was measured in α TC1 and β TC3 cells. Data are expressed as cpm/well/10 min and represent the mean \pm SE of at least three independent experiments performed in triplicate. * (NaCl vs ChCl) P<0.001; ° (DHK versus control) P<0.001.

FIG. 3: GLT1A EXPRESSION IN ISOLATED HUMAN ISLETS

3A: PCR analysis of GLT1 expression in human islets. Total RNA was extracted from 1000 human isolated islets, and RT-PCR was performed with primers specific for the GLT1A and tubulin. As a negative control (C), RT-PCR reaction was performed in the absence of cDNA template. Left: DNA Marker (M).

3B: 3H-D Aspartate uptake. The Na-dependent (NaCl) and Na-independent (ChCl) [3H]-D-Aspartate uptake was measured in 40, hand picked, isolated human islets. To determine GLT1-mediated aspartate uptake, 0.3 mM DHK was added to the uptake solution. Data are expressed as % of Na-dependent uptake (NaCl) and represent the mean \pm SE of at least three independent experiments performed in triplicate. * (DHK versus controls) P<0.001.

3C: Immunoprecipitation of GLT1 from brain and islet lysates. 1000 human islets were lysed and 100 μ g of whole lysate extract or P2 brain fraction was immunoprecipitated with the anti-GLT1 antibody or a rabbit serum. Immunoprecipitated were separated onto 9% SDS-PAGE and immunoblotted with specific anti-GLT1 antibody. 50-100 μ g of P2 brain fraction or islet extract was loaded in the same gel (Tot). **oligomer; *monomer; ° a specific band.

FIG. 4. GLT1 IMMUNOLocalIZATION IN HUMAN PANCREAS SECTIONS

4A: Immunohistochemical analysis. Immunohistochemistry (HRP staining) of paraffin embedded human pancreas sections with a selective anti-GLT1 antibody. 40 \times (left) and 100 \times (right) image magnifications are shown.

4B: Double immunofluorescence analysis: paraffin embedded human pancreas sections were double immunostained with anti-GLT1 and hormones as markers of different endocrine cell types, as indicated. Bar=10 μ m. In the inset, a particular of the islet is shown at higher magnification (2 \times).

FIG. 5: GLT1 CONTROLS HORMONE SECRETION IN HUMAN ISOLATED ISLETS. 48 hours after isolation, 20 human islets per tube were exposed to 3.3 or 16.7 mM glucose in the absence and the presence of either L-glutamate (0.5 mM), DHK (0.3 mM) or both L-glutamate and DHK, and insulin secretion measured. Levels of secreted insulin from islets were normalized to total insulin content. Data are expressed as % of insulin content and represent the mean \pm SD of two independent experiments performed in duplicate.

FIG. 6. PHARMACOLOGICAL INHIBITION OF THE GLUTAMATE TRANSPORTER GLT1 INDUCES β -CELL DEATH

6A: Dose-Dependent Inhibition of 3H-D-Aspartate Uptake by DHK

3 \times 10⁵ β TC3 cells/well were plated onto 24-well culture plates and the Na-dependent [3H]-D-Aspartate uptake was measured in the presence or the absence of increasing DHK concentrations (0.05-0.3 mM). Data are expressed as cpm/well/10 min and represent the mean \pm SE of at least three independent experiments performed in triplicate. * (DHK versus controls) P<0.001.

6B. MTT assay. 24 hrs after plating, α TC1 and β TC3 cells were incubated for five days with different DHK concentrations and viability was assessed by MTT assay. Data are presented as % RGR versus control (100%) and represent the mean \pm SE of three independent experiments (n=8). * (DHK versus control) p<0.05

6C TUNEL assay: 24 hours after plating, β TC3 cells were incubated for five days with 0.1 mM DHK, and cell apoptosis was assessed by TUNEL assay. Cell nuclei were labelled with PrI. Data are presented as TUNEL positive cells per field (histograms on the right), and are the mean \pm SE of two independent experiments performed in duplicate. * P<0.05

6D ShRNA interference. β TC3 cells were transfected with two different shRNA directed against GLT1 (Sh1, Sh3) or a control shRNA (ShC), and three days after transfection, cells were assayed for 3[H]-D-aspartate uptake (b) or lysed and the presence of GLT assayed by western blotting (a) or fixed and processed for TUNEL (c).

FIG. 7 DOWN REGULATION OF THE GLUTAMATE TRANSPORTER GLT1/EAAT2 INDUCES β -CELL DEATH IN HUMAN ISOLATED ISLETS.

7A: MTT assay: 48 hrs after isolation, 20 islets/tube were incubated for three days with the indicated glutamate and DHK concentrations in the presence of 3.3 mM glucose or 16.7 mM glucose and viability was assessed by MTT assay. Data are expressed as % Relative Growth Rate (% RGR) versus control samples and are the mean \pm SE of three different experiments performed in triplicate.

7B: TUNEL assay: 48 hrs after isolation, islets were incubated for three days with 0.5 mM glutamate (GLU), 0.1 mM DHK (DHK) or both (GLU+DHK) in the presence of 11 mM glucose and cell apoptosis was assessed by TUNEL assay. To label β -cells, islets were double stained with insulin.

FIG. 8 PHARMACOLOGICAL UP-REGULATION OF THE GLUTAMATE TRANSPORTER GLT1/EAAT2 RESTORES β -CELL VIABILITY.

8A: GL1 expression. 150.000 cells were plated on 3.5 mm diameter Petri dishes and 24 hours after plating, they were incubated with 10 μ M ceftriaxone for five days. After incubation cells were lysed and 100 μ g of whole lysate extracts were separated onto a 9% SDS-PAGE and the expression of glutamate transporter was detected using specific anti-GLT1 or anti- β -catenin antibodies. The expression of GLT1 was quantified by densitometry, and normalized over β -catenin content. Shown is a representative experiment; Similar results were obtained in two other independent experiments.

8B: MTT assay: 24 hrs after plating, β TC3 cells were incubated for five days with the indicated ceftriaxone concentrations in the presence or absence of 5 mM glutamate and viability was assayed by MTT assay. Data are presented as % RGR versus control (100%) and represent the mean \pm SE of three independent experiments (n=8). *(ceftriaxone versus relative control) p<0.05.

FIG. 9. AUTOANTIBODIES AGAINST GLT1 ARE PRESENT IN DMT1 PATIENT SERUM SAMPLES

9A: Immunoprecipitation of GLT1 with serum samples of DMT1 patients. COS cells were transfected with mouseGLT1 cDNA. 48 hours after transfection, cells were lysed and 100 μ g of whole cell extract was immunoprecipitated with anti-GLT1 antibody, control serum from healthy subject (C6) or three different serum samples from T1D patients (D1, D2, D6). Immunoprecipitates were separated by SDS-PAGE and immunoblotted with the anti-GLT1 antibody. As a negative control, 100 μ g of whole lysate from mock-transfected COS cells was immunoprecipitated in the same conditions.

9B: GLT1 immunoprecipitation from mouse brain with serum samples of DMT1 patients. 50-100 μ g of P2 brain fractions were immunoprecipitated with the anti-GLT1 antibody or five different sera from healthy subjects (C1-C5) or T1D patients (D1-D5). GLT1 immunoprecipitates were separated by SDS-PAGE and revealed by immunoblotting with the anti-GLT1 antibody.

To determine the level of GLT1 autoreactivity, the 60 kDa band was quantified by densitometry. Data are presented as fold over mean control.

9C: Immunostaining of GLT1 and EAAC1 transfected cells with control and T1D serum samples. COS cells were transfected with mouseGLT1 or ratEAAC1 cDNAs, as indicated, and 48 hours after transfection, they were fixed in methanol and immunostained with an anti-GLT1 antibody, a control serum (C1) or three different serum samples from T1D patients (D1, D2 and D4). Bar: 10 μ m.

9D: Modulation of [3H]-D aspartate uptake by incubation with serum samples from DMT1 patients. β TC3 cells were plated onto 96-wells culture plates and the Na-dependent [3H]-D-Aspartate uptake was measured after cells pre-incubation with 20% serum samples for three hours at 37° C. Data are expressed as a percentage of mean uptake values in control subjects. Sera from 12 control subjects and 23 T1D patients were tested and reported as single point on the graph. Each point is the mean of at least two independent uptake experiments performed in triplicate. Activating or inhibiting sera are considered samples with an uptake value more than 2SD above or below the mean of controls subjects, respectively. In the insert are representative GLT1 immunoprecipitation experiments obtained with sera of the related categories.

FIG. 10: IMMUNOLocalIZATION OF GLT1 IN HUMAN PANCREAS SECTIONS OF T2D PATIENTS

Human pancreas from 6 healthy controls (upper panels) or 7 T2D patients (lower panels) were immunostained with the anti-GLT1 antibody followed by HRP-conjugated anti-rabbit IgG. Images magnification was 40 \times (left panels) and 100 \times (right panels).

EXPERIMENTAL

Materials and Methods

Cell Lines

β TC3 and α TC1 cells were derived from progeny of transgenic mice expressing SV40 large T-antigen under control of the rat insulin II 5'-flanking region or rat preproglucagon 5'-flanking region, respectively (Powers et al, 1990) and were

originally provided by Douglas Hanahan (Department of Biochemistry and Biophysics, University of California, San Francisco, Calif.). β TC3 were grown in RPMI 1640 11 mM glucose, supplemented with 10% heat inactivated fetal bovine serum, 2 mM L-glutamine, and 100 IU/ml streptomycin/penicillin, as previously described (Galbiati et al, 2002). Experiments were performed between the 27 and 33 passage of cell culture.

α TC1 were cultured in DMEM 25 mM glucose supplemented with 10% heat inactivated fetal bovine serum, 2 mM glutamine, and 100 IU/ml streptomycin/penicillin, as previously described (Galbiati et al, 2002). Experiments were performed between the 33 and 43 passage of cell culture. Cells were cultured under standard humidified conditions of 5% CO₂ at 37° C.

Cos cells, were cultured in DMEM supplemented with 10% fetal bovine serum, 2 mM glutamine, and 100 IU/ml streptomycin/penicillin. All media were supplied by SigmaAldrich.

Human Islets Isolation and Culture

Human pancreatic islets were isolated from the pancreases of cadaveric multiorgan donors by using the procedure already described by Ricordi (Ricordi, et al, 1988). The islets used in this study were isolated from eight different organs. After the isolation, the islets were purified from the contaminant exocrine tissue by centrifugation on Ficoll gradients, obtaining a final purity that ranged from 60% to 80%, as assayed by dithizone staining (Ricordi et al, 1988). Islets were then cultured in RPMI 1640 tissue culture medium. After a 48-h stabilization culture, old medium was replaced with fresh medium and islets were cultured until used for insulin secretory studies, RNA extraction and uptake experiments. For apoptosis assay, fresh medium containing glutamate (0.5 or 5 mM) or DHK (0.05 or 0.1 mM) was replaced and islets were cultured for additional five days.

[³H]D-Aspartic Acid Uptake

150,000 cells/well were plated in a 24-wells plate, and grown until confluence. After two washes in sodium-free solution (150 mM ChCl, 2 mM KCl, 1 mM CaCl₂, 1 mM MgCl₂, 10 mM Hepes pH 7.5), cells were incubated for 10 minutes in 200 μ l of Na⁺-dependent (150 mM NaCl 2 mM KCl, 1 mM CaCl₂, 1 mM MgCl₂, 10 mM Hepes pH 7.5) or Na⁺-independent (sodium-free solution) uptake solution containing 5 μ Ci/ml of [³H]D-Aspartic acid (specific activity 37 Ci/mmol; Amersham Biosciences). The amino acid uptake was stopped by washing the cells twice in ice-cold sodium-free solution. Cells were dissolved in 150 μ l of SDS 1% for liquid scintillation counting. For transport inhibition, DHK was added to the uptake solution at the indicated concentrations.

Diagnostic Functional Assay for the Determination of Anti-GLT1 Antibodies in the Serum of DMT1 Patients

β TC3 cells were plated in a 96-wells plate, and grown for two days. After one wash in RPMI medium, cells were incubated with 20% human serum samples in sodium solution (150 mM NaCl 2 mM KCl, 1 mM CaCl₂, 1 mM MgCl₂, 10 mM Hepes pH 7.5) or normal medium for 3 hours at 37° C. Then cells were washed twice with Na-free uptake solution (150 mM ChCl, 2 mM KCl, 1 mM CaCl₂, 1 mM MgCl₂, 10 mM Hepes pH 7.5), and incubated in 50 μ l of Na⁺-dependent (150 mM NaCl 2 mM KCl, 1 mM CaCl₂, 1 mM MgCl₂, 10 mM Hepes pH 7.5) uptake solution containing 5 μ Ci/ml of [³H]D-Aspartic acid (specific activity 37 Ci/mmol; Amersham Biosciences). The amino acid uptake was stopped by washing the cells twice in ice-cold sodium-free solution. Cells were dissolved in 50 μ l of SDS 1% for liquid scintillation counting. The controls are uptake experiments per-

formed in the absence of serum pre-incubation. The non-GLT1-mediated glutamate/aspartate uptake is calculated performing uptake experiments in the presence of 0.3 mM DHK. 12 serum samples from control subjects and 23 from DMT1 patients were analysed.

RNA Isolation and RT-PCR Analysis

β TC₃ and α TC₁ cells were plated onto 6 cm Petri dishes and grown until confluence. 3 ml of RNAFast were added to culture dishes and the total

RNA was extracted with RNA fast isolation system following manufacturer's protocol (Molecular Systems-San Diego, Calif.). After RNA precipitation, pellet was resuspended in 15 μ l of UltraPure™ DNase/RNase-Free Distilled Water (Gibco, Invitrogen) to obtain adequate concentration for subsequent reactions.

Total RNA quality was controlled by electrophoresis and its concentration was measured by means of spectrophotometric absorbance. A similar protocol was used to extract total RNA from 1500 isolated human islets of.

To remove any DNA contamination from RNA extract, 2 mg of total RNA were digested with DNase (Promega) in the presence of RNase OUT (Invitrogen) for 30 minutes at 37° C. The reaction was stopped by 10 minutes incubation with Stop Solution (Promega) at 65° C. For cDNA synthesis, 2 μ g of digested RNA was reverse-transcribed using random oligonucleotides (final concentration 12.5 ng/ μ l; Promega) as primers, and 200 U of M-MLU reverse transcriptase (Invitrogen) in the presence of RNase OUT, DTT 0.1 M (Invitrogen) and dNTPs (Promega). In the first step, RNA, oligonucleotides and UltraPure™ DNase/RNase-Free Distilled Water were incubated at 65° C. for 5 minutes; then the other reagents were added and the reaction was incubated for 50 minutes at 37° C. PCR amplification of the reverse-transcribed RNA was carried out using specific primers, designed with the help of the software Primer Input 4.0 (available on line) in the 3' end of each cDNAs in order to give a product of 200 bp.

The following primers were used

Mouse cell lines		Sequence	PCR product
Mouse GLT1a	Forw	1563 gaccaagacgcagtcattt	193
	Rev	1736 ggctgagaatcgggtcatta	
Mouse GLT1b	Forw	1573 gaccaagacgcagtcattt	190
	Rev	1743 gatgcaaggggtgtgattt	
Mouse GLAST	Forw	2005 atggtgaaatggggaactcg	300
	Rev	2780 gccgttttccaatcctatca	
Mouse EAAC1	Forw	1483 ggagcagatggatgtttctg	310
	Rev	1773 gctaggagatggctcctgtg	

Human Islet of		Sequence	PCR product
Human GLT1a/EAAT2	Forw	1743 cttttggggctgggatagtc	211
	Rev	1953 ttggctgccagagttactt	

For tubulin amplification see Federici et al, 2001. Reaction was performed with PCR Master Mix (Promega) in 25 μ l volume.

Cycling conditions were 2 minutes at 95° C.; 30 seconds at 95° C., 30 seconds at 60° C., 1 minute at 72° C., for 40 cycles;

and a final elongation at 72° C. for 10 minutes. Amplified DNA fragments were analyzed by electrophoresis in a 1.5% agarose gel and compared to 250 bp ladder (Invitrogen). To confirm absence of genomic contamination in the RNA samples, reverse transcriptase-negative controls were introduced in each experiment (in the RT-PCR, the M-MLU reverse transcriptase was omitted).

MouseGLT1 and ratEAAC1 Cloning

The full-length coding sequences of rat EAAC1 (147-1845 bp, GenBank™ accession number U39555) and mouse GLT1 (31-1754 bp, GenBank™ accession number AB007811) were cloned from rat kidney or mouse brain cRNA by RT-PCR reaction. First-strand cDNA was synthesized using Moloney murine leukemia virus reverse transcriptase and specific primers localized in the 3' untranslated region of rat EAAC1 and mouse GLT1. Amplification of full length transporters was obtained by PCR reactions using specific oligonucleotides primers designed with the assistance of the Primer3 software (<http://primer3.sourceforge.net/>; Rozen and Skaletsky 2000) in the 5' and 3' untranslated regions of ratEAAC1 and mouseGLT1. To facilitate the directional cloning of the fragment in plasmid vectors, a second PCR was carried out using primers carrying a BamHI enzyme restriction sites (mouse GLT1). PCR products were cloned into pCDNA vector, and sequence verified.

Cell Lysis and Western Blotting Analysis

β TC₃ or α TC₁ cells were seeded onto 6-cm tissue culture plates and allowed to attach and grow until confluence. Cells or 1500 isolated human islets were harvested and lysed in 100 μ l lysis buffer (150 mM NaCl, 30 mM Tris-HCl, 1 mM MgCl₂, 1% Triton X-100, 1 mM phenylmethylsulfonylfluoride, and 1 μ g/ml aprotinin and leupeptin). After 1 h at 4 C, lysates were centrifuged at 13,000 rpm for 10 min, and 50 μ g of total extracted proteins were analyzed on 9% SDS-PAGE and transferred onto nitrocellulose (Shleicher and Shull, Dassel, Germany). The blots were probed with rabbit anti-EAAC1 (Alpha Diagnostic) and anti-GLT1 (1 μ g/ml; kindly provided by dr. Grazia Pietrini, Perego et al., 2000 or Alpha Diagnostic) antibodies as a primary reagent followed by anti-rabbit or anti-human (80 ng/ml; Amersham, GE Healthcare) HRP-conjugated IgG, and visualised by ECL (Perkin-Elmer Life Science, Boston, Mass.). The signal intensities were densitometrically quantified using Scion Image software.

P2 Extract:

Total homogenates of rat brain tissues were prepared in a medium containing 0.32 M Sucrose, 10 Mm Tris-HCl pH 7.5, 5 mM EDTA, 5 mM EGTA and a mixture of protease inhibitors. After homogenization and centrifugation, the two supernatants were mixed and ultracentrifuged at 37000 g for 40 minutes at 4° C. The deriving pellet was resuspended in 10 volumes of RIPA buffer (150 mM NaCl, 50 mM TrisHCl pH 7.5, 1 mM EDTA, 1% NP-40, 0.5% deoxycholate, 0.05% SDS and a mixture of protease inhibitors) followed by 45 minutes incubation at 4° C. under constant agitation. Lysate was clarified by 10 minutes centrifugation at 13000 rpm, separated by SDS-PAGE and transferred to nitrocellulose.

Immunoprecipitation

50-100 mg of rat-P2 brain proteins or β TC₃ lysates-proteins were 0/N incubated at 4° C. with 4 μ l of the anti-GLT1 antibody (Perego et al, 2000), 4 μ l of preimmune rabbit serum or 15 μ l of human serum samples. Then, 40 μ l of 50% protein A sepharose (Immunopure Immobilized Protein A, Pierce) were added to each sample, incubated for two hours at 4° C. and the beads were recovered by centrifugation. Beads were then washed several times with the lysis buffer. After a final washing in 50 mM TrisHCl, pH 8, proteins bound to the beads were solubilised with LB and separated by SDS-PAGE.

Cell Transfection

3×10^5 COS or β TC₃ cells/cm² were seeded onto tissue culture dishes and, 24 hours after plating, they were transfected with rat EAAC1, mouse GLUT1 or shRNA (Origene) by means of lipofection (Lipofectamine™ 2000 reagent, Invitrogen). 48 hours after transfection, cells were processed for immunofluorescence.

Immunofluorescence

Cell Cultures.

β TC3 and COS cells were plated onto sterile glass coverslips. 48 hours after COS transient transfection and after β TC3 growth until 70% of confluence, COS and β TC3 cells were fixed in ice-cold methanol for 10 minutes and permeabilised with 0.5% Triton X-100 in PBS. Immunostaining with the primary antibodies in GDB solution (75 mM NaCl, 5 mM PO₄ buffered saline pH 7.4, 0.25% Triton X-100, 0.1% gelatine) was followed by incubation with the appropriate secondary antibodies (FITC-conjugated anti-rabbit, Rhodamine-conjugated anti-mouse or FITC-conjugated anti-human IgG, from Jackson Immunoresearch (West Grove, Pa.). The following primary antibodies were used: rabbit anti-GLT1 (Perego et al., 2000) and anti-EAAC1 antibodies (Alpha Diagnostic), control and T1D sera (for serum samples characterization see Table A).

Paraffin Embedded Sections.

Normal human pancreas were fixed in buffered formalin (formaldehyde 4% w/v and acetate buffer 0.05 mol/L) for 24 hours and then routinely processed and paraffin embedded. 5 μ m thick sections were mounted on poly-L-lysine coated slides, deparaffinized and hydrated through graded alcohol to water. After heat antigen retrieval, performed using microwave oven in 10 mM Citrate Buffer pH 6, sections were permeabilized using TBS-Triton 0.2%. Primary antibodies incubation was performed over night at 4° C. in the following solution: 0.2% Triton X-100, 1% gelatine in TBS pH 7.4. Then sections were washed thoroughly in TBS-Triton 0.2% and incubated with secondary antibodies for 2 hours at room temperature, followed by fluorochrome-conjugated streptavidin incubation for 30 minutes. The followed primary antibodies were used: guinea pig anti-insulin (Roche); mouse anti-glucagon (R&D Systems); mouse anti somatostatin (Biomed); mouse anti-chromogranin (Biogenex); rabbit anti-GLT1 (Perego et al., 2000). Secondary antibodies (FITC-conjugated anti-mouse IgG and biotin-conjugated anti-rabbit IgG) were from Jackson laboratories.

Immunohistochemistry

ABC immunohistochemistry was performed in formalin fixed human pancreas paraffin embedded sections. To suppress possible endogenous peroxidase activity, pancreas sections were treated with a hydrogen peroxide solution before antigen retrieval by microwave heating in citrate buffer. Sections were permeabilized with 0.3% Triton in TBS and incubated in normal anti donkey serum for 40 min at room temperature, to reduce unspecific protein binding, then they were incubated with rabbit anti-GLT1 antibody o/n at 4° C. Unbound antibodies were washed with TBS-Triton 0.3% and the signal was amplified using biotin-conjugated secondary antibodies (anti-rabbit biotin, Jackson) for 2 hours at room temperature, followed by Peroxidase conjugated-streptavidin (Chemicon). The reaction was performed with freshly activated DAB (Diaminobenzidine, Sigma Aldrich). Colour development was stopped by washing the slides thoroughly in tap water. The sections were then counterstained with Mayer's hematoxylin, and dehydrated. Coverslips were mounted with an hydrophobic mounting medium (Dako Corp.).

Cell Viability Assay

3-(4,5-Dimethylthiazol-2-yl)-2,5-diphenyltetrazolium bromide (MTT) assay. β TC₃ cells were seeded at a density of 8×10^3 cells/well onto 96-well culture plates. Cells were allowed to attach and grow for 24 h in standard medium. Then medium was replaced with fresh medium containing glutamate, DHK (Dihydrokainic Acid, Sigma Aldrich), glutamate receptor inhibitors APV and CNQX (Sigma Aldrich) or ceftriaxone (Sigma Aldrich) at the indicated concentrations. After five days incubation, cell viability was assessed using the MTT method, according to the manufacturer's protocols (Sigma Aldrich). Coloured formazan product was determined spectrophotometrically at 540 nm. 20 islets/tube were used to assess viability in human isolated islets. Data are expressed as % Relative Growth Rate (% RGR) versus control samples.

Quantification of Apoptosis in β Cells and Isolated Human Islets

Apoptosis of β -TC3 cells was estimated using the terminal deoxynucleotidyltransferase-mediated dUTP-biotin nick end-labelling assay (TUNEL). Briefly, 3×10^5 β TC3 cells were plated on glass coverslips, and 24 hours after plating, they were incubated with glutamate or DHK at the indicated concentration for five days. Control and treated cells were fixed in 4% paraformaldehyde, permeabilized using 0.5% Triton X-100 for 4 minutes at room temperature and processed according to the manufacturer's instructions. TUNEL-positive cells were counted by two independent observers using a 40 \times objective from at least 40 randomly selected fields per coverslip. Data were plotted as number of death cells/field.

Insulin Secretion

Insulin content and secretion were assessed on 20 islets, using a Micro-particle Enzyme Immunoassay (MEIA insulin, IMX System, Abbott Laboratories, Abbott Park, Ill., USA). Insulin secretion in response to increasing glucose concentrations, glutamate or DHK treatment was assessed by static incubation as previously described (Federici et al, 2000). Briefly, batches of 20 islets were pre-incubated in 1 ml of Krebs-Ringer buffer (KRB) supplemented with 3, 3 or 16.7 mM glucose for 30 min. Then the supernatants were replaced with Krebs' buffer containing 3, 3 or 16.7 mM glucose plus glutamate or the specific GLUT1 inhibitor DHK (Sigma, St Louis, Mo., USA), as indicated. After a 30-min incubation at 37° C., the medium was removed and frozen for immunoassays. At the end of incubation, islets were lysed in lyses buffer and the total insulin content determined by immunoassay. Levels of secreted insulin from islets were normalized to total insulin content.

Co-Localization Analysis

Single channel images obtained with the BIORAD confocal microscope (GLT1: channel 1/red; hormones: channel 2/green) were analyzed for pixel intensity with the IImage software. Co-localization between the two channels was calculated with a computer assisted program. The product of the differences from the mean intensity (PDM value) was calculated in each location of the image as indicated:

$$PDM = (\text{red intensity} - \text{mean red intensity}) \times (\text{green intensity} - \text{mean green intensity}).$$

If the intensities in the two channels vary in synchrony (i.e. they are dependent), they will vary around their respective mean image intensities together and the PDM value will be positive. If the pixel intensities vary asynchronously (i.e. the channels are segregated) most of the PDM value will be negative. A PDM positive value is indicative of co-localization, vice versa a negative value indicates segregated staining.

The Intensity Correlation Quotient (ICQ) was calculated on the entire area and was $ICQ = (\text{number of positive PDM}) / (\text{total number of PDM}) - 0.5$

Random staining: $ICQ \sim 0$;

Segregated staining: $0 > ICQ^3 - 0.5$;

Dependent staining: $0 < ICQ^3 + 0.5$

For chromogranin and insulin, the PDM value was calculated on the entire islet; for glucagon and somatostatin, analysis was performed on the particular showed at higher magnification.

Statistical analysis. Statistical significance of difference between groups was determined by unpaired Student's t-test. Differences were considered significant at $P \leq 0.05$.

Serum Samples:

Serum samples from 14 healthy subjects (negative control) and 21 who have been given a diagnosis of T1D were collected and stored at -20°C . until used. Details are provided in table A.

TABLE A

	Normal	Diabetic
Sex (F/M)	5/9	12/9
Age (years)	17.5 ± 10.9	32.3 ± 5.3

Tissue Samples:

Human pancreas from control or T2D patients were obtained from autopsic patients or surgically removed tumors. The samples were immediately fixed in 4% formaldehyde for immunocytochemical analysis. The phenotypic data of the group of patients with type 2 diabetes and Controls, used for immunohistochemical studies in this report, are provided in Table B.

TABLE B

	Normal	Diabetic
Sex (F/M)	3/3	4/3
Age (years)	64.5 ± 10.9	67.6 ± 5.3
Duration of DM (years)	0	10.2 ± 2.8

Results

Glutamate is Toxic to Endocrine β -Cells and Glutamate Toxicity May be Prevented by Inhibition of Ionotropic Glutamate Receptors

We first determine whether glutamate application may cause endocrine cell death. β TC3 and α TC1 cell lines were cultured for five days in the presence of different glutamate concentrations (from 0.05 to 5 mM), and cell viability was assessed by means of MTT test (FIG. 1A). Prolonged exposure to glutamate resulted in sustained reduction of β cell viability: β -cell toxicity was already detectable at 0.05 mM glutamate (11.53+0.52% reduction in RGR; $p < 0.01$) and it was maximal at 5 mM glutamate (51.46+2.61% reduction in RGR; $p < 0.01$). In contrast to β TC3, in α TC1 cells glutamate toxicity was detectable only at the highest glutamate concentration (5 mM) but significantly lower than in β TC3 ($p < 0.01$) (FIG. 1B).

We did not find any effect on cell survival after acute exposure to glutamate (15 min, 0.5 μ M glutamate: a treatment effective on neurons, Perego et al, 2000), or after exposure to glutamate for 2 days, both in α TC1 and in β TC3 cells.

The different viability of β TC3 and α TC1 cells cultured for 5 days in the presence of high glutamate concentrations was not due to differences in medium composition (RPMI for β TC3 and D-MEM for α TC1), since cell death was even more

pronounced in D-MEM medium. These data indicate that β -cells, like neurons, are vulnerable to the toxic effects of glutamate even though to a much lesser extent, as expected.

To further investigate the mechanisms by which chronic glutamate exposure may cause β -cell cytotoxicity, we performed a TUNEL assay. As shown in FIG. 1B, culture of β TC3 cells in presence of 0.5 mM glutamate for 5 days resulted in a significant increase in the number of TUNEL positive cells, indicating that glutamate induces β -cell death by apoptosis.

In the CNS, glutamate toxicity is caused by persistent activation of ionotropic receptors which are also expressed by pancreatic islet cells (Choi, 1988; Matute et al, 2007). To determine whether glutamate-induced β -cell death is mediated by the same mechanisms involved in neurotoxicity, ionotropic channels were blocked with their antagonists, in the presence of 5 mM glutamate (FIG. 1C). Vulnerability of β -cells to glutamate was partially prevented by co-administration of glutamate with 6-Cyano-7-nitroquinoxaline-2,3-dione (CNQX), a non-selective AMPA and kainate receptor antagonist (30% increase in RGR relative to 5 mM glutamate; $p < 0.05$) but not D-2-Amino-5-phosphonovaleric acid (APV), a selective NMDA receptor antagonist. No significantly differences in β -TC3 viability were detected in the presence of glutamate receptor antagonists, when given alone. These data indicate that glutamate-mediated β -cell cytotoxicity, as in the CNS, is mediated by extracellular glutamate and is triggered by the activation of AMPA and/or kainate ionotropic glutamate receptors.

The Na-Dependent Glutamate Transporter GLT1A is Exclusively Expressed by β TC3 Cells.

In the CNS, the extracellular glutamate concentration is maintained at relatively low levels by high-affinity glutamate transporters and in particular by GLT1. Although a high-affinity glutamate transporter has been cloned from pancreas (Manfras et al, 1994) and D-aspartate accumulation has been demonstrated in pancreatic islets (Weaver et al, 1998), it is not clear the pattern of expression of the different glutamate transporter types in endocrine cells. To this purpose, RT-PCR experiments were carried out using type-specific primers in α TC1 and β TC3 cells. RT-PCR (35 cycles) of total RNA from β TC3 cells resulted in the amplification of the GLT1A type, while all the other types were undetectable even after 40 PCR cycles. None of the canonical high-affinity glutamate transporters were detected in α TC1 cells after 40 cycles.

Western blotting experiments confirmed the exclusive expression of GLT1 in the β TC3 cells. As shown in FIG. 2B, a previously characterized anti-GLT1 antibody (Perego et al, 2000) identified two bands, running with an electrophoretic mobility of 60 and 120 KDa, in immunoblots of β TC. The molecular weight of these bands correspond with the molecular weight of GLT1 proteins identified in brain samples, thus confirming the expression of GLT1 in β -cells. No bands were detected using a pre-immune serum or anti-GLAST and anti-EAAC1 antibodies.

Immunofluorescence studies performed with the anti-GLT1 antibody revealed that the transporter was expressed in the vast majority of β TC3 cells and that it was prevalently located at the cell membrane where it could fulfil its function (FIG. 2C). No staining was detected in α TC1 cells or when the primary antibody was omitted.

To characterize the presence of functional transporters, experiments of 3H-D-aspartate (a non-metabolized GLT1 substrate Danbolt, 2001) uptake were performed in α TC1 and β TC3 cells. As shown in FIG. 2D, α TC1 and β TC3 cells showed a similar Na-independent (ChCl) 3H-D-aspartate

uptake. Conversely, Na-dependent D-aspartate uptake was significantly higher in β TC3 than in α TC1 cells.

Subtype specific expression of glutamate transporters was analyzed pharmacologically using dihydrokainate (DHK) a selective GLT1 inhibitor (Arriza et al., 1994). Na-dependent aspartate uptake in β TC3 was completely inhibited in the presence of 1 mM DHK, indicating that glutamate uptake in these cells is exclusively driven by GLT1. On the contrary, in α TC1 cells Na-dependent D-aspartate uptake was not inhibited by DHK, confirming that these cells express very low level of the GLT1 transporter, alternatively, they may express an unidentified glutamate type/s.

To determine whether the β -cell-exclusive expression of GLT1 observed in cell lines occurs also in vivo, the expression and the localization of the transporter was analyzed in human isolated islets and human pancreas sections (Varese and HSR). Human islets were isolated as described by Ricordi (Ricordi et al, 1988) and the expression of the glutamate transporter GLT1a was assessed by RT-PCR (FIG. 3A), immunoprecipitation (FIG. 3B) and uptake experiments (FIG. 3C). RT-PCR of total RNA with human type-specific primers resulted in amplification of the GLT1a type of glutamate transporter (35 cycles) (FIG. 3A).

Immunoprecipitation and western blotting experiments confirmed the expression of GLT1 in islet of human pancreas (FIG. 3B). In SDS-PAGE, the anti-GLT1 antibody revealed the presence of bands running with an apparent electrophoretic mobility of 60 and 120 KDa and corresponding to the monomeric and oligomeric form of GLT1, respectively, in both islets and brain immunoprecipitates.

The function of GLT1 was assessed by measuring D-aspartate uptake (FIG. 3C). A clear Na-dependent transport of aspartate was present in isolated human islets and was completely inhibited by 0.1 mM DHK. Taken together, these data show that pancreatic islets express a functional glutamate transporter and that GLT1 is the main regulator of glutamate clearance in human islets.

In order to confirm the β -cell specific expression of GLT1 in vivo, immunocytochemical and experiments were carried out in human pancreas sections. As shown in FIG. 4A, anti-GLT1 reactivity was restricted to a group of clustered cells, most likely correspondent to an islet. Noteworthy, few cells in the islet's core were completely devoid of GLT1 signal, thereby suggesting a cell-specific expression. At higher magnification, GLT1 staining was confined to the cell membrane, a localization consistent with the physiologic role of this transporter.

No staining for EAAC1/EAAT3 or GLAST1/EAAT2 was detected in the endocrine pancreas.

To identify which of the islet endocrine cell types expresses GLT1a, double immunofluorescence experiments were carried out using the anti-GLT1 antibody and hormones as markers of the different cell types (FIG. 4B). Immunostaining with chromogranin, a marker of endocrine cells, confirmed the expression of GLT1 only in the islets. GLT1 signal was concentrated at, or immediately below, the plasma membrane where it co-localized with chromogranin granules fused to the cell membrane; no intracellular GLT1 staining was detected. Similar staining at the cell-cell boundary was

detected in the majority of insulin-positive cells in the islet core, indicative of GLT1 expression in β -cells. On the contrary, GLT1 was not observed at the plasma membrane of glucagon-positive cells. These data suggest that GLT1 is not expressed in the plasma membrane of α and δ -cells, or if expressed, is under the level of detection. These conclusions were supported by a computer-assisted image analyses system (Table I). To mathematically evaluate co-localization between GLT1 (channel1) and hormones (channel2), the PDM value (product of the differences of pixel intensity from the mean intensity of each channel) was calculated. As shown in Table I, the intensity correlation quotient (ICQ=(number of positive PDM)/(total number of PDM)-0.5), calculated on the entire area, was positive for the insulin/GLT and chromogranin/GLT double immunostainings, thus indicating that there was co-localization. On the contrary, the negative ICQ value calculated for the glucagon/GLT1 and somatostatin/GLT1 double immunostaining, was indicative of segregated stainings. Taken together these data demonstrate that GLT1 is mainly expressed in β -cells.

Table I. Co-Localization Analysis

Co-localization between GLT1 and hormoneS was calculated with a computer assisted program. Single channel confocal images were analyzed for pixel intensity with the JImage software. To mathematically evaluate co-localization between GLT1 (channel 1, red) and hormones (channel 2, green), the product of the differences of pixel intensity from the mean intensity of each channel (PDM value) for the entire area was calculated.

Rr: Pearson' Coefficient for the entire area analyzed

ICQ: Intensity Correlation Quotient=(number of positive PDM)/(total number of PDM)-0.5

Random staining: ICQ~0;

Segregated staining: $-0.5 < ICQ^3 < 0$

Dependent staining: $0 < ICQ^3 < +0.5$

z-score: expresses the divergence of the experimental result from the most probable result as a number of standard deviations. The larger the value of z, the less probable the experimental result is due to chance.

p test: probability confidence, level set at 0.05

Ch1 P: determines if channel 1 is a subset of channel 2

Ch2 P: determines if channel 2 is a subset of channel 1

When the PDM value was calculated on the entire area, negative z score and low p values are due to areas showing exclusive hormone stainings.

PDM values calculated at each location support statistically significant co-localization between GLT1 and insulin or chromogranin at the plasma membrane.

	Rr	ICQ	Z score	P (sign test)	Dependent staining
Chromogranin	0.567	0.514	-12.563	>0.050000	+
Insulin	0.483	0.29	-30.999	>0.050000	+
Glucagon	0.099	-0.307	-59.524	>0.050000	—
Somatostatin	-0.265	-0.367	-93.294	>0.050000	—

	colocal:Ch1	Ch1 Z score	Ch1 P (sign test)	colocal:Ch2	Ch2 Z score	Ch2 P (sign test)
Chromogranin	0.563	23.712	<0.000005	0.74	79.179	<0.000005
Insulin	0.587	24.243	<0.000005	0.572	20.388	<0.000005

-continued

	colocal:Ch1	Ch1 Z score	Ch1 P (sign test)	colocal:Ch2	Ch2 Z score	Ch2 P (sign test)
Glucagon	0.187	-53.04	>0.050000	0.616	10.795	<0.000000
Somatostatin	0.203	-61.14	>0.050000	0.278	-39.01	>0.050000

Having established the exclusive β -cell expression of GLT1, both in cell lines and in human islet of Langerhans, we investigated the role of GLT1 in the islet physiology.

Several independent lines of evidence indicate that glutamate controls secretion of both glucagon and insulin in pancreatic islets, via activation of ionotropic glutamate receptors (Hoy et al, 1995; Inagaki et al, 1995; Muroyama et al, 2004; Bertrand et al, 1993). Therefore, GLT1 controlling the extracellular concentration of glutamate, may affect hormone secretion. FIG. 5 showed the results from a representative experiment where human isolated islets were exposed to 3.3 or 16.7 mM glucose in the absence and the presence of either L-glutamate (0.5 mM), DHK (0.3 mM) or both L-glutamate and DHK, and insulin secretion measured. Insulin secretion was increased in the presence of both glutamate and DHK at 16.7 mM glucose (87 \pm 38% increase over the level induced by 16.7 mM glucose control). No effect were detected in the presence of DHK or glutamate alone at 16.7 mM glucose or in any of the conditions tested at 3.3 mM glucose. These data are consistent with a key role of GLT1 in glutamate clearance in the islet, and indicate that this system contributes to the glutamatergic signalling pathway that modulates hormone secretion in the islet.

In the CNS GLT1 has been clearly shown to protect neurons from excitotoxicity. Given the vulnerability of β cells to glutamate, we investigate whether inhibition of GLT1 may affect cell survival (FIG. 6). Exposure to DHK induced a dose-dependent inhibition of Na-dependent D-aspartate uptake in β TC3 with IC₅₀=0.05 mM DHK (FIG. 6A). Five days incubation in the presence of the blocker caused a reduction in β TC3 viability that was already maximal at 0.05 mM DHK (6.17% decrease in RGR; $p < 0.01$) (FIG. 6B). Cytotoxicity was due to apoptosis as revealed by a TUNEL assay performed after incubation of β TC3 cells with 0.1 mM DHK for five days (FIG. 6C) ($p < 0.01$).

Similar results were obtained after molecular GLT1a knocking down by shRNA. Two different shRNAs (SH1 and SH3) were effective in reducing the GLT1 total expression, as measured by western blotting and uptake experiments (FIGS. 6Da and 6Db). A 30% down regulation in GLT1 surface activity was sufficient to significantly increase cell apoptosis after 24 hour incubation in the presence of 0.5 mM glutamate, as determined by TUNEL assay ($p < 0.05$) (FIG. 6Dc). More interestingly, the SH3 shRNA construct caused increased cell apoptosis also in normal growing medium.

These data, taken together, are consistent with a key role of GLT1 in glutamate clearance and in protecting β -cells from excitotoxicity. Moreover, they indicate that impairment of the GLT1 surface activity is sufficient, by itself, to induce β -cell death at glutamate concentrations proximal to physiological ranges.

We next tested the vulnerability of human islets to glutamate toxicity. Glutamate incubation for three days caused a dose-dependent decrease in cell viability that reached the statistical significance at the highest glutamate concentration (18% RGR decrease at 5 mM glutamate, $p < 0.01$) in high glucose (16.7 mM glucose), only (FIG. 7A). Interestingly, inhibition of GLT1 with 0.1 mM DHK reduced

to 0.5 mM the cytotoxic glutamate concentration (FIG. 7B). Cell death was due to apoptosis (FIG. 7C) and was restricted to β -cells as demonstrated by the TUNEL assay performed on dispersed isolated islets.

Our data suggest a key role of GLT1 in protecting β -cells from apoptosis, therefore up-regulation of its activity or expression is expected to be β -cell protective. Recently, β -lactam antibiotics were identified as potent stimulators of GLT-1 expression (Rothstein et al. 2005). In particular, the β -lactam ceftriaxone (CEF) was shown to increase both brain GLT1/EAAT2 expression and functional activity in vivo and to be neuroprotective in vitro in models of ischemic injury and motor neuron degeneration, based in part on protection from glutamate toxicity (Rothstein et al. 2003 and 2005). This action appears to be mediated through increased transcription of the EAAT2 gene (Su et al., 2003, Rothstein et al. 2005). Five days incubations with ceftriaxone caused a dose-dependent protection from glutamate toxicity (FIG. 8B). This effect was, at least in part, mediated through GLT1/EAAT2 because increased transporter's expression was measured in the presence of 10 μ M ceftriaxone (FIG. 8A).

Our data, taken together, identify glutamate and "excitotoxicity" as new possible pathogenetic factors and demonstrate that the glutamate transporter GLT1 is a key regulator of islet's glutamate clearance and β -cell survival.

Given the selective expression of GLT1 in β -cells, and its direct involvement in cell survival, we hypothesized that GLT1 could have been an important target molecule in diabetes pathogenesis. We therefore examined this possibility in both type 1 and type 2 diabetes, which are both characterized by increased β -cell death and reduced β -cell mass.

Type 1 diabetes (T1D) is a T cell-dependent autoimmune disease, characterized by the selective destruction of islets' β -cells (Anderson and Bluestone, 2005). Autoantibodies against insulin and other antigens expressed by either β -cell and neurons are commonly found in the serum of T1D patients, years before the clinical manifestation of the disease (Bingley et al, 1994; Pihoker et al, 2005; Achenbach et al, 2006). The same autoantibodies are found in some T1D relatives, and their number and titre can predict the progression from prediabetes to diabetes (Tan, 1991). Among them are autoantibodies against insulin (Palmer, et al. 1983), glutamic acid decarboxylase (GAD) (Solimena et al., 1988 and 1990; Baekkeskov, et al. 1990), IA2 (Bonifacio et al, 1995) and the cationic efflux transporter ZnT8 (Wenzlau et al, 2007).

Due to its membrane localization, exclusive for the β -cell, we reasoned that GLT1 could be an ideal T1D autoantigen. In addition to that, given the direct involvement of GLT1 in β -cell survival, autoantibodies against GLT1 may be pathogenic in sharp contrast with all the autoantigens described to date. At this regard, cytotoxic islet cell surface autoantigens (ICSA) have been described many years ago (Van der Winkle et al, 1982) although their precise identification is still missing.

Therefore, we searched anti-GLT1 antibodies in sera of T1D patients.

Three T1D sera and 1 control samples were used to immunoprecipitate the corresponding antigen from lysates of

GLT1A-transfected COS cells or mock COS cells (FIG. 9A). As a positive control, lysates were immunoprecipitated with the specific anti-GLT1 antibody. As shown in FIG. 9A, the anti-GLT1 antibody immunoprecipitated a protein of 60 KDa from lysates of GLT1-transfected COS cells. The same specific 60 KDa reactivity was detected in immunoprecipitates obtained with sera of T1D patients but not with the control serum, indicative of the presence of anti-GLT1 antibodies in T1D patients.

To further confirm this result, serum from 5 healthy controls (C1-C5) and 5 GAD- and ICA-positive T1D patients (D1-D5), were used to immunoprecipitate the GLT1 protein from the brain P2 fraction (previously shown to contain high amount of native GLT1 protein, FIG. 2). The rabbit-GLT1 immune serum and human sera specifically reacted with a 60 KDa band which correspond to the SDS-PAGE migration of the whole GLT1 protein. Quantification of sera reactivity to the 60 KDa band by densitometry revealed that the mean intensity of immunoprecipitates obtained with sera from T1D patients was 2 fold higher than control sera.

Immunoprecipitation results were confirmed by immunofluorescence studies (FIG. 9C). GLT1 positive sera stained the membrane of COS cells transfected with GLT1A, while no staining was detected with control sera. The detected reactivity was specific for GLT1, since no signal was observed in COS cells transfected with the EAAC1 glutamate transporter.

Finally, we tested the ability of circulating anti-GLT1 autoantibodies to modulate the transporter's activity. β -TC3 cells were incubated with serum samples for three hours at 37° C. and the GLT1 activity measured by uptake experiments. While the control samples showed similar uptake values (100 \pm 8.3%), incubation with T1D serum samples caused activity changes ranging from 11.94% to 364.31% relative to control subjects. Considering positive a sample if its uptake value was more than 2SD above or below the mean of controls subjects, we observed that 12 out of 23 T1D (52%) and one out of 12 putative control subjects (8%) were positive. Interestingly, sera found positive with the functional assay, present autoantibodies against GLT1.

Taken together, these data suggest that GLT1 may represent a novel T1D autoantigen and that anti-GLT1 antibodies may directly modulate the transporter's activity. Therefore, detection of anti-GLT1 antibodies by immunological or functional assays represent new and complementary methods for the diagnosis of T1D. Note that functional assay is rapid, easy to

Type 2 diabetes (T2D) is a multifactorial disease characterized by inadequate insulin secretion by pancreatic β cells and impaired insulin action at the target tissues. Insulin resistance, chronic inflammation, oxidative stress, β -cell hypersecretion and amyloid deposition, and hyperglycemia (glucotoxicity) are responsible for the progressive decline in β -cell mass. Increased oxidative stress and chronic inflammation have been shown to directly affect GLT1 expression, localization (Vanoni et al, 2006) and activity (Trotti et al, 1998). We therefore examined by immunocytochemistry (FIG. 10), whether GLT1 was differently expressed in islets of T2D patients. In pancreatic sections obtained from T2D subjects, the typical localization of GLT1 in the cell membrane was completely lost, and GLT1 was exclusively detected in the cytoplasm. Intracellular staining was observed in 5 out of 7 pancreases examined and in none of the 5 pancreases obtained by normal (non diabetic) controls.

Overall, these data indicate that GLT1 is selectively expressed in β cells and glutamate transporter inhibition causes β -cell death mediated by high glutamate. Antibodies against GLT1 were found in serum of T1D patients and GLT1

intracellular staining was detected in T2D patients, thus suggesting a direct role of the transporter in diabetes mellitus pathogenesis or progression.

References

- 5 Achenbach P, Warncke K, Reiter J, Williams A J, Ziegler A G, Bingley P J, Bonifacio E. Type 1 diabetes risk assessment: improvement by follow-up measurements in young islet autoantibody-positive relatives. *Diabetologia*. 2006; 49(12): 2969-76.
- 10 Anderson M S, Bluestone J A. The NOD mouse: a model of immune dysregulation. *Annu Rev Immunol*. 2005; 23: 447-85.
- 15 Arriza J L, Fairman W A, Wadiche J I, Murdoch G H, Kavanaugh M P, Amara S G. Functional comparisons of three glutamate transporter subtypes cloned from human motor cortex. *J. Neurosci.*, 1994; 14(9): 5559-69.
- 20 Bai L, Zhang X, Ghishan F K. Characterization of vesicular glutamate transporter in pancreatic alpha- and beta-cells and its regulation by glucose. *Am J Physiol Gastrointest Liver Physiol.*, 2003; 284(5): G808-14.
- 25 Bertrand G, Gross R, Puech R, Loubatieres-Mariani M M, Bockaert J. Glutamate stimulates glucagon secretion via an excitatory amino acid receptor of the AMPA subtype in rat pancreas. *Eur J. Pharmacol.* 1993; 237(1):45-50.
- 30 Bingley P J, Bonifacio E, Gale E A. Antibodies to glutamic acid decarboxylase as predictors of insulin-dependent diabetes mellitus. *Lancet*. 1994; 344(8917):266-7.
- 35 Brice N L, Varadi A, Ashcroft S J, Molnar E. Metabotropic glutamate and GABA(B) receptors contribute to the modulation of glucose-stimulated insulin secretion in pancreatic beta cells. *Diabetologia*, 2002; 45(2): 242-52.
- 40 Cabrera O, Jacques-Silva M C, Speier S, Yang S N, Köhler M, Fachado A, Vieira E, Zierath J R, Kibbey R, Berman D M, Kenyon N S, Ricordi C, Caicedo A, Berggren P O. Glutamate is a positive autocrine signal for glucagon release. *Cell Metab.* 2008; 7(6):545-54.
- 45 Choi D W, Maulucci-Gedde M, Kriegstein A R. Glutamate neurotoxicity in cortical cell culture. *J. Neurosci.*, 1987; 7(2): 357-68.
- 50 Choi D W, Koh J Y, Peters S. Pharmacology of glutamate neurotoxicity in cortical cell culture: attenuation by NMDA antagonists. *J. Neurosci.* 1988; 8(1):185-96.
- 55 Danbolt N C. Glutamate uptake. *Prog Neurobiol.*, 2001 September; 65(1): 1-105.
- 60 Efrat S, Linde S, Kofod H, Spector D, Delannoy M, Grant S, Hanahan D, Baekkeskov S. Beta-cell lines derived from transgenic mice expressing a hybrid insulin gene-oncogene. *Proc Natl Acad Sci USA.*, 1988; 85(23): 9037-41.
- 65 Federici M, Hribal M, Perego L, Ranalli M, Caradonna Z, Perego C, Usellini L, Nano R, Bonini P, Bertuzzi F, Marlier L N, Davalli A M, Carandente O, Pontiroli A E, Melino G, Marchetti P, Lauro R, Sesti G, Folli F. High glucose causes apoptosis in cultured human pancreatic islets of: a potential role for regulation of specific Bcl family genes toward an apoptotic cell death program. *Diabetes*. 2001; 50(6):1290-301.
- 70 Galbiati F, Polastri L, Gregori S, Freschi M, Casorati M, Cavallaro U, Fiorina P, Bertuzzi F, Zerbi A, Pozza G, Adorini L, Folli F, Christofori G, Davalli A M. Antitumorigenic and antinsulinogenic effects of calcitriol on insulinoma cells and solid beta-cell tumors. *Endocrinology*. 2002; 143(10):4018-30.
- 75 Gillard B K, Thomas J W, Nell L J, Marcus D M. Antibodies against ganglioside GT3 in the sera of patients with type 1 diabetes mellitus. *J. Immunol.* 1989; 142(11):3826-32.
- 80 Gonoi T, Mizuno N, Inagaki N, Kuromi H, Seino Y, Miyazaki J, Seino S. Functional neuronal ionotropic

glutamate receptors are expressed in the non-neuronal cell line MIN6. *J Biol Chem.*, 1994; 269(25): 16989-92. Haas and Erdo, 1991.

Hayashi M, Yamada H, Uehara S, Morimoto R, Muroyama A, Yatsushiro S, Takeda J, Yamamoto A, Moriyama Y. Secretory granule-mediated co-secretion of L-glutamate and glucagon triggers glutamatergic signal transmission in islets of. *J Biol Chem.*, 2003; 278(3): 1966-74.

Hinoi E, Takarada T, Ueshima T, Tsuchihashi Y, Yoneda Y. Glutamate signaling in peripheral tissues. *Eur J Biochem.*, 2004; 271(1): 1-13.

Hoy M, Maechler P, Efanov A M, Wollheim C B, Berggren P O, Gromada J. Increase in cellular glutamate levels stimulates exocytosis in pancreatic beta-cells. *FEBS Lett.*, 2002; 531(2): 199-203.

Inagaki N, Kuromi H, Gono T, Okamoto Y, Ishida H, Seino Y, Kaneko T, Iwanaga T. Seino S. Expression and role of ionotropic glutamate receptors in pancreatic islet cells. *FASEB J.*, 1995; 9(8): 686-91.

Izumi Y, Shimamoto K, Benz A M, Hammerman S B, Olney J W, Zorumski C F. Glutamate transporters and retinal excitotoxicity. *Glia.* 2002; 39(1):58-68.

Lipton S A, Rosenberg P A Excitatory amino acids as a final common pathway for neurologic disorders. *N Engl J Med.* 1994; 330(9):613-22.

Manfras B J, Rudert W A, Trucco M, Boehm B O. Cloning and characterization of a glutamate transporter cDNA from human brain and pancreas. *Biochim Biophys Acta.*, 1994; 1195(1): 185-8.

Matute C, Sánchez-Gómez M V, Martínez-Millán L, Milei R. Glutamate receptor-mediated toxicity in optic nerve oligodendrocytes. *Proc Natl Acad Sci USA.* 1997.

Matute C, Alberdi E, Domercq M, Sánchez-Gómez M V, Pérez-Samartín A, Rodríguez-Antigüedad A, Pérez-Cerdá F. Excitotoxic damage to white matter. *J Anat.* 2007; 210(6): 693-702.

Molnár E, Váradi A, McIlhinney R A, Ashcroft S J. Identification of functional ionotropic glutamate receptor proteins in pancreatic beta-cells and in islets of. *FEBS Lett.* 1995; 371(3):253-7.

Moriyama Y, Hayashi M. Glutamate-mediated signaling in the islets of: a thread entangled. *Trends Pharmacol Sci.*, 2003; 24(10): 511-7.

Muroyama A, Uehara S, Yatsushiro S, Echigo N, Morimoto R, Morita M, Hayashi M, Yamamoto A, Koh D S, Moriyama Y. A novel variant of ionotropic glutamate receptor regulates somatostatin secretion from delta-cells of islets of. *Diabetes.*, 2004; 53(7): 1743-53.

Nedergaard M, Takano T, Hansen A J. Beyond the role of glutamate as a neurotransmitter. *Nat Rev Neurosci.* 2002; 3(9): 748-55.

Palmer, J. P. Asplin C M, Clemons P, Lyen K, Tatpati O, Raghu P K, Paquette T L Insulin antibodies in insulin-dependent diabetics before insulin treatment. *Science.*, 1983; 222: 1337-1339.

Perego C, Vanoni C, Bossi M, Massari S, Basudev H, Longhi R, Pietrini G. The GLT1 and GLAST glutamate transporters are expressed on morphologically distinct astrocytes and regulated by neuronal activity in primary hippocampal cocultures. *J Neurochem.*, 2000; 75(3): 1076-84.

Pihoker C, Gilliam L K, Hampe C S, Lernmark A. Autoantibodies in diabetes. *Diabetes.* 2005; 54 Suppl 2:S52-61.

Powers A C, Efrat S, Mojsov S, Spector D, Habener J F, Hanahan D Proglucagon processing similar to normal islets in pancreatic alpha-like cell line derived from transgenic mouse tumor. *Diabetes.*, 1990; 39(4): 406-14.

Reetz A, Solimena M, Matteoli M, Folli F, Takei K, De Camilli P. GABA and pancreatic beta-cells: colocalization of glutamic acid decarboxylase (GAD) and GABA with synaptic-like microvesicles suggests their role in GABA storage and secretion. *EMBO J.*, 1991; 10(5): 1275-84.

Ricordi C, Lacy P E, Finke E H, Olack B J, Sharp D W: Automated method for isolation of human pancreatic islets. *Diabetes* 37:413-420, 1988.

Rothstein, J. D., Patel, S., Regan, M. R., Haenggeli, C., Huang, Y. H., Bergles, D. E., Jin, L., Dykes Hoberg, M., Vidensky, S., Chung, D. S., Toan, S. V., Bruijn, L. I., Su, Z. Z., Gupta, P., and Fisher, P. B. Beta-lactam antibiotics offer neuroprotection by increasing glutamate transporter expression. *Nature*, 2005, 433, 73-77

Rothstein J D, Dykes-Hoberg M, Pardo C A, Bristol L A, Jin L, Kuncl R W, Kanai Y, Hediger M A, Wang Y, Schielke J P, Welty D F. Knockout of glutamate transporters reveals a major role for astroglial transport in excitotoxicity and clearance of glutamate. *Neuron.* 1996; 16(3):675-86.

Rothstein, J. D., Jin, L., Dykes-Hoberg, M., and Kuncl, R. W. Chronic inhibition of glutamate uptake produces a model of slow neurotoxicity. *Proc. Natl. Acad. Sci. U.S.A.*, 1993; 90, 6591-6595

Satin L S, Kinard T A Neurotransmitters and their receptors in the islets of the pancreas: what messages do acetylcholine, glutamate, and GABA transmit? *Endocrine.* 1998; 8(3):213-2.

Skerry T M, Genever P G. Glutamate signalling in non-neuronal tissues. *Trends Pharmacol Sci.* 2001; 22(4):174-81.

Solimena M, Folli F, Denis-Donini S, Comi G C, Pozza G, De Camilli P, Vicari A M. Autoantibodies to glutamic acid decarboxylase in a patient with stiff-man syndrome, epilepsy, and type I diabetes mellitus. *N Engl J. Med.* 1988; 318(16): 1012-20.

Solimena M, Folli F, Aparisi R, Pozza G, De Camilli P. Autoantibodies to GABA-ergic neurons and pancreatic beta cells in stiff-man syndrome. *N Engl J. Med.* 1990; 322(22): 1555-60.

Storto M, Capobianco L, Battaglia G, Molinaro G, Gradini R, Riozzi B, Di Mambro A, Mitchell K J, Bruno V, Vairetti M P, Rutter G A, Nicoletti F. Insulin secretion is controlled by mGlu5 metabotropic glutamate receptors. *Mol. Pharmacol.*, 2006; 69(4): 1234-41.

Su, Z. Z., Leszczyniecka, M., Kang, D. C., Sarkar, D., Chao, W., Volsky, D. J., and Fisher, P. B. Insights into glutamate transport regulation in human astrocytes: cloning of the promoter for excitatory amino acid transporter 2 (EAAT2). *Proc. Natl. Acad. Sci. U.S.A.* 2003, 100, 1955-1960

Tan, E. M. Autoantibodies in pathology and cell biology. *Cell* 1991; 67:841-842.

Tanaka K, Watase K, Manabe T, Yamada K, Watanabe M, Takahashi K, Iwama H, Nishikawa T, Ichihara N, Kikuchi T, Okuyama S, Kawashima N, Hori S, Takimoto M, Wada K. Epilepsy and exacerbation of brain injury in mice lacking the glutamate transporter GLT1. *Science.* 1997; 276(5319): 1699-702.

Tong Q, Ouedraogo R, Kirchgessner A L. Localization and function of group III metabotropic glutamate receptors in rat pancreatic islets. *Am J Physiol Endocrinol Metab.*, 2002; 282(6): E1324-33.

Trotti D, Danbolt N C, Volterra A. Glutamate transporters are oxidant-vulnerable: a molecular link between oxidative and excitotoxic neurodegeneration? *Trends Pharmacol Sci.* 1998; 19(8):328-34.

Tsui H, Chan Y, Tang L, Winer S, Cheung R K, Paltser G, Selvanantham T, Elford A R, Ellis J R, Becker D J, Ohashi P

S, Dosch H M. Targeting of pancreatic glia in type 1 diabetes. *Diabetes*. 2008; 57(4):918-28.

Utsunomiya-Tate N, Endou H, Kanai Y. Cloning and functional characterization of a system ASC-like Na⁺-dependent neutral amino acid transporter. *J Biol Chem*. 1996; 271(25): 14883-90.

Van De Winkel M, Smets G, Gepts W, Pipeleers D. Islet cell surface antibodies from insulin-dependent diabetics bind specifically to pancreatic B cells. *J Clin Invest*. 1982; 70(1):41-9.

Vanoni C, Massari S, Losa M, Carrega P, Perego C, Conforti L, Pietrini G. Increased internalisation and degradation of GLT1 glial glutamate transporter in a cell model for familial amyotrophic lateral sclerosis (ALS). *J Cell Sci*, 2004; 117(Pt 22): 5417-26.

Weaver C D, Yao T L, Powers A C, Verdoorn T A. Differential expression of glutamate receptor subtypes in rat pancreatic islets. *J Biol Chem*, 1996; 271(22): 12977-84.

Weaver C D, Gundersen V, Verdoorn T A. A high affinity glutamate/aspartate transport system in pancreatic islets of modulates glucose-stimulated insulin secretion. *J Biol Chem*, 1998; 273(3): 1647-53.

Weiss M D, Rossignol C, Summers C, Anderson K J A pH-dependent increase in neuronal glutamate efflux in vitro: Possible involvement of ASCT1. *Brain Research*, 2005 1056: 105-112.

Wenzlau J M, Juhl K, Yu L, Moua O, Sarkar S A, Gottlieb P, Rewers M, Eisenbarth G S, Jensen J, Davidson H W, Hutton J C. The cation efflux transporter ZnT8 (Slc30A8) is a major autoantigen in human type 1 diabetes. *Proc Natl Acad Sci USA*. 2007; 104(43):17040-5.

SEQUENCE LISTING

<160> NUMBER OF SEQ ID NOS: 14

<210> SEQ ID NO 1

<211> LENGTH: 574

<212> TYPE: PRT

<213> ORGANISM: Homo sapiens

<400> SEQUENCE: 1

```

Met Ala Ser Thr Glu Gly Ala Asn Asn Met Pro Lys Gln Val Glu Val
1          5          10          15

Arg Met His Asp Ser His Leu Gly Ser Glu Glu Pro Lys His Arg His
          20          25          30

Leu Gly Leu Arg Leu Cys Asp Lys Leu Gly Lys Asn Leu Leu Leu Thr
          35          40          45

Leu Thr Val Phe Gly Val Ile Leu Gly Ala Val Cys Gly Gly Leu Leu
          50          55          60

Arg Leu Ala Ser Pro Ile His Pro Asp Val Val Met Leu Ile Ala Phe
          65          70          75          80

Pro Gly Asp Ile Leu Met Arg Met Leu Lys Met Leu Ile Leu Pro Leu
          85          90          95

Ile Ile Ser Ser Leu Ile Thr Gly Leu Ser Gly Leu Asp Ala Lys Ala
          100          105          110

Ser Gly Arg Leu Gly Thr Arg Ala Met Val Tyr Tyr Met Ser Thr Thr
          115          120          125

Ile Ile Ala Ala Val Leu Gly Val Ile Leu Val Leu Ala Ile His Pro
          130          135          140

Gly Asn Pro Lys Leu Lys Lys Gln Leu Gly Pro Gly Lys Lys Asn Asp
          145          150          155          160

Glu Val Ser Ser Leu Asp Ala Phe Leu Asp Leu Ile Arg Asn Leu Phe
          165          170          175

Pro Glu Asn Leu Val Gln Ala Cys Phe Gln Gln Ile Gln Thr Val Thr
          180          185          190

Lys Lys Val Leu Val Ala Pro Pro Asp Glu Glu Ala Asn Ala Thr
          195          200          205

Ser Ala Val Val Ser Leu Leu Asn Glu Thr Val Thr Glu Val Pro Glu
          210          215          220

Glu Thr Lys Met Val Ile Lys Lys Gly Leu Glu Phe Lys Asp Gly Met
          225          230          235          240

Asn Val Leu Gly Leu Ile Gly Phe Phe Ile Ala Phe Gly Ile Ala Met
          245          250          255

```


-continued

Ser Pro Ile His Pro Asp Val Val Met Leu Ile Ala Phe Pro Gly Asp
 65 70 75 80
 Ile Leu Met Arg Met Leu Lys Met Leu Ile Leu Pro Leu Ile Ile Ser
 85 90 95
 Ser Leu Ile Thr Gly Leu Ser Gly Leu Asp Ala Lys Ala Ser Gly Arg
 100 105 110
 Leu Gly Thr Arg Ala Met Val Tyr Tyr Met Ser Thr Thr Ile Ile Ala
 115 120 125
 Ala Val Leu Gly Val Ile Leu Val Leu Ala Ile His Pro Gly Asn Pro
 130 135 140
 Lys Leu Lys Lys Gln Leu Gly Pro Gly Lys Lys Asn Asp Glu Val Ser
 145 150 155 160
 Ser Leu Asp Ala Phe Leu Asp Leu Ile Arg Asn Leu Phe Pro Glu Asn
 165 170 175
 Leu Val Gln Ala Cys Phe Gln Gln Ile Gln Thr Val Thr Lys Lys Val
 180 185 190
 Leu Val Ala Pro Pro Ser Glu Glu Ala Asn Thr Thr Lys Ala Val Ile
 195 200 205
 Ser Met Leu Asn Glu Thr Met Asn Glu Ala Pro Glu Glu Thr Lys Ile
 210 215 220
 Val Ile Lys Lys Gly Leu Glu Phe Lys Asp Gly Met Asn Val Leu Gly
 225 230 235 240
 Leu Ile Gly Phe Phe Ile Ala Phe Gly Ile Ala Met Gly Lys Met Gly
 245 250 255
 Glu Gln Ala Lys Leu Met Val Glu Phe Phe Asn Ile Leu Asn Glu Ile
 260 265 270
 Val Met Lys Leu Val Ile Met Ile Met Trp Tyr Ser Pro Leu Gly Ile
 275 280 285
 Ala Cys Leu Ile Cys Gly Lys Ile Ile Ala Ile Lys Asp Leu Glu Val
 290 295 300
 Val Ala Arg Gln Leu Gly Met Tyr Met Ile Thr Val Ile Val Gly Leu
 305 310 315 320
 Ile Ile His Gly Gly Ile Phe Leu Pro Leu Ile Tyr Phe Val Val Thr
 325 330 335
 Arg Lys Asn Pro Phe Ser Phe Phe Ala Gly Ile Phe Gln Ala Trp Ile
 340 345 350
 Thr Ala Leu Gly Thr Ala Ser Ser Ala Gly Thr Leu Pro Val Thr Phe
 355 360 365
 Arg Cys Leu Glu Asp Asn Leu Gly Ile Asp Lys Arg Val Thr Arg Phe
 370 375 380
 Val Leu Pro Val Gly Ala Thr Ile Asn Met Asp Gly Thr Ala Leu Tyr
 385 390 395 400
 Glu Ala Val Ala Ala Ile Phe Ile Ala Gln Met Asn Gly Val Ile Leu
 405 410 415
 Asp Gly Gly Gln Ile Val Thr Val Ser Leu Thr Ala Thr Leu Ala Ser
 420 425 430
 Ile Gly Ala Ala Ser Ile Pro Ser Ala Gly Leu Val Thr Met Leu Leu
 435 440 445
 Ile Leu Thr Ala Val Gly Leu Pro Thr Glu Asp Ile Ser Leu Leu Val
 450 455 460
 Ala Val Asp Trp Leu Leu Asp Arg Met Arg Thr Ser Val Asn Val Val
 465 470 475 480
 Gly Asp Ser Phe Gly Ala Gly Ile Val Tyr His Leu Ser Lys Ser Glu
 485 490 495

-continued

Leu Asp Thr Ile Asp Ser Gln His Arg Met Gln Glu Asp Ile Glu Met
 500 505 510

Thr Lys Thr Gln Ser Ile Tyr Asp Asp Lys Asn His Arg Glu Ser Asn
 515 520 525

Ser Asn Gln Cys Val Tyr Ala Ala His Asn Ser Val Val Ile Asp Glu
 530 535 540

Cys Lys Val Thr Leu Ala Ala Asn Gly Lys Ser Ala Asp Cys Ser Val
 545 550 555 560

Glu Glu Glu Pro Trp Lys Arg Glu Lys
 565

<210> SEQ ID NO 3
 <211> LENGTH: 12021
 <212> TYPE: DNA
 <213> ORGANISM: Homo sapiens

<400> SEQUENCE: 3

gggtgatgtc agctctcgac gaaaatagag agggatcgcc tgcaaatccc cagctccggc 60
 ggggctaaac cttgcaatcc ctccctggcc ggcgcccagc cagagcgcag cggcctccac 120
 cgctcccaca ggcgcgcaca caccgcaca cgcgcacgca cgctcacctg cctctgccac 180
 cactctctgc tcccgccact cgccgcgccc gcgagcccgc cagcaaagca caggtggcag 240
 cggctgcagg ggcgcacgca cggcgtgccc cctcctgcag ccctggggcg atcgctctct 300
 cggggaagcc accctcggag cccccggagc tccccgcaa gcgccatccc cgcgggcgga 360
 ggggagcgcg ggtcgcgcgc cgtggagagc cgggacgcgg attagcgcgc gcaggagcct 420
 cctgcgcgcc ttgaggcgct aaagggctta ccccggaggc gggtggaagg gcgggcagag 480
 gctctcttta aataccgctc ccggccgcac ttgcgcctca ccccggcgtc cgctttctcc 540
 ctgcccaca gctgccgat agtgctgaag aggagggggc gttccccaga ccatggcatc 600
 tacggaaggt gccacaata tgcccagca ggtggaagt cgaatgcacg acagtcattc 660
 tggctcagag gaaccacaac accggcacct gggcctgccc ctgtgtgaca agctggggaa 720
 gaatctgctg ctccacctga cgggtgtttg tgtcatcctg ggagcagtg gtggagggct 780
 tcttcgcttg gcattctcca tccacctga tgtggttatg ttaatagcct tcccagggga 840
 tatactcatg aggatgctaa aaatgctcat tctcctcta atcatctcca gcttaatcac 900
 agggttgtca ggccctggat ctaaggctag tggccgcttg ggcacgagag ccatggtgta 960
 ttacatgtcc acgaccatca ttgctgcagt actgggggctc attctggtct tggctatcca 1020
 tccaggcaat cccaagctca agaagcagct ggggcctggg aagaagaatg atgaagtgtc 1080
 cagcctggat gccttctctg acctattctg aaatctcttc cctgaaaacc ttgtccaagc 1140
 ctgctttcaa cagattcaaa cagtgcgcaa gaaagtcctg gttgcaccac cgcggacgca 1200
 ggaggccaac gcaaccagcg ctgtgtgtct tctgttgaac gagactgtga ctgaggtgcc 1260
 ggaggagact aagatggtta tcaagaaggc cctggagttc aaggatggga tgaacgtctt 1320
 aggtctgata gggtttttca ttgcttttgg catcgctatg ggggaagatg gagatcaggc 1380
 caagctgatg gtggatttct tcaacatttt gaatgagatt gtaatgaagt tagtgatcat 1440
 gatcatgtgg tactctcccc tgggtatcgc ctgcctgato tgtggaaaga tcattgcaat 1500
 caaggactta gaagtgtgtg ctaggcaact ggggatgtac atggtaacag tgatcatagg 1560
 cctcatcacc caccggggca tctttctccc cttgatttac tttgtagtga ccaggaaaaa 1620
 ccccttctcc ttttttctgct gcattttcca agcttggatc actgcctggt gcaccgcttc 1680

-continued

cagtgtgga	actttgctg	tcaccttgc	ttgcctggaa	gaaaaatctgg	ggattgataa	1740
gcgtgtgact	agattcgtcc	ttcctgttgg	agcaaccatt	aacatggatg	gtacagccct	1800
ttatgaagcg	gtagccgcca	tctttatagc	ccaaatgaat	gggtgtgtcc	tgatggagg	1860
acagattgtg	actgtaagcc	tcacagccac	cctggcaagc	gtcggcgcg	ccagtatccc	1920
cagtgcggg	ctggtcacca	tgctcctcat	tctgacagcc	gtgggcctgc	caacagagga	1980
catcagcctg	ctgggtgctg	tggactggct	gctggacagg	atgagaactt	cagtcaatgt	2040
tgtgggtgac	tcttttgggg	ctgggatagt	ctatcacctc	tccaagtctg	agctggatac	2100
cattgactcc	cagcatcgag	tgcatgaaga	tattgaaatg	accaagactc	aatccattta	2160
tgatgacatg	aagaaccaca	gggaaagcaa	ctctaataca	tgtgtctatg	ctgcacacaa	2220
ctctgtcata	gtagatgaat	gcaaggtaac	tctggcagcc	aatggaaagt	cagccgactg	2280
cagtgttgag	gaagaacctt	ggaaacgtga	gaaataagga	tatgagtctc	agcaaattct	2340
tgaataaact	ccccagcgta	tcctatggta	actgatgata	taaacaaact	ttctttaaaa	2400
aggaaaaaaa	tgcgtatatt	tctatgttta	cttaactctg	tagccgaggg	ttagaggagc	2460
tcttgtgagt	cagtgatgac	aggcacgggtg	ctgtgtcttt	gccccaaat	gctttataac	2520
cgtctaattt	tctcacttgt	attattattt	gaatggatgc	tgctggagga	atcagttgga	2580
attgaagaca	cgttcttggc	agcttccctt	ttctcccagg	atgcagaaat	gtggatgctc	2640
ttttcccagg	ggacatgagt	aaagcagtgt	ggtacactcc	agggacttgg	gaaaatgagc	2700
aaacacacag	cgtgttattc	cttaaagtgt	tctccatgct	tcgcttggtt	atgcacaaga	2760
gattctatta	aaagcctcta	gaagtaactc	cccttaaaat	gtctagtaaa	gcttgacat	2820
ggattgatta	aaagcaata	cctgtcttag	ggaattctga	caatttatct	tccatatgct	2880
ctttaagtaa	aatgtttcaa	agacagtttt	aaaggagacc	atgctcttaa	aggcagttga	2940
ttaaagaacc	tgttacatct	ctgccttacc	ctgtgtaatc	tgtgagaaca	atggttgaaa	3000
tttcaaagta	tgtttcatta	ttctttctaa	atgtgataat	tgattaggaa	gtattttata	3060
tataaccact	gtagatattg	acaaaagtaa	gagagcacag	tcaacataaa	gtttaaccag	3120
agttaaatat	tcaaatttat	ttatgttcgg	tttgccttca	cctgggttag	taaaatcaaa	3180
tgagattatt	tggtagtgtt	tttgccttgt	ttaaccctaaa	agattatttt	ttggttccta	3240
aagaaaaaga	tatttttaat	ctgtcaatta	tttcagtcac	catctcatcg	tctagaaaag	3300
cctggtcatt	ttactgtcct	cacacatgga	agacacttgt	gttggtgtg	cctcttttaa	3360
tgtcatctct	tgatgaaaca	aaaatactgg	tatttatcca	atatgttgaa	agcgttttgt	3420
tatcttctat	caaagcacat	aaaaccagtt	ataggacaca	gttggaaagca	gagccagtct	3480
tcctcctcag	tcttctcagt	agaaaggaac	agaaaacaaa	catctgtgca	aaaccctata	3540
aaagtgatat	tcctatggca	gagtcagggc	agccttgaac	aatgacatgg	caacaaagga	3600
tggctctgta	caacttcaca	gatggaatct	tgtttaaggg	tgtgaagttt	taaggaataa	3660
ataatataat	tgggttagca	cagtgccttg	catgcagtag	gcagccaaca	aatccttaat	3720
gattggtaat	gcaagctaaa	atttttaatg	tctctactat	ccttttttat	tgaataacgc	3780
acagtatttt	cctaagggtg	ctgggtttgg	gagtaagctt	gggacttgaa	tcattgagaa	3840
ataaagcaca	ttgactccta	agaagtatgt	agaaccttgt	ttataggtga	gaataggctg	3900
tattatatga	aaccagcggg	gggatgctga	gacagtcatg	gtttatagaa	tccaaattct	3960
ctgagatgag	ggtgcttatg	gacctcaaat	agcctttctt	atctgctcct	tgtgacttct	4020
ctcttttaaa	tcagatacct	ttgaaacata	caagagacat	gagattccag	ttgtttttgt	4080

-continued

ctcctaaacc ctagtgatt ttggataag atcactactg aacagtatta ggcaactttt	4140
catttttgct tttcaaatga cattggtctt tatttccagt agatgggcag taacacgggt	4200
cagggtggtc aagggatatg attaagtga gtagttagaaa atgcattctt ttttttttt	4260
tttttttaga cagagtcttg ctctgttctt caggctggag tacagtggca cgatctcagc	4320
tactgcact gcaatgtcca cctctctagt tcaagcgatt ctctgtctc agcctcccga	4380
gtagctggga ctacaggcac atgccaccat gcctggctaa ttttttgat ttttagtaca	4440
gatgggtttc attatgttag ccaggatggt ctcgatctcc tgacctcatg atccaccgc	4500
catggcctcc caaagtctgt ggattacagg cgtgagccac cgtgcccggc cagaaaatac	4560
attctttaca gcaaatgtta taggttaagg agacagtctc tgggtttagc tgtgaaactg	4620
tttaggattt tctttaagtg gtgttcccaa gagctttttt ctggtaagtt ggaggctata	4680
ggcaaagcgt ctaggagctt gttgtttttt gctatggaag gccagctttg ggatctatat	4740
acatgggeat gtttctcaat ggagtggcca caggattctc ttctcagaac tctgcctgaa	4800
acctttccgg tgtgttttgt cttcaacttt ttcttagcta ttctattagc ctgtaaatat	4860
gtcagcagac aatgtgtttg gaagaaacaa ggtgtacaac ttcaaaagc aagttttttc	4920
tggtctgaga cttactgtgt gcaggaagtc tctgtgagaat atacttagaa aatcacactt	4980
atctggaat tcaataagtc atattaaaa tatacaattt cttgaaacta ggactagcct	5040
gaaaatccaa aatgcatgta gagttgacat gttgacatat gtctatgtcc tctgttttta	5100
tttaagcctc atttatttct cccttgccat gccattttgg gattttcttt gcccagcata	5160
tgtgccataa acagaacaaa tggatccagg gtatacctct aataacctt atctaataag	5220
aatacattta acctgtcaat tatatgtata gatttacct aattgggtca acatatatat	5280
gaatgcttgt aatagtctgt tactatttga taatgcataa atgttatatt tatatacagt	5340
tacagcaggc cagaaacata catacactgc atcctgtaag gtctgtaaat cagggtctcg	5400
gcaatgccat tttgctatag actcattcat gttttttagg aatcagaatc atttcaggag	5460
aaaaccaact aagtagactt taattctctt ctttctcatt cttgcccttt gagaaacca	5520
agtggaatca tcaactaatt acttactcaa attcaatgaa tcaaatccaa tccaatcagt	5580
gagaagaata gcttatcttt caaggtaata ctttacctta gatctttgag ggcagtcttc	5640
ccatacaag agcatcagaa aatcagggca atcatctaga tctcacagat cttcaacata	5700
ggactctagg ttatgagagc tgaaccacat agctatcagt ttcagttttt acttctatt	5760
gagtgtgtag aaacacagcc tatggttttg ctgtctgcgg aagttaccat acctgtaaa	5820
agacaaatat ttctttctcc tctcgaacca ctagtacgcc tggatatca tgaagctga	5880
aagaaggggt gccaaaatgc cttagctctg gatttagact catggaatat gagaaaggct	5940
tagggaaaat tcaagtcatt gggagattcc tgctagggtg tgccaggaat ctcaatgacc	6000
tggtgattag agggctctctg gtcatttcca cttgtgtgtg gagaaatata tcatttgc	6060
atgtatctag tcaagaagcc cttttggagc aaagtgggtg ggaaactcat ttactgggtc	6120
caccaaagga aaccaaatc tgccatgttt ttgcaaatc tacacgtccc tttgctctca	6180
atagcaaaag tgatgttata gtttttttta cttttgtcag aatcaaggct tgggccacct	6240
gtgcaatatt ttccatgga atgcagcagt aaatccaagt aggtatatcc gtgctcagag	6300
agaattctcc atagttctga ctctgaaaa acaagtctca ttagctctca tctagtttga	6360
tgactaaaag tgcacagcag ttataccoca gtggaagtga tttttctcac ctagtctc	6420
tctaactctt acggetatct agttgtctga gctgctggtt tgttttactt attctccaac	6480

-continued

tgaactcatt ccaaaccaag aaaaggacc aatgaaatt ttcagttatt atcatacttg	6540
ctccttgaat aagaatgcta gagtctggag gcagaagaag actaagttaa aaaaaaaca	6600
gcctgaagga attctggagt gagttttgta agtctaattg tcaaagaaga taaatggtct	6660
cagtatctgt agtaatttct ggtaagcct agagggatca ctgagtgcca atccaagcag	6720
gtggcactag aggcagattg ttctoctagc atagagtgag tttccagctg ctcatgacac	6780
atthttctat gattttccct aaaagaaaac caaattttct actccacctc ttcctttcct	6840
atcattccac ttattgttgc tgctttgcta acagccagct tagtaagcca tcacacaagt	6900
tagtgtgagg ctgtgtttta aaatagataa cagagaatct tgattaaata gtatccaact	6960
ttgtagcata acacagctaa ttcaggcaat gacatagaga tgataagaaa caacatggtt	7020
tggtagaggg aacatttgat ttagactctg cccattttta gctgtatgac ttacataagt	7080
cattttgtgt ccaagcctca ttttctccca tatgaaaagt gaaggggttg gattaaatga	7140
ctaaaatccc cttccagccc tatgagccca atgtattatg atctctgctt tgtttcctc	7200
ttaagaggct tctactata aaatgtgacc tatttacatt ttaagttgaa gtagcccaca	7260
ataatgaata atcaatttag atttttctca tctcctttgg gagaaattaa attcaagcct	7320
ctattcattt gatgttttac aacaagcttc aaagttggcc atgttcattc acagtttgat	7380
atthttgagac accaataaaa gttttttaat aaaagtctcc ttgacttaa ctcaccttc	7440
taatagaagt agtgatttgg ctcacggaaa aatgtttcca gagtcaacat gagaggactg	7500
gatgaaccta cagcctcact caagctgttg catcattgct gotgtagcaa cagagccctc	7560
tctgaatacc caaaacacac aattttctcc aacaattcta attgcccacc cagtatggga	7620
atthttgagac ctttggtgaa taaccttgat cactcttttg aaatttgta caacacttg	7680
acaatcacgg caactgtttg taaatatctt ttcttctccg ccagtatgta gacatgcaca	7740
cccattcaca agtaagcccg caaattcatt ttcacatttt cctcttggtt tgtttttatc	7800
atgggatca cattgcagga agagatgctc taacttaca gaatggaatt ttctgactat	7860
cattgccctc ttaaggcct gattagtttg tagggtggat gggatacaat gcatggtcta	7920
caaggtccat gtcaccagcc atgatcttta aacaacctct tgcactttct ggcactgctg	7980
caatggccca tgggtggacac ctctgctggt tgtccaaact tctgctaaat agagtagtgt	8040
tggtatthttg tgtgttga actcctttgt tgtcagagaa gacttcagct cttcaggtt	8100
gcaagggcaa gatgtaaaag taggactgaa aggattgggt tttgttttc ggcggctt	8160
ttccattag tgcaaaaac ctgatgcaag ggcagcaaga taaacacaat ttcttcattg	8220
accagataa gaacctgtag aaaagtgaga gatgccccta agttcctatt tcatttatcc	8280
taaataatat cctgaataac tactgatcag ttttttctca tgtccagcct tgcttcaact	8340
tccaacctcc aggccaaata ttcattttga tattttacaa aatcctctg gtttttacac	8400
agggcccttt tgtgctgaga ataaaaccag ctattggaac agacctcact gctttgtaga	8460
gtcagaagtt gacctagaga atgggtagca acaggtcctc agtttctctg gagaccccc	8520
caatccttgg gtgagtgttg aaacctgaca actgactggt agccttgta tcacctcac	8580
tggagatgga gatgttgacg tggagcctc actccttctg gggcactggt tcttctcatg	8640
gcaaccattt tgctgctcgt gaaacagcct gttgcctttg ctagggggca aatacacaca	8700
ctagccaagg aagttggtcc agcacatctc tgaggtttct ccccatgga cccatggagc	8760
gaattccctg agataaatga tcagaaagt ggctgtctgg tggtttaata ctccataaga	8820
gttacttccc ttatagaaag tcactcttgg gcatctagat tttctacaa atcacctaa	8880

-continued

ctccctccct	ttctctttct	cctggaaaac	ctcagcattg	catctccatg	ttgcacaaca	8940
cagatcagat	tatctggtca	ctatagagat	ttgtatataa	aaaaactact	tttttgagga	9000
ttttgtatat	tgtttttcta	tttgttttct	acagcttgag	gaaagagctg	gcaaactgtg	9060
aatctaactt	gatcttggtg	ccagcagata	tattttggct	tcctggtaag	agtctgtgtt	9120
accagggaca	atatattgcc	ctctgatcag	tattgcaccc	taaataccaca	aattcctcca	9180
gcccagtctt	acattttttt	aaacaaatcc	cctagcttgt	ttgctattat	ttataaagag	9240
cattagaaaa	tgtatttata	gacctggatg	ttatatgttt	aatattaatt	tagcctttaa	9300
taatgttata	ggtttgtaac	tattcttcag	aaattataaa	gaactcagtg	tagactgaat	9360
taatctattt	agtatctgta	attttgcaga	catattttct	tacagtattt	tctatgtaac	9420
cacacatgta	gaattataac	taattagagc	acaagaagtt	tcttcagcaa	tttagagcta	9480
ccaattgttt	cttgactata	tagtcacatt	tgacaaaatt	aagaaccag	tctttagtga	9540
tgcaataaac	aaaatgaacc	attaagaaca	aggaattgct	taaatacctt	agctggtgag	9600
gatatacatc	taataaattc	atctttctaa	ctcaaggaat	gggtctgatt	ttttaaatgt	9660
ttgacaccag	gccttgtttt	tccagctgag	cattctcatt	ttgcttttct	ctaagactat	9720
caaagacaag	gtattaatag	taggattatt	cctagatcag	aatgtttcat	acattcctaa	9780
aggtttatgt	ggaaattggc	ttagaaaaac	tttgagttag	agagactgag	gatgagtgtc	9840
agagatgaaa	tcaggacaga	tttgttgcag	ttaattcttg	ccaagcaaat	tagtggtaaa	9900
tgtcacattg	ttatgtgaat	tgagcacata	tttttaaaga	aagtttacia	aaaattttta	9960
gaaccaacta	tgaggcaata	ctgtatcact	gggggctggg	agtgggggct	tagaatcata	10020
ctgaaattgt	ttaaaagcag	cccaggtagt	ttctgtcctc	aggtaataa	cagactatat	10080
aacttccccg	aaaggtaaaa	cgatagccac	tgacagagag	agggtctctc	cttccacca	10140
atactttctg	agatgggtgt	aggagttaga	ttttaccctg	ggtttaaaaa	gtagttagtt	10200
acatagaaag	tgtatttgta	tgtatttgaa	cctgctcttc	attaacaaa	cagattagat	10260
gtaccctcga	ctggcaataa	ttgtatctat	tttcaagtac	agctagctgt	caaagcatga	10320
agctcttggt	tatacacact	gacacttggt	tcacgcatga	agaacagtgc	ctatgcactt	10380
tgtgtagcta	taattgtagt	atctaggtgt	aatttcagtg	aaatgggtga	tagatgtatt	10440
gtaatttaaa	tgtatatgtt	atttttggct	attcatctaa	atgcagtaga	catggtgtgc	10500
gggtgtttgc	aaacatttct	ttttccttct	tagataacta	gtcgtgaatc	atttctctc	10560
tttctcagtg	tggcttgga	atatatatga	gtgaagaatt	tatctgtgaa	tcctttgtac	10620
tgatgattgt	ttgaaagtct	gtgtgtgtcc	agcacctttg	taaatacaca	attcagagca	10680
gggatgggct	gggtgtgtgt	cctggttcct	agtgaaggt	catctcatgt	ctgtttaata	10740
catggtgaat	gcaactgtgg	aacttttgat	tacctagact	taggtagggt	tagaatgaga	10800
acatccatct	acagtcctcc	tttgcttggg	ggattgggct	cagaggaaca	aaaagttagt	10860
ctgactctgt	gcatattagc	atcatgtctt	tagagaaagg	tcagcctctc	tggttgccaa	10920
atactcatca	tgatgtcat	gacttaagg	ttctgaggag	ccttctctcc	cttgattttt	10980
tgagtcaggg	tacaggaaaa	aacattgctg	actaactaac	tgcaaatgca	tctgcaggtg	11040
aaaccctacg	aaagcacagt	tctggctata	aacttcagag	ttctctgtaa	aaaacttaga	11100
gcactagaag	cacaggaata	gtgagtgtac	agcttatgag	gttgttagagg	ggcaactgat	11160
gaacacaggt	cccacatata	tgagggagta	tgacgttctc	tacctaata	gttctgtgtg	11220
catgttttga	atgattgaag	atgggattaa	ctaatacga	tttaacagtg	cctcctaaaa	11280

-continued

```

cacacattct gtataattat cgctaaatac aatgctgtga ggtctatagt tctgtgaacc 11340
cctttctcct cccaagac agagaagaac tagccatgtg ctatagggaa ccctgagtgc 11400
cctactcttt tccaagaag ggtaaagcct acaatatcat cagggggcat gaagcacatt 11460
aatttgacgt ggctgcttca tatgaggaga tatggtggac aggctaattt ttccttgaaa 11520
atgtggcttc ttaactcct tcaaattta ggatgaata cttcctgaaa taaaactggg 11580
ctttatgcag gattctcttt gaaaattcct gtatgtccag aacaaaagat aaaactaatt 11640
gtattcctca cattcacaat ccccatgggt ctgaagtcac gtagcacaga gcatctatag 11700
cacatagtgt taaagacta atgaatgcaa aaagataaaa tcttcaacta atttttgaat 11760
tgtttctcat atatgctact agaaaatgcc ttgttgatga agcacatttt gggtagttga 11820
ggctctttgt tttcgcttt agctttctaa gctttcttac aatgtggact gattactgta 11880
acatttcacg tgtaaaataa ctggatattc tttatatact ggaaataacc tgtgaatcca 11940
atatttcaact aagtgtttta acttttgtgt atatatctct catcaataaa tgtggatttc 12000
aatttaaaaa aaaaaaaaaa a 12021

```

```

<210> SEQ ID NO 4
<211> LENGTH: 1947
<212> TYPE: DNA
<213> ORGANISM: Mus musculus

```

```

<400> SEQUENCE: 4

```

```

agccagtcca cttctacagc tgagagaatg gtcagtgcc acaatatgcc caagcaggta 60
gaagtgcgca tgcacgacag ccacctcagc tccgatgagc caaagcaccg aaacctgggc 120
atgcgcatgt gcgacaagct ggggaaaaat ctctgctct cactgactgt gtttggtgtc 180
atcctgggag cagtgtgtgg ggggctgctt cgcttgcat cgcccatcca cctgatgtg 240
gtcatgttga tagccttccc gggggacata ctcatgagga tgctgaagat gctcatcctc 300
cctcttatca tctccagttt aatcacaggg ttgtcaggcc tggatgctaa agccagcggc 360
cgcctaggca cgagagctat ggtgtattac atgtccacga ccatcattgc cgccgtgctg 420
ggggtcatcc tgggtgtggc catccacca ggcaatcca aactcaagaa gcagctaggg 480
cccgggaaga agaacgacga ggtgtctagc ctggatgect tcttgatct cattagaaat 540
ctcttcccg agaactggt gcaagcctgt ttccagcaga ttcagacagt gacaaagaaa 600
gttctggtgg cacctccatc tgaggaggcc aataccacca aggcggtcat ctccatgtg 660
aatgaaacca tgaacgaggc ccctgaagaa actaagatcg ttatcaagaa gggcctggag 720
ttcaaggacg ggatgaatgt cttaggtctg atcggattct ttattgcttt cggcattgcc 780
atggggaaga tgggtgaaca ggccaagctg atggtggagt tcttcaacat tctgaatgag 840
atcgtgatga agttagtgat catgatcatg tggtaactcc ctctgggtat cgctgcttg 900
atgtgtggga agatcatcgc catcaaggac ttagaagtgg ttgctaggca gctggggatg 960
tacatgatca ccgtgatcgt gggcctcacc attcacgggg gcactttct ccccttgatt 1020
tactttgtag tgaccagaaa aaatccattc tcttttttg ctggcatatt ccaagcctgg 1080
atcactgctc tgggaactgc ttccagtgt ggaactttgc ctgttacctt ccgttgcttg 1140
gaagataatc tagggattga caagcgtgtg accagattcg tctcccagc cggagcaacc 1200
attaacatgg atggcacagc cctttacgag gctgtggcag ccattttcat agcccaaatg 1260
aatggggta tcttgatgg aggtcagatt gtgactgtaa gccttacagc caccctggca 1320
agcattgggtg cagccagat tccaagcgc gggctggta ccatgctcct cattctcaca 1380

```

-continued

```

gctgtggggc tgccaacgga ggatatacagt ctgctgggtg cggtggactg gctgctggat 1440
agaatgagaa cttcagtc aa tgtgggtggc gattcttttg gggctgggat tgtctatcac 1500
ctttccaagt ctgagctgga caccattgac tccaacacc gaatgcagga agacatcgaa 1560
atgaccaaga cgcagtcacat ttacgacgac aagaaccaca gggaaagcaa ctctaatacag 1620
tgtgtctatg ccgacacaaa ctctgtcgta atagatgagt gcaaggtaac tctggcggcc 1680
aatggaaagt cagctgactg cagtgttgag gaagaacctt gaaaactgta aaaataatga 1740
cccgattctc agccaattct tgaataaact ccccgacgta tcttatggta aaagatgctc 1800
tctaaacagg cttcctttac aaaaggaaa gatgcatatg tttctatggt tacttaatct 1860
gtagctgag gcatagagga gctgtgtaca cccgtgatga taggcaccgt gctgtgtctt 1920
tgccaaataa tgctttatta actgtct 1947

```

```

<210> SEQ ID NO 5
<211> LENGTH: 20
<212> TYPE: DNA
<213> ORGANISM: Mus musculus

```

```

<400> SEQUENCE: 5

```

```

gaccaagacg cagtccattt 20

```

```

<210> SEQ ID NO 6
<211> LENGTH: 20
<212> TYPE: DNA
<213> ORGANISM: Mus musculus

```

```

<400> SEQUENCE: 6

```

```

ggctgagaat cgggtcatta 20

```

```

<210> SEQ ID NO 7
<211> LENGTH: 20
<212> TYPE: DNA
<213> ORGANISM: Mus musculus

```

```

<400> SEQUENCE: 7

```

```

gaccaagacg cagtccattt 20

```

```

<210> SEQ ID NO 8
<211> LENGTH: 20
<212> TYPE: DNA
<213> ORGANISM: Mus musculus

```

```

<400> SEQUENCE: 8

```

```

gatgcaagg gttgtgattt 20

```

```

<210> SEQ ID NO 9
<211> LENGTH: 20
<212> TYPE: DNA
<213> ORGANISM: Mus musculus

```

```

<400> SEQUENCE: 9

```

```

atgttgaat ggggaactcg 20

```

```

<210> SEQ ID NO 10
<211> LENGTH: 20
<212> TYPE: DNA
<213> ORGANISM: Mus musculus

```

```

<400> SEQUENCE: 10

```

```

gccgttttcc aatcctatca 20

```

-continued

<210> SEQ ID NO 11
 <211> LENGTH: 20
 <212> TYPE: DNA
 <213> ORGANISM: Mus musculus

<400> SEQUENCE: 11

ggagcagatg gatgtttcgt 20

<210> SEQ ID NO 12
 <211> LENGTH: 20
 <212> TYPE: DNA
 <213> ORGANISM: Mus musculus

<400> SEQUENCE: 12

gctaggagat ggctcctgtg 20

<210> SEQ ID NO 13
 <211> LENGTH: 20
 <212> TYPE: DNA
 <213> ORGANISM: Homo sapiens

<400> SEQUENCE: 13

cttttggggc tgggatagtc 20

<210> SEQ ID NO 14
 <211> LENGTH: 20
 <212> TYPE: DNA
 <213> ORGANISM: Homo sapiens

<400> SEQUENCE: 14

ttggtgccca gagttacctt 20

35

The invention claimed is:

1. A method in vitro for identifying type 1 diabetes or LADA (Latent Autoimmune Diabetes in Adults) or susceptibility to type 1 diabetes in a subject, which comprises determining the presence of antibodies reactive to the glutamate transporter protein GLUT1 in a blood serum sample of said subject

wherein the presence of antibodies reactive to GLUT1 in the serum identifies said subject with type 1 diabetes or LADA or at risk of developing said type 1 diabetes.

2. A method according to claim 1, wherein the GLUT1 protein is contacted with the serum sample from a human subject in conditions allowing the formation of an immune complex which is then detected by immunochemical or immunoenzymatic reactions.

3. A method according to claim 1, wherein the presence of antibodies reactive to GLUT1 is detected through a functional assay which comprises the following steps:

a) cells expressing GLUT1 are incubated with a serum sample in conditions allowing the interaction between GLUT1 and antibodies reacting therewith,

b) the cell uptake of a labelled GLUT1-substrate is measured and compared to the uptake in untreated control cells or in cells treated with a serum sample from non pre-diabetic or non-diabetic subjects,

whereby any change in cell uptake in the test sample is indicative of the presence of antibodies reacting with GLUT1.

4. A method according to claim 1, which is applied to the screening of individuals affected by diabetes or of subjects at risk of developing diabetes or LADA (Latent Autoimmune Diabetes in Adults).

* * * * *

专利名称(译)	用于诊断和治疗糖尿病的方法和组合物		
公开(公告)号	US8722343	公开(公告)日	2014-05-13
申请号	US13/130196	申请日	2009-11-20
[标]申请(专利权)人(译)	PEREGO CARLA 乌斯马泰韦拉泰 DAVALLI ALBERTO FOLLI FRANCO		
申请(专利权)人(译)	PEREGO, CARLA (乌斯马泰韦拉泰 DAVALLI, ALBERTO FOLLI, FRANCO		
当前申请(专利权)人(译)	佩雷戈, 卡拉		
[标]发明人	PEREGO CARLA DI CAIRANO ELIANA SARA DAVALLI ALBERTO FOLLI FRANCO		
发明人	PEREGO, CARLA DI CAIRANO, ELIANA SARA DAVALLI, ALBERTO FOLLI, FRANCO		
IPC分类号	G01N33/53 G01N33/48 G01N33/49		
CPC分类号	G01N2800/042 G01N33/564 G01N33/6872 G01N2500/04 G01N2500/10		
审查员(译)	PAK, MICHAEL		
优先权	61/116866 2008-11-21 US		
其他公开文献	US20110244486A1		
外部链接	Espacenet USPTO		

摘要(译)

用于诊断和治疗糖尿病的方法，测定和组合物，其中胰岛细胞中表达的谷氨酸转运蛋白和/或受体用作治疗靶标或工具，用于鉴定或治疗患有或易患糖尿病的个体。

FIG. 1A

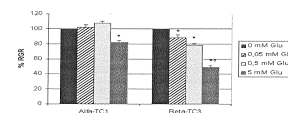


FIG. 1B

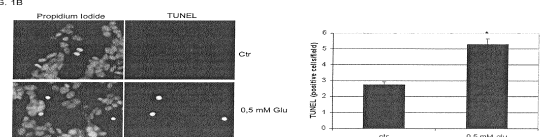


FIG. 1C

