



US010035841B2

(12) **United States Patent**
Clavijo et al.

(10) **Patent No.: US 10,035,841 B2**
(45) **Date of Patent: Jul. 31, 2018**

(54) **MONOCLONAL ANTIBODY AGAINST NOVEL EPITOPES OF FOOT-AND-MOUTH DISEASE VIRUS PROTEIN 3ABC AND USES THEREOF**

(71) Applicants: **Alfonso Clavijo**, Rio de Janeiro (BR); **Aida Elizabeth Rieder**, Westbrook, CT (US); **Abu Sayed**, East Lyme, CT (US); **Mangkey A. Bounpheng**, Austin, TX (US); **Thomas G. Burrage**, Guilford, CT (US); **Brooke A. Dancho**, Athens, GA (US); **Sabena Uddowla Blakeney**, Lanham, MD (US)

(72) Inventors: **Alfonso Clavijo**, Rio de Janeiro (BR); **Aida Elizabeth Rieder**, Westbrook, CT (US); **Abu Sayed**, East Lyme, CT (US); **Mangkey A. Bounpheng**, Austin, TX (US); **Thomas G. Burrage**, Guilford, CT (US); **Brooke A. Dancho**, Athens, GA (US); **Sabena Uddowla Blakeney**, Lanham, MD (US)

(73) Assignees: **THE TEXAS A&M UNIVERSITY SYSTEM**, College Station, TX (US); **THE UNITED STATES OF AMERICA, AS REPRESENTED BY THE SECRETARY OF AGRICULTURE**, Washington, DC (US); **THE UNITED STATES OF AMERICA, AS REPRESENTED BY THE SECRETARY OF HOMELAND SECURITY**, Washington, DC (US)

(*) Notice: Subject to any disclaimer, the term of this patent is extended or adjusted under 35 U.S.C. 154(b) by 0 days.

(21) Appl. No.: **15/010,278**

(22) Filed: **Jan. 29, 2016**

(65) **Prior Publication Data**

US 2017/0218053 A1 Aug. 3, 2017

(51) **Int. Cl.**
C07K 16/10 (2006.01)
G01N 33/53 (2006.01)
G01N 33/569 (2006.01)

(52) **U.S. Cl.**
CPC ... **C07K 16/1009** (2013.01); **G01N 33/56983** (2013.01); **C07K 2317/34** (2013.01); **C07K 2319/21** (2013.01); **C12N 2770/32122** (2013.01); **C12N 2770/32134** (2013.01); **G01N 2333/09** (2013.01)

(58) **Field of Classification Search**
None
See application file for complete search history.

(56) **References Cited**

U.S. PATENT DOCUMENTS

2011/0014639 A1* 1/2011 Chen C07K 16/1009
435/7.94

OTHER PUBLICATIONS

Ahmad et al., Hindawi Publishing Corporation, *Clinical and Developmental Immunology*, 2012, vol. 2012, Article ID 980250, 15 pages.*

Höhlich, B.-J. et al. "Identification of Foot-and-Mouth Disease Virus-Specific Linear B-Cell Epitopes to Differentiate between Infected and Vaccinated Cattle" *Journal of Virology*, Aug. 2003, pp. 8633-8639, vol. 77, No. 16.

Oem, J. K. et al. "Development of an epitope-blocking-enzyme-linked immunosorbent assay to differentiate between animals infected with and vaccinated against foot-and-mouth disease virus" *Journal of Virological Methods*, 2007, pp. 174-181, vol. 142.

Thermo Scientific Crosslinking Technical Handbook, "easy molecular bonding—crosslinking technology—Reactivity chemistries, applications and structure references" *Thermo Fisher Scientific Inc.*, 2012, pp. 1-54.

Yang, M. et al. "Development of a Competitive Enzyme-Linked Immunosorbent Assay for Detection of Antibodies against the 3B Protein of Foot-and-Mouth Disease Virus" *Clinical and Vaccine Immunology*, Apr. 2015, pp. 389-397, vol. 22, No. 4.

* cited by examiner

Primary Examiner — Stacy B Chen

(74) Attorney, Agent, or Firm — Saliwanchik, Lloyd & Eisenschenk

(57) **ABSTRACT**

This disclosure pertains to isolated antibodies or antigen binding fragments thereof that specifically bind to the 3ABC non-structural protein of Foot-and-Mouth Disease virus (FMDV), wherein the antibodies or antigen binding fragments thereof recognize the amino acid sequence of SEQ ID NO: 2, SEQ ID NO: 3, SEQ ID NO: 4, SEQ ID NO: 5, SEQ ID NO: 6 or SEQ ID NO: 12. Accordingly, this disclosure also pertains to polypeptides having an amino acid sequence selected from SEQ ID NO: 2, SEQ ID NO: 3, SEQ ID NO: 4, SEQ ID NO: 5 or SEQ ID NO: 12. Monoclonal antibody Mab 40C8 is also provided. The current disclosure also pertains to methods of detecting FMDV infection in an animal (including assays differentiating infected animals from vaccinated animals (DIVA)) and kits for performing the detection methods. Competitive ELISA kits comprising the antibody or antigen binding fragment thereof and immunoassay plates coated with the polypeptide comprising the amino acid sequence selected from SEQ ID NO: 2, SEQ ID NO: 3, SEQ ID NO: 4, SEQ ID NO: 5, SEQ ID NO: 6 and/or SEQ ID NO: 12 are also provided.

19 Claims, 15 Drawing Sheets
(8 of 15 Drawing Sheet(s) Filed in Color)

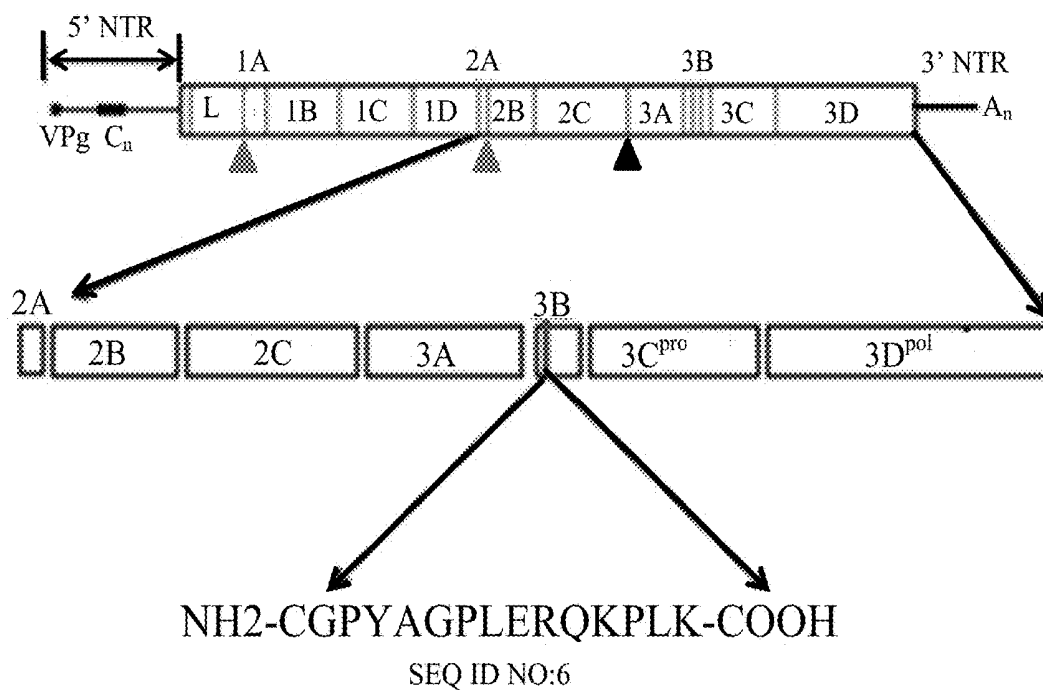
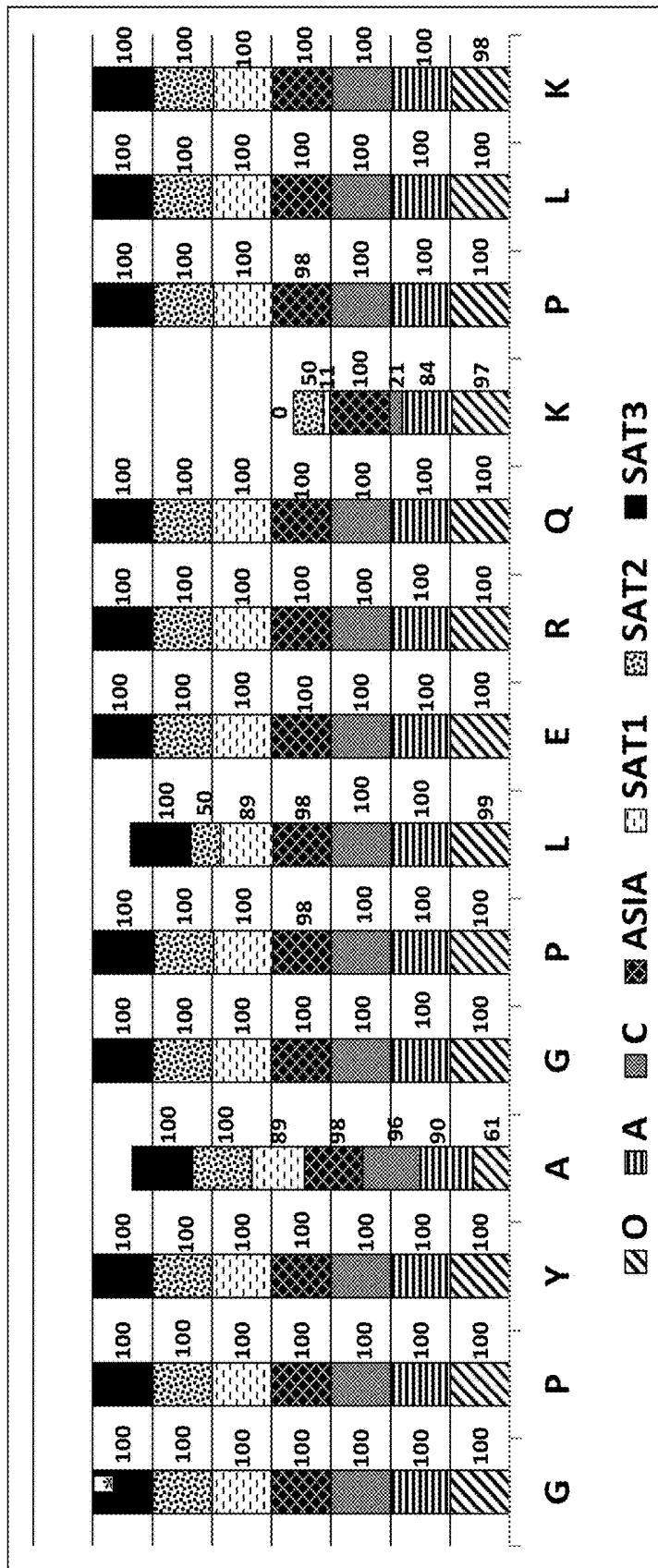


Figure 1

	O	%	A	%	C	%	ASIAI	%	SAT1	%	SAT2	%	SAT3	%	Total
*GPYAGPLERQKPLK	99	56	53	78	5	21	40	93		0		0		0	197
GPYTGPLERQKPLK	66	37	2	3		0	1	2		0		0		0	69
GPYAGPLERQRPLK	5	3	7	10	18	75		0		0		0		0	30
GPYAGPLERQQPLK		0		0		0		0	7	78	3	50	4	100	14
GPYTGPLERQRPLK		0	3	4	1	4		0	1	11		0		0	5
GPYAGPMERQKPLK		0		0		0		0	1	11	3	50		0	4
GPYVGPLERQKPLK	3	2		0		0		0		0		0		0	3
GPYSGPLERQKPLK		0	1	1		0		0		0		0		0	1
GPYGGPLERQKPLK		0	1	1		0		0		0		0		0	1
GPYAGPVERQKPLR	1	1		0		0		0		0		0		0	1
GPYAGPLERQKPLT	1	1		0		0		0		0		0		0	1
GPYAGPLERQKPLR	1	1		0		0		0		0		0		0	1
GPYAGPLERQKPLQ	1	1		0		0		0		0		0		0	1
GPYAGPLERQKPLE		0		0		0	1	2		0		0		0	1
GPYAGPLERQIPLK		0	1	1		0		0		0		0		0	1
GPYAGAFERQKTLK		0		0		0	1	2		0		0		0	1
	177	100	68	100	24	100	43	100	9	100	6	100	4	100	331

* peptide used for Mab production

Figure 2



*Percentage of strains of this serotype with the indicated amino acid

Figure 3

MAB 40C8 TVMDL

Peptide	OD 1	OD 2	Avg	pepCtrlOD	ODMab-ODCtrl	Pep/pepRef	peptide#
GPYAGPLERQKPLK	1.36	1.33	1.34	0.15	1.19	1.00	1
GPYTGPLERQKPLK	2.18	2.44	2.31	0.15	2.16	1.81	2
GPYAGPLERQRPLK	1.24	1.27	1.26	0.15	1.11	0.93	3
GPYAGPLERQQPLK	1.31	1.39	1.35	0.15	1.20	1.01	4
GPYTGPLERQRPLK	2.34	2.43	2.39	0.15	2.24	1.88	5
GPYAGPIMERQKPLK	2.52	2.55	2.53	0.15	2.38	2.00	6
GPYVGPLERQKPLK	2.23	2.32	2.28	0.15	2.13	1.79	7
GPYSGPLERQKPLK	2.17	2.09	2.13	0.15	1.98	1.67	8
GPYGGPLERQKPLK	2.70	2.83	2.77	0.15	2.62	2.20	9
GPYAGPVERQKPLR	2.03	2.14	2.09	0.15	1.94	1.63	10
GPYAGPLERQKPLT	1.23	1.23	1.23	0.15	1.08	0.91	11
GPYAGPLERQKPLR	1.36	1.29	1.33	0.15	1.18	0.99	12
GPYAGPLERQKPLQ	1.21	1.17	1.19	0.15	1.04	0.87	13
GPYAGPLERQKPLE	1.17	1.17	1.17	0.15	1.02	0.86	14
GPYAGPLERQIPLK	1.37	1.37	1.37	0.15	1.22	1.03	15
GPYAGAFERQKTLK	0.90	0.91	0.91	0.15	0.76	0.63	16

Figure 4

MAB F38B Winnipeg									
Peptide	OD 1	OD 2	Avg	control OD	ODMab-ODCrtol	Pep/pepRef	peptide#		
GPYAGPLERQKPLK	1.69	1.73	1.71	0.13	1.58	1.00	1		
GPYTGPLERQKPLK	1.33	1.25	1.29	0.13	1.16	0.74	2		
GPYAGPLERQRPLK	1.96	1.77	1.86	0.13	1.73	1.10	3		
GPYAGPLERQQPLK	1.83	1.82	1.82	0.13	1.69	1.07	4		
GPYTGPLERQRPLK	1.21	1.17	1.19	0.13	1.06	0.67	5		
GPYAGPMERQKPLK	1.71	1.68	1.69	0.13	1.56	0.99	6		
GPYVGPLERQKPLK	1.26	1.40	1.33	0.13	1.20	0.76	7		
GPYSGPLERQKPLK	1.75	1.91	1.83	0.13	1.70	1.08	8		
GPYGGPLERQKPLK	1.65	1.64	1.64	0.13	1.51	0.96	9		
GPYAGPVERQKPLR	0.75	0.82	0.78	0.13	0.65	0.41	10		
GPYAGPLERQKPLT	1.38	1.40	1.39	0.13	1.26	0.80	11		
GPYAGPLERQKPLR	1.79	1.66	1.72	0.13	1.59	1.01	12		
GPYAGPLERQKPLQ	1.48	1.46	1.47	0.13	1.34	0.85	13		
GPYAGPLERQKPLE	1.29	1.24	1.26	0.13	1.13	0.72	14		
GPYAGPLERQIPLK	1.63	1.71	1.67	0.13	1.54	0.97	15		
GPYAGAFERQKTLK	0.10	0.12	0.11	0.13	-0.02	-0.01	16		

Figure 4 (continued)

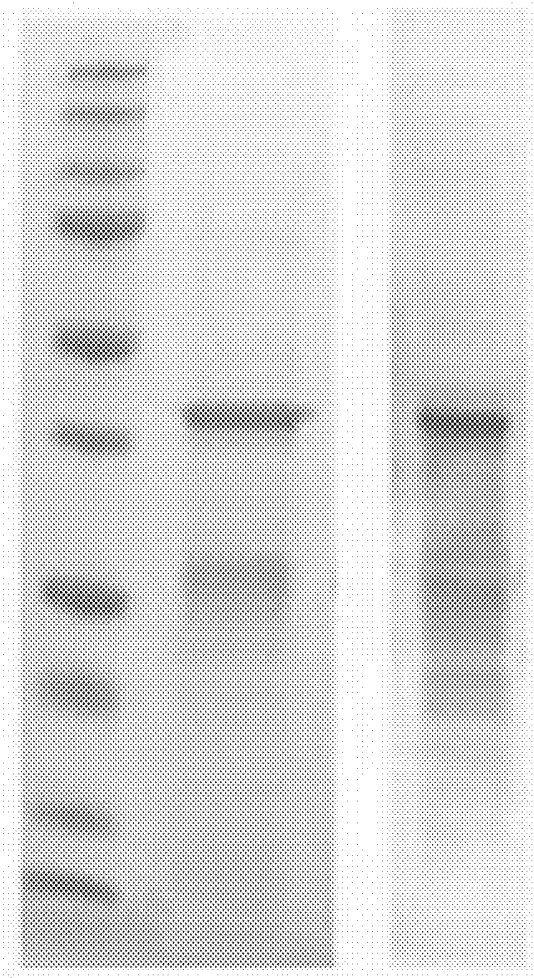


Figure 5

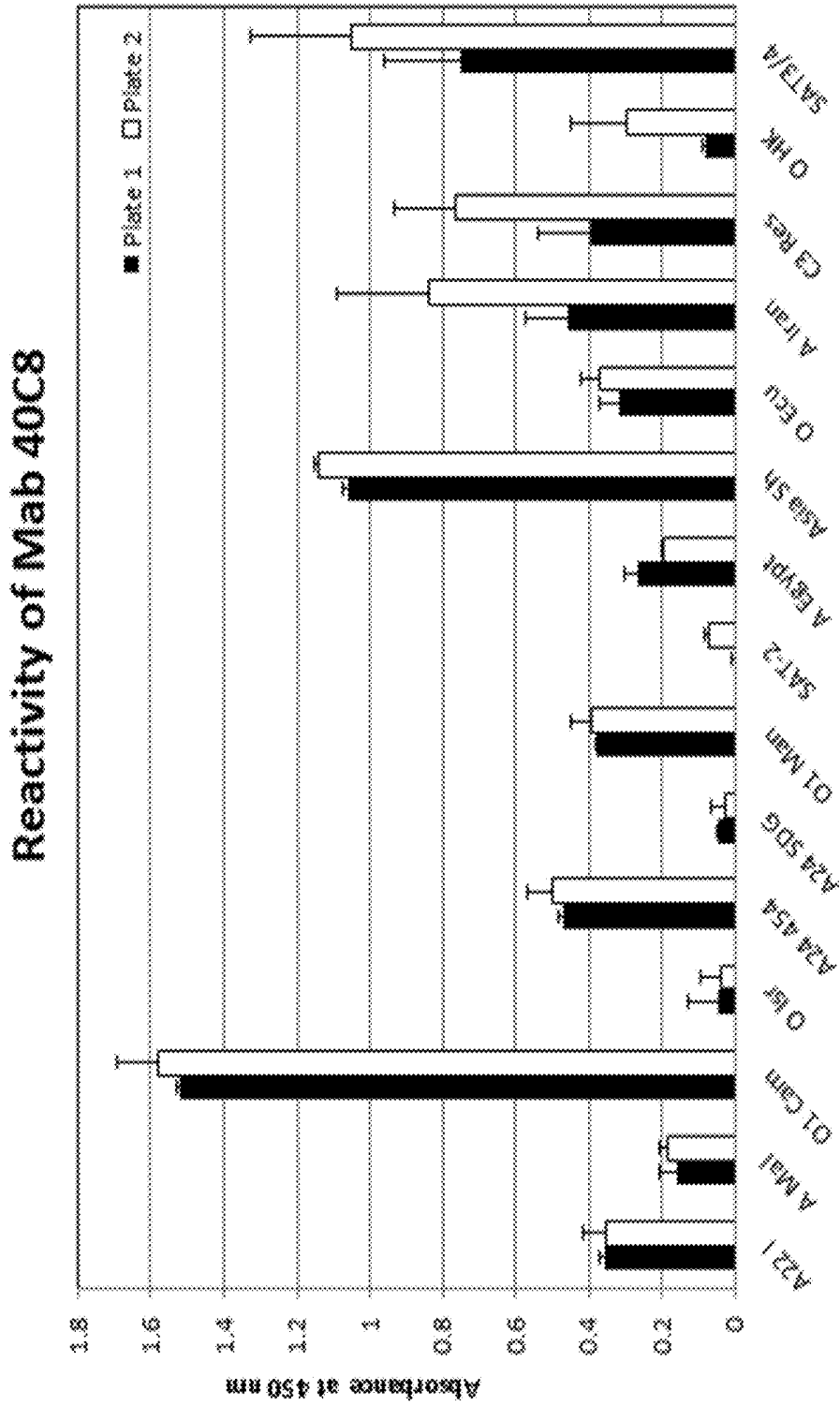


Figure 6

Figure 7A

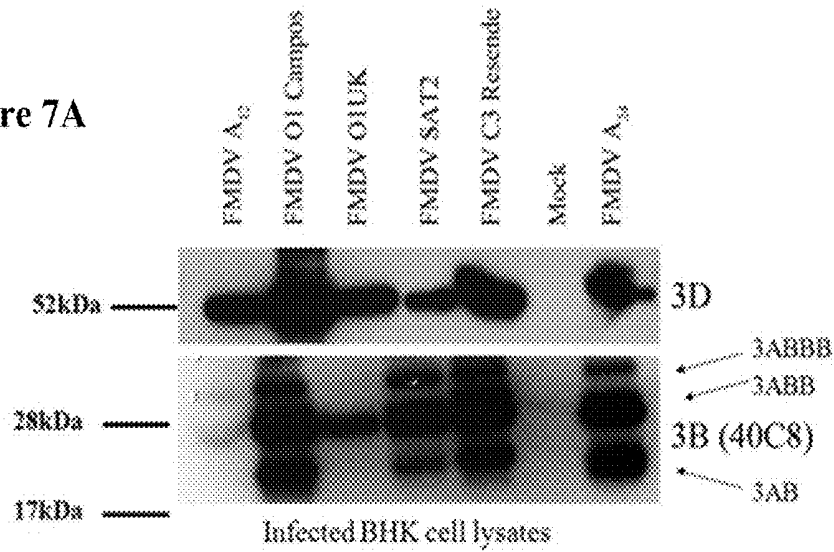
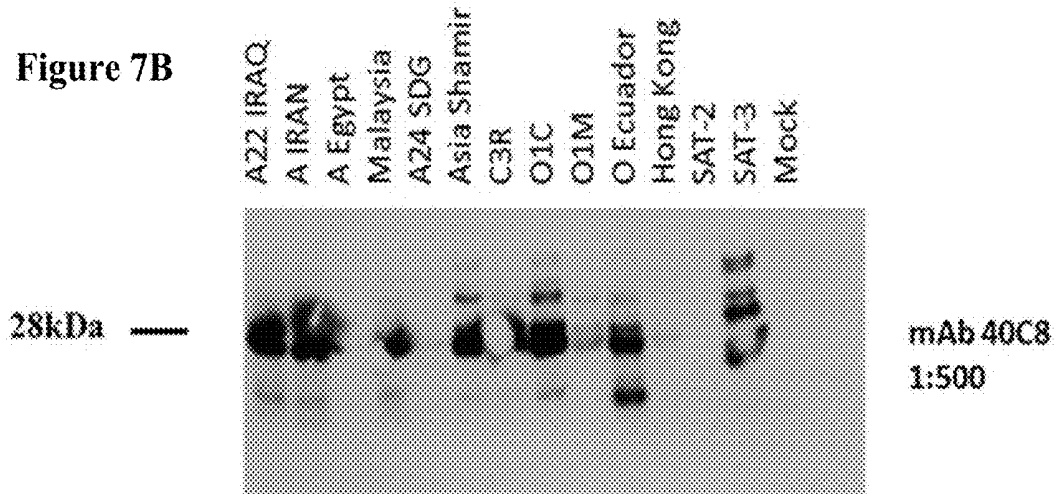


Figure 7B



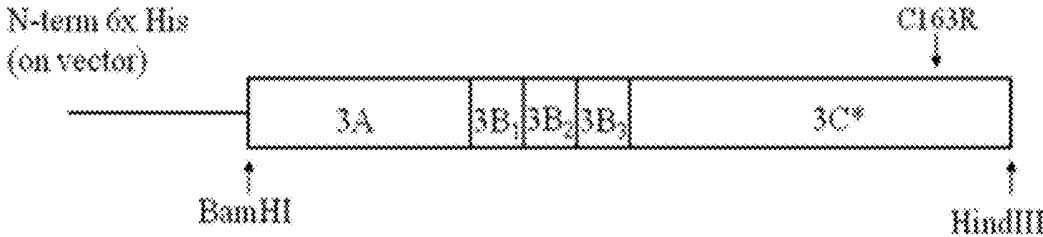


Figure 8

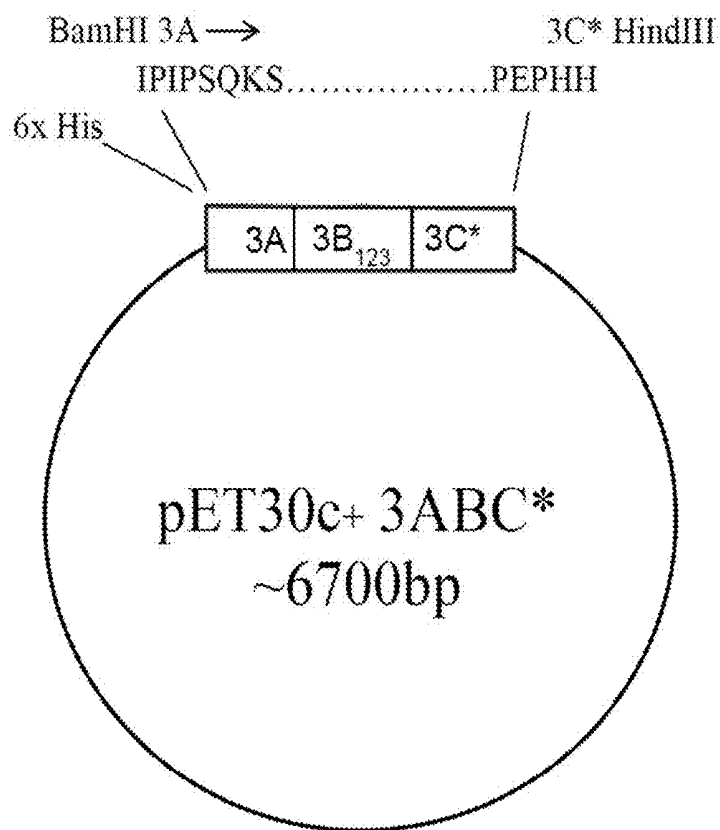


Figure 9

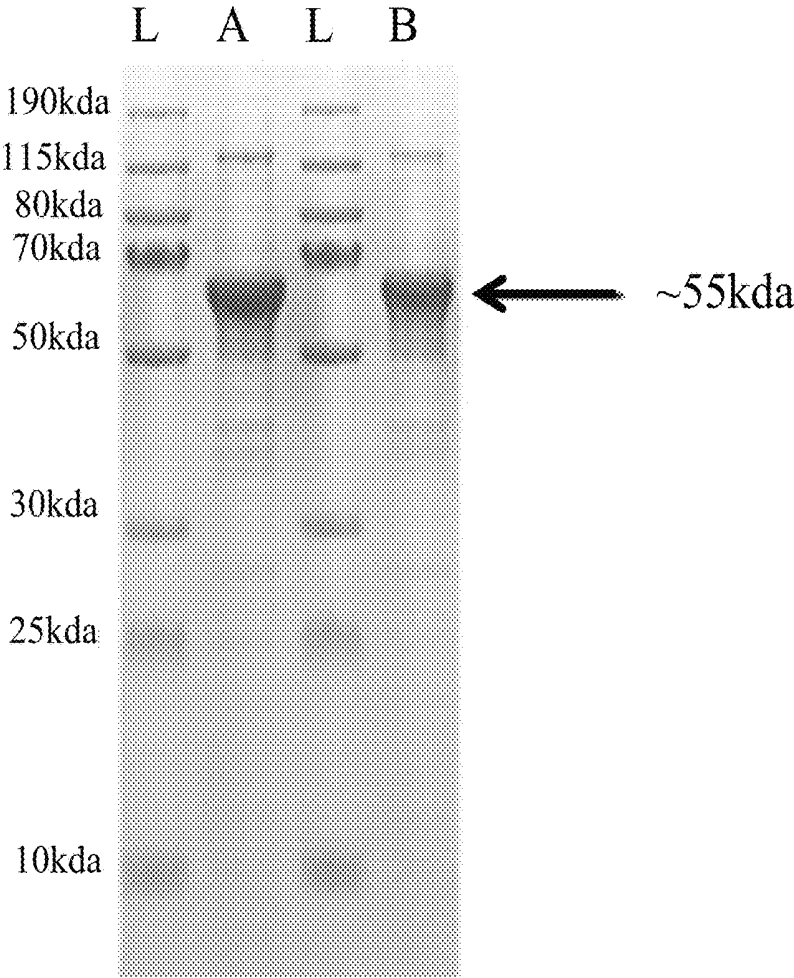


Figure 10

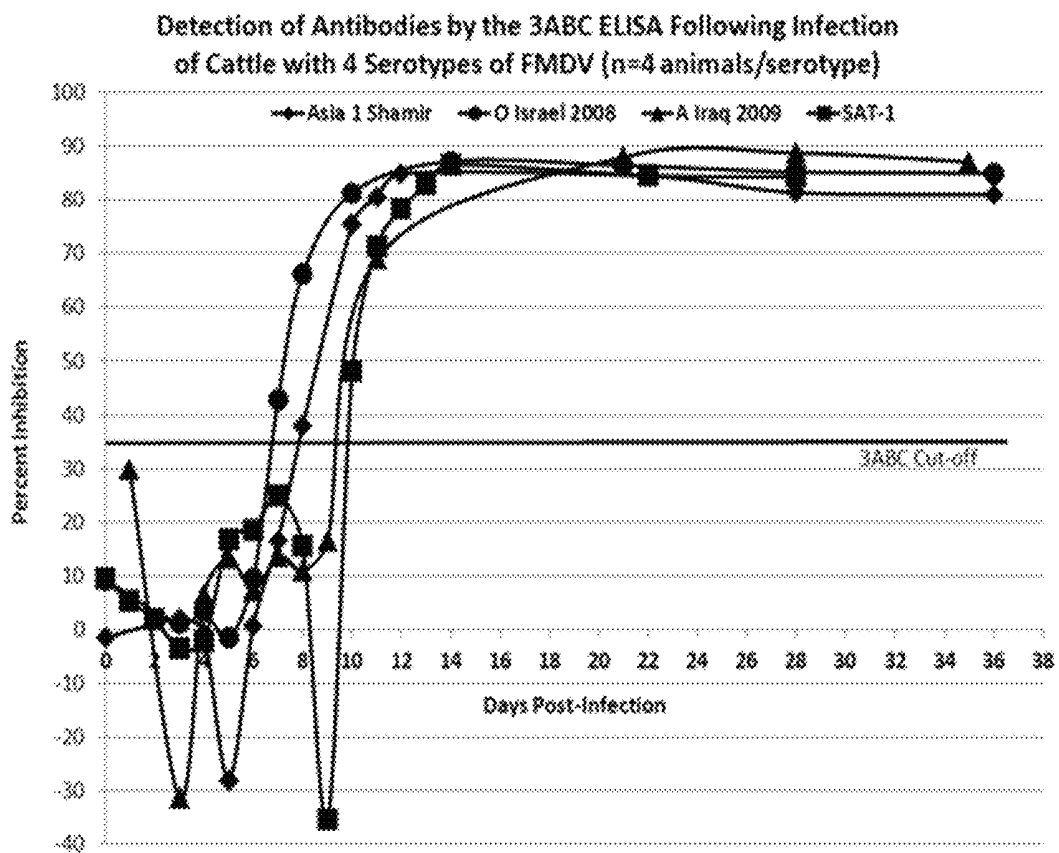


Figure 11

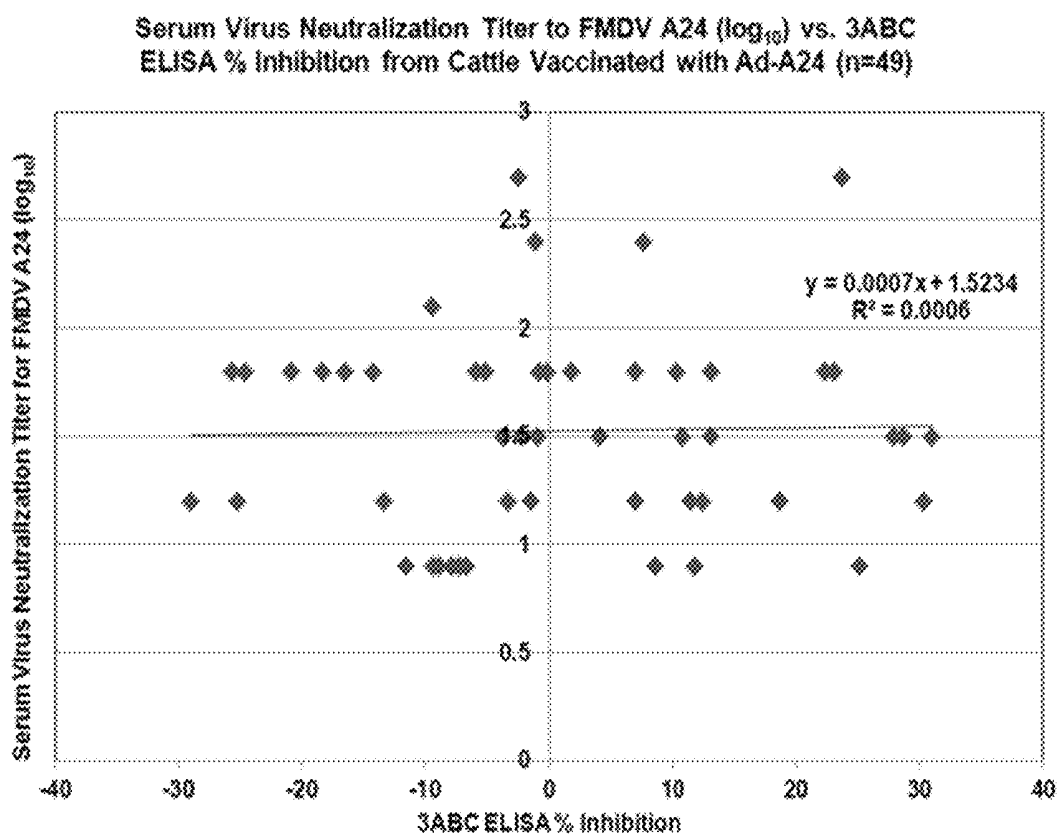


Figure 12

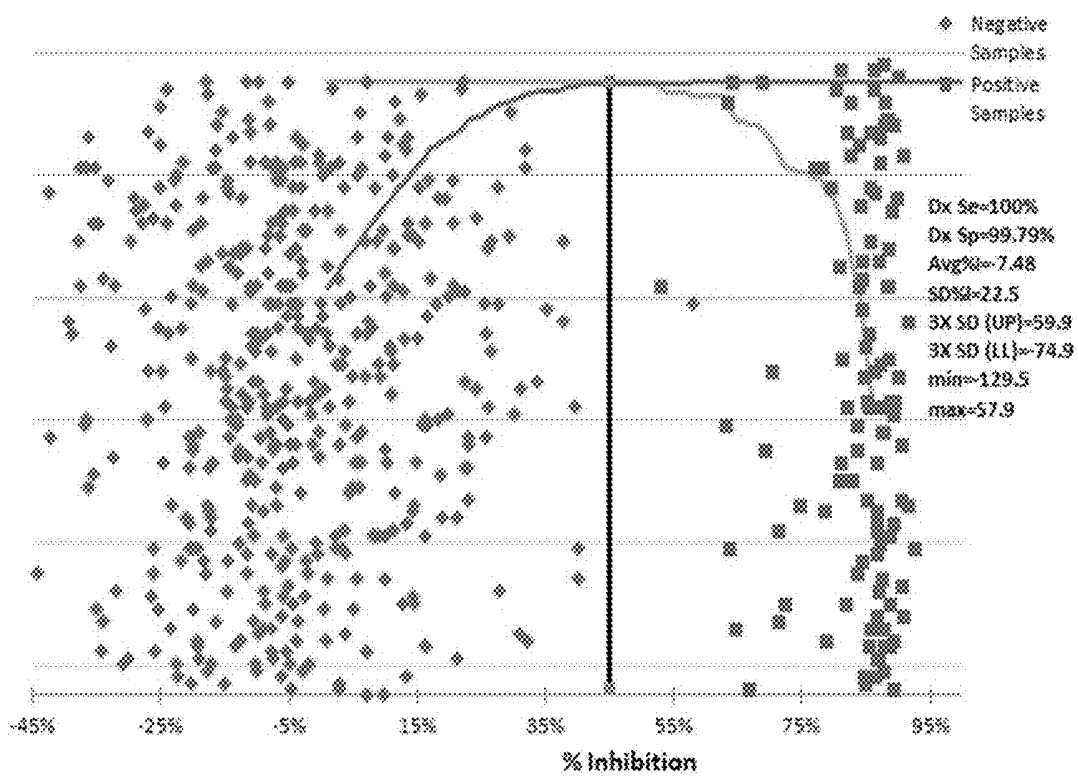


Figure 13

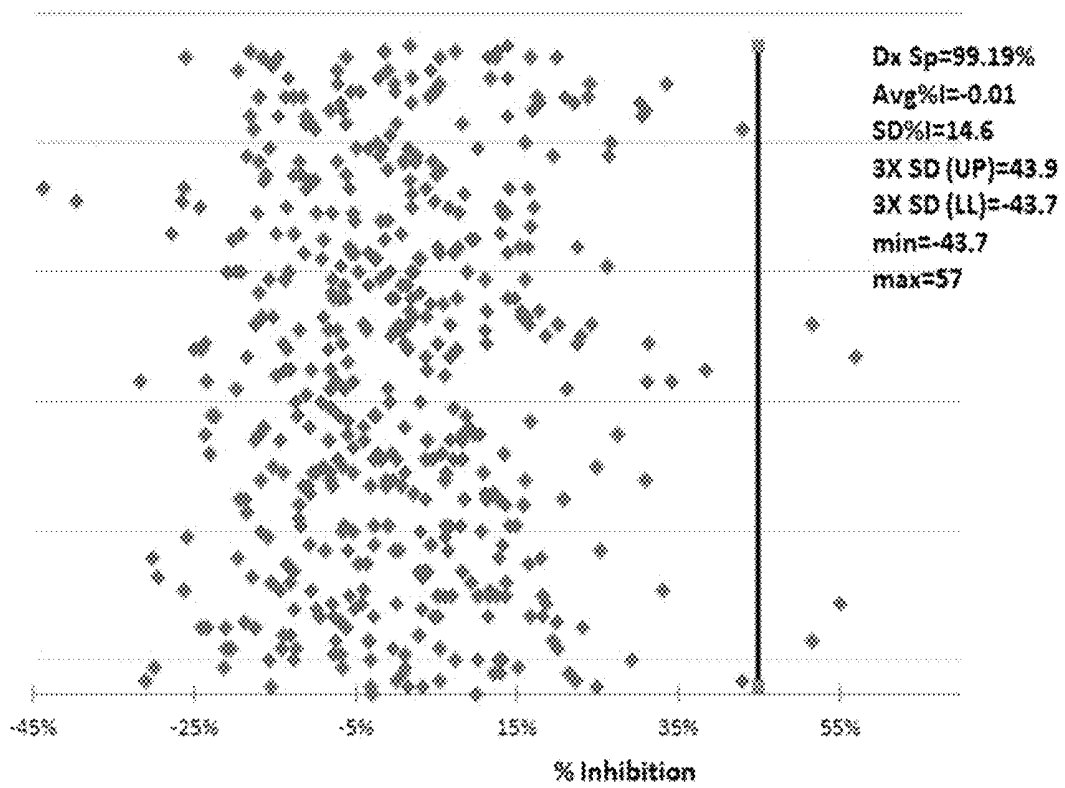


Figure 14

**MONOCLONAL ANTIBODY AGAINST
NOVEL EPITOPES OF FOOT-AND-MOUTH
DISEASE VIRUS PROTEIN 3ABC AND USES
THEREOF**

This invention was made with Government support under HSHQDC-11-X-00189 and HSHQDC-09-X-00369 awarded by the United States Department of Homeland Security Science and Technology (DHS S&T) to the U.S. Department of Agriculture, and under 2007-ST-061-000002-02 and HSHQDC-11-J-00452, awarded by DHS S&T to Texas A&M AgriLife Research. The Government has certain rights in the invention.

The Sequence Listing for this application is labeled "Seq-List-replace.txt" which was created on Dec. 15, 2017 and is 27 KB. The entire contents of the sequence listing is incorporated herein by reference in its entirety.

BACKGROUND

Foot-and-mouth disease (FMD) is a highly contagious viral disease (Foot-and-Mouth Disease Virus (FMDV)) that may affect domestic (e.g., cattle, swine, sheep, and goats) and wild (e.g., deer, bison, pronghorn antelope, and feral swine) cloven-hoofed animals. The disease is characterized by fever, vesicular (blister-like) lesions, and subsequent erosions (ulcers) of the surfaces of the mouth, tongue, nostrils, muzzle, feet, and teats. FMD does not typically kill adult livestock, but it does have very detrimental effects on productivity (meat and milk) and high mortality rates may occur in young animals.

FMD is caused by the FMD virus (FMDV) of the Aphthovirus genus in the Picornaviridae family. There are seven different serotypes of FMDV: O, A, C, Southern African Territories [SAT] 1, SAT 2, SAT 3 and Asia 1. Multiple serotypes co-circulate around the world; six out of the seven serotypes have been recorded in Africa (O, A, C, SAT 1, SAT 2, SAT 3), while four serotypes (O, A, C, Asia 1) have been documented in the Middle East and Asia. O serotype is most common, followed by Asia 1. All serotypes are immunologically distinct but produce clinically indistinguishable disease. There is no cross protection between serotypes.

Primary infection of ruminants is mainly by the respiratory route, whereas infection of pigs is usually through the oral route. Infection results in production of protective serotype specific antibodies against FMDV structural proteins 5 to 14 days post-infection. Transmission of FMDV mainly occurs through direct contact between infected and susceptible animals. Indirect transmission is also possible through fomites contaminated with secretions and excretions from infected animals. FMDV can be found in secretions and excretions such as expired air, saliva, nasal secretions, milk, urine, feces, and semen from acutely infected animals. Shedding can occur up to 4 days prior to the onset of clinical signs. Aerosol transmission also occurs, particularly through pigs that excrete large amounts of virus through their respiratory tract, resulting in infectious aerosols that can be inhaled by other animals in proximity.

FMD is present in about two-thirds of the world and endemic in parts of Africa, Asia, the Middle East, and South America. The global economic impact is colossal due to direct losses associated with reduced production efficiency and changes in herd structure, and indirect losses associated with cost of control strategies, and loss of international trade status. The estimated annual economic impact of FMD in production losses and vaccination cost in endemic regions is estimated between \$6.5 and \$21 billion USD, and \$1.5

billion USD in FMD free countries if outbreaks occurred, based on reported loss of \$20 billion USD during the last 15 years in countries that were previously considered FMD-free. The United States has been FMD-free since 1929.

However, there are many susceptible animals in the United States, including approximately 94.5 million cattle, 67 million swine, and 8.5 million sheep and goats. An outbreak of FMD in the U.S. would have a devastating economic impact, due to the loss of international trade, production lost, and costs associated with depopulation, disposal, and disinfection. Diagnostic testing capabilities to differentiate infected and vaccinated animals (DIVA) are necessary to support emergency vaccination strategies. To this end, there is a need for reagents that enables FMD serological testing in the US mainland. The current disclosure provides antibodies, peptides, and kits for detection of FMDV infections and differentiation of FMDV infected animals from FMDV vaccinated animals.

BRIEF SUMMARY

The current disclosure provides isolated antibodies or antigen binding fragments thereof that specifically bind to the 3ABC non-structural protein of Foot-and-Mouth Disease Virus (FMDV), wherein the antibodies or antigen binding fragments thereof recognize the amino acid sequence of SEQ ID NO: 3, SEQ ID NO: 4, SEQ ID NO: 5 or SEQ ID NO: 12 as an epitope. Accordingly, the current disclosure provides polypeptides providing a novel epitope from FMDV protein 3ABC. The epitope has the amino acid sequence set forth in SEQ ID NO: 3, SEQ ID NO: 4, SEQ ID NO: 5 or SEQ ID NO: 12. The antibodies or antigen binding fragments thereof can be monoclonal antibodies (Mab), chimeric antibodies, single chain antibodies, single chain fragment variable (scFv) antibodies, or fragment antigen-binding (Fab fragment). In an embodiment, the antibody is Mab 40C8 as produced by hybridoma which is deposited with the American Type Culture Collection with Designation: PTA-122531.

The current disclosure also provides methods of detecting Foot-and-Mouth Disease virus (FMDV) infection in an animal, the method comprising performing an assay using the polypeptides (epitope sequences) disclosed herein or antibodies or antigen binding fragments thereof that bind the disclosed polypeptides on a biological sample obtained from the animal. The assay can be an enzyme-linked immunosorbent assay (ELISA), for example, sandwich ELISA or competitive ELISA. An infected animal may be infected naturally (e.g., animals at commercial farms, etc.) or experimentally (e.g., in laboratories or experimental facility).

The current disclosure also provides kits, for example ELISA kits, comprising the antibody or antigen binding fragment thereof. The antibodies or antigen binding fragments thereof can be labeled with an enzyme in the ELISA kits. Alternately, the antibodies or antigen binding fragments thereof can be coated onto immunoassay plates. The kits can further comprise an immunoassay plate coated with the polypeptide comprising the amino acid sequence selected from SEQ ID NO: 2, SEQ ID NO: 3, SEQ ID NO: 4, SEQ ID NO: 5 or SEQ ID NO: 12.

Further, the current disclosure provides antibodies or antigen binding fragments thereof obtained from an animal that has been immunized with a polypeptide comprising an amino acid sequence selected from SEQ ID NO: 3, SEQ ID NO: 4, SEQ ID NO: 5 or SEQ ID NO: 12, and wherein the antibodies or antigen binding fragments thereof recognize

the amino acid sequence of SEQ ID NO: 3, SEQ ID NO: 4, SEQ ID NO: 5 or SEQ ID NO: 12 as an epitope.

BRIEF DESCRIPTION OF THE DRAWINGS

The patent or application file contains at least one drawing executed in color. Copies of this patent or patent application publication, with color drawing(s), will be provided by the Office upon request and payment of the necessary fee.

FIG. 1 shows sequence and location of the epitope (SEQ ID NO: 3) bound by the 40C8 antibody within the FMDV protein. The sequence in FIG. 1 includes a N-terminal cysteine residue used to conjugate the epitope to a carrier protein and is presented as SEQ ID NO: 6).

FIG. 2 shows a sequence analysis of 331 strains from GenBank which revealed up to 20% variability in the 3ABC epitope. The sequences are presented as SEQ ID NOs: 13-28.

FIG. 3 shows amino acid variability within the 3ABC peptide; the variability is higher in residues alanine (A), leucine (L) and lysine (K) at positions 4, 7, and 11, respectively.

FIG. 4 shows that Mab 40C8 exhibited positive reactivity to diverse 3ABC peptide variants. The sequences are presented as SEQ ID NOs: 13-28.

FIG. 5 shows that Mab 40C8 exhibited positive reactivity to the 3ABC recombinant protein, PET31b3b12X (44.7 kDa; SEQ ID NO: 2), which contains sequence variations within the 3B portion of the protein. Left: intact recombinant protein, analyzed by SDS PAGE; Right: specific Mab 40C8 detection of recombinant protein using Western blot analysis.

FIG. 6 shows reactivity of Mab 40C8-HRP with 6 major FMDV serotypes tested in direct ELISA.

FIGS. 7A and 7B show western blot analysis using Mab 40C8 antibody to detect various serotypes of FMDV. As a control the infected cell-lysates were also examined using a monoclonal antibody (F19-2) specific to the FMDV 3D polymerase.

FIG. 8 shows schematic of recombinant 3ABC* protein (* indicates mutation in the protein).

FIG. 9 shows schematic representation of entire plasmid for the expression of FMDV O1 Campos mutant 3ABC* protein (SEQ ID NO: 29 and SEQ ID NO: 30).

FIG. 10 shows SDS PAGE gel of recombinant 3ABC* protein. L: molecular weight markers; A: lot A; B: lot B.

FIG. 11 shows detection of antibodies by the 3ABC ELISA following infection of cattle with one of four serotypes of FMDV (n=4 animals/serotype; data averaged).

FIG. 12 shows detection of antibodies to the FMDV 3ABC non-structural proteins in cattle vaccinated with Ad-A24.

FIG. 13 shows percent inhibition (% I) distribution of 486 bovine FMDV negative and 139 FMDV positive samples. The vertical line denotes the 45% I cut-off; Dx Se denotes diagnostic sensitivity; Dx Sp denotes specificity.

FIG. 14 shows percent inhibition (% I) distribution of 491 bovine negative samples. The vertical line denotes the 45% I cut-off; Dx Sp denotes diagnostic specificity.

BRIEF DESCRIPTION OF THE SEQUENCES

SEQ ID NO: 1: Sequence of 3ABC protein from FMDV serotype O.

SEQ ID NO: 2: Amino acid sequence for the 3ABC recombinant protein designated PET31b3b12X.

SEQ ID NO: 3: Sequence of the epitope for Mab 40C8 binding. (Sequence: GPYAGPLERQKPLK).

SEQ ID NO: 4: Sequence of the minimal epitope for Mab 40C8 binding. (Sequence: GPLERQ).

SEQ ID NOs: 5 and 12: Alternate sequence of the minimal epitopes for MAB 40C8 binding, where X is any amino acid. (Sequence: G X₁X₂ERQ; GPYAGX₁X₂ERQKPLK).

SEQ ID NO: 6: FMDV peptide for generation of Mab 40C8 antibody with amino terminal cysteine added. (Sequence: CGPYAGPLERQKPLK).

SEQ ID NO: 7: Forward PCR primer for overlap extension PCR of 3ABC cDNA. (Sequence: CAATTCCTTCCAAAAATCT).

SEQ ID NO: 8: Reverse PCR primer for overlap extension PCR of 3ABC cDNA. (Sequence: GTGGTGTGGTTCGGGGTCCAA).

SEQ ID NO: 9: Nucleotide sequence of plasmid pET30c O1C 3ABC* (3C mutation at nucleotide 6381: T to C, Cysteine to Arginine).

SEQ ID NO: 10: Nucleotide sequence encoding O1C 3ABC* (3C mutant at nucleotide 1239; T to C, Cysteine to Arginine).

SEQ ID NO: 11: Amino acid sequence corresponding to the serotype O FMDV 3ABC* mutant protein containing a His6 tag for expression and purification from *Escherichia coli* (3C mutant at amino acid 163: Cysteine to Arginine).

SEQ ID NOs: 13-28: Peptide sequences disclosed in FIGS. 2 and 4.

DETAILED DISCLOSURE

Overview

We have developed a monoclonal antibody (40C8) specific for the FMDV nonstructural protein (NSP) 3ABC polypeptide and have demonstrated broad reactivity of this antibody against bovine sera from all seven FMDV serotypes. This monoclonal antibody may be used for FMDV serological diagnostics (including differentiation between infected and vaccinated animals (DIVA) capability) and attenuated FMD vaccine production quality control testing.

Foot-and-mouth disease (FMD) serological testing in the U.S. is currently performed only at the USDA Animal and Plant Health Inspection Service (APHIS) Foreign Animal Disease Diagnostic Laboratory (FADDL) at Plum Island Animal Disease Center (PIADC) under an experimental research and evaluation permit using an ELISA kit. The current disclosure provides antibodies, peptides, and kits for detection of FMDV infections and differentiation of FMDV infected animals from FMDV vaccinated animals.

DISCLOSURE

ATCC information: The hybridoma cell line which can be used to produce Mab 40C8 was deposited with American Type Culture Collection (ATCC), P.O. Box 1549, Manassas, Va. 20108, on Sep. 29, 2015 (ATCC Designation PTA-122531). The subject hybridoma cell line has been deposited under conditions that assure that access to the cell line will be available during the pendency of this patent application to one determined by the Commissioner of Patents and Trademarks to be entitled thereto under 37 C.F.R. 1.14 and 35 U.S.C. § 122. This deposit will be available as required by foreign patent laws in countries wherein counterparts of the subject application, or its progeny, are filed. However, it should be understood that the availability of a deposit does

not constitute a license to practice the subject invention in derogation of patent rights granted by governmental action.

The current disclosure provides a novel epitope of the 3ABC protein from FMDV, for example, an epitope having the amino acid sequence of SEQ ID NO: 3, SEQ ID NO: 4, SEQ ID NO: 5 or SEQ ID NO: 12 (or any polypeptide disclosed in FIG. 4), and antibodies and antigen binding fragments thereof that specifically recognize one of these epitopes. This disclosure also describes methods, techniques, approaches, kits for use in conjunction with the present disclosure.

The current disclosure also provides methods of using the antibodies or antigen binding fragments thereof and the novel epitopes for detection for FMDV infection in animals and for distinguishing FMDV infected animals from animals vaccinated against FMDV infection. The methods of the current disclosure provide improved sensitivity and specificity over the existing methods of detection of FMDV in animals and reduces the time necessary to identify animals having a positive serotype for FMDV.

Accordingly, the current disclosure provides antibodies and antigen binding fragments thereof that specifically binds to the 3ABC non-structural protein of FMDV, wherein the antibodies or antigen binding fragments thereof recognize the amino acid sequence of SEQ ID NO: 3, SEQ ID NO: 4, SEQ ID NO: 5 or SEQ ID NO: 12 (or any polypeptide disclosed in FIG. 4) as an epitope. In some embodiments, antibodies bind to the same epitope as the monoclonal antibody produced by the hybridoma 40C8. Such antibodies can be identified using any one of a variety of immunological screening assays in which antibody competition can be assessed. In an embodiment, the antibody is a monoclonal antibody. Additionally, the antibodies can be polyclonal antibodies. In further embodiments, the antibody or antigen binding fragments thereof can be chimeric antibodies, single chain antibodies, scFv antibodies, or Fab fragments.

Thus, one embodiment provides a monoclonal antibody, Mab 40C8, as produced by hybridoma cell line deposited with the American Type Culture Collection with Designation: PTA-122531.

A further embodiment provides antibodies or antigen binding fragments thereof obtained from an animal that has been immunized with a polypeptide comprising an amino acid sequence selected from SEQ ID NO: 4, SEQ ID NO: 5 or SEQ ID NO: 12 (or any polypeptide disclosed in FIG. 4), and wherein the antibodies or antigen binding fragments thereof recognize the amino acid sequence of SEQ ID NO: 3, SEQ ID NO: 4, SEQ ID NO: 5 or SEQ ID NO: 12 (or the immunizing polypeptide from FIG. 4) as an epitope. These antibodies can also be monoclonal antibodies or polyclonal antibodies.

The antibodies and antigen binding fragments thereof can be used in an assay to detect the presence or absence in a sample of 3ABC protein from FMDV, for example by a Western blot analysis or a sandwich ELISA; to detect the presence in a sample of antibodies against 3ABC protein from FMDV, for example, by a competitive ELISA; or to detect the presence of FMDV infection in an animal, for example, by a western blot analysis or an ELISA. The antibodies and antigen binding fragments thereof can also be used to distinguish the animals infected with FMDV from the animals vaccinated against FMDV. Accordingly, the current disclosure provides methods of detecting the presence of 3ABC protein, or antibodies against 3ABC proteins and thus detect the presence of FMDV infection in an animal.

The detection of the presence of 3ABC protein, or the antibodies against 3ABC proteins can be facilitated by conjugating/coupling the antibodies and antigen binding fragments thereof to appropriate labels. Non-limiting examples of labels that can be conjugated to the antibodies or antigen binding fragments thereof as disclosed herein include an enzyme, a radioisotope, a fluorescent label, or a bioluminescent label. Additional embodiments of labels that can be conjugated/coupled to the antibodies and antigen binding fragments thereof of the current disclosure and various methods of detecting the labels are recognized.

Various assays for detection of 3ABC proteins can be used to detect FMDV infection in an animal using the antibodies or antigen binding fragments thereof of the current disclosure. Non-limiting examples of protein detection assays include Western blot analysis, ELISA, immunohistochemistry, or immunoprecipitation. Additional examples of assays utilizing antibodies or antigen binding fragments thereof to detect the presence of specific proteins or specific antibodies in samples are recognized.

Assays disclosed herein can be used to detect the 3ABC protein, or antibodies against 3ABC proteins can be performed on a biological sample obtained from an animal. In certain embodiments, the biological sample obtained from the animal contains the 3ABC proteins derived from FMDV or the antibodies produced in the body of the animal against 3ABC proteins. In embodiments the biological sample is a body-fluid sample or a tissue sample. It should be appreciated that the assays may be used as part of an approach to determine the absence of the 3 ABC protein in some instances.

This disclosure also provides methods of screening a population of animals for FMDV infection, an exemplary method includes:

a) obtaining a biological sample from each animal from the population of animals,

b) conducting an assay comprising contacting said biological sample with an 3ABC polypeptide or a polypeptide comprising SEQ ID NO: 2, SEQ ID NO: 3, SEQ ID NO: 4, SEQ ID NO: 5, any polypeptide disclosed in FIG. 4 or SEQ ID NO: 12, said polypeptide being optionally bound to a substrate, using an antibody or an antigen binding fragment thereof to distinguish FMDV infected animals from animals vaccinated against FMDV infection, wherein the antibody or the antigen binding fragment thereof recognizes the amino acid sequence of SEQ ID NO: 3, SEQ ID NO: 4, SEQ ID NO: 5, any polypeptide disclosed in FIG. 4 or SEQ ID NO: 12 as an epitope, and

c) identifying individual animals from the population of animals as FMDV infected animals or FMDV vaccinated animals. In certain embodiments, the assay is performed using the kit according to the current disclosure. In a further embodiment, the animal screened for FMDV infection is at least one of cattle, buffalo, water buffalo, sheep, goat, antelope, deer, bison, elephant, llama, or alpaca. The sample obtained from the animal can be any biological sample described above. Additional embodiments provide for the optional quarantine or slaughter of infected animals.

Non-limiting examples of biological samples (e.g., body fluid samples) include aqueous humor, vitreous humor, blood serum, blood plasma, cerebrospinal fluid, endolymph, perilymph, exudates, lymph, mucus, pericardial fluid, pleural fluid, synovial fluid, milk, or oral fluids. Non-limiting examples of tissue samples include brain, eyes, pineal gland, pituitary gland, thyroid gland, parathyroid glands, thorax, heart, lungs, esophagus, thymus gland, pleura, adrenal glands, appendix, gall bladder, urinary bladder, large intes-

tine, small intestine, kidneys, liver, pancreas, spleen, stoma, prostate gland, testes, ovaries, or uterus. The tissue samples can be appropriately processed to produce a sample suitable for performing the assay for detection of the 3ABC protein, or antibodies against 3ABC proteins. It is to be apparent that the foregoing method can also be used to identify animals that have been inoculated for protection against FMD as is understandable to a person of ordinary skill.

The current disclosure further provides kits containing the antibodies or antigen binding fragments thereof. A kit, for example, is used to detect the presence in a sample of 3ABC protein, to detect the presence in a sample of antibodies against 3ABC protein from FMDV, or to detect the presence of FMDV infection in an animal. Using the antibodies or antigen binding fragments described herein, a person of ordinary skill in the art can design various assays for different purposes in accordance with this disclosure, for example, to detect the presence of 3ABC protein, to detect the presence of antibodies against 3ABC protein, or to detect the presence of FMDV infection in an animal. Antibodies that bind to an epitope defined by any one of SEQ ID NO: 3, 4, 5 or 12 are also expected to bind to proteins containing this epitope (e.g., the 3B, 3AB, 3ABC or the recombinant protein of SEQ ID NO: 2).

The kits in accordance with this disclosure can comprise reagents for conducting various assays. The reagents provided in a kit depend on the purpose and design of the assay to be performed. For example, a kit designed for a western blot analysis contains a labeled secondary antibody and additional reagents for visualizing the label. Various embodiments of western blot analyses are contemplated.

Kits for performing ELISA are also disclosed. The kits can be designed to perform different types of ELISA, for example, a sandwich ELISA or a competitive ELISA. A person of ordinary skill in the art knows various reagents and tools required for conducting each of the different types of ELISAs and accordingly, the current disclosure provides kits containing appropriate reagents and tools for performing these ELISAs.

For example, a kit for conducting a sandwich ELISA can contain an immunoassay plate coated with the antibodies or antigen binding fragments thereof disclosed herein. The sandwich ELISA kit can further contain 3ABC antibodies directed to different epitopes than the epitopes of the current disclosure. These different antibodies can be conjugated to an enzyme. The sandwich ELISA kit can further contain reagents for carrying out and visualizing the enzymatic reaction catalyzed by the conjugated enzyme.

A person of ordinary skill in the art with this disclosure can design various embodiments of a sandwich ELISA kit using the antibodies or antigen binding fragments thereof disclosed herein. For example, instead of coating the immunoassay plate with the antibodies or antigen binding fragments thereof, a kit contains immunoassay plate coated with antibodies against 3ABC epitopes different from the epitopes disclosed herein and enzymatically labeled antibodies or antigen binding fragments thereof of the current disclosure. Alternately, enzyme linked secondary antibodies can also be provided. Additional designs of ELISAs can be envisioned based on the present disclosure.

A further embodiment of this disclosure provides a kit for performing cELISA for detection of antibodies against 3ABC protein in a sample, for example a biological sample obtained from an animal. The USDA and Department of Homeland Security (DHS) Science and Technology research teams at Plum Island Animal Disease Center (PIADC) have developed the first bioengineered vaccine against FMDV

that can be produced in the U.S. The cELISA kit of the current disclosure provides a companion diagnostic tool for a U.S.-based FMD vaccination program that utilizes FMD vaccines lacking a full-length 3ABC protein. Therefore, the kit can be used to detect FMDV infection in animals and can also differentiate infected animals from vaccinated animals, animals vaccinated for immunity to FMDV. For example, animals vaccinated with FMD vaccines lacking a full-length 3ABC protein or FMD vaccines that do not code for the FMDV 3ABC protein lack antibodies that bind to the 3ABC polypeptide or the epitope bound by the antibodies disclosed herein. Thus, such animals should not have antibodies that bind to a polypeptide disclosed herein and such animals should not have antibodies that compete with the disclosed antibodies (e.g., such animals should have no antibodies that compete with the 40C8 monoclonal antibody (or antibodies that bind to the same epitope as the 40C8 antibody) for binding to a peptide as disclosed herein or the 3ABC polypeptide).

The cELISA kit described herein can provide a fast FMD serological assay which provides results in hours rather than days, as well as superior specificity and sensitivity compared to a commercial product. The cELISA kit of the current disclosure also provides a differentiation between infected and vaccinated animals (DIVA) test for the adenovirus serotype 5 FMD vaccine (and future vaccines that lack FMDV 3ABC immunogenic proteins. Certain aspects of this disclosure provide polypeptides useful for making antibodies or in competitive immunoassays. With respect to the amino acid sequences set forth in SEQ ID NO: 5 and SEQ ID NO: 12, X₁ and X₂ can be any amino acid (as set forth in Table 1), provided that if X₁ is proline, then X₂ cannot be leucine and if X₂ is leucine, then X₁ cannot be proline (e.g., SEQ ID NO: 12 specifically excludes the amino acid sequence of SEQ ID NO: 3 as a possible sequence). Another embodiment provides, with respect to the amino acid sequences set forth in SEQ ID NO: 5 and SEQ ID NO: 12, that X₁ and X₂ can be any amino acid (as set forth in Table 1), provided that if X₁ is proline, then X₂ cannot be methionine. Other non-limiting examples of polypeptides are provided in FIG. 4). In some other embodiments, polypeptides in which a cysteine (C) is found at the amino terminus of the polypeptide are also provided (e.g., SEQ ID NO: 6). Polypeptides containing a cysteine residue at the amino terminus of the polypeptide are suitable for covalent attachment to a carrier protein via another cysteine residue or various linkers.

TABLE 1

20 amino acids and single letter codes (SLC)	
Amino Acid	SLC
Isoleucine	I
Leucine	L
Valine	V
Phenylalanine	F
Methionine	M
Cysteine	C
Alanine	A
Glycine	G
Proline	P
Threonine	T
Serine	S
Tyrosine	Y
Tryptophan	W
Glutamine	Q
Asparagine	N
Histidine	H

TABLE 1-continued

20 amino acids and single letter codes (SLC)	
Amino Acid	SLC
Glutamic acid	E
Aspartic acid	D
Lysine	K
Arginine	R

In another aspect, immunoassays using the disclosed polypeptides or antibodies are provided. In embodiments in accordance with this aspect, antibodies that bind to an epitope comprising SEQ ID NO: 3, 4, 5 or 12 (or the polypeptides disclosed in FIG. 4) or a polypeptide selected from SEQ ID NO: 2, 3, 4, 5 or 12 (or polypeptides disclosed in FIG. 4) are bound to a substrate. The term "bound" refers to both covalent and non-covalent attachment of an antibody or polypeptide to a substrate. Thus, antibodies or polypeptides can be covalently bound to the substrate via a linker physically attached to a substrate or non-covalently bound to a substrate (e.g., adsorbed to a substrate surface, for example, a polystyrene surface).

In various embodiments, the substrate is one or more tubes, cylinders, beads, discs, silicon chips, microplates, polyvinylidene difluoride (PVDF) membrane, nitrocellulose membrane, nylon membrane, porous membranes, non-porous membranes, plastic, polymer, silicon, polymeric pins, a plurality of microtiter wells, or combinations thereof. The composition of the substrate can also be varied. Substrates (alternatively referred to as a support) can comprise glass, cellulose-based materials, thermoplastic polymers, such as polyethylene, polypropylene, or polyester, sintered structures composed of particulate materials (e.g., glass or various thermoplastic polymers), or cast membrane film composed of nitrocellulose, nylon, polysulfone, or the like. Thus, the substrate may be any surface or support upon which an antibody or a polypeptide selected from those disclosed in FIG. 4 or SEQ ID NOs: 2, 3, 4, 5, 6 and/or 12 can be immobilized, including one or more of a solid support (e.g., glass such as a glass slide or a coated plate, silica, plastic or derivatized plastic, paramagnetic or non-magnetic metal), a semi-solid support (e.g., a polymeric material, a gel, agarose, or other matrix), and/or a porous support (e.g., a filter, a nylon or nitrocellulose membrane or other membrane). In some embodiments, synthetic polymers is used as a substrate, including, e.g., polystyrene, polypropylene, polyglycidylmethacrylate, aminated or carboxylated polystyrenes, polyacrylamides, polyamides, polyvinylchlorides, and the like. In preferred embodiments, the substrate comprises a microtiter immunoassay plate or other surface suitable for use in an ELISA.

In embodiments, polypeptides have additional material covalently linked to either or both ends of the polypeptide (e.g., additional amino acids to the amino acid sequence of interest), provided that, in the case of SEQ ID NOs: 3, 4, 5, 6 or 12 (or the polypeptides disclosed in FIG. 4), the additional amino acids do not provide the sequence of the FMDV 3ABC or any other naturally occurring polypeptide containing SEQ ID NO: 3, 4, 5 or 12 (or sequence as disclosed in FIG. 4). Covalent linkage of additional amino acids to either or both ends of the polypeptide disclosed herein results in a combined amino acid sequence that is not naturally occurring, e.g. an unnatural amino acid sequence that is not found in nature. Polypeptides include a polypeptide having an amino acid sequence selected from the group consisting of SEQ ID NO: 4, 5, 6 or 12 (or any polypeptide

disclosed in FIG. 4) coupled to a carrier protein (e.g., a carrier such as an albumin (e.g., bovine serum albumin), keyhole limpet hemocyanin, ovalbumin). Such coupling can be a covalent linkage. These peptides are rendered immunogenic by coupling them to an immunogenic carrier by the following procedure.

An immunizing agent is constructed by covalently conjugating a polypeptide selected from the polypeptides disclosed in FIG. 4, SEQ ID NOs: 4, 5, 6 and/or 12 to an immunogenic carrier protein, preferably by means of a crosslinker, such as a glutaraldehyde moiety or other known linkers. Immunogenic carriers include compounds to which any one of the peptides disclosed herein attached so as to render the peptide immunogenic. Non-limiting examples of such carriers include proteins such as keyhole limpet hemocyanin (KLH), bovine serum albumin (BSA), ovalbumin (OVA), tetanus toxoid and human thyroglobulin. One function of the crosslinker is to introduce into the immunizing agent a spacer of sufficient size to prevent the carrier protein from masking the polypeptide. Suitable crosslinking agents are known in the art and are commercially available. The immunizing agent is then administered to a subject, such as a goat, sheep, rabbit, mouse, rat, guinea pig, pig, cow, buffalo or other appropriate non-human mammal in an amount sufficient to raise an immune response to the immunizing agent, specifically the polypeptide of SEQ ID NO: 2, 4, 5, 6 or 12 or any of the polypeptides disclosed in FIG. 4. The immunizing agent can be administered in combination with an adjuvant, such as Freund's Complete adjuvant, Freund's Incomplete adjuvant, aluminum salts, oil based adjuvants, saponins, chemically synthesized adjuvants, or other adjuvants.

Another embodiment provides for the use of the disclosed peptides for FMDV antigen or antibody detection. For example, the peptide can be used to coat an ELISA plate in a competitive or indirect ELISA format to detect FMDV antibody from diverse samples (e.g., natural or experimental infections). Alternatively, the peptide can be used in a liquid phase competitive ELISA for detection of FMDV antigen. In this example, an ELISA plate is coated with the 3ABC monoclonal antibody and a liquid sample containing the FMDV 3ABC antigen is then added and allowed to compete with a constant concentration of 3ABC peptide. Thus, one can detect 3ABC contaminants in vaccine preparations.

An example cELISA kit includes:

- the antibodies or antigen binding fragments thereof optionally labeled with an enzyme or other label,
- an immunoassay plate or other substrate coated with a polypeptide comprising an amino acid sequence selected from those disclosed in FIG. 4, SEQ ID NO: 3, SEQ ID NO: 4, SEQ ID NO: 5, SEQ ID NO: 6 and/or SEQ ID NO: 12,
- if the antibody or antigen binding fragment thereof is not labeled with an enzyme or other label, an antibody against the antibody or antigen binding fragment thereof conjugated to an enzyme or label, and
- reagents and tools for conducting the cELISA assay.

The antibody or antigen binding fragment thereof of the current disclosure provided in the kit can be chimeric antibodies, single chain antibodies, scFv antibodies, or Fab fragments. In one embodiment, the kit contains Mab 40C8 antibody as produced by hybridoma which is deposited with the American Type Culture Collection with Designation: PTA-122531.

The immunoassay plate can be coated with a polypeptide consisting essentially of the amino acid sequence selected from those disclosed in FIG. 4, SEQ ID NO: 2, SEQ ID NO:

3, SEQ ID NO: 4, SEQ ID NO: 5 and/or SEQ ID NO: 12 (or any combination thereof). Non-limiting examples of polypeptides that can be conjugated to the immunoassay plate include peptides consisting of those disclosed in FIG. 4, SEQ ID NO: 2, SEQ ID NO: 3, SEQ ID NO: 4, SEQ ID NO: 5 and/or SEQ ID NO: 12; 3ABC protein; or 3ABC protein carrying a mutation rendering it protease resistant (described in detail in the Materials and Methods section and the Examples below). Any peptide containing the epitopes for the antibodies or antigen binding fragments thereof disclosed herein can be used to coat the immunoassay plate and such embodiments are within the purview this disclosure.

The current disclosure also provides the following non-limiting embodiments:

1. An isolated antibody or antigen binding fragment thereof that specifically binds to 3ABC non-structural protein of Foot-and-Mouth Disease virus (FMDV), wherein the antibody or antigen binding fragment thereof specifically binds an epitope consisting essentially of SEQ ID NO: 3, SEQ ID NO: 4, SEQ ID NO: 5, SEQ ID NO: 6 or SEQ ID NO: 12.

2. The antibody or antigen binding fragment thereof of embodiment 1 that specifically binds the amino acid sequence of SEQ ID NO: 3, SEQ ID NO: 6, or SEQ ID NO: 12 as the epitope.

3. The antibody or antigen binding fragment thereof of embodiment 1 that specifically binds the amino acid sequence of SEQ ID NO: 4 as the epitope.

4. The antibody or antigen binding fragment thereof of embodiment 1 that specifically binds the amino acid sequence of SEQ ID NO: 5 as the epitope.

5. The antibody of embodiment 1, wherein the antibody is a monoclonal antibody.

6. The antibody of embodiment 1, wherein the antibody is a polyclonal antibody.

7. The antibody or antigen binding fragment thereof of embodiment 1, wherein the antibody is selected from a chimeric antibody, a single chain antibody, a single chain fragment variable (scFv) antibody, or a fragment antigen-binding (Fab fragment).

8. The antibody of embodiment 1, wherein the antibody is Mab 40C8 as produced by hybridoma which is deposited with the American Type Culture Collection with Designation: PTA-122531.

9. The antibody or antigen binding fragment thereof of embodiment 1, wherein the antibody or antigen binding fragment thereof is conjugated to a label.

10. The antibody of embodiment 9, wherein the label is selected from an enzyme label, a radioisotope, a fluorescent label, or a bioluminescent label.

11. A method of detecting FMDV infection in an animal, the method comprising contacting a sample from an animal with an antibody or antigen binding fragment thereof of that specifically binds to the 3ABC non-structural protein of FMDV, wherein the antibody or antigen binding fragment thereof specifically binds the amino acid sequence of SEQ ID NO: 2, SEQ ID NO: 3, SEQ ID NO: 4, SEQ ID NO: 5 SEQ ID NO: 6, or SEQ ID NO: 12.

12. The method of embodiment 11, wherein the sample obtained from the animal is a body-fluid sample or a tissue sample.

13. The method of embodiment 12, wherein the body-fluid sample is aqueous humor, vitreous humor, blood serum, blood plasma, cerebrospinal fluid, endolymph, perilymph, exudates, lymph, mucus, pericardial fluid, pleural fluid, synovial fluid, milk, or oral fluids.

14. The method of embodiment 12, wherein the tissue sample is brain, eyes, pineal gland, pituitary gland, thyroid gland, parathyroid glands, thorax, heart, lungs, esophagus, thymus gland, pleura, adrenal glands, appendix, gall bladder, urinary bladder, large intestine, small intestine, kidneys, liver, pancreas, spleen, stoma, prostate gland, testes, ovaries, or uterus.

15. The method of embodiment 11 or 12, wherein the assay is a Western blot analysis.

16. The method of embodiment 11 or 12, wherein the assay is an ELISA.

17. The method of embodiment 16, wherein the ELISA is sandwich ELISA, or competitive ELISA.

18. The method of embodiment 17, wherein the competitive ELISA is performed using an immunoassay plate, wherein the immunoassay plate is coated with one or more polypeptide consisting essentially of an amino acid sequence selected from SEQ ID NO: 2, SEQ ID NO: 3, SEQ ID NO: 4, SEQ ID NO: 5, SEQ ID NO: 6, or SEQ ID NO: 12.

19. The method of embodiment 16, wherein the antibody or antigen binding fragment thereof is conjugated to an enzyme.

20. The method of embodiment 19, wherein the enzyme is horseradish peroxidase.

21. The method of embodiment 11 or 12, wherein the antibody or antigen binding fragment thereof is conjugated to a label.

22. The method of embodiment 21, wherein the label is an enzyme label, a radioisotope, a fluorescent label, or a bioluminescent label.

23. A kit comprising an antibody or antigen binding fragment according to any one of embodiments 1-10, said antibody or antigen binding fragment specifically binding to 3ABC non-structural protein of FMDV, wherein the antibody or antigen binding fragment thereof specifically binds the amino acid sequence of SEQ ID NO: 2, SEQ ID NO: 3, SEQ ID NO: 4, SEQ ID NO: 5, SEQ ID NO: 6, or SEQ ID NO: 12.

24. The kit of embodiment 23, wherein said kit further comprising an immunoassay plate coated with a polypeptide comprising the amino acid sequence selected from SEQ ID NO: 2, SEQ ID NO: 3, SEQ ID NO: 4, SEQ ID NO: 5, SEQ ID NO: 6 or SEQ ID NO: 12, FMDV non-structural protein 3ABC or combinations thereof.

25. The kit of embodiment 23, wherein the antibody or antigen binding fragment thereof is conjugated to a label.

26. The kit of embodiment 23, wherein said label is an enzyme label, a radioisotope, a fluorescent label, or a bioluminescent label.

27. The kit of embodiment 23, wherein the antibody is a monoclonal antibody.

28. The kit of embodiment 23, wherein the antibody is a polyclonal antibody.

29. The kit of embodiment 23, wherein the antibody or antigen binding fragment thereof is a chimeric antibody, a single chain antibody, a scFv antibody, or a Fab fragment.

30. The kit of embodiment 23, wherein the antibody is Mab 40C8 as produced by hybridoma which is deposited with the American Type Culture Collection with Designation: PTA-122531.

31. A method of producing an antibody comprising immunizing an animal with an immunogen comprising a polypeptide consisting essentially of SEQ ID NO: 2, SEQ ID NO: 3, SEQ ID NO: 4, SEQ ID NO: 5, SEQ ID NO: 6 or SEQ ID NO: 12, or combinations thereof; and collecting antibodies from said animal.

32. The method according to embodiment 31, said method further comprising comparing the binding specificity of said collected antibodies to the monoclonal antibody 40C8.

33. The method of embodiment 31, said method comprising immunizing said animal, generating monoclonal antibodies from splenocytes isolated from said animal and comparing the binding specificity of monoclonal antibodies generated by said method with the 40C8 monoclonal antibody.

34. The method according to embodiment 32, wherein said generated monoclonal antibody specifically binds the amino acid sequence of SEQ ID NO: 3, SEQ ID NO: 4, SEQ ID NO: 5, SEQ ID NO: 6, or SEQ ID NO: 12 as the epitope.

35. The method according to embodiment 32, wherein said generated monoclonal antibody specifically binds the amino acid sequence of SEQ ID NO: 4 as the epitope.

36. The method according to embodiment 32, wherein said generated monoclonal antibody specifically binds the amino acid sequence of SEQ ID NO: 5 as the epitope.

37. A polypeptide consisting of an amino acid sequence selected from SEQ ID NO: 2, SEQ ID NO: 4, SEQ ID NO: 5, SEQ ID NO: 6 or SEQ ID NO: 12.

38. A polypeptide consisting essentially of an amino acid sequence selected from SEQ ID NO: 2, SEQ ID NO: 4, SEQ ID NO: 5, SEQ ID NO: 6 or SEQ ID NO: 12.

39. An immunogenic carrier protein covalently attached to:

a) a polypeptide consisting of an amino acid sequence selected from SEQ ID NO: 2, SEQ ID NO: 4, SEQ ID NO: 5, SEQ ID NO: 6 or SEQ ID NO: 12; or

b) consisting essentially of an amino acid sequence selected from SEQ ID NO: 2, SEQ ID NO: 4, SEQ ID NO: 5, SEQ ID NO: 6 or SEQ ID NO: 12.

40. A composition of matter comprising a polypeptide bound to a substrate, said polypeptide:

a) consisting of an amino acid sequence selected from SEQ ID NO: 2, SEQ ID NO: 4, SEQ ID NO: 5, SEQ ID NO: 6 or SEQ ID NO: 12; or

b) consisting essentially of an amino acid sequence selected from SEQ ID NO: 2, SEQ ID NO: 4, SEQ ID NO: 5, SEQ ID NO: 6 or SEQ ID NO: 12.

41. A composition of matter comprising a substrate to which an antibody according to one of embodiments 1-10 is bound.

42. The method of any one of embodiments 11-22, wherein said antibody binds to the same epitope as the 40C8 antibody.

43. The method of embodiment 42, wherein said antibody is the antibody produced by the hybridoma 40C8 or is an antigen binding fragment thereof.

44. An immunogenic composition comprising an adjuvant and a polypeptide:

a) consisting of an amino acid sequence selected from SEQ ID NO: 2, SEQ ID NO: 4, SEQ ID NO: 5, SEQ ID NO: 6 or SEQ ID NO: 12; or

b) consisting essentially of an amino acid sequence selected from SEQ ID NO: 2, SEQ ID NO: 4, SEQ ID NO: 5, SEQ ID NO: 6 or SEQ ID NO: 12, said polypeptide being, optionally, conjugated to an immunogenic carrier protein.

45. The method of embodiment 11 or 12, wherein the sample is from a vaccinated animal, infected animal or a combination of vaccinated and infected animals.

46. The method of embodiments 11, 12, 17-22 or 45, wherein said method is a competitive immunoassay and said method comprises:

combining said biological sample with Mab 40C8 or an antigen binding fragment thereof, or antibodies having the

binding specificity of Mab 40C8, or antigen binding fragments thereof, prior to contacting said biological with one or more 3ABC polypeptide or one or more polypeptide comprising an epitope comprising SEQ ID NO: 3, SEQ ID NO: 4, SEQ ID NO: 5, SEQ ID NO: 6 or SEQ ID NO: 12 or a 3ABC polypeptide;

contacting an immunoassay plate coated with one or more 3ABC polypeptide or one or more polypeptide containing an epitope consisting essentially of an amino acid sequence selected from SEQ ID NO: 3, SEQ ID NO: 4, SEQ ID NO: 5, SEQ ID NO: 6 or SEQ ID NO: 12 with an antibody or antigen binding fragment having the binding specificity of Mab 40C8, optionally washing said plate and, subsequently contacting said immunoassay plate with said biological sample; or

contacting an immunoassay plate coated with one or more 3ABC polypeptide or one or more polypeptide containing an epitope consisting essentially of an amino acid sequence selected from SEQ ID NO: 3, SEQ ID NO: 4, SEQ ID NO: 5, SEQ ID NO: 6 or SEQ ID NO: 12 with said biological sample, optionally washing said plate and, subsequently contacting said immunoassay plate with an antibody or antigen binding fragment having the binding specificity of Mab 40C8.

47. The method of embodiment 46, wherein said polypeptide comprises FMDV 3ABC.

48. The method of embodiment 46, wherein said method comprises contacting an immunoassay plate coated with one or more 3ABC polypeptide or one or more polypeptide containing an epitope consisting essentially of an amino acid sequence selected from SEQ ID NO: 3, SEQ ID NO: 4, SEQ ID NO: 5, SEQ ID NO: 6 or SEQ ID NO: 12 with an antibody or antigen binding fragment having the binding specificity of Mab 40C8, optionally washing said plate and, subsequently contacting said immunoassay plate with said biological samples, infected animals being identified by reduced binding of antibodies in said biological sample to said polypeptide being the inhibition of antibody binding.

49. The method of embodiment 46, wherein said method comprises contacting an immunoassay plate coated with one or more 3ABC polypeptide or one or more polypeptide containing an epitope consisting essentially of an amino acid sequence selected from SEQ ID NO: 3, SEQ ID NO: 4, SEQ ID NO: 5, SEQ ID NO: 6 or SEQ ID NO: 12 with said biological sample; contacting said immunoassay plate with an antibody or antigen binding fragment having the binding specificity of Mab 40C8 that is labeled with at least one of a fluorescent label, an enzymatic label or a radiolabel; and detecting the binding of said labeled antibody or antigen.

50. The method of embodiment 49, wherein reduced binding of said labeled antibody indicates that the animal from which the biological sample was obtained is infected by FMDV.

EXAMPLE MATERIALS AND METHODS

Example: Cloning and Expression of 3ABC* His-Tagged Recombinant Protein from *E. coli* Expression Plasmid

The viral RNA for the FMDV O1 Campos strain was isolated from FMDV infected BHK-21 cells following manufacturer protocols (RNeasy kit, Qiagen, Valencia, Calif.). The required recombinant protein 3ABC* fragment of the viral genome was transcribed to cDNA using SuperScript™ III First-Strand Synthesis System for real-time polymerase chain reaction (RT-PCR) (Invitrogen, Carlsbad,

Calif.) following the manufacturer's instructions. The cDNA obtained was then amplified by an overlap extension PCR (Forward oligonucleotide: 5'-CAATTCCTTCCAAAAATCT-3' (SEQ ID NO: 7), Reverse oligonucleotide: 5'-GTGGTGTGGTTCGGGGTCCAA-3' (SEQ ID NO: 8). Expected PCR product size was 1316 bp). Site-directed mutagenesis and overlapping PCR was used to introduce a mutation (*) that changes the residue Cysteine at position 163 into an Arginine at the active site of the 3C_{pro} viral proteinase.

The schematic representations of the recombinant protein and of the plasmid used for expression in prokaryotic cells are shown in FIG. 8 and FIG. 9. The sense and antisense primers were designed for cloning of 3ABC* PCR into pET30c 6xHis tag expression plasmid containing a 6xHis-tag at the N-terminus of the cloned protein. Cloning of the 3ABC* insert was accomplished by BamHI/HindIII restriction endonuclease digestion using standard molecular biology techniques. Sequence analysis verified the presence of the correct mutant recombinant protein. This was accomplished by using Big Dye Terminator Cycle Sequencing Kits (Applied Biosystems, Foster City, Calif.) and a PRISM 3700 automated sequencer.

p3ABC* was expressed in *E. coli* Rosetta (DE3)pLysS competent cells and induced with addition of isopropyl β-D-1-thiogalactopyranoside (IPTG) as follows:

Expression:

1. Grow single colony in 5 ml LB broth containing 0.4% glucose and 50 μg/ml kanamycin and 20 μg/ml chloramphenicol, overnight at 37° C. and 220 rpm in an incubator.

2. Inoculate the starter culture to 50 ml LB broth containing identical antibiotic concentration.

3. Grow cells at 37° C. and 220 rpm in the incubator to reach OD=0.8.

4. Induce with 1 mM IPTG (final concentration); grow at 37° C. for 4 hrs.

5. Freeze the cell pellet in -20° C. freezer.

Solubilization:

1. Thaw the frozen cell pellet on ice for 30 min.

2. Resuspend the cell pellet in BugBuster® reagent (5 ml buffer/g cells) (EMD Millipore, Billerica, Mass.).

3. Add Benzonase (Novagen, Bilerica, Mass.), lysozyme, leupeptin, and pepstatin to 1x concentration.

4. Incubate at room temperature for 20 min with intermittent stirring.

5. Centrifuge at 11,600 rpm in a SL-50T rotor for 20 minutes at 4° C. Discard supernatant.

6. Add same amount of volume (as above) of 1:10 Bugbuster®.

7. Centrifuge at 3000 rpm in a ST-H750 rotor for 20 min at 4° C.

8. Collect the pellet and resuspend in 1:10 concentration of BugBuster® again.

9. Centrifuge at 3000 rpm using ST-H750 rotor for 20 min at 4° C.

10. Resuspend the pellet in 1:10 Bugbuster® and centrifuge at 11,600 rpm for 20 min at 4° C. Discard the supernatant.

11. The protein was harvested from inclusion bodies and the protein pellet was solubilized with 100 mM NaH₂PO₄, 10 mM Tris, 8 M Urea pH 8 supplemented with 12 mM β-mercaptoethanol (BME) and 10% glycerol for 1 hour on ice.

12. The protein solution was centrifuged at 11,600 rpm in a SL-50T rotor for 20 min at 4° C. The supernatant was collected.

Protein preparations were aliquoted as 100 μl and stored at -20° C. Two lots of 3ABC* were verified in 12% Bis-Tris sodium dodecyl sulfate polyacrylamide gel electrophoresis (SDS PAGE) gel (FIG. 10) and can be seen as an approximate 55 kDa band.

A standard BCA protein assay (Thermo Fisher Scientific Inc., Waltham, Mass.) was performed to determine the approximate concentration of the crude recombinant protein preparation. Table 2 shows the concentration and inventory of the two lots of recombinant proteins.

TABLE 2

Batch information of recombinant 3ABC* proteins	
Recombinant protein	Concentration (mg/ml)
FMDV 3ABC* Lot 20112A	7.5
FMDV 3ABC* Lot 20112B	6.25

Following are examples which illustrate procedures for practicing the invention. These examples should not be construed as limiting. All percentages are by weight and all solvent mixture proportions are by volume unless otherwise noted.

Example 1—Mab 40C8 Production

An embodiment of the current disclosure provides a cELISA that utilizes an indicator monoclonal antibody (Mab), Mab 40C8, in a competitive format, i.e. sera from infected animals are used to block the binding of the indicator antibody to a target antigen. Mab 40C8 specifically binds to a B-cell linear epitope NH₂-GPYAGPLERQK-PLK-COOH (SEQ ID NO: 3) of the 3ABC protein of foot-and-mouth disease virus (FMDV) and is a key component of the cELISA. The minimal optimal reactive epitope is mapped to GPLERQ (SEQ ID NO: 4), enabling unique and useful function of the Mab in diagnostic testing that are described here after.

Mab 40C8 was generated using the peptide NH₂-CGPY-AGPLERQKPLK-COOH, (SEQ ID NO: 6, FIG. 1, which was chemically synthesized and purified by HPLC. Sequence analysis (n=331 strains available in GenBank), indicates ~20% genetic variability in this epitope (FIG. 2) indicating that a monoclonal generated against this peptide may recognize these sequence variants, thus enabling a cross-reactive serological test. The variability within the peptide is higher in the amino acid residues alanine (A), leucine (L), and lysine (K) at position 4, 7 and 11, respectively (FIG. 3).

The peptide was conjugated to KLH and used for mice immunization and Mab production using standard protocols. Briefly, female BALB/C mice were immunized subcutaneously with 20 μg of the peptide NH₂-GPYAGPLERQK-PLK-COOH (SEQ ID NO: 3) conjugated to KLH emulsified in an equal volume of Complete Freund's Adjuvant. Three identical boosters emulsified in incomplete Freund's adjuvant were given at four weeks interval. The mice were boosted with the peptide-KLH conjugate in PBS (40 μg/mouse) by intraperitoneal injection 4 days before fusion. Immunized spleen cells were fused with myeloma cells (P3X63 Ag8.653). After 2 weeks, hybridoma supernatants were screened using the FMDV recombinant 3ABC as the antigen in an indirect ELISA. Mab 40C8 exhibited strong reactivity with the 3ABC antigen and was characterized as IgG1 isotype with kappa light chains.

Mab 40C8 Reactivity to Peptides and 3ABC Recombinant Protein

Additional indirect ELISA testing confirmed reactivity to diverse 3ABC peptide variants (FIG. 4). This result indicates that this Mab exhibits broad peptide reactivity, potentially enabling detection of diverse strains of FMDV (n=331 by in silico analysis, as depicted in FIG. 2). The minimal epitopes are GPLERQ (SEQ ID NO: 4), and residues 2 and 3 of this sequence are not critical for Mab 40C8 binding.

Mab 40C8 also exhibited strong Western blot reactivity to the 3ABC recombinant protein, consisting of all sequence variants within the 3ABC epitope (FIG. 5). Furthermore, this Mab was able to compete with sera from a FMDV infected animals to the recombinant 3ABC protein, demonstrating the feasibility of a competitive ELISA application.

Mab 40C8 Reactivity to the Six FMDV Serotypes Infected Cell Lysates

For a cELISA, Mab 40C8 was directly conjugated to the horseradish peroxidase (HRP) detection system and the reactivity of Mab 40C8 conjugated to HRP (40C8-HRP) was screened with a panel of fifteen FMDV isolates using a direct ELISA format. These FMDV antigens were prepared from a cell line known to be highly permissive to FMDV growth (LFBK $\alpha\beta 6$). FIG. 6 shows that in two separate experiments 40C8-HRP bound to FMDV antigen in infected cell lysates. Variability in binding (e.g., measured by 450 nm absorbance) can be attributed to differences in the FMDV antigen content in the cell lysates. For example, isolates such as serotype O Israel (O Isr), A24 Cruzeiro SDG (A24 SDG), and SAT-2 that did not bind efficiently to Mab 40C8 in this assay were suspected of not growing well since other isolates of the same serotype and strain were reactive to Mab 40C8 using Western Blot analysis (see FIG. 7 and associated result descriptions below). Moreover, a similar low immunoreactivity for O Isr and A24 SDG was observed in another experiment (data not shown) in which the pan-FMDV specific monoclonal antibody, F1412SA (F14), which specifically binds an epitope in the FMDV VP2 (1B) protein, was used as a positive control. Collectively, these ELISA results indicate that Mab 40C8 exhibited reactivity to six FMDV serotypes using cell-lysates. SAT-1, the seventh serotype, was not available at the time of this analysis.

Furthermore, Western blot analysis was also performed to verify the ELISA results. Cell lysates prepared from BHK-21 cells infected with FMD viruses representing different serotypes were mixed with 2x Laemmli buffer, boiled, and stored. For Western blot analysis, a 1/10 fraction of cell extracts was run on 12% SDS-PAGE gels and transferred onto nitrocellulose blots following standard procedures. The blots were probed using Mab 40C8. The results are shown in FIGS. 7A and 7B. As a control, and to demonstrate that all samples contained the viral antigen, a second Western blot was developed using a FMDV 3D-specific monoclonal antibody (see upper panel in FIG. 5A where a product of about 52 kDa is detected that corresponds to the FMDV protein 3D). Together these results show that Mab 40C8 reacted with FMDV 3ABC across six strains in four serotypes. Certain strains exhibit strong reactivity while others required higher concentration of the Mab 40C8. The collective ELISA and Western blot data demonstrate that Mab 40C8 specifically binds FMDV proteins from all available serotypes.

SAT-2 Reactivity Confirmation

In the initial studies, characterizing the reactivity of the Mab 40C8 with cell culture-grown FMDV serotype SAT-2, results indicated that one strain of SAT-2 was not reactive, as seen in FIG. 6, and FIG. 7B. However, when another

SAT-2 strain was used, there was a positive reaction (FIG. 7A). In additional studies using different strains of SAT-2 in which animals were infected, all three serum samples were positive. So, it appears that the one strain of SAT-2 was not reactive due to low cell culture growth.

Mab 40C8 Non Reactivity to Ad-FMD Vaccines Infected Cells

The current disclosure provides a cELISA that can also discriminate between animals infected with FMDV and those immunized with FMD vaccines that have been inactivated and purified of NSPs. The FMD vaccine immunized animals (immunized using inactivated, purified FMDV vaccine or an adenovector serotype 5 vaccine) do not contain FMDV protein 3ABC which is recognized by Mab 40C8-HRP. For example, a vaccine containing the molecular clone of the adenovector serotype 5 carrying the FMDV capsid and processing genes (Ad-FMD) lack the specific 3ABC immunogenic site in the FMDV 3ABC protein. The antibody responses of animals immunized with vaccines lacking the viral non-structural proteins (e.g. Ad-FMD or inactivated, purified FMDV vaccines) can be discriminated or differentiated from those responses exhibited by FMDV infected animals. These differences can be detected by companion diagnostic tests, so-called DIVA (differentiation between infected and vaccinated animals). The Ad-FMD vaccines were designed to be vaccines with DIVA capabilities using a FMDV 3ABC cELISA designed as a companion diagnostic assay. The reactivity of Mab 40C8 with Ad-FMD infected cells was screened with FMDV Asia 1, O1 Campos, and O1 Manisa constructs using a direct ELISA as above. Ad-FMD-infected M2A cells actively express FMDV capsid and some processing genes. Ad-FMD antigens (infected M2A cell lysates) were directly adsorbed to ELISA plates and processed as above. Table 3 shows the clear binding of Mab F14 to the expressed FMDV capsid proteins, and the lack of binding of Mab 40C8 to the Ad-FMD cell lysates that lack immunogenic FMDV 3ABC nonstructural proteins. Therefore, the ELISA of the present disclosure can serve as a companion diagnostic assay for Ad-FMD vaccines.

TABLE 3

Immunoreactivity of Mab 40C8 and Mab F14 to Ad-FMD vaccine constructs grown in M2A cells.		
Adenovector FMD vaccine construct	Highest dilution for a positive response	
	Mab 40C8	Mab F14
Ad5-ASaudi Arabia 95	<1:2*	>1:64
Ad5-O1 Manisa	<1:2	>1:64
Ad5-O1 Campos	<1:2	>1:64
Ad5-O1Campos.2B	<1:2	>1:64
Ad5-O1Campos.2B + F(RGD)	<1:2	>1:64
M2A cells (no vaccine control)	<1:2	<1:2

*No positive reaction detected at the lowest dilution tested (1:2)

Example 2—3ABC cELISA Kit

Preparation of Horse-Radish Peroxidase (HRPO)-Conjugated Mab 40C8

Mab 40C8 ascites purified by sodium ammonium sulfate cut method were diluted in PBS to provide 2 mg/ml antibody. Mab 40C8 was dialyzed against 0.1 M sodium bicarbonate/carbonate buffer, pH 9.6. Half ml of a 4 mg/ml horseradish peroxidase solution (HRPO) dissolved in distilled water was mixed with 100 μ l of freshly prepared 0.1

M sodium periodate by stirring for 20 minutes at room temperature. The HRPO/sodium periodate solution was dialyzed against 1.0 mM sodium acetate buffer, pH 4.4 at 4° C. The pH of HRPO/sodium periodate solution was adjusted from 4.05 to pH 9.6 by adding 15 µl of freshly prepared 0.1 M sodium carbonate. The dialyzed Mab were combined with the HRPO/sodium periodate solution, and stirred for 2 hours at room temperature. Fifty µl of freshly prepared 4 mg/ml sodium borohydride solution was slowly added to the HRPO/FMDV ascites SAS Cut solution, incubated for 2 hours at 4° C., and then dialyzed against 1xPBS. The HRPO-conjugated Mab 40C8 was stabilized by adding a final concentration of 10% heat inactivated goat serum, 0.01% thimerosal, and 0.03% WAWA (4-aminoantipyrine).

Example: Preparation of Recombinant 3ABC-Coated Immunoassay Plate

A dilution of recombinant 3ABC was made in 0.1 M carbonate/bicarbonate buffer. Immunoassay plates were filled with 50 µl antigen per well, incubated in humid chamber overnight at 4° C. Wells were blocked with 20 µl blocking agent by incubating for 2 hours at 37° C. in humid chamber. The plates were dried overnight after discarding the liquid.

Example: Optimizations of Other Format Variables and Formulation of Kit Components

Other format variables including serum dilution factor, serum incubation time, buffer types for serum dilution, conjugate dilution buffer and plate wash were thoroughly compared and the combination supporting best analytical sensitivity and specificity was chosen. Components of the kit were formulated as follows.

1. Test serum dilution: PBS
2. Serum dilution factor: 1:2
3. Conjugate diluting buffer: 1:2 dilution of Stabilzyme (SurModics, Inc., Eden Prairie, Minn.) in PBS
4. Wash buffer: PBS containing 0.1% TWEEN (polysorbate 20)
5. Color reaction substrate: TMB (3,3',5,5'-Tetramethylbenzidine)

Preparation of Positive and Negative Controls

FMDV antibody negative bovine and porcine from FMDV-free farms in the U.S. were screened using a 3ABC cELISA. One bovine and three porcine were first immunized with recombinant 3ABC emulsified in Complete Freund's Adjuvant and then boosted with the same antigen emulsified in Incomplete Freund's Adjuvant. Serum from a FMDV negative bovine was used as the negative control in the assay. Positive bovine and porcine control serum was also collected and used to validate the immunoassay. These non-infectious positive controls showed reliable and concentration-dependent positive results in the cELISA format (Table 4).

Example: Assay Procedure

1. Add 50 µl serum at 1:2 in PBS to each well and incubate 30 min at room temperature.
2. Wash plate three times with 250 µl per well.
3. Add 50 µl HRP conjugated Mab and incubate at room temperature for 30 min.
4. Wash plate 3 times with 250 µl per well wash buffer.
5. Add 50 µl substrate per well and incubate 20 min at room temperature.

6. Add 50 µl Stop solution to each well and read at 450 nm.

TABLE 4

Representative QC data tested with sensitivity panel and control sera (bovine positive and negative)				
Sample I.D., Dilution	OD	OD	Mean	% Inhibition
C673 (+), 1:20	0.204	0.198	0.201	77.4
C673 (+), 1:40	0.274	0.278	0.276	68.9
C673 (+), 1:80	0.392	0.393	0.393	55.8
C673 (+), 1:160	0.602	0.598	0.600	32.5
Kit (-)	0.905	0.924	0.889	0.0
	0.849	0.876		
Kit (+)	0.265	0.266	0.259	70.8
	0.250	0.256		

Example: Analytical Sensitivity Evaluation

Seven FMDV Serotypes Limit of Detection Analysis

In order to determine the analytical sensitivity of the assay, sera collected from animals infected with one of each of the seven FMDV serotypes were diluted two-fold, to a maximum dilution of 1:2048. Samples from each dilution were evaluated in the 3ABC ELISA twice and once in a commercially available assay according to manufacturer's instructions (PrioCHECK® FMDV NS Antibody ELISA, ThermoFisher Scientific, Grand Island, N.Y.). The highest dilution at which a positive reaction was recorded is listed in Table 5. The analytical sensitivity for the 3ABC ELISA was at least 16- to 32-fold more sensitive for the Asia-1 serotype sample (cut-off dependent), two-fold more sensitive for serotype O 1, comparable sensitivity for serotypes A, C, SAT-1, and SAT-2, and one dilution less sensitive for SAT-3 compared to the PrioCHECK® FMDV NS Antibody ELISA. Sera collected from animals infected with one of the seven FMDV serotypes were reactive in both assays, and the sensitivity for the 3ABC ELISA was optimal for a competitive ELISA format.

TABLE 5

Analytical Sensitivity of the 3ABC ELISA for seven FMDV serotypes with 35% inhibition as the cut-off (1st test) (45% inhibition as the cut-off in the 2nd test). For example, 1:2048 detection is better/more sensitive than 1:32.			
Highest dilution for a positive response			
FMDV serotype	3ABC ELISA (1 st test)	3ABC ELISA (2nd test)	PrioCHECK®
A	1:512 (256)	1:256 (128)	1:128
Asia-1	1:2048 (512)	1:2048 (1024)	1:32
C	1:64 (32)	1:128 (32)	1:32
O 1	1:512 (256)	1:256 (128)	1:64
SAT-1	1:512 (256)	1:256 (128)	1:128
SAT-2	1:128 (64)	1:64 (64)	1:32
SAT-3	1:32 (16)	1:32 (16)	1:32

Post-Infection Antibody Detection Time Point/Window Determination

One male castrated steer was infected intradermolingually (IDL) with one FMDV serotype, (4 calves were each infected with one of 4 FMDV serotypes, A Iraq 2009, Asia 1 Shamir, SAT-1, and O Israel 2008). For each IDL-challenge calf, four uninfected cattle were mingled in order to be infected via the contact route. Serum samples were collected from each animal nearly every day from days 0 to 14, and then on days 21 or 22, 28, and 35 or 36.

The 3ABC ELISA detected antibodies in sera from cattle infected with one of the four FMDV serotypes between 7 to 10 days post-infection (dpi) (FIG. 11). Antibodies to FMDV O Israel 2008 were detected by 7 dpi, to Asia 1 Shamir by 8 dpi, to A Iraq 2009 by 9 dpi, and to SAT-1 by 10 dpi.

In another embodiment designed to determine when antibodies to the FMDV 3ABC nonstructural proteins can be detected by the 3ABC ELISA following infection, sera were collected over time from cattle that were infected with one of three FMDV serotypes, SAT-1, SAT-2, or SAT-3. Sera from various days post-infection (dpi) were evaluated using the 3ABC ELISA. The first day on which there was a positive reaction in the 3ABC ELISA are summarized in Table 6.

TABLE 6

Detection of antibodies to FMDV nonstructural proteins from FMDV-infected cattle.			
Test used to detect antibodies to FMDV non-structural proteins	Days Post-Infection when antibodies to FMDV non-structural proteins were detected in cattle sera following infection with one of three FMDV serotypes (no. cattle)		
	SAT-1 (n = 2)	SAT-2 (n = 2)	SAT-3 (n = 2)
3ABC ELISA	7, 10	6, 4	10, 11

These data indicates that the new FMDV 3ABC ELISA will be useful in detecting antibodies in cattle within 7 to 13 days post-infection with any one of the FMDV serotype SAT 1, SAT-2, or SAT-3 strains.

Example: Analytical Specificity Evaluation

FMD Look-Alike Samples Specificity Analysis

Diagnostic bovine sera samples previously evaluated and identified as having been collected from animals infected with pathogens that cause FMD look-alike lesions were tested with the 3ABC ELISA, the FMDV 3D virus infection associated antigen agar gel immunodiffusion (VIAA AGID), and by assays specific for the pathogen, e.g. Vesicular Stomatitis Virus (VSV) ELISA. Data are summarized in Table 7.

TABLE 7

Specificity of FMDV 3ABC ELISA on diagnostic serum samples that were confirmed as negative for FMDV antibodies and positive for VSV antibodies.				
No. of samples tested	No. Identified as Positive			Specificity
	VSV ELISA	FMDV 3D VIAA AGID	FMDV 3ABC ELISA	
55	55	0	0	100%

The specificity was 100% for sera tested from 55 cattle that had been infected with VSV and were positive for VSV antibodies. In the 3ABC ELISA, all samples exhibited $\leq 28\%$ inhibition with an average of -12% inhibition and a standard deviation of 25%.

In another experiment, 44 samples from 8 species of FMDV-susceptible animals that exhibited vesicular lesions but were free of FMDV, were tested by three assays: 1) FMDV 3ABC ELISA, 2) FMDV 3D VIAA AGID, and 3) FMDV PrioCHECK. Data are summarized in Table 8.

TABLE 8

Specificity of FMDV 3ABC ELISA on sera from vesicular disease diagnostic samples that were confirmed as FMDV negative				
Animal Species	No. Identified as Negative			No. Identified As Positive by any of the three assays
	FMDV 3ABC ELISA	FMDV 3D VIAA AGID	FMDV PrioCHECK®	
Alpaca	2	2	2	0
Bison	1	1	1	0
Bovine	28	28	28	0
Buffalo	1	1	1	0
Goat	4	4	4	0
Ovine	2	2	2	0
Swine	4	4	4	0
Yak	2	2	2	0
Total	44	44	44	0

The specificity of the 3ABC ELISA was 100% for 44 samples collected from 8 species of animals that were FMDV free and exhibited vesicular lesions, i.e. rule-out data provided by the USDA Animal and Plant Health Inspection Service Foreign Animal Disease Diagnostic Laboratory. The same results were obtained in the FMDV PrioCHECK® FMDV NS Antibody ELISA and the FMDV 3D VIAA AGID assays.

Adenovirus-A24 FMD Vaccine Vaccinated Samples Specificity Analysis

Cattle from Michigan and Nebraska were vaccinated with the conditionally licensed Ad-A24 FMD vaccine (USDA product code 1FM1.R0). Forty-nine cattle serum samples collected approximately 11 months post-vaccination were positive using serum virus neutralization (SVN) to detect antibodies produced to the FMDV A24 capsid proteins (average titer= $1.5 \log_{10}$, std. dev.=0.5, range 0.9 to 2.7 \log_{10}) (FIG. 12). Antibodies were not detected to the FMDV non-structural proteins, as expected, since these animals had been vaccinated but not infected with FMDV. In the 3ABC ELISA, the average % inhibition was 1.5%, std. dev.=16%, and range= -29% to 31%. There was no correlation between the SVN titers to the A24 antigen and the percent inhibition measured in the 3ABC ELISA; correlation=0.025 ($R^2=0.0006$). This data indicates that the 3ABC ELISA is suitable as a companion diagnostic assay for AdFMD based vaccines.

Example: Diagnostic Sensitivity Evaluation

Positive Reference Sample Set (Known Positive Status) Analysis

Serum samples obtained from 139 animals, at least 10 to 14 days post-infection with a known serotype of FMDV, were evaluated for their response in the 3ABC ELISA and with the commercially available PrioCHECK® FMDV NS Antibody ELISA. The samples were obtained from 112 cattle, 18 pigs, 5 sheep, and 4 goats that were experimentally infected with one of the seven FMDV serotypes; this sample set covered the full spectrum of all seven serotypes. All 139 serum samples were positive with the FMDV 3ABC ELISA assay, and 136 of those samples were positive with the PrioCHECK® FMDV NS Antibody ELISA (Table 9). The results demonstrate that the 3ABC ELISA can detect antibodies produced to the seven serotypes of FMDV 3ABC nonstructural protein in diverse animal species.

The diagnostic sensitivity was calculated using the results from the 139 serum samples (Table 10). Since all 139 serum

samples that were collected from FMDV-infected animals (known positives) exhibited a positive response in the 3ABC ELISA, the diagnostic sensitivity was 100%. In the PrioCHECK® FMDV NS Antibody ELISA, 136 of the same 139 samples were positive, which indicates a diagnostic sensitivity of 97.8%. The % inhibition (% I) distribution of these samples in the 3ABC ELISA are provided graphically on the right side of the vertical line in FIG. 13.

TABLE 9

Detection of antibodies to FMDV produced in animals infected with one of seven serotypes of FMDV		
FMDV Serotype*	3ABC ELISA Positive	FMDV PrioCHECK® Positive
A	52	52
O	23	23
C	1	1
SAT1	22	20
SAT2	3	3
SAT3	20	20
Asia-1	18	17
Total	139	136

*Serum samples were from 112 bovine, 18 swine, 5 ovine, and 4 caprine experimentally infected animals.

TABLE 10

Diagnostic sensitivity of the 3ABC ELISA compared to the PrioCHECK with reference to samples that were obtained from animals infected with FMDV.		
Assay Result	3ABC ELISA	FMDV PrioCHECK
Positive	139	136
Negative	0	3
Total Samples Tested (Known Positives)	139	139
Diagnostic Sensitivity	100%	97.8%

Diagnostic Specificity Evaluation

Approximately 500 bovine sera were split into two sample sets and tested by two laboratories, to assess diagnostic specificity. At TVMDL, there were 4 false positives out of 491 serum samples using 45% inhibition cut-off, resulting in 99.2% diagnostic specificity (FIG. 14). At FADDL, one false positive (out of 486) was obtained, resulting in 99.8% diagnostic specificity; this one false positive was one of the four false positives identified at TVMDL, i.e., same biological sample. Comparison of the TVMDL and FADDL % inhibition for the samples resulted in TVMDL % I average (Avg)=-0.018, standard deviation (SD)=14.6; FADDL % I Avg=-7.48, SD=22.5; p value <0.05. Although a significant difference in % I was observed, equivalent diagnostic specificity (probability that a negative sample test negative) was obtained; TVMDL Dx sp=99.2% and FADDL Dx sp=99.8%. This indicates that the assay of the current disclosure exhibits a wide % I distribution range for negatives (see FIGS. 12, 13, and 14) enabling tolerance of % I differences between labs and testers and high diagnostic specificity.

Furthermore, 200 samples from this 491 sample set was also tested with the PrioCHECK® FMDV NS Antibody ELISA at FADDL and 8 false positives were identified, resulting in 96% diagnostic specificity; only one of the false positives corresponded to the 3ABC ELISA false positive identified by TVMDL, i.e., same biological sample.

It should be understood that the examples and embodiments described herein are for illustrative purposes only and that various modifications or changes in light thereof will be suggested to persons skilled in the art and are to be included within the spirit and purview of this application and the scope of the appended claims. In addition, any elements or limitations of any invention or embodiment thereof disclosed herein can be combined with any and/or all other elements or limitations (individually or in any combination) or any other invention or embodiment thereof disclosed herein, and all such combinations are contemplated with the scope of the invention without limitation thereto.

SEQUENCE LISTING

<160> NUMBER OF SEQ ID NOS: 30

<210> SEQ ID NO 1

<211> LENGTH: 437

<212> TYPE: PRT

<213> ORGANISM: Foot-and-mouth disease virus

<220> FEATURE:

<221> NAME/KEY: MISC_FEATURE

<222> LOCATION: (1)..(437)

<223> OTHER INFORMATION: 3ABC protein from FMDV Campos 437 (GenBank: CAC86575.1, amino acids 1426-1862)

<400> SEQUENCE: 1

Ile Ser Ile Pro Ser Gln Lys Ser Val Leu Tyr Phe Leu Ile Glu Lys
1 5 10 15

Gly Gln His Glu Ala Ala Ile Glu Phe Glu Gly Met Val His Asp
20 25 30

Ser Ile Lys Glu Glu Leu Arg Pro Leu Ile Gln Gln Thr Ser Phe Val
35 40 45

Lys Arg Ala Phe Lys Arg Leu Lys Glu Asn Phe Glu Ile Val Ala Leu
50 55 60

Cys Leu Thr Leu Leu Ala Asn Ile Val Ile Met Ile Arg Glu Thr Arg
65 70 75 80

-continued

Lys Arg Gln Lys Met Val Asp Asp Ala Val Asn Glu Tyr Ile Glu Lys
 85 90 95
 Ala Asn Ile Thr Thr Asp Asp Lys Thr Leu Asp Glu Ala Glu Lys Ser
 100 105 110
 Pro Leu Glu Thr Ser Gly Ala Ser Thr Val Gly Phe Arg Glu Arg Thr
 115 120 125
 Leu Pro Gly Gln Lys Ala Cys Asp Asp Val Asn Ser Glu Pro Ala Gln
 130 135 140
 Pro Val Glu Glu Gln Pro Gln Ala Glu Gly Pro Tyr Ala Gly Pro Leu
 145 150 155 160
 Glu Arg Gln Lys Pro Leu Lys Val Arg Ala Lys Leu Pro Gln Gln Glu
 165 170 175
 Gly Pro Tyr Ala Gly Pro Met Glu Arg Gln Lys Pro Leu Lys Val Lys
 180 185 190
 Ala Lys Ala Pro Val Val Lys Glu Gly Pro Tyr Glu Gly Pro Val Lys
 195 200 205
 Lys Pro Val Ala Leu Lys Val Lys Ala Lys Asn Leu Ile Val Thr Glu
 210 215 220
 Ser Gly Ala Pro Pro Thr Asp Leu Gln Lys Met Val Met Gly Asn Thr
 225 230 235 240
 Lys Pro Val Glu Leu Ile Leu Asp Gly Lys Thr Val Ala Ile Cys Cys
 245 250 255
 Ala Thr Gly Val Phe Gly Thr Ala Tyr Leu Val Pro Arg His Leu Phe
 260 265 270
 Ala Glu Lys Tyr Asp Lys Ile Met Leu Asp Gly Arg Ala Met Thr Asp
 275 280 285
 Ser Asp Tyr Arg Val Phe Glu Phe Glu Ile Lys Val Lys Gly Gln Asp
 290 295 300
 Met Leu Ser Asp Ala Ala Leu Met Val Leu His Arg Gly Asn Arg Val
 305 310 315 320
 Arg Asp Ile Thr Lys His Phe Arg Asp Thr Ala Arg Met Lys Lys Gly
 325 330 335
 Thr Pro Val Val Gly Val Ile Asn Asn Ala Asp Val Gly Arg Leu Ile
 340 345 350
 Phe Ser Gly Glu Ala Leu Thr Tyr Lys Asp Ile Val Val Cys Met Asp
 355 360 365
 Gly Asp Thr Met Pro Gly Leu Phe Ala Tyr Arg Ala Ala Thr Lys Ala
 370 375 380
 Gly Tyr Cys Gly Gly Ala Val Leu Ala Lys Asp Gly Ala Asp Thr Phe
 385 390 395 400
 Ile Val Gly Thr His Ser Ala Gly Gly Asn Gly Val Gly Tyr Cys Ser
 405 410 415
 Cys Val Ser Arg Ser Met Leu Leu Lys Met Lys Ala His Ile Asp Pro
 420 425 430
 Glu Pro His His Glu
 435

<210> SEQ ID NO 2
 <211> LENGTH: 209
 <212> TYPE: PRT
 <213> ORGANISM: Artificial Sequence
 <220> FEATURE:
 <223> OTHER INFORMATION: FMDV sequence encoded by pET31b+12X3B

 <400> SEQUENCE: 2

-continued

Gly Gly Gly Gly Ser Pro Tyr Val Gly Pro Leu Glu Arg Gln Lys Pro
 1 5 10 15
 Leu Gly Gly Gly Gly Ser Pro Tyr Ser Gly Pro Leu Glu Arg Gln Lys
 20 25 30
 Pro Leu Gly Gly Gly Gly Ser Pro Tyr Gly Gly Pro Leu Glu Arg Gln
 35 40 45
 Lys Pro Leu Gly Gly Gly Gly Ser Pro Tyr Ala Gly Pro Val Glu Arg
 50 55 60
 Gln Lys Pro Leu Gly Gly Gly Gly Ser Pro Tyr Ala Gly Pro Met Glu
 65 70 75 80
 Arg Gln Lys Pro Leu Gly Gly Gly Gly Ser Pro Tyr Thr Gly Pro Leu
 85 90 95
 Glu Arg Gln Arg Pro Leu Gly Gly Gly Gly Ser Pro Tyr Ala Gly Pro
 100 105 110
 Leu Glu Arg Gln Gln Pro Leu Gly Gly Gly Gly Ser Pro Tyr Thr Gly
 115 120 125
 Pro Leu Glu Arg Gln Lys Pro Leu Gly Gly Gly Gly Ser Pro Tyr Ala
 130 135 140
 Gly Pro Leu Glu Arg Gln Arg Pro Leu Gly Gly Gly Gly Ser Pro Tyr
 145 150 155 160
 Ala Gly Pro Leu Glu Arg Gln Lys Pro Leu Gly Gly Gly Gly Ser Pro
 165 170 175
 Tyr Ala Gly Pro Leu Glu Arg Gln Ile Pro Leu Gly Gly Gly Gly Ser
 180 185 190
 Pro Tyr Ala Gly Ala Phe Glu Arg Gln Lys Thr Leu Gly Gly Gly Gly
 195 200 205

Ser

<210> SEQ ID NO 3
 <211> LENGTH: 14
 <212> TYPE: PRT
 <213> ORGANISM: Artificial Sequence
 <220> FEATURE:
 <223> OTHER INFORMATION: Sequence of the epitope for Mab 40C8 binding

<400> SEQUENCE: 3

Gly Pro Tyr Ala Gly Pro Leu Glu Arg Gln Lys Pro Leu Lys
 1 5 10

<210> SEQ ID NO 4
 <211> LENGTH: 6
 <212> TYPE: PRT
 <213> ORGANISM: Artificial Sequence
 <220> FEATURE:
 <223> OTHER INFORMATION: Sequence of the minimal epitope for Mab 40C8 binding

<400> SEQUENCE: 4

Gly Pro Leu Glu Arg Gln
 1 5

<210> SEQ ID NO 5
 <211> LENGTH: 6
 <212> TYPE: PRT
 <213> ORGANISM: Artificial Sequence
 <220> FEATURE:
 <223> OTHER INFORMATION: Alternate sequence of the minimal epitopes for MAB 40C8
 <220> FEATURE:
 <221> NAME/KEY: MISC_FEATURE

-continued

<222> LOCATION: (2)..(3)

<223> OTHER INFORMATION: Xaa is any amino acid

<400> SEQUENCE: 5

Gly Xaa Xaa Glu Arg Gln
1 5

<210> SEQ ID NO 6

<211> LENGTH: 15

<212> TYPE: PRT

<213> ORGANISM: Artificial Sequence

<220> FEATURE:

<223> OTHER INFORMATION: FMDV peptide

<400> SEQUENCE: 6

Cys Gly Pro Tyr Ala Gly Pro Leu Glu Arg Gln Lys Pro Leu Lys
1 5 10 15

<210> SEQ ID NO 7

<211> LENGTH: 20

<212> TYPE: DNA

<213> ORGANISM: Artificial Sequence

<220> FEATURE:

<223> OTHER INFORMATION: Forward PCR primer

<400> SEQUENCE: 7

caattccttc ccaaaaatct

20

<210> SEQ ID NO 8

<211> LENGTH: 21

<212> TYPE: DNA

<213> ORGANISM: Artificial Sequence

<220> FEATURE:

<223> OTHER INFORMATION: Reverse PCR primer

<400> SEQUENCE: 8

gtggtgtggt tcggggtcca a

21

<210> SEQ ID NO 9

<211> LENGTH: 6708

<212> TYPE: DNA

<213> ORGANISM: Artificial Sequence

<220> FEATURE:

<223> OTHER INFORMATION: Nucleotide sequence of plasmid pET30c O1C 3ABC*

<400> SEQUENCE: 9

tggcgaatgg gacgcgccct gtagcggcgc attaagcgcg gcggtgtggtg tggttacgcg 60

cagcgtgacc gctacacttg ccagcgcctc agcgcgccgt cctttcgctt tcttcccttc 120

ctttctegcc acgttcgccc gctttcccgc tcaagctcta aatcgggggc tccttttagg 180

gttccgattt agtgctttac ggcacctoga ccccaaaaaa cttgattagg gtgatggttc 240

acgtagtggg ccacgcctc gatagacggt ttttcgccct ttgacgttgg agtccacggt 300

ctttaatagt ggactcttgc tccaaactgg aacaacactc aacctatctc cgttctattc 360

ttttgattta taagggattt tgccgatttc ggctatttgg ttaaaaaatg agctgattta 420

acaaaaatth aacgcgaatt ttaacaaaaa attaacgttt acaatttcag gtggcacttt 480

tcggggaaat gtgcgcggaa cccctatttg tttatttttc taaatacatt caaatatgta 540

tccgctcatg aattaattct tagaaaaact catcgagcat caaatgaaac tgcaatttat 600

tcatatcagg attatcaata ccatattttt gaaaaagccg tttctgtaat gaaggagaaa 660

actcaccgag gcagttccat aggatggcaa gatcctggta tcggtctgctg attccgactc 720

-continued

gtccaacatc aatacaacct attaatctcc cctcgtcaaa aataaggtta tcaagtgaga	780
aatcaccatg agtgacgact gaatccgggtg agaatggcaa aagtttatgc atttctttcc	840
agacttgttc aacaggccag ccattacgct cgtcatcaaa atcactcgca tcaaccaaac	900
cgttattcat tcgtgattgc gcctgagcga gacgaaatac gcgatcgctg ttaaaaggac	960
aattacaaac aggaatcgaa tgcaaccggc gcaggaacac tgccagcgca tcaacaatat	1020
tttcacctga atcaggatat tcttctaata cctggaatgc tgttttcccg gggatcgag	1080
tggtgagtaa ccatgcatca tcaggagtac ggataaaatg cttgatggtc ggaagaggca	1140
taaattccgt cagccagttt agtctgacca tctcatctgt aacatcattg gcaacgctac	1200
ctttgccatg tttcagaaac aactctggcg catcgggctt cccatacaat cgatagattg	1260
tcgcacctga ttgcccgaca ttatcgcgag cccatttata cccatataaa tcagcatcca	1320
tgttggaatt taatcgcggc cttagagcaag acgtttcccg ttgaatatgg ctcataaac	1380
cccttgatt actgtttatg taagcagaca gttttattgt tcatgacca aatcccttaa	1440
cgtgagtttt cgttccactg agcgtcagac cccgtagaaa agatcaaagg atcttcttga	1500
gatccttttt ttctgcgctg aatctgctgc ttgcaacaa aaaaaccacc gctaccagcg	1560
gtggtttggt tgcccgatca agagctacca actcttttcc cgaaggtaac tggcttcagc	1620
agagcgcaga taccaaatca tgctcctcta gtgtagccgt agttaggcca ccacttcaag	1680
aactctgtag caccgcctac atacctcgct ctgctaatac tgttaccagt ggctgctgcc	1740
agtggcgata agtctgtctc taccgggttg gactcaagac gatagttacc ggataaggcg	1800
cagcggtcgg gctgaacggg gggttcgtgc acacagccca gcttgagcg aacgacctac	1860
accgaactga gatactaca gcgtgagcta tgagaagcg ccacgcttcc cgaagggaga	1920
aaggcggaca ggtatccggt aagcggcagg gtcggaacag gagagcgac gagggagctt	1980
ccagggggaa acgcctggtg tctttatagt cctgtcgggt ttcgccacct ctgacttgag	2040
cgtcgatttt tgtgatgctc gtcagggggg cggagcctat ggaaaaacgc cagcaacgcg	2100
gcctttttac ggttccctggc cttttgctgg cttttgctc acatgttctt tctgctgta	2160
tcccctgatt ctgtggataa ccgtattacc gcctttgagt gagctgatac cgctcgcgc	2220
agccgaacga ccgagcgcag cgagtcagtg agcaggaag cggaaagcg cctgatgctg	2280
tattttctcc ttacgcatct gtgcgggtatt tcacaccgca tatatggtgc actctcagta	2340
caatctgctc tgatgcccga tagttaagcc agtatacact ccgctatcgc tacgtgactg	2400
ggtcactggt gcgcccgcac acccgccaac acccgctgac gcgcoctgac gggcttgtct	2460
gctcccggca tccgcttaca gacaagctgt gaccgtctcc gggagctgca tgtgtcagag	2520
gttttcaccg tcatcaccga aacgcgcgag gcagctgcgg taaagctcat cagcgtggtc	2580
gtgaagcgat tcacagatgt ctgcctgttc atccgcgtcc agctcgttga gtttctccag	2640
aagcgttaat gctcggcttc tgataaagcg ggccatgta agggcggttt tttcctgttt	2700
ggtcactgat gctcctggt aagggggatt tctgttcctg ggggtaatga taccgatgaa	2760
acgagagagg atgctcaaga tacgggttac tgatgatgaa catgcccggg tactggaacg	2820
ttgtgagggg aaacaactgg cggtatggat gcggcgggac cagagaaaaa tcaactcaggg	2880
tcaatgccag cgcttcggtt atacagatgt aggtgttcca cagggtagcc agcagcatec	2940
tgcgatgcag atccggaaca taatggtgca gggcctgac ttccgcgttt ccagacttta	3000
cgaaaacacg aaaccaaga ccattcatgt tgttgctcag gtcgcagacg ttttgacgca	3060
gcagtcgctt cacgttcgct cgcgtatcgg tgattcatc tgctaaccag taaggcaacc	3120

-continued

ccgccagcct agccgggtcc tcaacgacag gagcacgac atgcgcaccc gtggggccgc 3180
 catgccggcg ataatggcct gcttctcgcc gaaacgtttg gtggcgggac cagtgcgaa 3240
 ggcttgagcg agggcgtgca agattccgaa taccgcaagc gacaggccga tcatcgctgc 3300
 gctccagcga aagcggctct cgccgaaaaat gaccagagc gctgcccgca cctgtcctac 3360
 gagtgtcatg ataaagaaga cagtcataag tgcggcgacg atagtcatgc cccgcgcca 3420
 ccggaaggag ctgactgggt tgaaggctct caaggcctc ggctcgagatc ccggtgccta 3480
 atgagtgagc taacttacat taattgcggt gcgctcactg cccgcttcc agtcgggaaa 3540
 cctgtcgtgc cagctgcatt aatgaatcgg ccaacgcgcg gggagaggcg gtttgcgtat 3600
 tgggcgccag ggtggttttt cttttcacca gtgagacggg caacagctga ttgcccttca 3660
 ccgctggcc ctgagagagt tgcagcaagc ggtccacgct ggtttgccc agcaggcgaa 3720
 aatcctgttt gatggtggtt aacggcggga tataacatga gctgtcttcg gtatcgctgt 3780
 atcccactac cgagatgtcc gcaccaacgc gcagcccga ctcggtaatg gcgcgcattg 3840
 cgcccagcgc catctgatcg ttggcaacca gcacgcagc gggaacgatg ccctcattca 3900
 gcatttgcac ggtttgttga aaaccggaca tggcactcca gtcgccttcc cgttccgcta 3960
 tcggctgaat ttgattgca gtgagatatt tatgccagcc agccagacgc agacgcgccc 4020
 agacagaact taatggccc gctaacagcg cgatttgcgt gtgaccaat gcgaccagat 4080
 gctccacgcc cagtcgcgta ccgtcttcat gggagaaaat aatactgttg atgggtgtct 4140
 ggtcagagac atcaagaaat aacgccgaa cattagtgca ggcagcttcc acagcaatgg 4200
 catcctggtc atccagcga tagttaatga tcagcccact gacgcgttgc gcgagaagat 4260
 tgtgcaccgc cgctttacag gcttcgacgc cgcttcgctt taccatcgac accaccacgc 4320
 tggcaccag ttgatcggcg cgagatttaa tcgcccgac aatttgcgac ggcgcgtgca 4380
 gggccagact ggaggtggca acgccaatca gcaacgactg tttgccgcc agttgtgtg 4440
 ccacgcggtt gggaaatgaa ttcagctccg ccacgcgcgc tccactttt tcccgcgtt 4500
 tcgcagaaac gtggtggcg ttggtcacca cgcgggaaac ggtctgataa gagacaccgg 4560
 catactctgc gacatcgat aacgttactg gtttcacatt caccacctg aattgactct 4620
 cttccggcg ctatcatgcc ataccgcgaa aggttttgcg ccattcgatg gtttccggga 4680
 tctcgacgct ctcccattag cgactcctgc attaggaagc agcccagtag taggttgagg 4740
 ccgttgagca ccgcccgcg aaggaatggt gcatgcaagg agatggcgcc caacagtccc 4800
 ccggccacgg ggccctccac catacccacg ccgaaacaag cgctcatgag cccgaagtgg 4860
 cgagcccgat cttcccctc ggtgatgtcg gcgatatagg cgcagcaac cgcacctgtg 4920
 gcgcgggtga tgcggcccac gatgcgtccg gcgtagagga tcgagatcga tctcgatccc 4980
 gcgaaattaa tacgactcac tataggggaa ttgtgagcgg ataacaattc cctctagaa 5040
 ataattttgt ttaacttaa gaaggagata tacatagca ccatcatcat catcattctt 5100
 ctggtctggt gccacgcggt tctggtatga aagaaaccgc tgetgctaaa ttcgaacgcc 5160
 agcacatgga cagcccagat ctgggtaccg acgacgacga caaggccatg ggatattctgt 5220
 ggatcccaat tccttcccaa aatctgtgt tgtactttct cattgagaag ggccaacatg 5280
 aggcagcaat tgaattcttt gagggcatg tccacgactc catcaaagag gaactccgac 5340
 ccctcatcca acaacttca tttgtgaaac gcgcttcaa gcgcctgaag gaaaattttg 5400
 agattgttgc tetgtgttta acacttttgg caaacattgt gatcatgatc cgtgagactc 5460

-continued

```

gcaagaggca gaaaatggtg gatgatgcag tgaatgagta cattgagaaa gcaaacatca 5520
ccacagatga caagactctt gacgaggcgg agaagagccc tctagagacc agcggcgcca 5580
gcaccgttgg ctttagagag agaactctcc caggtcaaaa ggcatgcgat gacgtgaact 5640
ccgagcctgc ccaacctgtt gaggagcaac cacaagctga aggacctac gccggaccac 5700
tcgagcgtca gaaacctctg aaagtgagag ccaagctccc acagcaggag gggccttacg 5760
ctggtccgat ggagagacag aaaccgctaa aagtgaaagc aaaagccccg gtcgtgaagg 5820
aaggacctta cgagggaccg gtgaagaagc ctgtcgcttt gaaagtgaaa gctaagaacc 5880
tgattgtcac tgagagtgtt gctccaccga ccgacttgca aaagatggtc atgggcaaca 5940
caaagcctgt tgagctcatc ctcgacggga agacagtagc catctgctgc gctactggag 6000
tgtttgcaac tgctaccctc gtgcctcgtc acctcttcgc agagaagtat gacaagatca 6060
tgttggacgg cagagccatg acagacagtg actacagagt gtttgagttt gagatcaaag 6120
taaaaggaca ggacatgctc tcagacgccg cgctcatggt gctccaccgt gggaaaccg 6180
tgagggacat cacgaagcacc tttcgtgaca cagcaagaat gaagaaagc acccccgtg 6240
tcggtgtgat caacaacgcc gatgtcggga gactgatttt ctctggtgag gcccttactt 6300
acaaggacat tgtggtttg atggacggag acaccatgcc tggcctcttt gcctacagag 6360
ccgccaccaa ggtcgtttat cgtggaggag ccgtcctcgc taaggacggg gctgacacgt 6420
tcctcgttgg caccactcc cctggaggca agggagtgg atactgctca tgcgtttcca 6480
ggtecatgct tcttaaaatg aaggacacaca ttgaccccg accacaccac aagcttgagg 6540
ccgcaactga gcaccaccac caccaccact gagatccggc tgctaacaaa gcccgaaagg 6600
aagctgagtt ggtcgtgcc acccgtgagc aataactagc ataaccctt ggggcctcta 6660
aacgggtcct gaggggtttt ttgctgaaag gaggaactat atccggat 6708

```

```

<210> SEQ ID NO 10
<211> LENGTH: 1304
<212> TYPE: DNA
<213> ORGANISM: Artificial Sequence
<220> FEATURE:
<223> OTHER INFORMATION: Nucleotide sequence encoding O1C 3ABC*

```

```

<400> SEQUENCE: 10
caattccttc ccaaaaatct gtgtgtact ttctcattga gaagggcaa catgaggcag 60
caattgaatt ctttagggc atggtccacg actccatcaa agaggaactc cgaccctca 120
tccaacaaac ttcatttgtg aaacgcgctt tcaagcgctt gaaggaaaat tttgagattg 180
ttgctctgtg tttaacactt ttggcaaaaca ttgtgatcat gatccgtgag actcgcaaga 240
ggcagaaaat ggtgatgat gcagtgaatg agtacattga gaaagcaaac atcaccacag 300
atgacaagac tcttgacgag gcgagaaga gccctctaga gaccagcggc gccagcaccg 360
ttggctttag agagagaact ctcccaggtc aaaaggcatg cgatgacgtg aactccgagc 420
ctgcccaacc tgtttaggag caaccacaag ctgaaggacc ctacgcccga ccaactcgagc 480
gtcagaaaacc tctgaaagtg agagccaagc tcccacagca ggaggggcct tacgctggtc 540
cgatggagag acagaaaccg ctaaaagtga aagcaaaagc cccggctcgtg aaggaaggac 600
cttacgaggg accggtgaag aagcctgtcg ctttgaaagt gaaagctaag aaactgattg 660
tcaactgagag tgggtctcca ccgaccgact tgcaaaagat ggtcatgggc aacacaaagc 720
ctgttgagct catcctcgac gggaagacag tagccatctg ctgcgctact ggagtgttg 780
gcactgctta cctcgtgctt cgteacctct tcgcagagaa gtatgacaag atcatgttgg 840

```

-continued

```

acggcagagc catgacagac agtgactaca gagtgtttga gtttgagatc aaagtaaaag    900
gacaggacat gctctcagac gcccgctca tggtgctcca ccgtgggaac cgcgtgaggg    960
acatcacgaa gcactttcgt gacacagcaa gaatgaagaa aggcaccccc gttgtcggtg    1020
tgatcaacaa cgccgatgtc gggagactga ttttctctgg tgaggccctt acttacaagg    1080
acattgtggt ttgcatggac ggagacacca tgcttggcct ctttgctac agagccgcca    1140
ccaaggctgg ttatcgtgga ggagccgtcc tcgctaagga cggggctgac acgttcacgt    1200
ttggcaccca ctccgctgga ggcaaggagag ttggataccg ctcatgcggt tccagggtcca    1260
tgcttcttaa aatgaaggca cacattgacc ccgaaccaca ccac                    1304

```

<210> SEQ ID NO 11

<211> LENGTH: 447

<212> TYPE: PRT

<213> ORGANISM: Artificial Sequence

<220> FEATURE:

<223> OTHER INFORMATION: Amino acid sequence corresponding to the serotype O FMDV 3ABC* protein and encoding a His6 tag for E. coli expression

<400> SEQUENCE: 11

```

Ile Pro Ser Gln Lys Ser Val Leu Tyr Phe Leu Ile Glu Lys Gly Gln
1           5           10          15
His Glu Ala Ala Ile Glu Phe Phe Glu Gly Met Val His Asp Ser Ile
20          25          30
Lys Glu Glu Leu Arg Pro Leu Ile Gln Gln Thr Ser Phe Val Lys Arg
35          40          45
Ala Phe Lys Arg Leu Lys Glu Asn Phe Glu Ile Val Ala Leu Cys Leu
50          55          60
Thr Leu Leu Ala Asn Ile Val Ile Met Ile Arg Glu Thr Arg Lys Arg
65          70          75          80
Gln Lys Met Val Asp Asp Ala Val Asn Glu Tyr Ile Glu Lys Ala Asn
85          90          95
Ile Thr Thr Asp Asp Lys Thr Leu Asp Glu Ala Glu Lys Ser Pro Leu
100         105         110
Glu Thr Ser Gly Ala Ser Thr Val Gly Phe Arg Glu Arg Thr Leu Pro
115         120         125
Gly Gln Lys Ala Cys Asp Asp Val Asn Ser Glu Pro Ala Gln Pro Val
130         135         140
Glu Glu Gln Pro Gln Ala Glu Gly Pro Tyr Ala Gly Pro Leu Glu Arg
145         150         155         160
Gln Lys Pro Leu Lys Val Arg Ala Lys Leu Pro Gln Gln Glu Gly Pro
165         170         175
Tyr Ala Gly Pro Met Glu Arg Gln Lys Pro Leu Lys Val Lys Ala Lys
180         185         190
Ala Pro Val Val Lys Glu Gly Pro Tyr Glu Gly Pro Val Lys Lys Pro
195         200         205
Val Ala Leu Lys Val Lys Ala Lys Asn Leu Ile Val Thr Glu Ser Gly
210         215         220
Ala Pro Pro Thr Asp Leu Gln Lys Met Val Met Gly Asn Thr Lys Pro
225         230         235         240
Val Glu Leu Ile Leu Asp Gly Lys Thr Val Ala Ile Cys Cys Ala Thr
245         250         255
Gly Val Phe Gly Thr Ala Tyr Leu Val Pro Arg His Leu Phe Ala Glu
260         265         270

```

-continued

Lys Tyr Asp Lys Ile Met Leu Asp Gly Arg Ala Met Thr Asp Ser Asp
 275 280 285

Tyr Arg Val Phe Glu Phe Glu Ile Lys Val Lys Gly Gln Asp Met Leu
 290 295 300

Ser Asp Ala Ala Leu Met Val Leu His Arg Gly Asn Arg Val Arg Asp
 305 310 315 320

Ile Thr Lys His Phe Arg Asp Thr Ala Arg Met Lys Lys Gly Thr Pro
 325 330 335

Val Val Gly Val Ile Asn Asn Ala Asp Val Gly Arg Leu Ile Phe Ser
 340 345 350

Gly Glu Ala Leu Thr Tyr Lys Asp Ile Val Val Cys Met Asp Gly Asp
 355 360 365

Thr Met Pro Gly Leu Phe Ala Tyr Arg Ala Ala Thr Lys Ala Gly Tyr
 370 375 380

Arg Gly Gly Ala Val Leu Ala Lys Asp Gly Ala Asp Thr Phe Ile Val
 385 390 395 400

Gly Thr His Ser Ala Gly Gly Lys Gly Val Gly Tyr Arg Ser Cys Val
 405 410 415

Ser Arg Ser Met Leu Leu Lys Met Lys Ala His Ile Asp Pro Glu Pro
 420 425 430

His His Lys Leu Ala Ala Ala Leu Glu His His His His His His
 435 440 445

<210> SEQ ID NO 12
 <211> LENGTH: 14
 <212> TYPE: PRT
 <213> ORGANISM: Foot-and-mouth disease virus
 <220> FEATURE:
 <221> NAME/KEY: MISC_FEATURE
 <222> LOCATION: (6)..(7)
 <223> OTHER INFORMATION: Xaa is any amino acid

<400> SEQUENCE: 12

Gly Pro Tyr Ala Gly Xaa Xaa Glu Arg Gln Lys Pro Leu Lys
 1 5 10

<210> SEQ ID NO 13
 <211> LENGTH: 14
 <212> TYPE: PRT
 <213> ORGANISM: Artificial Sequence
 <220> FEATURE:
 <223> OTHER INFORMATION: 3 ABC peptide

<400> SEQUENCE: 13

Gly Pro Tyr Ala Gly Pro Leu Glu Arg Gln Lys Pro Leu Lys
 1 5 10

<210> SEQ ID NO 14
 <211> LENGTH: 14
 <212> TYPE: PRT
 <213> ORGANISM: Artificial Sequence
 <220> FEATURE:
 <223> OTHER INFORMATION: 3 ABC peptide

<400> SEQUENCE: 14

Gly Pro Tyr Thr Gly Pro Leu Glu Arg Gln Lys Pro Leu Lys
 1 5 10

<210> SEQ ID NO 15
 <211> LENGTH: 14
 <212> TYPE: PRT

-continued

<213> ORGANISM: Artificial Sequence
 <220> FEATURE:
 <223> OTHER INFORMATION: 3 ABC peptide

<400> SEQUENCE: 15

Gly Pro Tyr Ala Gly Pro Leu Glu Arg Gln Arg Pro Leu Lys
 1 5 10

<210> SEQ ID NO 16
 <211> LENGTH: 14
 <212> TYPE: PRT
 <213> ORGANISM: Artificial Sequence
 <220> FEATURE:
 <223> OTHER INFORMATION: 3 ABC peptide

<400> SEQUENCE: 16

Gly Pro Tyr Ala Gly Pro Leu Glu Arg Gln Gln Pro Leu Lys
 1 5 10

<210> SEQ ID NO 17
 <211> LENGTH: 14
 <212> TYPE: PRT
 <213> ORGANISM: Artificial Sequence
 <220> FEATURE:
 <223> OTHER INFORMATION: 3 ABC peptide

<400> SEQUENCE: 17

Gly Pro Tyr Thr Gly Pro Leu Glu Arg Gln Arg Pro Leu Lys
 1 5 10

<210> SEQ ID NO 18
 <211> LENGTH: 14
 <212> TYPE: PRT
 <213> ORGANISM: Artificial Sequence
 <220> FEATURE:
 <223> OTHER INFORMATION: 3 ABC peptide

<400> SEQUENCE: 18

Gly Pro Tyr Ala Gly Pro Met Glu Arg Gln Lys Pro Leu Lys
 1 5 10

<210> SEQ ID NO 19
 <211> LENGTH: 14
 <212> TYPE: PRT
 <213> ORGANISM: Artificial Sequence
 <220> FEATURE:
 <223> OTHER INFORMATION: 3 ABC peptide

<400> SEQUENCE: 19

Gly Pro Tyr Val Gly Pro Leu Glu Arg Gln Lys Pro Leu Lys
 1 5 10

<210> SEQ ID NO 20
 <211> LENGTH: 14
 <212> TYPE: PRT
 <213> ORGANISM: Artificial Sequence
 <220> FEATURE:
 <223> OTHER INFORMATION: 3 ABC peptide

<400> SEQUENCE: 20

Gly Pro Tyr Ser Gly Pro Leu Glu Arg Gln Lys Pro Leu Lys
 1 5 10

<210> SEQ ID NO 21
 <211> LENGTH: 14
 <212> TYPE: PRT
 <213> ORGANISM: Artificial Sequence

-continued

<220> FEATURE:
<223> OTHER INFORMATION: 3 ABC peptide

<400> SEQUENCE: 21

Gly Pro Tyr Gly Gly Pro Leu Glu Arg Gln Lys Pro Leu Lys
1 5 10

<210> SEQ ID NO 22
<211> LENGTH: 14
<212> TYPE: PRT
<213> ORGANISM: Artificial Sequence
<220> FEATURE:
<223> OTHER INFORMATION: 3 ABC peptide

<400> SEQUENCE: 22

Gly Pro Tyr Ala Gly Pro Val Glu Arg Gln Lys Pro Leu Arg
1 5 10

<210> SEQ ID NO 23
<211> LENGTH: 14
<212> TYPE: PRT
<213> ORGANISM: Artificial Sequence
<220> FEATURE:
<223> OTHER INFORMATION: 3 ABC peptide

<400> SEQUENCE: 23

Gly Pro Tyr Ala Gly Pro Leu Glu Arg Gln Lys Pro Leu Thr
1 5 10

<210> SEQ ID NO 24
<211> LENGTH: 14
<212> TYPE: PRT
<213> ORGANISM: Artificial Sequence
<220> FEATURE:
<223> OTHER INFORMATION: 3 ABC peptide

<400> SEQUENCE: 24

Gly Pro Tyr Ala Gly Pro Leu Glu Arg Gln Lys Pro Leu Arg
1 5 10

<210> SEQ ID NO 25
<211> LENGTH: 14
<212> TYPE: PRT
<213> ORGANISM: Artificial Sequence
<220> FEATURE:
<223> OTHER INFORMATION: 3 ABC peptide

<400> SEQUENCE: 25

Gly Pro Tyr Ala Gly Pro Leu Glu Arg Gln Lys Pro Leu Gln
1 5 10

<210> SEQ ID NO 26
<211> LENGTH: 14
<212> TYPE: PRT
<213> ORGANISM: Artificial Sequence
<220> FEATURE:
<223> OTHER INFORMATION: 3 ABC peptide

<400> SEQUENCE: 26

Gly Pro Tyr Ala Gly Pro Leu Glu Arg Gln Lys Pro Leu Glu
1 5 10

<210> SEQ ID NO 27
<211> LENGTH: 14
<212> TYPE: PRT
<213> ORGANISM: Artificial Sequence
<220> FEATURE:

-continued

<223> OTHER INFORMATION: 3 ABC peptide

<400> SEQUENCE: 27

Gly Pro Tyr Ala Gly Pro Leu Glu Arg Gln Ile Pro Leu Lys
 1 5 10

<210> SEQ ID NO 28

<211> LENGTH: 14

<212> TYPE: PRT

<213> ORGANISM: Artificial Sequence

<220> FEATURE:

<223> OTHER INFORMATION: 3 ABC peptide

<400> SEQUENCE: 28

Gly Pro Tyr Ala Gly Ala Phe Glu Arg Gln Lys Thr Leu Lys
 1 5 10

<210> SEQ ID NO 29

<211> LENGTH: 8

<212> TYPE: PRT

<213> ORGANISM: Artificial Sequence

<220> FEATURE:

<223> OTHER INFORMATION: synthetic

<400> SEQUENCE: 29

Ile Pro Ile Pro Ser Gln Lys Ser
 1 5

<210> SEQ ID NO 30

<211> LENGTH: 5

<212> TYPE: PRT

<213> ORGANISM: Artificial Sequence

<220> FEATURE:

<223> OTHER INFORMATION: synthetic

<400> SEQUENCE: 30

Pro Glu Pro His His
 1 5

40

We claim:

1. An isolated monoclonal antibody or antigen binding fragment thereof, wherein the monoclonal antibody is Mab 40C8 as produced by the hybridoma which is deposited with the American Type Culture Collection with Designation PTA-122531.

2. The monoclonal antibody or antigen binding fragment thereof of claim 1, wherein the monoclonal antibody or antigen binding fragment thereof is conjugated to a label.

3. The monoclonal antibody of claim 2, wherein the label is selected from an enzyme label, a radioisotope, a fluorescent label, or a bioluminescent label.

4. A method of detecting FMDV infection in an animal, the method comprising contacting a sample from a animal with an monoclonal antibody or antigen binding fragment according to claim 1 that specifically binds to the 3ABC non-structural protein of FMDV.

5. The method of claim 4, wherein the sample obtained from the animal is a body-fluid sample or a tissue sample.

6. The method of claim 5, wherein the body-fluid sample is aqueous humor, vitreous humor, blood serum, blood plasma, cerebrospinal fluid, endolymph, perilymph, exudates, lymph, mucus, pericardial fluid, pleural fluid, synovial fluid, milk, or oral fluids.

7. The method of claim 5, wherein the tissue sample is brain, eyes, pineal gland, pituitary gland, thyroid gland,

parathyroid glands, thorax, heart, lungs, esophagus, thymus gland, pleura, adrenal glands, appendix, gall bladder, urinary bladder, large intestine, small intestine, kidneys, liver, pancreas, spleen, stoma, prostate gland, testes, ovaries, or uterus.

8. The method of claim 4, wherein the assay is a Western blot analysis.

9. The method of claim 4, wherein the assay is an ELISA.

10. The method of claim 9, wherein the ELISA is sandwich ELISA, or competitive ELISA.

11. The method of claim 10, wherein the competitive ELISA is performed using an immunoassay plate, wherein the immunoassay plate is coated with one or more polypeptide consisting essentially of an amino acid sequence selected from SEQ ID NO: 2, SEQ ID NO: 3, SEQ ID NO: 4, SEQ ID NO: 5, SEQ ID NO: 6, or SEQ ID NO: 12.

12. The method of claim 9, wherein the monoclonal antibody or antigen binding fragment thereof is conjugated to an enzyme.

13. The method of claim 12, wherein the enzyme is horseradish peroxidase.

14. The method of claim 4, wherein the monoclonal antibody or antigen binding fragment thereof is conjugated to a label.

15. The method of claim 14, wherein the label is an enzyme label, a radioisotope, a fluorescent label, or a bioluminescent label.

16. A kit comprising a monoclonal antibody or antigen binding fragment according to claim 1.

17. The kit of claim 16, wherein said kit further comprises an immunoassay plate coated with a polypeptide comprising the amino acid sequence selected from SEQ ID NO: 2, SEQ ID NO: 3, SEQ ID NO: 4, SEQ ID NO: 5, SEQ ID NO: 6 or SEQ ID NO: 12, FMDV non-structural protein 3ABC or combinations thereof.

18. The kit of claim 16, wherein the monoclonal antibody or antigen binding fragment thereof is conjugated to a label.

19. The kit of claim 16, wherein said label is an enzyme label, a radioisotope, a fluorescent label, or a bioluminescent label.

* * * * *

专利名称(译)	针对口蹄疫病毒蛋白3ABC的新表位的单克隆抗体及其用途		
公开(公告)号	US10035841	公开(公告)日	2018-07-31
申请号	US15/010278	申请日	2016-01-29
[标]申请(专利权)人(译)	Clavijo的ALFONSO RIEDER艾达·伊丽莎白 SAYED ABU BOUNPHENG MANGKEY		
申请(专利权)人(译)	Clavijo的, ALFONSO 里德尔, AIDA ELIZABETH 赛义德ABU		
当前申请(专利权)人(译)	得克萨斯州A & M大学系统 美利坚合众国, AS代表的农业部长 美利坚合众国为代表由国土安全部部长		
[标]发明人	CLAVIJO ALFONSO RIEDER AIDA ELIZABETH SAYED ABU BOUNPHENG MANGKEY A BURRAGE THOMAS G DANCHO BROOKE A UDDOWLA BLAKENEY SABENA		
发明人	CLAVIJO, ALFONSO RIEDER, AIDA ELIZABETH SAYED, ABU BOUNPHENG, MANGKEY A. BURRAGE, THOMAS G. DANCHO, BROOKE A. UDDOWLA BLAKENEY, SABENA		
IPC分类号	C07K16/10 G01N33/569 G01N33/53		
CPC分类号	C07K16/1009 G01N33/56983 C07K2317/34 G01N2333/09 C12N2770/32122 C12N2770/32134 C07K2319/21		
其他公开文献	US20170218053A1		

摘要(译)

本公开涉及与口蹄疫病毒 (FMDV) 的3ABC非结构蛋白特异性结合的分离的抗体或其抗原结合片段, 其中所述抗体或其抗原结合片段识别SEQ ID NO: 1的氨基酸序列。: 2, SEQ ID NO: 3, SEQ ID NO: 4, SEQ ID NO: 5, SEQ ID NO: 6或SEQ ID NO: 12。因此, 本公开内容还涉及具有选自SEQ ID NO: 1的氨基酸序列的多肽。NO: 2, SEQ ID NO: 3, SEQ ID NO: 4, SEQ ID NO: 5或SEQ ID NO: 12。还提供了单克隆抗体Mab 40C8。本公开还涉及检测动物中FMDV感染的方法 (包括将感染动物与接种动物区分开的测定法 (DIVA)) 和用于进行检测方法的试剂盒。竞争性ELISA试剂盒, 其包含抗体或其抗原结合片段和包被有包含选自SEQ ID NO: 2, SEQ ID NO: 3, SEQ ID NO: 4, SEQ ID NO: 5, SEQ ID NO: 6或SEQ ID NO: 12的氨基酸序列的多肽的免疫测定板。还提供了ID NO: 6和/或SEQ ID NO: 12。

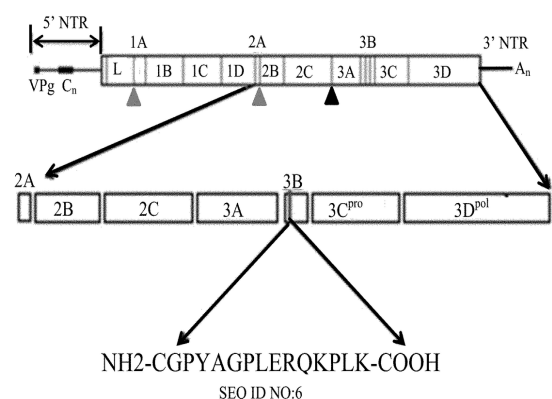


Figure 1