



US 20100062450A1

(19) **United States**

(12) **Patent Application Publication**
Arber

(10) **Pub. No.: US 2010/0062450 A1**
(43) **Pub. Date: Mar. 11, 2010**

(54) **METHODS AND KITS FOR EARLY
DETECTION OF CANCER OR
PREDISPOSITION THERETO**

Related U.S. Application Data

(60) Provisional application No. 60/763,378, filed on Jan. 31, 2006.

(75) Inventor: **Nadir Arber, Tel-Aviv (IL)**

Publication Classification

Correspondence Address:
MARTIN D. MOYNIHAN d/b/a PRTSI, INC.
P.O. BOX 16446
ARLINGTON, VA 22215 (US)

(51) **Int. Cl.**
G01N 33/53 (2006.01)
(52) **U.S. Cl.** **435/7.1**

(73) Assignee: **Medical Research Fund of Tel
Aviv Sourasky Medical Center,**
Tel-Aviv (IL)

(57) **ABSTRACT**

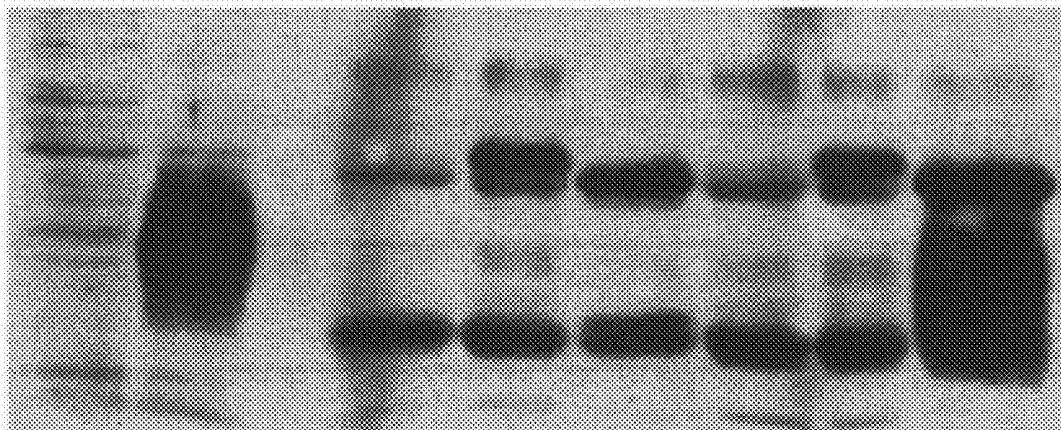
Methods and kits for diagnosing cancer or a pre-malignant lesion by determining the presence and/or level of circulating CD24 of a subject are provided. Also provided are methods and kits for determining if a subject is predisposed to gastrointestinal cancer by the determining the presence or absence, in a homozygous or heterozygous form of cancer associated genotype(s) in the CD24 and/or APC nucleic acid sequences. Also provided are methods and kits for monitoring efficacy of cancer therapy by determining the presence and/or level of circulating CD24 of a subject.

(21) Appl. No.: **12/223,315**

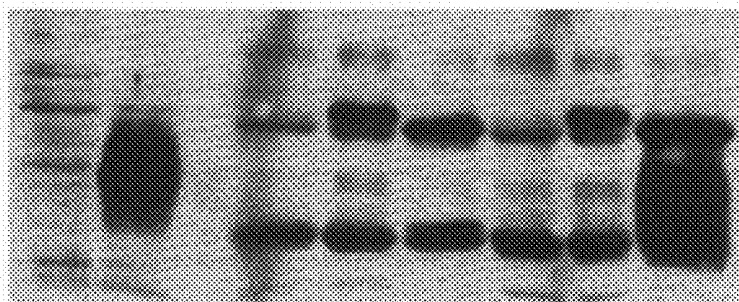
(22) PCT Filed: **Jan. 31, 2007**

(86) PCT No.: **PCT/IL2007/000122**

§ 371 (c)(1),
(2), (4) Date: **Jul. 29, 2008**



1 2 3 4 5 6 7 8



1 2 3 4 5 6 7 8

Fig. 1

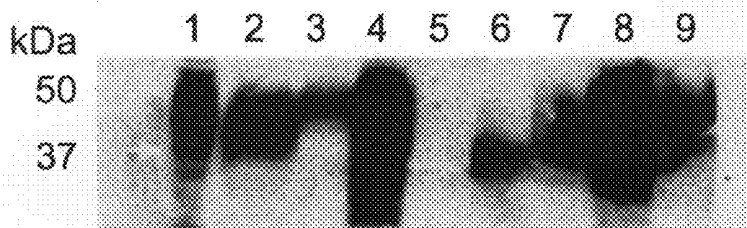


Fig. 2a

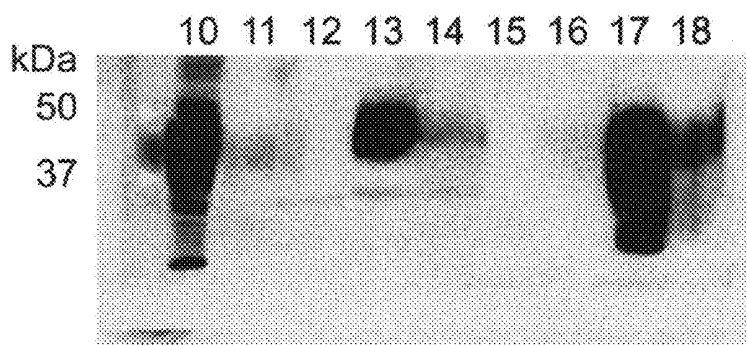


Fig. 2b

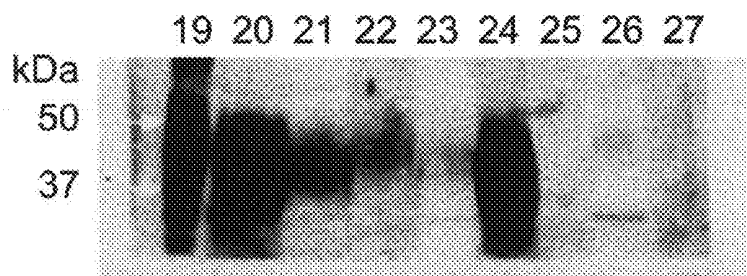


Fig. 2c

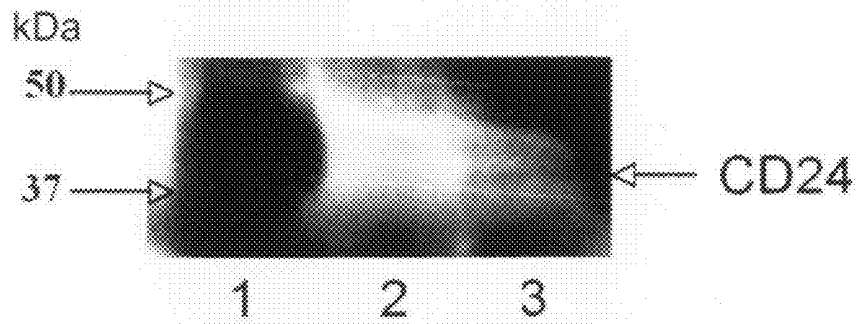


Fig. 3

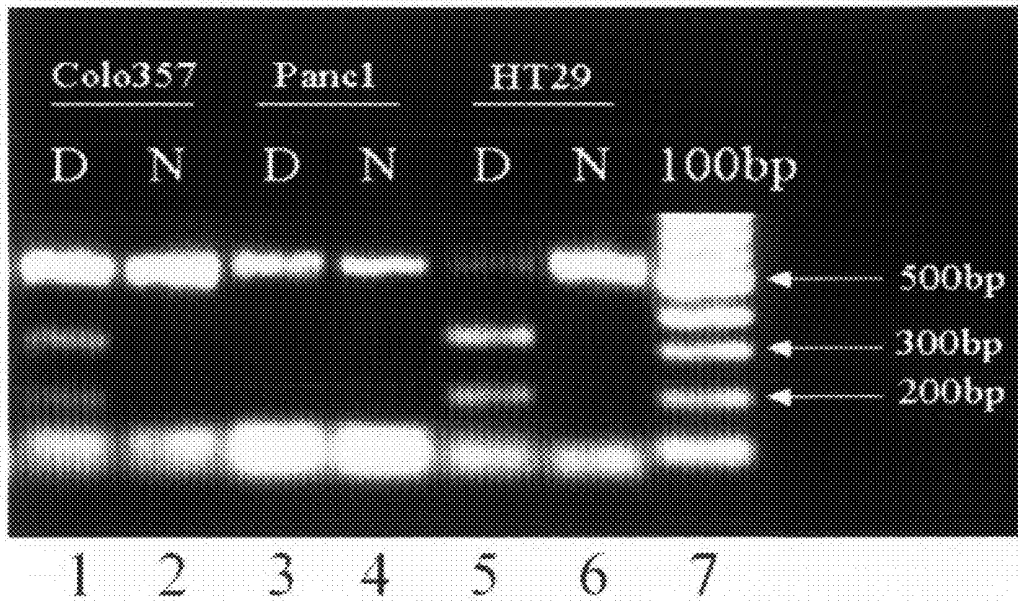


Fig. 4

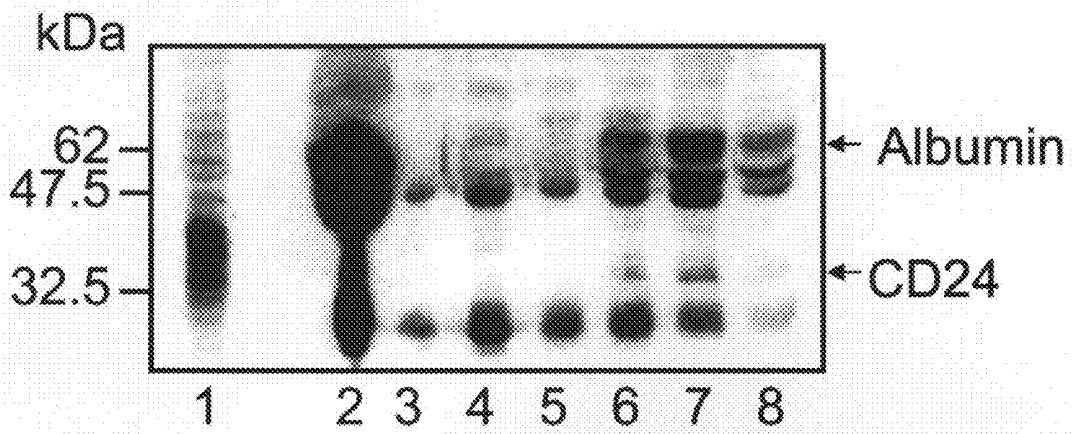


Fig. 5

METHODS AND KITS FOR EARLY DETECTION OF CANCER OR PREDISPOSITION THERETO

FIELD AND BACKGROUND OF THE INVENTION

[0001] The present invention relates to methods and kits for non-invasive, early detection of cancer and predisposition thereto using CD24, and more particularly, to methods and kits for diagnosing cancer or pre-malignant lesions by determining the expression level of soluble, shedded and/or blebbed CD24 in a biological sample.

[0002] Colorectal cancer (CRC) is a major health concern in the Western world as it is the third most common cancer in both men and women in the United States and Israel. This form of cancer develops through a stepwise process that involves a variety of genetic and epigenetic changes that are acquired over several years and eventually culminate in the transformation of normal epithelium into neoplasm. Although the disease has a long latency period, the currently available markers for disease detection are limited to invasive tests such as colon or gastric endoscopy, which often detect the disease while it has already been spread.

[0003] Mutations in oncogenes and tumor suppressor genes, abnormal gene expression and genetic defects in a variety of genes are intimately involved in CRC carcinogenesis. On the basis of the allelotypes of a series of colon tumors, Vogelstein and colleagues have showed that the molecular steps that occur after the activation of the APC- β -catenin—Tfc pathway involve a nonlinear accumulation of specific genetic changes that accompany the transition from normal colonic mucosa to metastatic carcinoma. These include mutations in the k-Ras oncogene, changes in methylation patterns, loss of DCC (Deleted in Colorectal Cancer gene) and SMADs [homologs of *Drosophila* Mothers Against Decapentaplegic (MAD) protein, and the *C. elegans* protein SMA] and mutations in p53.

[0004] The currently available screening methods for cancers of the gastrointestinal tract (GI tract) such as colorectal cancer (CRC) include fecal occult blood testing (FOBT). However, although clinical trials have shown that screening with serial FOBT reduces CRC mortality (Mandel J, et al., 1993.), the sensitivity of FOBT is limited [60%; McMahon P M, et al., 2001]. Several markers have been recently suggested as non-invasive diagnostic tools. These include proteins [e.g., fecal calprotectin, lactoferrin, lysozyme, albumin, alpha-1-antitrypsin, carcinoembryonic antigen (CEA), decay-accelerating factor (DAF), minichrosomal maintenance protein (MCM2)] or mRNA (e.g., fecal COX-2) (Kanaoka S., et al., 2004) which can be detected in stool samples, and proteins such as nicotinamide N-methyltransferase (NNMT) (Roessler M, et al., 2005) or proteasome activator complex subunit 3 (PSME3) (Roessler M., et al., 2006), which can be detected in serum samples. However, due to their low sensitivity and specificity, these markers are not in clinical use.

[0005] CD24, also known as heat-stable antigen (HSA) in mice, is a heavily glycosylated phosphatidylinositol-anchored mucin-like cell-surface protein. Physiologically, the CD24 protein is expressed mainly on hematopoietic subpopulations of B lymphocytes, various epithelial cells, muscle and neural cells. It plays a crucial role in cell selection and maturation during hematopoiesis and is expressed during the embryonic period, on developing neural and pancreatic cells. In addition,

CD24 is a potential ligand for P-selectin which functions as an adhesion molecule that enhances platelets aggregation.

[0006] The cellular function of CD24 is still unknown, but recent reports have strengthened its involvement in the initiation of intracellular signal transduction. Schabath et al. (Schabath H, et al., 2006) have associated the expression of CD24 with downregulation in the CXCR-4 chemokine receptor. In addition, CD24 is overexpressed in various malignant tissues including B-cell lymphomas, gliomas, small-cell and non-small cell lung, hepatocellular, renal cell, nasopharyngeal, bladder, uterine, epithelial ovarian, breast, prostate and pancreatic carcinomas (reviewed by Kristiansen et al., 2004). Moreover, its expression was found to correlate with increased growth rate, motility and survival in carcinoma cell lines derived from several organs (Baumann P, et al., 2005; Smith S C, et al., 2006) and with a more aggressive course of cancer. Thus, Weichert W., et al. (2005), found that increased expression of CD24 in the cytoplasm correlates with higher tumor stage, grade and presence of metastasis and concluded that overexpression of CD24 in the cytoplasm (as a result of over production or disturbances in distribution in the cell) is a marker for poorer prognosis. In addition, the role of CD24 in platelet aggregation may explain the involvement with cancer metastases and worse prognosis (Sammar, M., et al., 1994; Aigner, S., et al., 1997; Aigner, S., et al., 1998).

[0007] U.S. Pat. Appl. 20040005596 to Li J., et al., discloses methods of diagnosing cancer by determining the level of CD24 in situ in tissue samples suspected to be precancerous or cancerous, thus again necessitating invasional procedures for cancer detection.

[0008] There is thus a widely recognized need for, and it would be highly advantageous to have, a method of diagnosing cancer, especially at the pre-malignant stage, devoid of the above limitations.

SUMMARY OF THE INVENTION

[0009] According to one aspect of the present invention there is provided a method of diagnosing cancer or a pre-malignant lesion, the method comprising determining a presence and/or a level of a circulating CD24 of a subject in need thereof, wherein the presence and/or the level of the circulating CD24 above a predetermined threshold is indicative of the cancer or the pre-malignant lesion.

[0010] According to another aspect of the present invention there is provided a kit for diagnosing cancer or a pre-malignant lesion comprising a packaging material and at least one reagent for determining presence and/or level of circulating CD24 of a subject.

[0011] According to yet another aspect of the present invention there is provided a method of monitoring efficacy of cancer therapy, comprising determining a level of a circulating CD24 in a biological sample of the subject following the cancer therapy, wherein a decrease from a predetermined threshold in the level of the circulating CD24 following the cancer therapy is indicative of reduction of cancerous cells, thereby monitoring efficacy of the cancer therapy.

[0012] According to still another aspect of the present invention there is provided a method of determining if a subject is predisposed to gastrointestinal cancer, the method comprising determining a presence or absence, in a homozygous or heterozygous form, of at least one cancer-associated genotype in the CD24 nucleic acid sequence of the subject, thereby determining if the subject is predisposed to the gastrointestinal cancer.

[0013] According to an additional aspect of the present invention there is provided a kit for determining if a subject is predisposed to gastrointestinal cancer comprising a packaging material and at least one reagent for determining a presence or absence, in a homozygous or heterozygous form, of at least one cancer-associated genotype in the CD24 nucleic acid sequence of the subject.

[0014] According to yet an additional aspect of the present invention there is provided a kit for monitoring efficacy of cancer therapy, comprising packaging material and at least one reagent for determining a presence and/or a level of circulating CD24 of a subject.

[0015] According to further features in preferred embodiments of the invention described below, said pre-malignant region is an adenoma.

[0016] According to still further features in the described preferred embodiments determining is effected *ex vivo*.

[0017] According to still further features in the described preferred embodiments determining is effected *in vivo*.

[0018] According to still further features in the described preferred embodiments the CD24 comprises shedded CD24.

[0019] According to still further features in the described preferred embodiments the CD24 comprises blebbed CD24.

[0020] According to still further features in the described preferred embodiments the CD24 comprises soluble CD24.

[0021] According to still further features in the described preferred embodiments the pre-malignant lesion is associated with a solid tumor.

[0022] According to still further features in the described preferred embodiments the cancer is a solid tumor.

[0023] According to still further features in the described preferred embodiments the cancer is a gastrointestinal tract cancer.

[0024] According to still further features in the described preferred embodiments the pre-malignant lesion is associated with a gastrointestinal tract cancer.

[0025] According to still further features in the described preferred embodiments the gastrointestinal tract cancer is colorectal cancer.

[0026] According to still further features in the described preferred embodiments the pre-malignant lesion is associated with a cancer selected from the group consisting of lymphomas, gliomas, small-cell and non-small cell lung, hepatocellular, renal cell, nasopharyngeal, bladder, uterine, epithelial ovarian, breast, prostate and pancreatic carcinomas.

[0027] According to still further features in the described preferred embodiments the circulating CD24 is associated with a biological sample selected from the group consisting of a stool sample, a serum sample, a blood sample, a urine sample and a saliva sample.

[0028] According to still further features in the described preferred embodiments determining is effected at the protein level.

[0029] According to still further features in the described preferred embodiments the at least one reagent comprises a CD24 specific antibody.

[0030] According to still further features in the described preferred embodiments the at least one reagent comprises an oligonucleotide capable of specifically hybridizing to a CD24 nucleic acid sequence.

[0031] According to still further features in the described preferred embodiments the at least one cancer-associated genotype in the CD24 nucleic acid sequence is a thymidine

nucleotide containing allele at position 280 of the polynucleotide set forth by SEQ ID NO:1.

[0032] According to still further features in the described preferred embodiments the method further comprising determining a presence or an absence, in a homozygous or heterozygous form, of at least one cancer-associated genotype in an APC nucleic acid sequence of the subject.

[0033] According to still further features in the described preferred embodiments the kit further comprising at least one reagent for determining a determining a presence or an absence, in a homozygous or heterozygous form, of at least one cancer-associated genotype in an APC nucleic acid sequence of the subject.

[0034] According to still further features in the described preferred embodiments the at least one cancer-associated genotype in the APC nucleic acid sequence is an adenosine nucleotide containing allele at position 3977 of the polynucleotide set forth by SEQ ID NO:7.

[0035] According to still further features in the described preferred embodiments the at least one cancer-associated genotype in the APC nucleic acid sequence is a cytosine nucleotide containing allele at position 4006 of the polynucleotide set forth by SEQ ID NO:7.

[0036] According to still further features in the described preferred embodiments the at least one cancer-associated genotype in the APC nucleic acid sequence is an adenosine nucleotide containing allele at position 3977 and a cytosine nucleotide containing allele at position 4006 of the polynucleotide set forth by SEQ ID NO:7.

[0037] According to still further features in the described preferred embodiments the cancer therapy comprises radiation therapy.

[0038] According to still further features in the described preferred embodiments the cancer therapy comprises chemotherapy.

[0039] According to still further features in the described preferred embodiments the cancer therapy comprises antibody therapy.

[0040] According to still further features in the described preferred embodiments the kit further comprising instructions for use in monitoring efficacy of cancer therapy.

[0041] According to still further features in the described preferred embodiments the kit further comprising instructions for use in monitoring efficacy of cancer therapy.

[0042] According to still further features in the described preferred embodiments the kit further comprising instructions for use in determining if a subject is predisposed to gastrointestinal cancer.

[0043] According to still further features in the described preferred embodiments the kit further comprising instructions for use in diagnosing cancer or a pre-malignant lesion in a subject.

[0044] The present invention successfully addresses the shortcomings of the presently known configurations by providing methods and kits for diagnosing a pre-malignant lesion in a biological sample.

[0045] Unless otherwise defined, all technical and scientific terms used herein have the same meaning as commonly understood by one of ordinary skill in the art to which this invention belongs. Although methods and materials similar or equivalent to those described herein can be used in the practice or testing of the present invention, suitable methods and materials are described below. In case of conflict, the patent

specification, including definitions, will control. In addition, the materials, methods, and examples are illustrative only and not intended to be limiting.

[0046] As used herein, the terms “comprising” and “including” or grammatical variants thereof are to be taken as specifying the stated features, integers, steps or components but do not preclude the addition of one or more additional features, integers, steps, components or groups thereof. This term encompasses the terms “consisting of” and “consisting essentially of”.

[0047] The phrase “consisting essentially of” or grammatical variants thereof when used herein are to be taken as specifying the stated features, integers, steps or components but do not preclude the addition of one or more additional features, integers, steps, components or groups thereof but only if the additional features, integers, steps, components or groups thereof do not materially alter the basic and novel characteristics of the claimed composition, device or method.

[0048] The term “method” refers to manners, means, techniques and procedures for accomplishing a given task including, but not limited to, those manners, means, techniques and procedures either known to, or readily developed from known manners, means, techniques and procedures by practitioners of the biotechnological arts.

BRIEF DESCRIPTION OF THE DRAWINGS

[0049] The invention is herein described, by way of example only, with reference to the accompanying drawings. With specific reference now to the drawings in detail, it is stressed that the particulars shown are by way of example and for purposes of illustrative discussion of the preferred embodiments of the present invention only, and are presented in the cause of providing what is believed to be the most useful and readily understood description of the principles and conceptual aspects of the invention. In this regard, no attempt is made to show structural details of the invention in more detail than is necessary for a fundamental understanding of the invention, the description taken with the drawings making apparent to those skilled in the art how the several forms of the invention may be embodied in practice.

[0050] In the drawings:

[0051] FIG. 1 is CD24—immunoprecipitation (IP) analysis of CRC cell lines. Extracts of the HCT116 (which do not express CD24) or HT29 (which express CD24) CRC cell lines were subjected to CD24-IP followed by Western blot analysis using the SWA11 CD24 antibody. Lane 1: Total lysate of HCT116 CRC cells (without IP); lane 2: total lysate of HT29 CRC cells (without IP); lanes 3-8—elution products of HCT116 cells (lanes 3-5) or HT29 cells (lanes 6-8) using anti-mouse conjugated Sepharose beads (Sigma): in the absence of IP antibody (first binder) (lanes 3 and 6), or following IP using the ML5 Ab (lanes 4 and 7) or the SWA 11 Ab (lanes 5 and 8). Note the efficient IP using the SWA11 Ab to CD24 (lane 8), demonstrating that SWA11 is a suitable IP antibody, yielding low background.

[0052] FIGS. 2a-c are CD24 Western blot analyses of stool samples obtained from CRC patients before and after the surgical removal of the tumor, or before and after chemotherapy treatment. Protein extracts (equal amounts) from stool samples of 12 patients (designated P-1, P-2, P-3 . . . P-12) diagnosed with colorectal tumors [adenomas or adenocarcinomas (CRC)] were subjected to Western blot analysis using the SWA11 Ab. The clinical manifestations of the patients before surgical removal are as following: patient 1

(P-1)—polyp 15 mm; patient 2 (P-2)—massive polyp; patient 3 (P-3)—polyp 20 mm; patient 4 (P-4)—polyp 5 mm, low grade dysplasia; patient 5 (P-5)—adenocarcinoma; patient 7 (P-7)—adenocarcinoma; patient 8 (P-8)—adenocarcinoma; patient 9 (P-9)—polyp 15 mm; patient 10 (P-10)—high grade polyp; patient 11 (P-11)—adenocarcinoma; patient 12 (P-12)—adenocarcinoma; patient 6 (P-6) carcinoma of the rectum—both his samples were taken after tumor removal but before (lane 13) or after (lane 14) radiation therapy. FIG. 2a—lanes 1-9: Lane 1—HT29 cells (positive control); lanes 2-3—P-1; lanes 4-5—P-2; lanes 6-7—P-3; lanes 8-9—P-4; FIG. 2b—lanes 10-18: lane 10—HT29 cells; lanes 11-12—P-5; lanes 13-14—P-6; lanes 15-16—P-7; lanes 17-18—P-8; FIG. 2c—lanes 19-27: lane 19—HT29 cells; lanes 20-21—P-9; lanes 22-23—P-10; lanes 24-25—P-11; lanes 26-27—P-12. Lanes 2, 4, 6, 8, 11, 15, 17, 20, 22, 24 and 26—samples were taken before the surgical removal of the tumor, lanes 3, 5, 7, 9, 12, 13, 14, 16, 18, 21, 23, 25 and 27—samples were taken after the surgical removal of the tumor. Note the significant decrease in CD24 levels following the surgical removal of tumors in at least 9 of 11 of the patients (e.g., compare the intensity of the protein band in lane 3 to that of lane 2), demonstrating that the presence of CD24 in the stool originates at least in part from the tumor. In addition, note that while in stool samples taken before the surgical removal of polyps or tumors the CD24-protein species include proteins of various sizes such as from about 20 to about 60 kDa (e.g., lanes 4, 17, 20 and 24), in stool samples taken after the surgical removal of the polyps or tumors the CD24-protein species include proteins of high molecular weight such as from about 37 to about 50 kDa (e.g., lanes 11, 18, 21). Also note the significant decrease in CD24 levels in stool samples obtained following radiation therapy (lane 14) as compared to those obtained before radiation therapy (lane 13), demonstrating that the level of CD24 in the stool originated from the malignant cells of CRC, thus a decrease in the level following treatment may indicate treatment efficiency (e.g., elimination of cancer cells).

[0053] FIG. 3 depicts an immunoprecipitation analysis of CD24 in serum samples. Serum samples taken from patients having active CRC (lane 3) or non-active (lane 2) CRC were immunoprecipitated with a complex formed by pre-incubation of anti-mouse conjugated Sepharose beads (Sigma, Israel) with the SWA11 anti-CD24 monoclonal antibody. The immunoprecipitated complexes were subjected to Western blot analysis using the SWA11 anti-CD24 monoclonal antibody. Lane 1—HT29 cells over-expressing CD24; lane 2—serum from a patient having non-active CRC; lane 3—serum from a patient having active CRC. Note the ~40 kDa protein band in lane 3 and the absence of such protein band in lane 2, demonstrating the presence of CD24 in serum of subjects with active CRC and the disappearance of CD24 in subjects with non-active CRC.

[0054] FIG. 4 is an RFLP analysis of the Val57Ala polymorphism in the CD24 protein (SEQ ID NO:2) (C/T at position 280 of SEQ ID NO:1). Genomic DNA was subjected to PCR amplification using the forward (SEQ ID NO:3) and reverse (SEQ ID NO:4) primers and the resultant 520 bp PCR products were either digested using the BstXI restriction enzyme (“D” for digested, lanes 1, 3, and 5) or remained non-digested (“N” for non-digested, lanes 2, 4 and 6) and electrophoresed on a 1% agarose gel. Lanes 1 and 2—DNA of the colo357 pancreatic cancer cell line, which expresses high levels of CD24; lanes 3 and 4—DNA of the Panel pan-

creatic cancer cell line, which expresses moderate levels of CD24; lanes 5 and 6—DNA of the HT29 colon cancer cell line which expresses high levels of CD24; lane 7—100 by molecular weight marker. Note that while Panc1 cells which express moderate levels of CD24 exhibit the C/C genotype at position 280 of SEQ ID NO:1 (which corresponds to the Ala polymorph at position 57 of SEQ ID NO:2) as is evidenced by the presence of only the undigested PCR product of 520 bp, the Colo357 or HT29 cells, which express high levels of CD24 exhibit the C/T or the TT genotypes at position 280 of SEQ ID NO:1 (corresponding to the Ala/Val or Val/Val polymorphs at position 57), respectively, as is evidenced by the presence of both digested and undigested PCR products in lane 1 (Colo357) and only the digested PCR products in lane 5 (HT29).

[0055] FIG. 5 depicts the purification of CD24 from human serum. CD24 in serum samples from patients with active CRC was purified by anion exchange chromatography using a DEAE-cellulose (DE52) minicolumn. Prior to fractionation, the serum was centrifuged at 12,000×g (30 minutes, 4° C.) in order to remove any remaining debris, and the albumin was depleted from serum using the DAC (Depletion of albumin component) protocol, which was modified from a previously published method [Colantonio D A, et al., 2005, *Proteomics*, 5(15): 3831-5]. Following albumin depletion, the serum was diluted in 10 mM Tris-HCl pH 7.4 and loaded on a DE52 minicolumn pre-equilibrated in the same buffer. The flow-through (FT) and wash (W) were collected separately and bound protein was eluted with increasing concentrations of NaCl (0.05-0.3 M) in Tris-HCl pH 7.4. Eluted proteins were analyzed by SDS-PAGE and Western blotting using the SWA11 monoclonal antibody. Lane 1—total lysate of HT29 cell lines serves as a positive control for the CD24 molecular weight; lane 2—a sample of the serum sample following the centrifugation but before albumin depletion; lanes 3-8—are different elution fractions. Note the presence of a protein with an apparent molecular weight of 35-40 kDa in lanes 6 and 7 that was eluted in fractions containing 0.1-0.2 M NaCl and recognized by the anti-CD24 antibody.

DESCRIPTION OF THE PREFERRED EMBODIMENTS

[0056] The present invention relates to methods of early and non-invasive diagnosis of cancer or pre-malignant lesions using circulating CD24. In addition, the present invention is of high association of genotypes in the CD24 and APC genes with gastrointestinal cancer which can be used for detection predisposition thereto.

[0057] The principles and operation of the methods and kits of diagnosing pre-malignant lesions according to the present invention may be better understood with reference to the drawings and accompanying descriptions.

[0058] Before explaining at least one embodiment of the invention in detail, it is to be understood that the invention is not limited in its application to the details set forth in the following description or exemplified by the Examples. The invention is capable of other embodiments or of being practiced or carried out in various ways. Also, it is to be understood that the phraseology and terminology employed herein is for the purpose of description and should not be regarded as limiting.

[0059] Cancers of the gastrointestinal (GI) tract, including colorectal cancer (CRC), develop over several years through a stepwise process in which genetic and epigenetic changes

are acquired and eventually culminate in the transformation of normal epithelium into neoplasm. For example, CRC carcinogenesis involves mutations in oncogenes (e.g., k-Ras) and tumor suppressor genes (e.g., p53), changes in methylation patterns and loss of DCC and SMADs. However, in spite of the current genetic knowledge and the currently available endoscopy procedures (e.g., colonoscopy), at the time of diagnosis most of GI tract-related cancers have already spread and are more difficult to treat.

[0060] The currently available screening methods for cancers of the gastrointestinal tract (GI tract) such as colorectal cancer (CRC) include fecal occult blood testing (FOBT). However, although clinical trials have shown that screening with serial FOBT reduces CRC mortality, the sensitivity of FOBT is limited [60%; McMahon P M, 2001 (Supra)]. Several markers have been recently suggested as non-invasive diagnostic tools. These include proteins [e.g., fecal calprotectin, lactoferrin, lysozyme, albumin, alpha-1-antitrypsin, carcinoembryonic antigen (CEA), decay-accelerating factor (DAF), minichromosomal maintenance protein (MCM2)] or mRNA (e.g., fecal COX-2) which can be detected in stool samples, and proteins such as nicotinamide N-methyltransferase (NNMT) or proteasome activator complex subunit 3 (PSME3) which can be detected in serum samples. However, due to their low sensitivity and specificity, these markers are not in clinical use. Other diagnostic methods such as digital rectal exam (DRE), PET-CT (positron emission tomography) and virtual colonoscopy exhibit limited specificity and/or sensitivity. Thus, to date, the diagnosis of CRC is based on invasive procedures such as colon endoscopy (colonoscopy or sigmoidoscopy) followed by surgical removal of adenomas and histological staining.

[0061] CD24 is a heavily glycosylated phosphatidylinositol-anchored mucin-like cell-surface protein which is expressed mainly on hematopoietic subpopulations of B lymphocytes, various epithelial cells, muscle and neural cells. It is over-expressed in various malignant tissues including B-cell lymphomas, gliomas, small-cell and non-small cell lung, hepatocellular, renal cell, nasopharyngeal, bladder, uterine, epithelial ovarian, breast, prostate and pancreatic carcinomas (reviewed by Kristiansen et al., 2004). Moreover, its expression is correlated with increased growth rate, motility and survival of carcinoma cell lines derived from several organs (Baumann P, et al., 2005; Smith S C, et al., 2006) and with a more aggressive course of cancer. In addition, Weichert W., et al. (2005) found that increased expression of CD24 in the cytoplasm correlates with higher tumor stage, grade and presence of metastasis and concluded that over-expression of CD24 in the cytoplasm (as a result of overproduction or disturbances in distribution in the cell) is a marker for poorer prognosis. In addition, CD24 role in platelet aggregation may explain its involvement with cancer metastases and worse prognosis (Sammar, M., et al., 1994; Aigner, S., et al., 1997; Aigner, S., et al., 1998).

[0062] U.S. Pat. Appl. 20040005596 to Li J., et al., discloses methods of diagnosing cancer by determining the level of CD24 in situ in samples obtained from suspected precancerous or cancerous tissues, thus again necessitating invasive procedures for cancer detection.

[0063] While reducing the present invention to practice, the present inventors have uncovered that CD24 is over-expressed in pre-malignant lesions of the gastrointestinal tract

and that shedded, blebbed or secreted CD24 can be detected in biological samples of subjects having pre-malignant and malignant lesions.

[0064] As is shown in the Examples section which follows, the present inventors have uncovered that the level of the CD24 transcript is upregulated in ras mutant-transformed cell lines (Example 1) and that its level is reversed to normal following treatment of such cells with Celecoxib, a specific COX-2 inhibitor. In addition, the present inventors have uncovered that the level of expression of CD24 in various CRC cell lines correlates with the genotype of the Val57Ala SNP in CD24, such that cells which express high level of the CD24 protein carry the CD24^{Val} genotype (Val-57 polymorph) whereas, cells that barely express the protein carry the CD24^{Ala} genotype (Ala-57 polymorph) (Example 3). In addition, the present inventors have uncovered that CD24 is over-expressed in pre-malignant lesions of the GI tract which correlate with early stages of carcinogenesis (Table 1, Example 2). Moreover, as is further illustrated in the Examples section which follows, the present inventors have shown that soluble, shedded, blebbed or secreted CD24 can be detected in serum (FIGS. 3 and 5, Example 4), stool (FIGS. 2a-c, Example 4) and urine samples of patients with CRC carcinogenesis or pre-malignant lesions of the colon-rectal and that the level of CD24 in the stool decreases following the removal (e.g., by surgery) of the pre-malignant or malignant lesions (FIGS. 2a-c) as well as when the CRC is non-active (e.g., after radiation therapy; FIGS. 2b and 3, Example 4). Altogether, these results demonstrate that CD24 is an excellent marker for early diagnosis of cancer, even at the pre-malignant stage and that soluble CD24 (e.g., secreted), blebbed and/or shedded CD24 can be detected in biological samples such as stool, serum and urine and thus be used in cancer diagnosis.

[0065] Thus, according to one aspect of present invention there is provided a method of diagnosing cancer and/or a pre-malignant lesion. The method is effected by determining a presence and/or level of a circulating CD24 of a subject in need thereof, wherein the presence and/or the level of said circulating CD24 above a predetermined threshold is indicative of the cancer and/or the pre-malignant lesion.

[0066] As used herein the phrase "pre-malignant lesion" refers to a mass of cells and/or tissue having increased probability of transforming into a malignant tumor. Preferably, in the pre-malignant lesion of the present invention CD24 is over-expressed as compared to a non-malignant tissue or cell. Examples of pre-malignant lesions include, but are not limited to, adenomatous polyps, Barrett's esophagus, IPMN (Intraductal Papillary Mucinous Neoplasia), DCIS (Ductal Carcinoma in Situ) in the breast, leukoplakia and erythroplakia. Thus, the pre-malignant lesion which is diagnosed according to the method of this aspect of the present invention can transform into a malignant solid or non-solid (e.g., hematological malignancies) CD24-associated cancer (or tumor). Preferably, the pre-malignant lesion which is diagnosed by the method of this aspect of the present invention is an adenomatous polyp of the colon, an adenomatous polyp of the rectum, an adenomatous polyp of the small bowel and Barrett's esophagus.

[0067] Non-limiting examples of CD24-associated cancers which can be diagnosed by the method of this aspect of the present invention include tumors of the gastrointestinal tract (colon cancer, rectum cancer, anal region cancer, colorectal cancer, small and/or large bowel cancer, esophageal cancer,

stomach cancer, pancreatic cancer, gastric cancer, small intestine cancer, adenocarcinoma arising in the small intestine, carcinoid tumors arising in the small intestine, lymphoma arising in the small intestine, mesenchymal tumors arising in the small intestine, gastrointestinal stromal tumors), gallbladder carcinoma, Biliary tract tumors, prostate cancer, kidney (renal) cancer (e.g., Wilms' tumor), liver cancer (e.g., hepatoblastoma, hepatocellular carcinoma), hepatobiliary cancer, biliary tree cancer, tumors of the Gallbladder, bladder cancer, embryonal rhabdomyosarcoma, germ cell tumor, trophoblastic tumor, testicular germ cells tumor, immature teratoma of ovary, uterine, epithelial ovarian, sacrococcygeal tumor, choriocarcinoma, placental site trophoblastic tumor, epithelial adult tumor, ovarian cancer, cervical cancer, cancer of the vagina, cancer of the Vulva, lung cancer (e.g., small-cell and non-small cell lung carcinoma), nasopharyngeal, breast cancer, squamous cell carcinoma (e.g., in head and neck), neurogenic tumor, astrocytoma, ganglioblastoma, neuroblastoma, lymphomas (e.g., Hodgkin's disease, non-Hodgkin's lymphoma, B cell, Burkitt, cutaneous T cell, histiocytic, lymphoblastic, T cell, thymic, cutaneous T-cell lymphoma, primary central nervous system lymphoma), gliomas, medullary thyroid carcinoma, testicular cancer, brain and head/neck cancer, gynecologic cancer, endometrial cancer, germ cell tumors, mesenchymal tumors, neurogenic tumors, cancer of the bladder, cancer of the ureter, cancer of the renal pelvis, cancer of the urethra, cancer of the penis, cancer of the testis, cancers of the uterine body, endometrial carcinoma, uterine sarcoma, peritoneal carcinoma and Fallopian Tube carcinoma, germ cell tumors of the ovary, sex cord-stromal tumors, cancer of the endocrine system, thyroid tumors, medullary thyroid carcinoma, thyroid lymphoma, parathyroid tumors, adrenal tumors, pancreatic endocrine tumors, sarcomas of the soft tissue and bone, benign and malignant mesothelioma, malignant peritoneal mesothelioma, malignant mesothelioma of the Tunica Vaginalis Testis, malignant mesothelioma of the Pericardium, skin cancer, cutaneous melanoma, intraocular melanoma, neoplasms of the central nervous system, medulloblastomas, meningiomas, peripheral nerve tumors, Pineal region tumors, pituitary adenomas, craniopharyngiomas, acoustic neuromas, Glomus Jugulare tumors, Chordomas and Chondrosarcomas, Hemangioblastomas, Choroid Plexus Papillomas and Carcinomas, spinal axis tumors, leukemia, and chronic leukemia.

[0068] As used herein the phrase "diagnosing" refers to classifying a pathology (e.g., a CD24-associated cancer or a pre-malignant lesion) or a symptom, determining a severity of the pathology, monitoring pathology progression, forecasting an outcome of a pathology and/or prospects of recovery.

[0069] As used herein the phrase "subject in need thereof" refers to a human subject who is at risk of having cancer [e.g., a genetically predisposed subject, a subject with medical and/or family history of cancer, a subject who has been exposed to carcinogens, occupational hazard, environmental hazard] and/or a subject who exhibits suspicious clinical signs of cancer [e.g., blood in the stool or melena, unexplained pain, sweating, unexplained fever, unexplained loss of weight up to anorexia, changes in bowel habits (constipation and/or diarrhea), tenesmus (sense of incomplete defecation, for rectal cancer specifically), anemia and/or general weakness]. Additionally or alternatively, the subject in need thereof can be a healthy human subject undergoing a routine well-being check up.

[0070] As used herein the term “CD24” refers to the nucleic acid sequence and/or the amino acid sequence of at least a functional portion of the phosphatidylinositol-anchored mucin-like cell-surface protein (e.g., CD24 protein—SEQ ID NO:2, GenBank Accession No. NP_037362.1; CD24 transcript—SEQ ID NO:1, GenBank Accession No. NM_013230.2) encoded by a genomic sequence on chromosome 6q21.

[0071] The phrase “circulating CD24” refers to any CD24 molecule present in a biological sample of the subject which is not in situ anchored CD24. The phrase “in situ anchored CD24” refers to a tissue anchored CD24 amino acid or nucleic acid sequence which is anchored to intact cells at the site where it is produced (in situ) such as cells of pre-malignant lesions (e.g., adenomas) or cancerous tumors as described hereinabove. Thus, the phrase “circulating CD24” refers to any CD24 molecule which can be systemically detected. The circulating CD24 can be in a soluble or a non-soluble form (membrane anchored through a GPI moiety). Examples of such circulating CD24 include but are not limited to secreted CD24 (e.g., CD24 splice variant), shedded CD24 which is devoid of membrane components (e.g., by the action of phospholipases such as PIPLC; e.g., the amino acid sequence 27-80 of SEQ ID NO:2), blebbed CD24 (i.e., CD24 present in cell blebs that are formed by rupture of the plasma membrane from the underlying cytoskeleton followed by inflation of the detached membrane by intracellular fluid) or CD24 which is present on shedded cells (i.e., cells which are detached from the tissue).

[0072] Thus, the circulating CD24 of the present invention can be present in a biological sample that is remote from the cancerous tissue or cancer-free. For example, the biological sample may be stool, serum or urine while the cancer may be a GI cancer such as CRC.

[0073] The phrase “biological sample” as used herein refers to any cellular or non-cellular biological samples which may contain a circulating CD24 as described above. Examples include but are not limited to, a blood sample (e.g., serum), a saliva sample, a stool sample, a urine sample, pup smear, cervix sample, a bone marrow sample (specifically containing macrophages), lymph fluid, a skin sample, epithelial cells, various external secretions of the respiratory, intestinal, and genitourinary tracts, tears, milk, a tissue biopsy, a cerebrospinal fluid (CSF) sample, a sperm fluid sample, amniotic fluid, and chorionic villi sample (CVS), a sample of neuronal cells, dendritic cells, organs, and also samples of in vivo cell culture constituents.

[0074] Preferably, the biological sample used by the method of this aspect of the present invention is a blood sample (e.g., serum), a stool sample and/or a urine sample.

[0075] The biological sample can be obtained using methods known in the art such as using a syringe with a needle, a scalpel, fine needle aspiration (FNA), catheter, gastrointestinal endoscopy (e.g., colorectal endoscopy, gastro-endoscopy) and the like. Preferably, the biological sample of the present invention can be obtained by blood sampling, stool collection or urine collection. Determining the level and/or presence of soluble CD24 can be effected ex vivo (on a sample derived from the subject) as well as in vivo (within the subject).

[0076] As used herein, the phrase “presence and/or level of a circulating CD24” refers to the degree of gene expression and/or gene product activity of the CD24 gene in a biological

sample. Accordingly, the presence and/or level of CD24 can be determined at the amino acid level using protein detection methods.

[0077] Thus, the presence and/or level of the CD24 amino acid sequence (CD24 protein) can be determined using a CD24 specific antibody via the formation of an immunocomplex [i.e., a complex formed between the CD24 antigen (a CD24 amino acid sequence) present in the biological sample and the CD24 specific antibody].

[0078] The immunocomplex of the present invention can be formed at a variety of temperatures, salt concentration and pH values which may vary depending on the method and the biological sample used and those of skills in the art are capable of adjusting the conditions suitable for the formation of each immunocomplex.

[0079] The term “antibody” as used in this invention includes intact molecules as well as functional fragments thereof, such as Fab, F(ab')₂, Fv or single domain molecules such as VH and VL to an epitope of an antigen. These functional antibody fragments are defined as follows: (1) Fab, the fragment which contains a monovalent antigen-binding fragment of an antibody molecule, can be produced by digestion of whole antibody with the enzyme papain to yield an intact light chain and a portion of one heavy chain; (2) Fab', the fragment of an antibody molecule that can be obtained by treating whole antibody with pepsin, followed by reduction, to yield an intact light chain and a portion of the heavy chain; two Fab' fragments are obtained per antibody molecule; (3) (Fab')₂, the fragment of the antibody that can be obtained by treating whole antibody with the enzyme pepsin without subsequent reduction; F(ab')₂ is a dimer of two Fab' fragments held together by two disulfide bonds; (4) Fv, defined as a genetically engineered fragment containing the variable region of the light chain and the variable region of the heavy chain expressed as two chains; (5) Single chain antibody (“SCA”), a genetically engineered molecule containing the variable region of the light chain and the variable region of the heavy chain, linked by a suitable polypeptide linker as a genetically fused single chain molecule; and (6) Single domain antibodies are composed of a single VH or VL domains which exhibit sufficient affinity to the antigen.

[0080] Methods of producing polyclonal and monoclonal antibodies as well as fragments thereof are well known in the art (See for example, Harlow and Lane, *Antibodies: A Laboratory Manual*, Cold Spring Harbor Laboratory, New York, 1988, incorporated herein by reference).

[0081] Antibody fragments according to the present invention can be prepared by proteolytic hydrolysis of the antibody or by expression in *E. coli* or mammalian cells (e.g. Chinese hamster ovary cell culture or other protein expression systems) of DNA encoding the fragment. Antibody fragments can be obtained by pepsin or papain digestion of whole antibodies by conventional methods. For example, antibody fragments can be produced by enzymatic cleavage of antibodies with pepsin to provide a 5S fragment denoted F(ab')₂. This fragment can be further cleaved using a thiol reducing agent, and optionally a blocking group for the sulfhydryl groups resulting from cleavage of disulfide linkages, to produce 3.5S Fab' monovalent fragments. Alternatively, an enzymatic cleavage using pepsin produces two monovalent Fab' fragments and an Fc fragment directly. These methods are described, for example, by Goldenberg, U.S. Pat. Nos. 4,036,945 and 4,331,647, and references contained therein, which patents are hereby incorporated by reference in their entirety.

See also Porter, R. R. [Biochem. J. 73: 119-126 (1959)]. Other methods of cleaving antibodies, such as separation of heavy chains to form monovalent light-heavy chain fragments, further cleavage of fragments, or other enzymatic, chemical, or genetic techniques may also be used, so long as the fragments bind to the antigen that is recognized by the intact antibody.

[0082] Fv fragments comprise an association of VH and VL chains. This association may be noncovalent, as described in Inbar et al. [Proc. Nat'l Acad. Sci. USA 69:2659-62 (1972)]. Alternatively, the variable chains can be linked by an intermolecular disulfide bond or cross-linked by chemicals such as glutaraldehyde. Preferably, the Fv fragments comprise VH and VL chains connected by a peptide linker. These single-chain antigen binding proteins (scFv) are prepared by constructing a structural gene comprising DNA sequences encoding the VH and VL domains connected by an oligonucleotide. The structural gene is inserted into an expression vector, which is subsequently introduced into a host cell such as *E. coli*. The recombinant host cells synthesize a single polypeptide chain with a linker peptide bridging the two V domains. Methods for producing scFvs are described, for example, by Whitlow and Filpula, Methods 2: 97-105 (1991); Bird et al., Science 242:423-426 (1988); Pack et al., Bio/Technology 11:1271-77 (1993); and U.S. Pat. No. 4,946,778, which is hereby incorporated by reference in its entirety.

[0083] Another form of an antibody fragment is a peptide coding for a single complementarity-determining region (CDR). CDR peptides ("minimal recognition units") can be obtained by constructing genes encoding the CDR of an antibody of interest. Such genes are prepared, for example, by using the polymerase chain reaction to synthesize the variable region from RNA of antibody-producing cells. See, for example, Larrick and Fry [Methods, 2: 106-10 (1991)].

[0084] Antibodies can also be produced using various techniques known in the art, including phage display libraries [Hoogenboom and Winter, J. Mol. Biol., 227:381 (1991); Marks et al., J. Mol. Biol., 222:581 (1991)]. The techniques of Cole et al. and Boerner et al. are also available for the preparation of human monoclonal antibodies (Cole et al., Monoclonal Antibodies and Cancer Therapy, Alan R. Liss, p. 77 (1985) and Boerner et al., J. Immunol., 147(1):86-95 (1991)]. Similarly, human antibodies can be made by introduction of human immunoglobulin loci into transgenic animals, e.g., mice in which the endogenous immunoglobulin genes have been partially or completely inactivated. Upon challenge, human antibody production is observed, which closely resembles that seen in humans in all respects, including gene rearrangement, assembly, and antibody repertoire. This approach is described, for example, in U.S. Pat. Nos. 5,545,807; 5,545,806; 5,569,825; 5,625,126; 5,633,425; 5,661,016, and in the following scientific publications: Marks et al., Bio/Technology 10: 779-783 (1992); Lonberg et al., Nature 368: 856-859 (1994); Morrison, Nature 368 812-13 (1994); Fishwild et al., Nature Biotechnology 14, 845-51 (1996); Neuberger, Nature Biotechnology 14: 826 (1996); and Lonberg and Huszar, Intern. Rev. Immunol. 13, 65-93 (1995).

[0085] According to the method of this aspect of the present invention, detection of immunocomplex formation is indicative of a diagnosis of the cancer or the pre-malignant lesion. Various methods can be used to detect the formation of the CD24 immunocomplex of the present invention and those of

skills in the art are capable of determining which method is suitable for each immunocomplex and/or the type of cells used for diagnosis.

[0086] The CD24 antibody used in the immunocomplex of the present invention can be labeled using methods known in the art. It will be appreciated that the labeled antibodies can be either primary antibodies (i.e., which bind to the specific antigen, e.g., a CD24-specific antigen) or secondary antibodies (e.g., labeled goat anti rabbit antibodies, labeled mouse anti human antibody) which bind to the primary antibodies. The antibody can be directly conjugated to a label or can be conjugated to an enzyme.

[0087] Antibodies of the present invention can be fluorescently labeled (using a fluorescent dye conjugated to an antibody), radiolabeled (using radiolabeled e.g., ¹²⁵I, antibodies), or conjugated to an enzyme (e.g., horseradish peroxidase or alkaline phosphatase) and used along with a chromogenic substrate to produce a colorimetric reaction. The chromogenic substrates utilized by the enzyme-conjugated antibodies of the present invention include, but are not limited to, AEC, Fast red, ELF-97 substrate [2-(5'-chloro-2-phosphoryloxypheyl)-6-chloro-4(3H)-quinazolinone], p-nitrophenyl phosphate (PNPP), phenolphthalein diphosphate, and ELF 39-phosphate, BCIP/INT, Vector Red (VR), salmon and magenta phosphate (Avivi C., et al., 1994, J. Histochem. Cytochem. 1994; 42: 551-4) for alkaline phosphatase enzyme and Nova Red, diaminobenzidine (DAB), Vector(R) SG substrate, luminol-based chemiluminescent substrate for the peroxidase enzyme. These enzymatic substrates are commercially available from Sigma (St Louis, Mo., USA), Molecular Probes Inc. (Eugene, Oreg., USA), Vector Laboratories Inc. (Burlingame, Calif., USA), Zymed Laboratories Inc. (San Francisco, Calif., USA), Dako Cytomation (Denmark).

[0088] Detection of the CD24 immunocomplex in a biological sample such as serum, stool or urine which may contain circulating CD24 can be performed using fluorescence activated cell sorting (FACS), enzyme linked immunosorbent assay (ELISA), Western blot and radio-immunoassay (RIA) analyses, immunoprecipitation (IP) or by a molecular weight-based approach.

[0089] For Western blot the proteins are extracted from a cell sample and are subjected to electrophoresis (e.g., SDS-PAGE) and blotting to a membrane (e.g., nylon or PVDF). The membrane is then interacted with a CD24 antibody which can be either directly labeled or further subjected to a secondary labeled antibody. Detection may be by autoradiography, colorimetric reaction or chemiluminescence. This method allows both quantitation of an amount of substrate and determination of its identity by a relative position on the membrane which is indicative of a migration distance in the acrylamide gel during electrophoresis.

[0090] In case the concentration of the antigen in the biological sample is low, detection of the antigen (CD24 amino acid sequence) can be performed by immunoprecipitation (IP), essentially as described in the Examples section which follows. For immunoprecipitation analysis the CD24 antibody may directly interact with a sample (e.g., cell lysate) including CD24 and the formed complex can be further detected using a secondary antibody conjugated to beads (e.g., if the CD24 antibody is a mouse monoclonal antibody, the secondary antibody may be an anti-mouse antibody conjugated to e.g., Sepharose beads). The beads can be then precipitated by centrifugation, following which the precipitated proteins (e.g., CD24 and anti CD24 antibodies) can be

detached from the beads (e.g., using denaturation at 95° C.) and further subjected to Western blot analysis using the CD24 specific antibodies. Alternatively, the anti-CD24 antibody and the beads-conjugated secondary antibody may be added to the biological sample containing the antigen (CD24) to thereby form an immunocomplex. Alternatively, since CD24 is a highly glycosylated protein, it can be also precipitated using a substrate capable of binding glycosylated polypeptides such as Concanavalin A (GE Healthcare Bio-Sciences, Uppsala, Sweden) which may be also conjugated to beads, followed by Western blot analysis with anti-CD24 antibodies.

[0091] FACS analysis enables the detection of antigens present on cell membranes such as CD24. Briefly, CD24 specific antibodies are linked to fluorophores and detection is performed by means of a cell sorting machine which reads the wavelength of light emitted from each cell as it passes through a light beam. This method may employ two or more antibodies simultaneously.

[0092] The presence and/or level of CD24 can be also determined using ELISA. Briefly, a sample containing CD24 antigen is fixed to a surface such as a well of a microtiter plate. An antigen specific antibody (a CD24 antibody) coupled to an enzyme is applied and allowed to bind to the antigen. Presence of the antibody is then detected and quantitated by a colorimetric reaction employing the enzyme coupled to the antibody. Enzymes commonly employed in this method include horseradish peroxidase and alkaline phosphatase. If well calibrated and within the linear range of response, the amount of substrate present in the sample is proportional to the amount of color produced. A substrate standard is generally employed to improve quantitative accuracy.

[0093] The presence and/or level of CD24 can be also determined using radio-immunoassay (RIA). In one version, this method involves precipitation of the desired antigen (CD24) with a specific antibody and radiolabeled antibody binding protein (e.g., protein A labeled with I¹²⁵) immobilized on a precipitable carrier such as agarose beads. The number of counts in the precipitated pellet is proportional to the amount of antigen.

[0094] In an alternate version of the RIA, a labeled antigen and an unlabelled antibody binding protein are employed. A sample containing an unknown amount of antigen is added in varying amounts. The decrease in precipitated counts from the labeled antigen is proportional to the amount of antigen in the added sample.

[0095] The presence and/or level of CD24 can be also determined using molecular weight-based approach. Since the immunocomplex exhibits a higher molecular weight than its components, methods capable of detecting such a change in the molecular weight can be also employed. For example, the immunocomplex can be detected by a gel retardation assay. Briefly, a non-denaturing acrylamide gel is loaded with samples. A shift in the size (molecular weight) of the protein product as compared with its components is indicative of the presence of an immunocomplex. Such a shift to a higher molecular weight can be viewed using a non-specific protein staining such as silver stain or Commassie blue stain.

[0096] It will be appreciated that since shed cells or fragments thereof (also referred to as blebbed) may also include mRNA molecules, detection of the circulating CD24 in the biological sample may be also performed using mRNA detection methods which are capable of detecting CD24 over

expression. In cases of DNA amplification of the gene, detection of circulating CD24 can also be effected at the DNA level in the biological sample.

[0097] RNA or DNA detection methods can be performed using an isolated polynucleotide (e.g., a polynucleotide probe, an oligonucleotide probe/primer) capable of hybridizing to a CD24 nucleic acid sequence such as the CD24 transcript set forth by SEQ ID NO:1 or a portion thereof. Such a polynucleotide can be at any size, such as a short polynucleotide (e.g., of 15-200 bases), an intermediate polynucleotide of 100-2000 bases and a long polynucleotide of more than 2000 bases.

[0098] The isolated polynucleotide probe used by the present invention can be any directly or indirectly labeled RNA molecule [e.g., RNA oligonucleotide (e.g., of 17-50 bases), an in vitro transcribed RNA molecule], DNA molecule (e.g., oligonucleotide, e.g., 15-50 bases, cDNA molecule, genomic molecule) and/or an analogue thereof [e.g., peptide nucleic acid (PNA)] which is specific to the CD24 RNA transcript of the present invention.

[0099] Oligonucleotides designed according to the teachings of the present invention can be generated according to any oligonucleotide synthesis method known in the art such as enzymatic synthesis or solid phase synthesis. Equipment and reagents for executing solid-phase synthesis are commercially available from, for example, Applied Biosystems. Any other means for such synthesis may also be employed; the actual synthesis of the oligonucleotides is well within the capabilities of one skilled in the art and can be accomplished via established methodologies as detailed in, for example, "Molecular Cloning: A laboratory Manual" Sambrook et al., (1989); "Current Protocols in Molecular Biology" Volumes I-III Ausubel, R. M., ed. (1994); Ausubel et al., "Current Protocols in Molecular Biology", John Wiley and Sons, Baltimore, Md. (1989); Perbal, "A Practical Guide to Molecular Cloning", John Wiley & Sons, New York (1988) and "Oligonucleotide Synthesis" Gait, M. J., ed. (1984) utilizing solid phase chemistry, e.g. cyanoethyl phosphoramidite followed by deprotection, desalting and purification by for example, an automated trityl-on method or HPLC.

[0100] The isolated polynucleotide used by the present invention can be labeled either directly or indirectly using a tag or label molecule. Such labels can be, for example, fluorescent molecules (e.g., fluorescein or Texas Red), radioactive molecule (e.g., ³²P-γ-ATP or ³²P-α-ATP) and chromogenic substrates [e.g., Fast Red, BCIP/INT, available from (ABCAM, Cambridge, Mass.)]. Direct labeling can be achieved by covalently conjugating a label molecule to the polynucleotide (e.g., using solid-phase synthesis) or by incorporation via polymerization (e.g., using an in vitro transcription reaction or random-primed labeling). Indirect labeling can be achieved by covalently conjugating or incorporating to the polynucleotide a non-labeled tag molecule (e.g., Digoxigenin or biotin) and subsequently subjecting the polynucleotide to a labeled molecule (e.g., anti-Digoxigenin antibody or streptavidin) capable of specifically recognizing the non-labeled tag.

[0101] The above-described polynucleotides can be employed in a variety of RNA detection methods such as Northern blot analysis, reverse-transcribed PCR(RT-PCR) [e.g., a semi-quantitative RT-PCR, quantitative RT-PCR using e.g., the Light Cycler™ (Roche)], RNA in situ hybridization (RNA-ISH), in situ RT-PCR stain [e.g., as described in Nuovo G J, et al. 1993, Intracellular localization of poly-

merase chain reaction (PCR)-amplified hepatitis C cDNA. *Am J Surg Pathol.* 17: 683-90, and Komminoth P, et al. 1994, Evaluation of methods for hepatitis C virus detection in archival liver biopsies. Comparison of histology, immunohistochemistry, in situ hybridization, reverse transcriptase polymerase chain reaction (RT-PCR) and in situ RT-PCR. *Pathol Res Pract.*, 190: 1017-25] and oligonucleotide microarray analysis [e.g., using the Affymetrix microarray (Affymetrix®, Santa Clara, Calif.)].

[0102] DNA detection methods which can be used along with the present invention include, but are not limited to, Southern blot analysis, PCR, quantitative PCR and restriction fragment length polymorphism (RFLP).

[0103] As used herein the phrase “predetermined threshold” refers to a known level of circulating CD24 in a sample. Such a level can be experimentally determined by comparing normal samples (e.g., samples obtained from healthy subjects) to samples derived from subjects known to have carcinogenesis such as CRC (see for example, Table 1 and Example 2 of the Examples section which follows). Alternatively, such a level can be obtained from the scientific literature.

[0104] Thus, the presence and/or the level of the CD24 in the biological sample above a predetermined threshold is indicative of the cancer or the pre-malignant lesion.

[0105] It will be appreciated that the presence of the cancer or the pre-malignant lesion can be further validated using additional assays. For example, in case the level of CD24 detected in the stool of a subject is above a predetermined threshold, additional assays such as colon endoscopy followed by histological evaluations (including CD24 immunostaining) may be performed on the identified adenomas (in case adenomas are present).

[0106] Thus, the teachings of the present invention provide, for the first time, a highly reliable (over 80% accuracy), non-invasive method of diagnosing pre-malignant or malignant lesions of the gastrointestinal tract using biological samples such as serum, urine and stool.

[0107] It will be appreciated that the teachings of the present invention can be further used to monitor efficacy of cancer therapy or disease progression/remission. As is shown in FIG. 2b and described in Example 4 of the Examples section which follows, the level of CD24 in the stool decreased following radiation therapy in a subject suffering from CRC, probably as a result of a significant reduction in cancerous cells in the subject.

[0108] Thus, according to another aspect of the present invention there is provided a method of monitoring efficacy of cancer therapy. The method is effected by determining a level of a circulating CD24 in a biological sample of the subject following the cancer therapy, wherein a decrease from a predetermined threshold in the level of the circulating CD24 following the cancer therapy is indicative of reduction of cancerous cells, thereby monitoring efficacy of the cancer therapy.

[0109] The cancer therapy which efficacy is monitored according to the method of this aspect of the present invention can be radiation therapy, chemotherapy (e.g., CHOP, Cisplatin, carboplatin, oxaliplatin, azathioprine, mercaptopurine, vinca alkaloids, etoposide, teniposide, paclitaxel, docetaxel, irinotecan, topotecanamsacrine, etoposide, etoposide phosphate, teniposide and dactinomycin), antibody therapy [e.g., trastuzumab (Herceptin) and rituximab (Rituxan)] or a combination of any of the above.

[0110] Thus, a decrease from a pre-determined threshold in the level of circulating CD24 is indicative of the cancer therapy being efficient. On the other hand, if there is no decrease, or in case there is an increase from the pre-determined threshold in the level of circulating CD24 after treatment, then the cancer therapy is not efficient in eliminating (e.g., killing, depleting) the cancerous cells from the treated subject and additional and/or alternative therapies (e.g., treatment regimens) may be used.

[0111] It will be appreciated that the pre-determined threshold can be determined in a subset of subjects with known outcome of therapy.

[0112] Preferably, the decrease from the pre-determined threshold is of at least 10 times, more preferably, 15 times, preferably, 20 times, preferably, 50 times or at least 100 times (e.g., at least 1000 times) in the level of circulating CD24 following cancer therapy.

[0113] While further reducing the present invention to practice, the present inventors have uncovered that polymorphisms in the CD24 gene may be used as markers for predisposition of a subject to gastrointestinal cancer.

[0114] As is shown in Table 2, FIG. 4 and described in Example 3 of the Examples section which follows, individuals who carry the Val polymorph at position 57 of the CD24 protein (SEQ ID NO:2) have increased predisposition risk to develop gastrointestinal cancer. In addition, as is further illustrated in Example 3 of the Examples section which follows individuals who carry the Val polymorph at position 57 of the CD24 protein (SEQ ID NO:2) as well as the I317Q and/or the I307K polymorph of APC (SEQ ID NO:8) have increased predisposition risk to develop gastrointestinal cancer. These results suggest the use of the combination of the Val/Ala polymorphism at position 57 of the CD24 protein and the E1317Q and/or I1307K of the APC protein for determining predisposition to gastrointestinal cancer.

[0115] Thus, according to another aspect of the present invention there is provided a method of determining if a subject is predisposed to gastrointestinal cancer. The method is effected by determining a presence or absence, in a homozygous or heterozygous form, of at least one cancer-associated genotype in the CD24 nucleic acid sequence of the subject, thereby determining if the subject is predisposed to the gastrointestinal cancer.

[0116] As used herein, the term “predisposed” when used with respect to gastrointestinal cancer refers to a subject who is more susceptible to developing gastrointestinal cancer than non-predisposed subjects.

[0117] The terms “homozygous” or “heterozygous” refer to two identical or two different alleles, respectively, of a certain polymorphism.

[0118] The term “polymorphism” refers to the occurrence of two or more genetically determined variant forms (alleles) of a particular nucleic acid at a frequency where the rarer (or rarest) form could not be maintained by recurrent mutation alone. A single nucleotide polymorphism (SNP) results from a single base difference between related alleles at the same genetic locus. A non-limiting example of a polymorphism is the presence of a cytosine or thymidine nucleotide at position 280 of CD24 coding sequence (SEQ ID NO:1; GenBank Accession No. NM_013230.2) which results in a non-synonymous missense mutation of Ala/Val at position 57 of the CD24 polypeptide (SEQ ID NO:2; GenBank Accession No. NP_037362.1).

[0119] The term “absence” as used herein in regard to the genotype describes the negative result of a specific genotype determination test. For example, if the genotype determination test is suitable for the identification of thymidine nucleotide containing allele at position 280 of SEQ ID NO:1, and the subject on which the test is performed is homozygote for the cytosine nucleotide—containing allele at position 280 of SEQ ID NO:1, then the result of the test will be “absence of genotype”.

[0120] Preferably, the at least one cancer-associated genotype in the CD24 nucleic acid sequence is a thymidine nucleotide containing allele at position 280 of the polynucleotide set forth by SEQ ID NO:1.

[0121] As is further shown in Example 3 of the Examples section which follows, the present inventors have uncovered that individuals carrying both the thymidine nucleotide containing allele at position 280 of the polynucleotide set forth by SEQ ID NO:1 (which encodes the Val-57 polymorph of CD24) and the adenosine nucleotide containing allele at position 3977 of the polynucleotide set forth by SEQ ID NO:7 [which encodes the Lys (K)-1307 polymorph of APC] and/or the cytosine nucleotide containing allele at position 4006 of the polynucleotide set forth by SEQ ID NO:7 [which encodes the Gln (O)-1317 polymorph of APC] have increased predisposition to gastrointestinal cancer [p-values are 0.024 for Val-57 and Lys (K)-1307 and 0.028 for Val-57 and Gln (O)-1317].

[0122] Thus, according to preferred embodiments of the present invention the method of determining if a subject is predisposed to gastrointestinal cancer further comprising determining a presence or an absence, in a homozygous or heterozygous form, of at least one cancer-associated genotype in an APC nucleic acid sequence of the subject.

[0123] Preferably, the at least one cancer-associated genotype in the APC nucleic acid sequence is an adenosine nucleotide containing allele at position 3977 of the polynucleotide set forth by SEQ ID NO:7 (which encodes the lysine-1307 polymorph of the APC polypeptide set forth by SEQ ID NO:8).

[0124] Preferably, the at least one cancer-associated genotype in the APC nucleic acid sequence is an cytosine nucleotide containing allele at position 4006 of the polynucleotide set forth by SEQ ID NO:7 (which encodes the Glutamine-1317 of the polypeptide set forth by SEQ ID NO:8).

[0125] Preferably, the at least one cancer-associated genotype in the APC nucleic acid sequence is an adenosine nucleotide containing allele at position 3977 and a cytosine nucleotide containing allele at position 4006 of the polynucleotide set forth by SEQ ID NO:7.

[0126] The predisposition to gastrointestinal cancer can be quantified by generating and using genotype relative risk (GRR) values. The GRR is the increased chance of an individual with a particular genotype to develop the disease. Thus, the GRR of the risk genotype G, with respect to the protective genotype G_0 , is the ratio between the risk of an individual carrying genotype G to develop the disease, and the risk of an individual carrying genotype G_0 to develop the disease (e.g., CRC). The GRR used herein is represented in terms of an appropriate odds ratio (OR) of G versus G_0 in cases and controls. Moreover, computation of GRR of haplotypes is based on a multiplicative model in which the GRR of an homozygote individual is the square of the GRR of an heterozygote individual. For further details see Risch and

Merikangas, 1996 [The future of genetic studies of complex human diseases. *Science* 273: 1516-1517].

[0127] Once calculated, the GRR can reflect the increased predisposition risk of an individual with a specific cancer-associated genotype in the CD24 nucleic acid sequence and/or the APC nucleic acid sequence to develop gastrointestinal cancer.

[0128] Thus, the present invention provides a method of predicting predisposition of a subject to gastrointestinal cancer by detecting specific genotypes in the CD24 and APC genes and/or proteins. It will be appreciated that such genotypes can be detected on the DNA level, as well as on the protein level using antibodies capable of detecting specific protein polymorphs.

[0129] A DNA or a protein sample can be obtained from any source of cells or cell content of the subject, including, but not limited to, peripheral blood cells (obtained using a syringe, e.g., white blood cells), skin cells (obtained from a skin biopsy), mouth epithelial cells (obtained from a mouth wash), cerebrospinal fluid, urine, lymph fluids, various external secretions of the respiratory, intestinal, and genitourinary tracts, tears, saliva, and milk, as well as malignant tissues, amniotic fluid, and chorionic villi, tissue sections (e.g., frozen sections or paraffin-embedded sections) and the like.

[0130] Once the sample is obtained, DNA is preferably extracted using methods which are well known in the art, involving tissue mincing, cell lysis, protein extraction, and DNA precipitation using 2 to 3 volumes of 100% ethanol, rinsing in 70% ethanol, pelleting, drying, and resuspension in water or any other suitable buffer (e.g., Tris-EDTA). Preferably, following such a procedure, DNA concentration is determined, such as by measuring the optical density (OD) of the sample at 260 nm (wherein 1 unit OD=50 $\mu\text{g/ml}$ DNA). Alternatively, DNA can be obtained by adding a protein digestion enzyme (e.g., proteinase K), followed by denaturation (e.g., boiling at 95° C. for 5-10 minutes). Still alternatively, DNA can be isolated from tissue sections (e.g., archive paraffin embedded sections) as described previously (Arber N, Shapira I, et al., 2000, Activation of c-K-ras mutations in human gastrointestinal tumors. *Gastroenterology*, 118: 1045-50).

[0131] Preferably, the DNA sample is obtained from a peripheral blood sample. Methods of extracting DNA from blood samples are well known in the art.

[0132] Once obtained, the DNA sample is preferably characterized for the presence or absence of at least one or more of the cancer-associated genotype in the CD24 and/or APC nucleic acid sequence of the present invention.

[0133] The SNPs of the present invention can be identified using a variety of approaches suitable for identifying sequence alterations. One option is to determine the entire gene sequence of a PCR reaction product. Alternatively, a given segment of nucleic acid may be characterized on several other levels. At the lowest resolution, the size of the molecule can be determined by electrophoresis by comparison to a known standard run on the same gel. A more detailed picture of the molecule may be achieved by cleavage with combinations of restriction enzymes prior to electrophoresis, to allow construction of an ordered map. The presence of specific sequences within the fragment can be detected by hybridization of a labeled probe, or the precise nucleotide sequence can be determined by partial chemical degradation or by primer extension in the presence of chain-terminating nucleotide analogs.

[0134] The DNA sample is preferably amplified prior to determining sequence alterations, since many genotyping methods require amplification of the DNA region carrying the sequence alteration of interest.

[0135] In any case, the presence of a sequence alteration (e.g., SNP) in the CD24 or APC genes is determined using methods which typically involve the use of oligonucleotides that specifically hybridize with the nucleic acid sequence alterations in the CD24 or APC genes, such as those described hereinabove.

[0136] The term "oligonucleotide" refers to a single stranded or double stranded oligomer or polymer of ribonucleic acid (RNA) or deoxyribonucleic acid (DNA) or mimetics thereof. This term includes oligonucleotides composed of naturally-occurring bases, sugars and covalent internucleoside linkages (e.g., backbone) as well as oligonucleotides having non-naturally-occurring portions which function similarly to respective naturally-occurring portions.

[0137] Oligonucleotides designed according to the teachings of the present invention can be generated according to any oligonucleotide synthesis method known in the art such as enzymatic synthesis or solid phase synthesis. Equipment and reagents for executing solid-phase synthesis are commercially available from, for example, Applied Biosystems. Any other means for such synthesis may also be employed; the actual synthesis of the oligonucleotides is well within the capabilities of one skilled in the art and can be accomplished via established methodologies as detailed in, for example, "Molecular Cloning: A laboratory Manual" Sambrook et al., (1989); "Current Protocols in Molecular Biology" Volumes I-III Ausubel, R. M., ed. (1994); Ausubel et al., "Current Protocols in Molecular Biology", John Wiley and Sons, Baltimore, Md. (1989); Perbal, "A Practical Guide to Molecular Cloning", John Wiley & Sons, New York (1988) and "Oligonucleotide Synthesis" Gait, M. J., ed. (1984) utilizing solid phase chemistry, e.g. cyanoethyl phosphoramidite followed by deprotection, desalting and purification by for example, an automated trityl-on method or HPLC.

[0138] The oligonucleotide of the present invention is of at least 17, at least 18, at least 19, at least 20, at least 22, at least 25, at least 30 or at least 40, bases specifically hybridizable with sequence alterations described hereinabove.

[0139] The oligonucleotides of the present invention may comprise heterocyclic nucleosides consisting of purines and the pyrimidines bases, bonded in a 3' to 5' phosphodiester linkage.

[0140] Preferably used oligonucleotides are those modified in either backbone, internucleoside linkages or bases, as is known in the art.

[0141] Following is a non-limiting list of SNPs detection methods which can be used to identify one or more of the SNPs described above.

[0142] Restriction fragment length polymorphism (RFLP)—This method utilizes a change in a single nucleotide (the SNP nucleotide) that modifies a recognition site for a restriction enzyme, resulting in the creation or destruction of an RFLP. Single nucleotide mismatches in DNA heteroduplexes are also recognized and cleaved by some chemicals, providing an alternative strategy to detect single-base substitutions, generically named the "Mismatch Chemical Cleavage" (MCC) (Gogos, J. A. et al. (1990). Detection of single base mismatches of thymine and cytosine residues by potassium permanganate and hydroxylamine in the presence of tetralkylammonium salts. Nucl Acids Res 18, 6807-6814).

However, this method requires the use of osmium tetroxide and piperidine, two highly noxious chemicals that are not suited for use in a clinical laboratory.

[0143] Sequencing analysis—The isolated DNA is subjected to automated dideoxy terminator sequencing reactions using a dye-terminator (unlabeled primers and labeled dideoxy nucleotides) or a dye-primer (labeled primers and unlabeled dideoxy nucleotides) cycle sequencing protocol. For the dye-terminator reaction, a PCR reaction is performed using unlabeled PCR primers, followed by a sequencing reaction in the presence of one of the primers, deoxynucleotides, and the labeled dideoxy nucleotide mix. For the dye-primer reaction, a PCR reaction is performed using PCR primers conjugated to universal or reverse primers (one in each direction), followed by a sequencing reaction in the presence of four separate mixes (corresponding to the A, G, C, and T nucleotides), each containing a labeled primer specific to the universal or reverse sequence, and the corresponding unlabeled dideoxy nucleotides.

[0144] Microsequencing analysis—This analysis can be effected by conducting microsequencing reactions on specific regions of the CD24 or APC genes which may be obtained by amplification reaction (PCR), as mentioned hereinabove. Genomic or cDNA amplification products are then subjected to automated microsequencing reactions using ddNTPs (using specific fluorescence for each ddNTP) and an appropriate oligonucleotide microsequencing primer which can hybridize just upstream of the alteration site of interest. Once specifically extended at the 3' end by a DNA polymerase using a complementary fluorescent dideoxynucleotide analogue (e.g., via thermal cycling), the primer is precipitated to remove the unincorporated fluorescent ddNTPs. The reaction products into which fluorescent ddNTPs have been incorporated are then analyzed by electrophoresis on sequencing machines (e.g., ABI 377) to determine the identity of the incorporated base, thereby identifying the sequence alteration in the CD24 or APC genes of the present invention.

[0145] It will be appreciated that the extended primer may also be analyzed by MALDI-TOF Mass Spectrometry. In this case, the base at the alteration site is identified by the mass added onto the microsequencing primer. (See Haff, L. A. and Smirnov, I. P. (1997). Multiplex genotyping of PCR products with MassTag-labeled primers, Nucl Acids Res 25(18), 3749-3750.)

[0146] Recently developed solid-phase microsequencing reactions can be utilized as an alternative to the microsequencing approach described hereinabove. Solid-phase microsequencing reactions employ oligonucleotide microsequencing primers or PCR-amplified products of the DNA fragment of interest, which are immobilized. Immobilization can be carried out, for example, via an interaction between biotinylated DNA and streptavidin-coated microtitration wells or avidin-coated polystyrene particles.

[0147] In solid-phase microsequencing reactions, incorporated ddNTPs can be either radiolabeled (Syvanen, A. C. (1994). Detection of point mutations in human genes by the solid-phase minisequencing method. Clin Chim Acta 226, 225-236) or linked to fluorescein (Livak, K. J. and Hainer, J. W. (1994). A microtiter plate assay for determining apolipoprotein E genotype and discovery of a rare allele. Hum Mutat 3(4), 379-385). The detection of radiolabeled ddNTPs can be achieved through scintillation-based techniques. The detection of fluorescein-linked ddNTPs is based on the binding of anti-fluorescein antibody conjugated with alkaline phos-

phatase, followed by incubation with a chromogenic substrate (such as p-nitrophenyl phosphate).

[0148] Other reporter-detection conjugates include ddNTP linked to dinitrophenyl (DNP) and anti-DNP alkaline phosphatase conjugate (see Harju, L. et al. (1993). Colorimetric solid-phase minisequencing assay for the detection of alpha-1-antitrypsin Z mutation. *Clin Chem* 39(2), 2282-2287) and biotinylated ddNTP and horseradish peroxidase-conjugated streptavidin with o-phenylenediamine as a substrate (see WO 92/15712).

[0149] A diagnostic kit based on fluorescein-linked ddNTP with anti-fluorescein antibody conjugated with alkaline phosphatase is commercially available from GamidaGen Ltd (PR-ONTO).

[0150] Other modifications of the microsequencing protocol are described by: Nyren, P. B. et al. (1993). Solid phase DNA minisequencing by an enzymatic luminometric inorganic pyrophosphate detection assay. *Anal Biochem* 208(1), 171-175; and Pastinen, T. et al. (1997). Minisequencing: A specific tool for DNA analysis and diagnostics on oligonucleotide arrays. *Genome Research* 7, 606-614.

[0151] Mismatch detection assays based on polymerases and ligases—The Oligonucleotide Ligation Assay (OLA) uses two oligonucleotides that are designed to be capable of hybridizing to abutting sequences of a single strand of a target molecule. One of the oligonucleotides is biotinylated, and the other is detectably labeled. If the precise complementary sequence is found in a target molecule, the oligonucleotides will hybridize to the target such that their termini abut, and create a ligation substrate that can be captured and detected. OLA is capable of detecting single nucleotide polymorphisms and may be advantageously combined with PCR, as described by: Nickerson, J. A. et al. (1990). Automated DNA diagnostics using an ELISA-based oligonucleotide ligation assay. *Proc Natl Acad Sci U.S.A.* 87, 8923-8927. In this method, PCR is used to achieve the exponential amplification of target DNA, which is then detected using OLA.

[0152] Other amplification methods which are particularly suited for the detection of single nucleotide polymorphisms include LCR (ligase chain reaction) and Gap LCR (GLCR). LCR uses two pairs of probes to exponentially amplify a specific target. The sequences of each pair of oligonucleotides are selected to permit the pair to hybridize to abutting sequences of the same strand of the target. Such hybridization forms a substrate for a template-dependant ligase. In accordance with the present invention, LCR can be performed with oligonucleotides having the proximal and distal sequences of the same strand of a biallelic marker site. In one embodiment, either oligonucleotide will be designed to include the biallelic marker site. In such an embodiment, the reaction conditions are selected such that the oligonucleotides can be ligated together only if the target molecule either contains or lacks the specific nucleotide that is complementary to the biallelic marker on the oligonucleotide. In an alternative embodiment, the oligonucleotides will not include the biallelic marker, such that when they hybridize to the target molecule, a "gap" is created, as described in WO 90/01069. This gap is then "filled" with complementary dNTPs (as mediated by DNA polymerase), or by an additional pair of oligonucleotides. Thus, at the end of each cycle, each single strand has a complement capable of serving as a target during the next amplification cycle, and exponential allele-specific amplification of the desired sequence is obtained.

[0153] Ligase/Polymerase-mediated Genetic Bit Analysis™—This is another method for determining the identity of a nucleotide at a preselected site in a nucleic acid molecule (WO 95/21271). This method involves the incorporation of a nucleoside triphosphate, which is complementary to the nucleotide present at the preselected site, onto the terminus of a primer molecule, and their subsequent ligation to a second oligonucleotide. The reaction is monitored by detecting a specific label attached to the reaction's solid phase or by detection in solution.

[0154] Hybridization assay methods—Hybridization-based assays which allow the detection of single-base alterations rely on the use of an oligonucleotide which can be 10, 15, 20, or 30 to 100 nucleotides long, preferably from 10 to 50, more preferably from 40 to 50 nucleotides in length. Typically, the oligonucleotide includes a central nucleotide complementary to a polymorphic site of the CD24 or APC genes, and flanking nucleotide sequences spanning on each side of the central nucleotide that are substantially complementary to the nucleotide sequences of the CD24 or APC genes spanning on each side of the polymorphic site. Sequence alteration can be detected by hybridization of the oligonucleotide of the present invention to the template sequence under stringent hybridization reactions.

[0155] By way of example, hybridization of short nucleic acids (below 200 by in length, e.g. 17-40 by in length) can be effected by any of the following hybridization protocols, depending on the desired stringency: (i) hybridization solution of 6×SSC and 1% SDS or 3 M TMACI, 0.01 M sodium phosphate (pH 6.8), 1 mM EDTA (pH 7.6), 0.5% SDS, 100 µg/ml denatured salmon sperm DNA, and 0.1% nonfat dried milk, hybridization temperature of 1-1.5° C. below the T_m , final wash solution of 3 M TMACI, 0.01 M sodium phosphate (pH 6.8), 1 mM EDTA (pH 7.6), and 0.5% SDS at 1-1.5° C. below the T_m ; (ii) hybridization solution of 6×SSC and 0.1% SDS or 3 M TMACI, 0.01 M sodium phosphate (pH 6.8), 1 mM EDTA (pH 7.6), 0.5% SDS, 100 µg/ml denatured salmon sperm DNA, and 0.1% nonfat dried milk, hybridization temperature of 2-2.5° C. below the T_m , wash solution of 3 M TMACI, 0.01 M sodium phosphate (pH 6.8), 1 mM EDTA (pH 7.6), and 0.5% SDS at 1-1.5° C. below the T_m , and a final wash solution of 6×SSC at 22° C.; and (iii) hybridization solution of 6×SSC and 1% SDS or 3 M TMACI, 0.01 M sodium phosphate (pH 6.8), 1 mM EDTA (pH 7.6), 0.5% SDS, 100 µg/ml denatured salmon sperm DNA, and 0.1% nonfat dried milk, hybridization temperature.

[0156] The detection of hybrid duplexes can be carried out by a number of methods. Typically, hybridization duplexes are separated from unhybridized nucleic acids and the labels bound to the duplexes are then detected. Such labels refer to radioactive, fluorescent, biological, or enzymatic tags or labels of standard use in the art. A label can be conjugated to either the oligonucleotide probes or the nucleic acids derived from the biological sample (target). For example, oligonucleotides of the present invention can be labeled subsequent to synthesis, by incorporating biotinylated dNTPs or rNTP, or by some similar means (e.g., photo-cross-linking a psoralen derivative of biotin to RNAs), followed by addition of labeled streptavidin (e.g., phycoerythrin-conjugated streptavidin) or the equivalent. Alternatively, when fluorescently-labeled oligonucleotide probes are used, fluorescein, lissamine, phycoerythrin, rhodamine (Perkin Elmer Cetus), Cy2, Cy3, Cy3.5, Cy5, Cy5.5, Cy7, Fluor X (Amersham), and/or others (see,

e.g., Kricka, J. D. (1992), "Nonisotopic DNA Probe Techniques," Academic Press, San Diego) can be attached to the oligonucleotides.

[0157] Traditional hybridization assays include PCR, RT-PCR, RNase protection, in-situ hybridization, primer extension, Southern blot, Northern Blot, and dot blot analysis.

[0158] Those skilled in the art will appreciate that wash steps may be employed to wash away excess target DNA or probe as well as unbound conjugate. Further, standard heterogeneous assay formats are suitable for detecting the hybrids using the labels present on the oligonucleotide primers and probes.

[0159] Two recently developed assays allow hybridization-based allele discrimination with no need for separations or washes (see Landegren, U. et al. (1998). Reading bits of genetic information: methods for single-nucleotide polymorphism analysis. *Genome Res* 8(8), 769-776). The TaqMan® assay takes advantage of the 5' nuclease activity of Taq DNA polymerase to digest a DNA probe annealed specifically to the accumulating amplification product. TaqMan probes are labeled with a donor-acceptor dye pair that interact via fluorescence energy transfer. C1 cleavage of the TaqMan probe by the advancing polymerase during amplification dissociates the donor dye from the quenching acceptor dye, greatly increasing the donor fluorescence. All reagents necessary to detect two allelic variants can be assembled at the beginning of the reaction and the results are monitored in real time (see Livak, K. J. and Hainner, J. W. (1994). A microtiter plate assay for determining apolipoprotein E genotype and discovery of a rare allele. *Hum Mutat* 3(4), 379-385). In an alternative homogeneous hybridization-based procedure, molecular beacons are used for allelic discrimination. Molecular beacons are hairpin-shaped oligonucleotide probes that report the presence of specific nucleic acids in homogeneous solutions. When they bind to their targets they undergo a conformational reorganization that restores the fluorescence of an internally quenched fluorophore (Tyagi, S. et al. (1998). Multicolor molecular beacons for allele discrimination. *Nat Biotechnol* 16(1), 49-53).

[0160] It will be appreciated that a variety of controls may be usefully employed to improve accuracy of hybridization assays. For instance, samples may be hybridized to an irrelevant probe and treated with RNase A prior to hybridization, to assess false hybridization.

[0161] U.S. Pat. No. 5,451,503 provides several examples of oligonucleotide configurations which can be utilized to detect SNPs in template DNA or RNA.

[0162] Hybridization to oligonucleotide arrays—The chip/array technology has already been applied with success in numerous cases. For example, the screening of mutations has been undertaken in the BRCA1 gene, in *S. cerevisiae* mutant strains, and in the protease gene of HIV-1 virus (see: Hacia, J G et al. (1996). Detection of heterozygous mutations in BRCA1 using high density oligonucleotide arrays and two-colour fluorescence analysis. *Nat Genet.* 14(4), 441-447; Shoemaker, D. D. et al. (1996). Quantitative phenotypic analysis of yeast deletion mutants using a highly parallel molecular bar-coding strategy. *Nat Genet.* 14(4), 450-456; and Kozal, M. J. et al. (1996). Extensive polymorphisms observed in HIV-1 Glade B protease gene using high-density oligonucleotide arrays. *Nat Med* 2(7), 753-759).

[0163] The nucleic acid sample that includes the candidate region to be analyzed is isolated, amplified, and labeled with a reporter group. This reporter group can be a fluorescent

group such as phycoerythrin. The labeled nucleic acid is then incubated with the probes immobilized on the chip using a fluidics station. For example, Manz et al. describe the fabrication of fluidics devices and particularly microcapillary devices, in silicon and glass substrates (Manz, A. et al. (1993). Planar chip technology for miniaturization of separation systems. *Adv in Chromatogr* 33, 1-66).

[0164] Once the reaction is completed, the chip is inserted into a scanner and patterns of hybridization are detected. The hybridization data is collected from a signal emitted from the reporter groups already incorporated into the nucleic acid, which is now bound to the probes attached to the chip. Probes that perfectly match a sequence of the nucleic acid sample generally produce stronger signals than those that have mismatches. Since the sequence and position of each probe immobilized on the chip is known, the identity of the nucleic acid hybridized to a given probe can be determined.

[0165] For single-nucleotide polymorphism analyses, sets of four oligonucleotide probes (one for each base type), preferably sets of two oligonucleotide probes (one for each base type of the biallelic marker), are generally designed that span each position of a portion of the candidate region found in the nucleic acid sample, differing only in the identity of the polymorphic base. The relative intensity of hybridization to each series of probes at a particular location allows the identification of the base corresponding to the polymorphic base of the probe.

[0166] It will be appreciated that the use of direct electric field control improves the determination of single base mutations (Nanogen). A positive field increases the transport rate of negatively charged nucleic acids and results in a 10-fold increase in hybridization rates. Using this technique, single base pair mismatches are detected in less than 15 seconds (see Sosnowski, R. G. et al. (1997). Rapid determination of single base mismatch mutations in DNA hybrids by direct electric field control. *Proc Natl Acad Sci USA* 94(4), 1119-1123).

[0167] Integrated systems—Another technique which may be used to analyze sequence alterations includes multicomponent integrated systems, which miniaturize and compartmentalize processes such as PCR and capillary electrophoresis reactions in a single functional device. An example of such a technique is disclosed in U.S. Pat. No. 5,589,136, which describes the integration of PCR amplification and capillary electrophoresis in chips.

[0168] Integrated systems are preferably employed along with microfluidic systems. These systems comprise a pattern of microchannels designed onto a glass, silicon, quartz, or plastic wafer included on a microchip. The movements of the samples are controlled by electric, electro-osmotic, or hydrostatic forces applied across different areas of the microchip, to create functional microscopic valves and pumps with no moving parts. Varying the voltage controls the liquid flow at intersections between the micro-machined channels and changes the liquid flow rate for pumping across different sections of the microchip.

[0169] When identifying sequence alterations, a microfluidic system may integrate nucleic acid amplification, microsequencing, capillary electrophoresis, and a detection method such as laser-induced fluorescence detection. In a first step, the DNA sample is amplified, preferably by PCR. The amplification product is then subjected to automated microsequencing reactions using ddNTPs (with specific fluorescence for each ddNTP) and the appropriate oligonucleotide microsequencing primers, which hybridize just upstream of

the targeted polymorphic base. Once the extension at the 3' end is completed, the primers are separated from the unincorporated fluorescent ddNTPs by capillary electrophoresis. The separation medium used in capillary electrophoresis can for example be polyacrylamide, polyethylene glycol, or dextran. The incorporated ddNTPs in the single-nucleotide primer extension products are identified by fluorescence detection. This microchip can be used to process 96 to 384 samples in parallel. It can use the typical four-color laser-induced fluorescence detection of ddNTPs.

[0170] It will be appreciated that when utilized along with automated equipment, the above-described detection methods can be both rapidly and easily used to screen multiple samples for the CD24 or APC alterations of the present invention.

[0171] Allele-specific oligonucleotides (ASOs)—In this method, an allele-specific oligonucleotide (ASO) is designed to hybridize in proximity to the polymorphic nucleotide, such that a primer extension or ligation event can be used as the indicator of a match or a mismatch. Hybridization with radioactively labeled ASOs has also been applied to the detection of specific SNPs (Connor, B. J. et al. (1983), *Proc Natl Acad Sci USA*, 80, 278-282). The method is based on the differences in the melting temperatures of short DNA fragments differing by a single nucleotide. Stringent hybridization and washing conditions can differentiate between mutant and wild-type alleles.

[0172] Denaturing/Temperature Gradient Gel Electrophoresis (DGGE/TGGE)—Two other methods rely on detecting changes in electrophoretic mobility in response to minor sequence changes. One of these methods, termed “Denaturing Gradient Gel Electrophoresis” (DGGE), is based on the observation that slightly different sequences will display different patterns of local melting when electrophoretically resolved on a gradient gel. In this manner, variants can be distinguished, as differences in melting properties of homoduplexes versus heteroduplexes differing in a single nucleotide can be used to detect the presence of SNPs in the target sequences due to the corresponding change in electrophoretic mobilities. The fragments to be analyzed, usually PCR products, are “clamped” at one end by a long stretch of G-C base pairs (30-80) to allow complete denaturation of the sequence of interest without complete dissociation of the strands. The attachment of a GC “clamp” to the DNA fragments increases the fraction of mutations that can be recognized by DGGE (Abrams, E. S. et al. (1990). *Comprehensive detection of single base changes in human genomic DNA using denaturing gradient gel electrophoresis and a GC clamp*. *Genomics* 7, 463-475). Attaching a GC clamp to one primer is critical to ensure that the amplified sequence has a low dissociation temperature (Sheffield, V. C. et al. (1989). *Attachment of a 40-Base-Pair G+C-Rich Sequence (GC-Clamp) to Genomic DNA Fragments by the Polymerase Chain Reaction Results in Improved Detection of Single-Base Changes*. *Proc Natl Acad Sci* 86, 232-236; and Lerman, L. S. and Silverstein, K. (1987). *Computational simulation of DNA melting and its application to denaturing gradient gel electrophoresis*. *Meth Enzymol* 155, 482-501). Modifications of the technique have been developed using temperature gradients (Wartell, R. M. et al. (1990). *Detecting base pair substitutions in DNA fragments by temperature-gradient gel electrophoresis*. *Nucl Acids Res*, 18(9), 2699-2705) and the method can be also applied to RNA:RNA duplexes (Smith, F. I. et al. (1988). *Novel method of detecting single base substitu-*

tions in RNA molecules by differential melting behavior in solution. *Genomics* 3(3), 217-223).

[0173] Limitations on the utility of DGGE include the requirement that the denaturing conditions must be optimized for each type of DNA to be tested. Furthermore, the method requires specialized equipment to prepare the gels and maintain the needed high temperatures during electrophoresis. The expense associated with the synthesis of the clamping tail on one oligonucleotide for each sequence to be tested is also a major consideration. In addition, long running times are required for DGGE. The long running time of DGGE was shortened in a modification of the method called “Constant Denaturant Gel Electrophoresis” (CDGE) (Borresen, A. et al. (1991). *Constant Denaturant Gel Electrophoresis as a Rapid Screening Technique for p53 Mutations*. *Proc Natl Acad Sci USA* 88(19), 8405-8409). CDGE requires that gels be run under different denaturant conditions in order to reach high efficiency for the detection of SNPs.

[0174] A technique analogous to DGGE, termed “Temperature Gradient Gel Electrophoresis” (TGGE), uses a thermal gradient rather than a chemical denaturant gradient (Scholz, R. B. et al. (1993). *Rapid screening for Tp53 mutations by temperature gradient gel electrophoresis: a comparison with SSCP analysis*. *Hum Mol Genet*. 2(12), 2155-2158). TGGE requires the use of specialized equipment that can generate a temperature gradient perpendicularly oriented relative to the electrical field. TGGE can detect mutations in relatively small fragments of DNA; therefore, scanning large gene segments requires the use of multiple PCR products prior to running the gel.

[0175] Single-Strand Conformation Polymorphism (SSCP)—Another common method, called “Single-Strand Conformation Polymorphism” (SSCP), was developed by Hayashi, Sekya, and colleagues (reviewed by Hayashi, K. (1991). *PCR-SSCP: A simple and sensitive method for detection of mutations in the genomic DNA*. *PCR Meth Appl* 1, 34-38), and is based on the observation that single-strand nucleic acids can take on characteristic conformations under non-denaturing conditions, and these conformations influence electrophoretic mobility. The complementary strands assume sufficiently different structures that one strand may be resolved from the other. Changes in sequences within the fragment will also change the conformation, consequently altering the mobility and allowing this to be used as an assay for sequence variations (Orita, M. et al. (1989a). *Rapid and sensitive detection of point mutations and DNA polymorphisms using the polymerase chain reaction*. *Genomics* 5, 874-879; Orita, M. et al. (1989b). *Detection of Polymorphisms of Human DNA by Gel Electrophoresis as Single-Strand Conformation Polymorphisms*. *Proc Natl Acad Sci USA* 86, 2766-2770).

[0176] The SSCP process involves denaturing a DNA segment (e.g., a PCR product) that is labeled on both strands, followed by slow electrophoretic separation in a non-denaturing polyacrylamide gel to allow intra-molecular interactions to form without disturbance during the run. This technique is extremely sensitive to variations in gel composition and temperature. A serious limitation of this method is the relative difficulty encountered in comparing data generated in different laboratories, under apparently similar conditions.

[0177] Dideoxy fingerprinting (ddF)—Dideoxy fingerprinting (ddF) is another technique developed to scan genes for the presence of mutations (Liu, Q. and Sommer, S. S. (1994). *Parameters affecting the sensitivities of dideoxy fin-*

gerprinting and SSCP. PCR Methods Appl 4, 97-108). The ddF technique combines components of Sanger dideoxy sequencing with SSCP. First, a dideoxy sequencing reaction is performed using one dideoxy terminator. Next, the reaction products are electrophoresed on non-denaturing polyacrylamide gels to detect alterations in mobility of the termination segments, as in SSCP analysis. While ddF is an improvement over SSCP in terms of increased sensitivity, ddF requires the use of expensive dideoxynucleotides and the technique is still limited to the analysis of fragments of the size suitable for SSCP (i.e., fragments of 200-300 bases) for optimal detection of mutations.

[0178] In addition to the above limitations, all of these methods for detecting single mutations are limited as to the size of the nucleic acid fragment that can be analyzed. For the direct sequencing approach, sequences of greater than 600 base pairs require cloning, with the consequent delays and expense of either deletion sub-cloning or primer walking, in order to cover the entire fragment. SSCP and DGGE have especially severe size limitations. Because of reduced sensitivity to sequence changes, these methods are not considered suitable for larger fragments. Although SSCP is reportedly able to detect 90% of single-base substitutions within a 200 base-pair fragment, the detection drops to less than 50% for 400 base-pair fragments. Similarly, the sensitivity of DGGE decreases as the length of the fragment reaches 500 base pairs. The ddF technique, as a combination of direct sequencing and SSCP, is also limited by the relatively small size of the DNA that can be screened.

[0179] Pyrosequencing™ analysis—This technique (Pyrosequencing, Inc., Westborough, Mass., USA) is based on the hybridization of a sequencing primer to a single-stranded, PCR-amplified DNA template in the presence of DNA polymerase, ATP sulfurylase, luciferase, and apyrase enzymes and the adenosine 5'-phosphosulfate (APS) and luciferin substrates. In the second step the first of four deoxynucleotide triphosphates (dNTP) is added to the reaction and the DNA polymerase catalyzes the incorporation of the deoxynucleotide triphosphate into the DNA strand, if it is complementary to the base in the template strand. Each incorporation event is accompanied by release of pyrophosphate (PPi) in a quantity equimolar to the amount of incorporated nucleotide. In the last step the ATP sulfurylase quantitatively converts PPi to ATP in the presence of adenosine 5'-phosphosulfate. The ATP drives the luciferase-mediated conversion of luciferin to oxyluciferin that generates visible light in amounts that are proportional to the amount of ATP. The light produced in the luciferase-catalyzed reaction is detected by a charge-coupled device (CCD) camera and seen as a peak in a Pyrogram™. The strength of each light signal is proportional to the number of nucleotides incorporated.

[0180] Acycloprime™ analysis—This technique (PerkinElmer, Boston, Mass., USA) is based on fluorescent polarization (FP) detection. Following PCR amplification of the sequence containing the SNP of interest, excess primer and dNTPs are removed through incubation with shrimp alkaline phosphatase (SAP) and exonuclease I. Once the enzymes are heat-inactivated, the Acycloprime-FP process uses a thermostable polymerase to add one of two fluorescent terminators to a primer that ends immediately upstream of the SNP site. The terminator(s) added are identified by their increased FP and represent the allele(s) present in the original DNA sample. The Acycloprime process uses AcycloPol™, a novel mutant thermostable polymerase from the domain Archaea, and a

pair of AcycloTerminators™ labeled with R110 and TAMRA, representing the possible alleles for the SNP of interest. AcycloTerminator non-nucleotide analogues are biologically active with a variety of DNA polymerases. Similarly to 2',3'-dideoxynucleotide-5'-triphosphates, the acyclic analogues function as chain terminators. The analogue is incorporated by the DNA polymerase in a base-specific manner onto the 3'-end of the DNA chain; since there is no 3'-hydroxyl, the polymerase is unable to function in further chain elongation. It has been found that AcycloPol has a higher affinity and specificity for derivatized AcycloTerminators than various Taq mutants have for derivatized 2',3'-dideoxynucleotide terminators.

[0181] Reverse dot-blot—This technique uses labeled sequence-specific oligonucleotide probes and unlabeled nucleic acid samples. Activated primary amine-conjugated oligonucleotides are covalently attached to carboxylated nylon membranes. After hybridization and washing, the labeled probe or a labeled fragment of the probe can be released using oligomer restriction, i.e., the digestion of the duplex hybrid with a restriction enzyme. Circular spots or lines are visualized colorimetrically after incubation with streptavidin horseradish peroxidase, followed by development using tetramethylbenzidine and hydrogen peroxide, or alternatively via chemiluminescence after incubation with avidin alkaline phosphatase conjugate and a luminous substrate susceptible to enzyme activation, such as CSPD, followed by exposure to x-ray film.

[0182] It will be appreciated that advances in the field of SNP detection have provided additional accurate, easy, and inexpensive large-scale SNP genotyping techniques, such as: dynamic allele-specific hybridization (DASH) (Howell, W. M. et al. (1999). Dynamic allele-specific hybridization (DASH). *Nat Biotechnol* 17, 87-88); microplate array diagonal gel electrophoresis (MADGE) (Day, I. N. et al. (1995). High-throughput genotyping using horizontal polyacrylamide gels with wells arranged for microplate array diagonal gel electrophoresis (MADGE). *Biotechniques* 19, 830-835); the TaqMan® system (Holland, P. M. et al. (1991). Detection of specific polymerase chain reaction product by utilizing the 5'→3' exonuclease activity of *Thermus aquaticus* DNA polymerase. *Proc Natl Acad Sci USA* 88, 7276-7280); various DNA "chip" technologies such as GeneChip® microarrays (e.g., SNP chips, Affymetrix, USA), which is disclosed in U.S. Pat. No. 6,300,063 to Lipshutz et al. 2001, which is fully incorporated herein by reference; genetic bit analysis (GBA®), described by Golet, P. et al. (PCT Appl. No. 92/15712); peptide nucleic acids (PNA) (Ren, B. et al. (2004). Straightforward detection of SNPs in double-stranded DNA by using exonuclease III/nuclease S1/PNA system. *Nucleic Acids Res.* 32(4), e42) and locked nucleic acid (LNA) probes (Latorra, D. et al. (2003). Enhanced allele-specific PCR discrimination in SNP genotyping using 3' locked nucleic acid (LNA) primers. *Hum Mutat* 22(1), 79-85); molecular beacons (Abravaya, K. et al. (2003). Molecular beacons as diagnostic tools: technology and applications. *Clin Chem Lab Med* 41, 468-474); intercalating dyes (Germer, S, and Higuchi, R. (1999). Single-tube genotyping without oligonucleotide probes. *Genome Res* 9, 72-78); FRET primers (Solinas, A. et al. (2001). Duplex Scorpion primers in SNP analysis and FRET applications. *Nucleic Acids Res* 29(20), E96); AlphaScreen™ (Beaudet, L. et al. (2001). Homogeneous assays for single-nucleotide polymorphism typing using AlphaScreen. *Genome Res* 11(4), 600-608); SNPstream® (Bell, P. A. et al.

(2002). SNPstream UHT: ultra-high throughput SNP genotyping for pharmacogenomics and drug discovery. *Biotechniques Supplement* 70-72, 74, 76-77); multiplex minisequencing (Curcio, M. et al. (2002). Multiplex high-throughput solid-phase minisequencing by capillary electrophoresis and liquid core waveguide fluorescence detection. *Electrophoresis* 23(10), 1467-1472); SnaPshot™ Multiplex System (Turner, D. et al. (2002). Typing of multiple single nucleotide polymorphisms in cytokine and receptor genes using SnaPshot. *Hum Immunol* 63(6), 508-513); MassEXTEND™ (Cashman, J. R. et al. (2001). Population distribution of human flavin-containing monooxygenase form 3: gene polymorphisms. *Drug Metab Dispos* 29, 1629-1637); GOOD assay (Sauer, S, and Gut, I. G. (2003). Extension of the GOOD assay for genotyping single nucleotide polymorphisms by matrix-assisted laser desorption/ionization mass spectrometry. *Rapid Commun Mass Spectrom* 17, 1265-1272); microarray minisequencing (Liljedahl, U. et al. (2003). A microarray minisequencing system for pharmacogenetic profiling of antihypertensive drug response. *Pharmacogenetics* 13, 7-17); arrayed primer extension (APEX) (Tonnisson, N. et al. (2000). Unravelling genetic data by arrayed primer extension. *Clin Chem Lab Med* 38, 165-170); microarray primer extension (O'Meara, D. et al. (2002). SNP typing by apyrase-mediated allele-specific primer extension on DNA microarrays. *Nucleic Acids Res* 30, e75); tag arrays (Fan, J. B. et al. (2000). Parallel genotyping of human SNPs using generic high-density oligonucleotide tag arrays. *Genome Res* 10(6), 853-860); template-directed incorporation (TDI) (Akula, N. et al. (2002). Utility and accuracy of template-directed dye-terminator incorporation with fluorescence-polarization detection for genotyping single nucleotide polymorphisms. *Biotechniques* 32, 1072-1076, 1078); fluorescence polarization (Hsu, T. M. et al. (2001). Universal SNP genotyping assay with fluorescence polarization detection. *Biotechniques* 31, 560, 562, 564-568, passim); colorimetric oligonucleotide ligation assay (OLA) (Nickerson, D. A. et al. (1990). Automated DNA diagnostics using an ELISA-based oligonucleotide ligation assay. *Proc Natl Acad Sci USA* 87, 8923-8927); sequence-coded OLA (Gasparini, P. et al. (1999). Analysis of 31 CFTR mutations by polymerase chain reaction/oligonucleotide ligation assay in a pilot screening of 4476 newborns for cystic fibrosis. *J Med Screen* 6, 67-69); microarray ligation; ligase chain reaction; padlock probes; rolling circle amplification; invader assays (Shi, M. M. (2001). Enabling large-scale pharmacogenetic studies by high-throughput mutation detection and genotyping technologies. *Clin Chem* 47, 164-172); coded microspheres (Rao, K. V. et al. (2003). Genotyping single nucleotide polymorphisms directly from genomic DNA by invasive cleavage reaction on microspheres. *Nucleic Acids Res* 31, e66); MassARRAY™ (Leushner, J. and Chiu, N. H. (2000). Automated mass spectrometry: a revolutionary technology for clinical diagnostics. *Mol Diagn* 5, 341-348); heteroduplex analysis; mismatch cleavage detection; exonuclease-resistant nucleotide derivative (U.S. Pat. No. 4,656, 127); and other conventional techniques as described in: Sheffield et al. (1989); White, M. B. et al. (1992). Detecting single base substitution as heteroduplex polymorphisms. *Genomics* 12, 301-306; Grompe, M. et al. (1989). Scanning detection of mutations in human ornithine transcarbamoylase by chemical mismatch cleavage. *Proc Natl Acad Sci USA*

86(15), 5888-5892; and Grompe, M. (1993). The rapid detection of unknown mutations in nucleic acids. *Nat Genet* 5, 111-117.

[0183] As mentioned hereinabove, sequence alterations (e.g., the Val/Ala at position 57 of the CD24 polypeptide set forth in SEQ ID NO:2, the Ile/Lys at position 1307 of the APC polypeptide set forth in SEQ ID NO:8 and/or the Glu/Gln at position 1317 of the APC polypeptide set forth in SEQ ID NO:8) can also be determined at the protein level.

[0184] Briefly, proteins are extracted from a sample of any source of cells or cell content of the subject (as described hereinabove) and the presence of the specific polymorphisms of the CD24 and APC proteins is detected. While chromatography and electrophoretic methods are preferably used to detect large variations in CD24 molecular weight, such as detection of a truncated CD24 or APC protein generated by the CD24 or APC sequence alterations, immunodetection assays such as ELISA and Western blot analysis, immunohistochemistry, and the like, which may be effected using antibodies specific to CD24 or APC sequence alterations, are preferably used to detect point mutations and subtle changes in molecular weight.

[0185] Thus, the present invention also envisages the use of serum immunoglobulins, polyclonal antibodies or fragments thereof (i.e., immunoreactive derivatives thereof), monoclonal antibodies or fragments thereof having at least a portion of an antigen-binding region, including the fragments described hereinbelow, chimeric or humanized antibodies, and complementarity-determining regions (CDR) for detection of sequence alterations in the protein level (e.g., the Val/Ala polymorphisms at position 57 of the CD24 polypeptide set forth by SEQ ID NO:2; and/or the Ile/Lys at position 1307 of the APC polypeptide set forth in SEQ ID NO:8; and/or the Glu/Gln at position 1317 of the APC polypeptide set forth in SEQ ID NO:8).

[0186] The reagents described hereinabove for detection of immunocomplex formation (e.g., for determining CD24 presence and/or level in a biological sample) or hybridization when oligonucleotides are used [e.g., for determining the of a specific CD24 (e.g., the thymidine nucleotide at position 280 of SEQ ID No:1) or APC (e.g., the adenosine nucleotide at position 3977 of SEQ ID NO:7 and/or the cytosine nucleotide at position 4006 of SEQ ID NO:7) genotype of a subject] may be included in a diagnostic kit/article of manufacture preferably along with appropriate instructions for use and labels indicating FDA approval for use in diagnosing cancer or a pre-malignant lesion, for monitoring efficacy of cancer therapy and/or for determining the predisposition of a subject to gastrointestinal cancer.

[0187] Such a kit can include, for example, at least one container including at least one of the above described diagnostic agents (e.g., a CD24 specific antibody, a CD24 oligonucleotide capable of hybridizing a specific CD24 polymorph) and an imaging reagent packed in another container (e.g., enzymes, secondary antibodies, buffers, chromogenic substrates, fluorogenic material). The kit may also include appropriate buffers and preservatives for improving the shelf-life of the kit.

[0188] As used herein the term "about" refers to $\pm 10\%$.

[0189] Additional objects, advantages, and novel features of the present invention will become apparent to one ordinarily skilled in the art upon examination of the following examples, which are not intended to be limiting. Additionally, each of the various embodiments and aspects of the present

invention as delineated hereinabove and as claimed in the claims section below finds experimental support in the following examples.

EXAMPLES

[0190] Reference is now made to the following examples, which together with the above descriptions, illustrate the invention in a non limiting fashion.

[0191] Generally, the nomenclature used herein and the laboratory procedures utilized in the present invention include molecular, biochemical, microbiological and recombinant DNA techniques. Such techniques are thoroughly explained in the literature. See, for example, "Molecular Cloning: A Laboratory Manual" Sambrook et al., (1989); "Current Protocols in Molecular Biology" Volumes I-III Ausubel, R. M., ed. (1994); Ausubel et al., "Current Protocols in Molecular Biology", John Wiley and Sons, Baltimore, Md. (1989); Perbal, "A Practical Guide to Molecular Cloning", John Wiley & Sons, New York (1988); Watson et al., "Recombinant DNA", Scientific American Books, New York; Birren et al. (eds) "Genome Analysis: A Laboratory Manual Series", Vols. 1-4, Cold Spring Harbor Laboratory Press, New York (1998); methodologies as set forth in U.S. Pat. Nos. 4,666,828; 4,683,202; 4,801,531; 5,192,659 and 5,272,057; "Cell Biology: A Laboratory Handbook", Volumes I-III Cellis, J. E., ed. (1994); "Current Protocols in Immunology" Volumes I-III Coligan J. E., ed. (1994); Stites et al. (eds), "Basic and Clinical Immunology" (8th Edition), Appleton & Lange, Norwalk, Conn. (1994); Mishell and Shiigi (eds), "Selected Methods in Cellular Immunology", W. H. Freeman and Co., New York (1980); available immunoassays are extensively described in the patent and scientific literature, see, for example, U.S. Pat. Nos. 3,791,932; 3,839,153; 3,850,752; 3,850,578; 3,853,987; 3,867,517; 3,879,262; 3,901,654; 3,935,074; 3,984,533; 3,996,345; 4,034,074; 4,098,876; 4,879,219; 5,011,771 and 5,281,521; "Oligonucleotide Synthesis" Gait, M. J., ed. (1984); "Nucleic Acid Hybridization" Hames, B. D., and Higgins S. J., eds. (1985); "Transcription and Translation" Hames, B. D., and Higgins S. J., Eds. (1984); "Animal Cell Culture" Freshney, R. I., ed. (1986); "Immobilized Cells and Enzymes" IRL Press, (1986); "A Practical Guide to Molecular Cloning" Perbal, B., (1984) and "Methods in Enzymology" Vol. 1-317, Academic Press; "PCR Protocols: A Guide To Methods And Applications", Academic Press, San Diego, Calif. (1990); Marshak et al., "Strategies for Protein Purification and Characterization—A Laboratory Course Manual" CSHL Press (1996); all of which are incorporated by reference as if fully set forth herein. Other general references are provided throughout this document. The procedures therein are believed to be well known in the art and are provided for the convenience of the reader. All the information contained therein is incorporated herein by reference.

Example 1

CD24 Expression is Regulated in Ras Mutant Transformed Cell Lines

[0192] Differential gene expression analysis, using microarrays, provides a comprehensive profile of the relative mRNA levels, thus providing new insight into the various biologic pathways involved in disease pathogenesis, progression, and response to therapy. This technique emerges as a valuable potential tool for classifying histologically similar

tumors into molecularly specific subtypes, which may predict clinical outcome in individual patients. Microarray technology has been applied successfully in the study of many malignancies, including CRC (12-16).

[0193] To identify genes involved in CRC progression, the present inventors have transfected normal enterocytes with a variety of oncogenes and evaluated the gene expression pattern of the transformed cells before and after the exposure to Celecoxib (Pfizer, NY, USA), a specific COX-2 inhibitor, using the rat Affymetrix expression array, as follows.

[0194] Materials and Experimental Methods

[0195] In vitro cell model—The present inventors have developed an in vitro model which consisted of a variety of normal and transformed intestinal cell lines. Normal enterocytes derived from rat ileum (IEC 18 cells), were transfected with a variety of oncogenes. Among them, mutant ras transformed enterocytes (designated R1 cells) possess a very aggressive phenotype. These cells were produced by co-transfection of the drug resistance selectable marker tk-neo and the plasmid pMKcys, which encodes a mini human c-K-ras gene (15 kb) that contains a cysteine mutation at codon 12. Ras mutations are found in the majority of CRC patients. This cell line-based system is much more coherent and useful when one wishes to apply the new technique of expression micro-array, because it consists only of normal and malignant cells and is devoid of inflammatory, necrotic and stromal cells that might obstruct and mask the true effect of the malignant transformation.

[0196] Gene expression studies were performed using the Affymetrix rat (RG-U34) Genechip® according to manufacturer's instructions using RNA from the in vitro cell model.

[0197] Experimental Results

[0198] CD24 is upregulated in intestinal cells transformed with Ras mutants and its expression level is reversed following treatment with Celecoxib—To characterize altered gene expression pattern following malignant transformation in intestinal epithelial cells, RNA extracted from intestinal cell lines transformed with various oncogenes was subjected to analysis using the rat expression arrays [Affymetrix rat (RG-U34) Genechip®]. Specifically, differential gene expression was analyzed to compare IEC-18 and R1 cells [Sutter T, Miyake M, Kahn S M, Venkatraj V S, Sobrino A, Warburton D, Holt P R, Weinstein I B. Increased expression of cyclin D1 and the Rb tumor suppressor gene in c-K-ras transformed rat enterocytes. *Oncogene* 2; 12(9):1903-8, 1996], before and after short and long durations of exposures to Celecoxib (Pfizer, NY, USA), a specific COX-2 inhibitor and a proved chemo-preventive agent in the colon. Scanned output files were analyzed and the expression value of each gene was determined. Of the approximately 20,000 genes present on the Affymetrix chip, 1,081 were differentially expressed (>2-fold) in tumor cells (Sagiv E., et al., 2006, *Gastroenterology*, 131: 630-639; and data not shown). Of these, a cluster of 71 genes showed a reversion to normal expression levels following short and long treatments with celecoxib. One of the genes showing reversal to normal expression is the gene encoding for CD24 (GenBank Accession No. NM_013230; SEQ ID NO:1).

Example 2

CD24 is Overexpressed at Early Events of CRC Carcinogenesis

[0199] As described in the Background section hereinabove, Weichert W., et al. (*Clin. Cancer Res.* 2005, 11: 6574-

6581) tested the expression pattern of CD24 in 146 colorectal carcinomas (CRC) and found that while in 68.7% of the tumors CD24 exhibited a membranous staining, in 84.4% of the tumors CD24 is expressed in the cytoplasm. In addition, in 10% of the cases an exceptionally strong cytoplasmic CD24 expression was observed which correlated with higher tumor stage and poorer prognosis. However, to date the expression level of CD24 in pre-malignant tumors of the GI tract was never tested.

[0200] Based on the regulated expression pattern of CD24 in cell lines transformed with ras mutants (see Example 1, hereinabove), and in order to determine the involvement of CD24 in the early events leading to GI tracts carcinogenesis, immunohistochemical analyses were performed in a comprehensive group of 398 samples including normal tissue, pre-malignant tumors and malignant tumors of the entire GI tract, as follows.

[0201] Materials and Experimental Methods

[0202] Immunohistochemical analysis Immunohistochemical analyses were performed with an avidin-biotin complex immunoperoxidase technique (Umansky M., Rattan J., et al., *Oncogene* 2001; 20: 7987-7991). Four-micrometer tissue sections were mounted on poly-L-lysine-coated slides. After deparaffinization in Americlear (Baxter, McGaw Parl, IL) and absolute ethanol, sections were hydrated through a series of graded alcohol, distilled water, and phosphate-buffered saline (PBS) at pH 7.4. Slides were then immersed in 10 mM citrate buffer (pH 6) and microwaved at 750 W for a total of 10 minutes. After blocking with goat serum for 20 minutes, the primary antibodies, anti CD24 monoclonal antibody (Ab-2, clone 24Co2; Neo-markers, Fremont, Calif.), were applied and incubated overnight at 4° C. in a high-humidity chamber.

tions. Color development was accomplished with 0.375 mg/dL of 3,3'-diaminobenzidine tetrahydrochloride solution (Sigman Chemical, Co, St. Louis, Mo.) containing 0.0003% hydrogen peroxide. Slides were counterstained with hematoxylin and dehydrated, and coverslips were applied using Acrytol mounting medium (Surgipath Medical Industries, Richmond, Ill.).

[0203] Experimental Results

[0204] CD24 is over-expressed in various adenomas and carcinomas of the colon, rectum and entire GI tract—As is shown in Table 1, hereinbelow, the immunohistochemical analysis validated the array results related to the over-expression of this gene (CD24) in respect to the cellular protein milieu, as well as the projection of the results obtained from the rat model onto human CRC tissues. To this end, CD24 expression was determined in 398 samples spanning the entire GI tract (benign and malignant), 66 of them were CRC samples.

[0205] Positive luminal membrane staining for CD24 was seen in 49 out of 54 (90.7%) colorectal adenomatous polyps (pre-malignant tumors) and in 57 out of 66 (86.3%) adenocarcinomas (Table 1). It should be noted that the positive membrane staining was to the same extent in the pre-malignant (adenomas) as in the malignant tumors. On the other hand, membrane staining was positive in only 9 out of 54 (16.6%) normal appearing mucosa, adjacent to CRC samples. Positive membrane staining was not related to the gender or age of the patient, neither to the size or degree of dysplasia in adenomatous polyps (data not shown). In addition, positive membrane staining was seen in 77.9% of the pre-malignant adenomas of the entire GI tract and in 71.2% of the carcinomas of the entire GI tract (Table 1).

TABLE 1

CD24 staining	Immunohistochemical analysis of CD24 in CRC and other GI tumors					
	Colon and Rectum			Entire GI tract		
	Normal Tissue	Adenoma	Carcinoma	Normal Tissue	Adenoma	Carcinoma
Negative N (%)	45 (83.3)	5 (9.2)	9 (13.6)	122 (83)	21 (22.1)	45 (28.8)
Positive N (%)	9 (16.6)	49 (90.7)	57 (86.3)	25 (17)	74 (77.9)	111 (71.2)
Total N (%)	54 (100)	54 (100)	66 (100)	147 (100)	95 (100)	156 (100)

Table 1: 398 normal and tumor specimens obtained from normal adjacent mucosa and tumors of the entire GI tract (esophagus, stomach, pancreas, small and large bowel) were stained for CD24 using monoclonal anti-CD24 antibodies (Ab-2, clone 24C02; Neomarkers, Fremont, CA) and the staining of the membrane was recorded according to an intensity score on a scale of 0, 1, 2, and 3 of increasing intensity. Shown are the frequencies of positive membrane staining (of an intensity score higher than "1") in normal tissue, adenomas (pre-malignant lesions) and carcinomas of the entire GI tract (including the colon and rectum) as well as in the colon and rectum as a separate group.

Although all concentrations of primary antibody gave good membranous staining, the ideal concentration with minimal background was 20 µg/ml. As a negative control, duplicate sections of selected tissue samples were immunostained in the absence of the primary antibody. Subsequent steps utilized the Vectastain rabbit Elite ABC kit (Vector Laboratories, Burlingame, Calif.) according to the manufacturer's instruc-

[0206] The fact that CD24 was expressed to the same extent in adenomas (the pre-malignant stage of a carcinoma) as well as in all stages of CRC or the entire GI tract carcinomas indicates that expression of CD24 is an early event in the multi-step process of CRC carcinogenesis. Thus, the expression of CD24, not only in carcinomas (CRC and the entire GI tract), but already at the pre-malignant lesion, e.g., adenoma-

tous polyp suggests the use of CD24 as an early marker carcinogenic processes of the entire GI tract.

Example 3

Polymorphism in the CD24 Gene is of a Clinical Significance

[0207] Very little is known about polymorphism in the CD24 gene. Zhou Q., et al. 2003 (Proc. Natl. Acad. Sci. 100: 15041-15046) have described a single nucleotide polymorphism (SNP) in the human CD24 gene (C→T substitution at position 280 of GenBank Accession No. NM_013230; SEQ ID NO:1) resulting in a missense mutation [GCG (Ala) →GTG (Val) at position 57 of the CD24 protein set forth by SEQ ID NO:2; GenBank Accession No. NP_037362) immediately after the putative cleavage site of the GPI anchor, that is associated with an increased risk and a more rapid progression of Multiple Sclerosis.

[0208] The APC gene [protein—GenBank Accession No. NP_000029.2 (SEQ ID NO:8), mRNA—GenBank Accession No. NM_000038.3 (SEQ ID NO:7)] encodes a tumor suppressor protein, and is widely mutated as a first event in the carcinogenesis process of the colon and rectum. Laken et al (Laken S J, Petersen G M, Gruber S B, Oddoux, Vogelstein B. Familial colorectal cancer in Ashkenazim due to a hypermutable tract in APC. Nat Genet. 17: 79-83, 1997) identified the I1307K which results in a substitution of Lysine (K) for Isoleucine (I) in codon 1307 of the protein. The change does not affect the functionality of the protein but creates a sequence of 8 Adenines in the genes, which increase the risk for mistakes in the DNA polymerase activity and thus a 500 by region in high risk for mutability (Laken S J, et al., 1997). Previous studies performed by the present inventors (H. Strul, et al., 2003) demonstrated that this polymorphism does not contribute to the assessment of the risk for CRC.

[0209] E1317Q polymorphism in the APC protein does not have a known functional or phenotypic effect but it causes a mismatch repair activity and is related to higher risk for colorectal neoplasia.

[0210] Materials and Experimental Methods

[0211] Genotyping—Genomic DNA was extracted from peripheral blood lymphocytes. About 200 ng DNA were taken for real-time PCR reaction (for the APC SNPs) or RFLP analysis (for the CD24 SNP), as follows.

[0212] Determination of the Ala/Val polymorphism at position 57 of the CD24 protein—Genomic DNA was PCR amplified using the following primers: Forward: 5'-TTGT-TGCCACTTGGCATTGAGGC (SEQ ID NO:3) and Reverse: 5'-GGATTGGTTTAGAAGATGGGGAAA (SEQ ID NO:4) at annealing temperature of 50° C. The resulting CD24 PCR product is of 520 bp. The C→T change at position 280 of SEQ ID NO:1 yields a BstXI restriction enzyme site at nucleotide 327 of the PCR product, which allows the differentiation of the two CD24 alleles by restriction fragment length analysis. Thus, the DNA encoding the Val-57 polymorph is digested by BstXI to about 320 and 200 by and the DNA encoding the Ala-57 polymorph is undigested by BstXI and thus is of 520 bp.

[0213] Determining the I1307K polymorphism in the APC gene—The I1307K polymorphism is a substitution of isoleucine (I) (common allele) with lysine (K) (rare allele) at position 1307 of GenBank Accession No. NP_000029.2; SEQ ID NO:8; which results from the T→A substitution at nucleotide 3977 of NM_000038.3; SEQ ID NO:7. Briefly, genomic

DNA was PCR amplified using the following primers: Forward 5'-GATTCTGCTAATACCCTGCAAATAGCA-3' (SEQ ID NO:5) and reverse 5'-CCCTGCAGTCTGCTG-GATTTGG-3' (SEQ ID NO:6) primers. For real time PCR a sensor primer is designed according to the wild-type allele and downstream to it an anchor primer. Light reaction changes according to the temperature in which the sensor binds to the DNA and meets the anchor; the temperature is elevated with time and the time of reaction is measured. For the detection of the specific polymorphic nucleotide (T/A at position 3977 of SEQ ID NO:7) the anchor primer was: LC-Red640-TTTCAGGGTATTAGCAGAAATCTGCTTC-CTGTG-ph (SEQ ID NO:9) and sensor primer was: CCAATCTTTTCTTTTTTTTCT-FL (SEQ ID NO:10).

[0214] Determination of the E1317Q polymorphism in the APC gene—The E 1317Q polymorphism is a substitution of Glutamic acid (E) (common allele) with Glutamine (Q) (rare allele) at position 1317 of GenBank Accession No. NP_000029.2; SEQ ID NO:8; which results from the G→C substitution at nucleotide 4006 of NM_000038.3; SEQ ID NO:7. Briefly, genomic DNA was PCR amplified using the following primers: Forward 5'-GATTCTGCTAATACCCTGCAAATAGCA-3' (SEQ ID NO:5) and reverse 5'-CCCTGCAGTCTGCTGGATTGG-3' (SEQ ID NO:6) primers and detection of the specific polymorphic nucleotide (G/C at position 4006 of SQ ID NO:7) was by real time PCR using the anchor primer: TGCTGTGACACTGCTGGAACCTCGC-FL (SEQ ID NO:11) and sensor primer: ph-LC-Red705-CA-CAGGATCTTGAGCTGACCTAG (SEQ ID NO:12).

[0215] Experimental Results

[0216] CD24 expression is depended on the CD24 genotype at position 57 (Ala/Val 57)—Using the CD24 RFLP test the present inventors have found that HT29 cells, that express high level of the CD24 protein, exhibit the CD24^{V/V} (Val/Val at position 57 of the CD24 protein) genotype whereas, Panc1 cells and HCT116 cells that barely express the protein carry the CD24^{A/A} (Ala/Ala at position 57 of the CD24 protein) genotype. These results suggest that over-expression of the CD24 protein is associated with the Val-57 polymorph of CD24 protein. Still the majority of CD24 bearing CRC will not have the A/A genotype. In order to confirm this hypothesis, the CD24 genotypes were analyzed from peripheral blood DNA and the frequencies of the three genotypes were determined.

[0217] FIG. 4 depicts an example of the genotype analysis performed using restriction fragment length polymorphism (RFLP) of the Ala57Val polymorphism of the CD24 gene using the BstXI restriction enzyme.

[0218] The Val-57 polymorph is associated with increased risk to CRC carcinogenesis—A dataset of 1064 individuals (normal healthy subjects and CRC patients) with mean age 58.68 years, std. dev: 14.78, revealed that 61.75% of the population were Israeli Ashkenazi Jews and 25.47% were Israeli Sephardic Jews (the rest are mixed or other ethnic groups). Among the tested population, Sephardic Jews showed a significant association for harboring the common A/A (Ala) genotype: OR 1.3 [1.0-1.8]p=0.04. It should be noted, that the prevalence of CRC in Sephardic Jews is smaller than in Ashkenazi Jews (Darwish H, Trejo I E, et al., 2002. Fighting colorectal cancer: molecular epidemiology differences among Ashkenazi and Sephardic Jews and Palestinians. Ann Oncol., 13: 1497-501; Rozen P, Lynch H T, Figer A et al. Israel Cancer Registry, Cancer in Israel, Ministry of Health, Jerusalem, 1987. Familial colon cancer in the Tel-

Aviv area and the influence of ethnic origin. *Cancer*; 60:2355-2362). Thus, these results suggest that the Ala polymorph at position 57 of the CD24 protein, especially in its homozygous state, is a protective genotype against CRC, and on the other hand, the Val-57 polymorph of the CD24 protein is a risk genotype for CRC.

[0219] As is further shown in Tables 2 and 3, hereinbelow, screening of 890 subjects of them 393 were diagnosed with CRC and 498 were healthy subjects revealed that the Val/Val genotype (Table 2) and the Val allele (Table 3) is more prevalence in CRC affected subjects than in healthy controls, thus suggesting association of the Val-57 polymorph with CRC.

TABLE 2

Genotype frequencies of the CD24 Ala/Val 57 polymorphism				
Genotypes	Total subjects	VV	AV	AA
CRC	392	31 (7.9%)	144 (36.7%)	217 (55.35%)
Normal	498	34 (6.8%)	176 (35.35%)	288 (57.83%)

TABLE 3

Allele frequencies of the CD24 Ala/Val 58 polymorphism			
	Total Chromosomes	Val allele	Ala allele
CRC	784	206 (26.275%)	578 (73.72%)
Normal	996	244 (24.49%)	752 (75.50%)

[0220] Combined genotypes in CD24 and APC genes are highly associated with increased risk to colorectal neoplasia or cancer—To further test the association of combined genotypes in the CD24 and APC genes, 375 subjects with A/V genotype (at position 57) of the CD24 protein were tested for the presence of the E1317Q polymorphism in the APC protein. 7 out of 375 subjects were positive for the E1317Q polymorphism (i.e., exhibited one allele of the 1317Q polymorph in the APC protein). Six out of the seven (85.7%) subjects which were CD24 A/V and APC E1317Q had colorectal neoplasia. On the other hand, 368 subjects were negative for the 1317Q polymorph in the APC protein (i.e., exhibited only E1317). 162 out of the 368 subjects (44%) had colorectal neoplasia which yields an odds ratio (OR) of 7.62963 (Chi-square=4.83, p-value 0.028). Thus, these results demonstrate that among individuals who carry a mutation in the carcinogenesis initiating gene such as the APC E1317Q, the presence of a Val-57 polymorph of the CD24 protein is indicative of increased predisposition risk for colorectal cancer.

[0221] 405 subjects with the A/V genotype (at position 57) of the CD24 protein were tested for the presence of the I1307K polymorphism in the APC protein. 31 out of 405 subjects were positive (i.e., exhibited at least one allele of the 1307K polymorph in the APC protein). 21 out of the 31 (67.7%) subjects which were CD24 A/V and APC I1307K had colorectal neoplasia. On the other hand, of the 374 subjects which were negative for the I1307K polymorphism in the APC protein (i.e., exhibited only the I1307 polymorph in the APC protein) 175 (46%) had neoplasia which results in OR of 2.388 (Chi-square 5.03; p-value=0.0249). Thus, these results demonstrate that among individuals who carry a mutation in the carcinogenesis initiating gene such as the APC

I1307K, the presence of a Val-57 polymorph in the CD24 protein is indicative of increased predisposition risk for colorectal cancer.

Example 4

CD24 Detection in Stool, Serum or Urine as an Early Marker For GI Tract Malignancy

[0222] As described in Example 2, hereinabove, CD24 was significantly over-expressed in pre-malignant tumors of the GI tract, such as colorectal adenomatous polyps and adenomatous polyps of the entire GI tract. These results suggest that CD24 expression may precede the conversion of the pre-malignant adenoma to a malignant adenocarcinoma. Given that CD24 is expressed on the cell surface and conjugated via a GPI anchor, the present inventors have hypothesized that CD24 which is shedded or found in membrane residues from cell blebbing or death may be detected in various biological samples derived from subjects having pre-malignant tumors, and its detection may serve as an early marker of GI tract carcinogenesis.

[0223] In order to determine the presence of CD24 in biological samples obtained using non-invasive methods (e.g., stool, urine and serum), the present inventors have set up experimental conditions for CD24 immunoprecipitation, as follows.

[0224] Materials and Experimental Methods

[0225] Immunoprecipitation (IP) analysis of serum (as well as stool or urine) samples—Serum samples (500 μ l) were mixed with equal volumes (500 μ l) of lysis buffer (40 mM Tris-HCl, pH 7.4, 4 mM EDTA, 2% NP40, 0.2% SDS) or phosphate buffered saline (PBS). Anti-mouse conjugated Sepharose beads (Sigma, Cat. No. A6531) (20 μ l) were incubated for 1 hour with \pm 2-5 μ g of the monoclonal anti-CD24 antibody (SWA11), and aliquots of the beads-antibody complex (20 μ l) were then mixed with the lysed serum samples and incubated over-night in a cold-room while rotating. The resulting beads-immuno complexes which included the CD24 protein of the serum samples were collected (by short centrifugation) and washed 6 times with Hepes-saline buffer (20 mM HEPES, 150 mM NaCl, 0.1% Triton and 10% Glycerol), and then the CD24-immunoprecipitates were eluted by 4 \times protein sample buffer (200 mM Tris-HCl pH 6.8, 40% glycerol, 8% SDS, 0.2% Bromophenol blue, 100 mM DTT) at 90-95 $^{\circ}$ C. (5 minutes) followed by short centrifugation to separate the beads from the CD24 protein and the anti-CD24 antibody. The eluates were then subjected to Western blot analysis using the SWA11 anti-CD24 antibody.

[0226] Alternatively, serum samples were incubated with lysis buffer or PBS (as described hereinabove) and immunoprecipitation was performed with beads conjugated to Con-cavalin A, which binds to glycosylated proteins. The beads-immunocomplexes were then separated from the sample (by short centrifugation), followed by elution at 90-95 $^{\circ}$ C. The eluants (containing the CD24 protein) were then subjected to SDS-PAGE followed by Western blot analysis with the SWA11 CD24 antibody.

[0227] Western blot analysis—was performed on cell lysates prepared using the following lysis buffer: 20 mM Tris-HCl, pH 7.4, 2 mM EDTA, 1% NP40, 0.1% SDS, or in the presence of PBS using the SW11 antibody similarly to the Western blot performed following IP analysis. Briefly, the

amount of protein in the cell extracts is determined (e.g., using the Bradford assay) and 16 µg of total protein is loaded in each well.

[0228] Experimental Results

[0229] Calibration of the CD24 IP assay—The CD24 antibodies ML5 and SWA11 (Jackson D, Waibel R, Weber E, Bell J, Stahel R.A. CD24, a signal-transducing molecule expressed on human B cells, is a major surface antigen on small cell lung carcinomas. *Cancer Res.* 1992; 52:5264-7) were employed in order to calibrate the IP assay. Extracts of the HCT116 (which do not express CD24) or HT29 (which express CD24) CRC cell lines were subjected to CD24-IP (using the anti-mouse Sepharose beads) followed by Western blot analysis with either ML5 or SWA11 antibodies. As is shown in FIG. 1, the SWA11 antibody was found to be an efficient antibody for IP analysis, yielding low background.

[0230] Determination of the sensitivity of the CD24 IP analysis—In order to learn about the sensitivity of the method, lysates from HT29 cells, which express CD24, were homogenized with increasing concentrations of normal sera followed by IP analysis. The CD24 protein was visible when 1 mg, 100 µg and 10 µg lysates were mixed in 1 ml serum but not in 1 µg and less (data is not shown). The experiment was repeated twice, changing each time the incubation times of the beads-Ab complex with the samples in-order to increase sensitivity and reduce background signals.

[0231] CD24 IP analysis in serum samples—In order to determine if the over-expression of CD24 in GI tumors (pre-malignant and malignant) is associated with the presence of CD24 in the serum, samples of serum from patients whose tumor biopsies were formerly positively stained by CD24 IHC were subjected to IP analysis using CD24 monoclonal antibodies or concanavalin A conjugated beads (concanavalin A binds glycosylated proteins). Briefly, serum samples (0.5 ml) were incubated over-night with precipitating beads which were prepared by pre-incubation of anti-mouse conjugated Sepharose beads (Sigma, Israel) with the SWA11 anti-CD24 monoclonal antibody. In patients whose sera were taken at time when CRC was active, a signal of a 35-40 kDa protein was observed, corresponding to the CD24 protein in patients. On the other hand, in patients whose sera was taken when CRC was non-active (in remission), there was either no expression or significantly reduced expression of CD24 (FIG. 3 and data not shown). CD24 was also purified from serum sample of a patient with active CRC by anion exchange chromatography using a DEAE-cellulose (DE52) minicolumn and albumin depletion, followed by Western blot analysis with the SWA11 monoclonal anti CD24 antibody (FIG. 5). These results demonstrate the presence of CD24 protein in serum of subjects with active CRC and suggest its detection in serum as a marker for GI malignancies.

[0232] CD24 Western blot analysis in stool and urine samples—Over 90 samples of stool and urine from CRC patients and healthy subjects, attendees at the Integrated Cancer Prevention Center (Sorasky Medical Center, Tel Aviv, Israel) were collected and stored at -80° C. All subjects signed informed consent under the approval of the hospital IRB and the ministry of health, and matching endoscopic reports were recorded. In order to analyze CD24 presence in stool samples, a small amount (0.3-0.5 ml) was snapped from the frozen sample and homogenized in 1 ml protein lysis buffer with protease inhibitors. Lysates were collected from the supernatant phase following centrifugation of the homogenate (20 minutes, 14,000 rpm). In 21/26 subjects who

underwent colonoscopic examination and diagnosed with benign or malignant tumors CD24 was found in the stool (data not shown).

[0233] It should be noted that using either a lysis buffer (which removes membranal components) or PBS (which should not affect membranal components) there was no significant difference in the level of CD24 as detected by IP or Western blot analyses (data not shown) thus suggesting that the majority of CD24 detected in the serum was not membrane anchored.

[0234] The level of CD24 in the stool decreases following the removal of the tumor—In order to confirm that at least in part, the protein detected in the stool sample originates from the tumor, stool samples were collected from 11 patients before and after surgical/endoscopic removal of the tumor. Differences in the CD24 expression levels were visible among the paired samples (FIGS. 2a-c; and data not shown from a repeated experiment), demonstrating that the presence of CD24 in the stool originates at least in part from the tumors.

[0235] The level of CD24 in the stool decreases following radiation therapy—To further substantiate the relationship between CD24 in the stool and the presence of cancerous cells (active CRC disease) the level of CD24 was detected in CRC patients following the surgical removal of the tumor but before or after radiation therapy. As is shown in FIG. 2b (lanes 13 and 14), a significant decrease in the level of CD24 was noted after radiation therapy as compared to before treatment. Thus, these results demonstrate that the level of CD24 in the stool is in correlation with the presence of cancerous cells and can be used for monitoring efficacy of treatment.

[0236] The presence of low-molecular weight CD24 protein species is indicative of pre-cancerous or cancerous colorectal lesions—As seen in FIGS. 2a-c, in stool sample taken from patients before the surgical removal of the tumors or polyps there are various low molecular weight CD24-reactive bands of about 25-37 kDa which are absent from stool samples taken from the same patients after the surgical removal of the polyps or tumors. Without being bound to any theory, these results may indicate that the circulating CD24 which is present in stool, urine or serum samples of subjects having pre-malignant or malignant lesions comprises either only a portion of the CD24 amino acid sequence or represents a less glycosylated form (and therefore a lower molecular weight protein species) of CD24.

[0237] Altogether, these results demonstrate that detection of circulating CD24 in biological samples can be used as an early detection marker of cancer such as GI malignancies and/or for monitoring treatment efficacy of the cancer. In addition, the presence of low molecular weight species of CD24 (e.g., between 25 to 37 kDa) and/or high levels of CD24 (from any size from the range of 25-60 kDa) above a pre-determined threshold is indicative pre-malignant or malignant tumors.

[0238] Analysis and Discussion

[0239] The findings of the present study show that CD24 is expressed on the membrane of a distinctively high percentage of cells of pre-malignant and malignant tumors of the GI tract, including adenomas of the colon/rectum and of the rest of the alimentary tract (small intestine and upper GI tract). As a surface protein that is expressed at an early stage of tumor progression, while it rarely appears on normal tissues, the present inventors suggest CD24 as a novel highly reliable biomarker for cancer cells. In addition, the findings of CD24 in biological samples such as serum, stool and urine in sub-

jects having pre-malignant or malignant lesions of the GI tract demonstrate, for the first time, that soluble, shedded or blebbed CD24 (circulating CD24) can be used in the diagnosis of pre-malignant and malignant lesions.

[0240] Given that CD24 is a short peptide, that is set on the outer side of the cells and has no transmembrane domain but only an anchor to GPI, it is likely to believe that a portion of the protein, which as is shown in-vitro, is produced excessively when is expressed, is constantly secreted from the tumor cells and reaches the bloodstream or cleaved by lipases at the extra-cellular matrix. Furthermore, necrotic tumor cells, their fragments or blebbing products of tumor cells, might reach the bloodstream as well and contain in them GPI anchored CD24 protein.

[0241] One of the anti-CD24 monoclonal antibodies, the SWA11, was found by the present inventors to efficiently detect CD24 in biological samples using either an IP analysis [together with the anti-Mouse conjugated beads (Sigma)] or as an immuno-blotting antibody (e.g., the cell lysates shown in FIG. 1). Thus, CD24 which is shedded from cells overexpressing CD24 (e.g., the pre-malignant adenomas cells or the malignant CRC tumor cells) can be detected by IP followed by Western blot analysis in serum samples. In addition, CD24 can be also traced in phases of bigger non-dissolved materials (vesicles and cell fragments) that are separated from their medium by ultra-centrifugation or sucrose gradient separation. Given that CD24 is anchored to the membrane and therefore might be present at the blood stream while is still integrated in membrane fragments or vesicles that are the product of cell blabbing, these large corpuses are concentrated as mentioned due to their high weight and, membranes are dissolved by lysis buffer, and IP is performed as described. Furthermore, antibodies to the protein might also be present in the sera of subjects who express high levels of CD24. Their presence might be detectable using ELISA methodology with plates, coated with the purified protein or fixed with cells that express high CD24 levels. HT29 cells that express high levels of CD24 are fixed to a 96 wells plate with 5% formaldehyde. Serum is added to the well for 2 hours incubation, after three washes, an anti-Human HRP antibody is added to the wells, washed five times, and a color reaction is performed by adding a substrate to the HRP for five minutes [3,3',5,5'-Tetramethylbenzidine (TMB), Sigma]. Reaction is stopped with sulfuric-acid and the color intensity (that stands for the amount of anti-CD24 antibody in the serum) is measured by an ELISA reader device at 450 nm. CD24 DNA that might be shed from the tumor cells to the blood-stream can be detected by performing RT PCR from peripheral blood. Mutations and polymorphisms that are searched for can be thus detected, and also by quantitative PCR reactions, amplifications in the CD24 genes that occur within the tumor cells can be seen.

[0242] The methods for detecting CD24 at the serum of subjects, as a tool for early diagnosis of cancer, can be applied for all tumors which were previously reported to have a tendency to over-express CD24. This includes all the following tumors, as well as their pre-malignant lesions, and other tumors that will be discovered in the future to over-express CD24. Most kinds of lymphomas over-express CD24, it was so far reported in: acute leukemia, Waldeyer's ring lymphomas, common acute lymphoblastic leukemia, non-Hodgkin lymphoma, hairy cell leukemia. Also, solid tumors express CD24 such as: clear cell sarcoma, nephroblastoma, renal cell carcinoma, adult mesoblastic nephroma, small-cell and non

small-cell lung carcinoma, neuroblastoma, ganalioblastoma, sarcoma, squamous cell carcinoma, gastric and colorectal carcinoma, nasopharyngeal carcinoma, bladder cancer, breast cancer, glioma, ovarian cancer, prostate cancer, neuroendocrine prostate cancer, Merkel cell carcinoma and pancreatic cancer among others.

[0243] It is appreciated that certain features of the invention, which are, for clarity, described in the context of separate embodiments, may also be provided in combination in a single embodiment. Conversely, various features of the invention, which are, for brevity, described in the context of a single embodiment, may also be provided separately or in any suitable subcombination.

[0244] Although the invention has been described in conjunction with specific embodiments thereof, it is evident that many alternatives, modifications and variations will be apparent to those skilled in the art. Accordingly, it is intended to embrace all such alternatives, modifications and variations that fall within the spirit and broad scope of the appended claims. All publications, patents and patent applications and GenBank Accession numbers mentioned in this specification are herein incorporated in their entirety by reference into the specification, to the same extent as if each individual publication, patent or patent application or GenBank Accession number was specifically and individually indicated to be incorporated herein by reference. In addition, citation or identification of any reference in this application shall not be construed as an admission that such reference is available as prior art to the present invention.

REFERENCES

Additional References are Cited in Text

- [0245]** 1. Aigner, S., Stoeber, Z. M., Fogel, M., Weber, E., Zarn, J., Ruppert, M., Zeller, Y., Vestweber, D., Stahel, R., Sammar, M., and Altevogt, P. CD24, a mucin-type glycoprotein, is a ligand for P-selectin on human tumor cells. *Blood*, 1997, 89: 3385-3395.
- [0246]** 2. Aigner, S., Ramos, C. L., Hafezi-Moghadam, A., Lawrence, M. B., Friederichs, J., Altevogt, P., and Ley, K. CD24 mediates rolling of breast carcinoma cells on P-selectin. *FASEB J.* 1998, 12: 1241-1251.
- [0247]** 3. Baumann P, Cremers N, Kroese F, Orend G, Chiquet-Ehrismann R, Uede T, Yagita H, Sleeman J P. CD24 expression causes the acquisition of multiple cellular properties associated with tumor growth and metastasis. *Cancer Res.* 2005; 65:10783-93.
- [0248]** 4. Kanaoka S, Yoshida K, Miura N, Sugimura H, Kajimura M. Potential usefulness of detecting cyclooxygenase 2 messenger RNA in feces for colorectal cancer screening. *Gastroenterology.* 2004; 127(2): 422-7.
- [0249]** 5. Kristiansen et al., 2004; *J. of Mol. Hist.* 35: 255-262.
- [0250]** 6. Laken S J, Petersen G M, Gruber S B, Oddoux, Vogelstein B. Familial colorectal cancer in Ashkenazim due to a hypermutable tract in APC. *Nat Genet.* 17: 79-83, 1997.
- [0251]** 7. Mandel J, Bond J, et al., 1993, Reducing mortality from colorectal cancer by screening for fecal occult blood. Minnesota Colon Cancer Control Study. *N Engl J Med* 1993; 328: 1365-71.
- [0252]** 8. McMahon P M, Bosch J L, et al., 2001. Cost-effectiveness of colorectal cancer screening. *Radiology*, 219(1): 44-50

- [0253] 9. Roessler M, Rollinger W, Palme S, Hagmann M L, et al., 2005. Identification of nicotinamide N-methyltransferase as a novel serum tumor marker for colorectal cancer. *Clin Cancer Res.* 2005 Sep. 15; 11(18):6550-7.
- [0254] 10. Roessler M., Rollinger W, Mantovani-Endl L., et al. Identification of PSME3 as a Novel Serum Tumor Marker for Colorectal Cancer by Combining Two-dimensional Polyacrylamide Gel Electrophoresis with a Strictly Mass Spectrometry-based Approach for Data Analysis. *Molecular and Cellular Proteomics* 5: 2092-2101, 2006.
- [0255] 11. Sagiv E., et al., 2006, *Gastroenterology*, 131: 630-639
- [0256] 12. Sammar, M., Aigner, S., Hubbe, M., Schirrmacher, V., Schachner, M., Vestweber, D., and Altevogt, P. Heat-stable antigen (CD24) as ligand for mouse P-selectin. *Int. Immunol.* 1994, 6: 1027-1036.
- [0257] 13. Schabath H, Runz S, Joumaa S, Altevogt P. CD24 affects CXCR4 function in pre-B lymphocytes and breast carcinoma cells. *J Cell Sci.* 2006; 119:314-25.
- [0258] 14. Smith S C, Oxford G, Wu Z, Nitz M D, Conaway M, Frierson H F, Hampton G, Theodorescu D. The metastasis-associated gene CD24 is regulated by Ral GTPase and is a mediator of cell proliferation and survival in human cancer. *Cancer Res.* 2006; 66:1917-22.
- [0259] 15. Strul, H., Barenboim, M, Leshno, M, Gartner, R, Kariv, E, Aljadeff, Y, Aljadeff, D, Kazanov, L, Strier, A, Keidar, Y, Knaani, Y, Degani, L, Alon-Baron, H, Sobol-Dvory, Z, Halpern, N, Arber. The I1307K adenomatous polyposis coli gene variant does not contribute in the assessment of the risk for colorectal cancer in Ashkenazi Jews. *Cancer Epidemiol Biomarkers Prev* 12:1012-1015, 2003
- [0260] 16. Weichert W., et al. 2005; *Clin. Cancer Res.* 11: 6574-6581.
- [0261] 17. Zhou Q., et al. 2003, *Proc. Natl. Acad. Sci.* 100: 15041-15046.
- [0262] 18. U.S. Pat. Appl. 20040005596 to Li J., et al.

SEQUENCE LISTING

<160> NUMBER OF SEQ ID NOS: 12

<210> SEQ ID NO 1
 <211> LENGTH: 2194
 <212> TYPE: DNA
 <213> ORGANISM: Homo sapiens
 <220> FEATURE:
 <221> NAME/KEY: misc_feature
 <222> LOCATION: (280)..(280)
 <223> OTHER INFORMATION: C/T polymorphism

<400> SEQUENCE: 1

```

gggtctcgcc ggctcgccgc gctcccacc ttgcctgccc ccgcccggag ccagcggttc    60
tccaagcacc cagcatcctg ctagacgcgc cgcgcaccga cggaggggac atgggcagag    120
caatggtggc caggctcggg ctggggctgc tgetgctggc actgctccta cccacgcaga    180
tttattccag tgaacaaca actggaactt caagtaactc ctcccagagt acttccaact    240
ctgggttggc cccaaatcca actaatgcca ccaccaaggn ggctggtggt gccctgcagt    300
caacagccag tctctctgct gtctcactct ctctctgca tctctactct taagagactc    360
aggccaagaa acgtcttcta aatttcccca tcttctaaac ccaatccaaa tggcgtctgg    420
aagtccaatg tggcaaggaa aaacaggtct tcatcgaatc tactaattcc acacctttta    480
ttgacacaga aaatggtgag aatccccaat ttgattgatt tgaagaacat gtgagagggt    540
tgactagatg atggatgcca atattaaatc tgetggagtt tcatgtacaa gatgaaggag    600
aggcaacatc caaaatagtt aagacatgat ttccttgaat gtggcttgag aaatatggac    660
acttaatact accttgaaaa taagaataga aataaaggat gggattgtgg aatggagatt    720
cagttttcat ttggttcatt aattctataa ggccataaaa caggtaatat aaaaagcttc    780
catgattcta tttatatgta catgagaagg aacttccagg tgttactgta attcctcaac    840
gtattgttcc gacagcacta atttaatgcc gatatactct agatgaagtt ttacattggt    900
gagctattgc tgttctcttg ggaactgaac tcactttcct cctgaggctt tggatttgac    960
attgcatttg accttttatg tagtaattga catgtgccag ggcaatgatg aatgagaatc    1020
tccccccaga tccaagcacc ctgagcaact cttgattatc catattgagt caaatggtag    1080

```

-continued

```

gcatttccta tcacctgttt ccattcaaca agagcactac attcatttag ctaaaccgat 1140
tccaaagagt agaattgcat tgaccacgac taatttcaaa atgcttttta ttattattat 1200
tttttagaca gtctcacttt gtgccccagg ccggagtgca gtggtgcat ctcagatcag 1260
tgtaccattt gctcccggg ctcaagcgat tctcctgct cagcctccca agtagctggg 1320
attacaggca cctgccacca tgcccggcta atttttgtaa ttttagtaga gacagggttt 1380
caccatgttg ccaggtctgg tttcgaactc ctgacctcag gtgatccacc cgctcggcc 1440
tcccaaagtg ctgggattac aggcttgagc ccccgcgcc agccatcaaa atgcttttta 1500
ttcttgcata tgttgaatac tttttacaat ttaaaaaaat gatctgtttt gaaggcaaaa 1560
ttgcaaatct tgaattaag aaggcaaaaa tgtaaaggag tcaaaactat aaatcaagta 1620
tttggaagt gaagactgga agctaattg cattaaatc acaaaacttt atactcttcc 1680
tgtatataca ttttttttct ttaaaaaaca actatggatc agaatagcca catttagaac 1740
actttttggt atcagtcaat atttttagat agttagaacc tggctctaag cctaaaagtg 1800
ggcttgatc tgcagtaaat cttttacaac tgctcgaca cacataaacc tttttaaaaa 1860
tagacactcc ccgaagtctt ttgttcgcat ggtcacacac tgatgcttag atgttccagt 1920
aatctaatat ggcacagta gtcttgatga ccaaagtct ttttttccat ctttagaaaa 1980
ctacatggga acaaacagat cgaacagttt tgaagctact gtgtgtgtga atgaacactc 2040
ttgctttatt ccagaatgct gtacatctat ttggattgt atattgtgtt tgtgtattta 2100
cgctttgatt catagtaact tcttatggaa ttgattgca ttgaacacaa actgtaaata 2160
aaaagaaatg gctgaaagag caaaaaaaaa aaaa 2194

```

```

<210> SEQ ID NO 2
<211> LENGTH: 80
<212> TYPE: PRT
<213> ORGANISM: Homo sapiens
<220> FEATURE:
<221> NAME/KEY: misc_feature
<222> LOCATION: (57)..(57)
<223> OTHER INFORMATION: Ala / Val polymorphism

```

<400> SEQUENCE: 2

```

Met Gly Arg Ala Met Val Ala Arg Leu Gly Leu Gly Leu Leu Leu Leu
1          5          10         15
Ala Leu Leu Leu Pro Thr Gln Ile Tyr Ser Ser Glu Thr Thr Thr Gly
20         25         30
Thr Ser Ser Asn Ser Ser Gln Ser Thr Ser Asn Ser Gly Leu Ala Pro
35         40         45
Asn Pro Thr Asn Ala Thr Thr Lys Xaa Ala Gly Gly Ala Leu Gln Ser
50         55         60
Thr Ala Ser Leu Phe Val Val Ser Leu Ser Leu Leu His Leu Tyr Ser
65         70         75         80

```

```

<210> SEQ ID NO 3
<211> LENGTH: 26
<212> TYPE: DNA
<213> ORGANISM: Artificial sequence
<220> FEATURE:
<223> OTHER INFORMATION: Single strand DNA oligonucleotide

```

<400> SEQUENCE: 3

```

ttgttgccac ttggcatttt tgaggc 26

```

-continued

```

<210> SEQ ID NO 4
<211> LENGTH: 25
<212> TYPE: DNA
<213> ORGANISM: Artificial sequence
<220> FEATURE:
<223> OTHER INFORMATION: Single strand DNA oligonucleotide

<400> SEQUENCE: 4
ggattggggt tagaagatgg ggaaa                25

<210> SEQ ID NO 5
<211> LENGTH: 27
<212> TYPE: DNA
<213> ORGANISM: Artificial sequence
<220> FEATURE:
<223> OTHER INFORMATION: Single strand DNA oligonucleotide

<400> SEQUENCE: 5
gattctgcta ataccctgca aatagca                27

<210> SEQ ID NO 6
<211> LENGTH: 22
<212> TYPE: DNA
<213> ORGANISM: Artificial sequence
<220> FEATURE:
<223> OTHER INFORMATION: Single strand DNA oligonucleotide

<400> SEQUENCE: 6
ccctgcagtc tgctggattt gg                    22

<210> SEQ ID NO 7
<211> LENGTH: 10719
<212> TYPE: DNA
<213> ORGANISM: Homo sapiens
<220> FEATURE:
<221> NAME/KEY: misc_feature
<222> LOCATION: (3977)..(3977)
<223> OTHER INFORMATION: T/A polymorphism
<220> FEATURE:
<221> NAME/KEY: misc_feature
<222> LOCATION: (4006)..(4006)
<223> OTHER INFORMATION: G/C polymorphism

<400> SEQUENCE: 7
tggagacaga atggaggtgc tgccggactc ggaaatgggg tccaagggta gccaaggatg    60
gctgcagctt catatgatca gttgttaaag caagttgagg cactgaagat ggagaactca    120
aatcttcgac aagagctaga agataattcc aatcatctta caaaactgga aactgaggca    180
tctaatatga aggaagtact taaacaacta caaggaagta ttgaagatga agctatggct    240
tctctcgac  agattgattt attagagcgt cttaaagagc ttaacttaga tagcagtaat    300
ttccctggag taaaactgcg gtcaaaaatg tcctccggtt cttatggaag ccggaagga    360
tctgtatcaa gccgttctgg agagtgcagt cctgttccta tgggttcatt tccaagaaga    420
gggtttgtaa atggaagcag agaaagtact ggatatttag aagaactga gaaagagagg    480
tcattgcttc ttgctgatct tgacaaagaa gaaaaggaaa aagactggta ttacgctcaa    540
cttcagaatc tcactaaaag aatagatagt cttcctttaa ctgaaaatth ttccttacia    600
acagatatga ccagaaggca attggaatat gaagcaaggc aaatcagagt tgcgatggaa    660
gaacaactag gtacctgcca ggatattggaa aaacgagcac agcgaagaat agccagaatt    720

```

-continued

cagcaaatcg	aaaaggacat	acttcgtata	cgacagcttt	tacagtccca	agcaacagaa	780
gcagagaggt	catctcagaa	caagcatgaa	accggctcac	atgatgctga	gcggcagaat	840
gaaggtcaag	gagtgggaga	aatcaacatg	gcaacttctg	gtaatggta	gggttcaact	900
acacgaatgg	accatgaaac	agccagtgtt	ttgagttcta	gtagcacaca	ctctgcacct	960
cgaaggctga	caagtcatct	gggaaccaag	gtggaatgg	tgtattcatt	gttgtcaatg	1020
cttggtactc	atgataagga	tgatatgtcg	cgaactttgc	tagctatgtc	tagctcccaa	1080
gacagctgta	tatccatgcg	acagtctgga	tgtcttctc	tcctcatcca	gcttttacat	1140
ggcaatgaca	aagactctgt	attgttggga	aattcccggg	gcagtaaaga	ggctcggggc	1200
agggccagtg	cagcactcca	caacatcatt	cactcacagc	ctgatgacaa	gagaggcagg	1260
cgtgaaatcc	gagtccttca	tcttttggaa	cagatacgcg	cttactgtga	aacctgttgg	1320
gagtggcagg	aagctcatga	accaggcatg	gaccaggaca	aaaatccaat	gccagctcct	1380
gttgaacatc	agatctgtcc	tgctgtgtgt	gttctaata	aactttcatt	tgatgaagag	1440
catagacatg	caatgaatga	actaggggga	ctacaggcca	ttgcagaatt	attgcaagtg	1500
gactgtgaaa	tgtatgggct	tactaatgac	cactacagta	ttactactaag	acgatatgct	1560
ggaatggctt	tgacaaactt	gacttttggg	gatgtagcca	acaaggctac	gctatgctct	1620
atgaaaggct	gcatgagagc	acttgtggcc	caactaaaat	ctgaaagtga	agacttacag	1680
caggttattg	cgagtgtttt	gaggaatttg	tcttggcgag	cagatgtaaa	tagtaaaaag	1740
acgttgcgag	aagttggaag	tgtgaaagca	ttgatggaat	gtgctttaga	agttaaaaag	1800
gaatcaacc	tcaaaagcgt	attgagtgcc	ttatggaatt	tgtcagcaca	ttgcaactgag	1860
aataaagctg	atatatgtgc	tgtagatggg	gcacttgcct	tttgggttgg	cactcttact	1920
taccggagcc	agacaaacac	tttagccatt	attgaaagtg	gaggtgggat	attacggaat	1980
gtgtccagct	tgatagctac	aaatgaggac	cacaggcaaa	tcctaagaga	gaacaactgt	2040
ctacaaactt	tattacaaca	cttaaaatct	catagtttga	caatagttag	taatgcatgt	2100
ggaactttgt	ggaatctctc	agcaagaaat	cctaaagacc	aggaagcatt	atgggacatg	2160
ggggcagtta	gcatgtcaa	gaacctcatt	cattcaaagc	acaaaatgat	tgctatggga	2220
agtgtgcag	ctttaaggaa	tctcatggca	aataggcctg	cgaagtacaa	ggatgccaat	2280
attatgtctc	ctggctcaag	cttgccatct	cttcatgtta	ggaaacaaaa	agccctagaa	2340
gcagaattag	atgctcagca	cttatcagaa	acttttgaca	atatagacaa	tttaagtccc	2400
aaggcatctc	atcgtagtaa	gcagagacac	aagcaaagtc	tctatgggta	ttatgttttt	2460
gacaccaatc	gacatgatga	taatagggtca	gacaatttta	atactggcaa	catgactgtc	2520
cttcacccat	atgtgaatac	tacagtgtta	cccagctcct	cttcatcaag	aggaagctta	2580
gatagttctc	gttctgaaaa	agatagaagt	ttggagagag	aacggggaat	tggtctaggc	2640
aactaccatc	cagcaacaga	aaatccagga	acttcttcaa	agcgaggttt	gcagatctcc	2700
accactgcag	cccagattgc	caaagtcatt	gaagaagtgt	cagccattca	tacctctcag	2760
gaagacagaa	gttctgggtc	taccactgaa	ttacattgtg	tgacagatga	gagaaatgca	2820
cttagaagaa	gctctgctgc	ccatacacat	tcaaacactt	acaatttcac	taagtcggaa	2880
aattcaaata	ggacatgttc	tatgcttat	gccaatttag	aatacaagag	atcttcaaat	2940
gatagtttaa	atagtgctcag	tagtagtgat	ggttatggta	aaagaggtca	aatgaaaccc	3000

-continued

tcgattgaat cctattctga agatgatgaa agtaagtttt gcagttatgg tcaatacca	3060
gccgacctag cccataaaat acatagtgca aatcatatgg atgataatga tggagaacta	3120
gatacaccaa taaattatag tcttaaatat tcagatgagc agttgaaactc tggaaaggcaa	3180
agtccttcac agaatgaaag atgggcaaga cccaaacaca taatagaaga tgaataaaaa	3240
caaagtgagc aaagacaatc aaggaaatcaa agtacaactt atcctgttta tactgagagc	3300
actgatgata aacacotcaa gttccaacca ctttttgac agcaggaatg tgtttctcca	3360
tacaggtcac ggggagccaa tggttcagaa acaaatcgag tgggttctaa tcatggaatt	3420
aatcaaaatg taagccagtc tttgtgtcaa gaagatgact atgaagatga taagcctacc	3480
aattatagtg aacgttactc tgaagaagaa cagcatgaag aagaagagag accaacaat	3540
tatagcataa aatataatga agagaaactg catgtggatc agcctattga ttatagtta	3600
aaatagcca cagatattcc ttcacacag aaacagtcac tttcattctc aaagagtcca	3660
tctggacaaa gcagtaaac cgaacatag tcttcaagca gtgagaatac gtccacacct	3720
tcactaatg ccaagaggca gaatcagctc catccaagtt ctgcacagag tagaagtgg	3780
cagcctcaaa aggetgccac ttgcaaagtt tcttctatta accaagaaac aatacagact	3840
tattgtgtag aagatactcc aatatgtttt tcaagatgta gttcattatc atctttgtca	3900
tcagctgaag atgaaatagg atgtaatcag acgacacagg aagcagattc tgctaatacc	3960
ctgcaaatag cagaaanaaa agaaaagatt ggaactaggt cagctnaaga tcctgtgagc	4020
gaagttccag cagtgtcaca gcacctaga accaaatcca gcagactgca gggttctagt	4080
ttatcttcag aatcagccag gcacaaagct gttgaatfff ctccaggagc gaaatctccc	4140
tccaaaagtg gtgctcagac ccccaaaagt ccacctgaac actatgttca ggagacccca	4200
ctcatgttta gcagatgtac ttctgtcagt tcaactgata gttttgagag tctgttcgatt	4260
gccagctccg ttcagagtga accatgcagt ggaatggtaa gtggcattat aagccccagt	4320
gatcttcag atagccctgg acaaacatg ccaccaagca gaagtaaac acctccacca	4380
cctcctcaaa cagctcaaac caagcgagaa gtacctaaaa ataagcacc tactgctgaa	4440
aagagagaga gtggacctaa gcaagctgca gtaaatgctg cagttcagag ggtccaggtt	4500
cttcagatg ctgatacttt attacatfff gccacgaaa gtactccaga tggatfffct	4560
tgttcatcca gctgagtgct tctgagcctc gatgagccat ttatacagaa agatgtggaa	4620
ttaagaataa tgctccagtc tcaggaaaat gacaatggga atgaacaga atcagagcag	4680
cctaaagaat caaatgaaaa ccaagagaaa gaggcagaaa aaactattga ttctgaaaag	4740
gacctattag atgattcaga tgatgatgat attgaaatac tagaagaatg tattatfffct	4800
gccatgcaa caaagtcac acgtaagca aaaaagccag cccagactgc tccaaaatta	4860
cctccacctg tggcaaggaa accaagtcag ctgcctgtgt acaaaactct accatcaaaa	4920
aacaggttgc aaccccaaaa gcatgttagt tttacaccg gggatgatat gccacgggtg	4980
tattgtgttg aagggacacc tataaactff tccacagcta catctctaag tgatctaa	5040
atcgaatccc ctccaaatga gttagctgct ggagaaggag ttagaggagg ggcacagtca	5100
gggtaatffg aaaaacgaga taccattctc acagaaggca gaagtacaga tgaggctcaa	5160
ggaggaaaaa cctcatctgt aaccatacct gaattggatg acaataaagc agaggaaggt	5220
gatattcttg cagaatgcac taattctgct atgccc aaag ggaaggtca caagccttc	5280

-continued

cgtgtgaaaa agataatgga ccaggtccag caagcatctg cgtcttcttc tgcacccaac	5340
aaaaatcagt tagatggtaa gaaaaagaaa ccaacttcac cagtaaaacc tataaccacia	5400
aatactgaat ataggacacg tgtaagaaaa aatgcagact caaaaaataa tttaaatgct	5460
gagagagttt tctcagacaa caaagattca aagaaacaga atttgaaaa taattccaag	5520
gtcttcaatg ataagctccc aaataatgaa gatagagtca gaggaagttt tgcttttgat	5580
tcacctcacc attacacgcc tattgaagga actccttact gtttttcacg aaatgattct	5640
ttgagttctc tagattttga tgatgatgat gttgacctt ccagggaaaa ggctgaatta	5700
agaaaggcaa aagaaaaata ggaatcagag gctaaagtta ccagccacac agaactaacc	5760
tccaaccaac aatcagctaa taagacacaa gctattgcaa agcagccaat aaatcgaggt	5820
cagcctaaac ccatacttca gaaacaatcc acttttcccc agtcatccaa agacatacca	5880
gacagagggg cagcaactga tgaaaagtta cagaattttg ctattgaaaa tactccggtt	5940
tgtttttctc ataattcctc tctgagttct ctcaagtaca ttgaccaaga aaacaacaat	6000
aaagaaaatg aacctatcaa agagactgag cccctgact cacagggaga accaagtaaa	6060
cctcaagcat caggctatgc tcctaaatca tttcatgttg aagatacccc agtttgtttc	6120
tcaagaaaca gttctctcag ttctcttagt attgactctg aagatgacct gttgcaggaa	6180
tgtataagct ccgcaatgcc aaaaaagaaa aagccttcaa gactcaaggg tgataatgaa	6240
aaacatagtc ccagaaatat ggggtggcata ttaggtgaag atctgacact tgatttgaaa	6300
gatatacaga gaccagatcc agaacatggt ctatcccctg attcagaaaa ttttgattgg	6360
aaagctattc aggaaggtgc aaattccata gtaagtatt tacatcaagc tgctgctgct	6420
gcatgtttat ctgacaacg ttcgtctgat tcagattcca tcctttccct gaaatcagga	6480
atctctctgg gatcaccatt tcatcttaca cctgatcaag aagaaaaacc ctttacaagt	6540
aataaaggcc cacgaattct aaaaccaggg gagaaaagta cattggaaac taaaaagata	6600
gaatctgaaa gtaaaaggaat caaaggagga aaaaaagttt ataaaagttt gattactgga	6660
aaagttcgat ctaattcaga aatttcaggc caaatgaaac agccccttca agcaaacatg	6720
ccttcaatct ctgagggcag gacaatgatt catattccag gagttcgaaa tagctectca	6780
agtacaagtc ctgtttctaa aaaaggccca ccccttaaga ctccagcctc caaaagccct	6840
agtgaaggtc aaacagccc cacttctcct agaggagcca agccatctgt gaaatcagaa	6900
ttaagccctg ttgccaggca gacatcccaa ataggtgggt caagtaaagc accttctaga	6960
tcaggatcta gagattcgac ccttcaaga cctgcccagc aaccattaag tagacctata	7020
cagtctctcg gccgaaactc aatttccctt ggtagaaatg gaataagtcc tcttaacaaa	7080
ttatctcaac ttccaaggac atcatccctt agtactgctt caactaagtc ctgaggttct	7140
ggaaaaatgt catatacatc tccaggtaga cagatgagcc aacagaaact tacciaacaa	7200
acaggtttat ccaagaatgc cagtagtatt ccaagaagtg agtctgcctc caaaggacta	7260
aatcagatga ataatggtaa tggagccaat aaaaaggtag aactttctag aatgtcttca	7320
actaaatcaa gtggaagtga atctgataga tcagaaagac ctgtattagt acgccagtca	7380
actttcatca aagaagctcc aagcccaacc ttaagaagaa aattggagga atctgcttca	7440
tttgaatctc tttctccatc atctagacca gcttctccca ctaggctcca ggcacaaact	7500
ccagttttaa gtccttccct tctctgatag tctctatcca cacattctgc tgttcaggct	7560

-continued

ggtgatggc gaaaactccc acctaactctc agtcccacta tagagtataa tgatggaaga	7620
ccagcaaaagc gccatgatata tgcacgggtct cattctgaaa gtccttctag acttccaatc	7680
aataggctcag gaacctggaa acgtgagcac agcaaacatt catcatccct tctctgagta	7740
agcacttggga gaagaactgg aagttcatct tcaattcttt ctgcttcate agaatecagt	7800
gaaaaagcaa aaagtgagga tgaaaaacat gtgaactcta tttcaggaac caaaciaagt	7860
aaagaaaacc aagtatccgc aaaaggaaca tggagaaaaa taaaagaaaa tgaattttct	7920
cccacaaata gtactttctca gaccgtttcc tcaggtgcta caaatggtgc tgaatcaaag	7980
actctaattt atcaaatggc acctgctggt tctaaaacag aggatggttg ggtgagaatt	8040
gaggactgtc ccattaacaa tcttagatctt ggaagatctc ccacaggtaa tactcccccg	8100
gtgattgaca gtgtttcaga aaaggcaaat ccaaacatta aagattcaaa agataatcag	8160
gcaaaacaaa atgtgggtaa tggcagtggt cccatgcgta ccgtgggttt ggaaaatcgc	8220
ctgaactcct ttattcaggt ggatgccct gaccacaaaag gaactgagat aaaaccagga	8280
caaaaataatc ctgtccctgt atcagagact aatgaaagt ctatagtga acgtacccca	8340
ttcagttcta gcagctcaag caaacacagt tcacctagt ggactgttc tgcagagtg	8400
actcctttta attacaaccc aagccctagg aaaagcagcg cagatagcac ttcagctcgg	8460
ccatctcaga tcccaactcc agtgaataac aacacaaaga agcgagattc caaaactgac	8520
agcacagaat ccagtggaac ccaagctct aagcgcatt ctgggtctta ccttgtgaca	8580
tctgtttaaa agagaggaag aatgaaacta agaaaattct atgttaatta caactgctat	8640
atagacattt tgtttcaaat gaaactttaa aagactgaaa aattttgtaa ataggtttga	8700
ttctgttag agggtttttg ttctggaagc catatttgat agtatacttt gtcttcaactg	8760
gtcttatttt gggagcact cttgatgggt aggaaaaaaa tagtaaagcc aagtatggtt	8820
gtacagtatg ttttcatgt atttaaagta gcatcccatc ccaacttct ttaattattg	8880
cttgtcttaa aataatgaac actacagata gaaaatatga tatattgctg ttatcaatca	8940
tttctagatt ataaactgac taaacttaca tcagggaaaa attggtattt atgcaaaaaa	9000
aaatgttttt gtcttctgta gtccatctaa catcataatt aatcatgtgg ctgtgaaatt	9060
cacagtaata tggttcccga tgaacaagt taccagcct gcttctctt actgcatgaa	9120
tgaaactgat ggttcaattt cagaagtaat gattaacagt tatgtgtca catgatgtgc	9180
atagagatag ctacagtgtg ataatttaca ctattttgtg ctccaaacaa aacaaaaatc	9240
tgtgtaactg taaaacattg aatgaaacta ttttacctga actagatttt atctgaaagt	9300
aggtagaatt tttgctatgc tgaatttgt tgtatattct ggtatttgag gtgagatggc	9360
tgctctttta ttaatgagac atgaattgtg tctcaacaga aactaaatga acatttcaga	9420
ataaattatt gctgtatgta aactgttact gaaattggta tttgtttgaa gggctttgtt	9480
tcacatttgt attaataatt gtttaaaatg cctcttttaa aagcttatat aaattttttt	9540
cttcagcttc tatgcattaa gagtaaaatt cctcttactg taataaaaaac aattgaagaa	9600
gactgttgc acttaaccat tccatgcgtt ggcacttatc tattctgaa atttctttta	9660
tgtgattagc tcatcttgat ttttaaatatt tttccactta aacttttttt tcttactcca	9720
ctggagctca gtaaaagtaa attcatgtaa tagcaatgca agcagcctag cacagactaa	9780
gcattgagca taataggccc acataatttc ctctttctta atattataga attctgtact	9840

-continued

```

tgaaattgat tcttagacat tgcagctctc tcgaggcttt acagtgtaaa ctgtcttgcc 9900
ccttcacctt cttggtgcaa ctgggtctga catgaacct tttatcacc ctgtatgta 9960
gggcaagatc tcagcagtga agtataatca gcactttgcc atgctcagaa aattcaaatc 10020
acatggaact tttagaggtag atttaatacg attaagatat tcagaagtat attttagaat 10080
ccctgcctgt taaggaaact ttatttgtgg taggtacagt tctggggtac atgtaagtg 10140
tccccctata cagtggaggg aagtcttcc tctggaagga aataaaactg acacttatta 10200
actaagataa tttacttaat atatcttccc tgatttgttt taaaagatca gaggggtgact 10260
gatgatacat gcatacatat ttgttgaata aatgaaaatt tatttttagt gataagattc 10320
atacactctg tatttgggga gggaaaacct ttttaagcat ggtggggcac tcagatagga 10380
gtgaatacac ctacctggtg ccttgaaaaat cacatcaagt agttaattat ctaccctta 10440
cctgtgttta taacttccag gtaatgagaa tgattttttt taaagctaaa atgccagtaa 10500
ataaaagtgc tatgacttga gctaagatat ttgactccaa tgctgtact gtgtctactg 10560
caccactttg taaacacttc aatttactat ctttgaaatg attgaccttt aaatttttgc 10620
caaatgttat ctgaaattgt ctatgaatac catctacttc tgttgttttc ccaggcttcc 10680
ataaacaatg gagatacatg caaaaaaaaa aaaaaaaaa 10719

```

```

<210> SEQ ID NO 8
<211> LENGTH: 2843
<212> TYPE: PRT
<213> ORGANISM: Homo sapiens
<220> FEATURE:
<221> NAME/KEY: misc_feature
<222> LOCATION: (1307)..(1307)
<223> OTHER INFORMATION: Ile / lys polymorphism
<220> FEATURE:
<221> NAME/KEY: misc_feature
<222> LOCATION: (1317)..(1317)
<223> OTHER INFORMATION: Glu / Gln polymorphism

<400> SEQUENCE: 8

```

```

Met Ala Ala Ala Ser Tyr Asp Gln Leu Leu Lys Gln Val Glu Ala Leu
1      5      10     15
Lys Met Glu Asn Ser Asn Leu Arg Gln Glu Leu Glu Asp Asn Ser Asn
20     25     30
His Leu Thr Lys Leu Glu Thr Glu Ala Ser Asn Met Lys Glu Val Leu
35     40     45
Lys Gln Leu Gln Gly Ser Ile Glu Asp Glu Ala Met Ala Ser Ser Gly
50     55     60
Gln Ile Asp Leu Leu Glu Arg Leu Lys Glu Leu Asn Leu Asp Ser Ser
65     70     75     80
Asn Phe Pro Gly Val Lys Leu Arg Ser Lys Met Ser Leu Arg Ser Tyr
85     90     95
Gly Ser Arg Glu Gly Ser Val Ser Ser Arg Ser Gly Glu Cys Ser Pro
100    105    110
Val Pro Met Gly Ser Phe Pro Arg Arg Gly Phe Val Asn Gly Ser Arg
115    120    125
Glu Ser Thr Gly Tyr Leu Glu Glu Leu Glu Lys Glu Arg Ser Leu Leu
130    135    140
Leu Ala Asp Leu Asp Lys Glu Glu Lys Glu Lys Asp Trp Tyr Tyr Ala
145    150    155    160

```

-continued

Gln Leu Gln Asn Leu Thr Lys Arg Ile Asp Ser Leu Pro Leu Thr Glu
 165 170 175
 Asn Phe Ser Leu Gln Thr Asp Met Thr Arg Arg Gln Leu Glu Tyr Glu
 180 185 190
 Ala Arg Gln Ile Arg Val Ala Met Glu Glu Gln Leu Gly Thr Cys Gln
 195 200 205
 Asp Met Glu Lys Arg Ala Gln Arg Arg Ile Ala Arg Ile Gln Gln Ile
 210 215 220
 Glu Lys Asp Ile Leu Arg Ile Arg Gln Leu Leu Gln Ser Gln Ala Thr
 225 230 235 240
 Glu Ala Glu Arg Ser Ser Gln Asn Lys His Glu Thr Gly Ser His Asp
 245 250 255
 Ala Glu Arg Gln Asn Glu Gly Gln Gly Val Gly Glu Ile Asn Met Ala
 260 265 270
 Thr Ser Gly Asn Gly Gln Gly Ser Thr Thr Arg Met Asp His Glu Thr
 275 280 285
 Ala Ser Val Leu Ser Ser Ser Thr His Ser Ala Pro Arg Arg Leu
 290 295 300
 Thr Ser His Leu Gly Thr Lys Val Glu Met Val Tyr Ser Leu Leu Ser
 305 310 315 320
 Met Leu Gly Thr His Asp Lys Asp Asp Met Ser Arg Thr Leu Leu Ala
 325 330 335
 Met Ser Ser Ser Gln Asp Ser Cys Ile Ser Met Arg Gln Ser Gly Cys
 340 345 350
 Leu Pro Leu Leu Ile Gln Leu Leu His Gly Asn Asp Lys Asp Ser Val
 355 360 365
 Leu Leu Gly Asn Ser Arg Gly Ser Lys Glu Ala Arg Ala Arg Ala Ser
 370 375 380
 Ala Ala Leu His Asn Ile Ile His Ser Gln Pro Asp Asp Lys Arg Gly
 385 390 395 400
 Arg Arg Glu Ile Arg Val Leu His Leu Leu Glu Gln Ile Arg Ala Tyr
 405 410 415
 Cys Glu Thr Cys Trp Glu Trp Gln Glu Ala His Glu Pro Gly Met Asp
 420 425 430
 Gln Asp Lys Asn Pro Met Pro Ala Pro Val Glu His Gln Ile Cys Pro
 435 440 445
 Ala Val Cys Val Leu Met Lys Leu Ser Phe Asp Glu Glu His Arg His
 450 455 460
 Ala Met Asn Glu Leu Gly Gly Leu Gln Ala Ile Ala Glu Leu Leu Gln
 465 470 475 480
 Val Asp Cys Glu Met Tyr Gly Leu Thr Asn Asp His Tyr Ser Ile Thr
 485 490 495
 Leu Arg Arg Tyr Ala Gly Met Ala Leu Thr Asn Leu Thr Phe Gly Asp
 500 505 510
 Val Ala Asn Lys Ala Thr Leu Cys Ser Met Lys Gly Cys Met Arg Ala
 515 520 525
 Leu Val Ala Gln Leu Lys Ser Glu Ser Glu Asp Leu Gln Gln Val Ile
 530 535 540
 Ala Ser Val Leu Arg Asn Leu Ser Trp Arg Ala Asp Val Asn Ser Lys
 545 550 555 560

-continued

Lys Thr Leu Arg Glu Val Gly Ser Val Lys Ala Leu Met Glu Cys Ala
 565 570 575

Leu Glu Val Lys Lys Glu Ser Thr Leu Lys Ser Val Leu Ser Ala Leu
 580 585 590

Trp Asn Leu Ser Ala His Cys Thr Glu Asn Lys Ala Asp Ile Cys Ala
 595 600 605

Val Asp Gly Ala Leu Ala Phe Leu Val Gly Thr Leu Thr Tyr Arg Ser
 610 615 620

Gln Thr Asn Thr Leu Ala Ile Ile Glu Ser Gly Gly Gly Ile Leu Arg
 625 630 635 640

Asn Val Ser Ser Leu Ile Ala Thr Asn Glu Asp His Arg Gln Ile Leu
 645 650 655

Arg Glu Asn Asn Cys Leu Gln Thr Leu Leu Gln His Leu Lys Ser His
 660 665 670

Ser Leu Thr Ile Val Ser Asn Ala Cys Gly Thr Leu Trp Asn Leu Ser
 675 680 685

Ala Arg Asn Pro Lys Asp Gln Glu Ala Leu Trp Asp Met Gly Ala Val
 690 695 700

Ser Met Leu Lys Asn Leu Ile His Ser Lys His Lys Met Ile Ala Met
 705 710 715 720

Gly Ser Ala Ala Ala Leu Arg Asn Leu Met Ala Asn Arg Pro Ala Lys
 725 730 735

Tyr Lys Asp Ala Asn Ile Met Ser Pro Gly Ser Ser Leu Pro Ser Leu
 740 745 750

His Val Arg Lys Gln Lys Ala Leu Glu Ala Glu Leu Asp Ala Gln His
 755 760 765

Leu Ser Glu Thr Phe Asp Asn Ile Asp Asn Leu Ser Pro Lys Ala Ser
 770 775 780

His Arg Ser Lys Gln Arg His Lys Gln Ser Leu Tyr Gly Asp Tyr Val
 785 790 795 800

Phe Asp Thr Asn Arg His Asp Asp Asn Arg Ser Asp Asn Phe Asn Thr
 805 810 815

Gly Asn Met Thr Val Leu Ser Pro Tyr Leu Asn Thr Thr Val Leu Pro
 820 825 830

Ser Ser Ser Ser Ser Arg Gly Ser Leu Asp Ser Ser Arg Ser Glu Lys
 835 840 845

Asp Arg Ser Leu Glu Arg Glu Arg Gly Ile Gly Leu Gly Asn Tyr His
 850 855 860

Pro Ala Thr Glu Asn Pro Gly Thr Ser Ser Lys Arg Gly Leu Gln Ile
 865 870 875 880

Ser Thr Thr Ala Ala Gln Ile Ala Lys Val Met Glu Glu Val Ser Ala
 885 890 895

Ile His Thr Ser Gln Glu Asp Arg Ser Ser Gly Ser Thr Thr Glu Leu
 900 905 910

His Cys Val Thr Asp Glu Arg Asn Ala Leu Arg Arg Ser Ser Ala Ala
 915 920 925

His Thr His Ser Asn Thr Tyr Asn Phe Thr Lys Ser Glu Asn Ser Asn
 930 935 940

Arg Thr Cys Ser Met Pro Tyr Ala Lys Leu Glu Tyr Lys Arg Ser Ser
 945 950 955 960

Asn Asp Ser Leu Asn Ser Val Ser Ser Ser Asp Gly Tyr Gly Lys Arg

-continued

965					970					975					
Gly	Gln	Met	Lys	Pro	Ser	Ile	Glu	Ser	Tyr	Ser	Glu	Asp	Asp	Glu	Ser
			980					985					990		
Lys	Phe	Cys	Ser	Tyr	Gly	Gln	Tyr	Pro	Ala	Asp	Leu	Ala	His	Lys	Ile
		995					1000					1005			
His	Ser	Ala	Asn	His	Met	Asp	Asp	Asn	Asp	Gly	Glu	Leu	Asp	Thr	
	1010					1015					1020				
Pro	Ile	Asn	Tyr	Ser	Leu	Lys	Tyr	Ser	Asp	Glu	Gln	Leu	Asn	Ser	
	1025					1030					1035				
Gly	Arg	Gln	Ser	Pro	Ser	Gln	Asn	Glu	Arg	Trp	Ala	Arg	Pro	Lys	
	1040					1045					1050				
His	Ile	Ile	Glu	Asp	Glu	Ile	Lys	Gln	Ser	Glu	Gln	Arg	Gln	Ser	
	1055					1060					1065				
Arg	Asn	Gln	Ser	Thr	Thr	Tyr	Pro	Val	Tyr	Thr	Glu	Ser	Thr	Asp	
	1070					1075					1080				
Asp	Lys	His	Leu	Lys	Phe	Gln	Pro	His	Phe	Gly	Gln	Gln	Glu	Cys	
	1085					1090					1095				
Val	Ser	Pro	Tyr	Arg	Ser	Arg	Gly	Ala	Asn	Gly	Ser	Glu	Thr	Asn	
	1100					1105					1110				
Arg	Val	Gly	Ser	Asn	His	Gly	Ile	Asn	Gln	Asn	Val	Ser	Gln	Ser	
	1115					1120					1125				
Leu	Cys	Gln	Glu	Asp	Asp	Tyr	Glu	Asp	Asp	Lys	Pro	Thr	Asn	Tyr	
	1130					1135					1140				
Ser	Glu	Arg	Tyr	Ser	Glu	Glu	Glu	Gln	His	Glu	Glu	Glu	Glu	Arg	
	1145					1150					1155				
Pro	Thr	Asn	Tyr	Ser	Ile	Lys	Tyr	Asn	Glu	Glu	Lys	Arg	His	Val	
	1160					1165					1170				
Asp	Gln	Pro	Ile	Asp	Tyr	Ser	Leu	Lys	Tyr	Ala	Thr	Asp	Ile	Pro	
	1175					1180					1185				
Ser	Ser	Gln	Lys	Gln	Ser	Phe	Ser	Phe	Ser	Lys	Ser	Ser	Ser	Gly	
	1190					1195					1200				
Gln	Ser	Ser	Lys	Thr	Glu	His	Met	Ser	Ser	Ser	Ser	Glu	Asn	Thr	
	1205					1210					1215				
Ser	Thr	Pro	Ser	Ser	Asn	Ala	Lys	Arg	Gln	Asn	Gln	Leu	His	Pro	
	1220					1225					1230				
Ser	Ser	Ala	Gln	Ser	Arg	Ser	Gly	Gln	Pro	Gln	Lys	Ala	Ala	Thr	
	1235					1240					1245				
Cys	Lys	Val	Ser	Ser	Ile	Asn	Gln	Glu	Thr	Ile	Gln	Thr	Tyr	Cys	
	1250					1255					1260				
Val	Glu	Asp	Thr	Pro	Ile	Cys	Phe	Ser	Arg	Cys	Ser	Ser	Leu	Ser	
	1265					1270					1275				
Ser	Leu	Ser	Ser	Ala	Glu	Asp	Glu	Ile	Gly	Cys	Asn	Gln	Thr	Thr	
	1280					1285					1290				
Gln	Glu	Ala	Asp	Ser	Ala	Asn	Thr	Leu	Gln	Ile	Ala	Glu	Xaa	Lys	
	1295					1300					1305				
Glu	Lys	Ile	Gly	Thr	Arg	Ser	Ala	Xaa	Asp	Pro	Val	Ser	Glu	Val	
	1310					1315					1320				
Pro	Ala	Val	Ser	Gln	His	Pro	Arg	Thr	Lys	Ser	Ser	Arg	Leu	Gln	
	1325					1330					1335				
Gly	Ser	Ser	Leu	Ser	Ser	Glu	Ser	Ala	Arg	His	Lys	Ala	Val	Glu	
	1340					1345					1350				

-continued

Phe Ser	Ser Gly Ala Lys Ser	Pro Ser Lys Ser Gly	Ala Gln Thr
1355	1360	1365	
Pro Lys	Ser Pro Pro Glu His Tyr Val Gln Glu Thr	Pro Leu Met	
1370	1375	1380	
Phe Ser	Arg Cys Thr Ser Val Ser Ser Leu Asp Ser	Phe Glu Ser	
1385	1390	1395	
Arg Ser	Ile Ala Ser Ser Val Gln Ser Glu Pro Cys Ser Gly Met		
1400	1405	1410	
Val Ser	Gly Ile Ile Ser Pro Ser Asp Leu Pro Asp Ser Pro Gly		
1415	1420	1425	
Gln Thr	Met Pro Pro Ser Arg Ser Lys Thr Pro Pro Pro Pro Pro		
1430	1435	1440	
Gln Thr	Ala Gln Thr Lys Arg Glu Val Pro Lys Asn Lys Ala Pro		
1445	1450	1455	
Thr Ala	Glu Lys Arg Glu Ser Gly Pro Lys Gln Ala Ala Val Asn		
1460	1465	1470	
Ala Ala	Val Gln Arg Val Gln Val Leu Pro Asp Ala Asp Thr Leu		
1475	1480	1485	
Leu His	Phe Ala Thr Glu Ser Thr Pro Asp Gly Phe Ser Cys Ser		
1490	1495	1500	
Ser Ser	Leu Ser Ala Leu Ser Leu Asp Glu Pro Phe Ile Gln Lys		
1505	1510	1515	
Asp Val	Glu Leu Arg Ile Met Pro Pro Val Gln Glu Asn Asp Asn		
1520	1525	1530	
Gly Asn	Glu Thr Glu Ser Glu Gln Pro Lys Glu Ser Asn Glu Asn		
1535	1540	1545	
Gln Glu	Lys Glu Ala Glu Lys Thr Ile Asp Ser Glu Lys Asp Leu		
1550	1555	1560	
Leu Asp	Asp Ser Asp Asp Asp Asp Ile Glu Ile Leu Glu Glu Cys		
1565	1570	1575	
Ile Ile	Ser Ala Met Pro Thr Lys Ser Ser Arg Lys Ala Lys Lys		
1580	1585	1590	
Pro Ala	Gln Thr Ala Ser Lys Leu Pro Pro Pro Val Ala Arg Lys		
1595	1600	1605	
Pro Ser	Gln Leu Pro Val Tyr Lys Leu Leu Pro Ser Gln Asn Arg		
1610	1615	1620	
Leu Gln	Pro Gln Lys His Val Ser Phe Thr Pro Gly Asp Asp Met		
1625	1630	1635	
Pro Arg	Val Tyr Cys Val Glu Gly Thr Pro Ile Asn Phe Ser Thr		
1640	1645	1650	
Ala Thr	Ser Leu Ser Asp Leu Thr Ile Glu Ser Pro Pro Asn Glu		
1655	1660	1665	
Leu Ala	Ala Gly Glu Gly Val Arg Gly Gly Ala Gln Ser Gly Glu		
1670	1675	1680	
Phe Glu	Lys Arg Asp Thr Ile Pro Thr Glu Gly Arg Ser Thr Asp		
1685	1690	1695	
Glu Ala	Gln Gly Gly Lys Thr Ser Ser Val Thr Ile Pro Glu Leu		
1700	1705	1710	
Asp Asp	Asn Lys Ala Glu Glu Gly Asp Ile Leu Ala Glu Cys Ile		
1715	1720	1725	

-continued

Asn Ser 1730	Ala Met Pro Lys 1735	Gly Lys Ser His Lys Pro 1740	Phe Arg Val
Lys Lys 1745	Ile Met Asp Gln Val 1750	Gln Gln Ala Ser Ala 1755	Ser Ser Ser
Ala Pro 1760	Asn Lys Asn Gln Leu 1765	Asp Gly Lys Lys Lys 1770	Lys Pro Thr
Ser Pro 1775	Val Lys Pro Ile Pro 1780	Gln Asn Thr Glu Tyr 1785	Arg Thr Arg
Val Arg 1790	Lys Asn Ala Asp Ser 1795	Lys Asn Asn Leu Asn 1800	Ala Glu Arg
Val Phe 1805	Ser Asp Asn Lys Asp 1810	Ser Lys Lys Gln Asn 1815	Leu Lys Asn
Asn Ser 1820	Lys Val Phe Asn Asp 1825	Lys Leu Pro Asn Asn 1830	Glu Asp Arg
Val Arg 1835	Gly Ser Phe Ala Phe 1840	Asp Ser Pro His His 1845	Tyr Thr Pro
Ile Glu 1850	Gly Thr Pro Tyr Cys 1855	Phe Ser Arg Asn Asp 1860	Ser Leu Ser
Ser Leu 1865	Asp Phe Asp Asp Asp 1870	Asp Val Asp Leu Ser 1875	Arg Glu Lys
Ala Glu 1880	Leu Arg Lys Ala Lys 1885	Glu Asn Lys Glu Ser 1890	Glu Ala Lys
Val Thr 1895	Ser His Thr Glu Leu 1900	Thr Ser Asn Gln Gln 1905	Ser Ala Asn
Lys Thr 1910	Gln Ala Ile Ala Lys 1915	Gln Pro Ile Asn Arg 1920	Gly Gln Pro
Lys Pro 1925	Ile Leu Gln Lys Gln 1930	Ser Thr Phe Pro Gln 1935	Ser Ser Lys
Asp Ile 1940	Pro Asp Arg Gly Ala 1945	Ala Thr Asp Glu Lys 1950	Leu Gln Asn
Phe Ala 1955	Ile Glu Asn Thr Pro 1960	Val Cys Phe Ser His 1965	Asn Ser Ser
Leu Ser 1970	Ser Leu Ser Asp Ile 1975	Asp Gln Glu Asn Asn 1980	Asn Lys Glu
Asn Glu 1985	Pro Ile Lys Glu Thr 1990	Glu Pro Pro Asp Ser 1995	Gln Gly Glu
Pro Ser 2000	Lys Pro Gln Ala Ser 2005	Gly Tyr Ala Pro Lys 2010	Ser Phe His
Val Glu 2015	Asp Thr Pro Val Cys 2020	Phe Ser Arg Asn Ser 2025	Ser Leu Ser
Ser Leu 2030	Ser Ile Asp Ser Glu 2035	Asp Asp Leu Leu Gln 2040	Glu Cys Ile
Ser Ser 2045	Ala Met Pro Lys Lys 2050	Lys Lys Pro Ser Arg 2055	Leu Lys Gly
Asp Asn 2060	Glu Lys His Ser Pro 2065	Arg Asn Met Gly Gly 2070	Ile Leu Gly
Glu Asp 2075	Leu Thr Leu Asp Leu 2080	Lys Asp Ile Gln Arg 2085	Pro Asp Ser
Glu His 2090	Gly Leu Ser Pro Asp 2095	Ser Glu Asn Phe Asp 2100	Trp Lys Ala
Ile Gln	Glu Gly Ala Asn Ser	Ile Val Ser Ser Leu	His Gln Ala

-continued

2105	2110	2115
Ala Ala Ala Ala Cys Leu Ser Arg Gln Ala Ser Ser Asp Ser Asp 2120 2125 2130		
Ser Ile Leu Ser Leu Lys Ser Gly Ile Ser Leu Gly Ser Pro Phe 2135 2140 2145		
His Leu Thr Pro Asp Gln Glu Glu Lys Pro Phe Thr Ser Asn Lys 2150 2155 2160		
Gly Pro Arg Ile Leu Lys Pro Gly Glu Lys Ser Thr Leu Glu Thr 2165 2170 2175		
Lys Lys Ile Glu Ser Glu Ser Lys Gly Ile Lys Gly Gly Lys Lys 2180 2185 2190		
Val Tyr Lys Ser Leu Ile Thr Gly Lys Val Arg Ser Asn Ser Glu 2195 2200 2205		
Ile Ser Gly Gln Met Lys Gln Pro Leu Gln Ala Asn Met Pro Ser 2210 2215 2220		
Ile Ser Arg Gly Arg Thr Met Ile His Ile Pro Gly Val Arg Asn 2225 2230 2235		
Ser Ser Ser Ser Thr Ser Pro Val Ser Lys Lys Gly Pro Pro Leu 2240 2245 2250		
Lys Thr Pro Ala Ser Lys Ser Pro Ser Glu Gly Gln Thr Ala Thr 2255 2260 2265		
Thr Ser Pro Arg Gly Ala Lys Pro Ser Val Lys Ser Glu Leu Ser 2270 2275 2280		
Pro Val Ala Arg Gln Thr Ser Gln Ile Gly Gly Ser Ser Lys Ala 2285 2290 2295		
Pro Ser Arg Ser Gly Ser Arg Asp Ser Thr Pro Ser Arg Pro Ala 2300 2305 2310		
Gln Gln Pro Leu Ser Arg Pro Ile Gln Ser Pro Gly Arg Asn Ser 2315 2320 2325		
Ile Ser Pro Gly Arg Asn Gly Ile Ser Pro Pro Asn Lys Leu Ser 2330 2335 2340		
Gln Leu Pro Arg Thr Ser Ser Pro Ser Thr Ala Ser Thr Lys Ser 2345 2350 2355		
Ser Gly Ser Gly Lys Met Ser Tyr Thr Ser Pro Gly Arg Gln Met 2360 2365 2370		
Ser Gln Gln Asn Leu Thr Lys Gln Thr Gly Leu Ser Lys Asn Ala 2375 2380 2385		
Ser Ser Ile Pro Arg Ser Glu Ser Ala Ser Lys Gly Leu Asn Gln 2390 2395 2400		
Met Asn Asn Gly Asn Gly Ala Asn Lys Lys Val Glu Leu Ser Arg 2405 2410 2415		
Met Ser Ser Thr Lys Ser Ser Gly Ser Glu Ser Asp Arg Ser Glu 2420 2425 2430		
Arg Pro Val Leu Val Arg Gln Ser Thr Phe Ile Lys Glu Ala Pro 2435 2440 2445		
Ser Pro Thr Leu Arg Arg Lys Leu Glu Glu Ser Ala Ser Phe Glu 2450 2455 2460		
Ser Leu Ser Pro Ser Ser Arg Pro Ala Ser Pro Thr Arg Ser Gln 2465 2470 2475		
Ala Gln Thr Pro Val Leu Ser Pro Ser Leu Pro Asp Met Ser Leu 2480 2485 2490		

-continued

Ser Thr His Ser Ser Val Gln Ala Gly Gly Trp Arg Lys Leu Pro
 2495 2500 2505
 Pro Asn Leu Ser Pro Thr Ile Glu Tyr Asn Asp Gly Arg Pro Ala
 2510 2515 2520
 Lys Arg His Asp Ile Ala Arg Ser His Ser Glu Ser Pro Ser Arg
 2525 2530 2535
 Leu Pro Ile Asn Arg Ser Gly Thr Trp Lys Arg Glu His Ser Lys
 2540 2545 2550
 His Ser Ser Ser Leu Pro Arg Val Ser Thr Trp Arg Arg Thr Gly
 2555 2560 2565
 Ser Ser Ser Ser Ile Leu Ser Ala Ser Ser Glu Ser Ser Glu Lys
 2570 2575 2580
 Ala Lys Ser Glu Asp Glu Lys His Val Asn Ser Ile Ser Gly Thr
 2585 2590 2595
 Lys Gln Ser Lys Glu Asn Gln Val Ser Ala Lys Gly Thr Trp Arg
 2600 2605 2610
 Lys Ile Lys Glu Asn Glu Phe Ser Pro Thr Asn Ser Thr Ser Gln
 2615 2620 2625
 Thr Val Ser Ser Gly Ala Thr Asn Gly Ala Glu Ser Lys Thr Leu
 2630 2635 2640
 Ile Tyr Gln Met Ala Pro Ala Val Ser Lys Thr Glu Asp Val Trp
 2645 2650 2655
 Val Arg Ile Glu Asp Cys Pro Ile Asn Asn Pro Arg Ser Gly Arg
 2660 2665 2670
 Ser Pro Thr Gly Asn Thr Pro Pro Val Ile Asp Ser Val Ser Glu
 2675 2680 2685
 Lys Ala Asn Pro Asn Ile Lys Asp Ser Lys Asp Asn Gln Ala Lys
 2690 2695 2700
 Gln Asn Val Gly Asn Gly Ser Val Pro Met Arg Thr Val Gly Leu
 2705 2710 2715
 Glu Asn Arg Leu Asn Ser Phe Ile Gln Val Asp Ala Pro Asp Gln
 2720 2725 2730
 Lys Gly Thr Glu Ile Lys Pro Gly Gln Asn Asn Pro Val Pro Val
 2735 2740 2745
 Ser Glu Thr Asn Glu Ser Ser Ile Val Glu Arg Thr Pro Phe Ser
 2750 2755 2760
 Ser Ser Ser Ser Ser Lys His Ser Ser Pro Ser Gly Thr Val Ala
 2765 2770 2775
 Ala Arg Val Thr Pro Phe Asn Tyr Asn Pro Ser Pro Arg Lys Ser
 2780 2785 2790
 Ser Ala Asp Ser Thr Ser Ala Arg Pro Ser Gln Ile Pro Thr Pro
 2795 2800 2805
 Val Asn Asn Asn Thr Lys Lys Arg Asp Ser Lys Thr Asp Ser Thr
 2810 2815 2820
 Glu Ser Ser Gly Thr Gln Ser Pro Lys Arg His Ser Gly Ser Tyr
 2825 2830 2835
 Leu Val Thr Ser Val
 2840

<210> SEQ ID NO 9

<211> LENGTH: 33

-continued

```

<212> TYPE: DNA
<213> ORGANISM: Artificial sequence
<220> FEATURE:
<223> OTHER INFORMATION: Single strand DNA oligonucleotide

<400> SEQUENCE: 9

tttgcagggt attagcagaa tctgcttct gtg                               33

<210> SEQ ID NO 10
<211> LENGTH: 21
<212> TYPE: DNA
<213> ORGANISM: Artificial sequence
<220> FEATURE:
<223> OTHER INFORMATION: Single strand DNA oligonucleotide

<400> SEQUENCE: 10

ccaatctttt ctttttttct t                                               21

<210> SEQ ID NO 11
<211> LENGTH: 25
<212> TYPE: DNA
<213> ORGANISM: Artificial sequence
<220> FEATURE:
<223> OTHER INFORMATION: Single strand DNA oligonucleotide

<400> SEQUENCE: 11

tgctgtgaca ctgctggaac ttcgc                                           25

<210> SEQ ID NO 12
<211> LENGTH: 23
<212> TYPE: DNA
<213> ORGANISM: Artificial sequence
<220> FEATURE:
<223> OTHER INFORMATION: Single strand DNA oligonucleotide

<400> SEQUENCE: 12

cacaggatct tgagctgacc tag                                             23

```

1. A method of diagnosing cancer or a pre-malignant lesion, the method comprising determining a presence and/or a level of a circulating CD24 in a subject in need thereof, wherein said presence and/or said level of said circulating CD24 above a predetermined threshold is indicative of the cancer or the pre-malignant lesion.

2. The method of claim 1, wherein said pre-malignant region is an adenoma.

3-4. (canceled)

5. The method of claim 1, wherein said circulating CD24 is selected from the group consisting of shedded CD24, blebbed CD24 and soluble CD24.

6-7. (canceled)

8. The method of claim 1, wherein the pre-malignant lesion is associated with a solid tumor.

9. The method of claim 1, wherein the cancer is a solid tumor.

10. The method of claim 1, wherein the pre-malignant lesion or the cancer is associated with a gastrointestinal tract cancer.

11-12. (canceled)

13. The method of claim 1, wherein said circulating CD24 is comprised in a biological sample selected from the group

consisting of a stool sample, a serum sample, a blood sample, a urine sample, and a saliva sample.

14. The method of claim 1, wherein said determining is effected at the protein level.

15. A kit for diagnosing cancer or a pre-malignant lesion comprising a packaging material, at least one reagent for determining a presence and/or a level of circulating CD24 of a subject and instructions for use in diagnosing the cancer or the pre-malignant lesion.

16. (canceled)

17. A method of determining if a subject is predisposed to gastrointestinal cancer, the method comprising determining a presence or an absence, in a homozygous or heterozygous form, of at least one cancer-associated genotype in a CD24 nucleic acid sequence of the subject, thereby determining if the subject is predisposed to the gastrointestinal cancer.

18-22. (canceled)

23. A kit for determining if a subject is predisposed to gastrointestinal cancer comprising a packaging material, at least one reagent for determining a presence or absence, in a homozygous or heterozygous form, of at least one cancer-associated genotype in the CD24 nucleic acid sequence of the subject and instructions for use in determining if the subject is predisposed to the gastrointestinal cancer.

24-28. (canceled)

29. A method of monitoring efficacy of cancer therapy, comprising determining a level of a circulating CD24 in a biological sample of the subject following the cancer therapy, wherein a decrease from a predetermined threshold in the level of the circulating CD24 following the cancer therapy is indicative of reduction of cancerous cells, thereby monitoring efficacy of the cancer therapy.

30-31. (canceled)

32. The method of claim **29**, wherein said circulating CD24 is selected from the group consisting of shedded CD24, blebbed CD24 and soluble CD24.

33-35. (canceled)

36. The method of claim **29**, wherein the cancer is a gastrointestinal tract cancer.

37. (canceled)

38. The method of claim **29**, wherein said biological sample is selected from the group consisting of a stool sample, a serum sample, a blood sample, a urine sample, and a saliva sample.

39. The method of claim **29**, wherein said determining is effected at the protein level.

40. The method of claim **29**, wherein the cancer therapy is selected from the group consisting of radiation therapy, chemotherapy and antibody therapy.

41-42. (canceled)

43. A kit for monitoring efficacy of cancer therapy, comprising packaging material, at least one reagent for determining a presence and/or a level of circulating CD24 of a subject and instructions for use in monitoring the efficacy of the cancer therapy.

44. (canceled)

45. The kit of claim **43**, wherein said at least one reagent comprises a CD24 specific antibody.

* * * * *

专利名称(译)	用于早期检测癌症或易感性的方法和试剂盒		
公开(公告)号	US20100062450A1	公开(公告)日	2010-03-11
申请号	US12/223315	申请日	2007-01-31
[标]申请(专利权)人(译)	医疗资源基金特拉维夫SOURASKY医仙		
申请(专利权)人(译)	医学研究基金特拉维夫SOURASKY医疗中心		
当前申请(专利权)人(译)	医学研究基金特拉维夫SOURASKY医疗中心		
[标]发明人	ARBER NADIR		
发明人	ARBER, NADIR		
IPC分类号	G01N33/53		
CPC分类号	C12Q1/6886 C12Q2600/118 C12Q2600/156 G01N2800/52 G01N33/57488 G01N2333/70596 G01N33/57419		
优先权	60/763378 2006-01-31 US		
其他公开文献	US9394569		
外部链接	Espacenet USPTO		

摘要(译)

提供了通过确定受试者的循环CD24的存在和/或水平来诊断癌症或恶变前病变的方法和试剂盒。还提供了用于通过确定CD24和/或APC核酸序列中的癌症相关基因型的纯合或杂合形式的存在或不存在来确定受试者是否易患胃肠癌的方法和试剂盒。还提供了用于通过确定受试者的循环CD24的存在和/或水平来监测癌症疗法的功效的方法和试剂盒。

