



US 20060177876A1

(19) **United States**

(12) **Patent Application Publication** (10) **Pub. No.: US 2006/0177876 A1**  
**Chung et al.** (43) **Pub. Date: Aug. 10, 2006**

(54) **MONOCLONAL ANTIBODY AGAINST ASIALO ALPHA 1-ACID GLYCOPROTEIN, IMMUNOCHROMATOGRAPHIC STRIP COMPRISING THE MONOCLONAL ANTIBODY, AND METHOD FOR DIAGNOSING LIVER DISEASES USING THE IMMUNOCHROMATOGRAPHIC STRIP**

(76) Inventors: **Tai-Wha Chung**, Daejeon (KR); **Eun-Young Song**, Seoul (KR); **Ji-Hyun Kang**, Daejeon (KR); **Kyoung-A Kim**, Daejeon (KR); **Eun-Young Lee**, Daejeon (KR); **Yong-Kyung Choe**, Daejeon (KR)

Correspondence Address:  
**STAAS & HALSEY LLP**  
**SUITE 700**  
**1201 NEW YORK AVENUE, N.W.**  
**WASHINGTON, DC 20005 (US)**

(21) Appl. No.: **10/540,848**  
(22) PCT Filed: **Dec. 27, 2003**  
(86) PCT No.: **PCT/KR03/02860**

(30) **Foreign Application Priority Data**

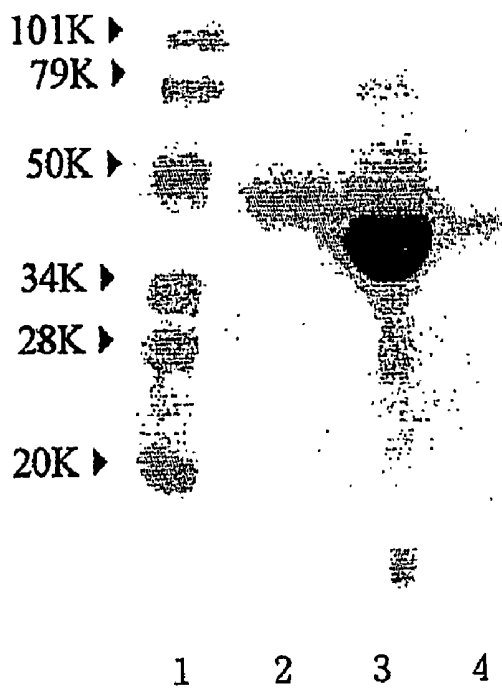
Dec. 27, 2002 (KR)..... 10-2002-0084834

**Publication Classification**

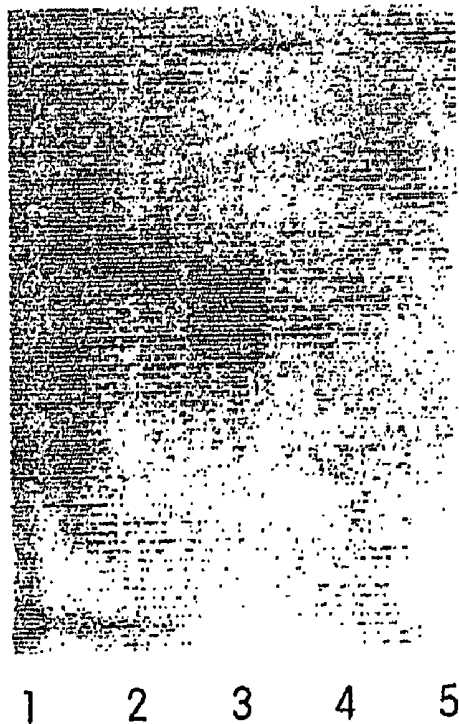
(51) **Int. Cl.**  
**G01N 33/567** (2006.01)  
**G01N 33/558** (2006.01)  
**G01N 33/53** (2006.01)  
**C07K 16/40** (2006.01)  
(52) **U.S. Cl.** ..... **435/7.2; 436/514; 530/388.26; 977/900**

(57) **ABSTRACT**

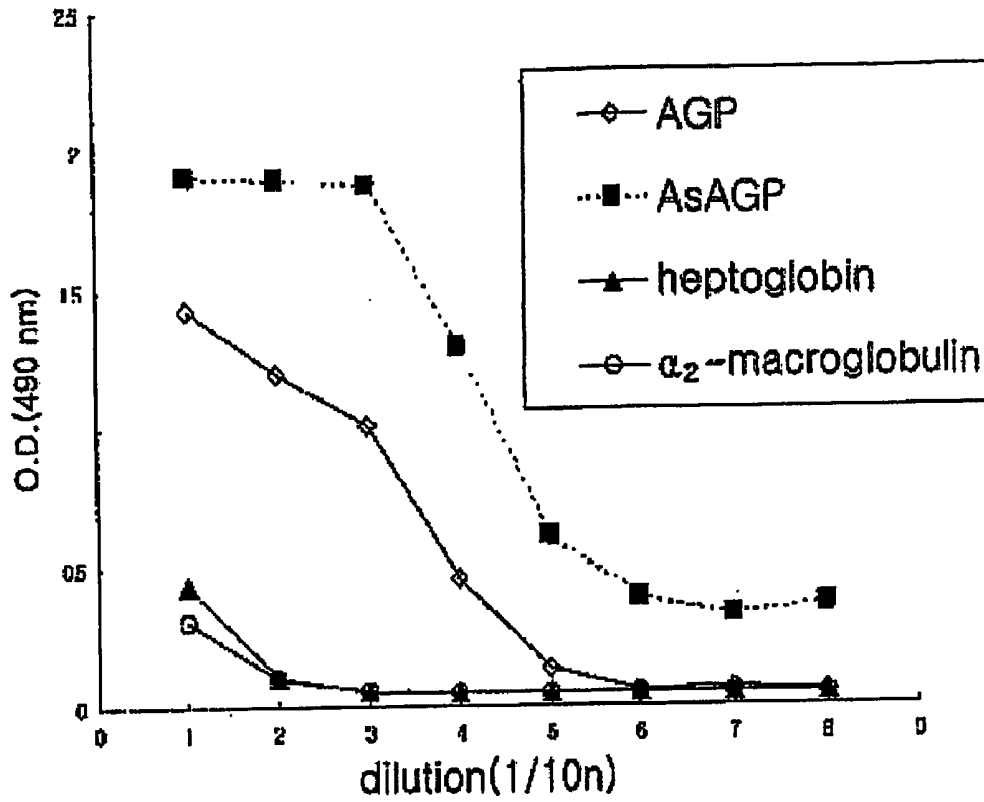
The present invention relates to a method for diagnosing a liver disease rapidly in an early stage. More particularly, the present invention relates to a monoclonal antibody against asialo  $\alpha$ 1-acid glycoprotein; a method for diagnosing a liver disease which evaluates asialo  $\alpha$ 1-acid glycoprotein in a test sample by using said monoclonal antibody; and a diagnostic strip for immunochromatography composed of said monoclonal antibody against asialo  $\alpha$ 1-acid glycoprotein and *Ricinus communis* agglutinin (RCA). The diagnostic device of the present invention is convenient to measure the concentration of asialo  $\alpha$ 1-acid glycoprotein and to diagnose a liver disease rapidly.



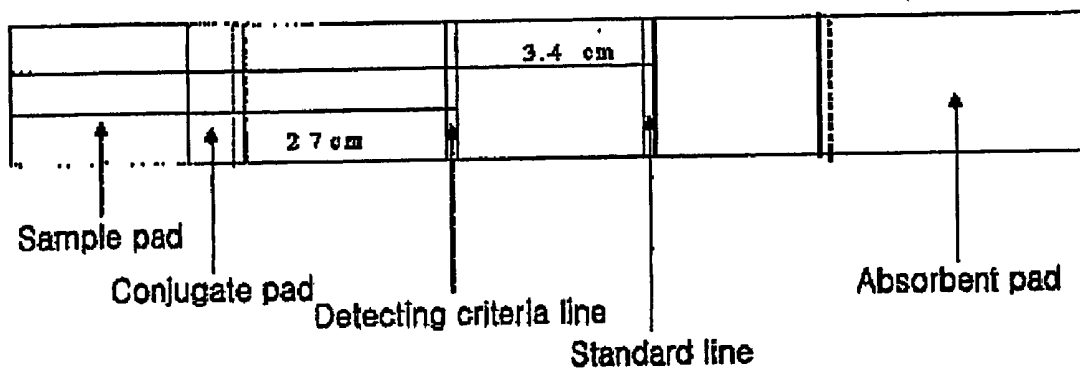
도 1



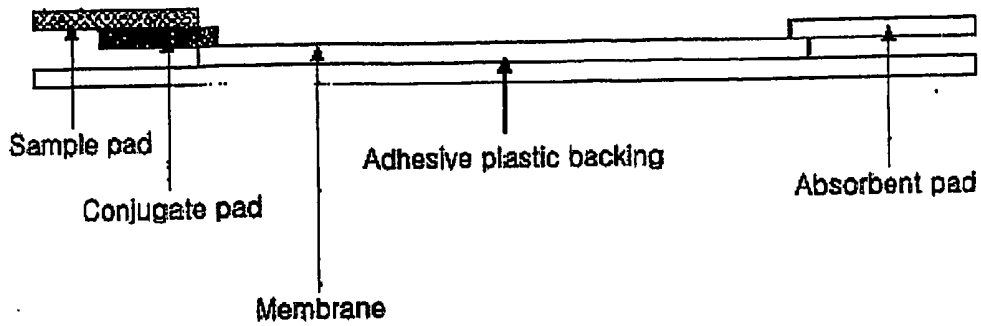
도 2



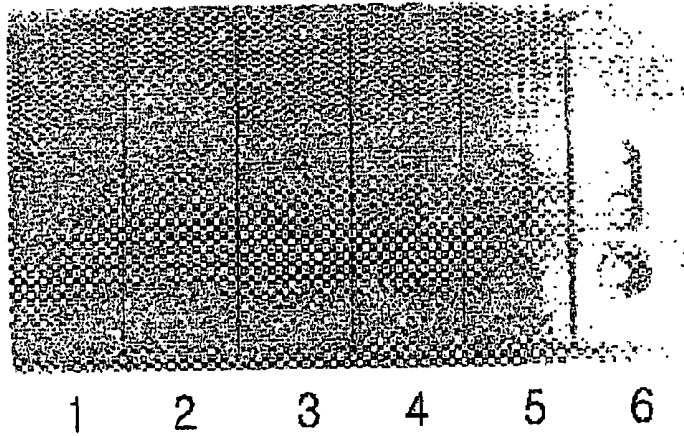
도 3



도 4a



도 4b



- 1 :  $\alpha_1$ -acid glycoprotein + heptoglobin +  $\alpha_2$ -macroglobulin
- 2 : normal person
- 3 : 1.5  $\mu\text{g/ml}$
- 4 : 2.0  $\mu\text{g/ml}$
- 5 : 3.0  $\mu\text{g/ml}$
- 6 : 4.0  $\mu\text{g/ml}$

도 5

**MONOCLONAL ANTIBODY AGAINST ASIALO  
ALPHA 1-ACID GLYCOPROTEIN,  
IMMUNOCHROMATOGRAPHIC STRIP  
COMPRISING THE MONOCLONAL ANTIBODY,  
AND METHOD FOR DIAGNOSING LIVER  
DISEASES USING THE  
IMMUNOCHROMATOGRAPHIC STRIP**

TECHNICAL FIELD

[0001] The present invention relates to a method for diagnosing a liver disease rapidly in an early stage. More particularly, the present invention relates to a monoclonal antibody against asialo  $\alpha$ 1-acid glycoprotein; a method for diagnosing a liver disease which evaluates asialo  $\alpha$ 1-acid glycoprotein in a test sample by using said monoclonal antibody; and a diagnostic strip for immunochromatography composed of said monoclonal antibody against asialo  $\alpha$ 1-acid glycoprotein and *Ricinus communis* agglutinin (RCA). The diagnostic device of the present invention is convenient to measure the concentration of asialo  $\alpha$ 1-acid glycoprotein and to diagnose a liver disease rapidly.

BACKGROUND

[0002] Liver disease including hepatitis, liver cirrhosis, and hepatocarcinoma is the most prevalent disease in Korea, Japan, Taiwan, China and other Southeast Asian countries. Presently, liver diseases have been diagnosed by evaluating the content of bilirubin or urobilinogen from patients' urine, by measuring the contents of glutamic-oxaloacetic transaminase (GOT), glutamic pyruvic transaminase, total bilirubin, albumin, lactic acid dehydrogenase and the like so as to analyze the changes of biochemical components in blood and by detecting an antigen from hepatitis B virus (HBV) or hepatitis C virus (HCV) or antibody against these viruses. Besides, liver cirrhosis can be diagnosed by alpha-feto protein (AFP) and carcinoembryonic antigen (CEA) test. However, liver is a complex organ due to various functions and is vitally specific not to reveal an abnormal state outwardly. Furthermore, an early diagnostic method has not been established yet and thus liver disease is often difficult to be treated, since it is diagnosed after severely worsen.

[0003] The present inventors have developed a marker which diagnoses a liver disease in an early stage clinically and reflects the severity of patient exactly and then manufactured a diagnostic kit. It has been disclosed in the patent application and the treatise that the marker be a remarkable agent for diagnosing a liver disease.

[0004] Precisely, the present inventors have demonstrated the diagnostic method and the diagnostic kit in Korean patent application PCT/KR00/00840 (Aug. 1, 2000), U.S. patent application Ser. No. 09/662,363 (Sep. 13, 2000) and Korean patent application 10-2000-0040609 (Jul. 14, 2000), which exploits the sandwich ELISA method by using the specific antibody and lectin and measures asialo glycoprotein in blood. This techniques are confirmed to be recurrent and accurate and thus to be useful for diagnosing liver functions and to treat hepatic diseases.

[0005] It is reported that asialo glycoprotein represent the prognostic status of hepatic disease as a marker in blood serum (T. Sawamura et al., Gastroenterology 1981, 81: 527-533; T. Sawamura et al., Gastroenterology 1984, 87: 1217-1221). In addition, it is elucidated that asialo glyco-

protein help to detect the status of hepatic cancer since the concentration is proportional to the severity in liver cancer (T. Sawamura et al., Gastrologia Japonica 1985, 20: 201-208).

[0006] Conventionally, the receptor against asialo glycoprotein is separated from human or other animal such as rabbit and mouse, purified and applied as a capture protein in order to measure the concentration of asialo glycoprotein. After it is labeled with radioactive substrates, the competitive radioactive assay and electro immunodiffusion are accomplished (J. S. Marshall et al., J. Lab. Clin. Med. 1978, 92: 30-37; N. Serbource-Goguel et al., Hepatology 1983, 3: 356-359).

[0007] Unfortunately, there are some problems. Above all, the receptor against asialo glycoprotein is difficult to be obtained in a large scale, although the test kit needs a large amount of asialo glycoprotein. In case of competitive radioreceptor assay, it is dangerous to use radioactive substance and hard to prepare special facilities for treating waste material and the like. In cases of electroimmunodiffusion, it is complicated to analyze data quantitatively. Especially, the competitive assay is not suitable for general diagnostic kit since it lacks accuracy and recurrence.

BRIEF DESCRIPTION OF THE DRAWINGS

[0008] The above and other objects, features and other advantages of the present invention will be more clearly understood from the following detailed description taken in conjunction with the accompanying drawings, in which;

[0009] **FIG. 1** depicts  $\alpha$ 1-acid glycoprotein (AGP) and desialylated  $\alpha$ 1-acid glycoprotein purified from blood plasma by performing sodium dodecyl polyacrylamide gel electrophoresis-(SDS-PAGE).

[0010] **FIG. 2** depicts the monoclonal antibody against asialo  $\alpha$ 1-acid glycoprotein produced from the hybridoma cell line of the present invention by performing western blotting.

[0011] **FIG. 3** depicts the monoclonal antibody prepared in the present invention by performing ELISA method, which reacts only with asialo  $\alpha$ 1-acid glycoprotein and excludes heptoglobin and  $\alpha$ 2-macroglobulin.

[0012] **FIG. 4a** depicts a planar view of the diagnostic strip for immunochromatography prepared in the present invention.

[0013] **FIG. 4b** depicts a front view of the diagnostic strip for immunochromatography prepared in the present invention.

[0014] **FIG. 5** depicts the result which is measured by using the cassette type diagnostic strip for immunochromatography prepared in the present invention and indicates asialo  $\alpha$ 1-acid glycoprotein in a concentration-dependent mode.

DISCLOSURE OF THE INVENTION

[0015] In order to settle above-mentioned technical problems and to diagnose a liver disease rapidly and easily by detecting asialo glycoprotein, the present inventors have attempted to develop a monoclonal antibody specific for asialo  $\alpha$ 1-acid glycoprotein (AsAGP), a diagnostic method

for liver disease by using said monoclonal antibody and a diagnostic strip for immunochromatography useful for the same method.

[0016] The object of the present invention is to provide a device and a method for detecting a liver disease easily.

[0017] In order to attain said object, the present invention provides a monoclonal antibody binding only with asialo  $\alpha$ 1-acid glycoprotein and excluding heptoglobin and  $\alpha$ 2-macroglobulin. The monoclonal antibody of the present invention also does not react with asialo heptoglobin and asialo  $\alpha$ 2-macroglobulin. Preferably, the monoclonal antibody of the present invention is a subclass type IgG<sub>1</sub>.

[0018] The monoclonal antibody can be prepared by the process disclosed in the prior arts (Davidson R. L. and P. S. Gerald 1976, Improved techniques for the induction of mammalian cell hybridization by polyethylene glycol, *Somatic Cell Genet.*, 2: 165-176; Knott C. L., Kuus-Reichel K., Liu R. and Wolfert R. L. 1997, Development of antibodies for diagnostic assays, In Price C. and Newman D. (eds.), *Principles and Practice of Immunoassay*, 2<sup>nd</sup> ed. New York, Stockton Press, 36-64; Gillete R. W. 1987, Alternatives to pristine priming for ascitic fluid and monoclonal antibody production, *J. Immunol. Meth.* 99, 21-23; Norwood T. H., C. J. Zeigler and G. M. Martin 1976, Dimethyl sulphoxide enhances polyethylene glycol-mediated somatic cell fusion, *Somatic cell Genet.*, 2: 263-270) Precisely, it is manufactured by the process which comprises (1) separating asialo  $\alpha$ 1-acid glycoprotein and (2) immunizing mice.

[0019] Above all, in order to produce the monoclonal antibody obtained above in a large scale, the hybridoma cell is prepared by the conventional process, separated, screened, injected into a mouse peritoneally and then collected from peritoneal fluid.

[0020] Concretely, asialo  $\alpha$ 1-acid glycoprotein is purified from blood by the process as described in the patent applications [PCT application PCT/KR00/00840 (Aug. 1, 2000), U.S. patent application Ser. No. 09/662,363 (Sep. 13, 2000), Korean patent application 10-2000-0040609 (Jul. 14, 2000)]. Asialo  $\alpha$ 1-acid glycoprotein is suspended by using phosphate buffer, blended by using Titer-MAX and applied to immunize a mouse. A spleen cell and a myeloma cell are separated from the experimental mouse immunized, fused and screened to select a hybridoma cell line specific for asialo  $\alpha$ 1-acid glycoprotein by ELISA method. In order to produce the monoclonal antibody specific for asialo  $\alpha$ 1-acid glycoprotein in a large scale from the hybridoma cell above, the hybridoma cell producing the monoclonal antibody against asialo  $\alpha$ 1-acid glycoprotein is injected to experimental mice and the peritoneal fluid of the mice containing the hybridoma cell in a high level is collected and separated a cell specific for the monoclonal antibody of the present invention.

[0021] In addition, the present invention also provides the hybridoma cell line which can produce in a large scale a monoclonal antibody binding only with asialo  $\alpha$ 1-acid glycoprotein excluding heptoglobin and  $\alpha$ 2-macroglobulin.

[0022] In order to investigate whether the monoclonal antibody against asialo  $\alpha$ 1-acid glycoprotein obtained from the hybridoma cell be specific for asialo  $\alpha$ 1-acid glycoprotein or not, asialo  $\alpha$ 1-acid glycoprotein is first analyzed by performing electrophoresis and western blotting. It is further

examined whether the monoclonal antibody of the present invention reacts only with asialo  $\alpha$ 1-acid glycoprotein and excludes other glycoproteins by performing ELISA method and the like as demonstrated in Example 2.

[0023] Preferably, the present invention provides the hybridoma cell line, producing the subclass type IgG<sub>1</sub> monoclonal antibody specific for asialo  $\alpha$ 1-acid glycoprotein and deposited to Korea Research Institute of Bioscience and Biotechnology, Gene Bank in May 24, 2004 (accession number KCTC 10261 BP) under Budapest Treaty.

[0024] In addition, the present invention provides a method for detecting a hepatic disease which comprises steps (1) reacting a monoclonal antibody which binds only with asialo  $\alpha$ 1-acid glycoprotein and excludes heptoglobin and  $\alpha$ 2-macroglobulin; *Ricinus communis* agglutinin (hereinafter, referred to as "RCA") as a lectin, specifically recognizing asialo glycoprotein; and a test sample; and (2) measuring asialo  $\alpha$ 1-acid glycoprotein (AsAGP).

[0025] In the method for detecting a hepatic disease of the present invention, test samples can be analyzed on a microplate through a sandwich enzyme immunoassay, an enzyme immunoassay onto an diagnostic strip for immunochromatography and various types of enzyme immunoassay. Especially, the enzyme immunoassay onto diagnostic strip for immunochromatography is the most convenient among these methods.

[0026] Preferably, the monoclonal antibody utilized in the diagnostic method of the present invention is a subclass type IgG<sub>1</sub> as described above. More preferably, the monoclonal antibody is produced from the mouse hybridoma cell line of the present invention deposited with accession number KCTC 10261 BP. Besides, as a lectin, RCA recognizing asialo  $\alpha$ 1-acid glycoprotein is preferable to be utilized.

[0027] The present invention provides a diagnostic strip for immunochromatography which comprises a monoclonal antibody binding only with asialo  $\alpha$ 1-acid glycoprotein and excluding heptoglobin and  $\alpha$ 2-macroglobulin; and lectin RCA recognizing asialo glycoprotein; measure the concentration of asialo  $\alpha$ 1-acid glycoprotein in a test sample; and diagnose a liver disease rapidly and easily.

[0028] Preferably, the present invention provides the diagnostic strip for immunochromatography which includes the monoclonal antibody As 16.89 deposited with the accession number KCTC 10261 BP and RCA as a lectin. The diagnostic strip for immunochromatography of the present invention comprises glass fiber (GF) membrane coated with micro-particles such as gold-colloid conjugated with monoclonal antibody; nitrocellulose membrane (NC) in which RCA band is lined as a diagnostic line and an monoclonal antibody band as a standard line; a sample pad absorbing test sample solution; an absorbent pad discarding non-reactive substance; and an adhesive plastic backing for mounting the above-mentioned members.

[0029] The diagnostic strip for immunochromatography of the present invention is mounted in due turn, preferably NC membrane, GF membrane, a sample pad and absorbent pad are partially overlaid onto the adhesive plastic backing to transfer substance smoothly by capillary reaction.

[0030] The diagnostic strip for immunochromatography can be prepared by the conventional procedure. Preferably,

the diagnostic strip of the present invention can be manufactured to a cassette type or a stick type.

[0031] Besides, the test sample is preferable to be blood or serum and 10-fold diluted by using elution buffer and the elution buffer is preferable to be 50 mM borate buffer containing 5% sucrose, 1% bovine serum albumin or 1% Triton X-100.

[0032] The diagnostic strip for immunochromatography of the present invention is used to detect a liver disease as follows: when a test sample is diluted and dropped onto the sample pad, both the standard line and diagnostic line are colored on the strip after 3-5 minutes so that the sample be judged according to colors whether positive for hepatic disease or not. Precisely, if Ab-gold conjugate is adopted as a microparticle, the positive sample including asialo  $\alpha$ 1-acid glycoprotein reveals red color both on the standard line and the criteria line after a test and the negative sample including asialo  $\alpha$ 1-acid glycoprotein in a normal level (not a patient of liver disease) reveals red color only on the standard line.

[0033] As described above, the diagnostic strip for immunochromatography of the present invention can detect asialo  $\alpha$ 1-acid glycoprotein to reach a cutoff value, about 1.50  $\mu$ g/ml, which can diagnose a liver disease early and monitor its prognosis and treatment if the level of asialo  $\alpha$ 1-acid glycoprotein present in patients of liver cirrhosis and liver cancer continued to be evaluated.

[0034] Furthermore as illustrated above, the monoclonal antibody which reacts only with asialo  $\alpha$ 1-acid glycoprotein and excludes heptoglobin and  $\alpha$ 2-macroglobulin and the diagnostic strip for immunochromatography by using the same can inform the test result rapidly and conveniently so that liver diseases can be diagnosed easily. Therefore, it is expected to contribute to the prevention and treatment of liver diseases.

## EXAMPLES

[0035] Practical and presently preferred embodiments of the present invention are illustrated as shown in the following Examples. However, it will be appreciated that those skilled in the art, on consideration of this disclosure, may make modifications and improvements within the spirit and scope of the present invention.

### Example 1

#### Separation and Purification of Asialo $\alpha$ 1-Acid Glycoprotein (AsAGP)

[0036]  $\alpha$ 1-acid glycoprotein (AGP) was separated and purified from asialo glycoprotein contained in human blood plasma as follows.

[0037] 2 NIH unit of thrombin was added to 200 ml of human blood plasma, stored at 37° C. for 2 hours and at 4° C. overnight and centrifuged to remove blood clot. The serum prepared above was dialyzed by using 0.05M of sodium acetate buffer (pH 4.3), loaded onto DEAE column previously equilibrated by using the same buffer, and then eluted through linear concentration gradient after 0.05 M of sodium acetate buffer (pH 4.3) and 0.1 M of sodium acetate buffer (pH 4.3) were mixed. Afterward, the optical density (OD) was measured at 280 nm and the data was illustrated in FIG. 1. The fractions including AGP and other proteins

were collected, mixed with ammonium sulfate to 0.5 g/ml and centrifuged to precipitate proteins. The resulting supernatant was mixed again with ammonium sulfate to 0.18 g/ml to precipitate proteins and the pellet was dissolved in a small amount of distilled water (D. W.), dialyzed sufficiently by using D. W. and then lyophilized.

[0038] 40 mg of AGP separated above was hydrolyzed at 80° C. for 2 hours by using 6 ml of 0.1 N sulfate solution, neutralized by using 1 N of sodium hydroxide and then dialyzed by using 0.01 N of phosphate buffer (pH 7.4). The desialylated  $\alpha$ 1-acid glycoprotein (AsAGP) prepared in the above procedure was loaded onto Sephadex G-200 column, filtrated by using 0.01 M of phosphate buffer. (pH 7.4) and calculated through OD value at 280 nm and finally the fractions including proteins were collected. The result was illustrated in FIG. 1: lane 1 is the standard marker of protein molecular weight; lane 2 is  $\alpha$ 1-acid glycoprotein; lane 3 and 4 are asialo  $\alpha$ 1-acid glycoprotein (AsAGP).

### Example 2

#### Preparation of Monoclonal Antibody Against Asialo $\alpha$ 1-Acid Glycoprotein

##### Immunization of Mice

[0039] In order to obtain an immunized mouse essential to prepare a hybridoma cell line producing a monoclonal antibody against asialo  $\alpha$ 1-acid glycoprotein, asialo  $\alpha$ 1-acid glycoprotein as an antigen was suspended well by using Titer-MAX, adjusted to 50  $\mu$ g/50 ml of concentration and then injected into peritoneal cavity of Balb/c mice aged 6-8 weeks. After 2 weeks, the same amount of antigen mentioned in the first injection was mixed with Titer-MAX and injected repeatedly onto the same site. Through the same procedure, the antigen was injected again after 7 days and repeatedly injected after 3 weeks. Afterward, the small amount of blood was collected from a tail of mouse and examined to evaluate a titer.

##### (2) Cell Fusion

[0040] In order to perform cell fusion for preparing a hybridoma cell line, mice were immunized with asialo  $\alpha$ 1-acid glycoprotein antigen mentioned above and spleen cells and myeloma cells were collected from the mice. Then,  $10^8$  of spleen cell and  $10^7$  myeloma cell (SP2/0) were washed sufficiently, mixed together and 1 ml of PEG 1500 was poured for about 1 minutes, stirred slightly for about 1 minutes. Afterward, 9 ml of RPMI medium was added for about 3 minutes to reach 50 ml of final volume as stirred slowly. The cell suspension was centrifuged to collect the cell pellet, suspended again to  $1\sim 2 \times 10^5$  cells/ml by using HAT medium, poured into a 96-well microplate in 0.2 ml volume per well, and then incubated at 37° C. in CO<sub>2</sub> incubator.

##### Screening of Hybridoma Cell Producing Monoclonal Antibody

[0041] In order to select a hybridoma cell specific for asialo  $\alpha$ 1-acid glycoprotein, ELISA method was tried by exploiting a microplate coated with asialo  $\alpha$ 1-acid glycoprotein as follows. Precisely, asialo  $\alpha$ 1-acid glycoprotein antigen was put into a microplate in 100  $\mu$ l (1  $\mu$ g/ml) per well to coat the surface and washed off to remove antigens not reacted. The culture medium of hybridoma cell was poured

to each well in 100  $\mu$ l, reacted for 2 hours and washed off by using Tween 20 phosphate buffer (PBST) to remove the culture medium not reacted. Afterward, goat anti-mouse IgG-horseradish peroxidase (HRP) was added, reacted for an hour at room temperature and washed off by using PBST solution. Then, ortho-phenylenediamine (OPD) was utilized as a substrate of peroxidase, reacted and examined to measure OD value at 490 nm with ELISA reader.

[0042] As a result, the cell line secreting antibodies highly binding to asialo  $\alpha$ 1-acid glycoprotein antigen was first screened and repeatedly selected to separate the hybridoma cell secreting a monoclonal antibody specific for asialo  $\alpha$ 1-acid glycoprotein antigen. The resulting cells were treated by the limiting dilution to become a monoclonal and the hybridoma cell line producing a monoclonal antibody was sorted again. Afterward, 2 clones having the highest titer such as asialo  $\alpha$ 1-acid glycoprotein 1 and asialo  $\alpha$ 1-acid glycoprotein 2 were collected, tried to measure the titer of supernatant in culture medium through ELISA method and then the subunit type of the monoclonal antibody was analyzed by the double immunodiffusion. Consequently, the antibodies secreted from the clones of the present invention were identified as IgG<sub>1</sub> and IgM respectively.

[0043] The cell line secreting IgG<sub>1</sub> has been named as AS 16.89 and deposited to Korea Research Institute of Biotechnology and Biotechnology, Gene Bank in May 24, 2004 (accession number KCTC 10261 BP).

#### Large Scale Production and Purification of Monoclonal Antibody

[0044] In order to produce a monoclonal antibody from a hybridoma cell in a large scale, 0.5 ml of pristane was injected into peritoneal cavity of Balb/c mice. After 1 week, each cell line obtained in the above procedure (3) was injected to the experimental mice in  $5 \times 10^6$  cells per mouse and then peritoneal fluid was collected from the peritoneal cavity if swollen. The peritoneal fluid was centrifuged at 12,000 rpm to collect cells and the resulting supernatant was filtrated through protein G column to separate and purify the monoclonal antibody against asialo  $\alpha$ 1-acid glycoprotein and also stored at  $-20^\circ$  C. for the next experiments.

#### Identification of Specificity of Monoclonal Antibody by Western Blot

[0045] In order to elucidate the property of monoclonal antibody specific for asialo  $\alpha$ 1-acid glycoprotein, the monoclonal antibody against asialo  $\alpha$ 1-acid glycoprotein purified through the above-mentioned procedure (4) was identified by performing SDS-polyacrylamide gel electrophoresis and western blotting (See FIG. 2). The western blotting was accomplished by a typical procedure in the prior arts. In FIG. 2, lane 1 is a standard marker of protein molecular weight; lane 2,  $\alpha$ 1-acid glycoprotein; lane 3, asialo  $\alpha$ 1-acid glycoprotein; lane 4,  $\alpha$ 2-macroglobulin; and lane 5, heptoglobin.

#### Identification of Specificity of Monoclonal Antibody by Enzyme Immunochemical Assay

[0046] Asialo  $\alpha$ 1-acid glycoprotein, heptoglobin,  $\alpha$ 2-macroglobulin antigen were added to 96-well microplate in 100  $\mu$ l (1  $\mu$ g/ml) per well respectively, attached on the surface, reacted for 2 hours with the monoclonal antibody against asialo  $\alpha$ 1-acid glycoprotein as added in 100  $\mu$ l, and washed

off by using phosphate buffer-Tween 20 (PBST) to remove the culture medium not reacted. Further, goat anti-mouse IgG-HRP was added, reacted for an hour at room temperature and washed sufficiently by using PBST solution. Afterward, ortho-phenylenediamine (OPD) was added as a substrate of peroxidase and reacted so as to measure OD value at 490 nm with ELISA reader. As a result, it is confirmed that the monoclonal antibody against asialo  $\alpha$ 1-acid glycoprotein purified above be the monoclonal antibody specific for asialo  $\alpha$ 1-acid glycoprotein (See FIG. 3). In FIG. 3, AGP depicts  $\alpha$ 1-acid glycoprotein and AsAGP, asialo  $\alpha$ 1-acid glycoprotein of the present invention.

#### Example 3

##### Detection of Liver Disease by Diagnostic Kit for Immunochromatography

[0047] The diagnostic kit for immunochromatography of the present invention which can measure the concentration of asialo  $\alpha$ 1-acid glycoprotein in a test sample by the immune reaction between the monoclonal antibody As 16.89 specific for asialo  $\alpha$ 1-acid glycoprotein produced above and asialo  $\alpha$ 1-acid glycoprotein in blood was manufactured and applied in clinical fields as follows.

##### Preparation of Diagnostic Kit for Immunochromatography

[0048] The diagnostic kit for detecting asialo  $\alpha$ 1-acid glycoprotein in blood is composed of following components as described below. monoclonal antibody (As16.89) specific for asialo  $\alpha$ 1-acid glycoprotein fixed onto solid carrier such as microplate lectin (RCA)-horseradish peroxidase (HRP) against asialo  $\alpha$ 1-acid glycoprotein sample dilution buffer (1% BSA/PBST)

enzyme substrate solution (OPD)

washing buffer (PBST)

standard solution of asialo  $\alpha$ 1-acid glycoprotein

stopping buffer

##### Measurement

[0049] a. The standard solution (1  $\mu$ g/ml) of asialo  $\alpha$ 1-acid glycoprotein was poured in 100  $\mu$ l respectively to microplate on which the monoclonal antibody As 16.89 was fixed. Experiment samples, including 40 normal persons, 155 patients without liver disease, 36 patients of acute hepatitis, 272 patients of chronic hepatitis (CH), 230 patients of liver cirrhosis, 72 patients of hepatocarcinoma (HCC) proceeded from liver cirrhosis, were obtained from St. Mary Hospital, Catholic Medical School. The blood sample was diluted to 1:10 ratio by using the dilution buffer, allotted onto each well of microplate in 100  $\mu$ l and incubated for 120 minutes at room temperature.

b. After reacted, the washing buffer was added in 100  $\mu$ l per well and washed three times repeatedly.

c. The lectin (RCA)-HRP diluted by the process for the preparation was allotted onto each well of microplate and reacted for 60 minutes at room temperature.

d. Step b was repeated.

e. The enzyme substrate solution (OPD) was allotted onto each well of microplate above.

f. The stopping buffer was added on each well in 100  $\mu$ l to stop the enzymatic reaction.

g. OD value was measured at 490 nm with ELISA reader.

[0050] As a result, the content of asialo  $\alpha$ 1-acid glycoprotein in blood was evaluated through the above-mentioned procedure as illustrated in Table 1.

TABLE 1

		Measurement of blood AsAGP (cutoff value: 1.50 $\mu$ g/ml)					
				AsAGP > 1.50 $\mu$ g/ml		AsAGP > 1.50 $\mu$ g/ml	
class	sum	Ave. +SD $\mu$ g/ml*	No. of sample	%	No. of sample	%	
standard group	sum	196	0.89 $\times$ 0.46	19	10.0	177	90
	normal	41	0.84 $\times$ 0.41	2	5	39	95
	non-hepatic disease	155	0.90 $\times$ 0.48	17	11	138	89
Group 1 of liver disease	acute hepatitis	36	1.33 $\times$ 0.77	9	25	27	75
Group 2 of liver disease	sum	574	2.48 $\times$ 0.89	323	56	251	44
	chronic hepatitis (CH)	272	1.63 $\times$ 0.45	99	36	173	64
	liver cirrhosis (LC)	230	3.12 $\times$ 0.42	165	72	65	28
	hepatocarcinoma (HCC) with liver cirrhosis (LC)	72	3.64 $\times$ 0.1	59	82	13	18

[0051] Consequently, it is confirmed that the concentration of asialo  $\alpha$ 1-acid glycoprotein (AsAGP) for normal persons and patients of non-hepatic disease be below 1.00  $\mu$ g/ml in an average level and the number of sample over 1.50  $\mu$ g/ml in the concentration of AsAGP be about 10%. In patient groups of acute hepatitis, chronic hepatitis, liver cirrhosis and hepatocarcinoma with liver cirrhosis, the blood level of AsAGP was evaluated to average 1.33  $\mu$ g/ml, 1.63  $\mu$ g/ml, 3.12  $\mu$ g/ml and 3.64  $\mu$ g/ml respectively. The concentrations be remarkably distinguished from those of standard group, even if the ratio of sample over 1.5  $\mu$ g/ml of AsAGP be 25%, 36%, 72% and 82% respectively. Therefore, it is verified that this test be effective upon the diagnosis of hepatic diseases.

[0052] Hence, according to data demonstrated above, the cutoff value for diagnosing a liver disease was decided to be 1.50  $\mu$ g/ml when the monoclonal antibody As 16.89 of the present invention was used for the enzyme immunoassay.

#### Example 4

##### Preparation of Diagnostic Strip for Immunochromatography

##### Preparation of Monoclonal Antibody-Gold Conjugate

[0053] The monoclonal antibody specific for asialo  $\alpha$ 1-acid glycoprotein selected in the present invention was added in 15  $\mu$ g/ml to the colloidal solution of gold particles,

reacted for 2 hours at room temperature and rotated. Then, 10% of BSA was blended in  $\frac{1}{10}$  volume to become 1% of concentration and again reacted for an hour to prepare Ab-gold conjugate. Afterward, the resultant was centrifuged at 12,000 rpm for 40 minutes to discard the supernatant solution and 2 mM of borate buffer was added to wash off Ab-gold conjugate. The resultant was washed repeatedly, three times and finally 2 mM of borate buffer containing 1% BSA was added in about  $\frac{1}{10}$  volume of gold solution and suspended. After measured with UV spectrometer, the OD value at 530 nm was adjusted to 3.00 by dilution.

##### Sample Pad

[0054] The sample pad is a member absorbing test sample and is made of cellulose material for this purpose.

##### Glass Fiber (GF) Membrane

[0055] The glass fiber is a component on which AsAGP in test sample and the monoclonal antibody prepared by the process of the present invention are reacted. The GF membrane was coated with gold colloid particle-As 16.89 on the surface and prepared as follows. The monoclonal antibody produced from hybridoma cell line As 16.89 of the present invention was conjugated onto the membrane as illustrated in step (1).

[0056] GF membrane (1.0 cm $\times$ 0.7 cm) purchased from Millipore Co. Ltd. was soaked by using 20 mM sodium borate buffer, sprayed uniformly by using gold colloid particle-As 16.89 onto the surface, dried at 37 $^{\circ}$  C. and thus made to GF membrane pad for immunochromatography (also conjugate pad) on which a monoclonal antibody conjugated with a coloring particle is fixed.

##### Nitrocellulose (NC) Membrane and Lining

[0057] Nitrocellulose membrane purchased from Millipore Co. Ltd. was cut to a proper size (0.7 cm $\times$ 5 cm), lined at a point of about 3.4 cm from the bottom of plastic backing with goat anti-mouse IgG as a standard line and at a point of 2.7 cm as a criteria line for detecting asialo  $\alpha$ 1-acid glycoprotein by using RCA purchased from EY Lab, and then dried to complete the NC membrane.

##### Absorbent Pad

[0058] Cellulose membrane was used to absorb substance not reacted in a test sample after an immune reaction and to transfer the sample solution through capillary reaction.

##### Preparation of Diagnostic Strip for Immunochromatography

[0059] As illustrated in FIG. 4a and FIG. 4b, the above-mentioned members were mounted onto the adhesive plastic backing. Precisely, NC membrane, GF membrane, sample pad and absorbent pad were arranged in due turn, overlaid evenly in about 0.1 cm portion and fixed by adhesion in order to transfer substance smoothly through capillary reaction.

#### Example 5

##### Analysis of Asialo $\alpha$ 1-Acid Glycoprotein by Using Diagnostic Strip for Immunochromatography

[0060] Serum sample was diluted to 1:10 ratio by using elution buffer (such as 50 mM borate buffer containing 5% sucrose, 1% bovine serum albumin or 1% Triton X-100) and

added in 60-70  $\mu$ l volume onto the sample pad of diagnostic strip for immunochromatography prepared in Example 4 so as to examine the standard line and the criteria line after 3-5 minutes whether colored or not.

[0061] FIG. 5 depicts the result from the cassette type strip for immunochromatography. NO. 1 is the standard dropping the mixture of  $\alpha$ 1-acid glycoprotein (AGP), heptoglobin and  $\alpha$ 2-macroglobulin; NO. 2, the diagnostic strip in the serum of normal person; NO. 3-NO. 6, the strip in 1.5  $\mu$ g/ml, 2.0  $\mu$ g/ml, 3.0  $\mu$ g/ml and 4.0  $\mu$ g/ml of asialo  $\alpha$ 1-acid glycoprotein respectively. As illustrated in FIG. 5, in NO. 3, the line is obscure; and in NO. 4-NO. 6, red colors are clear both on the standard line (upper) and the criteria line (lower).

[0062] The diagnostic strip for immunochromatography of the present invention is observed that only the standard line become red in the test sample of normal person (negative) under the cutoff value, 1.50  $\mu$ g/ml of asialo  $\alpha$ 1-acid glycoprotein since antigen-antibody-enzyme conjugate complex was not formed. On the other hand, when asialo  $\alpha$ 1-acid glycoprotein level increased to more than 1.50  $\mu$ g/ml due to a liver disease, both the lines become red, in which asialo  $\alpha$ 1-acid glycoprotein was absorbed on the sample pad, reacted with gold particle-monoclonal antibody As 16.89 conjugate on GF membrane to form an immune complex, transferred onto NC membrane through capillary reaction and conjugated with RCA in the criteria line on NC membrane to make gold precipitate. Furthermore, the criteria line can be varied in thickness and color density, depending upon the concentration of asialo  $\alpha$ 1-acid glycoprotein. Therefore, it is possible to predict the severity of liver disease by the concentration of asialo  $\alpha$ 1-acid glycoprotein in the test sample.

#### INDUSTRIAL APPLICABILITY

[0063] As illustrated above, the monoclonal antibody specific for asialo  $\alpha$ 1-acid glycoprotein and the diagnostic strip and the diagnostic kit for immunochromatography by using the same of the present invention can be utilized to evaluate asialo  $\alpha$ 1-acid glycoprotein present in blood sample rapidly and easily. Therefore, the monoclonal antibody and the diagnostic device of the present invention can monitor the severity, the treatment and the prognosis of liver diseases efficiently.

[0064] Those skilled in the art will appreciate that the conceptions and specific embodiments disclosed in the foregoing description may be readily utilized as a basis for modifying or designing other embodiments for carrying out the same purposes of the present invention.

[0065] Those skilled in the art will also appreciate that such equivalent embodiments do not depart from the spirit and scope of the invention as set forth in the appended claims.

What is claimed is:

1. A monoclonal antibody which reacts only with asialo  $\alpha$ 1-acid glycoprotein and excludes heptoglobin and  $\alpha$ 2-macroglobulin.
2. The monoclonal antibody according to claim 1, which is a subclass type IgG<sub>1</sub>.

3. A cell line which produces in a large scale a monoclonal antibody reacting only with asialo  $\alpha$ 1-acid glycoprotein and excluding heptoglobin and  $\alpha$ 2-macroglobulin.

4. The cell line according to claim 3, which is prepared by fusing a spleen cell and a myeloma cell extracted from a mouse immunized with asialo  $\alpha$ 1-acid glycoprotein.

5. The cell line according to claim 4, which produces the subclass type IgG<sub>1</sub> monoclonal antibody specific for asialo  $\alpha$ 1-acid glycoprotein and is deposited to Korea Research Institute of Bioscience and Biotechnology, Gene Bank in May 24, 2004 (accession number KCTC 10349 BP) under Budapest Treaty.

6. A method for diagnosing a liver disease in which a monoclonal antibody which reacts only with asialo  $\alpha$ 1-acid glycoprotein and excludes heptoglobin and  $\alpha$ 2-macroglobulin; and lectin RCA (*Ricinus communis* agglutinin) recognizing asialo glycoprotein are reacted with a test sample to measure the amount of asialo  $\alpha$ 1-acid glycoprotein (AsAGP).

7. The method for diagnosing a liver disease according to claim 6, in which the monoclonal antibody is the subclass IgG<sub>1</sub> produced from the mouse cell line deposited with the accession number KCTC 10261 BP.

8. The method for diagnosing a liver disease according to claim 6, in which the test sample is blood or serum.

9. An diagnostic strip for immunochromatography which comprises a monoclonal antibody reacting only with asialo  $\alpha$ 1-acid glycoprotein excluding heptoglobin and  $\alpha$ 2-macroglobulin; and RCA recognizing asialo glycoprotein as a lectin; and reacts a test sample at over 1.50  $\mu$ g/ml of asialo  $\alpha$ 1-acid glycoprotein to detect a liver disease.

10. The diagnostic strip for immunochromatography according to claim 9, in which the monoclonal antibody is As 16.89 deposited with the accession number KCTC 10261 BP.

11. The diagnostic strip for immunochromatography according to claim 9, in which the monoclonal antibody is conjugated with a micro-particle such as colloid type gold particle.

12. The diagnostic strip for immunochromatography according to claim 11, which comprises (1) glass fiber (GF) coated with micro-particles conjugated with the monoclonal antibody; (2) nitrocellulose membrane (NC) including a standard line and a diagnostic line to detect a glycoprotein; (3) a sample pad for a test sample; (4) a absorbent pad for non-reactive substance; and (4) an adhesive plastic backing for mounting above-mentioned members.

13. The diagnostic strip for immunochromatography according to claim 12, in which NC membrane, GF membrane, a sample pad and a absorbent pad are partially overlaid on said adhesive plastic backing in due turn to transfer substance by capillary reaction and an RCA band as a diagnostic line and an antibody band as a standard line are separated in some interval.

14. The diagnostic strip for immunochromatography according to claim 9, in which said test sample is blood or serum 10-folds diluted by using an elution buffer.

15. The diagnostic strip for immunochromatography according to claim 14, in which said elution buffer is 50 mM of borate buffer containing 5% sucrose, 1% bovine serum albumin or 1% Triton X-100.

16. The diagnostic strip for immunochromatography according to claim 9, in which a standard line and a diagnostic line are colored on said strip to indicate positive for a hepatic disease.

17. The diagnostic strip for immunochromatography according to claim 9, which is a cassette type.

18. The diagnostic strip for immunochromatography according to claim 9, which is a stick type.

19. A diagnostic kit for immunochromatography which comprises a monoclonal antibody reacting only with asialo  $\alpha$ 1-acid glycoprotein and excluding heptoglobin and

$\alpha$ 2-macroglobulin; RCA (*Ricinus communis* agglutinin) recognizing asialo glycoprotein as a lectin; and reacts a test sample at over 1.50  $\mu$ g/ml of asialo  $\alpha$ 1-acid glycoprotein to detect a liver disease.

20. The diagnostic kit for immunochromatography according to claim 19, in which the monoclonal antibody is As 16.89 deposited with the accession number KCTC 10261 BP.

\* \* \* \* \*

专利名称(译)	抗脱唾液酸 $\alpha$ 1-酸糖蛋白的单克隆抗体，包含该单克隆抗体的免疫层析条带，以及使用该免疫层析条带诊断肝脏疾病的方法		
公开(公告)号	<a href="#">US20060177876A1</a>	公开(公告)日	2006-08-10
申请号	US10/540848	申请日	2003-12-27
[标]申请(专利权)人(译)	中台WHA SONG EUN YOUNG 姜智敏HYUN KIM KYOUNG一个 李恩YOUNG CHOE YONG KYUNG		
申请(专利权)人(译)	CHUNG TAI-WHA SONG EUN-YOUNG 康JI-HYUN KIM KYOUNG-A 李恩YOUNG CHOE YONG-KYUNG		
当前申请(专利权)人(译)	韩国研究院生物科学与生物 东方电子有限公司		
[标]发明人	CHUNG TAI WHA SONG EUN YOUNG KANG JI HYUN KIM KYOUNG A LEE EUN YOUNG CHOE YONG KYUNG		
发明人	CHUNG, TAI-WHA SONG, EUN-YOUNG KANG, JI-HYUN KIM, KYOUNG-A LEE, EUN-YOUNG CHOE, YONG-KYUNG		
IPC分类号	G01N33/567 G01N33/558 G01N33/53 C07K16/40 C07K16/18 C07K16/28 G01N33/68		
CPC分类号	C07K16/18 C07K16/28 G01N33/558 G01N33/6893 G01N2400/02 G01N2800/08 G01N2800/085		
优先权	1020020084834 2002-12-27 KR		
其他公开文献	US7575938		
外部链接	<a href="#">Espacenet</a> <a href="#">USPTO</a>		

#### 摘要(译)

本发明涉及一种早期快速诊断肝病的方法。更具体地，本发明涉及抗脱唾液酸 $\alpha$ 1-酸糖蛋白的单克隆抗体;用于诊断肝脏疾病的方法，其通过使用所述单克隆抗体评价测试样品中的脱唾液酸 $\alpha$ 1-酸性糖蛋白;用于免疫层析的诊断条带由所述抗唾液酸 $\alpha$ 1-酸性糖蛋白和蓖麻凝集素(RCA)的单克隆抗体组成。本发明的诊断装置便于测量脱唾液酸 $\alpha$ 1-酸性糖蛋白的浓度并快速诊断肝脏疾病。

