



US010393757B2

(12) United States Patent
Hashimoto et al.**(10) Patent No.: US 10,393,757 B2**
(45) Date of Patent: Aug. 27, 2019**(54) DIAGNOSTIC DRUG AND DIAGNOSTIC METHOD FOR ALZHEIMER'S DISEASE**WO WO 2009/048747 A2 4/2009
WO WO 2010/088633 A2 8/2010
WO WO 2010/140694 A1 12/2010**(75) Inventors: Masakazu Hashimoto**, Suita (JP); **Hiroyuki Nakagawa**, Osaka (JP); **Mikio Aoki**, Osaka (JP); **Lars O. Tjernberg**, Huddinge (SE); **Bengt Winblad**, Huddinge (SE)

OTHER PUBLICATIONS

(73) Assignee: DAINIPPON SUMITOMO PHARMA CO., LTD., Osaka (JP)Buntup et al., *Neurochemical Research*, 33(2): 248-256 (2008).
Dahlin et al., *The Journal of Pharmacology and Experimental Therapeutics*, 329(2): 558-570 (2009).**(*) Notice:** Subject to any disclaimer, the term of this patent is extended or adjusted under 35 U.S.C. 154(b) by 196 days.MacKenzie et al., *Flugers Arch.—European Journal of Physiology*, 447(5): 784-795 (2004).**(21) Appl. No.: 13/997,854**Melone et al., *Cerebral Cortex*, 14(5): 562-574 (2004).**(22) PCT Filed: Dec. 28, 2011**Pontèn et al., *Journal of Internal Medicine*, 270(5): 428-446 (2011).**(86) PCT No.: PCT/JP2011/080517**Sleat et al., *Proteomics*, 5(6): 1520-1532 (2005).§ 371 (c)(1),
(2), (4) Date: **Jun. 25, 2013**European Patent Office, Supplementary European Search Report in European Patent Application No. 11853134.2 (dated Apr. 2, 2015).
Celestino-Soper et al., *Human Molecular Genetics*, 20(22): 4360-4370 (2011).**(87) PCT Pub. No.: WO2012/091138**Corder et al., *Experimental Gerontology*, 35: 851-864 (2000).PCT Pub. Date: **Jul. 5, 2012**Corder et al., *Science*, New Series, 261(5123): 921-923 (1993).**(65) Prior Publication Data**

US 2013/0280732 A1 Oct. 24, 2013

Jamieson et al., *Neuroscience Letters*, 374: 124-128 (2005).**(30) Foreign Application Priority Data**

Dec. 28, 2010 (JP) 2010-293891

Laterza et al., *Clinical Chemistry*, 52(9): 1713-1721 (2006).Nakamura et al., *Molecular Neurodegeneration*, 4(35): 11 pages (Aug. 20, 2009) [doi:10.1186/1750-1326-4-35].**(51) Int. Cl.****G01N 33/53** (2006.01)
G01N 33/566 (2006.01)
A01N 37/18 (2006.01)
G01N 33/68 (2006.01)
C07K 16/18 (2006.01)Sundberg et al., *J. Mol. Neurosci.*, 35: 179-193 (2008).Zheng et al., *FASEB Journal*, 23(12): 4207-4217 (2009).**(52) U.S. Cl.**CPC **G01N 33/6896** (2013.01); **C07K 16/18** (2013.01); **G01N 2800/2821** (2013.01)

Japanese Patent Office, International Search Report in International Application No. PCT/JP2011/080517 (dated Feb. 21, 2012).

Japanese Patent Office, International Preliminary Report on Patentability in International Application No. PCT/JP2011/080517 (dated Jul. 10, 2013).

Wu et al., *Molecular & Cellular Proteomics*, 9(6): 1100-1117 and supplementary table (Jun. 2010).Geldmacher, *Prim. Care Companion J. Clin. Psychiatry*, 9(2): 113-121 (2007).**(58) Field of Classification Search**None
See application file for complete search history.

(Continued)

Primary Examiner — Olga N Chernyshev

(74) Attorney, Agent, or Firm — Leydig Voit and Mayer, Ltd.**(56) References Cited**

U.S. PATENT DOCUMENTS

7,368,531 B2 * 5/2008 Rosen C07K 14/47
435/320.1
2010/0113590 A1 5/2010 Hiruma et al.**(57) ABSTRACT**

The present invention provides an agent for determining Alzheimer's disease, comprising an anti-S38AA antibody, a method of determining Alzheimer's disease in a test animal, comprising detecting an S38AA fragment in a sample collected from said animal, and a method of screening for a substance that treats or prevents Alzheimer's disease, comprising contacting a test substance with a cell permitting measurement of production of a S38AA fragment, measuring the production amount of the S38AA fragment in the cell, and comparing the production amount with that of the S38AA fragment in a control cell free of contact with the test substance, and selecting a test substance that down-regulates the production amount of the S38AA fragment as a substance capable of treating or preventing Alzheimer's disease, based on the comparison results.

FOREIGN PATENT DOCUMENTS

CN 101594860 A 12/2009
JP 2008-545424 A 12/2008
WO WO 2001/077137 A1 10/2001
WO WO 2002/018435 A1 3/2002
WO WO 2003/016493 A2 2/2003
WO WO 2006/128902 A1 12/2006
WO WO 2006/128906 A1 12/2006
WO WO 2008/090717 A1 7/2008**2 Claims, 5 Drawing Sheets****Specification includes a Sequence Listing.**

(56)

References Cited

OTHER PUBLICATIONS

National Center for Biotechnology Information, "Putative sodium-coupled neutral amino acid transporter 10 isoform a [*Homo Sapiens*]," NCBI Reference Sequence: NP_001033073.1 (Dec. 26, 2010) [obtained at: <https://www.ncbi.nlm.nih.gov/protein/83921602?sat=14&satkey=5307359> on Sep. 24, 2017)].

Uniprot Consortium, "Putative sodium-coupled neutral amino acid transporter 10 (SLC38A10 Gene and S38AA Protein)," Identification No. Q9HBR0 (Entry Version 110 dated Feb. 13, 2019—Sequence Version 2 dated Feb. 26, 2008) [obtained at <https://www.uniprot.org/uniprot/Q9HBR0>].

* cited by examiner

Fig. 1

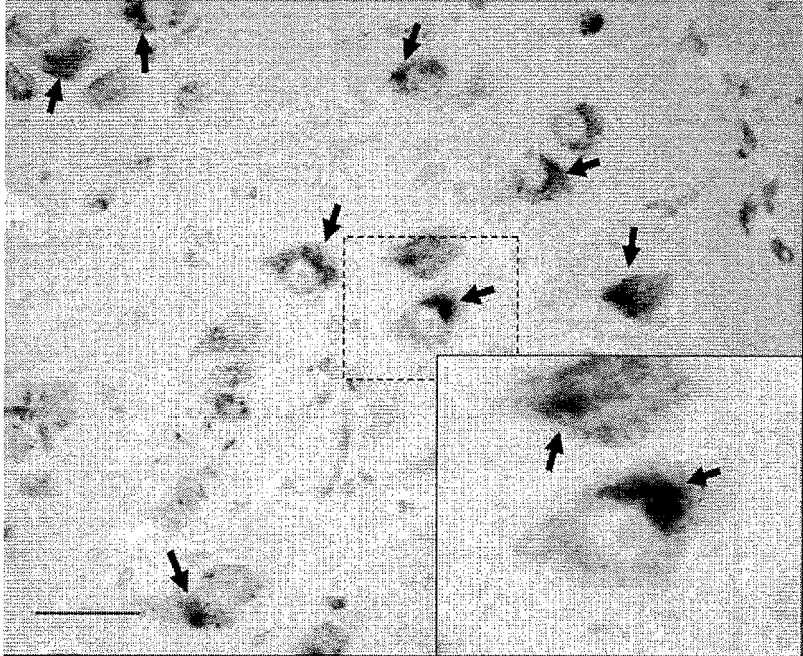


Fig. 2

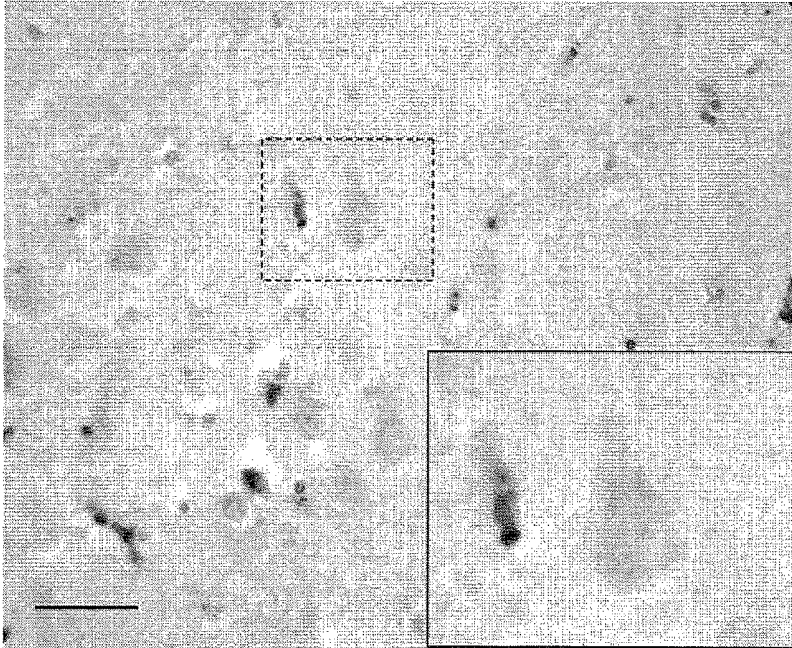


Fig. 3

10	20	30	40	50	60
mtaaaaasnwg	litnivnsiv	gvsvltmpfc	fkqcgivlga	lllvfcswmt	hqscmflyks
70	80	90	100	110	120
aslskrtya	glafhaygka	gkmlvetsmi	gmlgtciaf	yvvigdlgsn	ffarlfgfv
130	140	150	160	170	180
ggtfrmlf	avslcivlpl	slqrnmmasi	qsfsamalf	ytvfmfvivl	sslkhgflsg
190	200	210	220	230	240
qwlrrvsyvr	wegvfrcipi	fgmsfacqsq	vlptydsld	psvktmssif	asslnvttf
250	260	270	280	290	300
yvmvgffgyv	sfteatagnv	lmhfpsnlvt	emlrvgfms	vavgfpmml	pcrqalstll
310	320	330	340	350	360
ceqqkdgtf	aaggymplr	fkaltlsvvf	gtmvggilip	nvetilgltg	atmgslicfi
370	380	390	400	410	420
cpaliykkih	knaissqvl	wvlgvlvvs	tvttlsvsee	vpedlaeeap	ggrlgeaegl
430	440	450	460	470	480
mkvearlsa	qdpvvavaed	grekpkpkpe	reeleqaqik	gpvdvpgrd	gkeapeeaql
490	500	510	520	530	540
drpgqgiavp	vgeahrhepp	vphdkvvvde	gdreyveen	kppsrhaggk	apgvqgqmap
550	560	570	580	590	600
plpdserekq	epaqgevgkr	pgqaqaaleea	gdldpedpqv	peadgqpavq	pakedlgpgd
610	620	630	640	650	660
rglhprpqav	lseqqnglav	gggekakggp	ppgnaagdtg	qpaedsdhgg	kpplpaekpa
670	680	690	700	710	720
pgpglpepr	eqrdveragg	nqaasqleea	graemldhav	llqvikeqqv	qqkrlldqqe
730	740	750	760	770	780
kllavieeqh	keihqqrqed	eedkprqvev	hqepgaavpr	gqeapegkar	etvenlpplp
790	800	810	820	830	840
ldpvlrapgg	rpapsqdlng	rslehsegpy	grdpagppdg	gpdtepraaq	aklrdgqkda
850	860	870	880	890	900
apraagtve	lpkgpeqvpy	pdpareaggp	eerlaeefpg	qsqdvtaggsq	drkkpgkeva
910	920	930	940	950	960
atgtsilkea	nwlvagpgae	tgdpmmkpkq	vsrdlglaad	lpggaegaaa	qpqavlrqpe
970	980	990	1000	1010	1020
lrvisdgegg	gqgghrldhg	ghlemrkarg	gdhvpvsheq	prggedaavq	epqrpepel
1030	1040	1050	1060	1070	1080
gikravpggq	rpdnakpnd	lklqagsdlr	rrrrdlgpha	egqlaprdgv	iiglnplpdv
1090	1100	1110			
qvndlrqald	aqlrqaagga	lqvvsrqlr	qapgppees		

Fig. 4

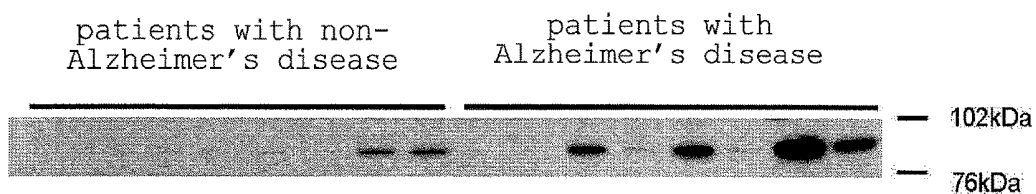


Fig. 5

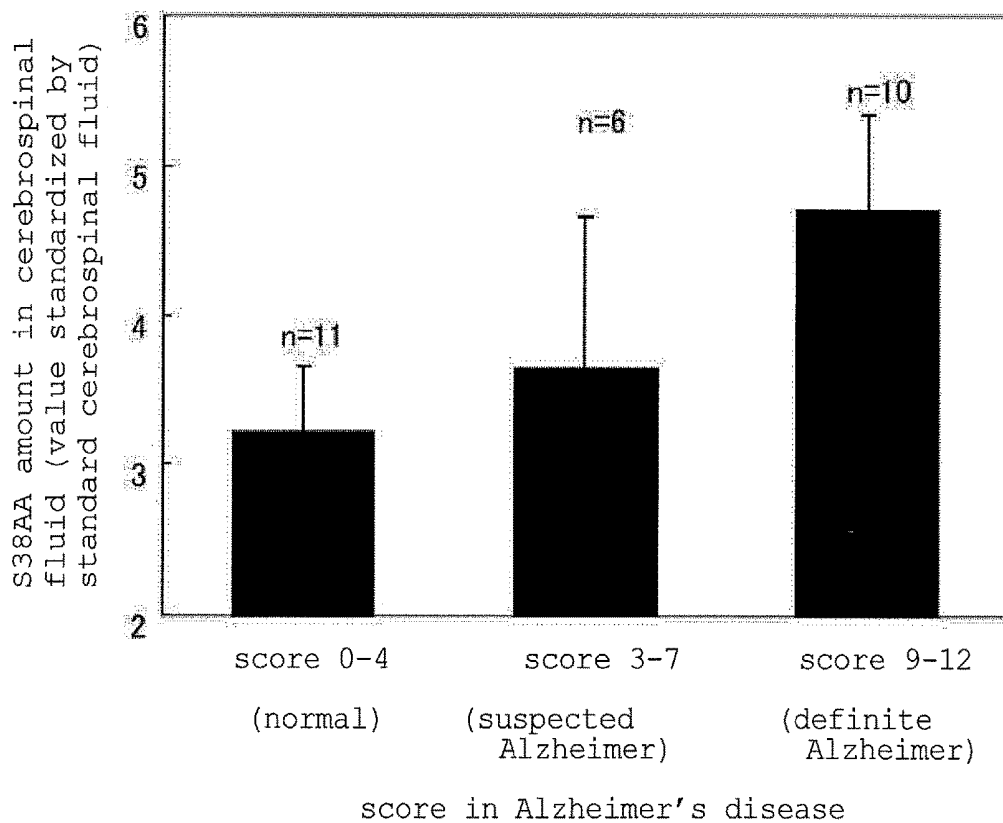


Fig. 6

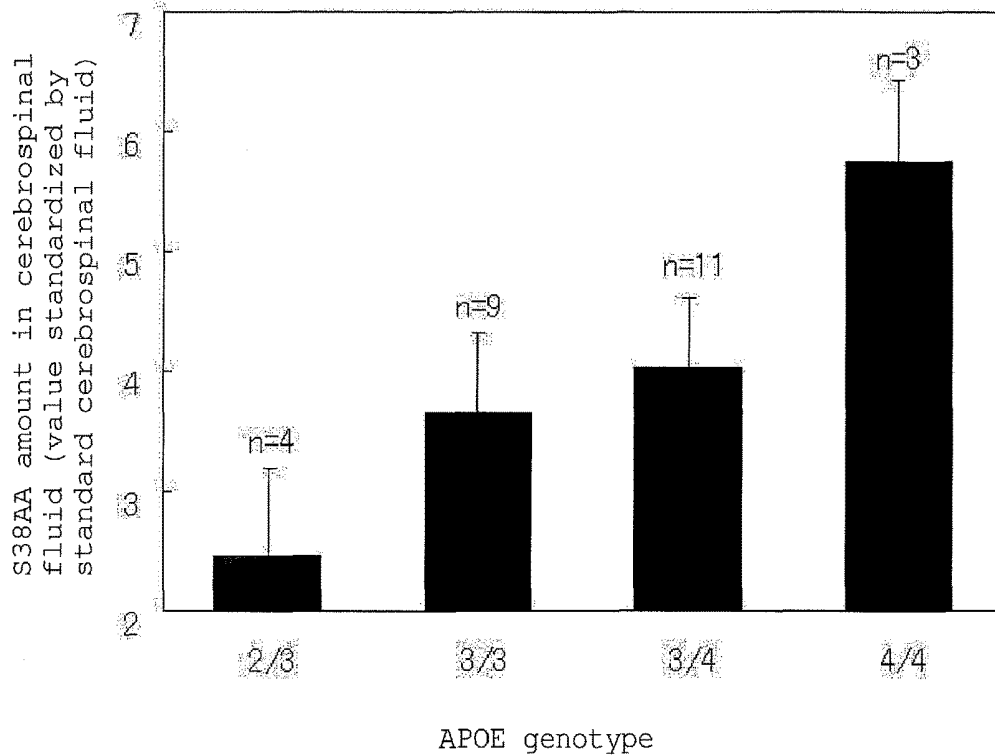


Fig. 7

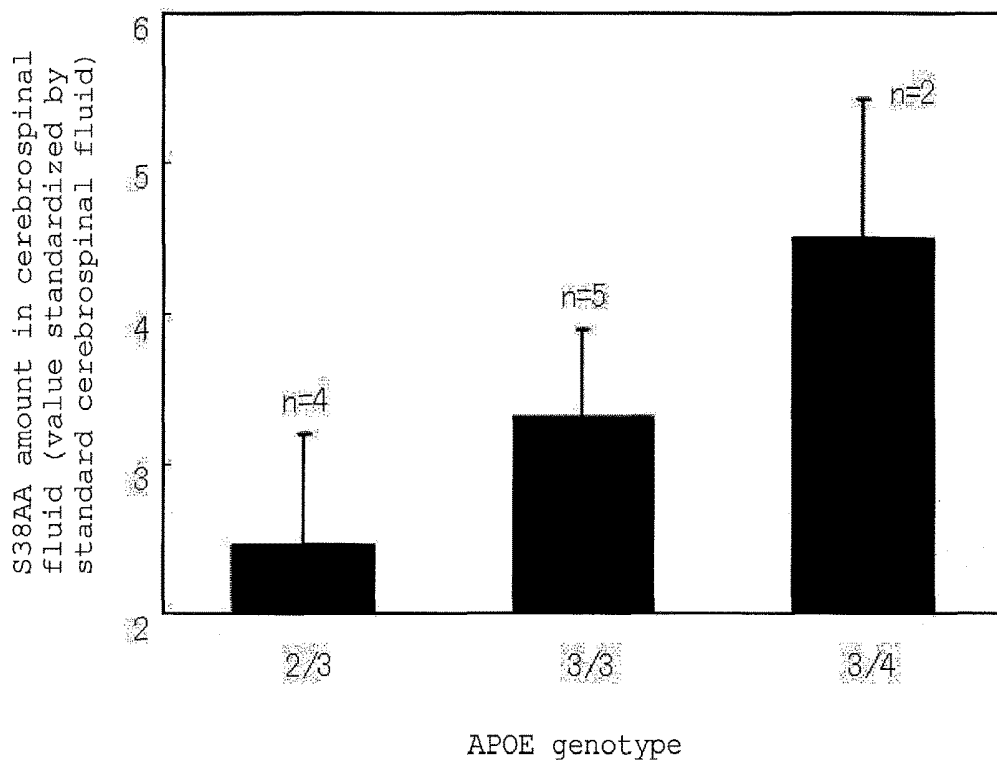


Fig. 8

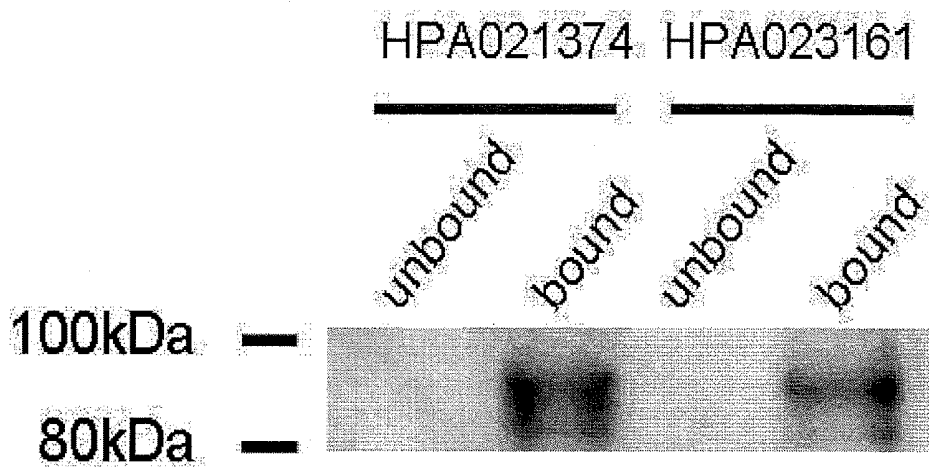
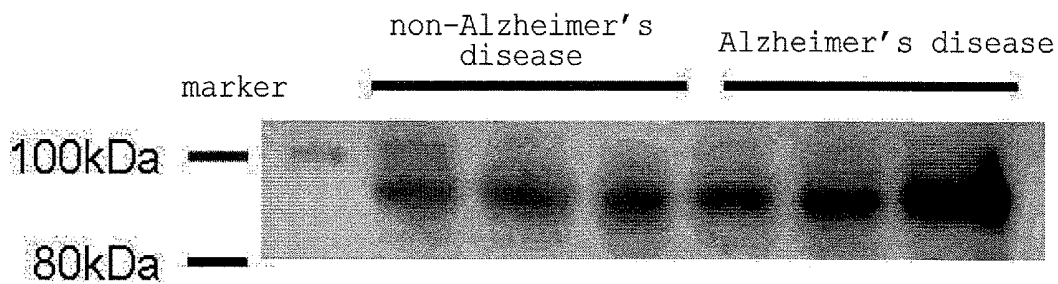


Fig. 9



DIAGNOSTIC DRUG AND DIAGNOSTIC METHOD FOR ALZHEIMER'S DISEASE**CROSS-REFERENCE TO RELATED APPLICATIONS**

This patent application is the U.S. national phase of International Patent Application No. PCT/JP2011/080517, filed Dec. 28, 2011, which claims the benefit of Japanese Patent Application No. 2010-293891, filed on Dec. 28, 2010, which are incorporated by reference in their entireties herein.

INCORPORATION-BY-REFERENCE OF MATERIAL ELECTRONICALLY SUBMITTED

Incorporated by reference in its entirety herein is a computer-readable nucleotide/amino acid sequence listing submitted concurrently herewith and identified as follows: 30,374 bytes ASCII (Text) file named "713766Sequence-Listing.txt," created Jun. 24, 2013.

TECHNICAL FIELD

The present invention relates to an agent for determining Alzheimer's disease, a method of determining Alzheimer's disease, and a method of screening for a substance for the treatment or prevention of Alzheimer's disease.

BACKGROUND ART

Alzheimer's disease is a progressive dementia that starts with decrease of short term memory and mild learning disability, develops higher brain dysfunction, particularly visuospatial agnosia, ideational apraxia, constructive apraxia and the like, and finally reaches movement disorder and so-called personality destruction, for which a method of radical treatment has not been found to date. There are predicted to be 2.4 million patients with Alzheimer's disease in the world in 2040, and the importance of a radical treatment method therefor or an early diagnosis thereof is increasing. The progression thereof is different from angiopathic dementia often found in Japan and is considered to continue over several years to ten years or more. In the case of a familial Alzheimer's disease caused by abnormal gene mutation, which is one of the Alzheimer's diseases, the condition of many of the patients rapidly worsens in several years, and the disease is characterized by an early onset since the age at onset is in their 30's-40's. Age, family history, genotype, hypertension, diabetes, smoking and the like are known as the risk factors of Alzheimer's disease other than the gene mutation, of which the relation with APOE genotype is clear. In particular, ApoE4 allele has already been reported as a risk factor of Alzheimer's disease (non-patent document 1).

As pathological changes characteristic in Alzheimer's disease, extracellular accumulation of amyloid plaque containing amyloid beta as a main constituent component, and accumulation of highly phosphorylated tau protein in nerve cells are widely known to occur. As for spatial and temporal pathological changes in brain, since accumulation of phosphorylated tau in the pyramidal cells in the hippocampus, particularly the region called CA1, is already observed in patients with early-onset Alzheimer's disease, the pyramidal cells in this region are considered to be spatially and temporally exposed to the strong influence of Alzheimer's disease in early stages, namely show fragility (non-patent

document 2). On the other hand, since the movement disorder emerges almost at the final stage of Alzheimer's disease as mentioned above, the purkinje cell in the cerebellum is considered to be most resistant to Alzheimer's disease.

The incidence rate of Alzheimer's disease is considered to rapidly increase after 75 years old, and early detection and the start of an early treatment are important for suppressing the pathological progression by a symptomatic drug therapy.

Due to the absence of a radical cure for Alzheimer's disease at present, a diagnostic marker for early detection of Alzheimer's disease is energetically searched for, and the measurement of amyloid beta (A β 40, A β 42) and phosphorylated tau protein in blood or cerebrospinal fluid is considered to be the most promising. However, it is still difficult to clearly find acquisition of Alzheimer's disease in the future, that is, potential patients with Alzheimer's disease, even when these markers are used alone or in combination (for example, ratio of A β 40 and A β 42).

DOCUMENT LIST**Non-Patent Documents**

non-patent document 1: Science. (1993) 261:921-3
non-patent document 2: Exp Gerontol. (2000) 35:851-64

SUMMARY OF THE INVENTION**Problems to be Solved by the Invention**

The problem of the present invention is to provide an agent for determining Alzheimer's disease, a method of determining Alzheimer's disease, and a method of screening for a substance for the treatment or prevention of Alzheimer's disease.

Means of Solving the Problems

The present inventors have conducted intensive studies and found that the amount of S38AA fragment increases in the cerebrospinal fluid and plasma of patients with Alzheimer's disease as compared to normal person, and this S38AA fragment is a polypeptide containing the extra-membranous domain of S38AA isoform 1.

Furthermore, the present inventors have measured the amount of the S38AA fragment in the cerebrospinal fluid of non-Alzheimer's disease (normal person), and patients with suspected Alzheimer's disease (potential Alzheimer's disease) and severe Alzheimer's disease, and found that the amount of the S38AA fragment increases with the worsening pathology (progression) of Alzheimer's disease and, since this pathology-dependent increase in the amount of the S38AA fragment in Alzheimer's disease shows a positive correlation with ApoE4 carrier and a negative correlation with ApoE2 carrier, the S38AA fragment has high reliability as an index for the determination of Alzheimer's disease.

Based on these findings, the present inventors have been convinced that an anti-S38AA antibody is useful as a determining agent for Alzheimer's disease and Alzheimer's disease can be detected by measuring the S38AA fragment, which resulted in the completion of the present invention.

Accordingly, the present invention relates to the following.

[1] An agent for determining Alzheimer's disease, comprising an anti-S38AA antibody.

- [2] The determining agent of [1], wherein the anti-S38AA antibody is an antibody recognizing the S38AA extra-membranous domain.
- [3] The determining agent of [2], wherein the S38AA extra-membranous domain is an extra-membranous domain of S38AA isoform 1.
- [4] A kit for determining Alzheimer's disease, comprising the detecting agent of any of [1]-[3].
- [5] A method of determining Alzheimer's disease in a test animal, comprising detecting an S38AA fragment in a sample collected from said animal.
- [6] The method of [5], wherein the test animal is a human.
- [7] The method of [5] or [6], wherein the S38AA fragment is a fragment derived from S38AA isoform 1.
- [8] The method of [5] or [6], wherein the S38AA fragment is a polypeptide comprising an amino acid sequence shown by SEQ ID NO: 3.
- [9] The method of any of [5]-[8], wherein the sample is blood, cerebrospinal fluid or urine.
- [10] The method of any of [5]-[8], wherein the sample is cerebrospinal fluid.
- [11] The method of any of [5]-[10], further comprising detecting one or more other diagnostic markers for Alzheimer's disease.
- [12] A method of searching for a substance capable of treating or preventing Alzheimer's disease, comprising the following steps:
- (1) contacting a test substance with a cell permitting measurement of production of a S38AA fragment;
 - (2) measuring the production amount of the S38AA fragment in the cell contacted with the test substance, and comparing the production amount with that of the S38AA fragment in a control cell free of contact with the test substance; and
 - (3) selecting a test substance that down-regulates the production amount of the S38AA fragment as a substance capable of treating or preventing Alzheimer's disease, based on the comparison results of the above-mentioned (2).

Effect of the Invention

According to the present invention, an agent for determining Alzheimer's disease and a method of determining Alzheimer's disease can be provided.

In addition, according to the screening method of the present invention, an agent capable of treating or preventing Alzheimer's disease can be provided.

BRIEF DESCRIPTION OF THE DRAWINGS

FIG. 1 shows an immunostaining image of a representative hippocampus CA1 region of a normal example. The intensely-stained parts (arrows) in the nerve cell of FIG. 1 show strong expression of S38AA. The lower right panel is an enlarged view of the part enclosed with a broken line. The scale bar shows 20 μ m.

FIG. 2 shows an immunostaining image of a representative hippocampus CA1 region of an example of definite Alzheimer's disease. The lower right panel is an enlarged view of the part enclosed with a broken line. The scale bar shows 20 μ m.

FIG. 3 shows a predicted extra-membrane region of the amino acid sequence of S38AA isoform 1 in the box. The immunoprecipitated S38AA fragment was analyzed by shotgun proteome, and the identified peptide fragment sequence

and the position thereof are underlined. The amino acid sequence depicted in FIG. 3 corresponds to SEQ ID NO: 2.

FIG. 4 shows an example of Western blot analysis of S38AA in the cerebrospinal fluid and the results of molecular weight analysis of the detected S38AA fragment.

FIG. 5 shows the quantification results of S38AA fragments in the cerebrospinal fluid of non-Alzheimer's disease patients, patients with suspected Alzheimer's disease and patients with definite Alzheimer's disease, by Western blot method. The Y-axis shows the signal intensity of each group, which is standardized by the standard cerebrospinal fluid.

FIG. 6 shows the amount of an S38AA fragment in the cerebrospinal fluid of respective groups of all patients divided according to the APOE genotype (divided into 4 kinds of genotypes of ApoE2/3, ApoE3/3, ApoE3/4, ApoE4/4).

FIG. 7 shows the relationship between the amount of S38AA fragment and APOE genotype of 11 patients with non-Alzheimer's disease. The Y-axis shows the signal intensity of each group, which is standardized by the standard cerebrospinal fluid.

FIG. 8 shows the results of the molecular weight analysis of S38AA fragment specifically separated by an immunoprecipitation method using an anti-S38AA antibody (HPA021374, HPA023161).

FIG. 9 shows an example of Western blot analysis of S38AA fragment in human plasma and the results of molecular weight analysis of the determined S38AA fragment.

DESCRIPTION OF EMBODIMENTS

Accordingly, the present invention relates to the following.

1. Agent of the Present Invention for Determining Alzheimer's Disease

The present inventors have found that (1) the amount of S38AA fragment increases in the cerebrospinal fluid and plasma of patients with Alzheimer's disease as compared to normal person, (2) the amount of the S38AA fragment is found to increase even in patients with suspected Alzheimer's disease more than in normal person, and the amount of the S38AA fragment increases with the worsening pathology (progression) of Alzheimer's disease, and (3) since this pathology-dependent increase in the amount of the S38AA fragment in Alzheimer's disease shows a positive correlation with ApoE4 carrier and a negative correlation with ApoE2 carrier, the S38AA fragment has high reliability as an index for the determination of Alzheimer's disease.

Accordingly, the present invention provides an agent for determining Alzheimer's disease, comprising an anti-S38AA antibody.

The determining agent of the present invention can determine not only whether a person is affected with Alzheimer's disease but also whether a person is suspected of being affected with Alzheimer's disease, that is, whether the person has a high possibility of being affected with the disease in the near future, though the person is not yet suffering from the disease.

Therefore, the "determination" of Alzheimer's disease in the present invention is used to mean not only determination of whether a person is already affected with Alzheimer's disease, but encompass judgment of whether a person has a high possibility of being affected in the near future, though the person is not yet suffering from the disease.

In the present specification, "suspected Alzheimer's disease" refers to a condition associated with a high possibility

of being affected (definitely diagnosed) in the future, though a definite diagnosis of Alzheimer's disease has not been made. Specific examples thereof include the condition to be classified into mild or moderate level by the severity classification in diagnosis according to amyloid imaging, MRI, CT, SPET or clinical symptom, the state of mild cognitive impairment and the like.

As S38AA, for example, amino acid sequences such as human S38AA isoform 1 (UniProtKB/Swiss-Prot number: Q9HBR0-1, SEQ ID NO: 2), rat S38AA isoform 1 (NCBI Reference Sequence number: XP_002727892.1), mouse S38AA isoform 1 (NCBI Reference Sequence number: NP_077211.4), human S38AA isoform 2 (UniProtKB/Swiss-Prot number: Q9HBR0-2) and the like are known.

In addition, as the sequence of a nucleic acid encoding S38AA (hereinafter to be referred to as "S38AA gene"), for example, human S38AA isoform 1 cDNA sequence (NCBI Reference Sequence number: NM_001037984.1, SEQ ID NO: 1) is known.

S38AA is predicted to be a ten-transmembrane protein according to UniProtKB/Swiss-Prot database, and the amino acid sequence from the 399th inclusive (to the 1119th in isoform 1, and to the 780th in isoform 2) is assumed to be the extra-membrane region.

"S38AA" in the present specification encompasses not only "protein" or "(poly) peptide" shown by these known sequences, but also, for example, equivalents thereof (homologs and splice variants), variants, derivatives, mature forms, amino acid-modified forms and the like as long as they have biological functions equivalent to those of a particular amino acid sequence showing human S38AA isoform 1 (SEQ ID NO: 2). Here, examples of the homolog include proteins of other biological species such as mouse, rat and the like, which correspond to human protein. They can be deductively identified from the base sequence of a gene identified by HomoloGene (www.ncbi.nlm.nih.gov/HomoloGene/). Examples of the splice variant include human S38AA isoform 2 (the 689-780th amino acid sequence is different from isoform 1, and the 781-1119th amino acid sequence is deleted). In addition, the variant encompasses naturally-occurring allelic variants (polymorphism), variants not present in nature, and variants having amino acid sequences artificially altered by deleting, substituting, adding or inserting. Examples of the above-mentioned variant include those having at least 70%, preferably 80%, more preferably 95%, further more preferably 97%, identity with a mutation-free protein or (poly) peptide. Examples of the naturally-occurring allelic variant (polymorphism) include, a variant of SEQ ID NO: 2 wherein the 559th Lys is substituted for Arg (dbSNP: rs35546507) and a variant wherein the 831st Ala is substituted for Gly (dbSNP: rs2725405). In addition, the amino acid-modified form encompasses naturally-occurring amino acid-modified forms and amino acid-modified forms not present in nature, and specifically, amino acid-phosphorylated forms (e.g., phosphorylated form of SEQ ID NO: 2 wherein the 889th Ser is phosphorylated) can be included.

The extra-membranous domain and transmembrane region and the like of a protein can be easily assumed using, for example, prediction data described in UniProtKB/Swiss-Prot database, and a known prediction tool and software such as TMHMM (www.cbs.dtu.dk/services/TMHMM) and the like.

The "S38AA fragment" in the present specification only needs to be a (poly) peptide containing the S38AA extra-membranous domain. The "S38AA extra-membranous domain" here means a peptide region containing the whole

or partial extra-membrane region on the C-terminal side of any of the above-mentioned S38AAs, or the whole or partial extra-membrane region on the C-terminal side of S38AA in the cell organelle such as Golgi and the like. In addition, the "S38AA fragment" in the present specification is characterized in that it is recognized by anti-S38AA antibody HPA024631 (Atlas Antibodies; produced using a peptide consisting of the 402-491st amino acid sequence of SEQ ID NO: 2 as immunogen).

Preferably, the S38AA fragment contains the amino acid sequence shown by SEQ ID NO: 3. The amino acid sequence shown by SEQ ID NO: 3 corresponds to the 761-770th partial amino acid sequence of human S38AA isoform 1 (in isoform 2, the amino acid sequence from the 689th inclusive is different due to alternative splicing). Therefore, while the S38AA fragment is preferably a fragment derived from S38AA isoform 1, since the cleavage site of S38AA is predicted, from the apparent molecular weight of S38AA fragment by SDS-PAGE, to be in the amino acid sequence (up to the 688th amino acid of SEQ ID NO: 2) common to the two isoforms, if the cleavage reaction occurs upon recognition of only the amino acid sequence in the cleavage site, a fragment derived from isoform 2 can also be included in the S38AA fragment of the present invention.

While the molecular weight of the S38AA fragment is not limited, it is preferably about 76-about 102 kDa in the apparent molecular weight by SDS-PAGE. Therefore, a fragment cleaved after the 161st amino acid of the amino acid sequence shown by SEQ ID NO: 2 is more preferable (molecular weight (Calculated) of the fragment consisting of the 161-1119th amino acid sequence is about 102 kDa). In addition, from the results of the pull-down assay and shotgun MS analysis mentioned below, the S38AA fragment of the present invention is more preferably a fragment containing the 505-1014th amino acid sequence of the amino acid sequence shown by SEQ ID NO: 2.

The "anti-S38AA antibody" in the present invention is an antibody that recognizes the S38AA extra-membranous domain, with preference given to an antibody that recognizes the extra-membranous domain of S38AA isoform 1. Said extra-membranous domain may be in the amino acid region specific to isoform 1 (in SEQ ID NO: 2, the 689-1119th amino acid region), in the amino acid region common with isoform 2 (the 399-688th amino acid region) or go across the both regions. In addition, the extra-membranous domain may be a continuous partial amino acid sequence in the S38AA extra-membrane region or a conformation formed by two or more separate and subsequent partial amino acid sequences.

The anti-S38AA antibody may also be, for example, polyclonal or monoclonal antibody produced by using a known method, such as commercially available anti-S38AA antibodies (e.g., HPA024631, HPA023161, HPA021374 (each manufactured by Atlas Antibodies)) and the like, or fragments thereof (e.g., Fab, F(ab')₂, ScFv, minibody etc.).

As the anti-S38AA antibody to be used in the present invention, a monoclonal antibody and a polyclonal antibody derived from mammals are preferable.

Examples of the monoclonal antibody and polyclonal antibody derived from mammals include those produced in the blood of animal, those produced by hybridomas, and those produced by a host transformed with an expression vector containing an antibody gene by a genetic engineering means, those produced in large amounts in a CHO cell factory by the gene of an optimal antibody screened for from an enormous clone library consisting of 1,000,000,000,000

molecules by phage display, or human antibody directly produced using transgenic mouse that produces human antibody, and the like.

Monoclonal antibody and polyclonal antibody can be produced by a known method to those of ordinary skill in the art.

(1) Production of Monoclonal Antibody

S38AA is administered alone or together with a carrier and a diluent to a site where an antibody can be produced by administration to a mammal. To increase antibody produc- 10
 tibility by administration, a complete Freund's adjuvant or incomplete Freund's adjuvant may also be administered. The administration is generally performed once every 2-6 weeks, and about 2-10 times in total. Examples of the mammal to be used include monkey, rabbit, dog, guinea pig, 15
 mouse, rat, sheep and goat, with preference given to mouse and rat.

For the production of monoclonal antibody-producing cells, from mammals, for example, mice immunized with an antigen, individuals found to show an antibody titer are 20
 selected, the spleen or lymph node is collected 2-5 days after the final immunization, the antibody-producing cells contained therein are fused with myeloma cells, whereby a monoclonal antibody-producing hybridoma can be pre- 25
 pared. The antibody titer in antiserum can be measured by, for example, reacting the below-mentioned labeled S38AA with antiserum, and measuring the activity of a label bound to the antibody. A fusion operation can be performed by a known method, for example, the method of Köhler and Milstein [Nature, 256, 495 (1975)]. As the fusion Stimulant, 30
 for example, polyethylene glycol (PEG), Sendai virus and the like can be mentioned, and PEG is preferably used.

As the myeloma cell, for example, NS-1, P3U1, SP2/0 and the like can be mentioned, and P3U1 is preferably used. A preferable ratio of the numbers of the antibody-producing 35
 cells (spleen cells) and myeloma cells to be used is about 1:1-20:1, PEG (preferably PEG 1000-PEG 6000) is added at a concentration of about 10-80%, and the cell fusion can be efficiently performed by incubating at about 20-40° C., preferably about 30-37° C., for about 1-10 min.

For screening for a monoclonal antibody-producing hybridoma, various methods can be used. Examples thereof include a method comprising adding a hybridoma culture supernatant to a solid phase (e.g., microplate) adsorbed with an antigen such as a protein and the like directly or together 45
 with a carrier, adding an anti-immunoglobulin antibody labeled with a radioactive substance, an enzyme or the like (when the cell used for cell fusion is from a mouse, an anti-mouse immunoglobulin antibody is used) or protein A, and detecting a monoclonal antibody bound to the solid phase, a method comprising adding a hybridoma culture 50
 supernatant to a solid phase adsorbed with an anti-immunoglobulin antibody or protein A, adding a protein labeled with a radioactive substance, an enzyme etc., and the like, and detecting a monoclonal antibody bound to the solid phase, and the like.

The monoclonal antibody can be selected by a method known per se or a method analogous thereto, and can be generally selected using a medium for animal cells which is added with HAT (hypoxanthine, aminopterin, thymidine), 60
 and the like. As the medium for selection and growth, any medium can be used as long as hybridomas can grow. For example, RPMI 1640 medium containing 1-20%, preferably 10-20%, of fetal bovine serum, GIT medium containing 1-10% of fetal bovine serum (Wako Pure Chemical Indus- 65
 tries, Ltd.), a serum-free medium for hybridoma culture (SFM-101, Nissui Pharmaceutical Co., Ltd.) and the like can

be used. The culture temperature is generally 20-40° C., preferably about 37° C. The culture time is generally 5 days-3 weeks, preferably 1 week-2 weeks. Culture can be generally performed in 5% carbon dioxide gas. The antibody titer of the hybridoma culture supernatant can be measured in the same manner as in the above-mentioned measurement of the antibody titer of the antiserum.

The monoclonal antibody can be separated and purified according to a separation and purification method of immunoglobulin, in the same manner as in general separation and purification of polyclonal antibody [e.g., salting out method, alcohol precipitation method, isoelectric point precipitation method, electrophoresis, adsorption and desorption method by ion exchanger (e.g., DEAE), ultracentrifugation method, gel filtration method, specific purification method including collecting only an antibody by an active adsorbent such as antigen-bound solid phase, protein A, protein G or the like, and dissociating the bond to give the antibody].

(2) Production of Polyclonal Antibody

Polyclonal antibody to S38AA can be produced by a method known per se or a method analogous thereto. For example, a polyclonal antibody can be produced by produc-
 ing a complex of an immunizing antigen (antigen such as protein and the like) and a carrier protein, immunizing a mammal in the same manner as in the above-mentioned production method of the monoclonal antibody or chicken, collecting a substance containing an antibody to S38AA from the immunized animal, and separating and purifying the antibody.

As for the complex of an immunizing antigen and a carrier protein to be used for immunizing a mammal or chicken, the kind of the carrier protein and the mixing ratio of the carrier and hapten may be any and any ratio as long as the antibody can be efficiently produced against hapten used for immunization by crosslinking with the carrier. For example, a method including coupling bovine serum albumin, bovine thyroglobulin, keyhole limpet hemocyanin and the like at a weight ratio of about 0.1-20, preferably about 1-5, to hapten of 1 is used.

While various condensing agents can be used for coupling hapten with a carrier, an activated ester reagent containing glutaraldehyde, carbodiimide, maleimide activated ester, a thiol group and a dithiopyridyl group, and the like can be used.

The condensation product is administered to a mammal or chicken alone or together with a carrier and a diluent to a site where an antibody can be produced. To increase antibody producibility by administration, a complete Freund's adjuvant or incomplete Freund's adjuvant may also be admin- 45
 istered. The administration is generally performed once every 2-6 weeks, and about 3-10 times in total.

The polyclonal antibody can be collected from the blood, ascites, mother's milk and the like of the mammal immunized by the above-mentioned method, preferably from the blood, and in the case of chicken, it can be collected from the blood and egg-yolk.

The titer of the polyclonal antibody in the antiserum can be measured in the same manner as in the above-mentioned measurement of the antibody titer of the antiserum. The polyclonal antibody can be separated and purified according to a separation and purification method of immunoglobulin, in the same manner as in the above-mentioned separation and purification of monoclonal antibody.

2. Kit for Determining Alzheimer's Disease

The present invention provides a kit for determining Alzheimer's disease. The kit of the present invention contains a reagent for measuring the amount of the S38AA

fragment. By measuring the amount of the S38AA fragment using the kit of the present invention, Alzheimer's disease can be determined.

The kit of the present invention specifically contains an anti-S38AA antibody that recognizes S38AA. Examples of the anti-S38AA antibody include the anti-S38AA antibody described in detail in the aforementioned "1. Agent of the present invention for determining Alzheimer's disease". The antibody may be a fluorescence-labeled antibody, enzyme-labeled antibody, streptavidin-labeled antibody, biotin-labeled antibody or radioactive-labeled antibody.

The anti-S38AA antibody is generally contained in the kit of the present invention in the form of an aqueous solution thereof dissolved in water or a suitable buffer (e.g., TE buffer, PBS etc.) at a suitable concentration or a freeze-dried product.

The kit of the present invention may further contain, in its constitution, other components necessary for performing the method, according to the measurement method of S38AA fragment. For example, for measurement by Western blot, the kit of the present invention can further contain a blotting buffer, a labeling reagent, a blotting membrane and the like, a determination reagent, a standard solution and the like. Examples of the "standard solution" here include an aqueous solution obtained by dissolving a purified standard product of the above-mentioned "S38AA fragment" in water or a suitable buffer (e.g., TE buffer, PBS and the like) at a particular concentration.

For measurement by sandwich ELISA, the kit of the present invention can further contain, in addition to the above, an immobilized antibody measurement plate, a washing solution and the like. For measurement by an agglutination method including latex agglutination method, an antibody-coated latex, gelatin or the like can be contained. For measurement by a chemical fluorescence method or a chemical fluorescence electron method, antibody-conjugated magnetic particles and a suitable buffer can be contained. For detection of S38AA by using LC/MS, LC-MS/MS or an immunochromatography method, an antibody-coated column or micro column, and a macro chip can be contained as a part of the detection instrument. Furthermore, in a time-resolved fluorescence measurement method or a fluorescence measurement method similar thereto, a plurality of labeled anti-S38AA antibodies and other necessary components may be contained in the constitution.

3. Method for Determining Alzheimer's Disease

The present inventors have found that (1) the amount of S38AA fragment increases in the cerebrospinal fluid and plasma of patients with Alzheimer's disease as compared to normal person, (2) the amount of the S38AA fragment is found to increase even in patients with mild Alzheimer's disease more than in normal person, and the amount of the S38AA fragment increases with the worsening pathology (progression) of Alzheimer's disease, and (3) since this pathology-dependent increase in the amount of the S38AA fragment in Alzheimer's disease shows a positive correlation with ApoE4 carrier and a negative correlation with ApoE2 carrier, the S38AA fragment has high reliability as an index for the determination of Alzheimer's disease.

Thus, the present invention provides a method for determining Alzheimer's disease comprising detecting an S38AA fragment in a sample collected from a test animal.

The determination method of the present invention can determine not only whether a person is affected with Alzheimer's disease but also whether the person has a high

possibility of being affected with the disease in the near future, though the person is not yet suffering from the disease.

The detection method of the present invention contains a step of detecting an S38AA fragment in a test sample collected from a test animal, and a step of determining Alzheimer's disease based on the positive correlation between the amount of the S38AA fragment and Alzheimer's disease.

While the animal that can be a test subject for the determination method of the present invention is not particularly limited as long as it produces S38AA, for example, mammals (e.g., human, monkey, bovine, swine, horse, dog, cat, sheep, goat, rabbit, hamster, guinea pig, mouse, rat etc.), birds (e.g., chicken etc.) and the like can be mentioned. Preferred is a mammal, and more preferred is a human.

While a biological sample derived from a test animal to be the sample is not particularly limited, for example, blood, serum, plasma, saliva, urine, cerebrospinal fluid and the like can be mentioned. More preferred is plasma or cerebrospinal fluid.

Serum and plasma can be prepared by collecting blood from a test animal according to a conventional method, and separating the liquid component. The cerebrospinal fluid can be collected by a known means such as spinal tap and the like.

An S38AA fragment in a sample can be detected by a known method. It can be detected by subjecting to, for example, Western blot, gel electrophoresis (e.g., SDS-PAGE, two-dimensional gel electrophoresis and the like), various separation and purification methods (e.g., ion exchange chromatography, hydrophobic chromatography, gel filtration chromatography, affinity chromatography, reversed-phase chromatography, isoelectric point chromatography, capillary electrophoresis and the like), ionization method (e.g., electron impact ionization method, field desorption method, secondary ionization method, fast atom bombardment, matrix assisted laser desorption/ionization (MALDI) method, electrospray ionization method and the like), mass spectrometer (e.g., double-focusing mass spectrometer, quadrupole mass spectrometer, time-of-flight mass spectrometer, Fourier-transform mass spectrometer, ion cyclotron mass spectrometer and the like) and the like.

In addition, the S38AA fragment can be detected according to a known immunochemical method (nephelometry, competitive method, immunometric method, chemical fluorescence method, chemical fluorescence electron method, sandwich method etc.). As for these immunochemical methods, reference can be made to, for example, "Radioimmunoassay" edited by Hiroshi Irie (Kodansha, published in 1974), "radioimmunoassay (sequel)" edited by Hiroshi Irie (Kodansha, published in 1979), "Enzyme Immunoassay" edited by Eiji Ishikawa et al. (the 3rd edition, Igaku-Shoin, published in 1987), "Methods in ENZYMOLOGY" Vol. 121 (Immunochemical Techniques (Part I: Hybridoma Technology and Monoclonal Antibodies)) (published by Academic Press) and the like.

Examples of the anti-S38AA antibody capable of specifically detecting S38AA include the anti-S38AA antibody described in detail in "1. Agent of the present invention for determining Alzheimer's disease".

Then, based on the concentration of the detected S38AA fragment, Alzheimer's disease can be detected. As shown in the below-mentioned Example 2, the concentration of the S38AA fragment in the cerebrospinal fluid of patients with Alzheimer's disease and patients with suspected Alzheimer's disease is higher than that of normal person, and the

concentration of the S38AA fragment in the plasma is also higher in patients with Alzheimer's disease than in normal person. Based on the positive correlation between the concentration of the S38AA fragment and Alzheimer's disease therefore, a diagnosis of Alzheimer's disease can be made when the concentration of the S38AA fragment in the sample is high.

Furthermore, even for normal persons, an ApoE4 carrier group, which is an Alzheimer's disease sensitive allele (Alzheimer's disease high risk group), shows a high concentration of the S38AA fragment in the cerebrospinal fluid as compared to a homo ApoE3 genotype group. Conversely, an ApoE2 carrier group, which is an Alzheimer's disease resistant allele, shows a low concentration of the S38AA fragment in the cerebrospinal fluid as compared to the homo ApoE3 genotype group. Therefore, a high concentration of the S38AA fragment in the sample can be judged to show a high possibility of being affected Alzheimer's disease in the future.

The determination method of the present invention can determine Alzheimer's disease with higher precision by measuring, in addition to the S38AA fragment, alteration of other diagnostic markers for Alzheimer's disease. Examples of other diagnostic markers for Alzheimer's disease include known markers such as amyloid beta (A β 40, A β 42), phosphorylated tau protein and the like. These can be detected according to a conventional well-known detection method.

4. Method for Searching for Substance Capable of Treating or Preventing Alzheimer's Disease

The present invention also provides a method for searching for a substance that treats or prevents Alzheimer's disease, which comprises evaluating whether a test substance suppresses production of an S38AA fragment, and a substance obtainable by said method. In the search method of the present invention, a substance that down-regulates the production of an S38AA fragment is selected as a substance that treats or prevents Alzheimer's disease.

The test substance to be subjected to the search method of the present invention may be any known or novel compound. Examples thereof include nucleic acid, carbohydrate, lipid, protein, peptide, organic low-molecular-weight compound, compound library produced using a combinatorial chemistry technique, random peptide library, natural component derived from microorganism, animals and plants, marine organism etc., and the like.

The search method of the present invention comprises the following steps:

- (1) contacting a test substance with a cell permitting measurement of production of a S38AA fragment;
- (2) measuring the production amount of the S38AA fragment in the cell contacted with the test substance, and comparing the production amount with that of the S38AA fragment in a control cell free of contact with the test substance; and
- (3) selecting a test substance that down-regulates the production amount of the S38AA fragment as a substance capable of treating or preventing Alzheimer's disease, based on the comparison results of the above-mentioned (2).

The "cell" to be used for the search method of the present invention means a cell permitting evaluation of the production level of the measurement target, an S38AA fragment. Examples of the cell include a cell capable of naturally producing the S38AA fragment of the measurement target, an S38AA-expressing cell capable of producing an S38AA fragment by stimulation, and a genetically engineered cell to be able to produce an S38AA fragment.

The measurement target, that is, the cell capable of naturally producing an S38AA fragment, is not particularly limited and, as such cell, a primary cultured cell of a mammal (for example, human, mouse etc.), a cell line induced from said primary cultured cell and the like can be used.

S38AA is known to be expressed in U251 cell and SHSY-5Y cell, and is also expressed in BE(2)-C cell and SK-N-MC cell. In addition, a genetically engineered cell overexpressing S38AA or labeled S38AA with FLAG tag etc., and the like can also be produced using a known technique. By culture, S38AA is cleaved from the S38AA expressing cell and the produced S38AA fragment is liberated. When the amount of the produced S38AA fragment is small, the production of the S38AA fragment can be measured by cultivating, as appropriate, under conditions easily causing the cleavage of S38AA.

Examples of the conditions easily causing the cleavage of S38AA include cultivating in a glucose depletion medium or a medium containing a substance known to physiologically stimulate the brain. Specific examples of such substance include cytokines such as TNF α , interferon- γ , interleukin-1, interleukin-6 and the like, amyloid beta or aggregate thereof and the like.

The test substance and the cell permitting measurement of the production of an S38AA fragment are contacted in a culture medium. The culture medium is appropriately selected according to the cell permitting measurement of the production of an S38AA fragment. Examples thereof include minimum essential medium (MEM), Dulbecco's modified Eagle medium (DMEM), containing about 5-20% of fetal bovine serum, and the like. The culture conditions are appropriately determined in the same manner. For example, the pH of the medium is about 6-about 8, the culture temperature is generally about 30-about 40° C., and the culture time is about 0.1-about 72 hr.

The production amount of the S38AA fragment can be measured by measuring the amount of the S38AA fragment liberated in the cell culture supernatant according to the method described in the item of (3. Method for determining Alzheimer's disease).

The production amount can be preferably compared based on the presence or absence of a significant difference. The production amount of an S38AA fragment in the control cell free of contact with the test substance may be measured before or simultaneously with the measurement of the production amount of the S38AA fragment in the cell contacted with the test substance.

Hence, a substance obtained by comparison that down-regulates the production amount of the S38AA fragment, is selected as an agent capable of treating or preventing Alzheimer's disease.

The compound obtained by the search method of the present invention is useful as a candidate substance for the development of a new therapeutic or preventive agent for Alzheimer's disease.

EXAMPLES

The present invention is explained in the following by referring to the Examples, which do not limit the present invention in any manner.

Reference Example 1

Study of S38AA Expression Amount in Brain Tissue

A brain section preserved in the Swedish brain bank (Brain Power), use of which was permitted by the Ethical

Committee of the Karolinska Institute, was used. A hippocampus section (5 micrometers thick) was sliced from a brain tissue block fixed with formalin and embedded in paraffin, and adhered to a slide glass. After a deparaffinization and hydrophilic treatment with xylene-alcohol, the antigen was retrieved by heating at 121° C. for 25 min in Diva Decloaker (BIOCARE MEDICAL). After cooling, a non-specific reaction was blocked with 3% goat whole serum diluted with Tris buffered saline (pH 7.6), and thereafter an anti-S38AA antibody (catalog number: HPA024631, Atlas Antibodies) diluted 200-fold with Tris buffered saline was incubated overnight with the specimen at 4° C. After washing with Tris buffered saline, the specimen was incubated with a biotinylated goat anti-rabbit IgG antibody diluted 300-fold, at room temperature for 1 hr. Thereafter, for color development, the specimen was treated with Vectastain Elite ABC kit (Vector Laboratories) for 30 min and further with 3-3-diaminobenzidine-4HCl (DAB/H₂O₂) for color development. For counter staining, hematoxylin was used.

FIG. 1 shows an immunostaining image of a representative hippocampus CA1 region of a normal example, and FIG. 2 shows an immunostaining image of a representative hippocampus CA1 region of a case with definite Alzheimer's disease. The length of the bar in the Figure corresponds to 200 μm. As shown with the arrows in FIG. 1, the deeply-stained parts in the cell show strong expression of S38AA. In the case of severe Alzheimer's disease, staining is scarcely found in nerve cells. Since the recognition site of the anti-S38AA antibody used is the extra-membranous domain of S38AA isoform 1 and S38AA isoform 2, the results show a decrease in the S38AA extra-membranous domain in the hippocampus CA1 region in a case of Alzheimer's disease with definite diagnosis. From these results, it is clear that the S38AA expression amount drastically decreases in the case of severe Alzheimer's disease.

Reference Example 2

Quantitative Mass Spectrometry of S38AA Protein in Hippocampus CA1 Pyramidal Cell by Heavy Oxygen Labeling Method

After obtaining use permission from the Ethical Committee of the Karolinska Institute, a frozen section was prepared from the patients-postmortem brain preserved in the Swedish brain bank (Brain Power), and the hippocampus CA1 pyramidal cells were recovered by a laser capture method according to the method of Aoki et al. already reported (Neuroreport (2008) 19:1085-9).

Hippocampus CA1 pyramidal cells (each 12,000 cells) were separated and collected from a patient with definite Alzheimer's disease and a non-Alzheimer's disease patient. The cells recovered in a tube were lysed with 1 μL of 0.5% RapiGest SF (Waters) solution, and incubated at 95° C. for 90 min. Thereafter, the solvent was removed by a centrifugal vacuum system, 2 μL of 4 mM calcium chloride, 1% RapiGest SF, 360 mM sodium hydrogen carbonate mixed solution and 5 μL of distilled water were further added, and the mixture was subjected to a sonication treatment for 5 min. For limited trypsinolysis of a protein derived from the nerve cell, 3 μL of 0.1 mg/mL trypsin was further added, and the mixture was incubated at 37° C. for 24 hr. Thereafter, a sample (1 μL) was collected and electrophoresed on 4-12% gradient SDS-PAGE gel, subjected to silver staining, and the completion of the limited degradation was confirmed. The limited degradation sample derived from the patient with

definite Alzheimer's disease was labeled with heavy oxygen. The detail of the method is as described below.

After limited trypsinolysis, concentrated hydrochloric acid (3 μL) was added to chemically degrade RapiGest SF. The resulting degradation product was precipitated by centrifugation at 13,000 rpm for 10 min, and the supernatant was separated. The obtained supernatant was adsorbed to ZipTipC₁₈ (Millipore) column, washed three times with 0.3% formic acid solution, and purified by eluting with 80% acetonitrile/0.3% formic acid solution. The solvent in the purified sample was removed by a centrifugal vacuum system, and the residue was re-dissolved in 0.3 M sodium acetate deuterium solution (pH 5.2, 1.7 μL), 50 mM calcium chloride (1 μL) and heavy oxygen water (47.3 μL). Thereafter, 0.5 mg/mL trypsin (Trypsin Gold, Promega, 1 μL) and the mixture was incubated at 37° C. for 48 hr. To quench the labeling reaction, 5% formic acid solution (8 μL) diluted with heavy oxygen water was added and the mixture was incubated at 95° C. for 90 min. The final sample was preserved at -80° C. While the sample derived from the non-Alzheimer's disease patient was treated in the same manner as the sample derived from the patient with definite Alzheimer's disease, distilled water was used instead of heavy oxygen water. Immediately before conducting mass spectrometry, an equal amount of 20 μL each of the heavy oxygenated sample derived from the patient with definite Alzheimer's disease and the sample derived from the non-Alzheimer's disease patient were mixed, and injected to an analysis column (Zorbax 300SB, 0.1×150 mm, Agilent Technologies Inc.). As the mobile phase for analysis, used were 0.1% acetic acid (mobile phase A) and 0.1% acetic acid-methanol (mobile phase B), wherein a gradient program of increasing the concentration of mobile phase B linearly from 5% to 75% for 90 min, and thereafter maintaining same in 95% mobile phase B for 10 min was used. As mass spectrometer, Thermo Fisher, LTQ-Orbitrap system was used. The mass measurement range was set to 400-2000 m/z. Using the obtained data, the peptide was identified by Mascot software version 2.2 and Swiss-Prot database (release 55), and further, quantitatively analyzed by Xome software (Mitsui Knowledge Industry Co., Ltd.). The analysis parameter on the Mascot software is as follows. The monoisotopic mass was used for the analysis, the peptide mass tolerance was set to 10 ppm and the fragment ion MS/MS tolerance was set to 0.8 Da. As a digestive enzyme, trypsin was specified, and the missed cleavage number was set to 1 at maximum. The analysis target was C-terminal double-label alone, and methionine oxidation was allowed.

According to the above-mentioned proteome analysis, S38AA was successfully identified. Furthermore, the difference in the S38AA expression amount was studied between Alzheimer's disease patients (AD) and non-Alzheimer's disease patients (control) (Table 1). The identified sequence by MASCOT peptide search corresponds to the extra-membranous domain of S38AA isoform 1 (the 761-770th amino acid region of the amino acid sequence shown by SEQ ID NO: 2), and the peptide identification was statistically significant.

The amount of the S38AA extra-membranous domain in the pyramidal cells decreased to 1/20 in Alzheimer's disease patients as compared to non-Alzheimer's disease control. The recognition site of the antibody used in the immunohistological study was an extra-membranous domain, and since the expression amount also decreased even in that case, the results matched with those of the immunohistological study. That is, it is clear that at least the S38AA

15

extra-membranous domain decreases in the nerve cells of the hippocampus CA1 region in Alzheimer's disease.

TABLE 1

Alzheimer's disease patient/non-Alzheimer's disease patient expression amount ratio	identified peptide sequence	significance level of identification
0.053	GQEAPGKAR (SEQ ID NO: 3)	0.032

Example 1

Detection and Molecular Weight Prediction of S38AA Fragment in Cerebrospinal Fluid

The cerebrospinal fluids of patients diagnosed with definite Alzheimer's disease (10 cases, pathological score 9-12: pathological score in the Swedish brain bank), suspected Alzheimer's disease (6 cases, pathological score 3-7) and normal (11 cases, pathological score 0-4) were used. The scoring was performed according to the evaluation method of Alafuzoff et al. (*Acta Neuropathol* (Berl) (1987) 74: 209-225). The pathology determination was performed taking into consideration the pathological score and antemortem examination by clinicians. SDS sample was prepared by adding 1 volume of an LDS sample buffer (Invitrogen) relative to 3 volumes of cerebrospinal fluid and heating the mixture at 70° C. for 10 min. Using the prepared sample (10 μ L), S38AA was separated on 4-12% gradient SDS-PAGE gel. Thereafter, using Mini Trans-Blot system (Bio-Rad Laboratories), the separated total protein was transferred to PVDF membrane, and applied to the step of antibody staining. Prior to the detection of S38AA with the antibody, the PVDF membrane was blocked from non-specific reactions with 5% skim milk-containing phosphate buffered saline (pH 7.4) at room temperature for 1 hr. The primary antibody (catalog number: HPA024631, Atlas Antibodies) was diluted 1000-fold with phosphate buffered saline and the membrane was incubated with the diluted antibody at 4° C. overnight. Thereafter, the membrane was incubated with 50000-fold diluted HRP-conjugated goat anti-rabbit IgG antibody (GE healthcare) at room temperature for 1 hr, sufficiently washed and treated with SuperSignal (registered trade mark) West Dura (Thermo Fisher Scientific) to allow color development.

A signal derived from S38AA fragment in the cerebrospinal fluid could be detected by Western blot, and it was found the intensity thereof tended to increase in Alzheimer's disease (FIG. 4). The detected molecular weight was 76-102 kDa, corresponding to the full-length of S38AA isoform 2. However, isoform 2 is a ten-transmembrane protein having a considerably low possibility of the full-length protein being secreted in the cerebrospinal fluid. Hence, the possibility of partial cleavage and secretion of S38AA was examined.

The amino acid sequence of S38AA isoform 1 was obtained from the registered information of UniProtKB database. The extra-membrane region was predicted using TMHMM software, and the obtained predicted extra-membrane region is shown in a box (FIG. 3). The extra-membrane region consisted of 721 amino acids from the 399th to the 1119th and the molecular weight was calculated to be about 76 kDa. On the other hand, the molecular weight of S38AA in the cerebrospinal fluid was estimated to be about 76-102 kDa by Western blot (FIG. 4), which almost matched

16

with the assumed molecular weight size of the extra-membrane region. From the aspect of the molecular weight, the S38AA detected in the cerebrospinal fluid was suggested to be a (poly) peptide (S38AA fragment) containing the extra-membranous domain of isoform 1.

Example 2

Patient Background, Quantitative Analysis of S38AA Fragment in Cerebrospinal Fluid and Correlation with APOE Allele

For quantitative analysis, cerebrospinal fluids of several cases were mixed in advance, and used as the standard cerebrospinal fluid for all analyses. All samples were treated in the same manner, and a standard curve was drawn for each SDS-PAGE gel. Western blot for quantitative analysis of the S38AA fragment was performed in the same manner as in Example 1. The signal intensity derived from S38AA antibody was image analyzed by LAS3000 image analyzer (Fujifilm Corp.) and quantified using MultiGauge V3.0 software (Fujifilm Corp.). Each signal intensity was normalized by the standard curve prepared from the standard cerebrospinal fluid transferred simultaneously onto each membrane.

As for the patients' background, specific patient numbers were accorded in the present test from the aspect of protection of personal information, which did not match with the reference numbers used by the Swedish brain bank. APOE genotype was analyzed according to the standard procedure manual of the Swedish brain bank. The genotype was known for the patients of 27 cases (Table 2) and the analysis was performed using the same.

TABLE 2

Alzheimer's disease severity classification	patient No.	diagnosis	score	ApoE allele
normal	1	non-Alzheimer's disease	01	3/3
	2	non-Alzheimer's disease	04	2/3
	3	non-Alzheimer's disease	02	2/3
	4	non-Alzheimer's disease	00	3/4
	5	non-Alzheimer's disease	00	3/3
	6	non-Alzheimer's disease	01	3/3
	7	non-Alzheimer's disease	04	3/4
	8	non-Alzheimer's disease	02	3/3
	9	non-Alzheimer's disease	00	2/3
	10	non-Alzheimer's disease	00	2/3
	11	non-Alzheimer's disease	00	3/3
mild or moderate	12	suspected Alzheimer's disease	06	3/4
	13	suspected Alzheimer's disease	03	3/3
	14	suspected Alzheimer's disease	07	3/4
		suspected Alzheimer's disease		

TABLE 2-continued

Alzheimer's disease severity classification	patient No.	diagnosis	score	ApoE allele
severe	15	suspected Alzheimer's disease	07	3/4
	16	suspected Alzheimer's disease	07	3/3
	17	suspected Alzheimer's disease	N.D.	3/3
	18	definite Alzheimer's disease	10	3/3
	19	definite Alzheimer's disease	10	3/4
	20	definite Alzheimer's disease	12	3/4
	21	definite Alzheimer's disease	11	3/4
	22	definite Alzheimer's disease	10	3/4
	23	definite Alzheimer's disease	11	4/4
	24	definite Alzheimer's disease	09	4/4
	25	definite Alzheimer's disease	09	3/4
26	definite Alzheimer's disease	10	3/4	
27	definite Alzheimer's disease	N.D.	4/4	

N.D.: not determined

score: evaluation method of Alafuzoff et al. (Acta Neuropathol (1987) 74: 209-225).

As shown in FIG. 5, it is clear that the amount of the S38AA fragment in the cerebrospinal fluid increases in Alzheimer's disease, and the amount of the S38AA fragment tends to increase even in patients with suspected Alzheimer's disease. This shows that the S38AA fragment increases from the early or preclinical stages of Alzheimer's disease, and a clear increase is observed in patients with definite Alzheimer's disease.

The whole patients were classified by APOE genotype (4 kinds of ApoE2/3, ApoE3/3, ApoE3/4, ApoE4/4; see Table 2), and the amount of S38AA in the cerebrospinal fluid of each group is shown in a graph (FIG. 6). The amount of the S38AA fragment remarkably increased particularly in the homozygous patients (ApoE4/4) having ApoE4. ApoE4 is an onset risk gene of Alzheimer's disease, and ApoE2 is considered to be a resistance factor of the onset of Alzheimer's disease. That is, FIG. 6 shows that the onset risk factors of Alzheimer's disease of APOE genotype and the amount of the S38AA fragment in the cerebrospinal fluid are correlated.

As for the relationship between the amount of the S38AA fragment in 11 non-Alzheimer's disease patients and the APOE genotype, the amount of the S38AA fragment in the cerebrospinal fluid increased in the order of ApoE2/3, ApoE3/3 and ApoE3/4, as shown in FIG. 7.

These correlations indicate that S38AA in the cerebrospinal fluid is correlated with the risk of the onset of Alzheimer's

er's disease in the future, and further suggests that S38AA has a possibility of becoming a biomarker for estimating the risk of the onset of Alzheimer's disease in the future even in patients with preclinical Alzheimer's disease. Although early detection and the start of an early treatment are considered to be important in Alzheimer's disease, a diagnostic marker capable of early detection of Alzheimer's disease has not been found. Therefore, detection of the suspected Alzheimer's disease is extremely useful.

Example 3

Confirmation that S38AA Fragment in Cerebrospinal Fluid Contains S38AA Extra-membrane Region

(1) Confirmation of S38AA Fragment Based on Antibody Used for Immunoprecipitation

An anti-S38AA antibody (HPA023161 or HPA021374, Atlas Antibodies, 2 μL) for immunoprecipitation was added to the cerebrospinal fluid (500 μL) derived from patient with Alzheimer's disease and the mixture was incubated for 20 hr at 4° C., and thereafter incubated together with ProteinG Mag Sepharose (GE healthcare) for 1 hr at 4° C., whereby an S38AA fragment was immunoprecipitated. Thereafter, LDS sample buffer (Invitrogen, 10 μL) was added to magnetic beads to give a sample for SDS-PAGE (ProteinG Mag Sepharose bound fraction). In addition, 9 μL of the supernatant fraction free of precipitation by ProteinG Mag Sepharose was taken, and the LDS sample buffer (3 μL) was added to give a sample of an unbound fraction (ProteinG Mag Sepharose unbound fraction).

After performing SDS-PAGE in the same manner as in Example 1, Western blot was performed using HPA024631 as a primary antibody.

As a result, in both HPA023161 and HPA021374 used for immunoprecipitation, an immunoprecipitate having a molecular weight similar to that found in the cerebrospinal fluid could be detected by Western blot (FIG. 8: bound lane). On the other hand, S38AA fragment was not detected in the supernatant of the immunoprecipitate (FIG. 8: unbound lane).

Since the amino acid sequences of the peptides used for producing the antibodies of HPA023161 and HPA021374 are MKPKQVSRDLGLAADLPGGAEGAAAQPQAVLRQPE LRVISDGEQGGQQGHRLDHGGHLEMRKA (SEQ ID NO: 4; corresponding to the 926-988th amino acid region in SEQ ID NO: 2) and PVPKDKVVDDEGQDREVPEENKPPSRH AGGKAPGVQGMAPPLPDSER-EKQPEQGEVVKRPGQAQALEEAGDLPEDPQKVPE ADGQPA (SEQ ID NO: 5; corresponding to the 500-588th amino acid region in SEQ ID NO: 2), respectively, it has been shown that at least the S38AA fragment in the cerebrospinal fluid contains an amino acid sequence which is a part of these S38AA extra-membranous domain sequences.

(2) Confirmation of S38AA Fragment by Shotgun MS Analysis

To show that the immunoprecipitation sample of Example 3(1) contains the S38AA extra-membranous domain, MilliQ water (90 μL), 1 M Tris buffer (pH 8, 5 μL), urea (48 mg) and 0.5 M dithiothreitol (1 μL) were added to the two kinds of immunoprecipitation samples, and the mixtures were incubated at 30° C. for 2 hr. Thereafter, 0.5 M iodoacetamide (2 μL) was added, and the mixture was treated at room temperature for 1 hr to alkylate the thiol residue. Thereafter, 50 mM ammonium carbonate (750 μL) was added, trypsin (Promega, 2 μg) was added, and the mixture was incubated

at 37° C. overnight to give a tryptic digest. The obtained tryptic digest was treated with trifluoroacetic acid to decrease the pH to 1-2, and purified by TopTip200 column (Glygen Corp.) according to the operation manual.

The tryptic digest immunoprecipitated by HPA023161 or HPA021374 was dissolved in 0.1% trifluoroacetic acid solution (20 μ L), and 5 μ L thereof was injected into an analysis column (Zorbax 300SB, 0.1 \times 150 mm, Agilent Technologies). For the mobile phase of the analysis, 0.1% formic acid (mobile phase A) and 0.1% formic acid-methanol (mobile phase B) were used. A gradient program of increasing the concentration of mobile phase B linearly from 5% to 75% over 30 min, and thereafter to 98% mobile phase B (31 min), and maintaining for 5 min (36 min) was used. The mass spectrometer used was Thermo Fisher, LTQ velos system. The mass measurement range was set to 400-1400 m/z. Using the obtained data, peptide was identified using Mascot software version 2.2 and Swiss-Prot database (20110804).

The analysis parameter conditions on Mascot software are as follows.

monoisotopic mass was selected
 peptide mass tolerance: 15 Da
 fragment ion MS/MS tolerance: 0.8 Da
 digestive enzyme: trypsin was specified
 missed cleavage number: 1 at maximum
 methionine oxidation: allowed

As a result of the shotgun MS analysis of the immunoprecipitates by HPA023161 and HPA021374, a total of 6 peptide sequences derived from the S38AA extra-membranous domain could be identified (FIG. 3, underlined part, SEQ ID NOs: 6-11). Therefore, it has been shown that the immunoprecipitates certainly contain the S38AA extra-membranous domain.

Example 4

Detection and Molecular Weight Prediction of S38AA Fragment in Plasma

Whether or not the S38AA fragment can be detected also in human plasma was studied. Heparin plasma was separated from patients with Alzheimer's disease and non-Alzheimer's disease patients. PureProteome albumin removal magnetic beads (Millipore, 500 μ L) and ProteinG Mag Sepharose (GE healthcare, 60 μ L) were placed in an Eppendorf tube, and washed with phosphate buffered saline. Thereafter, plasma (20 μ L) and phosphate buffered saline (60 μ L) were added to the mixed magnetic beads, and the mixture was incubated at 4° C. for 2 hr. The obtained plasma was confirmed by SDS-PAGE to be free of albumin and immunoglobulin. To this sample (60 μ L) was added LDS sample buffer (Invitrogen, 20 μ L) to give a sample for SDS-PAGE, which was analyzed by Western blot using HPA024631 as a primary antibody in the same manner as in the above-mentioned Example 3.

As a result, a band considered to have the same molecular weight as that of the cerebrospinal fluid was found as shown in FIG. 9, and the amount of the corresponding band increased in patients with Alzheimer's disease.

Therefore, the S38AA fragment is also present in human plasma, and the amount of the S38AA fragment in plasma was clarified to increase in patients with Alzheimer's disease as compared to normal person.

Detection Example 1 of S38AA Fragment Produced in Supernatant of Cultured Cell

BE(2)-C cell, SK-N-MC cell, SHSY-5Y cell and SHSY-5Y (APP) cell (cell line obtained by introducing human APP gene into SHSY-5Y cell) were cultured in D-MEM (Invitrogen) containing 10% fetal bovine serum for 2 days, and thereafter, the medium was recovered. Rat fetal primary nerve cell was cultured in Neurobasal medium (Invitrogen) containing B27 for 7 days, and the medium was recovered. HPA021374 antibody was added to each recovered medium (1 mL), and the mixture was incubated at 4° C. for 20 hr. Thereafter, ProteinG Mag Sepharose (30 μ L) was added and the mixture was incubated at 4° C. for 2 hr. The magnetic beads were washed with PBS(-), and 4-fold diluted LDS sample buffer (20 μ L) was added to give a sample for SDS-PAGE. In the same manner as in the above-mentioned Example 3, the sample was analyzed by Western blot using HPA024631 as a primary antibody.

As a result, a band considered to have the same molecular weight as that of the cerebrospinal fluid and plasma was observed. Therefore, it has been clarified that the cleavage of S38AA, namely, production and secretion of S38AA fragment, can be detected also in cultured cells and rat primary cultured cells, similar to human nerve cell.

Example 6

Detection Example 2 of S38AA Fragment Produced in Supernatant of Cultured Cell

An expression vector containing a DNA sequence added with Flag-Tag (DYKDDDDK; SEQ ID NO: 12) to the C-terminal of S38AA was constructed, and introduced into SHSY-5Y cell. After 48 hr, the medium (75 μ L) was recovered, and LDS sample buffer (25 μ L) was added to give a sample for SDS-PAGE. This time, the sample was analyzed by Western blot using an anti-Flag M2 monoclonal antibody (Sigma-Aldrich Corp.) as a primary antibody.

As a result, a band considered having the same molecular weight as that of the cerebrospinal fluid and plasma could be detected without immunoprecipitation, unlike Example 5. Therefore, it has been clarified that the gene introduction enables easier detection of S38AA fragment even in the culture supernatant of cultured cells.

INDUSTRIAL APPLICABILITY

According to the present invention, a determination agent and a determination method of Alzheimer's disease, which can determine not only patients affected with Alzheimer's disease but also patients having a high risk of developing Alzheimer's disease in the future, can be provided.

Furthermore, according to the present invention, a method of screening for a substance that treats or prevents Alzheimer's disease can be provided.

This application is based on a patent application No. 2010-293891 filed in Japan (filing date: Dec. 28, 2010), the contents of which are incorporated in full herein.

SEQUENCE LISTING

<160> NUMBER OF SEQ ID NOS: 12

<210> SEQ ID NO 1

<211> LENGTH: 4303

<212> TYPE: DNA

<213> ORGANISM: Homo sapiens

<220> FEATURE:

<221> NAME/KEY: CDS

<222> LOCATION: (376)..(3735)

<400> SEQUENCE: 1

```

cgccgcgccg gcagctgagt tgggctgagg tgtccctagc tggetctgcg gctcttcccg      60
gtctgggctc ggagattcac aggcggcccc cgaggccgag cgagggacgc atggccctga      120
ggcgccgca gggcttggcg gggctccggag gttgacctcg cccccgcagc cggccttcca      180
ggctgctcc tccagccagc ctctggggcc cgcgccccgc cctgctcagg ctcccgtgtt      240
caggtgccc atcccctccc caccggcgtc ccggacctg ggacctgtga ccgtggcctc      300
gggctgggct tccaaagccg gccgcagccc ggcgaccccc gaggcctctc gccccgggcc      360
cctagacctc tcaact atg acc gcg gcc gcc gcc tcc aac tgg ggg ctg atc      411
          Met Thr Ala Ala Ala Ala Ser Asn Trp Gly Leu Ile
          1              5              10
acg aac atc gtg aac agc atc gta ggg gtc agt gtc ctc acc atg ccc      459
Thr Asn Ile Val Asn Ser Ile Val Gly Val Ser Val Leu Thr Met Pro
          15              20              25
ttc tgc ttc aaa cag tgc ggc atc gtc ctg ggg gcg ctg ctc ttg gtc      507
Phe Cys Phe Lys Gln Cys Gly Ile Val Leu Gly Ala Leu Leu Leu Val
          30              35              40
ttc tgc tca tgg atg acg cac cag tgc tgc atg ttc ttg gtg aag tcg      555
Phe Cys Ser Trp Met Thr His Gln Ser Cys Met Phe Leu Val Lys Ser
          45              50              55              60
gcc agc ctg agc aag cgg agg acc tac gcc ggc ctg gca ttc cac gcc      603
Ala Ser Leu Ser Lys Arg Arg Thr Tyr Ala Gly Leu Ala Phe His Ala
          65              70              75
tac ggg aag gca ggc aag atg ctg gtg gag acc agc atg atc ggg ctg      651
Tyr Gly Lys Ala Gly Lys Met Leu Val Glu Thr Ser Met Ile Gly Leu
          80              85              90
atg ctg ggc acc tgc atc gcc ttc tac gtc gtg atc ggc gac ttg ggg      699
Met Leu Gly Thr Cys Ile Ala Phe Tyr Val Val Ile Gly Asp Leu Gly
          95              100              105
tcc aac ttc ttt gcc cgg ctg ttc ggg ttt cag gtg ggc ggc acc ttc      747
Ser Asn Phe Phe Ala Arg Leu Phe Gly Phe Gln Val Gly Gly Thr Phe
          110              115              120
cgc atg ttc ctg ctg ttc gcc gtg tgc ctg tgc atc gtg ctc ccg ctc      795
Arg Met Phe Leu Leu Phe Ala Val Ser Leu Cys Ile Val Leu Pro Leu
          125              130              135              140
agc ctg cag cgg aac atg atg gcc tcc atc cag tcc ttc agc gcc atg      843
Ser Leu Gln Arg Asn Met Met Ala Ser Ile Gln Ser Phe Ser Ala Met
          145              150              155
gcc ctc ctc ttc tac acc gtg ttc atg ttc gtg atc gtg ctc tcc tct      891
Ala Leu Leu Phe Tyr Thr Val Phe Met Phe Val Ile Val Leu Ser Ser
          160              165              170
ctc aag cac ggc ctc ttc agt ggg cag tgg ctg cgg cgg gtc agc tac      939
Leu Lys His Gly Leu Phe Ser Gly Gln Trp Leu Arg Arg Val Ser Tyr
          175              180              185
gtc cgc tgg gag ggc gtc ttc cgc tgc atc ccc atc ttc ggc atg tcc      987
Val Arg Trp Glu Gly Val Phe Arg Cys Ile Pro Ile Phe Gly Met Ser
          190              195              200
ttc gcc tgc cag tcc cag gtg ctg ccc acc tac gac agc ctg gat gag      1035
Phe Ala Cys Gln Ser Gln Val Leu Pro Thr Tyr Asp Ser Leu Asp Glu

```

-continued

205	210	215	220	
ccg tca gtg aaa acc atg agc tcc ata ttt gct tcc tcc ctt aat gtg				1083
Pro Ser Val Lys Thr Met Ser Ser Ile Phe Ala Ser Ser Leu Asn Val				
	225	230	235	
gtc acc acc ttc tac gtc atg gtg ggg ttt ttc ggc tac gtc agc ttc				1131
Val Thr Thr Phe Tyr Val Met Val Gly Phe Phe Gly Tyr Val Ser Phe				
	240	245	250	
acc gag gcc acg gcc ggc aac gtg ctc atg cac ttt ccc tcc aac ctg				1179
Thr Glu Ala Thr Ala Gly Asn Val Leu Met His Phe Pro Ser Asn Leu				
	255	260	265	
gtg acg gag atg ctc cgt gtg ggc ttc atg atg tca gtg gct gtg ggc				1227
Val Thr Glu Met Leu Arg Val Gly Phe Met Met Ser Val Ala Val Gly				
	270	275	280	
ttc ccc atg atg atc ctg cca tgc agg cag gcc ctg agc acg ctg ctg				1275
Phe Pro Met Met Ile Leu Pro Cys Arg Gln Ala Leu Ser Thr Leu Leu				
	285	290	295	300
tgt gag cag cag caa aaa gat ggc acc ttt gca gca ggg ggc tac atg				1323
Cys Glu Gln Gln Lys Asp Gly Thr Phe Ala Ala Gly Gly Tyr Met				
	305	310	315	
ccc cct ctc cgg ttt aaa gca ctt acc ctc tct gtg gtg ttt gga acc				1371
Pro Pro Leu Arg Phe Lys Ala Leu Thr Leu Ser Val Val Phe Gly Thr				
	320	325	330	
atg gtt ggt ggc atc ctt atc ccc aac gtg gag acc atc ctg ggc ctc				1419
Met Val Gly Gly Ile Leu Ile Pro Asn Val Glu Thr Ile Leu Gly Leu				
	335	340	345	
aca gga gcg acc atg gga agc ctc atc tgc ttc atc tgc ccg gcg ctg				1467
Thr Gly Ala Thr Met Gly Ser Leu Ile Cys Phe Ile Cys Pro Ala Leu				
	350	355	360	
atc tac aag aaa atc cac aag aac gca ctt tcc tcc cag gtg gtg ctg				1515
Ile Tyr Lys Lys Ile His Lys Asn Ala Leu Ser Ser Gln Val Val Leu				
	365	370	375	380
tgg gtc ggc ctg ggc gtc ctg gtg gtg agc act gtc acc aca ctg tct				1563
Trp Val Gly Leu Val Leu Val Val Ser Thr Val Thr Thr Leu Ser				
	385	390	395	
gtg agc gag gag gtc ccc gag gac ttg gca gag gaa gcc cct ggc ggc				1611
Val Ser Glu Glu Val Pro Glu Asp Leu Ala Glu Glu Ala Pro Gly Gly				
	400	405	410	
cgg ctt gga gag gcc gag ggt ttg atg aag gtg gag gca gcg cgg ctc				1659
Arg Leu Gly Glu Ala Glu Gly Leu Met Lys Val Glu Ala Ala Arg Leu				
	415	420	425	
tca gcc cag gat ccg gtt gtg gcc gtg gct gag gat ggc cgg gag aag				1707
Ser Ala Gln Asp Pro Val Val Ala Val Ala Glu Asp Gly Arg Glu Lys				
	430	435	440	
ccg aag ctg ccg aag gag aga gag gag ctg gag cag gcc cag atc aag				1755
Pro Lys Leu Pro Lys Glu Arg Glu Glu Leu Glu Gln Ala Gln Ile Lys				
	445	450	455	460
ggg ccc gtg gat gtg cct gga cgg gaa gat ggc aag gag gca ccg gag				1803
Gly Pro Val Asp Val Pro Gly Arg Glu Asp Gly Lys Glu Ala Pro Glu				
	465	470	475	
gag gca cag ctc gat cgc cct ggg caa ggg att gct gtg cct gtg ggc				1851
Glu Ala Gln Leu Asp Arg Pro Gly Gln Gly Ile Ala Val Pro Val Gly				
	480	485	490	
gag gcc cac cgc cac gag cct cct gtt cct cac gac aag gtg gtg gta				1899
Glu Ala His Arg His Glu Pro Pro Val Pro His Asp Lys Val Val Val				
	495	500	505	
gat gaa gcc caa gac cga gag gtg cca gaa gag aac aaa cct cca tcc				1947
Asp Glu Gly Gln Asp Arg Glu Val Pro Glu Glu Asn Lys Pro Pro Ser				
	510	515	520	
aga cac gcg ggc gga aag gct cca ggg gtc cag ggc cag atg gcg ccg				1995

-continued

Arg 525	His	Ala	Gly	Gly	Lys	Ala	Pro	Gly	Val	Gln	Gly	Gln	Met	Ala	Pro		
					530					535					540		
cct	ctg	ccc	gac	tca	gaa	aga	gag	aaa	caa	gag	ccg	gag	cag	gga	gag		2043
Pro	Leu	Pro	Asp	Ser	Glu	Arg	Glu	Lys	Gln	Glu	Pro	Glu	Gln	Gly	Glu		
				545					550					555			
ggt	ggg	aag	agg	cct	gga	cag	gcc	cag	gcc	ttg	gag	gag	gcg	ggt	gat		2091
Val	Gly	Lys	Arg	Pro	Gly	Gln	Ala	Gln	Ala	Leu	Glu	Glu	Ala	Gly	Asp		
			560					565					570				
ctt	cct	gaa	gat	ccc	cag	aaa	ggt	cca	gaa	gca	gat	ggt	cag	cca	gct		2139
Leu	Pro	Glu	Asp	Pro	Gln	Lys	Val	Pro	Glu	Ala	Asp	Gly	Gln	Pro	Ala		
			575				580						585				
gtc	cag	cct	gca	aag	gag	gac	ctg	ggg	cca	gga	gac	agg	ggc	ctg	cat		2187
Val	Gln	Pro	Ala	Lys	Glu	Asp	Leu	Gly	Pro	Gly	Asp	Arg	Gly	Leu	His		
				590			595				600						
cct	cgg	ccc	cag	gca	gtg	ctg	tct	gag	cag	cag	aac	ggc	ctg	gcg	gtg		2235
Pro	Arg	Pro	Gln	Ala	Val	Leu	Ser	Glu	Gln	Gln	Asn	Gly	Leu	Ala	Val		
					610					615					620		
ggt	gga	ggg	gaa	aag	gcc	aag	ggg	gga	ccg	ccg	cca	ggc	aac	gcc	gcc		2283
Gly	Gly	Gly	Glu	Lys	Ala	Lys	Gly	Gly	Pro	Pro	Pro	Gly	Asn	Ala	Ala		
				625					630					635			
ggg	gac	aca	ggg	cag	ccc	gca	gag	gac	agc	gac	cac	ggt	ggg	aag	cct		2331
Gly	Asp	Thr	Gly	Gln	Pro	Ala	Glu	Asp	Ser	Asp	His	Gly	Gly	Lys	Pro		
			640					645					650				
ccc	ctc	cca	gcg	gag	aag	ccg	gct	cca	ggg	cct	ggg	ctg	ccg	ccc	gag		2379
Pro	Leu	Pro	Ala	Glu	Lys	Pro	Ala	Pro	Gly	Pro	Gly	Leu	Pro	Pro	Glu		
							660						665				
cct	cgc	gag	cag	agg	gac	gtg	gag	cga	gcg	ggt	gga	aac	cag	gcg	gcc		2427
Pro	Arg	Glu	Gln	Arg	Asp	Val	Glu	Arg	Ala	Gly	Gly	Asn	Gln	Ala	Ala		
						675							680				
agc	cag	ctg	gag	gaa	gct	ggc	agg	gcg	gag	atg	ctg	gac	cac	gcc	gtc		2475
Ser	Gln	Leu	Glu	Glu	Ala	Gly	Arg	Ala	Glu	Met	Leu	Asp	His	Ala	Val		
					690					695					700		
ctg	ctt	cag	gtg	atc	aaa	gaa	cag	cag	gtg	cag	caa	aag	cgc	ttg	ctg		2523
Leu	Leu	Gln	Val	Ile	Lys	Glu	Gln	Gln	Val	Gln	Gln	Lys	Arg	Leu	Leu		
				705					710					715			
gac	cag	cag	gag	aag	ctg	ctg	gcg	gtg	atc	gag	gag	cag	cac	aag	gag		2571
Asp	Gln	Gln	Glu	Lys	Leu	Leu	Ala	Val	Ile	Glu	Glu	Gln	His	Lys	Glu		
				720					725					730			
atc	cac	cag	cag	agg	cag	gag	gac	gag	gag	gat	aaa	ccc	agg	cag	gtg		2619
Ile	His	Gln	Gln	Arg	Gln	Glu	Asp	Glu	Glu	Asp	Lys	Pro	Arg	Gln	Val		
				735			740							745			
gag	gtg	cat	caa	gag	ccc	ggg	gca	gcg	gtg	ccc	aga	ggc	cag	gag	gcc		2667
Glu	Val	His	Gln	Glu	Pro	Gly	Ala	Ala	Val	Pro	Arg	Gly	Gln	Glu	Ala		
						755					760						
cct	gaa	ggc	aag	gcc	agg	gag	acg	gtg	gag	aat	ctg	cct	ccc	ctg	cct		2715
Pro	Glu	Gly	Lys	Ala	Arg	Glu	Thr	Val	Glu	Asn	Leu	Pro	Pro	Leu	Pro		
					770						775				780		
ttg	gac	cct	gtc	ctc	aga	gct	cct	ggg	ggc	cgc	cct	gct	cca	tcc	cag		2763
Leu	Asp	Pro	Val	Leu	Arg	Ala	Pro	Gly	Gly	Arg	Pro	Ala	Pro	Ser	Gln		
					785					790					795		
gac	ctt	aac	cag	cgc	tcc	ctg	gag	cac	tct	gag	ggg	cct	gtg	ggc	aga		2811
Asp	Leu	Asn	Gln	Arg	Ser	Leu	Glu	His	Ser	Glu	Gly	Pro	Val	Gly	Arg		
						800			805					810			
gac	cct	gct	ggc	cct	cct	gac	ggc	ggc	cct	gac	aca	gag	cct	cgg	gca		2859
Asp	Pro	Ala	Gly	Pro	Pro	Asp	Gly	Gly	Pro	Asp	Thr	Glu	Pro	Arg	Ala		
						815			820					825			
gcc	cag	gcc	aag	ctg	aga	gat	ggc	cag	aag	gat	gcc	gcc	ccc	agg	gca		2907
Ala	Gln	Ala	Lys	Leu	Arg	Asp	Gly	Gln	Lys	Asp	Ala	Ala	Pro	Arg	Ala		
						830			835					840			

-continued

gct ggc act gtg aag gag ctc ccc aag ggc ccg gag cag gtg ccc gtg Ala Gly Thr Val Lys Glu Leu Pro Lys Gly Pro Glu Gln Val Pro Val 845 850 855 860	2955
cca gac ccc gcc agg gaa gcc ggg gcc cca gag gag cgc ctc gca gag Pro Asp Pro Ala Arg Glu Ala Gly Gly Pro Glu Glu Arg Leu Ala Glu 865 870 875	3003
gaa ttc cct ggg caa agt cag gac gtt act ggc ggt tcc caa gac agg Glu Phe Pro Gly Gln Ser Gln Asp Val Thr Gly Gly Ser Gln Asp Arg 880 885 890	3051
aaa aaa cct ggg aag gag gtg gca gcc act ggc acc agc att ctg aag Lys Lys Pro Gly Lys Glu Val Ala Ala Thr Gly Thr Ser Ile Leu Lys 895 900 905	3099
gaa gcc aac tgg ctc gtg gca ggg cca gga gca gag acg ggg gac cct Glu Ala Asn Trp Leu Val Ala Gly Pro Gly Ala Glu Thr Gly Asp Pro 910 915 920	3147
cgc atg aag ccc aag caa gtg agc cga gac ctg ggc ctt gca gcg gac Arg Met Lys Pro Lys Gln Val Ser Arg Asp Leu Gly Leu Ala Ala Asp 925 930 935 940	3195
ctg ccc ggt ggg gcg gaa gga gca gct gca cag ccc cag gct gtg tta Leu Pro Gly Gly Ala Glu Gly Ala Ala Ala Gln Pro Gln Ala Val Leu 945 950 955	3243
cgc cag ccg gaa ctg cgg gtc atc tct gat ggc gag cag ggt gga cag Arg Gln Pro Glu Leu Arg Val Ile Ser Asp Gly Glu Gln Gly Gly Gln 960 965 970	3291
cag ggc cac cgg ctg gac cat ggc ggt cac ctg gag atg aga aag gcc Gln Gly His Arg Leu Asp His Gly Gly His Leu Glu Met Arg Lys Ala 975 980 985	3339
cgc ggg ggg gac cat gtg cct gtg tcc cac gag cag ccg aga ggc ggg Arg Gly Gly Asp His Val Pro Val Ser His Glu Gln Pro Arg Gly Gly 990 995 1000	3387
gag gac gct gct gtc cag gag ccc agg cag agg cca gag cca gag Glu Asp Ala Ala Val Gln Glu Pro Arg Gln Arg Pro Glu Pro Glu 1005 1010 1015	3432
ctg ggg ctc aaa cga gct gtc ccg ggg gcc cag agg ccg gac aat Leu Gly Leu Lys Arg Ala Val Pro Gly Gly Gln Arg Pro Asp Asn 1020 1025 1030	3477
gcc aag ccc aac cgg gac ctg aaa ctg cag gct ggc tcc gac ctc Ala Lys Pro Asn Arg Asp Leu Lys Leu Gln Ala Gly Ser Asp Leu 1035 1040 1045	3522
cgg agg cga cgg cgg gac ctt ggc cct cat gca gag ggt cag ctg Arg Arg Arg Arg Asp Leu Gly Pro His Ala Glu Gly Gln Leu 1050 1055 1060	3567
gcc ccg agg gat ggg gtc atc att ggc ctt aac ccc ctg cct gat Ala Pro Arg Asp Gly Val Ile Ile Gly Leu Asn Pro Leu Pro Asp 1065 1070 1075	3612
gtc cag gtg aac gac ctc cgt ggc gcc ctg gat gcc cag ctc cgc Val Gln Val Asn Asp Leu Arg Gly Ala Leu Asp Ala Gln Leu Arg 1080 1085 1090	3657
cag gct gcg ggg gga gct ctg cag gtg gtc cac agc cgg cag ctt Gln Ala Ala Gly Gly Ala Leu Gln Val Val His Ser Arg Gln Leu 1095 1100 1105	3702
aga cag gcg cct ggg cct cca gag gag tcc tag cacctgctgg Arg Gln Ala Pro Gly Pro Pro Glu Glu Ser 1110 1115	3745
ccatgagggc cacgccagcc actgccctcc tcggccagca gcaggctgtg ctcagccgca	3805
tcccagccaa actctggagg tcacactcgc ctctccccag ggtttcatgt ctgaggccct	3865
caccaagtgt gactgacagt ataaaagatt cactgtggca tcgtttccag aatgttcttg	3925
ctgtcgttct gttgcagctc ttagtctgag gtcctctgac ctctagactc tgagctcact	3985

-continued

```

ccagcctgtg aggagaaacg gcctccgctg cgagctggct ggtgcaactcc caggctcagg 4045
ctggggagct gctgctctgt tggtcaggcc tctgctcct gccagggagc acgctggctc 4105
ttecgggtga gctcggccgt gcgtggaggt gcgcatggct gctcatggtc ccaacacagg 4165
ctactgtgag agccagcatc caaccccacg cttgcagtga ctcagaatga taattattat 4225
gactgtttat cgatgcttcc cacagtgtgg tagaaagtct tgaataaaca cttttgcctt 4285
caccagaaa aaaaaaaaa 4303
    
```

```

<210> SEQ ID NO 2
<211> LENGTH: 1119
<212> TYPE: PRT
<213> ORGANISM: Homo sapiens
    
```

<400> SEQUENCE: 2

```

Met Thr Ala Ala Ala Ala Ser Asn Trp Gly Leu Ile Thr Asn Ile Val
1          5          10          15
Asn Ser Ile Val Gly Val Ser Val Leu Thr Met Pro Phe Cys Phe Lys
          20          25          30
Gln Cys Gly Ile Val Leu Gly Ala Leu Leu Leu Val Phe Cys Ser Trp
          35          40          45
Met Thr His Gln Ser Cys Met Phe Leu Val Lys Ser Ala Ser Leu Ser
          50          55          60
Lys Arg Arg Thr Tyr Ala Gly Leu Ala Phe His Ala Tyr Gly Lys Ala
65          70          75          80
Gly Lys Met Leu Val Glu Thr Ser Met Ile Gly Leu Met Leu Gly Thr
          85          90          95
Cys Ile Ala Phe Tyr Val Val Ile Gly Asp Leu Gly Ser Asn Phe Phe
          100          105          110
Ala Arg Leu Phe Gly Phe Gln Val Gly Gly Thr Phe Arg Met Phe Leu
          115          120          125
Leu Phe Ala Val Ser Leu Cys Ile Val Leu Pro Leu Ser Leu Gln Arg
          130          135          140
Asn Met Met Ala Ser Ile Gln Ser Phe Ser Ala Met Ala Leu Leu Phe
145          150          155          160
Tyr Thr Val Phe Met Phe Val Ile Val Leu Ser Ser Leu Lys His Gly
          165          170          175
Leu Phe Ser Gly Gln Trp Leu Arg Arg Val Ser Tyr Val Arg Trp Glu
          180          185          190
Gly Val Phe Arg Cys Ile Pro Ile Phe Gly Met Ser Phe Ala Cys Gln
          195          200          205
Ser Gln Val Leu Pro Thr Tyr Asp Ser Leu Asp Glu Pro Ser Val Lys
210          215          220
Thr Met Ser Ser Ile Phe Ala Ser Ser Leu Asn Val Val Thr Thr Phe
225          230          235          240
Tyr Val Met Val Gly Phe Phe Gly Tyr Val Ser Phe Thr Glu Ala Thr
          245          250          255
Ala Gly Asn Val Leu Met His Phe Pro Ser Asn Leu Val Thr Glu Met
          260          265          270
Leu Arg Val Gly Phe Met Met Ser Val Ala Val Gly Phe Pro Met Met
          275          280          285
Ile Leu Pro Cys Arg Gln Ala Leu Ser Thr Leu Leu Cys Glu Gln Gln
290          295          300
Gln Lys Asp Gly Thr Phe Ala Ala Gly Gly Tyr Met Pro Pro Leu Arg
    
```

-continued

305	310	315	320
Phe Lys Ala Leu Thr Leu Ser Val Val Phe Gly Thr Met Val Gly Gly	325	330	335
Ile Leu Ile Pro Asn Val Glu Thr Ile Leu Gly Leu Thr Gly Ala Thr	340	345	350
Met Gly Ser Leu Ile Cys Phe Ile Cys Pro Ala Leu Ile Tyr Lys Lys	355	360	365
Ile His Lys Asn Ala Leu Ser Ser Gln Val Val Leu Trp Val Gly Leu	370	375	380
Gly Val Leu Val Val Ser Thr Val Thr Thr Leu Ser Val Ser Glu Glu	385	390	395
Val Pro Glu Asp Leu Ala Glu Glu Ala Pro Gly Gly Arg Leu Gly Glu	405	410	415
Ala Glu Gly Leu Met Lys Val Glu Ala Ala Arg Leu Ser Ala Gln Asp	420	425	430
Pro Val Val Ala Val Ala Glu Asp Gly Arg Glu Lys Pro Lys Leu Pro	435	440	445
Lys Glu Arg Glu Glu Leu Glu Gln Ala Gln Ile Lys Gly Pro Val Asp	450	455	460
Val Pro Gly Arg Glu Asp Gly Lys Glu Ala Pro Glu Glu Ala Gln Leu	465	470	475
Asp Arg Pro Gly Gln Gly Ile Ala Val Pro Val Gly Glu Ala His Arg	485	490	495
His Glu Pro Pro Val Pro His Asp Lys Val Val Val Asp Glu Gly Gln	500	505	510
Asp Arg Glu Val Pro Glu Glu Asn Lys Pro Pro Ser Arg His Ala Gly	515	520	525
Gly Lys Ala Pro Gly Val Gln Gly Gln Met Ala Pro Pro Leu Pro Asp	530	535	540
Ser Glu Arg Glu Lys Gln Glu Pro Glu Gln Gly Glu Val Gly Lys Arg	545	550	555
Pro Gly Gln Ala Gln Ala Leu Glu Glu Ala Gly Asp Leu Pro Glu Asp	565	570	575
Pro Gln Lys Val Pro Glu Ala Asp Gly Gln Pro Ala Val Gln Pro Ala	580	585	590
Lys Glu Asp Leu Gly Pro Gly Asp Arg Gly Leu His Pro Arg Pro Gln	595	600	605
Ala Val Leu Ser Glu Gln Gln Asn Gly Leu Ala Val Gly Gly Gly Glu	610	615	620
Lys Ala Lys Gly Gly Pro Pro Gly Asn Ala Ala Gly Asp Thr Gly	625	630	635
Gln Pro Ala Glu Asp Ser Asp His Gly Gly Lys Pro Pro Leu Pro Ala	645	650	655
Glu Lys Pro Ala Pro Gly Pro Gly Leu Pro Pro Glu Pro Arg Glu Gln	660	665	670
Arg Asp Val Glu Arg Ala Gly Gly Asn Gln Ala Ala Ser Gln Leu Glu	675	680	685
Glu Ala Gly Arg Ala Glu Met Leu Asp His Ala Val Leu Leu Gln Val	690	695	700
Ile Lys Glu Gln Gln Val Gln Gln Lys Arg Leu Leu Asp Gln Gln Glu	705	710	715
Lys Leu Leu Ala Val Ile Glu Glu Gln His Lys Glu Ile His Gln Gln	725	730	735

-continued

Arg Gln Glu Asp Glu Glu Asp Lys Pro Arg Gln Val Glu Val His Gln
 740 745 750

Glu Pro Gly Ala Ala Val Pro Arg Gly Gln Glu Ala Pro Glu Gly Lys
 755 760 765

Ala Arg Glu Thr Val Glu Asn Leu Pro Pro Leu Pro Leu Asp Pro Val
 770 775 780

Leu Arg Ala Pro Gly Gly Arg Pro Ala Pro Ser Gln Asp Leu Asn Gln
 785 790 795 800

Arg Ser Leu Glu His Ser Glu Gly Pro Val Gly Arg Asp Pro Ala Gly
 805 810 815

Pro Pro Asp Gly Gly Pro Asp Thr Glu Pro Arg Ala Ala Gln Ala Lys
 820 825 830

Leu Arg Asp Gly Gln Lys Asp Ala Ala Pro Arg Ala Ala Gly Thr Val
 835 840 845

Lys Glu Leu Pro Lys Gly Pro Glu Gln Val Pro Val Pro Asp Pro Ala
 850 855 860

Arg Glu Ala Gly Gly Pro Glu Glu Arg Leu Ala Glu Glu Phe Pro Gly
 865 870 875 880

Gln Ser Gln Asp Val Thr Gly Gly Ser Gln Asp Arg Lys Lys Pro Gly
 885 890 895

Lys Glu Val Ala Ala Thr Gly Thr Ser Ile Leu Lys Glu Ala Asn Trp
 900 905 910

Leu Val Ala Gly Pro Gly Ala Glu Thr Gly Asp Pro Arg Met Lys Pro
 915 920 925

Lys Gln Val Ser Arg Asp Leu Gly Leu Ala Ala Asp Leu Pro Gly Gly
 930 935 940

Ala Glu Gly Ala Ala Ala Gln Pro Gln Ala Val Leu Arg Gln Pro Glu
 945 950 955 960

Leu Arg Val Ile Ser Asp Gly Glu Gln Gly Gly Gln Gln Gly His Arg
 965 970 975

Leu Asp His Gly Gly His Leu Glu Met Arg Lys Ala Arg Gly Gly Asp
 980 985 990

His Val Pro Val Ser His Glu Gln Pro Arg Gly Gly Glu Asp Ala Ala
 995 1000 1005

Val Gln Glu Pro Arg Gln Arg Pro Glu Pro Glu Leu Gly Leu Lys
 1010 1015 1020

Arg Ala Val Pro Gly Gly Gln Arg Pro Asp Asn Ala Lys Pro Asn
 1025 1030 1035

Arg Asp Leu Lys Leu Gln Ala Gly Ser Asp Leu Arg Arg Arg Arg
 1040 1045 1050

Arg Asp Leu Gly Pro His Ala Glu Gly Gln Leu Ala Pro Arg Asp
 1055 1060 1065

Gly Val Ile Ile Gly Leu Asn Pro Leu Pro Asp Val Gln Val Asn
 1070 1075 1080

Asp Leu Arg Gly Ala Leu Asp Ala Gln Leu Arg Gln Ala Ala Gly
 1085 1090 1095

Gly Ala Leu Gln Val Val His Ser Arg Gln Leu Arg Gln Ala Pro
 1100 1105 1110

Gly Pro Pro Glu Glu Ser
 1115

<210> SEQ ID NO 3

<211> LENGTH: 10

-continued

<212> TYPE: PRT
 <213> ORGANISM: Homo sapiens

<400> SEQUENCE: 3

Gly Gln Glu Ala Pro Glu Gly Lys Ala Arg
 1 5 10

<210> SEQ ID NO 4
 <211> LENGTH: 63
 <212> TYPE: PRT
 <213> ORGANISM: Homo sapiens

<400> SEQUENCE: 4

Met Lys Pro Lys Gln Val Ser Arg Asp Leu Gly Leu Ala Ala Asp Leu
 1 5 10 15

Pro Gly Gly Ala Glu Gly Ala Ala Ala Gln Pro Gln Ala Val Leu Arg
 20 25 30

Gln Pro Glu Leu Arg Val Ile Ser Asp Gly Glu Gln Gly Gly Gln Gln
 35 40 45

Gly His Arg Leu Asp His Gly Gly His Leu Glu Met Arg Lys Ala
 50 55 60

<210> SEQ ID NO 5
 <211> LENGTH: 89
 <212> TYPE: PRT
 <213> ORGANISM: Homo sapiens

<400> SEQUENCE: 5

Pro Val Pro His Asp Lys Val Val Val Asp Glu Gly Gln Asp Arg Glu
 1 5 10 15

Val Pro Glu Glu Asn Lys Pro Pro Ser Arg His Ala Gly Gly Lys Ala
 20 25 30

Pro Gly Val Gln Gly Gln Met Ala Pro Pro Leu Pro Asp Ser Glu Arg
 35 40 45

Glu Lys Gln Glu Pro Glu Gln Gly Glu Val Gly Lys Arg Pro Gly Gln
 50 55 60

Ala Gln Ala Leu Glu Glu Ala Gly Asp Leu Pro Glu Asp Pro Gln Lys
 65 70 75 80

Val Pro Glu Ala Asp Gly Gln Pro Ala
 85

<210> SEQ ID NO 6
 <211> LENGTH: 11
 <212> TYPE: PRT
 <213> ORGANISM: Homo sapiens

<400> SEQUENCE: 6

Lys Val Val Val Asp Glu Gly Gln Asp Arg Glu
 1 5 10

<210> SEQ ID NO 7
 <211> LENGTH: 12
 <212> TYPE: PRT
 <213> ORGANISM: Homo sapiens

<400> SEQUENCE: 7

Lys Leu Leu Ala Val Ile Glu Glu Gln His Lys Glu
 1 5 10

<210> SEQ ID NO 8
 <211> LENGTH: 13

-continued

```

<212> TYPE: PRT
<213> ORGANISM: Homo sapiens

<400> SEQUENCE: 8

Arg Ser Leu Glu His Ser Glu Gly Pro Val Gly Arg Asp
1           5           10

<210> SEQ ID NO 9
<211> LENGTH: 16
<212> TYPE: PRT
<213> ORGANISM: Homo sapiens

<400> SEQUENCE: 9

Leu Pro Lys Gly Pro Glu Gln Val Pro Val Pro Asp Pro Ala Arg Glu
1           5           10           15

<210> SEQ ID NO 10
<211> LENGTH: 15
<212> TYPE: PRT
<213> ORGANISM: Homo sapiens

<400> SEQUENCE: 10

Arg Leu Asp His Gly Gly His Leu Glu Met Arg Lys Ala Arg Gly
1           5           10           15

<210> SEQ ID NO 11
<211> LENGTH: 13
<212> TYPE: PRT
<213> ORGANISM: Homo sapiens

<400> SEQUENCE: 11

Arg Gly Gly Glu Asp Ala Ala Val Gln Glu Pro Arg Gln
1           5           10

<210> SEQ ID NO 12
<211> LENGTH: 8
<212> TYPE: PRT
<213> ORGANISM: Homo sapiens

<400> SEQUENCE: 12

Asp Tyr Lys Asp Asp Asp Lys
1           5

```

45

The invention claimed is:

1. A method of treating a test person affected with Alzheimer's disease or having a high possibility of being affected with Alzheimer's disease in the near future comprising the steps of:

- (1) detecting an S38AA fragment with an anti-S38AA antibody in a sample collected from the test person,
- (2) comparing the amount of S38AA fragment in the sample collected from the test person with an amount of S38AA fragment in a sample collected from a normal person,
- (3) determining the test person is affected with Alzheimer's disease or has a high possibility of being affected with Alzheimer's disease in the near future when the amount of S38AA fragment in the sample from the test person is high relative to the amount of S38AA fragment in the sample from the normal person, and
- (4) administering an agent capable of treating or preventing Alzheimer's disease to the test person who is determined to be affected with Alzheimer's disease or has a high possibility of being affected with Alzheimer's disease in the near future in step (3),

wherein the S38AA is a polypeptide comprising the amino acid sequence shown by SEQ ID NO: 2, wherein the S38AA fragment is a polypeptide consisting of the S38AA extra-membranous domain or a partial polypeptide thereof,

wherein the antibody is an antibody specifically recognizing an amino acid region selected from the following (a) to (c): (a) the 689-1119th amino acids of the amino acid sequence shown by SEQ ID NO: 2, (b) the 399-688th amino acids of the amino acid sequence shown by SEQ ID NO: 2, and (c) an amino acid region spanning both regions (a) and (b), and

wherein the sample collected from the test person and the sample collected from the normal person are blood.

2. A method of starting an early treatment for suppressing the pathological progression by a symptomatic drug therapy for a test person affected with Alzheimer's disease or having a high possibility of being affected with Alzheimer's disease in the near future comprising the steps of:

- (1) detecting an S38AA fragment with an anti-S38AA antibody in a sample collected from the test person,

- (2) comparing the amount of S38AA fragment in the sample collected from the test person with an amount of S38AA fragment in a sample collected from a normal person,
- (3) determining the test person is affected with Alzheimer's disease or has a high possibility of being affected with Alzheimer's disease in the near future when the amount of S38AA fragment in the sample from the test person is high relative to the amount of S38AA fragment in the sample from the normal person, and
- (4) administering the symptomatic drug to the test person who is determined to be affected with Alzheimer's disease or has a high possibility of being affected with Alzheimer's disease in the near future in step (3),
- wherein the S38AA is a polypeptide comprising the amino acid sequence shown by SEQ ID NO: 2,
- wherein the S38AA fragment is a polypeptide consisting of the S38AA extra-membranous domain or a partial polypeptide thereof,
- wherein the antibody is an antibody specifically recognizing an amino acid region selected from the following (a) to (c): (a) the 689-1119th amino acids of the amino acid sequence shown by SEQ ID NO: 2, (b) the 399-688th amino acids of the amino acid sequence shown by SEQ ID NO: 2, and (c) an amino acid region spanning both regions (a) and (b), and
- wherein the sample collected from the test person and the sample collected from the normal person are blood.

* * * * *

专利名称(译)	阿尔茨海默病的诊断药物和诊断方法		
公开(公告)号	US10393757	公开(公告)日	2019-08-27
申请号	US13/997854	申请日	2011-12-28
[标]申请(专利权)人(译)	桥本MASAKAZU 青木干雄 TJERNBERG LARSØ 本特·温布莱德		
申请(专利权)人(译)	桥本MASAKAZU 中川HIROYUKI 青木干雄 TJERNBERG, LARS O. 温布莱德, 本特		
当前申请(专利权)人(译)	大日本住友制药股份有限公司.		
[标]发明人	HASHIMOTO MASAKAZU NAKAGAWA HIROYUKI AOKI MIKIO TJERNBERG LARS O WINBLAD BENGT		
发明人	HASHIMOTO, MASAKAZU NAKAGAWA, HIROYUKI AOKI, MIKIO TJERNBERG, LARS O. WINBLAD, BENGT		
IPC分类号	G01N33/53 G01N33/566 A01N37/18 G01N33/68 C07K16/18		
CPC分类号	G01N33/6896 G01N2800/2821 C07K16/18		
优先权	2010293891 2010-12-28 JP		
其他公开文献	US20130280732A1		
外部链接	Espacenet		

摘要(译)

本发明提供一种用于确定阿尔茨海默病的药剂，其包含抗S38AA抗体，在测试动物中测定阿尔茨海默氏病的方法，包括检测从所述动物收集的样品中的S38AA片段，以及筛选物质的方法治疗或预防阿尔茨海默病的方法，包括使测试物质与允许测量S38AA片段产生的细胞接触，测量细胞中S38AA片段的产生量，并将产生量与对照中S38AA片段的产量进行比较基于比较结果，细胞不与测试物质接触，并选择下调作为能够治疗或预防阿尔茨海默病的物质的S38AA片段的产生量的测试物质。

