



US008084033B2

(12) **United States Patent**
Yin et al.(10) **Patent No.: US 8,084,033 B2**
(45) **Date of Patent: Dec. 27, 2011**(54) **COMPOSITION COMPRISING A CELL
EXPRESSING AN AC133 CELL SURFACE
ANTIGEN AND AN ANTIBODY OR
ANTIGEN-BINDING FRAGMENT**(75) Inventors: **Amy H. Yin**, San Jose, CA (US); **Sheri
Miraglia**, Alameda, CA (US); **Wayne G.
Godfrey**, Atherton, CA (US); **David W.
Buck**, Half Moon Bay, CA (US)(73) Assignee: **Amcell Corporation**, Burlingame, CA
(US)(*) Notice: Subject to any disclaimer, the term of this
patent is extended or adjusted under 35
U.S.C. 154(b) by 0 days.(21) Appl. No.: **12/169,336**(22) Filed: **Jul. 8, 2008**(65) **Prior Publication Data**

US 2009/0093052 A1 Apr. 9, 2009

Related U.S. Application Data(63) Continuation of application No. 10/827,907, filed on
Apr. 19, 2004, now abandoned, which is a continuation
of application No. 09/881,853, filed on Jun. 13, 2001,
now abandoned, which is a continuation of application
No. 08/842,382, filed on Apr. 23, 1997, now Pat. No.
6,455,678, which is a continuation-in-part of
application No. 08/639,891, filed on Apr. 26, 1996,
now Pat. No. 5,843,633.(51) **Int. Cl.****A61K 39/00** (2006.01)**A61K 39/395** (2006.01)**C07K 16/00** (2006.01)**C07K 17/00** (2006.01)**C12P 21/08** (2006.01)(52) **U.S. Cl.** **424/178.1; 424/153.1; 530/391.1**(58) **Field of Classification Search** None
See application file for complete search history.(56) **References Cited****U.S. PATENT DOCUMENTS**4,452,773 A 6/1984 Molday
4,714,680 A 12/1987 Civin
5,061,620 A 10/1991 Tsukamoto et al.
5,248,599 A 9/1993 Sariyama et al.
5,411,863 A 5/1995 Miltenyi
5,573,930 A 11/1996 Ladner et al.**FOREIGN PATENT DOCUMENTS**

EP 0 622 512 7/1995

OTHER PUBLICATIONSElsaba, T., et al. PLoS ONE, 2010; 5(5):1-11.*
Brandt, J., et al., "Cytokine-dependent Long-Term Culture of Highly
Enriched Precursors of Hematopoietic Progenitor Cells from Human
Bone Marrow," The American Society for Clinical Investigation,
Inc., pp. 932-941 (Sep. 1990).Brashem-Stein, C., et al., "Ontogeny of Hematopoietic Stem Cell
Development: Reciprocal Expression of CD33 and a Novel Molecule
by Maturing Myeloid and Erythroid Progenitors," Blood, vol. 82 (No.
3):792-799 (Aug. 1, 1993).Civin and Gore, "Antigenic Analysis of Hematopoiesis: A Review," J.
of Hematotherapy, vol. 2:137-144 (1993).Cioffi, J.A., et al., "Novell B219/OB receptor isoforms: Possible role
of leptin in hematopoiesis and reproduction," Nature Medicine, vol.
2 (No. 5):585-589 (May 1996).Gordon, M.Y., et al., "Characterisation of Stroma-Dependent Blast
Colony-Forming Cells in Human Marrow," Journal of Cellular Physi-
ology, pp. 150-156 (1987).Graf, L., et al., Identification of a Novel DNA Sequence Dif-
ferentially Expressed Between Normal Human CD34+CD38.sup.10
Marrow Cells, Blood, vol. 86 (No. 2):548-556 (Jul. 15, 1996).Grimsley, P.G., et al., "Rapid Positive Selection of CD34 + Cells
Using Magnetic Microspheres Coated with Monoclonal Antibody
QBEND/10 Linked via a Cleavable Disulphide Bond," Leukemia,
vol. 7, No. 6:898-908 (1993).Kato and Radbruch, "Isolation and Characterization of CD34.sup.+
Hematopoietic Stem Cells, From Human Peripheral Blood by High-
Gradient Magnetic Cell Sorting," Cytometry, vol. 14:384-392
(1993).Lee, B.B., et al., "A Hematopoietic Organ-Specific 49-kD Nuclear
Antigen: Predominance in Immature Normal and Tumor Granulo-
cytes and Detection in Hematopoietic Precursor Cells," Blood, vol.
87 (No. 6):2283-2291 (Mar. 15, 1996).McNiece, I.K., "Detection of a Human CFC with a High Proliferative
Potential," Blood, vol. 74, (No. 2):609-612 (Aug. 1, 1989).Mikayama et al. Molecular Cloning & Functional Expression of a
cDNA P.N.A.S. (90) 10056-10060 (1993).Miltenyi, S., et al., "High Gradient Magnetic Cell Separation with
MACS," pp. 231-238 (1990).Moretti, P. et al., "Identification of homeobox genes expressed in
human haemopoietic progenitor cells," (1994) Elsevier Science B.V.,
pp. 213-219.Olweus, J. et al., CD64/Fc.gamma.Ri Is a Granulo-monocytic Lin-
eage Marker on CD34.sup.+ Hematopoietic Progenitor Cells, Blood
85 (9):2402-2413 (1995).

(Continued)

Primary Examiner — Gerald R Ewoldt(74) *Attorney, Agent, or Firm* — Kilpatrick Townsend &
Stockton LLP(57) **ABSTRACT**Compositions comprising a cell expressing an AC133 cell
surface antigen and an antibody, or antigen binding fragment
thereof, that specifically binds to the antigen are provided.
Expression of the antigen is highly tissue specific. It is
detected on a subset of hematopoietic progenitor and stem
cells derived from human bone marrow, fetal bone marrow
and liver, cord blood and adult peripheral blood. The subset of
cells recognized by AC133 is CD34^{bright} and contains sub-
stantially all of the CFU-GM activity present in the CD34⁺
population. This highly specific distribution of AC133 makes
it exceptionally useful as a reagent for isolating and charac-
terizing human hematopoietic progenitor and stem cells.
Cells selected for expression of AC133 antigen can be further
purified by selection for other hematopoietic stem cell and
progenitor cell markers.**13 Claims, 16 Drawing Sheets**

OTHER PUBLICATIONS

Reisbach G., et al., "Characterization of hemopoietic cell populations from human cord blood expressing c-kit," 1993 International Society for Experimental Hematology, pp. 74-79.

Spangrude, G.J., et al., "Resting and activated subsets of mouse multipotent hematopoietic stem cells," pp. 7433-7439 (Jun. 18, 1990).

Sutherland and Keating, "The CD34 Antigen: Structure, Biology, and Potential Clinical Applications," J. of Hematotherapy, 1:115-129 (1992).

To, L.B., et al., "Establishment of a Clinical Threshold Cell Does: Correlation Between CFU-Gm and Duration of Aplasia," AlphaMed Press, pp. 15-20. (1990).

Wognum, A.W., et al., "Distribution of Receptors for Granulocyte-Macrophage Colony-Stimulation Factor on Immature CD34 + Bone Marrow Cells, Differentiating Monomyeloid Progenitors, and Mature Blood Cell Subsets," Blood, vol. 84 (No. 3):764-774 (Aug. 1, 1994).

* cited by examiner

FIG. 1

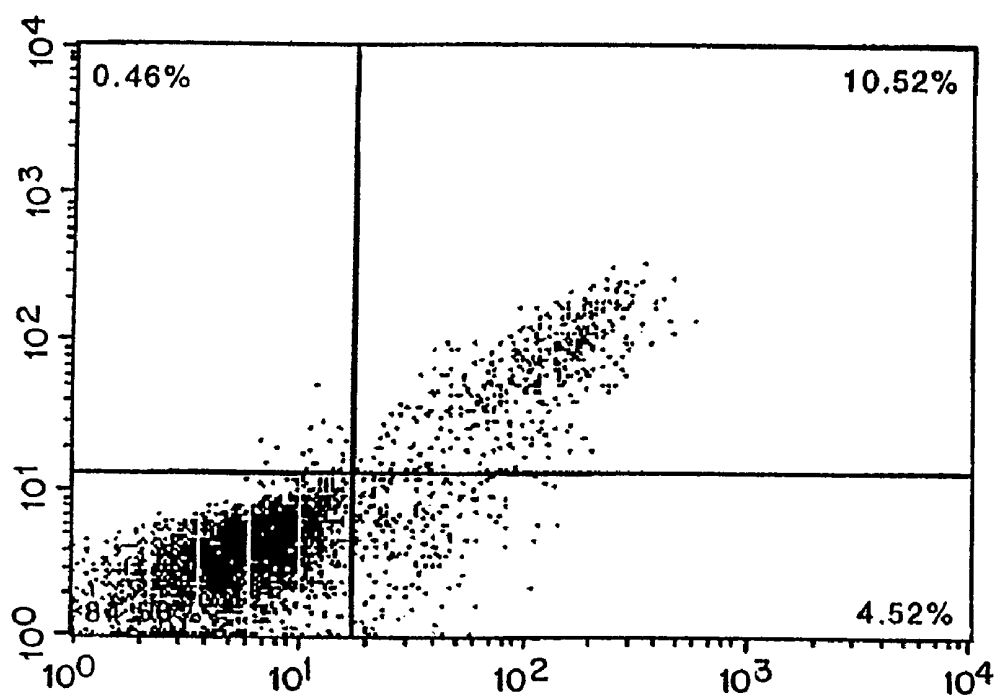


FIG. 2

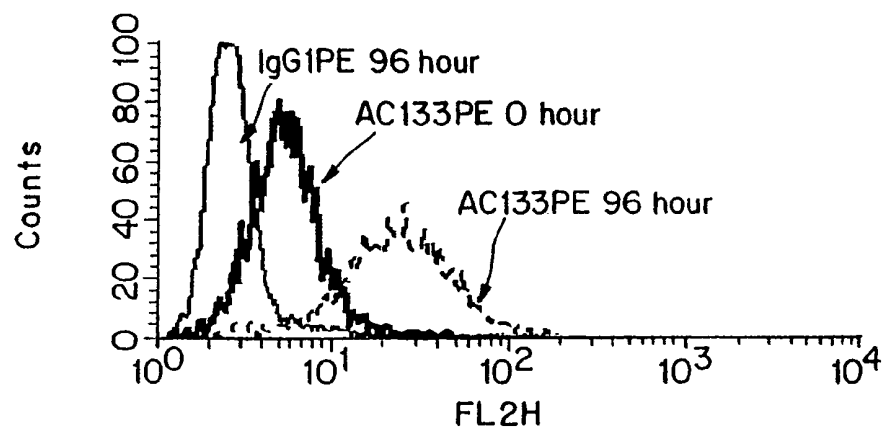


FIG. 3

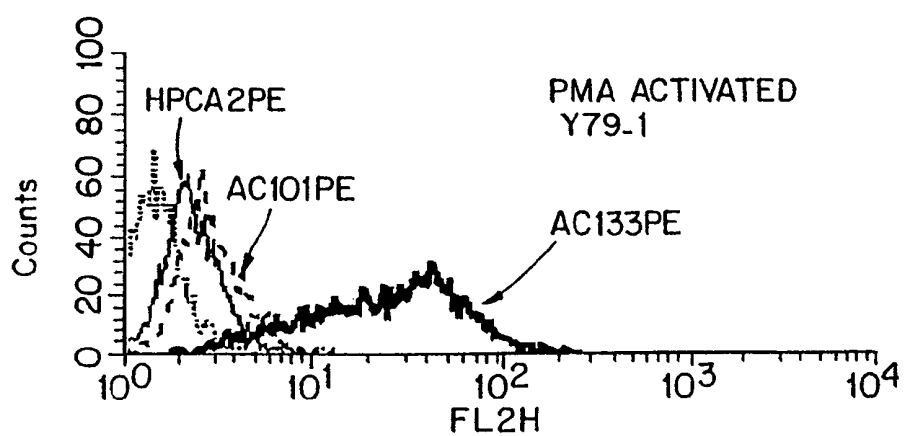


FIG. 4A

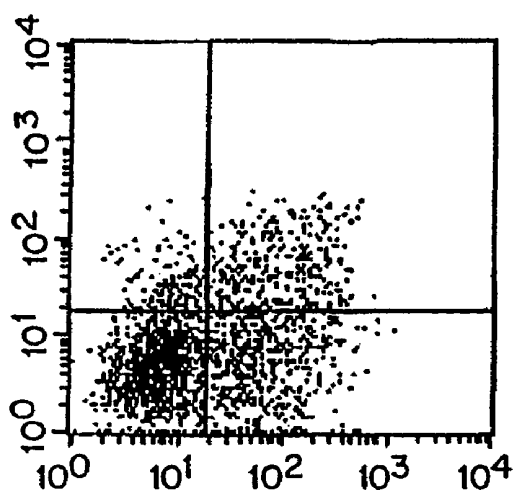


FIG. 4B

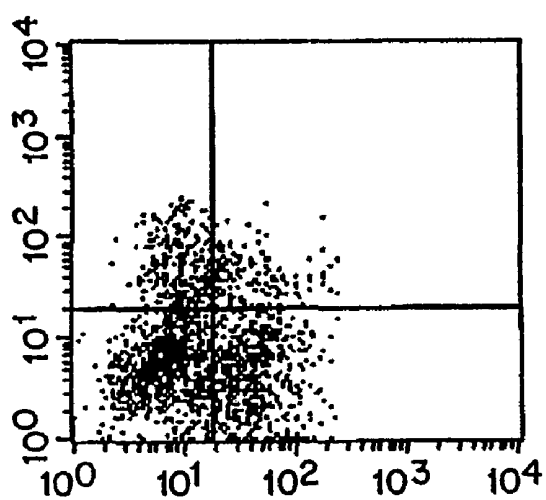


FIG. 5A

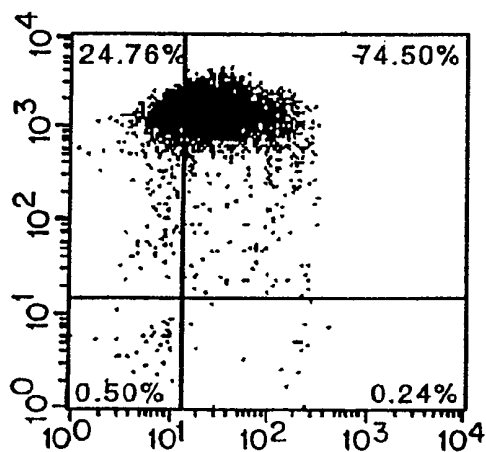


FIG. 5B

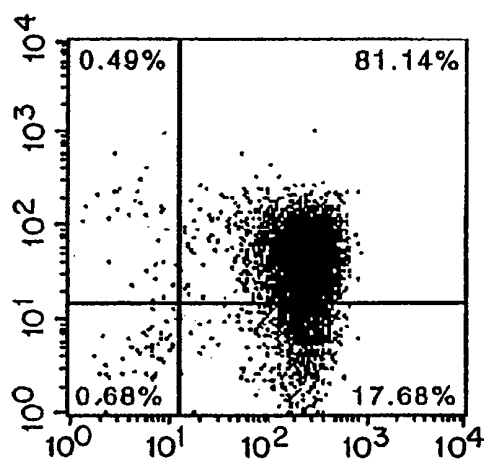


FIG. 5C

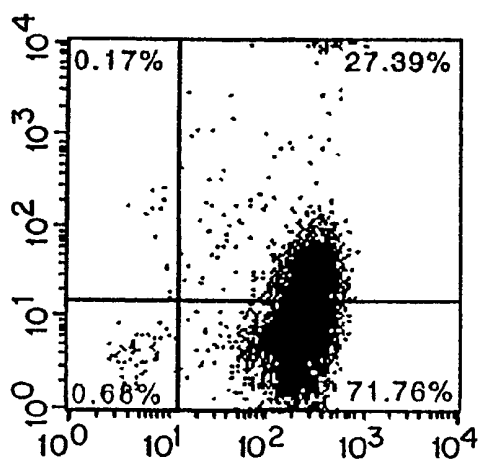


FIG. 5D

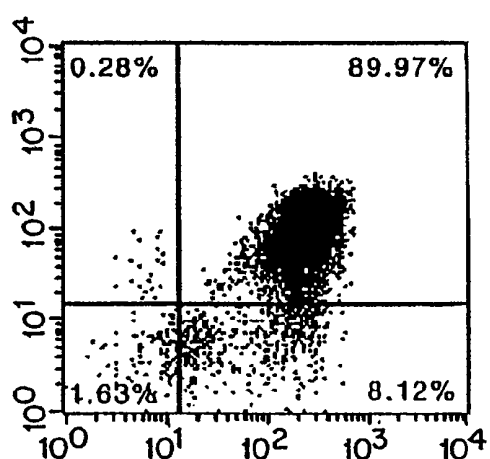


FIG. 6

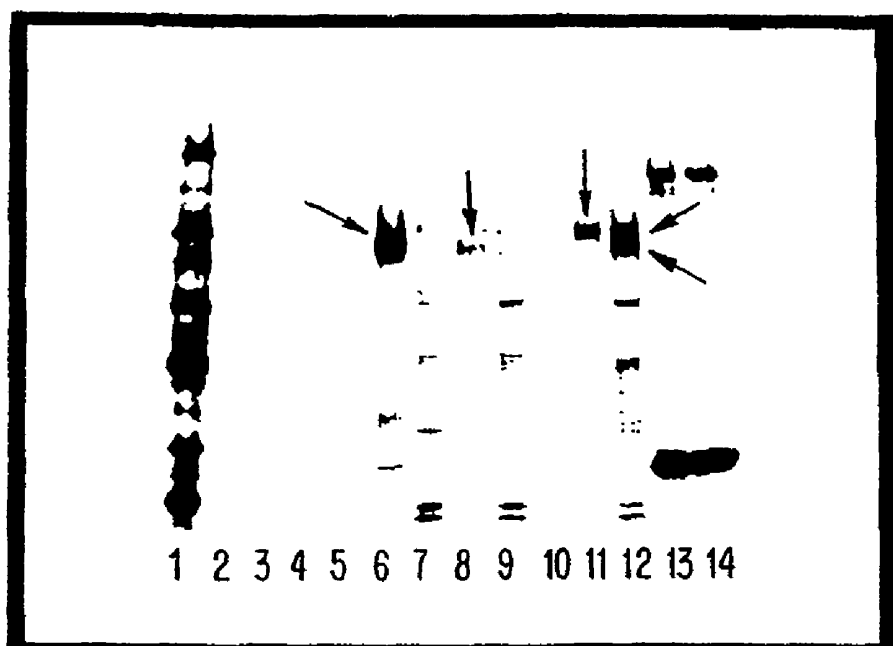


FIG. 7A

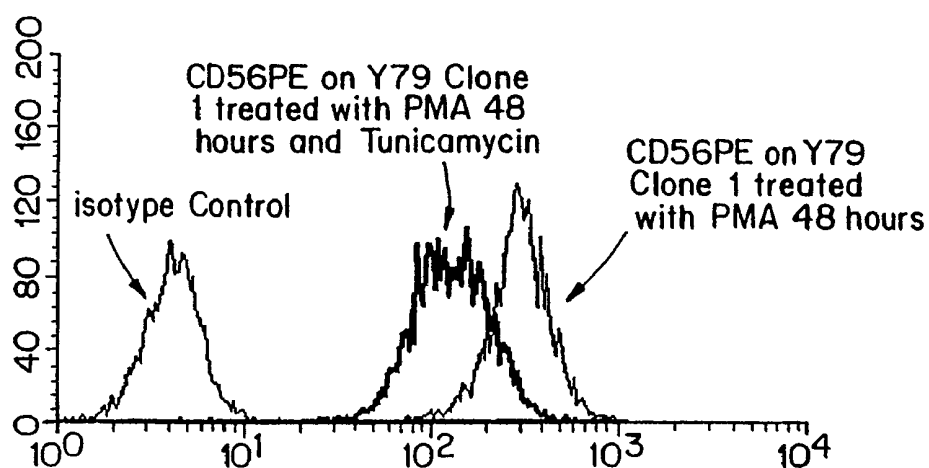


FIG. 7B

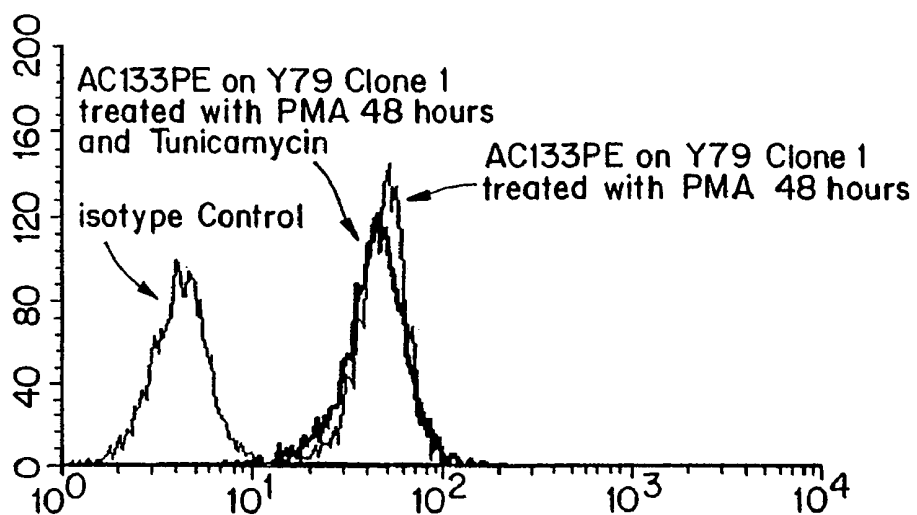


FIG. 8

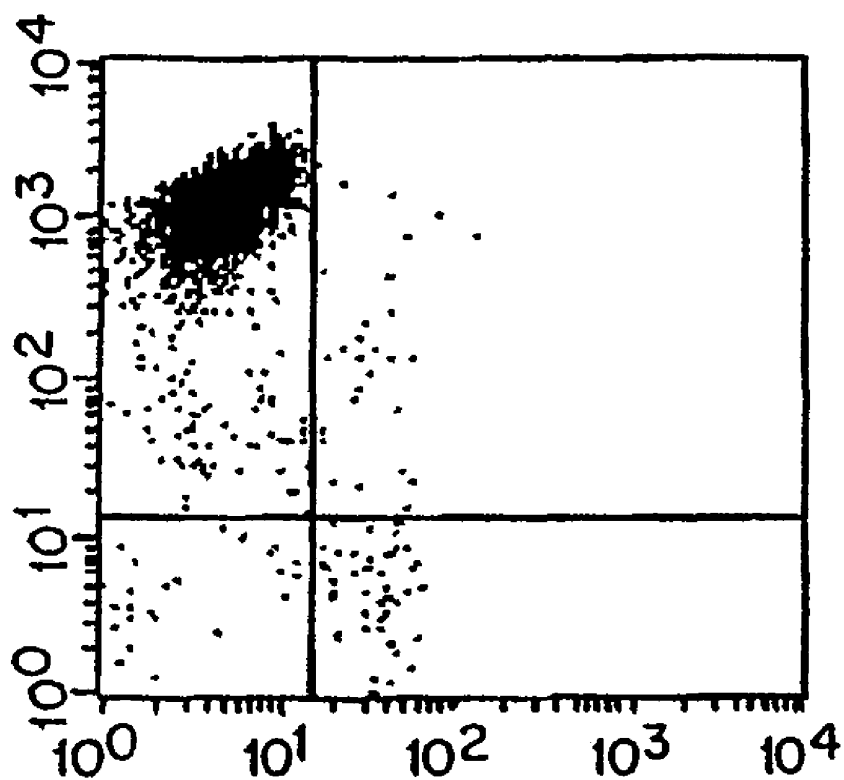


FIG. 9A

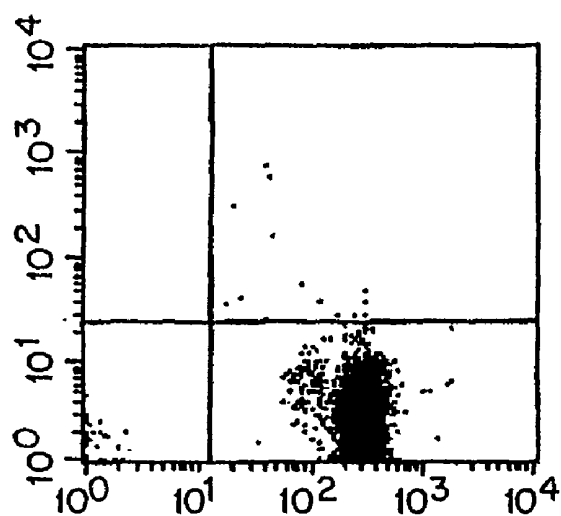


FIG. 9B

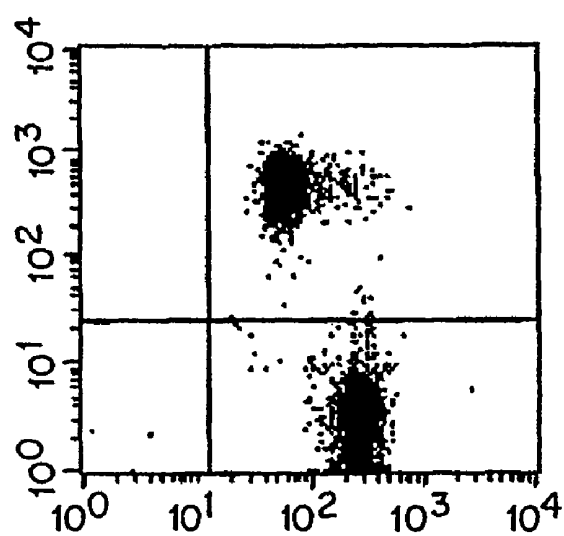
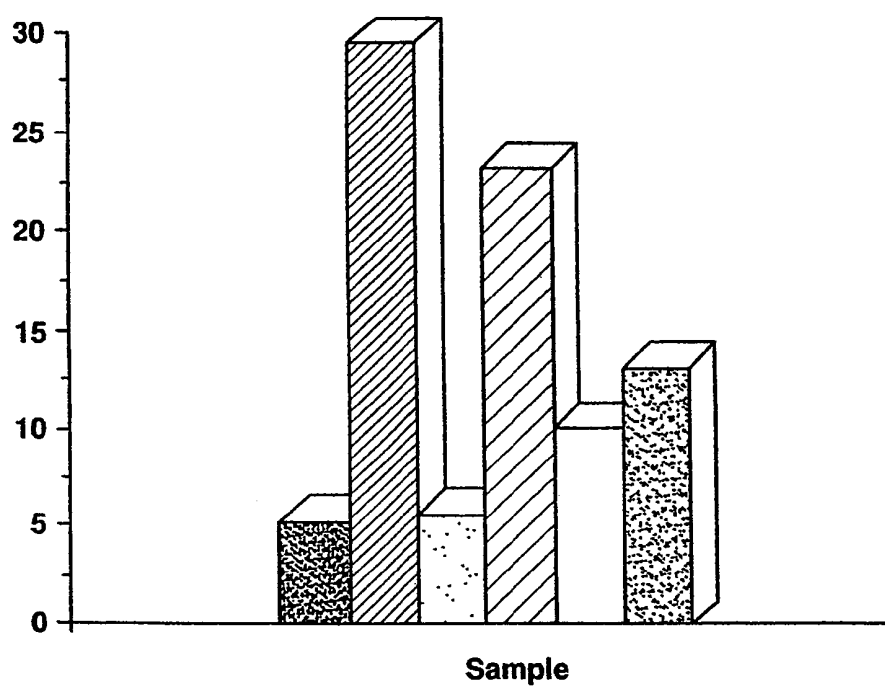
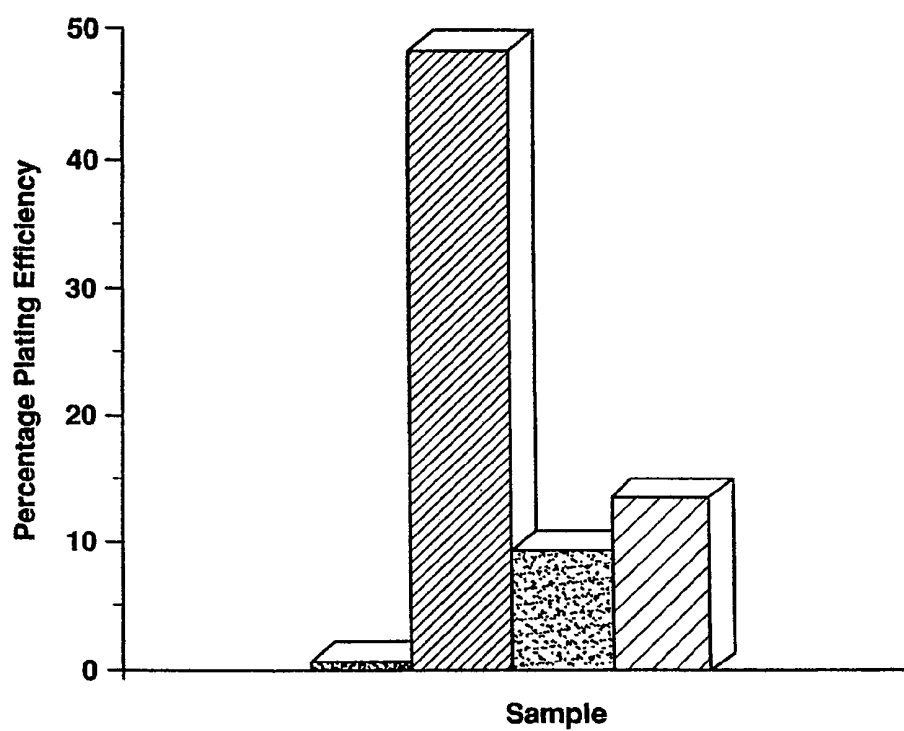


FIG.10



- LP Control/CFU-GM
- ▨ LP Control/BFU-E
- C4-AC101/CFU-GM
- ▨ C4-AC101/BFU-E
- C4-AC133/CFU-GM
- C4-AC133/BFU-E

FIG.11



- AC101/CFU-GM
- AC101/BFU-E
- AC133/CFU-GM
- AC133/BFU-E

FIG. 12 -1

CCAAGTTCTA CCTCATGTTT GGAGGATCTT GCTAGCT ATG GCC CTC GTA CTC GGC	55
Met Ala Leu Val Leu Gly	
1 5	
TCC CTG TTG CTG CTG GGG CTG TGC GGG AAC TCC TTT TCA GGA GGG CAG	103
Ser Leu Leu Leu Leu Gly Leu Cys Gly Asn Ser Phe Ser Gly Gly Gln	
10 15 20	
CCT TCA TCC ACA GAT GCT CCT AAG GCT TGG AAT TAT GAA TTG CCT GCA	151
Pro Ser Thr Asp Ala Pro Lys Ala Trp Asn Tyr Glu Leu Pro Ala	
25 30 35	
ACA AAT TAT GAG ACC CAA GAC TCC CAT AAA GCT GGA CCC ATT GGC ATT	199
Thr Asn Tyr Glu Thr Gln Asp Ser His Lys Ala Gly Pro Ile Gly Ile	
40 45 50	
CTC TTT GAA CTA GTG CAT ATC TTT CTC TAT GTG GTA CAG CCG CGT GAT	247
Leu Phe Glu Leu Val His Ile Phe Leu Tyr Val Val Gln Pro Arg Asp	
55 60 65 70	
TTC CCA GAA GAT ACT TTG AGA AAA TTC TTA CAG AAG GCA TAT GAA TCC	295
Phe Pro Glu Asp Thr Leu Arg Lys Phe Leu Gln Lys Ala Tyr Glu Ser	
75 80 85	
AAA ATT GAT TAT GAC AAG CCA GAA ACT GTA ATC TTA GGT CTA AAG ATT	343
Lys Ile Asp Tyr Asp Lys Pro Glu Thr Val Ile Leu Gly Leu Lys Ile	
90 95 100	
GTC TAC TAT GAA GCA GGG ATT ATT CTA TGC TGT GTC CTG GGG CTG CTG	391
Val Tyr Tyr Glu Ala Gly Ile Ile Leu Cys Cys Val Leu Gly Leu Leu	
105 110 115	
TTT ATT ATT CTG ATG CCT CTG GTG GGG TAT TTC TTT TGT ATG TGT CGT	439
Phe Ile Ile Leu Met Pro Leu Val Gly Tyr Phe Cys Met Cys Arg	
120 125 130	
TGC TGT AAC AAA TGT GGT GGA GAA ATG CAC CAG CGA CAG AAG GAA AAT	487
Cys Cys Asn Lys Cys Gly Gly Glu Met His Gln Arg Gln Lys Glu Asn	
135 140 145 150	
GGG CCC TTC CTG AGG AAA TGC TTT GCA ATC TCC CTG TTG GTG ATT TGT	535
Gly Pro Phe Leu Arg Lys Cys Phe Ala Ile Ser Leu Leu Val Ile Cys	
155 160 165	
ATA ATA ATA AGC ATT GGC ATC TTC TAT GGT TTT GTG GCA AAT CAC CAG	583
Ile Ile Ile Ser Ile Gly Ile Phe Tyr Gly Phe Val Ala Asn His Gln	
170 175 180	
GTA AGA ACC CGG ATC AAA AGG AGT CGG AAA CTG GCA GAT AGC AAT TTC	631
Val Arg Thr Arg Ile Lys Arg Ser Arg Lys Leu Ala Asp Ser Asn Phe	
185 190 195	
AAG GAC TTG CGA ACT CTC TTG AAT GAA ACT CCA GAG CAA ATC AAA TAT	679
Lys Asp Leu Arg Thr Leu Leu Asn Glu Thr Pro Glu Gln Ile Lys Tyr	
200 205 210	
ATA TTG GCC CAG TAC AAC ACT ACC AAG GAC AAG GCG TTC ACA GAT CTG	727
Ile Leu Ala Gln Tyr Asn Thr Thr Lys Asp Lys Ala Phe Thr Asp Leu	
215 220 225 230	

FIG.12-2

AAC AGT ATC AAT TCA GTG CTA GGA GGC GGA ATT CTT GAC CGA CTG AGA Asn Ser Ile Asn Ser Val Leu Gly Gly Gly Ile Leu Asp Arg Leu Arg 235 240 245	775
CCC AAC ATC ATC CCT GTT CTT GAT GAG ATT AAG TCC ATG GCA ACA GCG Pro Asn Ile Ile Pro Val Leu Asp Glu Ile Lys Ser Met Ala Thr Ala 250 255 260	823
ATC AAG GAG ACC AAA GAG GCG TTG GAG AAC ATG AAC AGC ACC TTG AAG Ile Lys Glu Thr Lys Glu Ala Thr Glu Asn Met <u>Asn Ser Thr</u> Leu Lys 265 270 275	871
AGC TTG CAC CAA CAA AGT ACA CAG CTT AGC AGC AGT CTG ACC AGC GTG Ser Leu His Gln Gln Ser Thr Gln Leu Ser Ser Ser Leu Thr Ser Val 280 285 290	919
AAA ACT AGC CTG CGG TCA TCT CTC AAT GAC CCT CTG TGC TTG GTG CAT Lys Thr Ser Leu Arg Ser Ser Leu Asn Asp Pro Leu Cys Leu Val His 295 300 305 310	967
CCA TCA AGT GAA ACC TGC AAC AGC ATC AGA TTG TCT CTA AGC CAG CTG Pro Ser Ser Glu Thr Cys Asn Ser Ile Arg Leu Ser Leu Ser Gln Leu 315 320 325	1015
AAT AGC AAC CCT GAA CTG AGG CAG CTT CCA CCC GTG GAT GCA GAA CTT Asn Ser Asn Pro Glu Leu Arg Gln Leu Pro Pro Val Asp Ala Glu Leu 330 335 340	1063
GAC AAC GTT AAT AAC GTT CTT AGG ACA GAT TTG GAT GGC CTG GTC CAA Asp Asn Val Asn Asn Val Leu Arg Thr Asp Leu Asp Gly Leu Val Gln 345 350 355	1111
CAG GGC TAT CAA TCC CTT AAT GAT ATA CCT GAC AGA GTA CAA CGC CAA Gln Gly Tyr Gln Ser Leu Asn Asp Ile Pro Asp Arg Val Gln Arg Gln 360 365 370	1159
ACC ACG ACT GTC GTA GCA GGT ATC AAA AGG GTC TTG AAT TCC ATT GGT Thr Thr Thr Val Val Ala Gly Ile Lys Arg Val Leu Asn Ser Ile Gly 375 380 385 390	1207
TCA GAT ATC GAC AAT GTA ACT CAG CGT CTT CCT ATT CAG GAT ATA CTC Ser Asp Ile Asp <u>Asn Val Thr</u> Gln Arg Leu Pro Ile Gln Asp Ile Leu 395 400 405	1255
TCA GCA TTC TCT GTT TAT GTT AAT AAC ACT GAA AGT TAC ATC CAC AGA Ser Ala Phe Ser Val Tyr Val <u>Asn Asn Thr</u> Glu Ser Tyr Ile His Arg 410 415 420	1303
AAT TTA CCT ACA TTG GAA GAG TAT GAT TCA TAC TGG TGG CTG GGT GGC Asn Leu Pro Thr Leu Glu Glu Tyr Asp Ser Tyr Trp Trp <u>Leu Gly Gly</u> 425 430 435	1351
CTG GTC ATC TGC TCT CTG CTG ACC CTC ATC GTG ATT TTT TAC TAC CTG Leu Val Ile Cys Ser Leu Leu Thr Leu Ile Val Ile Phe Tyr Tyr Leu 440 445 450	1399
GGC TTA CTG TGT GGC GTG TGC GGC TAT GAC AGG CAT GCC ACC CCG ACC Gly Leu Leu Cys Gly Val Cys Gly Tyr Asp Arg His Ala Thr Pro Thr 455 460 465 470	1447

FIG. 12-3

ACC CGA GGC TGT GTC TCC AAC ACC GGA GGC GTC TTC CTC ATG GTT GGA	1495
Thr Arg Gly Cys Val Ser Asn Thr Gly Gly Val Phe Leu Met Val Gly	
475 480 485	
GTT GGA TTA AGT TTC CTC TTT TGC TGG ATA TTG ATG ATC ATT GTG GTT	1543
Val Gly Leu Ser Phe Leu Phe Cys Trp Ile Leu Met Ile Ile Val Val	
490 495 500	
CTT ACC TTT GTC TTT GGT GCA AAT GTG GAA AAA CTG ATC TGT GAA CCT	1591
Leu Thr Phe Val Phe Gly Ala Asn Val Glu Lys Leu Ile Cys Glu Pro	
505 510 515	
TAC ACG AGC AAG GAA TTA TTC CGG GTT TTG GAT ACA CCC TAC TTA CTA	1639
Tyr Thr Ser Lys Glu Leu Phe Arg Val Tyr Asp Thr Pro Tyr Leu Leu	
520 525 530	
AAT GAA GAC TGG GAA TAC TAT CTC TCT GGG AAG CTA TTT AAT AAA TCA	1687
Asn Glu Asp Trp Glu Tyr Leu Ser Gly Lys Leu Phe Asn Lys Ser	
535 540 545 550	
AAA ATG AAG CTC ACT TTT GAA CAA GTT TAC AGT GAC TGC AAA AAA AAT	1735
Lys Met Lys Leu Thr Phe Glu Gln Val Tyr Ser Asp Cys Lys Lys Asn	
555 560 565	
AGA GGC ACT TAC GGC ACT CTT CAC CTG CAG AAC AGC TTC AAT ATC AGT	1783
Arg Gly Thr Tyr Gly Thr Leu His Leu Gln Asn Ser Phe Asn Ile Ser	
570 575 580	
GAA CAT CTC AAC ATT AAT GAG CAT ACT GGA AGC ATA AGC AGT GAA TTG	1831
Glu His Leu Asn Ile Asn Glu His Thr Gly Ser Ile Ser Ser Glu Leu	
585 590 595	
GAA AGT CTG AAG GTA AAT CTT AAT ATC TTT CTG TTG GGT GCA GCA GGA	1879
Glu Ser Leu Lys Val Asn Leu Asn Ile Phe Leu Leu Gly Ala Ala Gly	
600 605 610	
AGA AAA AAC CTT CAG GAT TTT GCT GCT TGT GGA ATA GAC AGA ATG AAT	1927
Arg Lys Asn Leu Gln Asp Phe Ala Ala Cys Gly Ile Asp Arg Met Asn	
615 620 625 630	
TAT GAC AGC TAC TTG GCT CAG ACT GGT AAA TCC CCC GCA GGA GTG AAT	1975
Tyr Asp Ser Tyr Leu Ala Gln Thr Gly Lys Ser Pro Ala Gly Val Asn	
635 640 645	
CTT TTA TCA TTT GCA TAT GAT CTA GAA GCA AAA GCA AAC AGT TTG CCC	2023
Leu Leu Ser Phe Ala Tyr Asp Leu Glu Ala Lys Ala Asn Ser Leu Pro	
650 655 660	
CCA GGA AAT TTG AGG AAC TCC CTG AAA AGA GAT GCA CAA ACT ATT AAA	2071
Pro Gly Asn Leu Arg Asn Ser Leu Lys Arg Asp Ala Gln Thr Ile Lys	
665 670 675	
ACA ATT CAC CAG CAA CGA GTC CTT CCT ATA GAA CAA TCA CTG AGC ACT	2119
Thr Ile His Gln Gln Arg Val Leu Pro Ile Glu Gln Ser Leu Ser Thr	
680 685 690	
CTA TAC CAA AGC GTC AAG ATA CTT CAA CGC ACA GGG AAT GGA TTG TTG	2167
Leu Tyr Gln Ser Val Lys Ile Leu Gln Arg Thr Gly Asn Gly Leu Leu	
695 700 705 710	
GAG AGA GTA ACT AGG ATT CTA GCT TCT CTG GAT TTT GCT CAG AAC TTC	2215
Glu Arg Val Thr Arg Ile Leu Ala Ser Leu Asp Phe Ala Gln Asn Phe	
715 720 725	

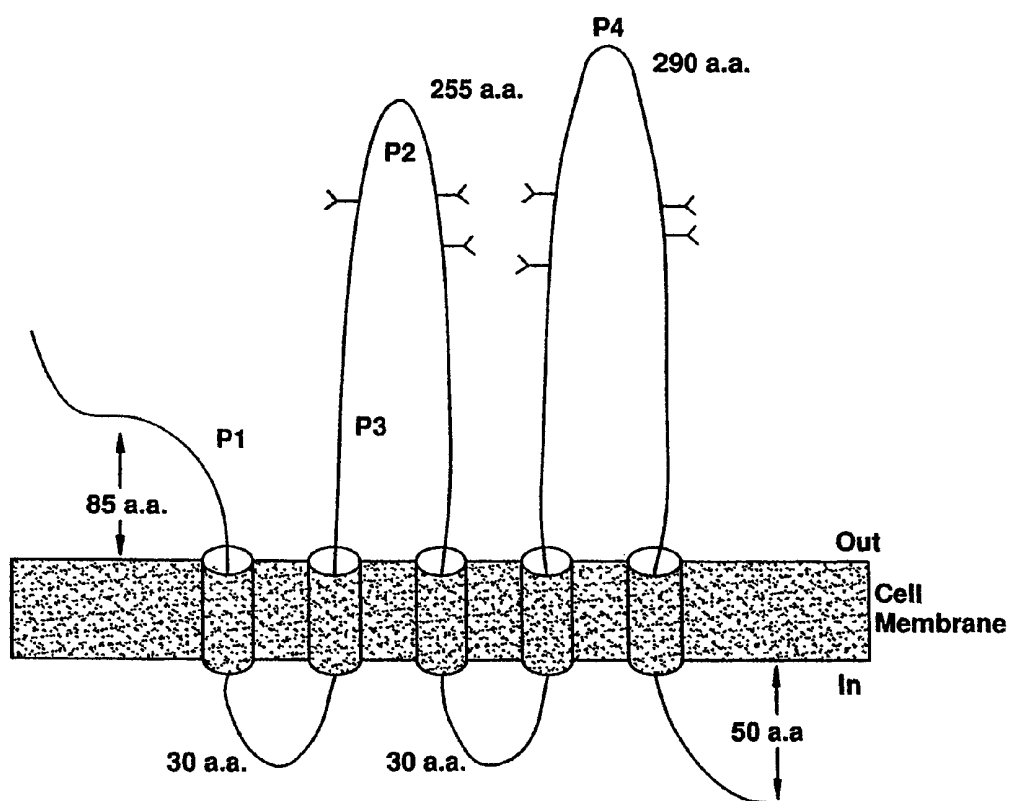
FIG. 12 -4

ATC ACA AAC AAT ACT TCC TCT GTT ATT ATT GAG GAA ACT AAG AAG TAT Ile Thr <u>Asn Asn Thr Ser</u> Ser Val Ile Ile Glu Glu Thr Lys Lys Tyr 730 735 740	2263
GGG AGA ACA ATA ATA GGA TAT TTT GAA CAT TAT CTG CAG TGG ATC GAG Gly Arg Thr Ile Ile Gly Tyr Phe Glu His Tyr Leu Gln Trp Ile Glu 745 750 755	2311
TTC TCT ATC AGT GAG AAA GTG GCA TCG TGC AAA CCT GTG GCC ACC GCT Phe Ser Ile Ser Glu Lys Val Ala Ser Cys Lys Pro Val Ala Thr Ala 760 765 770	2359
CTA GAT ACT GCT GTT GAT GTC TTT CTG TGT AGC TAC ATT ATC GAC CCC Leu Asp Thr Ala Val Asp Val Phe Leu Cys Ser Tyr Ile Ile Asp Pro 775 780 785 790	2407
TTG AAT TTG TTT TGG TTT GGC ATA GGA AAA GCT ACT GTA TTT TTA CTT Leu Asn <u>Leu Phe Trp Phe Gly Ile Gly Lys Ala Thr Val Phe Leu Leu</u> 795 800 805	2455
CCG GCT CTA ATT TTT GCG GTA AAA CTG GCT AAG TAC TAT CGT CGA ATG Pro Ala Leu Ile Phe Ala Val Lys <u>Leu Ala Lys Tyr Tyr Arg Arg Met</u> 810 815 820	2503
GAT TCG GAG GAC GTG TAC GAT GAT GTT GAA ACT ATA CCC ATG AAA AAT Asp Ser Glu Asp Val Tyr Asp Asp Val Glu Thr Ile Pro Met Lys Asn 825 830 835	2551
ATG GAA AAT GGT AAT AAT GGT TAT CAT AAA GAT CAT GTA TAT GGT ATT Met Glu Asn Gly Asn Asn Gly Tyr His Lys Asp His Val Tyr Gly Ile 840 845 850	2599
CAC AAT CCT GTT ATG ACA AGC CCA TCA CAA CAT T GATAGCTGAT His Asn Pro Val Met Thr Ser Pro Ser Gln His 855 860 865	2643
GTTGAACTG CTTGAGCATC AGGATACTCA AAGTGGAAAG GATCACAGAT TTTTGGTAGT	2703
TTCTGGGTCT ACAAGGACTT TCCAAATCCA GGAGCAACGC CAGTGGCAAC GTAGTGACTC	2763
AGGCGGGCAC CAAGGCAACG GCACCATTTG TCTCTGGGTA GTGCTTTAAG AATGAACACA	2823
ATCACGTTAT AGTCCATGGT CCATCACTAT TCAAGGATGA CTCCCTCCCT TCCTGTCTAT	2883
TTTTGTTTTT TACTTTTTTA CACTGAGTTT CTATTTAGAC ACTACAACAT ATGGGGTGTT	2943
TGTTCCCATTT GGATGCATTT CTATCAAAAC TCTATCAAAT GTGATGGCTA GATTCTAACA	3003
TATTGCCATG TGTGGAGTGT GCTGAACACA CACCAGTTTA CAGGAAAGAT GCATTTTGTG	3063
TACAGTAAAC GGTGTATATA CCTTTTGTTA CCACAGAGTT TTTTAAACAA ATGAGTATTA	3123
TAGGACTTTC TTCTAAATGA GCTAAATAAG TCACCATTGA CTTCTTGGTG CTGTTGAAAA	3183
TAATCCATTT TCACTAAAAG TGTGTGAAAC CTACAGCATA TTCTTCACGC AGAGATTTTC	3243
ATCTATTATA CTTTATCAAA GATTGGCCAT GTTCCACTTG GAAATGGCAT GCAAAAGCCA	3303
TCATAGAGAA ACCTGCGTAA CTCCATCTGA CAAATTCAAA AGAGAGAGAG AGATCTTGAG	3363
AGAGAAATGC TGTTCGTTCA AAAGTGGAGT TGTTTTAAACA GATGCCAATT ACGGTGTACA	3423

FIG. 12-5

GTTTAACAGA	GTTTTCTGTT	GCATTAGGAT	AAACATTAAT	TGGAGTGCAG	CTAACATGAG	3483
TATCATCAGA	CTAGTATCAA	GTGTTCTAAA	ATGAAATATG	AGAAGATCCT	GTCACAATTC	3543
TTAGATCTGG	TGTCCAGCAT	GGATGAAACC	TTTGAGTTTG	GTCCCTAAAT	TTGCATGAAA	3603
GCACAAGGTA	AATATTCATT	TGCTTCAGGA	GTTTCATGTT	GGATCTGTCA	TTATCAAAAG	3663
TGATCAGCAA	TGAAGAACTG	GTCGGACAAA	ATTTAACGTT	GATGTAATGG	AATTCCAGAT	3723
GTAGGCATTC	CCCCCAGGTC	TTTTCATGTG	CAGATTGCAG	TTCTGATTCA	TTTGAAATAAA	3783
AAGGAACTTG	GAAAAAAAAA	A				3804

FIG. 13



COMPOSITION COMPRISING A CELL EXPRESSING AN AC133 CELL SURFACE ANTIGEN AND AN ANTIBODY OR ANTIGEN-BINDING FRAGMENT

INTRODUCTION

Technical Field

This application is a Continuation Application of application Ser. No. 10/827,907, filed Apr. 19, 2004, now abandoned, which is a Continuation of application Ser. No. 09/881,853, filed Jun. 13, 2001, now abandoned, which is a Continuation of application Ser. No. 08/842,382, filed Apr. 23, 1997, now U.S. Pat. No. 6,455,678, which is a Continuation-In-Part (CIP) of application Ser. No. 08/639,891, filed Apr. 29, 1996, now U.S. Pat. No. 5,843,633. The entire content of each of these Applications is hereby incorporated by reference.

BACKGROUND

The high turnover of mammalian blood cells requires a supply of hematopoietic stem cells that are able to give rise to other blood cell lineages. The immediate progeny of the hematopoietic stem cell are called progenitor cells, and are capable of giving rise to various cell types within one or more lineages, i.e. the erythroid, myeloid and lymphoid lineages. The stem cell and progenitor cell populations constitute only a small percentage of the total number of cells in bone marrow, fetal liver, etc. These populations are of immense interest because of their ability to repopulate the hematopoietic system.

A number of methods have been described in the literature for the purification or enrichment of hematopoietic stem cell and progenitor cell populations. There is significant commercial interest in these methods because hematopoietic progenitors have a number of clinical uses. Progenitor cell transplantation is currently used in conjunction with chemotherapy and radiation for the treatment of leukemia, breast cancer and other tumors. Frequently, autologous transplants are used to avoid the danger of graft rejection, but there is an increased risk of disease reappearance, due to the presence of tumor cells in the engrafting cell population. Transplantation of a more purified source of progenitor cells is therefore preferable.

There is also interest in the use of hematopoietic progenitor cells as a vehicle for gene therapy. Although not yet proven in the clinic, the longevity of hematopoietic stem cells and the dissemination of their progeny in the vasculature are desirable characteristics. A number of vectors, including several retrovirus and adenovirus based constructs, that can transfect hematopoietic stem cells have been described.

Proteins and other cell surface markers found on hematopoietic stem cell and progenitor cell populations are of great interest, as they are useful in preparing reagents for identification, separation and isolation of these populations and in the further characterization of these important cells. Although some antigens are now known that can be used in the identification and separation (positive and negative) of stem cells, such as (for example) the CD 34 antigen, which is found on stem cells but not on mature blood cells, there is a continued need for development of other antigens, particularly one that can simplify the identification and separation of desirable classes and subclasses of cells, especially hematopoietic stem cells and progenitor cells.

BACKGROUND LITERATURE

U.S. Pat. No. 5,061,620 describes a substantially homogeneous human hematopoietic stem cell composition and the

manner of obtaining such composition. Stromal cell-associated hematopoiesis is described by Paul et al (1991) *Blood* 77:1723-1733. The phenotype of stem cells with rhodamine staining is discussed in Spangrude and Johnson (1990) *P.N.A.S.* 87:7433-7437. Cell surface antigen expression in hematopoiesis is discussed in Strauss et al. (1983) *Blood* 61:1222-1231 and Sieff et al. (1982) *Blood* 60:703-713. Descriptions of pluripotential hematopoietic cells are found in McNiece et al. (1989) *Blood* 74:609-612 and Moore et al. (1979) *Blood Cells* 5:297-311. Characterization of a human hematopoietic progenitor cell capable of forming blast cell-containing colonies in vitro is found in Gordon et al. (1987) *J. Cell. Physiol.* 130:150-156 and Brandt et al. (1988) *J. Clin. Invest.* 82:1017-1027. The use of progenitor cells in transplantation is discussed in To et al. in *Progenitor Threshold in Transplantation* (ISBN 1-880854 17-1) pp. 15-20. Utilities for the cell compositions obtained using the methods and compositions of the invention are described in these publications, among others.

The use of high-gradient magnetic separation for the isolation of human hematopoietic progenitor cells is described in Thomas and Landsdorp (1992) in *Advances in Bone Marrow Purging* pp. 537-544; and Kato and Radbruch (1993) *Cytometry* 14:384-392. Other methods of magnetic selection for human hematopoietic progenitor cells are described in Bigas et al. (1992) in *Advances in Bone Marrow Purging* pp. 545-551; Oku et al. (1992) in *Advances in Bone Marrow Purging* pp. 553-560; and Hardwick et al. (1992) in *Advances in Bone Marrow Purging* pp. 583-589. High gradient magnetic cell sorting is described in Miltenyi et al. (1990) *Cytometry* 11:231-238. Molday, U.S. Pat. No. 4,452,773 describes the preparation of magnetic iron-dextran microspheres and provides a summary describing the various means of preparation of particles suitable for attachment to biological materials.

SUMMARY OF THE INVENTION

Methods and compositions are provided for the enrichment and characterization of human hematopoietic progenitor and stem cells. An antigen has been identified, referred to here as the AC133 antigen, that is present on stem cells and on progenitor cells and that can be used for the identification and/or separation of these important cells from the vast majority of cells present in a biological (or other) source of hematopoietic cells. Novel antigen compositions and reagents that react with them, such as antibodies, are provided for use in the methods of the invention and for the further investigation of hematopoietic progenitor and stem cell biology. For example, hematopoietic cells can be obtained from various sources, including fetal and adult bone marrow, cytokine mobilized peripheral blood cells, and fetal liver, and can be separated using reagents and methods of the invention.

BRIEF DESCRIPTION OF THE DRAWINGS

The invention now being generally described, the same will be better understood by reference to the following description of specific embodiments together with the figures that form part of the current specification, wherein:

FIG. 1 shows a dot-plot from fluorescence activated cell sorting (FACS) analysis of fetal liver cells. The y axis represents cell staining with AC133 antibody conjugated to phycoerythrin (PE). The cells were counterstained with HPCA2-FITC (anti-CD34). The numbers represent the percent of total cells that fall within the quadrants.

FIG. 2 is a graph showing FACS analysis of AC133 antigen expression on phorbol myristate acetate (PMA) activated Y79.1 cells.

FIG. 3 is a graph showing FACS analysis of AC133 antigen and CD34 expression on PMA activated Y79.1 cells.

FIGS. 4A and 4B show dot-plots from 3 color FACS analysis of the antibodies, AC133, CD38 and HLA-DR on fetal liver cells. The x axis in FIG. 4A represents HLA-DR-FITC, and they axis represents cell staining with AC133-PE. The x axis in FIG. 4B represents CD38-FITC, and they axis represents cell staining with AC133-PE.

FIGS. 5A, 5B, 5C and 5D show dot-plots from FACS analysis of the antibodies CD38, HLA-DR, CD90 and CD117 on AC133 positive cells purified from fetal liver. In FIG. 5A the x axis represents CD38-FITC staining, and the y axis represents HPCA2-PE staining. In FIGS. 5B, 5C and 5D, the x axis represents staining with HPCA2-FITC. The y axis in FIG. 5B represents cell staining with anti-HLA-DR-PE. The y axis in FIG. 5C represents cell staining with anti-CD90-PE. The y axis in FIG. 5D represents cell staining with anti-CD117-PE. The numbers represent the percent of total cells that fall within the boxed gates.

FIG. 6 is a gel showing the results of an immunoprecipitation with AC133 antibody and the cell lines KG1a and Y79.1. The lanes are as follows: 1) molecular weight markers; 2) a 1:5 dilution of unprecipitated KG1a lysate; 3) a 1:50 dilution of unprecipitated Y79.1 lysate; 4) KG1a lysate precipitated with AC101 antibody (CD34); 5) Y79.1 lysate precipitated with AC101 antibody; 6) KG1a lysate precipitated with HPCA2 antibody (CD34); 7) Y79.1 lysate precipitated with HPCA2 antibody; 8) KG1a lysate precipitated with 16D11 antibody (CD34); 9) Y79.1 lysate precipitated with 16D11 antibody; 10) KG1a lysate precipitated with AC133 antibody; 11) Y79.1 lysate precipitated with AC133 antibody; 12) mixed KG1a and Y79.1 lysate precipitated with a mixture of AC133 and HPCA2 antibodies; 13) KG1a lysate precipitated with 8A3 (anti-CD109) antibody; 14) KG1a lysate precipitated with 15G5 (anti-CD109) antibody.

FIGS. 7A and 7B are graphs showing FACS analysis of CD56 (FIG. 7A) and AC133 antigen (FIG. 7B) expression on PMA activated, tunicamycin treated or untreated Y79.1 cells.

FIG. 8 is a dot-plot showing FACS analysis of HPCA2-PE (y axis) staining of AC133 magnetically purified fetal liver cells. The x axis represents staining with a glycophorin A-FITC conjugate.

FIGS. 9A and 9B are dot plots showing FACS analysis of HPCA2 staining of buffy coat peripheral blood mononuclear cells before and after AC133 magnetic separation. The y axis shows staining with HPCA2-PE, the x axis shows staining with anti-CD45 and anti-CD15-FITC conjugated antibodies.

FIG. 10 is a bar graph showing the cloning efficiency of AC133 and AC101 purified cells in a clonogenicity assay.

FIG. 11 is a bar graph showing the plating efficiency of AC133 purified cells and AC133 negative, CD34 positive cells.

FIG. 12 is a chemical formula showing DNA (SEQ ID NO:1) and amino acid (SEQ ID NO:2) sequences for the AC133 antigen.

FIG. 13 is a schematic diagram of the transmembrane and other regions of the AC133 antigen.

DESCRIPTION OF SPECIFIC EMBODIMENTS

Methods and compositions are provided that have use in the enrichment and/or characterization of human hematopoietic stem cells and/or progenitor cells. The immediate progeny of the hematopoietic stem cell, called here "progenitor"

cells, are capable of giving rise to various cell types within one or more lineages. In the present invention, stem cells and/or a sub-set of progenitor cells (i.e., CFU-GM cells that are needed for short-term engraftment) can be identified or selected through the use of reagents that specifically bind to a newly discovered antigen referred to here as the AC133 antigen (Ag) that is highly specific for these cells. The high tissue specificity of AC133 antigen expression is particularly advantageous during enrichment for highly purified progenitor cell populations. An AC133-positive cell population is highly enriched for cells that are active in assays measuring progenitor cell activity, particularly in the CFU-GM activity. The subset of cells that is AC133 negative and CD34 positive is enriched for BFU-E activity, a measure of erythroid-committed progenitor cell activity.

Reagents that specifically bind to the AC133 antigen include without limitation physiological ligands, synthetic ligands, polyclonal antibodies, and monoclonal antibodies. An AC133 monoclonal antibody is any monoclonal antibody which interacts specifically with the AC133 cell antigen expressed on a subset of hematopoietic progenitor cells derived from human bone marrow, fetal bone marrow and liver, cord blood and adult peripheral blood. The subset of progenitor cells recognized by antibodies directed to AC133 are CD34^{bright} and contains substantially all of the CFU-GM activity present in the CD34⁺ subset (as well as those cells that are still stem cells collected in a collection of progenitor cells). For purposes of transplantation, cells active in CFU-GM are of particular interest because they provide for production of neutrophils. Use of an AC133 antibody allows positive immunoselection of hematopoietic progenitor cell populations, as well as the phenotypic analysis of progenitor cell populations using flow cytometry. In particular, an antibody against AC133 recognizes not just CFU-GM cells, which are needed for short-term engraftment and protection from sepsis, but also primitive long-term re-populating cells that are necessary for long-term engraftment. Cells selected for expression of AC133 antigen can then be further purified and/or separated by selection for other hematopoietic stem cell and progenitor cell markers.

As outlined below in detail, molecules of interest in the various methods of the invention include the AC133 antigen itself, reagents that specifically bind to AC133 or a fragment thereof, AC133 complexed to a ligand, an AC133-ligand complex wherein the ligand is an antibody, nucleic acid sequences encoding the AC133 antigen, and population of cells that express the AC133 antigen or any of its fragments. The AC133 antigen can be isolated from natural sources or produced using recombinant DNA technology. The nucleic acids can be cDNA, RNA, a genomic sequence, or a synthetic sequence comprising the coding sequence by itself or in conjunction with transcriptional regulatory regions and other sequences found in expression and/or cloning vectors. The AC133 Ag itself can be obtained in a purified form by isolation from cells, which can be identified as positive by AC133 antibody binding using affinity binding methods known in the art. Positive identification is available by proteolytic digestion of cell membrane proteins and comparison of sequences to the protein sequence for AC133 set out in FIG. 12.

mAb AC133 is an antibody with specificity for a novel cell surface antigen that is expressed on bright CD34⁺ cells. The antigen is expressed on a subset of hematopoietic progenitor cells derived from human bone marrow, fetal bone marrow and liver, cord blood, and adult peripheral blood. mAb AC133 can be used in a magnetic bead system to immunoselect hematopoietic progenitor cell populations, resulting in potential therapeutic benefit, as well as in the phenotypic analysis

of progenitor cell populations using flow cytometric techniques. To further characterize the nature of this novel molecule, the AC133 antigen was purified by immunoaffinity chromatography. The AC133 antigen consists of a single polypeptide chain with a reduced molecular weight of about 120 kD, and comprises a glycoprotein with an about 20-kDa N-glycosidic-linked polysaccharides. The reduced AC133 antigen is recognized by mAb AC133, suggesting a linear epitope or a sugar epitope.

It will be recognized by those experienced in the field of glycoproteins that such molecules are not expected to have exactly identical sugar structures because of the enzymatic nature of sugar synthesis, which occurs without the template (i.e., messenger RNA) that exists for peptide synthesis, although similarities will certainly exist among the sugar structures in a collection of AC133 molecules because of synthesis from the same starting peptide structure. Accordingly, "AC133 antigen" refers to proteins having the peptide structure shown in FIG. 12 (discussed below) with sugar structures attached at glycosylation sites. Because of the natural variations in sugar structures, a range of molecular weights for glycosylated molecules is also to be expected and comes within the scope of the present invention. In the case of AC133 antigen, there appears to be relatively low variation in the structure and size of the attached sugar residues, compared to other known proteins. Molecular weight of AC133 is typically found to be in the range of 115 to 127 kD, regardless of the details of the experimental technique used to measure molecular weight.

The purified AC133 antigen was digested with lysyl endopeptidase to generate peptides that were isolated by reverse phase HPLC and sequenced by Edman degradation. These peptides were used to design degenerate oligonucleotides used in the polymerase chain reaction with a WERI-Rb-1 cDNA library template. This technique yielded 1.7 kD of unambiguous sequence which was then used to isolate the entire cDNA clone. This cDNA encodes a single open reading frame of 2598 nucleotides, and predicts a 865 amino acid protein with a molecular weight of 96.8 kDa, which corresponds with the about 90 kDa molecular weight found for the deglycosylated antigen. Hydrophobicity and transmembrane helicity analysis suggests the presence of five transmembrane domains, resulting in two large extracellular loops. There are a total of 8 consensus sequences for sites of N-linked glycosylation, all on the two large (260 and 290 a.a.) loops supporting our proposed structural model with two large extracellular loops and a 50 amino acid C-terminal cytoplasmic tail. A truncated version of the AC133 antigen missing the cytoplasmic tail is still recognized by mAb AC133. There are consensus sequences for a leucine zipper motif in both extracellular loops, which can be involved in receptor interaction with its physiological ligand. As shown in FIG. 13, the AC133 antigen appears as a 5-transmembrane protein ("5TM protein") with an extracellular N-terminus and a cytoplasmic C-terminus.

Families of 4TM (also called tetraspan), 7TM, and 11TM proteins have been characterized in the literature. While the function of the tetraspan family is not known, the 7TM proteins are generally believed to be G-protein coupled receptors binding chemotactic agonists, and 11TM proteins represent a family of ion-channel receptors. However, a 5TM molecule has not previously been described, and the structure of the AC133 antigen differs markedly from known 7 TM family members with respect to molecular weight and size of extracellular loops. Additionally, the AC133 antigen does not share sequence homology with 4TM or 7TM proteins, while family

members do share significant homology with each other, particularly within the transmembrane domains.

Short fragments of the AC133 gene are present in Genbank as EST's (expressed sequence tags), such as adult retina, pancreatic islets and fetal brain. Expression of the AC133 antigen, however, appears to be limited to primitive hematopoietic stem cells and some neural-crest-derived tissues. AC133 antigen is also expressed on NT-2 teratocarcinoma cells; however expression is lost as these cells terminally differentiate into neurons. The interaction of the physiological ligand with the AC133 antigen (receptor) can provide for intracellular signalling.

The original monoclonal antibody discovered to the AC133 antigen is one of a panel of antibodies which defines a novel antigen of approximately Mr 120,000 which is selectively expressed on CD34^{bright} human hematopoietic stem and progenitor cells. CD34^{bright} cells support long-term B cell lymphopoiesis and myelopoiesis in vitro and mediate T, B, myelomonocytic and megakaryocytic repopulation in vivo. CD34^{dim} cells have failed to provide long-term hematopoietic activity in vitro or in vivo. The CD34^{bright} population contains all of the primitive stem cell activity and therefore is the population of choice for further studies in hematopoietic stem cell transplantation and gene therapy. AC133 antibody provides a means for the positive selection and phenotypic analysis of hematopoietic stem cells and a subset of committed progenitor cells. The original specific antibody AC133, a murine IgG₁ antibody, was elicited from mice immunized with purified CD34⁺ human progenitor cells. In order to determine the precise antigen phenotype of AC133 positive cells, AC133 and CD34 double positive cells were examined in fetal liver, fetal and adult bone marrow, cord blood and peripheral blood using 3 and 4 color FACS analysis. The subset recognized by AC133 antibody in all tissues are CD34^{bright}, CD38^{-/+}, HLA-DR^{+/-}. The CD90⁺, CD117⁺ and CD109⁺ stem cell populations are included within the AC133 positive population. Typically AC133 stains 20-60% of all CD34⁺ cells, a population which contains all the non-lineage committed CD34⁺ population as well as CD34⁺ cells committed to the granulocyte/monocytic pathway. AC133 antigen expression has not been demonstrated on peripheral blood mononuclear cells, granulocytes, platelets or umbilical vein-derived endothelial cells by standard FACS procedures. FACS analysis on a panel of 50 human cell lines shows that only 2 retinoblastoma cell lines, Y79.1 and WERI-Rb-1, express AC133 antigen, along with NT-2 teratocarcinoma cells. Transplantation of AC133 positive cells into fetal sheep has demonstrated the engrafting capability of selected cells, and human cells which have homed to the fetal sheep bone marrow have been harvested and shown to engraft secondary recipients, proving the long term repopulating potential of selected cells. The AC133 gene codes for a polypeptide consisting of 865 aa with a predicted size of 96.8 kDa. This protein has a unique structure, traversing the membrane 5 times. The AC133 antigen therefore defines a new class of mammalian 5TM membrane proteins. Together these data demonstrate that AC133 provides an alternative antigen system for the identification and separation of hematopoietic stem cells.

Antibodies that selectively bind to stem cells and/or progenitor cells are of particular interest. Antibodies to AC133 Ag can be obtained by immunizing a xenogeneic immunocompetent mammalian host (such as a murine, rodentia, lagomorphs, ovine, porcine, or bovine, host) with human hematopoietic progenitor cells. The choice of a particular host is primarily one of convenience. A suitable progenitor cell population for immunization is obtained by isolating CD34⁺

cells from cytokine-mobilized peripheral blood, bone marrow, fetal liver, or other source of progenitor cells. The cells can be incubated with phytohemagglutinin prior to their use as an immunogen.

Immunizations are performed in accordance with conventional techniques, where the cells can be injected subcutaneously, intramuscularly, intraperitoneally, intravascularly into a host. Normally, from about 10^6 to 10^8 cells will be used, which can be divided into 1 or more injections, usually not more than about 8 injections, over a period of from about one to three weeks. The injections can occur with or without adjuvant; examples of adjuvant include complete or incomplete Freund's adjuvant, specol, and alum.

In a preferred embodiment, contralateral immunization is used, as described in the examples below. This method relies on the trafficking ability of immune lymphocytes to home to the site of antigen stimulation. The animals are pre-immunized at a localized site on one side of the body, such as a left footpad, with cells that express many immunodominant but irrelevant antigens. Various mature hematopoietic cells can be used for this purpose. The immunogen of interest is injected at a localized site on the opposite side of the animal. Lymphocytes pre-immunized with and responding to irrelevant antigens are decoyed to the left-hand draining lymph nodes, while the lymphocytes responding to the immunogen of interest will be present in the right-hand draining lymph nodes, e.g. the popliteal lymph nodes for footpad injection. This popliteal lymph node can be used as a source of cells for fusion.

After completion of the immunization schedule, the antiserum can be harvested in accordance with conventional techniques to provide polyclonal antisera specific for the surface membrane proteins of hematopoietic progenitor cells, including AC133 Ag. Lymphocytes can then be harvested from the appropriate lymphoid tissue, e.g. spleen or draining lymph node, and fused with an appropriate fusion partner, usually a myeloma line, to produce a hybridoma secreting a specific monoclonal antibody. Screening clones of hybridomas for the antigenic specificity of interest can be performed in accordance with conventional methods.

Of particular interest are the specific monoclonal antibody AC133 described in the Examples below; other antibodies (both monoclonal and polyclonal) that bind to the AC133 antigen, especially cross-reactive antibodies (i.e., those which bind to the same epitope, and substantially inhibit simultaneous binding); species analogs thereof; binding fragments thereof; and conjugates thereof. A deposit of a murine hybridoma cell line that expresses an antibody to the AC133 antigen was made at the American Type Culture Collection, 10801 University Boulevard, Manassas Va. 20110, on Apr. 23, 1997, and given the ATCC designation HB12346. These antibodies are capable of immunoselection for the hematopoietic subset of interest.

It is known that antibodies can be produced as a single chain instead of a normal multimeric structure. Single chain antibodies are described in Jost et al. (1994) *J.B.C.* 269: 26267-73, and in numerous other publications. DNA sequences encoding the variable region of the heavy chain and the variable region of the light chain are ligated to a spacer encoding at least about 4 amino acids of small neutral amino acids, including glycine and/or serine. The protein encoded by this fusion allows assembly of a functional variable region that retains the specificity and affinity of the original antibody.

Methods of humanizing antibodies are also known in the art. A humanized antibody can be the product of an animal having transgenic, human, immunoglobulin-constant-region genes (see for example International Patent Applications WO

90/10077 and WO 90/04036). Alternatively, the antibody of interest can be engineered by recombinant DNA techniques to substitute the CH1, CH2, CH3, hinge domains, and/or the framework residues with the corresponding human sequence (see WO 92/02190).

The use of Ig cDNA for construction of chimeric immunoglobulin genes is known in the art (Liu et al. (1987) *P.N.A.S.* 84:3439 and (1987) *J. Immunol.* 159:3521). In these techniques mRNA is isolated from a hybridoma or other cell producing the antibody and used to produce cDNA. The cDNA of interest can be amplified by the polymerase chain reaction using specific primers (U.S. Pat. Nos. 4,683,195 and 4,683,202). Alternatively, a library can be made and screened to isolate the sequence of interest. The DNA sequence encoding the variable region of the antibody is then fused to human constant region sequences. The sequences of human constant region genes can be found in Kabat et al. (1991) *Sequences of Proteins of Immunological Interest*, N.I.H. publication no. 91-3242. Human C region genes are readily available from known clones. The chimeric, humanized antibody can then be expressed by conventional methods.

Antibody fragments, such as Fv, F(ab')₂ and Fab fragments, can be prepared by cleavage of the intact antibody, e.g. by protease or chemical cleavage. Alternatively, a truncated gene can be designed. For example, a chimeric gene encoding a portion of the F(ab')₂ fragment could include DNA sequences encoding the CH1 domain and hinge region of the H chain, followed by a translational stop codon to yield a truncated antibody fragment.

Antibodies to the AC133 antigen bind to a protein that has an apparent molecular weight (under Western blot conditions from reducing SDS-PAGE gels, based on commercially available standards) of about 120 kD, and generally appears to be in the range of about 115 to 127 kD. The antibody appears to recognize a sugar epitope, as AC133 antibody cannot be immunoprecipitated from tunicamycin-treated WERI-Rb-1 cells. The AC133 antigen is expressed on a subset of CD34⁺ cells, but is absent on endothelium and fibroblasts. Included in the population of AC133-positive cells are HLA-DR⁺, CD90⁺ and CD117⁺ progenitor cells (the antigen formerly known as CD90⁺ is now known as CD90⁺; both DR positive and negative as well as CD38 positive and negative cells are included in this population). This population contains substantially all of the hematopoietic stem activity present in the CD34⁺ subset of hematopoietic cells.

Reagents that specifically bind to the AC133 antigen are not limited to antibodies. Any of numerous methods known in the art to detect the binding of one species to another can be used to assay for the presence of an AC133 antigen-binding reagent. One universally adaptable assay involves distribution of radioactivity between soluble and solid phases can be detected using radioactively labeled test compounds and AC133 antigen attached to a solid phase. AC133 antigen can be attached, for example, to a solid phase in a column, and a tritium- or ¹⁴C-labelled test compound in a physiological buffer can be passed through the column. Bound radioactivity can be detected directly on the column or by subtraction of radioactivity in the soluble phase passing through the column from the applied radioactivity. Binding affinity can be detected by measuring levels of bound radioactivity at different concentrations of test compound after allowing sufficient time for binding to equilibrate. Specificity of binding for AC133 can be detected by determining whether test compounds that bind to AC133 also bind to antigens present on mature blood cells (or other antigens of interest in a preselected assay medium). Especially preferred ligands are those that are selective-for AC133 with less than 10%, preferably

less than 5%, crossreactivity with any antigen present on mature blood cells. Crossreactivity can be measured by any standard technique and preferably is measured by a competitive binding assay between pure AC133 antigen, the ligand to be tested, and the suspected crossreactive antigen using a concentration of AC133 antigen and test ligand where the ligand half-saturates binding to AC133. Most preferably, crossreactivity is measured at a concentration of AC133 antigen that half saturates monoclonal antibody ATCC HB12346 when the antibody is present at a concentration of 50 ng/100 μ l.

Once a reagent is identified that specifically binds to AC133, the reagent (in its radioactively labeled form, in a non-radioactive form modified to contain another label, or in certain uses in unlabeled form) can be used in various assays or biological uses that call for the binding of a reagent to AC133, such as fluorescent staining, cell separation, or cell differentiation, either in vivo and in vitro. For example, immunoselection with an antibody against AC133 provides a means of purifying hematopoietic progenitor and stem cells. The antibodies also find use in diagnostics to detect or enumerate hematopoietic progenitor cells, in dividing the CD34 positive population into functionally distinct sub-populations, in isolation of progenitor cells, and in preparation of progenitors to produce mature blood cells. Biological samples (e.g. blood or derivatives thereof, biopsies, and synovial fluid) can be assayed for the presence of cells expressing the surface molecule bound by the subject antibodies. For example, assays can be performed on cell lysates, intact cells, or frozen sections in order to distinguish different types of cells.

The subject antibodies and other reagents that specifically bind to AC133 are useful for the preparation of substantially pure human hematopoietic progenitor and stem cells. A subset of progenitor cells can be separated from other hematopoietic cells on the basis of AC133 binding and can be further separated from each other by binding to other surface markers known in the art. Sources of hematopoietic cells include fetal or adult bone marrow; fetal liver; umbilical cord blood; and peripheral blood, particularly cytokine mobilized peripheral blood (see, for example, Campos et al. (1993) *Leukemia* 7:1409-15 and Grigg et al. (1993) *Bone Marrow Transplant* 11, Suppl 2:23-9).

Human stem cells have been reported to have the phenotype CD34^{bright}; HLA-DR⁺; CD38^{dim/negative}; CD117 (c-kit)^{dim}; CD90(Thy-1)⁺; and to lack expression of a variety of lineage specific markers, including CD3, CD4, CD7, CD8, CD14, CD15, and CD19. A negative designation indicates that the level of staining is at or below the brightness of an isotype-matched negative control. A dim designation indicates that the level of staining may be near the level of a negative stain, but may also be brighter than an isotype matched control.

Procedures for separation include magnetic separation using antibody-coated magnetic beads and affinity chromatography or "panning" using antibody attached to a solid matrix (e.g. plate). Techniques providing accurate separation include fluorescence-activated cell sorters, which can have varying degrees of sophistication, such as having multiple color channels, low angle and obtuse light scattering detecting channels, or impedance channels. Dead cells can be eliminated by selection with dyes associated with dead cells e.g., (propidium iodide, LDS). Red blood cells can be removed by (for example) elutriation, hemolysis, or Ficoll-Paque gradients. Any technique can be employed that is not unduly detrimental to the viability of the selected cells.

Conveniently, antibodies can be conjugated with labels for a number of different purposes: e.g., magnetic beads to allow for ease of separation of a particular cell type; biotin, which binds with high affinity to avidin or streptavidin; fluorochromes, which can be used with a fluorescence activated cell sorter; haptens; and the like. Multi-color analyses can be employed with a FACS or in a combination of immunomagnetic separation and flow cytometry. Multi-color analysis is of interest for the separation of cells based on multiple surface antigens: e.g., AC133⁺, CD90⁺ or CD117⁺, AC133⁻, or CD34⁺. Fluorochromes which find use in a multi-color analysis include phycobiliproteins, e.g. phycoerythrin and allophycocyanins; fluorescein, and Texas red.

In one embodiment of the invention, an anti-AC133 antibody is directly or indirectly conjugated to a magnetic reagent, such as a superparamagnetic microparticle (microparticle). Direct conjugation to a magnetic particle is achieved by use of various chemical linking groups as known in the art. For example, antibody can be coupled to the microparticles through side chain amino or sulfhydryl groups and heterofunctional cross-linking reagents. A large number of heterofunctional compounds are available for linking to entities. A preferred linking group is 3-(2-pyridyldithio)propionic acid N-hydroxysuccinimide ester (SPDP) or 4-(N-maleimidomethyl)-cyclohexane-1-carboxylic acid N-hydroxysuccinimide ester (SMCC) with a reactive sulfhydryl group on the antibody and a reactive amino group on the magnetic particle.

Alternatively, an anti-AC133 antibody is indirectly coupled to magnetic particles. The antibody is directly conjugated to a hapten, and hapten-specific, second-stage antibodies are conjugated to the particles. Suitable haptens include digoxin, digoxigenin, FITC, dinitrophenyl, nitrophenyl, avidin, and biotin. Methods for conjugation of the hapten to a protein are known in the art, and kits for such conjugations are commercially available.

For separation or identification of stem cells or progenitor cells, an antibody is added to a hematopoietic cell sample. The amount of an anti-AC133 antibody necessary to bind a particular cell subset is empirically determined by performing a test separation and analysis. The cells and an anti-AC133 Ab are incubated for a period of time sufficient for complexes to form, usually at least about five minutes, more usually at least about 10 minutes, and usually not more than one hour, more usually not more than about 30 minutes.

The cells can additionally be incubated with antibodies or binding molecules specific for cell-surface markers known to be present or absent on hematopoietic progenitor or stem cells. For example, CD90, CD117 and HLA-DR are useful in the positive selection of stem cells. Various markers known to be absent on stem cells, such as CD3, CD4, CD8, CD14, CD15, and CD19, can be used for negative selection. The labeled cells are separated in accordance with the specific antibody preparation. Fluorochrome-labeled antibodies are useful for FACS separation and magnetic particles for immunomagnetic selection or particularly high gradient magnetic selection (HGMS). Exemplary magnetic separation devices are described in WO/90/07380, PCT/US96/00953 and EP 438,520, herein incorporated by reference.

The purified cell population can be collected in any appropriate medium. Various media are commercially available and can be used, including Dulbecco's Modified Eagle Medium (DMEM), Hank's Basic Salt Solution (HBSS), Dulbecco's phosphate buffered saline (DPBS), RPMI, Iscove's modified Dulbecco's medium (IMDM), and phosphate buffered saline (PBS) with 5 mM EDTA, any of which can be

supplemented with fetal calf serum (FCS), bovine serum albumin (BSA), or human serum albumin (HSA).

Compositions highly enriched for human hematopoietic progenitor and/or stem cells (depending on the source of cells) are achieved in this manner in a single step. The desired cells will be at or about 80% or more of the cell composition, and preferably be at or about 90% or more of the cell composition. Specific populations of interest include AC133⁺ cells, which are characterized as CD34^{bright} and HLA-DR⁺. This population can be further selected for those cells that are CD90⁺, CD117⁺ and/or CD38^{dim}. Functionally these cells are highly enriched for CFU-GM activity and for long-term repopulating cells. Another population of interest is CD133⁺ and CD34⁺, which is enriched for BFU-E activity. The use of the subject antibodies for purification are advantageous over the use of CD34, because AC133 is expressed by a more restricted population of cells, thereby permitting a more enriched subset for the specific activity of interest.

Once the desired cells have been isolated, they can be propagated by growing in conditioned medium from stromal cells, co-culturing with such stromal cells, or in media comprising maintenance factors supporting the proliferation of such progenitor cells e.g., stem cell factor or combinations of interleukins. The medium employed for culturing cells is conveniently a defined enriched medium, such as IMDM or a mixture of IMDM and RPMI 1640, and will generally be composed of salts, amino acids, vitamins, 5×10^{-5} M β -mercaptoethanol, streptomycin/penicillin and 10% fetal calf serum, and can be changed from time to time, generally at least once to twice per week.

The subject cell compositions find use in a variety of ways. They can be used to reconstitute an irradiated host and/or a host subject to chemotherapy. By providing for maturation, proliferation and differentiation into one or more selected lineages through specific different growth factors the progenitor cells can be used as a source of committed cells. Such factors as erythropoietin, colony stimulating factors (e.g., GM-CSF, G-CSF or M-CSF), interleukins (e.g. IL-1, -2, -3, -4, -5, -6, -7, -8, -9, or -10), or the like, or stromal cells can be used to influence the growth and differentiation of progenitor cells.

The cells can also be used in the isolation and evaluation of factors associated with the differentiation and maturation of hematopoietic cells, including reagents that specifically bind to the AC133 antigen. Thus, the cells can be used in assays to determine the activity of media, such as conditioned media; to evaluate fluids for growth factor activity or involvement with dedication of lineages; or the like.

The cells can be used for the treatment of genetic diseases. Genetic diseases associated with hematopoietic cells can be treated by genetic modification of autologous or allogeneic stem cells to correct a genetic defect or treat to protect against disease, e.g., HIV. For example, diseases such as θ -thalassemia, sickle cell anemia, adenosine deaminase deficiency, recombinase deficiency, or recombinase regulatory gene deficiency can be corrected by introduction of the wild-type gene into the subject cells, either by homologous or random recombination. Alternatively, normal allogeneic progenitor cells can be transplanted. Diseases other than those associated with hematopoietic cells can also be treated, where the disease is related to the lack of a particular secreted product such as hormone, enzyme, interferon, factor, or the like.

The cells can be frozen at liquid nitrogen temperatures and stored for long periods of time, as they can be thawed and reused. The cells will usually be stored in 5% DMSO and 95% fetal calf serum. Once thawed, the cells can be expanded by

use of growth factors or stromal cells associated with stem cell proliferation and differentiation.

The AC133 antigen can be obtained in substantially pure form from either natural sources or by recombinant techniques. From natural sources, the antigen-positive cells are lysed and passed through an affinity column of anti-AC133 monoclonal antibody. Hematopoietic progenitor cells can be isolated from natural sources by conventional separation techniques, or cell lines described in the experimental section can be used as a source of antigen. The affinity-purified protein is eluted from the affinity column with an appropriate salt solution or aqueous/organic gradient, such as acetonitrile or ethanol, usually in the presence of a low acid concentration, e.g., 0.1-1 percent trifluoroacetic acid. The eluted protein is then further purified by chromatography, electrophoresis, or the like in accordance with conventional techniques.

The examples below describe the use of a monoclonal antibody to purify the AC133 antigen by affinity chromatography resulting in greater than 95% pure AC133 antigen. Peptides of such a purified preparation can be prepared and isolated for sequence analysis, as a result of which nucleic acid probes can be designed for the isolation of AC133 gene sequences. The gene sequence of AC133 set forth herein (FIG. 12) (SEQ ID NO:1) allows the antigen to be obtained by recombinant techniques. For example, total RNA is isolated from cells that have been shown by antibody binding to express the targeted protein. Residual DNA is removed in accordance with conventional techniques, and the polyadenylated RNA can be purified further, for example on oligo-dT sepharose or by gel chromatography. cDNA is then prepared in accordance with conventional techniques using reverse transcriptase (see Sambrook et al., supra and the Examples below). The cDNA is then introduced into an appropriate cloning system, such as Σ gt11, where the cDNA is expressed. The phage plaques can then be screened using the subject antibodies, or by employing polyclonal antisera. Alternatively, a cloning system can be used which allows probing with nucleic acid sequences derived from the AC133 antigen protein sequence. The cDNA inserts are then subcloned into other vectors, as desired. The cDNA can be used for further probing of the cDNA library for a complete transcript. Alternatively, the cDNA sequence can be used to probe a genomic library to identify the genomic gene encoding the subject proteins (See, for example, Molecular Cloning: A Laboratory Manual, 2nd ed., J. Sambrook, E. F. Fritsch, T. Maniatis, CSHL, Cold Spring Harbor, N.Y., 1989).

DNA of the invention includes the nucleotide sequences encoding the AC133 protein or fragments thereof, as well as adjacent 5' and 3' non-coding nucleotide sequences involved in the regulation of expression of the protein encoded by the genes, and will include up to about the length of the mature mRNA or genomic DNA. Thus, the present invention provides an isolated nucleic acid molecule, in which the molecule comprises (1) a first sequence having an amino acid coding region for AC133 as set forth in FIG. 12 (SEQ ID NO:1); (2) a second sequence, wherein said second sequence is a subsequence of said first sequence and is at least 14, preferably at least 17 or 20, more preferably at least 25, nucleotides in length; (3) a third sequence in which at least one nucleotide of said first or second sequences is replaced by a different nucleotide; or (4) a fourth sequence complementary to any of said first, second or third sequences; with the proviso that (i) if said molecule is an RNA molecule, U replaces T in said sequence of said molecule, (ii) said third sequence is at least 90%, preferably at least 95%, identical to said first or second sequence, and (iii) said second sequence is not nucleotides 347-667, 1564-1696, or 2110-2386 of SEQ.

ID NO:1. Also included as DNA of the invention is the corresponding genomic sequence, including introns. These non-coding sequences include terminator and polyadenylation sequences, regulatory protein binding sequences, transcriptional sequences, and the like. Molecules containing the full length AC133 cDNA sequences are useful as sources of sub-sequences or as starting materials for the preparation of the AC133 molecule itself.

A "subsequence" is a group of consecutive nucleotides from the cDNA sequence. Any of these sequences can be used in the identification of the presence (or absence) of the AC133 gene or of the expression of mRNA encoding the AC133 antigen. Such subsequences can be prepared by chemical synthesis from starting nucleotides (as in an automated gene synthesizer) or by biochemical manipulation of the full-length sequences (e.g., using restriction endonucleases to prepare fragments, optionally followed by (1) cleavage of terminal nucleotides and exonucleases and/or (2) size sorting and/or affinity capture to select the desired sequence). Any subsequence of the AC133 sequence described in SEQ ID No.: 1 of sufficient length to be unique among the other nucleic acids present under the conditions being used is useful as one of the two primers used in a polymerase chain reaction (PCR) amplification of all or part of the genomic AC133 gene. The length of a subsequence necessary to hybridize uniquely with the desired target sequence will vary with the particular method being used, and selection of the length is within the ordinary skill of those who carry out routine identification of genetic material. A preferred subsequence is at least 15 nt in length, more preferably at least 18 nt, even more preferably at least 19, 20, 21, 25, or 30 nt in length up to the full length of the nucleotide sequence shown as SEQ. ID NO: 1, preferably less than 200 nt in length if used as a hybridization probe or less than 50 nt in length if used as a PCR primer.

Three subsequences within the coding region of SEQ. ID NO:1 were previously recorded in Genbank as EST's of unknown function. Accordingly, these Genbank subsequences, nucleotides 347-667, 1564-1696, and 2010-2386, are not claimed as subsequences of the invention. Additionally, there are a number of EST's in Genbank from the 3' untranslated region of SEQ. ID NO:1, also of unknown function, specifically in the regions covered by nucleotides 2684-3332 and 3408-3804. Subsequences from these two regions are not claimed as part of the present invention. Longer subsequences of the entire sequence shown as SEQ. ID NO:1 that contain one or more of the Genbank sequences, as well as subsequences of any length that include part of one or more Genbank sequence but also contain newly identified nucleotides set forth in SEQ. ID NO:1, are considered to be part of the present invention.

The nucleic acid compositions of the subject invention can be genomic or cDNA sequences encoding all or a part of the subject protein. Fragments can be obtained of the cDNA or genomic sequence by chemically synthesizing oligonucleotides in accordance with conventional methods, such as by restriction enzyme digestion or by PCR amplification. For the most part, fragments will be of at least 12 nt, more usually at least 18 nt, or one of the other lengths described above. Preferred fragments will include a functional epitope. The sequence providing for a functional epitope can be determined by expression of the sequence, and assaying for reactivity of the expression product with specific antibodies by conventional immunoassay.

Exemplary amino acid and DNA sequences of the invention are set forth in SEQ ID No.: 1 and 2 below. Standard abbreviations for nucleotides and amino acids are used in this

specification. Polypeptides derived from the natural AC133 antigen are particularly preferred embodiments of the invention, although variations based on the specific sequences of these polypeptides are also parts of the present invention. In its broader aspects the invention (as it pertains to polypeptides per se) includes any polypeptide selected from the group consisting of (1) a first amino acid sequence of AC133 as set forth in SEQ ID NO: 2; (2) a second amino acid sequence wherein the second sequence is a subsequence of the first sequences and is at least 6, preferably 8, more preferably 10, amino acids in length; or (3) a third sequence in which at least one amino acid of the first or second sequences is replaced by a different amino acid, with the proviso that the amino acid replacement is a replacement of one acidic residue for another, one basic residue for another, one non-polar residue for another, one uncharged polar residue for another, or one aromatic residue for another, with the proviso that the third sequence is at least 90%, preferably 95%, identical to the first or second sequence.

Two amino acid sequences are homologous if there is a partial or complete identity between their sequences. For example, 85% homology means that 85% of the amino acids are identical when the two sequences are aligned for maximum matching. Gaps (in either of the two sequences being matched) are allowed in maximizing matching. Gaps of 5 or less are preferred with 2 or less being more preferred. Alternatively and preferably, two protein sequences (or polypeptide sequences derived from them of at least 30 amino acids in length) are homologous as this term is used herein, if they have an alignment score of more than 5 (in standard deviation units) using the program align with the mutation data matrix and a gap penalty of 6 or greater (Dayhoff, M. O., in *Atlas of Protein Sequence and Structure*, 1972, vol. 5, National Bio-medical Research Foundation, pp. 101-110, and supplement 2 to this volume, pp. 1-10). The two sequences or parts thereof are more preferably homologous if their amino acids are greater than or equal to 50% identical when optimally aligned using the align program.

Minor amino acid variations from the natural amino acid sequence sets forth in SEQ ID No.: 2 are contemplated; in particular, conservative amino acid replacements are contemplated. Conservative replacements of those that take place within a family of amino acids that are related in their side chains. Genetically encoded amino acids are generally divided into four families: (1) acidic, aspartate, glutamate; (2) basic: lysine, arginine, histidine; (3) non-polar: alanine, valine, leucine, isoleucine, proline, phenylalanine, methionine, tryptophan; and (4) uncharged polar: glycine, asparagine, glutamine, cysteine, serine, threonine, tyrosine. Phenylalanine, tryptophan and tyrosine are sometimes classified jointly as aromatic amino acids. For example, it is reasonable to expect that an isolated replacement of a leucine with an isoleucine or valine, an aspartate with a glutamate, a threonine with a serine, or a similar replacement of an amino acid with a structurally related amino acid will not have a major effect on the binding properties of the resulting molecule, especially if the replacement does not involve an amino acid as a binding site involved in the interaction of AC133 or its derivatives with a reagent that binds specifically to AC133. Whether an amino acid change results in a functional peptide can readily be determined by assaying the specific binding properties of the polypeptide derivative.

As shown in FIG. 13, there are a number of regions having different functions in the peptide structure of AC133. These regions can be described (beginning with the amino terminus) as an extracellular N-terminus, a first transmembrane region, a first cytoplasmic loop, a second transmembrane region, a

first extracellular loop, a third transmembrane region, a second cytoplasmic loop, a fourth transmembrane region, a second extracellular loop, a fifth transmembrane, and a cytoplasmic C-terminus. Approximate sizes of the regions are shown in FIG. 13, with best estimates of the amino acids present in the different regions being as follows: extracellular N-terminus, aa 20-107; first transmembrane region, aa 107-126; first cytoplasmic loop, aa 127-157; second transmembrane region, aa 158-179; first extracellular loop, aa 180-435; third transmembrane region, aa 436-454; second cytoplasmic loop, aa 455-480; fourth transmembrane region, aa 481-503; second extracellular loop, aa 504-792; fifth transmembrane, aa 793-816; and cytoplasmic C-terminus, aa 817-865. There appears to be a cleavable signal sequence (aa 1-19) at the amino terminus of the encoded peptide; this sequence is not included as part of the regions shown in FIG. 13 but will be present in synthetically produced AC133 peptides.

Also shown in FIG. 13 are the approximate locations of short peptide segments (P1-P4) that were identified to verify the structure of the AC133 antigen and of glycosylation sites (indicated by a "Y" at the point of attachment). FIG. 12 also shows the glycosylation sites (which are boxed in the amino acid sequence) and transmembrane regions (which are underlined). Two glycosylation sites overlap (NNTS, which consists of an overlapping NNT and NTS) and are shown by a larger box with dashed lines indicating the individual consensus glycosylation sites.

The DNA sequences can be obtained in substantial purity and can be obtained as an isolated molecule other than a sequence of an intact chromosome. Usually, the DNA will be obtained substantially free of other nucleic acid compounds, generally being at least about 50%, usually at least about 90% pure and are typically "recombinant", i.e., flanked by one or more nucleotides with which they are not normally associated with on a natural chromosome.

The DNA sequences are used in a variety of ways. They can be used as probes for identifying related surface proteins in the same or other species. The DNA can also be used to identify cells or organs that are expressing the subject genes. Techniques in which one probes cells for the presence of particular nucleotide sequences, particularly as DNA, mRNA or cDNA, are well-established in the literature and do not require elaboration here. Conveniently, mRNA can be isolated free of DNA, and by using reverse transcriptase and PCR with specific primers, the subject cDNAs of interest of can be expanded, separated on gel electrophoresis and then probed using Southern blotting or sequencing. Other techniques can also find use.

Homologous sequences are those with substantial sequence similarity to AC133 antigen sequences included within the subject invention, i.e., at least 80%, preferably at least 90%, more preferably at least 95%, sequence identity with the nucleotide sequence of the subject DNA sequence. Sequence similarity is calculated based on a reference sequence, which can be a subset of a larger sequence, such as a conserved motif, coding region, or flanking region. A reference sequence will usually be at least about 18 nt long, more usually at least about 30 nt long, and can extend to the complete sequence that is being compared. Such homologous nucleic acid sequences will be detected by hybridization under low stringency conditions, for example, at 50° C. and 10×SSC (0.9 M NaCl/0.09 M sodium citrate) and remain bound when subject to washing at 55° C. with 1×SSC.

For expression, the DNA sequences can be inserted into an appropriate expression vector, where the native transcription initiation region can be employed or an exogenous transcriptional initiation region. The promoter can be introduced by

recombinant methods in vitro, or as the result of homologous integration of the sequence into a chromosome. A wide variety of transcriptional initiation regions are known for a wide variety of expression hosts, where the expression hosts can involve prokaryotes or eukaryotes, particularly *E. coli*, *B. subtilis*, mammalian cells, such as CHO cells, COS cells, monkey kidney cells, lymphoid cells, particularly human cell lines, and the like. Generally a selectable marker operative in the expression host will be present. The promoter can be operably linked to the coding sequence of the genes of interest so as to produce a translatable mRNA transcript. Expression vectors have convenient restriction sites located near the promoter sequence so as to provide for the insertion of nucleic acid sequences encoding heterologous proteins. The promoters in suitable expression vectors can be either constitutive or inducible. Expression vectors for the production of fusion proteins, where the exogenous fusion peptide provides additional functionality, such as increased protein synthesis, stability, reactivity with defined antisera, or an enzyme marker, e.g., θ -galactosidase, are of particular interest.

Expression cassettes can be prepared comprising the transcription initiation region, which can be constitutive or inducible, with or without an enhancer sequence, including the endogenous or heterologous enhancer sequence, the AC133 gene or fragment thereof, and a transcriptional termination region, optionally having a signal for attachment of a poly A sequence. The gene can be genomic, including the native introns, or cDNA gene, or portion thereof. Of particular interest is the use of sequences which allow for the expression of functional epitopes, usually at least about 24 nucleotides in length, more usually at least about 48 nucleotides in length, and up to the complete open reading frame of the gene.

After introduction of the DNA, the cells containing the construct can be selected by means of a selectable marker, the cells expanded and then used for expression. Where secretion is desired, a signal peptide can be joined to the sequence encoding the subject proteins or fragments thereof, whereby the protein will be expressed, translocated through the cell membrane, and processed to remove the signal peptide.

The expression cassettes can be introduced into a variety of vectors, where the vectors will normally be characterized by the ability to provide selection of cells comprising the expression vectors. The vectors can provide for extrachromosomal maintenance, particularly as plasmids in bacteria or viruses in eukaryotic cells, or for integration, particularly in mammalian cells. Where extrachromosomal maintenance is desired, an origin sequence will be provided for the replication of the plasmid, which can be a low- or high-copy plasmid. A wide variety of markers are available for selection, particularly those which protect against toxins, more particularly against antibiotics. The particular marker which is chosen will be selected in accordance with the nature of the host, where in some cases, complementation can be employed with auxotrophic hosts, e.g., yeast. Introduction of the DNA construct can be by any convenient means, e.g., calcium-precipitated DNA, electroporation, fusion, transfection, or infection with viral vectors.

The following examples are offered by way of illustration and not by way of limitation.

EXAMPLES

Generation of the AC133 Monoclonal Antibody by Contralateral Immunization. Five New Zealand Black (NZB) mice were inoculated a total of seven times over a twenty day period, via the footpad route, with purified CD34 positive

human progenitor cells, which had been pre-incubated with phytohemagglutinin (PHA) (Gibco/BRL).

Mice were pre-immunized on Day -3 in the left hand footpad with cells that express many immunodominant but irrelevant antigens. In this case peripheral blood mononuclear cells (PBMC) were used as an irrelevant cell, as they express many antigens such as Class I HLA antigens, HLA-DR, CD15, CD26, CD29, CD31, CD36, CD44, CD45, CD58, etc., which are also expressed on hematopoietic stem cells. On day 0 PBMC are reinjected into the left footpad, and purified stem cells are injected into the right hand footpad. PBMC and purified stem cells are pre-incubated with PHA for ten minutes and washed with PBS prior to injection. Progenitor cells were isolated from a leukaphoresis pack of a cytokine mobilized donor using immunomagnetic beads. This treatment provides non-specific adjuvant effects, and obviates the need adjuvants such as Freund's. Mice are given a total of 5-8 such injections at three days intervals.

On day 21, one day after the last injection, the mouse right hand popliteal lymph nodes were removed. A lymphocyte suspension was prepared, and the cells fused to SP2/0 Ag14 myeloma cells using a modification of the method originally described by Kohler and Milstein (1975) *Nature* 256:495-497. Cells were plated on 96 well plates in DMEM+20% fetal calf serum, with 10^{-4} M hypoxanthine and 2 μ g/ml azaserine (Buck et al. (1984) in *Monoclonal Antibodies and Functional Cell Lines* Kennet et al. eds., Plenum Press, New York pp. 275-309). On day 10, visible hybridoma colonies were apparent. Supernatants (s/n) from hybridoma containing wells were screened for binding to a fetal liver cell preparation containing up to 15% CD34+ cells, using a 2 color flow cytometry assay. Binding of mouse Ig containing s/n to the test cells was traced with rat anti-mouse Ig-conjugated to phycoerythrin (IgPE) and counterstained with a known mouse anti-CD34 antibody (AC101) conjugate. FIG. 1 shows the results from this two color FACS analysis using AC133 supernatant. AC133 is shown to stain only the bright CD34 positive cells in the fetal liver preparation. AC133 hybridoma cells were shown to secrete an IgG1/kappa antibody. The cells were expanded in culture and stocks frozen in liquid nitrogen. AC133 cells were subcloned by limiting dilution analysis and a series of positively secreting subclones were also frozen in liquid nitrogen.

Antibody purification and conjugation. AC133 cells were initially grown as an ascites tumor in nude mice, with collection of antibody-rich ascites fluid. More recently AC133 cells have been grown to very high density in a hollow fiber culture device (Cellmax QUAD artificial capillary system, Celco Inc., Germantown, Md.). Pure IgG antibody was prepared from hollow fiber cultures or from ascites fluid by Protein A chromatography. Pure antibody was stored in 0.01M phosphate buffered saline (PBS) with 0.01% sodium azide at 4° C. This pure antibody stock was used to prepare fluorescein isothiocyanate (FITC) (Wofsy et al. (1980) in *Selected Methods in Cellular Immunology*, Mishell and Shiigi eds., W.H. Freeman and Co., San Francisco. pp. 294-295), phycoerythrin (PE) (Hardy (1986) in *Handbook of Experimental Immunology*, Weir et al., eds. Blackwell Scientific Press, Oxford. p. 31), or magnetic bead conjugates, according to standard protocols.

AC133 expression on normal tissues and cell lines. Using standard FACS staining procedures, there was no detectable staining of peripheral blood mononuclear cells, granulocytes or platelets, or human umbilical vein endothelial cells with AC133 antibody. Examination of a panel of human cell lines by FACS analysis (data shown in Table 1) showed that only three cell lines tested, the retinoblastoma cell lines Y79.1 and

WERI-Rb-1 and the teratocarcinoma cell line NT-2, expresses detectable levels of AC133 antigen.

TABLE 1

AC133 Expression on Human Cell Lines		
Cell Line	Cell Type	AC133
8402	T cell line (CD34+)	-
8866	B-LCL	-
AZ676	breast carcinosarcoma	-
BIAB	N. American Burkitts' lymphoma	-
BT474	breast tumor	-
BT549	breast tumor	-
BT20	breast tumor	-
CaCL74-36	melanoma	-
15 Daudi	B-LCL-	-
Du4475	breast tumor (CD34+)	-
HEL92.1.7	erythroleukemia	-
HL-60	promyelocytic leukemia	-
HPB-ALL	acute lymphocytic leukemia	-
HS-R	myeloma (EBV+)	-
20 HT1080	fibrosarcoma	-
HT29	colon adenocarcinoma	-
IM-9	B-LCL	-
JM	T cell line	-
Jurkat	T cell line	-
KG1a	acute myelogenous leukemia (CD34+)	-
25 KG1	acute myelogenous leukemia (CD34+)	-
KG1a.5	acute myelogenous leukemia (CD34+)	-
K562	erythroleukemia	-
MOLT-4	T cell line	-
MCF-7	breast tumor	-
Raji	B-LCL	-
30 RPMI 8226	myeloma	-
SK HEP-1	hepatoma	-
U937	histiocytic lymphoma	-
WERI-Rb-1	retinoblastoma	+
Y79.1	retinoblastoma	+
NT-2	teratocarcinoma	+

Activation of Y79.1 cells with PMA was found to increase the expression of AC133 antigen (shown in FIG. 2). However, PMA activation of several other cell lines, or PHA activation of human PBMC was unable to induce the expression of AC133 antigen (data are shown in Table 2). AC133 antigen expression was not detectable on any of the CD34+ cell lines tested. This finding, along with the lack of CD34 expression on the Y79.1 cell line (shown in FIG. 3), excludes the possibility that AC133 is directed to the CD34 antigen. AC133 antigen expression is limited to primitive stem and progenitor cells, unlike the CD34 antigen, which is also expressed on endothelium and fibroblasts (Krause et al. (1996) *Blood* 87:1-13).

The AC133 antigen is expressed on the CD34^{bright} population of human progenitor cells isolated from fetal and adult bone marrow, fetal liver, cord blood, leukaphoresis (LP) packs and LP packs from cytokine mobilized donors. Typically it stains 30-50% of all CD34+ cells in these populations.

TABLE 2

Activation of Cell Lines						
Addition of PMA at 1 ng/ml for:						
	0 hr	24 hr	48 hr	72 hr	96 hr	144 hr
Y79.1	dim+	+	+	+	+	+
KG1a	-	-	-	-	-	N/A
K562	-	-	-	-	-	N/A
HEL92.1.7	-	-	-	-	N/A	N/A
Jurkat	-	-	-	N/A	N/A	N/A
65 8402	-	N/A	N/A	-	N/A	N/A

TABLE 2-continued

Activation of Cell Lines			
Addition of PWM at 10 µg/ml for:			
	0 hr	24 hr	48 hr
Y79.1	dim+	+	+
KG1a	-	-	-

Phenotyping of AC133 positive cells. Phenotyping of AC133 and CD34 double positive cells was accomplished using 2 and 3 color FACS analysis, employing a panel of conjugated antibodies directed to cell surface structures known to be expressed on progenitor cells. Fetal liver, fetal and adult bone marrow, cord blood and peripheral blood were all used to determine the precise phenotype of AC133 positive cells. AC133 cells found in all of these tissues are CD34^{bright}, CD38^{-/+} and HLA-DR^{-/+}. The data are shown in FIG. 4. The CD90 (Thy1)⁺ and CD117 (c-kit)⁺ stem cell populations are included within the AC133 positive population, as shown in FIG. 5. In a series of experiments performed with AC133 immunomagnetically purified fetal liver cells, CD38-FITC conjugated antibody stained 74.5% of the AC133 purified cells, while 24.8% were CD38 negative. As expected, HLA-DR stained the majority of the cells (81.14%). CD90 is shown to stain 27.4% of the test cells, while CD117 stained 90%. It is generally believed that primitive (repopulating) hematopoietic stem cells have the phenotype of CD34^{bright}, CD38^{dim/neg}, HLA-DR⁺, CD117^{dim} and CD90⁺. Thus, the AC133 antibody recognizes a phenotypically important population of human hematopoietic progenitor cells.

Immunoprecipitation of the AC133 antigen. Immunoprecipitation experiments showed that the AC133 antigen has a molecular weight of 120 kD. Biotin (Pierce) labeled, activated Y79.1 and Weri-RB-1 cells were solubilized with lysis buffer: 2.5% Brij (Sigma), 25 mM Tris-HCl, pH8.0, 125 mM NaCl, 2.5 mM EDTA, 2.2 Tg/ml Aprotinin (Sigma) and 1 mM PMSF (Sigma). The lysates were incubated with AC133 and control antibodies after preclearing. Immunocomplexes were collected on *Staphylococcus aureus* cells (CalBiochem) and heated for five minutes at 95° C. in SDS-PAGE sample buffer with 1% 2-mercaptoethanol. Immunoprecipitates were resolved by SDS-PAGE and transferred to nitrocellulose membranes (Novex). Visualization was accomplished using streptavidin linked to horseradish peroxidase (HRP) (Amersham) and the Supersignal CL-HRP substrate system (Pierce). CD49d, CD71 and CD98 were used as controls, and their expected bands of 133 kD, 92 kD and 80/40 kD were observed in the corresponding lanes. The immunoprecipitation with AC133 showed a distinct band corresponding to a molecular weight of 120 kD. This band was absent in the samples that were immunoprecipitated with the anti-CD34 antibodies AC101, HPCA1 and HPCA2, indicating that CD34 is not expressed in the Y79.1 cell line. This is consistent with the FACS data.

The data from a further experiment is shown in FIG. 6, where biotin labeled Y79.1, as well as KG1a cells, confirmed the AC133 molecular weight data by comparing CD34 and AC133 precipitates on the same gel. In this experiment, CD34 and Y79.1 antigens were precipitated from biotinylated KG1a (CD34⁺) and Y79.1 lysates in adjacent lanes. The results clearly demonstrate that 1) each antibody precipitates its own distinct antigen, and 2) that the molecular weight of these two antigens is distinctly different, being 110 and 127 kD, respectively. In control lanes 6 and 8, HPCA2 and 16D11 (anti-CD34) precipitate a band of 110 kD from KG1a lysate, but do not

precipitate anything from Y79.1 lysate (lanes 7 and 9). AC133 precipitates a 120 kD protein from the Y79.1 lysate (lane 10), but nothing from the KG1a lysate in lane 11. In lane 12, KG1a and Y79.1 lysates were mixed, and AC133 Ag and CD34 were co-precipitated. The results show that the two antigens are of different molecular weights.

AG133 magnetic bead conjugation. Purified AC133 antibody was conjugated to magnetic amino-dextran beads using a standard protocol for 4-(N-maleimidomethyl)-cyclohexane-1-carboxylic acid N-hydroxysuccinimide ester (SMCC). AC133 antibody was added to SMCC activated beads at 5 Tg per OD₄₅₀ unit, and incubated at room temperature for two hours. The reaction was stopped by the addition of 0-mercaptoethanol and NEM. The conjugate was purified over two columns in the presence of a magnetic field, and eluted. The concentration was adjusted to OD₄₅₀=10, and OPG was added for stabilization. The conjugate in PBS and 0.1% sodium azide was filtered through a 0.2 µm filter, and stored at 4° C.

Separation of human hematopoietic progenitor cells with AC133 magnetic bead conjugate. AC133 direct magnetic bead conjugates were prepared and tested on buffy coat PBMCs, fetal liver WCI, fetal bone marrow and adult bone marrow. FIG. 8 shows the FACS dot plot of fetal liver cells purified with AC133 bead conjugate using the miniMACS system and stained with glycophorin A-FITC and HPCA2-PE. The starting material contained 7.4% CD34⁺ cells, following AC133 purification, greater than 90% of AC133 purified cells were bright CD34⁺. FIG. 9 shows that AC133 magnetic conjugate was also very effective in enriching CD34⁺ cells from a buffy coat which contained about 0.26% CD34⁺ cells. The final purified population was 64% positive for CD34, as shown by HPCA2-PE staining. This ability to separate cells in a magnetic purification system enables further study of the functional and phenotypic properties of AC133.

Clonogenic potential of AC133 positive cells. AC133 magnetic beads selected cells purified from leukaphoresis packs were tested in clonogenicity assays using a commercially available kit (Stem Cell Technologies, Vancouver, B.C.). By providing a controlled growth environment utilizing recombinant human growth factors this culture assay identifies the major colony forming units (CFU) within a CD34 positive cell population. It provides information on the composition of progenitor cell populations, with respect to the relative percentages of cells committed to a particular lineage specific differentiation. Typically in peripheral blood derived CD34⁺ cell populations BFU-e (burst forming units-erythroid), and CFU-GM (colony forming units-granulocyte macrophage) are the predominant colonies recognized, being present at a 3:1 ratio. FIG. 10 shows the results from a typical clonogenicity experiment comparing AC133 and CD34 purified cells obtained from a split leukapheresis pack. Colonies obtained with unfractionated control cells are typically predominantly BFU-E (29.34%), with a smaller number of CFU-GM (5.14%). CD34 purified cells show a similar distribution with 23.3% BFU-E, and 5.58% CFU-GM. In contrast, AC133 purified cells show a different pattern, with 13.1% BFU-E and 10.2% CFU-GM. Calculations show that 58% of CFU-GM were recovered in the AC133 purified fraction, while only 13% of BFUEs were recovered.

FIG. 11 shows the results from a similar clonogenicity assay obtained following AC133 immunomagnetic purification. In this experiment, AC133 cells were positively selected, and then CD34 positive cells were positively selected from the AC133 negative flow-through. This design allowed the direct comparison of AC133⁺ cells with CD34⁺ but AC133⁻

cells from the same donor. The results indicate that 93.8% of the CFU-GM progenitors were recovered in the AC133 positive fraction, the remaining 6.2% being recovered from the CD34⁺/AC133⁻ fraction. Conversely, the CD34⁺/AC133⁻ fraction contained 78.0% of the BFU-e progenitors, while the remaining 22.0% were contained in the AC133⁺ fraction.

The above experimental results rule out the possibility that an anti-AC133 antibody is an antibody to Fc receptors, or that an anti-AC133 antibody binds to stem cells via Fc receptor uptake. Further experiments rule out the possibility that AC133 antibody staining is due to free PE. AC133 antibody does not behave like an antibody to RTK, a receptor tyrosine kinase, TIE, a tyrosine kinase that contains immunoglobulin-like domains and growth factor homology domains and which is expressed in vascular endothelial cells and hematopoietic cells. AC133 antibody also does not behave like an antibody to P-glycoprotein, a 170 kD multi-drug resistance product which is also expressed in hematopoietic cells.

We have shown that AC133 antibody recognizes an antigen expressed only on bright CD34⁺ cells in bone marrow, fetal liver and peripheral blood. This antibody and its antigen do not match the molecular weight or distribution of any known CD antigen. Apart from stem cells, AC133 antibody has been shown to react with a human retinoblastoma cell line that is negative for CD34 expression. AC133 antigen is, in addition, not expressed on a number of CD34⁺ cell lines.

It is evident from the above results that the subject invention provides for a novel antigen found on primitive stem cells and a subset of hematopoietic progenitor cells, as well as antibodies that specifically bind to the antigen. Expression of the antigen is highly tissue specific. It is only detected on a subset of hematopoietic progenitor cells, and is present on substantially all cells that are active in the CFU-GM assay. This highly specific distribution of AC133 antigen makes it exceptionally useful as a reagent for isolating and characterizing human hematopoietic progenitor and stem cells.

Purification and characterization of the AC133 antigen. The purification and characterization of the AC133 antigen, as well as the isolation of a cDNA clone is described here. Protein and nucleic acid sequence analysis of this molecule indicate that the AC133 antigen is the first described member of a new class of transmembrane receptors, having 5 transmembrane domains with little if any homology to known G-protein coupled 7 transmembrane family members.

Antibody AC133 was prepared and purified as described above and conjugated to CNBr activated sepharose. CNBr activated sepharose was purchased from Pharmacia (Alameda, Calif.), and mAb AC133 affinity resin was prepared per the manufacturer's procedure using a 25 minute ligand coupling reaction. The COS-7 and the WERI-Rb-1 retinoblastoma cell lines were obtained from American Type Culture Collection (Rockville, Md.). Custom primers were synthesized by Operon Technologies (Alameda, Calif.).

Purification of the AC133 Antigen. The AC133 antigen was isolated from 96 hour PMA activated Y79 retinoblastoma cells (commercially available, for example, from ATCC). Cells (2×10^9) were washed with PBS and lysed in 0.125M NaCl, 25 mM Tris pH 8, 0.005% NaN₃, 2.5 mM EDTA, and 2.5% Brij 99/96 (2:1) detergent containing 1.0 mM phenylmethyl sulfonylfluoride (PMSF) and a 1/1000 dilution of a 2.2 mg/ml solution of aprotinin containing 4.1 trypsin inhibitor units per mg (Sigma). Cells were vortexed intermittently for 5 minutes at room temperature and then left on ice for 20 minutes. Cell nuclei and debris were removed by centrifugation at 12,000×G for 10 minutes. Lysate supernatant was filtered through a 0.2 μm filter prior to loading onto 0.5 mL mAb AC133 affinity column equilibrated in wash buffer

(0.125 M NaCl, 25 mM Tris pH 8.0, 0.01% NaN₃, 2.5 mM EDTA, 0.1% Brij). The column was washed extensively with wash buffer and the antigen was eluted in 50 mM ethanolamine pH 11.5, 0.1% Brij, 0.01% NaN₃. The pH was immediately adjusted to neutral with HCl. Passage of the antigen eluate over a 300 μl bed volume DEAE column equilibrated in wash buffer removed many of contaminating proteins, and a second affinity chromatography step using an AC133 antibody column as described above resulted in >95% pure AC133 antigen amenable to proteolysis and protein sequence analysis. The purity and identity of AC133 antigen was confirmed by sodium dodecyl sulfate-polyacrylamide gel electrophoresis (SDS-PAGE) and Western analysis (Towbin, H., T. Staehelin, and J. Gordon (1979) PNAS 76, 4350-4354; Towbin, H. and J. Gordon (1984) J. Immunol. Meth 72:313-340).

Endoglycosidase treatment of the purified AC133 antigen. One microgram of AC133 antigen was resuspended in 50 μl water and 125 μl 0.1 M 2-mercaptoethanol and 0.5% SDS. The protein was denatured at 100° C. for 5 minutes. Denatured mixture (35 μl) was added to each of 5 tubes, together with 25 μl 0.5 M Tris pH 8, 10 μl water, 10 μl 10% NP-40. 0-0.1 unit PNGase F (Sigma) was added to each tube, and the tubes were incubated at 30° C. overnight. Deglycosylated antigen was visualized on a silver stained SDS-polyacrylamide gel.

Lysyl endopeptidase digestion of the AC133 Antigen and isolation of peptides. AC 133 antigen was precipitated from 1.4 mL of 2 μg/mL affinity column eluate by the addition of TCA to 10%. The precipitated dry protein was suspended in 25 μL of solution digest buffer (8M urea, 400 mM Tris pH 7.8), to which 5 μl of 45 mM DTT was added and the mixture incubated at 50° C. for 15 min. After cooling to room temperature, 5 μl of 100 mM iodoacetamide was added and the mix was incubated for an additional 15 minutes. Distilled water (70 μl) was added, diluting the urea to 2 M, and 2 pmol of the lysyl endopeptidase, LysC (commercially available from Wako Chemicals, USA), was added. The digestion was carried out at 37° C. for 24 hours. Peptides were isolated by HPLC separation on a VYDAC narrowbore C18 reverse phase column with a 4-32% acetonitrile gradient in 0.1% trifluoroacetic acid (TFA).

Protein sequence analysis of AC133 antigen peptides. N-terminal sequence analysis was determined using Edman chemistry (Edman, P., Begg, G. (1967) Eur. J. Biochem. 1, 80-91; Huwrick, R. M., Hunkapillar, M. W., Hood, L. E., and Dreyer, W. J. (1987) J. Biol. Chem. 256, p. 7990) on an Applied Biosystems 477A or 473A liquid pulse protein sequenator. PTH-Amino acids were separated on a Brownlee C-18 reverse phase column (2.1 mm×22 cm) at 55° C. in buffer A (3.5% tetrahydrofuran with addition of 2 to 4% ABI Premix Buffer concentrate from Applied Biosystems to buffer B (acetonitrile), with a 12-36% buffer B linear gradient over 18 min, followed by a 13 min. isocratic period at 36% B.

Isolation and protein sequencing of the AC133 antigen. The 120 kD AC133 antigen was isolated by immunoaffinity chromatography from a retinoblastoma cell line, Y79, which was PMA activated for 96 hours prior to harvest. Sequential affinity chromatography and DEAE chromatography were utilized to generate >95% pure AC133 antigen by SDS-PAGE and silver staining and the identity of the purified molecule as the AC133 antigen was confirmed by Western blotting. Deglycosylation of the antigen with PNGase F to remove N-linked sugar shows that approximately 30 kD of the molecular weight is due to glycosylation. Repeated initial attempts to sequence the N-terminus of the AC133 antigen failed, suggesting that this protein is amino-terminally

blocked. However, digestion of the purified antigen with lysyl endopeptidase followed by reverse phase HPLC, yielded four peptide sequences with lengths of 12-16 amino acids. Searches of the major protein and nucleic acid databases with the peptide and resulting degenerate oligonucleotide sequences indicated that the AC133 antigen could not be identified with any described molecules. (The amino acid sequence has now been deduced from cDNA cloning and is shown in FIG. 12.)

cDNA Cloning. Total RNA was isolated from WERI-Rb-1 retinoblastoma cells (available from the American Type Culture Collection; Rockville, Md.) and poly A⁺ RNA was prepared using the Poly A⁺ Tract System (Promega Corp., Madison, Wis.). cDNA was synthesized (Guebler, U. and B. J. Hoffman (1983) *Gene* 25:263) using superscript reverse transcriptase (GIBCO BRL, Gaithersburg, Md.) and an oligo dT primer. The blunted cDNA was ligated to nonself-complementary Bst XI adaptors and gel purified to remove unligated adaptors and small fragments. The Tinkered cDNA was then ligated into the pCDNA-I expression vector (Invitrogen, San Diego, Calif.) and electroporated into *Escherichia coli* strain MC1061/P3 (Dower, W. J. (1990) *Genetic Engineering* V. 12 Edited by J. K. Seflow, Plenum Press, New York 275-295. (Electroporation of Bacteria: a general approach to genetic transformation); Ausubel, F. M., R. Brent, R. E. Kingston, D. D. Moore, J. G. Seidman, J. A. Smith and K. Struhl. 1987-1994 *Current Protocols in Molecular Biology*. John Wiley Sons; N.Y.). WERI-Rb-1 library cDNA (10 ng/reaction) was used as a PCR template with 100 µmol each degenerate sense and antisense primers designed from the protein sequence of four AC133 antigen peptides. PCR reactions were carried out in buffer (50 mM KCl, 10 mM Tris pH 9, 0.1% Triton X-100, 1.5 mM MgCl₂, 0.2 mM (each) dNTP's) with 5 units of Taq DNA polymerase per reaction (Promega Corp, Madison, Wis.). Amplification was carried out in an MJ research (data) instrument as follows: 92° C. for 1 min, 55-37° C. for 1 min, 72° C. for 3 min, 35 cycles. After amplification the reaction mixtures were run on 1% agarose gels, and unique bands not appearing in the individual primer controls were gel purified and cloned into pCR 2.1 using a TA Cloning Kit (Invitrogen, San Diego, Calif.). The 5' and 3' ends of the gene were isolated by hemi-specific PCR with nested sets of AC133 antigen gene specific primers and library specific primers. Twenty cycles of single-stranded PCR were performed with each gene specific primer in a 50 µl reaction volume with 100 ng of the library cDNA and 10 pmol each primer in PCR reaction buffer (described above) with 5 units of Taq polymerase. An aliquot (10 µl) of this reaction mix was removed and used as template for a second, 35 cycle, PCR reaction using both the gene specific primer and the library specific primer. An aliquot (5 µl) of this PCR reaction mix was then used for another 35 cycles of reaction using nested library and gene specific primers. Bands corresponding to the 5' and 3' ends of the gene were gel purified and cloned into pCR 2.1. Overlapping cDNA clones were sequenced by the dideoxy chain reaction using fluorescent dye terminators and an ABI sequencer (Applied Biosystems, Foster City, Calif.)

Isolation of a cDNA clone of the AC133 antigen. To isolate the cDNA for this protein, a cDNA library was prepared from the WERI-Rb-1 retinoblastoma cell line that expresses approximately 10-fold more AC133 antigen than PMA activated Y79 cells. Degenerate primers were used in low stringency PCR reactions with the library to yield a 1.7 kb fragment that contained the correct sequence of peptide 3 at the 5' end and the correct sequence of peptide 4 at the 3' prime end. Additionally, the sequence of peptide 2 was found within the fragment in the correct reading frame. Hemi-specific PCR

with gene specific primers and library specific primers yielded additional 1.2 kb and 2 kb fragments corresponding to the 5' and 3' ends of the gene and overlapping with the initial 1.7 kb clone.

Sequencing of the three partial clones yielded a 4 kb cDNA containing an open reading frame of 3.0 kb, but also containing a 128 bp intron that appears to be associated with the poly A⁺ version of the gene, and does not contain eukaryotic consensus splice sequences. To isolate an intact stem cell derived clone without the intron, AC133⁺ stem cells were isolated from fetal liver utilizing a magnetic conjugate of mAb AC133 and the Miltenyi magnetic separation system Miltenyi Biotec, GMBH). Total RNA was isolated from these cells, and used as a template for RT-PCR reactions. Primers designed to span the intron generate a single 582 bp fragment with the poly A⁺ derived cDNA template, but generate a single 454 bp fragment without the intron from total RNA in AC133⁺ cell lines (FIG. 3), suggesting that the spliced mRNA is the major product within the total RNA pool. RT-PCR was utilized to generate cDNA clones originating before the start methionine and containing the complete cDNA sequence. The full length cDNA encoding AC133 antigen predicts a protein of 863 amino acids with a molecular weight of 96.8 kD (FIG. 4). Hydrophobicity analysis of the sequence (FIG. 5) and transmembrane helix algorithms indicate that the protein spans the cell membrane a total of five times (FIG. 6) predicting the presence of two large (255 and 280 amino acids) extracellular loops and a C-terminal cytoplasmic tail. Other structural features suggested by the protein sequence include leucine zipper motifs in both of the putative large extracellular loops and six consensus sequences for N-glycosylation.

Expression of the AC133 antigen in transfected COS-7 cells. AC133 positive cells (1×10⁷) were isolated from fetal liver as described above. Total RNA was isolated using RNAzol (Gibco BRL, Gaithersburg, Md.) as described (Chomczynski, P. and Sacchi, N. (1987) *Anal. Biochem.* 162, 156). RT-PCR was performed using the Promega Access RT-PCR system (Promega Corp, Madison, Wis.) with 10 ng total RNA template and primers directed before the start methionine and after the stop codon. The 2.8 kb band corresponding to the coding region of the gene was cloned into the Invitrogen directional eukaryotic TA cloning vector (pCR 3.1) containing the CMV promoter. Subconfluent COS-7 cells (available from the ATCC, Rockville, Md.) were transfected with 5 µg of cloned DNA by electroporation and incubated for 48 hours prior to FACS analysis. Transfected COS-7 cells were stained with 50 ng/100 µl test mAb AC133-PE, and analyzed with a Becton Dickinson (San Jose, Calif.) FACS scan.

Expression of the AC133 antigen in COS cells. COS cells transfected with the AC133 antigen gene were stained with mAb AC133-PE and analyzed by FACS (FIG. 7). Cos cells transfected with the AC133 antigen gene stain brightly with mAb AC133-PE, however, untransfected cells, cells transfected with empty vector or the gene for CD-8 do not stain with this antibody.

AC133 expression in various lymphoid and non-lymphoid cell lines. The presence of AC133 antigen transcript in a variety of cell lines was assessed by Northern analysis. Northern blot analysis was performed by using Clontech (Palo Alto, Calif.) multiple tissue northern blots, and by resolving RNA samples on a 1% agarose-2M formaldehyde gel and capillary blotting overnight into nylon membrane. Total RNA was isolated with Tri Reagent, and 15 µg was loaded per lane. Staining of the blot with methylene blue was used to monitor RNA

concentrations. An 800 bp EcoRI fragment of the cDNA was labelled with 32P-dCTP by random priming and used as a probe.

The presence of AC133 antigen transcript in a variety of cell lines was assessed by Northern analysis. A 4.4 kB mRNA transcript was detectable in WERI-Rb-1 cells as well as Y79 cells and MACS-isolated AC133+ fetal liver cells. While expression of the AC133 antigen is enhanced in Y79 cells upon PMA activation, the corresponding mRNA appears to be downregulated. In normal hemopoietic tissue, the AC133 antigen message is detectable in fetal liver, and weakly detectable in adult bone marrow as expected due to the fact that AC133+ cells in these tissues are in a minority. The AC133 antigen transcript was also noted in non-lymphoid tissues, particularly in pancreas, kidney, and placenta. Weaker signals were observed for liver, lung, brain, and heart. This is in contrast to immunohistochemical staining of paraffin tissue sections where AC133 antigen expression was detectable only in bone marrow.

In a similar manner, other antibodies have been developed that are specific for the AC133 antigen. The following table shows antibodies, immunogens, isotypes, and cross blocking for a panel of such antibodies.

Antibody	Immunogen	Isotype	AC133 cross blocking
AC133	HSC	IgG1 kappa	+++
AC139	WERI-Rb-1	IgG1 kappa	+++
AC140	WERI-Rb-1	IgG1 kappa	+/-
AC141	WERI-Rb-1	IgG1 kappa	-
AC142	WERI-Rb-1	IgG1 kappa	ND

All publications and patent applications cited in this specification are herein incorporated by reference as if each individual publication or patent application were specifically and individually indicated to be incorporated by reference.

Although the foregoing invention has been described in some detail by way of illustration and example for purposes of clarity of understanding, it will be readily apparent to those of ordinary skill in the art in light of the teachings of this invention that certain changes and modifications can be made thereto without departing from the spirit or scope of the appended claims.

SEQUENCE LISTING

(1) GENERAL INFORMATION:

(iii) NUMBER OF SEQUENCES: 2

(2) INFORMATION FOR SEQ ID NO: 1:

(i) SEQUENCE CHARACTERISTICS:

- (A) LENGTH: 3804 base pairs
- (B) TYPE: nucleic acid
- (C) STRANDEDNESS: double
- (D) TOPOLOGY: linear

(ii) MOLECULE TYPE: cDNA

(iii) HYPOTHETICAL: NO

(ix) FEATURE:

- (A) NAME/KEY: CDS
- (B) LOCATION: 38..2633

(xi) SEQUENCE DESCRIPTION: SEQ ID NO: 1:

```

CCAAGTTCTA CCTCATGTTT GGAGGATCTT GCTAGCT ATG GCC CTC GTA CTC GGC      55
                Met Ala Leu Val Leu Gly
                1                5

TCC CTG TTG CTG CTG GGG CTG TGC GGG AAC TCC TTT TCA GGA GGG CAG      103
Ser Leu Leu Leu Leu Gly Leu Cys Gly Asn Ser Phe Ser Gly Gly Gln
    10                15                20

CCT TCA TCC ACA GAT GCT CCT AAG GCT TGG AAT TAT GAA TTG CCT GCA      151
Pro Ser Ser Thr Asp Ala Pro Lys Ala Trp Asn Tyr Glu Leu Pro Ala
    25                30                35

ACA AAT TAT GAG ACC CAA GAC TCC CAT AAA GCT GGA CCC ATT GGC ATT      199
Thr Asn Tyr Glu Thr Gln Asp Ser His Lys Ala Gly Pro Ile Gly Ile
    40                45                50

CTC TTT GAA CTA GTG CAT ATC TTT CTC TAT GTG GTA CAG CCG CGT GAT      247
Leu Phe Glu Leu Val His Ile Phe Leu Tyr Val Val Gln Pro Arg Asp
    55                60                65                70

TTC CCA GAA GAT ACT TTG AGA AAA TTC TTA CAG AAG GCA TAT GAA TCC      295
Phe Pro Glu Asp Thr Leu Arg Lys Phe Leu Gln Lys Ala Tyr Glu Ser
    75                80                85

AAA ATT GAT TAT GAC AAG CCA GAA ACT GTA ATC TTA GGT CTA AAG ATT      343

```

-continued

Lys	Ile	Asp	Tyr	Asp	Lys	Pro	Glu	Thr	Val	Ile	Leu	Gly	Leu	Lys	Ile		
		90						95					100				
GTC	TAC	TAT	GAA	GCA	GGG	ATT	ATT	CTA	TGC	TGT	GTC	CTG	GGG	CTG	CTG	391	
Val	Tyr	Tyr	Glu	Ala	Gly	Ile	Ile	Leu	Cys	Cys	Val	Leu	Gly	Leu	Leu		
		105					110					115					
TTT	ATT	ATT	CTG	ATG	CCT	CTG	GTG	GGG	TAT	TTC	TTT	TGT	ATG	TGT	CGT	439	
Phe	Ile	Ile	Leu	Met	Pro	Leu	Val	Gly	Tyr	Phe	Phe	Cys	Met	Cys	Arg		
		120				125					130						
TGC	TGT	AAC	AAA	TGT	GGT	GGA	GAA	ATG	CAC	CAG	CGA	CAG	AAG	GAA	AAT	487	
Cys	Cys	Asn	Lys	Cys	Gly	Gly	Glu	Met	His	Gln	Arg	Gln	Lys	Glu	Asn		
		135			140					145				150			
GGG	CCC	TTC	CTG	AGG	AAA	TGC	TTT	GCA	ATC	TCC	CTG	TTG	GTG	ATT	TGT	535	
Gly	Pro	Phe	Leu	Arg	Lys	Cys	Phe	Ala	Ile	Ser	Leu	Leu	Val	Ile	Cys		
				155				160						165			
ATA	ATA	ATA	AGC	ATT	GGC	ATC	TTC	TAT	GGT	TTT	GTG	GCA	AAT	CAC	CAG	583	
Ile	Ile	Ile	Ser	Ile	Gly	Ile	Phe	Tyr	Gly	Phe	Val	Ala	Asn	His	Gln		
			170				175						180				
GTA	AGA	ACC	CGG	ATC	AAA	AGG	AGT	CGG	AAA	CTG	GCA	GAT	AGC	AAT	TTC	631	
Val	Arg	Thr	Arg	Ile	Lys	Arg	Ser	Arg	Lys	Leu	Ala	Asp	Ser	Asn	Phe		
		185					190					195					
AAG	GAC	TTG	CGA	ACT	CTC	TTG	AAT	GAA	ACT	CCA	GAG	CAA	ATC	AAA	TAT	679	
Lys	Asp	Leu	Arg	Thr	Leu	Leu	Asn	Glu	Thr	Pro	Glu	Gln	Ile	Lys	Tyr		
		200				205					210						
ATA	TTG	GCC	CAG	TAC	AAC	ACT	ACC	AAG	GAC	AAG	GCG	TTC	ACA	GAT	CTG	727	
Ile	Leu	Ala	Gln	Tyr	Asn	Thr	Thr	Lys	Asp	Lys	Ala	Phe	Thr	Asp	Leu		
		215			220					225				230			
AAC	AGT	ATC	AAT	TCA	GTG	CTA	GGA	GGC	GGA	ATT	CTT	GAC	CGA	CTG	AGA	775	
Asn	Ser	Ile	Asn	Ser	Val	Leu	Gly	Gly	Gly	Ile	Leu	Asp	Arg	Leu	Arg		
			235					240						245			
CCC	AAC	ATC	ATC	CCT	GTT	CTT	GAT	GAG	ATT	AAG	TCC	ATG	GCA	ACA	GCG	823	
Pro	Asn	Ile	Ile	Pro	Val	Leu	Asp	Glu	Ile	Lys	Ser	Met	Ala	Thr	Ala		
		250					255						260				
ATC	AAG	GAG	ACC	AAA	GAG	GCG	TTG	GAG	AAC	ATG	AAC	AGC	ACC	TTG	AAG	871	
Ile	Lys	Glu	Thr	Lys	Glu	Ala	Leu	Glu	Asn	Met	Asn	Ser	Thr	Leu	Lys		
		265				270						275					
AGC	TTG	CAC	CAA	CAA	AGT	ACA	CAG	CTT	AGC	AGC	AGT	CTG	ACC	AGC	GTG	919	
Ser	Leu	His	Gln	Gln	Ser	Thr	Gln	Leu	Ser	Ser	Ser	Leu	Thr	Ser	Val		
		280				285						290					
AAA	ACT	AGC	CTG	CGG	TCA	TCT	CTC	AAT	GAC	CCT	CTG	TGC	TTG	GTG	CAT	967	
Lys	Thr	Ser	Leu	Arg	Ser	Ser	Leu	Asn	Asp	Pro	Leu	Cys	Leu	Val	His		
		295			300					305				310			
CCA	TCA	AGT	GAA	ACC	TGC	AAC	AGC	ATC	AGA	TTG	TCT	CTA	AGC	CAG	CTG	1015	
Pro	Ser	Ser	Glu	Thr	Cys	Asn	Ser	Ile	Arg	Leu	Ser	Leu	Ser	Gln	Leu		
			315						320					325			
AAT	AGC	AAC	CCT	GAA	CTG	AGG	CAG	CTT	CCA	CCC	GTG	GAT	GCA	GAA	CTT	1063	
Asn	Ser	Asn	Pro	Glu	Leu	Arg	Gln	Leu	Pro	Pro	Val	Asp	Ala	Glu	Leu		
			330				335						340				
GAC	AAC	GTT	AAT	AAC	GTT	CTT	AGG	ACA	GAT	TTG	GAT	GGC	CTG	GTC	CAA	1111	
Asp	Asn	Val	Asn	Asn	Val	Leu	Arg	Thr	Asp	Leu	Asp	Gly	Leu	Val	Gln		
		345				350						355					
CAG	GGC	TAT	CAA	TCC	CTT	AAT	GAT	ATA	CCT	GAC	AGA	GTA	CAA	CGC	CAA	1159	
Gln	Gly	Tyr	Gln	Ser	Leu	Asn	Asp	Ile	Pro	Asp	Arg	Val	Gln	Arg	Gln		
		360				365					370						
ACC	ACG	ACT	GTC	GTA	GCA	GGT	ATC	AAA	AGG	GTC	TTG	AAT	TCC	ATT	GGT	1207	
Thr	Thr	Thr	Val	Val	Ala	Gly	Ile	Lys	Arg	Val	Leu	Asn	Ser	Ile	Gly		
					380					385				390			
TCA	GAT	ATC	GAC	AAT	GTA	ACT	CAG	CGT	CTT	CCT	ATT	CAG	GAT	ATA	CTC	1255	
Ser	Asp	Ile	Asp	Asn	Val	Thr	Gln	Arg	Leu	Pro	Ile	Gln	Asp	Ile	Leu		
			395					400						405			
TCA	GCA	TTC	TCT	GTT	TAT	GTT	AAT	AAC	ACT	GAA	AGT	TAC	ATC	CAC	AGA	1303	

-continued

Ser	Ala	Phe	Ser	Val	Tyr	Val	Asn	Asn	Thr	Glu	Ser	Tyr	Ile	His	Arg	
			410					415					420			
AAT	TTA	CCT	ACA	TTG	GAA	GAG	TAT	GAT	TCA	TAC	TGG	TGG	CTG	GGT	GGC	1351
Asn	Leu	Pro	Thr	Leu	Glu	Glu	Tyr	Asp	Ser	Tyr	Trp	Trp	Leu	Gly	Gly	
			425				430					435				
CTG	GTC	ATC	TGC	TCT	CTG	CTG	ACC	CTC	ATC	GTG	ATT	TTT	TAC	TAC	CTG	1399
Leu	Val	Ile	Cys	Ser	Leu	Leu	Thr	Leu	Ile	Val	Ile	Phe	Tyr	Tyr	Leu	
			440				445				450					
GGC	TTA	CTG	TGT	GGC	GTG	TGC	GGC	TAT	GAC	AGG	CAT	GCC	ACC	CCG	ACC	1447
Gly	Leu	Leu	Cys	Gly	Val	Cys	Gly	Tyr	Asp	Arg	His	Ala	Thr	Pro	Thr	
			455		460					465					470	
ACC	CGA	GGC	TGT	GTC	TCC	AAC	ACC	GGA	GGC	GTC	TTC	CTC	ATG	GTT	GGA	1495
Thr	Arg	Gly	Cys	Val	Ser	Asn	Thr	Gly	Gly	Val	Phe	Leu	Met	Val	Gly	
			475					480						485		
GTT	GGA	TTA	AGT	TTC	CTC	TTT	TGC	TGG	ATA	TTG	ATG	ATC	ATT	GTG	GTT	1543
Val	Gly	Leu	Ser	Phe	Leu	Phe	Cys	Trp	Ile	Leu	Met	Ile	Ile	Val	Val	
			490				495						500			
CTT	ACC	TTT	GTC	TTT	GGT	GCA	AAT	GTG	GAA	AAA	CTG	ATC	TGT	GAA	CCT	1591
Leu	Thr	Phe	Val	Phe	Gly	Ala	Asn	Val	Glu	Lys	Leu	Ile	Cys	Glu	Pro	
			505				510					515				
TAC	ACG	AGC	AAG	GAA	TTA	TTC	CGG	GTT	TTG	GAT	ACA	CCC	TAC	TTA	CTA	1639
Tyr	Thr	Ser	Lys	Glu	Leu	Phe	Arg	Val	Leu	Asp	Thr	Pro	Tyr	Leu	Leu	
			520				525				530					
AAT	GAA	GAC	TGG	GAA	TAC	TAT	CTC	TCT	GGG	AAG	CTA	TTT	AAT	AAA	TCA	1687
Asn	Glu	Asp	Trp	Glu	Tyr	Tyr	Leu	Ser	Gly	Lys	Leu	Phe	Asn	Lys	Ser	
			535		540				545					550		
AAA	ATG	AAG	CTC	ACT	TTT	GAA	CAA	GTT	TAC	AGT	GAC	TGC	AAA	AAA	AAT	1735
Lys	Met	Lys	Leu	Thr	Phe	Glu	Gln	Val	Tyr	Ser	Asp	Cys	Lys	Lys	Asn	
			555					560					565			
AGA	GGC	ACT	TAC	GGC	ACT	CTT	CAC	CTG	CAG	AAC	AGC	TTC	AAT	ATC	AGT	1783
Arg	Gly	Thr	Tyr	Gly	Thr	Leu	His	Leu	Gln	Asn	Ser	Phe	Asn	Ile	Ser	
			570					575					580			
GAA	CAT	CTC	AAC	ATT	AAT	GAG	CAT	ACT	GGA	AGC	ATA	AGC	AGT	GAA	TTG	1831
Glu	His	Leu	Asn	Ile	Asn	Glu	His	Thr	Gly	Ser	Ile	Ser	Ser	Glu	Leu	
			585				590					595				
GAA	AGT	CTG	AAG	GTA	AAT	CTT	AAT	ATC	TTT	CTG	TTG	GGT	GCA	GCA	GGA	1879
Glu	Ser	Leu	Lys	Val	Asn	Leu	Asn	Ile	Phe	Leu	Leu	Gly	Ala	Ala	Gly	
			600			605					610					
AGA	AAA	AAC	CTT	CAG	GAT	TTT	GCT	GCT	TGT	GGA	ATA	GAC	AGA	ATG	AAT	1927
Arg	Lys	Asn	Leu	Gln	Asp	Phe	Ala	Ala	Cys	Gly	Ile	Asp	Arg	Met	Asn	
			615		620				625					630		
TAT	GAC	AGC	TAC	TTG	GCT	CAG	ACT	GGT	AAA	TCC	CCC	GCA	GGA	GTG	AAT	1975
Tyr	Asp	Ser	Tyr	Leu	Ala	Gln	Thr	Gly	Lys	Ser	Pro	Ala	Gly	Val	Asn	
			635					640						645		
CTT	TTA	TCA	TTT	GCA	TAT	GAT	CTA	GAA	GCA	AAA	GCA	AAC	AGT	TTG	CCC	2023
Leu	Leu	Ser	Phe	Ala	Tyr	Asp	Leu	Glu	Ala	Lys	Ala	Asn	Ser	Leu	Pro	
			650					655					660			
CCA	GGA	AAT	TTG	AGG	AAC	TCC	CTG	AAA	AGA	GAT	GCA	CAA	ACT	ATT	AAA	2071
Pro	Gly	Asn	Leu	Arg	Asn	Ser	Leu	Lys	Arg	Asp	Ala	Gln	Thr	Ile	Lys	
			665				670					675				
ACA	ATT	CAC	CAG	CAA	CGA	GTC	CTT	CCT	ATA	GAA	CAA	TCA	CTG	AGC	ACT	2119
Thr	Ile	His	Gln	Gln	Arg	Val	Leu	Pro	Ile	Glu	Gln	Ser	Leu	Ser	Thr	
			680			685					690					
CTA	TAC	CAA	AGC	GTC	AAG	ATA	CTT	CAA	CGC	ACA	GGG	AAT	GGA	TTG	TTG	2167
Leu	Tyr	Gln	Ser	Val	Lys	Ile	Leu	Gln	Arg	Thr	Gly	Asn	Gly	Leu	Leu	
			695		700				705					710		
GAG	AGA	GTA	ACT	AGG	ATT	CTA	GCT	TCT	CTG	GAT	TTT	GCT	CAG	AAC	TTC	2215
Glu	Arg	Val	Thr	Arg	Ile	Leu	Ala	Ser	Leu	Asp	Phe	Ala	Gln	Asn	Phe	
			715					720					725			
ATC	ACA	AAC	AAT	ACT	TCC	TCT	GTT	ATT	ATT	GAG	GAA	ACT	AAG	AAG	TAT	2263

-continued

Ile Thr Asn Asn Thr Ser Ser Val Ile Ile Glu Glu Thr Lys Lys Tyr	
730 735 740	
GGG AGA ACA ATA ATA GGA TAT TTT GAA CAT TAT CTG CAG TGG ATC GAG	2311
Gly Arg Thr Ile Ile Gly Tyr Phe Glu His Tyr Leu Gln Trp Ile Glu	
745 750 755	
TTC TCT ATC AGT GAG AAA GTG GCA TCG TGC AAA CCT GTG GCC ACC GCT	2359
Phe Ser Ile Ser Glu Lys Val Ala Ser Cys Lys Pro Val Ala Thr Ala	
760 765 770	
CTA GAT ACT GCT GTT GAT GTC TTT CTG TGT AGC TAC ATT ATC GAC CCC	2407
Leu Asp Thr Ala Val Asp Val Phe Leu Cys Ser Tyr Ile Ile Asp Pro	
775 780 785 790	
TTG AAT TTG TTT TGG TTT GGC ATA GGA AAA GCT ACT GTA TTT TTA CTT	2455
Leu Asn Leu Phe Trp Phe Gly Ile Gly Lys Ala Thr Val Phe Leu Leu	
795 800 805	
CCG GCT CTA ATT TTT GCG GTA AAA CTG GCT AAG TAC TAT CGT CGA ATG	2503
Pro Ala Leu Ile Phe Ala Val Lys Leu Ala Lys Tyr Tyr Arg Arg Met	
810 815 820	
GAT TCG GAG GAC GTG TAC GAT GAT GTT GAA ACT ATA CCC ATG AAA AAT	2551
Asp Ser Glu Asp Val Tyr Asp Asp Val Glu Thr Ile Pro Met Lys Asn	
825 830 835	
ATG GAA AAT GGT AAT AAT GGT TAT CAT AAA GAT CAT GTA TAT GGT ATT	2599
Met Glu Asn Gly Asn Asn Gly Tyr His Lys Asp His Val Tyr Gly Ile	
840 845 850	
CAC AAT CCT GTT ATG ACA AGC CCA TCA CAA CAT T GATAGCTGAT	2643
His Asn Pro Val Met Thr Ser Pro Ser Gln His	
855 860 865	
GTTGAAACTG CTTGAGCATC AGGATACTCA AAGTGGAAG GATCACAGAT TTTTGGTAGT	2703
TTCTGGGTCT ACAAGGACTT TCCAAATCCA GGAGCAACGC CAGTGGCAAC GTAGTGACTC	2763
AGGCGGGCAC CAAGGCAACG GCACCATTTG TCTCTGGGTA GTGCTTTAAG AATGAACACA	2823
ATCACGTIAT AGTCCATGGT CCATCACTAT TCAAGGATGA CTCCTCCCT TCCTGTCTAT	2883
TTTTGTTTTT TACTTTTTTA CACTGAGTTT CTATTTAGAC ACTACAACAT ATGGGGTGTT	2943
TGTTCCCATT GGATGCATTT CTATCAAAAC TCTATCAAT GTGATGGCTA GATTCTAACA	3003
TATTGCCATG TGTGGAGTGT GCTGAACACA CACCAGTTTA CAGGAAAGAT GCATTTTGTG	3063
TACAGTAAAC GGTGTATATA CCTTTTGTTA CCACAGAGTT TTTTAAACAA ATGAGTATTA	3123
TAGGACTTTC TTCTAAATGA GCTAAATAAG TCACCATTGA CTTCTTGGTG CTGTTGAAAA	3183
TAATCCATTT TCACTAAAAG TGTGTGAAAC CTACAGCATA TTCTTCACGC AGAGATTTTC	3243
ATCTATTATA CTTTATCAAA GATTGGCCAT GTTCCACTTG GAAATGGCAT GCAAAAGCCA	3303
TCATAGAGAA ACCTGCGTAA TCACATCTGA CAAATTCAAA AGAGAGAGAG AGATCTTGAG	3363
AGAGAAATGC TGTTCGTTCA AAAGTGGAGT TGTTTAAACA GATGCCAATT ACGGTGTACA	3423
GTTTAAACAGA GTTTTCTGTT GCATTAGGAT AACATTAAAT TGGAGTGCAG CTAACATGAG	3483
TATCATCAGA CTAGTATCAA GTGTTCTAAA ATGAAATATG AGAAGATCCT GTCACAATTC	3543
TTAGATCTGG TGTCACGAT GGATGAAACC TTTGAGTTTG GTCCTTAAAT TTGCATGAAA	3603
GCACAAGGTA AATATTCATT TGCTTCAGGA GTTTCATGTT GGATCTGTCA TTATCAAAAAG	3663
TGATCAGCAA TGAAGAACTG GTCGGACAAA ATTTAACGTT GATGTAATGG AATTCCAGAT	3723
GTAGGCATTC CCCCCAGGTC TTTTCATGTG CAGATTGCAG TTCTGATTCA TTTGAATAAA	3783
AAGGAACTTG GAAAAAAA A	3804

(2) INFORMATION FOR SEQ ID NO: 2:

(i) SEQUENCE CHARACTERISTICS:

(A) LENGTH: 865 amino acids

-continued

(B) TYPE: amino acid
(D) TOPOLOGY: linear

(ii) MOLECULE TYPE: protein

(xi) SEQUENCE DESCRIPTION: SEQ ID NO: 2:

```

Met Ala Leu Val Leu Gly Ser Leu Leu Leu Leu Gly Leu Cys Gly Asn
 1           5           10           15
Ser Phe Ser Gly Gly Gln Pro Ser Ser Thr Asp Ala Pro Lys Ala Trp
          20           25           30
Asn Tyr Glu Leu Pro Ala Thr Asn Tyr Glu Thr Gln Asp Ser His Lys
          35           40           45
Ala Gly Pro Ile Gly Ile Leu Phe Glu Leu Val His Ile Phe Leu Tyr
          50           55           60
Val Val Gln Pro Arg Asp Phe Pro Glu Asp Thr Leu Arg Lys Phe Leu
          65           70           75           80
Gln Lys Ala Tyr Glu Ser Lys Ile Asp Tyr Asp Lys Pro Glu Thr Val
          85           90           95
Ile Leu Gly Leu Lys Ile Val Tyr Tyr Glu Ala Gly Ile Ile Leu Cys
          100          105          110
Cys Val Leu Gly Leu Leu Phe Ile Ile Leu Met Pro Leu Val Gly Tyr
          115          120          125
Phe Phe Cys Met Cys Arg Cys Cys Asn Lys Cys Gly Gly Glu Met His
          130          135          140
Gln Arg Gln Lys Glu Asn Gly Pro Phe Leu Arg Lys Cys Phe Ala Ile
          145          150          155          160
Ser Leu Leu Val Ile Cys Ile Ile Ile Ser Ile Gly Ile Phe Tyr Gly
          165          170          175
Phe Val Ala Asn His Gln Val Arg Thr Arg Ile Lys Arg Ser Arg Lys
          180          185          190
Leu Ala Asp Ser Asn Phe Lys Asp Leu Arg Thr Leu Leu Asn Glu Thr
          195          200          205
Pro Glu Gln Ile Lys Tyr Ile Leu Ala Gln Tyr Asn Thr Thr Lys Asp
          210          215          220
Lys Ala Phe Thr Asp Leu Asn Ser Ile Asn Ser Val Leu Gly Gly Gly
          225          230          235          240
Ile Leu Asp Arg Leu Arg Pro Asn Ile Ile Pro Val Leu Asp Glu Ile
          245          250          255
Lys Ser Met Ala Thr Ala Ile Lys Glu Thr Lys Glu Ala Leu Glu Asn
          260          265          270
Met Asn Ser Thr Leu Lys Ser Leu His Gln Gln Ser Thr Gln Leu Ser
          275          280          285
Ser Ser Leu Thr Ser Val Lys Thr Ser Leu Arg Ser Ser Leu Asn Asp
          290          295          300
Pro Leu Cys Leu Val His Pro Ser Ser Glu Thr Cys Asn Ser Ile Arg
          305          310          315          320
Leu Ser Leu Ser Gln Leu Asn Ser Asn Pro Glu Leu Arg Gln Leu Pro
          325          330          335
Pro Val Asp Ala Glu Leu Asp Asn Val Asn Asn Val Leu Arg Thr Asp
          340          345          350
Leu Asp Gly Leu Val Gln Gln Gly Tyr Gln Ser Leu Asn Asp Ile Pro
          355          360          365
Asp Arg Val Gln Arg Gln Thr Thr Thr Val Val Ala Gly Ile Lys Arg
          370          375          380
Val Leu Asn Ser Ile Gly Ser Asp Ile Asp Asn Val Thr Gln Arg Leu

```

-continued

385	390	395	400
Pro Ile Gln Asp	Ile Leu Ser Ala Phe Ser Val Tyr Val Asn Asn Thr		
	405	410	415
Glu Ser Tyr Ile His Arg Asn Leu Pro Thr Leu Glu Glu Tyr Asp Ser			
	420	425	430
Tyr Trp Trp Leu Gly Gly Leu Val Ile Cys Ser Leu Leu Thr Leu Ile			
	435	440	445
Val Ile Phe Tyr Tyr Leu Gly Leu Leu Cys Gly Val Cys Gly Tyr Asp			
	450	455	460
Arg His Ala Thr Pro Thr Thr Arg Gly Cys Val Ser Asn Thr Gly Gly			
	465	470	475
Val Phe Leu Met Val Gly Val Gly Leu Ser Phe Leu Phe Cys Trp Ile			
	485	490	495
Leu Met Ile Ile Val Val Leu Thr Phe Val Phe Gly Ala Asn Val Glu			
	500	505	510
Lys Leu Ile Cys Glu Pro Tyr Thr Ser Lys Glu Leu Phe Arg Val Leu			
	515	520	525
Asp Thr Pro Tyr Leu Leu Asn Glu Asp Trp Glu Tyr Tyr Leu Ser Gly			
	530	535	540
Lys Leu Phe Asn Lys Ser Lys Met Lys Leu Thr Phe Glu Gln Val Tyr			
	545	550	555
Ser Asp Cys Lys Lys Asn Arg Gly Thr Tyr Gly Thr Leu His Leu Gln			
	565	570	575
Asn Ser Phe Asn Ile Ser Glu His Leu Asn Ile Asn Glu His Thr Gly			
	580	585	590
Ser Ile Ser Ser Glu Leu Glu Ser Leu Lys Val Asn Leu Asn Ile Phe			
	595	600	605
Leu Leu Gly Ala Ala Gly Arg Lys Asn Leu Gln Asp Phe Ala Ala Cys			
	610	615	620
Gly Ile Asp Arg Met Asn Tyr Asp Ser Tyr Leu Ala Gln Thr Gly Lys			
	625	630	635
Ser Pro Ala Gly Val Asn Leu Leu Ser Phe Ala Tyr Asp Leu Glu Ala			
	645	650	655
Lys Ala Asn Ser Leu Pro Pro Gly Asn Leu Arg Asn Ser Leu Lys Arg			
	660	665	670
Asp Ala Gln Thr Ile Lys Thr Ile His Gln Gln Arg Val Leu Pro Ile			
	675	680	685
Glu Gln Ser Leu Ser Thr Leu Tyr Gln Ser Val Lys Ile Leu Gln Arg			
	690	695	700
Thr Gly Asn Gly Leu Leu Glu Arg Val Thr Arg Ile Leu Ala Ser Leu			
	705	710	715
Asp Phe Ala Gln Asn Phe Ile Thr Asn Asn Thr Ser Ser Val Ile Ile			
	725	730	735
Glu Glu Thr Lys Lys Tyr Gly Arg Thr Ile Ile Gly Tyr Phe Glu His			
	740	745	750
Tyr Leu Gln Trp Ile Glu Phe Ser Ile Ser Glu Lys Val Ala Ser Cys			
	755	760	765
Lys Pro Val Ala Thr Ala Leu Asp Thr Ala Val Asp Val Phe Leu Cys			
	770	775	780
Ser Tyr Ile Ile Asp Pro Leu Asn Leu Phe Trp Phe Gly Ile Gly Lys			
	785	790	795
Ala Thr Val Phe Leu Leu Pro Ala Leu Ile Phe Ala Val Lys Leu Ala			
	805	810	815

-continued

Lys	Tyr	Tyr	Arg	Arg	Met	Asp	Ser	Glu	Asp	Val	Tyr	Asp	Asp	Val	Glu
			820					825					830		
Thr	Ile	Pro	Met	Lys	Asn	Met	Glu	Asn	Gly	Asn	Asn	Gly	Tyr	His	Lys
		835					840					845			
Asp	His	Val	Tyr	Gly	Ile	His	Asn	Pro	Val	Met	Thr	Ser	Pro	Ser	Gln
	850					855					860				
His															
865															

What is claimed is:

1. A composition comprising (a) an isolated cell expressing an AC133 cell surface antigen having SEQ ID NO:2 and (b) an antibody, or antigen-binding fragment thereof, that specifically binds said cell surface antigen, complexed with said cell surface antigen.
2. The composition of claim 1 wherein the cell is a teratocarcinoma cell.
3. The composition of claim 1 wherein the cell is a retinoblastoma cell.
4. The composition of claim 1 wherein the cell is of neural crest origin.
5. The composition of claim 1 wherein the cell is a recombinant COS-7 cell expressing SEQ ID NO:2.
6. The composition of claim 1 wherein the cell is a hematopoietic progenitor cell.
7. The composition of claim 1 wherein the cell is a hematopoietic stem cell.
8. The composition of claim 1 wherein the cell is CD34⁺.
9. The composition of claim 1 wherein the antibody is a monoclonal antibody.
10. The composition of claim 6 wherein the monoclonal antibody is a human, murine or humanized monoclonal antibody.
11. The composition of claim 1 wherein the antibody or the antigen-binding fragment is a Fab, F(ab')₂, scFv, or single chain antibody.
12. The composition of claim 1 wherein the antibody or the antigen-binding fragment is conjugated to a label.
13. The composition of claim 12 wherein the label is selected from the group consisting of a magnetic bead, superparamagnetic microparticle, biotin, fluorochrome and hapten.

* * * * *

UNITED STATES PATENT AND TRADEMARK OFFICE

CERTIFICATE OF CORRECTION

PATENT NO. : 8,084,033 B2
APPLICATION NO. : 12/169336
DATED : December 27, 2011
INVENTOR(S) : Amy H. Yin et al.

Page 1 of 1

It is certified that error appears in the above-identified patent and that said Letters Patent is hereby corrected as shown below:

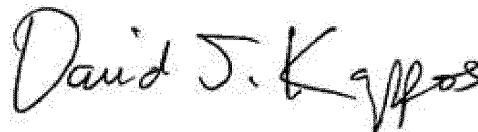
On the cover sheet, (75) Inventors, delete "Wayne G. Godfrey, Atherton, CA"

On the cover sheet, (75) Inventors, insert --Wayne R. Godfrey, Los Altos, CA--

On column 38, line 17, delete "claim 6"

On column 38, line 17, insert --claim 9--

Signed and Sealed this
Twentieth Day of March, 2012

A handwritten signature in black ink that reads "David J. Kappos". The signature is written in a cursive, flowing style with a large initial 'D' and a stylized 'K'.

David J. Kappos
Director of the United States Patent and Trademark Office

专利名称(译)	包含表达AC133细胞表面抗原的细胞和抗体或抗原结合片段的组合物		
公开(公告)号	US8084033	公开(公告)日	2011-12-27
申请号	US12/169336	申请日	2008-07-08
[标]申请(专利权)人(译)	尹AMY ^ h 米拉利亚SHERI BUCK DAVIDW		
申请(专利权)人(译)	尹AMY ^ h 米拉利亚SHERI BUCK DAVIDW		
当前申请(专利权)人(译)	AMCELL CORPORATION		
[标]发明人	YIN AMY H MIRAGLIA SHERI GODFREY WAYNE G BUCK DAVID W		
发明人	YIN, AMY H. MIRAGLIA, SHERI GODFREY, WAYNE G. BUCK, DAVID W.		
IPC分类号	A61K39/00 A61K39/395 C07K16/00 C07K17/00 C12P21/08 C12N15/02 C07K14/47 C07K14/705 C07K16/18 C07K16/28 C07K16/40 C12N5/06 C12N5/08 C12N5/10 C12N5/20 C12N15/12 G01N33/53 G01N33/569 G01N33/577		
CPC分类号	C07K14/705 C07K16/28 G01N33/56966 Y10S530/806 Y10S530/838		
代理机构(译)	KILPATRICK TOWNSEND & STOCKTON LLP		
其他公开文献	US20090093052A1		
外部链接	Espacenet USPTO		

摘要(译)

提供了包含表达AC133细胞表面抗原的细胞和特异性结合抗原的抗体或其抗原结合片段的组合物。抗原的表达是高度组织特异性的。它在源自人骨髓，胎儿骨髓和肝脏，脐带血和成人外周血的造血祖细胞和干细胞的子集上检测到。AC133识别的细胞亚群是CD34^{bright}，并且基本上包含CD34⁺群体中存在的所有CFU-GM活性。这种高度特异性的AC133分布使其作为分离和表征人造造血祖细胞和干细胞的试剂特别有用。选择用于表达AC133抗原的细胞可以通过选择其他造血干细胞和祖细胞标记物进一步纯化。

FIG.1

