



US 20110229495A1

(19) **United States**

(12) **Patent Application Publication**  
**Wagner**

(10) **Pub. No.: US 2011/0229495 A1**

(43) **Pub. Date: Sep. 22, 2011**

(54) **METHODS FOR PREDICTING  
DEVELOPMENT OF AUTO-IMMUNE  
DISEASES AND TREATMENT OF SAME**

**Publication Classification**

(76) Inventor: **David H. Wagner**, Denver, CO  
(US)

(51) **Int. Cl.**  
*A61K 39/395* (2006.01)  
*G01N 33/566* (2006.01)  
*A61K 38/02* (2006.01)  
*A61K 31/7105* (2006.01)  
*A61K 38/10* (2006.01)  
*A61K 38/16* (2006.01)  
*A61K 31/352* (2006.01)  
*A61P 37/02* (2006.01)

(21) Appl. No.: **12/397,063**

(52) **U.S. Cl.** ..... **424/173.1**; 435/7.24; 514/1.1;  
514/44 A; 514/21.5; 514/21.4; 514/455

(22) Filed: **Mar. 3, 2009**

(57) **ABSTRACT**

**Related U.S. Application Data**

(62) Division of application No. 10/563,570, filed on Aug. 25, 2006, now abandoned, filed as application No. PCT/US04/21646 on Jul. 7, 2004.

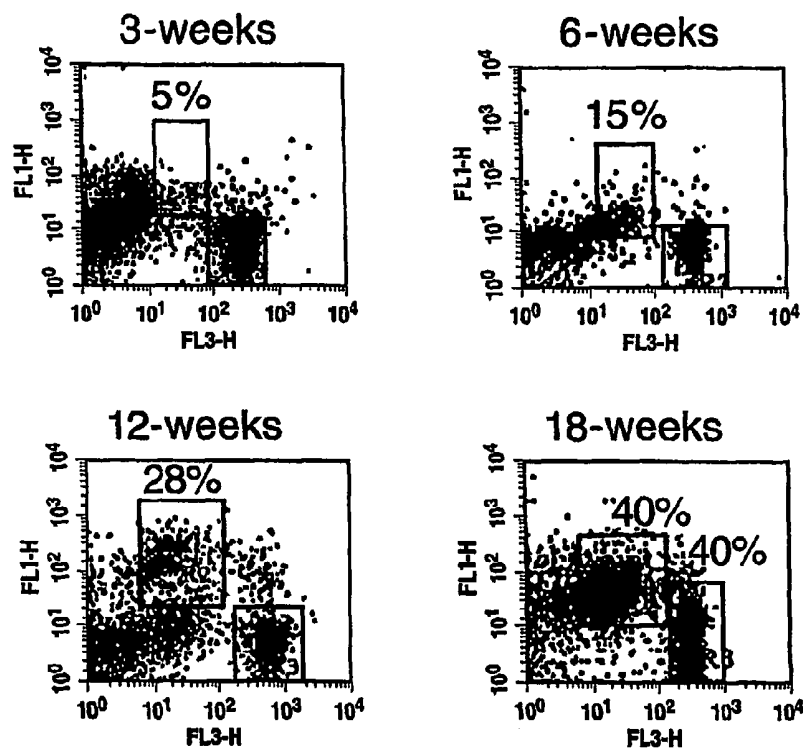
(60) Provisional application No. 60/484,655, filed on Jul. 7, 2003.

The present invention provides a new method for the prediction of, or diagnosis of, auto-immune diseases, thereby alerting the subject to the presence of, or propensity to develop, an auto-immune disease so that preventative or therapeutic regimens may be initiated or changed so as to treat, modulate or prevent expansion of the CD4<sup>lo</sup>CD40<sup>hi</sup> T cell population responsible for the destructive inflammation. The invention also discloses agents which modulate, treat or prevent expansion of CD4<sup>lo</sup>CD40<sup>hi</sup> T cells. In one embodiment, the method is predictive of type 1 diabetes.

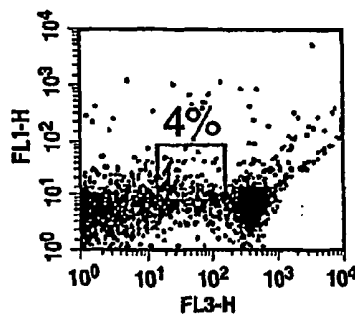
# Fig. 1

## Auto-aggressive T cells Expand as Diabetes-Prone Mice Age

### 1A. NOD

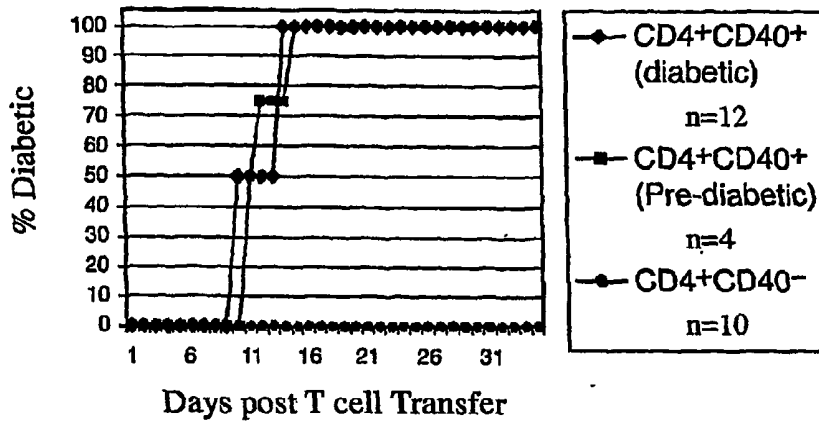


### 1B. NOD 12 weeks old after CD40—CD154 is blocked

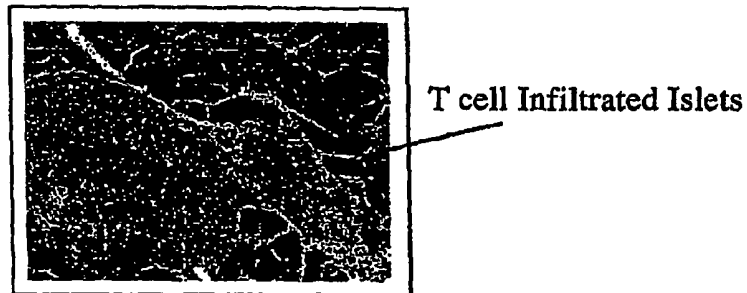


**Fig. 2**

**2A.**



**2B.** CD40<sup>+</sup> T cells recipients



**2C.** CD40-depleted T cell recipients



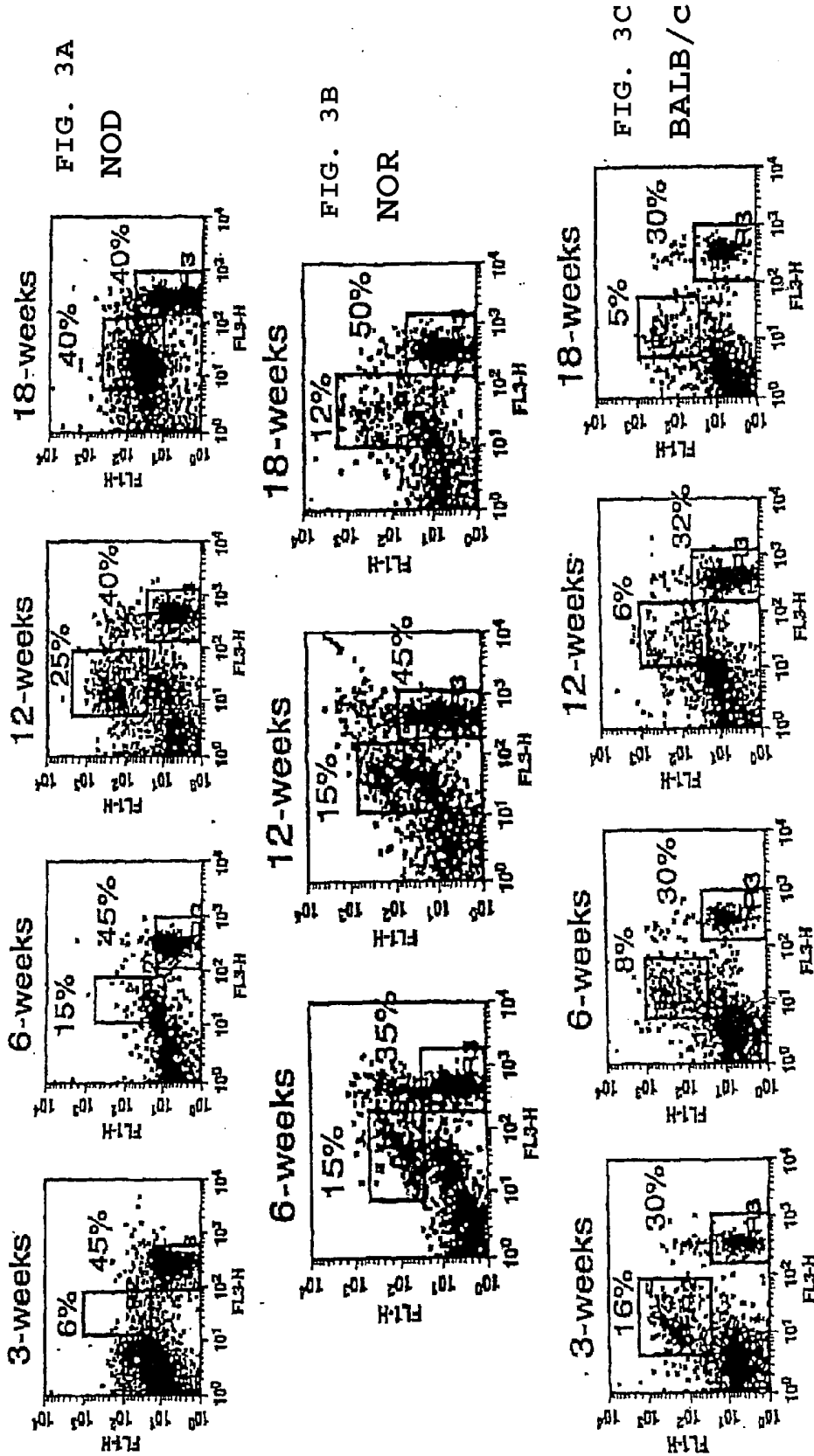
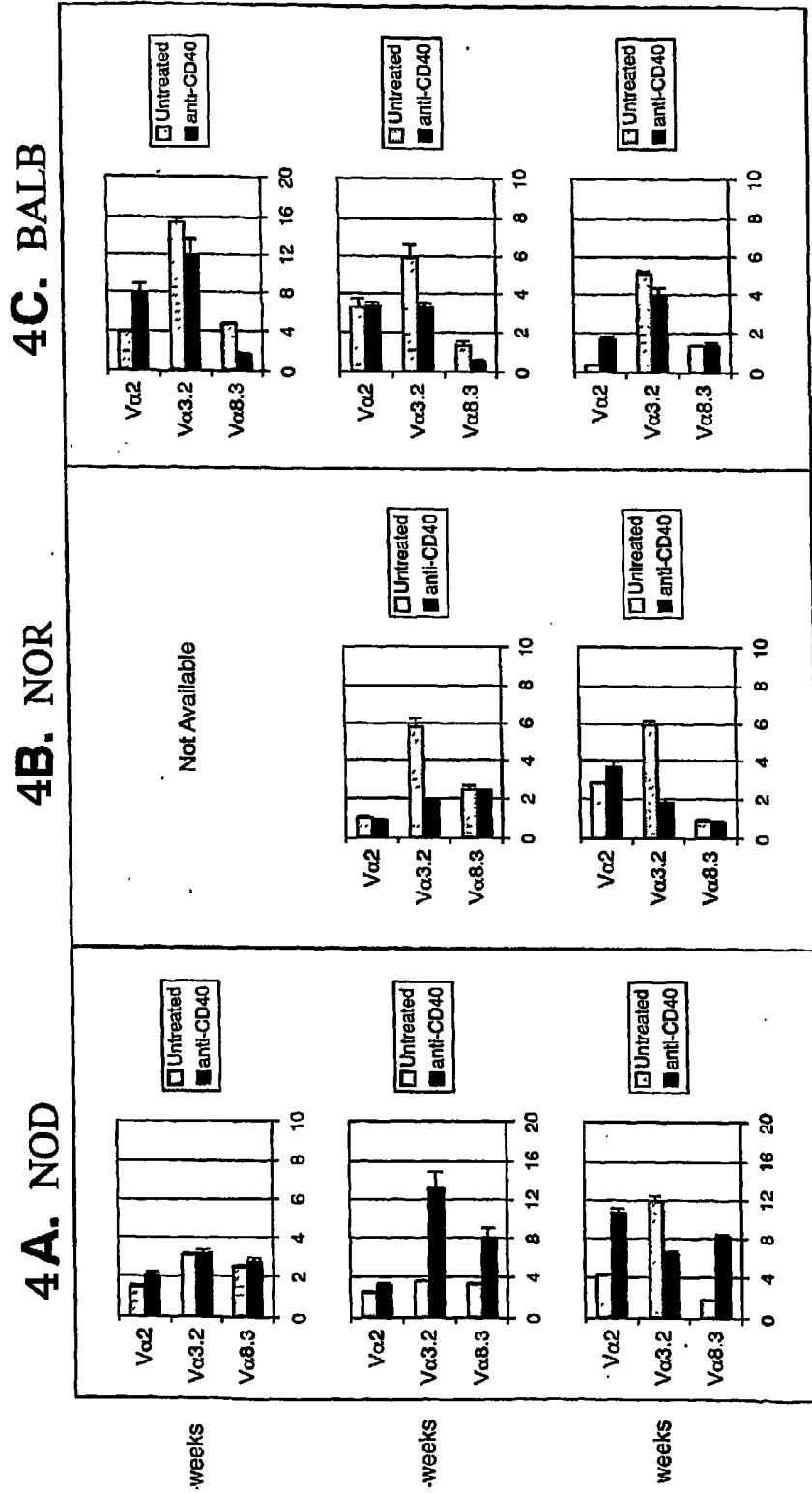


FIG. 3

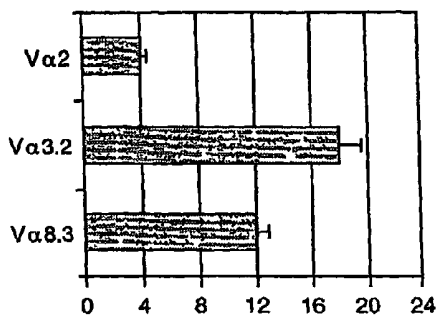
**Fig. 4**

**Percent  $V\alpha^+$  in Gated  $CD4^+CD40^+$ T cells**

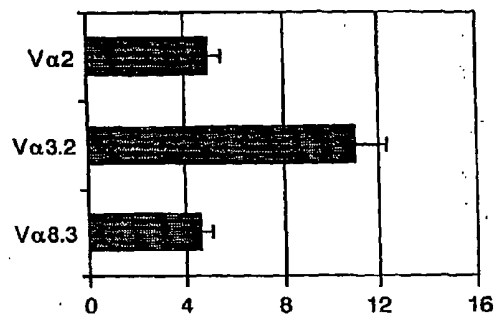


**Fig. 5**

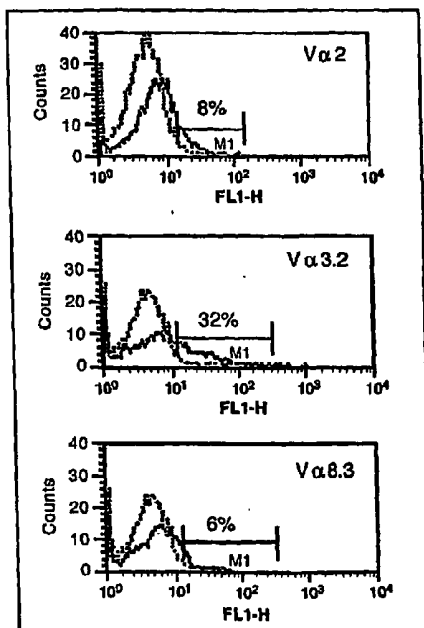
**5A.**  $V\alpha^+$  T cells in the  $CD4^+CD40^+$  Population of 12-week old, pre-diabetic NODs.



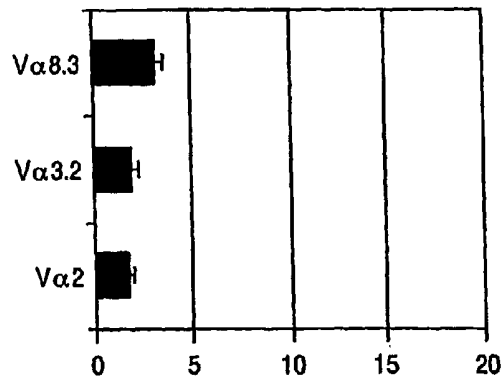
**5B.**  $V\alpha^+$  T cells in the  $CD4^+CD40^+$  Population of 20-week old, diabetic NODs.



**5C.**  $V\alpha^+$  T cells recovered from  $CD4^+CD40^+$  transfers into NOD.scid recipients.

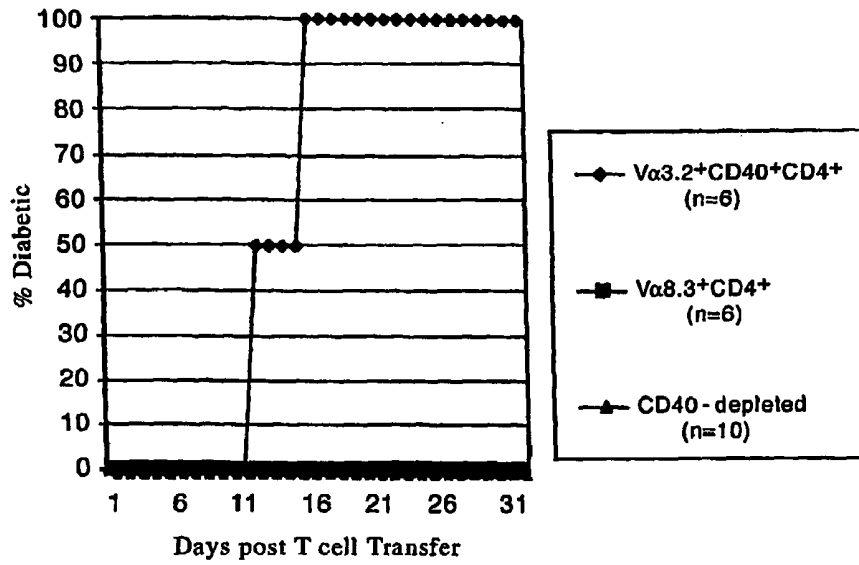


**5D.**  $V\alpha^+$  T cells recovered from  $CD4^+CD40^-$  transfers into NOD.scid recipients.

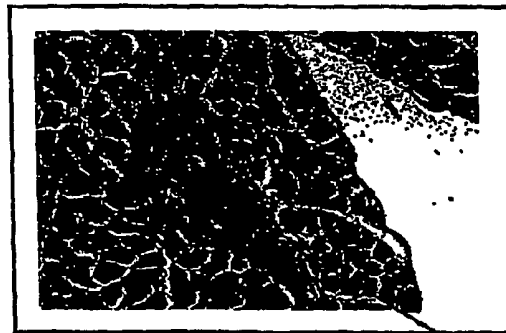


### Fig. 6

6A.

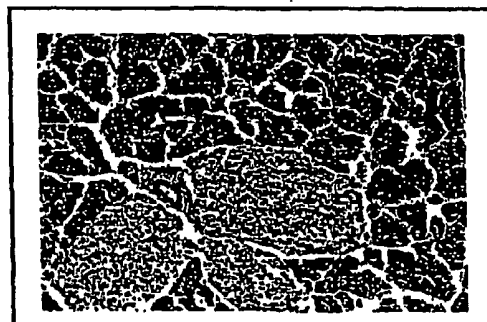


6B. Vα3.2+ Recipients



T cell infiltrates

6C. Vα8.3+ Recipients

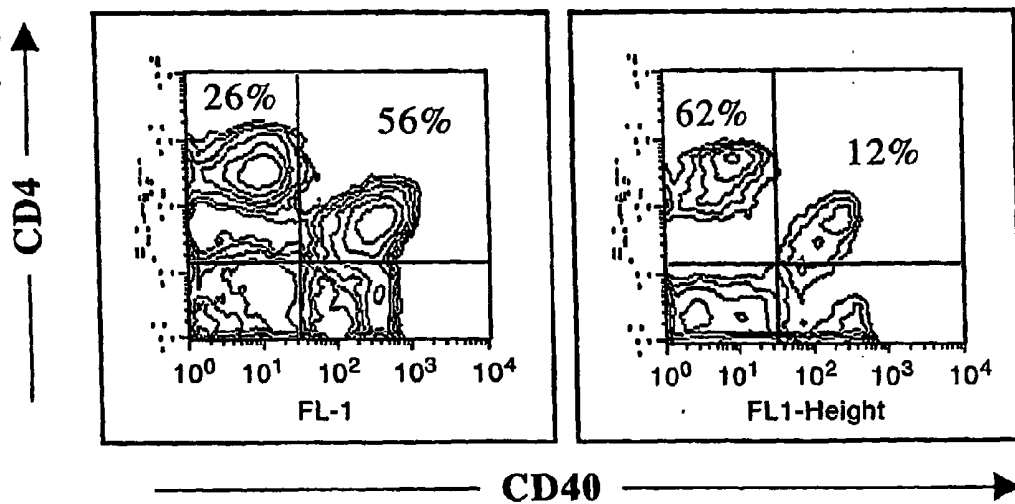


### Fig. 7

**CD4<sup>+</sup>CD40<sup>+</sup> T Cell Increases  
Are Predictive of Rheumatoid Arthritis**

**Rheumatoid  
Arthritis Patient**

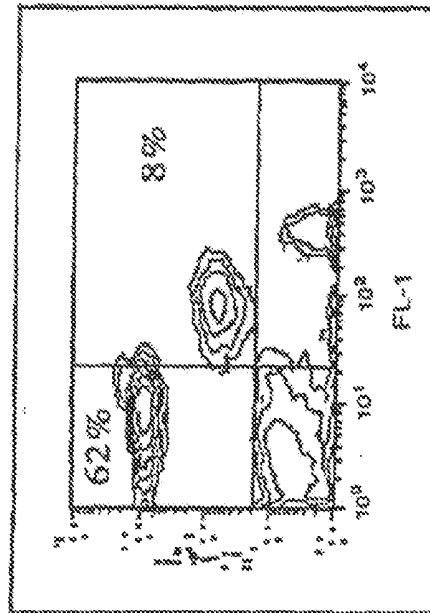
**Control Patient**



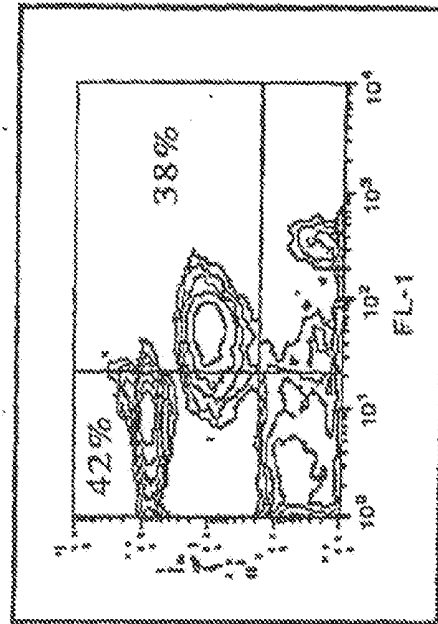
# Fig. 8

CD4<sup>+</sup>CD40<sup>+</sup> T Cell Increases  
Are Predictive of Asthma

Control Patient



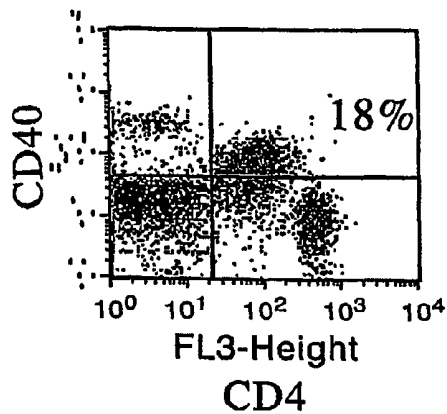
Asthma Patient



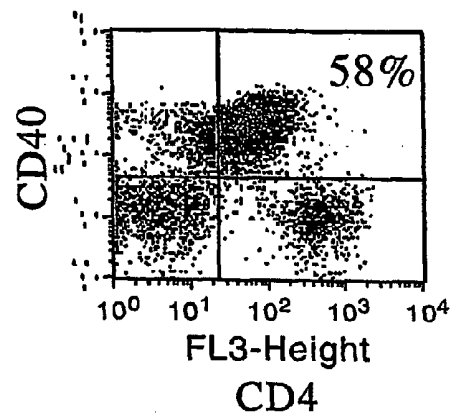
CD40

**Fig. 9**

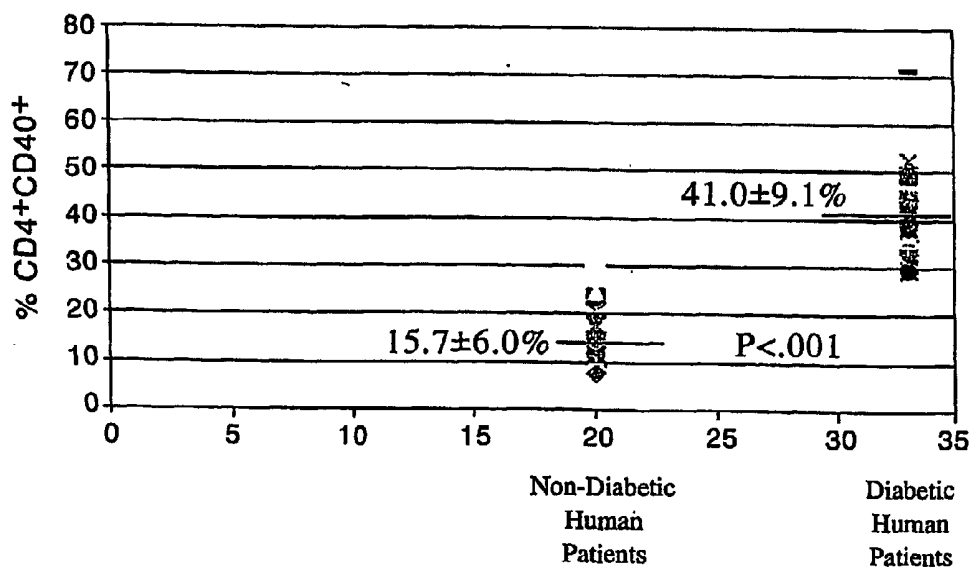
**9A.** Non-Diabetic Human Patient



**9B.** Diabetic Human Patient



**9C.** %CD4+CD40+ T cells in Diabetic versus Non-Diabetic Patients



## METHODS FOR PREDICTING DEVELOPMENT OF AUTO-IMMUNE DISEASES AND TREATMENT OF SAME

### CROSS-REFERENCE TO RELATED APPLICATIONS

[0001] This application claims the benefit of U.S. Provisional Application 60/484,655, filed Jul. 7, 2003, which is hereby incorporated by reference in its entirety.

### FIELD OF THE INVENTION

[0002] The invention relates to the fields of diagnosis and treatment of auto-immune diseases. More particularly, the present invention provides methods for determining the propensity to develop auto-immune disease(s), diagnosis of existing autoimmune diseases and provides methods and compositions for treatment of the auto-immune disease(s).

### BACKGROUND OF THE INVENTION

#### Auto-Immune Diseases

[0003] Auto-immune diseases, regardless of the nature of the particular disease, arise because the immune system of an afflicted individual responds, inappropriately, to self-tissue, as though it were an infection. This response results in persistent and cumulatively destructive inflammation leading to irreversible tissue damage.

[0004] The auto-immune nature of the disease is that T cells of the immune system mediate the process. Furthermore, a unique classification of T cell characterized as auto-aggressive is responsible for the tissue damage. The population of T cells capable of becoming auto-aggressive has recently been identified (Wagner, D. H., Jr. et al., *Int. J. Mol. Med.* 4, 231-242 (1999); Wagner, D. H., Jr. et al., *Proc. Natl. Acad. Sci. USA* 99, 3782-7 (2002), and Vaitaitis, G. M. et al., *Cutting Edge, J. Immunol.* 170, 3455-459 (2003)). T cells can be identified by the expression of certain molecules including CD4 or CD8 and the T cell receptor, TCR. It has been determined that T cells which can be identified as auto-aggressive express the molecule CD40 (Wagner, D. H., Jr. et al., (1999); Wagner, D. H., Jr. et al., (2002), and Vaitaitis, G. M. et al., (2003)).

[0005] During a normal immune response, invading pathogens such as bacteria, fungi, parasites, viri or even neoplastic tissue including tumors are processed by specific cells of the immune system (macrophages, dendritic cells) and presented to T cells to initiate a response. These "foreign" pathogens are so identified because they are not part of the normal tissue of the individual. The T cell, through a protein on its cell surface, the T cell receptor (TCR), responds to the specific antigen being presented. There is a wide range of T cells, each expressing a specific receptor. In theory, one T cell has only one specific T cell receptor. Therefore, a T cell expressing its predetermined TCR encounters antigens that are being presented. The specialized antigen presenting cells (APC) of the immune system present antigens in the context of a cell surface protein, major-histocompatibility complex (MHC) class II, also known as Human Leukocyte Antigens (HLA). When a T cell recognizes the presented antigen, it becomes activated. The process of T cell activation includes induction of proliferation and production/secretion of proteins called cytokines that are able to assist the immune response. The cytokines recruit other lymphocytes to the infection, and help

to activate cells involved in the destruction of the pathogen to establish localized inflammation and to ultimately resolve the infection.

[0006] Inflammation during infection is necessary and important to the removal of pathogens. It is only during auto-immune disease that persistent inflammation is damaging. It is necessary for an individual to maintain a collection of different TCR-expressing T cells, referred to as the T cell repertoire. This provides the necessary wide range of immunity.

[0007] While a variety of T cells provide an individual with normal immunity, in certain instances T cells arise which do not respond to foreign tissue but instead respond to an individual's self-tissue, resulting in an auto-immune disease. For instance in type 1 diabetes, afflicted patients generate T cells that react to the  $\beta$ -cells of the pancreatic islets.

[0008] These T cells respond to antigens of the  $\beta$ -cells as though the cells were foreign, establishing inflammation and tissue destruction. In this case, the  $\beta$  cell ceases to produce insulin, a hormone necessary for normal metabolic functions, and clinical hyperglycemia (elevated glucose levels) ensues. In other auto-immune diseases, similar events occur, that is, T cells respond to self-tissue as though it was foreign. This interaction establishes inflammation and eventual tissue destruction.

#### RAG Proteins in Auto-Immune Diseases

[0009] The process that generates TCR molecules involves a class of proteins termed recombination-activating-gene (RAG1 (SEQ ID NO: 2)) and RAG2 (SEQ ID NO: 4)) proteins. As T cells develop normally, the RAG proteins become activated to alter the genes for the TCR. This process occurs many times in the thymus, thus generating a wide variety of T cells capable of responding to antigens later in the periphery (Akamatsu, Y. & Oettinger, M. A., *Mol. Cell. Biol.* 18, 4670-8 (1998); Noordzij, J. et al., *Blood* 96, 203-209 (2000); and, Yannoutsos, N. et al., *J. Exp. Med.* 194, 471-80 (2001)).

[0010] The TCR is composed of a chain and  $\beta$  chain proteins (Malissen, M. et al., *Immunology Today* 13, 315-322 (1992); Chien, Y. H. & Davis, M. M., *Immunology Today* 14, 597-602 (1993)). Early during development of T cells within the thymus, the RAG proteins become activated, and migrate to the nucleus of the cell, where the proteins bind to DNA within the genes of the TCR  $\beta$ -chain, cut the DNA, and splice it back together in a way that alters the gene (Yannoutsos, N. et al., *J. Exp. Med.* 194, 471-80 (2001)). This is repeated for the  $\alpha$ -chain gene. The process is repeated numerous times in developing T cells, and thus generates different TCR molecules, referred to as the T cell repertoire. The newly generated T cells then go through processes of positive and negative selection to remove any potentially damaging T cells (Nossal, G. J. V., *Cell* 76, 229-239 (1994); von Boehmer, H., *Cell* 76, 219-228 (1994)) including auto-aggressive T cells. The "safe" T cells then migrate to peripheral organs such as spleen, lymph nodes, lung, intestine, liver, etc. to await activation once a pathogen invades the body.

[0011] It has recently been shown (see, for example, U.S. Pat. No. 6,187,584) that RAG proteins contain D35E like motifs which are similar to the D35E motifs of retroviral integrases. U.S. Pat. No. 6,187,584 discloses a site-specific DNA binding site which is highly conserved and shared between the Herpes major DNA binding proteins, the RAG proteins, and the integrases of retroviruses. The highly conserved D35E motif may be subject to pharmacological modu-

lation and agents interacting with the D35E motif may exhibit activity against retroviral integrases such as human immunodeficiency virus (HIV), and Herpes viruses, as well as immunomodulatory properties via interaction with RAG.

**[0012]** A recent report describes a new class of drugs, chaetochromins, capable of inhibiting the RAG proteins but in a non-cellular system (Melek, M. et al., *Proc. Natl. Acad. Sci. USA* 99, 134-7 (2002)). This class of drugs, also called "HIV Integrase Inhibitors," have also been described elsewhere. See, for example, U.S. Pat. Nos. 6,403,347; 6,110,716; and, WO99/40183. These drugs have been shown to be inhibitors of human immunodeficiency virus (HIV) integration (Singh, S. B. et al., *Org. Lett.* 4, 1123-6 (2002); Singh, S. B. et al., *J. Nat. Prod.* 64, 874-82 (2001)) and are believed to act by inhibiting strand transfer and cleavage activity.

#### Anti-CD40 Antibodies and Anti-CD154 Antibodies

**[0013]** The importance of CD40 in auto-immune diseases, including collagen-induced arthritis (Durie, F. H. et al., *Science* 281, 1328-1330 (1993)), chronic inflammatory diseases, including colitis (De Jong, Y. et al., *Gastroenterology* 119, 715-723 (2000)), atherosclerosis (Lutgens, E. et al., *Nat. Med.* 5, 1313-6 (1999)), and systemic lupus erythematosus (Wang, X. et al., *J. Immunol.* 168, 2046-53 (2002)) among others, continues to be expounded. It has been shown that blocking CD40-CD40 ligand (CD154) (SEQ ID NO: 6) interaction prevents rejection of islet transplants (Zheng, X. X. et al., *Transplant Proc* 31, 627-8 (1999); Molano, R. D. et al., *Transplant Proc* 33, 248-9 (2001)). T cell infiltration into the pancreas occurs in NOD mice as early as 3-4 weeks of age with extensive insulinitis at 12-weeks of age (Luhder, F. et al., *J. Exp. Med.* 187, 379-87 (1998)). Injecting 3-week old NOD mice with CD40 Ligand (CD154) blocking antibodies prevented onset of T1D but injecting NOD mice at 9-weeks of age had no effect on disease onset (Balasa, B. et al., *J. Immunol.* 159, 4620-7 (1997)). This suggests an important cellular developmental framework with regards to CD40 and diabetes that potentially involves T cells.

**[0014]** Numerous drugs are available to treat the symptoms of auto-immunity but as yet there is no approach to predict, modulate or prevent expansion of the cells responsible for the diseases and destructive inflammation. Thus, in view of the problems with the known drugs, treatment and diagnostic methods discussed above, new drugs and new methods for the prediction, diagnosis, modulation and treatment of auto-immune diseases are needed.

#### SUMMARY OF THE INVENTION

**[0015]** The present invention solves the problems discussed above and provides a new type of drug to treat the symptoms of auto-immunity. The new type of drug disclosed herein modulates, treats or prevents expansion of the cells responsible for the auto-immune disease and the destructive inflammation they cause. The present invention also provides a new method for the prediction of, or diagnosis of, auto-immune diseases, thereby alerting the subject to the presence of, or propensity to develop, an auto-immune disease so that preventive or therapeutic regimens may be initiated or changed which will treat, modulate or prevent expansion of the cell population responsible for the destructive inflammation.

**[0016]** The invention herein includes a method for determining whether a test subject has at least one auto-immune disease comprising a) obtaining blood from the predeter-

mined test subject thus obtaining a test sample; b) obtaining blood from a non-autoimmune subject thus obtaining a control sample; c) contacting the test sample and the control sample with a combination of at least one detectably-labeled anti-CD4 antibody and a least one detectably-labeled anti-CD40 antibody; d) detecting the level of CD4<sup>lo</sup> CD40<sup>hi</sup> T cells in the test sample and in the control sample; wherein when there is an increase in the level of CD4<sup>lo</sup> CD40<sup>hi</sup> T cells in the test sample as compared to the level of CD4<sup>lo</sup> CD40<sup>hi</sup> T cells in the control sample, the test subject has at least one auto-immune disease.

**[0017]** The invention here in also includes a method for determining whether a predetermined test subject is susceptible to developing at least one predetermined auto-immune disease comprising a) obtaining a first sample of blood from said predetermined test subject; b) obtaining a second sample of blood from said same subject; c) detecting the CD4<sup>lo</sup> CD40<sup>hi</sup> T cell population in said first and second samples; d) contacting said second test sample with at least one predetermined antigen indicative of at least one predetermined auto-immune disease for a length of time and in an amount sufficient to obtain a positive or negative cellular response in the CD4<sup>lo</sup> CD40<sup>hi</sup> T cell population of said second sample, e) determining whether a positive or negative cellular response occurs in the CD4<sup>lo</sup> CD40<sup>hi</sup> T cell population of said first and said second samples by measuring at least one response selected from the group consisting of CD4<sup>lo</sup> CD40<sup>hi</sup> T cell proliferation, CD4<sup>lo</sup> CD40<sup>hi</sup> T cell death and CD4<sup>lo</sup> CD40<sup>hi</sup> cytokine production, wherein when a positive response occurs in the CD4<sup>lo</sup> CD40<sup>hi</sup> T cell population of the second sample as compared to the response in the CD4<sup>lo</sup> CD40<sup>hi</sup> T cell population from the first sample, the predetermined subject is susceptible to developing the at least one predetermined autoimmune disease.

**[0018]** The invention is also directed to a method of modulating the proliferation of CD4<sup>lo</sup> CD40<sup>hi</sup> T cells in a subject in need of said modulation comprising at least one method selected from the group consisting of a) contacting said subject with at least one agent which inhibits the activation of RAG recombinase activity; b) contacting said subject with an antibody molecule, or fragment thereof, to CD40; c) contacting said subject with an antibody molecule, or fragment thereof, to CD154; d) contacting said subject with at least one blocking peptide to prevent interaction of the CD40 receptor with the CD154 ligand; e) contacting said subject with at least one RNA molecule specifically hybridizing to the RAG2 gene product; and, f) contacting said subject with at least one RNA molecule specifically hybridizing to the RAG1 gene product; wherein said contacting is for a length of time sufficient and in an amount sufficient to modulate the proliferation of CD4<sup>lo</sup> CD40<sup>hi</sup> T cells in said subject.

**[0019]** The invention is also directed to a kit for detecting CD4<sup>lo</sup> CD40<sup>hi</sup> T cells comprising a) at least one detectably labeled anti-CD4 antibody and at least one detectably labeled anti-CD40 antibody; and, b) at least one predetermined antigen indicative of at least one predetermined auto-immune disease.

#### BRIEF DESCRIPTION OF THE DRAWINGS

**[0020]** The foregoing summary, as well as the following detailed description of the invention, will be better understood when read in conjunction with the appended figures. For the purpose of illustrating the invention, shown in the figures are embodiments which are presently preferred. It

should be understood, however, that the invention is not limited to the precise arrangements, examples and instrumentalities shown.

**[0021]** FIGS. 1A-B. Auto-aggressive T cells expand as diabetes-prone mice age. (A) Expression of CD4<sup>+</sup> and CD40<sup>+</sup> on T cells of NOD mice at 3 weeks, 6 weeks, 12 weeks and 18 weeks. (B) Expression of CD4<sup>+</sup> and CD40<sup>+</sup> on T cells of NOD mice at 12 weeks after CD40-CD 154 interaction is blocked.

**[0022]** FIGS. 2A-C. Highly purified CD40<sup>+</sup> T cells transfer diabetes. (A). CD4<sup>+</sup>CD40<sup>+</sup> T cells or CD4<sup>+</sup>CD40<sup>-</sup> T cells from diabetic NOD (line with diamonds) or from pre-diabetic NOD mice (line with squares) rapidly transfers diabetes. Half of the CD40<sup>+</sup> recipients became diabetic, blood glucose (b.g.) >250 mg/ml at 10 days post injection and the remaining were diabetic by 14 days. CD40<sup>-</sup> T cell recipients did not develop diabetes through 45 days. Half of the animals receiving CD4<sup>+</sup>CD40<sup>+</sup> T cells purified from pre-diabetic mice became diabetic at 12 days, and all animals were diabetic by 15 days, with none of the CD4<sup>+</sup>CD40<sup>-</sup> recipients becoming diabetic ( $p < 0.05$ ). (B). Pancreata of NOD.scid animals receiving CD4<sup>+</sup>CD40<sup>+</sup> T cells demonstrate T cell infiltration and overall lack of insulin granules while (C), pancreata of CD4<sup>+</sup>CD40<sup>-</sup> T cell recipients show no T cell infiltration. Islet infiltration was scored with >100 islets/treatment-group examined. CD40<sup>+</sup> recipients demonstrated extensive infiltration with >95% of islets infiltrated whereas CD40<sup>-</sup> recipients had no detectable infiltrate at 15 days. Panels shown are representative of all experiments.

**[0023]** FIGS. 3A-C. Expansions in CD4<sup>+</sup>CD40<sup>+</sup> T cells as NOD mice develop. CD4 versus CD40 T cell levels in T cells from (A) NOD, (B) NOR and (C) BALB/c mice at 3-weeks, 6-weeks, 12-weeks and 18-weeks of age (Data was verified from CD3 magnetic column, Miltenyi Corp., purified cells). Gates were set from isotype controls. (A) In NOD mice at 3-weeks the CD4<sup>+</sup>CD40<sup>+</sup> population is 6% of total T cells, at 6-weeks, CD4<sup>+</sup>CD40<sup>+</sup> are 15% of total T cells, at 12-weeks CD4<sup>+</sup>CD40<sup>+</sup> are 25%, and at 18-weeks CD4<sup>+</sup>CD40<sup>+</sup> are 40% of T cells. (B) In NOR mice at 6-weeks, CD4<sup>+</sup>CD40<sup>+</sup> are 15% of total T cells, at 12-weeks CD4<sup>+</sup>CD40<sup>+</sup> are 15%, and at 18-weeks CD4<sup>+</sup>CD40<sup>+</sup> are 12% of T cells. NORs at 3-weeks were not available. (C) In BALB/c mice at 3-weeks the CD4<sup>+</sup>CD40<sup>+</sup> population is 16% of total T cells, at 6-weeks, 8% of total T cells, at 12-weeks 6%, and at 18-weeks CD4<sup>+</sup>CD40<sup>+</sup> are 5% of T cells. Data represent 3 separate experiments.

**[0024]** FIGS. 4A-C. CD40 driven expansions of specific V $\alpha$ <sup>+</sup> T cells in NOD mice. V $\alpha$ <sup>+</sup> T cells within the CD4<sup>+</sup>CD40<sup>+</sup> T cell population were determined in immediately ex vivo T cells or CD40-crosslinked T cells from (A) NOD, (B) NOR and (C) BALB/c mice, at age 3-weeks, 12-weeks and 18-weeks. Untreated (light bars) or CD40 crosslinked for 18 hrs (dark bars) T cells are represented. Data are percent V $\alpha$ <sup>+</sup> T cells only within the CD4<sup>+</sup>CD40<sup>+</sup> gated populations above appropriate isotype controls. Data are an average of 3 experiments with 3 animals in each experiment, x-axis is percent V $\alpha$ <sup>+</sup> in gated CD4<sup>+</sup>CD40<sup>+</sup> T cells.

**[0025]** FIGS. 5A-D. Expansions of V $\alpha$ 3.2<sup>+</sup> T cells in pancreata of pre-diabetic and diabetic NOD mice. Pancreata from (A) 12-week old pre-diabetic (n=4), and (B) >18-week old diabetic NOD (n=4) show expansions of V $\alpha$ 3.2<sup>+</sup> and V $\alpha$ 8.3<sup>+</sup> T cells within the gated CD4<sup>+</sup>CD40<sup>+</sup> population, above isotype controls. (C) T cells from CD4<sup>+</sup>CD40<sup>+</sup> NOD.scid recipients and from CD4<sup>+</sup>CD40<sup>-</sup> NOD.scid recipient at 15

days post injections demonstrate V $\alpha$ <sup>+</sup> expansion (solid lines) above isotype controls (dashed lines). (D) T cells from CD4<sup>+</sup>CD40<sup>-</sup> NOD.scid recipients at 15 days post injections demonstrate no significant V $\alpha$ <sup>+</sup> expansions. As in FIG. 2, data represent 3 separate experiments, n=12 for each treatment. FIG. 5 demonstrates that during autoimmune diabetes, type-1, there are expansion of specific V $\alpha$ <sup>+</sup> T cells. The numbering system is arbitrary. We have identified CD40<sup>+</sup> T cells in humans and predict there will be specific V $\alpha$ <sup>+</sup> expansions.

**[0026]** FIGS. 6A-C. Pancreatic histology from V $\alpha$ 3.2<sup>+</sup> and V $\alpha$ 8.3<sup>+</sup> NOD.scid recipients. (A) V $\alpha$ 3.2<sup>+</sup> T cells transfer diabetes but V $\alpha$ 8.3<sup>+</sup> T cells do not. V $\alpha$ 3.2<sup>+</sup> T cells were >80% CD40<sup>+</sup> while only 30% of V $\alpha$ 8.3<sup>+</sup> T cells were CD40<sup>+</sup>. As controls, CD40-depleted T cells did not transfer diabetes. As before, diabetes was considered to be a blood glucose >150 mg/ml. Pancreata from (B) V $\alpha$ 3.2<sup>+</sup> recipients demonstrate extensive infiltration and lack of insulin production. (C) V $\alpha$ 8.3<sup>+</sup> recipients did not demonstrate infiltrated islets.

**[0027]** FIGS. 7A-B. CD4<sup>+</sup>CD40<sup>+</sup> T cell increases are predictive of rheumatoid arthritis. 7A. Rheumatoid arthritis patient. 7B. Control patient. See Example 4 for details.

**[0028]** FIGS. 8A-B. CD4<sup>+</sup>CD40<sup>+</sup> T cell increases are predictive of asthma. 8A. Control patient. 8B. Asthma patient. See Example 5 for details.

**[0029]** FIGS. 9A-C. CD4<sup>+</sup>CD40<sup>+</sup> T cells are predictive for human type I diabetes. FIG. 9A. Non-Diabetic human patient. FIG. 9B. Diabetic human patient. FIG. 9C. % CD4<sup>+</sup>CD40<sup>+</sup> T cells in diabetic versus non-diabetic patients. See Example 6 for details.

## DETAILED DESCRIPTION

### Definitions

**[0030]** Unless defined otherwise, all technical and scientific terms used herein have the same meaning as commonly understood by one of ordinary skill in the art to which this invention belongs.

**[0031]** As used herein, the term “agent” refers to any compound which is pharmacologically and/or biologically active in a subject.

**[0032]** As used herein, the term “antibody” refers to intact immunoglobulins. “Antibody fragments” refers to a number of well characterized fragments produced by digestion with various peptidases. Thus, for example, pepsin digests an antibody below the disulfide linkages in the hinge region to produce F(ab)<sub>2</sub> a dimer of Fab which itself is a light chain joined to V<sub>H</sub> C<sub>H1</sub> by a disulfide bond. The F(ab)<sub>2</sub> may be reduced under mild conditions to break the disulfide linkage in the hinge region, thereby converting the F(ab)<sub>2</sub> dimer into an Fab' monomer. The Fab' monomer is essentially an Fab with part of the hinge region (see, Fundamental Immunology, Third Edition, W. E. Paul, ed., Raven Press, N.Y. 1993). While various antibody fragments are defined in terms of the digestion of an intact antibody, such fragments may be synthesized de novo either chemically or by utilizing recombinant DNA methodology. Thus, the term “antibody fragments” includes antibody fragments either produced by the modification of whole antibodies or those synthesized de novo using recombinant DNA methodologies, such as, for example, single chain Fv. See, for example, U.S. Pat. No. 6,552,181.

**[0033]** As used herein, the term “auto-aggressive T cells” refers to a population of T cells which stain positively for both the CD4<sup>+</sup> and CD40<sup>+</sup> markers. These cells exist in some low

level in normal individuals but are increased in numbers in individuals expressing, or prone to developing, auto-immune diseases.

**[0034]** As used herein, the term “auto-immune” disease refers to a disease or condition where the target of the disease is “self” or a “self antigen.” There are a number of diseases that are believed to involve T cell immunity directed to self antigens. The auto-immune disease may be triggered directly or indirectly by one or more antigens.

**[0035]** As used herein, the term “CD4<sup>+</sup>” refers to a cell surface molecule the presence or absence of which is used to describe and characterize a specific population of T cells. For example, a cell population expressing low levels of CD4 is termed “CD4<sup>low</sup>”, a cell population expressing high levels of CD4 is termed “CD4<sup>high</sup>”, and a cell population which is not detectably expressing, for example, CD4, is termed “CD4<sup>-</sup>”.

**[0036]** As used herein, the term “CD40<sup>+</sup> cell” refers to a cell surface molecule the presence or absence of which is used to describe and characterize a specific population of T cells. For example, a cell population expressing low levels of CD40 is termed “CD40<sup>low</sup>”, a cell population expressing high levels of CD40 is termed “CD40<sup>high</sup>”, and a cell population which is not detectably expressing CD40 is termed “CD40<sup>-</sup>”.

**[0037]** As used herein, the term “CD4<sup>+</sup>CD40<sup>+</sup>” refers to the T cells expressing low levels of CD4 and high levels of CD40. The term “CD4<sup>low</sup>CD40<sup>+</sup>” refers to the same cell population as the term “CD4<sup>low</sup>CD40<sup>+</sup>”.

**[0038]** As used herein, the term “CD154” refers to a cell surface molecule which is a ligand for the CD40 receptor.

**[0039]** As used herein, the term “contacting with at least one agent” should be understood to mean providing an agent of the invention or a prodrug of an agent of the invention to a subject.

**[0040]** As used herein, the term “derivative thereof” refers to a chemically modified agent wherein the chemical modification takes place at one or more functional groups of the agent and/or on an aromatic ring, when present. The derivative however is expected to retain the pharmacological activity of the agent from which it is derived.

**[0041]** As used herein, the term “detecting” refers to assaying, measuring, discovering or discerning the existence, presence or fact of a predetermined target entity, for example, CD4 or CD40.

**[0042]** As used herein, the term “detectably labeled” refers to any substance whose detection or measurement, either directly or indirectly, by physical or chemical means, is indicative of the presence of the target entity, for example, CD4 and CD40 in the test sample. Many detectable labels are known in the art and useful in the practice of the invention.

**[0043]** As used herein, the term “disease specific antigen” refers to one or more antigens known to be related to, involved with, or expressed during the existence of, a specific auto-immune disease. For example, human insulinoma cells or pancreatic tissue obtained from a pancreatic biopsy express one or more antigens specific for type 1 diabetes. Another example of an antigen which is specific for an autoimmune disease is myelin basic protein, specific for multiple sclerosis. There are numerous citations in the literature of T cells responding to whole tissue which is sufficiently descriptive for autoimmunity. See, for example, Haskins, G. E. & Records, R. E., *Nebr. Med. J.* 67, 23 (1982); Haskins, K. M., et al., *Proc. Natl. Acad. Sci. USA* 86, 8000 (1989); Haskins, K. & McDuffie, M., *Science* 249, 1433 (1990); and Haskins, K. & Wegmann, D., *Diabetes* 45, 1299 (1996).

**[0044]** As used herein, the term “propensity to develop” refers to the susceptibility, predisposition or likelihood that a particular subject will develop an auto-immune disease. Subjects susceptible to developing an auto-immune disease are also termed “auto-immune prone.” Such subjects do not exhibit detectable symptoms of an existing auto-immune disease. The auto-immune disease may not have yet developed, is inactive, or has not progressed to the point where symptoms or indications are exhibited by the subject, in which case the test is predictive of developing or expressing the auto-immune disease.

**[0045]** As used herein, the terms “RAG1” or “RAG2” refer to proteins which interact with the recombination-activation-genes (“RAG”). (Li, T. T. et al., *Eur. J. Immunol.* 32 (10), 2792-2799 (2002); Schatz, D. G. et al., *Cell* 59 (6), 1035-1048 (1989)).

**[0046]** As used herein, the term “recombinogenic” refers to the ability to catalyze or otherwise be involved with or effect recombination of nucleic acid molecules. Specifically, such recombination could include, but is not limited to DNA strand breakage and DNA strand transfer, and transposition of mobile elements. See, for example, U.S. Pat. No. 6,187,584.

**[0047]** As used herein, the term “subject” refers to an individual or patient. The subject can be any animal having or not having, predisposed or not predisposed, to developing, an auto-immune disease. Preferred subjects include humans and mammals.

**[0048]** Although any methods and materials similar or equivalent to those described herein can be used in the practice or testing of the present invention, the preferred methods and materials are described.

**[0049]** The invention herein includes a method for determining whether a test subject has at least one auto-immune disease comprising a) obtaining blood from the predetermined test subject thus obtaining a test sample; b) obtaining blood from a non-autoimmune subject thus obtaining a control sample; c) contacting the test sample and the control sample with a combination of at least one detectably-labeled anti-CD4 antibody and at least one detectably-labeled anti-CD40 antibody; d) detecting the level of CD4<sup>low</sup> CD40<sup>high</sup> T cells in the test sample and in the control sample; wherein when there is an increase in the level of CD4<sup>low</sup> CD40<sup>high</sup> T cells in the test sample as compared to the level of CD4<sup>low</sup> CD40<sup>high</sup> T cells in the control sample, the test subject has at least one auto-immune disease. In one embodiment, the method further comprises isolating the test sample CD4<sup>low</sup> CD40<sup>high</sup> T cells and the control sample CD4<sup>low</sup> CD40<sup>high</sup> T cells from part 1d) and determining the presence or absence of an increase in production of at least one cytokine in the test T cell population as compared to the sample T cell population. In another embodiment of the method, the cytokine is at least one cytokine selected from the group consisting of IL-2, IL-4, IL-6, IL-10, TGFβ and IFNγ. In a different embodiment of the method, the auto-immune disease is selected from the group consisting of type 1 diabetes, rheumatoid arthritis, lupus, multiple sclerosis, atherosclerosis, Crohn’s colitis, ulcerative gastritis, primary biliary cirrhosis, chronic obstructive pulmonary disease (COPD) and scleroderma. In a preferred embodiment, the auto-immune disease is type 1 diabetes. In a highly preferred embodiment, the COPD disease is emphysema. In one aspect of the invention, the detecting is by flowcytometry. In a highly preferred embodiment of the method, the subject is human.

**[0050]** The invention here in also includes a method for determining whether a predetermined test subject is susceptible to developing a first predetermined auto-immune disease comprising a) obtaining a first sample of blood from said predetermined test subject; b) obtaining a second sample of blood from said same subject; c) detecting the CD4<sup>lo</sup> CD40<sup>hi</sup> T cell population in said first and second samples; d) contacting said second test sample with at least one predetermined antigen indicative of at least one predetermined auto-immune disease for a length of time and in an amount sufficient to obtain a positive or negative cellular response in the CD4<sup>lo</sup> CD40<sup>hi</sup> T cell population of said second sample, e) determining whether a positive or negative cellular response occurs in the CD4<sup>lo</sup> CD40<sup>hi</sup> T cell population of said first and said second samples by measuring at least one response selected from the group consisting of CD4<sup>lo</sup> CD40<sup>hi</sup> T cell proliferation, CD4<sup>lo</sup> CD40<sup>hi</sup> T cell death and CD4<sup>lo</sup> CD40<sup>hi</sup> cytokine production, wherein when a positive response occurs in the CD4<sup>lo</sup> CD40<sup>hi</sup> T cell population of the second sample as compared to the response from the CD4<sup>lo</sup> CD40<sup>hi</sup> T cell population of the first sample, the predetermined subject is susceptible to developing the at least one predetermined autoimmune disease. In one embodiment, the T cells are isolated or purified from the first sample, the second sample or both samples. In one embodiment of the method, a positive response is an increase in CD4<sup>lo</sup> CD40<sup>hi</sup> T cell proliferation, an increase in CD4<sup>lo</sup> CD40<sup>hi</sup> T cell death and an increase in production of at least one cytokine produced by said CD4<sup>lo</sup> CD40<sup>hi</sup> T cell population. In a different embodiment of the method, the at least one cytokine is selected from the group consisting of IL-2, IL-4, IL-6, IL-10, TGF $\beta$  and IFN $\gamma$ . In a preferred embodiment of the method, the at least one preselected auto-immune disease is type 1 diabetes and said antigen is pancreatic tissue. In another embodiment, the at least one preselected auto-immune disease is rheumatoid arthritis and said antigen is synovial tissue. In different embodiment of the method, the at least one preselected auto-immune disease is multiple sclerosis and said antigen is nervous tissue. In yet another embodiment of the method, the at least one preselected auto-immune disease is scleroderma and said antigen is skin tissue. In an additional embodiment, the at least one auto-immune disease is atherosclerosis and said antigen is cardiac tissue. In a highly preferred embodiment of the method, the subject is human.

**[0051]** The invention is also directed to a method of modulating the proliferation of CD4<sup>lo</sup> CD40<sup>hi</sup> T cells in a subject in need of said modulation comprising at least one method selected from the group consisting of a) contacting said subject with at least one agent which inhibits the activation of RAG recombinase activity; b) contacting said subject with an antibody molecule, or fragment thereof, to CD40; c) contacting said subject with an antibody molecule, or fragment thereof, to CD154; d) contacting said subject with at least one blocking peptide to prevent interaction of the CD40 receptor with the CD154 ligand; e) contacting said subject with at least one RNA molecule specifically hybridizing to the RAG2 gene product; and, f) contacting said subject with at least one RNA molecule specifically hybridizing to the RAG1 gene product; wherein said contacting is for a length of time sufficient and in an amount sufficient to modulate the proliferation of CD4<sup>lo</sup> CD40<sup>hi</sup> T cells in said subject. In one embodiment of the method of in part a), at least one agent is a chaetochromin or a derivative thereof. In another embodiment of the method, in part b), the antibody fragment is an Fab

portion. In a different embodiment of the method, in part c), the antibody fragment is an Fab portion. In yet a different embodiment, in part d), the blocking peptide is selected from the group consisting of SSKTTSVLQWAEKGYTYM-SNNLVT (SEQ ID NO: 7) and QIAAHVISEASSK (SEQ ID NO: 8). In another embodiment, in part e), the RNA molecule is selected from the group consisting of

5' -AUGUCUCUGCAGAUGGUAACdAdG-3' ; (SEQ ID NO: 9)

5' -CUGUUACCAUCUGCAGAGACdAdU-3' ; (SEQ ID NO: 10)

5'GGUAGGAGAUCUUCUUG AAGdCdC-3' ; (SEQ ID NO: 11)

5'GGGAUGGGCACUGGGUCCAUGdCdU-3' ; (SEQ ID NO: 12)

5'AGCAUGGACCCAGUGCCCAUCCdCdC-3' ; (SEQ ID NO: 13) and,

5' -CUGUUACCAUCUGCA GAGACdAdU-3' . (SEQ ID NO: 14)

**[0052]** In yet another embodiment of the method, in part f), the RNA molecule is selected from the group consisting of 5'-AUGGCAGCCUCUUUCCCCACCCAdCdC-3' (SEQ ID NO: 15); 5'-GGUGGGUGGGAAAGAGGCUGCCdAdU-3' (SEQ ID NO: 16); 5'-AAACUUGCAGCUCAG-CAAAAAACdTdC-3' (SEQ ID NO: 17); 5'-GAGU-UUUUUGCUGAGCUGCAAGUdUdU-3' (SEQ ID NO: 18); 5'-GAGUUUUUUGCUGAGCUGCAAGUdUdU-3' (SEQ ID NO: 19); 5'-UCACAAAACCCUGGCCCAUG-UUdCdC-3' (SEQ ID NO: 20); and, 5'-GGAACAUGGGC-CAGGGUUUUGUdGdA-3' (SEQ ID NO: 21).

**[0053]** In a different embodiment of the method, the subject has an increased level of CD4<sup>lo</sup>CD40<sup>hi</sup> T cells as compared to the level of CD4<sup>lo</sup>CD40<sup>hi</sup> T cells in a non-auto-immune subject and the modulation is a decrease in the level of CD4<sup>lo</sup>CD40<sup>hi</sup> T cells. In a highly preferred embodiment of the method, the subject is human.

**[0054]** The invention is also directed to a kit for detecting CD4<sup>lo</sup>CD40<sup>hi</sup> T cells comprising a) at least one detectably labeled anti-CD4 antibody and at least one detectably labeled anti-CD40 antibody; and, b) at least one predetermined antigen indicative of at least one predetermined auto-immune disease.

**[0055]** We have discovered a population of T cells that cause auto-immune disease. In a diabetes animal model system, CD4<sup>+</sup> T cells which also express the CD40 molecule have been shown to be pathogenic. Isolation and purification of these cells repeatedly transfers diabetes to non-sick animals, whereas other CD4<sup>+</sup> cells that do not express the CD40 molecule do not transfer disease (Wagner, D. H., Jr. et al., (2002)). Furthermore, the pathogenic T cells have been shown to express lower levels of the CD4 molecule. We also previously determined that numerous auto-immune prone animal strains have elevated numbers of CD40-expressing CD4 T cells (Wagner, D. H., Jr. et al., (1999)). In other studies, we determined that humans have CD40-expressing T cells. Individuals that were heavy smokers or tobacco users and therefore more susceptible to respiratory disease had higher numbers of CD40-expressing T cells, consistent with the involvement of CD40-expressing T cells in disease. The mechanism by which these T cells generate TCR molecules that respond to self-tissue (Vaitaitis, G. M. et al., (2003)) has been determined. A subpopulation of T cells categorized by expression of CD40 has been discovered to be auto-aggressive. By engaging the CD40 molecule, the RAG proteins can

be activated again. That is, activation of the RAG proteins occur in peripheral T cells after the initial activation of RAG proteins during T cell development. This process causes a new TCR molecule to be expressed on the surface of the T cell (Vaitaitis, G. M. et al., (2003)).

**[0056]** CD40 engagement leads to the expression of specific TCR bearing T cells that are able to transfer diabetes. Our discovery describes a new mechanism for generating auto-aggressive T cells later in the periphery, but importantly describes that CD40 expression on auto-aggressive T cells can directly affect the RAG proteins and thus the expression of TCR molecules that can interact with self-tissue.

## I. Tests for Auto-Immune Diseases

### **[0057]** A. Diagnostic Tests

#### **[0058]** 1. Predetermined Auto-Immune Diseases

**[0059]** This invention specifically includes blood tests utilizing the characterization of auto-aggressive T cells by expression of both CD40 and low-level expression of CD4, thereby defining a new cell type. Diagnostic tests for known auto-immune diseases may be established according to the methods disclosed in this invention. The auto-immune disease may be active in a subject, in which case the test is diagnostic. This invention will diagnose known existing auto-immune diseases such as type 1 diabetes, rheumatoid arthritis, lupus, atherosclerosis, multiple sclerosis, Crohn's colitis, ulcerative gastritis, primary biliary cirrhosis and auto-immune hepatitis, for example.

#### **[0060]** 2. Auto-Immune Diseases with Unknown Cause

**[0061]** The presence of an increased level of CD4<sup>+</sup>CD40<sup>+</sup> T cells (exaggerated level) as compared to the level of cells in a non-autoimmune subject or sample or control population (the standard level) indicates the presence of an auto-immune disease in the subject having the elevated level of CD4<sup>+</sup>CD40<sup>+</sup> T cells. Thus, the method of the invention can provide a diagnosis of an existing auto-immune disease whether or not the etiology of the auto-immune disease is known.

### **[0062]** B. Predictive Tests for Auto-Immune Diseases

#### **[0063]** 1. Predetermined Auto-Immune Diseases

**[0064]** Alternatively, the auto-immune disease may not have yet developed, is inactive, or has not progressed to the point where symptoms or indications are exhibited by the subject, in which case the test is predictive of expressing the auto-immune disease. The invention also includes a blood test that will predict the susceptibility of an individual towards any predetermined auto-immune disease. This will be accomplished by a blood test kit. In a physician's office, blood samples will be taken. In a laboratory setting, the blood samples will be treated with fluorescent labeled antibodies that recognize the CD4 molecule and antibodies that recognize the CD40 molecule after the sample is contacted with one or more auto-immune disease specific antigens in an amount and for a length of time sufficient to activate the T cells of the predetermined subject. The T cells may be, but are not required to be, in purified or isolated form before contact. Cells that stain positively with both markers will be categorized as "autoaggressive." While these cells do exist in some low level in normal individuals, they are shown to be increased in "auto-immune" disease prone individuals. Therefore exaggerated levels of CD4<sup>+</sup>CD40<sup>+</sup> T cells will indicate a propensity to develop auto-immunity. Standard levels or "exaggerated" levels will be determined by establishing a normal level of CD4<sup>+</sup>CD40<sup>+</sup> T cells in non-auto-immune prone individuals. The levels of CD4<sup>+</sup>CD40<sup>+</sup> cells

are determined using any method appropriate for determining presence or absence of the CD4 and CD40 markers.

**[0065]** Auto-immune diseases for which diagnostic or predictive tests may be established according to the methods of the invention, include but are not limited to, multiple sclerosis (MS), rheumatoid arthritis (RA), systemic lupus erythematosus, atherosclerosis, Crohn's colitis, ulcerative colitis, primary biliary cirrhosis, chronic obstructive pulmonary disease (COPD) including such as for example, emphysema, allergic asthma and scleroderma, and can be any auto-immune disease for which at least one antigen is known to be involved. For example, type 1 diabetes is known to involve one or more antigens on the surface of pancreatic cells. Similarly, rheumatoid arthritis is known to involve one or more antigens expressed on the surface of synovial tissue; multiple sclerosis is known to involve one or more antigens expressed on the surface of nervous tissue; scleroderma is known to involve one or more antigens expressed on the epidermal or dermal layer of skin tissue; atherosclerosis is known to involve one or more antigens expressed on the surface of cardiac tissue; and, emphysema is known to involve one or more antigens expressed on respiratory tissue and antigens found in tobacco smoke or tobacco products. This invention will characterize the susceptibility of an individual to auto-immune diseases such as type 1 diabetes, rheumatoid arthritis, lupus, atherosclerosis, multiple sclerosis, Crohn's colitis, ulcerative gastritis, primary biliary cirrhosis and auto-immune hepatitis, for example.

**[0066]** For identifying T cells expressing CD4 and CD40, any anti-CD4 or anti-CD40 antibody, or fragment thereof, known in the art may be used. Such antibodies and fragments are commercially available. See, for example, U.S. Pat. No. 5,683,693. Also contemplated for use in the invention are peptides, oligonucleotides or a combination thereof which specifically recognize determinants, such as, for example, CD4 and CD40, with specificity similar to traditionally generated antibodies. See, for example, U.S. Pat. No. 6,365,362.

**[0067]** Representative examples of useful detectable labels, include, but are not limited to the following: molecules or ions directly or indirectly detectable based on light absorbance, fluorescence, reflectance, light scatter, phosphorescence, or luminescence properties; molecules or ions detectable by their radioactive properties; molecules or ions detectable by their nuclear magnetic resonance or paramagnetic properties. Included among the group of molecules indirectly detectable based on light absorbance or fluorescence, for example, are various enzymes which cause appropriate substrates to convert, e.g., from non-light absorbing to light absorbing molecules, or from non-fluorescent to fluorescent molecule. See, for example, U.S. Pat. No. 6,365,362.

## II. Methods of Treatment of Auto-Immune Diseases

### **[0068]** A. CD40-CD154 Interactions

**[0069]** This invention is also related to the use of new drugs or existing drugs to control CD40-CD154 interactions within the auto-aggressive T cell population. Several means of preventing the generation of CD4<sup>+</sup>CD40<sup>+</sup> auto-aggressive T cells exist. It is possible to treat individuals with an antibody against the CD40 ligand, CD154, or against the CD40 molecule to prevent interaction of those molecules. Preventing this interaction inhibits the development of auto-aggressive T cells (FIG. 1). Another means of preventing CD40 induced activation is to block interaction with CD40 ligand through use of specific peptides (blocking peptides). Because CD40

acts as a “receptor” on auto-aggressive T cells, by designing specific amino acid peptides that can bind to the active site of the CD40 molecule, interaction with the natural ligand for CD40, (CD154) can be prevented. See, for example, U.S. Pat. No. 5,683,693 and Balasa, B. et al. (1997).

**[0070]** Sequence analysis of the CD154 (SEQ ID NO: 6), the natural ligand for CD40, has been determined. From this information inhibiting peptides can be inferred (see, for example, Karpusas, M. et al., *Structure* 3, 1426 (1995)). Such peptides, include but are not limited to

SSKTTSVLQWAEKGYTMSNNLVT (SEQ ID NO: 7)  
and

QIAAHVISEASSK. (SEQ ID NO: 8)

**[0071]** The use of blocking peptides will be as follows. We will design peptides that interact with the CD40 antigen. These peptides will not induce the CD40 antigen to activate the T cell. The peptides will prevent interaction of the ligand for CD40, CD40L also known as CD154, with CD40 on the T cells. We have shown that when CD40 is activated on T cells later in life, in a mouse diabetes model, that T cells are induced to alter TCR expression. We predict that this action generates auto-aggressive T cells. By using the blocking peptides we predict that we can successfully prevent the generation of auto-aggressive T cells. Blocking peptides can be used according, for example, to the following protocols.

**[0072]** Protocol #1: Blood samples are taken. The T cells may be purified from the blood sample by standard techniques such as cell sorting or use of anti-CD4 antibodies and purification columns. The blood samples or purified/isolated T cells are incubated with the “blocking peptides.” The blood samples or purified/isolated T cells are then treated with physiological sources of CD40 ligand and assayed for changes in T cell receptor expression such as described in Wagner, D. H., Jr. et al. (2002); Wagner, D. H., Jr. et al., *Eur. J. Immunol.* 24, 3148 (1994); Wagner, D. H., Jr. et al., *J. Exp. Med.* 184, 1631 (1996); and Wagner, D. H., Jr. et al. (1999).

**[0073]** Protocol #2: Blocking peptides are administered to patients determined to be at high risk for a specific autoimmune disease, such as assessed using the predictive kit described herein. Blocking peptides are in use therapeutically for several diseases (Lung, F. D. & Tsai, J. Y., *Biopolymers* 71, 132 (2003); Anderson, M. E. & Siahaan, T. J., *Peptides* 24, 487 (2003)).

**[0074]** B. RAG Proteins

**[0075]** 1. Agents

**[0076]** This invention is also related to the use of new agents or existing agents to control the activation of the RAG proteins within the auto-aggressive T cell population. One means of inhibiting auto-aggressive T cell development is to inhibit the generation of the “self-reactive” T cell receptor. Relative to the RAG1 and RAG2 proteins, there are two ways to control the activity of these proteins. The first is to control the “recombinase” activity of these proteins. Because RAG1 and RAG2 bind to DNA and cut then splice the DNA to generate new TCR molecules, these proteins have a “recombinase” activity (Vaandrager, J. W., et al., *Blood* 96, 1947-52 (2000)).

**[0077]** Any agent that could prevent this recombination activity potentially would prevent the action of these proteins. Because we have discovered that RAG proteins are exclusively over-expressed in auto-aggressive T cells, agents can

be used to inhibit the activation of RAG1 and/or RAG2 genes. Inhibition of RAG activation will inhibit the onset of autoimmune diseases by affecting the generation of auto-aggressive T cells.

Experiment to Show Inhibition of RAG Activity

**[0078]** T cells are isolated using standard techniques such as cell sorter, or T cell-purification columns (Wagner, D. H., Jr. et al. (2002); Vaitaitis, G. M. et al. (2003); Wagner, D. H., Jr. et al. (1994); Wagner, D. H., Jr. et al. (1996); Wagner, D. H., Jr. et al. (1999)). T cells are incubated with different concentrations of 1) integrase inhibitors as described in U.S. Pat. No. 6,403,347 B1; 2) RAG1 and or RAG2 RNAi pools (the RAG RNAi pools are several different combinations of RAG-RNA molecules to maximize efficacy of inhibition); or 3) CD40L blocking peptides. Options 1 and 2 directly inhibit activation of RAGs and option #3 inhibits the CD40 signaling pathways leading to activation of RAGs. Following treatment, T cells will be incubated with agonistic (activating) anti-CD40 antibody, with physiological or nonphysiological sources of CD40L. T cells then will be assayed for changes in T cell receptor molecules. We have shown that anti-CD40 induces changes in T cell receptor expression (Wagner, D. H., Jr. et al. (1999)). Physiological sources of CD40L include activated T cells (Wagner, D. H., Jr. et al., (1994)) and platelets (Andre, P. et al., *Circulation* 106, 896 (2002); Wang, C. L. et al., *Pediatrics* 111, E140 (2003)). Nonphysiological sources include isolated, pure or purified preparations of CD40L. T cells that have been treated as in #1, 2 or 3 should not demonstrate changes in TCR expression. As controls, untreated T cells will be treated with anti-CD40 or with CD40L sources and assayed for altered TCR expression. These experiments will determine how blocking CD40-CD154 interaction prevents expansion of altered TCR-bearing T cells. We have determined that T cells that alter TCR expression in the periphery are diabetogenic (Wagner, D. H., Jr. et al., (2002)).

**[0079]** We show that blocking CD40-CD154 interaction inhibits the expansion of auto-aggressive T cells in the type 1 diabetes model (FIG. 1). For physiologic examination, we will treat animals, nonobese mice (NOD) (NOD mice are the accepted animal model for human type 1 diabetes) with integrase inhibitors, such as chaetochromins, using the protocol described in U.S. Pat. No. 6,403,347 B1 or with RNAi molecules or with CD40-blocking peptides (described herein). Animals are closely monitored for expansion of CD4<sup>lo</sup>CD40<sup>+</sup> T cells and for diabetes onset.

**[0080]** 2. RNAi Molecules

**[0081]** Another important means of preventing RAG1 and or RAG2 activity in auto-immune disease is to prevent the synthesis and accumulation of these proteins within auto-aggressive cells. Because the RAG proteins are synthesized normally in T cells and B cells, it is possible to use a class of drugs inhibitory to the synthesis of these proteins. These drugs include inhibitory RNA (“RNAi”) molecules, specifically designed to inhibit the expression of the RAG1 and RAG2 proteins. RNAi molecules are designed by determining the nucleotide sequence of the RAG1 and RAG2 genes. Such RNAi molecules include but are not limited to

5' -AUGUCUCUGCAGAUGGUAACdAdG-3' ; (SEQ ID NO: 9)

5' -CUGUUACCAUCUGCAGAGACdAdU-3' (SEQ ID NO: 10)

-continued

5' -GGUAGGAGAUCUUCUUGAAGdCdC-3'; (SEQ ID NO: 11)

5' -GGGGAUGGGCACUGGGUCCAUGdCdU-3'; (SEQ ID NO: 12)

5' -AGCAUGGACCCAGUGCCCAUCCdCdC-3'; (SEQ ID NO: 13)

5' -CUGUUACCAUCUGCAGAGACdAdU-3'; (SEQ ID NO: 14)

5' -AUGGCAGCCUUCUUCACCCdCdC-3'; (SEQ ID NO: 15)

5' -GGUGGGUGGGAAGAGGCGCCdAdU-3'; (SEQ ID NO: 16)

5' -AAACUUGCAGCUCAGCAAAAAACdTdC-3'; (SEQ ID NO: 17)

5' -GAGUUUUUGCUGAGCGCAAGUUdUdU-3'; (SEQ ID NO: 18)

5' -GAGUUUUUGCUGAGCGCAAGUUdUdU-3'; (SEQ ID NO: 19)

5' -UCACAAAACCCUGGCCAUGUUdCdC-3'; (SEQ ID NO: 20)

and,

5' -GGAACAUGGGCCAGGGUUUGUdGdA-3'. (SEQ ID NO: 21)

**[0082]** When genes are transcribed into messenger RNA that will be translated into protein, a "sense" strand on the gene for that substance is read by the machinery of the cell involved. Small pieces of chemically altered RNA molecules, including but not limited to those above, can be synthesized, that when administered, will go into the cell and bind to the synthesis machinery of that cell to prevent, specifically, the synthesis of the desired protein. This process does not inhibit the synthesis of other proteins within the cell.

**[0083]** This invention also provides kits for the detection and/or quantification of CD4<sup>+</sup>CD40<sup>+</sup> cells. The kits can include a container containing one or more of any of the above antibodies, antigens or ligands, with or without labels, free, or bound to a solid support as described herein. The kits can also include instructions for the use of one or more of these reagents in any of the assays described herein. For example, antigens envisioned to be useful in the practice of the invention include proteins such as, for example, myosin and actin, and other compounds such as, for example, nicotine and catecholamine. Any protein, biological or nonbiological chemical can conceivably serve as a foreign antigen.

**[0084]** Methods for staining cytokines are standard in the lab. See, for example, *Methods of Immunology*, Cold Spring Harbor Text book. T cells are isolated from whole blood that is red blood cell depleted, then treated with anti-CD3 or anti-CD3+anti-CD40 (molecule specific antibodies) for 45 min. Antibodies are washed away in a phosphate buffered saline solution. T cells are incubated in growth media overnight. The media is removed and assayed using enzyme-linked immunosorbent assay (ELISA) specifically for Th1 cytokines, IL-2, IFN-gamma and Th2 cytokines, IL-4, IL-6, and IL-10. For ELISA a plate is coated with antibodies that recognize one of the cytokines of interest. The media is applied and incubated overnight, then the plates are washed. The plates are incubated with a second antibody containing a horseradish peroxidase molecule conjugated to an anti-cytokine antibody, e.g., anti-IL-4 or IL-2, etc. The plate is treated with peroxide and a colorogenic reagent that develops color if the well is positive. The color levels are determined by a spectrophotometer.

**[0085]** A second method is to directly stain T cells for production of cytokines. T cell are treated with anti-CD3 or anti-CD3+anti-CD40 antibodies in the presence of brefeldin A, a substance that blocks cytokine secretion. T cells are

stained on the surface for expression of CD4 and CD40 using appropriate antibodies. T cells are washed and treated with saponin buffer. Saponin is a mild detergent that lyses cells by causing small holes in the cell membrane. The T cells are then incubated with fluorochrome-labeled antibodies, washed and assayed by flow cytometry.

**[0086]** The pharmaceutically acceptable salts of the compounds of this invention include those formed from a variety of cations such as, for example, but not limited to, sodium, potassium, aluminum, calcium, lithium, magnesium, zinc, and from bases such as ammonia, ethylenediamine, lysine, arginine, ornithine, choline, N,N'-dibenzylethylenediamine, chlorprocaine, diethanolamine, procaine, N-benzylphenethylamine, diethylamine, piperazine, tris(hydroxymethyl)aminomethane, and tetramethylammonium hydroxide. These salts may be prepared by standard procedures, e.g. by reacting the free acid with a suitable organic or inorganic base. Many other suitable cations and bases are known in the art, see, for example, Remington's, and U.S. Pat. No. 6,403,347, and are envisioned in the practice of the invention.

**[0087]** For modulating the proliferation of the CD4<sup>lo</sup>CD40<sup>hi</sup> lymphocytes, the agents of the present invention may be administered by a variety of routes, including, but not limited to, orally, as subcutaneous injections, by intravenous, intramuscular, infrasternal injection or infusion techniques, by inhalation spray, topically, or rectally, such as in suppositories, in dosage unit formulations containing conventional non-toxic pharmaceutically-acceptable carriers, adjuvants and vehicles.

**[0088]** Thus, in accordance with the present invention the contacting involves contacting a subject in need of such treatment with a composition comprising a pharmaceutical carrier and a therapeutically-effective amount of at least one agent of the present invention. The compositions may be in variety of orally-administrable forms, such as but not limited to, suspensions or tablets, nasal sprays, sterile injectable preparations, for example, as sterile injectable aqueous or nonaqueous suspensions. See, for example, U.S. Pat. No. 6,403,347 and Remington's.

**[0089]** When administered orally, these compositions are prepared according to techniques well-known in the art of pharmaceutical formulation and may contain, by way of example, microcrystalline cellulose for imparting bulk, alginate acid or sodium alginate as a suspending agent, methylcellulose as a viscosity enhancer, and sweeteners/flavoring agents known in the art. As immediate release tablets, these compositions may contain microcrystalline cellulose, dicalcium phosphate, starch, magnesium stearate and lactose and/or other excipients, binders, extenders, disintegrants, diluents and lubricants known in the art. See, for example, U.S. Pat. No. 6,403,347 and Remington's.

**[0090]** When administered by nasal aerosol or inhalation, these compositions are prepared according to techniques well-known in the art of pharmaceutical formulation and may be prepared as solutions in saline, employing benzyl alcohol or other suitable preservatives, absorption promoters to enhance bioavailability, fluorocarbons, and/or other solubilizing or dispersing agents known in the art. See, for example, U.S. Pat. No. 6,403,347 and Remington's.

**[0091]** The injectable solutions or suspensions may be formulated according to known art, using suitable non-toxic, parenterally-acceptable diluents or solvents, such as mannitol, 1,3-butanediol, water, Ringer's solution or isotonic sodium chloride solution, or suitable dispersing or wetting

and suspending agents, such as sterile, bland, fixed oils, including synthetic mono- or diglycerides, and fatty acids, including oleic acid. When rectally administered in the form of suppositories, these compositions may be prepared by mixing the agent with a suitable non-initiating excipient, such as cocoa butter, synthetic glyceride esters of polyethylene glycols, which are solid at ordinary temperatures, but liquefy and/or dissolve in the rectal cavity to release the drug. See, for example, U.S. Pat. No. 6,403,347 and Remington's.

**[0092]** The agents of the present invention can be administered orally to humans or other mammals in a dosage range of 1 to 1000 mg/kg body weight in divided doses. One preferred dosage range is 0.1 to 200 mg/kg body weight orally in divided doses. Another preferred dosage range is 0.5 to 100 mg/kg body weight orally in divided doses. For oral administration, the agents are preferably provided in the form of tablets containing 1.0 to 1000 milligrams of the active ingredient, particularly in 0.001, 0.01, 0.1, 0.5 or 1.0 milligram increments, for the symptomatic adjustment of the dosage to the subject to be treated. It will be understood, however, that the specific dose level and frequency of dosage for any particular subject may be varied and will depend upon a variety of factors including the activity of the specific agent employed, the metabolic stability and length of action of that compound, the age, body weight, general health, sex, diet, mode and time of administration, rate of excretion, drug combination, the severity of the particular condition, and the subject in need of having the proliferation of CD4<sup>lo</sup>CD40<sup>hi</sup> lymphocytes modulated. See, for example, U.S. Pat. Nos. 6,403,347; 6,110,716; 5,683,693 and Remington's.

**[0093]** Also envisioned in the practice of the invention is a composition comprising a combination of at least two of the following: a combination comprising one or more agent which inhibits the activation of RAG recombinase; an antibody molecule or fragment thereof to CD40; an antibody molecule or fragment thereof to CD154; at least one blocking peptide which inhibits the interaction of the CD40 receptor with the CD154 ligand; at least one RNA molecule specifically hybridizing to the RAG2 gene product; and, at least one RNA molecule specifically hybridizing to the RAG1 gene product.

**[0094]** The following examples are provided to facilitate the practice of the present invention. These examples are not intended to limit the scope of the invention in any way.

## EXAMPLES

### Example 1

#### Specific TCRV $\alpha$ <sup>+</sup>Expansions within the CD4<sup>lo</sup>CD40<sup>+</sup>Auto-Aggressive T Cell Population Promote Type 1 Diabetes

**[0095]** The current study herein demonstrates that CD4<sup>+</sup>CD40<sup>+</sup> T cells, including for the first time T cells purified from pre-diabetic animals, rapidly transfer diabetes to NOD scid recipients. Importantly, these T cells expand as NOD mice develop diabetes. Furthermore, there are CD40 driven expansions of TCR V $\alpha$ 3.2<sup>+</sup> and V $\alpha$ 8.3<sup>+</sup> T cells within the auto-aggressive T cell population but these expansions are confined to the auto-immune strain. In addition this study shows that primary CD40<sup>+</sup>V $\alpha$ 3.2<sup>+</sup> T cells induce diabetes with the same kinetics as established diabetogenic T cell clones while V $\alpha$ 8.3<sup>+</sup> T cells do not induce diabetes. The data

presented herein show that specific V $\alpha$ <sup>+</sup> T cells are predictive of diabetes onset. All mammals specifically humans demonstrate CD4<sup>lo</sup>CD40<sup>+</sup> T cells.

## Introduction

**[0096]** Numerous cell types are involved in the development of auto-immune diseases including type 1 diabetes (T1D). Auto-aggressive T cells though are fundamental in progression of the disease (Wagner, D. H., Jr. et al., (2002); Mathis, D. et al., *Nature* 414, 792-8 (2001); Candeias, S. et al., *Proc. Natl. Acad. Sci. USA* 88, 6167-70 (1991); Dilts, S. M. et al., *J. Autoimmun* 13, 285-90 (1999); Haskins, K. & Wegmann, D. (1996); Katz, J. D. et al., *Cell* 74, 1089-100 (1993)). Studies involving adoptive transfers of diabetogenic T cell clones to nonobese diabetic (NOD) mice and studies using diabetogenic-TCR, transgenic (TCR-Tg) mice demonstrate that CD4<sup>+</sup> T cells infiltrate the pancreatic  $\beta$  cells leading to loss of insulin production (Candeias, S. et al., (1991); Haskins, K. & Wegmann, D. (1996)). CD8<sup>+</sup> TCR-Tg NOD mice develop diabetes suggesting a role for CD8<sup>+</sup> T cells in disease progression (Amrani, A. et al., *Immunity* 16, 719-32 (2002)). However, when primary CD8<sup>+</sup> T cells are used, CD4<sup>+</sup> T cell help is required to fulminate disease (Lejon, K. & Fathman, C. G., *J. Immunol.* 163, 5708-5714 (1999)).

**[0097]** While diabetogenic T cell clones and TCR-Tg mice provide information about the disease process, it is important to address primary T cells as disease culprits. Recently we suggested that auto-aggressive T cells in the NOD arise from a peripheral subset of T cells that express CD40 (Wagner, D. H., Jr. et al., (2002)). Further studies demonstrate that these T cells are induced through CD40 to transcribe, translate and translocate the recombinase RAG1 and RAG2 proteins to the nucleus (Vaitaitis, G. M. et al., (2003)). Because RAGs function to alter TCR expression, this suggests that CD40 signals contribute to altered TCR expression post thymic selection; perhaps leading to the generation of auto-aggressive T cells in the periphery as opposed to escape from thymic negative selection.

## Materials and Methods

**[0098]** Mice. Nonobese diabetic (NOD), Nonobese resistant (NOR) and BALB/c mice were purchased from Jackson Laboratories, Bar Harbor, Me.; bred and maintained under pathogen-free conditions in the IUCAC approved animal facility at the Webb-Waring Institute, University of Colorado Health Sciences Center, Denver, Colo.

**[0099]** Staining. T cells were purified from excised spleens of NOD, NOR or BALB/c mice at the ages indicated, incubated on nylon wool wetted columns with HBSS-5% BSA for 45 min. Purified T cells (>92% CD3<sup>+</sup>) were washed with HESS-5% BSA, treated with 2.4.G2, anti-Fc-receptor blocking antibody, then stained with directly conjugated FITC-anti-CD40, 1C10<sup>37</sup>, PE-anti-TCR $\alpha\beta$ , H57.597 or PE-anti-CD3, 145.2C11 (Pharmingen, San Diego, Calif.), and CyChrome<sup>TM</sup>-anti-CD4, H129.19 (Pharmingen). Cells were run on a Becton-Dickinson FACScalibur and assayed using CellQuest<sup>TM</sup> software. In some cases, splenic T cells were incubated with biotin-anti-CD3 (145.2C11), washed with HESS, incubated with Miltenyi (Auburn, Calif.) magnetic avidin beads and passed through a Miltenyi selection column as per manufacturer's instructions. Purified T cells were then stained as described.

**[0100]** For V $\alpha$  staining, purified T cells were left untreated or crosslinked with biotin anti-CD40 followed by avidin for 18 hr. T cells were incubated with 2.4.G2, then stained with FITC anti-V $\alpha$ 2, anti-V $\alpha$ 3.2 or anti-V $\alpha$ 8.3 (all from Pharmingen), biotinylated anti-CD40 (1C10) with PE-avidin (Pharmingen), and CyChrome-anti-CD4 (Pharmingen) for analysis.

**[0101]** Adoptive Transfers. T cells were nylon wool-purified from spleens of diabetic and pre-diabetic NOD females, incubated with biotinylated anti-CD40 (1C10 produced in-house), biotinylated anti-V $\alpha$ 3.2, or biotinylated anti-V $\alpha$ 8.3 (both from Pharmingen). The cells were washed with PBS then incubated with magnetic avidin beads (Miltenyi, Auburn, Calif.) and passed over magnetic purification columns (Miltenyi). Purified T cells were eluted and determined to be >98% pure by flow cytometry. CD8<sup>+</sup> T cells were removed by incubating T cells with a magnetic conjugated anti-CD8 antibody (Miltenyi) then passed over a magnetic column (Miltenyi). Purified CD4<sup>+</sup>CD40<sup>+</sup> T cells,  $1.5 \times 10^6$ , were injected intraperitoneally, i.p., into 9-day old NOD.scid recipients. Control animals received CD4<sup>+</sup>CD40<sup>-</sup> T cells,  $1.5 \times 10^6$  cells. Animals were monitored for diabetes onset by blood glucose (b.g.) determinations. Diabetes was considered to be a b.g. level of >150 mg/dl.

**[0102]** Highly purified V $\alpha$ 3.2<sup>+</sup> and V $\alpha$ 8.3<sup>+</sup> T cells,  $1.5 \times 10^6$ , were injected i.p. into 9-day old NOD.scid recipients that were monitored for diabetes as before. Controls received an equivalent number of CD40<sup>-</sup> T cells. V $\alpha$ 3.2<sup>+</sup> T cells were determined to be >80% CD40<sup>+</sup> while V $\alpha$ 8.3<sup>+</sup> T cells were <30% CD40<sup>+</sup>. Experiments were repeated three times.

**[0103]** Histology. Pancreata from CD4<sup>+</sup>CD40<sup>+</sup> and from CD4<sup>+</sup>CD40<sup>-</sup> T cell NOD.scid recipients were fixed in formalin, paraffin embedded, and sliced by microtome to generate tissue slides. Slides were stained with Hematoxylin and Eosin (H&E) or Aldehyde Fuchsin (A/F) as described previously (Wagner, D. H., Jr. et al., (2002)). Slides were scored for infiltration and insulin production as described (Wagner, D. H., Jr. et al., (2002)).

## Results

**[0104]** Purified CD4<sup>+</sup>CD40<sup>+</sup> T cells are Highly Diabetogenic.

**[0105]** We demonstrated previously that a subset of T helper cells in NOD mice characterized as CD4<sup>lo</sup> successfully transfers T1D (Wagner, D. H., Jr. et al., (2002)). However, substantial numbers ( $2 \times 10^7$ ) and multiple injections of these T cells were required to achieve diabetes. Here we demonstrate directly, through use of highly purified CD4<sup>+</sup>CD40<sup>+</sup> T cells, that relatively low numbers,  $1.5 \times 10^6$ , of cells rapidly induced diabetes (FIG. 2A). Importantly, highly purified CD4<sup>lo</sup>CD40<sup>+</sup> T cells isolated from 9-week old, pre-diabetic NOD animals could successfully transfer diabetes (FIG. 2A). Previous reports suggest that only T cells from diabetic NOD mice can successfully transfer diabetes (Christianson, S. W. et al., *Diabetes* 42, 44-55 (1993)). None of the CD40<sup>-</sup> T cell recipients were diabetic after 45 days (FIG. 2A). Histology of the pancreata confirmed that the islets of CD40<sup>+</sup> recipients were heavily infiltrated and insulin production diminished by 15 days (FIG. 2B), while pancreata from CD4<sup>+</sup>CD40<sup>-</sup> control recipients demonstrated no T cell infiltration (FIG. 2C). Injected T cells were determined to be CD8<sup>-</sup>. Furthermore, while CD8<sup>+</sup> TCR transgenic NOD mice develop diabetes, that process is independent of CD40-CD154 interactions (Amrani, A. et al., (2002)).

**[0106]** CD4<sup>+</sup>CD40<sup>+</sup> T cells increase in diabetes-prone NOD mice. Because primary CD4<sup>lo</sup>CD40<sup>+</sup> T cells are diabetogenic, we determined the levels of CD4<sup>+</sup>CD40<sup>+</sup> T cells as auto-immune-prone NOD mice age. We compared levels of these cells in NOD to the diabetes resistant NOR strain and the non-auto-immune BALB/c strain. NOR serves as an important control because these animals contain the same unique MHC configuration, IA<sup>g7</sup> but are congenic at other loci and do not develop diabetes (Serreze, D. V. et al., *J. Exp. Med.* 180, 1553-8 (1994)).

**[0107]** Cells infiltrate the pancreata of NOD mice at 3-weeks of age with progressive insulinitis at 12-weeks and diabetes onset typically by 16-20 weeks (Luhder, F. et al., (1998); Baker, F. J. et al., *Proc. Natl. Acad. Sci. USA* 99, 9374-9 (2002); Szanya, V. et al., *J. Immunol.* 169, 2461-5 (2002)). In 3-week old NOD females, there were low levels (6%) of CD4<sup>lo</sup>CD40<sup>+</sup> T cells (FIG. 3A). The percentage of CD4<sup>lo</sup>CD40<sup>+</sup> T cells doubled at 6-Weeks of age and by 12-weeks the number increased to 25% of the T cell compartment (FIG. 3A). By 18-weeks the percentage was 40% of the T cell compartment in mice which had not yet become diabetic (FIG. 3A). Over this developmental period, percentages of CD4<sup>hi</sup> CD40<sup>-</sup> T cells decreased (FIG. 3A). In diabetic NOD mice, greater than 50% of the CD4<sup>+</sup> T cell population is CD40<sup>+</sup>. In the NOR strain, 15% of the T cell population at 6-weeks of age, was CD4<sup>lo</sup>CD40<sup>+</sup> and remained consistently at 15% as NOR mice developed (FIG. 3B). Percentages of the CD4<sup>hi</sup>CD40<sup>+</sup> T cell population increased through development. Interestingly, CD4<sup>lo</sup>CD40<sup>+</sup> T cells in non-auto-immune prone BALB/c mice were highest at 3-weeks of age, 16%, decreasing to 5% as BALB/c mice matured through 18 weeks (FIG. 3C). Reportedly, BALB/c mice contain superantigens (sAg) that delete specific TCR bearing T cells (Goldman, A. et al., *Medicina* 55, 45-7 (1995); Maillard, I. et al., *Eur. J. Immunol.* 26, 1000-6 (1996)). Possibly then, sAg induced depletion accounts for the reduction of CD4<sup>+</sup>CD40<sup>+</sup> T cells as BALB/c Mice age. However the CD4<sup>hi</sup> CD40<sup>-</sup> population remained constant.

**[0108]** V $\alpha$  expansions of CD40<sup>+</sup>CD4<sup>+</sup> T cells in auto-immune NOD mice. Studies of T cells in diabetes have focused largely on diabetogenic T cell clones such as BDC2.5 (Haskins, K. & Wegmann, D. (1996); Luhder, F. et al., (1998)). Even though the BDC2.5 T cell clone is highly diabetogenic, it was recently shown using an anti-idiotypic antibody that the BDC2.5 TCR, V $\beta$ 4/V $\alpha$ 1, occurs at extremely low levels in the NOD mouse (Kanagawa, O. et al., *J. Immunol.* 168, 6159-64 (2002)). Thus another approach is required to study primary T cells as disease culprits. Immediately ex vivo (untreated) CD4<sup>+</sup>CD40<sup>+</sup> T cells from NOD mice at 3-weeks of age showed that few detectable V $\alpha$ <sup>+</sup> T cells were present, with each V $\alpha$ <sup>+</sup> population constituting less than 3.5% of the CD4<sup>+</sup>CD40<sup>+</sup> subset (FIG. 4A). At 12-weeks of age, immediately ex vivo cells showed no significant change in percentages of the V $\alpha$ <sup>+</sup> T cells. However, in vitro CD40 cross-linking of T cells induced substantial increases, almost 4-fold, in V $\alpha$ 3.2<sup>+</sup> and V $\alpha$ 8.3<sup>+</sup> T cells. These changes were not due to induced selective survival as reported earlier (Vaitaitis, G. M. et al., (2003)) and changes occurred after only 18 hrs. Furthermore, CD40 cross-linking did not induce T cells into cell-cycle as determined by CFSE staining (data not shown). In NOD mice at 18-weeks of age, but not diabetic, there were expansions, when compared to V $\alpha$ <sup>+</sup> levels of 3-week old animals, of V $\alpha$ 2<sup>+</sup> T cells but substantial increases of V $\alpha$ 3.2<sup>+</sup> T cells in immediately ex vivo cells. Thus these

particular T cells expanded in vivo as NOD mice age. In vitro CD40 cross-linking of CD4<sup>+</sup>CD40<sup>+</sup> T cells induced further changes in V $\alpha$  expression resulting in increased percentages of V $\alpha$ 2<sup>+</sup> and V $\alpha$ 8.3<sup>+</sup> expressing T cells. The CD40<sup>+</sup> T cells were not propelled into cell cycle as determined by CFSE labeling (data not shown). In older NOD mice, CD40 cross-linking induced reductions in the percentage of V $\alpha$ 3.2<sup>+</sup> T cells (FIG. 4A). Importantly, T cells were not induced into cell death (data not shown). NOR mice contain the unique MHC-class II component, I-A<sup>s7</sup> suggesting a similar T cell selective environment to the NOD, however congenic differences at the gene loci that render these animals resistant to development of diabetes (Serreze, D. V. et al., (1994)) may affect T cell development. As demonstrated in FIG. 3, CD4<sup>lo</sup>CD40<sup>+</sup> T cells are increased in NOR mice, but only achieve 15% of the total T cell population. At 12-weeks and at 18-weeks of age, NOR animals had higher in vivo levels of V $\alpha$ 3.2<sup>+</sup> T cells, relative to the other V $\alpha$ <sup>+</sup> cells examined. The levels were still lower than in NOD (note scales). Unlike in NOD animals CD40 cross-linking of T cells in both cases induced reductions of V $\alpha$ 3.2<sup>+</sup> T cells. Again, this was not due to induced cell death (data not shown). The only explanation is that CD40 induced altered expression of V $\alpha$  consistent with our recent report (Vaitaitis, G. M. et al., (2003)).

**[0109]** In 3-week old BALB/c animals there were low percentages, less than 4%, of the examined V $\alpha$ <sup>+</sup> T cells within immediately ex vivo CD4<sup>+</sup>CD40<sup>-</sup> cells (FIG. 4). However, in vitro CD40 cross-linking induced substantial increases in V $\alpha$ 3.2<sup>+</sup> and V $\alpha$ 8.3<sup>+</sup> T cells. At 12-weeks of age within immediately ex vivo T cells there were higher percentages of V $\alpha$ 2<sup>+</sup> and V $\alpha$ 3.2<sup>+</sup> T cells compared to levels at 3-weeks of age (FIG. 4). In vitro CD40 engagement had no significant effect on the percentages of V $\alpha$ 2<sup>+</sup> T cells, but CD40 engagement induced a significant reduction in V $\alpha$ 3.2<sup>+</sup> T cells. As before, this reduction was not due to induced cell death (data not shown). In older BALB/c animals immediately ex vivo CD4<sup>lo</sup>CD40<sup>+</sup> T cells showed higher percentages of V $\alpha$ 3.2<sup>+</sup> T cells relative to the other examined V $\alpha$ <sup>+</sup> T cells. As in 12-week old mice, CD40 engagement induced decreases in levels of V $\alpha$ 3.2<sup>+</sup> T cells.

**[0110]** V $\alpha$ 3.2<sup>+</sup> CD4<sup>+</sup>CD40<sup>+</sup> T cells are increased in pancreas of pre-diabetic and recently diabetic NOD mice. If a specific V $\alpha$ <sup>+</sup> T cells were involved in progression of diabetes that cell should be present in pancreata. We also determined V $\alpha$ <sup>+</sup> expansions from CD4<sup>lo</sup>CD40<sup>+</sup> NOD.scid recipients after onset of diabetes.

**[0111]** Pancreata from 12-week old, NOD mice showed higher percentages of V $\alpha$ 3.2<sup>+</sup> and V $\alpha$ 8.3<sup>+</sup> T cells within the CD4<sup>lo</sup>CD40<sup>+</sup>, auto-aggressive T cell population (FIG. 5A). Pancreata from newly diagnosed diabetic NOD mice demonstrated an increased percentage of V $\alpha$ 3.2<sup>+</sup> T cells (FIG. 5B). After diabetes onset within the CD4<sup>+</sup>CD40<sup>+</sup> recipients, analysis revealed expansions of V $\alpha$ 3.2<sup>+</sup> cells, comprising 32% within the CD4<sup>+</sup>CD40<sup>+</sup> T cell population (FIG. 5C). T cells from CD4<sup>+</sup>CD40<sup>-</sup> recipients demonstrated levels of the V $\alpha$ <sup>+</sup> T cells at <4% (FIG. 5D). These data cumulatively suggest that expansions of specific V $\alpha$ <sup>+</sup> T cells are associated with, if not directly responsible for, diabetes.

**[0112]** V $\alpha$ 3.2<sup>+</sup> T cells are highly diabetogenic while V $\alpha$ 8.3<sup>+</sup> T cells are not. We determined the pathogenicity of V $\alpha$ 3.2<sup>+</sup> or V $\alpha$ 8.3<sup>+</sup> T cells through adoptive transfers into NOD.scid recipients. V $\alpha$ 3.2<sup>+</sup> recipients became diabetic with the same kinetics as recipients of purified CD40<sup>+</sup> T cells (FIG. 6). That is, 3 of the 6 recipients were diabetic 10-days after injection

with 3 more becoming diabetic at 12 days after injection (FIG. 6). These T cells were determined to be CD8<sup>-</sup>. After 45 days, none of the V $\alpha$ 8.3<sup>+</sup> recipients (6 of 6) and none of the CD4<sup>+</sup>CD40<sup>-</sup> T cell recipients (10 of 10) became diabetic (FIG. 6). While it is not possible to call these primary T cells a true clonal expansion since they may express different VP molecules, the kinetics of disease transfer is similar to that of established diabetogenic T cell clones (Haskins, K. & Wegmann, D. (1996)). Histology of pancreata from V $\alpha$ 3.2<sup>+</sup> and V $\alpha$ 8.3<sup>+</sup> T cell recipients confirmed that V $\alpha$ 3.2<sup>+</sup> T cells migrate to the pancreas, infiltrate islets and diminish insulin production (FIG. 7A). Conversely, V $\alpha$ 8.3<sup>+</sup> T cells, examined at 15 days, do not infiltrate the pancreas (FIG. 7B). This study now demonstrates that appropriate isolation of auto-aggressive T cells can be accomplished prior to the onset of diabetes. This also is the first report of primary T cells able to induce diabetes as rapidly as diabetogenic T cell clones.

#### Discussion

**[0113]** The finding of CD40 involvement in auto-immunity continues to expand. CD40 interactions with its ligand, CD154, have been demonstrated as instrumental in rheumatoid arthritis (Durie, F. H. et al., (1993)), SLE (Wang, X. et al., (2002)), chronic colitis (De Jong, Y. et al., (2000)), atherosclerosis (Lutgens, E. et al., (1999)), scleroderma (Valentini, G. et al., *J. Autoimmun.* 15, 61-6 (2000)) and several reports demonstrate a definitive role for CD40 signals in T1D. Blocking CD40-CD154 interactions prevents rapid rejection of transplanted islets (Molano, R. et al. *Diabetes* 50, 270-276 (2001); Kover, K. et al., *Diabetes* 49, 1666-1670 (2000)). Relative to disease onset, blocking CD40-CD154 interactions early (3-weeks) during NOD development but not later (9-weeks) prevents diabetes (Balasa, B. et al., (1997)). That particular study suggests that an important cell developmental event occurs after 3-weeks but before 9-weeks of age in the auto-immune NOD model. This prompted the current course of study for the newly described CD4<sup>lo</sup>CD40<sup>+</sup>, auto-aggressive T cell population.

**[0114]** CD40 is expressed on a wide variety of tissues including epithelium (van Den Berg, T. K. et al., *Immunol.* 88, 294-300 (1996)), endothelium (Kotowicz, K. et al., *Immunol.* 100, 441-8 (2000)), neural tissue (Suo, Z. et al., *J. Neurochem.* 80, 655-66 (2002)) and cells of leukocytic origin (Banchereau, J. et al., *Ann. Rev. Immunol.* 12, 881-920 (1994)). We previously demonstrated that CD40 is expressed on several highly diabetogenic T cell clones; furthermore, we demonstrated that a sub-population of T cells characterized as CD4<sup>lo</sup>CD40<sup>+</sup> occur in high numbers in diabetic NOD mice, and successfully transfer diabetes to NOD.scid recipients (Wagner, D. H., Jr. et al., (2002)). In a recent report, we demonstrated that CD40 signals induce transcription, translation, and nuclear translocation of the RAG1 and RAG2 recombinase proteins in peripheral T cells (Vaitaitis, G. M. et al., (2003)). RAGs are responsible for V, D, J recombination of the TCR and subsequent antigen diversity of the T cell repertoire.

**[0115]** Therefore reactivation of RAGs could result in altered TCR expression in peripheral T cells thus escaping thymic negative selection. It is important, however, to recognize CD40<sup>+</sup> T cells as a sub-population of the T cell compartment because CD40<sup>-/-</sup> mice still develop T cells though their adaptive immune response including T cell antigen recall is highly impaired (Borrow, P. et al., *J. Exp. Med.* 183, 2129-42 (1996); Soong, L. et al., *Immunity* 4, 263-73 (1996)). There

are reports of CD40-expressing CD8<sup>+</sup> T cells (Bourgeois, C. et al., *Science* 297, 2060-3 (2002)). Relative to diabetes it was demonstrated using a well-described CD8<sup>+</sup> TCR-Tg model, that CD40-CD154 interactions are not involved in CD8<sup>+</sup> T cell mediated diabetes onset (Amrani, A. et al., (2002)).

**[0116]** Until now it has been difficult to assess primary T cells as disease culprits in diabetes. It has been reported that transfer of diabetes using primary T cells required that the T cells be isolated from diabetic NOD mice (Christianson, S. W. et al., (1993)). However, in that system extraordinarily large numbers of T cells and both CD4<sup>+</sup> and CD8<sup>+</sup> T cells were required to induce diabetes. Recently, it was demonstrated that transfer of highly purified primary CD8<sup>+</sup> T cells from diabetic NOD mice to NOD.scid recipients did not induce diabetes until primary CD4<sup>+</sup> T cells were transferred (Lejon, K. & Fathman, C. G., (1999)). There likely are multiple ways of inducing diabetes involving several different cellular mechanisms. Complicating this picture, there are highly successful diabetogenic CD8<sup>+</sup> T cell clones and subsequent TCR-Tg animals, which do not appear to require CD4<sup>+</sup> help (Anderson, B. et al., *Proc. Natl. Acad. Sci. USA* 96, 9311-6 (1999); Serra, P. et al., *Proc. Natl. Acad. Sci. USA* 13, 13 (2002)).

**[0117]** The involvement of CD4<sup>+</sup> T cells in T1D has focused largely on diabetogenic T cell clones e.g., BDC2.5 and the corresponding BDC2.5 TCR-Tg animal (Katz, J. D. (1993)). Although BDC2.5 rapidly transfers disease, recently it was reported that its clonally defined TCR, V $\beta$ 4/V $\alpha$ 1 is grossly under-represented within NOD mice including the BDC2.5 TCR-Tg animal (Kanagawa, O. et al., (2002)). Theoretically, clonal expansions would occur due to availability of self-antigens. However, it is possible that changes within the TCR, such that it is no longer detectable by anti-idiotypic antibody occurs, but these T cells remain diabetogenic. Another study demonstrated that within the BDC2.5TCR-Tg animal there is substantial drift within V $\alpha$  usage but animals become diabetic nevertheless (Luhder, F. et al., (1998)). The current report demonstrates that auto-aggressive T cells expand as NOD mice age, likely by an antigen-driven response. Additionally, there are CD40-driven expansions of V $\alpha$ 3.2<sup>+</sup> cells within NOD T cells. Interestingly, in the NOR control there were early expansions of V $\alpha$ 3.2<sup>+</sup> T cells but only relative to the other V $\alpha$ <sup>+</sup> T cells examined. The levels of V $\alpha$ 3.2<sup>+</sup> T cells were substantially lower. Because the CD4<sup>lo</sup>CD40<sup>+</sup> T cell population does not expand in NOR, the numbers of V $\alpha$ 3.2<sup>+</sup> T cells potentially do not reach a critical mass to induce disease. Nevertheless, these data suggest that changes in TCR relative to V $\alpha$  expression are intrinsic to diabetogenesis.

**[0118]** There are two possible scenarios to explain the V $\alpha$  increases within the periphery, proliferation or alteration in V $\alpha$  expression. We have determined that CD40 signals do not promote T cells into cell cycle. In addition, CD40 signals promote T cell survival and not selective cell death. We have shown that CD40 signals auto-aggressive T cells to increase RAG1 and RAG2 expression, and importantly, CD40 signals induce translocation of the RAG proteins to the nucleus (Vaitaitis, G. M. et al., (2003)). Therefore the most likely explanation is that CD40 signals induce altered V $\alpha$  expression, explaining the expansion of V $\alpha$ 3.2<sup>+</sup> and V $\alpha$ 8.3<sup>+</sup> T cells. The clonal nature of these cells is indeterminate because the V $\beta$  repertoire of these cells is as yet unknown. V $\alpha$  expression may define a subset of T cells that can be further qualified relative to V $\beta$  expression. It has been demonstrated that dia-

betogenic T cell clones become heterogeneous with respect to antigen specificity (Candeias, S. et al., (1991)) suggesting that several  $\beta$  cell antigens are involved in the diabetogenic process. Therefore the V $\alpha$ 3.2<sup>+</sup> T cells may express several different V $\beta$  molecules but nonetheless rapidly induce diabetes.

#### Example 2

##### Diagnostic Tests for Auto-Immune Diseases

##### Type 1 Diabetes

**[0119]** A diagnostic test for type 1 diabetes comprising a blood test determining the levels of CD4<sup>+</sup>CD40<sup>+</sup> T cells is envisioned. For this diagnostic test, a blood sample or samples comprising T cells is taken from a predetermined subject. Similarly, a blood sample or samples comprising T cells is taken from one or more subjects not having, or prone to develop, type 1 diabetes. The blood sample from the non-prone subject(s) (the control sample or population) establishes the baseline level (control level) of CD4<sup>+</sup>CD40<sup>+</sup> T cells in the control population.

**[0120]** The cell-containing samples from both populations are treated with a fluorescent anti-CD4 antibody in combination with a fluorescent anti-CD40 antibody and the sample cells are assayed for expression of CD4 and CD40 by flow-cytometry using methods known in the art. Levels of CD4<sup>+</sup>CD40<sup>+</sup> cells in the control sample and the subject sample are determined. Exaggerated levels of CD4<sup>+</sup>CD40<sup>+</sup> cells are levels higher than those in the control population. Exaggerated levels of CD4<sup>+</sup>CD40<sup>+</sup> cells indicate a propensity to develop type 1 diabetes.

#### Example 3

##### Diagnostic and Predictive Tests for Emphysema

**[0121]** Emphysema is a chronic obstructive pulmonary disease (COPD) that results in destruction of alveoli of the lungs. The disease is both life altering and life threatening. While most suffers of emphysema are or have been chronic smokers, all smokers do not contract emphysema. This is consistent with auto-immune disease.

**[0122]** Smokers are exposed to tobacco smoke antigens, but not every individual develops emphysema. This invention will specifically test a person's susceptibility to develop COPD by tobacco smoke exposure. Blood will be drawn from an individual and examined for CD4<sup>+</sup>CD40<sup>+</sup> T cells, the hallmark of disease potential. Lymphocytes will be isolated by standard means, and exposed to tobacco smoke antigens. Simple tests of response including proliferation and T cell cytokine production will be tested using flow cytometry. Cells will be stained directly for expression of CD40 and CD4, then labeled to determine proliferation and stained intra-cellularly for cytokine production. This invention will encompass an approximately 4-5 day test period, at which time positive or negative results can be reported to the requesting physician.

#### Example 4

**[0123]** CD4<sup>+</sup>CD40<sup>+</sup> T cell increases are predictive of rheumatoid arthritis. Peripheral blood, 10 ml, was drawn by phlebotomy from clinically identified rheumatoid arthritis (RA) patients. Blood was mixed with phosphate buffered saline (PBS) 1:1 then layered on Ficoll and centrifuged to isolate lymphocytes. Lymphocytes were collected, washed with PBS

and directly stained with Cy-chrome conjugated anti-CD4 and FITC-conjugated anti-CD40. Stained T cells were analyzed using a FACScalibur Flow Cytometer. Levels of T cells were compared from RA patients and control patients. As in type 1 diabetes, CD4<sup>+</sup>CD40<sup>+</sup> T cell levels are greatly exaggerated, 56% versus 12%, in RA compared to controls. Thus CD4<sup>+</sup>CD40<sup>+</sup> T cell increases are predictive of rheumatoid arthritis. Results are shown in FIGS. 7A and 7B.

#### Example 5

[0124] CD4<sup>+</sup>CD40<sup>+</sup> T cell increases are predictive of asthma. Peripheral blood, 10 ml, was drawn by phlebotomy from clinically identified Asthma patients. Blood was mixed with phosphate buffered saline (PBS) 1:1 then layered on Ficoll and centrifuged to isolate lymphocytes. Lymphocytes were collected, washed with PBS and directly stained with Cy-chrome conjugated anti-CD4 and FITC-conjugated anti-CD40. Stained T cells were analyzed using a FACScalibur Flow Cytometer. Levels of T cells were compared from Asthma patients and control patients. As in type 1 diabetes, CD4<sup>+</sup>CD40<sup>+</sup> T cell levels are greatly exaggerated, 38% versus 8%, in RA compared to controls. Thus CD4<sup>+</sup>CD40<sup>+</sup> T cell increases are predictive of asthma. Results are shown in FIGS. 8A and 8B.

#### Example 6

[0125] CD40<sup>+</sup>CD4<sup>+</sup> T cells are predictive for Human type 1 diabetes. Blood was drawn from 25 clinically diagnosed type 1 diabetic patients and from 20 non-diabetic controls. Whole blood was diluted with PBS, suspended on Hypaque-Ficoll, centrifuged for 10 min at 5000 RPM. Leukocytes were isolated and stained with directly conjugated anti-CD3, anti-CD4 and anti-CD40. Cells were assayed through a FACScalibur flow cytometer. Cells were gated on CD3 (T cell marker) and analyzed for CD4 and CD40 levels. Controls (A) and Diabetics (B) are represented. Total percent of CD4<sup>+</sup>CD40<sup>+</sup>/CD4<sup>+</sup>CD40<sup>+</sup>+CD4<sup>+</sup>CD40<sup>-</sup> are represented (C). This measurement is predictive of diabetes. Results are presented in FIGS. 9A-C.

[0126] All cited patents, patent applications, publications and other documents cited in this application are herein incorporated by reference in their entirety. The present invention is not to be limited in terms of the particular embodiments described in this application, which are intended as single illustrations of individual aspects of the invention. Functionally equivalent methods and apparatus within the scope of the invention, in addition to those enumerated herein, will be apparent to those skilled in the art from the foregoing description and accompanying drawings. Such modifications and variations are intended to fall within the scope of the appended claims.

#### SEQUENCE LISTING

<160> NUMBER OF SEQ ID NOS: 24

<210> SEQ ID NO 1

<211> LENGTH: 6545

<212> TYPE: DNA

<213> ORGANISM: Homo sapiens

<220> FEATURE:

<221> NAME/KEY: CDS

<222> LOCATION: (113)..(3244)

<400> SEQUENCE: 1

gagagcagag aacacacttt gccttctctt tggtattgag taatatcaac caaattgcag 60

acatctcaac accttggccca ggcagcctgc tgagcaaggt acctcagcca gc atg gca 118  
Met Ala

1

gcc tct ttc cca ccc acc ttg gga ctc agt tct gcc cca gat gaa att 166  
Ala Ser Phe Pro Pro Thr Leu Gly Leu Ser Ser Ala Pro Asp Glu Ile  
5 10 15

cag cac cca cat att aaa ttt tca gaa tgg aaa ttt aag ctg ttc cgg 214  
Gln His Pro His Ile Lys Phe Ser Glu Trp Lys Phe Lys Leu Phe Arg  
20 25 30

gtg aga tcc ttt gaa aag aca cct gaa gaa gct caa aag gaa aag aag 262  
Val Arg Ser Phe Glu Lys Thr Pro Glu Glu Ala Gln Lys Glu Lys Lys  
35 40 45 50

gat tcc ttt gag ggg aaa ccc tct ctg gag caa tct cca gca gtc ctg 310  
Asp Ser Phe Glu Gly Lys Pro Ser Leu Glu Gln Ser Pro Ala Val Leu  
55 60 65

gac aag gct gat ggt cag aag cca gtc cca act cag cca ttg tta aaa 358  
Asp Lys Ala Asp Gly Gln Lys Pro Val Pro Thr Gln Pro Leu Leu Lys  
70 75 80

gcc cac cct aag ttt tca aag aaa ttt cac gac aac gag aaa gca aga 406

-continued

Ala His Pro Lys Phe Ser Lys Lys Phe His Asp Asn Glu Lys Ala Arg	
85 90 95	
ggc aaa gcg atc cat caa gcc aac ctt cga cat ctc tgc cgc atc tgt	454
Gly Lys Ala Ile His Gln Ala Asn Leu Arg His Leu Cys Arg Ile Cys	
100 105 110	
ggg aat tct ttt aga gct gat gag cac aac agg aga tat cca gtc cat	502
Gly Asn Ser Phe Arg Ala Asp Glu His Asn Arg Arg Tyr Pro Val His	
115 120 125 130	
ggt cct gtg gat ggt aaa acc cta ggc ctt tta cga aag aag gaa aag	550
Gly Pro Val Asp Gly Lys Thr Leu Gly Leu Leu Arg Lys Lys Glu Lys	
135 140 145	
aga gct act tcc tgg ccg gac ctc att gcc aag gtt ttc cgg atc gat	598
Arg Ala Thr Ser Trp Pro Asp Leu Ile Ala Lys Val Phe Arg Ile Asp	
150 155 160	
gtg aag gca gat gtt gac tcg atc cac ccc act gag ttc tgc cat aac	646
Val Lys Ala Asp Val Asp Ser Ile His Pro Thr Glu Phe Cys His Asn	
165 170 175	
tgc tgg agc atc atg cac agg aag ttt agc agt gcc cca tgt gag gtt	694
Cys Trp Ser Ile Met His Arg Lys Phe Ser Ser Ala Pro Cys Glu Val	
180 185 190	
tac ttc ccg agg aac gtg acc atg gag tgg cac ccc cac aca cca tcc	742
Tyr Phe Pro Arg Asn Val Thr Met Glu Trp His Pro His Thr Pro Ser	
195 200 205 210	
tgt gac atc tgc aac act gcc cgt cgg gga ctc aag agg aag agt ctt	790
Cys Asp Ile Cys Asn Thr Ala Arg Arg Gly Leu Lys Arg Lys Ser Leu	
215 220 225	
cag cca aac ttg cag ctc agc aaa aaa ctc aaa act gtg ctt gac caa	838
Gln Pro Asn Leu Gln Leu Ser Lys Lys Leu Lys Thr Val Leu Asp Gln	
230 235 240	
gca aga caa gcc cgt cag cgc aag aga aga gct cag gca agg atc agc	886
Ala Arg Gln Ala Arg Gln Arg Lys Arg Arg Ala Gln Ala Arg Ile Ser	
245 250 255	
agc aag gat gtc atg aag aag atc gcc aac tgc agt aag ata cat ctt	934
Ser Lys Asp Val Met Lys Lys Ile Ala Asn Cys Ser Lys Ile His Leu	
260 265 270	
agt acc aag ctc ctt gca gtg gac ttc cca gag cac ttt gtg aaa tcc	982
Ser Thr Lys Leu Leu Ala Val Asp Phe Pro Glu His Phe Val Lys Ser	
275 280 285 290	
atc tcc tgc cag atc tgt gaa cac att ctg gct gac cct gtg gag acc	1030
Ile Ser Cys Gln Ile Cys Glu His Ile Leu Ala Asp Pro Val Glu Thr	
295 300 305	
aac tgt aag cat gtc ttt tgc cgg gtc tgc att ctc aga tgc ctc aaa	1078
Asn Cys Lys His Val Phe Cys Arg Val Cys Ile Leu Arg Cys Leu Lys	
310 315 320	
gtc atg ggc agc tat tgt ccc tct tgc cga tat cca tgc ttc cct act	1126
Val Met Gly Ser Tyr Cys Pro Ser Cys Arg Tyr Pro Cys Phe Pro Thr	
325 330 335	
gac ctg gag agt cca gtg aag tcc ttt ctg agc gtc ttg aat tcc ctg	1174
Asp Leu Glu Ser Pro Val Lys Ser Phe Leu Ser Val Leu Asn Ser Leu	
340 345 350	
atg gtg aaa tgt cca gca aaa gag tgc aat gag gag gtc agt ttg gaa	1222
Met Val Lys Cys Pro Ala Lys Glu Cys Asn Glu Glu Val Ser Leu Glu	
355 360 365 370	
aaa tat aat cac cac atc tca agt cac aag gaa tca aaa gag att ttt	1270
Lys Tyr Asn His His Ile Ser Ser His Lys Glu Ser Lys Glu Ile Phe	
375 380 385	
gtg cac att aat aaa ggg ggc cgg ccc cgc caa cat ctt ctg tcg ctg	1318







-continued

```

ttttaacatt agtttttttg aaaactcttg gttttgtttt tttggaaatg agtggggccac 5204
taagccacac tttcccttca tcctgcttaa tccttccagc atgtctctgc actaataaac 5264
agctaaattc acataatcat cctatttact gaagcatggt catgctgggt tatagatttt 5324
ttaccatttt ctactctttt tctctatttg tggcactgta aatactttcc agtattaaat 5384
tatccttttc taacactgta ggaactattt tgaatgcatg tgactaagag catgatttat 5444
agcacaacct ttccaataat cccttaatca gatcacattt tgataaaccc tgggaacatc 5504
tggctgcagg aatttcaata tgtagaaaac ctgcctatgg ttttttgccc ttactgttga 5564
gactgcaata tcctagacct tagttttata cttagatttt atttttagca atgcctattg 5624
caagtgaat tatatactcc agggaaattc accacactga atcgagcatt tgtgtgtgta 5684
tgtgtgaagt atatctggga cttcagaagt gcaatgtatt tttctcctgt gaaacctgaa 5744
tctacaagtt tctgccaag ccaactcagg gcaattgcagg gaccagtgat aatggctgat 5804
gaaaattgat gattggtcag tgaggtcaaa aggagccttg ggattaataa acatgcactg 5864
agaagcaaga ggaggagaaa aagatgtctt tttcttcag gtgaactgga atttagtttt 5924
gcctcagatt tttttccac aagatacaga agaagataaa gatttttttg gttgagagtg 5984
tgggtcttgc attacatcaa acagagtcca aattccacac agataagagg caggatata 6044
aagcgcagtt gtagtctggg aggaataaac cattatttgg atgcaggtgg tttttgattg 6104
caaatatgtg tgtgtcttca gtgattgtat gacagatgat gtattctttt gatgttaaaa 6164
gattttaagt aagagtagat acattgtacc cattttacat tttcttattt taactacagt 6224
aatctacata aatatacctc agaaatcatt tttggtgatt attttttgtt ttgtagaatt 6284
gcacttcagt ttattttctt acaataaacc ttacattttg tttaatggct tccaagagcc 6344
tttttttttt tgtatttccag agaaaattca ggtaccagga tgcaatgat ttatttgatt 6404
caggggacct gtatttccat gtcaaatggt ttcaataaaa atgaaatag agtttcaata 6464
ctttttatat tttaatattt ccttaatatt atggttattg tccgccattt tgttgtatat 6524
tgtaaataaa gtttagattg t 6545

```

```

<210> SEQ ID NO 2
<211> LENGTH: 1043
<212> TYPE: PRT
<213> ORGANISM: Homo sapiens

```

<400> SEQUENCE: 2

```

Met Ala Ala Ser Phe Pro Pro Thr Leu Gly Leu Ser Ser Ala Pro Asp
1           5           10           15
Glu Ile Gln His Pro His Ile Lys Phe Ser Glu Trp Lys Phe Lys Leu
                20           25           30
Phe Arg Val Arg Ser Phe Glu Lys Thr Pro Glu Glu Ala Gln Lys Glu
        35           40           45
Lys Lys Asp Ser Phe Glu Gly Lys Pro Ser Leu Glu Gln Ser Pro Ala
        50           55           60
Val Leu Asp Lys Ala Asp Gly Gln Lys Pro Val Pro Thr Gln Pro Leu
65           70           75           80
Leu Lys Ala His Pro Lys Phe Ser Lys Lys Phe His Asp Asn Glu Lys
        85           90           95
Ala Arg Gly Lys Ala Ile His Gln Ala Asn Leu Arg His Leu Cys Arg

```



-continued

---

Leu Leu Pro Gly Tyr His His Phe Glu Trp Gln Pro Pro Leu Lys Asn  
 515 520 525

Val Ser Ser Ser Thr Asp Val Gly Ile Ile Asp Gly Leu Ser Gly Leu  
 530 535 540

Ser Ser Ser Val Asp Asp Tyr Pro Val Asp Thr Ile Ala Lys Arg Phe  
 545 550 555 560

Arg Tyr Asp Ser Ala Leu Val Ser Ala Leu Met Asp Met Glu Glu Asp  
 565 570 575

Ile Leu Glu Gly Met Arg Ser Gln Asp Leu Asp Asp Tyr Leu Asn Gly  
 580 585 590

Pro Phe Thr Val Val Val Lys Glu Ser Cys Asp Gly Met Gly Asp Val  
 595 600 605

Ser Glu Lys His Gly Ser Gly Pro Val Val Pro Glu Lys Ala Val Arg  
 610 615 620

Phe Ser Phe Thr Ile Met Lys Ile Thr Ile Ala His Ser Ser Gln Asn  
 625 630 635 640

Val Lys Val Phe Glu Glu Ala Lys Pro Asn Ser Glu Leu Cys Cys Lys  
 645 650 655

Pro Leu Cys Leu Met Leu Ala Asp Glu Ser Asp His Glu Thr Leu Thr  
 660 665 670

Ala Ile Leu Ser Pro Leu Ile Ala Glu Arg Glu Ala Met Lys Ser Ser  
 675 680 685

Glu Leu Met Leu Glu Leu Gly Gly Ile Leu Arg Thr Phe Lys Phe Ile  
 690 695 700

Phe Arg Gly Thr Gly Tyr Asp Glu Lys Leu Val Arg Glu Val Glu Gly  
 705 710 715 720

Leu Glu Ala Ser Gly Ser Val Tyr Ile Cys Thr Leu Cys Asp Ala Thr  
 725 730 735

Arg Leu Glu Ala Ser Gln Asn Leu Val Phe His Ser Ile Thr Arg Ser  
 740 745 750

His Ala Glu Asn Leu Glu Arg Tyr Glu Val Trp Arg Ser Asn Pro Tyr  
 755 760 765

His Glu Ser Val Glu Glu Leu Arg Asp Arg Val Lys Gly Val Ser Ala  
 770 775 780

Lys Pro Phe Ile Glu Thr Val Pro Ser Ile Asp Ala Leu His Cys Asp  
 785 790 795 800

Ile Gly Asn Ala Ala Glu Phe Tyr Lys Ile Phe Gln Leu Glu Ile Gly  
 805 810 815

Glu Val Tyr Lys Asn Pro Asn Ala Ser Lys Glu Glu Arg Lys Arg Trp  
 820 825 830

Gln Ala Thr Leu Asp Lys His Leu Arg Lys Lys Met Asn Leu Lys Pro  
 835 840 845

Ile Met Arg Met Asn Gly Asn Phe Ala Arg Lys Leu Met Thr Lys Glu  
 850 855 860

Thr Val Asp Ala Val Cys Glu Leu Ile Pro Ser Glu Glu Arg His Glu  
 865 870 875 880

Ala Leu Arg Glu Leu Met Asp Leu Tyr Leu Lys Met Lys Pro Val Trp  
 885 890 895

Arg Ser Ser Cys Pro Ala Lys Glu Cys Pro Glu Ser Leu Cys Gln Tyr  
 900 905 910

-continued

---

Ser Phe Asn Ser Gln Arg Phe Ala Glu Leu Leu Ser Thr Lys Phe Lys  
 915 920 925

Tyr Arg Tyr Glu Gly Lys Ile Thr Asn Tyr Phe His Lys Thr Leu Ala  
 930 935 940

His Val Pro Glu Ile Ile Glu Arg Asp Gly Ser Ile Gly Ala Trp Ala  
 945 950 955 960

Ser Glu Gly Asn Glu Ser Gly Asn Lys Leu Phe Arg Arg Phe Arg Lys  
 965 970 975

Met Asn Ala Arg Gln Ser Lys Cys Tyr Glu Met Glu Asp Val Leu Lys  
 980 985 990

His His Trp Leu Tyr Thr Ser Lys Tyr Leu Gln Lys Phe Met Asn Ala  
 995 1000 1005

His Asn Ala Leu Lys Thr Ser Gly Phe Thr Met Asn Pro Gln Ala  
 1010 1015 1020

Ser Leu Gly Asp Pro Leu Gly Ile Glu Asp Ser Leu Glu Ser Gln  
 1025 1030 1035

Asp Ser Met Glu Phe  
 1040

<210> SEQ ID NO 3  
 <211> LENGTH: 2414  
 <212> TYPE: DNA  
 <213> ORGANISM: Homo sapiens  
 <220> FEATURE:  
 <221> NAME/KEY: CDS  
 <222> LOCATION: (163)..(1746)

<400> SEQUENCE: 3

actctcttta cagtcagcct tctgcttgcc acagtcatag tgggcagtca gtgaatcttc 60

cccaagtgct gacaattaat acctggttta gcggcaaaga ttcagagagg cgtgagcagc 120

ccctctggcc ttcagacaaa aatctacgta ccatcagaaa ct atg tct ctg cag 174  
 Met Ser Leu Gln  
 1

atg gta aca gtc agt aat aac ata gcc tta att cag cca ggc ttc tca 222  
 Met Val Thr Val Ser Asn Asn Ile Ala Leu Ile Gln Pro Gly Phe Ser  
 5 10 15 20

ctg atg aat ttt gat gga caa gtt ttc ttc ttt gga caa aaa ggc tgg 270  
 Leu Met Asn Phe Asp Gly Gln Val Phe Phe Phe Gly Gln Lys Gly Trp  
 25 30 35

ccc aaa aga tcc tgc ccc act gga gtt ttc cat ctg gat gta aag cat 318  
 Pro Lys Arg Ser Cys Pro Thr Gly Val Phe His Leu Asp Val Lys His  
 40 45 50

aac cat gtc aaa ctg aag cct aca att ttc tct aag gat tcc tgc tac 366  
 Asn His Val Lys Leu Lys Pro Thr Ile Phe Ser Lys Asp Ser Cys Tyr  
 55 60 65

ctc cct cct ctt cgc tac cca gcc act tgc aca ttc aaa ggc agc ttg 414  
 Leu Pro Pro Leu Arg Tyr Pro Ala Thr Cys Thr Phe Lys Gly Ser Leu  
 70 75 80

gag tct gaa aag cat caa tac atc atc cat gga ggg aaa aca cca aac 462  
 Glu Ser Glu Lys His Gln Tyr Ile Ile His Gly Gly Lys Thr Pro Asn  
 85 90 95 100

aat gag gtt tca gat aag att tat gtc atg tct att gtt tgc aag aac 510  
 Asn Glu Val Ser Asp Lys Ile Tyr Val Met Ser Ile Val Cys Lys Asn  
 105 110 115

aac aaa aag gtt act ttt cgc tgc aca gag aaa gac ttg gta gga gat 558  
 Asn Lys Lys Val Thr Phe Arg Cys Thr Glu Lys Asp Leu Val Gly Asp

-continued

120		125		130		
ggt cct gaa gcc aga tat ggt cat tcc att aat gtg gtg tac agc cga						606
Val Pro Glu Ala Arg Tyr Gly His Ser Ile Asn Val Val Tyr Ser Arg						
135		140		145		
ggg aaa agt atg ggt gct ctc ttt gga gga cgc tca tac atg cct tct						654
Gly Lys Ser Met Gly Ala Leu Phe Gly Gly Arg Ser Tyr Met Pro Ser						
150		155		160		
acc cac aga acc aca gaa aaa tgg aat agt gta gct gac tgc ctg ccc						702
Thr His Arg Thr Thr Glu Lys Trp Asn Ser Val Ala Asp Cys Leu Pro						
165		170		175		180
tgt gtt ttc ctg gtg gat ttt gaa ttt ggg tgt gct aca tca tac att						750
Cys Val Phe Leu Val Asp Phe Glu Phe Gly Cys Ala Thr Ser Tyr Ile						
185		190		195		
ctt cca gaa ctt cag gat ggg cta tct ttt cat gtc tct att gcc aaa						798
Leu Pro Glu Leu Gln Asp Gly Leu Ser Phe His Val Ser Ile Ala Lys						
200		205		210		
aat gac acc atc tat att tta gga gga cat tca ctt gcc aat aat atc						846
Asn Asp Thr Ile Tyr Ile Leu Gly Gly His Ser Leu Ala Asn Asn Ile						
215		220		225		
cgg cct gcc aac ctg tac aga ata agg gtt gat ctt ccc ctg ggt agc						894
Arg Pro Ala Asn Leu Tyr Arg Ile Arg Val Asp Leu Pro Leu Gly Ser						
230		235		240		
cca gct gtg aat tgc aca gtc ttg cca gga gga atc tct gtc tcc agt						942
Pro Ala Val Asn Cys Thr Val Leu Pro Gly Gly Ile Ser Val Ser Ser						
245		250		255		260
gca atc ctg act caa act aac aat gat gaa ttt gtt att gtt ggt ggc						990
Ala Ile Leu Thr Gln Thr Asn Asn Asp Glu Phe Val Ile Val Gly Gly						
265		270		275		
tat cag ctt gaa aat caa aaa aga atg atc tgc aac atc atc tct tta						1038
Tyr Gln Leu Glu Asn Gln Lys Arg Met Ile Cys Asn Ile Ile Ser Leu						
280		285		290		
gag gac aac aag ata gaa att cgt gag atg gag acc cca gat tgg acc						1086
Glu Asp Asn Lys Ile Glu Ile Arg Glu Met Glu Thr Pro Asp Trp Thr						
295		300		305		
cca gac att aag cac agc aag ata tgg ttt gga agc aac acg gga aat						1134
Pro Asp Ile Lys His Ser Lys Ile Trp Phe Gly Ser Asn Thr Gly Asn						
310		315		320		
gga act gtt ttt ctt ggc ata cca gga gac aat aaa caa gtt gtt tca						1182
Gly Thr Val Phe Leu Gly Ile Pro Gly Asp Asn Lys Gln Val Val Ser						
325		330		335		340
gaa gga ttc tat ttc tat atg ttg aaa tgt gct gaa gat gat act aat						1230
Glu Gly Phe Tyr Phe Tyr Met Leu Lys Cys Ala Glu Asp Asp Thr Asn						
345		350		355		
gaa gag cag aca aca ttc aca aac agt caa aca tca aca gaa gat cca						1278
Glu Glu Gln Thr Thr Phe Thr Asn Ser Gln Thr Ser Thr Glu Asp Pro						
360		365		370		
ggg gat tcc act ccc ttt gaa gac tct gaa gaa ttt tgt ttc agt gca						1326
Gly Asp Ser Thr Pro Phe Glu Asp Ser Glu Glu Phe Cys Phe Ser Ala						
375		380		385		
gaa gca aat agt ttt gat ggt gat gat gaa ttt gac acc tat aat gaa						1374
Glu Ala Asn Ser Phe Asp Gly Asp Asp Glu Phe Asp Thr Tyr Asn Glu						
390		395		400		
gat gat gaa gaa gat gag tct gag aca ggc tac tgg att aca tgc tgc						1422
Asp Asp Glu Glu Asp Glu Ser Glu Thr Gly Tyr Trp Ile Thr Cys Cys						
405		410		415		420
cct act tgt gat gtg gat atc aac act tgg gta cca ttc tat tca act						1470



-continued

100				105				110							
Val	Cys	Lys	Asn	Asn	Lys	Lys	Val	Thr	Phe	Arg	Cys	Thr	Glu	Lys	Asp
			115				120								125
Leu	Val	Gly	Asp	Val	Pro	Glu	Ala	Arg	Tyr	Gly	His	Ser	Ile	Asn	Val
			130				135								140
Val	Tyr	Ser	Arg	Gly	Lys	Ser	Met	Gly	Ala	Leu	Phe	Gly	Gly	Arg	Ser
							150								160
Tyr	Met	Pro	Ser	Thr	His	Arg	Thr	Thr	Glu	Lys	Trp	Asn	Ser	Val	Ala
							165								175
Asp	Cys	Leu	Pro	Cys	Val	Phe	Leu	Val	Asp	Phe	Glu	Phe	Gly	Cys	Ala
			180												190
Thr	Ser	Tyr	Ile	Leu	Pro	Glu	Leu	Gln	Asp	Gly	Leu	Ser	Phe	His	Val
			195				200								205
Ser	Ile	Ala	Lys	Asn	Asp	Thr	Ile	Tyr	Ile	Leu	Gly	Gly	His	Ser	Leu
			210				215								220
Ala	Asn	Asn	Ile	Arg	Pro	Ala	Asn	Leu	Tyr	Arg	Ile	Arg	Val	Asp	Leu
							230								240
Pro	Leu	Gly	Ser	Pro	Ala	Val	Asn	Cys	Thr	Val	Leu	Pro	Gly	Gly	Ile
							245								255
Ser	Val	Ser	Ser	Ala	Ile	Leu	Thr	Gln	Thr	Asn	Asn	Asp	Glu	Phe	Val
							260								270
Ile	Val	Gly	Gly	Tyr	Gln	Leu	Glu	Asn	Gln	Lys	Arg	Met	Ile	Cys	Asn
			275				280								285
Ile	Ile	Ser	Leu	Glu	Asp	Asn	Lys	Ile	Glu	Ile	Arg	Glu	Met	Glu	Thr
			290				295								300
Pro	Asp	Trp	Thr	Pro	Asp	Ile	Lys	His	Ser	Lys	Ile	Trp	Phe	Gly	Ser
							310								320
Asn	Thr	Gly	Asn	Gly	Thr	Val	Phe	Leu	Gly	Ile	Pro	Gly	Asp	Asn	Lys
							325								335
Gln	Val	Val	Ser	Glu	Gly	Phe	Tyr	Phe	Tyr	Met	Leu	Lys	Cys	Ala	Glu
							340								350
Asp	Asp	Thr	Asn	Glu	Glu	Gln	Thr	Thr	Phe	Thr	Asn	Ser	Gln	Thr	Ser
							355								365
Thr	Glu	Asp	Pro	Gly	Asp	Ser	Thr	Pro	Phe	Glu	Asp	Ser	Glu	Glu	Phe
							370								380
Cys	Phe	Ser	Ala	Glu	Ala	Asn	Ser	Phe	Asp	Gly	Asp	Asp	Glu	Phe	Asp
							385								400
Thr	Tyr	Asn	Glu	Asp	Asp	Glu	Glu	Asp	Glu	Ser	Glu	Thr	Gly	Tyr	Trp
							405								415
Ile	Thr	Cys	Cys	Pro	Thr	Cys	Asp	Val	Asp	Ile	Asn	Thr	Trp	Val	Pro
							420								430
Phe	Tyr	Ser	Thr	Glu	Leu	Asn	Lys	Pro	Ala	Met	Ile	Tyr	Cys	Ser	His
							435								445
Gly	Asp	Gly	His	Trp	Val	His	Ala	Gln	Cys	Met	Asp	Leu	Ala	Glu	Arg
							450								460
Thr	Leu	Ile	His	Leu	Ser	Ala	Gly	Ser	Asn	Lys	Tyr	Tyr	Cys	Asn	Glu
							465								480
His	Val	Glu	Ile	Ala	Arg	Ala	Leu	His	Thr	Pro	Gln	Arg	Val	Leu	Pro
							485								495
Leu	Lys	Lys	Pro	Pro	Met	Lys	Ser	Leu	Arg	Lys	Lys	Gly	Ser	Gly	Lys
							500								510

-continued

---

```

Ile Leu Thr Pro Ala Lys Lys Ser Phe Leu Arg Arg Leu Phe Asp
      515                520                525

<210> SEQ ID NO 5
<211> LENGTH: 1816
<212> TYPE: DNA
<213> ORGANISM: Homo sapiens
<220> FEATURE:
<221> NAME/KEY: CDS
<222> LOCATION: (40)..(825)

<400> SEQUENCE: 5

cttctctgcc agaagatacc atttcaactt taacacagc atg atc gaa aca tac      54
                               Met Ile Glu Thr Tyr
                               1           5

aac caa act tct ccc cga tct gcg gcc act gga ctg ccc atc agc atg      102
Asn Gln Thr Ser Pro Arg Ser Ala Ala Thr Gly Leu Pro Ile Ser Met
                10                15                20

aaa att ttt atg tat tta ctt act gtt ttt ctt atc acc cag atg att      150
Lys Ile Phe Met Tyr Leu Leu Thr Val Phe Leu Ile Thr Gln Met Ile
                25                30                35

ggg tca gca ctt ttt gct gtg tat ctt cat aga agg ttg gac aag ata      198
Gly Ser Ala Leu Phe Ala Val Tyr Leu His Arg Arg Leu Asp Lys Ile
                40                45                50

gaa gat gaa agg aat ctt cat gaa gat ttt gta ttc atg aaa acg ata      246
Glu Asp Glu Arg Asn Leu His Glu Asp Phe Val Phe Met Lys Thr Ile
                55                60                65

cag aga tgc aac aca gga gaa aga tcc tta tcc tta ctg aac tgt gag      294
Gln Arg Cys Asn Thr Gly Glu Arg Ser Leu Ser Leu Leu Asn Cys Glu
                70                75                80                85

gag att aaa agc cag ttt gaa ggc ttt gtg aag gat ata atg tta aac      342
Glu Ile Lys Ser Gln Phe Glu Gly Phe Val Lys Asp Ile Met Leu Asn
                90                95                100

aaa gag gag acg aag aaa gaa aac agc ttt gaa atg caa aaa ggt gat      390
Lys Glu Glu Thr Lys Lys Glu Asn Ser Phe Glu Met Gln Lys Gly Asp
                105                110                115

cag aat cct caa att gcg gca cat gtc ata agt gag gcc agc agt aaa      438
Gln Asn Pro Gln Ile Ala Ala His Val Ile Ser Glu Ala Ser Ser Lys
                120                125                130

aca aca tct gtg tta cag tgg gct gaa aaa gga tac tac acc atg agc      486
Thr Thr Ser Val Leu Gln Trp Ala Glu Lys Gly Tyr Tyr Thr Met Ser
                135                140                145

aac aac ttg gta acc ctg gaa aat ggg aaa cag ctg acc gtt aaa aga      534
Asn Asn Leu Val Thr Leu Glu Asn Gly Lys Gln Leu Thr Val Lys Arg
                150                155                160                165

caa gga ctc tat tat atc tat gcc caa gtc acc ttc tgt tcc aat cgg      582
Gln Gly Leu Tyr Tyr Ile Tyr Ala Gln Val Thr Phe Cys Ser Asn Arg
                170                175                180

gaa gct tcg agt caa gct cca ttt ata gcc agc ctc tgc cta aag tcc      630
Glu Ala Ser Ser Gln Ala Pro Phe Ile Ala Ser Leu Cys Leu Lys Ser
                185                190                195

ccc ggt aga ttc gag aga atc tta ctc aga gct gca aat acc cac agt      678
Pro Gly Arg Phe Glu Arg Ile Leu Leu Arg Ala Ala Asn Thr His Ser
                200                205                210

tcc gcc aaa cct tgc ggg caa caa tcc att cac ttg gga gga gta ttt      726
Ser Ala Lys Pro Cys Gly Gln Gln Ser Ile His Leu Gly Gly Val Phe
                215                220                225

gaa ttg caa cca ggt gct tcg gtg ttt gtc aat gtg act gat cca agc      774

```

-continued

---

Glu	Leu	Gln	Pro	Gly	Ala	Ser	Val	Phe	Val	Asn	Val	Thr	Asp	Pro	Ser	
230					235					240					245	
caa	gtg	agc	cat	ggc	act	ggc	ttc	acg	tcc	ttt	ggc	tta	ctc	aaa	ctc	822
Gln	Val	Ser	His	Gly	Thr	Gly	Phe	Thr	Ser	Phe	Gly	Leu	Leu	Lys	Leu	
			250						255					260		
tga	acagtgtcac	cttg	caggct	gtg	gtgggagc	tgac	gctggg	ag	tcttcata							875
ata	cagcaca	gogg	ttaagc	ccac	ccctg	ttaact	gcct	att	tataacc	ctag	gac	ctc				935
cct	tatggag	aact	tttat	tata	cactcc	aagg	catgta	gaact	gtaat	aagt	gaatta					995
cag	gtc	acat	gaac	caaaa	gggg	ccctgc	tccata	agag	ctt	atata	atc	tga	agcagca			1055
ac	ccactga	tcag	acatc	cag	agagtcc	tat	gaaaaga	caagg	catt	atgc	acaggt					1115
tga	attctga	gtaa	acagca	gata	aactgc	caag	ttcagt	ttt	gtttctt	tcg	ctgcagt					1175
gt	ctttccat	ggata	atgca	ttt	gatttat	cagt	gaagat	gcaga	agggga	aat	ggggagc					1235
ctc	agctcac	attc	agttat	ggt	tgactct	gggt	tccat	ggc	ctt	gttg	gagggggcca					1295
gg	ctctagaa	cgt	cta	aacac	agtg	gagaac	cga	aaccccc	cccc	cccccc	ccgccacct					1355
ctc	ggacagt	tatt	cattct	ctt	caatct	ctct	ctctcc	atct	ctctct	ttc	agctctct					1415
ct	ctctcaac	ctct	ttcttc	caat	ctctct	ttct	caatct	ctct	gtttcc	cttt	gtcagt					1475
ct	ttccctc	cccc	agctctc	tctt	ctcaat	cccc	ctttct	aac	acacaca	cac	acacaca					1535
cac	acacaca	cac	acacaca	cac	acacaca	cac	acacaca	cac	acagagt	cagg	ccgttg					1595
ct	agtcagtt	ctct	cttttc	cacc	ctgtcc	ctat	ctctac	cact	atagat	gagg	gtgagg					1655
ag	tagggagt	gcag	ccctga	gcct	gccccac	tcct	cattac	gaa	atgactg	tatt	taaagg					1715
aa	atctattg	tat	ctacctg	cagt	ctccat	tg	ttccaga	gtga	acttgt	aatt	atcttg					1775
tt	ttttat	ttt	gaataat	aa	gacctct	ta	acattaaa	a								1816

<210> SEQ ID NO 6  
 <211> LENGTH: 261  
 <212> TYPE: PRT  
 <213> ORGANISM: Homo sapiens

<400> SEQUENCE: 6

Met	Ile	Glu	Thr	Tyr	Asn	Gln	Thr	Ser	Pro	Arg	Ser	Ala	Ala	Thr	Gly	
1				5					10					15		
Leu	Pro	Ile	Ser	Met	Lys	Ile	Phe	Met	Tyr	Leu	Leu	Thr	Val	Phe	Leu	
			20					25					30			
Ile	Thr	Gln	Met	Ile	Gly	Ser	Ala	Leu	Phe	Ala	Val	Tyr	Leu	His	Arg	
		35					40					45				
Arg	Leu	Asp	Lys	Ile	Glu	Asp	Glu	Arg	Asn	Leu	His	Glu	Asp	Phe	Val	
	50					55					60					
Phe	Met	Lys	Thr	Ile	Gln	Arg	Cys	Asn	Thr	Gly	Glu	Arg	Ser	Leu	Ser	
65					70					75				80		
Leu	Leu	Asn	Cys	Glu	Glu	Ile	Lys	Ser	Gln	Phe	Glu	Gly	Phe	Val	Lys	
			85						90					95		
Asp	Ile	Met	Leu	Asn	Lys	Glu	Glu	Thr	Lys	Lys	Glu	Asn	Ser	Phe	Glu	
		100						105					110			
Met	Gln	Lys	Gly	Asp	Gln	Asn	Pro	Gln	Ile	Ala	Ala	His	Val	Ile	Ser	
		115					120					125				
Glu	Ala	Ser	Ser	Lys	Thr	Thr	Ser	Val	Leu	Gln	Trp	Ala	Glu	Lys	Gly	
	130						135					140				

-continued

---

Tyr Tyr Thr Met Ser Asn Asn Leu Val Thr Leu Glu Asn Gly Lys Gln  
 145 150 155 160  
 Leu Thr Val Lys Arg Gln Gly Leu Tyr Tyr Ile Tyr Ala Gln Val Thr  
 165 170 175  
 Phe Cys Ser Asn Arg Glu Ala Ser Ser Gln Ala Pro Phe Ile Ala Ser  
 180 185 190  
 Leu Cys Leu Lys Ser Pro Gly Arg Phe Glu Arg Ile Leu Leu Arg Ala  
 195 200 205  
 Ala Asn Thr His Ser Ser Ala Lys Pro Cys Gly Gln Gln Ser Ile His  
 210 215 220  
 Leu Gly Gly Val Phe Glu Leu Gln Pro Gly Ala Ser Val Phe Val Asn  
 225 230 235 240  
 Val Thr Asp Pro Ser Gln Val Ser His Gly Thr Gly Phe Thr Ser Phe  
 245 250 255  
 Gly Leu Leu Lys Leu  
 260

<210> SEQ ID NO 7  
 <211> LENGTH: 24  
 <212> TYPE: PRT  
 <213> ORGANISM: Artificial sequence  
 <220> FEATURE:  
 <223> OTHER INFORMATION: Blocking peptide

<400> SEQUENCE: 7

Ser Ser Lys Thr Thr Ser Val Leu Gln Trp Ala Glu Lys Gly Tyr Tyr  
 1 5 10 15  
 Thr Met Ser Asn Asn Leu Val Thr  
 20

<210> SEQ ID NO 8  
 <211> LENGTH: 13  
 <212> TYPE: PRT  
 <213> ORGANISM: Artificial sequence  
 <220> FEATURE:  
 <223> OTHER INFORMATION: Blocking peptide

<400> SEQUENCE: 8

Gln Ile Ala Ala His Val Ile Ser Glu Ala Ser Ser Lys  
 1 5 10

<210> SEQ ID NO 9  
 <211> LENGTH: 22  
 <212> TYPE: RNA  
 <213> ORGANISM: Artificial Sequence  
 <220> FEATURE:  
 <223> OTHER INFORMATION: mammalian  
 <220> FEATURE:  
 <221> NAME/KEY: misc\_feature  
 <222> LOCATION: (21)..(22)  
 <223> OTHER INFORMATION: n is a, c, g, or u

<400> SEQUENCE: 9

augucucugc agaugguaac nn

22

<210> SEQ ID NO 10  
 <211> LENGTH: 22  
 <212> TYPE: RNA  
 <213> ORGANISM: Artificial Sequence  
 <220> FEATURE:  
 <223> OTHER INFORMATION: mammalian

---

-continued

---

<220> FEATURE:  
<221> NAME/KEY: misc\_feature  
<222> LOCATION: (21)..(22)  
<223> OTHER INFORMATION: n is a, c, g, or u  
  
<400> SEQUENCE: 10  
  
cuguuaccacugcagagac nn 22  
  
<210> SEQ ID NO 11  
<211> LENGTH: 22  
<212> TYPE: RNA  
<213> ORGANISM: Artificial Sequence  
<220> FEATURE:  
<223> OTHER INFORMATION: mammalian  
<220> FEATURE:  
<221> NAME/KEY: misc\_feature  
<222> LOCATION: (21)..(22)  
<223> OTHER INFORMATION: n is a, c, g, or u  
  
<400> SEQUENCE: 11  
  
gguaggagau cuuccugaag nn 22  
  
<210> SEQ ID NO 12  
<211> LENGTH: 24  
<212> TYPE: RNA  
<213> ORGANISM: Artificial Sequence  
<220> FEATURE:  
<223> OTHER INFORMATION: mammalian  
<220> FEATURE:  
<221> NAME/KEY: misc\_feature  
<222> LOCATION: (23)..(24)  
<223> OTHER INFORMATION: n is a, c, g, or u  
  
<400> SEQUENCE: 12  
  
ggggaugggc acugggucca ugnn 24  
  
<210> SEQ ID NO 13  
<211> LENGTH: 24  
<212> TYPE: RNA  
<213> ORGANISM: Artificial Sequence  
<220> FEATURE:  
<223> OTHER INFORMATION: mammalian  
<220> FEATURE:  
<221> NAME/KEY: misc\_feature  
<222> LOCATION: (23)..(24)  
<223> OTHER INFORMATION: n is a, c, g, or u  
  
<400> SEQUENCE: 13  
  
agcauggacc cagugcccau ccnn 24  
  
<210> SEQ ID NO 14  
<211> LENGTH: 22  
<212> TYPE: RNA  
<213> ORGANISM: Artificial Sequence  
<220> FEATURE:  
<223> OTHER INFORMATION: mammalian  
<220> FEATURE:  
<221> NAME/KEY: misc\_feature  
<222> LOCATION: (21)..(22)  
<223> OTHER INFORMATION: n is a, c, g, or u  
  
<400> SEQUENCE: 14  
  
cuguuaccacugcagagac nn 22  
  
<210> SEQ ID NO 15  
<211> LENGTH: 24

---

-continued

---

<212> TYPE: RNA  
<213> ORGANISM: Artificial Sequence  
<220> FEATURE:  
<223> OTHER INFORMATION: mammalian  
<220> FEATURE:  
<221> NAME/KEY: misc\_feature  
<222> LOCATION: (23)..(24)  
<223> OTHER INFORMATION: n is a, c, g, or u

<400> SEQUENCE: 15

auggcagccu cuuucccacc cann 24

<210> SEQ ID NO 16  
<211> LENGTH: 24  
<212> TYPE: RNA  
<213> ORGANISM: Artificial Sequence  
<220> FEATURE:  
<223> OTHER INFORMATION: mammalian  
<220> FEATURE:  
<221> NAME/KEY: misc\_feature  
<222> LOCATION: (23)..(24)  
<223> OTHER INFORMATION: n is a, c, g, or u

<400> SEQUENCE: 16

gguggguggg aaagaggcug ccnn 24

<210> SEQ ID NO 17  
<211> LENGTH: 25  
<212> TYPE: RNA  
<213> ORGANISM: Artificial Sequence  
<220> FEATURE:  
<223> OTHER INFORMATION: mammalian  
<220> FEATURE:  
<221> NAME/KEY: misc\_feature  
<222> LOCATION: (24)..(25)  
<223> OTHER INFORMATION: n is a, c, g, or u

<400> SEQUENCE: 17

aaacuugcag cucagcaaaa aacnn 25

<210> SEQ ID NO 18  
<211> LENGTH: 26  
<212> TYPE: RNA  
<213> ORGANISM: Artificial Sequence  
<220> FEATURE:  
<223> OTHER INFORMATION: mammalian  
<220> FEATURE:  
<221> NAME/KEY: misc\_feature  
<222> LOCATION: (25)..(26)  
<223> OTHER INFORMATION: n is a, c, g, or u

<400> SEQUENCE: 18

gaguuuuuug cugagcugca aguunn 26

<210> SEQ ID NO 19  
<211> LENGTH: 26  
<212> TYPE: RNA  
<213> ORGANISM: Artificial Sequence  
<220> FEATURE:  
<223> OTHER INFORMATION: mammalian  
<220> FEATURE:  
<221> NAME/KEY: misc\_feature  
<222> LOCATION: (25)..(26)  
<223> OTHER INFORMATION: n is a, c, g, or u

<400> SEQUENCE: 19

gaguuuuuug cugagcugca aguunn 26

-continued

---

<210> SEQ ID NO 20  
 <211> LENGTH: 24  
 <212> TYPE: RNA  
 <213> ORGANISM: Artificial Sequence  
 <220> FEATURE:  
 <223> OTHER INFORMATION: mammalian  
 <220> FEATURE:  
 <221> NAME/KEY: misc\_feature  
 <222> LOCATION: (23)..(24)  
 <223> OTHER INFORMATION: n is a, c, g, or u

<400> SEQUENCE: 20

ucacaaaacc cuggcccaug uunn 24

<210> SEQ ID NO 21  
 <211> LENGTH: 24  
 <212> TYPE: RNA  
 <213> ORGANISM: Artificial Sequence  
 <220> FEATURE:  
 <223> OTHER INFORMATION: mammalian  
 <220> FEATURE:  
 <221> NAME/KEY: misc\_feature  
 <222> LOCATION: (23)..(24)  
 <223> OTHER INFORMATION: n is a, c, g, or u

<400> SEQUENCE: 21

ggaacauggg ccaggguuuu gunn 24

<210> SEQ ID NO 22  
 <211> LENGTH: 17  
 <212> TYPE: PRT  
 <213> ORGANISM: Artificial sequence  
 <220> FEATURE:  
 <223> OTHER INFORMATION: Pre-pro-insulin peptide

<400> SEQUENCE: 22

Ala Gly Ser Leu Gln Pro Leu Ala Leu Glu Gly Ser Leu Gln Lys Arg  
 1 5 10 15

Gly

<210> SEQ ID NO 23  
 <211> LENGTH: 15  
 <212> TYPE: PRT  
 <213> ORGANISM: Artificial sequence  
 <220> FEATURE:  
 <223> OTHER INFORMATION: GAD peptide

<400> SEQUENCE: 23

Pro Arg Leu Ile Ala Phe Thr Ser Glu His Ser His Phe Ser Leu  
 1 5 10 15

<210> SEQ ID NO 24  
 <211> LENGTH: 15  
 <212> TYPE: PRT  
 <213> ORGANISM: Artificial sequence  
 <220> FEATURE:  
 <223> OTHER INFORMATION: GAD peptide

<400> SEQUENCE: 24

Phe Phe Arg Met Val Ile Ser Asn Pro Ala Ala Thr His Gln Asp  
 1 5 10 15

---

What is claimed is:

1. A method for determining whether a test subject has at least one auto-immune disease comprising

- a) obtaining blood from the predetermined test subject thus obtaining a test sample;
- b) obtaining blood from a non-autoimmune subject thus obtaining a control sample;
- c) contacting the test sample and the control sample with a combination of at least one detectably-labeled anti-CD4 antibody and at least one detectably-labeled anti-CD40 antibody;
- d) detecting the level of CD4<sup>lo</sup> CD40<sup>hi</sup> T cells in the test sample and in the control sample;

wherein when there is an increase in the level of CD4<sup>lo</sup> CD40<sup>hi</sup> T cells in the test sample as compared to the level of CD4<sup>lo</sup> CD40<sup>hi</sup> T cells in the control sample, the test subject has at least one auto-immune disease.

2. The method of claim 1 further comprising isolating the test sample CD4<sup>lo</sup> CD40<sup>hi</sup> T cells and the control sample CD4<sup>lo</sup> CD40<sup>hi</sup> T cells from part 1d) and determining the presence or absence of an increase in production of at least one cytokine in the test T cell population as compared to the sample T cell population.

3. The method of claim 2 wherein said cytokine is at least one cytokine selected from the group consisting of IL-2, IL-4, IL-6, IL-10, TGFβ and IFNγ.

4. The method of claim 1, wherein the auto-immune disease is selected from the group consisting of type 1 diabetes, rheumatoid arthritis, lupus, multiple sclerosis, atherosclerosis, Crohn's colitis, ulcerative gastritis, primary biliary cirrhosis, chronic obstructive pulmonary disease (COPD) and scleroderma.

5. The method of claim 4, wherein the auto-immune disease is type 1 diabetes.

6. The method of claim 4, wherein the COPD disease is emphysema.

7. The method of claim 1, wherein said detecting is by flowcytometry.

8. The method of claim 1, wherein said subject is human.

9. A method for determining whether a predetermined test subject is susceptible to developing at least one predetermined auto-immune disease comprising

- a) obtaining a first sample of blood from said predetermined test subject;
- b) obtaining a second sample of blood from said same subject;
- c) detecting the CD4<sup>lo</sup> CD40<sup>hi</sup> T cell population in said first and second samples;
- d) contacting said second test sample with at least one predetermined antigen indicative of at least one predetermined auto-immune disease for a length of time and in an amount sufficient to obtain a positive or negative cellular response in the CD4<sup>lo</sup> CD40<sup>hi</sup> T cell population of said second sample,

e) determining whether a positive or negative cellular response occurs in the CD4<sup>lo</sup> CD40<sup>hi</sup> T cell population of said first and said second samples by measuring at least one response selected from the group consisting of CD4<sup>lo</sup> CD40<sup>hi</sup> T cell proliferation, CD4<sup>lo</sup> CD40<sup>hi</sup> T cell death and CD4<sup>lo</sup> CD40<sup>hi</sup> cytokine production,

wherein when a positive response occurs in the CD4<sup>lo</sup> CD40<sup>hi</sup> T cell population of the second sample as compared to the response from the CD4<sup>lo</sup> CD40<sup>hi</sup> T cell population of the first sample, the predetermined subject

is susceptible to developing the at least one predetermined autoimmune disease.

10. The method of claim 9, wherein a positive response is an increase in CD4<sup>lo</sup> CD40<sup>hi</sup> T cell proliferation, an increase in CD4<sup>lo</sup> CD40<sup>hi</sup> T cell death and an increase in production of at least one cytokine produced by said CD4<sup>lo</sup> CD40<sup>hi</sup> T cell population.

11. The method of claim 10 wherein said at least one cytokine is selected from the group consisting of IL-2, IL-4, IL-6, IL-10, TGFβ and IFNγ.

12. The method of claim 9 wherein said at least one preselected auto-immune disease is type 1 diabetes and said antigen is pancreatic tissue.

13. The method of claim 9 wherein said at least one preselected auto-immune disease is rheumatoid arthritis and said antigen is synovial tissue.

14. The method of claim 9, wherein said at least one preselected auto-immune disease is multiple sclerosis and said antigen is nervous tissue.

15. The method of claim 9, wherein said at least one preselected auto-immune disease is scleroderma and said antigen is skin tissue.

16. The method of claim 9, wherein said at least one auto-immune disease is atherosclerosis and said antigen is cardiac tissue.

17. The method of claim 9, wherein said subject is human.

18. A method of modulating the proliferation of CD4<sup>lo</sup> CD40<sup>hi</sup> T cells in a subject in need of said modulation comprising at least one method selected from the group consisting of

- a) contacting said subject with at least one agent which inhibits the activation of RAG recombinase activity;
  - b) contacting said subject with an antibody molecule, or fragment thereof, to CD40;
  - c) contacting said subject with an antibody molecule, or fragment thereof, to CD154;
  - d) contacting said subject with at least one blocking peptide to prevent interaction of the CD40 receptor with the CD154 ligand;
  - e) contacting said subject with at least one RNA molecule specifically hybridizing to the RAG2 gene product; and,
  - f) contacting said subject with at least one RNA molecule specifically hybridizing to the RAG1 gene product;
- wherein said contacting is for a length of time sufficient and in an amount sufficient to modulate the proliferation of CD4<sup>lo</sup> CD40<sup>hi</sup> T cells in said subject.

19. The method of claim 18, part a), wherein said at least one agent is a chaetochromin or a derivative thereof.

20. The method of claim 18, part b), wherein said antibody fragment is an Fab portion.

21. The method of claim 18, part c), wherein said antibody fragment is an Fab portion.

22. The method of claim 18, part d), wherein said blocking peptide is selected from the group consisting of SSKTTSV-LQWAEKGYTMSNNLVT (SEQ ID NO: 7) and QIAAH-VISEASSK (SEQ ID NO: 8).

23. The method of claim 18, part e), wherein said RNA molecule is selected from the group consisting of

5' -AUGUCUCUGCAGAUGGUAACdAdG-3' ; (SEQ ID NO: 9)

5' -CUGUUACCAUCUGCAGAGACdAdU-3' ; (SEQ ID NO: 10)

-continued

5'-GGUAGGAGAUCUCCUGAAGdCdC-3'; (SEQ ID NO: 11)

5'-GGGGAUGGGCACUGGGUCCAUGdCdU-3'; (SEQ ID NO: 12)

5'-AGCAUGGACCCAGUGCCCAUCCdCdC-3'; (SEQ ID NO: 13)  
and,

5'-CUGUUACCAUCUGCAGAGAdAdU-3'. (SEQ ID NO: 14)

**24.** The method of claim 18, part f), wherein said RNA molecule is selected from the group consisting of

5'-AUGGCAGCCUUCUCCACCCAdCdC-3'; (SEQ ID NO: 15)

5'-GGUGGGUGGGAAAGAGGCGCCAdAdU-3'; (SEQ ID NO: 16)

5'-AAACUUGCAGCUCAGCAAAAAAdTdC-3'; (SEQ ID NO: 17)

5'-GAGUUUUUGCUGAGCUGCAAGUUdUdU-3'; (SEQ ID NO: 18)

-continued

5'-GAGUUUUUUGCUGAGCUGCAAGUUdUdU-3'; (SEQ ID NO: 19)

5'-UCACAAAACCCUGGCCCAUGUUdCdC-3'; (SEQ ID NO: 20)  
and,

5'-GGAAACAUGGGCCAGGGUUUUUGUdGdA-3'. (SEQ ID NO: 21)

**25.** The method of claim 18, wherein said subject has an increased level of CD4<sup>lo</sup>CD40<sup>hi</sup> T cells as compared to the level of CD4<sup>lo</sup>CD40<sup>hi</sup> T cells in a non-auto-immune subject and the modulation is a decrease in the level of CD4<sup>lo</sup>CD40<sup>hi</sup> T cells.

**26.** The method of claim 18, wherein said subject is human.

**27.** A kit for detecting CD4<sup>lo</sup>CD40<sup>hi</sup> T cells comprising  
a) at least one detectably labeled anti-CD4 antibody and at least one detectably labeled anti-CD40 antibody; and,  
b) at least one predetermined antigen indicative of at least one predetermined auto-immune disease.

\* \* \* \* \*

专利名称(译)	预测自身免疫疾病发展的方法及其治疗方法		
公开(公告)号	<a href="#">US20110229495A1</a>	公开(公告)日	2011-09-22
申请号	US12/397063	申请日	2009-03-03
[标]申请(专利权)人(译)	WAGNER David H制作		
申请(专利权)人(译)	WAGNER David H制作		
当前申请(专利权)人(译)	WAGNER David H制作		
[标]发明人	WAGNER DAVID H		
发明人	WAGNER, DAVID H.		
IPC分类号	A61K39/395 G01N33/566 A61K38/02 A61K31/7105 A61K38/10 A61K38/16 A61K31/352 A61P37/02 A61B G01N33/50 G01N33/53 G01N33/564		
CPC分类号	C07K16/2812 C07K16/2878 G01N33/505 G01N33/564 G01N2800/24 G01N2333/70514 G01N2333/70578 G01N2800/042 G01N33/6893 A61P37/02		
优先权	10/563570 2006-08-25 US PCT/US2004/021646 2004-07-07 WO 60/484655 2003-07-07 US		
外部链接	<a href="#">Espacenet</a> <a href="#">USPTO</a>		

摘要(译)

本发明提供了一种用于预测或诊断自身免疫疾病的新方法，从而警告受试者存在自身免疫疾病或倾向于发展自身免疫疾病，从而可以启动预防或治疗方案或改变以便治疗，调节或阻止负责破坏性炎症的CD4loCD40hi T细胞群的扩增。本发明还公开了调节，治疗或预防CD4loCD40hi T细胞扩增的药剂。在一个实施方案中，该方法可预测1型糖尿病。

