



US 20070041971A1

(19) **United States**

(12) **Patent Application Publication**  
**Wagner**

(10) **Pub. No.: US 2007/0041971 A1**

(43) **Pub. Date: Feb. 22, 2007**

(54) **METHODS FOR PREDICTING  
DEVELOPMENT OF AUTO-IMMUNE  
DISEASES AND TREATMENT OF SAME**

**Related U.S. Application Data**

(60) Provisional application No. 60/484,655, filed on Jul. 7, 2003.

(76) Inventor: **David H. Wagner**, Denver, CO (US)

**Publication Classification**

(51) **Int. Cl.**  
*A61K 48/00* (2007.01)  
*G01N 33/53* (2006.01)  
*A61K 39/395* (2006.01)  
(52) **U.S. Cl.** ..... **424/144.1**; 435/7.1; 514/44

Correspondence Address:  
**MORGAN LEWIS & BOCKIUS LLP**  
**1111 PENNSYLVANIA AVENUE NW**  
**WASHINGTON, DC 20004 (US)**

(57) **ABSTRACT**

The present invention provides a new method for the prediction of, or diagnosis of, auto-immune diseases, thereby alerting the subject to the presence of, or propensity to develop, an auto-immune disease so that preventative or therapeutic regimens may be initiated or changed so as to treat, modulate or prevent expansion of the CD4<sup>lo</sup>CD40<sup>hi</sup> T cell population responsible for the destructive inflammation. The invention also discloses agents which modulate, treat or prevent expansion of CD4<sup>lo</sup>CD40<sup>hi</sup> T cells. In one embodiment, the method is predictive of type 1 diabetes.

(21) Appl. No.: **10/563,570**

(22) PCT Filed: **Jul. 7, 2004**

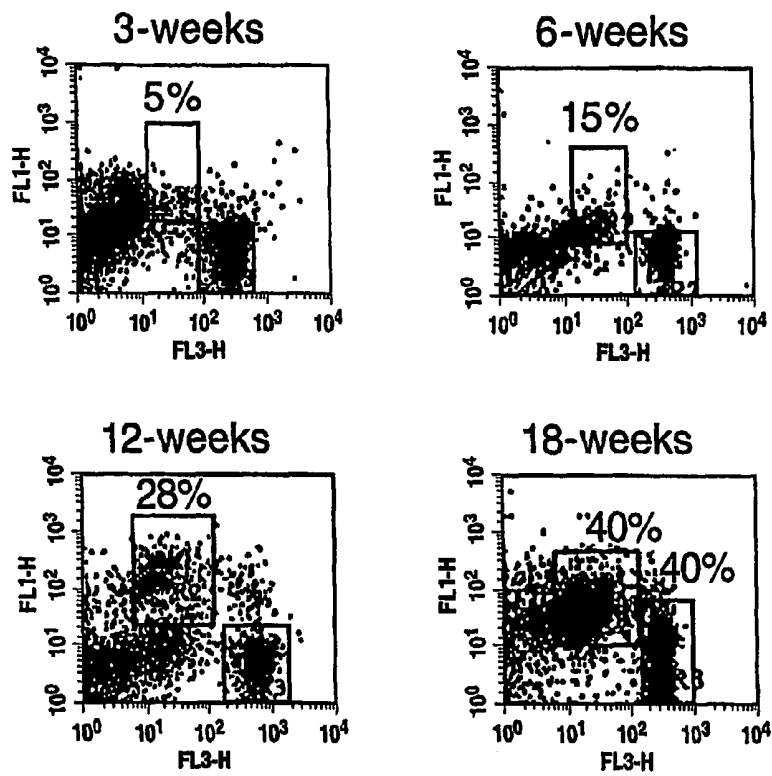
(86) PCT No.: **PCT/US04/21646**

§ 371(c)(1),  
(2), (4) Date: **Aug. 25, 2006**

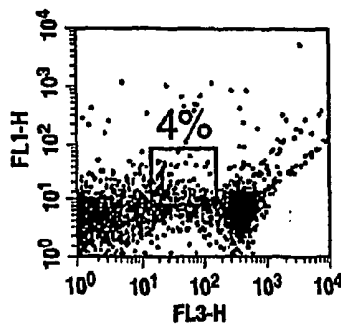
# Fig. 1

## Auto-aggressive T cells Expand as Diabetes-Prone Mice Age

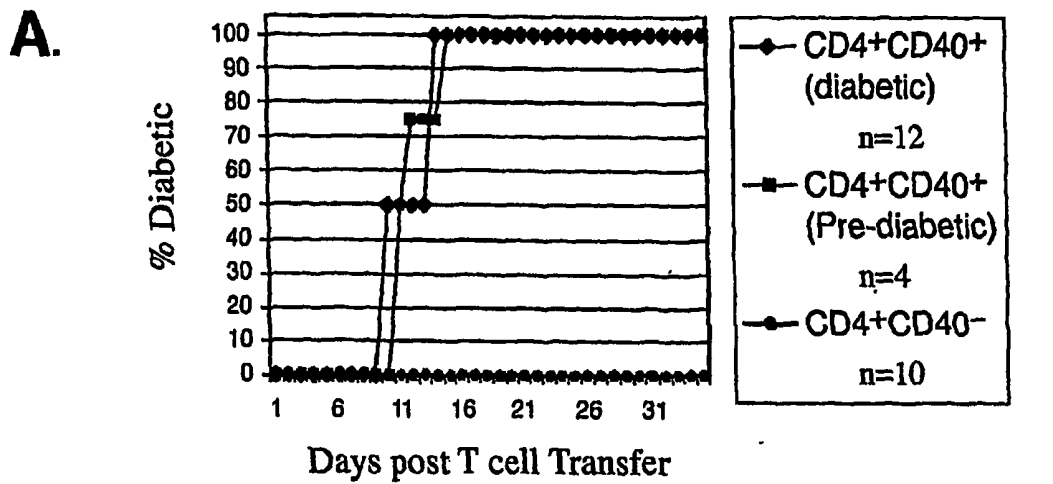
### A. NOD



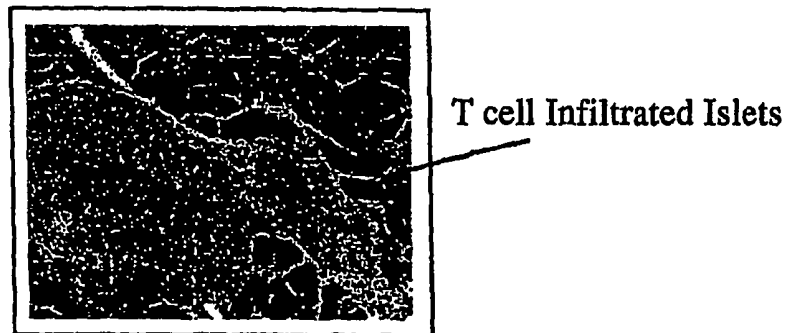
### B. NOD 12 weeks old after CD40—CD154 is blocked



### Fig. 2



**B. CD40<sup>+</sup> T cells recipients**

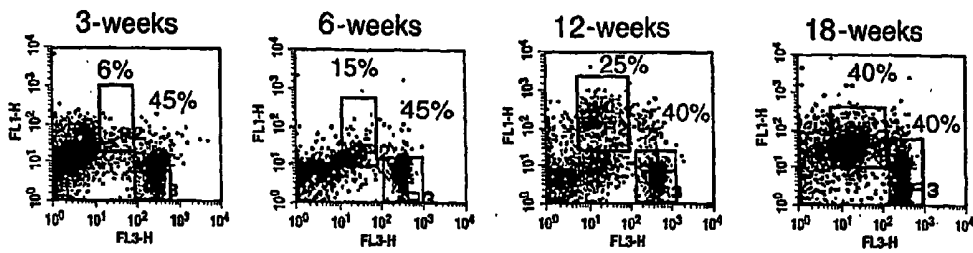


**C. CD40-depleted T cell recipients**

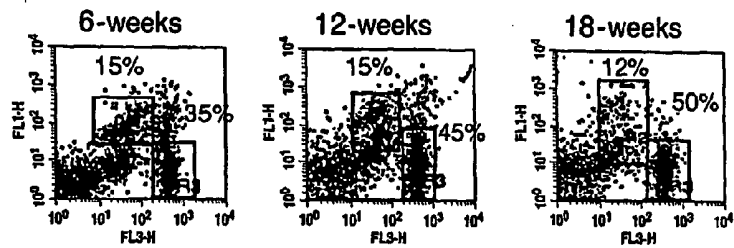


**Fig. 3**

**A. NOD**



**B. NOR**



**C. BALB/c**

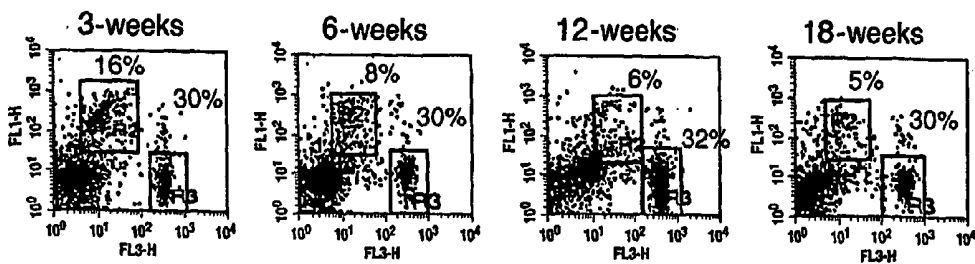
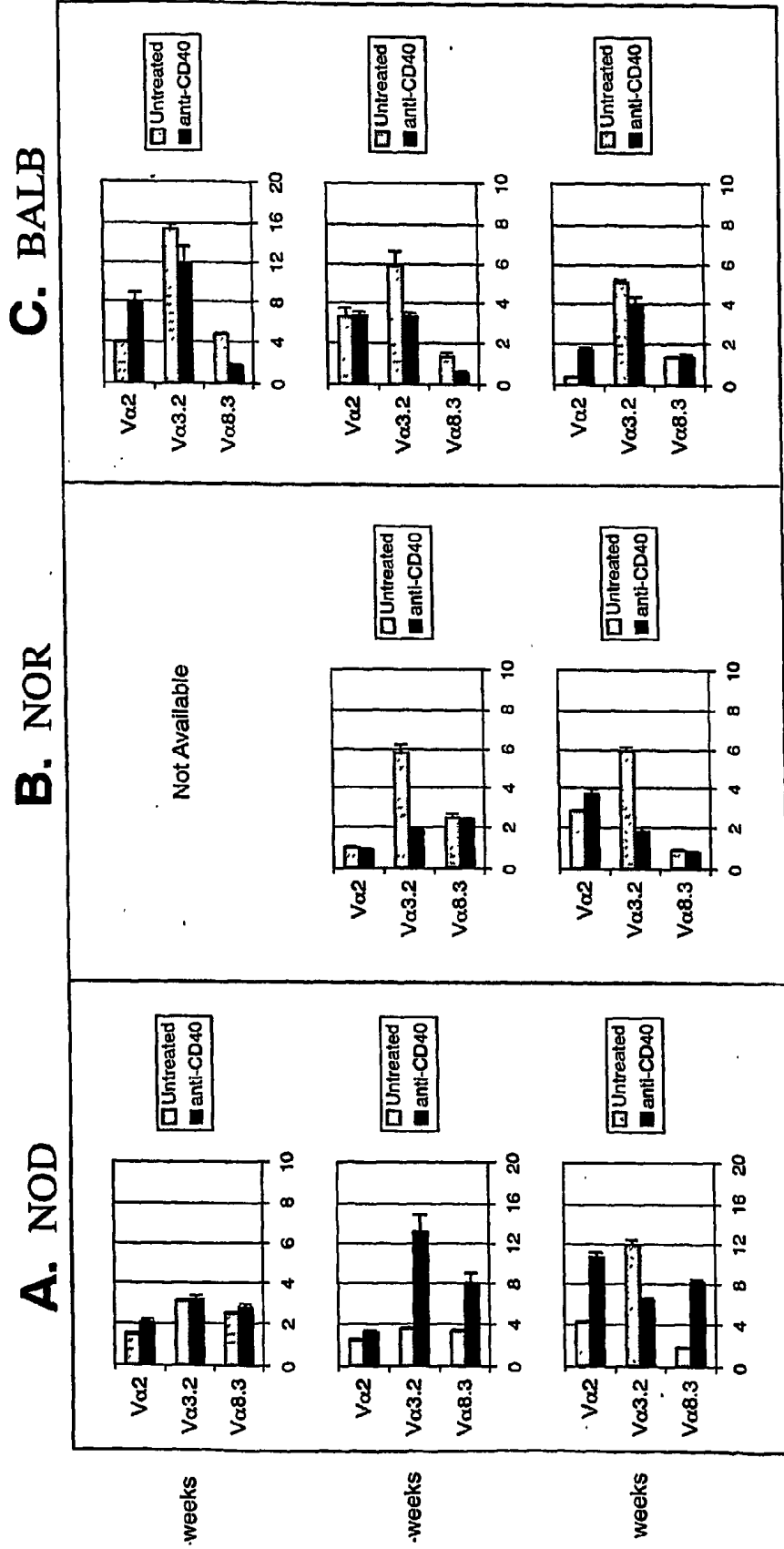


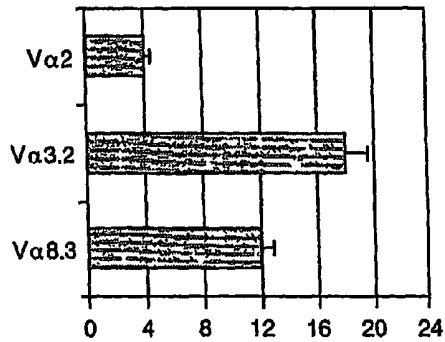
Fig. 4

Percent  $V\alpha^+$  in Gated  $CD4^+CD40^+$ T cells

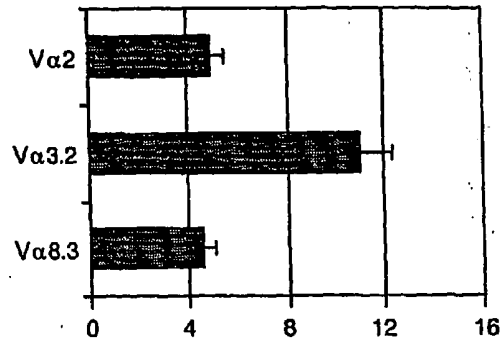


**Fig. 5**

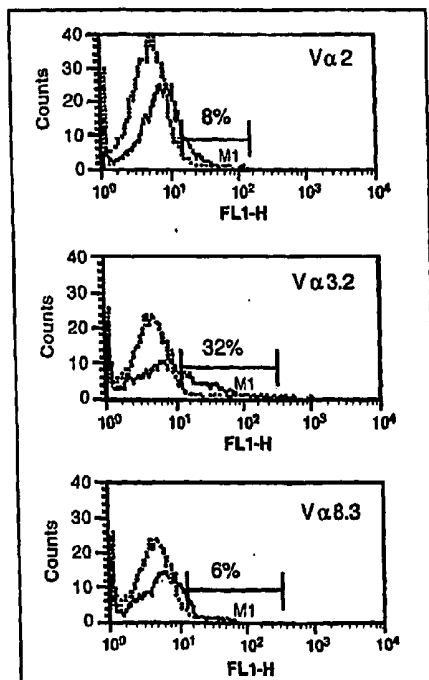
**A.**  $V\alpha^+$  T cells in the  $CD4^+CD40^+$  Population of 12-week old, pre-diabetic NODs.



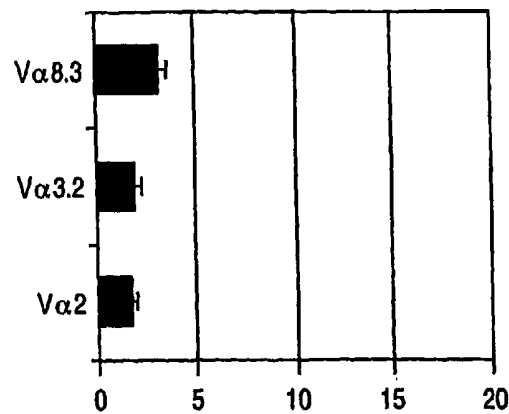
**B.**  $V\alpha^+$  T cells in the  $CD4^+CD40^+$  Population of 20-week old, diabetic NODs.



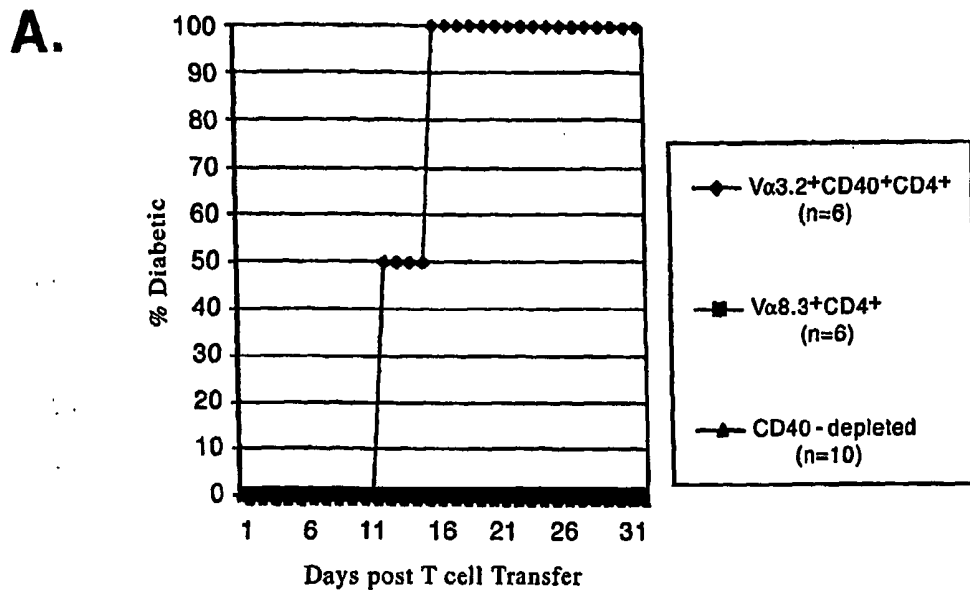
**C.**  $V\alpha^+$  T cells recovered from  $CD4^+CD40^+$  transfers into NOD.scid recipients.



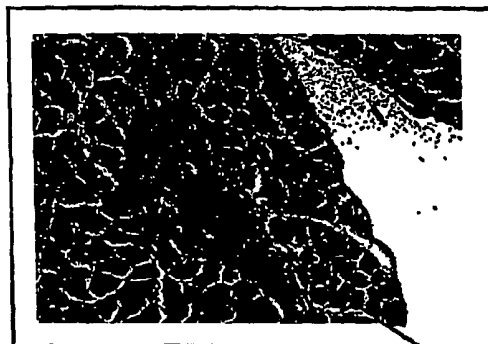
**D.**  $V\alpha^+$  T cells recovered from  $CD4^+CD40^-$  transfers into NOD.scid recipients.



### Fig. 6

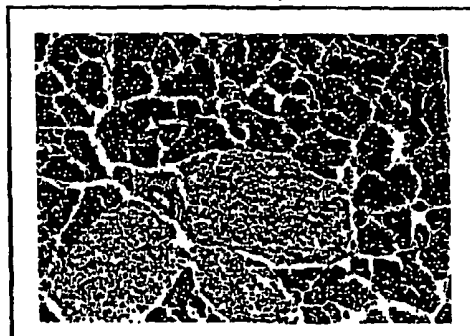


### B. Vα3.2+ Recipients



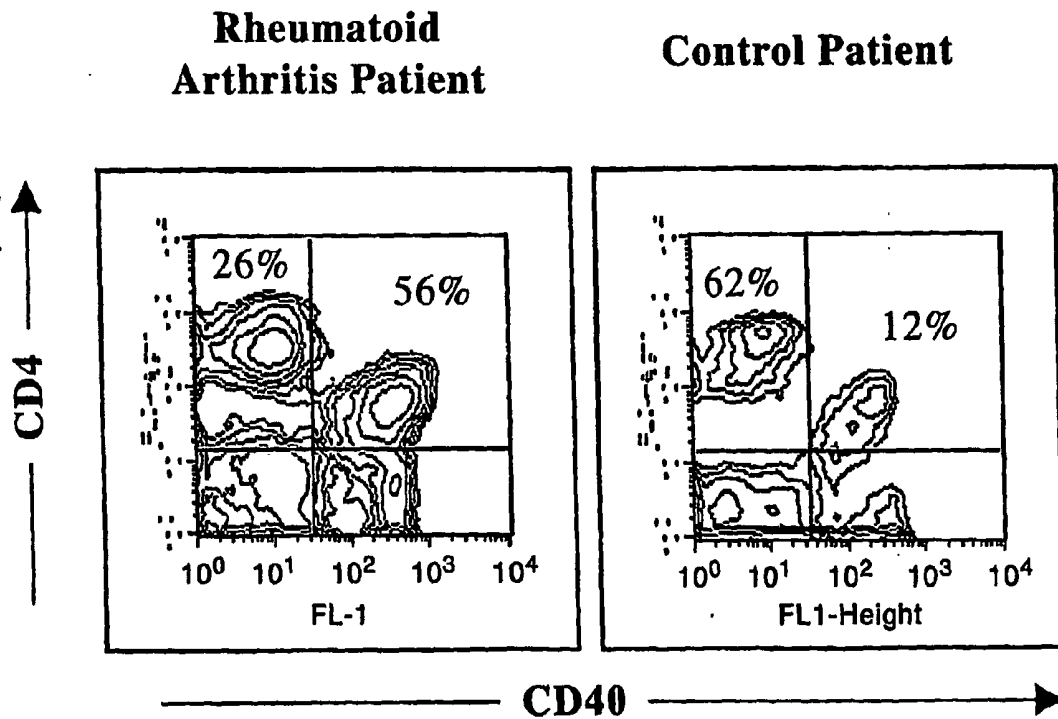
T cell infiltrates

### C. Vα8.3+ Recipients



# Fig. 7

## CD4<sup>+</sup>CD40<sup>+</sup> T Cell Increases Are Predictive of Rheumatoid Arthritis

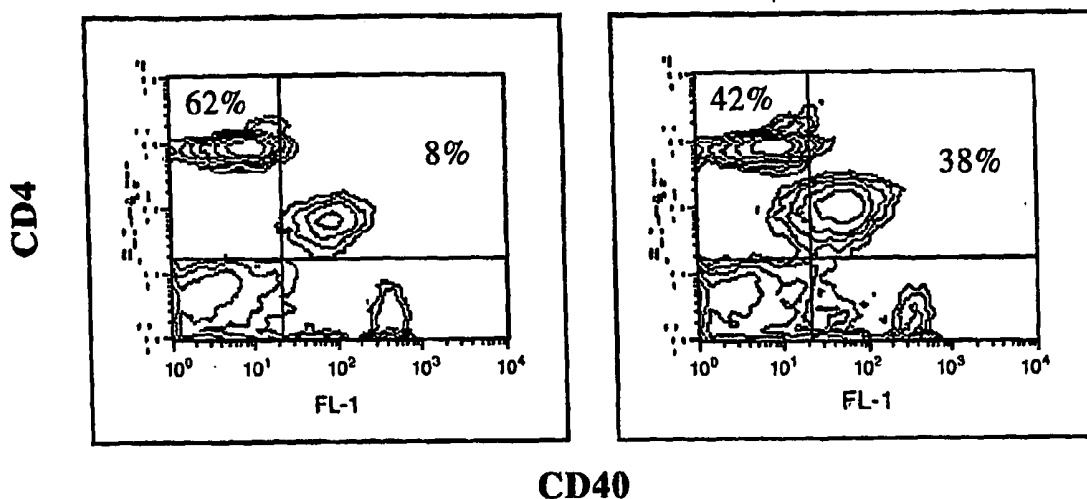


# Fig. 8

## CD4<sup>+</sup>CD40<sup>+</sup> T Cell Increases Are Predictive of Asthma

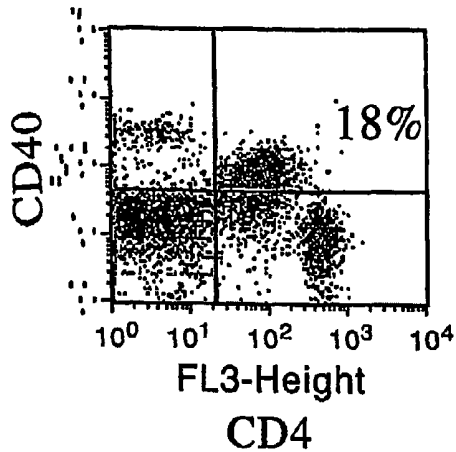
Control Patient

Asthma Patient

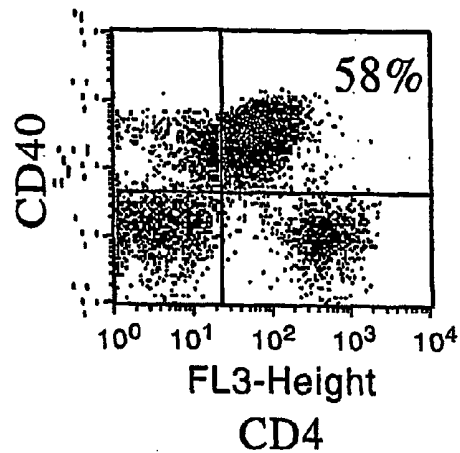


**Fig. 9**

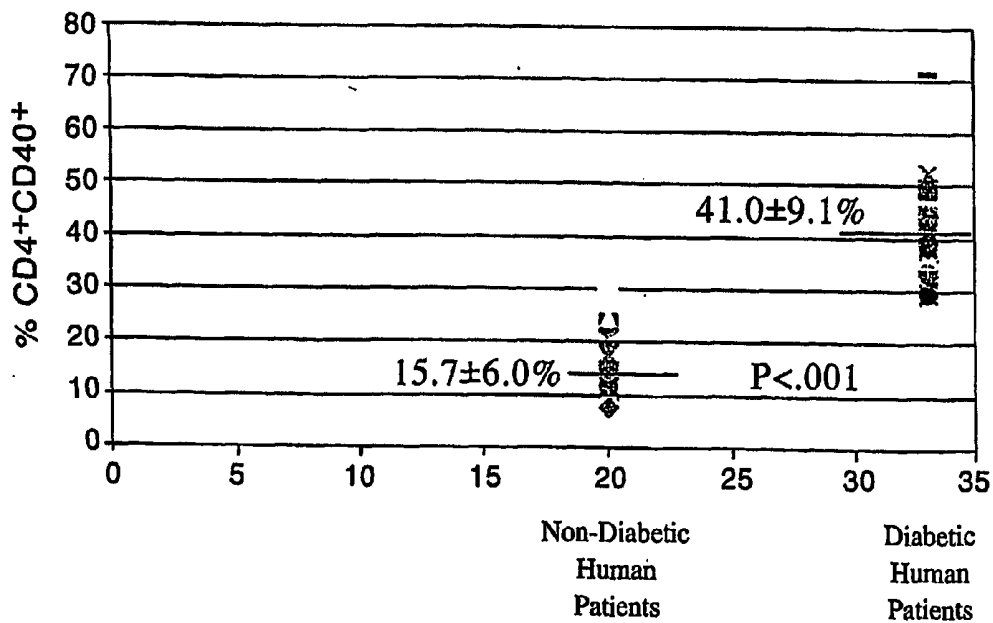
**A. Non-Diabetic Human Patient**



**B. Diabetic Human Patient**



**C. %CD4+CD40+ T cells in Diabetic versus Non-Diabetic Patients**



**METHODS FOR PREDICTING DEVELOPMENT  
OF AUTO-IMMUNE DISEASES AND TREATMENT  
OF SAME**

CROSS-REFERENCE TO RELATED  
APPLICATIONS

[0001] This application claims the benefit of U.S. Provisional Application 60/484,655, filed Jul. 7, 2003, which is hereby incorporated by reference in its entirety.

FIELD OF THE INVENTION

[0002] The invention relates to the fields of diagnosis and treatment of auto-immune diseases. More particularly, the present invention provides methods for determining the propensity to develop auto-immune disease(s), diagnosis of existing autoimmune diseases and provides methods and compositions for treatment of the auto-immune disease(s).

BACKGROUND OF THE INVENTION

Auto-Immune Diseases

[0003] Auto-immune diseases, regardless of the nature of the particular disease, arise because the immune system of an afflicted individual responds, inappropriately, to self-tissue, as though it were an infection. This response results in persistent and cumulatively destructive inflammation leading to irreversible tissue damage.

[0004] The auto-immune nature of the disease is that T cells of the immune system mediate the process. Furthermore, a unique classification of T cell characterized as auto-aggressive is responsible for the tissue damage. The population of T cells capable of becoming auto-aggressive has recently been identified (Wagner, D. H., Jr. et al., *Int. J. Mol. Med.* 4, 231-242 (1999); Wagner, D. H., Jr. et al., *Proc. Natl. Acad. Sci. USA* 99, 3782-7 (2002), and Vaitaitis, G. M. et al., *Cutting Edge, J. Immunol.* 170, 3455-459 (2003)). T cells can be identified by the expression of certain molecules including CD4 or CD8 and the T cell receptor, TCR. It has been determined that T cells which can be identified as auto-aggressive express the molecule CD40 (Wagner, D. H., Jr. et al., (1999); Wagner, D. H., Jr. et al., (2002), and Vaitaitis, G. M. et al., (2003)).

[0005] During a normal immune response, invading pathogens such as bacteria, fungi, parasites, viri or even neoplastic tissue including tumors are processed by specific cells of the immune system (macrophages, dendritic cells) and presented to T cells to initiate a response. These "foreign" pathogens are so identified because they are not part of the normal tissue of the individual. The T cell, through a protein on its cell surface, the T cell receptor (TCR), responds to the specific antigen being presented. There is a wide range of T cells, each expressing a specific receptor. In theory, one T cell has only one specific T cell receptor. Therefore, a T cell expressing its predetermined TCR encounters antigens that are being presented. The specialized antigen presenting cells (APC) of the immune system present antigens in the context of a cell surface protein, major-histocompatibility complex (MHC) class II, also known as Human Leukocyte Antigens (HLA). When a T cell recognizes the presented antigen, it becomes activated. The process of T cell activation includes induction of proliferation and production/secretion of proteins called cytokines

that are able to assist the immune response. The cytokines recruit other lymphocytes to the infection, and help to activate cells involved in the destruction of the pathogen to establish localized inflammation and to ultimately resolve the infection.

[0006] Inflammation during infection is necessary and important to the removal of pathogens. It is only during auto-immune disease that persistent inflammation is damaging. It is necessary for an individual to maintain a collection of different TCR-expressing T cells, referred to as the T cell repertoire. This provides the necessary wide range of immunity.

[0007] While a variety of T cells provide an individual with normal immunity, in certain instances T cells arise which do not respond to foreign tissue but instead respond to an individual's self-tissue, resulting in an auto-immune disease. For instance in type 1 diabetes, afflicted patients generate T cells that react to the D-cells of the pancreatic islets.

[0008] These T cells respond to antigens of the  $\beta$ -cells as though the cells were foreign, establishing inflammation and tissue destruction. In this case, the  $\beta$  cell ceases to produce insulin, a hormone necessary for normal metabolic functions, and clinical hyperglycemia (elevated glucose levels) ensues. In other auto-immune diseases, similar events occur, that is, T cells respond to self-tissue as though it was foreign. This interaction establishes inflammation and eventual tissue destruction.

RAG Proteins in Auto-Immune Diseases

[0009] The process that generates TCR molecules involves a class of proteins termed recombination-activating-gene (RAG1 (SEQ ID NO: 2)) and RAG2 (SEQ ID NO: 4)) proteins. As T cells develop normally, the RAG proteins become activated to alter the genes for the TCR. This process occurs many times in the thymus, thus generating a wide variety of T cells capable of responding to antigens later in the periphery (Akamatsu, Y. & Oettinger, M. A., *Mol. Cell. Biol.* 18, 4670-8 (1998); Noordzij, J. et al., *Blood* 96, 203-209 (2000); and, Yannoutsos, N. et al., *J. Exp. Med.* 194, 471-80 (2001)).

[0010] The TCR is composed of a chain and P chain proteins (Malissen, M. et al., *Immunology Today* 13, 315-322 (1992); Chien, Y. H. & Davis, M. M., *Immunology Today* 14, 597-602 (1993)). Early during development of T cells within the thymus, the RAG proteins become activated, and migrate to the nucleus of the cell, where the proteins bind to DNA within the genes of the TCR 3-chain, cut the DNA, and splice it back together in a way that alters the gene (Yannoutsos, N. et al., *J. Exp. Med.* 194, 471-80 (2001)). This is repeated for the  $\alpha$ -chain gene. The process is repeated numerous times in developing T cells, and thus generates different TCR molecules, referred to as the T cell repertoire. The newly generated T cells then go through processes of positive and negative selection to remove any potentially damaging T cells (Nossal, G. J. V., *Cell* 76, 229-239 (1994); von Boehmer, H., *Cell* 76, 219-228 (1994)) including auto-aggressive T cells. The "safe" T cells then migrate to peripheral organs such as spleen, lymph nodes, lung, intestine, liver, etc. to await activation once a pathogen invades the body.

[0011] It has recently been shown (see, for example, U.S. Pat. No. 6,187,584) that RAG proteins contain D35E like

motifs which are similar to the D35E motifs of retroviral integrases. U.S. Pat. No. 6,187,584 discloses a site-specific DNA binding site which is highly conserved and shared between the Herpes major DNA binding proteins, the RAG proteins, and the integrases of retroviruses. The highly conserved D35E motif may be subject to pharmacological modulation and agents interacting with the D35E motif may exhibit activity against retroviral integrases such as human immunodeficiency virus (HIV), and Herpes viruses, as well as immunomodulatory properties via interaction with RAG.

[0012] A recent report describes a new class of drugs, chaetochromins, capable of inhibiting the RAG proteins but in a non-cellular system (Melek, M. et al., *Proc. Natl. Acad. Sci. USA* 99, 134-7 (2002)). This class of drugs, also called "HIV Integrase Inhibitors," have also been described elsewhere. See, for example, U.S. Pat. Nos. 6,403,347; 6,110,716; and, WO99/40183. These drugs have been shown to be inhibitors of human immunodeficiency virus (HIV) integration (Singh, S. B. et al., *Org. Lett.* 4, 1123-6 (2002); Singh, S. B. et al., *J. Nat. Prod.* 64, 874-82 (2001)) and are believed to act by inhibiting strand transfer and cleavage activity.

#### Anti-CD40 Antibodies and Anti-CD154 Antibodies

[0013] The importance of CD40 in auto-immune diseases, including collagen-induced arthritis (Durie, F. H. et al., *Science* 281, 1328-1330 (1993)), chronic inflammatory diseases, including colitis (De Jong, Y. et al., *Gastroenterology* 119, 715-723 (2000)), atherosclerosis (Lutgens, E. et al., *Nat. Med.* 5, 1313-6 (1999)), and systemic lupus erythematosus (Wang, X. et al., *J. Immunol.* 168, 2046-53 (2002)) among others, continues to be expounded. It has been shown that blocking CD40-CD40 ligand (CD154) (SEQ ID NO: 6) interaction prevents rejection of islet transplants (Zheng, X. X. et al., *Transplant Proc* 31, 627-8 (1999); Molano, R. D. et al., *Transplant Proc* 33, 248-9 (2001)). T cell infiltration into the pancreas occurs in NOD mice as early as 3-4 weeks of age with extensive insulinitis at 12-weeks of age (Luhder, F. et al., *J. Exp. Med.* 187, 379-87 (1998)). Injecting 3-week old NOD mice with CD40 Ligand (CD154) blocking antibodies prevented onset of T1D but injecting NOD mice at 9-weeks of age had no effect on disease onset (Balasa, B. et al., *J. Immunol.* 159, 4620-7 (1997)). This suggests an important cellular developmental framework with regards to CD40 and diabetes that potentially involves T cells.

[0014] Numerous drugs are available to treat the symptoms of auto-immunity but as yet there is no approach to predict, modulate or prevent expansion of the cells responsible for the diseases and destructive inflammation. Thus, in view of the problems with the known drugs, treatment and diagnostic methods discussed above, new drugs and new methods for the prediction, diagnosis, modulation and treatment of auto-immune diseases are needed.

#### SUMMARY OF THE INVENTION

[0015] The present invention solves the problems discussed above and provides a new type of drug to treat the symptoms of auto-immunity. The new type of drug disclosed herein modulates, treats or prevents expansion of the cells responsible for the auto-immune disease and the destructive inflammation they cause. The present invention also provides a new method for the prediction of, or diagnosis of, auto-immune diseases, thereby alerting the subject to the presence of, or propensity to develop, an auto-immune

disease so that preventive or therapeutic regimens may be initiated or changed which will treat, modulate or prevent expansion of the cell population responsible for the destructive inflammation.

[0016] The invention herein includes a method for determining whether a test subject has at least one auto-immune disease comprising a) obtaining blood from the predetermined test subject thus obtaining a test sample; b) obtaining blood from a non-autoimmune subject thus obtaining a control sample; c) contacting the test sample and the control sample with a combination of at least one detectably-labeled anti-CD4 antibody and a least one detectably-labeled anti-CD40 antibody; d) detecting the level of CD4<sup>lo</sup>CD40<sup>hi</sup> T cells in the test sample and in the control sample; wherein when there is an increase in the level of CD4<sup>lo</sup>CD40<sup>hi</sup> T cells in the test sample as compared to the level of CD4<sup>lo</sup>CD40<sup>hi</sup> T cells in the control sample, the test subject has at least one auto-immune disease.

[0017] The invention here in also includes a method for determining whether a predetermined test subject is susceptible to developing at least one predetermined auto-immune disease comprising a) obtaining a first sample of blood from said predetermined test subject; b) obtaining a second sample of blood from said same subject; c) detecting the CD4<sup>lo</sup>CD40<sup>hi</sup> T cell population in said first and second samples; d) contacting said second test sample with at least one predetermined antigen indicative of at least one predetermined auto-immune disease for a length of time and in an amount sufficient to obtain a positive or negative cellular response in the CD4<sup>lo</sup>CD40<sup>hi</sup> T cell population of said second sample, e) determining whether a positive or negative cellular response occurs in the CD4<sup>lo</sup>CD40<sup>hi</sup> T cell population of said first and said second samples by measuring at least one response selected from the group consisting of CD4<sup>lo</sup>CD40<sup>hi</sup> T cell proliferation, CD4<sup>lo</sup>CD40<sup>hi</sup> T cell death and CD4<sup>lo</sup>CD40<sup>hi</sup> cytokine production, wherein when a positive response occurs in the CD4<sup>lo</sup>CD40<sup>hi</sup> T cell population of the second sample as compared to the response in the CD4<sup>lo</sup>CD40<sup>hi</sup> T cell population from the first sample, the predetermined subject is susceptible to developing the at least one predetermined autoimmune disease.

[0018] The invention is also directed to a method of modulating the proliferation of CD4<sup>lo</sup>CD40<sup>hi</sup> T cells in a subject in need of said modulation comprising at least one method selected from the group consisting of a) contacting said subject with at least one agent which inhibits the activation of RAG recombinase activity; b) contacting said subject with an antibody molecule, or fragment thereof, to CD40; c) contacting said subject with an antibody molecule, or fragment thereof, to CD154; d) contacting said subject with at least one blocking peptide to prevent interaction of the CD40 receptor with the CD154 ligand; e) contacting said subject with at least one RNA molecule specifically hybridizing to the RAG2 gene product; and, f) contacting said subject with at least one RNA molecule specifically hybridizing to the RAG1 gene product; wherein said contacting is for a length of time sufficient and in an amount sufficient to modulate the proliferation of CD4<sup>lo</sup>CD40<sup>hi</sup> T cells in said subject.

[0019] The invention is also directed to a kit for detecting CD4<sup>lo</sup>CD40<sup>hi</sup> T cells comprising a) at least one detectably labeled anti-CD4 antibody and at least one detectably

labeled anti-CD40 antibody; and, b) at least one predetermined antigen indicative of at least one predetermined auto-immune disease.

#### BRIEF DESCRIPTION OF THE DRAWINGS

**[0020]** The foregoing summary, as well as the following detailed description of the invention, will be better understood when read in conjunction with the appended figures. For the purpose of illustrating the invention, shown in the figures are embodiments which are presently preferred. It should be understood, however, that the invention is not limited to the precise arrangements, examples and instrumentalities shown.

**[0021]** FIGS. 1A-B. Auto-aggressive T cells expand as diabetes-prone mice age. (A) Expression of CD4<sup>+</sup> and CD40<sup>+</sup> on T cells of NOD mice at 3 weeks, 6 weeks, 12 weeks and 18 weeks. (B) Expression of CD4<sup>+</sup> and CD40<sup>+</sup> on T cells of NOD mice at 12 weeks after CD40-CD154 interaction is blocked.

**[0022]** FIGS. 2A-C. Highly purified CD40<sup>+</sup> T cells transfer diabetes. (A) CD4<sup>+</sup>CD40<sup>+</sup> T cells or CD4<sup>+</sup>CD40<sup>-</sup> T cells from diabetic NOD (line with diamonds) or from pre-diabetic NOD mice (line with squares) rapidly transfers diabetes. Half of the CD40<sup>+</sup> recipients became diabetic, blood glucose (b.g.) >250 mg/ml at 10 days post injection and the remaining were diabetic by 14 days. CD40<sup>-</sup> T cell recipients did not develop diabetes through 45 days. Half of the animals receiving CD4<sup>+</sup>CD40<sup>+</sup> T cells purified from pre-diabetic mice became diabetic at 12 days, and all animals were diabetic by 15 days, with none of the CD4<sup>+</sup>CD40<sup>-</sup> recipients becoming diabetic (p<0.05). (B) Pancreata of NOD.scid animals receiving CD4<sup>+</sup>CD40<sup>+</sup> T cells demonstrate T cell infiltration and overall lack of insulin granules while (C), pancreata of CD4<sup>+</sup>CD40<sup>-</sup> T cell recipients show no T cell infiltration. Islet infiltration was scored with >100 islets/treatment-group examined. CD40<sup>+</sup> recipients demonstrated extensive infiltration with >95% of islets infiltrated whereas CD40<sup>-</sup> recipients had no detectable infiltrate at 15 days. Panels shown are representative of all experiments.

**[0023]** FIGS. 3A-C. Expansions in CD4<sup>+</sup>CD40<sup>+</sup> T cells as NOD mice develop. CD4 versus CD40 T cell levels in T cells from (A) NOD, (B) NOR and (C) BALB/c mice at 3-weeks, 6-weeks, 12-weeks and 18-weeks of age (Data was verified from CD3 magnetic column, Miltenyi Corp., purified cells). Gates were set from isotype controls. (A) In NOD mice at 3-weeks the CD4<sup>+</sup>CD40<sup>+</sup> population is 6% of total T cells, at 6-weeks, CD4<sup>+</sup>CD40<sup>+</sup> are 15% of total T cells, at 12-weeks CD4<sup>+</sup>CD40<sup>+</sup> are 25%, and at 18-weeks CD4<sup>+</sup>CD40<sup>+</sup> are 40% of T cells. (B) In NOR mice at 6-weeks, CD4<sup>+</sup>CD40<sup>+</sup> are 15% of total T cells, at 12-weeks CD4<sup>+</sup>CD40<sup>+</sup> are 15%, and at 18-weeks CD4<sup>+</sup>CD40<sup>+</sup> are 12% of T cells. NORs at 3-weeks were not available. (C) In BALB/c mice at 3-weeks the CD4<sup>+</sup>CD40<sup>+</sup> population is 16% of total T cells, at 6-weeks, 8% of total T cells, at 12-weeks 6%, and at 18-weeks CD4<sup>+</sup>CD40<sup>+</sup> are 5% of T cells. Data represent 3 separate experiments.

**[0024]** FIGS. 4A-C. CD40 driven expansions of specific V $\alpha$ <sup>+</sup> T cells in NOD mice. V $\alpha$ <sup>+</sup> T cells within the CD4<sup>+</sup>CD40<sup>+</sup> T cell population were determined in immediately ex vivo T cells or CD40-crosslinked T cells from (A) NOD, (B) NOR and (C) BALB/c mice, at age 3-weeks, 12-weeks and 18-weeks. Untreated (light bars) or CD40

crosslinked for 18 hrs (dark bars) T cells are represented. Data are percent V $\alpha$ <sup>+</sup> T cells only within the CD4<sup>+</sup>CD40<sup>+</sup> gated populations above appropriate isotype controls. Data are an average of 3 experiments with 3 animals in each experiment, x-axis is percent V $\alpha$ <sup>+</sup> in gated CD4<sup>+</sup>CD40<sup>+</sup> T cells.

**[0025]** FIGS. 5A-D. Expansions of V $\alpha$ 3.2<sup>+</sup> T cells in pancreata of pre-diabetic and diabetic NOD mice. Pancreata from (A) 12-week old pre-diabetic (n=4), and (B) >18-week old diabetic NOD (n=4) show expansions of V $\alpha$ 3.2<sup>+</sup> and V $\alpha$ 8.3<sup>+</sup> T cells within the gated CD4<sup>+</sup>CD40<sup>+</sup> population, above isotype controls. (C) T cells from CD4<sup>+</sup>CD40<sup>+</sup> NOD.scid recipients and from CD4<sup>+</sup>CD40<sup>-</sup> NOD.scid recipient at 15 days post injections demonstrate V $\alpha$ <sup>+</sup> expansion (solid lines) above isotype controls (dashed lines). (D) T cells from CD4<sup>+</sup>CD40<sup>-</sup> NOD.scid recipients at 15 days post injections demonstrate no significant V $\alpha$ <sup>+</sup> expansions. As in FIG. 2, data represent 3 separate experiments, n=12 for each treatment. FIG. 5 demonstrates that during autoimmune diabetes, type-1, there are expansion of specific V $\alpha$ <sup>+</sup> T cells. The numbering system is arbitrary. We have identified CD40<sup>+</sup> T cells in humans and predict there will be specific V $\alpha$ <sup>+</sup> expansions.

**[0026]** FIGS. 6A-C. Pancreatic histology from V $\alpha$ 3.2<sup>+</sup> and V $\alpha$ 8.3<sup>+</sup> NOD.scid recipients. (A) V $\alpha$ 3.2<sup>+</sup> T cells transfer diabetes but V $\alpha$ 8.3<sup>+</sup> T cells do not. V $\alpha$ 3.2<sup>+</sup> T cells were >80% CD40<sup>+</sup> while only 30% of V $\alpha$ 8.3<sup>+</sup> T cells were CD40<sup>+</sup>. As controls, CD40-depleted T cells did not transfer diabetes. As before, diabetes was considered to be a blood glucose >150 mg/ml. Pancreata from (B) V $\alpha$ 3.2<sup>+</sup> recipients demonstrate extensive infiltration and lack of insulin production. (C) V $\alpha$ 8.3<sup>+</sup> recipients did not demonstrate infiltrated islets.

**[0027]** FIGS. 7A-B. CD4<sup>+</sup>CD40<sup>+</sup> T cell increases are predictive of rheumatoid arthritis. 7A. Rheumatoid arthritis patient. 7B. Control patient. See Example 4 for details.

**[0028]** FIGS. 8A-B. CD4<sup>+</sup>CD40<sup>+</sup> T cell increases are predictive of asthma. 8A. Control patient. 8B. Asthma patient. See Example 5 for details.

**[0029]** FIGS. 9A-C. CD4<sup>+</sup>CD40<sup>+</sup> T cells are predictive for human type I diabetes. FIG. 9A. Non-Diabetic human patient. FIG. 9B. Diabetic human patient. FIG. 9C. % CD4<sup>+</sup>CD40<sup>+</sup> T cells in diabetic versus non-diabetic patients. See Example 6 for details.

#### DETAILED DESCRIPTION

##### Definitions

**[0030]** Unless defined otherwise, all technical and scientific terms used herein have the same meaning as commonly understood by one of ordinary skill in the art to which this invention belongs.

**[0031]** As used herein, the term "agent" refers to any compound which is pharmacologically and/or biologically active in a subject.

**[0032]** As used herein, the term "antibody" refers to intact immunoglobulins. "Antibody fragments" refers to a number of well characterized fragments produced by digestion with various peptidases. Thus, for example, pepsin digests an antibody below the disulfide linkages in the hinge region to produce F(ab)<sub>2</sub>, a dimer of Fab which itself is a light chain

joined to  $V_H C_{H1}$  by a disulfide bond. The  $F(ab)'_2$  may be reduced under mild conditions to break the disulfide linkage in the hinge region, thereby converting the  $F(ab)'_2$  dimer into an Fab' monomer. The Fab' monomer is essentially an Fab with part of the hinge region (see, *Fundamental Immunology*, Third Edition, W. E. Paul, ed., Raven Press, N.Y. 1993). While various antibody fragments are defined in terms of the digestion of an intact antibody, such fragments may be synthesized de novo either chemically or by utilizing recombinant DNA methodology. Thus, the term "antibody fragments" includes antibody fragments either produced by the modification of whole antibodies or those synthesized de novo using recombinant DNA methodologies, such as, for example, single chain Fv. See, for example, U.S. Pat. No. 6,552,181.

[0033] As used herein, the term "auto-aggressive T cells" refers to a population of T cells which stain positively for both the CD4<sup>+</sup> and CD40<sup>+</sup> markers. These cells exist in some low level in normal individuals but are increased in numbers in individuals expressing, or prone to developing, auto-immune diseases.

[0034] As used herein, the term "auto-immune" disease refers to a disease or condition where the target of the disease is "self" or a "self antigen." There are a number of diseases that are believed to involve T cell immunity directed to self antigens. The auto-immune disease may be triggered directly or indirectly by one or more antigens.

[0035] As used herein, the term "CD4<sup>+</sup>" refers to a cell surface molecule the presence or absence of which is used to describe and characterize a specific population of T cells. For example, a cell population expressing low levels of CD4 is termed "CD4<sup>low</sup>", a cell population expressing hi levels of CD4 is termed "CD4<sup>high</sup>", and a cell population which is not detectably expressing, for example, CD4, is termed "CD4<sup>-</sup>".

[0036] As used herein, the term "CD40<sup>+</sup> cell" refers to a cell surface molecule the presence or absence of which is used to describe and characterize a specific population of T cells. For example, a cell population expressing low levels of CD40 is termed "CD40<sup>low</sup>", a cell population expressing high levels of CD40 is termed "CD40<sup>high</sup>", and a cell population which is not detectably expressing CD40 is termed "CD40<sup>-</sup>".

[0037] As used herein, the term "CD4<sup>+</sup>CD40<sup>+</sup>" refers to the T cells expressing low levels of CD4 and high levels of CD40. The term "CD4<sup>+</sup>CD40<sup>+</sup>" refers to the same cell population as the term "CD4<sup>lo</sup>CD40<sup>+</sup>".

[0038] As used herein, the term "CD154" refers to a cell surface molecule which is a ligand for the CD40 receptor.

[0039] As used herein, the term "contacting with at least one agent" should be understood to mean providing an agent of the invention or a prodrug of an agent of the invention to a subject.

[0040] As used herein, the term "derivative thereof" refers to a chemically modified agent wherein the chemical modification takes place at one or more functional groups of the agent and/or on an aromatic ring, when present. The derivative however is expected to retain the pharmacological activity of the agent from which it is derived.

[0041] As used herein, the term "detecting" refers to assaying, measuring, discovering or discerning the existence, presence or fact of a predetermined target entity, for example, CD4 or CD40.

[0042] As used herein, the term "detectably labeled" refers to any substance whose detection or measurement, either directly or indirectly, by physical or chemical means, is indicative of the presence of the target entity, for example, CD4 and CD40 in the test sample. Many detectable labels are known in the art and useful in the practice of the invention.

[0043] As used herein, the term "disease specific antigen" refers to one or more antigens known to be related to, involved with, or expressed during the existence of, a specific auto-immune disease. For example, human insulinoma cells or pancreatic tissue obtained from a pancreatic biopsy express one or more antigens specific for type 1 diabetes. Another example of an antigen which is specific for an autoimmune disease is myelin basic protein, specific for multiple sclerosis. There are numerous citations in the literature of T cells responding to whole tissue which is sufficiently descriptive for autoimmunity. See, for example, Haskins, G. E. & and Records, R. E., *Nebr. Med. J.* 67, 23 (1982); Haskins, K. M., et al., *Proc. Natl. Acad. Sci. USA* 86, 8000 (1989); Haskins, K. & McDuffie, M., *Science* 249, 1433 (1990); and Haskins, K. & Wegmann, D., *Diabetes* 45, 1299 (1996).

[0044] As used herein, the term "propensity to develop" refers to the susceptibility, predisposition or likelihood that a particular subject will develop an auto-immune disease. Subjects susceptible to developing an auto-immune disease are also termed "auto-immune prone." Such subjects do not exhibit detectable symptoms of an existing auto-immune disease. The auto-immune disease may not have yet developed, is inactive, or has not progressed to the point where symptoms or indications are exhibited by the subject, in which case the test is predictive of developing or expressing the auto-immune disease.

[0045] As used herein, the terms "RAG1" or "RAG2" refer to proteins which interact with the recombination-activation-genes ("RAG"). (Li, T. T. et al., *Eur. J. Immunol.* 32 (10), 2792-2799 (2002); Schatz, D. G. et al., *Cell* 59 (6), 1035-1048 (1989)).

[0046] As used herein, the term "recombinogenic" refers to the ability to catalyze or otherwise be involved with or effect recombination of nucleic acid molecules. Specifically, such recombination could include, but is not limited to DNA strand breakage and DNA strand transfer, and transposition of mobile elements. See, for example, U.S. Pat. No. 6,187,584.

[0047] As used herein, the term "subject" refers to an individual or patient. The subject can be any animal having or not having, predisposed or not predisposed, to developing, an auto-immune disease. Preferred subjects include humans and mammals.

[0048] Although any methods and materials similar or equivalent to those described herein can be used in the practice or testing of the present invention, the preferred methods and materials are described.

[0049] The invention herein includes a method for determining whether a test subject has at least one auto-immune disease comprising a) obtaining blood from the predetermined test subject thus obtaining a test sample; b) obtaining blood from a non-autoimmune subject thus obtaining a control sample; c) contacting the test sample and the control

sample with a combination of at least one detectably-labeled anti-CD4 antibody and at least one detectably-labeled anti-CD40 antibody; d) detecting the level of CD4<sup>lo</sup>CD40<sup>hi</sup> T cells in the test sample and in the control sample; wherein when there is an increase in the level of CD4<sup>lo</sup>CD40<sup>hi</sup> T cells in the test sample as compared to the level of CD4<sup>lo</sup>CD40<sup>hi</sup> T cells in the control sample, the test subject has at least one auto-immune disease. In one embodiment, the method further comprises isolating the test sample CD4<sup>lo</sup>CD40<sup>hi</sup> T cells and the control sample CD4<sup>lo</sup>CD40<sup>hi</sup> T cells from part 1d) and determining the presence or absence of an increase in production of at least one cytokine in the test T cell population as compared to the sample T cell population. In another embodiment of the method, the cytokine is at least one cytokine selected from the group consisting of IL-2, IL-4, IL-6, IL-10, TGF $\beta$  and IFN $\gamma$ . In a different embodiment of the method, the auto-immune disease is selected from the group consisting of type 1 diabetes, rheumatoid arthritis, lupus, multiple sclerosis, atherosclerosis, Crohn's colitis, ulcerative gastritis, primary biliary cirrhosis, chronic obstructive pulmonary disease (COPD) and scleroderma. In a preferred embodiment, the auto-immune disease is type 1 diabetes. In a highly preferred embodiment, the COPD disease is emphysema. In one aspect of the invention, the detecting is by flowcytometry. In a highly preferred embodiment of the method, the subject is human.

[0050] The invention here in also includes a method for determining whether a predetermined test subject is susceptible to developing at least one predetermined auto-immune disease comprising a) obtaining a first sample of blood from said predetermined test subject; b) obtaining a second sample of blood from said same subject; c) detecting the CD4<sup>lo</sup>CD40<sup>hi</sup> T cell population in said first and second samples; d) contacting said second test sample with at least one predetermined antigen indicative of at least one predetermined auto-immune disease for a length of time and in an amount sufficient to obtain a positive or negative cellular response in the CD4<sup>lo</sup>CD40<sup>hi</sup> T cell population of said second sample, e) determining whether a positive or negative cellular response occurs in the CD4<sup>lo</sup>CD40<sup>hi</sup> T cell population of said first and said second samples by measuring at least one response selected from the group consisting of CD4<sup>lo</sup>CD40<sup>hi</sup> T cell proliferation, CD4<sup>lo</sup>CD40<sup>hi</sup> T cell death and CD4<sup>lo</sup>CD40<sup>hi</sup> cytokine production, wherein when a positive response occurs in the CD4<sup>lo</sup>CD40<sup>hi</sup> T cell population of the second sample as compared to the response from the CD4<sup>lo</sup>CD40<sup>hi</sup> T cell population of the first sample, the predetermined subject is susceptible to developing the at least one predetermined auto-immune disease. In one embodiment, the T cells are isolated or purified from the first sample, the second sample or both samples. In one embodiment of the method, a positive response is an increase in CD4<sup>lo</sup>CD40<sup>hi</sup> T cell proliferation, an increase in CD4<sup>lo</sup>CD40<sup>hi</sup> T cell death and an increase in production of at least one cytokine produced by said CD4<sup>lo</sup>CD40<sup>hi</sup> T cell population. In a different embodiment of the method, the at least one cytokine is selected from the group consisting of IL-2, IL-4, IL-6, IL-10, TGF $\beta$  and IFN $\gamma$ . In a preferred embodiment of the method, the at least one preselected auto-immune disease is type 1 diabetes and said antigen is pancreatic tissue. In another embodiment, the at least one preselected auto-immune disease is rheumatoid arthritis and said antigen is synovial tissue. In different embodiment of the method, the at least one preselected auto-immune dis-

ease is multiple sclerosis and said antigen is nervous tissue. In yet another embodiment of the method, the at least one preselected auto-immune disease is scleroderma and said antigen is skin tissue. In an additional embodiment, the at least one auto-immune disease is atherosclerosis and said antigen is cardiac tissue. In a highly preferred embodiment of the method, the subject is human.

[0051] The invention is also directed to a method of modulating the proliferation of CD4<sup>lo</sup>CD40<sup>hi</sup> T cells in a subject in need of said modulation comprising at least one method selected from the group consisting of a) contacting said subject with at least one agent which inhibits the activation of RAG recombinase activity; b) contacting said subject with an antibody molecule, or fragment thereof, to CD40; c) contacting said subject with an antibody molecule, or fragment thereof, to CD154; d) contacting said subject with at least one blocking peptide to prevent interaction of the CD40 receptor with the CD154 ligand; e) contacting said subject with at least one RNA molecule specifically hybridizing to the RAG2 gene product; and, f) contacting said subject with at least one RNA molecule specifically hybridizing to the RAG1 gene product; wherein said contacting is for a length of time sufficient and in an amount sufficient to modulate the proliferation of CD4<sup>lo</sup>CD40<sup>hi</sup> T cells in said subject. In one embodiment of the method of in part a), at least one agent is a chaetochromin or a derivative thereof. In another embodiment of the method, in part b), the antibody fragment is an Fab portion. In a different embodiment of the method, in part c), the antibody fragment is an Fab portion. In yet a different embodiment, in part d), the blocking peptide is selected from the group consisting of SSKTTS-VLQWAEKGYTMSNNLVT (SEQ ID NO: 7) and QIAAHVISEASSK (SEQ ID NO: 8). In another embodiment, in part e), the RNA molecule is selected from the group consisting of

5'-AUGUCUCUGCAGAUGGUAACdAdG-3'; (SEQ ID NO: 9)

5'-CUGUUACCAUCUGCAGAGACdAdU-3'; (SEQ ID NO: 10)

5'-GGUAGGAGAUCUUCUGAAGdCdC-3'; (SEQ ID NO: 11)

5'-GGGGAUGGGCACUGGGUCCAUGdCdU-3'; (SEQ ID NO: 12)

5'-AGCAUGGACCCAGUGCCCAUCCdCdC-3'; (SEQ ID NO: 13)

and,  
5'-CUGUUACCAUCUGCAGAGACdAdU-3'. (SEQ ID NO: 14)

[0052] In yet another embodiment of the method, in part f), the RNA molecule is selected from the group consisting of 5'-AUGGCAGCCUCUUUCCCCACCCAdCdC-3' (SEQ ID NO: 15); 5'-GGUGGGUGGGAAAGAGGCUGC-CdAdU-3' (SEQ ID NO: 16); 5'-AAACUUGCAGCUCAG-CAAAAAACdTdC-3' (SEQ ID NO: 17); 5'-GAG-UUGCUGAGCUGCAAGUUdUdU-3' (SEQ ID NO: 18); 5'-GAGUUUUUUGCUGAGCUGCAAGUUdUdU-3' (SEQ ID NO: 19); 5'-UCACAAAACCCUGGCCCAUG-UUdCdC-3' (SEQ ID NO: 20); and, 5'-GGAACAUGGGC-CAGGGUUUUGUdGdA-3' (SEQ ID NO: 21).

[0053] In a different embodiment of the method, the subject has an increased level of CD4<sup>lo</sup>CD40<sup>hi</sup> T cells as compared to the level of CD4<sup>lo</sup>CD40<sup>hi</sup> T cells in a non-auto-immune subject and the modulation is a decrease in the level

of CD4<sup>lo</sup>CD40<sup>hi</sup> T cells. In a highly preferred embodiment of the method, the subject is human.

[0054] The invention is also directed to a kit for detecting CD4<sup>lo</sup>CD40<sup>hi</sup> T cells comprising a) at least one detectably labeled anti-CD4 antibody and at least one detectably labeled anti-CD40 antibody; and, b) at least one predetermined antigen indicative of at least one predetermined auto-immune disease.

[0055] We have discovered a population of T cells that cause auto-immune disease. In a diabetes animal model system, CD4<sup>+</sup> T cells which also express the CD40 molecule have been shown to be pathogenic. Isolation and purification of these cells repeatedly transfers diabetes to non-sick animals, whereas other CD4<sup>+</sup> cells that do not express the CD40 molecule do not transfer disease (Wagner, D. H., Jr. et al., (2002)). Furthermore, the pathogenic T cells have been shown to express lower levels of the CD4 molecule. We also previously determined that numerous auto-immune prone animal strains have elevated numbers of CD40-expressing CD4 T cells (Wagner, D. H., Jr. et al., (1999)). In other studies, we determined that humans have CD40-expressing T cells. Individuals that were heavy smokers or tobacco users and therefore more susceptible to respiratory disease had higher numbers of CD40-expressing T cells, consistent with the involvement of CD40-expressing T cells in disease. The mechanism by which these T cells generate TCR molecules that respond to self-tissue (Vaitaitis, G. M. et al., (2003)) has been determined. A subpopulation of T cells categorized by expression of CD40 has been discovered to be auto-aggressive. By engaging the CD40 molecule, the RAG proteins can be activated again. That is, activation of the RAG proteins occur in peripheral T cells after the initial activation of RAG proteins during T cell development. This process causes a new TCR molecule to be expressed on the surface of the T cell (Vaitaitis, G. M. et al., (2003)).

[0056] CD40 engagement leads to the expression of specific TCR bearing T cells that are able to transfer diabetes. Our discovery describes a new mechanism for generating auto-aggressive T cells later in the periphery, but importantly describes that CD40 expression on auto-aggressive T cells can directly affect the RAG proteins and thus the expression of TCR molecules that can interact with self-tissue.

#### I. Tests for Auto-Immune Diseases

##### [0057] A. Diagnostic Tests

##### [0058] 1. Predetermined Auto-Immune Diseases

[0059] This invention specifically includes blood tests utilizing the characterization of auto-aggressive T cells by expression of both CD40 and low-level expression of CD4, thereby defining a new cell type. Diagnostic tests for known auto-immune diseases may be established according to the methods disclosed in this invention. The auto-immune disease may be active in a subject, in which case the test is diagnostic. This invention will diagnose known existing auto-immune diseases such as type 1 diabetes, rheumatoid arthritis, lupus, atherosclerosis, multiple sclerosis, Crohn's colitis, ulcerative gastritis, primary biliary cirrhosis and auto-immune hepatitis, for example.

##### [0060] 2. Auto-Immune Diseases with Unknown Cause

[0061] The presence of an increased level of CD4<sup>+</sup>CD40<sup>+</sup> T cells (exaggerated level) as compared to the level of cells in a non-autoimmune subject or sample or control population (the standard level) indicates the presence of an auto-immune disease in the subject having the elevated level of CD4<sup>+</sup>CD40<sup>+</sup> T cells. Thus, the method of the invention can provide a diagnosis of an existing auto-immune disease whether or not the etiology of the auto-immune disease is known.

##### [0062] B. Predictive Tests for Auto-Immune Diseases

##### [0063] 1. Predetermined Auto-Immune Diseases

[0064] Alternatively, the auto-immune disease may not have yet developed, is inactive, or has not progressed to the point where symptoms or indications are exhibited by the subject, in which case the test is predictive of expressing the auto-immune disease. The invention also includes a blood test that will predict the susceptibility of an individual towards any predetermined auto-immune disease. This will be accomplished by a blood test kit. In a physician's office, blood samples will be taken. In a laboratory setting, the blood samples will be treated with fluorescent labeled antibodies that recognize the CD4 molecule and antibodies that recognize the CD40 molecule after the sample is contacted with one or more auto-immune disease specific antigens in an amount and for a length of time sufficient to activate the T cells of the predetermined subject. The T cells may be, but are not required to be, in purified or isolated form before contact. Cells that stain positively with both markers will be categorized as "autoaggressive." While these cells do exist in some low level in normal individuals, they are shown to be increased in "auto-immune" disease prone individuals. Therefore exaggerated levels of CD4<sup>+</sup>CD40<sup>+</sup> T cells will indicate a propensity to develop auto-immunity. Standard levels or "exaggerated" levels will be determined by establishing a normal level of CD4<sup>+</sup>CD40<sup>+</sup> T cells in non-auto-immune prone individuals. The levels of CD4<sup>+</sup>CD40<sup>+</sup> cells are determined using any method appropriate for determining presence or absence of the CD4 and CD40 markers.

[0065] Auto-immune diseases for which diagnostic or predictive tests may be established according to the methods of the invention, include but are not limited to, multiple sclerosis (MS), rheumatoid arthritis (RA), systemic lupus erythromatosis, atherosclerosis, Crohn's colitis, ulcerative colitis, primary biliary cirrhosis, chronic obstructive pulmonary disease (COPD) including such as for example, emphysema, allergic asthma and scleroderma, and can be any auto-immune disease for which at least one antigen is known to be involved. For example, type 1 diabetes is known to involve one or more antigens on the surface of pancreatic cells. Similarly, rheumatoid arthritis is known to involve one or more antigens expressed on the surface of synovial tissue; multiple sclerosis is known to involve one or more antigens expressed on the surface of nervous tissue; scleroderma is known to involve one or more antigens expressed on the epidermal or dermal layer of skin tissue; atherosclerosis is known to involve one or more antigens expressed on the surface of cardiac tissue; and, emphysema is known to involve one or more antigens expressed on respiratory tissue and antigens found in tobacco smoke or tobacco products. This invention will characterize the susceptibility of an individual to auto-immune diseases such as type 1 diabetes, rheumatoid arthritis, lupus, atherosclerosis, multiple sclero-

sis, Crohn's colitis, ulcerative gastritis, primary biliary cirrhosis and auto-immune hepatitis, for example.

[0066] For identifying T cells expressing CD4 and CD40, any anti-CD4 or anti-CD40 antibody, or fragment thereof, known in the art may be used. Such antibodies and fragments are commercially available. See, for example, U.S. Pat. No. 5,683,693. Also contemplated for use in the invention are peptides, oligonucleotides or a combination thereof which specifically recognize determinants, such as, for example, CD4 and CD40, with specificity similar to traditionally generated antibodies. See, for example, U.S. Pat. No. 6,365,362.

[0067] Representative examples of useful detectable labels, include, but are not limited to the following: molecules or ions directly or indirectly detectable based on light absorbance, fluorescence, reflectance, light scatter, phosphorescence, or luminescence properties; molecules or ions detectable by their radioactive properties; molecules or ions detectable by their nuclear magnetic resonance or paramagnetic properties. Included among the group of molecules indirectly detectable based on light absorbance or fluorescence, for example, are various enzymes which cause appropriate substrates to convert, e.g., from non-light absorbing to light absorbing molecules, or from non-fluorescent to fluorescent molecule. See, for example, U.S. Pat. No. 6,365,362.

#### H. Methods of Treatment of Auto-Immune Diseases

##### [0068] A. CD40-CD154 Interactions

[0069] This invention is also related to the use of new drugs or existing drugs to control CD40-CD154 interactions within the auto-aggressive T cell population. Several means of preventing the generation of CD4<sup>+</sup>CD40<sup>+</sup> auto-aggressive T cells exist. It is possible to treat individuals with an antibody against the CD40 ligand, CD154, or against the CD40 molecule to prevent interaction of those molecules. Preventing this interaction inhibits the development of auto-aggressive T cells (FIG. 1). Another means of preventing CD40 induced activation is to block interaction with CD40 ligand through use of specific peptides (blocking peptides). Because CD40 acts as a "receptor" on auto-aggressive T cells, by designing specific amino acid peptides that can bind to the active site of the CD40 molecule, interaction with the natural ligand for CD40, (CD154) can be prevented. See, for example, U.S. Pat. No. 5,683,693 and Balasa, B. et al. (1997).

[0070] Sequence analysis of the CD154 (SEQ ID NO: 6), the natural ligand for CD40, has been determined. From this information inhibiting peptides can be inferred (see, for example, Karpusas, M. et al., *Structure* 3, 1426 (1995)). Such peptides, include but are not limited to

SSKTTTSLVQLQWAEKGYTMSNNLVT (SEQ ID NO: 7)  
and

QIAAHVISEASSK. (SEQ ID NO: 8)

[0071] The use of blocking peptides will be as follows. We will design peptides that interact with the CD40 antigen. These peptides will not induce the CD40 antigen to activate the T cell. The peptides will prevent interaction of the ligand for CD40, CD40L also known as CD154, with CD40 on the T cells. We have shown that when CD40 is activated on T

cells later in life, in a mouse diabetes model, that T cells are induced to alter TCR expression. We predict that this action generates auto-aggressive T cells. By using the blocking peptides we predict that we can successfully prevent the generation of auto-aggressive T cells. Blocking peptides can be used according, for example, to the following protocols.

[0072] Protocol #1: Blood samples are taken. The T cells may be purified from the blood sample by standard techniques such as cell sorting or use of anti-CD4 antibodies and purification columns. The blood samples or purified/isolated T cells are incubated with the "blocking peptides." The blood samples or purified/isolated T cells are then treated with physiological sources of CD40 ligand and assayed for changes in T cell receptor expression such as described in Wagner, D. H., Jr. et al. (2002); Wagner, D. H., Jr. et al., *Eur. J. Immunol.* 24, 3148 (1994); Wagner, D. H., Jr. et al., *J. Exp. Med.* 184, 1631 (1996); and Wagner, D. H., Jr. et al. (1999).

[0073] Protocol #2: Blocking peptides are administered to patients determined to be at high risk for a specific autoimmune disease, such as assessed using the predictive kit described herein. Blocking peptides are in use therapeutically for several diseases (Lung, F. D. & Tsai, J. Y., *Biopolymers* 71, 132 (2003); Anderson, M. E. & Siahaan, T. J., *Peptides* 24, 487 (2003)).

##### [0074] B. RAG Proteins

###### [0075] 1. Agents

[0076] This invention is also related to the use of new agents or existing agents to control the activation of the RAG proteins within the auto-aggressive T cell population. One means of inhibiting auto-aggressive T cell development is to inhibit the generation of the "self-reactive" T cell receptor. Relative to the RAG1 and RAG2 proteins, there are two ways to control the activity of these proteins. The first is to control the "recombinase" activity of these proteins. Because RAG1 and RAG2 bind to DNA and cut then splice the DNA to generate new TCR molecules, these proteins have a "recombinase" activity (Vaandrager, J. W., et al., *Blood* 96, 1947-52 (2000)).

[0077] Any agent that could prevent this recombination activity potentially would prevent the action of these proteins. Because we have discovered that RAG proteins are exclusively over-expressed in auto-aggressive T cells, agents can be used to inhibit the activation of RAG1 and/or RAG2 genes. Inhibition of RAG activation will inhibit the onset of auto-immune diseases by affecting the generation of auto-aggressive T cells.

#### Experiment to Show Inhibition of RAG Activity

[0078] T cells are isolated using standard techniques such as cell sorter, or T cell-purification columns (Wagner, D. H., Jr. et al. (2002); Vaitaitis, G. M. et al. (2003); Wagner, D. H., Jr. et al. (1994); Wagner, D. H., Jr. et al. (1996); Wagner, D. H., Jr. et al. (1999)). T cells are incubated with different concentrations of 1) integrase inhibitors as described in U.S. Pat. No. 6,403,347 B1; 2) RAG1 and or RAG2 RNAi pools (the RAG RNAi pools are several different combinations of RAG-RNA molecules to maximize efficacy of inhibition); or 3) CD40L blocking peptides. Options 1 and 2 directly inhibit activation of RAGs and option #3 inhibits the CD40 signaling pathways leading to activation of RAGs. Following treatment, T cells will be incubated with agonistic (activat-

ing) anti-CD40 antibody, with physiological or nonphysiological sources of CD40L. T cells then will be assayed for changes in T cell receptor molecules. We have shown that anti-CD40 induces changes in T cell receptor expression (Wagner, D. H., Jr. et al. (1999)). Physiological sources of CD40L include activated T cells (Wagner, D. H., Jr. et al., (1994)) and platelets (Andre, P. et al., *Circulation* 106, 896 (2002); Wang, C. L. et al., *Pediatrics* 111, E140 (2003)). Nonphysiological sources include isolated, pure or purified preparations of CD40L. T cells that have been treated as in #1, 2 or 3 should not demonstrate changes in TCR expression. As controls, untreated T cells will be treated with anti-CD40 or with CD40L sources and assayed for altered TCR expression. These experiments will determine how blocking CD40-CD154 interaction prevents expansion of altered TCR-bearing T cells. We have determined that T cells that alter TCR expression in the periphery are diabetogenic (Wagner, D. H., Jr. et al., (2002)).

[0079] We show that blocking CD40-CD154 interaction inhibits the expansion of auto-aggressive T cells in the type 1 diabetes model (FIG. 1). For physiologic examination, we will treat animals, nonobese mice (NOD)(NOD mice are the accepted animal model for human type 1 diabetes) with integrase inhibitors, such as chaetochromins, using the protocol described in U.S. Pat. No. 6,403,347 B1 or with RNAi molecules or with CD40-blocking peptides (described herein). Animals are closely monitored for expansion of CD4<sup>+</sup>CD40<sup>+</sup> T cells and for diabetes onset.

#### [0080] 2. RNAi Molecules

[0081] Another important means of preventing RAG1 and or RAG2 activity in auto-immune disease is to prevent the synthesis and accumulation of these proteins within auto-aggressive cells. Because the RAG proteins are synthesized normally in T cells and B cells, it is possible to use a class of drugs inhibitory to the synthesis of these proteins. These drugs include inhibitory RNA ("RNAi") molecules, specifically designed to inhibit the expression of the RAG1 and RAG2 proteins. RNAi molecules are designed by determining the nucleotide sequence of the RAG1 and RAG2 genes. Such RNAi molecules include but are not limited to

(SEQ ID NO: 9)  
5'-AUGUCUCUGCAGAUGGUAACdAdG-3';

(SEQ ID NO: 10)  
5'-CUGUUACCAUCUGCAGAGACdAdU-3'

(SEQ ID NO: 11)  
5'-GGUAGGAGAUCUCCUGAAGdCdC-3';

(SEQ ID NO: 12)  
5'-GGGGAUGGGCACUGGUCCAUgdcdu-3';

(SEQ ID NO: 13)  
5'-AGCAUGGACCCAGUGCCCAUCCdCdC-3';

(SEQ ID NO: 14)  
5'-CUGUUACCAUCUGCAGAGACdAdU-3';

(SEQ ID NO: 15)  
5'-AUGGCAGCCUUCUCCACCCAdCdC-3';

(SEQ ID NO: 16)  
5'-GGUGGUGGGAAGAGGCUGCCdAdU-3';

#### -continued

(SEQ ID NO: 17)  
5'-AAACUUGCAGCUCAGCAAAAACdTdc-3';

(SEQ ID NO: 18)  
5'-GAGUUUUUUGCUGAGCUGCAAGUdUdu-3';

(SEQ ID NO: 19)  
5'-GAGUUUUUUGCUGAGCUGCAAGUdUdu-3';

(SEQ ID NO: 20)  
5'-UCACAAAACCCUGGCCCAUGUdCdC-3';  
and

(SEQ ID NO: 21)  
5'-GGAACAUGGGCCAGGGUUUGUdGdA-3';.

[0082] When genes are transcribed into messenger RNA that will be translated into protein, a "sense" strand on the gene for that substance is read by the machinery of the cell involved. Small pieces of chemically altered RNA molecules, including but not limited to those above, can be synthesized, that when administered, will go into the cell and bind to the synthesis machinery of that cell to prevent, specifically, the synthesis of the desired protein. This process does not inhibit the synthesis of other proteins within the cell.

[0083] This invention also provides kits for the detection and/or quantification of CD4<sup>+</sup>CD40<sup>+</sup> cells. The kits can include a container containing one or more of any of the above antibodies, antigens or ligands, with or without labels, free, or bound to a solid support as described herein. The kits can also include instructions for the use of one or more of these reagents in any of the assays described herein. For example, antigens envisioned to be useful in the practice of the invention include proteins such as, for example, myosine and actin, and other compounds such as, for example, nicotine and catecholamine. Any protein, biological or non-biological chemical can conceivably serve as a foreign antigen.

[0084] Methods for staining cytokines are standard in the lab. See, for example, *Methods of Immunology*, Cold Spring Harbor Text book. T cells are isolated from whole blood that is red blood cell depleted, then treated with anti-CD3 or anti-CD3+anti-CD40 (molecule specific antibodies) for 45 min. Antibodies are washed away in a phosphate buffered saline solution. T cells are incubated in growth media overnight. The media is removed and assayed using enzyme-linked immunosorbant assay (ELISA) specifically for Th1 cytokines, IL-2, IFN-gamma and Th2 cytokines, IL-4, IL-6, and IL-10. For ELISA a plate is coated with antibodies that recognize one of the cytokines of interest. The media is applied and incubated overnight, then the plates are washed. The plates are incubated with a second antibody containing a horseradish peroxidase molecule conjugated to an anti-cytokine antibody, e.g., anti-IL-4 or IL-2, etc. The plate is treated with peroxide and a colorogenic reagent that develops color if the well is positive. The color levels are determined by a spectrophotometer.

[0085] A second method is to directly stain T cells for production of cytokines. T cell are treated with anti-CD3 or anti-CD3+ anti-CD40 antibodies in the presence of brefeldin A, a substance that blocks cytokine secretion. T cells are stained on the surface for expression of CD4 and CD40 using appropriate antibodies. T cells are washed and treated

with saponin buffer. Saponin is a mild detergent that lyses cells by causing small holes in the cell membrane. The T cells are then incubated with fluorochrome-labeled antibodies, washed and assayed by flow cytometry.

[0086] The pharmaceutically acceptable salts of the compounds of this invention include those formed from a variety of cations such as, for example, but not limited to, sodium, potassium, aluminum, calcium, lithium, magnesium, zinc, and from bases such as ammonia, ethylenediamine, lysine, arginine, ornithine, choline, N,N'-dibenzylethylenediamine, chlorprocaine, diethanolamine, procaine, N-benzylphenethylamine, diethylamine, piperazine, tris(hydroxymethyl)aminomethane, and tetramethylammonium hydroxide. These salts may be prepared by standard procedures, e.g., by reacting the free acid with a suitable organic or inorganic base. Many other suitable cations and bases are known in the art, see, for example, Remington's, and U.S. Pat. No. 6,403,347, and are envisioned in the practice of the invention.

[0087] For modulating the proliferation of the CD4<sup>lo</sup>CD40<sup>hi</sup> lymphocytes, the agents of the present invention may be administered by a variety of routes, including, but not limited to, orally, as subcutaneous injections, by intravenous, intramuscular, intrasternal injection or infusion techniques, by inhalation spray, topically, or rectally, such as in suppositories, in dosage unit formulations containing conventional non-toxic pharmaceutically-acceptable carriers, adjuvants and vehicles.

[0088] Thus, in accordance with the present invention the contacting involves contacting a subject in need of such treatment with a composition comprising a pharmaceutical carrier and a therapeutically-effective amount of at least one agent of the present invention. The compositions may be in variety of orally-administrable forms, such as but not limited to, suspensions or tablets, nasal sprays, sterile injectible preparations, for example, as sterile injectible aqueous or nonaqueous suspensions. See, for example, U.S. Pat. No. 6,403,347 and Remington's.

[0089] When administered orally, these compositions are prepared according to techniques well-known in the art of pharmaceutical formulation and may contain, by way of example, microcrystalline cellulose for imparting bulk, alginate acid or sodium alginate as a suspending agent, methylcellulose as a viscosity enhancer, and sweeteners/flavoring agents known in the art. As immediate release tablets, these compositions may contain microcrystalline cellulose, dicalcium phosphate, starch, magnesium stearate and lactose and/or other excipients, binders, extenders, disintegrants, diluents and lubricants known in the art. See, for example, U.S. Pat. No. 6,403,347 and Remington's.

[0090] When administered by nasal aerosol or inhalation, these compositions are prepared according to techniques well-known in the art of pharmaceutical formulation and may be prepared as solutions in saline, employing benzyl alcohol or other suitable preservatives, absorption promoters to enhance bioavailability, fluorocarbons, and/or other solubilizing or dispersing agents known in the art. See, for example, U.S. Pat. No. 6,403,347 and Remington's.

[0091] The injectible solutions or suspensions may be formulated according to known art, using suitable non-toxic, parenterally-acceptable diluents or solvents, such as manni-

tol, 1,3-butanediol, water, Ringer's solution or isotonic sodium chloride solution, or suitable dispersing or wetting and suspending agents, such as sterile, bland, fixed oils, including synthetic mono- or diglycerides, and fatty acids, including oleic acid. When rectally administered in the form of suppositories, these compositions may be prepared by mixing the agent with a suitable non-initiating excipient, such as cocoa butter, synthetic glyceride esters of polyethylene glycols, which are solid at ordinary temperatures, but liquefy and/or dissolve in the rectal cavity to release the drug. See, for example, U.S. Pat. No. 6,403,347 and Remington's.

[0092] The agents of the present invention can be administered orally to humans or other mammals in a dosage range of 1 to 1000 mg/kg body weight in divided doses. One preferred dosage range is 0.1 to 200 mg/kg body weight orally in divided doses. Another preferred dosage range is 0.5 to 100 mg/kg body weight orally in divided doses. For oral administration, the agents are preferably provided in the form of tablets containing 1.0 to 1000 milligrams of the active ingredient, particularly in 0.001, 0.01, 0.1, 0.5 or 1.0 milligram increments, for the symptomatic adjustment of the dosage to the subject to be treated. It will be understood, however, that the specific dose level and frequency of dosage for any particular subject may be varied and will depend upon a variety of factors including the activity of the specific agent employed, the metabolic stability and length of action of that compound, the age, body weight, general health, sex, diet, mode and time of administration, rate of excretion, drug combination, the severity of the particular condition, and the subject in need of having the proliferation of CD4<sup>lo</sup>CD40<sup>hi</sup> lymphocytes modulated. See, for example, U.S. Pat. Nos. 6,403,347; 6,110,716; 5,683,693 and Remington's.

[0093] Also envisioned in the practice of the invention is a composition comprising a combination of at least two of the following: a combination comprising one or more agent which inhibits the activation of RAG recombinase; an antibody molecule or fragment thereof to CD40; an antibody molecule or fragment thereof to CD154; at least one blocking peptide which inhibits the interaction of the CD40 receptor with the CD154 ligand; at least one RNA molecule specifically hybridizing to the RAG2 gene product; and, at least one RNA molecule specifically hybridizing to the RAG1 gene product.

[0094] The following examples are provided to facilitate the practice of the present invention. These examples are not intended to limit the scope of the invention in any way.

## EXAMPLES

### Example 1

Specific TCRV $\alpha$ <sup>+</sup> Expansions within the CD4<sup>lo</sup>CD40<sup>+</sup> Auto-Aggressive T Cell Population Promote Type 1 Diabetes

[0095] The current study herein demonstrates that CD4<sup>+</sup>CD40<sup>+</sup> T cells, including for the first time T cells purified from pre-diabetic animals, rapidly transfer diabetes to NOD.scid recipients. Importantly, these T cells expand as NOD mice develop diabetes. Furthermore, there are CD40 driven expansions of TCR V $\alpha$ 3.2<sup>+</sup> and V $\alpha$ 8.3<sup>+</sup> T cells within the auto-aggressive T cell population but these expansions are

confined to the auto-immune strain. In addition this study shows that primary CD4<sup>+</sup> V $\alpha$ 3.2<sup>+</sup> T cells induce diabetes with the same kinetics as established diabetogenic T cell clones while V $\alpha$ 8.3<sup>+</sup> T cells do not induce diabetes. The data presented herein show that specific V $\alpha$ <sup>+</sup> T cells are predictive of diabetes onset. All mammals specifically humans demonstrate CD4<sup>lo</sup>CD40<sup>+</sup> T cells.

#### Introduction

**[0096]** Numerous cell types are involved in the development of auto-immune diseases including type 1 diabetes (T1D). Auto-aggressive T cells though are fundamental in progression of the disease (Wagner, D. H., Jr. et al., (2002); Mathis, D. et al., *Nature* 414, 792-8 (2001); Candeias, S. et al., *Proc. Natl. Acad. Sci. USA* 88, 6167-70 (1991); Dilts, S. M. et al., *J. Autoimmun* 13, 285-90 (1999); Haslins, K. & Wegmann, D. (1996); Katz, J. D. et al., *Cell* 74, 1089-100 (1993)). Studies involving adoptive transfers of diabetogenic T cell clones to nonobese diabetic (NOD) mice and studies using diabetogenic-TCR, transgenic (TCR-Tg) mice demonstrate that CD4<sup>+</sup> T cells infiltrate the pancreatic  $\beta$  cells leading to loss of insulin production (Candeias, S. et al., (1991); Haskins, K. & Wegmann, D. (1996)). CD8<sup>+</sup> TCR-Tg NOD mice develop diabetes suggesting a role for CD8<sup>+</sup> T cells in disease progression (Amrani, A. et al., *Immunity* 16, 719-32 (2002)). However, when primary CD8<sup>+</sup> T cells are used, CD4<sup>+</sup> T cell help is required to fulminate disease (Lejon, K. & Fathman, C. G., *J. Immunol.* 163, 5708-5714 (1999)).

**[0097]** While diabetogenic T cell clones and TCR-Tg mice provide information about the disease process, it is important to address primary T cells as disease culprits. Recently we suggested that auto-aggressive T cells in the NOD arise from a peripheral subset of T cells that express CD40 (Wagner, D. H., Jr. et al., (2002)). Further studies demonstrate that these T cells are induced through CD40 to transcribe, translate and translocate the recombinase RAG1 and RAG2 proteins to the nucleus (Vaitaitis, G. M. et al., (2003)). Because RAGs function to alter TCR expression, this suggests that CD40 signals contribute to altered TCR expression post thymic selection; perhaps leading to the generation of auto-aggressive T cells in the periphery as opposed to escape from thymic negative selection.

#### Materials and Methods

**[0098]** Mice. Nonobese diabetic (NOD), Nonobese resistant (NOR) and BALB/c mice were purchased from Jackson Laboratories, Bar Harbor, Me.; bred and maintained under pathogen-free conditions in the IUCAC approved animal facility at the Webb-Waring Institute, University of Colorado Health Sciences Center, Denver, Colo.

**[0099]** Staining. T cells were purified from excised spleens of NOD, NOR or BALB/c mice at the ages indicated, incubated on nylon wool wetted columns with HBSS-5% BSA for 45 min. Purified T cells (>92% CD3<sup>+</sup>) were washed with HBSS-5% BSA, treated with 2.4.G2, anti-Fc-receptor blocking antibody, then stained with directly conjugated FITC-anti-CD40, 1C10<sup>37</sup>, PE-anti-TCR $\alpha\beta$ , H57.597 or PE-anti-CD3, 145.2C11 (Pharmingen, San Diego, Calif.), and CyChrome<sup>TM</sup>-anti-CD4, H129.19 (Pharmingen). Cells were run on a Becton-Dickinson FACScalibur and assayed using CellQuest<sup>TM</sup> software. In some cases, splenic T cells were incubated with biotin-anti-CD3 (145.2C11), washed with

HBSS, incubated with Miltenyi (Auburn, Calif.) magnetic avidin beads and passed through a Miltenyi selection column as per manufacturer's instructions. Purified T cells were then stained as described.

**[0100]** For V $\alpha$  staining, purified T cells were left untreated or crosslinked with biotin anti-CD40 followed by avidin for 18 hr. T cells were incubated with 2.4.G2, then stained with FITC anti-V $\alpha$ 2, anti-V $\alpha$ 3.2 or anti-V $\alpha$ 8.3 (all from Pharmingen), biotinylated anti-CD40 (1C10) with PE-avidin (Pharmingen), and CyChrome-anti-CD4 (Pharmingen) for analysis.

**[0101]** Adoptive Transfers. T cells were nylon wool-purified from spleens of diabetic and pre-diabetic NOD females, incubated with biotinylated anti-CD40 (1C10 produced in-house), biotinylated anti-V $\alpha$ 3.2, or biotinylated anti-V $\alpha$ 8.3 (both from Pharmingen). The cells were washed with PBS then incubated with magnetic avidin beads (Miltenyi, Auburn, Calif.) and passed over magnetic purification columns (Miltenyi). Purified T cells were eluted and determined to be >98% pure by flow cytometry. CD8<sup>+</sup> T cells were removed by incubating T cells with a magnetic conjugated anti-CD8 antibody (Miltenyi) then passed over a magnetic column (Miltenyi). Purified CD4<sup>+</sup>CD40<sup>+</sup> T cells,  $1.5 \times 10^6$ , were injected intraperitoneally, i.p., into 9-day old NOD.scid recipients. Control animals received CD4<sup>+</sup>CD40<sup>-</sup> T cells,  $1.5 \times 10^6$  cells. Animals were monitored for diabetes onset by blood glucose (b.g.) determinations. Diabetes was considered to be a b.g. level of >150 mg/dl.

**[0102]** Highly purified V $\alpha$ 3.2<sup>+</sup> and V $\alpha$ 8.3<sup>+</sup> T cells,  $1.5 \times 10^6$ , were injected i.p. into 9-day old NOD.scid recipients that were monitored for diabetes as before. Controls received an equivalent number of CD40<sup>-</sup> T cells. V $\alpha$ 3.2<sup>+</sup> T cells were determined to be >80% CD40<sup>+</sup> while V $\alpha$ 8.3<sup>+</sup> T cells were <30% CD40<sup>+</sup>. Experiments were repeated three times.

**[0103]** Histology. Pancreata from CD4<sup>+</sup>CD40<sup>+</sup> and from CD4<sup>+</sup>CD40<sup>-</sup> T cell NOD.scid recipients were fixed in formalin, paraffin embedded, and sliced by microtome to generate tissue slides. Slides were stained with Hematoxylin and Eosin (H&E) or Aldehyde Fuchsin (A/F) as described previously (Wagner, D. H., Jr. et al., (2002)). Slides were scored for infiltration and insulin production as described (Wagner, D. H., Jr. et al., (2002)).

#### Results

Purified CD4<sup>+</sup>CD40<sup>+</sup> T cells are Highly Diabetogenic.

**[0104]** We demonstrated previously that a subset of T helper cells in NOD mice characterized as CD4<sup>lo</sup> successfully transfers T1D (Wagner, D. H., Jr. et al., (2002)). However, substantial numbers ( $2 \times 10^7$ ) and multiple injections of these T cells were required to achieve diabetes. Here we demonstrate directly, through use of highly purified CD4<sup>+</sup>CD40<sup>+</sup> T cells, that relatively low numbers,  $1.5 \times 10^6$ , of cells rapidly induced diabetes (FIG. 2A). Importantly, highly purified CD4<sup>lo</sup>CD40<sup>+</sup> T cells isolated from 9-week old, pre-diabetic NOD animals could successfully transfer diabetes (FIG. 2A). Previous reports suggest that only T cells from diabetic NOD mice can successfully transfer diabetes (Christianson, S. W. et al., *Diabetes* 42, 44-55 (1993)). None of the CD40<sup>-</sup> T cell recipients were diabetic after 45 days (FIG. 2A). Histology of the pancreata confirmed that the islets of CD40<sup>+</sup> recipients were heavily

infiltrated and insulin production diminished by 15 days (FIG. 2B), while pancreata from CD4<sup>+</sup>CD40<sup>-</sup> control recipients demonstrated no T cell infiltration (FIG. 2C). Injected T cells were determined to be CD8<sup>-</sup>. Furthermore, while CD8<sup>+</sup> TCR transgenic NOD mice develop diabetes, that process is independent of CD40-CD154 interactions (Amrani, A. et al., (2002)).

[0105] CD4<sup>+</sup>CD40<sup>+</sup> T cells increase in diabetes-prone NOD mice. Because primary CD4<sup>lo</sup>CD40<sup>+</sup> T cells are diabetogenic, we determined the levels of CD4<sup>+</sup>CD40<sup>+</sup> T cells as auto-immune-prone NOD mice age. We compared levels of these cells in NOD to the diabetes resistant NOR strain and the non-auto-immune BALB/c strain. NOR serves as an important control because these animals contain the same unique MHC configuration, I-A<sup>g7</sup> but are congenic at other loci and do not develop diabetes (Serreze, D. V. et al., *J. Exp. Med.* 180, 1553-8 (1994)).

[0106] Cells infiltrate the pancreata of NOD mice at 3-weeks of age with progressive insulinitis at 12-weeks and diabetes onset typically by 16-20 weeks (Luhder, F. et al., (1998); Baker, F. J. et al., *Proc. Natl. Acad. Sci. USA* 99, 9374-9 (2002); Szanya, V. et al., *J. Immunol.* 169, 2461-5 (2002)). In 3-week old NOD females, there were low levels (6%) of CD4<sup>lo</sup>CD40<sup>+</sup> T cells (FIG. 3A). The percentage of CD4<sup>lo</sup>CD40<sup>+</sup> T cells doubled at 6-weeks of age and by 12-weeks the number increased to 25% of the T cell compartment (FIG. 3A). By 18-weeks the percentage was 40% of the T cell compartment in mice which had not yet become diabetic (FIG. 3A). Over this developmental period, percentages of CD4<sup>hi</sup>CD40<sup>-</sup> T cells decreased (FIG. 3A). In diabetic NOD mice, greater than 50% of the CD4<sup>+</sup> T cell population is CD40<sup>+</sup>. In the NOR strain, 15% of the T cell population at 6-weeks of age, was CD4<sup>lo</sup>CD40<sup>+</sup> and remained consistently at 15% as NOR mice developed (FIG. 3B). Percentages of the CD4<sup>hi</sup>CD40<sup>+</sup> T cell population increased through development. Interestingly, CD4<sup>lo</sup>CD40<sup>+</sup> T cells in non-auto-immune prone BALB/c mice were highest at 3-weeks of age, 16%, decreasing to 5% as BALB/c mice matured through 18 weeks (FIG. 3C). Reportedly, BALB/c mice contain super-antigens (sAg) that delete specific TCR bearing T cells (Goldman, A. et al., *Medicina* 55, 45-7 (1995); Maillard, I. et al., *Eur. J. Immunol* 26, 1000-6 (1996)). Possibly then, sAg induced depletion accounts for the reduction of CD4<sup>+</sup>CD40<sup>+</sup> T cells as BALB/c mice age. However the CD4<sup>hi</sup>CD40<sup>-</sup> population remained constant.

[0107] V $\alpha$  expansions of CD4<sup>+</sup>CD40<sup>+</sup> T cells in auto-immune NOD mice. Studies of T cells in diabetes have focused largely on diabetogenic T cell clones such as BDC2.5 (Haskins, K. & Wegmann, D. (1996); Luhder, F. et al., (1998)). Even though the BDC2.5 T cell clone is highly diabetogenic, it was recently shown using an anti-idiotypic antibody that the BDC2.5 TCR, V $\beta$ 4/V $\alpha$ 1, occurs at extremely low levels in the NOD mouse (Kanagawa, O. et al., *J. Immunol.* 168, 6159-64 (2002)). Thus another approach is required to study primary T cells as disease culprits. Immediately ex vivo (untreated) CD4<sup>+</sup>CD40<sup>+</sup> T cells from NOD mice at 3-weeks of age showed that few detectable V $\alpha$ <sup>+</sup> T cells were present, with each V $\alpha$ <sup>+</sup> population constituting less than 3.5% of the CD4<sup>+</sup>CD40<sup>+</sup> subset (FIG. 4A). At 12-weeks of age, immediately ex vivo cells showed no significant change in percentages of the V $\alpha$ <sup>+</sup> T cells. However, in vitro CD40 cross-linking of T cells

induced substantial increases, almost 4-fold, in V $\alpha$ 3.2<sup>+</sup> and V $\alpha$ 8.3<sup>+</sup> T cells. These changes were not due to induced selective survival as reported earlier (Vaitaitis, G. M. et al., (2003)) and changes occurred after only 18 hrs. Furthermore, CD40 cross-linking did not induce T cells into cell-cycle as determined by CFSE staining (data not shown). In NOD mice at 18-weeks of age, but not diabetic, there were expansions, when compared to V $\alpha$ <sup>+</sup> levels of 3-week old animals, of V $\alpha$ 2<sup>+</sup> T cells but substantial increases of V $\alpha$ 3.2<sup>+</sup> T cells in immediately ex vivo cells. Thus these particular T cells expanded in vivo as NOD mice age. In vitro CD40 cross-linking of CD4<sup>+</sup>CD40<sup>+</sup> T cells induced further changes in V $\alpha$  expression resulting in increased percentages of V $\alpha$ 2<sup>+</sup> and V $\alpha$ 8.3<sup>+</sup> expressing T cells. The CD40<sup>+</sup> T cells were not propelled into cell cycle as determined by CFSE labeling (data not shown). In older NOD mice, CD40 cross-linking induced reductions in the percentage of V $\alpha$ 3.2<sup>+</sup> T cells (FIG. 4A). Importantly, T cells were not induced into cell death (data not shown). NOR mice contain the unique MHC-class II component, I-A<sup>g7</sup> suggesting a similar T cell selective environment to the NOD, however congenic differences at the gene loci that render these animals resistant to development of diabetes (Serreze, D. V. et al., (1994)) may affect T cell development. As demonstrated in FIG. 3, CD4<sup>lo</sup>CD40<sup>+</sup> T cells are increased in NOR mice, but only achieve 15% of the total T cell population. At 12-weeks and at 18-weeks of age, NOR animals had higher in vivo levels of V $\alpha$ 3.2<sup>+</sup> T cells, relative to the other V $\alpha$ <sup>+</sup> cells examined. The levels were still lower than in NOD (note scales). Unlike in NOD animals CD40 cross-linking of T cells in both cases induced reductions of V $\alpha$ 3.2<sup>+</sup> T cells. Again, this was not due to induced cell death (data not shown). The only explanation is that CD40 induced altered expression of V $\alpha$  consistent with our recent report (Vaitaitis, G. M. et al., (2003)).

[0108] In 3-week old BALB/c animals there were low percentages, less than 4%, of the examined V $\alpha$ <sup>+</sup> T cells within immediately ex vivo CD4<sup>+</sup>CD40<sup>-</sup> cells (FIG. 4). However, in vitro CD40 cross-linking induced substantial increases in V $\alpha$ 3.2<sup>+</sup> and V $\alpha$ 8.3<sup>+</sup> T cells. At 12-weeks of age within immediately ex vivo T cells there were higher percentages of V $\alpha$ 2<sup>+</sup> and V $\alpha$ 3.2<sup>+</sup> T cells compared to levels at 3-weeks of age (FIG. 4). In vitro CD40 engagement had no significant effect on the percentages of V $\alpha$ 2<sup>+</sup> T cells, but CD40 engagement induced a significant reduction in V $\alpha$ 3.2<sup>+</sup> T cells. As before, this reduction was not due to induced cell death (data not shown). In older BALB/c animals immediately ex vivo CD4<sup>lo</sup>CD40<sup>+</sup> T cells showed higher percentages of V $\alpha$ 3.2<sup>+</sup> T cells relative to the other examined V $\alpha$ <sup>+</sup> T cells. As in 12-week old mice, CD40 engagement induced decreases in levels of V $\alpha$ 3.2<sup>+</sup> T cells.

[0109] V $\alpha$ 3.2<sup>+</sup> CD4<sup>+</sup>CD40<sup>+</sup> T cells are increased in pancreas of pre-diabetic and recently diabetic NOD mice. If a specific V $\alpha$ <sup>+</sup> T cells were involved in progression of diabetes that cell should be present in pancreata. We also determined V $\alpha$ <sup>+</sup> expansions from CD4<sup>lo</sup>CD40<sup>+</sup> NOD.scid recipients after onset of diabetes.

[0110] Pancreata from 12-week old, NOD mice showed higher percentages of V $\alpha$ 3.2<sup>+</sup> and V $\alpha$ 8.3<sup>+</sup> T cells within the CD4<sup>lo</sup>CD40<sup>+</sup>, auto-aggressive T cell population (FIG. 5A). Pancreata from newly diagnosed diabetic NOD mice demonstrated an increased percentage of V $\alpha$ 3.2<sup>+</sup> T cells (FIG. 5B). After diabetes onset within the CD4<sup>+</sup>CD40<sup>+</sup> recipients,

analysis revealed expansions of V $\alpha$ 3.2<sup>+</sup> cells, comprising 32% within the CD4<sup>+</sup>CD40<sup>+</sup> T cell population (FIG. 5C). T cells from CD4<sup>+</sup>CD40<sup>-</sup> recipients demonstrated levels of the V $\alpha$ 3.2<sup>+</sup> T cells at <4% (FIG. 5D). These data cumulatively suggest that expansions of specific V $\alpha$ 3.2<sup>+</sup> T cells are associated with, if not directly responsible for, diabetes.

[0111] V $\alpha$ 3.2<sup>+</sup> T cells are highly diabetogenic while V $\alpha$ 8.3<sup>+</sup> T cells are not. We determined the pathogenicity of V $\alpha$ 3.2<sup>+</sup> or V $\alpha$ 8.3<sup>+</sup> T cells through adoptive transfers into NOD.scid recipients. V $\alpha$ 3.2<sup>+</sup> recipients became diabetic with the same kinetics as recipients of purified CD40<sup>+</sup> T cells (FIG. 6). That is, 3 of the 6 recipients were diabetic 10-days after injection with 3 more becoming diabetic at 12 days after injection (FIG. 6). These T cells were determined to be CD8<sup>-</sup>. After 45 days, none of the V $\alpha$ 8.3<sup>+</sup> recipients (6 of 6) and none of the CD4<sup>+</sup>CD40<sup>-</sup> T cell recipients (10 of 10) became diabetic (FIG. 6). While it is not possible to call these primary T cells a true clonal expansion since they may express different VP molecules, the kinetics of disease transfer is similar to that of established diabetogenic T cell clones (Haskins, K. & Wegmann, D. (1996)). Histology of pancreata from V $\alpha$ 3.2<sup>+</sup> and V $\alpha$ 8.3<sup>+</sup> T cell recipients confirmed that V $\alpha$ 3.2<sup>+</sup> T cells migrate to the pancreas, infiltrate islets and diminish insulin production (FIG. 7A). Conversely, V $\alpha$ 8.3<sup>+</sup> T cells, examined at 15 days, do not infiltrate the pancreas (FIG. 7B). This study now demonstrates that appropriate isolation of auto-aggressive T cells can be accomplished prior to the onset of diabetes. This also is the first report of primary T cells able to induce diabetes as rapidly as diabetogenic T cell clones.

#### Discussion

[0112] The finding of CD40 involvement in auto-immunity continues to expand. CD40 interactions with its ligand, CD154, have been demonstrated as instrumental in rheumatoid arthritis (Durie, F. H. et al., (1993)), SLE (Wang, X. et al., (2002)), chronic colitis (De Jong, Y. et al., (2000)), atherosclerosis (Lutgens, E. et al., (1999)), scleroderma (Valentini, G. et al., *J. Autoimmun.* 15, 61-6 (2000)) and several reports demonstrate a definitive role for CD40 signals in T1D. Blocking CD40-CD154 interactions prevents rapid rejection of transplanted islets (Molano, R. et al., *Diabetes* 50, 270-276 (2001); Kover, K. et al., *Diabetes* 49, 1666-1670 (2000)). Relative to disease onset, blocking CD40-CD154 interactions early (3-weeks) during NOD development but not later (9-weeks) prevents diabetes (Balasa, B. et al., (1997)). That particular study suggests that an important cell developmental event occurs after 3-weeks but before 9-weeks of age in the auto-immune NOD model. This prompted the current course of study for the newly described CD4<sup>lo</sup>CD40<sup>+</sup>, auto-aggressive T cell population.

[0113] CD40 is expressed on a wide variety of tissues including epithelium (van Den Berg, T. K. et al., *Immunol.* 88, 294-300 (1996)), endothelium (Kotowicz, K. et al., *Immunol.* 100, 441-8 (2000)), neural tissue (Suo, Z. et al., *J. Neurochem.* 80, 655-66 (2002)) and cells of leukocytic origin (Banchereau, J. et al., *Ann. Rev. Immunol.* 12, 881-920 (1994)). We previously demonstrated that CD40 is expressed on several highly diabetogenic T cell clones; furthermore, we demonstrated that a sub-population of T cells characterized as CD4<sup>lo</sup>CD40<sup>+</sup> occur in high numbers in diabetic NOD mice, and successfully transfer diabetes to NOD.scid recipients (Wagner, D. H., Jr. et al., (2002)). In a

recent report, we demonstrated that CD40 signals induce transcription, translation, and nuclear translocation of the RAG1 and RAG2 recombinase proteins in peripheral T cells (Vaitaitis, G. M. et al., (2003)). RAGs are responsible for V, D, J recombination of the TCR and subsequent antigen diversity of the T cell repertoire.

[0114] Therefore reactivation of RAGs could result in altered TCR expression in peripheral T cells thus escaping thymic negative selection. It is important, however, to recognize CD40<sup>+</sup> T cells as a sub-population of the T cell compartment because CD40<sup>-/-</sup> mice still develop T cells though their adaptive immune response including T cell antigen recall is highly impaired (Borrow, P. et al., *J. Exp. Med.* 183, 2129-42 (1996); Soong, L. et al., *Immunity* 4, 263-73 (1996)). There are reports of CD40-expressing CD8<sup>+</sup> T cells (Bourgeois, C. et al., *Science* 297, 2060-3 (2002)). Relative to diabetes it was demonstrated using a well-described CD8<sup>+</sup> TCR-Tg model, that CD40-CD154 interactions are not involved in CD8<sup>+</sup> T cell mediated diabetes onset (Amrani, A. et al., (2002)).

[0115] Until now it has been difficult to assess primary T cells as disease culprits in diabetes. It has been reported that transfer of diabetes using primary T cells required that the T cells be isolated from diabetic NOD mice (Christianson, S. W. et al., (1993)). However, in that system extraordinarily large numbers of T cells and both CD4<sup>+</sup> and CD8<sup>+</sup> T cells were required to induce diabetes. Recently, it was demonstrated that transfer of highly purified primary CD8<sup>+</sup> T cells from diabetic NOD mice to NOD.scid recipients did not induce diabetes until primary CD4<sup>+</sup> T cells were transferred (Lejon, K. & Fathman, C. G., (1999)). There likely are multiple ways of inducing diabetes involving several different cellular mechanisms. Complicating this picture, there are highly successful diabetogenic CD8<sup>+</sup> T cell clones and subsequent TCR-Tg animals, which do not appear to require CD4<sup>+</sup> help (Anderson, B. et al., *Proc. Natl. Acad. Sci. USA* 96, 9311-6 (1999); Serra, P. et al., *Proc. Natl. Acad. Sci. USA* 13, 13 (2002)).

[0116] The involvement of CD4<sup>+</sup> T cells in T1D has focused largely on diabetogenic T cell clones e.g., BDC2.5 and the corresponding BDC2.5 TCR-Tg animal (Katz, J. D. (1993)). Although BDC2.5 rapidly transfers disease, recently it was reported that its clonally defined TCR, V $\beta$ 4/V $\alpha$ 1 is grossly under-represented within NOD mice including the BDC2.5 TCR-Tg animal (Kanagawa, O. et al., (2002)). Theoretically, clonal expansions would occur due to availability of self-antigens. However, it is possible that changes within the TCR, such that it is no longer detectable by anti-idiotypic antibody occurs, but these T cells remain diabetogenic. Another study demonstrated that within the BDC2.5 TCR-Tg animal there is substantial drift within V $\alpha$  usage but animals become diabetic nevertheless (Luhder, F. et al., (1998)). The current report demonstrates that auto-aggressive T cells expand as NOD mice age, likely by an antigen-driven response. Additionally, there are CD40-driven expansions of V $\alpha$ 3.2<sup>+</sup> cells within NOD T cells. Interestingly, in the NOR control there were early expansions of V $\alpha$ 3.2<sup>+</sup> T cells but only relative to the other V $\alpha$ 3.2<sup>+</sup> T cells examined. The levels of V $\alpha$ 3.2<sup>+</sup> T cells were substantially lower. Because the CD4<sup>lo</sup>CD40<sup>+</sup> T cell population does not expand in NOR, the numbers of V $\alpha$ 3.2<sup>+</sup> T cells potentially do not reach a critical mass to induce disease.

Nevertheless, these data suggest that changes in TCR relative to  $V\alpha$  expression are intrinsic to diabetogenesis.

[0117] There are two possible scenarios to explain the  $V\alpha$  increases within the periphery, proliferation or alteration in  $V\alpha$  expression. We have determined that CD40 signals do not promote T cells into cell cycle. In addition, CD40 signals promote T cell survival and not selective cell death. We have shown that CD40 signals auto-aggressive T cells to increase RAG1 and RAG2 expression, and importantly, CD40 signals induce translocation of the RAG proteins to the nucleus (Vaitaitis, G. M. et al., (2003)). Therefore the most likely explanation is that CD40 signals induce altered  $V\alpha$  expression, explaining the expansion of  $V\alpha 3.2^+$  and  $V\alpha 8.3^+$  T cells. The clonal nature of these cells is indeterminate because the  $V\beta$  repertoire of these cells is as yet unknown.  $V\alpha$  expression may define a subset of T cells that can be further qualified relative to  $V\beta$  expression. It has been demonstrated that diabetogenic T cell clones become heterogeneous with respect to antigen specificity (Candeias, S. et al., (1991)) suggesting that several  $\beta$  cell antigens are involved in the diabetogenic process. Therefore the  $V\alpha 3.2^+$  T cells may express several different  $V\beta$  molecules but nonetheless rapidly induce diabetes.

#### Example 2

##### Diagnostic Tests for Auto-Immune Diseases

###### Type 1 Diabetes

[0118] A diagnostic test for type 1 diabetes comprising a blood test determining the levels of  $CD4^+CD40^+$  T cells is envisioned. For this diagnostic test, a blood sample or samples comprising T cells is taken from a predetermined subject. Similarly, a blood sample or samples comprising T cells is taken from one or more subjects not having, or prone to develop, type 1 diabetes. The blood sample from the non-prone subject(s) (the control sample or population) establishes the baseline level (control level) of  $CD4^+CD40^+$  T cells in the control population.

[0119] The cell-containing samples from both populations are treated with a fluorescent anti-CD4 antibody in combination with a fluorescent anti-CD40 antibody and the sample cells are assayed for expression of CD4 and CD40 by flowcytometry using methods known in the art. Levels of  $CD4^+CD40^+$  cells in the control sample and the subject sample are determined. Exaggerated levels of  $CD4^+CD40^+$  cells are levels higher than those in the control population. Exaggerated levels of  $CD4^+CD40^+$  cells indicate a propensity to develop type 1 diabetes.

#### Example 3

##### Diagnostic and Predictive Tests for Emphysema

[0120] Emphysema is a chronic obstructive pulmonary disease (COPD) that results in destruction of alveoli of the lungs. The disease is both life altering and life threatening. While most suffers of emphysema are or have been chronic smokers, all smokers do not contract emphysema. This is consistent with auto-immune disease.

[0121] Smokers are exposed to tobacco smoke antigens, but not every individual develops emphysema. This invention will specifically test a person's susceptibility to develop COPD by tobacco smoke exposure. Blood will be drawn

from an individual and examined for  $CD4^+CD40^+$  T cells, the hallmark of disease potential. Lymphocytes will be isolated by standard means, and exposed to tobacco smoke antigens. Simple tests of response including proliferation and T cell cytokine production will be tested using flow cytometry. Cells will be stained directly for expression of CD40 and CD4, then labeled to determine proliferation and stained intra-cellularly for cytokine production. This invention will encompass an approximately 4-5 day test period, at which time positive or negative results can be reported to the requesting physician.

#### Example 4

[0122]  $CD4^+CD40^+$  T cell increases are predictive of rheumatoid arthritis. Peripheral blood, 10 ml, was drawn by phlebotomy from clinically identified rheumatoid arthritis (RA) patients. Blood was mixed with phosphate buffered saline (PBS) 1:1 then layered on Ficoll and centrifuged to isolate lymphocytes. Lymphocytes were collected, washed with PBS and directly stained with Cy-chrome conjugated anti-CD4 and FITC-conjugated anti-CD40. Stained T cells were analyzed using a FACScalibur Flow Cytometer. Levels of T cells were compared from RA patients and control patients. As in type 1 diabetes,  $CD4^+CD40^+$  T cell levels are greatly exaggerated, 56% versus 12%, in RA compared to controls. Thus  $CD4^+CD40^+$  T cell increases are predictive of rheumatoid arthritis. Results are shown in FIGS. 7A and 7B.

#### Example 5

[0123]  $CD4^+CD40^+$  T cell increases are predictive of asthma. Peripheral blood, 10 ml, was drawn by phlebotomy from clinically identified Asthma patients. Blood was mixed with phosphate buffered saline (PBS) 1:1 then layered on Ficoll and centrifuged to isolate lymphocytes. Lymphocytes were collected, washed with PBS and directly stained with Cy-chrome conjugated anti-CD4 and FITC-conjugated anti-CD40. Stained T cells were analyzed using a FACScalibur Flow Cytometer. Levels of T cells were compared from Asthma patients and control patients. As in type 1 diabetes,  $CD4^+CD40^+$  T cell levels are greatly exaggerated, 38% versus 8%, in RA compared to controls. Thus  $CD4^+CD40^+$  T cell increases are predictive of asthma. Results are shown in FIGS. 8A and 8B.

#### Example 6

[0124]  $CD40^+CD4^+$  T cells are predictive for Human type 1 diabetes. Blood was drawn from 25 clinically diagnosed type 1 diabetic patients and from 20 non-diabetic controls. Whole blood was diluted with PBS, suspended on Hypaque-Ficoll, centrifuged for 10 min at 5000 RPM. Leukocytes were isolated and stained with directly conjugated anti-CD3, anti-CD4 and anti-CD40. Cells were assayed through a FACScalibur flow cytometer. Cells were gated on CD3 (T cell marker) and analyzed for CD4 and CD40 levels. Controls (A) and Diabetics (B) are represented. Total percent of  $CD4^+CD40^+/CD4^+CD40^++CD4^+CD40^-$  are represented (C). This measurement is predictive of diabetes. Results are presented in FIGS. 9A-C.

[0125] All cited patents, patent applications, publications and other documents cited in this application are herein incorporated by reference in their entirety. The present invention is not to be limited in terms of the particular

embodiments described in this application, which are intended as single illustrations of individual aspects of the invention. Functionally equivalent methods and apparatus within the scope of the invention, in addition to those

enumerated herein, will be apparent to those skilled in the art from the foregoing description and accompanying drawings. Such modifications and variations are intended to fall within the scope of the appended claims.

---

SEQUENCE LISTING

<160> NUMBER OF SEQ ID NOS: 21

<210> SEQ ID NO 1

<211> LENGTH: 6545

<212> TYPE: DNA

<213> ORGANISM: Homo sapiens

<400> SEQUENCE: 1

```

gagagcagag aacacacttt gccttctctt tggattgag taatatcaac caaattgcag    60
acatctcaac accttggcca ggcagcctgc tgagcaaggt acctcagcca gcatggcagc    120
ctctttccca cccaccttgg gactcagttc tgccccagat gaaattcagc acccacatat    180
taaattttca gaatgaaat ttaagctgtt ccgggtgaga tcctttgaaa agacacctga    240
agaagctcaa aaggaaaaga aggattcctt tgaggggaaa ccctctcttg agcaatctcc    300
agcagtcctg gacaaggctg atggtcagaa gccagtccca actcagccat tgttaaaagc    360
ccaccctaag ttttcaaaga aatttcacga caacgagaaa gcaagaggca aagcagatcca    420
tcaagccaac cttcgacatc tctgcgcgat ctgtgggaat tcttttagag ctgatgagca    480
caacaggaga tatccagtcc atggtcctgt ggatggtaaa accctaggcc ttttacgaaa    540
gaagaaaaag agagctactt cctggccgga cctcattgcc aaggttttcc ggatcgatgt    600
gaaggcagat gttgactcga tccaccccac tgagttctgc cataactgct ggagcatcat    660
gcacaggaag ttagcagtg ccccatgtga ggtttacttc ccgaggaacg tgaccatgga    720
gtggcaccac cacacaccat cctgtgacat ctgcaacact gcccgctcggg gactcaagag    780
gaagagtctt cagccaaact tgcagctcag caaaaaactc aaaactgtgc ttgaccaagc    840
aagacaagcc cgtcagcgca agagaagagc tcaggcaagg atcagcagca aggatgtcat    900
gaagaagatc gccaaactgca gtaagataca tcttagtacc aagctccttg cagtggactt    960
cccagagcac tttgtgaaat ccatctcctg ccagatctgt gaacacatto tggctgacct    1020
tgtggagacc aactgtaagc atgtcttttg ccgggtctgc attctcagat gcctcaaagt    1080
catgggcagc tattgtccct ctgcccagata tccatgcttc cctactgacc tggagagtcc    1140
agtgaagtcc tttctgagcg tcttgaattc cctgatggtg aaatgtccag caaaagagtg    1200
caatgaggag gtcagtttgg aaaaatataa tcaccacatc tcaagtcaca aggaatcaaa    1260
agagattttt gtgcacatta ataaaggggg ccgcccgcgc caacatcttc tgctcgtgac    1320
tcggagagct cagaagcacc ggctgagggg gctcaagctg caagtcaaag cctttgctga    1380
caaagaagaa ggtggagatg tgaagtccgt gtgcatgacc ttgttctctg tggctctgag    1440
ggcgaggaat gagcacagcg aagctgatga gctggaggcc atcatgcagg gaaagggtc    1500
tggcctgacg ccagctgttt gcttggccat ccgtgtcaac accttcctca gctgcagtca    1560
gtaccacaag atgtacagga ctgtgaaagc catcacaggg agacagattt ttcagccttt    1620
gcatgccctt cggaatgctg agaaggtact tctgccaggc taccaccact ttgagtggca    1680
gccacctctg aagaatgtgt ctccagcac tgatgttggc attattgatg ggctgtctgg    1740

```

-continued

---

actatcatcc tctgtgatg attaccagc ggacaccatt gcaaagaggt tccgctatga	1800
ttcagctttg gtgtctgctt tgatggacat ggaagaagac atcttgaag gcatgagatc	1860
ccaagacctt gatgattacc tgaatggccc cttcactgtg gtggtgaagg agtcttgtga	1920
tggaatggga gacgtgagtg agaagcatgg gagtgggctt gtagtccag aaaaggcagt	1980
ccgtttttca ttcacaatca tgaaaattac tattgcccac agctctcaga atgtgaaagt	2040
atttgaagaa gccaaaccta actctgaact gtgttgcaag ccattgtgcc ttatgctggc	2100
agatgagtct gaccacgaga cgctgactgc catcctgagt cctctcattg ctgagagggg	2160
ggccatgaag agcagtgaat taatgcttga gctgggagc attctccgga ctttcaagtt	2220
catcttcagg ggcaccggct atgatgaaa acttgtgctg gaagtgaag gcctcgaggc	2280
ttctggetca gtctacattt gtactctttg tgatgccacc cgtctggaag cctctcaaaa	2340
tcttgtcttc cactctataa ccagaagcca tgctgagaac ctggaacgtt atgaggtctg	2400
gcgttccaac cottaccatg agtctgtgga agaactgcgg gatcgggtga aaggggtctc	2460
agctaaacct ttcattgaga cagtccttc catagatgca ctccactgtg acattggcaa	2520
tgcagctgag ttctacaaga tcttcagct agagataggg gaagtgtata agaatcccaa	2580
tgcttcaaaa gaggaagga aaaggtggca ggccacactg gacaagcatc tccggaagaa	2640
gatgaacctc aaaccaatca tgaggatgaa tggcaacttt gccaggaagc tcatgaccaa	2700
agagactgtg gatgcagttt gtgagttaat tccttccgag gagaggcacg aggctctgag	2760
ggagctgatg gatctttacc tgaagatgaa accagtatgg cgatcatcat gcctgctaa	2820
agagtgccca gaatccctct gccagtacag ttcaattca cagcgttttg ctgagctcct	2880
ttctacgaag ttcaagtata ggtatgaggg aaaaatcacc aattattttc aaaaaacct	2940
ggcccatggt cctgaaatta ttgagagggg tggctccatt ggggatggg caagtgaggg	3000
aatgagtctt ggtaacaaac tgtttaggcg cttccggaaa atgaatgcca ggcagtccaa	3060
atgctatgag atggaagatg tcctgaaaca ccaactggtt tacacctcca aatacctcca	3120
gaagtttatg aatgctcata atgcattaaa aacctctggg tttaccatga accctcaggc	3180
aagcttaggg gaccattag gcatagagga ctctctgtaa agccaagatt caatggaatt	3240
ttaagttagg caaccactta tgagttgggt tttgcaattg agtttccctc tgggttgcat	3300
tgagggtctc tcctagcacc ctttactgct gtgtatgggg cttcaccatc caagaggtgg	3360
taggttgagg taagatgcta cagatgctct caagtcagga atagaactg atgagctgat	3420
tgcttgaggc ttttagtgag ttccgaaaag caacaggaaa aatcagttat ctgaaagctc	3480
agtaactcag aacaggagta actgcagggg accagagatg agcaaagatc tgtgtgtgtt	3540
ggggagctgt catgtaaac aaagccaagg ttgtcaaaga acagccagtg aggccagaaa	3600
ttggtcttgt ggttttcatt tttttcccc ttgattgatt atattttgta ttgagatatg	3660
ataagtgcct tctatttcat ttttgaataa ttcttcattt ttataatttt acatatcttg	3720
gcttgctata taagattcaa aagagctttt taaatttttc taataatatac ttacatttgt	3780
acagcatgat gacctttaca aagtgcctc aatgcattta cccattcgtt atataaatat	3840
gttacatcag gacaactttg agaaaatcag tcctttttta tgtttaaatt atgtatctat	3900
tgtaaccttc agagtttagg aggtcatctg ctgtcatgga tttttcaata atgaatttag	3960
aatacacctg ttagctacag ttagttatta aatcttctga taatatatgt ttacttagct	4020

-continued

---

atcagaagcc aagtatgatt ctttattttt actttttcat ttcaagaat ttagagtttc	4080
caaatttaga gcttctgcat acagtcttaa agccacagag gcttgtaaaa atataggtta	4140
gcttgatgtc taaaaatata tttcatgtct tactgaaaca ttttgccaga ctttctccaa	4200
atgaaacctg aatcaatttt tctaaatcta ggtttcatag agtcctctcc tctgcaatgt	4260
gttattcttt ctataatgat cagtttactt tcagtggatt cagaattgtg tagcaggata	4320
accttgatt tttccatccg ctaagtttag atggagtcca aacgcagtac agcagaagag	4380
ttaacattta cacagtgtt tttaccactg tggaatgttt tcacactcat ttttccttac	4440
aacaattctg aggagttagt gttgttatta tctccatttg atgggggttt aatgatttgc	4500
tcaaagtcac ttaggggtaa taaatacttg gcttggaat ttaacacagt cttttgtct	4560
ccaaagccct tcttctttcc accacaaatt aatcactatg tttataaggt agtatcagaa	4620
tttttttagg attcacaact aatcactata gcacatgacc ttgggattac atttttatgg	4680
ggcaggggta agcggccttt aaatcatttg tgtgctctgg ctctttgat agaagaaagc	4740
aacacaaaag ctccaaaggg ccccctaacc ctcttggtgc tccagtatt tggaaactat	4800
gatctgcatc cttaggaatc tgggatttgc cagttgctgg caatgtagag caggcatgga	4860
atthttatg ctagtgagtc ataatgatat gttagtgtta attagttttt cttcctttga	4920
ttttattggc cataattgct actcttcata cacagtatat caaagagctt gataatttag	4980
ttgtcaaaag tgcacggcg acattatctt taattgtatg tatttggtgc ttcttcaggg	5040
attgaaactca gtatctttca ttaaaaaaca cagcagtttt ccttgctttt tatatgcaga	5100
atatcaaaag catttctaatt ttagttgtca aaaacatata catatthtaa cattagtttt	5160
tttgaaaact cttggttttg tttttttgga aatgagtggg ccactaagcc acactttccc	5220
ttcatctgc ttaatccttc cagcatgtct ctgcaactaa aaacagctaa attcacataa	5280
tcacctatt tactgaagca tggatcatgt gttttataga ttttttacc atttctactc	5340
tttttctcta ttgggtggc tgtaaaact ttccagtatt aaattatcct tttctaacac	5400
tgtaggaact atthtgaatg catgtgacta agagcatgat ttatagcaca acctttccaa	5460
taatccctta atcagatcac atthtgataa accctgggaa catctggctg caggaatthc	5520
aatatgtaga aacgctgct atggtttttt gcccttactg ttgagactgc aatatactag	5580
accctagttt tatactagag ttttattttt agcaatgcct attgcaagtg caattatata	5640
ctccagggaa attcaccaca ctgaatcgag catttggtgtg tgtatgtgtg aagtatatct	5700
gggacttcag aagtgcaatg tatttttctc ctgtgaaacc tgaatctaca agttttctgc	5760
caagccactc aggtgcattg cagggaccag tgataatggc tgatgaaaat tgatgattgg	5820
tcagtgaggt caaaaggagc cttgggatta ataaacatgc actgagaagc aagaggagga	5880
gaaaaagatg tctttttctt ccagggtgaac tggaaatttag ttttgctca gatttttttc	5940
ccacaagata cagaagaaga taaagatttt tttggttgag agtgtgggtc ttgcattaca	6000
tcaaacagag tccaaattcc acacagataa gaggcaggat atataagcgc cagtggtagt	6060
tgggaggaat aaaccattat ttgatgcag gtggtttttg attgcaaata tgtgtgtgtc	6120
ttcagtgatt gtatgacaga tgatgtattc ttttgatgtt aaaagatttt aagtaagagt	6180
agatacattg taacctttt acattttctt atthtaacta cagtaactca cataaatata	6240
cctcagaat catttttggg gattatthtt tgtttttag aattgcactt cagtttattt	6300

-continued

---

```

tcttacaat aaccttacat tttgtttaat ggcttccaag agcctttttt tttttgtatt 6360
tcagagaaaa ttcaggtacc aggatgcaat ggatttattt gattcagggg acctgtattt 6420
ccatgtcaaa tgttttcaaa taaaatgaaa tatgagtttc aatacttttt atattttaat 6480
atttccttaa tattatggtt attgtccgcc attttgttgt atattgtaaa taaagtttag 6540
attgt 6545

```

```

<210> SEQ ID NO 2
<211> LENGTH: 1043
<212> TYPE: PRT
<213> ORGANISM: Homo sapiens

```

```

<400> SEQUENCE: 2

```

```

Met Ala Ala Ser Phe Pro Pro Thr Leu Gly Leu Ser Ser Ala Pro Asp
1          5          10          15
Glu Ile Gln His Pro His Ile Lys Phe Ser Glu Trp Lys Phe Lys Leu
20          25          30
Phe Arg Val Arg Ser Phe Glu Lys Thr Pro Glu Glu Ala Gln Lys Glu
35          40          45
Lys Lys Asp Ser Phe Glu Gly Lys Pro Ser Leu Glu Gln Ser Pro Ala
50          55          60
Val Leu Asp Lys Ala Asp Gly Gln Lys Pro Val Pro Thr Gln Pro Leu
65          70          75          80
Leu Lys Ala His Pro Lys Phe Ser Lys Lys Phe His Asp Asn Glu Lys
85          90          95
Ala Arg Gly Lys Ala Ile His Gln Ala Asn Leu Arg His Leu Cys Arg
100         105         110
Ile Cys Gly Asn Ser Phe Arg Ala Asp Glu His Asn Arg Arg Tyr Pro
115         120         125
Val His Gly Pro Val Asp Gly Lys Thr Leu Gly Leu Leu Arg Lys Lys
130         135         140
Glu Lys Arg Ala Thr Ser Trp Pro Asp Leu Ile Ala Lys Val Phe Arg
145         150         155         160
Ile Asp Val Lys Ala Asp Val Asp Ser Ile His Pro Thr Glu Phe Cys
165         170         175
His Asn Cys Trp Ser Ile Met His Arg Lys Phe Ser Ser Ala Pro Cys
180         185         190
Glu Val Tyr Phe Pro Arg Asn Val Thr Met Glu Trp His Pro His Thr
195         200         205
Pro Ser Cys Asp Ile Cys Asn Thr Ala Arg Arg Gly Leu Lys Arg Lys
210         215         220
Ser Leu Gln Pro Asn Leu Gln Leu Ser Lys Lys Leu Lys Thr Val Leu
225         230         235         240
Asp Gln Ala Arg Gln Ala Arg Gln Arg Lys Arg Arg Ala Gln Ala Arg
245         250         255
Ile Ser Ser Lys Asp Val Met Lys Lys Ile Ala Asn Cys Ser Lys Ile
260         265         270
His Leu Ser Thr Lys Leu Leu Ala Val Asp Phe Pro Glu His Phe Val
275         280         285
Lys Ser Ile Ser Cys Gln Ile Cys Glu His Ile Leu Ala Asp Pro Val
290         295         300
Glu Thr Asn Cys Lys His Val Phe Cys Arg Val Cys Ile Leu Arg Cys

```



-continued

---

Leu Glu Ala Ser Gly Ser Val Tyr Ile Cys Thr Leu Cys Asp Ala Thr  
 725 730 735

Arg Leu Glu Ala Ser Gln Asn Leu Val Phe His Ser Ile Thr Arg Ser  
 740 745 750

His Ala Glu Asn Leu Glu Arg Tyr Glu Val Trp Arg Ser Asn Pro Tyr  
 755 760 765

His Glu Ser Val Glu Glu Leu Arg Asp Arg Val Lys Gly Val Ser Ala  
 770 775 780

Lys Pro Phe Ile Glu Thr Val Pro Ser Ile Asp Ala Leu His Cys Asp  
 785 790 795 800

Ile Gly Asn Ala Ala Glu Phe Tyr Lys Ile Phe Gln Leu Glu Ile Gly  
 805 810 815

Glu Val Tyr Lys Asn Pro Asn Ala Ser Lys Glu Glu Arg Lys Arg Trp  
 820 825 830

Gln Ala Thr Leu Asp Lys His Leu Arg Lys Lys Met Asn Leu Lys Pro  
 835 840 845

Ile Met Arg Met Asn Gly Asn Phe Ala Arg Lys Leu Met Thr Lys Glu  
 850 855 860

Thr Val Asp Ala Val Cys Glu Leu Ile Pro Ser Glu Glu Arg His Glu  
 865 870 875 880

Ala Leu Arg Glu Leu Met Asp Leu Tyr Leu Lys Met Lys Pro Val Trp  
 885 890 895

Arg Ser Ser Cys Pro Ala Lys Glu Cys Pro Glu Ser Leu Cys Gln Tyr  
 900 905 910

Ser Phe Asn Ser Gln Arg Phe Ala Glu Leu Leu Ser Thr Lys Phe Lys  
 915 920 925

Tyr Arg Tyr Glu Gly Lys Ile Thr Asn Tyr Phe His Lys Thr Leu Ala  
 930 935 940

His Val Pro Glu Ile Ile Glu Arg Asp Gly Ser Ile Gly Ala Trp Ala  
 945 950 955 960

Ser Glu Gly Asn Glu Ser Gly Asn Lys Leu Phe Arg Arg Phe Arg Lys  
 965 970 975

Met Asn Ala Arg Gln Ser Lys Cys Tyr Glu Met Glu Asp Val Leu Lys  
 980 985 990

His His Trp Leu Tyr Thr Ser Lys Tyr Leu Gln Lys Phe Met Asn Ala  
 995 1000 1005

His Asn Ala Leu Lys Thr Ser Gly Phe Thr Met Asn Pro Gln Ala  
 1010 1015 1020

Ser Leu Gly Asp Pro Leu Gly Ile Glu Asp Ser Leu Glu Ser Gln  
 1025 1030 1035

Asp Ser Met Glu Phe  
 1040

<210> SEQ ID NO 3  
 <211> LENGTH: 2414  
 <212> TYPE: DNA  
 <213> ORGANISM: Homo sapiens

<400> SEQUENCE: 3

actctcttta cagtcagcct tctgcttgcc acagtcatag tgggcagtca gtgaatcttc 60  
 cccaagtgct gacaattaat acctggttta gcggcaaaga ttcagagagg cgtgagcagc 120

-continued

---

ccctctggcc ttcagacaaa aatctacgta ccatcagaaa ctatgtctct gcagatggta	180
acagtcagta ataacatagc ctttaattcag ccaggcttct cactgatgaa ttttgatgga	240
caagttttct tctttggaca aaaaggctgg cccaaaagat cctgccccac tggagttttc	300
catctggatg taaagcataa ccatgtcaaa ctgaagccta caattttctc taaggattcc	360
tgctacctcc ctctctctcg ctacccagcc acttgacat tcaaaggcag cttggagtct	420
gaaaagcatc aatacatcat ccatggaggg aaaacaccaa acaatgaggt ttcagataag	480
atztatgtca tgtctattgt ttgcaagaac acaaaaagg ttactttctg ctgcacagag	540
aaagacttgg taggagatgt tcctgaagcc agatatggtc attccattaa tgtggtgtac	600
agccgagga aagatgagg tgctctcttt ggaggacgct catacatgcc ttctaccac	660
agaaccacag aaaaatggaa tagttagct gactgcctgc cctgtgtttt cctggtggat	720
tttgaatttg ggtgtgctac atcacatctt cttccagaac ttcaggatgg gctatctttt	780
catgtctcta ttgcaaaaa tgacaccatc tatattttag gaggacattc acttgccaat	840
aatatccggc ctgccaacct gtacagaata agggttgato tcccctggg tagcccagct	900
gtgaattgca cagtcttggc aggaggaatc tctgtctcca gtgcaatcct gactcaaact	960
aacaatgatg aatttgttat tgttgggtgc tatcagcttg aaaatcaaaa aagaatgatc	1020
tgcaacatca tctctttaga ggacaacaag atagaaattc gtgagatgga gaccccagat	1080
tggaccccag acattaagca cagcaagata tggtttggaa gcaacacggg aaatggaact	1140
gtttttcttg gcataccagg agacaataaa caagttgttt cagaaggatt ctatttctat	1200
atgttgaaat gtgctgaaga tgataactaa gaagagcaga caacattcac aaacagtcaa	1260
acatcaacag aagatccagg ggattccact ccctttgaag actctgaaga attttgttc	1320
agtgcagaag caaatagttt tgatggtgat gatgaatttg acacctataa tgaagatgat	1380
gaagaagatg agtctgagac aggctactgg attacatgct gccctacttg tgatgtggat	1440
atcaacactt ggttaccatt ctattcaact gagctcaaca aaccggccat gatctactgc	1500
tctcatgggg atgggcactg ggtccatgct cagtgcattg atctggcaga acgcacactc	1560
atccatctgt cagcaggaag caacaagtat tactgcaatg agcatgtgga gatagcaaga	1620
gctctacaca ctccccaaag agtccctacc ttaaaaaagc ctccaatgaa atccctccgt	1680
aaaaaagggt ctgaaaaaat cttgactcct gccaaagaat cctttcttag aaggttgttt	1740
gattagtttt gcaaaagcct ttcagattca ggtgatgga atttttgaat ctatttttaa	1800
aatcataaca ttgattttaa aaatacattt ttgtttattt aaaatgccta tgttttcttt	1860
tagttacatg aattaagggc cagaaaaaag tgtttataat gcaatgataa ataaagtcat	1920
tctagaccct atacattttg aaaatatttt acccaatac tcaatttact aattttattt	1980
tactgagga tttctgatct gattttttat tcaacaaacc ttaaacacc cagaagcagta	2040
ataatcatcg aggtatgttt atatttatta tatgagtctt ggtaacaaat aacctataa	2100
gtgtttatga caaatttagc caataaagaa attaacacc ccaagaatta aattgattat	2160
tttgtgcaac ataacaatc ggcagttggc caaaacttaa aagcaagatc tactacatcc	2220
cacattagtg ttctttatat acctcaagc aaccctttgg attatgccc tgaacaagtt	2280
agtttctcat agctttacag atgtagatat aaatataaat atatgtatac atatagatag	2340
ataatgttct cactgacac aaaaagaaga ataaataatc tacatcaaaa aaaaaaaaaa	2400

-continued

aaaaaaaaaaaa

2414

<210> SEQ ID NO 4  
 <211> LENGTH: 527  
 <212> TYPE: PRT  
 <213> ORGANISM: Homo sapiens

&lt;400&gt; SEQUENCE: 4

```

Met Ser Leu Gln Met Val Thr Val Ser Asn Asn Ile Ala Leu Ile Gln
1          5          10          15

Pro Gly Phe Ser Leu Met Asn Phe Asp Gly Gln Val Phe Phe Phe Gly
          20          25          30

Gln Lys Gly Trp Pro Lys Arg Ser Cys Pro Thr Gly Val Phe His Leu
          35          40          45

Asp Val Lys His Asn His Val Lys Leu Lys Pro Thr Ile Phe Ser Lys
          50          55          60

Asp Ser Cys Tyr Leu Pro Pro Leu Arg Tyr Pro Ala Thr Cys Thr Phe
65          70          75          80

Lys Gly Ser Leu Glu Ser Glu Lys His Gln Tyr Ile Ile His Gly Gly
          85          90          95

Lys Thr Pro Asn Asn Glu Val Ser Asp Lys Ile Tyr Val Met Ser Ile
          100          105          110

Val Cys Lys Asn Asn Lys Lys Val Thr Phe Arg Cys Thr Glu Lys Asp
          115          120          125

Leu Val Gly Asp Val Pro Glu Ala Arg Tyr Gly His Ser Ile Asn Val
130          135          140

Val Tyr Ser Arg Gly Lys Ser Met Gly Ala Leu Phe Gly Gly Arg Ser
145          150          155          160

Tyr Met Pro Ser Thr His Arg Thr Thr Glu Lys Trp Asn Ser Val Ala
          165          170          175

Asp Cys Leu Pro Cys Val Phe Leu Val Asp Phe Glu Phe Gly Cys Ala
          180          185          190

Thr Ser Tyr Ile Leu Pro Glu Leu Gln Asp Gly Leu Ser Phe His Val
          195          200          205

Ser Ile Ala Lys Asn Asp Thr Ile Tyr Ile Leu Gly Gly His Ser Leu
210          215          220

Ala Asn Asn Ile Arg Pro Ala Asn Leu Tyr Arg Ile Arg Val Asp Leu
225          230          235          240

Pro Leu Gly Ser Pro Ala Val Asn Cys Thr Val Leu Pro Gly Gly Ile
          245          250          255

Ser Val Ser Ser Ala Ile Leu Thr Gln Thr Asn Asn Asp Glu Phe Val
260          265          270

Ile Val Gly Gly Tyr Gln Leu Glu Asn Gln Lys Arg Met Ile Cys Asn
275          280          285

Ile Ile Ser Leu Glu Asp Asn Lys Ile Glu Ile Arg Glu Met Glu Thr
290          295          300

Pro Asp Trp Thr Pro Asp Ile Lys His Ser Lys Ile Trp Phe Gly Ser
305          310          315          320

Asn Thr Gly Asn Gly Thr Val Phe Leu Gly Ile Pro Gly Asp Asn Lys
          325          330          335

Gln Val Val Ser Glu Gly Phe Tyr Phe Tyr Met Leu Lys Cys Ala Glu
          340          345          350

```

-continued

---

Asp Asp Thr Asn Glu Glu Gln Thr Thr Phe Thr Asn Ser Gln Thr Ser  
 355 360 365

Thr Glu Asp Pro Gly Asp Ser Thr Pro Phe Glu Asp Ser Glu Glu Phe  
 370 375 380

Cys Phe Ser Ala Glu Ala Asn Ser Phe Asp Gly Asp Asp Glu Phe Asp  
 385 390 395 400

Thr Tyr Asn Glu Asp Asp Glu Glu Asp Glu Ser Glu Thr Gly Tyr Trp  
 405 410 415

Ile Thr Cys Cys Pro Thr Cys Asp Val Asp Ile Asn Thr Trp Val Pro  
 420 425 430

Phe Tyr Ser Thr Glu Leu Asn Lys Pro Ala Met Ile Tyr Cys Ser His  
 435 440 445

Gly Asp Gly His Trp Val His Ala Gln Cys Met Asp Leu Ala Glu Arg  
 450 455 460

Thr Leu Ile His Leu Ser Ala Gly Ser Asn Lys Tyr Tyr Cys Asn Glu  
 465 470 475 480

His Val Glu Ile Ala Arg Ala Leu His Thr Pro Gln Arg Val Leu Pro  
 485 490 495

Leu Lys Lys Pro Pro Met Lys Ser Leu Arg Lys Lys Gly Ser Gly Lys  
 500 505 510

Ile Leu Thr Pro Ala Lys Lys Ser Phe Leu Arg Arg Leu Phe Asp  
 515 520 525

<210> SEQ ID NO 5  
 <211> LENGTH: 1816  
 <212> TYPE: DNA  
 <213> ORGANISM: Homo sapiens

<400> SEQUENCE: 5

```

cttctctgcc agaagatacc atttcaactt taacacagca tgatogaaac atacaaccaa    60
acttctcccc gatctgcggc cactggactg cccatcagca tgaaaatttt tatgtattta    120
cttactgttt ttcttatcac ccagatgatt gggtcagcac tttttgctgt gtatcttcat    180
agaaggttgg acaagataga agatgaaagg aatcttcatg aagatthtgt attcatgaaa    240
acgatacaga gatgcaaacac aggagaaaga tccttatcct tactgaactg tgaggagatt    300
aaaagccagt ttgaaggctt tgtgaaggat ataatgtaa acaagagga gacgaagaaa    360
gaaaaacagct ttgaaatgca aaaaggtgat cagaatcctc aaattgcggc acatgtcata    420
agtgaggcca gcagtaaaac aacatctgtg ttacagtggg ctgaaaaagg atactacacc    480
atgagcaaca acttggtaac cctggaaaaa gggaaacagc tgaccgtaa aagacaagga    540
ctctattata tctatgcccc agtcaccttc tgttccaatc gggaaagcttc gagtcaagct    600
ccatttatag ccagcctctg cctaaagtcc cccggtagat togagagaat cttactcaga    660
gctgcaaata cccacagttc cgccaaacct tgcgggcaac aatccattca cttgggagga    720
gtatttgaat tgcaaccagg tgcttcgggt tttgtcaatg tgactgatcc aagccaagtg    780
agccatggca ctgcttccac gtcctttggc ttactcaaac tctgaacagt gtcaccttgc    840
aggctgtggt ggagctgacg ctgggagtct tcataatata gcacagcggg taagcccacc    900
ccctgttaac tgccatttta taaccctagg atcctcctta tggagaacta tttattatac    960
actccaaggc atgtagaact gtaataagtg aattacaggt cacatgaaac caaacgggc    1020
cctgctccat aagagcttat atatctgaag cagcaacccc actgatgcag acatccagag    1080
    
```

-continued

```

agtcctatga aaagacaagg ccattatgca caggttgaat tctgagtaaa cagcagataa 1140
cttgccaagt tcagttttgt ttctttgogt gcagtgtctt tccatggata atgcatttga 1200
tttatcagtg aagatgcaga agggaaatgg ggagcctcag ctcacattca gttatgggtg 1260
actctggggt cctatggcct tggttgaggg gccaggctc tagaacgtct aacacagtgg 1320
agaaccgaaa cccccccccc cccccccgcc accctctcgg acagttattc attctctttc 1380
aatctctctc tctccatctc tctctttcag tctctctctc tcaacctctt tcttccaatc 1440
tctctttctc aatctctctg tttccctttg tcagtctctt cctccccca gtctctcttc 1500
tcaatcccc tttctaacac acacacacac acacacacac acacacacac acacacacac 1560
acacacacac acacacacac agagtcaggg cgttgctagt cagttctctt cttccaccc 1620
tgtccctatc tctaccacta tagatgaggg tgaggagtag ggagtgcagc cctgagcctg 1680
cccactctc attacgaaat gactgtattt aaaggaaatc tattgtatct acctgcagtc 1740
tccattgttt ccagagtgaa cttgtaatta tctgttatt tttttttga ataataaaga 1800
cctcttaaca ttaaaa 1816

```

&lt;210&gt; SEQ ID NO 6

&lt;211&gt; LENGTH: 261

&lt;212&gt; TYPE: PRT

&lt;213&gt; ORGANISM: Homo sapiens

&lt;400&gt; SEQUENCE: 6

```

Met Ile Glu Thr Tyr Asn Gln Thr Ser Pro Arg Ser Ala Ala Thr Gly
1           5           10          15
Leu Pro Ile Ser Met Lys Ile Phe Met Tyr Leu Leu Thr Val Phe Leu
20          25          30
Ile Thr Gln Met Ile Gly Ser Ala Leu Phe Ala Val Tyr Leu His Arg
35          40          45
Arg Leu Asp Lys Ile Glu Asp Glu Arg Asn Leu His Glu Asp Phe Val
50          55          60
Phe Met Lys Thr Ile Gln Arg Cys Asn Thr Gly Glu Arg Ser Leu Ser
65          70          75          80
Leu Leu Asn Cys Glu Glu Ile Lys Ser Gln Phe Glu Gly Phe Val Lys
85          90          95
Asp Ile Met Leu Asn Lys Glu Glu Thr Lys Lys Glu Asn Ser Phe Glu
100         105         110
Met Gln Lys Gly Asp Gln Asn Pro Gln Ile Ala Ala His Val Ile Ser
115         120         125
Glu Ala Ser Ser Lys Thr Thr Ser Val Leu Gln Trp Ala Glu Lys Gly
130         135         140
Tyr Tyr Thr Met Ser Asn Asn Leu Val Thr Leu Glu Asn Gly Lys Gln
145         150         155         160
Leu Thr Val Lys Arg Gln Gly Leu Tyr Tyr Ile Tyr Ala Gln Val Thr
165         170         175
Phe Cys Ser Asn Arg Glu Ala Ser Ser Gln Ala Pro Phe Ile Ala Ser
180         185         190
Leu Cys Leu Lys Ser Pro Gly Arg Phe Glu Arg Ile Leu Leu Arg Ala
195         200         205
Ala Asn Thr His Ser Ser Ala Lys Pro Cys Gly Gln Gln Ser Ile His
210         215         220

```

-continued

Leu Gly Gly Val Phe Glu Leu Gln Pro Gly Ala Ser Val Phe Val Asn  
 225 230 235 240

Val Thr Asp Pro Ser Gln Val Ser His Gly Thr Gly Phe Thr Ser Phe  
 245 250 255

Gly Leu Leu Lys Leu  
 260

<210> SEQ ID NO 7  
 <211> LENGTH: 24  
 <212> TYPE: PRT  
 <213> ORGANISM: Artificial sequence  
 <220> FEATURE:  
 <223> OTHER INFORMATION: Blocking peptide

<400> SEQUENCE: 7

Ser Ser Lys Thr Thr Ser Val Leu Gln Trp Ala Glu Lys Gly Tyr Tyr  
 1 5 10 15

Thr Met Ser Asn Asn Leu Val Thr  
 20

<210> SEQ ID NO 8  
 <211> LENGTH: 13  
 <212> TYPE: PRT  
 <213> ORGANISM: Artificial sequence  
 <220> FEATURE:  
 <223> OTHER INFORMATION: Blocking peptide

<400> SEQUENCE: 8

Gln Ile Ala Ala His Val Ile Ser Glu Ala Ser Ser Lys  
 1 5 10

<210> SEQ ID NO 9  
 <211> LENGTH: 22  
 <212> TYPE: RNA  
 <213> ORGANISM: Artificial sequence  
 <220> FEATURE:  
 <223> OTHER INFORMATION: RNA molecule  
 <220> FEATURE:  
 <221> NAME/KEY: misc\_feature  
 <222> LOCATION: (21)..(21)  
 <223> OTHER INFORMATION: n is dA  
 <220> FEATURE:  
 <221> NAME/KEY: misc\_feature  
 <222> LOCATION: (22)..(22)  
 <223> OTHER INFORMATION: n is dG

<400> SEQUENCE: 9

augucucugc agaugguaac nn

22

<210> SEQ ID NO 10  
 <211> LENGTH: 22  
 <212> TYPE: RNA  
 <213> ORGANISM: Artificial sequence  
 <220> FEATURE:  
 <223> OTHER INFORMATION: RNA molecule  
 <220> FEATURE:  
 <221> NAME/KEY: misc\_feature  
 <222> LOCATION: (21)..(21)  
 <223> OTHER INFORMATION: n is dA  
 <220> FEATURE:  
 <221> NAME/KEY: misc\_feature  
 <222> LOCATION: (22)..(22)  
 <223> OTHER INFORMATION: n is dU

<400> SEQUENCE: 10

---

-continued

---

cuguuaccacugcagagac nn

22

<210> SEQ ID NO 11  
<211> LENGTH: 22  
<212> TYPE: RNA  
<213> ORGANISM: Artificial sequence  
<220> FEATURE:  
<223> OTHER INFORMATION: RNA molecule  
<220> FEATURE:  
<221> NAME/KEY: misc\_feature  
<222> LOCATION: (21)..(21)  
<223> OTHER INFORMATION: n is dC  
<220> FEATURE:  
<221> NAME/KEY: misc\_feature  
<222> LOCATION: (22)..(22)  
<223> OTHER INFORMATION: n is dC  
  
<400> SEQUENCE: 11

gguaggagau cuuccugaag nn

22

<210> SEQ ID NO 12  
<211> LENGTH: 24  
<212> TYPE: RNA  
<213> ORGANISM: Artificial sequence  
<220> FEATURE:  
<223> OTHER INFORMATION: RNA molecule  
<220> FEATURE:  
<221> NAME/KEY: misc\_feature  
<222> LOCATION: (23)..(23)  
<223> OTHER INFORMATION: n is dC  
<220> FEATURE:  
<221> NAME/KEY: misc\_feature  
<222> LOCATION: (24)..(24)  
<223> OTHER INFORMATION: n is dU  
  
<400> SEQUENCE: 12

ggggaugggc acugggucca ugnn

24

<210> SEQ ID NO 13  
<211> LENGTH: 24  
<212> TYPE: RNA  
<213> ORGANISM: Artificial sequence  
<220> FEATURE:  
<223> OTHER INFORMATION: RNA molecule  
<220> FEATURE:  
<221> NAME/KEY: misc\_feature  
<222> LOCATION: (23)..(23)  
<223> OTHER INFORMATION: n is dC  
<220> FEATURE:  
<221> NAME/KEY: misc\_feature  
<222> LOCATION: (24)..(24)  
<223> OTHER INFORMATION: n is dC  
  
<400> SEQUENCE: 13

agcauggacc cagugcccau ccnn

24

<210> SEQ ID NO 14  
<211> LENGTH: 22  
<212> TYPE: RNA  
<213> ORGANISM: Artificial sequence  
<220> FEATURE:  
<223> OTHER INFORMATION: RNA molecule  
<220> FEATURE:  
<221> NAME/KEY: misc\_feature  
<222> LOCATION: (21)..(21)  
<223> OTHER INFORMATION: n is dA  
<220> FEATURE:  
<221> NAME/KEY: misc\_feature

---

-continued

---

<222> LOCATION: (22)..(22)  
<223> OTHER INFORMATION: n is dU

<400> SEQUENCE: 14

cuguuaccacugcagagac nn 22

<210> SEQ ID NO 15  
<211> LENGTH: 24  
<212> TYPE: RNA  
<213> ORGANISM: Artificial sequence  
<220> FEATURE:  
<223> OTHER INFORMATION: RNA molecule  
<220> FEATURE:  
<221> NAME/KEY: misc\_feature  
<222> LOCATION: (23)..(23)  
<223> OTHER INFORMATION: n is dC  
<220> FEATURE:  
<221> NAME/KEY: misc\_feature  
<222> LOCATION: (24)..(24)  
<223> OTHER INFORMATION: n is dC

<400> SEQUENCE: 15

auggcagccu cuuucccacc cann 24

<210> SEQ ID NO 16  
<211> LENGTH: 24  
<212> TYPE: RNA  
<213> ORGANISM: Artificial sequence  
<220> FEATURE:  
<223> OTHER INFORMATION: RNA molecule  
<220> FEATURE:  
<221> NAME/KEY: misc\_feature  
<222> LOCATION: (23)..(23)  
<223> OTHER INFORMATION: n is dA  
<220> FEATURE:  
<221> NAME/KEY: misc\_feature  
<222> LOCATION: (24)..(24)  
<223> OTHER INFORMATION: n is dU

<400> SEQUENCE: 16

gguggguggg aaagaggcug ccnn 24

<210> SEQ ID NO 17  
<211> LENGTH: 25  
<212> TYPE: RNA  
<213> ORGANISM: Artificial sequence  
<220> FEATURE:  
<223> OTHER INFORMATION: RNA molecule  
<220> FEATURE:  
<221> NAME/KEY: misc\_feature  
<222> LOCATION: (24)..(24)  
<223> OTHER INFORMATION: n is dT  
<220> FEATURE:  
<221> NAME/KEY: misc\_feature  
<222> LOCATION: (25)..(25)  
<223> OTHER INFORMATION: n is dC

<400> SEQUENCE: 17

aaacuugcag cucagcaaaa aacnn 25

<210> SEQ ID NO 18  
<211> LENGTH: 26  
<212> TYPE: RNA  
<213> ORGANISM: Artificial sequence  
<220> FEATURE:  
<223> OTHER INFORMATION: RNA molecule  
<220> FEATURE:  
<221> NAME/KEY: misc\_feature

---

-continued

---

<222> LOCATION: (25)..(25)  
<223> OTHER INFORMATION: n is dU  
<220> FEATURE:  
<221> NAME/KEY: misc\_feature  
<222> LOCATION: (26)..(26)  
<223> OTHER INFORMATION: n is dU

<400> SEQUENCE: 18

gaguuuuuug cugagcugca aguunn

26

<210> SEQ ID NO 19  
<211> LENGTH: 26  
<212> TYPE: RNA  
<213> ORGANISM: Artificial sequence  
<220> FEATURE:  
<223> OTHER INFORMATION: RNA molecule  
<220> FEATURE:  
<221> NAME/KEY: misc\_feature  
<222> LOCATION: (25)..(25)  
<223> OTHER INFORMATION: n is dU  
<220> FEATURE:  
<221> NAME/KEY: misc\_feature  
<222> LOCATION: (26)..(26)  
<223> OTHER INFORMATION: n is dU

<400> SEQUENCE: 19

gaguuuuuug cugagcugca aguunn

26

<210> SEQ ID NO 20  
<211> LENGTH: 24  
<212> TYPE: RNA  
<213> ORGANISM: Artificial sequence  
<220> FEATURE:  
<223> OTHER INFORMATION: RNA molecule  
<220> FEATURE:  
<221> NAME/KEY: misc\_feature  
<222> LOCATION: (23)..(23)  
<223> OTHER INFORMATION: n is dC  
<220> FEATURE:  
<221> NAME/KEY: misc\_feature  
<222> LOCATION: (24)..(24)  
<223> OTHER INFORMATION: n is dC

<400> SEQUENCE: 20

ucacaaaacc cuggcccaug uunn

24

<210> SEQ ID NO 21  
<211> LENGTH: 24  
<212> TYPE: RNA  
<213> ORGANISM: Artificial sequence  
<220> FEATURE:  
<223> OTHER INFORMATION: RNA molecule  
<220> FEATURE:  
<221> NAME/KEY: misc\_feature  
<222> LOCATION: (23)..(23)  
<223> OTHER INFORMATION: n is dG  
<220> FEATURE:  
<221> NAME/KEY: misc\_feature  
<222> LOCATION: (24)..(24)  
<223> OTHER INFORMATION: n is dA

<400> SEQUENCE: 21

ggaacauggg ccaggguuuu gunn

24

---

What is claimed is:

1. A method for determining whether a test subject has at least one auto-immune disease comprising

- a) obtaining blood from the predetermined test subject thus obtaining a test sample;
- b) obtaining blood from a non-autoimmune subject thus obtaining a control sample;
- c) contacting the test sample and the control sample with a combination of at least one detectably-labeled anti-CD4 antibody and at least one detectably-labeled anti-CD40 antibody;
- d) detecting the level of CD4<sup>lo</sup>CD40<sup>hi</sup> T cells in the test sample and in the control sample;

wherein when there is an increase in the level of CD4<sup>lo</sup>CD40<sup>hi</sup> T cells in the test sample as compared to the level of CD4<sup>lo</sup>CD40<sup>hi</sup> T cells in the control sample, the test subject has at least one auto-immune disease.

2. The method of claim 1 further comprising isolating the test sample CD4<sup>lo</sup>CD40<sup>hi</sup> T cells and the control sample CD4<sup>lo</sup>CD40<sup>hi</sup> T cells from part 1d) and determining the presence or absence of an increase in production of at least one cytokine in the test T cell population as compared to the sample T cell population.

3. The method of claim 2 wherein said cytokine is at least one cytokine selected from the group consisting of IL-2, IL-4, IL-6, IL-10, TGF $\beta$  and IFN $\gamma$ .

4. The method of claim 1, wherein the auto-immune disease is selected from the group consisting of type 1 diabetes, rheumatoid arthritis, lupus, multiple sclerosis, atherosclerosis, Crohn's colitis, ulcerative gastritis, primary biliary cirrhosis, chronic obstructive pulmonary disease (COPD) and scleroderma.

5. The method of claim 4, wherein the auto-immune disease is type 1 diabetes.

6. The method of claim 4, wherein the COPD disease is emphysema.

7. The method of claim 1, wherein said detecting is by flowcytometry.

8. The method of claim 1, wherein said subject is human.

9. A method for determining whether a predetermined test subject is susceptible to developing at least one predetermined auto-immune disease comprising

- a) obtaining a first sample of blood from said predetermined test subject;
- b) obtaining a second sample of blood from said same subject;
- c) detecting the CD4<sup>lo</sup>CD40<sup>hi</sup> T cell population in said first and second samples;
- d) contacting said second test sample with at least one predetermined antigen indicative of at least one predetermined auto-immune disease for a length of time and in an amount sufficient to obtain a positive or negative cellular response in the CD4<sup>lo</sup>CD40<sup>hi</sup> T cell population of said second sample;
- e) determining whether a positive or negative cellular response occurs in the CD4<sup>lo</sup>CD40<sup>hi</sup> T cell population of said first and said second samples by measuring at least one response selected from the group consisting of

CD4<sup>lo</sup>CD40<sup>hi</sup> T cell proliferation, CD4<sup>lo</sup>CD40<sup>hi</sup> T cell death and CD4<sup>lo</sup>CD40<sup>hi</sup> cytokine production,

wherein when a positive response occurs in the CD4<sup>lo</sup>CD40<sup>hi</sup> T cell population of the second sample as compared to the response from the CD4<sup>lo</sup>CD40<sup>hi</sup> T cell population of the first sample, the predetermined subject is susceptible to developing the at least one predetermined autoimmune disease.

10. The method of claim 9, wherein a positive response is an increase in CD4<sup>lo</sup>CD40<sup>hi</sup> T cell proliferation, an increase in CD4<sup>lo</sup>CD40<sup>hi</sup> T cell death and an increase in production of at least one cytokine produced by said CD4<sup>lo</sup>CD40<sup>hi</sup> T cell population.

11. The method of claim 10 wherein said at least one cytokine is selected from the group consisting of IL-2, IL-4, IL-6, IL-10, TGF $\beta$  and IFN $\gamma$ .

12. The method of claim 9 wherein said at least one preselected auto-immune disease is type 1 diabetes and said antigen is pancreatic tissue.

13. The method of claim 9 wherein said at least one preselected auto-immune disease is rheumatoid arthritis and said antigen is synovial tissue.

14. The method of claim 9, wherein said at least one preselected auto-immune disease is multiple sclerosis and said antigen is nervous tissue.

15. The method of claim 9, wherein said at least one preselected auto-immune disease is scleroderma and said antigen is skin tissue.

16. The method of claim 9, wherein said at least one auto-immune disease is atherosclerosis and said antigen is cardiac tissue.

17. The method of claim 9, wherein said subject is human.

18. A method of modulating the proliferation of CD4<sup>lo</sup>CD40<sup>hi</sup> T cells in a subject in need of said modulation comprising at least one method selected from the group consisting of

- a) contacting said subject with at least one agent which inhibits the activation of RAG recombinase activity;
- b) contacting said subject with an antibody molecule, or fragment thereof, to CD40;
- c) contacting said subject with an antibody molecule, or fragment thereof, to CD154;
- d) contacting said subject with at least one blocking peptide to prevent interaction of the CD40 receptor with the CD154 ligand;
- e) contacting said subject with at least one RNA molecule specifically hybridizing to the RAG2 gene product; and,
- f) contacting said subject with at least one RNA molecule specifically hybridizing to the RAG1 gene product;

wherein said contacting is for a length of time sufficient and in an amount sufficient to modulate the proliferation of CD4<sup>lo</sup>CD40<sup>hi</sup> T cells in said subject.

19. The method of claim 18, part a), wherein said at least one agent is a chaetochromin or a derivative thereof.

20. The method of claim 18, part b), wherein said antibody fragment is an Fab portion.

21. The method of claim 18, part c), wherein said antibody fragment is an Fab portion.

22. The method of claim 18, part d), wherein said blocking peptide is selected from the group consisting of SSKTTTSLVQWAEKGYTMSNNLVT (SEQ ID NO: 7) and QIAAHVISEASSK (SEQ ID NO: 8).

23. The method of claim 18, part e), wherein said RNA molecule is selected from the group consisting of

5'-AUGUCUCUGCAGAUGGUAACdAdg-3'; (SEQ ID NO: 9)  
 5'-CUGUUACCAUCUGCAGAGACdAdU-3'; (SEQ ID NO: 10)  
 5'-GGUAGGAGAUCUCCUGAAGdCdC-3'; (SEQ ID NO: 11)  
 5'-GGGGAUGGGCAGUGGUCCAUGdCdU-3'; (SEQ ID NO: 12)  
 5'-AGCAUGGACCCAGUGCCCAUCCdCdC-3'; (SEQ ID NO: 13)  
 and,  
 5'-CUGUUACCAUCUGCAGAGACdAdU-3'. (SEQ ID NO: 14)

24. The method of claim 18, part f), wherein said RNA molecule is selected from the group consisting of

(SEQ ID NO: 15)  
 5'-AUGGCAGCCUCUUCCACCCAdCdC-3';  
 (SEQ ID NO: 16)  
 5'-GGUGGGUGGAAAGAGGCUGCCdAdU-3';  
 (SEQ ID NO: 17)  
 5'-AAACUUGCAGCUCAGCAAAAACdTdC-3';

-continued

(SEQ ID NO: 18)  
 5'-GAGUUUUUUUGCUGAGCUGCAAGUdUdU-3';  
 (SEQ ID NO: 19)  
 5'-GAGUUUUUUUGCUGAGCUGCAAGUdUdU-3';  
 (SEQ ID NO: 20)  
 5'-UCACAAAACCCUGGCCCAUGUdCdC-3';  
 and,  
 (SEQ ID NO: 21)  
 5'-GGAACAUGGGCCAGGGUUUGdGdA-3'.

25. The method of claim 18, wherein said subject has an increased level of CD4<sup>lo</sup>CD40<sup>hi</sup> T cells as compared to the level of CD4<sup>lo</sup>CD4<sup>hi</sup> T cells in a non-auto-immune subject and the modulation is a decrease in the level of CD4<sup>lo</sup>CD40<sup>hi</sup> T cells.

26. The method of claim 18, wherein said subject is human.

27. A kit for detecting CD4<sup>lo</sup>CD40<sup>hi</sup> T cells comprising

- a) at least one detectably labeled anti-CD4 antibody and at least one detectably labeled anti-CD40 antibody; and,  
 b) at least one predetermined antigen indicative of at least one predetermined auto-immune disease.

\* \* \* \* \*

专利名称(译)	预测自身免疫疾病发展的方法及其治疗方法		
公开(公告)号	<a href="#">US20070041971A1</a>	公开(公告)日	2007-02-22
申请号	US10/563570	申请日	2004-07-07
[标]申请(专利权)人(译)	WAGNER David H制作		
申请(专利权)人(译)	WAGNER David H制作		
当前申请(专利权)人(译)	WEBB-WARING研究所		
[标]发明人	WAGNER DAVID H		
发明人	WAGNER, DAVID H.		
IPC分类号	A61K48/00 G01N33/53 A61K39/395 A61B G01N33/50 G01N33/564 G01N33/566		
CPC分类号	C07K16/2812 C07K16/2878 G01N33/505 G01N33/564 G01N2800/24 G01N2333/70514 G01N2333/70578 G01N2800/042 G01N33/6893		
优先权	60/484655 2003-07-07 US		
外部链接	<a href="#">Espacenet</a> <a href="#">USPTO</a>		

摘要(译)

本发明提供了一种用于预测或诊断自身免疫疾病的新方法，从而警告受试者存在自身免疫疾病或倾向于发展自身免疫疾病，从而可以启动预防或治疗方案或改变以便治疗，调节或阻止负责破坏性炎症的CD4loCD40hi T细胞群的扩增。本发明还公开了调节，治疗或预防CD4loCD40hi T细胞扩增的药剂。在一个实施方案中，该方法可预测1型糖尿病。

