



US 20050027104A1

(19) **United States**

(12) **Patent Application Publication** (10) **Pub. No.: US 2005/0027104 A1**

Forsgren et al.

(43) **Pub. Date: Feb. 3, 2005**

(54) **NOVEL SURFACE EXPOSED
IMMUNOGLOBULIN D-BINDING PROTEIN
FROM FORAXELLA CATARRHALIS**

Publication Classification

(51) **Int. Cl.⁷** **C07K 1/00**; C07K 14/00;
C07K 17/00
(52) **U.S. Cl.** **530/350**

(76) Inventors: **Arne Forsgren**, Falsterbro (SE);
Kristian Riesbeck, Malmo (SE);
Hakan Jansson, Lund (SE)

(57) **ABSTRACT**

Correspondence Address:
BURNS DOANE SWECKER & MATHIS L L P
POST OFFICE BOX 1404
ALEXANDRIA, VA 22313-1404 (US)

The present invention relates to a surface exposed protein, which can be detected in *Moraxella catarrhalis*, having an amino acid sequence as described in SEQ ID NO 1, an apparent molecular weight of 200 kDa and a capacity of selectively binding membrane bound or soluble IgD, to an immunogenic or IgD-binding fragment of said surface exposed protein, and to an immunogenic and adhesive fragment of said surface exposed protein. DNA segments, vaccines, plasmids and phages, non human hosts, recombinant DNA molecules and plants, fusion proteins and polypeptides and fusion products are also described. A method of detecting IgD, a method of separating IgD, a method of isolation of a surface exposed protein of *Moraxella catarrhalis* and a method for treatment of an autoimmune disease are also disclosed.

(21) Appl. No.: **10/480,456**

(22) PCT Filed: **Jul. 1, 2002**

(86) PCT No.: **PCT/SE02/01299**

(30) **Foreign Application Priority Data**

Jul. 4, 2001 (SE) 0102410-8

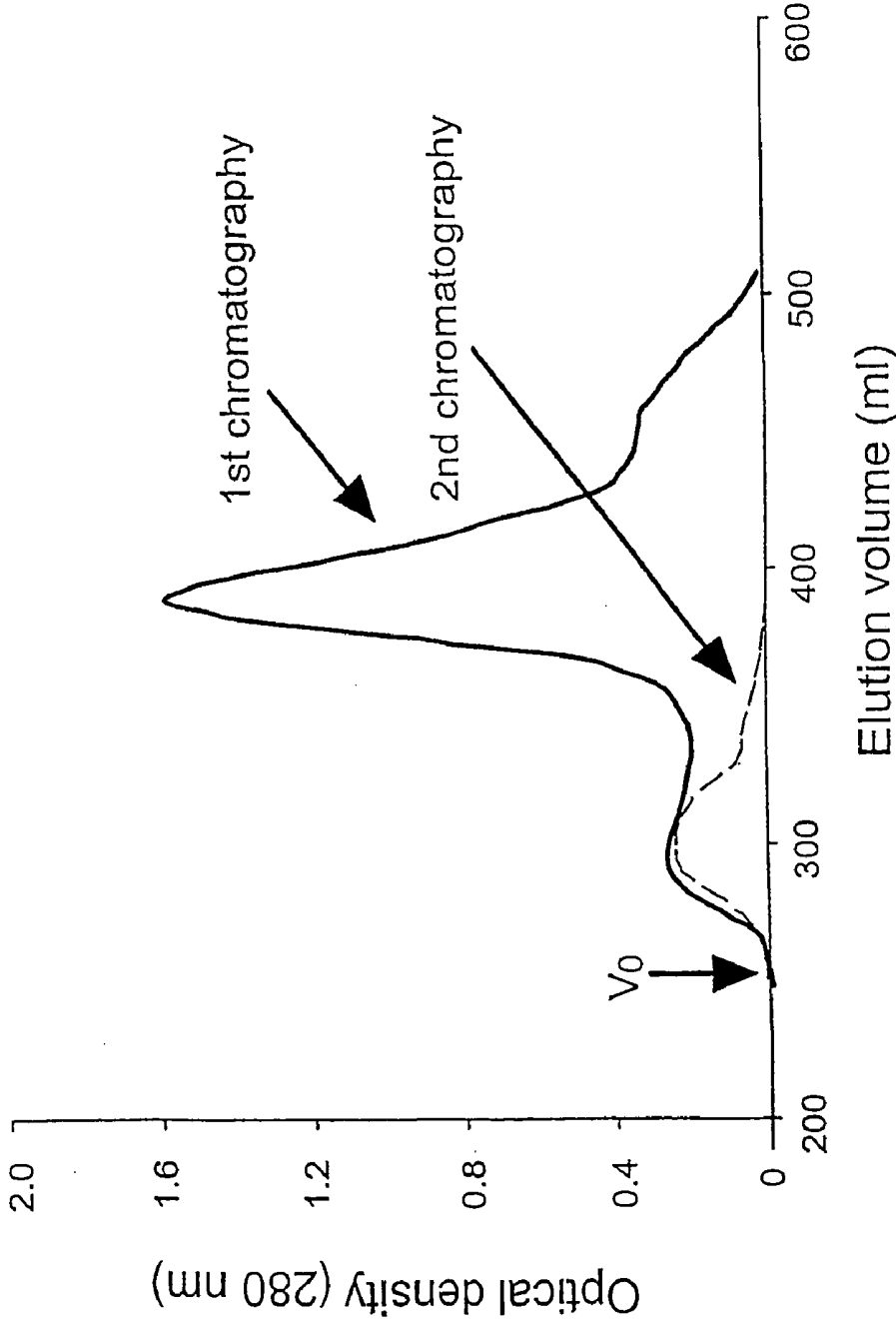


Fig 1

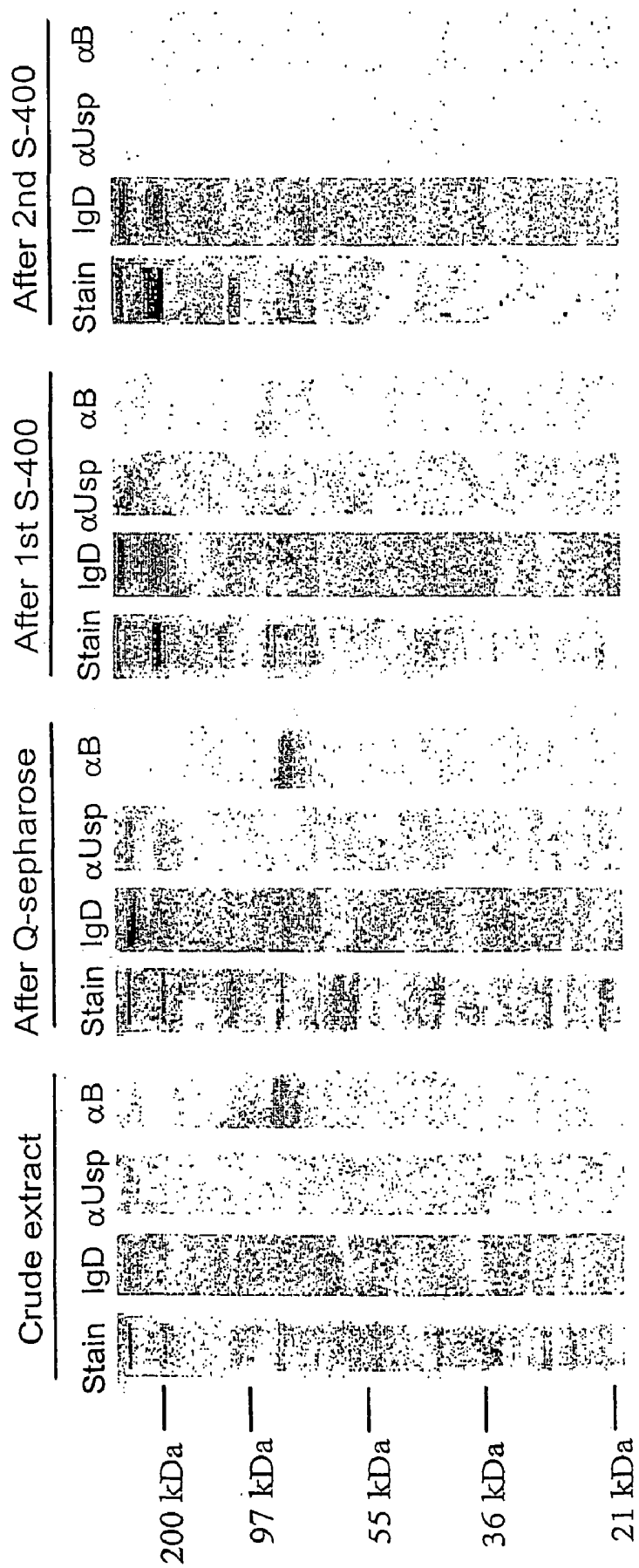


Fig 2

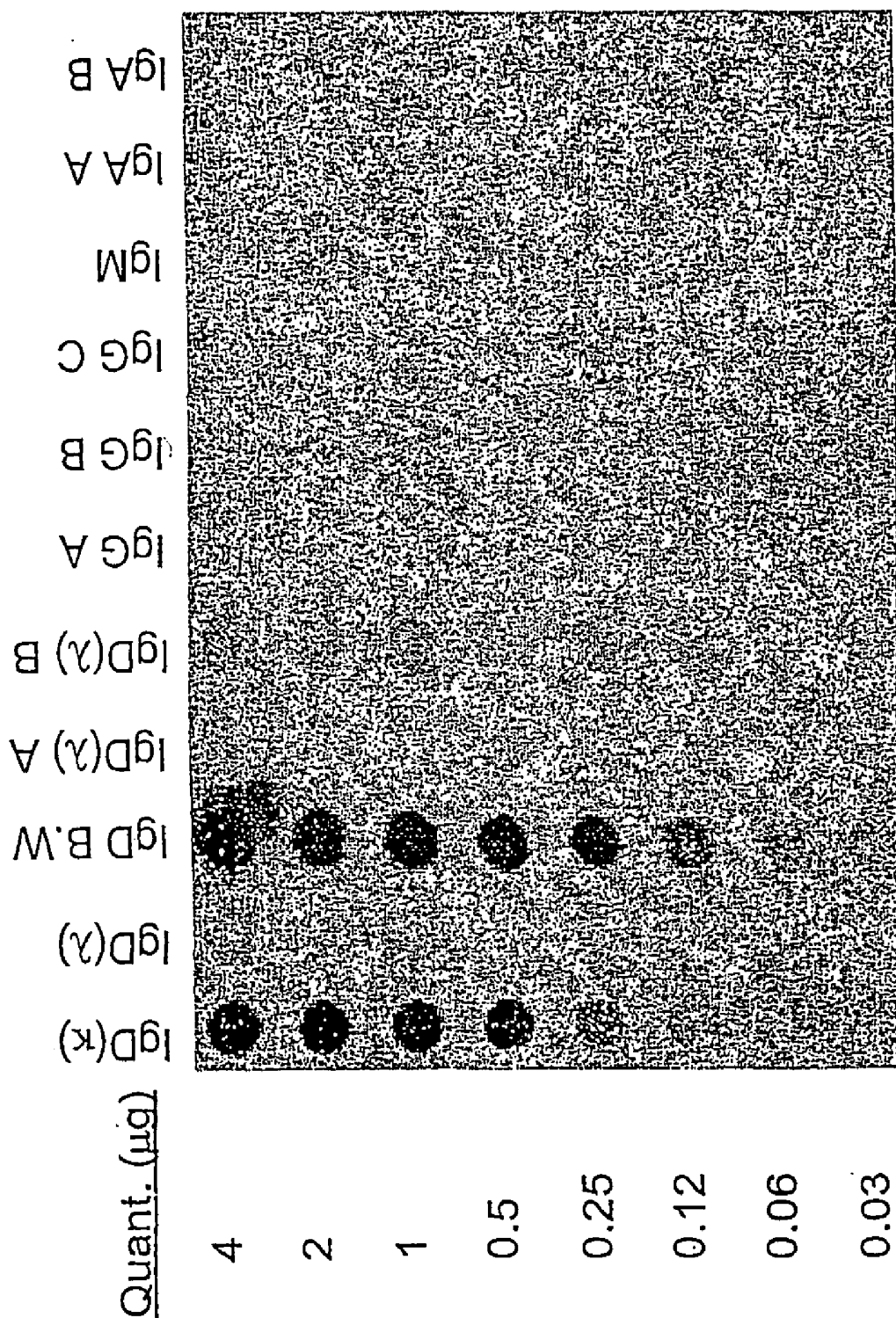


Fig 3

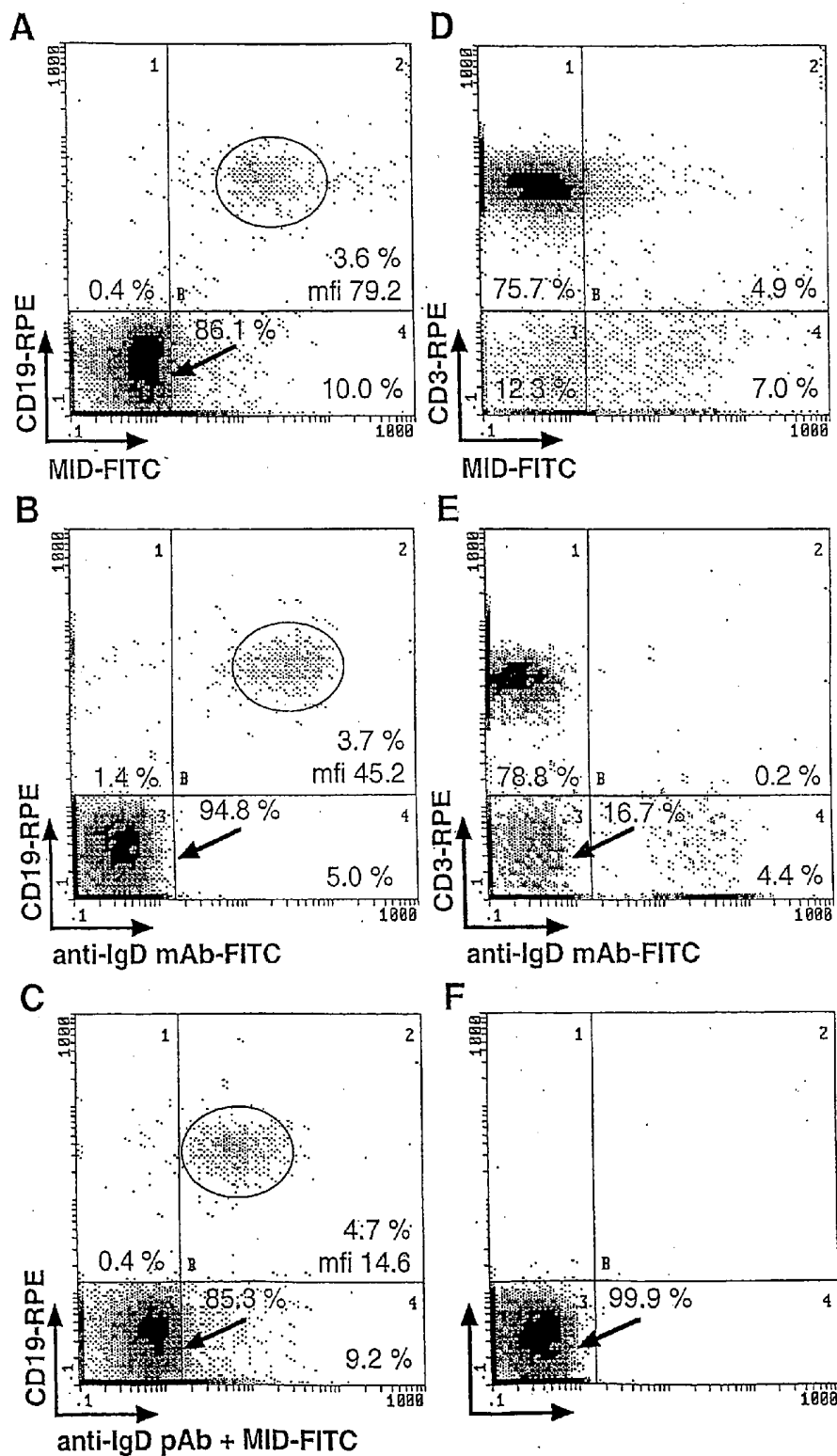


Fig 4

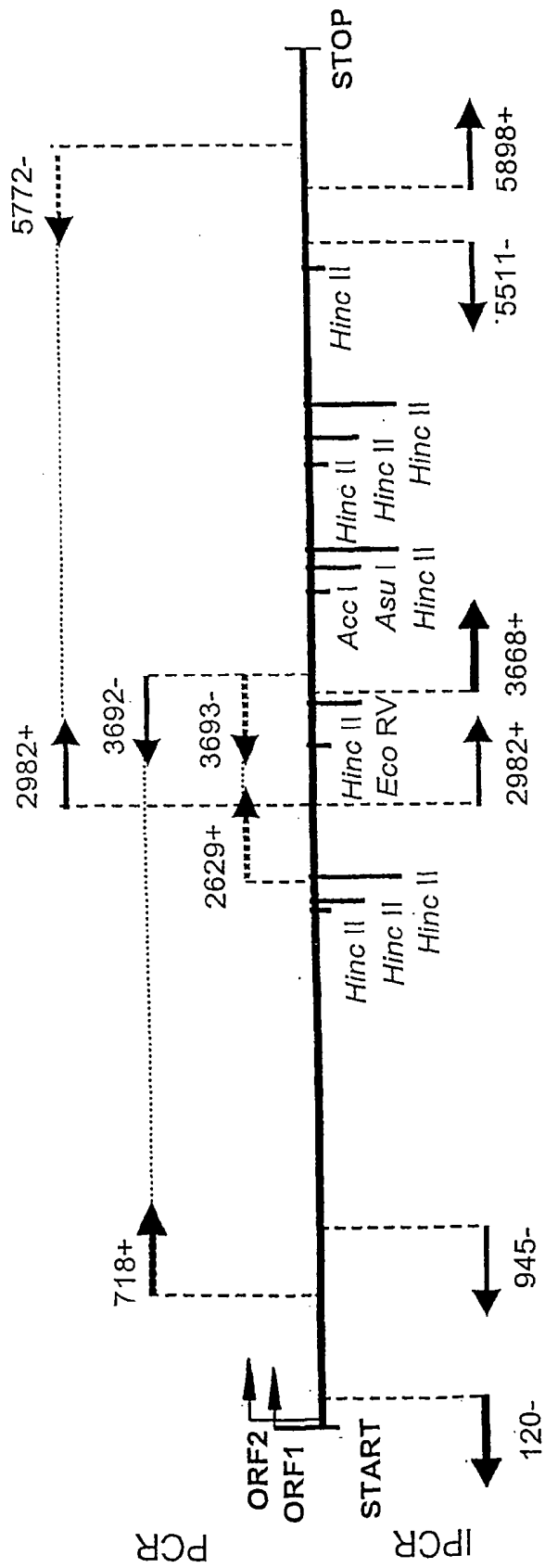


Fig 5

-250

ACTCTATTATTTGATATGTTTTGAAACTAATCTATTGACTTAAATCACCATATGGTTATAAT

TTAGCATAATGGTAGGCTTTTTGTAAAAATCACATCGCAATATTGTTCTACTGTTACTACCA

-35

TGCTTGAATGACGATCCCAATCATCAGATTCATTCAAGTGATGTGTTTGTATACGCATCATT

-10

rbs

TACCCTAATTATTTCAATCGAAATGCCTATGTCAGCATGTATCATTTTTTTAAGGTAAACCA

1/1

31/11

CC ATG AAT CAC ATC TAT AAA GTC ATC TTT AAC AAA GCC ACA GGC ACA

Met asn his ile tyr lys val ile phe asn lys ala thr gly thr

61/21

TTT ATG GCC GTG GCG GAA TAT GCC AAA TCC CAC AGC ACG GGG GGT

phe Met ala val ala glu tyr ala lys ser his ser thr gly gly

91/31

121/41

AGC TGT GCT ACA GGG CAA GTT GGC AGT GTA TGC ACT CTG AGC TTT

ser cys ala thr gly gln val gly ser val cys thr leu ser phe

151/51

GCC CGT GTT GCC GCG CTC GCT GTC CTC GTG ATC GGT GCG ACG CTC

ala arg val ala ala leu ala val leu val ile gly ala thr leu

181/61

211/71

AAT GGC AGT GCT TAT GCT CAA CAA GAT CCC AGA CAT ATC GCA ATT

asn gly ser ala tyr ala gln gln asp pro arg his ile ala ile

241/81

GAT GGC AAC AGC TCG AAC ACA TCC TCA GGC ACT GCC CGT GCG ACA

asp gly asn ser ser asn thr ser ser gly thr ala arg ala thr

271/91

301/101

GGT GAT CGA GCC ATT GCT CTT GGT GAA AAT GCT AAT GCA GAG GGC

gly asp arg ala ile ala leu gly glu asn ala asn ala glu gly

331/111

GGT CAA GCC ATC GCC ATC GGT AGT AGC AAT AAA ACA GGT GGT AGA

gly gln ala ile ala ile gly ser ser asn lys thr gly gly arg

361/121

391/131

AAC GCG CTG AAT ATA GGT ACC GAT GCC AAA GGT GAG GAG TCC ATC

asn ala leu asn ile gly thr asp ala lys gly glu glu ser ile

421/141

GCC ATC GGT GGT GAT GTA GTG GCT GAG GGT ACT GCC TCG ATT GCC

ala ile gly gly asp val val ala glu gly thr ala ser ile ala

451/151

481/161

ATC GGT GGT GAT GAC TTA CAT TTG TGG GAT GAA CCA AAT AAG CAA

ile gly gly asp asp leu his leu trp asp glu pro asn lys gln

Fig 6

511/171
AAG TTC CTC GAC CCA AAA GTT AAA GAA TTG ATT TTA AAA CAT CAA
lys phe leu asp pro lys val lys glu leu ile leu lys his gln
541/181 571/191
GAA TTA AAC AAC ATA TAC AAA CTG CCT GAT GGT AGT CCT CAA AGA
glu leu asn asn ile tyr lys leu pro asp gly ser pro gln arg
601/201
TAT TTT CGC ACA TAC GCA AAG GGA CAC GCC AGT ATT GCA CTA GGA
tyr phe arg thr tyr ala lys gly his ala ser ile ala leu gly
631/211 661/221
ACC ATG ACA CAG GCA GAG GGT CAT TTT GCC AAC GCC TTT GGT ACA
thr met thr gln ala glu gly his phe ala asn ala phe gly thr
691/231
CGG GCA ACA GCT AAA GGC AAC TAT TCC TTG GCA GTG GGT CTT ACC
arg ala thr ala lys gly asn tyr ser leu ala val gly leu thr
721/241 751/251
GCC CAA GCC AAC ACA GAA TCT TCA ATC GCT GTT GGT TCT AAT GCA
ala gln ala asn thr glu ser ser ile ala val gly ser asn ala
781/261
CAA GCT AAC GGG TTT GCA GCG ACA GCC ATT GGT GGA GGT ACT AAA
gln ala asn gly phe ala ala thr ala ile gly gly gly thr lys
811/271 841/281
GCT GAT TTG GGT CGA AGC ATA GCC CTA GGT TTT GGT TCT CAG ATC
ala asp leu gly arg ser ile ala leu gly phe gly ser gln ile
871/291
CTT ACT AAG GAG AAG GAT AGT CAT AAC AAT ACC AAT GTC TAT GTA
leu thr lys glu lys asp ser his asn asn thr asn val tyr val
901/301 931/311
CCA CAA GGT GAA ATA TTA GAA GAG CGG TAT AAA GCC ACC GAA AAC
pro gln gly glu ile leu glu glu arg tyr lys ala thr glu asn
961/321
GGT CAG TCG CCT AAT AAG GTA GTG GAT ATA TTT TCC ATT GGT AGT
gly gln ser pro asn lys val val asp ile phe ser ile gly ser
991/331 1021/341
AGC TCT ATC AAA CGT AAA ATC ATC AAT GTC GGT GCG GGT TCT CAG
ser ser ile lys arg lys ile ile asn val gly ala gly ser gln
1051/351
GAG ACC GAT GCG GTC AAT GTG GCA CAG CTT AAA TTG GTG GAG CGG
glu thr asp ala val asn val ala gln leu lys leu val glu arg

Fig 6 cont

1081/361
GTG GCT AAG CGT CAA ATT ACT TTT CAG GGT GAT GAT AGC AAT AAT
val ala lys arg gln ile thr phe gln gly asp asp ser asn asn
1141/381
AGC GTA AAA AAA GGT TTG GGT CAG ACT TTA ACT ATT AAA GGT GGT
ser val lys lys gly leu gly gln thr leu thr ile lys gly gly
1171/391
AAA ACA GAG ACC GGT GAA CTA ACC GAA AAT AAC ATC GGT GTG GTA
lys thr glu thr gly glu leu thr glu asn asn ile gly val val
1231/411
CAA GAT GAT AAT GGT AAT GGT CTG AAA GTT AAA CTT GCT AAA GAT
gln asp asp asn gly asn gly leu lys val lys leu ala lys asp
1261/421
CTG ACT GGT TTG ACC AAG GTT GCA GTA AAT GGT AAT GGT GCT AAC
leu thr gly leu thr lys val ala val asn gly asn gly ala asn
1321/441
AAC GCC GAG CTA CTA AAC GGT GGT CTG ACC TTT TCG ACA TCA GGT
asn ala glu leu leu asn gly gly leu thr phe ser thr ser gly
1351/451
GCC AAT GCA GGC AAA ACG GTC TAT GGC ACT GAT GGG GTG AAG TTT
ala asn ala gly lys thr val tyr gly thr asp gly val lys phe
1411/471
ACT AAT AAT ACA GGA ACA GGA ACA GGA ACG GCA ATA CCC GAC ACT
thr asn asn thr gly thr gly thr gly thr ala ile pro asp thr
1441/481
ACT CGT ATT ACC AAA AAT AAA ATT GGC TTT GCT GGG GCT GAT GAA
thr arg ile thr lys asn lys ile gly phe ala gly ala asp glu
1501/501
CAA GTT GAT GAA AGC AAA CCT TAT CTT GAC AAC GAA AAG CTA AAA
gln val asp glu ser lys pro tyr leu asp asn glu lys leu lys
1531/511
GTT GGC ACA GTT GAG ATT AAA AAA ACT GGC ATC AAT GCA GGT AAT
val gly thr val glu ile lys lys thr gly ile asn ala gly asn
1591/531
CAA GAA ATT ACC AAG GTC AAA TCT GCC ATT GTT GAT GCA GTT AAT
gln glu ile thr lys val lys ser ala ile val asp ala val asn
1621/541
GGA CAA GCA AAT CAA AGC TTT GTG AAC CTT CTA GAA ACA GCA GGC
gly gln ala asn gln ser phe val asn leu leu glu thr ala gly
1681/561
ACA AAC ACC AAC AAA CAA AAC TCT GCC GCC ACG GTT AAA GAC TTA
thr asn thr asn lys gln asn ser ala ala thr val lys asp leu

Fig 6 cont

1711/571
TAC GAC CTA TCA CAA TCA CCG CTG ACC TTT ACA GGT GAT AGC GGT
tyr asp leu ser gln ser pro leu thr phe thr gly asp ser gly
1771/591
AAC GTT AAG AGA AAA CTG GGT CAG ACT TTA ACC ATC ACA GGC GGA
asn val lys arg lys leu gly gln thr leu thr ile thr gly gly
1801/601
CAA ACA AAG ACC GAT CAA TTA ACC GAC AAT AAC ATC GGT GTG GTA
gln thr lys thr asp gln leu thr asp asn asn ile gly val val
1861/621
GCA GGT ACT AAT GGC TTA ACC GTT AAA CTT GCT AAA ACT TTA AAC
ala gly thr asn gly leu thr val lys leu ala lys thr leu asn
1891/631
AGT CTT ACT GAA GTT AAT ACG GCT ACA TTA AAC GCC ACC AAT AAA
ser leu thr glu val asn thr ala thr leu asn ala thr asn lys
1951/651
GTT AAG GTA GAT AAT AGT ACT GGT AAT ACG GCT GAA TTA TTA AAC
val lys val asp asn ser thr gly asn thr ala glu leu leu asn
1981/661
AAT GGT TTA ACC TTT ACC CAA ACA ACA GGT GCA AAT TCA GGT AAA
asn gly leu thr phe thr gln thr thr gly ala asn ser gly lys
2041/681
ACC GTC TAT GGC AAT GAT GGC TTG AAG TTT ACT AAT AGT GCT AAT
thr val tyr gly asn asp gly leu lys phe thr asn ser ala asn
2071/691
AAA GCA CTT GGC GGC ACA ACT TAC ATC ACC AAA GAT CAA GTT GGT
lys ala leu gly gly thr thr tyr ile thr lys asp gln val gly
2131/711
TTT AGC AAT CAA GAT GGC TTA CTT GAT GAA AGC AAA CCG TAT CTT
phe ser asn gln asp gly leu leu asp glu ser lys pro tyr leu
2161/721
AAC CGA GAA AAG CTA AAA GTT GGT AAA ATT GAG ATT AAA GAC AGT
asn arg glu lys leu lys val gly lys ile glu ile lys asp ser
2221/741
GGC ATT AAT GCA GGT GGT AAA GCC ATC ACA GGA CTG CCC TCA ACA
gly ile asn ala gly gly lys ala ile thr gly leu pro ser thr
2251/751
CTG CCC AAC ACT ACC TAT ACT GCA CCT GGC GTG CAT ACT GCA CTA
leu pro asn thr thr tyr thr ala pro gly val his thr ala leu
2311/771
CAT GGC AGT ACA ATT TCT AAC GAC GAC AAA ACC CGT GCC GCC AGT
his gly ser thr ile ser asn asp asp lys thr arg ala ala ser

Fig 6 cont

2341/781	2371/791
ATC GCC GAT GTG CTA AAC GCA GGC TTT AAC TTG GAA GGT AAT GGT ile ala asp val leu asn ala gly phe asn leu glu gly asn gly	
2401/801	
GAA GCG GTT GAC TTT GTC TCC ACT TAT GAC ACC GTC AAC TTT GCC glu ala val asp phe val ser thr tyr asp thr val asn phe ala	
2431/811	2461/821
GAT GGC AAT GCC ACC ACC GCT AAG GTA ACT TAT GAT AAC AAA ACC asp gly asn ala thr thr ala lys val thr tyr asp asn lys thr	
2491/831	
AGT AAA GTG GCG TAT GAT GTC AAT GTG GAT GGT ACA ACC ATT CAT ser lys val ala tyr asp val asn val asp gly thr thr ile his	
2521/841	2551/851
CTA ACA GGC ACT AAT GGC AAG AAA AAC CAA ATT GGC GTA AAA ACC leu thr gly thr asn gly lys lys asn gln ile gly val lys thr	
2581/861	
ACC ACA CTG ACC ACA AAA CGT GCT AAA GGT AAT ACA GCA ACT AAT thr thr leu thr thr lys arg ala lys gly asn thr ala thr asn	
2611/871	2641/881
TTT AGT GTT AAC TCT GGT GAT GAC AAT GCC CTT ATT AAC GCC AAA phe ser val asn ser gly asp asp asn ala leu ile asn ala lys	
2671/891	
GAC ATC GCC GAC AAT CTA AAC ACC CTA GCT GGT GAA ATT CGC ACC asp ile ala asp asn leu asn thr leu ala gly glu ile arg thr	
2701/901	2731/911
GCC AAA GGC ACA GCA AGC ACC GCC CTA CAA ACC TTC TCT ATT ATT ala lys gly thr ala ser thr ala leu gln thr phe ser ile ile	
2761/921	
GAT GAA CAA GGT AAT AAC TTT ATG GTC GGT AAC CTT TAC TCT GGT asp glu gln gly asn asn phe met val gly asn leu tyr ser gly	
2791/931	2821/941
TAT GAC ACC TCA AAT ACC TCT GAG ACC GTC ACC TTT GTA GGT GAA tyr asp thr ser asn thr ser glu thr val thr phe val gly glu	
2851/951	
AAC GGC ATT ACC ACC AAG GTA AAT AAA GGT AAA GTC AAA GTT GGT asn gly ile thr thr lys val asn lys gly lys val lys val gly	
2881/961	2911/971
ATT GAC CAA ACC AAA GGC TTA ACC ACG CCT AAG CTG ACC GTG GGT ile asp gln thr lys gly leu thr thr pro lys leu thr val gly	
2941/981	
AGT AGT AAT GGC AAA GGC ATT GTC ATT GAC AGT AAA GAT GGT CAA ser ser asn gly lys gly ile val ile asp ser lys asp gly gln	

Fig 6 cont

2971/991 3001/1001
AAT ACC ATC ACA GGA CTA AGC AAC ACT CTA ACC GAT GCC ACC AAC
asn thr ile thr gly leu ser asn thr leu thr asp ala thr asn
3031/1011
GCA ACA ACA GGG CAT GTC AGT GAA ATC CAG GGC TTG GCA CAA GGT
ala thr thr gly his val ser glu ile gln gly leu ala gln gly
3061/1021 3091/1031
GCA AAC AAA ACC CGT GCC GCC AGC ATT GGT GAT GTA CTA AAC GCA
ala asn lys thr arg ala ala ser ile gly asp val leu asn ala
3121/1041
GGC TTT AAC TTG CAA GGC AAT GGT GAA GCC AAA GAC TTT GTC TCC
gly phe asn leu gln gly asn gly glu ala lys asp phe val ser
3151/1051 3181/1061
ACT TAT GAC ACC GTC AAC TTT ATC GAT GGC AAT GCC ACC ACC GCT
thr tyr asp thr val asn phe ile asp gly asn ala thr thr ala
3211/1071
AAG GTG ACC TAT GAT GAC ACG AAA CAG ACC AGC ACA GTA ACT TAT
lys val thr tyr asp asp thr lys gln thr ser thr val thr tyr
3241/1081 3271/1091
GAT GTC AAT GTG GAT AAT AAA ACC CTT GAA GTG ACA GGC GAT AAA
asp val asn val asp asn lys thr leu glu val thr gly asp lys
3301/1101
AAA CTT GGC GTC AAA ACC ACC ACA CTG ACC AAA ACA AGT GCT AAT
lys leu gly val lys thr thr thr leu thr lys thr ser ala asn
3331/1111 3361/1121
GGT AAT GCA ACC AAA TTT AGT GCC GCC GAT GGC GAT GCC CTT GTT
gly asn ala thr lys phe ser ala ala asp gly asp ala leu val
3391/1131
AAA GCC AGT GAT ATC GCC ACC CAT CTA AAT ACC TTG GCT GGC GAC
lys ala ser asp ile ala thr his leu asn thr leu ala gly asp
3421/1141 3451/1151
ATC CAA ACC GCC AAA GGA GCA AGC CAA GCA AGC AGC TCA GCA AGC
ile gln thr ala lys gly ala ser gln ala ser ser ser ala ser
3481/1161
TAT GTG GAT GCT GAT GGC AAC AAG GTC ATC TAT GAC AGT ACC GAT
tyr val asp ala asp gly asn lys val ile tyr asp ser thr asp

Fig 6 cont

3511/1171	3541/1181
AAG AAG TAC TAT CAA GCC AAA AAT GAT GGC ACA GTT GAT AAA ACC	
lys lys tyr tyr gln ala lys asn asp gly thr val asp lys thr	
3571/1191	
AAA GAA GTT GCC AAA GAC AAA CTG GTC GCC CAA GCC CAA ACC CCA	
lys glu val ala lys asp lys leu val ala gln ala gln thr pro	
3601/1201	3631/1211
GAT GGC ACA TTG GCT CGA ATG AAT GTC AAA TCA GTC ATT AAC AAA	
asp gly thr leu ala arg met asn val lys ser val ile asn lys	
3661/1221	
GAA CAA GTA AAT GAT GCC AAT AAA AAG CAA GGC ATC AAC GAA GAC	
glu gln val asn asp ala asn lys lys gln gly ile asn glu asp	
3691/1231	3721/1241
AAC GCC TTT GTT AAA GGA CTT GAA AAA GCC GCT TCT GAT AAC AAA	
asn ala phe val lys gly leu glu lys ala ala ser asp asn lys	
3751/1251	
ACC AAA AAC GCC GCA GTA ACT GTG GGT GAT TTA AAT GCC GTT GCC	
thr lys asn ala ala val thr val gly asp leu asn ala val ala	
3781/1261	3811/1271
CAA ACA CCG CTG ACC TTT GCA GGG GAT ACA GGC ACA ACG GCT AAA	
gln thr pro leu thr phe ala gly asp thr gly thr thr ala lys	
3841/1281	
AAA CTG GGC GAG ACT TTG ACC ATC AAA GGT GGG CAA ACA GAC ACC	
lys leu gly glu thr leu thr ile lys gly gly gln thr asp thr	
3871/1291	3901/1301
AAT AAG CTA ACC GAT AAT AAC ATC GGT GTG GTA GCA GGT ACT GAT	
asn lys leu thr asp asn asn ile gly val val ala gly thr asp	
3931/1311	
GGC TTC ACT GTC AAA CTT GCC AAA GAC CTA ACC AAT CTT AAC AGC	
gly phe thr val lys leu ala lys asp leu thr asn leu asn ser	
3961/1321	3991/1331
GTT AAT GCA GGT GGC ACC AAA AAT GAT GAC AAA GGC GTG TCT TTT	
val asn ala gly gly thr lys ile asp asp lys gly val ser phe	
4021/1341	
GTA GAC GCA AAC GGT CAA GCC AAA GCA AAC ACC CCT GTG CTA AGT	
val asp ala asn gly gln ala lys ala asn thr pro val leu ser	
4051/1351	4081/1361
GCC AAT GGG CTG GAC CTG GGT GGC AAA CGC ATC AGT AAC ATC GGT	
ala asn gly leu asp leu gly gly lys arg ile ser asn ile gly	

Fig 6 cont

4111/1371

GCA GCT GTT GAT GAT AAC GAT GCG GTG AAC TTT AAG CAG TTT AAT
ala ala val asp asp asn asp ala val asn phe lys gln phe asn
4141/1381 4171/1391

GAA GTT GCC AAA ACG GTC AAC AAC CTA AAC AAC CAA AGT AAC TCA
glu val ala lys thr val asn asn leu asn asn gln ser asn ser
4201/1401

GGT GCG TCA TTG CCC TTT GTA GTA ACC GAT GCC AAT GGC AAG CCC
gly ala ser leu pro phe val val thr asp ala asn gly lys pro
4231/1411 4261/1421

ATC AAT GGC ACC GAT GAC AAG CCC CAA AAA GCC ATC AAG GGC GCC
ile asn gly thr asp asp lys pro gln lys ala ile lys gly ala
4291/1431

GAT GGT AAA TAC TAT CAC GCC AAC GCC AAC GGC GTA CCT GTG GAC
asp gly lys tyr tyr his ala asn ala asn gly val pro val asp
4321/1441 4351/1451

AAA GAT GGC AAC CCC ATC ACC GAT GCG GAC AAA CTT GCC AAT CTG
lys asp gly asn pro ile thr asp ala asp lys leu ala asn leu
4381/1461

GCA GCT CAT GGC AAA CCC CTT GAT GCA GGT CAT CAA GTG GTG GCA
ala ala his gly lys pro leu asp ala gly his gln val val ala
4411/1471 4441/1481

AGC CTA GGC GGC AAC TCA GAT GCC ATC ACC CTA ACC AAC ATC AAG
ser leu gly gly asn ser asp ala ile thr leu thr asn ile lys
4471/1491

TCC ACT TTG CCA CAA ATT GAC ACA CCA AAC ACA GGT AAT GCC AAT
ser thr leu pro gln ile asp thr pro asn thr gly asn ala asn
4501/1501 4531/1511

GCA GGG CAA GCC CAA AGT CTG CCC AGC CTA TCA GCA GCA CAG CAA
ala gly gln ala gln ser leu pro ser leu ser ala ala gln gln
4561/1521

AGT AAT GCT GCC AGT GTC AAA GAT GTG CTA AAT GTA GGC TTT AAC
ser asn ala ala ser val lys asp val leu asn val gly phe asn
4591/1531 4621/1541

TTG CAG ACC AAT CAC AAT CAA GTG GAC TTT GTC AAA GCC TAT GAT
leu gln thr asn his asn gln val asp phe val lys ala tyr asp
4651/1551

ACC GTC AAC TTT GTC AAT GGT ACA GGT GCC GAC ATC ACA AGC GTG
thr val asn phe val asn gly thr gly ala asp ile thr ser val

Fig 6 cont

4681/1561 4711/1571
CGT AGT GCT GAT GGC ACG ATG AGT AAC ATC ACC GTC AAC ACC GCC
arg ser ala asp gly thr met ser asn ile thr val asn thr ala
4741/1581
TTA GCA GCG ACC GAT GAT GAT GGC AAT GTG CTT ATC AAA GCC AAA
leu ala ala thr asp asp asp gly asn val leu ile lys ala lys
4771/1591 4801/1601
GAT GGT AAG TTC TAC AAA GCA GAC GAC CTC ATG CCA AAC GGC TCA
asp gly lys phe tyr lys ala asp asp leu met pro asn gly ser
4831/1611
CTA AAA GCA GGC AAA TCA GCC AGT GAT GCC AAA ACT CCA ACT GGT
leu lys ala gly lys ser ala ser asp ala lys thr pro thr gly
4861/1621 4891/1631
CTA AGC CTT GTC AAC CCC AAT GCT GGT AAA GGC AGT ACA GGC GAT
leu ser leu val asn pro asn ala gly lys gly ser thr gly asp
4921/1641
GCA GTG GCT CTT AAT AAC TTA TCA AAA GCG GTA TTT AAA TCC AAA
ala val ala leu asn asn leu ser lys ala val phe lys ser lys
4951/1651 4981/1661
GAT GGT ACA ACT ACT ACC ACA GTA AGC TCT GAT GGC ATC AGT ATC
asp gly thr thr thr thr thr val ser ser asp gly ile ser ile
5011/1671
CAA GGC AAA GAT AAC AGC AAC ATC ACC CTA AGC AAA GAT GGG CTG
gln gly lys asp asn ser asn ile thr leu ser lys asp gly leu
5041/1681 5071/1691
AAT GTA GGC GGT AAG GTC ATC AGC AAT GTG GGT AAA GGC ACA AAA
asn val gly gly lys val ile ser asn val gly lys gly thr lys
5101/1701
GAC ACC GAC GCT GCC AAT GTA CAA CAG TTA AAC CGA AGT ACG CAA
asp thr asp ala ala asn val gln gln leu asn arg ser thr gln
5131/1711 5161/1721
CTT GTT GGG TCT TGG GTA ATG GCT GGT AAT GAT AAC GCT GAC GGC
leu val gly ser trp val met ala gly asn asp asn ala asp gly
5191/1731
AAT CAG GTA AAC ATT GCC GAC ATC AAA AAA GAC CCA AAT TCA GGT
asn gln val asn ile ala asp ile lys lys asp pro asn ser gly
5221/1741 5251/1751
TCA TCA TCT AAC CGC ACT GTC ATC AAA GCA GGC ACG GTA CTT GGC
ser ser ser asn arg thr val ile lys ala gly thr val leu gly
5281/1761
GGT AAA GGT AAT AAC GAT ACC GAA AAA CTT GCC ACT GGT GGT GTA
gly lys gly asn asn asp thr glu lys leu ala thr gly gly val

Fig 6 cont

5311/1771
CAA GTG GGC GTG GAT AAA GAC GGC AAC GCT AAC GGC GAT TTA AGC
gln val gly val asp lys asp gly asn ala asn gly asp leu ser
5371/1791

AAT GTT TGG GTC AAA ACC CAA AAA GAT GGC AGC AAA AAA GCC CTG
asn val trp val lys thr gln lys asp gly ser lys lys ala leu
5401/1801

CTC GCC ACT TAT AAC GCC GCA GGT CAG ACC AAC TAT TTG ACC AAC
leu ala thr tyr asn ala ala gly gln thr asn tyr leu thr asn
5461/1821

AAC CCC GCA GAA GCC ATT GAC AGA ATA AAT GAA CAA GGT ATC CGC
asn pro ala glu ala ile asp arg ile asn glu gln gly ile arg
5491/1831

TTC TTC CAT GTC AAC GAT GGC AAT CAA GAG CCT GTG GTA CAA GGG
phe phe his val asn asp gly asn gln glu pro val val gln gly
5551/1851

CGT AAC GGC ATT GAC TCA AGT GCC TCA GGC AAG CAC TCA GTG GCG
arg asn gly ile asp ser ser ala ser gly lys his ser val ala
5581/1861

GTC GGT TAT AAG GCC AAG GCA GAT GGT GAA GCC GCC GTT GCC ATA
val gly tyr lys ala lys ala asp gly glu ala ala val ala ile
5641/1881

GGC AGA CAA ACC CAA GCA GGC AAC CAA TCC ATC GCC ATC GGT GAT
gly arg gln thr gln ala gly asn gln ser ile ala ile gly asp
5671/1891

AAC GCA CAA GCC ACA GGC GAT CAA TCC ATC GCC ATC GGT ACA GGC
asn ala gln ala thr gly asp gln ser ile ala ile gly thr gly
5731/1911

AAT GTG GTA GCA GGT AAG CAC TCT GGT GCC ATC GGC GAC CCA AGC
asn val val ala gly lys his ser gly ala ile gly asp pro ser
5761/1921

ACT GTT AAG GCT GAT AAC AGT TAC AGT GTG GGT AAT AAC AAC CAG
thr val lys ala asp asn ser tyr ser val gly asn asn asn gln
5821/1941

TTT ACC GAT GCC ACT CAG ACC GAT GTC TTT GGT GTG GGC AAT AAC
phe thr asp ala thr gln thr asp val phe gly val gly asn asn
5851/1951

ATC ACC GTG ACC GAA AGT AAC TCG GTT GCC TTA GGT TCA AAC TCT
ile thr val thr glu ser asn ser val ala leu gly ser asn ser

Fig 6 cont

5911/1971
GCC ATC AGT GCA GGC ACA CAC GCA GGC ACA CAA GCC AAA AAA TCT
ala ile ser ala gly thr his ala gly thr gln ala lys lys ser
5941/1981 5971/1991
GAC GGC ACA GCA GGT ACA ACC ACC ACA GCA GGT GCA ACA GGT ACG
asp gly thr ala gly thr thr thr thr ala gly ala thr gly thr
6001/2001
GTT AAA GGC TTT GCT GGA CAA ACG GCG GTT GGT GCG GTC TCC GTG
val lys gly phe ala gly gln thr ala val gly ala val ser val
6031/2011 6061/2021
GGT GCC TCA GGT GCT GAA CGC CGT ATC CAA AAT GTG GCA GCA GGT
gly ala ser gly ala glu arg arg ile gln asn val ala ala gly
6091/2031
GAG GTC AGT GCC ACC AGC ACC GAT GCG GTC AAT GGT AGC CAG TTG
glu val ser ala thr ser thr asp ala val asn gly ser gln leu
6121/2041 6151/2051
TAC AAA GCC ACC CAA AGC ATT GCC AAC GCA ACC AAT GAG CTT GAC
tyr lys ala thr gln ser ile ala asn ala thr asn glu leu asp
6181/2061
CAT CGT ATC CAC CAA AAC GAA AAT AAA GCC AAT GCA GGG ATT TCA
his arg ile his gln asn glu asn lys ala asn ala gly ile ser
6211/2071 6241/2081
TCA GCG ATG GCG ATG GCG TCC ATG CCA CAA GCC TAC ATT CCT GGC
ser ala met ala met ala ser met pro gln ala tyr ile pro gly
6271/2091
AGA TCC ATG GTT ACC GGG GGT ATT GCC ACC CAC AAC GGT CAA GGT
arg ser met val thr gly gly ile ala thr his asn gly gln gly
6301/2101 6331/2111
GCG GTG GCA GTG GGA CTG TCG AAG CTG TCG GAT AAT GGT CAA TGG
ala val ala val gly leu ser lys leu ser asp asn gly gln trp
6361/2121
GTA TTT AAA ATC AAT GGT TCA GCC GAT ACC CAA GGC CAT GTA GGG
val phe lys ile asn gly ser ala asp thr gln gly his val gly
6391/2131
GCA GCA GTT GGT GCA GGT TTT CAC TTT TAA GCCATAAATCGC
ala ala val gly ala gly phe his phe stop

AGATTTTACTTAAAAATCAATCTCACCATAGTTGTATAAAACAGCATCA

inverted repeat

6505

GCATCAGTCATATTACTGATGCTTGATGGTTTTTATTACTTAAACCATTTTA

Fig 6 cont

		MID		ATCC 25238; UspA1		ATCC 25238; UspA2	
		Bc5	BBH17	Perez112	RH1	RH4	
	Bc5	100 %	83.5 %	79.2 %	75.8 %	65.6 %	11.1 %
		100 %	88.1 %	82.6 %	80.2 %	71.3 %	17.9 %
	BBH17	100 %	78.3 %	76.3 %	76.3 %	65.3 %	9.5 %
		100 %	81.4 %	79.6 %	79.6 %	71.2 %	14.9 %
	Perez112	100 %	100 %	85.0 %	68.0 %	68.0 %	11.1 %
		100 %	100 %	89.1 %	72.9 %	72.9 %	17.5 %
	RH1	100 %	100 %	100 %	67.7 %	67.7 %	5.5 %
		100 %	100 %	100 %	71.7 %	71.7 %	8.3 %
	RH4			100 %	100 %	100 %	10.0 %
				100 %	100 %	100 %	15.6 %
	ATCC 25238; UspA1						100 %
							100 %
	ATCC 25238; UspA2						28.8 %
							38.3 %
	MID						100 %
							100 %

Fig 7

MID-1 (Bc5) protein(top), patent US 5808024(bottom)

```

      10      20      30      40      50      60      70      80
MNHIYKVFINKATGTFMVAEYAKSHSTGGSCATGQVGSVCTLSFARVAALAVLVIGATLNGSAYAQQDPRHIAIDGNSSNT

      90      100     110     120     130     140     150     160
SSGTARATGDRAIALGENANAEGGQAI AIGSSNKTGGRNALNIGTDAKGEESIAIGGDVVAEGTASIAIGGDDLHLWDEPNK

      170     180     190     200     210     220     230     240
QKFLDPKVKELILKHQELNNIYKLPDGSQRYFRITYAKGHASIALGTMTOAEGHFANAFGTRATAKGNYS LAVGLTAQANTE
      . . . . .
      MSYAQQGHFSNAFGTRATAKSAVSLAVGLAATAEQG
      10      20      30

      250     260     270     280     290     300     310     320
SSI AVGSNAQANGFAATAIGGGTKADLGRSIALGFGSQILITKEKDSHNNTNVVYVPOGELLEERYKATENGQSPNKVVDIFSI
      . . . . .
      STIAIGSDATSSSLGATLGAQTRALQGSIALGQGSVVVTQSDNNSRPAYTPNTQALDPKFOATNNTKAGPLSIGSN-----
      40      50      60      70      80      90      100     110

      330     340     350     360     370     380     390     400
GSSSIKRKILNVGAGSQETDAVNVAQLKLVKVERAKRQ-ITFQGDSDNSVKKGLGQTLTIKGGKPTETGELTENNIGVVQDDN
      . . . . .
      ---SIKRKILNVGAGVNKTDVNVAQLEAVVKWAKERRITFQGDSDNSTDVKIGLDNLTIKGGAETNA-----
      120     130     140     150     160     170

      410     420     430     440     450     460     470     480     490
GNGLKVKLAKDLTGLTKVAVNGNGANNAELNGLTFPSTSGANACKTVYGTGDKVVFVNNITGTGTGTAI PDTTRITKNIKIGFA
-----

      500     510     520     530     540     550     560     570
GADEQVDESKPYLDNEKLVGTVVEIKKTGINAGNQEITKVKSAIVDAVNGQANQSFVNLLETAGTNTNKNSAATVKDLYDL
-----

```

Fig 8

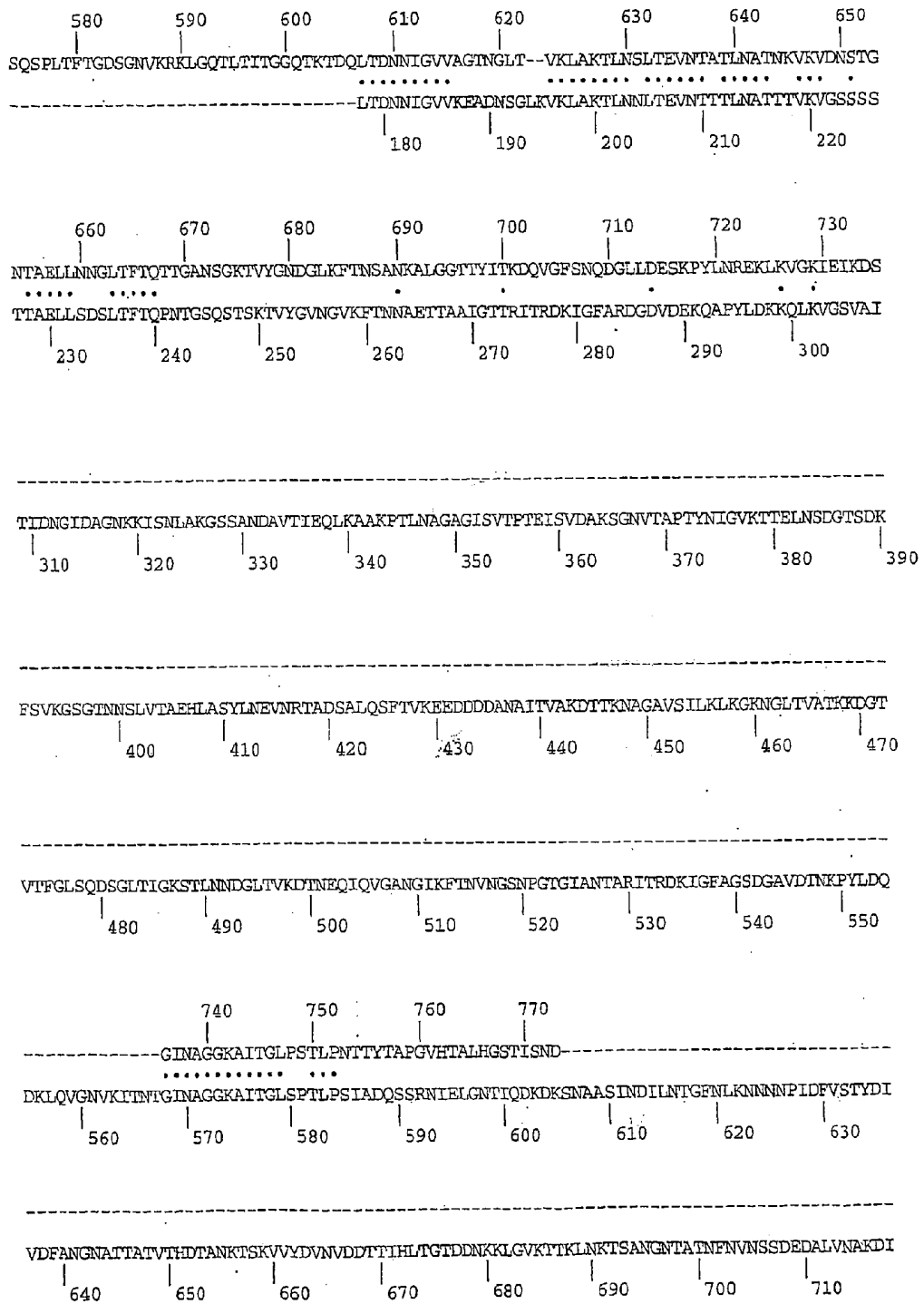


Fig 8 cont

Fig 8 cont

 AENLNPLAKEIHTTKGTADTALQTFVKKVDENMNADDANAITVGGQKNANNQVNTLTLKGENGLNIRTKNGIVTFGINTTS
 | 720 | 730 | 740 | 750 | 760 | 770 | 780 | 790 | 800

 GLKAGKSTLNDGGLSIKNPTGSEQIQVGADGVKFAKVMNNGVVGAGIDGITRITRDEIGFTGTNGSLDKSKPHLSKDGINAG
 | 810 | 820 | 830 | 840 | 850 | 860 | 870 | 880

 GKKITNIQSGEIAQNSHDAVVGKTYDLKTELENKISSSTARTAQNLSLHEFSVADEQGNFTVSNPYSSYDTSKTSDVITFAG
 | 890 | 900 | 910 | 920 | 930 | 940 | 950 | 960

-----DKTR

 ENGITIKVNGKVVVRVVGIDQTKGLTTPKLVGNNGKGVIVDSQNGQNTITGLSNILANVTNDKGSVVRTTEQGNLIKDEDKTR
 | 970 | 980 | 990 | 1000 | 1010 | 1020 | 1030 | 1040

780 790 800 810 820 830 840 850
 AASIAADVLNAGFNLEGNGEAVDFVSTYDITVNFADGNATTAKVTYDNKTSKV--AYDVNVVDGTTIHLTGINGKKNQIGVKMTT

 AASIVDVLNAGFNLEGNGEAVDFVSTYDITVNFADGNATTAKVTYDITTSKTSKVVDVNVDDITIEVK-----
 | 1050 | 1060 | 1070 | 1080 | 1090 | 1100 | 1110

860 870 880 890 900 910 920 930
 LITKRAKGNIAINFSVNSGDDNALINAKDIADNLNITLAGEIRPAKGTASTALQTFSSIIDBQGNFMVGNLYSGYDTSNISET

940 950 960 970 980 990 1000 1010 1020
 VTFVGENGITIKVNGKVVVRVVGIDQTKGLTTPKLVGNNGKGVIVDSKDGQNTITGLSNILANVTNDKGSVVRTTEQGNLIKDEDKTR

1030 1040 1050 1060 1070 1080 1090 1100

Fig 8 cont

NKTRAASIGDVLNAGFNLCQNGEAKDFVSTYDITVNFIDGNATTAKVTYDDTKQSTVTVYDWNVDNKLLEVTGDKKLGVKTTT

 -----DKKLGVKTTT
 1120

1110 1120 1130 1140 1150 1160 1170 1180
 LTKTSANGNATKFSAAD-GDALVKASDIATHLNTLAGDIQTAKGASQASSASASYVDADGNKVTYDSTDKKYYQAKNDGTVDK
 ..
 LTSTGTGANKFALSNOATGDALVKASDIVAHLNNTLSGDIQTAKGASQANNSAGYVDADGNKVTYDSTDNKYYQAKNDGTVDK
 1130 1140 1150 1160 1170 1180 1190 1200

1190 1200 1210 1220 1230 1240 1250 1260
 TKEVAKDKLVAQAQTPDGTFLARMNVKSVINKEQVNDANKKQGINEDNAFVKGLEKAASDNKTKNAAVTVGDLNAVAQTPLTF

 TKEVAKDKLVAQAQTPDGTFLAQMNKSVINKEQVNDANKKQGINEDNAFVKGLEKAASDNKTKNAAVTVGDLNAVAQTPLTF
 1210 1220 1230 1240 1250 1260 1270 1280

1270 1280 1290 1300 1310 1320 1330 1340
 AGDTGTYAKKLGESTLTIKGGQPTDNKLTDMNIGVVAGTDGFTVKLAKDLTNLNSVNAGGTKIDDKGVSFVDANGQAKANTPV

 AGDTGTYAKKLGESTLTIKGGQPTDNKLTDMNIGVVAGTDGFTVKLAKDLTNLNSVNAGGTKIDDKGVSFVDSSGQAKANTPV
 1290 1300 1310 1320 1330 1340 1350 1360

1350 1360 1370 1380 1390 1400 1410 1420 1430
 LSANGLDLGGKRI SNIGA AVDDNDAVNFKQFNEVAKTVNVLNNOQNSGASLPFVVTDANGKPI NGTDDKPKAIKADGKY

 LSANGLDL
 1370

1440 1450 1460 1470 1480 1490 1500 1510
 HANANGVPVDRKGNPITDADKLANLAH GKPLDAGHQVVASLGGNSDAITLITNPKSTLPQIDTPNTGNANAGQAQSLPSLSA

1520 1530 1540 1550 1560 1570 1580 1590
 AQQSNAASVKDVLNVEGNLQTNENQVDFVKAYDITVNFVNGTGADITSVRSADGIMSNIITVNTALAATDDDCGNVLIKARDGKF

1600 1610 1620 1630 1640 1650 1660 1670

YKADDLMPNGSLKAGKSASDAKTPTGSLVNPKNAGKSGTGDVAVALNLSKAVFKSKDGTITTTTSSDGLISIQKLNLSMVLZG

 1680 1690 1700 1710 1720 1730 1740 1750
 KDGLNVGGKVISNVGKGTKDTDAANVQQLNRSTQLVGSWVMAGNDNADGNQVNIADIKKDPNSGSSSNRTVIKAGTVLGGKG

 -----GGKVISNVGKGTKDTDAANVQQLNEVFRNLGLGN-AGNDNADGNQVNIADIKKDPNSGSSSNRTVIKAGTVLGGKG
 1380 1390 1400 1410 1420 1430 1440 1450

1760 1770 1780 1790 1800 1810 1820 1830 1840
 NNDTEKLATGGVQVGVVDKDGANGDLSNVVVKTKQKDGSKKALLATYNAAGQTNVLTNNPAEAIDRINEQGIRFFHVNDGNQE

 NNDTEKLATGGIQQVGVVDKDGANGDLSNVVVKTKQKDGSKKALLATYNAAGQTNVLTNNPAEAIDRINEQGIRFFHVNDGNQE
 1460 1470 1480 1490 1500 1510 1520 1530

1850 1860 1870 1880 1890 1900 1910 1920
 FVVQGRNGIDSSASGKHSVAVGKAKADGEAAVAIGRQTQAGNQSTAIIGNAQATGDSIAIGTGNVVAGKHSAGIADPSTV

 FVVQGRNGIDSSASGKHSVAIGFQAKADGEAAVAIGRQTQAGNQSTAIIGNAQATGDSIAIGTGNVVAGKHSAGIADPSTV
 1540 1550 1560 1570 1580 1590 1600 1610

1930 1940 1950 1960 1970 1980 1990 2000
 KADNSYSVGNMNQFTDATQTDVFGVGNITVTESNVALGNSAISAGTHAGTQAKKSDGTAGTTTTAGATGTVKGFAGQTA

 KADNSYSVGNMNQFTDATQTDVFGVGNITVTESNVALGNSAISAGTHAGTQAKKSDGTAGTTTTAGATGTVKGFAGQTA
 1620 1630 1640 1650 1660 1670 1680 1690

2010 2020 2030 2040 2050 2060 2070 2080
 VGA VSVGASGAERRIQNVAAAGEVSATSTDAVNGSQLYKATQSIANATNELDHRHQNENKANAGISSAMAMASMPQAYIPGR

 VGA VSVGASGAERRIQNVAAAGEVSATSTDAVNGSQLYKATQSIANATNELDHRHQNENKANAGISSAMAMASMPQAYIPGR
 1700 1710 1720 1730 1740 1750 1760 1770 1780

2090 2100 2110 2120 2130
 SMVTGGIATHNGQGAVAVGLSKLSDNGQWVFKINGSADTQGHVGA AVGAGFHF

 SMVTGGIATHNGQGAVAVGLSKLSDNGQWVFKINGSADTQGHVGA AVGAGFHF
 1790 1800 1810 1820 1830

Fig 8 cont

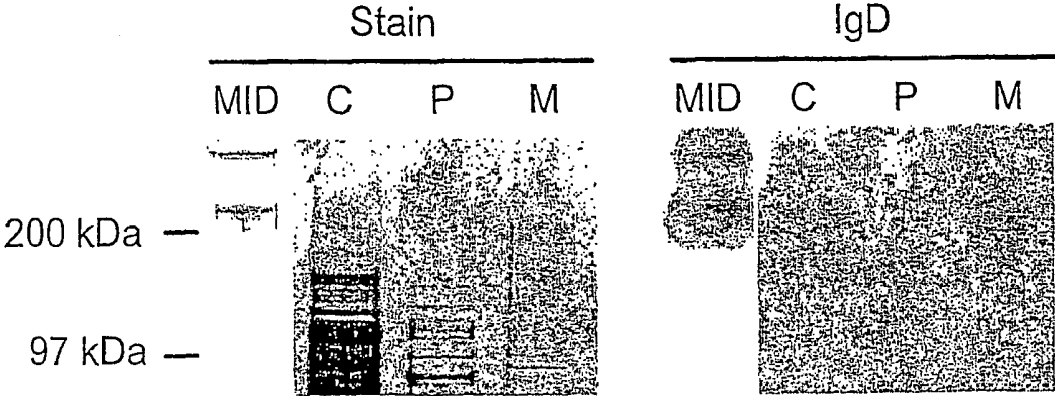


Fig 9

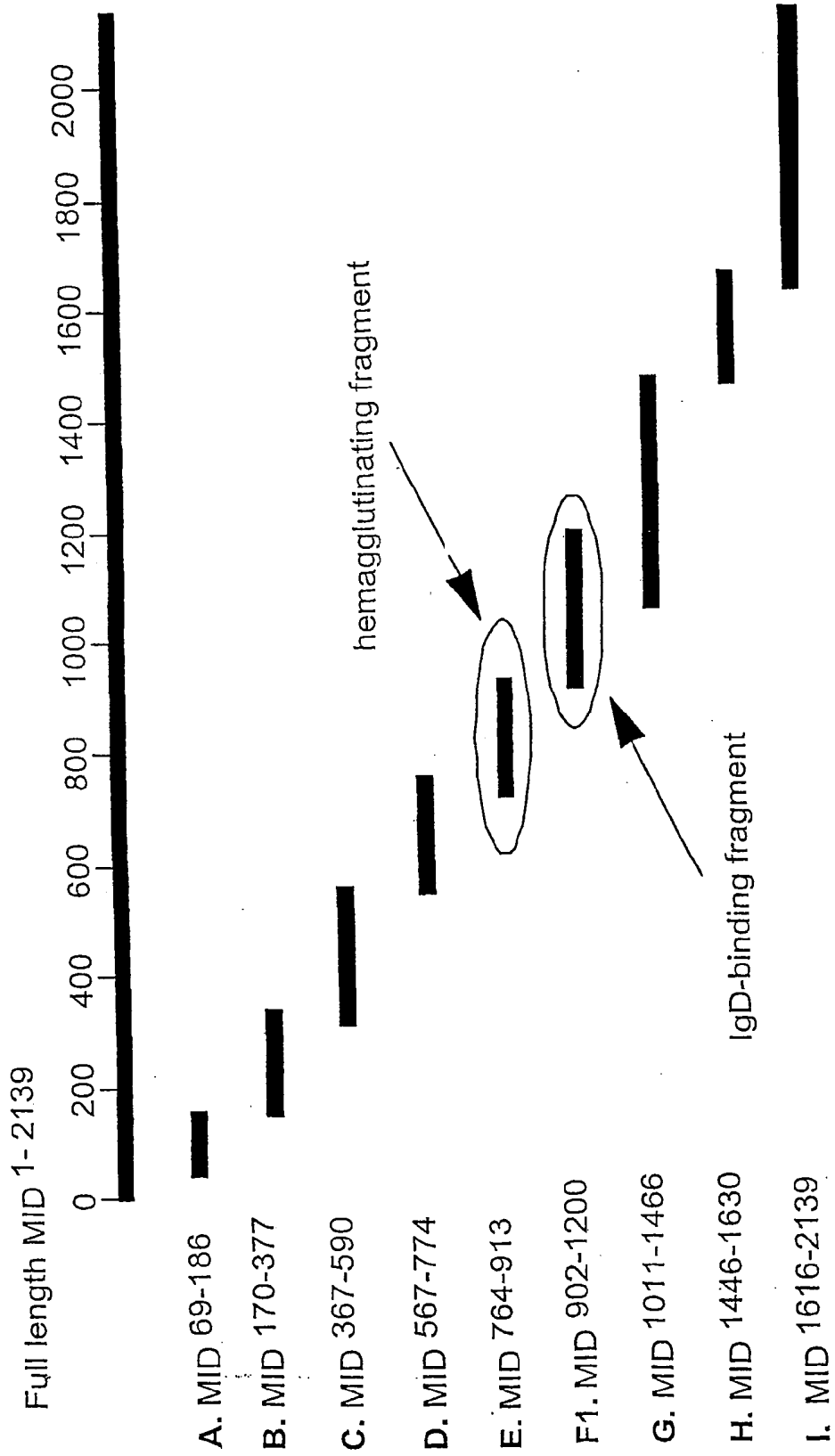


Fig 10

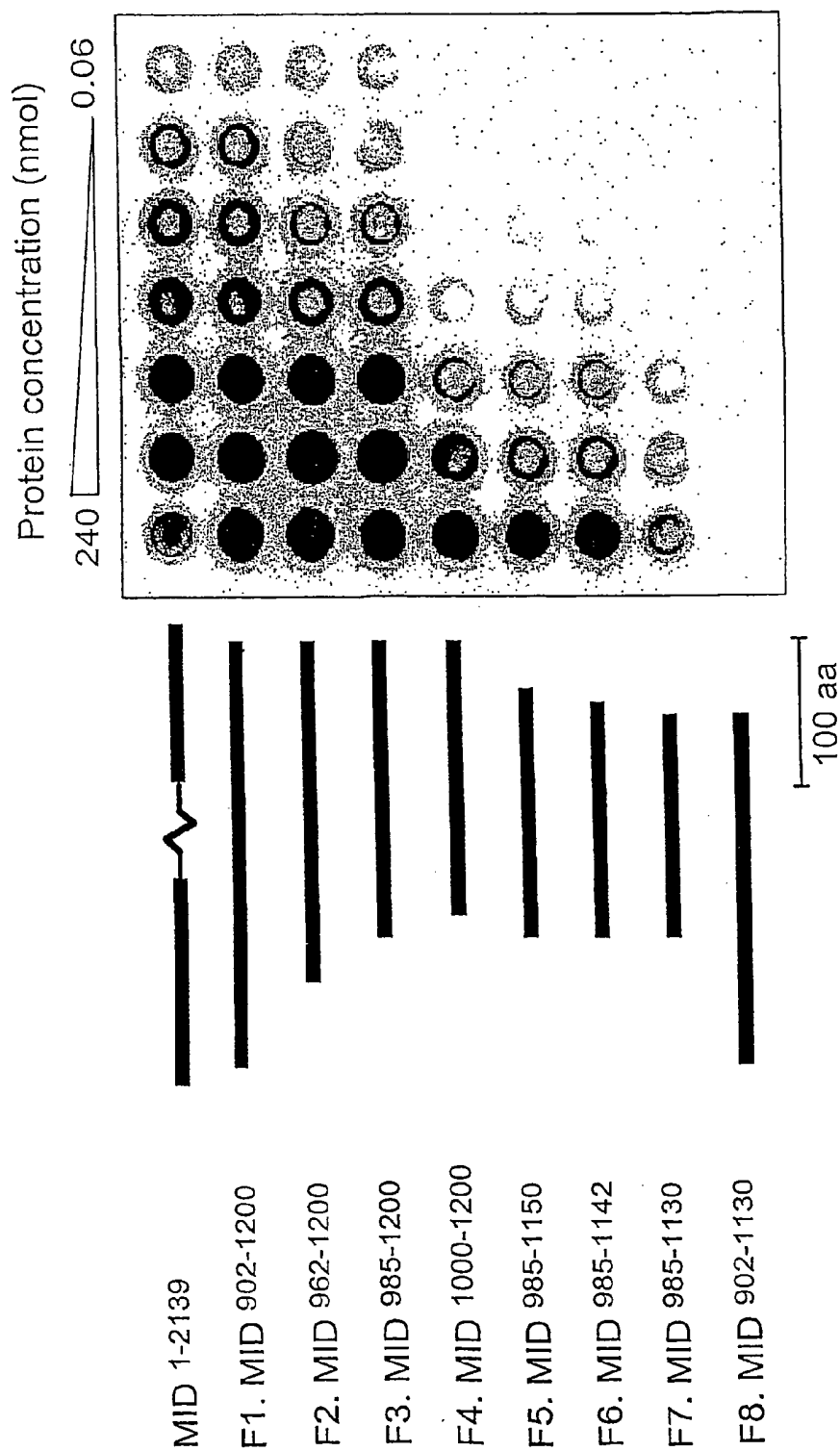


Fig 11

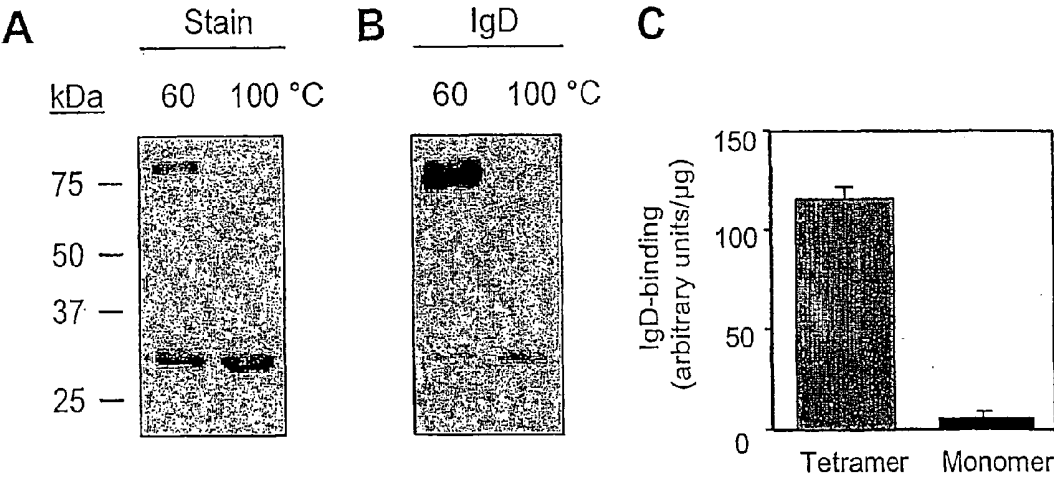


Fig 12

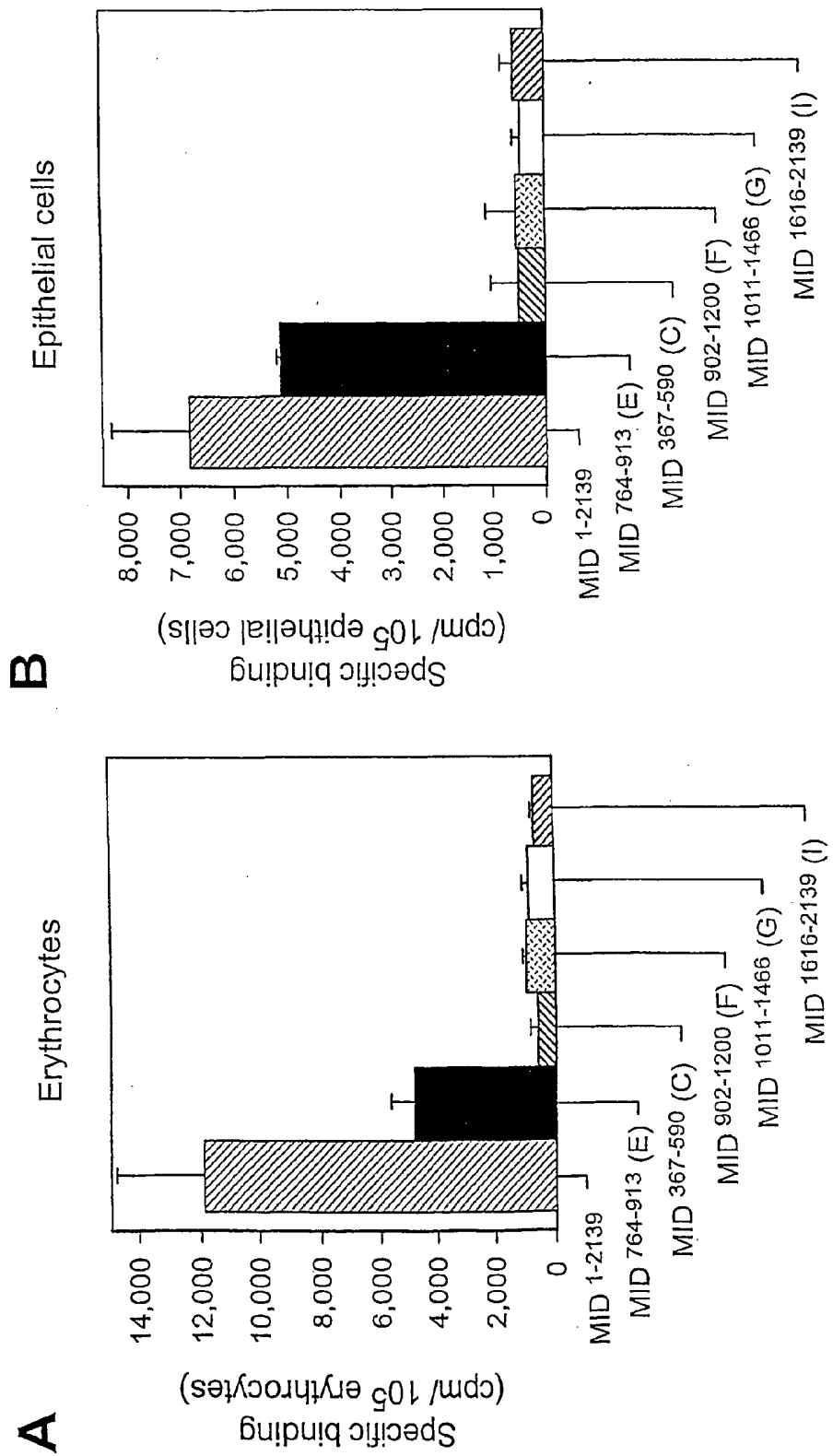


Fig 13

MID-expressing *M. catarrhalis*

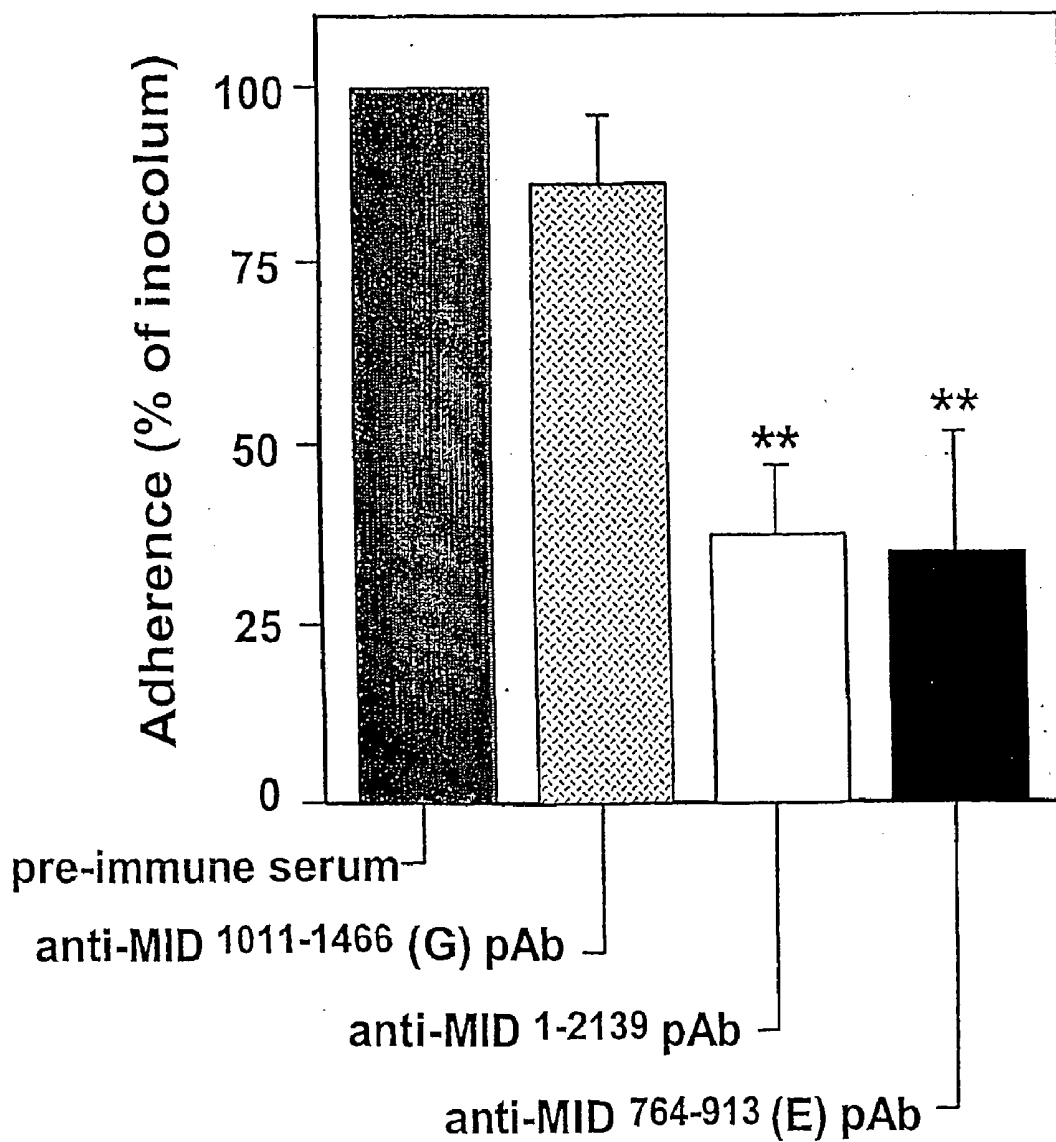


Fig 14

**NOVEL SURFACE EXPOSED
IMMUNOGLOBULIN D-BINDING PROTEIN FROM
FORAXELLA CATARRHALIS**

FIELD OF THE INVENTION

[0001] The present invention relates to a surface exposed protein, which can be detected in *Moraxella catarrhalis*, having an amino acid sequence as described in SEQ ID NO 1, an apparent molecular weight of 200 kDa and a capacity of selectively binding membrane bound or soluble IgD, and to an immunogenic or IgD-binding fragment of said surface exposed protein, and to an immunogenic and adhesive fragment of said surface exposed protein.

BACKGROUND OF THE INVENTION

[0002] *Moraxella catarrhalis* is a Gram-negative diplococcus that for a long time was considered a relatively harmless commensal in the respiratory tract. At present, it is the third most frequent cause of otitis media and also a significant agent in sinusitis and lower respiratory tract infections in adults with pulmonary disease. *M. catarrhalis* is also one of the most common inhabitants of the pharynx of healthy children.

[0003] Two decades ago, *Haemophilus influenzae* and *M. catarrhalis* were shown to display a strong affinity for both soluble and surface-bound human IgD (1). The IgD-binding seems to be paralleled by a similar interaction with surface-bound IgD at the cellular level, a phenomenon that explains the strong mitogenic effects on human lymphocytes by *H. influenzae* and *M. catarrhalis* (2-4). An IgD-binding outer membrane protein from *H. influenzae* (protein D) was isolated and cloned, and shown to be an important pathogenicity factor (5). However, protein D does not bind to the majority of IgD myelomas tested, and it was suggested that encapsulated *H. influenzae* of serotype b expresses an additional IgD receptor (6).

[0004] Early studies demonstrated that the outer membrane proteins (OMPs) from a diverse collection of *Moraxella* isolates exhibit a high degree of similarity (7). Investigators have primarily focused their research efforts on a selected group of proteins. Recent studies have demonstrated that the high-molecular-weight surface antigen, termed UspA or HMW-OMP, is actually comprised of two different proteins. These proteins are named UspA1 and UspA2 (8,9,10). The apparent molecular masses of these OMPs are greater than 250 kDa as determined by SDS-PAGE analysis. Reduction with formic acid yields bands of approximately 120 to 140 kDa, suggesting that the UspA proteins form an oligomeric complex composed of several monomeric subunits (11). The predicted mass of each protein, as deduced from the cloned genes, is 88 kDa and 62 kDa for UspA1 and UspA2, respectively. It is thought that the difference in the deduced mass and the mass determined using SDS-PAGE is due to a predicted coiled coil structure (9).

[0005] In a recent patent publication, an outer membrane protein of *M. catarrhalis* with a molecular mass of approximately 200 kDa was isolated (12). A sequence encoding a protein of approximately 200 kDa was also provided. The protein was shown to be immunogenic, but no further biological functions were presented. In addition, a 200 kDa protein is associated with hemagglutinating *M. catarrhalis* (13,14).

[0006] CopB is an 80 kDa surface exposed major OMP that shows a moderate antigenic conservation. In addition, OMP CD is a 46 kDa highly conserved protein with numerous surface exposed epitopes and OMP E a 47 kDa protein detected on a variety of heterologous strains. The lactoferrin-binding (LbpA and B) and transferrin-binding (TbpA and B) proteins have molecular sizes of 99-111 and 74-105 kDa, respectively.

[0007] Certain strains of *Staphylococcus aureus* produce immunostimulatory exotoxins such as toxic shock syndrome toxin-1 (TSST-1), staphylococcal enterotoxin A (SEA), SEB and SEC, all of which are associated with food poisoning and toxic shock syndrome (TSS). These exotoxins have been denominated as superantigens (SAg) due to their ability to activate a high frequency of T lymphocytes. SAg bind as unprocessed proteins to HLA class II molecules on APC and oligoclonally activate T cells expressing particular TCR VD chains. In vivo exposure to excessive amounts of SAg results in a strong cytokine production and includes IL-2, TNF- α and IFN- γ , which are associated with a toxic shock like syndrome.

[0008] Since the discovery of the first immunoglobulin-binding bacterial protein, *S. aureus* protein A (SpA) in 1966, this protein has been extensively characterized. The ability of SpA to bind the Fc part of IgG is well known, but SpA also binds a fraction of Ig-molecules of all classes due to the so called 'alternative' binding, which represents an interaction with the variable region of certain heavy chains. All IgG-binding capacity of *S. aureus* has been considered to be mediated by SpA. However, the existence of a second gene in *S. aureus* encoding an Ig-binding protein has also been reported.

[0009] *Streptococcus pyogenes* and *Peptostreptococcus magnus* are other examples of Ig-binding bacteria. *S. pyogenes* produces protein H belonging to the M family of proteins, and has strong affinity for the Fc region of IgG. Proteins expressed by some strains bind IgA instead of IgG or both IgG and IgA. Protein Bac or the B-antigen is an IgA-binding protein expressed by certain strains of group B streptococci. Finally, *P. magnus* expresses protein L that shows high and specific affinity for Ig light chains, especially k light chains, and thereby interacts with all classes of Ig.

[0010] IgD is a unique immunoglobulin that exists in both a soluble and a surface-bound form. Both forms are encoded by the same gene and are splicing products. All mature B lymphocytes have B cell receptors (BCR) consisting of membrane-bound IgD and IgM. Soluble IgD comprises approximately 0.25% of the total amount of serum-Ig. The main function of IgD seems to be as an antigen-receptor on the B cell surface in order to optimize B cell recruitment and accelerated affinity maturation. Antigen is taken up through IgD by endocytosis followed by intracellular degradation and presentation on MHC class II for T cells, which in turn are activated and produce cytokines. Hereby, T cell help is obtained including numerous cytokines (e.g. interleukin-4) and co-stimulatory molecules such as CD28.

[0011] Despite macrophages, dendritic cells, and B cells all can present antigens to T lymphocytes, the B cells are 100-fold more efficient due to the importance of the antigen-presenting immunoglobulin on the surface. An attractive strategy in order to potentiate immunization is to directly

target an antigen to the B cell receptor. It was early shown that the mouse antibody-response against bovine serum albumin (BSA) conjugated to anti-IgD monoclonal antibodies was 100-fold stronger compared to BSA administration without any antibody. In parallel, it has been demonstrated that a mouse myeloma antigen incorporated into the constant region of anti-IgD-antibodies targeted to the surface-bound IgD results in an up to 1000-fold more efficient antigen presentation on MHC class II (15).

[0012] Tolerance induction can be achieved experimentally by B cell activation through the IgD BCR without any additional T cell help. It would also be possible to treat autoimmune diseases by inducing B cell anergy and thus inhibit the production of auto-antibodies. In fact, SLE-prone mice administered dextran-conjugated anti-IgD antibodies exhibit a delayed development of autoimmunity. In yet another study it was shown that B cell activation via IgD decreases a T helper 2-induced IgE response suggesting a therapy for diminishing the IgE production in severely allergic individuals by displacing the antibody response from a Th2- to a Th1-response. By targeting antigens to the B cell receptor IgD, stimulation, tolerance, and a switch from IgE-production can be achieved. In addition, polyclonal activation has been reported. The outcome is depending on the experimental model used. With different constructs including various repeating IgD-binding segments, it is possible to tailor the response.

[0013] The T cell is a significant player in the anti-tumour response since it recognizes tumour-specific antigens. However, the important T cells display commonly depressed activity in the cancer patient due to a general immunosuppression. A triggering of T helper cells would therefore be very beneficial. Vaccination against tumours using antigen presenting cells (APC) has recently been acknowledged (17). Immunization protocols with APC pulsed ex vivo with tumor antigens (peptides) have been shown to induce effective MHC class I presentation for cytotoxic T cells. It has also been demonstrated that EBV-transformed B cells are able to present melanoma antigens for tumour-infiltrating lymphocytes (TIL). In experimental models, it has also been shown that tumour cells transfected with MHC class II and B7 surface molecules, receptors that are abundant on B cells, would be a feasible approach for tumour vaccination. Interestingly, B16 melanoma bearing mice that were injected with B cells pulsed with a tumour lysate from the corresponding cell line showed a prolonged survival due to an increase in IFN- γ producing T cells. It was also demonstrated that the induced T helper cells evoked a stronger cytotoxic response against the solid tumours. Since myeloma antigen targeted to IgD induces a T cell response, the suggested approach using IgD-binding bacterial proteins conjugated to specific tumour antigens would be feasible.

[0014] To target an antigen (e.g. peptide derived from a microbe or a specific tumour) to IgD-bearing B cells in order to trigger both humoral and cellular immune responses a IgD-binding protein or a shorter IgD-binding peptide would be a very feasible vector. Several examples of successful strategies with a similar angle of approach exist. The humoral immune response in mice against bovine serum albumin (BSA) conjugated to anti-IgD monoclonal antibodies is 100-fold stronger compared to when BSA is administered alone. A recent publication by Lunde et al. (15) describes that when a myeloma-derived peptide is integrated

in the constant region of anti-IgD Fab' fragments and injected into mice, a 1,000-fold more efficient antigen presentation is achieved against the antigen in question (15). In parallel, the Ig-binding fragment of *S. aureus* protein A fused with cholera toxin significantly increases both systemic and mucosal immune responses 10- to 100-fold against the cholera toxin (16). Finally, in a mouse tumour model consisting of the experimentally well defined B16 melanoma, activated B lymphocytes that are pulsed ex vivo with peptides derived from the tumour tissue can evoke a stronger anti-tumour response in vivo and consequently a prolonged survival (17).

SUMMARY OF THE INVENTION

[0015] In one aspect the present invention relates to a surface exposed protein, which can be detected in *Moraxella catarrhalis*, having an amino acid sequence as described in SEQ ID NO 1, an apparent molecular weight of 200 kDa and a capacity of selectively binding membrane bound or soluble IgD, or naturally occurring or artificially modified variants thereof, or an immunogenic or IgD-binding fragment of said protein or variants, or an immunogenic and adhesive fragment of said surface exposed protein.

[0016] In another aspect the present invention relates to an immunogenic or IgD-binding fragment of a surface exposed protein as defined above, which fragment can be detected in *Moraxella catarrhalis*, having a capacity of selectively binding membrane bound or soluble IgD, or naturally occurring or artificially modified variants thereof.

[0017] In a further aspect the present invention relates to an immunogenic or IgD-binding fragment as described above, having an amino acid sequence as described in SEQ ID NO 10.

[0018] In still a further aspect the present invention relates to an immunogenic and adhesive fragment of a surface exposed protein as defined above, which fragment can be detected in *Moraxella catarrhalis*, having a capacity of binding erythrocytes and epithelial cells.

[0019] In still another aspect the present invention relates to an immunogenic and adhesive fragment as defined above, having an amino acid sequence as described in SEQ ID NO 8.

[0020] In one aspect the present invention relates to a DNA segment comprising a DNA sequence, as shown in SEQ ID NO 2, which DNA sequence codes for a surface exposed protein of *Moraxella catarrhalis* as defined above, or naturally occurring or artificially modified variants of said DNA sequence.

[0021] In yet another aspect the present invention relates to a DNA segment comprising a DNA sequence which codes for an immunogenic or IgD-binding fragment as defined above.

[0022] In a further aspect the present invention relates to a DNA segment as defined above, comprising a DNA sequence, as shown in SEQ ID NO 11, which DNA sequence codes for an immunogenic or IgD-binding fragment as defined above.

[0023] In still a further aspect the present invention relates to a DNA segment comprising a DNA sequence, which

codes for an immunogenic and adhesive fragment of a surface exposed protein as defined above.

[0024] In another aspect the present invention relates to a DNA segment as above, comprising a DNA sequence, as shown in SEQ ID NO 9, which DNA sequence codes for an immunogenic and adhesive fragment as defined above.

[0025] In a further aspect the present invention relates to a vaccine containing a surface exposed protein of *Moraxella catarrhalis*, said protein having an amino acid sequence as shown in SEQ ID NO 1, an apparent molecular weight of 200 kDa and a capacity of selectively binding membrane bound or soluble IgD, or naturally occurring or artificially modified variants of said protein, or an immunogenic or IgD-binding fragment of said protein or variants, or an immunogenic and adhesive fragment of said surface exposed protein.

[0026] In another aspect the present invention relates to a vaccine containing an immunogenic or IgD-binding fragment of a surface exposed protein of *Moraxella catarrhalis*, which has a capacity of selectively binding membrane bound or soluble IgD, or naturally occurring or artificially modified variants of said fragment, preferably a vaccine containing an immunogenic or IgD-binding fragment having an amino acid sequence as described in SEQ ID NO 10.

[0027] In still another aspect the present invention relates to a vaccine containing an immunogenic and adhesive fragment of a surface exposed protein of *Moraxella catarrhalis* as defined above, preferably a vaccine containing an immunogenic and adhesive fragment having an amino acid sequence as described in SEQ ID NO 8.

[0028] In one preferred embodiment said vaccines are combined with another vaccine and in another preferred embodiment said vaccines are combined with an immunogenic portion of another molecule.

[0029] In one aspect the present invention relates to a plasmid or phage comprising a DNA sequence, which codes for a surface exposed protein of *Moraxella catarrhalis*, said protein having an amino acid sequence as shown in SEQ ID NO 1, an apparent molecular weight of 200 kDa and a capacity of selectively binding membrane bound or soluble IgD, or naturally occurring or artificially modified variants thereof, or an immunogenic or IgD-binding fragment of said protein or variants.

[0030] In another aspect the present invention relates to a plasmid or phage comprising a DNA sequence, which codes for an immunogenic or IgD-binding fragment of a surface exposed protein, which fragment can be detected in *Moraxella catarrhalis* and has a capacity of selectively binding membrane bound or soluble IgD, or naturally occurring or artificially modified variants of said fragment, preferably a plasmid or phage comprising a DNA sequence, which codes for an immunogenic or IgD-binding fragment having an amino acid sequence as described in SEQ ID NO 10.

[0031] In still another aspect the present invention relates to a plasmid or phage comprising a DNA sequence, which codes for an immunogenic and adhesive fragment of a surface exposed protein as defined above, which fragment can be detected in *Moraxella catarrhalis* and has a capacity of selectively binding erythrocytes and epithelial cells or

naturally occurring or artificially modified variants of said fragment, preferably a plasmid or phage comprising a DNA sequence, which codes for an immunogenic and adhesive fragment having an amino acid sequence as described in SEQ ID NO 8.

[0032] In yet another aspect the present invention relates to a non human host comprising at least one plasmid or phage as defined above, and capable of producing said protein or variants, or said immunogenic or IgD-binding fragment of said protein or variants, or said immunogenic and adhesive fragment of said protein, which host is chosen among bacteria, yeast and plants. In one embodiment the host is *E. coli*.

[0033] In one aspect the present invention relates to a recombinant DNA molecule comprising a DNA sequence coding for a surface exposed protein of *Moraxella catarrhalis*, said protein having an amino acid sequence as shown in SEQ ID NO 1, an apparent molecular weight of 200 kDa and a capacity of selectively binding membrane bound or soluble IgD, or naturally occurring or artificially modified variants thereof, or for an immunogenic or IgD-binding fragment of said protein, or variants, which DNA sequence is fused to another gene.

[0034] In another aspect the present invention relates to a recombinant DNA molecule comprising a DNA sequence coding for an immunogenic or IgD-binding fragment of a surface exposed protein, which fragment can be detected in *Moraxella catarrhalis* and has a capacity of selectively binding membrane bound or soluble IgD, or naturally occurring or artificially modified variants thereof, which DNA sequence is fused to another gene, preferably a recombinant DNA molecule comprising a DNA sequence coding for an immunogenic or IgD-binding fragment having an amino acid sequence as described in SEQ ID NO 10.

[0035] In still another aspect the present invention relates to a recombinant DNA molecule comprising a DNA sequence coding for an immunogenic and adhesive fragment of a surface exposed protein as above, which fragment can be detected in *Moraxella catarrhalis* and has a capacity of selectively binding erythrocytes and epithelial cells, or naturally occurring or artificially modified variants of said fragment, which DNA sequence is fused to another gene, preferably a recombinant DNA molecule comprising a DNA sequence coding for an immunogenic and adhesive fragment having an amino acid sequence as described in SEQ ID NO 8.

[0036] In yet another aspect the present invention relates to a plasmid or phage comprising said fused DNA sequence as defined above.

[0037] In a further aspect the present invention relates to a non-human host comprising at least one plasmid or phage as defined above, which host is chosen among bacteria, yeast and plants. In one embodiment the host is *E. coli*.

[0038] In one aspect the present invention relates to a fusion protein or polypeptide, in which a surface exposed protein of *Moraxella catarrhalis*, said protein having an amino acid sequence as shown in SEQ ID NO 1, an apparent molecular weight of 200 kDa and a capacity of selectively binding membrane bound or soluble IgD, or naturally occurring or artificially modified variants thereof, or an immunogenic or IgD-binding fragment of said protein or variants, is

combined with another protein by the use of a recombinant DNA molecule as defined above.

[0039] In another aspect the present invention relates to a fusion protein or polypeptide, in which an immunogenic or IgD-binding fragment of a surface exposed protein, which fragment can be detected in *Moraxella catarrhalis*, which has a capacity of selectively binding membrane bound or soluble IgD, or naturally occurring or artificially modified variants thereof, is combined with another protein by the use of a recombinant DNA molecule as defined above.

[0040] In still another aspect the present invention relates to a fusion protein or polypeptide in which an immunogenic and adhesive fragment of a surface exposed protein as defined above, which fragment can be detected in *Moraxella catarrhalis* and has a capacity of selectively binding erythrocytes and epithelial cells, or naturally occurring or artificially modified variants of said fragment, is combined with another protein by the use of a recombinant DNA molecule as defined in above.

[0041] In yet another aspect the present invention relates to a fusion product, in which a surface exposed protein of *Moraxella catarrhalis*, said protein having an amino acid sequence as shown in SEQ ID NO 1, an apparent molecular weight of 200 kDa and a capacity of selectively binding membrane bound or soluble IgD, or naturally occurring or artificially modified variants of said protein, or an immunogenic or IgD-binding fragment of said protein or variants, is covalently or by any other means bound to a protein, carbohydrate or matrix.

[0042] In a further aspect the present invention relates to a fusion product in which an immunogenic or IgD-binding fragment of a surface exposed protein, which fragment can be detected in *Moraxella catarrhalis* and has a capacity of selectively binding membrane bound or soluble IgD, or naturally occurring or artificially modified variants of said fragment, is covalently or by any other means bound to a protein, carbohydrate or matrix.

[0043] In still another aspect the present invention relates to a fusion product in which an immunogenic and adhesive fragment of a surface exposed protein as defined above, which fragment can be detected in *Moraxella catarrhalis* and has a capacity of selectively binding erythrocytes and epithelial cells, or naturally occurring or artificially modified variants of said fragment, is covalently, or by any other means, bound to a protein, carbohydrate or matrix. Preferably, a fusion product in which an immunogenic or IgD-binding fragment, having an amino acid sequence described in SEQ ID NO 10, is covalently, or by any other means, bound to a protein, carbohydrate or matrix. Preferably, a fusion product in which an immunogenic and adhesive fragment, having an amino acid sequence described in SEQ ID NO 8, is covalently, or by any other means, bound to a protein, carbohydrate or matrix.

[0044] In one aspect the present invention relates to a method of detecting IgD using a surface exposed protein of *Moraxella catarrhalis*, said protein having an amino acid sequence as shown in SEQ ID NO 1, an apparent molecular weight of 200 kDa and a capacity of selectively binding membrane bound or soluble IgD, or naturally occurring or artificially modified variants of said protein, or an immunogenic or IgD-binding fragment of said protein or variants, optionally labelled and/or bound to a matrix.

[0045] In a further aspect the present invention relates to a method of detecting IgD using an immunogenic or IgD-binding fragment of a surface exposed protein, which fragment can be detected in *Moraxella catarrhalis* and has a capacity of selectively binding membrane bound or soluble IgD, or naturally occurring or artificially modified variants of said fragment, optionally labelled and/or bound to a matrix.

[0046] In another aspect the present invention relates to a method of detecting IgD using an immunogenic or IgD-binding fragment of a surface exposed protein of *Moraxella catarrhalis*, having an amino acid sequence as described in SEQ ID NO 10, and a capacity of selectively binding membrane bound or soluble IgD, or naturally occurring or artificially modified variants of said fragment, optionally labelled and/or bound to a matrix.

[0047] In a further aspect the present invention relates to a method of separating IgD using a surface exposed protein of *Moraxella catarrhalis*, said protein an amino acid sequence as shown in SEQ ID NO 1, an apparent molecular weight of 200 kDa and a capacity of selectively binding membrane bound or soluble IgD, or naturally occurring or artificially modified variants of said protein, or an immunogenic or IgD-binding fragment of said protein or variants, optionally bound to a matrix.

[0048] In yet another aspect the present invention relates to method of separating IgD using an immunogenic or IgD-binding fragment of a surface exposed protein, which fragment can be detected in *Moraxella catarrhalis* and has a capacity of selectively binding membrane bound or soluble IgD, or naturally occurring or artificially modified variants of said fragment, optionally bound to a matrix.

[0049] In another aspect the present invention relates to a method of separating IgD using an immunogenic or IgD-binding fragment of a surface exposed protein of *Moraxella catarrhalis*, having an amino acid sequence as described in SEQ ID NO 10, and a capacity of selectively binding membrane bound or soluble IgD, or naturally occurring or artificially modified variants of said fragment, optionally labelled and/or bound to a matrix.

[0050] In one aspect the present invention relates to a method of isolation of a surface exposed protein of *Moraxella catarrhalis*, said protein having an amino acid sequence as shown in SEQ ID NO 1, an apparent molecular weight of 200 kDa and a capacity of selectively binding membrane bound or soluble IgD, or naturally occurring or artificially modified variants of said protein, or an immunogenic or IgD-binding fragment of said protein or variants. Said method comprises the steps:

[0051] a) subjecting a suspension of *Moraxella catarrhalis* to an extraction process by adding a zwitterionic or non-ionic detergent, optionally in the presence of EDTA;

[0052] b) applying the extract comprising the IgD-binding protein of *Moraxella catarrhalis* from step a) to an adsorption column;

[0053] c) eluting the IgD-binding protein; and

[0054] d) separating the IgD-binding protein.

[0055] In another embodiment the concentration of the detergent in step a) of the method is within the range 0.1-5%, preferably 3%.

[0056] In yet another aspect the present invention relates to a method for treatment of an autoimmune disease comprising extra corporal circulation of the blood through a material comprising a surface exposed protein as defined above, or a fragment thereof as defined above, for removal of IgD from the blood.

[0057] In one aspect the present invention relates to a purified antibody which is specific to an immunogenic portion of a surface exposed protein *Moraxella catarrhalis*, said protein having an amino acid sequence as described in SEQ ID NO 1, an apparent molecular weight of 200 kDa and a capacity of selectively binding membrane bound or soluble IgD, or naturally occurring or artificially modified variants thereof, or an immunogenic or IgD-binding fragment of said protein or variants.

[0058] In another aspect the present-invention relates to a purified antibody as described above, which is specific to an immunogenic or IgD-binding fragment as defined above, having a capacity of selectively binding membrane bound or soluble IgD, or naturally occurring or artificially modified variants of said fragment.

[0059] In still another aspect the present invention relates to a purified antibody as described above, which is specific to an immunogenic or adhesive fragment as defined above, having a capacity of binding erythrocytes and epithelial cells.

DESCRIPTION OF THE FIGURES

[0060] FIG. 1. Chromatography and rechromatography on a Sephacryl S-400 column of Empigen® soluble extract from *M. catarrhalis* after ion exchange chromatography. The solid line indicates protein content of the first chromatography and the broken line rechromatography of the first peak. Vo specifies the void volume.

[0061] FIG. 2. Analysis on SDS-PAGE of fractions representing different purification steps of MID. The fractions are shown for crude extract in 3% Empigen®, after an ion-exchange chromatography on Q-sepharose column, and after the 1st and 2nd gelfiltrations on a Sephacryl S-400 column. Two gels were run simultaneously, one was stained with Coomassie blue (Stain) and one was blotted onto Immobilon-P membranes, probed with human IgD(κ) myeloma protein (IgD), anti-UspA (α Usp), or anti-CopB (α B) monoclonal antibodies followed by incubation with appropriate horseradish peroxidase-conjugated secondary antibodies. Molecular weights of marker proteins are indicated to the left.

[0062] FIG. 3. Binding of MID to human myeloma sera representing different immunoglobulin classes. All sera were diluted in two-fold steps (4 to 0.3 μ g) and applied to a nitrocellulose membrane. After saturation, washing and blocking, an [125 I]-MID-labeled probe was added. After overnight incubation and additional washings, specific MID-IgD binding was visualized by autoradiography.

[0063] FIG. 4. IgD-bearing B cells specifically bound FITC-conjugated MID. PBLs stained with RPE-conjugated mAbs against CD19+ (A) or CD3+ (D) followed by incubation with MID-FITC were compared to PBLs incubated with anti-CD19 mAb in addition to an anti-IgD mAb (B). Double staining with CD3+ and anti-IgD mAb is demonstrated in (E). In (C), a panel with PBLs pre-incubated with

a rabbit immunoglobulin fraction against human IgD followed by addition of anti-CD19 mAb and MID-FITC is shown. A control sample with no antibodies or MID-FITC is also included (F). PBLs were isolated from heparinized human blood using Lymphoprep one-step gradients. Lymphocytes (2.5×10^5) were incubated with the appropriate anti-bodies, washed and further incubated with MID-FITC (10 μ g/ml). All incubations were performed on ice and after final washings, PBLs were analysed by flow cytometry. In this particular experiment, 68% of the total lymphocyte population was gated and analysed. Less than 2% of the cells were labeled when isomatched mAbs were included as negative controls. A pre-immune rabbit serum did not significantly block MID-FITC binding to the IgD BCR (not shown). An experiment with a typical donor out of three separate ones analysed is shown.

[0064] FIG. 5. Schematic map of the mid gene showing the cloning strategy. Oligonucleotide primers used for DNA amplification are indicated by arrows placed above (PCR) and below (inverse PCR [IPCR]) the relevant sequences. Degenerated primers based upon the amino acid sequences outlined in Table II and specific primers are shown by broken and solid lines, respectively.

[0065] FIG. 6. Nucleotide sequence of the mid gene from *M. catarrhalis* Be5 together with the deduced amino acid sequence. Putative -35, -10 regions, a possible ribosome binding site (RBS), inverted repeat, the predicted signal peptide, and two alternative start-codons at amino acid positions 1 and 17 are indicated. The stop-codon and the inverted repeat is also shown.

[0066] FIG. 7. The degrees of identity and similarity between MID isolated from five *M. catarrhalis* strains and UspA1 and A2 from ATCC 25238 are demonstrated. The identity and similarity were calculated using the software Needle.

[0067] FIG. 8. Comparison of the amino acid sequence of MID with the protein presented in U.S. Pat. No. 5,808,024.

[0068] FIG. 9. Recombinantly expressed MID retained its IgD-binding capacity. The left panel shows a Coomassie brilliant blue stained gel and the right panel a Western blot probed with human IgD. Native MID protein (MID) was run and compared to cytoplasmic (C), periplasmic (P), and membrane (M) fractions. Numbers on the left indicate a molecular weight standard. *E. coli* BL21DE3 containing pET16-MID were induced for 4 h by IPTG. Cellular fractions were collected and proteins were separated by two SDS-PAGE that was run in parallel and either stained with Coomassie brilliant blue or blotted onto an Immobilon-P membrane. The membrane was probed with human IgD followed by incubation with a horseradish peroxidase-conjugated secondary antibody.

[0069] FIG. 10. MID764-913 (fragment E) and MID902-1200 (fragment F) is responsible for erythrocyte hemagglutination and IgD-binding, respectively. A series of truncated MID proteins (designated A to I) were manufactured. Recombinant proteins containing histidine tags in their C-terminals (A to H) or fused with maltose binding protein (I) were produced in *E. coli* and purified on nickel and amylose resin columns, respectively.

[0070] FIG. 11. MID962-1200 (fragment F2) has a conserved IgD-binding capacity compared with full length

MID1-2139. Equimolar concentrations (range 240 to 0.06 nmol) of purified full length MID1-2139 and 8 truncated MID fragments (F1 to F8) were analysed for IgD-binding by dot blots. The proteins MID902-1130 (F8), MID985-1130 (F7), and MID1000-1200 (F4) did not attract IgD, whereas all other fragments bound IgD. DNA encoding for the various truncated MID proteins were cloned into the expression vector pET26b(+) and produced in *E. coli*. The recombinant proteins containing His-tags were purified and dot blotted onto a nitrocellulose membrane. The membrane was probed with human IgD followed by secondary HRP-conjugated polyclonal antibodies that were used for detection.

[0071] FIG. 12. A tetrameric structure of MID962-1200 (F2) is a prerequisite for optimal IgD-binding. (A), SDS-PAGE of MID962-1200 after treatment at 60° C. separates monomers and tetramers. After heat treatment at 100° C. monomers only can be detected. (B), Corresponding Western blot with IgD as probe reveals weak IgD-binding to monomers. (C), Mean IgD-binding to tetramers and monomers, respectively in 6 different experiments. IgD-binding is shown as arbitrary units/ μ g protein. MID962-1200 was treated in SDS-sample buffer at 60° C. or 100° C. for 10 min, and subjected to SDS-PAGE and Western blot analysis. The resulting Coomassie-stained gel and Western blot were analysed by densitometry. The percentage of protein migrating as tetramer or monomer was calculated and compared with the IgD-binding capacity.

[0072] FIG. 13. [¹²⁵I]-labelled recombinant MID764-913 (fragment E) is specifically attracted to erythrocytes and epithelial cells. [¹²⁵I]-labelled MID and a series of truncated [¹²⁵I]-MID fragments (C, E, F, G, and I) were added to human erythrocytes (A). The recombinant [¹²⁵I]-labelled MID fragments were also added to epithelial cells (B). All truncated MID proteins (except fragment I) were produced in *E. coli* followed by purification on nickel resins. Fragment I was a fusion protein with MBP and consequently purified on an amylose resin. The recombinant proteins were labelled with [¹²⁵I] and added to erythrocytes or the epithelial cell line A549. After several washings, bound radioactivity was measured in a γ -counter. Data are presented as mean values of 2 experiments with duplicates. Error bars indicate SD.

[0073] FIG. 14. Adhesion of MID-expressing *M. catarrhalis* to epithelial cells depends on the amino acid residues MID764-913 (fragment E). A decreased adhesion to epithelial cells was observed with MID-expressing bacteria coated with rabbit anti-MID1-2139 or anti-MID764-913 polyclonal antibodies compared to a pre-immune serum or anti-MID1011-1446 (fragment G) pAb. Bacteria were pre-incubated with the pre-immune serum or specific antisera for 1 h at 4° C. Bacteria were added to the epithelial cells followed by centrifugation and incubation for 30 min at 37° C. After washings, cells were treated with trypsin-EDTA and the suspensions were plated on blood agar plates. Colony forming units were counted after an overnight incubation. The adherence ratio (cfu added/cfu adhered) was calculated. Results are shown as mean values of 4 separate experiments with duplicates. Error bars indicate SD. *** $P \leq 0.001$, ** $P \leq 0.01$ and * $P \leq 0.05$.

DESCRIPTION OF THE INVENTION

[0074] MID is not identical to previously well characterized outer membrane proteins of *M. catarrhalis*. It is not

recognized by monoclonal antibodies derived against the UspA or CopB outer membrane antigens. MID also has a different migration pattern in SDS-PAGE and a different composition as shown by amino acid and DNA sequence analysis. MID appears as a 200 kDa band in accordance with the Mw from the deduced amino acid sequence, but also as an extra band with an estimated molecular mass of more than 1,000 kDa. The extra band indicates that native MID is an oligomeric complex in a similar fashion as UspA (11). This is further supported by the fact that MID was eluted immediately after the void volume from a Sephacryl. S-400 column with a fractionation range of up to -8,000 kDa. The amino acid sequences for MID shows 11.1 and 6.7% identity, respectively, with the USPA1 and USPA2 outer membrane proteins from *M. catarrhalis* (FIG. 7).

[0075] In a recent patent publication, an outer membrane protein of *M. catarrhalis* with a molecular mass of approximately 200 kDa was isolated (12). A sequence encoding a protein of approximately 200 kDa was also provided. However, that protein sequence is not identical to the sequence provided by us and shows only 45.9 to 54.4% identity with MID (FIG. 7). The protein was shown to be immunogenic, but no further biological functions were presented. In addition, a 200 kDa protein is associated with hemagglutinating *M. catarrhalis* (13,14).

[0076] Experimental Part

[0077] The present investigation describes the isolation, purification, characterization, cloning and expression of the novel Ig-binding protein named MID of *M. catarrhalis*, which has affinity for human IgD, of an immunogenic or IgD-binding fragment of said surface exposed protein, and of an immunogenic and adhesive fragment of said surface exposed protein.

[0078] Materials and Methods

[0079] Bacteria and Plasmids

[0080] *M. catarrhalis*, strain Be5, was a clinical isolate from a nasopharyngeal swab culture at our Department. 118 strains isolated from blood, nasopharynx, and sputum were obtained from Sweden, Denmark, Finland, Hungary, Japan, and USA. Sequenced strains and plasmids used for expression are shown in Table I.

TABLE I

Bacterial strains and plasmids used in this study		
Strains or plasmid	Description (site of isolation)	Reference or source
Strains		
DH5 α	<i>E. coli</i>	Novagen
BL21DE3	<i>E. coli</i>	Novagen
BBH17	<i>M. catarrhalis</i> (sputum)	Christensen (Denmark)
Be5	<i>M. catarrhalis</i> (nasopharynx)	Dept. Clinical Microbiology, Malmö, Sweden
NCTC 4103	<i>M. catarrhalis</i> (nasopharynx)	CCUG (Gothenburg, Sweden)
RH1	<i>M. catarrhalis</i> (blood)	Christensen (Denmark)
RH4	<i>M. catarrhalis</i> (blood)	Christensen (Denmark)

TABLE I-continued

Bacterial strains and plasmids used in this study		
Strains or plasmid	Description (site of isolation)	Reference or source
Plasmid		
pET16 (b)	Expression vector	Novagen
pET16-MID	PET16 (b) with the ORF of mid	This study

[0081] Bacteria were grown overnight in Nutrient Broth (Oxoid, Basingstoke Hampshire, England), harvested and washed in phosphate-balanced saline (PBS), pH 7.2 by centrifugation.

[0082] Immunoglobulins, Sera and Other Proteins

[0083] The Ig preparations IgG1 (κ), IgG1(λ), IgG2(κ), IgG2(λ), IgG3(κ), IgG3(λ), IgG4(κ), IgG4(λ), IgA1(κ), IgA1(λ), IgA2(κ), IgA2(λ), IgM (κ), IgM(λ), IgD(κ), IgD(λ) and IgE(κ) were all of human origin and purchased from The Binding Site (Birmingham, England). IgD myeloma sera IgD(κ) and IgD(λ) were from the same company and IgD-standard serum OTRD 02/b3 was from Behringwerke AG (Marburg, Germany). Myeloma sera IgD(λ)A, IgD(λ) B, IgG A, IgG B, IgG C, IgM, IgA A and IgA B were obtained from the Department of Clinical Chemistry, Malmö, Sweden. The concentration of respective immunoglobulins was according to the suppliers.

[0084] Antibodies

[0085] Horseradish peroxidase (HRP)-conjugated goat anti-human IgD was from Biosource (Camarillo, Calif.). Fluorescein isothiocyanate (FITC)-conjugated mouse anti-human IgD, unlabelled rabbit anti-human IgD, and HRP-labelled rabbit anti-mouse Ig were purchased from Dako-patts (Gentofte, Denmark). Goat anti-human IgD and HRP-conjugated rabbit anti-human polyvalent immunoglobulins was from Sigma (St. Louis, Mo.). Phycoerythrin (RPE)-conjugated mouse anti-human CD3 and CD19 were from Becton Dickinson (San José, Calif.). Mouse monoclonal antibodies 17C7 (UspA) and 10F3 (CopB) were kindly provided by Dr. Eric J. Hansen, Department of Microbiology, University of Texas (Dallas, Tex.).

[0086] Antisera

[0087] Rabbits were immunized intramuscularly with 200 μ g of purified MID (Forsgren et al., 2001), recombinant MID fragments, or recombinant UspA1 emulsified in complete Freund's adjuvans (Difco, Becton Dickinson, Heidelberg, Germany) and boosted on days 18 and 36 with the same dose of protein in incomplete Freund's adjuvans. Blood was drawn 2 to 3 weeks later. The anti-UspA1 polyclonal antibodies reacted with both recombinant UspA1 and UspA2 as examined by Western blots.

[0088] SDS-PAGE and Detection of Proteins on Membranes (Western Blot)

[0089] SDS-PAGE was run using a commercial electrophoresis system consisting of 10% Bis-Tris gels with running (MES), sample (LDS), and transfer buffer as well as a blotting instrument (Novex, San Diego, Calif.). Briefly,

samples were boiled for 10 min followed by electrophoresis at room temperature using Protein II vertical slab electrophoresis cells (Novex) at 150 constant voltage. Gels were stained with Coomassie Brilliant Blue R-250 (Bio-Rad, Sundbyberg, Sweden). In addition, electrophoretical transfer of protein bands from the gel to an immobilon-P membrane (Millipore, Bedford, Mass.) was carried out at 30 V for 2-3 h. After transfer, the immobilon-P membrane was blocked in PBS with 0.05% Tween 20 (PBS-Tween) containing 5% milk powder. After several washings in PBS-Tween, the membrane was incubated for 1 h in room temperature with purified IgD myeloma protein (0.5 μ g/ml, hu IgD(κ) myeloma; The Bindingsite, Birmingham, UK) in PBS-Tween including 2% milk powder. HRP-conjugated goat anti-human IgD diluted $\frac{1}{1000}$ in the same buffer was added after several washings in PBS-Tween. In some experiments, IgD myeloma protein was replaced by myeloma protein of other immunoglobulin classes and HRP-labeled anti-human polyvalent immunoglobulins (Sigma) was used as secondary layer. Mouse mAbs 17C7 and 10F3 were used to detect *Moraxella* outer membrane proteins UspA1, 2 and Cop B, respectively (7,8). In these experiments, HRP-labeled rabbit anti-mouse immunoglobulins were used as a secondary layer. After incubation for 40 min at room temperature and several additional washings in PBS-Tween, development was performed with ECL Western blotting detection reagents (Amersham Pharmacia Biotech, Uppsala, Sweden). Western blots were analysed by a Personal Molecular Imager FX (Bio-Rad).

[0090] Enzyme Linked Immunosorbent Assay (ELISA)

[0091] ELISA was used to quantitate the immunoglobulin D-binding protein. Extracts of *M. catarrhalis* diluted in five-fold steps in 0.1 M Tris-HCl, pH 9.0 were added in 100 μ l volumes to microtiter plates (F96 Maxisorb, Nunc-Immuno module, Roskilde, Denmark), which were sealed and incubated at 4° C. overnight. After washing the plate four times in PBS-Tween, blocking buffer PBS-Tween containing 1.5% ovalbumin, was added. The plate was incubated for 1 h at room temperature and further washed four times with PBS-Tween. IgD(κ) myeloma protein, 0.05 μ g in 100 μ l PBS-Tween containing 1.5% ovalbumin was added to each well and after incubation for 1 h at room temperature the plate was washed four times with PES-Tween. After 1 h incubation with HRP-conjugated goat anti-human IgD diluted $\frac{1}{1000}$ in the same buffer and subsequent washing with PBS-Tween, tetramethylbenzidine (20 mM) in 0.1 M potassium citrate solution, pH 4.25, mixed with hydrogen peroxide (final concentration 0.002%) was added. After 30 min, the enzymatic reaction was stopped by adding 2 M sulphuric acid. The optical density (OD) was then measured at 450 nm in an automated ELISA reader (Multiskan Plus, Labsystems, Finland)

[0092] Dot Blot Assay

[0093] Purified MID (0.0005-0.2 μ g) in a volume of 100 μ l in 0.1 M Tris-HCl, pH 9.0 were manually applied to nitrocellulose membranes (Schleicher & Schuell, Dassel, Germany) by using a dot blot apparatus (Schleicher & Schuell). After saturation, the membranes were incubated for 2 h at room temperature in PBS-Tween containing 1% ovalbumin and 5% milk powder and washed four times with PBS-Tween. Human myeloma protein 0.5 μ g in 100 μ l PBS-Tween was added and after 2 h of incubation, followed by

several washings in PBS-Tween, HRP-labelled anti-human light chains (κ and λ) (Dakopatts) in dilution $1/200$ was used as a secondary antibody. Development was performed as described above for the Western blots. In another set of experiments, dilutions of human myeloma sera in a volume of $100 \mu\text{l}$ in 0.1 M Tris-HCl, pH 9.0 was first applied to the membranes. After saturation, incubations, blocking, and washing steps were performed as described above. Thereafter, [^{125}I]-labeled protein MID probe (5 to 10×10^5 cpm/ml) in PBS-Tween was added. After overnight incubation, the membrane was washed four times with PBS-Tween, air dried, and exposed to Kodak CEA.C x-ray films at -70°C . using Kodak X-Omat regular intensifying screen (Eastman Kodak, Rochester, N.Y.).

[0094] Extraction of IgD-Binding Protein

[0095] *M. catarrhalis* bacteria (1.5×10^{11} colony forming units (cfu)/ml) were suspended in 0.05 M Tris-HCl-buffer (pH 8.8) containing $0.1\text{--}5\%$ Empigen (Calbiochem Novabiochem, Bedford, Mass.). In some experiments Empigen was replaced by CHAPS (Sigma), n-Octyl-p-D-glucoside (Bachem, Budendorf, Switzerland) or Triton X-100 (Sigma). All these detergents at a concentration of $0.1\text{--}5\%$ were tested with or without 0.01 M EDTA. The bacterial suspensions were mixed by magnetic stirring for 2 h at 37°C . After centrifugation at $8000 \times g$ for 20 min at 4°C ., the supernatants were filtrated with sterile filters ($0.45 \mu\text{m}$; Sterivex-HV, Millipore).

[0096] Purification of IgD-Binding Protein

[0097] *M. catarrhalis* extract in 3% Empigen® was applied to a Q-sepharose column (Amersham Pharmacia Biotech) equilibrated with 0.05 M Tris-HCl (pH 8.8) containing 0.1% Empigen®. The column was eluted using a 0 to 1 M NaCl linear gradient in the same buffer. Fractions showing most IgD-binding activity as detected by ELISA and Western Blot were pooled, dialyzed in Spectraphor membrane tubes (molecular weight cut off $25,000$; Spectrum, Laguna hills, CA) against 0.05 M Tris-HCl, pH 8.8, concentrated on YM100 disc membranes (molecular weight cut off $100,000$; Amicon, Beverly, Mass.) and then applied to gel-chromatography. The gel-filtration of IgD-binding protein was done on a Sephacryl S-400 high resolution column (20 by 900 mm ; Amersham Pharmacia Biotech), equilibrated with 0.05 M Tris-HCl, pH 8.8 containing 0.1% Empigen®. Fractions containing the strongest IgD-binding activity were concentrated and re-chromatographed as described above.

[0098] Peptide Cleavage and Amino Acid Sequence Analysis

[0099] Purified MID in 0.05 M Tris-HCl (pH 8.8) containing 0.1% Empigen® was treated with trypsin or chymotrypsin in an enzyme-protein-ratio of $1:10$ at 37°C . overnight. The cleavage mixtures were subjected to SDS-PAGE and peptide bands transferred to Immobilon membranes were automatically sequenced or exposed to Western blot analysis as described above. In order to get an N-terminal sequence of the protein, deblocking of intact MID from a possible pyroglutamate group was attempted. Two different protocols were used to deblock both soluble and membrane-bound protein. Automated amino acid sequence analysis was performed with an Applied Biosystems (Foster City, Calif.) 470A gas-liquid solid phase sequenator with

on-line detection of the released aminoacid phenylthiohydantoin derivatives by Applied Biosystems model 120A PTH analyser.

[0100] Labeling of Protein MID

[0101] Purified MID was radioiodinated ($[^{125}\text{I}]$; Amersham, Buckinghamshire, England) to high specific activity with lactoperoxidase. The preparations contained approximately 0.05 mol iodine per mol protein. FITC (Sigma) was conjugated to purified MID using a standard protocol. Briefly, MID (2 mg/ml) in 0.1 M carbonate buffer, pH 9.5, was incubated with $0.15 \mu\text{g/ml}$ FITC solubilized in DMSO. After 45 min at room temperature and constant stirring, the sample was diluted and subjected to a PD10 column (Pharmacia Biotech) pre-equilibrated with PBS, pH 7.4. The resulting MID-FITC was used for binding studies.

[0102] DNA Isolation and Sequencing

[0103] Genomic DNA was extracted from five *M. catarrhalis* strains (see Table I) using a genomic DNA preparation kit (Qiagen, Hilden, Germany) and was subsequently used as template for amplification of the MID gene by PCR. Degenerate primers were synthesized according to the amino terminal sequences of the four peptide fragments (Table II).

TABLE II

Amino acid sequences derived from highly purified MID after protease digestions.	
Peptide sequence	Protease
TAQANTESSIAVG	Trypsin
GNTATNFSVNSGGDNALIN	Trypsin
QGINEDNAFVKGLEK	Trypsin
PSTVKADN	Chymotrypsin

[0104] In some of the PCR reactions (High Fidelity PCR System; Roche, Bromma, Sweden), specific primers were used in combination with the degenerate ones. DNA sequences flanking the central region of the gene, where the peptide fragments originated from, were isolated using inverse PCR (IPCR). Briefly, genomic DNA was cleaved with the following restriction enzymes used separately; EcoRV, SphI and PstI for the isolation of the start codon, and AccI, AsuI and finally HincII for the isolation of the stop codon sequences. The resulting fragments were religated upon themselves (Rapid DNA Ligation Kit; Roche) and the DNA was used in IPCR. To amplify the start and stop codon areas of the gene, specific primers were designed and used in a long template PCR (LTPCR) (Expand Long Template PCR System; Roche). All PCR products were cloned into pPCR-Script-Amp (Stratagene, La Jolla, Calif.) and sequenced using the Big Dye Cycle Sequencing Ready Reaction kit (Applied Biosystems, Warrington, England). Primers for amplification of genomic DNA were designed using the Oligo Primer Analysis software (Molecular Biology Insights, Cascade, Co). The signal peptide was deduced using the SignalP V1.1 World Wide Web Prediction Server Center for Biological Sequence Analysis (<http://www.cbs.dtu.dk/services/SignalP/>)

[0105] PCR Amplification of the Mid Gene

[0106] The complete 6.4 kb open reading frame of the mid gene was amplified by PCR using *M. catarrhalis* Bc5 strain genomic DNA as template. The oligonucleotide primers containing BamHI restriction enzyme recognition sequences were 5'-cgggacccgatggccggtggcgaatatgcc-3' (primer A, SEQ ID NO 3) and 5'-cgcgatccgaaaagtgaaaacctgcaccaactgctgc-3' (primer B, SEQ ID NO 4) generating a PCR product of 6391 base pairs. BamHI-digested insert was ligated into pET16(b) and the resulting plasmid pET16-MID was transformed into DH5 α . Both strands of the cloned PCR product were sequenced.

[0107] To examine the full length mid gene in other *M. catarrhalis* strains, the primers A and B were used. In addition, primers used for narrowing down the sequence encoding the signal peptide were either primer A or 5'-tgtcagcatgtatcatttttaagtaaacaccatg-3' (primer C; detecting the upper start codon, SEQ ID NO 5) in combination with 5'-catcaattgcatgtctgggatcttg-31 (primer D; located at a conserved region just outside the signal peptide, SEQ ID NO 6) generating 192- and 266-base pair long PCR products (using Bc5 genomic DNA as template), respectively. Furthermore, primer A or C in combination with 5'-ctcaccatcagtgccatagacc-3' (primer E, SEQ ID NO 7) were used for confirming the existence of the mid gene resulting in 1355- and 1429-base pair long fragments, respectively. The expand long template PCR system was used in all reactions and conditions were as recommended by the manufacturer (Roche, Bromma, Sweden).

[0108] Expression of the Mid Gene Product in *E. coli* and Cell Fraction

[0109] To express the mid gene product, pET16-MID was transformed into the expression host BL21DE3, containing a chromosomal copy of the T7 RNA polymerase gene under lacUV5 control. The recombinant bacteria were grown in LB medium supplemented with 2% of glucose and ampicillin. Overexpression was achieved by growing cells to logarithmic-growth phase at OD₆₀₀ of 0.6 followed by addition of 1 mM IPTG. After 4 h of induction, bacteria were sonicated according to a standard protocol and the resulting proteins were analysed by SDS-PAGE.

[0110] Localisation of recombinant protein from pET16-MID was carried out by osmotic shock as described. Briefly, broth cultures of induced and uninduced cells were harvested and resuspended in 30 mM Tris-HCl, pH 8, containing 20% sucrose. EDTA was added to a final concentration of 1 mM and the solution was slowly stirred at room temperature for 10 min. After centrifugation at 10,000 g for 10 min at 4° C., cells were resuspended in ice-cold 5 mM MgSO₄ and stirred for 10 min on ice. During this step, the periplasmic proteins were released into the buffer. The supernatant containing the periplasmic fraction was collected by centrifugation. Bacteria were completely lysed by lysozyme at a final concentration of 100 mg/ml followed by sonication. Finally, the soluble cytoplasmic and insoluble membrane fractions were collected.

[0111] Truncated MID-Derived Recombinant Proteins

[0112] The different truncated MID fragments designated A to I with their specific sizes and primers for generating the proteins are shown in **FIG. 10**. The open reading frame of the mid gene from *M. catarrhalis* Bc5 (in pET26-MID)

(Forsgren et al., 2001) was used as template. All MID constructs, except for MID367-590 (C), were amplified by PCR using specific primers introducing BamHI and HindIII restriction enzyme sites. Due to an internal HindIII restriction enzyme site in fragment C, an XhoI site was used instead of HindIII at the 3' end. All PCR products, except for MID1616-2139 (I), were cloned into pET26 (Novagen, Madison, Wis.). The PCR product encoding for the I fragment was cloned into pMAL-c2 (New England Biolabs, Beverly, Mass.). To avoid presumptive toxicity, the resulting plasmids were first transformed into the non-expressing host *E. coli* DH5 α . Thereafter, plasmids encoding for fragments A to D, G and H were transformed into *E. coli* BL21(DE3), whereas the host BL21(DE3)-pLysS was used for vectors containing fragments E and F. Both *E. coli* strains were incubated in the presence of kanamycin, whereas chloramphenicol also was supplemented when BL21(DE3)-pLysS transformants were used. Fragment I was expressed in DH5 α . Bacteria were grown to mid-log phase followed by induction with 1 mM isopropyl-1-thio- β -D-galactoside (IPTG). After 3.5 h, transformants were sonicated and the overexpressed proteins were purified according to the manufacturers instructions. Resulting recombinant proteins having a histidine tag or fused to maltose binding protein were purified on resins containing nickel amylose, respectively. The concentrations of the eluted proteins were determined using the BCA Protein Assay Kit (Pierce). Thereafter, recombinant proteins were analysed by SDS-PAGE and Western blots.

[0113] Hemagglutination

[0114] Human erythrocytes were obtained from freshly drawn heparinized human blood. The erythrocytes were washed twice in PBS (pH 7.2) and suspended in PBS at a final concentration of 1%. Bacteria cultured in Nutrient Broth were harvested by centrifugation, washed and suspended to 1-2 \times 10⁹/ml in PBS. Bacteria and erythrocyte suspension (50 μ l of each) were mixed in round bottom microtiter plates (Sarstedt, Newton, N.C.). In some experiments, erythrocytes were mixed with MID-Sepharose or BSA-Sepharose in 150 μ l PBS. Agglutination was read by the naked eye.

[0115] Cell Line and Adherence Assay.

[0116] The lung carcinoma cell line A549 (type II alveolar epithelial cells; CCL-185) was obtained from ATCC. The cells were cultured in RPMI 1640 medium (Gibco BRL, Life Technologies, Paisley, Scotland) supplemented with 10% fetal calf serum, 2 mM L-glutamine, and 12 μ g/ml gentamicin (referred to as culture medium). On the day before adherence experiments, cells were harvested, washed twice in gentamicin-free RPMI 1640 and added to 12-well tissue culture plates (Nunc, Roskilde, Denmark) at a concentration of 1 \times 10⁴ cells/well in 2.0 ml gentamicin free culture medium. Cells were thereafter incubated overnight at 37° C. in 5% CO₂. On the day of experiments, *M. catarrhalis* (-2 \times 10⁸) in PBS, 0.15% gelatin (Sigma) was inoculated onto the monolayers. In neutralization experiments with specific antisera, bacteria were preincubated with polyclonal antibodies (dilution 1/250). After 1 h at 4° C., bacteria were added to the epithelial cells. In all experiments, tissue culture plates were centrifuged at 3,000 g for 5 min and incubated at 37° C., 5% CO₂. After 30 min, the infected monolayers were rinsed twice with PBS, 0.15% gelatin with

gentle rocking to remove nonadherent bacteria and then treated with trypsin-EDTA (0.05% trypsin, 0.5 mM EDTA) to release them from the plastic support. Thereafter, the resulting cell/bacteria suspension was seeded to agar plates containing 1.1% isovitalax, 7.8% human blood, and finally 0.9% proteose peptone. Data was calculated from duplicate cultures.

[0117] Flow Cytometry Analysis

[0118] Human peripheral blood lymphocytes (PBLs) were isolated from heparinized blood from healthy donors by centrifugation on a step gradient of Ficoll-Isopaque (Lymphoprep; Pharmacia, Uppsala, Sweden). For flow cytometry analyses, a standard staining protocol was used with 0.5% BSA (w/v) in PBS as buffer. PBLs (2.5×10^5 in $100 \mu\text{l}$) were labeled with anti-CD3 or anti-CD19 mAbs with or without FITC-conjugated anti-IgD mAb on ice for 30 min according to the manufacturer's instructions. In blocking experiments, lymphocytes were also pre-incubated with anti-IgD immunoglobulins for 30 min. After two washes, $10 \mu\text{g/ml}$ of purified FITC-conjugated MID was supplemented to the cells followed by incubation for 45 min on ice. After 4 final washes with excess PBS 0.5% BSA, 105 cells for each sample were analysed in an EPICS^{XL}-MCL flow cytometer (Coulter, Hialeah, Fla.). Where appropriate, rabbit and goat pre-immune sera and mouse IgG1 and IgG2a were included as negative controls (Dakopatts)

[0119] Results

[0120] Extraction and Purification of MID

[0121] Solubilization of MID was a major obstacle in the process of purification. Amongst several detergents tested, only Empigen[®] and n-Octyl- β -D glucoside alone at a final concentration of 3% solubilized MID from a suspension of *M. catarrhalis* efficiently as estimated by ELISA and Western blot. The two detergents were equally efficient. Triton X-100 alone did not solubilize MID, but Triton X-100 plus 0.01 M EDTA solubilized MID efficiently. CHAPS alone or CHAPS with EDTA or EDTA alone did not solubilize MID. In the following experiments, Empigen[®] extraction was used for solubilization and subsequent purification of MID. When the Empigen[®] extract of *M. catarrhalis* was applied to a Q-sepharose column, all IgD-binding material was eluted from the column with 0.1% Empigen[®] in 0.05 M Tris HCl, pH 8.8. No additional IgD-binding material could be eluted when a NaCl-gradient up to 1 M was applied to the same column. After concentration of the IgD-binding material obtained after separation on Q-sepharose, fractionation of the extract was achieved by gel filtration in the presence of 0.1% Empigen[®] on a Sephacryl S-400 column (FIG. 1). Most IgD-binding material was eluted in this first peak immediately after the void volume. MID was further purified by rechromatography of the first peak under the same conditions.

[0122] FIG. 2 shows that after purification MID appeared as two bands, one 200 kDa-band and a second band with an apparent molecular mass of more than 1,000 kDa. Western blot experiments were performed to confirm that MID was not identical to the previously described outer membrane proteins UspA1 and 2 with an apparent molecular mass varying from 350 to 720 kD (8-10) or CopB with a molecular weight of 80 kDa. The crude Empigen[®] extract of *M. catarrhalis* or partly purified preparations of MID were

subjected to SDS-PAGE, transferred to Immobilon filters and blotted with antibodies to those *Moraxella* proteins and also with human IgD. As can be seen in FIG. 2, MID (as revealed by IgD-binding) is not identical with the outer membrane proteins UspA and Cop B.

[0123] Three attempts were made to determine the amino-terminal amino acid sequence of purified MID. Approximately 1000 pmol of MID was applied each time in an automated amino acid sequencer. Inasmuch as no amino acid phenylthiohydantoin derivatives were obtained, the amino-terminal end of the single MID polypeptide chain was probably blocked. It was recently determined that the moraxella UspA1 and UspA2 proteins, which are also resistant to Edman degradation, contained a pyroglutamyl residue that was removed by the treatment with pyroglutamate aminopeptidase. However, when MID purified from *M. catarrhalis* or recombinant MID was treated with this enzyme according to two different protocols (twice for each method) and then subjected to Edman degradation, no N-terminal amino acid sequence was obtained.

[0124] IgD-Binding Properties of MID

[0125] Crude Empigen[®] extracts of *M. catarrhalis* and highly purified MID subjected to SDS-PAGE and transferred to filters were exposed to highly purified commercially available Ig-preparations representing all human Ig-classes and subclasses (Table III).

TABLE III

Summary of Western Blot and dot blot analyses showing the binding specificity of highly purified commercially available myeloma immunoglobulin D preparations against a crude Empigen[®] extract of *M. catarrhalis* and highly purified MID.

Immunoglobulin	200 kDa-protein in crude extract	Purified MID
IgD(κ), IgD(λ)	+	+
IgG1(κ), IgG1(λ)	-	-
IgG2(κ), IgG2(λ)	-	-
IgG3(κ), IgG3(λ)	-	-
IgG4(κ), IgG4(λ)	-	-
IgA1(κ), IgA1(λ)	-	-
IgA2(κ), IgA2(λ)	-	-
IgM: (κ), IgM(λ)	-	-
IgE(κ)	-	-

[0126] Only the two IgD preparations interacted with the MID-band in the 200 kDa-position in a similar fashion as shown for IgD in FIG. 2. When dot blot experiments were performed and purified MID in dilutions was first added to membranes and purified human myeloma proteins and secondary antibodies were subsequently applied, only the two IgD myelomas interacted with MID. One of the two myelomas detected as little as $0.001 \mu\text{g}$ of MID on the membrane. The specificity of the interaction between MID and IgD was further verified by using radiolabeled MID in other dot blot experiments. In FIG. 3, it is demonstrated that MID effectively bound four IgD myeloma sera. A distinct reaction could be detected in the range $0.03\text{-}4 \mu\text{g}$ of IgD. For the IgD standard serum (B.W.) reactivity was seen at even lower concentrations (not shown). In contrast, 6 different Ig myeloma sera representing IgG, IgA and IgM showed no visible reaction with MID at $4 \mu\text{g}$.

[0127] Purified MID specifically attracted human soluble IgD as revealed in dot and Western blots (FIGS. 2 and 3, Table III). To test whether MID bound to the surface-expressed B cell receptor (BCR) IgD, human peripheral blood lymphocytes (PBLs) were isolated. FITC was conjugated to MID followed by incubation with PBLs for 45 min on ice. In parallel, PBLs were labeled with RPE-conjugated mAbs directed against the T cell marker CD3 or the B cell specific surface antigen CD19 and subsequently analysed by flow cytometry (FIG. 4). Interestingly, a large fraction of CD19⁺ lymphocytes bound significant amounts of MID-FITC (FIG. 4A), whereas T cells (CD3⁺ lymphocytes) only displayed a non-specific background binding (FIG. 4D). The MID-FITC signal corresponded well with CD19⁺ cells incubated with anti-IgD mAbs revealing IgD-positive B cells (FIG. 4B). To further elucidate the specificity of MID-FITC binding to IgD bearing CD19⁺ lymphocytes, PBLs were preincubated with a rabbit anti-human IgD immunoglobulin fraction. After incubation and washings, MID-FITC binding was analysed by flow cytometry according to the standard procedure. The antiserum almost completely inhibited specific MID-FITC binding to the IgD BCR when compared to cells incubated with the pre-immune serum. Mean fluorescence intensity decreased from 79.2 to 14.6 arbitrary units. Similar results were obtained with goat immunoglobulins raised against IgD (not shown). Thus, IgD-expressing B cells promoted specific MID-FITC binding to the surface-expressed BCR IgD.

[0128] Cloning of the Gene Encoding MID and DNA Sequence Analysis

[0129] Degenerate primers were designed according to the obtained amino terminal sequences of four peptide fragments originating from MID (Table II) and were used in PCRs in all possible combinations. The specific primers 2982+ and 3692- (FIG. 5) were synthesized using the deduced sequence of a distinctive PCR product generated with the degenerate primer pair 2629+/3693-. A PCR reaction using the specific primers in combination with the degenerate ones (718+ and 5772-) resulted in totally 5054 bp of the gene coding for MID. Flanking sequences surrounding the core of the mid gene were obtained by inverse PCR (IPCR). IPCR on EcORV- and AsuI/AccI-digested *M. catarrhalis* genomic DNA with the primer-pairs 2982+/945- and 3668+/120-, respectively, provided the sequence for the start-codon area. In addition, IPCR on HincII-digested moraxella genomic DNA with the primer-pair 5898+/5511- generated the 3' sequence including the stop-codon. The complete nucleotide sequence of the gene encoding MID in *M. catarrhalis* Bc5 is shown in SEQ ID NO 2 and the resulting amino acid sequence is shown in SEQ ID NO 1. Two alternative open reading frames were revealed and are 20' indicated at amino acid positions 1 and 17, see FIG. 6). Consequently, the length of the mid gene product was either 2123 or 2139 amino acids. In addition to a putative ribosome-binding site (AAGG), -10 (TAATTA) and -35 (TTGAAT) consensus sequence boxes were identified. Furthermore, 62 bases downstream of the TAA stop-codon an inverted repeat was found with the potential of stem-loop formation that is necessary for transcriptional termination. To get an overview of the similarity and identity between different mid genes, the sequences of the five ORF MID proteins were analysed. For 4 strains, the degree of identity and similarity was $\geq 75.8\%$ and $\geq 78.3\%$, respectively (FIG. 7). In contrast, slightly lower values, $\geq 65.3\%$ and $\geq 71.2\%$,

respectively, were obtained for the fifth isolate (RH4). Identity and similarity with UspA1 was 5.5-11.1% and 8.3-17.9%, respectively, and with UspA2 6.5-7.5% respectively 11.1-12.4%.

[0130] The Mid Gene Can Be Detected in All *M. catarrhalis* Strains

[0131] By PCR analyses, the mid-I gene was detected in all 118 *M. catarrhalis* strains, whereas the Moraxella (neseria)-related controls were negative. In addition, the size of the mid-1 gene was confirmed using primers spanning the whole gene including the start and stop codons. Analysis of the deduced amino acid sequence of MID differs from UspA1, UspA2 and the protein described in U.S. Pat. No. 5,808,024

[0132] The open reading frame defined a protein with a calculated molecular mass of just below 220 kDa that readily corresponded to the empirical value of approximately 200 kDa found by SDS-PAGE. The N-terminal amino acid sequence showed the typical characteristics of a signal peptide with a potential cleavage site between amino acids 66 and 67. Despite that the first amino acid after the signal peptidase cleavage site most likely was a glutamine residue, any sequence could not be determined by Edman degradation. Furthermore, no amino acid sequence was obtained after pyroglutamate aminopeptidase treatment. The predicted amino acid sequence was also subjected to a hydrophobicity profile analysis by the method of Kyte and Doolittle and showed mainly hydrophilic properties except for the putative signal peptide that was strongly hydrophobic. The deduced amino acid sequence for MID differs significantly from those for the protein described in U.S. Pat. No. 5,808,024 and also from the UspA-proteins (FIGS. 7 and 8).

[0133] The mid gene is distributed in all *M. catarrhalis* strains To investigate whether or not the mid gene existed in all *M. catarrhalis* strains, primers were chosen based upon a conserved area upstream of the open reading frame (ORF) and a conserved area downstream including the stop codon sequence (Forsgren et al., 2001). The mid gene was detected in all 86 clinical isolates and 7 type strains analysed, and the length of the genomic mid DNA was approximately 6,000 base pairs. The existence was further verified by Southern blots using a probe containing a sequence selected from the 3'-end of the gene. Southern blot experiments revealed that the moraxella strains contained only one mid gene.

[0134] Expression of Recombinant MID in *E. Coli*

[0135] To confirm that the cloned mid gene corresponded to the purified IgD-binding protein, the gene including the predicted signal sequence and start codon was subcloned into the expression vector pET16(b) and thereby under the control of a T7 promoter. The resulting pET16-MID was subsequently transformed into *E. coli* BL21DE3 followed by induction with IPTG. Bacterial cells were lysed and subfractionated, and recombinant MID was localized by Western blots using human IgD as a probe. Important verifying characteristics of MID were provided from the expression experiments (FIG. 9). Firstly, following induction, cells containing pET16-MID were able to produce recombinant MID confirming the correct reading frame of the gene. Secondly, recombinant MID (as shown by SDS-PAGE) displayed a molecular mass of approximately 200

kDa, corresponding to the 217 kDa calculated value from the amino acid sequence. Thirdly, the recombinant protein was indeed the mid gene product in *E. coli* as its IgD-binding phenotype was confirmed by Western blot analysis. Total protein from *E. coli* containing induced pET16(b) vector without insert did not display any IgD-binding capacity (data not shown). Fourthly, the subcellular localization of the recombinant protein showed that MID was equally located in the cytoplasmic and the membrane fractions, but not in the periplasmic space. The localization of MID's in the membrane fraction correlated very well with the known outer membrane localization in *M. catarrhalis*. IgD-binding is preserved in 238 amino acids of MID

[0136] To in detail determine the MID IgD-binding region, 9 sequences derived from the full length MID were cloned into pET26b(+) and expressed in *E. coli*. The recombinant proteins covered the entire MID sequence and their individual lengths and positions were as demonstrated in FIG. 10. The recombinant proteins comprising amino acid residues 69-1111 or 1011-2139 of MID did not bind IgD as revealed in Western and dot blots. In contrast, the protein MID902-1200 (protein fragment F1) attracted IgD-, strongly suggesting that the single IgD-binding region of MID was within that particular sequence.

[0137] To pinpoint the sequence responsible for the IgD-binding, the truncated MID902-1200 was systematically shortened at the N- and C-terminal ends (FIG. 11). Equimolar concentrations of the various recombinant proteins were compared to native full length MID1-2139 isolated from *M. catarrhalis*. The different recombinant proteins were diluted in four-fold steps, added to membranes and incubated with human IgD. On a molar basis, an essentially preserved IgD-binding capacity was detected for the truncated MID protein stretching from amino acid residue 962 to 1200. The shortest truncated protein still interacting with IgD was localized between MID985 and MID1142 (fragment F6). The IgD-binding property was lost when the N-terminus was reduced to the MID1000 residue (fragment F4) or when the C-terminal was shortened to MID1130 (fragment F7). Finally, a fragment (MID902-1130; F8) with a longer N-terminal and a shorter C-terminal (compared to MID985-1200; F3) was also manufactured and analysed. However, this truncated MID did not interact with IgD, suggesting that the binding capacity was depending on a longer-C-terminal.

[0138] To further characterize the specific MID-dependent IgD-binding, an IgD ELISA was constructed using human IgD as bate. All the recombinant truncated MID fragments were subjected to ELISA followed by incubation with a specific rabbit anti-serum directed against MID902-1200. The ELISA was developed using HRP-conjugated goat anti-rabbit polyclonal antibodies. The same pattern as with the dot blot (FIG. 11) was observed, i.e. fragments F4, F7, and F8 was not attracted to the solid phase IgD, whereas the other fragments bound to a variable degree compared to full length MID (not shown).

[0139] Optimal MID962-1200—IgD Interaction is Depending on a Tetramer Structure

[0140] To shed light upon the need for a tetramer structure in order to obtain an optimal IgD-binding, MID962-1200 (F2, SEQ ID NO 10) was incubated at 60 or 100° C. followed by analysis on SDS-PAGE and Western blots. MID962-1200 formed both a monomer and a tetramer after

pre-treatment at 60° C. (FIG. 12A). The tetrameric structure was, however, disrupted at 100° C. and resulted in a monomeric form, which displayed a considerably weaker binding to IgD when examined in Western blots (FIGS. 12A and B). To investigate the capability of the tetramer to bind IgD in comparison with the monomeric form, the MID962-1200 fragment, SEQ ID NO 10, was subjected to analysis at 60° C. in 6 different experiments. The heat treated protein was subjected to SDS-PAGE and the IgD-binding activity was analysed by Western blots. Resulting gels and filters were analysed by densitometry and the protein concentration (density) of the monomer was divided with the corresponding tetramer concentration. The obtained value (%) was related to the concentration (μg) of total protein loaded on the gels. Interestingly, when IgD-binding to the tetrameric respectively monomeric forms were compared, a 23-fold more efficient binding to IgD was found with the tetrameric MID962-1200 (FIG. 12C). *M. catarrhalis* IgD-binding protein (MID) hemagglutinates human erythrocytes

[0141] To investigate a putative involvement of MID in hemagglutination, a series of clinical isolates that either expressed MID or by phase variation had shut off the mid gene was selected. Interestingly, all out of 21 isolates expressing MID hemagglutinated human erythrocytes, whereas only four out of the MID-negative strains (n=21) hemagglutinated the red blood cells. An almost full correlation between hemagglutinating capacity and MID expression was observed. UspA1/2 expression was similar and irrespective of the MID expression.

[0142] These initial experiments prompted us to examine whether or not purified MID protein from the model strain *M. catarrhalis* Be5 (Forsgren et al., 2001) hemagglutinates erythrocytes. To mimic the bacterial surface, MID was conjugated to Sepharose beads and incubated with the human erythrocytes. Bovine serum albumin (BSA) linked to Sepharose was included as a negative control. Interestingly, the human erythrocytes were hemagglutinated in the presence of MID-Sepharose, whereas BSA-Sepharose did not interfere with the erythrocytes (data not shown). The hemagglutinating domain of MID is located between amino acid residues Alanine764 and Serine913

[0143] To dissect the molecule and pin-point the specific site of the molecule that was responsible for the hemagglutination, a series of truncated DNA fragments of the mid gene was cloned and recombinantly expressed in *E. coli* (FIG. 10). Polyclonal antibodies against the truncated MID proteins were raised in rabbits and used in an ELISA. In preparatory experiments, antibodies to MID and the MID-derived proteins were titrated to give similar values when tested in ELISA against respective antigens. The capacity of the truncated MID proteins to bind to lysed erythrocytes was then measured in ELISA using the specific antibodies at appropriate concentrations. MID or MID764-913 (fragment E) gave higher ELISA values (4 to 16 times) as compared to the other truncated MID proteins. Thus, the hemagglutinating structure of MID seemed to be located within amino acid residues 764-913 of MID (SEQ ID NO 8).

[0144] MID764-913 (Fragment E, SEQ ID NO 8) Binds Directly to Both Erythrocytes and Type II Alveolar Epithelial Cells

[0145] To further confirm the importance of MID764-913 as an adhesin, MID and a selection of the truncated MID-

derived proteins were radiolabelled and tested in direct binding experiments with human erythrocytes and alveolar epithelial cells (FIG. 13). Both [125I]-MID and [125I]-MID764-913 strongly bound to erythrocytes, whereas the truncated MID fragments MID367-590 (fragment C), MID902-1200 (F), MID1011-1446 (G), and MID1616-2139 (I) did not bind above background levels (FIG. 13A). In parallel, the alveolar epithelial cell line A549 also attracted both the full length [¹²⁵I]-labelled MID and the truncated MID764-913 (FIG. 13B). All the other fragments did not bind to the epithelial cells. Taken together, the fragment MID764-913 (SEQ ID NO 8) was the crucial part of the adhesin MID that mediated the attachment to mammalian cells.

[0146] Antibodies to Full Length MID1-2139 and MID764-913 Inhibit Adherence of *M. catarrhalis* to Type II Alveolar Epithelial Cells

[0147] To further analyse the influence of full length MID and MID764-913 on *M. catarrhalis* adherence to type II alveolar epithelial cells, a MID-expressing and a MID-deficient *M. catarrhalis* strain were preincubated with antibodies to MID and subsequently added to alveolar epithelial cells for adherence. As demonstrated in FIG. 14, polyclonal antibodies directed against full length MID1-2139 and MID763-913 (fragment E, SEQ ID NO 8) effectively inhibited adherence for the MID-expressing isolate. In contrast, pre-immune serum and a pAb directed against MID1011-1466 (fragment G) did not significantly interfere with adhesion.

REFERENCES

- [0148] 1. Forsgren, A. and Grubb, A. (1979) Many bacterial species bind human IgD. *J. Immunol.* 122, 1468-1472.
- [0149] 2. Banck, G. and Forsgren, A. (1978) Many bacterial species are mitogenic for human blood lymphocytes. *Scand. J. Immunol.* 8, 347-354.
- [0150] 3. Calvert, J. E. and Calogeres, A. (1986) Characteristics of human B cells responsive to the T-independent mitogen *Branhamella catarrhalis*. *Immunology* 58, 37-41.
- [0151] 4. Forsgren, A., Penta, A., Schlossman, S. F. and Tedder, T. F. (1988) *Branhamella catarrhalis* activates human B lymphocytes following interactions with surface IgD and class I major histocompatibility complex antigens. *Cell. Immunol.* 112, 78-88.
- [0152] 5. Janson, H., Carlén, B., Cervin, A., Forsgren, A., Björk-Magnusdóttir, A., Lindberg, S. and Runer, T. (1999) Effects on the ciliated epithelium of protein D-producing and -nonproducing nontypeable *Haemophilus influenzae* in nasopharyngeal tissue cultures. *J. Infect. Dis.* 180, 737-746.
- [0153] 6. Sasaki, K. and Munson Jr., R. S. (1993) Protein D of *Haemophilus influenzae* is not a universal immunoglobulin D-binding protein. *Infect. Immun.* 61, 3026-3031.
- [0154] 7. Helminen, M. E., Beach, R., Maciver, I., Jarosik, G., Hansen, E. J. and Leinonen, M. (1995) Human immune response against outer membrane proteins of *Moraxella (Branhamella) catarrhalis* determined by immunoblotting and enzyme immunoassay. *Clin. Diagn. Lab. Immunol.* 2, 35-39.
- [0155] 8. Aebi, C., Maciver, I., Latimer, J. L., Cope, L. D., Stevens, M. K., Thomas, S. E., McCracken, G. H. and Hansen, E. J. (1997) A protective epitope of *Moraxella catarrhalis* is encoded by two different genes. *Infect. Immun.* 65, 4367-4377.
- [0156] 9. Cope, L. D., Lafontaine, E. R., Slaughter, C. A., Hasemann, C. A. Jr., Aebi, C., Henderson, F. W., McCracken, G. H. Jr and Hansen, E. J. (1999) Characterization of *Moraxella catarrhalis* uspA1 and uspA2 genes and their encoded products. *J. Bacteriol* 181, 4026-4034.
- [0157] 10. Klingman, K. L. and Murphy, T. F. (1994) Purification and characterization of a high-molecular-weight outer membrane protein of *Moraxella (Branhamella) catarrhalis*. *Infect. Immun.* 62,1150-1155.
- [0158] 11. WO 98/28333
- [0159] 12. Sasaki, K., Harkness, R. E., Loosmoore, S. M. and Klein, M. H. (1998) U.S. Pat. No. 5,808,024.
- [0160] 13. Fitzgerald, M., Mulcahy, R., Murphy, S., Keane, C., Coakley, D. and Scott, T. (1997) A 200 kDa protein is associated with haemagglutinating isolates of *Moraxella (Branhamella) catarrhalis*. *FEMS Immun. Med. Microbiol.* 18, 209-216.
- [0161] 14. Tucker, K., Plosila, L., and Samuel, J. (1994) Correlation between hemagglutination and globotetraosyl-ceramide binding by *Branhamella catarrhalis*. Abstract 117 of the 94th General meeting of the American Society for Microbiology.
- [0162] 15. Lunde E, Munthe L A, Vabo A, Sandlie I, Bogen B. (1999) Antibodies engineered with IgD specificity efficiently deliver integrated, T-cell epitopes for antigen presentation by B cells. *Nat Biotechnol.* 17, 670-675.
- [0163] 16. Lycke N. (2001) The B-cell targeted CTA1-DD vaccine adjuvant is highly effective at enhancing anti-body as well as CTL responses. *Curr. Opin. Mol. Ther.* 3, 37-44.
- [0164] 17. Ito O, Harada M, Takenoyama M, Tamada K, Li T, Abe K, Fujie H, Nomoto K. 1998 Vaccination with activated B cells pulsed with tumor-lysates can induce tumor-specific CD4+ T cells in vivo. *Immunobiol.* 199, 133-147.

SEQUENCE LISTING

<160> NUMBER OF SEQ ID NOS: 11

<210> SEQ ID NO 1

-continued

<211> LENGTH: 2139

<212> TYPE: PRT

<213> ORGANISM: Moraxella catarrhalis

<400> SEQUENCE: 1

```

Met Asn His Ile Tyr Lys Val Ile Phe Asn Lys Ala Thr Gly Thr Phe
  1           5           10           15

Met Ala Val Ala Glu Tyr Ala Lys Ser His Ser Thr Gly Gly Ser Cys
           20           25           30

Ala Thr Gly Gln Val Gly Ser Val Cys Thr Leu Ser Phe Ala Arg Val
           35           40           45

Ala Ala Leu Ala Val Leu Val Ile Gly Ala Thr Leu Asn Gly Ser Ala
  50           55           60

Tyr Ala Gln Gln Asp Pro Arg His Ile Ala Ile Asp Gly Asn Ser Ser
  65           70           75           80

Asn Thr Ser Ser Gly Thr Ala Arg Ala Thr Gly Asp Arg Ala Ile Ala
           85           90           95

Leu Gly Glu Asn Ala Asn Ala Glu Gly Gly Gln Ala Ile Ala Ile Gly
           100          105          110

Ser Ser Asn Lys Thr Gly Gly Arg Asn Ala Leu Asn Ile Gly Thr Asp
           115          120          125

Ala Lys Gly Glu Glu Ser Ile Ala Ile Gly Gly Asp Val Val Ala Glu
           130          135          140

Gly Thr Ala Ser Ile Ala Ile Gly Gly Asp Asp Leu His Leu Trp Asp
           145          150          155          160

Glu Pro Asn Lys Gln Lys Phe Leu Asp Pro Lys Val Lys Glu Leu Ile
           165          170          175

Leu Lys His Gln Glu Leu Asn Asn Ile Tyr Lys Leu Pro Asp Gly Ser
           180          185          190

Pro Gln Arg Tyr Phe Arg Thr Tyr Ala Lys Gly His Ala Ser Ile Ala
           195          200          205

Leu Gly Thr Met Thr Gln Ala Glu Gly His Phe Ala Asn Ala Phe Gly
           210          215          220

Thr Arg Ala Thr Ala Lys Gly Asn Tyr Ser Leu Ala Val Gly Leu Thr
           225          230          235          240

Ala Gln Ala Asn Thr Glu Ser Ser Ile Ala Val Gly Ser Asn Ala Gln
           245          250          255

Ala Asn Gly Phe Ala Ala Thr Ala Ile Gly Gly Gly Thr Lys Ala Asp
           260          265          270

Leu Gly Arg Ser Ile Ala Leu Gly Phe Gly Ser Gln Ile Leu Thr Lys
           275          280          285

Glu Lys Asp Ser His Asn Asn Thr Asn Val Tyr Val Pro Gln Gly Glu
           290          295          300

Ile Leu Glu Glu Arg Tyr Lys Ala Thr Glu Asn Gly Gln Ser Pro Asn
           305          310          315          320

Lys Val Val Asp Ile Phe Ser Ile Gly Ser Ser Ser Ile Lys Arg Lys
           325          330          335

Ile Ile Asn Val Gly Ala Gly Ser Gln Glu Thr Asp Ala Val Asn Val
           340          345          350

Ala Gln Leu Lys Leu Val Glu Arg Val Ala Lys Arg Gln Ile Thr Phe
           355          360          365

Gln Gly Asp Asp Ser Asn Asn Ser Val Lys Lys Gly Leu Gly Thr

```

-continued

370			375			380									
Leu	Thr	Ile	Lys	Gly	Gly	Lys	Thr	Glu	Thr	Gly	Glu	Leu	Thr	Glu	Asn
385					390					395					400
Asn	Ile	Gly	Val	Val	Gln	Asp	Asp	Asn	Gly	Asn	Gly	Leu	Lys	Val	Lys
			405						410						415
Leu	Ala	Lys	Asp	Leu	Thr	Gly	Leu	Thr	Lys	Val	Ala	Val	Asn	Gly	Asn
			420					425						430	
Gly	Ala	Asn	Asn	Ala	Glu	Leu	Leu	Asn	Gly	Gly	Leu	Thr	Phe	Ser	Thr
			435					440						445	
Ser	Gly	Ala	Asn	Ala	Gly	Lys	Thr	Val	Tyr	Gly	Thr	Asp	Gly	Val	Lys
			450				455				460				
Phe	Thr	Asn	Asn	Thr	Gly	Thr	Gly	Thr	Gly	Thr	Ala	Ile	Pro	Asp	Thr
465				470						475					480
Thr	Arg	Ile	Thr	Lys	Asn	Lys	Ile	Gly	Phe	Ala	Gly	Ala	Asp	Glu	Gln
				485						490				495	
Val	Asp	Glu	Ser	Lys	Pro	Tyr	Leu	Asp	Asn	Glu	Lys	Leu	Lys	Val	Gly
				500				505						510	
Thr	Val	Glu	Ile	Lys	Lys	Thr	Gly	Ile	Asn	Ala	Gly	Asn	Gln	Glu	Ile
			515				520							525	
Thr	Lys	Val	Lys	Ser	Ala	Ile	Val	Asp	Ala	Val	Asn	Gly	Gln	Ala	Asn
			530				535				540				
Gln	Ser	Phe	Val	Asn	Leu	Leu	Glu	Thr	Ala	Gly	Thr	Asn	Thr	Asn	Lys
545					550						555				560
Gln	Asn	Ser	Ala	Ala	Thr	Val	Lys	Asp	Leu	Tyr	Asp	Leu	Ser	Gln	Ser
				565						570				575	
Pro	Leu	Thr	Phe	Thr	Gly	Asp	Ser	Gly	Asn	Val	Lys	Arg	Lys	Leu	Gly
			580					585						590	
Gln	Thr	Leu	Thr	Ile	Thr	Gly	Gly	Gln	Thr	Lys	Thr	Asp	Gln	Leu	Thr
			595				600						605		
Asp	Asn	Asn	Ile	Gly	Val	Val	Ala	Gly	Thr	Asn	Gly	Leu	Thr	Val	Lys
			610				615				620				
Leu	Ala	Lys	Thr	Leu	Asn	Ser	Leu	Thr	Glu	Val	Asn	Thr	Ala	Thr	Leu
625					630						635				640
Asn	Ala	Thr	Asn	Lys	Val	Lys	Val	Asp	Asn	Ser	Thr	Gly	Asn	Thr	Ala
				645						650				655	
Glu	Leu	Leu	Asn	Asn	Gly	Leu	Thr	Phe	Thr	Gln	Thr	Thr	Gly	Ala	Asn
				660						665				670	
Ser	Gly	Lys	Thr	Val	Tyr	Gly	Asn	Asp	Gly	Leu	Lys	Phe	Thr	Asn	Ser
				675				680					685		
Ala	Asn	Lys	Ala	Leu	Gly	Gly	Thr	Thr	Tyr	Ile	Thr	Lys	Asp	Gln	Val
			690				695				700				
Gly	Phe	Ser	Asn	Gln	Asp	Gly	Leu	Leu	Asp	Glu	Ser	Lys	Pro	Tyr	Leu
705					710					715					720
Asn	Arg	Glu	Lys	Leu	Lys	Val	Gly	Lys	Ile	Glu	Ile	Lys	Asp	Ser	Gly
				725						730				735	
Ile	Asn	Ala	Gly	Gly	Lys	Ala	Ile	Thr	Gly	Leu	Pro	Ser	Thr	Leu	Pro
				740				745						750	
Asn	Thr	Thr	Tyr	Thr	Ala	Pro	Gly	Val	His	Thr	Ala	Leu	His	Gly	Ser
				755			760						765		
Thr	Ile	Ser	Asn	Asp	Asp	Lys	Thr	Arg	Ala	Ala	Ser	Ile	Ala	Asp	Val
							775								

-continued

Leu Asn Ala Gly Phe Asn Leu Glu Gly Asn Gly Glu Ala Val Asp Phe
 785 790 795 800
 Val Ser Thr Tyr Asp Thr Val Asn Phe Ala Asp Gly Asn Ala Thr Thr
 805 810 815
 Ala Lys Val Thr Tyr Asp Asn Lys Thr Ser Lys Val Ala Tyr Asp Val
 820 825 830
 Asn Val Asp Gly Thr Thr Ile His Leu Thr Gly Thr Asn Gly Lys Lys
 835 840 845
 Asn Gln Ile Gly Val Lys Thr Thr Thr Leu Thr Thr Lys Arg Ala Lys
 850 855 860
 Gly Asn Thr Ala Thr Asn Phe Ser Val Asn Ser Gly Asp Asp Asn Ala
 865 870 875 880
 Leu Ile Asn Ala Lys Asp Ile Ala Asp Asn Leu Asn Thr Leu Ala Gly
 885 890 895
 Glu Ile Arg Thr Ala Lys Gly Thr Ala Ser Thr Ala Leu Gln Thr Phe
 900 905 910
 Ser Ile Ile Asp Glu Gln Gly Asn Asn Phe Met Val Gly Asn Leu Tyr
 915 920 925
 Ser Gly Tyr Asp Thr Ser Asn Thr Ser Glu Thr Val Thr Phe Val Gly
 930 935 940
 Glu Asn Gly Ile Thr Thr Lys Val Asn Lys Gly Lys Val Lys Val Gly
 945 950 955 960
 Ile Asp Gln Thr Lys Gly Leu Thr Thr Pro Lys Leu Thr Val Gly Ser
 965 970 975
 Ser Asn Gly Lys Gly Ile Val Ile Asp Ser Lys Asp Gly Gln Asn Thr
 980 985 990
 Ile Thr Gly Leu Ser Asn Thr Leu Thr Asp Ala Thr Asn Ala Thr Thr
 995 1000 1005
 Gly His Val Ser Glu Ile Gln Gly Leu Ala Gln Gly Ala Asn Lys Thr
 1010 1015 1020
 Arg Ala Ala Ser Ile Gly Asp Val Leu Asn Ala Gly Phe Asn Leu Gln
 1025 1030 1035 1040
 Gly Asn Gly Glu Ala Lys Asp Phe Val Ser Thr Tyr Asp Thr Val Asn
 1045 1050 1055
 Phe Ile Asp Gly Asn Ala Thr Thr Ala Lys Val Thr Tyr Asp Asp Thr
 1060 1065 1070
 Lys Gln Thr Ser Thr Val Thr Tyr Asp Val Asn Val Asp Asn Lys Thr
 1075 1080 1085
 Leu Glu Val Thr Gly Asp Lys Lys Leu Gly Val Lys Thr Thr Thr Leu
 1090 1095 1100
 Thr Lys Thr Ser Ala Asn Gly Asn Ala Thr Lys Phe Ser Ala Ala Asp
 1105 1110 1115 1120
 Gly Asp Ala Leu Val Lys Ala Ser Asp Ile Ala Thr His Leu Asn Thr
 1125 1130 1135
 Leu Ala Gly Asp Ile Gln Thr Ala Lys Gly Ala Ser Gln Ala Ser Ser
 1140 1145 1150
 Ser Ala Ser Tyr Val Asp Ala Asp Gly Asn Lys Val Ile Tyr Asp Ser
 1155 1160 1165
 Thr Asp Lys Lys Tyr Tyr Gln Ala Lys Asn Asp Gly Thr Val Asp Lys
 1170 1175 1180

-continued

Thr Lys Glu Val Ala Lys Asp Lys Leu Val Ala Gln Ala Gln Thr Pro
 1185 1190 1195 1200
 Asp Gly Thr Leu Ala Arg Met Asn Val Lys Ser Val Ile Asn Lys Glu
 1205 1210 1215
 Gln Val Asn Asp Ala Asn Lys Lys Gln Gly Ile Asn Glu Asp Asn Ala
 1220 1225 1230
 Phe Val Lys Gly Leu Glu Lys Ala Ala Ser Asp Asn Lys Thr Lys Asn
 1235 1240 1245
 Ala Ala Val Thr Val Gly Asp Leu Asn Ala Val Ala Gln Thr Pro Leu
 1250 1255 1260
 Thr Phe Ala Gly Asp Thr Gly Thr Thr Ala Lys Lys Leu Gly Glu Thr
 1265 1270 1275 1280
 Leu Thr Ile Lys Gly Gly Gln Thr Asp Thr Asn Lys Leu Thr Asp Asn
 1285 1290 1295
 Asn Ile Gly Val Val Ala Gly Thr Asp Gly Phe Thr Val Lys Leu Ala
 1300 1305 1310
 Lys Asp Leu Thr Asn Leu Asn Ser Val Asn Ala Gly Gly Thr Lys Ile
 1315 1320 1325
 Asp Asp Lys Gly Val Ser Phe Val Asp Ala Asn Gly Gln Ala Lys Ala
 1330 1335 1340
 Asn Thr Pro Val Leu Ser Ala Asn Gly Leu Asp Leu Gly Gly Lys Arg
 1345 1350 1355 1360
 Ile Ser Asn Ile Gly Ala Ala Val Asp Asp Asn Asp Ala Val Asn Phe
 1365 1370 1375
 Lys Gln Phe Asn Glu Val Ala Lys Thr Val Asn Asn Leu Asn Asn Gln
 1380 1385 1390
 Ser Asn Ser Gly Ala Ser Leu Pro Phe Val Val Thr Asp Ala Asn Gly
 1395 1400 1405
 Lys Pro Ile Asn Gly Thr Asp Asp Lys Pro Gln Lys Ala Ile Lys Gly
 1410 1415 1420
 Ala Asp Gly Lys Tyr Tyr His Ala Asn Ala Asn Gly Val Pro Val Asp
 1425 1430 1435 1440
 Lys Asp Gly Asn Pro Ile Thr Asp Ala Asp Lys Leu Ala Asn Leu Ala
 1445 1450 1455
 Ala His Gly Lys Pro Leu Asp Ala Gly His Gln Val Val Ala Ser Leu
 1460 1465 1470
 Gly Gly Asn Ser Asp Ala Ile Thr Leu Thr Asn Ile Lys Ser Thr Leu
 1475 1480 1485
 Pro Gln Ile Asp Thr Pro Asn Thr Gly Asn Ala Asn Ala Gly Gln Ala
 1490 1495 1500
 Gln Ser Leu Pro Ser Leu Ser Ala Ala Gln Gln Ser Asn Ala Ala Ser
 1505 1510 1515 1520
 Val Lys Asp Val Leu Asn Val Gly Phe Asn Leu Gln Thr Asn His Asn
 1525 1530 1535
 Gln Val Asp Phe Val Lys Ala Tyr Asp Thr Val Asn Phe Val Asn Gly
 1540 1545 1550
 Thr Gly Ala Asp Ile Thr Ser Val Arg Ser Ala Asp Gly Thr Met Ser
 1555 1560 1565
 Asn Ile Thr Val Asn Thr Ala Leu Ala Ala Thr Asp Asp Asp Gly Asn
 1570 1575 1580
 Val Leu Ile Lys Ala Lys Asp Gly Lys Phe Tyr Lys Ala Asp Asp Leu

-continued

1585	1590	1595	1600
Met Pro Asn Gly Ser Leu Lys Ala Gly Lys Ser Ala Ser Asp Ala Lys	1605	1610	1615
Thr Pro Thr Gly Leu Ser Leu Val Asn Pro Asn Ala Gly Lys Gly Ser	1620	1625	1630
Thr Gly Asp Ala Val Ala Leu Asn Asn Leu Ser Lys Ala Val Phe Lys	1635	1640	1645
Ser Lys Asp Gly Thr Thr Thr Thr Thr Val Ser Ser Asp Gly Ile Ser	1650	1655	1660
Ile Gln Gly Lys Asp Asn Ser Asn Ile Thr Leu Ser Lys Asp Gly Leu	1665	1670	1680
Asn Val Gly Gly Lys Val Ile Ser Asn Val Gly Lys Gly Thr Lys Asp	1685	1690	1695
Thr Asp Ala Ala Asn Val Gln Gln Leu Asn Arg Ser Thr Gln Leu Val	1700	1705	1710
Gly Ser Trp Val Met Ala Gly Asn Asp Asn Ala Asp Gly Asn Gln Val	1715	1720	1725
Asn Ile Ala Asp Ile Lys Lys Asp Pro Asn Ser Gly Ser Ser Ser Asn	1730	1735	1740
Arg Thr Val Ile Lys Ala Gly Thr Val Leu Gly Gly Lys Gly Asn Asn	1745	1755	1760
Asp Thr Glu Lys Leu Ala Thr Gly Gly Val Gln Val Gly Val Asp Lys	1765	1770	1775
Asp Gly Asn Ala Asn Gly Asp Leu Ser Asn Val Trp Val Lys Thr Gln	1780	1785	1790
Lys Asp Gly Ser Lys Lys Ala Leu Leu Ala Thr Tyr Asn Ala Ala Gly	1795	1800	1805
Gln Thr Asn Tyr Leu Thr Asn Asn Pro Ala Glu Ala Ile Asp Arg Ile	1810	1815	1820
Asn Glu Gln Gly Ile Arg Phe Phe His Val Asn Asp Gly Asn Gln Glu	1825	1830	1835
Pro Val Val Gln Gly Arg Asn Gly Ile Asp Ser Ser Ala Ser Gly Lys	1845	1850	1855
His Ser Val Ala Val Gly Tyr Lys Ala Lys Ala Asp Gly Glu Ala Ala	1860	1865	1870
Val Ala Ile Gly Arg Gln Thr Gln Ala Gly Asn Gln Ser Ile Ala Ile	1875	1880	1885
Gly Asp Asn Ala Gln Ala Thr Gly Asp Gln Ser Ile Ala Ile Gly Thr	1890	1895	1900
Gly Asn Val Val Ala Gly Lys His Ser Gly Ala Ile Gly Asp Pro Ser	1905	1910	1915
Thr Val Lys Ala Asp Asn Ser Tyr Ser Val Gly Asn Asn Asn Gln Phe	1925	1930	1935
Thr Asp Ala Thr Gln Thr Asp Val Phe Gly Val Gly Asn Asn Ile Thr	1940	1945	1950
Val Thr Glu Ser Asn Ser Val Ala Leu Gly Ser Asn Ser Ala Ile Ser	1955	1960	1965
Ala Gly Thr His Ala Gly Thr Gln Ala Lys Lys Ser Asp Gly Thr Ala	1970	1975	1980
Gly Thr Thr Thr Thr Ala Gly Ala Thr Gly Thr Val Lys Gly Phe Ala	1985	1990	1995
			2000

-continued

Gly Gln Thr Ala Val Gly Ala Val Ser Val Gly Ala Ser Gly Ala Glu
 2005 2010 2015

Arg Arg Ile Gln Asn Val Ala Ala Gly Glu Val Ser Ala Thr Ser Thr
 2020 2025 2030

Asp Ala Val Asn Gly Ser Gln Leu Tyr Lys Ala Thr Gln Ser Ile Ala
 2035 2040 2045

Asn Ala Thr Asn Glu Leu Asp His Arg Ile His Gln Asn Glu Asn Lys
 2050 2055 2060

Ala Asn Ala Gly Ile Ser Ser Ala Met Ala Met Ala Ser Met Pro Gln
 2065 2070 2075 2080

Ala Tyr Ile Pro Gly Arg Ser Met Val Thr Gly Gly Ile Ala Thr His
 2085 2090 2095

Asn Gly Gln Gly Ala Val Ala Val Gly Leu Ser Lys Leu Ser Asp Asn
 2100 2105 2110

Gly Gln Trp Val Phe Lys Ile Asn Gly Ser Ala Asp Thr Gln Gly His
 2115 2120 2125

Val Gly Ala Ala Val Gly Ala Gly Phe His Phe
 2130 2135

<210> SEQ ID NO 2
 <211> LENGTH: 6889
 <212> TYPE: DNA
 <213> ORGANISM: Moraxella catarrhalis

<400> SEQUENCE: 2

```

aatcattacc ccccccttta tgggggatca tatgaataga atattatgat tgtatctgat      60
tattgtatca gaatggtgat gcctacgagt tgatttgggt gaatcactct attatttgat      120
atgttttgaa actaatctat tgacttaaat caccatatgg ttataattta gcataatggt      180
aggctttttg taaaaatcac atcgcaatat tgttctactg ttactacat gcttgaatga      240
cgatcccaat catcagattc attcaagtga tgtgtttgta tacgcatcat ttaccctaatt    300
tatttcaatc gaaatgccta tgtcagcatg tatcattttt ttaaggtaaa ccacatgaa      360
tcacatctat aaagtcattt ttaacaaagc cacaggcaca tttatggccg tggcgaata      420
tgccaaatcc cacagcacgg ggggtagctg tgetacaggg caagttggca gtgtatgcac      480
tctgagcttt gcccggtgtg ccgcgctcgc tgtcctcgtg atcggtgcca cgctcaatgg      540
cagtgccttat gctcaacaag atcccagaca tatcgcaatt gatggcaaca gctcgaacac      600
atcctcaggg actgcccgtg cgacaggtga tcgagccatt gctcttgggtg aaaatgctaa      660
tgcagagggc ggtcaagcca tcgccatcgg tagtagcaat aaaacaggtg gtagaaacgc      720
gctgaatata ggtaccgatg ccaaaggtga ggagtccatc gccatcgggtg gtgatgtagt      780
ggctgagggg actgcctcga ttgccatcgg tggatgatgac ttacatttgt gggatgaacc      840
aaataagcaa aagttcctcg acccaaaagt taaagaattg attttaaaac atcaagaatt      900
aaacaacata tacaaactgc ctgatggtag tcctcaaaga tattttcgca catacgcaaa      960
gggacacgcc agtattgcac taggaacat gacacaggca gagggtcatt ttgccaacgc     1020
ctttgttaca cgggcaacag ctaaaggcaa ctattccttg gcagtggttc ttaccgcca     1080
agccaacaca gaatttcaa tcgctgttgg ttctaataca caagctaacg ggtttgcagc     1140
gacagccatt ggtggaggta ctaaagctga tttgggtcga agcatagccc taggttttgg     1200
    
```

-continued

ttctcagatc cttactaagg agaaggatag tcataacaat accaatgtct atgtaccaca	1260
aggtgaaata ttagaagagc ggtataaagc caccgaaaac ggtcagtcgc ctaataaggt	1320
agtggatata ttttcattg gtagtagctc tatcaaacgt aaaatcatca atgtcgggtc	1380
gggttctcag gagaccgatg cggtcfaatg ggcacagctt aaattgggtg agcgggtggc	1440
taagcgtaaa attacttttc agggatgatg tagcaataat agcgtaaaa aaggtttggg	1500
tcagacttta actattaagg gtggtaaaa agagaccggt gaactaacg aaaataacat	1560
cgggtggtga caagatgata atggtaatgg tctgaaagt aaacttgcta aagatctgac	1620
tggtttgacc aaggttgac taaatggtaa tgggtctaac aacgccgagc tactaaacgg	1680
tggtctgacc ttttcgacat caggtgccaa tgcaggcaaa acggtctatg gcaactgatg	1740
ggtgaagttt actaataata caggaacagg aacaggaacg gcaataccg acaactactg	1800
tattacaaa aataaaattg gctttgctg ggctgatgaa caagttgatg aaagcaaac	1860
ttatcttgac aacgaaaagc taaaagttg cacagttgag attaaaaaa ctggcatcaa	1920
tgcaggaat caagaaatta ccaaggtcaa atctgccatt gttgatgac ttaatggaca	1980
agcaaatcaa agctttgtga accttctaga aacagcaggc acaaacacca acaaacaaaa	2040
ctctgccgcc acggttaaag acttatacga cctatcacia tcaccgctga cctttacagg	2100
tgatagcggc aacgttaaga gaaaactggg tcagacttta accatcacag gcggacaaac	2160
aaagaccgat caattaaccg acaataacat cgggtggtga gcaggtacta atggctaac	2220
cgttaaacct gctaaaactt taaacagtct tactgaagt aatacggcta cattaaacgc	2280
caccaataaa gttaaagtag ataatagtag tggtaatag cctgaattat taaacaatgg	2340
tttaacctt acccaacaa caggtgcaaa ttcaggtaaa accgtctatg gcaatgatg	2400
cttgaagttt actaatagtg ctaataaagc acttgccggc acaacttaca tcaccaaga	2460
tcaagttggt tttagcaatc aagatggctt acttgatgaa agcaaacctt atcttaaccg	2520
agaaaagcta aaagttggtg aaattgagat taaagacagt ggcattaatg caggtggtga	2580
agccatcaca ggactgccct caacactgcc caacactacc tatactgcac ctggcgtgca	2640
tactgcacta catggcagta caatttctaa cgacgacaaa acccgtgccg ccagtatcgc	2700
cgatgtgcta aacgcaggct ttaacttggg aggtaatggt gaagcgggtg actttgtctc	2760
cacttatgac accgtcaact ttgccgatgg caatgccacc accgctaagg taacttatga	2820
taacaaaacc agtaaaagtg cgtatgatgt caatgtggat ggtacaacca ttcactaac	2880
aggcactaat ggcaagaaaa accaaattgg cgtaaaaacc accacactga ccacaaaacg	2940
tgctaaaggt aatacagcaa ctaattttag tgttaactct ggtgatgaca atgcccttat	3000
taacgcaaaa gacatgccg acaactctaaa caccctagct ggtgaaattc gcaccgcaa	3060
aggcacagca agcaccgccc tacaacactt ctctattatt gatgaacaag gtaataactt	3120
tatggtcggc aacctttact ctggttatga cacctcaaat acctotgaga ccgtcacctt	3180
tgtaggtgaa aacggcatta ccaccaaggt aaataaaggt aaagtcaag ttggtattga	3240
ccaaaacaaa ggcttaacca cgcctaagct gaccgtgggt agtagtaatg gcaaaggcat	3300
tgctattgac agtaaaagtg gtcaaaatac catcacagga ctaagcaaca ctctaaccga	3360
tgccaccaac gcaacaacag ggcattgac tgaatccag ggcttggcac aaggtgcaaa	3420
caaaaccctg gcgccagca ttggtgatgt actaaacgca ggctttaact tgcaaggcaa	3480

-continued

tggatgaagcc aaagactttg tctccactta tgacaccgtc aactttatcg atggcaatgc	3540
caccaccgct aagggtgacct atgatgacac gaaacagacc agcacagtaa cttatgatgt	3600
caatgtggat aataaaaccc ttgaagtgac aggcgataaa aaacttgccg tcaaaaccac	3660
cacactgacc aaaacaagtg ctaatggtaa tgcaaccaa tttagtgccg ccgatggcga	3720
tgcccttggt aaagccagt atacgccac ccatctaaat accttgccg ggcacatcca	3780
aaccgcaaaa ggagcaagcc aagcaagcag ctacagcaagc tatgtggatg ctgatggcaa	3840
caaggtcatc tatgacagta ccgataagaa gtactatcaa gccaaaaatg atggcacagt	3900
tgataaaacc aaagaagttg ccaagacaa actggtcgcg caagccaaa ccccagatgg	3960
cacattggct cgaatgaatg tcaaatcagt cattaacaaa gaacaagtaa atgatgcaaa	4020
taaaaagcaa ggcacaaagc aagacaagc cttgtttaa ggacttgaaa aagccgcttc	4080
tgataacaaa accaaaaacg ccgcagtaac tgtgggtgat ttaaatgccg ttgccaaaac	4140
accgctgacc tttgcagggg atacagcacc aacggctaaa aaactggccg agactttgac	4200
catcaaaggt gggcaaacag acaccaataa gctaaccgat aataacatcg gtgtggtagc	4260
aggtactgat ggcttccactg tcaaaactgc caaagaccta accaatctta acagcgtaa	4320
tgacagtgcc accaaaattg atgacaaagg cgtgtctttt gtacagcaa acggtcaagc	4380
caaagcaaac acccctgtcg taagtgcctaa tgggctggac ctgggtggca aacgcatcag	4440
taacatcggg gcagctgttg atgataacga tgcggtgaac ttaagcagc ttaatgaagt	4500
tgccaaaacg gtcaacaacc taaacaacca aagtaactca ggtgcgcat tgccctttgt	4560
agtaaccgat gccaatggca agcccatcaa tggcaccgat gacaagcccc aaaaagccat	4620
caagggcgcc gatggtaaat actatcacgc caacgccaac ggcgtacctg tggacaaaga	4680
tggcaacccc atcaccgatg cggacaaact tgccaatctg gcagctcatg gcaaacccct	4740
tgatgcaggt catcaagtgg tggcaagcct aggcggcaac tcagatgcca tcaccctaac	4800
caacatcaag tccactttg cacaattga cacaccaaac acaggtaatg ccaatgcagg	4860
gcaagcccaa agtctgcca gcctatcagc agcacagcaa agtaatgctg ccagtgtcaa	4920
agatgtgcta aatgtaggct ttaacttgca gaccaatcac aatcaagtgg actttgtcaa	4980
agcctatgat accgtcaact ttgtcaatg tacaggtgcc gacatcacia gcgtgcgtag	5040
tgctgatggc acgatgagta acatcacctg caacaccgcc ttagcagcga ccgatgatga	5100
tggcaatgtg cttatcaaa ccaaaagatg taagttctac aaagcagacg acctcatgcc	5160
aaacggctca ctaaaagcag gcaaatcagc cagtgatgcc aaaactcaa ctggtctaag	5220
ccttgtcaac ccaatgctg gtaaaggcag tacagcgatg gcagtgctc ttaataactt	5280
atcaaaagcg gtattttaat ccaaaagatg tacaactact accacagtaa gctctgatgg	5340
catcagatc caaggcaag ataacagcaa catcacccta agcaaaagatg ggctgaatgt	5400
agcggtgaag gtoatcagca atgtgggtaa aggcacaaaa gacaccgacg ctgccaatgt	5460
acaacagtta aaccgaagta cgcaacttgt tgggtcttgg gtaatggctg gtaatgataa	5520
cgctgacggc aatcaggtaa acattgccga catcaaaaaa gaccctaaatt caggttcac	5580
atctaaccgc actgtcatca aagcaggcac ggtacttggc ggtaaaagta ataacgatac	5640
cgaaaaactt gccactgggt ggtgacaagt gggcgtggat aaagcggca acgctaacgg	5700
cgatttaagc aatgtttggg tcaaaaccca aaaagatggc agcaaaaaag ccctgctcgc	5760

-continued

```

cacttataac gccgcaggtc agaccaacta tttgaccaac aaccccgcag aagccattga 5820
cagaataaat gaacaaggta tccgcttctt ccatgtcaac gatggcaatc aagagcctgt 5880
gggtacaaggc cgtaacggca ttgactcaag tgccctcaggc aagcactcag tggcggtcgg 5940
ttataaggcc aaggcagatg gtgaagccgc cgttgccata ggcagacaaa cccaagcagg 6000
caaccaatcc atcgccatcg gtgataacgc acaagccaca ggcgatcaat ccatcgccat 6060
cggtagcaggc aatgtggtag caggtaagca ctctggtgcc atcggcgacc caagcactgt 6120
taaggctgat aacagttaca gtgtgggtaa taacaaccag tttaccgatg ccactcagac 6180
cgatgtcttt ggtgtgggca ataacatcac cgtgaccgaa agtaactcgg ttgccttagg 6240
ttcaaactct gccatcagtg caggcacaca cgcaggcaca caagccaaaa aatctgacgg 6300
cacagcaggt acaaccacca cagcaggtgc aacaggtacg gttaaaggct ttgctggaca 6360
aacggcgggt ggtgcggtct ccgtgggtgc ctcaggtgct gaacgccgta tccaaaatgt 6420
ggcagcaggt gaggtcagtg ccaccagcac cgatgcggtc aatggtagcc agttgtacaa 6480
agccacccaa agcattgcca acgcaaccaa tgagcttgac catcgtatcc accaaaacga 6540
aaataaagcc aatgcaggga tttcatcagc gatggcagtg gcgtccatgc cacaagccta 6600
cattcctggc agatccatgg ttaccggggg tattgccacc cacaacggtc aagggtcggg 6660
ggcagtgggg ctgtcgaagc tgtcggataa tggatcaatg gtatttaaaa tcaatgggtc 6720
agccgatacc caaggccatg taggggcagc agttggtgca ggttttact ttaagccat 6780
aatcgcaag attttactta aaaatcaatc tcaccatagt tgtataaac agcatcagca 6840
tcagtcatat tactgatgct tgatggtttt tattacttaa accatttta 6889

```

```

<210> SEQ ID NO 3
<211> LENGTH: 30
<212> TYPE: DNA
<213> ORGANISM: Moraxella catarrhalis

```

```

<400> SEQUENCE: 3

```

```

cgggatccga tggcctggc ggaatatgcc 30

```

```

<210> SEQ ID NO 4
<211> LENGTH: 38
<212> TYPE: DNA
<213> ORGANISM: Moraxella catarrhalis

```

```

<400> SEQUENCE: 4

```

```

cgcggatccg aaaagtgaaa acctgcacca actgctgc 38

```

```

<210> SEQ ID NO 5
<211> LENGTH: 38
<212> TYPE: DNA
<213> ORGANISM: Moraxella catarrhalis

```

```

<400> SEQUENCE: 5

```

```

tgtcagcatg tatcattttt ttaaggtaaa ccaccatg 38

```

```

<210> SEQ ID NO 6
<211> LENGTH: 28
<212> TYPE: DNA
<213> ORGANISM: Moraxella catarrhalis

```

```

<400> SEQUENCE: 6

```

-continued

 catcaattgc gatatgtctg ggatcttg 28

<210> SEQ ID NO 7
 <211> LENGTH: 25
 <212> TYPE: DNA
 <213> ORGANISM: Moraxella catarrhalis

<400> SEQUENCE: 7

cttcacccca tcagtccat agacc 25

<210> SEQ ID NO 8
 <211> LENGTH: 150
 <212> TYPE: PRT
 <213> ORGANISM: Moraxella catarrhalis

<400> SEQUENCE: 8

 Ala Leu His Gly Ser Thr Ile Ser Asn Asp Asp Lys Thr Arg Ala Ala
 1 5 10 15

 Ser Ile Ala Asp Val Leu Asn Ala Gly Phe Asn Leu Glu Gly Asn Gly
 20 25 30

 Glu Ala Val Asp Phe Val Ser Thr Tyr Asp Thr Val Asn Phe Ala Asp
 35 40 45

 Gly Asn Ala Thr Thr Ala Lys Val Thr Tyr Asp Asn Lys Thr Ser Lys
 50 55 60

 Val Ala Tyr Asp Val Asn Val Asp Gly Thr Thr Ile His Leu Thr Gly
 65 70 75 80

 Thr Asn Gly Lys Lys Asn Gln Ile Gly Val Lys Thr Thr Thr Leu Thr
 85 90 95

 Thr Lys Arg Ala Lys Gly Asn Thr Ala Thr Asn Phe Ser Val Asn Ser
 100 105 110

 Gly Asp Asp Asn Ala Leu Ile Asn Ala Lys Asp Ile Ala Asp Asn Leu
 115 120 125

 Asn Thr Leu Ala Gly Glu Ile Arg Thr Ala Lys Gly Thr Ala Ser Thr
 130 135 140

 Ala Leu Gln Thr Phe Ser
 145 150

<210> SEQ ID NO 9
 <211> LENGTH: 450
 <212> TYPE: DNA
 <213> ORGANISM: Moraxella catarrhalis

<400> SEQUENCE: 9

gcactacatg gcagtacaat ttctaacgac gacaaaaccc gtgccgccag tatcgccgat 60

gtgctaaacg caggctttaa cttggaaggt aatggtgaag cggttgactt tgtctccact 120

tatgacaccg tcaactttgc cgatggcaat gccaccaccg ctaaggtaac ttatgataac 180

aaaaccagta aagtggcgta tgatgtcaat gtggatggta caaccattca tctaaccaggc 240

actaatggca agaaaaacca aattggcgta aaaaccacca cactgaccac aaaacgtgct 300

aaaggtaata cagcaactaa ttttagtggt aactctggtg atgacaatgc ccttattaac 360

gccaaagaca tcgccgacaa tctaaacacc ctactggtg aaattcgac cgccaaaggc 420

acagcaagca ccgccctaca aaccttctct 450

<210> SEQ ID NO 10

-continued

```

<211> LENGTH: 239
<212> TYPE: PRT
<213> ORGANISM: Moraxella catarrhalis

<400> SEQUENCE: 10
Asp Gln Thr Lys Gly Leu Thr Thr Pro Lys Leu Thr Val Gly Ser Ser
  1          5          10          15
Asn Gly Lys Gly Ile Val Ile Asp Ser Lys Asp Gly Gln Asn Thr Ile
          20          25          30
Thr Gly Leu Ser Asn Thr Leu Thr Asp Ala Thr Asn Ala Thr Thr Gly
          35          40          45
His Val Ser Glu Ile Gln Gly Leu Ala Gln Gly Ala Asn Lys Thr Arg
          50          55          60
Ala Ala Ser Ile Gly Asp Val Leu Asn Ala Gly Phe Asn Leu Gln Gly
          65          70          75          80
Asn Gly Glu Ala Lys Asp Phe Val Ser Thr Tyr Asp Thr Val Asn Phe
          85          90          95
Ile Asp Gly Asn Ala Thr Thr Ala Lys Val Thr Tyr Asp Asp Thr Lys
          100          105          110
Gln Thr Ser Thr Val Thr Tyr Asp Val Asn Val Asp Asn Lys Thr Leu
          115          120          125
Glu Val Thr Gly Asp Lys Lys Leu Gly Val Lys Thr Thr Thr Leu Thr
          130          135          140
Lys Thr Ser Ala Asn Gly Asn Ala Thr Lys Phe Ser Ala Ala Asp Gly
          145          150          155          160
Asp Ala Leu Val Lys Ala Ser Asp Ile Ala Thr His Leu Asn Thr Leu
          165          170          175
Ala Gly Asp Ile Gln Thr Ala Lys Gly Ala Ser Gln Ala Ser Ser Ser
          180          185          190
Ala Ser Tyr Val Asp Ala Asp Gly Asn Lys Val Ile Tyr Asp Ser Thr
          195          200          205
Asp Lys Lys Tyr Tyr Gln Ala Lys Asn Asp Gly Thr Val Asp Lys Thr
          210          215          220
Lys Glu Val Ala Lys Asp Lys Leu Val Ala Gln Ala Gln Thr Pro
          225          230          235

```

```

<210> SEQ ID NO 11
<211> LENGTH: 717
<212> TYPE: DNA
<213> ORGANISM: Moraxella catarrhalis

```

```

<400> SEQUENCE: 11

```

```

gaccaaacca aaggcttaac cagcctaag ctgaccgtgg gtagtagtaa tggcaaaggc      60
attgtcattg acagtaaaga tggtcaaaat accatcacag gactaagcaa cactctaacc      120
gatgccacca acgcaacaac agggcatgtc agtgaaatcc agggcttggc acaaggtgca      180
aacaaaaccc gtgccgccag cattggtgat gtactaaacg caggctttaa cttgcaaggc      240
aatggtgaag ccaaagactt tgtctcact tatgacaccg tcaactttat cgatggcaat      300
gccaccaccg ctaaggtgac ctatgatgac acgaaacaga ccagcacagt aacttatgat      360
gtcaatgtgg ataataaac ccttgaagtg acaggcgata aaaaacttgg cgtcaaaacc      420
accacactga caaaaacaag tgctaatggt aatgcaacca aatttagtgc cgccgatggc      480
gatgcccttg ttaaagccag tgatatcgcc acctatctaa ataccttggc tggcgacatc      540

```

-continued

caaaccgcca aaggagcaag ccaagcaagc agctcagcaa gctatgtgga tgctgatggc	600
aacaaggtca tctatgacag taccgataag aagtactatc aagccaaaaa tgatggcaca	660
gttgataaaa ccaagaagt tgccaaagac aaactggtcg cccaagccca aacccca	717

1. A surface exposed protein, which can be detected in *Moraxella catarrhalis*, having an amino acid sequence as described in SEQ ID NO 1, an apparent molecular weight of 200 kDa and a capacity of selectively binding membrane bound or soluble IgD, or naturally occurring or artificially modified variants thereof, or an immunogenic or IgD-binding fragment of said protein or variants, or an immunogenic and adhesive fragment of said surface exposed protein.

2. An immunogenic or IgD-binding fragment of a surface exposed protein as defined in claim 1, which fragment can be detected in *Moraxella catarrhalis*, having a capacity of selectively binding membrane bound or soluble IgD, or naturally occurring or artificially modified variants thereof.

3. An immunogenic or IgD-binding fragment according to claim 2, having an amino acid sequence as described in SEQ ID NO 10.

4. An immunogenic and adhesive fragment of a surface exposed protein as defined in claim 1, which fragment can be detected in *Moraxella catarrhalis*, having a capacity of binding erythrocytes and epithelial cells.

5. An immunogenic and adhesive fragment according to claim 4, having an amino acid sequence as described in SEQ ID NO 8.

6. A DNA segment comprising a DNA sequence, as shown in SEQ ID NO 2, which DNA sequence codes for a surface exposed protein of *Moraxella catarrhalis* as defined in claim 1, or naturally occurring or artificially modified variants of said DNA sequence.

7. A DNA segment comprising a DNA sequence which codes for an immunogenic or IgD-binding fragment as defined in claim 2.

8. A DNA segment according to claim 7, comprising a DNA sequence, as shown in SEQ ID NO 11, which DNA sequence codes for an immunogenic or IgD-binding fragment having an amino acid sequence as described in SEQ ID NO 10.

9. A DNA segment comprising a DNA sequence, which codes for an immunogenic and adhesive fragment of a surface exposed protein as defined in claim 4.

10. A DNA segment according to claim 9, comprising a DNA sequence, as shown in SEQ ID NO 9, which DNA sequence codes for an immunogenic and adhesive fragment which can be detected in *Moraxella catarrhalis* having a capacity of binding erythrocytes and epithelial cells and an amino acid sequence as described in SEQ ID NO 8.

11. A vaccine containing a surface exposed protein of *Moraxella catarrhalis*, said protein having an amino acid sequence as shown in SEQ ID NO 1, an apparent molecular weight of 200 kDa and a capacity of selectively binding membrane bound or soluble IgD, or naturally occurring or artificially modified variants of said protein, or an immunogenic or IgD-binding fragment of said protein or variants, or an immunogenic and adhesive fragment of said surface exposed protein.

12. A vaccine containing an immunogenic or IgD-binding fragment of a surface exposed protein of *Moraxella catarrhalis*, having a capacity of selectively binding membrane bound or soluble IgD, or naturally occurring or artificially modified variants of said fragment.

13. A vaccine according to claim 12 containing an immunogenic or IgD-binding fragment which can be detected in *Moraxella catarrhalis* having a capacity of selectively binding membrane bound or soluble IgD or naturally occurring or artificially modified variants thereof and an amino acid sequence as described in SEQ ID NO 10.

14. A vaccine containing an immunogenic and adhesive fragment of a surface exposed protein of *Moraxella catarrhalis* as defined in claim 4.

15. A vaccine according to claim 14 containing an immunogenic and adhesive fragment of a surface exposed protein which can be detected in *Moraxella catarrhalis* having a capacity of binding erythrocytes and epithelial cells and an amino acid sequence as described in SEQ ID NO 8.

16. A vaccine according to claim 11, combined with another vaccine.

17. A vaccine according to claim 11, combined with an immunogenic portion of another molecule.

18. A plasmid or phage comprising a DNA sequence, which codes for a surface exposed protein of *Moraxella catarrhalis*, said protein having an amino acid sequence as shown in SEQ ID NO 1, an apparent molecular weight of 200 kDa and a capacity of selectively binding membrane bound or soluble IgD, or naturally occurring or artificially modified variants thereof, or an immunogenic or IgD-binding fragment of said protein or variants.

19. A plasmid or phage comprising a DNA sequence, which codes for an immunogenic or IgD-binding fragment of a surface exposed protein as defined in claim 1, which fragment can be detected in *Moraxella catarrhalis* and has a capacity of selectively binding membrane bound or soluble IgD, or naturally occurring or artificially

modified variants of said fragment.

20. A plasmid or phage according to claim 19 comprising a DNA sequence, which codes for an immunogenic or IgD-binding fragment as which can be detected in *Moraxella catarrhalis* having a capacity of selectively binding membrane bound or soluble IgD or naturally occurring or artificially modified variants thereof and an amino acid sequence as described in SEQ ID NO 10.

21. A plasmid or phage comprising a DNA sequence, which codes for an immunogenic and adhesive fragment of a surface exposed protein as defined in claim 1, which fragment can be detected in *Moraxella catarrhalis* and has a capacity of selectively binding erythrocytes and epithelial cells or naturally occurring or artificially modified variants of said fragment.

22. A plasmid or phage according to claim 21 comprising a DNA sequence, which codes for an immunogenic and

adhesive fragment of a surface exposed protein which can be detected in *Moraxella catarrhalis* having a capacity of binding erythrocytes and epithelial cells and an amino acid sequence as described in SEQ ID NO 8.

23. A non human host comprising at least one plasmid or phage as defined in claim 18, and capable of producing said protein or variants, or said immunogenic or IgD-binding fragment of said protein or variants, or said immunogenic and adhesive fragment of said protein, which host is chosen among bacteria, yeast and plants.

24. A host according to claim 23, which is *E. coli*.

25. A recombinant DNA molecule comprising a DNA sequence coding for a surface exposed protein of *Moraxella catarrhalis*, said protein having an amino acid sequence as shown in SEQ ID NO 1, an apparent molecular weight of 200 kDa and a capacity of selectively binding membrane bound or soluble IgD, or naturally occurring or artificially modified variants thereof, or an immunogenic or IgD-binding fragment of said protein or variants, which DNA sequence is fused to another gene.

26. A recombinant DNA molecule comprising a DNA sequence coding for an immunogenic or IgD-binding fragment of a surface exposed protein as defined in claim 1, which fragment can be detected in *Moraxella catarrhalis* and has a capacity of selectively binding membrane bound or soluble IgD, or naturally occurring or artificially modified variants thereof, which DNA sequence is fused to another gene.

27. A recombinant DNA molecule according to claim 26 comprising a DNA sequence, which codes for an immunogenic or IgD-binding fragment which can be detected in *Moraxella catarrhalis* having a capacity of selectively binding membrane bound or soluble IgD or naturally occurring or artificially modified variants thereof and an amino acid sequence as described in SEQ ID NO 10 which DNA sequence is fused to another gene.

28. A recombinant DNA molecule comprising a DNA sequence coding for an immunogenic and adhesive fragment of a surface exposed protein as defined in claim 1, which fragment can be detected in *Moraxella catarrhalis* and has a capacity of selectively binding erythrocytes and epithelial cells, or naturally occurring or artificially modified variants of said fragment, which DNA sequence is fused to another gene.

29. A recombinant DNA molecule according to claim 28 comprising a DNA sequence, which codes for an immunogenic and adhesive fragment of a surface exposed protein which can be detected in *Moraxella catarrhalis* having a capacity of binding erythrocytes and epithelial cells and an amino acid sequence as described in SEQ ID NO 8 which DNA sequence is fused to another gene.

30. A plasmid or phage comprising a fused DNA sequence as defined in claim 25.

31. A non-human host comprising at least one plasmid or phage as defined in claim 30, which host is chosen among bacteria, yeast and plants.

32. A host according to claim 31, which is *E. coli*.

33. A fusion protein or polypeptide, in which a surface exposed protein of *Moraxella catarrhalis*, said protein having an amino acid sequence as shown in SEQ ID NO 1, an apparent molecular weight of 200 kDa and a capacity of selectively binding membrane bound or soluble IgD, or naturally occurring or artificially modified variants thereof, or an immunogenic or IgD-binding fragment of said protein

or variants, is combined with another protein by the use of a recombinant DNA molecule as defined in claim 25.

34. A fusion protein or polypeptide in which an immunogenic or IgD-binding fragment of a surface exposed protein as defined in claim 1, which fragment can be detected in *Moraxella catarrhalis*, having a capacity of selectively binding membrane bound or soluble IgD, or naturally occurring or artificially modified variants thereof, is combined with another protein by the use of a recombinant DNA molecule comprising a DNA sequence coding for an immunogenic or IgD-binding fragment of a surface exposed protein which can be detected in *Moraxella catarrhalis*, having an amino acid sequence as described in SEQ ID NO 1, an apparent molecular weight of 200 kDa and a capacity of selectively binding membrane bound or soluble IgD, or naturally occurring or artificially modified variants thereof, or an immunogenic or IgD-binding fragment of said protein or variants, or an immunogenic and adhesive fragment of said surface exposed protein, which fragment can be detected in *Moraxella catarrhalis* and has a capacity of selectively binding membrane bound or soluble IgD, or naturally occurring or artificially modified variants thereof, which DNA sequence is fused to another gene.

35. A fusion protein or polypeptide according to claim 34 in which an immunogenic or IgD-binding fragment which can be detected in *Moraxella catarrhalis* having a capacity of selectively binding membrane bound or soluble IgD or naturally occurring or artificially modified variants thereof and an amino acid sequence as described in SEQ ID NO 10 is combined with another protein by the use of a recombinant DNA molecule comprising a DNA sequence coding for an immunogenic or IgD-binding fragment of a surface exposed protein which can be detected in *Moraxella catarrhalis*, having an amino acid sequence as described in SEQ ID NO 1, an apparent molecular weight of 200 kDa and a capacity of selectively binding membrane bound or soluble IgD, or naturally occurring or artificially modified variants thereof, or an immunogenic or IgD-binding fragment of said protein or variants, or an immunogenic and adhesive fragment of said surface exposed protein, which fragment can be detected in *Moraxella catarrhalis* and has a capacity of selectively binding membrane bound or soluble IgD, or naturally occurring or artificially modified variants thereof, which DNA sequence is fused to another gene.

36. A fusion protein or polypeptide in which an immunogenic and adhesive fragment of a surface exposed protein as defined in claim 1, which fragment can be detected in *Moraxella catarrhalis* and has a capacity of selectively binding erythrocytes and epithelial cells, or naturally occurring or artificially modified variants of said fragment, is combined with another protein by the use of a recombinant DNA molecule comprising a DNA sequence coding for an immunogenic and adhesive fragment of said surface exposed protein which fragment can be detected in *Moraxella catarrhalis* and has a capacity of selectively binding erythrocytes and epithelial cells, or naturally occurring or artificially modified variants of said fragment, which DNA Sequence is fused to another gene.

37. A fusion protein or polypeptide according to claim 36 in which an immunogenic and adhesive fragment which can be detected in *Moraxella catarrhalis* having a capacity of binding erythrocytes and epithelial cells and an amino acid sequence as described in SEQ ID NO 8 is combined with another protein by the use of a recombinant DNA molecule

comprising a DNA sequence coding for an immunogenic and adhesive fragment of a surface exposed protein, which fragment can be detected in *Moraxella catarrhalis* and has a capacity of selectively binding erythrocytes and epithelial cells, or naturally occurring or artificially modified variants of said fragment and an amino acid sequence as described in SEQ ID NO 8, which DNA sequence is fused to another gene.

38. A fusion product, in which a surface exposed protein of *Moraxella catarrhalis*, said protein having an amino acid sequence as shown in SEQ ID NO 1, an apparent molecular weight of 200 kDa and a capacity of selectively binding membrane bound or soluble IgD, or naturally occurring or artificially modified variants of said protein, or an immunogenic or IgD-binding fragment of said protein or variants, is covalently, or by any other means, bound to a protein, carbohydrate or matrix.

39. A fusion product in which an immunogenic or IgD-binding fragment of a surface exposed protein as defined in claim 2, which fragment can be detected in *Moraxella catarrhalis* and has a capacity of selectively binding membrane bound or soluble IgD, or naturally occurring or artificially modified variants of said fragment, is covalently, or by any other means, bound to a protein, carbohydrate or matrix.

40. A fusion product according to claim 39 in which an immunogenic or IgD-binding fragment having an amino acid sequence as described in SEQ ID NO 10 is covalently, or by any other means, bound to a protein, carbohydrate or matrix.

41. A fusion product in which an immunogenic and adhesive fragment of a surface exposed protein as defined in claim 2, which fragment can be detected in *Moraxella catarrhalis* and has a capacity of selectively binding erythrocytes and epithelial cells, or naturally occurring or artificially modified variants of said fragment, is covalently, or by any other means, bound to a protein, carbohydrate or matrix.

42. A fusion product according to claim 41 in which an immunogenic and adhesive fragment which can be detected in *Moraxella catarrhalis* having a capacity of binding erythrocytes and epithelial cells and an amino acid sequence as described in SEQ ID NO 8 is covalently, or by any other means, bound to a protein, carbohydrate or matrix.

43. A method of detecting IgD using a surface exposed protein of *Moraxella catarrhalis*, said protein having an amino acid sequence as shown in SEQ ID NO 1, an apparent molecular weight of 200 kDa and a capacity of selectively binding membrane bound or soluble IgD, or naturally occurring or artificially modified variants of said protein, or an immunogenic or IgD-binding fragment of said protein or variants, optionally labelled and/or bound to a matrix.

44. A method of detecting IgD using an immunogenic or IgD-binding fragment of a surface exposed protein as defined in claim 2, which fragment can be detected in *Moraxella catarrhalis* and has a capacity of selectively binding membrane bound or soluble IgD, or naturally occurring or artificially modified variants of said fragment, optionally labelled and/or bound to a matrix.

45. A method of detecting IgD according to claim 44 using an immunogenic or IgD-binding fragment of a surface exposed protein of *Moraxella catarrhalis* having a capacity of selectively binding membrane bound or soluble IgD, or naturally occurring or artificially modified variants thereof and having an amino acid sequence as described in SEQ ID

NO 10, and a capacity of selectively binding membrane bound or soluble IgD, or naturally occurring or artificially modified variants of said protein, optionally labelled and/or bound to a matrix.

46. A method of separating IgD using a surface exposed protein of *Moraxella catarrhalis*, said protein having an amino acid sequence as shown in SEQ ID NO 1, an apparent molecular weight of 200 kDa and a capacity of selectively binding membrane bound or soluble IgD, or naturally occurring or artificially modified variants of said protein, or an immunogenic or IgD-binding fragment of said protein or variants, optionally bound to a matrix.

47. A method of separating IgD using an immunogenic or IgD-binding fragment of a surface exposed protein as defined in claim 2, which fragment can be detected in *Moraxella catarrhalis* and has a capacity of selectively binding membrane bound or soluble IgD, or naturally occurring or artificially modified variants of said fragment, optionally bound to a matrix.

48. A method of separating IgD according to claim 47 using an immunogenic or IgD-binding fragment of a surface exposed protein of *Moraxella catarrhalis* having a capacity of selectively binding membrane bound or soluble IgD, or naturally occurring or artificially modified variants thereof and having an amino acid sequence as described in SEQ ID NO 10, having a capacity of selectively binding membrane bound or soluble IgD, or naturally occurring or artificially modified variants of said protein, optionally labelled and/or bound to a matrix.

49. A method of isolation of a surface exposed protein of *Moraxella catarrhalis*, said protein having an amino acid sequence as shown in SEQ ID NO 1, an apparent molecular weight of 200 kDa and a capacity of selectively binding membrane bound or soluble IgD, or naturally occurring or artificially modified variants of said protein, or an immunogenic or IgD-binding fragment of said protein or variants, said method comprising the steps:

- a) subjecting a suspension of *Moraxella catarrhalis* to an extraction process by adding a zwitterionic or non-ionic detergent, optionally in the presence of EDTA;
- b) applying the extract comprising the IgD-binding protein of *Moraxella catarrhalis* from step a) to an adsorption column;
- c) eluting the IgD-binding protein; and
- d) separating the IgD-binding protein.

50. A method according to claim 49, wherein the detergent is selected from the group comprising Empigen®, n-Octyl-p-D glucoside and Triton X-100+0.01M EDTA.

51. A method according to claim 49, wherein the concentration of the detergent in step a) is within the range of 0.1-5%.

52. A method for treatment of an autoimmune disease comprising extra corporal circulation of the blood through a material comprising a surface exposed protein as defined in claim 1, for removal of IgD from the blood.

53. A purified antibody which is specific to an immunogenic portion of a surface exposed protein *Moraxella catarrhalis*, said protein having an amino acid sequence as described in SEQ ID NO 1, an apparent molecular weight of 200 kDa and a capacity of selectively binding membrane bound or soluble IgD, or naturally occurring or artificially

modified variants thereof, or an immunogenic or IgD-binding fragment of said protein or variants.

54. A purified antibody according to claim 48, which is specific to an immunogenic or IgD-binding fragment having a capacity of selectively binding membrane bound or soluble IgD, or naturally occurring or artificially modified variants thereof and having an amino acid sequence as described in SEQ ID NO 10, having a capacity of selectively binding membrane bound or soluble IgD, or naturally occurring or artificially modified variants of said fragment.

55. A purified antibody according to claim 48, which is specific to an immunogenic or adhesive fragment having an amino acid sequence as described in SEQ ID NO 8, having a capacity of binding erythrocytes and epithelial cells.

56. A method according to claim 50, wherein the concentration of the detergent in step a) is within the range of 0,1-5%.

57. A method according to claim 49 wherein the concentration of the detergent of step a) is about 3%.

58. A method according to claim 50 wherein the concentration of the detergent of step a) is about 3%.

59. A method for treatment of an autoimmune disease comprising extra corporal circulation of the blood through a material comprising an immunogenic or IgD fragment of a surface exposed protein as defined in claim 2 for removal of IgD from the blood.

60. A method for treatment of an autoimmune disease comprising extra corporal circulation of the blood through a material comprising an immunogenic or IgD fragment of a surface exposed protein as defined in claim 3 for removal of IgD from the blood.

* * * * *

专利名称(译)	来自粘膜炎莫拉氏菌的新型表面暴露的免疫球蛋白d结合蛋白		
公开(公告)号	US20050027104A1	公开(公告)日	2005-02-03
申请号	US10/480456	申请日	2002-07-01
[标]申请(专利权)人(译)	FORSGREN ARNE RIESBECK KRISTIAN JANSSON HAKAN		
申请(专利权)人(译)	FORSGREN ARNE RIESBECK KRISTIAN JANSSON HAKAN		
当前申请(专利权)人(译)	FORSGREN ARNE RIESBECK KRISTIAN JANSSON HAKAN		
[标]发明人	FORSGREN ARNE RIESBECK KRISTIAN JANSSON HAKAN		
发明人	FORSGREN, ARNE RIESBECK, KRISTIAN JANSSON, HAKAN		
IPC分类号	G01N33/53 A61K35/14 A61K39/00 A61P37/06 C07K1/22 C07K14/195 C07K14/21 C07K16/12 C07K19/00 C12N1/19 C12N1/21 C12N5/10 C12N7/00 C12N15/09 C12N15/31 C12P21/02 C07K1/00 C07K14/00 C07K17/00		
CPC分类号	A61K39/00 C07K2319/00 C07K14/212 A61P11/00 A61P37/04 A61P37/06		
优先权	0102410 2001-07-04 SE		
其他公开文献	US7470432		
外部链接	Espacenet USPTO		

摘要(译)

本发明涉及一种表面暴露的蛋白质，其可在粘膜炎莫拉氏菌中检测，具有SEQ ID NO 1所述的氨基酸序列，表观分子量为200kDa，选择性结合膜结合或可溶性IgD的能力，所述表面暴露蛋白的免疫原性或IgD结合片段，以及所述表面暴露蛋白的免疫原性和粘附片段。还描述了DNA区段，疫苗，质粒和噬菌体，非人宿主，重组DNA分子和植物，融合蛋白和多肽以及融合产物。还公开了检测IgD的方法，分离IgD的方法，分离卡他莫拉菌的表面暴露蛋白的方法和治疗自身免疫疾病的方法。

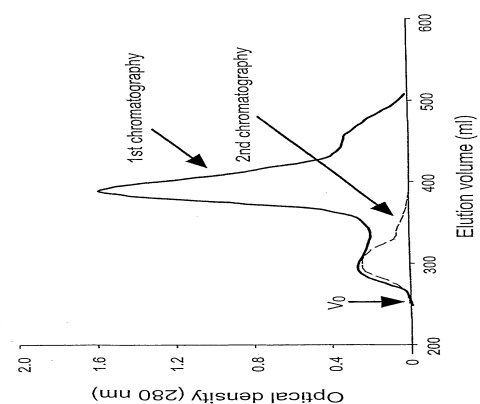


Fig 1