



US007759076B2

(12) **United States Patent**
Shults et al.

(10) **Patent No.:** **US 7,759,076 B2**
(45) **Date of Patent:** **Jul. 20, 2010**

- (54) **QUANTITATIVE ZAP-70 ASSAY**
- (75) Inventors: **Keith E. Shults**, Nolensville, TN (US);
Angel L. Flye, Chapel Hill, TN (US);
Leigh Ann Hobbs, Brentwood, TN (US);
David Miller, Brentwood, TN (US)
- (73) Assignee: **Esoterix, Inc.**, Brentwood, TN (US)
- (*) Notice: Subject to any disclaimer, the term of this patent is extended or adjusted under 35 U.S.C. 154(b) by 767 days.

(21) Appl. No.: **11/251,271**

(22) Filed: **Oct. 14, 2005**

(65) **Prior Publication Data**
US 2007/0087393 A1 Apr. 19, 2007

- (51) **Int. Cl.**
G01N 33/574 (2006.01)
G01N 33/53 (2006.01)
- (52) **U.S. Cl.** **435/7.23; 435/7.1**
- (58) **Field of Classification Search** None
See application file for complete search history.

- (56) **References Cited**
U.S. PATENT DOCUMENTS
7,329,502 B2 2/2008 Staudt et al.
2003/0203416 A1 10/2003 Staudt et al.
2008/0227741 A1 9/2008 Staudt et al.

OTHER PUBLICATIONS

Tockman et al (Cancer Res., 1992, 52:2711s-2718s).*

Shankey et al (Clinical Cytometry, 2006, 70B:259-269).*

Bosch et al (Clinical Cytometry, 2006, 70B:214-217).*

Letestu et al (Clinical Cytometry, 2006, 70B:309-314).*

Shults et al (Clinical Cytometry, 2006, 70B:276-283).*

Technical Data Sheet, SpheroTM, p. 1.*

NIST Calibration Particles, Polysciences, Inc., p. 1-3.*

Herishanu et al I (Leukemia & Lymphoma, 2005, 46 (Suppl 1):S48).*

Herishanu et al II (Leukemia, 2005, 19: 1289-1291; Published online Apr. 21, 2005).*

Technical Data Sheet, SpheroTM, p. 1, printed Oct. 26, 2008.*

NIST Calibration Particles, Polysciences, Inc., p. 1-3, printed Oct. 26, 2008.*

Admirand J.H.. et al., Immunohistochemical detection of ZAP-70 in 341 cases of non-Hodgkin and Hodgkin lymphoma, Mod Pathol. 17(8):954-61 (2004).

Byrd JC, et al., Chronic lymphocytic leukemia, Hematology (Am Soc Hematol Educ Program) 1:163-83 (2004).

Chen L, Widhopf G, Huynh L, Rassenti L, Rai KR, Weiss A, Kipps TJ. Expression of ZAP-70 is associated with increased B-cell receptor signaling in chronic lymphocytic leukemia. Blood. Dec. 15, 2002;100(13):4609-14. Epub Aug. 8, 2002 PMID: 12393534 [PubMed—indexed for Medline].

Crespo M., et al., ZAP-70 expression as a surrogate for immunoglobulin-variable-region mutations in chronic lymphocytic leukemia. N Engl J Med 348 (18): 1764-75 (2003).

Durig J, Nuckel H, Cremer M, Fuhrer A, Halfmeyer K, Fandrey J, Moroy T, Klein-Hitpass L, Duhrsen U. ZAP-70 expression is a prognostic factor in chronic lymphocytic leukemia. Leukemia. Dec. 2003;17(12):2426-34. PMID: 14523469 [PubMed—indexed for Medline].

Firestein, Gary S., The T cell cometh: interplay between adaptive immunity and cytokine networks in rheumatoid arthritis, The Journal of Clinical Investigation, vol. 114, Aug. 4, 2004, pp. 471-474.

Herishanu Y., et al., Quantitative flow cytometry of ZAP-70 levels in CLL using molecules of equivalent soluble fluorochrome: B-CLL cell and T-cell ZAP-70 levels correlate with disease progression, Leukemia & Lymphoma 46(S1): S50 (2005).

Latour et al.—Proximal protein tyrosine kinases in immunoreceptor signaling, Immunology 2001, 13:299-306.

Letestu R., et al., Evaluation of ZAP-70 expression by flow cytometry in chronic lymphocytic leukemia: a multicentric international harmonization process, Leukemia & Lymphoma 46(S1): S47 (2005).

Mainou-Fowler T, Dignum HM, Proctor SJ, Summerfield GP. The prognostic value of CD38 expression and its quantification in B cell chronic lymphocytic leukemia (B-CLL). Leuk Lymphoma. Mar. 2004;45(3):455-62. Review. PMID: 15160906 [PubMed—indexed for Medline].

Orchard JA, et al., ZAP-70 expression and prognosis in chronic lymphocytic leukaemia. Lancet 363 (9403): 105-11 (2004).

Otsu Makoto, et al., Reconstitution of lymphoid development and function in ZAP-70-deficient mice following gene transfer into bone marrow cells, Blood, 100(4): 1248-1256 (2002).

Rassenti LZ, et al., ZAP-70 compared with immunoglobulin heavy-chain gene mutation status as a predictor of disease progression in chronic lymphocytic leukemia. N Engl J Med 351 (9): 893-901 (2004).

Rosenwald et al., Relation of Gene Expression Phenotype to Immunoglobulin Mutation Genotype in B-cell Chronic Lymphocytic Leukemia, The Journal of Experimental Medicine, 149:1639-1647 (2001).

Sakaguchi N, et al., Altered thymic T-cell selection due to a mutation of the ZAP-70 gene causes autoimmune arthritis in mice, Nature. 426(6965):454-60 (2003).

Schwartz et al.—Quantitating Fluorescence Intensity from Fluorophore: The definition of MESF Assignment, Journal of Research of the National Institute of Standards and Technology, vol. 107, Jan.-Feb. 1, 2002, p. 83-91.

Shanafelt et al.—Prognosis at diagnosis: integrating molecular biological insights into clinical practice for patients with CLL, Blood, Feb. 15, 2004, vol. 103, 4: 1202-1210.

Solberg et al.—Approved Recommendation on the Theory of Reference Values, Eur. J. Clin. Chem. Clin. Biochem., vol. 29, 1991, No. 8, pp. 531-535.

Stevenson et al.—Chronic lymphocytic leukemia: revelations from the B-cell receptor, Blood, Jun. 15, 2004—vol. 103, No. 12, pp. 4389-4395.

van Oers et al.—The Syk/ZAP-70 protein tyrosine kinase connection to antigen receptor signaling processes, Immunology, vol. 7, 1995: pp. 227-236.

(Continued)

Primary Examiner—Laura B Goddard
(74) *Attorney, Agent, or Firm*—Kilpatrick Stockton LLP

(57) **ABSTRACT**

An quantitative ZAP-70 assay is provided, with ZAP-70+ and ZAP-70- controls, normal human blood controls, an improved antibody with better signal to noise ratio, and using the median MEFL that is calibrated using a standard curve.

8 Claims, 7 Drawing Sheets

OTHER PUBLICATIONS

Wange—TCR Signaling: Another abl-Bodies Kinase Joins the Cascade, *Current Biology*, vol. 14, 2004, p. R562-R564.
Wiestner A, Rosenwald A, Barry TS, Wright G, Davis RE, Henrickson SE, Zhao H, Ibbotson RE, Orchard JA, Davis Z, Stetler-Stevenson M, Raffeld M, Arthur DC, Marti GE, Wilson WH, Hamblin TJ, Oscier DG, Staudt LM. ZAP-70 expression identifies a

chronic lymphocytic leukemia subtype with unmutated immunoglobulin genes, inferior clinical outcome, and distinct gene expression profile. *Blood*. Jun. 15, 2003;101(12):4944-51. Epub Feb. 20, 2003 PMID: 12595313 [PubMed—indexed for Medline].
Wong et al.—Tyrosine kinase inhibitors: a new approach for asthma, Elsevier, *Biochimica et Biophysica Acta* 1697 (2004) 53-69.

* cited by examiner

Fig. 1: Standard Curve—Conversion of Mean Channels to MEFL

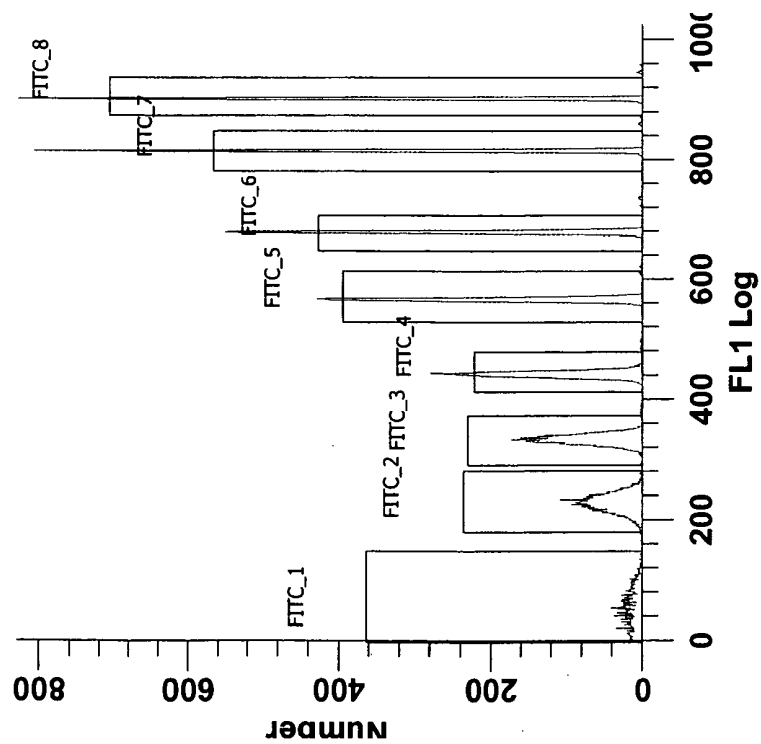
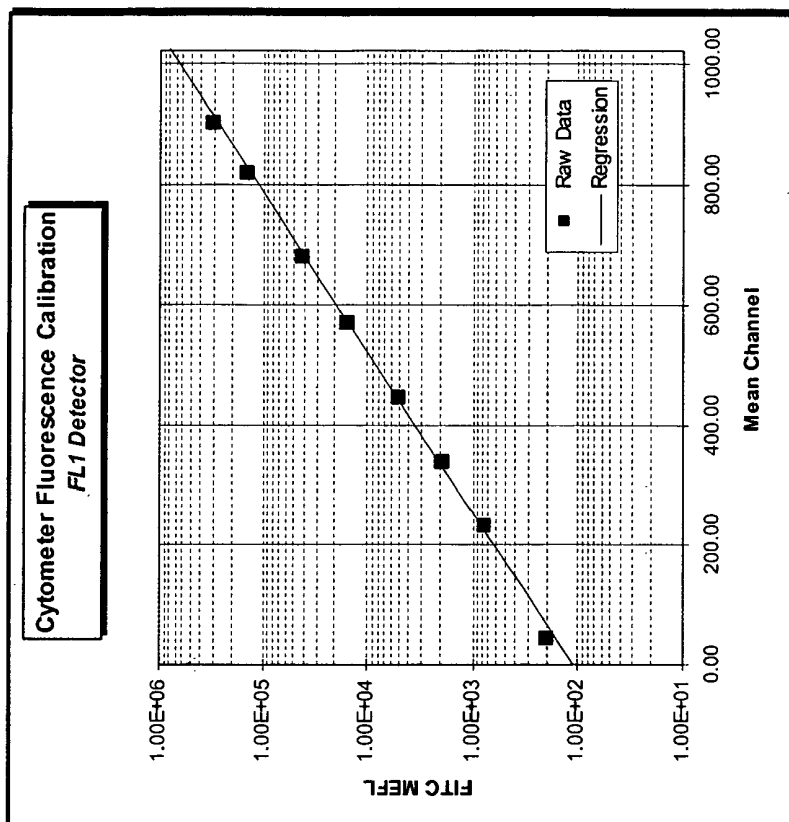


FIG. 2. Comparison of Fluorochrome Performance

Fig. 2: Comparison of Fluorochrome Performance

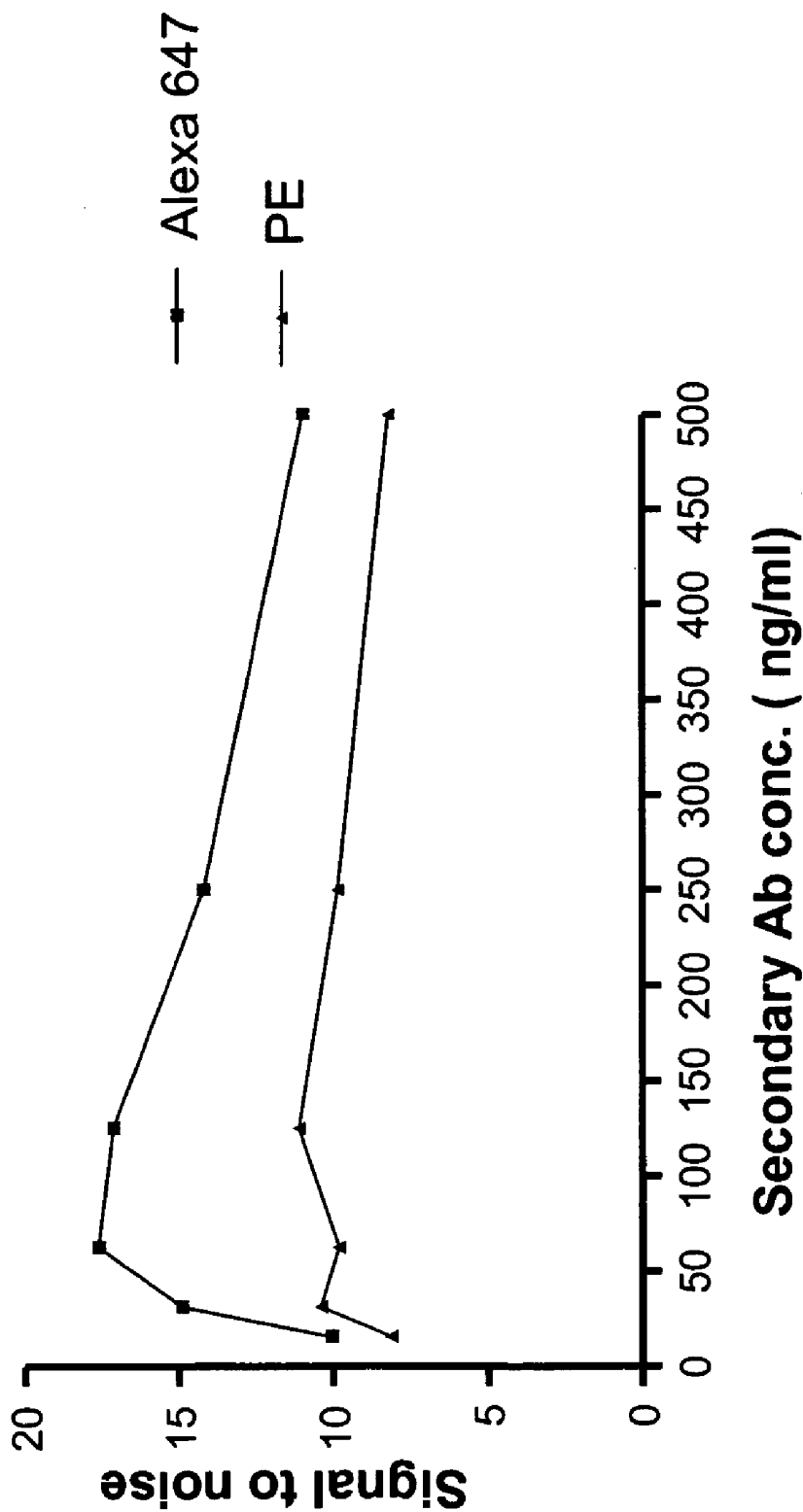


FIG. 3. Anti-ZAP-70 PE vs. Anti-ZAP-70 Alexa fluor® 647

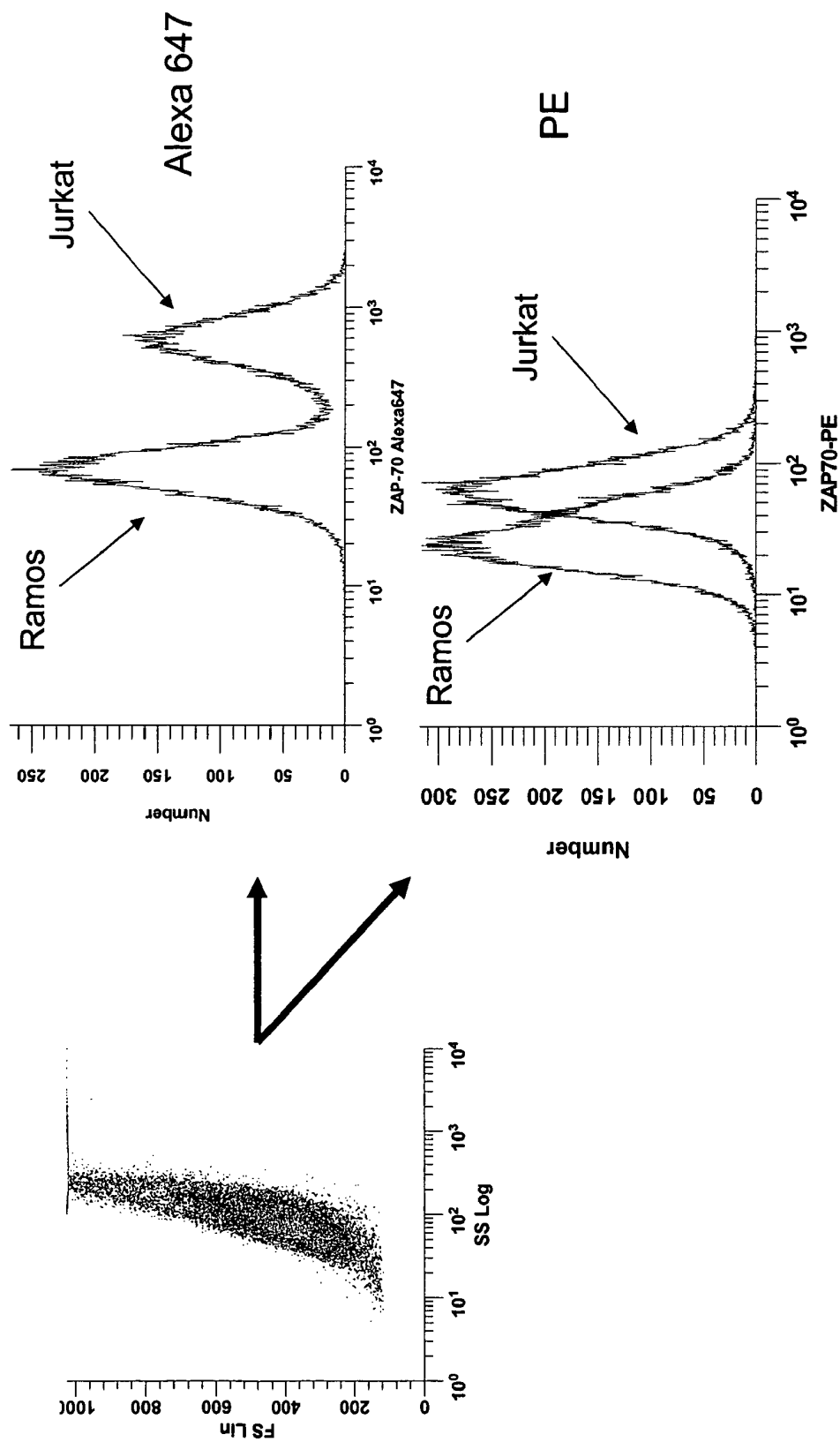
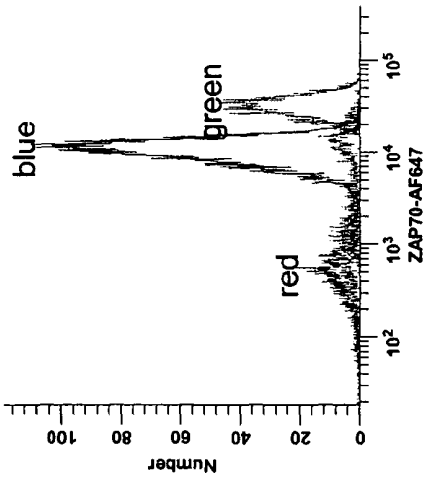
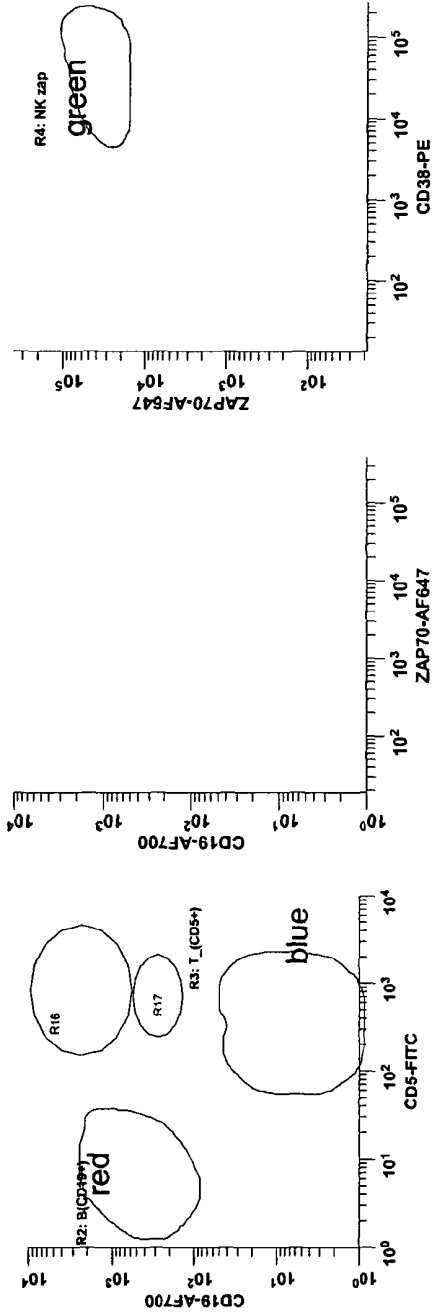


Fig. 4. Normal Peripheral Blood



Id1: DART-ZAP-12.001
Id2: 23-Mar-04

	Alias	MedianX
R7	Norm_B-cell_ZAP	494.58
R8	Normal_T_CEII_ZAP	10271.46
R9	NK_Cell_ZAP	30668.05
R13	Naive_B-_38	123.36
R14	Memory B cell	5592.88
R15	Mature_Plasma_38	58089.15

FIG. 5. MEFL Levels of T Cells in Normal Patients vs. CLL Patients

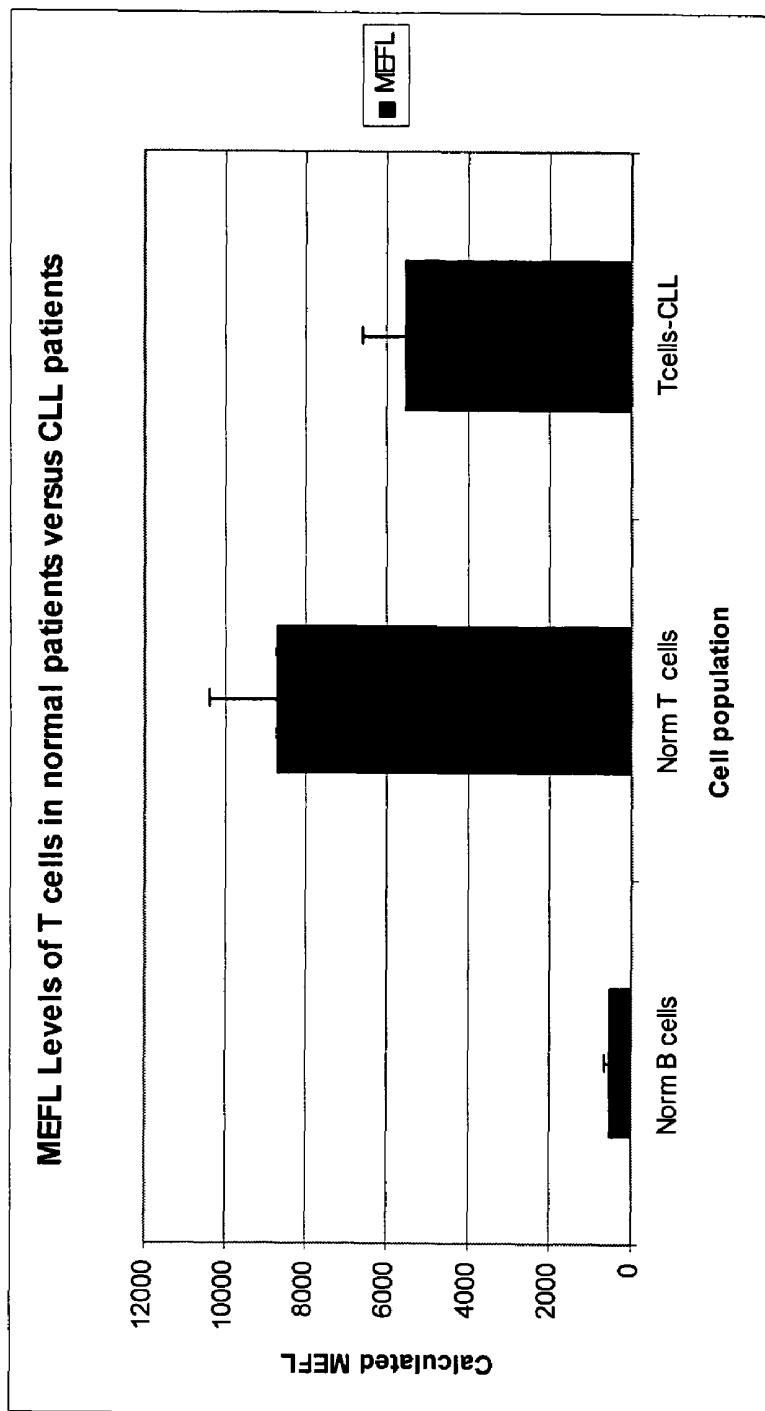
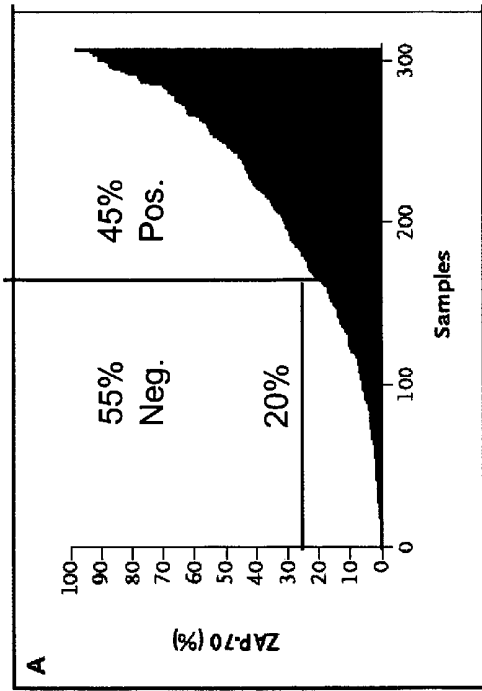


FIG. 6. Cutoffs—One Cutoff vs. Two.



**Fig. 6A. One cutoff (20%)
from Rassenti (2004)**

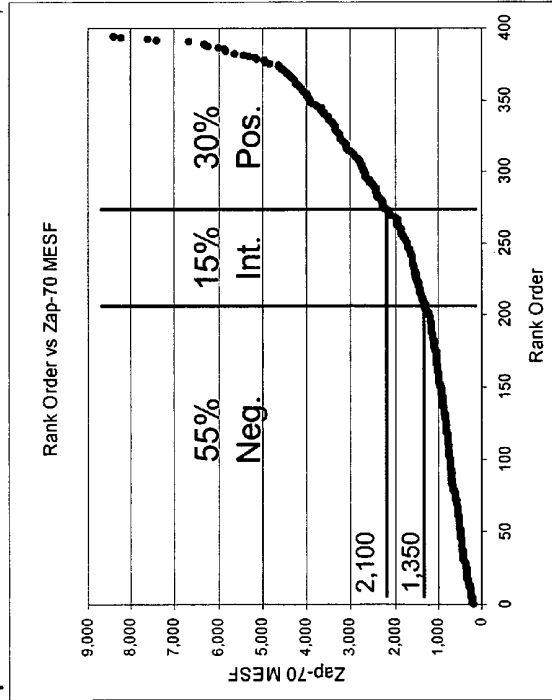
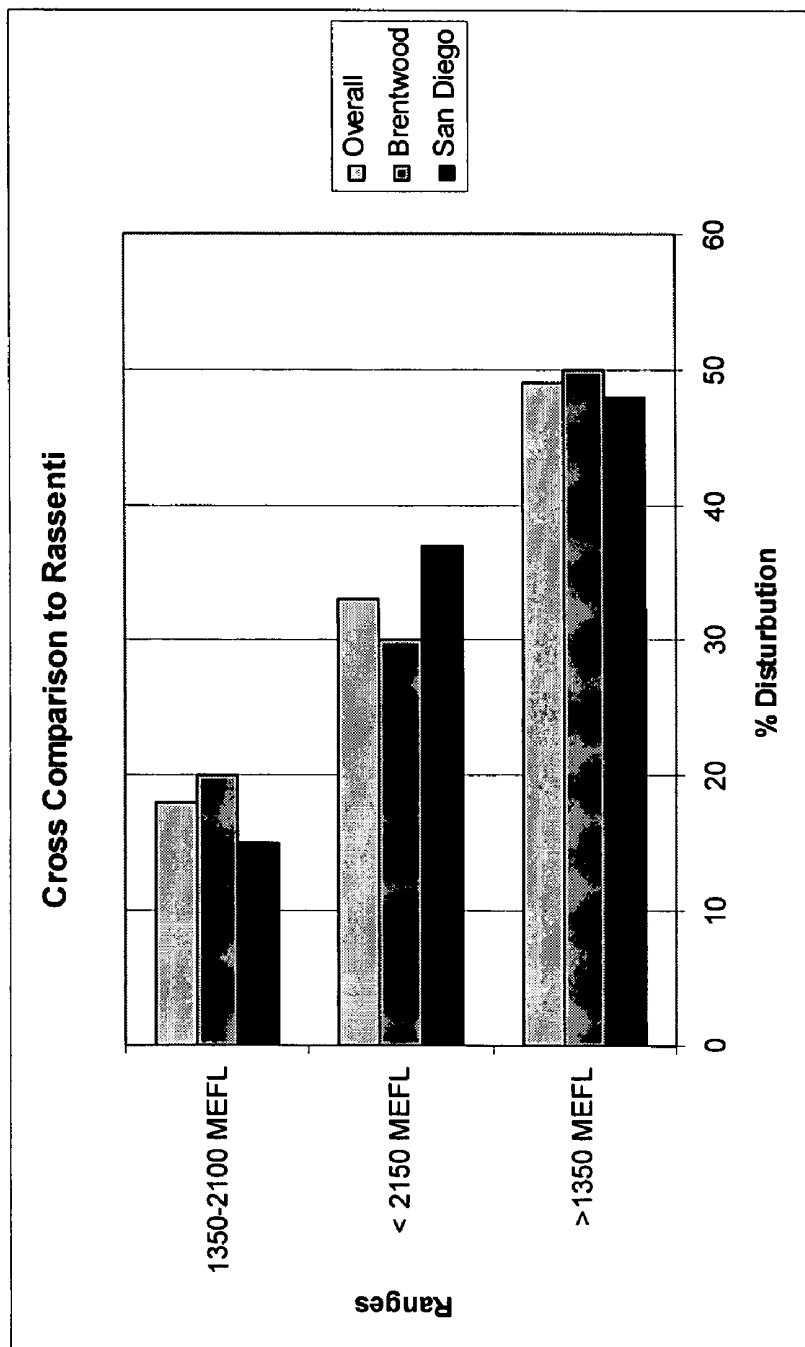


Fig 6b: two cutoffs
0 – 1,350: negative
1,351 – 2,100: indeterminate
2,100 – and up: positive

*It may be noted that the upper limit of "normal" (900 MESF) is less than the upper limit of "negative" (1350 MESF).

Fig. 7. Multiple Site Data



Brentwood= 411 cases; San Diego =155 cases over 3 month span. Published positive rate in Rassenti et al 307 cases=45.9%. Esoterix= 48%

QUANTITATIVE ZAP-70 ASSAY

PRIOR RELATED APPLICATIONS

Not applicable.

FEDERALLY SPONSORED RESEARCH STATEMENT

Not applicable.

FIELD OF THE INVENTION

The invention relates to an improved ZAP-70 prognostic assay based on flow cytometry. The assay is improved by being made quantitative, rather than qualitative—that is rather than providing a simple yes/no answer for the ZAP-70 expression test, a numerical result for the level of ZAP-70 expression is provided. Improvements include the use of a standard curve of fluorescence per unit antibody; the use of a first control containing both ZAP-70⁺ and ZAP-70⁻ cells, and the use of normal blood samples as assay controls, and finally, two cutoff values are provided, rather than single cutoff. The assay is thus made considerably more reliable than the prior art assays, and can be effectively used in predicting the prognosis of chronic lymphocytic leukemia.

BACKGROUND OF THE INVENTION

Chronic lymphocytic leukemia (CLL) is a malignancy of bone marrow cells (lymphocytes) that is found mostly in older people. It affects about 8,200 Americans each year, representing about 22-30% of all leukemia cases according to the National Cancer Institute. Many patients with CLL live for a long time without treatment and survive many years after diagnosis. Others, however, have disease that rapidly progresses and leads to death within a few years.

The clinical problem has been how to distinguish between these two groups of patients in order to treat each group appropriately. Since the late '90s it has been known that the presence or absence of somatic mutations in the immunoglobulin heavy chain variable (IgVH) regions of CLL cells provides a reliable distinguishing characteristic between these two patient populations. Patients whose CLL cells express un-mutated IgVH regions usually have early progression of their disease, whereas patients with mutated IgVH regions usually have later progression.

However, one major shortcoming of using IgVH mutations as a biomarker for CLL is that most clinical laboratories are not capable of detecting IgVH mutations. Even if readily available, the technology is expensive to implement and time

consuming, making it impractical for widespread screening of all CLL patients. Thus, scientists have been searching for a reliable surrogate marker for IgVH mutation.

Rosenwald found such a marker. In 2001 his group reported that Zeta-associated protein of 70 kDa (ZAP-70), a cytoplasmic tyrosine kinase essential for T-cell-receptor signal transduction, is preferentially expressed in CLL B-cells whose immunoglobulin genes have not undergone somatic hypermutation, while a second CLL subtype with mutated immunoglobulin genes most often lacks ZAP-70 expression. Rosenwald (2001); US2003203416.

Patients with less ZAP-70 in their B-cells were more likely to have mutations, and lived anywhere from 15 to 34 years after their diagnosis, with an average survival of 24.4 years. On the other hand, CLL patients whose cells contained significant ZAP-70 were less likely to have mutations and lived from 7 to 11.5 years, with an average of 9.3 years. Recently, it was shown that ZAP-70 expression in T-cells correlates with B-CLL ZAP-70 and bears the same correlation with time to clinical progression of the disease (Herishanu 2005).

The use of ZAP-70 as a marker for IgVH mutation was initially very promising, however, subsequent studies have cast doubt on its prognostic value. Researchers have criticized the current ZAP-70 assays, as follows:

However, for both CD38 and ZAP-70, subsequent studies have yielded controversial results with regard to their validity as a surrogate marker for VH and prognostic indicator. The facts that (1) divergent results have been obtained in different laboratories (CD38 and ZAP-70), (2) the expression level may change over time (CD38), (3) a careful separation of T-cells is necessary (ZAP-70), (4) different cut-off values to distinguish “positive” from “negative” cases were defined (CD38 and ZAP-70), and (5) approximately 10%-30% of cases show discordant status for CD38 or ZAP-70 as compared to VH in all series described, indicate that these markers may not be as reliable as initially thought for routine diagnostics. Byrd (2004) (cites omitted) (emphasis added).

The National Cancer Institute has also noted that the test is not standardized: “This test, which is commercially available, but has not undergone national standardization, has been proposed as a surrogate for the mutational status.” Our own lab has noted that ZAP-70 is present only in low copy number against a large background of noise, and these facts have hindered the realization of the true prognostic value of the ZAP-70 assay. Thus, it is apparent that the use of the ZAP-70 assay as a prognostic tool needs considerable improvement. What is needed in the art is a standardized assay with increased reliability, sensitivity and greater quantitative precision.

SUMMARY OF THE INVENTION

The following abbreviations are used in herein:

TABLE 1

Abbreviations	
Abbreviation	Expansion
ABC	Antibody Binding Capacity - The ABC is the number of monoclonal antibodies a sample will bind, and correlates to the number of antigens expressed on the cell surface.

TABLE 1-continued

<u>Abbreviations</u>	
Abbreviation	Expansion
Eff. F/P	The effective number of fluorochrome molecules conjugated per each antibody molecule determined by measured fluorescence intensity of antibody capture microspheres measured on a flow cytometer calibrated in units of fluorochrome specific MESF
F/P	Number of fluorochrome molecules conjugated per each antibody molecule determined by absorbance on a spectrophotometer.
FCS	Fetal Calf Serum
FSC	Forward angle light scatter
mAb	Monoclonal antibody
MESF	Molecules of Equivalent Soluble Fluorochrome. Corrects for changes in extinction coefficient, quenching, and small spectra shifts. Using the appropriate calibration controls, MESF and ABC can be calculated directly by the software that controls the cytometer. See also Molecules of Equivalent Soluble Fluorochrome or MEFL, which is used interchangeably herein.
MFI	Mean Fluorescence Intensity
pAb	polyclonal antibody
PB	Peripheral blood
PBS	phosphate buffered saline (200 mg/l KCl; 200 mg/l KH ₂ PO ₄ ; 8 g/l NaCl; 2.16 g/l Na ₂ HPO ₄ •7H ₂ O, pH 7.4)
PermiFlow Working Solution	A 1:1 mixture of PermiFlow and Sigma water RNase DNase free

“ZAP-70⁺” or “ZAP-70 positive” cells are defined as cells having a significant and known level of ZAP-70 expression. “ZAP-70⁻” or “ZAP-70 negative” cells have a much lower level of ZAP-70, but need not be completely devoid of ZAP-70 expression.

The routine, clinical determination of ZAP-70 expression in CLL has proved problematic in many laboratories. Poor precision, caused by the low copy number and a high level of non-specific binding, is a significant issue in connection with the assay. Accordingly, we have developed a quantitative assay that is standardized and provides better results.

Prominent in the literature (Crespo, 2003, Rassenti 2004) is the use of the tail of the distribution of ZAP-70 in normal or patient T-cells to define positivity. Instead, the invention uses a bead standard curve to convert MFI to MEFL using the medians of the distributions. The median is not dependent on the shape of the distribution and so has better precision. In this way we have shown that the prior art approaches contribute significantly to poor precision. We have also developed a Winlist protocol that helps to standardize the data analysis.

Extensive quality control measures are also necessary to assay precision. In addition to a daily normal peripheral blood control, the invention uses a cultured cell line system containing cells with known ZAP-70 levels. An on-going review of patient data for the relative number with a negative result is also useful. It is emphasized that meticulous laboratory technique, including the strict standardization of pipetting, incubation, and washing are of paramount importance to obtaining a reproducible assay.

In a preferred embodiment, the invention employs an Alexa fluor® 647 conjugated anti-ZAP-70 antibody, rather than the more commonly used PE reagent, because of the better signal-to-noise ratio. In a further preferred embodiment, the patients samples are fresh blood, because blood storage decreases apparent ZAP-70 levels (Letestu 2005). Aged samples should be corrected for age-dependant reduction in ZAP-70 levels.

We analyzed 375 patients using the NCCLS (CLSI) rank-order, non-parametric approach to reference ranges to assign a cutoff for “negative.” This cutoff was constructed at the 55th percentile of the patients studied. The next 15% of the rank-

25

order were designated as “intermediate.” The 35% with the highest values are, then, considered to be positive. The use of the two-cutoff rather than a single cutoff further improves the reliability of the assay.

30

Generally speaking the invention is a quantitative ZAP-70 assay described as follows: stain a first control cell population with an anti-ZAP-70 antibody, an anti-T-cell antibody and an anti-B-cell antibody, wherein said first control cell population comprises mixture of ZAP-70⁺ T-cells and ZAP-70⁻ B-cells. In preferred embodiments, the first control cell population can be a mixture of Jurkat (a T-cell line) and Ramos cells (a B-cell line). In another preferred embodiment, a second control cell population comprising normal human blood can also be used. Measure anti-ZAP-70 antibody in the B-cells and T-cells by converting mean fluorescent intensity (MFI) of anti-ZAP-70 antibody to molecules of equivalent fluorochrome (MEFL) using a standard curve, and using the median of the population as the ZAP-70 value. Confirm that the amount of ZAP-70 in the first control cell population is within pre-established normal parameters, and if so, repeat on a patient sample, wherein if the level of ZAP-70 in the patient B-cells is in the top 30% indicates that the patient has progressive chronic lymphocytic leukemia (CLL), and if the level of ZAP-70 in the patient B-cells is in the lower 55% indicates that the patient has indolent CLL. In another embodiment, the level of ZAP-70 in T-cells can also be used, since T-cell ZAP-70 also correlates with time to progression of disease. An Alexa fluor® 647 stain is particularly preferred. The T-cell antibody can be anti-CD5 antibody, and the anti-B-cell antibody can be anti-CD19 antibody, but many of the T- and B-cell antibodies are known and available.

55

Several anti-ZAP-70 antibodies are available, some of which are already conjugated to fluorescent probes. Those antibodies that are not conjugated can easily be conjugated with an appropriate dye using one of the many available conjugation kits. Commercial suppliers will also provide custom antibodies on demand. Exemplary antibodies include the following:

60

65

TABLE 2

Anti-ZAP-70 antibodies	
BD Biosciences Pharmingen™	#612588 Mouse Anti-ZAP-70 Kinase mAb, FITC Conjugated, Clone 29 #612719 Mouse Anti-ZAP-70 Kinase mAb, Unconjugated, Clone 24a #612589 Mouse Anti-ZAP-70 Kinase Monoclonal Antibody, Unconjugated, Clone 24a #612589 Mouse Anti-ZAP-70 Kinase Monoclonal Antibody, FITC Conjugated, Clone 29 #612718 Mouse Anti-ZAP-70 mAb, Unconjugated, Clone 29 #557818 Mouse Anti-Zap70 (Y319)/Syk (Y352) mAb, Alexa Fluor® 488 Conjugated #557817 Mouse Anti-Zap70 (Y319)/Syk (Y352) Mab, Alexa Fluor® 647 Conjugated #557881 Mouse Anti-Zap70 (Y319)/Syk (Y352) mAb, Phycoerythrin Conjugated #CM259A Mouse Anti-ZAP-70 Research Use Only mAb, Unconjugated
Biocare Medical™ BioLegend™	#313403 Mouse Anti-ZAP-70 mAb, R-Phycoerythrin Conjugated, Clone 1E7.2 #313401 Mouse Anti-ZAP-70 mAb, Unconjugated, Clone 1E7.2
CalTag Lab.™	#MHZAP7000 Purified anti-human mouse ZAP-70 #MHZAP7020 Alexa Fluor 488 anti-human mouse ZAP-70 #MHZAP7004 R-PE anti-human mouse ZAP-70 #MHZAP7018 Pe-Cy5.5 anti-human mouse ZAP-70
Cell Signaling Technology™	#2701S Anti-Zap-70, phospho (Tyr319)/Syk, phospho (Tyr352) Antibody, Unconjugated #2704S Anti-Zap-70, phospho (Tyr493) Antibody, Unconjugated #2704L Anti-Zap-70, phospho (Tyr493) Antibody, Unconjugated #2707 Rabbit Anti-Zap-70 mAb, Alexa Fluor™ 647 Conjugated, Clone 136F12 #2705 Rabbit Anti-Zap-70 mAb, Unconjugated, Clone 99F2
Chemicon™ Diagnostic BioSystems™ eBioscience™	#AB1377 Anti-ZAP-70 (70 kDa zeta-associated protein) pAb, Unconjugated #Mob 431 Anti-ZAP-70 mAb, Unconjugated, Clone 2F3.2 #14-6695 Affinity Purified anti-mouse/human ZAP-70 (ZAP70) #13-6695 Biotin anti-mouse/human ZAP-70 (ZAP70) #11-6695 FITC anti-mouse/human ZAP-70 (ZAP70) #12-6695 PE anti-mouse/human ZAP-70 (ZAP70) #35-6695 Phycoerythrin-Cy5.5 (PE-Cy5.5) anti-mouse/human ZAP-70 (ZAP70)
GeneTex™	#GTX73804 ZAP-70 Mouse mAb #GTX74255 ZAP-70 Rabbit pAb #GTX12868 ZAP70 (phospho Y292) Rabbit pAb #GTX12869 ZAP70 (phospho Y315 + Y319) Rabbit pAb #GTX13957 ZAP70 Rabbit pAb #GTX18384 ZAP70 Mouse mAb #GTX18371 ZAP70 Mouse mAb #GTX14827 ZAP70 Mouse mAb
Novus Biologicals™	#ab14827 Mouse Anti-ZAP70 mAb, Unconjugated, Clone 2F3.2 #ab13957 Rabbit Anti-ZAP70 Pab, Unconjugated #ab12868 Rabbit Anti-ZAP70, phospho (Tyr292) Pab, Unconjugated #ab12869 Rabbit Anti-ZAP70, phospho (Tyr315/Tyr319) Pab, Unconjugated
OriGene™ Serotec Inc Spring Bioscience™ United States Biological™ Upstate™	#TA201071 Zap-70 (99F2) Rabbit mAb #AHP470 Rabbit Anti-Human ZAP-70 Pab, Unconjugated #E4634 Rabbit Anti-ZAP-70 Pab, Unconjugated #Z0300 Anti-Human ZAP 70 mAb, Unconjugated, Clone 0.T.155 #06-271 Anti-ZAP-70 #05-776 Anti-ZAP-70, clone 1E7.2 #16-211 Anti-ZAP-70, clone 2F3.2, biotin conjugate, human #16-210 Anti-ZAP-70, clone 2F3.2, FITC conjugate, human #05-253 Anti-ZAP-70, clone 2F3.2, human #05-253MG Anti-ZAP-70, clone 2F3.2, human #16-214 Anti-ZAP-70, clone 2F3.2, (TRITC) Rhodamine conjugate, human
Zymed Tebu-Bio™	Anti-ZAP-70 mAb, Unconjugated, Clone ZAP-70-6F7 #021MHZAP7004 Anti ZAP-70 Human PE #021MHZAP7020 Anti ZAP-70 Human Alexa 488

The fluorescent labels should be chosen with the operating characteristics of the cytometer in mind such that there is sufficient separation of signal so as to allow the cytometer to distinguish between the two or more signals. Many such labels are known in the art, including fluorescent isothiocyanate (FITC, aka fluorescein), Phycoerythrin (PE); Cy5PE; Cy7PE; Texas Red (TR); Allophycocyanin (APC); Cy5; Cy7APC; Cascade Blue; and the like. However, preferred labels are the Alexa Fluor® labels available from Invitrogen™, CalTag™, BD Biosciences™, etc., including Alexa

Fluor® 350, 405, 430, 488, 500, 514, 532, 546, 555, 568, 594, 610, 633, 635, 647, 660, 680, 700 and 750 dyes. Particularly preferred is Alexa Fluor® 647.

In order to detect an intracellular target such as ZAP-70, cells must be fixed and permeabilized to allow the antibody to penetrate the cell and bind the antigen, while retaining sufficient cell morphology to allow cell separation. Thus, cells are permeabilized with agents such as 0.05% Triton X-100 in PBS, stained with antibody and then fixed. For example, PERMEAFIX™ or PERMIFLOW™ at mild denaturation or

room temperatures preserves cell morphology and thus allows subsequent analysis by flow cytometry. Such methods are described in more detail in co-pending application 60/512,834 filed Oct. 20, 2003.

“Fixatives” are defined herein as fixatives that allow both cell fixation and permeation, while retaining cell surface morphology and DNA and RNA content, sufficient to allow separation of cells based on light scatter, surface epitopes and/or nucleic acid content. An acceptable fixative contains 0.75-0.85% formaldehyde, 25-30 mM DNBS, 6.8-7% DMSO and 0.08-0.1% Tween 20 detergent. A preferred fixative is PERMIFLOW.TM

BRIEF DESCRIPTION OF THE DRAWINGS

FIG. 1. Standard Curve—Conversion of MFI to MEFL. Using the same standardized cytometry set-up in which patients are analyzed, a eight peak fluorescent standard is used to plot known equivalent fluorescent levels against linear mean channels (median of the MFI) (only six points shown in the graph). The derived slope and intercept are used to convert the MFI to MEFL.

FIG. 2. Comparison of Fluorochrome Performance. Signal to noise ratio is plotted against antibody concentration for both Alexa fluor® 647 and PE labeled antibodies. Alexa fluor® 647 provides significantly improved signal to noise ratio, especially at lower concentrations. Cells were stained with the same primary antibody to SMAD-2 developed with secondary antibody conjugated to either Alexa 647 or PE and at the various concentrations.

FIG. 3. Anti-ZAP-70 PE vs. Anti-ZAP-70 Alexa fluor® 647. Separation of control cell populations—the ZAP-70 negative Ramos cell line and the ZAP-70 positive Jurkat cell line—is greatly improved with the Alexa fluor® 647 label. This figure also illustrates the usefulness of these cell lines as positive and negative controls. This figure is predicted from the data presented in FIG. 2 and holds true in the detection of ZAP-70.

FIG. 4. Normal Peripheral Blood. The cells in blue represent T cells, the cells in red represent B cells and the cells labeled green are NK cells. The data has been converted to

Annual CCS meeting, Abs#12.p.16,2004). The Rassenti (2004) and Crespo (2003) papers use T-cell levels for ZAP-70 to set the threshold level for positivity in the CLL cells. As this data shows, the prior art assays lack precision because their one-point “standard” is a moving target.

FIG. 6. Cutoffs—One Cutoff vs. Two. The prior used a single cutoff value to assign patients as ZAP-70 positive or negative (FIG. 6a). However, subsequent research has shown that this is too simplistic and a two cutoff assay is proposed in FIG. 6b. Here, patients with high ZAP-70 levels (greater than 2,100 MEFL) are positive, low ZAP-70 (less than 1350 MEFL) are negative, but those between 1,350 and 2,100 MEFL ZAP-70 are indeterminate.

FIG. 7. Multiple Site data. Showing that the assay is reproducible across different laboratories.

DESCRIPTION OF EMBODIMENTS OF THE INVENTION

The present invention is exemplified with respect to CLL. However, it can be used for any disease for which ZAP-70 is a marker, including for example, severe combined immunodeficiency (SCID) (Otsu 2002), arthritis (Sakaguchi 2003), or other types of lymphoma (Admirand 2004).

The following examples describe the invention as practiced in additional detail, but should not be construed as limiting.

EXAMPLE 1

Materials

The sample can be any bone marrow or peripheral blood sample that is received in ACD, Sodium Heparin, or EDTA. In a preferred embodiment the sample is a fresh heparin sample. In addition to standard laboratory equipment, the following was used herein:

TABLE 3

Equipment and reagents
Cytometer with filters for FITC, PE, Alexa fluor ® 647, and Alexa fluor ® 700.
anti-ZAP-70 Alexa fluor ® 647 (Cell Signaling Technology #2705)
Buffer QC (1.0 M NaCl, 50 mM MOPS pH 7.0, 15% isopropanol (v/v))
Microsoft TM Excel 2000 TM
Newborn Calf Serum
PBS + 2% NCS
PerniFlow (Invirion TM Corp. # 55001, Reagent #1)
PerniFlow Working Solution (1:1 mixture of PerniFlow TM and Sigma TM water RNase/DNase free)
Rainbow calibration particles (Spherotech, TM Inc., Cat. #RCP-30-5A)
RPMI (Invitrogen TM #11875119)
Surface Antibody Cocktail containing anti-CD5-FITC and anti-CD19-PE
Water (Sigma TM #W4502)
WinList TM Version 5.0 (Verity Software House TM)

MEFL as evidenced by the median X values in the box. The single parameter histogram in the lower left demonstrates the ability to independently measure ZAP 70 levels in the various subsets.

FIG. 5. MEFL Levels of T-cells in Normal Subjects vs. CLL Patients. FIGS. 4 and 5 are the same data represented in different ways; FIG. 4 is a FACS scatter plot, and FIG. 5 is the calculated MEFL for the various cell populations(19th

TABLE 4

Cell Type	Antibodies	
	Antibody	Source
T-cells	anti-CD5-FITC	Immunotech IM#0468
B-cells	anti-CD19-PE	Immunotech IM#1285

TABLE 4-continued

Cell Type	Antibodies	
	Antibody	Source
T-, B-, and NK-cells	anti-ZAP-70-Alexa fluor® 647	Cell Sig. Tech. Cat # 2707
T-, B-, and NK-cells	anti-ZAP-70-PE	Caltag™ Catalog #MHZAP7004

EXAMPLE 2

Sample Preparation

About one million WBC cells/ml are needed for each patient sample. The antibodies employed are shown in Table 4, above.

Deliver 100 µl of adjusted blood sample to a 12×75 mm tube. Add titered amounts of Surface Antibody Cocktail or if cocktail is unavailable, use titered amounts of anti-CD5 FITC and anti-CD19 PE antibodies to prepare a "hand-made" cocktail. Vortex to mix. Allow to incubate in the dark for 20 minutes.

Wash tubes in 4 ml of PBS+2% NCS. Spin at 1300 rpm for 5 minutes, decant, and blot. Add 4 ml of prepared PermiFlow Working Solution to each tube and pipet up and down until there is no RBC pellet adhered to bottom of tube. Incubate at RT for 1 hour or at 4° C. overnight if test is to be completed the next working day.

Spin tubes to a pellet, decant, and add 4 ml of PBS+2% NCS, mix well with pipet. Spin to a pellet and repeat. If there is still a large amount of residual lysed red cell debris in the bottom of tube as indicated by a solid red pellet, repeat wash until residual lysed red cell debris is removed.

Add saturating, titered amounts of the anti-ZAP-70 Alexa 647 to each tube. Vortex to mix and incubate at RT for 1 hour. Wash twice in PBS+2% NCS. Re-suspend cells in 750 µl PBS+2% NCS.

Prepare Rainbow™ beads by adding 1 drop of vortexed Rainbow Bead suspension to 1 ml of Buffer QC. Collect Rainbow Bead data.

EXAMPLE 3

Flow Cytometry

We used the BECKMAN COULTER™ FC500 or BECTON DICKINSON™ FACS CALIBUR FLOW cytometer herein, but any properly quality controlled flow cytometer that satisfies established windows of analysis can be used, provided the laser excitation lines and filter configurations are correct for the excitation and detection of all fluorescence labels used in the assay. In general, we collect 50,000 ungated events. Data was analyzed in WinList (VERITY SOFTWARE™) and Excel (MICROSOFT™) or equivalent. Exemplary results are shown in FIG. 1 through 6.

EXAMPLE 4

Antibody Optimization

One of the difficulties with the current assay is the ZAP-70 is expressed at only low levels and the signal to noise ratio with existing antibodies is poor. Thus, to fully optimize the assay, we also studied the fluorescent behavior of multiple

fluorochromes. We assessed the performance of different fluorochromes at identical antibody concentrations. The graph in FIG. 2 depicts a typical finding comparing the SMAD-2 primary antibody developed with secondary antibodies conjugated to either PE or Alexa fluor® 647 using the same flow cytometer. The graph teaches us three things: 1) In ranges of 0.5-2 µg, Alexa fluor® 647 exhibits better signal to noise performance, and 2) there is a point where more antibody is not better, and 3) excess Alexa fluors are more easily removed from the cell in comparison to PE.

We then tested these labels in a real cell separation experiment using our Ramos/Jurkat controls (described in more detail below). We compared the anti-ZAP-70 rabbit monoclonal clone 136F12 conjugated with Alexa fluor® 647 to a commercially available anti-ZAP-70 conjugated with PE. FIG. 3 shows greatly improved signal separation of the Alexa fluor® based label, and it was chosen for all future experiments.

We also optimized the level of each antibody. Antibody titration data was plotted to show 1) staining intensity versus antibody staining concentration, 2) percent positive staining versus concentration and 3) the signal to noise ratio versus concentration (data not shown). These plots aided in the identification of the optimal staining concentration of each antibody, indicated whether saturation staining was possible for each antibody. The minimal antibody that provided saturation staining was chosen for future experiments.

EXAMPLE 5

Assay Design

An improved ZAP-70 assay should meet one or more of these basic criteria: 1) the assay should be adaptable to peripheral blood, bone marrow, and cell line systems; 2) the assay should be multiparametric with a preferred minimum of 6 parameters (FSC,SSC,FITC/PE/Alexa647/Alexa700) combining surface/cytoplasmic staining; 3) The assay should collect data uncompensated to remove hardware bias (technologists who enter hardware values incorrectly can bias quantitative values versus off-line software compensation); 4) The assay should convert fluorescence parameters to MEFL and quantitate all fluorescence parameters; and 5) the assay should measure each cell population independently. Therefore, we designed a ZAP-70 assay to meet these needs.

Our ZAP-70 assay requires the mean fluorescence intensity (MFI) to be converted to molecules of equivalent fluorochrome (MEFL). MEFL provides a more precise indicator of ZAP-70 expression because it equates the median intensity of the populations relative to a known, stable standard. This is done using an 8 peak fluorescent standard to correlate known equivalent fluorescent levels to linear mean channels. The slope and intercept are derived by linear regression and used to convert the median intensity to MEFL.

To further improve our assay we have added two types of quantitative controls. One of our controls is a mixture of equal numbers of Jurkat and Ramos cells. Jurkat cells express significant ZAP-70, while Ramos cells express much less ZAP-70. Thus, this mixture of cells provides useful positive and negative controls for the assay (see e.g., FIG. 3). This material controls for cell fixation, permeation, antibody staining and ZAP-70 expression levels across different laboratories and equipment. It also accounts for proper removal of excess antibody because elevated levels in the Ramos cells indicate poor lab technique.

We also employ a second kind of semi-quantitative control, using blood from normal subjects. About 100 µl of blood is

stained from a normal subject, and this blood provides ZAP-70 positive NK and T-cells, as well as ZAP-70 negative normal B-cells. The normal blood thus controls for cell separation, as well as fixation, permeation and staining, while providing three levels of ZAP 70 expression.

EXAMPLE 6

Evaluation

Finally, based on the available data, it is apparent that a simple single cutoff system for presence or absence of ZAP-70 is too simplistic and does not accurately reflect the biology of CLL. Instead we propose a two cutoff system, providing three ranges ZAP-70 expression—positive, negative, and an in-between, indeterminate region where ZAP-70 expression is inconclusive. Under the conditions described herein, we have set the cutoff values at 2,100 MESF (30% positive), and 1,350 MESF (55% negative) with the intervening region being 15% indeterminate. Studies of patient samples show this grouping indicates our quantitative assay matches the published distribution of patients with known IgVH status.

TABLE 5

Data
<u>Normal Ranges:</u>
B-cells: 300-900 median MESF
T-cells: 4300-9000 median MESF
<u>Patient:</u>
Negative ≤ 1350
Intermediate = 1,350-2,100
Positive ≥ 2100

*These ranges were determined in-house and may be subject to change due to ongoing evaluation.

Further the assay was repeated at two locations to determine whether it was reproducible across sites. The data in FIG. 7 shows that the assay is very reproducible.

The following articles are incorporated by reference in their entirety:

Admirand J. H. et al., Immunohistochemical detection of ZAP-70 in 341 cases of non-Hodgkin and Hodgkin lymphoma, *Mod Pathol.* 17(8):954-61 (2004)

Byrd J C, et al., Chronic lymphocytic leukemia, *Hematology (Am Soc Hematol Educ Program)* 1:163-83 (2004).

Crespo M., et al., ZAP-70 expression as a surrogate for immunoglobulin-variable-region mutations in chronic lymphocytic leukemia. *N Engl J Med* 348 (18): 1764-75 (2003).

Herishanu Y., et al., Quantitative flow cytometry of ZAP-70 levels in CLL using molecules of equivalent soluble fluorochrome: B-CLL cell and T-cell ZAP-70 levels correlate with disease progression, *Leukemia & Lymphoma* 46(S1): S48 (2005).

Letestu R., et al., Evaluation of ZAP-70 expression by flow cytometry in chronic lymphocytic leukemia: a multicentric international harmonization process, *Leukemia & Lymphoma* 46(S1): S47 (2005).

Orchard J A, et al., ZAP-70 expression and prognosis in chronic lymphocytic leukaemia. *Lancet* 363 (9403): 105-11 (2004).

Makoto Otsu, et al., Reconstitution of lymphoid development and function in ZAP-70-deficient mice following gene transfer into bone marrow cells, *Blood*, 100(4): 1248-1256 (2002).

Rassenti L Z, et al., ZAP-70 compared with immunoglobulin heavy-chain gene mutation status as a predictor of disease progression in chronic lymphocytic leukemia. *N Engl J Med* 351 (9): 893-901 (2004).

5 Rosenwald et al., Relation of Gene Expression Phenotype to Immunoglobulin Mutation Genotype in B-cell Chronic Lymphocytic Leukemia, *The Journal of Experimental Medicine*, 149:1639-1647 (2001).

10 Sakaguchi N, et al., Altered thymic T-cell selection due to a mutation of the ZAP-70 gene causes autoimmune arthritis in mice, *Nature*. 426(6965):454-60 (2003).

The invention claimed is:

1. A quantitative ZAP-70 assay for predicting the prognosis of chronic lymphocytic leukemia (CLL), comprising the steps of:

15 a. staining a first control cell population with an anti-ZAP-70 antibody, an anti-T-cell antibody and an anti-B-cell antibody, wherein said first control cell population comprises equal mixture of ZAP-70⁺ T-cells and ZAP-70⁻ B-cells;

20 b. separating the B-cells and the T-cells and measuring anti-ZAP-70 antibody staining in the B-cells and T-cells to obtain a mean fluorescent intensity (MFI) in each;

25 c. converting the median of the MFI to molecules of equivalent fluorochrome (MEFL), wherein MEFL indicates an amount of ZAP-70;

30 d. repeating steps a)-c) on a patient blood sample if the amount of ZAP-70 in the first control cell population is within a pre-established range of ZAP-70 for normal and indolent CLL B-cells and T-cells;

35 e. wherein an amount of ZAP-70 in B-cells of the patient blood sample in the top 30% of said pre-established range for B-cells indicates that the patient has progressive CLL, and an amount of ZAP-70 in B-cells of the patient blood sample in the lower 55% of said pre-established range for B-cells indicates that the patient has indolent CLL.

2. The assay of claim 1, wherein the first control cell population is a mixture of Jurkat and Ramos cells.

40 3. The assay of claim 1, wherein anti-T-cell antibody is anti-CD5 antibody, and the anti-B-cell antibody is anti-CD19 antibody.

45 4. The assay of claim 1, wherein the B-cells and T-cells of the first control cell population and the patient blood sample are electronically separated by flow cytometry.

50 5. The assay of claim 1, wherein ≥ 2100 MEFL in the patient B-cells indicates said patient has progressive CLL, and ≤ 1350 MEFL in the patient B-cells indicates said patient has indolent CLL.

55 6. The assay of claim 1, further comprising repeating steps a)-c) using a second control cell population comprising normal human blood and confirming that ZAP-70 in the second control cell population is within a pre-established range of ZAP-70 for B-cells and T-cells in normal blood.

7. The assay of claim 6, wherein the B-cells and T-cells of the first control cell population, the second control cell population, and the patient blood sample are electronically separated by flow cytometry.

60 8. A quantitative ZAP-70 assay, comprising the steps of:

a. staining a first control cell population comprising a mixture of T-cells and B-cells with an anti-ZAP-70 antibody, anti-CD19 antibody and anti-CD5 antibody, wherein the mixture of B-cells and T-cells is a mixture of Ramos and Jurkat cells;

b. separating the B-cells and T-cells by flow cytometry using the anti-CD19 antibody and anti-CD5 antibody;

13

- c. measuring anti- ZAP-70 antibody in mean fluorescent intensity (MFI) in the separated B-cells and T-cells;
- d. converting each MFI to molecules of equivalent fluorochrome (MEFL) using the median of the MFI, wherein MEFL indicates an amount of ZAP-70;
- e. repeating steps a)-d) using a second control cell population comprising normal human blood;
- f. repeating steps a) -d) on a patient blood sample if the amount of ZAP-70 in the first control cell population and second control cell population are within pre-estab-

14

lished ranges of ZAP-70 for normal and indolent CLL B-cells and T-cells, wherein a ZAP-70 level in B-cells of the patient blood sample in the top 30% of the pre-established range for B-cells indicates that the patient has a shorter time to progression of chronic lymphocytic leukemia (CLL), and a ZAP-70 level in B-cells of the patient blood sample in the lower 55% of the pre-established range for B-cells indicates that the patient has indolent CLL.

* * * * *

专利名称(译)	定量ZAP-70测定		
公开(公告)号	US7759076	公开(公告)日	2010-07-20
申请号	US11/251271	申请日	2005-10-14
[标]申请(专利权)人(译)	SHULTS KEITHê FLYE ANGEL大号 HOBBS LEIGH一个 DAVID MILLER		
申请(专利权)人(译)	SHULTS KEITHê FLYE ANGEL大号 HOBBS LEIGH一个 DAVID MILLER		
当前申请(专利权)人(译)	ESOTERIX INC.		
[标]发明人	SHULTS KEITH E FLYE ANGEL L HOBBS LEIGH ANN MILLER DAVID		
发明人	SHULTS, KEITH E. FLYE, ANGEL L. HOBBS, LEIGH ANN MILLER, DAVID		
IPC分类号	G01N33/574 G01N33/53		
CPC分类号	G01N33/56972 G01N33/57426		
其他公开文献	US20070087393A1		
外部链接	Espacenet USPTO		

摘要(译)

提供定量ZAP-70测定，其具有ZAP-70 +和ZAP-70-对照，正常人血液对照，具有更好信噪比的改进抗体，并使用使用标准曲线校准的中值MEFL。

Fig. 1: Standard Curve—Conversion of Mean Channels to MEFL

