



US 20040101904A1

(19) **United States**(12) **Patent Application Publication** (10) **Pub. No.: US 2004/0101904 A1**
Pardridge et al. (43) **Pub. Date: May 27, 2004**(54) **DELIVERY OF PHARMACEUTICAL AGENTS
VIA THE HUMAN INSULIN RECEPTOR****Publication Classification**(75) Inventors: **William M. Pardridge**, Pacific
Palisades, CA (US); **Ruben J. Boado**,
Agoura Hills, CA (US)(51) **Int. Cl.⁷** **G01N 33/53**; C07K 16/28
(52) **U.S. Cl.** **435/7.1**; 530/388.22; 530/388.15

Correspondence Address:

David J. Oldenkamp, Esq.
Shapiro & Dupont LLP
Suite 700
233 Wilshire Boulevard
Santa Monica, CA 90401 (US)(57) **ABSTRACT**(73) Assignee: **The Regents of the University of Cali-
fornia**(21) Appl. No.: **10/307,276**(22) Filed: **Nov. 27, 2002**

A humanized murine antibody is provided that binds to the human insulin receptor (HIR). The humanized murine antibody is suitable for use as a Trojan horse to deliver pharmaceutical agents to human organs and tissue that express the HIR. The humanized murine antibody is especially well suited for delivering neuropharmaceutical agents from the blood stream to the brain across the blood brain barrier (BBB). The humanized murine antibody may be genetically fused to the pharmaceutical agent or it may be linked to the pharmaceutical agent using an avidin-biotin conjugation system.

MURINE 83-14 VH NUCLEOTIDE AND AMINO ACID SEQUENCE

CAG GTC CAG CTG CAG GAG TCT GGA CCT GAG CTG GTG AAG CCT GGG GCT TTA GTG
gln val gln leu gln glu ser gly pro glu leu val lys pro gly ala leu val

AAG ATA TCC TGC AAG GCT TCT GGT TAC ACC TTC ACA AAC TAC GAT ATA CAC TGG GTG AAG
lys ile ser cys lys ala ser gly tyr thr phe thr asn tyr asp ile his trp val lys

VH-CDR1

CAG AGG CCT GGA CAG GGA CTT GAG TGG ATT GGA TGG ATT TAT CCT GGA GAT GGT AGT ACT
gln arg pro gly gln gly leu glu trp ile gly trp ile tyr pro gly asp gly ser thr
* * * * * * * * * * * * * * * * VH-CDR2

AAG TAC AAT GAG AAA TTC AAG GGC AAG GCC ACA CTG ACT GCA GAC AAA TCC TCC AGC ACA
lys tyr asn glu lys phe lys gly lys ala thr leu thr ala asp lys ser ser ser thr
* * * * *

GCC TAC ATG CAC CTC AGC AGC CTG ACT TCT GAG AAA TCT GCA GTC TAT TTC TGT GCA AGA
ala tyr met his leu ser ser leu thr ser glu lys ser ala val tyr phe cys ala arg
* * * * * * * * * *

GAG TGG GCT TAC TGG GGC CAA GGG ACT CTG GTC ACT GTC TCT GCA
glu trp ala tyr trp gly gln gly thr leu val thr val ser ala
* * * * * * * * * * * * * * *

VH-CDR3

MURINE 83-14 VL NUCLEOTIDE AND AMINO ACID SEQUENCE

GAT ATC CAG ATG ACC CAA TCT CCA TCC TCC TTA TCT GCC TCT CTG GGA GAA AGA GTC AGT
asp ile gln met thr gln ser pro ser ser leu ser ala ser leu gly glu arg val ser
* * * * * * * * * * * * * * *

CTC ACT TGT CGG GCA AGT CAG GAC ATT GGT GGT AAC TTA TAC TGG CTT CAG CAG GGA CCA
leu thr cys arg ala ser gln asp ile gly gly asn leu tyr trp leu gln gln gly pro
VL-CDR1

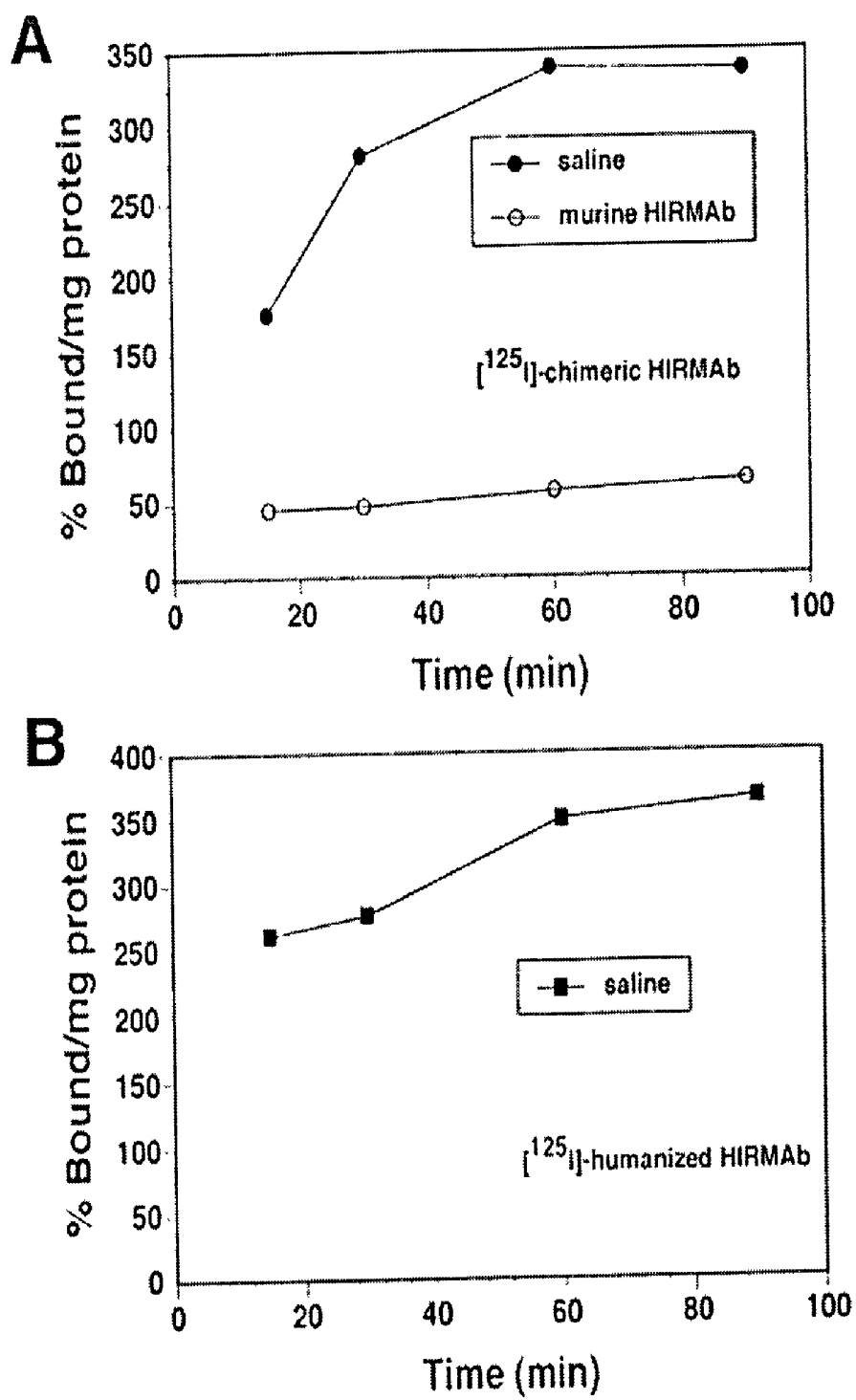
GAT GGA ACT ATT AAA CGC CTG ATA TAC GCC ACA TCC AGT TTA GAT TCT GGT GTC CCC AAA
asp gly thr ile lys arg leu ile tyr ala thr ser ser leu asp ser gly val pro lys
VL-CDR2

AGG TTC AGT GGC AGT AGG TCT GGG TCA GAT TAT TCT CTC ACC ATC AGC AGC CTT GAG TCT
arg phe ser gly ser arg ser gly ser asp tyr ser leu thr ile ser ser leu glu ser

GAA GAT TTT GTA GAC TAT TAC TGT CTA CAG TAT TCT AGT TCT CCG TGG ACG TTC GGT GGA
glu asp phe val asp tyr tyr cys leu gln tyr ser ser ser pro trp thr phe gly gly
VL-CDR3

GGC ACC AAG ATG GAA ATC AAA CGG
gly thr lys met glu ile lys arg

FIG. 1

**FIG. 2**

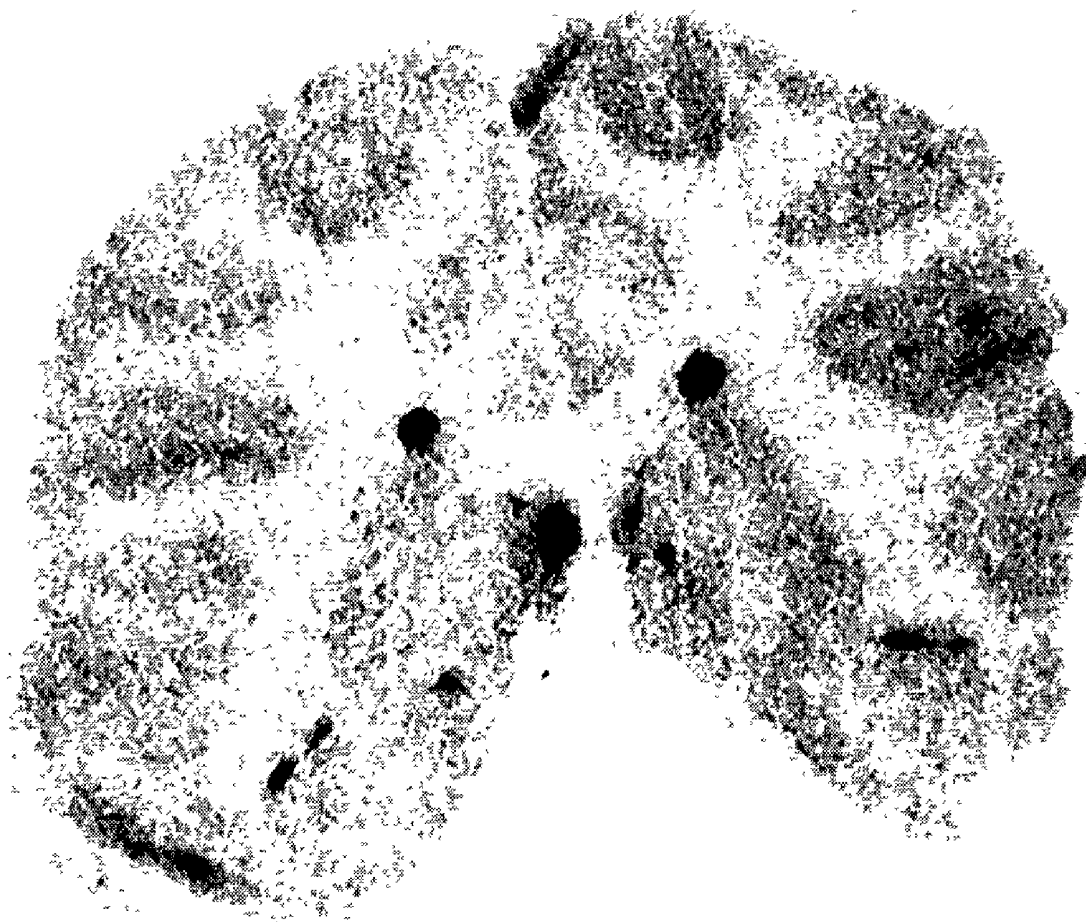


FIG. 3

Heavy Chain

| | FR1 | CDR1 | FR2 |
|-----------|------------------------------------|------------|----------------|
| humanized | QVQLLES G AELVRPGSSVKISCKAS | GYTFTNYDIH | WVKQRPGQGLEWIG |
| murine | QVQLQES G PELVKPGALVKISCKAS | GYTFTNYDIH | WVKQRPGQGLEWIG |
| human B43 | QVQLLES G AELVRPGSSVKISCKAS | GYAFSSYWMN | WVKQRPGQGLEWIG |
| | 1 | 26 | 36 |

| | CDR2 | FR3 |
|-----------|-------------------|--|
| humanized | WIYPGDGSTKYNEKFKG | KATLTADKSSSTAYMHLSSLTSEKSAVYFCAR |
| murine | WIYPGDGSTKYNEKFKG | KATLTADKSSSTAYMHLSSLTSEKSAVYFCAR |
| human B43 | QIWPGDGDTNYNGKFKG | KATLTAD E SSSTAYM Q LSSLR S EDSAVY S CA R |
| | 50 | 67 |

| | CDR3 | FR4 |
|-----------|-----------------|--------------|
| humanized | -----EWAY | WGQGTTVTVSA |
| murine | -----EWAY | WGQGTTLVTVSA |
| human B43 | RETTTVGRYYYAMDY | WGQGTTVT--- |
| | 99 | 103 |
| | 99 | 113 |

Light Chain

| | FR1 | CDR1 | FR2 |
|-----------|----------------------------------|----------------------|------------------------------------|
| humanized | DIQMTQSPSSLSASVGDRV T ITC | RASQDIGGNLY | WYQQKPGKAPK L LIY |
| murine | DIQMTQSPSSLSASLGERV S LTC | RASQDIGGNLY | WLQQGPDG T IKR L LIY |
| REI | DIQMTQSPSSLSASVGDRV T ITC | QASQDI I KYLN | WYQQKPGKAPK L LIY |
| | 1 | 24 | 35 |

| | CDR2 | FR3 |
|-----------|---------|--|
| humanized | ATSSLDS | GVPSRFSGSGSGTDY T FTIS S LQ P EDIATYYC |
| murine | ATSSLDS | GVPKRFSGSRSGSDY S L T IS S LE S EDFVDYYC |
| REI | EASNLQA | GVPSRFSGSGSGTDY T FTIS S LQ P EDIATYYC |
| | 50 | 57 |

| | CDR3 | FR4 |
|-----------|-----------|-------------|
| humanized | LQYSSSPWT | FGQGTKVEIKR |
| murine | LQYSSSPWT | FGGGTKMEIKR |
| REI | QQYQSLPYT | FGQGTKVEIKR |
| | 89 | 108 |

FIG. 4

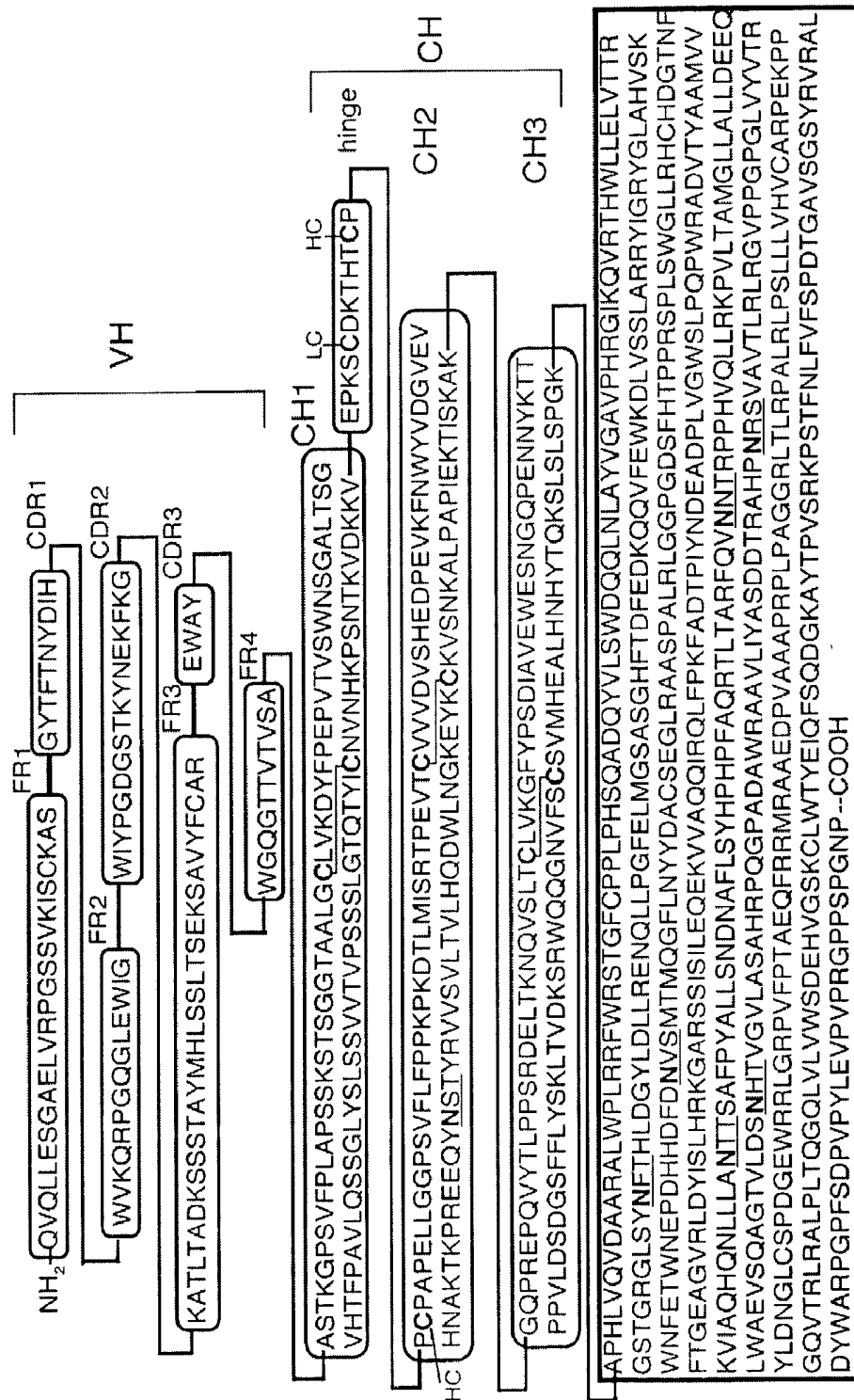


FIG. 5

DELIVERY OF PHARMACEUTICAL AGENTS VIA THE HUMAN INSULIN RECEPTOR

BACKGROUND OF THE INVENTION

[0001] 1. Field of the Invention

[0002] The present invention relates generally to the delivery of pharmaceutical agents from the blood stream to the human brain and other organs or tissues that express the human insulin receptor. More particularly, the present invention involves the development of "humanized" monoclonal antibodies (MAb) that may be attached to pharmaceutical agents to form compounds that are able to readily bind to the human insulin receptor (HIR). The compounds are able to cross the human blood brain barrier (BBB) by way of insulin receptors located on the brain capillary endothelium. Once across the BBB, the humanized monoclonal antibody/pharmaceutical agent compounds are also capable of undergoing receptor mediated endocytosis into brain cells via insulin receptors located on the brain cells.

[0003] 2. Description of Related Art

[0004] The publications and other reference materials referred to herein to describe the background of the invention and to provide additional detail regarding its practice are hereby incorporated by reference. For convenience, the reference materials are identified by author and date and grouped in the appended bibliography.

[0005] The BBB is a system-wide membrane barrier that prevents the brain uptake of circulating drugs, protein therapeutics, antisense drugs, and gene medicines. Drugs or genes can be delivered to the human brain for the treatment of serious brain disease either (a) by injecting the drug or gene directly into the brain, thus bypassing the BBB, or (b) by injecting the drug or gene into the bloodstream so that the drug or gene enters the brain via the transvascular route across the BBB. With intra-cerebral administration of the drug, it is necessary to drill a hole in the head and perform a procedure called craniotomy. In addition to being expensive and highly invasive, this craniotomy based drug delivery to the brain approach is ineffective, because the drug or gene is only delivered to a tiny volume of the brain at the tip of the injection needle. The only way the drug or gene can be distributed widely in the brain is the transvascular route following injection into the bloodstream. However, this latter approach requires the ability to undergo transport across the BBB. The BBB has proven to be a very difficult and stubborn barrier to traverse safely.

[0006] Prior work has shown that drugs or gene medicines can be ferried across the BBB using molecular Trojan horses that bind to BBB receptor/transport systems. These Trojan horses may be modified proteins, endogenous peptides, or peptidomimetic monoclonal antibodies (MAb's). For example, HIR MAb 83-14 is a murine MAb that binds to the human insulin receptor (HIR). This binding triggers transport across the BBB of MAb 83-14 (Pardridge et al, 1995), and any drug or gene payload attached to the MAb (Wu et al., 1997).

[0007] The use of molecular Trojan horses to ferry drugs or genes across the BBB is described in U.S. Pat. Nos. 4,801,575 and 6,372,250. The linking of drugs to MAb transport vectors is facilitated with use of avidin-biotin technology. In this approach, the drug or protein therapeutic

is monobiotinylated and bound to a conjugate of the antibody vector and avidin or streptavidin. The use of avidin-biotin technology to facilitate linking of drugs to antibody-based transport vectors is described in U.S. Pat. No. 6,287,792. Fusion proteins have also been used where a drug is genetically fused to the MAb transport vector.

[0008] HIRMAb 83-14 has been shown to rapidly undergo transport across the BBB of a living Rhesus monkey, and to bind avidly to isolated human brain capillaries, which are the anatomical substrate of the human BBB (see Pardridge et al., 1995). In either case, the activity of the HIRMAb 83-14 with respect to binding and transport at the primate or human BBB is more than 10-fold greater than the binding or transport of other peptidomimetic MAb's that may target other BBB receptors such as the transferrin receptor (Pardridge, 1997). To date, HIRMAb 83-14 is the most active BBB transport vector known (Pardridge, 1997). On this basis, the HIRMAb 83-14 has proven to be a very useful agent for the delivery of drugs to the primate brain in vivo, and would also be highly active for brain drug or gene delivery to the brain in humans.

[0009] HIRMAb 83-14 cannot be used in humans because this mouse protein will be immunogenic. Genetically engineered forms of HIRMAb 83-14 might be used in humans in either the form of a chimeric antibody or a genetically engineered "humanized" HIRMAb. However, in order to perform the genetic engineering and production of either a chimeric or a humanized antibody, it is necessary to first clone the variable region of the antibody heavy chain (VH) and the variable region of the antibody light chain (VL). Following cloning of the VH and VL genes, the genes must be sequenced and the amino acid sequence deduced from the nucleotide sequence. With this amino acid sequence, using technologies known to those skilled in the art (Foote et al., 1992), it may be possible to perform humanization of the murine HIRMAb 83-14. However, HIRMAb 83-14 may lose biological activity following the humanization (Pichla et al., 1997). Therefore, it is uncertain as to whether the murine HIRMAb can be humanized with retention of biological activity.

[0010] A chimeric form of the HIRMAb 83-14 has been genetically engineered, and the chimeric antibody binds to the HIR and is transported into the primate brain (Coloma et al., 2000). However, a chimeric antibody retains the entire mouse FR for both the VH and the VL, and because of this, chimeric antibodies are still immunogenic in humans (Bruggemann et al., 1989). In contrast to the chimeric antibody, a humanized antibody would use the human FR amino acid sequences for both the VH and the VL and retain only the murine amino acids for the 3 complementarity determining regions (CDRs) of the VH and 3 CDRs of the VL. Not all murine MAb's can be humanized, because there is a loss of biological activity when the murine FR's are replaced by human FR sequences (Pichla et al., 1997). The biological activity of the antibody can be restored by substituting back certain mouse FR amino acids (see U.S. Pat. No. 5,585,089). Nevertheless, even with FR amino acid back-substitution, certain antibodies cannot be humanized with retention of biological activity (Pichla et al., 1997). Therefore, there is no certainty that the murine HIRMAb 83-14 can be humanized even once the key murine CDR and FR amino acid sequences are known.

SUMMARY OF THE INVENTION

[0011] In accordance with the present invention, it was discovered that the murine HIRMAb 83-14 antibody can be humanized to provide a biologically active humanized insulin receptor (HIR) antibody that may be used in combination with drugs and diagnostic agents to treat human beings in vivo. The HIR antibody may be conjugated to the drug or diagnostic agent using avidin-biotin conjugation or the HIR antibody/drug combination may be prepared as a fusion protein using genetic engineering techniques. The HIR antibody is especially well suited for delivering neuropharmaceutical agents to the human brain across the BBB. The humanized character of the HIR antibody significantly reduces immunogenic reactions in humans.

[0012] The humanized murine antibody of the present invention is capable of binding to the HIR and includes a heavy chain (HC) of amino acids and a light chain (LC) of amino acids which both include variable and constant regions. The variable regions of the HC and LC include complementarity determining regions (CDRs) that are interspersed between framework regions (FRs).

[0013] The HC includes a first CDR located at the amino end of the variable region, a third CDR located at the carboxyl end of the HC variable region and a second CDR located between said first and third CDRs. The amino acid sequences for the first CDR, the second CDR, and the third CDR are SEQ. ID. NOS. 31, 33 and 35, respectively, and combined equivalents thereof. The HC framework regions include a first FR located adjacent to the amino end of the first CDR, a second FR located between said first and second CDRs, a third FR located between said second and third CDRs and a fourth FR located adjacent to the carboxyl end of said third CDR. In accordance with the present invention, the four FRs of the HC are humanized such that the overall antibody retains biological activity with respect to the HIR and is not immunogenic in humans.

[0014] The LC also includes a first CDR located at the amino end of the variable region, a third CDR located at the carboxyl end of the variable region and a second CDR located between said first and third CDRs. The amino acid sequences for the first CDR, the second CDR, and the third CDR are SEQ. ID. NOS. 38, 40, and 42, respectively, and combined equivalents thereof. The LC framework regions include a first FR located adjacent to the amino end of said first CDR, a second FR located between said first and second CDRs, a third FR located between said second and third CDRs and a fourth FR located adjacent to the carboxyl end of said third CDR. Pursuant to the present invention, the four FRs of the LC are humanized such that the overall antibody retains biological activity with respect to the HIR and has minimal immunogenicity in humans.

[0015] The constant regions of the murine antibody are also modified to minimize immunogenicity in humans. The murine HC constant region is replaced with the HC constant region from a human immunoglobulin such as IgG1. The murine LC constant region is replaced with a constant region from the LC of a human immunoglobulin such as a kappa (κ) LC constant region. Replacement of the murine HC and LC constant regions with human constant regions was found to not adversely affect the biological activity of the humanized antibody with respect to HIR binding.

[0016] The present invention not only covers the humanized murine antibodies themselves, but also covers pharma-

ceutical compositions that are composed of the humanized antibody linked to a drug or diagnostic agent. The humanized antibody is effective in delivering the drug or diagnostic agent to the HIR in vivo to provide transport across the BBB and/or endocytosis into cells via the HIR. The compositions are especially well suited for intra venous (iv) injection into humans for delivery of neuropharmaceutical agents to the brain.

[0017] The above discussed and many other features and attendant advantages of the present invention will become better understood by reference to the detailed description when taken in conjunction with the accompanying drawings.

BRIEF DESCRIPTION OF THE DRAWINGS

[0018] FIG. 1 shows the nucleotide sequence for the murine VH (SEQ. ID. NO. 1) and murine VL (SEQ. ID. NO. 2) and deduced amino acid sequence of the murine VH (SEQ. ID. NO. 3) and the murine VL (SEQ. ID. NO. 4), which shows the 3 framework (FR) regions and the 4 complementarity determining regions (CDRs) of both the heavy chain (HC) and the light chain (LC) of the 83-14 murine HIRMAb. The amino acids denoted by an asterisk (*) were confirmed by amino acid sequencing of either the intact murine LC or tryptic peptides of the intact murine HC; for amino acid sequencing, the intact murine HC or LC were purified from gels following purification of the intact murine IgG from the hybridoma conditioned medium.

[0019] FIGS. 2A and 2B graphically show the results of a radio-receptor assay on isolated human brain capillaries that were obtained with a mechanical homogenization procedure from human autopsy brain. These capillaries were incubated with [125 I]-labeled chimeric HIRMAb (Coloma et al., 2000) (FIG. 2A) or [125 I]-version 5 humanized HIRMAb (FIG. 2B). The data show that both antibodies bind equally well to human brain capillaries, which form the anatomical basis of the BBB in humans.

[0020] FIG. 3 shows the brain scan of a Rhesus monkey treated with a humanized monoclonal antibody in accordance with the present invention. The [125 I]-labeled version 5 HIRMAb was injected intravenously in an anesthetized rhesus monkey, and the animal was euthanized 120 minutes later. The brain was rapidly removed and cut into coronal hemispheric slabs, which were immediately frozen. Cryostat sections (20 μ m) were cut and exposed to x-ray film. The film was scanned to yield the image shown in FIG. 3. This image shows the clear demarcations between the gray matter and white matter of the primate brain. Owing to the higher vascular density in gray matter, there is a greater uptake of the humanized HIRMAb, relative to white matter.

[0021] FIG. 4 shows a comparison of the amino acid sequence for the 3 FRs and 3 CDRs of both the heavy chain and the light chain for the following: (a) the version 5 humanized HIRMAb, (v) the original murine 83-14 HIRMAb, and (c) the VH of the B43 human IgG or the VL of the REI human IgG.

[0022] FIG. 5 shows the amino acid sequence of a fusion protein of human α -L-iduronidase (IDUA) (SEQ. ID. NO. 48), which is fused to the carboxyl terminus of the heavy chain (HC) of the humanized monoclonal antibody to the human insulin receptor (HIRMAb). The HC is comprised of a variable region (VH) and a constant region (CH); the CH

is further comprised of 3 sub-regions, CH1 (SEQ. ID. NO. 44), CH2 (SEQ. ID. NO. 45), and CH3 (SEQ. ID. NO. 46); the CH1 and CH2 regions are connected by a 12 amino acid hinge region (SEQ. ID. NO. 47). The VH is comprised of 4 framework regions (FR1=SEQ. ID. NO. 30; FR2=SEQ. ID. NO. 32; FR3=SEQ. ID. NO. 34; and FR4=SEQ. ID. NO. 36) and 3 complementarity determining regions (CDR) (CDR1=SEQ. ID. NO. 31; CDR2=SEQ. ID. NO. 33; and CDR3=SEQ. ID. NO. 35). The amino acid sequence shown for the CH is well known in existing databases and corresponds to the CH sequence of human IgG1. There is a single N-linked glycosylation site on the asparagine (N) residue within the CH2 region of the CH, and there are 6 potential N-linked glycosylation sites within the IDUA sequence, as indicated by the underline.

DETAILED DESCRIPTION OF THE INVENTION

[0023] The present invention involves the humanization of the murine monoclonal antibody identified as MAb 83-14 so that it can be used in vivo in humans. As previously mentioned, MAb 83-14 has a high affinity for the human insulin receptor at the human or rhesus monkey blood-brain barrier (Pardridge, et al. 1995) and is a candidate for use as a Trojan horse to transport neuropharmaceutical agents across the BBB. As used herein, the term "pharmaceutical agents" is intended to include any drug, gene or chemical that is used to treat or diagnose disease in humans. The term "neuropharmaceutical agent" covers pharmaceutical agents that are used to treat brain disease. The present humanized antibody Trojan horses are especially well suited for transporting neuropharmaceutical agents from the blood stream to the brain across the BBB.

[0024] The complete amino acid sequence for the variable region of the HC and LC of murine MAb 83-14 was determined as described in Example 1. The nucleotide sequence for the gene that expresses the murine VH (SEQ. ID. NO. 1) and the murine VL (SEQ. ID. NO. 2) is set forth in **FIG. 1**. The amino acid sequence for the murine VH (SEQ. ID. NO. 3) and murine VL (SEQ. ID. NO. 4) is also set forth in **FIG. 1**. The amino acid sequences for the variable regions of the murine MAb 83-14 VH and VL are also set forth in **FIG. 4** (SEQ. ID. NOS. 3 AND 4, respectively). The humanized murine antibodies of the present invention are prepared by modifying the amino acid sequences of the variable regions of the murine antibody to more closely resemble human antibody without destroying the ability of the antibody to strongly bind to the HIR. In addition, the humanized antibody includes constant regions that also correspond to human antibody.

[0025] The humanized murine antibodies include a heavy chain of amino acids (HC) that is composed of a constant region (CH) and a variable region (VH). The variable region of the HC has an amino end and a carboxyl end and includes three CDRs interspersed between four FRs. The first CDR (CDR1) is located towards the amino end of the VH with the third CDR (CDR3) being located towards the carboxyl end of the HC. The amino acid sequences for murine MAb 83-14 HC CDR1, CDR2, and CDR3 are set forth in SEQ. ID. NOS. 31, 33 and 35, respectively. Since the HC CDRs are essential for antibody binding to the HIR, it is preferred that the humanized antibodies have HC CDRs with amino acid sequences that are identical to SEQ. ID. NOS. 31, 33 and 35.

However, the humanized antibodies may include CDRs in the HC that have amino acid sequences which are "individually equivalent" to SEQ. ID. NOS. 31, 33 and 35. "Individually equivalent" amino acid sequences are those that have at least 75 percent sequence identity and which do not adversely affect the binding of the antibody to the HIR. Preferably, individually equivalent amino acid sequences will have at least 85 percent sequence identity with SEQ. ID. NOS. 31, 33 or 35. Even more preferred are individually equivalent amino acid sequences having at least 95 percent sequence identity.

[0026] The three VH CDR amino acid sequences may also be viewed as a combined group of amino acid sequences (VH CDR1, VH CDR2 and VH CDR3). The present invention also covers equivalents of the combined group of VH CDR sequences. Such "combined equivalents" are those that have at least 75 percent sequence identity with the combined amino acid sequences SEQ. ID. NOS. 31, 32 and 35 and which do not adversely affect the binding of the antibody to the HIR. Preferably, combined equivalent amino acid sequences will have at least 85 percent sequence identity with the combined sequences found in SEQ. ID. NOS. 31, 33 and 35. Even more preferred are combined equivalent amino acid sequences that have at least 95 percent sequence identity with the combined amino acid sequences (SEQ. ID. NOS. 31, 33 and 35).

[0027] It is preferred that the VH CDR amino acid sequences meet both the individual equivalency and combined equivalency requirements set forth above. However, there are certain situations, especially for the shorter CDRs, where one or more of the CDRs may not meet the criteria for individual equivalence even though the criteria for combined equivalence is met. In such situations, the individual equivalency requirements are waived provided that the combined equivalency requirements are met. For example, VH CDR3 (SEQ. ID. NO. 35) is only 4 amino acids long. If two amino acids are changed, then the individual sequence identity is only 50% which is below the 75% floor for individual equivalence set forth above. However, this particular sequence is still suitable for use as part of a combined equivalent VH CDR group provided that the sequence identity of the combined CDR1, CDR2 and CDR3 sequences meet the group equivalency requirements.

[0028] The humanized murine antibodies also include a light chain (LC) of amino acids that is composed of a constant region (CL) and a variable region (VL). The variable region of the LC has an amino end and a carboxyl end and includes three CDRs interspersed between four FRs. The first CDR (CDR1) is located towards the amino end of the VL with the third CDR (CDR3) being located towards the carboxyl end of the VL. The amino acid sequences for murine MAb 83-14 LC CDR1, CDR2, and CDR3 are set forth in SEQ. ID. NOS. 38, 40 and 42, respectively. Since the VL CDRs are also important for antibody binding to the HIR, it is preferred that the humanized antibodies have LC CDRs with amino acid sequences that are identical to SEQ. ID. NOS. 38, 40 and 42. However, the humanized antibodies may include CDRs in the VL that have amino acid sequences which are "individually equivalent" to SEQ. ID. NOS. 38, 40 or 42. "Individually equivalent" amino acid sequences are those that have at least 75 percent sequence identity and which do not adversely affect the binding of the antibody to the HIR. Preferably, individually equivalent amino acid

sequences will have at least 85 percent sequence identity with SEQ. ID. NOS. 38, 40 or 42. Even more preferred are individually equivalent amino acid sequences having at least 95 percent sequence identity.

[0029] The three VL CDR amino acid sequences may also be viewed as a combined group of amino acid sequences (VL CDR1, VL CDR2 and VL CDR3). The present invention also covers equivalents of the combined group of VL CDR sequences. Such "combined equivalents" are those that have at least 75 percent sequence identity with the combined amino acid sequences SEQ. ID. NOS. 38, 40 and 42 and which do not adversely affect the binding of the antibody to the HIR. Preferably, combined equivalent amino acid sequences will have at least 85 percent sequence identity with the combined sequences found in SEQ. ID. NOS. 38, 40 and 42. Even more preferred are combined equivalent amino acid sequences that have at least 95 percent sequence identity with the combined amino acid sequences (SEQ. ID. NOS. 38, 40 and 42).

[0030] It is preferred that the VL CDR amino acid sequences meet both the individual equivalency and combined equivalency requirements set forth above. However, there are certain situations, especially for the shorter CDRs, where one or more of the CDRs may not meet the criteria for individual equivalence even though the criteria for combined equivalence is met. In such situations, the individual equivalency requirements are waived provided that the combined equivalency requirements are met. For example, VH CDR3 (SEQ. ID. NO. 42) is only 9 amino acids long. If three amino acids are changed, then the individual sequence identity is only 66% which is below the 75% floor for individual equivalence set forth above. However, this particular sequence is still suitable for use as part of a combined equivalent VL CDR group provided that the sequence identity of the combined CDR1, CDR2 and CDR3 sequences meet the group equivalency requirements.

[0031] The first framework region (FR1) of the VH is located at the amino end of the humanized antibody. The fourth framework region (FR4) is located towards the carboxyl end of the humanized antibody. Exemplary preferred amino acid sequences for the humanized VH FR1, FR2, FR3 and FR4 are set forth in SEQ. ID. NOS. 30, 32, 34 and 36, respectively, and these preferred sequences correspond to version 5 humanized HIRMAb (Table 3). The amino acid sequence for FR2 (SEQ. ID. NO. 32) is identical to the amino acid sequence of murine MAb 83-14 VH FR2 or the human IgG₁, B43 (See FIG. 4). The amino acid sequences for VH FR1 and FR4 (SEQ. ID. NOS. 30 and 36) correspond to the B43 human antibody framework regions that have amino acid sequences that differ from murine MAb 83-14 (FIG. 4). The amino acid sequences for the VH FR3 (SEQ. ID. NO. 34) of the version 5 humanized HIRMAb corresponds to the VH FR3 of the murine 83-14 antibody (Table 3). It is possible to modify the preferred VH FR sequences without destroying the biological activity of the antibody. Suitable alternate or equivalent FRs include those that have at least 70 percent individual sequence identity with SEQ. ID. NOS. 30, 32, 34 or 36 and do not destroy the resulting antibodies ability to bind the HIR. Preferably, the alternate FRs will have at least 80 percent sequence identity with the preferred VH FR that is being replaced. Even more preferred are alternate FRs that have at least 90 percent sequence identity with the preferred VH FR that is being replaced.

[0032] The four VH FR amino acid sequences may also be viewed as a combined group of amino acid sequences (VH FR1, VH FR2, VH FR3 and VH FR4). The present invention also covers alternates or equivalents of the combined group of VH FR sequences. Such "combined equivalents" are those that have at least 70 percent sequence identity with the combined amino acid sequences SEQ. ID. NOS. 30, 32, 34 and 36 and which do not adversely affect the binding of the antibody to the HIR. Preferably, combined equivalent amino acid sequences will have at least 80 percent sequence identity with the combined sequences found in SEQ. ID. NOS. 30, 32, 34 and 36. Even more preferred are combined equivalent amino acid sequences that have at least 90 percent sequence identity with the combined amino acid sequences (SEQ. ID. NOS. 30, 32, 34 and 36).

[0033] It is preferred that the alternate VH FR amino acid sequences meet both the individual equivalency and combined equivalency requirements set forth above. However, there are certain situations, especially for the shorter FRs, where one or more of the FRs may not meet the criteria for individual equivalence even though the criteria for combined equivalence is met. In such situations, the individual equivalency requirements are waived provided that the combined equivalency requirements are met.

[0034] The first framework region (FR1) of the LC is located at the amino end of the VL of the humanized antibody. The fourth framework region (FR4) is located towards the carboxyl end of the VL of the humanized antibody. Exemplary preferred amino acid sequences for the humanized VL FR1, FR2, FR3 and FR4 are set forth in SEQ. ID. NOS. 37, 39, 41 and 43, respectively. The amino acid sequences for VL FR1, FR2, FR3 and FR4 (SEQ. ID. NOS. 37, 39, 41 and 43) correspond to the REI human antibody framework regions that have amino acid sequences that differ from murine MAb 83-14 (See FIG. 4). It is possible to modify the preferred VL FR sequences without destroying the biological activity of the antibody. Suitable alternate or equivalent FRs include those that have at least 70 percent sequence identity with SEQ. ID. NOS. 37, 39, 41 and 43 and do not destroy the resulting antibodies ability to bind the HIR. Preferably, the equivalent or alternate FRs will have at least 80 percent sequence identity with the preferred VL FR that is being replaced. Even more preferred are alternate FRs that have at least 90 percent sequence identity with the preferred VL FR that is being replaced.

[0035] The four VL FR amino acid sequences may also be viewed as a combined group of amino acid sequences (VL FR1, VL FR2, VL FR3 and VL FR4). The present invention also covers alternates or equivalents of the combined group of VL FR sequences. Such "combined equivalents" are those that have at least 70 percent sequence identity with the combined amino acid sequences SEQ. ID. NOS. 37, 39, 41 and 43 and which do not adversely affect the binding of the antibody to the HIR. Preferably, combined equivalent amino acid sequences will have at least 80 percent sequence identity with the combined sequences found in SEQ. ID. NOS. 37, 39, 41 and 43. Even more preferred are combined equivalent amino acid sequences that have at least 90 percent sequence identity with the combined amino acid sequences (SEQ. ID. NOS. 37, 39, 41 and 43).

[0036] It is preferred that the alternate VL FR amino acid sequences meet both the individual equivalency and com-

bined equivalency requirements set forth above. However, there are certain situations, especially for the shorter FRs, where one or more of the FRs may not meet the criteria for individual equivalence even though the criteria for combined equivalence is met. In such situations, the individual equivalency requirements are waived provided that the combined equivalency requirements are met.

[0037] Version 5 is a preferred humanized antibody in accordance with the present invention. The amino acid sequences for the VH and VL of Version 5 are set forth in SEQ. ID. NOS. 5 and 6, respectively. The preparation and identification of Version 5 is set forth in more detail in Example 2, Table 3 and FIG. 4. The amino acid sequences for the VH FRs of Version 5 correspond to the preferred VH FR sequences set forth above (SEQ. ID. NOS. 30, 32, 34 and 36). In addition, the amino acid sequences for the VL FRs of Version 5 correspond to the preferred VL FR sequences set forth above (SEQ. ID. NOS. 37, 39, 41, 43). The VH and VL FRs of Version 5 are a preferred example of VH and VL LC FRs that have been "humanized". "Humanized" means that the four framework regions in either the HC or LC have been matched as closely as possible with the FRs from a human antibody (HAb) without destroying the ability of the resulting antibody to bind the HIR. The model human antibody used for the HC is the B43 antibody, and the model human antibody used for the LC is the REI antibody, and both the B43 and REI antibody sequences are well known and available in public databases. When the HC or LC FRs are humanized, it is possible that one or more of the FRs will not correspond identically with the chosen HAb template and may retain identity or similarity to the murine antibody. The degree to which murine amino acid sequences are left in the humanized FRs should be kept as low as possible in order to reduce the possibility of an immunogenic reaction in humans.

[0038] Examples of FRs that have been humanized are set forth in Example 2 and Table 3. Framework regions from human antibodies that correspond closely to the FRs of murine MAb 84-13 are chosen. The human FRs are then substituted into the MAb 84-13 in place of the murine FRs. The resulting antibody is then tested. The FRs, as a group, are only considered to be humanized if the modified antibody still binds strongly to the HIR receptor and has reduced immunogenicity in humans. If the first test is not successful, then the human FRs are modified slightly and the resulting antibody tested. Exemplary human antibodies that have HC FRs that may be used to humanize the HC FRs of MAb 84-13 include B43 human IgG (SEQ. ID. NO. 12), which is deposited in Genbank (accession number S78322), and other human IgG molecules with a VH homologous to the murine 83-14 VH may be found by searching public databases, such as the Kabat Database of immunoglobulin sequences. Exemplary human antibodies that have LC FR's that may be used to humanize the LC FRs of MAb 84-13 include human REI antibody (SEQ. ID. NO. 13), which is deposited in Genbank (accession number 1WTLB), and other human IgG molecules with a VL homologous to the murine 83-14 VL may be found by searching public databases, such as the Kabat Database of immunoglobulin sequences.

[0039] In order for the humanized antibody to function properly, the HC and LC should each include a constant region. Any number of different human antibody constant regions may be incorporated into the humanized antibody

provided that they do not destroy the ability of the antibody to bind the HIR. Suitable human antibody HC constant regions include human IgG1, IgG2, IgG3, or IgG4. The preferred HC constant region is human IgG1. Suitable human antibody LC constant regions include kappa (κ) or lambda. Human K LC constant regions are preferred.

[0040] The humanized antibody may be used in the same manner as any of the other antibody targeting agents (Trojan Horses) that have previously been used to deliver genes, drugs and diagnostic agents to cells by accessing the HIR. The humanized antibody is typically linked to a drug or diagnostic compound (pharmaceutical agent) and combined with a suitable pharmaceutical carrier and administered intravenously (iv). With suitable carriers, the drug/humanized antibody complex could also be administered subcutaneously, intramuscularly, intra-nasally, intra-theically, or orally. There are a number of ways that the humanized antibody may be linked to the pharmaceutical agent. The humanized antibody may be fused to either avidin or streptavidin and conjugated to a pharmaceutical agent that has been mono-biotinylated in accordance with known procedures that use the avidin-biotin linkage to conjugate antibody Trojan Horses and pharmaceutical agents together. Alternatively, the humanized antibody and pharmaceutical agent may be expressed as a single fusion protein using known genetic engineering procedures.

[0041] Exemplary pharmaceutical agents to which the humanized antibody may be linked include small molecules, recombinant proteins, synthetic peptides, antisense agents or nanocontainers for gene delivery. Exemplary recombinant proteins include basic fibroblast growth factor (bFGF), human α -L-iduronidase (IDUA), or other neurotrophins, such as brain derived neurotrophic factor, or other lysosomal enzymes. The use of Trojan Horses, such as the present humanized antibody, for transporting bFGF across the BBB is described in a co-pending U.S. patent application Ser. No. _____ (UC Case 2002-094-1, Attorney Docket 0180-0027) that is owned by the same assignee as the present application and which was filed on the same day as the present application)

[0042] Once the humanized antibody is linked to a pharmaceutical agent, it is administered to the patient in the same manner as other known conjugates or fusion proteins. The particular dose or treatment regimen will vary widely depending upon the pharmaceutical agent being delivered and the condition being treated. The preferred route of administration is intravenous (iv). Suitable carriers include saline or water buffered with acetate, phosphate, TRIS or a variety of other buffers, with or without low concentrations of mild detergents, such as one from the Tween series of detergents. The humanized antibody/pharmaceutical agent Trojan horse compound is preferably used to deliver neuropharmaceutical agents across the BBB. However, the humanized Trojan horse may also be used to deliver pharmaceutical agents, in general, to any organ or tissue that carries the HIR.

[0043] The following examples describe how the humanized monoclonal antibodies in accordance with the present invention were discovered and additional details regarding their fabrication and use.

EXAMPLE 1

[0044] Cloning of Murine 83-14 VH and VL Genes

[0045] Poly A+ RNA was isolated from the 83-14 hybridoma cell line (Soos et al, 1986), and used to produce complementary DNA (cDNA) with reverse transcriptase. The cDNA was used with polymerase chain reaction (PCR) amplification of either the 83-14 VH or 83-14 VL gene using oligodeoxynucleotide (ODN) primers that specifically amplify the VH and VL of murine antibody genes, and similar methods are well known (Li et al., 1999). The sequences of PCR ODNs suitable for PCR amplification of these gene fragments are well known (Li., 1999). The PCR products were isolated from 1% agarose gels and the expected 0.4 Kb VH and VL gene products were isolated. The VH and VL gene fragments were sequentially subcloned into a bacterial expression plasmid so as to encode a single chain Fv (ScFv) antibody. The ScFv expression plasmid was then used to transform *E. Coli*. Individual colonies were identified on agar plates and liquid cultures were produced in LB medium. This medium was used in immunocytochemistry of Rhesus monkey brain to identify clones producing antibody that bound avidly to the Rhesus monkey brain microvasculature or BBB. This immunocytochemistry test identified those colonies secreting the functional 83-14 ScFv. Following identification of the 83-14 VH and VL genes, the nucleotide sequence was determined in both directions using automatic DNA sequencing methods. The nucleotide sequence of the murine 83-14 VH (SEQ. ID. NO. 1) and the murine VL (SEQ. ID. NO. 2) gives the deduced amino acid sequence for the murine VH (SEQ. ID. NO. 3) and the murine VL (SEQ. ID. NO. 4). The amino acid sequence is given for all 3 CDRs and all 4 FRs of both the HC and the LC of the murine 83-14 HIRMAb. The variable

region of the LC is designated VL, and the variable region of the HC is designated VH in **FIG. 1**.

EXAMPLE 2

[0046] Iterative Humanization of the 83-14 HIRMAb: Version 1 Through Version 5

[0047] Humanization of the 83-14 MAb was performed by CDR/FR grafting wherein the mouse FRs in the 83-14 MAb are replaced by suitable human FR regions in the variable regions of both the LC and HC. The Kabat database was screened using the Match program. Either the murine 83-14 VH or the VL amino acid sequence was compared with human IgG VH or human κ light chain VL databases. Using the minimal mismatch possible, several human IgG molecules were identified that contained FR amino sequences highly homologous to the amino acid sequences of the murine 83-14 VH and VL. The framework regions of the B43 human IgG1 heavy chain and the REI human K light chain were finally selected for CDR/FR grafting of the murine 83-14 HIRMAb.

[0048] Sets of 6 ODN primers, of 69-94 nucleotides in length, were designed to amplify the synthetic humanized 83-14 VL and VH genes (Tables 1 and 2). The ODN primers overlapped 24 nucleotides in both the 5'- and 3'-ends, and secondary structure was analyzed with standard software. Stable secondary structure producing T_m of $>46^\circ$ C. was corrected by replacement of first, second, or third letter codons to reduce the melting point of these structures to $32-46^\circ$ C. In addition, primers corresponding to both 5' and 3' ends were also designed, and these allowed for PCR amplification of the artificial genes. These new sequences lack any consensus N-glycosylation sites at asparagine residues.

TABLE 1

| Oligodeoxynucleotides for CDR/FR grafting of VL | |
|--|-------------------|
| Primer 1 FWD | |
| 5' TAGGATATCCACCATGGAGACCCCGCCAGCTGCTGTTCTGCTGCTTTGGCTTC | (SEQ. ID. NO. 14) |
| CAGATACTACCGGTGACATCCAGATGACCCAG-3' | |
| Primer 2 reverse | |
| 5' GTCCTGACTAGCCGACAAAGTAATGGTCACTCTGTCAACCCACGCTGGCGCTCAGGCTG | (SEQ. ID. NO. 15) |
| CTTGGGCTCTGGGTCATCTGGATGTCCGCGT-3' | |
| Primer 3 FWD | |
| 5' ATTACTTGTCTGGGCTAGTCAGGACATTGGAGGAACTTATATTGGTACCAACAAAAGC | (SEQ. ID. NO. 16) |
| CAGGTAAAGCTCCAAAGTTACTGATCTACGCC-3' | |
| Primer 4 reverse | |
| 5' GGTGTAGTCGGTACCGCTACCACTACCACTGAATCTGCTGGCACACCAGAATCTAAA | (SEQ. ID. NO. 17) |
| CTAGATGTGGCGTAGATCAGTAACCTTTGGAGC-3' | |
| Primer 5 FWD | |
| 5' AGTGGTAGCGGTACCGACTACACCTTCACCATCAGCAGTTACAGCCAGAGGACATCG | (SEQ. ID. NO. 18) |
| CCACCTACTATTGCCTACAGTATTCTAGTTCT-3' | |
| Primer 6 reverse | |
| 5' CCCGTCGACTTCAGCCTTTTGATTTCACCTTGGTCCCTTGTCGGAACGTCCATGGAGA | (SEQ. ID. NO. 19) |
| ACTAGAATACTGTAGGCAATA-3' | |
| 5-PCR primer FWD | |
| 5' TAGGATATCCACCATGGAGACCC-3' | (SEQ. ID. NO. 20) |
| 3-PCR primer reverse | |
| 5' CCCGTCGACTTCAGCCTTTTGATT-3' | (SEQ. ID. NO. 21) |

[0049]

TABLE 2

| Oligodeoxynucleotides for CDR/FR grafting of VH | |
|--|--|
| PRIMER 1 FWD | |
| 5' TAGGATATCCACCATGGACTGGACCTGGAGGGTGGTTATGCCTGCTTGCACTGGCCCCC (SEQ. ID. NO. 22) | |
| GGAGCCACAGCCAGTGCAGCTGCTCGAGTCTGGG-3' | |
| PRIMER 2 REVERSE | |
| 5' GTTTGTGAAGGTGTAACCAAGCCTTGCAGGAAATCTTCACTGAGGACCCAGGCCTC (SEQ. ID. NO. 23) | |
| ACCAGCTCAGCCAGACTCGAGCAGCTGCACCTG-3' | |
| PRIMER 3 FWD | |
| 5' GCTTCTGGTTACACCTTCACAACTACGATATACACTGGGTGAAGCAGAGGCCTGGAC (SEQ. ID. NO. 24) | |
| AGGGTCTTGAGTGGATTGGATGGATTATCCTGGA-3' | |
| PRIMER 4 REVERSE | |
| 5' GCTGGAGGATTCGCTGCAGTCAAGTGGCTTTGCCCTTGAATTTCTCATTGTACTTAG (SEQ. ID. NO. 25) | |
| TACTACCATCTCCAGGATAAATCCATCCAATCCA-3' | |
| PRIMER 5 FWD | |
| 5' CTGACTGCAGACGAATCCTCCAGCAGCCTACATGCAACTAAGCAGCCTACGATCTG (SEQ. ID. NO. 26) | |
| AGGACTCTGCGTCTATTCTTGTGCAAGAGAGTGG-3' | |
| PRIMER 6 REVERSE | |
| 5' CATGCTAGCAGACGGTGACTGTGGTCCCTTGTCCCCAGTAAGCCCACTCTCTTGCA (SEQ. ID. NO. 27) | |
| CAAGAATAGAC-3' | |
| 5'-PCR PRIMER FWD | |
| 5' TAGGATATCCACCATGGACTGGACCTG-3' (SEQ. ID. NO. 28) | |
| 3'-PCR PRIMER REV | |
| 5' CATGCTAGCAGACGGTGACTGTG-3' (SEQ. ID. NO. 29) | |

[0050] The PCR was performed in a total volume of 100 μ L containing 5 pmole each of 6 overlapping ODNs, nucleotides, and Taq and Taq extender DNA polymerases. Following PCR, the humanized VH and VL genes were individually ligated in a bacterial expression plasmid and *E. coli* was transformed. Several clones were isolated, individually sequenced, and clones containing no PCR-introduced sequence errors were subsequently produced.

[0051] The humanized VH insert was released from the bacterial expression plasmid with restriction endonucleases and ligated into eukaryotic expression vectors described previously (Coloma et al, 1992; U.S. Pat. No. 5,624,659). A similar procedure was performed for the humanized VL synthetic gene. Myeloma cells were transfected with the humanized light chain gene, and this cell line was subsequently transfected with version 1 of the humanized heavy chain gene (Table 3). The transfected myeloma cells were screened in a 96-well ELISA to identify clones secreting intact human IgG. After multiple attempts, no cell lines producing human IgG could be identified. Conversely, Northern blot analysis indicated the transfected cell lines produced the expected humanized 83-14 mRNA, which proved the transfection of the cell line was successful. These results indicated that version 1 of the humanized HIRMAb, which contains no FR amino acid substitutions, was not secreted from the cell, and suggested the humanized HC did not properly assemble with the humanized LC. Version 1 was derived from a synthetic HC gene containing FR amino acids corresponding to the 25C1/C1 antibody (Bejcek et al, 1995). Therefore, a new HC artificial gene was prepared, which contained HC FR amino acids derived from a different human IgG sequence, that of the B43 human IgG (Bejcek et al, 1995), and this yielded version 2 of the humanized HIRMAb (Table 3). However, the version 2

humanized HIRMAb was not secreted by the transfected myeloma cell. Both versions 1 and 2 contain the same HC signal peptide (Table 3), which is derived from Rechavi et al (1983). In order to evaluate the effect of the signal peptide on IgG secretion, the signal peptide sequence was changed to that used for production of the chimeric HIRMAb (Coloma et al, 2000), and the sequence of this signal peptide is given in Table 3. Versions 2 and 3 of the humanized HIRMAb differed only with respect to the signal peptide (Table 3). However, version 3 was not secreted from the myeloma cell, indicating the signal peptide was not responsible for the lack of secretion of the humanized HIRMAb.

[0052] The above findings showed that simply grafting the murine 83-14 CDRs on to human FR regions produced a protein that could not be properly assembled and secreted. Prior work had shown that the chimeric form of the HIRMAb was appropriately processed and secreted in transfected myeloma lines (Coloma et al, 2000). This suggested that certain amino acid sequences within the FRs of the humanized HC or LC prevented the proper assembly and secretion of the humanized HIRMAb. Therefore, chimeric/humanized hybrid molecules were engineered. Version 4a contained the murine FR1 and the humanized FR2, FR3, and FR4; version 4b contained the murine FR 3, and FR4 and the humanized FR1 and FR2 (Table 3). Both versions 4a and 4b were secreted, although version 4b was more active than version 4a. These findings indicated amino acids within either FR3 or FR4 were responsible for the lack of secretion of the humanized HIRMAb. The human and murine FR4 differed by only 1 amino acid (Table 3); therefore, the sequence of FR4 was altered by site-directed mutagenesis to correspond to the human sequence, and this version was designated version 5 (Table 3). The version 5 HIRMAb corresponded to the original CDR-grafted antibody sequence

with substitution of the human sequence in FR3 of the VH with the original murine sequence for the FR3 in the VH. The same CDR-grafted LC, without any FR substitutions, was used in production of all versions of the humanized HIRMAb. This corresponds with other work showing no FR changes in the LC may be required (Graziano et al, 1995).

version 5 humanized HIRMAb was purified by protein A affinity chromatography and the affinity of this antibody for the HIR was tested with an immunoradiometric assay (IRMA), which used [¹²⁵I]-labeled murine 83-14 MAb as the ligand as described previously (Coloma et al, 2000). These results showed that the affinity of the antibody for the

TABLE 3

| Iterations of Genetic Engineering of Humanized HIRMAb Heavy Chain | | | |
|---|---------------------------|----------------------------------|----------------|
| | FR1 | CDR1 | FR2 |
| Version 5 | QVQLLESGAELVRPGSSVKISCKAS | GYTFTNYDIH | WVKQRPGQGLEWIG |
| Version 4b | QVQLLESGAELVRPGSSVKISCKAS | GYTFTNYDIH | WVKQRPGQGLEWIG |
| Version 4a | QVQLQESGPGLVKPGALVKISCKAS | GYTFTNYDIH | WVKQRPGQGLEWIG |
| Version 3 | QVQLLESGAELVRPGSSVKISCKAS | GYTFTNYDIH | WVKQRPGQGLEWIG |
| Version 2 | QVQLLESGAELVRPGSSVKISCKAS | GYTFTNYDIH | WVKQRPGQGLEWIG |
| Version 1 | QVQLLESGAELVRPGSSVKISCKAS | GYTFTNYDIH | WVKQRPGQGLEWIG |
| murine | QVQLQESGPGLVKPGALVKISCKAS | GYTFTNYDIH | WVKQRPGQGLEWIG |
| human B43 | QVQLLESGAELVRPGSSVKISCKAS | GYAFSSYWMN | WVKQRPGQGLEWIG |
| | 1 | 26 | 36 |
| *****CDR2*****FR3 | | | |
| Version 5 | WIYPGDGSTKYNEKFKG | KATLTADKSSSTAYMHLSSLTSEKSAVYFCAR | |
| Version 4b | WIYPGDGSTKYNEKFKG | KATLTADKSSSTAYMHLSSLTSEKSAVYFCAR | |
| Version 4a | WIYPGDGSTKYNEKFKG | KATLTADKSSSTAYMQLSLRSEDSAVYSCAR | |
| Version 3 | WIYPGDGSTKYNEKFKG | KATLTADKSSSTAYMQLSLRSEDSAVYSCAR | |
| Version 2 | WIYPGDGSTKYNEKFKG | KATLTADKSSSTAYMQLSLRSEDSAVYSCAR | |
| Version 1 | WIYPGDGSTKYNEKFKG | KATLTADKSSSTAYMQLSLRSEDSAVYSCAR | |
| murine | WIYPGDGSTKYNEKFKG | KATLTADKSSSTAYMHLSSLTSEKSAVYFCAR | |
| human B43 | QIWPGDGDTNYNGKFKG | KATLTADKSSSTAYMQLSLRSEDSAVYSCAR | |
| | 50 | 67 | |
| *****CDR3*****FR4 | | | |
| Version 5 | -----EWAY | WGQGTIVTVSA' (SEQ. ID. NO. 5) | |
| Version 4b | -----EWAY | WGQGTIVTVSA' (SEQ. ID. NO. 11) | |
| Version 4a | -----EWAY | WGQGTIVTVSA' (SEQ. ID. NO. 10) | |
| Version 3 | -----EWAY | WGQGTIVTVSA' (SEQ. ID. NO. 9) | |
| Version 2 | -----EWAY | WGQGTIVTVSA' (SEQ. ID. NO. 8) | |
| Version 1 | -----EWAY | WGQGTIVTVSA' (SEQ. ID. NO. 7) | |
| murine | -----EWAY | WGQGTIVTVSA' (SEQ. ID. NO. 3) | |
| human B43 | RETTTVGRYYYAMDY | WGQGTIVT---' (SEQ. ID. NO. 12) | |
| | 99 | 99 | 103 |
| | 113 | | |

[0053] Version 1 was designed using the FRs of the human 25C1C1 IgG heavy chain (HC) variable region (VH). Version 1 did not produce secreted hIgG from the transfected myeloma cells despite high abundance of the HC mRNA determined by Northern blot analysis.

[0054] Version 2 was re-designed using the FRs of the human B43 IgG HC variable region. The peptide signal #1 (MDWTWRVLCCLAVAPGAHS) (SEQ. ID. NO. 49) in versions 1 and 2 was replaced by signal peptide #2 (MGWSWVMLFLLSVTAGKGL) (SEQ. ID. NO. 50) in version 3. The FRs and CDRs in version 2 and 3 are identical. The signal peptide #2 was used for versions 4a, 4b and 5.

[0055] Version 4a has human FRs 2, 3 and 4 and murine FR1.

[0056] Version 4b has human FRs 1 and 2, and murine FRs 3 and 4

[0057] Version 5 was produced using the human FRs 1, 2 and 4 and the murine FR3.

[0058] Versions 4a, 4b and 5 produced secreted hIgG, whereas version 1, 2, and 3 did not secrete IgG. Among versions 4a, 4b, and 5, version 5 contains fewer murine framework amino acid substitutions and is preferred.

[0059] The version 5 form of the protein was secreted intact from the transfected myeloma lines. The secreted

HIR was retained. In the IRMA, the antigen was the extracellular domain of the HIR, which was produced from transfected CHO cells and purified by lectin affinity chromatography of CHO cell conditioned medium. The dissociation constant (K_D) of the murine and Version 5 humanized 83-14 HIRMAb was 2.7 ± 0.4 nM and 3.7 ± 0.4 nM, respectively. These results show that the 83-14 HIRMAb has been successfully humanized using methods that (a) obtain the FR regions of the HC and of the LC from different human immunoglobulin molecules, and (b) do not require the use of molecular modeling of the antibody structure, as taught in U.S. Pat. No. 5,585,089. Similar to other applications (Graziano et al., 1995), no FR amino acid changes in the LC of the antibody were required.

EXAMPLE 3

[0060] Binding of the Humanized HIRMAb to the Human BBB

[0061] Prior work has reported that the radiolabelled murine HIRMAb avidly binds to human brain capillaries with percent binding approximately 400% per mg protein at 60-120 minutes of incubation (Pardridge et al., 1995). Similar findings were recorded with radiolabelled Version 5 humanized HIRMAb in this example. When human brain capillaries were incubated in a radioreceptor assay with [¹²⁵I] Version 5 humanized HIRMAb, the percent binding

approximated 400% per mg protein by 60 minutes of incubation at room temperature, and approximated the binding to the human brain capillary of the [125 I]-chimeric HIRMAb (see **FIGS. 2A and 2B**). In contrast, the binding of a nonspecific IgG to human brain capillaries is less than 5% per mg protein during a comparable incubation period (Pardridge et al., 1995). This example shows that the Version 5 humanized HIRMAb was avidly bound and endocytosed by the human brain capillary, which forms the BBB in vivo.

EXAMPLE 4

Transport of Humanized HIRMAb Across the Primate BBB In Vivo

[0062] The humanized Version 5 HIRMAb was radiolabelled with 125-Iodine and injected intravenously into the adult Rhesus monkey. The animal was sacrificed 2 hours later and the brain was removed and frozen. Cryostat sections (20 micron) were cut and applied to X-ray film. Scanning of the film yielded an image of the primate brain uptake of the humanized HIRMAb (**FIG. 3**). The white matter and gray matter tracts of the primate brain are clearly delineated, with a greater uptake in the gray matter as compared with the white matter. The higher uptake of the human HIRMAb in the gray matter, as compared with the white matter, is consistent with the 3-fold higher vascular density in gray matter, and 3-fold higher nonspecific IgG is injected into Rhesus monkeys there is no brain uptake of the antibody (Pardridge et al., 1995). These film autoradiography studies show that the humanized HIRMAb is able to carry a drug (iodine) across the primate BBB in vivo. Based on the high binding of the humanized HIRMAb to the human BBB (**FIG. 2**), similar findings of high brain uptake in vivo would be recorded in humans.

EXAMPLE 5

[0063] Affinity Maturation of the Antibody by CDR or FR Amino Acid Substitution

[0064] The amino acid sequences of the VH of the HC and of the VL of the LC are given in **FIG. 4** for the Version 5 humanized HIRMAb, the murine 83-14 HIRMAb, and either the B43 HC or the REI LC antibodies. Given the CDR amino sequences in **FIG. 4**, those skilled in the art of antibody engineering (Schier et al., 1996) may make certain amino acid substitutions in the 83-14 HC or LC CDR sequences in a process called "affinity maturation" or molecular evolution. This may be performed either randomly or guided by x-ray diffraction models of immunoglobulin structure, similar to single amino acid changes made in the FR regions of either the HC or the LC of an antibody (U.S. Pat. No. 5,585,089). Similarly, given the FR amino acid sequences in **FIG. 4**, those skilled in the art can make certain amino acid substitutions in the HC or LC FR regions to further optimize the affinity of the HIRMAb for the target HIR antigen. The substitutions should be made keeping in mind the sequence identity limitations set forth previously for both the FR and CDR regions. These changes may lead to either increased binding or increased endocytosis or both.

EXAMPLE 6

[0065] Humanized HIRMAb/ α -L-iduronidase Fusion Protein

[0066] α -L-iduronidase (IDUA) is the enzyme missing in patients with Hurler syndrome or type I mucopolysaccharidosis (MPS), which adversely affects the brain. The brain pathology ultimately results in early death for children carrying this genetic disease. IDUA enzyme replacement therapy (ERT) for patients with MPS type I is not effective for the brain disease, because the enzyme does not cross the BBB. This is a serious problem and means the children with this disease will die early even though they are on ERT. The enzyme could be delivered across the human BBB following peripheral administration providing the enzyme is attached to a molecular Trojan horse such as the humanized HIRMAb. The IDUA may be attached to the humanized HIRMAb with avidin-biotin technology. In this approach, the IDUA enzyme is mono-biotinylated in parallel with the production of a fusion protein of the humanized HIRMAb and avidin. In addition, the IDUA could be attached to the humanized HIRMAb not with avidin-biotin technology, but with genetic engineering that avoids the need for biotinylation or the use of foreign proteins such as avidin. In this approach, the gene encoding for IDUA is fused to the region of the humanized HIRMAb heavy chain or light chain gene corresponding to the amino or carboxyl terminus of the HIRMAb heavy or light chain protein. Following construction of the fusion gene and insertion into an appropriate prokaryotic or eukaryotic expression vector, the HIRMAb/IDUA fusion protein is mass produced for purification and manufacturing. The amino acid sequence and general structure of a typical MAb/IDUA fusion protein is shown in **FIG. 5** (SEQ. ID. NO. 48). In this construct, the enzyme is fused to the carboxy terminus of the heavy chain (HC) of the humanized HIRMAb. The amino acid sequence for the IDUA shown in **FIG. 5** is that of the mature, processed enzyme. Alternatively, the enzyme could be fused to the amino terminus of the HIRMAb HC or the amino or carboxyl termini of the humanized HIRMAb light chain (LC). In addition, one or more amino acids within the IDUA sequence could be modified with retention of the biological activity of the enzyme. Fusion proteins of lysosomal enzymes and antibodies have been prepared and these fusion proteins retain biological activity (Haisma et al, 1998). The fusion gene encoding the fusion protein can be inserted in one of several commercially available permanent expression vectors, such as pCEP4, and cell lines can be permanently transfected and selected with hygromycin or other selection agents. The conditioned medium may be concentrated for purification of the recombinant humanized HIRMAb/IDUA fusion protein.

EXAMPLE 7

[0067] Role of Light Chain (LC) in Binding of HIRMAb to the Human Insulin Receptor

[0068] Myeloma cells (NSO) were transfected with a plasmid encoding the either the humanized HIRMAb light chain or "surrogate light chain", which was an anti-dansyl MAb light chain (Shin and Morrison, 1990). The anti-dansyl light chain is derived from the anti-dansyl IgG, where dansyl is a common hapten used in antibody generation. Both the myeloma line transfected with the humanized HIRMAb

light chain, and the myeloma line transfected with the surrogate light chain were subsequently transfected with a plasmid encoding the heavy chain of the chimeric HIRMAb. One cell line secreted an IgG comprised of the anti-HIRMAb chimeric heavy chain and the anti-HIRMAb humanized light chain, and this IgG is designated chimeric HIRMAb heavy chain/humanized HIRMAb light chain IgG. The other cell line secreted an IgG comprised of a chimeric HIRMAb heavy chain and the anti-dansyl light chain, and this IgG is designated chimeric HIRMAb HC/dansyl LC IgG. Both cell lines secreted IgG processed with either the humanized HIRMAb light chain or the anti-dansyl light chain, as determined with a human IgG ELISA on the myeloma supernatants. These data indicated the chimeric HIRMAb heavy chain could be processed and secreted by myeloma cells producing a non-specific or surrogate light chain. The reactivity of these chimeric antibodies with the soluble extracellular domain (ECD) of the HIR was determined by ELISA. The HIR ECD was purified by lectin affinity chromatography of the conditioned medium of CHO cells transfected with the HIR ECD as described previously (Coloma et al, 2000). In the HIR ECD ELISA, the murine 83-14 HIRMAb was used as a positive control and mouse IgG2a was used as a negative control. The negative control produced negligible ELISA signals; the standard curve with the murine 83-14 MAb gave a linear increase in absorbance that reached saturation at 1 μ g/ml murine 83-14 MAb. The immune reaction in the ELISA was quantified with a spectrophotometer and maximum absorbance at 405 nm (A405) in this assay was 0.9. All isolated myeloma clones secreting the chimeric HIRMAb heavy chain/humanized HIRMAb light chain IgG were positive in the HIR ECD ELISA with immuno-reactive levels that maximized the standard curve. In addition, the myeloma clones secreting the chimeric HIRMAb HC/dansyl LC IgG also produced positive signals in the HIR ECD ELISA, and the A405 levels were approximately 50% of the A405 levels obtained with the chimeric HIRMAb heavy chain/humanized HIRMAb light chain IgG. These findings indicate the light chain plays a minor role in binding of the HIRMAb to its target antigen, which is the extracellular domain of the human insulin receptor. This interpretation is supported by the finding that no FR substitutions in the humanized LC were required to enable active binding of the humanized HIRMAb to the HIR ECD (see Example 2). These findings show that large variations in the amino acid sequence of the HIRMAb light chain (50% and more) can be made with minimal loss of binding of the intact humanized HIRMAb to the target HIR antigen. Accordingly, a wide variety of LC's may be used to prepare humanized antibodies in accordance with the present invention provided that they are compatible with the HC. The LC is considered to be "compatible" with the HC if the LC can be combined with the HC and not destroy the ability of the resulting antibody to bind to the HIR. In addition, the LC must be human or sufficiently humanized so that any immunogenic reaction in humans is minimized. Routine experimentation can be used to determine whether a selected human or humanized LC sequence is compatible with the HC.

[0069] Having thus described exemplary embodiments of the present invention, it should be noted by those skilled in the art that the within disclosures are exemplary only and that various other alternatives, adaptations and modifications may be made within the scope of the present invention. Accordingly, the present invention is not limited to the

above preferred embodiments and examples, but is only limited by the following claims.

BIBLIOGRAPHY

- [0070] Bruggemann, M. et al. (1989) "The immunogenicity of chimeric antibodies," *J. Exp. Med.*, 170:2153-2157.
- [0071] Coloma, M. J., Lee, H. J., Kurihara, A., Landaw, E. M., Boado, R. J., Morrison, S. L., and Pardridge, W. M. (2000) "Transport across the primate blood-brain barrier of a genetically engineered chimeric monoclonal antibody to the human insulin receptor," *Pharm. Res.*, 17:266-274.
- [0072] Coloma, M. J., Hastings, A., Wims, L. A., and Morrison, S. L. (1992) "Novel vectors for the expression of antibody molecules using variable regions generated by polymerase chain reaction," *J. Immunol. Methods*, 152:89-104.
- [0073] Foote, J. and Winter, G. (1992) "Antibody framework residues affecting the conformation of the hypervariable loops," *J. Mol. Biol.*, 224:487-499.
- [0074] Graziano, R. F. et al. (1995) "Construction and characterization of a humanized anti- γ -Ig receptor type I (Fc γ RI) monoclonal antibody," *J. Immunol.*, 155:4996-5002.
- [0075] Haisma, J. J. et al (2000) Construction and characterization of a fusion protein of single-chain anti-CD20 antibody and human β -glucuronidase for antibody-directed enzyme prodrug therapy. *Blood*. 92: 184-190.
- [0076] Li, J. Y., Sugimura, K., Boado, R. J., Lee, H. J., Zhang, C., Dubel, S., and Pardridge, W. M. (1999) "Genetically engineered brain drug delivery vectors—cloning, expression, and in vivo application of an anti-transferrin receptor single chain antibody-streptavidin fusion gene and protein," *Protein Engineering*, 12:787-796.
- [0077] Miller, G. (2002) "Breaking down barriers," *Science*, 297:1116-1118.
- [0078] Pardridge, W. M. (1997) "Drug delivery to the brain," *J. Cereb. Blood Flow. Metabol.*, 17:713-731.
- [0079] Pardridge, W. M., Buciak, J. L., and Friden, P. M. (1991) "Selective transport of anti-transferrin receptor antibody through the blood-brain barrier in vivo," *J. Pharmacol. Exp. Ther.*, 259:66-70.
- [0080] Pardridge, W. M., Kang, Y.-S., Buciak, J. L., and Yang, J. (1995) "Human insulin receptor monoclonal antibody undergoes high affinity binding to human brain capillaries in vitro and rapid transcytosis through the blood-brain barrier in vivo in the primate," *Pharm. Res.* 12:807-816.
- [0081] Pichla, W. L., Murali, R., and Burnett, R. M. (1997) "The crystal structure of a Fab fragment to the melanoma-associated GD2 ganglioside," *J. Struct. Biol.*, 119:6-16.
- [0082] Rechavi, G. et al (1983) "Evolutionary aspects of immunoglobulin heavy chain variable region (VH) gene subgroups". *Proc. Natl. Acad. Sci. (U.S.A.)* 80: 855-859.

- [0083] Schier, R. et al. (1996) "Isolation of picomolar affinity anti-c-erbB-2 single-chain Fv by molecular evolution of the complementarity determining regions in the center of the antibody binding site," *J. Mol. Biol.*, 263:551-557.
- [0084] Shin, S. U. and Morrison, S. L. (1990) "Expression and characterization of an antibody binding specificity joined to insulin-like growth factor 1: potential applications for cellular targeting". *Proc. Natl. Acad. Sci. U.S.A.* 87: 5322-5326.
- [0085] Soos, M. A., et al (1986) "Monoclonal antibodies reacting with multiple epitopes on the human insulin receptor". *Biochem. J.* 235: 199-208.
- [0086] U.S. Pat. No. 5,624,659 (issued Apr. 29, 1997) "Method of Treating Brain Tumors Expressing Tenascin" (Inventors: Darell D. Bigner and Michael R. Zalutsky; Assignee: Duke University).
- [0087] U.S. Pat. No. 6,287,792 (issued Sep. 11, 2001) "Drug delivery of antisense oligonucleotides and peptides to tissues in vivo and to cells using avidin-biotin technology (Inventors: William M. Pardridge and Ruben J. Boado; Assignee: University of California).
- [0088] Vogel, C. L. et al. (2002) "Efficacy and safety of trastuzumab as a single agent in first-line treatment of HER2-overexpressing metastatic breast cancer," *J. Clin. Oncol.*, 20:719-726.
- [0089] Wu, D., Yang, J., and Pardridge, W. M. (1997): "Drug targeting of a peptide radiopharmaceutical through the primate blood-brain barrier in vivo with a monoclonal antibody to the human insulin receptor." *J. Clin. Invest.*, 100: 1804-1812.
- [0090] Zhang, Y., Lee, H. J., Boado, R. J., and Pardridge, W. M. (2002) "Receptor-mediated delivery of an antisense gene to human brain cancer cells," *J. Gene Med.*, 4:183-194.

SEQUENCE LISTING

(1) GENERAL INFORMATION:

(iii) NUMBER OF SEQUENCES: 50

(2) INFORMATION FOR SEQ ID NO: 1:

(i) SEQUENCE CHARACTERISTICS:

- (A) LENGTH: 339 nucleotides
- (B) TYPE: nucleotide
- (C) STRANDEDNESS: single
- (D) TOPOLOGY: linear

(ii) MOLECULE TYPE: nucleic acid

(xi) SEQUENCE DESCRIPTION: SEQ ID NO: 1

```
CAGGTCCAGC TGCAGGAGTC TGGACCTGAG CTGGTGAAGC CTGGGGCTTT AGTGAAGATA    60
TCCTGCAAGG CTCTCTGGTTA CACCTTCACA AACTACGATA TACACTGGGT GAAGCAGAGG    120
CCTGGACAGG GACTTGAGTG GATTGGATGG ATTTATCCTG GAGATGGTAG TACTAAGTAC    180
AATGAGAAAT TCAAGGGCAA GCCACACTG ACTGCAGACA AATCCTCCAG CACAGCCTAC    240
ATGCACCTCA GCAGCCTGAC TTCTGAGAAA TCTGCAGTCT ATTTCTGTGC AAGAGAGTGG    300
GCTTACTGGG GCCAAGGGAC TCTGGTCACT GTCTCTGCA                                339
```

(2) INFORMATION FOR SEQ ID NO: 2:

(i) SEQUENCE CHARACTERISTICS:

- (A) LENGTH: 324 nucleotides
- (B) TYPE: nucleotide
- (C) STRANDEDNESS: single
- (D) TOPOLOGY: linear

(ii) MOLECULE TYPE: nucleic acid

(xi) SEQUENCE DESCRIPTION: SEQ ID NO: 2

```
GATATCCAGA TGACCCAATC TCCATCCTCC TTATCTGCCT CTCTGGGAGA AAGAGTCAGT    60
CTCACTTGTC GGGCAAGTCA GGACATTGGT GGTAACCTAT ACTGGCTTCA GCAGGGACCA    120
```

-continued

| | |
|--|-----|
| GATGGAAC TAACGCCT GATATACGCC ACATCCAGTT TAGATTCTGG TGTCCCCAA | 180 |
| AGGTTTCAGTG GCAGTAGGTC TGGGTCAGAT TATTCTCTCA CCATCAGCAG CCTTGAGTCT | 240 |
| GAAGATTTTG TAGACTATTA CTGTCTACAG TATTCTAGTT CTCCTGGAC GTTCGGTGGA | 300 |
| GGCACCAAGA TGAAATCAA ACGG | 324 |

(2) INFORMATION FOR SEQ ID NO: 3:

(i) SEQUENCE CHARACTERISTICS:

- (A) LENGTH: 113 amino acids
- (B) TYPE: amino acid
- (C) STRANDEDNESS: single
- (D) TOPOLOGY: linear

(ii) MOLECULE TYPE: protein

(xi) SEQUENCE DESCRIPTION: SEQ ID NO: 3

```

gln val gln leu gln glu ser gly pro glu leu val lys pro gly ala
1           5           10           15
leu val lys ile ser cys lys ala ser gly tyr thr phe thr asn tyr
20          25          30
asp ile his trp val lys gln arg pro gly gln gly leu glu trp ile
35          40          45
gly trp ile tyr pro gly asp gly ser thr lys tyr asn glu lys phe
50          55          60
lys gly lys ala thr leu thr ala asp lys ser ser ser thr ala tyr
65          70          75          80
met his leu ser ser leu thr ser glu lys ser ala val tyr phe cys
85          90          95
ala arg glu trp ala tyr trp gly gln gly thr leu val thr val ser
100         105         110
ala
113

```

(2) INFORMATION FOR SEQ ID NO: 4:

(i) SEQUENCE CHARACTERISTICS:

- (A) LENGTH: 108 amino acids
- (B) TYPE: amino acid
- (C) STRANDEDNESS: single
- (D) TOPOLOGY: linear

(ii) MOLECULE TYPE: protein

(xi) SEQUENCE DESCRIPTION: SEQ ID NO: 4

```

asp ile gln met thr gln ser pro ser ser leu ser ala ser leu gly
1           5           10           15
glu arg val ser leu thr cys arg ala ser gln asp ile gly gly asn
20          25          30
leu tyr trp leu gln gln gly pro asp gly thr ile lys arg leu ile
35          40          45
tyr ala thr ser ser leu asp ser gly val pro lys arg phe ser gly
50          55          60
ser arg ser gly ser asp tyr ser leu thr ile ser ser leu glu ser
65          70          75          80
glu asp phe val asp tyr tyr cys leu gln tyr ser ser ser pro trp
85          90          95

```

-continued

thr phe gly gly gly thr lys met glu ile lys arg
 100 105

(2) INFORMATION FOR SEQ ID NO: 5:

- (i) SEQUENCE CHARACTERISTICS:
 (A) LENGTH: 113 amino acids
 (B) TYPE: amino acid
 (C) STRANDEDNESS: single
 (D) TOPOLOGY: linear

(ii) MOLECULE TYPE: protein

(xi) SEQUENCE DESCRIPTION: SEQ ID NO: 5

gln val gln leu leu glu ser gly ala glu leu val arg pro gly ser
 1 5 10 15

ser val lys ile ser cys lys ala ser gly tyr thr phe thr asn tyr
 20 25 30

asp ile his trp val lys gln arg pro gly gln gly leu glu trp ile
 35 40 45

gly trp ile tyr pro gly asp gly ser thr lys tyr asn glu lys phe
 50 55 60

lys gly lys ala thr leu thr ala asp lys ser ser ser thr ala tyr
 65 70 75 80

met his leu ser ser leu thr ser glu lys ser ala val tyr phe cys
 85 90 95

ala arg glu trp ala tyr trp gly gln gly thr thr val thr val ser
 100 105 110

ala
 113

(2) INFORMATION FOR SEQ ID NO: 6:

- (i) SEQUENCE CHARACTERISTICS:
 (A) LENGTH: 108 amino acids
 (B) TYPE: amino acid
 (C) STRANDEDNESS: single
 (D) TOPOLOGY: linear

(ii) MOLECULE TYPE: protein

(xi) SEQUENCE DESCRIPTION: SEQ ID NO: 6

asp ile gln met thr gln ser pro ser ser leu ser ala ser val gly
 1 5 10 15

glu arg val thr ile thr cys arg ala ser gln asp ile gly gly asn
 20 25 30

leu tyr trp tyr gln gln lys pro gly lys ala pro lys leu leu ile
 35 40 45

tyr ala thr ser ser leu asp ser gly val pro ser arg phe ser gly
 50 55 60

ser gly ser gly thr asp tyr thr phe thr ile ser ser leu gln pro
 65 70 75 80

glu asp ile ala thr tyr tyr cys leu gln tyr ser ser ser pro trp
 85 90 95

thr phe gly gln gly thr lys val glu ile lys arg
 100 105

(2) INFORMATION FOR SEQ ID NO: 7:

-continued

(i) SEQUENCE CHARACTERISTICS:
(A) LENGTH: 113 amino acids
(B) TYPE: amino acid
(C) STRANDEDNESS: single
(D) TOPOLOGY: linear

(ii) MOLECULE TYPE: protein

(xi) SEQUENCE DESCRIPTION: SEQ ID NO: 7

gln val gln leu leu glu ser gly ala glu leu val arg pro gly ser
1 5 10 15
ser val lys ile ser cys lys ala ser gly tyr thr phe thr asn tyr
 20 25 30
asp ile his trp val lys gln arg pro gly gln gly leu glu trp ile
 35 40 45
gly trp ile tyr pro gly asp gly ser thr lys tyr asn glu lys phe
 50 55 60
lys gly gln ala thr leu thr ala asp lys ser ser ser thr ala tyr
65 70 75 80
met gln leu ser ser leu thr ser glu asp ser ala val tyr ser cys
 85 90 95
ala arg glu trp ala tyr trp gly gln gly thr thr val thr val ser
 100 105 110
ala
113

(2) INFORMATION FOR SEQ ID NO: 8:

(i) SEQUENCE CHARACTERISTICS:
(A) LENGTH: 113 amino acids
(B) TYPE: amino acid
(C) STRANDEDNESS: single
(D) TOPOLOGY: linear

(ii) MOLECULE TYPE: protein

(xi) SEQUENCE DESCRIPTION: SEQ ID NO: 8

gln val gln leu leu glu ser gly ala glu leu val arg pro gly ser
1 5 10 15
ser val lys ile ser cys lys ala ser gly tyr thr phe thr asn tyr
 20 25 30
asp ile his trp val lys gln arg pro gly gln gly leu glu trp ile
 35 40 45
gly trp ile tyr pro gly asp gly ser thr lys tyr asn glu lys phe
 50 55 60
lys gly lys ala thr leu thr ala asp glu ser ser ser thr ala tyr
65 70 75 80
met gln leu ser ser leu arg ser glu asp ser ala val tyr ser cys
 85 90 95
ala arg glu trp ala tyr trp gly gln gly thr thr val thr val ser
 100 105 110
ala
113

(2) INFORMATION FOR SEQ ID NO: 9:

(i) SEQUENCE CHARACTERISTICS:

-continued

(A) LENGTH: 113 amino acids
(B) TYPE: amino acid
(C) STRANDEDNESS: single
(D) TOPOLOGY: linear

(ii) MOLECULE TYPE: protein

(xi) SEQUENCE DESCRIPTION: SEQ ID NO: 9

```

gln val gln leu leu glu ser gly ala glu leu val arg pro gly ser
1          5          10          15
ser val lys ile ser cys lys ala ser gly tyr thr phe thr asn tyr
          20          25          30
asp ile his trp val lys gln arg pro gly gln gly leu glu trp ile
          35          40          45
gly trp ile tyr pro gly asp gly ser thr lys tyr asn glu lys phe
          50          55          60
lys gly lys ala thr leu thr ala asp glu ser ser ser thr ala tyr
65          70          75          80
met gln leu ser ser leu arg ser glu asp ser ala val tyr ser cys
          85          90          95
ala arg glu trp ala tyr trp gly gln gly thr thr val thr val ser
          100          105          110
ala
113

```

(2) INFORMATION FOR SEQ ID NO: 10:

(i) SEQUENCE CHARACTERISTICS:
(A) LENGTH: 113 amino acids
(B) TYPE: amino acid
(C) STRANDEDNESS: single
(D) TOPOLOGY: linear

(ii) MOLECULE TYPE: protein

(xi) SEQUENCE DESCRIPTION: SEQ ID NO: 10

```

gln val gln leu gln glu ser gly pro glu leu val lys pro gly ala
1          5          10          15
leu val lys ile ser cys lys ala ser gly tyr thr phe thr asn tyr
          20          25          30
asp ile his trp val lys gln arg pro gly gln gly leu glu trp ile
          35          40          45
gly trp ile tyr pro gly asp gly ser thr lys tyr asn glu lys phe
          50          55          60
lys gly lys ala thr leu thr ala asp glu ser ser ser thr ala tyr
65          70          75          80
met gln leu ser ser leu arg ser glu asp ser ala val tyr ser cys
          85          90          95
ala arg glu trp ala tyr trp gly gln gly thr thr val thr val ser
          100          105          110
ala
113

```

(2) INFORMATION FOR SEQ ID NO: 11:

(i) SEQUENCE CHARACTERISTICS:
(A) LENGTH: 113 amino acids
(B) TYPE: amino acid

-continued

(C) STRANDEDNESS: single
(D) TOPOLOGY: linear

(ii) MOLECULE TYPE: protein

(xi) SEQUENCE DESCRIPTION: SEQ ID NO: 11

```

gln val gln leu leu glu ser gly ala glu leu val arg pro gly ser
1      5      10      15
ser val lys ile ser cys lys ala ser gly tyr thr phe thr asn tyr
      20      25      30
asp ile his trp val lys gln arg pro gly gln gly leu glu trp ile
      35      40      45
gly trp ile tyr pro gly asp gly ser thr lys tyr asn glu lys phe
      50      55      60
lys gly lys ala thr leu thr ala asp lys ser ser ser thr ala tyr
65      70      75      80
met his leu ser ser leu thr ser glu lys ser ala val tyr phe cys
      85      90      95
ala arg glu trp ala tyr trp gly gln gly thr leu val thr val ser
      100      105      110
ala
113

```

(2) INFORMATION FOR SEQ ID NO: 12:

(i) SEQUENCE CHARACTERISTICS:
(A) LENGTH: 121 amino acids
(B) TYPE: amino acid
(C) STRANDEDNESS: single
(D) TOPOLOGY: linear

(ii) MOLECULE TYPE: protein

(xi) SEQUENCE DESCRIPTION: SEQ ID NO: 12

```

gln val gln leu leu glu ser gly ala glu leu val arg pro gly ser
1      5      10      15
ser val lys ile ser cys lys ala ser gly tyr ala phe ser ser tyr
      20      25      30
trp met asn trp val lys gln arg pro gly gln gly leu glu trp ile
      35      40      45
gly gln ile trp pro gly asp gly asp thr asn tyr asn gly lys phe
      50      55      60
lys gly lys ala thr leu thr ala asp glu ser ser ser thr ala tyr
65      70      75      80
met gln leu ser ser leu arg ser glu asp ser ala val tyr ser cys
      85      90      95
ala arg arg glu thr thr thr val gly arg tyr tyr tyr ala met asp
      100      105      110
tyr trp gly gln gly thr thr val thr

```

(2) INFORMATION FOR SEQ ID NO: 13:

(i) SEQUENCE CHARACTERISTICS:
(A) LENGTH: 108 amino acids
(B) TYPE: amino acid
(C) STRANDEDNESS: single
(D) TOPOLOGY: linear

-continued

(ii) MOLECULE TYPE: protein

(xi) SEQUENCE DESCRIPTION: SEQ ID NO: 13

```

asp ile gln met thr gln ser pro ser ser leu ser ala ser val gly
1       5       10      15
asp arg val thr ile thr cys gln ala ser gln asp ile ile lys tyr
20      25      30
leu asn trp leu gln gln lys pro gly lys ala pro lys leu leu ile
35      40      45
tyr glu ala ser asn leu gln ala gly val pro ser arg phe ser gly
50      55      60
ser gly ser gly thr asp tyr thr phe thr ile ser ser leu gln pro
65      70      75      80
glu asp ile ala thr tyr tyr cys gln gln tyr gln ser leu pro tyr
85      90      95
thr phe gly gln gly thr lys val glu ile lys arg
100     105

```

(2) INFORMATION FOR SEQ ID NO: 14:

(i) SEQUENCE CHARACTERISTICS:

- (A) LENGTH: 91 nucleotides
- (B) TYPE: nucleotide
- (C) STRANDEDNESS: single
- (D) TOPOLOGY: linear

(ii) MOLECULE TYPE: nucleic acid

(xi) SEQUENCE DESCRIPTION: SEQ ID NO: 14

```

TAGGATATCC ACCATGGAGA CCCCCGCCA GCTGCTGTTC CTGTTGCTGC TTGGGCTTCC      60
AGATACTACC GGTGACATCC AGATGACCCA G                                     91

```

(2) INFORMATION FOR SEQ ID NO: 15:

(i) SEQUENCE CHARACTERISTICS:

- (A) LENGTH: 90 nucleotides
- (B) TYPE: nucleotide
- (C) STRANDEDNESS: single
- (D) TOPOLOGY: linear

(ii) MOLECULE TYPE: nucleic acid

(xi) SEQUENCE DESCRIPTION: SEQ ID NO: 15

```

GTCCTGACTA GCCCGACAAG TAATGGTCAC TCTGTCACCC ACGCTGGCGC TCAGGCTGCT      60
TGGGCTCTGG GTCATCTGGA TGTCGCCGGT                                     90

```

(2) INFORMATION FOR SEQ ID NO: 16:

(i) SEQUENCE CHARACTERISTICS:

- (A) LENGTH: 90 nucleotides
- (B) TYPE: nucleotide
- (C) STRANDEDNESS: single
- (D) TOPOLOGY: linear

(ii) MOLECULE TYPE: nucleic acid

(xi) SEQUENCE DESCRIPTION: SEQ ID NO: 16

```

ATTACTTGTC GGGCTAGTCA GGACATTGGA GGAACTTAT ATTGGTACCA ACAAAGCCA      60
GGTAAAGCTC CAAAGTTACT GATCTACGCC                                     90

```

-continued

(2) INFORMATION FOR SEQ ID NO: 17:

(i) SEQUENCE CHARACTERISTICS:

- (A) LENGTH: 90 nucleotides
- (B) TYPE: nucleotide
- (C) STRANDEDNESS: single
- (D) TOPOLOGY: linear

(ii) MOLECULE TYPE: nucleic acid

(xi) SEQUENCE DESCRIPTION: SEQ ID NO: 17

GGTGTAGTCG GTACCGCTAC CACTACCACT GAATCTGCTT GGCACACCAG AATCTAAACT 60

AGATGTGGCG TAGATCAGTA ACTTTGGAGC 90

(2) INFORMATION FOR SEQ ID NO: 18:

(i) SEQUENCE CHARACTERISTICS:

- (A) LENGTH: 90 nucleotides
- (B) TYPE: nucleotide
- (C) STRANDEDNESS: single
- (D) TOPOLOGY: linear

(ii) MOLECULE TYPE: nucleic acid

(xi) SEQUENCE DESCRIPTION: SEQ ID NO: 18

AGTGGTAGCG GTACCGACTA CACCTTCACC ATCAGCAGCT TACAGCCAGA GGACATCGCC 60

ACCTACTATT GCCTACAGTA TTCTAGTTCT 90

(2) INFORMATION FOR SEQ ID NO: 19:

(i) SEQUENCE CHARACTERISTICS:

- (A) LENGTH: 80 nucleotides
- (B) TYPE: nucleotide
- (C) STRANDEDNESS: single
- (D) TOPOLOGY: linear

(ii) MOLECULE TYPE: nucleic acid

(xi) SEQUENCE DESCRIPTION: SEQ ID NO: 19

CCCGTCGACT TCAGCCTTTT GATTTCACCC TTGGTCCCTT GTCCGAACGT CCATGGAGAA 60

CTAGAATACT GTAGGCAATA 80

(2) INFORMATION FOR SEQ ID NO: 20:

(i) SEQUENCE CHARACTERISTICS:

- (A) LENGTH: 24 nucleotides
- (B) TYPE: nucleotide
- (C) STRANDEDNESS: single
- (D) TOPOLOGY: linear

(ii) MOLECULE TYPE: nucleic acid

(xi) SEQUENCE DESCRIPTION: SEQ ID NO: 20

TAGGATATCC ACCATGGAGA CCCC 24

(2) INFORMATION FOR SEQ ID NO: 21:

(i) SEQUENCE CHARACTERISTICS:

- (A) LENGTH: 24 nucleotides
- (B) TYPE: nucleotide
- (C) STRANDEDNESS: single
- (D) TOPOLOGY: linear

(ii) MOLECULE TYPE: nucleic acid

-continued

(xi) SEQUENCE DESCRIPTION: SEQ ID NO: 21
CCCGTCGACT TCAGCCTTTT GATT 24

(2) INFORMATION FOR SEQ ID NO: 22:

(i) SEQUENCE CHARACTERISTICS:
(A) LENGTH: 94 nucleotides
(B) TYPE: nucleotide
(C) STRANDEDNESS: single
(D) TOPOLOGY: linear

(ii) MOLECULE TYPE: nucleic acid

(xi) SEQUENCE DESCRIPTION: SEQ ID NO: 22
TAGGATATCC ACCATGGACT GGACCTGGAG GGTGTTATGC CTGCTTGACG TGGCCCCCGG 60
AGCCACAGC CAAGTGCAGC TGCTCGAGTC TGGG 94

(2) INFORMATION FOR SEQ ID NO: 23:

(i) SEQUENCE CHARACTERISTICS:
(A) LENGTH: 93 nucleotides
(B) TYPE: nucleotide
(C) STRANDEDNESS: single
(D) TOPOLOGY: linear

(ii) MOLECULE TYPE: nucleic acid

(xi) SEQUENCE DESCRIPTION: SEQ ID NO: 23
GTTTGTGAAG GTGTAACCAG AAGCCTTGCA GGAAATCTTC ACTGAGGACC CAGGCCTCAC 60
CAGCTCAGCC CCAGACTCGA GCAGCTGCAC TTG 93

(2) INFORMATION FOR SEQ ID NO: 24:

(i) SEQUENCE CHARACTERISTICS:
(A) LENGTH: 93 nucleotides
(B) TYPE: nucleotide
(C) STRANDEDNESS: single
(D) TOPOLOGY: linear

(ii) MOLECULE TYPE: nucleic acid

(xi) SEQUENCE DESCRIPTION: SEQ ID NO: 24
GCTTCTGGTT ACACCTTCAC AAACACGAT ATACACTGGG TGAAGCAGAG GCCTGGACAG 60
GGTCTTGAGT GGATTGGATG GATTTATCCT GGA 93

(2) INFORMATION FOR SEQ ID NO: 25:

(i) SEQUENCE CHARACTERISTICS:
(A) LENGTH: 93 nucleotides
(B) TYPE: nucleotide
(C) STRANDEDNESS: single
(D) TOPOLOGY: linear

(ii) MOLECULE TYPE: nucleic acid

(xi) SEQUENCE DESCRIPTION: SEQ ID NO: 25
GCTGGAGGAT TCGTCTGCAG TCAGAGTGGC TTTGCCCTTG AATTTCTCAT TGTACTTAGT 60
ACTACCATCT CCAGGATAAA TCCATCCAAT CCA 93

(2) INFORMATION FOR SEQ ID NO: 26:

-continued

(i) SEQUENCE CHARACTERISTICS:
 (A) LENGTH: 93 nucleotides
 (B) TYPE: nucleotide
 (C) STRANDEDNESS: single
 (D) TOPOLOGY: linear

(ii) MOLECULE TYPE: nucleic acid

(xi) SEQUENCE DESCRIPTION: SEQ ID NO: 26

CTGACTGCAG ACGAATCCTC CAGCACAGCC TACATGCAAC TAAGCAGCCT ACGATCTGAG 60
 GACTCTGCGG TCTATTCTTG TGCAAGAGAG TGG 93

(2) INFORMATION FOR SEQ ID NO: 27:

(i) SEQUENCE CHARACTERISTICS:
 (A) LENGTH: 69 nucleotides
 (B) TYPE: nucleotide
 (C) STRANDEDNESS: single
 (D) TOPOLOGY: linear

(ii) MOLECULE TYPE: nucleic acid

(xi) SEQUENCE DESCRIPTION: SEQ ID NO: 27

CATGCTAGCA GAGACGGTGA CTGTGGTCCC TTGTCCCCAG TAAGCCCACT CTCTTGACA 60
 AGAATAGAC 69

(2) INFORMATION FOR SEQ ID NO: 28:

(i) SEQUENCE CHARACTERISTICS:
 (A) LENGTH: 27 nucleotides
 (B) TYPE: nucleotide
 (C) STRANDEDNESS: single
 (D) TOPOLOGY: linear

(ii) MOLECULE TYPE: nucleic acid

(xi) SEQUENCE DESCRIPTION: SEQ ID NO: 28

TAGGATATCC ACCATGGACT GGACCTG 27

(2) INFORMATION FOR SEQ ID NO: 29:

(i) SEQUENCE CHARACTERISTICS:
 (A) LENGTH: 25 nucleotides
 (B) TYPE: nucleotide
 (C) STRANDEDNESS: single
 (D) TOPOLOGY: linear

(ii) MOLECULE TYPE: nucleic acid

(xi) SEQUENCE DESCRIPTION: SEQ ID NO: 29

CATGCTAGCA GAGACGGTGA CTGTG 25

(2) INFORMATION FOR SEQ ID NO: 30:

(i) SEQUENCE CHARACTERISTICS:
 (A) LENGTH: 25 amino acids
 (B) TYPE: amino acid
 (C) STRANDEDNESS: single
 (D) TOPOLOGY: linear

(ii) MOLECULE TYPE: nucleic acid

(xi) SEQUENCE DESCRIPTION: SEQ ID NO: 30

gln val gln leu leu glu ser gly ala glu leu val arg pro gly ser
 1 5 10 15

-continued

ser val lys ile ser cys lys ala ser
20 25

(2) INFORMATION FOR SEQ ID NO: 31:

- (i) SEQUENCE CHARACTERISTICS:
 - (A) LENGTH: 10 amino acids
 - (B) TYPE: amino acid
 - (C) STRANDEDNESS: single
 - (D) TOPOLOGY: linear

(ii) MOLECULE TYPE: polypeptide

(xi) SEQUENCE DESCRIPTION: SEQ ID NO: 31

gly tyr thr phe thr asn tyr asp ile his
1 5 10

(2) INFORMATION FOR SEQ ID NO: 32:

- (i) SEQUENCE CHARACTERISTICS:
 - (A) LENGTH: 14 amino acids
 - (B) TYPE: amino acid
 - (C) STRANDEDNESS: single
 - (D) TOPOLOGY: linear

(ii) MOLECULE TYPE: polypeptide

(xi) SEQUENCE DESCRIPTION: SEQ ID NO: 32

trp val lys gln arg pro gly gln gly leu glu trp ile gly
1 5 10

(2) INFORMATION FOR SEQ ID NO: 33:

- (i) SEQUENCE CHARACTERISTICS:
 - (A) LENGTH: 17 amino acids
 - (B) TYPE: amino acid
 - (C) STRANDEDNESS: single
 - (D) TOPOLOGY: linear

(ii) MOLECULE TYPE: polypeptide

(xi) SEQUENCE DESCRIPTION: SEQ ID NO: 33

trp ile tyr pro gly asp gly ser thr lys tyr asn glu lys phe lys
1 5 10 15

gly
17

(2) INFORMATION FOR SEQ ID NO: 34:

- (i) SEQUENCE CHARACTERISTICS:
 - (A) LENGTH: 32 amino acids
 - (B) TYPE: amino acid
 - (C) STRANDEDNESS: single
 - (D) TOPOLOGY: linear

(ii) MOLECULE TYPE: polypeptide

(xi) SEQUENCE DESCRIPTION: SEQ ID NO: 34

lys ala thr leu thr ala asp lys ser ser ser thr ala tyr met his
1 5 10 15

leu ser ser leu thr ser glu lys ser ala val tyr phe cys ala arg
20 25 30

(2) INFORMATION FOR SEQ ID NO: 35:

-continued

- (i) SEQUENCE CHARACTERISTICS:
 - (A) LENGTH: 4 amino acids
 - (B) TYPE: amino acid
 - (C) STRANDEDNESS: single
 - (D) TOPOLOGY: linear

- (ii) MOLECULE TYPE: polypeptide

- (xi) SEQUENCE DESCRIPTION: SEQ ID NO: 35

glu trp ala tyr
1 4

(2) INFORMATION FOR SEQ ID NO: 36:

- (i) SEQUENCE CHARACTERISTICS:
 - (A) LENGTH: 11 amino acids
 - (B) TYPE: amino acid
 - (C) STRANDEDNESS: single
 - (D) TOPOLOGY: linear

- (ii) MOLECULE TYPE: polypeptide

- (xi) SEQUENCE DESCRIPTION: SEQ ID NO: 36

trp gly gln gly thr thr val thr val ser ala
1 5 10

(2) INFORMATION FOR SEQ ID NO: 37:

- (i) SEQUENCE CHARACTERISTICS:
 - (A) LENGTH: 23 amino acids
 - (B) TYPE: amino acid
 - (C) STRANDEDNESS: single
 - (D) TOPOLOGY: linear

- (ii) MOLECULE TYPE: polypeptide

- (xi) SEQUENCE DESCRIPTION: SEQ ID NO: 37

asp ile gln met thr gln ser pro ser ser leu ser ala ser leu gly
1 5 10 15

glu arg val thr ile thr cys
20

(2) INFORMATION FOR SEQ ID NO: 38:

- (i) SEQUENCE CHARACTERISTICS:
 - (A) LENGTH: 11 amino acids
 - (B) TYPE: amino acid
 - (C) STRANDEDNESS: single
 - (D) TOPOLOGY: linear

- (ii) MOLECULE TYPE: polypeptide

- (xi) SEQUENCE DESCRIPTION: SEQ ID NO: 38

arg ala ser gln asp ile gly gly asn leu tyr
1 5 10

(2) INFORMATION FOR SEQ ID NO: 39:

- (i) SEQUENCE CHARACTERISTICS:
 - (A) LENGTH: 15 amino acids
 - (B) TYPE: amino acid
 - (C) STRANDEDNESS: single
 - (D) TOPOLOGY: linear

- (ii) MOLECULE TYPE: polypeptide

-continued

(xi) SEQUENCE DESCRIPTION: SEQ ID NO: 39

trp tyr gln gln lys pro gly lys ala pro lys leu leu ile tyr
1 5 10 15

(2) INFORMATION FOR SEQ ID NO: 40:

- (i) SEQUENCE CHARACTERISTICS:
(A) LENGTH: 7 amino acids
(B) TYPE: amino acid
(C) STRANDEDNESS: single
(D) TOPOLOGY: linear

(ii) MOLECULE TYPE: polypeptide

(xi) SEQUENCE DESCRIPTION: SEQ ID NO: 40

ala thr ser ser leu asp ser
1 5

(2) INFORMATION FOR SEQ ID NO: 41:

- (i) SEQUENCE CHARACTERISTICS:
(A) LENGTH: 32 amino acids
(B) TYPE: amino acid
(C) STRANDEDNESS: single
(D) TOPOLOGY: linear

(ii) MOLECULE TYPE: polypeptide

(xi) SEQUENCE DESCRIPTION: SEQ ID NO: 41

gly val pro ser arg phe ser gly ser gly ser gly thr asp tyr thr
1 5 10 15

phe thr ile ser ser leu gln pro glu asp ile ala thr tyr tyr cys
 20 25 30

(2) INFORMATION FOR SEQ ID NO: 42:

- (i) SEQUENCE CHARACTERISTICS:
(A) LENGTH: 9 amino acids
(B) TYPE: amino acid
(C) STRANDEDNESS: single
(D) TOPOLOGY: linear

(ii) MOLECULE TYPE: polypeptide

(xi) SEQUENCE DESCRIPTION: SEQ ID NO: 42

leu gln tyr ser ser ser pro trp thr
1 5

(2) INFORMATION FOR SEQ ID NO: 43:

- (i) SEQUENCE CHARACTERISTICS:
(A) LENGTH: 11 amino acids
(B) TYPE: amino acid
(C) STRANDEDNESS: single
(D) TOPOLOGY: linear

(ii) MOLECULE TYPE: polypeptide

(xi) SEQUENCE DESCRIPTION: SEQ ID NO: 43

phe gly gln gly thr lys val glu ile lys arg
1 5 10

(2) INFORMATION FOR SEQ ID NO: 44:

- (i) SEQUENCE CHARACTERISTICS:

-continued

(A) LENGTH: 98 amino acids
(B) TYPE: amino acid
(C) STRANDEDNESS: single
(D) TOPOLOGY: linear

(ii) MOLECULE TYPE: polypeptide

(xi) SEQUENCE DESCRIPTION: SEQ ID NO: 44

```

Ala Ser Thr Lys Gly Pro Ser Val Phe Pro Leu Ala Pro Ser Ser Lys
1      5      10      15
Ser Thr Ser Gly Gly Thr Ala Ala Leu Gly Cys Leu Val Lys Asp Tyr
      20      25      30
Phe Pro Glu Pro Val Thr Val Ser Trp Asn Ser Gly Ala Leu Thr Ser
      35      40      45
Gly Val His Thr Phe Pro Ala Val Leu Gln Ser Ser Gly Leu Tyr Ser
      50      55      60
Leu Ser Ser Val Val Thr Val Pro Ser Ser Ser Leu Gly Thr Gln Thr
      65      70      75      80
Tyr Ile Cys Asn Val Asn His Lys Pro Ser Asn Thr Lys Val Asp Lys
      85      90      95
Lys Val
      98

```

(2) INFORMATION FOR SEQ ID NO: 45:

(i) SEQUENCE CHARACTERISTICS:
(A) LENGTH: 113 amino acids
(B) TYPE: amino acid
(C) STRANDEDNESS: single
(D) TOPOLOGY: linear

(ii) MOLECULE TYPE: polypeptide

(xi) SEQUENCE DESCRIPTION: SEQ ID NO: 45

```

Pro Cys Pro Ala Pro Glu Leu Leu Gly Gly Pro Ser Val Phe Leu Phe
1      5      10      15
Pro Pro Lys Pro Lys Asp Thr Leu Met Ile Ser Arg Thr Pro Glu Val
      20      25      30
Thr Cys Val Val Val Asp Val Ser His Glu Asp Pro Glu Val Lys Phe
      35      40      45
Asn Trp Tyr Val Asp Gly Val Glu Val His Asn Ala Lys Thr Lys Pro
      50      55      60
Arg Glu Glu Gln Tyr Asn Ser Thr Tyr Arg Val Val Ser Val Leu Thr
      65      70      75      80
Val Leu His Gln Asp Trp Leu Asn Gly Lys Glu Tyr Lys Cys Lys Val
      85      90      95
Ser Asn Lys Ala Leu Pro Ala Pro Ile Glu Lys Thr Ile Ser Lys Ala
      100      105      110
Lys
      113

```

(2) INFORMATION FOR SEQ ID NO: 46:

(i) SEQUENCE CHARACTERISTICS:
(A) LENGTH: 107 amino acids
(B) TYPE: amino acid
(C) STRANDEDNESS: single
(D) TOPOLOGY: linear

-continued

(ii) MOLECULE TYPE: polypeptide

(xi) SEQUENCE DESCRIPTION: SEQ ID NO: 46

Gly Gln Pro Arg Glu Pro Gln Val Tyr Thr Leu Pro Pro Ser Arg Asp
 1 5 10 15
 Glu Leu Thr Lys Asn Gln Val Ser Leu Thr Cys Leu Val Lys Gly Phe
 20 25 30
 Tyr Pro Ser Asp Ile Ala Val Glu Trp Glu Ser Asn Gly Gln Pro Glu
 35 40 45
 Asn Asn Tyr Lys Thr Thr Pro Pro Val Leu Asp Ser Asp Gly Ser Phe
 50 55 60
 Phe Leu Tyr Ser Lys Leu Thr Val Asp Lys Ser Arg Trp Gln Gln Gly
 65 70 75 80
 Asn Val Phe Ser Cys Ser Val Met His Glu Ala Leu His Asn His Tyr
 85 90 95
 Thr Gln Lys Ser Leu Ser Leu Ser Pro Gly Lys
 100 105

(2) INFORMATION FOR SEQ ID NO: 47:

- (i) SEQUENCE CHARACTERISTICS:
 (A) LENGTH: 12 amino acids
 (B) TYPE: amino acid
 (C) STRANDEDNESS: single
 (D) TOPOLOGY: linear

(ii) MOLECULE TYPE: polypeptide

(xi) SEQUENCE DESCRIPTION: SEQ ID NO: 47

Glu Pro Lys Ser Cys Asp Lys Thr His Thr Cys Pro
 1 5 10

(2) INFORMATION FOR SEQ ID NO: 48:

- (i) SEQUENCE CHARACTERISTICS:
 (A) LENGTH: 626 amino acids
 (B) TYPE: amino acid
 (C) STRANDEDNESS: single
 (D) TOPOLOGY: linear

(ii) MOLECULE TYPE: polypeptide

(xi) SEQUENCE DESCRIPTION: SEQ ID NO: 48

Ala Pro His Leu Val Gln Val Asp Ala Ala Arg Ala Leu Trp Pro Leu
 1 5 10 15
 Arg Arg Phe Trp Arg Ser Thr Gly Phe Cys Pro Pro Leu Pro His Ser
 20 25 30
 Gln Ala Asp Gln Tyr Val Leu Ser Trp Asp Gln Gln Leu Asn Leu Ala
 35 40 45
 Tyr Val Gly Ala Val Pro His Arg Gly Ile Lys Gln Val Arg Thr His
 50 55 60
 Trp Leu Leu Glu Leu Val Thr Thr Arg Gly Ser Thr Gly Arg Gly Leu
 65 70 75 80
 Ser Tyr Asn Phe Thr His Leu Asp Gly Tyr Leu Asp Leu Leu Arg Glu
 85 90 95
 Asn Gln Leu Leu Pro Gly Phe Glu Leu Met Gly Ser Ala Ser Gly His
 100 105 110
 Phe Thr Asp Phe Glu Asp Lys Gln Gln Val Phe Glu Trp Lys Asp Leu

-continued

| 115 | | | | | 120 | | | | | 125 | | | | | |
|-----|-----|-----|-----|-----|-----|-----|-----|-----|-----|-----|-----|-----|-----|-----|-----|
| Val | Ser | Ser | Leu | Ala | Arg | Arg | Tyr | Ile | Gly | Arg | Tyr | Gly | Leu | Ala | His |
| 130 | | | | | | 135 | | | | | 140 | | | | |
| Val | Ser | Lys | Trp | Asn | Phe | Glu | Thr | Trp | Asn | Glu | Pro | Asp | His | His | Asp |
| 145 | | | | | 150 | | | | | 155 | | | | | 160 |
| Phe | Asp | Asn | Val | Ser | Met | Thr | Met | Gln | Gly | Phe | Leu | Asn | Tyr | Tyr | Asp |
| | | | | 165 | | | | | 170 | | | | | 175 | |
| Ala | Cys | Ser | Glu | Gly | Leu | Arg | Ala | Ala | Ser | Pro | Ala | Leu | Arg | Leu | Gly |
| | | | 180 | | | | | 185 | | | | | 190 | | |
| Gly | Pro | Gly | Asp | Ser | Phe | His | Thr | Pro | Pro | Arg | Ser | Pro | Leu | Ser | Trp |
| | 195 | | | | | | 200 | | | | | 205 | | | |
| Gly | Leu | Leu | Arg | His | Cys | His | Asp | Gly | Thr | Asn | Phe | Phe | Thr | Gly | Glu |
| | 210 | | | | | 215 | | | | | 220 | | | | |
| Ala | Gly | Val | Arg | Leu | Asp | Tyr | Ile | Ser | Leu | His | Arg | Lys | Gly | Ala | Arg |
| 225 | | | | | 230 | | | | | 235 | | | | | 240 |
| Ser | Ser | Ile | Ser | Ile | Leu | Glu | Gln | Glu | Lys | Val | Val | Ala | Gln | Gln | Ile |
| | | | | 245 | | | | | 250 | | | | | 255 | |
| Arg | Gln | Leu | Phe | Pro | Lys | Phe | Ala | Asp | Thr | Pro | Ile | Tyr | Asn | Asp | Glu |
| | | | 260 | | | | | 265 | | | | | 270 | | |
| Ala | Asp | Pro | Leu | Val | Gly | Trp | Ser | Leu | Pro | Gln | Pro | Trp | Arg | Ala | Asp |
| | 275 | | | | | | 280 | | | | | 285 | | | |
| Val | Thr | Tyr | Ala | Ala | Met | Val | Val | Lys | Val | Ile | Ala | Gln | His | Gln | Asn |
| | 290 | | | | | 295 | | | | | 300 | | | | |
| Leu | Leu | Leu | Ala | Asn | Thr | Thr | Ser | Ala | Phe | Pro | Tyr | Ala | Leu | Leu | Ser |
| 305 | | | | | 310 | | | | | 315 | | | | | 320 |
| Asn | Asp | Asn | Ala | Phe | Leu | Ser | Tyr | His | Pro | His | Pro | Phe | Ala | Gln | Arg |
| | | | 325 | | | | | | 330 | | | | | 335 | |
| Thr | Leu | Thr | Ala | Arg | Phe | Gln | Val | Asn | Asn | Thr | Arg | Pro | Pro | His | Val |
| | | | 340 | | | | | 345 | | | | | 350 | | |
| Gln | Leu | Leu | Arg | Lys | Pro | Val | Leu | Thr | Ala | Met | Gly | Leu | Leu | Ala | Leu |
| | 355 | | | | | 360 | | | | | 365 | | | | |
| Leu | Asp | Glu | Glu | Gln | Leu | Trp | Ala | Glu | Val | Ser | Gln | Ala | Gly | Thr | Val |
| | 370 | | | | | 375 | | | | | 380 | | | | |
| Leu | Asp | Ser | Asn | His | Thr | Val | Gly | Val | Leu | Ala | Ser | Ala | His | Arg | Pro |
| 385 | | | | | 390 | | | | 395 | | | | | 400 | |
| Gln | Gly | Pro | Ala | Asp | Ala | Trp | Arg | Ala | Ala | Val | Leu | Ile | Tyr | Ala | Ser |
| | | | 405 | | | | | 410 | | | | | 415 | | |
| Asp | Asp | Thr | Arg | Ala | His | Pro | Asn | Arg | Ser | Val | Ala | Val | Thr | Leu | Arg |
| | | | 420 | | | | | 425 | | | | | 430 | | |
| Leu | Arg | Gly | Val | Pro | Pro | Gly | Pro | Gly | Leu | Val | Tyr | Val | Thr | Arg | Tyr |
| | 435 | | | | | | 440 | | | | | 445 | | | |
| Leu | Asp | Asn | Gly | Leu | Cys | Ser | Pro | Asp | Gly | Glu | Trp | Arg | Arg | Leu | Gly |
| | 450 | | | | | 455 | | | | | 460 | | | | |
| Arg | Pro | Val | Phe | Pro | Thr | Ala | Glu | Gln | Phe | Arg | Arg | Met | Arg | Ala | Ala |
| 465 | | | | | 470 | | | | 475 | | | | | 480 | |
| Glu | Asp | Pro | Val | Ala | Ala | Ala | Pro | Arg | Pro | Leu | Pro | Ala | Gly | Gly | Arg |
| | | | 485 | | | | | 490 | | | | | 495 | | |
| Leu | Thr | Leu | Arg | Pro | Ala | Leu | Arg | Leu | Pro | Ser | Leu | Leu | Leu | Val | His |
| | | | 500 | | | | | 505 | | | | | 510 | | |
| Val | Cys | Ala | Arg | Pro | Glu | Lys | Pro | Pro | Gly | Gln | Val | Thr | Arg | Leu | Arg |
| | 515 | | | | | | 520 | | | | | 525 | | | |

-continued

Ala Leu Pro Leu Thr Gln Gly Gln Leu Val Leu Val Trp Ser Asp Glu
 530 535 540

His Val Gly Ser Lys Cys Leu Trp Thr Tyr Glu Ile Gln Phe Ser Gln
 545 550 555 560

Asp Gly Lys Ala Tyr Thr Pro Val Ser Arg Lys Pro Ser Thr Phe Asn
 565 570 575

Leu Phe Val Phe Ser Pro Asp Thr Gly Ala Val Ser Gly Ser Tyr Arg
 580 585 590

Val Arg Ala Leu Asp Tyr Trp Ala Arg Pro Gly Pro Phe Ser Asp Pro
 595 600 605

Val Pro Tyr Leu Glu Val Pro Val Pro Arg Gly Pro Pro Ser Pro Gly
 610 615 620

Asn Pro
 625

(2) INFORMATION FOR SEQ ID NO: 49:

- (i) SEQUENCE CHARACTERISTICS:
 (A) LENGTH: 19 amino acids
 (B) TYPE: amino acid
 (C) STRANDEDNESS: single
 (D) TOPOLOGY: linear

(ii) MOLECULE TYPE: polypeptide

(xi) SEQUENCE DESCRIPTION: SEQ ID NO: 49

Met Asp Trp Thr Trp Arg Val Leu Cys Leu Leu Ala Val Ala Pro Gly
 1 5 10 15

Ala His Ser
 19

(2) INFORMATION FOR SEQ ID NO: 50:

- (i) SEQUENCE CHARACTERISTICS:
 (A) LENGTH: 19 amino acids
 (B) TYPE: amino acid
 (C) STRANDEDNESS: single
 (D) TOPOLOGY: linear

(ii) MOLECULE TYPE: polypeptide

(xi) SEQUENCE DESCRIPTION: SEQ ID NO: 50

Met Gly Trp Ser Trp Val Met Leu Phe Leu Leu Ser Val Thr Ala Gly
 1 5 10 15

Lys Gly Leu
 19

What is claimed is:

1. A humanized antibody that binds with the human insulin receptor, said antibody comprising:

- a) heavy chain of amino acids comprising a constant region and a variable region wherein said variable region has an amino end and a carboxyl end and comprises complementarity determining regions interspersed between framework regions, said complementarity determining regions comprising a first complementarity determining region located at the amino end of said variable region, a third complementarity determining region located at the carboxyl end of said

variable region and a second complementarity determining region located between said first and third complementarity determining regions, wherein the amino acid sequences for said first complementarity determining region, said second complementarity region and said third complementarity region are SEQ. ID. NO. 31, SEQ. ID. NO. 33, SEQ. ID. NO. 35, respectively and combined equivalents thereof and wherein said framework regions comprise a first framework region located adjacent to the amino end of said first complementarity determining region, a second framework region located between said first and second

complementarity determining regions, a third framework region located between said second and third complementarity determining regions and a fourth framework region located adjacent to the carboxyl end of said third complementarity determining region, wherein said framework regions have been humanized: and

b) a light chain of amino acids compatible with said heavy chain.

2. A humanized antibody that binds with the human insulin receptor according to claim 1 wherein said light chain of amino acids comprises a constant region and a variable region wherein said variable region has an amino end and a carboxyl end and comprises complementarity determining regions interspersed between framework regions, said complementarity determining regions comprising a first complementarity determining region located at the amino end of said variable region, a third complementarity determining region located at the carboxyl end of said variable region and a second complementarity determining region located between said first and third complementarity determining regions, wherein the amino acid sequences for said first complementarity determining region, said second complementarity determining region and said third complementarity determining region are SEQ. ID. NOS. 38, 40 and 42, respectively and combined equivalents thereof, and wherein said framework regions comprise a first framework region located adjacent to the amino end of said first complementarity determining region, a second framework region located between said first and second complementarity determining regions, a third framework region located between said second and third complementarity determining region and a fourth framework region located adjacent to the carboxyl end of said third complementarity determining region, wherein said framework regions have been humanized.

3. A humanized antibody according to claim 1 wherein said constant region for said heavy chain is a human IgG1 constant region.

4. A humanized antibody according to claim 2 wherein said constant region for said light chain is a human κ constant region.

5. A humanized antibody according to claim 1 wherein the amino acid sequences for the first framework, second framework, third framework and fourth framework regions of said heavy chain are SEQ. ID. NOS. 30, 32, 34 and 36, respectively and combined equivalents thereof.

6. A humanized antibody according to claim 2 wherein the amino acid sequences for the first framework, second framework, third framework and fourth framework regions of said light chain are SEQ. ID. NOS. 37, 39, 41 and 43, respectively and combined equivalents thereof.

7. A humanized antibody according to claim 6 wherein the amino acid sequence for the first framework, second framework, third framework and fourth framework regions of said light chain are SEQ. ID. NOS. 30, 32, 34 and 36, respectively and combined equivalents thereof.

8. A humanized antibody according to claim 7 wherein the constant region for said heavy chain is a human IgG1 constant region.

9. A humanized antibody according to claim 7 wherein said constant region for said light chain is a human κ constant region.

10. A humanized antibody according to claim 8 wherein said constant region for said light chain is a human κ constant region.

11. A composition that is capable of binding to the human insulin receptor, said composition comprising:

a pharmaceutical agent; and

a human insulin receptor targeting agent comprising a humanized antibody according to claim 1 wherein said human insulin receptor targeting agent is linked to said pharmaceutical agent.

12. A composition according to claim 11 wherein said pharmaceutical agent is biotinylated and said human insulin receptor targeting agent comprises avidin or streptavidin and wherein said pharmaceutical agent is linked to said human insulin receptor targeting agent via at least one avidin-biotin linkage.

13. A composition according to claim 12 wherein said pharmaceutical agent is monobiotinylated.

14. A composition according to claim 11 wherein said pharmaceutical agent is a neuropharmaceutical agent.

15. A composition according to claim 11 wherein said human insulin receptor targeting agent consists essentially of a humanized murine antibody and wherein said humanized murine antibody is linked to said pharmaceutical agent by genetic fusion to form a fusion protein comprising said humanized murine antibody and said pharmaceutical agent.

16. A pharmaceutical preparation for intravenous administration to a human, said pharmaceutical preparation comprising a composition according to claim 11 and an acceptable carrier for said composition to provide for intravenous administration of said pharmaceutical preparation.

17. A pharmaceutical preparation according to claim 16 wherein said pharmaceutical agent is a neuropharmaceutical agent.

18. A method for increasing the ability of a neuropharmaceutical agent to cross the human blood brain barrier comprising the step of linking said neuropharmaceutical agent to a humanized murine antibody according to claim 1.

19. A method according to claim 18 wherein said neuropharmaceutical agent is linked to said humanized murine antibody via an avidin-biotin linkage.

20. A method according to claim 18 wherein said neuropharmaceutical agent is linked to said humanized murine antibody by genetic fusion.

21. A method for targeting a pharmaceutical agent to the human insulin receptor in vivo comprising the step of linking said pharmaceutical agent to a humanized murine antibody according to claim 1.

22. A method according to claim 21 wherein said pharmaceutical agent is linked to said humanized murine antibody via an avidin-biotin linkage.

23. A method according to claim 21 wherein said neuropharmaceutical agent is linked to said humanized murine antibody by genetic fusion.

24. A method for intravenously administering a pharmaceutical agent to a human patient, said method comprising the step of injecting a pharmaceutical preparation according to claim 16 into the blood stream of said human patient.

| | | | |
|----------------|---|---------|------------|
| 专利名称(译) | 通过人胰岛素受体递送药剂 | | |
| 公开(公告)号 | US20040101904A1 | 公开(公告)日 | 2004-05-27 |
| 申请号 | US10/307276 | 申请日 | 2002-11-27 |
| [标]申请(专利权)人(译) | 加利福尼亚大学董事会 | | |
| 申请(专利权)人(译) | 加利福尼亚大学董事会 | | |
| 当前申请(专利权)人(译) | 加利福尼亚大学董事会 | | |
| [标]发明人 | PARDRIDGE WILLIAM M
BOADO RUBEN J | | |
| 发明人 | PARDRIDGE, WILLIAM M.
BOADO, RUBEN J. | | |
| IPC分类号 | A61K47/48 C07K16/28 G01N33/53 | | |
| CPC分类号 | A61K47/48561 C07K2317/24 C07K16/2869 A61K2039/505 A61K47/6849 A61P25/00 | | |
| 其他公开文献 | US7388079 | | |
| 外部链接 | Espacenet USPTO | | |

摘要(译)

提供了与人胰岛素受体 (HIR) 结合的人源化鼠抗体。人源化鼠抗体适合用作特洛伊木马以将药剂递送至表达HIR的人体器官和组织。人源化鼠抗体特别适合于通过血脑屏障 (BBB) 从血流向脑提供神经药剂。人源化鼠抗体可以与药剂遗传融合，或者可以使用抗生物素蛋白 - 生物素缀合系统与药剂连接。

MURINE 83-14 VH NUCLEOTIDE AND AMINO ACID SEQUENCE

CAG GTC CAG CTG CAG GAG TCT GGA CCT GAG CTG GTG AAG CCT GGG GCT TTA GTG
gln val gln leu gln glu ser gly pro glu leu val lys pro gly ala leu val
AAG ATA TCC TGC AAG GCT TCT GGT TAC ACC TTC ACA AAC TAC GAT ATA CAC TGG GTG AAG
lys ile ser cys lys ala ser gly tyr thr phe thr asn tyr asp ile his trp val lys
VH-CDR1

CAG AGG CCT GGA CAG GGA CTT GAG TGG ATT GGA TGG ATT TAT CCT GGA GAT GGT AGT ACT
gln arg pro gly gln gly leu glu trp ile gly trp ile tyr pro gly asp gly ser thr
VH-CDR2

AAG TAC AAT GAG AAA TTC AAG GGC AAG GCC ACA CTG ACT GCA GAC AAA TCC TCC AGC ACA
lys tyr asn glu lys phe lys gly lys ala thr leu thr ala asp lys ser ser ser thr
VH-CDR3

GCC TAC ATG CAC CTC AGC AGC CTG ACT TCT GAG AAA TCT GCA GTC TAT TTC TGT GCA AGA
ala tyr met his leu ser ser leu thr ser glu lys ser ala val tyr phe cys ala arg
VH-CDR3

MURINE 83-14 VL NUCLEOTIDE AND AMINO ACID SEQUENCE

GAT ATC CAG ATG ACC CAA TCT CCA TCC TCC TTA TCT GCC TCT CTG GGA GAA AGA GTC AGT
asp ile gln met thr gln ser pro ser ser leu ser ala ser leu gly glu arg val ser
VL-CDR1

CTC ACT TGT CGG GCA AGT CAG GAC ATT GGT GGT AAC TTA TAC TGG CTT CAG CAG GGA CCA
leu thr cys arg ala ser gln asp ile gly gly asn leu tyr trp leu gln gln gly pro
VL-CDR2

GAT GGA ACT ATT AAA CGC CTG ATA TAC GCC ACA TCC AGT TTA GAT TCT GGT GTC CCC AAA
asp gly thr ile lys arg leu ile tyr ala thr ser ser leu asp asp gly val pro lys
VL-CDR3

AGG TTC AGT GGC AGT AGG TCT GGG TCA GAT TAT TCT CTC ACC ATC AGC AGC CTT GAG TCT
arg phe ser gly ser arg ser gly ser asp tyr ser leu thr ile ser ser leu glu ser
GAA GAT TTT GTA CAC TAT TAC TGT CTA CAG TAT TCT AGT TCT CGG TGG ACC TTC GGT GGA
glu asp phe val asp tyr tyr cys leu gln tyr ser ser ser pro trp thr phe gly gly
VL-CDR3

GCC ACC AAG ATG GAA ATC AAA CGG
gly thr lys met glu ile lys arg

FIG. 1