



US009429583B2

(12) **United States Patent**
LaFauci et al.

(10) **Patent No.:** **US 9,429,583 B2**
(45) **Date of Patent:** ***Aug. 30, 2016**

(54) **SYSTEM AND METHOD FOR
QUANTIFYING FRAGILE X MENTAL
RETARDATION 1 PROTEIN IN TISSUE AND
BLOOD SAMPLES**

(58) **Field of Classification Search**
None
See application file for complete search history.

(56) **References Cited**

(71) Applicant: **Research Foundation For Mental
Hygiene, Inc.**, Menands, NY (US)

U.S. PATENT DOCUMENTS

(72) Inventors: **Giuseppe LaFauci**, Old Bridge, NJ
(US); **William T. Brown**, Staten Island,
NY (US); **Richard Kascsak**,
Morganville, NJ (US)

5,650,334 A * 7/1997 Zuk G01N 33/533
435/174
2002/0099009 A1 * 7/2002 Peter C07K 16/18
530/358
2005/0106628 A1 * 5/2005 Miyata G01N 33/6893
435/7.1
2008/0248590 A1 * 10/2008 Gulliksen B01L 3/502784
436/518
2012/0039989 A1 * 2/2012 Hubbell C07K 14/4701
424/450

(73) Assignee: **RESEARCH FOUNDATION FOR
MENTAL HYGIENE, INC.**, Menands,
NY (US)

OTHER PUBLICATIONS

(*) Notice: Subject to any disclaimer, the term of this
patent is extended or adjusted under 35
U.S.C. 154(b) by 70 days.

This patent is subject to a terminal dis-
claimer.

“Blood.” Chambers 21st Century Dictionary. Eds. Mairi Robinson
and George Davidson. London: Chambers Harrap, 2001. Credo
Reference. Web. Sep. 16, 2015.*
Iwahashi et al., A quantitative ELISA assay for the Fragile X Mental
Retardation 1 Protein, Journal of Molecular Diagnostics, 11(4), p.
279-289.*
Harlow, E. and Lane, D., Antibodies: A Laboratory Manual (1988)
Cold Spring Harbor Laboratory Press, Cold Spring Harbor, NY, p.
75-76.*

(21) Appl. No.: **14/153,674**

* cited by examiner

(22) Filed: **Jan. 13, 2014**

(65) **Prior Publication Data**

Primary Examiner — Christine Foster
Assistant Examiner — Ellen J Marcsisin
(74) *Attorney, Agent, or Firm* — Bond Schoeneck and King
PLLC; David Nocilly; George McGuire

US 2014/0127724 A1 May 8, 2014

Related U.S. Application Data

(63) Continuation of application No. 13/493,318, filed on
Jun. 11, 2012, now Pat. No. 8,628,934.

(57) **ABSTRACT**

(60) Provisional application No. 61/495,679, filed on Jun.
10, 2011.

A system and method for the detection and quantification of
fragile X mental retardation protein (FMRP) in human tissue
and blood samples. The system includes several high avidity
monoclonal antibodies that may be provided on Xmap
microspheres to capture FMRP from a tissue or blood
specimen. The resulting complex is reacted with a poly-
clonal anti-FMRP rabbit antibody and then mixed with an
anti-rabbit IgG antibody conjugated to phycoerythrin. Fluo-
rescence emitted from the resulting complex is a function of
the amount of FMRP present in the specimen.

(51) **Int. Cl.**
G01N 33/68 (2006.01)
G01N 33/533 (2006.01)

(52) **U.S. Cl.**
CPC **G01N 33/6896** (2013.01); **G01N 33/533**
(2013.01); **G01N 33/6812** (2013.01); **G01N**
2800/30 (2013.01)

10 Claims, 20 Drawing Sheets

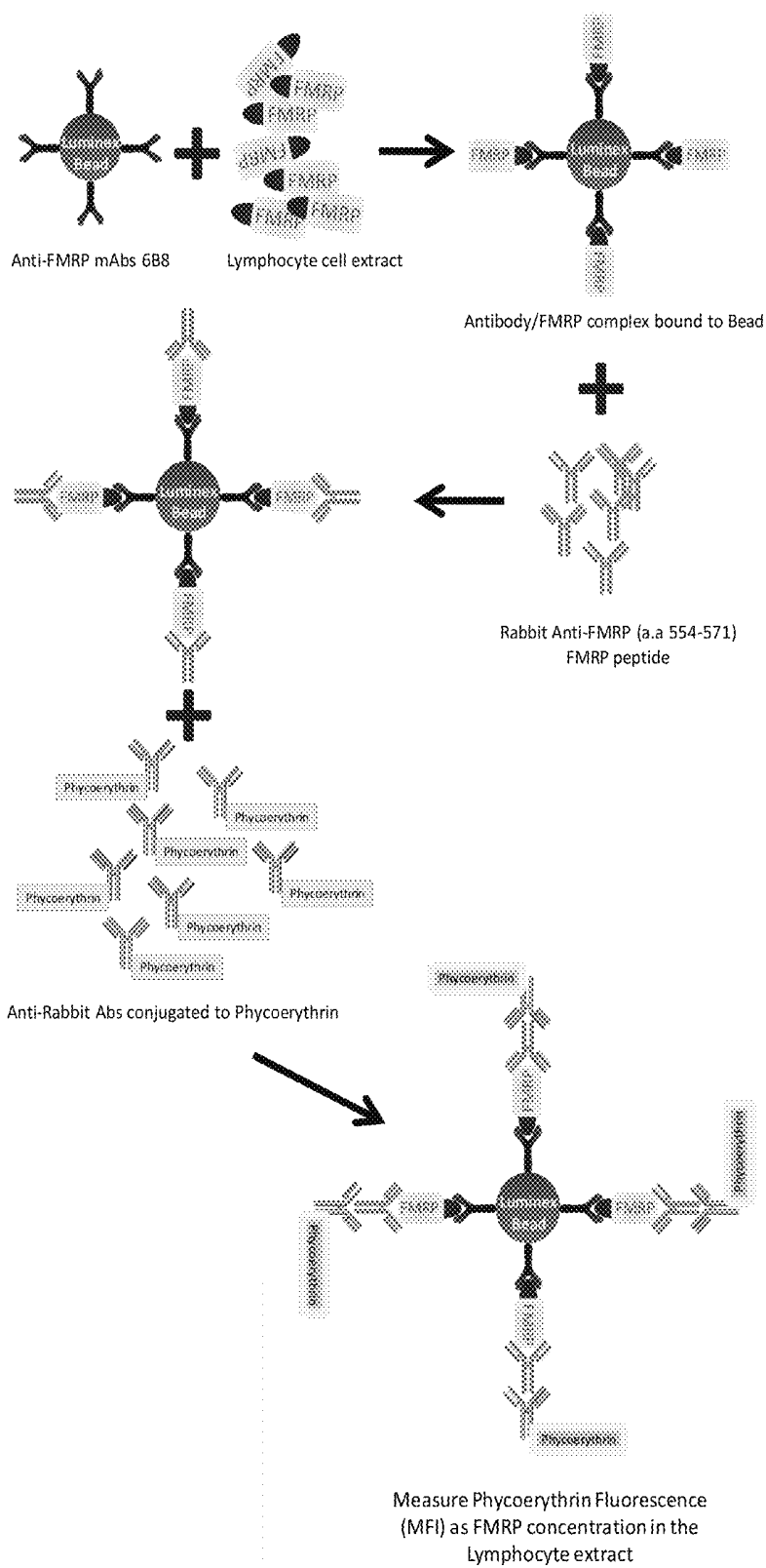


FIGURE 1

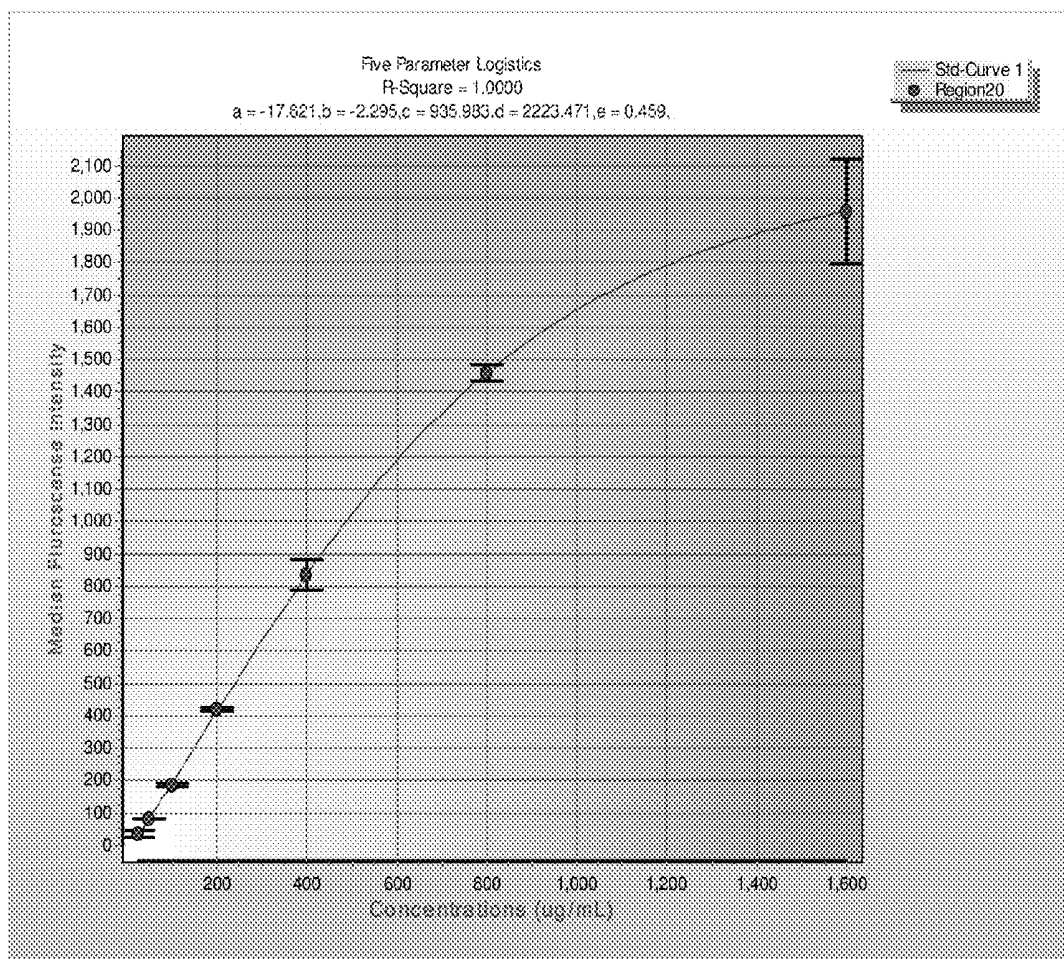


FIGURE 2

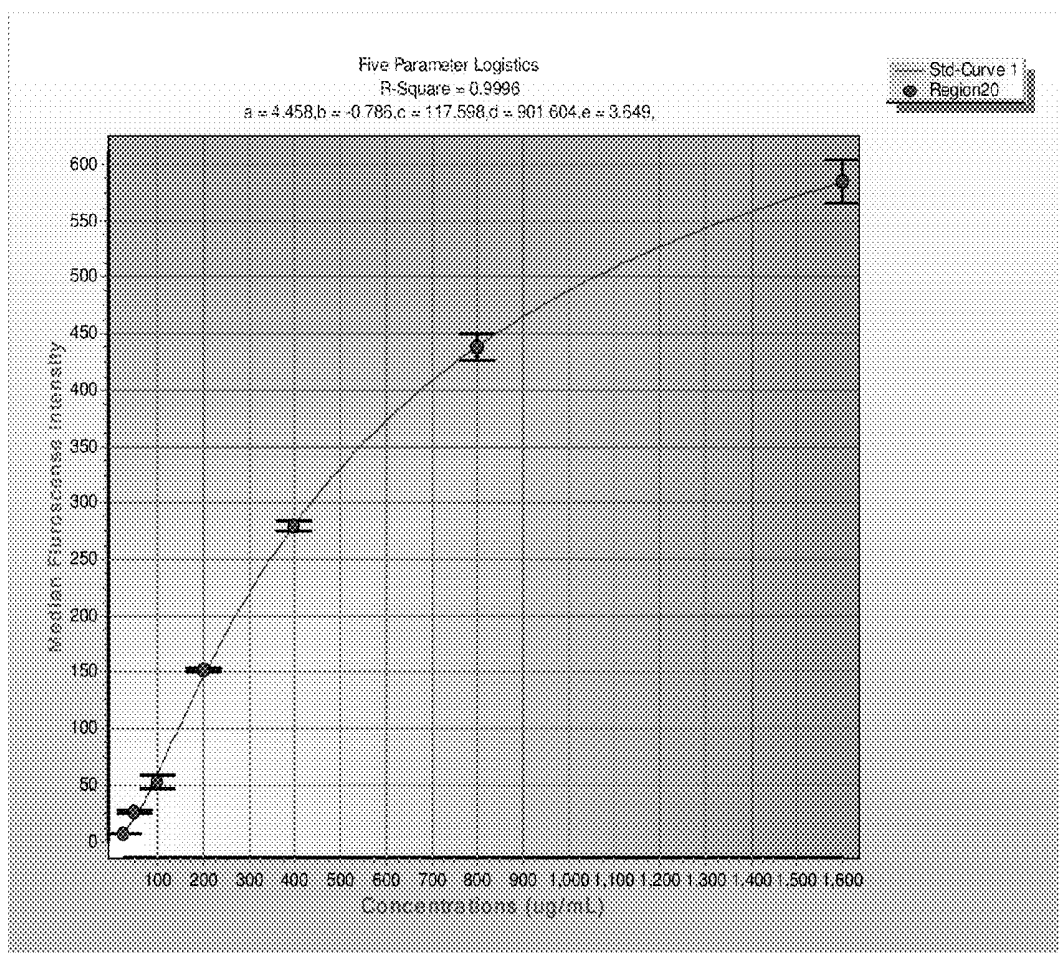


FIGURE 3

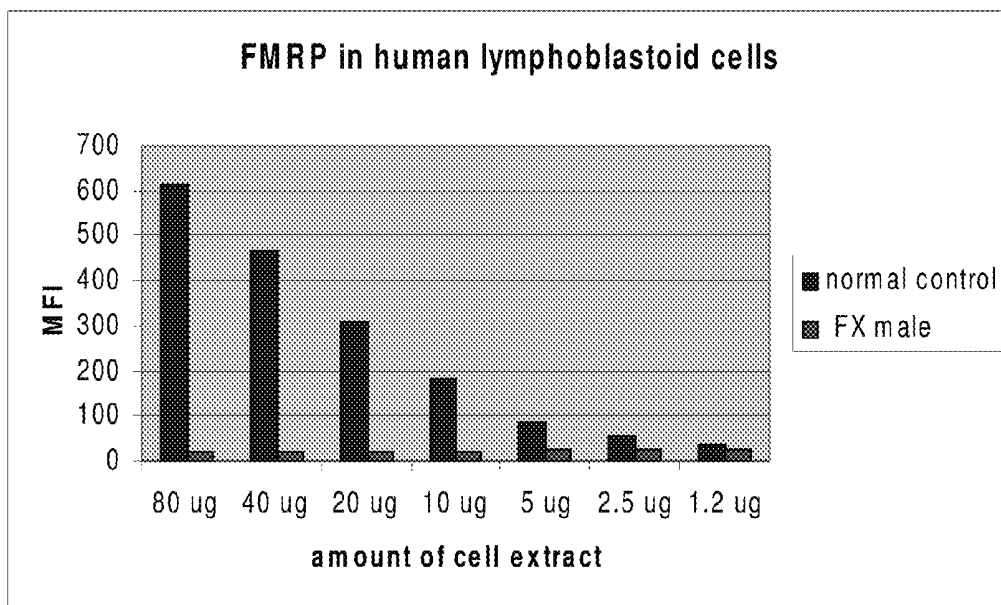


FIGURE 4

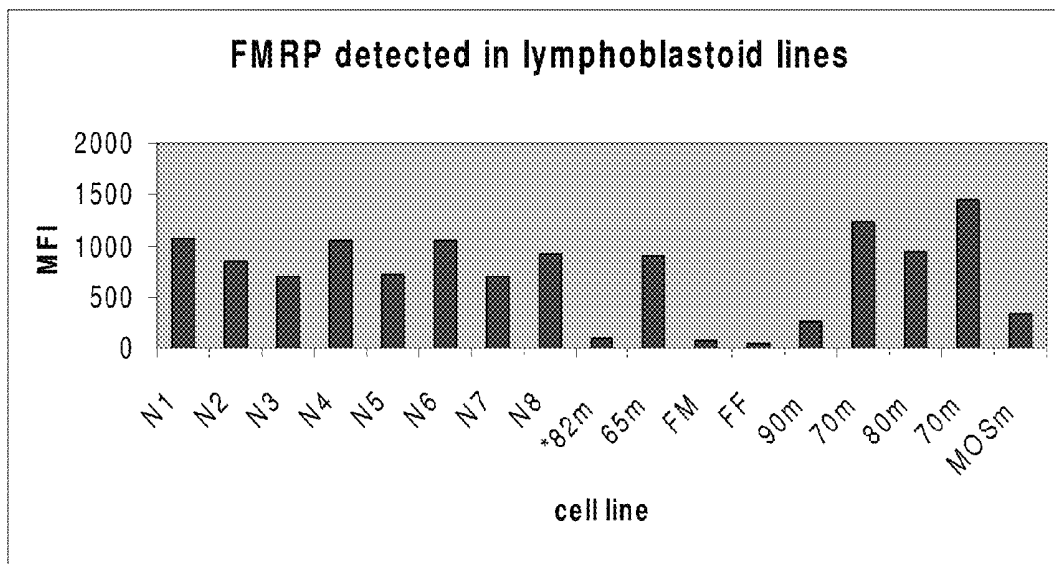


FIGURE 5

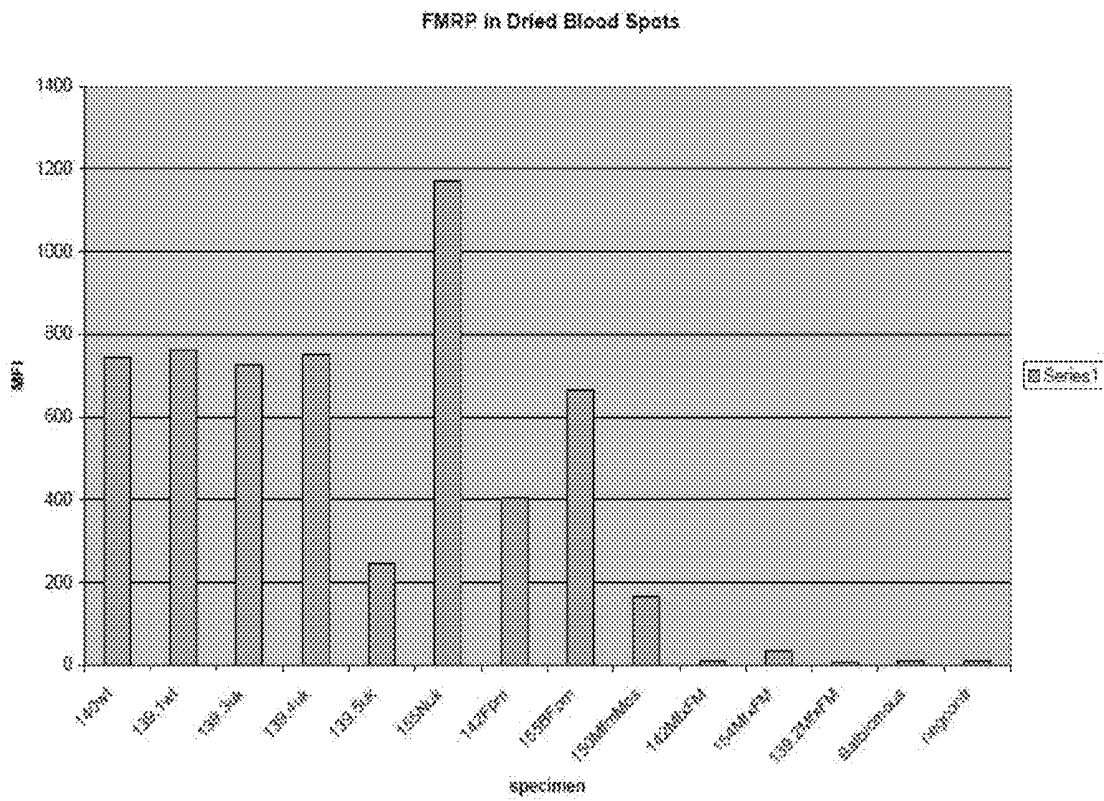
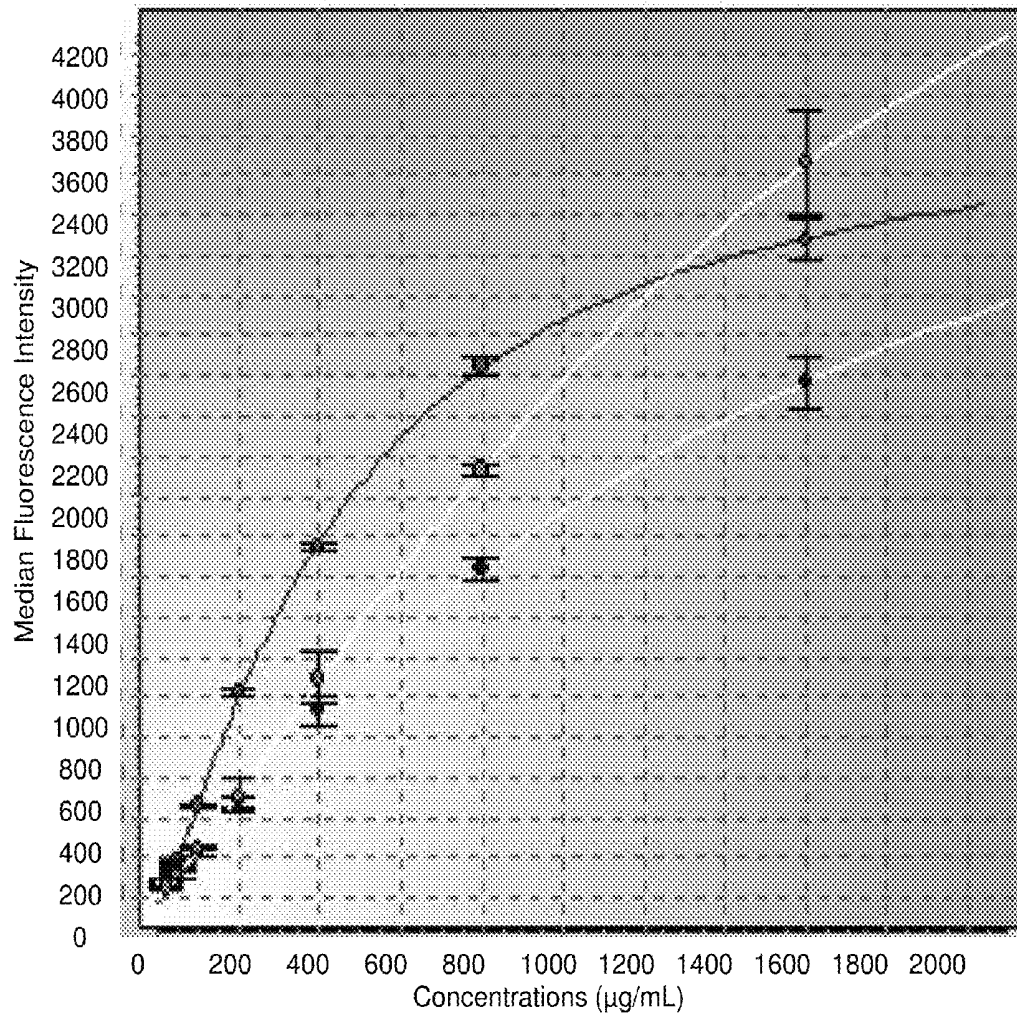
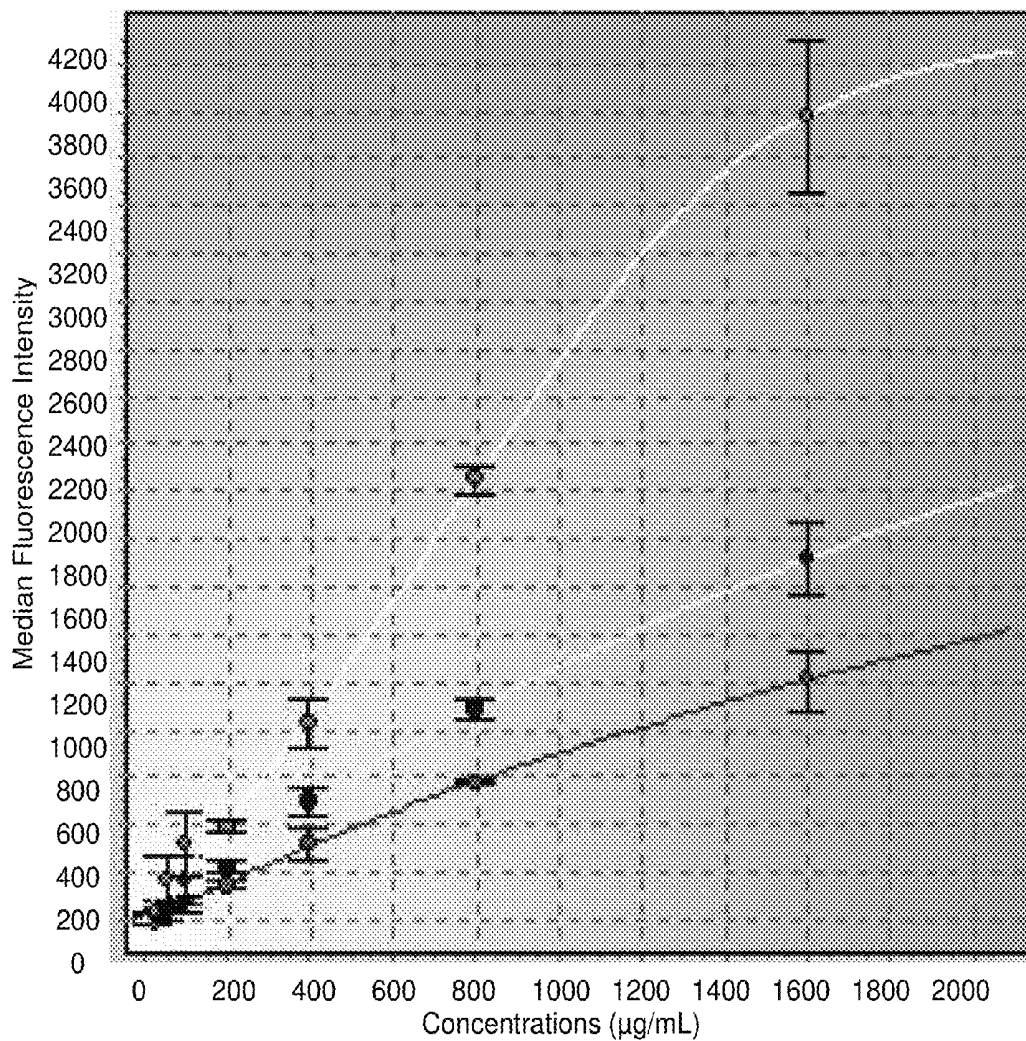


FIGURE 6



SIMPLEX ASSAY

FIGURE 7A



MULTIPLEX ASSAY

FIGURE 7B

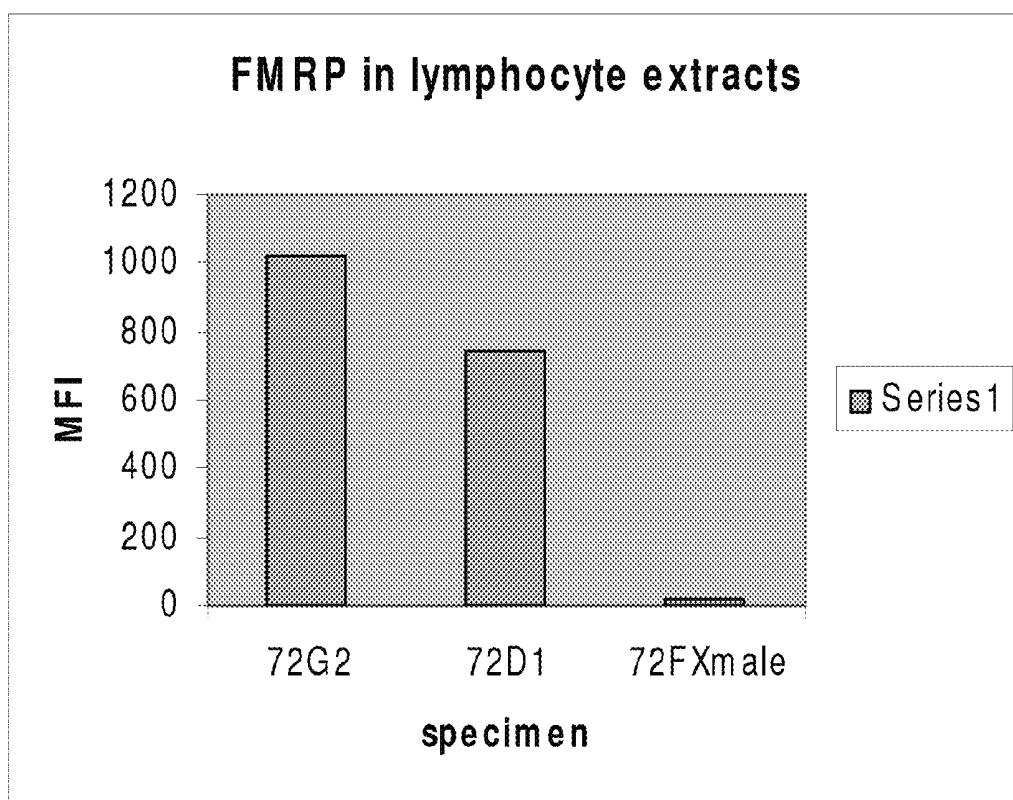


FIGURE 8

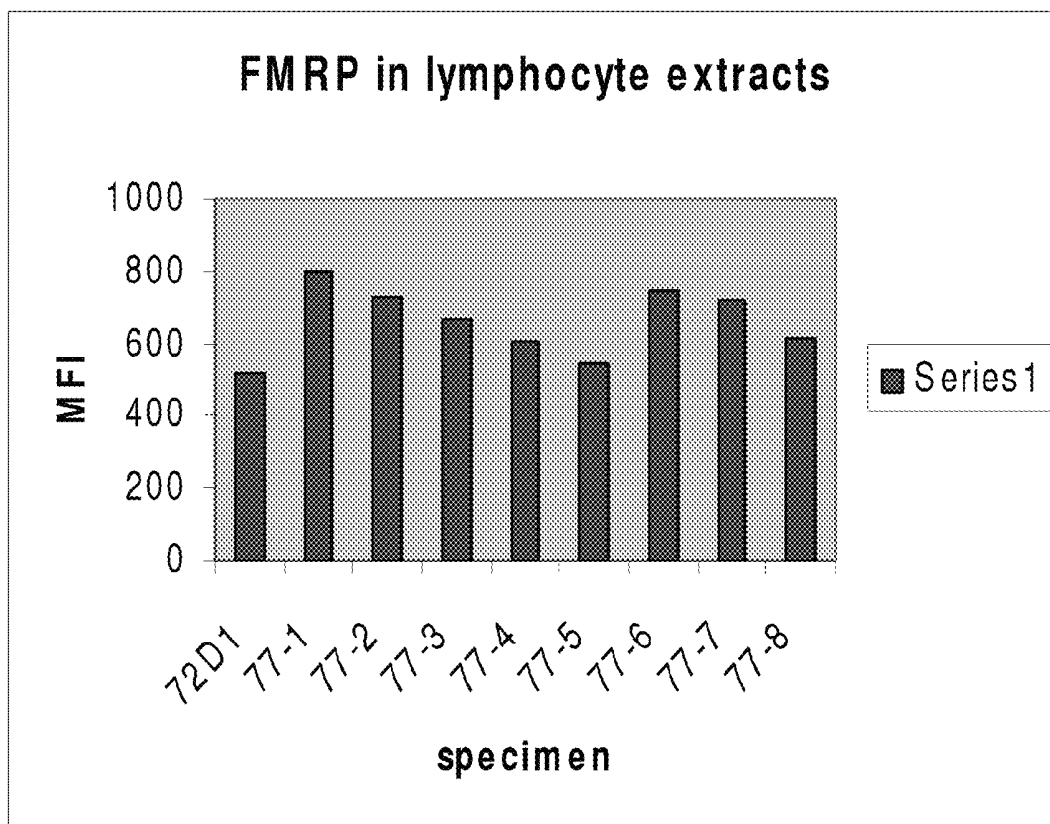


FIGURE 9

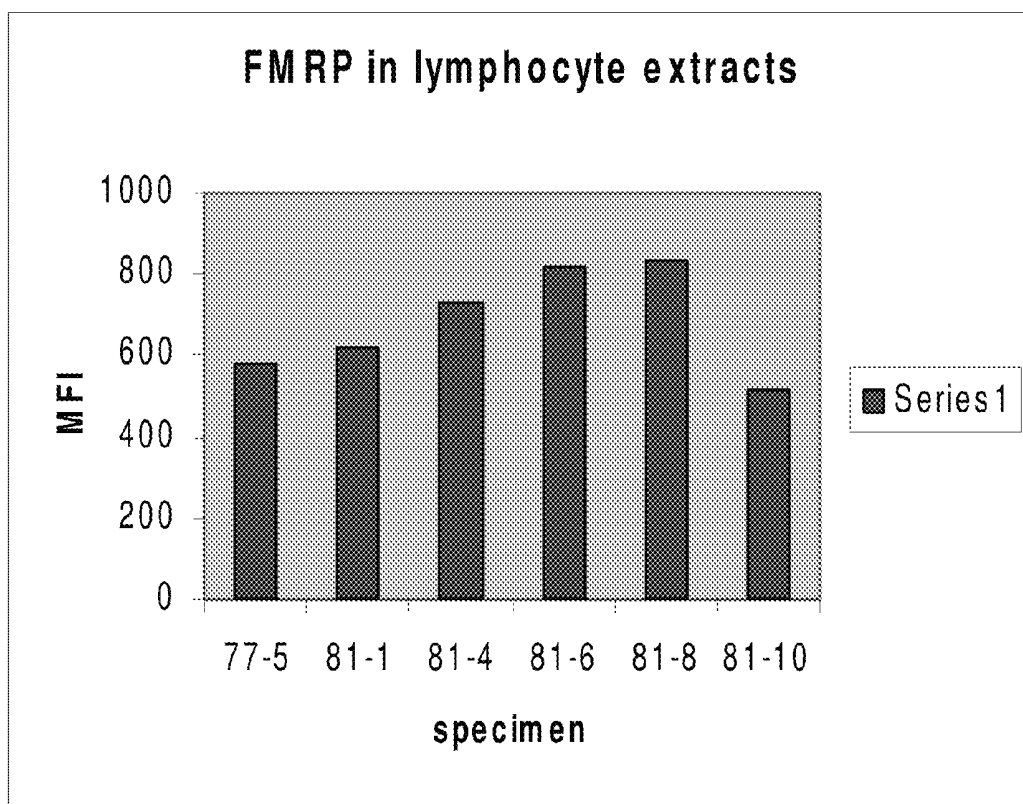


FIGURE 10

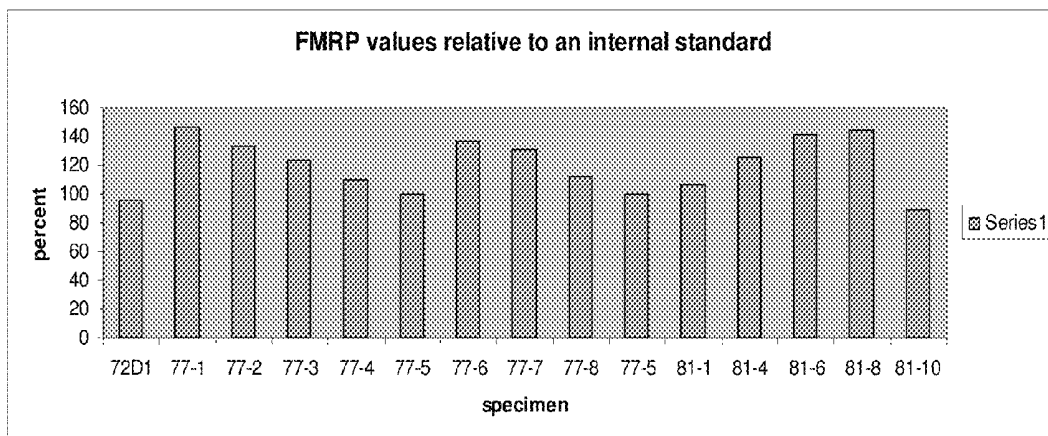


FIGURE 11

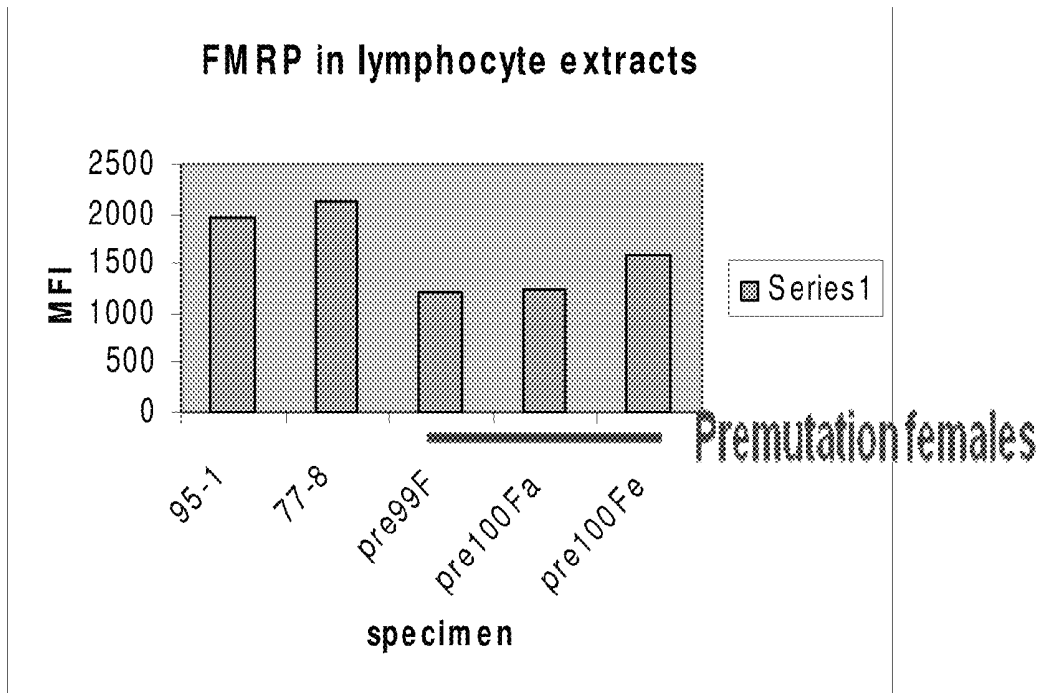


FIGURE 12

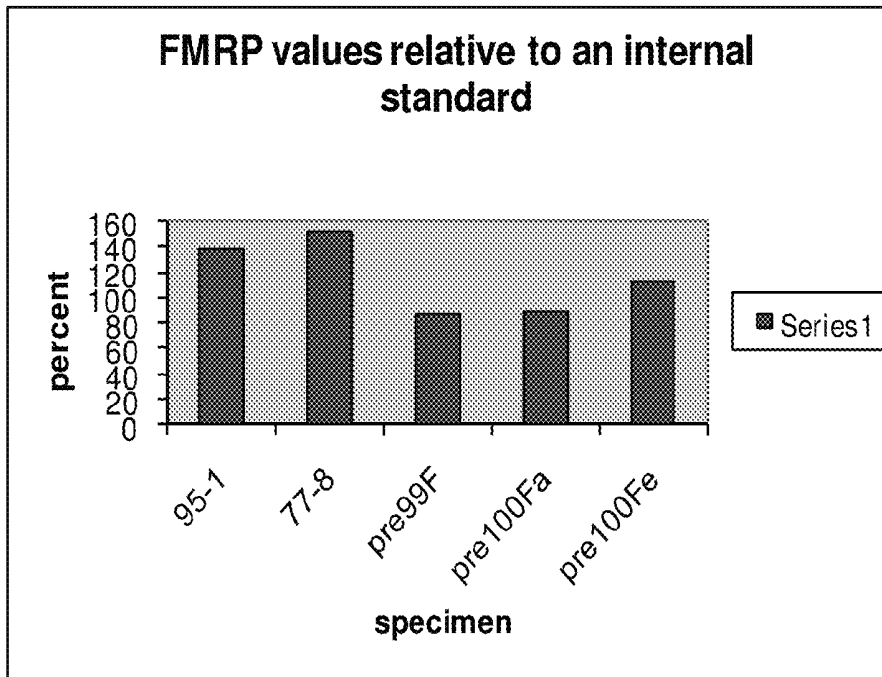


FIGURE 13

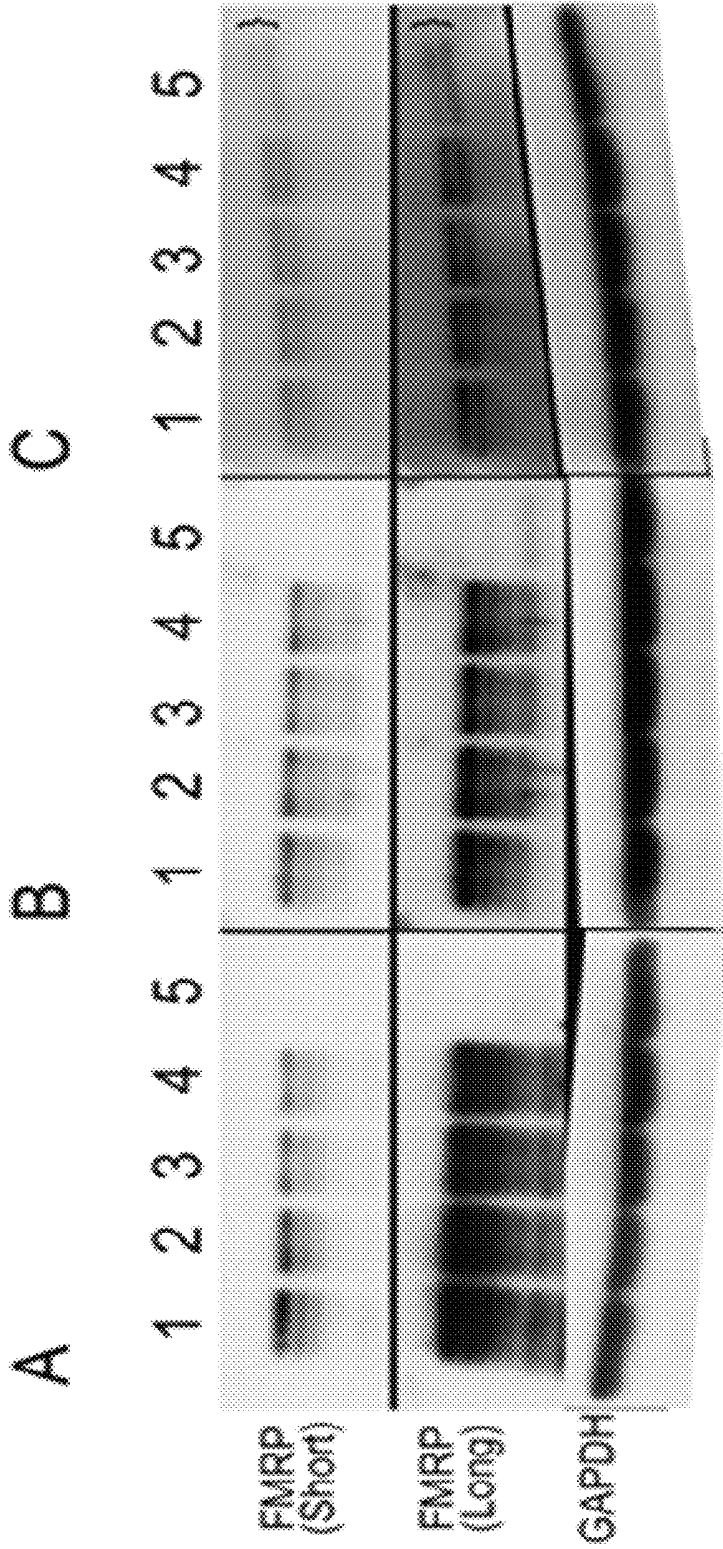


FIGURE 14A-C

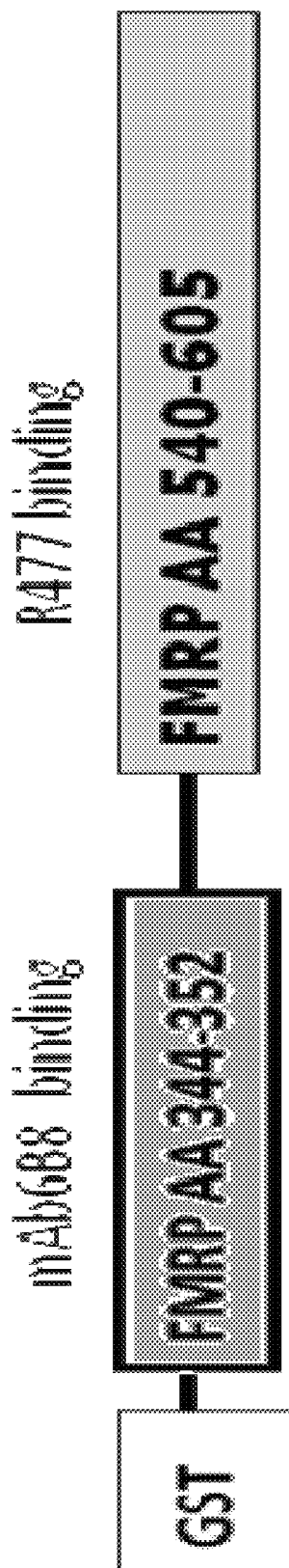


FIGURE 15

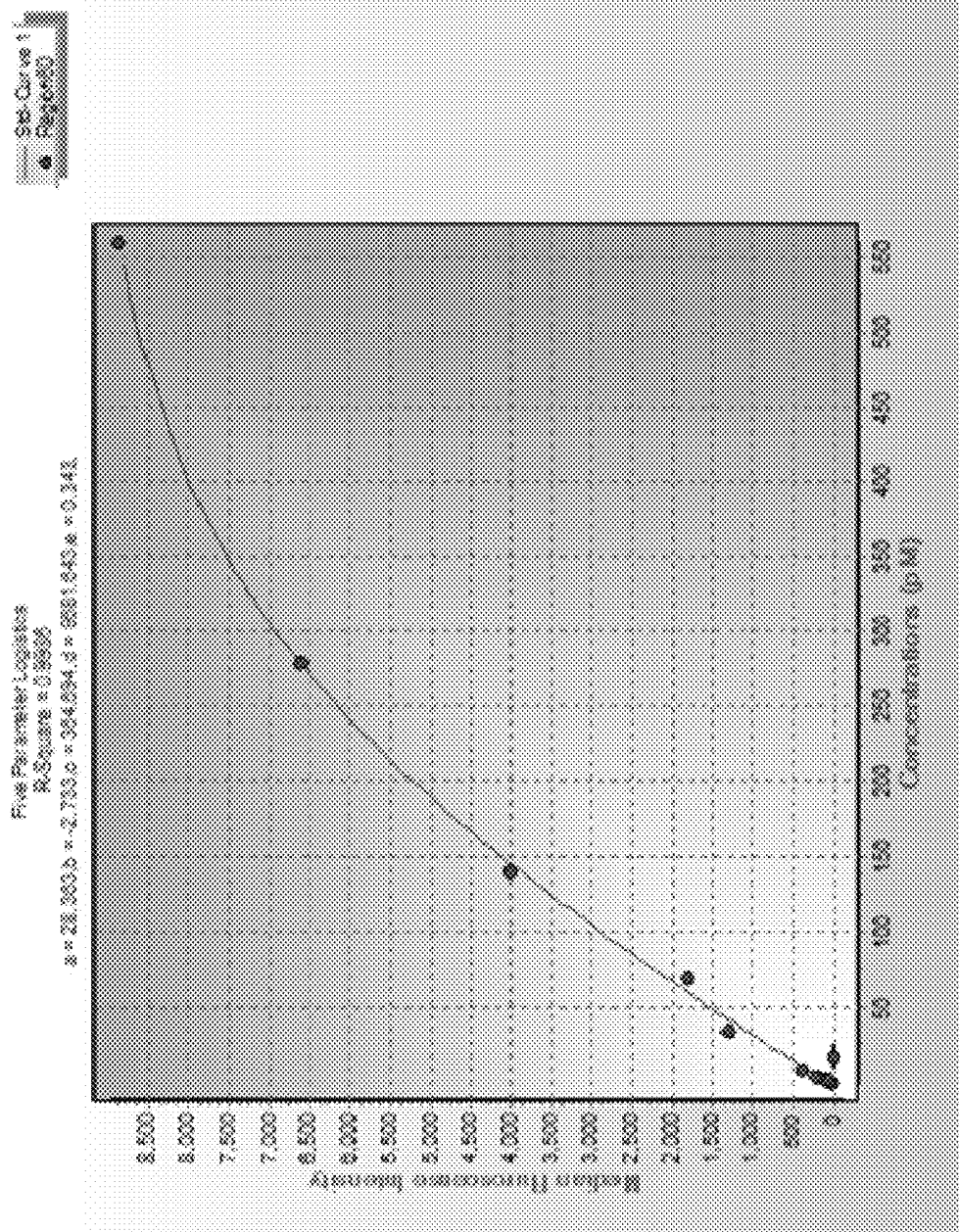


FIGURE 16

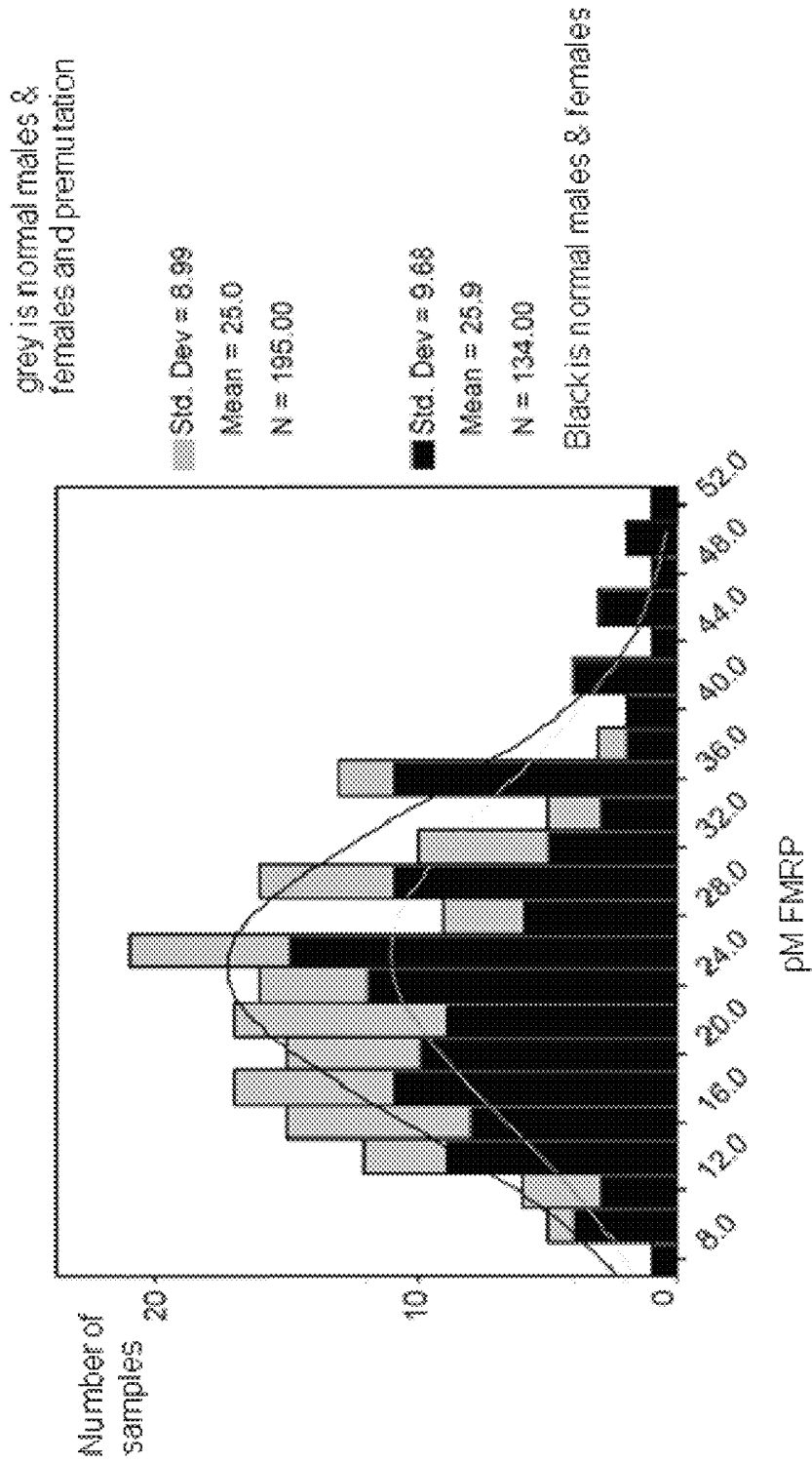
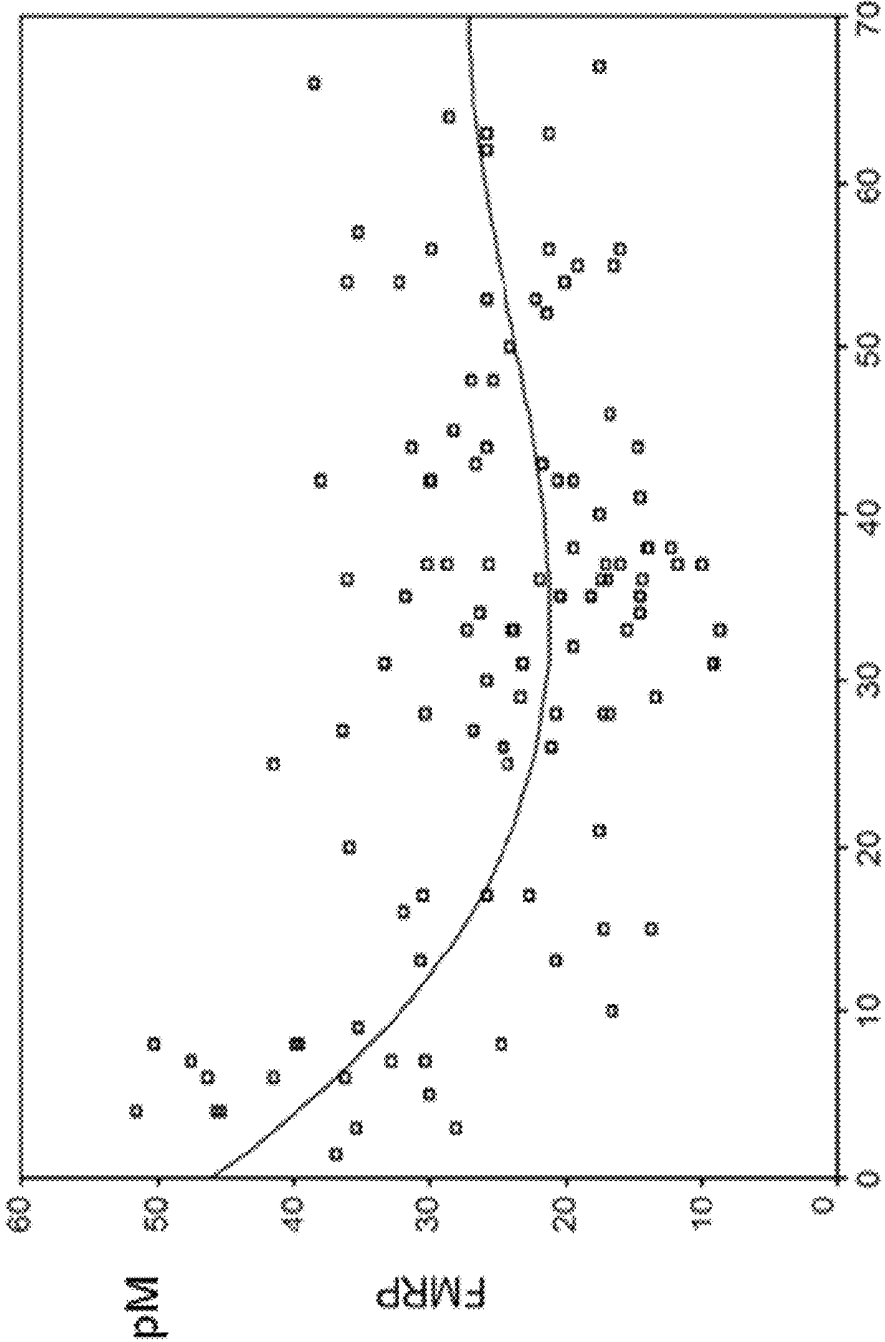
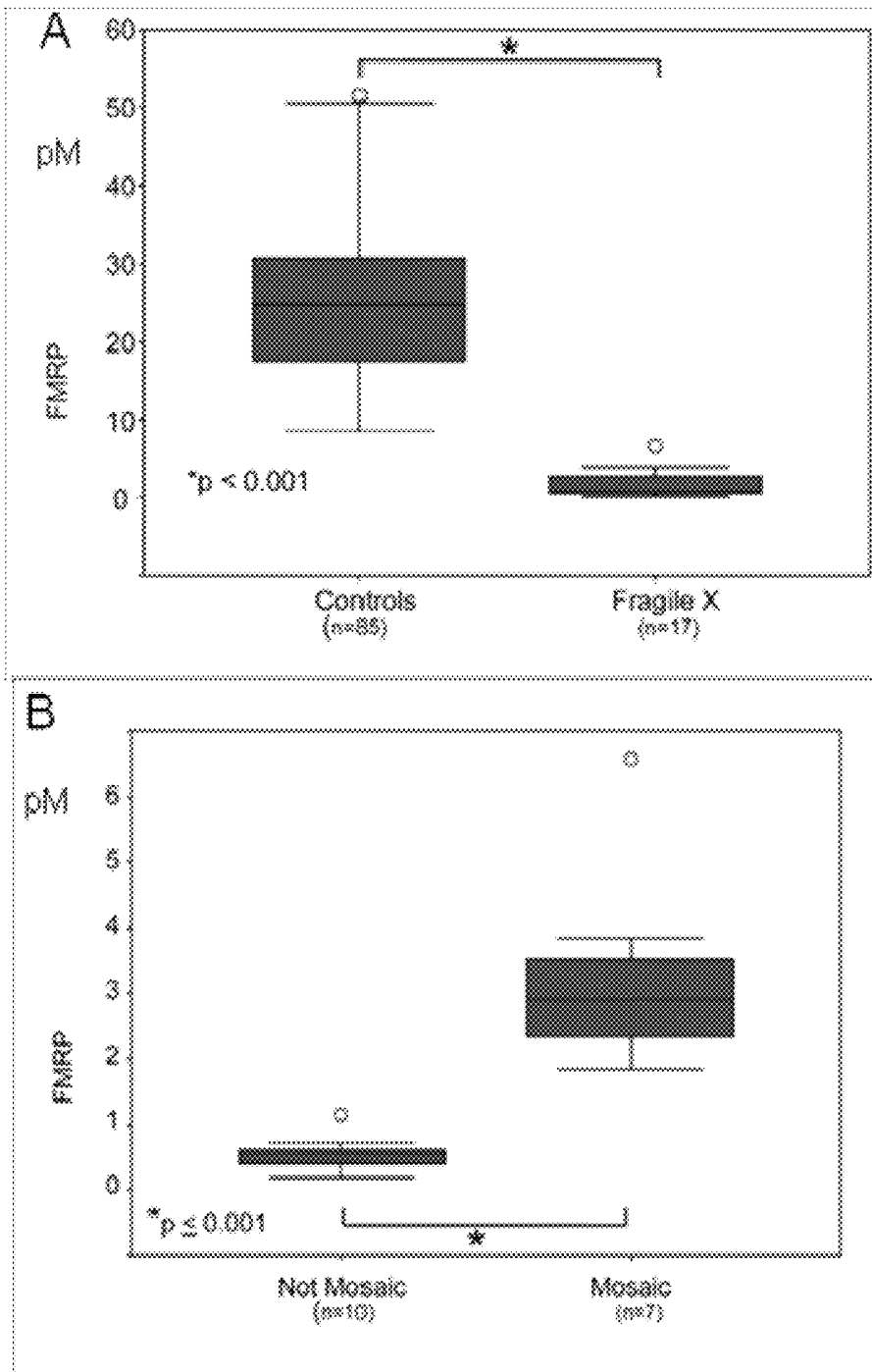


FIGURE 17



AGE

FIGURE 18



FIGURES 19A and B

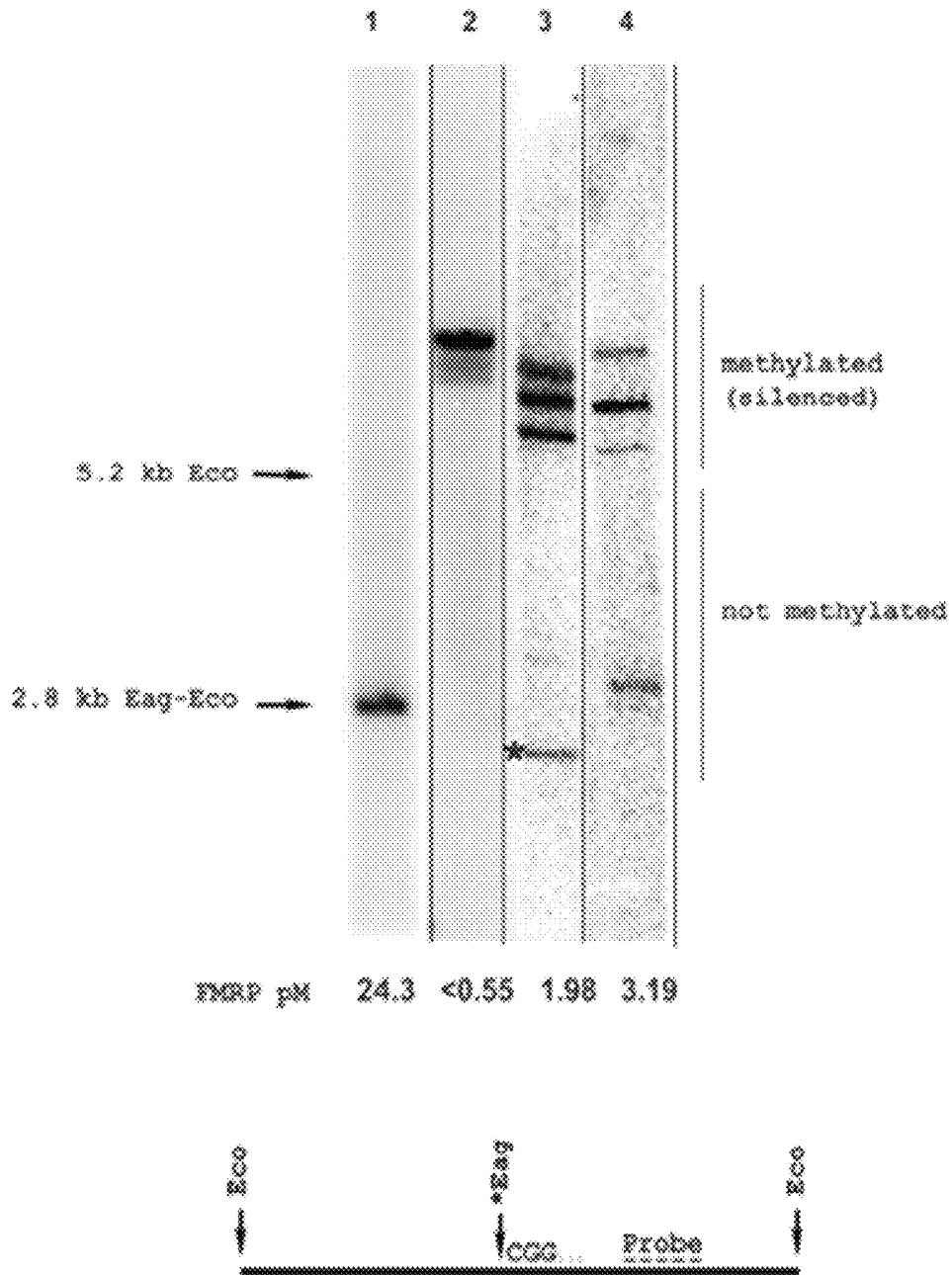
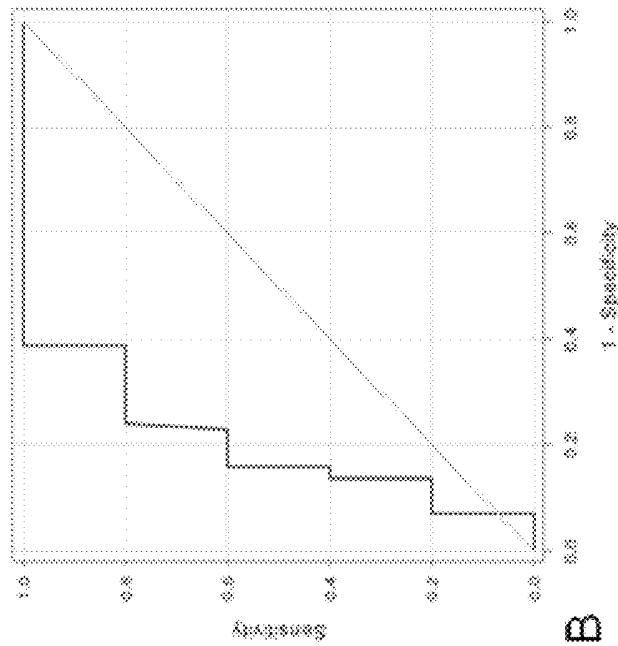
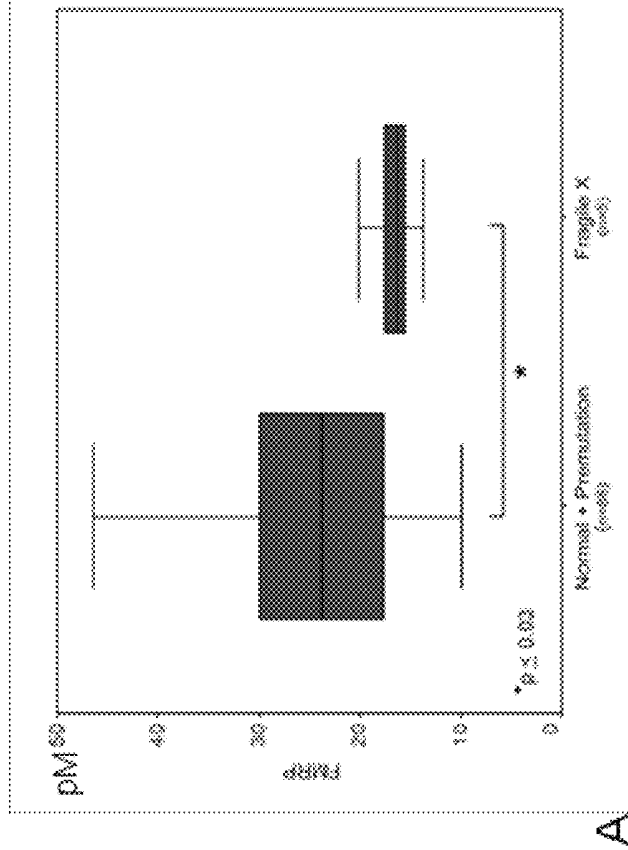


FIGURE 20

Females: Normal + Premutation vs Full mutation



B



A

FIGURES 21A and B

**SYSTEM AND METHOD FOR
QUANTIFYING FRAGILE X MENTAL
RETARDATION 1 PROTEIN IN TISSUE AND
BLOOD SAMPLES**

CROSS-REFERENCE TO RELATED
APPLICATIONS

The present application is a continuation of U.S. application Ser. No. 13/493,318, filed on Jun. 11, 2012, issued as U.S. Pat. No. 8,628,934, which claims priority to U.S. Provisional Application No. 61/495,679, filed on Jun. 10, 2011.

BACKGROUND OF THE INVENTION

1. Field of the Invention

The present invention relates to fragile X mental retardation 1 protein detection and, more specifically, to a system and method for quantifying the protein in tissue samples in a capture immunoassay using anti-FMRP antibodies.

2. Description of the Related Art

Fragile X syndrome (FXS) is a heritable condition characterized by cognitive and behavioral abnormalities and is the most common single gene cause of autism. The syndrome results from an expanded triplet CGG repeat that generates a fragile X site on the X chromosome that results in the absence or reduced expression of the FMR1 gene product FMRP. Almost all individuals with the syndrome carry FMR1 forms (alleles) that do not express the protein because the mutated alleles harbor long stretches of hypermethylated CGG repeats, e.g., the full mutation (FM) has more than 200 CGG repeats, that abolish or compromise FMR1 transcription and/or translation. Alleles containing shorter repeats, e.g., permutations of 55 to 200 CGG repeats, may express a reduced amount of FMRP.

Most individuals carrying the permutation (PM) are not cognitively affected. However, PM alleles have been reported to play a role in autism spectrum disorders, premature ovarian failure and fragile X-associated tremor-ataxia syndrome. Early diagnosis of the syndrome is extremely important for child supportive care, early intervention and for family planning.

The laboratory diagnosis of Fragile X syndrome is currently performed by DNA testing (Southern blot and PCR methods) using blood or other tissues. The tests often require several days (7-10 days), however, and can be performed only by a limited number of specialized laboratories. These methods are directed at determining the length of the CGG repeats in the FMR1 alleles and use the CGG repeat size of the allele to infer or predict whether the proband cells produce abnormal levels of FMRP.

The development of an immunoassay for the direct quantification of FMRP has been hampered by the lack of mouse monoclonal antibodies (mAbs) having the affinity required to capture efficiently the human protein while showing no cross reactivity with the Fragile X related proteins, FXR1P and FXR2P. Various attempts have been made to test directly for the presence of FMRP in blood and other tissues using mAb 1C3 that recognizes an epitope localized in the N-terminal of FMRP. The problem with these tests, however, is that the 1C3 mAb cross-reacts with the FX related protein FXR1 and does not have a strong binding affinity to FMRP.

For example, one test uses a Western blot analysis to study FMRP expression in human lymphocytes from FM patients, PM and normal individuals. This test uses an anti-FMRP mAb from Chemicon that cross reacts with a 70 kd protein

(FXR1) in FM male samples. Immunocytochemical staining of lymphocytes or hair root cells using an anti-FMRP mAb (1C3) has also been used to detect cells expressing FMRP. Cells from male FM patients are not stained or show a small percentage of stained cells. The test does not measure the quantity of FMRP, but instead determines the fraction of cells that express the protein.

Finally, a luminometer-based sandwich ELISA for FMRP that allows quantification of FMRP in lymphocytes within 3 to 4 days has been described in the art. The assay uses a chicken polyclonal Ab to capture FMRP and a commercially available mAb, 1C3 (Chemicon, Millipore) for detection. Because of cross-reacting, this test produces a high background that does not allow signal detection when used with common blocking agents as milk and BSA. While the background may be reduced or suppressed using hydrolyzed casein as blocking agent, the blocking step—usually performed before incubation with the antigen—must follow the incubation with the antigen (lymphocyte extract) in order to produce a detectable signal and the ability of the chicken polyclonal Ab to capture FMRP from the lymphocyte extracts is reduced or abrogated by the presence of the blocking agent. In addition, this ELISA is cumbersome, time consuming (around 3 to 4 days), and requires several long incubation times, such as 24-48 hours for binding of the chicken Ab to the plate, overnight incubation for binding of antigen, about 2 hours for blocking, 8-10 hours for binding with the detecting mAb, and then about 12 hour for binding with horseradish peroxidase-conjugated donkey anti-mouse IgG. Accordingly, there remains a need for an immunoassay that is relatively fast and does not require a specialized laboratory.

BRIEF SUMMARY OF THE INVENTION

The present invention comprises a series of specific mAbs (6B8, 1B12, 5C2, 2D10, 10H12, etc.) that have high affinity to human FMRP and that show no cross-reactivity to FXR1P or FXR2P. The present invention also includes a polyclonal antibody (R477) generated by immunizing a rabbit with a peptide (DDHSRTDNRPRNPREAK) (SEQ. ID NO. 1) corresponding to a carboxyl domain (starting at aa. residue 554) of human FMRP. R477 Ab binds with high specificity and avidity to FMRP.

The present invention further comprises an xMAP® microsphere LUMNEX® based, enzyme-linked immunosorbent assay (ELISA) that allows the detection and quantification of FMRP in blood samples and other tissues. First, the xMAP® microspheres are coated with any of the above mentioned high avidity mAbs to capture FMRP from the specimen. Next, the microsphere-mAb-FMRP complex is reacted with anti-FMRP R477 Ab. Finally, anti-rabbit IgG Ab conjugated to phycoerythrin is added. The fluorescence emitted from the result of this process is a function of the amount of FMRP present in the specimen and may be detected using the Luminex-200 System.

The assay may be used to detect FMRP in human lymphocytes, platelets, dried blood spots, cultured chorionic villi cells, lymphoblastoid cell lines, mouse or human brain extracts and other tissues. As expected by those of skill in the art, the assay does not detect FMRP in lymphocytes isolated from full mutation (FM) male Fragile X patients, in lymphoblastoid cell lines derived from male FM FX individuals, and in brain extracts from the Fmr1 KO mouse. Low levels of FMRP are detected in specimens derived from male FM size mosaic and methylation mosaic patients.

Microspheres are available in 100 distinctly colored sets each exhibiting a unique signature that is recognized by the LUMINEX® System. Using two or three different microsphere sets, where each set is coupled with a different specific anti-FMRP mAb, the present invention provides a multiplex capture sandwich immunoassay for the detection in the same well of FMRP by more than one antibody. The FMRP signal is compared to that of bona-fide lysates from normal individuals (or mice) and is quantified using as standards recombinant fusion protein (GST-SR7) carrying only the capture and detection domains of FMRP. The assays may be performed in 96-well-plates and can be completed in 24 hours.

The present invention may be used to detect and quantify FMRP from dried blood spots (DBS). In this method, drops of blood are spotted onto a collection card (Whatman, WB10001.4) and air-dried for a few hours. The matrix in the card lyses cells, denatures proteins and inhibits the growth of microorganisms. While blood samples (6 to 8 ml) must be stored in a refrigerator and processed for isolation of lymphocytes or platelets as soon as possible (hours from acquisition), DBS cards preparation requires collection of small blood samples (about 20 µl per spot) that are drawn by lancet from the finger, heel, or toe of a neonate. The cards can be stored at room temperature in low gas-permeability plastic bags and sent by regular mail to a laboratory for testing. DBS are used routinely for neonates screening of metabolic diseases, serum protein levels, intracellular enzymes, viruses, and genetic disorders. Moreover, measurement of FMRP in DBS can be performed along with other metabolic markers in a multiplex capture Luminex immunoassay for simultaneous measurement of a wide range of proteins found in blood such as the conventional inflammatory markers or neurotrophins, regularly performed on neonatal dried blood spots by immunoassay with the xMAP® technology. Our assay can easily be incorporated into a routine protein marker screening of neonatal DBS.

BRIEF DESCRIPTION OF THE SEVERAL VIEWS OF THE DRAWING(S)

The present invention will be more fully understood and appreciated by reading the following Detailed Description in conjunction with the accompanying drawings, in which:

FIG. 1 is a schematic of the system and method for the detection of FMRP in a tissue sample according to the present invention;

FIG. 2 is a graph of the median fluorescence intensity verses the concentration of total protein for mAb 5C2 using mouse brain tissue samples;

FIG. 3 is a graph of the median fluorescence intensity verses concentration of total protein for mAb 5C2 using a human lymphoblastoid cell line derived from a normal individual;

FIG. 4 is a chart of median fluorescence intensity verses total amount of protein extract from human lymphoblastoid cells (normal control and FM FX male patient) using mAb 5C2;

FIG. 5 is a chart of median fluorescence intensity detection of FMRP in several control (N1-N8) and premutation (82 m, 65 m, 90 m, 70 m, 80 m, and 70 m) and full mutation (FM, FF) lymphoblastoid cell lines using mAb 5C2;

FIG. 6 is a histogram of FMRP detection in DBS where the MSI values were produced from DBS from normal, premutation and FX individuals and capture was done using mAb 6B8 coupled microspheres. More specifically, specimens 140 wt, 139.1 wt are from normal male individuals and

were used as positive controls; Balb/cJ mouse brain homogenate was used as negative control since mouse FMRP does not bind to mAb 6B8; negative control was done without FMRP; specimens 142MfxFM, 154MfxFM, 139.2MfxFm are from male full mutation FX individuals; specimen 150MfmMos is from a male mosaic full mutation individual; specimens 124Fpm and 155BFpm are from female premutation individuals; and the other specimens are from individuals whose FX status had not been determined;

FIGS. 7A and 7B are graphs of median fluorescence intensity verses concentration of total protein from lymphocytes of a normal individual where both experiments were done using three sets of xMAP® microspheres each coupled to one mAb, i.e., 5C2 (red), 6B8 (white) and 2D10 (yellow). FIG. 7A depicts an experiment performed using capture mAb in a separate well (simplex) and FIG. 7B depicts an experiment performed using all three mAbs in the same well (multiplex).

FIG. 8 is a chart of median fluorescence intensity for the detection of FMRP using mAb 6B8 coupled xMAP® microspheres to capture where specimens 72G2 and 72D1 are from normal individuals and 72Fmale is from a male FM FX patient, and capture was done using mAb 6B8;

FIG. 9 is a chart of median fluorescence intensity showing the detection of FMRP in lymphocyte extracts from nine normal individuals where capture was done using mAb 6B8;

FIG. 10 is a chart of median fluorescence intensity showing the detection of FMRP in lymphocyte extracts from six normal individuals where capture was done using mAb 6B8;

FIG. 11 is a chart of FMRP values relative to an internal standard for several specimens using mAb 6B8;

FIG. 12 is a chart of fluorescence detection of FMRP in lymphocyte extracts from normal individuals (95-1 and 77-8) and from three premutation women (pre99F, pre100Fa and pre100Fe where capture was done with microspheres coupled to mAb 6B8;

FIG. 13 is a chart of FMRP values relative to an internal standard (a bona-fide lymphocyte extract) for specimens described in FIG. 12.

FIG. 14A-C is a series of Western blots showing the immunoreactivity of two antibodies used in the capture assay pair with lymphocyte extracts from normal individuals (1,2), premutation carriers (3,4) and male FXS patients using (A) mAb68B, (B) R477, and (C) mAb1C3 with overexposed films in the middle section and sample loading shown in the bottom section with an anti-GAPDH antibody.

FIG. 15 is a schematic of recombinant GST fusion protein (GST-SR7) carrying an abbreviated FMRP containing the mAb6B8 and the mAb6B8 and R477 epitope domains;

FIG. 16 is a graph of the dose response curve of fluorescence (MFI) as a function of the standard fusion protein GST-SR7 concentration;

FIG. 17 shows the distribution of FMRP concentration in DBS from normal individuals (black, N=134) and in the combined population of normal and premutation individuals (grey, N=195);

FIG. 18 is plot of FMRP levels in normal individuals as a function of age;

FIG. 19 shows box plots comparing FMRP levels in: A) normal males (N=85) and FXS full mutation males (N=17); and B) FXS full mutation (non mosaic, N=7) and male full mutation mosaic (N=10);

FIG. 20 is a Western blot analysis showing the high specificity of mAb6B8 (Panel A), and R477 (B). For comparison the commercially available anti-FMRP, mAb 1C3 was used in panel C. Proteins were extracted from lymphocytes of a normal male (Lane 1); normal female (Lane 2);

two premutation females (Lanes 3 and 4); and a full-mutation male (lane 5). The lower section of each panel was reacted with an anti-GAPDH (MAB374; EMD Millipore) The signal of the GAPDH protein was used as loading control;

FIG. 21 is a chart of a comparison of FMRP level in females with full mutation alleles to females with normal or permutation alleles (N=88) using the Mann-Whitney test, where (A) is a plot analysis showing significantly lower levels of FMRP in full mutation (p=0.03) and (B) is a Receiver-Operating Characteristic (ROC) curve showing that at a cutoff of 13.7 pM, the assay for full mutation females gives a sensitivity of 20% and a specificity of 93%.

DETAILED DESCRIPTION OF THE INVENTION

Referring to the Figures, wherein like numerals refer to like parts throughout, there is seen in FIG. 1 a pathway for the detection and measurement of FRMP according to the present invention. More particularly, anti-FMRP mAbs (preferably bound to xMAP® microsphere beads) are mixed with a target tissue sample extract containing FMRP to form an antibody FMRP complex bound to the beads. Rabbit anti-FMRP antibody is then attached to the complex. An anti-rabbit IgG Ab conjugated to phycoerthrin is then added so that the amount of phycoerthrin fluorescence may be measured to determine the quantity of FMRP bound to the beads.

As described above, the present invention includes a number of new anti-FMRP monoclonal antibodies that exhibit a high affinity for the capture of human FMRP without exhibiting cross-reactivity to related proteins FXRP1 or FXRP2. The mAbs according to the present invention were produced in the IBR Monoclonal Antibodies Facility using recombinant mouse FMRP and human FMRP. These proteins were expressed in Sf9 insect cells infected with baculovirus engineered to carry either the mouse or the human FMR1 gene. The recombinant proteins were expressed, purified in large scale, and used for immunizing mice and for hybridoma screening. Several rabbits were immunized with a FMRP peptide (17-aa long position 554 to 570), i.e., (DDHSRTDNRPRNPREAK) (SEQ. ID NO. 1). A rabbit anti-FMRP R477 polyclonal antibody produces a particularly strong response with high affinity and avidity to

the protein. The purified R477 Ab reacts strongly to the immunogen peptide and FMRP from a variety of sources: including mouse brain extracts, human lymphocyte extracts, platelets, lymphoblastoid cell lines, lymphocyte extracts and dried blood spots. This antibody serves as the detection reagent in the protein-based Luminex assay.

The epitopes of mAbs 1B12 and 6B8 have been determined (see Table 1 below). The other mAbs have been found to bind to a domain of FMRP (Table 1).

TABLE 1

mAb	FMRP Domain (aa)	Epitope
1F1	442-540	NA
1E3	320-354	NA
1B12	329-375	GPNA/SP/SEE (SEQ. ID NO. 2)
2G5	76-132	NA
3E7	442-540	NA
5C2	320-375	NA
2D10	396-431	NA
3H8	320-375	NA
10H12	442-540	NA
6B8	320-375	SRVGPN (SEQ. ID NO. 3)
7F9	442-540	NA

Table 2 below illustrates the phycoerythrin fluorescence measured as a function of the total amount of protein for two of the antibodies 5C2 and 2D10 of the present invention, and with an anti-PrP mAb, 3F4. The latter mAb, as expected by people of skill in the art, did not react with FMRP and was used as negative control.

TABLE 2

Antigen µg	Mouse Brain		H Lymphobl control				H Lymphobl FX male			
Capture Beads = 5C2										
80	1879	2106	14	629	601	13.5	27	18.5	16	
40	1475	1514	16	477	460	17	20.5	20	16	
20	835	899	18	313	307	18	20	19	16	
10	459	449	18	184	181	17	22	22	21	
5	226	216	22	80	88	18	24	23	22.5	
2.5	116	113	22	56	58.5	22	25	23.5	23.5	
1.25	74	61	12	38	37.5	22	22	26	22	
0	34	32	31	28	33	26	27	24	26	
Capture Beads = 3F4, anti PrP										
80	51	49	4	6	6	3	5	4	3	
40	36	39.5	4	5	6	4	4	4	4	
20	17.5	18	4	5	6	4	4	5	4	
10	11	10	4	5	4	4	5	5	4	
5	7	8	3	5	5	3	5	6	4	
2.5	7	6	0	6	6	4	5	5	5	
1.25	7	5	0	5	5	5	5	4.5	4	
0	6	6	4	6	6	5	6	5	4	

TABLE 2-continued

Antigen µg	Mouse Brain		H Lymphobl control				H Lymphobl FX male			
	Capture Beads = 2D10									
80	447	528	26	275	317	28	35	32	28	
40	289	309	28	181	182	28	35	34	32	
20	138	139	31	94.5	111	32	33	32.5	28	
10	72	68	31	64	66	32	35	34	30	
5	47	47	29.5	47.5	45	32.5	33	31.5	29	
2.5	40	41	25.5	41	41	34	31	30.5	28	
1.25	41	27	0	36	35	32	29	31	28	
0	38	39	39	35	38	31	34	31	30	

As seen in the above Table 2 and in FIGS. 2-8, mAb 2D10 reacts to both human and mouse FMRP. mAb 6B8 reacts strongly to human, but not mouse FMRP. Both of these antibodies were derived from mice immunized with human recombinant FMRP. Additional antibodies (see Table 1) include mAb 5C2 and 1B12 derived from mice immunized with mouse recombinant FMRP are reactive to both mouse and human FMRP.

There is seen in FIGS. 4 and 5 an assay displaying the MFI verses total protein amount of lymphoblastoid cells extract from a normal individual and from a FM FX patient. Whereas the MFI obtained from the normal specimen was dependent on the amount of total protein, the MFI obtained with the FX specimen did not show any variation.

There is in FIG. 6 an assay done using Dried Blood Spots and mAb 6B8 xMAP® microspheres. Specimens from normal male individuals were used as positive controls and produced MFI values around 750. A mouse specimen was used as negative control since the capturing 6B8 microspheres do not bind to mouse FMRP. Specimens from full mutation FX males produced MFI values of 10 to 30. A specimen from a mosaic FM FX patient showed a MFI of 150. Premutation samples showed either normal MFI values or slight lower MFI. The results clearly indicate to those that know the art that the DBS assay can be used to screen for male FM FX and male mosaic FM individuals.

There is shown in FIGS. 7A and 7B assays performed with three diverse xMAP® microspheres coupled either with mAb 5C2, 6B8, or 2D10. Two experiments were performed using a normal lymphoblastoid cell line extract. In one experiment, each set of coupled microspheres were placed in separate wells (Simplex assay), in the other all three sets were used in the same wells (Multiplex assay). In both experiments, microspheres coupled with mAb 6B8 produced higher MFI than the other two sets. The Multiplex experiments shows that when used in the same well 6B8 microspheres still maintain high MFI while the other two sets produce lower MFI with respect to those obtained in the Simplex assay. To those of skill in the art, the data indicate that mAb 6B8 has higher affinity to human FMRP than the other two mAbs. Table 3 below describes the specimens used in FIG. 5.

TABLE 3

Sample	Genotype	Sex	CGG	MFI	Cell line
N1	Control	male	normal	1060	GM4736
N2	Control	female	normal	851	GM7000
N3	Control	NA	normal	691	GM7113
N4	Control	male	normal	1041	GM6994
N5	Control	female	normal	723	GM7010
N6	Control	female	normal	1047	GM7036
N7	Control	male	normal	691	GM7352

TABLE 3-continued

Sample	Genotype	Sex	CGG	MFI	Cell line
N8	Control	female	normal	919	GM7436
82m	mosaic	male	82, >200	97	C4079
65m	premutation	male	65	901	C6711
FM	full mut	male	>200	80	C2159
FF	full mut	female	30, >200	35	C8027
90m	premutation	male	90	249	C3907
70m	Pemutation	male	70	1236	C5557
80m	Pemutation	male	80	932	C2274
70m	Pemutation	male	70	1450	C3137
MOSm	mosaic mut	male	>200	331	C10148

There is seen in FIG. 8, an assay displaying the median fluorescence intensity (MFI) (the median Fluorescence value detected by the system after reading 100 microspheres) for two normal control and one Fragile X male lymphocyte extract. Note the nearly zero MFI for the Fragile X lymphocyte extract compared to the 100 fold higher values for the two control lymphocyte extracts. This 100 fold difference is highly reproducible relative to male full mutation FX individuals.

There is seen in FIGS. 8-10 the detection of FMRP in lymphocytes derived from the normal population (14 samples) where MFIs varied from 550 to 800. FIG. 11 depicts these values are compared to the internal lymphocyte standard 77-5. Despite the use of identical protein concentrations for these assays, there is a wide variation in the MFI levels. The cause of these variations is not known.

There is seen in FIGS. 12 and 13 the MFIs for lymphocyte extracts from two controls and three premutation females. Note the intermediate MFIs for the lymphocyte extracts from the premutation females compared to the extracts from the control subjects. These figures reflect the MFIs relative to the internal lymphocyte standard. While the MFIs for all three premutation females were lower than the two control MFIs, the variation in control MFI values does not allow a statistical comparison.

Example 1

The method for detecting and measuring FMRP according to the present invention may be used in connection with human lymphocytes as follows. First, mononuclear cells are isolated from blood using BD Vacutainer CPT (Becton Drive, Franklin Lakes, REF 362760) according to the BD protocol. Cells are lysed in M-Per (Invitrogen) buffer supplemented with 150 mM NaCl, chymostatin (10 µg/ml), antipain (10 µg/ml, and 1/200 dilution of Protease inhibitor cocktail set III (Calbiochem), and sonicated using a Branson Digital Sonifier 250 (Denbury, Conn.). Cell debris are removed by centrifugation at 16,000xg at 4° C. for 15 min and the protein concentration is determined (Micro BCA

Assay kit; Thermo Scientific, Rockford, Ill.). Samples are diluted in assay buffer (PBS, 1% BSA, 0.05% Tween 20, 0.05% Na Azide).

LUMINEX®-based ELISA protocols are well known to those of skill in the art, and will not be described here in detail. In brief, microspheres (about 5,000) that are coupled with the chosen anti-FMRP mAb are mixed in a well of a Multiscreen Filter Plate (MSBVN1210—Millipore, Billerica, Mass.) with the lysates (100 µl total volume) and incubated on a plate shaker at room temperature in the dark for 4 hours. A serial dilution of a lymphocyte extract (in duplicate wells, starting at 5 µg total protein per well) from a normal individual and/or a recombinant fusion protein are/is used as standards to quantify FMRP. The supernatant is aspirated using a vacuum manifold, the microspheres are washed 3 times, re-suspended in 100 µl of assay buffer containing 2 µg/ml of R477 Ab, and incubated on a plate shaker overnight. The liquid is aspirated, the microspheres washed and incubated with 100 µl of anti-rabbit IgG conjugated to phycoerythrin (2 µg/ml in assay buffer; Invitrogen P2771MP) for 2 hours. After aspirating the liquid, microspheres are re-suspended in 100 µl of assay buffer and analyzed on the Luminex 200.

Example 2

The present invention may also be used in connection with lymphoblastoid cell lines as follows. First, pellets of cultured cells (1×10⁷) are homogenized in a dounce homogenizer (20 strokes with the loose pestle) in 1 ml of ice cold buffer (10 mM HEPES H 7.4; 200 mM NaCl, 0.5% TRITON-X®100, 30 mM EDTA, Protease inhibitor) available from Roche. Lysates are transferred into tubes, centrifuged at 6,800×g at 4° C. Supernatant is transferred into fresh tubes, and protein concentration determined as described above. The LUMINEX® capture ELISA is performed as described in above with respect to human lymphocytes.

Example 3

The present invention may additionally be used in connection with dried blood spots (DBS). The preparation and use of DBS is well known to those of skill in the art, and will not be described here in detail. In brief, blood samples are spotted onto ID blood staining cards (Whatman, WB100014) and let dry overnight at room temperature. Cards are then wrapped in aluminum foil and stored in sealed plastic bags at room temperature. Disks (7-mm-diameter) are punched from dried blood spots and transferred into a 2-ml screw-cap tube with wide bottom. M-Per buffer (150 µl) supplemented with 150 mM NaCl, chymostatin (10 µg/ml), antipain (10 µg/ml, and 1/200 dilution of Protease inhibitor cocktail set III (Calbiochem) is added and tubes incubated at room temperature on a BELLY DANCER® shaker at maximum speed for 3 hours. Tubes are centrifuged for 20 sec and supernatant transferred into a fresh tube. Debris is removed by a brief centrifugation step and supernatant (20 µl to 40 µl) diluted in assay buffer. FMRP is detected using the capture ELISA described above.

Example 4

The present invention may further be used in connection with platelets. Isolation procedures of human platelets are well known to those of skill in the art and will not be described in detail herein. In brief, blood samples (8 ml) are collected in a vacutainer BD tube (yellow cap, 39 mM citric

acid, 75 mM sodium citrate, 135 mM glucose, pH 7.4), and centrifuged at low speed (190×g) for 15 min at room temperature. Platelet-rich plasma is transferred to fresh tubes and centrifuged at 2500×g for 5 min at room temperature. The platelet pellets are lysed in M-Per (Invitrogen) buffer supplemented with 150 mM NaCl, chymostatin (10 µg/ml), antipain (10 µg/ml, and 1/200 dilution of Protease inhibitor cocktail set III (Calbiochem), and sonicated using a Branson Digital Sonifier 250. Debris is removed by centrifugation at 16,000×g at 4° C. for 15 min and protein concentration determined as described above. The LUMINEX® capture ELISA is performed as described above.

Example 5

The present assay may be used in connection with mouse brain extracts. Brains are washed in cold PBS and homogenized using in a dounce homogenizer (10 strokes with the loose pestle) in 2 ml/brain of ice cold buffer (10 mM HEPES pH 7.4; 200 mM NaCl, 0.5% TritonX-100, 30 mM EDTA, protease inhibitor (Roche, complete). Debris is removed by centrifugation at 6,800×g at 4° C. Supernatants are transferred to fresh tubes and NaCl is added to a final concentration of 400 mM. Supernatants are clarified by centrifugation at 50,000×g in a Beckman TLA 100.4 rotor for 30 min at 4° C. After protein determination, samples are assayed for FMRP using the Luminex capture ELISA as described above.

The capture ELISA method of the present invention allows for detection and quantification of a low abundant intracellular non-enzymatic protein in DBS. Thus, the invention can be applied in the detection and quantification of other relevant intracellular proteins by developing specific-ad hoc-capture immunoassays. Compared to conventional tests, the present invention has a very high signal to background ratio, works with BSA as blocking buffer which is used in all steps (before, during and after the capture step), has few and shorter incubation times (about 4 hours with the capture mAb, overnight with the detecting rabbit Ab, and the 2 hours with the anti-rabbit IgG Ab conjugated to phycoerythrin). Thus, this assay can be performed in 24 hours and uses replenishable, specific, high-affinity anti-FMRP mAbs. Furthermore, the present invention may be used with the LUMINEX® platform that allows for multiplex formats and several anti-FMRP mAbs can be used to detect FMRP in the same sample. Multiplex can be also performed with microsphere sets coupled with mAbs against other antigens. Multiplex assays can also be used as negative controls, or to detect diverse antigens for sample normalization.

The present invention is particularly valuable as it allows for detection and quantification of FMRP in the minute amount of proteins extracted from dried blood. The ELISA can identify male FM FX, male mosaic FM FX, from normal and from PM individuals (see FIG. 6). In as much as newborn DBS acquisition and screening for metabolic abnormalities is performed routinely in most of the U.S., and in a large number of countries in Europe, Americas and Australia, the present invention offers for the first time a valuable, simple, economical and accurate method to perform worldwide newborn screening for FXS in the general population.

Furthermore, the present invention provides a method that, for the first time, can detect and quantify low abundance intracellular non-enzymatic proteins in DBS by capture immunoassays. Therefore, the present invention can be applied in the diagnostic detection and quantification of

other relevant intracellular proteins present in other neurodegenerative diseases. like the Batten Cln3 protein, which is not present in 85 percent of Batten Disease patients. The present invention can also be used to quantify FMRP in human chorionic villi and other organs and tissues, as well as to study FMRP expression at different stages of development.

Example 6

The recombinant fusion protein for FMRP quantification was developed as part of this invention. A glutathione S-transferase (GST) fusion protein carrying two short domains of FMRP corresponding to the epitopes of mAb6B8 and R477 was constructed with a double stranded synthetic oligomer encoding a nine amino acid sequence of FMRP (aa 344 to 352) that includes the epitope recognized by mAb6B8. The double stranded product, which was flanked by a 5' BamHI overhang and a 3' EcoRI overhang was ligated into vector pGEX-4T (GE Healthcare Biosciences, Piscataway, N.J.).

This plasmid, which expressed a peptide recognized by 6B8, was modified to include the R477 epitope as follows. The FMR1 cDNA region that encodes the R477 epitope was amplified with forward and reverse primers CGGAATTC-CGTGGAGGAGGCTTCAA (SEQ. ID NO. 4), CCCTC-GAGCAGCCGACTACCTTCCACTG (SEQ. ID NO. 5) and ligated the amplicon downstream of the 6B8 epitope to generate the plasmid pGEX-hFMR1-S. Clones were screened by western blot analysis for expression of a fusion protein, GST-SR7, that reacted with both antibodies. The fusion protein was expressed in *E. coli* strain BL21 by IPTG induction and purified by glutathione-Superflow resin (Clontech) according to the manufacturer's directions. After elution with 10 mM glutathione in 0.1M Tris-HCl pH 8.0 solution, GST-SR7 was dialyzed against 25 mM Tris-HCl pH 7.4, 150 mM NaCl buffer, concentrated in an Amicon Ultra-15 10K (Millipore), aliquoted, lyophilized and stored at -70° C.

The FMRP concentration was determined with serial dilutions of the recombinant fusion protein GST-SR7 (FIG. 16) to generate a standard curve for each plate using the MasterPlex QT v2.5 quantitative analysis software for protein assay (MiraiBio, Hitachi Solutions America Ltd, South San Francisco, Calif.). Median fluorescence intensity (MFI) was plotted against recombinant FMRP concentrations using a sigmoidal five parameter logistic model.

A Western blot analysis (FIG. 14) with protein samples (15 ug) analyzed on precast 4%-15% polyacrylamide Criterion Tris-HCl gels (BioRad, Hercules, Calif.) at 200 mV for 1 hr according to the manufacturer's directions. Separated proteins were transferred onto PVDF membranes (0.22 um, BioRad, Hercules, Calif.) in transfer buffer (25 mM Tris, 192 mM glycine, pH 8.3) using a semidry electroblotter (OWL HEP-1, Thermo Scientific, Waltham, Mass.) for 1 hr at 10 V. Membranes were incubated in 5% nonfat dry milk in 0.01 M Tris pH 7.5; 0.137 M NaCl; 0.05% Tween 20 (blocking buffer) and then incubated with either anti-FMRP antibodies (mAb6B8, R477, or mAb 1C3 from EMD Millipore, Billerica, Mass.), or a rabbit anti-glyceraldehyde 3-phosphate dehydrogenase (0.2 ug/ml, sc-25778, Santa Cruz Biotechnology, Inc. Santa Cruz, Calif.). After washing, membranes were incubated for 1 hr with the conspecific alkaline phosphatase-conjugated secondary antibodies (Sigma-Aldrich Corp., St. Louis, Mo.). Proteins were detected with CDP-Star (NEB, Ipswich, Mass.) according to the manufacturer's directions.

The fragile X analysis of DNA isolated from blood samples (FIG. 22) was performed by PCR and Southern blot with the AmplideX® FMR1 PCR (RUO) reagents and capillary electrophoresis according to the manufacturer's directions (Asuragen, Austin, Tex. 78744 USA). DBS DNA was isolated with the DNEASY® kit (Qiagen, Valencia, Calif.) according to the manufacturer's directions for QIAAMP® DNA Mini Kit, concentrated by precipitation with ethanol and analyzed with AmplideX® FMR1 PCR (RUO) reagents as above.

DBS from blood received more than 3 days after collection were excluded from the analysis. The single newborn blood sample DBS was also excluded. Data were analyzed with either SPSS® (Chicago, Ill.) or SIGMAPLOT® (Systat Software Inc., San Jose, Calif.) software.

As described above, initial experiments suggested that mouse monoclonal antibody (mAb) 6B8 and rabbit polyclonal R477 that had been developed in accordance with the present invention were the best candidate pair. The specificity of mAb6B8 and R477 for FMRP seen in FIG. 14 was characterized by western blot analysis of extracts from normal (male and female), premutation (female), and full mutation (male) lymphocytes. Three major FMRP bands (68 to 80 kDa) were recognized by mAb6B8 in normal and premutation samples while no bands were detected by this antibody in the full mutation FXS male sample. This indicated that this antibody has little if any cross reactivity with the closely related proteins FXR1P and FXR2P or other unidentified proteins. Three bands (66-80 kDa) were detected with R477 in all extracts except male full mutation FXS. As seen in FIG. 14, this antibody also detected a faint band (65 kDa) in all lanes (normal, premutation and male FXS), that was visible on long exposure, indicating that R477 has a weak cross reactivity to an unspecified protein. Since the western blot data indicated that these antibodies both recognize FMRP without having any other targets in common, the combination of mAb6B8 and R477 as capture and detection reagents, respectively, should allow highly specific detection of FMRP in a capture immunoassay.

As illustrated in FIG. 4, the levels of FMRP detected (MFI) in the in normal cells were strictly proportional to the amount of sample. Background fluorescence values were detected in all wells containing male full mutation extracts, independently of the amount of sample tested. In normal individuals, N1 to N8 in FIG. 5, FMRP levels vary from 691 MFI and 1060 MFI. Similar values were measured in 4 premutation males (901 MFI to 1450 MFI). While background fluorescence was detected in a FM cell line (FM, 35 MFI), low amount of FMRP was found in a cell lines derived from two males full mutation mosaic (FM mos 1, 97 MFI, mos 2, 331 MF).

For FMRP quantification, as well as to control for technical variations in capture and detection, a reference protein was constructed for the Luminex immunoassay. Referring to FIG. 15, a series of GST-fusion proteins were used that carry discrete regions of FMRP to localize the mAb6B8 and R477 epitopes (LaFauci et al.; manuscript in preparation) and a GST fusion protein was constructed, GST-SR7, that harbored both of them. Purified GST-SR7 at concentrations of 0.5 to 300 pM resulted in a linear response in the Luminex assay (see FIG. 16). Repeated assays (55) of GST-SR7 at different concentrations were highly correlated ($r=0.996$) and long term (4 month) storage of the protein standard at -70° C. did not affect its performance which indicated that this standard was stable and not prone to aggregation.

Referring to FIG. 16, a standard curve calculated from dilutions of a known amount of GST-SR7 was used to

measure the amount of FMRP present in DBS samples from 215 individuals with normal, premutation, or fragile X full mutation genotypes. Table 4 below shows the capture immunoassay quantification of FMRP in DBS extracts derived from normal, premutation and Full-mutation individuals.

TABLE 4

Genotype	N	mean pM	median pM	Std. dev	mini-mum pM	maxi-mum pM	Range
Females							
normal	49	25.96	25.40	8.60	11.61	46.29	34.69
Premutation	59	22.99	22.49	7.01	9.86	38.73	28.87
Full-mutation	5	17.24	16.74	2.04	15.41	20.08	4.67
Total females	113						
Males							
normal	85	25.80	24.79	10.30	8.61	51.49	42.88
Full-mutation	10	0.55	0.5	0.26	0.2	1.15	0.95
FM mosaic	7	3.29	2.90	1.61	1.84	6.58	4.74
Total FM	17	1.70	0.72	1.71	0.20	6.58	6.39
Total males	102						
Total	215						

FMRP levels are reported as concentration (pM) in the 50 ul extracts which are equivalent to 8.7 ul of whole blood. As with lymphocytes, duplicate extracts of 57 DBS were highly correlated ($r=0.96$), indicating that the assay is also very reliable with these extracts. Referring to FIG. 17, on individuals with normal FMR1 alleles, the FMRP level appears to be normally distributed, with no difference between males and females. Moreover, the levels of FMRP followed a normal distribution in the group composed by both normal and premutation individuals. Referring to FIG. 18 the level of FMRP detected in the assay declines with age from infants to pre-teens and then appears to level off in teen years and remain unchanged through adulthood.

In males with a full mutation allele, the mean FMRP level was 1.7 pM (6% of normal) with a maximum of 6.6 pM (26% of normal). There was no overlap between full mutation and normal levels, as seen in FIG. 19A, and the difference between the two groups was highly significant

(Mann-Whitney $p<0.001$). ROC analysis showed that, at a cut off of 7.59 pM, sensitivity and specificity were both 100% which indicates that the likelihood of false negative and false positive results using this LUMINEX® assay is extremely low. The full mutation male samples included full mutation mosaics which have a significantly higher level of FMRP, as seen in FIG. 19B ($p=0.001$). ROC analysis showed that, at a cut off of 1.5 pM, sensitivity and specificity were both 100% which indicates that this assay can distinguish mosaic fragile X from non-mosaic. Referring to FIG. 20, the level of FMRP detected in the LUMINEX® assay is consistent with the intensity of the premutation band in the Southern blot analysis of 2 mosaic full mutation males.

In females with a premutation allele, the mean FMRP level appeared to be lower than normal but the difference did not reach significance ($p=0.09$). The sample population included too few premutation males (2) to distinguish this group from the normal population. Although there were only 5 full mutation females in the sample population, this group was significantly different from normal allele females (Mann-Whitney, $p=0.032$), and from the combined group of females with either normal or premutation alleles (Mann-Whitney, $p=0.03$), as seen in FIG. 21.

The Luminex-based capture immunoassay according to the present invention readily identified 14 male Fragile X full-mutation samples among DBS from 215 individuals with normal, premutation and full mutation alleles. The identification was accurate and in all cases matched the Fragile X genotype determined by Southern blot and PCR. The assay uses a new developed monoclonal antibody, mAb6B8 as capturing antibody, which has a high affinity for FMRP and detected no other proteins in western blots of lymphocytes extracts, as seen in FIG. 14. The new developed rabbit polyclonal antibody, R477, the detection antibody, also has high affinity for FMRP. In over-exposed western blots, however, R477 showed a very low cross-reactivity to an unidentified protein (lane 5). This protein is not recognized by mAb 6B8. Since only proteins recognized by both antibodies are detected in the capture immunoassay, the combination of mAb6B8 and R477 confers high sensitivity and specificity, and allows reliable measurements of FMRP in DBS punches derived from blood volumes as low as 2.2 ul (3-mm-diameter punch).

The assay of the present invention allows a low cost, rapid and direct quantitative measurement of FMRP that is specific, sensitive, and amenable to high throughput analysis for detection of full mutation FXS and suitable for screening of high-risk population and newborn.

SEQUENCE LISTING

<160> NUMBER OF SEQ ID NOS: 5

<210> SEQ ID NO 1
 <211> LENGTH: 17
 <212> TYPE: PRT
 <213> ORGANISM: Homo sapiens

<400> SEQUENCE: 1

Asp Asp His Ser Arg Thr Asp Asn Arg Pro Arg Asn Pro Arg Glu Ala
 1 5 10 15

Lys

<210> SEQ ID NO 2

-continued

```

<211> LENGTH: 9
<212> TYPE: PRT
<213> ORGANISM: Homo sapiens

<400> SEQUENCE: 2

Gly Pro Asn Ala Ser Pro Ser Glu Glu
1                5

```

```

<210> SEQ ID NO 3
<211> LENGTH: 6
<212> TYPE: PRT
<213> ORGANISM: Homo sapiens

<400> SEQUENCE: 3

```

```

Ser Arg Val Gly Pro Asn
1                5

```

```

<210> SEQ ID NO 4
<211> LENGTH: 25
<212> TYPE: DNA
<213> ORGANISM: Artificial Sequence
<220> FEATURE:
<223> OTHER INFORMATION: Primer

<400> SEQUENCE: 4

```

```

cggaattccg tggaggagc ttcaa

```

25

```

<210> SEQ ID NO 5
<211> LENGTH: 28
<212> TYPE: DNA
<213> ORGANISM: Artificial Sequence
<220> FEATURE:
<223> OTHER INFORMATION: Primer

<400> SEQUENCE: 5

```

```

ccctcgagca gccgactacc ttccactg

```

28

-
- What is claimed is:
1. An assay system for detecting a fragile X mental retardation protein in a human tissue sample, comprising:
 - a monoclonal mouse antibody that binds to SEQ. ID NO. 3;
 - a polyclonal antibody that binds to a second, different epitope of the fragile X mental retardation protein; and
 - a third antibody that binds to said polyclonal antibody and is conjugated to a fluorescent compound.
 2. The assay system of claim 1, wherein said monoclonal antibody does not bind to fragile X related protein number one or fragile X related protein number two.
 3. The assay system of claim 1, wherein the polyclonal antibody comprises a polyclonal rabbit antibody.
 4. The assay system of claim 3, wherein the polyclonal antibody binds to SEQ. ID NO. 1.
 5. The assay system of claim 1, wherein said third antibody is an anti-immunoglobulin G antibody.
 6. An assay system for detecting a fragile X mental retardation protein in a human tissue sample, comprising:
 - a monoclonal antibody that binds to a first epitope of the human fragile X mental retardation protein;
 - a polyclonal antibody that binds to a second, different epitope of the fragile X mental retardation protein; and
 - a third antibody that binds to said polyclonal antibody and is conjugated to a fluorescent compound;
 7. The assay system of claim 1, wherein the monoclonal antibody is coupled to a substrate.
 8. The assay system of claim 7, wherein the substrate comprises beads.
 9. The assay system of claim 8, wherein the fluorescent compound is phycoerythrin.
 10. The assay system of claim 1, wherein the assay comprises an enzyme-linked immunosorbent assay (ELISA).

* * * * *

专利名称(译)	用于定量组织和血液样品中脆性X智力迟钝1蛋白的系统和方法		
公开(公告)号	US9429583	公开(公告)日	2016-08-30
申请号	US14/153674	申请日	2014-01-13
申请(专利权)人(译)	研究基金会心理卫生, INC.		
当前申请(专利权)人(译)	研究基金会心理卫生, INC.		
[标]发明人	LAFauci GIUSEPPE BROWN WILLIAM T KASCSAK RICHARD		
发明人	LAFauci, GIUSEPPE BROWN, WILLIAM T. KASCSAK, RICHARD		
IPC分类号	G01N33/68 G01N33/533		
CPC分类号	G01N33/6896 G01N2800/30 G01N33/533 G01N33/6812		
代理人(译)	MCGUIRE, GEORGE		
审查员(译)	福斯特, 克里斯蒂娜		
优先权	61/495679 2011-06-10 US		
其他公开文献	US20140127724A1		
外部链接	Espacenet USPTO		

摘要(译)

用于检测和定量人组织和血液样品中脆性X智力迟钝蛋白 (FMRP) 的系统和方法。该系统包括几种高亲和力单克隆抗体, 其可以在Xmap微球上提供以从组织或血液样本中捕获FMRP。使得到的复合物与多克隆抗FMRP兔抗体反应, 然后与缀合藻红蛋白的抗兔IgG抗体混合。从所得复合物发射的荧光是样品中存在的FMRP量的函数。

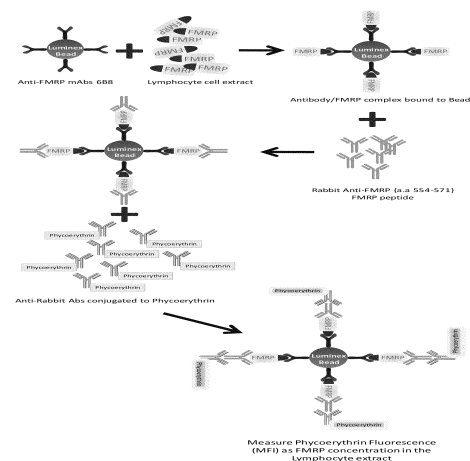


FIGURE 1