



US 20090118171A1

(19) **United States**

(12) **Patent Application Publication**
Zollo

(10) **Pub. No.: US 2009/0118171 A1**

(43) **Pub. Date: May 7, 2009**

(54) **USE OF ENZYMATIC INHIBITORS OF
H-PRUNE FOR THE PREVENTION AND
TREATMENT OF THE METASTASES OF
TUMOURS OVEREXPRESSING H-PRUNE**

(30) **Foreign Application Priority Data**

Dec. 11, 2003 (IT) RM2003A000572

Publication Classification

(76) Inventor: **Massimo Zollo, Naples (IT)**

Correspondence Address:
ARENT FOX LLP
1050 CONNECTICUT AVENUE, N.W., SUITE
400
WASHINGTON, DC 20036 (US)

(51) **Int. Cl.**
A61K 38/16 (2006.01)
A61K 38/10 (2006.01)
A61K 31/4375 (2006.01)
C07K 14/00 (2006.01)
C07K 7/00 (2006.01)
G01N 33/53 (2006.01)
C12Q 1/68 (2006.01)
A61K 39/395 (2006.01)

(21) Appl. No.: **10/582,115**

(52) **U.S. Cl.** **514/12**; 514/14; 514/283; 530/324;
530/326; 435/7.1; 435/6; 435/7.92; 530/388.1

(22) PCT Filed: **Dec. 10, 2004**

(57) **ABSTRACT**

(86) PCT No.: **PCT/IT2004/000689**

§ 371 (c)(1),
(2), (4) Date: **Oct. 6, 2008**

The invention relates to the use of enzymatic inhibitors of h-PRUNE and to screening method for the prevention and treatment of the metastases of tumours overexpressing h-PRUNE thereof and to the diagnostic kit for the prognosis of said metastases thereof.

A)

	Motif 1	Motif 2	Motif 3	Motif 4
RV2837c_Mt	VGWVCHVFDADTIGAGLALALVLDGCG	VDLVTVVDPSPVDRGLGAG	(6) RELIVDHEASND	SADSTTTVAEILDANGKPIDPRVAHCYIAGLADTGSFRWASV
s111253_Ssp	DIALCHQTFDFVLAAGVLAAGLAKLHPSR	(34) IRSLSIVDQOGRDLGAA	(8) RQVAIVDHEKNSP	(11) AVGASTTLLIVEKLRADISLMSVEASVMALGHVDTGSLTFTOT
MGPA_Mg	VIFPHVRFDGDCGLGAQOGLPHLJKANF	(30) EALAVVDPYANYKRIELRE	(7) KAVLRIDHFPNED	(11) SYVACCEQIIVEMATVAKWTIPFVAATLLYGIYTDNRFLYSMT
YTOI_Bs	IILHRVRFDPDAYGSCGLTEILRETY	(32) GALVVDPTANQBERIDQOR	(4) AKLMKVDHFPNED	(13) SYSEMIYELLEGKEHGKLNKKAELLYAGIVCDTGRFLFPNT
AF0756_Af	LGIFTHDNFDPDSSMSAVALEIAKQFD	(37) YDAFAIVDSSGRCVWNSIP	(3) DISIVDHPFAEK	(10) DYGATATILTEYIKELKITPSSKILATALPFGKSEDFEKRNR
MJ0977_Mj	NKILIVTHDPTDGLTSRAILQKLAERLN	(23) YDLITPADLGGSGQLMIKE	(11) DKILIDHPQPEE	(18) GABI CGAGVSYLFAKAINNDWIDLAKYAVLGVADIQNIEGKLI
MJ1198_Mj	RPIIIRHHTDGYCGGIALEKALPPI	(46) LPLVITDNGSTDEDIPAI	(7) IEVIVDHPFPEE	(85) KGRTYDREYLEKIALCMTDFEAYLRFMDGKGVVDLILATNIKEF
HP1042_Hp	MQVYHLSHLDGVAQVNSQVFFKNIQ	(27) EPLIIVDNLNINAEAYL	(13) IOQLDHEISGK	(19) IYVEFLKXHYAILFPKNTWLEPLVEMVNSVDIMDTCGYGFELG
RecJ_Hi	QKIVIVGDFDADGATSTALSVALRQLG	(31) VOLMTVDNGVSSFDGVAF	(5) IRVLVDHELPPE	(33) LAVRAKPRELGIPTAETQPNFTDLDLVALGLADVVPLDQNNR
RecJ_Hp	TEILVVDGADAGVISSAIMAKFFESLN	(27) AFLIIVDNGINAFEAARF	(5) YTLIIVDHECLHH	(37) LVAFYLCYGHQLLGKESKSHSELICLAGVATIDAMPPLTFFNK
RecJ_Ssp	EKVTINGDFADGITSTAVLEWGLQFF	(32) TKLIIVDQNGSTNLDEIVY	(5) MDVIVDHEFTLPD	(27) VAFKLVYALXNQYPTVPOQPLEDLDLVAIGLADLVTLQGDGR
YYBQ_Bs	IILFQHQPETDTICSAIAYADLNKLG	(36) VNGVIVDHNERQOSIKDI	(3) QVLEVIDHERIAN	(12) PVGCTATILNKVYKENVKIEKEIAGLMLSAIISDLSLLFKSPTC
ICRA_Sg	ILVFGHQPESDAIGSSVAFAYLAREAY	(38) ABOVILDHNFOOSVADI	(3) EYVGVVDHFRVAN	(12) PVGSASSIVYRMFKVHSHVAVSKIEIAGLMLSGIISDTLLLSKSPPT
Y608_Mj	RYVGHKNPDTISASIVLAVFLDCYP	(31) GKBIIVDHESEKSSQSFDDL	(3) KLIAVDHFKVGL	(19) IAELYPKDAIDLIGCKKELKAPDLAGLILLSAISDITVLFKSPPT
AF0756_Af	VYVGHKNEPDSVCSAIFAYLWNKWK	(46) GKVALVDHSEKAQTVDGI	(3) EVVAIVDHEKIGD	(12) PVGCTATVIKLLFDKTVGEIPKDIAGILLSSILSDITVIFKSATT
U60409_Lm	TVVOGNEGDDSIIVGCIYLAMLFDKQP	(44) QIAHMLVDIALLNASVWLY	(14) RVVGVVDHDFDEQ	(11) LRTVGSACTLVTELYRBCGEDVWCPTLLTAPLYLDTVNFPEPAQK
PPX1_Sc	TICVGNESADVDSIASALITYSCQYIYN	(62) ELNSIVDNDNTPKVLKXY	(2) NVVGVVDHDFDLQ	(14) SCSSLVFNHYEKLQGRBREVVMNIAPLLKGAFLIDTSMRERKVB
PRUNE_Dm	HLVWGNESQLEDSAVATLAFVYAQRH	(48) DIVNIVDHHVSLAPNVT	(1) NVTIIVDHEPLED	(18) SVGSCATLVAQRYLAEQPRSTVAQLLHATVLDITNFPAPAAK
h-prune.1_Hs	HVVLGNEAQLDSTVSALALAFYLAKTT	(52) QULTIIVDHHILSKSDTAL	(2) AVAEVVDHRRPIEP	(12) LVGSCATLVTERILQGAPEIILDRTAALLHGTIILDVNMDLKIG

	Specific motifs	Gis	
RV2837c_Mt	[107] TVNLAASGFGGGRHLAAGYTTGS	1648883	
s111253_Ssp	[123] DFDLQLEPPYGGGHAQAAAANLUDV	1653244	
MGPA_Mg	[102] GINVRDIAIKYCGGHNNASGAIITNK	1045875	
YTOI_Bs	[103] GPVINGLARKYNGGHPPLASGSIYSW	2293259	
AF2029_Af	[102] EVLRRAFDVGSAAGGHAHAAGAQLPLG	2648507	
MJ0977_Mj	[254] AIKYASEKTVNGSGGKHKFAAGAYIPDN	2128614	
MJ1198_Mj	[109] QLMBEIPEASLDGGHECAGSLKFPVEG	2128720	
HP1042_Hp	[137] CDVCELSQMFNGGGRNASGGKIDGP	2314198	
RecJ_Hi	[168] RIHSQHPNMLKFGGHAMAAGLSIRBE	1172895	
RecJ_Hp	[155] DALNGVSSLLLYGGHROAGLSYERK	2313437	
RecJ_Ssp	[165] ALLHSORHLMLFGGHPFAAGLSLPLD	1652638	
YYBQ_Bs	[31] DLSRKTVBELISIDAKEFTLG	(75) TALLKGVVSRKKQVVPVLTG	586817
ICRA_Sg	[31] NLAKSAEELIDIDAKTYPELN	(75) HAFLAGAVSRKKQVVPQLTE	1743856
MJ0608_Mj	[32] VVGKLPKEELINDFKNFDEN	(74) SVFLEGVMSRKKQVVPPLER	1591318
AF0756_Af	[32] AVDDLTFAMDIIKRDYKDFDMS	(75) SVMLDGVMRKKQVVPPLKX	11498362
L2759.9_Lm	[36] DVLAALVPQILRDRYKQFSPK	[105] YLSDDPSISRKK-LVPALSE	1407725
PPX1_Sc	[41] DIKGFVSDILKDYKQVNFQ	(97) MFKLVNVEATRKKQVVPVLEE	730369
PRUNE_Dm	[37] DISKLTLEVLKDKMVKVLQTD	(97) LRQHNVAQRKH-ILPVIKR	1079081
h-prune.1_Hs	[34] DVSGLTTEQMLRDKDQKTYIRQ	(94) YLQNTQVSRKK-LLPILQE	11245938

Fig. 1

Family 2

Family 1

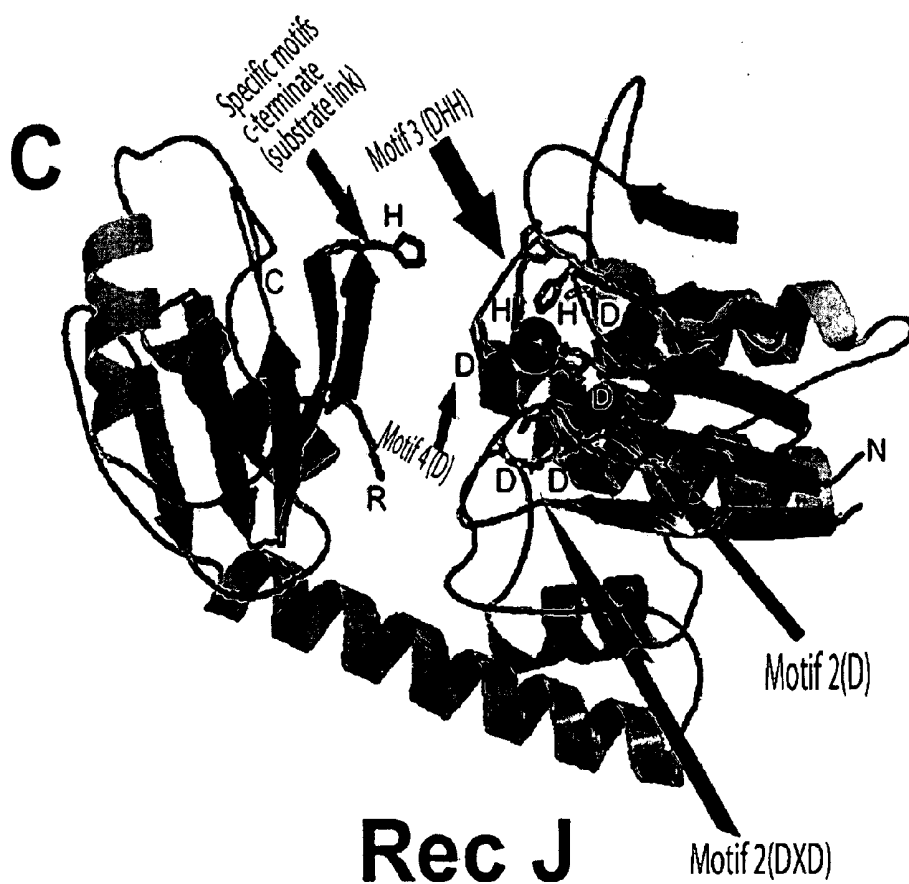
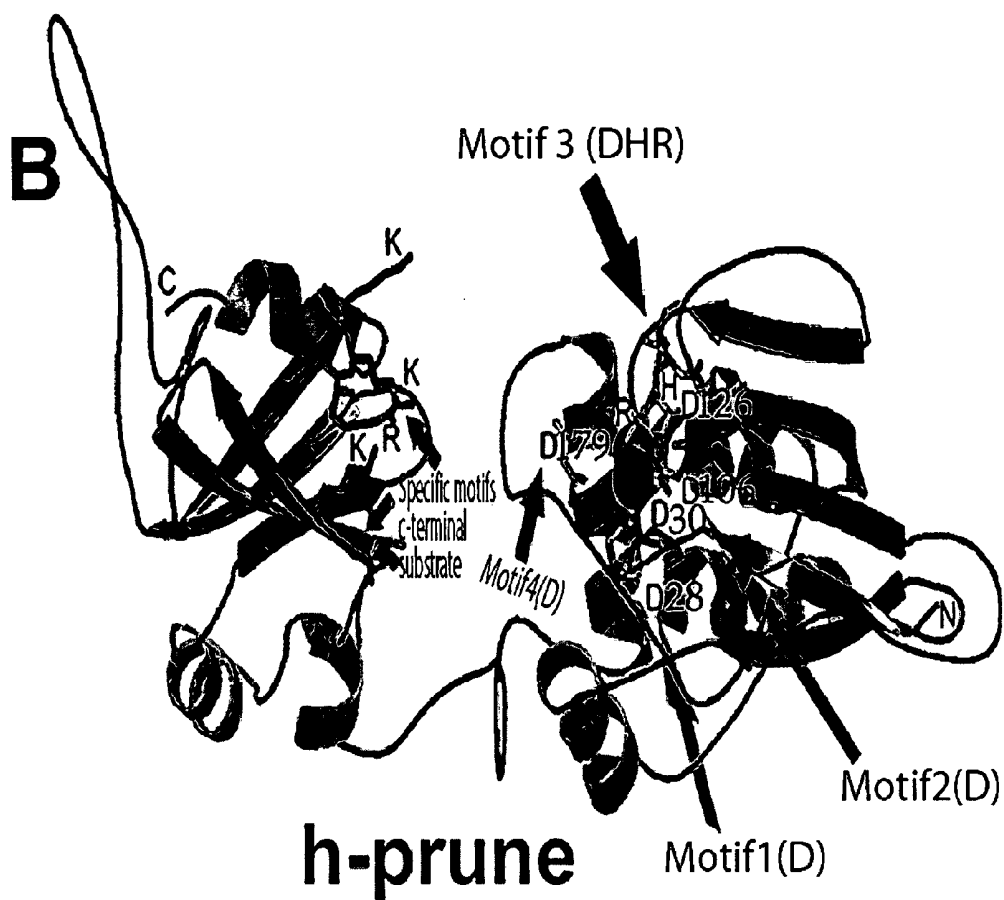
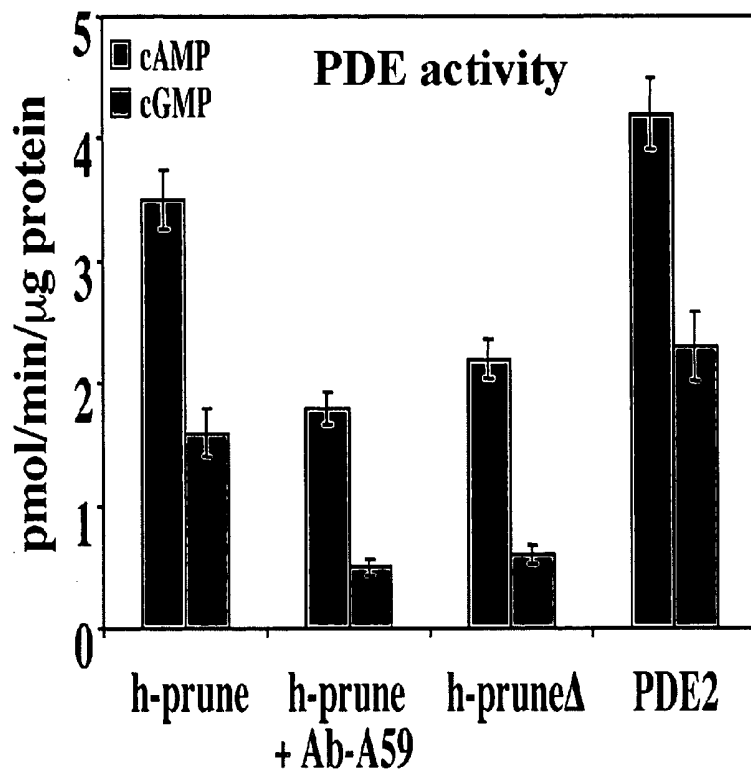


Fig. 1

A



B

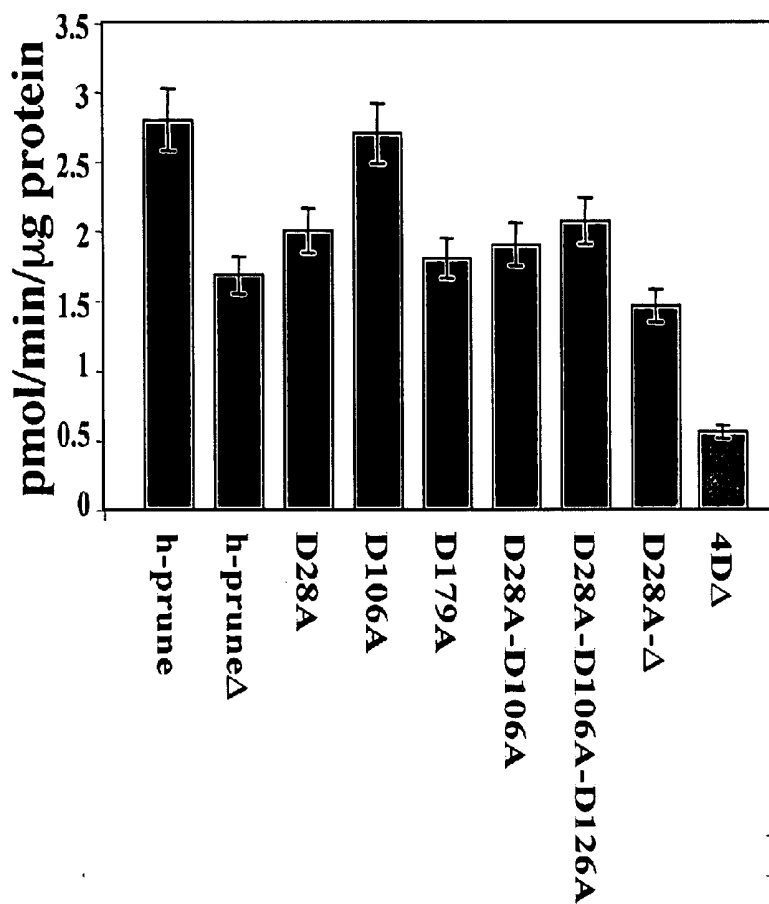


Fig. 2

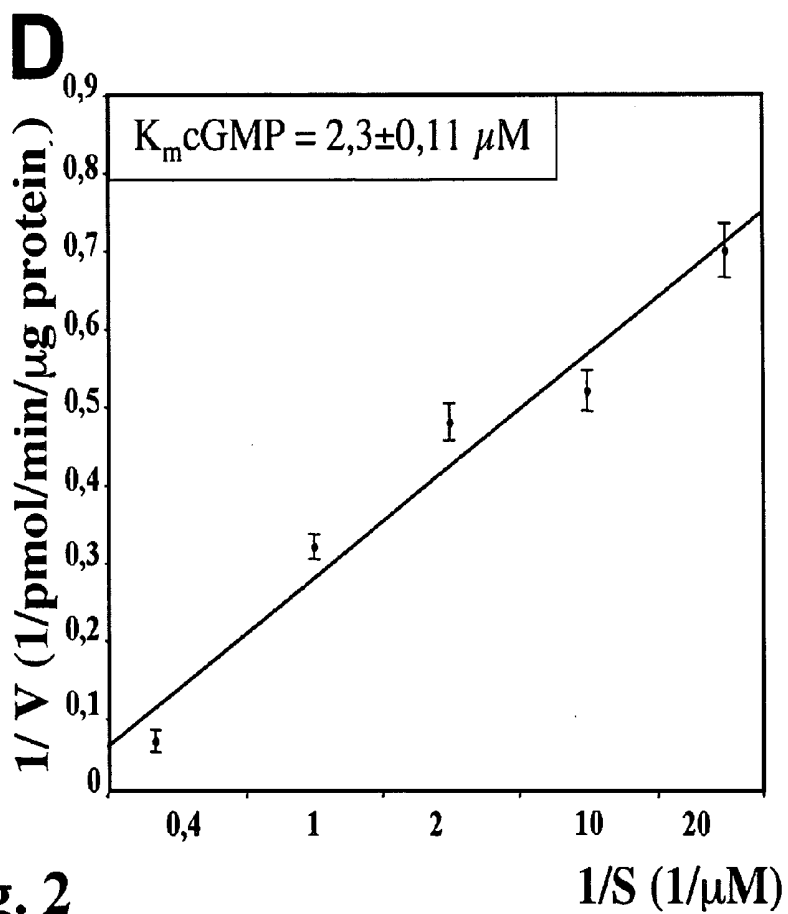
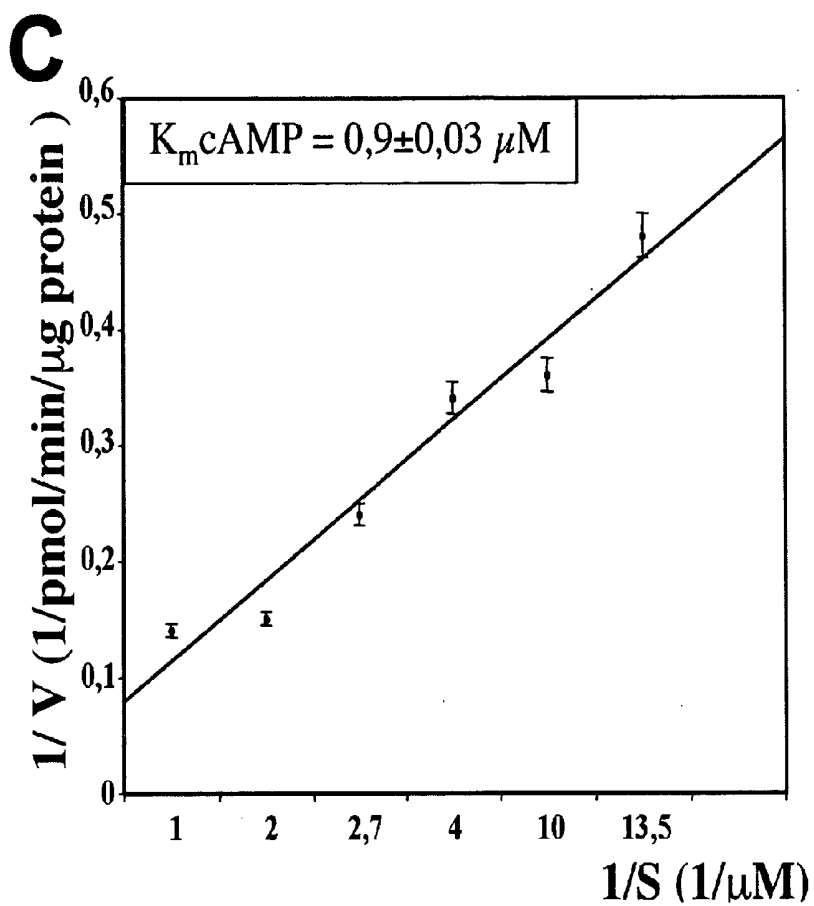


Fig. 2

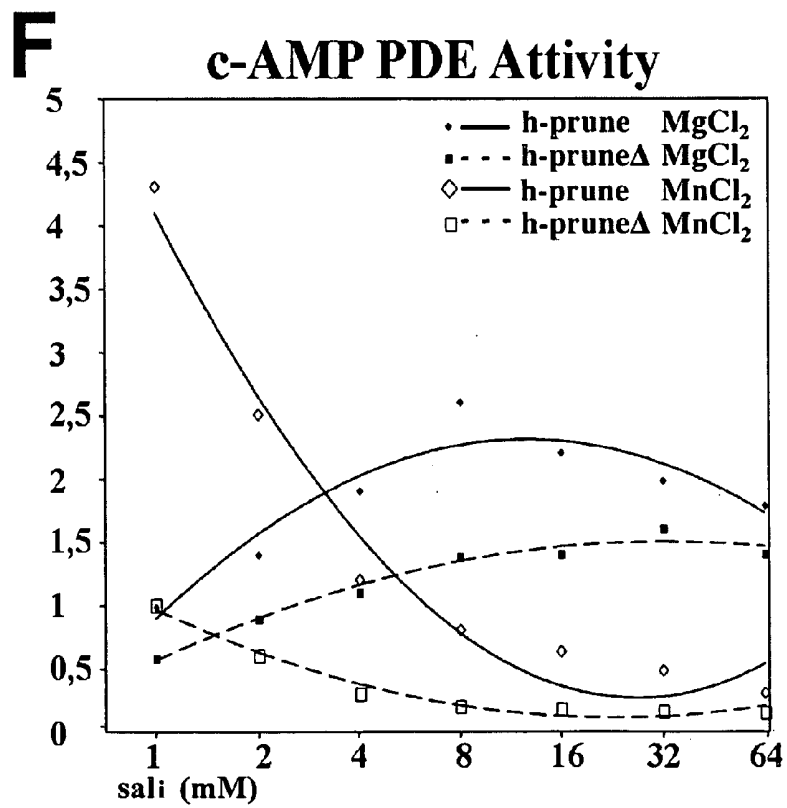
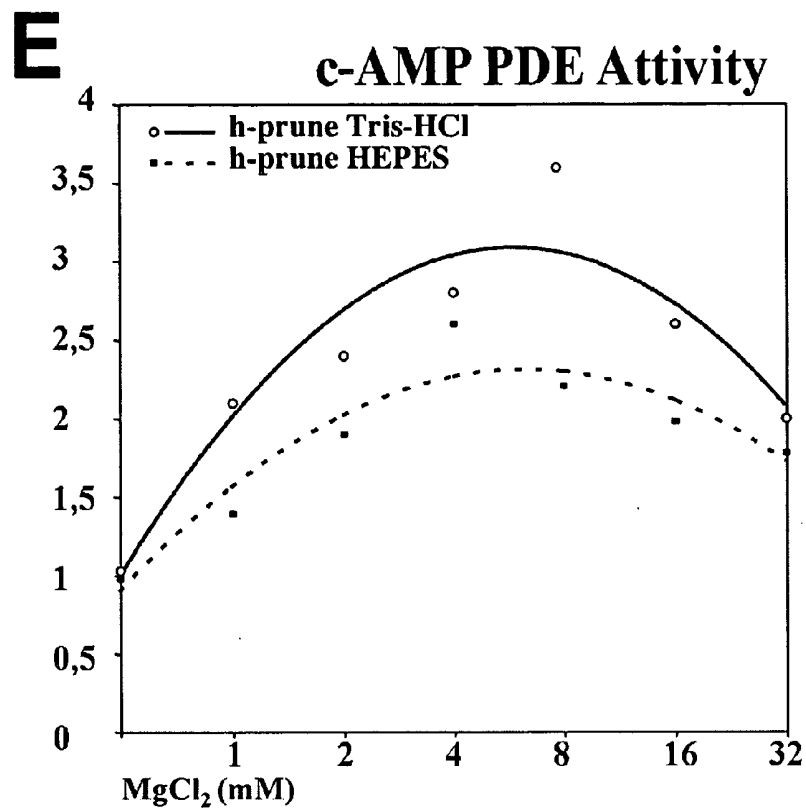


Fig. 2

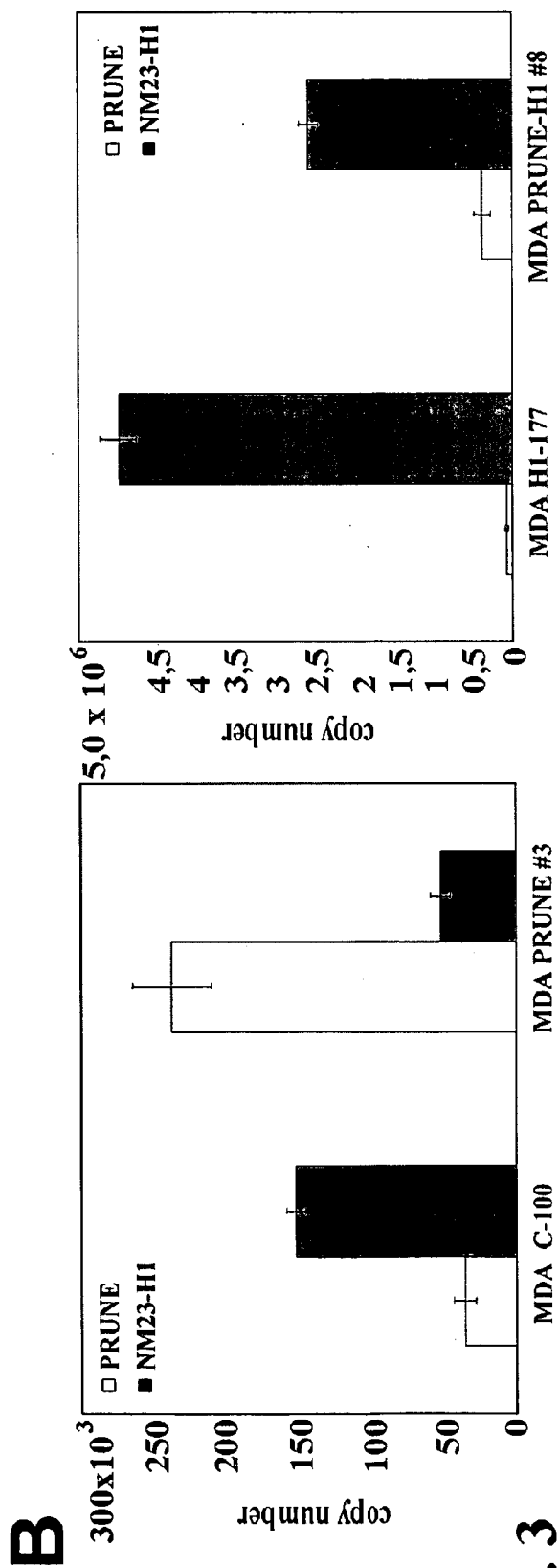


Fig. 3

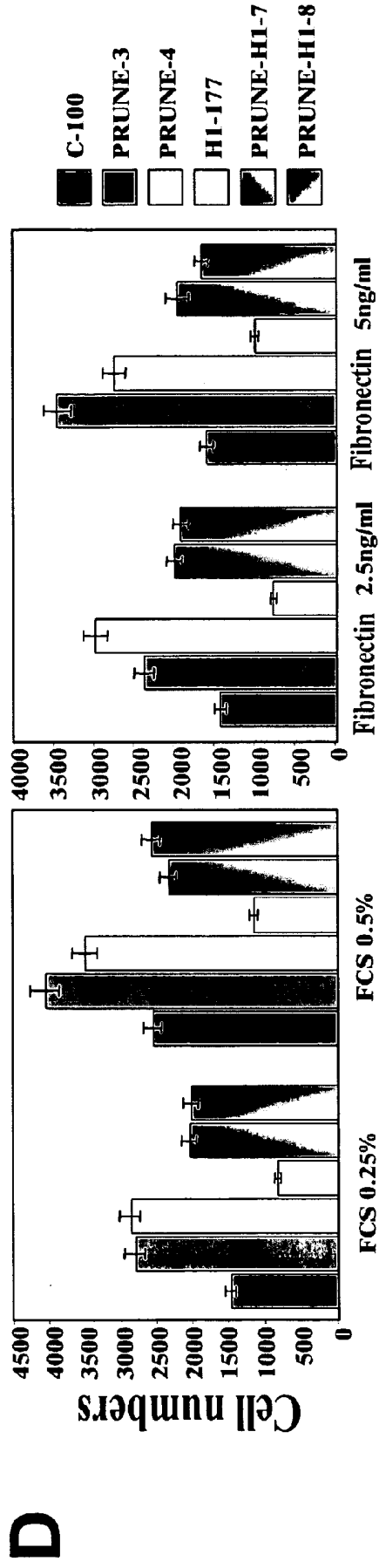
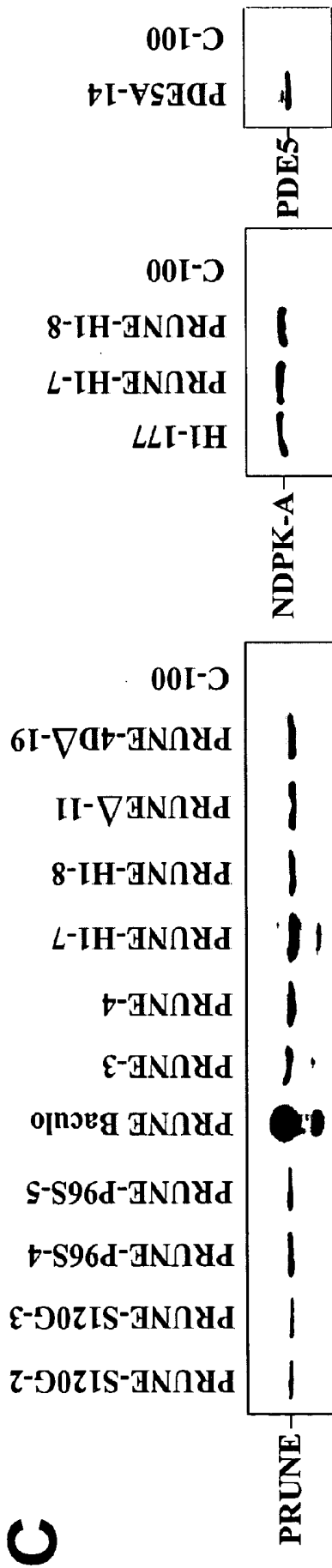


Fig. 3

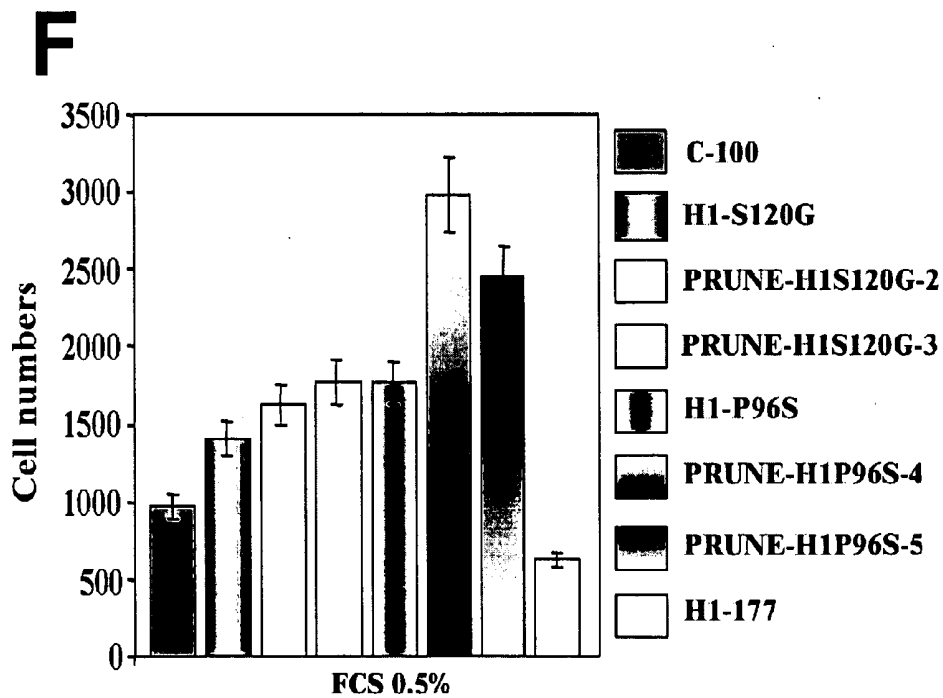
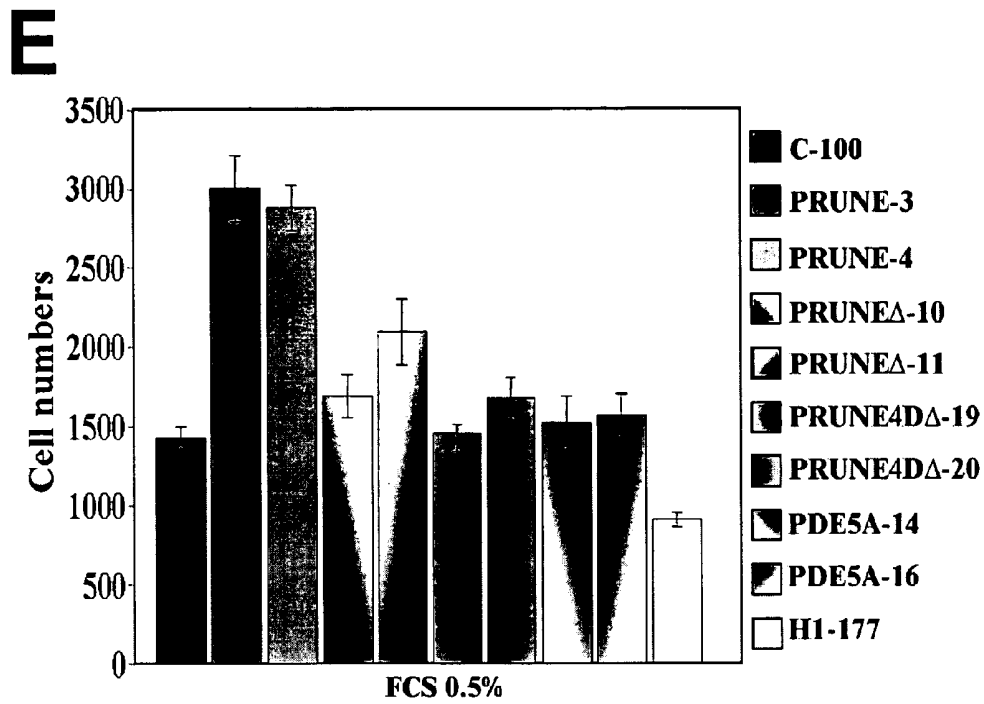
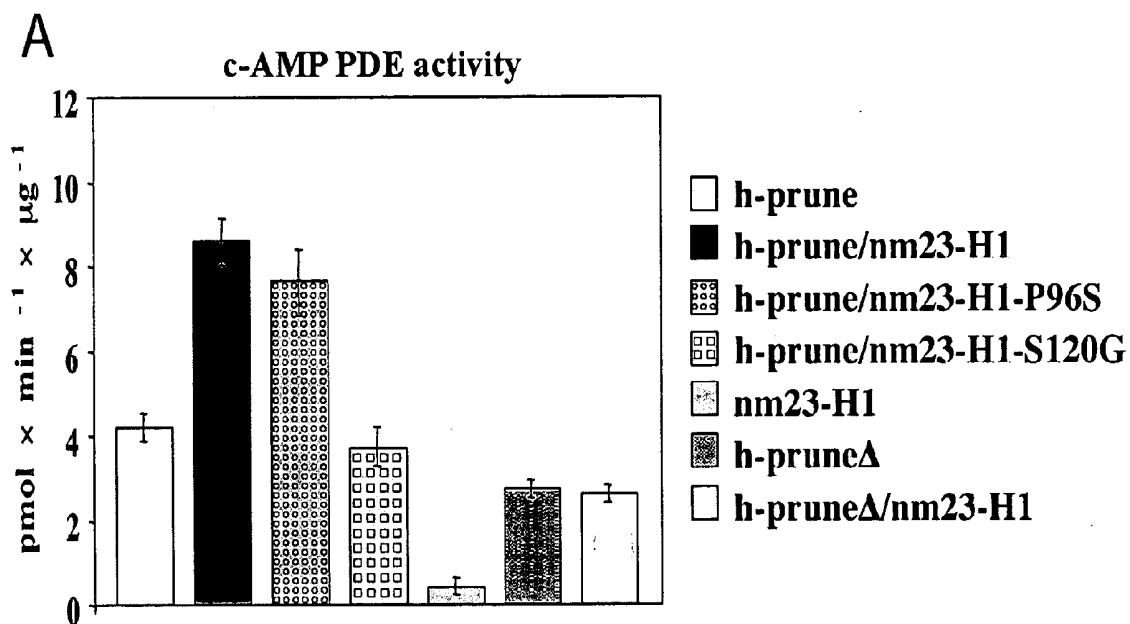


Fig. 3



B

clone name	PDE h-prune Activity (pmol×min ⁻¹ ×μg ⁻¹)	Mobility cell number
MDA C-100	3.8±0.7	1548±84
MDA H1-177	2.2±0.4	928±73
MDA PRUNE #3	35±5.3	2812±294
MDA PRUNE #4	28.7±2.5	3272±271
MDA PRUNEΔ #10	16.8±1.2	1682±64
MDA PRUNEΔ #11	14.6±0.9	2087±97
MDA PRUNE-H1 #7	18.8±2.6	2048±93
MDA PRUNE-H1 #8	22±4.2	2006±87
MDA H1S120G	2.4±0.8	1328±54
MDA PRUNE-H1S120G #2	4.4±1.6	1624±89
MDA PRUNE-H1S120G #3	5.3±1.4	1767±108
MDA H1P96S	3.0±0.3	1742±38
MDA PRUNE-H1P96S #4	19.2±0.3	2982±184
MDA PRUNE-H1P96S #5	11.6±0.4	2448±143

Fig. 4

A

Inibitor	Selective for a PDE type	IC ₅₀ μM	h-prune IC ₅₀ μM
Cilostamide	PDE3	0.05	>100
Dipiridamole	PDE5/6/9/10/11	0.9/0.38/4.5/1.1/0.37	0.78±0.05
IBMX	not selective	2-59	40.2±0.8
Milrinone	PDE3	1.3	>100
Rolipram	PDE4	2.0	>100
Vinpocetine	PDE1C	8.1	22.3±1.1
Zaprinast	PDE1/5/6	6.9/0.76/0.15	>100
Sulindac	cGMP PDEs	—	>100

B

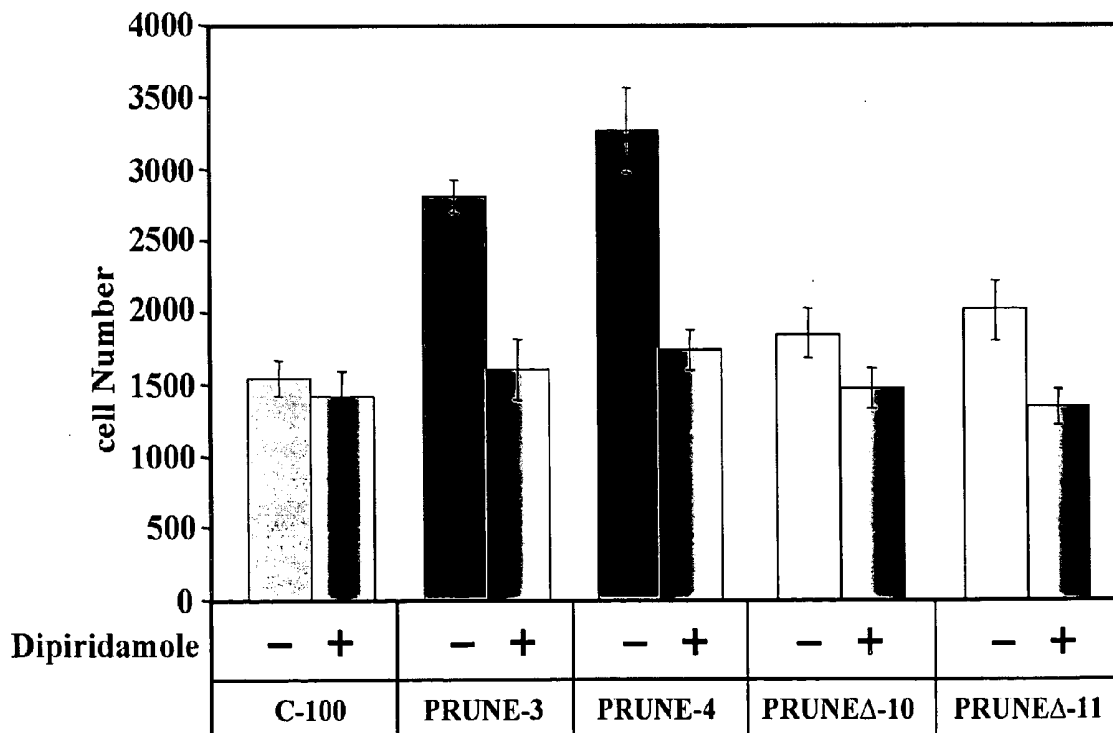


Fig. 5

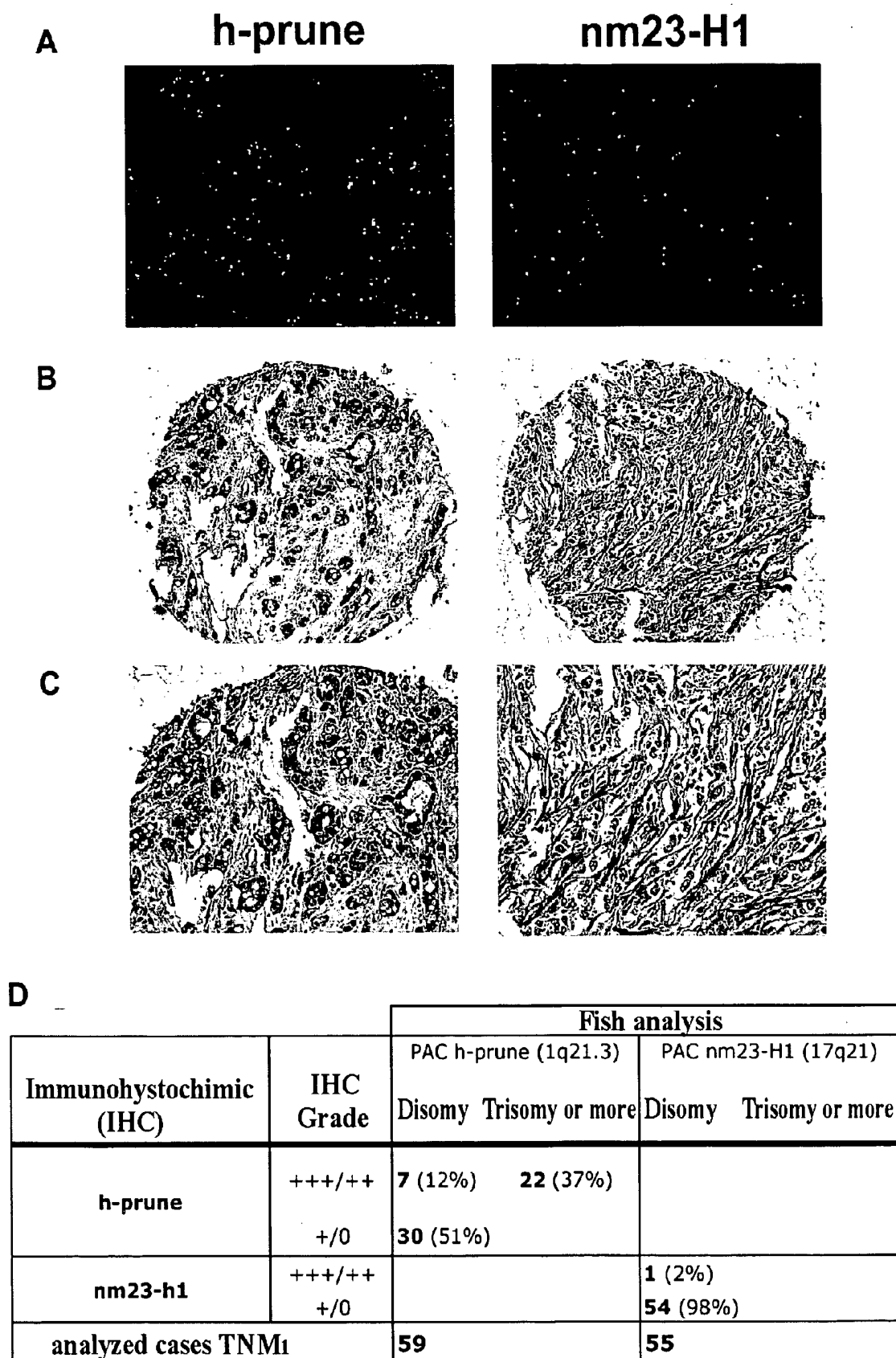


Fig. 6

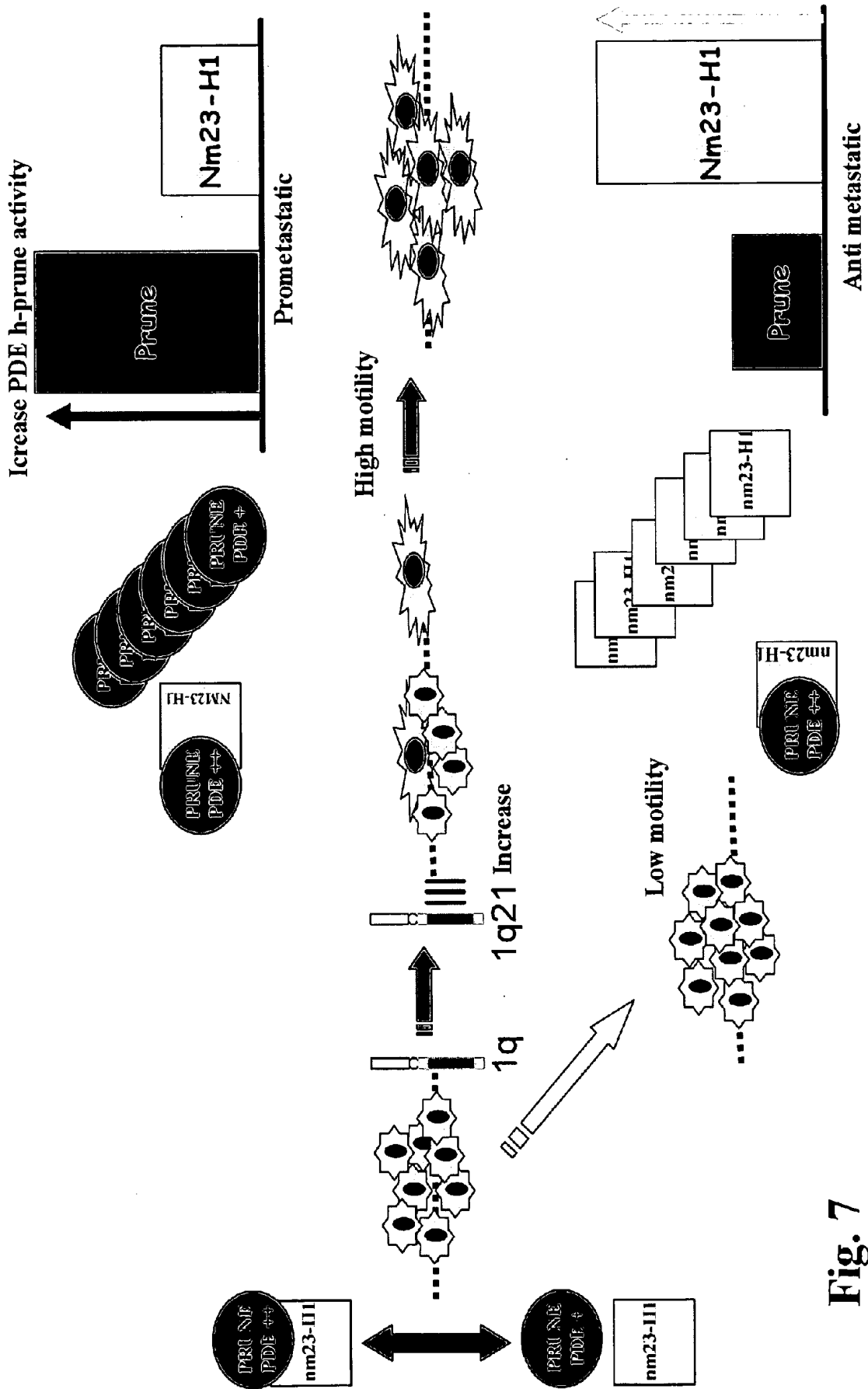


Fig. 7

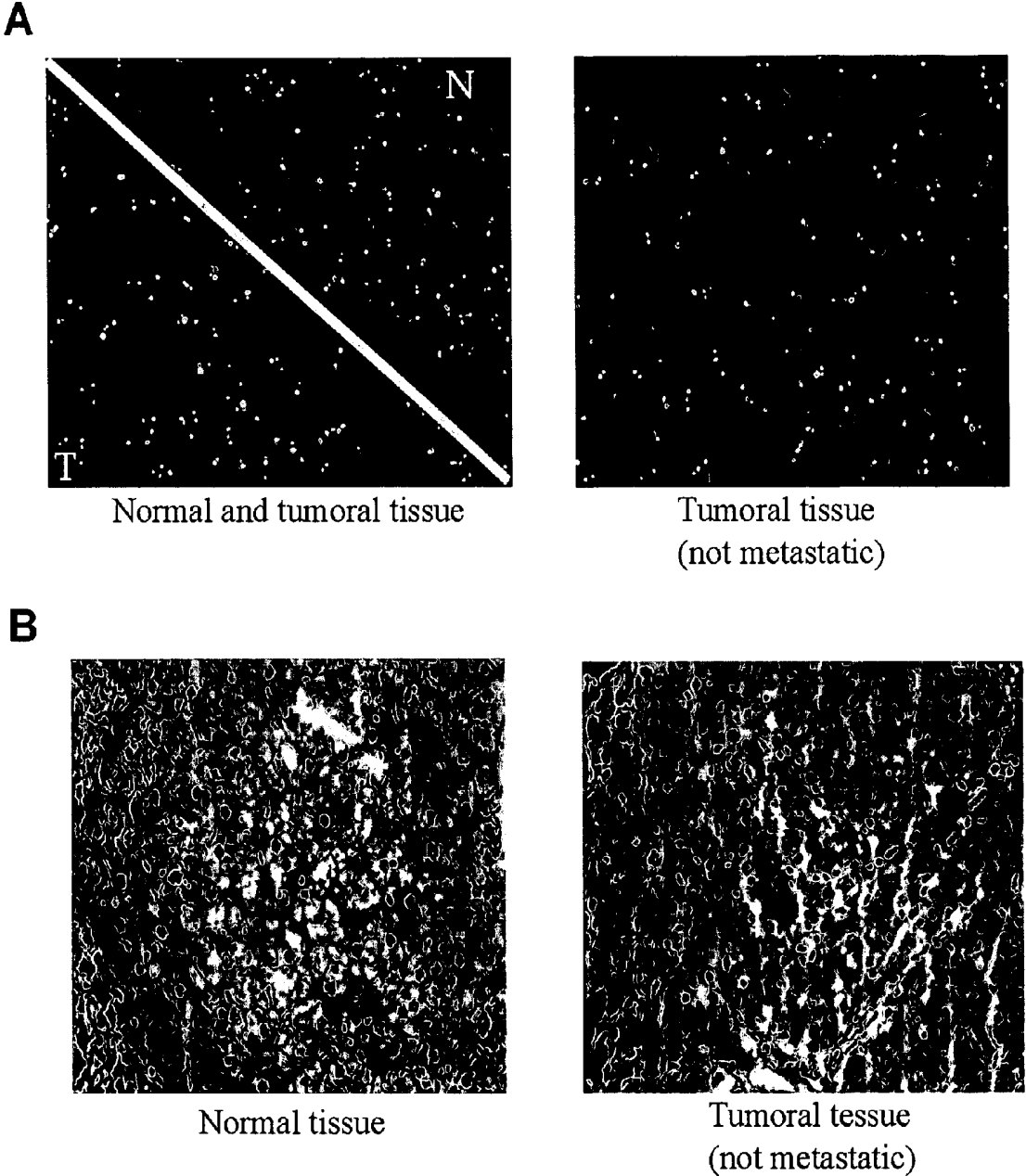


Fig. 8

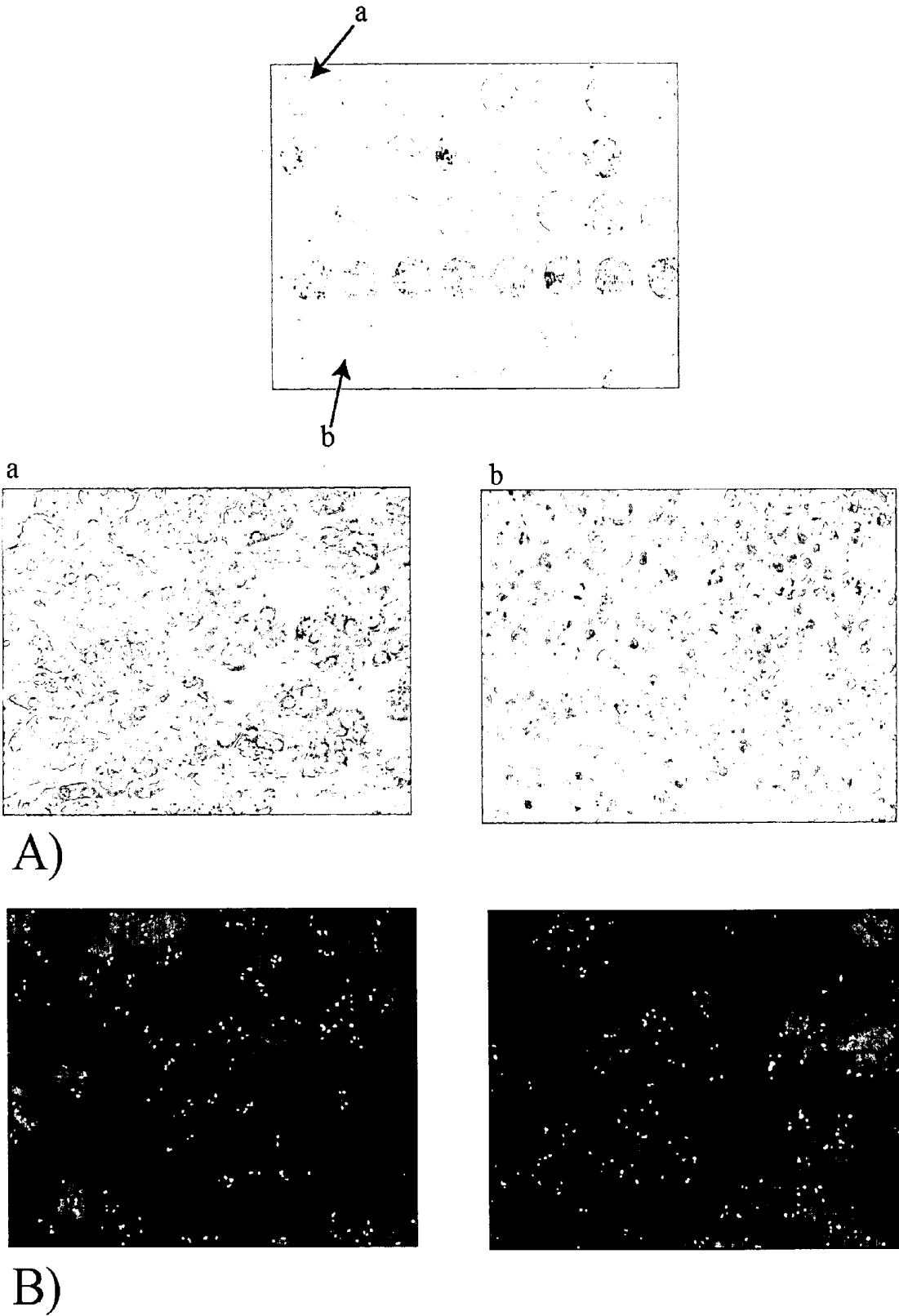


Fig. 9

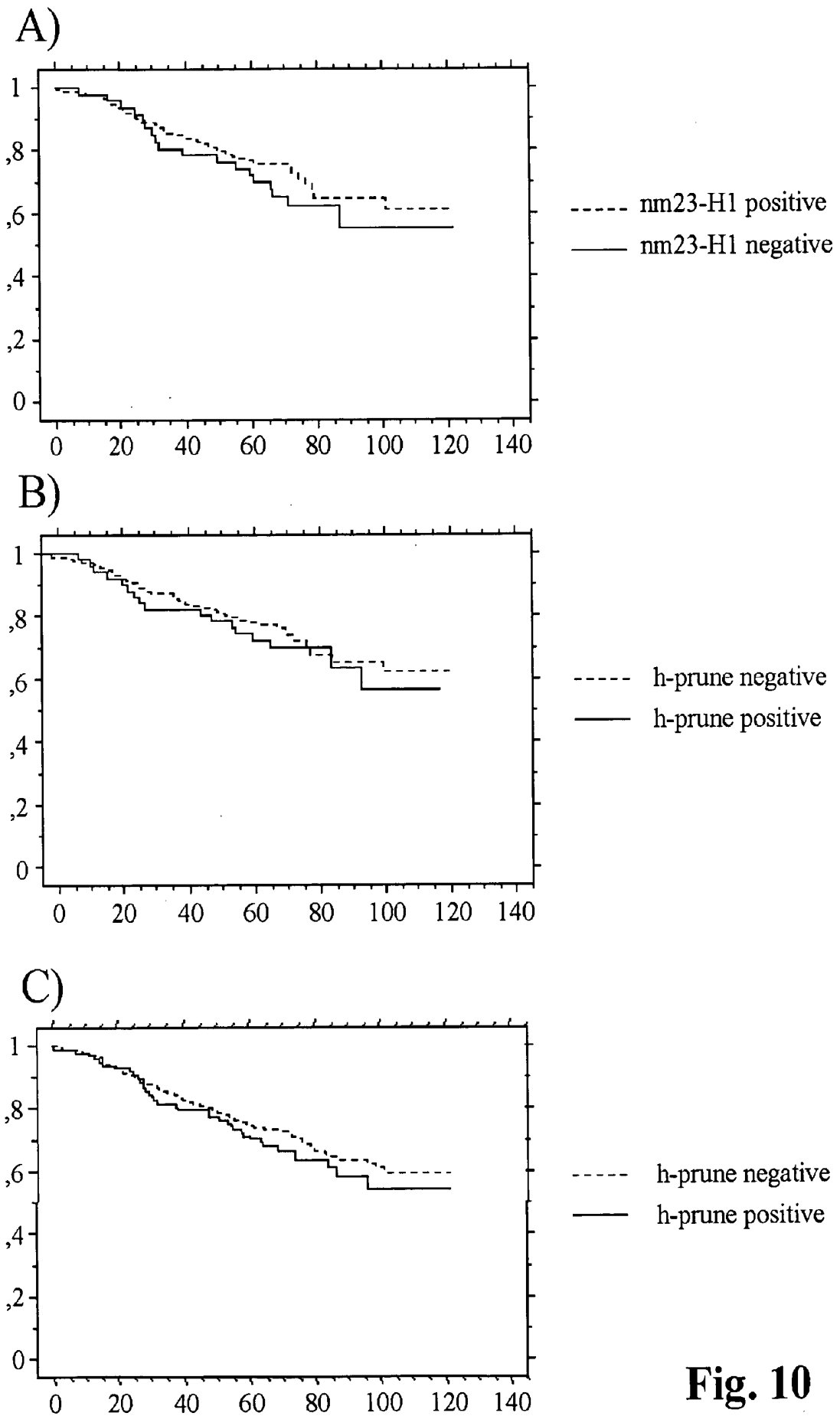
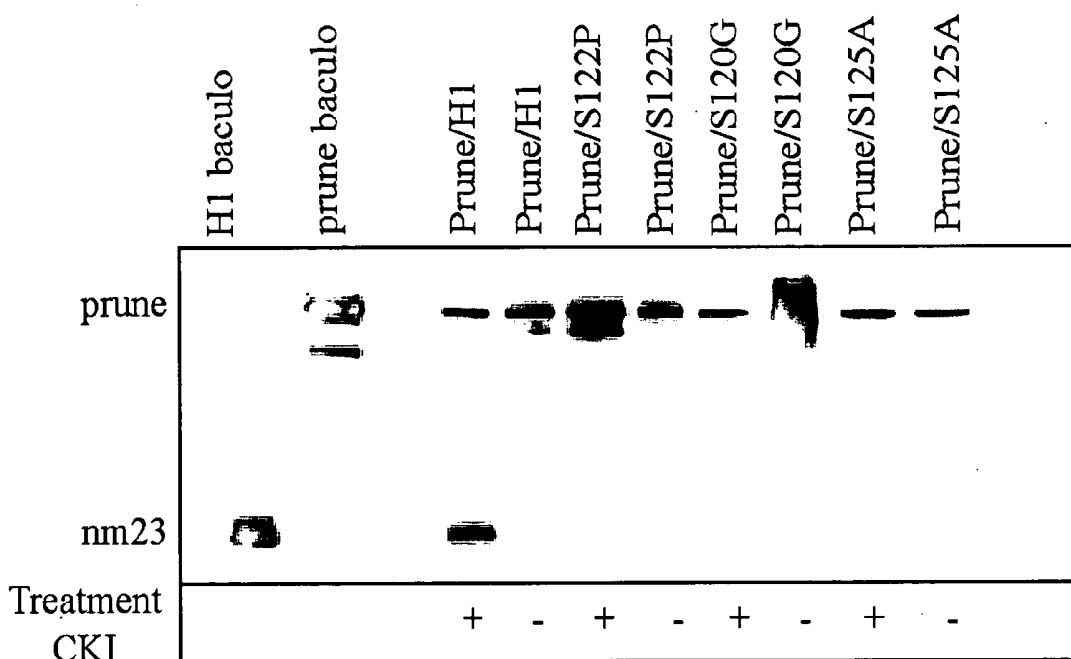


Fig. 10



A)

MYDVDPDYASLGSPVEMA
 NLERTFIAIKPDGVQRGLV
 GEIIKRFEQKGFRLVAMK
 FLRASEEHLKQHYIDLKD
 RPFPPGLVKYMNSGPVVA
 MVWEGLNVVKTGRVML
 GETNPADSKPGTIRGDFCI
 QVGRNIIHGSDSVKSAEK
 EISLWFKPEELVDYKSCA
 HDWVYE

B)

Fig. 11

Voyager Spec #1 MC[BP = 1344,6 2144,9]

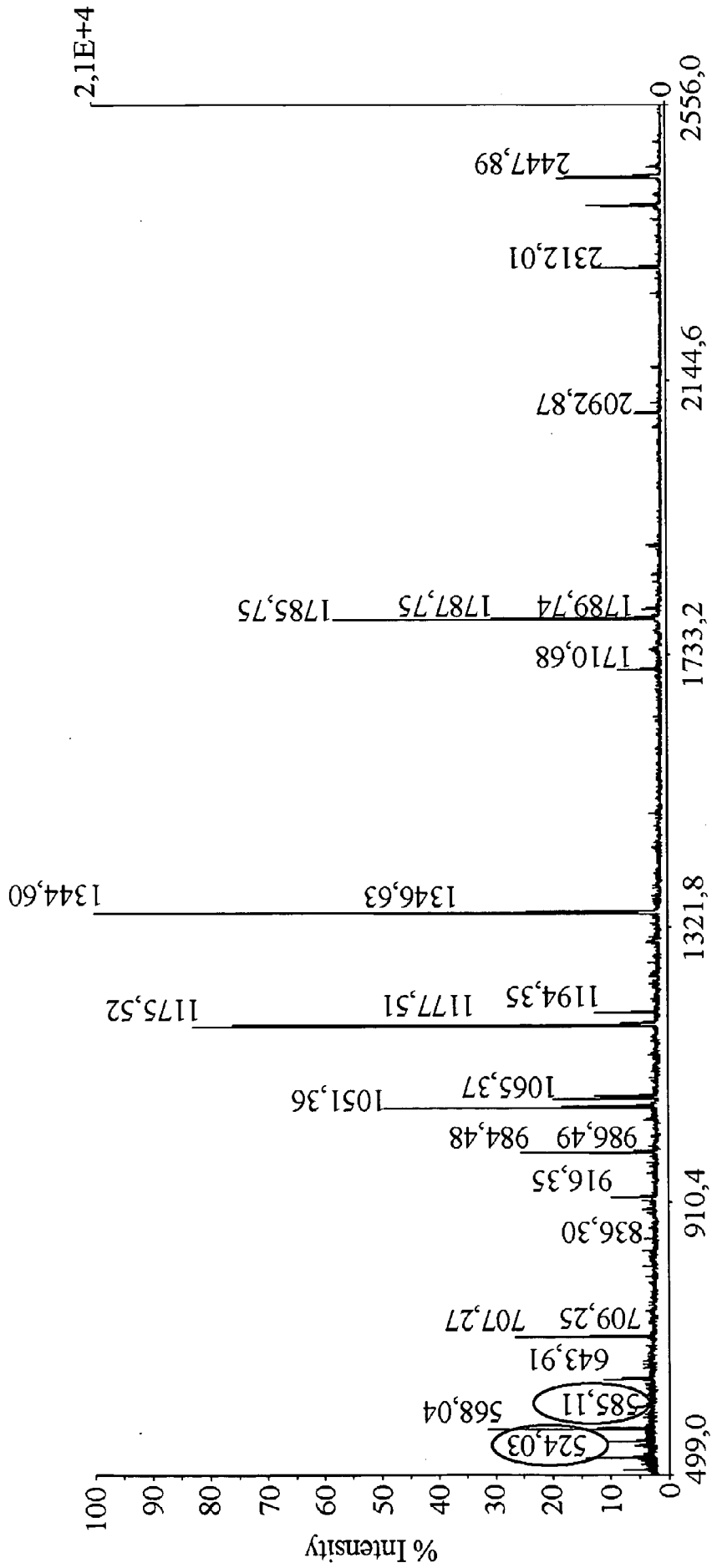


Fig. 11 C

A

	1	2	3	4
CKIδ	+	+	-	-
Isoform Nm23	H1	H2	H1	H2



B

	0h	2h	4h	6h	8h	0h
IC261	—	—	—	—	—	—
CIP	—	—	—	—	—	+
Phosphorecated nmZH1						
Total nm23H1						

C

	1	2	3	4	5
IC261 μMol	—	50	200	—	—

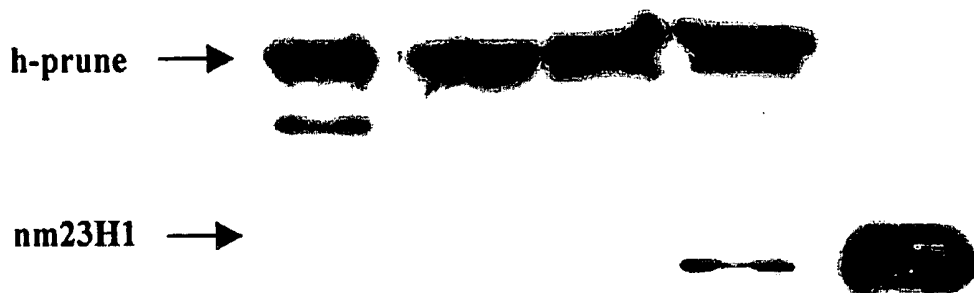


Fig. 12

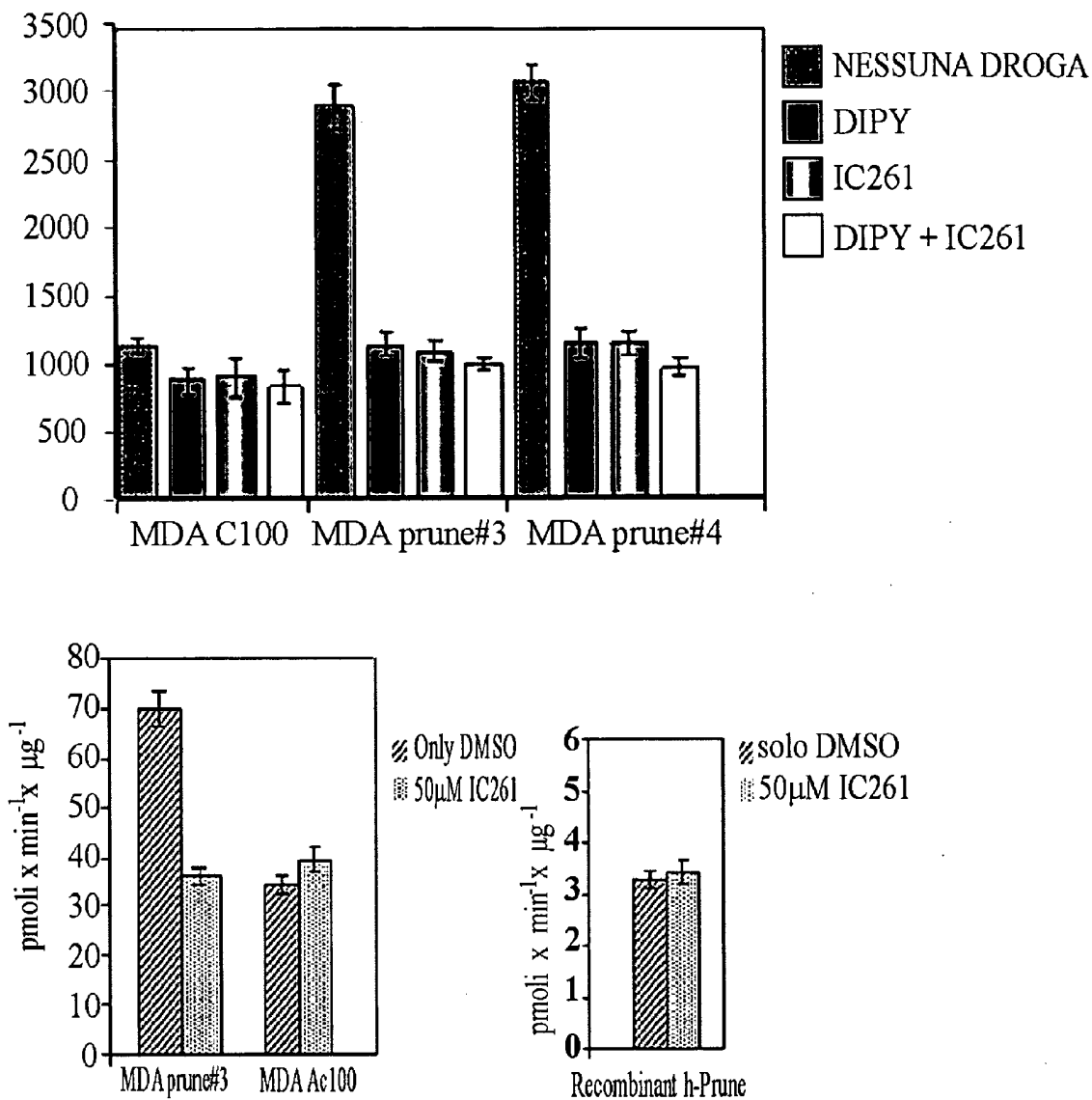


Fig. 13

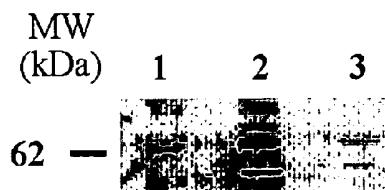


Fig. 14

USE OF ENZYMATIC INHIBITORS OF H-PRUNE FOR THE PREVENTION AND TREATMENT OF THE METASTASES OF TUMOURS OVEREXPRESSING H-PRUNE

[0001] The present invention relates to the use of enzymatic inhibitors of h-PRUNE for the prevention and treatment of the metastases of tumours overexpressing h-PRUNE, screening method for said inhibitors and diagnostic kit for the detection of the metastases thereof.

[0002] More particularly the invention relates to the use of enzymatic inhibitors of h-PRUNE for the prevention and treatment of the metastases of breast tumours, sarcomas, melanomas, neuroblastomas and screening method for said inhibitors thereof. Further the invention relates to a diagnostic kit for metastases of said tumours.

[0003] The human PRUNE (h-PRUNE) protein belongs to the DHH superfamily, which includes several phosphoesterases, such as the nuclear RecJ from bacteria and the pyrophosphatases from yeast and bacteria (Aravind et al., 1998).

[0004] The DHH superfamily can be divided in two main groups on the basis of a —C-terminal motif which is very well conserved within each group but not across the various groups. All the members of this superfamily possess four other motifs containing highly conserved charged amino acid residues predicted to be responsible of ionic bonds and to catalyse the phosphoesterification. The main characteristic of these is the third motif, namely DHH (Asp-His-His), after which this superfamily was named.

[0005] RecJ protein is a DNA repair protein and, along with other nucleases and poorly characterised bacterial proteins, belongs to the first group; while PRUNE and polyphosphatases belong to the second group.

[0006] The gene PRUNE from *Drosophila* was originally characterised on the base of its mutant phenotype showing a brownish-purple colour of eyes due to the reduction of drosoperins, in contrast to the bright red eye of the wild-type fly (Timmons et al., 1996). While homozygous PRUNE mutants are viable and fertile, they are lethal by developing pseudomelanotic tumours in the presence of at least a single mutation copy which interferes with the correct formation of imagine disc which will result in the wing (awd/K-pn; also named Killer of PRUNE).

[0007] Humans encode up to eight orthologs of awd gene (nm23), at least four of which encode for active nucleoside diphosphate kinases (NDKPs) which catalyse the phosphoryl group transfer from a nucleoside triphosphate to a nucleoside diphosphate (Lombardi et al., 2000).

[0008] Several tumours and highly proliferative cells overexpress nm23-H1 mRNA and the protein thereof and in most cases this overexpression is linked to early stages of cancer. Breast cancer is a complex disease which presents a difficult clinical management due to its biological heterogeneity and its wide spectrum of responsiveness to treatment (Keen et al., 2003). Improved knowledge of molecular mechanisms underlying tumourigenesis allowed the identification of an increasing number of biomarkers which have been correlated with various cancer prognosis at different steps of pathology development, thus resulting in the choice of the most suitable therapeutic treatment (Keen et al., Domchek et al., 2002).

[0009] Among well-established prognostic factors currently used in cases of primary breast cancer there are lymph

node involvement, histological examination, tumour size, estrogen and progesterone receptor status, proliferation index, nuclear or histological grade (Kuru et al., 2003, Morabito et al., 2003). It would be useful to provide new molecules involved in subsequent transformation, invasion and metastases processes to be used as markers for the prognosis of the subsequent steps in the tumour pathology development.

[0010] In breast cancer and melanomas high expression of human nm23-H1 is associated with a decreased metastatic potential (Florenes et al., 1992). For the specific case of breast cancer the spread of metastases is responsible for virtually all cancer deaths.

[0011] To become invasive tumour cells need to change their adhesive properties, loose contact with other cells in the primary tumour and establish new contacts with the extracellular matrix of the host cells of tissues they invade. Within this context the modulation of protease activity surrounding the tumour cells, plays a critical role. To migrate from the primary tumour and exit the circulatory system for colonising secondary organs, tumour cells also need to gain motility functions.

[0012] To date several metastases suppressing genes have been isolated and characterised (Steeg et al., 2003). Within this group nm23 is known to induce a decrease of cell motility when it is overexpressed in tumour breast cells (Freije et al., 1997, Hartsough et al., 2001, Freije et al., 1997), influence anchorage-independent colonisation and induce the differentiation (Kantor et al., 1993; Leone et al., 1993; Howlett et al., 1994; Hartsough et al., 1998, Lombardi et al., 2000). In addition it has been demonstrated that an overexpression of nm23-H1 in the aggressive breast cancer cell line clone MDA-C100 significantly reduces its metastatic phenotype both in vitro and in vivo (Hartsough et al., 2000, Mao et al., 2001, Tseng et al., 2001).

[0013] The inventor in a previous study has demonstrated the interaction between h-PRUNE and nm23-H1 and the disruption of this interaction by nm23H1-S120G mutation (Reymond et al., 1999). Further it has been disclosed that amplification of several copies of h-PRUNE results in induction of cell proliferation and high levels of h-PRUNE expression, compared to the moderate or low nm23-H1 levels, are correlated to increased aggressiveness of sarcoma and breast carcinoma tumours (Forus et al. 2001).

[0014] Accordingly it is apparent the need to provide compounds suitable to inhibit the enzymatic activity of h-PRUNE to be used advantageously for the treatment and prevention of tumours and metastases thereof characterised by the overexpression of h-PRUNE.

[0015] Now the author of the present invention has identified a new enzymatic activity of h-PRUNE particularly correlated to metastases, particularly of breast cancer, and susceptible to therapeutic enzymatic inhibition. In fact, the author has now discovered that h-PRUNE possesses a cyclic nucleotide phosphodiesterase activity with a preferential affinity for cAMP over cGMP as substrates, which can be effectively suppressed by some phosphodiesterase inhibitors.

[0016] In addition, through the study carried out by the author of the pre-sent invention, it was found that h-PRUNE enzyme results to be overexpressed with concurrent decrease of nm-23 expression in metastatic tumours in several tissues. Further it was found a direct correlation between increased activity of cAMP-PDE h-PRUNE and cell motility, due to a physical protein-protein interaction with nm23H1, in a breast tumour model. This discovery underlines the interaction between h-PRUNE and nm23-H1 resulting in the modifica-

tion of the protective function of nm23-H1 in the cell proliferation and suppression of the tumour metastasis processes.

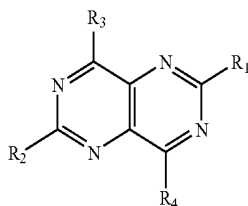
[0017] According to a further aspect of the invention, the possible role of h-PRUNE as potential independent marker for prognosis of the clinical development of breast cancer was evaluated by studying the distribution of the expression of h-PRUNE protein and of nm23-H1 in a group of patients with breast carcinoma. Particularly, the h-PRUNE overexpression, distributed homogeneously among the various analysed clinical cases, offers the chance of an advantageous use of the protein as prognosis marker independently from other factors such as, for instance, tumour type, histological sizes, estrogen and progesterone receptors reactivity, lymph nodes involvement. The identification of a new marker is useful to identify the tumours with metastatic potential and make more effective the management of the patients afflicted by breast cancer, in terms of choice of targeted therapy to be adopted.

[0018] Among the phosphodiesterase (PDE) inhibitors which were tested through a suitable screening method for the evaluation of the inhibition of hPRUNE cyclic nucleotide phosphodiesterase activity, diprydamole, a drug already known for its anticoagulant properties, has revealed the highest ability to inhibit the h-PRUNE activity in terms of IC_{50} , both in vitro and breast cellular model. Also vinpocetine and 3-isobutyl-1-methylxanthine (IBMX) in the screening shown promising values of IC_{50} for the h-PRUNE inhibition; the data from this selection suggest to address the screening to structural analogous, derivatives and isomers of the above mentioned three compounds.

[0019] Finally, in vivo analysis of many metastatic breast tumours confirmed the existence of a direct correlation between increased levels of h-PRUNE protein and negative regulation of the nm23-H1 expression, which results in the distant metastasis formation as reported in the clinical follow-up study.

[0020] Therefore it is an object of the present invention the use of inhibitors of h-PRUNE cyclic nucleotide phosphodiesterase activity for the preparation of a medicament for prevention and treatment of tumour metastases characterised by an overexpression of h-PRUNE, such as, for instance, breast carcinoma, sarcoma, neuroblastoma, prostate tumour, pancreatic tumour, colonic tumour, rectal tumour, medulloblastoma, epithelioma, epatocarcinoma, cell T or cell B lymphoma, myeloma and melanoma.

[0021] Particularly the present invention relates to inhibitors of h-PRUNE cyclic nucleotide phosphodiesterase activity having the following general formula (I):



(I)

wherein R1 and R2, which are the same or different, can be selected from the group consisting of amino alcohol, amino alkyl, cholesterol;

wherein R3 and R4, which are the same or different, can be selected from the group consisting of eterocyclic aromatic or aromatic rings. Preferably the eterocyclic aromatic rings can

be selected from the group consisting of pyrazole, pyrrole, imidazole, pyridine, pyrimidine, morpholine. In a preferred embodiment of the present invention R1 and/or R2 are diethanolamine and R3 and/or R4 are pyrimidine.

[0022] In a more preferred embodiment of the present invention R1 and R2 are diethanolamine and R3 and R4 are pyrimidine and the inhibitor is diprydamole.

[0023] The present invention further relates to the use of inhibitors of h-PRUNE cyclic nucleotide phosphodiesterase activity which can be selected from the group consisting of vinpocetine, 3-isobutyl-1-methylxanthine, IC261 and derivatives, structural analogues and isomers thereof.

[0024] It is further object of the present invention the use of an inhibitor of h-PRUNE cyclic nucleotide phosphodiesterase activity which is the peptide comprising the following amino acid sequence: NIIHGSDSVESAEKE (SEQ ID No 9). In a particularly preferred embodiment, said peptide also comprises, downstream of the aforementioned amino acid sequence, a further peptide liable of the permeability and having the sequence GGGYGRKKRRRQRRR. Therefore, the peptide characterised in that it is permeable, includes the following sequence NIIHGSDSVESAEKEGGGYGRKKRRRQRRR (SEQ ID No 10).

[0025] It is a further object of the present invention the peptide comprising the following amino acid sequence:

NIIHGSDSVESAEKE (SEQ ID No 9) and in a particular embodiment the peptide comprising the following amino acid sequence:

NIIHGSDSVESAEKEGGGYGRKKRRRORRR (SEQ ID No 10); and characterised in that it is permeable because of the sequence GGGYGRKKRRRORRR.

[0026] It is a further object of the present invention a screening method for h-PRUNE-inhibiting compounds, comprising the following steps:

a) selection of at least one phosphodiesterase (PDE) inhibiting compound or derivative, structural analogue or isomer thereof;

b) administration of said at least one compound at concentration between 0.05 μM and 10 μM to one h-PRUNE overexpressing cellular line;

c) quantitative analysis of the cyclic nucleotide phosphodiesterase activity of h-PRUNE and/or analysis of the cell motility versus the concentration of said at least one compound and the chemo-attractant and selection of the compound able to inhibit said phosphodiesterase activity between values from 0.01 to 1 $\text{pmol}/\text{min}^{-1}/\text{ug}^{-1}$ and/or inhibit said motility up values between 200 and 1200 cells.

[0027] The inhibition of the cyclic nucleotide phosphodiesterase activity of h-PRUNE by a compound tested as inhibitor of said activity can be established by evaluation of IC_{50} for the aforesaid compound.

[0028] The cell line overexpressing h-PRUNE is the following: MDA-C100 435 prune #4 (deposited at CBA in Genoa on Oct. 12, 2004).

[0029] Quantitative analysis of the cyclic nucleotide phosphodiesterase activity of h-PRUNE can be performed by hydrolysis tests of the c-AMP and/or c-GMP substrates. Said substrate is used at concentration between 0.008 μM and 1 μM .

[0030] It is a further object of the present invention a method for the preparation of a pharmaceutical composition comprising the method as above described involving the additional step d) of mixing of at least an identified compound, or

derivative, structural analogue or isomer thereof, along with one or more adjuvants and/or pharmacologically acceptable excipients.

[0031] Furthermore the present invention pertains to the use of h-PRUNE inhibiting compounds selected according to the method as above defined, for the preparation of a medicament for prevention and treatment of metastases of tumours characterised by an overexpression of h-PRUNE, wherein said tumours can be breast carcinomas, sarcomas, neuroblastomas and melanomas.

[0032] Further object of the present invention is a method for detection of h-PRUNE in a biological sample for diagnosis of metastases of the tumours characterised by an h-PRUNE overexpression by immunological assay, FISH analysis, Real-time PCR, in situ hybridization. Particularly, said method may comprise the following steps:

a) bring into contact said biological sample such as, for instance, a tissue section or biological fluid, with at least one monoclonal or polyclonal anti-h-PRUNE antibody, which can be labelled with a radioisotope, fluorescent molecule or enzyme;

b) detection of the antigen-antibody complex;

c) quantitative analysis of the antigen-antibody complex.

[0033] The detection and quantitative analysis of the antigen-antibody complex can be performed through immunohistochemical, immunoprecipitation, immunofluorescence, ELISA, immunoblotting analyses.

[0034] As to the method for the h-PRUNE detection in a biological sample for diagnosis of metastases of the tumours characterised by an h-PRUNE overexpression of h-PRUNE by Real time PCR, the specific primers are:

5' - AGAGATCTTGGACAGGCAAACCT-3' ; (SEQ ID No 1)

3' - CCATGTTGACACAGTCCAGGAT-5' ; (SEQ ID No 2)

or their complementary sequences.

[0035] As to the method for h-PRUNE detection of in a biological sample for diagnosis of metastases of the tumours characterised by an overexpression using in situ hybridization, the labelled probe can comprise the following oligonucleotide sequence:

CTGCATGGAACCATC (SEQ ID No 3)

or its complementary sequence or the sequence wherein T is replaced by U.

[0036] Said labelled probe for Real-time PCR can be linear or circular one (TaqMan, Hybridization probe, Molecular Beacon) and the labelling can be carried out with at least a radioisotope and/or fluorochrome. The labelling with at least a fluorochrome (emitting or exciting type), preferably with 6FAM (6-carboxyfluorescein), can be performed at 3' and/or 5' end of the probe oligonucleotidic sequence.

[0037] It is a further object of the present invention a diagnostic kit for the detection of h-PRUNE in a biological sample for diagnosis of metastases of the tumours characterised by an h-PRUNE overexpression (such as, for instance, breast carcinomas, sarcomas, neuroblastomas, melanomas, prostate carcinomas, rectum colonic carcinomas) comprising at least one monoclonal or polyclonal anti-h-PRUNE antibody, which can be labelled, for instance, with a radioisotope, fluorescent molecule or enzyme.

[0038] The diagnostic kit can alternatively include a couple of specific primers for h-PRUNE that can comprises the sequences:

5' - AGAGATCTTGGACAGGCAAACCT-3' ; (SEQ ID No 1)

3' - CCATGTTGACACAGTCCAGGAT-5' ; (SEQ ID No 2)

or their complementary sequences.

[0039] Finally the diagnostic kit can include at least one labelled oligonucleotide probe for Real-time PCR or in situ hybridization that can comprise the oligonucleotide sequence:

CTGCATGGAACCATC (SEQ ID No 3)

or its complementary sequence or sequence in which T is replaced by U.

[0040] Said labelled oligonucleotidic probe for Real-time PCR can be linear and/or circular one and the labelling can be with at least a radioisotope and/or fluorochrome, preferably with 6FAM (6 carboxyfluorescein) and can be performed at 3' and/or 5' end of the oligonucleotide sequence of the probe.

[0041] It is a further object of the present invention a monoclonal murine antibody able to recognise and bind selectively the h-PRUNE recombinant protein, characterised in that it belongs to the IgM immunoglobulin class and is produced by the 4G3/4 clone (deposited at CBA in Genoa on Oct. 12, 2004). This clone was obtained through the immunization of mice with the whole h-PRUNE recombinant protein in a fusion construct containing at the NH₂ terminal the maltose binding protein (pMAL5 construct). The protein was purified through a maltose affinity column chromatography and then injected in two mice, with 5 boosters, any one with 100 ug of purified protein.

[0042] In addition the present invention pertains to a h-PRUNE (A59) rabbit polyclonal antibody characterised in that it recognises and binds selectively the peptide used for the rabbit immunization comprising the amino acid sequence:

(SEQ ID No 4)
NH₂-Ala-Leu-Glu-Glu-Ala-Val-Ala-Glu-Val-Leu-Asp-

His-Arg-Pro-Ile-Glu-Pro-Lys-COOH

or parts thereof.

[0043] A further object of the present invention is to provide the specific primers for hPRUNE amplification by Real-time PCR comprising at least one of the following oligonucleotide sequences:

5' - AGAGATCTTGGACAGGCAAACCT-3' ; (SEQ ID No 1)

3' - CCATGTTGACACAGTCCAGGAT-5' ; (SEQ ID No 2)

or their complementary sequences.

[0044] Finally, the present invention relates to h-PRUNE-specific oligonucleotide probe for Real-time PCR or in situ hybridization comprising the sequence:

CTGCATGGAACCATC; (SEQ ID No 3)

or its complementary sequence or the sequence in which T is replaced by U.

[0045] Said oligonucleotidic probe for Real-time PCR can be linear and/or circular one and can be labelled with at least one radioisotope and/or fluorochrome, preferably with 6FAM (6-carboxyfluorescein) and said labelling can be performed at 3' and/or 5' end of the oligonucleotide sequence of the probe.

[0046] The present invention now will be described by way of illustration, but not limitation, according to its preferred embodiments, with particular reference to the figures of attached drawings, in which:

[0047] FIG. 1 shows multiple alignment of DHH family phosphoesterases sequences, showing separately the four generic motifs (I-IV) and the motifs diagnostic of the two distinct subfamilies mapping to the second domain; numerals indicate the positions of the first aligned residue in each protein sequence and distances between the different elements (panel A). "Ribbon" structure of the hPRUNE protein based on the crystal structure of PPASE and the RecJ protein (panel B) and "ribbon" structure of the RecJ protein (panel C); the arrows indicate aspartic acids residues (D);

[0048] FIG. 2 shows the identification of h-PRUNE PDE activity on cAMP and cGMP substrates (panel A). Histogram of the analysis of single and multiple mutations mapping the potential catalytic site of h-PRUNE protein (panel B). Lineweaver-Burk plots to determine K_m and V_{max} for both cAMP and cGMP as substrate, respectively, (panels C, D). cAMP-PDE activity measured in the presence of two different buffers at increasing concentrations of Mg^{2+} (panel E). cAMP-PDE activity measured in the presence of increasing concentrations of Mg^{2+} (black points) or Mn^{2+} (white points). Activity plots of both h-PRUNE (solid lines) and h-PRUNE Δ (scattered lines) are shown (panel F);

[0049] FIG. 3 shows stable clones analyses and in vitro motility assays. Examination of mRNA expression of h-PRUNE and nm23-H1 genes by Real Time PCR quantitative analysis; relevant ΔCt values are shown (panel A). Detection of the mRNA expression by Real Time; the copy number of m-RNA is reported (panel B). Western blot analyses using h-PRUNE, nm23-H1 and His-tag specific antibodies, respectively (for PDE5A) indicate the amount of proteins expressed in each individual cell clone (panel C). Cellular motility of MDA C-100 (control), MDA H1-177, MDA-PRUNE and MDA-H1-177-PRUNE cell lines, overexpressing respectively h-PRUNE (clone #3 and #4) alone or h-PRUNE and nm23-H1 (clone #7 and #8), (panel D). Cellular motility of MDA C-100 (control), MDA-PRUNE (clone #3 and #4), MDA-PRUNE Δ (clone #10 and #11), MDA-PRUNE4D Δ (clone #19 and #20), MDA-PDE5A (clone #14 and #16) and MDA-H1-177 cell lines (panel E). Cellular motility of MDA C-100 (control), MDA-nm23H1-S120G, MDA-nm23H1-S120G-PRUNE (clone #2 and #3), MDA-nm23H1-P96S, MDA-nm23H1-P96S-PRUNE (clone #4 and #5) cell lines, overexpressing nm23-H1 mutants alone or with h-PRUNE (panel F);

[0050] FIG. 4 shows the in vitro and in vivo h-PRUNE PDE activity analyses; h-PRUNE and h-PRUNE Δ cAMP-PDE activities in the presence of nm23 proteins (panel A). In the panel B table the values of h-PRUNE PDE activity measured as $pmol \times min^{-1} \times \mu g^{-1}$ on whole protein cell lysate are reported;

[0051] FIG. 5 shows the motility histogram representing analysis of the inhibiting activity on PDEs and motility of MDA C-100 (control), MDA-PRUNE (clone #3 and #4) and MDA PRUNE Δ (clone #10 and #11) cell lines (panel A). In the panel B table the inhibition activities on different PDE by

8 tested inhibitors, expressed as values of IC_{50} , are reported; in the last column h-PRUNE IC_{50} values for some most sensitive compounds are shown.

[0052] FIG. 6 shows in vivo analysis of breast tumour associated metastases; FISH analysis on MTA (multiple tissue array) that shows amplification of h-PRUNE (left) and nm23-H1 (right) (panel A). 100 \times and 200 \times magnification of immuno-histochemical analyses (IHC) of two groups of h-PRUNE highly expressing (+++) tumours (left) compared to moderate and low (0/+) nm23-H1 expression level (right) (panels B, C); result table of both FISH and IHC analyses performed on 59 TNM_I breast cancer cases (panel D).

[0053] FIG. 7 shows a model representing h-PRUNE pro-metastatic function in breast cancer

[0054] FIG. 8 shows FISH and immunohistochemistry analyses comparing normal and tumour breast tissues; in panel A FISH analysis on MTA that allows to individualise the h-PRUNE copy number both in normal and tumour tissues (left) and in tumour but no-metastatic tissues (right) is represented; in panel B magnification of the immuno-histochemical analysis performed on two groups of low h-PRUNE expressing (+) tumours is reported;

[0055] FIG. 9 shows expression and cytogenetic analysis of h-PRUNE in breast carcinoma. In the panel A the immuno-histochemical analysis for h-PRUNE expression performed in TMA sections and 40 \times magnification of positive (a) and negative (b) h-PRUNE immunostaining are shown. In the panel B FISH analysis on the same samples employing h-PRUNE/PAC279-h19 as probes and pUC177 as control is reported;

[0056] FIG. 10 shows Kaplan-Meier survival analyses on h-PRUNE and nm23-H1 expression. All cases of breast carcinomas were subjected to nm23-H1 (A) and h-PRUNE (B) immunostaining; h-PRUNE-positive breast carcinomas in the presence (C) or absence (D) of axillary lymph node involvement;

[0057] FIG. 11, A, shows in vitro immuno-precipitation of baculovirus produced h-PRUNE protein and Casein Kinase δ in vitro phosphorylated and not phosphorylated nm23H1, several single mutations in S120-125 region were produced in order to show the complex formation through in vitro immuno-precipitation. The proteins are visible by Western blots using anti-HIS antibodies present in terminal NH2 of the recombinant proteins synthesised in Baculovirus. Lane 1 and 2 shows recombinant proteins as control. Immuno-precipitations were performed with A-59 anti-h-prune polyclonal antibody and the detection by W.B. with anti-His tag (prune/nm23) polyclonal antibodies; FIG. 11B shows protein sequence and MALDI-MS of the protein, phosphorylation-positive serines are in bold type; FIG. 11 C shows COS7 expressed nm23-H2 using pcDNA-HA-nm23H2 construct and anti-HA recognising antibodies, following SDS page gel purification and trypsinization and sent to MALDI-MS molecular weight profile analysis, the identification of peptides and molecular mass thereof was carried out using Voyager mass-spectrometer with a mass increase corresponding to one or two phosphorylations. (80 Daltons, 160 Daltons);

[0058] FIG. 12 A: K73 polyclonal antibody that recognises the peptide correspondent to nm23H1 phosphorylated region, obtained in rabbits, several times affinity purified against the phosphorylated peptide, lane 1 and lane 2 show that baculovirus produced nm23H1 and H2 recombinant protein, when in vitro phosphorylated by casein Kinase δ , is then recognised by the phosphorylated serine recognising IgG enriched spe-

sific K73 antibody. These data show the presence of specific phosphorylation in the Serine 120-125 region by a K73 specific antibody; FIG. 12 C: MDA H1177 were incubated with 50 mMol IC261 at different times, as described in example 4, 30 mg of total extract were analysed for the phosphorylation of nm23 with K73 polyclonal antibody purified against the phosphorylated peptide. Lane 6 (given at 0 h) shows 30 mg of extract, used in lane 1, treated for 1 hour with 10 U of ICP at 37° C. FIG. 12 D, MDA C100 were treated at two different concentrations with IC261 for 6 h, h-prune was immunoprecipitated with A59 polyclonal antibody, the interaction with nm23-H1 was detected through moAb anti nm23H1 moAb (NOVOCASTRA). Lanes 1 and 5 show 20 ng of recombinant h-prune WB positive control and 20 ng of MDAH1177 cellular extract, respectively;

[0059] FIG. 13 A shows cellular motility values (arithmetic mean \pm SD for five independent duplicate assays) following the treatment with dipyrindamole, IC261 or dipyrindamole and IC261; FIG. 13 B (lower left) shows that the presence of IC261 alters the content of linearised cAMP in MDA prune #4 cell (total content of cAMP-PDE activity) showing that the complex is responsible for the PDE-cAMP increase in the cells. In fact FIG. 13 B (lower right) shows that recombinant h-prune protein in vitro in the presence of IC261 do not modify its biological activity, the specific activity value being similar to non-treated protein. From these data IC261 inhibits h-prune-nm23 complex, the latter being responsible for the in vivo increase of phosphodiesterase activity, as it's apparent in MDA prune #4;

[0060] FIG. 14 shows h-prune detection by Western blot with a prune specific monoclonal antibody (4G3/4).

EXAMPLE 1

Structural and Functional Analysis of h-Prune

[0061] Materials and Methods

[0062] Protein Sequence Analysis

[0063] The non-redundant database of protein sequences at the National Center for Biotechnology (NIH, Bethesda) was iteratively searched using the PSI-BLAST program (Altschul et al, 1997). Multiple alignments of protein sequences were constructed using the T_coffee program (Notredame et al., 1993) and corrected on the basis of PSI-BLAST program results.

[0064] Phylogenetic trees were constructed using the Philip Fitch program and Molphy package ProtML program.

[0065] Homology modelling of protein structures was performed by the SWISS-PDB-viewer software and the alignment with the template was manually adjusted to minimise the clashes of the protein backbone. The energy minimisation was carried out using the GROMOS program using a Sippl-like force field.

[0066] The diagrams of the ribbon structure proteins were generated using the MOLSCRIPT program.

[0067] Cell Culture

[0068] HEK-293 and MDA-MB-435 cells were cultured in Dulbecco's modified Eagles' medium supplemented WITH 10% FOETAL BOVINE SERUM, 100 UNITS/ml PENICILLIN, and 100 μ g/ml streptomycin at 37° C. with 5% CO₂.

[0069] Protein Expression and Purification in Baculovirus

[0070] Protein expression was performed using Baculovirus Expression System (Invitrogen). In brief, the cDNA coding for h-PRUNE, nm23-H1 and the nm23-H1 (Mac Donald et al, 1996) and h-PRUNE mutants: h-PRUNEA, D28A,

D106A, D179A, D28A-D106A, D28A-D106A-D126A, D28A- Δ , 4DA (D28A-D106A- Δ -D179A) were subcloned into an EcoRI/XhoI digested pFastBac-Hta vector.

[0071] To produce the h-PRUNE mutant cDNAs, site-directed mutagenesis of the h-PRUNE construct was carried out using the QuikChange III kit (Stratagene) according to the manufacturer instructions (see example 2).

[0072] Virus infection and purification conditions are described in Garzia and coll. (2003).

[0073] Subsequently histidine-tagged h-PRUNE and h-PRUNEA were purified on a MonoQ HR 5/5 column (Amersham) using 10 mM Tris-HCl pH 8.0 buffer. Column elution was performed with a linear gradient from 0 to 0.8 M NaCl, over 20 min and at a flow rate of 1 ml/min. The fractions were further dialysed against 10 mM Tris-HCl, pH 8.0 buffer, and tested for activity.

[0074] The purity of isolated proteins was measured by SDS page electrophoresis analysis.

[0075] Identification and Characterization of the h-Prune Phosphodiesterase Activity

[0076] PDE activity was measured by a cAMP/cGMP detection assay, as described by Fisher et al. 1998 and with a scintillation assay (Amersham-Pharmacia Biotech).

[0077] Samples were diluted and incubated at 30° C. in 100 μ l assay buffer (50 mM Tris-HCl, pH 7.4, 8.3 mM MgCl₂, 1.7 mM EGTA) containing the desired concentration of cAMP or cGMP as substrates (unlabeled to ³H-labeled ratio=3:1).

[0078] All the reactions, including blanks containing alone medium, were conducted in triplicate and allowed to proceed for an incubation time giving <25% substrates turnover (empirically determined).

[0079] Reactions were terminated by adding 50 μ l Yttrium silicate SPA beads (Amersham).

[0080] Enzyme activities were calculated for the amount of radiolabeled product detected according to the manufacturer protocol. As negative controls h-PRUNE pre-incubated with A59 polyclonal antibodies, raised against the motif III region (Apotech Corporation, CH) and h-PRUNEA mutant were used.

[0081] In particular, for PDE activity of h-PRUNE and h-PRUNE mutants 200 ng of purified enzymes were incubated for 10 min at 30° C.

[0082] Lineweaver-Burk plots with K_m and V_{max} values were determined by measuring hydrolysis within a substrate concentration range (0.05-10.0 μ M) and fixed amount of diluted enzyme over 5-40 min. Initial rates were calculated at each substrate concentration and plotted against the latter whereby the kinetic parameters were determined.

[0083] To study the influence of different buffers and nm23 activity on h-PRUNE PDE activity and perform inhibition studies, PDE assay was modified as reported in "materials and methods" section of example 2.

[0084] In Vitro Cell Motility Assays

[0085] Stable MDA clones overexpressing h-PRUNE, h-PRUNEA, h-PRUNE4DA and human PDE5A were produced and analysed as described in "materials and methods" section of example 2.

[0086] Control breast cancer cell line MDA-C100 was used in the cell motility assay, as described previously (Leo et al., 1993) along with nm23-H1 overexpressing cell line (MDA-H1-177), which shows inhibition of metastasis processes in vivo.

[0087] Cellular motility was determined by means of the 6-well trans-well technology (Corning-Costar) using, as final

concentrations, 0.25%, 0.5% FCS, 2.5 and 5.0 ng/ml fibronectin (Sigma), acting chemo-attractants, respectively (for further details see "materials and methods" section of example 2).

[0088] Statistical Analysis

[0089] All the assays, including PDE activity and cellular motility ones, were validated using the T-test method available at <http://www.graphpad.com/quickcalcs/index.cfm>.

[0090] FISH and HIC analyses, tumour clinical case collection and TNM selection are reported in "materials and methods" section of example 2.

[0091] Results

[0092] Structural and Functional Analysis of h-Prune

[0093] An ITERATIVE protein data base search (PSI-BLAST) carried out on h-PRUNE protein, allowed to recover with statistically significant expectation values, the eukaryotic orthologs of PRUNE, followed by inorganic pyrophosphatases from a variety of bacteria and DHH proteins from various organisms, including the RecJ nucleases (FIG. 1, panel C).

[0094] Clustering of the DHH proteins using the BLAST-CLUST program and phylogenetic analysis, using the maximum likelihood method, shows that PRUNE proteins (human and *Drosophila*) belong to the second DHH family, along with the inorganic pyrophosphatases (FIG. 1, panel A).

[0095] While the two families of DHH proteins share a common N-terminal domain that contains the four conserved motifs typical of the DHH superfamily, they are distinguished from each other by their C-terminal domains. Shared N-terminal domain has an α/β fold with parallel β -sheets and contains the absolutely conserved elements of the form DXD (Motif-I), D (Motif-II), DHH (Motif-III) and D/E (Motif-IV) (FIG. 1 panels A and B).

[0096] All of these residues are on the same face of this domain and together form the catalytic site chelating at least two divalent cations. PRUNE proteins contain the form DHR as substitution of the canonical DHH (Motif-III) that is observed in all other members of this family (FIG. 1, panel A).

[0097] In both DHH families, the C-terminal domain contains a core sheet of five strands, four of which form two β -strand hairpins. However, differences in the C-terminal domains between the first and the second family of DHH proteins may contribute prominently to substrate specificity of the two superfamilies. Additionally, C-terminal domain to the DHH module, mammalian PRUNE contains a non-globular extension within which there are some conserved serines that may play a role for regulation of the phosphorylation.

[0098] Structural analysis of h-PRUNE showed similarities to RecJ (Yamagata et al., 2002) and pyrophosphatases (Ahn et al., 2001), thus suggesting a potential similar activity to the latter.

[0099] However, their strong synergistic interactions with the awd/K-pn-like NDPKs suggested that PRUNE proteins might have alternative substrates, such as nucleotides.

[0100] Evolutionary studies about DHH family shown that phosphoesterases are derived from a number of protein folds containing various phosphoesterase and hydrolase domains. These include: the HD fold, from which the classic signalling PDEs are recognised (PDE1-11) (Aravind et al., 1998); the metal- β -lactamase fold (Galperin et al., 1999, Aravind et al., 1999), from which the PdsA-like PDEs are derived; and the calcineurin-like phosphoesterase fold (Aravind et al., 1998), from which Icc-like PDEs are derived.

[0101] The DHH catalytic domain has a very distinct fold from these other families and contains several analogous metal chelating residues (aspartic acid and histidines) that could potentially define an entirely new class of PDEs. In order to test this hypothesis, h-PRUNE was expressed, purified and assayed for potential PDE activity.

[0102] Identification and Characterisation of the h-Prune PDE Activity

[0103] To determine the ability of h-PRUNE to hydrolyse phosphoester bonds in cyclic nucleotides (cAMP and cGMP), h-PRUNE was cloned and expressed using the Baculovirus expression system. His-tagged h-PRUNE and h-PRUNE Δ , a mutation created in the motif III region (DHRP126-129AAAA), were purified by affinity chromatography.

[0104] PDE assay was used to characterize purified h-PRUNE catalytic activity and to determine the specific substrate.

[0105] As shown in FIG. 2, panel A, h-PRUNE possesses significant PDE activity which is higher for cAMP than for cGMP substrate, while h-PRUNE Δ shows a 40% reduction of this activity. As positive control PDE2 was used; the negative controls were both h-PRUNE pre-incubated with A59 specific polyclonal antibody and h-PRUNE Δ .

[0106] To confirm the PDE detected activity, h-PRUNE and h-PRUNE Δ were overexpressed transiently in human HEK-293 cells and then immuno-precipitated and PDE assay was carried out on immuno-precipitated proteins.

[0107] These results indicate that h-PRUNE purified protein, both from insect and human cells, shows PDE activity.

[0108] To identify amino acids potentially involved in the catalytic site, a mutation analysis at single and multiple sites affecting h-PRUNE PDE activity was conducted. All the aspartic acid residues of the DHH characteristic motifs (FIG. 1, panel B) were mutated both alone and in combination (figure 2, panel B). The mutants were expressed using the Baculovirus expression system and purified to homogeneity (80% yield of purification).

[0109] The proteins were tested for their cAMP-PDE activity and it was observed an 80% decrease in the h-PRUNE 4DA (D28A, D106A, Δ , D179A) mutant activity. In summary, D28, D126, H127, R128, P129 and D179 amino acids were found to be essential for h-PRUNE PDE activity, thus indicating that most likely they are part of the catalytic site. Instead, D106A mutation in motif 11 did not influence h-PRUNE PDE activity.

[0110] To define K_m values, the His-tagged h-PRUNE protein was purified to homogeneity by another purification step using ion-exchange chromatography (Mono-Q column) with high purification yield (90%). K_m and V_{max} values were determined by measuring nucleotides hydrolysis with a fixed amount of purified enzyme within substrate concentration range (0.05-10.0 μ M) and considering data points in the reaction linear part. Both cAMP and cGMP are substrates for h-PRUNE and show K_m values of 0.9 ± 0.03 μ M and 2.3 ± 0.11 μ M, respectively (FIG. 2, panels C and D).

[0111] Maximal rates of substrate turnover (V_{max}) were found to be 12.8 ± 0.5 μ mol \times min⁻¹ \times μ g⁻¹ and 16.1 ± 0.8 μ mol \times min⁻¹ \times μ g⁻¹ purified enzyme for cAMP and cGMP, respectively.

[0112] Thus evidence of a cyclic nucleotide phosphodiesterase activity for a protein of the DHH superfamily was pointed out. To study the buffer influence on h-PRUNE PDE activity, Tris-HCl and HEPES buffers were tested in the pres-

ence of same salt and higher PDE activity was observed in the presence of Tris-HCl buffer (FIG. 2, panel E).

[0113] Considering the ion dependence of DHH proteins, it was assessed the Mg^{2+} and Mn^{2+} ion dependency of h-PRUNE in the PDE cAMP assay. Although higher activity found of h-PRUNE in Tris-HCl buffer, PDE assays in the presence of HEPES buffer to avoid oxo-reduction reactions were performed and increasing concentrations of two different divalent ions were used.

[0114] Although some PDE activity was measured in the no-ion buffer, Mg^{2+} stimulated h-PRUNE PDE activity (FIG. 2, panel E); in contrast, in the presence of $MnCl_2$ this activity is inhibited. In addition, the h-PRUNE mutant is not activated by the Mg^{2+} ions, as well as the wild-type protein (FIG. 2, panel F), thus indicating that the motif III, modified in h-PRUNE mutant, is necessary for phosphodiesterase activity. In conclusion, it was shown that h-PRUNE cAMP-PDE activity is influenced positively by the Mg^{2+} ion concentration.

[0115] Stable Breast MDA h-Prune Clones and Correlation to Cellular Motility

[0116] To study the h-PRUNE function in regulating nm23-H1 anti-motility and metastasis suppressing activities, breast cancer MDA-C100 and HI-177 cellular models were employed (Hartsough et al., 2000, Mao et al., 2001, Tseng et al., 2001).

[0117] The MDA-435-C100 cells (highly metastatic breast carcinoma cells, ATCC) were transfected with h-PRUNE gene cDNA in a LTR-containing plasmid construct (pBabe construct, which is employed to generate ecotropic retrovirus in mammalian cells), after transfection, different puromycin resistant clones were obtained (20 culture days to isolate clones), plasmid antibiotic resistance, and selected for h-prune cDNA overexpression thereof under the LTR promoter.

[0118] Several stable clones overexpressing h-PRUNE cDNA (clone #3 and #4, this last deposited at CBA in Genoa on Oct. 12, 2004), h-PRUNE Δ cDNA (clone #10 and #11), h-PRUNE4DA cDNA (clone #19 and #20) and PDE5A cDNA (clone #14 and #16) in MDA-C100 cells were produced. h-PRUNE Δ cDNA in MDA-H1-177 overexpressing nm23-H1 (clone #7 and #8), MDA overexpressing nm23H1-P96S (clone #4 and #5) and MDA overexpressing nm23H1-S120G (clone #2 and #3) was stabilised.

[0119] Some of these clones were characterised to determine the expression level of h-PRUNE mRNA using Real Time PCR analysis by TaqMan technology (FIG. 3, panel A). Four clones were selected for their level of mRNA expression by quantitative analysis and copy number extrapolation, to be compared to target reference gene (GAPDH) (FIG. 3, panel B).

[0120] In addition, Western blot analyses were performed to identify the expression levels of the h-PRUNE, nm23 and PDE5A proteins (FIG. 3, panel C).

[0121] Stable clones produced were then assayed for cellular motility using the Trans-well cell culture chambers (Freije et al, 1997, Hartsough et al., 2001, Freije et al., 1997). 6 independent clones (MDA-C-100; MDA-PRUNE clone #3 and #4, deposited at CBA in Genoa on Oct. 12, 2004; MDA-H1-177-PRUNE clone #7 and #8; MDA-11-177) were assayed. MDA-PRUNE clones have a 2-folds increase in motility when compared to the control cell line MDA-C100 (FIG. 3, panel D).

[0122] Values observed for the MDA-H1-177-PRUNE clone are increased of 2.2 folds as compared to the cell line MDA-H1-177, overexpressing nm23-H1 alone (FIG. 3, panel D). Clone MDA-H1-177 observed value is reduced by at least 40% compared to the MDA-C100 cell line, as previously reported (Hartsough et al, 2001), thus confirming the role of nm23-H1 for the inhibition of cellular motility.

[0123] In order to study the contribution of h-PRUNE PDE activity to cell motility, a motility assay on MDA-C100, MDA-H1-177, MDA-PRUNE (clone #3 and #4 deposited at CBA in Genoa on Oct. 12, 2004), MDA-PRUNE Δ (clone #10 and #11) and MDA-PRUNE4DA (clone #19 and #20) was carried out. These mutants were chosen because of their different ability to influence h-PRUNE PDE activity.

[0124] A 40% and almost complete (90%) decreases of cell motility in MDA-PRUNE Δ and in MDA-PRUNE4DA clones, both compared to MDA-PRUNE stable clones, were observed respectively. To verify whether h-PRUNE PDE activity contributes alone to cell motility in breast cancer cell lines, the clones overexpressing a well characterised PDE (PDE5A) in MDA-C100 (MDA-PDE5A clone #14 and #16) were tested. No increase in cell motility was observed in both PDE5A overexpressing clones (FIG. 3, panel E), thus indicating that only h-PRUNE PDE activity is able to induce cell motility in this conventional cellular model.

[0125] In addition, it has been reported (Freije et al., 1997, Hartsough et al., 2001, Freije et al., 1997) that the nm23H1-S120G (a mutant non-interacting with h-PRUNE) (Reymond et al., 1999) and nm23H1-P96S (a mutant retaining its ability to bind h-PRUNE) proteins are able to induce cellular motility.

[0126] The role of h-PRUNE in cellular motility activity overexpressing mutants with and without h-PRUNE was investigated and this was correlated to cellular motility. MDA-nm23H1-S120G-PRUNE clones show an almost 60% motility increase as compared to the MDA-C100 control cell line, while the MDA-nm23H1-P96S-PRUNE clones show a 200% motility increase when compared to MDA-C100 cells (FIG. 3, panel F).

[0127] In conclusion, the results indicate that overexpression of h-PRUNE in MDA-C100 cells increases cellular motility. h-PRUNE is able to revert the anti motility effect of nm23-H1, thus promoting cellular motility. This effect is not observed when h-PRUNE is overexpressed in the presence of h-PRUNE interaction impaired nm23H1-S120G mutant, thus postulating a role of nm23-H1-h-PRUNE complex on the increase of cellular motility.

[0128] In Vitro and In Vivo h-Prune PDE Activity

[0129] Considering that h-PRUNE and nm23-H1 physically interact (Mac Donald et al., 1996), it was examined whether nm23s may influence the PDE activity of h-PRUNE and the biochemical significance of the nm23-h-PRUNE interaction. This was achieved by pre-incubating nm23-H1 with h-PRUNE purified protein and measuring the cAMP-PDE activity in vitro.

[0130] h-PRUNE PDE activity showed up to a 2-fold increase over the control in the presence of nm23-H1. In addition, to verify that this increased activity is due to a physical interaction, different nm23 mutants were tested. The non-interacting mutant nm23H1-S120G (FIG. 4, panel A) was not able to increase h-PRUNE PDE activity; in contrast, the interacting mutant nm23H1-P96S increased h-PRUNE PDE activity almost as the wild-type nm23-H1, although to a

lesser extent. This is possible because of the lower binding affinity to h-PRUNE, as previously reported (Reymond et al., 1999).

[0131] As a further control experiment, h-PRUNE Δ PDE activity was tested in the presence of nm23-H1 protein, because these two proteins do not interact during coimmunoprecipitation assays. There is no increase in h-PRUNE Δ PDE measured activity (FIG. 4, panel A).

[0132] These results demonstrate a correlation between the direct physical interaction of h-PRUNE and nm23-H1 and the increase of h-PRUNE PDE activity. Furthermore, each stable clone used in the motility assay was analysed for specific h-PRUNE cAMP-PDE activity on immuno-precipitated protein (FIG. 4, panel B).

[0133] As it result from these analyses, the MDA-PRUNE clones have 8 fold increase of cAMP-PDE activity as compared to the MDA-C100 one. Instead, the MDA-PRUNE Δ clones have a 0.5 fold decrease of cAMP-PDE activity as compared to the MDA-PRUNE and this correlates to their cell motility properties (FIG. 4, panel B).

[0134] In addition, it was found that h-PRUNE PDE activity in MDA-h-PRUNE clones compared to stable double MDA-H1-177-PRUNE ones is increased of 1.4-folds (FIG. 4, panel B).

[0135] These results show a direct correlation between h-PRUNE PDE activity and cell motility. Furthermore, MDA-nm23H1-S120G-PRUNE clones have a 3-folds decrease of h-PRUNE PDE activity as compared to the MDA-nm23H1-P96S-PRUNE ones, thus implying a direct correlation among h-PRUNE cAMP-PDE activity, cellular motility and protein-protein interactions. In conclusion, a direct correlation between h-PRUNE PDE function and protein-protein interactions, resulting in a significant influence on cellular motility, was pointed out.

[0136] PDE Inhibitor Studies of h-Prune and Influence on Cellular Motility

[0137] To identify the physiological role of h-PRUNE cAMP PDE activity in the cell a panel of selective PDE inhibitors was tested and it was verified whether any affects h-PRUNE protein activity.

[0138] The ability of h-PRUNE to hydrolyse cAMP was inhibited selectively by dipyrindamole (already known to act against PDE5, PDE6, PDE9, PDE10 and PDE11). IC₅₀ measured for dipyrindamole inhibition of h-PRUNE PDE activity was 0.78±0.05 μ M and this value is lower (higher specificity) than other selective PDE inhibition values (PDE5, PDE9, PDE 10). Only PDE6 and PDE11 have a IC₅₀ value lower than h-PRUNE (FIG. 5, panel A).

[0139] h-PRUNE was also moderately sensitive to IBMX (3-isobutyl-1-methylxanthine) (IC₅₀; 40.2±0.8 μ M), a non-selective specific PDE inhibitor, and vinpocetine (IC₅₀; 22.3±1.1 μ M), a PDE1C specific inhibitor.

[0140] Several other inhibitors used in this study did not affect c-AMP h-PRUNE hydrolysis activity, even when applied at 100-fold higher concentration than for their IC₅₀ values against the other PDEs. Results of the inhibiting studies are summarised in FIG. 5, panel A.

[0141] Data presented above was further verified in MDA-MB-435 breast cancer cell line, in order to study the physiological inhibition in vitro.

[0142] It was chosen to use h-PRUNE overexpressing MDA clones and, as additional controls, MDA-PRUNE Δ ones, because of a partial reduction (40%) of h-PRUNE PDE activity as discussed above (FIG. 2, panels A and B), to verify at which extent dipyrindamole was able to inhibit their activities and correlate them to cellular motility.

[0143] Both the MDA-PRUNE and PRUNE Δ clones were incubated with dipyrindamole (8 μ M, a 10-fold higher concentration than for IC₅₀) for 24 h to obtain the complete enzyme inactivation and then the motility assay was repeated as described above.

[0144] After treatment with dipyrindamole, MDA-PRUNE and MDA-PRUNE Δ clones showed an average motility reduction of 40% and 20%, respectively, showing that the inhibitor acts against h-PRUNE PDE activity thus resulting in substantial decrease of cellular motility (FIG. 5, panel B).

[0145] Breast Carcinoma Study on Metastases Affected Patients

[0146] To verify in vivo the oncogenic role of h-PRUNE we have randomly selected fifty-nine cases for which metastases have been reported (T×N×MI according to TNM classification which describes the anatomical extent of disease (Hejna et al., 1999)).

[0147] Analysis was performed on a tissue multiple array (TMA) containing primary tumour tissues cases that showed metastasis at the time of diagnosis or during follow-up (at least 5 years of follow-up; date of diagnosis: 1992-97).

[0148] FISH analyses, using a PAC containing h-PRUNE (279-H19) as probe, revealed 22 out of 59 (37%) tumour cases with trisomy or higher copy number, indicating amplification of the h-PRUNE genomic region. Only one disomy and none amplification were observed in a total of 55 analysed cases using a PAC containing nm23-H1 as probe (FIG. 6, panel A).

[0149] In addition, immuno-histochemical analyses on TMA were performed using two antibodies (A59, K73) recognising h-PRUNE and nm23-H1, respectively. FISH and immunohistochemical analyses of normal as well as no metastatic cancer tissues were reported.

[0150] According to immuno-histopathology grading, in all of 22 cases (37%) after cytogenetic amplification of h-PRUNE chromosomal region it was also underlined high h-PRUNE protein expression in contrast to low or moderate expression level of nm23-H1, thus suggesting that about one third of breast metastasis formation may be due to both h-PRUNE amplification and overexpression with concurrent diminished level of the nm23-H1 metastases suppressing function.

[0151] In addition, 7 cases (12%) do not present h-PRUNE amplification but possess high h-PRUNE protein level while nm-23H1 level is low (FIG. 6, panel D). This suggests the presence of an alternative mechanism of h-PRUNE overexpression independent from gene amplification.

[0152] These data indicate a metastasis-promoting role of h-PRUNE protein in breast carcinoma.

EXAMPLE 2

Gene Expression Profile of Breast MDA Stable Clones

[0153] Materials and Methods

[0154] Mutants Preparation

[0155] The following oligonucleotides were used to generate h-PRUNE mutants:

h-PRUNE Δ (DHRP126-129AAAA) : (SEQ ID No 5)
 5'-GTA GCA GAG GTG CTA GCC GCT GCA GCC ATC GAG CCG
 AAA CAC-3' ;

-continued

D28A: (SEQ ID No 6)
 5'-GAA GCC TGT GCT TTG GAC TCC-3';

D106A: (SEQ ID No 7)
 5'-ACC CTC ATC CTT GTC GCT CAT CAT ATC TTA TCC-3';

D179a: (SEQ ID No 8)
 5'-GAA CCA TCA TCC TGG CAT GTG TCA ACA TGG-3'.

[0156] Mutated nucleotides are noted in boldface type and the altered codon is underlined. All mutations were confirmed by DNA sequencing.

[0157] Characterization of the h-Prune PDE Phosphodiesterase Activity

[0158] To study the buffer influence on h-PRUNE PDE activity the PDE assay was modified by using 50 mM Tris-HCl, pH 7.4 or 50 mM HEPES buffer, pH 7.5 at increasing concentrations (0, 1, 2, 4, 8, 16 and 32 mM) of MgCl₂.

[0159] To study the ion presence effect the PDE assays were performed in 50 mM HEPES buffer, pH 7.5 (in order to avoid oxo-reduction reactions) at increasing concentrations (1, 2, 4, 8, 16, 32 and 64 mM) of MgCl₂ or MnCl₂ salt. As a negative control, h-PRUNEΔ was used in the same conditions as for h-PRUNE. h-PRUNE activity in the absence of ions was tested after extensive dialysis of the protein against 50 mM Tris-HCl, pH 7.4, 1.7 mM EGTA or 50 mM HEPES buffer, pH 7.5, 1.7 mM EGTA.

[0160] The influence of nm23 (NDPK) activity on h-PRUNE PDE activity was investigated by carrying out the assays with a pre-incubation of purified h-PRUNE with various nm23 (70% purification yield, -H1, -h1-S120G or -H1-P96S).

[0161] The possible effect of nm23-H1 on h-PRUNEΔ was tested by pre-incubating the purified mutant protein with nm23-H1 and performing the PDE assay.

[0162] As to the inhibitor studies, eight different potential inhibitors were tested, namely: cilostamide, diprydamole, 3-isobutyl-1-methylxanthine (IBMX), milrinone, rolipram, vinpocetine, sulindac and zaprinast (Sigma).

[0163] Low concentration of cAMP (0.01 μM) was employed in order to approximate IC₅₀ to K_i. All inhibition studies were carried out in triplicate and were repeated thrice.

[0164] Stable Clones Analyses

[0165] h-PRUNE, h-PRUNEΔ and h-PRUNE4DΔ cDNAs were subcloned into the EcoRI/XhoI digested pBABE vector modified with His-tagged at the N-terminus. Human PDE5A cDNA was PCR amplified by adding EcoRI and XhoI restriction ends in order to clone it into the same His-tagged vector.

[0166] The MDA-C100, MDA-H1-177, MDA-nm23H1-S120G and MDA-nm23H1-P96S clones were transfected with pBABE-h-PRUNE expression vector. MDA-C100 clone was transfected with pBABE-h-PRUNEΔ, pBABE-h-PRUNE4DΔ, and pBABE-h-PDE5A expression vectors.

[0167] Transfections were performed by using Lipofectamine (Invitrogen), according to the manufacturer instructions. Transfectants were selected in Dulbecco's modi-

fied Eagles' medium (DMEM) containing 10% foetal bovine serum, 100 Units/ml penicillin, 100 μg/ml streptomycin and 2 μg/ml puromycin (Sigma).

[0168] In order to prepare the bulk transfected lines, plates containing one hundred puromycin-resistant colonies were trypsinized, and cell lines were thus established.

[0169] Several puromycin-resistant pBABE-h-PRUNE, pBABE-h-PRUNEΔ, pBABE-h-PRUNE4DΔ and pBABE-PDE5A clones were isolated for every MDA clone, transfected and characterised both by Real time PCR and western blot analyses.

[0170] For real time PCR analysis, individual cell clones (MDA-C100, MDA-H1-177, MDA-H1S120G, MDA-H1P96S cell lines, several h-PRUNE- and h-PRUNEΔ stable clones) were plated at concentrations of 7-9×10⁶ cells in 75 cm² flasks.

[0171] mRNA was extracted and purified by TRIZOL® (Invitrogen) and then assayed by TaqMan quantitative Real Time PCR detection system using an ABI PRISM 7000 instrument (Applied Biosystems). Gene primer pairs were synthesised (Applied Biosystems: NME1-P/N 4331182; GAPDH) and Assay on Design was used to construct 6FAM probe sequence (6-carboxyfluorescein) both for the h-PRUNE and h-PRUNEΔ genes:

6FAM-CTGCATGGAACCATC; (SEQ ID No 3)

FOR:
 AGAGATCTTGGACAGGCAAAC; (SEQ ID No 1)

REV:
 CCATGTTGACACAGTCCAGGAT. (SEQ ID No 2)

[0172] Several clones were selected and assayed for their mRNA expression levels by quantitative analysis and copy number extrapolation, as compared to reference target ones (GAPDH)

[0173] For western blot analysis, 15 μg of protein lysate in buffer were analysed by SDS-PAGE on 10% (w/v) or 12.5% (w/v) polyacrylamide gels and were electroblotted onto a PVDF membrane (Immobilon-P, Millipore). The lysates were immuno-detected with h-PRUNE specific polyclonal (A59, raised against the motif III region) for h-PRUNE, nm23-H1 (clone NM301, specific for the H1 isoform; Santa Cruz) for nm23-H1 and Penta-His against a His-tag (QIAGEN) for PDE5A antibodies, respectively.

[0174] After incubation with horseradish peroxidase-labelled anti-mouse IgG, visualisation was performed by enhanced chemiluminescence (Amersham). Eleven cell lines, namely MDA-PRUNE (clone #3 and #4), MDAH1-177-PRUNE (clone #7 and #8), MDA-nm23H1-S120G-PRUNE (clone #2 and #3), MDA-nm23H1-P96S-PRUNE (clone #4 and #5) and MDA-PRUNEΔ (clone #11), MDA-PRUNE4DΔ (clone #19), MDA-PDE5A (clone #14), were selected and proteins were normalised on Western blots.

[0175] In Vitro Cell Motility Assay

[0176] The trans-well technology was used (6-well—Coming-Costar). In the lower wells, 2.5 ml of DMEM containing 0.1% BSA, 100 Units/ml penicillin, 100 μg/ml streptomycin, 5 mM HEPES buffer (motility medium), and the diluted

chemo-attractant were incubated; in the upper wells cells were incubated for 3 hours at 37° C. with 5% CO₂. After the attraction procedure, cells were fixed and stained with Gill n° 1 hematoxylin solution according to manufacturer protocol (Coming-Costar); the cells were finally counted under the microscope.

[0177] FISH Analysis

[0178] PAC 279-H19 (PRUNE—chromosome 1q21.3) and PAC nm23-H1 (nm23H1—chromosome 17q21) labelled by nick translation with dUTP-Cy3 (red) and control pUC177 labelled by nick translation with dUTP-Fluor X (green) on 4 mm-thick formalin-fixed paraffin-embedded tissue sections (pUC177 was provided by Dr. M. Rocchi).

[0179] Nuclei were counterstained with 4',6-diamidino-2-phenyl-indole (DAPI). Two distinct experiments for each case were performed. Digital images were captured using an Olympus computerised epifluorescence microscope provided with COHU Video and Cytovision software. Hybridization signals on intact, well preserved, and non-overlapping nuclei were evaluated by at least two independent researchers.

[0180] IHC Analysis

[0181] MDA tumours were immuno-detected with specific A59 h-PRUNE polyclonal and nm23-H1 antibodies, respectively (clone K73, specific for the H1 and H2 isoforms; Apotech Corporation, CH).

[0182] Intensity of immunohistochemical staining was used to classify the tumour samples as positive if present in at least 20% of cells analysed under the microscope (strong +++, moderate ++, diffusely weak staining + or negative 0 (absent or focally weak staining) for h-PRUNE and nm23-H1 proteins expression.

[0183] Tumour Case Collection and TNM Selection

[0184] Tumour cases have been collected by AUSL1 of Sassari including patients with a minimum of 5 years follow-up. The TNM System classification was applied to this study as described by Sobin (Hejna et al., 1999) was used for describing the anatomical extent of disease and based on the assessment of three components: T corresponding to the extent of the primary tumour (from T0 to T4), N corresponding to absence or presence and extent of regional lymph node metastasis (from N0 to N4), and M standing for the absence or presence of distant metastasis (M0 or M1). The collection of 59 tumour breast cases was categorised as T×N×M1 positive.

[0185] Gene Expression in Breast Cellular Clones

[0186] Probe preparation was carried out according to the following procedure.

[0187] RNA was extracted from MDA-H1-177-PRUNE (clone #8) and MDA-H1-177 clones by TRIZOL® method. Total RNA templates ranging from 15 to 20 ug were labelled using the Amersham CyScribe First Strand cDNA Labelling Kit with the following modifications.

[0188] Reverse transcription time was increased to three hours. The probe was then digested with Rnase-H for 30 minutes at 37° C.

[0189] In order to eliminate the residual RNA, reaction mixtures were incubated with 0.25 M NaOH for 20 minutes and then neutralised with 2.8 M MOPS. The amount of incorporated Cy-dye was calculated for both Cy5 and Cy3. Labelled Cy3 and Cy5 targets were coupled in equal amounts and hybridised onto slides.

[0190] Probes with less of 50 pmoles of incorporated Cy-dye were not used for hybridisation.

[0191] Standard hybridisation protocol was applied to the slides. Two independent sets of experiments were performed.

[0192] Scanning and Image Analysis

[0193] Scanning and Image analysis were performed, respectively, by a Medway Far 2000-I and by Array Pro software from Media Cybernetics. Scanner sensitivity was kept between 900 and 1000 to compensate for both saturation and low intensity. Images in 16-bit format were processed.

[0194] Data Mining

[0195] In order to establish the statistical significance of any observed differences in genic expression between two experimental conditions each experiment was performed in triplicate.

[0196] In order to describe the data significance and variability a T-test was carried out on the several replicated experiments. Cyber-T tool available at the web page <http://www.igb.uci.edu/servers/cybert> was used to apply the test. A cut-off value at p=0.05 was used. As result of this analysis it is expected an almost of 5% false positives in different data sets. Only data sets that passed the test were used (data selection following T test).

[0197] Results

[0198] In order to verify the gene expression profile of the stable clones overexpressing nm23-H1 alone and/or in combination with h-PRUNE, gene array studies were performed using a ready made array containing a 19,000 genes set. This array contains human Unigene cDNA data set spotted on glass slides (Ontario, Canada, Array facility, <http://www.micrarrays.ca/>).

[0199] RNAs from MDA-H1-177 and MDA-H1-177-PRUNE (clone #8) clones were used to perform hybridisation. Two independent sets of experiments were performed on each breast cancer clone and T-test values (p=0.05) were extrapolated (<http://www.tigem.it/zollo/cancer/supplemental/array.html>).

[0200] Expression levels of several genes involved in metastasis processes were found to be differentially regulated in the MDA-H1-177-PRUNE (clone #8) compared to MDA-H1-177 clone, as shown in Table 1. Table 1 summarises array experiments conducted on stable cellular breast clones; in the columns from left to right there are reported: the gene identification with ID number, Unigene reference number and position on human chromosomes; relationship between the array data of MDA-H1-177/MDA-H1-177-PRUNE clone #8 after two independent experiments conducted in duplicate; T-test value, including standard deviation and p value; bibliographical references of genes; processes of corresponding metastasis.

TABLE 1

Gene Identification ID	Signal intensity ratio (H1-177/Clone8)	Signal intensity ratio (H1-177/Clone8)	#obs	Mn	SD	t	P	Gene references	Metastasis correlated processes
310622; W31182; 310622; Hs.181385; uncharacterized haematopoietic stem/progenitor cells protein MDS030; 9: 9p24.1	1.441332	1.442391601	2	1.4418	0.0005	995.8991	0.006	AUTHORS Zhao, M., Gu, J., Li, N., Peng, Y., Han, Z. and Chen, Z. TITLE Novel genes expressed in haematopoietic stem/progenitor cells from myelodysplastic syndrome patient JOURNAL Unpublished	Angiogenesis
489392; AA054454; 489392; Hs.82159; proteasome (prosome, macropain) subunit, alpha type 1; PSMA1; 11: 11p15.1	1.42474	1.423157331	2	1.4239	0.0007	635.9779	0.001	Coux O; Tanaka, K; Goldberg, A; Structure and functions of the 20S and 26S proteasomes. Ann. Rev. Biochem. 65: 801-847, 1996.	Protein Degradation
485121; AA037777; 485121; Hs.25300; phosphatidylinositol 4-kinase type II; PI4KII; 10: 10q24	0.39234	0.394341204	2	0.3933	0.0035	-366.7976	0.0017	16635-40 Minogue S, Anderson JS, Waugh MG, dos Santos M, Corless S, Craner R, Hsuan JJ	Endocytosis and cytoskeleton rearrangement
4692752; BG538790; 4692752; Hs.94881	3.977598	4.013662507	2	3.9955	0.0063	306.9319	0.002	Cancer Lett. 1995 May 4; 91(1): 47-54 Salesiotis AN, Wang CK, Wang CD, Burger A, LiH, SethA	Metastasis
307259; W21103; 307259; Hs.84344; CGI-135 protein; LOC51024; 7: 7q11.22	0.851047	0.857366017	2	0.8542	0.0052	-42.6056	0.0149	Hs.38738 <i>Homo sapiens</i> CLDN15 Claudin 15; Colegio OR, Van Itallie CM, McCrea HJ, Rahner C, Anderson-IM, Claudius create charge-selective channels in the paracellular pathway between epithelial cells. Ann J Physiol Cell Physiol. 2002 Jul; 283(1): C142-7. PMID: 120550B2	Adhesion
4862951; 8076631 6; 4862951; Hs.347991; nuclea r receptor sub-family 2, group F, member 2; NR2F2; 15: 15q26	0.777256	0.787969285	2	0.7825	0.0096	-35.8148	0.0177	Perreira et al. (1999)	Angiogenesis and development
266005; N31521; 266005; Hs.198689; bullous pemphigoid antigen 1, 230/2 40 kDa; BPAG1; 6: 6p12-p11	0.868882	0.862911048	2	0.8658	0.0048	-41.7638	0.0152	Brown, A.; Bemier, G.; Mathieu, M.; Rossant, J.; Kothary, R. The mouse dystonia musculorum gene is a neutral isoform of bullous pemphigoid antigen 1. Nature Genet 10: 301-306, 1995	Cytoskeleton organization
278764; N98784; 278764; Hs.148495; proteasome (prosome, macropain) 26S subunit, non-ATPase, 4; PSMD4; 1: 1q21.1	0.695804	0.681432398	2	0.6885	0.0147	-35.7552	0.0178	Deveraux, Q.; Jensen. C.; Rechsteiner, M.; Molecular cloning and expression of a 26 S protease subunit enriched in diluence repeats. J. Biot. Chem. 270: 23726-23729, 1995. PubMed ID: 7559544	Protein degradation
54551 17; BM91 1128; 54551 17; Hs.111779; secreted protein, acidic, cysteine-rich (osteonectin); SPARC; 5: 5q31.3-q32	1.472603	1.515457276	2	1.4938	0.0202	27.9731	0.0227	Biochem Biophys Res Commun 2001 Sep 21; 287(2): 422-6 Induction of SPARO by VEGF in human vascular endothelial cells. Kato Y, Lewalle JM, Baba Y, Tsukuda M, SsKai, N, Baba M, Kobayashi K, Koshika S, Nagashima Y, Francken F, Noel A, Foidart JM, Hata Rl	Angiogenesis
321313; W321 80; 321 313; Hs.387254	0.699574	0.671066627	2	0.6851	0.0294	-18.1757	0.0349	Stiligo C, De Luca A, Cascone I, Sorbello V, Fuso L, Panzone R, Biglia N, Audero E,	Angiogenesis

TABLE 1-continued

Gene Identification ID	Signal intensity ratio Cy3/Cy5 (H1-177/Clone8)	Signal intensity ratio Cy5/Cy3 (H1-177/Clone8)	#obs	Mn	SD	t	P	Gene references	Metastasis correlated processes
320701: W32046: 320701: Hs.5415	0.772313	0.74904291	2	0.7605	0.0216	-17.8901	0.0355	Arisio R, Su ss olmo F, Sismondi P, De Bortoli M. Related Articles. Links Angiopoietin-2 expression in breast cancer correlates with lymph node invasion and short survival. <i>Int J Cancer</i> . 2003 Feb 1; 103(4): 466-74.	Angiogenesis
300555: W07526: 300555: Hs.2936: matrix metalloproteinase 13 (collagenase 3): MMP13: 11: 11q22.3	1.094073	1.1105961019	2	1.1	0.0076	17.6383	0.036	Silflogi C, De Luca A, Cascone T, Sorbello V, Fuso L, Ponzone R, Biglia N, Audero E, Arisio R, Bussotino F, Sismondi P, De Bortoli M. Related Articles. Links Angiopoietin-2 expression in breast cancer correlates with lymph node invasion and short survival. <i>Int J Cancer</i> . 2003 Feb 1; 103(4): 466-74.	Metastasis
429533: AA011457: 429533: Hs.237617: dipeptidylpeptidase 9: DPP9: 19: 19p13.3	1.185238	1.164378856	2	1.1752	0.0131	17.3649	0.0366	Gonzalez Sanchez LO, Marlin Suarez A, Gava R, Cuesta Fernandez E, Diez Santisteban MC. Related Articles. Links [Expression and clinical significance of collagenase-3 (MMP-13) in gastric cancer] <i>Gastroenterol Hepatol</i> . 2003 Jan; 26(1): 1-7.	Tumor biology (metastasis)
4747535: BG676028: 4747535: Hs.89626: parathyroid hormone-like hormone: PTHLH: 12: 12p12.1-p11.2	0.944871	0.951010591	2	0.8479	0.0045	-16.5107	0.0385	Spanish. COLLAGENASE 3 PRECURSOR IV Olson C, Waghmann N, Identification and characterisation of human DPP9, a novel homologue of dipeptidyl peptidases IV. <i>Gene</i> . 2002 Oct. 18; 2991(1-2): 185-93	Metastasis
504278: AA1.49501: 504278: Hs.332405: arginase, liver: ARG1: 6: 6q23	1.391833	1.329405384	2	1.3602	0.0324	13.4093	0.0473	Linferth R., Anderson N, Boey R, Nolan T., Downey S, Brady G, Ashcroft L, Bundred N, Coexpression of parathyroid hormone related protein and its receptor in early breast cancer predicts poor patient survival <i>Clin Cancer Research</i> 2002 Oct (10) 3172-7 PMID: 12374885	Angiogenesis
127468: R08943: 127468: Hs.269181: ESTs, Similar to plakophilin 2	1.34385	1.378604879	2	1.3611	0.0180	241.491	0.0263	Devel LE, Jasinis MA, de la Torre E, Golohi T, Diamant M, Megenta G, Sacerdote de Lustig E, Sale ME. Arginine metabolic pathways involved in the modulation of tumor-induced angiogenesis of macrophages. <i>FEBS Lett</i> . 2002 Dec 4; 532(1-2): 216-20.	Adhesion

[0201] Some genes, involved in oncogenesis and metastasis processes and significantly altered in gene expression analysis, were selected, and their expression level by an alternative method was confirmed.

[0202] Real time PCR experiments were performed on 11 genes (gene primers pairs were selected from GeneBank ID sequences). 7 and 4 out of these selected genes were found to be up- and down-regulated in MDA-H1-177-PRUNE clone (clone #8), respectively. Such gene expression differentiated at level of the stable h-PRUNE overexpressing clones, whose expression was confirmed both by chip-array and by PCR Real Time, is reported in table 2.

[0203] In the above described cellular models an up regulation of genes known to be involved in cytoskeleton re-organization (phosphatidylinositol 4-kinase type ii), protease activation (proteasome 26s subunit, nedd4 binding protein), oncogenesis (1-plastin, rab1b, braca1 associated protein (brap2), protein phosphorylation and nuclear transport (casein kinase ii 1-ckip1 interacting protein), was found.

[0204] While a down regulation was found in four genes, involved in extracellular matrix contacts or cell adhesion (Plakofilin, LIM), cytoskeleton re-organization (Plakin) and oncosuppressing activity (EXT1) and such evidences are reported in table 2. This table reports the different gene expression in stable h-PRUNE overexpressing MDA clones; in the columns from left to right there are reported: Genebank ID identification; gene name; relationship between array expression values of clone #8/clone #177 after two independent experiments conducted in duplicate; P value for array expression; relationship between the array expression values of clone #8/clone #177 valued by Real Time PCR; P value for Real Time PCR; correlated cellular biological process

CONCLUSIONS

[0206] Structural analyses based on the two proteins belonging to the DHH superfamily, namely RecJ nuclease and inorganic pyrophosphatase, suggest that h-PRUNE is likely to possess a metal-ion-dependent phosphoesterase activity. As a result from DHH family structural analysis and evolutionary protein folding studies of phosphoesterases, it was demonstrated that mammalian h-PRUNE possesses a cyclic nucleotide phosphodiesterase activity.

[0207] Since h-PRUNE interacts with nm23-H1 isoform having NDPK activity, which is known to function on nucleotides, the attention was focused on the characterisation of the cyclic nucleotides phosphodiesterase activity and its role in cellular signalling. h-PRUNE Δ mutant containing substitutions in the conserved motif III of the DHH family shows a reduction of the PDE activity (FIG. 2, panels A, B, F).

[0208] Single or multiple mutation analyses at various sites indicate that only mutations in istidine (127), arginine (128), and proline (129) of motif III and aspartic acids D28, D126, D179, present respectively in motif I, III and IV, were found affecting substantially the h-PRUNE PDE activity, thus indicating most likely their involvement in the h-PRUNE PDE catalytic site.

[0209] The conserved motif III region is responsible for the binding of Mg²⁺ ions as predicted by protein modelling (FIG. 1, panel B), and, in addition, in an in vitro functional assay it was observed that h-PRUNE is also able to function in the absence (FIG. 2, panel E) or at low metal ion concentrations (FIG. 2, panel F).

[0210] It was demonstrated that h-PRUNE and the nm23s protein levels are unbalanced in sarcoma and breast carci-

TABLE 2

Genebank ID	Gene Name	Array expression		Real Time expression		Cellular biological process
		value ratio clone #8/clone 177	P value	value ratio clone #8/177	P value	
UP-REGULATED						
NM_030981.1	RAB 1B ras family	0.6902	0.0184	0.4005	0.0001	Oncogenesis
BT007330.1	Phosphatidylinositol 4-kinase type II	0.3933	0.0017	0.2230	0.0013	Cytoskeletal rearrangement
AF035620.1	BRACA1 associated protein (BRAP2)	0.7563	0.0027	0.0670	0.0062	Oncogenesis
M22300.1	PLASTIN	0.7491	0.0078	0.0990	0.0001	Oncogenesis
NM_018177.2	NEDD4 binding protein 2 (NABP2)	0.7567	0.0145	0.2230	0.001	Protease activation
NM_016274.3	CK2 interacting preotein 1 (CKIP1)	0.7929	0.0161	0.3499	0.0004	Proliferation
XM_2080211	26-S PROTEASOME	0.6886	0.0178	0.4475	0.0044	Protease activation
DOWN-REGULATED						
R08943.1	EST Ro8943 similar to plakophilin	1.3611	0.0263	2.9180	0.4764	Cell adhesion
AF061258.1	LIM	1.1717	0.0145	3.0525	0.0092	Cell adhesion
BC0011741	EXT1	2.1573	0.0398	2.9588	0.0623	Tumor suppressor
NM_001723.2	PLAKIN	0.7826	0.0178	0.5625	0.0619	Cytoskeleton organization

[0205] In summary, genes involved in processes linked to oncogenesis were discovered to be significantly altered in their expression level, thus indicating a determinant contribution of h-PRUNE to the higher oncogenic potential of this breast cancer cell line.

noma tumours, suggesting that h-PRUNE may negatively regulate nm23-H1 anti-metastatic function. An increase in h-PRUNE expression is directly correlated with aggressiveness of these tumours and cancer progression (Forus et al., 2001). Since several reports have postulated that the anti-

metastatic activity of nm23-H1 is independent of the NDPK activity (Steeg et al., 1993, Wagner 1997), we investigated the h-PRUNE influence on cellular motility, which represents one of the first cellular functions to be acquired by the cancer cells to migrate away from the primary tumour site.

[0211] In order to confirm that h-PRUNE PDE activity is directly involved in these phenomena, h-PRUNE, h-PRUNE Δ and h-PRUNE4DA were overexpressed in a breast cancer model, and it was observed that overexpression of the wild type protein induces cell motility, while a decrease of its PDE function (h-PRUNE Δ , h-PRUNE4DA) corresponds to a decrease of cell motility.

[0212] On the contrary it was observed 80% PDE activity reduction for the mutant h-PRUNE4DA and that overexpression in MDA clone causes no significant increase in cell motility, thus excluding that other potential h-PRUNE activities are responsible of increasing motility.

[0213] Even though no other intracellular characterised PDE was associated to cell migration it has been investigated whether the increment of PDE activity in MDA stable clones might contribute to cell motility. To this end, PDE5A was overexpressed in the same cellular model and tested for influence on cell motility. PDE5A, chosen for its sensitivity to dipyridamole (IC₅₀ 0.9 μ M), do not affect MDA breast cell motility, thus indicating that only h-PRUNE PDE function is responsible of increasing cell motility in breast cancer cells.

[0214] In addition, it has been observed that h-PRUNE overexpression in a high nm23-H1 expression background displays a decreased motility pheno-type and lower h-PRUNE PDE activity compared to the cells overexpressing h-PRUNE alone. Although, h-PRUNE PDE activity is increased in vitro upon interaction with nm23-H1 (FIG. 4, panel A), this effect was not observed in vivo. These phenomena can be explained by the presence of a high amount of nm23-H1 in MDA-H1-177-PRUNE if compared to MDA-PRUNE clones (FIG. 3, panel B).

[0215] This can influence negatively the PRUNE-nm23H1 complex formation, which might depend on the presence of different oligomeric and/or post-translationally modified nm23-H1 forms (for example: serine phosphorylation) (Steeg et al., 2003).

[0216] In order to verify the hypothesis that the negative regulation of h-PRUNE on the nm23 anti-metastatic function is due to an increase in PDE activity as a result of the protein-protein interaction, it was investigated the effect of two nm23-H1 mutants on h-PRUNE PDE activity. These protein mutants are nm23H1-P96S, able to physically interact with h-PRUNE, and nm23H1-S120G, that does not interact with h-PRUNE (Reymond et al., 1999); both mutants were transfected in breast cancer cells (MDA-435) and they are able to suppress the endogenous anti-motility effect of the nm23-H1 wild-type protein (Frije et al., 1997, Mac Donald et al., 1996).

[0217] Additionally, it was shown that breast cancer cells overexpressing h-PRUNE in a high nm23 expression system, such as nm23-H1-S120G, have lower cellular motility in comparison to overexpressing h-PRUNE cells in a nm23-H1-P96S system.

[0218] Thus it was further demonstrated that the physical interaction between these two proteins may be responsible for the motility promotion. Furthermore, the h-PRUNE-nm23-H1-S120G clone has almost 66% lower PDE activity compared to the PDE value observed in the clone overexpressing both h-PRUNE and nm23-H1-P96S (FIG. 4, panel B), thus

definitively indicating a correlation between protein-protein interaction, h-PRUNE CAMP-PDE activity and cellular motility effects.

[0219] In order to understand whether known PDE inhibitors were able to selectively function against h-PRUNE PDE activity, a set of 8 PDE inhibitors was tested and it was discovered that dipyridamole is able to inhibit h-PRUNE PDE activity with a significant IC₅₀ value.

[0220] In addition, the use of dipyridamole significantly reduces the motility of the stable h-PRUNE breast clones and at a lesser extent the h-PRUNE Δ overexpressing clones (FIG. 5, panel B). It is common opinion that anti-coagulants such as dipyridamole and similar drugs exert their function interfering on the blood-clotting pathway activation through inhibition of adhesion of cells to capillary walls. In view of here reported results, it is reasoning to believe that the use of dipyridamole might represent a prevention and treatment drug for spread breast cancer metastases.

[0221] Moreover, the in vitro observed data on cellular motility activation were in vivo confirmed using a significant number of breast cancer tissues from T \times N \times M1 patients. In 59 tumours out of cases presenting distal metastasis, h-PRUNE was found amplified in copy number and overexpressed in 22 cases (37%), whereas nm23-H1 was found expressed at lower levels in all analysed cases (FIG. 6, panels B, C, D).

[0222] Preliminary data indicate a negative prognostic role of h-PRUNE in breast cancer as inferred by a statistically significant decrease of the overall survival rate among patients with overexpression of h-PRUNE. The presented data indicate that h-PRUNE up-regulates genes involved in metastasis and its activity in vivo increases the risk of more aggressive tumour behaviour, thus contributing negatively to the clinical outcome in breast cancer patients. Reported results have important pharmacological consequences, as the possibility to provide drugs able to selectively inhibit h-PRUNE PDE activity to be used in treatment of breast carcinoma in order to block h-PRUNE prometastasis malignancy function. Furthermore, 11 genes involved in oncogenesis and metastasis processes, whose expression was altered in breast MDA-H1-177-PRUNE (clone #8) if compared to MDA-H1-177 clone, were analysed by array expression and validated by Real Time PCR. The results presented are additional evidences of the aggressiveness and metastatic potential of the MDA breast cancer cell line correlated to h-PRUNE overexpression (example 2).

[0223] Overall, these results underline the role of h-PRUNE on promotion of cellular motility and metastases influencing negatively the nm23-H1 anti-metastatic function. The model employed for studying the role of h-PRUNE in cancer progression requires generally the amplification in tumour cells.

[0224] The amplification leads to an increased h-PRUNE PDE activity in cytoplasmic compartment, thus influencing negatively the suppressor of metastasis function of the nm23s. The activation of the h-PRUNE PDE activity is due to a physical interaction with the nm23-H1 protein; the complex formation results in a substantial decrease of free nm23-H1 form level, thus influencing cell proliferation, cellular motility and metastatic processes (FIG. 7).

EXAMPLE 3

Study of the h-Prune Overexpression Role in Diagnosis of Invasive Breast Carcinoma

[0225] Materials and Methods

[0226] Patients

[0227] In this study patients with a diagnosis of breast carcinoma confirmed by histological exam were included. Cases were retrieved from two archives of the University Hospital of Basel in Switzerland with the approval of the local Ethics Committee and of the Institute of Pathology at the University of Sassari, respectively. The first archive included 1,531 invasive ductal carcinomas, 310 invasive lobular carcinomas, 69 mucinous carcinomas, 65 tubular carcinomas, 48 medullary carcinomas, and 86 other types of invasive carcinomas. Formalin-fixed paraffin-embedded tumour samples were thus available from the Institute of Pathology, University Hospital Basel; the Institute for Clinical Pathology, Basel; and the Triemli Hospital, Zurich. The second archive included 307 invasive ductal carcinomas, 69 invasive lobular carcinomas, 12 mucinous carcinomas, and 24 other types of invasive carcinomas.

[0228] All of the clinico-pathological features for each patient, including disease stage at diagnosis, therapy, relapse, disease-free survival, and time of last control, were obtained from the registries of Basel and Sassari. Pathological stage, tumour diameter and nodal status were obtained from the primary pathology reports. Clinical data were available after a 10-year follow-up for 2,299 cases (median, 56 months; range, 2-120 months); clinical data after a 15-year follow-up were available for 222 patients (median, 138 months; range, 121-176 months). The use of the specimens and data for this study was approved by the Ethics Committees at both Basel University Hospital and the University of Sassari.

[0229] Tissue Multiple Array (TMA)

[0230] TMA construction was previously described (Simon et al. 2001; Simon et al., 2002). Summarising, tissue cylinders with a diameter of 0.6 mm were punched from representative tumour areas of a tissue donor using a semiautomatic robotic precision instrument and positioned in 6 different paraffin blocks, each containing between 342 and 522 individual samples. Four micrometric sections of the resulting TMA blocks were transferred to a coated section System (Instrumedics Inc., Hackensack, N.J.). The presence of tumour tissue on the multiple-arrayed sample was verified by haematoxylin-eosin staining. Tissue microarrays included at least two sections from different areas of breast cancer from each patient as well as normal tissue as control.

[0231] Immunohistochemistry (IHC)

[0232] Formalin-fixed, paraffin-embedded tissue sections were immunostained using anti-h-PRUNE specific monoclonal (clone 4G3/4, against a recombinant fusion protein from 1 to 351 amino acids; Apotech Corporation, CH) and anti-nm23-H1 (clone K73, -H1 isoform specific; Apotech Corporation, CH) antibodies. Immunohistochemical analysis was performed using the Vectastain Elite ABC Kit (vector Laboratories Inc.) according to the manufacturer instructions and following a known protocol (Forus et al., 2001; D'angelo et al., 2003).

[0233] Optimised IHC protocols were established by staining representative control histopathology sections of healthy

breast tissue. In normal breast tissue, nm23-H1 protein was homogeneously expressed, whereas expression of h-PRUNE was absent or at low intensity.

[0234] Staining was evaluated semiquantitatively by using 54 normal samples randomly positioned in duplicate across the multiple arrays; intensity and distribution of immunohistochemical staining was used to classify tumour samples as positive (strong [+++] to moderate [++] staining, homogeneously distributed or presented by large majority of tumour cells) or negative (absent or weak staining [+]) for both h-PRUNE and nm23 expression.

[0235] FISH Analysis

[0236] Paraffin-embedded TMA sections were treated according to known protocols (Simon et al., 2002; Muresu et al., 2002).

[0237] The PAC 279-H19 clone, spanning the h-PRUNE gene region localised on chromosome 1q21.3, and DNA/BAC clone, specific for the nm23-H1 gene localised on chromosome 17q21.3, were labelled by nick translation with dUTP-CY3 (red) and used as probes. pUC177, corresponding to the peri-centromeric region on chromosome 1q12 and pZ17-14, corresponding to the centromeric region of chromosome 17, clones were labelled by nick translation with dCTP-Fluor X (green) and used as controls.

[0238] Nuclei were counterstained with 4',6-diamidino-2-phenyl-indole (DAPI). Two distinct experiments were performed for each case.

[0239] Digital images were captured using an Olympus BX-61 epifluorescence microscope equipped with appropriate filters for excitation of DAPI, Cy3 (orange) or Fluor X (Vysis), and a COHU video and Cytovision software. Hybridisation signals on at least 100 intact, well-preserved, and non-overlapping, nuclei were evaluated by at least two investigators.

[0240] Statistical Analysis

[0241] The following variables and categories were included in this study: pathological primary tumour size (pT), pathological nodal status (pN), presence of metastases (M), estrogen and progesterone receptor (ER and PR, respectively) status, age at diagnosis, histological tumour type, and overall survival (calculated starting from the time of surgical operation). In particular, nodal and receptor statuses were not available in a large number of the cases because these variables were not required for the inclusion of the patients in the study.

[0242] Survival data analysis was carried out with the statistical package Egret (version 2.0.3). The Cox regression model was performed using raw mortality and tumour-specific mortality incidence as censorship.

[0243] The time of overall survival was expressed in months and independent variables (h-PRUNE, nm23-H1, pT, pN) were stratified in three age groups: 23-44 (N=252), 45-64 (N=1,146), and 65-98 (N=1123).

[0244] Kaplan Meier estimates were executed by subdivision of h-PRUNE and nm23-H1 immunohistochemical data.

[0245] Using the Pearson's Chi-Squared test, h-PRUNE and nm23-H1 expression assessing was performed in association with the pathological parameters (histological tumour type, pT, pN, M, ER, PR). The exact coefficient for sample proportion analysis was calculated to determine all of the significant parameters (below the 0.05 level). All analyses were performed with the statistical package SPSS/7.5 for Windows.

[0246] Results

[0247] Assessment of h-PRUNE and nm23-H1 expression levels, as well as h-PRUNE chromosomal copy number, was carried out on TMA sections from the archival tissues of 2,109 patients with a histologically proven breast carcinoma diagnosis and available follow-up data. Additional TMA sections from 412 breast cancer patients (i.e., whose TNM classification was available) were evaluated for h-prune immunostaining. The majority of patients had ductal carcinoma as the histological variant (1,883; 73%) and were >60 years of age (1,425; 57%) at the time of diagnosis. Data of the clinical follow-ups for each patient was available, covering a median period of 59 months (range 2-176); the majority of the patients were still alive (1,716; 68%), and only a very few cases were lost in the follow-up (12; 0.5%) at the time of this study. Expression of h-PRUNE and nm23-H1 proteins was evaluated by immunohistochemical analysis using two specific anti-bodies (4G3/4 and K73 monoclonal Ab clone, respectively). FIG. 9 (panels A and B) shows representative examples of staining for h-PRUNE protein in a series of multiple tissue arrays.

615 (30%) were nm23-H1+]. In table 3 are reported the immunohistochemical analysis (IHC) results for the h-PRUNE and nm23-H1 proteins present in invasive breast carcinomas. No statistical correlation between h-PRUNE and nm23-H1 expression was observed.

TABLE 3

IHC Analysis	nm23-H1		Total	P
	Positive	negative		
Positive h-PRUNE	359 (30%)	821 (70%)	1180	0.219
Negative h-PRUNE	256 (29%)	625 (71%)	881	

[0249] The distribution of the h-PRUNE and nm23-H1 protein expression was evaluated in a subgroup of patients (2109 breast cancer patients) on the basis of different histopathological parameters. No significant correlation was observed between h-PRUNE or nm23-H1 expression and the tumour type (ductal vs globular), pT, pN, ER and PR reactivity (table 4).

TABLE 4

Tumour parameters	h-prune		h-prune		Total	P		
	Negative	Positive	Negative	Positive				
Primary tumour size	T ₁	319 (42%)	440 (58%)	T ₁₋₂	765 (44%)	985 (56%)	1750	0.63
	T ₂	446 (45%)	545 (55%)	T ₃₋₄	160 (45%)	196 (55%)		
	T ₃	54 (45%)	65 (55%)					
	T ₄	106 (45%)	131 (55%)					
Grading	G1	211 (40%)	323 (60%)	G ₁₋₂	584 (41%)	831 (59%)	1415	0.13
	G2	373 (42%)	508 (58%)	G ₃	336 (48%)	357 (52%)		
	G3	336 (48%)	357 (52%)					
Histological type	ductal	621 (42%)	865 (58%)				1,486	0.42
	lobular	117 (40%)	174 (60%)					
	other	125 (49%)	131 (51%)					
ER	+	649 (42%)	882 (58%)				1531	0.37
	-	204 (44%)	259 (56%)					
PR	+	279 (43%)	369 (57%)				648	0.34
	-	523 (42%)	714 (58%)					

[0248] A strongly positive cytoplasmic immunostaining for h-PRUNE protein (referred to as h-PRUNE+) was observed in the majority (1,340; 54%) of the 2,463 tested tumours (58 cases were not assessed); a positive cytoplasmic immunostaining for nm23-H1 protein was observed in 615 (30%) of the 2,061 tested tumours. Among the 2,061 tumour tissues evaluated for h-PRUNE and nm23-H1 expression, an inverse distribution of positive immunostaining was observed [1,180 (57%), breast carcinomas were h-PRUNE+, whereas

[0250] Fluorescence in situ hybridization (FISH) analyses were performed on 1,016 tumours from breast cancer patients. PAC clone (279-H19) corresponding to the h-PRUNE genomic region at chromosome 1q21.3 and a control clone corresponding to the peri-centromeric region at 1q12 chromosome were used as probes. Multiple FISH signals at 1q21.3 in >20% in the analysed nuclei were found in 173 (17%) cases (Table 5; FIG. 9C). Considering cases with at least two gene copies for centromere and breast carcinomas

with polysomy of entire chromosome 1 due to the presence of multiple centromere signals, a very low level of h-PRUNE amplification at chromosome 1q21.3 was observed (68 cases of 1.016; 6.7%). This indicates that the gene amplification mechanism occurs in a low number breast cancer cases. The increase in DNA copy number at the h-prune genomic region is significantly associated with effective statistic correlation to the presence of a positive h-prune immunostaining in tumours with trisomy (p=0.027) or tetrasomy (p=0.033) (Table 5). However, the low frequency of such a cytogenetic alteration suggests that involved alternative pathogenetic pathways determine h-PRUNE activation and increased somatic expression of h-prune in breast cancer.

TABLE 5

Marker	No.	Disomy %	Tri-somy %		P	Tetrasomy %	P
			88	54			
h-prune positive	440	386	88	54	12	21	4.8
h-prune negative							

TABLE 5-continued

Marker	No.	Disomy %	Tri-somy %		P	Tetrasomy %	P
			79	119			
h-prune positive	576	457	79	119	21	0.027	47
Total tested	1016	843	83	173	17		68

*: multiple signals in >20% of the analysed nuclei after hybridisation with a PAC clone corresponding to the h-prune gene at chromosome 1q21.3;
 **: including also amplification of the entire chromosome 1; No: number of cases;
 P: Chi-squared test.

[0251] Correlation Between h-Prune and Clinicopathological Parameters

[0252] To evaluate the clinicopathological role of h-PRUNE overexpression in breast cancer, immunohistochemical analyses were performed on invasive primary breast tumours using both the series of 2,109 breast cancer cases (with all of the pathological primary tumour information and up to 15-year clinical follow-up data; Table 4) and the series of 412 breast cancer cases (with a complete TNM classification and up to 10-year clinical follow-up data; Table 6).

TABLE 6

TNM	h-prune		h-prune		Total	P	
	Negative	Positive	Negative	Positive			
Tumour size	T ₁	83 (58%)	59 (42%)	T ₁₋₂	170 (58%)	122 (42%)	292
	T ₂	87 (58%)	63 (42%)				
	T ₃	11 (44%)	14 (56%)	T ₃₋₄	26 (47%)	29 (53%)	55
	T ₄	15 (50%)	15 (50%)				
Nodal status	N ₀	125 (71%)	50 (29%)	N ₀₋₁	230 (68%)	109 (32%)	339
	N ₁	105 (64%)	59 (36%)				
	N ₂	6 (30%)	14 (70%)	N ₂₋₃	6 (27%)	16 (73%)	22
	N ₃	—	2 (100%)				
Metastasis	M ₀	210 (67%)	103 (33%)				313
	M ₁	14 (36%)	25 (64%)				39

P: Chi-squared Pearson test; two tailed; 95% confidence interval;

[0253] Tumour sections from the subset of 2,109 patients were also investigated for nm23-H1 expression by immunohistochemical analysis (Table 7).

TABLE 7

Tumour parameter	nm23-H1		nm23-H1		Total	P	
	Negative	Positive	Negative	Positive			
Size	T ₁	489 (68%)	226 (32%)	T ₁₋₂	1,162 (69%)	517 (31%)	1,679
	T ₂	673 (70%)	291 (30%)				

TABLE 7-continued

Tumour parameter	nm23-H1		nm23-H1		Total	P	
	Negative	Positive	Negative	Positive			
T ₃	86 (45%)	31 (26%)	T ₃₋₄	254 (73%)	94 (27%)	348	
T ₄	168 (73%)	63 (27%)					
Grading	G1 (69%)	159 (31%)	G ₁₋₂	937 (68%)	434 (32%)	1,371	0.14
	G2 (68%)	275 (32%)					
	G3 (74%)	501 (26%)	G ₃	501 (74%)	179 (26%)	680	
Histology	ductal (69%)	1,031 (31%)				1,486	0.68
	lobular (69%)	201 (31%)				291	
	other (65%)	167 (35%)				256	
ER	positive (71%)	1,076 (29%)				1,523	0.41
	negative (70%)	329 (30%)				471	
PR	positive (69%)	449 (31%)				652	0.27
	negative (71%)	871 (29%)				1,233	

P: Chi-squared Pearson test; two tailed; 95% confidence interval;
ER, estrogen receptor status;
PR, progesterone receptor status.

[0254] This latter subset was uninformative for the presence of distant metastases; information on nodal status was partially available for such breast cancer patients in terms of presence (N+) or absence (N-) of lymph node involvement (positive h-prune immunostaining was observed in 210/482 [44%] N+ cases and 179/496 [36%] N- cases, P=0, 109; analogously, no statistical correlation for nm23-H1+ immunostaining was found in these two groups). Thus, the prognostic value of each parameter was determined on the basis of the survival analysis.

[0255] On December 2002, 782 (31%) patients were died due to disease, with the median survival of the whole being 59 months, with a follow-up of live patients of 72 months. Using Pearson's Chi-Squared test, h-prune and nm23-H1 immunostaining were evaluated for association with several pathological parameters: histological type, tumour rating (as standardised by Elston and Ellis), pT, ER, PR, and (when available) pN and M. No statistically significant correlation between either h-prune or nm23-H1 expression and tumour type (ductal vs. lobular), histological grade, pT, ER and PR reactivity were observed (Table 4). Positive h-prune immunostaining was instead significantly correlated with either the advanced nodal status (N₂—N₃ group; p=0.017) or presence of distant metastases (M₁ group; p=0.029) among the series of 412 breast cancer patients (Table 6). Statistical analysis of this series confirmed the absence of any significant association between h-prune overexpression and primary tumour size (Table 6).

[0256] Using the Cox model adjusted according to disease stage and age at diagnosis, no prognostic values of either h-prune overexpression (HR 0.61, 95% CI 0.31-1.18, p=0.144) or nm23-H1 (RR 0.98, 95% CI 0.90-1.07, p=0.158) were observed (Table 8 and 9; FIG. 10).

TABLE 8

Statistical analysis on 2,109 breast cancer patients			
Marker*	Risk Ratio	95% CI	P
h-PRUNE (negative vs positive)	0.93	0.78-1.09	0.369
nm23-H1 (negative vs positive)	0.98	0.90-1.07	0.158
Tumour size (pT ₁ vs pT ₂₋₄)	0.81	0.68-0.96	0.017
Tumour grading (G ₁ vs G _{2,3})	0.70	0.59-0.83	0.001

TABLE 9

Marker*	Risk Ratio	95% CI	P
h-prune (negative vs positive)	0.61	0.31-1.18	0.144
Tumour size (pT ₁₋₄)	12.49	4.10-38.02	<0.001
Nodal status (pN _{0,3})	2.43	1.34-4.40	0.003

[0257] Overall, tumour rating, primary tumour size, and axillary nodal status remain the parameters closely correlated to prognosis in this series of breast cancer patients (Table 8 and 9).

[0258] In conclusion the h-prune marker is therefore associated to advanced breast carcinoma status and it can be considered new marker of lymph node status in the passage from N1 to N2 status.

EXAMPLE 4

Study on the Use of IC261 that Inhibits NM23 H1 and H2 Phosphorylation and Formation of the Complex with h-Prune Causing an In Vivo Inhibition of h-Prune cAMP-PDE Activity

[0259] Materials and Methods

[0260] Study showing that in vitro and in vivo nm23H1 and H2 proteins are phosphorylated by a Casein Kinase 1δ and

phosphorylation mediates the formation of the complex (FIG. 11).

[0261] Methods—In Vitro

[0262] Phosphorylation in vitro, interaction assay and generation of phospho-nm23 antibody. Purified recombinant nm23 and mutants thereof in quantity of 100 ng were incubated in CKI standard reaction buffer as described in Garzia et al. (2003) for 1 hour at 30° C. Subsequently nm23 phosphorylated proteins were incubated with h-prune in co-IP standard buffer supplemented with 5% BSA. h-prune protein was immunoprecipitated with a polyclonal antibody, A59, against a peptide on motif III region of h-prune. The presence of different mutants of phosphorylated or not h-prune bonded nm23 was detected by subsequent Western blot analyses on immunoprecipitates, carried out with anti-His tail antibody (Qiagen) detecting at the same time h-prune and nm23 proteins.

[0263] The K73 polyclonal antibody was obtained using as immunogen a N115 to E127 phosphopeptide, phosphorylated in position S122, from nm23-H1 protein, the antiserum was used after IgG purification on the column of the resultant protein A in a non selective antibody and further affinity purification on the phosphopeptide (NIHGSDSVKSAE) used as immunogen. This second procedure was carried out through cross-linking of 1 mg of desalted phospholipid dissolved in DMSO with the Affi-gel 25 resin (Biorad) according to the manufacturer protocol. The coupled resin then was used for the affinity purification using serum of rabbit immunised with the phosphorylated and already purified and IgG peptide enriched (K73 polyclonal antibody), directly applied on Affi-gel bound peptide column, up to the antibody was adsorbed by the column. The column was washed for each column ml with 10 ml of 100 mM Tris-HCl, pH 8, 10 ml of 500 mM NaCl, 10 mM Tris-HCl, pH 8, 10 ml of 10 mM Tris-HCl, pH 8, respectively. Elution was conducted with 0.1 M glycine, pH 3.

[0264] Methods—In Vivo

[0265] In Situ Protein Digestion and MALDI Analysis

[0266] Trypsin, dithiothreitol and iodoacetamide were acquired from Sigma. Trifluoroacetic acid (TFA)-HPLC, 99% pure, is from Carlo Erba. All the other reagents and solvents with the highest purity were available from Baker.

[0267] Analysis was conducted on blue Coomassie stained proteins excised from SDS gel, washed twice in milliQ water gradient. Excised stains were washed firstly with CAN and then 0.1 M ammonium bicarbonate. The solution then was removed and the washing repeated twice. Protein samples were reduced by incubation in dithiothreitol (DTT) for 45 minutes at 56° C. Reducing buffer was removed by washing with ACN/AMBIC as described. Free cysteines were alkylated by incubation in 55 mM iodoacetamide for 30 minutes at room temperature in the dark. The gel particles were washed with ammonium bicarbonate and ACN. Enzymatic digestion was conducted with trypsin (12.5 ng/μl) in 10 mM ammonium bicarbonate, pH 8.0. Gel pieces were incubated at 4° C. for 4 hours. Trypsin solution was then removed and a new aliquot of buffer solution was added; The samples were incubated for 18 hours at 37° C. A minimal reaction volume, enough for the complete gel rehydration, was used. Then peptides were extracted by washing gel particles with 10 mM ammonium bicarbonate and 0.1% TFA in 50% ACN at room temperature.

[0268] MALDI-TOF mass spectra were recorded using an Applied Biosystem Voyager DE-PRO instrument and a new

Voyager MALDI TOF/TOF mass spectrometer. A solution mixture of peptide and alpha-cyano-hydroxy cinnamic acid (10 mg/ml in ACN/0.1% TFA in water, 2:1, v/v) was applied to the metallic plate and dried at room temperature. Mass calibration was carried out using external standard. The first data was analysed using a software furnished by manufacturers and reported as monoisotopic masses.

[0269] Results shown in FIG. 3 demonstrate that in absence of phosphorylation, nm23H1 and nm23H2 proteins in the sites don't form the complex with h-prune.

[0270] Cell Motility Study on h-Prune Overexpressing Clones.

[0271] Study on the Inhibition by IC261.

[0272] The MDA-PRUNE #3 and MDA-PRUNE #4 cellular clone and MDA-435 C-100 cells (control cells) were treated with 8 μM dipyrindamole or 50 μM IC261 (Casein Kinase I δ and ε inhibitor; Calbiochem, Nottingham, UK) for 24 hours or 8 hours, respectively. Cellular motility assays then were applied to "boiden and chamber" cells using 0.5% Fetal Serum FCS concentration as chemo-attractant. Then cells were counted under microscope and a statistic analysis for achieved data was applied (FIG. 13A).

[0273] Cells were counted under microscope, cell motility values are arithmetic means±SD for five independent assays, every one performed in duplicate (MDA-clones prune #3 and #4/MDA-clones prune #3 and #4 with IC261 p<0.002).

[0274] In Vitro Cellular Motility Assay

[0275] Stable h-prune overexpressing MDA clones were achieved as described in D'Angelo et al 2004. The control MDA-C100 breast cancer cell line was used in the cell motility assay (Leone et al. 1993a; Leone et al. 1993b). Cellular motility was determined using the trans-well technology (6 well, Corning-Costar) using 0.5% FCS, final concentrations as chemo-attractants (see D'Angelo et al. 2004). In vitro h-prune inhibition motility assay was carried out as follows. MDA-prune (clones #3 and #4) and MDA-C100 were incubated with dipyrindamole (8 μM, a 10-fold higher concentration with respect to its IC₅₀) for 24 h to obtain the complete enzyme inactivation, the same cellular lines were incubated with IC261 at a concentration of 50 μM for 8 h, in which condition the highest reduction of nm23 phosphorylation without signal of cellular death can be observed, and then the motility assay was repeated as described above. All results are the average of five independent experiments, every one conducted in duplicate. Statistical analysis was performed with the T-test method deteriorated available in the site <http://www.graphpad.com/quickcaics/index.cfm>, values with a P≤0.05 are considered statistically significant.

[0276] Study on the Total Content of cAMP-PDE in h-Prune Overexpressing Cells and Subjected to IC261 Administration.

[0277] MDA-Prune #4 cells were as such or treated with 50 μM IC261 for 8 hours. Then cells were lysed and tested for their cAMP-PDE total content using the Amersham "scintillation proximity assay" method. In presence of IC261 no alteration of the cAMP phosphodiesterase activity of recombinant h-prune (FIG. 13 B, right) was detected whereas it was pointed out the ability to sensitively lower total content of cAMP-PDE activity in prune overexpressing MDA prune #4 clone, showing that the h-prune and nm23 complex is responsible for cell PDE-cAMP increase (FIG. 13B, left) and that such complex can be inhibited by IC261 in vivo.

[0278] A. PDE Activity Assay vs cAMP

[0279] PDE activity was measured with a scintillation proximity assay (Amersham-Pharmacia Biotech). Samples, 20 µg of MDA-prune #4 total extract and MDA-C100 extract used as control, were incubated at 30° C. in 100 µl of assay buffer (50 mM Tris-HCl [PH 7.4], 8.3 mM MgCl₂, 1.7 mM EGTA) containing desired cAMP concentrations as substrate (unlabelled vs 3H-labelled ratio 3:1). All reactions, including blanks with alone buffer, were carried out in triplicate and allowed to proceed for an incubation time giving a substrate turnover (empirically determined) <25%. The reactions were quenched by adding 50 µl of Yttrium silicate SPA pearls (Amersham). Enzymatic activities for discovered radio-labelled product quantity were calculated according to the manufacturer protocol. The treatment with IC261 was the same as for motility assay described above.

[0280] Results

[0281] The obtained results show that by inhibiting the Casein Kinase 1 δ using IC261 it is possible to inhibit nm23-H1 and H2 phosphorylation and therefore the bonding with h-prune protein in vivo. By using this drug it is possible therefore to inhibit the formation of the h-prune-nm23 complex, being this last dependent on phosphorylations in 8120, 8122, 8125 region (NIHGSDSVESA EKE) by Casein Kinase I. This study allows to use IC261 for inhibiting the binding of nm23H1 and H2 to h-prune and inhibiting cellular motility induced by the protein complex.

[0282] A new procedure can foresee the use of new peptides permeable in the cell and competitive for the binding of h-prune, poaching quota of in vivo phosphorylated nm23-H1 and H2, whose sequence derives from the amino acidic sequence of nm23-H1 and H2 range of 8120, 8122 and 8125 serines (example H1: NIHGSDSVESA EKE followed by the permeable peptide sequence of the region of the HIV TAT protein; GGGYGRKKRRRQRRR; 95% of purity synthesized by PRIMM). Such or similar peptides are able to compete with Casein Kinase I phosphorylation in vivo, on the H1 and H2 wild type proteins and reduce quota of phosphorylated nm23 responsible for h-prune complex formation and increase of h-prune cAMP-PDE activity in the cell and finally induction of the cellular motility. Also a control peptide with recognition sequence of the Casein Kinase I cramble referred as (H1—: SDEIGKVS ENIAHSE followed by permeable peptide sequence GGGYGRKKRRRQRRR) was synthesised. Using this technology it is possible to target more specifically the inhibition of interaction between h-prune and nm23 in vivo.

EXAMPLE 5

Preparation of Monoclonal Antibody Against h-Prune (4G3/4, Deposited at the CBA in Genoa on Oct. 12, 2004)

[0283] h-prune protein, fused at N terminal a tail and produced in *E. Coli* through a pMaltose vector, was gel purified. The mice were immunized for 5 weeks (100 µg protein per injection) and the spleen was taken for pre-paring some hybridoma cultures. It was necessary approximately 2 mg of protein antigen for immunisation and analysis. Primm can provide conjugated synthetic peptides for the immunization in the case the protein wasn't available. The development and production of monoclonal antibodies are set out in different phases:

[0284] peptide synthesis and peptide conjugation (where necessary).

[0285] synthesis of about 10 mg of peptide, purity >70%

[0286] conjugation of 3-4 mg of peptide to a carrier protein (as antigen)

[0287] conjugation of 1-2 mg of peptide to a different carrier protein for ELISA screening.

Phase I (1.5 months):

[0288] Immunization of 3 BALB/c mice with antigen. Procedure for the quantitative titration of specific immunoglobulins in the immunised animal sera. ELISA assay of the immune response and animal selection for the following fusion of spleen cells.

Phase II (2 months)

[0289] Splenectomy and fusion of the splenocytes with myelosis cells; hybridoma selection through ELISA, freezing of the most positive clones.

Phase III (1-1.5 months)

[0290] Cloning and subcloning of positive clones (1/2 or 4) through limiting dilution. Freezing of hybridomas (2 aliquot/clone). Viability, productivity and stability assays after unfreezing of an aliquot.

[0291] Phase IV (1-1.5 months).

[0292] Production and Purification of 0, 5-4 mg of any mAb in Cellular Culture from 0.5 l of Supernatant.

[0293] Selected hybridoma produces murine IgMs which were purified from hybridoma culture supernatant. The mAb quantity employed for immunocytochemistry is equal to a mAb solution diluted 1:100 to 300 µg/ml. The antibody works and recognises both human and murine prunes. The detection of endogenous protein is carried out using ICC, IF and Western blot (FIG. 14).

[0294] The antibody purification was carried out according to the following IgM purification protocol: supernatant of the lysed cells was subjected to a flow of 1 ml/min. The HiTrap IgM was equilibrated (1 ml, Amersham-Pharmacia) with 5 volumes of 20 mM sodium phosphate, pH 7.4, 0.8 M (NH₄)₂SO₄ (Buffer A); 5 volumes of 20 mM sodium phosphate pH 7.4 (Buffer B); 5 volumes of 20 mM sodium phosphate pH 7.4, 30% isopropanol (Buffer C). ELISA assays were conducted against peptide and purified whole protein for determining the specificity of produced antigen and clone selection.

[0295] Introduce hybridoma supernatant in the column and repeat thrice the elution process with the three buffers, so set out: column washing with 15 volumes of Buffer A (15 ml); column elution with 12 volumes (12 ml) of Buffer B (1 ml fraction collection); reading of the fraction absorbance at 280 nm and collection of the fractions with absorbency <0.1 O.D.; fraction dialysis with tubes with a cut-off between 12000-14000 against a 1xPBS buffer overnight at 4° C. To regenerate the column use 7 ml of buffer C. Column storage in buffer B+20% ethanol.

BIBLIOGRAPHY

- [0296]** Aravind, I. and Koonin, E. V. (1998). Trends in biochemical sciences 23, 17-19.
- [0297]** Timmons, L. and Shearn, A., (1996). Genetics 144, 1589-1600.
- [0298]** Lombardi, D., Lacombe, M. L. and Paggi, M. G., (2000). J. Cell Physiol 182, 144-149.
- [0299]** Keen, J. C., Davidson, N. E., (2003). Cancer 97, 825-833.

- [0300] Domchek, S. M., Weber, B. L., (2002). *Curr Opin Oncol* 14, 589-593.
- [0301] Kuru, B., Camlibel, M., Ali Gulcelik, M., Alagol, H., (2003). *J. Surg. Oncol* 83, 167-172.
- [0302] Morabito, A., Magnani, E., Gion, M., (2003). *Clin Breast Cancer* 3, 381-390.
- [0303] Florenes, V. A., Aamdal, S., Myklebost, O., Maeldandsmo, G. M., Bruland, O. S., and Fodstad, O., (1992). *Cancer Res* 52, 6088-6091.
- [0304] Steeg, P. S., (2003). *Nat Rev Cancer* 3, 55-63.
- [0305] Freije, J. M., Blay, P., Macdonald, N. J., Manrow, King, and Steeg, P. S., (1997). *J Biol Chem* 272, 5525-5532.
- [0306] Hartsough, M. T., Clare, S. E., Mair, M., Elkaloun, A. G., Sgroi, D., Osborne, C. K., Clarke, G. and Steeg, P. S. (2001). *Cancer Res* 61, 2320-2327.
- [0307] Freije, J. M., Lawrence J. A., Hollingshead M. G., De la Rosa, A., Narayanan, V., Grever, M., Sausville, E. A., Paull, K., and Steeg P. S. (1997). *Nat Med* 3, 395-401.
- [0308] Kantor, J. O., Mc Cormick, B., Steeg, P. S., and Zetter, B. R., (1993) *Cancer Res* 53, 1971-1973.
- [0309] Leone A, Flatow, U., Van Houtte K, and Steeg P. S. (1993). *Oncogene* 8, 2325-2333.
- [0310] Howlett, A. R., Petersen, O. W., Steeg, P. S., and Bissell M. J. (1994) *J Natl Cancer Inst* 86, 1838-1844.
- [0311] Hartsough, M. T., and Steeg P. S., (1998). *Am J Hum Genet.* 63, 6 10.
- [0312] Lombardi D., L. M. L., Paggi M. G., (2000) *J. Cell Physiol.* 182, 144149.
- [0313] Hartsough M. T. and Steeg P. S. (2000). *J. Bioenerg Biomembr* 32, 301-308.
- [0314] Mao, H., Liu, H., Fu, X., Fang, Z., Abrams, J., and Worsham, M. J. (2001). *Int J Oncol* 18, 587-591.
- [0315] Tseng Y. H., Vicent, D., Zhu, J., Niu, Y., Adeyinka, A., Moyers, J. S., Watson, P. H., and Kahn, C. R (2001). *Cancer Res* 61, 2071-0.2079.
- [0316] Reymond A, Valorio, S., Merla, G., Al-Maghteh, M., Zuffardi, O., Bulfone A, Ballabio A, and Zollo, M., (1999). *Oncogene* 18, 7244 7252.
- [0317] Forus A, D'Angelo A., Henriksen, J., Merla, G., Maeldandsmo, G. M. Florenes, Y. A., Olivieri S., Bjerkehagen, B., Meza-Zepeda, L. A., Del Vecchio Blanco, F., Muller, C., Sanvito F., Kononen, J., Nesland, J. M. Fodstad O., Reymond A, Kallioniemi, O. P., Arrigoni G., Ballabio A, Myklebost, O., and Zollo M., (2001). *Oncogene* 20, 6881-6890.
- [0318] Altshul, S. F., Madden, T. L., Schaffer A. A., Zhang Z., Miller W., and Lipman, D. J. (1997). *Nucleic Acids Research* 25, 3389-3402.
- [0319] Notredame C., Higgins D. G., and Hering a J., (2000). *J Mol Biol* 302 205-217.
- [0320] Macdonald, N. J., Freije, J.m.p, Stracke, M. L, Manrow R. E., and Steeg, P. S. (1996). *J. Biol Chem* 271, 25107-25116.
- [0321] Garzia, L, Andre A., Amoresano. A., D'Angelo, A., Martusciello R, Cirulli, C., Turumi, T, Marino G., and Zollo M., (2003) *Biotechniques* vol 35, 384-391.
- [0322] Fisher D. A, Smith, J. F., Pillar, J. S., St Denis, S. H. and Cheng, J. B. (1998). *J Biol Chem* 273, 15559-15564.
- [0323] Leone, A., Seeger R. C., Hong C. C. M., Hu, Y. Y., Arboleda M. J. Brodeur G. M., Stram, D., Slamon D. J., and Steeg, P. S. (1993). *Oncogene* 8, 855-865.
- [0324] Yamagata, A., Kakuta, Y., Masui, R and Fukuyama, K (2002). *Proc Natl Acad Sci Usa* 99, 5908-5912.
- [0325] Ahn, S., Milner, A. J. Futterer, K, Konopka, M., Ilias, M., Young T. W. and White S, A (2001). *J. Mol. Biol* 313, 797, 811.
- [0326] Aravind L, and Koonin E V. (1998). *Trends Biochem Sci* 23, 469 472.
- [0327] Aravind L., and Koonin E V. (1998). *Nucleic Acids Res* 26, 3746 3752.
- [0328] Galperin M. Y., Natale D. A, Aravind L, and Koonin E. V. (1999).
- [0329] *J. Mol. Microbiol Biotechnol* 1, 303-305.
- [0330] Aravind L., (1999). *In Silico Biol* 1, 69-91.
- [0331] Hejna, M., Raderer M., and Zielinsky, C. C. (1999). *J Natl Cancer Inst* 91, 22-36.
- [0332] Stteg, P. S., De la Rosa, A., Flatow, U., Macdonald N. J., Benedictc M., and Leone A., (1993). *Breast Cancer Res Treat* 25, 175-187.
- [0333] Wagner, P. D., Steeg, P. S, and Vu, N. D. (1997). *Proc Natl Acad Sci USA* 94, 9000-9005.
- [0334] Simon, R, Nocito, A., Hubscher, T., (2001). *J. Natl Cancer Inst*, 93, 1141-1146.
- [0335] Simon, R, Sauter, G., (2002). *Exp Hematol*, 30(12), 1365-1372.
- [0336] D'Angelo, A., Garzia, L, Andrè, A., (2003). *Cancer Cell* 2003.
- [0337] Muresu, R, Sini, M. C., Cossu, Á., (2002). *Eur J Cancer* 38, 1802 1809.

SEQUENCE LISTING

<160> NUMBER OF SEQ ID NOS: 12

<210> SEQ ID NO 1

<211> LENGTH: 22

<212> TYPE: DNA

<213> ORGANISM: Artificial Sequence

<220> FEATURE:

<223> OTHER INFORMATION: Description of Artificial Sequence: Synthetic primer

<400> SEQUENCE: 1

agagatcttg gacagggcaaa ct

22

-continued

<210> SEQ ID NO 2
<211> LENGTH: 22
<212> TYPE: DNA
<213> ORGANISM: Artificial Sequence
<220> FEATURE:
<223> OTHER INFORMATION: Description of Artificial Sequence: Synthetic primer

<400> SEQUENCE: 2

ccatggtgac acagtccagg at 22

<210> SEQ ID NO 3
<211> LENGTH: 15
<212> TYPE: DNA
<213> ORGANISM: Artificial Sequence
<220> FEATURE:
<223> OTHER INFORMATION: Description of Artificial Sequence: Synthetic probe

<400> SEQUENCE: 3

ctgcatggaa ccatc 15

<210> SEQ ID NO 4
<211> LENGTH: 18
<212> TYPE: PRT
<213> ORGANISM: Artificial Sequence
<220> FEATURE:
<223> OTHER INFORMATION: Description of Artificial Sequence: Synthetic antigen for the monoclonal antibody anti h-PRUNE sequence

<400> SEQUENCE: 4

Ala Leu Glu Glu Ala Val Ala Glu Val Leu Asp His Arg Pro Ile Glu
1 5 10 15

Pro Lys

<210> SEQ ID NO 5
<211> LENGTH: 42
<212> TYPE: DNA
<213> ORGANISM: Artificial Sequence
<220> FEATURE:
<223> OTHER INFORMATION: Description of Artificial Sequence: Synthetic primer

<400> SEQUENCE: 5

gtagcagagg tgctagccgc tgcagccatc gagccgaaac ac 42

<210> SEQ ID NO 6
<211> LENGTH: 21
<212> TYPE: DNA
<213> ORGANISM: Artificial Sequence
<220> FEATURE:
<223> OTHER INFORMATION: Description of Artificial Sequence: Synthetic primer

<400> SEQUENCE: 6

gaagcctgtg ctttgactc c 21

<210> SEQ ID NO 7
<211> LENGTH: 33
<212> TYPE: DNA
<213> ORGANISM: Artificial Sequence
<220> FEATURE:
<223> OTHER INFORMATION: Description of Artificial Sequence: Synthetic primer

-continued

<400> SEQUENCE: 7

accctcatcc ttgtcgctca tcatacttta tcc

33

<210> SEQ ID NO 8

<211> LENGTH: 30

<212> TYPE: DNA

<213> ORGANISM: Artificial Sequence

<220> FEATURE:

<223> OTHER INFORMATION: Description of Artificial Sequence: Synthetic primer

<400> SEQUENCE: 8

gaaccatcat cctggcatgt gtcaacatgg

30

<210> SEQ ID NO 9

<211> LENGTH: 15

<212> TYPE: PRT

<213> ORGANISM: Artificial Sequence

<220> FEATURE:

<223> OTHER INFORMATION: Description of Artificial Sequence: Synthetic inhibitor of h-prune H1 sequence

<400> SEQUENCE: 9

Asn Ile Ile His Gly Ser Asp Ser Val Glu Ser Ala Glu Lys Glu
1 5 10 15

<210> SEQ ID NO 10

<211> LENGTH: 29

<212> TYPE: PRT

<213> ORGANISM: Artificial Sequence

<220> FEATURE:

<223> OTHER INFORMATION: Description of Artificial Sequence: Synthetic permeable inhibitor of h-prune H1 sequence

<400> SEQUENCE: 10

Asn Ile Ile His Gly Ser Asp Ser Val Glu Ser Ala Glu Lys Glu Gly
1 5 10 15Gly Gly Tyr Gly Arg Lys Lys Arg Arg Gln Arg Arg Arg
20 25

<210> SEQ ID NO 11

<211> LENGTH: 167

<212> TYPE: PRT

<213> ORGANISM: Artificial Sequence

<220> FEATURE:

<223> OTHER INFORMATION: Description of Artificial Sequence: Synthetic h-prune sequence

<400> SEQUENCE: 11

Met Tyr Asp Val Pro Asp Tyr Ala Ser Leu Gly Ser Pro Val Glu Met
1 5 10 15Ala Asn Leu Glu Arg Thr Phe Ile Ala Ile Lys Pro Asp Gly Val Gln
20 25 30Arg Gly Leu Val Gly Glu Ile Ile Lys Arg Phe Glu Gln Lys Gly Phe
35 40 45Arg Leu Val Ala Met Lys Phe Leu Arg Ala Ser Glu Glu His Leu Lys
50 55 60Gln His Tyr Ile Asp Leu Lys Asp Arg Pro Phe Phe Pro Gly Leu Val
65 70 75 80

Lys Tyr Met Asn Ser Gly Pro Val Val Ala Met Val Trp Glu Gly Leu

nise and bind selectively the h-PRUNE recombinant protein, characterised in that it belongs to the IgM immunoglobulin class and is produced by 4G3/4 clone (deposited at the CBA in Genoa on Oct. 12, 2004).

46. Method according to claim 42, wherein said anti-h-PRUNE antibody is labelled with a radioisotope, fluorescent molecule or enzyme.

47. Method for in vitro detection of h-PRUNE according to claim 43, wherein said detection and quantitative analysis of the antigen antibody complex are performed by immunohistochemistry, immunoprecipitation, immunofluorescence, ELISA, immunoblotting analyses.

48. Method according to claim 42, wherein PCR Real time primers specific for h-PRUNE comprise the sequences:

5' -AGAGATCTTGGACAGGCAAACCT-3'; (SEQ ID No 1)

3' -CCATGTTGACACAGTCCAGGAT-5'; (SEQ ID No 2)

or their complementary sequences.

49. Method according to claim 42, wherein the labelled probe for Real-time PCR or in situ hybridization comprise the oligonucleotidic sequence: CTGCATGGAACCATC (SEQ ID No 3) or its complementary sequence or the sequence wherein T is replaced by U.

50. Method according to claim 49, wherein said labelled probe for Real-time PCR is linear or circular one.

51. Method according to claim 49, wherein said probe is labelled with at least one radioisotope and/or fluorochrome.

52. Method according to claim 49, wherein said probe is labelled with at least a fluorochrome at 5' and/or 3'.

53. Method according to claim 49, wherein said fluorochrome is 6-carboxyfluorescein.

54. Diagnostic kit for the detection of h-PRUNE in a biological sample for metastases diagnosis of tumours characterised by an h-PRUNE overexpression comprising at least one anti-h-PRUNE monoclonal antibody, or a pair of primers specific for h-PRUNE or labelled oligonucleotidic probe specific for h-PRUNE.

55. Diagnostic kit according to claim 54, wherein the tumours characterised by an h-PRUNE overexpression are breast carcinoma, sarcoma, neuroblastoma, melanoma.

56. Diagnostic kit according to claim 54, wherein said anti-h-PRUNE antibody is characterised in that it belongs to the IgM immunoglobulin class and is produced by 4G3/4 clone (deposited at the CBA in Genoa on Oct. 12, 2004).

57. Diagnostic kit according to claim 56, wherein said anti-h-PRUNE monoclonal antibody is labelled with a radioisotope, fluorescent molecule or enzyme.

58. Diagnostic kit according to claim 54, wherein said pair of primers specific for h-PRUNE comprises the sequences:

5' -AGAGATCTTGGACAGGCAAACCT-3'; (SEQ ID No 1)

3' -CCATGTTGACACAGTCCAGGAT-5'; (SEQ ID No 2)

or their complementary sequences.

59. Diagnostic kit according to claim 54, wherein said labelled oligonucleotidic probe for Real-time PCR or in situ hybridization comprises the oligonucleotidic sequence:

CTGCATGGAACCATC (SEQ ID NO 3)

or its complementary sequence or the sequence wherein T is replaced by U.

60. Diagnostic kit according to claim 59, wherein said labelled oligonucleotidic probe for Real-time PCR is linear or circular one.

61. Diagnostic kit according to claim 59, wherein said oligonucleotidic probe is labelled with at least one radioisotope and/or fluorochrome.

62. Diagnostic kit according to claim 59, wherein said probe is labelled with at least one fluorochrome at 5' and/or 3'.

63. Diagnostic kit according to claim 62, wherein the fluorochrome is 6-carboxyfluorescein.

64. Monoclonal murine antibody able to recognise and bind selectively the h-PRUNE recombinant protein, characterised in that it belongs to the IgM immunoglobulin class and is produced by 4G3/4 clone (deposited at the CBA in Genoa on Oct. 12, 2004).

* * * * *

专利名称(译)	h-prune的酶抑制剂用于预防和治疗过度表达h-prune的肿瘤转移的用途		
公开(公告)号	US20090118171A1	公开(公告)日	2009-05-07
申请号	US10/582115	申请日	2004-12-10
[标]申请(专利权)人(译)	佐罗MASSIMO		
申请(专利权)人(译)	佐罗MASSIMO		
当前申请(专利权)人(译)	佐罗MASSIMO		
[标]发明人	ZOLLO MASSIMO		
发明人	ZOLLO, MASSIMO		
IPC分类号	A61K38/16 A61K38/10 A61K31/4375 C07K14/00 C07K7/00 G01N33/53 C12Q1/68 A61K39/395 A61K31/475 A61K31/4985 A61K31/505 A61K38/00 A61K38/12 C07K7/08 C12N9/16 G01N33/50 G01N33/574		
CPC分类号	A61K31/475 A61K31/4985 A61K31/505 A61K38/10 A61K38/12 A61K38/16 G01N2500/10 C07K14/001 C12N9/16 G01N33/5008 G01N33/5011 G01N33/5029 G01N33/5091 C07K7/08		
优先权	102003901169303 2003-12-11 IT		
外部链接	Espacenet USPTO		

摘要(译)

本发明涉及h-PRUNE的酶抑制剂的用途，以及用于预防和治疗过表达h-PRUNE的肿瘤的转移的筛选方法，以及用于所述转移的预后的诊断试剂盒。

(I)

