

(19) World Intellectual Property Organization
International Bureau



(43) International Publication Date
23 October 2008 (23.10.2008)

PCT

(10) International Publication Number
WO 2008/127779 A2

- (51) **International Patent Classification:**
G01N 33/532 (2006.01) G01N 33/58 (2006.01)
G01N 33/533 (2006.01)
- (21) **International Application Number:**
PCT/US2008/054357
- (22) **International Filing Date:**
20 February 2008 (20.02.2008)
- (25) **Filing Language:** English
- (26) **Publication Language:** English
- (30) **Priority Data:**
11/680,597 28 February 2007 (28.02.2007) US
- (71) **Applicant (for all designated States except US):** GENERAL ELECTRIC COMPANY [US/US]; 1 River Road, Schenectady, New York 12345 (US).
- (72) **Inventors; and**
- (75) **Inventors/Applicants (for US only):** LU, Su [CN/CN]; 1800 Cai Lun Road, ZhangJiang Hi-Tech Park, Shanghai 201203 (CN). GUI, John Yupeng [US/CN]; Yang-guangHaiAn, Apt. 7-1-1101, Mianshan Zone, East Lake

High Tech. District, Wuhan Hubei (CN). **MOASSER, Bahram** [US/US]; 437 Phelps Street, Gaithersburg, Maryland 20878 (US). **CAI, Wei** [CN/CN]; 1800 Cai Lun Road, ZhangJiang Hi-Tech Park, Shanghai 201203 (CN). **ZHENG, Zhixin** [CN/CN]; No. 14-18 Daili Chun Baitang County, Hangjiang District, Putian Fujian 351111 (CN). **NELSON, John R.** [US/US]; 3 Tracy Court, Clifton Park, New York 12065 (US).

(74) **Agents:** **Ji, Yonggang** et al.; GE Healthcare Bio-Sciences Corp., 800 Centennial Avenue, Piscataway, New Jersey 08855 (US).

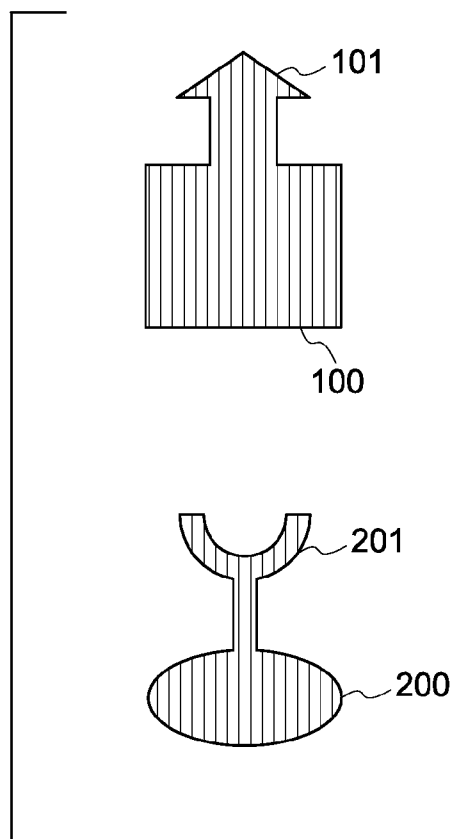
(81) **Designated States (unless otherwise indicated, for every kind of national protection available):** AE, AG, AL, AM, AO, AT, AU, AZ, BA, BB, BG, BH, BR, BW, BY, BZ, CA, CH, CN, CO, CR, CU, CZ, DE, DK, DM, DO, DZ, EC, EE, EG, ES, FI, GB, GD, GE, GH, GM, GT, HN, HR, HU, ID, IL, IN, IS, JP, KE, KG, KM, KN, KP, KR, KZ, LA, LC, LK, LR, LS, LT, LU, LY, MA, MD, ME, MG, MK, MN, MW, MX, MY, MZ, NA, NG, NI, NO, NZ, OM, PG, PH, PL, PT, RO, RS, RU, SC, SD, SE, SG, SK, SL, SM, SV,

[Continued on next page]

(54) **Title:** COMPOSITION, DEVICE AND ASSOCIATED METHOD

(57) **Abstract:** A composition includes a first probe capable of binding to a first analyte and a first initiator bonded to the first probe. The composition further includes a second probe capable of binding to a second analyte and a second initiator bonded to the second probe. At least one of the first initiator or the second initiator is capable of initiating a controlled polymerization reaction. An associated kit, device, and method are provided.

FIG. 1



WO 2008/127779 A2



SY, TJ, TM, TN, TR, TT, TZ, UA, UG, US, UZ, VC, VN,
ZA, ZM, ZW.

(84) Designated States (*unless otherwise indicated, for every kind of regional protection available*): ARIPO (BW, GH, GM, KE, LS, MW, MZ, NA, SD, SL, SZ, TZ, UG, ZM, ZW), Eurasian (AM, AZ, BY, KG, KZ, MD, RU, TJ, TM), European (AT, BE, BG, CH, CY, CZ, DE, DK, EE, ES, FI, FR, GB, GR, HR, HU, IE, IS, IT, LT, LU, LV, MC, MT, NL, NO, PL, PT, RO, SE, SI, SK, TR), OAPI (BF, BJ, CF, CG, CI, CM, GA, GN, GQ, GW, ML, MR, NE, SN, TD, TG).

Declarations under Rule 4.17:

- *as to applicant's entitlement to apply for and be granted a patent (Rule 4.17(ii))*
- *as to the applicant's entitlement to claim the priority of the earlier application (Rule 4.17(iii))*

Published:

- *without international search report and to be republished upon receipt of that report*

COMPOSITION, DEVICE AND ASSOCIATED METHOD

CROSS REFERENCE TO RELATED APPLICATIONS

[0001] This application is a continuation-in-part of United States Application Serial No 11/300,780, entitled "Signal Enhancement through Polymerization", filed December 15, 2005, the disclosure of which is incorporated herein by reference.

BACKGROUND

Technical Field

[0002] The invention includes embodiments that relate to a composition for detecting multiple analytes. The invention includes embodiments that relate to a kit and a device for detecting multiple analytes. The invention includes embodiments that relate to a method of detecting multiple analytes.

Discussion of Related Art

[0003] Detection of chemical and biological analytes may be required in various applications, for example, in pharmaceutical research, clinical diagnostics, food and beverage-quality monitoring, water purification, soil, water, and air-pollution monitoring, or in detection of chemical or biological warfare agents.

[0004] One or more chemical or biological analytes may be detected using molecules (probes) capable of specifically recognizing the analyte. Recognition may occur via highly specific interactions between two molecules, for example, an enzyme and a substrate, antibody and antigen, and the like. An occurrence or non-occurrence of the recognition reaction may be detected using suitable detection means as indication of the presence or absence of the analyte. In some applications, the analyte may be present in a very low concentration and the recognition event between the probe and the analyte may not be easily detected. Analyte amplification techniques may be employed to increase the concentration of the analyte, which may make it difficult to accurately quantify the analyte.

[0005] It may be desirable to have compositions, devices, and methods for detection of analytes that have characteristics or features that are different from those currently available.

BRIEF DESCRIPTION

[0006] In one embodiment, a composition is provided. The composition includes a first probe capable of binding to a first analyte and a first initiator bonded to the first probe. The composition further includes a second probe capable of binding to a second analyte and a second initiator bonded to the second probe. At least one of the first initiator or the second initiator is capable of initiating a controlled polymerization reaction.

[0007] In one embodiment, a kit is provided. The kit includes a composition capable of detecting a plurality of analytes. The composition includes a first probe capable of binding to a first analyte and a first initiator bonded to the first probe. The composition includes a second probe capable of binding to a second analyte and a second initiator bonded to the second probe. The composition further includes a first polymer precursor and a second polymer precursor. At least one of the first initiator or the second initiator is capable of initiating a controlled polymerization reaction of the first polymer precursor or the second polymer precursor respectively.

[0008] In one embodiment, an article is provided. The article includes a substrate having a first analyte and a second analyte disposed on a surface of the substrate. The substrate is capable of associating with a first polymer through the first analyte and a first probe bonded to a first initiator and the substrate is capable of associating with a second polymer through the second analyte and a second probe bonded to a second initiator. At least one of the first initiator or the second initiator is capable of initiating a controlled polymerization reaction.

[0009] In one embodiment, a method is provided. The method includes contacting the composition with a first analyte to form a first complex and further contacting the composition with a second analyte to form a second complex. The method further

includes contacting the first complex with a first polymer precursor and contacting the second complex with a second polymer precursor.

BRIEF DESCRIPTION OF DRAWING FIGURES

[0010] Fig. 1 is a schematic illustration of a composition in accordance with one embodiment of the invention.

[0011] Fig. 2 is a schematic illustration of a composition in accordance with one embodiment of the invention.

[0012] Fig. 3 is a schematic illustration of a composition in accordance with one embodiment of the invention.

[0013] Fig. 4 is a schematic illustration of a composition in accordance with one embodiment of the invention.

[0014] Fig. 5 is a schematic illustration of a composition in accordance with one embodiment of the invention.

[0015] Fig. 6 is a reaction scheme for synthesis of a modified polymer precursor in accordance with one embodiment of the invention.

[0016] Fig. 7 is a reaction scheme for synthesis of a signal generator-modified polymer precursor in accordance with one embodiment of the invention.

[0017] Fig. 8 is a reaction scheme for synthesis of a signal generator-modified polymer precursor in accordance with one embodiment of the invention.

[0018] Fig. 9 is a reaction scheme for synthesis of a modified polymer precursor in accordance with one embodiment of the invention.

[0019] Fig. 10 is a reaction scheme for synthesis of a signal generator-modified polymer precursor in accordance with one embodiment of the invention.

[0020] Fig. 11 is a reaction scheme for synthesis of a modified initiator in accordance with one embodiment of the invention.

[0021] Fig. 12 is a reaction scheme for synthesis of a modified initiator in accordance with one embodiment of the invention.

[0022] Fig. 13 is a reaction scheme for preparation of an initiator immobilized on a polystyrene bead.

[0023] Fig. 14 is a plot of fluorescence intensity of slides prepared in Example 12.

[0024] Fig. 15 shows the fluorescence images of slides prepared in Example 15.

[0025] Fig. 16 shows the fluorescence intensity of slides prepared in Example 15.

[0026] Fig. 17 is a reaction scheme for synthesis of a polymer using a modified polymer precursor in accordance with one embodiment of the invention.

[0027] Figs. 18(a) and 18(b) show the absorbance and fluorescence intensity of slides prepared in Example 16.

[0028] Figs. 19(a) and 19(b) show the absorbance and fluorescence intensity of slides prepared in Example 17.

[0029] Fig. 20 shows the fluorescence images of slides prepared in Example 20.

[0030] Fig. 21 shows the fluorescence intensity of slides prepared in Example 20.

[0031] Fig. 22 shows the fluorescence intensity of slides prepared in Example 20.

[0032] Fig. 23 is a schematic illustration of a signal-generator-conjugated DNA hybrid and a DNA hybrid functionalized with a surface initiated polymer.

[0033] Fig. 24 shows the fluorescence intensity of composition prepared in Example 22.

DETAILED DESCRIPTION

[0034] The invention includes embodiments that relate to a composition for detecting multiple analytes. The invention includes embodiments that relate to a kit

and a device for detecting multiple analytes. The invention includes embodiments that relate to a method of detecting multiple analytes.

[0035] In the following specification and the clauses which follow, reference will be made to a number of terms have the following meanings. The singular forms "a", "an" and "the" include plural referents unless the context clearly dictates otherwise. Approximating language, as used herein throughout the specification and clauses, may be applied to modify any quantitative representation that could permissibly vary without resulting in a change in the basic function to which it is related. Accordingly, a value modified by a term such as "about" is not to be limited to the precise value specified. In some instances, the approximating language may correspond to the precision of an instrument for measuring the value. Similarly, "free" may be used in combination with a term, and may include an insubstantial number, or trace amounts, while still being considered free of the modified term.

[0036] As used herein, the terms "may" and "may be" indicate a possibility of an occurrence within a set of circumstances; a possession of a specified property, characteristic or function; and/or qualify another verb by expressing one or more of an ability, capability, or possibility associated with the qualified verb. Accordingly, usage of "may" and "may be" indicates that a modified term is apparently appropriate, capable, or suitable for an indicated capacity, function, or usage, while taking into account that in some circumstances the modified term may sometimes not be appropriate, capable, or suitable. For example, in some circumstances an event or capacity can be expected, while in other circumstances the event or capacity can not occur – this distinction is captured by the terms "may" and "may be".

[0037] As used herein, the term "peptide" refers to a linear sequence of amino acids connected to the other by peptide bonds between the alpha amino and carboxyl groups of adjacent amino acids. The amino acids may be the standard amino acids or some other non standard amino acids. Some of the standard nonpolar (hydrophobic) amino acids include alanine (Ala), leucine (Leu), isoleucine (Ile), valine (Val), proline (Pro), phenylalanine (Phe), tryptophan (Trp) and methionine (Met). The polar neutral amino acids include glycine (Gly), serine (Ser), threonine (Thr), cysteine (Cys),

tyrosine (Tyr), asparagine (Asn) and glutamine (Gln). The positively charged (basic) amino acids include arginine (Arg), lysine (Lys) and histidine (His). The negatively charged (acidic) amino acids include aspartic acid (Asp) and glutamic acid (Glu). The non standard amino acids may be formed in body, for example by posttranslational modification, some examples of such amino acids being selenocysteine and pyrrolysine. The peptides may be of a variety of lengths, either in their neutral (uncharged) form or in forms such as their salts. The peptides may be either free of modifications such as glycosylations, side chain oxidation or phosphorylation or comprising such modifications. Substitutes for an amino acid within the sequence may also be selected from other members of the class to which the amino acid belongs. A suitable peptide may also include peptides modified by additional substituents attached to the amino side chains, such as glycosyl units, lipids or inorganic ions such as phosphates as well as chemical modifications of the chains. Thus, the term "peptide" or its equivalent may be intended to include the appropriate amino acid sequence referenced, subject to the foregoing modifications, which do not destroy its functionality.

[0038] As used herein, the term "carbohydrate" refers to a polyhydroxy aldehyde or ketone, or a compound that can be derived from them by any of several means including (1) reduction to give sugar alcohols; (2) oxidation to give sugar acids; (3) substitution of one or more of the hydroxyl groups by various chemical groups, for example, hydrogen may be substituted to give deoxysugars, and amino group (NH₂ or acetyl-NH) may be substituted to give amino sugars; (4) derivatization of the hydroxyl groups by various moieties, for example, phosphoric acid to give phospho sugars, or sulphuric acid to give sulfo sugars, or reaction of the hydroxyl groups with alcohols to give monosaccharides, disaccharides, oligosaccharides, and polysaccharides. Carbohydrate group may include monosaccharides, disaccharides, or oligosaccharides. Suitable monosaccharides may include, but are not limited to, glucose, fructose, mannose and galactose. A disaccharide, as further defined herein, is a compound, which upon hydrolysis yields two molecules of a monosaccharide. Suitable disaccharides may include, but are not limited to, lactose, maltose, isomaltose, trehalose, maltulose, and sucrose. Suitable oligosaccharides may include,

but are not limited to, raffinose and acarbose. Also included are the saccharides modified by additional substituents, for example, methyl glycosides, N-acetyl-glucosamine, N-acetyl-galactosamine and their de-acetylated forms.

[0039] As used herein, the term “antibody” refers to an immunoglobulin that specifically binds to and is thereby defined as complementary with a particular spatial and polar organization of another molecule. The antibody may be monoclonal or polyclonal and may be prepared by techniques that are well known in the art such as immunization of a host and collection of sera (polyclonal) or by preparing continuous hybrid cell lines and collecting the secreted protein (monoclonal), or by cloning and expressing nucleotide sequences or mutagenized versions thereof coding at least for the amino acid sequences required for specific binding of natural antibodies. Antibodies may include a complete immunoglobulin or fragment thereof, which immunoglobulins include the various classes and isotypes, such as IgA, IgD, IgE, IgG1, IgG2a, IgG2b and IgG3, IgM. Functional antibody fragments may include portions of an antibody capable of retaining binding at similar affinity to full-length antibody (for example, Fab, Fv and F(ab')₂, or Fab'). In addition, aggregates, polymers, and conjugates of immunoglobulins or their fragments may be used where appropriate so long as binding affinity for a particular molecule is substantially maintained.

[0040] As used herein, the term “chromophore” refers to a part of a molecule where the energy difference between two different molecular orbitals falls within the range of the visible spectrum. A chromophore may be responsible for a color of the molecule effected by absorbance of certain wavelengths of visible light and transmittance or reflectance of other wavelengths.

[0041] As used herein, the term “fluorophore” refers to a chemical compound, which when excited by exposure to a particular wavelength of light, emits light (at a different wavelength. Fluorophores may be described in terms of their emission profile, or “color.” Green fluorophores (for example Cy3, FITC and Oregon Green) may be characterized by their emission at wavelengths generally in the range of 515-540 nanometers. Red fluorophores (for example Texas Red, Cy5 and

tetramethylrhodamine) may be characterized by their emission at wavelengths generally in the range of 590-690 nanometers.

[0042] The invention includes a composition in one embodiment. The composition includes a first probe capable of binding to a first analyte and a first initiator bonded to the first probe. The composition further includes a second probe capable of binding to a second analyte and a second initiator bonded to the second probe. At least one of the first initiator or the second initiator is capable of initiating a controlled polymerization reaction. In one embodiment, the composition may be used to detect multiple analytes in a sample.

[0043] As used herein, the term probe may refer to a chemical or a biological molecule that may selectively bond to an analyte. A suitable probe may be selected depending on the sample to be analyzed and the analytes available for detection in the sample. In one embodiment, the analytes to be detected may be essentially chemical in nature and the probe(s) may include a chemical molecule. In one embodiment, the analytes to be detected may be essentially biological in nature and the probes(s) may include a biological molecule. In one embodiment, the analytes to be detected may be essentially chemical in nature and the probe(s) may include a biological molecule. In one embodiment, the analytes to be detected may be essentially biological in nature and the probe(s) may include a chemical molecule.

[0044] In one embodiment, one or more probe may include a chemical molecule that may be capable of binding to an analyte of interest. A suitable chemical molecule may be organic or inorganic in nature. A suitable organic chemical probe may include an organic ligand capable of binding the target of interest. Suitable organic ligands may include one or more of porphyrin, acetylacetonate, ethylenediaminetetracetate (EDTA), pyridine, bipyridine, terpyridine, ethylenediamine, oxalate, and the like. A suitable inorganic chemical probe may include an inorganic ligand, a metal complex, a metal salt, a nanocrystal, a nanoparticle, or combinations thereof. Suitable inorganic ligands may include one or more of halide, azide, ammonia, triphenylphosphine, thiocyanate, isothiocyanate, and the like.

[0045] In one embodiment, one or more probe may include a biological molecule that may be capable of binding to an analyte of interest. A biological molecule may refer to a molecule obtained from a biological subject *in vivo* or *in vitro*. Suitable biological molecules may include one or more of natural or modified peptides, proteins (e.g., antibodies, affibodies, or aptamers), nucleic acids (e.g., polynucleotides, DNA, RNA, or aptamers); polysaccharides (e.g., lectins, sugars), lipids, enzymes, enzyme substrates or inhibitors, antigens, haptens, vitamins, and the like.

[0046] In one embodiment, a probe may recognize and bind to the analyte. For example, one of the analytes may include a zinc cation capable of binding to a porphyrin-based probe. Similarly, an analyte may include a nucleic acid and the probe may include an oligonucleotide sequence capable of binding to a complementary base sequence in the nucleic acid. In one embodiment, an analyte may include a protein and the probe may be capable of binding to one or more amino acids in the protein sequence. In one embodiment, an analyte may include a ligand and the probe may include a receptor capable of binding to the analyte. Alternatively, an analyte may include a receptor and the probe may include a ligand. In one embodiment, an analyte may include an antigen and the probe may include an antibody or antibody fragment or vice versa. In one embodiment, an analyte may include a nucleic acid and the probe may include complementary nucleic acids. In one embodiment, the analyte and the probe may include proteins capable of binding to each other.

[0047] Binding between the probe(s) and the corresponding analyte(s) may be effected by non-covalent bond formation or covalent bond formation. Covalent bond formation may refer to chemical bond formation (reaction) between the analyte and the probe resulting from sharing of one or more electrons between two or more atoms (in the analyte and the probe). Non-covalent bond formation may refer to interactions between the probe and the analyte that are not covalent in nature. Suitable examples of non-covalent interactions may include one or more ionic interactions, hydrophobic bonding, dipole-dipole interactions, hydrogen bonding, Van der Waal interactions, or high affinity interactions (such as, biotin-avidin or biotin-streptavidin complexation).

In some embodiments, the analyte and the probe may have areas on their surfaces or in cavities giving rise to specific recognition between the two resulting in non-covalent binding. In some embodiments, a probe may bind to an analyte based on the reciprocal fit of a portion of their molecular shapes.

[0048] One or more probe may bind to the corresponding analyte in a specific manner. As used herein, the term “specific binding” may refer to the specific recognition of one of two different molecules for the other compared to substantially less recognition of other molecules. In some embodiments, a probe may bind to an analyte with sufficient specificity, that is, a probe may bind to an analyte with greater affinity than it does to any other molecule. In some embodiments, the probe may bind to other molecules, but the binding may be such that the non-specific binding may be at or near background levels. In some embodiments, the affinity of the probe for the analyte of interest may be in a range that is at least 2-fold, at least 5-fold, at least 10-fold, or more than its affinity for other molecules. In some embodiments, probes with the greatest differential affinity may be employed, although they may not be those with the greatest affinity for the analyte. In some embodiments, a probe molecule may have an intrinsic equilibrium association constant (K_A) for the analyte no lower than about 10^5 M^{-1} under physiological conditions.

[0049] In one embodiment, one or more probe may be sequence- or structure-specific; wherein the sequence or structure of an analyte recognized and bound by the probe may be sufficiently unique to that analyte.

[0050] In one embodiment, one or more probe may be structure-specific and may recognize a primary, secondary, or tertiary structure of an analyte. A primary structure of an analyte may include specification of its atomic composition and the chemical bonds connecting those atoms (including stereochemistry), for example, the type and nature of linear arrangement of amino acids in a protein. A secondary structure of an analyte may refer to the general three-dimensional form of segments of biomolecules, for example, for a protein a secondary structure may refer to the folding of the peptide “backbone” chain into various conformations that may result in distant amino acids being brought into proximity with each other. Suitable examples of

secondary structures may include, but are not limited to, alpha helices, beta pleated sheets, or random coils. A tertiary structure of an analyte may be its overall three dimensional structure. A quaternary structure of an analyte may be the structure formed by its noncovalent interaction with one or more other analytes or macromolecules (such as protein interactions). An example of a quaternary structure may be the structure formed by the four-globin protein subunits to make hemoglobin. A probe in accordance with the embodiments of the invention may be specific for any of the afore-mentioned structures.

[0051] An example of a structure-specific probe may include a protein-specific molecule that may bind to a protein analyte. Examples of suitable protein-specific molecules may include antibodies and antibody fragments, nucleic acids (for example, aptamers that recognize protein analytes), or protein substrates (non-catalyzable). In some embodiments, an analyte may include an antigen and the probe(s) may include an antibody. A suitable antibody may include monoclonal antibodies, polyclonal antibodies, multispecific antibodies (for example, bispecific antibodies), or antibody fragments so long as they bind specifically to an antigen analyte.

[0052] In one embodiment, one or more probe may be specific for a region of the analyte of interest. For example, the probe may be specific for a protein modification. Protein modifications may include post-translational modifications such as phosphorylation, glycosylation, ubiquitylation, acetylation, and the like.

[0053] In one embodiment, one or more probe may be sequence-specific. A sequence-specific probe may include a nucleic acid and the probe may be capable of recognizing a particular linear arrangement of nucleotides or derivatives thereof in the analyte. In some embodiments, the linear arrangement may include contiguous nucleotides or derivatives thereof that may each bind to a corresponding complementary nucleotide in the probe. In an alternate embodiment, the sequence may not be contiguous as there may be one, two, or more nucleotides that may not have corresponding complementary residues on the probe. Suitable examples of nucleic acid-based probes may include, but are not limited to, DNA or RNA oligonucleotides or polynucleotides. In some embodiments, suitable nucleic acids

may include nucleic acid analogs, such as dioxygenin dCTP, biotin dCTP 7-azaguanosine, azidothymidine, inosine, or uridine.

[0054] In one embodiment, both the probe and the analyte may include nucleic acids. In one embodiment, a nucleic-acid based probe may form a Watson-Crick bond with the nucleic acid analyte. In another embodiment, the nucleic acid probe may form a Hoogsteen bond with the nucleic acid analyte, thereby forming a triplex. A nucleic acid probe that binds by Hoogsteen binding may enter the major groove of a nucleic acid analyte and hybridize with the bases located there. Suitable examples of the above probes may include molecules that recognize and bind to the minor and major grooves of nucleic acids (for example, some forms of antibiotics.) In certain embodiments, the nucleic acid probes may form both Watson-Crick and Hoogsteen bonds with the nucleic acid analyte (for example, bis PNA probes are capable of both Watson-Crick and Hoogsteen binding to a nucleic acid).

[0055] The length of nucleic acid probe may also determine the specificity of binding. The energetic cost of a single mismatch between the probe and the nucleic acid analyte may be relatively higher for shorter sequences than for longer ones. In some embodiments, hybridization of smaller nucleic acid probes may be more specific than the hybridization of longer nucleic acid probes, as the longer probes may be more amenable to mismatches and may continue to bind to the nucleic acid depending on the conditions. In certain embodiments, shorter probes may exhibit lower binding stability at a given temperature and salt concentration. In some embodiments, the nucleic acid probe may have a length in range of from about 4 nucleotides to about 12 nucleotides, from about 12 nucleotides to about 25 nucleotides, from about 25 nucleotides to about 50 nucleotides, from about 50 nucleotides to about 100 nucleotides, from about 100 nucleotides to about 250 nucleotides, from about 250 nucleotides to about 500 nucleotides, or from about 500 nucleotides to about 1000 nucleotides. In some embodiments, the nucleic acid probe may have a length in a range that is greater than about 1000 nucleotides. Notwithstanding the length of the nucleic acid probe, all the nucleotide residues of the probe may not hybridize to complementary nucleotides in the nucleic acid analyte. For example, the probe may include 50 nucleotide residues in length, and only 25 of

those nucleotide residues may hybridize to the nucleic acid analyte. In some embodiments, the nucleotide residues that may hybridize may be contiguous with each other. The nucleic acid probes may be single stranded or may include a secondary structure.

[0056] Regardless of the type of probe(s) and the analyte, the specificity of binding between the probe(s) and the analyte may also depend on the binding conditions (for example, hybridization conditions in case of complementary nucleic acids). Suitable binding conditions may be realized by modulation of one or more of pH, temperature, probe concentration, or salt concentration.

[0057] In one embodiment, one or more probe may be capable of binding to the analyte through combination of one or more intermediary probes. The combinations of probes may provide greater specificity or in certain embodiments amplification of the signal. Thus, in one embodiment, a composition may include additional probes that may be used to form a sandwich with the first probe or the second probe. In one embodiment, a first probe or a second probe may be capable of binding to a corresponding primary probe, which in turn may be capable of binding to a first analyte or a second analyte. The first probe (bonded to the first initiator) or the second probe (bonded to the second initiator) in this case may then be referred to as secondary probe. In one embodiment, the first probe or the second probe may be capable of binding to a corresponding secondary probe, which in turn may be capable of binding to a corresponding primary probe, which may be capable of binding to the analyte. The first probe or the second probe in this case may then be referred to as tertiary probe.

[0058] Suitable examples of probe combinations may include primary antibody-secondary antibody, complementary nucleic acids, or other ligand-receptor pairs (such as biotin-streptavidin). Some specific examples of suitable probe pairs may include mouse anti-myc for recombinant expressed proteins with c-myc epitope; mouse anti-HisG for recombinant protein with His-Tag epitope, mouse anti-xpress for recombinant protein with epitope- tag, rabbit anti-goat for goat IgG primary molecules, complementary nucleic acid sequence for a nucleic acid; mouse anti-thio

for thioredoxin fusion proteins, rabbit anti-GFP for fusion protein, jacalin for α -D-galactose; and melibiose for carbohydrate-binding proteins, sugars, nickel couple matrix or heparin.

[0059] In some embodiments, a combination of a primary antibody and a secondary antibody may be used as a first probe or a second probe. A primary antibody may be capable of binding to a specific region of the analyte and the secondary antibody may be capable of binding to the primary antibody. A secondary antibody may be attached to an initiator before binding to the primary antibody or may be capable of binding to an initiator at a later step. In an alternate embodiment, a primary antibody and specific binding ligand-receptor pairs (such as biotin-streptavidin) may be used. The primary antibody may be attached to one member of the pair (for example biotin) and the other member (for example, streptavidin as a first probe or a second probe) may be bonded with an initiator. In some embodiments, initial signal amplification may be obtained when several secondary antibodies may bind to epitopes on the primary antibody.

[0060] Further signal amplification may be obtained by initiating a polymerization reaction using the first initiator and the second initiator. An initiator may refer to one or more molecules capable of initiating a polymerization reaction. An initiator may be further characterized by the mechanism of the initiation and the polymerization reaction type. In one embodiment, the first initiator and the second initiator may be capable of initiating a polymerization reaction type different from each other. In one embodiment, both the first initiator and the second initiator may be capable of initiating the same reaction type. In some embodiments where both the initiators may be capable of initiating the same reaction type, the second initiator may be inactive or blocked. Inactive initiator, as used herein, may refer to an initiator that may be capable of initiating a polymerization reaction only in an activated state. Blocked initiator, as used herein, may refer to an initiating molecule that may include protective functional groups, which may inhibit its initiating capabilities.

[0061] In one embodiment, the second initiator may be activated or unblocked by application of a suitable stimulus. In one embodiment, the stimulus may include

application of thermal energy or electromagnetic radiation. Thermal energy may include application of heat to the second initiator resulting in an increase in temperature of the second initiator. Electromagnetic radiation may include ultraviolet, electron beam, or microwave radiation. For example, the second initiator may include a photoinitiator. A photoinitiator may be initially inactive and may be activatable after application of ultraviolet radiation. In one embodiment, the stimulus may include a chemical agent. Suitable chemical agents may include chemicals that modify pH (for example, acids or bases), electron donors (e.g., nucleophiles), electron acceptors (e.g., electrophiles), oxidizing agents, reducing agents, or combinations thereof. For example, in one embodiment, the second initiator may be inactive at a particular pH and may be activated by changing the pH. In one embodiment, a chemical agent may cleave or remove a protective blocking from the blocked second initiator.

[0062] In one embodiment, depending upon the type of polymerization reaction, a first initiator or a second initiator may include a single molecule. In one embodiment, depending upon the type of polymerization reaction, a first initiator or a second initiator may include a combination of molecules that may together provide for initiation of the polymerization reaction.

[0063] In one embodiment, a probe and an initiator may be bonded to each other directly (that is without any linkers). In one embodiment, a probe and an initiator may be bonded to each other via a linker. A linker may include a form of linking structure or sequence formed due to the non-covalent or covalent bond formation. Non-covalent interactions may include, but are not limited to, hydrophobic interactions, ionic interactions, hydrogen-bond interactions, high affinity interactions (such as, biotin-avidin or biotin-streptavidin complexation), or other affinity interactions. The nature of the binding may be such that it does not substantially impair the effectiveness of either entity (for example, binding mechanism should not affect the initiator efficiency or analyte-binding capability of the probe).

[0064] In one embodiment, an initiator may include a functional group capable of binding to a probe. Correspondingly, a probe may include a complementary

functional group capable of reacting with the functional group in an initiator. Suitable examples of functional group combinations may include, but are not limited to, amine ester and amines or anilines; acyl azide and amines or anilines; acyl halides and amines, anilines, alcohols, or phenols; acyl nitrile and alcohols or phenols; aldehyde and amines or anilines; alkyl halide and amines, anilines, alcohols, phenols or thiols; alkyl sulfonate and thiols, alcohols or phenols; anhydride and alcohols, phenols, amines or anilines; aryl halide and thiols; aziridine and thiols or thioethers; carboxylic acid and amines, anilines, alcohols or alkyl halides; diazoalkane and carboxylic acids; epoxide and thiols; haloacetamide and thiols; halotriazin and amines, anilines or phenols; hydrazine and aldehydes or ketones; hydroxyamine and aldehydes or ketones; imido ester and amines or anilines; isocyanate and amines or anilines; and isothiocyanate and amines or anilines. A functional group in one of the aforementioned functional group pair may be present in an initiator and a corresponding functional group may be present in a probe. For example, an initiator may include a carboxylic acid and a probe may include an amine, aniline, alcohol or acyl halide, or vice versa. Conjugation between an initiator and a probe may be effected in this case by formation of an amide or an ester linkage. In one embodiment, linkage between the initiator and the probe may be affected using ligand-receptor pairs, for example, biotin-streptavidin. A probe may be bonded to a biotin and an initiator may be bonded to a streptavidin, and the probe-initiator binding may be provided by biotin-streptavidin pair formation. A suitable functional group may be included in the first initiator by modification of existing initiators or synthesis of new initiators.

[0065] A first initiator or a second initiator may be capable of initiating a controlled polymerization reaction. As used herein, controlled polymerization reaction refers to a polymerization reaction that allows for control of the molecular weight and polydispersity index of the polymer produced. In one embodiment, a controlled polymerization reaction includes one more of the following characteristics: linear dependence of the degree of polymerization as a function of time; linear dependence of the number-average molecular weight (M_n) on the extent of polymerization; control over the molecular weight of the polymer by varying the

polymer precursor to initiator ratio, a polydispersity index (PDI) in a range that is less than about 2.0; chain-breaking reactions insignificant compared to chain propagation reactions; complete conversion of polymer precursor to polymer with the ability to continue polymerization upon addition of more polymer precursor; the ability to make block copolymers by sequential polymer precursor addition; or ability to produce chain-end functionalized polymers in high yield.

[0066] In one embodiment, controlled polymerization reaction types may include one or more of: atom transfer radical polymerization (ATRP), group transfer polymerization (GTP), nitroxide mediated polymerization (NMP), reversible addition-fragmentation transfer (RAFT), or ring opening metathesis polymerization (ROMP). In one embodiment, controlled polymerization reaction types may include one or more of: degenerative transfer (DT), anionic polymerization, cationic polymerization, coordination polymerization, acyclic diene metathesis polymerization (ADMET), or other polymerization reactions involving stable free radicals (SFR).

[0067] In one embodiment, at least one of the first initiator and the second initiator may be independently capable of initiating an atom transfer radical polymerization (ATRP) type. In one embodiment, at least one of the first initiator and the second initiator may be independently capable of initiating a ring opening metathesis polymerization (ROMP) type. In one embodiment, at least one of the first initiator and the second initiator may be independently capable of initiating a group transfer polymerization (GTP) type. In one embodiment, at least one of the first initiator and the second initiator may be independently capable of initiating a nitroxide-mediated polymerization type (NMP). In one embodiment, at least one of the first initiator and the second initiator may be independently capable of initiating a reversible addition fragmentation chain transfer polymerization type (RAFT). In one embodiment, the first initiator may be capable of initiating an atom transfer radical polymerization reaction type and the second initiator may be capable of initiating a ring opening metathesis polymerization reaction type. In one embodiment, both the first initiator and the second initiator may be capable of initiating an atom transfer radical polymerization reaction type. In some embodiments, where both the first initiator and

the second initiator are capable of initiating an atom transfer radical polymerization, the second initiator may be inactive or blocked.

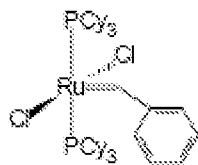
[0068] In one embodiment, an initiator may include an initiating molecule and a catalyst, for example, an alkyl halide and copper halide-bipyridine-based catalyst used in atom transfer radical polymerization (ATRP). In one embodiment, an initiator may include a catalyst, for example, metal alkyldiene catalysts used in ring opening metathesis polymerization (ROMP).

[0069] The type of initiator suitable for the invention may depend on the details of the polymerization reaction, including the mechanism for polymerization, the types of polymer precursors being used, the molecular weights desired, the solvent system and the reaction conditions. In some embodiments, an initiator may be an initiator for polymerization by a free radical mechanism, such as ATRP, NMP, DT, RAFT or a related mechanism involving stable free radicals. In some embodiments, an initiator may be a reagent for producing metal-alkyldiene catalysts for olefin metathesis such as in ROMP or ADMET.

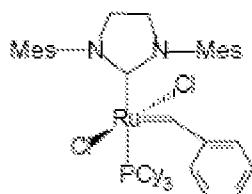
[0070] In one embodiment, an initiator may include an ATRP initiator. An ATRP initiator may include a combination of an alkyl halide and a transition metal complex (metal ligand complex). The transition metal complex may participate in a redox cycle with an initiator and dormant polymer chain, but may not form a direct carbon-metal bond with the polymer chain. The transition metal complex may be selected from the group consisting of Cu(I)/Cu(II), Fe(II)/Fe(III); Ru(II)/Ru(III), Cr(II)/Cr(III); Mo(0)/Mo(I); Mo(II)/Mo(III); W(II)/W(III); Rh(III)/Rh(IV); Co(I)/Co(II), Re(II)/Re(III); Ni(0)/Ni(I); Mn(III)/Mn(IV); V(II)/V(III); Zn(I)/Zn(II); Au(I)/Au(II); and Ag(I)/Ag(II). Suitable examples of ligands may include bipyridines, alkyl-substituted bipyridine derivatives, alkylpyridine imines (for example N-(propyl)-2,2,5-pyridylmethanimine), triamines, tetraamines (for example N,N,N',N'',N''-pentamethyldiethylenetriamine and tris(2-(dimethylamino) ethyl(amine))). In one embodiment, an initiator may be capable of initiating a direct ATRP reaction type. In one embodiment, an initiator may be capable of initiating an indirect ATRP reaction type. An indirect ATRP initiator may include a free radical initiator and metal halide

ligand complex. In one embodiment, an initiator may include an alkyl bromide and CuCl complex. A CuCl complex may include a bipyridine ligand or a tris(2-(dimethylamino) ethyl(amine)) ligand.

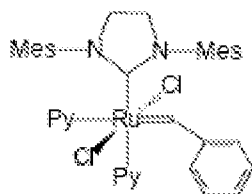
[0071] In one embodiment, an initiator may include a ROMP initiator. A ROMP initiator may include a metal alkylidene catalyst. In one embodiment, a ROMP initiator may include one or more molecules having formula (I) to (VI), or derivatives thereof.



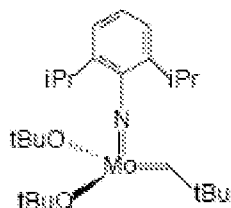
(I)



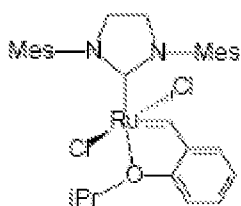
(II)



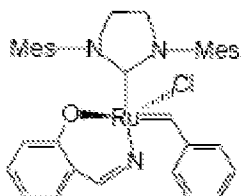
(III)



(IV)



(V)

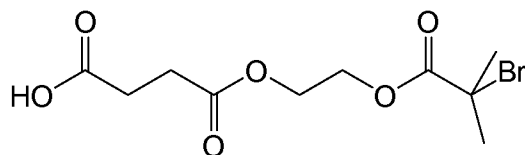


(VI)

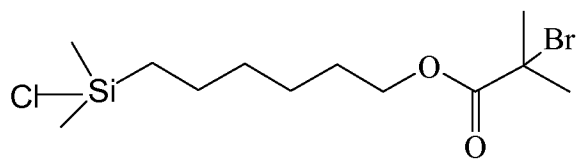
[0072] In one embodiment, an initiator may include a NMP initiator. NMP initiators may include a free radical initiator (optional) and a nitroxide source. In some embodiments, the nitroxide source may also provide for free radical initiation (for example, an alkoxy amine). A suitable nitroxide source may include one or more of alkoxyamines, TEMPO (i.e., 2,2,6,6-tetramethylpiperidiny1-1-oxy), reaction products of nitrones, or reaction products of nitric oxides.

[0073] In one embodiment, an initiator may include a RAFT initiator. A RAFT initiator may include a free radical initiator and a control agent. A suitable RAFT control agent may include one or more of dithiocarbonates, dithioesters, xanthates, or dithioacylhydrazones.

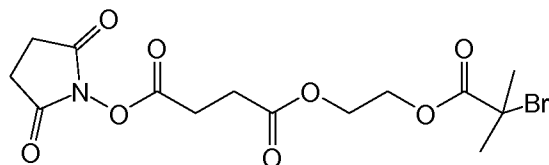
[0074] Some other examples of ATRP initiators may include structures having formulae (VII) to (X).



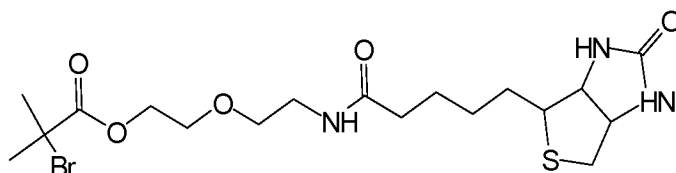
(VII)



(VIII)

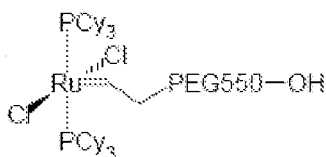


(IX)

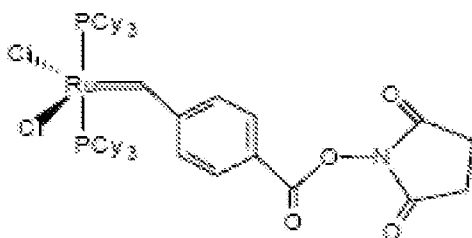


(X)

[0075] One or more of the aforementioned molecules may be used in combination with a metal ligand complex as an ATRP initiator. Some other examples of ROMP initiators may include structures having formulae (XI) and (XII), wherein PEG550 represents a polyethylene glycol chain having a molecular weight of 550 grams per mole.



(XI)



(XII)

[0076] In one embodiment, an initiator may be chosen such that under the reaction conditions there is no substantial adverse interaction of the initiator with other polymer precursors or reagents under the conditions of the polymerization. Furthermore, an initiator may be chosen such that the initiator may not affect the binding between the analyte and the probe. An initiator may also have the requisite solubility in the reaction medium or polymer precursor mixture.

[0077] In one embodiment, the composition further includes a first analyte and a second analyte. In one embodiment, the first probe is bonded to the first analyte and the second probe is bonded to the second analyte. Fig. 1 illustrates a schematic example of a composition in accordance with one embodiment of the invention. The composition further includes a first probe 110 having a first analyte-specific binding site 111. The first probe also includes a first initiator 112 bonded to the first probe via a linking structure 113. The composition also includes a second probe 210 having a second analyte-specific binding site 211. The second probe also includes a second initiator 212 bonded to the second probe via a linking structure 213. Fig. 2 illustrates a schematic example of a composition in accordance with one embodiment of the invention. The composition includes a first analyte 100 having a first probe-specific binding site 101. The composition includes a second analyte 200 having a second probe-specific binding site 201. The composition also includes the first probe and the second probe as described hereinabove. Fig. 3 illustrates a schematic example of a first complex 150 and a second complex 250 in accordance with one embodiment of the invention. The first complex 150 includes a first analyte 100 bonded to a first probe 110 via specific binding sites 101 and 111. The second complex 250 includes a second analyte 200 bonded to a second probe 210 via specific binding sites 201 and 211.

[0078] In one embodiment, an analyte may be a portion of a sample to be analyzed. In one embodiment, multiple analytes in a sample may be detected using the compositions disclosed herein. Suitable samples that may be analyzed using the compositions disclosed herein may include soil samples, air samples, water samples, plant samples, food samples, or biological samples. "Biological sample" as used herein, may refer to a sample obtained from a biological subject in vivo or in vitro. In

some embodiments, a biological sample may be of an eukaryotic origin, for example, insects, protozoa, birds, fish, reptiles, and in another embodiment of a mammalian origin, for example, rat, mouse, cow, dog, donkey, guinea pig, or rabbit, and in another embodiment of a primate origin, for example, chimpanzees or humans. Suitable examples of biological samples may include cultures, blood, plasma, serum, saliva, cerebral spinal fluid, pleural fluid, milk, lymph, sputum, semen, urine, stool, tears, saliva, needle aspirates, external sections of the skin, respiratory, intestinal, and genitourinary tracts, tumors, organs, cell cultures or cell culture constituents, or solid tissue sections. Biological samples also may include extracts from a biological sample, for example, an antigen from a biological fluid, such as blood.

[0079] A sample may include any of the aforementioned samples regardless of their physical condition, such as, but not limited to, being frozen or stained or otherwise treated. In some embodiments, a sample may include compounds which are not naturally intermixed with the sample in nature such as preservatives, anticoagulants, buffers, fixatives, nutrients, antibiotics, solvents, or the like. In one embodiment, the sample may be immobilized on a solid support, such as, blots, assays, arrays, glass slides, nanoparticles, beads, microtiter, ELISA plates, or any other substrate.

[0080] In some embodiments, the sample may be analyzed as is, that is, without harvest and/or isolation of the analyte of interest. In an alternate embodiment, harvest and isolation of analytes may be performed prior to analysis. An analyte according to an embodiment of the invention may be present on the surface of a sample (for example, an antigen on a surface of a tissue section) or present in the bulk of the sample (for example, an antibody in a buffer solution). In some embodiments, an analyte may not be inherently present on the surface of a sample and the sample may have to be processed to make the analyte available on the surface. In one embodiment, a sample may not be required and the analyte may be analyzed directly or the analyte may be directly immobilized on a substrate during analysis.

[0081] Suitability of analyte (s) to be analyzed may be determined by the type and nature of analysis required for the sample. In one embodiment, the analysis may

provide information about the presence or absence of an analyte in the sample. For example, the analysis may provide information about the presence or absence of a germ in a suspected infected air sample. In another embodiment, an analysis may provide information on a state of a sample. For example, if the sample includes a drinking water sample, the analysis may provide information about the concentration of bacteria in the sample and thus the potability of the sample. Similarly, if the sample includes a tissue sample, the methods disclosed herein may be used to detect analyte(s) that may help in comparing different types of cells or tissues, comparing different developmental stages, detecting the presence of a disease or abnormality, determining the type of disease abnormality or investigating the interactions between multiple analytes and pathways.

[0082] An analyte may be living or nonliving in nature. In one embodiment, an analyte may include a pollutant. Suitable pollutants may include one or more of air pollutants, soil pollutants, or water pollutants. Air pollutants may include one or more of carbon monoxide, sulfur dioxide, chlorofluorocarbon, or nitrogen dioxide. Suitable soil pollutants may include one or more of hydrocarbons, heavy metals, herbicides, pesticides, or chlorinated hydrocarbons. Suitable water pollutants may include one or more heavy metals, fertilizers, herbicides, insecticides, or pathogens. In one embodiment, an analyte may include one or more of phosphate, molybdate, magnesium, sulfite, or calcium, which may provide information about a water or soil sample, for example, hardness of a water sample.

[0083] In one embodiment, an analyte may include one or more spoilage indicators associated with meat by-product. Suitable meats may include beef, lamb, pork, chicken, and the like. Spoilage indicators may include one or more biogenic diamines, or histamine, that is formed by the biological activity of bacteria in contact with meat. The spoilage factor, and diamine content, may be directly linked to the bacterial content of spoiled meat. In one embodiment, an analyte may provide information regarding the decarboxylation of free amino acids in the meat by enzymes released by spoilage microorganisms. Two of these products, putrescence and cadaverine, may have a distinctive odor and the odor concentration may correlate with

surface bacteria counts. The surface bacteria count may be used to evaluate meat freshness.

[0084] In one embodiment, an analyte may include a chemical warfare agent. Suitable chemical warfare agents may include one or more incapacitating agents, lachrymators, vesicants or blister agents, nerve agents, pulmonary agents, blood agents, or malodorants.

[0085] Suitable incapacitating agents may include nervous system affecters, vomiting agents, choking agents, hallucinogens, sedatives, narcotics, depressants, and the like, and combinations of two or more thereof. In one embodiment, an incapacitating agent may include 3-quinuclidinyl benzilate (QNB, BZ), which may be an anticholinergic agent that may react with a probe comprising, for example, choline. Alternative nervous system affecters may include commercially available over the counter (OTC) or prescription pharmaceutical compositions. In one embodiment, an incapacitating agent may include curare, or a curare analog or derivative.

[0086] Suitable lachrymators may include one or more of o-chlorobenzylmalonitrile, chloromethyl chloroformate, stannic chloride, sym-dichloromethyl ether, benzyl bromide, xylyl bromide, methyl chlorosulphonate, ethyl iodoacetate, bromacetone, bromomethyl-ethyl ketone, acrolein (2-propanal), capsaicin including analogs and derivatives, or the like.

[0087] A suitable vesicant may include one or more of sulfur mustard, nitrogen mustard, or an arsenical such as Lewisite. Suitable sulfur mustard may include one or more of 2-chloroethyl chloromethyl sulfide, bis(2-chloroethyl) sulfide or dichloroethyl disulfide, bis (2-chloroethylthio) methane, 1,2-bis (2-chloroethylthio) ethane, 1,3-bis (2-chloroethylthio)-n-propane, 1,4-bis (2-chloroethylthio)-n-butane, 1,5-bis (2-chloroethylthio)-n-pentane, bis (2-chloroethylthiomethyl) ether, or bis (2-chloroethyl thioethyl) ether. Suitable nitrogen mustard may include one or more of bis (2-chloroethyl) ethylamine, bis (2-chloroethyl) methylamine, or tris (2-chloroethyl) amine. Suitable Lewisites may include one or more of 2-chlorovinyl dichloroarsine, or bis (2-chlorovinyl) chloroarsine, tris (2-chlorovinyl) arsine.

[0088] Suitable nerve agents may include cholinesterase inhibitors. In one embodiment, a cholinesterase inhibitor may include one or more of o-alkyl (Me, Et, n-Pr or i-Pr) - phosphonofluoridates, such as o-isopropyl methylphosphonofluoridate (sarin) or o-pinacolyl methylphosphonofluoridate (soman); o-alkyl N,N-dialkyl (Me, Et, n-Pr or i-Pr) phosphoramidocyanidates, such as o-ethyl N,N-dimethyl phosphoramidocyanidate (tabun); or o-alkyl S-2-dialkyl (Me, Et, n-Pr or i-Pr)-aminoethyl alkyl (Me, Et, n-Pr or i-Pr) phosphonothiolates and corresponding alkylated or protonated salts, such as o-ethyl S-2-diisopropylaminoethyl methyl phosphonothiolate.

[0089] Suitable pulmonary agents may include one or both of phosgene (carbonyl chloride) and perfluroisobutylene. Suitable chemical toxins may include one or more of palytoxin, ricin, saxitoxin, or botulinum toxin.

[0090] Suitable blood agents may include forms of cyanide such as salts, and analogs and derivatives of cyanide salts. A suitable solid salt of cyanide may include sodium, potassium, and/or calcium. A suitable volatile liquid form of cyanide may include hydrogen cyanide and/or cyanogen chloride.

[0091] In one embodiment, an analyte may include one or more biological agents. Suitable biological agents may include pathogens, toxins, or combinations thereof. Biological agents may include prions, microorganisms (viruses, bacteria and fungi) and some unicellular and multicellular eukaryotes (for example parasites) and their associated toxins. Pathogens are infectious agents that may cause disease or illness to their host (animal or plant). Pathogens may include one or more of bacteria, viruses, protozoa, fungi, parasites, or prions.

[0092] Some examples of bacterial biological agents (and the diseases or effect caused by them) may include one or more of: escherichia coli (peritonitis, food poisoning); mycobacterium tuberculosis (tuberculosis); bacillus anthracis (anthrax); salmonella (food poisoning); staphylococcus aureus (toxic shock syndrome); streptococcus pneumoniae (pneumonia); streptococcus pyogenes (strep throat); helicobacter pylori (stomach ulcers); or francisella tularensis (tularemia).

[0093] Some examples of viruses (and the diseases or effect caused by them) may include one or more of hepatitis A, B, C, D and E (liver disease); influenza virus (flu, Avian flu); SARS coronavirus (severe acute respiratory syndrome); herpes simplex virus (herpes); molluscum contagiosum (rash); or human immunodeficiency virus (AIDS).

[0094] Some examples of protozoa (and the diseases or effect caused by them) may include one or more of cryptosporidium (cryptosporidiosis); giardia lamblia (giardiasis); plasmodium (malaria); or trypanosoma cruzi (chagas disease). Some examples of fungi (and the diseases or effect caused by them) may include one or more of pneumocystis jiroveci (opportunistic pneumonia); tinea (ringworm); or candida (candidiasis).

[0095] Some examples of parasites may include one or more of roundworm, scabies, tapeworm, or flatworm. Some examples of protein-based pathogens may include prions (Bovine spongiform encephalopathy (BSE) commonly known as mad cow disease or variant Creutzfeldt-Jakob disease (vCJD)).

[0096] Toxins include proteins capable of causing disease on contact or absorption with body tissues by interacting with biological macromolecules and may be used as bioweapons. Suitable toxins may include Ricin, SEB, Botulism toxin, Saxitoxin, and many Mycotoxins.

[0097] Some other examples of diseases caused by biological agents may include anthrax, Ebola, Bubonic Plague, Cholera, Tularemia, Brucellosis, Q fever, Machupo, Coccidioides mycosis, Glanders, Melioidosis, Shigella, Rocky Mountain Spotted Fever, Typhus, Psittacosis, Yellow Fever, Japanese B Encephalitis, Rift Valley Fever, or Smallpox.

[0098] Biological agents may be present in food samples, in air samples, in water samples, in soil samples, in plant samples, or in biological samples. In one embodiment, biological agents may provide information regarding the spoilage of food samples, for example, the bacteria in a spoilt meat sample. In one embodiment, the biological agents may indicate the presence or concentration of legionella

pneumophila in an industrial water sample (cooling, water, process water, or waste water). In one embodiment, the biological agents may indicate the presence or concentration of cryptosporidia giardia in a municipal water sample (drinking water or waste water). In one embodiment, the biological agents may indicate the presence or concentration of lysteria or salmonella in a food sample.

[0099] In one embodiment, the biological agents may be used as biological warfare agents. Detection and analysis of the biological agents may provide information regarding the infected area. In one embodiment, analysis of the biological agents may provide information regarding the effectiveness of disinfection of the affected environment.

[0100] In one embodiment, an analyte that may be detected using the compositions disclosed herein, may include one or more biomolecules. In one embodiment, a biomolecule-based analyte may be part of a biological agent, such as, a pathogen. In one embodiment, a biomolecule may be used for diagnostic, therapeutic, or prognostic applications, for example, in RNA or DNA assays. Suitable biomolecules may include one or more of peptides, proteins (e.g., antibodies, affibodies, or aptamers), nucleic acids (e.g., polynucleotides, DNA, RNA, or aptamers); polysaccharides (e.g., lectins or sugars), lipids, enzymes, enzyme substrates, ligands, receptors, vitamins, antigens, or haptens. The term analyte refers to both separate molecules and to portions of such molecules, such as an epitope of a protein that may bind specifically with one or more probes.

[0101] Probes and their corresponding biomolecule analytes may be considered as binding pairs, of which non-limiting examples may include immune-type binding-pairs, such as, antigen/antibody, antigen/antibody fragment, or hapten/anti-hapten; nonimmune-type binding-pairs, such as biotin/avidin, biotin/streptavidin, folic acid/folate binding protein, hormone/hormone receptor, lectin/specific carbohydrate, enzyme/enzyme, enzyme/substrate, enzyme/substrate analog, enzyme/pseudo-substrate (substrate analogs that cannot be catalyzed by the enzymatic activity), enzyme/co-factor, enzyme/modulator, enzyme/inhibitor, or vitamin B12/intrinsic factor. Other suitable examples of binding pairs may include complementary nucleic

acid fragments (including DNA sequences, RNA sequences, PNA sequences, and peptide nucleic acid sequences); Protein A/antibody; Protein G/antibody; nucleic acid/nucleic acid binding protein; or polynucleotide/polynucleotide binding protein.

[0102] In one embodiment, the composition may further include a first polymer precursor and a second polymer precursor. A polymer precursor may include monomeric species, oligomeric species, mixtures of monomeric species, mixtures of oligomeric species, polymeric species, mixtures of polymeric species, partially-crosslinked species, mixtures of partially-crosslinked crosslinked species, or mixtures of two or more of the foregoing. In one embodiment, the composition may include a first polymer precursor. A first initiator may be capable of initiating a controlled polymerization reaction of the first polymer precursor. Similarly, a second initiator may be capable of initiating a controlled polymerization reaction of the second polymer precursor.

[0103] In one embodiment, a first polymer precursor or a second polymer precursor may include a functional group that may be capable of initiating a polymerization reaction of another polymer precursor to form branched polymers. In one embodiment, a first polymer precursor or a second polymer precursor may include a functional group that may be capable of bonding to another initiator that may initiate a polymerization reaction of another polymer precursor to form branched polymer.

[0104] A polymer precursor may include reactive groups capable of chemically reacting to form a polymer. A reactive group may participate in a chemical reaction when exposed to one or more of thermal energy, electromagnetic radiation, or chemical reagents (for example, an initiator).

[0105] A polymer precursor may include an organic or inorganic backbone depending on the type of initiators and the compatibility of the polymer precursor with the composition (such as, solubility in the solvents employed). A suitable inorganic backbone for a polymer precursor may include main chain linkages other than that of carbon-carbon linkages or carbon-heteroatom-carbon linkages, for

example, silicon-silicon linkages in silanes, silicon-oxygen-silicon linkages in siloxanes, phosphorous-nitrogen-phosphorous linkages in phosphazenes, and the like.

[0106] A suitable organic polymer precursor may essentially include only carbon-carbon linkages (for example, olefins) or carbon-heteroatom-carbon linkages (for example, ethers, esters and the like) in the main chain. Suitable examples of organic polymer precursors may include one or more of olefin-derived polymer precursors, for example, ethylene, propylene, and their mixtures; methylpentane-derived polymer precursors, for example, butadiene, isoprene, and their mixtures; polymer precursors of unsaturated carboxylic acids and their functional derivatives, for example, acrylics such as alkyl acrylates, alkyl methacrylate, acrylamides, acrylonitrile, and acrylic acid; alkenylaromatic polymer precursors, for example styrene, alpha-methylstyrene, vinyltoluene, and rubber-modified styrenes; amides, for example, nylon-6, nylon-6,6, nylon-1,1, and nylon-1,2; esters, such as, alkylene dicarboxylates, especially ethylene terephthalate, 1,4-butylene terephthalate, trimethylene terephthalate, ethylene naphthalate, butylene naphthalate, cyclohexanedimethanol terephthalate, cyclohexanedimethanol-co-ethylene terephthalate, and 1,4-cyclohexanedimethyl-1,4-cyclohexanedicarboxylate and alkylene arenedioates; carbonates; estercarbonates; sulfones; imides; arylene sulfides; sulfide sulfones; and ethers such as arylene ethers, phenylene ethers, ethersulfones, etherimides, etherketones, etheretherketones; or blends, homopolymers, or copolymers thereof.

[0107] In one embodiment, a polymer precursor may include functional groups that may chemically react to form a polymer via controlled polymerization reaction. In one embodiment, a polymer precursor may include functional groups that may chemically react to form a polymer via atom transfer radical polymerization, ring-opening metathesis polymerization, or combinations of two or more of the foregoing. In one embodiment, a polymer precursor may include one or more of styrene, acrylate, methacrylate, or norbornene functional groups. In one embodiment, a polymer precursor may be soluble in a probe solution at room temperature. In one embodiment, a polymer precursor may be soluble in water at room temperature.

[0108] In one embodiment, the first polymer precursor or the second polymer precursor may include one or more signal generators. As used herein, the term “signal generator” may refer to a molecule capable of providing a detectable signal. A detectable signal may refer to a signal capable of being detected using one or more detection techniques including for example, spectrometry, calorimetry, spectroscopy, or visual inspection. Suitable examples of a detectable signal may include an optical signal, an electrical signal, or a radioactive signal.

[0109] The type of signal generator suitable for the compositions disclosed herein may depend on a variety of factors, including the nature of the analysis being conducted, the type of the energy source and detector used, the type of initiator employed, the type of probe, the type of target, or the solvents employed.

[0110] A signal generator may provide a characteristic signal following interaction with an energy source or a current. An energy source may include electromagnetic radiation source and a fluorescence excitation source. Electromagnetic radiation source may be capable of providing electromagnetic energy of any wavelength including visible, infrared and ultraviolet. Electromagnetic radiation may be in the form of a direct light source or may be emitted by a light emissive compound such as a donor fluorophore. A fluorescence excitation source may be capable of making a source fluoresce or may give rise to photonic emissions (that is, electromagnetic radiation, directed electric field, temperature, physical contact, or mechanical disruption). Suitable signal generators may provide a signal capable of being detected by a variety of methods including optical measurements (for example, fluorescence), electrical conductivity, or radioactivity. Suitable signal generators may be, for example, light emitting, energy accepting, fluorescing, radioactive, or quenching.

[0111] A suitable signal generator may be sterically and chemically compatible with the constituents to which it is bound, for example, a polymer precursor. A suitable signal generator may not interfere with the polymerization capability of the polymer precursor. Additionally, after the polymerization reaction, a suitable signal generator may not interfere with the binding of the probe to the analyte, nor may it affect the binding specificity of the probe. A suitable signal generator may be organic

or inorganic in nature. In some embodiments, a signal generator may be of a chemical, peptide or nucleic acid nature.

[0112] A signal generator may be directly or indirectly detectable. A directly detectable moiety may be one that may be detected directly by its ability to emit a signal, such as for example a fluorescent label that emits light of a particular wavelength following excitation by light of another lower, characteristic wavelength and/or absorb light of a particular wavelength. An indirectly detectable signal generator may be one that may be detected indirectly by its ability to bind, recruit and, in some cases, cleave another moiety, which may in turn emit a signal. An example of an indirectly detectable signal generator may be an enzyme-based signal generator, which when contacted with a suitable substrate may cleave the substrate to provide a detectable signal. Alternatively, an indirectly detectable signal generator may be capable of binding a compound that does emit a signal. For example, a signal generator, such as biotin, which itself does not emit a signal when bound to labeled avidin or streptavidin molecules may be detected. Other examples of indirectly detectable signal generators may include ligands that bind specifically to particular receptors. Detectably labeled receptors may be allowed to bind to ligand labeled polymer precursors in order to detect the probes. For example, a polymer precursor may be attached to a biotin molecule and a signal generator may be attached to an avidin molecule that may bind specifically to biotin. Some other examples of indirectly detectable signal generators may include an affinity molecule, a ligand, a receptor, a biotin molecule, an avidin molecule, a streptavidin molecule, an antigen (e.g., epitope tags such as the FLAG or HA epitope), a hapten (e.g., biotin, pyridoxal, digoxigenin fluorescein and dinitrophenol), an antibody, an antibody fragment, a microbead, or combinations of two or more thereof.

[0113] In some embodiments, a signal generator may be selected from a light emissive molecule, a radioisotope (e.g., ^{32}P or ^3H , ^{14}C , ^{125}I and ^{131}I), an optical or electron density marker, a Raman-active tag an enzyme, an enzyme substrate (for example, a chromogenic substrate), an electron spin resonance molecule (such as for example nitroxyl radicals), an electrical charge transferring molecule (i.e., an electrical charge transducing molecule), a semiconductor nanocrystal, a

semiconductor nanoparticle, a colloid gold nanocrystal, a microbead, a magnetic bead, a paramagnetic particle, a quantum dot, or an affinity molecule (e.g., a biotin molecule, a streptavidin molecule, a protein, a peptide, nucleic acid, a carbohydrate, an antigen, a hapten, an antibody, an antibody fragment, or a lipid). In one embodiment, a signal generator bonded to a first polymer precursor may be detectable by a different detection means as that for a signal generator bonded to a second polymer precursor. For example, the signal generator bonded to a first polymer precursor may include a magnetic particle and a signal generator bonded to the second polymer precursor may include a fluorophore. In one embodiment, a signal generator bonded to a first polymer precursor may be detectable by the same detection means as that for a signal generator bonded to a second polymer precursor, but the signals from the two may be distinguishable. For example, the signal generator bonded to a first polymer precursor may include a red fluorophore and a signal generator bonded to the second polymer precursor may include a green fluorophore.

[0114] In some embodiments, a signal generator may include a light-emissive molecule. A light emissive molecule may emit light in response to irradiation with light of a particular wavelength. Light emissive molecules may be capable of absorbing and emitting light through luminescence (non-thermal emission of electromagnetic radiation by a material upon excitation), phosphorescence (delayed luminescence as a result of the absorption of radiation), chemiluminescence (luminescence due to a chemical reaction), fluorescence, or polarized fluorescence.

[0115] In some embodiments, a signal-generator may be directly detectable. In some embodiments, a signal generator may include a chromophore. In some embodiments, a signal-generator may include a fluorescent molecule or a fluorophore. Suitable chromophores and fluorophores may include one or more molecules listed hereinabove. In some embodiments, the signal generator may be part of a FRET pair. FRET pair includes two fluorophores that are capable of undergoing FRET to produce or eliminate a detectable signal when positioned in proximity to one another. Some examples of donors may include Alexa 488, Alexa 546, BODIPY 493, Oyster 556, Fluor (FAM), Cy3, or TTR (Tamra). Some examples of acceptors may include Cy5, Alexa 594, Alexa 647, or Oyster 656.

[0116] In some embodiments, a signal generator may essentially include a fluorophore. Examples of fluorophores include, but are not limited to, 4-acetamido-4'-isothiocyanatostilbene-2,2'-disulfonic acid, acridine, derivatives of acridine and acridine isothiocyanate, 5-(2'-aminoethyl)aminonaphthalene-1-sulfonic acid (EDANS), 4-amino-N-[3-vinylsulfonyl]phenyl]naphthalimide-3,5 disulfonate (Lucifer Yellow VS), N-(4-anilino-1-naphthyl)maleimide, anthranilamide, Brilliant Yellow, coumarin, coumarin derivatives, 7-amino-4-methylcoumarin (AMC, Coumarin 120), 7-amino-trifluoromethylcoumarin (Coumarin 151), cyanosine; 4',6-diaminidino-2-phenylindole (DAPI), 5',5''-dibromopyrogallol-sulfonephthalein (Bromopyrogallol Red), 7-diethylamino-3-(4'-isothiocyanatophenyl)4-methylcoumarin, 4,4'-diisothiocyanatodihydro-stilbene-2,2'-disulfonic acid, 4, 4'-diisothiocyanatostilbene-2,2'-disulfonic acid, 5-[dimethylamino]naphthalene-1-sulfonyl chloride (DNS, dansyl chloride), eosin, derivatives of eosin such as eosin isothiocyanate, erythrosine, derivatives of erythrosine such as erythrosine B and erythrosin isothiocyanate; ethidium; fluorescein and derivatives such as 5-carboxyfluorescein (FAM), 5-(4,6-dichlorotriazin-2-yl) aminofluorescein (DTAF), 2',7'-dimethoxy-4',5'-dichloro-6-carboxyfluorescein (JOE), fluorescein, fluorescein isothiocyanate (FITC), QFITC (XRITC); fluorescamine derivative (fluorescent upon reaction with amines); IR144; IR1446; Malachite Green isothiocyanate; 4-methylumbelliferone; ortho cresolphthalein; nitrotyrosine; pararosaniline; Phenol Red, B-phycoerythrin; o-phthaldialdehyde derivative (fluorescent upon reaction with amines); pyrene and derivatives such as pyrene, pyrene butyrate and succinimidyl 1-pyrene butyrate; Reactive Red 4 (Cibacron. Brilliant Red 3B-A), rhodamine and derivatives such as 6-carboxy-X-rhodamine (ROX), 6-carboxyrhodamine (R6G), lissamine rhodamine B sulfonyl chloride, rhodamine (Rhod), rhodamine B, rhodamine 123, rhodamine X isothiocyanate, sulforhodamine B, sulforhodamine 101 and sulfonyl chloride derivative of sulforhodamine 101 (Texas Red); N,N,N',N'-tetramethyl-6-carboxyrhodamine (TAMRA); tetramethyl Rhodamine, tetramethyl rhodamine isothiocyanate (TRITC); riboflavin; rosolic acid and lanthanide chelate derivatives, quantum dots, cyanines, and squaraines. Some other examples of fluorophores may include one or one or more of fluorescein, Rhodamine, Texas Red, VECTOR Red, ELF (Enzyme-Labeled Fluorescence), Cy2, Cy3, Cy3.5, Cy5, Cy7, FluorX, Calcein,

Calcein-AM, CRYPTOFLUOR, Orange (42 kDa), Tangerine (35 kDa), Gold (31 kDa), Red (42 kDa), Crimson (40 kDa), BHMP, BHDMAP, Br-Oregon, Lucifer Yellow, Alexa dye family, N-[6-(7-nitrobenz-2-oxa-1, 3-diazol-4-yl)amino]caproyl] (NBD), BODIPY, boron dipyrromethene difluoride, Oregon Green, MITOTRACKER. Red, DiOC(3), DiIC.sub.18, Phycoerythrin, Phycobiliproteins BPE (240 kDa) RPE (240 kDa) CPC (264 kDa) APC (104 kDa), Spectrum Blue, Spectrum Aqua, Spectrum Green, Spectrum Gold, Spectrum Orange, Spectrum Red, NADH, NADPH, FAD, Infra-Red (IR) Dyes, Cyclic GDP-Ribose (cGDPR), Calcofluor White, Lissamine, Umbelliferone, Tyrosine or Tryptophan.

[0117] In some embodiments, a signal generator may be indirectly detectable, for example, an enzyme/enzyme substrate combination. In some embodiments, an enzyme may precipitate a soluble substrate to form an insoluble product (for example, in immunohistochemistry). Further, an enzyme may catalyze a chemical reaction of a chromogenic substrate that may be measured using a suitable technique. For example, the enzyme may catalyze a color change in a substrate, which can be measured spectrophotometrically. Alternatively, an enzyme may alter the fluorescence or chemiluminescence properties of the substrate. Suitable examples of enzyme-substrate combinations are described herein below.

[0118] Horseradish peroxidase (HRPO) with hydrogen peroxidase as a substrate, wherein the hydrogen peroxidase may oxidize a dye precursor (e.g., orthophenylene diamine (OPD) or 3,3',5,5'-tetramethyl benzidine hydrochloride (TMB)). Other suitable HRPO substrates may include, but are not limited to, 2,2' Azino-di-3-ethylbenz-thiazoline sulfonate (ABTS, green, water soluble), aminoethyl carbazole, 3-amino, 9-ethylcarbazole AEC (3A9EC, red). Alpha-naphthol pyronin (red), 4-chloro-1-naphthol (4C1N, blue, blue-black), 3,3'-diaminobenzidine tetrahydrochloride (DAB, brown), ortho-dianisidine (green), o-phenylene diamine (OPD, brown, water soluble), TACS Blue (blue), TACS Red (red), 3,3',5,5'Tetramethylbenzidine (TMB, green or green/blue), TRUE BLUE (blue), VECTO VIP (purple), VECTOR SG (smoky blue-gray), and Zymed Blue HRP substrate (vivid blue).

[0119] Alkaline phosphatase (AP) with para-Nitrophenyl phosphate as chromogenic substrate. Other suitable AP substrates include, but are not limited to, AP-Blue substrate (blue precipitate, Zymed); AP-Orange substrate (orange precipitate, Zymed), AP-Red substrate (red, red precipitate, Zymed), 5-bromo, 4-chloro, 3-indolyphosphate (BCIP substrate, turquoise precipitate), 5-bromo, 4-chloro, 3-indolyl phosphate/nitroblue tetrazolium/iodonitrotetrazolium (BCIP/INT substrate, yellow-brown precipitate, Biomeda), 5-bromo, 4-chloro, 3-indolyphosphate/nitroblue tetrazolium (BCIP/NBT substrate, blue/purple), 5-bromo, 4-chloro, 3-indolyl phosphate/nitroblue tetrazolium/iodonitrotetrazolium (BCIP/NBT/INT, brown precipitate, DAKO, Fast Red (Red), Magenta-phos (magenta), Naphthol AS-BI-phosphate (NABP)/Fast Red TR (Red), Naphthol AS-BI-phosphate (NABP)/New Fuchsin (Red), Naphthol AS-MX-phosphate (NAMP) /New Fuchsin (Red), New Fuchsin AP substrate (red), p-Nitrophenyl phosphate (PNPP, Yellow, water soluble), VECTOR Black (black), VECTO Blue (blue), VECTOR Red (red), Vega Red (raspberry red color).

[0120] β -D-galactosidase (β -D-Gal) with a chromogenic substrate (e.g., p-nitrophenyl- β -D-galactosidase) or fluorogenic substrate (e.g., 4-methylumbelliferyl- β -D-galactosidase). Other suitable β -galactosidase substrates, include, but are not limited to, 5-bromo-4-chloro-3-indoyl beta-D-galactopyranoside (X-gal, blue precipitate).

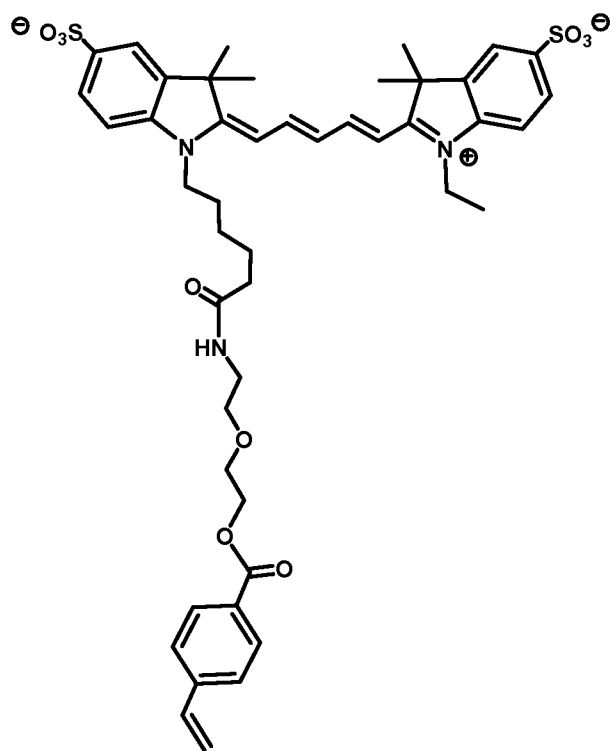
[0121] Suitable glucose oxidase (GO) substrates, include, but are not limited to, nitroblue tetrazolium (NBT, purple precipitate), tetranitroblue tetrazolium (TNBT, black precipitate), 2-(4-iodophenyl)-5-(4-nitrophenyl)-3-phenyltetrazolium chloride (INT, red or orange precipitate), Tetrazolium blue (blue), Nitrotetrazolium violet (violet), and 3-(4,5-dimethylthiazol-2-yl)-2,5-diphenyltetrazolium bromide (MTT, purple). Tetrazolium substrates may require glucose as a co-substrate. The precipitates associated with each of the substrates listed hereinabove may have unique detectable spectral signatures.

[0122] In some embodiments, the polymer precursor may be intrinsically labeled with a signal generator (for example, if the polymer precursor is an oligomer, during

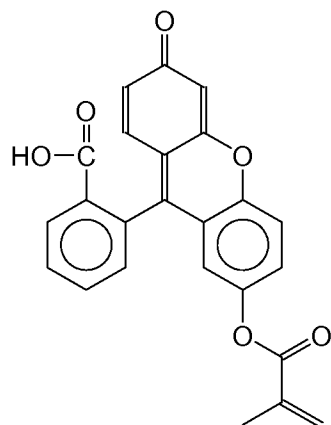
synthesis using a detectably labeled monomer). A polymer precursor that is intrinsically labeled may not require a separate signal generator in order to be detected. Rather the intrinsic label may be sufficient for rendering the polymer precursor detectable. In alternate embodiments, the polymer precursor may be labeled by binding to it a specific signal generator (i.e., extrinsically labeled).

[0123] A polymer precursor and a signal generator may be chemically linked to each other through functional groups capable of reacting and forming a linkage under suitable conditions. Suitable examples of functional group combinations may include, but are not limited to, amine ester and amines or anilines; acyl azide and amines or anilines; acyl halides and amines, anilines, alcohols, or phenols; acyl nitrile and alcohols or phenols; aldehyde and amines or anilines; alkyl halide and amines, anilines, alcohols, phenols or thiols; alkyl sulfonate and thiols, alcohols or phenols; anhydride and alcohols, phenols, amines or anilines; aryl halide and thiols; aziridine and thiols or thioethers; carboxylic acid and amines, anilines, alcohols or alkyl halides; diazoalkane and carboxylic acids; epoxide and thiols; haloacetamide and thiols; halotriazin and amines, anilines or phenols; hydrazine and aldehydes or ketones; hydroxyamine and aldehydes or ketones; imido ester and amines or anilines; isocyanate and amines or anilines; and isothiocyanate and amines or anilines. A functional group in one of the aforementioned functional group pair may be present in a polymer precursor and a corresponding functional group may be present in the signal generator. For example, a polymer precursor may include a carboxylic acid and the signal generator may include an amine, aniline, alcohol or acyl halide, or vice versa. Conjugation between the polymer precursor and the signal generator may be effected in this case by formation of an amide or an ester linkage.

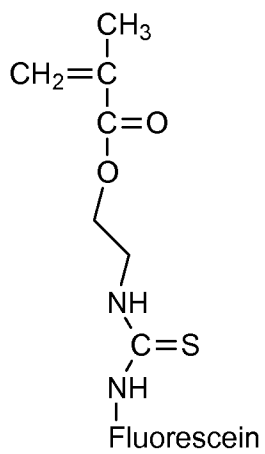
[0124] In one embodiment, a polymer precursor may include one or more signal-generator-labeled-monomers. Suitable examples of signal generator-labeled-monomers may include-fluorophore-labeled-monomers. Some examples of fluorophore-labeled-monomers may include cyanine or fluorescein-labeled-monomers. Some examples of signal generator-labeled-polymer precursors in accordance with one embodiment of the invention may include structures having formulae (XIII) to (XVI).



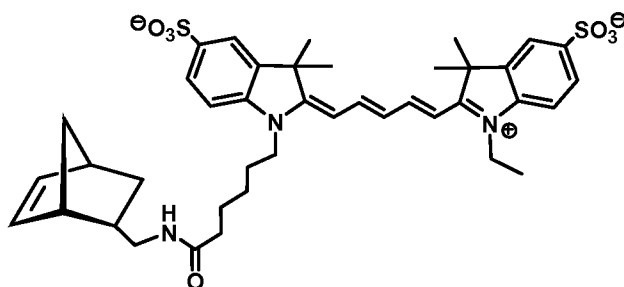
(XIII)



(XIV)



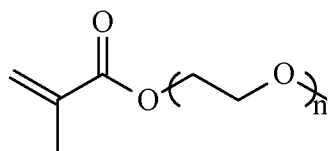
(XV)



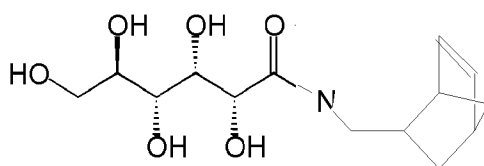
(XVI)

[0125] In one embodiment, a polymer precursor may include a mixture of monomers: signal-generator-labeled-polymer precursors and unlabeled polymer precursors. In one embodiment, unlabeled monomers may be employed along with the labeled polymer precursors to prevent quenching of signal between labeled polymer precursors. The concentration of labeled- and unlabeled-polymer precursors may be varied depending on the molecular weight of polymer desired and the extent of dequenching required. Suitable unlabeled-polymer precursors may include one or more monomers polymerizable by initiators employed in accordance with the compositions disclosed herein.

[0126] In one embodiment, at least one initiator may include an ATRP initiator and at least one polymer precursor may include a mixture of a fluorophore-labeled ATRP polymer precursors and unlabeled-ATRP polymer precursors. For example, a fluorophore-labeled ATRP polymer precursor may include one or more molecules having structures of formulae (XIII) to (XV) and unlabeled-ATRP polymer precursor may include an acrylate or styrene polymer precursors. In one embodiment, an unlabeled ATRP polymer precursor may have a structure of formula (XVII).



(XVII)

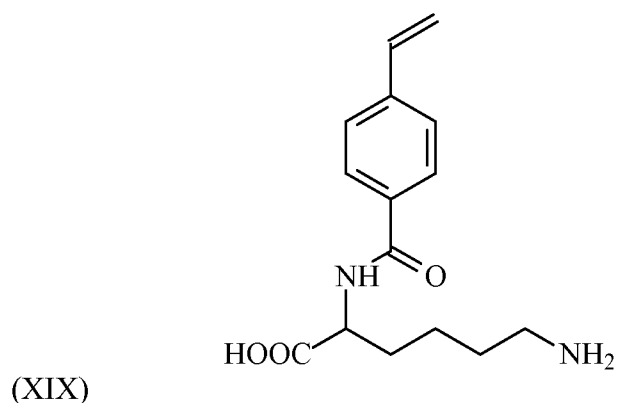


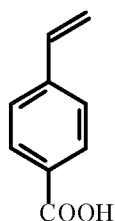
(XVIII)

[0127] In one embodiment, at least one initiator may include an ROMP initiator and at least one polymer precursor may include a mixture of a fluorophore-labeled ROMP polymer precursors and unlabeled-ROMP polymer precursors. For example, a fluorophore-labeled ROMP polymer precursor may include a molecule having a structure of formula (XVI) and unlabeled-ROMP polymer precursor may include a norbornene polymer precursor having a structure of formula (XVIII).

[0128] In one embodiment, a polymer precursor may be unlabeled, that is, may not include a signal generator. For compositions where a mixture of unlabeled polymer precursors may be employed, all the polymer precursors may be unlabeled, in accordance with one embodiment of the invention. In one embodiment, an unlabeled polymer precursor may include one or more functional groups that may be conjugated or bonded with signal generators post-polymerization reaction.

[0129] Some examples of non-labeled polymer precursors that may be used in compositions, in accordance with one embodiment of the invention, may include structures of formulae (XIX) or (XX). In one embodiment, a polymer formed from the polymer precursors with formulae (XIX) or (XX) may be conjugated to a signal generator, for example, via cyanine-labeled lysine or polylysine.





(XX)

[0130] Fig. 4 illustrates a schematic example of a composition in accordance with one embodiment of the invention. The composition includes the first complex 150 and the first polymer precursor 120. The first polymer precursor 120 further includes a signal generator 130. The composition further includes the second complex 250 and the second polymer precursor 220. The second polymer precursor 220 further includes a signal generator 230 different from the signal generator 130. As described hereinabove, in some embodiments, a polymer precursor may be unlabeled, or may include functional groups capable of bonding to one or more signal generators post polymerization reaction. In some embodiments, a polymer precursor may include functional groups capable of bonding to one or more initiators post polymerization reaction.

[0131] In one embodiment, a complex and a polymer precursor may be present in the form of solution. In one embodiment, a complex and a polymer precursor may be present in the form of an emulsion. In one embodiment, a complex may be immobilized on a solid support and a polymer precursor may be present in the form of a solution in contact with the complex.

[0132] In one embodiment, the composition may include a reaction product of a composition. In one embodiment, a reaction product of the composition as disclosed herein may include a mixture of a polymer product bonded to the analyte through the probe and any unreacted polymer precursor. In one embodiment, the conversion of the polymer precursor may be complete, that is, the reaction product may be free of any unreacted polymer precursor. In one embodiment, a reaction product may include a first polymer and a second polymer bonded to a first analyte and a second analyte

respectively. A polymer formed may be a homopolymer or a copolymer. A polymer formed may be linear, branched, or crosslinked.

[0133] In one embodiment, a polymer may be a homopolymer of labeled or unlabeled-monomers. In one embodiment, an unlabeled polymer may be labeled with a signal-generator after the formation of the polymer. In one embodiment, a polymer may be a copolymer of labeled monomers, unlabeled-monomers, or combinations thereof. A copolymer may be block, alternating, or a random copolymer. In one embodiment, a polymer may be a linear polymer. In one embodiment, a polymer may be a branched polymer. In one embodiment, a polymer may be a crosslinked polymer.

[0134] Average molecular weight of a polymer may depend upon one or more of the amount of signal desired, the type of initiators and monomers employed, ratio of monomer to initiator, or the reagent conditions (for example, presence or absence of solvent). In one embodiment, at least one of the polymers may have a number average molecular weight in a range of from about 50 grams per mole to about 100 grams per mole, from about 100 grams per mole to about 200 grams per mole, from about 200 grams per mole to about 500 grams per mole, from about 500 grams per mole to about 1000 grams per mole, from about 1000 grams per mole to about 2500 grams per mole, from about 2500 grams per mole to about 5000 grams per mole, from about 5000 grams per mole to about 10000 grams per mole, from about 10000 grams per mole to about 25000 grams per mole, from about 25000 grams per mole to about 50000 grams per mole, or from about 50000 grams per mole to about 100000 grams per mole. In one embodiment, a number average molecular weight of at least one of the polymers may be in a range of from about 100000 grams/mole to about 250000 grams/mole, from about 250000 grams/mole to about 500000 grams/mole, or from about 500000 grams/mole to about 1000000 grams/mole. In one embodiment, the number average molecular weight of at least one of the polymers may be in a range that is greater than about 10^6 grams/mole. In one embodiment, the number average molecular weight of a polymer may be controlled by varying the initiator and polymer precursor concentration. In one embodiment, the number average molecular weight

of at least one of the polymers may be related to the ratio of initiator and polymer precursor concentration, for example, in controlled polymerization

[0135] In one embodiment, at least one of the polymers may have a unimodal molecular weight distribution. In one embodiment, at least one of the polymers may have a polydispersity index in a range that is less than about 2.0. In one embodiment, at least one of the polymers may have a polydispersity index in a range that is less than about 1.5. In one embodiment, at least one of the polymers may have a polydispersity index in a range of from about 1.0 to about 1.1, from about 1.1 to about 1.2, from about 1.2 to about 1.3, from about 1.3 to about 1.4, or from about 1.4 to about 1.5. In one embodiment, at least one of the polymers may have a polydispersity index in a range that is less than about 1.1. Polydispersity index refers to the ratio of a weight average molecular weight of a polymer to the number average molecular weight of a polymer and may be a measure of the molecular weight distribution.

[0136] In one embodiment, the composition may include a first analyte, a first probe bonded to the first analyte, a first initiator bonded to the first probe, and a first polymer. The composition further includes a second analyte, a second probe bonded to the second analyte, a second initiator bonded to the second probe, and a second polymer. Fig. 5 illustrates a schematic example of a composition in accordance with one embodiment of the invention. The composition includes the complex 150 and a polymer 140 bonded to the complex through the first probe 110. The polymer includes a plurality of signal generators 130. The composition further includes the complex 250 and a polymer 240 bonded to the complex through the first probe 210. The polymer includes a plurality of signal generators 230. As described hereinabove, a polymer may be a homopolymer or a copolymer. Furthermore, although the polymer is shown as linear in the figure, branched and crosslinked polymer may also be present in the composition.

[0137] In one embodiment, the composition includes a plurality of probes capable of detecting a plurality of analytes, that is, the composition may be capable of multiple analyte detection or multiplexing. Each analyte may be detected using a particular probe where each probe may be specific to a particular analyte and each

probe used in an analysis may be labeled with a distinguishable signal generator. As described hereinabove, each probe may be labeled with a signal generator via an initiator and the polymer bonded to the probe through an initiator. As used herein, a plurality may be an amount greater than two but less than infinity.

[0138] In one embodiment, all the components of the composition (analyte, probe, initiator, polymer precursor, polymer) may be soluble in water at a room temperature. In one embodiment, the composition may be soluble in water at room temperature. In one embodiment, the composition may be capable of forming an emulsion in water at room temperature. In one embodiment, all the components of the composition (analyte, probe, initiator, polymer precursor, polymer) may be soluble in an organic solvent at room temperature. Suitable organic solvent may include one or more of methanol, ethanol, dimethylsulfoxide, dimethylformamide, or N-methylpyrrolidinone.

[0139] In one embodiment, the composition may be soluble in a solvent, other than water, at room temperature. A suitable solvent may include a polar or a nonpolar solvent that may not affect the integrity of the analyte, probe, or binding specificity between the analyte and the probe.

[0140] In one embodiment, a kit for detection of multiple analytes is provided. The kit may include a first probe bonded to a first initiator, a first polymer precursor, a second probe bonded to a second initiator, and a second polymer precursor. The first probe may include specific binding site that may be capable of binding to a binding sites present in the first analyte. Similarly, the second probe may include specific binding site that may be capable of binding to a binding sites present in the second analyte. In one embodiment, the kit may further include additional reagents required for the polymerization of the polymer precursor, for example, a metal ligand complex used along with the halide initiator in an ATRP reaction. In some embodiments a mixture of signal-generator-labeled-polymer precursors and unlabeled-polymer precursors may be employed, and the kit may include the labeled and unlabeled-polymer precursors as mixtures or separate compositions. In some embodiments, the polymer precursors employed may be all unlabeled, and the kit may further include one or more signal-generator capable of binding to the polymer post-

polymerization. In one embodiment, the kit may further include additional reagents, such as, solvents, buffer solutions, and the like. In one embodiment, the kit may include a plurality (2, 3,...n) of probes, each bonded to a distinct initiator and a plurality of polymer precursors. The plurality of probes may include specific binding sites that may be capable of binding to specific binding sites present in different analytes.

[0141] In one embodiment, an article for detection of multiple analyte is provided. The device includes a substrate and the substrate is capable of immobilizing two or more analytes on its surface. In one embodiment, the substrate may be capable of associating with two or more polymers. In one embodiment, the substrate may be capable of associating with a first polymer through a first analyte and a first probe bonded to a first initiator. The substrate may be further capable of associating with a second polymer through a second analyte and a second probe bonded to a second initiator.

[0142] A suitable substrate may include one or more of arrays, gels, glass slides, cells, tissue, tissue section, beads, blots, ELISA plates, and the like. In one embodiment, two or more analytes may be immobilized on a surface of the substrate by functionalizing the substrate using a suitable functional group, for example, an amino silane. An analyte may be immobilized on the substrate using the amine functional group. In one embodiment, a first analyte or a second analyte may be immobilized on a surface of the substrate using specific-binding pairs such as streptavidin-biotin, for example, a biotinylated analyte may be immobilized on a streptavidin-functionalized substrate. In one embodiment, a probe (different from the first probe and the second probe and not bonded to an initiator) capable of binding to the analyte may be immobilized on the substrate. A first analyte or second analyte may be bonded to the probe. A first probe and a second probe may be then bonded to the first analyte or the second analyte forming, for example, a sandwich assay. The first probe and the second probe may be bonded to the first initiator and the second initiator respectively.

[0143] In one embodiment, the article is capable of detecting two or more biomolecules, for example in molecular biology. In one embodiment, the article includes one or more of a protein microarray, an RNA microarray, a DNA microarray, an ELISA plate, a membrane used in a blot technique (for example, Western blot, Southern Blot, or Northern Blot), or a histological sample (cell, tissue, tissue section).

[0144] In one embodiment, a device is provided. The device includes the article as disclosed herein. The device is capable of detecting a type of the analyte, an amount of the analyte, or both type and amount of an analyte.

[0145] In one embodiment, the device is a handheld device capable of detecting analytes on-site, for example, a device that may provide for detection of analytes by a first responder. In one embodiment, the handheld device may be capable of detecting two or more chemical warfare agents or bio-warfare agents. In one embodiment, the device is capable of sensing two or more pollutants in an air sample, a soil sample, or a water sample. In one embodiment, the device is capable of sensing two or more spoilage-indicators in a food or beverage sample.

[0146] In one embodiment, the device is an autonomous detection system capable of automatically collecting, preparing, and detecting an analyte in an environment. In one embodiment, the autonomous detection system may be portable and may be capable of detecting analytes on-site. In one embodiment, the autonomous detection system may be capable of detecting two or more chemical warfare agents or bio-warfare agents. In one embodiment, the device may be a hand-held device, may be a part of a mobile lab, or may be a part of a device capable of area analysis.

[0147] In one embodiment, a method of detection of multiple analytes is provided. The method includes contacting the first analyte with a first probe bonded to a first initiator to form a first complex. The method includes contacting the second analyte with a second probe bonded to a second initiator to form a second complex. The contacting conditions (pH, concentration, temperature, and the like) between the analytes and the probes may be such that the probes may bind to the analytes through the specific binding sites present in the analytes.

[0148] In one embodiment, the first analyte and the second analyte may be contacted with the first probe and the second probe simultaneously, that is, a mixture of probes may be used that may be contacted with the analytes. In one embodiment, the first probe and the second probe may bind to the first analyte and the second analyte simultaneously. In one embodiment, the first analyte and the second analyte may be contacted with the first probe and the second probe sequentially, that is, either the first probe or the second probe may be first contacted with the corresponding analyte followed by the other probe. In one embodiment, the first probe or the second probe may bind to the corresponding analyte first followed by binding of the other probe with the other analyte.

[0149] As described hereinabove, the analytes may be portion of a sample to be analyzed (for example, a organophosphate in a water sample or a biological agent in an infected air sample), may be an extract of a sample to be analyzed (for example, an antigen in a blood sample), or the analytes may be the sample itself (for example, a nucleic acid in a buffer solution). In some embodiments, the analytes or the sample (if the analyte is present in a sample) may be processed and prepared before contacting the analyte or the sample with the probe(s). Analyte or sample preparation may include one or more of the following steps: separation of analyte, concentration of analyte, purification of analyte, analyte amplification, and the like. One or more of the aforementioned analyte or sample preparation techniques may be employed to make the analyte available for binding and detection.

[0150] In one embodiment, a method may further include immobilizing the analytes on a surface of a substrate using one or more of the techniques described herein elsewhere. A method may further include a blocking step in which the substrate (if employed) may be contacted with reagents that may block non-specific binding of the first probe and the second probe to the substrate.

[0151] A method may also include one or more washing steps after contacting the analyte with the first probe. A washing step may include contacting the analyte-probe complex with a series of washing solutions to remove any unbound or non-specifically bound probes.

[0152] In one embodiment, the first complex and the second complex may be further contacted with a first polymer precursor and a second polymer precursor. In one embodiment, the first complex and the second complex may be contacted with a first polymer precursor and a second polymer precursor under conditions effective to initiate a polymerization reaction of the polymer precursors to form a first polymer and a second polymer, respectively.

[0153] In one embodiment, the first complex and the second complex may be contacted with the first polymer precursor and the second polymer precursor simultaneously, that is, a mixture of polymer precursors may be used that may be contacted with the analyte. In one embodiment, the first polymer precursor and the second polymer precursor may polymerize simultaneously. In one embodiment, the complex may be contacted with the first polymer precursor and the second polymer precursor sequentially, that is, either the first polymer precursor or the second polymer precursor may be first contacted with the corresponding complex followed by the other polymer precursor. In one embodiment, the first polymer precursor or the second polymer precursor may polymerize first followed by the polymerization reaction of the other polymer precursor.

[0154] In one embodiment, a first complex may be formed first and the first complex may be contacted with a first polymer precursor to form a first polymer. Further a second complex may be formed that may be contacted with the second polymer precursor to form a second polymer.

[0155] A method may also include one or more washing steps after contacting the first complex or the second complex with the corresponding polymer precursor. A washing step may include contacting the analyte-polymer complexes with a series of washing solutions to remove any unbound polymers or any unreacted polymer precursors.

[0156] In one embodiment, polymer precursors may include one or more signal generators. Correspondingly, the polymers may include signal generators capable of providing a detectable signal. In one embodiment, polymer precursors may not

include a signal generator and the polymer precursors may include functional groups capable of binding to a signal generator. In one embodiment, the method may further include contacting one or more polymer with one or more signal generators.

[0157] The method may further include observing at least one signal from at least one polymer. A signal from the signal generator in the polymer may be detected using a detection system. The nature of the detection system used may depend upon the nature of the signal generators used. Thus, the detection system may include an electron spin resonance (ESR) detection system, a charge coupled device (CCD), AMS detection system (e.g., for radioisotopes), a fluorescent detection system, an electrical detection system, a photographic film detection system, a chemiluminescent detection system, an enzyme detection system, an atomic force microscopy (AFM) detection system (e.g., for the detection of microbeads), a scanning tunneling microscopy (STM) detection system (e.g., for the detection of microbeads), an optical detection system, a spectroscopic detection system (laser FM or multiphoton excitation), a near field detection system, or a total internal reflection (TIR) detection system.

[0158] One or more of the aforementioned techniques may be used to observe one or more characteristics of a signal from a signal generator (present in the first polymer or the second polymer). In some embodiments, signal intensity, signal wavelength, signal location, signal frequency, or signal shift may be determined using one or more of the aforementioned techniques. In some embodiments, one or more aforementioned characteristics of the signal may be observed, measured, and recorded. In some embodiments, a signal generator may include a fluorophore and fluorescence wavelength or fluorescent intensity may be determined using a fluorescence detection system. In some embodiments, at least one signal may be observed in situ, that is, a signal may be observed directly from the signal generator associated through the polymer to the probe and the analyte in the sample. In some embodiments, a signal from the signal generator may be analyzed within the sample, obviating the need for separate array-based detection systems.

[0159] In some embodiments, observing a signal may include capturing an image of the sample. In some embodiments, a microscope connected to an imaging device may be used as a detection system, in accordance with the methods disclosed herein. In some embodiments, a signal generator (such as, fluorophore) may be excited and the signal (such as, fluorescence signal) obtained may be observed and recorded in the form of a digital signal (for example, a digitalized spectra or an image). In one embodiment, a method may include observing a first signal from a first polymer and a second signal from a second polymer.

[0160] In one embodiment, a signal may be analyzed to obtain information regarding the analyte. In one embodiment, the method may include correlating the signal to a type of an analyte. In one embodiment, the method may include correlating the signal to a type of multiple analytes. In one embodiment, the method may include correlating the signal to an amount of analyte. In one embodiment, the method may include correlating the signal to an amount of multiple analytes. In one embodiment, the method may include correlating the signal to both type and amount of an analyte. In one embodiment, the method may include correlating the signal to both type and amount of multiple analytes. In one embodiment, the presence or absence of a signal may indicate the presence or absence of an analyte in the sample. In one embodiment, the presence or absence of signals may indicate the presence or absence of multiple analytes in the sample.

[0161] In some embodiments, an intensity value of at least one signal (for example, fluorescence intensity) may be measured and may be correlated to the amount of corresponding analyte in the sample. A correlation between the amount of analyte and the signal intensity may be determined using calibration standards. In one embodiment, the method may include determining the relative concentration or absolute amount of at least one analyte in a sample. The relative concentration or amount may be determined by measuring the amount of a signal from a probe bound to an analyte.

[0162] In one embodiment, the signal amount may be compared to a calibration curve that may be prepared prior to or at the same time the sample is analyzed for

absolute quantification. In one embodiment, the calibration curve may be a plot of signal intensity (y-axis) as a function of known analyte concentration (x-axis). In one embodiment, the method may include quantification of an analyte directly, that is, without the use of calibration curves between signal intensity and analyte amount. The latter may be possible, for example, in compositions employing controlled polymerization initiators. A controlled polymerization reaction may provide for synthesis of polymers with known molecular weight and narrow polydispersity index such that the amount of signal corresponding to a particular polymer molecular weight may be accurately determined. The amount of signal may be then correlated to the amount of analyte present in the sample. For example, the combined degree of polymerization (calculated from the molecular weight) of the polymer may be calculated to be about 10. The amount of signal measured for the signal may correspond to about 100 degree of polymerization. The number of polymers that may be present may be then calculated to be about $100/10$ equal to about 10. Since one polymer may be bonded to one analyte at any given time, the number of analytes present in the sample may be correspondingly calculated to be about 10 in a given test sample.

[0163] In embodiments where multiple analytes may be analyzed using multiple probes, relative amounts of different analytes in the biological sample may be determined by measuring different signal intensities. In some embodiments, one or more control samples may be used. By observing a presence or absence of a signal in the samples (sample of interest versus a control), information regarding the sample may be obtained. For example by comparing a diseased tissue sample versus a normal tissue sample, information regarding the analytes present in the diseased tissue sample may be obtained. Similarly by comparing signal intensities between the samples (i.e., sample of interest and one or more control), information regarding the expression of analytes in the sample may be obtained.

[0164] In some embodiments, a location of at least one signal in the sample may be observed. In some embodiments relative locations of two or more signals may be observed. A location of the signal may be correlated to a location of the analyte, providing information regarding localization of different analytes in the sample. In

some embodiments, an intensity value of the signal and a location of the signal may be correlated to obtain information regarding localization of different analytes in the sample. For example, certain analytes may be expressed more in the cytoplasm relative to the nucleus in a tissue sample, or vice versa. In some embodiments, information regarding relative localization of analytes may be obtained by comparing location and intensity values of two or more signals.

[0165] In one embodiment, one or more of the observing or correlating step may be performed using computer-aided means. In some embodiments, one or more of the method steps be automated and may be performed using automated systems.

[0166] In one embodiment, a composition and a method, as disclosed herein, may be particularly applicable for detecting analytes in a rare or small sample (for example, a nanoliter volume sample) or in a sample where analyte concentration is low. In one embodiment, the test sample or the analyte sample may have a nanoliter volume, that is, it may be only necessary to load a nanoliter volume into the detection system in order to perform the method described herein.

[0167] In one embodiment, a composition and a method as disclosed herein may be particularly applicable for detecting analytes at a nanomolar concentration. In one embodiment, a composition and a method as disclosed herein may be particularly applicable for detecting analytes at a picomolar concentration. In one embodiment, a composition and a method as disclosed herein may be particularly applicable for detecting analytes at a femtomolar concentration. In one embodiment, analytes may be present at a frequency of less than about 1 in 10,000 molecules. In one embodiment, analytes may be present at a frequency of less than about 1 in 100,000 molecules. In one embodiment, analytes may be present at a frequency of less than about 1 in 1,000,000 molecules. In one embodiment, analytes may be present at a frequency of less than about 1 in 2,000,000 molecules in the test sample. Accordingly, the composition and the method may be used to detect and analyze analytes that are extremely rare.

[0168] In one embodiment, the compositions and methods disclosed herein may have a limit of detection (LOD) of less than about 1000 analytes in about 18000 litres of air. In one embodiment, the compositions and methods disclosed herein may have a limit of detection (LOD) of about 100 analytes in about 18000 litres of air. In one embodiment, the compositions and methods disclosed herein may have a limit of detection (LOD) of about 10 analytes in about 18000 litres of air.

[0169] In one embodiment, the compositions and methods disclosed herein may provide for detection of analytes at low concentrations by amplifying the observable signal using a polymerization reaction. In one embodiment, the compositions and methods disclosed herein may provide for detection of analytes at low concentrations by amplifying the observable signal, thus obviating the need to amplify the analyte using techniques such as polymerase chain reaction (PCR). In one embodiment, the compositions and methods disclosed herein may provide for detection of analytes that may not be amenable to analyte amplification techniques like PCR, for example, protein analytes.

[0170] In one embodiment, the compositions and methods disclosed herein may provide for detection of multiple analytes in a test sample, thereby conserving sample. In one embodiment, the degree of multiplexing may be 2 (i.e., 2 analytes may be detected in a single analysis). In one embodiment, the degree of multiplexing may in a range of from about 2 to about 4, from about 4 to about 6, from about 6 to about 10, from about 10 to about 20, from about 20 to about 50, from about 50 to about 100, from about 100 to about 250, or from about 250 to about 500. In one embodiment, the degree of multiplexing may be greater than about 500.

[0171] In one embodiment, the compositions and methods disclosed herein may provide a detectable signal in less amount of test time. In one embodiment, the compositions and methods disclosed herein may provide a detectable signal in less amount of test time by formation of branched polymers. In one embodiment, the compositions and methods disclosed herein may provide a detectable signal in a test time in a range of less than about 2 hours, in a range of less than about 1 hour, in a

range of less than about 30 minutes, in a range of less than about 15 minutes, or in a range of less than about 5 minutes.

EXAMPLES

[0172] The following examples are intended only to illustrate methods and embodiments in accordance with the invention, and as such should not be construed as imposing limitations upon the clauses.

[0173] Examples 1-4 describe the synthesis of a polymer-precursor conjugated to a signal generator.

EXAMPLE 1 Synthesis of Cy5-labeled-ATRP-Monomer

[0174] Synthesis of Compound 2. A solution of di-tert-butyl carbonate (2.57 g, 11.8 mmol) in chloroform (10 mL) is added to a solution of compound 1, that is 2-(2-amino-ethoxy)ethanol (1.25 g, 11.9 mmol), in chloroform (10 mL). The mixture is stirred at room temperature for about two hours. The solution is washed with water (15 mL) and the organic layer dried over anhydrous MgSO₄ and concentrated in vacuo to provide compound 2 (2.31 g, 95%). ¹H NMR (CDCl₃): δ 1.38 (9H, s), 3.25-3.28 (2H, m), 3.47-3.52 (4H, m), 3.66-3.69 (2H, m), 4.82 (1H, bs).

[0175] Synthesis of Compound 4. DCC (1.24 g, 6.0 mmol) and DMAP (0.36 g, 3.0 mmol) are added to 4-ethenylbenzoic acid (i.e. compound 3) (0.82 g, 5.5 mmol) and alcohol 2 (1.13 g, 5.5 mmol) in CH₂Cl₂ (30 mL), and the mixture is stirred overnight. Dicyclohexylurea (DCU) is filtered off and H₂O (15 mL) is added. The aqueous and organic layers are separated, and the aqueous layer is extracted with CH₂Cl₂ (3 x 30 mL). The combined organic extracts are dried with MgSO₄, concentrated in vacuo, and chromatographed (hexanes:EtOAc, 20:1 to 5:1) to provide ester 4 (0.99 g, 54%). ¹H NMR (CDCl₃): δ 1.43 (9H, s), 3.33-3.34 (2H, m), 3.58-3.60 (2H, m), 3.78-3.81 (2H, m), 4.46-4.48 (2H, m), 4.92 (1H, bs), 5.39 (1H, d), 5.86 (1H, d), 6.76 (1H, dd), 7.47 (2H, d), 8.01 (2H, d).

[0176] Synthesis of Compound 5 ("Amino Styrene 5"). Trifluoroacetic acid (2 mL) is added to a solution of compound 4 (0.15 g, 0.46 mmol) in CH₂Cl₂ (6 mL) and

stirred at room temperature for about two hours. The resulting mixture is washed with saturated aqueous NaHCO_3 and extracted with CH_2Cl_2 . The organic layer is dried with Na_2SO_4 , concentrated in vacuo, and chromatographed (CH_2Cl_2 : MeOH, 20 : 1 to 10 : 1, with 1% Et_3N) to provide compound 5 (0.10 g, 92%). ^1H NMR (CDCl_3): δ 2.88-2.91 (2H, m), 3.56-3.59 (2H, m), 3.80-3.82 (2H, m), 4.47-4.49 (2H, m), 5.38 (1H, d), 5.86 (1H, d), 6.76 (1H, dd), 7.46 (2H, d), 8.01 (2H, d). The reaction scheme is shown in Fig. 6.

[0177] Synthesis of ATRP Dye-Monomer Using Cy5 and Compound 5. Cy5 mono-NHS ester (5.0 mg, 6.3 μmol) in 2.0 mL DMSO is added into amino styrene, compound 5 (1.5 mg, 6.3 μmol) in DMSO (2.0 mL). After 0.13 mL of triethylamine (0.95 mmol) is added into the mixture, the reaction is stirred overnight in dark at room temperature. The crude product is purified by HPLC (C-18, $\text{CH}_3\text{CN}/\text{H}_2\text{O}/\text{CF}_3\text{COOH}$) to give compound 11 (5.0 mg, 87% yield). The reaction scheme is shown in Fig. 7.

EXAMPLE 2 Synthesis of FITC-labeled-ATRP-Monomer (FITC-MA)

[0178] Six milligrams of sodium hydroxide (0.15 mmol) is added to a solution of 2-aminoethyl methacrylate hydrochloride (25 mg, 0.153 mmol) in 1 mL sodium carbonate buffer (pH = 9.6). Fluorescein isothiocyanate (FITC) (65 mg, 0.17 mmol) dissolved in 1.5 mL DMSO is added into the mixture. The mixture is stirred overnight at room temperature. The resulting clear red solution can be stored at 2°C without further purification. ^1H NMR ($\text{DMSO}-d_6$): δ 6.10 (1H, s), 5.68 (1H, s), 4.26 (2H, t), 3.83 (2H, t), 1.89 (3H, s), 0.42 (6H, s). The reaction scheme is shown in Fig. 8.

EXAMPLE 3 Synthesis of Bifunctional ATRP Monomer For Post-polymerization Modification

[0179] Synthesis of BOC-protected N-(4-vinylbenzoyl)lysine, compound 7: A solution of DCC (0.68 g, 3.3 mmol), DMAP (0.10 g, 2.5 mmol), Et_3N (0.46 mL, 3.3 mmol) and compound 6 (0.89 g, 3.0 mmol) in CH_2Cl_2 (15 mL) is added to a solution of 4-vinylbenzoic acid (i.e. compound 3) (0.44 g, 3.0 mmol) in CH_2Cl_2 (15 mL) and the mixture is stirred overnight. Dicyclohexylurea (DCU) is filtered off and the

filtrate is concentrated. The crude product is purified by silica gel column chromatography with hexane/EtOAc (4:1 to 1:1) as the eluent. Compound 7 is obtained in 89% yield (1.05 g). ¹H NMR (CDCl₃): δ 1.41 (9H, s), 1.49-1.57 (2H, m), 1.80-1.84 (2H, m), 1.95-2.01 (2H, m), 3.11-3.12 (2H, m), 3.78 (3H, s), 4.60 (1H, bs), 4.79-4.84 (1H, m), 5.36 (1H, d), 5.84 (1H, d), 6.71-6.78 (2H, m), 7.47 (2H, d), 7.79 (2H, d).

[0180] Synthesis of N-(4-vinylbenzoyl)lysine, compound 8, ("VBA-Lys"): A solution of compound 7 (0.13 g, 0.34 mmol) in dioxane/MeOH (6 mL) is hydrolyzed with 1 M LiOH, at a pH between about 10 and about 9.5. The mixture is stirred at room temperature for 2 to 3 hours. The completeness of the reaction is judged using thin layer chromatography (TLC). Trifluoroacetic acid (0.5 mL) is added to the solution and followed by stirring at room temperature for another two hours. The resulting mixture is concentrated in vacuo, and separated by chromatography (CH₂Cl₂: MeOH, 20: 1 to 10 : 1, with 1% Et₃N) to give compound 8 (0.08 g, 84% yield) with a trace amount of Et₃N or a salt thereof. ¹H NMR (CDCl₃): δ 1.45-1.58 (2H, m), 1.80-1.89 (2H, m), 2.01-2.09 (2H, m), 3.07-3.14 (2H, m), 4.49-4.52 (1H, m), 4.68 (1H, bs), 5.32 (1H, d), 5.81 (1H, d), 6.74 (1H, d), 7.43 (2H, d), 7.83 (2H, d). The reaction scheme is shown in Fig. 9.

EXAMPLE 4 Synthesis of Cy5-labeled- ROMP Monomer

[0181] Synthesis of 5-Norbornene-2-methanamine (bicyclo[2.2.1]hept-5-en-2-ylmethanamine). A three-neck flask is equipped with mechanical stirrer, reflux condenser and dropping funnel. The flask is charged under N₂, with 42 ml of a 1.0 M solution of lithium aluminum hydride in anhydrous ether (42 mmol). A solution of 5 g of 5-Norbornene-2-carbonitrile (bicyclo[2.2.1]hept-5-ene-2-carbonitrile) in 45 ml of ether (42 mmol, 1.0 M) is added dropwise through the addition funnel at a rate that allows a gentle reflux. After one hour, the mixture is cooled to 0°C and water is added dropwise until hydrogen gas liberation is no longer observed. To this, 100 ml of 20% sodium potassium tartrate is added and produces a clear solution. The reaction solution is transferred to a separatory funnel, and the aqueous phase is collected and washed with 3x50 ml portions of ether. The combined ether fractions

are dried with calcium sulfate and solvent is removed by rotary evaporation yielding a yellow oil. This product is further distilled under reduced pressure to yield a clear oil.

[0182] Synthesis of Cy5-labeled 5-Norbornene-2-methanamine (ROMP monomer). To a N₂-flushed vial is added a 100 ml of a 400 mM solution of 5-Norbornene-2-methanamine (5 mg, 0.04 mmol, 130 mM final concentration), 100 ml of a 340 mM solution of Cy5 mono-NHS ester N,N-diisopropylethylammonium salt (30 mg, 0.034 mmol, 113 mM final concentration). With stirring, 100 ml of N,N-diisopropylethylamine (75.7 mg, 0.59 mmol, 2 M final concentration) is added and the dark blue solution is stirred overnight under N₂. This is purified by HPLC and lyophilized to yield a deep blue microcrystalline powder. The reaction scheme is shown in Fig. 10.

[0183] Examples 5-10 describe the procedure for modification of an initiator or immobilization of an initiator on a substrate.

EXAMPLE 5 Synthesis of silane-modified ATRP Initiator

[0184] Synthesis of compound 9: Five grams of 4-pentene-1-ol (5.0 g, 0.058 mol), triethylamine 12 mL, and anhydrous dichloromethane (50 mL) are added to a dry 250 mL one-necked round-bottomed flask immersed in an ice bath. Eighteen grams of 2-bromoisobutyryl bromide (BiBB) (18 g, 0.078 mol) dissolved in 30 mL dichloromethane is added dropwise to the flask using a syringe over the course of 0.5 hour. The reaction mixture is stirred at 20°C overnight. The mixture is extracted with 10% saturated sodium carbonate three times and dried over anhydrous sodium sulfate. The dichloromethane is removed by rotary evaporation. Vacuum distillation affords 10.4 g of compound 9. (yield: 10.4 g, 76%). ¹H NMR (CDCl₃): δ 5.81 (1H, m), 5.03 (2H, m), 4.19 (2H, t), 2.19 (2H, m), 1.94 (6H, s), 1.80 (2H, m).

[0185] Synthesis of compound 10 (silane-modified ATRP initiator): Two drops of Karstedt's catalyst is added at 0°C to a mixture of compound 9 (10.42 g, 0.044 mol) and chlorodimethylsilane (6.6 mL, 0.058 mol) in 100 mL flask. The mixture is stirred at room temperature overnight. The unreacted silane is removed by rotary evaporation. The mixture is distilled under vacuum to afford 11.2 g compound 10 (77

% in yield). $^1\text{H NMR}$ (CDCl_3): δ 4.19 (2H, t), 1.95 (6H, s), 1.71 (2H, t), 1.47 (4H, m), 0.86 (2H, t), 0.42 (6H, s). The reaction scheme is shown in Fig. 11.

EXAMPLE 6 Synthesis of Bifunctional ATRP Initiator For Conjugation to Primary Amines

[0186] N-Hydroxysuccinimide (B, 1.28 g) and the free acid (A, 2.3 g) are dissolved in CH_2Cl_2 (90 mL) and cooled to 0°C . EDCI (2.09 g) is added, the reaction is stirred for 10 min at 0°C and then stirred overnight at room temperature. The reaction is diluted with Et_2O (20 mL), washed with 5% aqueous acid (10 mL), saturated aqueous sodium bicarbonate (10 mL) and brine (10 mL) and dried with sodium sulfate. After concentration under reduced pressure, the resulting residue is purified by flash chromatography (silica gel, 1:1 hexane:ethyl acetate) to yield 3.82 g of the activated ester as a colorless oil. Fig. 12 is a reaction scheme for synthesis of a modified initiator in accordance with one embodiment of the invention.

EXAMPLE 7 Preparation of Surface-Supported ATRP Initiator on Quartz Surface using silanated-ATRP initiator

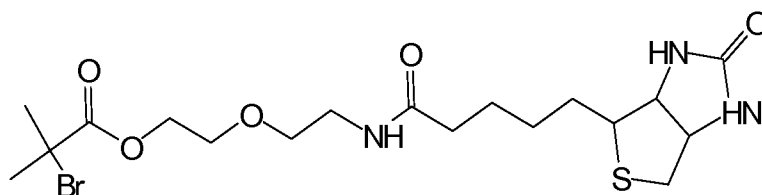
[0187] Quartz slides ($10 \times 10 \text{ mm}^2$) are soaked in 10% NaOH overnight and then rinsed with deionized (DI) water. The slides are then sonicated in DI water successively with 1% HCl, water, and finally with ethanol. Each sonication step lasts about 20 minutes. The slides are dried at 110°C under vacuum for two hours, and are immersed in dry THF (20 mL). Then 0.5 mL of compound 10 is injected into the suspension via a syringe. The mixture is stirred and refluxed under N_2 atmosphere overnight. The slides are then washed by anhydrous THF thoroughly and dried in air.

EXAMPLE 8 Preparation of Surface-Supported ATRP Initiator on a Quartz Surface Using Biotinylated-initiator

[0188] Drops of biotin-NHS (100 μL of 2 mM in PBS at pH = 7.4) are dropped onto polylysine film using a micropipette. Another polylysine-coated slide is loaded facedown on top of the slide. The slides are incubated for two hours at room temperature, and then rinsed thoroughly with deionized water and PBS buffer solution

successively. Streptavidin (100 μ L, 1.0 mg / mL in PBS) is loaded on the biotin-modified slides. The coupling reaction is conducted overnight at about 2 to 8°C, and then they are washed with PBS buffer solution and Tween 20 separately. Alternatively, the coupling reaction can be run for about two hours at room temperature. Finally, 100 μ L of biotinylated initiator having formula XXI (4 mg /mL in methanol) is diluted with 20 mL PBS buffer, and the slides are immersed therein. The slides are incubated overnight and then washed with PBS buffer.

(XXI)



EXAMPLE 9 Preparation of Surface-Supported ATRP Initiator on Magnetic Particles

[0189] Two milliliters of streptavidin-coated iron oxide particles (i.e. magnetic particles) and 10 μ L of biotin initiator having formula (XXI) are put into a flask and the mixture is stirred overnight. The magnetic particles are collected with a magnet and washed with PBS buffer five times.

EXAMPLE 10 Preparation of Surface-Supported ROMP Initiator on Polystyrene Beads

[0190] Synthesis of (vinyl) polystyrene: Chloromethyl polystyrene resin (10g, 1 mmol/g of Cl, 10 mmol of Cl, 100-200 mesh) is swelled by shaking overnight in 60 ml THF. Under N₂, n-butyl lithium (46 ml, 1.6 M, 74 mmol) is added dropwise to a 300 ml suspension of lithium iodide (9.9g, 74 mmol) and trimethylsulfonium iodide (16.32g, 80 mmol) at 0°C. After addition, the reaction is stirred for an hour at 0°C. This is added, at 0°C, to the swelled (chloromethyl) polystyrene resin in THF and the suspension is shaken overnight at room temperature. The mixture is diluted with methanol and filtered through a 0.45 m PTFE membrane. The resin is washed with

methanol/acetic acid (80/20), methanol and methylene chloride and dried under vacuum at room temperature for about 16 hours.

[0191] Synthesis of bis(tricyclohexylphosphine) benzyldine ruthenium dichloride polystyrene resin. Under N₂, a 2.5 ml methylene chloride solution of bis(tricyclohexylphosphine) benzyldine ruthenium dichloride (130 mg, 0.16 mmol, 64 mM) is added to a suspension of (vinyl) polystyrene (2g, 1 mmol/g vinyl, 2 mmol vinyl, 100-200 mesh) in 40 ml methylene chloride and shaken at room temperature for one hour. The mixture is filtered under N₂, and washed with ample amounts of methylene chloride and ether and dried under vacuum at 40°C overnight to give a brown resin. Fig. 13 is a reaction scheme for preparation of an initiator immobilized on a polystyrene bead.

[0192] Examples 11-17 describe the procedure for ATRP polymerization of polymer precursors using initiators immobilized on a substrate.

EXAMPLE 11 Surface Initiated ATRP Co-polymerization of Non-fluorescent Monomer (HEMA) and Fluorescent Monomer (FITC-MA) on Quartz Slides

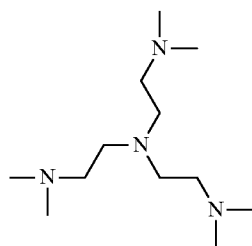
[0193] 1.5 mL of 2-hydroxyethylene methacrylate (HEMA) is dissolved in 1.5 mL of degassed deionized water. CuCl (10.3 mg, 0.1 mmol), CuBr₂ (6.8 mg, 0.03 mmol) and 2,2'-bipyridine (46 mg, 0.29 mmol) are added to a vial containing both the initiator-modified quartz slides (from Example 7) and unmodified control quartz slides. The vial is sealed with a rubber septum and degassed. The monomer solution is then transferred into the vial and a homogeneous brown solution forms upon gentle shaking. A 1.0 mL of FITC-MA solution is introduced with a syringe. The polymerization is carried out at room temperature overnight. The quartz slides are then removed from the reaction mixture, rinsed with deionized water, DMF and then deionized water successively and dried in air. Fluorescence spectra are measured with an excitation at 475 nm (as shown in Fig. 14). Surface initiated polymerization (SIP) of FITC-MA and HEMA showed a fluorescence peak when compared to a control sample (blank slide).

EXAMPLE 12 Surface Initiated ATRP Co-polymerization of Non-fluorescent Monomer (HEMA) and Fluorescent Monomer (FITC-MA) on Quartz Slides

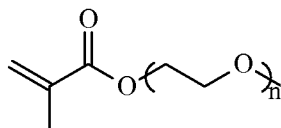
[0194] A glass tube is charged with FMA (75 mg), NaOH (7.5 mg), CuBr₂ (8 mg), water (0.5 mL) and HEMA (0.5 mL). After all materials dissolve, the pH value of the solution is adjusted to about 8 by adding NaHCO₃. The mixture in the tube is degassed with two freeze-pump-thaw cycles and 160 μL of CuCl and Me₆TREN solution ([Cu⁺] = 0.5 mg/μl, CuCl:Me₆TREN = 1:1.5) is added. After an additional freeze-pump-thaw cycle, the ATRP initiator modified quartz slides from Example 7 are added under argon, and then a final freeze-pump-thaw cycle is performed. The polymerization is carried out at room temperature overnight. The quartz slides are then removed from the reaction mixture and rinsed with deionized water, DMF and NaHCO₃/Na₂CO₃ buffer successively and dried in air. Fluorescence spectra are then measured with a Perkin-Elmer LS55 luminescence spectrometer with an excitation at 460 nm.

EXAMPLE 13 Surface Initiated ATRP Co-polymerization of Non-fluorescent Monomer (MPEO) and Fluorescent Monomer (FITC-MA) using Biotinylated-Initiator Modified Quartz Slides

[0195] A glass tube is charged with FITC (20 mg), NaOH (1.5 mg), CuBr₂ (1.5 mg), water (0.2 mL) and MPEO (0.1 mL). After all materials dissolved, the pH of the solution is adjusted to about 8 with NaHCO₃. The mixture in the tube is degassed with two freeze-pump-thaw cycles and 28 μL of CuCl and Me₆TREN solution ([Cu⁺] = 0.5 mg/μl, CuCl : Me₆TREN = 1:1.5) is added. After additional freeze-pump-thaw cycles, the initiator-modified quartz slides are added under argon and a final freeze-pump-thaw cycle is performed. The polymerization is carried out at room temperature overnight. The quartz slides are then removed from the reaction mixture and rinsed with deionized water, DMF and NaHCO₃/Na₂CO₃ buffer successively and dried in air. Fluorescence spectra are then measured with Perkin-Elmer LS55 luminescence spectrometer with an excitation peak at 460 nm.



(XXII)

Me₆TREN

(XXIII)

MPEO, Mw = 300

EXAMPLE 14 Surface Initiated ATRP Co-polymerization of Non-fluorescent Monomer (MPEO) and Fluorescent Monomer (FITC-MA) on Initiator Modified Magnetic Particles

[0196] A glass tube is charged with FITC-MA (10 mg), NaOH (2 mg), CuBr₂ (0.8 mg), water (0.1 mL) and MPEO (0.1 mL). After all materials dissolve in the solution, the pH value of the solution is adjusted to about 8 by adding NaHCO₃. Then 0.1 mL of magnetic particle solution is added by syringe. The mixture in the tube is degassed with three freeze-pump-thaw cycles. Then 14 μL of CuCl and Me₆TREN solution ([Cu] = 0.5 mg / μL, CuCl : Me₆TREN = 1:1.5) is added and the mixture is reacted without stirring overnight. The iron oxide particles are collected with a magnet, and sequentially washed with deionized water three times and NaHCO₃/Na₂CO₃ buffer (pH = 9.6) twice. Fluorescence spectra are measured with a Perkin-Elmer LS55 luminescence spectrometer with excitation at 460 nm in NaHCO₃/Na₂CO₃ buffer.

EXAMPLE 15 Surface Initiated ATRP Co-polymerization of Non-fluorescent Monomer (MPEO) and Fluorescent Monomer (FITC-MA) on Initiator Modified Quartz slides to observe the effect of Quenching

[0197] Quartz slides are modified with 3-aminopropyltriethoxysilane and trimethoxysilane (TMS) and subsequently modified with NHS-ATRP initiator. Two series of quartz slides are prepared using 1% (v/v) and 10% (v/v) concentration of 3-aminopropyltriethoxysilane. Series 1 quartz slides are modified with 1% (v/v) 3-aminopropyltriethoxysilane and 99% trimethoxysilane (TMS) and subsequently modified with NHS-ATRP initiator. Series 2 quartz slides are modified with 10% (v/v) 3-aminopropyltriethoxysilane and 90% trimethoxysilane (TMS) and subsequently modified with NHS-ATRP initiator. $\text{CuCl}:\text{CuBr}_2:\text{Bipy}$ in a molar ratio of 1:0.3:2 and at a concentration of 25 mM is used as a catalyst. Eight different polymerization reactions are conducted by varying the molar ratio of fluorescent monomer (FITC-MA) to non-fluorescent monomer (MPEO) with a total concentration of 1M. The molar ratios of FITC-MA to MPEO are 100:0, 1:0, 1:1, 1:2, 1:5, 1:10, 1:20, 1:50, and 1:100. Two control samples: (TMS1 and TMS2) using trimethoxy silane modified quartz slides with FITC-MA and MPEO in 1M concentrations are used for comparison.

[0198] Figs 15 and 16 show the fluorescence images and the fluorescence intensity of the series 1 and series 2 samples as a function of molar ratio of FITC-MA to MPEO. Optimum intensity seems to be obtained using a molar ratio of 1:20. At higher molar ratios quenching of signal between the fluorescent monomers is seen.

EXAMPLE 16 Surface Initiated ATRP Co-polymerization of Non-fluorescent Monomer (VBA) and Bifunctional ATRP Monomer (VBA-Lys) on Initiator Modified Quartz Slides and Post-polymerization Detection By Covalent Functionalization

[0199] Co-polymerization of VBA-Lys and VBA on supported ATRP initiator quartz surface: A glass tube is charged with VBA (100 mg), VBA-Lysine (10 mg), NaOH (30 mg, in solution, 100 mg/mL), and water (0.1 mL). The materials are dissolved, and then the pH of the solution is adjusted to about 8 with solid NaHCO_3 . The mixture of monomers and catalyst is degassed with three freeze-pump-thaw cycles. Then, 3.8 μL of CuCl and 2,2'-bipyridine (bpy) solution ($[\text{Cu}^{+1}] = 0.5 \text{ mg}/\mu\text{L}$, $\text{CuCl}:\text{bpy} = 1:1.5$) is added and the mixture is transferred to a reaction chamber containing a species that includes an initiator, e.g. initiator-modified quartz. After

polymerizing overnight, the reaction is quenched by rinsing the quartz with excess water. This process yields a lysine-labeled polymer, as shown in Fig. 17.

[0200] Visualization of surface bound VBA-Lys/VBA co-polymer: The lysine-labeled polymer can be conjugated to a variety of dyes via the primary amine of lysine. For instance, in this example the lysine labeled polymer from the previous step is subsequently stained with Cy5 NHS-mono ester under basic conditions and quantified fluorometrically, as shown in Fig. 18. Absorbance of surface initiated polymerization (SIP) reaction product post-labeling is greater than that of the control. Fluorescence intensity of SIP polymer-post labeling is greater than that of control and that of the SIP polymer before labeling.

EXAMPLE 17 Surface Initiated ATRP Polymerization of Non-fluorescent Monomer (VBA) on Initiator Modified Quartz Slides and Post-polymerization Detection using Fluorescent Polymer

[0201] Polymerization of vinyl benzoic acid on supported ATRP initiator quartz surface. Vinyl benzoic acid, i.e. VBA, (0.500 g, 3.38 mmol) is dissolved in 1.5 mL degassed deionized water containing 0.126 g of sodium hydrogencarbonate and 0.130 g of sodium hydroxide to form a clear solution. CuBr (9.9 mg, 0.138 mmol), CuBr₂ (5.1 mg, 0.023 mmol) and 2, 2'-bipyridine (32 mg, 0.207 mmol) are added to a vial containing both the ATRP initiator modified quartz slides from Example 7 and unmodified control slides. The vial is sealed with a rubber septum and degassed. The monomer solution is then transferred to the vial and a homogeneous brown solution forms upon gentle shaking. The polymerization is carried out at room temperature overnight. The quartz slides are then removed from the reaction mixture, rinsed with deionized water, DMF, and then deionized water successively and then dried in air. UV-vis spectra of the slides are recorded (as shown in Fig. 19).

[0202] Visualization of surface bound poly(vinyl benzoic acid). To stain the surface of the slides, quarternized polyfluorene-block-poly(dimethylaminoethylene methacrylate) is dissolved in 1:1 DMSO/water to form a 4 mg/mL clear solution. The slides are immersed in the solution for 15 minutes and rinsed with deionized water

thoroughly. Fluorescence spectra are then measured with excitation at or near the absorption peak, which in this case is about 375 nm (Fig. 19). Absorbance of surface initiated polymerization (SIP) reaction product post-labeling is greater than that of the control. Fluorescence intensity of SIP polymer-post labeling is greater than that of control and that of the SIP polymer before labeling.

[0203] Examples 18 and 19 describe the procedure for ROMP polymerization of polymer precursors using initiators immobilized on a substrate.

EXAMPLE 18 Surface Initiated ROMP Polymerization of Fluorescent Monomer using ROMP Initiator Modified Polystyrene Beads

[0204] Polymerization of Cy5-labeled 5-Norbornene-2-methanamine using the supported catalyst-Bis(tricyclohexylphosphine) benzylidene ruthenium dichloride polystyrene resin. Under N₂, a solution of Cy5-labeled 5-Norbornene-2-methanamine (4.2 mg, 5.52×10^{-3} mmol) in 100 ml of DMF is added to the Bis(tricyclohexylphosphine) benzylidene ruthenium dichloride polystyrene resin of Example 10 and the mixture is shaken overnight. The beads are washed several times with DMF, until the washes are clear. The fluorescent polymer-modified polystyrene beads are visualized using a confocal fluorescent microscope.

EXAMPLE 19 Surface Initiated ROMP Polymerization of Fluorescent Monomer (Cy5-norbornene) and Non-Fluorescent Monomer (gluconate norbornene) using ROMP Initiator Modified Quartz slides

[0205] Surface-functionalized ROMP initiator is synthesized by catalyzing a ROMP reaction of the surface-modified norbornene (using norbornene silane) using a ROMP catalyst (30 mg/mL). Two different concentrations of surface-immobilized ROMP initiator are employed: 1% (v/v) and 10% (v/v) concentration.

[0206] The surface-immobilized ROMP catalyst is used to initiate a polymerization reaction of a monomer mixture (1M): Cy5-norbornene (structure XVI) and gluconate norbornene (structure XVIII) in a 1:10 molar ratio. The surface-immobilized ROMP catalyst is also used to initiate a polymerization reaction of 1M monomer mixture:

Cy5-PEG-norbornene and gluconate norbornene (structure XVIII) in a 1:10 molar ratio. Quartz slides-surface functionalized with an amine (at 1% (v/v) and 10% (v/v) concentration) having a monolayer of Cy5-NHS are used as controls.

[0207] Examples 20 and 21 describe the procedure for synthesis of branched polymers using initiators immobilized on a substrate.

EXAMPLE 20 Surface Initiated ATRP-ATRP Graft Polymerization of fluorescent monomers using ATRP Initiator Modified Quartz slides

[0208] Quartz slides are modified with 10% (v/v) 3-aminopropyltriethoxysilane and 90% trimethoxysilane (TMS) and subsequently modified with NHS-ATRP initiator. CuCl:CuBr₂:Bipy in a molar ration of 1:0.3:2 and at a concentration of 25 mM is used as a catalyst. In the first ATRP reaction 1M of hydroxy ethyl methacryalte (HEMA) at a concentration of 25 mM is polymerized for 15 minutes using the surface-immobilized ATRP initiator. The hydroxy-functionalized polymer is then reacted with 2-bromoisobutyryl bromide (0.1 M) in TEA (0.1M) for 30 minutes. The resulting bromo-functionalized methacrylate polymer is subjected to another ATRP polymerization reaction using Cu(I)Cl, Cu(II)Br₂ and 2,2'-bipyridyl (1 : 0.3 : 2) catalyst at a concentration of 25 mM. The monomer used are FITC-MA and MPEO (1 : 20, mol to mol) at a concentration of 1 M. Figs 20-22 show the fluorescence images and fluorescence intensity values of the graft/branched ATRP-ATRP polymerization product, linear ATRP polymerization product, and the control samples (monolayer of 10% amine and blank slide). A linear polymer shows a 5x signal amplification versus the control sample after a polymerization time of 30 minutes. A branched polymer shows a 15x signal amplification versus the control sample after a polymerization time of 45 minutes.

EXAMPLE 21 Surface Initiated ROMP-ATRP Graft Polymerization of fluorescent monomers using ROMP Initiator Modified Quartz slides

[0209] Quartz slides are modified with 10% (v/v) 3-aminopropyltriethoxysilane and 90% trimethoxysilane (TMS). ATRP initiator (Norbornene-methyl bromoisobutyrate) is copolymerized with norbornene-NHS and Norbornene acetate

by ROMP method in THF solution and then the resulting macro-initiator is transferred to the amine-coated quartz surface via NH_2 -NHS reaction. The resulting bromo-functionalized norbornene polymer immobilized on a quartz surface is then subjected to an ATRP polymerization reaction using Cu(I)Cl , Cu(II)Br_2 and 2,2'-bipyridyl (1 : 0.3 : 2) catalyst at a concentration of 25 mM. The monomers used are FITC-MA and MPEO (1: 20, mol to mol) at a concentration of 1 M.

EXAMPLE 22 Analyte detection by surface initiated ATRP reaction of a fluorescent monomer and non-fluorescent monomer from a complementary DNA- anti-sense DNA hybrid

[0210] A DNA sequence analyte is immobilized on a substrate using a biotinylated DNA sequence as the analyte and streptavidin particle as a substrate. An anti-sense DNA probe sequence having a 5' terminal NH_2 residue is reacted with NHS-ATRP initiator prior to hybridizing the probe with the analyte. This is followed by a hybridization reaction between the DNA analyte and anti-sense DNA probe. The hybridization is carried out for 5 hours. Following the hybridization reaction, the analyte-probe hybrid is subjected to an ATRP reaction using Cu(I)Cl , Cu(II)Br_2 and 2,2'-bipyridyl (1:0.3:2.9) catalyst at a concentration of 25 mM. The monomers used are FITC-MA and MPEO (1: 20, mol to mol) at a concentration of 1 M.

[0211] An anti-sense DNA sequence with a single fluorescent dye FAM is hybridized against the DNA modified streptavidin particles and used as a control. Fig. 23 is a schematic illustration of the control sample and the test sample using ATRP polymerization. Fig. 24 shows the fluorescent intensity for the test sample prepared using surface-initiated polymerization reaction (SIPS) and the control sample having a single dye. SIPS-sample shows almost 1.5x signal intensity when compared to the sample with a single dye molecule.

EXAMPLE 23 Multiplexing using two probes capable of binding to two different analytes

[0212] A multiplexing example of the invention is similar to Example 22, except that the present example includes a plurality of chemically distinct probes (different

anti-sense DNA sequences) that recognize chemically distinct analytes (different complementary DNA sequences). In this example, each type of chemically distinct probe is attached to a chemically distinct initiator. For instance, a first anti-sense DNA sequence that binds to a first analyte can be bonded to one or more an ATRP initiators, while a second anti-sense DNA sequence that binds to a second analyte can be bonded to one or more ROMP initiators. According to this example, a sample is exposed to the first and second anti-sense DNA sequences thereby allowing any complementary DNA sequences that may be present to bond to the anti-sense DNA sequences. The DNA/DNA hybrids are exposed in series to ATRP and ROMP reaction conditions, thus forming a first polymer by ATRP, and a second polymer by ROMP. Furthermore, the first and second polymers can have colors or analytical signals that are distinct from each other. That is to say, the polymers can absorb and/or photoluminesce in different regions of the electromagnetic spectrum. Therefore, the presence of the first and second analytes can be distinguished and quantitatively determined in a single sample.

[0213] Reference is made to substances, components, or ingredients in existence at the time just before first contacted, formed in situ, blended, or mixed with one or more other substances, components, or ingredients in accordance with the present disclosure. A substance, component or ingredient identified as a reaction product, resulting mixture, or the like may gain an identity, property, or character through a chemical reaction or transformation during the course of contacting, in situ formation, blending, or mixing operation if conducted in accordance with this disclosure with the application of common sense and the ordinary skill of one in the relevant art (e.g., chemist). The transformation of chemical reactants or starting materials to chemical products or final materials is a continually evolving process, independent of the speed at which it occurs. Accordingly, as such a transformative process is in progress there may be a mix of starting and final materials, as well as intermediate species that may be, depending on their kinetic lifetime, easy or difficult to detect with current analytical techniques known to those of ordinary skill in the art.

[0214] Reactants and components referred to by chemical name or formula in the specification or claims hereof, whether referred to in the singular or plural, may be

identified as they exist prior to coming into contact with another substance referred to by chemical name or chemical type (e.g., another reactant or a solvent). Preliminary and/or transitional chemical changes, transformations, or reactions, if any, that take place in the resulting mixture, solution, or reaction medium may be identified as intermediate species, master batches, and the like, and may have utility distinct from the utility of the reaction product or final material. Other subsequent changes, transformations, or reactions may result from bringing the specified reactants and/or components together under the conditions called for pursuant to this disclosure. In these other subsequent changes, transformations, or reactions the reactants, ingredients, or the components to be brought together may identify or indicate the reaction product or final material.

[0215] The foregoing examples are illustrative of some features of the invention. The appended claims are intended to claim the invention as broadly as has been conceived and the examples herein presented are illustrative of selected embodiments from a manifold of all possible embodiments. Accordingly, it is Applicants' intention that the appended claims not limit to the illustrated features of the invention by the choice of examples utilized. As used in the claims, the word "comprises" and its grammatical variants logically also subtend and include phrases of varying and differing extent such as for example, but not limited thereto, "consisting essentially of" and "consisting of." Where necessary, ranges have been supplied, and those ranges are inclusive of all sub-ranges there between. It is to be expected that variations in these ranges will suggest themselves to a practitioner having ordinary skill in the art and, where not already dedicated to the public, the appended claims should cover those variations. Advances in science and technology may make equivalents and substitutions possible that are not now contemplated by reason of the imprecision of language; these variations should be covered by the appended claims.

CLAIMS:

1. A composition, comprising
a first probe capable of binding to a first analyte;
a first initiator bonded to the first probe;
a second probe capable of binding to a second analyte; and
a second initiator bonded to the second probe; and
at least one of the first initiator or the second initiator is capable of initiating a controlled polymerization reaction.
2. The composition as defined in claim 1, wherein at least one of the first probe is capable of binding to the first analyte or the second probe is capable of binding to the second analyte through physical bond formation arising from one or more of electrostatic interactions, hydrogen bonding, hydrophobic interactions, or affinity interactions.
3. The composition as defined in claim 1, wherein at least one of the first probe is capable of binding to the first analyte or the second probe is capable of binding to the second analyte through covalent bond formation
4. The composition as defined in claim 1, wherein at least one of the first probe is capable of binding to the first analyte or the second probe is capable of binding to the second analyte through a binding mechanism having a binding constant that is greater than about 10^5 M^{-1} under physiological conditions.
5. The composition as defined in claim 1, wherein the first initiator and the second initiator are independently capable of initiating a polymerization reaction type different from each other.
6. The composition as defined in claim 1, wherein the first initiator and the second initiator are capable of initiating a same polymerization reaction type.

7. The composition as defined in claim 1, wherein at least one of the first initiator or the second initiator is independently capable of initiating a controlled polymerization reaction.

8. The composition as defined in claim 1, wherein at least one of the first initiator or the second initiator is independently capable of initiating one or more of an atom transfer radical polymerization reaction type, a group transfer polymerization reaction type, a nitroxide-mediated polymerization reaction type, or a reversible addition fragmentation chain transfer polymerization reaction type.

9. The composition as defined in claim 1, wherein at least one of the first initiator or the second initiator is independently capable of initiating a ring opening metathesis polymerization reaction type.

10. The composition as defined in claim 1, wherein the first initiator is capable of initiating an atom transfer radical polymerization reaction type and the second initiator is capable of initiating a ring opening metathesis polymerization reaction type.

11. The composition as defined in claim 1, wherein both the first initiator and the second initiator are capable of initiating an atom transfer radical polymerization type.

12. The composition as defined in claim 1, comprising a first analyte and a second analyte, wherein the first probe is bonded to the first analyte and the second probe is bonded to the second analyte.

13. The composition as defined in claim 12, comprising a first polymer precursor and a second polymer precursor, wherein the first initiator and the second initiator are capable of initiating a polymerization reaction of the polymer precursor and the second polymer precursor respectively.

14. A composition comprising a reaction product of the composition as defined in claim 13.

15. The composition as defined in claim 14, comprising at least one of a first polymer or a second polymer.

16. The composition as defined in claim 15, wherein at least one of the first polymer or the second polymer is linear.

17. The composition as defined in claim 15, wherein at least one of the first polymer or the second polymer is branched.

18. The composition as defined in claim 15, wherein at least one of the first polymer or the second polymer has a number average degree of polymerization in a range of from about 100 grams per mole to about 1000000 grams per mole.

19. The composition as defined in claim 15, wherein at least one of the first polymer or the second polymer has a unimodal molecular weight distribution.

20. The composition as defined in claim 15, wherein at least one of the first polymer or the second polymer has a polydispersity that is less than about 1.5.

21. The composition as defined in claim 13, wherein at least one of the first polymer precursor or the second polymer precursor comprises one or more signal generator.

22. The composition as defined in claim 21, wherein the signal generator comprises one or more of a chromophore, a fluorophore, a Raman-active tag, a radioactive label, an enzyme, or an enzyme substrate.

23. The composition as defined in claim 1, wherein the analyte comprises one or more pollutants selected from the group consisting of air-pollutants, water-pollutants, soil pollutants, and combinations of two or more thereof.

24. The composition as defined in claim 1, wherein the analyte comprises one or more spoilage indicators associated with a meat by-product.

25. The composition as defined in claim 1, wherein the analyte comprises one or more chemical warfare agents selected from the group consisting of incapacitating agents, lachrymators, vesicant, blister agents, nerve agents, pulmonary agents, blood agents, malodorants, and combinations of two or more thereof.

26. The composition as defined in claim 1, wherein the analyte comprises one or more biological warfare agents selected from the group consisting of pathogens, toxins, and combinations thereof.

27. The composition as defined in claim 1, wherein the pathogen is selected from the group consisting of bacteria, viruses, protozoa, fungi, parasites, prions, and combinations of two or more thereof.

28. The composition as defined in claim 1, wherein the analyte comprises one or more biomolecules selected from the group consisting of peptides, proteins, nucleic acids, polysaccharides, lipids, enzymes, enzyme substrates, antigens, haptens, aptamers, vitamins, and combinations of two or more thereof.

29. The composition as defined in claim 1, wherein at least one of the first probe or the second probe comprises one or more of a nucleic acid, a protein, a sugar, a lipid, a carbohydrate, a vitamin, an enzyme, or an enzyme substrate.

30. The composition as defined in claim 1, comprising a third probe capable of binding to a third analyte and a third initiator bonded to the third probe.

31. The composition as defined in claim 1, wherein the composition is soluble in water at room temperature.

32. The composition as defined in claim 1, wherein the composition is soluble in an organic solvent comprising one or more of methanol, ethanol, dimethylsulfoxide, dimethylformamide, or N-methylpyrrolidinone, at room temperature.

33. A kit, comprising:

a composition capable of detecting a plurality of analytes, the composition comprising:

a first probe capable of binding to a first analyte;

a first initiator bonded to the first probe;

a second probe capable of binding to a second analyte;

a second initiator bonded to the second probe;

a first polymer precursor; and

a second polymer precursor; wherein

at least of the first initiator or the second initiator is capable of initiating a controlled polymerization reaction of the first polymer precursor or the second polymer precursor respectively.

34. An article, comprising:

a substrate comprising a first analyte and a second analyte disposed on a surface of the substrate,

and the substrate is capable of associating with a first polymer through the first analyte and a first probe bonded to a first initiator and the substrate is capable of associating with a second polymer through the second analyte and a second probe bonded to a second initiator, wherein at least of the first initiator or the second initiator is capable of initiating a controlled polymerization reaction.

35. The article as defined in claim 34, wherein the substrate comprises one or more of a particle, a slide, a gel, a cell, a tissue sample, or a microarray.

36. A device comprising the article as defined in claim 35, wherein the device is capable of detecting a type of the analyte, an amount of the analyte, or both type and amount of an analyte.

37. A method comprising:

contacting the composition as defined in claim 1 with a first analyte to form a first complex;

contacting the composition as defined in claim with a second analyte to form a second complex;

contacting the first complex with a first polymer precursor and

contacting the second complex with a second polymer precursor.

38. The method as defined in claim 37, comprising forming at least one of a first polymer or a second polymer.

39. The method as defined in claim 38, comprising observing at least one of a first signal or a second signal from the first polymer or the second polymer respectively.

40. The method as defined in claim 39, comprising contacting at least one of the first polymer or the second polymer with one or more signal-generator before observing the first signal or the second signal.

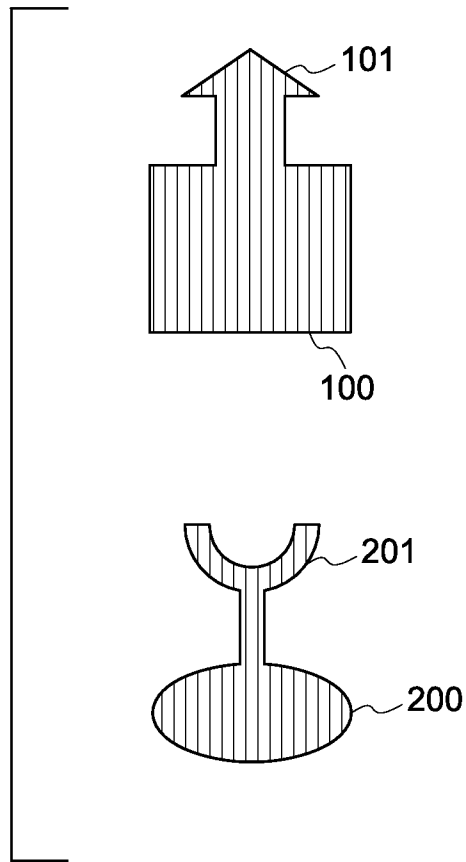
41. The method as defined in claim 39, comprising correlating at least one of the first signal or the second signal to a type of an analyte.

42. The method as defined in claim 39, comprising correlating at least one of the first signal or the second signal to an amount of analyte.

43. The method as defined in claim 39, comprising correlating at least one of the first or the second signal to both type and amount of an analyte.

44. The method as defined in claim 39, comprising observing a plurality of signals to detect multiple analytes.

FIG. 1



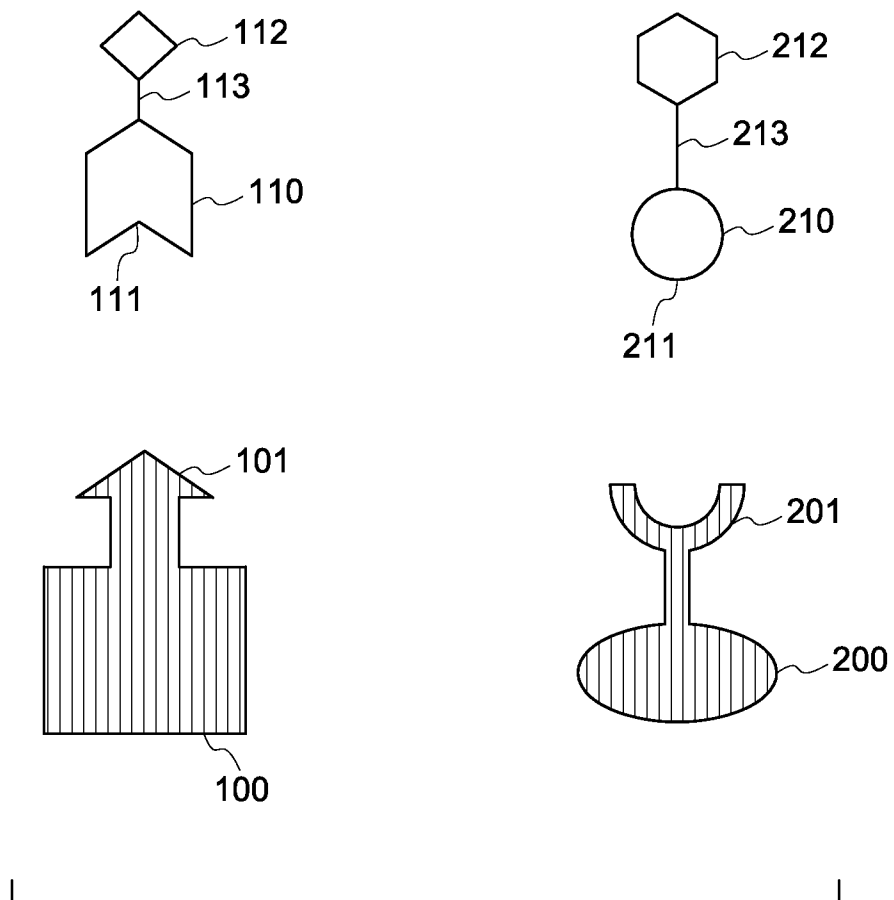


FIG. 2

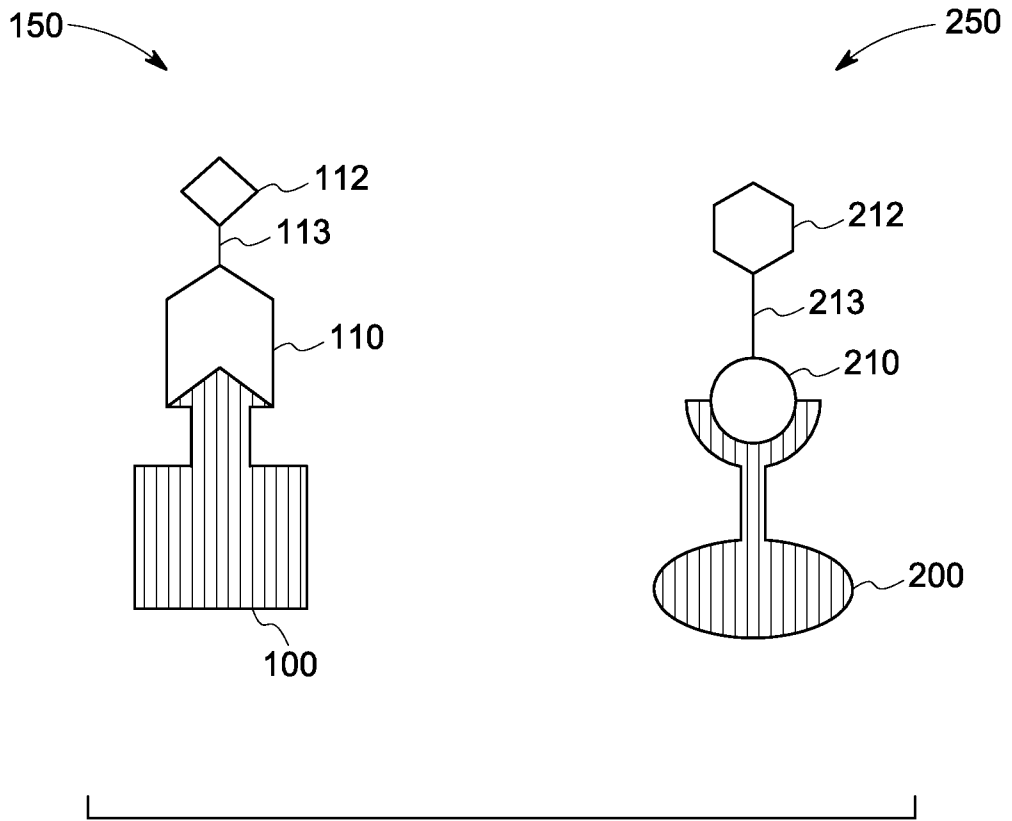


FIG. 3

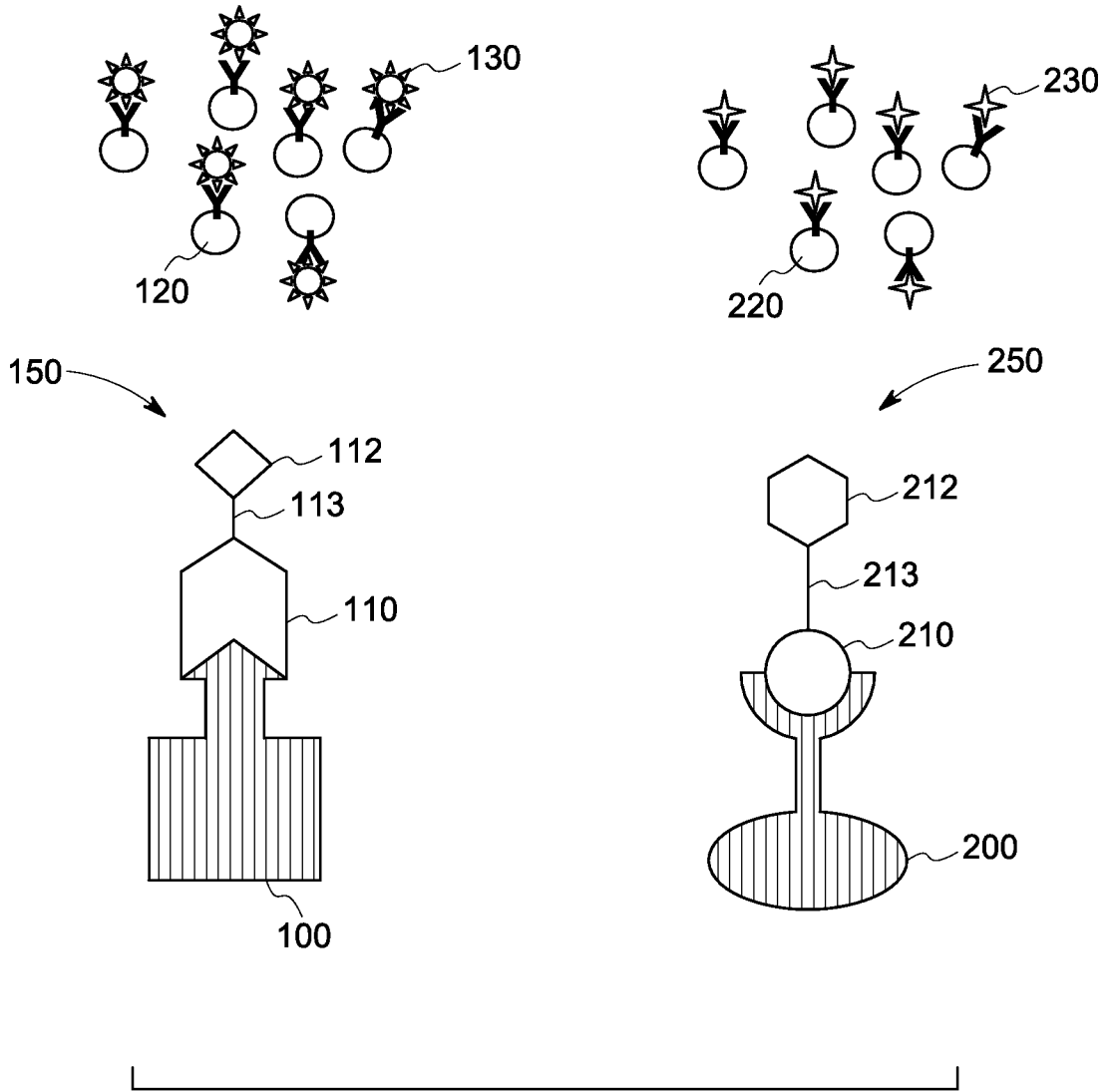


FIG. 4

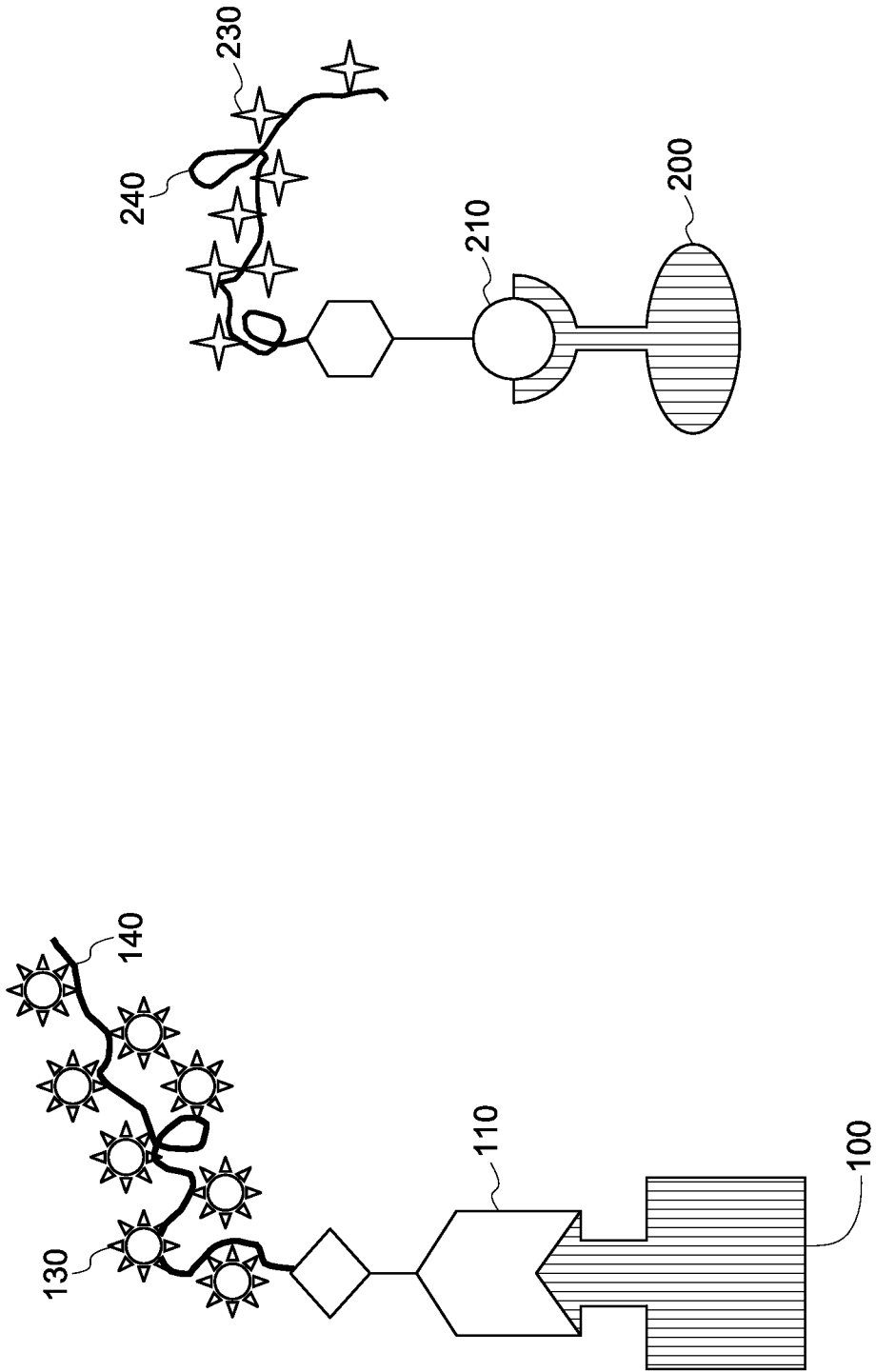


FIG. 5

6/23

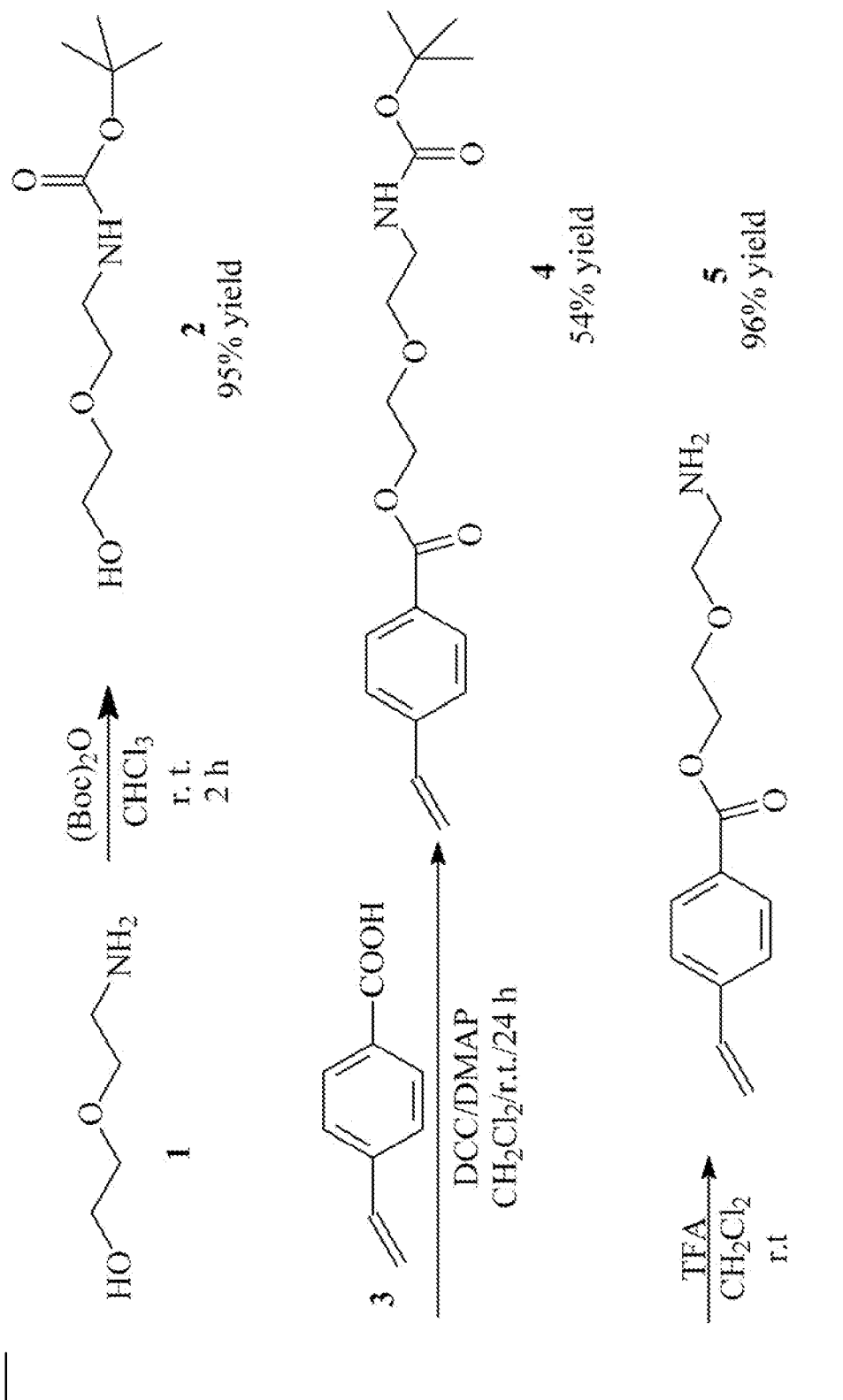


FIG. 6

7/23

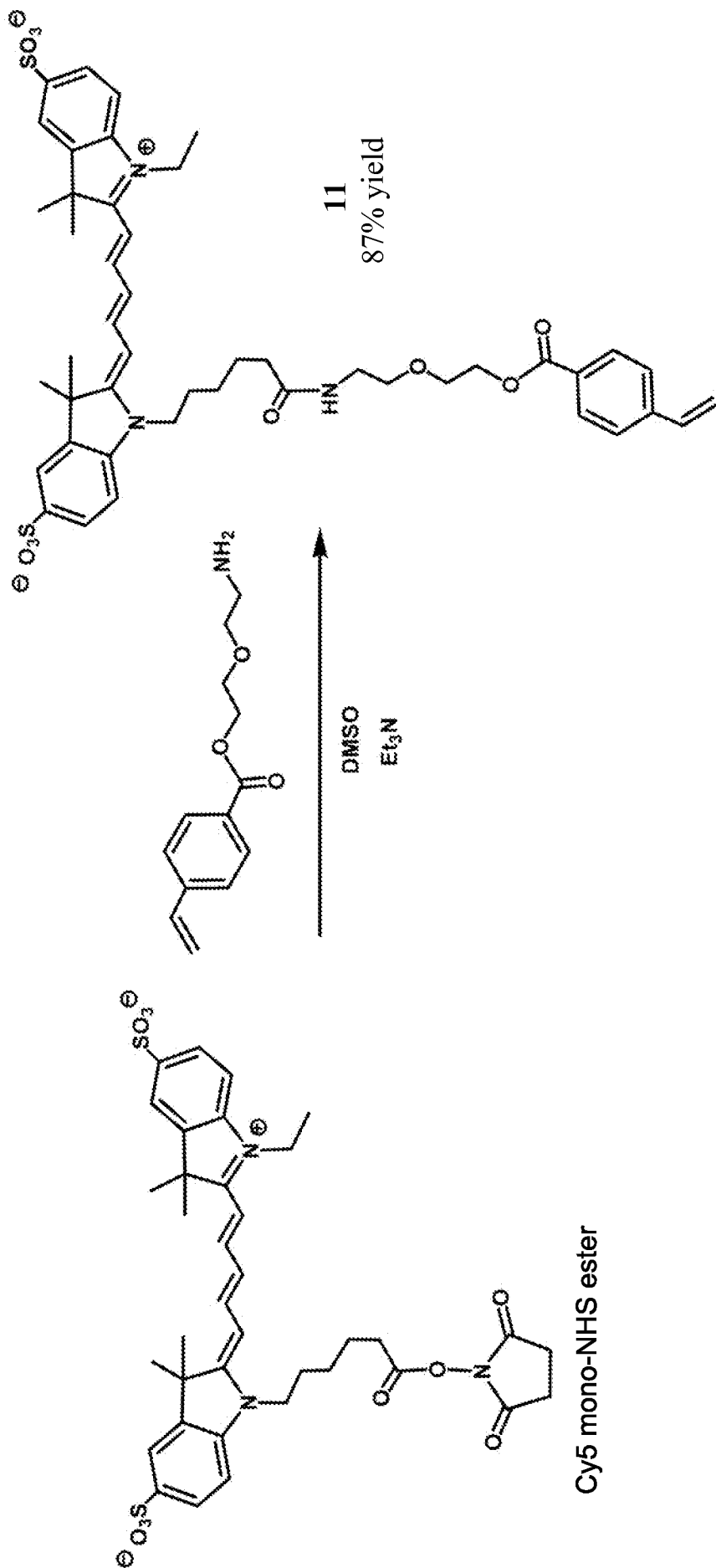


FIG. 7

8/23

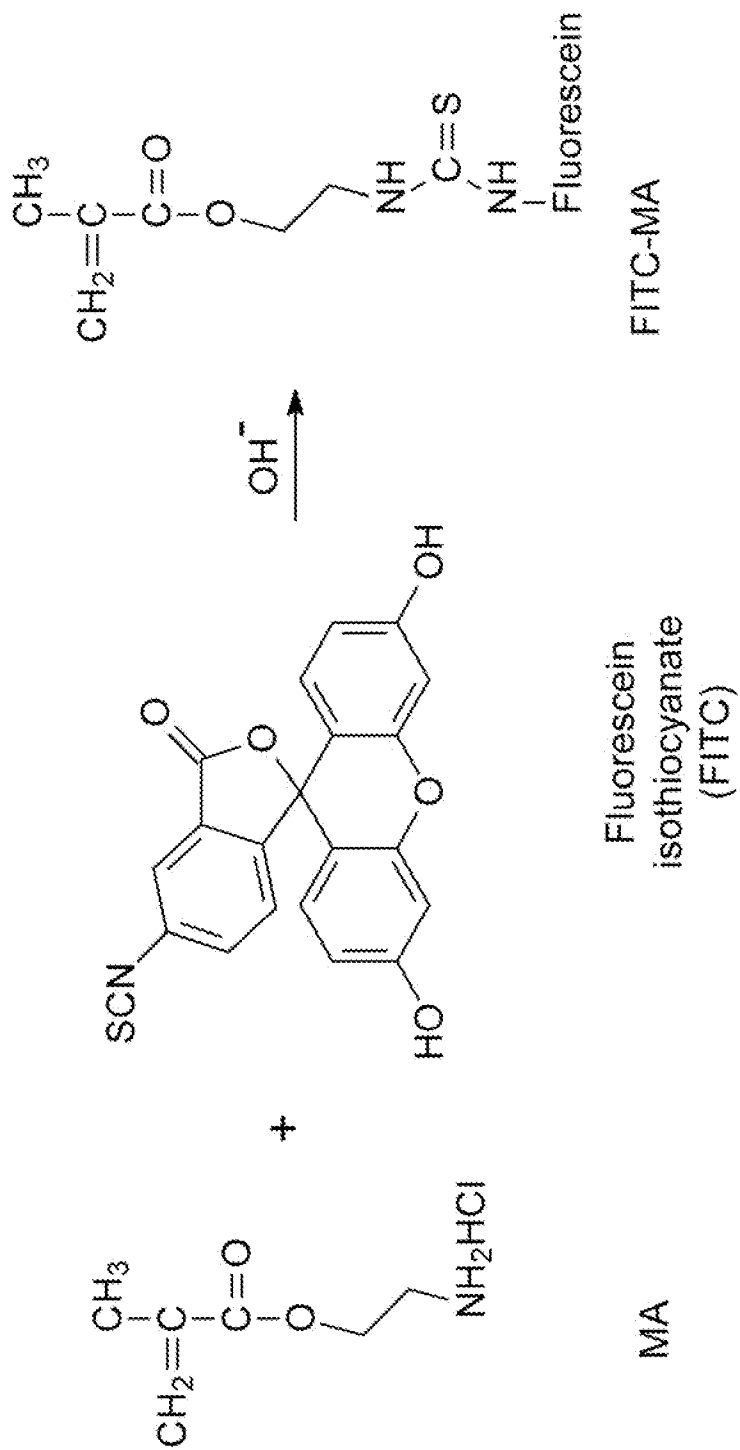


FIG. 8

9/23

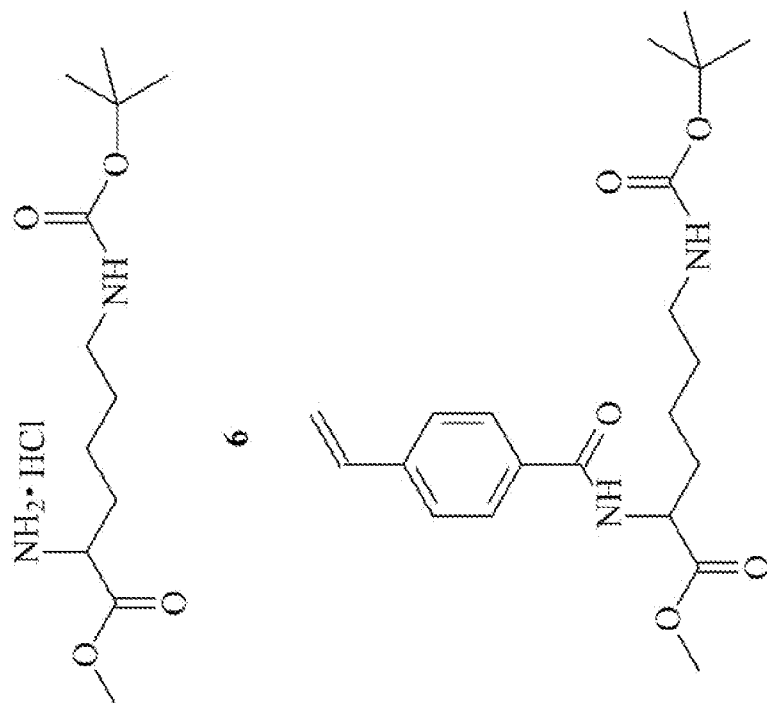
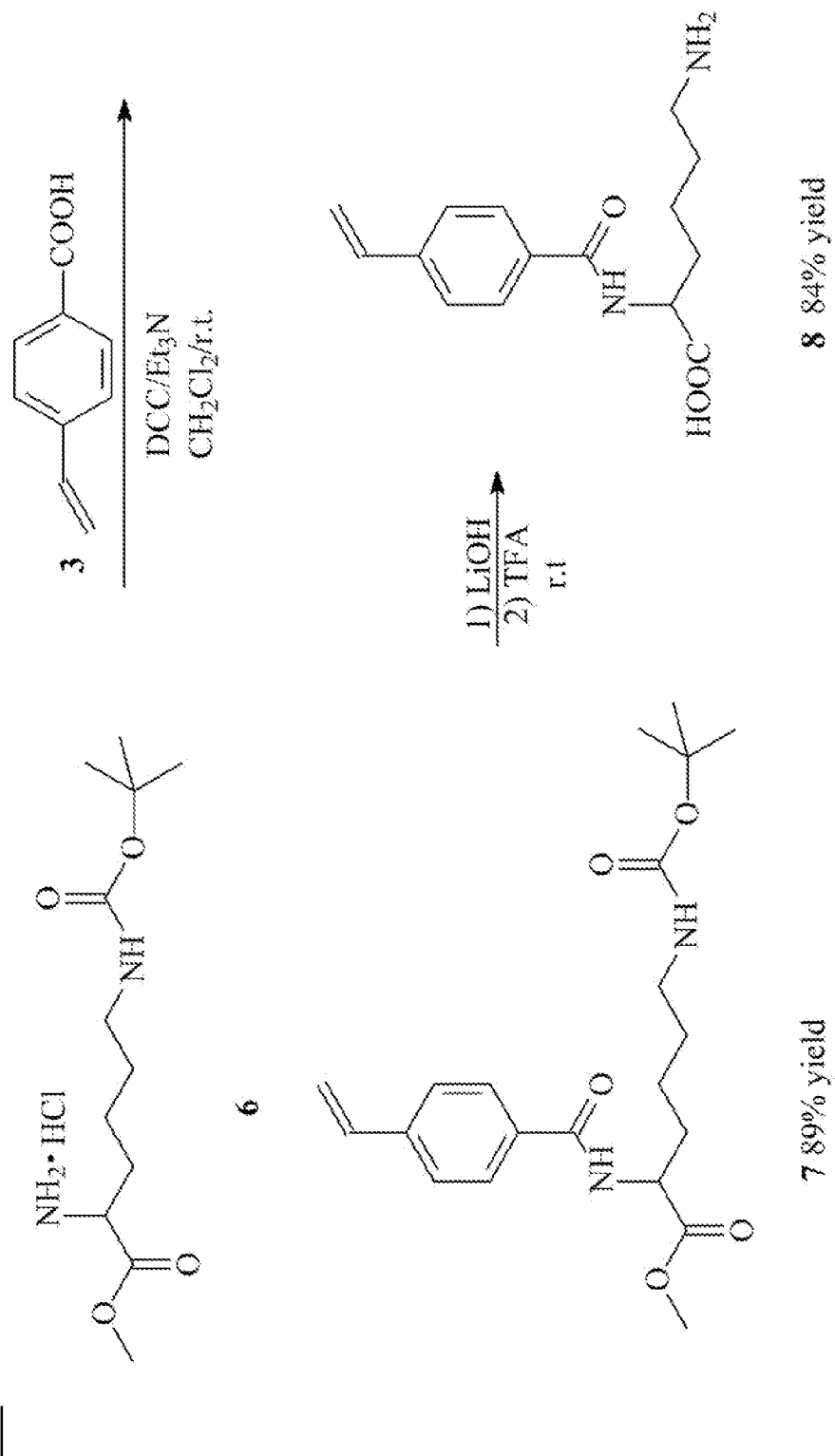


FIG. 9

10/23

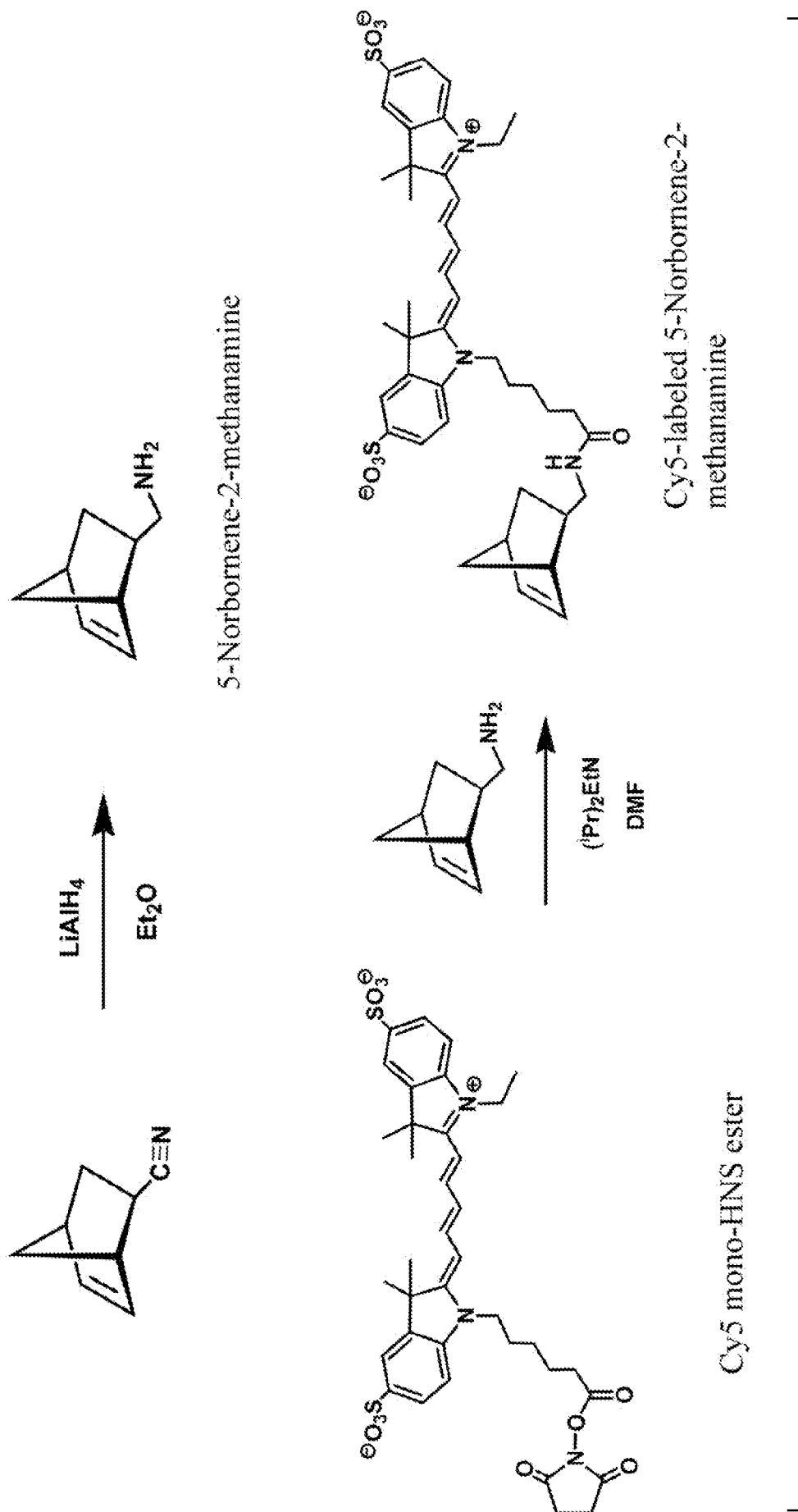


FIG. 10



Compound 9

Compound 10

FIG. 11

11/23

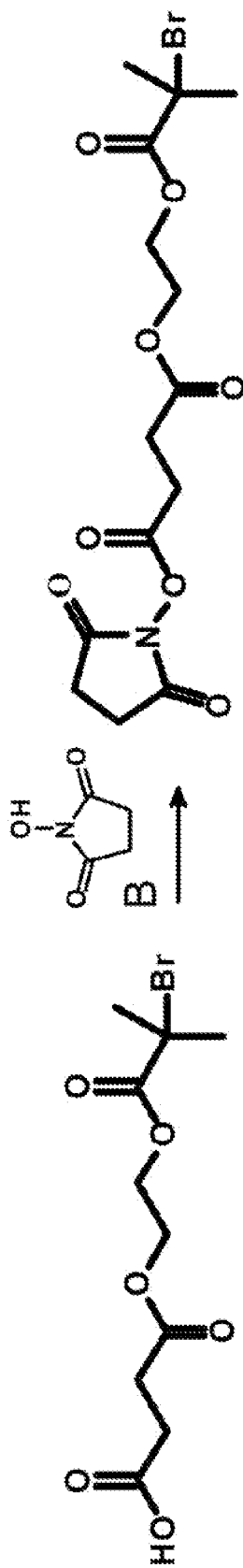


FIG. 12

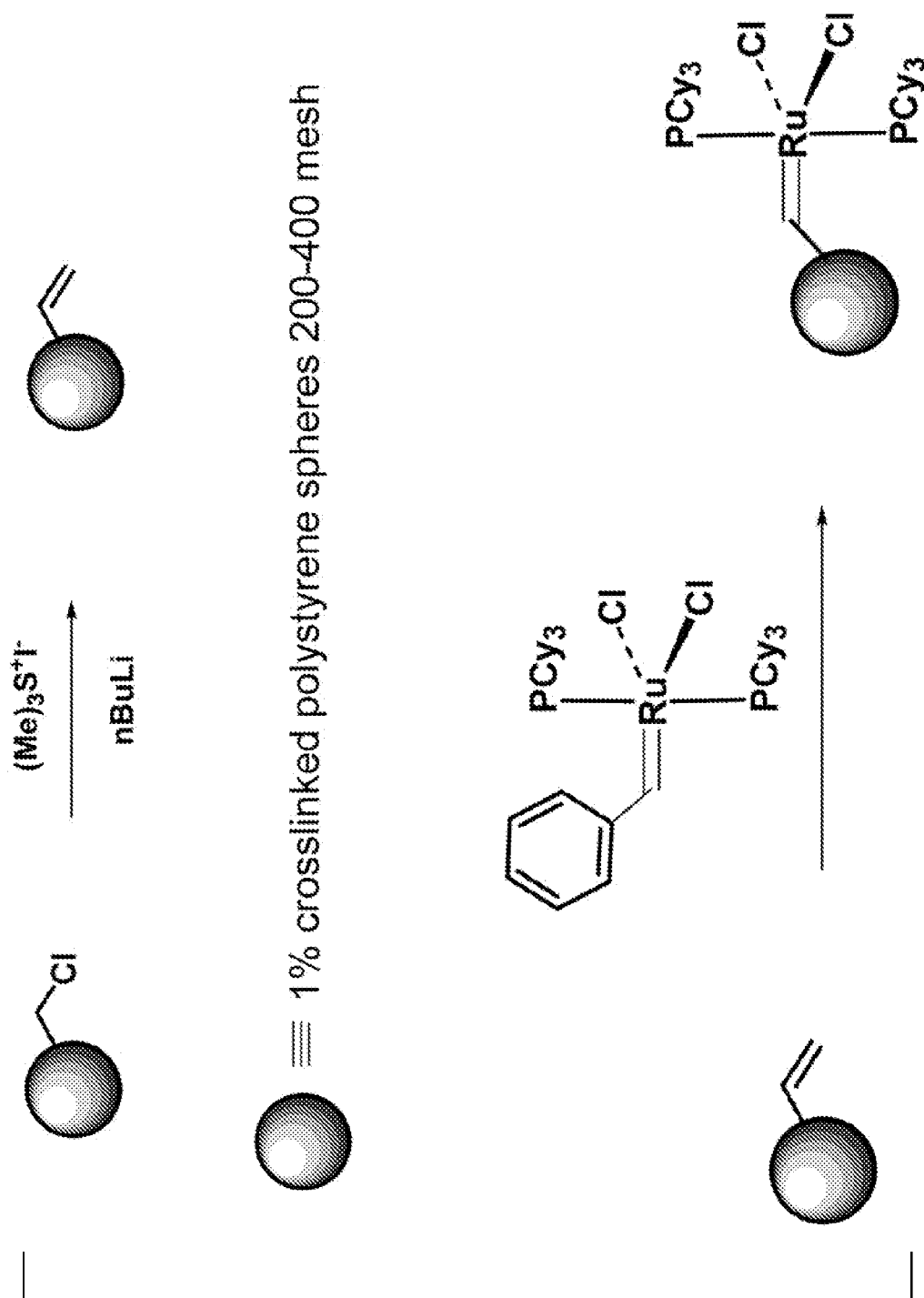


FIG. 13

13/23

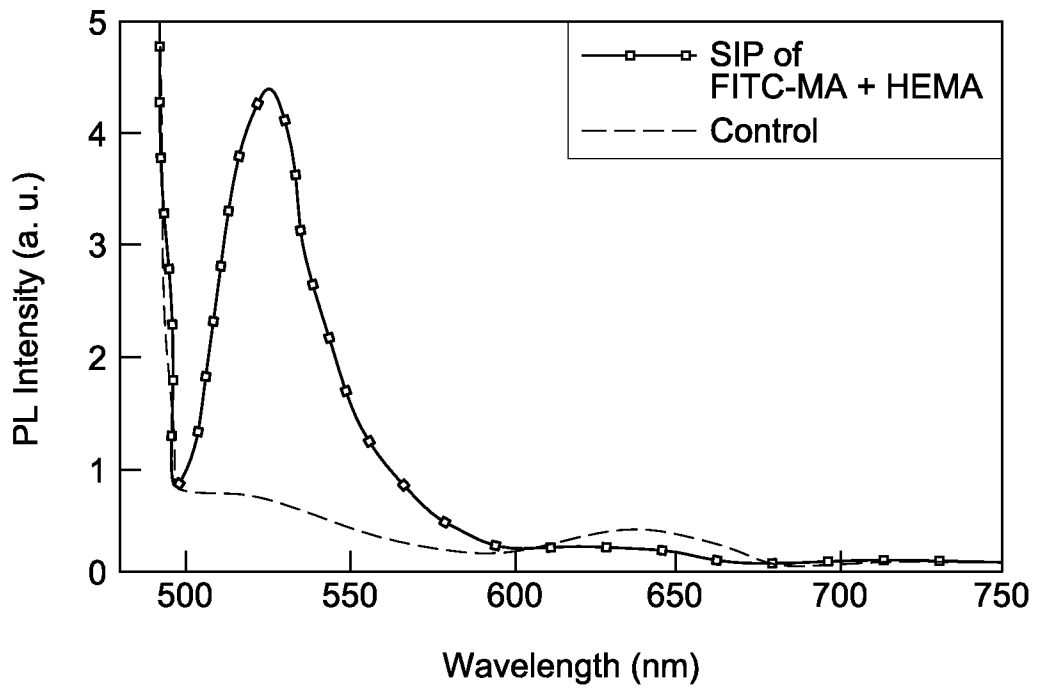


FIG. 14

14/23

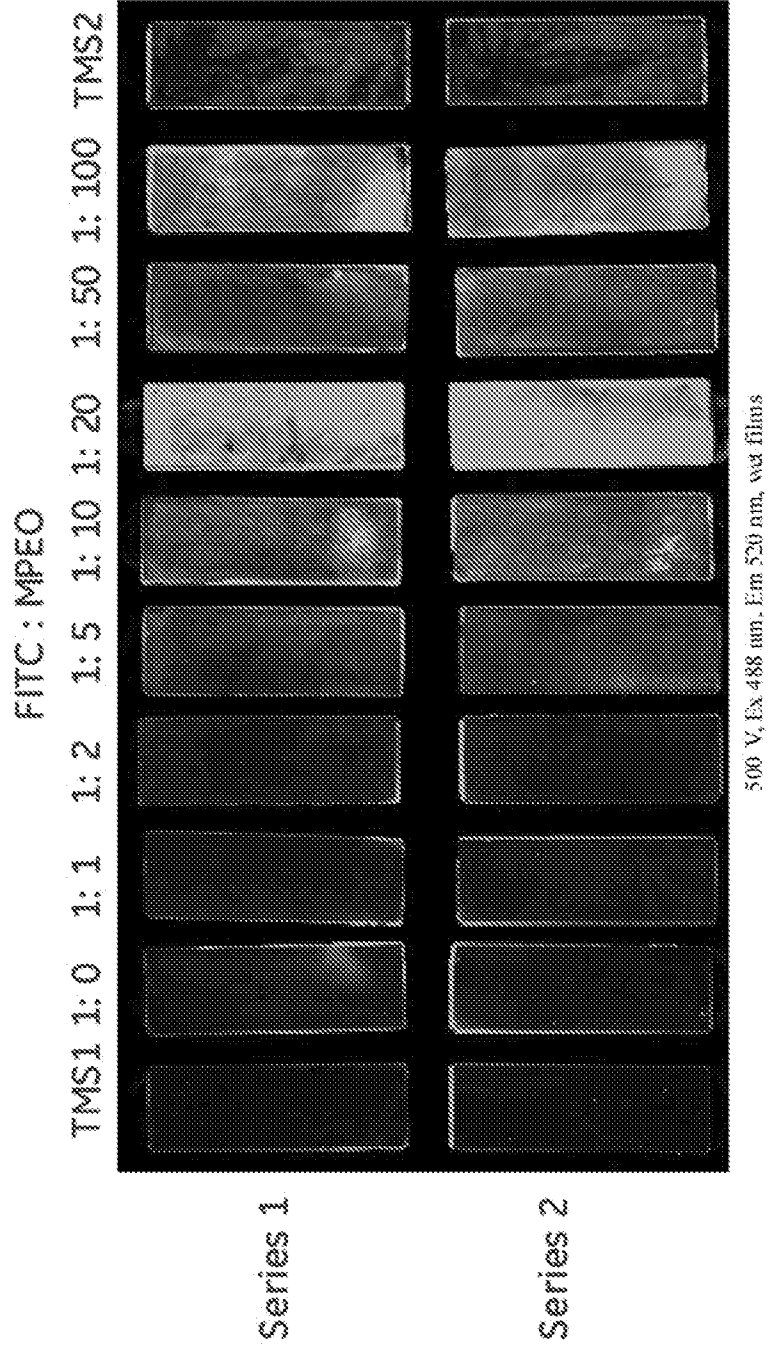


FIG. 15

15/23

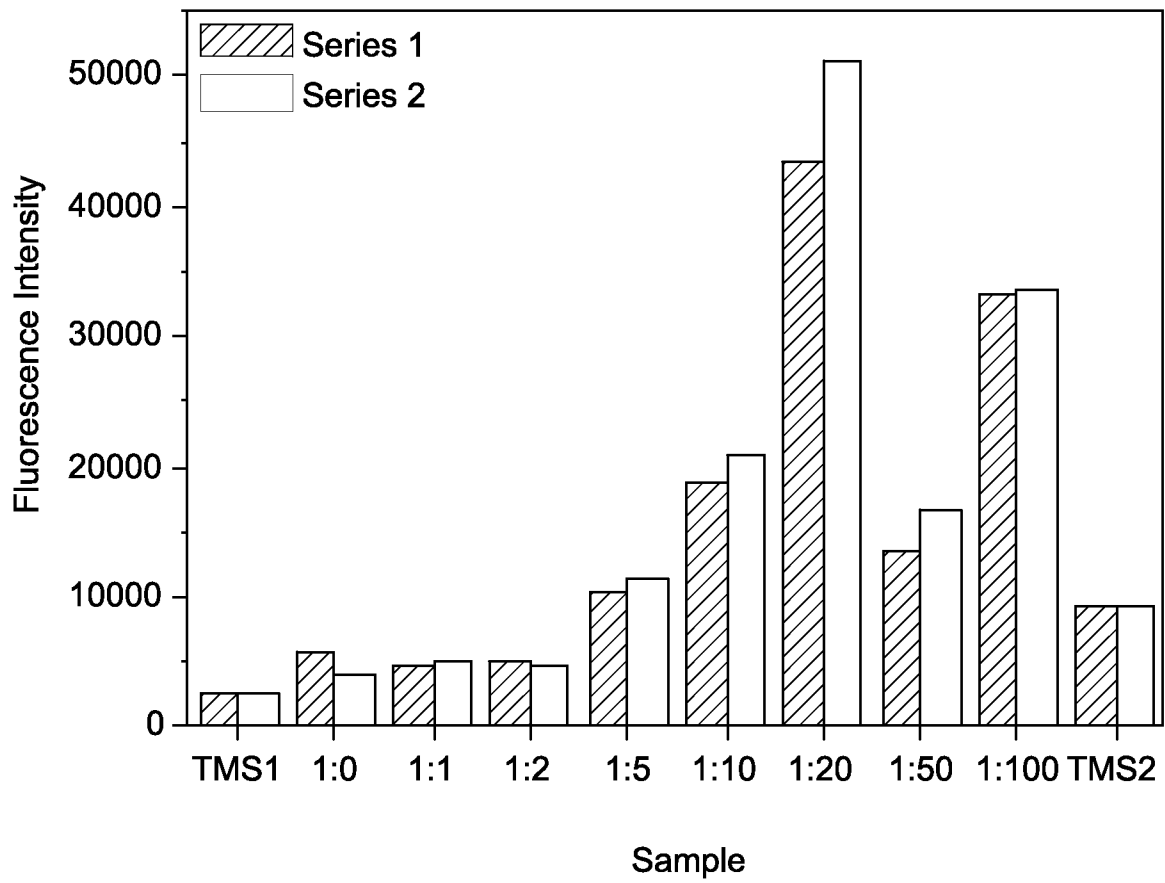


FIG. 16

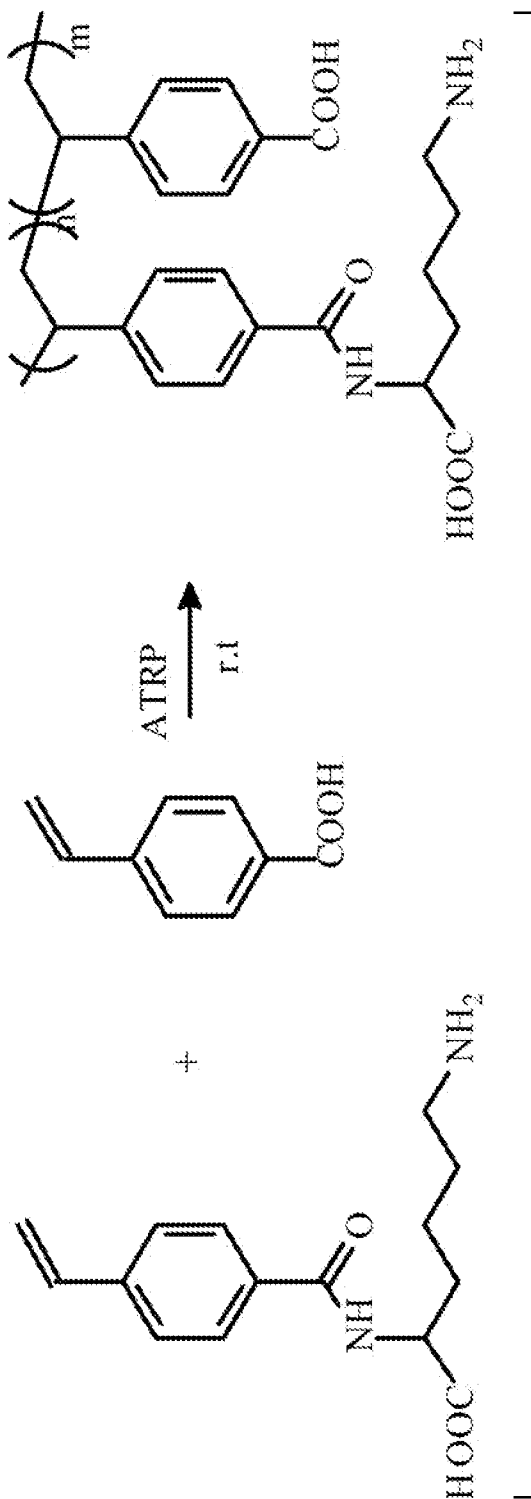


FIG. 17

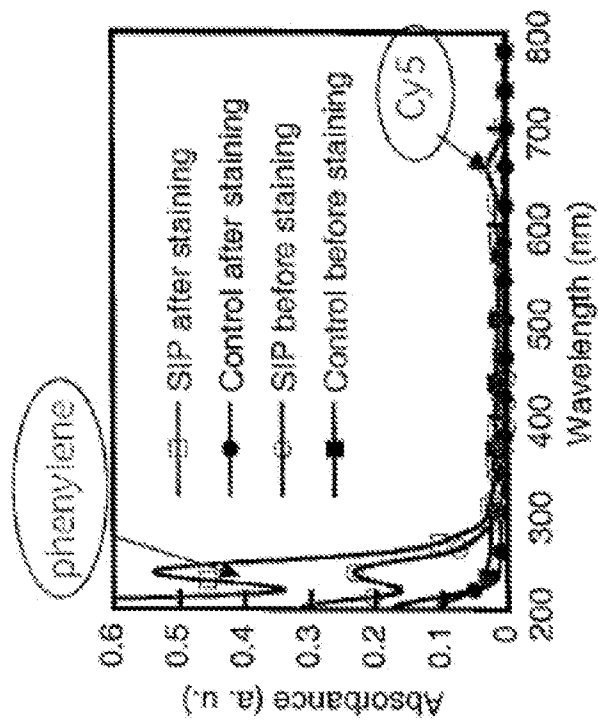


FIG. 18(a)

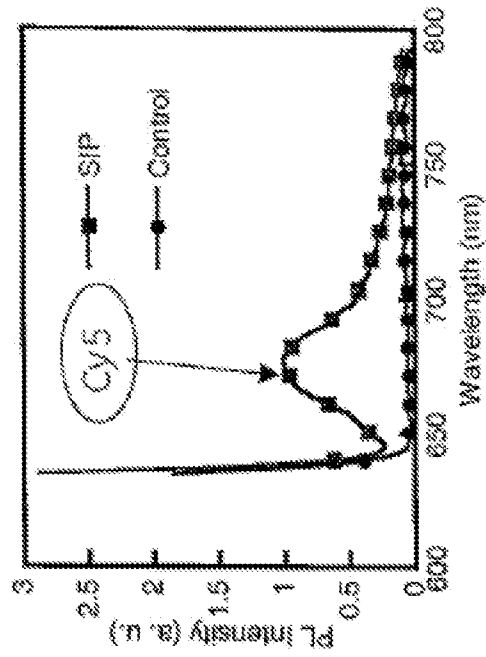


FIG. 18(b)

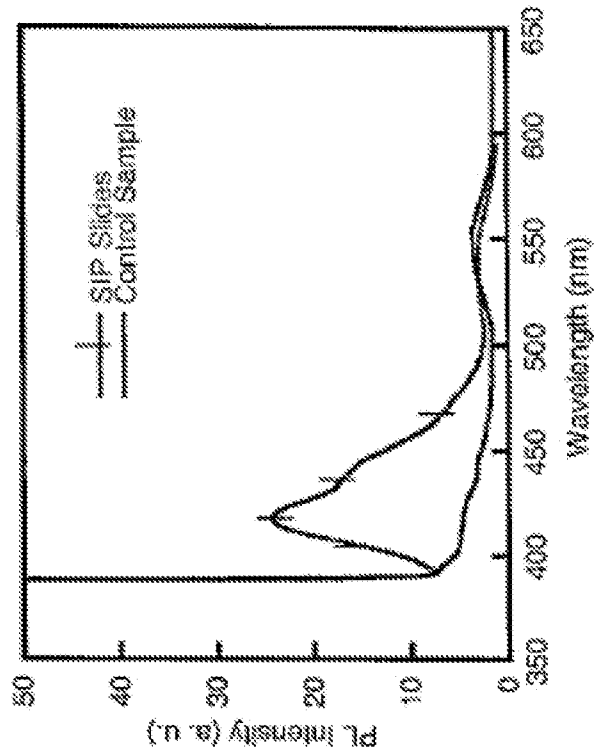


FIG. 19(b)

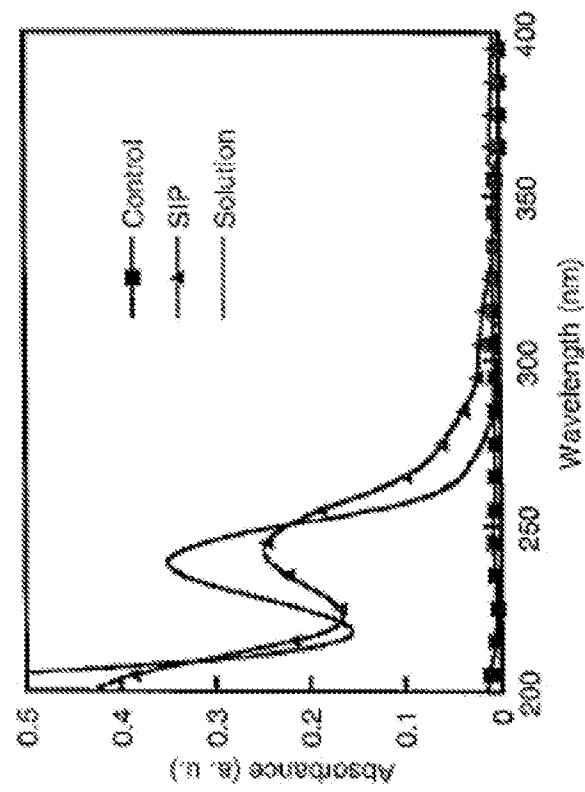


FIG. 19(a)

19/23

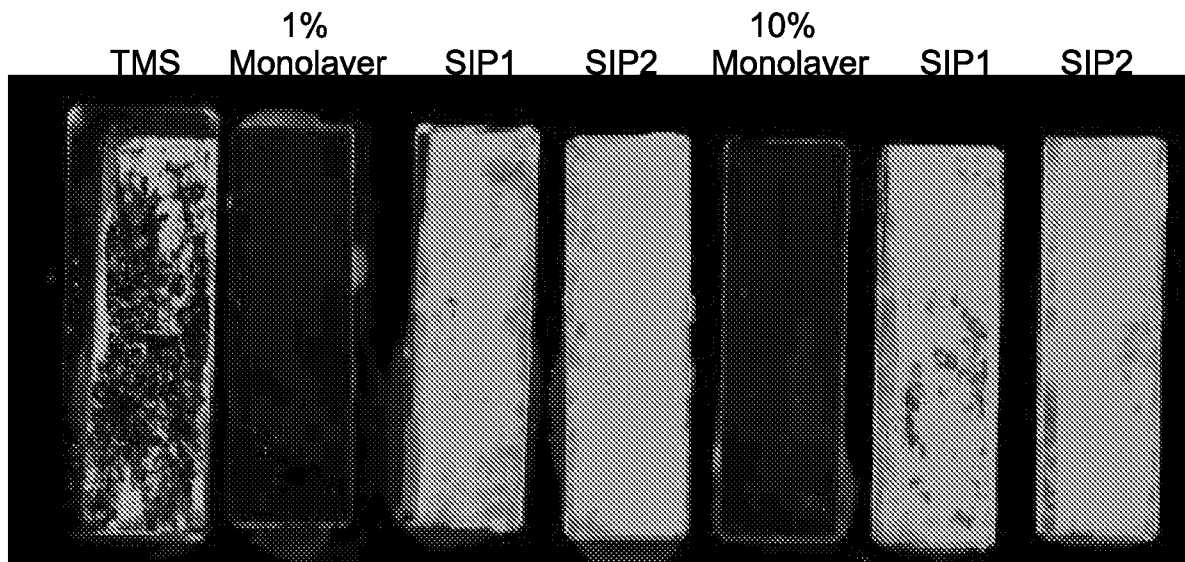


FIG. 20

20/23

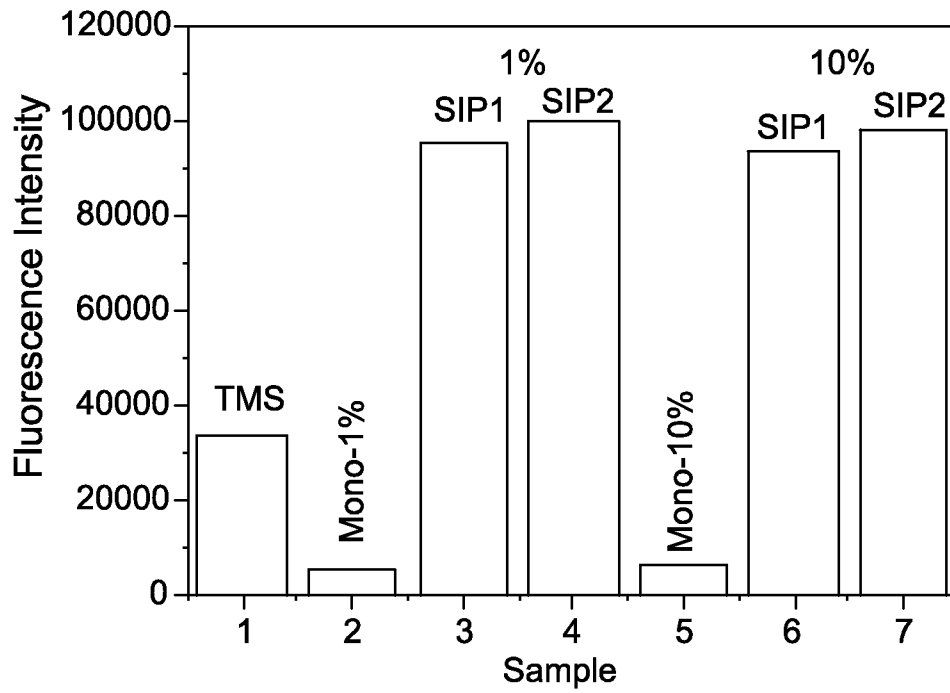


FIG. 21

21/23

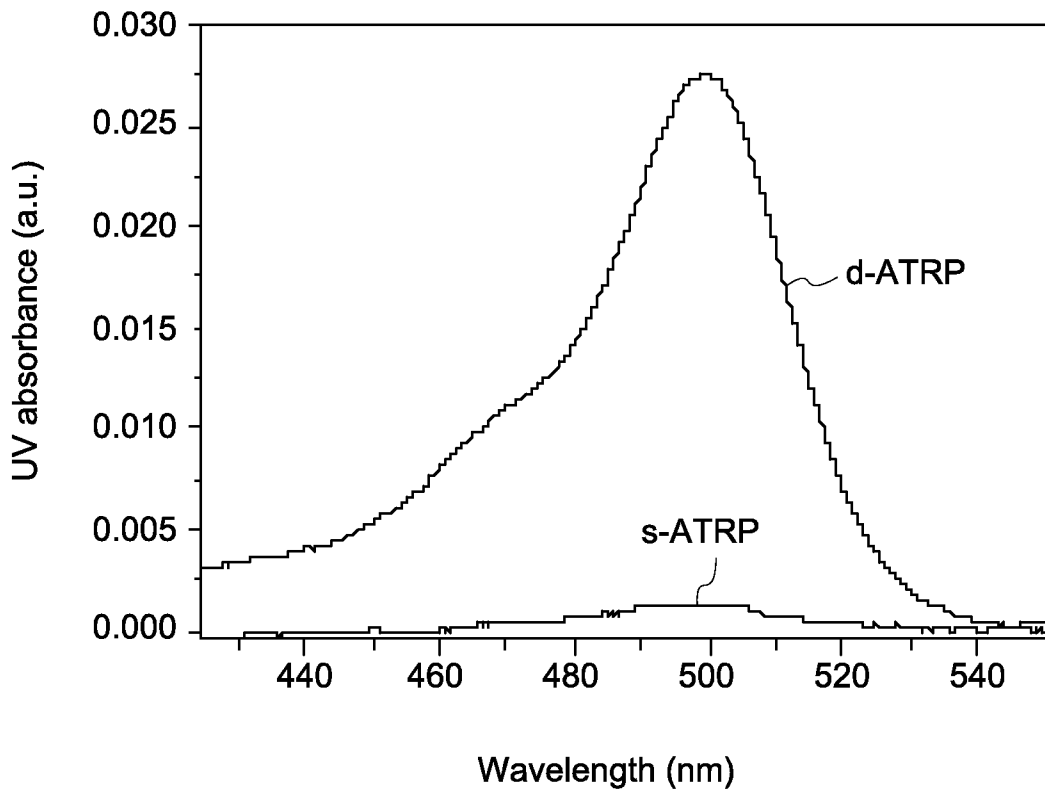


FIG. 22

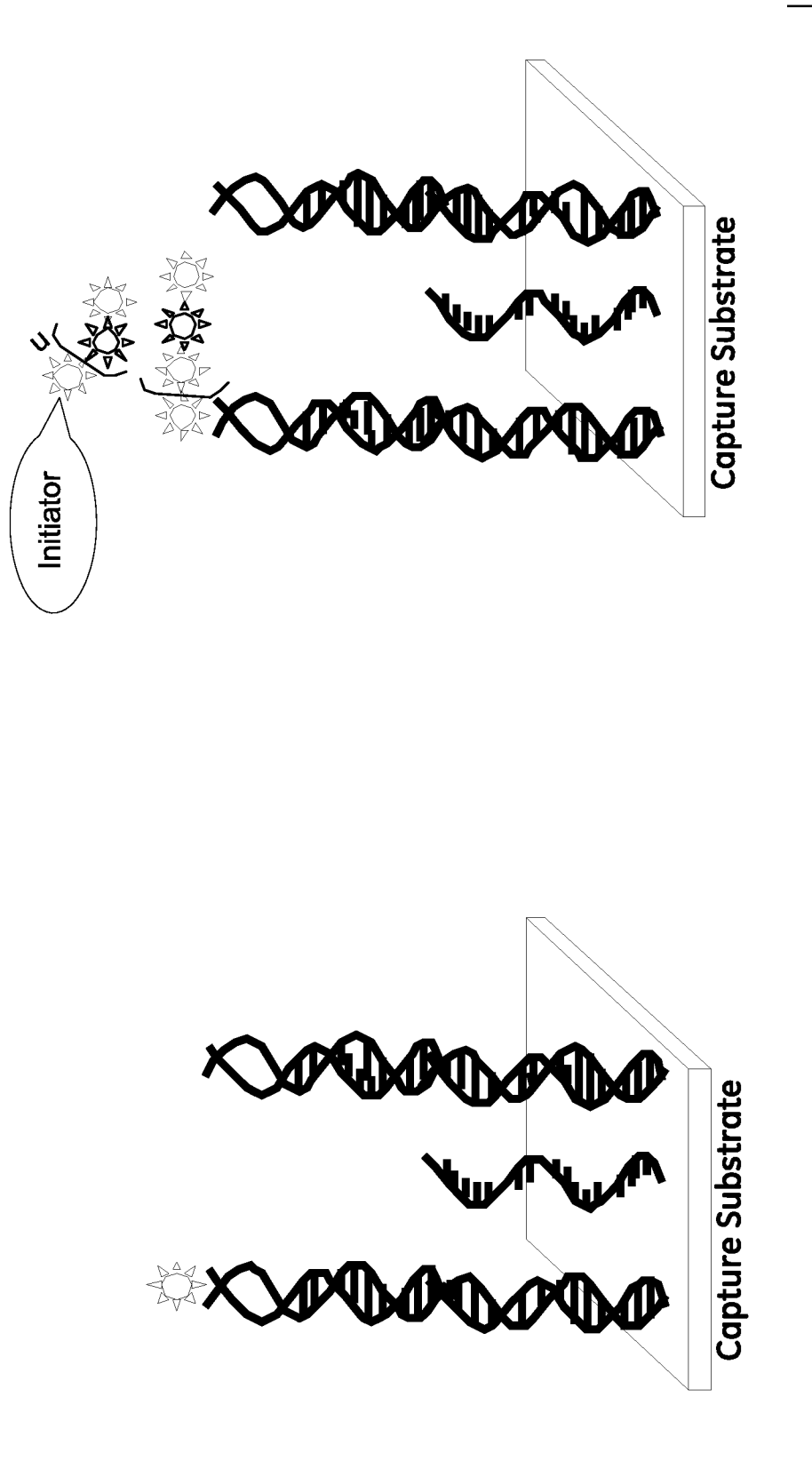


FIG. 23

23/23

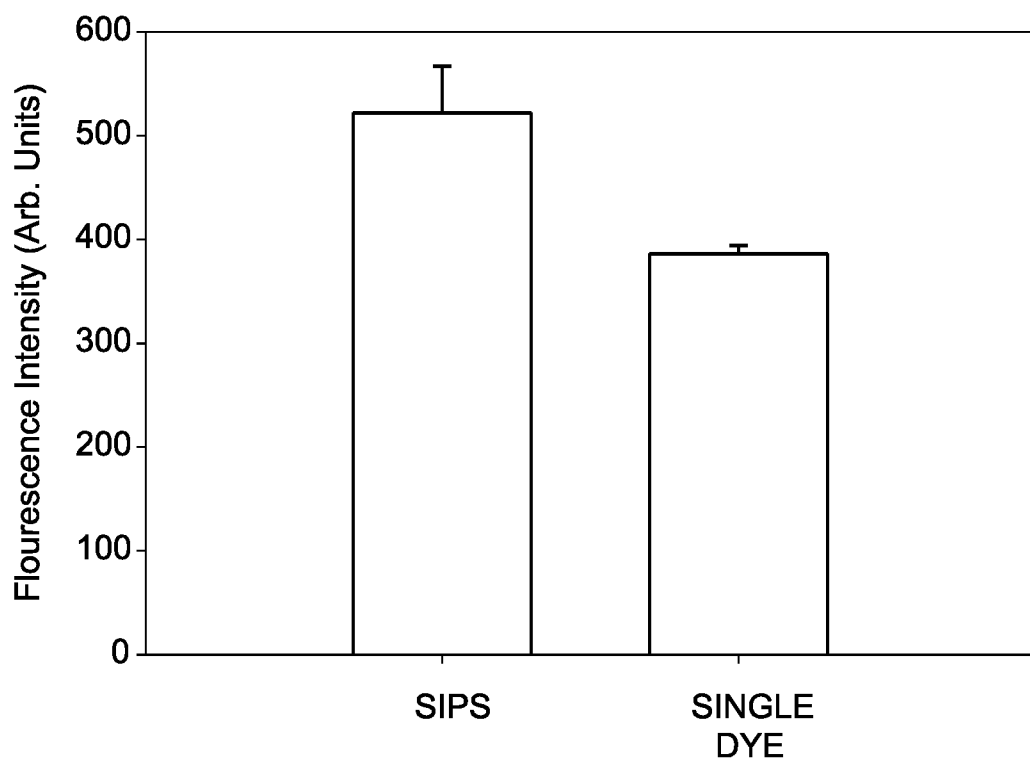


FIG. 24

专利名称(译)	使用基于聚合的信号放大检测分析物的组合物和方法		
公开(公告)号	EP2122351A2	公开(公告)日	2009-11-25
申请号	EP2008780435	申请日	2008-02-20
[标]申请(专利权)人(译)	通用电气公司		
申请(专利权)人(译)	通用电气公司		
当前申请(专利权)人(译)	通用电气公司		
[标]发明人	LU SU GUI JOHN YUPENG MOASSER BAHRAM CAI WEI ZHENG ZHIXIN NELSON JOHN R		
发明人	LU, SU GUI, JOHN YUPENG MOASSER, BAHRAM CAI, WEI ZHENG, ZHIXIN NELSON, JOHN R.		
IPC分类号	G01N33/532 G01N33/533 G01N33/58		
CPC分类号	C12Q1/6834 G01N33/533 G01N33/582		
代理机构(译)	布莱恩 , IAN BENNETT		
优先权	11/680597 2007-02-28 US		
其他公开文献	EP2122351B1		
外部链接	Espacenet		

摘要(译)

组合物包括能够结合第一分析物的第一探针和结合第一探针的第一引发剂。该组合物还包括能够结合第二分析物的第二探针和结合到第二探针的第二引发剂。第一引发剂或第二引发剂中的至少一种能够引发受控的聚合反应。提供了相关的套件，设备和方法。