



(11) **EP 1 548 436 B1**

(12) **EUROPEAN PATENT SPECIFICATION**

(45) Date of publication and mention of the grant of the patent:  
**19.11.2008 Bulletin 2008/47**

(21) Application number: **03794267.9**

(22) Date of filing: **05.09.2003**

(51) Int Cl.:  
**G01N 33/53 (2006.01) G01N 33/96 (2006.01)**

(86) International application number:  
**PCT/JP2003/011388**

(87) International publication number:  
**WO 2004/023141 (18.03.2004 Gazette 2004/12)**

(54) **METHOD OF ASSAYING OXIDIZED LDL-BETA 2-GLYCOPROTEIN I COMPLEX IN VIVO**

VERFAHREN ZUM TESTEN DES OXIDIERTES-LDL-BETA-2-GLYCOPROTEIN-I-KOMPLEXES IN VIVO

METHODE D'ANALYSE IN VIVO D'UN COMPLEXE OXYDE A BASE DE LDL-BETA-GLYCOPROTEINE

(84) Designated Contracting States:  
**AT BE BG CH CY CZ DE DK EE ES FI FR GB GR HU IE IT LI LU MC NL PT RO SE SI SK TR**

(30) Priority: **06.09.2002 JP 2002261366**

(43) Date of publication of application:  
**29.06.2005 Bulletin 2005/26**

(73) Proprietor: **Matsuura, Eiji**  
**Okayama-shi,**  
**Okayama 700-0916 (JP)**

(72) Inventor: **Matsuura, Eiji**  
**Okayama-shi,**  
**Okayama 700-0916 (JP)**

(74) Representative: **Bannerman, David Gardner**  
**Withers & Rogers LLP**  
**Goldings House**  
**2 Hays Lane**  
**London**  
**SE1 2HW (GB)**

(56) References cited:  
**WO-A1-95/09363 JP-A- 7 306 202**  
**US-A- 5 900 359**

- **MATSUURA EIJI ET AL: "Anti-beta 2-glycoprotein I autoantibodies and atherosclerosis." INTERNATIONAL REVIEWS OF IMMUNOLOGY. 2002 JAN-FEB, vol. 21, no. 1, January 2002 (2002-01), pages 51-66, XP008063196 ISSN: 0883-0185**

- **LIU QINGPING ET AL: "omega-Carboxyl variants of 7-ketocholesteryl esters are ligands for beta2-glycoprotein I and mediate antibody-dependent uptake of oxidized LDL by macrophages" JOURNAL OF LIPID RESEARCH, vol. 43, no. 9, September 2002 (2002-09), pages 1486-1495, XP002377699 ISSN: 0022-2275**
- **MATSUURA EIJI ET AL: "Autoantibody-mediated atherosclerosis." AUTOIMMUNITY REVIEWS. DEC 2002, vol. 1, no. 6, 25 August 2002 (2002-08-25), pages 348-353, XP002377700 ISSN: 1568-9972**
- **CUADRADO M J ET AL: "Antiphospholipid, anti-beta 2-glycoprotein-I and anti-oxidized-low-density-lipoprotein antibodies in antiphospholipid syndrome." QJM : MONTHLY JOURNAL OF THE ASSOCIATION OF PHYSICIANS. SEP 1998, vol. 91, no. 9, September 1998 (1998-09), pages 619-626, XP002377701 ISSN: 1460-2725**
- **KOIKE: 'Antiphospholipid antibodies in arterial thrombosis' ANNALS OF MEDICINE vol. 32, no. SUPPL. 1, 2000, pages 27 - 31, XP002974811**
- **KOBAYASHI ET AL.: 'A specific ligand for beta2-glycoprotein I mediates autoantibody-dependent uptake of oxidized low density lipoprotein by macrophages' JOURNAL OF LIPID RESEARCH vol. 42, no. 5, 2001, pages 697 - 709, XP002951004**

Note: Within nine months of the publication of the mention of the grant of the European patent in the European Patent Bulletin, any person may give notice to the European Patent Office of opposition to that patent, in accordance with the Implementing Regulations. Notice of opposition shall not be deemed to have been filed until the opposition fee has been paid. (Art. 99(1) European Patent Convention).

**EP 1 548 436 B1**

**Description**

## Technical Field

5 **[0001]** The present invention relates to a standard useful in measurement of "oxidized LDL (oxLDL) / $\beta$ 2-glycoprotein I ( $\beta$ 2-GPI) complex" ( $\beta$ 2-GPI/oxLDL complex) occurring in the living body and to a method of measuring the  $\beta$ 2-GPI/oxLDL complex *in vivo* by using the standard.

## Background Art

10

**[0002]** First, abbreviations used in this specification will be described.

aPL: anti-phospholipid antibody

aCL: anti-cardiolipin antibody

15 APS: antiphospholipid syndrome

$\beta$ 2-GPI:  $\beta$ 2-glycoprotein I

$\beta$ 2-GPI/oxLDL complex: complex consisting of oxLDL and  $\beta$ 2-GPI

BSA: bovine serum albumin

CL: cardiolipin

20  $\text{Cu}^{2+}$ -oxLDL: oxLDL oxidized with  $\text{CuSO}_4$

DEAE: diethylaminoethyl

EDTA: ethylenediaminetetraacetic acid

ELISA: enzyme-linked immunosorbent assay

HRP: horseradish peroxidase

25 LDL: low-density lipoprotein

MDA: malondialdehyde

OD: optical density

oxLDL: oxidized LDL

oxLig-1: 7-ketocholesteryl-9-carboxynonanoate;

30 9-oxo-9-(7-ketocholest-5-en-3 $\beta$ -yloxy)nonanoic acid (IUPAC)

oxLig-2: 7-ketocholesteryl-12-carboxy(keto)dodecanoate

PAPS: primary antiphospholipid syndrome

PBS: phosphate buffered saline

PL (PLs): phospholipid(s)

35 SLE: systemic lupus erythematosus

TBARS: thiobarbituric acid reactive substance

TLC: thin layer chromatography

9-COOH-22KC: 7-ketocholesteryl-13-carboxytridecanoate;

13-oxo-13-(7-ketocholest-5-en-3 $\beta$ -yloxy)tridecanoic acid

40

**[0003]** It is known that  $\beta$ 2-GPI is a major antigen which is recognized by "phospholipid antibody" occurring in patients with APS, and binds specifically to oxLDL but not to non-oxidized (native) LDL. WO 95/9363 discloses a method of measuring oxLDL by using such ability of  $\beta$ 2-GPI to bind specifically to oxLDL, its applied kit for diagnosis of arteriosclerotic diseases, etc. Further, J. Lipid Res., 42, pp. 697-709 (2001) [reference 7] discloses that  $\beta$ 2-GPI recognizes the structural part of oxLig-1 in oxLDL and binds thereto.

45

**[0004]** oxLDL forms a complex with  $\beta$ 2-GPI ( $\beta$ 2-GPI/oxLDL complex) in the living body, and by measuring this complex occurring in the living body, various diseases can be detected. As a standard for measuring this complex occurring in the living body,  $\text{Cu}^{2+}$ -oxLDL and  $\beta$ 2-GPI which were contacted with each other without pre-incubation have been conventionally used.

50

**[0005]** A standard for measuring the hardly dissociable  $\beta$ 2-GPI/oxLDL complex occurring in the living body is desirably the same as, or as similar as possible to, the standard for measuring the complex occurring in the living body. However, a mode of bonding between oxLDL and  $\beta$ 2-GPI, etc., in the  $\beta$ 2-GPI/oxLDL, complex occurring in the living body and in the  $\beta$ 2-CPT/oxLDL complex used conventionally as the standard have not been known.

55

**[0006]** US5,900,359 discloses the use of an anti-cardiolipin antibody, anti-lipoprotein antibody or anti- $\beta$ 2-glycoprotein I antibody together with an immobilized antibody thereof to enable an accurate assay for a complex of  $\beta$ 2-glycoprotein I and an oxidized lipoprotein in a blood sample.

**[0007]** Matsuura et al (Intern. Rev. Immunol., 21:51-66 (2002)) reviews anti- $\beta$ 2-glycoprotein I antibodies and atherosclerosis.

## Disclosure of the Invention

**[0008]** The present invention relates to a standard useful for measurement of the  $\beta$ 2-GPI/oxLDL complex occurring in the living body, as well as a method of measuring the  $\beta$ 2-GPI/oxLDL complex *in vivo* by using the standard.

**[0009]** The present inventors have studied a mode of bonding between oxLDL and  $\beta$ 2-GPI in the  $\beta$ 2-GPI/oxLDL complex occurring in the living body, and as a result, we have surprisingly found that a majority of the complexes form a covalent bonding or a stronger bonding than at least electrostatic bonding force. On the other hand, the present inventors have found that when the conventionally used standard (that is, oxLDL and  $\beta$ 2-GPI contacted with each other without pre-incubation) is subjected to measurement, the bonding between oxLDL and  $\beta$ 2-GPI in this complex is a mere electrostatic bonding.

**[0010]** The conventional standard can be used in measurement of the  $\beta$ 2-GPI/oxLDL complex occurring in the living body. For carrying out more accurate and strict measurement, however, the standard is desirably as similar as possible to the complex occurring in the living body, as described above.

**[0011]** On the basis of the foregoing new finding, the present inventors have successfully provided a novel standard for measuring  $\beta$ 2-GPI/oxLDL complex, a method of measuring  $\beta$ 2-GPI/oxLDL complex by using the standard, a method of detecting a disease by using the measurement method, and a kit for measuring  $\beta$ 2-GPI/oxLDL complex by using the standard, and the present invention has been thereby completed.

**[0012]** Further, the present inventors have also paid attention to the fact that an antigen used in measurement of "antibody recognizing  $\beta$ 2-GPI/oxLDL complex" (autoantibody) occurring in the living body is also desirably as similar as possible to the  $\beta$ 2-GPI/oxLDL complex occurring in the living body, and have successfully provided a novel antigen for measuring the "antibody recognizing  $\beta$ 2-GPI/oxLDL complex", a method of measuring the "antibody recognizing  $\beta$ 2-GPI/oxLDL complex" by using the antigen, a method of detecting a disease by using the measurement method, a solid phase having the antigen immobilized thereon, and a kit for measuring the "antibody recognizing  $\beta$ 2-GPI/oxLDL complex" by using the solid phase, and the present invention has been thereby completed.

**[0013]** That is, the present invention provides a standard for measuring a  $\beta$ 2-GPI/oxLDL complex in a sample, which comprises a complex having oxLDL bound covalently to  $\beta$ 2-GPI as an ingredient (this standard is referred to hereinafter as standard 1 of the present invention).

**[0014]** A first aspect of the invention provides a standard for measuring a  $\beta$ 2-GPI/oxLDL complex in a sample, wherein the standard: (a) comprises an oxidized LDL/ $\beta$ 2-GPI complex obtainable by incubating oxidized LDL and  $\beta$ 2-GPI under 37 °C and pH7.4 for 16 hours, and (b) the oxidized LDL/ $\beta$ 2-GPI complex has the following properties: (i) oxidized LDL and  $\beta$ 2-GPI constituting the complex are substantially not dissociated even in the coexistence of 100 U/ml heparin, and (ii) oxidized LDL and  $\beta$ 2-GPI constituting the complex are substantially not dissociated even in the coexistence of 10 mM MgCl<sub>2</sub>.

**[0015]** The standard comprising an oxidized LDL/ $\beta$ 2-GPI complex obtainable by incubating oxidized LDL and  $\beta$ 2-GPI under 37°C and pH7.4 for 16 hours is referred to hereinafter as standard 2 of the present invention.

**[0016]** The "sample" subjected to measurement using the standard of the present invention is preferably a sample derived from a living body. This "sample derived from a living body" is preferably blood.

**[0017]** Hereinafter, both standards 1 and 2 of the present invention are collectively referred to simply as "standard of the present invention".

**[0018]** Further, the present invention provides a method of measuring a  $\beta$ 2-GPI/oxLDL complex in a sample, which comprises using the standard of the present invention (this method is referred to hereinafter as measurement method 1 of the present invention). The measurement method 1 of the present invention preferably comprises at least a step of covalently binding "oxLDL" to " $\beta$ 2-GPI" in a sample. Preferably the method also comprises at least a step of previously incubating "oxLDL" and " $\beta$ 2-GPI" in a sample under the condition of pH 3 to 9. Preferably the method also comprises at least a step of dissociating "complex having 'oxLDL' bound electrostatically to 'a protein, a polypeptide, an amino acid, an aminosugar or an aminolipid'" in a sample

**[0019]** Further, the present invention provides a method of detecting a disease, which comprises measuring a  $\beta$ 2-GPI/oxLDL complex in a sample by using the measurement method 1 of the present invention and correlating the measured "complex in the sample" with a disease (this method is referred to hereinafter as detection method 1 of the present invention). The disease detected by the detection method 1 of the present invention is preferably selected from the group consisting of APS, thrombosis, arterial thrombosis, venous thrombosis, pregnancy morbidity, renal disease, arteriosclerosis (cerebral infarction, myocardial infarction etc.) and diabetes.

**[0020]** Further, the present invention provides a kit for measuring a  $\beta$ 2-GPI/oxLDL complex in a sample, which comprises the standard of the present invention as a constituent ingredient (this kit is referred to hereinafter as kit 1 of the present invention). Preferably the kit 1 of the present invention further comprises "antibody recognizing the 'oxLDL/ $\beta$ 2-GPI complex'" as a constituent ingredient. Preferably the kit 1 of the present invention is used in detection of a disease.

**[0021]** Further, the present invention provides an antigen for measuring "antibody recognizing the  $\beta$ 2-GPI/oxLDL

complex" in a sample, which comprises the "complex having oxLDL bound covalently to  $\beta$ 2-GPI" as an ingredient (this antigen is referred to hereinafter as antigen 1 of the present invention).

[0022] The present invention also provides an antigen for measuring "antibody recognizing the  $\beta$ 2-GPI/oxLDL complex" in a sample, which comprises the " $\beta$ 2-GPI/oxLDL complex obtainable by incubating oxLDL and  $\beta$ 2-GPI under the conditions of 37°C and pH 7.4 for 16 hours" as an ingredient (this antigen is referred to hereinafter as antigen 2 of the present invention). The " $\beta$ 2-GPI/oxLDL complex obtainable by incubating oxLDL and  $\beta$ 2-GPI under the conditions of 37°C and pH 7.4 for 16 hours" in the antigen 2 of the present invention preferably has the following properties (a) and (b):

(a) oxLDL and  $\beta$ 2-GPI constituting the complex are substantially not dissociated even in the coexistence of 100 U/ml heparin, and

(b) oxLDL and  $\beta$ 2-GPI constituting the complex are substantially not dissociated even in the coexistence of 10 mM  $MgCl_2$ .

[0023] Hereinafter, antigens 1 and 2 of the present invention are collectively referred to simply as "antigen of the present invention".

[0024] Further, the present invention provides a method of measuring "antibody recognizing the  $\beta$ 2-GPI/oxLDL complex" in a sample, which comprises using the antigen of the present invention (this method is referred to hereinafter as measurement method 2 of the present invention).

[0025] Further, the present invention provides a method of detecting a disease, which comprises measuring "antibody recognizing the  $\beta$ 2-GPI/oxLDL complex" in a sample by using the measurement method 2 of the present invention, and correlating the measured "antibody in the sample" with a disease (this method is referred to hereinafter as detection method 2 of the present invention). The disease detected by the detection method 2 of the present invention is preferably selected from the group consisting of APS, thrombosis, arterial thrombosis, venous thrombosis, pregnancy morbidity, renal disease, arteriosclerosis (cerebral infarction, myocardial infarction etc.) and diabetes.

[0026] The present invention also provides a solid phase having the antigen of the present invention immobilized thereon (this solid phase is referred to hereinafter as solid phase of the present invention).

[0027] Further, the present invention provides a kit for measuring "antibody recognizing the  $\beta$ 2-GPI/oxLDL complex" in a sample, which comprises the solid phase of the present invention as a constituent ingredient (this kit is referred to hereinafter as kit 2 of the present invention). Preferably the kit 2 of the present invention further comprises a substance binding to "antibody recognizing the  $\beta$ 2-GPI/oxLDL complex" as a constituent ingredient. Preferably the kit 2 of the present invention is used in detection of a disease.

[0028] The present invention also provides a method of measuring an immune complex in a sample, which comprises using "antibody recognizing  $\beta$ 2-GPI" and/or "antibody recognizing LDL" and an anti-IgG antibody (this method is referred to hereinafter as measurement method 3 of the present invention).

#### Brief Description of the Drawings

#### [0029]

Fig. 1 is a graph showing ligand blotting analysis of two  $\omega$ -carboxyl mutants (oxLig-1 and 9-COOH-22KC) of oxysterol ester. The ligand developed on a TLC plate was stained with  $I_2$  vapor (A), and the ligand blotting was conducted by using anti- $\beta$ 2-GPI antibody (Cof-22 (B) and EY2C9 (C)).

Fig. 2 is a graph showing a profile of formation of  $Cu^{2+}$ -oxidized oxLDL/ $\beta$ 2-GPI complex.

(A) ELISA for detecting  $\beta$ 2-GPI/oxLDL complex was conducted by incubating oxLDL12h (0  $\mu$ g/ml (white triangle), 0.16  $\mu$ g/ml (white square) or 2.5  $\mu$ g/ml (white circle), in terms of apoB) together with  $\beta$ 2-GPI at various concentrations in wells.

(B) ELISA was conducted by incubating oxLDL12h (LDL treated with 5  $\mu$ M  $CuSO_4$  at 37°C for 12 hours; circle) or native LDL (square) at the concentrations shown in the graph in the absence (white) or presence (25  $\mu$ g/ml; black) of  $\beta$ 2-GPI.

(C) ELISA was conducted by incubating oxLDL12h at the concentrations shown in the graph and  $\beta$ 2-GPI (25  $\mu$ g/ml) in the absence (white circle) or presence (black square) of heparin (100 U/ml) or in the presence (black lozenge) of  $MgCl_2$  (10 mM) in wells.

(D) The oxLDL12h/ $\beta$ 2-GPI16h complex was prepared by incubating oxLDL12h (100  $\mu$ g/ml) at 37°C for 16 hours together with  $\beta$ 2-GPI (100  $\mu$ g/ml). Using this complex (2.5  $\mu$ g/ml in terms of apoB), ELISA was conducted in the absence (white circle) or presence (black square) of heparin (100 U/ml) or in the presence (black lozenge)

## EP 1 548 436 B1

of  $\text{MgCl}_2$  (10 mM). The data are shown by the mean  $\pm$ SD of 3 samples.

Fig. 3 is a graph showing a change with time of formation of  $\text{Cu}^{2+}$ -oxidized oxLDL/ $\beta$ 2-GPI complex.

- 5 (A) TBARS in LDL (treated with 5  $\mu\text{M}$   $\text{CuSO}_4$  for the time shown in the graph) was measured.  
(B) The  $\beta$ 2-GPI/oxLDL complex was formed by incubating  $\text{Cu}^{2+}$ -oxLDL (2.5  $\mu\text{g}/\text{ml}$  in terms of apoB) together with  $\beta$ 2-GPI (0  $\mu\text{g}/\text{ml}$  (white circle), 25  $\mu\text{g}/\text{ml}$  (black circle)) in wells and subjected to ELISA. ELISA in the coexistence of 25  $\mu\text{g}/\text{ml}$   $\beta$ 2-GPI was also conducted in the presence of heparin (100 U/ml; black square) or  $\text{MgCl}_2$  (10 mM; black lozenge).
- 10 (C) The  $\beta$ 2-GPI/oxLDL complex was formed by incubating oxLDL12h (100  $\mu\text{g}/\text{ml}$ ) together with  $\beta$ 2-GPI (100  $\mu\text{g}/\text{ml}$ ) under the condition of 4°C (dotted line) or 37°C (solid line) for the time shown in the graph and then detected by ELISA. ELISA was also conducted in the absence of heparin and  $\text{MgCl}_2$  (white circle) or in the presence of heparin (100 U/ml; black square) or  $\text{MgCl}_2$  (10 mM; black lozenge).
- 15 (D) The  $\beta$ 2-GPI/oxLDL complex was formed by incubating LDL (100  $\mu\text{g}/\text{ml}$ ) and  $\beta$ 2-GPI (100  $\mu\text{g}/\text{ml}$ ) simultaneously in a process of oxidation with  $\text{Cu}^{2+}$  (5  $\mu\text{M}$ ) at 37°C, and the  $\beta$ 2-GPI/oxLDL complex (2.5  $\mu\text{g}/\text{ml}$  in terms of apoB) was detected by ELISA. ELISA was conducted in the presence of heparin (100 U/ml; black square) or in the presence (10 mM; black lozenge) or absence (white circle) of  $\text{MgCl}_2$ . The data are shown by the mean  $\pm$ SD of 3 samples.

20 Fig. 4 is a graph showing the stability of the oxLDL12h/ $\beta$ 2-GPI16h complex and the complex reduced with  $\text{NaCNBH}_3$  under varying pH conditions

The oxLDL12h/ $\beta$ 2-GPI16h complex (100  $\mu\text{g}/\text{ml}$  in terms of apoB) was reduced by treatment with 200 mM  $\text{NaCNBH}_3$  at pH 7.4 for 16 hours in PBS. The unreduced or reduced complex was incubated at 37°C for 16 hours in the presence or absence of 10 mM  $\text{MgCl}_2$  under the pH condition shown in the graph. The  $\beta$ 2-GPI/oxLDL complex in this preparation containing 300 ng/ml LDL (in terms of apoB) was measured by ELISA. The data are shown by the mean  $\pm$ SD of 3 samples.

25 Fig. 5 is a graph showing  $\beta$ 2-GPI/oxLDL complex present in serum from patients.

- 30 (A) Native LDL (nLDL) / $\beta$ 2-GPI16h (reaction mixture where innate LDL and  $\beta$ 2-GPI had been incubated at 37°C for 16 hours; negative control) (300 ng/ml in terms of apoB), oxLDL12h/ $\beta$ 2-GPI16h (300 ng/ml) or a 100-fold dilution of  $\beta$ 2-GPI/oxLDL complex-positive serum was incubated in the presence or absence of heparin (100 U/ml) or  $\text{MgCl}_2$  (10 mM).  
(B)  $\beta$ 2-GPI/oxLDL complex-positive serum was pre-incubated at pH 10, 37°C for 16 hours in the presence of  $\text{MgCl}_2$  (10 mM) and subjected to ELISA. The data are shown by the mean of two samples.

35 Fig. 6 is a graph showing the serum level of  $\beta$ 2-GPI/oxLDL complex detected by ELISA.

Serums collected from healthy persons and patients with primary APS (PAPS), APS accompanied by SLE (secondary APS), or SLE not accompanied by APS were diluted 100-fold to detect  $\beta$ 2-GPI/oxLDL complex. The cut-off value (1 U/ml) was regulated so as to be 3 times as high as the standard deviation of the mean of 50 healthy persons. Number in the graph shows the mean of each group.

40 Fig. 7 is a graph showing the relationship among the antibody titers of  $\beta$ 2-GPI-related IgG antibodies detected in 3 different ELISA systems.

- 45 (A) Relationship between " $\beta$ 2-GPI-dependent IgG aCL (anti- $\beta$ 2-GPI/CL IgG antibody)" and "anti- $\beta$ 2-GPI/oxLig-1 IgG antibody".  
(B) Relationship between "anti- $\beta$ 2-GPI IgG antibody (detected by ELISA using a polyoxidized plate coated with  $\beta$ 2-GPI)" and "anti- $\beta$ 2-GPI/oxLig-1 IgG antibody".

50 Fig. 8 is a graph showing the relationship between IgG antibody titer and IgG immune complex level.

- (A) Relationship between "anti- $\beta$ 2-GPI IgG antibody" and " $\beta$ 2-GPI/IgG immune complex (IC)"  
(B) Relationship between "anti- $\beta$ 2-GPI/oxLig-1 IgG antibody" and "LDL/IgG immune complex".  
(C) Relationship between " $\beta$ 2-GPI/IgG immune complex" and "LDL/IgG immune complex".

55 Fig. 9 is a graph showing the detection result of "antibody recognizing  $\beta$ 2-GPI/oxLDL complex" by ELISA. (A) is a graph showing the serum level of the antibody recognizing  $\beta$ 2-GPI/oxLDL complex. (B) shows the relationship between the "antibody recognizing  $\beta$ 2-GPI/oxLDL complex" and the "anti- $\beta$ 2-GPI IgG antibody".

## Best Mode for Carrying Out the Invention

**[0030]** Hereinafter, the mode for carrying out the invention will be described.

5 Standard of the present invention

<1>-1 Standard 1 of the present invention

**[0031]** The standard 1 of the present invention is a standard for measuring a  $\beta$ 2-GPI/oxLDL complex in a sample, which comprises complex having oxLDL bound covalently to  $\beta$ 2-GPI.

**[0032]** The "oxLDL" constituting the standard 1 of the present invention can be prepared by oxidizing LDL. Although the method of oxidization is not particularly limited, a method that involves incubation with  $\text{Cu}^{2+}$  can be mentioned as a preferable method. For example, LDL can be oxidized by incubating LDL with about 5  $\mu\text{M}$   $\text{CuSO}_4$  at a temperature of about 37°C. In this case, the oxidation reaction can be terminated by adding a chelating agent such as EDTA. For specific examples of this method, reference is made to the Examples shown later.

**[0033]** The " $\beta$ 2-GPI" constituting the standard 1 of the present invention can be obtained from serum etc. in mammals or can be produced by genetic engineering techniques. The origin of " $\beta$ 2-GPI" is not particularly limited, but " $\beta$ 2-GPI" is preferably derived from the same animal species as that of an animal from which the "sample" subjected to measurement was collected. For example, when the sample subjected to measurement is human serum, human-derived  $\beta$ 2-GPI is preferably used.

**[0034]** The standard 1 of the present invention comprises, as an ingredient, the complex having "oxLDL" bound covalently to the " $\beta$ 2-GPI". The method of covalently binding the two is not particularly limited, and can be suitably selected from known techniques.

**[0035]** By binding "oxLDL" and " $\beta$ 2-GPI" covalently to each other in this manner, the two forms a hardly dissociable complex. The "complex having oxLDL bound covalently to  $\beta$ 2-GPI" in the standard 1 of the present invention is used as a standard for measuring the  $\beta$ 2-GPI/oxLDL complex in a sample.

**[0036]** The term "measurement" in this specification is a concept encompassing not only quantitative measurement of a certain substance but also qualitative detection (detection of the presence or absence of a certain substance).

**[0037]** The term "standard" in this specification means "standard substance" used in measuring a certain substance. That is, when quantitative or qualitative measurement of a certain substance A is to be conducted, substance A (standard substance) serving as standard is necessary. For example, when substance A in a sample is quantitatively measured by using OD, substance A (standard substance) prepared at a predetermined concentration is measured for its OD, and the OD value of the sample is compared with the OD value of this standard substance, whereby the concentration of substance A in the sample can be determined. Further, when the presence or absence of substance A in a sample is judged (that is, when substance A is qualitatively measured), the presence or absence of substance A in the sample can be judged (substance A can be qualitatively measured) by using an indicator the presence or absence of a substance having the same physicochemical properties and biological properties (for example, antigenicity etc.) as those of substance A (standard substance) as standard. The "standard substance" used in such measurement is a typical example of the "standard" in this specification.

**[0038]** The standard 1 of the present invention may further contain other ingredients insofar as the "complex having oxLDL bound covalently to  $\beta$ 2-GPI" is contained as an ingredient. The "other ingredients" used herein are not particularly limited insofar as they do not adversely affect the physicochemical properties and biological properties (for example antigenicity etc.) of the "complex having oxLDL bound covalently to  $\beta$ 2-GPI" itself, and do not inhibit the functions of the complex as standard. As used herein, the "other ingredients" are exemplified by an excipient, a buffer agent, a stabilizer, a preservative etc. used in preparation of usual reagents.

**[0039]** The form of the standard 1 of the present invention is not particularly limited insofar as the standard can be formed as desired for use, and for example the standard can be used in forms such as a dissolved form, a frozen form and a lyophilized form. This product can be charged into a suitable container such as an ampoule, vial, syringe or bottle and can be distributed as such or stored, and can be used as the standard for measurement.

50 <1>-2 Standard 2 of the present invention

**[0040]** The standard 2 of the present invention is the standard for measuring  $\beta$ 2-GPI/oxLDL complex in a sample, which comprises " $\beta$ 2-GPI/oxLDL complex obtainable by incubating oxLDL and  $\beta$ 2-GPI under the conditions of 37°C and pH 7.4 for 16 hours" as an ingredient.

**[0041]** A description of "oxLDL" and " $\beta$ 2-GPI" in the standard 2 of the present invention is the same as described above in the "standard 1 of the present invention".

**[0042]** The standard 2 of the present invention comprises, as an ingredient, the  $\beta$ 2-GPI/oxLDL complex obtainable

by incubating oxLDL and  $\beta$ 2-GPI under the conditions of 37°C and pH 7.4 for 16 hours. The term "obtainable" means that the  $\beta$ 2-GPI/oxLDL complex as the ingredient of the standard 2 of the present invention is not limited to the "complex actually obtained by incubating oxLDL and  $\beta$ 2-GPI under the conditions of 37°C and pH 7.4 for 16 hours" but may include the complex obtained by a method different therefrom. Accordingly, when the  $\beta$ 2-GPI/oxLDL complex obtained by a different method is evaluated to be equal as substance to the " $\beta$ 2-GPI/oxLDL complex actually obtained by incubating oxLDL and  $\beta$ 2-GPI under the conditions of 37°C and pH 7.4 for 16 hours", the  $\beta$ 2-GPI/oxLDL complex obtained by the different method can also be used as the ingredient of the standard 2 of the present invention.

**[0043]** The ingredient of the standard 2 of the present invention, that is, the "complex obtainable by incubating oxLDL and  $\beta$ 2-GPI under the conditions of 37°C and pH 7.4 for 16 hours" preferably has the following properties (a) and (b):

- (a) oxLDL and  $\beta$ 2-GPI constituting the complex are substantially not dissociated even in the coexistence of 100 U/ml heparin, and
- (b) oxLDL and  $\beta$ 2-GPI constituting the complex are substantially not dissociated even in the coexistence of 10 mM  $MgCl_2$ .

**[0044]** The  $\beta$ 2-GPI/oxLDL complex having the properties (a) and (b) can be obtained by incubating at least oxLDL and  $\beta$ 2-GPI under the conditions of 37°C and pH 7.4 for 16 hours. However, the  $\beta$ 2-GPI/oxLDL complex which can be used as the ingredient of the standard 2 of the present invention is not limited to the complex actually obtained by this method, but may be the complex obtained by a method different therefrom, as described above.

**[0045]** The standard 2 of the present invention makes use of such  $\beta$ 2-GPI/oxLDL complex as a standard for measuring the  $\beta$ 2-GPI/oxLDL complex in a sample.

**[0046]** The standard 2 of the present invention, similar to the standard 1 of the present invention, may contain other ingredients insofar as such  $\beta$ 2-GPI/oxLDL complex is contained as an ingredient, and a description and examples of the "other ingredients" are the same as described above in the "standard 1 of the present invention".

**[0047]** A description etc. of the form etc. of the standard 2 of the present invention is also the same as described above in the "standard 1 of the present invention".

**[0048]** The sample subjected to measurement using the standard of the present invention is not particularly limited insofar as it requires measurement of  $\beta$ 2-GPI/oxLDL complex. The sample may not be purified for  $\beta$ 2-GPI/oxLDL complex. The sample is preferably a sample derived from a living body, and the sample derived from a living body is exemplified specifically by blood (which is used in this specification as a concept including serum and plasma). The blood may be used as it is, may be diluted, or may be processed to such an extent that the  $\beta$ 2-GPI/oxLDL complex in a sample is not adversely affected.

<2> Measurement method 1 of the present invention

**[0049]** The measurement method 1 of the present invention is a method of measuring  $\beta$ 2-GPI/oxLDL complex in a sample, which comprises using the standard of the present invention.

**[0050]** As used herein, the "standard of the present invention" may be either standard 1 or 2 of the present invention. Its description is as described above.

**[0051]** How the measurement method 1 of the present invention is specifically carried out is not limited insofar as the standard of the present invention is used. Specific methods are exemplified by immunological measurement techniques using e.g. antibody (ELISA [sandwich method, competitive method, inhibition method etc.], immunoblotting, agglutination method etc.).

**[0052]** It has been found by the present inventors that a majority of bonds formed between oxLDL and  $\beta$ 2-GPI in  $\beta$ 2-GPI/oxLDL complexes occurring in the living body are covalent bonds or stronger bonds than at least electrostatic binding force, and some bonds are electrostatic bonds. It has been confirmed by the present inventors that the complex having a covalent bond and the complex having an electrostatic bond are slightly different from each other in respect of physicochemical properties and biological properties (for example antigenicity etc.).

**[0053]** Accordingly, previous formation of a covalent bond between oxLDL and  $\beta$ 2-GPI in every " $\beta$ 2-GPI/oxLDL complex formed by electrostatic bonding" present in a sample is preferable in that every complex (covalently bound complex and electrostatically bound complex) present in the sample can be measured more accurately. That is, the measurement method 1 of the present invention preferably comprises at least a step of covalently binding "oxLDL" to " $\beta$ 2-GPI" in a sample. A description of the covalently binding is the same as described above in the "standard 1 of the present invention".

**[0054]** As previously described in the "standard 2 of the present invention", oxLDL and  $\beta$ 2-GPI are incubated under the condition of pH 3 to 9 (for example, pH 7.4), whereby a bond having the following properties (a) and (b) can be formed between oxLDL and  $\beta$ 2-GPI.

- (a) oxLDL and  $\beta$ 2-GPI constituting the complex are substantially not dissociated even in the coexistence of 100

U/ml heparin, and

(b) oxLDL and  $\beta$ 2-GPI constituting the complex are substantially not dissociated even in the coexistence of 10 mM  $MgCl_2$ .

5 **[0055]** Accordingly, the conversion of the bond in every " $\beta$ 2-GPI/oxLDL complex formed by electrostatic bonding" present in a sample into the bond having the properties (a) and (b) is preferable in that every complex in the sample (that is, the complex having the bond with the properties (a) and (b) and the complex having an electrostatic bond) can be measured more accurately. That is, the measurement method 1 of the present invention preferably comprises at least a step of previously incubating "oxLDL" and " $\beta$ 2-GPI" in a sample under the condition of pH 3 to 9. Specifically,  
10 the pH value is about 7.4.

**[0056]** The bond having the properties (a) and (b) is considered due to formation of Schiff base, and this reaction proceeds with an acid catalyst. Accordingly, the pH value during incubation is preferably neutral to acidic. However, strongly acidic conditions cause protein denaturation and are thus not preferable.

15 **[0057]** Although the incubation temperature is not particularly limited insofar as it is to such an extent that the functions of oxLDL and  $\beta$ 2-GPI are not lost, the incubation temperature is for example 37°C or thereabout. The incubation time is not particularly limited either, and can be suitably established by those skilled in the art. Generally, the above bond can be formed more completely as the incubation time is increased.

**[0058]** Previous dissociation of oxLDL from  $\beta$ 2-GPI in every " $\beta$ 2-GPI/oxLDL complex formed by electrostatic bonding" present in a sample is preferable in that only the complex having a covalent bond or the bond having the properties (a) and (b), present in the sample, can be measured more accurately. That is, the measurement method 1 of the present invention preferably comprises at least a step of dissociating "a complex having 'oxLDL' bound electrostatically to 'a protein, a polypeptide, an amino acid, an aminosugar or an aminolipid' " in a sample. The dissociation method, conditions etc. are not particularly limited insofar as the electrostatically bound complex only is dissociated, while the complex having a covalent bond or the bond with the properties (a) and (b) is not dissociated; for example, there is a method that  
20 involves incubating the complex in the presence of heparin or a salt such as  $MgCl_2$ ,  $CaCl_2$  or the like. The concentration of these substances, the incubation temperature, the incubation time etc. can be suitably determined by those skilled in the art in such a range that while the electrostatically bound complex only is dissociated, the complex having a covalent bond or the bond with the properties (a) and (b) is not dissociated. The incubation temperature is for example 37°C or thereabout. Generally, the complex can be dissociated into its components more completely as the incubation time is  
25 increased.

30 **[0059]** The meaning of the "sample" is the same as described in the "standard of the present invention".

<3> Detection method 1 of the present invention

35 **[0060]** The detection method 1 of the present invention is a method of detecting a disease, which comprises measuring a  $\beta$ 2-GPI/oxLDL complex in a sample by using the measurement method 1 of the present invention and correlating the measured "complex in the sample" with a disease.

**[0061]** In the detection method 1 of the present invention, the  $\beta$ 2-GPI/oxLDL complex in a sample is first measured by the measurement method 1 of the present invention. A description of the measurement method 1 of the present  
40 invention is as described above. The "sample" used herein is not particularly limited insofar as it is derived from the living body of an animal subjected to detection of a disease, and specifically blood etc. can be mentioned. Other description of the "sample" is the same as described above in the "standard of the present invention".

**[0062]** In the detection method 1 of the present invention, the " $\beta$ 2-GPI/oxLDL complex in the sample" measured by using the measurement method 1 of the present invention is then correlated with a disease to detect the disease.

45 **[0063]** As described above, the term "measurement" in this specification is a concept encompassing not only quantitative measurement but also qualitative detection (detection of the presence or absence). Accordingly, the "measured ' $\beta$ 2-GPI/oxLDL complex in the sample' " as used herein may be measured for its "amount" in the sample (quantitative measurement result) or its "presence or absence" in the sample (qualitative measurement result). The amount may be either an amount (observed value) determined from a calibration curve prepared using the present standards of known  
50 concentrations, a relationship etc. or a ratio (relative value) relative to a value of healthy animals (animals having no disease).

**[0064]** The amount of the " $\beta$ 2-GPI/oxLDL complex" is increased by a certain disease so that when the amount of the complex in a sample is higher than that of a healthy person, the sample can be correlated with "contraction of the disease" or "high possibility of contraction of the disease". When the amount of the complex in the sample is equal to that of a  
55 healthy person, the sample can be correlated with "absence of contraction of the disease" or "low possibility of contraction of the disease".

**[0065]** The detection method 1 of the present invention can detect not only contraction of a disease but also the severity of the contracted disease. For example, when the amount of the complex in a sample from a certain person

tends to be increased in periodic measurement, the sample can be correlated with "progress of the disease" or "high possibility of progress of the disease". On the other hand, when the amount of the complex measured tends to be decreased, the sample can be correlated with "tendency to ameliorate the disease" or "high possibility of tendency to ameliorate the disease". When the amount of the complex measured tends to be constant, the sample can be correlated with "no change in the severity of the disease (or no change in health) " or "high possibility of no change in the severity of the disease (or high possibility of no change in health)".

**[0066]** The "disease" detected by the detection method 1 of the present invention is preferably selected from the group consisting of APS, thrombosis, arterial thrombosis, venous thrombosis, pregnancy morbidity, renal disease, arteriosclerosis (cerebral infarction, myocardial infarction etc.) and diabetes.

<4> Kit 1 of the present invention

**[0067]** The kit 1 of the present invention is a kit for measurement of a  $\beta$ 2-GPI/oxLDL complex in a sample, which comprises the standard of the present invention as a constituent ingredient. The "standard of the present invention" used herein may be either standard 1 or 2 of the present invention. Its description is as described above.

**[0068]** The kit 1 of the present invention may contain other constituent ingredients insofar as it contains the standard of the present invention as a constituent ingredient. Preferably the kit further contains "antibody recognizing  $\beta$ 2-GPI/oxLDL complex" as a constituent ingredient.

**[0069]** The "antibody recognizing  $\beta$ 2-GPI/oxLDL complex" is not particularly limited either, and can be exemplified by, for example, an anti- $\beta$ 2-GPI autoantibody WB-CAL-1 (IgG2a,  $\kappa$ ) and a mouse monoclonal anti-human apoB100 antibody ID2 (IgG).

**[0070]** The "antibody recognizing  $\beta$ 2-GPI/oxLDL complex" is preferably labeled with a labeling substance in order to facilitate detection.

**[0071]** Instead of labeling the "antibody recognizing  $\beta$ 2-GPI/oxLDL complex" itself, a substance binding to the "antibody recognizing  $\beta$ 2-GPI/oxLDL complex" may be labeled.

**[0072]** The labeling substance used in such labeling includes enzymes (peroxidase, alkali phosphatase,  $\beta$ -galactosidase, luciferase, acetylcholine esterase etc.), fluorochromes (fluorescein isothiocyanate (FITC) etc.), chemoluminescent substances (luminol etc.), biotin, avidin (including streptavidin) etc., but is not particularly limited insofar as it can be used in usual labeling of protein. The labeling method can be selected suitably from known methods suitable for the labeling substance, for example a glutaraldehyde method, periodate crosslinking method, maleimide crosslinking method, carbodiimide method and activated ester method [see "Tanpakushitsu No Kagaku" (Protein Chemistry), Third Volume, published in 1987 by TOKYO KAGAKU DOZIN CO., LTD.]. For example, when biotin is used as the labeling substance, a method of using a hydrazide derivative of biotin (see Avidin-Biotin Chemistry: A Handbook, pp. 57-63, published in 1994 by PIERCE CHEMICAL COMPANY) can be used, or when fluorescein isothiocyanate is used, the labeling method can be selected from methods described in Japanese Published Examined Patent Application No. 63-17843 etc.

**[0073]** For detection of the labeling substance, the detection method can be suitably selected by those skilled in the art, depending on the labeling substance used. For example, when peroxidase is used as the labeling substance, the labeling substance can be detected by adding a substrate for the enzyme, for example a coloration substrate such as tetramethyl benzidine or o-phenylene diamine and aqueous hydrogen peroxide, and then measuring a change in optical density as the degree of coloration of a product by the enzyme reaction. When a fluorochrome or a chemoluminescent substance is used, a method of measuring the fluorescence or emission of a solution after the reaction can be mentioned.

**[0074]** Other constituent ingredients which can be added to the kit 1 of the present invention can be exemplified by detection reagents for the labeling substance, a reagent labeling the "antibody recognizing  $\beta$ 2-GPI/oxLDL complex", etc. In addition to these constituent ingredients, a blocking substance, a washing solution, a sample diluent, an enzyme reaction termination solution etc. may be contained.

**[0075]** These constituent ingredients can be accommodated respectively in separate containers and stored as a kit which can, at use, be used according to the measurement method 1 of the present invention.

**[0076]** Measurement of the  $\beta$ 2-GPI/oxLDL complex by using the kit 1 of the present invention can be carried out according to the measurement method 1 of the present invention.

**[0077]** The kit 1 of the present invention is used preferably in detection of a disease. The "disease" detected by the kit 1 of the present invention is preferably selected from the group consisting of APS, thrombosis, arterial thrombosis, venous thrombosis, pregnancy morbidity, renal disease, arteriosclerosis (cerebral infarction, myocardial infarction etc.) and diabetes. Detection of the disease by using the kit 1 of the present invention can be carried out according to the detection method 1 of the present invention.

**[0078]** The "sample" used herein is not particularly limited insofar as it is derived from the living body of an animal subjected to detection of a disease, and specifically blood etc. can be mentioned. Other description of the "sample" is the same as described above in the "standard of the present invention".

<5> Antigen of the present invention

<5>-1 Antigen 1 of the present invention

5 **[0079]** The antigen 1 of the present invention is an antigen for measuring "antibody recognizing  $\beta$ 2-GPI/oxLDL complex" in a sample, which comprises "complex having oxLDL bound covalently to  $\beta$ 2-GPI" as an ingredient.

**[0080]** A description of the "complex having oxLDL bound covalently to  $\beta$ 2-GPI" as the ingredient in the antigen 1 of the present invention is the same as described above in the "standard 1 of the present invention". The antigen 1 of the present invention, similar to the standard 1 of the present invention, may contain other ingredients insofar as such  $\beta$ 2-GPI/oxLDL complex is contained as an ingredient, and a description and examples of the "other ingredients" are the same as described above in the "standard 1 of the present invention".

**[0081]** A description etc. of the form etc. of the antigen 1 of the present invention is the same as described above in the "standard 1 of the present invention". The meaning of the "sample" is also the same as described in the "standard of the present invention".

15

<5>-2 Antigen 2 of the present invention

**[0082]** The antigen 2 of the present invention is an antigen for measuring "antibody recognizing  $\beta$ 2-GPI/oxLDL complex" in a sample, which comprises " $\beta$ 2-GPI/oxLDL complex obtainable by incubating oxLDL and  $\beta$ 2-GPI under the conditions of 37°C and pH 7.4 for 16 hours".

**[0083]** A description of the " $\beta$ 2-GPI/oxLDL complex obtainable by incubating oxLDL and  $\beta$ 2-GPI under the conditions of 37°C and pH 7.4 for 16 hours" is the same as described in the "standard 2 of the present invention". Accordingly, the " $\beta$ 2-GPI/oxLDL complex obtainable by incubating oxLDL and  $\beta$ 2-GPI under the conditions of 37°C and pH 7.4 for 16 hours" as the ingredient of the antigen 2 of the present invention preferably has the following properties (a) and (b):

25

(a) oxLDL and  $\beta$ 2-GPI constituting the complex are substantially not dissociated even in the coexistence of 100 U/ml heparin, and

30

(b) oxLDL and  $\beta$ 2-GPI constituting the complex are substantially not dissociated even in the coexistence of 10 mM  $MgCl_2$ .

35

**[0084]** The method of producing the  $\beta$ 2-GPI/oxLDL complex having the properties (a) and (b) is also the same as described above in the "standard 2 of the present invention".

**[0085]** The antigen 2 of the present invention, similar to the standard 1 of the present invention, may contain other ingredients insofar as such  $\beta$ 2-GPI/oxLDL complex is contained as an ingredient, and a description and examples of the "other ingredients" are the same as described above in the "standard 1 of the present invention".

**[0086]** A description etc. of the form etc. of the antigen 2 of the present invention is the same as described above in the "standard 1 of the present invention". The meaning of the "sample" is also the same as described in the "standard of the present invention".

**[0087]** The "antibody recognizing  $\beta$ 2-GPI/oxLDL complex" as the subject of measurement using the antigen of the present invention includes, but is not limited to, autoantibody, the antibody described in the kit 1 of the present invention, etc.

**[0088]** Any antigen of the present invention binds to the "antibody recognizing  $\beta$ 2-GPI/oxLDL complex" and can, by virtue of this property, be used in measurement of the "antibody recognizing  $\beta$ 2-GPI/oxLDL complex".

45

<6> Measurement method 2 of the present invention

**[0089]** The measurement method 2 of the present invention is a method of measuring "antibody recognizing  $\beta$ 2-GPI/oxLDL complex" in a sample, which comprises using the antigen of the present invention.

**[0090]** The "antigen of the present invention" used herein may be either antigen 1 or 2 of the present invention. Its description is as described above.

**[0091]** How the measurement method 2 of the present invention is specifically carried out is not limited insofar as the antigen of the present invention is used. Examples of the specific method are the same as in the "measurement method 1 of the present invention" described above. In the measurement method 2 of the present invention, however, the antigen of the present invention is used preferably in a form immobilized on a solid phase. That is, the measurement method 2 of the present invention is preferably a method using the "solid phase of the present invention" described later.

**[0092]** The meaning of the "sample" is the same as described above in the "standard of the present invention". The "antibody recognizing  $\beta$ 2-GPI/oxLDL complex" is the same as described above in the "antigen of the present invention".

55

<7> Detection method 2 of the present invention

**[0093]** The detection method 2 of the present invention is a method of detecting a disease, which comprises measuring "antibody recognizing  $\beta$ 2-GPI/oxLDL complex" in a sample by using the measurement method 2 of the present invention and correlating the measured "antibody in the sample" with a disease.

**[0094]** In the detection method 2 of the present invention, the "antibody recognizing  $\beta$ 2-GPI/oxLDL complex" in a sample is first measured by the measurement method 2 of the present invention. A description of the measurement method 2 of the present invention is as described above. The "sample" used herein is not particularly limited insofar as it is derived from the living body of an animal subjected to detection of a disease, and specifically blood etc. can be mentioned. Other description of the "sample" is the same as described above in the "standard of the present invention".

**[0095]** In the detection method 2 of the present invention, the "antibody recognizing  $\beta$ 2-GPI/oxLDL complex in a sample" measured by using the measurement method 2 of the present invention is then correlated with a disease to detect the disease.

**[0096]** The "measured 'antibody recognizing  $\beta$ 2-GPI/oxLDL complex in a sample'" mentioned herein may be measured for its "amount" in the sample (quantitative measurement result) or its "presence or absence" in the sample (qualitative measurement result), similar to the above description of the "detection method 1 of the present invention".

**[0097]** The "amount" may be an observed value or a relative value similar to the above description of the "detection method 1 of the present invention".

**[0098]** The amount of the "antibody recognizing  $\beta$ 2-GPI/oxLDL complex" is increased by a certain disease so that when the amount of the antibody in a sample is higher than that of a healthy person, the sample can be correlated with "contraction of the disease" or "high possibility of contraction of the disease". When the amount of the antibody in a sample is equal to that of a healthy person, the sample can be correlated with "absence of contraction of the disease" or "low possibility of contraction of the disease".

**[0099]** The detection method 2 of the present invention, similar to the detection method 1 of the present invention, can be used in detecting not only the contraction of a disease but also the severity of a disease, and the "disease" detected by the detection method 2 of the present invention, similar to the detection method 1 of the present invention, is preferably selected from the group consisting of APS, thrombosis, arterial thrombosis, venous thrombosis, pregnancy morbidity, renal disease, arteriosclerosis (cerebral infarction, myocardial infarction etc.) and diabetes.

<8> Solid phase of the present invention

**[0100]** The solid phase of the present invention is a solid phase having the antigen of the present invention immobilized thereon.

**[0101]** As used herein, the "antigen of the present invention" may be either antigen 1 or 2 of the present invention. Its description is as described above.

**[0102]** The solid phase used in immobilizing the antigen of the present invention is not particularly limited insofar as it is capable of immobilizing the antigen of the present invention, and is insoluble in water, a sample and a measurement reaction solution. The solid phase can be in the form of a plate (e.g. a microplate well etc.), a tube, beads, a membrane, gel etc. The material of the solid phase includes polystyrene, polypropylene, nylon, polyacrylamide etc.

**[0103]** Among these, a plate made of polystyrene is preferable.

**[0104]** As the method of immobilizing the antigen of the present invention onto the solid phase, it is possible to employ a physical adsorption method, a covalent bonding method, and general methods of immobilizing protein or lipid.

**[0105]** Among these methods, the physical adsorption method is preferable because this method is easy in procedure and used frequently.

**[0106]** Specifically, the physical adsorption method includes, for example, a method of adsorbing the antigen of the present invention onto a solid phase (for example a microplate) by dissolving the antigen of the present invention in a buffer solution or the like, and contacting the solution with the solid phase.

**[0107]** In the surface of the solid phase having the antigen of the present invention immobilized thereon, there may remain a surface region not having the antigen thereon, and when the "antibody recognizing  $\beta$ 2-GPI/oxLDL complex" and other molecular species in a sample are immobilized on such antigen-free region, accurate measurement results cannot be obtained in some cases. Accordingly, it is preferable that before contacting a sample with the solid phase, a blocking substance is added to the solid phase so that the region not having the antigen immobilized thereon is covered therewith. The blocking substance includes serum albumin, casein, skim milk and gelatin, and products commercially available as the blocking substance can also be used.

**[0108]** Specifically, the blocking method includes, for example, a method that involves adding e.g. a blocking substance (serum albumin, casein, skim milk, gelatin etc.) to the solid phase and storing it at about 37°C for 30 minutes to 2 hours or at ordinary temperatures (15 to 25°C) for 1 to 2 hours.

<9> Kit 2 of the present invention

**[0109]** The kit 2 of the present invention is a kit for measurement of "antibody recognizing  $\beta$ 2-GPI/oxLDL complex" in a sample, which comprises the solid phase of the present invention as a constituent ingredient.

**[0110]** The kit 2 of the present invention may contain other constituent ingredients insofar as it contains the solid phase of the present invention as a constituent ingredient. It is particularly preferable that the kit 2 further contains, as a constituent ingredient, a substance binding to the "antibody recognizing  $\beta$ 2-GPI/oxLDL complex".

**[0111]** Although the "substance binding to the 'antibody recognizing  $\beta$ 2-GPI/oxLDL complex'" is not particularly limited insofar as it binds to the "antibody recognizing  $\beta$ 2-GPI/oxLDL complex", the "substance" is for example an antibody which depending on the animal, class etc. from which the "antibody recognizing  $\beta$ 2-GPI/oxLDL complex" (immunoglobulin) was derived, binds specifically to the immunoglobulin. For example, when the "antibody recognizing  $\beta$ 2-GPI/oxLDL complex" is mouse-derived IgG1, an anti-mouse IgG1 antibody can be used as the "substance binding to the 'antibody recognizing  $\beta$ 2-GPI/oxLDL complex'".

**[0112]** The "substance binding to 'antibody recognizing  $\beta$ 2-GPI/oxLDL complex'" is preferably labeled with a labeling substance to make detection easy.

**[0113]** Instead of labeling the "substance binding to 'antibody recognizing  $\beta$ 2-GPI/oxLDL complex'" itself, a substance binding to the "substance binding to 'antibody recognizing  $\beta$ 2-GPI/oxLDL complex'" may be labeled.

**[0114]** A description of the labeling substance used in such labeling, and a description of the detection of the labeling substance, are the same as described above in the "kit 1 of the present invention".

**[0115]** Other constituent ingredients which can be added to the kit 2 of the present invention can be exemplified by detection reagents for the labeling substance, a reagent labeling the "substance binding to 'antibody recognizing  $\beta$ 2-GPI/oxLDL complex'", etc. In addition to these constituent ingredients, a blocking substance, a washing solution, a sample diluent, an enzyme reaction termination solution etc. may be contained.

**[0116]** These constituent ingredients can be accommodated respectively in separate containers and stored as a kit which can, at use, be used according to the measurement method 2 of the present invention.

**[0117]** Measurement of the "antibody recognizing  $\beta$ 2-GPI/oxLDL complex" by using the kit 2 of the present invention can be carried out according to the measurement method 2 of the present invention.

**[0118]** The kit 2 of the present invention is used preferably in detection of a disease. The "disease" detected by the kit 2 of the present invention, similar to the "kit 1 of the present invention" described above, is preferably selected from the group consisting of APS, thrombosis, arterial thrombosis, venous thrombosis, pregnancy morbidity, renal disease, arteriosclerosis (cerebral infarction, myocardial infarction etc.) and diabetes.

**[0119]** Detection of the disease by using the kit 2 of the present invention can be carried out according to the detection method 2 of the present invention.

**[0120]** The "sample" used herein is not particularly limited insofar as it is derived from the living body of an animal subjected to detection of a disease, and specifically blood etc. can be mentioned. Other description of the "sample" is the same as described above in the "standard of the present invention".

<10> Measurement method 3 of the present invention

**[0121]** The measurement method 3 of the present invention is a method of measuring an immune complex in a sample, which comprises using "antibody recognizing  $\beta$ 2-GPI" and/or "antibody recognizing LDL" and an anti-IgG antibody.

**[0122]** According to the measurement method 3 of the present invention, an IgG immune complex formed with  $\beta$ 2-GPI or LDL can be detected.

**[0123]** The "antibody recognizing  $\beta$ 2-GPI" is not particularly limited, but is preferably Cof-23. The "antibody recognizing LDL" is not particularly limited either, but is preferably anti-apoB100 antibody (1D2). The "anti-IgG antibody" is not particularly limited either, and can be exemplified by an antibody which depending on the animal, class etc. from which the IgG (immunoglobulin G) constituting the immune complex was derived, binds specifically to the IgG. For example, when the IgG constituting the immune complex is derived from humans, an anti-human IgG antibody can be used as the anti-IgG antibody.

**[0124]** These antibodies are preferably those immobilized on a solid phase. The solid phase which can be used herein is the same as the "solid phase of the present invention" described above. The meaning of the "sample" is the same as described in the "standard of the present invention".

**[0125]** Hereinafter, the present invention will be described in more detail by reference to the Examples, but the present invention is not limited thereto. Number in brackets in the Examples refers to reference number in the list of references shown later.

**[0126]** First, materials, methods etc. used in the Examples will be described.

## (1) Monoclonal antibody

**[0127]** Cof-22 (IgG1,  $\kappa$ ) and Cof-23 (IgG1,  $\kappa$ ) : Anti-human  $\beta$ 2-GPI antibodies which are established from BALB/c mice immunized with human  $\beta$ 2-GPI [reference 2], both of which bind in solution to monomeric  $\beta$ 2-GPI.

**[0128]** WB-CAL-1 (IgG2a,  $\kappa$ ): Anti- $\beta$ 2-GPI autoantibody which is an antibody derived from WB F1 mice [reference 8].

**[0129]** EY2C9 (IgM): Anti- $\beta$ 2-GPI autoantibody which is an antibody established from peripheral-blood lymphocytes in patients with APS [reference 9].

**[0130]** WB-CAL-1 and EY2C9 both bind to only " $\beta$ 2-GPI having formed a complex with negatively charged PLs" or " $\beta$ 2-GPI having formed a complex with oxLDL" and do not bind in solution to monomeric  $\beta$ 2-GPI.

**[0131]** 1D2 (IgG): Mouse monoclonal anti-human apoB100 antibody binding to both oxLDL and native LDL and obtained from YAMASA CORPORATION.

(2) Preparation of human  $\beta$ 2-GPI

**[0132]** According to a method described in [reference 10],  $\beta$ 2-GPI was purified from plasma in healthy persons. The pooled plasma from healthy persons was purified by a heparin-Sepharose column, a DEAE-cellulose column and an anti- $\beta$ 2-GPI affinity column. For preventing contamination of  $\beta$ 2-GPI with various immunoglobulins G, fractions rich in  $\beta$ 2-GPI were further passed through a protein A-Sepharose column. The final  $\beta$ 2-GPI fraction was delipidated by sufficient washing with n-butanol.

## (3) Isolation and oxidization of LDL

**[0133]** According to a method described in [reference 11], LDL ( $d = 1.019$  to  $1.063$  g/ml) was isolated by ultracentrifuging fresh plasma from healthy persons. The isolated LDL was adjusted to  $100 \mu\text{g/ml}$  and oxidized by incubation for varying times at  $37^\circ\text{C}$  together with  $5 \mu\text{M}$   $\text{CuSO}_4$  ( $10$  mM Hepes,  $150$  mM NaCl, pH  $7.4$  (Hepes buffer)). The oxidization was terminated by adding EDTA (final concentration  $1$  mM), and this LDL was dialyzed against Hepes buffer containing  $1$  mM EDTA. The degree of oxidation was evaluated by a thiobarbituric acid reactive substance (TBARS) value [reference 12].

## (4) Synthesis of an oxysterol derivative of 9-carboxynonanoate

**[0134]** 7-Ketocholesteryl-9-carboxynonanoate (oxLig-1) was synthesized according to a method described in [reference 7]. 22-Ketocholesteryl-9-carboxynonanoate (9-COOH-22KC) was also synthesized in an analogous manner. That is,  $19.2$  mg ( $0.10$  mmol) 1-ethyl-3-(3-dimethylaminopropyl)carbodiimide hydrochloride and  $6.1$  mg ( $0.80$  mmol) 4-(dimethylamino)pyridine were added to a solution of  $10$  mg ( $0.025$  mmol) 22-ketocholesterol and  $14.1$  mg ( $0.075$  mmol) azelaic acid in acetone ( $1$  ml). The mixture was stirred at room temperature for 2 days, concentrated and extracted with chloroform. The extract was washed successively with  $2$  M hydrochloric acid, dried over magnesium sulfate anhydride and evaporated. The residues were applied to chromatography on a silica gel column with toluene/ethyl acetate ( $3/1$ , v/v) to give 9-COOH-22KC ( $8.5$  mg, yield  $61\%$ ). The analysis result by  $^1\text{H}$  NMR is as follows:

$^1\text{H}$ -NMR ( $300$  MHz,  $\text{CDCl}_3$ )  $\delta = 5.35$  (d,  $^1\text{H}$ , J  $5.1$  Hz, H-6),  $4.59$  (m,  $^1\text{H}$ , H-3)

**[0135]** In the  $^1\text{H}$  NMR spectrum of 9-COOH-22KC similar to oxLig-1, a signal of H-3 was detected as multiplet at a position of  $\delta = 4.59$  ppm. This result indicated that the hydroxyl group at this position had been esterified. Although the spectrum showed a signal of olefin proton H-6 in a lower magnetic field, the spin-spin coupling thereof with its adjacent methylene group was observed. The molecular weight of 9-COOH-22KC was identical with that of oxLig-1. 9-COOH-22KC was positive in the Lieberman-Burchard reaction, and revealed the absence of bound ketone at 7-position.

## (5) Ligand blotting analysis on a thin-layer chromatography (TLC) plate

**[0136]** For conducting TLC ligand blotting, the lipid was spotted on a Polygram silica gel G plate (manufactured by Machery-Nagel) and developed with chloroform/methanol ( $8/1$ , v/v). The ligand blotting analysis was conducted according to a method described in [reference 7]. That is, the plate was dried and blocked with PBS containing  $1\%$  bovine serum albumin (BSA), and then the plate was incubated for 1 hour together with the  $\beta$ 2-GPI and anti- $\beta$ 2-GPI antibodies (Cof-22 and EY2C9). Then, the plate was incubated for 1 hour with horseradish peroxidase (HRP)-labeled anti-mouse IgG antibody or anti-human IgM antibody. Between each step, the plate was washed sufficiently with PBS. Coloration was conducted using  $\text{H}_2\text{O}_2$  and 4-methoxy-1-naphthol. In a TLC plate of control, the separated ligand was stained with  $\text{I}_2$  vapor.

## EP 1 548 436 B1

### (6) ELISA for detection of $\beta$ 2-GPI/oxLDL complex

5 [0137] 8  $\mu$ g/ml anti- $\beta$ 2-GPI antibody (WB-CAL-1) solution in Hepes buffer was put in a volume 50  $\mu$ l/well to a microtiter plate (Immulon 2HB, Dynex Technologies Inc.) and adsorbed onto each well by incubating the plate overnight at 4°C. This plate was blocked with 1% skim milk for 1 hour. A serum sample (100-fold dilution) or a solution containing  $\beta$ 2-GPI/oxLDL complex or oxLDL was added to each well (100  $\mu$ l/well) and incubated for 2 hours. In some experiments, exogenous  $\beta$ 2-GPI was allowed to be present (25  $\mu$ g/ml) in this step. Then, each well was incubated for 1 hour together with biotin-labeled anti-apoB100 antibody (1D2), and was incubated for 30 minutes with HRP-labeled avidin. Coloration was conducted using o-phenylene diamine and H<sub>2</sub>O<sub>2</sub>. The coloration reaction was terminated by adding 2 N sulfuric acid, and OD at 490 nm was measured. Among these steps, each well was washed sufficiently with Hepes buffer containing 0.05% Tween 20. The optical density (OD) of each sample in the assay was corrected by the average OD of the blank wells. 10 1.0 U/ml was adjusted to be 3 times as high as the standard deviation of the mean of serum samples from 50 healthy persons, and as a result, 1.0 U/ml oxLDL12h/ $\beta$ 2-GPI16h complex corresponded to about 4.5  $\mu$ g/ml in terms of apoB. Samples having reactivity higher than 1.0 U/ml were expressed as positive.

### (7) ELISA for detection of anti- $\beta$ 2-GPI/lipid IgG antibody

20 [0138] CL (derived from bovine heart, manufactured by Sigma), oxLig-1 or 9-COOH-22KC (50  $\mu$ g/ml ethanol, 50  $\mu$ l/well) was adsorbed by evaporation onto a polystyrene plate (Immulon 1B; Dynex Technologies Inc.), and this plate was blocked with 1% BSA. In each well, the purified monoclonal autoantibody or serum sample (100-fold dilution) was incubated for 1 hour in the presence or absence of  $\beta$ 2-GPI (25  $\mu$ g/ml), and then HRP-labeled anti-mouse IgG or anti-human IgG or IgM was added to each well.

25 [0139] The subsequent step was carried out according to the method described in the "ELISA for detection of  $\beta$ 2-GPI/oxLDL complex". The optical density (OD) of each sample was corrected by the average OD of the blank wells, and its antibody titer was calculated by using the positive standard in the living body. When the antibody titer in a sample was more than 3 times as high as the standard deviation of the mean of plasma samples from 50 healthy persons, the sample was expressed as positive.

### (8) ELISA for detection of anti- $\beta$ 2-GPI IgG antibody

30 [0140] ELISA for detection of anti- $\beta$ 2-GPI IgG antibody was carried out by a method described in [reference 1]. That is,  $\beta$ 2-GPI was put in a volume of 10  $\mu$ g/ml (50  $\mu$ l/well) to a polyoxidized polystyrene plate (carboxylated, Sumilon C, Sumitomo Bakelite Co., Ltd.) and adsorbed onto each well by overnight incubation at 4°C, and this plate was blocked with 3% gelatin. A serum sample was diluted 100-fold and incubated for 1 hour in each well. Then, HRP-labeled anti-human IgG was added to the plate. The subsequent step was carried out according to the method described in the "ELISA for detection of  $\beta$ 2-GPI/oxLDL complex". 35

### (9) ELISA for detection of IgG immune complex

40 [0141] For detection of IgG immune complex formed with  $\beta$ 2-GPI or LDL, the anti- $\beta$ 2-GPI antibody (Cof-23) or anti-apoB100 antibody (1D2) was put in an amount of 5  $\mu$ g/ml (50  $\mu$ l/well) to a polystyrene plate (Immulon 1B) and adsorbed onto each well by overnight incubation at 4°C. Then, this plate was blocked with 1% BSA. A serum sample (100-fold dilution) was incubated for 1 hour in each well, and then HRP-labeled anti-human IgG was added thereto. The subsequent step was carried out according to the method described in the "ELISA for detection of  $\beta$ 2-GPI/oxLDL complex". 45

### (10) ELISA for detection of the "antibody recognizing $\beta$ 2-GPI/oxLDL complex"

50 [0142] The oxLDL12h/ $\beta$ 2-GPI16h complex (10  $\mu$ g/ml, 50  $\mu$ g/well) was incubated at 4°C overnight in each well in a polystyrene plate (Immulon 1B) and blocked with PBS containing 1% BSA. Then, a serum sample diluted 100-fold with PBS containing 0.3% BSA was put to each well, reacted for 1 hour and then reacted for 1 hour with HRP-labeled anti-human IgG. The well was colored in a usual manner by adding o-phenylene diamine and H<sub>2</sub>O<sub>2</sub>, the reaction was terminated with sulfuric acid, and the absorbance at 490 nm was measured.

### (11) Statistical analysis

55 [0143] Statistical analysis was carried out by using StatView Software (Abacus Concepts). In the case of comparing autoantibody with clinical profile, the Fisher's exact test was used. The confidence interval (C.I.) at the 95% confidence level was calculated by the Woolf method.

(12) Serum sample

**[0144]** The patients from whom the serum samples used in the Examples were derived are constituted as shown in Table 1.

Table 1

	No	%
Patients		
SLE only	44	
APS	83	
Primary	46	55.4
Complication with SLE	37	44.6
Clinical profile		
Thrombosis	71	55.9
Arterial thrombosis only	26	20.5
Venous thrombosis only	27	21.3
Arterial or venous thrombosis	18	14.2
Pregnancy morbidity	31/116	26.7
Thrombocytopenia	23/123	18.7
Autoantibodies		
$\beta$ 2-GPI-dependent IgG aCL (anti- $\beta$ 2-GPI/CL IgG antibody)	73/127	57.5
Anti- $\beta$ 2-GPI IgG antibody	46/127	36.2
Anti- $\beta$ 2-GPI/oxLig-1 IgG antibody	60/127	47.2
Lupus anticoagulants	59/108	54.6
$\beta$ 2-GPI/oxLDL complex	72/127	56.7

## Results

(1) Role of 7-ketone as a  $\beta$ 2-GPI-binding ligand

**[0145]** For comparing two  $\omega$ -carboxyl oxysterol esters mutants different in ketone position (that is, 7-ketocholesteryl-9-carboxynonanoate [oxLig-1] and 22-ketocholesteryl-9-carboxynonanoate [9-COOH-22KC]) for their binding to  $\beta$ 2-GPI, they were subjected to ligand blotting and to ELISA using anti- $\beta$ 2-GPI antibody as a probe. In the ligand blotting for detection by Cof-22 antibody and EY2C9 antibody,  $\beta$ 2-GPI bound predominantly to the 7-keto mutant (oxLig-1) but not to 9-COOH-22KC (Fig. 1). As a result of detection by the anti- $\beta$ 2-GPI antibody (Cof-22, WB-CAL-1 or EY2C9) in ELISA using a plate coated with the ligand,  $\beta$ 2-GPI bound more strongly to immobilized oxLig-1 than to immobilized 9-COOH-22KC (Table 2). These data reveal that the ketone at 7-position in the cholesterol skeleton is a determinative group essential for interaction of high affinity between  $\beta$ 2-GPI and its ligand " $\text{Cu}^{2+}$ -oxLDL-derived oxLig-1".

Table 2

Immobilized lipid	$\beta$ 2-GPI-binding(OD)		
	w/Cof-22	w/WB-CAL-1	w/EY2C9
oxLig-1	1.194 $\pm$ 0.099 (0.041 $\pm$ 0.001)	0.441 $\pm$ 0.007 (0.013 $\pm$ 0.004)	0.878 $\pm$ 0.031 (0.013 $\pm$ 0.001)
9-COOH-22KC	0.217 $\pm$ 0.016 (0.067 $\pm$ 0.013)	0.063 $\pm$ 0.004 (0.031 $\pm$ 0.011)	0.130 $\pm$ 0.024 (0.046 $\pm$ 0.008)

(2) Interaction between  $\beta$ 2-GPI and "LDL having undergone oxidation via  $\text{Cu}^{2+}$ "

**[0146]** LDL (100  $\mu$ g/ml) was oxidized by incubation with 5  $\mu$ M  $\text{CuSO}_4$  at 37°C for 12 hours (oxLDL thus obtained is

referred to as "oxLDL12h") and the oxidation was terminated by adding EDTA. As a result of ELISA for detection of  $\beta$ 2-GPI/oxLDL complex, the OD was increased only when oxLDL12h was incubated with exogenous  $\beta$ 2-GPI in a well. Formation of the complex depended on the concentrations of both  $\beta$ 2-GPI and oxLDL (Fig. 2A, B). Significant formation of the complex occurred only when oxLDL12h was used, but did not occur when native LDL was used. Formation of the complex at pH 7.4 was cancelled almost completely in the presence of heparin or  $MgCl_2$  (Fig. 2C). This inhibition was also observed similarly in the presence of  $CaCl_2$  (data are not shown). From these data, it was revealed that  $\beta$ 2-GPI can form an initially dissociable non-covalent complex with oxLDL12h. On the other hand, when oxLDL12h was incubated with  $\beta$ 2-GPI at pH 7.4, 37°C for 16 hours, a relatively stable oxLDL/ $\beta$ 2-GPI complex was consistently observed (oxLDL12h/ $\beta$ 2-GPI16h). Even if heparin or  $MgCl_2$  was added at pH 7.4, formation of the oxLDL12h/ $\beta$ 2-GPI16h complex could not be disintegrated (Fig. 2D).

**[0147]** For further examination of this process, various experiments with time were conducted. Fig. 3A is a graph showing time-dependent formation of TBARS in LDL treated with  $CuSO_4$ . The LDL preparation exposed to  $Cu^{2+}$  ion at 37°C formed TBARS rapidly, and its peak was detected after 4 hours. On the other hand, LDL oxidation causing binding to  $\beta$ 2-GPI proceeded with a slight delay, and reached the maximum level after about 12 hours (Fig. 3B). This complex formation was inhibited almost completely by addition of heparin or  $MgCl_2$ . These data agreed with the previous finding [reference 6] that  $\beta$ 2-GPI binds to  $Cu^{2+}$ -oxLDL, but not to "LDL modified with MDA".

**[0148]** Previously formed oxLDL12h was incubated with  $\beta$ 2-GPI for varying times under the condition of 4°C or 37°C (their final concentrations were 100  $\mu$ g/ml and 100  $\mu$ g/ml respectively) (Fig. 3C). Formation of the  $\beta$ 2-GPI/oxLDL complex depended on temperature and time. This complex was not dissociated even by incubation under the condition of pH 7.4 in the presence of heparin or  $MgCl_2$ . Fig. 3D is a graph showing that during the process of oxidation with  $Cu^{2+}$ , stable interaction between  $\beta$ 2-GPI and oxLDL is formed even in the presence of  $\beta$ 2-GPI.

### (3) Stability of $\beta$ 2-GPI/oxLDL complex *in vitro* at various pH values

**[0149]** At neutral pH, there appeared the stable complex which is considered as a Schiff base adduct formed between a lysine residue,  $\epsilon$ -amine of  $\beta$ 2-GPI and aldehyde formed oxidatively via  $Cu^{2+}$  on oxLDL. For confirming this, the stability of the complex not reduced or reduced with  $NaCNBH_3$  was analyzed under basic pH condition. As shown in Fig. 4, the dissociation of reduced oxLDL12h/ $\beta$ 2-GPI16h complex was not observed in the absence of  $MgCl_2$  under the pH condition used in this examination. In the presence of  $MgCl_2$ , 82% of the non-reduced complex was dissociated and 69% of the reduced complex was dissociated at pH 10. This phenomenon indicated that the adduct is not a Schiff base, or that even if the adduct is a Schiff base, the adduct is in an environment where it cannot contact with  $NaCNBH_3$  (e.g., a hydrophobic pocket).

### (4) Indissociable $\beta$ 2-GPI/oxLDL complex in serum from patients

**[0150]** Serum samples from patients with APS and/or SLE were screened to examine whether or not the  $\beta$ 2-GPI/oxLDL complex occurred at high level. First, the  $\beta$ 2-GPI/oxLDL complex was identified in 20 serum samples. This group showed the serum complex at high concentrations of 2.1 to 13.7 U/ml (average concentration: 4.48 U/ml (cut-off value: 1.0 U/ml)). As shown in Fig. 5, native LDL even upon incubation at 37°C for 16 hours together with  $\beta$ 2-GPI did not form the complex. On the other hand, the oxLDL12h/ $\beta$ 2-GPI16h complex is stable under the condition of pH 7.4, even in the presence of heparin or  $MgCl_2$ . Even in the oxLDL/ $\beta$ 2-GPI complex detected in 5 serum samples at pH 7.4, a typical binding pattern was observed. In all the 20 samples, the complex formed *in vivo* was stable at neutral pH, even in the presence of heparin or  $MgCl_2$  (ODs in the presence of heparin and  $MgCl_2$  were  $121 \pm 25.1\%$  and  $128 \pm 13.6\%$ , respectively, based on that under the control conditions). The complex formed in the pre-stage, present in the serum samples, was observed consistently ( $104 \pm 10.9\%$ ) even after incubation with  $MgCl_2$  at pH 10, 37°C for 16 hours (under this condition, the complex formed *in vitro* could be dissociated) (Fig. 4). From these findings, it is considered that the indissociable, covalent adduct is formed *in vivo* between  $\beta$ 2-GPI and oxLDL. The *in vitro* adduct observed in this experiment is considered as an intermediate product in formation of the indissociable complex.

### (5) Clinical significance of $\beta$ 2-GPI/oxLDL complex and its autoantibody

**[0151]** An apparent calibration curve of oxLDL12h/ $\beta$ 2-GPI16h complex in the range of 10 ng/ml to 1.25  $\mu$ g/ml in terms of apoB was prepared in ELISA. Because the WB-CAL-1 antibody used had high specificity for  $\beta$ 2-GPI having formed the complex with oxLDL, this ELISA was not influenced by endogenous and monomeric  $\beta$ 2-GPI present at high concentration in the serum sample. In this experiment, the  $\beta$ 2-GPI/oxLDL complex was observed in 58.7% (27/46) of patients with primary APS, 54.1% (20/37) of patients with APS accompanied by SLE (secondary APS), and 56.8% (25/44) of patients with SLE not accompanied by APS (Fig. 6). This complex was also positive in 18.6% (16/86) of patients with chronic nephritis (diagnosed by renal biopsy).

**[0152]** Anti- $\beta$ 2-GPI/oxLig-1 IgG antibody was observed in 71.7% (33/46) of the patients with primary APS, 59.5% (22/37) of the patients with APS accompanied by SLE (secondary APS), and 11.4% (5/44) of the patients with SLE not accompanied by APS.

**[0153]** The antibody titer of anti- $\beta$ 2-GPI/oxLig-1 IgG antibody in this group of 127 patients was strongly correlated with the antibody titers of both  $\beta$ 2-GPI-dependent IgG aCL and anti- $\beta$ 2-GPI IgG antibody (whose correlation coefficients  $r^2$  are 0.69 and 0.81 respectively) (Fig. 7). As shown in Fig. 8, there was good correlation between "anti- $\beta$ 2-GPI IgG antibody" and " $\beta$ 2-GPI-containing IgG immune complex" ( $r^2 = 0.50$ ) (Fig. 8A); "anti- $\beta$ 2-GPI/oxLig-1 IgG antibody" and " $\beta$ 2-GPI-containing IgG immune complex" ( $r^2 = 0.50$ ) (Fig. 8B); and " $\beta$ 2-GPI-containing IgG immune complex" and "LDL-containing IgG immune complex" ( $r^2 = 0.40$ ) (Fig. 8C). However, good correlation was not observed between the level of  $\beta$ 2-GPI/oxLDL complex and the antibody titer of these antibodies (data are not shown).

**[0154]** The anti- $\beta$ 2-GPI/oxLig-1 IgG antibody in these patients (127 patients with APS and/or SLE) was observed to have significant relationship with history of thrombosis (arterial and/or venous thrombosis, arterial thrombosis and venous thrombosis) and pregnancy morbidity, but not with thrombocytopenia (Table3). The assay p value (expectation value), odds ratio, and 95% CI in arterial thrombosis were better than those in venous thrombosis, pregnancy morbidity and thrombocytopenia. All the patients were divided into  $\beta$ 2-GPI/oxLDL complex positive and negative groups, and the  $\beta$ 2-GPI/oxLig-1 IgG antibody was statistically analyzed. As a result, strong correlation between the anti- $\beta$ 2-GPI/oxLig-1 IgG antibody and thrombosis, arterial thrombosis, venous thrombosis and pregnancy morbidity was observed in the  $\beta$ 2-GPI/oxLDL complex positive group. The highest correlation was observed with respect to arterial thrombosis.

Table 3

Subjects	Fischer's exact test (p)	Odds ratio	95%CI
(A) Patients with thrombosis (arterial thrombosis and/or venous thrombosis) (n = 127 in total)	$1.7 \times 10^{-7}$	7.65	3.41-17.2
( $\beta$ 2-GPI/oxLDL positive, n = 72)	$5.9 \times 10^{-5}$	8.21	2.79-24.2
( $\beta$ 2-GPI/oxLDL negative, n = 55)	0.0014	6.87	2.01-23.5
(B) Patients with arterial thrombosis (n = 127 in total)	$6.9 \times 10^{-7}$	7.45	3.21-17.3
( $\beta$ 2-GPI/oxLDL positive, n = 72)	$4.8 \times 10^{-5}$	10.2	2.98-34.7
( $\beta$ 2-GPI/oxLDL negative, n = 55)	0.0043	5.63	1.68-18.9
(C) Patients with venous thrombosis (n = 127 in total)	0.026	2.23	1.06-4.68
( $\beta$ 2-GPI/oxLDL positive, n = 72)	0.066	2.37	0.89-6.29
( $\beta$ 2-GPI/oxLDL negative, n = 55)	0.20	1.93	0.61-6.14
(D) Patients with pregnancy morbidity (n = 116 in total)	0.0052	3.31	1.39-7.90
( $\beta$ 2-GPI/oxLDL positive, n = 69)	0.014	4.43	1.27-15.4
( $\beta$ 2-GPI/oxLDL negative, n = 47)	0.12	2.67	0.74-9.61
(E) Patients with thrombocytopenia (n = 123 in total)	0.25	1.53	0.61-3.80
( $\beta$ 2-GPI/oxLDL positive, n = 70)	0.22	1.93	0.58-6.50
( $\beta$ 2-GPI/oxLDL negative, n = 53)	0.61	1.05	0.25-4.46
(A) Patients with thrombosis (arterial thrombosis and/or venous thrombosis) (n = 127 in total)			
( $\beta$ 2-GPI/oxLDL positive, n = 72)			
( $\beta$ 2-GPI/oxLDL negative, n = 55)			
(B) Patients with arterial thrombosis (n = 127 in total)			
(C) Patients with venous thrombosis (n = 127 in total)			
(D) Patients with pregnancy morbidity (n = 116 in total)			
(E) Patients with thrombocytopenia (n = 123 in total)			

(6) Detection of "antibody recognizing  $\beta$ 2-GPI/oxLDL complex"

**[0155]** The "antibody recognizing  $\beta$ 2-GPI/oxLDL complex" in serum was detected by ELISA. Further, the relationship between the "antibody recognizing  $\beta$ 2-GPI/oxLDL complex" and the "anti- $\beta$ 2-GPI IgG antibody" was examined. The

results are shown in Fig. 9.

## Discussion

5 **[0156]** The present inventors reported that a major lipid ligand involved in binding  $\beta$ 2-GPI to oxLDL formed by  $\text{Cu}^{2+}$  is  $\omega$ -carboxylated 7-ketocholesterol ester such as 7-ketocholesteryl-9-carboxynonanoate (oxLig-1), and the  $\omega$ -carboxyl group is essential for recognition of  $\beta$ 2-GPI [reference 7]. The interaction between  $\beta$ 2-GPI and  $\text{Cu}^{2+}$ -oxLDL *in vitro* is reversible in an initial stage by treatment with  $\text{Mg}^{2+}$ , but is gradually developed into more stable interaction, requiring  $\text{Mg}^{2+}$  and high pH for dissociation. On the other hand, a stable and indissociable oxLDL/ $\beta$ 2-GPI complex was found in  
10 serum samples from patients with APS and/or SLE. Further, an IgG immune complex containing LDL and  $\beta$ 2-GPI was detected in these patient serums, and further it was suggested that the  $\beta$ 2-GPI/oxLDL complex in serum was correlated with arterial thrombosis.

**[0157]** Formation of foam cells is regarded as a characteristic of the initial development of atheroma, and LDL is a major lipid source accumulated in the foam cells. The binding of modified LDL to a scavenger receptor of macrophage leads to unregulated accumulation of cholesterol, thus leading to foam-cell formation accompanied by atherosclerotic damage. By the present inventor, two major ligand structures giving the binding of  $\beta$ 2-GPI to  $\text{Cu}^{2+}$ -oxLDL and anti- $\beta$ 2-GPI antibody-mediated phagocytosis by macrophages respectively were recently identified as 7-ketocholesteryl-9-carboxynonanoate (oxLig-1) and 7-ketocholesteryl-12-carboxy(keto)dodecanoate (oxLig-2) [reference 7].

**[0158]** In this study, bound ketone in 7-position in the cholesterol skeleton of the ligand is essential for high-affinity binding to  $\beta$ 2-GPI, and ketone in 22-position cannot be substituted therefor [Fig. 1 and Table 2].

**[0159]** It is reported that a patch consisting of positively charged 14 amino acid residues, and a movable loop, in domain V of  $\beta$ 2-GPI are important for interaction with amphiphilic compounds such as CL, phosphatidylserine, phosphatidic acid and phosphatidyl glycerol [references 3 to 5]. It is further reported that this binding region of  $\beta$ 2-GPI is also related to interaction with oxLDL [reference 13]. It is estimated that the bound ketone in the ligand, together with the  $\omega$ -carboxyl group, is orientated towards a hydrophilic space and binds specifically to  $\beta$ 2-GPI. Generally, the activity of the bound ketone to form a Schiff base adduct is lower than that of  $\omega$ -aldehyde. The interaction between oxLDL and  $\beta$ 2-GPI is inhibited by any one of  $\text{MgCl}_2$ ,  $\text{CaCl}_2$  and heparin, and it is thus considered that the  $\beta$ 2-GPI ligand is involved in non-covalent electrostatic interaction between oxLDL and  $\beta$ 2-GPI under neutral pH condition.

**[0160]** At present, it is well-known that in ELISA using a microtiter plate coated with PL, anti- $\beta$ 2-GPI antibody found in serum from patients with APS binds to complexes of  $\beta$ 2-GPI and negative charged PLs such as CL, phosphatidylserine and phosphatidic acid [reference 10]. It was also recently revealed that aCL present in patients with APS reacts with a Schiff base adduct formed between oxidized CL and  $\beta$ 2-GPI. However, the negatively charged PLs are very minor components of LDL. Products oxidized via  $\text{Cu}^{2+}$  in LDL include cholesterol and/or oxysterol esterified with 9- or 13-hydroperoxy (or hydroxy)-octadecadienoate, 9-oxononanoate or 9-carboxynonanoate, and some of these products are  
35 also present in arteriosclerotic plaques [references 14-16]. As already reported [reference 7], not only oxidized PLs but  $\omega$ -carboxyl-oxysterol esters such as oxLig-1 and oxLig-2 were detected as major  $\beta$ 2-GPI ligands in  $\text{Cu}^{2+}$ -oxLDL. Characteristics of *in vitro* and *in vivo* adducts are not revealed. However, it is highly possible that such compounds are conjugates of  $\beta$ 2-GPI and some cholesteryl esters modified by oxidation. In this study, treatment of oxLDL12h/ $\beta$ 2-GPI16h complex with an excess (200 mM) of  $\text{NaCNBH}_3$  was not effective in reduction of imine in the Schiff base adduct. This  
40 result revealed a possibility that the stable and indissociable oxLDL/ $\beta$ 2-GPI complex is formed by Michael reaction or by other mechanism such as direct oxidation of lysine residues by alkoxy radicals of polyunsaturated fatty acid.

**[0161]** This study revealed that in patients (54.1 to 58.7%) with APS and/or SLE, oxLDL is circulated as a stable and indissociable complex with  $\beta$ 2-GPI. It is reported that oxLDL is incorporated predominantly via a scavenger receptor into macrophages, and leads often to formation of foam cells and atherosclerotic damage. However, there is incomplete formation of oxLDL circulating in blood in patients with arteriosclerosis. In this experiment, free oxLDL in serum from the patient is not measured, but oxLDL formed *in vivo* is considered to form a complex with endogenous  $\beta$ 2-GPI (concentration of  $\beta$ 2-GPI in plasma is about 200  $\mu\text{g/ml}$ ). As shown in Fig. 3D, LDL having undergone oxidation *in vitro* forms a stable adduct in the presence of  $\beta$ 2-GPI under neutral pH condition as the incubation time is increased. Further, the stable interaction between  $\beta$ 2-GPI and oxLDL is observed under various *in vitro* conditions such as in a buffer solution only, a buffer solution containing 1% BSA, and 50% human serum (data are not shown). Thus, the  $\beta$ 2-GPI ligand correlated with oxLig-1 and oxLig-2 causes specific interaction between  $\beta$ 2-GPI and oxLDL in the presence of an excess of various plasma/serum proteins, to form a stable complex.

**[0162]** The relationship of aPL with severe clinical complications such as arterial/venous thrombosis, pregnancy morbidity and thrombocytopenia is established in patients with APS. aCL was initially considered to bind to acidic PLs such as CL, but at present, it is widely admitted that  $\beta$ 2-GPI is a true antigen for aCL. It was shown in 1998 that anti- $\beta$ 2-GPI IgG antibody can serve as a serum marker of arterial thrombosis for patients with SLE, and also that anti-MDA-LDL IgG antibody is not correlated with arterial thrombosis. This study revealed good relationship among the antibody titers of anti- $\beta$ 2-GPI/CL IgG antibody, anti- $\beta$ 2-GPI IgG antibody, and anti- $\beta$ 2-GPI/oxLig-1 IgG antibody (Fig. 7). The appearance

of anti- $\beta$ 2-GPI/oxLig-1 IgG antibody were correlated more highly with history of arterial thrombosis than with history of venous thrombosis or pregnancy morbidity (Table 3). On the other hand, significant correlation of these antibodies with thrombocytopenia was not observed. These findings suggest that  $\beta$ 2-GPI/oxLig-1 ( $\beta$ 2-GPI/oxLDL) complex is a true target antigen of aCL. The anti- $\beta$ 2-GPI/oxLig-1 IgG antibody is a powerful candidate for a factor inducing atherothrombosis/atherosclerosis based on autoimmune disease.

**[0163]** All of the examined patients with APS/SLE were divided into 2 groups, that is,  $\beta$ 2-GPI/oxLDL complex positive and negative groups, and stronger relationship between the anti- $\beta$ 2-GPI/oxLig-1 antibody and the development of these clinical morbid states was observed in the positive group than in the negative group. In the autoantibody-positive patients with APS, IgG immune complexes containing  $\beta$ 2-GPI and LDL were also observed. The mechanism of *in vivo* oxidation of LDL is unrevealed, but its oxidation product  $\beta$ 2-GPI/oxLDL complex is considered to play a pathogenic role as auto-immune antigen inducing the occurrence of thrombosis, particularly arterial thrombosis, in APS.

**[0164]** George et al. have reported that LDL receptor-deficient mice given usual feed and immunized with  $\beta$ 2-GPI have accelerated atherosclerosis [reference 17].  $\beta$ 2-GPI is present abundantly under endothelium and in an intimal-medial border of human atherosclerotic plaque, and occurs together with monocytes and CD4-positive lymphocytes [reference 18]. Accordingly, the circumstantial evidence of the autoimmune mechanism in which  $\beta$ 2-GPI and oxLDL in generation of atheroma of APS are involved is further increased.

**[0165]** This is the first report that a stable and indissociable  $\beta$ 2-GPI/oxLDL complex is found in patient serum, and this complex would be a quantifiable risk factor with respect to arterial thrombosis in APS. However, the  $\beta$ 2-GPI/oxLDL complex is observed not only in APS but also in antibody-negative and non-thrombus SLE and in chronic nephritis. This indicates that given only the level of the complex in serum, the clinical condition of APS cannot be predicted. Abnormalities in lipid and lipoprotein metabolism are common among various renal diseases and hyperlipemia, and are understood to increase plasma lipoproteins such as LDL involved in high mortality and high occurrence of atherosclerotic cardiovascular disorder in patients with renal diseases. These findings raise an important and new problem for clinical significance of the  $\beta$ 2-GPI/oxLDL complex circulating in blood in patients with coronary artery diseases. Preparation of the kit of the present invention

(1) The kit 1 of the present invention constituted as shown below was prepared.

**[0166]**

1.  $\beta$ 2-GPI/oxLDL complex (1 mg) (standard) obtained by incubating oxLDL 12h at pH 7.4, 37°C for 16 hours together with  $\beta$ 2-GPI
2. One 96-well immune plate
- Anti- $\beta$ 2-GPI antibody (WB-CAL-1), one tube
3. Biotin-labeled anti-apoB100 antibody (1D2)
4. HRP-labeled avidin
5. o-Phenylene diamine solution, 1 tube
6. Aqueous hydrogen peroxide, 1 tube
7. Reaction termination solution (1 N HCl), 1 tube

(2) The kit 2 of the present invention constituted as shown below was prepared.

**[0167]**

1. One 96-well immune plate on which the  $\beta$ 2-GPI/oxLDL complex obtained by incubating oxLDL 12h at pH 7.4, 37°C for 16 hours together with  $\beta$ 2-GPI was immobilized
2. HRP-labeled anti-human IgG antibody
3. o-Phenylene diamine solution, 1 tube
4. Aqueous hydrogen peroxide, 1 tube

References

**[0168]**

1. J. Exp. Med., 179, pp. 457-462 (1994)
2. Blood, 87, pp. 3262-3270 (1996)
3. EMBO J., 18, pp. 5166-5174 (1999)
4. J. Mol. Biol., 304, pp. 927-939 (2000)

5. Biochemistry, 40, pp. 8092-8100 (2000)
6. Clin. Exp. Immunol., 107, pp. 569-573 (1997)
7. J. Lipid Res., 42, pp. 697-709 (2001)
8. J. Immunol., 149, pp. 1063-1068 (1992)
9. Arthritis Rheum., 37, pp. 1453-1461 (1994)
10. J. Immunol., 148, pp. 3885-3891 (1992)
11. J. Clin. Invest., 43, pp. 1345-1353 (1955)
12. Anal. Biochem., 95, pp. 351-358 (1979)
13. Int. Immunol., 12, pp. 1183-1192 (2000)
14. Anal. Biochem., 213, pp. 79-89 (1993)
15. J. Lipid Res., 36, pp. 1876-1886 (1995)
16. J. Lipid Res., 38, pp. 1347-1360 (1997)
17. Circulation, 98, pp. 1108-1115 (1998)
18. Circulation, 99, pp. 2227-2230 (1999)

#### Industrial Applicability

**[0169]** When the standard of the present invention is used, the  $\beta$ 2-GPI/oxLDL complex occurring particularly in the living body can be measured more accurately and strictly, by which the measurement method 1 of the present invention, the detection method 1 of the present invention and the kit 1 of the present invention can be provided, and thus the standard of the present invention is extremely useful.

**[0170]** When the antigen of the present invention is used, "antibody recognizing  $\beta$ 2-GPI/oxLDL complex" occurring particularly in the living body can be measured more accurately and strictly, by which the measurement method 2 of the present invention, the detection method 2 of the present invention, the solid phase of the present invention and the kit 2 of the present invention can be provided, and thus the antigen of the present invention is extremely useful. The measurement method 3 of the present invention can easily and rapidly detect an IgG immune complex formed with  $\beta$ 2-GPI or LDL and is thus extremely useful.

#### Claims

1. A standard for measuring oxidized LDL / $\beta$ 2-GPI complex in a sample wherein the standard:

- (a) comprises an oxidized LDL /  $\beta$ 2-GPI complex obtainable by incubating oxidized LDL and  $\beta$ 2-GPI under 37 °C and pH7.4 for 16 hours, and
- (b) the oxidized LDL /  $\beta$ 2-GPI complex has the following properties:

- (i) oxidized LDL and  $\beta$ 2-GPI constituting the complex are substantially not dissociated even in the coexistence of 100 U/ml heparin, and
- (ii) oxidized LDL and  $\beta$ 2-GPI constituting the complex are substantially not dissociated even in the coexistence of 10 mM  $MgCl_2$ .

2. The standard according to claim 1, wherein the sample derived from a living body.

3. The standard according to claim 2, wherein the sample derived from a living body is blood.

4. Use of the standard according to any one of claims 1 to 3 in the measurement of oxidized LDL /  $\beta$ 2-GPI in a sample taken from a living body.

5. A method of measuring oxidized LDL/  $\beta$ 2-GPI complex in a sample, which comprises using the standard according to any one of claims 1 to 3.

6. The measurement method according to claim 5, which comprises at least a step of covalently binding oxidized LDL to  $\beta$ 2-GPI in a sample.

7. The measurement method according to claim 5, which comprises at least a step of previously incubating oxidized LDL and  $\beta$ 2-GPI in a sample, under the condition of pH 3 to 9.

## EP 1 548 436 B1

8. The measurement method according to claim 5, which comprises at least a step of dissociating complex having oxidized LDL bound electrostatically to a protein, a polypeptide, an amino acid, an aminosugar or an aminolipid in a sample.
- 5 9. A method of detecting a disease, which comprises measuring oxidized LDL/  $\beta$ 2-GPI complex in a sample by using the measurement method according to any one of claims 5 to 8 and correlating the measured "complex in the sample" with a disease.
- 10 10. The detection method according to claim 9, wherein the disease is selected from antiphospholipid syndrome, thrombosis, arterial thrombosis, venous thrombosis, pregnancy morbidity, renal disease, arteriosclerosis and diabetes.
11. A kit for measuring oxidized LDL/  $\beta$ 2-GPI complex in a sample, which comprises as a constituent ingredient the standard according to any one of claims 1 to 3.
- 15 12. The measurement kit according to claim 11, which further comprises antibody recognizing the standard as a constituent ingredient.
13. The measurement kit according to claim 11 or 12, which is used in detection of a disease.
- 20 14. An antigen for measuring antibody recognizing oxidized LDL/  $\beta$ 2-GPI complex in a sample, which comprises the standard according to any one of claims 1 to 3.
15. A method of measuring antibody recognizing oxidized LDL/  $\beta$ 2-GPI complex in a sample, which comprises using the antigen according claim 14.
- 25 16. A method of detecting a disease, which comprises measuring antibody recognizing oxidized LDL/  $\beta$ 2-GPI complex in a sample by using the measurement method according to claim 15 and correlating the measured antibody in the sample with a disease.
- 30 17. The detection method according to claim 16, wherein the disease is selected from antiphospholipid syndrome, thrombosis, arterial thrombosis, venous thrombosis, pregnancy morbidity, renal disease, arteriosclerosis and diabetes.
18. A solid phase having the antigen according to claim 14 immobilized thereon.
- 35 19. A kit for measuring antibody recognizing oxidized LDL/  $\beta$ 2-GPI complex in a sample, which comprises the solid phase according to claim 18 as a constituent ingredient.
20. The measurement kit according to claim 19, which further comprises, as a constituent ingredient, a substance binding to the antibody recognizing oxidized LDL/  $\beta$ 2-GPI complex.
- 40 21. The measurement kit according to claim 20, which is used in detection of a disease.

### 45 Patentansprüche

1. Standard zum Messen von oxidiertem LDL/ $\beta$ 2-GPI-Komplex in einer Probe, wobei der Standard:
- 50 (a) einen oxidierten LDL/ $\beta$ 2-GPI-Komplex umfasst, der durch Inkubieren von oxidiertem LDL und  $\beta$ 2-GPI bei 37°C und pH 7,4 während 16 Stunden erhältlich ist; und  
(b) der oxidierte LDL/ $\beta$ 2-GPI-Komplex die folgenden Eigenschaften hat:
- (i) oxidiertes LDL und  $\beta$ 2-GPI, die den Komplex bilden, sind selbst in Gegenwart von 100 E/ml Heparin im Wesentlichen nicht dissoziiert; und
- 55 (ii) oxidiertes LDL und  $\beta$ 2-GPI, die den Komplex bilden, sind selbst in Gegenwart von 10 mM  $MgCl_2$  im Wesentlichen nicht dissoziiert.
2. Standard gemäß Anspruch 1, wobei die Probe von einem lebenden Körper stammt.

## EP 1 548 436 B1

3. Standard gemäß Anspruch 2, wobei es sich bei den von einem lebenden Körper stammenden Probe um Blut handelt.
4. Verwendung des Standards gemäß einem der Ansprüche 1 bis 3 bei der Messung von oxidiertem LDL/ $\beta$ 2-GPI-Komplex in einer Probe, die von einem lebenden Körper entnommen wurde.
5. Verfahren zum Messen von oxidiertem LDL/ $\beta$ 2-GPI-Komplex in einer Probe, umfassend das Verwenden des Standards gemäß einem der Ansprüche 1 bis 3.
6. Messverfahren gemäß Anspruch 5, das wenigstens einen Schritt des kovalenten Bindens von oxidiertem LDL an  $\beta$ 2-GPI in einer Probe umfasst.
7. Messverfahren gemäß Anspruch 5, das wenigstens einen Schritt des Vorinkubierens von oxidiertem LDL und  $\beta$ 2-GPI in einer Probe unter der Bedingung pH 3 bis 9 umfasst.
8. Messverfahren gemäß Anspruch 5, das wenigstens einen Schritt des Dissoziierens eines Komplexes, der oxidiertes LDL, das elektrostatisch an ein Protein gebunden ist, ein Polypeptid, eine Aminosäure, einen Aminozucker oder ein Aminolipid aufweist, in einer Probe umfasst.
9. Verfahren zum Nachweisen einer Krankheit, umfassend das Messen von oxidiertem LDL/ $\beta$ 2-GPI-Komplex in einer Probe unter Verwendung des Messverfahrens gemäß einem der Ansprüche 5 bis 8 und Korrelieren des gemessenen Komplexes in der Probe mit der Krankheit.
10. Nachweisverfahren gemäß Anspruch 9, wobei die Krankheit aus Antiphospholipid-Syndrom, Thrombose, arterieller Thrombose, venöser Thrombose, Schwangerschaftsmorbidität, Nierenkrankheit, Arteriosklerose und Diabetes ausgewählt ist.
11. Kit zum Messen von oxidiertem LDL/ $\beta$ 2-GPI-Komplex in einer Probe, der als konstituierenden Bestandteil den Standard gemäß einem der Ansprüche 1 bis 3 umfasst.
12. Messkit gemäß Anspruch 11, der weiterhin einen Antikörper, der den Standard erkennt, als konstituierenden Bestandteil umfasst.
13. Messkit gemäß Anspruch 11 oder 12, der beim Nachweis einer Krankheit verwendet wird.
14. Antigen zum Messen von Antikörper, der oxidierten LDL/ $\beta$ 2-GPI-Komplex in einer Probe erkennt, umfassend den Standard gemäß einem der Ansprüche 1 bis 3.
15. Verfahren zum Messen von Antikörper, der oxidierten LDL/ $\beta$ 2-GPI-Komplex in einer Probe erkennt, umfassend die Verwendung des Antigens gemäß Anspruch 14.
16. Verfahren zum Nachweisen einer Krankheit, umfassend das Messen von Antikörper, der oxidierten LDL/ $\beta$ 2-GPI-Komplex erkennt, in einer Probe unter Verwendung des Messverfahrens gemäß Anspruch 15 und Korrelieren des gemessenen Antikörpers in der Probe mit der Krankheit.
17. Nachweisverfahren gemäß Anspruch 16, wobei die Krankheit aus Anti-phospholipid-Syndrom, Thrombose, arterieller Thrombose, venöser Thrombose, Schwangerschaftsmorbidität, Nierenkrankheit, Arteriosklerose und Diabetes ausgewählt ist.
18. Feste Phase, auf der das Antigen gemäß Anspruch 14 immobilisiert ist.
19. Kit zum Messen von Antikörper, der oxidierten LDL/ $\beta$ 2-GPI-Komplex in einer Probe erkennt, umfassend die feste Phase gemäß Anspruch 18 als konstituierenden Bestandteil.
20. Messkit gemäß Anspruch 19, der als konstituierenden Bestandteil weiterhin eine Substanz umfasst, die an den Antikörper bindet, der den oxidierten LDL/ $\beta$ 2-GPI-Komplex erkennt.
21. Messkit gemäß Anspruch 20, der beim Nachweis einer Krankheit verwendet wird.

**Revendications**

1. Etalon pour mesurer le complexe LDL oxydé /  $\beta$ 2-GPI dans un échantillon, dans lequel l'étalon :
  - 5 (a) comprend un complexe LDL oxydé /  $\beta$ 2-GPI que l'on peut obtenir en incubant le LDL oxydé et le  $\beta$ 2-GPI à 37°C et à pH 7,4 durant 16 heures, et
  - (b) le complexe LDL oxydé /  $\beta$ 2-GPI a les propriétés suivantes :
    - 10 (i) le LDL oxydé et le  $\beta$ 2-GPI constituant le complexe sont sensiblement non dissociés même en présence de 100 U/ml d'héparine, et
    - (ii) le LDL oxydé et le  $\beta$ 2-GPI constituant le complexe sont sensiblement non dissociés même en présence de 10 mM de  $MgCl_2$ .
- 15 2. Etalon selon la revendication 1, dans lequel l'échantillon est dérivé d'un corps vivant.
3. Etalon selon la revendication 2, dans lequel l'échantillon dérivé d'un corps vivant est le sang.
4. Utilisation de l'étalon selon l'une quelconque des revendications 1 à 3 dans la mesure du LDL oxydé /  $\beta$ 2-GPI dans un échantillon prélevé dans un corps vivant.
- 20 5. Procédé de mesure du complexe LDL oxydé /  $\beta$ 2-GPI dans un échantillon, qui comprend l'utilisation de l'étalon selon l'une quelconque des revendications 1 à 3.
- 25 6. Procédé de mesure selon la revendication 5, qui comprend au moins une étape de liaison covalente du LDL oxydé au  $\beta$ 2-GPI dans un échantillon.
7. Procédé de mesure selon la revendication 5, qui comprend au moins une étape d'incubation préalable du LDL oxydé et du  $\beta$ 2-GPI dans un échantillon, dans la condition de pH 3 à 9.
- 30 8. Procédé de mesure selon la revendication 5, qui comprend au moins une étape de dissociation du complexe ayant le LDL oxydé lié de manière électrostatique à une protéine, un polypeptide, un acide aminé, un sucre aminé ou un lipide aminé dans un échantillon.
- 35 9. Procédé de détection d'une maladie, qui comprend la mesure du complexe LDL oxydé /  $\beta$ 2-GPI dans un échantillon en utilisant le procédé de mesure selon l'une quelconque des revendications 5 à 8 et en corrélant le complexe mesuré dans l'échantillon avec une maladie.
- 40 10. Procédé de détection selon la revendication 9, dans lequel la maladie est choisie parmi le syndrome antiphospholipide, la thrombose, la thrombose artérielle, la thrombose veineuse, la morbidité de grossesse, une maladie rénale, l'artériosclérose et le diabète.
- 45 11. Kit pour mesurer le complexe LDL oxydé /  $\beta$ 2-GPI dans un échantillon, qui comprend comme ingrédient constitutif l'étalon selon l'une quelconque des revendications 1 à 3.
- 50 12. Kit de mesure selon la revendication 11, qui comprend en outre un anticorps reconnaissant l'étalon comme ingrédient constitutif.
13. Kit de mesure selon la revendication 11 ou 12, qui est utilisé dans la détection d'une maladie.
- 55 14. Antigène pour mesurer un anticorps reconnaissant le complexe LDL oxydé /  $\beta$ 2-GPI dans un échantillon, qui comprend l'étalon selon l'une quelconque des revendications 1 à 3.
15. Procédé de mesure d'un anticorps reconnaissant le LDL oxydé /  $\beta$ 2-GPI dans un échantillon, qui comprend l'utilisation de l'antigène selon la revendication 14.
16. Procédé de détection d'une maladie, qui comprend la mesure d'un anticorps reconnaissant le complexe LDL oxydé /  $\beta$ 2-GPI dans un échantillon en utilisant le procédé de mesure selon la revendication 15 et en corrélant l'anticorps mesuré dans l'échantillon avec une maladie.

## EP 1 548 436 B1

17. Procédé de détection selon la revendication 16, dans lequel la maladie est choisie parmi le syndrome antiphospholipide, la thrombose, la thrombose artérielle, la thrombose veineuse, la morbidité de grossesse, une maladie rénale, l'artériosclérose et le diabète.

5 18. Phase solide ayant immobilisé dessus l'antigène selon la revendication 14.

19. Kit pour mesurer un anticorps reconnaissant le complexe LDL oxydé /  $\beta$ 2-GPI dans un échantillon, qui comprend la phase solide selon la revendication 18 comme ingrédient constitutif.

10 20. Kit de mesure selon la revendication 19, qui comprend en outre comme ingrédient constitutif une substance se liant à l'anticorps reconnaissant le complexe LDL oxydé /  $\beta$ 2-GPI.

21. Kit de mesure selon la revendication 20, qui est utilisé dans la détection d'une maladie.

15

20

25

30

35

40

45

50

55

FIG. 1

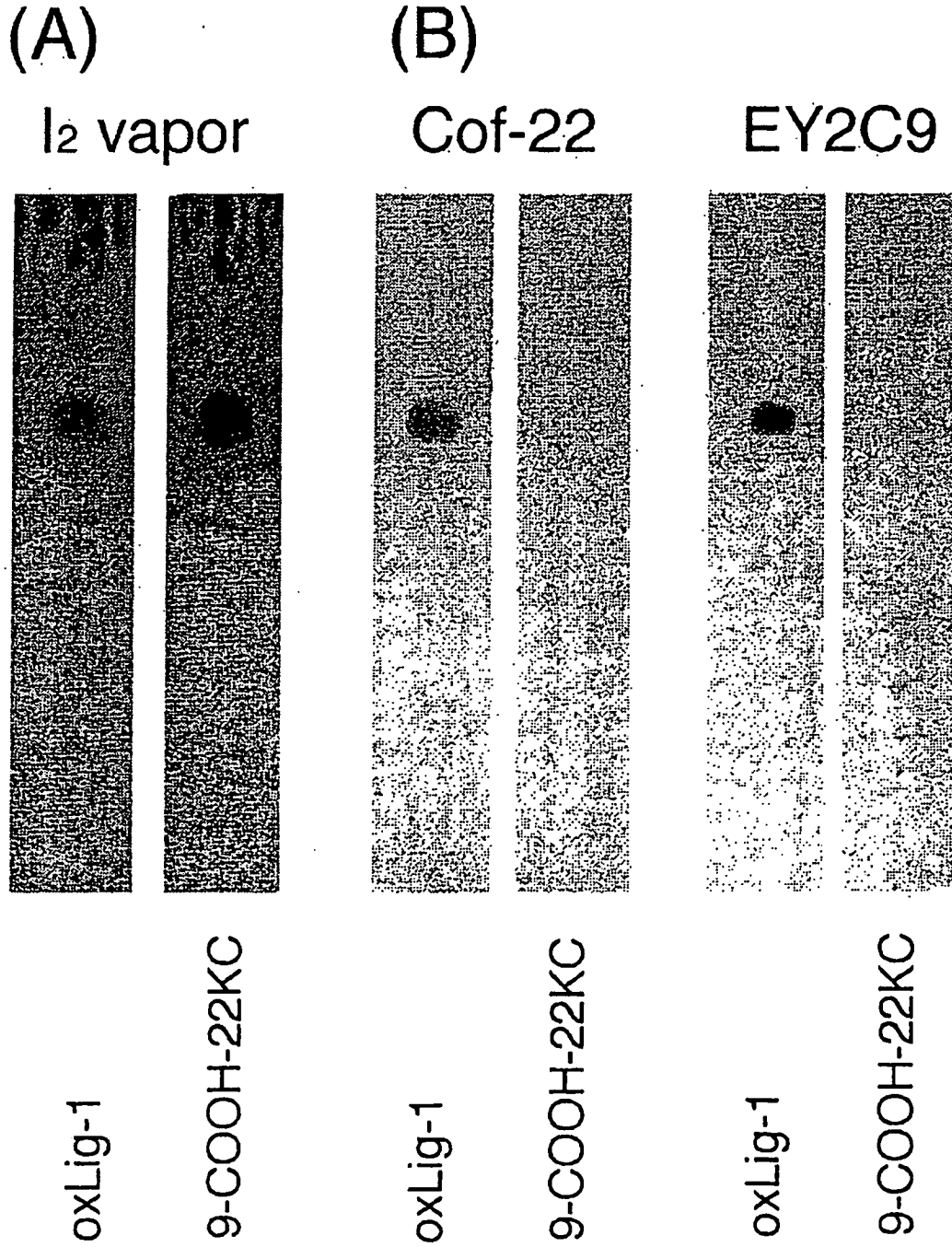


FIG. 2

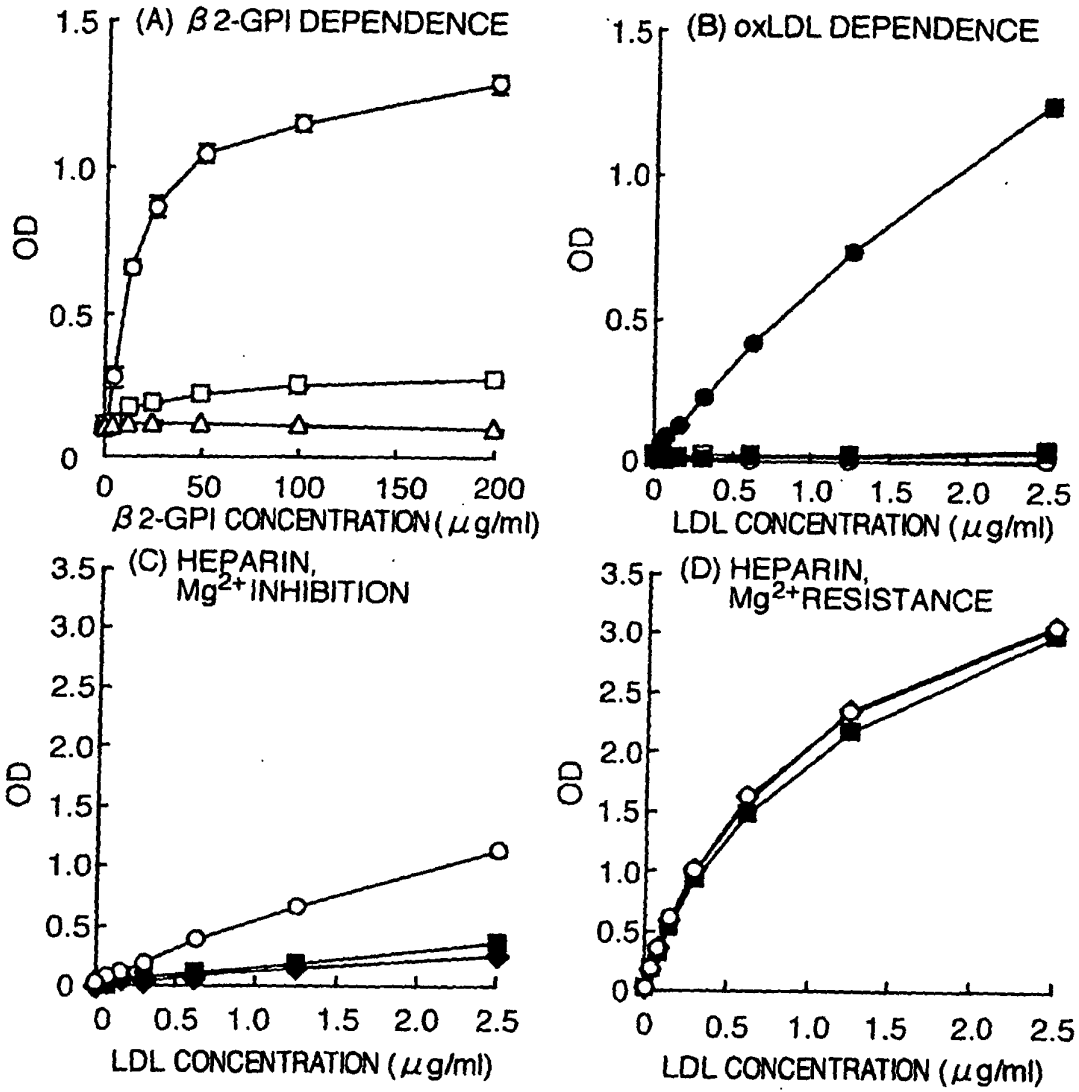


FIG. 3

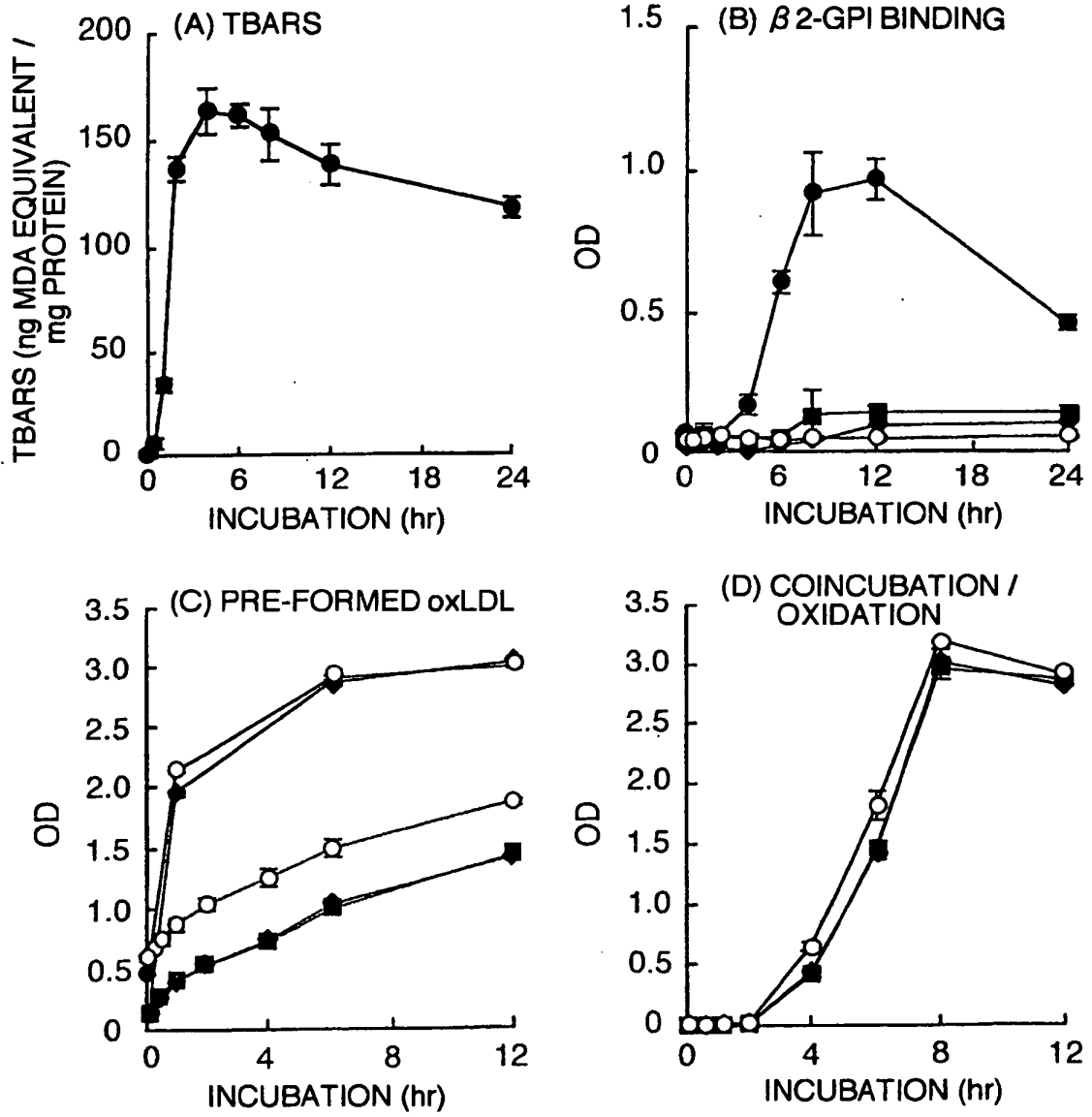


FIG. 4

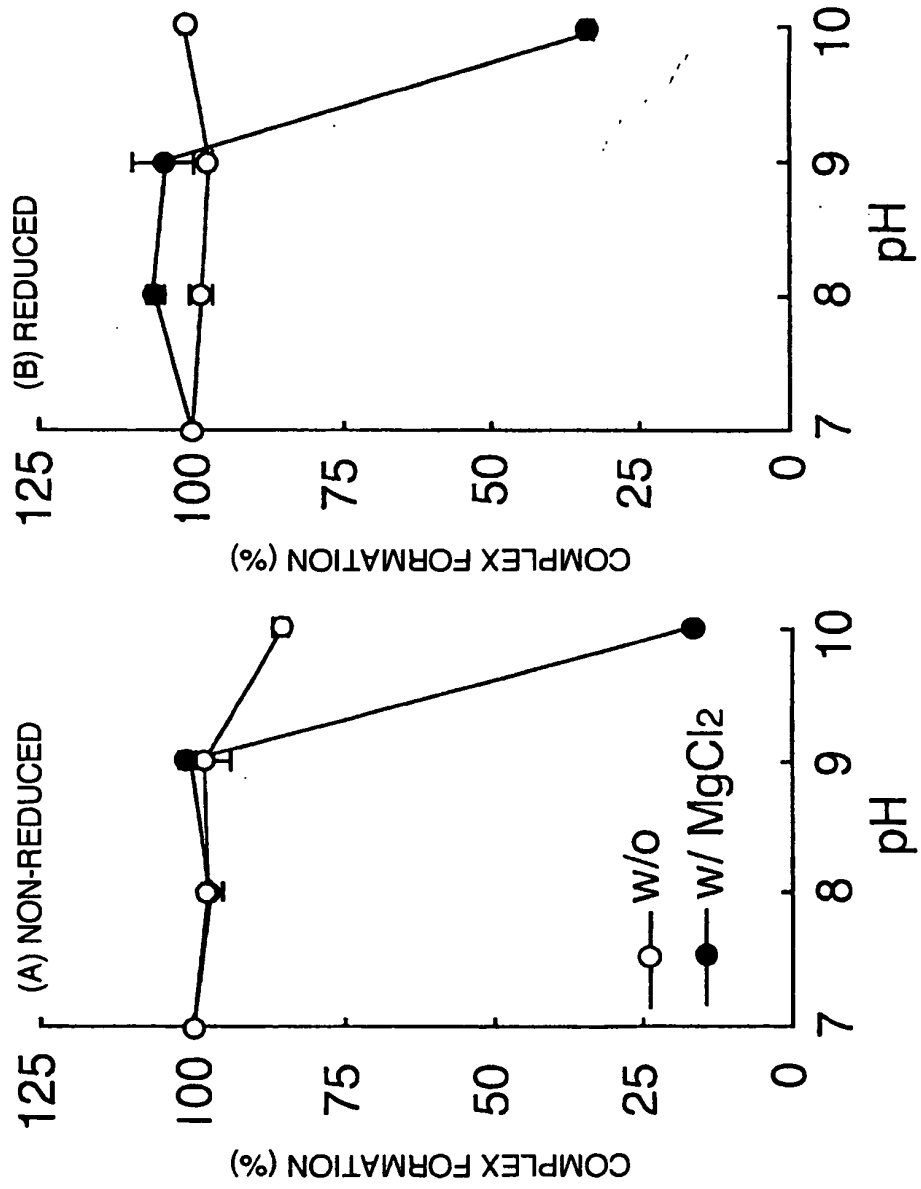


FIG. 5

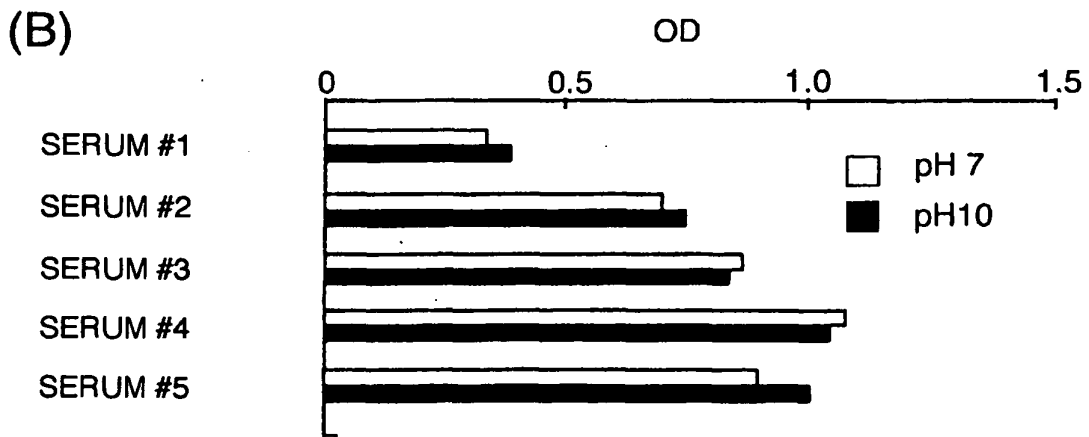
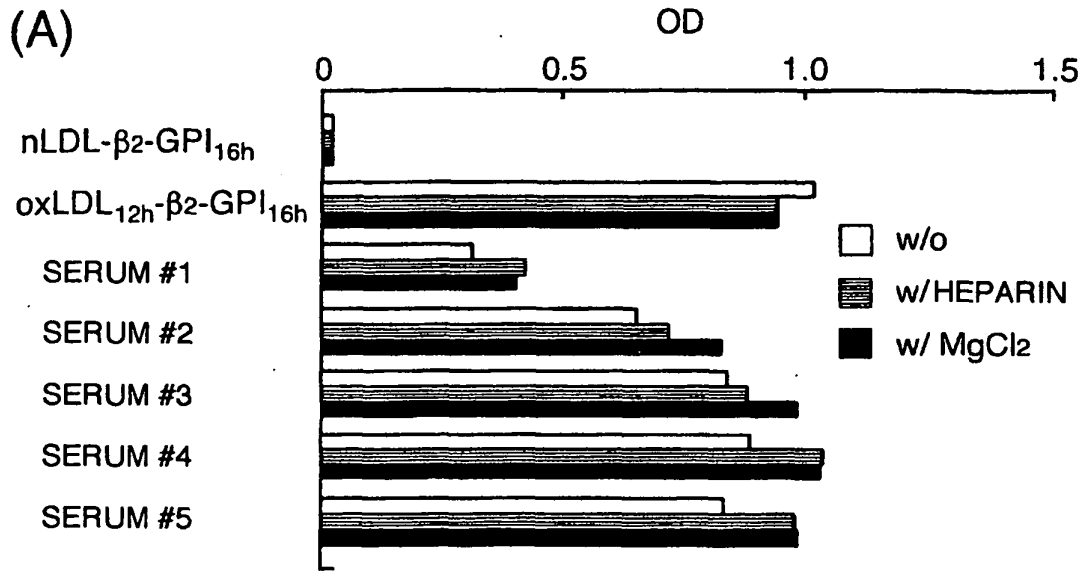


FIG. 6

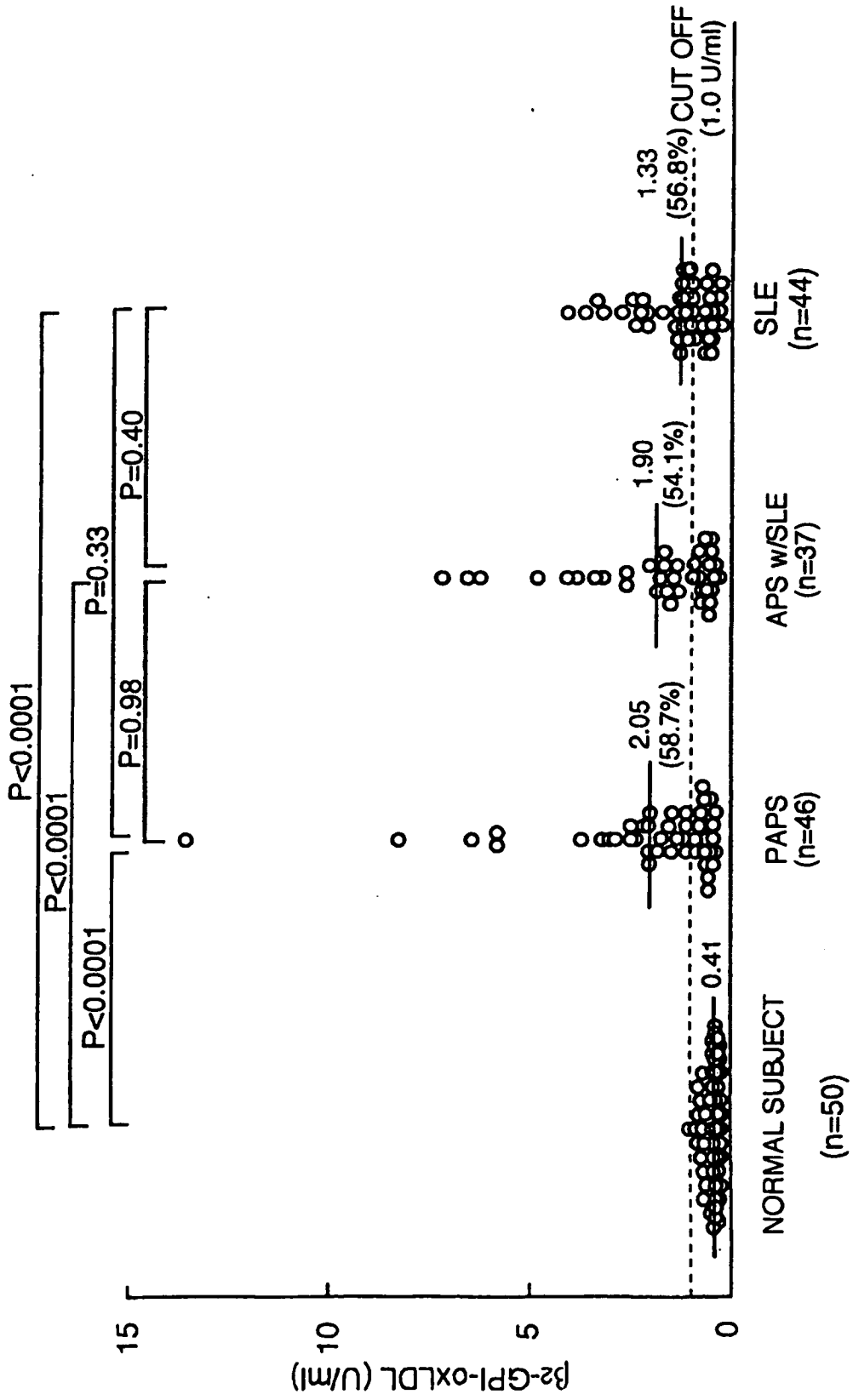


FIG. 7

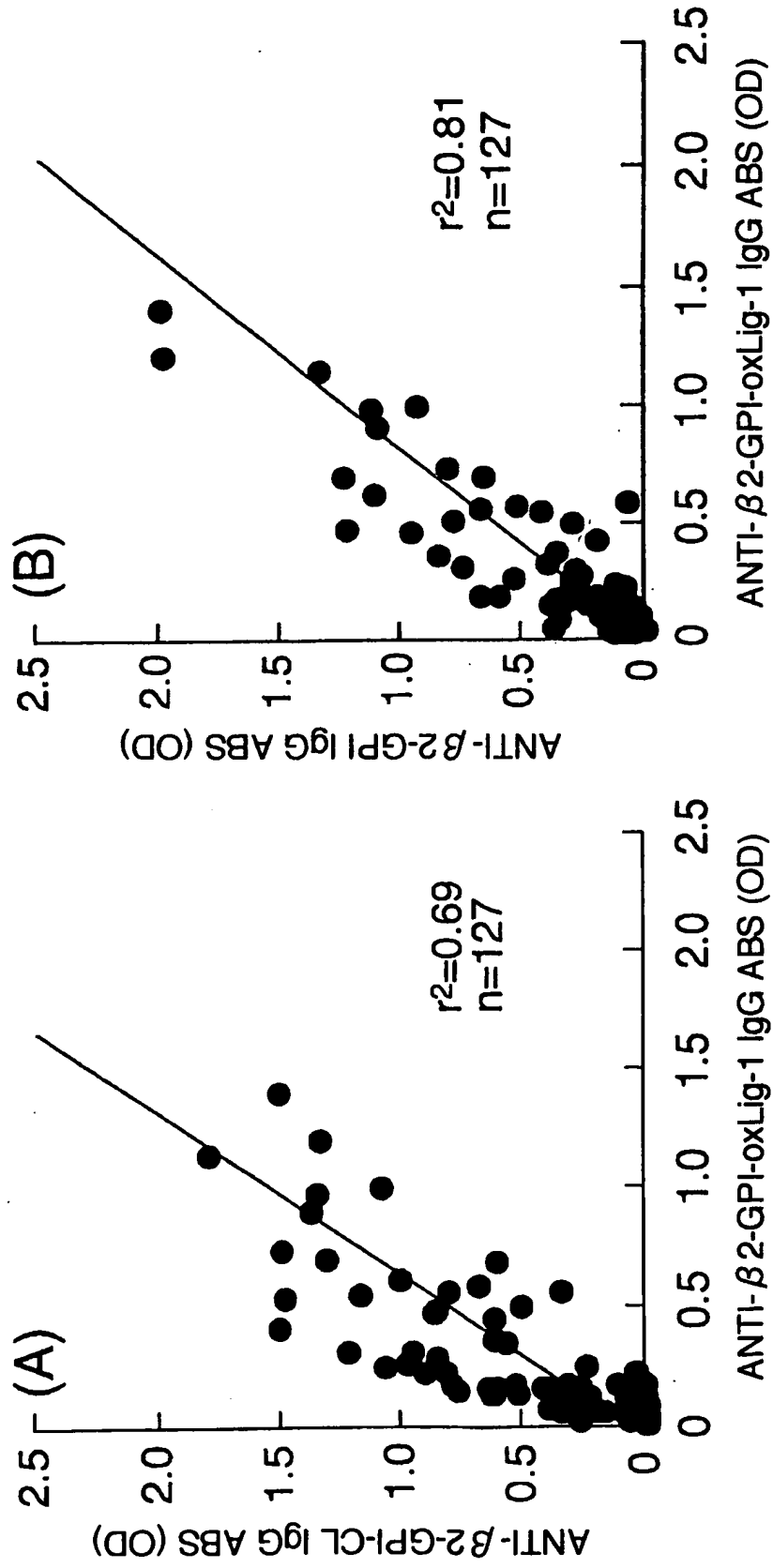


FIG. 8

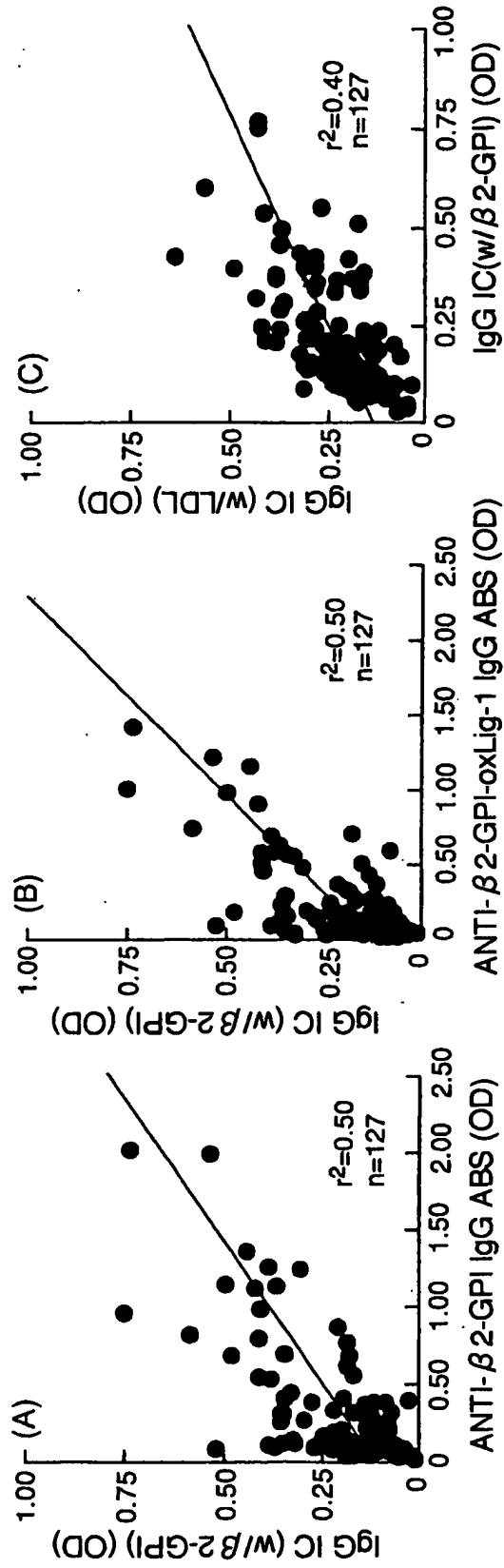
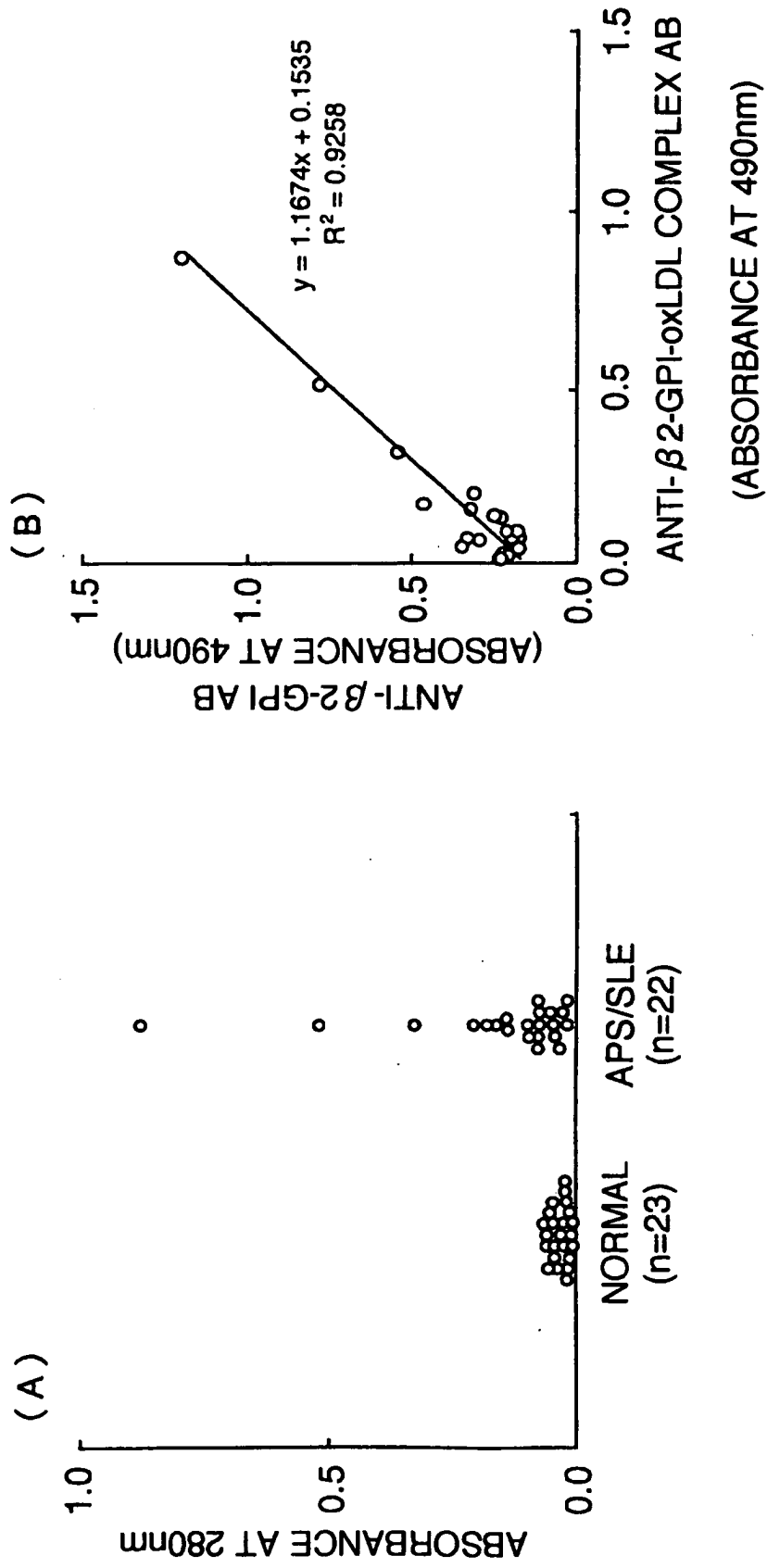


FIG. 9



**REFERENCES CITED IN THE DESCRIPTION**

*This list of references cited by the applicant is for the reader's convenience only. It does not form part of the European patent document. Even though great care has been taken in compiling the references, errors or omissions cannot be excluded and the EPO disclaims all liability in this regard.*

**Patent documents cited in the description**

- WO 959363 A [0003]
- US 5900359 A [0006]
- JP 63017843 A [0072]

**Non-patent literature cited in the description**

- *J. Lipid Res.*, 2001, vol. 42, 697-709 [0003] [0168]
- **MATSUURA et al.** *Intern. Rev. Immunol.*, 2002, vol. 21, 51-66 [0007]
- Tanpakushitsu No Kagaku. TOKYO KAGAKU DOZ-IN CO., LTD, 1987 [0072]
- Avidin-Biotin Chemistry: A Handbook. PIERCE CHEMICAL COMPANY, 1994, 57-63 [0072]
- *J. Exp. Med.*, 1994, vol. 179, 457-462 [0168]
- *Blood*, 1996, vol. 87, 3262-3270 [0168]
- *EMBO J.*, 1999, vol. 18, 5166-5174 [0168]
- *J. Mol. Biol.*, 2000, vol. 304, 927-939 [0168]
- *Biochemistry*, 2000, vol. 40, 8092-8100 [0168]
- *Clin. Exp. Immunol.*, 1997, vol. 107, 569-573 [0168]
- *J. Immunol.*, 1992, vol. 149, 1063-1068 [0168]
- *Arthritis Rheum.*, 1994, vol. 37, 1453-1461 [0168]
- *J. Immunol.*, 1992, vol. 148, 3885-3891 [0168]
- *J. Clin. Invest.*, 1955, vol. 43, 1345-1353 [0168]
- *Anal. Biochem.*, 1979, vol. 95, 351-358 [0168]
- *Int. Immunol.*, 2000, vol. 12, 1183-1192 [0168]
- *Anal. Biochem.*, 1993, vol. 213, 79-89 [0168]
- *J. Lipid Res.*, 1995, vol. 36, 1876-1886 [0168]
- *J. Lipid Res.*, 1997, vol. 38, 1347-1360 [0168]
- *Circulation*, 1998, vol. 98, 1108-1115 [0168]
- *Circulation*, 1999, vol. 99, 2227-2230 [0168]

专利名称(译)	在体内测定氧化的LDL-β2-糖蛋白i复合物的方法		
公开(公告)号	<a href="#">EP1548436B1</a>	公开(公告)日	2008-11-19
申请号	EP2003794267	申请日	2003-09-05
[标]申请(专利权)人(译)	松浦EIJI		
申请(专利权)人(译)	松浦英二		
当前申请(专利权)人(译)	松浦英二		
[标]发明人	MATSUURA EIJI		
发明人	MATSUURA, EIJI		
IPC分类号	G01N33/53 G01N33/96 G01N33/92		
CPC分类号	G01N33/92		
优先权	2002261366 2002-09-06 JP		
其他公开文献	EP1548436A4 EP1548436A1		
外部链接	<a href="#">Espacenet</a>		

摘要(译)

具有与β2-GPI共价结合的oxLDL的复合物可用作测量活体中β2-GPI / oxLDL复合物的标准，从而更准确和严格地测量活体中的β2-GPI / oxLDL复合物，并且可以是用于提供新的测量方法，检测方法，试剂盒等。

