

(12) INTERNATIONAL APPLICATION PUBLISHED UNDER THE PATENT COOPERATION TREATY (PCT)

(19) World Intellectual Property
Organization
International Bureau



WIPO | PCT



(10) International Publication Number
WO 2012/166918 A1

(43) International Publication Date
6 December 2012 (06.12.2012)

- (51) International Patent Classification:
G01N 33/53 (2006.01)
- (21) International Application Number:
PCT/US2012/040207
- (22) International Filing Date:
31 May 2012 (31.05.2012)
- (25) Filing Language: English
- (26) Publication Language: English
- (30) Priority Data:
61/491,580 31 May 2011 (31.05.2011) US
- (71) Applicant (for all designated States except US): **IDEXX LABORATORIES, INC.** [US/US]; One Idexx Drive, Westbrook, Maine 04032 (US).
- (72) Inventors; and
- (75) Inventors/Applicants (for US only): **YERRAMILI, Murthy V.S.N** [US/US]; 7 Old Oak Way, Falmouth, Maine 04105 (US). **YERRAMILI, Mahalakshmi** [US/US]; 7 Old Oak Way, Falmouth, Maine 04105 (US). **ATKINSON, Michael** [US/US]; 112 Solstice Circle, Cary, NC 27513 (US).
- (74) Agent: **GATTARI, Patrick, G.**; McDonnell Boehnen Hulbert & Berghoff LLP, 300 South Wacker Drive, Suite 3100, Chicago, IL 60606 (US).
- (81) Designated States (unless otherwise indicated, for every kind of national protection available): AE, AG, AL, AM, AO, AT, AU, AZ, BA, BB, BG, BH, BR, BW, BY, BZ, CA, CH, CL, CN, CO, CR, CU, CZ, DE, DK, DM, DO, DZ, EC, EE, EG, ES, FI, GB, GD, GE, GH, GM, GT, HN, HR, HU, ID, IL, IN, IS, JP, KE, KG, KM, KN, KP, KR, KZ, LA, LC, LK, LR, LS, LT, LU, LY, MA, MD, ME, MG, MK, MN, MW, MX, MY, MZ, NA, NG, NI, NO, NZ, OM, PE, PG, PH, PL, PT, QA, RO, RS, RU, RW, SC, SD, SE, SG, SK, SL, SM, ST, SV, SY, TH, TJ, TM, TN, TR, TT, TZ, UA, UG, US, UZ, VC, VN, ZA, ZM, ZW.
- (84) Designated States (unless otherwise indicated, for every kind of regional protection available): ARIPO (BW, GH, GM, KE, LR, LS, MW, MZ, NA, RW, SD, SL, SZ, TZ, UG, ZM, ZW), Eurasian (AM, AZ, BY, KG, KZ, RU, TJ, TM), European (AL, AT, BE, BG, CH, CY, CZ, DE, DK, EE, ES, FI, FR, GB, GR, HR, HU, IE, IS, IT, LT, LU, LV, MC, MK, MT, NL, NO, PL, PT, RO, RS, SE, SI, SK, SM, TR), OAPI (BF, BJ, CF, CG, CI, CM, GA, GN, GQ, GW, ML, MR, NE, SN, TD, TG).
- Published:
- with international search report (Art. 21(3))
 - with sequence listing part of description (Rule 5.2(a))



WO 2012/166918 A1

(54) Title: DETECTION OF DEGRADATION PRODUCTS OF FELINE NT-proBNP

(57) Abstract: A method for determining the amount of NT-proBNP in blood samples from felines. The method includes detecting degradation products of feline NT-proBNP by various methods, including using antibodies, kits and devices.

DETECTION OF DEGRADATION PRODUCTS OF FELINE NT-proBNP**CROSS REFERENCE TO RELATED APPLICATION**

[0001] This application claims benefit of US Provisional Application No. 61/491,580 filed May 31, 2011, which is incorporated herein by reference in its entirety.

5

SEQUENCE LISTING STATEMENT

[0002] The sequence listing is filed in this application in electronic format only and is incorporated by reference herein. The sequence listing text file "10-999_SeqListing_ST25.txt" was created on May 31, 2012, and is 11 bytes in size.

BACKGROUND10 **Field of the Invention**

[0003] The invention is related to the detection of NT-proBNP in biological samples from felines.

Description of Related Art

[0004] Heart diseases play an important role in animal health, including non-human animals. Heart diseases concern, for example, the cardiac valves and the cardiac muscle. Because the heart is capable of compensating functional impairment by working harder, such diseases in most cases remain hidden, with the consequence that the state of the heart will deteriorate due to the increased load on the heart. The symptoms resulting from heart diseases, such as fatigue, circulatory insufficiency, and languor are usually recognized when the animal's heart is no longer able to compensate for the weakness. In such a case, the heart disease has progressed to the point that curing the disease is no longer possible.

[0005] While chronic cardiac valve and cardiac muscle changes are usually not curable, the use of medicaments can slow the further progress of the disease. Therefore, an early diagnosis for heart diseases is preferred. Routinely, physical methods are used for this purpose, such as auscultation of the heart sounds, the recording of an electrocardiogram, and X-ray and ultrasonic examinations. These examination methods have the disadvantage that they are carried out only when already visible or audible defects of the heart are recognized. Furthermore, physical

examination methods require suitable and generally expensive devices in order to carry out a respective diagnosis.

[0006] In many heart diseases, such as, *e.g.*, heart decompensation and dilated cardiomyopathy, a peptide hormone -- the so-called BNP (brain natriuretic peptide) -- is secreted by heart muscle tissue. Since this hormone is produced in the heart and is increasingly produced in case of an overstress and congestion of the heart, determining the BNP level in blood is a suitable means for evaluating cardiac insufficiency.

[0007] BNP as well as other natriuretic peptides play an important part in regulating water balance and blood pressure. If the cardiac wall is dilated, it secretes BNP in increasing amounts, which in turn causes an excretion of sodium and liquid via the kidneys and a dilation of the blood vessels. These factors can lower the blood pressure and the filling level of the heart. BNP is synthesized by the cells of the cardiac muscle as proBNP, which is cleaved into N-terminal proBNP (NT-proBNP) and BNP. Both parts of the polypeptide are delivered to the blood and can be determined therein.

[0008] The utility of both BNP and NT-proBNP as makers for cardiac disease in veterinary patients (*e.g.*, dogs and cats) has been demonstrated in numerous studies. For instance, BNP and NT-proBNP assays have been shown to be effective as a diagnostic test for dogs, as illustrated by two studies, which report remarkably similar sensitivity and specificity (85% and 82% respectively) for differentiating the cause of clinical signs that may be attributable to cardiac disease in dogs. *See Oyama MA, et al.*, "Assessment of serum N-terminal pro-B-type natriuretic peptide concentration for differentiation of congestive heart failure from primary respiratory tract disease as the cause of respiratory signs in dogs," *Journal of American Veterinary Medical Association* (December 2009); *Boswood et al.*, "The diagnostic accuracy of different natriuretic peptides in the investigation of canine cardiac disease," *JSAP* 2007 1-7. In cats, the clinical challenge is different, as the most common cardiac disease in cats is hypertrophic cardiomyopathy. This disease remains occult or 'silent' with very few clinical signs that are appreciable to the pet owner until the disease is very advanced.

[0009] A number of immunoassays for the detection of NT-proBNP are known. These assays use polyclonal or monoclonal antibodies specific for epitopes within various regions of the peptide. These methods, however, are subject to variability because NT-proBNP is further

processed *ex vivo* by various proteases in the blood serum and plasma. Therefore, immunoassays for NT-proBNP are inherently vulnerable to inconsistency due to the *ex vivo* degradation of the protein over time. Therefore, samples to be tested for NT-proBNP are typically refrigerated and efforts are made to conduct sample analysis as quickly as possible following taking of the
5 sample.

[0010] Accordingly, the inventors have identified a need in the art for a method of determining NT-proBNP that can measure NT-proBNP without regard to when a sample was taken and without cumbersome handling requirements for the sample.

SUMMARY

10 [0011] In one aspect, the invention is directed to a method for determining the amount of NT-proBNP in a sample from a feline. The method includes determining the amount of a polypeptide selected from a sequence consisting essentially of one of ASEASAIQELLDGLRDTVSEL (SEQ ID NO: 5),
LGPLQQGHSPAESWEAQEEPPARVLAPHDNVLR (SEQ ID NO:9) and
15 LQQGHSPAESWEAQEEPPARVLAPHDNVLR (SEQ ID NO:10) in the sample, and correlating the amount of the polypeptide in the sample to the amount of NT-proBNP in the sample.

[0012] In various aspects, the amount of polypeptide can be determined with mass spectrometry or an immunoassay. For instance, the immunoassay can include (a) contacting the
20 sample with a first antibody that specifically binds a polypeptide selected from a sequence consisting essentially of one of SEQ ID NO:5, SEQ ID NO:9 and SEQ ID NO: 10, (b) determining the amount of binding of the NT-proBNP in the sample to the first antibody, and (c) associating the amount of binding to the amount of NT-proBNP in the sample. In one example, the determining step includes further includes contacting a complex formed by the first antibody
25 and the NT-proBNP in the sample with a second antibody specific for feline NT-proBNP that is directly or indirectly conjugated to a label and detecting the amount of the label associated with the complex. In this aspect, the first antibody and the second antibody do not compete for binding to the same epitope on NT-proBNP. The second antibody may be specific for one of SEQ ID NO:5, SEQ ID NO:9 and SEQ ID NO: 10.

[0013] The method may also include the use of a standard, and includes contacting a standard comprising recombinant NT-proBNP with the first antibody, detecting the binding of the standard to the first antibody, and comparing the amount of binding of the first antibody to the NT-proBNP in the sample to the amount of binding of the first antibody to the standard.

5 Similarly, the method may include contacting a standard comprising recombinant NT-proBNP with the first antibody and the second antibody, and comparing a signal from the label of the second antibody that is bound to the NT-proBNP in the sample to the signal from the label of the second antibody that is bound to the standard.

[0014] In selected aspects of the invention, the antibodies are monoclonal or polyclonal
10 antibodies raised against a polypeptide selected from a sequence consisting essentially of one of SEQ ID NO:5, SEQ ID NO:9 and SEQ ID NO: 10.

[0015] In a further aspect, the invention is directed to a method for determining the presence or amount of NT-proBNP in a biological sample. The method includes: (a) forming a mixture of the sample with a first monoclonal antibody that specifically binds NT-proBNP, wherein the first
15 monoclonal antibody is conjugated to a label; (b) allowing the NT-proBNP in the sample and the first monoclonal antibody to form a complex; (c) contacting the mixture with a second antibody that binds to NT-proBNP wherein the second antibody is immobilized on a solid phase; and (d) detecting the presence or amount of the label on the solid phase.

[0016] In yet another aspect, the invention is directed to a method for determining the
20 presence or amount of NT-proBNP in a biological sample, which includes detecting a degradation product of NT-proBNP in the sample. The method can use a mass spectrometer or at least one antibody or two antibodies directed towards two different epitopes on the degradation product.

[0017] Still further, the invention is directed to a kit for determining the presence, absence or
25 level of feline NT-proBNP in a sample. The components of the kit include a solid support; a first antibody, the first antibody being specific for a first epitope on a fragment of feline NT-proBNP, the fragment being less than the full length of feline NT-proBNP and being stable in feline serum or plasma at room temperature after at least 192 hours from taking the sample; and a second antibody being specific for a second epitope on the fragment of feline NT-proBNP, the second
30 epitope being different than the first epitope.

[0018] The invention is also directed to an immunoassay device that includes: a solid support having a first antibody bound thereto, the first antibody being specific for a first epitope on a fragment of feline NT-proBNP; a fragment of feline NT-proBNP being bound to the first antibody, the fragment being less than the full length of feline NT-proBNP and being stable in
5 feline serum or plasma at room temperature after at least 192 hours from taking the sample; and a second antibody being specific for a second epitope on the fragment of feline NT-proBNP, the second epitope being different than the first epitope, the second antibody being bound to the fragment of feline NT-proBNP.

[0019] In various aspects of the kit and the device, the fragment of feline NT-proBNP is
10 selected from the group consisting of ASEASAIQELLDGLRDTVSEL (SEQ ID NO: 5); LGPLQQGHSPAESWEAQEEPPARVLAPHDNVLR (SEQ ID NO:9) and LQQGHSPAESWEAQEEPPARVLAPHDNVLR (SEQ ID NO:10).

[0020] In a further aspect, the invention is direct to a method for determining the presence or amount of feline NT-proBNP in a biological sample. The method includes:

15 (a) providing a first antibody that binds at least one of the following peptides:

ASEASAIQELLDGLRDTVSEL (SEQ ID NO:5);

DGLRDTVSEL (SEQ ID NO:6);

LDGLRDTVSELQEAQM (SEQ ID NO:7);

LGPLQQGHSPAESWEAQEEPPAR (SEQ ID NO:8);

20 LGPLQQGHSPAESWEAQEEPPARVLAPHDNVLR (SEQ ID NO:9);

LQQGHSPAESWEAQEEPPARVLAPHDNVLR (SEQ ID NO:10); and

VLAPHDNVLR (SEQ ID NO:11);

(b) providing a sample suspected of containing feline NT-proBNP or fragments thereof;

25 (c) contacting the sample with the first antibody to provide an antibody/peptide complex;

(d) providing a second antibody that forms a complex with the antibody/peptide complex; and

30 (e) detecting the presence, absence or amount of the antibody/peptide/antibody complex.

BRIEF DESCRIPTION OF THE FIGURES

[0021] Figure 1 provides an alignment of BNP polypeptide sequences from canine, feline and human (SEQ ID NOS 1, 2 and 3).

5 [0022] Figure 2 shows the results of the degradation of feline synthetic NT-proBNP in plasma.

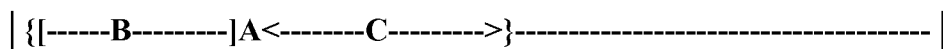
[0023] Figures 3 and 4 show the relative amounts of NT-proBNP polypeptide fragments in plasma samples after 0, 24, 96 and 192 hours of spiking with feline synthetic NT-proBNP.

DETAILED DESCRIPTION

10 [0024] Degradation products of NT-proBNP can be determined to provide an accurate and reliable measurement of the original amount of NT-proBNP in a fresh blood sample. Because the stable degradation products, and not the NT-proBNP itself, are determined, the urgency to test the sample immediately or to refrigerate the sample prior to testing is eliminated.

[0025] There are several ways to assay a sample (e.g. whole blood, serum or plasma) for NT-proBNP or its degradation products. Mass Spectrometry, for example, can be used to look for a particular peptide sequence (e.g. full length NT-proBNP or a portion thereof). Immunoassay techniques can also be used to directly or indirectly detect full length NT-proBNP or a portion thereof. In a direct assay format, monoclonal antibodies, polyclonal antibodies or combinations thereof can be used to capture and detect full length or fragments of NT-proBNP
15 (e.g., "sandwich" assays where one antibody captures the target analyte and a second, labeled antibody detects the captured analyte).

[0026] When assaying for NT-proBNP fragments in a sandwich assay, it is important to ensure the antibody pair is specific for epitopes that exist on the target, i.e. the assay will miss the fragment if one or more of the epitopes are cleaved from the original peptide or otherwise
25 become compromised or inactivated. For example, assuming the line below is full length feline | NT-proBNP |. Over time, the peptide degrades into portions {A}, [B] and <C>, where [B] and <C> are degradation products of A:



[0027] An antibody pair, one directed to an epitope on [B] and the other to an epitope on <C>, will work in a sandwich assay for {A} (or the full length peptide) as long as {A} does not degrade into [B] and <C>. If {A} degrades into [B] and <C>, a working assay for this section of the full peptide would need to have an antibody pair directed towards active epitopes on either
5 [B] or <C>.

[0028] Alternatively, in a competition immunoassay format, only one epitope of a target fragment need be identified and targeted with either a monoclonal or polyclonal antibody. In this format, if the fragment/epitope is present, it will bind with the antibody and “compete” with a detection reagent that would have otherwise bound to the antibody.

10 [0029] Preferred target NT-proBNP fragments (discussed in detail, below) are those that exist in detectable concentrations over time. By determining those fragments that are stable over time one can choose Mass Spectrometry parameters or antibodies to detect and determine the concentration of the stable fragment. Once one determines the concentration of a stable fragment, the original amount of NT-proBNP in the sample can be determined.

15 [0030] In order to assess the extent of heart damage or disease, the determination of the quantity of NT-proBNP in a sample is helpful. Quantitative determination of the degradation products of NT-proBNP (*i.e.*, a polypeptide fragment of native feline NT-proBNP) can be accomplished by several methods. Once the amount of one or more of its degradation products (the analyte) in a sample is determined, the amount NT-proBNP in the sample, prior to
20 degradation, can be determined.

[0031] Accordingly, in one aspect the invention is directed to determining the amount of NT-proBNP in a sample from a feline, wherein the method includes determining the amount of a degradation product of NT-proBNP. The amount of NT-proBNP in the sample can be used as a measurement of cardiac disease in the animal.

25 [0032] Substantial homology between species exists for BNP and NT-proBNP. For example, Figure 1 provides an alignment of BNP polypeptide sequences from human, canine and feline (SEQ ID NOS 1-3). As described above, BNP is processed prior to secretion from muscle cells as the N-terminal pro-BNP (NT-proBNP) and BNP.

[0033] Feline Synthetic NT-proBNP (fsNT-proBNP) has the following polypeptide sequence (SEQ ID NO:4):

HPLGGPGPAS EASAIQELLD GLRDTVSELQ EAQMALGPLQ
 QGHSPAESWE AQEEPPARVL APHDNVLRAL RRLGSSKM

5

[0034] As shown in FIG. 2, feline NT-proBNP is degraded (cleaved in at least one location) nearly 80% after 24 hours *ex vivo* in plasma. Because the peptide is quickly degraded, epitopes specific for various antibodies may no longer be available for binding to the antibodies. In addition, when an assay relies upon antibody pairs that bind to the same polypeptide, cleavage through degradation of the polypeptide in the region between the two epitopes recognized by the antibodies results in the antibodies not longer being able to associate and provide a signal that is indicative of the association.

10

[0035] For nomenclature purposes, the feline NT-proBNP sequence can be loosely divided into two regions: the N-terminal region, which roughly includes the N-terminal half of the peptide, and the C-terminal region, which generally includes the C-terminal half of the peptide. Preferred degradation products of NT-proBNP are shown in Figures 3 and 4, wherein NT-proBNP was incubated in feline plasma and sampled after 4, 96 and 192 hours .

15

[0036] Preferred Feline NT-proBNP N-Terminal Peptide Plasma Degradents (Figure 3):

ASEASAIQELLDGLRDTVSEL (SEQ ID NO:5);
 DGLRDTVSEL (SEQ ID NO:6); and
 LDGLRDTVSELQEAQM (SEQ ID NO:7).

20

[0037] Preferred Feline NT-proBNP C-Terminal Peptide Plasma Degradents (Figure 4):

LGPLQQGHSPAESWEAQEEPPAR (SEQ ID NO:8);
 LGPLQQGHSPAESWEAQEEPPARVLAPHDNVLR (SEQ ID NO:9);
 LQQGHSPAESWEAQEEPPARVLAPHDNVLR (SEQ ID NO:10); and
 VLAPHDNVLR (SEQ ID NO:11).

25

[0038] The most prevalent polypeptides after 192 hours were:

ASEASAIQELLDGLRDTVSEL (SEQ ID NO: 5) in the N-terminal region; and
 LGPLQQGHSPAESWEAQEEPPARVLAPHDNVLR (SEQ ID NO: 9) and
 LQQGHSPAESWEAQEEPPARVLAPHDNVLR (SEQ ID NO:10) in the C-terminal region.

30

[0039] The invention also provides antibodies that selectively bind to one of the NT-proBNP degradation products, as well as variants and further fragments thereof. As used herein, an antibody selectively binds a target peptide when it binds the target peptide and does not significantly bind to unrelated proteins. An antibody is still considered to selectively bind a peptide even if it also binds to other proteins that are not substantially homologous with the target peptide so long as such proteins share homology with a fragment or domain of the peptide target of the antibody. In this case, it would be understood that antibody binding to the peptide is still selective despite some degree of cross-reactivity.

[0040] As used herein, an antibody is defined in terms consistent with that recognized within the art: they are multi-subunit proteins produced by a mammalian organism in response to an antigen challenge. Chimeric antibodies are also within the scope of the invention. The antibodies of the present invention include polyclonal antibodies and monoclonal antibodies, as well as fragments of such antibodies, including, but not limited to, Fab or F(ab')₂, and Fv fragments.

[0041] Many methods are known for generating and/or identifying antibodies to a given target peptide. Several such methods are described by Harlow, *Antibodies*, Cold Spring Harbor Press, (1989).

[0042] In general, to generate antibodies, an isolated peptide is used as an immunogen and is administered to a mammalian organism, such as a rat, rabbit or mouse. In one aspect, the antibodies of the invention are monoclonal antibodies produced by a mouse myeloma cell line. This cell line can be made by fusing a mouse myeloma cell line with the spleen cells from mice that have been injected with the NT-proBNP fragments described herein and suitable carrier proteins that are well known to those of skill in the art.

[0043] The antibodies can be used to isolate NT-proBNP or a fragment thereof by standard techniques, such as affinity chromatography or immunoprecipitation. In one aspect, the invention is directed to an immunological method for detecting the presence of an amount of NT-proBNP in a biological sample. The invention provides a method, a device and a kit that uses one or more feline NT-proBNP monoclonal antibodies. In another aspect, the method includes calibrators and standards comprising one or more NT-proBNP polypeptides.

[0044] Stable fragments NT-proBNP can also be used to purify polyclonal antibodies from sera (e.g. from chickens, goats, sheep and/or donkeys that have been immunized with all or a portion of the NT-proBNP sequence).

[0045] As used herein, antibodies that have been raised against a particular polypeptide sequence refer to polyclonal or monoclonal antibodies that have been obtained after immunizing an animal with the polypeptide, such as well known in the art, usually conjugated to a suitable carrier.

[0046] "Binding specificity" or "specific binding" refers to the substantial recognition of a first molecule for a second molecule, for example a polypeptide and a polyclonal or monoclonal antibody, or an antibody fragment (e.g. a Fv, single chain Fv, Fab', or F(ab')₂ fragment) specific for the polypeptide.

[0047] A "specific binding pair" is a set of two different molecules, where one molecule has an area on its surface or in a cavity that specifically binds to, and is therefore complementary to, an area on the other molecule. "Specific binding partner" refers to one of these two complementarily binding molecules. "Specific binding pair" may refer to a ligand and a receptor, for example. In another example, the specific binding pair might refer to an immunological pair, for example an antigen and antibody.

[0048] "Substantial binding" or "substantially bind" refer to an amount of specific binding or recognizing between molecules in an assay mixture under particular assay conditions. In its broadest aspect, substantial binding relates to the difference between a first molecule's incapability of binding or recognizing a second molecule, and the first molecule's capability of binding or recognizing a third molecule, such that the difference is sufficient to allow a meaningful assay to be conducted distinguishing specific binding under a particular set of assay conditions, which includes the relative concentrations of the molecules, and the time and temperature of an incubation. In another aspect, one molecule is substantially incapable of binding or recognizing another molecule in a cross-reactivity sense where the first molecule exhibits a reactivity for a second molecule that is less than 25%, preferably less than 10%, more preferably less than 5% of the reactivity exhibited toward a third molecule under a particular set of assay conditions, which includes the relative concentration and incubation of the molecules. Specific binding can be tested using a number of widely known methods, e.g. an

immunohistochemical assay, an enzyme-linked immunosorbent assay (ELISA), a radioimmunoassay (RIA), or a western blot assay.

[0049] A "blood sample" refers to a whole blood sample from an animal or its components (e.g., serum, plasma, etc.).

5 [0050] A "label" is any molecule that is bound (via covalent or non-covalent means, alone or encapsulated) to another molecule or solid support and that is chosen for specific characteristics that allow detection of the labeled molecule. Generally, labels are comprised of, but are not limited to, the following types: particulate metal and metal-derivatives, radioisotopes, catalytic or enzyme-based reactants, chromogenic substrates and chromophores, fluorescent and
10 chemiluminescent molecules, and phosphors. The utilization of a label produces a signal that may be detected by means such as detection of electromagnetic radiation or direct visualization, and that can optionally be measured.

[0051] The label employed in the current invention could be, but is not limited to: alkaline phosphatase; glucose-6-phosphate dehydrogenase ("G6PDH"); horse radish peroxidase (HRP);
15 chemiluminescers such as isoluminol, fluorescers such as fluorescein and rhodamine compounds; ribozymes; and dyes.

[0052] The label can directly produce a signal, and therefore additional components are not required to produce a signal. Alternatively, a label may need additional components, such as substrates or co-enzymes, in order to produce a signal. The suitability and use of such labels
20 useful for producing a signal are discussed in U.S. Patent No. 6,489,309, and U.S. Patent No. 5,185,243, which are incorporated by reference herein in their entirety. For example, a label may be conjugated to the specific binding partner in a non-covalent fashion. Alternatively, the label may be conjugated to the specific binding partner covalently. U.S. Patent No 3,817,837, and U.S. Patent No. 3,996,345, which are incorporated by reference herein in their entirety, describe
25 in detail example of various ways that a label may be non-covalently or covalently conjugated to the specific binding partner.

[0053] Solid phase means a porous or non-porous water insoluble material. Such materials include a support or a surface such as the wall of a reaction vessel. The support can be hydrophilic or capable of being rendered hydrophilic and includes inorganic powders such as
30 silica, magnesium sulfate, and alumina; natural polymeric materials, particularly cellulosic

materials and materials derived from cellulose, such as fiber containing papers, e.g., filter paper, chromatographic paper, etc.; synthetic or modified naturally occurring polymers, such as nitrocellulose, cellulose acetate, poly(vinyl chloride), polyacrylamide, cross linked dextran, agarose, polyacrylate, polyethylene, polypropylene, poly(4-methylbutene), polystyrene, polymethacrylate, poly(ethylene terephthalate), nylon, poly(vinyl butyrate), etc.; either used by themselves or in conjunction with other materials; glass available as Bioglass, ceramics, metals, and the like. Natural or synthetic assemblies such as liposomes, phospholipid vesicles, and cells can also be employed.

[0054] Binding of specific binding pair members to a support or surface may be accomplished by well-known techniques, commonly available in the literature. See, for example, "Immobilized Enzymes," Ichiro Chibata, Halsted Press, New York (1978) and Cuatrecasas, J. Biol. Chem., 245:3059 (1970). The surface can have any one of a number of shapes, such as strip, rod, particle, including bead, and the like. In one aspect, the polypeptides of the invention include a N-terminal cysteine residue to assist in binding the polypeptides to the solid phase.

[0055] The method of the invention can be optimized in many ways and one of skill in the art could simultaneously adjust the sample dilutions, reagent concentrations, incubation temperatures and times used in the method to accomplish detection of NT-proBNP.

[0056] To be useful in the detection methods of the present invention, the polypeptides are obtained in a substantially pure form, that is, typically from about 50% w/w or more purity, substantially free of interfering proteins and contaminants. Preferably, the polypeptides are isolated or synthesized in a purity of at least 80% w/w, and more preferably, in at least about 95% w/w purity. Using conventional protein purification techniques, homogeneous polypeptide compositions of at least about 99% w/w purity can be obtained. For example, the proteins may be purified by use of the antibodies described hereinafter using the immunoabsorbant affinity columns described hereinabove.

[0057] The method of the invention may be accomplished using immunoassay techniques well known to those of skill in the art, including, but not limited to, using microplates and lateral flow devices. In one embodiment, an antibody specific for NT-proBNP protein is immobilized on a solid support at a distinct location. Following addition of the sample, detection of protein-antibody complexes on the solid support can be by any means known in the art. For example,

U.S. Patent No. 5,726,010, which is incorporated herein by reference in its entirety, describes an example of a lateral flow device, the SNAP[®] immunoassay device (IDEXX Laboratories), useful in the present invention. In another aspect, the solid support is a well of a microtiter plate.

[0058] Immobilization of one or more analyte capture reagents, e.g., antibodies to NT-proBNP, onto a device or solid support is performed so that an analyte capture reagent will not be washed away by the sample, diluent and/or wash procedures. One or more analyte capture reagents can be attached to a surface by physical adsorption (i.e., without the use of chemical linkers) or by chemical binding (i.e., with the use of chemical linkers). Chemical binding can generate stronger attachment of specific binding substances on a surface and provide defined orientation and conformation of the surface-bound molecules.

[0059] In another aspect, the invention includes one or more labeled specific binding reagents that can be mixed with a test sample prior to application to a device for of the invention. In this case it is not necessary to have labeled specific binding reagents deposited and dried on a specific binding reagent pad in the device. A labeled specific binding reagent, whether added to a test sample or pre-deposited on the device, can be for example, a labeled NT-proBNP monoclonal antibody.

[0060] The detection method may include the use of a standard such as a recombinant NT-proBNP polypeptide. The standard can be mixed with the monoclonal antibody or antibodies in the same manner as the sample. The amount of binding between the monoclonal antibody or antibodies and the standard can be compared to the amount of binding of the antibodies to the protein in the sample. Accordingly, because the amount of NT-proBNP in the standard is known, the amount of protein in the sample can be determined.

[0061] Any or all of the above embodiments can be provided as a kit. In one particular example, such a kit can include, for example, a solid support, a first antibody specific for a first epitope on a fragment of feline NT-proBNP. The fragment can be less than the full length of feline NT-proBNP and stable in feline serum or plasma at room temperature after at least 192 hours from taking the sample. Such fragments are described above; for example SEQ ID NO:5, SEQ ID NO:9 and SEQ ID NO:10. The kit can also include a second antibody being specific for a second epitope on the fragment of feline NT-proBNP, the second epitope being different than the first epitope.

[0062] The kit can include a device complete with specific binding reagents (e.g., a non-immobilized labeled specific binding reagent and an immobilized analyte capture reagent) and wash reagent, as well as detector reagent and positive and negative control reagents, if desired or appropriate. In addition, other additives can be included, such as stabilizers, buffers, and the like.

5 The relative amounts of the various reagents can be varied, to provide for concentrations in solution of the reagents that substantially optimize the sensitivity of the assay. Particularly, the reagents can be provided as dry powders, usually lyophilized, which on dissolution will provide for a reagent solution having the appropriate concentrations for combining with a sample.

[0063] The device may also include a liquid reagent that transports unbound material (e.g., unreacted fluid sample and unbound specific binding reagents) away from the reaction zone (solid phase). A liquid reagent can be a wash reagent and serve only to remove unbound material from the reaction zone, or it can include a detector reagent and serve to both remove unbound material and facilitate analyte detection. For example, in the case of a specific binding reagent conjugated to an enzyme, the detector reagent includes a substrate that produces a
15 detectable signal upon reaction with the enzyme-antibody conjugate at the reactive zone. In the case of a labeled specific binding reagent conjugated to a radioactive, fluorescent, or light-absorbing molecule, the detector reagent acts merely as a wash solution facilitating detection of complex formation at the reactive zone by washing away unbound labeled reagent.

[0064] Two or more liquid reagents can be present in a device, for example, a device can
20 comprise a liquid reagent that acts as a wash reagent and a liquid reagent that acts as a detector reagent and facilitates analyte detection.

[0065] A liquid reagent can further include a limited quantity of an "inhibitor", i.e., a substance that blocks the development of the detectable end product. A limited quantity is an amount of inhibitor sufficient to block end product development until most or all excess,
25 unbound material is transported away from the second region, at which time detectable end product is produced.

[0066] In one aspect, the device is provided upon binding of NT-proBNP from the sample to the antibody immobilized on the device. Accordingly, the device has a solid support having a first antibody bound thereto, the first antibody being specific for a first epitope on a fragment of
30 feline NT-proBNP. A fragment of feline NT-proBNP becomes bound to the first antibody, the

fragment being less than the full length of feline NT-proBNP. This fragment is, for example, one of the fragments describe above and is stable in feline serum or plasma at room temperature after at least 192 hours from taking the sample. The device also includes a second antibody being specific for a second epitope on the fragment of feline NT-proBNP, the second epitope
5 being different than the first epitope, the second antibody being bound to the fragment of feline NT-proBNP. Therefore, the device is complete upon sandwiching the fragment between the first and second antibodies, as would occur upon application of a sample containing NT-proBNP to the device.

[0067] Detection of NT-proBNP by Mass Spectrometry

10 [0068] Peptides and peptide fragments of the disclosure may be detected using standard mass spectrometric techniques. In mass spectrometry (MS), the analyte is first vaporized and ionized, then the ions are directed to a mass analyzer, in which electromagnetic fields are used to separate species by mass. Lastly, a detector quantifies the abundance of each species.

[0069] Standard ionization techniques that are well known in the art include electrospray
15 ionization (ESI) and matrix-assisted laser desorption ionization (MALDI), which are commonly used with liquid and solid biological samples. Other ionization technologies known in the art include thermal ionization (TIMS), spark ionization, secondary ion mass spectrometry (SIMS), atmospheric pressure chemical ionization (APCI), ion attachment ionization, direct analysis in real time (DART), desorption/ionization on silicon (DIOS), thermospray ionization, fast atom
20 bombardment (FAB), field desorption, glow discharge, and inductively couple plasma (ICP). Examples of well-known mass analyzers include sector field, time-of-flight (TOF), quadrupole, quadrupole ion trap (IT), linear quadrupole ion trap, Fourier transform ion cyclotron resonance (FT-ICR), and orbitrap mass analyzers. Examples of well-known detectors include electron multiplier, Faraday cup, microchannel plate, and Daly detectors.

25 [0070] Mass analyzers segregate ions according to their mass-to-charge ratio (m/z , where m is mass and z is charge). For example, a peptide of molecular weight P with two positive charges will have a net mass of $(P + 2)$ due to the ionizing presence of two protons, and will appear on a mass spectrum at $m/z = (P + 2)/2$. Thus, in general, a molecule of molecular weight M with charge Z will appear on a mass spectrum at $m/z = (M + Z)/Z$.

[0071] Mass spectrometry can be combined with liquid chromatography (LC) or gas chromatography (GC) to facilitate detection and identification of compounds residing within a complex mixture. In liquid chromatography-mass spectrometry (LC/MS), the analyte solution is first passed through a high-performance liquid chromatography (HPLC) column, which may
5 separate components by a characteristic such as hydrophobicity, partition coefficient, polarity, bioaffinity, charge, or size using well-known chromatographic techniques such as reversed-phase chromatography, normal phase chromatography, displacement chromatography, partition chromatography, ion exchange chromatography, size exclusion chromatography, or bioaffinity chromatography. The mass spectrometer then generates a mass spectrum for each peak in the
10 HPLC chromatogram. Using LC/MS, a single species of interest can be separated and identified from within complex biological mixtures such as plasma or serum.

[0072] LC can also be combined with a tandem mass spectrometer (MS/MS), which is capable of multiple rounds of mass spectrometry for purposes such as protein identification. An MS/MS system can isolate and stabilize an individual ion species appearing in a mass spectrum,
15 which is then fragmented using any one of several well-known techniques, such as collision-induced dissociation (CID), electron capture dissociation (ECD), electron transfer dissociation (ETD), infrared multiphoton dissociation (IRMPD), and blackbody infrared radiative dissociation (BIRD). The fragments are themselves analyzed by MS to generate a fragment mass spectrum, also called a fragmentation pattern. In the case of protein identification, an
20 experimentally derived fragmentation pattern (generated from a sample with an unknown protein or peptide) can be compared with fragmentation patterns that have been predicted from information in protein sequence or nucleotide sequence databases. A high degree of similarity between experimental and predicted fragmentation patterns leads to identification of the unknown protein in the sample.

25 [0073] Other features and advantages of the invention will be apparent from the following Examples. The following are provided for exemplification purposes only and are not intended to limit the scope of the invention described in broad terms above. All references cited in this disclosure are incorporated herein by reference.

Examples

[0074] LC/MS analyses were obtained using a Thermo-Scientific ACCELA UHPLC and LTQ ORBITRAP DISCOVERY™ mass spectrometry systems.

[0075] For plasma extraction, 100uL of plasma was precipitated by addition of 200uL methanol in a 1.5 mL protein LoBind eppendorf tube. After vortexing for 10 seconds, the precipitate was pelleted by centrifugation at 13,000 rpm for 15 minutes at 10°C using a benchtop centrifuge. The supernatant was transferred to a limited volume glass HPLC vial and analyzed by LC/MS as described in the following examples.

[0076] **Example 1 -- MS analysis of degradation kinetics of NT-proBNP in feline plasma**

[0077] Degradation kinetics of whole feline synthetic (fs) NT-proBNP in feline plasma were investigated by adding 1.0 µg fsNT-proBNP to 1mL of feline plasma prepared as described above. Aliquots of the plasma were analyzed by LC/MS at 0, 4, 24, and 48 hours after addition of the peptide. As shown in Figure 2, approximately 80% of the peptide was degraded after 24 hours.

[0078] The LC gradient for this example is shown in Table 1, where Solvent C is 0.1% formic acid in water and Solvent D is 0.1% formic acid in acetonitrile.

Table 1.

No	Time	A%	B%	C%	D%	µL/min
1	0	0	0	100	0	300
2	5	0	0	100	0	300
3	23	0	0	65	35	300
4	26	0	0	65	35	300
5	44	0	0	5	95	300
6	46	0	0	5	95	300
7	46.5	0	0	100	0	300
8	60	0	0	100	0	300

Column: Acquity UPLC BEH300 C₁₈ 1.7µM 2.1id x 150mm length

Guard Column: vanguard BEH C₁₈ 1.7uM

Injection volume: 25µL

Tray temp: 10°C

Column oven temp: 45°C

MS run time: 60.0 minutes

[0079] The mass spec parameters for degradation kinetics are shown in Table 2:

Table 2

MS run time: 60.0 minutes

Divert valve:

Divert Time	Valve State
0.00	To waste
4.95	To source
55	To waste

5

Number of Scan Events: 1

Tune Method: 031710 peptide tune

[0080] Scan Event Details:

10 1: FTMS + c norm res=30000 o(375.0-2000.0)

CV = 0.0V

Default Charge State: 2

Activation Q: 0.250

Activation Time: 30.000

15 CV = 0.0V

[0081] MS Tune File Values

Source Type: ESI

Capillary Temp (°C): 250.00

Sheath gas Flow: 24.0

20 Aux Gas Flow: 13.0

Sweep Gas Flow: 0

ITMS MSn AGC Target: 10000

FTMS Injection waveforms: off

FTMS AGC Target: 500000

25 Source voltage (kV): 4.50

Source current (µA): 100.00

Capillary Voltage (V): 68.28

Tube Lens (V): 130.00

Skimmer Offset (V): 0.00

30 Multipole RF Amplifier (V_{p-p}): 550.00

Multipole 00 offset (V): -1.60

Lens 0 Voltage (V): -2.70

Multipole 0 offset (V): -2.70

Lens 1 Voltage (V): -11.00

35 Gate Lens offset (V): -60.00

Multipole 1 offset (V): -10.5

Front Lens (V): -5.18

ITMS MSn microscans: 3

ITMS MSn Max Ion Time (ms): 100.00

FTMS full microscans: 1

FTMS full Max Ion Time (ms): 500.00

[0082] The Mass Spec parameters used for determining peptide degradation products are shown in Table 3.

5 **Table 3**

MS run time: 60.0 minutes

Divert valve:

Divert Time	Valve State
0.00	To waste
4.95	To source
55	To waste

Number of Scan Events: 6

10 Tune Method: 031710 peptide tune

[0083] Scan Event Details:

1: FTMS + c norm res=30000 o(375.0-2000.0)

CV = 0.0V

15 2: ITMS + c norm Dep MS/MS Most intense ion from (1)

Activation Type: CID

Min. Signal Required: 500.0

Isolation Width: 1.50

Normalized Coll. Energy: 35.0

20 Default Charge State: 2

Activation Q: 0.250

Activation Time: 30.000

CV = 0.0V

25 3: ITMS + c norm Dep MS/MS 2nd most intense ion from (1)

Activation Type: CID

Min. Signal Required: 500.0

Isolation Width: 2.00

Normalized Coll. Energy: 35.0

30 Default Charge State: 2

Activation Q: 0.250

Activation Time: 30.000

CV = 0.0V

35 4: ITMS + c norm Dep MS/MS 3rd most intense ion from (1)

Activation Type: CID

Min. Signal Required: 500.0

Isolation Width: 2.00

Normalized Coll. Energy: 35.0

Default Charge State: 2

Activation Q: 0.250

Activation Time: 30.000
CV = 0.0V

5: ITMS + c norm Dep MS/MS 4th most intense ion from (1)

5 Activation Type: CID
Min. Signal Required: 500.0
Isolation Width: 1.50
Normalized Coll. Energy: 35.0
Default Charge State: 2
10 Activation Q: 0.250
Activation Time: 30.000
CV = 0.0V

6: ITMS + c norm Dep MS/MS 5th most intense ion from (1)

15 Activation Type: CID
Min. Signal Required: 500.0
Isolation Width: 1.50
Normalized Coll. Energy: 35.0
Default Charge State: 2
Activation Q: 0.250
20 Activation Time: 30.000
CV = 0.0V

[0084] Data Dependent Settings:

Use separate polarity settings disabled
25 Parent Mass List: (none)
Reject Mass List: (none)
Neutral Loss Mass List: (none)
Product Mass List: (none)
Neutral loss in top: 3
Product in top: 3
30 Most intense if no parent masses found not enabled
Add/subtract mass not enabled
FT master scan preview mode enabled
Charge state screening enabled
Monoisotopic precursor selection enabled
35 Non-peptide monoisotopic recognition not enabled
Charge state rejection enabled
Unassigned charge states : rejected
Charge state 1 : not rejected
Charge state 2 : not rejected
40 Charge state 3 : not rejected
Charge states 4+ : not rejected

[0085] Global Data Dependent Settings:

45 Use global parent and reject mass lists not enabled
Exclude parent mass from data dependent selection not enabled

Exclusion mass width relative to mass
Exclusion mass width relative to low (ppm): 20.000
Exclusion mass width relative to high (ppm): 20.000
Parent mass width relative to mass
5 Parent mass width relative to low (ppm): 10.000
Parent mass width relative to high (ppm): 10.000
Reject mass width relative to mass
Reject mass width relative to low (ppm): 20.000
Reject mass width relative to high (ppm): 20.000
10 Zoom/UltraZoom scan mass width by mass
Zoom/UltraZoom scan mass width low: 5.00
Zoom/UltraZoom scan mass width high: 5.00
FT SIM scan mass width low: 5.00
FT SIM scan mass width high: 5.00
15 Neutral Loss candidates processed by decreasing intensity
Neutral Loss mass width by mass
Neutral Loss mass width low: 0.50000
Neutral Loss mass width high: 0.50000
Product candidates processed by decreasing intensity
20 Product mass width by mass
Product mass width low: 0.50000
Product mass width high: 0.50000
MS mass range: 0.00-1000000.00
MSn mass range by mass
25 MSn mass range: 0.00-1000000.00
Use m/z values as masses not enabled
Analog UV data dep. not enabled
Dynamic exclusion enabled
Repeat Count: 2
30 Repeat Duration: 30.00
Exclusion List Size: 500
Exclusion Duration: 60.00
Exclusion mass width relative to mass
Exclusion mass width relative to low (ppm): 20.000
35 Exclusion mass width relative to high (ppm): 20.000
Expiration: disabled
Isotopic data dependence not enabled
Mass Tags data dependence not enabled4
40 [0086] MS Tune File Values
Source Type: ESI
Capillary Temp (°C): 250.00
Sheath gas Flow: 24.0
Aux Gas Flow: 13.0
45 Sweep Gas Flow: 0
ITMS MSn AGC Target: 10000

FTMS Injection waveforms: off
 FTMS AGC Target: 500000
 Source voltage (kV): 4.50
 Source current (μ A): 100.00
 5 Capillary Voltage (V): 68.28
 Tube Lens (V): 130.00
 Skimmer Offset (V): 0.00
 Multipole RF Amplifier (Vp-p): 550.00
 Multipole 00 offset (V): -1.60
 10 Lens 0 Voltage (V): -2.70
 Multipole 0 offset (V): -2.70
 Lens 1 Voltage (V): -11.00
 Gate Lens offset (V): -60.00
 Multipole 1 offset (V): -10.5
 15 Front Lens (V): -5.18
 ITMS MSn microscans: 3
 ITMS MSn Max Ion Time (ms): 100.00
 FTMS full microscans: 1
 FTMS full Max Ion Time (ms): 500.00

20 [0087] **Example 2: Characterization of stable degradation products of feline NT-proBNP**

[0088] To characterize the fsNT-proBNP stable degradation products present after incubation in feline plasma, fsNT-proBNP was added to feline plasma at 1, 5, and 10 μ g/mL and
 25 incubated at room temperature. At 0, 24, 48, 96, and 192 hours, 100 μ L aliquots of the plasma were collected and combined with 200 μ L of methanol to form a precipitate. After centrifugation, the supernatant was analyzed for stable peptides by LC/MS as described in Example 1.

[0089] The relative abundance of several fragments from the N-terminal, capture, and C-terminal regions were evaluated over time. These data are shown in Figures 3 and 4, and
 30 indicate that the most stable fragment sequences over time were ASEASAIQELLDGLRDTVSEL (SED ID NO: 5) from the N-terminal region and LGPLQQGHSPAESWEAQEEPPARVLAPHDNVLR (SED ID NO: 9) and LQQGHSPAESWEAQEEPPARVLAPHDNVLR (SEQ ID NO:10); from the C-terminal
 35 region.

[0090] **Example 3: Identification of Stable Epitopes of Feline NT-proBNP**

[0091] To identify stable peptide epitopes, a database containing the amino acid sequence of fsNT-proBNP (SEQ ID NO:1) in FASTA format was created. The RAW file of interest acquired from the LC-MS run was uploaded along with the FASTA database to Proteome Discoverer software (v 1.0 Thermo Scientific) for identification of the stable epitopes using SEQUEST.

5 [0092] The peptides that satisfy the criteria as directed in the Proteome Discover Software were identified as stable epitopes for a particular time series.

[0093] **Example 4: Immunoassay for feline NT-proBNP**

[0094] Immunoassays can be conducted using monoclonal antibodies specific for stable feline NT-proBNP degradation fragments (SEQ ID NOS: 5, 9 and 10) at, for example, 24, 48, 72
10 and 96 hours. Sheep polyclonal antibodies raised against various fragment of feline NT-proBNP can be coated on a solid phase. Monoclonal antibodies can be raised against any of SEQ ID NOS:5, 9 and 10, and conjugated at either or both the N and C terminus with a protein carrier, for example, (PEG)6-Cys-KLH. The antibodies can be labeled with HRP or another label using standard techniques known in the art. Feline plasma incubated with the solid
15 phase for 1 hour followed by a second incubation with the labeled antibodies allow for the detection of the label on the solid phase when the polyclonal and monoclonal antibodies bind to the same degradation fragment of feline NT-proBNP.

[0095] The examples given above are merely illustrative and are not meant to be an exhaustive list of all possible embodiments, applications or modifications of the invention. Thus,
20 various modifications and variations of the described methods and systems of the invention will be apparent to those skilled in the art without departing from the scope and spirit of the invention. Although the invention has been described in connection with specific embodiments, it should be understood that the invention as claimed should not be unduly limited to such specific embodiments. Indeed, various modifications of the described modes for carrying out the
25 invention which are obvious to those skilled in molecular biology, immunology, chemistry, biochemistry or in the relevant fields are intended to be within the scope of the appended claims.

[0096] It is understood that the invention is not limited to the particular methodology, protocols, and reagents, etc., described herein, as these may vary as the skilled artisan will recognize. It is also to be understood that the terminology used herein is used for the purpose of
30 describing particular embodiments only, and is not intended to limit the scope of the invention.

[0097] The embodiments of the invention and the various features and advantageous details thereof are explained more fully with reference to the non-limiting embodiments and/or illustrated in the accompanying drawings and detailed in the following description. It should be noted that the features illustrated in the drawings are not necessarily drawn to scale, and features of one embodiment may be employed with other embodiments as the skilled artisan would recognize, even if not explicitly stated herein.

[0098] Any numerical values recited herein include all values from the lower value to the upper value in increments of one unit provided that there is a separation of at least two units between any lower value and any higher value. As an example, if it is stated that the concentration of a component or value of a process variable such as, for example, size, angle size, pressure, time and the like, is, for example, from 1 to 90, specifically from 20 to 80, more specifically from 30 to 70, it is intended that values such as 15 to 85, 22 to 68, 43 to 51, 30 to 32, etc. are expressly enumerated in this specification. For values which are less than one, one unit is considered to be 0.0001, 0.001, 0.01 or 0.1 as appropriate. These are only examples of what is specifically intended and all possible combinations of numerical values between the lowest value and the highest value enumerated are to be considered to be expressly stated in this application in a similar manner.

[0099] Particular methods, devices, and materials are described, although any methods and materials similar or equivalent to those described herein can be used in the practice or testing of the invention. The disclosures of all references and publications cited herein are expressly incorporated by reference in their entireties to the same extent as if each were incorporated by reference individually.

WHAT IS CLAIMED IS:

1. A method for determining the amount of NT-proBNP in a sample from a feline comprising determining the amount of a polypeptide selected from a sequence consisting essentially of one of ASEASAIQELLDGLRDTVSEL (SED ID NO: 5),
5 LGPLQQGHSPAESWEAQEEPPARVLAPHDNVLR (SEQ ID NO:9) and LQQGHSPAESWEAQEEPPARVLAPHDNVLR (SEQ ID NO:10) in the sample, and correlating the amount of the polypeptide in the sample to the amount of NT-proBNP in the sample.
2. The method according to claim 1, wherein the amount of polypeptide is determined with
10 mass spectrometry.
3. The method of claim 1, further comprising:
 - (a) contacting the sample with a first antibody that specifically binds a polypeptide selected from a sequence consisting essentially of one of SEQ ID NO:5, SEQ ID NO:9 and SEQ ID NO: 10,
 - 15 (b) determining the amount of binding of the NT-proBNP in the sample to the first antibody, and
 - (c) associating the amount of binding to the amount of NT-proBNP in the sample.
4. The method of claim 3, wherein the determining further comprises: contacting a complex formed by the first antibody and the NT-proBNP in the sample with a second antibody specific
20 for feline NT-proBNP, wherein the second antibody is directly or indirectly conjugated to a label; and detecting the amount of the label associated with the complex, wherein the first antibody and the second antibody do not compete for binding to the same epitope on NT-proBNP.
5. The method of claim 4, wherein the second antibody is specific for one of SEQ ID NO:5,
25 SEQ ID NO:9 and SEQ ID NO: 10.
6. The method of claim 3, further comprising contacting a standard comprising recombinant NT-proBNP with the first antibody, detecting the binding of the standard to the first antibody,

and comparing the amount of binding of the first antibody to the NT-proBNP in the sample to the amount of binding of the first antibody to the standard.

7. The method of claim 5, further comprising contacting a standard comprising recombinant NT-proBNP with the first antibody and the second antibody, and comparing a signal from the label of the second antibody that is bound to the NT-proBNP in the sample to the signal from the label of the second antibody that is bound to the standard.
8. The method of claim 3, wherein the first antibody is a first monoclonal antibody raised against a polypeptide selected from a sequence consisting essentially of one of SEQ ID NO:5, SEQ ID NO:9 and SEQ ID NO: 10.
9. The method of claim 3, wherein the second antibody is a second monoclonal antibody raised against a polypeptide selected from a sequence consisting essentially of one of SEQ ID NO:5, SEQ ID NO:9 and SEQ ID NO: 10.
10. A method for determining the presence or amount of NT-proBNP in a biological sample comprising:
- (a) forming a mixture of the sample with a first monoclonal antibody that specifically binds NT-proBNP, wherein the first monoclonal antibody is conjugated to a label;
 - (b) allowing the NT-proBNP in the sample and the first monoclonal antibody to form a complex;
 - (c) contacting the mixture with a second antibody that binds to NT-proBNP wherein the second antibody is immobilized on a solid phase; and
 - (d) detecting the presence or amount of the label on the solid phase.
11. A method for determining the presence or amount of NT-proBNP in a biological sample comprising detecting a degradation product of NT-proBNP in the sample.
12. The method of claim 11, wherein the method comprises the use of a Mass Spectrometer.
13. The method of claim 11, wherein the method comprises the use of at least one antibody.
14. The method of claim 11, wherein the method comprises the use of at least two antibodies directed towards two different epitopes on the degradation product.

15. A kit for determining the presence, absence or level of feline NT-proBNP in a sample comprising:

- (a) a solid support;
- (b) a first antibody, the first antibody being specific for a first epitope on a fragment of feline NT-proBNP, the fragment being less than the full length of feline NT-proBNP and being stable in feline serum or plasma at room temperature after at least 192 hours from taking the sample; and
- (c) a second antibody being specific for a second epitope on the fragment of feline NT-proBNP, the second epitope being different than the first epitope.

10 16. The kit of claim 15, wherein the fragment of feline NT-proBNP is selected from the group consisting of ASEASAIQELLDGLRDTVSEL (SED ID NO: 5);
LGPLQQGHSPAESWEAQEEPPARVLAPHDNVLR (SEQ ID NO:9) and
LQQGHSPAESWEAQEEPPARVLAPHDNVLR (SEQ ID NO:10).

17. An immunoassay device comprising:

- (a) a solid support having a first antibody bound thereto, the first antibody being specific for a first epitope on a fragment of feline NT-proBNP;
- (b) a fragment of feline NT-proBNP being bound to the first antibody, the fragment being less than the full length of feline NT-proBNP and being stable in feline serum or plasma at room temperature after at least 192 hours from taking the sample; and
- (c) a second antibody being specific for a second epitope on the fragment of feline NT-proBNP, the second epitope being different than the first epitope, the second antibody being bound to the fragment of feline NT-proBNP.

25 18. The immunoassay device of claim 17 wherein the fragment of feline NT-proBNP is selected from the group consisting of ASEASAIQELLDGLRDTVSEL (SED ID NO: 5);
LGPLQQGHSPAESWEAQEEPPARVLAPHDNVLR (SEQ ID NO:9) and
LQQGHSPAESWEAQEEPPARVLAPHDNVLR (SEQ ID NO:10).

19. A method for determining the presence or amount of feline NT-proBNP in a biological sample comprising:

(a) providing a first antibody that binds at least one of the following peptides:

ASEASAIQELLDGLRDTVSEL (SEQ ID NO:5);

DGLRDTVSEL (SEQ ID NO:6);

LDGLRDTVSELQEAQM (SEQ ID NO:7);

5

LGPLQQGHSPAESWEAQEEPPAR (SEQ ID NO:8);

LGPLQQGHSPAESWEAQEEPPARVLAPHDNVLR (SEQ ID NO:9);

LQQGHSPAESWEAQEEPPARVLAPHDNVLR (SEQ ID NO:10); and

VLAPHDNVLR (SEQ ID NO:11);

(b) providing a sample suspected of containing feline NT-proBNP or fragments thereof;

10

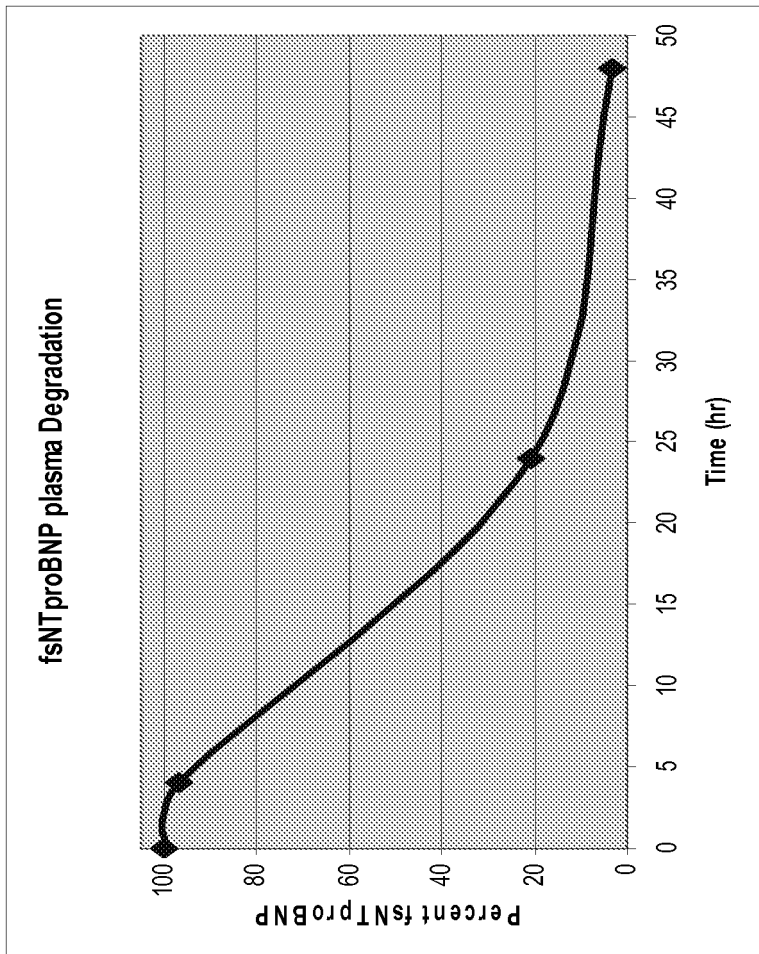
(c) contacting the sample with the first antibody to provide an antibody/peptide complex;

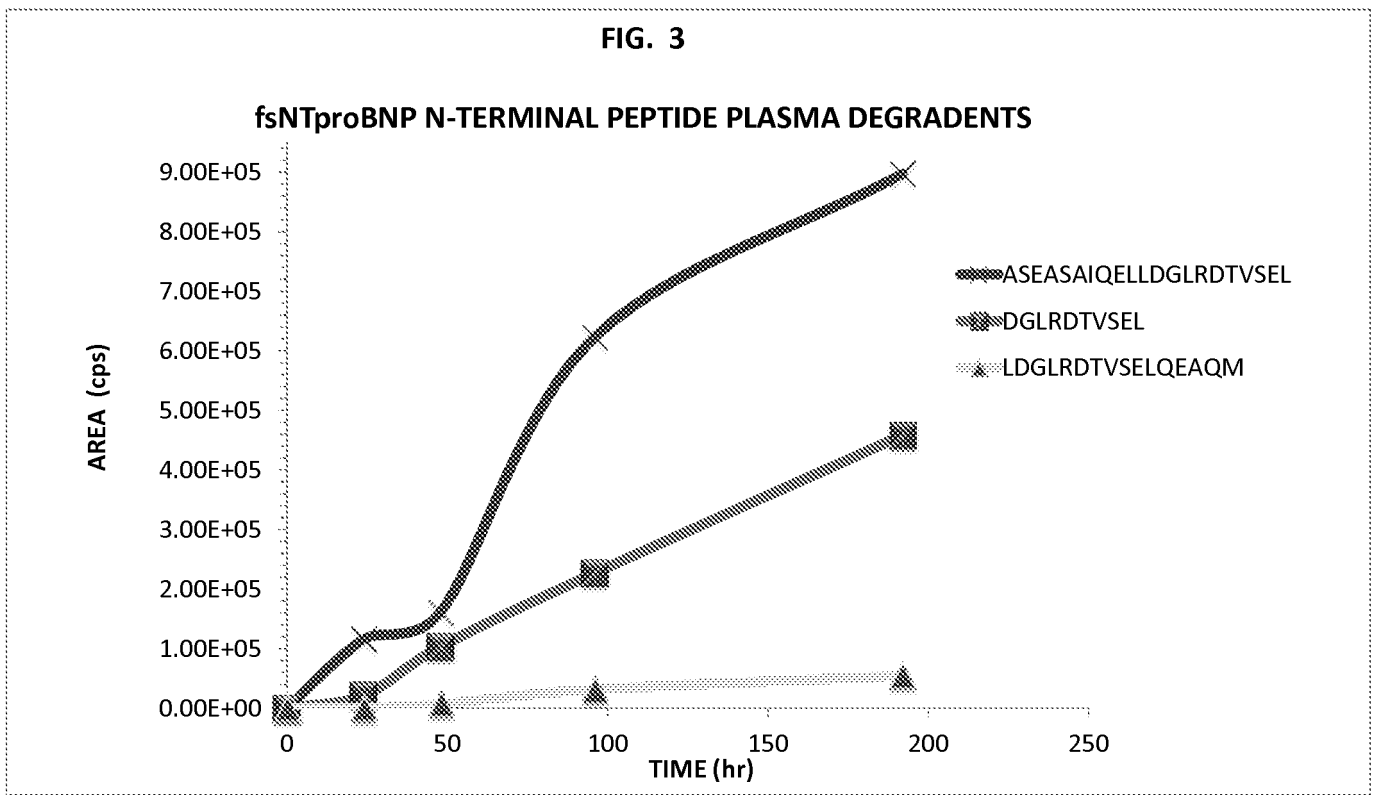
(d) providing a second antibody that forms a complex with the antibody/peptide complex; and

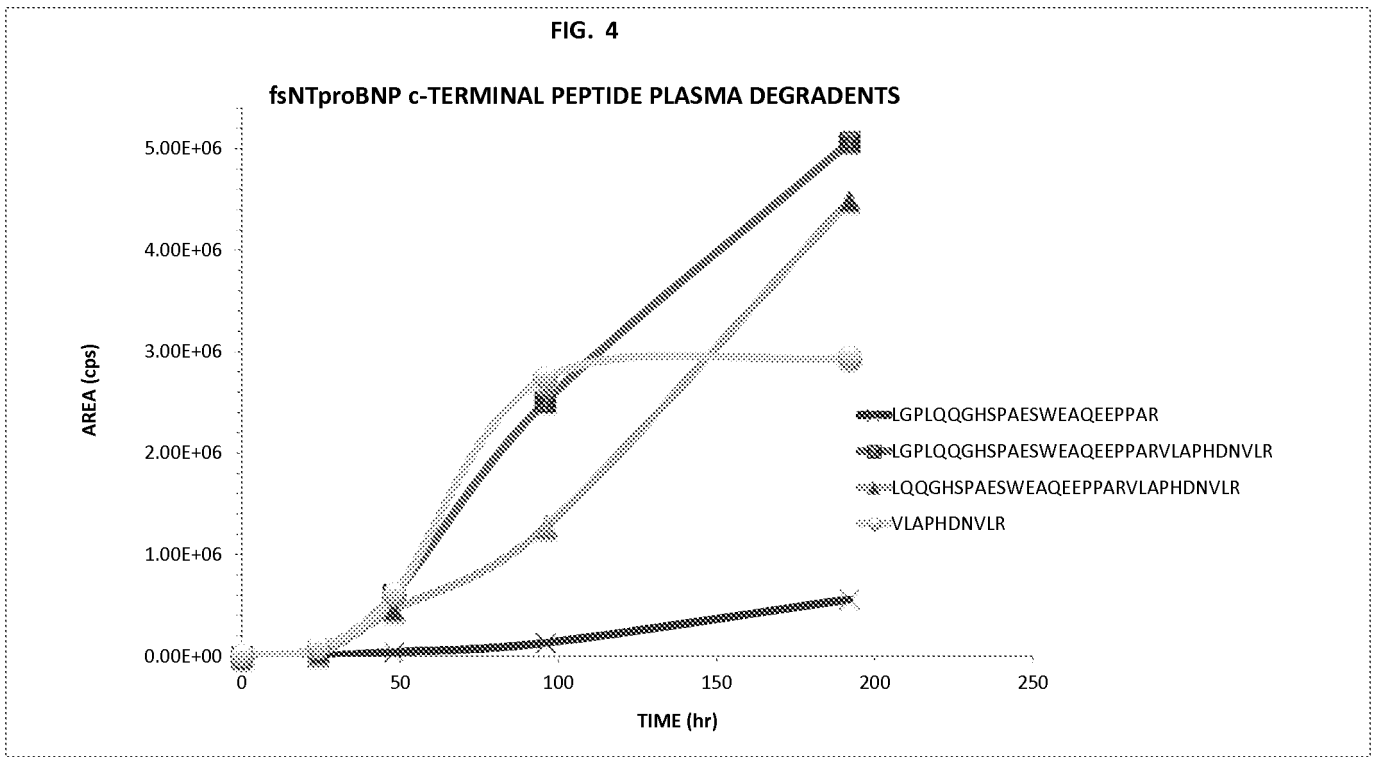
15

(e) detecting the presence, absence or amount of the antibody/peptide/antibody complex.

FIGURE 2







INTERNATIONAL SEARCH REPORT

International application No.
PCT/US 12/40207

A. CLASSIFICATION OF SUBJECT MATTER
 IPC(8) - G01N 33/53 (2012.01)
 USPC - 435/7.1, 7.92
 According to International Patent Classification (IPC) or to both national classification and IPC

B. FIELDS SEARCHED
 Minimum documentation searched (classification system followed by classification symbols)
 USPC: 435/7.1, 7.92

Documentation searched other than minimum documentation to the extent that such documents are included in the fields searched
 USPC: 435/7.1, 7.92; 530/387.9 (text search)

Electronic data base consulted during the international search (name of data base and, where practicable, search terms used)
 Electronic data bases: PubWEST (USPT, EPAB, JPAB, PGPB); Google Scholar
 Search terms: NT-ProBNP, feline or cat, specific epitope, quantitation, mass spectrometry, immunoassay, sandwich ELISA, monoclonal or polyclonal antibody

C. DOCUMENTS CONSIDERED TO BE RELEVANT

Category*	Citation of document, with indication, where appropriate, of the relevant passages	Relevant to claim No.
X --- Y	ALA-KOPSALA et al., Molecular heterogeneity has a major impact on the measurement of circulating N-terminal fragments of A- and B-type natriuretic peptides. <i>Clim Chem</i> , September 2004, Vol 50, No 9, Pages 1576-1588. Especially abstract, pg 1578 col 2 para 2.	11, 13, 14 ----- 12
X --- Y	US 2009/0170136 A1 (WOLOSZCZUK et al.) 02 July 2009 (02.07.2009). Especially para [0016-0020], [0024], [0029], [0031], [0045], [0078]	1, 3-10, 19 ----- 2, 15-18
Y	US 2010/0075429 A1 (HESS et al.) 25 March 2010 (25.03.2010). Especially para [0029], [0031].	2, 12
Y	PEMBERTON et al., Deconvolution analysis of cardiac natriuretic peptides during acute volume overload. <i>Hypertension</i> , September 2000, Vol 36, No 3, Pages 355-359. Especially pg 357 fig 2	15-18
A	US 2010/0136590 A1 (WOLOSZCZUK et al.) 03 June 2010 (03.06.2010). Especially sheet 1 fig 1.	1, 16, 18, 19
A	FOX et al., Utility of plasma N-terminal pro-brain natriuretic peptide (NT-proBNP) to distinguish between congestive heart failure and non-cardiac causes of acute dyspnea in cats. <i>J Vet Cardiol</i> , May 2009, Vol 11, Suppl 1, Pages S51-S61. Especially pg S54 col 1 para 2.	1-19
A	WESS et al., Utility of measuring plasma N-terminal pro-brain natriuretic peptide in detecting hypertrophic cardiomyopathy and differentiating grades of severity in cats. <i>Vet Clin Pathol</i> , ePub 24 March 2011, Vol 40, No 2, Pages 237-244, Especially pg 239 col 1 para 2-3.	1-19

Further documents are listed in the continuation of Box C.

* Special categories of cited documents:	"T" later document published after the international filing date or priority date and not in conflict with the application but cited to understand the principle or theory underlying the invention
"A" document defining the general state of the art which is not considered to be of particular relevance	"X" document of particular relevance; the claimed invention cannot be considered novel or cannot be considered to involve an inventive step when the document is taken alone
"E" earlier application or patent but published on or after the international filing date	"Y" document of particular relevance; the claimed invention cannot be considered to involve an inventive step when the document is combined with one or more other such documents, such combination being obvious to a person skilled in the art
"L" document which may throw doubts on priority claim(s) or which is cited to establish the publication date of another citation or other special reason (as specified)	"&" document member of the same patent family
"O" document referring to an oral disclosure, use, exhibition or other means	
"P" document published prior to the international filing date but later than the priority date claimed	

Date of the actual completion of the international search 14 August 2012 (14.08.2012)	Date of mailing of the international search report 07 SEP 2012
Name and mailing address of the ISA/US Mail Stop PCT, Attn: ISA/US, Commissioner for Patents P.O. Box 1450, Alexandria, Virginia 22313-1450 Facsimile No. 571-273-3201	Authorized officer: Lee W. Young PCT Helpdesk: 571-272-4300 PCT OSP: 571-272-7774

专利名称(译)	检测肌NT-proBNP的降解产物		
公开(公告)号	EP2715353A1	公开(公告)日	2014-04-09
申请号	EP2012792727	申请日	2012-05-31
[标]申请(专利权)人(译)	艾德克斯实验室公司		
申请(专利权)人(译)	IDEXX实验室, INC.		
当前申请(专利权)人(译)	IDEXX实验室, INC.		
[标]发明人	YERRAMILLI MURTHY V S N YERRAMILLI MAHALAKSHMI ATKINSON MICHAEL		
发明人	YERRAMILLI, MURTHY V.S.N YERRAMILLI, MAHALAKSHMI ATKINSON, MICHAEL		
IPC分类号	G01N33/53 G01N33/74		
CPC分类号	G01N33/54306 G01N33/74 G01N2333/58 G01N2800/32		
优先权	61/491580 2011-05-31 US		
其他公开文献	EP2715353B1 EP2715353A4		
外部链接	Espacenet		

摘要(译)

一种测定猫科动物血液样本中NT-proBNP含量的方法。该方法包括通过各种方法检测猫NT-proBNP的降解产物, 包括使用抗体, 试剂盒和装置。