

(19) World Intellectual Property Organization
International Bureau



(43) International Publication Date
10 August 2006 (10.08.2006)

PCT

(10) International Publication Number
WO 2006/083126 A1

- (51) International Patent Classification:
G01N 33/53 (2006.01)
- (21) International Application Number:
PCT/KR2006/000380
- (22) International Filing Date: 3 February 2006 (03.02.2006)
- (25) Filing Language: Korean
- (26) Publication Language: English
- (30) Priority Data:
10-2005-0010924 5 February 2005 (05.02.2005) KR
10-2006-0010285 2 February 2006 (02.02.2006) KR

(81) Designated States (unless otherwise indicated, for every kind of national protection available): AE, AG, AL, AM, AT, AU, AZ, BA, BB, BG, BR, BW, BY, BZ, CA, CH, CN, CO, CR, CU, CZ, DE, DK, DM, DZ, EC, EE, EG, ES, FI, GB, GD, GE, GH, GM, HR, HU, ID, IL, IN, IS, JP, KE, KG, KM, KN, KP, KZ, LC, LK, LR, LS, LT, LU, LV, LY, MA, MD, MG, MK, MN, MW, MX, MZ, NA, NG, NI, NO, NZ, OM, PG, PH, PL, PT, RO, RU, SC, SD, SE, SG, SK, SL, SM, SY, TJ, TM, TN, TR, TT, TZ, UA, UG, US, UZ, VC, VN, YU, ZA, ZM, ZW.

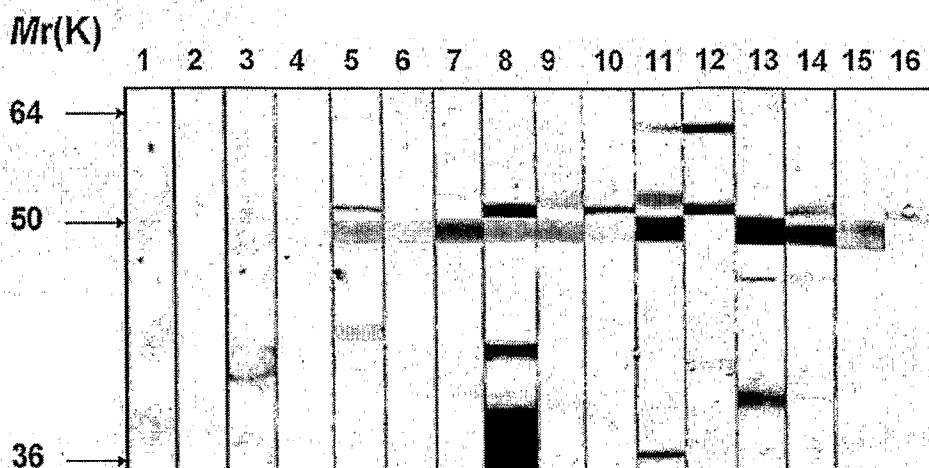
(84) Designated States (unless otherwise indicated, for every kind of regional protection available): ARIPO (BW, GH, GM, KE, LS, MW, MZ, NA, SD, SL, SZ, TZ, UG, ZM, ZW), Eurasian (AM, AZ, BY, KG, KZ, MD, RU, TJ, TM), European (AT, BE, BG, CH, CY, CZ, DE, DK, EE, ES, FI, FR, GB, GR, HU, IE, IS, IT, LT, LU, LV, MC, NL, PL, PT, RO, SE, SI, SK, TR), OAPI (BF, BJ, CF, CG, CI, CM, GA, GN, GQ, GW, ML, MR, NE, SN, TD, TG).

- (71) Applicants and
- (72) Inventors: JEON, Sook-yeong [KR/KR]; 217-1702 Ssangyong Apartment, 831 Sanghyeon-ri, Suji-eup, Yongin-si, Gyeonggi-do, Gyeonggi-do 449-843 (KR). NAM, Dong-ho [KR/KR]; 217-1702 Ssangyong Apartment, 831 Sanghyeon-ri, Suji-eup, Yongin-si, Gyeonggi-do, Gyeonggi-do 449-843 (KR).
- (74) Agent: IM, Jae-ryong; 8th Floor, Yoohwa Bldg., 995-16, Daechi-dong, Gangnam-gu, Seoul 135-280 (KR).

Published:
— with international search report

For two-letter codes and other abbreviations, refer to the "Guidance Notes on Codes and Abbreviations" appearing at the beginning of each regular issue of the PCT Gazette.

(54) Title: COMPOSITION FOR PREVENTION, TREATMENT, AND DIAGNOSIS OF CHRONIC OBSTRUCTIVE PULMONARY DISEASE (COPD)



(57) Abstract: The present invention provides a pharmaceutical composition for preventing or treating chronic obstructive pulmonary disease (COPD) comprising cytokeratin 18 protein as an active ingredient. The present invention also provides a diagnostic composition and a diagnostic kit for diagnosing COPD comprising cytokeratin 18 protein. The present invention further provides a composition for screening a therapeutic agent for COPD, comprising one or more of cytokeratin 18 protein or autoantibodies to cytokeratin 18 obtained from patients with COPD and a method for screening a therapeutic agent for COPD using this composition. The present invention still further provides methods for diagnosing, preventing or treating COPD using cytokeratin 18 protein.

WO 2006/083126 A1

COMPOSITION FOR PREVENTION, TREATMENT, AND DIAGNOSIS OF CHRONIC
OBSTRUCTIVE PULMONARY DISEASE (COPD)

5

Background of the Invention

Technical Field

The present invention relates to compositions for prevention, treatment, and diagnosis of chronic obstructive pulmonary disease (COPD).

Background Art

10

Chronic obstructive pulmonary disease (COPD) is currently defined as chronic disease showing irreversible obstruction of airways resulting from the progression of two major underlying diseases including chronic bronchitis and pulmonary emphysema. Chronic bronchitis is defined clinically as the persistence of cough, sputum, and difficult breathing, and pulmonary emphysema is defined histopathologically as an irreversible destruction of airway walls distal to the terminal bronchiole and clinically shows slowly progressive respiratory difficulties (GOLD workshop summary, Am J Respir Crit Care Med 2001; 163:1256-1276). Therefore, current definition of COPD excludes a bronchial asthma showing reversible
15 obstruction of airways. COPD is currently the fourth leading cause of death in the United States and Europe, and causes of death in patients with COPD are complications of the disease such as respiratory failure or infection (GOLD workshop summary, Am J Respir Crit Care Med 2001; 163:1256-1276).
20

20

Currently, smoking is regarded as the most important risk factor
25 for the development of COPD. And secretions of many inflammatory mediators

(IL-8 etc.) from airway epithelial cells stimulated by smoking and other factors including air pollution or chronic infection by bacteria or virus are considered to be responsible for the development of chronic inflammation of airway tissue in COPD (GOLD workshop summary, Am J Respir Crit Care Med 2001; 163:1256-1276). However, the reason for the chronic persistence of inflammation after acute inflammation induced by those external stimuli is not determined yet. Accordingly, it is suggested that other pathogenetic mechanisms besides smoking may be involved in the pathogenetic mechanism of COPD (O'Byrne PM, Postma DS. Am J Respir Crit Care Med 1999;159:S41-S66). Especially, the reasons for the persistence of airway inflammation and apoptosis of airway epithelial cells in COPD patients even after stop of smoking are not explained yet (Hodge S et al., Eur Respir J 2005;25:447-54). The etiology and pathogenetic mechanism of COPD are not determined yet, and therefore, fundamental treatment of COPD is difficult now. The COPD patients having advanced disease and severely decreased pulmonary function are at a high risk of the disease-associated premature death (GOLD workshop summary, Am J Respir Crit Care Med 2001;163:1256-1276).

Currently, diagnosis of chronic obstructive pulmonary disease can be made when the patients complain of typical clinical symptoms (cough, sputum, and dyspnea, etc.) and their FEV1 measured following the inhalation of bronchodilator showed less than 80% of predictive value and the ratio of FEV1/FVC was less than 70% on pulmonary function test (GOLD workshop summary, Am J Respir Crit Care Med 2001;163:1256-1276). However, there is still no laboratory test which can be used for the early detection of patients with COPD who complain of typical clinical symptoms but show

normal pulmonary function and thereby used for the prevention of further progression of COPD.

As a pharmacological therapy of COPD, bronchodilator and corticosteroid are known to be effective for the improvement of clinical symptoms. Direct administration of corticosteroid to the target airway tissue by inhalation devices is preferred method over systemic administration to avoid systemic side effects. Additional medications such as theophylline can also be useful. However, there is still no available therapeutic agent which can induce complete remission of COPD or fundamentally improve COPD and modify a natural course of the disease.

Detection of autoantibodies to antigens of airway or lung tissues in COPD patients has been reported (Wagner V, et al., *Acta Allergol* 1965;20:1-9). Although a hypothesis that COPD is caused by autoimmune mechanism has been proposed (Agusti A, et al., *Thorax* 2003;58:832-834), this hypothesis has not been clearly demonstrated because an autoantigen reacting with autoantibodies in the blood of patients with COPD has not been identified yet. Recently, it has been demonstrated that pulmonary emphysema (one of major underlying diseases causing COPD) could have been developed in animals by autoimmune response against the vascular endothelial autoantigen (Taraseviciene-Stewart L, et al., *Am J Respir Crit Care Med.* 2005;171:734-42). In the above study, it has been reported that rats immunized by antigens extracted from human vascular endothelial cells to induce autoimmune response developed pulmonary emphysema, and passive transfer of CD4+ cells from spleens of the above pulmonary emphysema-developed rats to naive rats resulted in pulmonary emphysema in recipient rats, and pulmonary emphysema has been also caused in mouse after injection

of anti-endothelial cell antibodies obtained from serum of rats immunized with vascular endothelial cells (Taraseviciene-Stewart L, et al., Am J Respir Crit Care Med. 2005;171:734-42). This study showed that antibodies to vascular endothelial cell antigens were sufficient to trigger the development of pulmonary emphysema, although target autoantigens involved in development of the disease was not identified yet. On the basis of above, it has been suggested that autoimmune mechanism might be involved in the pathogenesis of COPD.

10

Disclosure

Technical problem

However, previous studies could not establish a causal relationship between autoimmunity and COPD due to the lack of an identified autoantigen associated with patients with COPD and lack of a logical association between the autoantibodies in the bodily fluid of patients with COPD and the damage of airway tissue. So, autoantibody testing is not currently used for the diagnosis or classification of COPD

Because the primary etiology and mechanism causing the development of COPD is not completely understood yet, a treatment method that can induce complete remission of COPD has not been developed yet. Current pharmacological therapy for COPD can improve the clinical symptoms and pulmonary function only during the continuous administration of medication, but there is no treatment method which can modify the long-term natural course of COPD or prevent a death due to COPD.

A cytokeratin 18 protein, which is identified as a target autoantigen of COPD in the present invention, is a cytoskeletal protein found primarily in epithelial cells lining the respiratory and gastrointestinal tracts, including bronchial epithelial cells and lung (alveolar) epithelial cells (Moll, R. et al., Cell 1982; 31:11-24). Although cytokeratin 18 is a predominantly intracellular protein, its strong expression on the cell surface was also observed in epithelial cells (Moll, R. et al., Cell 1982; 31:11-24; Saarloos, M.N. et al., Curr Eye Res 1999; 19:439-449). Although cytokeratin 18 protein has been also identified as a target autoantigen associated with bronchial asthma and autoimmune hepatitis (Nahm DH, et al. Am J Respir Crit Care Med 2002;165:1536-9), it has never been identified as a target autoantigen associated with COPD.

Technical Solution

The present inventors judged that autoantigen proteins involved in the development of COPD might be present in the airway epithelial cells on the basis of previous reports and results from deductive ratiocination of present inventors, and therefore, analyzed the airway epithelial autoantigen proteins reacting with IgG autoantibodies by immunoblot method using proteins from cultured human airway epithelial cells.

Consequently, the inventors discovered autoantibodies to airway epithelial cells in serum samples of patients with COPD, and identified that the airway epithelial autoantigen was cytokeratin 18 protein. Also, inventors demonstrated significant inhibitions of autoantibody-induced cytotoxicity of airway epithelial cells by adsorption of autoantibodies

from patients with COPD with cytokeratin 18 protein, and thereby the inventors made the present invention.

It is an object of the present invention to provide a pharmaceutical composition for preventing or treating COPD comprising
5 cytokeratin 18 protein as an active ingredient.

It is another object of the present invention to provide a diagnostic composition for diagnosing COPD comprising cytokeratin 18 protein.

It is still another object of the present invention to provide a
10 composition for screening therapeutic agents for COPD comprising one or more of cytokeratin 18 protein, antibodies to cytokeratin 18 protein, and autoantibodies to cytokeratin 18 from patients with COPD.

The present invention provides a pharmaceutical composition for preventing or treating COPD comprising cytokeratin 18 protein as an active
15 ingredient.

Cytokeratin 18 protein used in the present compositions for diagnosing or treating COPD, or screening therapeutic agent for COPD, can be originated from mammals including human, mouse, rat, rabbit, cow, pig, and goat.

20 Cytokeratin 18 protein used in the present invention can be proteins having an amino acid sequence of SEQ ID NO: 1 or an amino acid sequence of SEQ ID NO: 2, or their polypeptide fragments retaining equal physiological activity to the cytokeratin 18 proteins.

In the present invention, the above polypeptide fragments mean
25 polypeptides retaining minimal autoantigenic epitope binding with autoantibodies from patients with COPD.

The amino acid sequence of SEQ ID NO: 1 is an amino acid sequence of human (*Homo sapiens*) cytokeratin 18 protein (NCBI accession no. P05783), and an amino acid sequence of SEQ ID NO: 2 is an amino acid sequence of bovine (*Bos taurus*) cytokeratin 18 protein (NCBI accession no. XP_582930).

5 Also, the cytokeratin 18 proteins can be one or more proteins selected from proteins expressed from known CDS(cDNA) sequence of a human (*Homo sapiens*) cytokeratin 18 including mRNA sequence (NCBI accession no. NM_199187) or a base sequence with polymorphism in the above nucleotide sequence.

10 Also, cytokeratin 18 protein can be obtained by isolating and purifying from cells or tissues of mammals, or microorganism. Or, cytokeratin 18 protein can be produced by recombinant genetic engineering technology using one of DNA base sequence encoding the amino acid sequence of SEQ ID NO: 1 or SEQ ID NO: 2 or their fragment or DNA base sequence with
15 polymorphism in the above nucleotide sequence, thereby isolating them from cells or tissues of mammals, or microorganisms and purifying them.

The "Chronic obstructive pulmonary disease (COPD)" in the present invention includes pulmonary emphysema and chronic bronchitis.

The present invention is based on the fact identifying cytokeratin
20 18 protein as an airway epithelial autoantigen binding with IgG autoantibodies in the blood samples of patients with COPD, for the first time.

It can be judged from the previous reports and results of Examples in the present invention that autoantibodies in the blood of patients with
25 COPD can directly induce cytotoxicity to airway epithelial cells through binding to cytokeratin 18 proteins of airway epithelial cells or indirectly

induce cytotoxicity to airway epithelial cells and induce chronic inflammation of airway tissue through the formation of immune complexes consisted of autoantibodies and autoantigen and secondary complement activation and chemotaxis of inflammatory cells. And these damages of airway epithelial cells and chronic inflammation of airway tissue can cause clinical symptoms of COPD through the developments of irreversible structural changes of airway tissues.

In the Examples of the present invention, IgG antibodies purified from blood samples of patients with COPD induced cytotoxicity to airway epithelial cells. Also, the administration of cytokeratin 18 protein of the present invention into the model of IgG antibody-induced airway epithelial cell cytotoxicity, induced adsorptions of autoantibodies in the blood of patients with COPD, and thereby inhibited IgG antibody-induced cytotoxicity to airway epithelial cells.

Thus, the pharmaceutical composition comprising cytokeratin 18 protein of the present invention can be used as a medicament preventing, alleviating or treating COPD.

The pharmaceutical composition comprising cytokeratin 18 protein as an active ingredient may further comprise pharmaceutically and physiologically acceptable additives besides the active ingredient. Such additives may include, for example, excipients, disintegrating agents, sweetening agents, binding agents, coating agents, inflating agents, lubricants, glidants, flavoring agents, solubilizers, etc.

The pharmaceutical composition comprising cytokeratin 18 protein as an active ingredient may further comprise one or more pharmaceutically acceptable carriers to be formulated appropriately for administration.

For liquid formulation, the pharmaceutically acceptable carriers should be sterilized and suitable to living bodies. For example, the pharmaceutically acceptable carriers may include saline, sterilized water, linger solution, bufferd saline, albumin injection solution, dextrose
5 solution, malto dextrine solution, glycerin, ethanol, or the mixture of one or more of the above ingredients. If necessary, other common additives can be added, such as antioxidants, buffers, bacteriostatic agents, etc. Also, diluting agents, dispersing agents, surfactants, binders or lubricants can be further added in order to formulate the composition to injection
10 formulations such as aqueous solution, suspension, emulsion, pills, capsules, granules, Tablets, etc. Furthermore, the present pharmaceutical compositon can be appropriately formulated depending on each disease or ingredient of the composition, by using the disclosed method in Remington's Pharmaceutical Science, Mack Publishing Company, Easton PA, as a preferable
15 method in the art.

Formulation type of the present pharmaceutical compositon comprising cytokeartin 18 protein as an active ingredient, can be granules, powder, coated tablets, tablets, capsules, suppositories, syrup, juice, suspensions, emulsions, drops, injectable liquid formulation or slowly-
20 released formulation of active compound, etc.

The present pharmaceutical compositon comprising cytokeartin 18 protein as an active ingredient, can be administered intravenously, intraarterially, intraperitoneally, intramuscularly, intrasternally, percutaneously, intranasally, rectally, orally, intraocularly,
25 intradermally, locally, or by inhalation, according to ordinary methods.

The dosage of the present pharmaceutical composition comprising cytokeratin 18 protein as an active ingredient means an effecteffective amount to inhibit or treat damage or inflammatory reaction of airway epithelial cells and tissues. Thus, this daosage can be modified depending on various
5 factors such as the kind of a disease to be treated, severity of the disease, kinds and amounts of active ingredients and other ingredients contained in the composition, age, weight, general health status and sex of the patient, diet, time and route of administration, secretion rate of the composition, period of treatment, drugs used simultaneously, etc. In
10 adults, when cytokeratin 18 proteins are administrated one or several times per day, the preferable dosage of cytokeratin 18 proteins is 0.01 mg/kg ~ 100 mg/kg.

Also, the present invention provides a method for preventing or treating COPD by administering cytokeratin 18 proteins. Preferably, the
15 above COPD can be pulmonary emphysema or chronic bronchitis.

The present invention shows that the administration of cytokeratin 18 proteins can adsorb autoantibodies in the blood of patients with COPD thereby inhibiting autoantibody-induced cytotoxicity to airway epithelial cells and inhibiting the development of secondary inflammation of airway
20 tissue.

The present invention provides a method of preventing or treating COPD by administering cytokeratin 18 protein. In this method, cytokeratin 18 protein can be administrated intravenously, intraarterially, intraperitoneally, intramuscular, intrasternally, percutaneously,
25 intranasally, rectally, orally, intraocularly, intradermally, locally, or by inhalation, according to ordinary methods.

In the method of preventing or treating COPD by administering cytokeratin 18 protein, the dosage of cytokeratin 18 proteins to be administrated can be referred as an effectective amount to inhibit or treat autoantibody-induced cytotoxicity to airway epithelial cells or secondary
5 inflammatory reaction of airway tissues caused by the formation of immune complex consisted of autoantigen-autoantibodies. In adults, when cytokeratin 18 proteins are administrated one or several times per day, the preferable dosage of cytokeratin 18 proteins is 0.01 mg/kg ~ 100 mg/kg. This dosage can be modified depending on various factors such as the kind
10 of a disease to be treated, severity of the disease, kinds and amounts of active ingredients and other ingredients contained in the composition, age, weight, general health status and sex of the patient, diet, time or route of administration, secretion rate of composition, period of treatment, drugs used simultaneously, etc.

15 Also, the present invention provides the use of cytokeratin 18 protein for the manufacture of a medicament for COPD.

Further, the present invention provides a diagnostic composition comprising cytokeratin 18 protein for diagnosing COPD.

The cytokeratin 18 protein contained in the present diagnostic
20 composition can be proteins having the amino acid sequence of SEQ ID NO: 1 or the amino acid sequence of SEQ ID NO: 2, or their polypeptide fragments retaining equal physiological activity to the cytokeratin 18 proteins, and may be originated from mammals including human, rat, mouse, rabbit, cow, pig, goat, etc.

25 The diagnostic composition comprising cytokeratin 18 protein according to the present invention can react with biological samples of

patients with COPD, thereby showing positive results. Thus, the diagnostic composition can be used for the diagnosis of COPD.

Also, the cytokeratin 18 proteins can be one or more proteins selected from proteins expressed from known CDS(cDNA) sequence of a human
5 (*Homo sapiens*) cytokeratin 18 including mRNA sequence (NCBI accession no. NM_199187) or a base sequence with polymorphism in the above nucleotide sequence.

Also, cytokeratin 18 protein can be obtained by isolating and purifying from cells or tissues of mammals, or microorganism. Or,
10 cytokeratin 18 protein can be produced by recombinant genetic engineering technology using one of DNA base sequence encoding the amino acid sequence of SEQ ID NO: 1 or SEQ ID NO: 2 or their fragment or DNA base sequence with polymorphism in the above nucleotide sequence, thereby isolating them from cells or tissues of mammals, or microorganisms and purifying them.

15 The present diagnostic composition comprising cytokeratin 18 protein can be used for the detection, diagnosis, and classification of COPD with higher sensitivity as shown in the present Examples.

The diagnostic composition can comprise buffer or reaction solution which makes maintain physiological activity or structure of proteins,
20 besides the proteins. Also, the diagnostic composition can be provided in the form of powder, or in the solubilized state in an appropriate buffer, or maintained at 4°C, in order to maintain stability.

The present invention provides a diagnostic kit for diagnosing COPD comprising diagnostic composition comprising cytokeratin 18 protein for
25 diagnosing COPD.

The diagnostic kit of the present invention can comprise buffer or reaction solution which makes to maintain physiological activity or structure of proteins, besides cytokeratin 18 proteins. Further, the proteins can be provided in the form of powder, or in the solubilized state in an appropriate buffer, or maintained at 4°C, in order to maintain stability.

The diagnostic kit of the present invention can comprise components other than cytokeratin 18 protein. For the positive control result, the diagnostic kit can comprise polyclonal antibodies or monoclonal antibodies to cytokeratin 18 protein from mammals, or human's biological samples of which autoantibodies to cytokeratin 18 protein are positive. For the negative control result, the diagnostic kit can comprise other antibodies or buffers. If necessary, the diagnostic kit can further comprise other components required for the detection of autoantibodies to cytokeratin 18 protein from biological samples of subjects.

Other components required for immunodetecting reaction include anti-human IgG antibodies produced from rat, mouse, rabbit, cow, pig, or goat, etc., as the secondary antibodies, and colorizing agents, buffers, etc.

As the secondary antibodies, alkaline phosphatase (AP)-conjugated, horse radish peroxidase (HRP)-conjugated, biotin-conjugated antibodies, or fluorescent material(for example, rhodamine, Texas Red, fluorescein, phycoerythrin, etc.)-conjugated antibodies can be used.

The biotin-conjugated secondary antibodies can use AP or HRP enzyme-conjugated avidin, AP-conjugated secondary antibodies can use BCIP/NBT as color couplers, and HRP-conjugated secondary antibodies can use

DAB (diaminobenzidine), etc. as color couplers, thereby inducing color reaction to determine the presence of autoantibodies. The secondary antibodies to which fluorescent materials are conjugated, can be monitored on a fluorescence microscope. Thus, from the fluorescence microscopy, the presence of autoantibodies can be determined.

The assay methods applied to the kit are known to those skilled in the art. The assay methods to be used for the kit include any techniques that can detect antigen-antibody reaction, such as fluorescence immunoassays, enzyme-substrate color reaction, enzyme immunoassays, immunoblotting, immunoprecipitation assay, antigen-antibody agglutination immunoassays, light-scattering immunoassays, radioimmunoassay, flow cytometry, complement-fixing method, etc.

The kit of the present invention can further comprise tubes, wells or plates required for mixing each component, or covering letter describing the way of using, if necessary.

The present invention provides a method for diagnosing COPD by using diagnostic compositions comprising cytokeratin 18 protein as an active ingredient.

The method comprises the following steps:

- (a) obtaining biological samples of a subject suspected to have COPD;
- (b) contacting the biological samples with cytokeratin 18 protein, thereby inducing the formation of immune complex; and
- (c) diagnosing the COPD in the subject by detecting the immune complex, thereby determining the presence of autoantibodies to cytokeratin 18 protein.

In step (a) of the present diagnosing method, the biological samples can include any fluid which can be isolated and collected from human bodies, such as blood, plasma, serum, urine, tears, salivar, sputum, nasal secretion, bronchial secretion, bronchial washing fluid, pulmonary
5 secretion, alveolus washing fluid, etc.

In step (b) of the present diagnosing method, the formation of immune complex can use immunoblotting, ELISA, etc., and can use any methods for detecting the antigen-antibody reaction, which are ordinary in the art.

Step (c) of the present diagnosing method is a step determining
10 the formation of immune complex by inducing color reactions or detecting fluorescence of immune complex, and it can use any methods for detecting antigen-antibody reaction, which are ordinary in the art. If the presence of immune complex is confirmed, this result means that the subject has COPD. For the positive control result, instead of the subject's biological
15 samples, what can be used are polyclonal antibodies or monoclonal antibodies to cytokeratin 18 protein from mammals, or human's biological samples of which autoantibodies to cytokeratin 18 protein are positive. For the negative control result, what can be used are antibodies or buffers other than the antibodies to cytokeratin 18 protein.

20 From the prior reports of immunological studies for other autoimmune dieases, it is known that in case of patients showing IgG autoantibodies to specific autoantigen proteins in blood, a considerable number of patients has antigen-specific T-cell reaction to the same autoantigen protein, and it is useful to test delayed type hypersensitivity
25 after intradermal injection of the same autoantigen proteins reacting with IgG autoantibodies in the patients (Beales PE et al, Autoimmunity

2000;32:109-113). In prior arts, skin tests of tuberculin type have been used, in which tests were performed by injecting specific antigen to subjects, intradermally, and testing the injected skin part after 24 to 72 hours of the injection to measuring the size of skin swelling (induration), thus determining the presence of delayed-type hypersensitivity reaction or late-onset skin reaction to the above antigen.

Accordingly, the diagnostic composition comprising cytokeratin 18 protein can be applied to the use of the diagnostic composition to detecting patients showing autoimmune response to cytokeratin 18 protein among patients with COPD by measuring the size of skin swelling after 24 to 72 hours of the intradermal injection of cytokeratin 18 protein.

Also, the present invention provides a method of diagnosing COPD by using a diagnostic composition comprising cytokeratin 18 protein.

The present method of diagnosing chronic COPD comprises the following steps:

- a) selecting a subject suspected to have COPD;
- b) injecting intradermally the diagnostic compositions comprising cytokeratin 18 protein and
- c) diagnosing the COPD by examining the injected skin part after 24 to 72 hours of the injection and detecting the presence of the skin swelling and measuring the size of skin swelling, thus determining the presence of delayed-type hypersensitivity reaction or late skin reaction to cytokeratin 18 protein.

By using the present diagnostic composition and diagnosing method, the result for the presence of COPD can be obtained easily and correctly determined. Therefore, it can be used effectively for clinical study in a

large scale. Also, it can be used to screen therapeutic agents or to develop treatment methods for COPD.

The present invention provides a composition for screening a therapeutic agent for COPD, comprising one or more materials of cytokeratin 18 protein, antibodies to cytokeratin 18 protein, or autoantibodies to
5 cytokeratin 18 from the patients with COPD, and a method for screening a therapeutic agent using this composition.

Cytokeratin 18 protein contained in the present composition for screening therapeutic agents can be proteins having the amino acid sequence
10 of SEQ ID NO: 1 or the amino acid sequence of SEQ ID NO: 2, or proteins expressed from known CDS(cDNA) sequence of a human (*Homo sapiens*) cytokeratin 18 including mRNA sequence (NCBI accession no. NM_199187) or a base sequence with polymorphism in the above nucleotide sequence, or polypeptide fragments of cytokeratin 18 protein showing equal physiological
15 activity to cytokeratin 18 protein.

The antibodies to cytokeratin 18 protein contained in the present composition for screening therapeutic agents can be prepared for the cytokeratin 18 proteins, but it can be also obtained commonly or commercially in the art.

20 The compositions for screening a therapeutic agent can comprise buffer or reaction solution which makes maintain physiological activity or structure of proteins, besides cytokeratin 18 protein, antibodies to cytokeratin 18 protein, or autoantibodies to cytokeratin 18 from the patients with COPD. Also, the composition can be provided in the form of
25 powder, or in the solubilized state in an appropriate buffer, or maintained at 4°C, in order to maintain stability.

The present compositions for screening a therapeutic agent enable the selection of a therapeutic agent for COPD, by screening the material which inhibits binding between cytokeratin 18 proteins and autoantibodies to cytokeratin 18 in the biological samples obtained from the patients with
5 COPD, or inhibits cytotoxic reaction of the autoantibodies to cytokeratin 18 protein-expressing cells.

Also, the present invention provides a method of screening a therapeutic agent for COPD, by using compositions comprising one or more of cytokeratin 18 protein, antibodies to cytokeratin 18 protein, or
10 autoantibodies to cytokeratin 18 from the patients with COPD, as target materials.

The method of screening a therapeutic agent for COPD comprises the following step:

(a) isolating autoantibodies from biological samples obtained from
15 the patients with COPD;

(b) contacting test materials with the autoantibodies obtained in step (a); and

(c) selecting a therapeutic agent for COPD by determining whether the test materials can inhibit binding of the autoantibodies to cytokeratin
20 18 protein, or inhibit cytotoxic effects of the autoantibodies to cytokeratin 18 protein-expressing cells.

In the present method of screening a therapeutic agent, the test materials can be nucleic acids, proteins, extracts, or compounds which are
25 expected to have possibilities of inhibitor for COPD according to ordinary selecting method, or randomly selected.

In the present method for screening a therapeutic agent, for the confirmation of the reaction between the composition for screening and the test materials, common methods used to confirm protein-protein reaction including antigen-antibody reaction or protein-compound reaction can be used.

For example, the following methods can be used: a method which reacts cytokeratin 18 proteins or autoantibodies with the test material, thereby determining the activity, yeast two-hybrid method, screening method of phage-displayed peptide clone binding to cytokeratin 18 proteins, high throughput screening (HTS) method using natural product, chemical library etc., drug hit HTS method, cell-based screening method, or screening method using DNA array, etc.

In present invention, matters relating to genetic engineering technology will be more clear from the contents of Sambrook's literature etc. (Sambrook, et al., Molecular Cloning, A Laboratory Manual, Cold Spring Harbor laboratory Press, Cold Spring Harbor, N. Y. (2001)).

Advantageous effects

As described in the above, the present invention identified cytokeratin 18 protein as an autoantigen recognized by autoantibodies in the serum samples of patients having COPD. Thus, a pharmaceutical composition of the present invention cytokeratin 18 protein as an active ingredient can be used as a medicament for preventing, alleviating, and treating COPD through the inhibition of autoantibody-induced cytotoxicity to airway epithelial cells and the inhibition of the secondary development

of chronic airway epithelial inflammation induced by the formation of immune complexes consisted of autoantibodies and autoantigen.

Also, a diagnostic composition comprising cytokeratin 18 protein according to the present invention can be used for detecting, diagnosing or
5 classifying COPD.

Description of Drawings

Fig. 1 shows immunoblot analysis of human airway epithelial cell (A549) proteins reacting with IgG autoantibodies in serum samples of
10 healthy controls, pulmonary emphysema patients having normal pulmonary function, and patients with COPD;

Fig. 2 shows immunoblot detection of IgG autoantibodies to recombinant human cytokeratin 18 protein in serum samples of healthy controls, pulmonary emphysema patients with normal pulmonary function, and
15 patients with COPD;

Fig. 3 shows the bindings of IgG autoantibodies in serum samples of COPD with the recombinant human cytokeratin 18 proteins and the commercially available purified bovine cytokeratin 18 protein detected by immunoblot analysis;

20 Fig. 4 shows the detection of antibody-induced cytotoxicity to human airway epithelial cells (A549) by IgG antibodies purified from serum samples of patients with COPD;

Fig. 5 shows inhibitions of IgG autoantibody-induced cytotoxicity to airway epithelial cells (A549) when the IgG antibodies from patients
25 with COPD were adsorbed with human cytokeratin 18 protein prior to addition to airway epithelial cells;

Best Mode

Hereinafter, the present invention is more specifically explained by the Examples. However, the following examples are provided for the purpose of illustration and are not intended to limit the scope of the present invention.

[EXAMPLE 1] Detection of IgG autoantibodies to cytokeratin 18 protein in serum samples from patients with COPD

10 (1-1) Subjects

Subjects

The inventors examined serum samples obtained from 9 patients with chronic obstructive pulmonary disease (COPD), 2 patients with pulmonary emphysema showing normal pulmonary function and 58 healthy controls. Diagnosis of COPD was determined by recently reported criterion of NHLBI/WHO GOLD Workshop summary (Am J Respir Crit Care Med 2001;163:1256-1276). Both of 2 patients with pulmonary emphysema had smoking history of more than 10 pack years. They have been clinically complained dyspnea symptom and chest X-ray showed findings compatible with pulmonary emphysema. However, they had normal findings with values of FEV1 (forced expiratory volume in one second) and FVC (forced vital capacity) were greater than 80% of predictive value on pulmonary function test. All 9 patients with COPD had clinical histories compatible with COPD such as cough, sputum, dyspnea, etc. Also, their FEV1 measured following the inhalation of bronchodilator showed less than 80% of predictive value on pulmonary function test, and the ratio of FEV1/FVC was less than 70%. All patients with COPD had

smoking history of more than 10 pack years, but had no signs of tuberculosis or other pulmonary diseases in chest X-ray. The serum samples of the patients with COPD were stored at -20 °C.

(1-2) Cell Culture

5 The human airway epithelial cell line A549 (ATCC CCL-185; Giard et al, J Natl Cancer Inst 1973; 51:1417-23) was obtained from American Type Culture Collection (ATCC; VA, USA) and was cultured as recommend by ATCC.

(1-3) Extraction of cell proteins and immunoblot analysis

10 Immunoblot analysis was performed with human airway epithelial cells and the serum samples obtained from healthy controls and patients with COPD according to the above Example (1-1), to identify human airway epithelial cell proteins which bind to IgG autoantibodies in the serum.

15 Firstly, in order to extract proteins from the human airway epithelial cell A549 in the above (1-2), the cultured cells were lysed in lysis buffer containing 10 mM Tris/HCl, pH 7.2, 2% sodium dodecyl sulphate (SDS), 158 mM NaCl, and 10 mM dithiothreitol.

20 The proteins in cell lysates were separated by discontinuous Sodium Dodecyl Sulfate-Polyacrylamide Gel Electrophoresis (SDS-PAGE). Following electrophoresis, proteins were transferred onto a polyvinylidene difluoride (PVDF) membrane (Bio-Rad Laboratories, Hercules, CA). After the transfer, the PVDF membrane was treated with Tris-buffered saline (TBS) containing 5% bovine serum, 10% powdered skim milk and 0.1% Tween 20 for one or more hours, to block non-specific bindings of proteins to PVDF, and then the PVDF membrane was cut in 4mm strips. The cut strips were reacted with
25 patients' serum diluted in the same buffer in 1:100 (v/v) for 2 hours at room temperature. After washing, the membrane was incubated with alkaline

phosphates-conjugated goat anti-human IgG antibodies (Sigma Chemical Co., St. Louis, MO) for 2 hours at room temperature. After the final washing, the membrane was stained with a BCIP/NBT solution (5-bromo-4-chloro-3-indoyl phosphate/nitro blue tetrazolium; Sigma) for 5 minutes to detect the proteins reacted with patients' serum. To compare with results from patients with other disease, a serum sample from a patient with nonallergic asthma that a detection of IgG autoantibodies to cytokeratin 18 has been confirmed by previous report of inventors (Nahm DH, et al. Am J Respir Crit Care Med 2002;165:1536-9) was also included in the experiments.

10 In order to minimize technical errors in detection rate of each test, each test comprised a positive standard serum and negative control serum. The results of the tests were assessed by at least two investigators independently with naked eyes. When test serum showed strong band to certain airway epithelial cell protein compared to negative control serum, the stained intensity of the band were the same as or stronger than that of positive standard serum, and the result read by the two investigators corresponded to each other, which case was defined as the positive detection of autoantibodies.

20 Mouse monoclonal antibody to cytokeratin 18 protein (clone CK5, Sigma Chemical Co., St. Louis, MO), goat antibody to human alpha-enolase protein (Santa Cruz Biotechnology, Santa Cruz, CA) and their alkaline phosphatase-conjugated secondary antibodies were included in each experiment to confirm the location of the reacting autoantigen proteins when the detection results of the autoantibodies to airway epithelial cell proteins were read.

25

The target autoantigen protein was determined by comparing and analyzing the results of immunoblot localization of airway epithelial cell proteins on the PVDF membrane reacting with IgG autoantibodies of patients and airway epithelial cell proteins reacting with mouse monoclonal antibody to cytokeratin 18 protein (clone CK5, Sigma Chemical Co., St. Louis, MO) or goat antibody to human alpha-enolase protein (Santa Cruz Biotechnology, Santa Cruz, CA) in the points of staining patterns and molecular weights.

Fig. 1 shows result of immunoblot analysis of airway epithelial cell (A549) proteins reacting with IgG autoantibodies in serum samples of healthy controls, patients with pulmonary emphysema showing normal pulmonary function, and patients with COPD. Lanes 1 and 2 show the results for serum samples of healthy controls, lanes 3 and 4 show the results for serum samples of patients with pulmonary emphysema showing normal pulmonary function, lanes 5-13 show the results for serum samples of patients with COPD, and lane 14 shows the result for a serum sample of a patient with bronchial asthma, lane 15 shows the result for mouse monoclonal antibodies to cytokeratin 18 protein, and lane 16 shows the result for goat antibodies to alpha-enolase.

Fig. 1 shows that IgG autoantibodies to protein band corresponding to cytokeratin 18 protein identified by mouse monoclonal antibodies were detected in 8 (89%) of total 9 patients with chronic obstructive pulmonary disease. This result showed significantly higher detection rate than that of healthy controls (5 of 58 healthy control; 8.6%) (chi-square test, $p < 0.05$).

(1-4) Detection of autoantibodies in the blood samples of patients with COPD using recombinant human cytokeratin 18 protein

By using the above subjects' serum of (1-3) and commercially available human recombinant cytokeratin 18 protein (Research Diagnostics INC., Pleasant Hill Road Flanders, NJ) produced from *E. coli* by the genetic engineering technology, immunoblot was performed in same sample arrangement as in Fig 1. The results are shown in Fig. 2.

Fig. 2 shows immunoblot detection of IgG autoantibodies to recombinant human cytokeratin 18 protein using serum samples of healthy controls, patients with pulmonary emphysema showing normal pulmonary function, and patients with COPD. Lanes 1 and 2 show the results for serum samples of healthy controls, lanes 3 and 4 show the results for serum samples of patients with pulmonary emphysema showing normal pulmonary function, lanes 5-13 show the results for serum samples of patients with COPD, and lane 14 shows the result for a serum sample of a patient with bronchial asthma, lane 15 shows the result for mouse monoclonal antibodies to cytokeratin 18 protein, and lane 16 shows the result for goat antibodies to alpha-enolase.

As shown in Fig. 2, IgG autoantibodies to recombinant human cytokeratin 18 protein were clearly detected in 3 (33.3%) of 9 patients with COPD (lanes 7,11, and 13). , IgG autoantibodies to recombinant human cytokeratin 18 protein were also detected in other 5 patients with COPD (lanes 5,6,8,9,10 in Fig. 2) and two patients with pulmonary emphysema showing normal pulmonary function (lane 3,4 in Fig. 2).

As the results of Fig. 2 were consistent with the results of Fig. 1, it was confirmed that the autoantigen reacting with IgG autoantibodies in serum samples from patients with COPD was human cytokeratin 18 protein.

As shown in Fig. 1 and Fig. 2, IgG autoantibodies to recombinant
5 cytokeratin 18 protein or cytokeratin 18 protein in airway epithelial cells were positively detected in patients with COPD.

Thus, it was reconfirmed that the autoantigen reacting with IgG autoantibodies in the serum samples of patients with COPD was cytokeratin 18 protein (Fig. 2).

10

[Example 2] Immunoblot analysis for bovine cytokeratin 18 protein

In order to determine whether IgG autoantibodies in serum samples of patients with COPD are selectively reacted with human cytokeratin 18 protein or they could react with cytokeratin 18 proteins from other mammal,
15 the inventors performed immunoblot analysis.

Reaction of IgG autoantibodies in serum samples from 3 patients with COPD with commercially available recombinant human cytokeratin 18 protein and purified bovine cytokeratin 18 protein (Research Diagnostics INC., Pleasant Hill Road Flanders, NJ) was detected and compared by
20 immunoblot analysis, according to the method of (1-3). The results are shown in Fig. 3.

Fig. 3 shows immunoblot results that show comparing the reaction of IgG autoantibodies in serum samples of patients with COPD with recombinant human cytokeratin 18 protein and purified bovine cytokeratin 18 protein.
25 Lanes 1, 3, 5 and 7 show the results of the recombinant human cytokeratin 18 protein, and lanes 2, 4, 6, and 8 show the results of purified bovine

cytokeratin 18 protein. Lanes 1 & 2, lanes 3 & 4, and lanes 5 & 6 show the results obtained by reacting with 3 serum samples of 3 patients with COPD, and lanes 7 & 8 show the result of reacting with mouse monoclonal antibodies to cytokeratin 18 protein.

5 From the results obtained by using the serum samples of 3 patients with COPD, it was confirmed that IgG autoantibodies to cytokeratin 18 in their serum samples could react with bovine cytokeratin 18 protein having the same molarcular weight of human cytokeratin 18 protein.

As shown in the above, the test results of autoantigen-
10 autoantibodies using human recombinant human cytokeratin 18 protein and purified bovine cytokeratin 18 protein corresponded to each other. Thus, it was confirmed that bovine cytokeratin 18 protein could be used to detect autoantibodie in serum samples of patients with COPD.

15 [Example 3] Inhibition of IgG antibody-induced cytotoxicity to airway epithelial cells by the administration of cytokeratin 18 protein

(3-1) Confirmation of cytotoxicity to airway epithelial cells by IgG autoantibodies

Cytotoxicity to airway epithelial cell by IgG autoantibodies was
20 measured by the microcytotoxicity method using Terasaki tray and modifying prior reported method (Martin S, et al; Tissue Antigens 1991;37:152-155).

In the above test, IgG antibodies were isolated from plasma samples of 2 patients with COPD, and a healthy control, where patients with COPD had IgG autoantibodies to human cytokeratin 18 protein.

25 IgG antibodies of 1 healthy control were isolated to have a purity of 90%, by using ethanol precipitation and ultrafiltration according to

prior preparing method of IgG antibodies (Lebing W et al, Vox Sang 2003;84:193-201). IgG antibodies of 2 patients with COPD were isolated in purity of greater than 95% by affinity chromatography using Protein A column. The purity of the isolated IgG antibodies was determined by SDS-
5 PAGE and protein staining. Also, the amount of endotoxin in the isolated IgG antibody solution was measured quantitatively by using LAL (Limulus amebocyte lysate). As a result, the contamination of endotoxin was not detected.

Human IgG antibodies used for intravenous administration
10 (IVglobulin, Green Cross Pharmaceutical Co., Korea) were commercially obtained and used as control IgG antibodies, where the control IgG antibodies were isolated from plasma of a large number of blood donors, to have a purity of more than 95%.

First of all, the above human IgG antibodies were diluted by using
15 DMEM/F12 medium at concentrations of 5mg/ml, 1mg/ml, and 0.2mg/ml. Then, the diluted samples were put into 96-well Terasaki tray at a ratio of 1 μ l/well in quadruplicate. Also, samples containing only DMEM/F12 medium were put in 96-well Terasaki tray in quadruplicate as negative controls.

The cultured human airway epithelial cell line A549 was treated
20 with Trypsin/EDTA and isolated, then 1 μ l (2000 cells/ μ l) of the solution was put into each of above wells. In order to prevent evaporation of the solution, 5 μ l of mineral oil was put into the wells. And then, the wells were reacted for 2 hours and 30 minutes. 5% eosin Y dye (Sigma Chemical Co.) was put into the wells at a ratio of 5 μ l/well to stain the cells.
25 Then, formalin solution was put into the wells at a ratio of 5 μ l/well to fix the stained cells. A coverslide was covered and the number of cells

without damage of cell membrane was counted by light microscope to determine cytotoxicity.

The cytotoxicity to airway epithelial cell by IgG antibodies was expressed as cytolysis % according to following equation, by comparing mean
5 number of cells in wells reacting with the samples and mean number of cells in negative control wells containing only DMEM/F12 medium.

【Equation 1】

Cytotoxicity (cytolysis %) = [(mean number of cells in negative
10 control wells - mean number of cells in wells containing samples) / mean number of cells in negative control wells] x 100

The result of the test was obtained in quadruplicate to each sample, and then expressed in terms of mean and standard deviation.

Fig. 4 show that IgG antibodies isolated from plasma samples of 2
15 patients with COPD (patient 1 and patient 2) show significantly higher cytotoxicity than commercial IgG antibodies obtained from multiple healthy donors used for intravenous administration (IVglobulin; normal controls 1) or IgG antibodies isolated from plasma of a healthy control (normal control 2) under the conditions of 1 μ g/well and 5 μ g/well (t-test, $p < 0.05$).

20 (3-2) Inhibition of IgG autoantibody-induced cytotoxicity to airway epithelial cell by cytokeratin 18 protein

In order to absorb autoantibodies to cytokeratin 18 protein from patients with COPD, 50 μ g of the human cytokeratin 18 protein purified according to the previous report of the inventors (Nahm DH, et al. Am J
25 Respir Crit Care Med 2002;165:1536-9) and 50 μ g of the purified human cytokeratin 19 protein as a negative control were subjected to

electrophoresis and transferred to PVDF membrane. PVDF membranes containing human cytokeratin 18 protein or human cytokeratin 19 protein were cutted into small pieces and transferred to eppendorf tubes separately.

50 μ g of IgG antibodies which were isolated from serum samples of 2 patients with COPD and diluted in DMEM/F12 medium to have a concentration of 5 mg/ml were mixed with PVDF membrane pieces containing either 50 μ g of human cytokeratin 18 protein or human cytokeratin 19 protein, and then, the mixtures were reacted for 16 hours at 4°C. After the reaction, supernatant was collected by centrifugation, and the cytotoxicity to human airway epithelial cell by IgG antibodies was measured in the above method (3-1).

The result of the experiment was obtained in 6 independent experiments of each samples, and then, expressed in terms of mean and standard deviation.

Fig. 5 shows that when the IgG antibodies of patients with COPD (patient 1, 2) were adsorbed with human cytokeratin 18 protein prior to the addition to airway epithelial cells, the cytotoxicity to airway epithelial cell by IgG autoantibodies (shown as "CK18" in each graph) was significantly reduced compared to the case of adsorbtion with the same amount of human cytokeratin 19 protein used as a control antigen (shown as "CK19" in each graph) (Table 1) (t-test, $p < 0.001$).

【TABLE 1】

| Patients | Absorption with cytokeratin 19 protein (cytolysis %) | Absorption with cytokeratin 18 protein (cytolysis %) |
|----------|--|--|
| | | |

| | | |
|-----------|-------------|------------|
| Patient 1 | 61.9 ± 6.4* | 13.7 ± 4.5 |
| Patient 2 | 37.2 ± 6.2* | 1.8 ± 2.7 |
| *: P<0.01 | | |

Above results show that cytokeratin 18 protein can be used for the inhibition of cytotoxic reaction to airway epithelial cell induced by IgG autoantibodies to cytokeratin 18 protein in the blood of patients with COPD.

5 Accordingly, it is evident that the cytotoxic effect and the inflammatory effect of IgG autoantibodies can be repressed if the cytokeratin 18 protein of the present invention is administered into the patients with COPD.

10 Industrial Applicability

As described in the above, the present invention identified cytokeratin 18 protein as an autoantigen recognized by autoantibodies in the serum samples of patients having COPD. Thus, a pharmaceutical composition of the present invention cytokeratin 18 protein as an active
15 ingredient can be used as a medicament for preventing, alleviating, and treating COPD through the inhibition of autoantibody-induced cytotoxicity to airway epithelial cells and the inhibition of the secondary development of chronic airway epithelial inflammation induced by the formation of immune complexes consisted of autoantibodies and autoantigen.

20 Also, a diagnostic composition comprising cytokeratin 18 protein according to the present invention can be used for detecting, diagnosing or classifying COPD.

Also, the present invention can be used for a pharmaceutical

formulation comprising cytokeratin 18 protein or fragments thereof to protect patients with COPD. The present invention also can be used to identify a pharmaceutical compound capable of inhibiting the binding ability of autoantibodies to cytokeratin 18 from patients with COPD to
5 cytokeratin 18 protein or cytokeratin 18-expressing cells.

What is claimed is:

1. A pharmaceutical composition for preventing or treating chronic obstructive pulmonary disease comprising cytokeratin 18 protein as an active ingredient.

5 2. The composition of claim 1, wherein the cytokeratin 18 protein are originated from mammals selected from the group consisting of human, mouse, rat, rabbit, pig, cow and goat.

3. The composition of claim 2, wherein the cytokeratin 18 protein has an amino acid sequence of SEQ ID NO: 1.

10 4. The composition of claim 2, wherein the cytokeratin 18 protein has an amino acid sequence of SEQ ID NO: 2.

5. The composition of claim 1, wherein the chronic obstructive pulmonary disease is pulmonary emphysema or chronic bronchitis.

15 6. A method of preventing or treating chronic obstructive pulmonary disease by administering an effective amount of cytokeratin 18 protein.

7. The method of claim 6, wherein the cytokeratin 18 protein is originated from mammals selected from the group consisting of human, mouse, rat, rabbit, pig, cow and goat.

20 8. The method of claim 7, wherein the cytokeratin 18 protein has the amino acid sequence of SEQ ID NO: 1.

9. The method of claim 7, wherein the cytokeratin 18 protein has the amino acid sequence of SEQ ID NO: 2.

10. The method of claim 6, wherein the chronic obstructive pulmonary disease is pulmonary emphysema or chronic bronchitis.

11. A diagnostic composition for diagnosing chronic obstructive pulmonary disease comprising cytokeratin 18 protein.

12. The composition of claim 11, wherein the cytokeratin 18 protein is originated from mammals selected from the group consisting of human,
5 mouse, rat, rabbit, pig, cow and goat.

13. The composition of claim 12, wherein the cytokeratin 18 protein has the amino acid sequence of SEQ ID NO: 1.

14. The composition of claim 12, wherein the cytokeratin 18 protein has the amino acid sequence of SEQ ID NO: 2.

10 15. The composition of claim 11, wherein the chronic obstructive pulmonary disease is pulmonary emphysema or chronic bronchitis.

16. A method of diagnosing chronic obstructive pulmonary disease by using diagnostic compositions containing cytokeratin 18 protein as an active ingredient comprising the steps of:

15 (a) obtaining biological samples of a subject suspected to have chronic obstructive pulmonary disease such as pulmonary emphysema or chronic bronchitis;

(b) contacting the above biological samples with cytokeratin 18 protein to induce the formation of immune complex; and

20 (c) diagnosing said COPD in the subject by detecting the above immune complex to determine the presence of autoantibodies to cytokeratin 18 protein.

25 17. The method of claim 16, wherein the cytokeratin 18 protein is originated from mammals selected from the group consisting of human, mouse, rat, rabbit, pig, cow and goat.

18. The method of claim 17, wherein the cytokeratin 18 protein has the amino acid sequence of SEQ ID NO: 1.

19. The method of claim 17, wherein the cytokeratin 18 protein has the amino acid sequence of SEQ ID NO: 2.

5 20. The method of claim 16, wherein the chronic obstructive pulmonary disease is pulmonary emphysema or chronic bronchitis.

21. A composition for screening a therapeutic agent for chronic obstructive pulmonary disease, comprising one or more of cytokeratin 18 protein, antibodies to said cytokeratin 18 protein, or autoantibodies to
10 cytokeratin 18 obtained from patients having said chronic obstructive pulmonary disease.

22. The composition of claim 21, wherein the cytokeratin 18 protein is originated from mammals selected from the group consisting of human, mouse, rat, rabbit, pig, cow and goat.

15 23. The composition of claim 22, wherein the cytokeratin 18 protein has the amino acid sequence of SEQ ID NO: 1.

24. The composition of claim 22, wherein the cytokeratin 18 protein has the amino acid sequence of SEQ ID NO: 2.

20 25. The composition of claim 21, wherein the chronic obstructive pulmonary disease is pulmonary emphysema or chronic bronchitis.

26. A method of screening a therapeutic agent for chronic obstructive pulmonary disease by using any one of the compositions of claims 21 to 25 comprising the steps of:

(a) isolating autoantibodies from biological samples obtained from
25 patients having chronic obstructive pulmonary disease such as pulmonary emphysema or chronic bronchitis;

(b) contacting test materials with the said autoantibodies obtained in the above step (a); and

(c) selecting a therapeutic agent for chronic obstructive pulmonary disease by determining whether the test materials can inhibit binding of
5 the said autoantibodies to cytokeratin 18 protein or can inhibit cytotoxic effects of the said autoantibodies to cytokeratin 18 protein-expressing cells.

27. The method of claim 26, wherein said biological samples are one or more materials selected from the group consisting of blood, plasma,
10 serum, urine, tears, salivar, sputum, nasal secretion, bronchial secretion, bronchial washing fluid, pulmonary secretion and alveolus washing fluid.

28. A method for diagnosing chronic obstructive pulmonary disease by using a diagnostic composition comprising cytokeratin 18 protein, comprising the steps of:

15 a) selecting subjects suspected to have chronic obstructive pulmonary disease;

b) injecting intradermally to the subject any one of said diagnostic compositions of claims 11 to 15; and

c) diagnosing chronic obstructive pulmonary disease by examining
20 the injected skin part after 24 to 72 hours of the injection to detect the presence of skin swelling and measure the size of skin swelling to determine the presence of delayed-type hypersensitivity reaction or late-skin reaction to cytokeratin 18 protein.

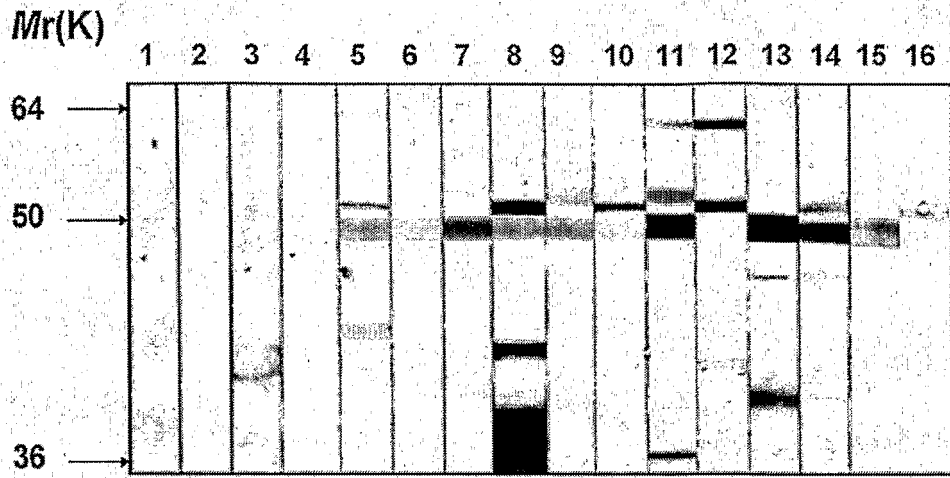
29. A method for screening or classifying the patients with chronic
25 obstructive pulmonary disease by using a diagnostic composition comprising cytokeratin 18 protein, comprising the steps of:

a) selecting subjects suspected to have chronic obstructive pulmonary disease;

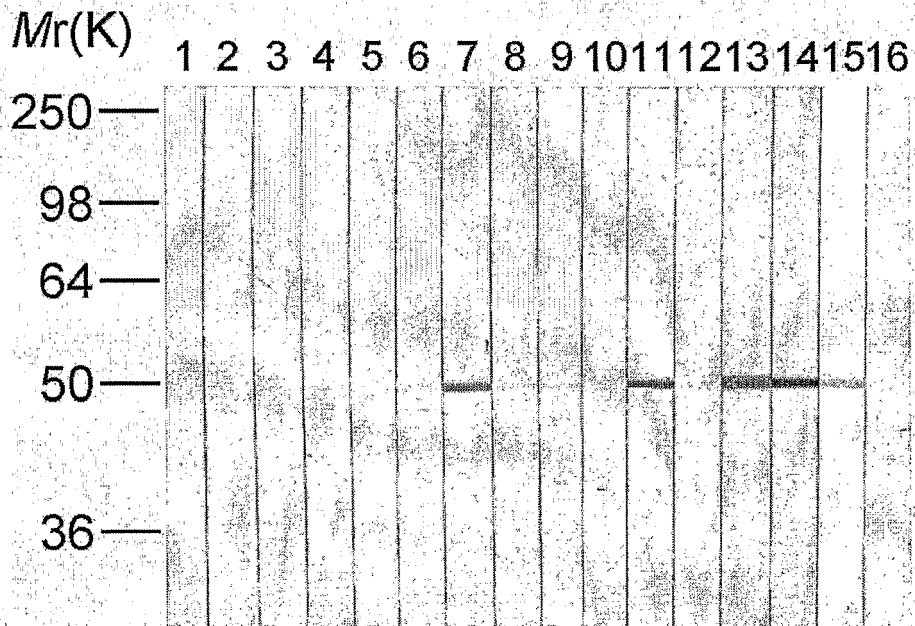
b) injecting intradermally to the subject any one of said diagnostic compositions of claims 11 to 15; and

5 c) screening or classifying the patients having chronic obstructive pulmonary disease among the above subjects by examining the injected skin part after 24 to 72 hours of the injection to detect the presence of skin swelling and measure the size of skin swelling to determine the presence of delayed-type hypersensitivity reaction or late-skin reaction to cytokeratin
10 18 protein.

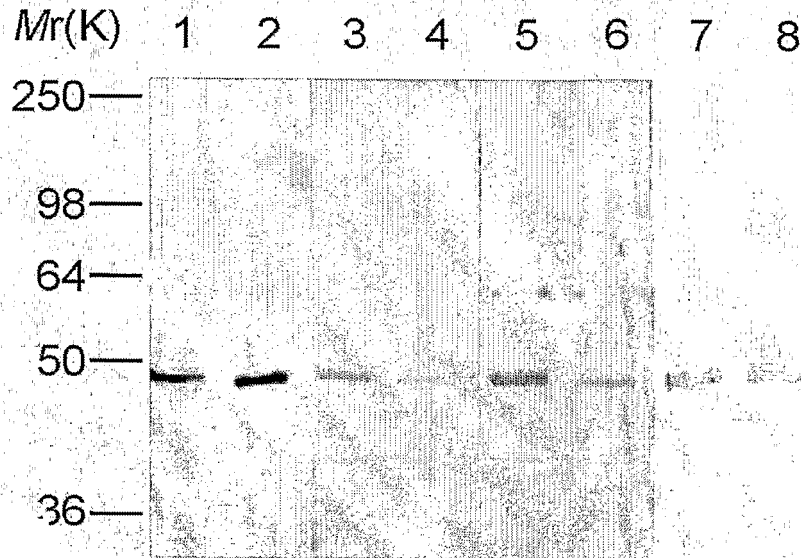
[Fig. 1]



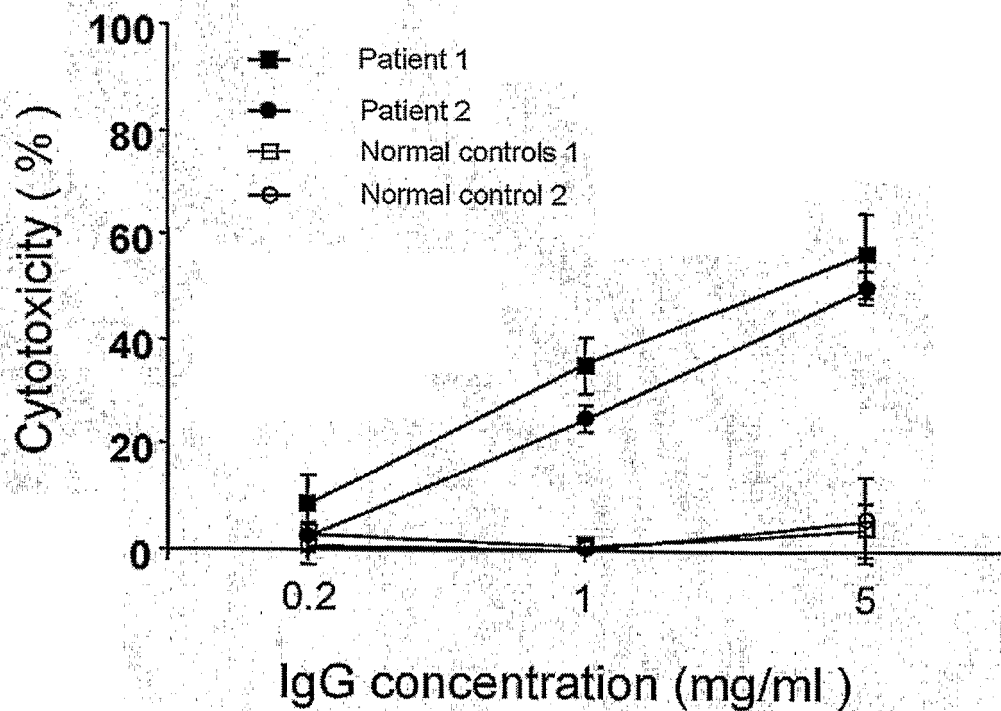
[Fig. 2]



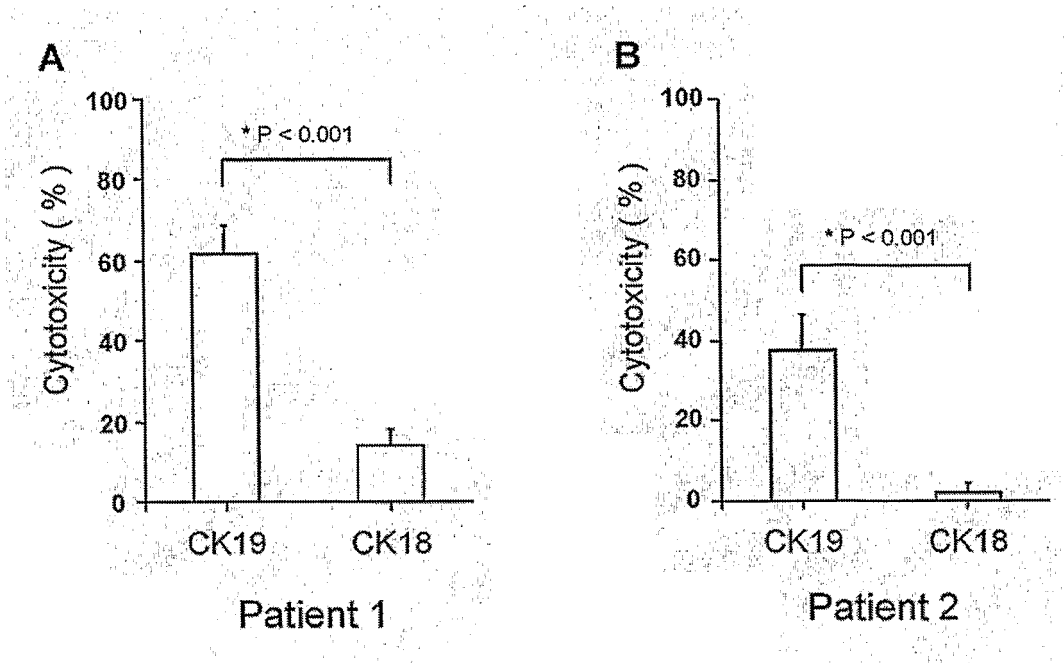
[Fig. 3]



[Fig. 4]



[Fig. 5]



Sequence Listing

<110> JEON, Sook-Yeong
 NAM, Dong-Ho

<120> Composition for prevention, treatment and diagnosis of chronic
 obstructive pulmonary disease

<130> NP06-0017

<160> 2

<170> KopatentIn 1.71

<210> 1
 <211> 430
 <212> PRT
 <213> Homo sapiens

<400> 1

Met Ser Phe Thr Thr Arg Ser Thr Phe Ser Thr Asn Tyr Arg Ser Leu
 1 5 10 15

Gly Ser Val Gln Ala Pro Ser Tyr Gly Ala Arg Pro Val Ser Ser Ala
 20 25 30

Ala Ser Val Tyr Ala Gly Ala Gly Gly Ser Gly Ser Arg Ile Ser Val
 35 40 45

Ser Arg Ser Thr Ser Phe Arg Gly Gly Met Gly Ser Gly Gly Leu Ala
 50 55 60

Thr Gly Ile Ala Gly Gly Leu Ala Gly Met Gly Gly Ile Gln Asn Glu
 65 70 75 80

Lys Glu Thr Met Gln Ser Leu Asn Asp Arg Leu Ala Ser Tyr Leu Asp
 85 90 95

Arg Val Arg Ser Leu Glu Thr Glu Asn Arg Arg Leu Glu Ser Lys Ile
 100 105 110

Arg Glu His Leu Glu Lys Lys Gly Pro Gln Val Arg Asp Trp Ser His

Sequence Listing

| | | |
|---|-----|-----|
| 115 | 120 | 125 |
| Tyr Phe Lys Ile Ile Glu Asp Leu Arg Ala Gln Ile Phe Ala Asn Thr | | |
| 130 | 135 | 140 |
| Val Asp Asn Ala Arg Ile Val Leu Gln Ile Asp Asn Ala Arg Leu Ala | | |
| 145 | 150 | 155 |
| Ala Asp Asp Phe Arg Val Lys Tyr Glu Thr Glu Leu Ala Met Arg Gln | | |
| | 165 | 170 |
| | | 175 |
| Ser Val Glu Asn Asp Ile His Gly Leu Arg Lys Val Ile Asp Asp Thr | | |
| | 180 | 185 |
| | | 190 |
| Asn Ile Thr Arg Leu Gln Leu Glu Thr Glu Ile Glu Ala Leu Lys Glu | | |
| 195 | 200 | 205 |
| Glu Leu Leu Phe Met Lys Lys Asn His Glu Glu Glu Val Lys Gly Leu | | |
| 210 | 215 | 220 |
| Gln Ala Gln Ile Ala Ser Ser Gly Leu Thr Val Glu Val Asp Ala Pro | | |
| 225 | 230 | 235 |
| | | 240 |
| Lys Ser Gln Asp Leu Ala Lys Ile Met Ala Asp Ile Arg Ala Gln Tyr | | |
| | 245 | 250 |
| | | 255 |
| Asp Glu Leu Ala Arg Lys Asn Arg Glu Glu Leu Asp Lys Tyr Trp Ser | | |
| | 260 | 265 |
| | | 270 |
| Gln Gln Ile Glu Glu Ser Thr Thr Val Val Thr Thr Gln Ser Ala Glu | | |
| 275 | 280 | 285 |
| Val Gly Ala Ala Glu Thr Thr Leu Thr Glu Leu Arg Arg Thr Val Gln | | |
| 290 | 295 | 300 |
| Ser Leu Glu Ile Asp Leu Asp Ser Met Arg Asn Leu Lys Ala Ser Leu | | |
| 305 | 310 | 315 |
| | | 320 |
| Glu Asn Ser Leu Arg Glu Val Glu Ala Arg Tyr Ala Leu Gln Met Glu | | |
| | 325 | 330 |
| | | 335 |

Sequence Listing

Gln Leu Asn Gly Ile Leu Leu His Leu Glu Ser Glu Leu Ala Gln Thr
 340 345 350

Arg Ala Glu Gly Gln Arg Gln Ala Gln Glu Tyr Glu Ala Leu Leu Asn
 355 360 365

Ile Lys Val Lys Leu Glu Ala Glu Ile Ala Thr Tyr Arg Arg Leu Leu
 370 375 380

Glu Asp Gly Glu Asp Phe Asn Leu Gly Asp Ala Leu Asp Ser Ser Asn
 385 390 395 400

Ser Met Gln Thr Ile Gln Lys Thr Thr Thr Arg Arg Ile Val Asp Gly
 405 410 415

Lys Val Val Ser Glu Thr Asn Asp Thr Lys Val Leu Arg His
 420 425 430

<210> 2
 <211> 429
 <212> PRT
 <213> Bos taurus

<400> 2
 Met Ser Phe Ser Thr Gln Ser Thr Phe Ser Asn Tyr Arg Ser Leu Gly
 1 5 10 15

Ser Val Gln Ser Ser Gly His Arg Val Arg Pro Val Ser Ser Ala Ala
 20 25 30

Ser Val Tyr Ala Gly Ala Gly Gly Ser Gly Ser Arg Ile Ser Val Ser
 35 40 45

Arg Thr Thr Ser Val Arg Gly Gly Trp Gly Ser Gly Asn Leu Gly Ala
 50 55 60

Gly Met Ala Gly Gly Leu Val Gly Val Gly Gly Ile Gln Gly Glu Lys
 65 70 75 80

INTERNATIONAL SEARCH REPORT

International application No.
PCT/KR2006/000380**A. CLASSIFICATION OF SUBJECT MATTER***G01N 33/53(2006.01)i*

According to International Patent Classification (IPC) or to both national classification and IPC

B. FIELDS SEARCHED

Minimum documentation searched (classification system followed by classification symbols)

G01N 33/53(2006.01)i

Documentation searched other than minimum documentation to the extent that such documents are included in the fields searched

Electronic data base consulted during the international search (name of data base and, where practicable, search terms used)

CA, PubMed, GenBank, Delphion "cytokeratin 18 AND (COPD OR pulmonary disease OR emphysema OR bronchitis)"

C. DOCUMENTS CONSIDERED TO BE RELEVANT

| Category* | Citation of document, with indication, where appropriate, of the relevant passages | Relevant to claim No. |
|-----------|---|-----------------------|
| A | GenBank Accession No.AAV38219, Oct. 2004, N. Kalnine et al. | 1-5, 11-15, 21-27 |
| A | American J. Respiratory Critical Care Medicine, Vol.165, No.11, pages 1536-1539, 2002, D.-H. Nahm et al.: "Identification of Cytokeratin 18 as a Bronchial Epithelial Autoantigen Associated with Nonallergic Asthma" | 1-5, 11-15, 21-27 |
| A | Clinical Science, Vol.94, pages531-535, 1998, H. Kanazawa et al.: "CYFRA 21-1, a Cytokeratin Subunit 19 Fragment, in Bronchoalveolar Lavage Fluid from Patients with Interstitial Lung Disease" | 1-5, 11-15, 21-27 |
| A | Archives Pathology Laboratory Medicine, Vol.125, pages 1494-1496, Nov. 2001, R. Veeramachaneni et al.: "Benign Myoepithelioma of the Lung" | 1-5, 11-15, 21-27 |

 Further documents are listed in the continuation of Box C. See patent family annex.

* Special categories of cited documents:

"A" document defining the general state of the art which is not considered to be of particular relevance

"E" earlier application or patent but published on or after the international filing date

"L" document which may throw doubts on priority claim(s) or which is cited to establish the publication date of citation or other special reason (as specified)

"O" document referring to an oral disclosure, use, exhibition or other means

"P" document published prior to the international filing date but later than the priority date claimed

"T" later document published after the international filing date or priority date and not in conflict with the application but cited to understand the principle or theory underlying the invention

"X" document of particular relevance; the claimed invention cannot be considered novel or cannot be considered to involve an inventive step when the document is taken alone

"Y" document of particular relevance; the claimed invention cannot be considered to involve an inventive step when the document is combined with one or more other such documents, such combination being obvious to a person skilled in the art

"&" document member of the same patent family

Date of the actual completion of the international search

24 MAY 2006 (24.05.2006)

Date of mailing of the international search report

25 MAY 2006 (25.05.2006)

Name and mailing address of the ISA/KR

Korean Intellectual Property Office
920 Dunsan-dong, Seo-gu, Daejeon 302-701,
Republic of Korea

Facsimile No. 82-42-472-7140

Authorized officer

CHANG, Je Hwan

Telephone No. 82-42-481-8158



INTERNATIONAL SEARCH REPORT

International application No.

PCT/KR2006/000380

Box No. I Nucleotide and/or amino acid sequence(s) (Continuation of item 1.b of the first sheet)

1. With regard to any nucleotide and/or amino acid sequence disclosed in the international application and necessary to the claimed invention, the international search was carried out on the basis of :
 - a. type of material
 - a sequence listing
 - table(s) related to the sequence listing
 - b. format of material
 - on paper
 - in electronic form
 - c. time of filing/furnishing
 - contained in the international application as filed
 - filed together with the international application in electronic form
 - furnished subsequently to this Authority for the purposes of search
2. In addition, in the case that more than one version or copy of a sequence listing and/or table relating thereto has been filed or furnished, the required statements that the information in the subsequent or additional copies is identical to that in the application as filed or does not go beyond the application as filed, as appropriate, were furnished.
3. Additional comments:

INTERNATIONAL SEARCH REPORTInternational application No.
PCT/KR2006/000380**Box No. II Observations where certain claims were found unsearchable (Continuation of item 2 of first sheet)**

This international search report has not been established in respect of certain claims under Article 17(2)(a) for the following reasons:

1. Claims Nos.: 6~10, 16~20, 28, 29
because they relate to subject matter not required to be searched by this Authority, namely:

Claims 6~10, 16~20, 28 and 29 relate to methods for treatment and diagnosis of human body (PCT Article 39(1)).
2. Claims Nos.:
because they relate to parts of the international application that do not comply with the prescribed requirements to such an extent that no meaningful international search can be carried out, specifically:
3. Claims Nos.:
because they are dependent claims and are not drafted in accordance with the second and third sentences of Rule 6.4(a).

Box No. III Observations where unity of invention is lacking (Continuation of item 3 of first sheet)

This International Searching Authority found multiple inventions in this international application, as follows:

1. As all required additional search fees were timely paid by the applicant, this international search report covers all searchable claims.
2. As all searchable claims could be searched without effort justifying an additional fee, this Authority did not invite payment of any additional fee.
3. As only some of the required additional search fees were timely paid by the applicant, this international search report covers only those claims for which fees were paid, specifically claims Nos.:

4. No required additional search fees were timely paid by the applicant. Consequently, this international search report is restricted to the invention first mentioned in the claims; it is covered by claims Nos.:

Remark on Protest

- The additional search fees were accompanied by the applicant's protest and, where applicable, the payment of a protest fee.
- The additional search fees were accompanied by the applicant's protest but the applicable protest fee was not paid within the time limit specified in the invitation.
- No protest accompanied the payment of additional search fees.

| | | | |
|----------------|--|---------|------------|
| 专利名称(译) | 用于预防, 治疗和诊断慢性阻塞性肺病 (COPD) 的组合物 | | |
| 公开(公告)号 | EP1848997A1 | 公开(公告)日 | 2007-10-31 |
| 申请号 | EP2006715833 | 申请日 | 2006-02-03 |
| [标]申请(专利权)人(译) | JEON SOOK永 NAHM东浩 | | |
| 申请(专利权)人(译) | 全度, SOOK映 NAHM, 东浩 | | |
| 当前申请(专利权)人(译) | 全度, SOOK映 NAHM, 东浩 | | |
| [标]发明人 | JEON SOOK YEONG NAHM DONG HO | | |
| 发明人 | JEON, SOOK-YEONG NAHM, DONG-HO | | |
| IPC分类号 | G01N33/53 | | |
| CPC分类号 | G01N33/564 G01N33/6887 G01N2800/12 | | |
| 优先权 | 1020050010924 2005-02-05 KR 1020060010285 2006-02-02 KR | | |
| 其他公开文献 | EP1848997B1 EP1848997A4 EP1848997B9 | | |
| 外部链接 | Espacenet | | |

摘要(译)

本发明提供用于预防或治疗包含细胞角蛋白18蛋白作为活性成分的慢性阻塞性肺病 (COPD) 的药物组合物。本发明还提供诊断组合物和诊断试剂盒, 用于诊断包含细胞角蛋白18蛋白的COPD。本发明进一步提供用于筛选COPD治疗剂的组合物, 其包含一种或多种细胞角蛋白18蛋白或从患有COPD的患者获得的细胞角蛋白18的自身抗体, 以及使用该组合物筛选COPD治疗剂的方法。本发明还进一步提供了使用细胞角蛋白18蛋白诊断, 预防或治疗COPD的方法。