

(19)



(11)

**EP 3 399 314 A1**

(12)

**EUROPEAN PATENT APPLICATION**  
published in accordance with Art. 153(4) EPC

(43) Date of publication:

**07.11.2018 Bulletin 2018/45**

(51) Int Cl.:

**G01N 33/53** (2006.01)      **C07K 14/47** (2006.01)  
**G01N 33/50** (2006.01)      **G01N 33/574** (2006.01)  
**C07K 16/18** (2006.01)      **C07K 16/24** (2006.01)  
**C07K 16/28** (2006.01)

(21) Application number: **16881790.6**

(22) Date of filing: **27.12.2016**

(86) International application number:

**PCT/JP2016/088978**

(87) International publication number:

**WO 2017/115816 (06.07.2017 Gazette 2017/27)**

(84) Designated Contracting States:

**AL AT BE BG CH CY CZ DE DK EE ES FI FR GB  
GR HR HU IE IS IT LI LT LU LV MC MK MT NL NO  
PL PT RO RS SE SI SK SM TR**

Designated Extension States:

**BA ME**

Designated Validation States:

**MA MD**

(72) Inventors:

- **HONJO, Tasuku**  
Kyoto-shi  
Kyoto 606-8501 (JP)
- **CHAMOTO, Kenji**  
Kyoto-shi  
Kyoto 606-8501 (JP)
- **GOTO, Megumi**  
Kobe-shi  
Hyogo 651-0073 (JP)
- **UGA, Hitoshi**  
Kobe-shi  
Hyogo 651-0073 (JP)

(30) Priority: **28.12.2015 JP 2015256605**

(71) Applicants:

- **Kyoto University**  
Kyoto-shi, Kyoto 606-8501 (JP)
- **Sysmex Corporation**  
Kobe-shi, Hyogo 651-0073 (JP)

(74) Representative: **De Clercq & Partners**

**Edgard Gevaertdreef 10a  
9830 Sint-Martens-Latem (BE)**

(54) **METHOD FOR DETERMINING CANCER, AND DEVICE AND COMPUTER PROGRAM FOR DETERMINING CANCER**

(57) The present invention relates to a method for determining cancer. Furthermore, the present invention relates to an apparatus and computer program for determining cancer.

**EP 3 399 314 A1**

**Description**

## TECHNICAL FIELD

5 **[0001]** The present invention relates to a method for determining cancer. Furthermore, the present invention relates to an apparatus and computer program for determining cancer.

## BACKGROUND ART

10 **[0002]** Receptor molecules called PD-1 (Programmed cell death-1) are expressed on the surface of activated T cells (see Non Patent Literature 1). PD-1 is known as a molecule that suppresses excessive activation of T cells and negatively regulates the immune response of a living body. In addition, on the surface of activated T cells, molecules called CTLA-4 (Cytotoxic T lymphocyte antigen-4) are also expressed. Similarly to PD-1, CTLA-4 also has a function of suppressing activation of T cells. On the other hand, some cells in the cancer section express PD-L1 (Programmed cell death-ligand 1), PD-1 ligand, on the cell surface. It is known that such cells in the cancer section suppress the activation of T cells through the binding of PD-L1 of their own to PD-1 of T cells, and avoid T cell attack. As a result, cancer increases in vivo. In fact, there is a correlation between PD-L1 expression level in the cancer section and poor prognosis rate of cancer patients. As described above, PD-L1, PD-1 and CTLA-4 are also referred to as immune checkpoint molecules because they are involved in suppression of immunity.

20

## CITATIONS LIST

## Non Patent Literature

25 **[0003]** Non Patent Literature 1: Agata Y. et al., Expression of the PD-1 antigen on the surface of stimulated mouse T and B lymphocytes. Int. Immunol., Vol. 8, pp. 765-772 (1996)

## SUMMARY OF INVENTION

## 30 TECHNICAL PROBLEMS

**[0004]** Since PD-L1 is a molecule present on the cell membrane, in order to determine cancer by PD-L1 detection, it is necessary to use the tissue collected from a subject as a sample. For example, a method of collecting a tumor tissue from a cancer patient to prepare a pathological tissue specimen and performing immunostaining of PD-L1 is known. In addition, a method of determining immunogenicity by confirming gene mutation in cancer cells is also adopted. However, due to the following reasons, the conventional method has some points to be improved. 1) Collection of tissues imposes a heavy burden on subjects. 2) When the cause of cancer onset is in T cells, the result cannot be obtained by the determination method based on the detection of PD-L1. 3) Tissue specimens vary widely depending on the collection site, and the expression level of immune checkpoint-related molecules in whole cancer tissue or whole body cannot be quantified. Therefore, it is desirable to have a cancer determination method that quantifies the amount of immune checkpoint-related molecules of cancer cells and T cells systemically, with a small burden on subjects.

40

## SOLUTIONS TO PROBLEMS

45 **[0005]** As described above, PD-L1, PD-1 and CTLA-4 are molecules involved in suppression of immune activation state, and it is known that, when the immune state of the living body is activated, expression of these molecules on the cell surface increases. Here, when the living body is affected by cancer, it is considered that T cells are activated to exclude cancer in the living body, and expression of CTLA-4 and PD-1 increases on the T cell surface. Moreover, on the cell surface of the cancer section, it is considered that the expression of PD-L1 increases to avoid attack of activated T cells. The present inventors have considered that, as the expression of these molecules increases on the cell surface, the amount of molecules released from the cell surface also increases. That is, the present inventors have considered that PD-L1, PD-1 and CTLA-4 released from the cell surface increase in the body of a cancer patient.

50

**[0006]** The present inventors have found that, by measuring free PD-L1 and free PD-1 as free protein markers in a liquid sample such as a blood sample, whether the sample is a sample collected from a subject suffering from cancer can be discriminated, thereby completing the present invention.

55

**[0007]** Therefore, the present invention provides a method for determining cancer, the method including the steps of: measuring free PD-L1 and free PD-1 as free protein markers in a liquid sample collected from a subject, and determining whether or not the liquid sample is a sample collected from a subject suffering from cancer, based on measurement results.

**[0008]** Also, the present invention provides a cancer determination apparatus comprising a computer containing a processor and a memory under control of the processor, in which a computer program for making the computer execute the steps of acquiring measured values of free PD-L1 and free PD-1 as free protein markers in a liquid sample collected from a subject, and determining whether or not the liquid sample is a sample collected from a subject suffering from cancer, based on measured values of the markers, is recorded in the memory.

**[0009]** Furthermore, the present invention provides a computer program for determining cancer which is recorded on a computer readable medium, in which the computer program is a computer program for making the computer execute the steps of acquiring measured values of free PD-L1 and free PD-1 as free protein markers in a liquid sample collected from a subject, and determining whether or not the liquid sample is a sample collected from a subject suffering from cancer, based on measured values of the markers.

#### ADVANTAGEOUS EFFECTS OF INVENTION

**[0010]** According to the present invention, since a liquid sample collected from a subject is used, the burden on the subject in collecting the sample is small. In addition, the present invention makes it possible to objectively evaluate whether or not the liquid sample is a sample collected from a subject suffering from cancer.

#### BRIEF DESCRIPTION OF DRAWINGS

**[0011]**

Fig. 1 is a schematic diagram showing an example of a cancer determination apparatus.

Fig. 2 is a block diagram showing a hardware configuration of a cancer determination apparatus.

Fig. 3A is a flowchart for a cancer determination using a cancer determination apparatus.

Fig. 3B is a flowchart for a cancer determination using a cancer determination apparatus.

Fig. 4 is a flowchart for a cancer determination using a cancer determination apparatus.

Fig. 5 is an ROC curve when a determination is made from predicted values based on concentration values of free PD-L1.

Fig. 6 is an ROC curve when a determination is made from predicted values based on concentration values of free PD-1.

Fig. 7 is an ROC curve when a determination is made from predicted values based on concentration values of free CTLA-4.

Fig. 8 is an ROC curve when a determination is made from predicted values based on concentration values of free PD-L1 and free PD-1.

Fig. 9 is an ROC curve when a determination is made from predicted values based on concentration values of free PD-L1, free PD-1 and free CTLA-4.

#### DESCRIPTION OF EMBODIMENTS

[1. Cancer Determination Method]

**[0012]** In the cancer determination method of the present invention (hereinafter also simply referred to as "determination method"), first, free PD-L1 and free PD-1 are measured as free protein markers in a liquid sample collected from a subject. In the present embodiment, in addition to free PD-L1 and free PD-1, free CTLA-4 may be further measured.

**[0013]** The subject from which the liquid sample is collected is not particularly limited, and may be a person suspected of suffering from cancer, for example. In the present embodiment, the type of cancer is not particularly limited, and, for example, various cancers such as solid cancer and blood cancer may be the subject of determination. Examples of the solid cancer include lung cancer, kidney cancer, ovarian cancer, melanoma, and the like. Examples of the blood cancer include leukemia, malignant lymphoma, multiple myeloma, and the like.

**[0014]** The liquid sample is not particularly limited as long as it is a liquid sample that has been collected from a subject and can contain free protein. Examples of such liquid sample include a blood sample, cerebrospinal fluid, pleural effusion, ascites, lymph, urine, and the like. In the present embodiment, a blood sample is preferable as the liquid sample. Examples of the blood sample include whole blood, plasma and serum, and plasma and serum are particularly preferable.

**[0015]** When insoluble contaminants such as cells are contained in the liquid sample, for example, impurities may be removed from the liquid sample by a known means such as centrifugal separation and filtration. Further, the liquid sample may be diluted with an appropriate aqueous medium as necessary. Such an aqueous medium is not particularly limited as long as it does not interfere with the measurement described later, and examples thereof include water, physiological saline, a buffer solution, and the like. The buffer solution is not particularly limited as long as it has a buffering effect at

a pH near neutrality (for example, a pH of 6 or more and 8 or less). Examples of the buffer solution include Good buffers such as HEPES, MES, Tris and PIPES, phosphate buffered saline (PBS), and the like.

5 [0016] Free PD-L1, free PD-1 and free CTLA-4 measured as markers in the present embodiment are all free proteins. As used herein, the term "free protein" refers to a protein that is detached from the surface of a cell in a liquid sample and is present outside the cell. Such a free protein may be either a protein solubilized in a liquid component (liquid phase) of the liquid sample, a protein encapsulated in a vesicle, or a protein present on the surface of a vesicle. The vesicle is not particularly limited as long as it is a small vesicle composed of a membrane. The vesicle may contain a liquid phase therein. Preferred examples of the vesicles include extracellular vesicles such as exosomes, microvesicles, apoptotic bodies, and the like.

10 [0017] The means for measuring a free protein marker is not particularly limited as long as it can acquire a value reflecting the amount or concentration of the free protein marker contained in the liquid sample (hereinafter also referred to as a "measured value of the marker"). In the present embodiment, a method of capturing a free protein marker using a substance capable of specifically binding to the marker is preferable. The free protein marker contained in the liquid sample can be measured by detecting the free protein marker captured by such a substance by a method known in the art.

15 [0018] Examples of the substance capable of specifically binding to a free protein marker include an antibody, an aptamer and the like, among which an antibody is particularly preferable. Antibodies themselves against each of the PD-L1, PD-1 and CTLA-4 proteins are known in the art and are generally available. An antibody against a free protein marker is not particularly limited as long as it is an antibody capable of specifically binding to a free protein marker. Such an antibody may be any of monoclonal antibodies, polyclonal antibodies, and fragments thereof (for example, Fab, F(ab')<sub>2</sub>, etc.). Alternatively, a commercially available antibody may be used.

20 [0019] A method for measuring a free protein marker using an antibody is not particularly limited and can be appropriately selected from known immunological measurement methods. In the present embodiment, an enzyme-linked immunosorbent assay (ELISA method) is preferred, and a sandwich ELISA method being particularly preferred. As an example of the measurement step, the case of measuring a free protein marker in a liquid sample by a sandwich ELISA method will be described below.

25 [0020] First, a complex containing a free protein marker and an antibody for capturing the free protein marker (hereinafter also referred to as "capture antibody") and an antibody for detecting the free protein marker (hereinafter also referred to as "detection antibody") is formed on a solid phase. The complex can be formed by mixing a liquid sample that can contain a free protein marker, a capture antibody, and a detection antibody. Then, a solution containing the complex is brought into contact with a solid phase capable of capturing the capture antibody, whereby the complex can be formed on the solid phase. Alternatively, a solid phase preliminarily immobilized with the capture antibody may be used. That is, a solid phase immobilized with the capture antibody, the liquid sample, and the detection antibody are brought into contact with each other, whereby the complex can be formed on the solid phase. When both the capture antibody and the detection antibody are monoclonal antibodies, it is preferable that the epitopes be different from each other.

30 [0021] The mode of immobilization of the capture antibody on the solid phase is not particularly limited. For example, the capture antibody and the solid phase may be bound directly, or the capture antibody and the solid phase may be indirectly bound via another substance. Examples of the direct bond include physical adsorption and the like. Examples of the indirect bond include a bond via a combination of biotin and avidin or streptavidin (hereinafter also referred to as "avidins"). In this case, by preliminarily modifying the capture antibody with biotin and previously binding avidins to the solid phase, the capture antibody and the solid phase can be indirectly bound via the bond between the biotin and the avidins.

35 [0022] The material of the solid phase is not particularly limited, and it can be selected from, for example, organic polymer compounds, inorganic compounds, biopolymers, and the like. Examples of the organic polymer compound include latex, polystyrene, polypropylene, and the like. Examples of the inorganic compound include magnetic bodies (iron oxide, chromium oxide, ferrite, etc.), silica, alumina, glass, and the like. Examples of the biopolymer include insoluble agarose, insoluble dextran, gelatin, cellulose, and the like. Two or more of these may be used in combination. The shape of the solid phase is not particularly limited, and examples thereof include particles, membranes, microplates, microtubes, test tubes, and the like. Among them, particles are preferable, and magnetic particles are particularly preferable.

40 [0023] In the present embodiment, B/F (Bound/Free) separation for removing an unreacted free component not forming a complex may be performed between the process of forming the complex and the process of detecting the complex. The unreacted free component refers to a component not constituting a complex. Examples thereof include capture antibodies not bound to the free protein marker, detection antibodies, and the like. The means of B/F separation is not particularly limited, and when the solid phase is a particle, B/F separation can be performed by recovering only the solid phase capturing the complex by centrifugation. When the solid phase is a container such as a microplate or a microtube, B/F separation can be performed by removing a liquid containing an unreacted free component. When the solid phase is a magnetic particle, B/F separation can be performed by aspirating and removing a liquid containing an unreacted free component by a nozzle while magnetically constraining the magnetic particles with a magnet, which is preferable

from the viewpoint of automation. After removing the unreacted free component, the solid phase capturing the complex may be washed with a suitable aqueous medium such as PBS.

**[0024]** Then, the complex formed on the solid phase is detected by a method known in the art, whereby the measured value of the free protein marker contained in the liquid sample can be acquired. For example, when an antibody labeled with a labeling substance is used as a detection antibody, the measured value of the marker in the liquid sample can be acquired by detecting a signal generated by the labeling substance. Alternatively, also when a labeled secondary antibody against the detection antibody is used, the measured value of the marker in the liquid sample can be acquired in the same manner.

**[0025]** Also, as an example of a method for measuring a free protein marker using an antibody, the immune complex transfer method described in JP H01-254868 A can be used.

**[0026]** The phrase "detecting a signal" herein includes qualitatively detecting the presence or absence of a signal, quantifying a signal intensity, and semi-quantitatively detecting the intensity of a signal. Semi-quantitative detection means to show the intensity of the signal in stages such as "no signal generated", "weak", "medium", "strong", and the like. In the present embodiment, it is preferable to detect the intensity of a signal quantitatively or semi-quantitatively.

**[0027]** The labeling substance is not particularly limited as long as a detectable signal is generated. For example, it may be a substance which itself generates a signal (hereinafter also referred to as "signal generating substance") or a substance which catalyzes the reaction of other substances to generate a signal. Examples of the signal generating substance include fluorescent substances, radioactive isotopes, and the like. Examples of the substance that catalyzes the reaction of other substances to generate a detectable signal include enzymes. Examples of the enzymes include alkaline phosphatase, peroxidase,  $\beta$ -galactosidase, luciferase, and the like. Examples of the fluorescent substance include fluorescent dyes such as fluorescein isothiocyanate (FITC), rhodamine and Alexa Fluor (registered trademark), fluorescent proteins such as GFP, and the like. Examples of the radioisotopes include  $^{125}\text{I}$ ,  $^{14}\text{C}$ ,  $^{32}\text{P}$ , and the like. Among them, an enzyme is preferable as a labeling substance, and alkaline phosphatase and peroxidase are particularly preferable.

**[0028]** Methods for detecting a signal themselves are known in the art. In the present embodiment, a measurement method according to the type of signal derived from the labeling substance may be appropriately selected. For example, when the labeling substance is an enzyme, signals such as light and color generated by reacting a substrate for the enzyme can be measured by using a known apparatus such as a spectrophotometer.

**[0029]** The substrate of the enzyme can be appropriately selected from known substrates according to the type of the enzyme. For example, when alkaline phosphatase is used as the enzyme, examples of the substrate include chemiluminescent substrates such as CDP-Star (registered trademark) (disodium 4-chloro-3-(methoxyspiro[1,2-dioxetane-3,2'-(5'-chloro)tricyclo[3.3.1.1<sup>3,7</sup>]decan]-4-yl)phenyl phosphate) and CSPD (registered trademark) (disodium 3-(4-methoxyspiro[1,2-dioxetane-3,2-(5'-chloro)tricyclo[3.3.1.1<sup>3,7</sup>]decan]-4-yl)phenyl phosphate), and chromogenic substrates such as 5-bromo-4-chloro-3-indolyl phosphate (BCIP), disodium 5-bromo-6-chloro-indolyl phosphate and p-nitrophenyl phosphate. Also, when peroxidase is used as the enzyme, examples of the substrate include chemiluminescent substrates such as luminol and derivatives thereof, and chromogenic substrates such as 2,2'-azinobis(3-ethylbenzothiazoline-6-ammonium sulfonate) (ABTS), 1,2-phenylenediamine (OPD) and 3,3',5,5'-tetramethylbenzidine (TMB).

**[0030]** When the labeling substance is a radioactive isotope, radiation as a signal can be measured using a known apparatus such as a scintillation counter. Also, when the labeling substance is a fluorescent substance, fluorescence as a signal can be measured using a known apparatus such as a fluorescence microplate reader. The excitation wavelength and the fluorescence wavelength can be appropriately determined according to the type of fluorescent substance used.

**[0031]** The detection result of the signal can be used as the measured value of the marker. For example, when quantitatively detecting the intensity of a signal, the signal intensity value itself or a value acquired from the measured value can be used as the measured value of the marker. Examples of the value acquired from the measured value of the signal intensity include a value acquired by subtracting the measured value of a negative control sample or the background value from the measured value, a value acquired by applying the measured value to a calibration curve, and the like. The negative control sample can be appropriately selected, and examples thereof include a liquid sample obtained from a healthy subject and the like.

**[0032]** In the present embodiment, it is preferable to measure the free protein marker contained in the liquid sample by a sandwich ELISA method using a capture antibody immobilized on magnetic particles and a detection antibody labeled with a labeling substance. In this case, measurement may be carried out using a commercially available fully automated immunoassay system such as HISCL series (manufactured by Sysmex Corporation).

**[0033]** Next, in the sample determination method according to the present embodiment, whether or not the liquid sample is a sample collected from a subject suffering from cancer is discriminated based on the measurement result.

**[0034]** In the present embodiment, it is preferred that the measured values of the free protein markers acquired by the measurement are compared with a predetermined threshold value corresponding to each marker, and whether or not the liquid sample is a sample collected from a subject suffering from cancer is determined, based on the comparison

result.

**[0035]** For example, when the measured values of free PD-L1 and free PD-1 are acquired, the measured value of free PD-L1 is compared with the first threshold value, and the measured value of free PD-1 is compared with the second threshold value, then a determination is made based on the comparison results. As an example of the determination, when the measured value of free PD-L1 is higher than the first threshold value or is equal to the first threshold value and the measured value of free PD-1 is higher than the second threshold value or is equal to the second threshold value, it may be determined that the liquid sample is a sample collected from a subject suffering from cancer. Also, when the measured value of free PD-L1 is lower than the first threshold value or the measured value of free PD-1 is lower than the second threshold value, it may be determined that the liquid sample is not one collected from a subject suffering from cancer.

**[0036]** For example, when the measured values of free PD-L1, free PD-1 and free CTLA-4 are acquired, the measured value of free PD-L1 is compared with the first threshold value, the measured value of free PD-1 is compared with the second threshold value, and the measured value of free CTLA-4 is compared with the third threshold value, then a determination is made based on the comparison results. As an example of the determination, when the measured value of free PD-L1 is higher than the first threshold value or is equal to the first threshold value, the measured value of free PD-1 is higher than the second threshold value or is equal to the second threshold value, and the measured value of free CTLA-4 is higher than the third threshold value or is equal to the third threshold value, it may be determined that the liquid sample is a sample collected from a subject suffering from cancer. Also, when the measured value of free PD-L1 is lower than the first threshold value, the measured value of free PD-1 is lower than the second threshold value, or the measured value of free CTLA-4 is lower than the third threshold value, it may be determined that the liquid sample is not one collected from a subject suffering from cancer.

**[0037]** In a further embodiment, a predicted value acquired by multivariate analysis from the measured value of the free protein markers acquired by the measurement is compared with a predetermined threshold value corresponding to the predicted value, and whether or not the liquid sample is a sample collected from a subject suffering from cancer may be determined, based on the comparison result. Multivariate analysis can be appropriately selected from known analytical methods such as logistic regression analysis, multiple regression analysis, and discriminant analysis. Logistic regression analysis is preferable among them.

**[0038]** For example, when the measured values of free PD-L1 and free PD-1 are acquired, these measured values are substituted into the discriminant created by multivariate analysis (for example, logistic regression analysis) to acquire a predicted value. Even when the measured value of free CTLA-4 is further acquired, the measured values of all the acquired markers are substituted into the discriminant created by multivariate analysis (for example, logistic regression analysis) in the same manner as above, to acquire a predicted value. Then, the acquired predicted value is compared with a predetermined threshold value, and a determination is made based on the comparison results. As an example of the determination, when the acquired predicted value is higher than the predetermined threshold value or is equal to the predetermined threshold value, it may be determined that the liquid sample is a sample collected from a subject suffering from cancer. Further, when the acquired predicted value is lower than the predetermined threshold value, it may be determined that the liquid sample is not one collected from a subject suffering from cancer.

**[0039]** In the present embodiment, when the measured values of free PD-L1 and free PD-1 are acquired, the predicted value may be calculated using a regression equation of the following formula (I). In addition, when the measured values of free PD-L1, free PD-1 and free CTLA-4 are acquired, the predicted value may be calculated using a regression equation of the following formula (II). These regression equations are equations constructed based on the multiple logistic model. In the formula, [PD-L1], [PD-1] and [CTLA-4] are the measured values of free PD-L1, free PD-1 and free CTLA-4, respectively.  $b_0$  is a coefficient of the intercept, and  $b_1$  to  $b_3$  are coefficients of each free protein marker. The coefficients can be determined by a known method such as a maximum likelihood method.

[Expression 1]

$$P = \frac{1}{1 + \exp [ - (b_0 + b_1 \times [\text{PD-L1}] + b_2 \times [\text{PD-1}] ) ]} \quad (\text{I})$$

[Expression 2]

$$P = \frac{1}{1 + \exp [ - (b_0 + b_1 \times [\text{PD-L1}] + b_2 \times [\text{PD-1}] + b_3 \times [\text{CTLA-4}] ) ]} \quad (\text{II})$$

[0040] The predetermined threshold value corresponding to each marker and the threshold value corresponding to the predicted value described above are not particularly limited and can be set empirically, for example, by accumulating data of free protein markers in liquid samples collected from various cancer patients. Alternatively, the predetermined cut-off value may be set as follows. Liquid samples are collected from a healthy subject and various cancer patients, and measured values of free protein markers are acquired. Then, from the acquired measured values, values that can distinguish between the healthy subject and the cancer patient for each marker are obtained, and the obtained values are set as predetermined cut-off values corresponding to each marker. Alternatively, the measured values of the markers acquired from liquid samples of a healthy subject and various cancer patients are substituted into the discriminant created by multivariate analysis to acquire a predicted value of the healthy subject and a predicted value of the cancer patient. Then, based on the acquired predicted value, a value that can distinguish between the healthy subject and the cancer patient is obtained, and the obtained value is set as a predetermined cut-off value corresponding to the predicted value.

[0041] The determination method of the present embodiment makes it possible to provide a doctor and the like with information that assists diagnosis of cancer. That is, the determination method of the present embodiment can also be interpreted as a method for assisting determination or diagnosis of cancer.

## [2. Apparatus and Computer Program for Cancer Determination]

[0042] The scope of the present invention also includes apparatuses for carrying out the cancer determination method of the present embodiment. Such an apparatus is a cancer determination apparatus (hereinafter also simply referred to as "determination apparatus"). The scope of the present invention also includes a computer program for making a computer execute the above-described cancer determination method according to the present embodiment. Such a computer program is a computer program for determining cancer.

[0043] Hereinbelow, an example of the apparatus for carrying out the method of the present embodiment will be described with reference to the drawings. However, the present embodiment is not limited only to the embodiment shown in this example. Fig. 1 is a schematic diagram of a cancer determination apparatus. A determination apparatus 10 shown in Fig. 1 includes an immunoassay device 20 and a computer system 30 connected to the immunoassay device 20.

[0044] In the present embodiment, the type of immunoassay device is not particularly limited, and it can be appropriately selected according to the method for measuring a free protein marker. In the example shown in Fig. 1, the immunoassay device 20 is a commercially available automated immunoassay device capable of detecting a chemiluminescent signal generated by a sandwich ELISA method using magnetic particles on which a capture antibody is immobilized and an enzyme-labeled detection antibody. The immunoassay device 20 is not particularly limited as long as it can detect a signal based on the used labeling substance, and it can be appropriately selected according to the type of the labeling substance.

[0045] When a reagent containing magnetic particles on which a capture antibody is immobilized, a reagent containing an enzyme-labeled detection antibody and a liquid sample collected from a subject are set in the immunoassay device 20, the immunoassay device 20 performs an antigen-antibody reaction using each reagent, acquires a chemiluminescent signal as optical information based on the enzyme-labeled antibody specifically bound to a free protein marker, and transmits the obtained optical information to the computer system 30.

[0046] The computer system 30 includes a computer main body 300, an input unit 301, and a display unit 302 that displays specimen information, a determination result, and the like. The computer system 30 receives the optical information from the immunoassay device 20. Then, a processor of the computer system 30 executes a computer program for determining cancer, installed in a hard disk 313, based on the optical information. As shown in Fig. 1, the computer system 30 may be equipment separate from the immunoassay device 20, or may be equipment including the immunoassay device 20. In the latter case, the computer system 30 may itself be the determination apparatus 10. A commercially available automatic immunoassay device may be loaded with the computer program for determining cancer described above.

[0047] With reference to Fig. 2, the computer main body 300 includes a CPU (Central Processing Unit) 310, a ROM (Read Only Memory) 311, a RAM (Random Access Memory) 312, a hard disk 313, an input/output interface 314, a reading device 315, a communication interface 316, and an image output interface 317. The CPU 310, the ROM 311, the RAM 312, the hard disk 313, the input/output interface 314, the reading device 315, the communication interface 316 and the image output interface 317 are data-communicably connected by a bus 318. Further, the immunoassay device 20 is communicably connected to the computer system 30 via the communication interface 316.

[0048] The CPU 310 can execute a program stored in the ROM 311 or the hard disk 313 and a program loaded in the RAM 312. The CPU 310 calculates a measured value of a free protein marker, the CPU 310 reads a predetermined threshold value corresponding to each marker stored in the ROM 311 or the hard disk 313, and the CPU 310 determines whether or not the liquid sample is a sample collected from a subject suffering from cancer. Alternatively, the CPU 310 may read the discriminant of multivariate analysis stored in the ROM 311 or the hard disk 313, and the CPU 310 may calculate a predicted value from the measured value of the free protein marker. Further, the CPU 310 may read a

predetermined threshold value corresponding to the predicted value stored in the ROM 311 or the hard disk 313, and the CPU 310 may determine whether or not the liquid sample is a sample collected from a subject suffering from cancer. The CPU 310 outputs the determination result and displays it on the display unit 302.

5 [0049] The ROM 311 includes a mask ROM, PROM, EPROM, EEPROM, and the like. In the ROM 311, a computer program executed by the CPU 310 and data used for executing the computer program are recorded as described above. In the ROM 311, data used for a determination flow to be described later, such as the predetermined threshold value and the discriminant of multivariate analysis, may be recorded.

10 [0050] The RAM 312 includes SRAM, DRAM, and the like. The RAM 312 is used for reading the program recorded in the ROM 311 and the hard disk 313. The RAM 312 is also used as a work area of the CPU 310 when executing these programs.

[0051] The hard disk 313 has installed therein an operating system to be executed by the CPU 310, a computer program such as an application program (the computer program for determining cancer), and data used for executing the computer program. In the hard disk 313, data used for a determination flow to be described later, such as the predetermined threshold value and the discriminant of multivariate analysis, may be recorded.

15 [0052] The reading device 315 is constituted of a flexible disk drive, a CD-ROM drive, a DVD-ROM drive, and the like. The reading device 315 can read a program or data recorded in a portable recording medium 40.

[0053] The input/output interface 314 includes, for example, a serial interface such as USB, IEEE1394 and RS-232C, a parallel interface such as SCSI, IDE and IEEE1284, and an analog interface including a D/A converter, an A/D converter and the like. The input unit 301 such as a keyboard and a mouse is connected to the input/output interface 314. An operator can input various commands to the computer main body 300 through the input unit 301.

20 [0054] The communication interface 316 is, for example, an Ethernet (registered trademark) interface or the like. The computer main body 300 can also transmit print data to a printer or the like through the communication interface 316.

[0055] The image output interface 317 is connected to the display unit 302 including an LCD, a CRT, and the like. As a result, the display unit 302 can output a video signal corresponding to the image data coming from the CPU 310. The display unit 302 displays an image (screen) according to the input video signal.

25 [0056] With reference to Fig. 3A, the cancer determination flow executed by the determination apparatus 10 will be described. Here, it will be described as an example a case where measured values of free PD-L1 and free PD-1 are acquired from a chemiluminescent signal generated by a sandwich ELISA method using magnetic particles on which a capture antibody is immobilized, and an enzyme-labeled detection antibody and a determination is made using the acquired measured value. However, the present embodiment is not limited only to this example.

30 [0057] In step S101, the CPU 310 acquires optical information (chemiluminescent signal) from the immunoassay device 20, the CPU 310 calculates the measured values of free PD-L1 and free PD-1 from the acquired optical information, and the CPU 310 stores them in the hard disk 313. In step S102, the CPU 310 compares the calculated measured value of free PD-L1 with the first threshold value stored in the hard disk 313. When the measured value of free PD-L1 is higher than the first threshold value or is equal to the first threshold value, the process proceeds to step S103. In step S103, the CPU 310 compares the calculated measured value of free PD-1 with the second threshold value stored in the hard disk 313. When the measured value of free PD-1 is higher than the second threshold value or is equal to the second threshold value, the process proceeds to step S104. In step S104, the CPU 310 stores in the hard disk 313 the determination result that the liquid sample is a sample collected from a subject suffering from cancer.

35 [0058] On the other hand, when the measured value of free PD-L1 is lower than the first threshold value in step S102, the process proceeds to step S105. When the measured value of free PD-1 is lower than the second threshold value in step S103, the process proceeds to step S105. In step S105, the CPU 310 stores in the hard disk 313 the determination result that the liquid sample is not one collected from a subject suffering from cancer. In step S106, the CPU 310 outputs the determination result, and displays it on the display unit 302, or makes a printer to print the determination result. Accordingly, it is possible to provide doctors and the like with information to assist the cancer determination of a subject. In this example, the order of steps S102 and S103 can be changed.

40 [0059] With reference to Fig. 3B, the cancer determination flow executed by the determination apparatus 10 will be described. In this example, it will be described as an example a case where the measured value of free CTLA-4 is further acquired, in addition to the measured values of free PD-L1 and free PD-1 and a determination is made using the acquired measured values. However, the present embodiment is not limited only to this example.

45 [0060] In step S201, the CPU 310 acquires optical information (chemiluminescent signal) from the immunoassay device 20, the CPU 310 calculates the measured values of free PD-L1, free PD-1 and free CTLA-4 from the acquired optical information, and the CPU 310 stores them in the hard disk 313. In step S202, the CPU 310 compares the calculated measured value of free PD-L1 with the first threshold value stored in the hard disk 313. When the measured value of free PD-L1 is higher than the first threshold value or is equal to the first threshold value, the process proceeds to step S203. In step S203, the CPU 310 compares the calculated measured value of free PD-1 with the second threshold value stored in the hard disk 313. When the measured value of free PD-1 is higher than the second threshold value or is equal to the second threshold value, the process proceeds to step S204. In step S204, the CPU 310 compares the calculated

measured value of free CTLA-4 with the third threshold value stored in the hard disk 313. When the measured value of free CTLA-4 is higher than the third threshold value or is equal to the third threshold value, the process proceeds to step S205. In step S205, the CPU 310 stores in the hard disk 313 the determination result that the liquid sample is a sample collected from a subject suffering from cancer.

5 **[0061]** On the other hand, when the measured value of free PD-L1 is lower than the first threshold value in step S202, the process proceeds to step S206. When the measured value of free PD-1 is lower than the second threshold value in step 203, the process proceeds to step S206. When the measured value of free CTLA-4 is lower than the third threshold value in step 204, the process proceeds to step S206. In step S206, the CPU 310 stores in the hard disk 313 the determination result that the liquid sample is not one collected from a subject suffering from cancer. In step S207, the CPU 310 outputs the determination result, and displays it on the display unit 302, or makes a printer to print the determination result. Accordingly, it is possible to provide doctors and the like with information to assist the cancer determination of a subject. In this example, the order of steps S202, S203 and S204 can be changed.

10 **[0062]** With reference to Fig. 4, the cancer determination flow executed by the determination apparatus 10 will be described. Here, it will be described as an example a case where a predicted value is acquired by a multiple logistic model from the acquired measured values of free PD-L1 and free PD-1 and a determination is made using the obtained predicted value. However, the present embodiment is not limited only to this example.

15 **[0063]** In step S301, the CPU 310 acquires optical information (chemiluminescent signal) from the immunoassay device 20, the CPU 310 calculates the measured values of free PD-L1 and free PD-1 from the acquired optical information, and the CPU 310 stores them in the hard disk 313. In step S302, the CPU 310 calculates a predicted value P based on the multiple logistic model according to the discriminant stored in the ROM 311 or the hard disk 313, from the measured values of free PD-L1 and free PD-1. In step S303, the CPU 310 compares the calculated predicted value P with a predetermined threshold value corresponding to the predicted value stored in the hard disk 313. When the predicted value P is higher than the predetermined threshold value or is equal to the predetermined threshold value, the process proceeds to step S304, and the CPU 310 stores in the hard disk 313 the determination result that the liquid sample is a sample collected from a subject suffering from cancer. On the other hand, when the predicted value P is lower than the predetermined threshold value in step S303, the process proceeds to step S305, and the CPU 310 stores in the hard disk 313 the determination result that the liquid sample is not one collected from a subject suffering from cancer. In step S306, the CPU 310 outputs the determination result, and displays it on the display unit 302, or makes a printer to print the determination result. Accordingly, it is possible to provide doctors and the like with information to assist the cancer determination of a subject.

20 **[0064]** In this example, when the measured value of free CTLA-4 is further acquired, the CPU 310 may calculate a predicted value P from the measured values of free PD-L1, free PD-1 and free CTLA-4 in step S302.

25 **[0065]** Hereinbelow, the present invention will be described in detail by examples, but the present invention is not limited to these examples.

## 30 EXAMPLES

### Example 1

35 **[0066]** In Example 1, a liquid sample derived from a healthy subject and a liquid sample derived from a cancer patient were discriminated based on concentration values of the free protein markers.

#### 1. Liquid Sample

40 **[0067]** As a liquid sample, human plasma (containing EDTA) obtained from a healthy subject and a cancer patient was used. Plasma (50 specimens) of healthy subjects was obtained from BioreclamationIVT, and plasma (60 specimens) of cancer patients was obtained from Proteogenentec and BioreclamationIVT. The breakdown of the cancer patients are lung cancer patients (21 specimens), kidney cancer patients (18 specimens), melanoma patients (15 specimens), and ovarian cancer patients (6 specimens).

2. Measurement of Free Protein Markers

(2.1) Preparation of Reagents

5 (2.1.1) First Reagents (Biotin-Labeled Antibody Solutions)

- First reagent for capturing PD-L1

10 **[0068]** Anti-PD-L1 antibody (clone No. 27A2) was used as a capture antibody. This antibody was labeled with biotin using Biotin Labeling Kit-SH (Catalog No. LK10, manufactured by Chemical Dojin Co., Ltd.). Specific operations were carried out according to the manual attached to the kit. The obtained biotin-labeled anti-PD-L1 antibody was added to 100 mM MES (pH 6.5) to prepare a first reagent for capturing PD-L1 (antibody concentration 5  $\mu\text{g/ml}$ ).

- First reagent for capturing PD-1

15 **[0069]** Anti-PD-1 antibody (clone No. MIH4) was used as a capture antibody. This antibody was labeled with biotin in the same manner as described above. The obtained biotin-labeled anti-PD-1 antibody was added to 100 mM HEPES (pH 7.5) to prepare a first reagent for capturing PD-1 (antibody concentration 5  $\mu\text{g/ml}$ ).

- First reagent for capturing CTLA-4

20 **[0070]** Anti-CTLA-4 antibody (clone No. BNI3) was used as a capture antibody. This antibody was labeled with biotin in the same manner as described above. The obtained biotin-labeled anti-CTLA-4 antibody was added to 100 mM MES (pH 6.5) to prepare a first reagent for capturing CTLA-4 (antibody concentration 5  $\mu\text{g/ml}$ ).

25 (2.1.2) Second Reagent (Streptavidin-Bound Particle-Containing Liquid)

30 **[0071]** Magnetic particles on which streptavidin was immobilized on its surface (average particle size 2  $\mu\text{m}$ ; the amount of streptavidin per 1 g of the magnetic particles is 2.9 to 3.5 mg, hereinafter also referred to as "STA-bound magnetic particles") were washed 3 times with a 10 mM HEPES buffer solution (pH 7.5). The washed STA-bound magnetic particles were added to a 10 mM HEPES (pH 7.5) so as to have a streptavidin concentration of 18 to 22  $\mu\text{g/ml}$  (a concentration of STA-bound magnetic particles of 0.48 to 0.52 mg/ml) to obtain an STA-bound particle-containing liquid.

35 (2.1.3) Third Reagents (Alkaline Phosphatase-Labeled Antibody Solutions)

- Third reagent for detecting PD-L1

40 **[0072]** Anti-PD-L1 antibody (clone No. 9L814) was used as a detection antibody. This antibody was labeled with alkaline phosphatase using Alkaline Phosphatase Labeling Kit-SH (Catalog No. LK13, manufactured by Chemical Dojin Co., Ltd.). Specific operations were carried out according to the manual attached to the kit. The obtained alkaline phosphatase-labeled anti-PD-L1 antibody was purified by gel filtration. This alkaline phosphatase-labeled anti-PD-L1 antibody was added to 100 mM MES (pH 6.5) so as to be diluted 75-fold to prepare a third reagent for detecting PD-L1.

- Third reagent for detecting PD-1

45 **[0073]** Anti-PD-1 antibody (clone No. PD1.3.1.3) was used as a detection antibody. This antibody was labeled with alkaline phosphatase and purified in the same manner as described above. The obtained alkaline phosphatase-labeled anti-PD-1 antibody was added to 100 mM HEPES (pH 7.5) so as to be diluted 75-fold to prepare a third reagent for detecting PD-1.

50 • Third reagent for detecting CTLA-4

55 **[0074]** Anti-CTLA-4 antibody (clone No. 14D3) was used as a detection antibody. This antibody was labeled with alkaline phosphatase and purified in the same manner as described above. The obtained alkaline phosphatase-labeled anti-CTLA-4 antibody was added to 100 mM MES (pH 6.5) so as to be diluted 75-fold to prepare a third reagent for detecting CTLA-4.

(2.1.4) Fourth Reagent (Buffer Solution for Measurement)

[0075] HISCL R4 reagent (manufactured by Sysmex Corporation) was used as a fourth reagent.

5 (2.1.5) Fifth Reagent (Substrate Solution)

[0076] HISCL R5 reagent (manufactured by Sysmex Corporation) containing CDP-Star (registered trademark) (Applied Biosystems) as an alkaline phosphatase chemiluminescent substrate was used as a fifth reagent.

10 (2.2) Measurement

[0077] Measurement of each free protein marker was performed with a fully automated immunoassay device HISCL-800 (manufactured by Sysmex Corporation) using the first to fifth reagents described above. This measurement is based on sandwich ELISA on magnetic particles. Specifically, plasma (20  $\mu$ L) was added to the first reagent (50  $\mu$ L) and mixed, then the second reagent (30  $\mu$ L) was added and mixed. The magnetic particles in the obtained mixed solution were magnetically collected to remove the supernatant, and a HISCL washing solution (300  $\mu$ L) was added to wash the magnetic particles. The supernatant was removed, and the third reagent (80  $\mu$ L) was added to the magnetic particles and mixed. The magnetic particles in the obtained mixed solution were magnetically collected to remove the supernatant, and a HISCL washing solution (300  $\mu$ L) was added to wash the magnetic particles. The supernatant was removed, and the fourth reagent (50  $\mu$ L) and the fifth reagent (100  $\mu$ L) were added to the magnetic particles and thoroughly mixed, and the chemiluminescence intensity was measured. The reaction time was 17 minutes throughout the entire process. The obtained chemiluminescence intensity was applied to the calibration curve to calculate the concentration of each free protein marker.

25 3. Determination and Result

[0078] A predicted value (P) of each specimen was calculated from concentration values of markers in liquid samples each derived from healthy subjects (n = 50) and cancer patients (n = 60), based on the multiple logistic model. Specifically, the predicted value was calculated from the following regression equation. This multiple logistic regression analysis was performed using StatFlex (manufactured by Artec Co., Ltd.).

$$\text{Regression equation: } P = 1/(1 + \exp(-x))$$

35 [0079] In the formula, "x" varies depending on the marker used for determination. In Table 1, "x"s corresponding to the markers used for determination are shown. In the table, [PD-L1], [PD-1] and [CTLA-4] are concentration values of free PD-L1, free PD-1 and free CTLA-4 in the liquid sample, respectively. Each coefficient in "x" was calculated using data of all specimens (n = 110) including healthy subjects and cancer patients.

40 [Table 1]

Marker	
PD-L1	$x = -4.4399 + 0.02837 \times [\text{PD-L1}]$
PD-1	$x = -3.3776 + 0.01925 \times [\text{PD-1}]$
CTLA-4	$x = -1.0339 + 0.57160 \times [\text{CTLA-4}]$
PD-L1 and PD-1	$x = -7.1206 + 0.02637 \times [\text{PD-L1}] + 0.01959 \times [\text{PD-1}]$
PD-L1, PD-1 and CTLA-4	$x = -8.4135 + 0.02898 \times [\text{PD-L1}] + 0.02105 \times [\text{PD-1}] + 0.48802 \times [\text{CTLA-4}]$

50 [0080] An ROC curve (Receiver Operatorating Characteristic curve) was created based on the calculated predicted value of each sample. The ROC curves corresponding to the markers used for the determination are shown in Figs. 5 to 9. Also, predetermined threshold values were determined from the ROC curves. Then, when the predicted value was higher than the predetermined threshold value or was equal to the predetermined threshold value, the liquid sample was determined to be a sample derived from a cancer patient, and when the predicted value was lower than the predetermined threshold value, the liquid sample was determined to be a sample derived from a healthy subject. Table 2 shows the area under the curve (AUC) of each ROC curve and the specificity when the sensitivity according to the above

## EP 3 399 314 A1

determination is about 90%. Incidentally, creation of ROC curves, calculation of threshold values, and calculations of sensitivity and specificity were carried out using StatFlex (manufactured by Artec Co., Ltd.).

[Table 2]

Marker	AUC	Specificity (%) when sensitivity is about 90%
PD-L1	0.80242	47.92
PD-1	0.79755	45.83
CTLA-4	0.82241	37.50
PD-L1 and PD-1	0.85534	64.58
PD-L1, PD-1 and CTLA-4	0.89113	70.83

**[0081]** As shown in Table 2, the AUC was higher when using a combination of free PD-L1 and free PD-1, or a combination of free PD-L1, free PD-1 and free CTLA-4, than when singly using each of free PD-L1, free PD-1 and free CTLA-4 for determination. In addition, the specificity when the sensitivity according to the determination is about 90% is higher when using a combination of free PD-L1 and free PD-1, than when singly using each of free PD-L1 and free PD-1 for determination. This specificity increased by further combining free CTLA-4 with free PD-L1 and free PD-1. Therefore, it was shown that, based on concentration values of free PD-L1 and free PD-1 in a liquid sample, it is possible to discriminate whether or not the sample is a sample derived from a cancer patient with high accuracy. In addition, it was shown that the determination accuracy is further improved by further using concentration values of free CTLA-4 for determination.

### REFERENCE SIGNS LIST

#### **[0082]**

- 10: Determination apparatus
- 20: Immunoassay device
- 30: Computer system
- 40: Recording medium
- 300: Computer body
- 301: Input unit
- 302: Display unit
- 310: CPU
- 311: ROM
- 312: RAM
- 313: Hard disk
- 314: Input/output interface
- 315: Reading device
- 316: Communication interface
- 317: Image output interface
- 318: Bus

### Claims

1. A method for determining cancer, the method comprising the steps of:

measuring free PD-L1 (Programmed cell death-ligand 1) and free PD-1 (Programmed cell death-1) as free protein markers in a liquid sample collected from a subject, and determining whether or not the liquid sample is a sample collected from a subject suffering from cancer, based on measurement results.

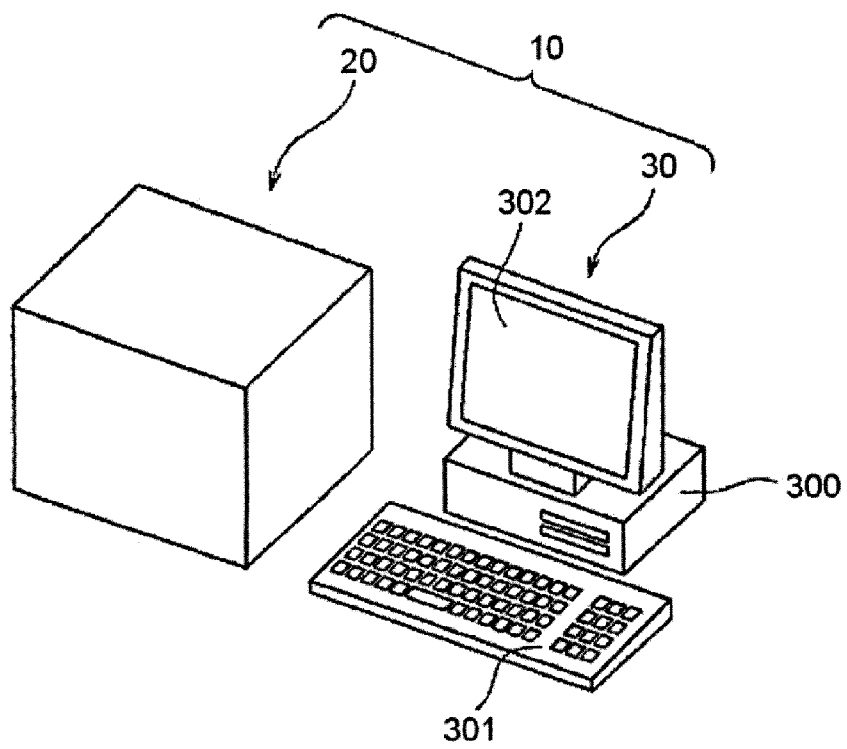
2. The method according to claim 1, wherein

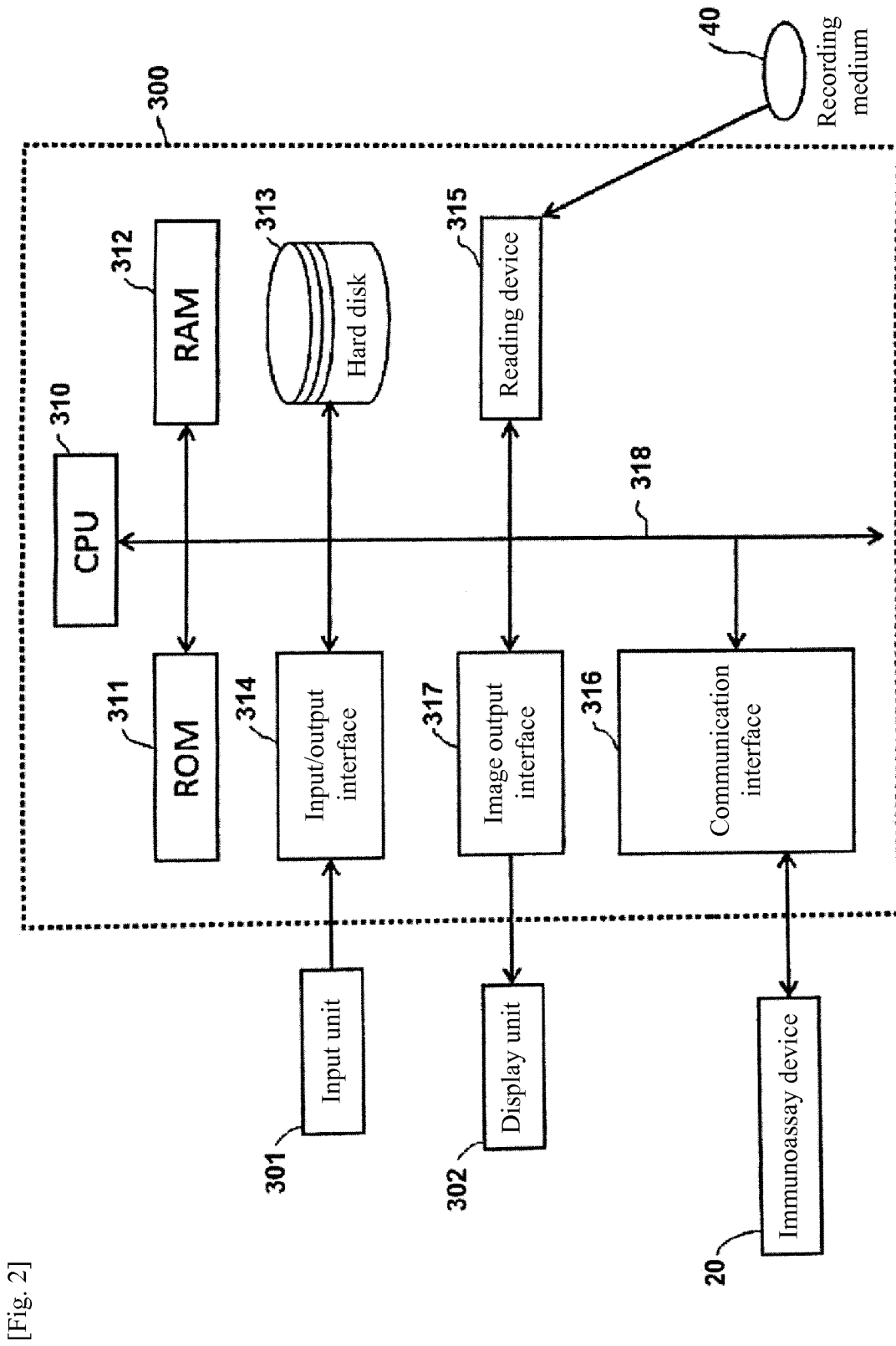
in the measurement step, free CTLA-4 (Cytotoxic T lymphocyte antigen-4) is further measured as a free protein

marker in the liquid sample, and  
in the determination step, whether or not the liquid sample is a sample collected from a subject suffering from cancer  
is determined, based on measurement results of the free PD-L1, the free PD-1 and the free CTLA-4.

- 5     **3.** The method according to claim 1 or 2, wherein the cancer is a solid cancer.
- 4.** The method according to any one of claims 1 to 3, wherein the cancer is lung cancer, kidney cancer, ovarian cancer,  
      or melanoma.
- 10    **5.** The method according to any one of claims 1 to 4, wherein  
      in the determination step, measured values of the free protein markers acquired in the measurement step are  
      compared with a predetermined threshold value corresponding to each of the markers, and whether or not the liquid  
      sample is a sample collected from a subject suffering from cancer is determined, based on a comparison result.
- 15    **6.** The method according to any one of claims 1 to 4, wherein  
      in the determination step, a predicted value acquired by multivariate analysis from measured values of the free  
      protein markers acquired in the measurement step is compared with a predetermined threshold value corresponding  
      to the predicted value, and whether or not the liquid sample is a sample collected from a subject suffering from  
      cancer is determined, based on a comparison result.
- 20    **7.** The method according to any one of claims 1 to 6, wherein the liquid sample is a blood sample.
- 8.** The method according to claim 6, wherein the multivariate analysis is logistic regression analysis.
- 25    **9.** A cancer determination apparatus comprising:  
      a computer containing a processor and a memory under control of the processor,  
      wherein  
      a computer program for making the computer execute the following steps of:
- 30           acquiring measured values of free PD-L1 (Programmed cell death-ligand 1) and free PD-1 (Programmed  
            cell death-1) as free protein markers in a liquid sample collected from a subject, and  
            determining whether or not the liquid sample is a sample collected from a subject suffering from cancer,  
            based on measured values of the markers,  
35           is recorded in the memory.
- 10.** The apparatus according to claim 9, wherein  
      in the step of acquiring measured values, a measured value of free CTLA-4 (Cytotoxic T lymphocyte antigen-4) is  
      further acquired as a free protein marker in the liquid sample.
- 40    **11.** A computer program for determining cancer which is recorded on a computer readable medium,  
      wherein  
      the computer program is a computer program for making the computer execute the following steps of:
- 45           acquiring measured values of free PD-L1 (Programmed cell death-ligand 1) and free PD-1 (Programmed cell  
            death-1) as free protein markers in a liquid sample collected from a subject, and  
            determining whether or not the liquid sample is a sample collected from a subject suffering from cancer, based  
            on measured values of the markers.
- 50    **12.** The computer program according to claim 11, wherein  
      in the step of acquiring measured values, a measured value of free CTLA-4 (Cytotoxic T lymphocyte antigen-4) is  
      further acquired as a free protein marker in the liquid sample.
- 55

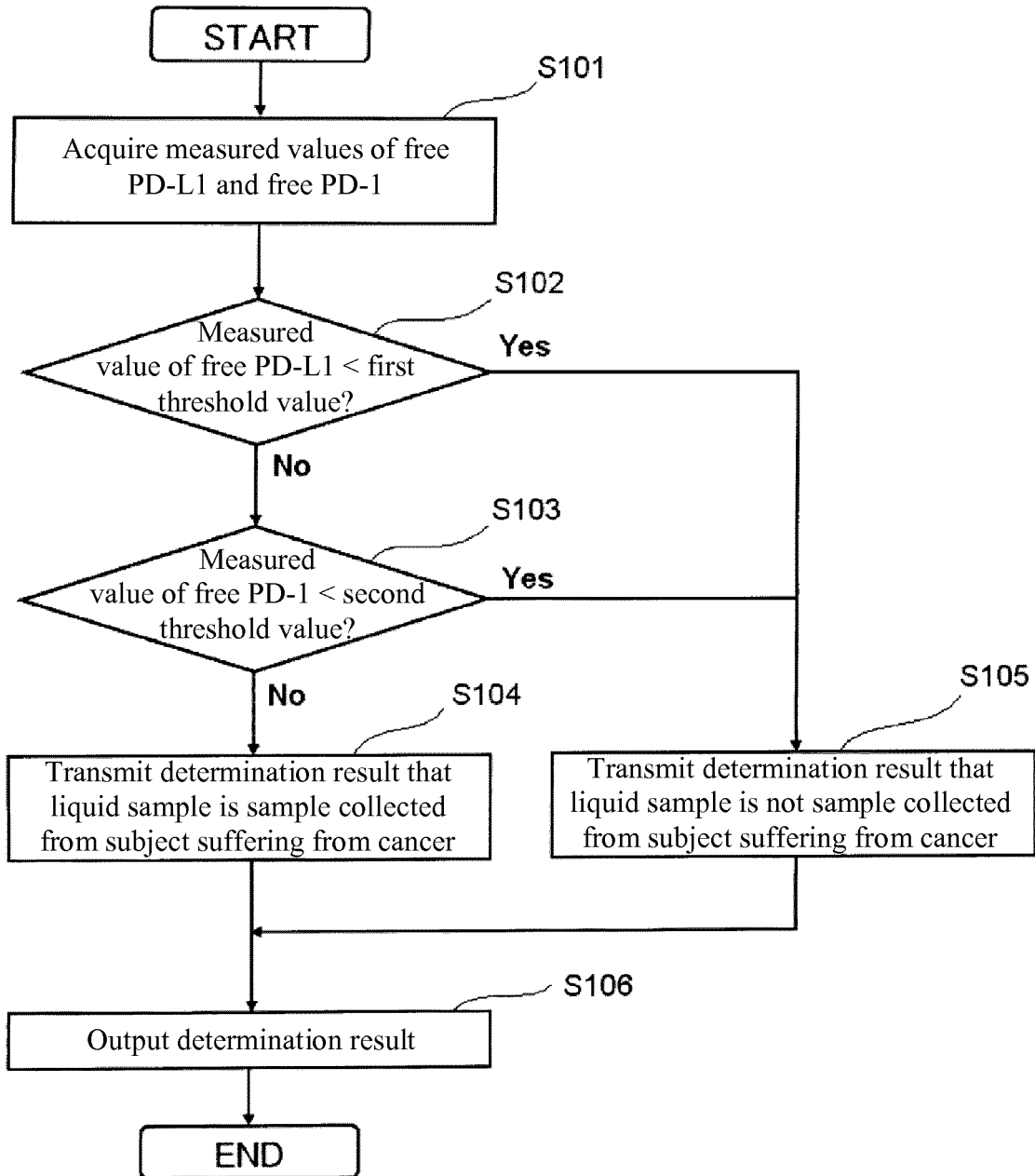
[Fig. 1]



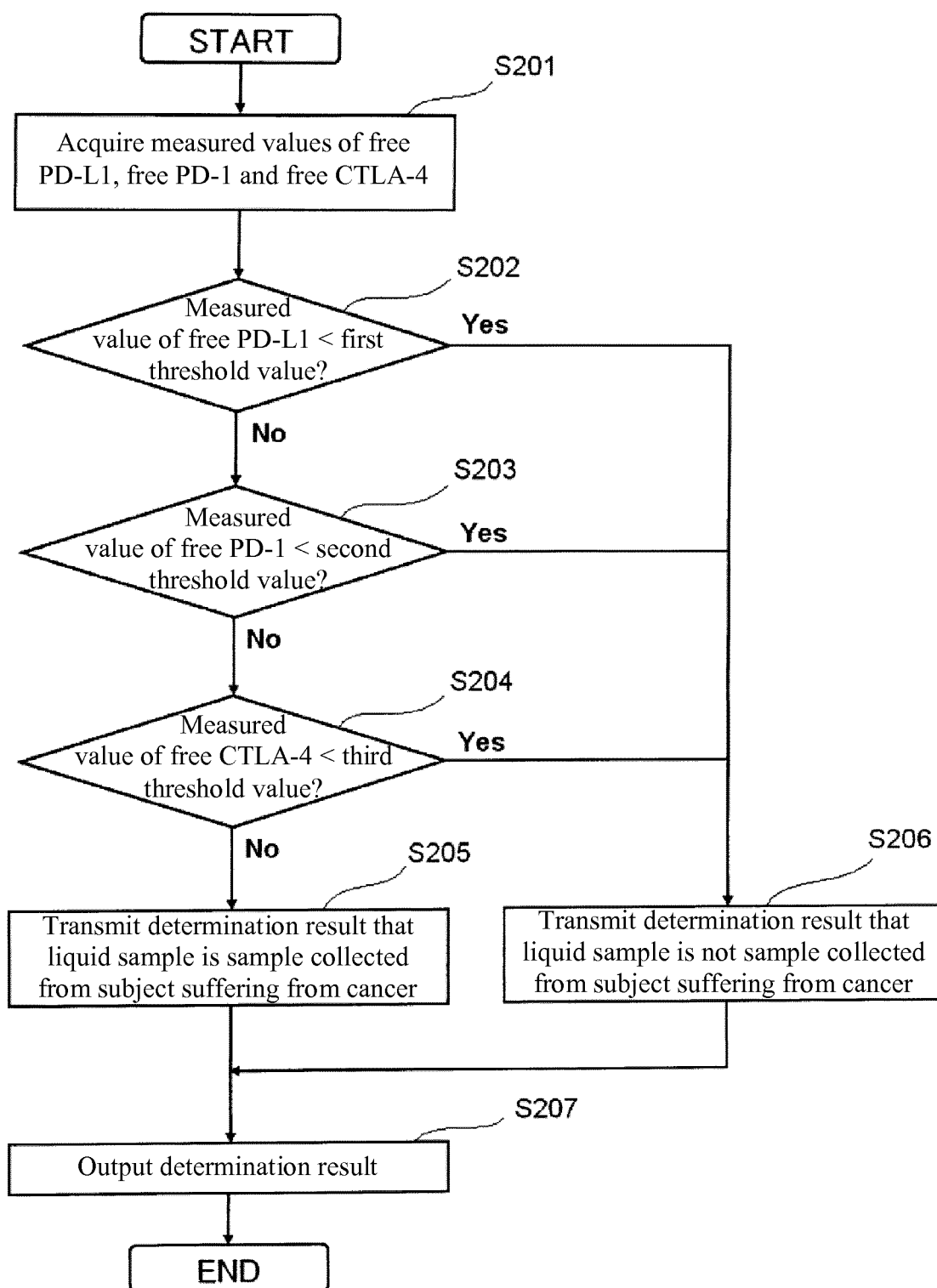


[Fig. 2]

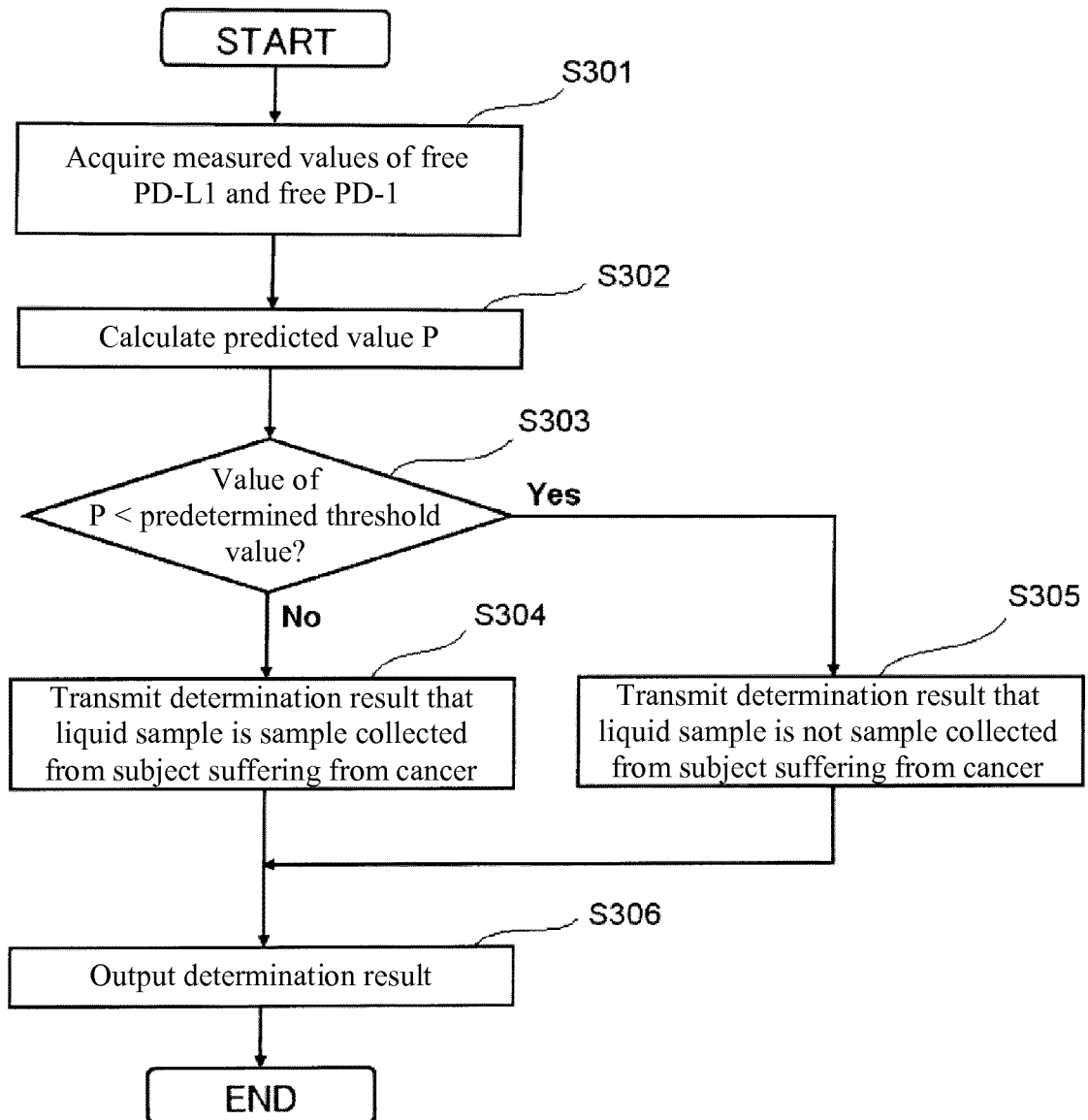
[Fig. 3A]



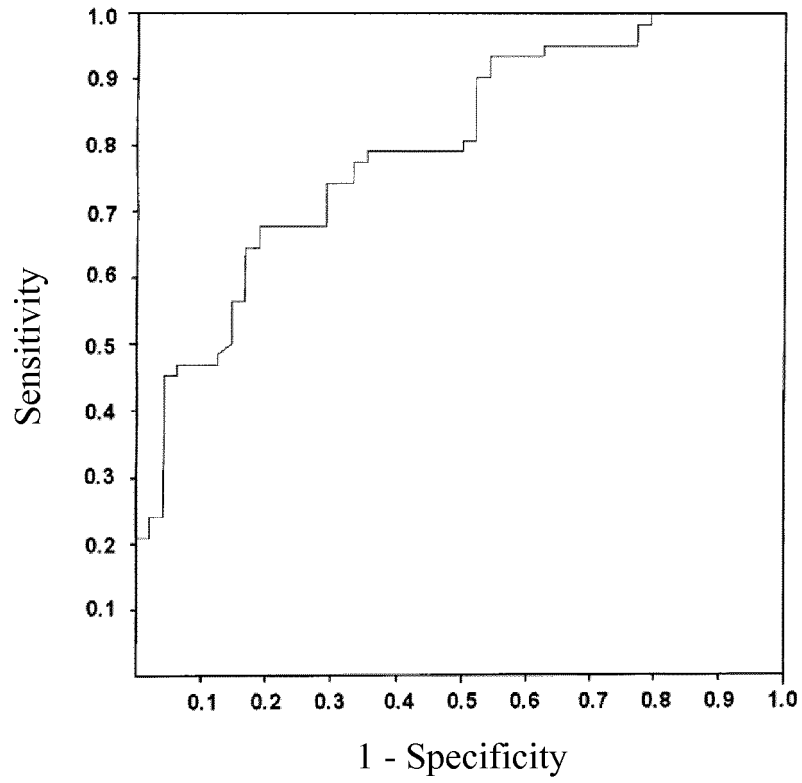
[Fig. 3B]



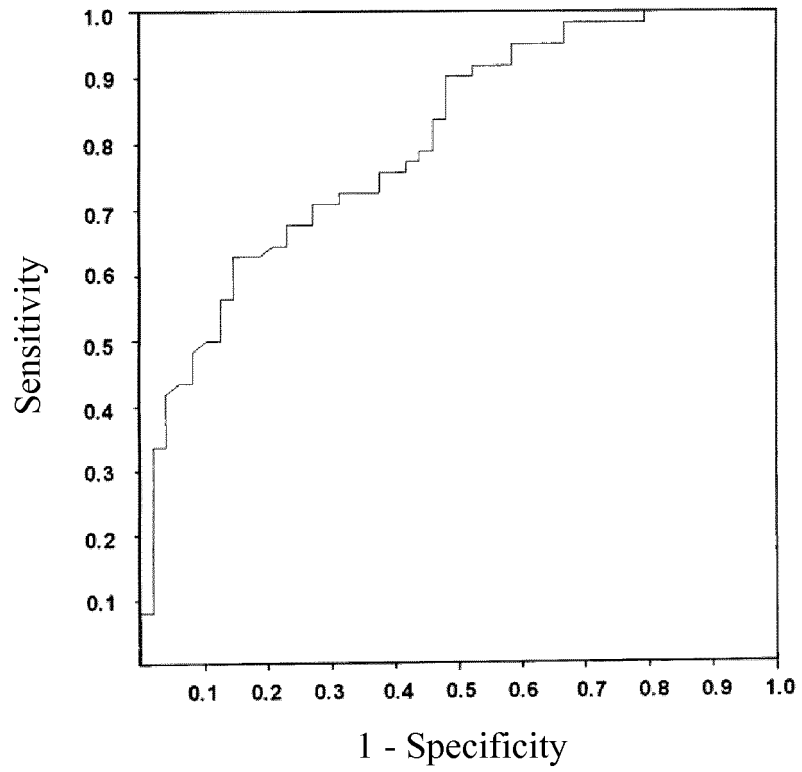
[Fig. 4]



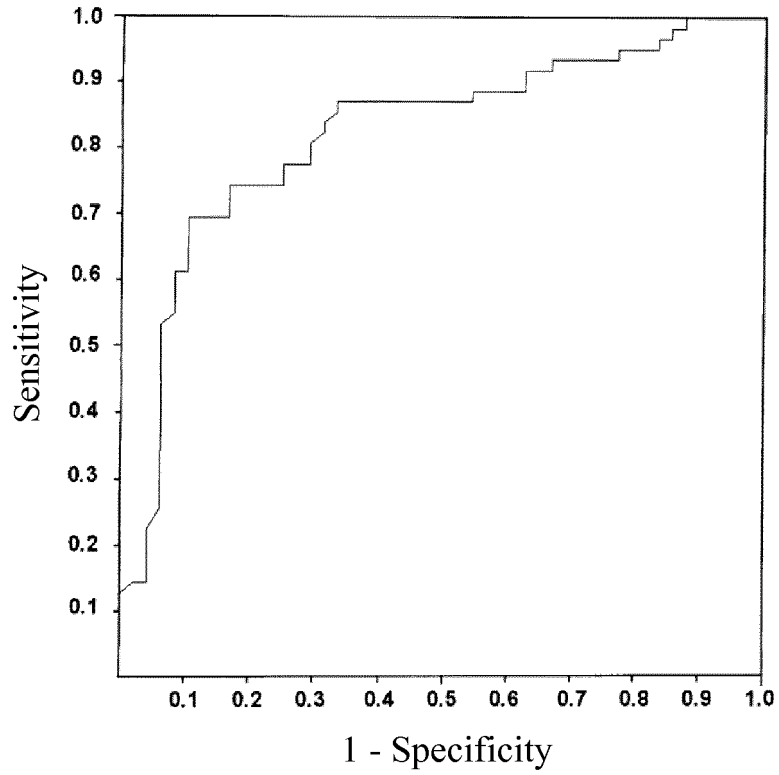
[Fig. 5]



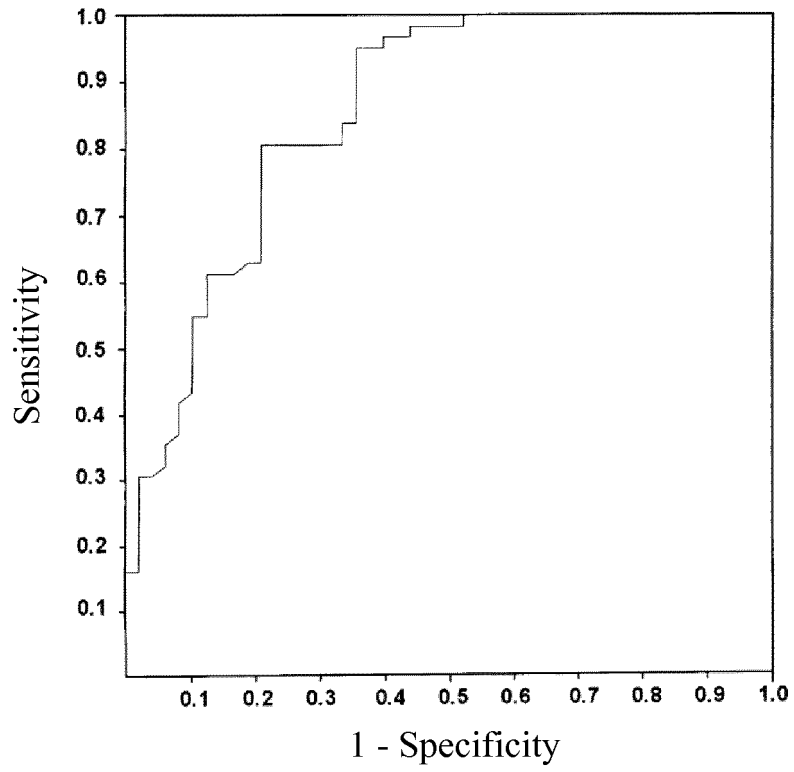
[Fig. 6]



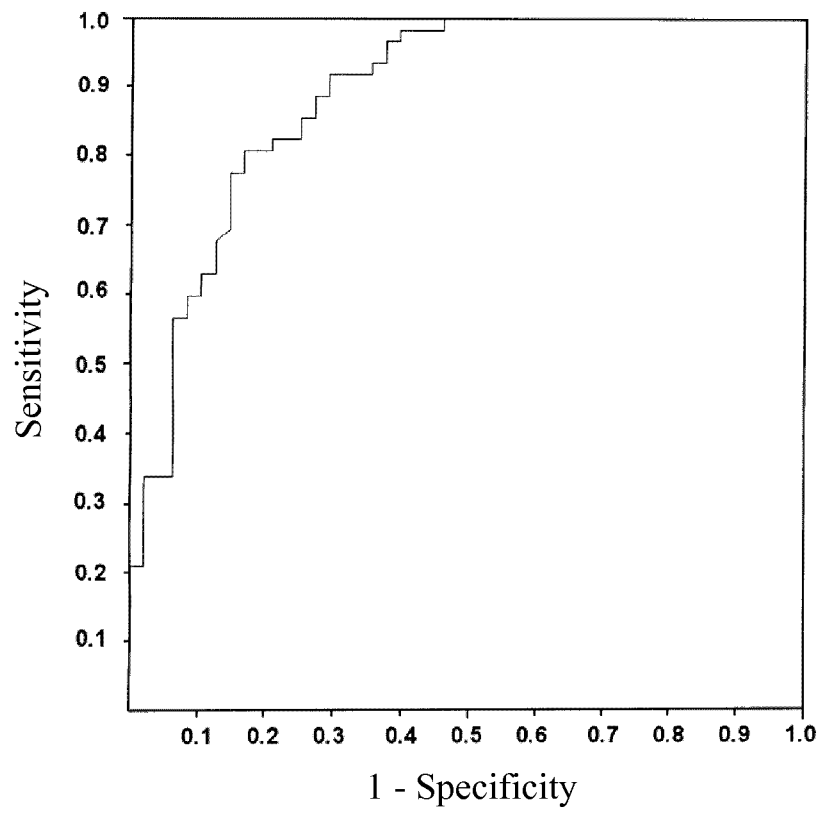
[Fig. 7]



[Fig. 8]



[Fig. 9]



## INTERNATIONAL SEARCH REPORT

International application No.

PCT/JP2016/088978

5	A. CLASSIFICATION OF SUBJECT MATTER G01N33/53(2006.01)i, C07K14/47(2006.01)i, G01N33/50(2006.01)i, G01N33/574(2006.01)i, C07K16/18(2006.01)n, C07K16/24(2006.01)n, C07K16/28(2006.01)n		
	According to International Patent Classification (IPC) or to both national classification and IPC		
10	B. FIELDS SEARCHED Minimum documentation searched (classification system followed by classification symbols) G01N33/53, C07K14/47, G01N33/50, G01N33/574, C07K16/18, C07K16/24, C07K16/28		
15	Documentation searched other than minimum documentation to the extent that such documents are included in the fields searched Jitsuyo Shinan Koho 1922-1996 Jitsuyo Shinan Toroku Koho 1996-2017 Kokai Jitsuyo Shinan Koho 1971-2017 Toroku Jitsuyo Shinan Koho 1994-2017		
20	Electronic data base consulted during the international search (name of data base and, where practicable, search terms used) JSTPlus/JMEDPlus/JST7580 (JDreamIII), CPlus/MEDLINE/BIOSIS (STN)		
25	C. DOCUMENTS CONSIDERED TO BE RELEVANT		
	Category*	Citation of document, with indication, where appropriate, of the relevant passages	
		Relevant to claim No.	
25	X Y A	AKUTSU, YASUNORI, SERUM LEVEL OF PD-1, PD-L1, AND PD-L2 AS A NEW BIOMARKER FOR ESOPHAGEAL CANCER, AMERICAN JOURNAL OF GASTROENTEROLOGY, 2015.10, VOL. 110, NO. SUPPL. 1, PP. S694 1622, ISSN 0002-9270	1, 3, 5-9, 11 2, 10, 12 4
30	X Y A	ZHANG PENG, LEVELS OF PROGRAMMED DEATH-1 AND PROGRAMMED DEATH LIGAND-1 IN THE PERIPHERAL BLOOD OF PATIENTS WITH ORAL SQUAMOUS CELL CARCINOMA AND ITS CLINICAL IMPLICATIONS, WEST CHINA JOURNAL OF STOMATOLOGY, 2015.10, VOL. 33, NO. 5, PP. 529-533, ISSN 1000-1182, Abstract	1, 3, 5-9, 11 2, 10, 12 4
35			
40	<input checked="" type="checkbox"/> Further documents are listed in the continuation of Box C. <input type="checkbox"/> See patent family annex.		
45	* Special categories of cited documents: "A" document defining the general state of the art which is not considered to be of particular relevance "E" earlier application or patent but published on or after the international filing date "L" document which may throw doubts on priority claim(s) or which is cited to establish the publication date of another citation or other special reason (as specified) "O" document referring to an oral disclosure, use, exhibition or other means "P" document published prior to the international filing date but later than the priority date claimed	"T" later document published after the international filing date or priority date and not in conflict with the application but cited to understand the principle or theory underlying the invention "X" document of particular relevance; the claimed invention cannot be considered novel or cannot be considered to involve an inventive step when the document is taken alone "Y" document of particular relevance; the claimed invention cannot be considered to involve an inventive step when the document is combined with one or more other such documents, such combination being obvious to a person skilled in the art "&" document member of the same patent family	
50	Date of the actual completion of the international search 07 March 2017 (07.03.17)	Date of mailing of the international search report 21 March 2017 (21.03.17)	
55	Name and mailing address of the ISA/ Japan Patent Office 3-4-3, Kasumigaseki, Chiyoda-ku, Tokyo 100-8915, Japan	Authorized officer  Telephone No.	

Form PCT/ISA/210 (second sheet) (January 2015)

## INTERNATIONAL SEARCH REPORT

International application No.

PCT/JP2016/088978

C (Continuation). DOCUMENTS CONSIDERED TO BE RELEVANT		
Category*	Citation of document, with indication, where appropriate, of the relevant passages	Relevant to claim No.
5 10	Y LAURENT STEFANIA, THE ENGAGEMENT OF CTLA-4 ON PRIMARY MELANOMA CELL LINES INDUCES ANTIBODY-DEPENDENT CELLULAR CYTOTOXICITY AND TNF- $\alpha$ PRODUCTION, JOURNAL OF TRANSLATIONAL MEDICINE, 2013.05.01, VOL. 11, PP. 108, ISSN 1479-5876, METHODS(Analysis of soluble CTLA-4 by ELISA)	2, 10, 12
15	Y MASUDA AKINORI, CLINICAL SIGNIFICANCE OF SERUM SOLUBLE T CELL REGULATORY MOLECULES IN CLEAR CELL RENAL CELL CARCINOMA, BIOMED RESEARCH INTERNATIONAL, 2014, VOL. 2014, PP. 396064, ISSN 2314-6141, Abstract, Table 2	2, 10, 12
20 25	Y ILHAN, F., SERUM AND PLEURAL FLUID SOLUBLE CTLA-4 LEVELS ARE INCREASED IN LUNG CANCER PATIENTS, NOVEL SCIENCE INTERNATIONAL JOURNAL OF MEDICAL SCIENCES, 2012, Vol.1 No.5, Page.145-147, ISSN 2278-0025, CAPLUS [online], STN INTERNATIONAL [retrieved on 2017.03.03], Retrieved from:STN, Accession No. 2012:1501792	2, 10, 12
30	Y ERFANI NASROLLAH, CIRCULATING SOLUBLE CTLA4 (SCTLA4) IS ELEVATED IN PATIENTS WITH BREAST CANCER, CANCER INVESTIGATION, 2010.10, VOL. 28, NO. 8, PP. 828-832, ISSN 1532-4192, Abstract, Table 1	2, 10, 12
35	Y MANSOUR, AMANY, INCREASED EXPRESSION OF COSTIMULATORY MOLECULES CD86 AND SCTLA-4 IN PATIENTS WITH ACUTE LYMPHOBLASTIC LEUKEMIA, LEUKEMIA & LYMPHOMA, 2014, Vol.55, No.9, Page. 2120-2124, ISSN: 1029-2403, Patients and methods(Measurement of serum sCTLA-4 levels), Table II	2, 10, 12
40	Y KUCUKHUSEYIN, OZLEM, INDIVIDUAL AND COMBINED EFFECTS OF CTLA4-CD28 VARIANTS AND OXIDANT-ANTIOXIDANT STATUS ON THE DEVELOPMENT OF COLORECTAL CANCER, ANTICANCER RESEARCH, 2015.10, Vol.35 No.10, Page.5391-5400, ISSN 0250-7005, Materials and Methods(Measurement of serum levels of CD28 and CTLA4), Table VI	2, 10, 12
45	A SUNAKAWA Mika, Clinical impact of soluble B7-H1 (PD-L1) in multiple myeloma, The Japanese Journal of Clinical Hematology, 2015.09.30, Vol.56 No.9, Page.1611 PS-1-138, ISSN 0485-1439	1-12
50 55	A CHEN YONGJING, DEVELOPMENT OF A SANDWICH ELISA FOR EVALUATING SOLUBLE PD-L1 (CD274) IN HUMAN SERA OF DIFFERENT AGES AS WELL AS SUPERNATANTS OF PD-L1+ CELL LINES, CYTOKINE, 2011.11, VOL.56 NO.2, PAGE.231-238, ISSN 1043-4666, Abstract	1-12

Form PCT/ISA/210 (continuation of second sheet) (January 2015)

## INTERNATIONAL SEARCH REPORT

International application No.

PCT/JP2016/088978

5

C (Continuation). DOCUMENTS CONSIDERED TO BE RELEVANT

10

15

20

25

30

35

40

45

50

55

Category*	Citation of document, with indication, where appropriate, of the relevant passages	Relevant to claim No.
P, A	Hisae IINUMA, "Ko PD-1 Kotaiyaku no Biomarker -Kessho PD-L1 Tanpaku no Biomarker to shite no Kanosei-", Japanese Journal of Cancer and Chemotherapy, 2016.09, vol.43, no.9, pages 1030 to 1035, ISSN 0385-0684, 4. Liquid Biopsy no Kanosei	1-12
P, A	OKUMA Y, HIGH PLASMA LEVELS OF SOLUBLE PROGRAMMED CELL DEATH LIGAND 1 ARE PROGNOSTIC FOR REDUCED SURVIVAL IN ADVANCED LUNG CANCER, Lung Cancer, 2017.02, Vol.104, Page.1-6, Epub 2016 Dec 5 ISSN 0169-5002	1-12

Form PCT/ISA/210 (continuation of second sheet) (January 2015)

**REFERENCES CITED IN THE DESCRIPTION**

*This list of references cited by the applicant is for the reader's convenience only. It does not form part of the European patent document. Even though great care has been taken in compiling the references, errors or omissions cannot be excluded and the EPO disclaims all liability in this regard.*

**Patent documents cited in the description**

- JP H01254868 A [0025]

**Non-patent literature cited in the description**

- **AGATA Y. et al.** Expression of the PD-1 antigen on the surface of stimulated mouse T and B lymphocytes. *Int. Immunol.*, 1996, vol. 8, 765-772 [0003]

专利名称(译)	用于确定癌症的方法，以及用于确定癌症的装置和计算机程序		
公开(公告)号	<a href="#">EP3399314A1</a>	公开(公告)日	2018-11-07
申请号	EP2016881790	申请日	2016-12-27
[标]申请(专利权)人(译)	国立大学法人京都大学 希森美康株式会社		
申请(专利权)人(译)	京都大学 希森美康公司		
当前申请(专利权)人(译)	京都大学 希森美康公司		
[标]发明人	HONJO TASUKU CHAMOTO KENJI GOTO MEGUMI UGA HITOSHI		
发明人	HONJO, TASUKU CHAMOTO, KENJI GOTO, MEGUMI UGA, HITOSHI		
IPC分类号	G01N33/53 C07K14/47 G01N33/50 G01N33/574 C07K16/18 C07K16/24 C07K16/28		
CPC分类号	C07K16/2818 C07K16/2827 C07K14/47 G01N33/574 G01N33/57423 G01N33/5743 G01N33/57438 G01N33/57449 G01N33/57488 G01N2333/70521 G01N2333/70532 G01N2333/70596 G16H50/20 G01N33/57492		
优先权	2015256605 2015-12-28 JP		
其他公开文献	EP3399314A4		
外部链接	<a href="#">Espacenet</a>		

摘要(译)

本发明涉及一种确定癌症的方法。此外，本发明涉及用于确定癌症的装置和计算机程序。

$$P = \frac{1}{1 + \exp[-(b_0 + b_1 \times [PD-L1] + b_2 \times [PD-1])]} \quad (1)$$