

(19)



(11)

EP 2 715 353 B1

(12)

EUROPEAN PATENT SPECIFICATION

(45) Date of publication and mention of the grant of the patent:

24.08.2016 Bulletin 2016/34

(51) Int Cl.:

G01N 33/74 (2006.01)

(21) Application number: **12792727.5**

(86) International application number:

PCT/US2012/040207

(22) Date of filing: **31.05.2012**

(87) International publication number:

WO 2012/166918 (06.12.2012 Gazette 2012/49)

(54) DETECTION OF DEGRADATION PRODUCTS OF FELINE NT-proBNP

NACHWEIS VON ABBAUPRODUKTEN VON FELINEM NT-PROBNP

DÉTECTION DES PRODUITS DE DÉGRADATION DE LA NT-PROBNP FÉLINE

(84) Designated Contracting States:

AL AT BE BG CH CY CZ DE DK EE ES FI FR GB GR HR HU IE IS IT LI LT LU LV MC MK MT NL NO PL PT RO RS SE SI SK SM TR

(30) Priority: **31.05.2011 US 201161491580 P**

(43) Date of publication of application:

09.04.2014 Bulletin 2014/15

(73) Proprietor: **IDEXX Laboratories, Inc.**

Westbrook, ME 04032 (US)

(72) Inventors:

- **YERRAMILI, Murthy V.S.N**
Falmouth, Maine 04105 (US)
- **YERRAMILI, Mahalakshmi**
Falmouth, Maine 04105 (US)
- **ATKINSON, Michael**
Cary, NC 27513 (US)

(74) Representative: **Hoffmann Eitle**

Patent- und Rechtsanwälte PartmbB
Arabellastraße 30
81925 München (DE)

(56) References cited:

WO-A1-2008/056034 US-A1- 2009 170 136
US-A1- 2010 075 429 US-A1- 2010 136 590

- **DAVID J CONNOLLY ET AL.:** "The effect of protease inhibition on the temporal stability of NT-proBNP in feline plasma at room temperature", **JOURNAL OF VETERINARY CARDIOLOGY, ELSEVIER, NL, vol. 13, no. 1, 1 November 2010 (2010-11-01), pages 13-19, XP028163858, ISSN: 1760-2734, DOI: 10.1016/J.JVC.2010.11.002 [retrieved on 2011-01-12]**
- **ALA-KOPSALA ET AL.:** 'Molecular heterogeneity has a major impact on the measurement of circulating N-terminal fragments of A- and B-type natriuretic peptides.' **CLIM CHEM vol. 50, no. 9, September 2004, pages 1576 - 1588, XP002619052**
- **PEMBERTON ET AL.:** 'Deconvolution analysis of cardiac natriuretic peptides during acute volume overload' **HYPERTENSION vol. 36, no. 3, September 2000, pages 355 - 359, XP055137906**
- **FOX ET AL.:** 'Utility of plasma N-terminal pro-brain natriuretic peptide (NT-proBNP) to distinguish between congestive heart failure and non-cardiac causes of acute dyspnea in cats' **J VET CARDIOL vol. 11, no. 1, May 2009, pages S51 - S61, XP026131492**
- **WESS ET AL.:** 'Utility of measuring plasma N-terminal pro-brain natriuretic peptide in detecting hypertrophic cardiomyopathy and differentiating grades of severity in cats' **VET CLIN PATHOL vol. 40, no. 2, 24 March 2011, pages 237 - 244, XP055137912**

EP 2 715 353 B1

Note: Within nine months of the publication of the mention of the grant of the European patent in the European Patent Bulletin, any person may give notice to the European Patent Office of opposition to that patent, in accordance with the Implementing Regulations. Notice of opposition shall not be deemed to have been filed until the opposition fee has been paid. (Art. 99(1) European Patent Convention).

Description**CROSS REFERENCE TO RELATED APPLICATION**

5 [0001] This application claims benefit of US Provisional Application No. 61/491,580 filed May 31, 2011.

SEQUENCE LISTING STATEMENT

10 [0002] The sequence listing is filed in this application in electronic format only. The sequence listing text file "10-999_SeqListing_ST25.txt" was created on May 31, 2012, and is 11 bytes in size.

BACKGROUND**Field of the Invention**

15

[0003] The invention is related to the detection of NT-proBNP in biological samples from felines.

Description of Related Art

20 [0004] Heart diseases play an important role in animal health, including non-human animals. Heart diseases concern, for example, the cardiac valves and the cardiac muscle. Because the heart is capable of compensating functional impairment by working harder, such diseases in most cases remain hidden, with the consequence that the state of the heart will deteriorate due to the increased load on the heart. The symptoms resulting from heart diseases, such as fatigue, circulatory insufficiency, and languor are usually recognized when the animal's heart is no longer able to compensate for the weakness. In such a case, the heart disease has progressed to the point that curing the disease is no longer possible.

25 [0005] While chronic cardiac valve and cardiac muscle changes are usually not curable, the use of medicaments can slow the further progress of the disease. Therefore, an early diagnosis for heart diseases is preferred. Routinely, physical methods are used for this purpose, such as auscultation of the heart sounds, the recording of an electrocardiogram, and X-ray and ultrasonic examinations. These examination methods have the disadvantage that they are carried out only when already visible or audible defects of the heart are recognized. Furthermore, physical examination methods require suitable and generally expensive devices in order to carry out a respective diagnosis.

30 [0006] In many heart diseases, such as, e.g., heart decompensation and dilated cardiomyopathy, a peptide hormone -- the so-called BNP (brain natriuretic peptide) -- is secreted by heart muscle tissue. Since this hormone is produced in the heart and is increasingly produced in case of an overstress and congestion of the heart, determining the BNP level in blood is a suitable means for evaluating cardiac insufficiency.

35 [0007] BNP as well as other natriuretic peptides play an important part in regulating water balance and blood pressure. If the cardiac wall is dilated, it secretes BNP in increasing amounts, which in turn causes an excretion of sodium and liquid via the kidneys and a dilation of the blood vessels. These factors can lower the blood pressure and the filling level of the heart. BNP is synthesized by the cells of the cardiac muscle as proBNP, which is cleaved into N-terminal proBNP (NT-proBNP) and BNP. Both parts of the polypeptide are delivered to the blood and can be determined therein.

40 [0008] The utility of both BNP and NT-proBNP as makers for cardiac disease in veterinary patients (e.g., dogs and cats) has been demonstrated in numerous studies. For instance, BNP and NT-proBNP assays have been shown to be effective as a diagnostic test for dogs, as illustrated by two studies, which report remarkably similar sensitivity and specificity (85% and 82% respectively) for differentiating the cause of clinical signs that may be attributable to cardiac disease in dogs. See Oyama MA, et al., "Assessment of serum N-terminal pro-B-type natriuretic peptide concentration for differentiation of congestive heart failure from primary respiratory tract disease as the cause of respiratory signs in dogs," Journal of American Veterinary Medical Association (December 2009); Boswood et al., "The diagnostic accuracy of different natriuretic peptides in the investigation of canine cardiac disease," JSAP 2007 1-7. In cats, the clinical challenge is different, as the most common cardiac disease in cats is hypertrophic cardiomyopathy. This disease remains occult or 'silent' with very few clinical signs that are appreciable to the pet owner until the disease is very advanced.

45 [0009] A number of immunoassays for the detection of NT-proBNP are known. These assays use polyclonal or monoclonal antibodies specific for epitopes within various regions of the peptide. These methods, however, are subject to variability because NT-proBNP is further processed *ex vivo* by various proteases in the blood serum and plasma. Therefore, immunoassays for NT-proBNP are inherently vulnerable to inconsistency due to the *ex vivo* degradation of the protein over time. Therefore, samples to be tested for NT-proBNP are typically refrigerated and efforts are made to conduct sample analysis as quickly as possible following taking of the sample.

50 [0010] From US 2009/170136 an assay for NT-proBNP in feline plasma samples is known. This document does not

teach an assay having two antibodies that bind to two distinct epitopes on a single degradation fragment of feline NT-proBNP. Both documents Fox et al., Journal Vet. Cardiol, 2009, volume 11 (1), S51-S61 and Wess et al., Vet Clin. Pathol, volume 40 (2), 2011, p. 237-244 teach NT-proBNP determination but do not teach the use of first and second antibodies which bind to two distinct epitopes, which are present on a single degradation fragment.

5 [0011] Finally, Connolly et al., Journal Vet. Card., 2010, volume 13 (1), pages 13-19, teaches a first antibody for an epitope in the region of aa 1 - 20 and the second antibody in the region of aa 60 - 80 of feline NT-proBNP and is particularly concerned with specific pairs.

[0012] Accordingly, the inventors have identified a need in the art for a method of determining NT-proBNP that can measure NT-proBNP without regard to when a sample was taken and without cumbersome handling requirements for the sample.

SUMMARY

15 [0013] In one aspect, the invention is directed to a method for determining the amount of NT-proBNP in a sample from a feline. The method includes determining the amount of a polypeptide selected from a sequence consisting of one of ASEASAIQELLDGLRDTVSEL (SED ID NO: 5), LGPLQQGHSPAESWEAQEEPPARVLAPHDNVLR (SEQ ID NO:9) and LQQGHSPAESWEAQEEPPARVLAPHDNVLR (SEQ ID NO:10) in the sample, and correlating the amount of the polypeptide in the sample to the amount of NT-proBNP in the sample wherein the determining comprises contacting a complex formed by a first antibody and a fragment of the NT-proBNP in the sample with a second antibody specific for the fragment, wherein the second antibody is directly or indirectly conjugated to a label; and detecting the amount of the label associated with the complex, wherein the first antibody and the second antibody do not compete for binding to the same epitope on the fragment, wherein said fragment is selected from SEQ ID NO:5, SEQ ID NO:9 and SEQ ID NO:10.

20 [0014] In various aspects, the amount of polypeptide can be determined with mass spectrometry or an immunoassay. For instance, the immunoassay can include (a) contacting the sample with a first antibody that specifically binds a polypeptide selected from a sequence consisting essentially of one of SEQ ID NO:5, SEQ ID NO:9 and SEQ ID NO: 1.0, (b) determining the amount of binding of the NT-proBNP in the sample to the first antibody, and (c) associating the amount of binding to the amount of NT-proBNP in the sample. The determining step includes further includes contacting a complex formed by the first antibody and the NT-proBNP in the sample with a second antibody specific for feline NT-proBNP that is directly or indirectly conjugated to a label and detecting the amount of the label associated with the complex. The first antibody and the second antibody do not compete for binding to the same epitope on NT-proBNP. The second antibody is specific for one of SEQ ID NO:5, SEQ ID NO:9 and SEQ ID NO: 10.

25 [0015] The method may also include the use of a standard, and includes contacting a standard comprising recombinant NT-proBNP with the first antibody, detecting the binding of the standard to the first antibody, and comparing the amount of binding of the first antibody to the NT-proBNP in the sample to the amount of binding of the first antibody to the standard. Similarly, the method then includes contacting a standard comprising recombinant NT-proBNP with the first antibody and the second antibody, and comparing a signal from the label of the second antibody that is bound to the NT-proBNP in the sample to the signal from the label of the second antibody that is bound to the standard.

30 [0016] In selected aspects of the invention, the antibodies are monoclonal or polyclonal antibodies raised against a polypeptide selected from a sequence consisting of one of SEQ ID NO:5, SEQ ID NO:9 and SEQ ID NO: 10.

35 [0017] In a further aspect, the specification is directed to a method for determining the presence or amount of NT-proBNP in a biological sample. The method includes: (a) forming a mixture of the sample with a first monoclonal antibody that specifically binds NT-proBNP, wherein the first monoclonal antibody is conjugated to a label; (b) allowing the NT-proBNP in the sample and the first monoclonal antibody to form a complex; (c) contacting the mixture with a second antibody that binds to NT-proBNP wherein the second antibody is immobilized on a solid phase; and (d) detecting the presence or amount of the label on the solid phase.

40 [0018] In yet another aspect, the specification is directed to a method for determining the presence or amount of NT-proBNP in a biological sample, which includes detecting a degradation product of NT-proBNP in the sample. The method can use a mass spectrometer or at least one antibody or two antibodies directed towards two different epitopes on the degradation product.

45 [0019] Still further, the invention is directed to a kit for determining the presence, absence or level of feline NT-proBNP in a sample. The components of the kit include a solid support; a first antibody, the first antibody being specific for a first epitope on a fragment of feline NT-proBNP, the fragment being selected as defined in claim 12, the fragment being less than the full length of feline NT-proBNP and being stable in feline serum or plasma at room temperature after at least 192 hours from taking the sample; and a second antibody being specific for a second epitope on the fragment of feline NT-proBNP, the second epitope being different than the first epitope.

50 [0020] The invention is also directed to an immunoassay device that is defined as in claim 1.

[0021] In the kit and the device, the fragment of feline NT-proBNP is selected from the group consisting of ASEASAIQELLDGLRDTVSEL (SED ID NO: 5); LGPLQQGHSPAESWEAQEEPPARVLAPHDNVLR (SEQ ID NO:9) and

LQQGHSPAESWEAQEEPPARVLAPHDNVLR (SEQ ID NO: 10).

[0022] In a further aspect, the invention is direct to a method for determining the amount of feline NT-proBNP in a biological sample. The method includes:

5 (a) providing a first antibody that binds at least one of the following peptides:

- ASEASAIQELLDGLRDTVSEL (SEQ ID NO:5);
- LGPLQQGHSPAESWEAQEEPPARVLAPHDNVLR (SEQ ID NO:9); and
- 10 LQQGHSPAESWEAQEEPPARVLAPHDNVLR (SEQ ID NO:10);

10

- (b) providing a sample suspected of containing feline NT-proBNP or fragments thereof;
- (c) contacting the sample with the first antibody to provide an antibody/peptide complex;
- (d) providing a second antibody that forms a complex with the antibody/peptide complex; and
- 15 (e) detecting the amount of the antibody/peptide/antibody complex.

15

BRIEF DESCRIPTION OF THE FIGURES

[0023]

20 Figure 1 provides an alignment of BNP polypeptide sequences from canine, feline and human (SEQ ID NOS 1, 2 and 3).

Figure 2 shows the results of the degradation of feline synthetic NT-proBNP in plasma.

25 Figures 3 and 4 show the relative amounts of NT-proBNP polypeptide fragments in plasma samples after 0, 24, 96 and 192 hours of spiking with feline synthetic NT-proBNP.

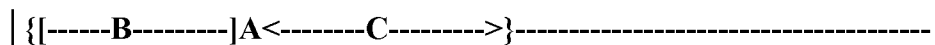
DETAILED DESCRIPTION

30 [0024] Degradation products of NT-proBNP can be determined to provide an accurate and reliable measurement of the original amount of NT-proBNP in a fresh blood sample. Because the stable degradation products, and not the NT-proBNP itself, are determined, the urgency to test the sample immediately or to refrigerate the sample prior to testing is eliminated.

35 [0025] There are several ways to assay a sample (e.g. whole blood, serum or plasma) for NT-proBNP or its degradation products. Mass Spectrometry, for example, can be used to look for a particular peptide sequence (e.g. full length NT-proBNP or a portion thereof). Immunoassay techniques can also be used to directly or indirectly detect full length NT-proBNP or a portion thereof. In a direct assay format, monoclonal antibodies, polyclonal antibodies or combinations thereof can be used to capture and detect full length or fragments of NT-proBNP (e.g., "sandwich" assays where one antibody captures the target analyte and a second, labeled antibody detects the captured analyte).

40 [0026] When assaying for NT-proBNP fragments in a sandwich assay, it is important to ensure the antibody pair is specific for epitopes that exist on the target, i.e. the assay will miss the fragment if one or more of the epitopes are cleaved from the original peptide or otherwise become compromised or inactivated. For example, assuming the line below is full length feline [NT-proBNP]. Over time, the peptide degrades into portions {A}, [B] and <C>, where [B] and <C> are degradation products of A:

45



50 [0027] An antibody pair, one directed to an epitope on [B] and the other to an epitope on <C>, will work in a sandwich assay for {A} (or the full length peptide) as long as {A} does not degrade into [B] and <C>. If {A} degrades into [B] and <C>, a working assay for this section of the full peptide would need to have an antibody pair directed towards active epitopes on either [B] or <C>.

[0028] Alternatively, in a competition immunoassay format, only one epitope of a target fragment need be identified and targeted with either a monoclonal or polyclonal antibody. In this format, if the fragment/epitope is present, it will bind with the antibody and "compete" with a detection reagent that would have otherwise bound to the antibody.

55 [0029] Preferred target NT-proBNP fragments (discussed in detail, below) are those that exist in detectable concentrations over time. By determining those fragments that are stable over time one can choose Mass Spectrometry pa-

rameters or antibodies to detect and determine the concentration of the stable fragment. Once one determines the concentration of a stable fragment, the original amount of NT-proBNP in the sample can be determined.

[0030] In order to assess the extent of heart damage or disease, the determination of the quantity of NT-proBNP in a sample is helpful. Quantitative determination of the degradation products of NT-proBNP (*i.e.*, a polypeptide fragment of native feline NT-proBNP) can be accomplished by several methods. Once the amount of one or more of its degradation products (the analyte) in a sample is determined, the amount NT-proBNP in the sample, prior to degradation, can be determined.

[0031] Accordingly, in one aspect the invention is directed to determining the amount of NT-proBNP in a sample from a feline, wherein the method includes determining the amount of a degradation product of NT-proBNP. The amount of NT-proBNP in the sample can be used as a measurement of cardiac disease in the animal.

[0032] Substantial homology between species exists for BNP and NT-proBNP. For example, Figure 1 provides an alignment of BNP polypeptide sequences from human, canine and feline (SEQ ID NOS 1-3). As described above, BNP is processed prior to secretion from muscle cells as the N-terminal pro-BNP (NT-proBNP) and BNP.

[0033] Feline Synthetic NT-proBNP (fsNT-proBNP) has the following polypeptide sequence (SEQ ID NO:4):

HPLGGPGPAS	EASAIQELLD	GLRDTVSELQ	EAQMALGPLQ
QGHSPAESWE	AQEPPARVL	APHDNVLRAL	RRLGSSKM

[0034] As shown in FIG. 2, feline NT-proBNP is degraded (cleaved in at least one location) nearly 80% after 24 hours *ex vivo* in plasma. Because the peptide is quickly degraded, epitopes specific for various antibodies may no longer be available for binding to the antibodies. In addition, when an assay relies upon antibody pairs that bind to the same polypeptide, cleavage through degradation of the polypeptide in the region between the two epitopes recognized by the antibodies results in the antibodies not longer being able to associate and provide a signal that is indicative of the association.

[0035] For nomenclature purposes, the feline NT-proBNP sequence can be loosely divided into two regions: the N-terminal region, which roughly includes the N-terminal half of the peptide, and the C-terminal region, which generally includes the C-terminal half of the peptide. Preferred degradation products of NT-proBNP are shown in Figures 3 and 4, wherein NT-proBNP was incubated in feline plasma and sampled after 4, 96 and 192 hours.

[0036] Preferred Feline NT-proBNP N-Terminal Peptide Plasma Degradants (Figure 3):

ASEASAIQELLDGLRDTVSEL (SEQ ID NO:5);
 DGLRDTVSEL (SEQ ID NO:6); and
 LDGLRDTVSELQEAQM (SEQ ID NO:7).

[0037] Preferred Feline NT-proBNP C-Terminal Peptide Plasma Degradants (Figure 4):

LGPLQQGHSPAESWEAQEPPAR (SEQ ID NO:8);
 LGPLQQGHSPAESWEAQEPPARVLAPHDNVLR (SEQ ID NO:9);
 LQQGHSPAESWEAQEPPARVLAPHDNVLR (SEQ ID NO: 10); and
 VLAPHDNVLR (SEQ ID NO:11).

[0038] The most prevalent polypeptides after 192 hours were:

ASEASAIQELLDGLRDTVSEL (SEQ ID NO: 5) in the N-terminal region; and
 LGPLQQGHSPAESWEAQEPPARVLAPHDNVLR (SEQ ID NO: 9) and
 LQQGHSPAESWEAQEPPARVLAPHDNVLR (SEQ ID NO:10) in the C-terminal region.

[0039] The specification also provides antibodies that selectively bind to one of the NT-proBNP degradation products, as well as variants and further fragments thereof. As used herein, an antibody selectively binds a target peptide when it binds the target peptide and does not significantly bind to unrelated proteins. An antibody is still considered to selectively bind a peptide even if it also binds to other proteins that are not substantially homologous with the target peptide so long as such proteins share homology with a fragment or domain of the peptide target of the antibody. In this case, it would be understood that antibody binding to the peptide is still selective despite some degree of cross-reactivity.

[0040] As used herein, an antibody is defined in terms consistent with that recognized within the art: they are multi-subunit proteins produced by a mammalian organism in response to an antigen challenge. Chimeric antibodies are also within the scope of the invention. The antibodies of the present invention include polyclonal antibodies and monoclonal antibodies, as well as fragments of such antibodies, including, but not limited to, Fab or F(ab')₂, and Fv fragments.

[0041] Many methods are known for generating and/or identifying antibodies to a given target peptide. Several such methods are described by Harlow, *Antibodies*, Cold Spring Harbor Press, (1989).

[0042] In general, to generate antibodies, an isolated peptide is used as an immunogen and is administered to a mammalian organism, such as a rat, rabbit or mouse. In one aspect, the antibodies of the invention are monoclonal antibodies produced by a mouse myeloma cell line. This cell line can be made by fusing a mouse myeloma cell line with the spleen cells from mice that have been injected with the NT-proBNP fragments described herein and suitable carrier proteins that are well known to those of skill in the art.

[0043] The antibodies can be used to isolate NT-proBNP or a fragment thereof by standard techniques, such as affinity chromatography or immunoprecipitation. In one aspect, the invention is directed to an immunological method for detecting the presence of an amount of NT-proBNP in a biological sample. The invention provides a method, a device and a kit that uses one or more feline NT-proBNP monoclonal antibodies. In another aspect, the method includes calibrators and standards comprising one or more NT-proBNP polypeptides.

[0044] Stable fragments NT-proBNP can also be used to purify polyclonal antibodies from sera (e.g. from chickens, goats, sheep and/or donkeys that have been immunized with all or a portion of the NT-proBNP sequence).

[0045] As used herein, antibodies that have been raised against a particular polypeptide sequence refer to polyclonal or monoclonal antibodies that have been obtained after immunizing an animal with the polypeptide, such as well known in the art, usually conjugated to a suitable carrier.

[0046] "Binding specificity" or "specific binding" refers to the substantial recognition of a first molecule for a second molecule, for example a polypeptide and a polyclonal or monoclonal antibody, or an antibody fragment (e.g. a Fv, single chain Fv, Fab', or F(ab')₂ fragment) specific for the polypeptide.

[0047] A "specific binding pair" is a set of two different molecules, where one molecule has an area on its surface or in a cavity that specifically binds to, and is therefore complementary to, an area on the other molecule. "Specific binding partner" refers to one of these two complementarily binding molecules. "Specific binding pair" may refer to a ligand and a receptor, for example. In another example, the specific binding pair might refer to an immunological pair, for example an antigen and antibody.

[0048] "Substantial binding" or "substantially bind" refer to an amount of specific binding or recognizing between molecules in an assay mixture under particular assay conditions. In its broadest aspect, substantial binding relates to the difference between a first molecule's incapability of binding or recognizing a second molecule, and the first molecule's capability of binding or recognizing a third molecule, such that the difference is sufficient to allow a meaningful assay to be conducted distinguishing specific binding under a particular set of assay conditions, which includes the relative concentrations of the molecules, and the time and temperature of an incubation. In another aspect, one molecule is substantially incapable of binding or recognizing another molecule in a cross-reactivity sense where the first molecule exhibits a reactivity for a second molecule that is less than 25%, preferably less than 10%, more preferably less than 5% of the reactivity exhibited toward a third molecule under a particular set of assay conditions, which includes the relative concentration and incubation of the molecules. Specific binding can be tested using a number of widely known methods, e.g. an immunohistochemical assay, an enzyme-linked immunosorbent assay (ELISA), a radioimmunoassay (RIA), or a western blot assay.

[0049] A "blood sample" refers to a whole blood sample from an animal or its components (e.g., serum, plasma, etc.).

[0050] A "label" is any molecule that is bound (via covalent or non-covalent means, alone or encapsulated) to another molecule or solid support and that is chosen for specific characteristics that allow detection of the labeled molecule. Generally, labels are comprised of, but are not limited to, the following types: particulate metal and metal-derivatives, radioisotopes, catalytic or enzyme-based reactants, chromogenic substrates and chromophores, fluorescent and chemiluminescent molecules, and phosphors. The utilization of a label produces a signal that may be detected by means such as detection of electromagnetic radiation or direct visualization, and that can optionally be measured.

[0051] The label employed in the current invention could be, but is not limited to: alkaline phosphatase; glucose-6-phosphate dehydrogenase ("G6PDH"); horse radish peroxidase (HRP); chemiluminescers such as isoluminol, fluorescers such as fluorescein and rhodamine compounds; ribozymes; and dyes.

[0052] The label can directly produce a signal, and therefore additional components are not required to produce a signal. Alternatively, a label may need additional components, such as substrates or co-enzymes, in order to produce a signal. The suitability and use of such labels useful for producing a signal are discussed in U.S. Patent No. 6,489,309, and U.S. Patent No. 5,185,243, For example, a label may be conjugated to the specific binding partner in a non-covalent fashion. Alternatively, the label may be conjugated to the specific binding partner covalently. U.S. Patent No 3,817,837, and U.S. Patent No. 3,996,345, describe in detail example of various ways that a label may be non-covalently or covalently conjugated to the specific binding partner.

[0053] Solid phase means a porous or non-porous water insoluble material. Such materials include a support or a surface such as the wall of a reaction vessel. The support can be hydrophilic or capable of being rendered hydrophilic and includes inorganic powders such as silica, magnesium sulfate, and alumina; natural polymeric materials, particularly cellulosic materials and materials derived from cellulose, such as fiber containing papers, e.g., filter paper, chromato-

graphic paper, etc.; synthetic or modified naturally occurring polymers, such as nitrocellulose, cellulose acetate, poly (vinyl chloride), polyacrylamide, cross linked dextran, agarose, polyacrylate, polyethylene, polypropylene, poly(4-methylbutene), polystyrene, polymethacrylate, poly(ethylene terephthalate), nylon, poly(vinyl butyrate), etc.; either used by themselves or in conjunction with other materials; glass available as Bioglass, ceramics, metals, and the like. Natural or synthetic assemblies such as liposomes, phospholipid vesicles, and cells can also be employed.

[0054] Binding of specific binding pair members to a support or surface may be accomplished by well-known techniques, commonly available in the literature. See, for example, "Immobilized Enzymes," Ichiro Chibata, Halsted Press, New York (1978) and Cuatrecasas, J. Biol. Chem., 245:3059 (1970). The surface can have any one of a number of shapes, such as strip, rod, particle, including bead, and the like. In one aspect, the polypeptides of the invention include a N-terminal cysteine residue to assist in binding the polypeptides to the solid phase.

[0055] The method of the invention can be optimized in many ways and one of skill in the art could simultaneously adjust the sample dilutions, reagent concentrations, incubation temperatures and times used in the method to accomplish detection of NT-proBNP.

[0056] To be useful in the detection methods of the present invention, the polypeptides are obtained in a substantially pure form, that is, typically from about 50% w/w or more purity, substantially free of interfering proteins and contaminants. Preferably, the polypeptides are isolated or synthesized in a purity of at least 80% w/w, and more preferably, in at least about 95% w/w purity. Using conventional protein purification techniques, homogeneous polypeptide compositions of at least about 99% w/w purity can be obtained. For example, the proteins may be purified by use of the antibodies described hereinafter using the immunoabsorbant affinity columns described hereinabove.

[0057] The method of the invention may be accomplished using immunoassay techniques well known to those of skill in the art, including, but not limited to, using microplates and lateral flow devices. In one embodiment, an antibody specific for NT-proBNP protein is immobilized on a solid support at a distinct location. Following addition of the sample, detection of protein-antibody complexes on the solid support can be by any means known in the art. For example, U.S. Patent No. 5,726,010, which is incorporated herein by reference in its entirety, describes an example of a lateral flow device, the SNAP[®] immunoassay device (IDEXX Laboratories), useful in the present invention. In another aspect, the solid support is a well of a microtiter plate.

[0058] Immobilization of one or more analyte capture reagents, e.g., antibodies to NT-proBNP, onto a device or solid support is performed so that an analyte capture reagent will not be washed away by the sample, diluent and/or wash procedures. One or more analyte capture reagents can be attached to a surface by physical adsorption (i.e., without the use of chemical linkers) or by chemical binding (i.e., with the use of chemical linkers). Chemical binding can generate stronger attachment of specific binding substances on a surface and provide defined orientation and conformation of the surface-bound molecules.

[0059] In another aspect, the invention includes one or more labeled specific binding reagents that can be mixed with a test sample prior to application to a device for of the invention. In this case it is not necessary to have labeled specific binding reagents deposited and dried on a specific binding reagent pad in the device. A labeled specific binding reagent, whether added to a test sample or pre-deposited on the device, can be for example, a labeled NT-proBNP monoclonal antibody.

[0060] The detection method may include the use of a standard such as a recombinant NT-proBNP polypeptide. The standard can be mixed with the monoclonal antibody or antibodies in the same manner as the sample. The amount of binding between the monoclonal antibody or antibodies and the standard can be compared to the amount of binding of the antibodies to the protein in the sample. Accordingly, because the amount of NT-proBNP in the standard is known, the amount of protein in the sample can be determined.

[0061] Any or all of the above embodiments can be provided as a kit. In one particular example, such a kit can include, for example, a solid support, a first antibody specific for a first epitope on a fragment of feline NT-proBNP. The fragment can be less than the full length of feline NT-proBNP and stable in feline serum or plasma at room temperature after at least 192 hours from taking the sample. Such fragments are described above; for example SEQ ID NO:5, SEQ ID NO:9 and SEQ ID NO:10. The kit can also include a second antibody being specific for a second epitope on the fragment of feline NT-proBNP, the second epitope being different than the first epitope.

[0062] The kit can include a device complete with specific binding reagents (e.g., a non-immobilized labeled specific binding reagent and an immobilized analyte capture reagent) and wash reagent, as well as detector reagent and positive and negative control reagents, if desired or appropriate. In addition, other additives can be included, such as stabilizers, buffers, and the like. The relative amounts of the various reagents can be varied, to provide for concentrations in solution of the reagents that substantially optimize the sensitivity of the assay. Particularly, the reagents can be provided as dry powders, usually lyophilized, which on dissolution will provide for a reagent solution having the appropriate concentrations for combining with a sample.

[0063] The device may also include a liquid reagent that transports unbound material (e.g., unreacted fluid sample and unbound specific binding reagents) away from the reaction zone (solid phase). A liquid reagent can be a wash reagent and serve only to remove unbound material from the reaction zone, or it can include a detector reagent and

serve to both remove unbound material and facilitate analyte detection. For example, in the case of a specific binding reagent conjugated to an enzyme, the detector reagent includes a substrate that produces a detectable signal upon reaction with the enzyme-antibody conjugate at the reactive zone. In the case of a labeled specific binding reagent conjugated to a radioactive, fluorescent, or light-absorbing molecule, the detector reagent acts merely as a wash solution facilitating detection of complex formation at the reactive zone by washing away unbound labeled reagent.

[0064] Two or more liquid reagents can be present in a device, for example, a device can comprise a liquid reagent that acts as a wash reagent and a liquid reagent that acts as a detector reagent and facilitates analyte detection.

[0065] A liquid reagent can further include a limited quantity of an "inhibitor", i.e., a substance that blocks the development of the detectable end product. A limited quantity is an amount of inhibitor sufficient to block end product development until most or all excess, unbound material is transported away from the second region, at which time detectable end product is produced.

[0066] In one aspect, the device is provided upon binding of NT-proBNP from the sample of the antibody immobilized on the device. Accordingly, the device has a solid support having a first antibody bound thereto, the first antibody being specific for a first epitope on a fragment of feline NT-proBNP. A fragment of feline NT-proBNP becomes bound to the first antibody, the fragment being less than the full length of feline NT-proBNP. This fragment is, for example, one of the fragments describe above and is stable in feline serum or plasma at room temperature after at least 192 hours from taking the sample. The device also includes a second antibody being specific for a second epitope on the fragment of feline NT-proBNP, the second epitope being different than the first epitope, the second antibody being bound to the fragment of feline NT-proBNP. Therefore, the device is complete upon sandwiching the fragment between the first and second antibodies, as would occur upon application of a sample containing NT-proBNP to the device.

Detection of NT-proBNP by Mass Spectrometry

[0067] Peptides and peptide fragments of the disclosure may be detected using standard mass spectrometric techniques. In mass spectrometry (MS), the analyte is first vaporized and ionized, then the ions are directed to a mass analyzer, in which electromagnetic fields are used to separate species by mass. Lastly, a detector quantifies the abundance of each species.

[0068] Standard ionization techniques that are well known in the art include electrospray ionization (ESI) and matrix-assisted laser desorption ionization (MALDI), which are commonly used with liquid and solid biological samples. Other ionization technologies known in the art include thermal ionization (TIMS), spark ionization, secondary ion mass spectrometry (SIMS), atmospheric pressure chemical ionization (APCI), ion attachment ionization, direct analysis in real time (DART), desorption/ionization on silicon (DIOS), thermospray ionization, fast atom bombardment (FAB), field desorption, glow discharge, and inductively couple plasma (ICP). Examples of well-known mass analyzers include sector field, time-of-flight (TOF), quadrupole, quadrupole ion trap (IT), linear quadrupole ion trap, Fourier transform ion cyclotron resonance (FT-ICR), and orbitrap mass analyzers. Examples of well-known detectors include electron multiplier, Faraday cup, microchannel plate, and Daly detectors.

[0069] Mass analyzers segregate ions according to their mass-to-charge ratio (m/z , where m is mass and z is charge). For example, a peptide of molecular weight P with two positive charges will have a net mass of $(P + 2)$ due to the ionizing presence of two protons, and will appear on a mass spectrum at $m/z = (P + 2)/2$. Thus, in general, a molecule of molecular weight M with charge Z will appear on a mass spectrum at $m/z = (M + Z)/Z$.

[0070] Mass spectrometry can be combined with liquid chromatography (LC) or gas chromatography (GC) to facilitate detection and identification of compounds residing within a complex mixture. In liquid chromatography-mass spectrometry (LC/MS), the analyte solution is first passed through a high-performance liquid chromatography (HPLC) column, which may separate components by a characteristic such as hydrophobicity, partition coefficient, polarity, bioaffinity, charge, or size using well-known chromatographic techniques such as reversed-phase chromatography, normal phase chromatography, displacement chromatography, partition chromatography, ion exchange chromatography, size exclusion chromatography, or bioaffinity chromatography. The mass spectrometer then generates a mass spectrum for each peak in the HPLC chromatogram. Using LC/MS, a single species of interest can be separated and identified from within complex biological mixtures such as plasma or serum.

[0071] LC can also be combined with a tandem mass spectrometer (MS/MS), which is capable of multiple rounds of mass spectrometry for purposes such as protein identification. An MS/MS system can isolate and stabilize an individual ion species appearing in a mass spectrum, which is then fragmented using any one of several well-known techniques, such as collision-induced dissociation (CID), electron capture dissociation (ECD), electron transfer dissociation (ETD), infrared multiphoton dissociation (IRMPD), and blackbody infrared radiative dissociation (BIRD). The fragments are themselves analyzed by MS to generate a fragment mass spectrum, also called a fragmentation pattern. In the case of protein identification, an experimentally derived fragmentation pattern (generated from a sample with an unknown protein or peptide) can be compared with fragmentation patterns that have been predicted from information in protein sequence or nucleotide sequence databases. A high degree of similarity between experimental and predicted fragmentation patterns

leads to identification of the unknown protein in the sample.

[0072] Other features and advantages of the invention will be apparent from the following Examples. The following are provided for exemplification purposes only and are not intended to limit the scope of the invention described in broad terms above. All references cited in this disclosure are incorporated herein by reference.

Examples

[0073] LC/MS analyses were obtained using a Thermo-Scientific ACCELA UHPLC and LTQ ORBITRAP DISCOVERY™ mass spectrometry systems.

[0074] For plasma extraction, 100uL of plasma was precipitated by addition of 200uL methanol in a 1.5 mL protein LoBind eppendorf tube. After vortexing for 10 seconds, the precipitate was pelleted by centrifugation at 13,000 rpm for 15 minutes at 10°C using a benchtop centrifuge. The supernatant was transferred to a limited volume glass HPLC vial and analyzed by LC/MS as described in the following examples.

Example 1 -- MS analysis of degradation kinetics of NT-proBNP in feline plasma

[0075] Degradation kinetics of whole feline synthetic (fs) NT-proBNP in feline plasma were investigated by adding 1.0 µg fsNT-proBNP to 1mL of feline plasma prepared as described above. Aliquots of the plasma were analyzed by LC/MS at 0, 4, 24, and 48 hours after addition of the peptide. As shown in Figure 2, approximately 80% of the peptide was degraded after 24 hours.

[0076] The LC gradient for this example is shown in Table 1, where Solvent C is 0.1% formic acid in water and Solvent D is 0.1% formic acid in acetonitrile.

Table 1.

No	Time	A%	B%	C%	D%	µL/min
1	0	0	0	100	0	300
2	5	0	0	100	0	300
3	23	0	0	65	35	300
4	26	0	0	65	35	300
5	44	0	0	5	95	300
6	46	0	0	5	95	300
7	46.5	0	0	100	0	300
8	60	0	0	100	0	300

Column: Acquity UPLC BEH300 C₁₈ 1.7µM 2.1id x 150mm length

Guard Column: vanguard BEH C₁₈ 1.7µM

Injection volume: 25µL

Tray temp: 10°C

Column oven temp: 45°C

MS run time: 60.0 minutes

[0077] The mass spec parameters for degradation kinetics are shown in Table 2:

Table 2

MS run time: 60.0 minutes	
Divert valve:	
Divert Time	Valve State
0.00	To waste
4.95	To source
55	To waste

EP 2 715 353 B1

Number of Scan Events: 1

[0078] Tune Method: 031710 peptide tune

5 Scan Event Details:

[0079] 1: FTMS + c norm res=30000 o(375.0-2000.0) CV = 0.0V

10 Default Charge State: 2
Activation Q: 0.250
Activation Time: 30.000

CV = 0.0V

15 MS Tune File Values

[0080]

20 Source Type: ESI
Capillary Temp (°C): 250.00
Sheath gas Flow: 24.0
Aux Gas Flow: 13.0
Sweep Gas Flow: 0
ITMS MSn AGC Target: 10000
25 FTMS Injection waveforms: off
FTMS AGC Target: 500000
Source voltage (kV): 4.50
Source current (µA): 100.00
Capillary Voltage (V): 68.28
30 Tube Lens (V): 130.00
Skimmer Offset (V): 0.00
Multipole RF Amplifier (Vp-p): 550.00
Multipole 00 offset (V): -1.60
Lens 0 Voltage (V): -2.70
35 Multipole 0 offset (V): -2.70
Lens 1 Voltage (V): -11.00
Gate Lens offset (V): -60.00
Multipole 1 offset (V): -10.5
Front Lens (V): -5.18
40 ITMS MSn microscans: 3
ITMS MSn Max Ion Time (ms): 100.00
FTMS full microscans: 1
FTMS full Max Ion Time (ms): 500.00

45 [0081] The Mass Spec parameters used for determining peptide degradation products are shown in Table 3.

Table 3

50	MS run time: 60.0 minutes	
	Divert valve:	
	Divert Time	Valve State
	0.00	To waste
	4.95	To source
55	55	To waste

EP 2 715 353 B1

Number of Scan Events: 6

[0082] Tune Method: 031710 peptide tune

5 Scan Event Details:

[0083]

10 1: FTMS + c norm res=30000 o(375.0-2000.0) CV = 0.0V
2: ITMS + c norm Dep MS/MS Most intense ion from (1)

15 Activation Type: CID
Min. Signal Required: 500.0
Isolation Width: 1.50
Normalized Coll. Energy: 35.0
Default Charge State: 2
Activation Q: 0.250
Activation Time: 30.000

20 CV = 0.0V
3: ITMS + c norm Dep MS/MS 2nd most intense ion from (1)

25 Activation Type: CID
Min. Signal Required: 500.0
Isolation Width: 2.00
Normalized Coll. Energy: 35.0
Default Charge State: 2
Activation Q: 0.250
Activation Time: 30.000

30 CV = 0.0V
4: ITMS + c norm Dep MS/MS 3rd most intense ion from (1)

35 Activation Type: CID
Min. Signal Required: 500.0
Isolation Width: 2.00
Normalized Coll. Energy: 35.0
Default Charge State: 2
Activation Q: 0.250
40 Activation Time: 30.000

CV = 0.0V
5: ITMS + c norm Dep MS/MS 4th most intense ion from (1)

45 Activation Type: CID
Min. Signal Required: 500.0
Isolation Width: 1.50
Normalized Coll. Energy: 35.0
Default Charge State: 2
50 Activation Q: 0.250
Activation Time: 30.000

CV = 0.0V
6: ITMS + c norm Dep MS/MS 5th most intense ion from (1)

55 Activation Type: CID
Min. Signal Required: 500.0
Isolation Width: 1.50

EP 2 715 353 B1

Normalized Coll. Energy: 35.0
Default Charge State: 2
Activation Q: 0.250
Activation Time: 30.000

5

CV = 0.0V

Data Dependent Settings:

10 **[0084]** Use separate polarity settings disabled

Parent Mass List: (none)
Reject Mass List: (none)
Neutral Loss Mass List: (none)
15 Product Mass List: (none)
Neutral loss in top: 3
Product in top: 3

Most intense if no parent masses found not enabled

20 Add/subtract mass not enabled

FT master scan preview mode enabled

Charge state screening enabled

Monoisotopic precursor selection enabled

Non-peptide monoisotopic recognition not enabled

25 Charge state rejection enabled

Unassigned charge states : rejected

Charge state 1 : not rejected

Charge state 2 : not rejected

30 Charge state 3 : not rejected

Charge states 4+ : not rejected

Global Data Dependent Settings:

35 **[0085]** Use global parent and reject mass lists not enabled

Exclude parent mass from data dependent selection not enabled

Exclusion mass width relative to mass

Exclusion mass width relative to low (ppm): 20.000

40 Exclusion mass width relative to high (ppm): 20.000

Parent mass width relative to mass

Parent mass width relative to low (ppm): 10.000

Parent mass width relative to high (ppm): 10.000

Reject mass width relative to mass

45 Reject mass width relative to low (ppm): 20.000

Reject mass width relative to high (ppm): 20.000

Zoom/UltraZoom scan mass width by mass

Zoom/UltraZoom scan mass width low: 5.00

Zoom/UltraZoom scan mass width high: 5.00

50 FT SIM scan mass width low: 5.00

FT SIM scan mass width high: 5.00

Neutral Loss candidates processed by decreasing intensity

Neutral Loss mass width by mass

Neutral Loss mass width low: 0.50000

55 Neutral Loss mass width high: 0.50000

Product candidates processed by decreasing intensity

Product mass width by mass

Product mass width low: 0.50000

EP 2 715 353 B1

Product mass width high: 0.50000
MS mass range: 0.00-1000000.00
MSn mass range by mass
MSn mass range: 0.00-1000000.00

5

Use m/z values as masses not enabled
Analog UV data dep. not enabled
Dynamic exclusion enabled

10

Repeat Count: 2
Repeat Duration: 30.00
Exclusion List Size: 500
Exclusion Duration: 60.00
Exclusion mass width relative to mass

15

Exclusion mass width relative to low (ppm): 20.000
Exclusion mass width relative to high (ppm): 20.000

Expiration: disabled

20

Isotopic data dependence not enabled
Mass Tags data dependence not enabled4

MS Tune File Values

25

[0086]

Source Type: ESI
Capillary Temp (°C): 250.00
Sheath gas Flow: 24.0
30 Aux Gas Flow: 13.0
Sweep Gas Flow: 0
ITMS MSn AGC Target: 10000
FTMS Injection waveforms: off
FTMS AGC Target: 500000
35 Source voltage (kV): 4.50
Source current (μA): 100.00
Capillary Voltage (V): 68.28
Tube Lens (V): 130.00
Skimmer Offset (V): 0.00
40 Multipole RF Amplifier (Vp-p): 550.00
Multipole 00 offset (V): -1.60
Lens 0 Voltage (V): -2.70
Multipole 0 offset (V): -2.70
Lens 1 Voltage (V): -11.00
45 Gate Lens offset (V): -60.00
Multipole 1 offset (V): -10.5
Front Lens (V): -5.18
ITMS MSn microscans: 3
ITMS MSn Max Ion Time (ms): 100.00
50 FTMS full microscans: 1
FTMS full Max Ion Time (ms): 500.00

Example 2: Characterization of stable degradation products of feline NT-proBNP

55

[0087] To characterize the fsNT-proBNP stable degradation products present after incubation in feline plasma, fsNT-proBNP was added to feline plasma at 1, 5, and 10 μg/mL and incubated at room temperature. At 0, 24, 48, 96, and 192 hours, 100 μL aliquots of the plasma were collected and combined with 200 μL of methanol to form a precipitate. After centrifugation, the supernatant was analyzed for stable peptides by LC/MS as described in Example 1.

[0088] The relative abundance of several fragments from the N-terminal, capture, and C-terminal regions were evaluated over time. These data are shown in Figures 3 and 4, and indicate that the most stable fragment sequences over time were ASEASAIQELLDGLRDTVSEL (SED ID NO: 5) from the N-terminal region and LGPLQQGHS-PAESWEAQEEPPARVLAPHDNVLR (SED ID NO: 9) and LQQGHSPAESWEAQEEPPARVLAPHDNVLR (SEQ ID NO: 10); from the C-terminal region.

Example 3: Identification of Stable Epitopes of Feline NT-proBNP

[0089] To identify stable peptide epitopes, a database containing the amino acid sequence of fsNT-proBNP (SEQ ID NO: 1) in FASTA format was created. The RAW file of interest acquired from the LC-MS run was uploaded along with the FASTA database to Proteome Discoverer software (v 1.0 Thermo Scientific) for identification of the stable epitopes using SEQUEST.

[0090] The peptides that satisfy the criteria as directed in the Proteome Discover Software were identified as stable epitopes for a particular time series.

Example 4: Immunoassay for feline NT-proBNP

[0091] Immunoassays can be conducted using monoclonal antibodies specific for stable feline NT-proBNP degradation fragments (SEQ ID NOS: 5, 9 and 10) at, for example, 24, 48, 72 and 96 hours. Sheep polyclonal antibodies raised against various fragment of feline NT-proBNP can be coated on a solid phase. Monoclonal antibodies can be raised against raised against any of SEQ ID NOS:5, 9 and 10, and conjugated at either or both the N and C terminus with a protein carrier, for example, (PEG)6-Cys-KLH. The antibodies can be labeled with HRP or another label using standard techniques known in the art. Feline plasma incubated with the solid phase for 1 hour followed by a second incubation with the labeled antibodies allow for the detection of the label on the solid phase when the polyclonal and monoclonal antibodies bind to the same degradation fragment of feline NT-proBNP.

[0092] The examples given above are merely illustrative and are not meant to be an exhaustive list of all possible embodiments, applications or modifications of the invention. Thus, various modifications and variations of the described methods and systems of the invention will be apparent to those skilled in the art without departing from the scope and spirit of the invention. Although the invention has been described in connection with specific embodiments, it should be understood that the invention as claimed should not be unduly limited to such specific embodiments. Indeed, various modifications of the described modes for carrying out the invention which are obvious to those skilled in molecular biology, immunology, chemistry, biochemistry or in the relevant fields are intended to be within the scope of the appended claims.

[0093] It is understood that the invention is not limited to the particular methodology, protocols, and reagents, etc., described herein, as these may vary as the skilled artisan will recognize. It is also to be understood that the terminology used herein is used for the purpose of describing particular embodiments only, and is not intended to limit the scope of the invention.

[0094] The embodiments of the invention and the various features and advantageous details thereof are explained more fully with reference to the non-limiting embodiments and/or illustrated in the accompanying drawings and detailed in the following description. It should be noted that the features illustrated in the drawings are not necessarily drawn to scale, and features of one embodiment may be employed with other embodiments as the skilled artisan would recognize, even if not explicitly stated herein.

[0095] Any numerical values recited herein include all values from the lower value to the upper value in increments of one unit provided that there is a separation of at least two units between any lower value and any higher value. As an example, if it is stated that the concentration of a component or value of a process variable such as, for example, size, angle size, pressure, time and the like, is, for example, from 1 to 90, specifically from 20 to 80, more specifically from 30 to 70, it is intended that values such as 15 to 85, 22 to 68, 43 to 51, 30 to 32, etc. are expressly enumerated in this specification. For values which are less than one, one unit is considered to be 0.0001, 0.001, 0.01 or 0.1 as appropriate. These are only examples of what is specifically intended and all possible combinations of numerical values between the lowest value and the highest value enumerated are to be considered to be expressly stated in this application in a similar manner.

[0096] Particular methods, devices, and materials are described, although any methods and materials falling under the scope as described herein can be used in the practice or testing of the invention.

Aspects of the specification

[0097]

EP 2 715 353 B1

- 5 1. A method for determining the amount of NT-proBNP in a sample from a feline comprising determining the amount of a polypeptide selected from a sequence consisting essentially of one of ASEASAIQELLDGLRDTVSEL (SEQ ID NO: 5), LGPLQQGHSPAESWEAQEEPPARVLAPHDNVLR (SEQ ID NO:9) and LQQGHSPAESWEAQEEPPARV-LAPHDNVLR (SEQ ID NO:10) in the sample, and correlating the amount of the polypeptide in the sample to the amount of NT-proBNP in the sample.
2. The method according to item 1, wherein the amount of polypeptide is determined with mass spectrometry.
- 10 3. The method of item 1, further comprising:
- (a) contacting the sample with a first antibody that specifically binds a polypeptide selected from a sequence consisting essentially of one of SEQ ID NO:5, SEQ ID NO:9 and SEQ ID NO: 10,
 - (b) determining the amount of binding of the NT-proBNP in the sample to the first antibody, and
 - (c) associating the amount of binding to the amount of NT-proBNP in the sample.
- 15 4. The method of item 3, wherein the determining further comprises: contacting a complex formed by the first antibody and the NT-proBNP in the sample with a second antibody specific for feline NT-proBNP, wherein the second antibody is directly or indirectly conjugated to a label; and detecting the amount of the label associated with the complex, wherein the first antibody and the second antibody do not compete for binding to the same epitope on NT- proBNP.
- 20 5. The method of item 4, wherein the second antibody is specific for one of SEQ ID NO:5, SEQ ID NO:9 and SEQ ID NO: 10.
- 25 6. The method of item 3, further comprising contacting a standard comprising recombinant NT-proBNP with the first antibody, detecting the binding of the standard to the first antibody, and comparing the amount of binding of the first antibody to the NT-proBNP in the sample to the amount of binding of the first antibody to the standard.
- 30 7. The method of item 5, further comprising contacting a standard comprising recombinant NT-proBNP with the first antibody and the second antibody, and comparing a signal from the label of the second antibody that is bound to the NT-proBNP in the sample to the signal from the label of the second antibody that is bound to the standard.
- 35 8. The method of item 3, wherein the first antibody is a first monoclonal antibody raised against a polypeptide selected from a sequence consisting essentially of one of SEQ ID NO:5, SEQ ID NO:9 and SEQ ID NO: 10.
9. The method of item 3, wherein the second antibody is a second monoclonal antibody raised against a polypeptide selected from a sequence consisting essentially of one of SEQ ID NO:5, SEQ ID NO:9 and SEQ ID NO: 10.
- 40 10. A method for determining the presence or amount of NT-proBNP in a biological sample comprising:
- (a) forming a mixture of the sample with a first monoclonal antibody that specifically binds NT-proBNP, wherein the first monoclonal antibody is conjugated to a label;
 - (b) allowing the NT-proBNP in the sample and the first monoclonal antibody to form a complex;
 - (c) contacting the mixture with a second antibody that binds to NT-proBNP wherein the second antibody is immobilized on a solid phase; and
 - (d) detecting the presence or amount of the label on the solid phase.
- 45 11. A method for determining the presence or amount of NT-pro BNP in a biological sample comprising detecting a degradation product of NT-proBNP in the sample.
- 50 12. The method of item 11, wherein the method comprises the use of a Mass Spectrometer.
13. The method of item 11, wherein the method comprises the use of at least one antibody.
- 55 14. The method of item 11, wherein the method comprises the use of at least two antibodies directed towards two different epitopes on the degradation product.
15. A kit for determining the presence, absence or level of feline NT-proBNP in a sample comprising:

EP 2 715 353 B1

- (a) a solid support;
(b) a first antibody, the first antibody being specific for a first epitope on a fragment of feline NT-proBNP, the fragment being less than the full length of feline NT-proBNP and being stable in feline serum or plasma at room temperature after at least 192 hours from taking the sample; and
5 (c) a second antibody being specific for a second epitope on the fragment of feline NT-proBNP, the second epitope being different than the first epitope.

16. The kit of item 15, wherein the fragment of feline NT-proBNP is selected from the group consisting of ASEASAIQELLDGLRDTVSEL (SEQ ID NO: 5); LGPLQQGHSPAESWEAQEEPPARVLAPHDNVLR (SEQ ID NO:9) and
10 LQQGHSPAESWEAQEEPPARVLAPHDNVLR (SEQ ID NO:30).

17. An immunoassay device comprising:

- (a) a solid support having a first antibody bound thereto, the first antibody being specific for a first epitope on a
15 fragment of feline NT-proBNP;
(b) a fragment of feline NT-proBNP being bound to the first antibody, the fragment being less than the full length of feline NT-proBNP and being stable in feline serum or plasma at room temperature after at least 192 hours from taking the sample; and
(c) a second antibody being specific for a second epitope on the fragment of feline NT-proBNP, the second
20 epitope being different than the first epitope, the second antibody being bound to the fragment of feline NT-proBNP.

18. The immunoassay device of item 17 wherein the fragment of feline NT-proBNP is selected from the group consisting of ASEASAIQELLDGLRDTVSEL (SEQ ID NO: 5); LGPLQQGHSPAESWEAQEEPPARVLAPHDNVLR
25 (SEQ ID NO:9) and LQQGHSPAESWEAQEEPPARVLAPHDNVLR (SEQ ID NO: 10).

19. A method for determining the presence or amount of feline NT-proBNP in a biological sample comprising:

- (a) providing a first antibody that binds at least one of the following peptides:

30 ASEASAIQELLDGLRDTVSEL (SEQ IDNO:5);
DGLRDTVSEL (SEQ ID NO:6);
LDGLRDTVSELQEAQM(SEQIDNO:7);
LGFLQQGHSPAESWEAQEEPPAR (SEQ ID NO:8);
35 LGPLQQGHSPAESWEAQEEPPARVLAPHDNVLR (SEQ ID NO:9);
LQQGHSPAESWEAQEEPPARVLAPHDNVLR (SEQ ID NO: 10); and
VLAPHDNVLR (SEQ ID NO:11);

- (b) providing a sample suspected of containing feline NT-proBNP or fragments thereof;
40 (c) contacting the sample with the first antibody to provide an antibody/peptide complex;
(d) providing a second antibody that forms a complex with the antibody/peptide complex; and
(e) detecting the presence, absence or amount of the antibody/peptide/antibody complex.

SEQUENCE LISTING

[0098]

<110> Idexx Laboratories, Inc. Murthy, Yerramilli

50 <120> DETECTION OF DEGRADATION PRODUCTS OF FELINE NT-proBNP

<130> 10-999

<150> US 61/491,580

55 <151> 2011-05-31

<160> 11

EP 2 715 353 B1

<170> PatentIn version 3.5

<210> 1

<211> 140

5 <212> PRT

<213> Canis familiaris

<220>

<221> misc_feature

10 <223> Canine preproBNP; SwissProt P16859

<400> 1

```

15      Met Glu Pro Cys Ala Ala Leu Pro Arg Ala Leu Leu Leu Leu Leu Phe
      1          5          10          15
      Leu His Leu Ser Pro Leu Gly Gly Arg Pro His Pro Leu Gly Gly Arg
20          20          25          30
      Ser Pro Ala Ser Glu Ala Ser Glu Ala Ser Glu Ala Ser Gly Leu Trp
          35          40          45
25      Ala Val Gln Glu Leu Leu Gly Arg Leu Lys Asp Ala Val Ser Glu Leu
          50          55          60
30      Gln Ala Glu Gln Leu Ala Leu Glu Pro Leu His Arg Ser His Ser Pro
      65          70          75          80
      Ala Glu Ala Pro Glu Ala Gly Gly Thr Pro Arg Gly Val Leu Ala Pro
35          85          90          95
      His Asp Ser Val Leu Gln Ala Leu Arg Arg Leu Arg Ser Pro Lys Met
          100          105          110
40      Met His Lys Ser Gly Cys Phe Gly Arg Arg Leu Asp Arg Ile Gly Ser
          115          120          125
45      Leu Ser Gly Leu Gly Cys Asn Val Leu Arg Lys Tyr
          130          135          140

```

<210> 2

<211> 132

50 <212> PRT

<213> Felis catus

<220>

<221> misc_feature

55 <223> Feline preproBNP; SwissProt Q9GLK4

<400> 2

EP 2 715 353 B1

1 Met Asp Pro Lys Thr Ala Leu Leu Arg Ala Leu Leu Leu Leu Leu Phe
 5 Leu His Leu Ser Pro Leu Gly Gly Arg Ser His Pro Leu Gly Gly Pro
 10 Gly Pro Ala Ser Glu Ala Ser Ala Ile Gln Glu Leu Leu Asp Gly Leu
 15 Arg Asp Thr Val Ser Glu Leu Gln Glu Ala Gln Met Ala Leu Gly Pro
 20 Leu Gln Gln Gly His Ser Pro Ala Glu Ser Trp Glu Ala Gln Glu Glu
 25 Pro Pro Ala Arg Val Leu Ala Pro His Asp Asn Val Leu Arg Ala Leu
 30 Arg Arg Leu Gly Ser Ser Lys Met Met Arg Asp Ser Arg Cys Phe Gly
 35 Arg Arg Leu Asp Arg Ile Gly Ser Leu Ser Gly Leu Gly Cys Asn Val
 40 Leu Arg Arg His
 45 Leu Arg Arg His
 50
 55

<210> 3
 <211> 134
 <212> PRT
 <213> Homo sapiens

<220>
 <221> misc_feature
 <223> Human preproBNP; SwissProt P16860

<400> 3

45 Met Asp Pro Gln Thr Ala Pro Ser Arg Ala Leu Leu Leu Leu Leu Phe
 50
 55

EP 2 715 353 B1

Leu His Leu Ala Phe Leu Gly Gly Arg Ser His Pro Leu Gly Ser Pro
 20 25 30
 5
 Gly Ser Ala Ser Asp Leu Glu Thr Ser Gly Leu Gln Glu Gln Arg Asn
 35 40 45
 10
 His Leu Gln Gly Lys Leu Ser Glu Leu Gln Val Glu Gln Thr Ser Leu
 50 55 60
 15
 Glu Pro Leu Gln Glu Ser Pro Arg Pro Thr Gly Val Trp Lys Ser Arg
 65 70 75 80
 20
 Glu Val Ala Thr Glu Gly Ile Arg Gly His Arg Lys Met Val Leu Tyr
 85 90 95
 25
 Thr Leu Arg Ala Pro Arg Ser Pro Lys Met Val Gln Gly Ser Gly Cys
 100 105 110
 30
 Phe Gly Arg Lys Met Asp Arg Ile Ser Ser Ser Ser Gly Leu Gly Cys
 115 120 125
 35
 Lys Val Leu Arg Arg His
 130
 40
 <210> 4
 <211> 78
 <212> PRT
 <213> Artificial Sequence
 45
 <220>
 <223> Feline Synthetic NT-proBNP (fsNT-proBNP)
 50
 <400> 4
 55
 His Pro Leu Gly Gly Pro Gly Pro Ala Ser Glu Ala Ser Ala Ile Gln
 1 5 10 15
 45
 Glu Leu Leu Asp Gly Leu Arg Asp Thr Val Ser Glu Leu Gln Glu Ala
 20 25 30
 50
 Gln Met Ala Leu Gly Pro Leu Gln Gln Gly His Ser Pro Ala Glu Ser
 35 40 45
 55
 Trp Glu Ala Gln Glu Glu Pro Pro Ala Arg Val Leu Ala Pro His Asp
 50 55 60
 65
 Asn Val Leu Arg Ala Leu Arg Arg Leu Gly Ser Ser Lys Met
 65 70 75

EP 2 715 353 B1

<210> 5
<211> 21
<212> PRT
<213> Artificial Sequence

5

<220>
<223> Preferred Feline NT-proBNP N-Terminal Peptide Plasma Degradent

10

Ala Ser Glu Ala Ser Ala Ile Gln Glu Leu Leu Asp Gly Leu Arg Asp
1 5 10 15

15

Thr Val Ser Glu Leu
20

<210> 6
<211> 10
<212> PRT
<213> Artificial Sequence

20

<220>
<223> Preferred Feline NT-proBNP N-Terminal Peptide Plasma Degradent

25

<400> 6

Asp Gly Leu Arg Asp Thr Val Ser Glu Leu
1 5 10

30

<210> 7
<211> 16
<212> PRT
<213> Artificial Sequence

35

<220>
<223> Preferred Feline NT-proBNP N-Terminal Peptide Plasma Degradent

<400> 7

40

Leu Asp Gly Leu Arg Asp Thr Val Ser Glu Leu Gln Glu Ala Gln Met
1 5 10 15

45

<210> 8
<211> 23
<212> PRT
<213> Artificial Sequence

50

<220>
<223> Preferred Feline NT-proBNP C-Terminal Peptide Plasma Degradent

<400> 8

55

EP 2 715 353 B1

Leu Gly Pro Leu Gln Gln Gly His Ser Pro Ala Glu Ser Trp Glu Ala
 1 5 10 15

5 Gln Glu Glu Pro Pro Ala Arg
 20

<210> 9

<211> 33

10 <212> PRT

<213> Artificial Sequence

<220>

<223> Preferred Feline NT-proBNP C-Terminal Peptide Plasma Degradent

15

<400> 9

Leu Gly Pro Leu Gln Gln Gly His Ser Pro Ala Glu Ser Trp Glu Ala
 1 5 10 15

20

Gln Glu Glu Pro Pro Ala Arg Val Leu Ala Pro His Asp Asn Val Leu
 20 25 30

25

Arg

<210> 10

<211> 30

30 <212> PRT

<213> Artificial Sequence

<220>

<223> Preferred Feline NT-proBNP C-Terminal Peptide Plasma Degradent

35

<400> 10

Leu Gln Gln Gly His Ser Pro Ala Glu Ser Trp Glu Ala Gln Glu Glu
 1 5 10 15

40

Pro Pro Ala Arg Val Leu Ala Pro His Asp Asn Val Leu Arg
 20 25 30

45

<210> 11

<211> 10

<212> PRT

<213> Artificial Sequence

50

<220>

<223> Preferred Feline NT-proBNP C-Terminal Peptide Plasma Degradent

<400> 11

55

Val Leu Ala Pro His Asp Asn Val Leu Arg
 1 5 10

Claims

1. An immunoassay device comprising a solid support having bound thereto a first antibody specific for a fragment of feline NT-proBNP selected from the group consisting of:

5 ASEASAIQELLDGLRDTVSEL (SEQ ID NO: 5);
 LGPLQQGHSPAESWEAQEPPARVLAPHDNVLR (SEQ ID NO:9); and
 LQQGHSPAESWEAQEPPARVLAPHDNVLR (SEQ ID NO:10), and a second antibody being specific for the
 10 fragment of feline NT-proBNP, wherein the first antibody and the second antibody bind to different epitopes on
 the fragment.

2. The device of claim 1, wherein the first antibody is raised against the fragment of feline NT-proBNP.

3. The device of claim 1 or 2, wherein the first antibody is a monoclonal antibody.

4. The device of claim 1 or 2, wherein the first antibody is a polyclonal antibody.

5. The device of claim 1, wherein the second antibody is raised against the fragment of feline NT-proBNP.

6. The device of claim 5, wherein the second antibody is a monoclonal antibody.

7. The device of claim 5, wherein the second antibody is a polyclonal antibody.

8. A method for determining the amount of NT-proBNP in a sample from a feline comprising determining the amount
 25 of a polypeptide selected from a sequence consisting of one of ASEASAIQELLDGLRDTVSEL (SEQ ID NO: 5),
 LGPLQQGHSPAESWEAQEPPARVLAPHDNVLR (SEQ ID NO:9) and LQQGHSPAESWEAQEPPARVLAPHD-
 NVLR (SEQ ID NO:10) in the sample, and correlating the amount of the polypeptide in the sample to the amount of
 NT-proBNP in the sample, wherein the determining comprises contacting a complex formed by a first antibody and
 30 a fragment of the NT-proBNP in the sample with a second antibody specific for the fragment, wherein the second
 antibody is directly or indirectly conjugated to a label; and detecting the amount of the label associated with the
 complex, wherein the first antibody and the second antibody do not compete for binding to the same epitope on the
 fragment, wherein said fragment is selected from SEQ ID NO:5, SEQ ID NO:9 and SEQ ID NO:10.

9. The method of claim 8, wherein the first antibody is raised against the fragment of feline NT-proBNP.

10. The method of any one of claim 8 or 9, wherein the first antibody is a monoclonal antibody.

11. The method of claim 8 or 9, wherein the first antibody is a polyclonal antibody.

12. A kit for determining the presence, absence or level of feline NT-proBNP in a sample comprising:

(a) a solid support; and

(b) a first antibody, the first antibody being specific for a first epitope on a fragment of feline NT-proBNP selected
 45 from the group consisting of ASEASAIQELLDGLRDTVSEL (SEQ ID NO: 5); LGPLQQGHSPAESWEAQEPP-
 PARVLAPHDNVLR (SEQ ID NO:9) and LQQGHSPAESWEAQEPPARVLAPHDNVLR (SEQ ID NO:10), and

(c) a second antibody being specific for a second epitope on the fragment of feline NT-proBNP, the second
 epitope being different than the first epitope.

Patentansprüche

1. Immunassay-Vorrichtung, umfassend einen festen Träger, an welchen gebunden ist ein erster Antikörper, welcher
 spezifisch ist für ein Fragment von feline NT-proBNP, ausgewählt aus der Gruppe, bestehend aus:

55 ASEASAIQELLDGLRDTVSEL (SEQ ID NO: 5);
 LGPLQQGHSPAESWEAQEPPARVLAPHDNVLR (SEQ ID NO: 9); und
 LQQGHSPAESWEAQEPPARVLAPHDNVLR (SEQ ID NO: 10),

EP 2 715 353 B1

und einen zweiten Antikörper, welcher spezifisch ist für das Fragment von felinem NT-proBNP, wobei der erste Antikörper und der zweite Antikörper an verschiedene Epitope auf dem Fragment binden.

2. Vorrichtung gemäß Anspruch 1, wobei der erste Antikörper gegen das Fragment von felinem NT-proBNP erzeugt wird.
3. Vorrichtung gemäß Anspruch 1 oder 2, wobei der erste Antikörper ein monoklonaler Antikörper ist.
4. Vorrichtung gemäß Anspruch 1 oder 2, wobei der erste Antikörper ein polyklonaler Antikörper ist.
5. Vorrichtung gemäß Anspruch 1, wobei der zweite Antikörper gegen das Fragment von felinem NT-proBNP erzeugt wird.
6. Vorrichtung gemäß Anspruch 5, wobei der zweite Antikörper ein monoklonaler Antikörper ist.
7. Vorrichtung gemäß Anspruch 5, wobei der zweite Antikörper ein polyklonaler Antikörper ist.
8. Verfahren zum Bestimmen der Menge an NT-proBNP in einer Probe aus einer Katze, umfassend das Bestimmen der Menge eines Polypeptids, ausgewählt aus einer Sequenz, bestehend aus einer von

ASEASAIQELLDGLRDTVSEL (SEQ ID NO: 5),
LGPLQQGHSPAESWEAQEPPARVLAPHDNVLR (SEQ ID NO: 9) und
LQQGHSPAESWEAQEPPARVLAPHDNVLR (SEQ ID NO: 10)

in der Probe, und das Korrelieren der Menge des Polypeptids in der Probe mit der Menge an NT-proBNP in der Probe, wobei das Bestimmen das Inkontaktbringen eines Komplexes, gebildet durch einen ersten Antikörper und ein Fragment des NT-proBNP in der Probe, mit einem zweiten Antikörper, welcher für das Fragment spezifisch ist, wobei der zweite Antikörper direkt oder indirekt an eine Markierung konjugiert ist, umfasst; und Erfassen der Menge der mit dem Komplex assoziierten Markierung, wobei der erste Antikörper und der zweite Antikörper nicht um Bindung an dasselbe Epitop auf dem Fragment konkurrieren, wobei das Fragment aus SEQ ID NO: 5, SEQ ID NO: 9 und SEQ ID NO: 10 ausgewählt ist.

9. Verfahren gemäß Anspruch 8, wobei der erste Antikörper gegen das Fragment von felinem NT-proBNP erzeugt wird.
10. Verfahren gemäß irgendeinem der Ansprüche 8 oder 9, wobei der erste Antikörper ein monoklonaler Antikörper ist.
11. Verfahren gemäß Anspruch 8 oder 9, wobei der erste Antikörper ein polyklonaler Antikörper ist.
12. Kit zum Bestimmen des Vorliegens, der Abwesenheit oder des Spiegels von felinem NT-proBNP in einer Probe, welcher umfasst:

(a) einen festen Träger; und
(b) einen ersten Antikörper, wobei der erste Antikörper spezifisch ist für ein erstes Epitop auf einem Fragment von felinem NT-proBNP, ausgewählt aus der Gruppe, bestehend aus ASEASAIQELLDGLRDTVSEL (SEQ ID NO: 5), LGPLQQGHSPAESWEAQEPPARVLAPHDNVLR (SEQ ID NO: 9) und LQQGHSPAESWEAQEPPARVLAPHDNVLR (SEQ ID NO: 10), und
(c) einen zweiten Antikörper, welcher für ein zweites Epitop auf dem Fragment von felinem NT-proBNP spezifisch ist, wobei das zweite Epitop ein anderes ist als das erste Epitop.

Revendications

1. Dispositif de dosage immunologique comprenant un support solide y ayant liés un premier anticorps spécifique d'un fragment de NT-proBNP félin choisi dans le groupe constitué de :

ASEASAIQELLDGLRDTVSEL (SED ID NO : 5),
LGPLQQGHSPAESWEAQEPPARVLAPHDNVLR (SEQ ID NO : 9) et
LQQGHSPAESWEAQEPPARVLAPHDNVLR (SEQ ID NO : 10), et un second anticorps spécifique du frag-

EP 2 715 353 B1

ment de NT-proBNP félin, le premier anticorps et le second anticorps se liant à des épitopes différents sur le fragment.

2. Dispositif selon la revendication 1, dans lequel le premier anticorps est soulevé contre le fragment de NT-proBNP félin.
3. Dispositif selon la revendication 1 ou 2, dans lequel le premier anticorps est un anticorps monoclonal.
4. Dispositif selon la revendication 1 ou 2, dans lequel le premier anticorps est un anticorps polyclonal.
5. Dispositif selon la revendication 1, dans lequel le second anticorps est soulevé contre le fragment de NT-proBNP félin.
6. Dispositif selon la revendication 5, dans lequel le second anticorps est un anticorps monoclonal.
7. Dispositif selon la revendication 5, dans lequel le second anticorps est un anticorps polyclonal.
8. Procédé de détermination de la quantité de NT-proBNP dans un échantillon provenant d'un félin comprenant la détermination de la quantité d'un polypeptide choisi à partir d'une séquence constituée de l'une de ASEASAIQEL-LDGLRDTVSEL (SEQ ID NO : 5), LGPLQQGHSPAESWEAQEPPARVLAPHDNVLR (SEQ ID NO : 9) et LQQGHSPAESWEAQEPPARVLAPHDNVLR (SEQ ID NO : 10) dans l'échantillon, et la mise en corrélation de la quantité du polypeptide dans l'échantillon et de la quantité de NT-proBNP dans l'échantillon, dans lequel la détermination comprend la mise en contact d'un complexe formé par un premier anticorps et un fragment du NT-proBNP dans l'échantillon avec un second anticorps spécifique du fragment, dans lequel le second anticorps est conjugué directement ou indirectement à un marqueur ; et la détection de la quantité du marqueur associé au complexe, dans lequel le premier anticorps et le second anticorps n'entrent pas en compétition pour la liaison au même épitope sur le fragment, dans lequel ledit fragment est choisi parmi SEQ ID NO : 5, SEQ ID NO : 9 et SEQ ID NO : 10.
9. Procédé selon la revendication 8, dans lequel le premier anticorps est soulevé contre le fragment du NT-proBNP félin.
10. Procédé selon l'une quelconque des revendications 8 ou 9, dans lequel le premier anticorps est un anticorps monoclonal.
11. Procédé selon la revendication 8 ou 9, dans lequel le premier anticorps est un anticorps polyclonal.
12. Kit pour la détermination de la présence, de l'absence ou du taux de NT-proBNP félin dans un échantillon comprenant :
 - (a) un support solide ; et
 - (b) un premier anticorps, le premier anticorps étant spécifique d'un premier épitope sur un fragment de NT-proBNP félin choisi dans le groupe constitué de ASEASAIQELLDGLRDTVSEL (SEQ ID NO : 5) ; LGPLQQGHSPAESWEAQEPPARVLAPHDNVLR (SEQ ID NO : 9) et LQQGHSPAESWEAQEPPARVLAPHDNVLR (SEQ ID NO : 10), et
 - (c) un second anticorps spécifique d'un second épitope sur le fragment de NT-proBNP félin, le second épitope étant différent du premier épitope.

FIGURE 1

```

Canine preproBNP      1 MEPCAALPRALLLLFLHLSPGLGGRPHPLGGRSPAS--EASEASEASGLWAVQELLGRLK 58
Feline preproBNP      1 MDPKTALLRALLLLLFLHLSPGLGGRSHPLGGPGPAS--EAS-----AIQELLDGRLR 49
Human preproBNP       1 MDPQTAPSRALLLLFLHLAFLLGGRSHPLGSPGSASDLETS-----GLQEQRNHLQ 51
                       *:* : *  *****; ***** . . . * * * * * * * * * * * * * * *
Canine                 59 DAVSELQAEQLALEPLHRSHSPAEAPEAGGTPR-GVIAPHDSVLIQALRRLLRSPKMMHKSG 117
Feline                 50 DTVSELQEAQMALGPLQQGHSPAESWEAQEEPPARVLAPHDNVLRALRRLLGSSKMMRDSR 109
Human                  52 GKLSELQVEQTSLEPLQESPRPTGVWKSREVATEGIRHRKMVLYTLRAPRSPKMWQSGG 111
                       . : ***** * : * * * * . * : : . : . : * * * * * * * * * * *
Canine                 118 CFGRRLDRIGSLGCVLRKY 140 [SwissProt P16859; SEQ ID NO: 1]
Feline                 110 CFGRRLDRIGSLGCVLRRH 132 [SwissProt Q9GLK4; SEQ ID NO: 2]
Human                  112 CFGRKMDRISSSSGLGCKVLRH 134 [SwissProt P16860; SEQ ID NO: 3]
                       *****:***** * *****:*****:*****:*****:*****:*****

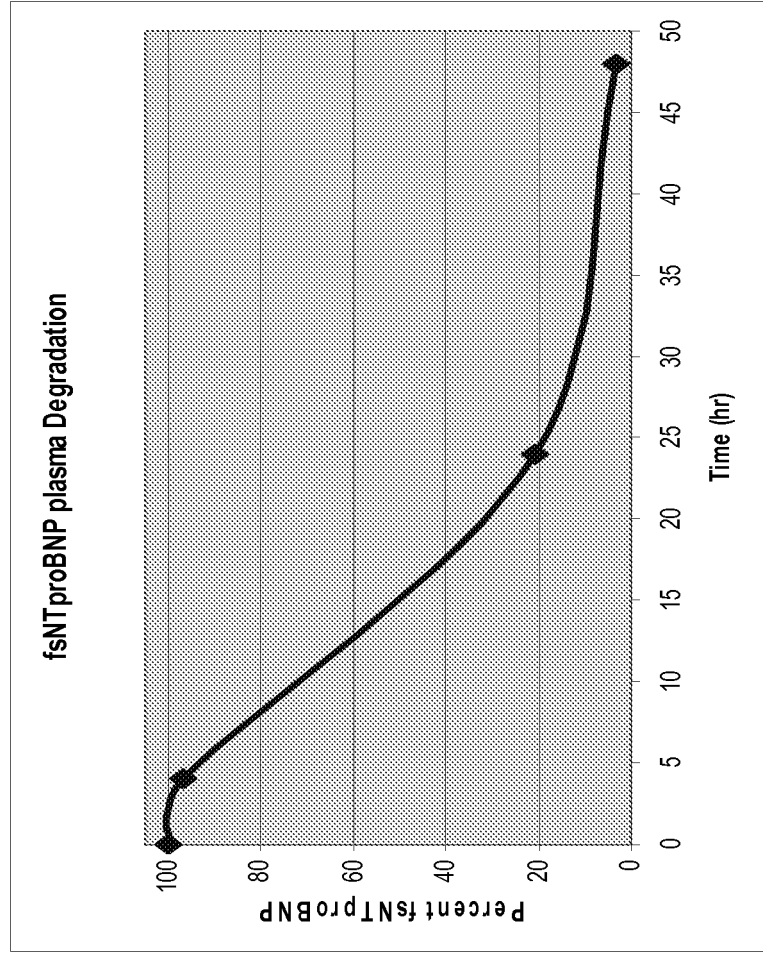
```

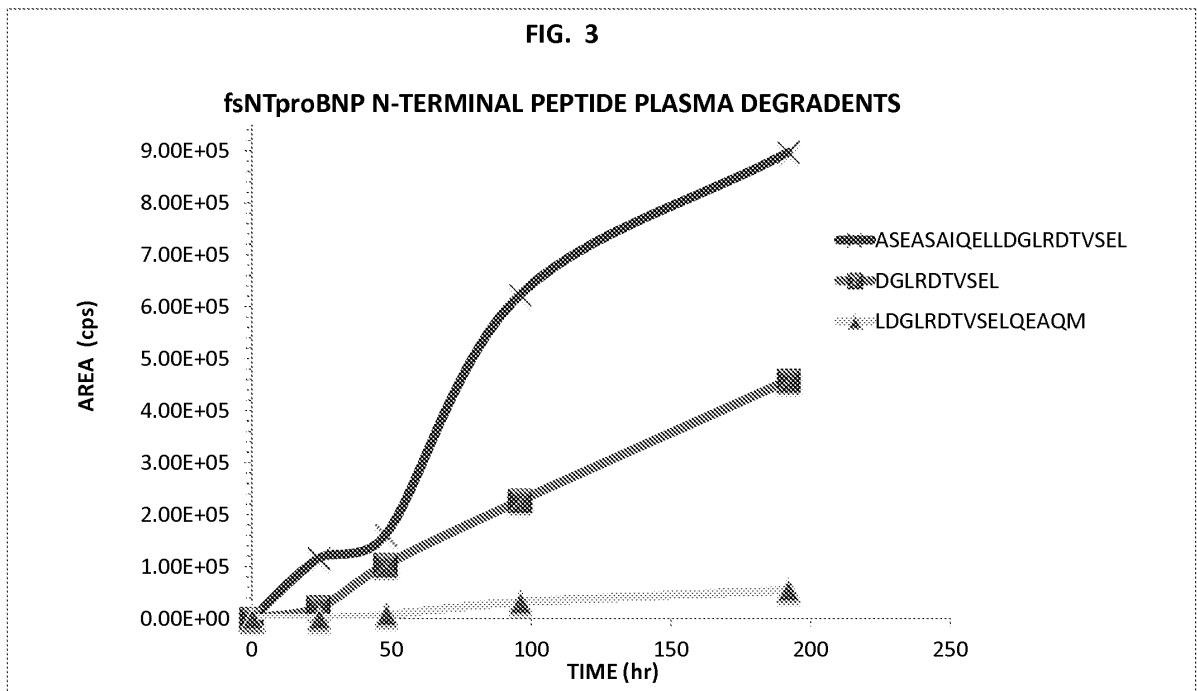
The underlined portion of each sequence represents the BNP region.

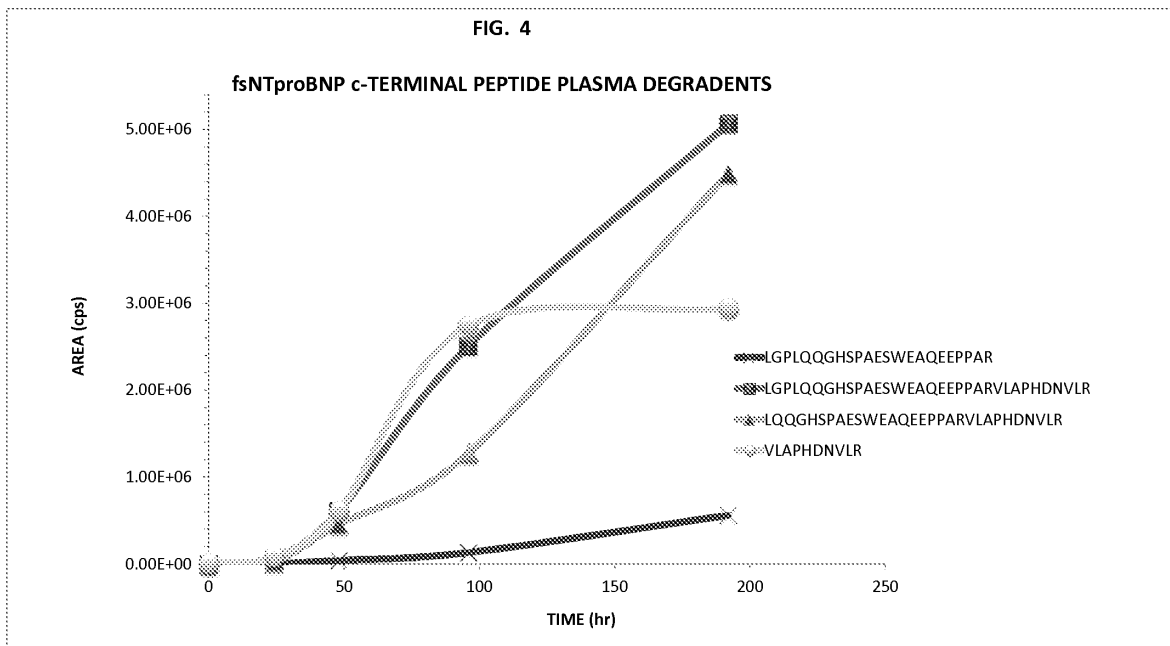
KEY

- * -- residues or nucleotides are identical in all sequences
- : -- conserved substitutions are observed
- . -- semi-conserved substitutions are observed

FIGURE 2







REFERENCES CITED IN THE DESCRIPTION

This list of references cited by the applicant is for the reader's convenience only. It does not form part of the European patent document. Even though great care has been taken in compiling the references, errors or omissions cannot be excluded and the EPO disclaims all liability in this regard.

Patent documents cited in the description

- US 61491580 B [0001] [0098]
- US 2009170136 A [0010]
- US 6489309 B [0052]
- US 5185243 A [0052]
- US 3817837 A [0052]
- US 3996345 A [0052]
- US 5726010 A [0057]

Non-patent literature cited in the description

- **OYAMA MA et al.** Assessment of serum N-terminal pro-B-type natriuretic peptide concentration for differentiation of congestive heart failure from primary respiratory tract disease as the cause of respiratory signs in dogs. *Journal of American Veterinary Medical Association*, December 2009 [0008]
- **BOSWOOD et al.** The diagnostic accuracy of different natriuretic peptides in the investigation of canine cardiac disease. *JSAP*, 2007, 1-7 [0008]
- **FOX et al.** *Journal Vet. Cardiol*, 2009, vol. 11 (1), S51-S61 [0010]
- **WESS et al.** *Vet Clin. Pathol*, 2011, vol. 40 (2), 237-244 [0010]
- **CONNOLLY et al.** *Journal Vet. Card.*, 2010, vol. 13 (1), 13-19 [0011]
- **HARLOW.** *Antibodies*. Cold Spring Harbor Press, 1989 [0041]
- *Immobilized Enzymes*. Ichiro Chibata. Halsted Press, 1978 [0054]
- **CUATRECASAS.** *J. Biol. Chem.*, 1970, vol. 245, 3059 [0054]

专利名称(译)	检测 胍NT-proBNP的降解产物		
公开(公告)号	EP2715353A4	公开(公告)日	2014-12-17
申请号	EP2012792727	申请日	2012-05-31
[标]申请(专利权)人(译)	艾德克斯实验室公司		
申请(专利权)人(译)	IDEXX实验室 , INC.		
当前申请(专利权)人(译)	IDEXX实验室 , INC.		
[标]发明人	YERRAMILLI MURTHY V S N YERRAMILLI MAHALAKSHMI ATKINSON MICHAEL		
发明人	YERRAMILLI, MURTHY V.S.N YERRAMILLI, MAHALAKSHMI ATKINSON, MICHAEL		
IPC分类号	G01N33/53 G01N33/74		
CPC分类号	G01N33/54306 G01N33/74 G01N2333/58 G01N2800/32		
优先权	61/491580 2011-05-31 US		
其他公开文献	EP2715353A1 EP2715353B1		
外部链接	Espacenet		

摘要(译)

一种测定猫科动物血液样本中NT-proBNP含量的方法。该方法包括通过各种方法检测猫NT-proBNP的降解产物，包括使用抗体，试剂盒和装置。