

(19)



(11)

EP 2 330 420 A1

(12)

EUROPEAN PATENT APPLICATION
published in accordance with Art. 153(4) EPC

(43) Date of publication:
08.06.2011 Bulletin 2011/23

(51) Int Cl.:
G01N 33/53 (2006.01)

(21) Application number: **09809743.9**

(86) International application number:
PCT/JP2009/063633

(22) Date of filing: **31.07.2009**

(87) International publication number:
WO 2010/024089 (04.03.2010 Gazette 2010/09)

(84) Designated Contracting States:
AT BE BG CH CY CZ DE DK EE ES FI FR GB GR HR HU IE IS IT LI LT LU LV MC MK MT NL NO PL PT RO SE SI SK SM TR
Designated Extension States:
AL BA RS

(72) Inventors:
• **KUWANA, Masataka**
Tokyo 160-8582 (JP)
• **SATO, Shinji**
Tokyo 160-8582 (JP)
• **FUJITA, Takashi**
Kyoto-shi
Kyoto 606-8507 (JP)

(30) Priority: **01.09.2008 JP 2008223789**

(71) Applicant: **Keio University**
Tokyo 108-8345 (JP)

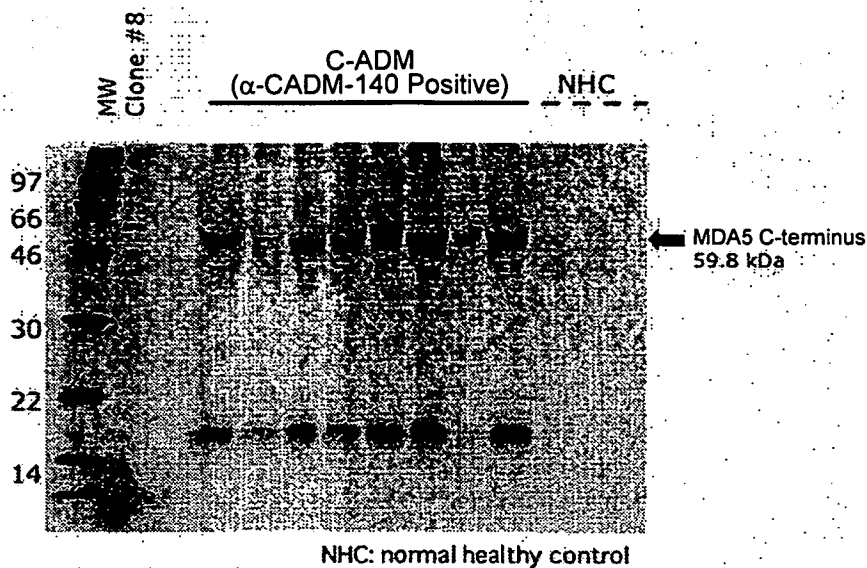
(74) Representative: **Müller-Boré & Partner**
Patentanwälte
Grafinger Straße 2
81671 München (DE)

(54) **DIAGNOSIS METHOD AND DIAGNOSIS KIT FOR DERMATOMYOSITIS**

(57) An object of the present invention is to identify an antigen corresponding to anti-CADM-140 antibody, produce a recombinant protein, and establish an assay

system by ELISA or the like. The present invention provides a kit for diagnosing dermatomyositis containing an MDA5 protein shown in SEQ ID NO: 4 or a fragment thereof that is recognized by anti-CADM-140 antibody.

Fig. 1



EP 2 330 420 A1

Description

Technical Field

5 **[0001]** The present invention relates to a method and a kit for diagnosing dermatomyositis, and use of an antigenic protein for diagnosing dermatomyositis.

Background Art

10 **[0002]** A basic characteristic of connective tissue disease that causes it to be regarded as an autoimmune disease is the production of autoantibodies against various cellular components. It is known that many of the antigens corresponding to such autoantibodies are enzymes and regulatory factors that are essential to life processes. Investigating the molecular structures of the autoantibodies and antigens corresponding thereto (autoantigens), and their biological functions is expected to contribute to the elucidation of the pathogenesis of connective tissue diseases.

15 **[0003]** Polymyositis/dermatomyositis (PM/DM) is an inflammatory myopathy in which proximal muscle weakness and muscular pain caused by skeletal muscle inflammation predominate. Particularly, when typical skin symptoms such as heliotrope rash and Gottron's papules are observed, the patient is diagnosed with DM. Polymyositis/dermatomyositis is one of the autoimmune diseases, and various autoantibodies are known to develop. The presence of antibodies in the sera of PM/DM patients has been reported; such antibodies include anti-aminoacyl tRNA synthetase antibody (anti-ARS antibody), anti-SRP antibody, anti-Mi-2 antibody, and like antibodies specifically detected in myositis patients, as well as anti-U1RNP antibody, anti-SS-A antibody, and like autoantibodies associated with myositis. It is known that patients who are positive for the same myositis-specific autoantibody exhibit similar clinical characteristics; this is clinically useful for diagnosis, classification of disease types, selection of appropriate treatment methods, and estimation of prognosis.

20 **[0004]** In contrast, autoantibody negativity was considered to be one of the characteristics of clinically amyopathic DM (C-ADM), which is a sub-type of PM/DM. The presence of autoantibodies specific to C-ADM was unknown. It was known that C-ADM is resistant to clinical treatment and associated with poor prognostic rapidly progressive interstitial lung disease (RP-ILD). To save the life of C-ADM patients with RP-ILD, the efficacy of potent treatment from an early stage using a combination of high dose steroid therapy and immunosuppressive drug administration has been reported and recommended. For this reason, early diagnosis of C-ADM with associated RP-ILD is clinically important, and the establishment of new indicators that are useful for early diagnosis has been desired.

25 **[0005]** In light of the above background, the present inventors investigated the sera of normal healthy controls, those of patients with connective tissue diseases including C-ADM, and those of patients with idiopathic pulmonary fibrosis, according to an immunoprecipitation (IPP) method. The inventors found that a new autoantibody capable of recognizing a 140-kDa protein is present in the sera of C-ADM patients, and termed the new autoantibody "anti-CADM-140 antibody" (Non-Patent Literature 1 (NPL 1)).

30 **[0006]** The anti-CADM-140 antibody was not detected in any of the patients with connective tissue diseases other than C-ADM, patients with idiopathic pulmonary fibrosis (IPF), and normal healthy controls. Clinically, significantly frequent development of RP-ILD in anti-CADM-140 antibody-positive patients was observed, which suggests a correlation between the anti-CADM-140 antibody and RP-ILD (Non-Patent Document 2).

35 **[0007]** This phenomenon is considered to be useful for early diagnosis and treatment selection for extremely poor prognostic C-ADM with associated RP-ILD, and is thus expected to improve its prognosis.

40 **[0008]** MDA5 has a SNP (http://www.ncbi.nlm.nih.gov/SNP/snp_ref.cgi?locusId=64135). The amino acid sequence and the base sequence thereof are available under NCBI Accession Number NM_022168. Patent Literature 1 (PTL 1) discloses the relationship between MDA5 and cancer.

45 **[0009]** The present inventors published Non-Patent Literature 3 (NPL 3), which discloses a technique to which the present invention pertains.

Citation List

50

Patent Literature

[0010]

55 PTL 1: Japanese Unexamined Patent Document No. 2003-531581

Non-patent Literature

[0011]

- 5 NPL 1: Arthritis Rheum. 46(9): S398, 2003
 NPL 2: Arthritis Rheum. 52(5): 1571-1576, 2005
 NPL 3: Arthritis Rheum. 60(7): 2193-2200, 2009

Summary of Invention

10

Technical Problem

[0012] Anti-CADM-140 antibody has been generally measured according to an IPP method using S³⁵-labeled leukemia-derived K562 cell extracts or HeLa cells. Although this is a reliable measurement method with high sensitivity and high specificity, the method utilizes isotopes and requires complicated procedures. Accordingly, the measurement method has been used only in a limited number of laboratories.

15

[0013] To apply anti-CADM-140 antibody measurement to actual clinical diagnosis, it is necessary to establish a measurement system that enables easy measurement of large quantities of samples. Identification of an antigen corresponding to anti-CADM-140 antibody, preparation of a recombinant protein, and establishment of a measurement system by ELISA etc., are important to establish such a system.

20

Solution to Problem

[0014] The present inventors used a HeLa cell cDNA library to clone an antigen gene corresponding to anti-CADM-140 antibody, and investigated the molecular sequence of the corresponding antigen protein. As a result, the inventors found that MDA5 (Melanoma Differentiation Associated Gene 5) is an antigen corresponding to anti-CADM-140 antibody and have accomplished the present invention based on this finding.

25

[0015] The present invention provides kits and methods for diagnosing dermatomyositis as itemized below.

30 Item 1. A kit for diagnosing dermatomyositis, comprising an MDA5 protein shown in SEQ ID NO: 4, or a fragment thereof that is recognized by anti-CADM-140 antibody.

Item 2. The kit for diagnosing dermatomyositis according to Item 1, comprising a C-terminal fragment of the MDA5 protein shown in SEQ ID NO: 2, or a fragment thereof that is recognized by anti-CADM-140 antibody.

35

Item 3. The kit according to Item 1, wherein the dermatomyositis is a clinically amyopathic dermatomyositis (C-ADM) associated with a high risk for developing rapidly progressive interstitial lung disease.

Item 4. The kit according to Item 1 used for measurement by enzyme-linked immunosorbent assay (ELISA).

Item 5. The kit according to Item 1, comprising:

40

- (i) an antigen comprising an MDA5 protein or an immunogenic peptide thereof;
- (ii) a medium suitable for use in a reaction between a sample of a subject and the antigen (i);
- (iii) a reagent for detecting a complex of the antigen (i) and anti-CADM-140 antibody; and optionally
- (iv) a reference sample not containing anti-CADM-140 antibody.

45

Item 6. A method for diagnosing dermatomyositis, comprising allowing a sample of a subject to react with an MDA5 protein or a fragment thereof that is recognized by anti-CADM-140 antibody; and diagnosing the subject as having dermatomyositis when the anti-CADM-140 antibody is detected in the sample.

Item 7. The method according to Item 5 wherein the sample is a blood, serum, or plasma sample.

Item 8. The method according to Item 6 wherein the anti-CADM-140 antibody in the sample is detected by ELISA.

50

Item 9. The method according to Item 6 comprising the following steps:

55

- (i) depositing a specific amount of a peptide composition of the present invention on a plurality of wells of a microtiter plate;
- (ii) diluting a sample of a subject suspected of having dermatomyositis, and adding the diluted sample to the wells;
- (iii) washing the microtiter plate after incubation;
- (iv) introducing a labeled anti-human immunoglobulin antibody to the wells of the microtiter plate; and
- (v) detecting the amount of label bound to the antibody by comparison with a control.

Item 10. Use of an MDA5 protein or a fragment thereof that is recognized by anti-CADM-140 antibody to diagnose

dermatomyositis.

Advantageous Effects of Invention

5 **[0016]** According to the present invention, extremely poor prognostic clinically amyopathic dermatomyositis associated with a high risk for developing extremely poor prognostic rapidly progressive interstitial lung disease can be detected with high accuracy.

10 **[0017]** The present invention enables quick measurement of anti-CADM-140 antibody in many samples. This is useful for early diagnosis and treatment selection for C-ADM with associated RP-ILD, and is expected to improve the prognosis of this disease whose treatment method has not been established and which has been considered as an extremely poor prognostic disease. Furthermore, the accumulation of anti-CADM-140 antibody-positive samples will enable the analysis of foreign antigens, such as a virus that is the target of a specific autoantibody, and contribute to the elucidation of the pathogenesis of C-ADM with associated RP-ILD.

15 Brief Description of Drawings

[0018]

20 **[FIG. 1]** FIG. 1 shows the results of investigation of a reaction between a protein of Clone #8 (MDA5) as an antigen and the sera of C-ADM patients according to an immunoprecipitation method, which was performed after purifying the protein of Clone #8 (MDA5) and confirming the expression of the protein using an in vitro transcription/translation system. The Clone #8 (MDA5) reacted with all of the anti-CADM-140 antibody-positive serum samples, but it did not react with the sera of normal healthy controls.

25 **[FIG. 2]** FIG. 2 shows the results of investigation of a reaction between a recombinant protein of Clone #8 (MDA5) as an antigen, and the sera of anti-CADM-140 antibody-positive C-ADM patients, those of patients with other connective tissue diseases, and those of normal healthy controls, according to an immunoprecipitation method, which was performed after purifying the protein of Clone #8 (MDA5) and confirming expression of the protein using an in vitro transcription/translation system. The recombinant protein did not react with the sera of normal healthy controls or the sera of patients other than anti-CADM-140 antibody-positive C-ADM patients.

30 **[FIG. 3]** FIG. 3 shows the IPP-IB results. When anti-CADM-140 antibody was reacted with an MDA5-expressing African green monkey renal cell-derived COS7 cell extract, the resulting 140-kDa immunoprecipitate reacted with goat anti-MDA5 antibody.

35 **[FIG. 4]** FIG. 4 shows the immunoblotting results of the sera of anti-CADM-140 antibody-positive patients and those of normal healthy controls, obtained by using recombinant RIG-I, recombinant MDA5, and recombinant LGP-2 as antigens. The sera of anti-CADM-140 antibody-positive patients reacted only with the recombinant MDA5, whereas the sera of normal healthy controls (NHC) did not react at all.

40 **[FIG. 5]** FIG. 5 shows the ELISA results of the sera of anti-CADM-140 antibody-positive C-ADM patients, those of anti-CADM-140 antibody-negative C-ADM patients, those of PM/DM patients, those of scleroderma (SSc) patients, those of systemic lupus erythematosus (SLE) patients, those of ILD patients, and those of normal healthy controls, obtained by using MDA5 as an antigen substrate. The cutoff value is indicated by a horizontal line. The analytical sensitivity and analytical specificity of this ELISA system were 85% and 100%, respectively.

Description of Embodiments

45 **[0019]** A feature of the present invention is an antigen (MDA5) specifically recognized by anti-CADM-140 antibody, which was found by the present inventor. MDA5 is one type of RIG-I family protein. RIG-I family proteins participate in a specific immune response that includes interferon type I production. RIG-I family proteins are highly homologous and contain a DexD/H-box helicase domain. In addition to MDA5, RIG-I and LGP-2 are also known as RIG-I family proteins. These proteins are very similar in sequence and structure, and are thus likely to be cross-reactive. Accordingly, the reactivity between anti-CADM-140 antibody and RIG-I family proteins was also investigated. The binding of anti-CADM-140 antibody to MDA5 depends on the conformation of the antigen, and anti-CADM-140 antibody preferentially reacts with an MDA5 partially modified from its native structure. These factors made it difficult to determine that anti-CADM-140 antibody is an antibody to MDA5.

50 **[0020]** To identify anti-CADM-140 antibody, the present inventors purified an antigen protein corresponding thereto and tried to identify the antigen protein by mass spectrometry. However, it was impossible to purify a sufficient amount of the antigen protein, and identification was difficult. This was considered to be attributable to low amounts of antigen in the serum or to the affinity of the antigen-antibody reaction.

[0021] Further, in the early stages of C-ADM, it is difficult to distinguish the disease from other types of dermatomyositis,

because C-ADM is difficult to diagnose and requires follow-up to carefully determine whether muscular symptoms are present or not.

[0022] However, the present inventors identified MDA5 specifically recognized by anti-CADM-140 antibody. As a result, it became clear that the clinical sensitivity and clinical specificity of the ELISA assay of dermatomyositis (C-ADM) are 69% and 99.6%, respectively. Although anti-CADM-140 antibody-negative C-ADM patients were previously difficult to diagnose or the diagnosis often took much time, the present invention enables quick diagnosis.

[0023] In this specification, "dermatomyositis" includes what is referred to as DM and clinically amyopathic dermatomyositis (C-ADM), which is a subtype of DM, but does not include polymyositis PM. Thus, the present invention provides a kit and a method for diagnosing whether the subject has DM or C-ADM or other diseases. DM is an inflammatory myopathy in which characteristic skin symptoms such as heliotrope rash and Gottron's papules, and proximal muscle weakness and/or muscular pain caused by skeletal muscle inflammation predominate. DM is generally diagnosed according to the diagnostic criteria of Bohan & Peter (Bohan A, Peter JB. Polymyositis and dermatomyositis. N Engl J Med 1975; 292: 344). However, C-ADM, which refers to the case in which cutaneous lesions characteristic of DM are exhibited but muscle weakness is not exhibited, does not meet the criteria of Bohan & Peter, and has been undiagnosable. In 2002, Sontheimer proposed new classification criteria in which a case of typical skin lesions without muscle weakness is called "C-ADM" (clinically amyopathic dermatomyositis), and "C-ADM" is classified as a subtype of DM [Sontheimer RD: Would a new name hasten the acceptance of amyopathic dermatomyositis (dermatomyositis sine myositis) as a distinctive subset within the idiopathic inflammatory dermatomyopathies spectrum of clinical illness? J Am Acad Dermatol 2002; 46: 626-36]. The target DM to be diagnosed according to the present invention includes those that meet the diagnostic criteria of Bohan & Peter or meet the classification criteria of Sontheimer.

[0024] The diagnostic kit and the diagnostic method of the present invention use an MDA5 protein or a fragment thereof recognized by anti-CADM-140 antibody to detect anti-CADM-140 antibody (hereinafter the "fragment recognized by anti-CADM-140 antibody" is sometimes simply referred to as an "immunogenic peptide"). Since the C-terminal 523-amino-acid sequence fragment (SEQ ID NO: 2) of MDA5 protein shown in SEQ ID NO: 4 binds to anti-CADM-140 antibody, an epitope recognized by anti-CADM-140 antibody is present in the C-terminal region of MDA5 protein. Insofar as this epitope is maintained, the MDA5 protein or the immunogenic peptide thereof may be a modified MDA5 protein or immunogenic peptide thereof that has one or more amino acid deletions, substitutions, additions, or insertions in a non-epitopic region thereof. The epitope typically consists of about 5 to about 10 amino acids, and particularly about 5 to about 8 amino acids. For example, the epitope of MDA5 can be determined by synthesizing a specific number of peptides (for example, 10 peptides at a time) while shifting by a fixed number of amino acids (for example, 5 amino acids) from the N-terminus of the C-terminal fragment of MDA5 shown in SEQ ID NO: 2 (for example, prepare a peptide consisting of the first to tenth amino acids, a peptide consisting of the sixth to 15th amino acids, a peptide consisting of the 11th to 20th amino acids, a peptide consisting of the 16th to 25th amino acids, ...), and then investigating the reactivity of each of the peptide fragments with anti-CADM-140 antibody. When the epitope is determined or the location of the epitope is narrowed down, the MDA5 protein (immunogenic peptide) fragment recognized by anti-CADM-140 antibody can be shortened. A shorter immunogenic peptide is preferable from the viewpoint of ease of production. A peptide consisting of 40 or less amino acids, 30 or less amino acids, or 20 or less amino acids, particularly about 5 to about 10 amino acids, is preferable. RNA helicase is encoded by MDA5.

[0025] MDA5 is known to have an SNP. The MDA5 protein or the immunogenic peptide that is used in the present invention may have any type of SNP. SEQ ID NO: 3 represents a base sequence of MDA5. SEQ ID NO: 1 represents a base sequence encoding a C-terminal fragment of the MDA5 fragment shown in SEQ ID NO: 2. However, the MDA5 of other amino acid sequences/base sequences that are related by SNP, or alleles of MDA5 are also included in the scope of "MDA5" in this specification.

[0026] The MDA5 or the immunogenic peptide of the present invention can be expressed as a recombinant protein and produced by genetic engineering, or can be produced by chemical synthesis. Particularly, when the immunogenic peptide has a short sequence consisting of preferably 50 or less amino acids, more preferably 30 or less, even more preferably 20 or less, and particularly, 5 to 10 amino acids, chemical synthesis (a solid or liquid phase synthesis) is preferably used to produce the peptide. The MDA5 or the immunogenic peptide thereof may be used in the form of a monomer, and may be crosslinked by a polyfunctional crosslinking agent such as glutaraldehyde, or can be produced by genetic engineering by using DNA encoding a peptide in which immunogenic peptides are connected in tandem.

[0027] The anti-CADM-140 antibody may be obtained from any sample such as the blood, serum, plasma, cerebrospinal fluid, and lymph of a subject. Blood, serum, and plasma are preferable, and serum is particularly preferable as the sample.

[0028] The kit for diagnosing dermatomyositis of the present invention contains an MDA5 protein or an immunogenic peptide thereof. The kit may contain a substance for detecting an antigen-antibody complex of an MDA5 protein or an immunogenic peptide thereof, and anti-CADM-140 antibody. Examples of such substances include anti-human immunoglobulin antibodies that are labeled with peroxidases such as horseradish peroxidase (HRP), enzyme labels such as β -galactosidase, alkaline phosphatase, and luciferase, fluorescent labels such as FITC (fluorescein isothiocyanate) and

RITC (tetramethylrhodamin isothiocyanate), or any other suitable labels, and particularly anti-human IgG antibodies labeled therewith.

[0029] Immunoassay is preferably used for the diagnostic kit and the diagnostic method of the present invention. Examples of the immunoassay include enzyme immunoassay (EIA), ELISA, fluoroimmunoassay (FIA), chemiluminescent immunoassay, immunoblotting (IB), Western blotting, immunostaining, and like methods.

[0030] The MDA5 protein or the immunogenic peptide used in the present invention is preferably bonded to a solid phase. Examples of such solid phases include agarose, wells of a microtiter plate, latex particles, and the like. Specific examples of the ELISA method include competitive immunoassay, sandwich immunoassay, and the like.

[0031] According to the method for diagnosing dermatomyositis of the present invention, a sample obtained from a subject is brought into contact with an MDA5 protein or an immunogenic peptide thereof to detect the presence or absence of an antigen-antibody complex of MDA5 or an immunogenic peptide thereof and anti-CADM-140 antibody by a physical or chemical method.

[0032] The method for diagnosing dermatomyositis of the present invention comprises, for example, the following steps:

(i) depositing a specific amount of the peptide composition of the present invention on a plurality of wells of a microtiter plate;

(ii) diluting a blood sample (serum or plasma) of a subject suspected of having dermatomyositis, and adding the diluted sample to the wells;

(iii) washing the microtiter plate after incubation;

(iv) adding human immunoglobulin (e.g., IgG) labeled with an enzyme label, a fluorescent label, or the like, to the wells of the microtiter plate; and

(v) detecting the amount of label bound to human immunoglobulin (the amount of substrate acted upon by an enzyme in the case of human immunoglobulin labeled with an enzyme label), compared to a control.

[0033] In a preferred embodiment, the diagnostic kit of the present invention may contain:

(i) an antigen comprising an MDA5 protein or an immunogenic peptide thereof (the antigen may be adhered to wells of a microtiter plate etc., and may further be blocked with a blocking agent such as skim milk, or an albumin such as bovine serum albumin (BSA) or I);

(ii) a medium suitable for the reaction between a sample of a subject and the antigen (i) (for example, buffers such as PBS);

(iii) a reagent for detecting a complex of the antigen (i) and anti-CADM-140 antibody (for example, a labeled anti-human immunoglobulin antibody bound to anti-CADM-140 antibody); and optionally

(iv) a reference sample not containing anti-CADM-140 antibody.

[0034] The "reference sample not containing anti-CADM-140 antibody" includes, for example, blood, serum, and plasma samples of normal healthy controls.

[0035] When the anti-human immunoglobulin antibody is labeled with peroxidase, anti-CADM-140 antibody can be detected by a process comprising adding a color development substrate such as tetramethylbenzidine; stopping the reaction with H₂SO₄; and measuring absorbance (450 nm: OD₄₅₀) using a plate reader.

[0036] By testing many samples using the diagnostic kit of the present invention and comparing the obtained results with other clinical observations, more accurate criteria for determining whether a subject has DM, based on the measured amount of anti-CADM-140 antibody can be established.

Examples

[0037] The present invention is described below in more detail.

Example 1: Method for early diagnosis of C-ADM

[0038] An antigenic protein was expressed in E. coli by using an E. coli (XL1-Blue MRF) expressing lambda ZAP phage prepared by using a HeLa cell cDNA library. The expressed protein was transferred to a nitrocellulose membrane, and reacted with anti-CADM-140 antibody-positive serum to isolate positive clones. Next, the reactivity of the obtained positive clones with 10 serum samples of anti-CADM-140 antibody-positive C-ADM patients, 14 serum samples of anti-CADM-140 antibody-negative persons (two C-ADM samples, two PM samples, one sample each of systemic lupus erythematosus, scleroderma, and interstitial lung disease, and seven samples of normal healthy controls) was investigated. Among the 9 clones that were obtained, Clone #8 reacted with anti-CADM-140 antibody-positive serum samples at high frequency, i.e. 9 out of 10 anti-CADM-140 antibody-positive C-ADM serum samples. After the protein was purified

and expression was confirmed using an in vitro transcription/translation assay, the reactivity of the sera of C-ADM patients with the protein as an antigen was investigated by immunoprecipitation. Clone #8 reacted with all of the anti-CADM-140 antibody-positive serum samples, but did not react with the sera of normal healthy controls (FIG. 1). Further, Clone #8 did not react with the sera of patients with connective tissue diseases other than anti-CADM-140 antibody-positive C-ADM (FIG. 2). Further, to determine the base sequence of Clone #8, plasmid DNA was excised from phage DNA from which the clone was obtained. The plasmid DNA was purified to determine the base sequence. Finally, a homology search was performed for the obtained base sequence, and the sequence was perfectly matched to the C-terminal sequence of MDA5.

[0039] An anti-CADM-140 antibody-positive serum was reacted with an MDA5-expressing African green monkey renal cell-derived COS7 cell extract by the IPP-IB method. The reactivity of 140 kDa of the obtained immunoprecipitate with goat anti-MDA5 antibody was investigated. When MDA5 was expressed, the immunoprecipitate reacted with goat anti-MDA5 antibody (FIG. 3). Further, the reactivity of anti-CADM-140 antibody-positive sera and the sera of normal healthy controls with recombinant purified proteins of RIG-I family RIG-I, MD5, and LGP-2 as antigens was investigated. The sera of anti-CADM-140 antibody-positive patients reacted only with recombinant MDA5, whereas the sera of normal healthy controls did not react with recombinant MDA5 (FIG. 4). It became clear from the above results that the antigen corresponding to anti-CADM-140 antibody is MDA5.

[0040] Further, the present inventors coated a 96-well plate with purified recombinant MDA5 as an antigen to establish an ELISA for an anti-ACDM-140 antibody assay. The diagnostic sensitivity and diagnostic specificity of the anti-CADM-140 antibody assay method were investigated.

More specifically, recombinant MDA5 was immobilized on a 96-well ELISA plate in an amount of 0.05 μ g/well and blocked with 3% BSA. Serum samples (each 250-fold diluted) were dispensed to the plate in an amount of 100 μ l per well, and allowed to react at room temperature for 2 hours. As a secondary antibody, 5000-fold diluted peroxidase conjugated goat anti-human-IgG was used. Tetramethylbenzidine (1 mg/ml) was added as a color development substrate, and the reaction was stopped with H₂SO₄. The absorbance was measured with a plate reader (450 nm: OD₄₅₀). Using this assay system, the serum samples of C-ADM-containing collagen disease patients, those of interstitial lung disease (ILD) patients, and those of normal healthy controls were measured. The results showed that the reactivity of the sera of the anti-CADM-140 antibody-positive PM/DM patients was higher than that of the anti-CADM-140 antibody-negative PM/DM patients, scleroderma (SSc) patients, systemic lupus erythematosus (SLE) patients, ILD patients, and normal healthy controls (FIG. 5). When the average + up to 10 times the standard derivation of normal healthy controls was defined as the normal cutoff range, the analytical sensitivity and the analytical specificity measured by this ELISA assay system were 85% and 100%, respectively. Thus, the results clearly show that this assay is an anti-CADM-140 antibody detection method with excellent sensitivity and specificity.

SEQUENCE LISTING

<110> KEIO UNIVERSITY

<120> The diagnostic product for dermatomyositis

<130> P09-69

<150> JP 2008-223789

<151> 2008-09-01

<160> 4

<170> PatentIn version 3.4

<210> 1

<211> 1706

<212> DNA

<213> Homo sapiens

<400> 1

gaagaacaca ttttaaaact atgtgccaat cttgatgcat ttactattaa aactgttaaa	60
gaaaaccttg atcaactgaa aaaccaaata caggagccat gcaagaagtt tgccattgca	120
gatgcaacca gagaagatcc atttaaagag aaacttctag aaataatgac aaggattcaa	180
acttattgtc aatgagtcc aatgtcagat tttggaactc aaccctatga acaatgggcc	240
attcaaatgg aaaaaaaaagc tgcaaaagaa ggaaatcgca aagaacgtgt ttgtgcagaa	300
catttgagga agtacaatga ggccctacaa attaatgaca caattcgaat gatagatgcg	360
tatactcadc ttgaaacttt ctataatgaa gagaaagata agaagtttgc agtcatagaa	420
gatgatagtg atgagggtgg tgatgatgag tattgtgatg gtgatgaaga tgaggatgat	480
ttaaagaaac ctttgaaact ggatgaaaca gatagatttc tcatgacttt atttttgaa	540
aacaataaaa tgttgaaaag gctggctgaa aaccagaat atgaaaatga aaagctgacc	600
aaattaagaa ataccataat ggagcaatat actaggactg aggaatcagc acgaggaata	660
atctttacaa aaacacgaca gagtgcatat gcgctttccc agtggattac tgaaaatgaa	720
aaatttgctg aagtaggagt caaagcccac catctgattg gagctggaca cagcagtgag	780
ttcaaaccce tgacacagaa tgaacaaaaa gaagtcatta gtaaatttcg cactggaaaa	840
ataaatctgc ttatcgctac cacagtggca gaagaaggtc tggatattaa agaatgtaac	900
attgttatcc gttatggtct cgtcaccaat gaaatagcca tggccaggc ccgtggtcga	960
gccagagctg atgagagcac ctacgtcctg gttgctcaca gtggttcagg agttatcgaa	1020
catgagacag ttaatgattt ccgagagaag atgatgtata aagctataca ttgtgttcaa	1080

EP 2 330 420 A1

aatatgaaac cagaggagta tgctcataag attttggaaat tacagatgca aagtataatg 1140
 gaaaagaaaa tgaaaaccaa gagaaatatt gccaaagcatt acaagaataa cccatcacta 1200
 5 ataactttcc ttgcaaaaa ctgcagtgtg ctagcctgtt ctggggaaga tatccatgta 1260
 attgagaaaa tgcatcacgt caatatgacc ccagaattca aggaacttta cattgtaaga 1320
 gaaaacaaag cactgcaaaa gaagtgtgcc gactatcaaa taaatggtga aatcatctgc 1380
 10 aaatgtggcc aggcttgggg aacaatgatg gtgcacaaag gcttagattt gccttgtctc 1440
 aaaataagga atttttagt ggttttcaaa aataattcaa caaagaaca atacaaaaag 1500
 15 tgggtagaat tacctatcac atttccaat cttgactatt cagaatgctg tttathtagt 1560
 gatgaggatt agcacttgat tgaagattct tttaaaatac tatcagttaa acatttaata 1620
 tgattatgat taatgtattc attatgctac agaactgaca taagaatcaa taaatgatt 1680
 20 gttttactct gcaaaaaaaaa aaaaaa 1706

25 <210> 2
 <211> 523
 <212> PRT
 <213> Homo sapiens

30 <400> 2

Glu Glu His Ile Leu Lys Leu Cys Ala Asn Leu Asp Ala Phe Thr Ile
 1 5 10 15

35 Lys Thr Val Lys Glu Asn Leu Asp Gln Leu Lys Asn Gln Ile Gln Glu
 20 25 30

40 Pro Cys Lys Lys Phe Ala Ile Ala Asp Ala Thr Arg Glu Asp Pro Phe
 35 40 45

45 Lys Glu Lys Leu Leu Glu Ile Met Thr Arg Ile Gln Thr Tyr Cys Gln
 50 55 60

50 Met Ser Pro Met Ser Asp Phe Gly Thr Gln Pro Tyr Glu Gln Trp Ala
 65 70 75 80

55 Ile Gln Met Glu Lys Lys Ala Ala Lys Glu Gly Asn Arg Lys Glu Arg
 85 90 95

Val Cys Ala Glu His Leu Arg Lys Tyr Asn Glu Ala Leu Gln Ile Asn
 100 105 110

EP 2 330 420 A1

Asp Thr Ile Arg Met Ile Asp Ala Tyr Thr His Leu Glu Thr Phe Tyr
 115 120 125
 5
 Asn Glu Glu Lys Asp Lys Lys Phe Ala Val Ile Glu Asp Asp Ser Asp
 130 135 140
 10
 Glu Gly Gly Asp Asp Glu Tyr Cys Asp Gly Asp Glu Asp Glu Asp Asp
 145 150 155 160
 15
 Leu Lys Lys Pro Leu Lys Leu Asp Glu Thr Asp Arg Phe Leu Met Thr
 165 170 175
 20
 Leu Phe Phe Glu Asn Asn Lys Met Leu Lys Arg Leu Ala Glu Asn Pro
 180 185 190
 25
 Glu Tyr Glu Asn Glu Lys Leu Thr Lys Leu Arg Asn Thr Ile Met Glu
 195 200 205
 30
 Gln Tyr Thr Arg Thr Glu Glu Ser Ala Arg Gly Ile Ile Phe Thr Lys
 210 215 220
 35
 Thr Arg Gln Ser Ala Tyr Ala Leu Ser Gln Trp Ile Thr Glu Asn Glu
 225 230 235 240
 40
 Lys Phe Ala Glu Val Gly Val Lys Ala His His Leu Ile Gly Ala Gly
 245 250 255
 45
 His Ser Ser Glu Phe Lys Pro Met Thr Gln Asn Glu Gln Lys Glu Val
 260 265 270
 50
 Ile Ser Lys Phe Arg Thr Gly Lys Ile Asn Leu Leu Ile Ala Thr Thr
 275 280 285
 55
 Val Ala Glu Glu Gly Leu Asp Ile Lys Glu Cys Asn Ile Val Ile Arg
 290 295 300
 Tyr Gly Leu Val Thr Asn Glu Ile Ala Met Val Gln Ala Arg Gly Arg
 305 310 315 320
 Ala Arg Ala Asp Glu Ser Thr Tyr Val Leu Val Ala His Ser Gly Ser
 325 330 335

EP 2 330 420 A1

Gly Val Ile Glu His Glu Thr Val Asn Asp Phe Arg Glu Lys Met Met
 340 345 350
 5 Tyr Lys Ala Ile His Cys Val Gln Asn Met Lys Pro Glu Glu Tyr Ala
 355 360 365
 10 His Lys Ile Leu Glu Leu Gln Met Gln Ser Ile Met Glu Lys Lys Met
 370 375 380
 15 Lys Thr Lys Arg Asn Ile Ala Lys His Tyr Lys Asn Asn Pro Ser Leu
 385 390 395 400
 Ile Thr Phe Leu Cys Lys Asn Cys Ser Val Leu Ala Cys Ser Gly Glu
 405 410 415
 20 Asp Ile His Val Ile Glu Lys Met His His Val Asn Met Thr Pro Glu
 420 425 430
 25 Phe Lys Glu Leu Tyr Ile Val Arg Glu Asn Lys Ala Leu Gln Lys Lys
 435 440 445
 30 Cys Ala Asp Tyr Gln Ile Asn Gly Glu Ile Ile Cys Lys Cys Gly Gln
 450 455 460
 Ala Trp Gly Thr Met Met Val His Lys Gly Leu Asp Leu Pro Cys Leu
 465 470 475 480
 35 Lys Ile Arg Asn Phe Val Val Val Phe Lys Asn Asn Ser Thr Lys Lys
 485 490 495
 40 Gln Tyr Lys Lys Trp Val Glu Leu Pro Ile Thr Phe Pro Asn Leu Asp
 500 505 510
 Tyr Ser Glu Cys Cys Leu Phe Ser Asp Glu Asp
 515 520
 45
 <210> 3
 <211> 3434
 <212> DNA
 <213> Homo sapiens
 50
 <400> 3
 gccccgctgc ccacctgccc gctgcccac ctgcccaggt gcgagtgcag ccccgcgcgc 60
 55 cggcctgaga gccctgtgga caacctcgtc attgtcaggc acagagcggg agaccctgct 120

EP 2 330 420 A1

tctctaagtg ggcagcggac agcggcacgc acatttcacc tgtcccgcag acaacagcac 180
 catctgcttg ggagaacctt ctccccttctc tgagaaagaa agatgtcgaa tgggtattcc 240
 5 acagacgaga atttccgcta tctcatctcg tgcttcaggg ccagggtgaa aatgtacatc 300
 caggtggagc ctgtgctgga ctacctgacc tttctgcctg cagaggtgaa ggagcagatt 360
 10 cagaggacag tcgccacctc cgggaacatg caggcagttg aactgctgct gagcaccttg 420
 gagaagggag tctggcacct tggttggact cgggaattcg tggaggccct cgggagaacc 480
 ggcagccctc tggccgcccg ctacatgaac cctgagctca cggacttgcc ctctccatcg 540
 15 tttgagaacg ctcatgatga atatctccaa ctgctgaacc tccttcagcc cactctgggt 600
 gacaagcttc tagttagaga cgtcttggat aagtgcattg aggaggaact gttgacaatt 660
 20 gaagacagaa accggattgc tgctgcagaa aacaatggaa atgaatcagg tgtaagagag 720
 ctactaaaaa ggattgtgca gaaagaaaac tggttctctg catttctgaa tgttcttctg 780
 caaacaggaa acaatgaact tgtccaagag ttaacaggct ctgattgctc agaaagcaat 840
 25 gcagagattg agaatttatc acaagttgat ggtcctcaag tggagagca acttctttca 900
 accacagttc agccaaatct ggagaaggag gtctggggca tggagaataa ctcatcagaa 960
 tcatcttttg cagattcttc tgtagtttca gaatcagaca caagtttggc agaaggaagt 1020
 30 gtcagctgct tagatgaaag tcttggacat aacagcaaca tgggcagtga ttcaggcacc 1080
 atgggaagtg attcagatga agagaatgtg gcagcaagag catccccgga gccagaactc 1140
 35 cagctcaggc cttaccaaat ggaagttgcc cagccagcct tggaggggaa gaatatcatc 1200
 atctgcctcc ctacagggag tggaaaaacc agagtggctg tttacattgc caaggatcac 1260
 ttagacaaga agaaaaaagc atctgagcct ggaaaagtta tagttcttgt caataaggta 1320
 40 ctgctagttg aacagctctt ccgcaaggag ttccaacat tttgaagaa atggtatcgt 1380
 gttattggat taagtggatg tacccaactg aaaatatcat ttccagaagt tgtcaagtcc 1440
 45 tgtgatatta ttatcagtac agtcaaate cttgaaaact cctctttaa cttgaaaat 1500
 ggagaagatg ctgggtttca attgtcagac ttttcctca ttatcattga tgaatgtcat 1560
 cacaccaaca aagaagcagt gtataataac atcatgaggc attatttgat gcagaagttg 1620
 50 aaaaacaata gactcaagaa agaaaacaaa ccagtgattc cccttctca gatactggga 1680
 ctaacagctt cacctggtgt tggaggggcc acgaagcaag ccaaagctga agaacacatt 1740
 ttaaaactat gtgccaatct tgatgcattt actattaataa ctgttaaaga aaaccttgat 1800
 55

EP 2 330 420 A1

caactgaaaa accaaataca ggagccatgc aagaagtttg ccattgcaga tgcaaccaga 1860
gaagatccat ttaaagagaa acttctagaa ataatgacaa ggattcaaac ttattgtcaa 1920
5 atgagtccaa tgtcagattt tggaactcaa ccctatgaac aatgggccat tcaaatggaa 1980
aaaaaagctg caaaagaagg aaatcgcaaa gaacgtgttt gtgcagaaca tttgaggaag 2040
tacaatgagg ccctacaaat taatgacaca attcgaatga tagatgcgta tactcatctt 2100
10 gaaactttct ataatgaaga gaaagataag aagtttgcag tcatagaaga tgatagtgat 2160
gagggtggtg atgatgagta ttgtgatggt gatgaagatg aggatgattt aaagaaacct 2220
15 ttgaaactgg atgaaacaga tagatttctc atgactttat tttttgaaaa caataaaatg 2280
ttgaaaaggc tggctgaaaa cccagaatat gaaaatgaaa agctgaccaa attaagaaat 2340
accataatgg agcaatatac taggactgag gaatcagcac gaggaataat ctttcaaaaa 2400
20 acacgacaga gtgcatatgc gctttccag tggattactg aaaatgaaaa atttgctgaa 2460
gtaggagtca aagcccacca tctgattgga gctggacaca gcagtgagtt caaacccatg 2520
acacagaatg aacaaaaaga agtcattagt aaatttcgca ctggaaaaat aaatctgctt 2580
25 atcgctacca cagtggcaga agaaggtctg gatattaaag aatgtaacat tgttatccgt 2640
tatggtctcg tcaccaatga aatagccatg gtccaggccc gtggtcgagc cagagctgat 2700
30 gagagcacct acgtcctggt tgctcacagt ggttcaggag ttatcgaaca tgagacagtt 2760
aatgatttcc gagagaagat gatgtataaa gctatacatt gtgttcaaaa tatgaaacca 2820
gaggagtatg ctcataagat tttggaatta cagatgcaaa gtataatgga aaagaaaatg 2880
35 aaaaccaaga gaaatattgc caagcattac aagaataacc catcactaat aactttcctt 2940
tgcaaaaact gcagtgtgct agcctgttct ggggaagata tccatgtaat tgagaaaatg 3000
catcacgtca atatgacccc agaattcaag gaactttaca ttgtaagaga aaacaaagca 3060
40 ctgcaaaaga agtgtgccga ctatcaaata aatggtgaaa tcatctgcaa atgtggccag 3120
gcttggggaa caatgatggt gcacaaaggc ttagatttgc cttgtctcaa aataaggaat 3180
45 tttgtagtgg ttttcaaaaa taattcaaca aagaacaat acaaaaagtg ggtagaatta 3240
cctatcacat ttoccaatct tgactattca gaatgctggt tatttagtga tgaggattag 3300
cacttgattg aagattcttt taaaatacta tcagttaaac atttaatatg attatgatta 3360
50 atgtattcat tatgctacag aactgacata agaatcaata aaatgattgt tttactctgc 3420
aaaaaaaaaaaa aaaa 3434

55

EP 2 330 420 A1

<210> 4
 <211> 1025
 <212> PRT
 <213> Homo sapiens

<400> 4

Met Ser Asn Gly Tyr Ser Thr Asp Glu Asn Phe Arg Tyr Leu Ile Ser
 1 5 10 15

Cys Phe Arg Ala Arg Val Lys Met Tyr Ile Gln Val Glu Pro Val Leu
 20 25 30

Asp Tyr Leu Thr Phe Leu Pro Ala Glu Val Lys Glu Gln Ile Gln Arg
 35 40 45

Thr Val Ala Thr Ser Gly Asn Met Gln Ala Val Glu Leu Leu Leu Ser
 50 55 60

Thr Leu Glu Lys Gly Val Trp His Leu Gly Trp Thr Arg Glu Phe Val
 65 70 75 80

Glu Ala Leu Arg Arg Thr Gly Ser Pro Leu Ala Ala Arg Tyr Met Asn
 85 90 95

Pro Glu Leu Thr Asp Leu Pro Ser Pro Ser Phe Glu Asn Ala His Asp
 100 105 110

Glu Tyr Leu Gln Leu Leu Asn Leu Leu Gln Pro Thr Leu Val Asp Lys
 115 120 125

Leu Leu Val Arg Asp Val Leu Asp Lys Cys Met Glu Glu Glu Leu Leu
 130 135 140

Thr Ile Glu Asp Arg Asn Arg Ile Ala Ala Ala Glu Asn Asn Gly Asn
 145 150 155 160

Glu Ser Gly Val Arg Glu Leu Leu Lys Arg Ile Val Gln Lys Glu Asn
 165 170 175

Trp Phe Ser Ala Phe Leu Asn Val Leu Arg Gln Thr Gly Asn Asn Glu
 180 185 190

Leu Val Gln Glu Leu Thr Gly Ser Asp Cys Ser Glu Ser Asn Ala Glu
 195 200 205

EP 2 330 420 A1

5 Ile Glu Asn Leu Ser Gln Val Asp Gly Pro Gln Val Glu Glu Gln Leu
 210 215 220
 10 Leu Ser Thr Thr Val Gln Pro Asn Leu Glu Lys Glu Val Trp Gly Met
 225 230 235 240
 15 Glu Asn Asn Ser Ser Glu Ser Ser Phe Ala Asp Ser Ser Val Val Ser
 245 250 255
 20 Glu Ser Asp Thr Ser Leu Ala Glu Gly Ser Val Ser Cys Leu Asp Glu
 260 265 270
 25 Ser Leu Gly His Asn Ser Asn Met Gly Ser Asp Ser Gly Thr Met Gly
 275 280 285
 30 Ser Asp Ser Asp Glu Glu Asn Val Ala Ala Arg Ala Ser Pro Glu Pro
 290 295 300
 35 Glu Leu Gln Leu Arg Pro Tyr Gln Met Glu Val Ala Gln Pro Ala Leu
 305 310 315 320
 40 Glu Gly Lys Asn Ile Ile Ile Cys Leu Pro Thr Gly Ser Gly Lys Thr
 325 330 335
 45 Arg Val Ala Val Tyr Ile Ala Lys Asp His Leu Asp Lys Lys Lys Lys
 340 345 350
 50 Ala Ser Glu Pro Gly Lys Val Ile Val Leu Val Asn Lys Val Leu Leu
 355 360 365
 55 Val Glu Gln Leu Phe Arg Lys Glu Phe Gln Pro Phe Leu Lys Lys Trp
 370 375 380
 Tyr Arg Val Ile Gly Leu Ser Gly Asp Thr Gln Leu Lys Ile Ser Phe
 385 390 395 400
 Pro Glu Val Val Lys Ser Cys Asp Ile Ile Ile Ser Thr Ala Gln Ile
 405 410 415
 Leu Glu Asn Ser Leu Leu Asn Leu Glu Asn Gly Glu Asp Ala Gly Val
 420 425 430

EP 2 330 420 A1

Gln Leu Ser Asp Phe Ser Leu Ile Ile Ile Asp Glu Cys His His Thr
 435 440 445
 5
 Asn Lys Glu Ala Val Tyr Asn Asn Ile Met Arg His Tyr Leu Met Gln
 450 455 460
 10
 Lys Leu Lys Asn Asn Arg Leu Lys Lys Glu Asn Lys Pro Val Ile Pro
 465 470 475 480
 15
 Leu Pro Gln Ile Leu Gly Leu Thr Ala Ser Pro Gly Val Gly Gly Ala
 485 490 495
 20
 Thr Lys Gln Ala Lys Ala Glu Glu His Ile Leu Lys Leu Cys Ala Asn
 500 505 510
 25
 Leu Asp Ala Phe Thr Ile Lys Thr Val Lys Glu Asn Leu Asp Gln Leu
 515 520 525
 30
 Lys Asn Gln Ile Gln Glu Pro Cys Lys Lys Phe Ala Ile Ala Asp Ala
 530 535 540
 35
 Thr Arg Glu Asp Pro Phe Lys Glu Lys Leu Leu Glu Ile Met Thr Arg
 545 550 555 560
 40
 Ile Gln Thr Tyr Cys Gln Met Ser Pro Met Ser Asp Phe Gly Thr Gln
 565 570 575
 45
 Pro Tyr Glu Gln Trp Ala Ile Gln Met Glu Lys Lys Ala Ala Lys Glu
 580 585 590
 50
 Gly Asn Arg Lys Glu Arg Val Cys Ala Glu His Leu Arg Lys Tyr Asn
 595 600 605
 55
 Glu Ala Leu Gln Ile Asn Asp Thr Ile Arg Met Ile Asp Ala Tyr Thr
 610 615 620
 His Leu Glu Thr Phe Tyr Asn Glu Glu Lys Asp Lys Lys Phe Ala Val
 625 630 635 640
 Ile Glu Asp Asp Ser Asp Glu Gly Gly Asp Asp Glu Tyr Cys Asp Gly
 645 650 655

EP 2 330 420 A1

Asp Glu Asp Glu Asp Asp Leu Lys Lys Pro Leu Lys Leu Asp Glu Thr
660 665 670

5 Asp Arg Phe Leu Met Thr Leu Phe Phe Glu Asn Asn Lys Met Leu Lys
675 680 685

10 Arg Leu Ala Glu Asn Pro Glu Tyr Glu Asn Glu Lys Leu Thr Lys Leu
690 695 700

15 Arg Asn Thr Ile Met Glu Gln Tyr Thr Arg Thr Glu Glu Ser Ala Arg
705 710 715 720

Gly Ile Ile Phe Thr Lys Thr Arg Gln Ser Ala Tyr Ala Leu Ser Gln
725 730 735

20 Trp Ile Thr Glu Asn Glu Lys Phe Ala Glu Val Gly Val Lys Ala His
740 745 750

25 His Leu Ile Gly Ala Gly His Ser Ser Glu Phe Lys Pro Met Thr Gln
755 760 765

30 Asn Glu Gln Lys Glu Val Ile Ser Lys Phe Arg Thr Gly Lys Ile Asn
770 775 780

Leu Leu Ile Ala Thr Thr Val Ala Glu Glu Gly Leu Asp Ile Lys Glu
785 790 795 800

35 Cys Asn Ile Val Ile Arg Tyr Gly Leu Val Thr Asn Glu Ile Ala Met
805 810 815

40 Val Gln Ala Arg Gly Arg Ala Arg Ala Asp Glu Ser Thr Tyr Val Leu
820 825 830

45 Val Ala His Ser Gly Ser Gly Val Ile Glu His Glu Thr Val Asn Asp
835 840 845

Phe Arg Glu Lys Met Met Tyr Lys Ala Ile His Cys Val Gln Asn Met
850 855 860

50 Lys Pro Glu Glu Tyr Ala His Lys Ile Leu Glu Leu Gln Met Gln Ser
865 870 875 880

55 Ile Met Glu Lys Lys Met Lys Thr Lys Arg Asn Ile Ala Lys His Tyr

			885					890						895		
5	Lys	Asn	Asn	Pro	Ser	Leu	Ile	Thr	Phe	Leu	Cys	Lys	Asn	Cys	Ser	Val
			900						905					910		
10	Leu	Ala	Cys	Ser	Gly	Glu	Asp	Ile	His	Val	Ile	Glu	Lys	Met	His	His
			915					920					925			
15	Val	Asn	Met	Thr	Pro	Glu	Phe	Lys	Glu	Leu	Tyr	Ile	Val	Arg	Glu	Asn
		930					935					940				
20	Lys	Ala	Leu	Gln	Lys	Lys	Cys	Ala	Asp	Tyr	Gln	Ile	Asn	Gly	Glu	Ile
	945				950						955					960
25	Ile	Cys	Lys	Cys	Gly	Gln	Ala	Trp	Gly	Thr	Met	Met	Val	His	Lys	Gly
				965						970					975	
30	Leu	Asp	Leu	Pro	Cys	Leu	Lys	Ile	Arg	Asn	Phe	Val	Val	Val	Phe	Lys
			980						985					990		
35	Asn	Asn	Ser	Thr	Lys	Lys	Gln	Tyr	Lys	Lys	Trp	Val	Glu	Leu	Pro	Ile
			995					1000					1005			
40	Thr	Phe	Pro	Asn	Leu	Asp	Tyr	Ser	Glu	Cys	Cys	Leu	Phe	Ser	Asp	
		1010					1015					1020				
	Glu	Asp														
		1025														

Claims

- 45 1. A kit for diagnosing dermatomyositis, comprising an MDA5 protein shown in SEQ ID NO: 4, or a fragment thereof that is recognized by anti-CADM-140 antibody.
- 50 2. The kit for diagnosing dermatomyositis according to Claim 1, comprising a C-terminal fragment of the MDA5 protein shown in SEQ ID NO: 2, or a fragment thereof that is recognized by anti-CADM-140 antibody.
- 55 3. The kit according to Claim 1, wherein the dermatomyositis is a clinically amyopathic dermatomyositis (C-ADM) associated with a high risk for developing rapidly progressive interstitial lung disease.
4. The kit according to Claim 1 used for measurement by enzyme-linked immunosorbent assay (ELISA).
5. The kit according to Claim 1, comprising:
 - (i) an antigen comprising an MDA5 protein or an immunogenic peptide thereof;

EP 2 330 420 A1

- (ii) a medium suitable for use in a reaction between a sample of a subject and the antigen (i);
- (iii) a reagent for detecting a complex of the antigen (i) and anti-CADM-140 antibody and; and optionally
- (iv) a reference sample not containing anti-CADM-140 antibody.

5 **6.** A method for diagnosing dermatomyositis, comprising allowing a sample of a subject to react with an MDA5 protein or a fragment thereof that is recognized by anti-CADM-140 antibody; and diagnosing the subject as having dermatomyositis when the anti-CADM-140 antibody is detected in the sample.

10 **7.** The method according to Claim 5 wherein the sample is a blood, serum, or plasma sample.

8. The method according to Claim 6 wherein the anti-CADM-140 antibody in the sample is detected by ELISA.

9. The method according to Claim 6 comprising the following steps:

15 (i) depositing a specific amount of a peptide composition of the present invention on a plurality of wells of a microtiter plate;

 (ii) diluting a sample of a subject suspected of having dermatomyositis, and adding the diluted sample to the wells;

 (iii) washing the microtiter plate after incubation;

20 (iv) introducing a labeled anti-human immunoglobulin antibody to the wells of the microtiter plate; and (v) detecting the amount of label bound to the antibody by comparison with a control.

10. Use of an MDA5 protein or a fragment thereof that is recognized by anti-CADM-140 antibody to diagnose dermatomyositis.

25

30

35

40

45

50

55

Fig. 1

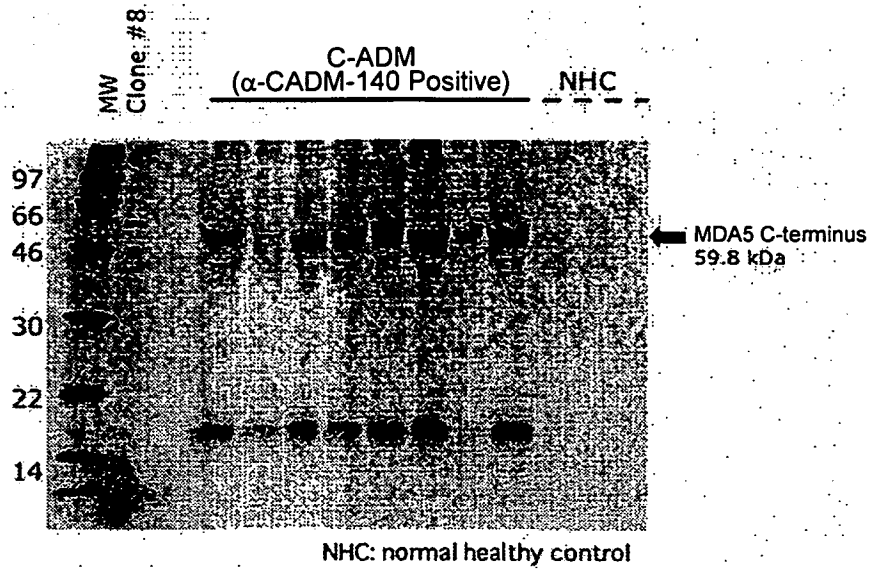


Fig. 2

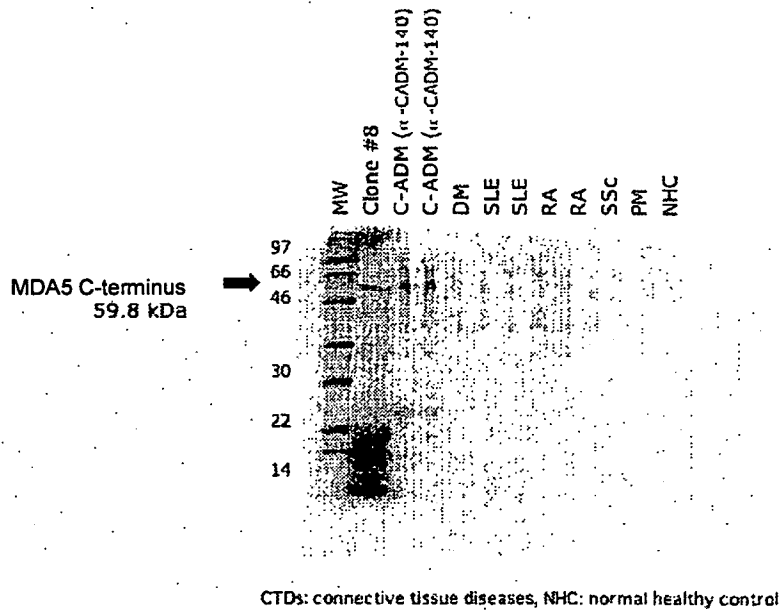


Fig. 3

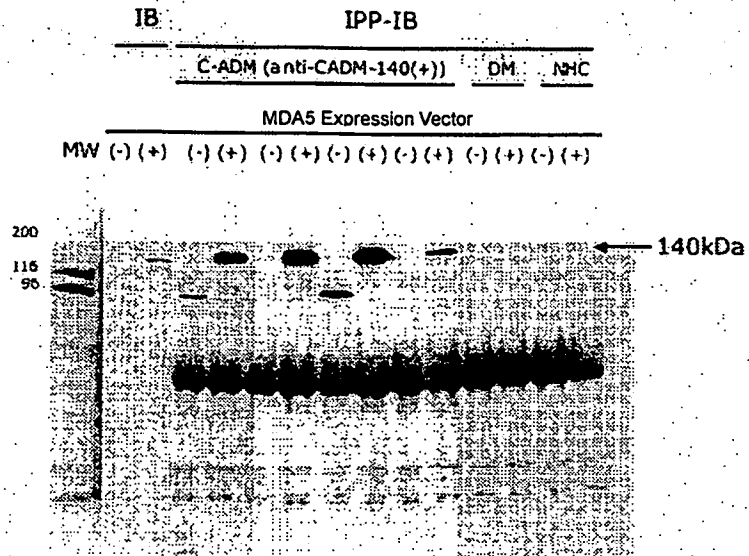


Fig. 4

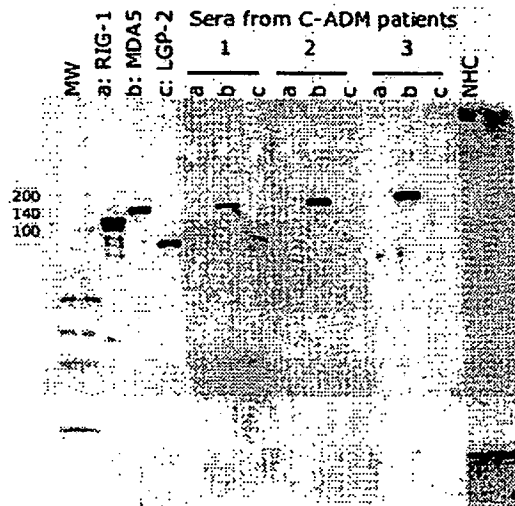
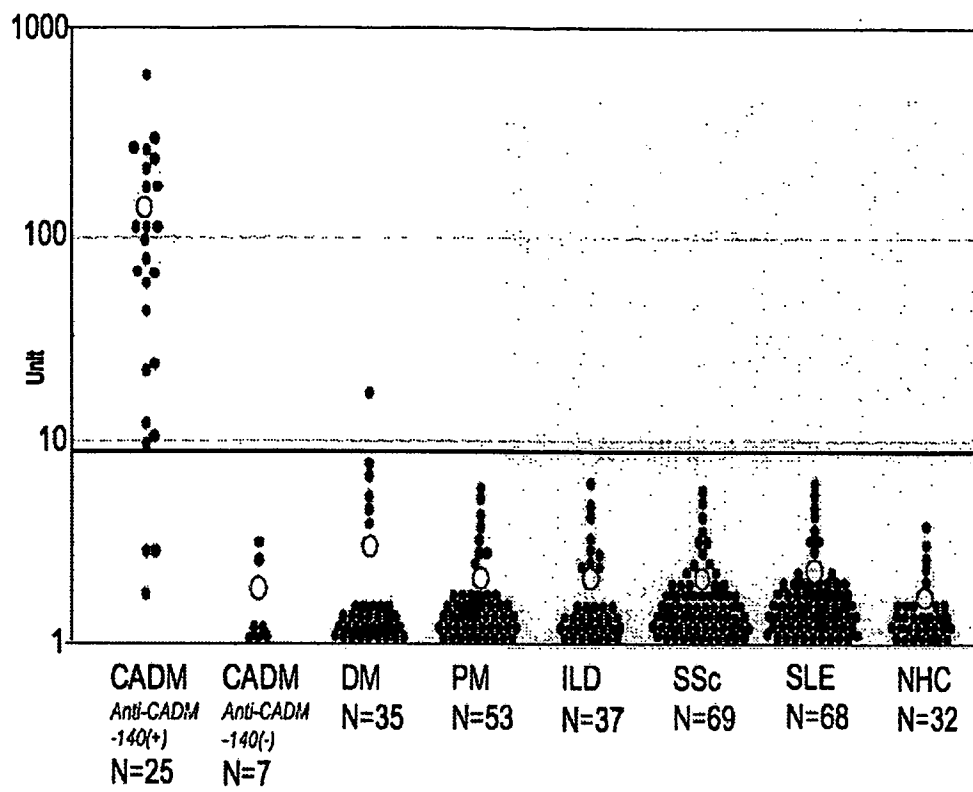


Fig. 5



INTERNATIONAL SEARCH REPORT

International application No.

PCT/JP2009/063633

A. CLASSIFICATION OF SUBJECT MATTER G01N33/53 (2006.01) i		
According to International Patent Classification (IPC) or to both national classification and IPC		
B. FIELDS SEARCHED		
Minimum documentation searched (classification system followed by classification symbols) G01N33/53		
Documentation searched other than minimum documentation to the extent that such documents are included in the fields searched Jitsuyo Shinan Koho 1922-1996 Jitsuyo Shinan Toroku Koho 1996-2009 Kokai Jitsuyo Shinan Koho 1971-2009 Toroku Jitsuyo Shinan Koho 1994-2009		
Electronic data base consulted during the international search (name of data base and, where practicable, search terms used)		
C. DOCUMENTS CONSIDERED TO BE RELEVANT		
Category*	Citation of document, with indication, where appropriate, of the relevant passages	Relevant to claim No.
A	Sato S et al., Arthritis Rheum., 2005.05, 52(5), 1571-1576	1-10
A	Michito HIRAKATA, Japanese journal of chinal immunology, 2007, Vol.30, No.6, 444-454	1-10
A	Shinji SATO, Molecular Rheumatology, 2006, Vol.3, No.1, 3-8	1-10
A	Yamasaki Y et al., Arthritis Rheum., 2007.02, 56(2), 596-604	1-10
A	Villers A et al, Ann Dermatol Venereol., 2006. 07, 133(6-7), 573-576	1-10
<input type="checkbox"/> Further documents are listed in the continuation of Box C.		<input type="checkbox"/> See patent family annex.
* Special categories of cited documents: "A" document defining the general state of the art which is not considered to be of particular relevance "E" earlier application or patent but published on or after the international filing date "L" document which may throw doubts on priority claim(s) or which is cited to establish the publication date of another citation or other special reason (as specified) "O" document referring to an oral disclosure, use, exhibition or other means "P" document published prior to the international filing date but later than the priority date claimed		"T" later document published after the international filing date or priority date and not in conflict with the application but cited to understand the principle or theory underlying the invention "X" document of particular relevance; the claimed invention cannot be considered novel or cannot be considered to involve an inventive step when the document is taken alone "Y" document of particular relevance; the claimed invention cannot be considered to involve an inventive step when the document is combined with one or more other such documents, such combination being obvious to a person skilled in the art "&" document member of the same patent family
Date of the actual completion of the international search 03 September, 2009 (03.09.09)		Date of mailing of the international search report 29 September, 2009 (29.09.09)
Name and mailing address of the ISA/ Japanese Patent Office		Authorized officer
Facsimile No.		Telephone No.

Form PCT/ISA/210 (second sheet) (April 2007)

INTERNATIONAL SEARCH REPORT

International application No.

PCT/JP2009/063633

Claims 1-2 and 4-10 relate to "the diagnosis of dermatomyositis" and include DM as well as C-ADM. However, only the diagnosis of C-ADM is disclosed in the meaning within PCT Article 5. Therefore, these claims are not supported in the meaning within PCT Article 6.

REFERENCES CITED IN THE DESCRIPTION

This list of references cited by the applicant is for the reader's convenience only. It does not form part of the European patent document. Even though great care has been taken in compiling the references, errors or omissions cannot be excluded and the EPO disclaims all liability in this regard.

Patent documents cited in the description

- JP 2003531581 A [0010]

Non-patent literature cited in the description

- *Arthritis Rheum.*, 2003, vol. 46 (9), 398 [0011]
- *Arthritis Rheum.*, 2005, vol. 52 (5), 1571-1576 [0011]
- *Arthritis Rheum.*, 2009, vol. 60 (7), 2193-2200 [0011]
- **Bohan A ; Peter JB.** Polymyositis and dermatomyositis. *N Engl J Med*, 1975, vol. 292, 344 [0023]
- **Sontheimer RD.** Would a new name hasten the acceptance of amyopathic dermatomyositis (dermatomyositis sine myositis) as a distinctive subset within the idiopathic inflammatory dermatomyopathies spectrum of clinical illness?. *J Am Acad Dermatol*, 2002, vol. 46, 626-36 [0023]

专利名称(译)	皮肤炎的诊断方法和诊断试剂盒		
公开(公告)号	EP2330420A4	公开(公告)日	2011-09-07
申请号	EP2009809743	申请日	2009-07-31
[标]申请(专利权)人(译)	学校法人庆应义塾		
申请(专利权)人(译)	庆应大学		
当前申请(专利权)人(译)	庆应大学		
[标]发明人	KUWANA MASATAKA SATO SHINJI FUJITA TAKASHI		
发明人	KUWANA, MASATAKA SATO, SHINJI FUJITA, TAKASHI		
IPC分类号	G01N33/53 G01N33/564 G01N33/68		
CPC分类号	G01N33/5743 G01N33/6854		
优先权	2008223789 2008-09-01 JP		
其他公开文献	EP2330420A1 EP2330420B1		
外部链接	Espacenet		

摘要(译)

本发明的目的是鉴定对应于抗CADM-140抗体的抗原，产生重组蛋白，并通过ELISA等建立测定系统。本发明提供了用于诊断皮肤炎的试剂盒，其含有SEQ ID NO：4中所示的MDA5蛋白或其抗CDM-140抗体识别的片段。

