



(11) **EP 1 806 582 B1**

(12) **EUROPEAN PATENT SPECIFICATION**

(45) Date of publication and mention of the grant of the patent:  
**11.05.2011 Bulletin 2011/19**

(51) Int Cl.:  
**G01N 33/53 (2006.01) G01N 33/564 (2006.01)**

(21) Application number: **06290012.1**

(22) Date of filing: **04.01.2006**

(54) **Method of diagnosing myasthenia gravis**

Verfahren zur Diagnose von Myasthenia gravis

Procédé de diagnostic d'une myasthénie gravis

(84) Designated Contracting States:  
**AT BE BG CH CY CZ DE DK EE ES FI FR GB GR HU IE IS IT LI LT LU LV MC NL PL PT RO SE SI SK TR**

(43) Date of publication of application:  
**11.07.2007 Bulletin 2007/28**

(73) Proprietors:  
• **INDUSTRIAL TECHNOLOGY RESEARCH INSTITUTE**  
**Chutung,**  
**Hsinchu (TW)**  
• **National Health Research Institutes**  
**Zhunan Township, Miaoli County 350 (TW)**  
• **Shin Kong Wu Ho-Su Memorial Hospital**  
**Taipei City (TW)**

(72) Inventors:  
• **Tseng, Tzu-Ling**  
**Chiayi City (TW)**  
• **Liao, Pei-Hsiu**  
**Taipei City 111 (TW)**  
• **Cheng, Ping-Fu**  
**Sijhou Township,**  
**Changhua County (TW)**  
• **Tsai, Shih-Feng**  
**Zhunan Township,**  
**Miaoli County (TW)**  
• **Chiu, Hou-Chang**  
**Shilin District,**  
**Taipei City (TW)**

(74) Representative: **Nargolwalla, Cyra**  
**Cabinet Plasseraud**  
**52, rue de la Victoire**  
**75440 Paris Cedex 09 (FR)**

(56) References cited:  
**JP-A- 2004 257 862 US-A- 5 777 083**  
**US-A1- 2005 260 770**

- **ASTARLOA R ET AL: "Humoral response to the human heat shock 60 kDa protein in myasthenia gravis [2]" JOURNAL OF THE NEUROLOGICAL SCIENCES 1996 NETHERLANDS, vol. 135, no. 2, 1996, pages 182-183, XP002401771 ISSN: 0022-510X**
- **YONEKURA K ET AL: "Prevalence of anti-heat shock protein antibodies in cerebrospinal fluids of patients with Guillain-Barre syndrome" JOURNAL OF NEUROIMMUNOLOGY, ELSEVIER SCIENCE PUBLISHERS BV, XX, vol. 156, no. 1-2, November 2004 (2004-11), pages 204-209, XP004591417 ISSN: 0165-5728**
- **CONROY S E ET AL: "Incidence of anti hsp 90 and 70 antibodies in children with SLE, juvenile dermatomyositis and juvenile chronic arthritis" CLINICAL AND EXPERIMENTAL RHEUMATOLOGY, PACINI, PISA, IT, vol. 14, no. 1, January 1996 (1996-01), pages 99-104, XP002097731 ISSN: 0392-856X**
- **CONROY S E ET AL: "Detection of autoantibodies to the 90 kDa heat shock protein in systemic lupus erythematosus and other autoimmune diseases" BRITISH JOURNAL OF RHEUMATOLOGY, vol. 33, no. 10, 1994, pages 923-926, XP008066162 ISSN: 0263-7103**
- **MINOTA S ET AL: "AUTOANTIBODIES TO THE HEAT-SHOCK PROTEIN HSP90 IN SYSTEMIC LUPUS ERYTHEMATOSUS" JOURNAL OF CLINICAL INVESTIGATION, vol. 81, no. 1, 1988, pages 106-109, XP002410878 ISSN: 0021-9738**

Note: Within nine months of the publication of the mention of the grant of the European patent in the European Patent Bulletin, any person may give notice to the European Patent Office of opposition to that patent, in accordance with the Implementing Regulations. Notice of opposition shall not be deemed to have been filed until the opposition fee has been paid. (Art. 99(1) European Patent Convention).

**EP 1 806 582 B1**

- **CONROY S E ET AL: "Detection of antibodies to the 90KDa heat shock protein in patients with SLE and other autoimmune rheumatic diseases" ARTHRITIS AND RHEUMATISM, vol. 36, no. 9 SUPPL., 1993, page S236, XP008066160 & 57TH ANNUAL SCIENTIFIC MEETING OF THE AMERICAN COLLEGE OF RHEUMATOLOGY; SAN ANTONIO, TEXAS, USA; NOVEMBER 7-11, 1993 ISSN: 0004-3591**

**Description**Field of the Invention

5 **[0001]** The invention relates to the field of immunology, including the development of immunological tolerance, and the pathology of autoimmune disorders. The invention generally relates to improved methods of diagnosing the organ-specific autoimmune disease myasthenia gravis.

Background of the Invention

10 **[0002]** Autoimmune diseases result from aberrant immune cell function or activity which causes inappropriately activated T cells to react against self tissue, thereby triggering production of cytokines and/or autoantibodies responsible for disease etiology and progression. COTRAN ET AL., PATHOLOGIC BASIS OF DISEASE 211-212 (6th ed. 1999); Scofield, "Autoantibodies as predictors of disease," *Lancet* 363:1544-1546 (2004). Autoimmunity indicates a loss of self-tolerance, though the mechanisms by which this occurs are not fully understood. *Id.* Autoimmune disorders may be systemic, affecting multiple organs or tissues, or localized, affecting a single organ, organ system or tissue. *Id.*

15 **[0003]** A hallmark of autoimmune disease is the production of high affinity autoantibodies directed against self proteins. Robinson et al., "Autoantigen microarrays for multiplex characterization of autoantibody responses," *Nature Med.* 8(3): 295-301 (2002). Some autoantibodies are known or strongly suspected to be involved in the development of cell and tissue damage associated with a particular disease, but for most, neither the pathogenic role nor the relationship to the underlying etiology of disease is known. *Id.* Nevertheless, the specificity and pathogenicity of autoantibody responses for certain diseases, such as myasthenia gravis, emphasizes their utility in improving diagnosis, classification, and treatment of autoimmune disorders. *Id.* Because serum autoantibodies often appear long before the onset of clinical symptoms, the ability to detect autoantibodies associated with specific autoimmune disorders quickly and accurately would enable the use of prophylactic treatments earlier in the course of disease, and may eventually permit immunological intervention sufficient to prevent the onset of disease entirely. Scofield, *supra*.

20 **[0004]** Myasthenia gravis ("MG") is a neuromuscular disorder caused by immune-mediated loss of acetylcholine receptors at neuromuscular junctions of skeletal muscle. COTRAN ET AL., *supra* at 1289. Estimates of the incidence of MG in populations worldwide range from approximately three to more than twenty people per 100,000. COTRAN ET AL., *supra*; Somnier, "Increasing incidence of late-onset anti-AChR antibody-seropositive myasthenia gravis," *Neurol.* 65:928-930 (2005). The prevalence of MG in the United States is estimated at about fourteen cases per 100,000 people, with approximately 36,000 cases diagnosed annually nationwide. Howard, "Myasthenia gravis: a summary," available at <http://www.myasthenia.org/information/summary.htm> (last accessed October 23, 2005).

25 **[0005]** Early onset myasthenia gravis, defined as arising either before age 40, or before age 50, tends primarily to appear in women, but late onset MG afflicts men and women equally. COTRAN ET AL., *supra* (noting that MG is most commonly observed in women "[w]hen arising before age 40 years"); Somnier, *supra* ("the dichotomy between early- and late-onset MG was defined at age 50"). Women typically develop the disease between the ages of twenty and forty, while in men, it generally appears between the ages of fifty and sixty, though it sometimes develops earlier, and may develop later in both sexes. COTRAN ET AL., *supra*.

30 **[0006]** Clinically, MG typically appears first as occasional muscle weakness in approximately two-thirds of patients, most commonly in the extraocular muscles. *Id.*; Howard, *supra*. These initial symptoms eventually worsen, producing drooping eyelids (ptosis) and/or double vision (diplopia), often causing the patient to seek medical attention. *Id.* Muscle weakness is restricted to the ocular muscles in about 10% of cases. Howard, *supra*. Eventually, many patients develop general muscular weakness that may fluctuate weekly, daily, or even more frequently. *Id.* Generalized MG often affects muscles that control facial expression, chewing, talking, swallowing, and breathing; before recent advances in treatment, respiratory failure was the most common cause of death. *Id.* With improved methods of treatment and critical care intervention, however, more than 95% of patients now survive for five years or more after diagnosis. *Id.* MG is frequently accompanied by thymic hyperplasia, observed in approximately 65% of patients, or, less commonly by thymoma, observed in about 15% of patients. *Id.*

35 **[0007]** Long-term outcome of MG patients has improved with more effective use of cholinesterase inhibitors and improved critical care, but therapies that directly reduce the autoimmune response or modify its effects on acetylcholine receptors and the surrounding neuromuscular junction may prove more effective in the long term. Richman et al., "Treatment of autoimmune myasthenia gravis," *Neurol.* 61:1652-1661 (2003). Treatment usually begins with the administration of anticholinesterase agents, including cholinesterase inhibitors. *Id.* Treatment regimes generally aim to induce immunologic remission with high doses of corticosteroids, frequently in conjunction with intravenous immunoglobulin or plasmapheresis. *Id.* Maintenance of remission is usually accomplished by gradual tapering of the corticosteroids, coupled with the use of "steroid-sparing" agents, such as azathioprine or mycophenolate. *Id.* Thymectomy may also be effective in some cases. *Id.*

**[0008]** MG is characterized by antibodies directed against the nicotinic acetylcholine receptor (AChR) in approximately 80-85% of patients. Richman et al., *supra*; Roxanis et al., "Thymic myoid cells and germinal center formation in myasthenia gravis; possible roles in pathogenesis," J. Neuroimmunol. 125:185-197 (2002). These antibodies cause loss of acetylcholine receptors and diminished receptor function at the muscle end-plate of the mature neuromuscular junction, which together lead to failure of neuromuscular signal transmission that manifests as the muscle weakness characteristic of generalized MG. Hoch et al., "Auto-antibodies to the receptor tyrosine kinase MsSK in patients with myasthenia gravis without acetylcholine receptor antibodies," Nature Med. 7(3):365-368 (2001). The serum concentration of anti-AChR antibodies varies widely among patients with similar degrees of muscular weakness, and therefore cannot be used to predict severity of the disease in individual patients. Howard, *supra*.

**[0009]** Not every patient with symptoms of generalized MG develops anti-AChR antibodies, however. Roxanis et al., *supra*. In some cases, symptomatic patients lack detectable anti-AChR antibodies until several months after onset of symptoms, or even longer. *Id.* Anti-AChR antibodies are observed more frequently in patients afflicted with generalized MG compared to those suffering only from ocular MG: approximately 74% of those with generalized MG, and 54% of those with ocular MG have detectable anti-AChR antibody in serum. Howard, *supra*. Another 10-20% of patients suffering from generalized MG never develop detectable anti-AChR antibodies, though as many as 90% of patients lacking anti-AChR antibodies instead have serum auto-antibodies directed to a muscle-specific receptor tyrosine kinase, MuSK. Hoch et al., *supra*; Roxanis et al., *supra*. MuSK mediates agrin-induced clustering of AChRs during synapse formation, and is expressed at the mature neuromuscular junction. Hoch et al., *supra*.

**[0010]** Astarloa and Castrillo (J. Neurol. Sciences, 1996, 135: 182-183) describe a method of diagnosing myasthenia gravis by measuring autoantibodies against HSP60 in a serum sample of a subject. Astarloa and Castrillo (J. Neurol. Sciences, 1996, 135: 182-183); U.S. Appl. No. 2005/0260770; and Yonekura et al. (J. Neuroimmunol., 2004, 156: 204-209) disclose reagents and kits for determining an amount of autoantibody against HSP60. Yonekura et al. (J. Neuroimmunol., 2004, 156: 204-209) describe the detection of anti-hsp27, hsp60, hsp70 and hsp90 antibodies in the cerebrospinal fluids of patients with Guillain-Barré syndrome. Conroy et al. (Clin. Exp. Rheum., 1996, 14: 99-104) disclose the detection of anti-hsp90 and anti-hsp70 antibodies in children with systemic lupus erythematosus, juvenile dermatomyositis and juvenile chronic arthritis. US. Pat. No. 5,777,083 discloses a diagnostic kit comprising an epitope of hsp90 which cross-reacts with an antibody against at least one other hsp90 protein. This kit can be used, in particular, for diagnosing malaria, fungal infection or bacterial infection. Conroy et al. (Br. J. Rheum., 1994, 33: 923-926) disclose the detection of autoantibodies to hsp90 in systemic lupus erythematosus and the following other autoimmune diseases: myositis, primary Sjogren Syndrome, rheumatoid arthritis, scleroderma, and osteoarthritis. Minota et al. (J. Clin. Invest., 1998, 81: 106-109) and Conroy et al. (Arthr. Rheum., 1993, 36: S236) disclose the detection of autoantibodies to hsp90 in systemic lupus erythematosus.

**[0011]** Thus, there remains a need for additional methods of diagnosing the disease.

## **SUMMARY OF THE INVENTION**

**[0012]** The present invention provides methods for diagnosing the neuromuscular autoimmune disorder myasthenia gravis ("MG"). The invention is based at least in part on the discovery that many patients suffering from early stages of MG have autoantibodies specific for the 60 kD heat-shock protein ("hsp60") and the 90 kD heat-shock protein ("hsp90"), two proteins not previously associated with the etiology and progression of MG. Accordingly, the invention provides a method of diagnosing MG in a subject comprising determining an amount of at least one autoantibody in a biological sample from the subject, wherein said autoantibody specifically binds an autoantigen characteristic of MG selected from heat-shock protein 90, alpha isoform (hsp90 $\alpha$ ) (SEQ ID NO:2), and heat-shock protein 90, beta isoform (hsp90 $\beta$ ) (SEQ ID NO:3).

**[0013]** An amount of an autoantibody may be determined by a variety of qualitative and quantitative methods. In some embodiments of the invention, an amount of an autoantibody is detected by Western blot. In other embodiments, an amount of an autoantibody is detected by enzyme-linked immunosorbent assays.

**[0014]** Additional objects and advantages of the invention will be set forth in part in the description which follows, and in part will be obvious from the description, or may be learned by practice of the invention. The objects and advantages of the invention will be realized and attained by means of the elements and combinations particularly pointed out in the appended claims. It is to be understood that both the foregoing general description and the following detailed description are exemplary and explanatory only and are not restrictive of the invention, as claimed.

**[0015]** The accompanying drawings, which are incorporated in and constitute a part of this specification, illustrate several embodiments of the invention and together with the description, serve to explain the principles of the invention, as claimed.

**BRIEF DESCRIPTION OF THE DRAWINGS**

[0016] **Figure 1** shows Western blots of cell lysates probed with serum from patients suffering from generalized myasthenia gravis according to the protocol of Example 1, identifying autoantibodies specific for heat-shock protein 60 (hsp60). Positive blots are indicated with a dot. Samples were taken from female patients with thymic hyperplasia (HF), male patients with thymic hyperplasia (HM), female patients with thymoma (TF), and male patients with thymoma (TM).

[0017] **Figure 2** shows Western blots of cell lysates probed with serum from patients suffering from generalized myasthenia gravis according to the protocol of Example 1, identifying autoantibodies specific for heat-shock protein 90 (hsp90). These experiments did not distinguish between the alpha and beta isoforms of hsp90. Positive blots are indicated with a dot. Samples were taken from female patients with thymic hyperplasia (HF), male patients with thymic hyperplasia (HM), female patients with thymoma (TF), and male patients with thymoma (TM).

[0018] **Figure 3** shows the results of enzyme-linked immunosorbent assays (ELISAs) performed with serum from patients with generalized MG identifying hsp60, according to the protocol of Example 2. Bars indicate the mean OD<sub>450</sub> value.

[0019] **Figure 4** shows the results of enzyme-linked immunosorbent assays (ELISAs) performed with serum from patients with generalized MG, identifying hsp90, according to the protocol of Example 2. Bars indicate the mean OD<sub>450</sub> value. These experiments did not distinguish between the alpha and beta isoforms of hsp90.

[0020] **Figure 5** shows the ability of the diagnostic methods of the invention correctly to categorize patients with MG as test-positive and those without as test-negative. Test-positive patients have autoantibodies that specifically bind hsp60 ("protein\_1") and/or hsp90 ("protein\_2"), while test-negative patients lack hsp60- and hsp90-specific autoantibodies.

[0021] **Table 1** shows that patients with stage I or stage IIa MG who lack AChR autoantibodies exhibit hsp60 or hsp90 autoantibodies as measured by ELISAs.

[0022] **Table 2** compares the diagnostic sensitivity of assays specific for (1) AChR; (2) hsp60; (3) hsp90; (4) hsp60 + hsp90; (5) AChR + hsp60; or (6) AChR + hsp90. Assaying for autoantibodies specific for AChR alone exhibited the lowest sensitivity for patients having stage I (ocular) MG.

**BRIEF DESCRIPTION OF THE SEQUENCES**

[0023] SEQ ID NO:1 is the amino acid sequence of human heat-shock protein 60 (hsp60).

[0024] SEQ ID NO:2 is the amino acid sequence of human heat-shock protein 90, alpha isoform (hsp90 $\alpha$ ).

[0025] SEQ ID NO:3 is the amino acid sequence of human heat-shock protein 90, beta isoform (hsp90 $\beta$ ).

**DETAILED DESCRIPTION OF THE INVENTION****I. Method of Diagnosing Autoimmune Disorders**

[0026] In one aspect, the invention provides methods of diagnosing myasthenia gravis in a subject, comprising obtaining a biological sample from a subject, and determining an amount of at least one autoantibody, wherein the autoantibody specifically binds at least one protein selected from heat-shock protein 90, alpha isoform (hsp90 $\alpha$ ), and heat-shock protein 90, beta isoform (hsp90 $\beta$ ).

[0027] An autoimmune disorder is a disease or disorder characterized by aberrant immune function, and frequently by the presence of autoantibodies. An autoantibody is an immunoglobulin protein ("Ig," also referred to as an "antibody") of any isotype, including IgG<sub>1</sub>, IgG<sub>2</sub>, IgG<sub>3</sub>, IgG<sub>4</sub>, IgA<sub>1</sub>, IgA<sub>2</sub>, IgD, IgE, or IgM, that specifically binds a target antigen derived from a protein produced by the same organism that produced the Ig protein, or antibody. Examples of autoimmune disorders characterized by autoantibodies include: Addison's disease (autoantibodies against 21-hydroxylase); coeliac disease (autoantibodies against tissue transglutaminase); type 1 insulin-dependent diabetes mellitus (autoantibodies against GAD-65 and/or insulin); Graves' disease/hyperthyroidism (autoantibodies against thyroid-stimulating-hormone receptor); Hashimoto's thyroiditis (autoantibodies against thyroid peroxidase and/or thyroglobulin); myasthenia gravis (autoantibodies against nicotinic acetylcholine receptor and/or muscle-specific receptor tyrosine kinase); Goodpasture's syndrome (autoantibodies against Type IV collagen in glomerular basement membranes); pemphigus vulgaris (autoantibodies against desmoglein 3); pernicious anemia (autoantibodies against H/K ATPase); primary biliary cirrhosis (autoantibodies against E2 PDS); vitiligo (autoantibodies against tyrosinase and/or SOX-10); multiple sclerosis (autoantibodies against myelin basic protein and/or myelin oligodendritic glycoprotein); systemic lupus erythematosus (autoantibodies against spliceosomal snRNP, Ro/La ribonuclear particle, histones, and/or native DNA); Sjögren's syndrome (autoantibodies against Ro/La ribonuclear particle and/or muscarinic receptor); and rheumatoid arthritis (autoantibodies against citrullinated cyclic peptide and/or IgM). Scofield, *supra*, at 1545.

[0028] "Subject", as used herein, means an animal, including a human or non-human mammal, e.g., a dog, a cat, a

mouse, a rat, a cow, a sheep, a pig, a goat, or a non-human primate, and expressly includes laboratory mammals, livestock, and domestic mammals. In some embodiments, the mammal may be a human; in others, the mammal may be a rodent, such as a mouse or a rat.

**[0029]** A biological sample is any biological material collected from cells, tissues, or organs of the subject. The source of the biological sample may vary depending on the particular symptoms present in the subject to be diagnosed. The biological sample may be analyzed immediately after it is taken, or stored. If stored, the sample may be equilibrated with an appropriate storage buffer, and kept at 4°C, at -20°C, at -70°C, or even in cryogenic liquids, such as liquid nitrogen or liquid helium. In one embodiment, the biological sample may consist of blood, serum, or plasma. In another embodiment, the biological sample may consist of amniotic fluid or milk. In still another embodiment, the biological sample may consist of a biopsy or tissue sample, or a cell suspension. In additional embodiments of the invention, the biological sample may consist of saliva, cerebrospinal fluid, lymph, sweat, mucus, synovial fluid, lacrimal fluid, or other clinical specimens and samples.

**[0030]** The term "specifically binds," or the like, means that two molecules form a complex that is relatively stable under physiologic conditions (*e.g.*, a stable antigen/antibody complex). The term is also applicable where, for example, an antigen-binding domain is specific for a particular epitope, which is found on a number of molecules. Thus, an antibody may specifically bind multiple proteins when it binds to an epitope present in each. Specific binding is characterized by a selective interaction, often including high affinity binding with a low to moderate capacity. Nonspecific binding usually is a less selective interaction, and may have a low affinity with a moderate to high capacity. Typically, binding is considered specific when the affinity is at least  $10^5 \text{ M}^{-1}$ ,  $10^6 \text{ M}^{-1}$ ,  $10^7 \text{ M}^{-1}$  or  $10^8 \text{ M}^{-1}$ . If necessary, non-specific binding can be reduced without substantially affecting specific binding by varying the binding conditions. Such conditions are known in the art, and a skilled artisan using routine techniques can select appropriate conditions. The conditions are usually defined in terms of concentration of antibodies, ionic strength of the solution, temperature, time allowed for binding, concentration of non-related molecules (*e.g.*, blocking agents such as serum albumin, milk casein), and so forth. *See, e.g.*, Morgan et al., "The Matrix Effects on Kinetic Rate Constants of Antibody-Antigen Interactions Reflect Solvent Viscosity," *J. Immunol. Meth.* 217:51-60 (1998); and Zhuang et al., "Measurement of Association Rate Constant of Antibody-Antigen Interaction in Solution Based on Enzyme-Linked Immunosorbent Assay," *J. Biosci. Bioeng.* 92(4): 330-336 (2001).

## **A. Detection of Autoantibodies**

**[0031]** Determining an amount of an autoantibody according to the methods of the invention encompasses both qualitative and quantitative methods of detection. A qualitative method of detection simply determines whether a particular autoantibody is present in a biological sample. A quantitative method of detection determines both whether a particular autoantibody is present in a biological sample, and in what quantity. Both qualitative and quantitative methods of detection are well known in the art. Such methods include Western blotting, immunoblotting, immunofluorescence, enzyme-linked immunosorbent assays ("ELISA"), and other comparable techniques.

### **1. Western Blotting**

**[0032]** Western blotting begins with an electrophoresis step, where proteins of interest are separated on the basis of size and charge by polyacrylamide gel electrophoresis, followed by transfer of the proteins from the gel to a charged membrane. After the transfer is completed, hybridization begins with a blocking step wherein all unreacted binding sites on the membrane are blocked to suppress nonspecific adsorption of antibodies, continues with a primary antibody incubation to bind a target antigen or antigens, and ends with a secondary antibody incubation wherein the antigen-antibody complex formed during the primary incubation is detected by radiographic, chromogenic, or chemiluminescent means. The secondary antibody is generally specific for the constant region ("Fc") common to all immunoglobulin protein isotypes. Secondary antibody may be obtained from a variety of mammalian sources, including, but not limited to, rabbit, sheep, goat, mouse, and rat.

**[0033]** To determine an amount of an autoantibody specific for an autoantigen characteristic of MG by Western blotting, purified or recombinant preparations of one or more of the autoantigens characteristic of MG are first subjected to sodium dodecylsulfate polyacrylamide gel electrophoresis (SDS-PAGE), according to standard methods well-known in the art. *See, e.g.*, SAMBROOK ET AL., 3 MOLECULAR CLONING: A LABORATORY MANUAL A8.40-A8.45 (2001) (describing various reagents and methods for electrophoresis of proteins by SDS-PAGE). The contents of the gel are then transferred to nitrocellulose, nylon, PVDF, or other membrane or filter suitable for fixation and Western blotting by standard methods equally well-known in the art. The transfer may be by immersion, semi-dry blotting, or by other comparable methods known in the art.

**[0034]** Alternatively, purified or recombinant preparations of one or more of the autoantigens may be spotted directly on nitrocellulose, nylon, polyvinylidene fluoride ("PVDF"), or other filter or membrane suitable for fixation and Western

blotting. If purified or recombinant preparations of the desired autoantigens are not available, the autoantigens may be supplied in cell lysates or tissue homogenates prepared with standard methods known in the art.

**[0035]** Next, the filters or membranes are fixed to prevent loss of the target proteins during the several hybridization, washing, and staining steps comprising Western blotting. Fixation may be accomplished by heat, cross-linking with ultraviolet light, or by other comparable methods known in the art. *See, e.g.,* SAMBROOK ET AL., 3 MOLECULAR CLONING: A LABORATORY MANUAL A8.52-A8.55 (describing various reagents and methods for immunoblotting and detection of antigen/antibody complexes).

**[0036]** Non-specific antibody binding sites on the fixed filter or membrane are blocked with buffered solutions (*e.g.*, phosphate-buffered saline ("PBS") or the like) containing a blocking agent such as, for example, 0.5% (w/v) low-fat dry milk or 5% (w/v) bovine serum albumin ("BSA"). After blocking, the filter or membrane then undergoes the primary antibody incubation, during which it is incubated with a biological sample from a subject to be diagnosed for an autoimmune disorder.

**[0037]** After the primary antibody incubation, the filter or membrane is washed, and the presence of autoantibody-autoantigen complexes detected using a secondary antibody labeled with chromogenic, fluorogenic, or chemiluminescent means. Autoantibody-autoantigen complexes are then detected colorimetrically (*e.g.*, with horseradish peroxidase and TMB), or by autoradiography (*e.g.*, alkaline phosphatase). If detected colorimetrically, or by chemiluminescence, the amount of color or fluorescence may be measured using a luminometer, a spectrophotometer, or other similar instruments. If detected autoradiographically, the amount of bound antibody may be measured from the exposed x-ray film using a densitometer, or similar instrument. *See, e.g.,* SAMBROOK ET AL., 3 MOLECULAR CLONING: A LABORATORY MANUAL A8.52-A8.55 (describing various reagents and methods for immunoblotting and detection of antigen/antibody complexes).

**[0038]** Secondary antibodies used in qualitative or quantitative methods of detection, whether polyclonal or monoclonal, may be labeled with a ligand (such as biotin) or a detectable marker (such as a fluorescent group or an enzyme) using conventional techniques. Suitable labels include fluorophores, chromophores, electron-dense reagents (*e.g.*, silver or gold), enzymes, and ligands having specific binding partners. Enzymes such as horseradish peroxidase or alkaline phosphatase are typically detected by their activity. For example, horseradish peroxidase can be detected by its ability to convert tetramethylbenzidine ("TMB") to a blue pigment, quantifiable with a spectrophotometer. Other suitable ligands and/or detectable markers include biotin and avidin or streptavidin, IgG and protein A, and the numerous additional receptor-ligand couples known in the art. Other permutations and possibilities will be readily apparent to those of ordinary skill in the art, and are considered as equivalents within the scope of the instant invention.

**[0039]** In one embodiment of the invention, an amount of at least one autoantibody which specifically binds an autoantigen selected from heat-shock protein 90, alpha isoform (hsp90 $\alpha$ ), and heat-shock protein 90, beta isoform (hsp90 $\beta$ ) is determined by Western blotting.

**[0040]** There are many common variations on the standard Western blotting protocol, including Far Western blots, as well as quantitative blotting methods and numerous others. One of ordinary skill in the art will select the appropriate protocol to use, depending on the autoantibody to be detected, the autoantigen to be used, the source of autoantigen and/or primary autoantibody used in the assay, and any other relevant experimental parameters. These and many other permutations and possibilities will be readily apparent to those of ordinary skill in the art, and are considered as equivalents within the scope of the instant invention.

## **2. Enzyme-Linked Immunosorbent Assay ("ELISA")**

**[0041]** Some ELISA methods are qualitative, used to measure simply the presence or absence of a particular antigen or antibody, while others are quantitative, permitting accurate measurement of antigen or antibody concentration. Because they are easy to perform and readily automated, ELISAs are commonly used to screen large numbers of antibodies or antigens for a particular binding specificity.

**[0042]** An ELISA begins with an antigen adsorption step, where the target antigen or antigens are adsorbed to the wells of a microtiter plate. *See, e.g.,* KIRKEGAARD & PERRY LABORATORIES, INC., TECHNICAL GUIDE FOR ELISA 9-13 (2003), *available at* <http://www.kpl.com/home.cfm#> (last accessed November 3, 2005) (discussing types of microtiter plates for use in ELISAs, as well as methods and reagents for adsorbing proteins to such plates). The most commonly used adsorption buffers for antibodies are 50 mM Carbonate, pH=9.6; 10 mM Tris-HCl, pH=8.5; and 10 mM PBS, pH=7.2. These buffers work well for many proteins. If the target antigen or antigens are not readily adsorbed to the surface of the microtiter plate, plates with surfaces modified or derivatized to permit covalent linkage of proteins to their surface by a variety of chemical means are widely available from commercial suppliers. Time and temperature are the most important factors affecting the amount of protein adsorbed.

**[0043]** Once the wells of a microtiter plate are coated with the desired antigen or antigens, they are washed with a blocking buffer to block non-specific antibody binding and to minimize false positive results. *See, e.g., id.* at 13-14 (discussing methods and reagents for blocking microtiter plates). Commonly used blocking agents are either protein

solutions, such as BSA (typically used at concentrations between 1% and 5% (w/v) in PBS, pH=7.0), non-fat dry milk, casein (the main protein component of non-fat dry milk) or caseinate (a more soluble version of casein, produced by partial digestion with sodium hydroxide), normal serum (typically used at concentrations between 1% and 5% (v/v)), and gelatin (normally used at concentrations between 1% and 5% (w/v)), or non-ionic detergents, such as Tween-20™ and Triton X-100™.

**[0044]** Commonly used washing reagents are selected for their ability to disrupt low affinity interactions between various reaction components that can affect the ability to detect specific antigen-antibody interactions. *See, e.g., id.* at 14-15 (discussing methods and reagents for washing microtiter plates). Wash solutions commonly contain a physiological buffer to prevent denaturation of antigens and their cognate antibodies, and to preserve enzyme activity. Buffers such as PBS, Tris-saline, or imidazole-buffered saline at neutral pH are widely used. Specific buffers are typically selected based on the method of detection to be employed in a particular assay. Wash buffers should also include non-ionic detergents such as Tween-20™, Triton X-100™ or the like, at concentrations of between 0.01 % to 0.05% (v/v), in order to disrupt low-affinity, non-specific interactions between reaction components.

**[0045]** After the blocking step, the wells of the microtiter plate are washed, the adsorbed antigen then undergoes the primary antibody incubation, during which it is incubated with a biological sample from a subject to be diagnosed for an autoimmune disorder. After the primary antibody incubation, the wells are washed, and the presence of autoantibody-autoantigen complexes detected using a secondary antibody labeled with chromogenic (*e.g.*, with horseradish peroxidase and TMB), fluorescent or chemiluminescent (*e.g.*, alkaline phosphatase) means. *See, e.g., id.* at 15-21 (discussing antibody preparation and use, as well as commonly used detection molecules). The amount of color or fluorescence may be measured using a luminometer, a spectrophotometer, or other similar instruments.

**[0046]** There are many common variations on the standard ELISA protocol, including competitive ELISA, sandwich ELISA, and numerous others. One of ordinary skill in the art will select the appropriate protocol to use, depending on the antibody to be detected, the antigen to be used, the source of antigen and/or primary antibody used in the assay, and any other relevant experimental parameters. These and many other permutations and possibilities will be readily apparent to those of ordinary skill in the art, and are considered as equivalents within the scope of the instant invention.

## **B. Clinical Forms of Myasthenia Gravis**

**[0047]** Adult myasthenic patients have been divided into four groups, as classified by Osserman and Genkins. Osserman, K.E. and Genkins, G., "Studies in myasthenia gravis: review of a twenty-year experience in over 1200 patients," *Mt. Sinai J. Med.* 38(6):497-537 (1971); "Myasthenia Gravis," available at [http://www.neuroland.com/nm/myas\\_gra.htm](http://www.neuroland.com/nm/myas_gra.htm) (last accessed December 1, 2005). Approximately 20% of patients are diagnosed with Type I MG, 30% with Type IIA, 20% with Type IIB, 11 % with Type III, and 9% with Type IV. The remaining 10% of cases are typically pediatric in origin. Osserman and Genkins, *supra*, at 502.

**[0048]** In Type I MG, or ocular MG, symptoms are generally confined to ocular muscles of one or both eyes. It is characterized by ptosis and diplopia, but if symptoms do not spread to other muscle groups within two years, this form of MG usually remains non-progressive. Only 55% of patients with this type of MG have autoantibodies specific for AChR. Osserman, K.E. and Genkins, G., *supra* at 501; "Myasthenia Gravis," available at [http://www.neuroland.com/nm/myas\\_gra.htm](http://www.neuroland.com/nm/myas_gra.htm) (last accessed December 1, 2005).

**[0049]** In Type IIa MG, or mild, generalized MG, symptoms tend to develop slowly, sometimes beginning with the ocular muscles, but gradually spread to the skeletal and bulbar musculature. Respiratory muscles are usually not affected. About 80% of patients with MG of this type have autoantibodies specific for AChR. In Type IIb MG, or moderate, generalized MG, symptoms again develop slowly, frequently beginning with the ocular muscles, and gradually spread to skeletal and bulbar musculature. The symptoms are typically more severe than in patients with Type IIA MG, but again, the respiratory muscles are usually spared. Osserman, K.E. and Genkins, G., *supra* at 501-02; "Myasthenia Gravis," available at [http://www.neuroland.com/nm/myas\\_gra.htm](http://www.neuroland.com/nm/myas_gra.htm) (last accessed December 1, 2005).

**[0050]** In Type III MG, or acute, fulminating MG, the disease is moderately severe or acute, with rapid onset of symptoms in skeletal and bulbar muscles, and early involvement of respiratory muscles. Patients with Type III MG frequently develop thymomas. Disease progression is usually complete within six months. Mortality is high in patients with Type III MG. Essentially 100% of patients with MG of this type have autoantibodies specific for AChR. Osserman, K.E. and Genkins, G., *supra* at 502; "Myasthenia Gravis," available at [http://www.neuroland.com/nm/myas\\_gra.htm](http://www.neuroland.com/nm/myas_gra.htm) (last accessed December 1, 2005).

**[0051]** In Type IV MG, or late, severe MG, the disease becomes chronic and severe, typically more than two years after onset of Type I or II-like symptoms. Approximately 89% of patients with this type of MG have autoantibodies specific for AChR. Osserman, K.E. and Genkins, G., *supra* at 502; "Myasthenia Gravis," available at [http://www.neuroland.com/nm/myas\\_gra.htm](http://www.neuroland.com/nm/myas_gra.htm) (last accessed December 1, 2005).

**[0052]** At least two types of thymic pathology are regularly observed in patients with MG. About 50% of patients display some degree of thymic hyperplasia. Approximately 15% of patients eventually develop thymoma. In some cases, MG

may be treated successfully by thymectomy, which results in sustained improvement of symptoms in more than 50% of patients, though it is less effective in older patients. Osserman, K.E. and Genkins, G., *supra* at 515-23.

### **C. Autoantigens Associated With Myasthenia Gravis**

5 [0053] Candidate autoantigens associated with particular autoimmune disorders may be identified by a variety of methods, including, for example, the method described in U.S. Patent Publication No. US-2005/0124076-A1, published on June 9, 2005. According to this method, serum antibodies are purified from serum samples obtained from healthy individuals and from individuals afflicted with an autoimmune disorder of interest, such as MG. The purified immunoglobulins are covalently attached to a chromatographic medium and used to make an affinity column. A protein sample isolated from a subject having MG, for example, taken from an organ, tissue, or cell type involved in the etiology or progression of the disease, is then analyzed.

10 [0054] For example, to identify candidate autoantigens associated with MG, a protein sample from the muscle end-plate of a mature neuromuscular junction, at which the immune-mediated loss of acetylcholine receptors characteristic of MG occurs, might be used. First, the protein sample would be passed over the column containing immunoglobulins isolated from a healthy individual. The unbound proteins are then passed over the column containing immunoglobulins isolated from a patient suffering from MG. All proteins bound to the second column are candidate autoantigens that are then eluted from the column and used in further analysis, such as, for example, mass spectrometry, to identify each isolated protein.

15 [0055] By this method, hsp90 was identified as novel candidate autoantigen in patients with MG. ELISA data demonstrated that patients with early stage MG (defined as stage I or stage IIa) lacking autoantibodies that specifically bind the AChR have autoantibodies that specifically bind hsp60 and hsp90. Thus assaying for the presence of such autoantibodies provides a novel method of diagnosing MG, particularly in patients at early stages of the disease who lack autoantibodies for AChR, the autoantigen most commonly associated with the disease (*see, e.g.*, Figure 5).

20 [0056] Candidate autoantigens may also be identified by other methods, such as screening cDNA expression libraries, or by subtractive phage display. To identify possible autoantigens by these methods, phage display or other protein expression libraries are constructed using mRNA isolated from an organ, tissue, or cell type involved in the etiology or progression of MG (*e.g.*, the muscle end-plate of a mature neuromuscular junction). Such libraries are then screened with immunoglobulins purified from serum samples obtained from individuals suffering from the autoimmune disorder of interest, and the results compared to those obtained using immunoglobulins purified from serum samples obtained from healthy individuals.

25 [0057] There are many additional variations on the standard autoantigen screening protocols, in addition to those presented above. One of ordinary skill in the art will select the appropriate protocol to use, depending on the autoimmune disease being studied, the source of the biological sample to be screened for candidate autoantigens, and any other relevant experimental parameters. These and many other permutations and possibilities will be readily apparent to those of ordinary skill in the art, and are considered as equivalents within the scope of the instant invention.

### **1. Heat-Shock Proteins**

30 [0058] Organisms respond to sudden increases in temperature or other forms of environmental stress by synthesizing a small set of evolutionarily conserved proteins called heat-shock proteins. Both the nature of the heat-shock response and the amino acid sequences of the various heat-shock protein family members are highly-conserved throughout evolution. For example, prokaryotic and eukaryotic heat-shock protein 70 (hsp70) are approximately 50% identical at the amino acid level. Parsell et al., "The function of heat-shock proteins in stress tolerance: degradation and reactivation of damaged proteins," *Ann. Rev. Genet.* 27:437-496 (1993). Individual members of the heat-shock protein family play different roles in protecting organisms from environmental stresses.

#### **a. The 60 kD Heat-Shock Protein**

35 [0059] The 60 kD heat-shock protein ("hsp60") is found primarily in the mitochondrial matrix, where it accounts for approximately 1% of all mitochondrial matrix protein. Parsell et al., *supra* at 465. Human hsp60 (SEQ ID NO:1) shares approximately 60% amino acid sequence identity with its *E. coli* homolog, GroEL. *Id.* Both proteins share a common oligomeric structure, consisting of a single, seven-membered ring, but sometimes observed as a "double doughnut" of two seven-membered rings. *Id.* Hsp60 has an ATPase activity that increases with increasing temperature; the binding of ATP induces a significant conformational change in structure of the oligomer. *Id.*

40 [0060] Unlike some other heat-shock protein family members, hsp60 functions at normal temperatures. *Id.* at 465-66. It is essential for growth at all temperatures *Id.* Hsp60 binds unfolded or denatured proteins with high affinity and promotes their proper folding. *Id.* Denatured substrates begin to acquire elements of secondary structure while bound to hsp60,

though formation of more complex structural elements is inhibited. *Id.*

### **b. The 90 kD Heat-Shock Protein**

5 [0061] The 90 kD heat-shock protein ("hsp90") has been found in the cytoplasm and nucleus of all eukaryotes examined so far, though no organellar species have yet been identified. Parsell et al., *supra* at 470. There are two major cytoplasmic isoforms of hsp90: hsp90 $\alpha$ , the inducible, major form (SEQ ID NO:2); and hsp90 $\beta$ , the constitutively expressed, minor form (SEQ ID NO:3). Sreedhar et al., "Hsp90 isoforms: functions, expression and clinical importance," FEBS Letters 562:11-15 (2004). Biochemical separation of the  $\alpha$  and  $\beta$  isoforms is difficult, and so most experiments investigating the biological role of hsp90 have been performed using a mixture of both. *Id.*

10 [0062] Human hsp90 $\alpha$  shares approximately 40% amino acid sequence identity with its *E. coli* homolog, HtpG. Parsell, *supra*. HtpG is moderately abundant at normal temperatures, and strongly induced by heat, but is not essential: deletion of the gene encoding it has no effect on growth at normal temperatures, and little effect at high temperatures. *Id.* In contrast, hsp90 is one of the most abundant proteins in eukaryotic cells, comprising 1-2% of total cellular protein under non-stress conditions. Deletion of the hsp90 gene in a eukaryote is lethal, suggesting that eukaryotic hsp90 has acquired a novel, essential function not present in its prokaryotic homolog. Sreedhar et al., *supra*; Parsell et al., *supra*.

15 [0063] Hsp90 interacts with many other cellular proteins, including casein kinase II, heme-regulated eIF-2 $\alpha$  kinase, various steroid hormone receptors, including estrogen, progesterone, androgen, glucocorticoid, and dioxin receptors, oncogenic tyrosine kinases of the src family, calmodulin, actin, and tubulin. Parsell et al., *supra* at 471. Experiments suggest that hsp90 plays a variety of roles in cell differentiation and development, ranging from regulation of muscle development to the regulation of early embryonic development and programmed cell death, or apoptosis. Sreedhar et al., *supra*, at 12. In addition, some evidence suggests that hsp90 expression is associated with several types of tumors, including pancreatic and breast, and with leukemia. *Id.* at 13. In addition, elevated transcription of hsp90 $\beta$  is associated with systemic lupus erythematosus, an autoimmune disorder characterized by autoantibodies directed to spliceosomal snRNP, Ro/La ribonuclear particle, histones, and/or native DNA. *Id.*

## **II. Kits for Diagnosing Autoimmune Disorders**

30 [0064] The methods of the invention may be implemented in a diagnostic kit that incorporates one or more of the above techniques to detect autoantibodies that specifically bind at least one autoantigen characteristic of myasthenia gravis. For example, the kit assays an amount of said autoantibody by Western blotting. In one aspect, the kit comprises multiple test strips on which aliquots of each of the two novel autoantigens of the invention, hsp60 and hsp90 $\alpha$ /hsp90 $\beta$ , have been fixed.

35 [0065] The kit further comprises control antibodies specific for each autoantigen, secondary antibodies directly or indirectly conjugated with horseradish peroxidase or any other agent that aids in the visualization of the autoantigen-autoantibody complex, and all necessary tubes, containers or reaction vessels, buffers and reagents required to perform the various blocking, washing, hybridization, and detection steps of a Western blot. The control antibody proteins can be provided in an appropriate buffer or solvent, or as a lyophilized powder. Similarly, the buffers and other reagents may be provided premixed, or in dry form that must be reconstituted by the user of the kit. Such a kit may contain other components, packaging, instructions, or other material to aid in the detection of autoantibodies.

40 [0066] The kit assays an amount of said autoantibody by ELISA. In one aspect, the kit comprises multiple microtiter plates coated with each of the two novel autoantigens of the invention, hsp90 $\alpha$ /hsp90 $\beta$ .

45 [0067] The kit further comprises control antibodies specific for each autoantigen, secondary antibodies directly or indirectly conjugated with horseradish peroxidase or any other agent that aids in the visualization of the autoantigen-autoantibody complex, and all necessary tubes, containers or reaction vessels, buffers and reagents required to perform the various blocking, washing, hybridization, and detection steps of an ELISA. The control antibody proteins can be provided in an appropriate buffer or solvent, or as a lyophilized powder. Similarly, the buffers and other reagents may be provided premixed, or in dry form that must be reconstituted by the user of the kit. Such a kit may contain other components, packaging, instructions, or other material to aid the detection of the autoantibodies.

## **EXAMPLES**

### **Example 1: Identification of autoantibodies by Western blot**

55 [0068] Serum samples were obtained from 209 myasthenia gravis patients at Shin-Kong Hospital, Taiwan, Republic of China. The patients were divided into four groups based on their thymic pathology: thirty-seven patients displayed some degree of thymic atrophy; one hundred twenty-one patients had developed thymoma; forty patients displayed some degree of thymic hyperplasia; and eleven patients had an unknown thymic pathology. Seventy-six patients had

Type I MG; eighty-one had Type IIa; thirty-eight had Type IIb, and fourteen patients had either Type III or Type IV MG. Negative controls used serum samples taken from fifty-four patients at Taichung Veterans General Hospital, all suffering from the unrelated disorder membranous glomerulonephritis (MGN), which is not autoimmune in origin.

**[0069]** HepG2/C3A cell lysates were separated on 10% SDS-PAGE gels loaded with 20  $\mu\text{g}$  per lane of cell extract and 2  $\mu\text{g}$  per lane of hsp60 or hsp90 protein. The samples were electrophoresed at 80V in the stacking gel and at 120V in the resolving gel. Fractionated proteins were transferred to PVDF using a TE70 Series Semi-dry Transfer Unit (Amersham Bioscience), according to the manufacturer's instructions. The transfer buffer was Towbin Buffer (1X is 25 mM Tris-HCl, pH=8.30, 192 mM glycine, and 20% (v/v) methanol).

**[0070]** The PVDF membranes were blocked in 5% (w/v) powdered non-fat milk in PBST buffer (80 mM  $\text{Na}_2\text{HPO}_4$ , 20 mM  $\text{NaH}_2\text{PO}_4$ , 100 mM NaCl, 0.05%-0.1% (v/v) Tween-20) for 1 hour at room temperature, or overnight at 4°C. The blocked membranes were then incubated in 5% (w/v) powdered non-fat milk in PBST buffer containing a 1:1000 dilution of patient serum for one hour at room temperature. Following incubation with the primary antibody, the membranes were washed with PBST. The membranes were then incubated for one hour at room temperature with the secondary antibody, an anti-human IgG labeled with horseradish peroxidase diluted 1:5000 in 5% (w/v) powdered non-fat milk in PBST buffer. The secondary antibody was horseradish peroxidase-conjugated mouse anti-human IgG specific for Fc $\gamma$  (Jackson ImmunoResearch Laboratories, Inc.), purchased from Biosource International, of Camarillo, CA, USA. Autoantibody binding to immobilized antigens was detected by enzyme-linked chemiluminescence using the ECL blotting substrate of Amersham Pharmacia Biotech, according to the manufacturer's instructions.

**[0071]** The results of these experiments are shown in Figures 1 and 2. Samples were taken from female patients with thymic hyperplasia (HF), male patients with thymic hyperplasia (HM), female patients with thymoma (TF), and male patients with thymoma (TM). Samples positive for autoantibodies specific for hsp60 or hsp90 are indicated by a dot. These experiments demonstrate that many patients at later stages of MG have autoantibodies specific for hsp60 and hsp90.

#### **Example 2: Identification of autoantibodies by enzyme-linked immunosorbent assay (ELISA)**

**[0072]** Aliquots of the serum samples described in Example 1 above, were further evaluated by ELISA. Microwell ELISA plates (Corning Life Sciences, New York, NY, USA) were coated overnight at 4°C with 0.2  $\mu\text{g}$  of recombinant human hsp60 (purified from *E. coli*) or hsp90 (purified from *S. cerevisiae*) in 0.1 M  $\text{NaHCO}_3$ , pH 8.6. Both recombinant heat-shock proteins were purchased from Sigma-Aldrich Co. The coated plates were then washed with PBS three times for one minute each, and then incubated with 200  $\mu\text{l}$  of blocking solution (5 mg/ml bovine serum albumin ("BSA") in PBST) at 37°C for 1 hour. Each well was washed with PBST six times for one minute each. Next, the plates were incubated with patient serum diluted from 1:100 to 1:800 in blocking solution for 1 hour and 30 minutes at 37°C. After incubation with the primary antibody, the plates were again washed six times for one minute each with blocking solution, and then incubated with the secondary antibody, horseradish peroxidase-conjugated mouse anti-human IgG specific for Fc $\gamma$  (Jackson ImmunoResearch Laboratories, Inc.) diluted 1:10,000 in PBST + 5 mg/ml BSA, at room temperature for 1 hour. The plates were again washed six times with PBST + 5 mg/ml BSA at room temperature, and developed by the addition of 100  $\mu\text{l}$  of 3, 3', 5, 5'-tetramethylbenzidine ("TMB") solution, prepared in 50 mM citrate phosphate. After the addition of the TMB solution, the plates were incubated for thirty minutes at room temperature, and then absorbance was measured at 450 nm with an MRX Microplate Reader (Dynex Technologies) according to the manufacturer's instructions.

**[0073]** The results of these experiments are shown in Figures 3 (hsp60) and 4 (hsp90), which compare ELISA results from the control group to those from the MG group, which included patients at all stages of the disease. The average absorbance at 450 nm is indicated by a horizontal line. These experiments did not distinguish between the alpha and beta isoforms of hsp90. The data shows that patients at all stages of MG have autoantibodies specific for hsp60 and hsp90.

**[0074]** Table 1 shows that MG may be accurately diagnosed in patients with Type I or IIa MG that lack AChR autoantibodies by assaying for the presence of autoantibodies that specifically bind hsp60 or hsp90. Autoantibodies specific for hsp60 and hsp90 were assayed by ELISA in forty patients: twenty-four diagnosed with Type I MG and sixteen diagnosed with Type IIa MG. Assays were performed with the protocol described in Example 2. Absorbance readings were converted to protein concentrations by standard methods. The cutoff points were: (1)  $\text{OD}_{450} = 0.2$  (AChR); (2)  $\text{OD}_{450} = 0.375$  (hsp60); and (3)  $\text{OD}_{450} = 0.232$  (hsp90). All forty patients lacked detectable AChR autoantibodies (columns labeled "AChR"). Twenty-eight patients had measurable levels of hsp60 autoantibodies (18 of 24 with Type I; 10 of 16 with Type IIa; columns labeled "Hsp60"). Thirty-three patients had measurable levels of hsp90 autoantibodies (21 of 24 with type I; 12 of 16 with type IIa; columns labeled "Hsp90")

EP 1 806 582 B1

Table 1.

Patient No. & MG Stage	AchR	AchR	Hsp60	Hsp60	Hsp90	Hsp90
I-1	<0.2	-	0.539	+	0.609	+
I-2	<0.2	-	0.593	+	0.293	+
I-3	<0.2	-	0.328	-	0.467	+
I-4	<0.2	-	0.716	+	0.498	+
I-5	<0.2	-	1.063	+	1.088	+
I-6	<0.2	-	0.907	+	0.898	+
I-7	<0.2	-	0.484	+	0.376	+
I-8	<0.2	-	0.724	+	0.644	+
I-9	<0.2	-	0.608	+	0.539	+
I-10	<0.2	-	0.61	+	0.495	+
I-11	<0.2	-	0.96	+	1.156	+
I-12	<0.2	-	0.412	+	0.365	+
I-13	<0.2	-	0.771	+	0.678	+
I-14	<0.2	-	0.769	+	0.743	+
I-15	<0.2	-	0.321	-	0.196	-
I-16	<0.2	-	0.623	+	0.632	+
I-17	<0.2	-	0.197	-	0.246	+
I-18	<0.2	-	0.309	-	0.236	+
I-19	<0.2	-	0.476	+	0.398	+
I-20	<0.2	-	0.708	+	0.175	-
I-21	<0.2	-	0.293	-	0.344	+
I-22	<0.2	-	0.711	+	0.708	+
I-23	<0.2	-	0.251	-	0.217	-
I-24	<0.2	-	0.535	+	0.34	+
Ila-1	<0.2	-	0.811	+	2.626	+
Ila-2	<0.2	-	0.542	+	0.497	+
Ila-3	<0.2	-	0.306	-	0.306	+
Ila-4	<0.2	-	0.498	+	0.324	+
Ila-5	<0.2	-	0.406	+	0.261	+
Ila-6	<0.2	-	0.169	-	0.162	-
Ila-7	<0.2	-	0.734	+	0.75	+
Ila-8	<0.2	-	0.313	-	0.226	-
Ila-9	<0.2	-	0.776	+	1.199	+
Ila-10	<0.2	-	0.214	-	0.106	-
Ila-11	<0.2	-	1.201	+	0.918	+
Ila-12	<0.2	-	0.193	-	0.138	-
Ila-13	<0.2	-	0.351	-	0.258	+
Ila-14	<0.2	-	0.552	+	0.8	+

(continued)

Patient No. & MG Stage	AChR	AChR	Hsp60	Hsp60	Hsp90	Hsp90
Ila-15	<0.2	-	0.498	+	0.642	+
Ila-16	<0.2	-	1.051	+	0.783	+

**[0075]** Figure 5 shows that the methods of the invention provide for "sensitive" and "specific" diagnosis of MG. "Sensitivity" measures the percentage of patients diagnosed with MG who tested positive for autoantibodies that specifically bind either hsp60 ("Protein\_1") or hsp90 ("Protein\_2"). HENNEKENS ET AL., EPIDEMIOLOGY IN MEDICINE 331-335 (1ST ED. 1987). "Specificity" measures the percentage of patients who did not have MG who tested negative for either hsp60 ("Protein\_1") or hsp90 ("Protein\_2") autoantibodies. *Id.* This experiment demonstrates that, of patients diagnosed with ocular (Type I) or mild, generalized (Type Ila) MG lacking autoantibodies that specifically bind the AChR, 76% have autoantibodies that specifically bind hsp60 and 86% have autoantibodies that specifically bind hsp90. In addition, 91 % of patients without MG tested negative for hsp60 autoantibodies, and 86% of patients without MG tested negative for hsp90 autoantibodies.

**[0076]** Table 2 shows that assaying for autoantibodies that specifically bind hsp60, hsp90, hsp60 + hsp90, AChR + hsp60, or AChR + hsp90, provides a more sensitive method of identifying patients with stage I (ocular) MG than by assaying for autoantibodies specific for AChR alone. The data summarized in Table 2 was obtained from seventy-three patients with stage I MG using the ELISA assay and cutoff values as discussed above for Table 1.

Table 2.

Autoantigen(s)	Sensitivity for patients with stage IMG (%)
AChR	67.1
Hsp60	78.1
Hsp90	86.3
Hsp60 + Hsp 90	98.6
AChR + Hsp60	91.7
AChR + Hsp90	95.9

**[0077]** Thus assaying for the presence of hsp60 and/or hsp90 autoantibodies provides a novel, sensitive, and specific method of diagnosing MG, particularly in patients at early stages of the disease lacking autoantibodies for AChR, the clinical marker most commonly associated with the disease.

**[0078]** The specification is most thoroughly understood in light of the teachings of the references cited within the specification. The embodiments within the specification provide an illustration of embodiments of the invention and should not be construed to limit the scope of the invention. The skilled artisan readily recognizes that many other embodiments are encompassed by the invention. To the extent that any general dictionary or technical dictionary contradicts or is inconsistent with this specification, the specification will supersede any such material. The citation of any references herein is not an admission that such references are prior art to the present invention.

**[0079]** Unless otherwise indicated, all numbers expressing quantities of ingredients, reaction conditions, and so forth used in the specification, including claims, are to be understood as being modified in all instances by the term "about." Accordingly, unless otherwise indicated to the contrary, the numerical parameters are approximations and may vary depending upon the desired properties sought to be obtained by the present invention. At the very least, and not as an attempt to limit the application of the doctrine of equivalents to the scope of the claims, each numerical parameter should be construed in light of the number of significant digits and ordinary rounding approaches.

**[0080]** Unless otherwise indicated, the term "at least" preceding a series of elements is to be understood to refer to every element in the series. Those skilled in the art will recognize, or be able to ascertain using no more than routine experimentation, many equivalents to the specific embodiments of the invention described herein. Such equivalents are intended to be encompassed by the following claims.

## REFERENCES

**[0081]** COTRAN ET AL., PATHOLOGIC BASIS OF DISEASE 211-212, 1289 (W.B. Saunders Co., Philadelphia, PA; 6th ed. 1999).

## EP 1 806 582 B1

- [0082] HENNEKENS ET AL., EPIDEMIOLOGY IN MEDICINE 331-335 (1 ST ED. 1987).
- [0083] Hoch et al., "Auto-antibodies to the receptor tyrosine kinase MsSK in patients with myasthenia gravis without acetylcholine receptor antibodies," *Nature Med.* 7(3):365-368 (2001).
- 5 [0084] Howard, "Myasthenia gravis: a summary," available at <http://www.myasthenia.org/information/summary.htm> (last accessed October 23, 2005).
- [0085] KIRKEGAARD & PERRY LABORATORIES, INC., TECHNICAL GUIDE FOR ELISA 9-21 (2003), available at <http://www.kpl.com/home.cfm#> (last accessed November 3, 2005).
- [0086] Luo et al., "Regulation of AChR clustering by dishevelled interacting with MuSK and PAK1," *Neuron* 35:489-505 (2002).
- 10 [0087] Morgan et al., "The Matrix Effects on Kinetic Rate Constants of Antibody-Antigen Interactions Reflect Solvent Viscosity," *J. Immunol. Meth.* 217:51-60 (1998).
- [0088] "Myasthenia Gravis," available at [http://www.neuroland.com/nm/myas\\_gra.htm](http://www.neuroland.com/nm/myas_gra.htm) (last accessed December 1, 2005).
- 15 [0089] Osserman, K.E. and Genkins, G., "Studies in myasthenia gravis: review of a twenty-year experience in over 1200 patients," *Mt. Sinai J. Med.* 38(6):497-537 (1971).
- [0090] Parsell et al., "The function of heat-shock proteins in stress tolerance: degradation and reactivation of damaged proteins," *Ann Rev. Genet.* 27:437-496 (1993).
- [0091] Ragheb et al., "Myasthenia gravis patients, but not healthy subjects, recognize epitopes that are unique to the  $\epsilon$ -subunit of the acetylcholine receptor," *J. Neuroimmunol.* 159:137-145 (2005).
- 20 [0092] Richman et al., "Treatment of autoimmune myasthenia gravis," *Neurol.* 61:1652-1661 (2003).
- [0093] Robinson et al., "Autoantigen microarrays for multiplex characterization of autoantibody responses," *Nature Med.* 8(3):295-301 (2002).
- [0094] Roxanis et al., "Thymic myoid cells and germinal center formation in myasthenia gravis; possible roles in pathogenesis," *J. Neuroimmunol.* 125:185-197 (2002).
- 25 [0095] SAMBROOK ET AL., 3 MOLECULAR CLONING: A LABORATORY MANUAL A8.40-A8.45 and A8.52-A8.55 (Cold Spring Harbor Laboratories Press, Cold Spring Harbor, NY, 3d ed. 2001).
- [0096] Scofield, "Autoantibodies as predictors of disease," *Lancet* 363:1544-1546 (2004).
- [0097] Somnier, "Increasing incidence of late-onset anti-AChR antibody-seropositive myasthenia gravis," *Neurol.* 65: 928-930 (2005).
- 30 [0098] Sreedhar et al., "Hsp90 isoforms: functions, expression and clinical importance," *FEBS Letters* 562:11-15 (2004).
- [0099] Zhuang et al., "Measurement of Association Rate Constant of Antibody-Antigen Interaction in Solution Based on Enzyme-Linked Immunosorbent Assay," *J. Biosci. Bioeng.* 92(4):330-336 (2001)

### 35 SEQUENCE LISTING

#### [0100]

- 40 <110> Industrial Technology Research Institute  
Tseng, Tzu-Ling  
Liao, Pei-Hsiu  
Cheng, Ping-Fu  
Tsai, Shih-Feng  
Chiu, Hou-Chang
- 45 <120> Method of Diagnosing Myasthenia Gravis and Kits Therefor
- <130> 09708.0005-00000
- 50 <160> 3
- <170> PatentIn version 3.3
- 55 <210> 1  
<211> 573  
<212> PRT  
<213> Homo sapiens

EP 1 806 582 B1

<400> 1

5 Met Leu Arg Leu Pro Thr Val Phe Arg Gln Met Arg Pro Val Ser Arg  
 1 5 10 15

10 Val Leu Ala Pro His Leu Thr Arg Ala Tyr Ala Lys Asp Val Lys Phe  
 20 25 30

15 Gly Ala Asp Ala Arg Ala Leu Met Leu Gln Gly Val Asp Leu Leu Ala  
 35 40 45

20 Asp Ala Val Ala Val Thr Met Gly Pro Lys Gly Arg Thr Val Ile Ile  
 50 55 60

25 Glu Gln Ser Trp Gly Ser Pro Lys Val Thr Lys Asp Gly Val Thr Val  
 65 70 75 80

30 Ala Lys Ser Ile Asp Leu Lys Asp Lys Tyr Lys Asn Ile Gly Ala Lys  
 85 90 95

35

40

45

50

55

EP 1 806 582 B1

5 Leu Val Gln Asp Val Ala Asn Asn Thr Asn Glu Glu Ala Gly Asp Gly  
 100 105 110  
 Thr Thr Thr Ala Thr Val Leu Ala Arg Ser Ile Ala Lys Glu Gly Phe  
 115 120 125  
 10 Glu Lys Ile Ser Lys Gly Ala Asn Pro Val Glu Ile Arg Arg Gly Val  
 130 135 140  
 15 Met Leu Ala Val Asp Ala Val Ile Ala Glu Leu Lys Lys Gln Ser Lys  
 145 150 155 160  
 20 Pro Val Thr Thr Pro Glu Glu Ile Ala Gln Val Ala Thr Ile Ser Ala  
 165 170 175  
 25 Asn Gly Asp Lys Glu Ile Gly Asn Ile Ile Ser Asp Ala Met Lys Lys  
 180 185 190  
 Val Gly Arg Lys Gly Val Ile Thr Val Lys Asp Gly Lys Thr Leu Asn  
 195 200 205  
 30 Asp Glu Leu Glu Ile Ile Glu Gly Met Lys Phe Asp Arg Gly Tyr Ile  
 210 215 220  
 35 Ser Pro Tyr Phe Ile Asn Thr Ser Lys Gly Gln Lys Cys Glu Phe Gln  
 225 230 235 240  
 40 Asp Ala Tyr Val Leu Leu Ser Glu Lys Lys Ile Ser Ser Ile Gln Ser  
 245 250 255  
 45 Ile Val Pro Ala Leu Glu Ile Ala Asn Ala His Arg Lys Pro Leu Val  
 260 265 270  
 50 Ile Ile Ala Glu Asp Val Asp Gly Glu Ala Leu Ser Thr Leu Val Leu  
 275 280 285  
 55

EP 1 806 582 B1

5 Asn Arg Leu Lys Val Gly Leu Gln Val Val Ala Val Lys Ala Pro Gly  
 290 295 300

10 Phe Gly Asp Asn Arg Lys Asn Gln Leu Lys Asp Met Ala Ile Ala Thr  
 305 310 315 320

15 Gly Gly Ala Val Phe Gly Glu Glu Gly Leu Thr Leu Asn Leu Glu Asp  
 325 330 335

20 Val Gln Pro His Asp Leu Gly Lys Val Gly Glu Val Ile Val Thr Lys  
 340 345 350

25 Asp Asp Ala Met Leu Leu Lys Gly Lys Gly Asp Lys Ala Gln Ile Glu  
 355 360 365

30 Lys Arg Ile Gln Glu Ile Ile Glu Gln Leu Asp Val Thr Thr Ser Glu  
 370 375 380

35 Tyr Glu Lys Glu Lys Leu Asn Glu Arg Leu Ala Lys Leu Ser Asp Gly  
 385 390 395 400

40 Val Ala Val Leu Lys Val Gly Gly Thr Ser Asp Val Glu Val Asn Glu  
 405 410 415

45 Lys Lys Asp Arg Val Thr Asp Ala Leu Asn Ala Thr Arg Ala Ala Val  
 420 425 430

50 Glu Glu Gly Ile Val Leu Gly Gly Gly Cys Ala Leu Leu Arg Cys Ile  
 435 440 445

55 Pro Ala Leu Asp Ser Leu Thr Pro Ala Asn Glu Asp Gln Lys Ile Gly  
 450 455 460

Ile Glu Ile Ile Lys Arg Thr Leu Lys Ile Pro Ala Met Thr Ile Ala

EP 1 806 582 B1

	465				470					475					480	
5	Lys	Asn	Ala	Gly	Val	Glu	Gly	Ser	Leu	Ile	Val	Glu	Lys	Ile	Met	Gln
					485					490					495	
10	Ser	Ser	Ser	Glu	Val	Gly	Tyr	Asp	Ala	Met	Ala	Gly	Asp	Phe	Val	Asn
				500					505					510		
15	Met	Val	Glu	Lys	Gly	Ile	Ile	Asp	Pro	Thr	Lys	Val	Val	Arg	Thr	Ala
			515					520					525			
20	Leu	Leu	Asp	Ala	Ala	Gly	Val	Ala	Ser	Leu	Leu	Thr	Thr	Ala	Glu	Val
		530					535					540				
25	Val	Val	Thr	Glu	Ile	Pro	Lys	Glu	Glu	Lys	Asp	Pro	Gly	Met	Gly	Ala
	545					550					555					560
30	Met	Gly	Gly	Met	Gly	Gly	Gly	Met	Gly	Gly	Gly	Met	Phe			
					565					570						
35	<210>	2														
	<211>	732														
	<212>	PRT														
	<213>	Homo sapiens														
40	<400>	2														
45	Met	Pro	Glu	Glu	Thr	Gln	Thr	Gln	Asp	Gln	Pro	Met	Glu	Glu	Glu	Glu
	1				5					10					15	
50	Val	Glu	Thr	Phe	Ala	Phe	Gln	Ala	Glu	Ile	Ala	Gln	Leu	Met	Ser	Leu
				20					25					30		
55	Ile	Ile	Asn	Thr	Phe	Tyr	Ser	Asn	Lys	Glu	Ile	Phe	Leu	Arg	Glu	Leu
			35					40					45			
60	Ile	Ser	Asn	Ser	Ser	Asp	Ala	Leu	Asp	Lys	Ile	Arg	Tyr	Glu	Ser	Leu

EP 1 806 582 B1

	50					55						60				
5	Thr	Asp	Pro	Ser	Lys	Leu	Asp	Ser	Gly	Lys	Glu	Leu	His	Ile	Asn	Leu
	65					70					75				80	
10	Ile	Pro	Asn	Lys	Gln	Asp	Arg	Thr	Leu	Thr	Ile	Val	Asp	Thr	Gly	Ile
					85					90					95	
15	Gly	Met	Thr	Lys	Ala	Asp	Leu	Ile	Asn	Asn	Leu	Gly	Thr	Ile	Ala	Lys
				100					105					110		
20	Ser	Gly	Thr	Lys	Ala	Phe	Met	Glu	Ala	Leu	Gln	Ala	Gly	Ala	Asp	Ile
			115					120					125			
25	Ser	Met	Ile	Gly	Gln	Phe	Gly	Val	Gly	Phe	Tyr	Ser	Ala	Tyr	Leu	Val
	130						135						140			
30	Ala	Glu	Lys	Val	Thr	Val	Ile	Thr	Lys	His	Asn	Asp	Asp	Glu	Gln	Tyr
	145					150					155					160
35	Ala	Trp	Glu	Ser	Ser	Ala	Gly	Gly	Ser	Phe	Thr	Val	Arg	Thr	Asp	Thr
					165					170					175	
40	Gly	Glu	Pro	Met	Gly	Arg	Gly	Thr	Lys	Val	Ile	Leu	His	Leu	Lys	Glu
				180					185					190		
45	Asp	Gln	Thr	Glu	Tyr	Leu	Glu	Glu	Arg	Arg	Ile	Lys	Glu	Ile	Val	Lys
			195					200					205			
50	Lys	His	Ser	Gln	Phe	Ile	Gly	Tyr	Pro	Ile	Thr	Leu	Phe	Val	Glu	Lys
	210						215					220				
55	Glu	Arg	Asp	Lys	Glu	Val	Ser	Asp	Asp	Glu	Ala	Glu	Glu	Lys	Glu	Asp
	225					230					235					240

EP 1 806 582 B1

Lys Glu Glu Glu Lys Glu Lys Glu Glu Lys Glu Ser Glu Asp Lys Pro  
 245 250 255  
 5  
 Glu Ile Glu Asp Val Gly Ser Asp Glu Glu Glu Glu Lys Lys Asp Gly  
 260 265 270  
 10  
 Asp Lys Lys Lys Lys Lys Lys Ile Lys Glu Lys Tyr Ile Asp Gln Glu  
 275 280 285  
 15  
 Glu Leu Asn Lys Thr Lys Pro Ile Trp Thr Arg Asn Pro Asp Asp Ile  
 290 295 300  
 20  
 Thr Asn Glu Glu Tyr Gly Glu Phe Tyr Lys Ser Leu Thr Asn Asp Trp  
 305 310 315 320  
 25  
 Glu Asp His Leu Ala Val Lys His Phe Ser Val Glu Gly Gln Leu Glu  
 325 330 335  
 30  
 Phe Arg Ala Leu Leu Phe Val Pro Arg Arg Ala Pro Phe Asp Leu Phe  
 340 345 350  
 35  
 Glu Asn Arg Lys Lys Lys Asn Asn Ile Lys Leu Tyr Val Arg Arg Val  
 355 360 365  
 40  
 Phe Ile Met Asp Asn Cys Glu Glu Leu Ile Pro Glu Tyr Leu Asn Phe  
 370 375 380  
 45  
 Ile Arg Gly Val Val Asp Ser Glu Asp Leu Pro Leu Asn Ile Ser Arg  
 385 390 395 400  
 50  
 Glu Met Leu Gln Gln Ser Lys Ile Leu Lys Val Ile Arg Lys Asn Leu  
 405 410 415  
 55  
 Val Lys Lys Cys Leu Glu Leu Phe Thr Glu Leu Ala Glu Asp Lys Glu  
 420 425 430

EP 1 806 582 B1

5 Asn Tyr Lys Lys Phe Tyr Glu Gln Phe Ser Lys Asn Ile Lys Leu Gly  
435 440 445

10 Ile His Glu Asp Ser Gln Asn Arg Lys Lys Leu Ser Glu Leu Leu Arg  
450 455 460

15 Tyr Tyr Thr Ser Ala Ser Gly Asp Glu Met Val Ser Leu Lys Asp Tyr  
465 470 475 480

20 Cys Thr Arg Met Lys Glu Asn Gln Lys His Ile Tyr Tyr Ile Thr Gly  
485 490 495

25 Glu Thr Lys Asp Gln Val Ala Asn Ser Ala Phe Val Glu Arg Leu Arg  
500 505 510

30 Lys His Gly Leu Glu Val Ile Tyr Met Ile Glu Pro Ile Asp Glu Tyr  
515 520 525

35 Cys Val Gln Gln Leu Lys Glu Phe Glu Gly Lys Thr Leu Val Ser Val  
530 535 540

40 Thr Lys Glu Gly Leu Glu Leu Pro Glu Asp Glu Glu Glu Lys Lys Lys  
545 550 555 560

45 Gln Glu Glu Lys Lys Thr Lys Phe Glu Asn Leu Cys Lys Ile Met Lys  
565 570 575

50 Asp Ile Leu Glu Lys Lys Val Glu Lys Val Val Val Ser Asn Arg Leu  
580 585 590

55 Val Thr Ser Pro Cys Cys Ile Val Thr Ser Thr Tyr Gly Trp Thr Ala  
595 600 605

Asn Met Glu Arg Ile Met Lys Ala Gln Ala Leu Arg Asp Asn Ser Thr  
610 615 620

EP 1 806 582 B1

5 Met Gly Tyr Met Ala Ala Lys Lys His Leu Glu Ile Asn Pro Asp His  
625 630 635 640

10 Ser Ile Ile Glu Thr Leu Arg Gln Lys Ala Glu Ala Asp Lys Asn Asp  
645 650 655

15 Lys Ser Val Lys Asp Leu Val Ile Leu Leu Tyr Glu Thr Ala Leu Leu  
660 665 670

Ser Ser Gly Phe Ser Leu Glu Asp Pro Gln Thr His Ala Asn Arg Ile  
675 680 685

20 Tyr Arg Met Ile Lys Leu Gly Leu Gly Ile Asp Glu Asp Asp Pro Thr  
690 695 700

25 Ala Asp Asp Thr Ser Ala Ala Val Thr Glu Glu Met Pro Pro Leu Glu  
705 710 715 720

30 Gly Asp Asp Asp Thr Ser Arg Met Glu Glu Val Asp  
725 730

35 <210> 3  
<211> 724  
<212> PRT  
<213> Homo sapiens

<400> 3

40 Met Pro Glu Glu Val His His Gly Glu Glu Glu Val Glu Thr Phe Ala  
1 5 10 15

45 Phe Gln Ala Glu Ile Ala Gln Leu Met Ser Leu Ile Ile Asn Thr Phe  
20 25 30

50 Tyr Ser Asn Lys Glu Ile Phe Leu Arg Glu Leu Ile Ser Asn Ala Ser  
35 40 45

55

EP 1 806 582 B1

Asp Ala Leu Asp Lys Ile Arg Tyr Glu Ser Leu Thr Asp Pro Ser Lys  
 50 55 60  
 5  
 Leu Asp Ser Gly Lys Glu Leu Lys Ile Asp Ile Ile Pro Asn Pro Gln  
 65 70 75 80  
 10  
 Glu Arg Thr Leu Thr Leu Val Asp Thr Gly Ile Gly Met Thr Lys Ala  
 85 90 95  
 15  
 Asp Leu Ile Asn Asn Leu Gly Thr Ile Ala Lys Ser Gly Thr Lys Ala  
 100 105 110  
 20  
 Phe Met Glu Ala Leu Gln Ala Gly Ala Asp Ile Ser Met Ile Gly Gln  
 115 120 125  
 Phe Gly Val Gly Phe Tyr Ser Ala Tyr Leu Val Ala Glu Lys Val Val  
 130 135 140  
 25  
 Val Ile Thr Lys His Asn Asp Asp Glu Gln Tyr Ala Trp Glu Ser Ser  
 145 150 155 160  
 30  
 Ala Gly Gly Ser Phe Thr Val Arg Ala Asp His Gly Glu Pro Ile Gly  
 165 170 175  
 35  
 Arg Gly Thr Lys Val Ile Leu His Leu Lys Glu Asp Gln Thr Glu Tyr  
 180 185 190  
 40  
 Leu Glu Glu Arg Arg Val Lys Glu Val Val Lys Lys His Ser Gln Phe  
 195 200 205  
 Ile Gly Tyr Pro Ile Thr Leu Tyr Leu Glu Lys Glu Arg Glu Lys Glu  
 210 215 220  
 45  
 Ile Ser Asp Asp Glu Ala Glu Glu Glu Lys Gly Glu Lys Glu Glu Glu  
 50  
 55



EP 1 806 582 B1

5 Ser Glu Leu Ala Glu Asp Lys Glu Asn Tyr Lys Lys Phe Tyr Glu Ala  
420 425 430

Phe Ser Lys Asn Leu Lys Leu Gly Ile His Glu Asp Ser Thr Asn Arg  
435 440 445

10 Arg Arg Leu Ser Glu Leu Leu Arg Tyr His Thr Ser Gln Ser Gly Asp  
450 455 460

15 Glu Met Thr Ser Leu Ser Glu Tyr Val Ser Arg Met Lys Glu Thr Gln  
465 470 475 480

20 Lys Ser Ile Tyr Tyr Ile Thr Gly Glu Ser Lys Glu Gln Val Ala Asn  
485 490 495

25 Ser Ala Phe Val Glu Arg Val Arg Lys Arg Gly Phe Glu Val Val Tyr  
500 505 510

Met Thr Glu Pro Ile Asp Glu Tyr Cys Val Gln Gln Leu Lys Glu Phe  
515 520 525

30 Asp Gly Lys Ser Leu Val Ser Val Thr Lys Glu Gly Leu Glu Leu Pro  
530 535 540

35 Glu Asp Glu Glu Glu Lys Lys Lys Met Glu Glu Ser Lys Ala Lys Phe  
545 550 555 560

40 Glu Asn Leu Cys Lys Leu Met Lys Glu Ile Leu Asp Lys Lys Val Glu  
565 570 575

45 Lys Val Thr Ile Ser Asn Arg Leu Val Ser Ser Pro Cys Cys Ile Val  
580 585 590

Thr Ser Thr Tyr Gly Trp Thr Ala Asn Met Glu Arg Ile Met Lys Ala  
595 600 605

50

55

5 Gln Ala Leu Arg Asp Asn Ser Thr Met Gly Tyr Met Met Ala Lys Lys  
610 615 620

10 His Leu Glu Ile Asn Pro Asp His Pro Ile Val Glu Thr Leu Arg Gln  
625 630 635 640

15 Lys Ala Glu Ala Asp Lys Asn Asp Lys Ala Val Lys Asp Leu Val Val  
645 650 655

20 Leu Leu Phe Glu Thr Ala Leu Leu Ser Ser Gly Phe Ser Leu Glu Asp  
660 665 670

25 Pro Gln Thr His Ser Asn Arg Ile Tyr Arg Met Ile Lys Leu Gly Leu  
675 680 685

30 Gly Ile Asp Glu Asp Glu Val Ala Ala Glu Glu Pro Asn Ala Ala Val  
690 695 700

35 Pro Asp Glu Ile Pro Pro Leu Glu Gly Asp Glu Asp Ala Ser Arg Met  
705 710 715 720

Glu Glu Val Asp

**Claims**

- 40 1. A method of diagnosing myasthenia gravis in a subject comprising:
- (a) determining an amount of at least one autoantibody in a biological sample from the subject, wherein said autoantibody specifically binds at least one protein selected from heat-shock protein 90, alpha isoform (hsp90 $\alpha$ ) (SEQ ID NO:2), and heat-shock protein 90, beta isoform (hsp90 $\beta$ ) (SEQ ID NO:3);
- 45 wherein an amount determined in (a) above a cutoff value for autoantibodies specific for hsp90 indicates that the subject has myasthenia gravis, the cutoff value being determined from negative controls not suffering from myasthenia gravis.
- 50 2. The method of claim 1, wherein the biological sample is selected from serum, blood, plasma, saliva, amniotic fluid, synovial fluid, lacrimal fluid, milk, lymph, urine, and sweat.
- 55 3. The method of claim 1 or claim 2, wherein the at least one autoantibody is detected by one or more methods selected from:
- (a) Western blot; and  
(b) enzyme-linked immunosorbent assay (ELISA).

4. The method of any one of claims 1-3, wherein the subject is a mammal.

5. The method of claim 4, wherein the mammal is a human.

5 6. The method of any one of claims 1-5, wherein the subject has thymic hyperplasia or thymoma.

7. The method of any one of claims 1-5, further comprising:

10 (b) determining an amount of at least one autoantibody in the biological sample, wherein said autoantibody specifically binds the nicotinic acetylcholine receptor (AChR); and  
(c) comparing the amount determined in (b) to a cutoff value for autoantibodies specific for AChR determined from negative controls not suffering from myasthenia gravis.

15 8. The method of any one of claims 1-5 and 7, wherein the biological sample lacks detectable autoantibodies specific for AChR and wherein the presence, in the biological sample, of at least one autoantibody that specifically binds to at least one of hsp90 $\alpha$  and hsp90 $\beta$ , in an amount above the cutoff value for autoantibodies specific for hsp90 indicates that the subject has Type I or Type IIa myasthenia gravis.

20 9. The method of any one of claims 1-5, further comprising:

(b) determining an amount of at least one autoantibody in the biological sample, wherein said autoantibody specifically binds the heat shock protein 60 (hsp60) (SEQ ID NO:1),

25 wherein an amount determined in (b) above a cutoff value for autoantibodies specific for hsp60 indicates that the subject has myasthenia gravis, the cutoff value being determined from negative controls not suffering from myasthenia gravis.

30 10. The method of claim 7 or claim 9, wherein in (b) the at least one autoantibody is detected by one or more methods selected:

(a) Western blot; and  
(b) enzyme-linked immunosorbent assay (ELISA).

35 **Patentansprüche**

1. Verfahren zur Diagnose von Myasthenia gravis bei einem Subjekt, wobei man:

40 (a) eine Menge an wenigstens einem Autoantikörper in einer biologischen Probe aus dem Subjekt bestimmt, wobei der Autoantikörper spezifisch an wenigstens ein Protein, ausgewählt aus Hitzeschockprotein 90, Alpha-Isoform (hsp90 $\alpha$ ) (SEQ ID NO:2), und Hitzeschockprotein 90, Beta-Isoform (hsp90 $\beta$ ) (SEQ ID NO:3), bindet,

45 wobei eine in (a) bestimmte Menge oberhalb einer Ausschlussgrenze für hsp90 spezifische Autoantikörper anzeigt, dass das Subjekt Myasthenia gravis hat, wobei die Ausschlussgrenze anhand nicht an Myasthenia gravis leidender Negativkontrollen bestimmt wird.

2. Verfahren nach Anspruch 1, wobei die biologische Probe ausgewählt ist aus Serum, Blut, Plasma, Speichel, Fruchtwasser, Synovia, Tränenflüssigkeit, Milch, Lymphe, Urin und Schweiß.

50 3. Verfahren nach Anspruch 1 oder Anspruch 2, wobei der wenigstens eine Autoantikörper mit einem oder mehreren Verfahren, ausgewählt aus:

(a) Western-Blot; und  
(b) ELISA (Enzyme-linked Immunosorbent Assay), nachgewiesen wird.

55 4. Verfahren nach einem der Ansprüche 1-3, wobei es sich bei dem Subjekt um einen Säuger handelt.

5. Verfahren nach Anspruch 4, wobei es sich bei dem Säuger um einen Menschen handelt.

## EP 1 806 582 B1

6. Verfahren nach einem der Ansprüche 1-5, wobei das Subjekt Thymushyperplasie oder ein Thymom hat.

7. Verfahren nach einem der Ansprüche 1-5, bei dem man ferner:

- 5 (b) eine Menge an wenigstens einem Autoantikörper in der biologischen Probe bestimmt, wobei der Autoantikörper spezifisch an den nikotinischen Acetylcholinrezeptor (AChR) bindet; und  
(c) die in (b) bestimmte Menge mit einer anhand nicht an Myasthenia gravis leidender Negativkontrollen bestimmten Ausschlussgrenze für für AChR spezifische Autoantikörper vergleicht.

10 8. Verfahren nach einem der Ansprüche 1-5 und 7, wobei der biologischen Probe nachweisbare für AChR spezifische Autoantikörper fehlen und wobei das Vorliegen wenigstens eines Autoantikörpers, der spezifisch an wenigstens entweder hsp90 $\alpha$  oder hsp90 $\beta$  bindet, in einer Menge oberhalb der Ausschlussgrenze für hsp90 spezifische Autoantikörper in der biologischen Probe anzeigt, dass das Subjekt Myasthenia gravis Typ I oder Typ IIa hat.

15 9. Verfahren nach einem der Ansprüche 1-5, bei dem man ferner:

- (b) eine Menge an wenigstens einem Autoantikörper in der biologischen Probe bestimmt, wobei der Autoantikörper spezifisch an das Hitzeschockprotein 60 (hsp60) (SEQ ID NO:1) bindet;

20 wobei eine in (b) bestimmte Menge oberhalb einer Ausschlussgrenze für hsp60 spezifische Autoantikörper anzeigt, dass das Subjekt Myasthenia gravis hat, wobei die Ausschlussgrenze anhand nicht an Myasthenia gravis leidender Negativkontrollen bestimmt wird.

25 10. Verfahren nach Anspruch 7 oder Anspruch 9, wobei in (b) der wenigstens eine Autoantikörper mit einem oder mehreren ausgewählten Verfahren nachgewiesen wird:

- (a) Western-Blot; und  
(b) ELISA (Enzyme-linked Immunosorbent Assay).

30

### Revendications

1. Procédé de diagnostic de la myasthénie gravis chez un sujet, comprenant :

- 35 (a) la détermination d'une quantité d'au moins un auto-anticorps dans un échantillon biologique du sujet, ledit auto-anticorps se liant spécifiquement à au moins une protéine choisie parmi la protéine de choc thermique 90, isoforme alpha (hsp90 $\alpha$ ) (SEQ ID N°: 2) et la protéine de choc thermique 90, isoforme bêta (hsp90 $\beta$ ) (SEQ ID N°: 3),

40 dans lequel une quantité déterminée au point (a) supérieure à la valeur seuil d'auto-anticorps spécifiques de hsp90 indique que le sujet a une myasthénie gravis, la valeur seuil étant déterminée à partir de témoins négatifs ne souffrant pas de myasthénie gravis.

45 2. Procédé selon la revendication 1, dans lequel l'échantillon biologique est choisi parmi le sérum, le sang, le plasma, la salive, le liquide amniotique, le liquide synovial, le fluide lacrymal, le lait, la lymphe, l'urine et la sueur.

3. Procédé selon la revendication 1 ou la revendication 2, dans lequel au moins un auto-anticorps est choisi par un ou plusieurs procédés choisis parmi :

- 50 (a) un procédé Western blot ; et  
(b) un essai immuno-enzymatique (ELISA).

4. Procédé selon l'une quelconque des revendications 1 à 3, dans lequel le sujet est un mammifère.

55 5. Procédé selon la revendication 4, dans lequel le mammifère est un être humain.

6. Procédé selon l'une quelconque des revendications 1 à 5, dans lequel le sujet a une hyperplasie thymique ou un thymome.

## EP 1 806 582 B1

7. Procédé selon l'une quelconque des revendications 1 à 5, comprenant en outre :

(b) la détermination d'une quantité d'au moins un auto-anticorps dans l'échantillon biologique, ledit auto-anticorps se liant spécifiquement au récepteur de l'acétylcholine nicotinique (AChR) ; et

(c) la comparaison de la quantité déterminée au point (b) à une valeur seuil d'auto-anticorps spécifiques de AChR déterminée à partir de témoins négatifs ne souffrant pas de myasthénie gravis.

8. Procédé selon l'une quelconque des revendications 1 à 5 et 7, dans lequel l'échantillon biologique est dépourvu d'auto-anticorps détectables spécifiques de AChR et dans lequel la présence, dans l'échantillon biologique, d'au moins un auto-anticorps qui se lie spécifiquement à au moins hsp90 $\alpha$  ou hsp90 $\beta$ , en une quantité supérieure à la valeur seuil d'auto-anticorps spécifiques de hsp90 indique que le sujet a une myasthénie gravis de type I ou de type IIa.

9. Procédé selon l'une quelconque des revendications 1 à 5, comprenant en outre :

(b) la détermination d'une quantité d'au moins un auto-anticorps dans l'échantillon biologique, ledit auto-anticorps se liant spécifiquement à la protéine de choc thermique 60 (hsp60) (SEQ ID N°: 1),

dans lequel une quantité déterminée au point (b) supérieure à une valeur seuil d'auto-anticorps spécifiques de hsp60 indique que le sujet a une myasthénie gravis, la valeur seuil étant déterminée à partir de témoins négatifs ne souffrant pas de myasthénie gravis.

10. Procédé selon la revendication 7 ou la revendication 9, dans lequel au point (b), au moins un auto-anticorps est détecté par un ou plusieurs procédés choisis parmi :

(a) un procédé Western blot ; et

(b) un essai immuno-enzymatique (ELISA).

Figure 1.

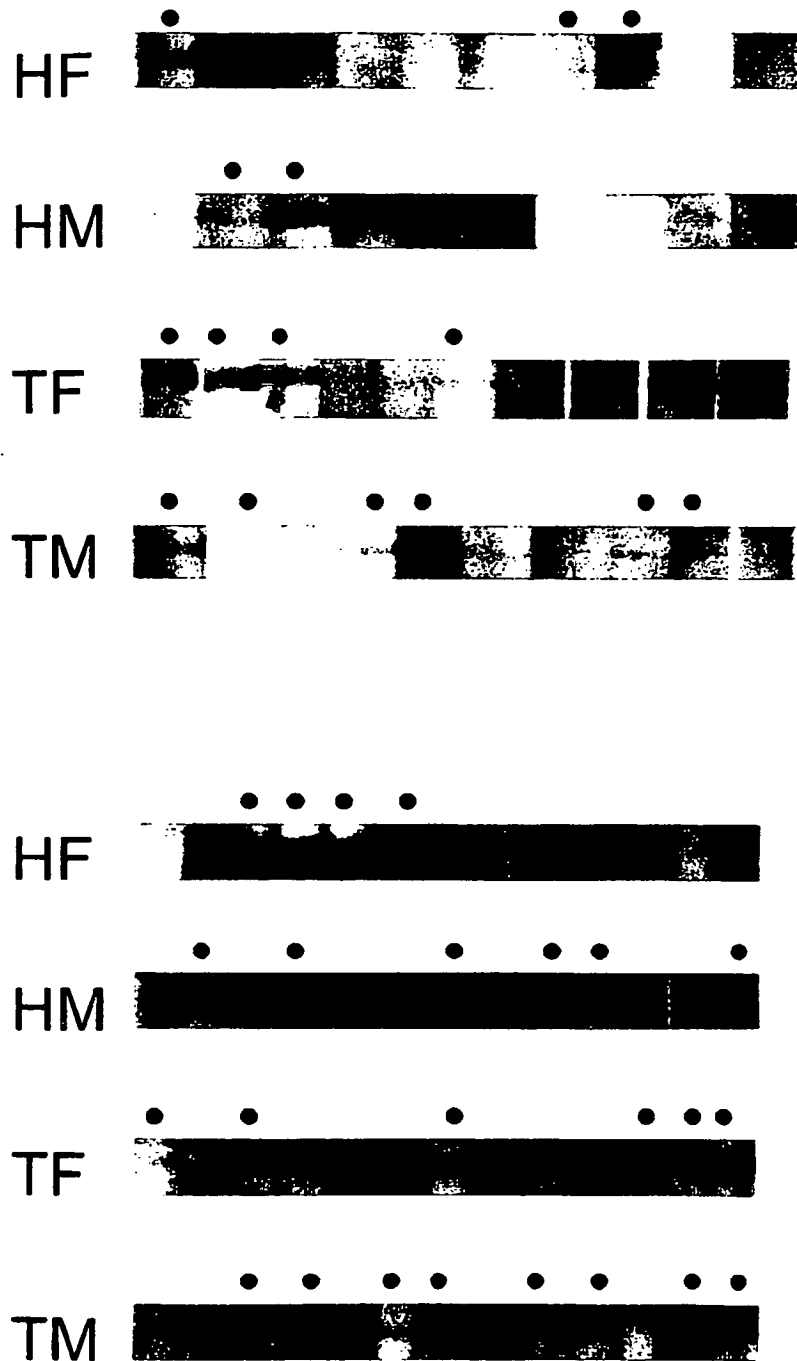


Figure 2.

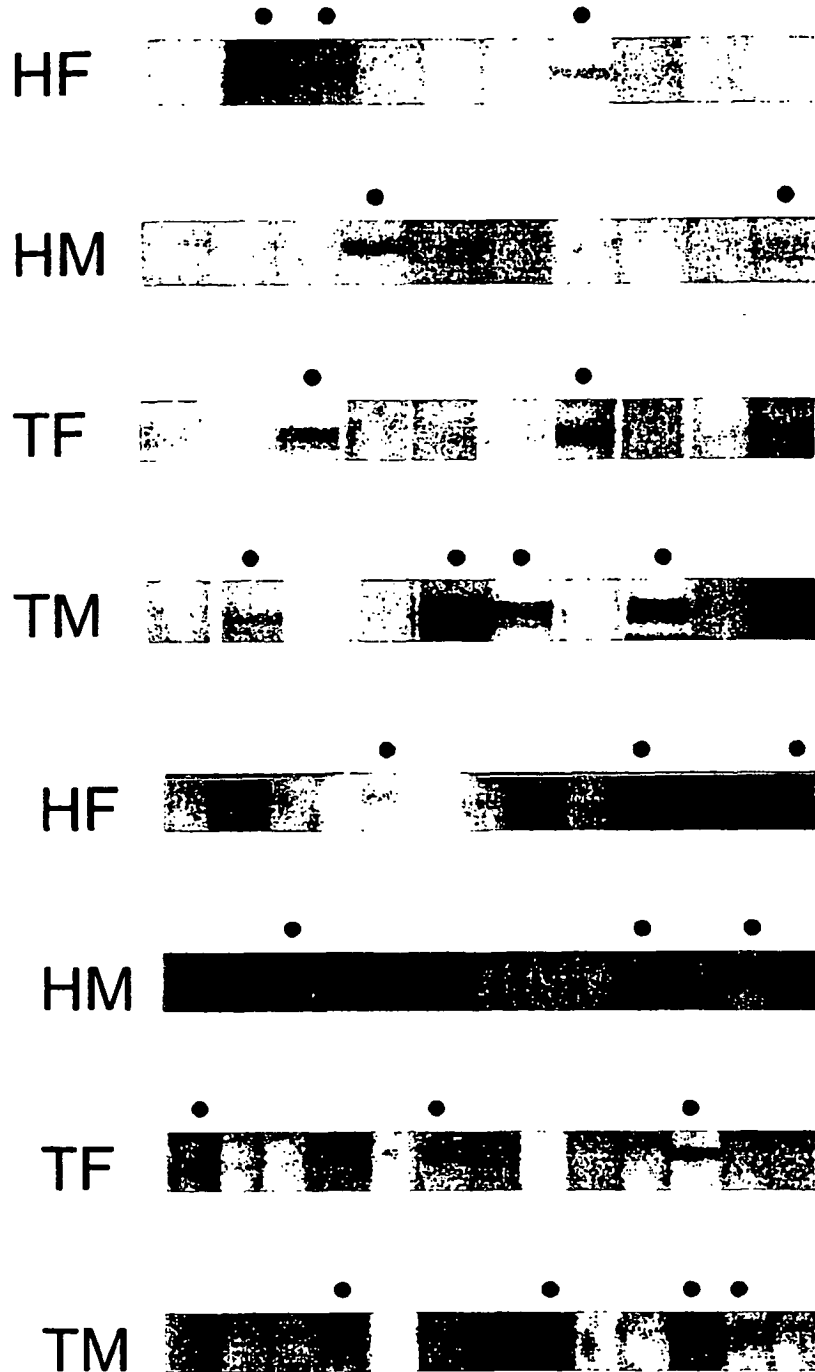


Figure 3.

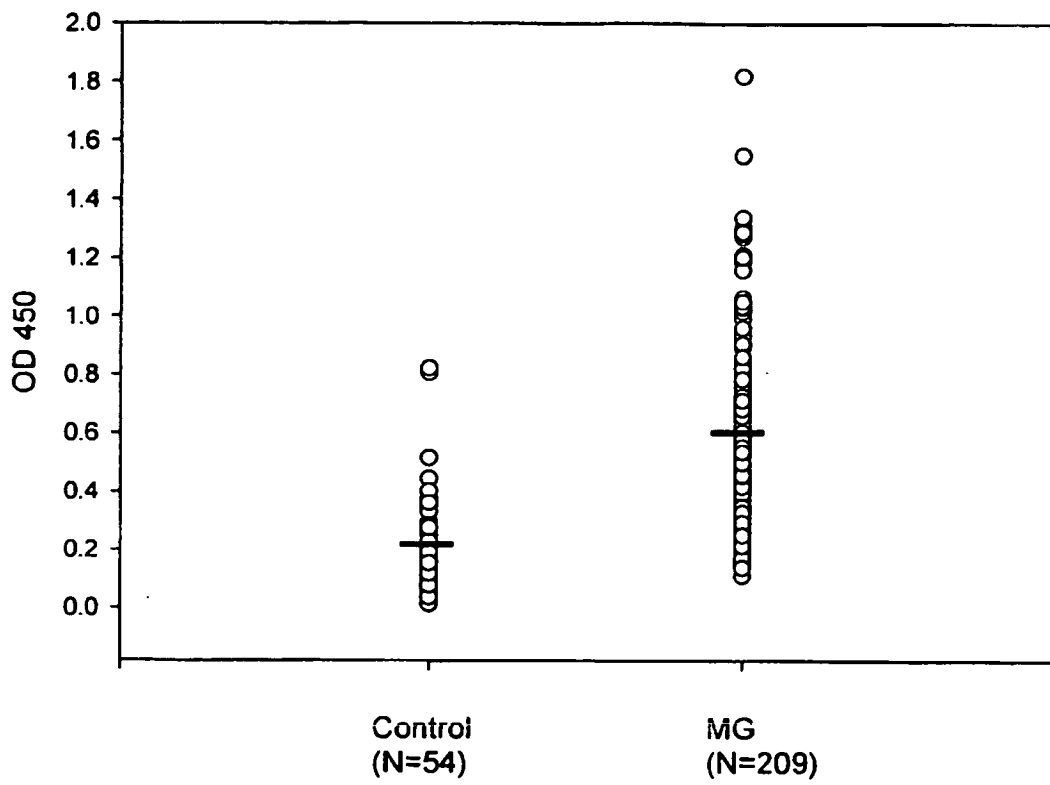


Figure 4.

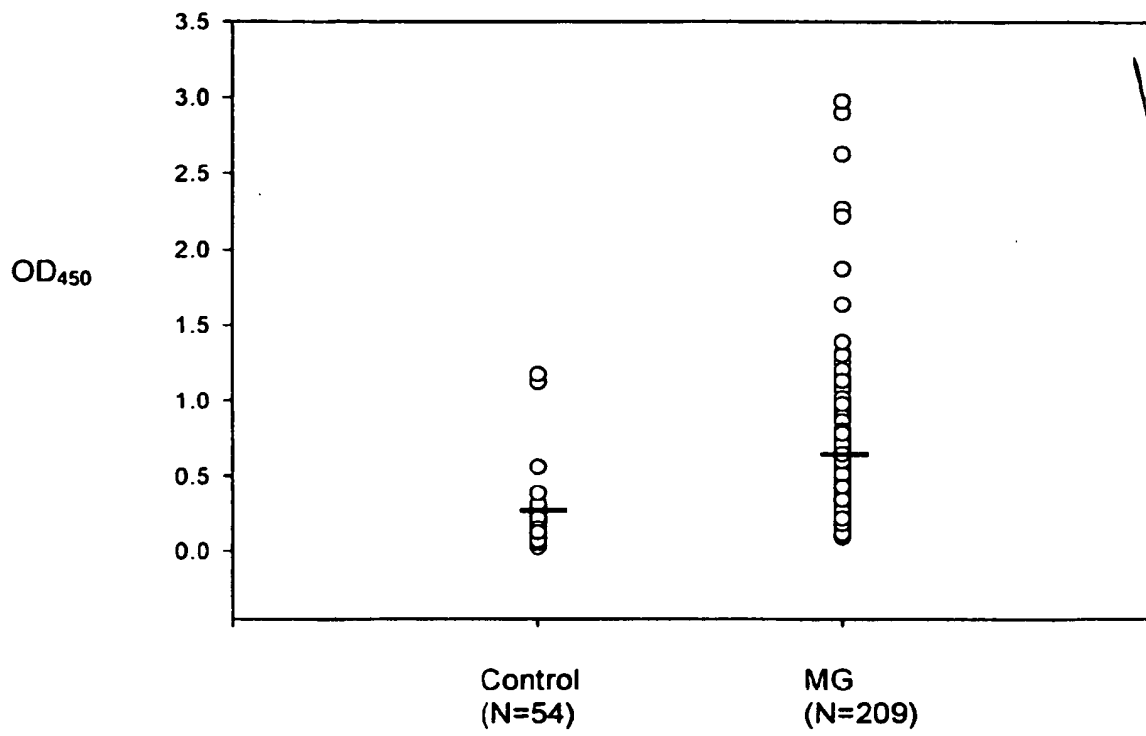
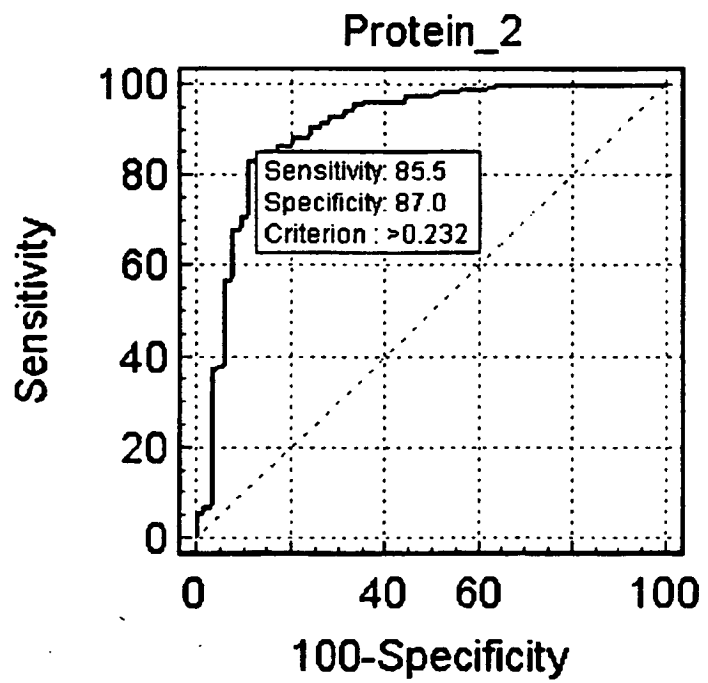
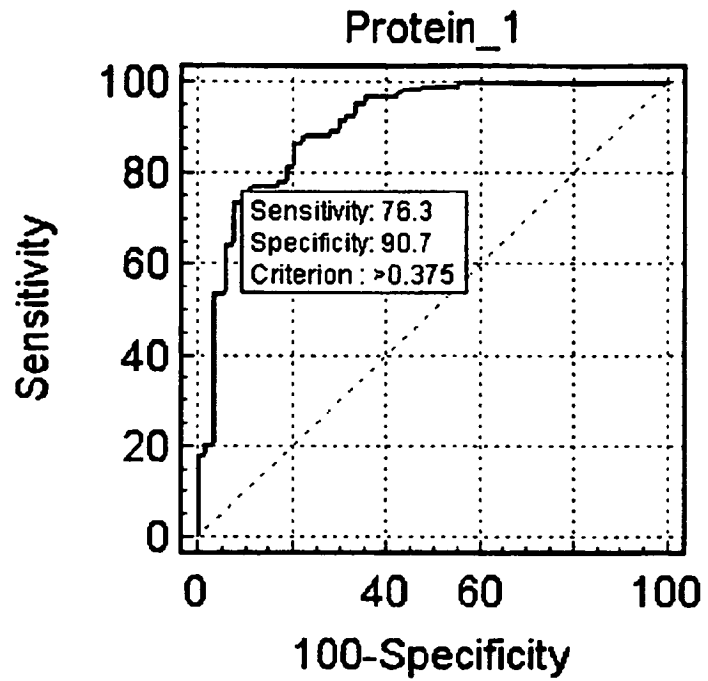


Figure 5.



## REFERENCES CITED IN THE DESCRIPTION

This list of references cited by the applicant is for the reader's convenience only. It does not form part of the European patent document. Even though great care has been taken in compiling the references, errors or omissions cannot be excluded and the EPO disclaims all liability in this regard.

## Patent documents cited in the description

- US 20050260770 A [0010]
- US 5777083 A [0010]
- US 20050124076 A1 [0053]

## Non-patent literature cited in the description

- **COTRAN et al.** PATHOLOGIC BASIS OF DISEASE. 1999, 211-212 [0002]
- **Scofield.** Autoantibodies as predictors of disease. *Lancet*, 2004, vol. 363, 1544-1546 [0002] [0096]
- **Robinson et al.** Autoantigen microarrays for multiplex characterization of autoantibody responses. *Nature Med.*, 2002, vol. 8 (3), 295-301 [0003] [0093]
- **Somnier.** Increasing incidence of late-onset anti-AChR antibody-seropositive myasthenia gravis. *Neurol.*, 2005, vol. 65, 928-930 [0004] [0097]
- **Richman et al.** Treatment of autoimmune myasthenia gravis. *Neurol.*, 2003, vol. 61, 1652-1661 [0007] [0092]
- **Roxanis et al.** Thymic myoid cells and germinal center formation in myasthenia gravis; possible roles in pathogenesis. *J. Neuroimmunol.*, 2002, vol. 125, 185-197 [0008] [0094]
- **MG. Hoch et al.** Auto-antibodies to the receptor tyrosine kinase MsSK in patients with myasthenia gravis without acetylcholine receptor antibodies. *Nature Med.*, 2001, vol. 7 (3), 365-368 [0008]
- **Astarloa ; Castrillo.** *J. Neurol. Sciences*, 1996, vol. 135, 182-183 [0010]
- **Yonekura et al.** *J. Neuroimmunol.*, 2004, vol. 156, 204-209 [0010]
- **Conroy et al.** *Clin. Exp. Rheum.*, 1996, vol. 14, 99-104 [0010]
- **Conroy et al.** *Br. J. Rheum.*, 1994, vol. 33, 923-926 [0010]
- **Minota et al.** *J. Clin. Invest.*, 1998, vol. 81, 106-109 [0010]
- **Conroy et al.** *Arthr. Rheum.*, 1993, vol. 36, S236 [0010]
- **Morgan et al.** The Matrix Effects on Kinetic Rate Constants of Antibody-Antigen Interactions Reflect Solvent Viscosity. *J. Immunol. Meth.*, 1998, vol. 217, 51-60 [0030] [0087]
- **Zhuang et al.** Measurement of Association Rate Constant of Antibody-Antigen Interaction in Solution Based on Enzyme-Linked Immunosorbent Assay. *J. Biosci. Bioeng.*, 2001, vol. 92 (4), 330-336 [0030] [0099]
- **SAMBROOK et al.** MOLECULAR CLONING: A LABORATORY MANUAL. 2001, vol. 3, A8.40-A8.45 [0033]
- **SAMBROOK et al.** MOLECULAR CLONING: A LABORATORY MANUAL. vol. 3, A8.52-A8.55 [0035] [0037]
- TECHNICAL GUIDE FOR ELISA. KIRKEGAARD & PERRY LABORATORIES, INC, 2003, 9-13 [0042]
- **Osserman, K.E. ; Genkins, G.** Studies in myasthenia gravis: review of a twenty-year experience in over 1200 patients. *Mt. Sinai J. Med.*, 1971, vol. 38 (6), 497-537 [0047] [0089]
- **Parsell et al.** The function of heat-shock proteins in stress tolerance: degradation and reactivation of damaged proteins. *Ann. Rev. Genet.*, 1993, vol. 27, 437-496 [0058]
- **Sreedhar et al.** Hsp90 isoforms: functions, expression and clinical importance. *FEBS Letters*, 2004, vol. 562, 11-15 [0061] [0098]
- **HENNEKENS et al.** EPIDEMIOLOGY IN MEDICINE. 1987, 331-335 [0075] [0082]
- **COTRAN et al.** PATHOLOGIC BASIS OF DISEASE. W.B. Saunders Co, 1999, vol. 211-212, 1289 [0081]
- **Hoch et al.** Auto-antibodies to the receptor tyrosine kinase MsSK in patients with myasthenia gravis without acetylcholine receptor antibodies. *Nature Med.*, 2001, vol. 7 (3), 365-368 [0083]
- TECHNICAL GUIDE FOR ELISA. KIRKEGAARD & PERRY LABORATORIES, INC, 2003, 9-21 [0085]
- **Luo et al.** Regulation of AChR clustering by dishevelled interacting with MuSK and PAK1. *Neuron*, 2002, vol. 35, 489-505 [0086]
- **Parsell et al.** The function of heat-shock proteins in stress tolerance: degradation and reactivation of damaged proteins. *Ann Rev. Genet.*, 1993, vol. 27, 437-496 [0090]
- **Ragheb et al.** Myasthenia gravis patients, but not healthy subjects, recognize epitopes that are unique to the  $\epsilon$ -subunit of the acetylcholine receptor. *J. Neuroimmunol.*, 2005, vol. 159, 137-145 [0091]

- **SAMBROOK et al.** MOLECULAR CLONING: A LABORATORY MANUAL. Cold Spring Harbor Laboratories Press, 2001, vol. 3, A8.40-A8.45A8.52-A8.55  
**[0095]**

专利名称(译)	诊断重症肌无力的方法		
公开(公告)号	<a href="#">EP1806582B1</a>	公开(公告)日	2011-05-11
申请号	EP2006290012	申请日	2006-01-04
[标]申请(专利权)人(译)	财团法人工业技术研究院 财团法人国家卫生研究院		
申请(专利权)人(译)	工业技术研究院 国家卫生研究院		
当前申请(专利权)人(译)	国家卫生研究院 新光吴火狮纪念医院 工业技术研究院		
[标]发明人	TSENG TZU LING LIAO PEI HSIU CHENG PING FU TSAI SHIH FENG CHIU HOU CHANG		
发明人	TSENG, TZU-LING LIAO, PEI-HSIU CHENG, PING-FU TSAI, SHIH-FENG CHIU, HOU-CHANG		
IPC分类号	G01N33/53 G01N33/564		
CPC分类号	G01N33/564		
其他公开文献	EP1806582A1		
外部链接	<a href="#">Espacenet</a>		

摘要(译)

本发明涉及通过测定至少一种特异性结合选自热休克蛋白60 ( hsp60 ) , 热休克蛋白90 ,  $\alpha$ 同种型的一种或多种自身抗原的自身抗体的量来诊断受试者中重症肌无力的方法。 hsp90 $\alpha$  ) 和热休克蛋白90 ,  $\beta$ 同种型 ( hsp90 $\beta$  ) 。本发明还提供了用于鉴定患有重症肌无力的受试者的诊断试剂盒。

```

Met Leu Arg Leu Pro Thr Val Phe Arg Gln Met Arg Pro Val Ser Arg
1           5           10           15
Val Leu Ala Pro His Leu Thr Arg Ala Tyr Ala Lys Asp Val Lys Phe
                20           25           30
Gly Ala Asp Ala Arg Ala Leu Met Leu Gln Gly Val Asp Leu Leu Ala
                35           40           45
Asp Ala Val Ala Val Thr Met Gly Pro Lys Gly Arg Thr Val Ile Ile
                50           55           60
Glu Gln Ser Trp Gly Ser Pro Lys Val Thr Lys Asp Gly Val Thr Val
65           70           75           80
Ala Lys Ser Ile Asp Leu Lys Asp Lys Tyr Lys Asn Ile Gly Ala Lys
                85           90           95

```