



(11) **EP 1 692 181 B1**

(12) **EUROPEAN PATENT SPECIFICATION**

(45) Date of publication and mention of the grant of the patent:  
**11.01.2012 Bulletin 2012/02**

(51) Int Cl.:  
**C07K 16/28 (2006.01) G01N 33/74 (2006.01)**  
**G01N 33/53 (2006.01)**

(21) Application number: **04797956.2**

(86) International application number:  
**PCT/EP2004/013043**

(22) Date of filing: **17.11.2004**

(87) International publication number:  
**WO 2005/049655 (02.06.2005 Gazette 2005/22)**

(54) **LEPTIN ANTAGONIST AND METHOD FOR QUANTITATIVE MEASUREMENT OF LEPTIN**  
LEPTINANTAGONIST UND VERFAHREN ZUR QUANTITATIVEN MESSUNG VON LEPTIN  
ANTAGONISTE DE LEPTINE ET PROCEDE DE MESURE QUANTITATIVE DE LEPTINE

(84) Designated Contracting States:  
**AT BE BG CH CY CZ DE DK EE ES FI FR GB GR HU IE IS IT LI LU MC NL PL PT RO SE SI SK TR**

(30) Priority: **17.11.2003 DE 10353593**

(43) Date of publication of application:  
**23.08.2006 Bulletin 2006/34**

(73) Proprietors:  
• **Klinikum der Universität München 80337 München (DE)**  
• **University of Sheffield Sheffield, S10 2TN (GB)**

(72) Inventors:  
• **STRASBURGER, Christian, J. 85635 Höhenkirchen (DE)**  
• **BIDLINGMAIER, Martin 80797 München (DE)**  
• **WU, Zida 80809 München (DE)**  
• **ROSS, Richard, J., M. Sheffield S11 9EJ (GB)**  
• **MATARESE, Giuseppe Inst. di Endocrinol. e Oncolog. Napoli (IT)**

(74) Representative: **Docherty, Robert Charles Symbiosis IP Limited Apollo House Eboracum Way Heworth Green, York YO31 7RE (GB)**

(56) References cited:  
**WO-A-00/76552 WO-A-99/59614**

- **WU ZIDA ET AL: "Quantification of the soluble leptin receptor in human blood by ligand-mediated immunofunctional assay" JOURNAL OF CLINICAL ENDOCRINOLOGY AND METABOLISM, vol. 87, no. 6, June 2002 (2002-06), pages 2931-2939, XP002323286 ISSN: 0021-972X**
- **MAINGRETTE FRITZ ET AL: "Leptin increases lipoprotein lipase secretion by macrophages: Involvement of oxidative stress and protein kinase C." DIABETES, vol. 52, no. 8, August 2003 (2003-08), pages 2121-2128, XP002323287 ISSN: 0012-1797**
- **CORSONELLO A ET AL: "Leptin-dependent platelet aggregation in healthy, overweight and obese subjects." INTERNATIONAL JOURNAL OF OBESITY, vol. 27, no. 5, May 2003 (2003-05), pages 566-573, XP002323288 ISSN: 0307-0565**
- **IVERSEN PER OLE ET AL: "Prevention of leptin binding to its receptor suppresses rat leukemic cell growth by inhibiting angiogenesis." BLOOD, vol. 100, no. 12, 1 December 2002 (2002-12-01), pages 4123-4128, XP002323289 ISSN: 0006-4971**
- **DATABASE INSPEC [Online] THE INSTITUTION OF ELECTRICAL ENGINEERS, STEVENAGE, GB September 1968 BERGTOLD F: 'Circuits; integrated, combined and connected' Database accession no. 2114 & AUTOMATIK WEST GERMANY vol. 13, no. 9, pages 301 - 303 ISSN: 0005-1136**

Remarks:

The file contains technical information submitted after the application was filed and not included in this specification

Note: Within nine months of the publication of the mention of the grant of the European patent in the European Patent Bulletin, any person may give notice to the European Patent Office of opposition to that patent, in accordance with the Implementing Regulations. Notice of opposition shall not be deemed to have been filed until the opposition fee has been paid. (Art. 99(1) European Patent Convention).

**EP 1 692 181 B1**

## Description

**[0001]** This invention relates to specific antibodies or fusion proteins, in particular deposited monoclonal antibody DSM ACC2618 or a fusion protein directed to a leptin receptor (leptin-R) or a leptin-binding protein (leptin-BP), as well as to the use of this antibody or fusion protein for quantitative analysis, for therapeutic purposes and for the preparation of therapeutic drugs. Furthermore, the invention relates to a method for quantitative determination of leptin in the sample of solubilized or suspended leptin-binding proteins by using DSM ACC 2618 or fusion proteins according to the invention, as well as to diagnostic agents and (diagnostic) kits containing this antibody or fusion protein.

**[0002]** Leptin (derived of the Greek term leptos = thin) is a protein hormone, that is primarily segregated by the fat cells (adipocytes). In 1994, leptin (Zhang et al. (1994) Nature 372, 425) was discovered as genetic product of the obesity gene (*ob* gene) with a molecular weight of approx. 16 kDa, formed by 146 amino acids. It plays an important role in energy metabolism (Friedman et al., (1998) Nature 395, 763 - 770). Apart from its relevance for energy metabolism, its contribution to the modulation of immunocompetent cells (Lord et al., (1998) Nature 394, 6696) or haematopoietic cells (Sierra-Honigmann et al., (1998) Science 281, 1683-1686) has been described in the meantime as well as a permissive function in the induction of puberty (Quinton et al., (1999) J Clin Endocrinol Metab 84(7), 2336-41). Leptin has also been strongly associated with diabetes and chronic heart failure (CHF) (see E.M. El-Bindary and A.Z. Darwish, Volume 7, Nos 4/5, July - September 2001, 697- 706).

**[0003]** In mice (*ob/ob* mouse), the lack of the leptin gene (*ob/ob* mouse) leads to massive overweight (adipositas). Due to the fact, that administration of leptin to *ob/ob* mice induces reduced food uptake and finally weight reduction, leptin was attributed some importance as an appetite suppressant. Anyhow, the situation is far more complex.

**[0004]** The effect of leptin is mediated via the leptin receptor (leptin-R) (Tartaglia et al., (1995) Cell 83(7), 1263-71), thus activating intracellular signal cascades. The leptin receptor pertains to the so-called class I of the cytokine receptor superfamily. In many receptors of this family, an extra-cellular portion of the leptin receptors circulates as leptin-binding protein in the blood, and this is also the case for the leptin receptor.

**[0005]** Defects of the leptin receptor were identified as a cause of overweight problems in human beings (Clement et al., (1998) Nature 392, 398 - 401). Conversely, patients suffering from anorexia nervosa (diminished appetite) seemingly have increased leptin levels in relation to their reduced fat mass. Therefore, determination of leptin concentration in blood or in serum samples is an important diagnostic tool for clarification of the underlying cause of eating disorders or extreme obesity.

**[0006]** As mentioned above, El-Bindary and Darwish (2001) have strongly associated leptin with diabetes and chronic heart failure (CHF). El-Bindary and Darwish (2001) investigated the interaction of TNF- $\alpha$ , leptin levels and insulin in patients suffering from CHF. CHF constitutes a complex syndrome associated with disturbance in several metabolic and endocrine functions. There is accumulated evidence that weight loss and cachexia seen in advanced stages of CHF constitute a poor prognosis in patients suffering therefrom. In particular, an increased plasma leptin level is assumed to be implicated in the wasting associated with late stage heart failure. Additionally, chronic heart failure is characterized by a hyperinsulinaemic state (Swan et al., Journal of the American College of Cardiology, 1997, 30:527-32), in which there is striking loss of both muscle and adipose tissue leading to overt cardiac cachexia in these patients (see Cleland and Clark, European heart journal, 1998, 19:1421-2). Recent attention has therefore been focused on cytokine activity in CHF. According to El-Bindary and Darwish (2001), there is a significant elevation of TNF- $\alpha$  in late stage CHF. Apparently, the level of circulating TNF- $\alpha$  is elevated in patients with advanced CHF. Assumably, TNF- $\alpha$  may contribute to the progression of the cardiac decompensation that occurs in advanced cases of CHF. The results also reveal a correlation between TNF- $\alpha$  and plasma leptin concentration. TNF- $\alpha$  may act directly on adipocytes to increase the production of the lipostatic factor leptin, wherein the level of serum leptin appears to be under control of TNF- $\alpha$ . Hence, there is a significant elevation of the insulin level and a correlation with TNF- $\alpha$  in late stage CHF. El-Bindary and Darwish (2001) also found evidence for a positive correlation between plasma leptin and insulin level in late-stage disease. Increased plasma leptin and associated increase in insulin were considered to be another cachexia causing factor. Increase in plasma TNF- $\alpha$ , leptin and insulin levels, and positive correlation between them in late stage heart failure may constitute one of many vicious circles of advanced stage CHF.

**[0007]** Since disorders of energy metabolism, in particular eating disorders, such as anorexia nervosa (diminished appetite), are observed more frequently, the identification of effective leptin-antagonists that may reduce, inhibit or even block the function of leptin, is of major interest and economic significance.

**[0008]** Therefore, it is a first object of the present invention to provide an antagonist of leptin-R and leptin-BP. Such an antagonist may be suitable in the treatment of diseases and/or symptoms associated with excessive leptin levels, such as diabetes, cachexia, obesity, chronic heart failure (CHF), etc., as well in the development and provision of a medicament and/or therapies for such diseases.

**[0009]** By using suitable leptin-antagonists (as mentioned above), regulatory mechanisms and specific effects of leptin are amenable to examination *in vitro* by selective inhibition of the leptin receptor and/or displacement of leptin from leptin-binding proteins.

**[0010]** In the light of the above, the quantitative determination of leptin in a sample and in particular in physiological body liquids - such as e.g. blood - is a prerequisite for therapeutic treatment and an important diagnostic tool. Many e.g. hormones or other messenger substances (ligands), bind specifically to their membrane receptors, the extracellular domain(s) of which is (are) frequently solubilized or suspended in the liquid. Thereby, a complex composed of ligands to be determined, e.g. leptin (ligand) and the leptin-binding protein, is formed, which influences (reduces) the level of free ligand in the sample. In order to avoid that problem, a labeled ligand is used and added to the sample. Nevertheless, the binding protein may bind to the labeled ligand in the solution and thus, the ligand is not detectable in the sample. Therefore, the binding protein interferes with quantitative ligand measurement and diagnostics.

**[0011]** Generally, so-called immunoassays are used for the analysis of the leptin concentration. They are based on the principle of an interaction of specific antibodies with an analyte. Alternatively, competitive assays are used (such as the radioimmunoassay, RIA), in which labeled leptin competes with the leptin present in the sample for the binding site on an antibody, thus generating a signal being inversely proportional to the concentration of the analyte to be determined. However, nowadays, sandwich-immunoassays are used most frequently, in which an immobilized specific antibody binds the analyte ("capturing antibody,"), and subsequently, a second, labeled antibody, directed to a different epitope of the analyte, binds the analyte, which is then immobilized. This generates a signal, that is proportional to the amount of the bound analyte. The best-known example of this measurement method is the "enzyme linked immuno sorbent assay" (ELISA) with a colorimetric endpoint. Other possibilities for the generation of a signal are radioactivity, chemoluminescence or (time resolved) fluorescence.

**[0012]** All assay methods mentioned above are based on the principle of the highly affinity, specific binding between an antibody directed to a e.g. hormone ligand - leptin, in this case - and the hormone ligand in the sample to be analyzed.

**[0013]** The main source of interference in the measurement of leptin in serum or blood is the presence of a highly affinity leptin-binding protein, namely the soluble extra-cellular portion of the leptin receptor in human serum. The effect of this leptin-binding protein on the measurement result may cause erroneously high or erroneously low values, always depending on the type of assay used (competitive assay or sandwich-assay). In the competitive assay, on the one hand, the labeled leptin (as a so-called "tracer") may be bound by the leptin-binding protein, thus being removed from solution, resulting in erroneously high concentrations. On the other hand, the leptin-binding protein may also block sterically the interaction of the specific antibody with the leptin molecules from a serum sample and thus may also cause erroneously low concentrations in the competitive assay. In contrast, this steric obstruction of the interaction between antibody and hormone generally provokes erroneously low results in the sandwich-immunoassay, since less hormone or less detection antibody will be bound. The error in the measurement results caused by this interference will become particularly relevant in the presence of certain physiological or pathological conditions that are associated with a change of leptin concentration in the blood.

**[0014]** Since Leptin-BP binds leptin in a sample and thus reduces the amount of free leptin in the sample, no unequivocal determination of physiological leptin concentrations can be obtained. Thus, due to the presence of soluble leptin-binding proteins, all experimental data for body fluid leptin levels are biased by interferences between leptin and leptin-binding protein.

**[0015]** In order to develop a standardizable diagnostic method or a therapeutic treatment for diseases such as obesity, diabetes and/or chronic heart failure (CHF), etc., there is a need for selective, specific and effective substances or molecules that bind to a leptin receptor and/or a leptin-binding protein. To date, only few substances or molecules are known, which selectively, specifically and effectively bind to a leptin receptor and/or a leptin-binding protein. Selectivity and specificity are prerequisites for quantitative and qualitative determination. Gonzales et al. (Gonzales et al., (2003) Mol Hum Reprod 9(3), 151-8) for instance report on polyclonal antibodies, that seem to inhibit leptin effects to a certain extent. However, such polyclonal antibodies cannot be reproduced, they cannot be humanized and are available only in limited amounts.

**[0016]** On the one hand, alternative solutions to avoid measurement inaccuracies relate to methodic extraction methods, that are carried out before the actual measurement method itself, in order to eliminate, e.g. the leptin-binding proteins. Anyhow, this implies significantly increased efforts as to the methods used and may simultaneously lead to misleading results. Altogether, to date there is no satisfactory state-of-the-art-solution to the difficulties of eliminating soluble leptin-binding proteins in samples to be analyzed.

**[0017]** Therefore, it is a second object of the invention to provide a method to obtain reliable results of the ligand level, e.g. leptin, of a sample containing leptin-binding protein(s) or leptin receptors with its /their ligand(s):

**[0018]** This object is solved by the present invention, which may render test methods, in particular assays for (body liquid) leptin determination, less susceptible to falsifying interference by leptin-binding protein. Such method may i.a. be suitable for the diagnosis of diseases and/or symptoms associated with excessive leptin levels, such as diabetes, cachexia, obesity, chronic heart failure (CHF), etc..

**[0019]** The inventors of the present invention succeeded in identifying and providing a molecule - in form of an antibody - that in essence specifically prevents the binding of leptin to a leptin receptor (leptin-R) and displaces leptin, which is bound to a leptin-binding protein, from this leptin-binding protein (leptin-BP).

**[0020]** Therefore, the invention provides the described DSM ACC 2618 antibody against a leptin receptor (leptin-R) and/or a leptin-binding protein (leptin-BP), characterized in that it fundamentally reduces and, preferably, prevents the interaction of the leptin receptor and/or of the leptin-binding protein with its ligand, i.e. leptin. The invention also provides a single chain antibody fragment characterized by SEQ ID NO:6.

**[0021]** A "leptin-binding protein," or "binding protein" (both termed leptin-BP) or "leptin receptor" (leptin-R) within the meaning of this invention comprises all proteins, that can bind with high affinity (specifically) to leptin to be determined in a sample. Leptin-binding protein is usually soluble or be present in the sample as a suspension. Leptin-binding protein is usually found in body liquid samples, e.g. serum, as the extra-cellular portion of the leptin receptor. Anyhow, it may also be located close to the cell membrane. Examples for human sequences of such leptin-binding proteins or binding protein or leptin receptors are the sequences O95274, P48357 and O15243 (source: Swiss-Prot/TrEMBL). Preferably they are leptin-binding proteins or binding proteins or leptin receptors of human origin, however, this invention also comprises corresponding proteins of all other vertebrates, in particular mammals, such as rat, mouse, pig, horse, cattle. Examples for such sequences are O02671, Q9MYLO, P48356, Q62959, O89013, Q9JLS8 (source: Swiss-Prot/TrEMBL). Preferably, the leptin-binding protein is a physiological leptin-binding protein, solubilized or suspended in liquid, preferably body liquid.

**[0022]** According to the present application, the term "antibody" comprises DCM ACC 2618 Fragments of DSM ACC 2618 according to the present invention are further defined below and represented by the single chain antibody fragment whown in SEQ IS NO:6.

**[0023]** DSM ACC 2148 is directed to the extra-cellular domain of a leptin receptor, in particular to a leptin-binding protein. In a more preferred embodiment, DSM ACC 2618 is directed to the leptin-binding site on a leptin-binding protein, to which the ligand (e.g. leptin) binds. Furthermore, the ligand is preferably leptin. In this context, the term "antibody directed to the leptin-binding site on a leptin-binding protein", means that the antibody as a binding epitope binds specifically and with high affinity to the binding site of the ligand (e.g. leptin) on the leptin-binding protein.

**[0024]** "Fragments" of an antibody according to the present application are also encompassed by the present invention as represented by SEQ ID SEQ ID NO:6

**[0025]** Single chain antibody fragment of the present invention preferably comprises or consists of an amino acid sequence, being encoded by SEQ ID NO: 5 or comprises the amino acid sequence SEQ ID NO: 6.

**[0026]** In a more preferred embodiment a fragment of an antibody of the present invention comprises or consists of a protein sequence encoded by a nucleic acid sequence selected from SEQ ID NO: 5, Alternatively, such a fragment comprises or consists of a protein sequence selected from SEQ ID NO: 6 or

**[0027]** In a specific embodiment, the antibody according to the present invention is the antibody ZMC2. ZMC2 is a monoclonal antibody, directed to the binding site of human leptin on the human leptin-binding protein and in the framework of the invention it had been optimized for the solution of this task. The monclonal antibody ZMC2 has been deposited in viable form by the applicant with entry dated September 25, 2003 under deposit number DSM ACC2618 along with the reference "ZMC2", assigned by the depositor, according to the stipulations of the Budapest Treaty at DSMZ (Deutsche Sammlung für Mikroorganismen und Zellkulturen GmbH) in Braunschweig.

**[0028]** "Fusion proteins" are also provided by the present invention. A "fusion protein" according to the present invention typically comprises a portion I and a portion II, wherein portion I may be any antibody or antibody fragment according to the present invention fused to other (protein)-constituents as portion II. Typically, portion I of such a fusion protein represents a full-length antibody. Alternatively, portion I of such a fusion protein may comprise any of the above mentioned fragments of an inventive antibody, preferably  $V_H$  or  $V_L$ . (Protein-constituents as portion II of a fusion protein of the present invention typically comprise any antibody or antibody fragment according to the present invention, or any peptide or protein, forming interactions with other proteins, e.g. ligands of leptin-R and/or leptin BP, preferably leptin or fragments or variants of leptin. It is preferred to use components as portion II, which specifically recognize cells to be targeted by the inventive fusion protein. Cells to be targeted are typically adipocytes, connective tissue cells and other leptin binding cells. A fragment of a leptin as used in the inventive fusion protein is preferably a shortened leptin molecule, still capable of binding to the leptin binding site of leptin-R or leptin-BP. A variant of a leptin- as used in the inventive fusion protein is preferably a full-length leptin molecule, comprising one or more amino acid substitutions, but still being capable of binding to the leptin binding site of leptin-R or leptin-BP. Therefore, the inventive fusion protein is preferably "bispecific", i.e. it is capable of binding two target molecules, whereby portion I is specific for target molecule I and portion II is specific for target molecule II. If the inventive fusion protein comprises e.g. leptin as portion II of the fusion protein, it may act as a so called "super-antagonist". This is due to the fact that leptin binds as a dimer to. Consequently, a fusion protein consisting of an inventive antibody (or a fragment thereof, both acting as an antagonist) as portion I and leptin (or a fragment thereof, or a high affinity leptin molecule) as portion II enable a fusion protein to bind with a higher strength and a better specificity to leptin-R or leptin-BP and to displace leptin from its binding to leptin-R or leptin-BP even more efficiently than an inventive antibody as such.

**[0029]** DSM ACC 2618 constituents of fusion proteins (as portion I or II) are typically provided by using the methods of enzymatic cleavage, protein-synthesis or by using those recombinant methods, as known by the expert in biochemistry

or molecular biology.

**[0030]** The inventive fusion protein may comprise DSM ACC 2618 (or a fragment thereof, both acting as an antagonist) as portion I and a second antibody as portion II. Alternatively, the inventive fusion protein may comprise an inventive antibody (or a fragment thereof, both acting as an antagonist) as portion I and a scFv-fragment of the inventive antibody as portion II. Such a fusion protein allows to potentially target the antibody to a specific cell type e.g. to obtain bispecific fusion proteins thereby. Preferably, the bispecific fusion protein is directed to a leptin receptor and/or a leptin-binding protein as first specificity and to a cell surface protein as second specificity of portion II. The inventive antibody, such as ZMC2, may be linked to an antibody, such as CD4-F<sub>ab</sub> directed to e.g. CD4 (or CD1, 2, 3, 4, 5, 6, 7, 8, 9, 10, CD 25, CD44, etc.). E.g. antibodies recognizing cell surface proteins of specific immune cells allow an inventive fusion protein to specifically bind to immune cells. In this case the affinity of both F<sub>ab</sub>-s could be altered to get a preferential effect. For example, a high affinity CD4-F<sub>ab</sub> as a bispecific antibody could then target CD4 cells.

**[0031]** Portions I and II of the inventive fusion protein optionally may be linked by a linker sequence. Preferably, the linker comprises a length of about 5 to 40 amino acids, more preferably between 5 and 30 amino acids and most preferably between 5 and 20 amino acids. Also preferably, the linker comprises a sequence containing at least 50% glycine residues, preferably at least 60 %, more preferably at least 70% and most preferably at least 80%.

**[0032]** In a specifically preferred embodiment, the fusion protein of the present invention comprises or consists of a protein sequence encoded by the nucleic acid sequence SEQ ID NO: 7 or of the protein sequence SEQ ID NO: 8.

**[0033]** Furthermore, DSM ACC 2618, a fragment thereof or a fusion protein according to the present invention, may have further covalently (or not covalently) coupled molecules or groups, for example a fluorescence marker or other markers, for example a gold label, or specific epitopes, that can be recognized by third molecules.

**[0034]** The subject matter of the invention disclosed herein are also mixtures (compositions) of the DSM ACC 2618 in the above sense, for instance mixtures of monoclonal antibodies or mixtures of monoclonal antibodies with antibody fragments, mixtures of anti-idiotypic antibodies etc..

**[0035]** Another embodiment of the present invention is a method for preferably quantitatively determining a ligand in a sample containing the ligand of a binding protein, e.g. in solubilized or suspended form, wherein at least DSM ACC 2618 or an inventive fusion protein according to the present invention is added to the sample to be determined (step a). This inventive method (step a) may be followed by a second step (step b) determining the ligand concentration in the sample.

**[0036]** According to the present inventive method, DSM ACC 2618 or an inventive fusion protein may be added to the sample before or during, preferably before, quantitative determination of the ligand concentration, e.g. leptin, in the sample, and/or may be incubated together with the sample.

**[0037]** DSM ACC 2618 according to the present invention, that binds exactly and with high affinity to the site of the leptin-binding proteins, to which the ligand binds, is especially preferred. Due to the binding of the inventive molecule, e.g. DSM ACC 2618 or an inventive fusion protein, a displacement of the ligand (leptin) from the leptin-binding protein occurs, preventing simultaneously binding of the ligand. This displacement will obviously be dependent on the increase of the amount of DSM ACC 2618 or inventive fusion protein added. Thus, a major excess of DSM ACC 2618 or inventive fusion protein over the molar leptin-binding protein concentration is mostly favourable for carrying out the inventive method.

**[0038]** The ligand (e.g. leptin) is "released" through the displacement and can subsequently be measured quantitatively without steric inhibition due to the binding activity of the leptin-binding protein.

**[0039]** A "ligand" as used in an inventive method typically comprises all compounds, that bind with high affinity to a leptin receptor and/or a leptin-binding protein and allow a measurement of their concentration in specific assays, and all compounds that are also determined, for instance for medical purposes. E.g. messenger substances, such as hormones, transmitters, for instance neurotransmitters, extra-cellular signal peptides or proteins, cytokines, chemokines, lymphokines etc. are compounds in the meaning of the present invention. Leptin is a preferable ligand of the invention. A ligand in the meaning of the present invention may also be a "physiological ligand". Such a "physiological ligand" is typically a ligand in the above sense, which is found in the body of a vertebrate, in particular in a body liquid, without being added exogenously. Correspondingly, this is also applicable for the physiological leptin-binding protein, where this is also the leptin-binding protein of the physiological ligand, naturally to be found under physiological conditions.

**[0040]** A "sample" in the sense of this invention is typically to be understood as any type of solution to be tested, in particular solutions of medically relevant substances, such as e.g. blood, lymph, serum, urine, liquor, also in a processed form, prepared for the sample handling. Likewise, it is preferable, if the sample to be determined in the inventive method contains liquid, preferably body liquid, more preferably human body liquid, in particular blood or human blood.

**[0041]** A "body liquid" is to be understood as each liquid obtained from the body of a vertebrate, in particular a mammal, in particular of a human being in the case of human beings, this would for instance be blood, urine or lymph, but also cytosolic preparations from human cells,

**[0042]** The term "in solubilized or suspended form" in the meaning of the present invention is to be understood as any form of solution of the leptin-binding proteins or of the ligand in the broader sense in the solution medium. This also

includes situations, in which for instance the leptin-binding protein is about to precipitate or has already precipitated, as long as it is still a constituent of the solution.

5 [0043] "Quantitative determination" in the context of the inventive method is to be understood as any method known by a skilled person for determining the amount of an analyte solved in a sample. This includes explicitly, e.g. quantification by using chromatographic methods with a concurrent standard, in particular a quantification by using the highly affinity interaction between antibody and ligand (antigen) via competitive assays or binding assays, such as e.g. a sandwich assay, also in the ELISA format. A specific advantage of this invention is the fact that adding a specific antagonistic antibody or an inventive fusion protein to a sample as disclosed herein can be combined with practically all known - in particular commercially available - test kits or test systems for quantitative analysis of the respective analyte (ligand) without any efforts.

10 [0044] In the inventive method preferably DCM ACC or an inventive fusion protein is added prior to or during, preferably prior to the quantitative determination and/or is incubated with the sample.

15 [0045] The sample to be tested is typically incubated together with DSM ACC 2618 or an inventive fusion protein. The term "incubation", as used herein is to be understood as a reaction condition, in which the reaction partners, in other words DCM ACC 2618 or an inventive fusion protein and leptin-binding protein are allowed to react with each other. Typically, DCM ACC 2618 or an inventive fusion protein is added to a sample containing leptin binding protein and leptin. The incubation is generally carried out for a limited period of time, in this case for example 6, 12, 18 or 24 hours. The term incubation has to be understood primarily as prior step - for example for a period of 6, 12, 18 or 24 hours - before the start of the quantitative measurement (for instance with a commercially available test kit) using antibody B for ligand (leptin) detection.

20 [0046] In another preferred embodiment of the method according to the present invention, the leptin-binding protein is a physiological partner of the ligand.

25 [0047] The method according to the present invention is also useful, when the ligand and/or the leptin-binding protein has been added externally (exogenously), e.g. following an injection or other uptake of, for instance, leptin as a ligand in patients or test persons.

30 [0048] The present inventive method can be used to measure any ligand of "binding proteins". Binding proteins are proteins interacting with other proteins. An example of a binding protein is leptin-binding protein or the leptin-receptor, interacting with leptin. The binding protein, as used in a method according to the present invention, is preferably soluble, more preferably a soluble (leptin-)receptor.

35 [0049] In a preferred embodiment of the method according to the present invention, the ligand as bound by a "binding protein" is a peptidic compound and/or a hormone, preferably a peptidic hormone, in particular leptin, or a hormone-binding protein. The term "peptidic" is to be understood here to comprise any compound, of which constituents are predominantly linked together by a peptidic bond (such as R1-NH-C(O)-R2).

40 [0050] Hormone binding proteins, if used as ligands in the inventive method, are preferably binding proteins (see below), that bind affine hormones. A "hormone" herein is to be understood as a chemical messenger substance, that acts at a distance from its site of synthesis and liberation. Hormones are preferably produced by endocrinal glands, for instance the hypophysis, gonads or epiphysis. Examples are the growth hormone or the luteinizing hormone LTH, insulin, melatonin, glucagon, gastrin, angiotensin, substance P, interleukines, vasopressin, endorphines, enkephalines, relaxin, the atrionatriuretic factor or also leptin.

45 [0051] In a specifically preferred embodiment of the method according to the present invention, the ligand used in such a method is human leptin and the leptin-binding protein is human leptin-binding protein. Furthermore, DSM ACC 2618 or an inventive fusion protein is preferably directed to the binding site of leptin on the leptin-binding protein.

50 [0052] Moreover, it is preferred to add a further antibody B, preferably a monoclonal antibody B, if a ligand of the binding protein according to the inventive method is quantitatively determined. Such an "antibody B", preferably a "monoclonal antibody B", is typically an anti-ligand-antibody, i.e. an antibody, which is directed to any ligand according to the present invention but not to leptin-R or leptin-BP. It is advantageous, if quantitative determination in the inventive method is carried out by using a competitive binding test, preferably a "radio-immuno assay" (RIA). Likewise it is typically favourable to quantitatively determine the ligand concentration by reading out a signal, which depends on the concentration of the ligand to be determined, preferably by using an enzyme-linked immuno sorbent assay (ELISA) and/or an according sandwich-assay.

55 [0053] In another preferred embodiment of the method according to the present invention, no separation of the leptin-binding proteins from the sample to be determined is effected prior to quantitative determination. In particular, this means, that it is not required for the invention disclosed to extract the leptin-binding protein from the sample prior to its quantitative analysis, in contrast to the state-of-the-art methods for the determination of ligand concentrations. In the art, practically each form of extraction is carried out, in which the ligand to be determined - such as for instance the hormone - remains in the sample, while the binding protein is separated from the sample, e.g. by precipitation and/or filtration with determined molecule weight exclusion limits, chromatographic methods, such as e.g. affinity chromatography or HPLC, dialysis in determined ligand sizes etc. Precisely this step can be avoided, preferably while using the method according to the

present invention. Due to the selection of DSM ACC 2618 or an inventive fusion protein, neither DSM ACC 2618 the inventive fusion protein nor the complex formed of DSM ACC 2618 the inventive fusion protein and leptin-binding protein is able to bind to the ligand to be determined. Therefore, in the sample determination is no longer interfered or falsified by ligand/binding protein interaction, even if the complexed leptin-binding protein remains in the sample. However, use of the highly affine antibodies B for quantitative measurement does not interfere, since they do not bind to DSM ACC 2618 the inventive fusion protein, to the leptin-binding protein or the complex formed by both, but exclusively to the ligand itself.

**[0054]** This advantage is in particular observed in an especially favourable and preferential method according to the present invention, in which DSM ACC 2618 the inventive fusion protein is added in such a way, that subsequent to addition the molar concentration of DSM ACC is equal or preferably higher than the molar concentration of the leptin-binding protein, preferably at least 50 % higher, more preferably at least twice as high, more preferably at least three times as high and in particular at least four times as high as the leptin-binding protein concentration.

**[0055]** Precisely, this addition of DSM ACC 2618 the inventive fusion protein in excessive amounts to the leptin-binding protein is especially favourable, since in the presence of a sufficient excess of DSM ACC 2618 the inventive fusion protein all ligands are displaced entirely from the leptin-binding protein and therefore become measurable. Since the leptin-binding protein is quantitatively complexed, it does not interfere any more with ligand concentration.

**[0056]** The correct and sufficient amount of DSM ACC 2618 or of inventive fusion protein to be added to the sample in order to provide a quantitative measurement of the ligand without interference phenomena, can be determined by the expert by simple preliminary tests. The optimal addition depends on the amount of a leptin-binding protein in the sample and eventually on the quantitative test system used or the amount of ligand to be determined.

**[0057]** In a preferred embodiment of the present invention a ligand is quantitatively determined by using antibody B, directed to the ligand, preferably a monoclonal antibody B, in a sample containing human blood. Therein, the ligand and a leptin-binding protein are preferably contained in solubilized or suspended form, and DSM ACC 2618 A/an inventive fusion protein is directed to the binding site of the ligand on the leptin-binding protein. Preferably DSM ACC 2618, is added to the sample to be determined in significant excessive amounts as compared to the amount of leptin-binding protein, before or during quantitative determination of the ligand, preferably before step b (quantitative degermination, by adding and incubating antibody B).

**[0058]** Preferably, the ligand as used in a method according to the present invention is leptin.

**[0059]** The present inventive method typically prevents interference of the leptin-binding protein with leptin by adding highly excessive amounts of DSM ACC 2618, or an inventive fusion protein to the sample to be determined. DSM ACC 2618 or an inventive fusion protein are directed to the leptin-binding protein. DSM ACC 2618 is used in the inventive method. It has been selected due to its particularly preferred property to bind to the leptin-binding protein-molecule exactly at the same binding site as the leptin molecule does. If excessive amounts of DSM ACC 2618 A are added, it leads to a displacement of the leptin molecules from their binding to the leptin-binding protein. Leptin is "released" and may then be measured by any immunoassay for leptin without sterically induced blocking by leptin-binding protein. Since DSM ACC 2618 itself or the inventive fusion protein itself do not interfere with the "anti-leptin antibodies" (antibody B) used for the measurement of leptin (ligand), removal of the complexes consisting of DSM ACC 2618 inventive fusion protein and leptin-binding protein from the sample is irrelevant. Practically, e.g. special anti-leptin-binding protein antibody ZMC2 with its leptin-displacing property or an inventive fusion protein is added to the sample before the analysis. After incubation with ZMC2 ligand determination follows the respective manufacturer's guidelines.

**[0060]** Another embodiment of the invention relates to a medicament or a vaccine containing DSM ACC 2618 and/or at least one inventive fusion protein. Preferably, a medicament or a vaccine is disclosed, which contains at least DSM ACC 2618 or an inventive fusion protein according to the present invention and optionally additives and/or adjuvants. Eventually, further active substances may be present in the medicament or vaccine according to present invention.

**[0061]** The medicament or vaccine containing at least DSM ACC 2618 and/or an inventive fusion protein according to the present invention is suitable, for instance for the treatment of excessive leptin levels. The inventive antibody may inhibit - preferably entirely - all leptin receptor binding sites. As a consequence, leptin cannot bind to its leptin receptor and/or the therapeutic DSM ACC 2618 the inventive fusion protein displaces leptin, which is bound to a leptin-binding protein, from its binding site.

**[0062]** According to a further embodiment, DSM ACC 2618 the inventive fusion protein according to the present invention or a medicament or vaccine containing at least DSM ACC 2618 the inventive fusion protein may be used therapeutically as a leptin-antagonist or may be used for the preparation of a medicament, that inhibits the physiological effect of human leptin. The physiologic effect is blocked by DSM ACC 2618 the inventive fusion protein according to the present invention due to its binding to the leptin binding site of the leptin-binding receptor.

**[0063]** A medicament or vaccine, containing DSM ACC 2618 according to the present invention (and, if applicable, further adjuvants or additives) and/or an inventive fusion protein, can therefore be used for therapeutic purposes also in any of those diseases, disorders or conditions showing unphysiologically increased leptin levels. This also implies, according to the present invention, the use of DSM ACC 2618 fusion proteins, medicaments or vaccines containing at

least DSM ACC 2618 for the treatment (or for the preparation of a medicament for the treatment) of all those disorders, diseases or pathophysiologies, for which excessive leptin levels are etiological, for example diseases of the energy metabolism, pathologic eating disorders, such as anorexia or cachexia. DSM ACC 2618 or an inventive fusion protein, medicaments or vaccines, containing DSM ACC 2618, may also be used in the treatment of TH1 mediated diseases including multiple sclerosis, diabetes, type 1 diabetes, chronic heart failure (CHF), TNF-mediated diseases, autoimmune colitis, rheumatoid arthritis, systemic lupus erythematosus, and transplant rejection, for the regulation of increased proliferation of naturally occurring regulatory/suppressor T cells and treatment of diseases associated therewith, and diseases associated with the MAPK/ERK1-2, AKT, p-27-kip1 signalling pathways.

**[0064]** Moreover, there are experimental results that document a correlation of leptin values and autoimmune disorder disposition.

**[0065]** DSM ACC 2618, medicaments or vaccines, containing or an inventive fusion protein, may also be used to block immune effects of leptin. DSM ACC 2618, fusion proteins, medicaments or vaccines, containing DSM ACC 2618 or a fusion protein, therefore may be used for immune therapy.

**[0066]** By administration of DSM ACC 2618 according to the present invention, or an inventive fusion protein or the respective inventive medicaments or vaccines, the effects of pathophysiologically increased extra-cellular leptin-concentration can be blocked without decreasing its serum concentration. Therefore, it is highly useful and promising, to use the inventive medicament or vaccine also for the treatment of diseases such as anorexia nervosa and in the different stages of cachexia. The hypersecretion of leptin in the case of insulin-dependent diabetes mellitus, which is made responsible for a variety of sequelae, may also be treated by an leptin-antagonist according to the present invention or a medicament or vaccine containing at least DSM ACC 2618.

**[0067]** Where appropriate, a therapeutic treatment of affected patients with excessive leptin levels may be carried out in combination with such medicaments or active substances, that decrease the secretion of leptin.

**[0068]** A medicament or a vaccine according to the present invention, DSM ACC 2618 or an inventive fusion protein is particularly preferred or may serve for the preparation of a medicament, for the treatment of conditions, that are associated with an undesired activation of the immune system as well as with autoimmune diseases. Autoimmune diseases may be selected e.g. from multiple sclerosis (MS), rheumatoid arthritis, diabetes, diabetes type I, systemic lupus erythematosus (SLE), chronic polyarthritis, Basedow's disease, autoimmune forms of chronic hepatitis, colitis ulcerosa, allergic type I-diseases, allergic type II-diseases, allergic type III-diseases, allergic type IV-diseases, fibromyalgia, alopecia, Morbus Bechterew, Morbus Crohn, Myasthenia gravis, neurodermitis, polymyalgia rheumatica, progressive systemic sclerosis (PSS), psoriasis, Reiter-syndrome, rheumatic arthritis, vasculitis, etc..

**[0069]** In a specific embodiment, a medicament according to the present invention, DSM ACC 2618 or an inventive fusion protein may be used or may serve for blocking peripheral effects of leptin. "Peripheral" effects are evoked by inhibiting leptin effects indirectly via blocking the leptin receptor. In contrast, "central" inhibition of leptin are due to direct interaction of a therapeutic compound with leptin.

**[0070]** Leptin acts peripherally e.g. on the immune system, whereas central effects are based on its binding to central control organs, e.g. the hypothalamus. Leptin's binding to the hypothalamus leads to weight control effects. For the treatment of certain immune disorders the interaction of leptin with its receptor shall be inhibited, whereas the leptin level in the other body parts (e.g. hypothalamus) shall remain unchanged in order to avoid considered weight loss/weight gain.

**[0071]** State-of-the-art treatment of leptin excess e.g. by administering anti-leptin-antibodies, lowers the leptin level in the body. Upon administration of anti-leptin-antibodies positive effects on the patient's immune disorder may be achieved. However, simultaneous side effects may appear, such as weight gain due to decreased levels of free leptin, e.g. at the hypothalamus. The inventive antagonist allows to avoid the side effects induced by state-of-the-art anti-leptin-antibodies. The anti-leptin-receptor antibody therapy according to the present invention as disclosed herein does not reduce the patient's leptin level by selectively blocking the leptin receptors of certain tissues without modifying the leptin responsiveness of other tissues ("central" effect in the hypothalamus). By way of example, while using an inventive antibody A, such as ZMC2, one might prevent an immune response without having an effect on weight, i.e. there is no significant change in weight during treatment with the inventive antibody A, e.g. ZMC2, or the inventive fusion protein.

**[0072]** Typically, DSM ACC 2618 or an inventive fusion protein as used in a medicament or a vaccine according to the present invention will be available as lyophilized powder, containing between 0.5 mg and 100 mg of the inventive antibody A, and further additives, as for example glycin, manitol, and/or sodium phosphate monohydrate. This lyophilized powder is provided in a suitable aqueous solution and administered subsequently, for example subcutaneously once or several times per day.

**[0073]** In principle, the medicaments according to the present invention may also be administered as liquid dosage form, in particular in form of injection solutions. Suitable additives and/or adjuvants are e.g. solutions or diluents, stabilizers, suspension mediators, buffer substances, preservatives, as well as colorants, expanders, and/or binders. The selection of the adjuvants as well as of the amounts to be administered depends on whether the medicament shall be administered parenterally, intravasally, intravenously, intraperitoneal or intramuscular. Preparations in form of suspensions and solutions as well as dry preparations, which allow an easy reconstitution, are suitable for all the parenteral

applications.

**[0074]** Another embodiment of the invention is a diagnostic agent containing at least one antibody or fusion protein according to the present invention as well as, where appropriate, additives and/or adjuvants. A "diagnostic agent" is to be understood as a preparation or an adjuvant which may be useful, for example for the diagnosis of a determined disease.

**[0075]** A further embodiment of the invention is a kit containing distinct from each other at least one first preparation containing at least DSM ACC 2618 or fusion protein according to the present invention and one operating test assay ready for use, based on an antigen/antibody-reaction, for the quantitative determination of a ligand, that serves as an antigen in this test.

**[0076]** A kit is to be understood as a conjunct form of different constituents in a packaging form. In this case it is in particular a diagnostic-kit, that contains the different constituents required for the quantitative analysis of a ligand.

**[0077]** A kit is preferred, in which the first preparation contains DSM ACC 2618 or fusion protein, directed to the binding site of the ligand, preferably leptin, especially preferentially human leptin, on the, preferably human, leptin-binding protein, and/or which contains, apart from the first preparation and the operative test assay ready for use, based on an antigen/antibody-reaction, for the quantitative determination of a ligand, also a preparation for the calibration.

**[0078]** An especially preferable embodiment is a kit according to the present invention, in which the first preparation contains the antibody ZMC2 (deposited, see above) and/or the preparation for the calibration and/or the antibody B in the enclosed operating test assay ready for use, wherein the test assay is based on an antigen/antibody-reaction for quantitative determination of a ligand, wherein antibody B, preferably a monoclonal antibody B, is directed to the ligand.

**[0079]** Preferably, the ligand is leptin and the antibody B is directed to the main isoform of leptin with a molecular weight of 16 kDa.

**[0080]** A further embodiment of the invention is the use of at least one antibody for determination, preferably quantitative determination, of a physiological ligand, preferably leptin, of a physiological leptin-binding protein.

**[0081]** A further subject matter of the invention is a method for preparing an antibody according to the present invention, i.e. an antibody directed to a leptin-binding protein, which is further directed to a ligand, comprising the following steps:

(a) immunization of animals with recombinantly produced leptin-binding protein, (b) isolation of immune cells from the animal, (c) fusion with myeloma-cell lines to hybridoma cell cultures, (d) selection of clones with high specificity for the leptin-binding protein. The immunization can be carried out with all animals suitable for such purposes, such as mice, rabbits, pigs, horses etc. In order to separate such clones, that produce antibodies directed to a leptin-binding protein, from inventive clones (that produce antibodies, which are e.g. specifically directed to the ligand binding site of the leptin-binding protein), suitable media (e.g. wells of microtiter plates, polystyrol beads, plastic tubes) are each coated with one (unselected) anti-leptin-capture antibody in a method step (e). In another method method (f), the leptin-binding protein and subsequently the ligand (e.g. leptin) are added. Thereby, the ligand should be preferably labeled (for example by using biotinylation, label (radioactive label, fluorescence marker, enzyme marker (horseradish-peroxidase) etc.)) or be detectable by using a respective anti-ligand-antibody, such that the property of the ligand, to bind to the leptin-binding protein in the recipient coated with capture antibody can be examined. Thus, alternative methods are for instance radioactivity, chemoluminescence, colorimetric methods or an enzyme reaction. After the washing step, those "wells" or "beads" that do not show a signal after the addition of the ligand, can be identified. In this case, the capture antibody blocks the ligand binding site. Thus, the binding site is not available any more for the binding of the ligand, since the capture antibody interferes with the ligand.

**[0082]** Finally, DSM ACC 2618 or a fusion protein according to the present invention can be identified with by carrying out competitive binding assays. As described above, a coating process is required here, though, in this method each well (e.g. of a microtiter plate) is coated with an anti-leptin-binding protein-antibody, that does not specifically recognize the ligand binding site. After addition of the leptin-binding protein, a potentially interesting antibody or a fusion protein (each with the property of specifically recognizing the ligand binding site) is added to each well above with labeled ligand. As the concentration of the antibody specific for the ligand binding site increases, the signal intensity of the ligand in the well decreases. This method may be used for selection of inventive antibodies directed to a leptin receptor and/or a leptin-binding protein.

**[0083]** As an alternative to using hybridoma cells, so-called "phage display" methods (Morphosys or Cambridge Antibody Technologies) may be used, in order to generate potentially inventive antibodies and to select them, as described above.

**[0084]** In the following section, the invention is described in a more detailed way by examples, without limiting the scope of the present invention to these Examples.

Examples and Figures:

Description of Figures:

**[0085]**

- Figure 1: shows the results of the examination in Example 2. The results prove, that addition of the inventive antibody may diminish or abolish the influence, which leptin mediates via the leptin receptor.
- Figure 2A: shows the protein sequence of the ZMC2/F<sub>ab</sub> light chain (amended).
- 5 Figure 2B: depicts the nucleotide sequence of the open reading frame of the pComb3/ZMC2,F<sub>ab</sub> vector (light chain) and its translation into the encoding protein sequence of ZMC2/F<sub>ab</sub> light chain (cf. also Figure 2A). Start and stop codons are indicated in bold letters, restriction sites are underlined, and primers sequences are double underlined. The sequence of the pComb3/ZMC2,F<sub>ab</sub> vector is indicated in italic letters.
- 10 Figure 3A: depicts the protein sequence of ZMC2/F<sub>ab</sub> Heavy chain-His.
- Figure 3B: shows the nucleotide sequence of the open reading frame of the pComb3/ZMC2,F<sub>ab</sub>-His vector (heavy chain) and its translation into the encoding protein sequence of the heavy chain of ZMC2/F<sub>ab</sub> Heavy chain-His (cf. Figure 3A). Start and stop codons are indicated in bold letters, Restriction sites are underlined, and primers sequences are double underlined. The sequence of pComb3/ZMC2,F<sub>ab</sub>-His vector is indicated in italic letters. The His-tag is indicated by a dotted (.....) line.
- 15 Figure 4A: discloses the nucleotide sequence of the high affinity clone ZMC2 ScFv (1C3). The V<sub>L</sub> sequence is indicated in bold letters. The V<sub>H</sub> sequence is double underlined. The linker in between is indicated in normal letters. The sequence of the vector is indicated in italic letters. The E-tag is indicated by a dotted line. Restriction sites (SfiI and NotI) are underlined, and primers sequences are double underlined.
- 20 Figure 4B: shows the translated protein sequence encoded by the nucleotide sequence of the high affinity clone ZMC2 ScFv (1 C3) as shown in Figure 4A. Disclosed is the sequence from V<sub>H</sub> until the end of the E-tag.
- 25 Figure 5A: depicts the nucleotide sequence of the ZMC2 Heavy chain - Leptin construct. Disclosed is the 1203 bp nucleotide sequence, wherein start and stop codons are indicated in bold letters and restriction sites are underlined. The ZMC2 heavy chain is indicated by a dotted (.....) line, the (G<sub>4</sub>S)<sub>4</sub> linker is double underlined. The sequence of Leptin indicated by a (.....) line and is the vector is indicated in italic letters. The his tag is indicated by a (.....) line.
- 30 Figure 5B: shows the translated protein sequence of the ZMC2 Heavy chain - Leptin construct (cf. Figure 5A). The ZMC2 heavy chain is indicated by a dotted (.....) line, the (G<sub>4</sub>S)<sub>4</sub> linker is double underlined. The sequence of Leptin indicated by a single line and is the vector is indicated in italic letters. The his tag is indicated by a (.....) line.
- 35 Figure 6: illustrates the binding of ZMC2 antibody to human leptin-R on ELISA. Figure 6 clearly shows that ZMC2 antibody binds to human leptin-R in a dose dependent manner (cf. Example 3).
- 40 Figure 7: shows a bar plot indicating the results of a competitive binding experiment of a ZMC2 antibody to human leptin-R in the presence of (excess) Leptin. On the x-axis different concentrations of leptin (ng/ml) are indicated (10000, 1000, 100, 10, 1, and 0,1 ng/ml) and ZMC2 in a concentration of 10 ng/ml). The y-axis shows the absorbance at 450 nm (OD 450 nm). As can be seen, the binding of ZMC2 to leptin-R is apparently very strong. Only a large excess of leptin can displace the binding of ZMC2 antibody to human leptin-R (cf. Example 4).
- 45 Figure 8: shows a bar plot of the dose response of luciferase activity in response to leptin stimulation in HEK293 cells. Therefore, HEK293 cells were transiently transfected with Ob-Rb and a STAT3-luciferase reporter construct and stimulated with varying doses of leptin for 2 hours. Then, luciferase activity was measured and was corrected for B-galactosidase. On the x-axis different concentrations of leptin (ng/ml) are indicated (1, 5, 10, 20, 50, 100, 250, 1000 ng/ml). The y-axis shows the degree of fold induction versus unstimulated cells. As can be obtained from Figure 8, induction of HEK293 cells with leptin reaches a maximum level, whereby nearly no further stimulation is observed (cf. Example 5).
- 50 Figure 8: shows a bar plot of the dose response of luciferase activity in response to leptin stimulation in HEK293 cells. Therefore, HEK293 cells were transiently transfected with Ob-Rb and a STAT3-luciferase reporter construct and stimulated with varying doses of leptin for 2 hours. Then, luciferase activity was measured and was corrected for B-galactosidase. On the x-axis different concentrations of leptin (ng/ml) are indicated (1, 5, 10, 20, 50, 100, 250, 1000 ng/ml). The y-axis shows the degree of fold induction versus unstimulated cells. As can be obtained from Figure 8, induction of HEK293 cells with leptin reaches a maximum level, whereby nearly no further stimulation is observed (cf. Example 5).
- 55

- Figure 9: illustrates in a bar plot the dose response for inhibitory effects of ZMC2 antibody on leptin signalling. HEK293 cells were transiently transfected with leptin-R and a STAT3-luciferase reporter construct and stimulated with leptin (5ng/ml) for 2 hours. Different doses of ZMC2 antibody (ug/ml, see x-axis) were added to the culture, luciferase activity was measured and corrected for B-galactosidase. The results are expressed as fold induction over the unstimulated cells. On the x-axis different concentrations of leptin (ng/ml) (0, 12,5 and 100 ng/ml) and ZMC2 (10, 5, 1, 0,5, and 0,1 ng/ml) are indicated. As can be obtained from Figure 9, ZMC2 antibody demonstrated inhibitory effects on leptin signalling in a dose response manner (cf. Example 6).
- Figure 10: shows a bar plot of the binding of ZMC2 antibody to mouse leptin-R. Binding of ZMC2 antibody was detected using a biotinylated secondary antibody followed by SAV-HRP. The OD of the resulted colour was measured at 450nm. On the x-axis different concentrations of leptin (ng/ml) and ZMC2 (ng/ml) are indicated. As may be seen in Figure 10, ZMC2 antibody binds to mouse leptin-R in a dose dependent manner and its binding can be displaced by leptin at high concentrations of leptin only (cf. Example 7).
- Figure 11: illustrates in a bar plot the blocking of TNF- $\alpha$  production in leptin activated human monocytes by ZMC2 antibody. Human monocytes were cultured in the presence of PBS, Leptin (250 ng/ml), ZMC2 (10 ng/ml) + Leptin and ZMC2 (5 ng/ml) + Leptin. The Y axis shows percentage of monocytes expressing TNF- $\alpha$  (cf. Example 8).
- Figure 12A depicts a proliferation assay showing the stimulation by okt3 (optimal dose 100ng/ml) of human PBL in autologous human serum in the presence of ZMC2 ab in different concentrations. In Figure 12A ZMC2 is shown (from 0,01, 0,1, 1 and 10 ug/ml) in the presence or absence of exogenous leptin (100ng/ml). As may be obtained from Figure 12A, there is a minor effect of ZMC2 to increase PBL proliferation that is reduced by leptin (cf. Example 9).
- Figure 12 B shows the stimulation by okt3 (optimal dose 100ng/ml) of human PBL in autologous human serum with different doses of leptin and more points on ZMC2 mAb dose response (0, 0.005, 0.05, 0.5, 5, 50 ug/ml) are shown. The curve in Figure 12B, is biphasic with a slight tendency to increased proliferation after treatment with ZMC2 which is again reduced by leptin (cf. Example 9).
- Figures 12C-D: show comparative experiments carried out with a donor (in the same assay as shown for Figures 12A and B) with an agonistic antileptin receptor ab from R&D systems and another anti-human leptin treatment from R&Dsystems. The agonistic anti-ObR2 antibody increases proliferation in a similar fashion to the antagonistic ZMC2 and the anti-leptin at low doses increases the proliferation. The proliferation then is reversed by leptin when using ZMC2, whereas it is still stimulated with anti-ObR2. On a mixed population of naive/memory cells; with leptin present in serum controlling memory cell proliferation, the addition of the blocking ab ZMC2 thus slightly increases proliferation which can then be reversed. Thus, ZMC2 is acting as an antagonistic antibody (cf. Example 9).
- Figure 13: shows a plot of the results from a proliferation assay similar to those as disclosed in Figure 12, but extended to a longer time period (proliferation at 4 days (96 h)). Figure 13 shows the stimulation by okt3 (optimal dose 100ng/ml) of human PBL in autologous human serum with different doses of leptin and more points on ZMC2 mAb dose response (0, 0.005, 0.05, 0.5, 5, 50 ug/ml) are shown. ZMC2 antibody stimulates proliferation, which is then clearly reversed by addition of leptin. Thus, ZMC2 clearly reacts as an antagonist to leptin-R regarding the overall response on the mixed T-cell population (cf. Example 10).
- Figures 14A-C: show a plot of food uptake experiments (cf. Example 11) on ob/ob and ob/+ mice: 3 mice groups were selected; all females; The mice were initially treated with low dose leptin such as to keep the weight constant. The treatment was 100ug/daily ip+Rec leptin 0.5ug/gr weight, for 5 days. In Figure 14A, percent in body weight change is flat during treatment with leptin alone, and instead of being prevented by ZMC2, the weight was slightly increased in terms of no change or even little reduction in body weight. On the heterozygotes (Figure 14B, cf. Example 11), treated in parallel, basically show the similar results. With the same dose of ZMC2 alone, the untreated mice slightly increase body weight over the time; In a comparative Experiment (Figure 14C, cf. Example 9) proliferation of spleen cells from normal mouse (B6) was stimulated with anti-CD3 for mouse (called 2C11) (0,0001, 0,001,

## EP 1 692 181 B1

0,01, 0,1, 1, 10, 100 ug/ml) dose response in the presence of FCS 2%. As can be seen in Figure 14C, a clear inhibition can be obtained at 10-100 ug/ml.

- 5 Figure 15: displays a photograph of a gelelectrophoresis. The samples applied on the gel were obtained from an anti-CD3 stimulation experiment using T-cells from autoimmunity-prone NOD mice. As may be obtained from the gel ERK1/2 phosphorylation is reduced by the leptin-R blocking antibody.
- Figure 16: shows a plasmid map of the pComb3/ZMC2 F<sub>ab</sub>-His clone.
- 10 Figure 17: shows the results of a Western Blot experiment during purification of recombinant F<sub>ab</sub> ZMC2. As can be obtained from the Western Blot, recombinant F<sub>ab</sub> ZMC2 is expressed in the soluble fraction and the Blot shows a protein of the correct size of Kappa light chain.
- 15 Figure 18: shows the results of a Western Blot experiment during purification of recombinant His-tagged F<sub>ab</sub> ZMC2. As can be obtained from the Western Blot, His tagged F<sub>ab</sub> ZMC2 can be purified on a Cobalt Column.
- Figure 19: shows a Coomassie Blue staining of a polyacrylamide gel of a purified F<sub>ab</sub> ZMC2 antibody.
- 20 Figure 20A: shows a bar plot of a binding experiment of ZMC2 and recombinant expressed F<sub>ab</sub> ZMC2 to human Leptin. The y-axis shows the absorbance at 450 nm (OD 450 nm).
- 25 Figure 20B: shows the effect of recombinant F<sub>ab</sub> ZMC2 on leptin-induced SIE activation. As can be obtained from Figure 20A recombinant F<sub>ab</sub> ZMC2 (rF<sub>ab</sub>) and chemically made F<sub>ab</sub> ZMC2 (cF<sub>ab</sub>) for ZMC2 block leptin signalling.

### Examples

#### Example 1:

30

#### Production of antibody A (directed to leptin-BP)

35 **[0086]** More than 20 Balb/c mice were repeatedly immunized with leptin-BP produced recombinantly according to the generally known method (ref. to leaflet of Titermax®). When a high titer against leptin-BP was achieved, the spleen has been removed from the animals, and according to the method described by Köhler and Milstein (Continuous cultures of fused cells secreting antibody of predefined specificity, Nature, 1975, Aug. 7; 256 (5517): 495-7) hybridoma cell cultures were produced by fusion with a mouse-myelom-cell line. Also according to generally known methods (limited dilution, screening of the hybridoma cell culture supernatants with labeled antigen) those clones were selected, which produced monoclonal antibody with high affinity and specificity for leptin- BP.

40 **[0087]** The majority of the selected clones were directed to such epitopes on the leptin-BP molecule, that are situated externally of the binding site for leptin. In order to select antibodies A according to the present invention, directed to an epitope within the binding site, at first one of many antibodies, that binds leptin-BP externally of the binding site, was used. It was identified by applying all monoclonal antibodies against leptin-BP (as many as possible), e.g. in separate wells each, on a microtiter plate (polystyrol plates with highly adsorptive surface) as capture antibody, (alternatively, 45 other methods, as e.g. coated polystyrol beads, coated plastic tubes etc., may also be used). Subsequently, recombinant leptin-BP has been added, which binds to the coating antibody - in a primarily still unknown arrangement (binding according to each epitope within or externally of the interaction site of the hormone receptor). Finally, labeled (in our case biotinylized) leptin has been added, which may now bind exclusively to the leptin-BP-molecules, and which possess a freely accessible binding site (i.e., where the coating antibody does not interfere with the leptin binding). Determination 50 of bound antibody was carried out by addition of streptavidineuropium, which binds to an bound biotinylized leptin and can be measured in a fluorimeter (time resolved fluorescence after addition of enhancement solution). Alternatively, this step may also be effected using analog methods (radioactivity, enzyme reaction/colorimetric method or chemoluminescence).

55 **[0088]** In order to find an antibody, that is directed to the binding site, a microtiter plate was coated with an antibody against leptin-BP, selected according to the above method, that does not interfere with the binding of leptin. The addition of leptin-BP provoked an aligned binding of the leptin-BP-molecules, that is to say with a freely accessible binding site for leptin. Subsequently, biotinylized leptin was added and simultaneously, all other monoclonal antibodies against leptin-BP (once again each antibody in an own well of the microtiter plate). If an antibody is then directed to the binding site,

it should block the binding of biotinylized leptin in a concentration dependent manner. This could be detected by a decrease of the signal intensity (detection method in our case again time resolved fluorescence (streptavidineuropium). For confirmation in an inverted experiment a displacement of biotinylized antibodies directed to leptin-BP by adding unlabeled leptin was carried out. This is possible, if the biotinylized antibody competes with the non-labeled leptin for the binding on the receptor binding site, i.e. if the epitope of the mAbs is located at the interaction site of the leptin/ leptin receptor.

Example 2:

Verification of the effectiveness of an antibody according to the present invention and the associated improvement of general quantitative measurement methods in the presence of interfering leptin-binding protein

**[0089]** Leptin-binding protein was immobilized on a microtiter plate such, that the binding site for leptin was freely accessible. This is carried out by using other antibodies directed to the leptin-binding protein, that do not bind within, but externally at the hormone-receptor-interaction site. Subsequently, labeled (biotinylized) leptin was added. Then, buffer solutions with ascending concentrations of the inventive antibody ZMC2 are added to the incubation solutions. Following an incubation time of 2 hours, the amount of labeled leptin bound to immobilized leptin-binding protein was measured by addition of a fluorescence dye, that binds specifically to biotin. With an ascending concentration of ZMC2, the binding of biotinylized leptin decreased, thus proving the displacement effect of ZMC2.

**[0090]** Furthermore, the functional blockade of the leptin receptors was proven in a cell culture assay by using ZMC2. Therefore, HEK293-cells were transfected transiently with the human leptin receptor as well as with a STAT 3-luciferase-reporter. This construct enables the visualization or the measurement of the intracellular signal cascade activation caused by leptin.

**[0091]** As shown in Figure 1, the addition of leptin to the cell culture provokes a 7-8-fold increase of the luciferase activity (compared with the control containing no leptin). Adding the inventive antibody ZMC2 to the preparation (5 µg/ml) prevents this activation in contrast to the control antibody (antibody with irrelevant specificity, in this case against KLH).

Example 3:

Binding of ZMC2 antibody to human leptin-R on ELISA

**[0092]** For detecting binding of ZMC2 antibody to human leptin-R an ELISA plate was coated with recombinant human leptin-R (200ng/well) and different concentrations of ZMC2 antibody (1000, 333, 111, 37, 12,3, 4,1, 1,3, 0,45, 0,15, 0,05, 0,016, 0,005, 0,0018, 0,0006 ng/ml) were added. Binding of ZMC2 antibody to leptin-R was detected subsequently using a biotinylated secondary antibody followed by SAV-HRP and the signal (OD of resulted colour) was measured at 450nm. As a result, ZMC2 antibody binds to human leptin-R in a dose dependent manner as may be obtained from the corresponding bar plot (see Figure 6).

Example 4:

Specificity of binding of ZMC2 antibody to human leptin-R

**[0093]** For a competitive binding experiment of a ZMC2 antibody to human leptin-R in the presence of (excess) leptin, an ELISA plate was coated with recombinant human leptin-R (200ng/well). Different concentrations of leptin (10000, 1000, 100, 10, 1, 0,1 ng/ml) were added to wells in presence or absence of ZMC2 antibody. ZMC2, if added, was present in a concentration of 10 ng/ml. Binding of ZMC2 antibody was then subsequently detected using a biotinylated secondary antibody followed by SAV-HRP and the signal (OD of resulted colour) was measured at 450nm. As can be obtained from Figure 7 only a large excess of leptin can displace the binding of ZMC2 antibody to human leptin-R. Accordingly, binding of ZMC2 antibody to leptin-R is highly specific.

Example 5:

Dose response of luciferase activity in response to leptin stimulation

**[0094]** In order to detect a dose response of luciferase activity in response to leptin stimulation, HEK293 cells were transiently transfected with leptin-Rb and a STAT3-luciferase reporter construct and stimulated with varying doses of leptin for 2 hours. After 2 hours the media were replaced with fresh medium containing no leptin and cultures were inoculated for further 4 hours before the cells were lysed. Subsequently, luciferase activity was measured and corrected

for  $\beta$ -galactosidase, which was used as a transfection control. The results are shown in Figure 8. The values shown express the fold induction over the unstimulated cells. The induction is dose dependent and reaches a maximum at about 50 - 1000 ng/ml Leptin.

5 Example 6:

Dose response for the inhibitory effects of ZMC2 antibody on leptin signalling

10 **[0095]** To obtain a dose response for the inhibitory effects of ZMC2 antibody on leptin signalling HEK293 cells were transiently transfected with leptin-Rb and a STAT3-luciferase reporter construct and stimulated with leptin (5ng/ml) for 2 hours. Different doses of ZMC2 antibody (10, 5, 1, 0,5 and 0,1  $\mu$ g/ml, if leptin is contained) were added to the culture 30 minutes prior to addition of leptin (0 ng/ml, if no ZMC2 is contained and 12,5 ng/ml, if ZMC2 is contained). Luciferase activity was measured subsequently and was corrected for  $\beta$ -galactosidase. The results are shown as a bar plot in Figure 9, being expressed as fold induction over the unstimulated cells. As a result ZMC2 antibody demonstrated inhibitory effects on leptin signalling in a dose response manner.

Example 7:

20 Binding of ZMC2 antibody to mouse leptin-R

**[0096]** An ELISA plate was coated with recombinant mouse leptin-R (200ng/well) and different concentrations of ZMC2 antibody, leptin, growth hormone or the combination of them (ng/ml) were added. Binding of ZMC2 antibody was detected using a biotinylated secondary antibody followed by SAV-HRP and the OD of resulted colour was measured at 450nm. The results are shown in Figure 10 as a bar plot. As can be obtained from the plot ZMC2 antibody binds to mouse leptin-R in a dose dependent manner and its binding can be displaced by leptin only at high doses.

Example 8:

30 Blocking of TNF- $\alpha$  production in leptin activated human monocytes by ZMC2

**[0097]** For this experiment, TNF- $\alpha$  production was induced by leptin activated human monocytes. After inducing TNF- $\alpha$  production, ZMC2 (10 and 5 ng/ml) was added to the monocytes in the presence and absence of leptin (250 ng/ml). The results are shown in Figure 11. As can be seen in Figure 11, ZMC2 is capable of blocking TNF- $\alpha$  production by leptin activated human monocytes. Y axis shows percentage of monocytes expressing TNF- $\alpha$  (% double positive (CD-14 and TNF- $\alpha$  positive) monocytes).

Example 9:

40 Stimulation of human PBL in autologous human serum by okt3 (anti-CD3 experiment)

**[0098]** For measuring the stimulation of human PBL in autologous human serum by okt3 (optimal dose 100ng/ml) cells were inoculated in the presence of ZMC2 ab (from 0, 0.1, 1 and 10  $\mu$ g/ml) and in the presence or absence of exogenous leptin (100ng/ml). Cells were harvested after 60 min allowing maximum DNA synthesis. The proliferation was measured (cpm) and can be seen in Figure 12A. There is a minor effect of ZMC2 to increase PBL proliferation that is reduced by leptin. This increase in proliferation can be reversed by leptin, as can be seen in the following experiments. ZMC2 thus acts as an antagonist. Furthermore, it is considered that the response to anti-CD3 stimulation in humans in the presence of leptin is dependent on the relative proportion of naive/memory cells in PBL; the more naive cells are present the greater is the increase in proliferation in response to leptin; alternatively, the more memory cells are present the greater is the inhibition of proliferation induced by leptin (although IFN-g secretion is increased, despite the reduced proliferation of memory cells).

**[0099]** In Figures 12B, C and D stimulation by okt3 (optimal dose 100ng/ml) of human PBL in autologous human serum with different doses of leptin (10 and 100 ng/ml) and more points on ZMC2 mAb dose response (0,0001, 0,001, 0,01, 0,1, 1, 10, 100  $\mu$ g/ml) is shown. As can be seen, the curve is biphasic with a slight tendency to increased proliferation after treatment with ZMC2 (Figure 12B) which is again reduced by leptin; with donor 2 experiments were performed in the same assay, i.e. the agonistic anti-leptin receptor ab (anti-ObR2) from R&D systems (Figure 12 C) and another anti-human leptin treatment from R&Dsystems (Figure 12 D). anti-ObR2 increases proliferation in a similar fashion to ZMC2 and the anti-leptin at low doses increases the proliferation, which is reversed by leptin. Here, the effects on a mixed population of naive/memory cells are studied, wherein leptin is present in serum controlling memory cell proliferation.

## EP 1 692 181 B1

Addition of the blocking ab ZMC2 slightly increases proliferation, which can be reversed upon addition of leptin. Thus, ZMC2 is acting as an antagonistic antibody, whereas anti-ObR2 acts as an agonistic antibody.

Example 10:

5

Elongated proliferation experiments

10

**[0100]** To better define the effect of ZMC2, proliferation experiments were carried out over a longer time period to see whether the increase in proliferation was more visible when cells were to be in a later phase of cell cycle. Therefore, proliferation was measured at 4 days (96 h), and surprisingly the ZMC2 ab still stimulated proliferation, wherein - looking at the overall response on a mixed T cell population - ZMC2 turned out to act as an antagonist, since addition of leptin reduces proliferation (see Figure 13). The specificity of ZMC2 additionally can be measured by the fact that addition of leptin reduces proliferation.

15

Example 11:

Food uptake experiments on ob/ob and ob/+ mice: 3 mice group

20

**[0101]** For food uptake experiments ob/ob and ob/+ mice, all females, were taken. In case of ob/ob, mice were treated with low dose leptin in order to maintain weight, i.e. not to loose weight but also not to increase weight, as it usually happens. Usually 1 gram of body weight every 2 days is typically fed to the mice. The treatment in the experiment was 100ug/daily ip+Rec leptin 0.5ug/gr weight, for 5 days. As can be seen in Figure 14A the curve in %in body weight change is flat during treatment with leptin alone, indicating that the treatment was working. Instead of being prevented by the ab, body weight was slightly increased in terms of no change in body weight. In an comparative Experiment heterozygotous mice (see Figure 14B), were used because they show a lower leptin than normal mice. The heterozygotes were treated in parallel with the same dose of ab alone. The untreated mice showed a tendency to increase body weight over the time (less strong than for the the ob/ob mice); the ab treated were similar for body weight, but after stopping body weight increased more than the controls.

25

30

Proliferation of spleen cells from normal mouse (B6)

**[0102]** Proliferation of spleen cells from normal mouse (B6) was stimulated with anti-CD3 for mouse (called 2C11) (0,0001, 0,001, 0,01, 0,1, 1, 10, 100 ug/ml) dose response in the presence of FCS 2%. As can be seen in Figure 14C, a clear inhibition can be obtained at 10-100 ug/ml.

35

SEQUENCE LISTING

**[0103]**

40

<110> Klinikum der Universitaet Muenchen Grosshadern-Innenstadt

<120> Leptin antagonist and method for the quantitative measurement of leptin

<130> LM01P002WO

45

<150> DE 103 53 953.4

<151> 2003-11-17

<160> 8

50

<170> PatentIn version 3.1

<210> 1

<211> 272

55

<212> PRT

<213> Mus musculus

<220>

EP 1 692 181 B1

<221> MISC\_FEATURE

<222> (1)..(270)

<223> Xaa = unknown or other

5 <400> 1

10	Xaa	His	Asn	Pro	Ile	Pro	Met	Pro	Pro	Ala	Ala	Ala	Gly	Leu	Leu	Leu
	1				5					10					15	
15	Leu	Ala	Ala	Gln	Pro	Ala	Met	Ala	Glu	Leu	Val	Met	Thr	Gln	Ser	Pro
				20					25					30		
20	Lys	Phe	Met	Ser	Thr	Ser	Ile	Gly	Asp	Arg	Val	Asn	Ile	Thr	Cys	Lys
			35					40					45			
25	Ala	Thr	Gln	Asn	Val	Arg	Thr	Ala	Val	Thr	Trp	Tyr	Gln	Gln	Lys	Pro
		50					55					60				
30	Gly	Gln	Ser	Pro	Gln	Ala	Leu	Ile	Phe	Leu	Ala	Ser	Asn	Arg	His	Thr
	65				70						75					80
35	Gly	Val	Pro	Ala	Arg	Phe	Thr	Gly	Ser	Gly	Ser	Gly	Thr	Asp	Phe	Thr
					85					90					95	
40	Leu	Thr	Ile	Asn	Asn	Val	Lys	Ser	Glu	Asp	Leu	Ala	Asp	Tyr	Phe	Cys
				100					105					110		
45	Leu	Gln	His	Trp	Asn	Tyr	Pro	Leu	Thr	Phe	Gly	Ser	Gly	Thr	Lys	Leu
			115					120					125			
50	Glu	Ile	Lys	Arg	Ala	Asp	Ala	Ala	Pro	Thr	Val	Ser	Ile	Phe	Pro	Pro
		130					135					140				

EP 1 692 181 B1

Ser Ser Glu Gln Leu Thr Ser Gly Gly Ala Ser Val Val Cys Phe Leu  
 145 150 155 160  
 5  
 Asn Asn Phe Tyr Pro Lys Asp Ile Asn Val Lys Trp Lys Ile Asp Gly  
 .165 170 175  
 10  
 Ser Glu Arg Gln Asn Gly Val Leu Asn Ser Trp Thr Asp Gln Asp Ser  
 180 185 190  
 15  
 Lys Asp Ser Thr Tyr Ser Met Ser Ser Thr Leu Thr Leu Thr Lys Asp  
 195 200 205  
 20  
 Glu Tyr Glu Arg His Asn Ser Tyr Thr Cys Glu Ala Thr His Lys Thr  
 210 215 220  
 25  
 Ser Thr Ser Pro Ile Val Lys Ser Phe Asn Arg Gly Glu Cys Xaa Xaa  
 225 230 235 240  
 30  
 Ser Arg Val Lys Arg Xaa Gln Ser Xaa Gly Gly Pro Gly Thr Pro Ile  
 245 250 255  
 35  
 Arg Pro Ile Gly Xaa Pro Tyr Tyr Asn Ser Leu Gly Gly Gly Phe Gln  
 260 265 270

<210> 2  
 <211> 818  
 <212> DNA  
 <213> Mus musculus

<220>  
 <221> misc\_feature  
 <222> (1)..(818)  
 <223> n = a, t, g, c, unknown or other

<220>  
 <221> CDS  
 <222> (3)..(818)  
 <223>

<400> 2

EP 1 692 181 B1

	na	ngt	cat	aat	cca	ata	cct	atg	cct	acg	gca	gcc	gct	gga	ttg	tta	47
	Xaa	His	Asn	Pro	Ile	Pro	Met	Pro	Thr	Ala	Ala	Ala	Gly	Leu	Leu		
	1				5				10						15		
5	tta	ctc	gct	gcc	caa	cca	gcc	atg	gcc	gag	ctc	gtg	atg	acc	cag	tct	95
	Leu	Leu	Ala	Ala	Gln	Pro	Ala	Met	Ala	Glu	Leu	Val	Met	Thr	Gln	Ser	
				20					25						30		
10	cca	aaa	ttc	atg	tcc	aca	tca	ata	gga	gac	agg	gtc	aat	atc	acc	tgc	143
	Pro	Lys	Phe	Met	Ser	Thr	Ser	Ile	Gly	Asp	Arg	Val	Asn	Ile	Thr	Cys	
			35						40						45		
15																	
20																	
25																	
30																	
35																	
40																	
45																	
50																	
55																	

EP 1 692 181 B1

	aag gcc act cag aat gtt cgt act gct gtt acc tgg tat caa cag aaa	191
	Lys Ala Thr Gln Asn Val Arg Thr Ala Val Thr Trp Tyr Gln Gln Lys	
	50	55
5	cca ggg cag tct cct caa gca ctg att ttc ttg gca tcc aac cgg cac	239
	Pro Gly Gln Ser Pro Gln Ala Leu Ile Phe Leu Ala Ser Asn Arg His	
	65	70
10	act ggt gtc cct gct cga ttc aca ggc agt gga tct ggg aca gat ttc	287
	Thr Gly Val Pro Ala Arg Phe Thr Gly Ser Gly Ser Gly Thr Asp Phe	
	80	85
15	act ctc acc att aac aat gtg aaa tct gaa gac ctg gca gat tat ttc	335
	Thr Leu Thr Ile Asn Asn Val Lys Ser Glu Asp Leu Ala Asp Tyr Phe	
	100	105
20	tgt cta caa cat tgg aat tat cct ctc acg ttc ggc tcg ggg aca aag	383
	Cys Leu Gln His Trp Asn Tyr Pro Leu Thr Phe Gly Ser Gly Thr Lys	
	115	120
25	ttg gaa ata aaa cgg gct gat gct gca cca act gta tcc atc ttc cca	431
	Leu Glu Ile Lys Arg Ala Asp Ala Ala Pro Thr Val Ser Ile Phe Pro	
	130	135
30	cca tcc agt gag cag tta aca tct gga ggt gcc tca gtc gtg tgc ttc	479
	Pro Ser Ser Glu Gln Leu Thr Ser Gly Gly Ala Ser Val Val Cys Phe	
	145	150
35	ttg aac aac ttc tac ccc aaa gac atc aat gtc aag tgg aag att gat	527
	Leu Asn Asn Phe Tyr Pro Lys Asp Ile Asn Val Lys Trp Lys Ile Asp	
	160	165
40	ggc agt gaa cga caa aat ggc gtc ctg aac agt tgg act gat cag gac	575
	Gly Ser Glu Arg Gln Asn Gly Val Leu Asn Ser Trp Thr Asp Gln Asp	
	180	185
45	agc aaa gac agc acc tac agc atg agc agc acc ctc acg ttg acc aag	623
	Ser Lys Asp Ser Thr Tyr Ser Met Ser Ser Thr Leu Thr Leu Thr Lys	
	195	200
50	gac gag tat gaa cga cat aac agc tat acc tgt gag gcc act cac aag	671
	Asp Glu Tyr Glu Arg His Asn Ser Tyr Thr Cys Glu Ala Thr His Lys	
	210	215
55	aca tca act tca ccc att gtc aag agc ttc aac agg gga gag tgt tag	719
	Thr Ser Thr Ser Pro Ile Val Lys Ser Phe Asn Arg Gly Glu Cys	
	225	230
60	taa tct aga gtt aag cgg ccg caa tcg agg ggg ggc ccg gta ccc caa	767
	Ser Arg Val Lys Arg Pro Gln Ser Arg Gly Gly Pro Val Pro Gln	
	240	245
65	ttc gcc cta tag ggg ngc cgt att aca att cac tgg gcg gcg gtt ttc	815
	Phe Ala Leu Gly Xaa Arg Ile Thr Ile His Trp Ala Ala Val Phe	
	255	260
70	aan	818
	Xaa	

EP 1 692 181 B1

<210> 3  
<211> 292  
<212> PRT  
<213> Mus musculus

5

<220>  
<221> MISC\_FEATURE  
<222> (1)..(292)  
<223> Xaa = any or other

10

<400> 3

15

20

25

30

35

40

45

50

55

EP 1 692 181 B1

1 Leu Ala Xaa Arg Gly Gly Gly Arg Lys Ile Xaa Phe Xaa Arg Glu Thr  
 5  
 5 Val Ile Met Lys Tyr Leu Xaa Ala Tyr Gly Pro Ala Ala Gly Leu Leu  
 20 25 30  
 10 Leu Leu Ala Ala Gln Pro Ala Met Ala Gln Val Lys Leu Leu Glu Ser  
 35 40 45  
 15 Gly Pro Gly Leu Val Ala Pro Ser Glu Ser Leu Ser Ile Thr Cys Thr  
 50 55 60  
 20 Ile Ser Gly Phe Ser Leu Thr Asp Asp Gly Val Ser Trp Ile Arg Gln  
 65 70 75 80  
 25 Pro Pro Gly Lys Gly Leu Glu Trp Leu Gly Val Ile Trp Gly Gly Gly  
 85 90 95  
 30 Ser Thr Tyr Phe Asn Ser Leu Phe Lys Ser Arg Leu Ser Ile Thr Arg  
 100 105 110  
 35 Asp Asn Ser Lys Ser Gln Val Phe Leu Glu Met Asp Ser Leu Gln Thr  
 115 120 125  
 40 Asp Asp Thr Ala Met Tyr Tyr Cys Ala Lys His Asp Gly His Glu Thr  
 130 135 140  
 45 Met Asp Tyr Trp Gly Gln Gly Thr Ser Val Thr Val Ser Ser Ser Lys  
 145 150 155 160  
 50 Thr Thr Pro Pro Ser Val Tyr Pro Leu Ala Pro Gly Ser Ala Ala Gln  
 165 170 175  
 55 Thr Asn Ser Met Val Thr Leu Gly Cys Leu Val Lys Gly Tyr Phe Pro  
 180 185 190  
 60 Glu Pro Val Thr Val Thr Trp Asn Ser Gly Ser Leu Ser Ser Gly Val  
 195 200 205

EP 1 692 181 B1

His Thr Phe Pro Ala Val Leu Gln Ser Asp Leu Tyr Thr Leu Ser Ser  
210 215 220

5

Ser Val Thr Val Pro Ser Ser Thr Trp Pro Ser Glu Thr Val Thr Cys  
225 230 235 240

10

Asn Val Ala His Pro Ala Ser Ser Thr Lys Val Asp Lys Lys Ile Val  
245 250 255

15

Pro Arg Asp Cys Thr Ser His His His His His Xaa Ala Ser Leu  
260 265 270

20

Val Val Ala Val Ala Leu His Ser Phe Val Xaa Ile Lys Ala Asn Arg  
275 280 285

25

Arg Pro Ala Xaa  
290

<210> 4  
<211> 876  
<212> DNA  
<213> Mus musculus

30 <220>  
<221> misc\_feature  
<222> (1)..(876)  
<223> n = a, t, g, c, unknown or other

35 <220>  
<221> CDS  
<222> (1)..(876)  
<223>

40 <400> 4

45

50

55



EP 1 692 181 B1

	Pro	Pro	Gly	Lys	Gly	Leu	Glu	Trp	Leu	Gly	Val	Ile	Trp	Gly	Gly	Gly	
					85					90					95		
5	agc	aca	tac	ttt	aat	tca	ctt	ttc	aaa	tcc	aga	ctg	agc	atc	acc	agg	336
	Ser	Thr	Tyr	Phe	Asn	Ser	Leu	Phe	Lys	Ser	Arg	Leu	Ser	Ile	Thr	Arg	
				100					105					110			
10	gac	aac	tct	aag	agc	caa	ggt	ttc	tta	gaa	atg	gac	agt	cta	caa	act	384
	Asp	Asn	Ser	Lys	Ser	Gln	Val	Phe	Leu	Glu	Met	Asp	Ser	Leu	Gln	Thr	
			115					120					125				
15	gat	gac	aca	gcc	atg	tac	tac	tgc	gcc	aaa	cat	gac	gga	cac	gag	act	432
	Asp	Asp	Thr	Ala	Met	Tyr	Tyr	Cys	Ala	Lys	His	Asp	Gly	His	Glu	Thr	
			130				135					140					
20	atg	gac	tat	tgg	ggt	caa	gga	acc	tca	gtc	acc	gtc	tcc	tca	tcc	aaa	480
	Met	Asp	Tyr	Trp	Gly	Gln	Gly	Thr	Ser	Val	Thr	Val	Ser	Ser	Ser	Lys	
					145		150			155						160	
25	acg	aca	ccc	cca	tct	gtc	tat	cca	ctg	gcc	cct	gga	tct	gct	gcc	caa	528
	Thr	Thr	Pro	Pro	Ser	Val	Tyr	Pro	Leu	Ala	Pro	Gly	Ser	Ala	Ala	Gln	
					165					170					175		
30	act	aac	tcc	atg	gtg	acc	ctg	gga	tgc	ctg	gtc	aag	ggc	tat	ttc	cct	576
	Thr	Asn	Ser	Met	Val	Thr	Leu	Gly	Cys	Leu	Val	Lys	Gly	Tyr	Phe	Pro	
				180					185					190			
35	gag	cca	gtg	aca	gtg	acc	tgg	aac	tct	gga	tcc	ctg	tcc	agc	ggg	gtg	624
	Glu	Pro	Val	Thr	Val	Thr	Trp	Asn	Ser	Gly	Ser	Leu	Ser	Ser	Gly	Val	
			195					200					205				
40	cac	acc	ttc	cca	gct	gtc	ctg	cag	tct	gac	ctc	tac	act	ctg	agc	agc	672
	His	Thr	Phe	Pro	Ala	Val	Leu	Gln	Ser	Asp	Leu	Tyr	Thr	Leu	Ser	Ser	
			210				215					220					
45	tca	gtg	act	gtc	ccc	tcc	agc	acc	tgg	ccc	agc	gag	acc	gtc	acc	tgc	720
	Ser	Val	Thr	Val	Pro	Ser	Ser	Thr	Trp	Pro	Ser	Glu	Thr	Val	Thr	Cys	
						230					235					240	
50	aac	ggt	gcc	cac	ccg	gcc	agc	agc	acc	aag	gtg	gac	aag	aaa	att	gtg	768
	Asn	Val	Ala	His	Pro	Ala	Ser	Ser	Thr	Lys	Val	Asp	Lys	Lys	Ile	Val	
					245					250					255		
55	ccc	agg	gat	tgt	act	agt	cat	cat	cat	cat	cat	cat	taa	gct	agc	cta	816
	Pro	Arg	Asp	Cys	Thr	Ser	His	His	His	His	His	His		Ala	Ser	Leu	
				260					265						270		
60	gtg	gtg	gcg	gtg	gct	ctc	cat	tcg	ttt	gtg	ang	ata	aag	gcc	aat	cgn	864
	Val	Val	Ala	Val	Ala	Leu	His	Ser	Phe	Val	Xaa	Ile	Lys	Ala	Asn	Arg	
				275					280					285			
65	aga	cct	gcn	cna													876
	Arg	Pro	Ala	Xaa													
				290													
70	<210>	5															
75	<211>	832															
80	<212>	DNA															
85	<213>	Mus musculus															

EP 1 692 181 B1

<220>  
<221> misc\_feature  
<222> (1)..(832)  
<223> n = a, t, g, c, any or other

5

<220>  
<221> CDS  
<222> (38)..(814)  
<223>

10

<400> 5

15

20

25

30

35

40

45

50

55

EP 1 692 181 B1

	atnctttntt gttcctttct atgcggccca gccggcc atg gcc cag gtc cag ctg	55
	Met Ala Gln Val Gln Leu	
	1 5	
5	cag gag tca gga act gaa gtg gta aag cct ggg gct tca gtg aag ttg	103
	Gln Glu Ser Gly Thr Glu Val Val Lys Pro Gly Ala Ser Val Lys Leu	
	10	
	tcc tgc aag gct tct ggc tac atc ttc aca agt tat gat ata gac tgg	151
	Ser Cys Lys Ala Ser Gly Tyr Ile Phe Thr Ser Tyr Asp Ile Asp Trp	
	25 30 35	
	gtg agg cag acg cct gaa cag gga ctt gag tgg att gga tgg att ttt	199
	Val Arg Gln Thr Pro Glu Gln Gly Leu Glu Trp Ile Gly Trp Ile Phe	
	40 45 50	
	cct gga gag ggg agt act gaa tac aat gag aag ttc aag ggc agg gcc	247
	Pro Gly Glu Gly Ser Thr Glu Tyr Asn Glu Lys Phe Lys Gly Arg Ala	
	55 60 65 70	
20	aca ctg agt gta gac aag tcc tcc agc aca gcc tat atg gag ctc act	295
	Thr Leu Ser Val Asp Lys Ser Ser Ser Thr Ala Tyr Met Glu Leu Thr	
	75 80 85	
	agg ctg aca tct gag gac tct gct gtc tat ttc tgt gct aga ggg gac	343
	Arg Leu Thr Ser Glu Asp Ser Ala Val Tyr Phe Cys Ala Arg Gly Asp	
	90 95 100	
	tac tat agg cgc tac ttt gac ttg tgg ggc caa ggg acc acg gtc acc	391
	Tyr Tyr Arg Arg Tyr Phe Asp Leu Trp Gly Gln Gly Thr Thr Val Thr	
	105 110 115	
30	gtc tcc tca tgt gga ggc ggt tca ggc gga ggt ggc tct ggc ggt ggc	439
	Val Ser Ser Cys Gly Gly Gly Ser Gly Gly Gly Gly Ser Gly Gly Gly	
	120 125 130	
	gga tct gac att gag ctc acc cag tct cca gca atc atg tct gca tct	487
	Gly Ser Asp Ile Glu Leu Thr Gln Ser Pro Ala Ile Met Ser Ala Ser	
	135 140 145 150	
	cca ggg gag agg gtc acc atg acc tgc agt gcc agc tca agt ata cgt	535
	Pro Gly Glu Arg Val Thr Met Thr Cys Ser Ala Ser Ser Ser Ile Arg	
	155 160 165	
	tac ata tat tgg tac caa cag aag cct gga tcc tcc ccc aga ctc ctg	583
	Tyr Ile Tyr Trp Tyr Gln Gln Lys Pro Gly Ser Ser Pro Arg Leu Leu	
	170 175 180	
45	att tat gac aca tcc aac gtg gct cct gga gtc cct ttt cgc ttc agt	631
	Ile Tyr Asp Thr Ser Asn Val Ala Pro Gly Val Pro Phe Arg Phe Ser	
	185 190 195	

50

55

EP 1 692 181 B1

	ggc agt ggg tct ggg acc tct tat tct ctc aca atc aac cga atg gag	679
	Gly Ser Gly Ser Gly Thr Ser Tyr Ser Leu Thr Ile Asn Arg Met Glu	
	200 205 210	
5		
	gct gag gat gct gcc act tat tac tgc cag gag tgg agt ggt tat cct	727
	Ala Glu Asp Ala Ala Thr Tyr Tyr Cys Gln Glu Trp Ser Gly Tyr Pro	
	215 220 225 230	
10		
	ctc acg ttc ggc tcg ggc acc aag cgg gaa atc aaa cgg gcg gcc gca	775
	Leu Thr Phe Gly Ser Gly Thr Lys Arg Glu Ile Lys Arg Ala Ala Ala	
	235 240 245	
15		
	ggt gcg ccg gtg ccg tat ccg gat ccg ctg gaa ccg cgt gccgcataga	824
	Gly Ala Pro Val Pro Tyr Pro Asp Pro Leu Glu Pro Arg	
	250 255	
	ctggttgaa	832
20	<210> 6	
	<211> 259	
	<212> PRT	
	<213> Mus musculus	
25	<220>	
	<221> misc_feature	
	<222> (1)..(832)	
	<223> n = a, t, g, c, any or other	
30	<400> 6	
35		
40		
45		
50		
55		



EP 1 692 181 B1

Gly Gly Ser Gly Gly Gly Gly Ser Asp Ile Glu Leu Thr Gln Ser Pro  
 130 135 140

5

Ala Ile Met Ser Ala Ser Pro Gly Glu Arg Val Thr Met Thr Cys Ser  
 145 150 155 160

10

Ala Ser Ser Ser Ile Arg Tyr Ile Tyr Trp Tyr Gln Gln Lys Pro Gly  
 165 170 175

15

Ser Ser Pro Arg Leu Leu Ile Tyr Asp Thr Ser Asn Val Ala Pro Gly  
 180 185 190

20

Val Pro Phe Arg Phe Ser Gly Ser Gly Ser Gly Thr Ser Tyr Ser Leu  
 195 200 205

25

Thr Ile Asn Arg Met Glu Ala Glu Asp Ala Ala Thr Tyr Tyr Cys Gln  
 210 215 220

30

Glu Trp Ser Gly Tyr Pro Leu Thr Phe Gly Ser Gly Thr Lys Arg Glu  
 225 230 235 240

Ile Lys Arg Ala Ala Ala Gly Ala Pro Val Pro Tyr Pro Asp Pro Leu  
 245 250 255

35

Glu Pro Arg

40

<210> 7  
 <211> 1252  
 <212> DNA  
 <213> Mus musculus

45

<220>  
 <221> misc\_feature  
 <222> (1)..(1252)  
 <223> n = a, t, g, c, unknown or other

50

55

<400> 7

EP 1 692 181 B1

tcgctgcca accagccatg gcccaggtga aactgctcga gtcaggacct ggcctggtgg 60  
 cgccctcaga gagcctgtcc atcacatgca ctatctcagg gttctcatta accgacgatg 120  
 5 gtgtaagctg gattcggcag cctccaggaa agggctctgga gtggctggga gtaatatggg 180  
 gtggtggaag cacatacttt aattcacttt tcaaatccag actgagcatc accagggaca 240  
 10 actctaagag ccaagttttc ttagaaatgg acagtctaca aactgatgac acagccatgt 300  
 actactgcg ccaacatgac ggacacgaga ctatggacta ttgggggtcaa ggaacctcag 360  
 tcaccgtctc ctcatccaaa acgacacccc catctgtcta tccactggcc cctggatctg 420  
 15 ctgccc aaac taactccatg gtgaccctgg gatgacctgg caagggctat ttccctgagc 480  
  
 cagtgacagt gacctggaac tctggatccc tgtccagcgg tgtgcacacc ttcccagctg 540  
 20 tcctgcagtc tgacctctac actctgagca gctcagtgac tgtcccctcc agcacctggc 600  
 ccagcgagac cgtcacctgc aacgttgcc acccgccag cagcaccaag gtggacaaga 660  
 25 aaattgtgcc cagggattgt actagtggtg gcggaggtag tgggtggcga ggtagcggtg 720  
 gcggaggttc tgggtggcga ggttccgaat tcctcgaggt gcccatccaa aaagtccaag 780  
 atgacaccaa aacctcacc aagacaattg tcaccaggat caatgacatt tcacacacgc 840  
 30 agtcagtctc ctccaaacag aaagtcaccg gtttggactt cattcctggg ctccaccca 900  
 tcctgacctt atccaagatg gaccagacac tggcagtcta ccaacagatc ctaccagta 960  
 tgccttcag aaacgtgatc caaatatcca acgacctgga gaacctccgg gatcttcttc 1020  
 35 acgtgctggc cttctctaag agctgccact tgcctgggc cagtggcctg gagacctgg 1080  
 acagcctggg ggggtgtcctg gaagcttcag gctactccac agaggtggtg gccctgagca 1140  
 40 ggctgcaggg gtctctgcag gacatgctgt ggcagctgga cctcagccct ggggtgacta 1200  
 gtcacatca tcacatcat taagctagcc tagtgggtggc ggtggctctc ca 1252  
  
 45 <210> 8  
 <211> 401  
 <212> PRT  
 <213> Mus musculus  
  
 50 <220>  
 <221> MISC\_FEATURE  
 <222> (1)..(401)  
 <223> Xaa = unknown or other  
  
 55 <400> 8

EP 1 692 181 B1

Met Ala Gln Val Lys Leu Leu Glu Ser Gly Pro Gly Leu Val Ala Pro  
1 5 10 15

5  
Ser Glu Ser Leu Ser Ile Thr Cys Thr Ile Ser Gly Phe Ser Leu Thr  
20 25 30

10  
Asp Asp Gly Val Ser Trp Ile Arg Gln Pro Pro Gly Lys Gly Leu Glu  
35 40 45

15  
Trp Leu Gly Val Ile Trp Gly Gly Gly Ser Thr Tyr Phe Asn Ser Leu  
50 55 60

20  
Phe Lys Ser Arg Leu Ser Ile Thr Arg Asp Asn Ser Lys Ser Gln Val  
65 70 75 80

25  
Phe Leu Glu Met Asp Ser Leu Gln Thr Asp Asp Thr Ala Met Tyr Tyr  
85 90 95

30

35

40

45

50

55

EP 1 692 181 B1

Cys Ala Lys His Asp Gly His Glu Thr Met Asp Tyr Trp Gly Gln Gly  
 100 105 110  
 5  
 Thr Ser Val Thr Val Ser Ser Ser Lys Thr Thr Pro Pro Ser Val Tyr  
 115 120 125  
 10  
 Pro Leu Ala Pro Gly Ser Ala Ala Gln Thr Asn Ser Met Val Thr Leu  
 130 135 140  
 Gly Cys Leu Val Lys Gly Tyr Phe Pro Glu Pro Val Thr Val Thr Trp  
 145 150 155 160  
 15  
 Asn Ser Gly Ser Leu Ser Ser Gly Val His Thr Phe Pro Ala Val Leu  
 165 170 175  
 20  
 Gln Ser Asp Leu Tyr Thr Leu Ser Ser Ser Val Thr Val Pro Ser Ser  
 180 185 190  
 Thr Trp Pro Ser Glu Thr Val Thr Cys Asn Val Ala His Pro Ala Ser  
 195 200 205  
 25  
 Ser Thr Lys Val Asp Lys Lys Ile Val Pro Arg Asp Cys Thr Ser Gly  
 210 215 220  
 30  
 Gly Gly Gly Ser Gly Gly Gly Gly Ser Gly Gly Gly Gly Ser Gly Gly  
 225 230 235 240  
 Gly Gly Ser Glu Phe Leu Glu Val Pro Ile Gln Lys Val Gln Asp Asp  
 245 250 255  
 35  
 Thr Lys Thr Leu Ile Lys Thr Ile Val Thr Arg Ile Asn Asp Ile Ser  
 260 265 270  
 40  
 His Thr Gln Ser Val Ser Ser Lys Gln Lys Val Thr Gly Leu Asp Phe  
 275 280 285  
 45  
 Ile Pro Gly Leu His Pro Ile Leu Thr Leu Ser Lys Met Asp Gln Thr  
 290 295 300  
 Leu Ala Val Tyr Gln Gln Ile Leu Thr Ser Met Pro Ser Arg Asn Val  
 305 310 315 320  
 50  
 Ile Gln Ile Ser Asn Asp Leu Glu Asn Leu Arg Asp Leu Leu His Val  
 325 330 335  
 55  
 Leu Ala Phe Ser Lys Ser Cys His Leu Pro Trp Ala Ser Gly Leu Glu



binding protein in solubilized or suspended form, **characterized in that** an antibody or fragment according to claim 1 or 2, , and/or a fusion protein according to any one of claims 4-10 is/are added to the sample to be determined.

- 5      **12.** The method according to claim 11, **characterized in that** an antibody or fragment according to claim 1 or 2 is added before or during the quantitative determination and/or is incubated with the sample.
- 10      **13.** The method according to claim 11 or 12, **characterized in that** the sample contains liquid.
- 10      **14.** The method according to claim 13 wherein said sample is a body liquid more preferably human body liquid.
- 15      **15.** The method according to claim 13 or 14 wherein said sample is blood.
- 15      **16.** The method according to any one of claims 11-15, **characterized in that** the leptin-binding protein is soluble, preferably a soluble portion of the leptin receptor and/or a hormone-binding protein, in particular a soluble hormone-binding protein.
- 20      **17.** The method according to any one of claims 11-16, **characterized in that** the quantitative determination of leptin is carried out by using the binding of leptin as an antigen to an antibody.
- 20      **18.** The method according to claim 17 wherein said antibody is a monoclonal antibody.
- 25      **19.** The method according to any one of claims 11-18, **characterized in that** the quantitative determination is carried out by using a competitive binding test.
- 25      **20.** The method according to claim 19 wherein said test is a radio-immuno assay.
- 30      **21.** The method according to one of claims 11-20, **characterized in that** the quantitative determination is carried out by the measurement of an increasing reading parameter to be increased as a function of the concentration of the ligand to be determined.
- 30      **22.** The method according to claim 21 wherein said method is an enzyme-linked immuno sorbent assay (ELISA) and/or a sandwich-assay.
- 35      **23.** The method according to any one of claims 11-22 , **characterized in that** the leptin-binding protein is not separated from the sample to be determined before quantitative determination.
- 35      **24.** The method according to any one of claims 11-23 , **characterized in that** an antibody or fragment according to claim 1 or 2 is added in the sample in a higher concentration than the leptin-binding protein, preferably in a concentration of at least 50% more, more preferably of at least 100%, even more preferably of at least 200% more, and most preferably of at least 400% more.
- 40      **25.** A medicament containing an antibody or fragment according to one any of claims 1 or 2, or a fusion protein according to any one of claims 4-10.
- 45      **26.** A diagnostic agent containing an antibody or fragment according to claim 1 or 2, or a fusion protein according to one of claims 4-6.
- 50      **27.** A kit containing: an antibody or fragment according to one of claims 1 or 2, or a fusion protein according to one of claims 4-6.
- 50      **28.** The kit according to claim 27, **characterized in that** the kit further contains a leptin monoclonal antibody.
- 55      **29.** The kit according to claim 28, **characterized in that** the leptin monoclonal antibody is directed to the main isoform of leptin with a molecular weight of 16 kDa.

Patentansprüche

- 5 1. Monoklonaler Antikörper oder Fragment eines monoklonalen Antikörpers, der oder das auf die extrazelluläre Domäne des Leptinrezeptors oder auf das Leptin-bindende Protein gerichtet ist, **dadurch gekennzeichnet, dass** der Antikörper oder das Fragment aus der Gruppe, bestehend aus
- 10 i) einem monoklonalen Antikörper, der unter der Zugangsnummer DSM ACC 2618 hinterlegt ist,  
ii) einem Einzelketten-Antikörperfragment, wie es in der SEQ ID NR: 6 dargestellt ist,  
ausgewählt ist, wobei der Antikörper oder das Fragment Leptin, das an den Leptinrezeptor oder das Leptin-bindende Protein gebunden ist, verdrängt.
- 15 2. Monoklonaler Antikörper oder Fragment nach Anspruch 1, **dadurch gekennzeichnet, dass** er oder es die Bindungsstelle für Leptin bindet.
3. Monoklonaler Antikörper oder Fragment nach einem der Ansprüche 1 oder 2 zur Verwendung als Medikament.
- 20 4. Fusionsprotein, enthaltend:
- i) einen Antikörper oder ein Fragment nach Anspruch 1 oder 2 und  
ii) einen zweiten Antikörper, ein Antikörperfragment, ein Peptid oder Leptin.
- 25 5. Fusionsprotein nach Anspruch 4, **dadurch gekennzeichnet, dass** das Fusionsprotein zwischen den Teilen i) und ii) einen Linker enthält.
- 30 6. Fusionsprotein nach Anspruch 5, **dadurch gekennzeichnet, dass** der Linker eine Länge von 5 bis 40 Aminosäuren, mehr bevorzugt zwischen 5 und 30 Aminosäuren und am meisten bevorzugt zwischen 5 und 20 Aminosäuren umfasst.
- 35 7. Fusionsprotein nach Anspruch 5 oder 6, **dadurch gekennzeichnet, dass** der Linker mindestens 50 % Glycinreste enthält, vorzugsweise mindestens 60 %, mehr bevorzugt mindestens 70 % und am meisten bevorzugt mindestens 80 %.
8. Fusionsprotein nach einem der Ansprüche 4 bis 7, **dadurch gekennzeichnet, dass** das Fusionsprotein bispezifisch ist und auf den Leptinrezeptor oder das Leptin-bindende Protein als eine erste Spezifität und auf ein Zelloberflächenprotein als eine zweite Spezifität gerichtet ist.
- 40 9. Fusionsprotein nach einem der Ansprüche 4 bis 8, **dadurch gekennzeichnet, dass** das Fusionsprotein eine Aminosäuresequenz umfasst, die durch die Nukleinsäuresequenz SEQ ID NR: 7 kodiert ist.
10. Fusionsprotein nach einem der Ansprüche 4 bis 8, **dadurch gekennzeichnet, dass** das Fusionsprotein die Aminosäuresequenz SEQ ID NR: 8 umfasst.
- 45 11. Verfahren zur quantitativen Bestimmung von Leptin in einer Probe, die Leptin und den Leptinrezeptor oder das Leptin-bindende Protein in gelöster oder suspendierter Form enthält, **dadurch gekennzeichnet, dass** ein Antikörper oder ein Fragment nach Anspruch 1 oder 2 und/oder ein Fusionsprotein nach einem der Ansprüche 4 bis 10 der zu bestimmenden Probe zugesetzt wird/werden.
- 50 12. Verfahren nach Anspruch 11, **dadurch gekennzeichnet, dass** ein Antikörper oder Fragment nach Anspruch 1 oder 2 vor oder während der quantitativen Bestimmung zugesetzt wird und/oder mit der Probe inkubiert wird.
13. Verfahren nach Anspruch 11 oder 12, **dadurch gekennzeichnet, dass** die Probe Flüssigkeit enthält.
- 55 14. Verfahren nach Anspruch 13, bei dem die Probe eine Körperflüssigkeit, mehr bevorzugt eine menschliche Körperflüssigkeit ist.
15. Verfahren nach Anspruch 13 oder 14, bei dem die Probe Blut ist.

## EP 1 692 181 B1

16. Verfahren nach einem der Ansprüche 11 bis 15, **dadurch gekennzeichnet, dass** das Leptin-bindende Protein löslich ist, vorzugsweise ein löslicher Teil des Leptinrezeptors und/oder eines Hormon-bindenden Proteins, insbesondere ein lösliches Hormon-bindendes Protein.
- 5 17. Verfahren nach einem der Ansprüche 11 bis 16, **dadurch gekennzeichnet, dass** die quantitative Bestimmung von Leptin durch Nutzen des Bindens von Leptin als ein Antigen an einen Antikörper durchgeführt wird.
18. Verfahren nach Anspruch 17, bei dem der Antikörper ein monoklonaler Antikörper ist.
- 10 19. Verfahren nach einem der Ansprüche 11 bis 18, **dadurch gekennzeichnet, dass** die quantitative Bestimmung durch Verwenden eines kompetitiven Bindungstests durchgeführt wird.
20. Verfahren nach Anspruch 19, bei dem der Test ein Radioimmunassay ist.
- 15 21. Verfahren nach einem der Ansprüche 11 bis 20, **dadurch gekennzeichnet, dass** die quantitative Bestimmung durch die Messung eines zunehmenden Messparameters, der als Funktion der Konzentration des zu bestimmenden Liganden zunimmt, durchgeführt wird.
22. Verfahren nach Anspruch 21, wobei das Verfahren ein enzymgekoppelter Immunadsorptionsassay (ELISA) und/oder ein Sandwich-Assay ist.
- 20 23. Verfahren nach einem der Ansprüche 11 bis 22, **dadurch gekennzeichnet, dass** das Leptin-bindende Protein vor der quantitativen Bestimmung nicht von der zu bestimmenden Probe getrennt wird.
- 25 24. Verfahren nach einem der Ansprüche 11 bis 23, **dadurch gekennzeichnet, dass** ein Antikörper oder Fragment nach Anspruch 1 oder 2 der Probe in einer höheren Konzentration zugesetzt wird als das Leptin-bindende Protein, vorzugsweise in einer Konzentration von mindestens 50 % mehr, mehr bevorzugt von mindestens 100 %, noch mehr bevorzugt von mindestens 200 % mehr und am meisten bevorzugt von mindestens 400 % mehr.
- 30 25. Medikament, das einen Antikörper oder Fragment nach einem der Ansprüche 1 oder 2 oder ein Fusionsprotein nach einem der Ansprüche 4 bis 10 enthält.
26. Diagnostisches Mittel, das einen Antikörper oder ein Fragment nach Anspruch 1 oder 2 oder ein Fusionsprotein nach einem der Ansprüche 4 bis 6 enthält.
- 35 27. Kit, der einen Antikörper oder ein Fragment nach einem der Ansprüche 1 oder 2 oder ein Fusionsprotein nach einem der Ansprüche 4 bis 6 enthält.
28. Kit nach Anspruch 27, **dadurch gekennzeichnet, dass** der Kit ferner einen monoklonalen Leptin-Antikörper enthält.
- 40 29. Kit nach Anspruch 28, **dadurch gekennzeichnet, dass** der monoklonale Leptin-Antikörper gegen die Hauptisoform von Leptin mit einem Molekulargewicht von 16 kDa gerichtet ist.

### 45 **Revendications**

1. Anticorps monoclonal, ou un fragment d'un anticorps monoclonal, dirigé vers le domaine extra cellulaire d'un récepteur leptine ou la protéine de liaison leptine, **caractérisé en ce que** l'anticorps ou fragment est choisi parmi le
- 50 groupe consistant en :
- i) un anticorps monoclonal déposé sous le numéro d'accès DSM ACC 2618 ;
- ii) un fragment anticorps de chaîne unique représenté dans SEQ ID NO :6 ;
- ledit anticorps ou fragment déplaçant la leptine qui est liée au récepteur leptine ou à la protéine de liaison leptine.
- 55 2. Anticorps monoclonal, ou un fragment d'un anticorps monoclonal selon la revendication 1, **caractérisé en ce qu'il** est lié au site de liaison pour la leptine.

## EP 1 692 181 B1

3. Anticorps monoclonal, ou un fragment d'un anticorps monoclonal selon l'une des revendications 1 ou 2 pour utilisation en tant que médicament.
- 5 4. Protéine de fusion contenant :
- i) un anticorps ou fragment selon l'une des revendications 1 ou 2 ; et
  - ii) un second anticorps, un fragment anticorps, un peptide ou leptine
- 10 5. Protéine de fusion selon la revendication 4, **caractérisée en ce qu'**elle contient un lieu entre les parties i) et ii).
6. Protéine de fusion selon la revendication 5, **caractérisée en ce que** le lieu comprend une longueur de 5 à 40 acides aminés, et de façon plus préférée entre 5 et 30 acides aminés, et de façon encore plus préférée entre 5 et 20 acides aminés.
- 15 7. Protéine de fusion selon la revendication 5 ou 6, **caractérisée en ce que** le lieu contient au moins 50% de résidu glycine, de préférence au moins 60%, de façon encore plus préférée au moins 70%, et de façon encore plus préférée, au moins 80%.
- 20 8. Protéine de fusion selon l'une des revendications 4 à 7, **caractérisée en ce qu'**elle est bi-spécifique et est dirigée vers le récepteur leptine ou la protéine de liaison leptine en tant que première spécificité et vers une protéine de surface de cellule en tant que seconde spécificité.
- 25 9. Protéine de fusion selon l'une des revendications 4 à 8, **caractérisée en ce que** la protéine de fusion comporte une séquence acide aminé encodée par la séquence acide nucléique SEQ ID NO :7.
- 30 10. Protéine de fusion selon l'une des revendications 4 à 8, **caractérisée en ce qu'**elle comporte la séquence acide aminé SEQ ID NO :8.
- 35 11. Procédé pour la détermination quantitative de leptine dans un échantillon contenant de la leptine et le récepteur leptine où la protéine de liaison leptine est solubilisée ou sous forme de suspension, **caractérisé en ce qu'**un anticorps ou fragment selon l'une des revendications 1 ou 2 et/ou une protéine de fusion selon l'une des revendications 4 à 10 est/sont ajoutée(s) à l'échantillon destiné à être analysé.
- 40 12. Procédé selon la revendication 11, **caractérisé en ce qu'**un anticorps ou fragment selon l'une des revendications 1 ou 2 est ajouté avant ou durant la détermination quantitative et/ou est incubé avec l'échantillon.
- 45 13. Procédé selon l'une des revendications 11 ou 12, **caractérisé en ce que** l'échantillon contient du liquide.
- 50 14. Procédé selon la revendication 13, **caractérisé en ce que** ledit échantillon est un liquide de corps, et de façon plus préférée un liquide de corps humain.
- 55 15. Procédé selon les revendications 13 ou 14, **caractérisé en ce que** ledit échantillon est du sang.
16. Procédé selon l'une des revendications 11 à 15, **caractérisé en ce que** la protéine de liaison leptine est soluble, de préférence une partie soluble du récepteur leptine et/ou une protéine de liaison hormone, en particulier une protéine de liaison hormone soluble.
17. Procédé selon l'une des revendications 11 à 17, **caractérisé en ce que** la détermination quantitative de la leptine est réalisée en utilisant la liaison de la leptine en tant que antigène.
18. Procédé selon la revendication 17, **caractérisé en ce que** ledit anticorps est un anticorps monoclonal.
19. Procédé selon l'une des revendications 11 à 18, **caractérisé en ce que** la détermination quantitative est réalisée en utilisant un test de liaison compétitif.
20. Procédé selon la revendication 19, **caractérisé en ce que** ledit test est un test immunologique radio.
21. Procédé selon l'une des revendications 11 à 20, **caractérisé en ce que** la détermination quantitative est réalisée

## EP 1 692 181 B1

par la mesure d'un paramètre de lecture augmentant, destiné à augmenter en fonction de la concentration du ligand destiné à être déterminé.

- 5
22. Procédé selon la revendication 21, **caractérisé en ce qu'il** est constitué d'un test sorbent immunologique lié enzyme (ELISA) et/ou un test dit « sandwich ».
23. Procédé selon l'une des revendications 11 à 22, **caractérisé en ce que** la protéine de liaison leptine n'est pas séparée de l'échantillon destiné à être déterminé avant la détermination quantitative.
- 10
24. Procédé selon l'une des revendication 11 à 23, **caractérisé en ce qu'**un anticorps ou fragment selon la revendication 1 ou 2 est ajouté à l'échantillon en une concentration plus élevée que la protéine de liaison leptine, de préférence en une concentration d'au moins 50% ou plus, et de manière plus préférée au moins 100%, et encore de manière plus préférée au moins 200% ou plus, et de façon encore plus préférée au moins 400% ou plus.
- 15
25. Médicament contenant un anticorps ou un fragment selon l'une des revendications 1 ou 2, ou une protéine de fusion selon l'une des revendications 4 à 10.
26. Agent de diagnostic contenant un anticorps ou un fragment selon l'une des revendications 1 ou 2, ou une protéine de fusion selon l'une des revendications 4 à 6.
- 20
27. Ensemble contenant : un anticorps ou un fragment selon l'une des revendications 1 ou 2, ou une protéine de fusion selon l'une des revendications 4 à 6.
28. Ensemble selon la revendication 27, **caractérisé en ce qu'il** comporte en outre un anticorps monoclonal leptine.
- 25
29. Ensemble selon la revendication 28, **caractérisé en ce que** l'anticorps monoclonal leptine est dirigé vers l'isoforme principale de leptine, avec un poids moléculaire de 16 kDa.
- 30
- 35
- 40
- 45
- 50
- 55

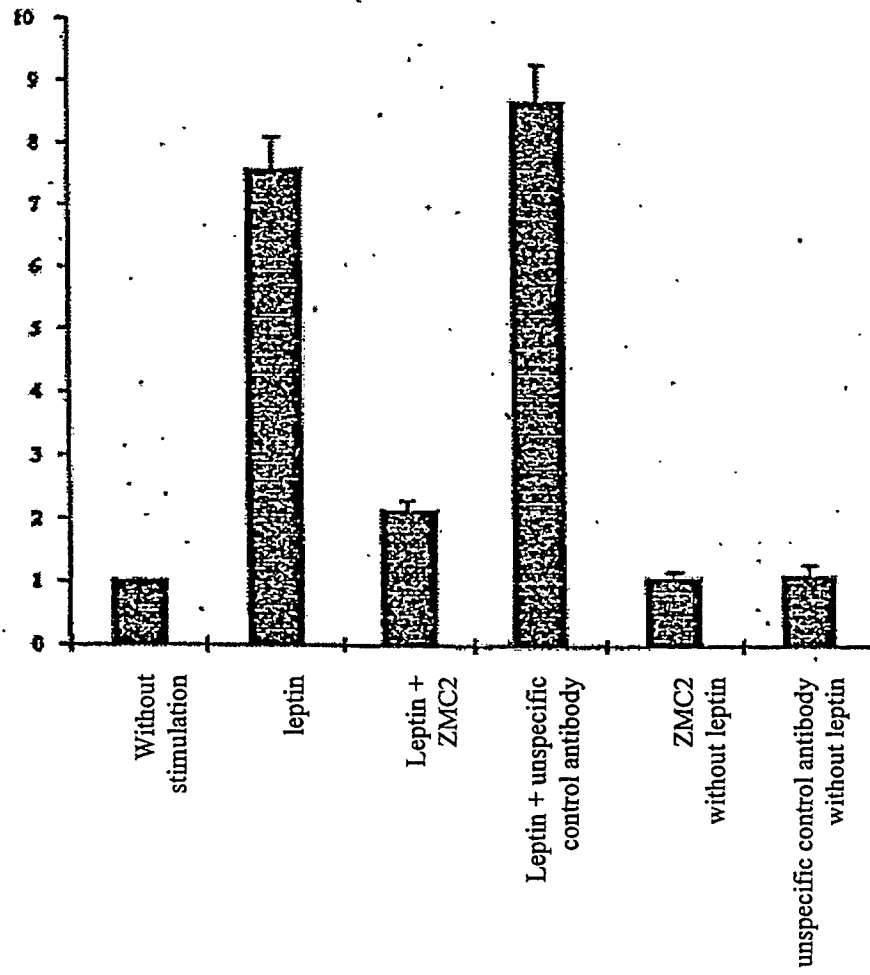


Figure 1

A)

XHNPIPMPPAAAGLLLLLAAQPAMAEVMTQSPKFMSTSIGDRVNITCKAT  
 QNVRTAVTWYQQKPGQSPQALIFLASNRHTGVPARFTGSGSGDFTLTIN  
 NVKSEDLADYFCLQHWNYPLTFGSGTKLEIKRADAAPTVSIFPPSSEQLT  
 SGGASVVCFLNNFYPKDINVKWKIDGSERQNGVLNSWTDQDSKDSTYSMS  
 STLTTLTKDEYERHNSYTCEATHKTSTSPIVKSFNRGEC\*\*SRVKRXQ SXG  
 GPGTPIRPIGXPHYNSLGGGFQ

B)

DNA: NANGTCATAATCCAATACCTATGCCTACGGCAGCCGCTGGATTGTTATTAC  
 +3: X H N P I P M P T A A A G L L L L  
 pComb3 vector SacI V<sub>L</sub>(κ) primer  
 DNA: TCGTGTCCCAACCAGCCATGGCCGAGCTCGTGTATGCCAGTCTCCAAAT  
 +3: A A Q P A M A E L V M T Q S P K F  
 DNA: TCATGTCCACATCAATAGGAGACAGGGTCAATATCACCTGCAAGGCCACTC  
 +3: M S T S I G D R V N I T C K A T Q  
 DNA: AGAATGTTCGTACTGCTGTTACCTGGTATCAACAGAAACCAGGGCAGTCTC  
 +3: N V R T A V T W Y Q Q K P G Q S P  
 DNA: CTCAGCACTGATTTCTTGGCATCCAACGGCACACTGGTGTCCCTGCTC  
 +3: Q A L I F L A S N R H T G V P A R  
 DNA: GATTACAGGCAGTGGATCTGGGACAGATTTCACTCTACCATTAACAATG  
 +3: F T G S G S G T D F T L T I N N V  
 DNA: TGAAATCTGAAGACCTGGCAGATTATTTCTGTCTACAACATTGGAATTATC  
 +3: K S E D L A D Y F C L Q H W N Y P  
 DNA: CTCTCACGTTCCGCTCGGGGACAAAGTTGGAATAAAAACGGGCTGATGCTG  
 +3: L T F G S G T K L E I K R A D A A  
 DNA: CACCAACTGTATCCATCTTCCACCATCCAGTGAGCAGTTAACATCTGGAG  
 +3: P T V S I F P P S S E Q L T S G G  
 DNA: GTGCCTCAGTCGTGTGCTTCTTGAACAACCTTACCCCAAAGACATCAATG  
 +3: A S V V C F L N N F Y P K D I N V  
 DNA: TCAAGTGAAGATTGATGGCAGTGAACGACAAAATGGCGTCTGAACAGTT  
 +3: K W K I D G S E R Q N G V L N S W  
 BclI  
 DNA: GGACTGATCAGGACAGCAAAGACAGCACCTACAGCATGAGCAGCACCCCTCA  
 +3: T D Q D S K D S T Y S M S S T L T  
 DNA: CGTTGACCAAGGACGAGTATGAACGACATAACAGCTATACCTGTGAGGCCA  
 +3: L T K D E Y E R H N S Y T C E A T  
 C<sub>L</sub>(κ) primer  
 DNA: CTCACAAGACATCAACTTCACCCATTGTCAAGAGCTTCAACAGGGGAGAGT  
 +3: H K T S T S P I V K S F N R G E C  
 Stop XbaI NotI KpnI  
 DNA: GTTAGTAATCTAGAGTTAAGCGGCCGCAATCGAGGGGGGGCCCGGTACCCC  
 +3: \* \* S R V K R P Q S R G G P V P Q  
 DNA: AATTCGCCCTATAGGGNGCCGTATTACAATTCAGTGGGCGGCGTTTTCA  
 +3: F A L \* G X R I T I H W A A V F X  
 DNA: AN  
 +3:

Figure 2

A)

LAXRGGGRKIXFXRETVIMKYLXAYGPAAGLLLLLAAQPAMAQVKLLESGP  
 GLVAPSESLITCTISGFSLTDDGVSWIRQPPGKGLEWLGVIWGGGSTYF  
 NSLFKSRLSITRDNKSQVFLMDSLQTDDTAMYCAKHDGHETMDYWGQ  
 GTSVTVSSSKTTPPSVYPLAPGSAAQTNSMVTLGCLVKGYFPEPVTWTWN  
 SGLSSGVHTFPAVLQSDLYTLSSSVTVPSSTWPSETVTCNVAHPASSTK  
 VDKKIVPRDCTSHHHHHH\*ASLVVAVALHSFVXIKANRRPAX

B)

DNA: TTGGCCNCCCGCGGTGGCGGCCGCAAAATTNTATTNCAAGGGAGACAGTC  
 -1: L A X R G G G R K I X F X R E T V

DNA: ATAATGAAATACCTTTTNGCCTACGGGCCAGCCGCTGGATTGTTACTC  
 -1: I M K Y L X A Y G P A A G L L L L  
 pComb3 vector XhoI V<sub>h</sub>b primer

DNA: GCTGCCCAACCAGCCATGGCCAGGTGAAACTGCTCGAGTCAGGACCTGGC  
 -1: A A Q P A M A Q V K L L E S G P G

DNA: CTGGTGGCGCCTCAGAGACCTGTCCATCACATGCACTATCTCAGGGTTC  
 -1: L V A P S E S L S I T C T I S G F

DNA: TCATTAACCGACGATGGTGTAAGCTGGATTGGCAGCCTCCAGGAAAGGGT  
 -1: S L T D D G V S W I R Q P P G K G

DNA: CTGGAGTGGCTGGGAGTAATATGGGGTGGTGAAGCACATACTTTAATTCA  
 -1: L E W L G V I W G G G S T Y F N S

DNA: CTTTTCAAATCCAGACTGAGCATCACCAGGGACAACCTAAGAGCCAAGTT  
 -1: L F K S R L S I T R D N S K S Q V

DNA: TTCTTAGAAATGGACAGTCTACAACTGATGACACAGCCATGTACTACTGC  
 -1: F L E M D S L Q T D D T A M Y Y C

DNA: GCCAAACATGACGGACACGAGACTATGGACTATTGGGGTCAAGGAACCTCA  
 -1: A K H D G H E T M D Y W G Q G T S

DNA: GTCACCGTCTCCTCATCCAAAACGACACCCCATCTGTCTATCCACTGGCC  
 -1: V T V S S S K T T P P S V Y P L A

DNA: CCTGGATCTGCTGCCAAACTAACTCCATGGTGACCCTGGGATGCCTGGTC  
 -1: P G S A A Q T N S M V T L G C L V

DNA: AAGGGCTATTCCCTGAGCCAGTGACAGTGACCTGGAACCTCTGGATCCCTG  
 -1: K G Y F P E P V T V T W N S G S L

DNA: TCCAGCGGTGTGCACACCTTCCCAGCTGTCTGCAGTCTGACCTTACACT  
 -1: S S G V H T F P A V L Q S D L Y T

DNA: CTGAGCAGCTCAGTACTGTCCCTCCAGCACCTGGCCAGCGAGACCGTC  
 -1: L S S S V T V P S S T W P S E T V

DNA: ACCTGCAACGTTGCCACCCGGCCAGCAGCACCAGGTGGACAAGAAAATT  
 -1: T C N V A H P A S S T K V D K K I  
 C<sub>H</sub>1(γ1)Primer SpeI His tag Stop

DNA: GTGCCAGGGATTGTAAGTACTAGTCATCATCATCATCATTAAGCTAGCCTA  
 -1: V P R D C T S H H H H H H \* A S L

DNA: GTGGTGGCGGTGGCTCTCCATTCGTTTGTGANGATAAAGGCCAATCGNAGA  
 -1: V V A V A L H S F V X I K A N R R

DNA: CCTGCNCNA  
 -1: P A X

Figure 3

A)

ATNCTTNTTGTTCTTTCTATGCGGCCAGCCGGCCATGGCCCAGGTCCAGCTG  
CAGGAGTCAGGAACTGAAGTGGTAAAGCCTGGGGCTTCAGTGAAGTTGTCCT  
GCAAGGCTTCTGGCTACATCTTCACAAGTTATGATATAGACTGGGTGAGGCAG  
ACGCCTGAACAGGGACTTGAGTGGATTGGATGGATTTTTCTGGAGAGGGGA  
GTA CTGAA TACAATGAGAAGTTCAAGGGCAGGGCCACACTGAGTGTAGACAA  
GTCCTCCA GCACAGCCTATATGGAGCTCACTAGGCTGACATCTGAGGACTCTG  
CTGTCTATTTCTGTGCTAGAGGGGACTACTATAGGCGCTACTTTGACTTGTGGG  
GCCAAGGGACCACGGTCACCGTCTCCTCATGTGGAGGCGGTTCAGGCGGAGG  
TGGCTCTG GCGGTGGCGGATCTGACATTGAGCTCACCCAGTCTCCAGCAATCA  
TGTCTGCATCTCCAGGGGAGAGGGTCACCATGACCTGCAGTGCCAGCTC  
AAGTATACGTTACATATATTGGTACCAACAGAAGCCTGGATCCTCCCCA  
GACTCCTGATTTATGACACATCCAACGTGGCTCCTGGAGTCCCTTTTCGC  
TTCA GTGGCAGTGGGTCTGGGACCTCTTATTCTCTCACAAATCAACCGAAT  
GGAGGCTGAGGATGCTGCCACTTATTACTGCCAGGAGTGGAGTGGTTAT  
CCTCTCAC GTTCGGCTCGGGCACCAAGCGGGAAATCAAACGGGCGGCCGC  
AGGTGCGCCGGTGCCGTATCCGGATCCGCTGGAACCGCGTGCCGCATAGACT-  
GTTGAA

B)

MAQVQLQESGTEVVKPGASVKLSCKASGYIFTSYDIDWVRQTPAQGLEWIG  
WIFPGEGST EYNEKFKGRATLSVDKSSSTAYMELTRLTSEDSAVYFCARG  
DYRRYFDLWGQGTTVTVSSGGGGSGGGGSGGGGSDIELTQSPAIMSASP  
GERVTMTCSASSIRYIYWYQKPGSSPRLLIYDTSNVAPGVPFRESGSG  
SGTSYSLTINRMEAEDAATYYCQEWSGYPLTFGSGTKREIKRAAAGAPVP  
YDPLEPR

Figure 4

A)

tcgctgcccaaccagcc**ATG**gcccaggtgaaactgctcgagtcaggacctggcctggtgg  
cgccctcagagagcctgtccatcacatgcactatctcagggttctcattaaccgacgatg  
gtgtaagctggattcggcagcctccaggaaagggctctggagtgctgggagtaatatggg  
gtggtggaagcacatactttaattcacttttcaaaccagactgagcatcaccagggaca  
actctaagagccaagttttcttagaaatggacagtctacaaactgatgacacagccatgt  
actactgcgccaacatgacggacacgagactatggactattgggggtcaaggaacctcag  
tcaccgtctcctcatccaaaacgacacccccatctgtctatccactggcccctggatctg  
ctgccaaactaactccatggtgaccctgggatgctgggtcaagggctatttcctgagc  
cagtgacagtgacctggaactctggatccctgtccagcgggtgtgcacacctcccagctg  
tcctgcagtctgacctctacactctgagcagctcagtgactgtcccctccagcacctggc  
ccagcgagaccgtcacctgcaacgttgccaccggccagcagcaccaaggtggacaaga  
aaattgtgccagggattgtactagtggtagcggaggatgtagcggaggtagcggatg  
gcggagggttctggtggcggagggtccgaattcctcgaggtgccatccaaaaagtccaag  
atgacacccaaaacctcatcaagacaattgtcaccaggatcaatgacatttcacacacgc  
agtcagtctcctccaaacagaaagtaccgggttggacttcattcctgggctccaccca  
tcctgaccttatccaagatggaccagacactggcagctaccaacagatcctcaccagta  
tgcttccagaaacgtgatccaaatatccaacgacctggagaacctccgggatcttcttc  
acgtgctggccttctctaagagctgccacttgccctgggccagtgccctggagaccttg  
acagcctgggggggtgctcctggaagcttcaggctactccacagaggtggtggcctgagca  
ggctgcaggggtctctgcaggacatgctgtggcagctggacctcagcctgggtgcacta  
gtcatcatcatcatcatcat**TAA**gctagcctagtgggtggcgggtggctctcca

B)

Maqvkllesgpglvapseslsitctisgfltddgvswirpppgkglewlgviwgggsty  
fnslfksrlsitrdnsksqvflemdslqtdtdtamyycakhdghetmdywggtsvtvss  
ktppsvyplapgsaagtnsmvtlgclvkgyfpepvtvtwnsgslssgvhtfpavlgdl  
ytllsssvtvpstwpsetvtcnvahpasstkvdkki vprdctsggggsggggsgggsgg  
ggseflevpigkvqddtktlktivtrindishtqsvsskqkvtgldfipglhpiltlsk  
mdqtlavyqqiltsmprnviqisndlenlrldllhvlafskschlpwasgletldslggv  
leasgystevvalsrllgslqdmwqlldlspgctshhhhh

Figure 5

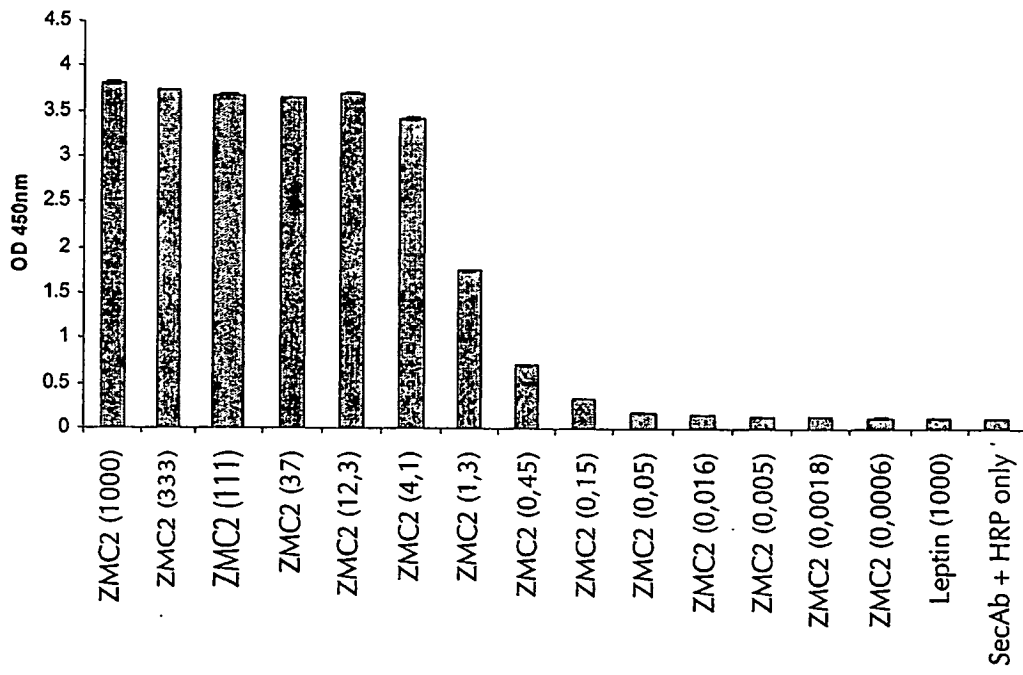


Figure 6

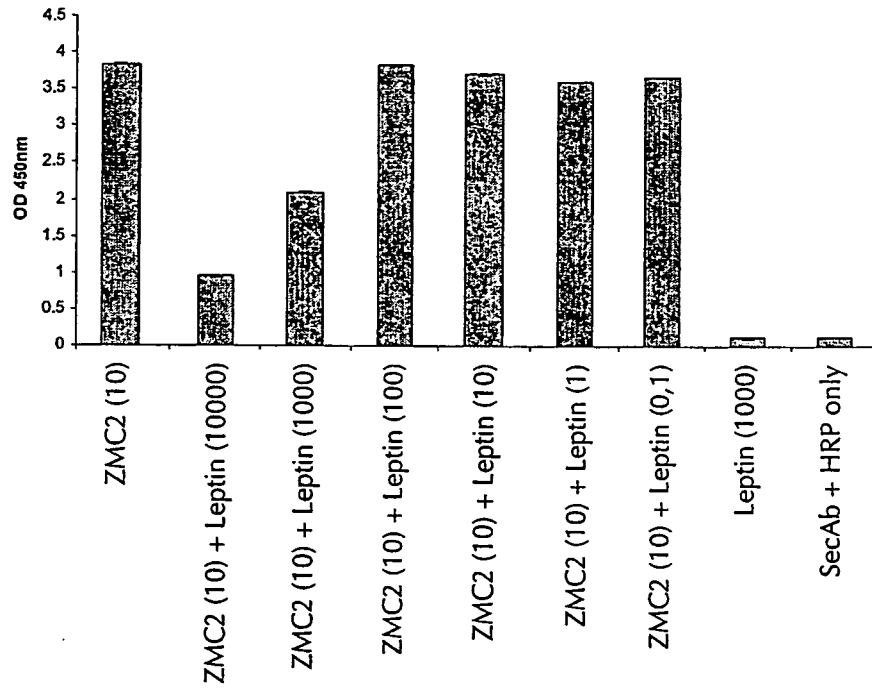


Figure 7

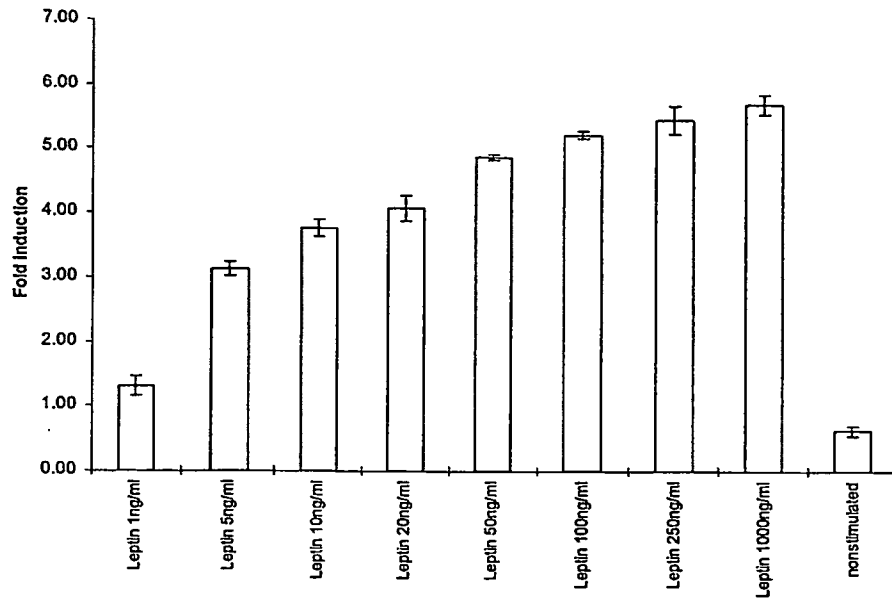


Figure 8

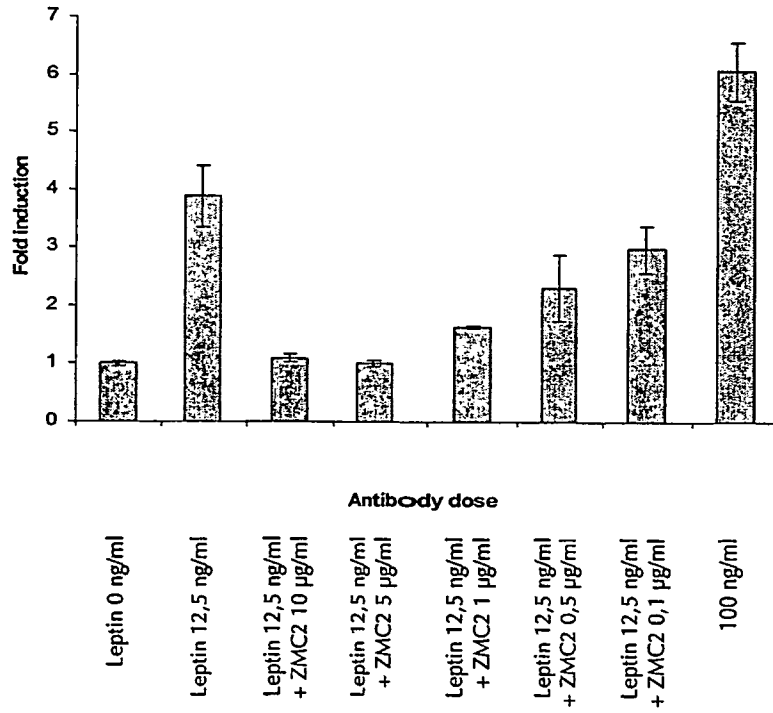


Figure 9

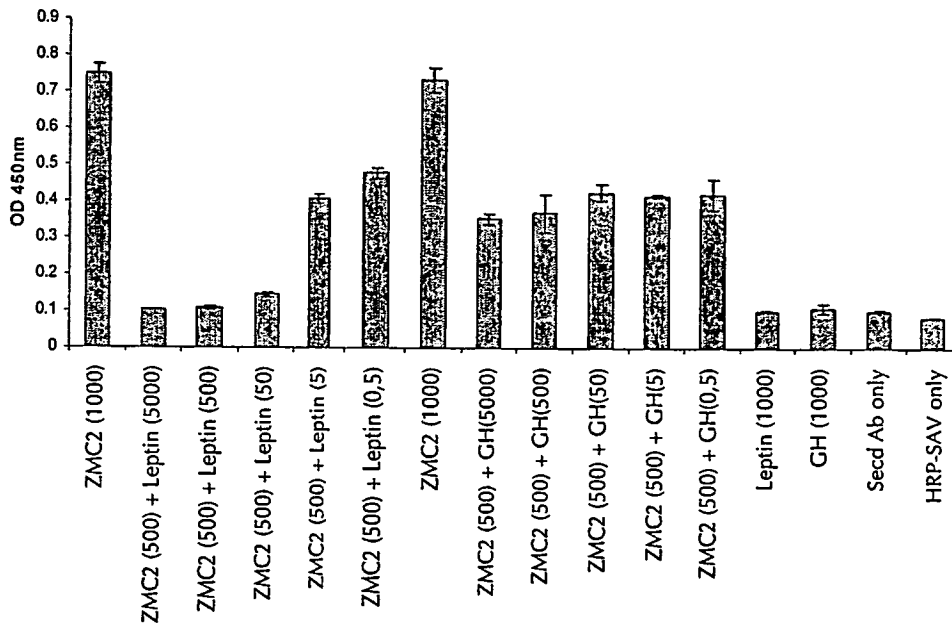


Figure 10

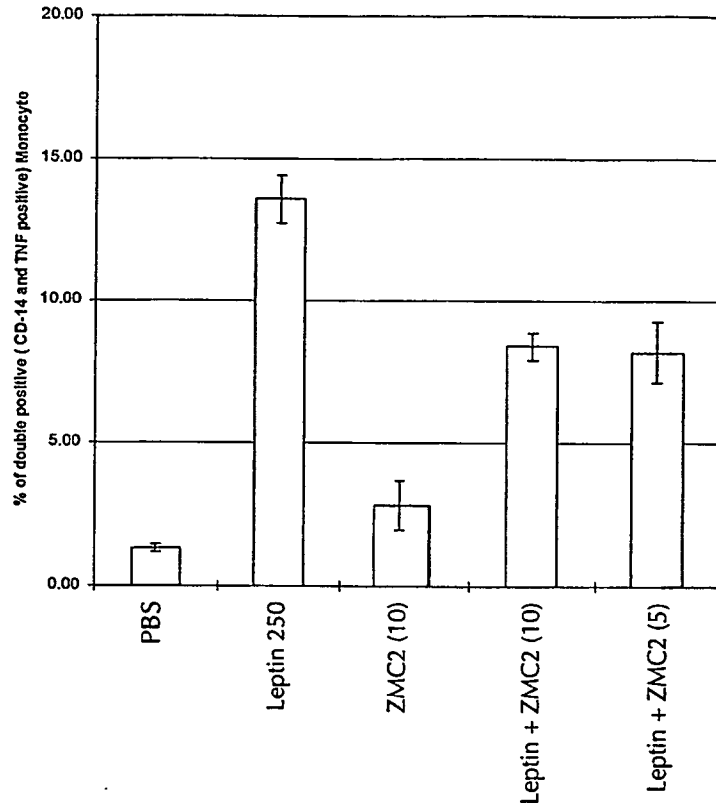


Figure 11

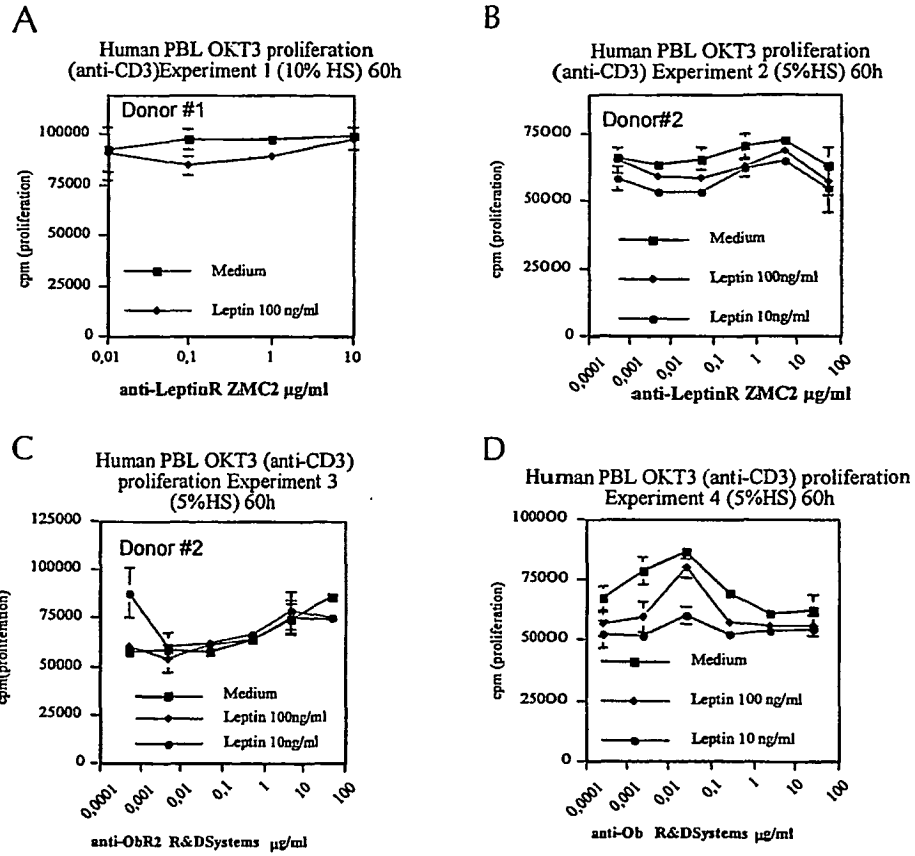


Figure 12

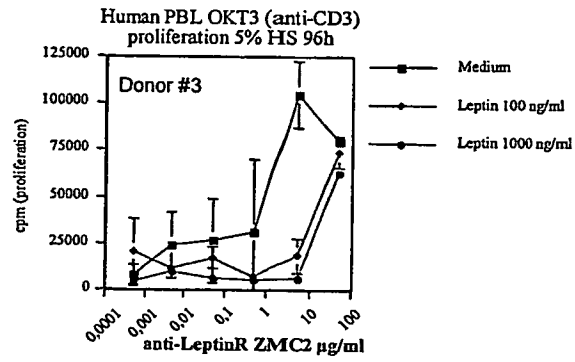


Figure 13

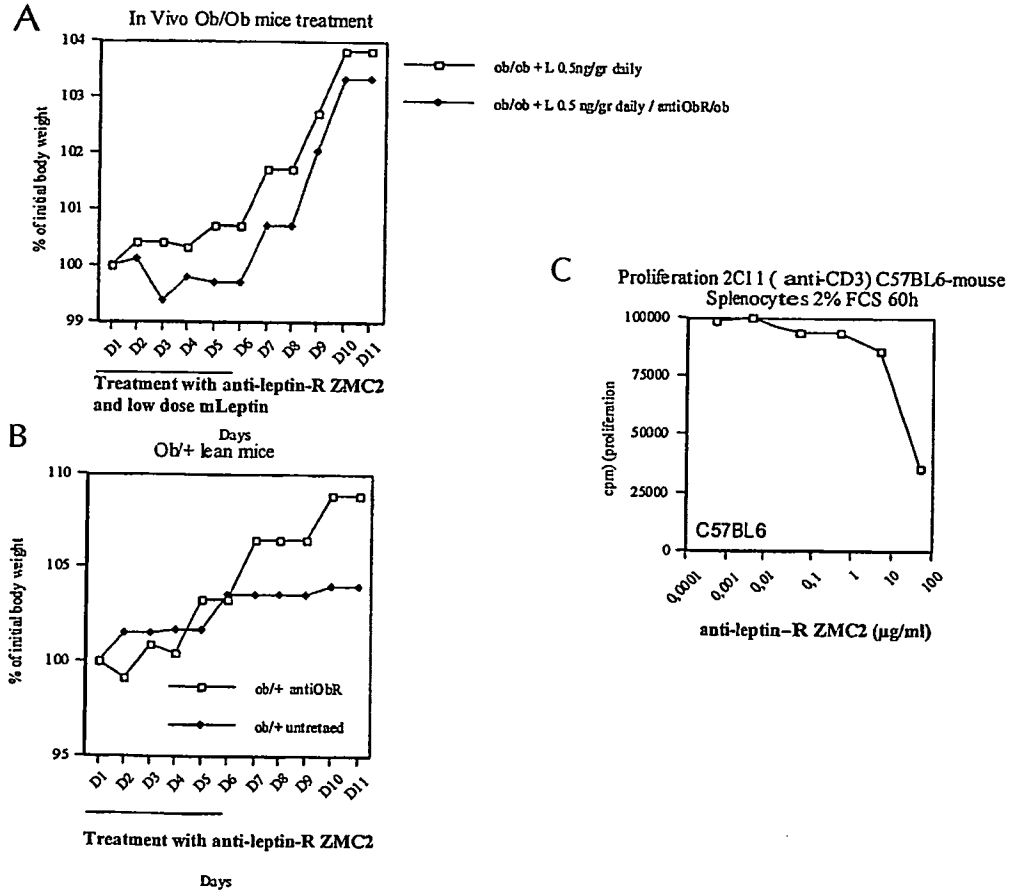


Figure 14

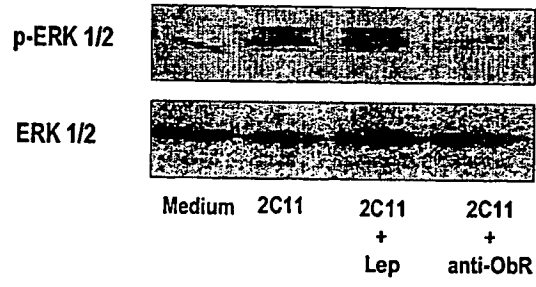


Figure 15

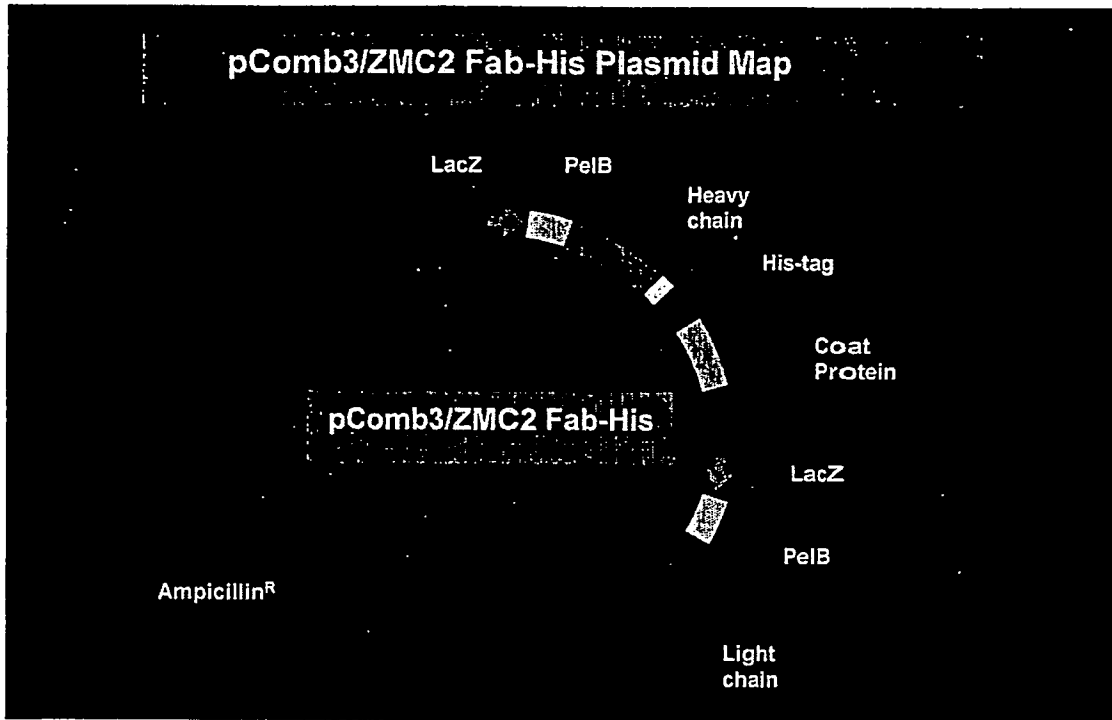


Figure 16

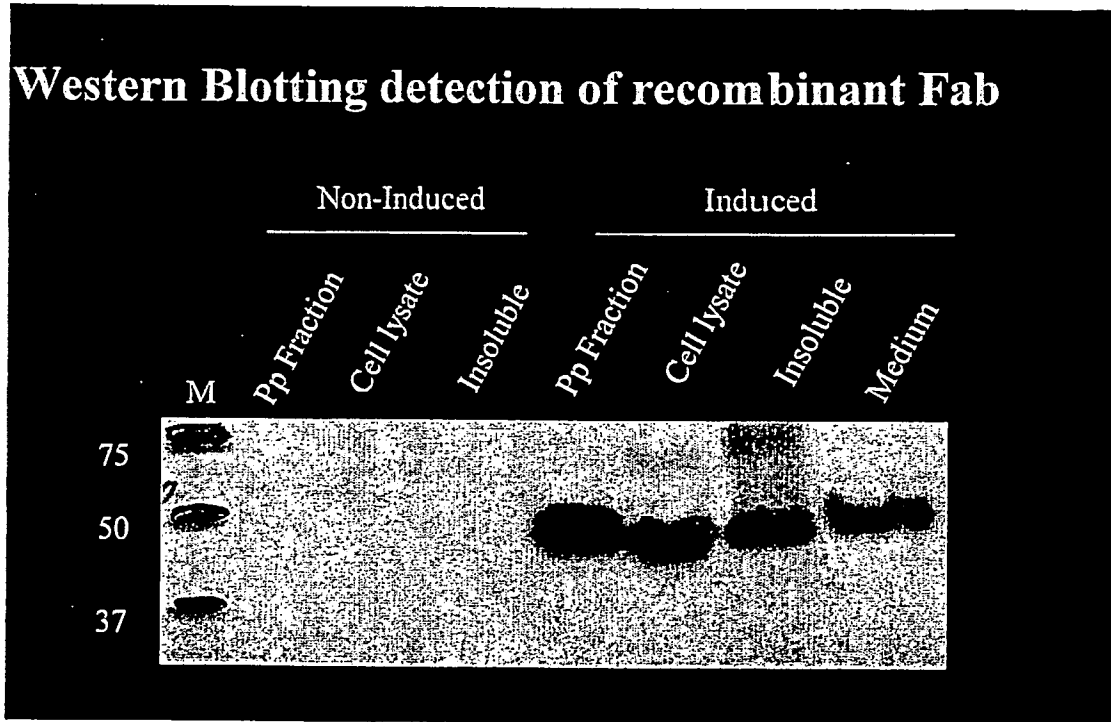


Figure 17

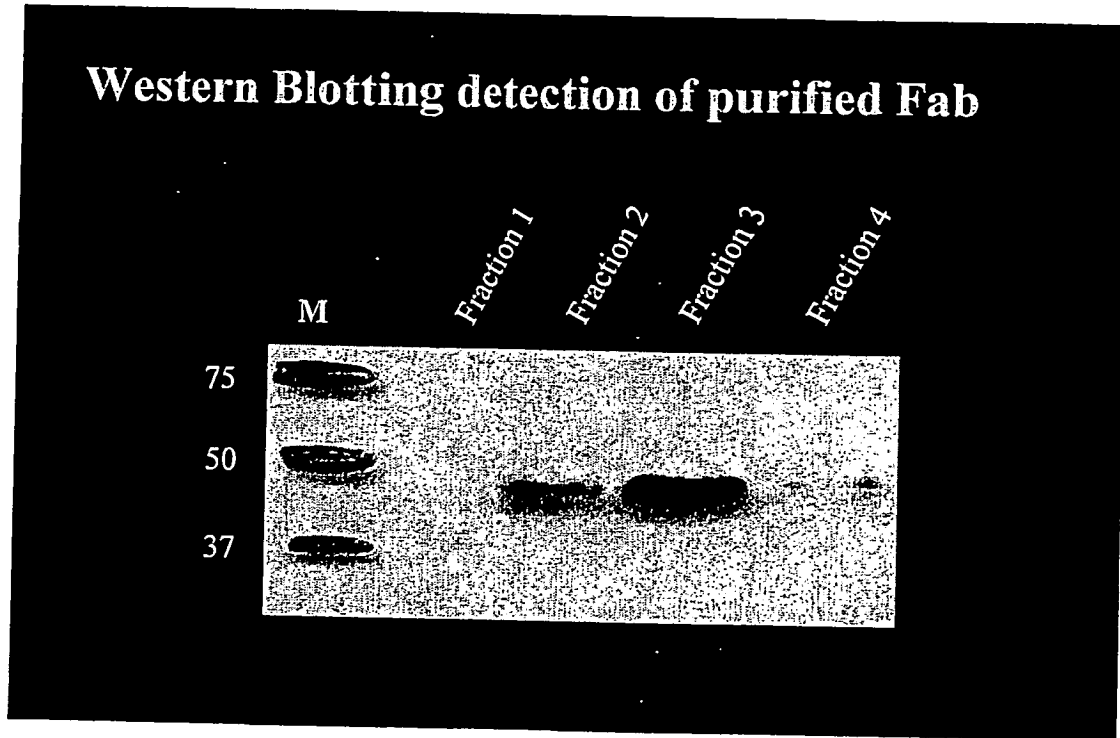


Figure 18

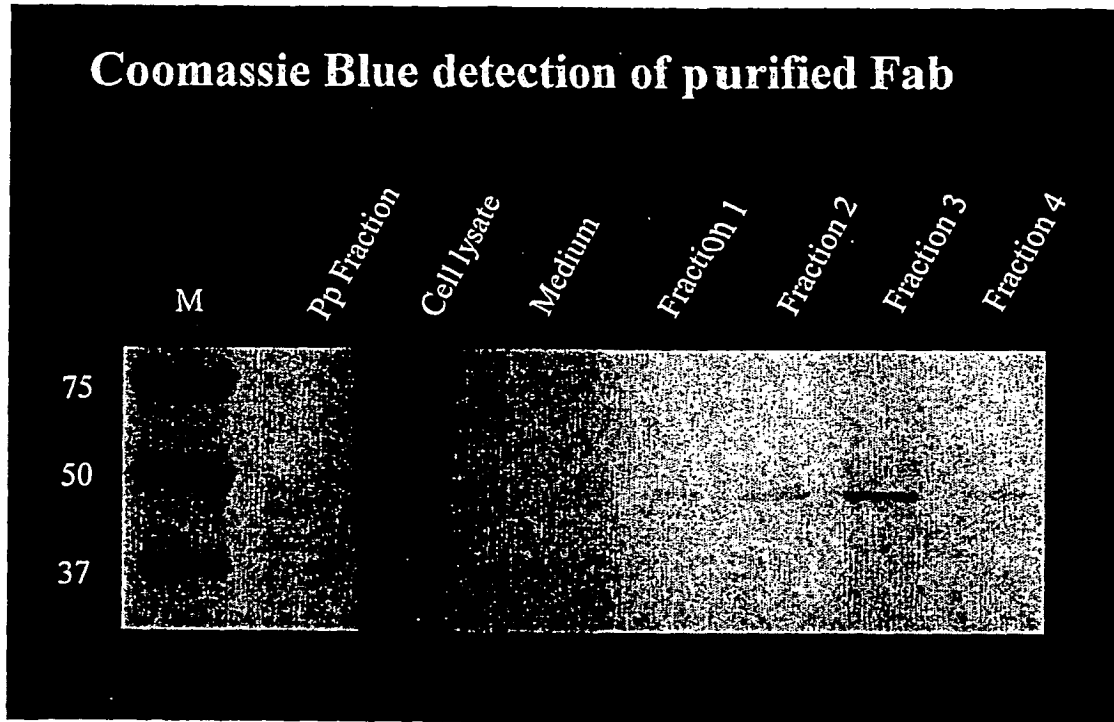
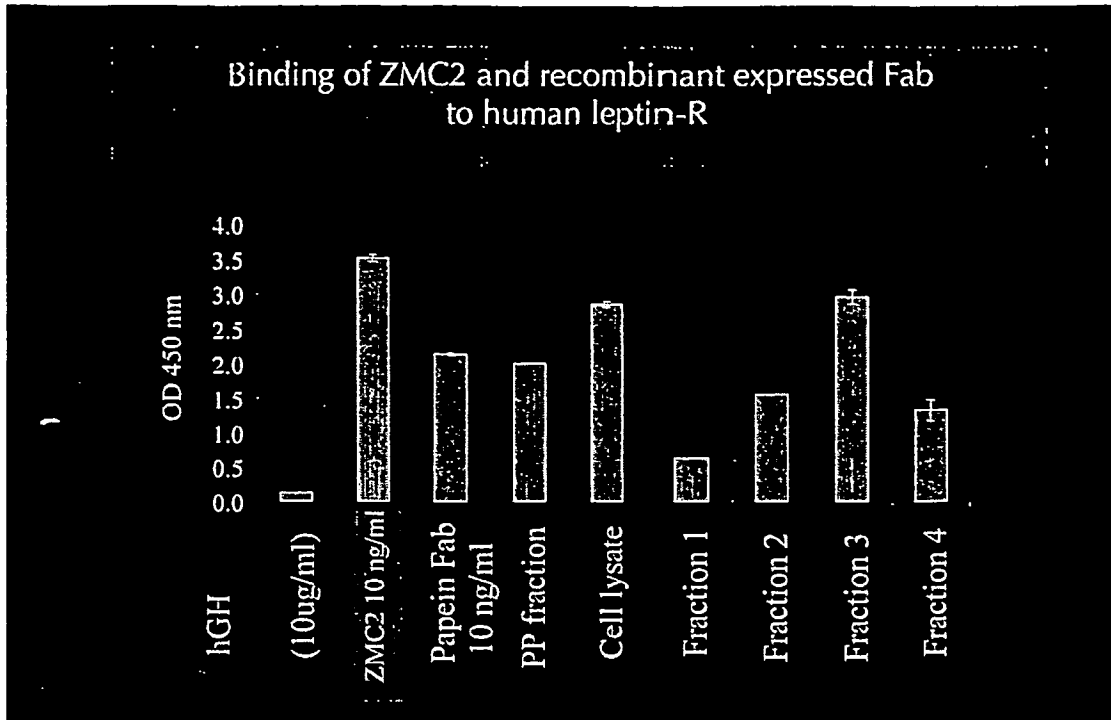


Figure 19

A)



B)

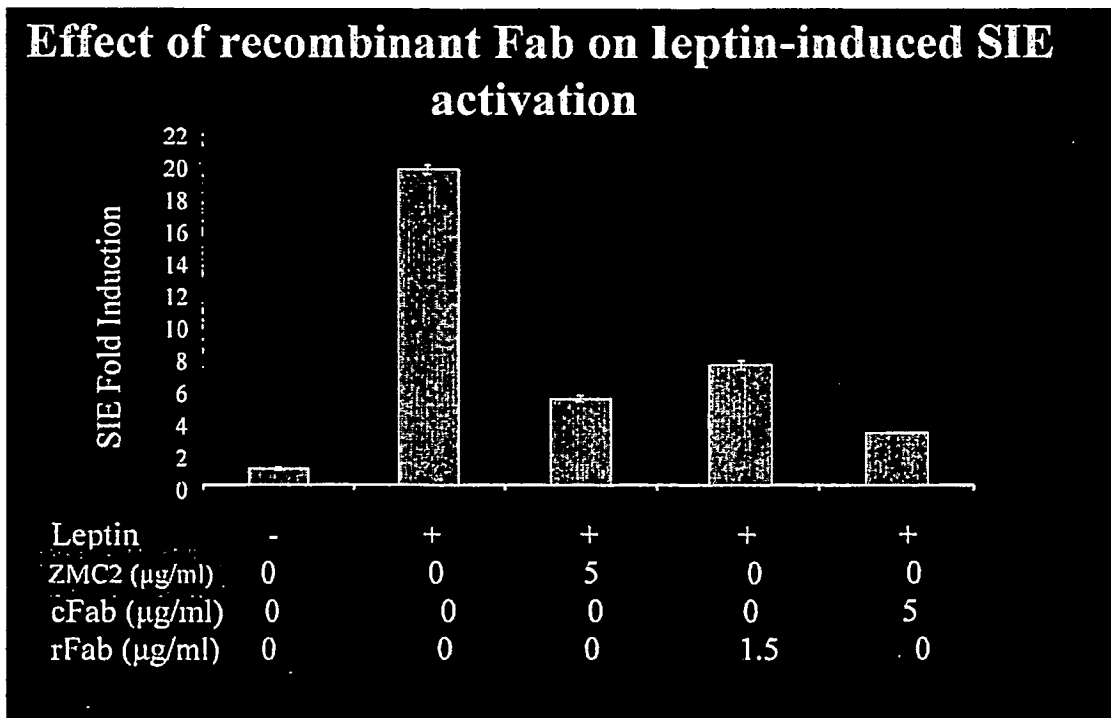


Figure 20

**REFERENCES CITED IN THE DESCRIPTION**

*This list of references cited by the applicant is for the reader's convenience only. It does not form part of the European patent document. Even though great care has been taken in compiling the references, errors or omissions cannot be excluded and the EPO disclaims all liability in this regard.*

**Patent documents cited in the description**

- DE 10353953 [0103]

**Non-patent literature cited in the description**

- **ZHANG et al.** *Nature*, 1994, vol. 372, 425 [0002]
- **FRIEDMAN et al.** *Nature*, 1998, vol. 395, 763-770 [0002]
- **LORD et al.** *Nature*, 1998, vol. 394, 6696 [0002]
- **SIERRA-HONIGMANN et al.** *Science*, 1998, vol. 281, 1683-1686 [0002]
- **QUINTON et al.** *J Clin Endocrinol Metab*, 1999, vol. 84 (7), 2336-41 [0002]
- **TARTAGLIA et al.** *Cell*, 1995, vol. 83 (7), 1263-71 [0004]
- **CLEMENT et al.** *Nature*, 1998, vol. 392, 398-401 [0005]
- **SWAN et al.** *Journal of the American College of Cardiology*, 1997, vol. 30, 527-32 [0006]
- **CLELAND ; CLARK.** *European heart journal*, 1998, vol. 19, 1421-2 [0006]
- **GONZALES et al.** *Mol Hum Reprod*, 2003, vol. 9 (3), 151-8 [0015]
- **KÖHLER ; MILSTEIN.** Continuous cultures of fused cells secreting antibody of predefined specificity. *Nature*, 07 August 1975, vol. 256 (5517), 495-7 [0086]

专利名称(译)	瘦素拮抗剂和瘦素定量测定方法		
公开(公告)号	<a href="#">EP1692181B1</a>	公开(公告)日	2012-01-11
申请号	EP2004797956	申请日	2004-11-17
[标]申请(专利权)人(译)	KLINIKUM DER UNIV MUNCHEN 谢菲尔德大学		
申请(专利权)人(译)	慕尼黑大学医院 谢菲尔德大学		
当前申请(专利权)人(译)	慕尼黑大学医院 谢菲尔德大学		
[标]发明人	STRASBURGER CHRISTIAN J BIDLINGMAIER MARTIN WU ZIDA ROSS RICHARD J M MATARESE GIUSEPPE INST DI ENDOCRINOL E ONCOLOG		
发明人	STRASBURGER, CHRISTIAN, J. BIDLINGMAIER, MARTIN WU, ZIDA ROSS, RICHARD, J., M. MATARESE, GIUSEPPE INST. DI ÉNDOCRINOL. E ONCOLOG.		
IPC分类号	C07K16/28 G01N33/74 G01N33/53		
CPC分类号	A61P1/04 A61P1/14 A61P1/16 A61P3/00 A61P3/10 A61P17/00 A61P17/06 A61P17/14 A61P19/02 A61P21/00 A61P21/04 A61P25/00 A61P29/00 A61P35/00 C07K16/2869 C07K2317/55 C07K2317/56 C07K2317/74 C07K2317/75 C07K2317/76 G01N33/74 G01N2333/575 G01N2333/715		
优先权	10353593 2003-11-17 DE		
其他公开文献	EP1692181A1		
外部链接	<a href="#">Espacenet</a>		

#### 摘要(译)

本发明涉及特异性抗体或融合蛋白，特别是特异性抗体A或针对瘦蛋白受体（瘦蛋白-R）或瘦蛋白结合蛋白（瘦蛋白-BP）的融合蛋白，以及这些抗体或融合蛋白用于定量分析，用于治疗目的和用于制备治疗药物。此外，本发明涉及通过使用根据本发明的特异性抗体或融合蛋白定量测定溶解或悬浮的瘦蛋白结合蛋白样品中瘦蛋白的方法，以及含有该抗体的诊断剂和（诊断）试剂盒。或融合蛋白。

```

Xaa His Asn Pro Ile Pro Met Pro Pro Ala Ala Ala Gly Leu Leu Leu
1          5          10          15
Leu Ala Ala Gln Pro Ala Met Ala Glu Leu Val Met Thr Gln Ser Pro
20          25          30
Lys Phe Met Ser Thr Ser Ile Gly Asp Arg Val Asn Ile Thr Cys Lys
35          40          45
Ala Thr Gln Asn Val Arg Thr Ala Val Thr Trp Tyr Gln Gln Lys Pro
50          55          60
Gly Gln Ser Pro Gln Ala Leu Ile Phe Leu Ala Ser Asn Arg His Thr
65          70          75          80
Gly Val Pro Ala Arg Phe Thr Gly Ser Gly Ser Gly Thr Asp Phe Thr
85          90          95
Leu Thr Ile Asn Asn Val Lys Ser Glu Asp Leu Ala Asp Tyr Phe Cys
100         105         110
Leu Gln His Trp Asn Tyr Pro Leu Thr Phe Gly Ser Gly Thr Lys Leu
115         120         125
Glu Ile Lys Arg Ala Asp Ala Ala Pro Thr Val Ser Ile Phe Pro Pro
130         135         140

```