

(19) World Intellectual Property
Organization
International Bureau



(43) International Publication Date
13 October 2005 (13.10.2005)

PCT

(10) International Publication Number
WO 2005/094467 A2

(51) International Patent Classification: Not classified

(21) International Application Number:
PCT/US2005/009539

(22) International Filing Date: 23 March 2005 (23.03.2005)

(25) Filing Language: English

(26) Publication Language: English

(30) Priority Data:
04290775.8 23 March 2004 (23.03.2004) EP
60/559,108 2 April 2004 (02.04.2004) US
60/582,650 23 June 2004 (23.06.2004) US
60/587,585 12 July 2004 (12.07.2004) US
60/643,483 12 January 2005 (12.01.2005) US

(71) Applicants (for all designated States except US): **CIPHERGEN BIOSYSTEMS, INC.** [US/US]; 6611 Dumbarton Circle, Fremont, CA 94555 (US). **AMERICAN NATIONAL RED CROSS** [US/US]; Holland Laboratory, 15601 Crabbs Branch Way, Rockville, MD 20855 (US).

(72) Inventors; and

(75) Inventors/Applicants (for US only): **BOSCHETTI, Egisto** [FR/FR]; 11, rue de la Cote a Belier, F-78290 Crossy sur Seine (FR). **HAMMOND, David** [GB/US]; 4916 Ripplemead Court, Laytonsville, MD 20882 (US).

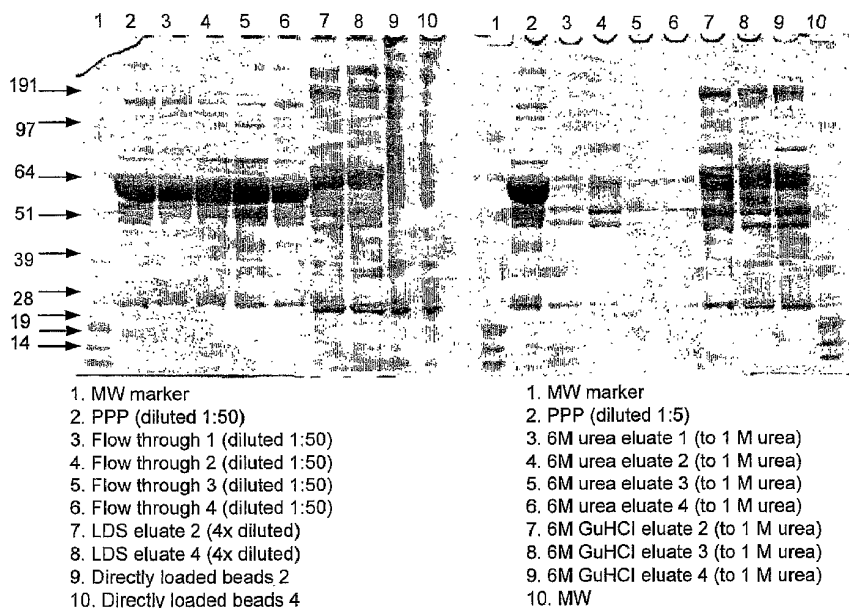
(74) Agents: **RUPPERT, Siegfried** et al.; Townsend and Townsend and Crew LLP, 2 Embarcadero Center, 8th Floor, San Francisco, CA 94111 (US).

(81) Designated States (unless otherwise indicated, for every kind of national protection available): AE, AG, AL, AM, AT, AU, AZ, BA, BB, BG, BR, BW, BY, BZ, CA, CH, CN, CO, CR, CU, CZ, DE, DK, DM, DZ, EC, EE, EG, ES, FI, GB, GD, GE, GH, GM, HR, HU, ID, IL, IN, IS, JP, KE, KG, KP, KR, KZ, LC, LK, LR, LS, LT, LU, LV, MA, MD, MG, MK, MN, MW, MX, MZ, NA, NI, NO, NZ, OM, PG, PH, PL, PT, RO, RU, SC, SD, SE, SG, SK, SL, SM, SY, TJ, TM, TN, TR, TT, TZ, UA, UG, US, UZ, VC, VN, YU, ZA, ZM, ZW.

(84) Designated States (unless otherwise indicated, for every kind of regional protection available): ARIPO (BW, GH, GM, KE, LS, MW, MZ, NA, SD, SL, SZ, TZ, UG, ZM, ZW), Eurasian (AM, AZ, BY, KG, KZ, MD, RU, TJ, TM),

[Continued on next page]

(54) Title: METHODS FOR REDUCING THE RANGE IN CONCENTRATIONS OF ANALYTE SPECIES IN A SAMPLE



(57) Abstract: The present invention relates to the fields of molecular biology, combinatorial chemistry and biochemistry. Particularly, the present invention describes methods and kits for dynamically reducing the variance between analyte taken from complex mixtures.

WO 2005/094467 A2



European (AT, BE, BG, CH, CY, CZ, DE, DK, EE, ES, FI, FR, GB, GR, HU, IE, IS, IT, LT, LU, MC, NL, PL, PT, RO, SE, SI, SK, TR), OAPI (BF, BJ, CF, CG, CI, CM, GA, GN, GQ, GW, ML, MR, NE, SN, TD, TG).

Published:

— *without international search report and to be republished upon receipt of that report*

Declaration under Rule 4.17:

— *of inventorship (Rule 4.17(iv)) for US only*

For two-letter codes and other abbreviations, refer to the "Guidance Notes on Codes and Abbreviations" appearing at the beginning of each regular issue of the PCT Gazette.

METHODS FOR REDUCING THE RANGE IN CONCENTRATIONS OF ANALYTE SPECIES IN A SAMPLE

CROSS-REFERENCES TO RELATED APPLICATIONS

[01] This is a continuation-in-part application claiming the benefit of provisional application Ser. No. 60/559,108, filed 04/02/2004, provisional application Ser. No. 60/582,650, filed 06/23/2004, provisional application Ser. No. 60/587,585, filed 07/12/2004, provisional application Ser. No. 60/643,483, filed 01/12/2005, and European patent application Ser. No. 04290775.8, filed 03/23/2004, the disclosures of which are incorporated in their entireties herein by reference.

FIELD OF THE INVENTION

[02] The present invention relates to the fields of combinatorial chemistry, protein chemistry and biochemistry.

BACKGROUND OF THE INVENTION

[03] Proteomics seeks to generate an identity profile of the entire proteome of an organism and, through analysis of this information, to identify potential diagnostic and therapeutic entities. Current technologies for resolving protein mixtures include two-dimensional gel electrophoresis and multi-dimensional liquid chromatography. Both of these techniques may be coupled to mass spectrometry. An example of this approach is the resolution and identification of 1,484 proteins in yeast (Washburn *et al.*, *Nat. Biotechnol.* 19(3): 242-2471 (2001)). Another example of methodology that separates and identifies proteins is a modified version of the yeast two-hybrid screening assay developed by Uetz *et al.* (Uetz *et al.*, *Nature* 403(6770): 623-627 (2000)) and Ito *et al.* (Ito *et al.*, *Proc. Natl. Acad. Sci. USA* 98(8): 4569-4574 (2001)), which identified over 4,000 protein-protein interactions in *Saccharomyces cerevisiae*. A quantitative methodology for protein separation and identification is isotope coded affinity tag (ICAT), developed by Aebersold and colleagues (Smolka *et al.*, *Anal.*

Biochem. 297(1): 25-312 (2001)). ICAT involves site-specific, covalent labeling of proteins with isotopically normal or heavy reagents to quantitate levels of protein expression.

[04] Complex protein mixtures may also be separated on libraries of combinatorially-generated ligands. Following exposure of an entity molecule to a combinatorial library, the entity may bind to ligands in the library. Detection of the bound entity may be accomplished when a purified, radiolabeled initial entity is used (Mondorf et al., *J. Peptide Research* 52: 526-536 (1998)). Other methods include detection by an antibody against the entity (Buettner et al., *International Journal of Peptide & Protein Research* 47: 70-83 (1996); Furka et al., *International Journal Peptide Protein Research* 37(6): 487-493 (1991); and Lam et al., (1991) *supra*). Ligands to multiple entities can be detected using beads immobilized on an adhesive in combination with a subtractive screening method. This is referred to as the QuASAR method (International (PCT) Patent Application WO 01/40265) and was used to detect ligands that bound to virus and prion protein.

[05] FIoNA assay technology (Hammond et al International (PCT) Patent Application WO 04/007757) and other combinatorial techniques can identify a ligand:entity interaction. The FIoNA assay technology identifies proteins from mixtures based on chemical, physical, biological, and/or biochemical function and not merely on their ability to bind a ligand within the library. Thus, the goal of FIoNA is to identify a ligand-support that binds a desired property, then to decode the ligand on the appropriate bead, and synthesize the bead in appropriate amounts to purify the one, or few proteins with the desired activity using current proteomic methods.

[06] The full analysis of analytes in complex biological extracts is hindered by the large difference in concentration between individual analytes. In most biological mixtures some analytes are present at high concentration and others only present at trace-levels. As a result, the concentration of analytes may not be adapted to the dynamic range of a given analytical method. That is to say, the difference in the signal strengths produced by the most abundant and least abundant analyte species in a sample generally is wider than the ability of the analytical method to detect and accurately measure. For example, highly concentrated proteins may saturate the detection system and very low concentrations may be below the sensitivity of the analytical method, as occurs in human serum where the difference in concentration between the most abundant protein (albumin – tens of mg/ml) and the least abundant (e.g., IL-6 – less than 1 pg/ml) may reach factors as high as hundreds of millions.

[07] Two ways are currently followed to deal with this gap: the first is to design more adapted instruments and the second is to alter the sample for analysis.

[08] One method of altering the sample is to deplete the sample of the more abundant species, thereby making the less abundant species more available for detection. This method involves, for example, the use of linker moieties, such as antibodies or specific dyes, that are directed to particular species in the sample. For example, in the case of plasma, the abundant proteins include albumin, immunoglobulins, fibrinogen, and alpha-1 proteinase inhibitor. Immunoaffinity columns are expensive, seldom totally specific for their target and will remove proteins associated with the target proteins. Moreover, once the most abundant proteins are removed, another set becomes the most abundant, which then creates the need to develop additional affinity columns. In addition, biological samples from different tissues within the same species and tissues from different species may have a completely different set of most abundant proteins. This method also suffers from the fact that elimination of some analyte species also eliminates species that interact with them. Thus some species that may be of interest are eliminated. While eliminating proteins of high abundance may help in some instances, this approach does not result in the detection of very low abundance proteins whose concentration is still below the sensitivity of the instrument to detect. Moreover, highly abundant species are represented by several proteins (even several dozen in some situations) and therefore a number of specific methods would have to be designed to address each different abundant species. Therefore, this method does not substantially compress the range of concentrations between the remaining analyte species.

[09] Another method is to fractionate the sample, typically by chromatography. This method results in the compartmentalization of classes of analytes into different fractions based on similar biochemical properties. For example, ion exchange chromatography will compartmentalize proteins into fractions based on charge, while size exclusion chromatography compartmentalizes proteins based on size. Therefore, these methods may reduce the concentration range of the analytes, but at the cost of substantially decreasing the diversity of the population of analyte species within each compartment.

SUMMARY OF THE INVENTION

[10] This invention provides a method to compress the range of concentrations between different analyte species in a complex sample while substantially maintaining the diversity of the population of analyte species in the sample. More specifically, the method decreases the concentration of more abundant species relative to the concentration of less abundant species but does not involve substantially eliminating from the sample analyte species based on physical-chemical characteristics.

[11] As noted, each analytical technology has a dynamic range of detection. When the amount of an analyte in a sample is above the dynamic range, its signal saturates the detection system and the amount cannot be measured accurately. When the amount of an analyte in a sample is below the sensitivity range of the detection system, the analyte also cannot be detected. Furthermore, signals from abundant analytes may interfere with the ability to detect less abundant analytes even if the less abundant analytes are within the dynamic range of detection. The methods of this invention compress the range of concentrations between analyte species in a sample. This allows one to provide an increased number of analyte molecules to the detector system so as to be above the sensitivity threshold of detection, while, at the same time, to decrease the amount of the abundant analytes submitted for detection so that there is considerably less saturation of the detection system by abundant analytes and, consequently, reduced interference with the ability to detect less abundant species above the sensitivity threshold. The result is an ability to detect more analyte species in a sample. Using this method, one can detect at least 1.5 times as many species from serum by mass spectrometry. Frequently, this number is between two and four times as many detectable species.

[12] The method of this invention contrasts with other methods of manipulating a sample for detection. For example, depletion of selected abundant species does not significantly decrease the range in concentrations of the wide number of species in a sample. Fractionation decreases the range in concentration of analytes, but does so by substantially decreasing the diversity of the species within the population of the compartment.

[13] This invention achieves this result by exposing a complex sample to a selected amount of a library containing many different binding moieties. Both variables – diversity of the library constituents and amount of the library used – can be manipulated to advantage in this invention. By manipulating the diversity of the different binding moieties to which the sample is exposed, it is possible to bind species throughout the range of concentrations, that is, both abundant and rare species. Also, the larger the number of different binding moieties used, the larger the number of species within the sample population it is possible to capture.

[14] The amount of the library also must be selected so that the binding moieties are saturated by at least the more abundant species in the sample. In this way, the relative amounts of abundant and rare species in the sample that are captured will be much closer than their relative concentrations in the original sample. This results in compression of the concentration range, which allows a greater number of signals produced by both abundant

and rare species during detection that are within the dynamic range of the selected detection system.

[15] It is an object of this invention to increase significantly the number of species detectable in a sample and, in particular, the discovery of new species within a sample. Certain kinds of libraries of binding moieties are preferred for achieving this end. In particular, one can best achieve this end by using libraries of large numbers of different binding moieties that have not been pre-selected for their ability to bind particular analytes in a sample. Such libraries are referred to herein as "non-selective" libraries. (The fact that binding specificities of some binding moieties in such a library may be apparent after using the library does not render the same library "selective.") Using such libraries increases the likelihood of capturing species throughout the population without discrimination. Thus, for example, a library of antibodies in which each antibody is directed to a known binding partner will select only the species to which each antibody is directed; in contrast a germline antibody library of the same size does not contain antibodies that bind to pre-selected analytes. Such a library is more likely to select species not known to exist in a sample. One can create non-selective libraries by employing combinatorial chemistry or by randomly assembling chemical moieties. Furthermore, by increasing the size of a library, whether selective or non-selective, one can increase the number of different analyte species in a sample captured and detected. Examples of non-selective libraries of binding moieties include germ line antibody libraries, phage display libraries of recombinant binding proteins, dye libraries and non-combinatorial libraries in which the binding specificity of the members is not pre-selected, combinatorial libraries of various sorts and portions thereof.

[16] It should also be noted that the amount of concentration compression depends upon the relative amounts of binding moieties and analytes in the sample. At one extreme, the relative amount of binding moieties to analytes may be so large that the binding moieties are able to capture all of the analytes in the sample. In this case, there is no compression of the analyte concentration range. At the other extreme, the relative amount of binding moieties to the analytes may be so small, that every analyte species saturates the ability of the binding moieties to bind. In this case, theoretically, the amount of each analyte species captured is the same, and the range in analyte concentration is compressed to equality. This extreme is particularly useful when the goal is to detect as many species as possible. Between these two extremes is the situation in which the more abundant species saturate the binding moieties, while the less abundant species do not saturate the binding moieties. In this case, there is little difference between the range in concentration of abundant analytes, while differences in

concentration of the less abundant species remain. This result is particularly useful for comparing the relative concentrations of analyte species between two different sample classes. For example, in biomarker discovery, samples taken from organisms having two different phenotypic states (e.g., cancer versus non-cancer) are compared to identify analyte species that are differentially present between the two states. By preserving the concentration differences between rare species, the methods of this invention allow one to find biomarkers among these rare analytes. In one embodiment, the ratio of binding moieties to analyte species in the sample is at most 1:500 and, more preferably, at most 1:50 or at most 1:5.

[17] This invention provides a method to reduce the range of concentrations between different analyte species in a complex sample while substantially maintaining the diversity of the population of analyte species in the sample. In a preferred embodiment of the present invention, a method is provided comprising the steps of (a) providing a first sample comprising a plurality of different analyte species present in the first sample in a first range of concentration,; (b) contacting the first sample with an amount of a library comprising at least 100 different binding moieties; (c) capturing amounts of the different analyte species from the first sample with the different binding moieties and removing unbound analyte species; and (d) isolating the captured analyte species from the binding moieties to produce a second sample comprising a plurality of different analyte species present in the second sample in a second range of concentrations. The amount of the library is selected to capture amounts of the different analyte species so that the second range of concentrations is less than the first range of concentrations.

[18] The first sample comprises at least 100, at least 1,000, at least 10,000, at least 100,000, at least 1,000,000 or at least 10,000,000 different analyte species. In some embodiments, the library comprises at least 1,000, at least 10,000, at least 100,000, at least 1,000,000 or at least 10,000,000 different binding moieties.

[19] Preferably, the binding moieties comprise bio-organic polymers. Preferably, the bio-organic polymers are selected from the group consisting of peptides, oligonucleotides and oligosaccharides. In another embodiment of the present invention, the binding moieties are selected from the group consisting of antibodies and aptamers.

[20] In a preferred embodiment of the present invention, the binding moieties are bound to a solid support or supports. Preferably, the solid support or supports is a collection of beads or particles. Each bead or particle can be attached to a substantially different binding moiety. Also, a plurality of different binding moieties can be attached to the same bead or particle. Preferably, the beads or particles have a diameter of less than 1 μm . The beads or particles

can be formed milling microparticulate beads using a method selected from the group consisting of crushing, grinding and sonicating. In a preferred embodiment of this method, the particles are coupled to a second solid support to form an array or dipstick. Preferred microparticulate beads are a polymeric matrix formed from a natural or synthetic polymer.

[21] In another preferred embodiment of the present invention, the solid support or supports is selected from the group consisting of fibers, monoliths, membranes and plastic strips.

[22] In a preferred embodiment of the present invention, the library contacting a first sample is a non-selective library. Many non-selective libraries can be used to practice the methods of the present invention. A preferred non-selective library can be selected from the group consisting of a germ line antibody library, a phage display library of recombinant binding proteins, a dye library or a non-combinatorial library in which the binding specificity of the members is not pre-selected, a combinatorial library and portions thereof.

[23] Preferably, the different binding moieties are comprised in a complete or incomplete combinatorial library. A preferred combinatorial library is a hexapeptide library.

[24] In one embodiment of the present invention, the second sample has a diversity of analyte species that is substantially the same as the first sample.

[25] Many samples can be used to practice the methods of the invention. In a preferred embodiment of the present invention, the sample is selected from the group consisting of amniotic fluid, blood, cerebrospinal fluid, intraarticular fluid, intraocular fluid, lymphatic fluid, milk, perspiration plasma, saliva semen, seminal plasma, serum, sputum, synovial fluid, tears, umbilical cord fluid, urine, biopsy homogenate, cell culture fluid, cell extracts, cell homogenate, conditioned medium, fermentation broth, tissue homogenate and derivatives of these.

[26] In one embodiment, the method of the present invention comprises the step of detecting analyte species in the second sample. Preferably, detecting the analytes is done by using a method selected from the group of colorimetric, spectrophotometric, magnetic resonance, ellipsometric, mass spectroscopic, electrophoretic, chromatographic, enzymatic, and sequence analysis.

[27] Optionally, the method of the present invention further comprise the step of fractionating the analytes in the second sample based on a physical or chemical property or the step of identifying at least one of the isolated analytes. Preferably, fractionating the analytes comprises segregating the analytes using a technique selected from the group

consisting of chromatography, electrophoresis, capillary electrophoresis, filtration and precipitation.

[28] In one embodiment of the present invention, the method further comprises the step of contacting a biospecific binding moiety with the second sample and determining whether the biospecific binding moiety has captured an analyte species from the second sample.

[29] Removing unbound analytes may comprise the step of washing the captured analytes with a wash buffer.

[30] The methods of this invention can be practiced using different analytes. In a preferred embodiment of the present invention, the analytes are selected from the group consisting of polypeptides, nucleic acids, complex carbohydrates, complex lipids, synthetic inorganic compounds and synthetic organic compounds.

[31] The present invention also provides a method for identifying a diagnostic biomarker. In a preferred embodiment, the method comprises the steps of (a) providing a first set of biosamples from a first set of organisms having a first phenotype; (b) providing a second set of biosamples from a second set of organisms having a second phenotype; (c) performing the method for reducing the range of concentrations between different analyte species in a sample as described herein (claim 1) on each of the biosamples, thereby creating a third and fourth set of biosamples, respectively; (d) detecting analyte species in each of the third and fourth set of biosamples; and (e) identifying at least one analyte species that is differentially present in the third and fourth set of biosamples, whereby the at least one analyte species is a biomarker for distinguishing the first phenotype from the second phenotype. In a preferred embodiment step (e) of this method comprises identifying a biomarker profile that provides better predictive power than any one of the biomarkers in the profile alone.

[32] The invention further provides a method for reducing the relative amounts of analytes in a sample. In a preferred embodiment of the present invention, the method comprises the steps of (a) providing a first sample comprising a first plurality of different analytes having a first variance in amounts; (b) contacting the first sample with a plurality of different binding moieties, each binding moiety present in a determined amount; (c) capturing a portion of the first different analytes from the first sample with the different binding moieties and removing uncaptured analytes; and (d) isolating the captured analytes from the binding moieties to produce a second sample comprising a second plurality of different analytes having a second variance in amounts. The determined amount of each of the plurality of different binding moieties is selected to capture amounts of the different analytes whereby the second variance in amounts is less than the first variance in amounts.

[33] The present invention also provides kits for detecting a plurality of analytes in a sample. In a preferred embodiment of the present invention, a kit comprises a container comprising a library of at least 100 different binding moieties and instructions for using the library to perform a method of the present invention. Preferably, the binding moieties are coupled to a solid support or supports. The library may also comprise a hexapeptide combinatorial library or a portion thereof, wherein the hexapeptides are attached to particles.

[34] Optionally, the kits of the present invention comprise a binding buffer for capturing analytes with the binding moieties or an elution buffer for eluting captured analytes from the binding moieties. Additional kit embodiments of the present invention include optional functional components that would allow one of ordinary skill in the art to perform any of the method variations described herein.

[35] The present invention also provides for libraries comprising binding moieties. In a preferred embodiment of the present invention, a library comprises at least 100 different binding moieties, wherein a plurality of different binding moieties are attached to the same solid support or supports.. Preferably, the binding moieties comprise a combinatorial hexapeptide library or a portion thereof.

BRIEF DESCRIPTION OF THE DRAWINGS

[36] Figure 1 depicts an analysis showing the result of the incubation of a combinatorial ligand library of the invention with plasma. The library was incubated with plasma according to the methods described in Example 2.

[37] Figure 2 is a comparison of plasma with and without removal of IgG prior to incubation with a library. The experiment was conducted as described in Example 3.

[38] Figure 3 depicts the result of an incubation of a combinatorial ligand library of the invention with serum. The experiment was conducted according to Example 4.

[39] Figure 4 is a PAGE analysis of Protein G column retentate. The panel on the left is stained with Coomassie Blue stain; the panel on the right is the same gel stained with Silver Quest.

[40] Figure 5 is a graphical depiction of blood fractions (based on mass), highlighting the trace nature of a large number of low abundance proteins.

[41] Figure 6 is a mass spectrometry comparison of sample before and after processing with the Equalization beads. Mass range 2.5kDa to 10kDa. The experiment was conducted according to Example 1.

[42] Figure 7 is a comparison of sample before and after processing with the Equalization beads. Mass range 2kDa to 30kDa. The experiment was conducted according to Example 1.

[43] Figure 8 is a comparison of sample before and after processing with the Equalization beads. Mass range 30kDa to 180kDa. The experiment was conducted according to Example 1.

[44] Figure 9 is a graphical depiction of one embodiment of the equalizer bead concept of the present invention.

DEFINITIONS

[45] Unless defined otherwise, all technical and scientific terms used herein have the meaning commonly understood by a person skilled in the art to which this invention belongs. The following references provide one of skill with a general definition of many of the terms used in this invention: Singleton *et al.*, *Dictionary of Microbiology and Molecular Biology* (2nd ed. 1994); *The Cambridge Dictionary of Science and Technology* (Walker ed., 1988); *The Glossary of Genetics*, 5th Ed., R. Rieger *et al.* (eds.), Springer Verlag (1991); and Halpern & Marham, *The Harper Collins Dictionary of Biology* (1991). As used herein, the following terms have the meanings ascribed to them unless specified otherwise.

[46] "Analyte" refers to any molecular moiety capable of binding to a binding moiety of the present invention in a manner that is not completely disrupted by contact with a wash solution as described herein. "Captured analyte" is any analyte bound by a binding moiety of the present invention after contact with a wash solution.

[47] "Adsorbent" refers to any material capable of binding an analyte (e.g., a target polypeptide). "Chromatographic adsorbent" refers to a material typically used in chromatography. Chromatographic adsorbents include for example, ion exchange materials, metal chelators, hydrophobic interaction adsorbents, hydrophilic interaction adsorbents, dyes, and mixed mode adsorbents (e.g., hydrophobic attraction/electrostatic repulsion adsorbents). "Biospecific adsorbent" refers to an adsorbent comprising a biomolecule, e.g., a nucleotide, a nucleic acid molecule, an amino acid, a polypeptide, a simple sugar, a polysaccharide, a fatty acid, a lipid, a steroid or a conjugate of these (e.g., a glycoprotein, a lipoprotein, a glycolipid). In certain instances the biospecific adsorbent can be a macromolecular structure such as a multiprotein complex, a biological membrane or a virus. Examples of biospecific adsorbents are solid supports coupled to antibodies, receptor proteins, lectins and nucleic acids. Biospecific adsorbents typically have higher specificity for a target analyte than a chromatographic adsorbent. Further examples of adsorbents for use in SELDI can be found

in U.S. Patent 6,225,047 (Hutchens and Yip, "Use of retentate chromatography to generate difference maps," May 1, 2001).

[48] Binding moieties may exist and interact with analytes detectable using the present invention in any physical state compatible with formation of molecular interactions, including gaseous, aqueous and organic suspensions and emulsions and, most preferably in a liquid state.

[49] "Solid support" refers to any insoluble material including particles (e.g., beads), fibers, monoliths, membranes, filters, plastic strips and the like.

[50] "Protein biochip" refers to a biochip adapted for the capture of polypeptides. Many protein biochips are described in the art. These include, for example, protein biochips produced by CIPHERGEN Biosystems (Fremont, CA), Packard BioScience Company (Meriden CT), Zyomyx (Hayward, CA) and Phylos (Lexington, MA). Examples of such protein biochips are described in the following patents or patent applications: U.S. patent 6,225,047 (Hutchens and Yip, "Use of retentate chromatography to generate difference maps," May 1, 2001); International publication WO 99/51773 (Kuimelis and Wagner, "Addressable protein arrays," October 14, 1999); International publication WO 00/04389 (Wagner *et al.*, "Arrays of protein-capture agents and methods of use thereof," July 27, 2000) and International publication WO 00/56934 (Englert *et al.*, "Continuous porous matrix arrays," September 28, 2000).

[51] "Surface-Enhanced Neat Desorption" or "SEND" is a version of SELDI that involves the use of probes ("SEND probe") comprising a layer of energy absorbing molecules attached to the probe surface. Attachment can be, for example, by covalent or non-covalent chemical bonds. Unlike traditional MALDI, the analyte in SEND is not required to be trapped within a crystalline matrix of energy absorbing molecules for desorption/ionization. "Energy absorbing molecules" ("EAM") refer to molecules that are capable of absorbing energy from a laser desorption/ ionization source and thereafter contributing to desorption and ionization of analyte molecules in contact therewith. The phrase includes molecules used in MALDI, frequently referred to as "matrix", and explicitly includes cinnamic acid derivatives, sinapinic acid ("SPA"), cyano-hydroxy-cinnamic acid ("CHCA") and dihydroxybenzoic acid, ferulic acid, hydroxyacetophenone derivatives, as well as others. It also includes EAMs used in SELDI. In certain embodiments, the energy absorbing molecule is incorporated into a linear or cross-linked polymer, e.g., a polymethacrylate. For example, the composition can be a copolymer of α -cyano-4-methacryloyloxy-cinnamic acid and acrylate. In another embodiment,

the composition is a co-polymer of α -cyano-4-methacryloyloxycinnamic acid, acrylate and 3-(tri-methoxy)silyl propyl methacrylate. In another embodiment, the composition is a co-polymer comprising α -cyano-4-methacryloyloxycinnamic acid and octadecylmethacrylate ("C18 SEND"). SEND is further described in United States patent 5,719,060 and WO 03/64594 (Kitagawa, "Monomers And Polymers Having Energy Absorbing Moieties Of Use In Desorption/Ionization Of Analytes", August 7, 2003).

[52] SEAC/SEND is a version of SELDI in which both a binding moiety and an energy absorbing molecule are attached to the sample presenting surface. SEAC/SEND probes therefore allow the capture of analytes through affinity capture and desorption without the need to apply external matrix. The C18 SEND biochip is a version of SEAC/SEND, comprising a C18 moiety which functions as a binding moiety, and a CHCA moiety which functions as an energy absorbing moiety.

[53] Protein biochips produced by CIPHERGEN Biosystems comprise surfaces having chromatographic or biospecific adsorbents attached thereto at addressable locations. CIPHERGEN ProteinChip® arrays include NP20, H4, H50, SAX-2, Q10, WCX-2, CM10, IMAC-30, LSAX-30, LWCX-30, IMAC-40, PS-10 and PS-20. These protein biochips comprise an aluminum substrate in the form of a strip. The surface of the strip is coated with silicon dioxide.

[54] In the case of the NP-20 biochip, silicon oxide functions as a hydrophilic adsorbent to capture hydrophilic proteins.

[55] H4, H50, SAX-2, WCX-2, IMAC-3, PS-10 and PS-20 biochips further comprise a functionalized, cross-linked polymer in the form of a hydrogel physically attached to the surface of the biochip or covalently attached through a silane to the surface of the biochip. The H4 biochip has isopropyl functionalities for hydrophobic binding. The H50 biochip has nonylphenoxy-poly(ethylene glycol) methacrylate for hydrophobic binding. The SAX-2 biochip has quarternary ammonium functionalities for anion exchange. The WCX-2 biochip has carboxylate functionalities for cation exchange. The IMAC-3 biochip has copper ions immobilized through nitrilotriacetic acid or IDA for coordinate covalent bonding. The PS-10 biochip has acyl-imidazole functional groups that can react with groups on proteins for covalent binding. The PS-20 biochip has epoxide functional groups for covalent binding with proteins. The PS-series biochips are useful for binding biospecific adsorbents, such as antibodies, receptors, lectins, heparin, Protein A, biotin/streptavidin and the like, to chip surfaces where they function to specifically capture analytes from a sample. The LSAX-30

(anion exchange), LWCX-30 (cation exchange) and IMAC-40 (metal chelate) biochips have functionalized latex beads on their surfaces. Such biochips are further described in: WO 00/66265 (Rich *et al.* (“Probes for a Gas Phase Ion Spectrometer,” November 9, 2000); WO 00/67293 (Beecher *et al.*, “Sample Holder with Hydrophobic Coating for Gas Phase Mass Spectrometer,” November 9, 2000); United States patent application 09/908,518 (Pohl *et al.*, “Latex Based Adsorbent Chip,” July 16, 2002) and United States patent application 60/350,110 (Um *et al.*, “Hydrophobic Surface Chip,” November 8, 2001).

[56] “Gas phase ion spectrometer” refers to an apparatus that detects gas phase ions. Gas phase ion spectrometers include an ion source that supplies gas phase ions. Gas phase ion spectrometers include, for example, mass spectrometers, ion mobility spectrometers, and total ion current measuring devices. “Gas phase ion spectrometry” refers to the use of a gas phase ion spectrometer to detect gas phase ions.

[57] “Mass spectrometer” refers to a gas phase ion spectrometer that measures a parameter that can be translated into mass-to-charge ratios of gas phase ions. Mass spectrometers generally include an ion source and a mass analyzer. Examples of mass spectrometers are time-of-flight, magnetic sector, quadrupole filter, ion trap, ion cyclotron resonance, electrostatic sector analyzer and hybrids of these. “Mass spectrometry” refers to the use of mass spectrometry to detect gas phase ions.

[58] “Probe” or “mass spectrometer probe” in the context of this invention refers to a device that can be used to introduce ions derived from an analyte into a gas phase ion spectrometer, such as a mass spectrometer. A “probe” will generally comprise a solid substrate (either flexible or rigid) comprising a sample-presenting surface on which an analyte is presented to the source of ionizing energy. “SELDI probe” refers to a probe comprising an adsorbent (also called a “binding moiety”) attached to the surface. “Adsorbent surface” refers to a surface to which an adsorbent is bound. “Chemically selective surface” refers to a surface to which is bound either an adsorbent or a reactive moiety that is capable of binding a binding moiety, e.g., through a reaction forming a covalent or coordinate covalent bond.

[59] “SELDI MS probe” refers to a probe comprising an adsorbent attached to the surface.

[60] “Variance” in the context of the present invention refers to the mathematical variance in the concentrations of analytes in a test sample. A reduction in variance is one that is statistically significant ($p > 0.05$). In simplest terms, the variance is the square of the standard deviation of all analyte concentrations in a test sample that are detected by at least

one detection method. A preferred detection method is mass spectroscopy, where the amount of a detectable analyte is the area beneath the mass peak identified by the detector.

[61] "Wash buffer" refers to a solution that may be used to wash and remove unbound material from an adsorbent surface. Wash buffers typically include salts that may or may not buffer pH within a specified range, detergents and optionally may include other ingredients useful in removing adventitiously associated material from a surface or complex.

[62] "Elution buffer" refers to a solution capable of dissociating a binding moiety and an associated analyte. In some circumstances, an elution buffer is capable of disrupting the interaction between subunits when the subunits are associated in a complex. As with wash buffers, elution buffers may include detergents, salt, organic solvents and the like used separately or as mixtures. Typically, these latter reagents are present at higher concentrations in an elution buffer than in a wash buffer making the elution buffer more disruptive to molecular interactions. This ability to disrupt molecular interactions is termed "stringency," with elution buffers having greater stringency than wash buffers.

DETAILED DESCRIPTION OF THE INVENTION

[63] The present invention provides kits and methods that allow one of ordinary skill in the art to reduce the concentration range of analytes of interest found in a complex mixture. The methods described here have particular advantage over prior art methods using analyte specific reagents because they allow a reduction in the range of concentrations of analytes in samples that have unknown constituents and are complex in both number of different analytes present (greater than 10^3) and in dynamic range of concentrations present (on the order of greater than 10^3). Consequently, using the claimed invention allows simultaneous analysis of the "Deep Proteome," which consists of the large number of low abundance proteins present in many fluids from biological sources, including blood, plasma and serum. (See Figure 5). The invention thus has utility in analytical preparation of complex mixtures of molecules, such as biological samples.

[64] Reduction of the range of concentrations of analytes or concentration variance is accomplished by utilizing binding moiety libraries of defined size and diversity, preferably synthesized or coupled onto an inert support. When introduced to a solution containing a diversity of analytes, the binding moieties of the claimed invention will bind analytes of the solution. Abundant analytes will be present in amounts far in excess of the amount necessary to saturate the capacity of their respective binding moiety; therefore, a high percentage of the total amount of these abundant analytes will remain unbound. Conversely, the lesser

amounts of the trace analytes means that these molecules will not saturate all of their available binding moieties; therefore, a greater percentage of the starting amount of the trace analytes will remain bound to their respective binding moieties as compared with the abundant analytes. Non-bound analytes may be removed by washing. When the bound analytes are eluted from the binding moieties there is a decreased relative amount of the abundant analytes in the eluted material relative to the starting material. In contrast, the amount of trace analytes is increased in the eluted material relative to the starting material. This coincident alteration of the relative concentrations of analytes results in an eluted material where many, if not all, analytes present in the solution can be detected in a single analysis, or in fewer analysis steps than would be the case with the starting material. In serum for example, albumins are abundant, many complement associated proteins, hormone-binding proteins are present in intermediate concentrations, while paracrine factors and cellular markers may be present at minute concentrations. Using the present invention, the range in analyte abundance observed in sera can be reduced, allowing many, if not most or even all analytes of interest to be analyzed.

[65] Preparation of samples using the claimed invention is straightforward. After adsorbing the analytes of interest, the analytes are optionally washed to remove unbound analytes. Adsorbed analytes are then eluted from the binding moieties using, for example, by applying an elution buffer. The resulting solution contains all analytes of interest free from binding moieties; however, unlike the original complex mixture, the range in analyte concentration present in the resulting solution is relatively small as the concentration of high abundance analytes has been decreased and that of low abundance analytes increased relative to the original complex mixture. This modification in range of concentrations of analytes or concentration range between analytes allows for a larger percentage of the analytes in the resulting solution to be detected without the recalibration of the detection device necessary for direct analysis of complex mixtures having components present at widely different concentrations.

[66] In some embodiments of the invention, analytes bound to binding moieties are eluted directly onto a probe or protein chip suitable for use in a mass spectrometer. To aid in analysis, elution buffers used in these embodiments may include a matrix material suitable for use in a mass spectrometer. Alternatively, the matrix material may be introduced to the analyte subsequent to deposition of the analyte on the probe or chip. In preferred embodiments of this type, SEND or SEAC/SEND biochips comprising a matrix material on the biochip are used. These preferred embodiments alleviate the need for a matrix material to

be included in the elution buffer or introduced to the analyte at some point in time subsequent to deposition onto the biochip.

[67] By providing a plurality of binding moieties, each recognizing a single or a low percentage of the analytes of interest present in a complex mixture, the present invention allows the composition of the complex mixture to be detected with minimal or no recalibration of the detection device. This includes detection of species that would otherwise not be detectable because either they were masked by high abundance analytes, or were present at too low a concentration to be detected by the method of analysis. This provides enormous benefits to high throughput analysis techniques that would otherwise be limited at the detection step by the need for multiple recalibrations, and/or multiple channels, and/or multiple detection steps or expensive and wasteful fractionation techniques necessitated by the large concentration range of the analytes present in many complex mixtures. Moreover, by increasing the relative concentration of low-abundance analytes, the invention allows detection of analytes that are only present in the sample in trace amounts. Using serum as an example, certain analytes such as some hormones are present at only trace amounts in unconcentrated sera. Other analytes, such as albumin, are abundant, being present in amounts ranging from micromolar to millimolar. The present invention concentrates the low abundance analytes relative to the high abundance analytes. Thus, in preparation of the exemplary serum sample using the present invention, the concentration of hormones is increased relative to the concentration of albumin and other high abundance analytes. By bringing the concentrations of low and high abundance analytes from the sera closer together, the analyte composition can be determined both qualitatively and quantitatively using only one or a few sensitivity settings of the analytical instrumentation used to detect the analytes.

[68] By the same approach the present invention allows determining traces amount of proteins present in biological samples such as purified therapeutic proteins where the tolerance in protein impurity content is very limited. For examples purified antibodies from cell culture supernatants may contain traces of different proteins coming from the cells used for the expression of antibodies. These latter should not be present and are generally detected by specific ELISA assays. However when the concentration of impurities is very low immunochemical tests are not effective. If the sample to analyze is first treated according to the present invention protein impurity traces may be significantly concentrated and therefore detected by regular chemical or immunochemical methods.

I. REDUCING RELATIVE ANALYTE CONCENTRATIONS IN A SAMPLE**A. Suitable Test Samples**

[69] Test samples of the present invention may be in any form that allows analytes present in the test sample to be contacted with binding moieties of the present invention, as described herein. Suitable test samples include gases, powders, liquids, suspensions, emulsions, permeable or pulverized solids, and the like. Preferably test solutions are liquids. Test samples may be taken directly from a source and used in the methods of the present invention without any preliminary manipulation. For example, a water sample may be taken directly from an aquifer and treated directly using the methods described herein.

[70] Alternatively, the original sample may be prepared in a variety of ways to enhance its suitability for testing. Such sample preparations include depletion of certain analytes, concentrating, grinding, extracting, percolating and the like. For example, solid samples may be pulverized to a powder, then extracted using an aqueous or organic solvent. The extract from the powder may then be subjected to the methods of the present invention. Gaseous samples may be bubbled or percolated through a solution to dissolve and/or concentrate components of the gas in a liquid prior to subjecting the liquid to methods of the present invention.

[71] Test samples preferably contain at least four analytes of interest, more preferably at least 8, 15, 20, 50, 100, 1000, 100,000, 1,000,000, 10,000,000 or more analytes of interest. In some circumstances, test samples suitable for manipulation using the methods of the present invention may include hundreds or thousands of analytes of interest. Preferably, the concentrations of analytes present in the test sample spans at least an order of magnitude, more preferably at least two, three, four or more orders of magnitude. Once subjected to the methods of the present invention, this concentration range for analytes detectable by at least one detection method will be decreased by at least a factor of two, more preferably a factor of 10, 20, 50, 100, 1000 or more.

[72] Test samples may be collected using any suitable method. For example, environmental samples may be collected by dipping, picking, scooping, sucking, or trapping. Biological samples may be collected by swabbing, scraping, withdrawing surgically or with a hypodermic needle, and the like. The collection method in each instance is highly dependent upon the sample source and the situation, with many alternative suitable techniques of collection well-known to those of skill in the art.

1. Biological Test Samples

[73] Test samples may be taken from any source that potentially includes analytes of interest including environmental samples such as air, water, dirt, extracts and the like. A preferred test sample of the present is a biological sample, preferably a biological fluid. Biological samples that can be manipulated with the present invention include amniotic fluid, blood, cerebrospinal fluid, intraarticular fluid, intraocular fluid, lymphatic fluid, milk, perspiration plasma, saliva semen, seminal plasma, serum, sputum, synovial fluid, tears, umbilical cord fluid, urine, biopsy homogenate, cell culture fluid, cell extracts, cell homogenate, conditioned medium, fermentation broth, tissue homogenate and derivatives of these. Analytes of interest in biological samples include proteins, lipids, nucleic acids and polysaccharides. More particularly, analytes of interest are cellular metabolites that are normally present in the animal, or are associated with a disease or infectious state such as a cancer, a viral infection, a parasitic infection, a bacterial infection and the like. Particularly interesting analytes are those that are markers for cellular stress. Analytes indicating that the animal is under stress are an early indicator of a number of disease states, including certain mental illnesses, myocardial infarction and infection.

[74] Analytes of interest also include those that are foreign to the animal, but found in tissue(s) of the animal. Particularly interesting analytes in this regard include therapeutic drugs including antibiotics, many of which exist as different enantiomers and toxins that may be produced by infecting organisms, or sequestered in an animal from the environment. Samples can be, for example, egg white or *E. coli* extracts.

2. Environmental Test Samples

[75] Environmental samples are another class of preferred test samples for use with the present invention. Preferred environmental samples include dirt, dust, dander, natural and synthetic fibers, water, plant materials, animal feces and the like. Preferred analytes in environmental samples include natural and synthetic toxins, fertilizers, herbicides and insecticides, and markers for bacterial and viral agents such as structural proteins characteristic of the agent of interest. Particularly preferred analytes sought in environmental test samples are toxins, particularly toxins such as botulinum, ricin, anthrax toxins and the like. Disease-related analytes of interest present in environmental test samples include complete virions as well as characteristic proteins and nucleic acids of botulinus, ebola, HIV, SARS, anthrax, plague, malaria, small pox, prions associated with bovine spongiform encephalopathy, scrapie, variant CJD etc.

[76] Exemplary environmental samples can be obtained from numerous sources including the natural environment, such as a naturally-occurring body of water. The naturally-occurring body of water can be, for example, an ocean, a lake, a sea, a river, a swamp, a pond, a delta, or a bay. The environmental extract can alternatively be an extract from a water treatment center.

[77] Alternatively, the environmental sample can be taken from a man-made environment, such as a building. The building can be any man-made building. Preferably, the building is contaminated with one or more biological pathogens such as small pox, anthrax, or one or more toxic agents, such as sarin, soman, nerve poisons, explosive chemicals, pesticides, VX, and blister agents. Methods for obtaining the environmental sample include dry swabbing the surface of the building, or wet swabbing the building's surface using a suitable solvent known to those of skill in the art.

B. Suitable Binding Moieties

[78] Suitable binding moieties of the present invention include small organic molecules, such as dyes and tryazines, and biopolymers such as peptides, proteins, polynucleotides, oligosaccharides or lipids. Binding moieties of the present invention may be molecules having molecular weights of 100KDa or more, such as antibodies, but preferably are smaller molecules with a molecular weight in the range of 10KDa, more preferably around 1KDa, desirably less than 1KDa for example, less than 750, 500, or 250Da. Ideally, binding moieties of the present invention are coupled to an insoluble particulate material. Each insoluble particle preferably carries several copies of the same binding moiety, with each particle type coupling a different binding moiety.

[79] Binding moieties of the present invention may be in solution, suspension, or in any other situation allowing contact of the binding moiety with analyte including mounted on a solid support.

[80] The binding moieties may be part of a "phage display library" where the peptide is presented as part of the phage coat. (See, e.g., Tang, Xiao-Bo, et al.; J. Biochem; 1997; pp. 686-690; vol. 122, No. 4). Presenting the peptide on the surface of the phage particle allows rapid throughput screening of combinatorial libraries of small peptides, a method that is also advantageous for screening combinatorial antibody libraries. A phage display library is formed from bacteriophage that has been recombinantly manipulated to express binding moiety as part of the phage protein coat. Using phage display, libraries of binding moieties may be easily constructed.

[81] Binding moieties may also be soluble combinatorial molecules. Soluble combinatorial molecules preferably comprise a capture moiety that allows the binding moiety to be coupled to a complementary solid support. Soluble binding moiety embodiments are typically contacted to the sample and allowed to bind analyte(s) of interest prior to isolating the resulting complexes by binding or coupling the binding moiety to a solid support.

Combinatorial libraries may be composed of building blocks containing chiral atoms such as 19 of the naturally occurring amino acids.

[82] Binding moieties of the present invention may be produced using any technique known to those of skill in the art. For example, binding moieties may be chemically synthesized, harvested from a natural source or, in the case of binding moieties that are bio-organic polymers, produced using recombinant techniques. For this latter reason, peptides having no more than 15, 10, 8, 6 or 4 amino acids are particularly advantageous, as they are easily produced using recombinant or solid phase chemistry techniques. Moreover, chemically synthesized libraries are described, for example, in Fodor et al., *Science* 251: 767-773 (1991) and Houghten et al., *Nature* 354: 84-86 (1991). In the split-couple-recombine solid phase combinatorial synthesis Lam et al., *Nature* 354, 82-84 (1991) such that the diversity of the complement of binding moieties is a result of the number of different amino acids to the power of the length of the binding moiety (number of amino acids in an individual binding moiety).

[83] Nucleic acids are another preferred bio-organic polymer binding moiety. As with peptides, nucleic acids may be produced using synthetic or recombinant techniques well-known to those of skill in the art. Preferable nucleic acid binding moieties of the present invention are at least 4, more preferably 6, 8, 10, 15, or 20 nucleotides in length. Nucleic acid binding moieties include single or double stranded DNA or RNA molecules (e.g., aptamers) that bind to specific molecular targets, such as a protein or metabolite.

[84] Oligosaccharide binding moieties are also contemplated as part of the invention. Oligosaccharide binding moieties are preferably at least 5 monosaccharide units in length, more preferably 8, 10, 15, 20, 25 or more monosaccharide units in length.

[85] A biopolymer binding moiety can be a lipid. As used herein, the term "lipid" refers to a hydrophobic or amphipathic moiety. Thus, lipid library of binding moieties are also contemplated for use in the methods and kits of the invention. Suitable lipids include a C14 to C50 aliphatic, aryl, arylalkyl, arylalkenyl, or arylalkynyl moiety, which may include at least one heteroatom selected from the group consisting of nitrogen, sulfur, oxygen, and phosphorus. Other suitable lipids include a phosphoglyceride, a glycosylglyceride, a

sphingolipid, a sterol, a phosphatidyl ethanolamine or a phosphatidyl propanolamine. Lipid library of binding moieties are preferably at least 5 units in length, more preferably at least 8, 10, 15, 20, 25, 50 or more units in length.

[86] Small organic molecules are also contemplated as binding moieties of the present invention. Typically, such molecules have properties that allow for ionic, hydrophobic or affinity interaction with the analyte. Small organic binding moieties include chemical groups traditionally used in chromatographic processes such as mono-, di- and tri-methyl amino ethyl groups, mono-, di- and tri-ethyl amino ethyl groups, sulphonyl, phosphoryl, phenyl, carboxymethyl groups and the like. For example libraries may use benzodiazepines, (see, e.g. Bunin et al., Proc. Natl. Acad. Sci. USA 91: 4708-4712 (1994)) and peptoids (e.g. Simon et al., Proc. Natl. Acad. Sci. USA 89: 9367-9371 (1992)). In another embodiment, the binding moiety is a dye or a triazine derivative. This list is by no means exhaustive, as one of skill in the art will readily recognize thousands of chemical functional groups with ionic, hydrophobic or affinity properties compatible with use as binding moieties of the present invention. The production and use of combinatorial binding moiety libraries is discussed in more detail, below.

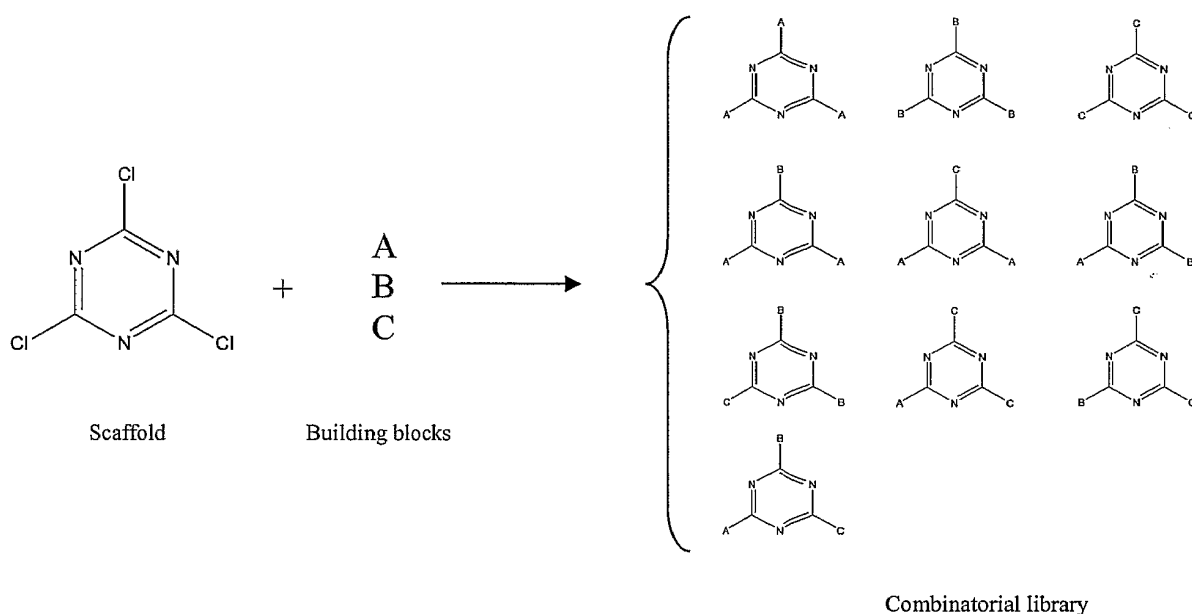
[87] Binding moieties may be purchased pre-coupled to the supports, synthesized on the support, or may be indirectly attached or directly immobilized on the support using standard methods (see, for example, Harlow and Lane, *Antibodies*, Cold Spring Harbor Laboratory, Cold Spring Harbor, NY (1988); Biancali et al., *Letters in Peptide Science* 7(291): 297(2000); MacBeath et al., *Science* 289: 1760-1763 (2000); Cass et al., ed., *Proceedings of the Thirteenth American Peptide Symposium*; Leiden, Escom, 975-979 (1994); U.S. Patent 5,576,220; Cook et al., *Tetrahedron Letters* 35: 6777-6780 (1994); and Fodor et al., *Science* 251(4995): 767-773 (1991)).

Combinatorial Libraries

[88] In one embodiment of this invention the library of binding moieties is a combinatorial library or portion thereof. A combinatorial chemical library is a collection of compounds generated by either chemical synthesis or biological synthesis, by combining a number of chemical "building blocks" in all possible combinations. For example, a complete linear combinatorial chemical library, such as a polypeptide library, is formed by combining a set of chemical building blocks (amino acids) in every possible way for a given compound length (i.e., the number of amino acids in a polypeptide compound). As an example, if the number of building blocks is 5 and the construct is composed of five members, the number of

possible linear combinations is of 5^5 or 3,125 members. In this case the building blocks (A, B, C, D and E) are assembled linearly such as: A-A-A-A-A; A-A-A-A-B; A-A-A-A-C; A-A-A-B-A; A-A-A-B-B; A-A-A-B-C;; A-A-B-A-A; A-A-B-A-B; A-A-B-A-C;; E-E-E-E-C; E-E-E-E-D; E-E-E-E-E.

[89] Another form of combinatorial library is scaffold-based. These constructs are based on a single central molecule or core, comprising positions that can be substituted by building blocks. An example is given by trichloro-triazine (three substitutable positions) on which several substituents can be attached. If the number of substituents is three, the number of possible combinations is 10. It is also possible to consider the relative positioning of each substituent; in this case the number of combinations is larger.



[90] As a third level it is possible to combine linear combinatorial libraries with scaffold-based libraries where substituents of this latter are combinatorial linear sequences.

[91] Millions of chemical compounds can be synthesized through such combinatorial mixing of chemical building blocks. For peptide binding moieties, the length is preferably limited to 15, 10, 8, 6 or 4 amino acids. Nucleic acid binding moieties of the invention have preferred lengths of at least 4, more preferably 6, 8, 10, 15, or at least 20 nucleotides.

Oligosaccharides are preferably at least 5 monosaccharide units in length, more preferably 8, 10, 15, 20, 25 or more monosaccharide units.

[92] Combinatorial libraries may be complete or incomplete. Complete combinatorial libraries of biopolymers are those libraries containing a representative of every possible permutation of monomers for a given polymer length and composition. Incomplete libraries

are those libraries lacking one or more possible permutation of monomers for a given polymer length.

[93] Peptide binding moieties are a preferred embodiment of the claimed invention. Methods for generating libraries of peptide binding moieties suitable for use in the claimed invention are well known to those of skill in the art, e.g., the “split, couple, and recombine” method (see, e.g., Furka et al., *Int. J. Peptide Protein Res.*, 37: 487-493 (1991); Houghton *et al.*, *Nature* 354:84-88 (1991); Lam et al., *Nature*, 354: 82-84 (1991); International Patent Application WO 92/00091; and U.S. Patents 5,010,175, 5,133,866, and 5,498, 538) or other approaches known in the art. The expression of peptide libraries also is described in Devlin et al., *Science*, 249: 404-406 (1990).

[94] Combinatorial and synthetic chemistry techniques well-known in the art can generate libraries containing millions of members (Lam et al., *Nature* 354: 82-84 (1991) and International (PCT) Patent Application WO 92/00091), each having a unique structure. A library of linear hexamer ligands made with 18 of the natural amino acids, for example, contains 34×10^6 different structures. When amino acid analogs and isomers are also included, the number of potential structures is practically limitless. Moreover, each member of such a library potentially possesses the capacity to bind to a different molecule. Members of a combinatorial library can be synthesized on or coupled to a solid support, such as a bead, with each bead essentially having millions of copies of a library member on its surface. As different beads may be coupled to different library members and the total number of beads used to couple the library members large, the potential number of different molecules capable of binding to the bead-coupled library members is enormous.

[95] Hammond et al., US 2003/0212253 (November 13, 2003) describes combinatorial libraries along the following lines. Peptide binding moiety libraries may be synthesized from amino acids that provide increased stability relative to the natural amino acids. For example, cysteine, methionine and tryptophan may be omitted from the library and unnatural amino acids such as 2-naphylalanine and norleucine included. The N-terminal amino acid may be a D-isomer or may be acetylated to provide greater biochemical stability in the presence of amino-peptidases. The binding moiety density must be sufficient to provide sufficient binding for the target molecule, but not so high that the binding moieties interact with themselves rather than the target molecule. A binding moiety density of 0.1 μmole – 500 μmole per gram of dry weight of support is desired and more preferably a binding moiety density of 10 μmole – 100 μmole per gram of support is desired. A 6-mer peptide library was synthesized onto Toyopearl-AF Amino 650M resin (Tosohaas, Montgomeryville, Pa.). The

size of the resin beads ranged from 60-130 μ m per bead. Initial substitution of the starting resin was achieved by coupling of a mixture of Fmoc-Ala-OH and Boc-Ala-OH (1:3.8 molar ratio). After coupling, the Boc protecting group was removed with neat TFA in full. The resulting deprotected amino groups were then acetylated. Peptide chains were assembled via the remaining Fmoc-Ala-OH sites on the resin bead. Standard Fmoc synthetic strategies were employed. In one embodiment a typical experiment, six grams of Fmoc-Ala-(Ac-Ala-) Toyopearl Resin was deprotected with 20% piperidine/DMF (2 x 20 min), then washed with DMF (8 times) and equally divided into 18 separate reaction vessels. In each separate vessel, a single Fmoc-amino acid was coupled to the resin (BOP/NMM, 5-10 fold excess) for 4-7 hours. The individual resins were washed and combined using the "split/mix" library technique (Furka et al., *Int. J. Peptide Protein Res.*, 37, 487-493 (1991); Lam et al., *Nature*, 354, 82-84 (1991); International Patent Application WO 92/00091 (1992); U.S. Pat. No. 5,010,175; U.S. Pat. No. 5,133,866; and U.S. Pat. No. 5,498,538). The cycle of deprotection and coupling was repeated until the amino acid sequence was completed (six cycles for a hexamer library). The final Fmoc was removed from peptide resins using 20% piperidine/DMF in separate reaction vessels during the last coupling cycle. Side-chain protecting groups were removed with TFA treatment (TFA:H.sub.2O:Phenol, 90:5:5) for 2 hours. Resins were washed extensively and dried under a vacuum. Peptide densities achieved were typically in the range of 0.06-0.12 mmol/g of resin. The amino acids may be either L or D-stereoisomers or racemates.

[96] Sequencing and peptide composition of peptide ligand-resin bead complexes were confirmed, and the degree of substitution of the resin was calculated by quantitative amino acid analysis at Commonwealth Biotechnologies, Inc., Richmond, Va. Sequencing was performed at Protein Technologies Laboratories, Texas A&M University, by Edman degradation using a Hewlett Packard G1005A.

[97] Devices for the preparation of combinatorial libraries are commercially available (*see, e.g.*, 357 MPS, 390 MPS, Advanced Chem Tech, Louisville KY, Symphony, Rainin, Woburn, MA, 433A Applied Biosystems, Foster City, CA, 9050 Plus, Millipore, Bedford, MA). In addition, numerous combinatorial libraries are themselves commercially available (*see, e.g.*, ComGenex, Princeton, N.J., Tripos, Inc., St. Louis, MO, 3D Pharmaceuticals, Exton, PA, Martek Biosciences, Columbia, MD, etc.).

[98] In some peptide library embodiments, the peptides are expressed on the surface of recombinant bacteriophage to produce large, easily screened, libraries. Using the "phage method" (Scott and Smith, *Science* 249:386-390, 1990; Cwirla, *et al*, *Proc. Natl. Acad. Sci.*,

87:6378-6382, 1990; Devlin *et al.*, *Science*, 49:404-406, 1990), very large libraries can be constructed (10^6 - 10^8 chemical entities). A second approach uses primarily chemical methods, of which the Geysen method (Geysen *et al.*, *Molecular Immunology* 23:709-715, 1986; Geysen *et al.* *J. Immunologic Method* 102:259-274, 1987; and the method of Fodor *et al.* (*Science* 251:767-773, 1991) are examples. Furka *et al.* (14th International Congress of Biochemistry, Volume #5, Abstract FR:013, 1988; Furka, *Int. J. Peptide Protein Res.* 37:487-493, 1991), Houghton (U.S. Pat. No. 4,631,211, issued December 1986) and Rutter *et al.* (U.S. Pat. No. 5,010,175, issued Apr. 23, 1991) describe methods to produce a mixture of peptides that can be tested as agonists or antagonists.

[99] Other chemistries for generating chemical diversity libraries can also be used. Such chemistries include, but are not limited to: peptides (e.g., PCT Publication No. WO 91/19735), encoded peptides (e.g., PCT Publication WO 93/20242), random bio-oligomers (e.g., PCT Publication No. WO 92/00091), benzodiazepines (e.g., U.S. Pat. No. 5,288,514), diversomers such as hydantoins, benzodiazepines and dipeptides (Hobbs *et al.*, *Proc. Nat. Acad. Sci. USA* 90:6909-6913 (1993)), vinylogous polypeptides (Hagihara *et al.*, *J. Amer. Chem. Soc.* 114:6568 (1992)), nonpeptidal peptidomimetics with glucose scaffolding (Hirschmann *et al.*, *J. Amer. Chem. Soc.* 114:9217-9218 (1992)), analogous organic syntheses of small compound libraries (Chen *et al.*, *J. Amer. Chem. Soc.* 116:2661 (1994)), oligocarbamates (Cho *et al.*, *Science* 261:1303 (1993)), and/or peptidyl phosphonates (Campbell *et al.*, *J. Org. Chem.* 59:658 (1994)), nucleic acid libraries (*see* Ausubel, Berger and Sambrook, all *supra*), peptide nucleic acid libraries (*see, e.g.*, U.S. Patent 5,539,083), antibody libraries (*see, e.g.*, Vaughn *et al.*, *Nature Biotechnology*, 14(3):309-314 (1996) and PCT/US96/10287), carbohydrate libraries (*see, e.g.*, Liang *et al.*, *Science*, 274:1520-1522 (1996) and U.S. Patent 5,593,853), small organic molecule libraries (*see, e.g.*, benzodiazepines, Baum C&EN, Jan 18, page 33 (1993); isoprenoids, U.S. Patent 5,569,588; thiazolidinones and metathiazanones, U.S. Patent 5,549,974; pyrrolidines, U.S. Patents 5,525,735 and 5,519,134; morpholino compounds, U.S. Patent 5,506,337; benzodiazepines, 5,288,514, and the like).

Linker Moieties

[100] Binding moieties of the present invention optionally include linker moieties that allow targeted and/or reversible coupling of the binding moiety to a solid support. Exemplary linker moieties include epitope and his-tags, which are attached to the biomolecule to be captured to form a fusion protein. In these instances, a cleavable linker sequence, such as

those specific for Factor XA or enterokinase (Invitrogen, San Diego, Calif.) may be optionally included between the biomolecule and the capture moiety to facilitate isolation and/or separation of the components of the fusion molecule. Protein domains specifically recognized by designer ligands may also be used as linker moieties (See, e.g., Deisenhofer, J., *Biochemistry* 20 (1981) 2361-2370). Many other equivalent linker moieties are known in the art. See, e.g., Hochuli, *Chemische Industrie*, 12:69-70 (1989); Hochuli, *Genetic Engineering, Principle and Methods*, 12:87-98 (1990), Plenum Press, N.Y.; and Crowe, *et al.* (1992) *OIAexpress: The High Level Expression & Protein Purification System*, QIAGEN, Inc. Chatsworth, Calif.; which are incorporated herein by reference. Antigenic determinants and other characteristic properties of the biomolecule to be adsorbed may also serve as capture moiety tags. Exemplary linker moieties include poly-histidine (poly-his) or poly-histidine-glycine (poly-his-gly) tags; the flu HA tag polypeptide and its antibody 12CA5 [Field *et al.*, *Mol. Cell. Biol.*, 8:2159-2165 (1988)]; the c-myc tag and the 8F9, 3C7, 6E10, G4, B7 and 9E10 antibodies thereto (Evan *et al.*, *Molecular and Cellular Biology*, 5:3610-3616 (1985)); and the Herpes Simplex virus glycoprotein D (gD) tag and its antibody (Paborsky *et al.*, *Protein Engineering*, 3(6):547-553 (1990)). Other tag polypeptides include the Flag-peptide (Hopp *et al.*, *BioTechnology*, 6:1204-1210 (1988)); the KT3 epitope peptide (Martin *et al.*, *Science*, 255:192-194 (1992)); a α -tubulin epitope peptide (Skinner *et al.*, *J. Biol. Chem.*, 266: 15163-15166 (1991)); and the T7 gene 10 protein peptide tag (Lutz-Freyermuth *et al.*, *Proc. Natl. Acad. Sci. USA*, 87: 6393-6397 (1990)).

C. Capturing Analytes From A Test Sample Using Binding Moieties

[101] Analytes present in a test sample are captured by contacting the test sample with the binding moieties under conditions that allow each binding moiety to couple with its corresponding analyte. As inferred above, binding moieties may be contacted with the test sample directly, or the binding moieties may be first attached to a solid support, such as a dipstick, SELDI probe, or insoluble polymeric bead, membrane or powder.

[102] In the case in which the binding moieties are part of a bead library, the ratio of bead volume to sample volume for a complex sample such as serum can be between, for example, 1:150 and 1:1. The smaller the ratio of beads to sample, the greater the ability to increase the relative concentration of low abundance or rare analyte species. At a constant bead:sample volume of 1:10, volumes of beads used with serum can be at least between 0.0005 ml and 15 mL of beads (including 0.020 ml).

[103] In one embodiment, the binding moiety is coupled to a solid support prior to contacting the test sample. In this alternative embodiment, the solid support is simply contacted with the test sample for a time sufficient to allow the binding moiety to bind analyte, then the solid support is withdrawn from the test sample with the analyte bound to it via formation of a complex between the analyte and the binding moiety.

[104] In one embodiment, the binding moieties include a linker moiety. In this embodiment the binding moieties are contacted directly to the test sample in a manner that allows analytes present in the test sample to bind to the binding moieties. After sufficient time has elapsed, a solid support that includes a complementary capture moiety to the capture moiety of the binding moiety is contacted to the test sample. This allows the binding moiety to couple with the solid support through the capture moiety, while retaining the bound analyte.

[105] Contacting the binding moiety with the test sample may be accomplished by admixing the two, swabbing the test sample onto the binding moiety, flowing the test sample over the solid support having binding moieties attached thereto, and other methods that would be obvious to those of ordinary skill in the art. The binding moieties and the analytes are kept in contact for a time sufficient to allow the binding moieties to reach binding equilibrium with the sample. Under typical laboratory conditions this is at least 10 minutes.

Solid Supports

[106] Acceptable supports for use in the present invention can vary widely. A support can be porous or nonporous. It can be continuous or non-continuous, flexible or nonflexible. A support can be made of a variety of materials including ceramic, glassy, metallic, organic polymeric materials, or combinations thereof.

[107] Preferred supports include organic polymeric supports, such as particulate or beaded supports, woven and nonwoven webs (such as fibrous webs), microporous fibers, microporous membranes, hollow fibers or tubes. Polyacrylamide and mineral supports such as silicates and carbonates (e.g., hydroxyl apatite) can also be used. Woven and nonwoven webs may have either regular or irregular physical configurations of surfaces. Particularly preferred embodiments include solid supports in the form of spherical or irregularly-shaped beads or particles.

[108] Porous materials are useful because they provide large surface areas. The porous support can be synthetic or natural, organic or inorganic. Suitable solids with a porous structure having pores of a diameter of at least about 1.0 nanometer (nm) and a pore volume of at least about 0.1 cubic centimeter/gram (cm³/g). Preferably, the pore diameter is at least

about 30 nm because larger pores will be less restrictive to diffusion. Preferably, the pore volume is at least about 0.5 cm³/g for greater potential capacity due to greater surface area surrounding the pores. Preferred porous supports include particulate or beaded supports such as agarose, hydrophilic polyacrylates, polystyrene, mineral oxides and Sepharose, including spherical and irregular-shaped beads and particles.

[109] For significant advantage, the supports for binding moieties are preferably hydrophilic. Preferably, the hydrophilic polymers are water swellable to allow for greater infiltration of analytes. Examples of such supports include natural polysaccharides such as cellulose, modified celluloses, agarose, cross-linked dextrans, amino-modified cross-linked dextrans, guar gums, modified guar gums, xanthan gums, locust bean gums and hydrogels. Other examples include cross-linked synthetic hydrophilic polymers such as polyacrylamide, polyacrylates, polyvinyl alcohol (PVA) and modified polyethylene glycols.

[110] Attachment of the binding moieties to the solid support may be accomplished through a variety of mechanisms. The solid support can be derivatized with a fully prepared binding moiety by attaching a previously prepared binding moiety to the solid support. Alternatively, the binding moiety may be formed on the solid support by attaching a precursor molecule to the solid support and subsequently adding additional precursor molecules to the growing chain bound to the solid support by the first precursor molecule. This mechanism of building the adsorbent on the solid support is particularly useful when the binding moiety is a polymer, particularly a biopolymer such as a polypeptide, polynucleotide or polysaccharide molecule. A biopolymer adsorbent can be provided by successively adding monomeric components (e.g., amino acids, nucleotides or simple sugars) to a first monomeric component attached to the solid support using methods known in the art. See, e.g., U.S. Pat. No. 5,445,934 (Fodor *et al.*).

[111] In certain embodiments, for example combinatorial libraries, each solid support, e.g., each bead, can have only one binding moiety attached to it (within the limits of combinatorial chemistry).

[112] However, in another embodiment, each solid support can have a plurality of different binding moieties attached. For example, a combinatorial library of peptides can be manufactured using the split-and-pool process. These peptides can be cleaved from the beads to which they attached, mixed, and then attached to a new set of beads, without any sorting of the peptides by beads. In this way, each bead will have many different binding moieties attached. Accordingly, this invention provides combinatorial libraries of binding moieties in which a plurality of different members of the combinatorial library are attached to the same

solid support. As few as one and as many as 10, 100, 1000, 10,000, 1,000,000, 1,000,000,000 or more different binding moieties may be coupled to a single solid support. In certain embodiments the solid support is in the form of beads, with a single, different, binding moiety type bound to each bead. For example in a peptide binding moiety library, peptides representing one possible permutation of amino acids would be bound to one bead, peptides representing another possible permutation to another bead, and so on.

[113] Binding moieties may be coupled to a solid support using reversible or non-reversible interactions. For example, non-reversible interactions may be made using a support that includes at least one reactive functional group, such as a hydroxyl, carboxyl, sulfhydryl, or amino group that chemically binds to the binding moiety, optionally through a spacer group. Suitable functional groups include N-hydroxysuccinimide esters, sulfonyl esters, iodoacetyl groups, aldehydes, epoxy, imidazolyl carbamates, and cyanogen bromide and other halogen-activated supports. Such functional groups can be provided to a support by a variety of known techniques. For example, a glass surface can be derivatized with aminopropyl triethoxysilane in a known manner. In some embodiments, binding moieties are coupled to a solid support during synthesis, as is known to those of skill in the art (e.g., solid phase peptide and nucleic acid synthesis).

[114] Alternatively, reversible interactions between a solid support and a binding moiety may be made using linker moieties associated with the solid support and/or the binding moiety. A variety of linker moieties suitable for use with the present invention are known, some of which are discussed above. Use of linker moieties for coupling diverse agents is well known to one of ordinary skill in the art, who can apply this common knowledge to form solid support/binding moiety couplings suitable for use in the present invention with no more than routine experimentation.

Microparticulate Solid Supports

[115] A preferred embodiment of the present invention utilizes small, beaded, microparticulate solid supports that are less than 1000 μm , preferably less than 100, 10, 1 or 0.1 μm in diameter. Such supports are typically formed by mechanical milling or otherwise reducing larger beads to a powder consistency. Microparticulate solid supports are desirable because they possess increased surface area to volume ratio compared to the larger bead. Microparticulate solid supports also decrease the volume of support necessary to contain a combinatorial library of the invention, thereby allowing more complex and efficient libraries to be used. Using existing equipment however, it is difficult to synthesize combinatorial

libraries on very small (< 10 μm) beads due to the limitations in frit sizes of the filter systems used. To overcome this problem the combinatorial library may be synthesized in bulk on a bead that may then be fragmented by mechanically grinding, crushing, or sonicating it to form a powder or collection of micro-particles.

[116] Using these techniques, microparticulate solid supports coupled to different binding moieties may be produced. These in turn may be extensively mixed to form a more uniform composition relative to mixing larger or various sizes of different beads.

[117] The microparticulate solid support may be covalently attached to an activated surface to make a "dipstick" or chip through an epoxy group, N-hydroxysuccinimide, dimethyl 3,3'-dithiopropionimide, or glutaraldehyde so as to form a chemical bond with the ligands of the combinatorial library or with the base matrix of the polymer on which the ligands were synthesized. This may be achieved through cross-linking to the N-terminal amino group of a peptide library.

[118] Non-reacted cross-linking groups on the surface may be reacted with a small chemical such as mercapto-ethanol to prevent further reactivity. In addition, surfaces may be further treated to prevent non-specific adhesion of protein.

[119] Target molecules bound to binding moieties coupled to microparticulate solid supports may be washed in one or a variety of ways, e.g. with buffer at different salt concentrations and pH and the bound proteins eluted in solutions of low pH, low or high ionic strength, strong chaotropes, acetonitrile/formic acid, etc.

[120] Eluted target molecules may be analyzed for protein composition according to molecular weight by several methods, including, but not limited to, for example, mass spectrometry, SDS-PAGE, capillary electrophoresis, or by pI through isoelectric focusing.

[121] Alternatively, target molecules may be eluted through electrophoresis. In this embodiment the microparticulate solid supports containing bound target molecules may be soaked with an appropriate solution such as Laemmli buffer and the proteins resolved by SDS-PAGE analysis. An alternative buffer may contain urea and the proteins may be separated by electrophoresis into an isoelectric focusing gel

[122] Alternatively, the microparticulate solid supports may be compounded with a bulking agent and compacted into tablet form. In this format it may be added directly to a sample solution or instead, first suspended in buffer.

[123] Microparticulate solid supports may be placed into solution such as agarose or acrylamide and cross-linked into a gel itself or cross-linked to each other through a polymerization reaction with a cross-linker on a fiber to form a monolithic material.

[124] Alternatively microparticulate solid supports may be immobilized onto a thin film of adhesive.

[125] Another approach is the entrapment of microparticulate solid supports in a porous matrix. Such matrixes could include nonwoven fibers or webs with the particles possibly being incorporated during the melt blowing stage.

[126] Microparticles can be incorporated into a single sheet or stack of membranes as desired to achieve the appropriate desired binding capacity; in which the microparticulate solid supports are entrapped between the layers by calendaring or hydroentanglement.

[127] The membrane composition can be selected from natural or synthetic sources including polyester and polypropylene fibers and meshes. Of course, one of skill in the art will be aware that many of the techniques described in this section are generally applicable to other embodiments of the present invention.

1. Removing Unbound Analytes

[128] A feature of the present invention is that treatment of analytes according to the methods described herein preferably concentrates and partially purifies bound analyte in addition to reducing the variance between analyte concentrations. Implementation of this feature to the fullest includes optionally washing any unbound analytes from the analyte bound to the binding moieties on the solid support.

[129] Washing away unbound analyte is preferably performed by contacting the analyte bound to the binding moiety with a mild wash solution. The mild wash solution is designed to remove contaminants and unbound analytes frequently found in the test sample originally containing the analyte. Typically a wash solution will be at a physiologic pH and ionic strength and the wash will be conducted under ambient conditions of temperature and pressure.

[130] Formulation of wash solutions suitable for use in the present invention can be performed by one of skill in the art without undue experimentation. Methods for removing contaminants, including low stringency washing methods, are published, for example in Scopes, *Protein Purification: Principles and Practice* (1982); Ausubel, *et al.* (1987 and periodic supplements); *Current Protocols in Molecular Biology*; Deutscher (1990) "Guide to Protein Purification" in *Methods in Enzymology* vol. 182, and other volumes in this series.

D. Isolating Captured Analytes From Binding Moieties

[131] Bound analyte may be eluted from the binding moieties and isolated using a variety of methods, preferably by using an aqueous elution buffer that disrupts the interaction between

the binding moiety and the analyte. Any suitable elution buffer may be used for this purpose, including denaturing agents such as chaotropes and organic solvents. Exemplary elution buffers include aqueous salt solutions of very low or high ionic strength, detergent solutions, and organic solvents. Solutions and suspensions of agents that competitively bind to binding moieties of the invention may also be used in elution buffers, provided that such competitive binding agents do not interfere with subsequent collection or analysis of the analytes of interest. The elution buffer(s) chosen are highly application-specific and may be readily identified by one of ordinary skill in the art through materials commonly available in the public domain or through routine experimentation (See, e.g., Scopes, *Protein Purification: Principles and Practice* (1982); and Deutscher (1990) "*Guide to Protein Purification*" in *Methods in Enzymology* vol. 182, and other volumes in this series).

[132] A typical sequence includes washing with sodium chloride (to collect proteins adsorbed by a dominant ion exchange interaction), followed by ethylene glycol (eluent for protein interacting mainly by hydrophobic associations), followed by lowering the pH to 2.5 (deforming buffer) and finally by guanidine-HCl.

[133] Examples of suitable elution buffers include those that modify surface charge of an analyte and/or binding moiety, such as pH buffer solutions. pH buffer solutions used to disrupt surface charge through modification of acidity preferably are strong buffers, sufficient to maintain the pH of a solution in the acidic range, i.e., at a pH less than 7, preferably less than 6.8, 6.5, 6.0, 5.5, 5.0, 4.0 or 3.0; or in the basic range at a pH greater than 7, preferably greater than 7.5, 8.0, 8.3, 8.5, 9.0, 9.3, 10.0 or 11.0. In certain embodiments, the elution buffer can comprise 9 M urea at pH 3, 9 M urea at pH 11 or a mixture of 6.66% MeCN / 13.33% IPA / 79.2% H₂O / 0.8% TFA. The selection of one method versus another depends on the analytical method used for the equalized sample.

[134] Alternatively, solutions of high salt concentration having sufficient ionic strength to mask charge characteristics of the analyte and/or binding moiety may be used. Salts having multi-valent ions are particularly preferred in this regard, e.g., sulphates and phosphates with alkali earth or transition metal counterions, although salts dissociating to one or more monovalent are also suitable for use in the present invention, provided that the ionic strength of the resulting solution is at least 0.1, preferably 0.25, 0.3, 0.35, 0.4, 0.5, 0.75, 1.0 mol l⁻¹ or higher. By way of example, many protein analyte/binding moiety interactions are sensitive to alterations of the ionic strength of their environment. Therefore, analyte may be isolated from the binding moiety by contacting the bound analyte with a salt solution, preferably an inorganic salt solution such as sodium chloride. This may be accomplished using a variety of

methods including bathing, soaking, or dipping a solid support to which the analyte is bound into the elution buffer, or by rinsing, spraying, or washing the elution buffer over the solid support. Such treatments will release the analyte from the binding moiety coupled to the solid support. The analyte may then be recovered from the elution buffer.

[135] Chaotropic agents, such as guanidine and urea, disrupt the structure of the water envelope surrounding the binding moiety and the bound analyte, causing dissociation of complex between the analyte and binding moiety. Chaotropic salt solutions suitable for use as elution buffers of the present invention are application specific and can be formulated by one of skill in the art through routine experimentation. For example, a suitable chaotropic elution buffer may contain urea or guanidine ranging in concentration from 0.1 to 9 M.

[136] Detergent-based elution buffers modify the selectivity of the affinity molecule with respect to surface tension and molecular complex structure. Suitable detergents for use as elution buffers include both ionic and nonionic detergents. Non-ionic detergents disrupt hydrophobic interactions between molecules by modifying the dielectric constant of a solution, whereas ionic detergents generally coat receptive molecules in a manner that imparts a uniform charge, causing the coated molecule to repel like-coated molecules. For example, the ionic detergent sodium dodecyl sulphate (SDS) coats proteins in a manner that imparts a uniform negative charge. Examples of non-ionic detergents include Triton X-100, TWEEN, NP-40 and Octyl-glycoside. Examples of zwitterionic detergents include CHAPS.

[137] Another class of detergent-like compounds that disrupt hydrophobic interactions through modification of a solution's dielectric constant includes ethylene glycol, propylene glycol and organic solvents such as ethanol, propanol, acetonitrile, and glycerol.

[138] A preferred elution buffer of the present invention includes a matrix material suitable for use in a mass spectrometer. A matrix material may be included in the elution buffer. Some embodiments of the invention may optionally include eluting analyte(s) from binding moieties directly to mass spectrometer probes, such as protein or biochips. In other embodiments of the invention the matrix may be mixed with analyte(s) after elution from binding moieties. Still other embodiments include eluting analytes directly to SEND or SEAC/SEND protein chips that include an energy absorbing matrix predisposed on the protein chip. In these latter embodiments, there is no need for additional matrix material to be present in the elution buffer.

[139] Other elution buffers suitable for the present invention include combinations of buffer components mentioned above. Elution buffers formulated from two or more of the foregoing

elution buffer components are capable of modifying the selectivity of molecular interaction between subunits of a complex based on multiple elution characteristics.

[140] Analytes isolated using the present invention will have a range of concentrations of analytes or concentration variance between analytes that is less than the range of concentrations of analytes or concentration variance originally present in the test sample. For example, after manipulation using the methods of the present invention, isolated analytes will have a range of concentrations of analytes or concentration variance from other isolated analytes that is decreased by at least a factor of two, more preferably a factor of 10, 20, 25, 50, 100, 1000 or more, from the concentration variance between the same analytes present in the test sample prior to subjecting the test sample to any of the methods described herein. Preferably, the method of the invention is performed with a minimal amount of elution buffer, to ensure that the concentration of isolated analyte in the elution buffer is maximized. More preferably, the concentration of at least one isolated analyte will be higher in the elution buffer than previously in the test sample.

[141] After isolating the captured analytes, the analytes may be further processed by concentration or fractionation based on some chemical or physical property such as molecular weight, isoelectric point or affinity to a chemical or biochemical ligand. Fractionation methods for nucleic acids, proteins, lipids and polysaccharides are well-known in the art and are discussed in, for example, Scopes, *Protein Purification: Principles and Practice* (1982); Sambrook *et al.*, *Molecular Cloning--A Laboratory Manual* (2nd ed.) Vol. 1-3, Cold Spring Harbor Laboratory, Cold Spring Harbor Press, N.Y., (Sambrook) (1989); and Current Protocols in Molecular Biology, F. M. Ausubel *et al.*, eds., *Current Protocols*, a joint venture between Greene Publishing Associates, Inc. and John Wiley & Sons, Inc., (1994 Supplement) (Ausubel).

E. Detecting Isolated Analytes

[142] After analytes have been eluted and isolated free of binding moieties, the analyte may be detected, quantified or otherwise characterized using any technique available to those of ordinary skill in the art. A feature of applying the analysis techniques of the present invention to complex test samples, is the dynamic reduction of variance in analyte concentrations for isolated analytes relative to the large range in analyte concentration found in the original test sample. This reduction in analyte concentration range allows a much larger percentage of analytes found in the original test sample to be detected and characterized without recalibrating the detection device than would be available for analyte

detection using the original test sample itself. The actual reduction in analyte concentration range achieved is dependent on a variety of factors including the nature of the original test sample, and the nature and diversity of the binding moieties used. Generally, the reduction in analyte concentration variance using the techniques described herein is sufficient to allow at least 25% more preferably at least 30%, 40%, 50%, 60%, 70%, 75% or 80% of the analytes isolated to be detected without instrument re-calibration. Ideally, the present invention allows at least 90%, 95%, 98% or more of the analytes isolated to be detected without instrument re-calibration.

[143] Detecting analytes isolated using the techniques described herein may be accomplished using any suitable method known to one of ordinary skill in the art. For example, colorimetric assays using dyes are widely available. Alternatively, detection may be accomplished spectroscopically. Spectroscopic detectors rely on a change in refractive index; ultraviolet and/or visible light absorption, or fluorescence after excitation with a suitable wavelength to detect reaction components. Exemplary detection methods include fluorimetry, absorbance, reflectance, and transmittance spectroscopy. Changes in birefringence, refractive index, or diffraction may also be used to monitor complex formation or reaction progression. Particularly useful techniques for detecting molecular interactions include surface plasmon resonance, ellipsometry, resonant mirror techniques, grating-coupled waveguide techniques, and multi-polar resonance spectroscopy. These techniques and others are well known and can readily be applied to the present invention by one skilled in the art, without undue experimentation. Many of these methods and others may be found for example, in "Spectrochemical Analysis" Ingle, J.D. and Crouch, S.R., Prentice Hall Publ. (1988) and "Analytical Chemistry" Vol. 72, No. 17.

[144] A preferred method of detection is by mass spectroscopy. Mass spectroscopy techniques include, but are not limited to ionization (I) techniques such as matrix assisted laser desorption (MALDI), continuous or pulsed electrospray (ESI) and related methods (e.g., IONSPRAY or THERMOSPRAY), or massive cluster impact (MCI); these ion sources can be matched with detection formats including linear or non-linear reflection time-of-flight (TOF), single or multiple quadropole, single or multiple magnetic sector, Fourier Transform ion cyclotron resonance (FTICR), ion trap, and combinations thereof (e.g., ion-trap/time-of-flight). For ionization, numerous matrix/wavelength combinations (MALDI) or solvent combinations (ESI) can be employed. Subattomole levels of analyte have been detected, for example, using ESI (Valaskovic, G. A. et al., (1996) Science 273:1199-1202) or MALDI (Li, L. et al., (1996) J. Am. Chem. Soc. 118:1662-1663) mass spectrometry. ES mass

spectrometry has been introduced by Fenn et al. (J. Phys. Chem. 88, 4451-59 (1984); PCT Application No. WO 90/14148) and current applications are summarized in recent review articles (R. D. Smith et al., Anal. Chem. 62, 882-89 (1990) and B. Ardrey, Electrospray Mass Spectrometry, Spectroscopy Europe, 4, 10-18 (1992)). MALDI-TOF mass spectrometry has been introduced by Hillenkamp et al. ("Matrix Assisted UV-Laser Desorption/Ionization: A New Approach to Mass Spectrometry of Large Biomolecules," Biological Mass Spectrometry (Burlingame and McCloskey, editors), Elsevier Science Publishers, Amsterdam, pp. 49-60, 1990). With ESI, the determination of molecular weights in femtomole amounts of sample is very accurate due to the presence of multiple ion peaks that may be used for the mass calculation. A preferred analysis method of the present invention utilizes Surfaces Enhanced for Laser Desorption/Ionization (SELDI), as discussed for example in U.S. Pat. No. 6,020,208. Mass spectroscopy is a particularly preferred method of detection in those embodiments of the invention where elution of analytes directly onto a mass spectrometer probe or biochip occurs, or where the elution buffer contains a matrix material or is combined with a matrix material after elution of analytes from the binding moieties.

[145] Another method of detection widely used is electrophoresis separation based on one or more physical properties of the analyte(s) of interest. A particularly preferred embodiment for analysis of polypeptide and protein analytes is two-dimensional electrophoresis. A preferred application separates the analyte by isoelectric point in the first dimension, and by size in the second dimension. Methods for electrophoretic analysis of analytes vary widely with the analyte being studied, but techniques for identifying a particular electrophoretic method suitable for a given analyte are well known to those of skill in the art.

II. IDENTIFICATION OF BIOMARKERS

[146] Another embodiment of the present invention is the use of the beaded binding moiety libraries described above in the identification of biomarkers for the diagnosis of diseases, infection or pollution. Biomarkers may be identified in any of the samples noted above, but preferably are identified from samples, such as blood, urine, cerebrospinal fluid and the like, taken from living beings, most preferably human beings. There are several ways in which biomarkers may be identified.

[147] A "biomarker" is virtually any biological compound, such as a protein and a fragment thereof, a peptide, a polypeptide, a proteoglycan, a glycoprotein, a lipoprotein, a

carbohydrate, a lipid, a nucleic acid, an organic or inorganic chemical, a natural polymer, and a small molecule, that is present in the biological sample and that may be isolated from, or measured in, the biosample. Furthermore, a biomarker can be the entire intact molecule, or it can be a portion thereof that may be partially functional or recognized, for example, by an antibody or other specific binding protein. A biomarker can be an epitope-specific antibody. A biomarker is considered to be informative if a measurable aspect of the biomarker is associated with a given phenotype, such as a particular disease state in a living being, or level of pollution in a body of water. Such a measurable aspect may include, for example, the presence, absence, or concentration of the biomarker in the biological sample from the individual and/or its presence as part of a profile of biomarkers. Such a measurable aspect of a biomarker is defined herein as a "feature." A feature may also be a ratio of two or more measurable aspects of biomarkers, which biomarkers may or may not be of known identity, for example. A "biomarker profile" comprises at least two such features, where the features can correspond to the same or different classes of biomarkers such as, for example, a nucleic acid and a carbohydrate. A biomarker profile may also comprise at least three, four, five, 10, 20, 30 or more features. In one embodiment, a biomarker profile comprises hundreds, or even thousands, of features. In another embodiment, the biomarker profile comprises at least one measurable aspect of at least one internal standard.

[148] A "phenotype" is an observable physical or biochemical characteristic of an organism, as determined by both genetic makeup and environmental influences. Alternatively, in the context of the present invention, a phenotype may also be associated with non-living aspects of nature, for example the phenotype of a body of water includes those aspects of the body of water that are detectable, either physically or chemically. For example, the phenotype of a lake includes the water temperature, acidity, mineral content, oxygen content, whether it is capable of sustaining life and if so, what types of life.

[149] A "phenotypic change" is a detectable change in a parameter associated with a given phenotype. For instance, a phenotypic change may include an increase or decrease of a biomarker in a bodily fluid, where the change is associated with a disease state. A phenotypic change may further include a change in a detectable aspect of a given state of a patient that is not a change in a measurable aspect of a biomarker. For example, a change in phenotype may include a detectable change in body temperature, respiration rate, pulse, blood pressure, or other physiological parameter. Such changes can be determined via clinical observation and measurement using conventional techniques that are well-known to the skilled artisan. As used herein, "conventional techniques" are those techniques that

classify an individual based on phenotypic changes without obtaining a biomarker profile according to the present invention.

[150] Using the claimed invention to identifying diagnostic biomarkers in a species or tissue requires the availability of at least two biosamples. The biosamples provided may be from a control group and a test group, a control group and a test individual, taken from the same individual at different times or any other permutation that is readily apparent to one of skill in the art.

[151] Each biosample obtained is treated with a beaded binding moiety library as described herein. In this way, more putative biomarkers are available for analysis, as described in the examples section herein below. This occurs because the binding moiety library narrows the variance in the concentration range of analytes present in the sample, thereby allowing both low abundance and high abundance analytes to be detected.

[152] After treatment with a binding moiety library of the present invention, analytes for each of the biosamples that are bound by the binding moieties are eluted and pooled separately. The pooled samples are then analyzed to determine if any of the common analytes in the samples display differential expression (enhanced expression in one biosample vs. the other), or is expressed in one biosample but not the other. Analytes displaying such differential expression are considered putative biomarkers for the phenotypic change or difference observed between the sources of the respective biosamples. Further statistical and analytic testing may then be performed to correlate the biomarker with the phenotypic change with a desired degree of certainty.

[153] Preferred methods of analytical analysis for use in identifying biomarkers are that same as those described above for identifying analytes binding the binding moieties of the invention generally.

III. KITS

[154] The present invention also includes kits containing components that allow one of ordinary skill in the art to perform the techniques described herein. The most basic of kits for this purpose provide a plurality of binding moieties, each binding moiety in an amount selected to capture a pre-determined amount of a different analyte. In some kit embodiments of the invention the binding moieties are supplied coupled to a solid support, preferably insoluble beads. In other embodiments the solid support and binding moieties are supplied separately. When supplied separately, the binding moieties and/or solid supports include a capture moiety that allows the operator of the invention to couple binding moiety to solid

support during the course of practicing the invention described herein. Kits providing separate binding moieties and solid supports may optionally provide additional reagents necessary to perform the reaction coupling the binding moieties to the solid supports.

[155] Kits of the present invention also include a plurality of containers retaining components for sample preparation and analyte isolation. Exemplary components of this nature include one or more wash solutions sufficient for removing unbound material from a binding moiety specifically bound to an analyte, and at least one elution solution sufficient to release analyte specifically bound by a binding moiety.

[156] Kit embodiments may optionally include instructions for using the library of binding moieties in the methods of this invention.

[157] Although the forgoing invention has been described in some detail by way of illustration and example for clarity and understanding, it will be readily apparent to one ordinary skill in the art in light of the teachings of this invention that certain variations, changes, modifications and substitution of equivalents may be made thereto without necessarily departing from the spirit and scope of this invention. As a result, the embodiments described herein are subject to various modifications, changes and the like, with the scope of this invention being determined solely by reference to the claims appended hereto. Those of skill in the art will readily recognize a variety of non-critical parameters that could be changed, altered or modified to yield essentially similar results.

[158] While each of the elements of the present invention is described herein as containing multiple embodiments, it should be understood that, unless indicated otherwise, each of the embodiments of a given element of the present invention is capable of being used with each of the embodiments of the other elements of the present invention and each such use is intended to form a distinct embodiment of the present invention.

[159] As can be appreciated from the disclosure above, the present invention has a wide variety of applications. The invention is further illustrated by the following examples, which are only illustrative and are not intended to limit the definition and scope of the invention in any way.

EXAMPLES

Example 1: Reduction of Range of Concentrations of Human Serum Proteins

[160] This example illustrates how one embodiment of the invention described above may be applied to a complex biological sample, in this case human serum. In this example, a

reduction in the variance of serum protein concentrations is achieved by selectively adsorbing serum proteins to hexapeptides coupled to insoluble beads. More than 1×10^6 possible permutations of hexapeptide are represented in the binding moiety population of the example, in the form of a combinatorial library of split, recombine and pool beads. In this format, high abundance serum analytes, such as albumin, are bound to a hexapeptide binding moiety, but only to a level equal to saturation of the particular binding moiety. In contrast, low abundance serum analytes are bound almost in their entirety, as the amount of binding moiety recognizing the low abundance analyte is not limiting. The result of this selective binding is a reduction in the range of analyte concentrations for proteins recognized by the binding moieties of used, without the risk of losing low abundance analytes inherent in methods that seek to selectively remove high abundance analytes. Consequently, a large percentage of the serum analytes isolated using the method can be detected in one batch analysis without a recalibration of the detection device. This contrasts with the situation presented when detecting the same analytes in a serum test sample where the detection device would have to be recalibrated repeatedly in order to detect the same analytes in untreated sera. In this example, 30 mL serum was centrifuged at 4°C, 14,000 rpm for 15 minutes and all lipid material carefully removed from the top layer. The remaining serum was filtered through a 0.8 µm filter, and then through 0.45 µm filter. 500µl of this filtered serum was set aside as a non-equalized control sample. Approximately 1 mL of hexapeptide library (swollen in 20% methanol overnight, then 20mM sodium citrate buffer containing 140mM sodium chloride pH7 overnight, and washed 3 times to remove fine particle material) was aliquoted into each of three gravity flow columns. Each aliquot of hexapeptide library was incubated with a 7.6 mL aliquot of filtered serum for 2 hours at room temperature with gentle agitation. After incubation, the columns were allowed to drain and the volume collected represented the flow-through. 1 mL of the flow-through was saved for analysis. The columns were then immediately washed with 20 mL citrate buffer (20 mM sodium citrate, 140 mM sodium chloride, pH= 7). The first 1 mL of the wash was additionally collected for analysis. After washing, several 200 uL aliquots of resin from each of the three column replicates were removed and processed as next described. To one 200µl aliquot of resin from each replicate, the sample was heated with 200 uL 2x LDS buffer + DTT reducing agent (prepared by mixing 500 uL 4x LDS, 200 uL 10x DTT, and 300 uL dH2O) for 10 minutes at 90°C. After the samples were cooled, they were centrifuged at 2,000 rpm for 1 minute. The supernatant was collected and saved at -20°C for 1D-gel analysis. To a second 200uL aliquot of resin from each replicate, the sample was incubated with 400uL 6M urea, for 1 hour in batch

format, with gentle agitation. The sample was then centrifuged at 2,000 rpm for 1 minute to pellet the hexamer ligand bead library and the supernatant was collected for analysis by SELDI-mass spectrometry. To a third 200uL aliquot of resin from each replicate, the sample was incubated with 400uL of 6MGuHCl for 1 hour in batch format, with gentle agitation. The sample was then centrifuged at 2,000 rpm for 1 minute to pellet the hexamers ligand bead library and the supernatant was collected for analysis by SELDI-mass spectrometry.

[161] All samples retained for SELDI-mass spectrometry analysis were subsequently processed on IMAC-Cu ProteinChip Arrays. IMAC arrays were first prepared by incubating 5min with 50uL of 100mM CuSO₄ to charge the surface with Cu. Incubation was done at room temperature with constant shaking. After the incubation period, excess CuSO₄ was removed by rinsing the arrays with distilled water. The charged IMAC-Cu arrays were then neutralized with 100mM Na acetate pH 4.0 for 5 min at room temperature with constant shaking. After the incubation time, the Na acetate was removed and the IMAC-Cu arrays were rinsed with distilled water. IMAC-Cu arrays were next pre-conditioned twice with 150ul binding buffer (0.1 M NaPO₄, 0.5 M NaCl, pH 7) for 5 min with constant shaking at room temperature. After preconditioning, this buffer was removed and a fresh 90ul aliquot of binding buffer was added, followed by and additional 10ul of sample from the equalization experiment (total incubation volume of 100ul). The samples were then incubated on the IMAC-Cu arrays for 30 min with constant shaking. After incubation, the excess sample volume was removed and the arrays washed three times with 150uL of binding buffer; 5 min each wash with constant shaking. After the final wash, the IMAC-Cu arrays were rinsed twice with 150uL distilled water, then dried. As a final step, 1uL of 50% saturated SPA (in 50% acetonitrile, 0.5% trifluoroacetic acid) was added to each spot, dried, then the matrix addition repeated with an additional 1ul 50% SPA. The arrays were then ready to be analyzed by SELDI-mass spectrometry.

[162] A SELDI-mass spectrometry comparison of filtered serum before and after equalization is depicted in Figures 6-8. Analysis of the sample by mass spectrometry showed increased evenness in the peak heights and an increase in the number of peaks seen, as the decrease in abundant molecules also decreased the ion suppression that hid peaks in the native sample. This methodology is anticipated to increase the number of detectable analytes in a complex solution, such as blood serum, by at least 0.5, more likely 1, 2, 3 or more orders of magnitude over the number of detectable analytes using the original complex solution not subjected to the methodology of the invention.

[163] It has been found that libraries of hexapeptides having as few as 700,000 different members produce similar results on serum as a library of 64 million members or 3 million members.

Table 1: Peak detection of proteins with S/N ratio >3 from Serum not processed with Equalization Beads. Total Peaks detected = 191

M/z	Mass	TOF	Intensity	MZ Area	TOF Area	S/N
2015.66	2014.65	17.177	6.4172	127.90	0.5429	49.02
2036.48	2035.47	17.265	5.3084	143.63	0.6038	40.64
2088.13	2087.12	17.482	2.2443	48.87	0.2033	17.28
2158.14	2157.14	17.771	1.1293	8.45	0.0346	8.76
2236.71	2235.71	18.090	1.4596	19.01	0.0765	11.41
2274.25	2273.24	18.240	2.6476	59.30	0.2367	20.78
2297.37	2296.36	18.332	1.7593	25.74	0.1021	13.84
2348.05	2347.05	18.532	1.1940	16.12	0.0632	9.44
2387.06	2386.06	18.685	1.0549	10.47	0.0408	8.38
2433.77	2432.76	18.865	1.1221	9.13	0.0352	8.95
2510.49	2509.48	19.159	1.1701	13.08	0.0497	9.41
2548.37	2547.36	19.302	1.4879	17.14	0.0645	12.01
2588.13	2587.13	19.451	1.1253	24.23	0.0903	9.12
2645.66	2644.65	19.665	0.8016	6.61	0.0244	6.53
2672.54	2671.53	19.764	0.7100	7.81	0.0287	5.80
2701.93	2700.92	19.872	0.6059	1.89	0.0069	4.96
2714.04	2713.03	19.916	0.7967	5.25	0.0192	6.53
2744.23	2743.22	20.026	1.5753	15.67	0.0569	12.96
2765.83	2764.82	20.105	1.9933	35.32	0.1277	16.43
2798.60	2797.60	20.223	1.8114	17.06	0.0614	14.98
2822.57	2821.56	20.309	2.2505	28.31	0.1013	18.66
2841.99	2840.98	20.378	1.0515	13.66	0.0487	8.73
2874.68	2873.68	20.494	1.3501	16.29	0.0578	11.25
2882.13	2881.12	20.521	1.0852	7.18	0.0254	9.05
2986.19	2985.19	20.886	1.6218	16.72	0.0582	13.66
3008.50	3007.50	20.964	0.7147	2.51	0.0087	6.03
3035.73	3034.72	21.058	0.6588	4.37	0.0151	5.58
3051.05	3050.04	21.111	0.3948	1.66	0.0057	3.35
3069.95	3068.95	21.176	0.4739	1.33	0.0046	4.02
3092.47	3091.47	21.253	1.1918	16.40	0.0561	10.14
3114.57	3113.56	21.328	0.4997	1.64	0.0056	4.26
3151.05	3150.05	21.452	0.6513	5.28	0.0179	5.57
3164.53	3163.52	21.498	0.9793	11.19	0.0378	8.39
3232.23	3231.22	21.725	1.5813	18.92	0.0633	13.63
3243.48	3242.47	21.763	0.7721	6.38	0.0213	6.66
3298.21	3297.21	21.945	3.4654	36.61	0.1212	30.07
3313.89	3312.88	21.997	5.1135	76.84	0.2537	44.43
3333.83	3332.82	22.063	2.5432	37.75	0.1242	22.14
3384.92	3383.91	22.230	2.1432	65.06	0.2129	18.75
3407.63	3406.63	22.304	1.0824	12.54	0.0408	9.49
3429.51	3428.51	22.375	0.6049	3.05	0.0099	5.31
3452.91	3451.90	22.451	0.8204	7.29	0.0236	7.22
3476.39	3475.38	22.527	0.5334	4.42	0.0142	4.71
3503.26	3502.25	22.614	0.5524	2.93	0.0094	4.89
3511.64	3510.63	22.641	0.4732	2.83	0.0091	4.19
3528.97	3527.96	22.696	0.4620	5.10	0.0163	4.10
3546.06	3545.06	22.751	0.5973	6.70	0.0214	5.30
3568.26	3567.25	22.821	1.0034	9.59	0.0305	8.93
3590.14	3589.14	22.891	1.0356	32.09	0.1018	9.23
3623.82	3622.81	22.998	0.4337	3.89	0.0123	3.88
3637.24	3636.23	23.040	0.4513	6.62	0.0208	4.04
3694.92	3693.91	23.221	0.5609	5.95	0.0186	5.05
3729.43	3728.42	23.329	0.4638	2.79	0.0087	4.19
3764.53	3763.52	23.438	0.4174	1.51	0.0047	3.78
3805.09	3804.09	23.563	0.8459	10.90	0.0336	7.69
3823.32	3822.31	23.619	1.7052	28.82	0.0886	15.54
3848.08	3847.07	23.695	1.0869	14.13	0.0433	9.93
3855.69	3854.69	23.719	0.8424	8.51	0.0260	7.70
3898.88	3897.87	23.850	2.3732	28.05	0.0854	21.77
3921.25	3920.25	23.919	1.1576	12.73	0.0387	10.64
3942.17	3941.16	23.982	0.5628	6.01	0.0182	5.18
3966.53	3965.52	24.056	0.5595	7.51	0.0227	5.16
3980.76	3979.76	24.099	0.4952	3.90	0.0118	4.58

4027.93	4026.93	24.240	0.3813	2.66	0.0080	3.54
4058.52	4057.52	24.332	0.5159	5.65	0.0169	4.80
4076.90	4075.89	24.386	1.2618	21.95	0.0653	11.77
4161.26	4160.25	24.636	9.0816	189.47	0.5588	85.34
4187.94	4186.94	24.715	3.9580	98.13	0.2882	37.28
4211.39	4210.38	24.784	1.9753	20.07	0.0588	18.65
4225.32	4224.31	24.824	1.7662	17.90	0.0524	16.69
4237.59	4236.58	24.860	1.0754	10.50	0.0307	10.18
4259.14	4258.13	24.923	1.1283	15.93	0.0464	10.70
4277.21	4276.20	24.976	0.9969	9.99	0.0290	9.47
4306.31	4305.31	25.060	1.4922	28.79	0.0835	14.21
4317.27	4316.27	25.092	1.4477	27.75	0.0803	13.80
4387.42	4386.41	25.294	0.5169	3.99	0.0114	4.96
4421.28	4420.27	25.391	0.6385	10.89	0.0311	6.14
4476.55	4475.55	25.549	1.6525	25.13	0.0714	15.98
4498.63	4497.62	25.611	0.8303	12.41	0.0352	8.04
4524.12	4523.11	25.683	0.5423	5.72	0.0162	5.27
4545.86	4544.85	25.745	0.7655	15.04	0.0424	7.45
4574.44	4573.43	25.825	0.2026	0.70	0.0020	1.98
4589.43	4588.42	25.867	0.2134	1.61	0.0045	2.08
4610.07	4609.07	25.925	0.1564	0.29	0.0008	1.53
4632.98	4631.97	25.989	0.9352	10.71	0.0299	9.17
4653.41	4652.40	26.046	0.3656	2.90	0.0081	3.59
4673.98	4672.97	26.104	0.2227	0.95	0.0026	2.19
4705.09	4704.08	26.190	0.1266	0.60	0.0017	1.25
4721.34	4720.33	26.235	0.5855	7.57	0.0209	5.79
4746.55	4745.55	26.305	0.5041	8.28	0.0228	4.99
4760.71	4759.70	26.344	0.4023	4.44	0.0122	3.99
4776.82	4775.81	26.388	0.5845	8.39	0.0231	5.81
4795.96	4794.95	26.441	0.8917	14.07	0.0386	8.87
4817.65	4816.64	26.500	0.7853	15.13	0.0414	7.83
4900.93	4899.92	26.727	0.5187	5.56	0.0151	5.21
4946.35	4945.35	26.850	0.3060	3.20	0.0086	3.09
4963.56	4962.55	26.897	0.4123	6.74	0.0182	4.16
5010.78	5009.78	27.024	12.5885	211.54	0.5681	127.69
5031.99	5030.99	27.081	5.8531	84.84	0.2273	59.48
5053.19	5052.18	27.137	3.0847	47.31	0.1265	31.41
5074.18	5073.17	27.193	1.7893	33.97	0.0906	18.25
5109.70	5108.69	27.288	1.4186	37.78	0.1004	14.52
5174.52	5173.52	27.460	0.4570	6.47	0.0171	4.70
5215.36	5214.36	27.568	0.7393	7.91	0.0208	7.64
5234.38	5233.38	27.618	0.5442	9.17	0.0241	5.63
5273.44	5272.43	27.720	0.2111	1.10	0.0029	2.19
5340.59	5339.58	27.895	0.5133	5.40	0.0140	5.36
5504.23	5503.22	28.318	0.3130	3.85	0.0099	3.32
5525.79	5524.79	28.373	0.3048	4.10	0.0105	3.24
5584.59	5583.58	28.523	0.4938	16.84	0.0429	5.27
5710.82	5709.81	28.842	0.2989	6.40	0.0161	3.23
5758.22	5757.21	28.961	0.3075	2.85	0.0071	3.33
5832.21	5831.20	29.146	0.4003	4.57	0.0114	4.37
5871.67	5870.66	29.244	0.3528	4.17	0.0103	3.86
5885.14	5884.13	29.277	0.3028	7.90	0.0195	3.32
6013.84	6012.83	29.595	0.7071	19.42	0.0477	7.84
6034.06	6033.06	29.644	0.4344	5.55	0.0136	4.83
6396.04	6395.03	30.517	3.0543	118.14	0.2814	35.06
6455.26	6454.25	30.657	26.1287	771.78	1.8272	301.52
6477.39	6476.38	30.710	12.0491	218.47	0.5159	139.32
6499.00	6497.99	30.761	7.2773	135.33	0.3190	84.31
6521.19	6520.18	30.813	5.3012	97.81	0.2302	61.54
6542.80	6541.79	30.864	4.2675	88.66	0.2083	49.63
6638.04	6637.03	31.087	20.2348	631.52	1.4750	237.36
6654.30	6653.29	31.125	19.0952	360.62	0.8401	224.32
6675.85	6674.84	31.175	9.8609	187.44	0.4359	116.07
6698.42	6697.41	31.227	6.2424	112.83	0.2620	73.63
6718.01	6717.00	31.273	4.2544	83.96	0.1946	50.27
6739.45	6738.44	31.322	2.7267	46.03	0.1065	32.28
6765.34	6764.34	31.382	1.9976	39.64	0.0916	23.70
6810.67	6809.66	31.487	2.0664	79.46	0.1831	24.62
6858.73	6857.73	31.597	1.8896	104.59	0.2400	22.61
7151.49	7150.48	32.262	0.9514	22.94	0.0516	11.69
7172.92	7171.91	32.310	1.0333	43.31	0.0971	12.72
7472.88	7471.87	32.977	0.4560	13.01	0.0286	5.77
7617.94	7616.93	33.294	0.4693	11.51	0.0251	6.02
7654.14	7653.13	33.373	1.3314	67.51	0.1465	17.12
7827.96	7826.96	33.748	0.2802	7.57	0.0163	3.66

7926.90	7925.89	33.960	2.4904	114.75	0.2450	32.85
7958.23	7957.23	34.027	1.3527	31.25	0.0665	17.89
8133.31	8132.30	34.398	7.5286	658.02	1.3865	101.22
8303.10	8302.09	34.754	0.8155	44.66	0.0931	11.14
8365.08	8364.07	34.883	0.5422	19.48	0.0405	7.45
8612.18	8611.18	35.393	10.6716	1028.00	2.1038	150.06
8774.36	8773.35	35.723	2.1558	178.91	0.3625	30.78
8940.04	8939.03	36.058	4.2497	277.17	0.5570	61.65
9028.23	9027.22	36.235	0.5131	9.18	0.0184	7.51
9116.51	9115.50	36.411	0.6114	14.83	0.0295	9.02
9162.72	9161.71	36.503	0.8263	59.88	0.1189	12.25
9307.46	9306.45	36.789	0.5852	23.46	0.0462	8.80
9454.10	9453.09	37.077	1.5935	140.29	0.2741	24.30
9585.08	9584.07	37.332	0.1746	4.40	0.0085	2.70
9683.68	9682.67	37.523	0.2391	6.15	0.0119	3.73
9743.77	9742.76	37.639	0.4345	27.31	0.0525	6.82
10072.71	10071.70	38.267	0.2760	15.39	0.0291	4.47
11533.88	11532.87	40.940	0.2410	19.15	0.0339	4.56
11691.05	11690.04	41.217	0.2518	35.15	0.0617	4.84
12454.78	12453.77	42.538	0.5778	57.72	0.0983	12.12
13574.94	13573.93	44.405	1.1111	178.32	0.2910	26.75
13715.41	13714.41	44.633	0.4473	42.34	0.0686	10.97
13866.02	13865.01	44.877	0.3384	35.35	0.0570	8.46
14034.19	14033.19	45.148	0.2951	53.00	0.0849	7.55
14392.29	14391.28	45.719	0.5330	106.02	0.1676	14.32
15118.66	15117.65	46.855	0.3627	57.41	0.0886	10.83
15313.34	15312.33	47.155	0.1527	18.28	0.0280	4.70
15870.49	15869.48	48.003	0.1483	34.49	0.0519	4.99
16659.22	16658.21	49.178	0.1152	23.78	0.0350	4.45
17261.53	17260.53	50.057	0.2182	48.44	0.0702	9.49
17403.26	17402.25	50.262	0.2735	94.70	0.1356	12.26
22185.18	22184.17	56.732	0.6056	798.59	1.0136	49.97
28054.19	28053.18	63.781	0.2571	107.68	0.1221	39.27
29051.79	29050.78	64.903	0.1030	74.85	0.0832	16.04
33245.74	33244.73	69.421	1.6601	1750.64	1.8258	281.43
34281.46	34280.45	70.492	0.5196	597.67	0.6025	89.96
39898.16	39897.15	76.038	0.0257	11.52	0.0110	4.98
44457.39	44456.39	80.258	0.3417	989.32	0.8917	69.77
49939.53	49938.52	85.055	0.0226	19.83	0.0169	4.91
51350.04	51349.03	86.246	0.0499	94.72	0.0792	10.85
55656.75	55655.74	89.784	0.0711	186.88	0.1514	15.47
59215.94	59214.93	92.607	0.1083	250.62	0.1967	23.63
66317.60	66316.59	97.995	2.2783	6680.56	4.9211	498.39
72737.16	72736.15	102.622	0.1259	350.29	0.2456	27.61
75001.97	75000.96	104.206	0.1127	216.04	0.1488	24.73
80013.65	80012.64	107.627	0.0678	279.89	0.1869	14.91
88591.36	88590.35	113.242	0.0472	171.17	0.1093	10.41
99724.32	99723.31	120.139	0.0857	436.66	0.2624	18.82
110663.70	110662.70	126.550	0.0315	123.51	0.0705	7.11
115751.09	115750.08	129.423	0.0392	84.89	0.0477	9.03
116910.94	116909.93	130.069	0.0411	256.88	0.1413	9.53
132576.48	132575.47	138.501	0.2015	1519.36	0.7867	49.62
175561.80	175560.79	159.360	0.0192	204.64	0.0927	5.21

Table 2: Peak detection of proteins with S/N ratio >3 from Serum after processing with Equalization Beads. Total Peaks detected = 271

M/z	Mass	TOF	Intensity	MZ Area	TOF Area	S/N
2021.84	2020.83	17.207	0.6376	12.12	0.0503	8.96
2067.93	2066.93	17.398	0.6601	6.51	0.0267	9.31
2087.13	2086.12	17.476	0.7201	7.41	0.0303	10.18
2106.09	2105.09	17.554	0.4864	3.56	0.0145	6.89
2180.24	2179.23	17.853	0.5382	3.23	0.0129	7.67
2221.86	2220.85	18.019	1.4170	8.54	0.0339	20.27
2240.96	2239.96	18.095	0.5589	6.06	0.0240	8.01
2266.94	2265.93	18.198	0.5494	3.98	0.0157	7.89
2293.08	2292.07	18.300	0.3779	2.12	0.0083	5.44
2339.18	2338.18	18.480	0.9868	7.77	0.0301	14.26
2378.63	2377.62	18.632	0.6337	4.75	0.0183	9.19
2396.27	2395.27	18.700	0.5728	5.76	0.0221	8.32
2439.97	2438.96	18.867	1.0408	6.19	0.0235	15.17
2467.12	2466.12	18.969	0.9706	8.52	0.0322	14.18

2497.92	2496.92	19.086	0.9600	7.48	0.0281	14.06
2526.24	2525.23	19.192	0.8088	7.31	0.0273	11.88
2553.87	2552.86	19.295	2.9512	30.44	0.1132	43.44
2625.36	2624.35	19.559	0.5117	2.40	0.0088	7.58
2655.34	2654.33	19.669	0.9776	9.38	0.0343	14.51
2683.62	2682.62	19.772	19.4999	144.76	0.5259	290.17
2706.16	2705.15	19.853	2.6950	27.91	0.1010	40.18
2729.04	2728.03	19.936	1.1192	9.74	0.0351	16.72
2801.03	2800.03	20.194	1.4372	7.80	0.0278	21.60
2841.72	2840.71	20.338	5.3061	38.45	0.1359	80.01
2864.83	2863.82	20.420	0.9591	9.76	0.0344	14.49
2889.55	2888.55	20.507	3.5170	27.58	0.0967	53.24
2930.16	2929.15	20.649	0.6606	5.11	0.0178	10.03
2946.66	2945.66	20.706	1.4513	12.23	0.0425	22.07
2991.41	2990.41	20.861	1.0116	11.76	0.0406	15.44
3068.43	3067.42	21.125	2.6692	27.74	0.0946	41.00
3091.47	3090.47	21.204	0.5713	6.74	0.0229	8.79
3104.33	3103.32	21.247	2.7977	23.84	0.0808	43.10
3128.84	3127.84	21.330	0.4361	3.91	0.0132	6.73
3159.53	3158.53	21.434	1.1023	8.52	0.0286	17.06
3186.78	3185.78	21.525	0.2998	2.51	0.0084	4.65
3203.52	3202.51	21.581	0.6912	5.44	0.0182	10.73
3224.18	3223.17	21.650	2.4947	24.72	0.0823	38.81
3237.12	3236.11	21.693	1.2228	9.75	0.0324	19.04
3247.56	3246.55	21.728	0.4539	3.69	0.0122	7.07
3289.31	3288.30	21.866	13.5948	102.60	0.3383	212.58
3311.94	3310.93	21.940	1.9602	14.93	0.0491	30.71
3336.82	3335.81	22.022	4.7302	36.91	0.1209	74.25
3346.26	3345.25	22.053	1.2829	10.27	0.0336	20.15
3358.47	3357.46	22.093	0.6222	3.29	0.0108	9.78
3373.64	3372.63	22.142	0.5314	4.59	0.0149	8.37
3385.05	3384.04	22.179	0.8139	6.98	0.0227	12.82
3415.17	3414.17	22.277	0.4451	3.75	0.0121	7.03
3427.49	3426.48	22.317	2.3109	15.05	0.0487	36.53
3438.79	3437.78	22.353	1.0937	8.77	0.0283	17.31
3447.05	3446.04	22.380	0.8280	5.94	0.0191	13.11
3459.90	3458.90	22.421	0.3291	1.87	0.0060	5.22
3467.20	3466.19	22.445	0.2547	1.29	0.0042	4.04
3485.27	3484.26	22.503	0.9642	6.74	0.0216	15.31
3495.20	3494.20	22.535	0.4776	3.13	0.0100	7.59
3506.27	3505.26	22.570	0.7766	5.56	0.0178	12.35
3524.49	3523.48	22.628	0.6243	5.34	0.0170	9.95
3530.57	3529.57	22.648	0.8564	6.82	0.0217	13.65
3552.77	3551.76	22.718	0.2099	1.07	0.0034	3.35
3573.00	3572.00	22.783	1.7464	12.44	0.0394	27.93
3642.53	3641.53	23.002	0.8032	4.85	0.0152	12.92
3660.13	3659.12	23.057	1.7988	14.34	0.0449	28.96
3683.85	3682.84	23.131	0.5319	4.38	0.0137	8.58
3702.01	3701.00	23.188	2.5079	18.21	0.0567	40.52
3746.51	3745.50	23.326	0.4842	3.69	0.0114	7.85
3774.17	3773.16	23.412	1.1931	13.41	0.0414	19.38
3789.41	3788.40	23.459	20.8035	191.08	0.5886	338.38
3811.60	3810.59	23.527	3.5547	39.12	0.1201	57.92
3833.14	3832.13	23.593	4.2186	38.90	0.1192	68.85
3848.99	3847.98	23.642	1.9147	24.85	0.0760	31.29
3887.00	3885.99	23.757	0.2288	0.81	0.0025	3.75
3907.37	3906.36	23.819	0.3720	1.41	0.0043	6.11
3916.17	3915.16	23.846	1.1685	9.34	0.0283	19.19
3931.92	3930.92	23.894	1.1141	11.11	0.0336	18.32
3946.05	3945.04	23.937	6.4985	54.40	0.1644	106.99
3960.15	3959.14	23.979	1.3249	16.05	0.0484	21.84
3979.74	3978.73	24.038	0.8035	6.65	0.0200	13.26
3996.40	3995.39	24.088	1.4516	16.40	0.0492	23.99
4013.73	4012.72	24.140	0.5642	5.43	0.0163	9.34
4037.17	4036.16	24.210	1.1069	9.51	0.0284	18.35
4079.33	4078.32	24.336	0.5052	2.25	0.0067	8.40
4101.88	4100.87	24.403	0.3796	2.87	0.0085	6.33
4116.36	4115.35	24.446	1.2880	7.31	0.0217	21.49
4123.41	4122.40	24.467	1.5143	14.62	0.0432	25.27
4147.47	4146.46	24.538	7.6159	67.57	0.1993	127.35
4161.38	4160.38	24.579	31.9075	291.83	0.8593	534.10
4181.81	4180.81	24.639	9.1974	127.91	0.3757	154.19
4205.75	4204.74	24.709	5.5891	74.72	0.2189	93.87
4227.41	4226.41	24.772	2.0620	29.87	0.0873	34.69
4249.76	4248.75	24.838	0.9303	10.38	0.0302	15.68

4272.77	4271.76	24.905	4.3852	39.31	0.1143	74.03
4295.30	4294.29	24.970	1.7984	15.14	0.0439	30.41
4316.14	4315.13	25.030	1.0213	13.60	0.0393	17.30
4334.00	4332.99	25.082	2.6466	26.85	0.0775	44.89
4356.55	4355.54	25.147	0.6608	5.66	0.0163	11.23
4367.67	4366.67	25.179	3.5704	34.89	0.1004	60.71
4386.58	4385.57	25.233	0.8809	9.31	0.0267	15.00
4412.41	4411.41	25.308	0.6081	2.58	0.0074	10.38
4435.68	4434.67	25.374	0.0322	-1.50	-0.0043	0.55
4445.90	4444.89	25.403	0.2572	0.77	0.0022	4.40
4494.15	4493.15	25.540	5.1702	62.47	0.1772	88.76
4516.89	4515.89	25.605	0.4659	3.11	0.0088	8.01
4540.00	4538.99	25.670	0.4298	6.56	0.0185	7.40
4573.91	4572.90	25.766	0.3421	4.53	0.0127	5.91
4607.33	4606.33	25.860	0.5394	7.83	0.0219	9.34
4622.34	4621.34	25.902	0.8686	6.78	0.0190	15.06
4651.23	4650.22	25.982	0.5581	4.93	0.0138	9.70
4680.47	4679.46	26.064	0.7940	11.05	0.0307	13.82
4717.86	4716.86	26.168	0.3405	3.24	0.0090	5.94
4737.63	4736.62	26.222	1.6830	16.14	0.0446	29.43
4746.03	4745.02	26.246	0.7521	4.57	0.0126	13.16
4759.22	4758.21	26.282	0.3119	3.05	0.0084	5.46
4787.60	4786.60	26.360	0.1802	0.99	0.0027	3.16
4816.82	4815.82	26.441	0.3586	2.73	0.0075	6.31
4829.31	4828.30	26.475	0.5449	7.60	0.0208	9.59
4849.72	4848.71	26.531	0.9698	9.32	0.0255	17.10
4869.86	4868.85	26.586	0.3755	3.13	0.0085	6.63
4899.44	4898.44	26.666	0.4979	5.97	0.0162	8.81
4918.11	4917.11	26.717	0.3938	4.58	0.0124	6.98
4963.85	4962.84	26.841	1.1185	16.74	0.0453	19.89
5062.61	5061.60	27.107	1.4525	17.55	0.0470	26.02
5094.27	5093.26	27.191	1.1946	17.48	0.0467	21.45
5108.24	5107.23	27.229	1.5213	20.68	0.0551	27.35
5128.79	5127.79	27.283	2.5384	26.47	0.0704	45.70
5145.89	5144.88	27.329	0.7368	10.95	0.0291	13.28
5173.86	5172.85	27.403	0.7359	13.56	0.0360	13.29
5187.50	5186.49	27.439	0.7046	7.49	0.0198	12.74
5205.84	5204.83	27.488	0.6291	8.47	0.0224	11.39
5274.33	5273.32	27.668	0.4129	4.92	0.0129	7.51
5315.83	5314.82	27.777	1.2730	19.00	0.0497	23.24
5341.10	5340.09	27.843	0.2176	2.07	0.0054	3.98
5359.34	5358.33	27.890	0.2531	2.97	0.0077	4.64
5402.17	5401.16	28.002	1.0504	16.14	0.0419	19.30
5433.21	5432.20	28.082	1.1667	14.37	0.0372	21.48
5454.45	5453.44	28.137	0.2116	2.89	0.0075	3.90
5504.70	5503.70	28.267	1.0223	19.86	0.0511	18.93
5546.41	5545.40	28.374	0.4939	6.77	0.0173	9.17
5609.12	5608.11	28.534	0.4736	9.68	0.0247	8.83
5624.76	5623.76	28.574	0.4185	4.48	0.0114	7.82
5682.49	5681.49	28.720	0.1958	1.06	0.0027	3.67
5733.38	5732.37	28.849	1.7600	31.18	0.0786	33.14
5755.15	5754.14	28.904	0.8682	12.82	0.0322	16.37
5797.90	5796.89	29.011	1.3933	36.06	0.0904	26.36
5847.40	5846.39	29.135	1.2801	24.84	0.0620	24.30
5874.14	5873.13	29.201	1.8388	62.45	0.1554	34.98
5934.72	5933.72	29.352	0.5579	12.73	0.0315	10.66
5978.50	5977.49	29.460	0.3853	7.29	0.0180	7.39
6013.90	6012.90	29.548	0.3552	2.90	0.0071	6.83
6032.85	6031.85	29.594	0.4093	3.60	0.0089	7.88
6133.82	6132.81	29.841	0.5865	6.96	0.0170	11.37
6162.34	6161.33	29.911	1.3553	20.48	0.0498	26.33
6184.57	6183.56	29.965	0.6588	9.78	0.0238	12.82
6216.02	6215.01	30.041	0.9219	19.68	0.0477	17.98
6236.00	6235.00	30.090	0.8304	10.75	0.0260	16.22
6255.36	6254.35	30.136	0.2361	2.34	0.0057	4.62
6320.39	6319.39	30.293	1.1214	17.58	0.0423	22.04
6342.23	6341.22	30.346	1.5366	26.64	0.0639	30.25
6456.30	6455.29	30.618	21.3573	431.55	1.0263	424.01
6498.25	6497.24	30.718	1.8487	25.84	0.0613	36.82
6521.67	6520.66	30.773	2.3440	32.22	0.0763	46.76
6551.22	6550.21	30.843	1.5207	32.41	0.0765	30.40
6614.06	6613.06	30.991	1.7907	21.31	0.0501	35.96
6653.73	6652.72	31.084	40.0260	990.54	2.3211	806.22
6696.04	6695.03	31.183	5.5580	89.50	0.2091	112.30
6718.43	6717.42	31.236	3.9535	70.52	0.1645	80.01

6740.82	6739.81	31.288	3.0803	58.81	0.1370	62.44
6763.08	6762.07	31.339	2.6139	47.31	0.1100	53.07
6832.17	6831.17	31.500	29.3327	769.05	1.7805	598.61
6852.89	6851.88	31.548	12.8114	225.11	0.5200	261.85
6873.74	6872.73	31.596	6.7676	115.78	0.2670	138.53
6895.96	6894.95	31.647	4.0495	126.91	0.2920	83.03
6968.15	6967.14	31.813	2.6462	48.81	0.1119	54.54
6987.83	6986.82	31.858	9.1160	179.49	0.4107	188.17
7007.18	7006.18	31.902	3.5064	48.01	0.1097	72.48
7035.74	7034.73	31.967	2.8179	55.45	0.1265	58.37
7054.79	7053.78	32.011	2.6118	69.35	0.1578	54.18
7219.97	7218.97	32.385	6.0098	205.68	0.4631	126.18
7323.59	7322.59	32.617	1.4502	43.84	0.0980	30.68
7354.38	7353.37	32.686	0.8418	14.96	0.0334	17.85
7426.45	7425.44	32.847	0.2530	8.63	0.0192	5.39
7632.91	7631.90	33.302	25.1248	922.09	2.0212	543.77
7697.48	7696.47	33.443	2.3440	94.17	0.2053	50.97
7781.99	7780.98	33.627	4.0191	140.62	0.3052	87.95
7839.40	7838.39	33.752	2.0650	82.17	0.1776	45.38
7929.48	7928.47	33.946	0.4065	11.97	0.0257	8.99
8003.12	8002.12	34.104	0.6177	20.19	0.0432	13.74
8070.02	8069.01	34.247	0.7401	21.61	0.0461	16.54
8141.70	8140.69	34.399	2.3180	68.48	0.1454	52.09
8158.61	8157.60	34.435	1.6675	29.11	0.0617	37.52
8251.98	8250.97	34.633	0.3282	9.23	0.0195	7.43
8294.07	8293.06	34.721	1.2292	37.02	0.0779	27.93
8372.44	8371.43	34.886	0.5741	27.10	0.0568	13.12
8484.99	8483.99	35.121	0.3754	8.50	0.0177	8.65
8589.51	8588.50	35.338	2.4703	105.46	0.2180	57.39
8651.75	8650.75	35.466	1.8591	59.08	0.1217	43.39
8713.50	8712.49	35.593	5.5491	204.46	0.4198	130.11
8756.81	8755.80	35.682	1.7265	52.13	0.1067	40.61
8833.41	8832.40	35.838	2.4403	133.47	0.2724	57.73
8939.05	8938.04	36.053	22.2153	1128.34	2.2880	529.75
9019.22	9018.21	36.216	2.3984	92.32	0.1862	57.54
9091.97	9090.96	36.362	2.3245	113.49	0.2282	56.07
9144.69	9143.68	36.468	2.3181	121.61	0.2437	56.14
9309.12	9308.12	36.796	3.6153	148.49	0.2952	88.65
9374.68	9373.68	36.926	2.4549	109.39	0.2167	60.49
9437.96	9436.95	37.051	2.7925	165.50	0.3267	69.14
9516.91	9515.90	37.207	1.8864	104.50	0.2055	46.99
9581.85	9580.84	37.334	1.3051	70.92	0.1390	32.67
9637.19	9636.19	37.443	1.0115	54.07	0.1056	25.43
9724.00	9722.99	37.612	0.3754	16.30	0.0317	9.50
9785.71	9784.70	37.732	0.2852	9.89	0.0192	7.25
9939.68	9938.68	38.029	0.7471	35.29	0.0679	19.22
10063.40	10062.39	38.267	4.5744	203.31	0.3889	118.81
10144.76	10143.75	38.422	0.5690	31.57	0.0601	14.87
10273.13	10272.12	38.666	0.7631	38.76	0.0734	20.15
10497.57	10496.57	39.089	0.2782	13.21	0.0247	7.47
10561.30	10560.29	39.208	0.4082	21.74	0.0406	11.02
10635.46	10634.45	39.346	0.5930	35.52	0.0661	16.10
10718.48	10717.47	39.500	0.9040	61.40	0.1139	24.71
10802.36	10801.36	39.656	0.8599	66.95	0.1236	23.66
10921.46	10920.45	39.875	0.4378	23.17	0.0426	12.16
11046.41	11045.40	40.104	0.1310	5.23	0.0096	3.68
11147.95	11146.94	40.289	0.1517	7.75	0.0141	4.29
11431.94	11430.93	40.802	1.5601	85.67	0.1542	45.13
11515.49	11514.48	40.952	3.4607	316.45	0.5666	100.79
11667.57	11666.56	41.223	5.1984	534.22	0.9496	153.29
11874.61	11873.61	41.590	0.8999	92.25	0.1626	26.99
12135.29	12134.28	42.047	0.3472	20.90	0.0365	10.64
12213.21	12212.20	42.183	0.1927	12.50	0.0217	5.94
12421.55	12420.55	42.543	0.4176	25.40	0.0438	13.11
12553.09	12552.08	42.770	0.3921	26.02	0.0446	12.44
12837.97	12836.97	43.255	0.7051	53.27	0.0904	22.92
13035.41	13034.40	43.589	0.2257	19.66	0.0331	7.46
13517.28	13516.27	44.393	1.7454	207.59	0.3436	60.20
13664.19	13663.19	44.635	1.0656	136.20	0.2239	37.24
13826.26	13825.25	44.901	0.9339	96.11	0.1572	33.11
14005.24	14004.23	45.193	4.3241	437.10	0.7106	155.80
14103.83	14102.82	45.353	2.4578	213.14	0.3450	89.36
14335.82	14334.81	45.727	8.7632	1030.75	1.6560	325.47
14534.46	14533.45	46.045	2.5813	335.53	0.5351	97.66
14717.09	14716.08	46.335	0.8605	197.18	0.3118	33.12

15187.24	15186.24	47.075	0.4437	75.60	0.1177	17.87
15657.41	15656.40	47.803	0.0897	8.45	0.0130	3.78
15820.39	15819.38	48.053	0.0865	9.75	0.0149	3.71
16443.65	16442.64	48.997	0.1190	11.73	0.0176	5.45
17066.08	17065.07	49.923	1.3076	165.52	0.2444	64.05
17175.08	17174.07	50.083	2.5670	301.87	0.4434	127.30
17296.48	17295.47	50.261	2.7701	417.80	0.6109	139.28
17482.10	17481.09	50.532	1.0341	142.54	0.2072	53.11
17766.54	17765.53	50.944	0.6228	131.11	0.1894	33.08
17945.02	17944.01	51.201	0.6698	282.23	0.4026	36.33
21092.56	21091.55	55.543	0.1325	101.64	0.1341	11.26
23718.05	23717.04	58.924	0.0883	65.37	0.0812	13.41
25789.62	25788.62	61.462	0.0509	34.02	0.0407	10.83
27804.46	27803.45	63.835	2.9497	1524.96	1.7606	669.03
28548.76	28547.75	64.689	0.8053	668.67	0.7571	187.12
31256.57	31255.56	67.709	0.0260	14.77	0.0161	6.61
32717.17	32716.17	69.284	0.0180	7.30	0.0078	4.81
34145.25	34144.24	70.791	0.1024	84.34	0.0879	28.83
34918.38	34917.37	71.593	0.0511	38.33	0.0394	14.78
37428.16	37427.16	74.139	0.0394	67.81	0.0677	12.55
39114.93	39113.92	75.802	0.0493	57.70	0.0560	16.80
41845.54	41844.54	78.421	0.1089	116.05	0.1097	40.17
42589.26	42588.26	79.120	0.0904	94.91	0.0883	33.69
44703.94	44702.93	81.073	0.0546	86.72	0.0788	20.98
50260.95	50259.94	85.996	0.0194	29.77	0.0255	8.06
55322.52	55321.51	90.250	0.1770	349.83	0.2859	79.52
65162.70	65161.69	97.996	0.0237	72.94	0.0551	11.64
69555.70	69554.69	101.264	0.0206	80.68	0.0584	10.46
82925.12	82924.12	110.623	0.0246	73.37	0.0490	13.93
89416.65	89415.64	114.894	0.0060	23.19	0.0148	3.43
97397.95	97396.94	119.939	0.0063	12.81	0.0079	3.57
110339.51	110338.50	127.698	0.0057	46.50	0.0263	3.26

Example 2. Incubation of Library with Unfractionated, Undiluted Human Pooled Plasma

[164] To aid analysis of complex samples, this method is useful to decrease the concentration differential. Human plasma is one of the most complex and difficult to analyze materials: proteins are present in concentration range greater than 10^{10} (Anderson and Anderson); decreasing this range will aid in the analysis of trace proteins. Under the conditions of this method, incubation of plasma with the ligand library will increase the number of proteins that can be detected and subsequently analyzed as compared with analysis of the unprocessed starting material.

A. Sample Preparation

[165] Frozen, pooled, human platelet-poor plasma (PPP) was thawed at 37°C and filtered through 0.8 and 0.45 μm filters. Four replicates of approximately 1 ml of a library of hexamer peptide ligands on Toyopearl 650 M amino resin (65 μm average diameter, $\sim 2 \times 10^6$ beads/ml; Tosoh Biosciences, Montgomeryville, PA) with EA-CA-Ala spacer were each incubated with 9 ml of plasma for 1 hour at room temp, rotating. The resin was drained and washed with 1 ml citrate buffer (20 mM citrate, 140 mM NaCl, pH 7.0). This wash solution was retained, as well as samples of the loading plasma and initial flow through. Bead libraries were subsequently washed with 20 column volumes of citrate.

[166] 100 μ l of resin from samples 2 and 4 were incubated with an equal volume (100 μ l) of 2x LDS buffer + DTT (Invitrogen, Carlsbad, CA) for 10 minutes at 90°C and centrifuged. The supernatant was collected and saved for analysis.

[167] 200 μ l of resin from replicates 1 – 4 were incubated with 400 μ l 6M GuHCl or 400 μ l 6M urea for 1 hour in a batch format. The resin was allowed to drain and the flow through was collected for analysis. The GuHCl and urea concentrations in the eluates were reduced to 1M Urea on G-25 columns as follows: the G-25 columns were equilibrated twice with 200 μ l 1M urea for 5 minutes, then centrifuged at 2000 rpm for 3 minutes. 20 μ l of the urea and GuHCl samples were added to the tubes and centrifuged again under the same conditions. The flow through was collected.

B. LDS-PAGE Analysis

[168] Initial PPP, flow through and wash were diluted 1:25 with citrate buffer, then 1:2 with 2x sample buffer. 14 μ l of the treated GuHCl and urea supernatants were heated in 5 μ l 4x LDS buffer + 2 μ l DTT reducing agent for 10 minutes at 90°C. Two wells were loaded with approximately 10 μ l of beads from samples 2 and 4. 23 μ l of each of the remaining samples were run on a 4-12% Bis-Tris gel (NuPage, Invitrogen) in MOPS buffer at 200 V. The gels were stained with Simply Blue (Invitrogen) according to the manufacturer's instructions. The results are shown in Figures 1 and 4.

[169] Several bands that are not visible in the original plasma are present in the treated samples, while the very intense albumin band present in the original plasma (~ 64 kD) is substantially reduced. These results demonstrate that the method described does decrease the concentration range of proteins as detected by this method, thereby increasing the number of proteins that can be detected and analyzed compared with analysis of the starting material.

Example 3. Reduction of Concentration Variance After Removal of IgG.

[170] In many proteomic applications, one of the first steps of sample preparation is removal of albumin and IgGs, as these high abundance proteins mask the detection of lower abundance species. Removal of these proteins, however, also often removes trace species associated with them, and also involves loss of sample. It would be advantageous to have a method of sample preparation that does not require IgG depletion before analysis. This example demonstrates that removal of IgGs is not required to visualize protein species that are not detected in intact plasma. The pattern of proteins detected in LDS-PAGE is compared in plasma that has and has not been depleted of IgGs.

A. Sample Preparation

[171] Frozen, pooled, human platelet-poor plasma (PPP) was thawed at 37°C and filtered through 0.8 and 0.45 µm filters. IgG was removed from the plasma as follows: 5 ml Protein G Sepharose Fast-flow resin (Amersham, T&S) was packed in a Bio-Rad column, 10 ml of filtered PPP was added to the at a 10 cm/h flow rate (controlled by a peristaltic pump) and the flow through was collected.

[172] Approximately 1 ml library of hexamer peptide ligands on Toyopearl 650 M amino resin (65 µm average diameter, ~ 2x 10⁶ beads/ml; Tosoh Biosciences, Montgomeryville, PA) with EACA-Ala spacer was incubated with 9 ml of flow through (above) for 1 hour/room temp/rotating. Clots that formed during incubation were removed by hand. The resin was drained and washed with 1 ml citrate buffer (20 mM citrate, 140 mM NaCl, pH 7.0), followed by 10 ml T-citrate (citrate buffer + 0.05% Tween-20) and 10 ml citrate buffer. The flow through and first 1 ml of wash were collected for analysis. The resin was divided into 3 approximately equal, 200 µl aliquots.

[173] One resin aliquot was heated with an equal volume (200 µl) 2x LDS buffer + DTT (Invitrogen, Carlsbad, CA) for 10 minutes at 90°C and centrifuged. The supernatant was collected and saved for analysis. The remaining resin aliquots were incubated with 500 µl 6M GuHCl or 500 µl 6M urea for 1 hour in batch format. The resin was allowed to drain and the flow through was collected for analysis.

[174] The GuHCl and urea concentrations in the eluates were reduced from 6M to 1M concentration and half the original volume (2x concentrated) by buffer exchange over G-25 columns.

B. LDS-PAGE Analysis

[175] Initial PPP, IgG-depleted PPP, flow through and wash, as well as samples of GuHCl and urea supernatants were heated in LDS buffer + DTT reducing agent for 10 minutes at 90°C. The final dilutions of the LDS buffer, GuHCl, and Urea eluates were 0.25x, 1x, and 1x, respectively. The PPP, IgG-depleted plasma, flow through, and wash were diluted 50X. The Protein G LDS and Glycine eluates were incubated with 2x LDS buffer + DTT. 23 µl of each samples were run on a 4-12% Bis-Tris gel, in MOPS buffer, at 200 V. Samples of plasma prepared earlier according to the methods above from which the IgG was not removed were run as well. The gels were stained with Simply Blue followed by SilverQuest according to the manufacturer's instructions. The data is presented in Figure 2.

[176] Although in the starting, flow through and wash samples there is a clear decrease in proteins at MW 50 and 25 KDa (sizes of the reduced immunoglobulin heavy and light

chains), there are no significant differences in the LDS-PAGE eluates from plasma both with and without IgG as visualized on the gels. The signals from the urea and GuHCl samples are indistinct due to sample handling issues. These data indicate that there is no obvious effect of removing IgGs. There may be other reasons that it is preferable to remove and retain the IgGs, perhaps for independent analysis; however, removal does not appear to be required to analyze trace proteins by this method.

Example 4. Reduction of Range of Concentrations of Proteins in Human Serum

[177] Previous examples have demonstrated the usefulness of the described method with undiluted and unfractionated human plasma. In clinical diagnostics the starting sample frequently is serum, not plasma. The following example demonstrates the feasibility of using the described method to prepare serum for analysis.

A. Serum Preparation

[178] Five 7 ml tubes of human blood were allowed to clot at 4°C overnight. The clotted blood was centrifuged at 4,000 rpm for 5 minutes in a Sorvall centrifuge RT7, serum collected, and filtered through 0.8 and 0.45 µm filters.

B. Sample Preparation:

1. TentaGel-Based Library Incubation

[179] 250 µl of TentaGel library [TentaGel M NH₂ 10 µm (Rapp Polymer) library (Peptides International, Louisville, KY) with Gly spacer- 10 µm average diameter, ~ 5.6 x 10⁸ beads/ml] in a 15 ml conical tube was incubated with 2.25 ml (1:9 v/v) serum for 1 hour, at room temperature (RT). Resin was centrifuged at 4000 rpm for 2 minutes and the supernatant saved for analysis (FT Tenta). The beads were washed with 1.25 ml citrate buffer by shaking, then centrifuging at 4,000 rpm for 2 minutes in a 2 ml Eppendorf tube. Saved wash for analysis (W Tenta). The beads were washed with an additional 4 x 1.25 ml citrate buffer. The beads were divided into three approximately 75 µl aliquots.

[180] One resin aliquot was incubated with 75 µl of 2x LDS/DTT, for 10 min, at 90°C. The beads were centrifuged and supernatant stored at -20°C. The others were incubated with 200 µl 6 M urea or 6 M GuHCl for 1.5 hr at RT. The initial and unbound serum fractions were diluted 1:25 with citrate, then 1:2 with 2x LDS/DTT. Samples were heated for 10 min at 90°C and then frozen at -20°C.

2. Toyopearl-Based Library Incubation

[181] Approximately 1 ml Toyopearl library (65 μm average diameter, $\sim 2 \times 10^6$ beads/ml ; Tosoh Biosciences, Montgomeryville, PA) was incubated with 9 ml serum for 1 hour/RT/rotating. 200 μl of resin were heated with 200 μl 2x (LDS buffer + DTT reducing agent) for 10 minutes at 90°C. The supernatant was collected and saved at -20C for analysis. 200 μl of resin were incubated with 400 μl (v/v) 6M urea for 1 hour in batch format. The flow through was collected for analysis and kept at room temperature. 200 μl of resin were incubated with 400 μl 6M GuHCl, for 1 hour in batch format. The flow through was collected for analysis and kept at room temperature. The initial and unbound serum fractions were diluted 1:25 with citrate, then 1:2 with 2x LDS/DTT. Samples were heated for 10 min at 90°C and then frozen at -20°C. 200 μl serum and 200 μl of each unbound fraction were delivered to Analytical Chemistry for analysis.

C. LDS-PAGE Analysis

[182] 14 μl of 1 M urea and GuHCl samples were heated with 5 μl 4x LDS buffer and 2 μl 10x DTT for 10 min, at 90°C. The frozen LDS samples were re-heated for 10 min, at 90°C. 20 μl of each sample was loaded per well into two 4-12% Bis Tris gels. The gels were run with MOPS running buffer at 200 V until the dye front reached the bottom of gels. Gels were stained with Simply Blue protein stain according to the manufacturer's instructions and destained with H₂O. The gels are presented in Figure 3.

[183] There is a substantial increase in the number of bands visible in serum following incubation with library (compare lane 2 with lanes 3 and 8). The pattern of bands is very similar to the pattern obtained with incubation of library with plasma (compare lane 3, Figure 3, with lane 7, Figure 1). These results indicate that preparation of serum samples with the method of this invention increases the number of bands that can be analyzed by LDS-PAGE, and decreases the concentration of the most abundant proteins in the eluates as compared with the starting serum.

[184] Although the foregoing invention has been described in some detail by way of illustration and example for clarity and understanding, it will be readily apparent to one of ordinary skill in the art in light of the teachings of this invention that certain changes and modifications may be made thereto without departing from the spirit and scope of the appended claims.

[185] All publications and patent applications cited in this specification are herein incorporated by reference as if each individual publication or patent application were specifically and individually indicated to be incorporated by reference.

WHAT IS CLAIMED IS:

1. A method comprising the steps of:

- (a) providing a first sample comprising a plurality of different analyte species present in the first sample in a first range of concentrations;
- (b) contacting the first sample with an amount of a library comprising at least 100 different binding moieties;
- (c) capturing amounts of the different analyte species from the first sample with the different binding moieties and removing unbound analyte species; and
- (d) isolating the captured analyte species from the binding moieties to produce a second sample comprising a plurality of different analyte species present in the second sample in a second range of concentrations;

wherein the amount of the library is selected to capture amounts of the different analyte species so that the second range of concentrations is less than the first range of concentrations.

2. The method of claim 1, wherein the first sample comprises at least 100, at least 1,000, at least 10,000, at least 100,000, at least 1,000,000 or at least 10,000,000 different analyte species.

3. The method of claim 1, wherein the library comprises at least 1,000, at least 10,000, at least 100,000, at least 1,000,000 or at least 10,000,000 different binding moieties.

4. The method of claim 1, wherein the binding moieties comprise bio-organic polymers.

5. The method of claim 1, wherein the binding moieties are bound to a solid support or supports.

6. The method of claim 1, wherein the library is a non-selective library.

7. The method of claim 1, wherein the different binding moieties are comprised in a complete or incomplete combinatorial library.
8. The method of claim 1, wherein the second sample has a diversity of analyte species that is substantially the same as the first sample.
9. The method of claim 1, wherein the sample is selected from the group consisting of amniotic fluid, blood, cerebrospinal fluid, intraarticular fluid, intraocular fluid, lymphatic fluid, milk, perspiration plasma, saliva semen, seminal plasma, serum, sputum, synovial fluid, tears, umbilical cord fluid, urine, biopsy homogenate, cell culture fluid, cell extracts, cell homogenate, conditioned medium, fermentation broth, tissue homogenate and derivatives of these.
10. The method of claim 1, further comprising detecting analyte species in the second sample.
11. The method of claim 1, wherein removing unbound analytes comprises washing the captured analytes with a wash buffer.
12. The method of claim 1, wherein the analytes are selected from the group consisting of polypeptides, nucleic acids, complex carbohydrates, complex lipids, synthetic inorganic compounds and synthetic organic compounds.
13. The method of claim 1, further comprising fractionating the analytes in the second sample based on a physical or chemical property.
14. The method of claim 1, further comprising identifying at least one of the isolated analytes.
15. The method of claim 1, further comprising contacting a biospecific binding moiety with the second sample and determining whether the biospecific binding moiety has captured an analyte species from the second sample.
16. The method of claim 4, wherein the bio-organic polymers are selected from the group consisting of peptides, oligonucleotides and oligosaccharides.
17. The method of claim 1, wherein the binding moieties are selected from antibodies and aptamers.

18. The method of claim 5, wherein the solid support or supports is a collection of beads or particles.
19. The method of claim 5, wherein the solid support or supports is selected from the group consisting of fibers, monoliths, membranes and plastic strips.
20. The method of claim 6, wherein the non-selective library is selected from the group consisting of a germ line antibody library, a phage display library of recombinant binding proteins, a dye library or a non-combinatorial library in which the binding specificity of the members is not pre-selected, a combinatorial library and portions thereof.
21. The method of claim 7, wherein the combinatorial library is a hexapeptide library.
22. The method of claim 10, wherein the analytes are detected using a method selected from the group consisting of colorimetric, spectrophotometric, magnetic resonance, ellipsometric, mass spectroscopic, electrophoretic, chromatographic, enzymatic, and sequence analysis.
23. The method of claim 13, wherein fractionating comprises segregating the analytes using a technique selected from the group consisting of chromatography, electrophoresis, capillary electrophoresis, filtration and precipitation.
24. The method of claim 18, wherein each bead or particle is attached to a substantially different binding moiety.
25. The method of claim 18, wherein a plurality of different binding moieties are attached to the same bead or particle.
26. The method of claim 18, wherein the beads or particles have a diameter of less than 1 μm .
27. The method of claim 18, wherein the beads or particles are formed milling microparticulate beads using a method selected from the group consisting of crushing, grinding, and sonicating.

28. The method of claim 27, wherein the microparticulate beads are a polymeric matrix formed from a natural or synthetic polymer.
29. The method of claim 27, wherein the particles are coupled to a second solid support to form an array or dipstick.
30. A kit for detecting a plurality of analytes in a sample, comprising:
- (i) a container comprising a library of at least 100 different binding moieties; and
 - (ii) instructions for using the library to perform the method of claim 1.
31. The kit of claim 30, wherein the binding moieties are coupled to the solid support or supports.
32. The kit of claim 30, wherein the library comprises a hexapeptide combinatorial library or a portion thereof wherein the hexapeptides are attached to particles.
33. The kit of claim 30, further comprising a binding buffer for capturing analytes with the binding moieties.
34. The kit of claim 30, further comprising an elution buffer for eluting captured analytes from the binding moieties.
35. A library comprising at least 100 different binding moieties, wherein a plurality of different binding moieties are attached to the same solid support or supports.
36. The library of claim 35, wherein the binding moieties comprise a combinatorial hexapeptide library or portion thereof.
37. A method for identifying a diagnostic biomarker, the method comprising the steps of:
- (a) providing a first set of biosamples from a first set of organisms having a first phenotype;

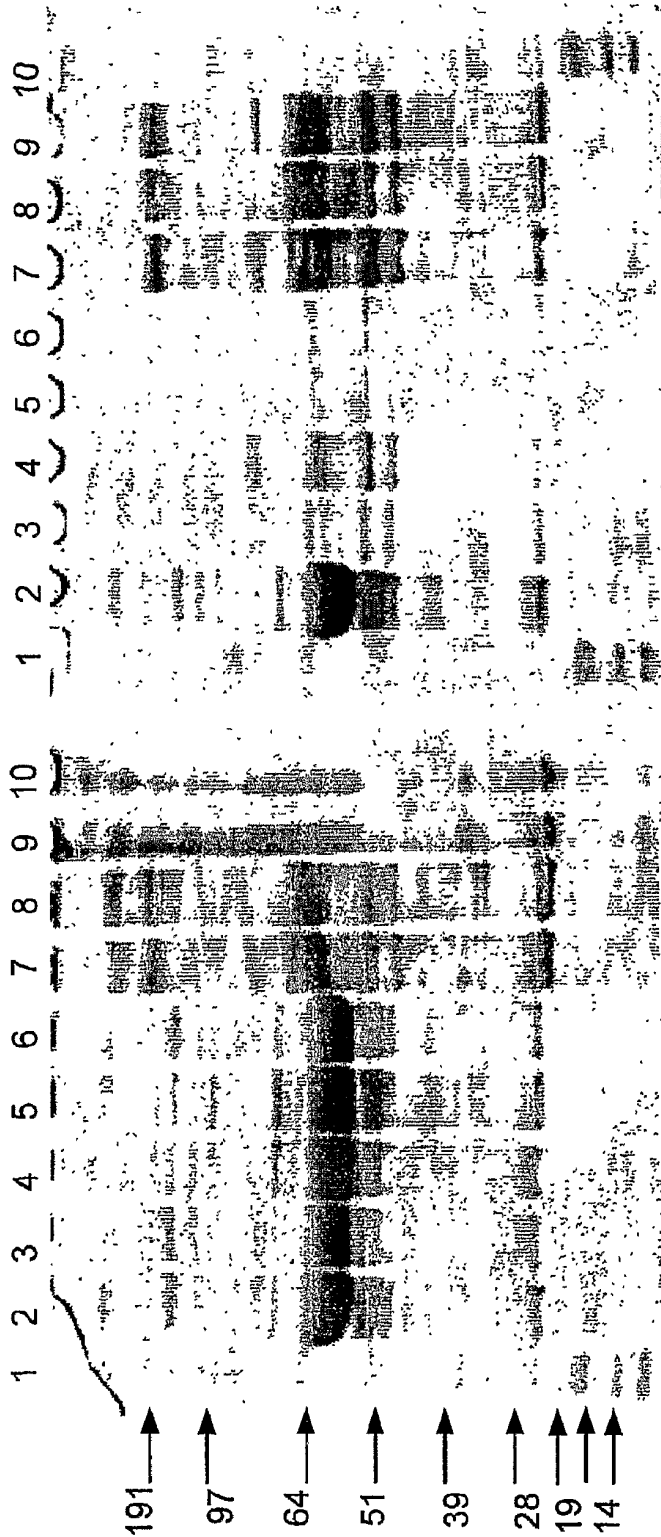
- (b) providing a second set of biosamples from a second set of organisms having a second phenotype;
- (c) performing the method of claim 1 on each of the biosamples, thereby creating a third and fourth set of biosamples, respectively;
- (d) detecting analyte species in each of the third and fourth set of biosamples;
- (e) identifying at least one analyte species that is differentially present in the third and fourth set of biosamples, whereby the at least one analyte species is a biomarker for distinguishing the first phenotype from the second phenotype.

38. The method of claim 37, wherein step (e) comprises identifying a biomarker profile that provides better predictive power than any one of the biomarkers in the profile, alone.

39. A method for reducing the relative amounts of analytes in a sample, the method comprising the steps of:

- (a) providing a first sample comprising a first plurality of different analytes having a first variance in amounts;
- (b) contacting the first sample with a plurality of different binding moieties, each binding moiety present in a determined amount;
- (c) capturing a portion of the first different analytes from the first sample with the different binding moieties and removing uncaptured analytes; and
- (d) isolating the captured analytes from the binding moieties to produce a second sample comprising a second plurality of different analytes having a second variance in amounts;

wherein the determined amount of each of the plurality of different binding moieties is selected to capture amounts of the different analytes whereby the second variance in amounts is less than the first variance in amounts.



- 1. MW marker
 - 2. PPP (diluted 1:50)
 - 3. Flow through 1 (diluted 1:50)
 - 4. Flow through 2 (diluted 1:50)
 - 5. Flow through 3 (diluted 1:50)
 - 6. Flow through 4 (diluted 1:50)
 - 7. LDS eluate 2 (4x diluted)
 - 8. LDS eluate 4 (4x diluted)
 - 9. Directly loaded beads. 2
 - 10. Directly loaded beads 4
-
- 1. MW marker
 - 2. PPP (diluted 1:5)
 - 3. 6M urea eluate 1 (to 1 M urea)
 - 4. 6M urea eluate 2 (to 1 M urea)
 - 5. 6M urea eluate 3 (to 1 M urea)
 - 6. 6M urea eluate 4 (to 1 M urea)
 - 7. 6M GuHCl eluate 2 (to 1 M urea)
 - 8. 6M GuHCl eluate 3 (to 1 M urea)
 - 9. 6M GuHCl eluate 4 (to 1 M urea)
 - 10. MW

FIG. 1

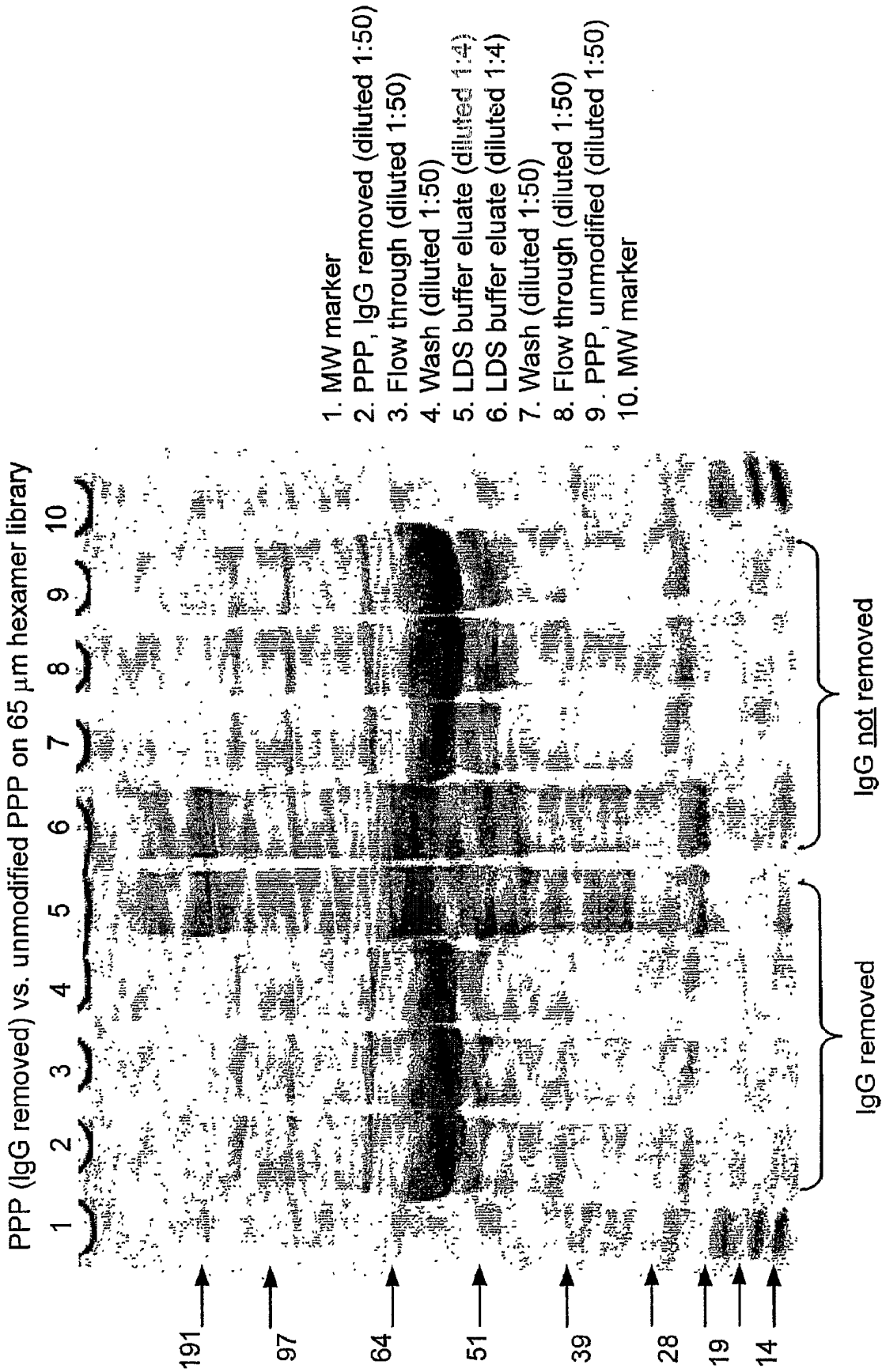


FIG. 2

1. MW marker
2. Serum (diluted 1:50)
3. LDS eluate Toyo (4x diluted)
4. Empty
5. LDS eluate Tenta (undiluted)
6. LDS eluate Tenta (2x diluted)
7. Empty
8. 6M GuHCl eluate Toyo (to 1 M urea)
9. 6M GuHCl eluate Tenta (to 1 M urea)
10. MW

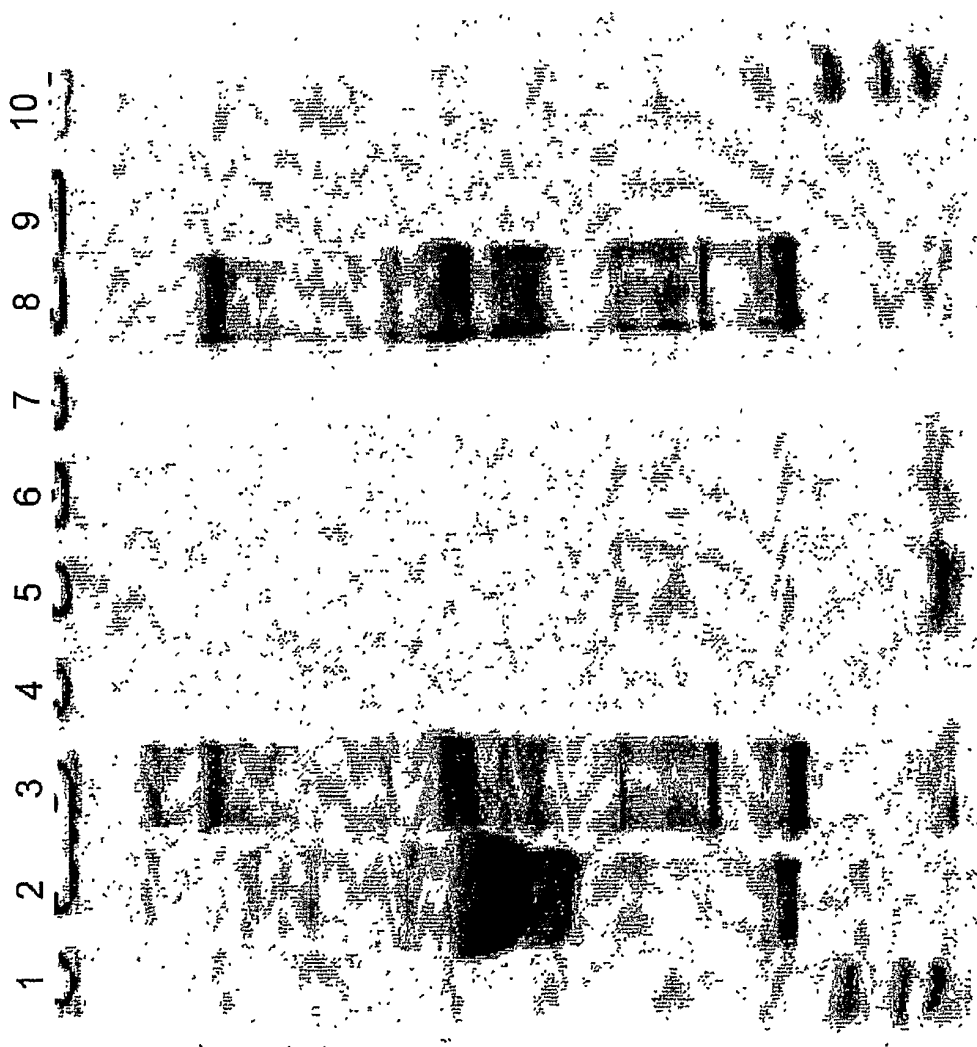
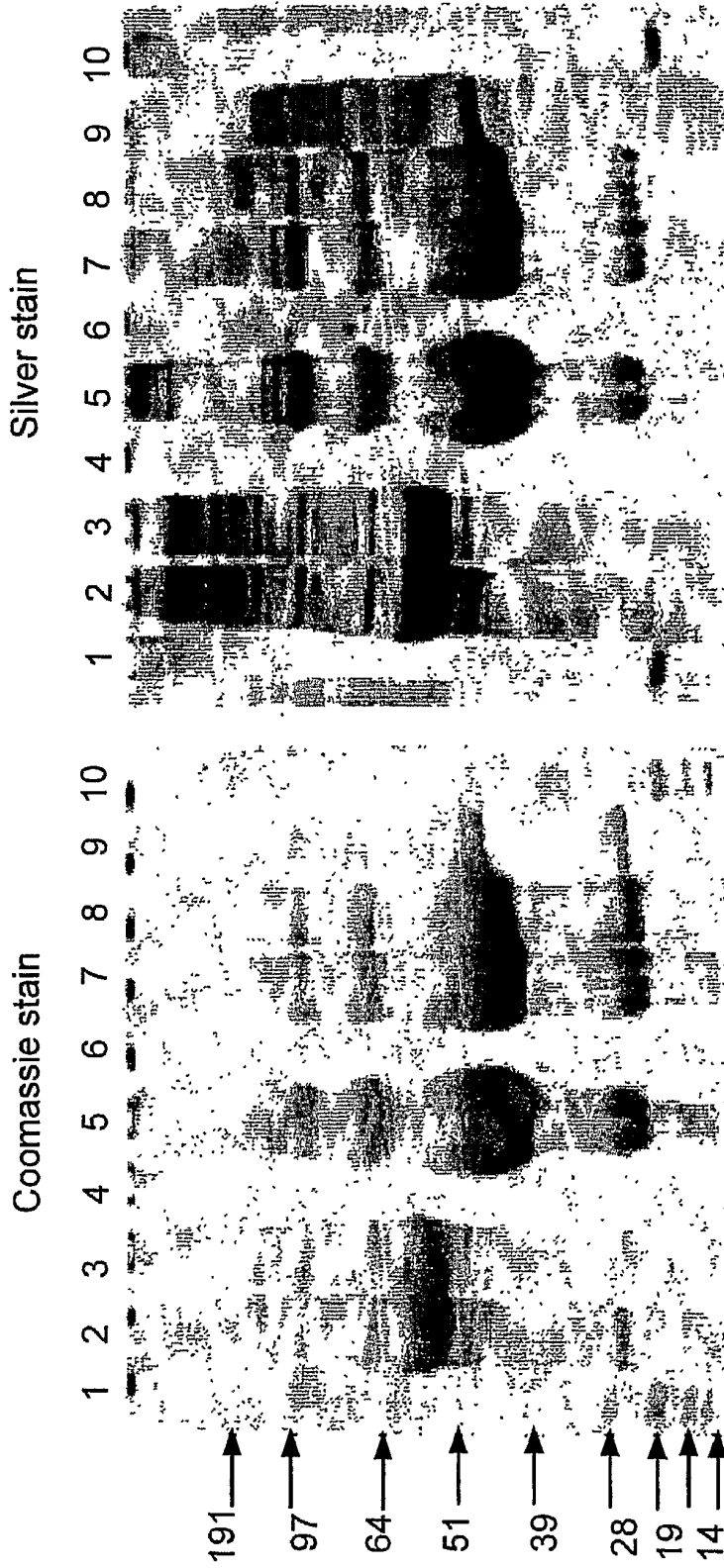


FIG. 3

PPP on protein G Sepharose



- 1. MW marker
- 2. PPP (diluted 1:50)
- 3. PPP, IgG removed (diluted 1:50)
- 4. Empty
- 5. LDS buffer eluate of ProteinG Sepharose
- 6. Empty
- 7. Fraction I eluated
- 8. Fraction II eluated
- 9. Fraction III eluated
- 10. MW marker

FIG. 4

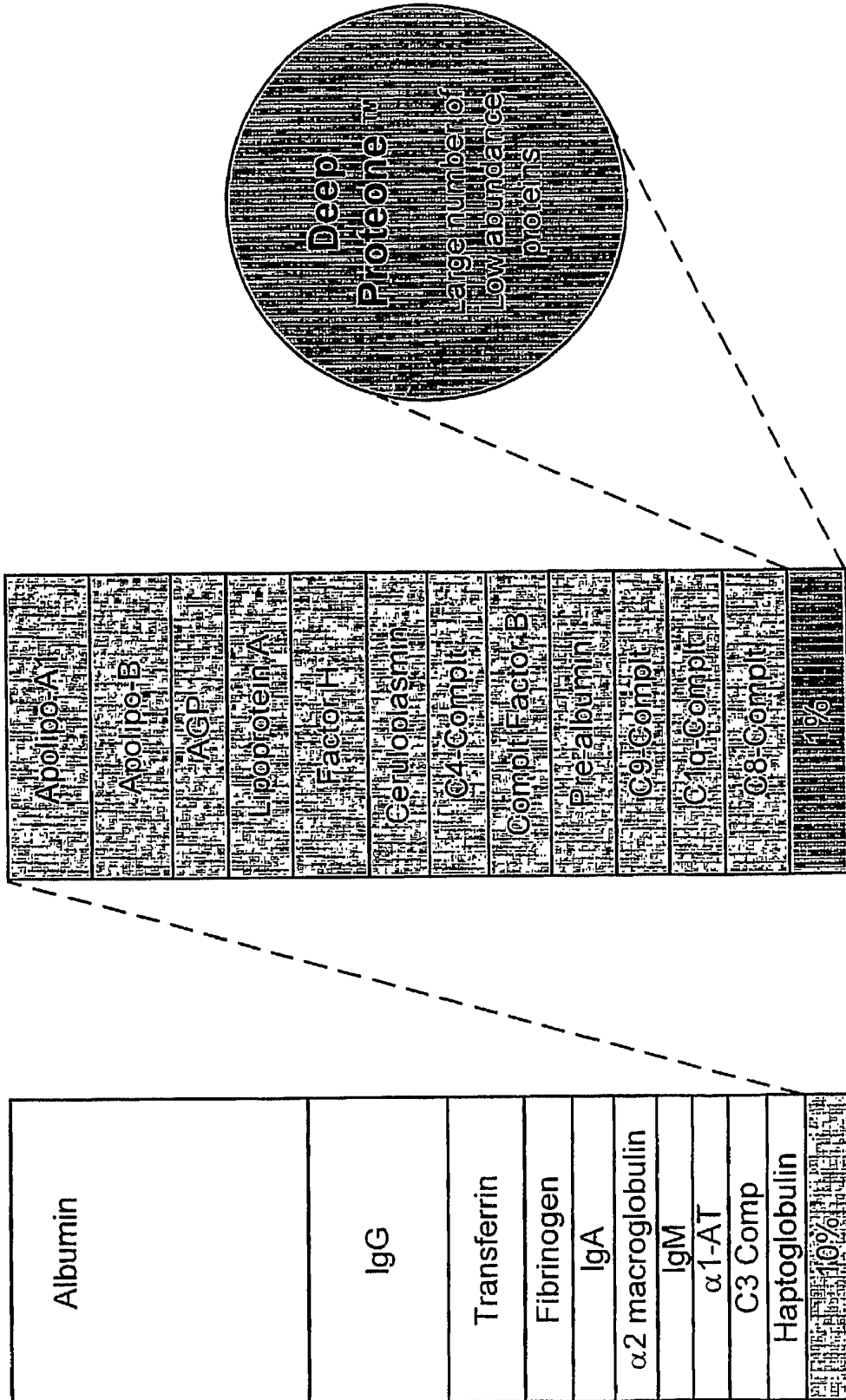


FIG. 5

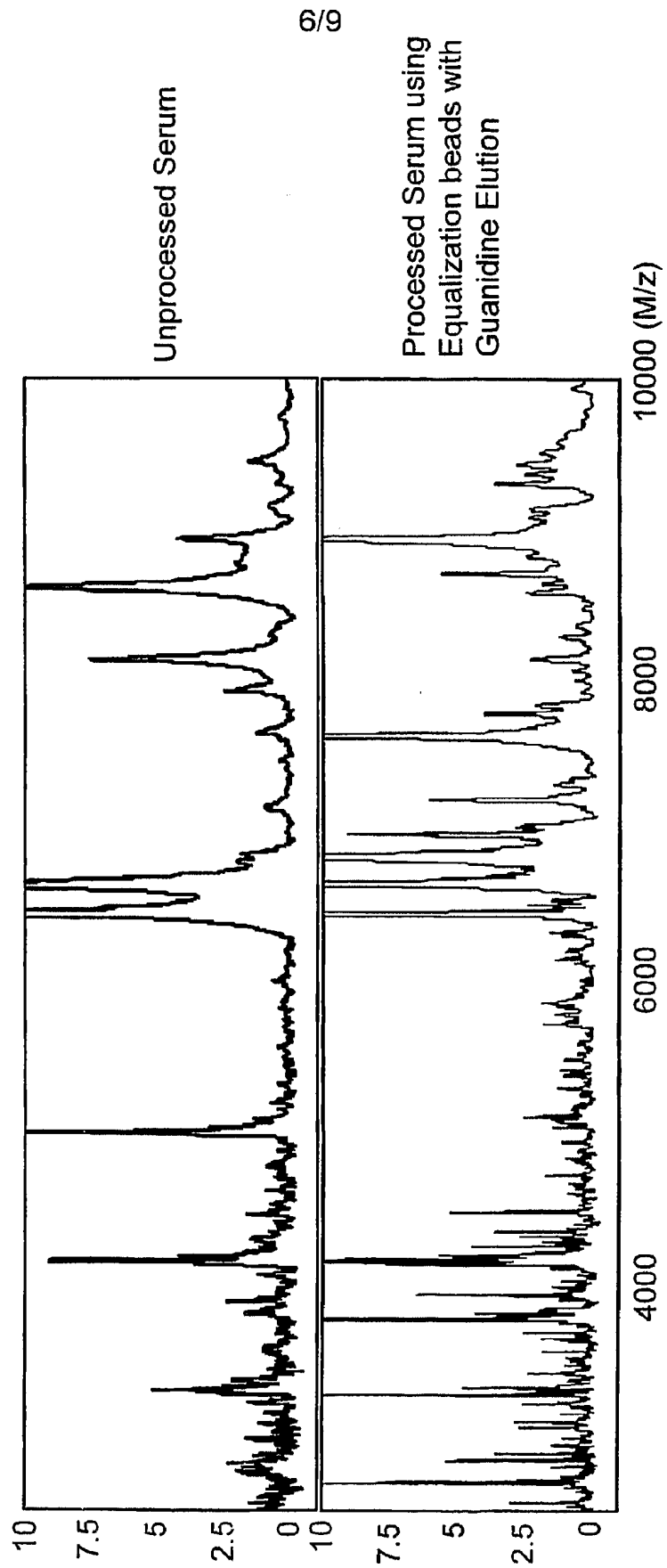


FIG. 6

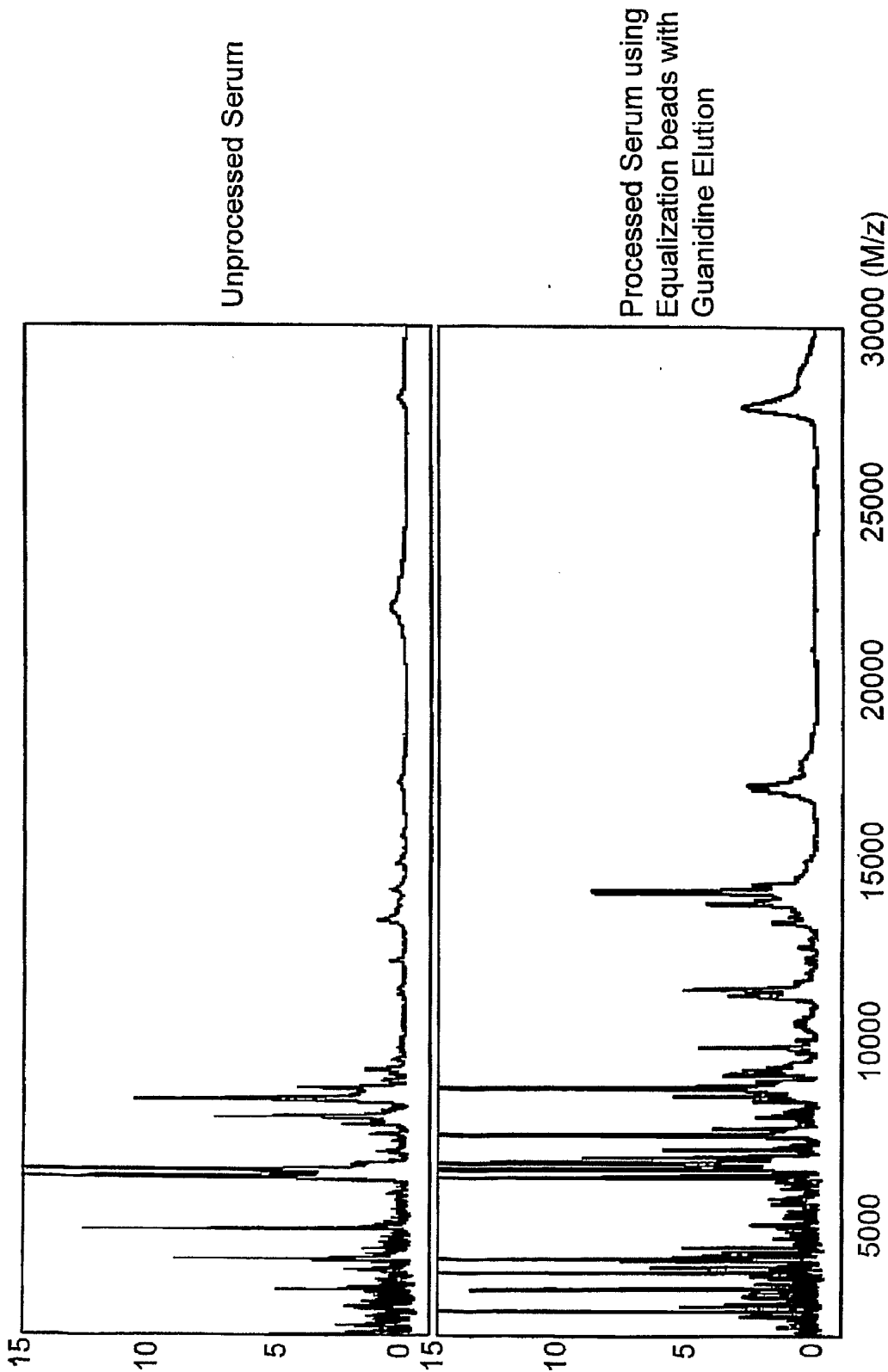


FIG. 7

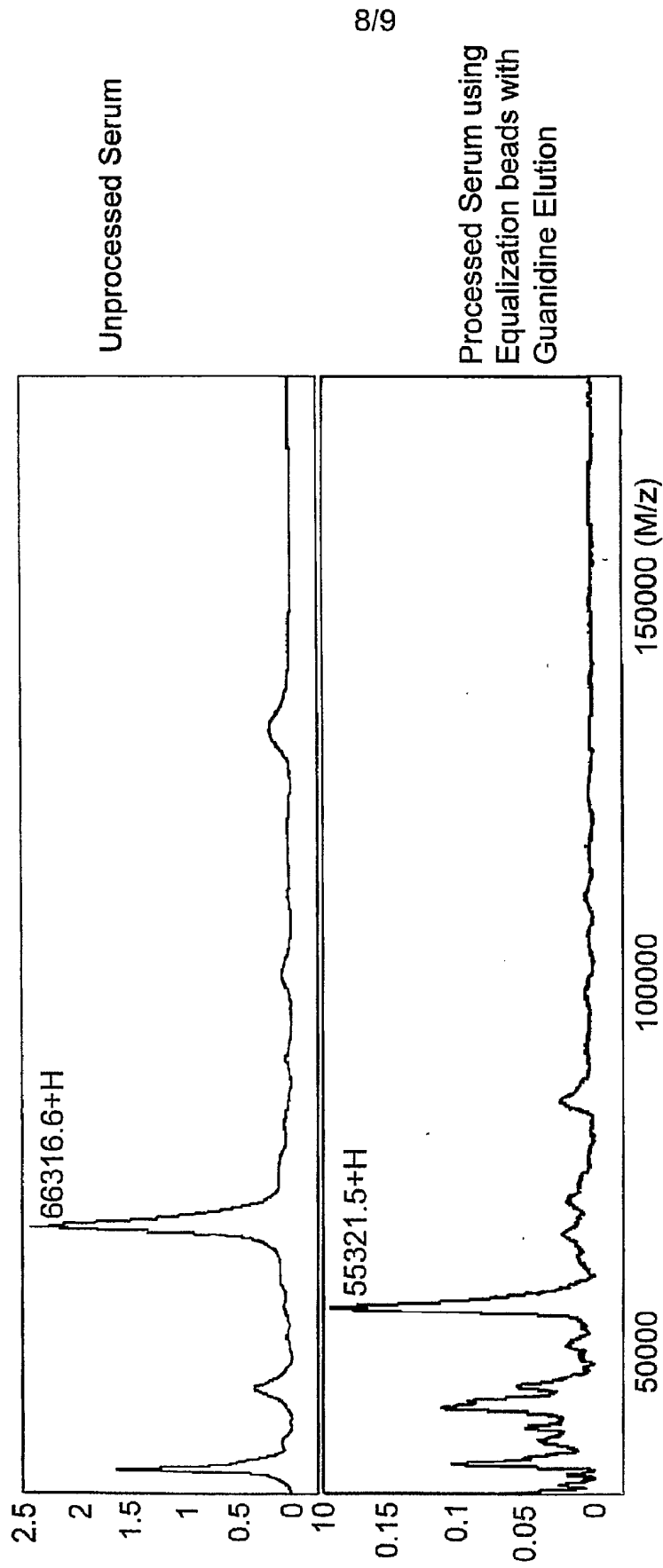


FIG. 8

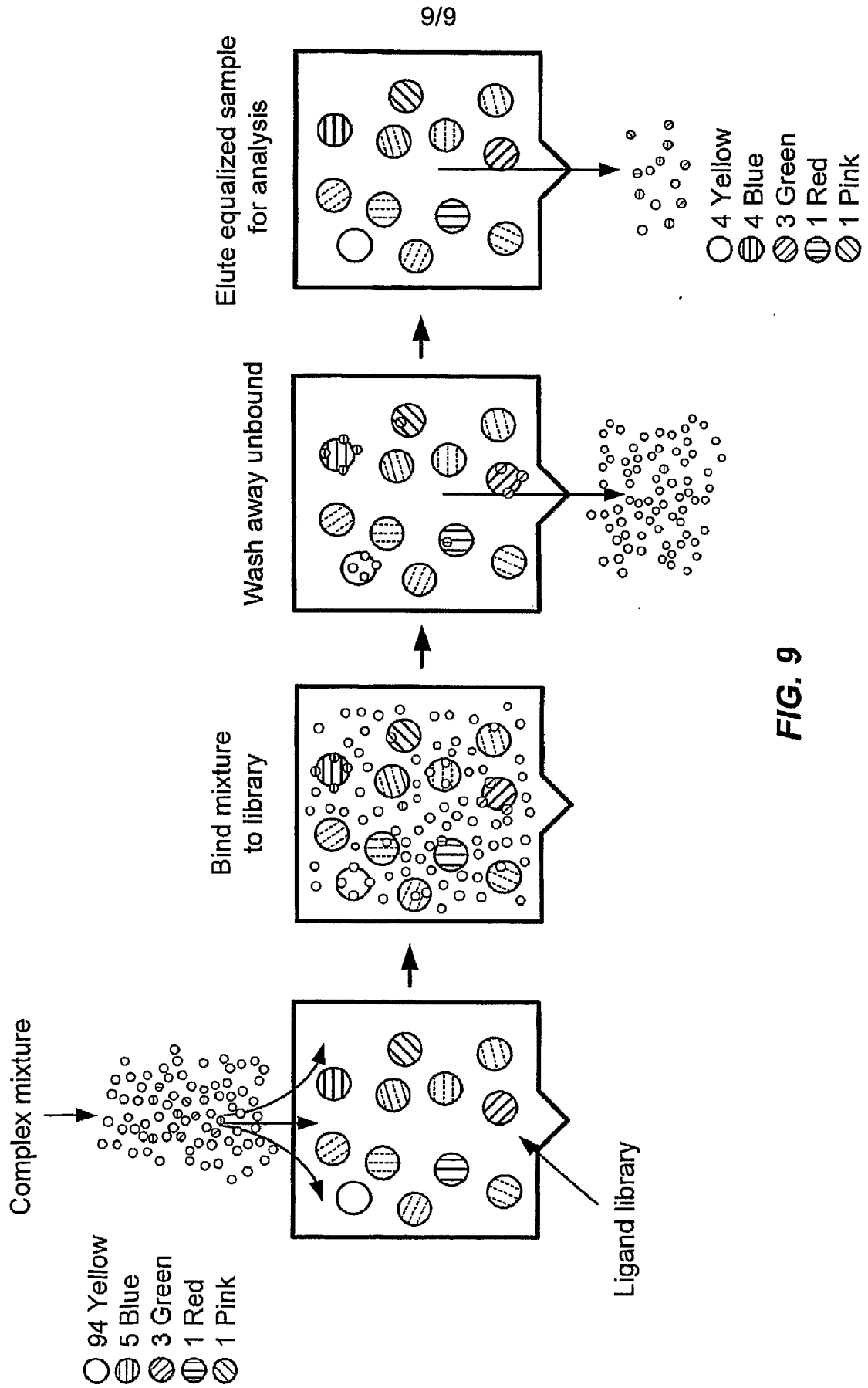


FIG. 9

专利名称(译)	降低样品中分析物种类浓度范围的方法		
公开(公告)号	EP1672984A4	公开(公告)日	2011-11-30
申请号	EP2005729099	申请日	2005-03-23
[标]申请(专利权)人(译)	赛弗根生物系统股份有限公司		
申请(专利权)人(译)	赛弗吉生物系统INC. 美国国家红十字会		
当前申请(专利权)人(译)	赛弗吉生物系统INC. 美国国家红十字会		
[标]发明人	BOSCHETTI EGISTO HAMMOND DAVID		
发明人	BOSCHETTI, EGISTO HAMMOND, DAVID		
IPC分类号	A23J1/00 G01N33/68 C12Q1/68 G01N33/53 G01N33/543		
CPC分类号	G01N33/6803 C40B30/04 G01N33/543 G01N33/54306 G01N33/6845		
代理机构(译)	ALBRECHT , THOMAS		
优先权	60/582650 2004-06-23 US 60/559108 2004-04-02 US 60/643483 2005-01-12 US 2004290775 2004-03-23 EP 60/587585 2004-07-12 US		
其他公开文献	EP1672984A2		
外部链接	Espacenet		

摘要(译)

本发明涉及分子生物学，组合化学和生物化学领域。特别地，本发明描述了用于动态地减少取自复杂混合物的分析物之间的差异的方法和试剂盒。