

(19) World Intellectual Property
Organization
International Bureau



(43) International Publication Date
21 May 2004 (21.05.2004)

PCT

(10) International Publication Number
WO 2004/041067 A2

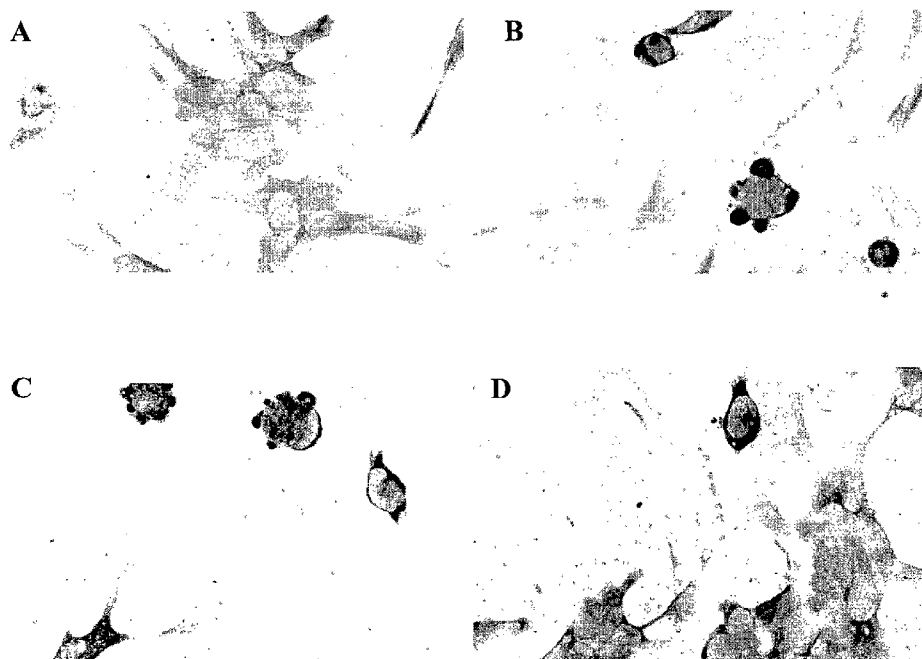
- (51) International Patent Classification⁷: **A61B**
- (21) International Application Number:
PCT/US2003/034527
- (22) International Filing Date: 31 October 2003 (31.10.2003)
- (25) Filing Language: English
- (26) Publication Language: English
- (30) Priority Data:
60/423,012 1 November 2002 (01.11.2002) US
- (71) Applicants: **ELAN PHARMACEUTICALS, INC.** [US/US]; 800 Gateway Boulevard, South San Francisco, CA 94080 (US). **THE REGENTS OF THE UNIVERSITY OF CALIFORNIA** [US/US]; 1111 Franklin Street, 5th Floor, Oakland, CA 94607 (US).
- (72) Inventors: **SCHENK, Dale, B.**; 1542 Los Altos Drive, Burlingame, CA 94010 (US). **MASLIAH, Eliezer**; 4661 Corte Mar Corazon, San Diego, CA 92130 (US).

- (74) Agents: **CELLI, Rosemarie** et al.; Townsend and Townsend and Crew LLP, Two Embarcadero Center, 8th Floor, San Francisco, CA 94111-3834 (US).
- (81) Designated States (*national*): AE, AG, AL, AM, AT, AU, AZ, BA, BB, BG, BR, BY, BZ, CA, CH, CN, CO, CR, CU, CZ, DE, DK, DM, DZ, EC, EE, EG, ES, FI, GB, GD, GE, GH, GM, HR, HU, ID, IL, IN, IS, JP, KE, KG, KP, KR, KZ, LC, LK, LR, LS, LT, LU, LV, MA, MD, MG, MK, MN, MW, MX, MZ, NI, NO, NZ, OM, PG, PH, PL, PT, RO, RU, SC, SD, SE, SG, SK, SL, SY, TJ, TM, TN, TR, TT, TZ, UA, UG, UZ, VC, VN, YU, ZA, ZM, ZW.
- (84) Designated States (*regional*): ARIPO patent (BW, GH, GM, KE, LS, MW, MZ, SD, SL, SZ, TZ, UG, ZM, ZW), Eurasian patent (AM, AZ, BY, KG, KZ, RU, TJ, TM), European patent (AT, BE, BG, CH, CY, CZ, DE, DK, EE, ES, FI, FR, GB, GR, HU, IE, IT, LU, MC, NL, PT, RO, SE, SI, SK, TR), OAPI patent (BF, BJ, CF, CG, CI, CM, GA, GN, GQ, GW, ML, MR, NE, SN, TD, TG).

Published:
— without international search report and to be republished upon receipt of that report

[Continued on next page]

(54) Title: PREVENTION AND TREATMENT OF SYNUCLEINOPATHIC DISEASE



(57) Abstract: The invention provides improved agents and methods for treatment of diseases associated with synucleinopathic diseases, including Lewy bodies of alpha-synuclein in the brain of a patient. Such methods entail administering agents that induce a beneficial immunogenic response against the Lewy body. The methods are particularly useful for prophylactic and therapeutic treatment of Parkinson's disease.

WO 2004/041067 A2



For two-letter codes and other abbreviations, refer to the "Guidance Notes on Codes and Abbreviations" appearing at the beginning of each regular issue of the PCT Gazette.

PREVENTION AND TREATMENT OF SYNUCLEINOPATHIC DISEASE

CROSS-REFERENCE TO RELATED APPLICATIONS

[0001] This application claims the benefit under 35 U.S.C. § 119(3) of U.S. Application No. 60/423,012, filed November 1 2002, which is incorporated by reference herein for all purposes.

BACKGROUND OF THE INVENTION

[0002] Alpha-synuclein (alphaSN) brain pathology is a conspicuous feature of several neurodegenerative diseases, including Parkinson's disease (PD), dementia with Lewy bodies (DLB), the Lewy body variant of Alzheimer's disease (LBVAD), multiple systems atrophy (MSA), and neurodegeneration with brain iron accumulation type-1 (NBIA-1). Common to all of these diseases, termed synucleinopathies, are proteinaceous insoluble inclusions in the neurons and the glia which are composed primarily of alphaSN.

[0003] Lewy bodies and Lewy neurites are intraneuronal inclusions which are composed primarily of alphaSN. Lewy bodies and Lewy neurites are the neuropathological hallmarks Parkinson's disease (PD). PD and other synucleinopathic diseases have been collectively referred to as Lewy body disease (LBD). LBD is characterized by degeneration of the dopaminergic system, motor alterations, cognitive impairment, and formation of Lewy bodies (LBs). (McKeith *et al.*, *Clinical and pathological diagnosis of dementia with Lewy bodies (DLB): Report of the CDLB International Workshop, Neurology (1996) 47:1113-24*). Other LBDs include diffuse Lewy body disease (DLBD), Lewy body variant of Alzheimer's disease (LBVAD), combined PD and Alzheimer's disease (AD), and multiple systems atrophy. Dementia with Lewy bodies (DLB) is a term coined to reconcile differences in the terminology of LBDs.

[0004] Disorders with LBs continue to be a common cause for movement disorders and cognitive deterioration in the aging population (Galasko *et al.*, *Clinical-neuropathological correlations in Alzheimer's disease and related dementias. Arch. Neurol. (1994) 51:888-95*). Although their incidence continues to increase creating a serious public health problem, to date these disorders are neither curable nor preventable and understanding the

causes and pathogenesis of PD is critical towards developing new treatments (Tanner *et al.*, *Epidemiology of Parkinson's disease and akinetic syndromes*, *Curr. Opin. Neurol.* (2000) 13:427-30). The cause for PD is controversial and multiple factors have been proposed to play a role, including various neurotoxins and genetic susceptibility factors.

[0005] In recent years, new hope for understanding the pathogenesis of PD has emerged. Specifically, several studies have shown that the synaptic protein alpha-SN plays a central role in PD pathogenesis since: (1) this protein accumulates in LBs (Spillantini *et al.*, *Nature* (1997) 388:839-40; Takeda *et al.*, *AM. J. Pathol.* (1998) 152:367-72; Wakabayashi *et al.*, *Neurosci. Lett.* (1997) 239:45-8), (2) mutations in the alpha-SN gene co-segregate with rare familial forms of parkinsonism (Kruger *et al.*, *Nature Gen.* (1998) 18:106-8; Polymeropoulos MH, *et al.*, *Science* (1997) 276:2045-7) and, (3) its overexpression in transgenic mice (Masliah *et al.*, *Science* (2000) 287:1265-9) and *Drosophila* (Feany *et al.*, *Nature* (2000) 404:394-8) mimics several pathological aspects of PD. Thus, the fact that accumulation of alpha-SN in the brain is associated with similar morphological and neurological alterations in species as diverse as humans, mice, and flies suggests that this molecule contributes to the development of PD.

[0006] An alpha-SN fragment, previously determined to be a constituent of AD amyloid plaques, was termed the non-amyloid-beta (non-A β) component of AD amyloid (NAC) (Iwai A., *Biochim. Biophys. Acta* (2000) 1502:95-109); Masliah *et al.*, *AM. J. Pathol.* (1996) 148:201-10; Ueda *et al.*, *Proc. Natl. Acad. Sci. USA* (1993) 90:11282-6).

Although the precise function of NAC is not known, it may play a critical role in synaptic events, such as neural plasticity during development, and learning and degeneration of nerve terminals under pathological conditions in LBD, AD, and other disorders (Hasimoto *et al.*, *Alpha-Synuclein in Lewy body disease and Alzheimer's disease*, *Brain Pathol.* (1999) 9:707-20; Masliah, *et al.*, (2000).

[0007] AD, PD, and dementia with Lewy bodies (DLB) are the most commonly found neurodegenerative disorders in the elderly. Although their incidence continues to increase, creating a serious public health problem, to date these disorders are neither curable nor preventable. Recent epidemiological studies have demonstrated a close clinical relationship between AD and PD, as about 30% of Alzheimer's patients also have PD. Compared to the rest of the aging population, patients with AD are thus more likely to develop concomitant PD. Furthermore, PD patients that become demented usually have

developed classical AD. Although each neurodegenerative disease appears to have a predilection for specific brain regions and cell populations, resulting in distinct pathological features, PD, AD, DLB and LBD also share common pathological hallmarks. Patients with familial AD, Down syndrome, or sporadic AD develop LBs on the amygdala, which are the classical neuropathological hallmarks of PD. Additionally, each disease is associated with the degeneration of neurons, interneuronal synaptic connections and eventually cell death, the depletion of neurotransmitters, and abnormal accumulation of misfolded proteins, the precursors of which participate in normal central nervous system function. Biochemical studies have confirmed the link between AD, PD and DLB.

[0008] The neuritic plaques that are the classic pathological hallmark of AD contain beta-amyloid ($A\beta$) peptide and non-beta amyloid component (NAC) peptide. $A\beta$ is derived from a larger precursor protein termed amyloid precursor protein (APP). NAC is derived from a larger precursor protein termed the non-beta amyloid component of APP, now more commonly referred to as alpha-SN. NAC comprises amino acid residues 60-87 or 61-95 of alpha-SN. Both $A\beta$ and NAC were first identified in amyloid plaques as proteolytic fragments of their respective full-length proteins, for which the full-length cDNAs were identified and cloned.

[0009] Alpha-SN is part of a large family of proteins including beta- and gamma-synuclein and synoretin. Alpha-SN is expressed in the normal state associated with synapses and is believed to play a role in neural plasticity, learning and memory. Mutations in human (h) alpha-SN that enhance the aggregation of alpha-SN have been identified (Ala30Pro and Ala53Thr) and are associated with rare forms of autosomal dominant forms of PD. The mechanism by which these mutations increase the propensity of alpha-SN to aggregate are unknown.

[0010] Despite the fact that a number of mutations can be found in APP and alpha-SN in the population, most cases of AD and PD are sporadic. The most frequent sporadic forms of these diseases are associated with an abnormal accumulation of $A\beta$ and alpha-SN, respectively. However, the reasons for over accumulation of these proteins is unknown. $A\beta$ is secreted from neurons and accumulates in extracellular amyloid plaques. Additionally $A\beta$ can be detected inside neurons. Alpha-SN accumulates in intraneuronal inclusions called LBs. Although the two proteins are typically found together in

extracellular neuritic AD plaques, they are also occasionally found together in intracellular inclusions.

[0011] The mechanisms by which alpha-SN accumulation leads to neurodegeneration and the characteristics symptoms of PD are unclear. However, identifying the role of factors promoting and/or blocking alpha-SN aggregation is critical for the understanding of LBD pathogenesis and development of novel treatments for its associated disorders. Research for identifying treatments has been directed toward searching for compounds that reduce alpha-SN aggregation (Hashimoto, *et al.*) or testing growth factors that will promote the regeneration and/or survival of dopaminergic neurons, which are the cells primarily affected (Djaldetti *et al.*, *New therapies for Parkinson's disease, J. Neurol* (2001) 248:357-62; Kirik *et al.*, *Long-term rAAV-mediated gene transfer of GDNF in the rat Parkinson's model: intrastriatal but not intranigral transduction promotes functional regeneration in the lesioned nigrostriatal system, J. Neurosci* (2000) 20:4686-4700). Recent studies in a transgenic mouse model of AD have shown that antibodies against A β 1-42 facilitate and stimulate the removal of amyloid from the brain, improve AD-like pathology and resulting in improve cognitive performance (Schenk *et al.*, *Immunization with amyloid- β attenuates Alzheimer-disease-like pathology in PDAPP mouse, Nature* (1999) 408:173-177; Morgan *et al.*, *A-beta peptide vaccination prevents memory loss in an animal model of Alzheimer's disease, Nature* (2000) 408:982-985; Janus *et al.*, *A-beta peptide immunization reduces behavioral impairment and plaques in a model of Alzheimer's disease, Nature* (2000) 408:979-82). In contrast to the extracellular amyloid plaques found in the brains of Alzheimer's patients, Lewy bodies are intracellular, and antibodies do not typically enter the cell.

[0012] Surprisingly, given the intracellular nature of LBs in brain tissue, the inventors have succeeded in reducing the number of inclusions in transgenic mice immunized with synuclein. The present invention is directed *inter alia* to treatment of PD and other diseases associated with LBs by administration of synuclein, fragments of synuclein, antigens that mimic synuclein or fragments thereof, or antibodies to certain epitopes of synuclein to a patient under conditions that generate a beneficial immune response in the patient. The inventors have also surprisingly succeeded in reducing the number of inclusions in transgenic mice immunized with A β . The present invention is directed *inter alia* to treatment of PD and other diseases associated with LBs by administration of A β , fragments of A β , antigens that mimic A β or fragments thereof, or antibodies to certain

epitopes of A β to a patient under conditions that generate a beneficial immune response in the patient. The invention thus fulfills a longstanding need for therapeutic regimes for preventing or ameliorating the neuropathology and, in some patients, the cognitive impairment associated with PD and other diseases associated with LBs.

BRIEF SUMMARY OF THE INVENTION

[0013] In one aspect, the invention provides methods of preventing or treating a disease characterized by Lewy bodies or alpha-SN aggregation in the brain. Such methods entail, inducing an immunogenic response against alpha-SN. Such induction may be achieved by active administration of an immunogen or passive by administration of an antibody or a derivative of an antibody to synuclein. In some methods, the patient is asymptomatic. In some methods, the patient has the disease and is asymptomatic. In some methods the patient has a risk factor for the disease and is asymptomatic. In some methods, the disease is Parkinson's disease. In some methods, the disease is Parkinson's disease, and the administering the agent improves motor characteristics of the patient. In some methods, the disease is Parkinson's disease administering the agent prevents deterioration of motor characteristics of the patient. In some methods, the patient is free of Alzheimer's disease.

[0014] For treatment of patients suffering from Lewy bodies or alpha-SN aggregation in the brain, one treatment regime entails administering a dose of alpha-SN or an active fragment thereof to the patient to induce the immune response. In some methods the alpha-SN or an active fragment thereof is administered in multiple doses over a period of at least six months. The alpha-SN or an active fragment thereof can be administered, for example, peripherally, intraperitoneally, orally, subcutaneously, intracranially, intramuscularly, topically, intranasally or intravenously. In some methods, the alpha-SN or an active fragment thereof is administered with an adjuvant that enhances the immune response to the alpha-SN or an active fragment thereof. In some methods, the immunogenic response comprises antibodies to alpha-SN or an active fragment thereof.

[0015] In some methods, the agent is amino acids 35-65 of alpha-SN. In some methods, the agent comprises amino acids 130-140 of alpha-SN and has fewer than 40 amino acids total. In some methods, the C-terminal amino acids of the agent are the C-terminal amino acid of alpha-SN. In some of the above methods, the alpha-SN or active fragment is linked to a carrier molecule to form a conjugate. In some of the above methods, the alpha-

SN or active fragment is linked to a carrier at the N-terminus of the alpha-SN or active fragment.

[0016] For treatment of patients suffering from Lewy bodies or alpha-SN aggregation in the brain, one treatment regime entails administering a dose of an antibody to alpha-SN or an active fragment thereof to the patient to induce the immune response. The antibody used may be human, humanized, chimeric, or polyclonal and can be monoclonal or polyclonal. In some methods the isotype of the antibody is a human IgG1. In some methods, the antibody is prepared from a human immunized with alpha-SN peptide and the human can be the patient to be treated with antibody. In some methods, the antibody binds to the outer surface of neuronal cells having Lewy bodies thereby dissipating the Lewy bodies. In some methods, the antibody is internalized within neuronal cells having Lewy bodies thereby dissipating the Lewy bodies.

[0017] In some methods, the antibody is administered with a pharmaceutical carrier as a pharmaceutical composition. In some methods, antibody is administered at a dosage of 0.0001 to 100 mg/kg, preferably, at least 1 mg/kg body weight antibody. In some methods the antibody is administered in multiple doses over a prolonged period, for example, at least six months. In some methods antibodies may be administered as a sustained release composition. The antibody can be administered, for example, peripherally, intraperitoneally, orally, subcutaneously, intracranially, intramuscularly, topically, intranasally or intravenously. In some methods, the patient is monitored for level of administered antibody in the blood of the patient.

[0018] In some methods, the antibody is administered by administering a polynucleotide encoding at least one antibody chain to the patient. The polynucleotide is expressed to produce the antibody chain in the patient. Optionally, the polynucleotide encodes heavy and light chains of the antibody and the polynucleotide is expressed to produce the heavy and light chains in the patient.

[0019] This invention further provides pharmaceutical compositions comprising an antibody to alpha-SN and a pharmaceutically acceptable carrier.

[0020] In another aspect, the invention provides methods of preventing or treating a disease characterized by Lewy bodies or alpha-SN aggregation in the brain comprising administering an agent that induces an immunogenic response against alpha-SN, and further comprising administering of a second agent that induces an immunogenic response

against A β to the patient. In some methods, the agent is A β or an active fragment thereof. In some methods, the agent is an antibody to A β .

[0021] In another aspect, the invention provides methods of preventing or treating a disease characterized by Lewy bodies or alpha-SN aggregation in the brain comprising administering an agent that induces an immunogenic response against A β to a patient. In some methods, the agent is A β or an active fragment thereof. In some methods, the agent is an antibody to A β . In some methods the disease is Parkinson's disease. In some methods, the patient is free of Alzheimer's disease and has no risk factors thereof. In some methods, further comprise monitoring a sign or symptom of Parkinson's disease in the patient. In some methods, the disease is Parkinson's disease and administering the agent results in improvement in a sign or symptom of Parkinson's disease.

[0022] This invention further provides pharmaceutical compositions comprising an agent effective to induce an immunogenic response against a component of a Lewy body in a patient, such as described above, and a pharmaceutically acceptable adjuvant. In some compounds, the agent is alpha-SN or an active fragment, for example, NAC. In some compounds the agent is 6CHC-1 or an active fragment. The invention also provides pharmaceutical compositions comprising an antibody specific for a component of a Lewy body.

[0023] In another aspect, the invention provides for methods of screening an antibody for activity in preventing or treating a disease associated with Lewy bodies. Such methods entail, contacting a neuronal cell expressing synuclein with the antibody. Then one determines whether the contacting reduces synuclein deposits in the cells compared with a control cells not contacted with the antibody.

[0024] In another aspect, the invention provides for methods of screening an antibody for activity in treating or preventing a Lewy body disease in the brain of a patient. Such methods entail contacting the antibody with a polypeptide comprising at least five contiguous amino acids of alpha-SN. Then one determines whether the antibody specifically binds to the polypeptide, specific binding providing an indication that the antibody has activity in treating the disease.

BRIEF DESCRIPTION OF THE DRAWINGS

[0025] FIG. 1 shows the amino acid sequence of alpha-SN (SEQ ID: 1) in alignment with two NAC amino acid sequences, SEQ ID NO: 2 and SEQ ID NO: 3, respectively.

[0026] FIG. 2 shows immunohistostained brain sections from nontransgenic mice (panels A, E, and I), alpha-SN transgenic mice immunized with adjuvant alone (panels B, F, J), and alpha-SN transgenic mice immunized with alpha-SN which developed low titers (panels C, G, and K) and high titers (panels D, H, and I) of antibodies to alpha-SN. Sections were subjected to staining with an anti-alpha-synulcein antibody to detect synuclein levels (panels A-D), an anti-IgG antibody to determine total IgG levels present in the section (panels E-H), and for Glial Fibrillary Acidic Protein (GFAP), a marker of astroglial cells.

[0027] FIG. 3 shows the effects of anti-mSYN polyclonal antibody on synuclein aggregation in transfected GT1-7 cells as seen by light microscopy.

[0028] FIG. 4 is a Western blot of synuclein levels in the cytoplasm (C) and membranes (P) of GT1-7 α -syn cells treated with preimmune sera and with 67-10 antibody at a concentration of (1:50) for 48 hours prior to analysis.

[0029] FIG. 5 shows the results of studies of the effect of A β 1-42 immunization amyloid deposition in the brains of nontransgenic, SYN, APP and SYN/APP transgenic mice. The detectable amyloid levels seen in APP and SYN/APP mice are reduced by A β 1-42 immunization.

[0030] FIG. 6 shows the results of studies of the effect of A β 1-42 immunization upon synuclein inclusion formation in the brains of nontransgenic, SYN, APP and SYN/APP transgenic mice. Synulcein inclusions detected in SYN and SYN/APP mice are reduced by A β 1-42 immunization.

[0031] FIG. 7 shows direct and indirect mechanisms by which antibodies block alpha-SN aggregation.

DEFINITIONS

[0032] The term "substantial identity" means that two peptide sequences, when optimally aligned, such as by the programs GAP or BESTFIT using default gap weights, share at least 65 percent sequence identity, preferably at least 80 or 90 percent sequence

identity, more preferably at least 95 percent sequence identity or more (*e.g.*, 99 percent sequence identity or higher). Preferably, residue positions which are not identical differ by conservative amino acid substitutions.

[0033] For sequence comparison, typically one sequence acts as a reference sequence, to which test sequences are compared. When using a sequence comparison algorithm, test and reference sequences are input into a computer, subsequence coordinates are designated, if necessary, and sequence algorithm program parameters are designated. The sequence comparison algorithm then calculates the percent sequence identity for the test sequence(s) relative to the reference sequence, based on the designated program parameters.

[0034] Optimal alignment of sequences for comparison can be conducted, *e.g.*, by the local homology algorithm of Smith & Waterman, *Adv. Appl. Math.* 2:482 (1981), by the homology alignment algorithm of Needleman & Wunsch, *J. Mol. Biol.* 48:443 (1970), by the search for similarity method of Pearson & Lipman, *Proc. Nat'l. Acad. Sci. USA* 85:2444 (1988), by computerized implementations of these algorithms (GAP, BESTFIT, FASTA, and TFASTA in the Wisconsin Genetics Software Package, Genetics Computer Group, 575 Science Dr., Madison, WI), or by visual inspection (*see generally* Ausubel *et al.*, *supra*). One example of algorithm that is suitable for determining percent sequence identity and sequence similarity is the BLAST algorithm, which is described in Altschul *et al.*, *J. Mol. Biol.* 215:403-410 (1990). Software for performing BLAST analyses is publicly available through the National Center for Biotechnology Information (NCBI) website. Typically, default program parameters can be used to perform the sequence comparison, although customized parameters can also be used. For amino acid sequences, the BLASTP program uses as defaults a word length (W) of 3, an expectation (E) of 10, and the BLOSUM62 scoring matrix (*see* Henikoff & Henikoff, *Proc. Natl. Acad. Sci. USA* 89, 10915 (1989)).

[0035] For purposes of classifying amino acids substitutions as conservative or non-conservative, amino acids are grouped as follows: Group I (hydrophobic sidechains): norleucine, met, ala, val, leu, ile; Group II (neutral hydrophilic side chains): cys, ser, thr; Group III (acidic side chains): asp, glu; Group IV (basic side chains): asn, gln, his, lys, arg; Group V (residues influencing chain orientation): gly, pro; and Group VI (aromatic side chains): trp, tyr, phe. Conservative substitutions involve substitutions between amino

acids in the same class. Non-conservative substitutions constitute exchanging a member of one of these classes for a member of another.

[0036] Therapeutic agents of the invention are typically substantially pure from undesired contaminant. This means that an agent is typically at least about 50% w/w (weight/weight) purity, as well as being substantially free from interfering proteins and contaminants. Sometimes the agents are at least about 80% w/w and, more preferably at least 90 or about 95% w/w purity. However, using conventional protein purification techniques, homogeneous peptides of at least 99% w/w can be obtained.

[0037] The phrase that a molecule "specifically binds" to a target refers to a binding reaction which is determinative of the presence of the molecule in the presence of a heterogeneous population of other biologics. Thus, under designated immunoassay conditions, a specified molecule binds preferentially to a particular target and does not bind in a significant amount to other biologics present in the sample. Specific binding of an antibody to a target under such conditions requires the antibody be selected for its specificity to the target. A variety of immunoassay formats may be used to select antibodies specifically immunoreactive with a particular protein. For example, solid-phase ELISA immunoassays are routinely used to select monoclonal antibodies specifically immunoreactive with a protein. *See, e.g., Harlow and Lane (1988) Antibodies, A Laboratory Manual*, Cold Spring Harbor Publications, New York, for a description of immunoassay formats and conditions that can be used to determine specific immunoreactivity. Specific binding between two entities means an affinity of at least 10^6 , 10^7 , 10^8 , 10^9 M⁻¹, or 10^{10} M⁻¹. Affinities greater than 10^8 M⁻¹ are preferred.

[0038] The term "antibody" or "immunoglobulin" is used to include intact antibodies and binding fragments thereof. Typically, fragments compete with the intact antibody from which they were derived for specific binding to an antigen fragment including separate heavy chains, light chains Fab, Fab' F(ab')₂, Fabc, and Fv. Fragments are produced by recombinant DNA techniques, or by enzymatic or chemical separation of intact immunoglobulins. The term "antibody" also includes one or more immunoglobulin chains that are chemically conjugated to, or expressed as, fusion proteins with other proteins. The term "antibody" also includes bispecific antibody. A bispecific or bifunctional antibody is an artificial hybrid antibody having two different heavy/light chain pairs and two different binding sites. Bispecific antibodies can be produced by a

variety of methods including fusion of hybridomas or linking of Fab' fragments. *See, e.g.,* Songsvilai & Lachmann, *Clin. Exp. Immunol.* 79:315-321 (1990); Kostelny *et al.*, *J. Immunol.* 148, 1547-1553 (1992).

[0039] APP⁶⁹⁵, APP⁷⁵¹, and APP⁷⁷⁰ refer, respectively, to the 695, 751, and 770 amino acid residue long polypeptides encoded by the human APP gene. *See* Kang *et al.*, *Nature* 325, 773 (1987); Ponte *et al.*, *Nature* 331, 525 (1988); and Kitaguchi *et al.*, *Nature* 331, 530 (1988). Amino acids within the human amyloid precursor protein (APP) are assigned numbers according to the sequence of the APP770 isoform. Terms such as A β 39, A β 40, A β 41, A β 42 and A β 43 refer to an A β peptide containing amino acid residues 1-39, 1-40, 1-41, 1-42 and 1-43.

[0040] An "antigen" is an entity to which an antibody specifically binds.

[0041] The term "epitope" or "antigenic determinant" refers to a site on an antigen to which B and/or T cells respond. B-cell epitopes can be formed both from contiguous amino acids or noncontiguous amino acids juxtaposed by tertiary folding of a protein. Epitopes formed from contiguous amino acids are typically retained on exposure to denaturing solvents whereas epitopes formed by tertiary folding are typically lost on treatment with denaturing solvents. An epitope typically includes at least 3, and more usually, at least 5 or 8-10 amino acids in a unique spatial conformation. Methods of determining spatial conformation of epitopes include, for example, x-ray crystallography and 2-dimensional nuclear magnetic resonance. *See, e.g., Epitope Mapping Protocols in Methods in Molecular Biology*, Vol. 66, Glenn E. Morris, Ed. (1996). Antibodies that recognize the same epitope can be identified in a simple immunoassay showing the ability of one antibody to block the binding of another antibody to a target antigen. T-cells recognize continuous epitopes of about nine amino acids for CD8 cells or about 13-15 amino acids for CD4 cells. T cells that recognize the epitope can be identified by *in vitro* assays that measure antigen-dependent proliferation, as determined by ³H-thymidine incorporation by primed T cells in response to an epitope (Burke *et al.*, *J. Inf. Dis.* 170, 1110-19 (1994)), by antigen-dependent killing (cytotoxic T lymphocyte assay, Tigges *et al.*, *J. Immunol.* 156, 3901-3910) or by cytokine secretion.

[0042] The term "immunological" or "immune" response is the development of a beneficial humoral (antibody mediated) and/or a cellular (mediated by antigen-specific T cells or their secretion products) response directed against an amyloid peptide in a

recipient patient. Such a response can be an active response induced by administration of immunogen or a passive response induced by administration of antibody or primed T-cells. A cellular immune response is elicited by the presentation of polypeptide epitopes in association with Class I or Class II MHC molecules to activate antigen-specific CD4⁺ T helper cells and/or CD8⁺ cytotoxic T cells. The response may also involve activation of monocytes, macrophages, NK cells, basophils, dendritic cells, astrocytes, microglia cells, eosinophils or other components of innate immunity. The presence of a cell-mediated immunological response can be determined by proliferation assays (CD4⁺ T cells) or CTL (cytotoxic T lymphocyte) assays (*see* Burke, *supra*; Tigges, *supra*). The relative contributions of humoral and cellular responses to the protective or therapeutic effect of an immunogen can be distinguished by separately isolating antibodies and T-cells from an immunized syngeneic animal and measuring protective or therapeutic effect in a second subject.

[0043] An "immunogenic agent" or "immunogen" is capable of inducing an immunological response against itself on administration to a mammal, optionally in conjunction with an adjuvant.

[0044] The term "all-D" refers to peptides having $\geq 75\%$, $\geq 80\%$, $\geq 85\%$, $\geq 90\%$, $\geq 95\%$, and 100% D-configuration amino acids.

[0045] The term "naked polynucleotide" refers to a polynucleotide not complexed with colloidal materials. Naked polynucleotides are sometimes cloned in a plasmid vector.

[0046] The term "adjuvant" refers to a compound that when administered in conjunction with an antigen augments the immune response to the antigen, but when administered alone does not generate an immune response to the antigen. Adjuvants can augment an immune response by several mechanisms including lymphocyte recruitment, stimulation of B and/or T cells, and stimulation of macrophages.

[0047] The term "patient" includes human and other mammalian subjects that receive either prophylactic or therapeutic treatment.

[0048] Competition between antibodies is determined by an assay in which the immunoglobulin under test inhibits specific binding of a reference antibody to a common antigen, such as alpha-SN. Numerous types of competitive binding assays are known, for example: solid phase direct or indirect radioimmunoassay (RIA), solid phase direct or

indirect enzyme immunoassay (EIA), sandwich competition assay (*see* Stahl *et al.*, *Methods in Enzymology* 9:242-253 (1983)); solid phase direct biotin-avidin EIA (*see* Kirkland *et al.*, *J. Immunol.* 137:3614-3619 (1986)); solid phase direct labeled assay, solid phase direct labeled sandwich assay (*see* Harlow and Lane, *Antibodies, A Laboratory Manual*, Cold Spring Harbor Press (1988)); solid phase direct label RIA using I-125 label (*see* Morel *et al.*, *Molec. Immunol.* 25(1):7-15 (1988)); solid phase direct biotin-avidin EIA (Cheung *et al.*, *Virology* 176:546-552 (1990)); and direct labeled RIA (Moldenhauer *et al.*, *Scand. J. Immunol.* 32:77-82 (1990)). Typically, such an assay involves the use of purified antigen bound to a solid surface or cells bearing either of these, an unlabelled test immunoglobulin and a labeled reference immunoglobulin. Competitive inhibition is measured by determining the amount of label bound to the solid surface or cells in the presence of the test immunoglobulin. Usually the test immunoglobulin is present in excess. Antibodies identified by competition assay (competing antibodies) include antibodies binding to the same epitope as the reference antibody and antibodies binding to an adjacent epitope sufficiently proximal to the epitope bound by the reference antibody for steric hindrance to occur. Usually, when a competing antibody is present in excess, it will inhibit specific binding of a reference antibody to a common antigen by at least 50 or 75%.

[0049] The term "symptom" or "clinical symptom" refers to a subjective evidence of a disease, such as altered gait, as perceived by the patient. A "sign" refers to objective evidence of a disease as observed by a physician.

[0050] Compositions or methods "comprising" one or more recited elements may include other elements not specifically recited. For example, a composition that comprises alpha-SN peptide encompasses both an isolated alpha-SN peptide and alpha-SN peptide as a component of a larger polypeptide sequence.

DETAILED DESCRIPTION OF THE INVENTION

I. General

[0051] The invention provides methods of preventing or treating several diseases and conditions characterized by presence of deposits of alpha-SN peptide aggregated to an insoluble mass in the brain of a patient, in the form of Lewy bodies. Such diseases are collectively referred to as Lewy Body diseases (LBD) and include Parkinson's disease (PD). Such diseases are characterized by aggregates of alpha-SN that have a β -pleated

sheet structure and stain with thioflavin-S and Congo-red (*see* Hasimoto, *Ibid*). The invention provides methods of preventing or treating such diseases using an agent that can generate an immunogenic response to alpha-SN. The immunogenic response acts to prevent formation of, or clear, synuclein deposits within cells in the brain. Although an understanding of mechanism is not essential for practice of the invention, the immunogenic response may induce clearing as a result of antibodies to synuclein that are internalized within cells and/or which interact with the membrane of such cells and thereby interfere with aggregation of synuclein. In some methods, the clearing response can be effected at least in part by Fc receptor mediated phagocytosis. Immunization with synuclein can reduce synuclein accumulation at synapses in the brain. Although an understanding of mechanism is not essential for practice of the invention, this result can be explained by antibodies to synuclein being taken up by synaptic vesicles.

[0052] Optionally, agents generating an immunogenic response against alpha-SN can be used in combination with agents that generate an immunogenic response to A β . The immunogenic response is useful in clearing deposits of A β in individuals having such deposits (*e.g.*, individuals having both Alzheimer's and Parkinson's disease); however, the immunogenic response also has activity in clearing synuclein deposits. Thus, the present invention uses such agents alone, or in combination with agents generating an immunogenic response to alpha-SN in individuals with LBD but who are not suffering or at risk of developing Alzheimer's disease.

II. Agents generating an immunogenic response against alpha synuclein

[0053] An immunogenic response can be active, as when an immunogen is administered to induce antibodies reactive with alpha-SN in a patient, or passive, as when an antibody is administered that itself binds to alpha-SN in a patient.

1. Agents Inducing Active Immune Response

[0054] Therapeutic agents induce an immunogenic response specifically directed to certain epitopes within the alpha-SN peptide. Preferred agents are the alpha-SN peptide itself and fragments thereof. Variants of such fragments, analogs and mimetics of natural alpha-SN peptide that induce and/or cross-react with antibodies to the preferred epitopes of alpha-SN peptide can also be used.

[0055] Alpha synuclein was originally identified in human brains as the precursor protein of the non- β -amyloid component of (NAC) of AD plaques. (Ueda *et al.*, *Proc.*

Natl. Acad. Sci. U.S.A. 90 (23):11282-11286 (1993). Alpha-SN, also termed the precursor of the non-A β component of AD amyloid (NACP), is a peptide of 140 amino acids.

Alpha-SN has the amino acid sequence:

MDVFMKGLSKAKEGVVAAAEKTKQGVAEAAGKTKEGVLYVGSKTKEGVVHGV
ATVAEKTKEQVTNVGGAVVTGVTAVAQKTVEGAGSLAAATGFVKKDQLGKNEE
GAPQEGILEDMPVDPDNEAYEMPSEEGYQDYEPEA (SEQ ID NO:1)

(Uéda et al., *Ibid.*; GenBank accession number: P37840).

[0056] The non-A β component of AD amyloid (NAC) is derived from alpha-SN. NAC, a highly hydrophobic domain within alpha synuclein, is a peptide consisting of at least 28 amino acids residues (residues 60-87) (SEQ ID NO: 3) and optionally 35 amino acid residues (residues 61-95) (SEQ ID NO: 2). *See Fig. 1.* NAC displays a tendency to form a beta-sheet structure (Iwai, *et al.*, *Biochemistry*, 34:10139-10145). Jensen *et al.* have reported NAC has the amino acid sequence:

EQVTNVGGAVVTGVTAVAQKTVEGAGSLAAATGFV (SEQ ID NO: 2)

(Jensen et al., *Biochem. J.* 310 (Pt 1): 91-94 (1995); GenBank accession number S56746).

[0057] Uéda *et al.* have reported NAC has the acid sequence:

KEQVTNVGGAVVTGVTAVAQKTVEGAGS (SEQ ID NO: 3)

(Uéda et al., *PNAS USA* 90:11282-11286 (1993)).

[0058] Disaggregated alpha-SN or fragments thereof, including NAC, means monomeric peptide units. Disaggregated alpha-SN or fragments thereof are generally soluble, and are capable of self-aggregating to form soluble oligomers. Oligomers of alpha-SN and fragments thereof are usually soluble and exist predominantly as alpha-helices. Monomeric alpha-SN may be prepared *in vitro* by dissolving lyophilized peptide

in neat DMSO with sonication. The resulting solution is centrifuged to remove any insoluble particulates. Aggregated alpha-SN or fragments thereof, including NAC, means oligomers of alpha-SN or fragments thereof which have associated into insoluble beta-sheet assemblies. Aggregated alpha-SN or fragments thereof, including NAC, means also means fibrillar polymers. Fibrils are usually insoluble. Some antibodies bind either soluble alpha-SN or fragments thereof or aggregated alpha-SN or fragments thereof. Some antibodies bind both soluble and aggregated alpha-SN or fragments thereof.

[0059] Alpha-SN, the principal component of the Lewy bodies characteristic of PD, and epitopic fragments thereof, such as, for example, NAC, or fragments other than NAC, can be used to induce an immunogenic response. Preferably such fragments comprise four or more amino acids of alpha-SN or analog thereof. Some active fragments include an epitope at or near the C-terminus of alpha-SN (*e.g.*, within amino acids 70-140, 100-140, 120-140, 130-140, or 135-140). In some active fragments, the C terminal residue of the epitope is the C-terminal residue of alpha-SN. Other components of Lewy bodies, for example, synphilin-1, Parkin, ubiquitin, neurofilament, beta-crystallin, and epitopic fragments thereof can also be used to induce an immunogenic response.

[0060] Unless otherwise indicated, reference to alpha-SN includes the natural human amino acid sequences indicated above as well as analogs including allelic, species and induced variants, full-length forms and immunogenic fragments thereof. Analogs typically differ from naturally occurring peptides at one, two or a few positions, often by virtue of conservative substitutions. Analogs typically exhibit at least 80 or 90% sequence identity with natural peptides. Some analogs also include unnatural amino acids or modifications of N or C terminal amino acids at one, two or a few positions. For example, the natural glutamic acid residue at position 139 of alpha-SN can be replaced with iso-aspartic acid. Examples of unnatural amino acids are D, alpha, alpha-disubstituted amino acids, N-alkyl amino acids, lactic acid, 4-hydroxyproline, gamma-carboxyglutamate, epsilon-N,N,N-trimethyllysine, epsilon-N-acetyllysine, O-phosphoserine, N-acetylserine, N-formylmethionine, 3-methylhistidine, 5-hydroxylysine, omega-N-methylarginine, β -alanine, ornithine, norleucine, norvaline, hydroxyproline, thyroxine, gamma-amino butyric acid, homoserine, citrulline, and isoaspartic acid. Therapeutic agents also include analogs of alpha-SN fragments. Some therapeutic agents of the invention are all-D peptides, *e.g.*, all-D alpha-SN or all-D NAC, and of all-D peptide analogs. Fragments and analogs can

be screened for prophylactic or therapeutic efficacy in transgenic animal models in comparison with untreated or placebo controls as described below.

[0061] Alpha-SN, its fragments, and analogs can be synthesized by solid phase peptide synthesis or recombinant expression, or can be obtained from natural sources. Automatic peptide synthesizers are commercially available from numerous suppliers, such as Applied Biosystems, Foster City, California. Recombinant expression can be in bacteria, such as *E. coli*, yeast, insect cells or mammalian cells. Procedures for recombinant expression are described by Sambrook *et al.*, *Molecular Cloning: A Laboratory Manual* (C.S.H.P. Press, NY 2d ed., 1989). Some forms of alpha-SN peptide are also available commercially, for example, at BACHEM and American Peptide Company, Inc.

[0062] Therapeutic agents also include longer polypeptides that include, for example, an active fragment of alpha-SN peptide, together with other amino acids. For example, preferred agents include fusion proteins comprising a segment of alpha-SN fused to a heterologous amino acid sequence that induces a helper T-cell response against the heterologous amino acid sequence and thereby a B-cell response against the alpha-SN segment. Such polypeptides can be screened for prophylactic or therapeutic efficacy in animal models in comparison with untreated or placebo controls as described below. The alpha-SN peptide, analog, active fragment or other polypeptide can be administered in associated or multimeric form or in dissociated form therapeutic agents also include multimers of monomeric immunogenic agents. The therapeutic agents of the invention may include polylysine sequences.

[0063] In a further variation, an immunogenic peptide, such as a fragment of alpha-SN, can be presented by a virus or bacteria as part of an immunogenic composition. A nucleic acid encoding the immunogenic peptide is incorporated into a genome or episome of the virus or bacteria. Optionally, the nucleic acid is incorporated in such a manner that the immunogenic peptide is expressed as a secreted protein or as a fusion protein with an outer surface protein of a virus or a transmembrane protein of bacteria so that the peptide is displayed. Viruses or bacteria used in such methods should be nonpathogenic or attenuated. Suitable viruses include adenovirus, HSV, Venezuelan equine encephalitis virus and other alpha viruses, vesicular stomatitis virus, and other rhabdo viruses, vaccinia and fowl pox. Suitable bacteria include *Salmonella* and *Shigella*. Fusion of an immunogenic peptide to HBsAg of HBV is particularly suitable.

[0064] Therapeutic agents also include peptides and other compounds that do not necessarily have a significant amino acid sequence similarity with alpha-SN but nevertheless serve as mimetics of alpha-SN and induce a similar immune response. For example, any peptides and proteins forming beta-pleated sheets can be screened for suitability. Anti-idiotypic antibodies against monoclonal antibodies to alpha-SN or other Lewy body components can also be used. Such anti-Id antibodies mimic the antigen and generate an immune response to it (*see Essential Immunology*, Roit ed., Blackwell Scientific Publications, Palo Alto, CA 6th ed., p. 181). Agents other than alpha-SN should induce an immunogenic response against one or more of the preferred segments of alpha-SN listed above (*e.g.*, NAC). Preferably, such agents induce an immunogenic response that is specifically directed to one of these segments without being directed to other segments of alpha-SN.

[0065] Random libraries of peptides or other compounds can also be screened for suitability. Combinatorial libraries can be produced for many types of compounds that can be synthesized in a step-by-step fashion. Such compounds include polypeptides, beta-turn mimetics, polysaccharides, phospholipids, hormones, prostaglandins, steroids, aromatic compounds, heterocyclic compounds, benzodiazepines, oligomeric N-substituted glycines and oligocarbamates. Large combinatorial libraries of the compounds can be constructed by the encoded synthetic libraries (ESL) method described in Affymax, WO 95/12608, Affymax, WO 93/06121, Columbia University, WO 94/08051, Pharmacocea, WO 95/35503 and Scripps, WO 95/30642 (each of which is incorporated herein by reference for all purposes). Peptide libraries can also be generated by phage display methods. *See, e.g.*, Devlin, WO 91/18980.

[0066] Combinatorial libraries and other compounds are initially screened for suitability by determining their capacity to bind to antibodies or lymphocytes (B or T) known to be specific for alpha-SN or other Lewy body components. For example, initial screens can be performed with any polyclonal sera or monoclonal antibody to alpha-SN or a fragment thereof. Compounds can then be screened for binding to a specific epitope within alpha-SN (*e.g.*, an epitope within NAC). Compounds can be tested by the same procedures described for mapping antibody epitope specificities. Compounds identified by such screens are then further analyzed for capacity to induce antibodies or reactive lymphocytes to alpha-SN or fragments thereof. For example, multiple dilutions of sera can be tested on microtiter plates that have been precoated with alpha-SN or a fragment thereof and a

standard ELISA can be performed to test for reactive antibodies to alpha-SN or the fragment. Compounds can then be tested for prophylactic and therapeutic efficacy in transgenic animals predisposed to a disease associated with the presence of Lewy body, as described in the Examples. Such animals include, for example, transgenic mice over expressing alpha-SN or mutant thereof (*e.g.*, alanine to threonine substitution at position 53) as described, *e.g.*, in WO 98/59050, Masliah, *et al.*, *Science* 287: 1265-1269 (2000), and van der Putter, *et al.*, *J. Neuroscience* 20: 6025-6029 (2000), or such transgenic mice that also over express APP or a mutant thereof. Particularly preferred are such synuclein transgenic mice bearing a 717 mutation of APP described by Games *et al.*, *Nature* 373, 523 (1995) and mice bearing a 670/671 Swedish mutation of APP such as described by McConlogue *et al.*, US 5,612,486 and Hsiao *et al.*, *Science* 274, 99 (1996); Staufenbiel *et al.*, *Proc. Natl. Acad. Sci. USA* 94, 13287-13292 (1997); Sturchler-Pierrat *et al.*, *Proc. Natl. Acad. Sci. USA* 94, 13287-13292 (1997); Borchelt *et al.*, *Neuron* 19, 939-945 (1997)). Examples of such synuclein/APP transgenic animals are provided in WO 01/60794. Additional animal models of PD include 6-hydroxydopamine, rotenone, and 1-methyl-4-phenyl-1,2,3,6- tetrahydropyridine (MPTP) animal models (M. Flint Beal, *Nature Reviews Neuroscience* 2:325-334 (2001)). The same screening approach can be used on other potential analogs of alpha-SN and longer peptides including fragments of alpha-SN, described above and other Lewy body components and analog or fragments thereof.

2. Agents for Passive Immune Response

[0067] Therapeutic agents of the invention also include antibodies that specifically bind to alpha-SN or other components of Lewy bodies. Antibodies immunoreactive for alpha-SN are known (*see*, for example, Arima, *et al.*, *Brian Res.* 808: 93-100 (1998); Crowther *et al.*, *Neuroscience Lett.* 292: 128-130 (2000); Spillantini, *et al.* *Nature* 388: 839-840 (1997). Such antibodies can be monoclonal or polyclonal. Some such antibodies bind specifically to insoluble aggregates of alpha-SN without binding to the soluble monomeric form. Some bind specifically to the soluble monomeric form without binding to the insoluble aggregated form. Some bind to both aggregated and soluble monomeric forms. Some such antibodies bind to a naturally occurring short form of alpha-SN (*e.g.*, NAC) without binding to a naturally occurring full length alpha-SN. Some antibodies bind to a long form without binding to a short form. Some antibodies bind to alpha-SN without binding to other components of LBs. Antibodies used in therapeutic methods usually have

an intact constant region or at least sufficient of the constant region to interact with an Fc receptor. Human isotype IgG1 is preferred because of it having highest affinity of human isotypes for the FcRI receptor on phagocytic cells. Bispecific Fab fragments can also be used, in which one arm of the antibody has specificity for alpha-SN, and the other for an Fc receptor. Some antibodies bind to alpha-SN with a binding affinity greater than or equal to about 10^6 , 10^7 , 10^8 , 10^9 , or 10^{10} M^{-1} .

[0068] Polyclonal sera typically contain mixed populations of antibodies binding to several epitopes along the length of alpha-SN. However, polyclonal sera can be specific to a particular segment of alpha-SN, such as NAC. Monoclonal antibodies bind to a specific epitope within alpha-SN that can be a conformational or nonconformational epitope. Prophylactic and therapeutic efficacy of antibodies can be tested using the transgenic animal model procedures described in the Examples. Preferred monoclonal antibodies bind to an epitope within NAC. In some methods, multiple monoclonal antibodies having binding specificities to different epitopes are used. Such antibodies can be administered sequentially or simultaneously. Antibodies to Lewy body components other than alpha-SN can also be used. For example, antibodies can be directed to neurofilament, ubiquitin, or synphilin. Therapeutic agents also include antibodies raised against analogs of alpha-SN and fragments thereof. Some therapeutic agents of the invention are all-D peptides, *e.g.*, all-D alpha-SN or all-D NAC.

[0069] When an antibody is said to bind to an epitope within specified residues, such as alpha-SN 1-5, for example, what is meant is that the antibody specifically binds to a polypeptide containing the specified residues (*i.e.*, alpha-SN 1-5 in this an example). Such an antibody does not necessarily contact every residue within alpha-SN 1-5. Nor does every single amino acid substitution or deletion within alpha-SN 1-5 necessarily significantly affect binding affinity. Epitope specificity of an antibody can be determined, for example, by forming a phage display library in which different members display different subsequences of alpha-SN. The phage display library is then selected for members specifically binding to an antibody under test. A family of sequences is isolated. Typically, such a family contains a common core sequence, and varying lengths of flanking sequences in different members. The shortest core sequence showing specific binding to the antibody defines the epitope bound by the antibody. Antibodies can also be tested for epitope specificity in a competition assay with an antibody whose epitope specificity has already been determined.

[0070] Some antibodies of the invention specifically binds to an epitope within NAC. Some antibodies specifically binds to an epitope within a 22-kilodalton glycosylated form of synuclein, *e.g.*, P22-synuclein (H. Shimura *et al.*, *Science* 2001 Jul 13:293(5528):224-5). Some antibodies binds to an epitope at or near the C-terminus of alpha-SN (*e.g.*, within amino acids 70-140, 100-140, 120-140, 130-140 or 135-140. Some antibodies bind to an epitope in which the C-terminal residue of the epitope is the C-terminal residue of alpha-SN. In some methods, the antibody specifically binds to NAC without binding to full length alpha-SN.

[0071] Monoclonal or polyclonal antibodies that specifically bind to a preferred segment of alpha-SN without binding to other regions of alpha-SN have a number of advantages relative to monoclonal antibodies binding to other regions or polyclonal sera to intact alpha-SN. First, for equal mass dosages, dosages of antibodies that specifically bind to preferred segments contain a higher molar dosage of antibodies effective in clearing amyloid plaques. Second, antibodies specifically binding to preferred segments can induce a clearing response against LBs without inducing a clearing response against intact alpha-SN, thereby reducing the potential for side effects.

i. General Characteristics of Immunoglobulins

[0072] The basic antibody structural unit is known to comprise a tetramer of subunits. Each tetramer is composed of two identical pairs of polypeptide chains, each pair having one "light" (about 25 kDa) and one "heavy" chain (about 50-70 kDa). The amino-terminal portion of each chain includes a variable region of about 100 to 110 or more amino acids primarily responsible for antigen recognition. The carboxy-terminal portion of each chain defines a constant region primarily responsible for effector function.

[0073] Light chains are classified as either kappa or lambda. Heavy chains are classified as gamma, mu, alpha, delta, or epsilon, and define the antibody's isotype as IgG, IgM, IgA, IgD and IgE, respectively. Within light and heavy chains, the variable and constant regions are joined by a "J" region of about 12 or more amino acids, with the heavy chain also including a "D" region of about 10 more amino acids. (*See generally, Fundamental Immunology*, Paul, W., ed., 2nd ed. Raven Press, N.Y., 1989, Ch. 7 (incorporated by reference in its entirety for all purposes).

[0074] The variable regions of each light/heavy chain pair form the antibody binding site. Thus, an intact antibody has two binding sites. Except in bifunctional or bispecific

antibodies, the two binding sites are the same. The chains all exhibit the same general structure of relatively conserved framework regions (FR) joined by three hypervariable regions, also called complementarity determining regions or CDRs. The CDRs from the two chains of each pair are aligned by the framework regions, enabling binding to a specific epitope. From N-terminal to C-terminal, both light and heavy chains comprise the domains FR1, CDR1, FR2, CDR2, FR3, CDR3 and FR4. The assignment of amino acids to each domain is in accordance with the definitions of Kabat, *Sequences of Proteins of Immunological Interest* (National Institutes of Health, Bethesda, MD, 1987 and 1991); Chothia & Lesk, *J. Mol. Biol.* 196:901-917 (1987); or Chothia *et al.*, *Nature* 342:878-883 (1989).

ii. Production of Nonhuman Antibodies

[0075] Chimeric and humanized antibodies have the same or similar binding specificity and affinity as a mouse or other nonhuman antibody that provides the starting material for construction of a chimeric or humanized antibody. Chimeric antibodies are antibodies whose light and heavy chain genes have been constructed, typically by genetic engineering, from immunoglobulin gene segments belonging to different species. For example, the variable (V) segments of the genes from a mouse monoclonal antibody may be joined to human constant (C) segments, such as IgG1 and IgG4. Human isotype IgG1 is preferred. In some methods, the isotype of the antibody is human IgG1. IgM antibodies can also be used in some methods. A typical chimeric antibody is thus a hybrid protein consisting of the V or antigen-binding domain from a mouse antibody and the C or effector domain from a human antibody.

[0076] Humanized antibodies have variable region framework residues substantially from a human antibody (termed an acceptor antibody) and complementarity determining regions substantially from a mouse-antibody, (referred to as the donor immunoglobulin). See, Queen *et al.*, *Proc. Natl. Acad. Sci. USA* 86:10029-10033 (1989), WO 90/07861, US 5,693,762, US 5,693,761, US 5,585,089, US 5,530,101, and Winter, US 5,225,539 (each of which is incorporated by reference in its entirety for all purposes). The constant region(s), if present, are also substantially or entirely from a human immunoglobulin. The human variable domains are usually chosen from human antibodies whose framework sequences exhibit a high degree of sequence identity with the murine variable region domains from which the CDRs were derived. The heavy and light chain variable region framework residues can be derived from the same or different human antibody sequences.

The human antibody sequences can be the sequences of naturally occurring human antibodies or can be consensus sequences of several human antibodies. *See Carter et al.*, WO 92/22653. Certain amino acids from the human variable region framework residues are selected for substitution based on their possible influence on CDR conformation and/or binding to antigen. Investigation of such possible influences is by modeling, examination of the characteristics of the amino acids at particular locations, or empirical observation of the effects of substitution or mutagenesis of particular amino acids.

[0077] For example, when an amino acid differs between a murine variable region framework residue and a selected human variable region framework residue, the human framework amino acid should usually be substituted by the equivalent framework amino acid from the mouse antibody when it is reasonably expected that the amino acid:

- (1) noncovalently binds antigen directly,
 - (2) is adjacent to a CDR region,
 - (3) otherwise interacts with a CDR region (e.g. is within about 6 Å of a CDR region),
- or
- (4) participates in the VL-VH interface.

[0078] Other candidates for substitution are acceptor human framework amino acids that are unusual for a human immunoglobulin at that position. These amino acids can be substituted with amino acids from the equivalent position of the mouse donor antibody or from the equivalent positions of more typical human immunoglobulins. Other candidates for substitution are acceptor human framework amino acids that are unusual for a human immunoglobulin at that position. The variable region frameworks of humanized immunoglobulins usually show at least 85% sequence identity to a human variable region framework sequence or consensus of such sequences.

iv. Human Antibodies

[0079] Human antibodies against alpha-SN are provided by a variety of techniques described below. Some human antibodies are selected by competitive binding experiments, or otherwise, to have the same epitope specificity as a particular mouse antibody, such as one of the mouse monoclonals described in Example XI. Human antibodies can also be screened for a particular epitope specificity by using only a fragment of alpha-SN as the immunogen, and/or by screening antibodies against a

collection of deletion mutants of alpha-SN. Human antibodies preferably have isotype specificity human IgG1.

(1) Trioma Methodology

[0080] The basic approach and an exemplary cell fusion partner, SPAZ-4, for use in this approach have been described by Oestberg *et al.*, *Hybridoma* 2:361-367 (1983); Oestberg, US Patent No. 4,634,664; and Engleman *et al.*, US Patent 4,634,666 (each of which is incorporated by reference in its entirety for all purposes). The antibody-producing cell lines obtained by this method are called triomas, because they are descended from three cells—two human and one mouse. Initially, a mouse myeloma line is fused with a human B-lymphocyte to obtain a non-antibody-producing xenogeneic hybrid cell, such as the SPAZ-4 cell line described by Oestberg, *supra*. The xenogeneic cell is then fused with an immunized human B-lymphocyte to obtain an antibody-producing trioma cell line. Triomas have been found to produce antibody more stably than ordinary hybridomas made from human cells.

[0081] The immunized B-lymphocytes are obtained from the blood, spleen, lymph nodes or bone marrow of a human donor. If antibodies against a specific antigen or epitope are desired, it is preferable to use that antigen or epitope thereof for immunization. Immunization can be either *in vivo* or *in vitro*. For *in vivo* immunization, B cells are typically isolated from a human immunized with alpha-SN, a fragment thereof, larger polypeptide containing alpha-SN or fragment, or an anti-idiotypic antibody to an antibody to alpha-SN. In some methods, B cells are isolated from the same patient who is ultimately to be administered antibody therapy. For *in vitro* immunization, B-lymphocytes are typically exposed to antigen for a period of 7-14 days in a media such as RPMI-1640 (*see* Engleman, *supra*) supplemented with 10% human plasma.

[0082] The immunized B-lymphocytes are fused to a xenogeneic hybrid cell such as SPAZ-4 by well known methods. For example, the cells are treated with 40-50% polyethylene glycol of MW 1000-4000, at about 37 degrees C, for about 5-10 min. Cells are separated from the fusion mixture and propagated in media selective for the desired hybrids (*e.g.*, HAT or AH). Clones secreting antibodies having the required binding specificity are identified by assaying the trioma culture medium for the ability to bind to alpha-SN or a fragment thereof. Triomas producing human antibodies having the desired specificity are subcloned by the limiting dilution technique and grown *in vitro* in culture

medium. The trioma cell lines obtained are then tested for the ability to bind alpha-SN or a fragment thereof.

[0083] Although triomas are genetically stable they do not produce antibodies at very high levels. Expression levels can be increased by cloning antibody genes from the trioma into one or more expression vectors, and transforming the vector into standard mammalian, bacterial or yeast cell lines.

(2) Transgenic Non-Human Mammals

[0084] Human antibodies against alpha-SN can also be produced from non-human transgenic mammals having transgenes encoding at least a segment of the human immunoglobulin locus. Usually, the endogenous immunoglobulin locus of such transgenic mammals is functionally inactivated. Preferably, the segment of the human immunoglobulin locus includes unrearranged sequences of heavy and light chain components. Both inactivation of endogenous immunoglobulin genes and introduction of exogenous immunoglobulin genes can be achieved by targeted homologous recombination, or by introduction of YAC chromosomes. The transgenic mammals resulting from this process are capable of functionally rearranging the immunoglobulin component sequences, and expressing a repertoire of antibodies of various isotypes encoded by human immunoglobulin genes, without expressing endogenous immunoglobulin genes. The production and properties of mammals having these properties are described in detail by, *e.g.*, Lonberg *et al.*, WO93/1222, US 5,877,397, US 5,874,299, US 5,814,318, US 5,789,650, US 5,770,429, US 5,661,016, US 5,633,425, US 5,625,126, US 5,569,825, US 5,545,806, *Nature* 148, 1547-1553 (1994), *Nature Biotechnology* 14, 826 (1996), Kucherlapati, WO 91/10741 (each of which is incorporated by reference in its entirety for all purposes). Transgenic mice are particularly suitable. Anti-alpha-SN antibodies are obtained by immunizing a transgenic nonhuman mammal, such as described by Lonberg or Kucherlapati, *supra*, with alpha-SN or a fragment thereof. Monoclonal antibodies are prepared by, *e.g.*, fusing B-cells from such mammals to suitable myeloma cell lines using conventional Kohler-Milstein technology. Human polyclonal antibodies can also be provided in the form of serum from humans immunized with an immunogenic agent. Optionally, such polyclonal antibodies can be concentrated by affinity purification using alpha-SN or other amyloid peptide as an affinity reagent.

(3) Phage Display Methods

[0085] A further approach for obtaining human anti-alpha-SN antibodies is to screen a DNA library from human B cells according to the general protocol outlined by Huse *et al.*, *Science* 246:1275-1281 (1989). As described for trioma methodology, such B cells can be obtained from a human immunized with alpha-SN, fragments, longer polypeptides containing alpha-SN or fragments or anti-idiotypic antibodies. Optionally, such B cells are obtained from a patient who is ultimately to receive antibody treatment. Antibodies binding to alpha-SN or a fragment thereof are selected. Sequences encoding such antibodies (or binding fragments) are then cloned and amplified. The protocol described by Huse is rendered more efficient in combination with phage-display technology. *See, e.g.*, Dower *et al.*, WO 91/17271 and McCafferty *et al.*, WO 92/01047, US 5,877,218, US 5,871,907, US 5,858,657, US 5,837,242, US 5,733,743 and US 5,565,332 (each of which is incorporated by reference in its entirety for all purposes). In these methods, libraries of phage are produced in which members display different antibodies on their outer surfaces. Antibodies are usually displayed as Fv or Fab fragments. Phage displaying antibodies with a desired specificity are selected by affinity enrichment to an alpha-SN peptide or fragment thereof.

[0086] In a variation of the phage-display method, human antibodies having the binding specificity of a selected murine antibody can be produced. *See* Winter, WO 92/20791. In this method, either the heavy or light chain variable region of the selected murine antibody is used as a starting material. If, for example, a light chain variable region is selected as the starting material, a phage library is constructed in which members display the same light chain variable region (*i.e.*, the murine starting material) and a different heavy chain variable region. The heavy chain variable regions are obtained from a library of rearranged human heavy chain variable regions. A phage showing strong specific binding for alpha-SN (*e.g.*, at least 10^8 and preferably at least 10^9 M⁻¹) is selected. The human heavy chain variable region from this phage then serves as a starting material for constructing a further phage library. In this library, each phage displays the same heavy chain variable region (*i.e.*, the region identified from the first display library) and a different light chain variable region. The light chain variable regions are obtained from a library of rearranged human variable light chain regions. Again, phage showing strong specific binding for alpha-SN are selected. These phage display the variable regions of

completely human anti-alpha-SN antibodies. These antibodies usually have the same or similar epitope specificity as the murine starting material.

v. Selection of Constant Region

[0087] The heavy and light chain variable regions of chimeric, humanized, or human antibodies can be linked to at least a portion of a human constant region. The choice of constant region depends, in part, whether antibody-dependent complement and/or cellular mediated toxicity is desired. For example, isotopes IgG1 and IgG3 have complement activity and isotypes IgG2 and IgG4 do not. Choice of isotype can also affect passage of antibody into the brain. Human isotype IgG1 is preferred. Light chain constant regions can be lambda or kappa. Antibodies can be expressed as tetramers containing two light and two heavy chains, as separate heavy chains, light chains, as Fab, Fab' F(ab')₂, and Fv, or as single chain antibodies in which heavy and light chain variable domains are linked through a spacer.

vi. Expression of Recombinant Antibodies

[0088] Chimeric, humanized and human antibodies are typically produced by recombinant expression. Recombinant polynucleotide constructs typically include an expression control sequence operably linked to the coding sequences of antibody chains, including naturally associated or heterologous promoter regions. Preferably, the expression control sequences are eukaryotic promoter systems in vectors capable of transforming or transfecting eukaryotic host cells. Once the vector has been incorporated into the appropriate host, the host is maintained under conditions suitable for high level expression of the nucleotide sequences, and the collection and purification of the crossreacting antibodies.

[0089] These expression vectors are typically replicable in the host organisms either as episomes or as an integral part of the host chromosomal DNA. Commonly, expression vectors contain selection markers, *e.g.*, ampicillin-resistance or hygromycin-resistance, to permit detection of those cells transformed with the desired DNA sequences.

[0090] *E. coli* is one prokaryotic host particularly useful for cloning the DNA sequences of the present invention. Microbes, such as yeast are also useful for expression. *Saccharomyces* is a preferred yeast host, with suitable vectors having expression control sequences, an origin of replication, termination sequences and the like as desired. Typical promoters include 3-phosphoglycerate kinase and other glycolytic enzymes. Inducible

yeast promoters include, among others, promoters from alcohol dehydrogenase, isocytochrome C, and enzymes responsible for maltose and galactose utilization.

[0091] Mammalian cells are a preferred host for expressing nucleotide segments encoding immunoglobulins or fragments thereof. *See Winnacker, From Genes to Clones*, (VCH Publishers, NY, 1987). A number of suitable host cell lines capable of secreting intact heterologous proteins have been developed in the art, and include CHO cell lines, various COS cell lines, HeLa cells, L cells, human embryonic kidney cell, and myeloma cell lines. Preferably, the cells are nonhuman. Expression vectors for these cells can include expression control sequences, such as an origin of replication, a promoter, an enhancer (Queen *et al.*, *Immunol. Rev.* 89:49 (1986)), and necessary processing information sites, such as ribosome binding sites, RNA splice sites, polyadenylation sites, and transcriptional terminator sequences. Preferred expression control sequences are promoters derived from endogenous genes, cytomegalovirus, SV40, adenovirus, bovine papillomavirus, and the like. *See Co et al.*, *J. Immunol.* 148:1149 (1992).

[0092] Alternatively, antibody coding sequences can be incorporated in transgenes for introduction into the genome of a transgenic animal and subsequent expression in the milk of the transgenic animal (*see, e.g.*, US 5,741,957, US 5,304,489, US 5,849,992). Suitable transgenes include coding sequences for light and/or heavy chains in operable linkage with a promoter and enhancer from a mammary gland specific gene, such as casein or beta lactoglobulin.

[0093] The vectors containing the DNA segments of interest can be transferred into the host cell by well-known methods, depending on the type of cellular host. For example, calcium chloride transfection is commonly utilized for prokaryotic cells, whereas calcium phosphate treatment, electroporation, lipofection, biolistics or viral-based transfection can be used for other cellular hosts. Other methods used to transform mammalian cells include the use of polybrene, protoplast fusion, liposomes, electroporation, and microinjection (*see generally*, Sambrook *et al.*, *supra*). For production of transgenic animals, transgenes can be microinjected into fertilized oocytes, or can be incorporated into the genome of embryonic stem cells, and the nuclei of such cells transferred into enucleated oocytes.

[0094] Once expressed, antibodies can be purified according to standard procedures of the art, including HPLC purification, column chromatography, gel electrophoresis and the like (*see generally*, Scopes, *Protein Purification* (Springer-Verlag, NY, 1982)).

3. Conjugates

[0095] Some agents for inducing an immune response contain the appropriate epitope for inducing an immune response against LBs but are too small to be immunogenic. In this situation, a peptide immunogen can be linked to a suitable carrier molecule to form a conjugate which helps elicit an immune response. Suitable carriers include serum albumins, keyhole limpet hemocyanin, immunoglobulin molecules, thyroglobulin, ovalbumin, tetanus toxoid, or a toxoid from other pathogenic bacteria, such as diphtheria, *E. coli*, cholera, or *H. pylori*, or an attenuated toxin derivative. T cell epitopes are also suitable carrier molecules. Some conjugates can be formed by linking agents of the invention to an immunostimulatory polymer molecule (*e.g.*, tripalmitoyl-S-glycerine cysteine (Pam₃Cys), mannan (a manose polymer), or glucan (a beta 1→2 polymer)), cytokines (*e.g.*, IL-1, IL-1 alpha and beta peptides, IL-2, gamma-INF, IL-10, GM-CSF), and chemokines (*e.g.*, MIP1 alpha and beta, and RANTES). Immunogenic agents can also be linked to peptides that enhance transport across tissues, as described in O'Mahony, WO 97/17613 and WO 97/17614. Immunogens may be linked to the carries with or without spacers amino acids (*e.g.*, gly-gly).

[0096] Some conjugates can be formed by linking agents of the invention to at least one T cell epitope. Some T cell epitopes are promiscuous while other T cell epitopes are universal. Promiscuous T cell epitopes are capable of enhancing the induction of T cell immunity in a wide variety of subjects displaying various HLA types. In contrast to promiscuous T cell epitopes, universal T cell epitopes are capable of enhancing the induction of T cell immunity in a large percentage, *e.g.*, at least 75%, of subjects displaying various HLA molecules encoded by different HLA-DR alleles.

[0097] A large number of naturally occurring T-cell epitopes exist, such as, tetanus toxoid (*e.g.*, the P2 and P30 epitopes), Hepatitis B surface antigen, pertussis, toxoid, measles virus F protein, *Chlamydia trachomatis* major outer membrane protein, diphtheria toxoid, *Plasmodium falciparum* circumsporozoite T, *Plasmodium falciparum* CS antigen, *Schistosoma mansoni* triose phosphate isomerase, *Escherichia coli* TraT, and Influenza virus hemagglutinin (HA). The immunogenic peptides of the invention can also be

conjugated to the T-cell epitopes described in Sinigaglia F. *et al.*, *Nature*, 336:778-780 (1988); Chicz R.M. *et al.*, *J. Exp. Med.*, 178:27-47 (1993); Hammer J. *et al.*, *Cell* 74:197-203 (1993); Falk K. *et al.*, *Immunogenetics*, 39:230-242 (1994); WO 98/23635; and, Southwood S. *et al.* *J. Immunology*, 160:3363-3373 (1998) (each of which is incorporated herein by reference for all purposes). Further examples include:

Influenza Hemagglutinin: HA₃₀₇₋₃₁₉ PKYVKQNTLKLAT (SEQ ID NO: 4)
 Malaria CS: T3 epitope EKIAKMEKASSVFNV (SEQ ID NO: 5)
 Hepatitis B surface antigen: HBsAg₁₉₋₂₈ FLLTRILTI (SEQ ID NO: 6)
 Heat Shock Protein 65: hsp65₁₅₃₋₁₇₁ DQSIGDLIAEAMDKVGNEG (SEQ ID NO: 7)
 bacille Calmette-Guerin QVHFQPLPPAVVKL (SEQ ID NO: 8)
 Tetanus toxoid: TT₈₃₀₋₈₄₄ QYIKANSKFIGITEL (SEQ ID NO: 9)
 Tetanus toxoid: TT₉₄₇₋₉₆₇ FNNFTVSFWLRVPKVSASHLE (SEQ ID NO: 10)
 HIV gp120 T1: KQIINMWQEVGKAMYA (SEQ ID NO: 11)

[0098] Alternatively, the conjugates can be formed by linking agents of the invention to at least one artificial T-cell epitope capable of binding a large proportion of MHC Class II molecules., such as the pan DR epitope ("PADRE"). PADRE is described in US 5,736,142, WO 95/07707, and Alexander J *et al.*, *Immunity*, 1:751-761 (1994) (each of which is incorporated herein by reference for all purposes). A preferred PADRE peptide is **AKXVAAWTLKAAA** (SEQ ID NO: 12), (common residues bolded) wherein X is preferably cyclohexylalanine, tyrosine or phenylalanine, with cyclohexylalanine being most preferred.

[0099] Immunogenic agents can be linked to carriers by chemical crosslinking. Techniques for linking an immunogen to a carrier include the formation of disulfide linkages using N-succinimidyl-3-(2-pyridyl-thio) propionate (SPDP) and succinimidyl 4-(N-maleimidomethyl)cyclohexane-1-carboxylate (SMCC) (if the peptide lacks a sulfhydryl group, this can be provided by addition of a cysteine residue). These reagents create a disulfide linkage between themselves and peptide cysteine residues on one protein and an amide linkage through the epsilon-amino on a lysine, or other free amino group in other amino acids. A variety of such disulfide/amide-forming agents are described by *Immun. Rev.* 62, 185 (1982). Other bifunctional coupling agents form a thioether rather than a disulfide linkage. Many of these thio-ether-forming agents are commercially available and include reactive esters of 6-maleimidocaproic acid, 2-bromoacetic acid, and

2-iodoacetic acid, 4-(N-maleimido-methyl)cyclohexane-1-carboxylic acid. The carboxyl groups can be activated by combining them with succinimide or 1-hydroxyl-2-nitro-4-sulfonic acid, sodium salt.

[0100] Immunogenicity can be improved through the addition of spacer residues (*e.g.*, Gly-Gly) between the T_h epitope and the peptide immunogen of the invention. In addition to physically separating the T_h epitope from the B cell epitope (*i.e.*, the peptide immunogen), the glycine residues can disrupt any artificial secondary structures created by the joining of the T_h epitope with the peptide immunogen, and thereby eliminate interference between the T and/or B cell responses. The conformational separation between the helper epitope and the antibody eliciting domain thus permits more efficient interactions between the presented immunogen and the appropriate T_h and B cells.

[0101] To enhance the induction of T cell immunity in a large percentage of subjects displaying various HLA types to an agent of the present invention, a mixture of conjugates with different T_h cell epitopes can be prepared. The mixture may contain a mixture of at least two conjugates with different T_h cell epitopes, a mixture of at least three conjugates with different T_h cell epitopes, or a mixture of at least four conjugates with different T_h cell epitopes. The mixture may be administered with an adjuvant.

[0102] Immunogenic peptides can also be expressed as fusion proteins with carriers (*i.e.*, heterologous peptides). The immunogenic peptide can be linked at its amino terminus, its carboxyl terminus, or both to a carrier. Optionally, multiple repeats of the immunogenic peptide can be present in the fusion protein. Optionally, an immunogenic peptide can be linked to multiple copies of a heterologous peptide, for example, at both the N and C termini of the peptide. Some carrier peptides serve to induce a helper T-cell response against the carrier peptide. The induced helper T-cells in turn induce a B-cell response against the immunogenic peptide linked to the carrier peptide.

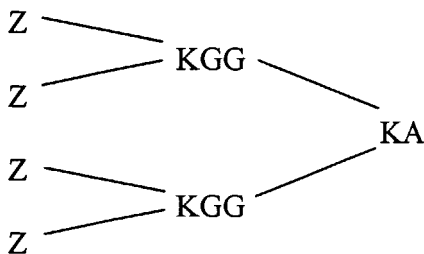
[0103] Some agents of the invention comprise a fusion protein in which an N-terminal fragment of alpha-SN is linked at its C-terminus to a carrier peptide. In such agents, the N-terminal residue of the fragment of alpha-SN constitutes the N-terminal residue of the fusion protein. Accordingly, such fusion proteins are effective in inducing antibodies that bind to an epitope that requires the N-terminal residue of alpha-SN to be in free form. Some agents of the invention comprise a plurality of repeats of NAC linked at the C-

terminus to one or more copy of a carrier peptide. Some fusion proteins comprise different segments of alpha-SN in tandem.

[0104] In some fusion proteins, NAC is fused at its N-terminal end to a heterologous carrier peptide. NAC can be used with C-terminal fusions. Some fusion proteins comprise a heterologous peptide linked to the N-terminus or C-terminus of NAC, which is in turn linked to one or more additional NAC segments of alpha-SN in tandem.

[0105] Some examples of fusion proteins suitable for use in the invention are shown below. Some of these fusion proteins comprise segments of alpha-SN linked to tetanus toxoid epitopes such as described in US 5,196,512, EP 378,881 and EP 427,347. Some fusion proteins comprise segments of alpha-SN linked to at least one PADRE. Some heterologous peptides are promiscuous T-cell epitopes, while other heterologous peptides are universal T-cell epitopes. In some methods, the agent for administration is simply a single fusion protein with an alpha-SN segment linked to a heterologous segment in linear configuration. The therapeutic agents of the invention may be represented using a formula. For example, in some methods, the agent is multimer of fusion proteins represented by the formula 2^x , in which x is an integer from 1-5. Preferably x is 1, 2, or 3, with 2 being most preferred. When x is two, such a multimer has four fusion proteins linked in a preferred configuration referred to as MAP4 (*see* US 5,229,490).

[0106] The MAP4 configuration is shown below, where branched structures are produced by initiating peptide synthesis at both the N terminal and side chain amines of lysine. Depending upon the number of times lysine is incorporated into the sequence and allowed to branch, the resulting structure will present multiple N termini. In this example, four identical N termini have been produced on the branched lysine-containing core. Such multiplicity greatly enhances the responsiveness of cognate B cells.



[0107] Z refers to the NAC peptide, a fragment of the NAC peptide, or other active fragment of alpha-SN as described in section I. 2 above. Z may represent more than one active fragment, for example:

Z = alpha-SN 60-72 (NAC region) peptide = NH₂-KEQVTNVCGGAVVT-COOH (SEQ ID NO: 13)

Z = alpha-SN 73-84 (NAC region) peptide = NH₂-GVTAVAQKTVECG-COOH (SEQ ID NO: 14)

Z = alpha-SN 102-112 peptide = NH₂-C-amino-heptanoic acid-KNEEGAPCQEG-COOH (SEQ ID NO: 15)

alpha-SN 128-140 peptide

[0108] Other examples of fusion proteins include:

Z-Tetanus toxoid 830-844 in a MAP4 configuration:

Z-QYIKANSKFIGITEL (SEQ ID NO: 16)

Z-Tetanus toxoid 947-967 in a MAP4 configuration:

Z-FNNFTVSFWLRVPKVSASHLE (SEQ ID NO: 17)

Z-Tetanus toxoid₈₃₀₋₈₄₄ in a MAP4 configuration:

Z-QYIKANSKFIGITEL (SEQ ID NO: 18)

Z-Tetanus toxoid₈₃₀₋₈₄₄ + Tetanus toxoid₉₄₇₋₉₆₇ in a linear configuration:

Z-QYIKANSKFIGITELFNNFTVSFWLRVPKVSASHLE (SEQ ID NO: 19)

[0109] PADRE peptide (all in linear configurations), wherein X is preferably cyclohexylalanine, tyrosine or phenylalanine, with cyclohexylalanine being most preferred-Z:

AKXVAAWTLKAAA-Z (SEQ ID NO: 20)

3Z-PADRE peptide:

Z-Z-Z-AKXVAAWTLKAAA (SEQ ID NO: 21)

[0110] Further examples of fusion proteins include:

AKXVAAWTLKAAA-Z-Z-Z-Z (SEQ ID NO: 22)

Z-AKXVAAWTLKAAA (SEQ ID NO: 23)

Z-ISQAVHAAHAEINEAGR (SEQ ID NO: 24)

PKYVKQNTLKLAT-Z-Z-Z (SEQ ID NO: 25)

Z-PKYVKQNTLKLAT-Z (SEQ ID NO: 26)

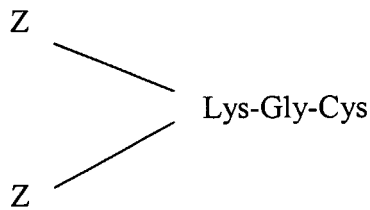
Z-Z-Z-PKYVKQNTLKLAT (SEQ ID NO: 27)

Z-Z-PKYVKQNTLKLAT (SEQ ID NO: 28)

Z-PKYVKQNTLKLAT-EKKIAKMEKASSVFNV-QYIKANSKFIGITEL-
FNNFTVSFWLRVPKVSASHLE-Z-Z-Z-Z-QYIKANSKFIGITEL-
FNNFTVSFWLRVPKVSASHLE (SEQ ID NO: 29)

Z-QYIKANSKFIGITELCFNNFTVSFWLRVPKVSASHLE-Z-
QYIKANSKFIGITELCFNNFTVSFWLRVPKVSASHLE-Z (SEQ ID NO: 30)

Z-QYIKANSKFIGITEL (SEQ ID NO: 31) on a 2 branched resin:



EQVTNVGGAISQAVHAAHAENEAGR (SEQ ID NO: 32)

(Synuclein fragment fusion protein in MAP-4 configuration)

[0111] The same or similar carrier proteins and methods of linkage can be used for generating immunogens to be used in generation of antibodies against alpha-SN for use in passive immunization. For example, alpha-SN or a fragment linked to a carrier can be administered to a laboratory animal in the production of monoclonal antibodies to alpha-SN.

4. Nucleic Acid Encoding Therapeutic Agents

[0112] Immune responses against Lewy bodies can also be induced by administration of nucleic acids encoding segments of alpha-SN peptide, and fragments thereof, other peptide immunogens, or antibodies and their component chains used for passive immunization. Such nucleic acids can be DNA or RNA. A nucleic acid segment encoding an immunogen is typically linked to regulatory elements, such as a promoter and enhancer that allow

expression of the DNA segment in the intended target cells of a patient. For expression in blood cells, as is desirable for induction of an immune response, promoter and enhancer elements from light or heavy chain immunoglobulin genes or the CMV major intermediate early promoter and enhancer are suitable to direct expression. The linked regulatory elements and coding sequences are often cloned into a vector. For administration of double-chain antibodies, the two chains can be cloned in the same or separate vectors. The nucleic acid encoding therapeutic agents of the invention may also encode at least one T cell epitope. The disclosures herein which relates to the use of adjuvants and the use of apply *mutatis mutandis* to their use with the nucleic acid encoding therapeutic agents of the present invention.

[0113] A number of viral vector systems are available including retroviral systems (*see, e.g.,* Lawrie and Tumin, *Cur. Opin. Genet. Develop.* 3, 102-109 (1993)); adenoviral vectors (*see, e.g.,* Bett *et al.*, *J. Virol.* 67, 5911 (1993)); adeno-associated virus vectors (*see, e.g.,* Zhou *et al.*, *J. Exp. Med.* 179, 1867 (1994)), viral vectors from the pox family including vaccinia virus and the avian pox viruses, viral vectors from the alpha virus genus such as those derived from Sindbis and Semliki Forest Viruses (*see, e.g.,* Dubensky *et al.*, *J. Virol.* 70, 508-519 (1996)), Venezuelan equine encephalitis virus (*see* US 5,643,576) and rhabdoviruses, such as vesicular stomatitis virus (*see* WO 96/34625) and papillomaviruses (Ohe *et al.*, *Human Gene Therapy* 6, 325-333 (1995); Woo *et al.*, WO 94/12629 and Xiao & Brandsma, *Nucleic Acids. Res.* 24, 2630-2622 (1996)).

[0114] DNA encoding an immunogen, or a vector containing the same, can be packaged into liposomes. Suitable lipids and related analogs are described by US 5,208,036, US 5,264,618, US 5,279,833, and US 5,283,185. Vectors and DNA encoding an immunogen can also be adsorbed to or associated with particulate carriers, examples of which include polymethyl methacrylate polymers and polylactides and poly(lactide-co-glycolides), (*see, e.g.,* McGee *et al.*, *J. Micro Encap.* 1996).

[0115] Gene therapy vectors or naked DNA can be delivered *in vivo* by administration to an individual patient, typically by systemic administration (*e.g.,* intravenous, intraperitoneal, nasal, gastric, intradermal, intramuscular, subdermal, or intracranial infusion) or topical application (*see e.g.,* US 5,399,346). Such vectors can further include facilitating agents such as bupivacaine (*see e.g.,* US 5,593,970). DNA can also be administered using a gene gun. *See* Xiao & Brandsma, *supra*. The DNA encoding an

immunogen is precipitated onto the surface of microscopic metal beads. The microprojectiles are accelerated with a shock wave or expanding helium gas, and penetrate tissues to a depth of several cell layers. For example, The Accel™ Gene Delivery Device manufactured by Agacetus, Inc. Middleton, WI is suitable. Alternatively, naked DNA can pass through skin into the blood stream simply by spotting the DNA onto skin with chemical or mechanical irritation (*see* WO 95/05853).

[0116] In a further variation, vectors encoding immunogens can be delivered to cells *ex vivo*, such as cells explanted from an individual patient (*e.g.*, lymphocytes, bone marrow aspirates, and tissue biopsy) or universal donor hematopoietic stem cells, followed by reimplantation of the cells into a patient, usually after selection for cells which have incorporated the vector.

III. Agents for Inducing Immunogenic Response Against A β

[0117] A β , also known as β -amyloid peptide, or A4 peptide (*see* US 4,666,829; Glenner & Wong, *Biochem. Biophys. Res. Commun.* 120, 1131 (1984)), is a peptide of 39-43 amino acids, which is the principal component of characteristic plaques of Alzheimer's disease. A β is generated by processing of a larger protein APP by two enzymes, termed β and γ secretases (*see* Hardy, *TINS* 20, 154 (1997)). Known mutations in APP associated with Alzheimer's disease occur proximate to the site of β or γ secretase, or within A β . For example, position 717 is proximate to the site of γ -secretase cleavage of APP in its processing to A β , and positions 670/671 are proximate to the site of β -secretase cleavage. It is believed that the mutations cause AD by interacting with the cleavage reactions by which A β is formed so as to increase the amount of the 42/43 amino acid form of A β generated.

[0118] A β has the unusual property that it can fix and activate both classical and alternate complement cascades. In particular, it binds to C1q and ultimately to C3bi. This association facilitates binding to macrophages leading to activation of B cells. In addition, C3bi breaks down further and then binds to CR2 on B cells in a T cell dependent manner leading to a 10,000 increase in activation of these cells. This mechanism causes A β to generate an immune response in excess of that of other antigens.

[0119] A β has several natural occurring forms. The human forms of A β are referred to as A β 39, A β 40, A β 41, A β 42 and A β 43. The sequences of these peptides and their

relationship to the APP precursor are illustrated by Fig. 1 of Hardy *et al.*, TINS 20, 155-158 (1997). For example, A β 42 has the sequence:

[0120] DAEFRHDSGYEVHHQKLVFFAEDVGSNKGAIIGLMVGGGVVIAT
(SEQ ID NO: 33)

[0121] A β 41, A β 40 and A β 39 differ from A β 42 by the omission of Ala, Ala-Ile, and Ala-Ile-Val respectively from the C-terminal end. A β 43 differs from A β 42 by the presence of a Thr residue at the C-terminus.

[0122] Analogous agents to those described above for alpha-SN have previously been described for A β (*see* WO 98/25386 and WO 00/72880, both of which are incorporated herein for all purposes). These agents include A β and active fragments thereof, conjugates of A β , and conjugates of A β active fragments, antibodies to A β and active fragments thereof (*e.g.*, mouse, humanized, human, and chimeric antibodies), and nucleic acids encoding antibody chains. Active fragments from the N-terminal half of A β are preferred. Preferred immunogenic fragments include A β 1-5, 1-6, 1-7, 1-10, 3-7, 1-3, and 1-4. The designation A β 1-5 for example, indicates a fragment including residues 1-5 of A β and lacking other residues of A β . Fragments beginning at residues 1-3 of A β and ending at residues 7-11 of A β are particularly preferred.

[0123] The disclosures herein which relates to agents inducing an active immune response, agents for inducing a passive immune response, conjugates, and nucleic acids encoding therapeutic agents (*see* Sections II. 1, 2, 3, and 4, above) apply *mutatis mutandis* to the use of A β and fragments thereof. The disclosures herein which relate to agents inducing an active immune response, agents for inducing a passive immune response, conjugates, and nucleic acids encoding therapeutic agents (*see* Sections II. 1, 2, 3, and 4, above) apply *mutatis mutandis* to the use of A β and fragments thereof. The disclosures herein which relate to patients amenable to treatment, and treatment regimes (*see* Sections IV and V, below) apply *mutatis mutandis* to the use of A β and fragments thereof.

[0124] Disaggregated A β or fragments thereof means monomeric peptide units. Disaggregated A β or fragments thereof are generally soluble, and are capable of self-aggregating to form soluble oligomers. Oligomers of A β and fragments thereof are usually soluble and exist predominantly as alpha-helices or random coils. Aggregated A β or fragments thereof, means oligomers of alpha-SN or fragments thereof that have

associate into insoluble beta-sheet assemblies. Aggregated A β or fragments thereof, means also means fibrillar polymers. Fibrils are usually insoluble. Some antibodies bind either soluble A β or fragments thereof or aggregated A β or fragments thereof. Some antibodies bind both soluble A β or fragments thereof and aggregated A β or fragments thereof.

Some examples of conjugates include:

AN90549 (A β 1-7-Tetanus toxoid 830-844 in a MAP4 configuration): (SEQ ID NO: 34)

DAEFRHD-QYIKANSKFIGITEL

AN90550 (A β 1-7-Tetanus toxoid 947-967 in a MAP4 configuration):

DAEFRHD-FNNFTVSFWLRVPKVSASHLE (SEQ ID NO: 35)

AN90542 (A β 1-7-Tetanus toxoid 830-844 + 947-967 in a linear configuration):

DAEFRHD-QYIKANSKFIGITELFNNFTVSFWLRVPKVSASHLE (SEQ ID NO: 36)

AN90576: (A β 3-9)-Tetanus toxoid 830-844 in a MAP4 configuration):

EFRHDSG-QYIKANSKFIGITEL (SEQ ID NO: 37)

[0125] PADRE peptide (all in linear configurations), wherein X is preferably cyclohexylalanine, tyrosine or phenylalanine, with cyclohexylalanine being most preferred:

[0126] AN90562 (PADRE-A β 1-7):

AKXVAAWTLAAA-DAEFRHD (SEQ ID NO: 38)

[0127] AN90543 (3 PADRE-A β 1-7):

DAEFRHD-DAEFRHD-DAEFRHD-AKXVAAWTLKAAA (SEQ ID NO: 39)

[0128] Other examples of fusion proteins (immunogenic epitope of A β bolded) include:

AKXVAAWTLKAAA-DAEFRHD-DAEFRHD-DAEFRHD (SEQ ID NO: 40)

DAEFRHD-AKXVAAWTLKAAA (SEQ ID NO: 41)

DAEFRHD-ISQAVHAAHAEINEAGR (SEQ ID NO: 42)

FRHDSGY-ISQAVHAAHAEINEAGR (SEQ ID NO: 43)

EFRHDSG-ISQAVHAAHAEINEAGR (SEQ ID NO: 44)

PKYVKQNTLKLAT-DAEFRHD-DAEFRHD-DAEFRHD (SEQ ID NO: 45)

DAEFRHD-PKYVKQNTLKLAT-DAEFRHD (SEQ ID NO: 46)

DAEFRHD-DAEFRHD-DAEFRHD-PKYVKQNTLKLAT (SEQ ID NO: 47)

DAEFRHD-DAEFRHD-PKYVKQNTLKLAT (SEQ ID NO: 48)

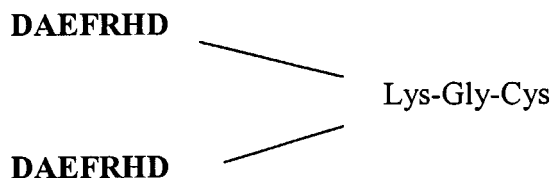
DAEFRHD-PKYVKQNTLKLAT-EKKIAKMEKASSVFNV-QYIKANSKFIGITEL-FNNFTVSFWLRVPKVSASHLE-DAEFRHD (SEQ ID NO: 49)

DAEFRHD-DAEFRHD-DAEFRHD-QYIKANSKFIGITELNFTVSFWLRVPKVSASHLE (SEQ ID NO: 50)

DAEFRHD-QYIKANSKFIGITELCFNNFTVSFWLRVPKVSASHLE (SEQ ID NO: 51)

DAEFRHD-QYIKANSKFIGITELCFNNFTVSFWLRVPKVSASHLE-DAEFRHD
(SEQ ID NO: 52)

DAEFRHD-QYIKANSKFIGITEL (SEQ ID NO: 53) on a 2 branched resin.



[0129] Preferred monoclonal antibodies bind to an epitope within residues 1-10 of A β (with the first N terminal residue of natural A β designated 1). Some preferred monoclonal antibodies bind to an epitope within amino acids 1-5, and some to an epitope within 5-10. Some preferred antibodies bind to epitopes within amino acids 1-3, 1-4, 1-5, 1-6, 1-7 or 3-7. Some preferred antibodies bind to an epitope starting at residues 1-3 and ending at residues 7-11 of A β . Other antibodies include those binding to epitopes with residues 13-280 (*e.g.*, monoclonal antibody 266). Preferred antibodies have human IgG1 isotype.

IV. Screening Antibodies for Clearing Activity

[0130] The invention provides methods of screening an antibody for activity in clearing a Lewy body or any other antigen, or associated biological entity, for which clearing

activity is desired. To screen for activity against a Lewy body, a tissue sample from a brain of a patient with PD or an animal model having characteristic Parkinson's pathology is contacted with phagocytic cells bearing an Fc receptor, such as microglial cells, and the antibody under test in a medium in vitro. The phagocytic cells can be a primary culture or a cell line, such as BV-2, C8-B4, or THP-1. In some methods, the components are combined on a microscope slide to facilitate microscopic monitoring. In some methods, multiple reactions are performed in parallel in the wells of a microtiter dish. In such a format, a separate miniature microscope slide can be mounted in the separate wells, or a nonmicroscopic detection format, such as ELISA detection of alpha-SN can be used. Preferably, a series of measurements is made of the amount of Lewy body in the in vitro reaction mixture, starting from a baseline value before the reaction has proceeded, and one or more test values during the reaction. The antigen can be detected by staining, for example, with a fluorescently labeled antibody to alpha-SN or other component of amyloid plaques. The antibody used for staining may or may not be the same as the antibody being tested for clearing activity. A reduction relative to baseline during the reaction of the LBs indicates that the antibody under test has clearing activity. Such antibodies are likely to be useful in preventing or treating PD and other LBD.

[0131] Analogous methods can be used to screen antibodies for activity in clearing other types of biological entities. The assay can be used to detect clearing activity against virtually any kind of biological entity. Typically, the biological entity has some role in human or animal disease. The biological entity can be provided as a tissue sample or in isolated form. If provided as a tissue sample, the tissue sample is preferably unfixed to allow ready access to components of the tissue sample and to avoid perturbing the conformation of the components incidental to fixing. Examples of tissue samples that can be tested in this assay include cancerous tissue, precancerous tissue, tissue containing benign growths such as warts or moles, tissue infected with pathogenic microorganisms, tissue infiltrated with inflammatory cells, tissue bearing pathological matrices between cells (*e.g.*, fibrinous pericarditis), tissue bearing aberrant antigens, and scar tissue. Examples of isolated biological entities that can be used include alpha-SN, viral antigens or viruses, proteoglycans, antigens of other pathogenic microorganisms, tumor antigens, and adhesion molecules. Such antigens can be obtained from natural sources, recombinant expression or chemical synthesis, among other means. The tissue sample or isolated biological entity is contacted with phagocytic cells bearing Fc receptors, such as

monocytes or microglial cells, and an antibody to be tested in a medium. The antibody can be directed to the biological entity under test or to an antigen associated with the entity. In the latter situation, the object is to test whether the biological entity is vicariously phagocytosed with the antigen. Usually, although not necessarily, the antibody and biological entity (sometimes with an associated antigen) are contacted with each other before adding the phagocytic cells. The concentration of the biological entity and/or the associated antigen, if present, remaining in the medium is then monitored. A reduction in the amount or concentration of antigen or the associated biological entity in the medium indicates the antibody has a clearing response against the antigen and/or associated biological entity in conjunction with the phagocytic cells.

[0132] Antibodies or other agents can also be screened for activity in clearing Lewy bodies using the in vitro assay described in Example II. Neuronal cells transfected with an expression vector expressing synuclein form synuclein inclusions that can be visualized microscopically. The activity of an antibody or other agent in clearing such inclusions can be determined comparing appearance or level of synuclein in transfected cells treated with agent with appearance or level of synuclein in control cells not treated with the agent. A reduction in size or intensity of synuclein inclusions or a reduction in level of synuclein signals activity in clearing synuclein. The activity can be monitored either by visualizing synuclein inclusions microscopically or by running cell extracts on a gel and visualizing a synuclein band. As noted in Example 1, section 2, the change in level of synuclein is most marked if the extracts are fractionated into cytosolic and membrane fractions, and the membrane fraction is analyzed.

V. PATIENTS AMENABLE TO TREATMENT

[0133] Patients amenable to treatment include individuals at risk of a synucleinopathic disease but not showing symptoms, as well as patients presently showing symptoms. Patients amenable to treatment also include individuals at risk of disease of a LBD but not showing symptoms, as well as patients presently showing symptoms. Such diseases include Parkinson's disease (including idiopathic Parkinson's disease), DLB, DLBD, LBVAD, pure autonomic failure, Lewy body dysphagia, incidental LBD, inherited LBD (*e.g.*, mutations of the alpha-SN gene, PARK3 and PARK4) and multiple system atrophy (*e.g.*, olivopontocerebellar atrophy, striatonigral degeneration and Shy-Drager syndrome). Therefore, the present methods can be administered prophylactically to individuals who

have a known genetic risk of a LBD. Such individuals include those having relatives who have experienced this disease, and those whose risk is determined by analysis of genetic or biochemical markers. Genetic markers of risk toward PD include mutations in the synuclein or Parkin, UCHLI, and CYP2D6 genes; particularly mutations at position 53 of the synuclein gene. Individuals presently suffering from Parkinson's disease can be recognized from its clinical manifestations including resting tremor, muscular rigidity, bradykinesia and postural instability.

[0134] In some methods, is free of clinical symptoms, signs and/or risk factors of any amyloidogenic disease and suffers from at least one synucleinopathic disease. In some methods, the patient is free of clinical symptoms, signs and/or risk factors of any disease characterized by extracellular amyloid deposits. In some methods, the patient is free of diseases characterized by amyloid deposits of A β peptide. In some methods, the patient is free of clinical symptoms, signs and/or risk factors of Alzheimer's disease. In some methods, the patient is free of clinical symptoms, signs and/or risk factors of Alzheimer's disease, cognitive impairment, mild cognitive impairment and Down's syndrome. In some methods, the patient has concurrent Alzheimer's disease and a disease characterized by Lewy bodies. In some methods, the patient has concurrent Alzheimer's disease and a disease characterized synuclein accumulation. In some methods, the patient has concurrent Alzheimer's and Parkinson's disease.

[0135] In asymptomatic patients, treatment can begin at any age (*e.g.*, 10, 20, or 30). Usually, however, it is not necessary to begin treatment until a patient reaches 40, 50, 60, or 70. Treatment typically entails multiple dosages over a period of time. Treatment can be monitored by assaying antibody, or activated T-cell or B-cell responses to the therapeutic agent (*e.g.*, alpha-SN peptide or A β , or both) over time. If the response falls, a booster dosage is indicated.

[0136] Optionally, presence of absence of symptoms, signs or risk factors of a disease is determined before beginning treatment.

VI. TREATMENT REGIMES

[0137] In general treatment regimes involve administering an agent effective to induce an immunogenic response to alpha-SN and/or an agent effective to induce an immunogenic response to A β to a patient. In prophylactic applications, pharmaceutical compositions or medicaments are administered to a patient susceptible to, or otherwise at

risk of a LBD in regime comprising an amount and frequency of administration of the composition or medicament sufficient to eliminate or reduce the risk, lessen the severity, or delay the outset of the disease, including physiological, biochemical, histologic and/or behavioral symptoms of the disease, its complications and intermediate pathological phenotypes presenting during development of the disease. In therapeutic applications, compositions or medicaments are administered to a patient suspected of, or already suffering from such a disease in a regime comprising an amount and frequency of administration of the composition sufficient to cure, or at least partially arrest, the symptoms of the disease (physiological, biochemical, histologic and/or behavioral), including its complications and intermediate pathological phenotypes in development of the disease. An amount adequate to accomplish therapeutic or prophylactic treatment is defined as a therapeutically- or prophylactically-effective dose. A combination of amount and dosage frequency adequate to accomplish therapeutic or prophylactic treatment is defined as a therapeutically or prophylactically-effective regime. In both prophylactic and therapeutic regimes, agents are usually administered in several dosages until a sufficient immune response has been achieved. Typically, the immune response is monitored and repeated dosages are given if the immune response starts to wane.

[0138] In some methods, administration of an agent results in reduction of intracellular levels of aggregated synuclein. In some methods, administration of an agent results in improvement in a clinical symptom of a LBD, such as motor function in the case of Parkinson's disease. In some methods, reduction in intracellular levels of aggregated synuclein or improvement in a clinical symptom of disease is monitored at intervals after administration of an agent.

[0139] Effective doses of the compositions of the present invention, for the treatment of the above described conditions vary depending upon many different factors, including means of administration, target site, physiological state of the patient, whether the patient is human or an animal, other medications administered, and whether treatment is prophylactic or therapeutic. Usually, the patient is a human but nonhuman mammals including transgenic mammals can also be treated. Treatment dosages need to be titrated to optimize safety and efficacy. The amount of immunogen depends on whether adjuvant is also administered, with higher dosages being required in the absence of adjuvant. The amount of an immunogen for administration sometimes varies from 1-500 μg per patient and more usually from 5-500 μg per injection for human administration. Occasionally, a

higher dose of 1-2 mg per injection is used. Typically about 10, 20, 50 or 100 μg is used for each human injection. The mass of immunogen also depends on the mass ratio of immunogenic epitope within the immunogen to the mass of immunogen as a whole. Typically, 10^{-3} to 10^{-5} micromoles of immunogenic epitope are used for microgram of immunogen. The timing of injections can vary significantly from once a day, to once a year, to once a decade. On any given day that a dosage of immunogen is given, the dosage is greater than 1 μg /patient and usually greater than 10 μg /patient if adjuvant is also administered, and greater than 10 μg /patient and usually greater than 100 μg /patient in the absence of adjuvant. A typical regimen consists of an immunization followed by booster injections at time intervals, such as 6 week intervals. Another regimen consists of an immunization followed by booster injections 1, 2 and 12 months later. Another regimen entails an injection every two months for life. Alternatively, booster injections can be on an irregular basis as indicated by monitoring of immune response.

[0140] For passive immunization with an antibody, the dosage ranges from about 0.0001 to 100 mg/kg, and more usually 0.01 to 5 mg/kg, of the host body weight. For example dosages can be 1 mg/kg body weight or 10 mg/kg body weight or within the range of 1-10 mg/kg or, in other words, 70 mgs or 700 mgs or within the range of 70-700 mgs, respectively, for a 70 kg patient. An exemplary treatment regime entails administration once per every two weeks or once a month or once every 3 to 6 months. In some methods, two or more monoclonal antibodies with different binding specificities are administered simultaneously, in which case the dosage of each antibody administered falls within the ranges indicated. Antibody is usually administered on multiple occasions. Intervals between single dosages can be weekly, monthly or yearly. Intervals can also be irregular as indicated by measuring blood levels of antibody to alpha-SN in the patient. In some methods, dosage is adjusted to achieve a plasma antibody concentration of 1–1000 $\mu\text{g}/\text{ml}$ and in some methods 25 – 300 $\mu\text{g}/\text{ml}$. Alternatively, antibody can be administered as a sustained release formulation, in which case less frequent administration is required. Dosage and frequency vary depending on the half-life of the antibody in the patient. In general, human antibodies show the longest half life, followed by humanized antibodies, chimeric antibodies, and nonhuman antibodies. The dosage and frequency of administration can vary depending on whether the treatment is prophylactic or therapeutic. In prophylactic applications, a relatively low dosage is administered at relatively infrequent intervals over a long period of time. Some patients continue to receive

treatment for the rest of their lives. In therapeutic applications, a relatively high dosage at relatively short intervals is sometimes required until progression of the disease is reduced or terminated, and preferably until the patient shows partial or complete amelioration of symptoms of disease. Thereafter, the patient can be administered a prophylactic regime.

[0141] Doses for nucleic acids encoding immunogens range from about 10 ng to 1 g, 100 ng to 100 mg, 1 µg to 10 mg, or 30-300 µg DNA per patient. Doses for infectious viral vectors vary from 10-100, or more, virions per dose.

[0142] Agents for inducing an immune response can be administered by parenteral, topical, intravenous, oral, subcutaneous, intraarterial, intracranial, intrathecal, intraperitoneal, intranasal or intramuscular means for prophylactic and/or therapeutic treatment. The most typical route of administration of an immunogenic agent is subcutaneous although other routes can be equally effective. The next most common route is intramuscular injection. This type of injection is most typically performed in the arm or leg muscles. In some methods, agents are injected directly into a particular tissue where deposits have accumulated, for example intracranial injection. Intramuscular injection or intravenous infusion are preferred for administration of antibody. In some methods, particular therapeutic antibodies are injected directly into the cranium. In some methods, antibodies are administered as a sustained release composition or device, such as a MedipadTM device.

[0143] As noted above, agents inducing an immunogenic response against alpha-SN and Aβ respectively can be administered in combination. The agents can be combined in a single preparation or kit for simultaneous, sequential or separate use. The agents can occupy separate vials in the preparation or kit or can be combined in a single vial. These agents of the invention can optionally be administered in combination with other agents that are at least partly effective in treatment of LBD. In the case of Parkinson's Disease and Down's syndrome, in which LBs occur in the brain, agents of the invention can also be administered in conjunction with other agents that increase passage of the agents of the invention across the blood-brain barrier.

[0144] Immunogenic agents of the invention, such as peptides, are sometimes administered in combination with an adjuvant. A variety of adjuvants can be used in combination with a peptide, such as alpha-SN, to elicit an immune response. Preferred adjuvants augment the intrinsic response to an immunogen without causing

conformational changes in the immunogen that affect the qualitative form of the response. Preferred adjuvants include aluminum hydroxide and aluminum phosphate, 3 De-O-acylated monophosphoryl lipid A (MPLTM) (see GB 2220211 (RIBI ImmunoChem Research Inc., Hamilton, Montana, now part of Corixa). StimulonTM QS-21 is a triterpene glycoside or saponin isolated from the bark of the Quillaja Saponaria Molina tree found in South America (see Kensil *et al.*, in *Vaccine Design: The Subunit and Adjuvant Approach* (eds. Powell & Newman, Plenum Press, NY, 1995); US Patent No. 5,057,540), (Aquila BioPharmaceuticals, Framingham, MA). Other adjuvants are oil in water emulsions (such as squalene or peanut oil), optionally in combination with immune stimulants, such as monophosphoryl lipid A (see Stoute *et al.*, *N. Engl. J. Med.* 336, 86-91 (1997)), pluronic polymers, and killed mycobacteria. Another adjuvant is CpG (WO 98/40100). Alternatively, alpha-SN or A β can be coupled to an adjuvant. However, such coupling should not substantially change the conformation of alpha-SN so as to affect the nature of the immune response thereto. Adjuvants can be administered as a component of a therapeutic composition with an active agent or can be administered separately, before, concurrently with, or after administration of the therapeutic agent.

[0145] A preferred class of adjuvants is aluminum salts (alum), such as alum hydroxide, alum phosphate, alum sulfate. Such adjuvants can be used with or without other specific immunostimulating agents such as MPL or 3-DMP, QS-21, polymeric or monomeric amino acids such as polyglutamic acid or polylysine. Another class of adjuvants is oil-in-water emulsion formulations. Such adjuvants can be used with or without other specific immunostimulating agents such as muramyl peptides (*e.g.*, N-acetylmuramyl-L-threonyl-D-isoglutamine (thr-MDP), N-acetyl-normuramyl-L-alanyl-D-isoglutamine (nor-MDP), N-acetylmuramyl-L-alanyl-D-isoglutaminyl-L-alanine-2-(1'-2'dipalmitoyl-sn-glycero-3-hydroxyphosphoryloxy)-ethylamine (MTP-PE), N-acetylglucosaminyl-N-acetylmuramyl-L-Al-D-isoglu-L-Ala-dipalmitoxy propylamide (DTP-DPP) theramideTM), or other bacterial cell wall components. Oil-in-water emulsions include (a) MF59 (WO 90/14837), containing 5% Squalene, 0.5% Tween 80, and 0.5% Span 85 (optionally containing various amounts of MTP-PE) formulated into submicron particles using a microfluidizer such as Model 110Y microfluidizer (Microfluidics, Newton MA), (b) SAF, containing 10% Squalene, 0.4% Tween 80, 5% pluronic-blocked polymer L121, and thr-MDP, either microfluidized into a submicron emulsion or vortexed to generate a larger particle size emulsion, and (c) RibiTM adjuvant system (RAS), (Ribi ImmunoChem, Hamilton, MT)

containing 2% squalene, 0.2% Tween 80, and one or more bacterial cell wall components from the group consisting of monophosphoryllipid A (MPL), trehalose dimycolate (TDM), and cell wall skeleton (CWS), preferably MPL + CWS (Detox™).

[0146] Another class of preferred adjuvants is saponin adjuvants, such as Stimulon™ (QS-21, Aquila, Framingham, MA) or particles generated therefrom such as ISCOMs (immunostimulating complexes) and ISCOMATRIX. Other adjuvants include RC-529, GM-CSF and Complete Freund's Adjuvant (CFA) and Incomplete Freund's Adjuvant (IFA). Other adjuvants include cytokines, such as interleukins (*e.g.*, IL-1, IL-2, IL-4, IL-6, IL-12, IL13, and IL-15), macrophage colony stimulating factor (M-CSF), granulocyte-macrophage colony stimulating factor (GM-CSF), and tumor necrosis factor (TNF). Another class of adjuvants is glycolipid analogues including N-glycosylamides, N-glycosylureas and N-glycosylcarbamates, each of which is substituted in the sugar residue by an amino acid, as immuno-modulators or adjuvants (*see* US Pat. No. 4,855,283). Heat shock proteins, *e.g.*, HSP70 and HSP90, may also be used as adjuvants.

[0147] An adjuvant can be administered with an immunogen as a single composition, or can be administered before, concurrent with or after administration of the immunogen. Immunogen and adjuvant can be packaged and supplied in the same vial or can be packaged in separate vials and mixed before use. Immunogen and adjuvant are typically packaged with a label indicating the intended therapeutic application. If immunogen and adjuvant are packaged separately, the packaging typically includes instructions for mixing before use. The choice of an adjuvant and/or carrier depends on the stability of the immunogenic formulation containing the adjuvant, the route of administration, the dosing schedule, the efficacy of the adjuvant for the species being vaccinated, and, in humans, a pharmaceutically acceptable adjuvant is one that has been approved or is approvable for human administration by pertinent regulatory bodies. For example, Complete Freund's adjuvant is not suitable for human administration. Alum, MPL and QS-21 are preferred. Optionally, two or more different adjuvants can be used simultaneously. Preferred combinations include alum with MPL, alum with QS-21, MPL with QS-21, MPL or RC-529 with GM-CSF, and alum, QS-21 and MPL together. Also, Incomplete Freund's adjuvant can be used (Chang *et al.*, *Advanced Drug Delivery Reviews* 32, 173-186 (1998)), optionally in combination with any of alum, QS-21, and MPL and all combinations thereof.

[0148] Agents of the invention are often administered as pharmaceutical compositions comprising an active therapeutic agent, *i.e.*, and a variety of other pharmaceutically acceptable components. See *Remington's Pharmaceutical Science* (15th ed., Mack Publishing Company, Easton, Pennsylvania, 1980). The preferred form depends on the intended mode of administration and therapeutic application. The compositions can also include, depending on the formulation desired, pharmaceutically-acceptable, non-toxic carriers or diluents, which are defined as vehicles commonly used to formulate pharmaceutical compositions for animal or human administration. The diluent is selected so as not to affect the biological activity of the combination. Examples of such diluents are distilled water, physiological phosphate-buffered saline, Ringer's solutions, dextrose solution, and Hank's solution. In addition, the pharmaceutical composition or formulation may also include other carriers, adjuvants, or nontoxic, nontherapeutic, nonimmunogenic stabilizers and the like.

[0149] Pharmaceutical compositions can also include large, slowly metabolized macromolecules such as proteins, polysaccharides such as chitosan, polylactic acids, polyglycolic acids and copolymers (such as latex functionalized sepharose(TM), agarose, cellulose, and the like), polymeric amino acids, amino acid copolymers, and lipid aggregates (such as oil droplets or liposomes). Additionally, these carriers can function as immunostimulating agents (*i.e.*, adjuvants).

[0150] For parenteral administration, agents of the invention can be administered as injectable dosages of a solution or suspension of the substance in a physiologically acceptable diluent with a pharmaceutical carrier that can be a sterile liquid such as water oils, saline, glycerol, or ethanol. Additionally, auxiliary substances, such as wetting or emulsifying agents, surfactants, pH buffering substances and the like can be present in compositions. Other components of pharmaceutical compositions are those of petroleum, animal, vegetable, or synthetic origin, for example, peanut oil, soybean oil, and mineral oil. In general, glycols such as propylene glycol or polyethylene glycol are preferred liquid carriers, particularly for injectable solutions. Antibodies can be administered in the form of a depot injection or implant preparation which can be formulated in such a manner as to permit a sustained release of the active ingredient. An exemplary composition comprises monoclonal antibody at 5 mg/mL, formulated in aqueous buffer consisting of 50 mM L-histidine, 150 mM NaCl, adjusted to pH 6.0 with HCl. Compositions for parenteral administration are typically substantially sterile, substantially isotonic and

manufactured under GMP conditions of the FDA or similar body. For example, compositions containing biologics are typically sterilized by filter sterilization. Compositions can be formulated for single dose administration.

[0151] Typically, compositions are prepared as injectables, either as liquid solutions or suspensions; solid forms suitable for solution in, or suspension in, liquid vehicles prior to injection can also be prepared. The preparation also can be emulsified or encapsulated in liposomes or micro particles such as polylactide, polyglycolide, or copolymer for enhanced adjuvant effect, as discussed above (*see* Langer, *Science* 249, 1527 (1990) and Hanes, *Advanced Drug Delivery Reviews* 28, 97-119 (1997)). The agents of this invention can be administered in the form of a depot injection or implant preparation which can be formulated in such a manner as to permit a sustained or pulsatile release of the active ingredient.

[0152] Additional formulations suitable for other modes of administration include oral, intranasal, and pulmonary formulations, suppositories, and transdermal applications.

[0153] For suppositories, binders and carriers include, for example, polyalkylene glycols or triglycerides; such suppositories can be formed from mixtures containing the active ingredient in the range of 0.5% to 10%, preferably 1%-2%. Oral formulations include excipients, such as pharmaceutical grades of mannitol, lactose, starch, magnesium stearate, sodium saccharine, cellulose, and magnesium carbonate. These compositions take the form of solutions, suspensions, tablets, pills, capsules, sustained release formulations or powders and contain 10%-95% of active ingredient, preferably 25%-70%.

[0154] Topical application can result in transdermal or intradermal delivery. Topical administration can be facilitated by co-administration of the agent with cholera toxin or detoxified derivatives or subunits thereof or other similar bacterial toxins (*See* Glenn *et al.*, *Nature* 391, 851 (1998)). Co-administration can be achieved by using the components as a mixture or as linked molecules obtained by chemical crosslinking or expression as a fusion protein.

[0155] Alternatively, transdermal delivery can be achieved using a skin patch or using transferosomes (Paul *et al.*, *Eur. J. Immunol.* 25, 3521-24 (1995); Cevc *et al.*, *Biochem. Biophys. Acta* 1368, 201-15 (1998)).

VII. Methods of Monitoring and Methods of Diagnosis

[0156] The invention provides methods of detecting an immune response against alpha-SN peptide and/or A β peptide in a patient suffering from or susceptible to a LBD. The methods are particularly useful for monitoring a course of treatment being administered to a patient. The methods can be used to monitor both therapeutic treatment on symptomatic patients and prophylactic treatment on asymptomatic patients. The methods are useful for monitoring both active immunization (*e.g.*, antibody produced in response to administration of immunogen) and passive immunization (*e.g.*, measuring level of administered antibody).

1. Active Immunization

[0157] Some methods entail determining a baseline value of an immune response in a patient before administering a dosage of agent, and comparing this with a value for the immune response after treatment. A significant increase (*i.e.*, greater than the typical margin of experimental error in repeat measurements of the same sample, expressed as one standard deviation from the mean of such measurements) in value of the immune response signals a positive treatment outcome (*i.e.*, that administration of the agent has achieved or augmented an immune response). If the value for immune response does not change significantly, or decreases, a negative treatment outcome is indicated. In general, patients undergoing an initial course of treatment with an immunogenic agent are expected to show an increase in immune response with successive dosages, which eventually reaches a plateau. Administration of agent is generally continued while the immune response is increasing. Attainment of the plateau is an indicator that the administered of treatment can be discontinued or reduced in dosage or frequency.

[0158] In other methods, a control value (*i.e.*, a mean and standard deviation) of immune response is determined for a control population. Typically the individuals in the control population have not received prior treatment. Measured values of immune response in a patient after administering a therapeutic agent are then compared with the control value. A significant increase relative to the control value (*e.g.*, greater than one standard deviation from the mean) signals a positive treatment outcome. A lack of significant increase or a decrease signals a negative treatment outcome. Administration of agent is generally continued while the immune response is increasing relative to the control value.

As before, attainment of a plateau relative to control values in an indicator that the administration of treatment can be discontinued or reduced in dosage or frequency.

[0159] In other methods, a control value of immune response (*e.g.*, a mean and standard deviation) is determined from a control population of individuals who have undergone treatment with a therapeutic agent and whose immune responses have reached a plateau in response to treatment. Measured values of immune response in a patient are compared with the control value. If the measured level in a patient is not significantly different (*e.g.*, more than one standard deviation) from the control value, treatment can be discontinued. If the level in a patient is significantly below the control value, continued administration of agent is warranted. If the level in the patient persists below the control value, then a change in treatment regime, for example, use of a different adjuvant may be indicated.

[0160] In other methods, a patient who is not presently receiving treatment but has undergone a previous course of treatment is monitored for immune response to determine whether a resumption of treatment is required. The measured value of immune response in the patient can be compared with a value of immune response previously achieved in the patient after a previous course of treatment. A significant decrease relative to the previous measurement (*i.e.*, greater than a typical margin of error in repeat measurements of the same sample) is an indication that treatment can be resumed. Alternatively, the value measured in a patient can be compared with a control value (mean plus standard deviation) determined in a population of patients after undergoing a course of treatment. Alternatively, the measured value in a patient can be compared with a control value in populations of prophylactically treated patients who remain free of symptoms of disease, or populations of therapeutically treated patients who show amelioration of disease characteristics. In all of these cases, a significant decrease relative to the control level (*i.e.*, more than a standard deviation) is an indicator that treatment should be resumed in a patient.

[0161] The tissue sample for analysis is typically blood, plasma, serum, mucous or cerebrospinal fluid from the patient. The sample is analyzed for indication of an immune response to any form of alpha-SN, typically NAC, or A β . The immune response can be determined from the presence of, *e.g.*, antibodies or T-cells that specifically bind to alpha-SN or AB. ELISA methods of detecting antibodies specific to alpha-SN are described in the Examples section. Methods of detecting reactive T-cells have been described above

(*see* Definitions). In some methods, the immune response is determined using a clearing assay, such as described in Section III above. In such methods, a tissue or blood sample from a patient being tested is contacted with LBs (*e.g.*, from a synuclein/hAPP transgenic mouse) and phagocytic cells bearing Fc receptors. Subsequent clearing of the LBs is then monitored. The existence and extent of clearing response provides an indication of the existence and level of antibodies effective to clear alpha-SN in the tissue sample of the patient under test.

2. Passive Immunization

[0162] In general, the procedures for monitoring passive immunization are similar to those for monitoring active immunization described above. However, the antibody profile following passive immunization typically shows an immediate peak in antibody concentration followed by an exponential decay. Without a further dosage, the decay approaches pretreatment levels within a period of days to months depending on the half-life of the antibody administered. For example the half-life of some human antibodies is of the order of 20 days.

[0163] In some methods, a baseline measurement of antibody to alpha-SN in the patient is made before administration, a second measurement is made soon thereafter to determine the peak antibody level, and one or more further measurements are made at intervals to monitor decay of antibody levels. When the level of antibody has declined to baseline or a predetermined percentage of the peak less baseline (*e.g.*, 50%, 25% or 10%), administration of a further dosage of antibody is administered. In some methods, peak or subsequent measured levels less background are compared with reference levels previously determined to constitute a beneficial prophylactic or therapeutic treatment regime in other patients. If the measured antibody level is significantly less than a reference level (*e.g.*, less than the mean minus one standard deviation of the reference value in population of patients benefiting from treatment) administration of an additional dosage of antibody is indicated.

3. Diagnostic Kits

[0164] The invention further provides diagnostic kits for performing the diagnostic methods described above. Typically, such kits contain an agent that specifically binds to antibodies to alpha-SN. The kit can also include a label. For detection of antibodies to alpha-SN, the label is typically in the form of labeled anti-idiotypic antibodies. For

detection of antibodies, the agent can be supplied prebound to a solid phase, such as to the wells of a microtiter dish. Kits also typically contain labeling providing directions for use of the kit. The labeling may also include a chart or other correspondence regime correlating levels of measured label with levels of antibodies to alpha-SN. The term labeling refers to any written or recorded material that is attached to, or otherwise accompanies a kit at any time during its manufacture, transport, sale or use. For example, the term labeling encompasses advertising leaflets and brochures, packaging materials, instructions, audio or video cassettes, computer discs, as well as writing imprinted directly on kits.

[0165] The invention also provides diagnostic kits for performing *in vivo* imaging. Such kits typically contain an antibody binding to an epitope of alpha-SN, preferably within NAC. Preferably, the antibody is labeled or a secondary labeling reagent is included in the kit. Preferably, the kit is labeled with instructions for performing an *in vivo* imaging assay.

VIII. *In Vivo* Imaging

[0166] The invention provides methods of *in vivo* imaging LBs in a patient. Such methods are useful to diagnose or confirm diagnosis of PD, or other disease associated with the presence of LBs in the brain, or susceptibility thereto. For example, the methods can be used on a patient presenting with symptoms of dementia. If the patient has LBs, then the patient is likely suffering from, *e.g.* PD. The methods can also be used on asymptomatic patients. Presence of abnormal deposits of amyloid indicates susceptibility to future symptomatic disease. The methods are also useful for monitoring disease progression and/or response to treatment in patients who have been previously diagnosed with Parkinson's disease.

[0167] The methods work by administering a reagent, such as antibody that binds to alpha-SN in the patient and then detecting the agent after it has bound. Preferred antibodies bind to alpha-SN deposits in a patient without binding to full length NACP polypeptide. Antibodies binding to an epitope of alpha-SN within NAC are particularly preferred. If desired, the clearing response can be avoided by using antibody fragments lacking a full length constant region, such as Fabs. In some methods, the same antibody can serve as both a treatment and diagnostic reagent. In general, antibodies binding to epitopes N-terminal of alpha-SN do not show as strong signal as antibodies binding to

epitopes C-terminal, presumably because the N-terminal epitopes are inaccessible in LBs (Spillantini et al PNAS, 1998). Accordingly, such antibodies are less preferred.

[0168] Diagnostic reagents can be administered by intravenous injection into the body of the patient, or directly into the brain by intracranial injection or by drilling a hole through the skull. The dosage of reagent should be within the same ranges as for treatment methods. Typically, the reagent is labeled, although in some methods, the primary reagent with affinity for alpha-SN is unlabelled and a secondary labeling agent is used to bind to the primary reagent. The choice of label depends on the means of detection. For example, a fluorescent label is suitable for optical detection. Use of paramagnetic labels is suitable for tomographic detection without surgical intervention. Radioactive labels can also be detected using PET or SPECT.

[0169] Diagnosis is performed by comparing the number, size and/or intensity of labeled loci to corresponding base line values. The base line values can represent the mean levels in a population of undiseased individuals. Base line values can also represent previous levels determined in the same patient. For example, base line values can be determined in a patient before beginning treatment, and measured values thereafter compared with the base line values. A decrease in values relative to base line signals a positive response to treatment.

EXAMPLES

I. Immunization of Human Alpha-Synuclein Transgenic Mice With Human Alpha-Synuclein Results in the Production of High Titer Anti-Alpha-Synuclein Antibodies That Cross the Blood-Brain Barrier

[0170] Full-length recombinant human alpha-SN was resuspended at a concentration of 1mg/ml in 1X phosphate buffered saline (PBS). For each injection, 50 μ l of alpha-SN was used; giving a final concentration of 50 μ g per injection to which 150 μ l of 1X PBS was added. Complete Freund's adjuvant (CFA) was then added 1:1 to either alpha-SN or PBS alone (control), vortexed and sonicated to completely resuspend the emulsion. For the initial injections, eight D line human alpha-SN transgenic (tg) single transgenic 4-7 months old mice (Masliah, *et al.* Science 287:1265-1269 (2000) received injections of human alpha-SN in CFA and, as control, four D line human alpha-SN tg mice received injections of PBS in CFA. Mice received a total of 6 injections. Three injections were performed at two weeks intervals and then 3 injections at one month intervals. Animals

were sacrificed using NIH Guidelines for the humane treatment of animals 5 months after initiation of the experiment. After blood samples were collected for determination of antibody titers, brains were immersion-fixed for 4 days in 4% paraformaldehyde in PBS. Levels of antibodies against human alpha-SN by ELISA are shown in Table 1. The treated mice are divided into two groups by titer. The first group developed a moderate titer of 2-8,000. The second group developed a high titer of 12000-30000. No titer was found in control mice. Neuropathological analysis showed that mice producing high titers had a marked decrease in the size of synuclein inclusions. Mice producing moderate titers showed a smaller decrease. Fig. 2 (panels a-d) show synuclein inclusions in (a) a nontransgenic mouse, (b) a transgenic mouse treated with CFA only, (c) a transgenic mouse immunized with alpha synuclein and CFA that developed a moderate titer and (d) a transgenic mouse immunized with alpha synuclein and CFA that developed a higher titer. Samples were visualized by immunostaining with an anti-human alpha-SN antibody. Fig. 2 shows synuclein inclusions in panel (b) but not panel (a). In panel (c), treated mouse, moderate titers, the inclusions are somewhat reduced in intensity. In panel (d) the inclusions are markedly reduced in intensity. Panels (e)-(h) show levels of anti-IgG in the brains same four mice as panels (a) to (d) respectively. It can be seen that IgG is present in panels (g) and to a greater extent in panel (h). The data shows that peripherally administered antibodies to alpha-SN cross the blood brain barrier and reach the brain. Panels (i) to (l) showing staining for GAP, a marker of astroglial cells, again for the same four mice as in the first two rows of the figure. It can be seen that panels (k) and (l) show moderately increased staining compared with (i) and (j). These data show that clearing of synuclein deposits is accompanied by a mild astroglial and microglial reaction.

Table 1

Group	Genotype	n=	Age at Sac	Treatment/Length	Titers	Syn (+) inclusions/mm ²
I	Syn Tg	4	10-13 mo	a-syn+CFA 50ug/inj for 3mo sac'd 3mo later	2,000 – 8,000	15-29
II	Syn Tg	4	10-13 mo	a-syn+CFA 50ug/inj for 3mo sac'd 3mo later	12,000 – 30,000	10-22
III	Syn Tg	4	10-13 mo	PBS+CFA for 3mo sac'd 3mo later	0	18-29

II. *In Vitro* Screen for Antibodies Clearing Synuclein Inclusions

[0171] GT1-7 neuronal cell (Hsue *et al.* Am. J. Pathol. 157:401-410 (2000)) were transfected with a pCR3.1-T expression vector (Invitrogen, Carlsbad, CA) expressing murine alpha-SN and compared with cells transfected with expression vector alone (Fig. 3, panels B and A respectively). Cells transfected with vector alone (panel A) have a fibroblastic appearance while cells transfected with alpha-SN are rounded, with inclusion bodies at the cell surface visible via both light and confocal scanning microscopy. Transfected cells were then treated with rabbit preimmune serum (panel C) or 67-10, an affinity purified rabbit polyclonal antibody against a murine alpha-SN C terminal residues 131-140 (Iwai, *et al.*, Neuron 14:467 (1995) (panel D). It can be seen that the inclusion bodies stain less strongly in panel D than in panel C indicating that the antibody against alpha synuclein was effective in clearing or preventing the development of inclusions. Fig. 4 shows a gel analysis of particulate and cytosolic fractions of GT1-7 transfected cells treated with the rabbit preimmune serum and 67-10 polyclonal antibody. It can be seen that the synuclein levels in the cytosolic fraction is largely unchanged by treatment with preimmune serum or antibody to alpha-SN. However, the alpha-SN band disappears in the membrane fraction of GT1-7 cells treated with antibody to alpha-SN. These data indicates that the alpha synuclein antibody activity results in the clearance of synuclein associated with the cellular membrane.

[0172] Transfected GT1-7 cells can be used to screen antibodies for activity in clearing synuclein incusions with detection either by immunohistochemical analysis, light microscopy as in Fig. 3 or by gel analysis as in Fig. 4.

III. Prophylactic and Therapeutic Efficacy of Immunization with Alpha-Synuclein

i. Immunization of human alpha-synuclein tg mice

[0173] For this study, heterozygous human alpha-SN transgenic (tg) mice (Line D) (Masliah *et al.*, *Am. J. Pathol* (1996) 148:201-10) and nontransgenic (nontg) controls are used. Experimental animals are divided into 3 groups. For group I, the preventive effects of early immunization by immunizing mice for 8 months beginning at 2 months of age are tested. For group II, young adult mice are vaccinated for 8 months beginning at the age of 6 months to determine whether immunization can reduce disease progression once moderate pathology had been established. For group III, older mice are immunized for 4 months beginning at the age of 12 months to determine whether immunization can reduce the severity of symptoms once robust pathology has been established. For all groups, mice are immunized with either recombinant human alpha-SN plus CFA or CFA alone, and for each experiment 20 tg and 10 nontg mice are used. Of them, 10 tg mice are immunized with human alpha-SN+CFA and other 10 tg with CFA alone. Similarly, 5 nontg mice are immunized with human alpha-SN+CFA and the other 5 with CFA alone. Briefly, the immunization protocol consists of an initial injection with purified recombinant human alpha-SN (2mg/ml) in CFA, followed by a reinjection 1 month later with human alpha-SN in combination with IFA. Mice are then re-injected with this mixture once a month. In a small subset of human alpha-SN tg (n=3/each; 6-months-old) and nontg (n=3/each; 6-month-old) mice, additional experiments consisting of immunization with murine (m) alpha-SN, human beta synuclein or mutant (A53T) human alpha-SN are performed.

[0174] Levels of alpha-SN antibody are determined using 96-well microtiter plates coated with 0.4 μ g per well of purified full-length alpha-SN by overnight incubation at 4°C in sodium carbonate buffer, pH 9.6. Wells are washed 4X with 200 μ L each PBS containing 0.1% Tween and blocked for 1 hour in PBS-1% BSA at 37°C. Serum samples are serially diluted "in-well", 1:3, starting in row A, ranging from a 1:150 to 1:328,050 dilution. For control experiments, a sample of mouse monoclonal antibody is run against alpha-SN, no protein, and buffer-only blanks. The samples are incubated overnight at 4°C followed by a 2-hour incubation with goat anti-mouse IgG alkaline phosphatase-

conjugated antibody (1:7500, Promega, Madison, WI). Atto-phos® alkaline phosphatase fluorescent substrate is then added for 30 minutes at room temperature. The plate is read at an excitation wavelength of 450 nm and an emission wavelength of 550 nm. Results are plotted on a semi-log graph with relative fluorescence units on the ordinate and serum dilution on the abscissa. Antibody titer is defined as the dilution at which there was a 50% reduction from maximal antibody binding.

[0175] For each group, at the end of the treatment, mice undergo motor assessment in the rotarod, as described (Masliah, *et al.* (2000)). After analysis, mice are euthanized and brains are removed for detailed neurochemical and neuropathological analysis as described below. Briefly, the right hemibrain is frozen and homogenized for determinations of aggregated and non-aggregated human alpha-SN immunoreactivity by Western blot (Masliah, *et al.* (2000)). The left hemibrain is fixed in 4% paraformaldehyde, serially sectioned in the vibratome for immunocytochemistry and ultrastructural analysis.

ii. Immunocytochemical and neuropathological analysis.

[0176] In order to determine if immunization decreases, human alpha-SN aggregation sections are immunostained with a rabbit polyclonal antibody against human alpha-SN (1:500). After an overnight incubation at 4°C, sections are incubated with biotinylated anti-rabbit secondary antibody followed by Avidin D-Horseradish peroxidase (HRP) complex (1:200, ABC Elite, Vector). Sections are also immunostained with biotinylated anti-rabbit, mouse or human secondary alone. The experiments with the anti-mouse secondary determine whether the antibodies against human alpha-SN cross into the brain. The reaction is visualized with 0.1% 3,3'-diaminobenzidine tetrahydrochloride (DAB) in 50mM Tris-HCl (pH 7.4) with 0.001% H₂O₂ and sections are then mounted on slides under Entellan. Levels of immunoreactivity are semiquantitatively assessed by optical densitometry using the Quantimet 570C. These sections are also studied by image analysis to determine the numbers of alpha-SN immunoreactive inclusions and this reliable measure of alpha-SN aggregation acts as a valuable index of the anti-aggregation effects of vaccination (Masliah, *et al.* (2000)).

[0177] Analysis of patterns of neurodegeneration is achieved by analyzing synaptic and dendritic densities in the hippocampus, frontal cortex, temporal cortex and basal ganglia utilizing vibratome sections double-immunolabeled for synaptophysin and microtubule-

associated protein 2 (MAP2) and visualized with LSCM. Additional analysis of neurodegeneration is achieved by determining tyrosine hydroxylase (TH) immunoreactivity in the caudoputamen and substantia nigra (SN) as previously described (Masliah, *et al.* (2000)). Sections will be imaged with the LSCM and each individual image is interactively thresholded such that the TH-immunoreactive terminals displaying pixel intensity within a linear range are included. A scale is set to determine the pixel to μm ratio. Then, this information is used to calculate the % area of the neuropil covered by TH-immunoreactive terminals. These same sections are also utilized to evaluate the numbers of TH neurons in the SN.

[0178] To assess the patterns of immune response to immunization, immunocytochemical and ultrastructural analysis with antibodies against human GFAP, MCH class II, Mac 1, TNF-alpha, IL1beta and IL6 are performed in the brain sections of nontg and alpha-SN tg mice immunized with recombinant human alpha-SN and control immunogens.

iii. Behavioral analysis.

[0179] For locomotor activity mice are analyzed for 2 days in the rotarod (San Diego Instruments, San Diego, CA), as previously described (Masliah, *et al.* (2000)). On the first day mice are trained for 5 trials: the first one at 10rpm, the second at 20rpm and the third to fifth at 40rpm. On the second day, mice are tested for 7 trials at 40rpm each. Mice are placed individually on the cylinder and the speed of rotation is increased from 0 to 40 rpm over a period of 240 sec. The length of time mice remain on the rod (fall Latency) is recorded and used as a measure of motor function.

IV. Immunization with Alpha-Synuclein Fragments

[0180] Human alpha-SN transgenic mice 10-13 months of age are immunized with 9 different regions of alpha-SN to determine which epitopes convey the efficacious response. The 9 different immunogens and one control are injected i.p. as described above. The immunogens include four human alpha-SN peptide conjugates, all coupled to sheep anti-mouse IgG via a cystine link. Alpha-SN and PBS are used as positive and negative controls, respectively. Titers are monitored as above and mice are euthanized at the end of 3-12 months of injections. Histochemistry, alpha-SN levels, and toxicology analysis is determined post mortem.

i. Preparation of Immunogens

[0181] Preparation of coupled alpha-SN peptides: H alpha-SN peptide conjugates are prepared by coupling through an artificial cysteine added to the alpha-SN peptide using the crosslinking reagent sulfo-EMCS. The alpha-SN peptide derivatives are synthesized with the following final amino acid sequences. In each case, the location of the inserted cysteine residue is indicated by underlining.

alpha-synuclein 60-72 (NAC region) peptide:

NH₂-KEQVTNVCGGAVVT-COOH (SEQ ID NO: 54)

alpha-synuclein 73-84 (NAC region) peptide:

NH₂-GVTAVAQKTVECG-COOH (SEQ ID NO: 55)

alpha-synuclein 102-112 peptide:

NH₂-C-amino-heptanoic acid- KNEEGAPCQEG-COOH (SEQ ID NO: 56)

alpha-synuclein 128-140 peptide:

Ac-NH-PSEEGYQDYEPECA-COOH (SEQ ID NO: 57)

[0182] To prepare for the coupling reaction, ten mg of sheep anti-mouse IgG (Jackson ImmunoResearch Laboratories) is dialyzed overnight against 10 mM sodium borate buffer, pH 8.5. The dialyzed antibody is then concentrated to a volume of 2 mL using an Amicon Centriprep tube. Ten mg sulfo-EMCS

[0183] [N (ε-maleimidocaproyloxy) succinimide] (Molecular Sciences Co.) is dissolved in one mL deionized water. A 40-fold molar excess of sulfo-EMCS is added drop wise with stirring to the sheep anti-mouse IgG and then the solution is stirred for an additional ten min. The activated sheep anti-mouse IgG is purified and buffer exchanged by passage over a 10 mL gel filtration column (Pierce Presto Column, obtained from Pierce Chemicals) equilibrated with 0.1 M NaPO₄, 5 mM EDTA, pH 6.5. Antibody containing fractions, identified by absorbance at 280 nm, are pooled and diluted to a concentration of approximately 1 mg/mL, using 1.4 mg per OD as the extinction coefficient. A 40-fold molar excess of alpha-SN peptide is dissolved in 20 mL of 10 mM NaPO₄, pH 8.0, with the exception of the alpha-SN peptide for which 10 mg is first dissolved in 0.5 mL of DMSO and then diluted to 20 mL with the 10 mM NaPO₄ buffer. The peptide solutions are each added to 10 mL of activated sheep anti-mouse IgG and rocked at room temperature for 4 hr. The resulting conjugates are concentrated to a final volume of less

than 10 mL using an Amicon Centriprep tube and then dialyzed against PBS to buffer exchange the buffer and remove free peptide. The conjugates are passed through 0.22 μ m-pore size filters for sterilization and then aliquoted into fractions of 1 mg and stored frozen at -20°C. The concentrations of the conjugates are determined using the BCA protein assay (Pierce Chemicals) with horse IgG for the standard curve. Conjugation is documented by the molecular weight increase of the conjugated peptides relative to that of the activated sheep anti-mouse IgG.

V. Passive Immunization with Antibodies to Alpha-Synuclein

[0184] Human alpha-SN mice each are injected with 0.5 mg in PBS of anti-alpha-SN monoclonals as shown below. All antibody preparations are purified to have low endotoxin levels. Monoclonals can be prepared against a fragment by injecting the fragment or longer form of alpha-SN into a mouse, preparing hybridomas and screening the hybridomas for antibody that specifically binds to a desired fragment of alpha-SN without binding to other nonoverlapping fragments of alpha-SN.

[0185] Mice are injected ip as needed over a 4 month period to maintain a circulating antibody concentration measured by ELISA titer of greater than 1:1000 defined by ELISA to alpha-SN or other immunogen. Titers are monitored as above and mice are euthanized at the end of 6 months of injections. Histochemistry, alpha-SN levels and toxicology are performed post mortem.

VI. A β Immunization of Syn/APP transgenic mice

[0186] This experiment compares the effects of A β immunization on three types of transgenic mice: transgenic mice with an alpha synuclein transgene (SYN), APP mice with an APP transgene (Games *et al.*) and double transgenic SYN/APP mice produced by crossing the single transgenic. The double transgenic mice are described in Masliah *et al.*, PNAS USA 98:12245-12250 (2001). These mice represent a model of individuals having both Alzheimer's and Parkinson's disease. Table 2 shows the different groups, the age of the mice used in the study, the treatment procedure and the titer of antibodies to A β . It can be seen that a significant titer was generated in all three types of mice. Fig. 5 shows the % area covered by amyloid plaques of A β in the brain determined by examination of brain sections from treated subjects by microscopy. Substantial deposits accumulate in the APP and SYN/APP mice but not in the SYN mice or nontransgenic controls. The deposits are greater in the SYN/APP double transgenic mice. Immunization with A β 1-42 reduces

the deposits in both APP and SYN/APP mice. Fig. 6 shows synuclein deposits in the various groups of mice as detected by confocal laser scanning and light microscopy. Synuclein deposits accumulate in the SYN and SYN/APP mice treated with CFA only. However, in the same types of mice treated with A β 1-42 and CFA there is a marked reduction in the level of synuclein deposit. These data indicate that treatment with A β is effective not only in clearing A β deposits but also in clearing deposits of synuclein. Therefore, treatment with A β or antibodies thereto is useful in treating not only Alzheimer's disease but combined Alzheimer's and Parkinson's disease, and Parkinson's disease in patients free of Alzheimer's disease. The titer of antiA β antibodies in SYN/APP mice correlated with decreased formation of synuclein inclusions ($r=-0.71$, $p < 0.01$).

Table 2

Group	n=	Age	Treatment/ Length	Ab Titers
SYN	4	12-20 mo	Ab inj. 50ug/inj for 6mo	10,000-58,000
SYN	2	12-20 mo	Sal inj. for 6mo	0
APP	2	12-20 mo	Ab inj. 50ug/inj for 6mo	25,000
APP	2	12-20 mo	Sal inj. for 6mo	0
SYN/APP	4	12-20 mo	Ab inj. 50ug/inj for 6mo	1,000-50,000
SYN/APP	2	12-20 mo	Sal inj. for 6mo	0

WHAT IS CLAIMED IS:

1. A method of preventing or treating a disease characterized by Lewy bodies or alpha-synuclein aggregation in the brain, the method comprising

administering an effective regime of an agent that induces an immunogenic response against alpha-synuclein to a patient.
2. The method of claim 1, wherein the immunogenic response comprises antibodies to alpha synuclein.
3. The method of claim 1, wherein the agent is alpha-synuclein.
4. The method of claim 1, wherein the agent is an immunogenic alpha-synuclein fragment for alpha-synuclein.
5. The method of claim 4, wherein the immunogenic fragment is amino acids 35-65 of alpha-synuclein (SEQ ID NO: 1).
6. The method of claim 4, wherein the immunogenic fragment comprises amino acids 130-140 of alpha-synuclein (SEQ ID NO: 1) and has fewer than 40 amino acids total.
7. The method of claim 4, wherein the C-terminal amino acid of the fragment is the C-terminal amino acid of alpha-synuclein.
8. The method of claim 1, further comprising determining that a patient is suffering from or at risk of a disease characterized by Lewy bodies, wherein the determining step occurs before the administration step.
9. The method of claim 8, wherein the determining step determines that a patient is suffering from a clinical symptom of a disease characterized by Lewy bodies.
10. The method of claim 8 or 9, further comprising determining the patient is free of clinical symptoms of a disease characterized by amyloid deposits of A β .
11. The method of claim 3, wherein the alpha-synuclein is administered with an adjuvant.

12. The method of claim 4, wherein the immunogenic alpha-synuclein fragment is administered with an adjuvant.

13. The method of claim 3, wherein the alpha-synuclein is linked to a carrier molecule to form a conjugate.

14. The method of claim 13, wherein the alpha-synuclein is linked to the carrier molecule at the N-terminus of the alpha-synuclein.

15. The method of claim 4, wherein the immunogenic alpha-synuclein fragment is linked to a carrier molecule to form a conjugate.

16. The method of claim 15, wherein the immunogenic alpha-synuclein fragment is linked to the carrier molecule at the N-terminus of the immunogenic alpha-synuclein fragment.

17. The method of claim 1, wherein the agent is an antibody to alpha-synuclein or immunogenic fragment thereof.

18. The method of claim 17, wherein the antibody is a humanized antibody.

19. The method of claim 17, wherein the antibody is human.

20. The method of claim 18 or 19, wherein the antibody is an antibody of human IgG1 isotype.

21. The method of claim 17, wherein the antibody is a monoclonal antibody.

22. The method of claims 17, wherein the antibody is a polyclonal antibody.

23. The method of claim 17, wherein the antibody is prepared from a human immunized with alpha-synuclein peptide.

24. The method of claim 23, wherein the human is the patient to be treated with antibody.

25. The method of claim 17 or 18, wherein the antibody is administered with a pharmaceutical carrier as a pharmaceutical composition.

26. The method of claim 17, wherein the antibody is administered at a dosage of 0.0001 to 100 mg/kg, preferably, at least 1 mg/kg body weight antibody.

27. The method of claim 17, wherein the antibody is administered in multiple dosages over a prolonged period, for example, of at least six months.

28. The method of claim 17, wherein the antibody is administered as a sustained release composition.

29. The method of claim 17, wherein the antibody is administered intraperitoneally, orally, subcutaneously, intracranially, intramuscularly, topically, intranasally or intravenously.

30. The method of claim 17, wherein the antibody is administered by administering a polynucleotide encoding at least one antibody chain to the patient.

31. The method of claim 30, wherein the polynucleotide is expressed to produce the antibody chain in the patient.

32. The method of claim 31, wherein the polynucleotide encodes heavy and light chains of the antibody and the polynucleotide is expressed to produce the heavy and light chains in the patient.

33. The method of claim 17, further comprising monitoring the patient for level of administered antibody in the blood of the patient.

34. The method of claim 17, wherein the antibody is internalized within neuronal cells having Lewy bodies thereby dissipating the Lewy bodies.

35. The method of claim 17, wherein the antibody binds to the outer surface of neuronal cells having Lewy bodies thereby dissipating the Lewy bodies.

36. The method of any one of claims 1-4 or 17, further comprising administering to the patient an effective regime of an agent that induces an immunogenic response against A β .

37. The method of claim 36, wherein the agent is A β or an immunogenic fragment thereof.

38. The method of claim 36, wherein the agent is an antibody to A β or a immunogenic fragment thereof.

39. The method of claim 36, wherein the disease is Parkinson's disease.

40. The method of claim 36, wherein the patient is free of Alzheimer's disease and has no risk factors thereof.

41. The method of claim 36, wherein the administering of the agent inducing an immunogenic response to alpha-synuclein and the agent inducing an immunogenic response to A β is simultaneous, separate, or sequential.

42. A method of preventing or treating a disease characterized by Lewy bodies or alpha-synuclein aggregation in the brain, the method comprising

administering an effective regime of an agent that induces an immunogenic response against A β to a patient.

43. The method of claim 42, wherein the agent is A β or an immunogenic fragment thereof.

44. The method of claim 42, wherein the agent is an antibody to A β or a fragment thereof.

45. A method of preventing or treating a disease characterized by Lewy bodies or alpha synuclein deposits, comprising

administering an effective regime of an agent that induces an immunogenic response against alpha-synuclein and an agent that induces an immunogenic response against A β to a patient.

46. The method of claim 1 or 45, wherein the agent is administered peripherally.

47. The method of claim 1 or 45, wherein the effective regime comprises administering multiple dosages over a period of at least six months.

48. The method of claim 1 or 45, wherein the patient is asymptomatic.
49. The method of claim 48, wherein the patient has a risk factor for the disease.
50. The method of claim 1 or 42, wherein the patient has the disease.
51. The method of claim 50, wherein the disease is Parkinson's disease.
52. The method of claim 51, wherein the patient has Parkinson's disease and the administering results in improvement in a sign or symptom of Parkinson's disease.
53. The method of claim 51, wherein the patient has Parkinson's disease, and the administering improves motor characteristics of the patient.
54. The method of any one of claims 1-4, 17, 42, or 45, further comprising monitoring a sign or symptom of Parkinson's disease in the patient.
55. The method of any one of claims 1-4, 17, 42, or 45, wherein the patient is free of Alzheimer's disease.
56. The method of claim 55, wherein the patient is free of Alzheimer's disease and has no risk factors thereof.
57. A pharmaceutical composition comprising an agent effective to induce an immunogenic response against a component of a Lewy body in a patient.
58. The pharmaceutical composition of claim 57, wherein the agent is an antibody or fragment thereof specific for a component of a Lewy body.
59. The pharmaceutical composition of claim 57, wherein the agent is alpha-synuclein, an immunogenic alpha-synuclein fragment, 6CHC-1, or an immunogenic 6CHC-1 fragment.
60. The pharmaceutical composition of claim 57, wherein the agent is an immunogenic alpha-synuclein fragment.
61. The pharmaceutical composition of claim 60, wherein the immunogenic alpha-synuclein fragment is NAC.

62. The pharmaceutical composition of any one of claims 57-61, wherein the agent is linked to a carrier molecule to form a conjugate.

63. The pharmaceutical composition of any one of claims 57-62, further comprising an agent effective to induce an immunogenic response against A β .

64. The pharmaceutical composition of any one of claims 57-63, further comprising a pharmaceutically acceptable adjuvant.

65. A method of screening an antibody for activity in preventing or treating a disease associated with Lewy bodies, comprising

contacting a neuronal cell expressing synuclein with the antibody;

determining whether the contacting reduces synuclein deposits in the cells compared with a control cells not contacted with the antibody.

66. A method of screening an antibody for activity in treating or preventing a Lewy body disease in the brain of a patient, comprising contacting the antibody with a polypeptide comprising at least five contiguous amino acids of alpha-synuclein; and

determining whether the antibody specifically binds to the polypeptide, specific binding providing an indication that the antibody has activity in treating the disease.

67. A method of screening an agent to determine whether the agent has activity useful in treating a disease characterized by Lewy Bodies, comprising

contacting the agent with a transgenic nonhuman animal disposed to develop a characteristic of a Lewy Body disease with the agent;

determining whether the agent affects the extent or rate of development of the characteristic relative to a control transgenic nonhuman animal;

wherein the agent is an immunogenic fragment of alpha synuclein or an antibody to alpha synuclein.

68. The method of claim 67, wherein the transgenic nonhuman animal comprises a transgene expressing alpha-synuclein.

69. The method of claim 68, wherein the alpha synuclein transgene is full length alpha synuclein.

70. The method of claim 67, wherein the transgenic nonhuman animal further comprises a transgene expressing amyloid precursor protein.

71. Use of (a) alpha-synuclein, an immunogenic fragment of alpha synuclein, an antibody to alpha-synuclein, or an antibody to an alpha-synuclein fragment; or (b) A β , an immunogenic fragment of A β , an antibody to A β , or an antibody to an A β fragment in the manufacture of a preparation for treatment of a disease characterized by Lewy Bodies or alpha-synuclein aggregation.

72. The use of claim 71, wherein (a) and (b) are used in the manufacture of a preparation for simultaneous, separate or sequential treatment of the disease.

[illegible]

Fig. 1

α -Synuclein Immunization Reduces the Formation SYN (+) Inclusions

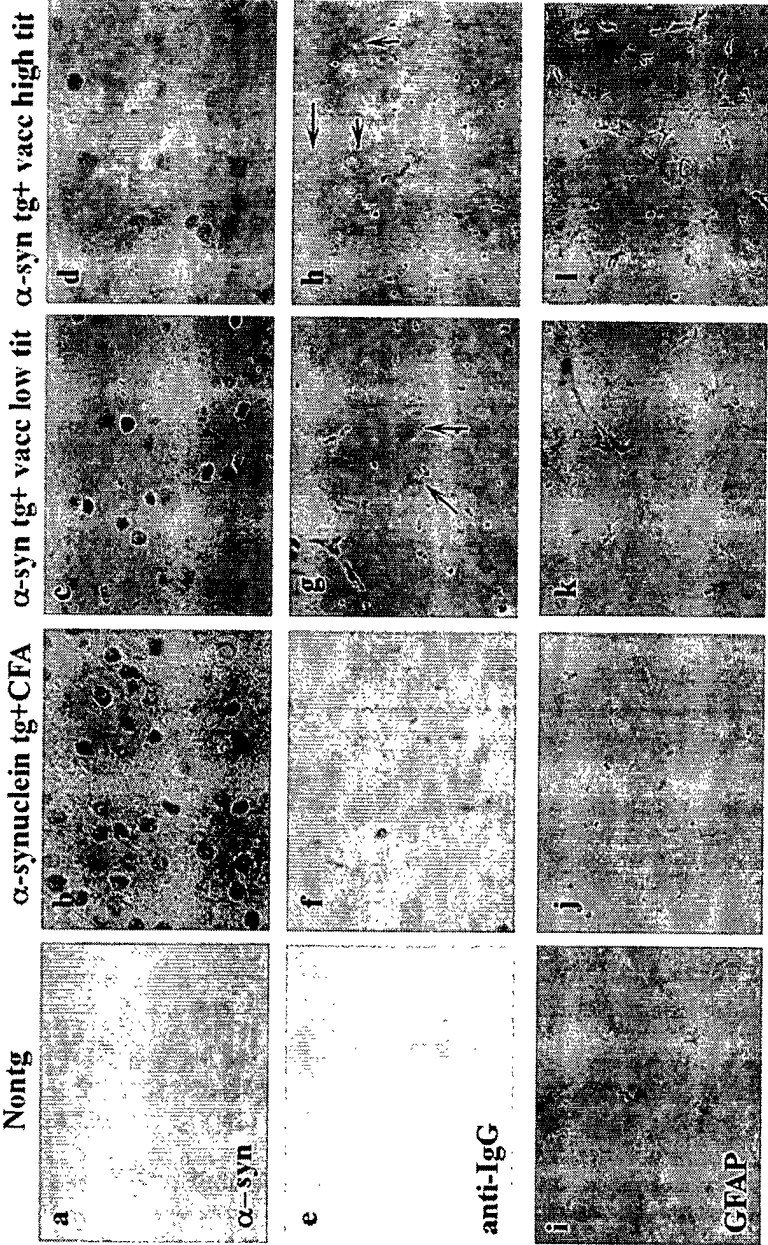


Fig. 2

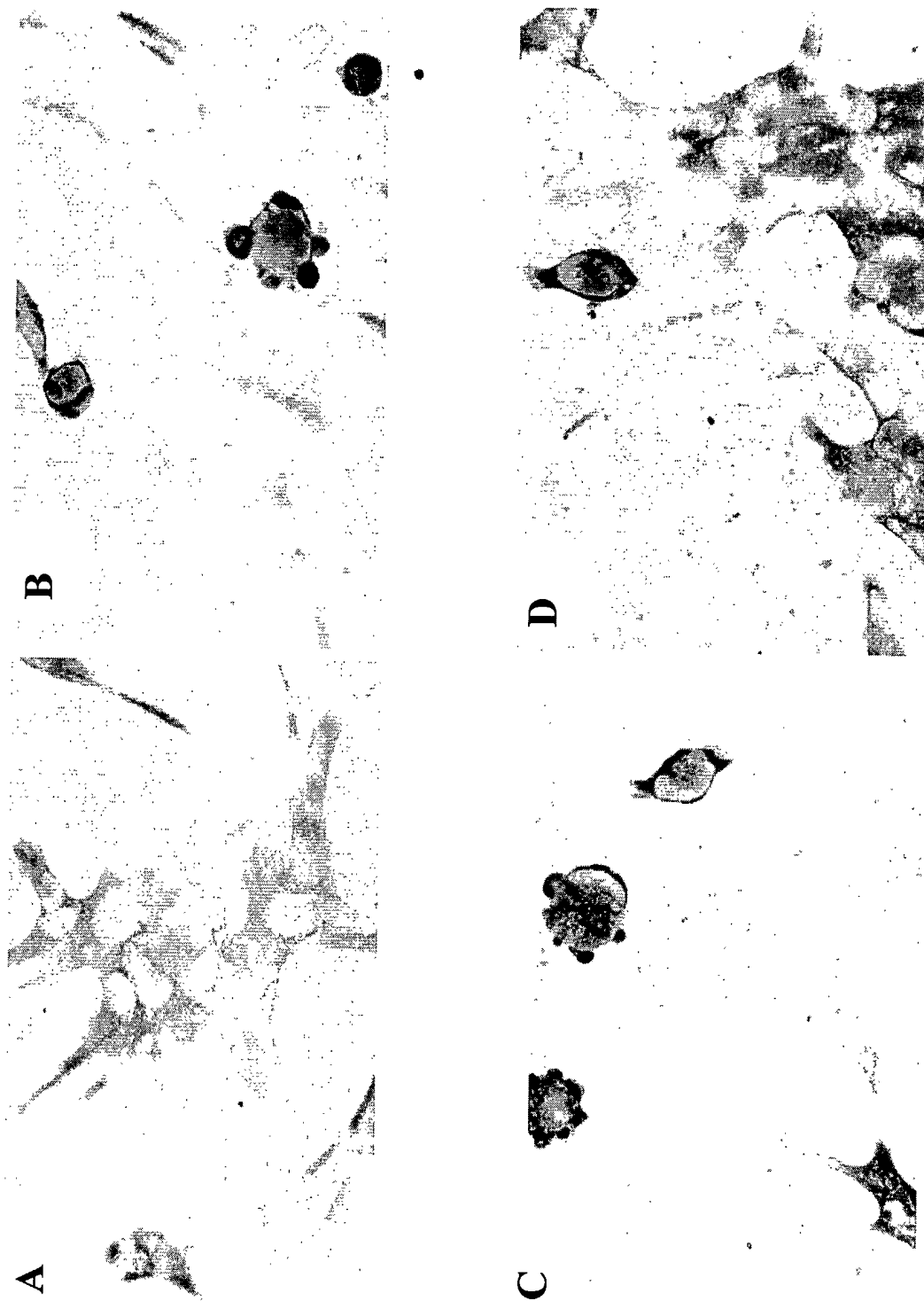
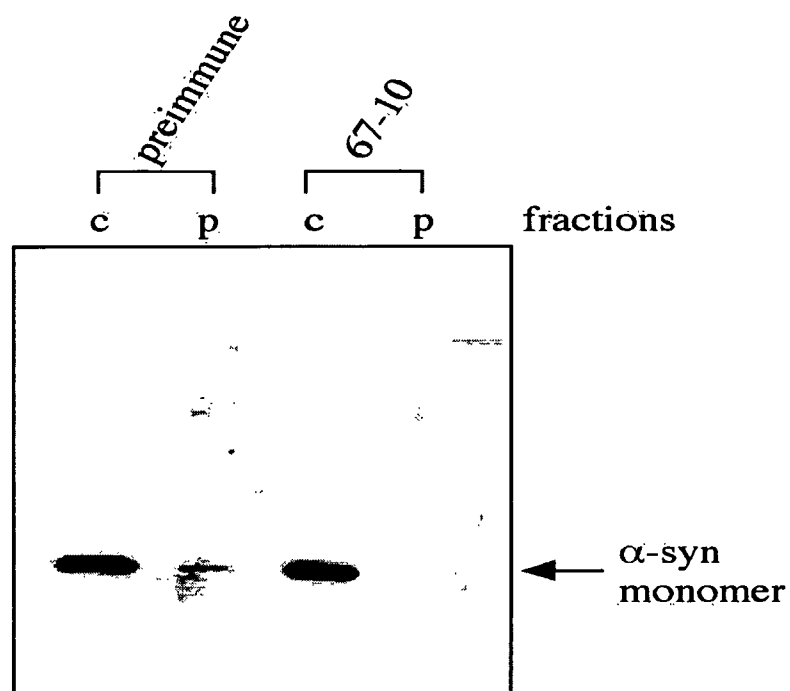


Fig. 3

4/7



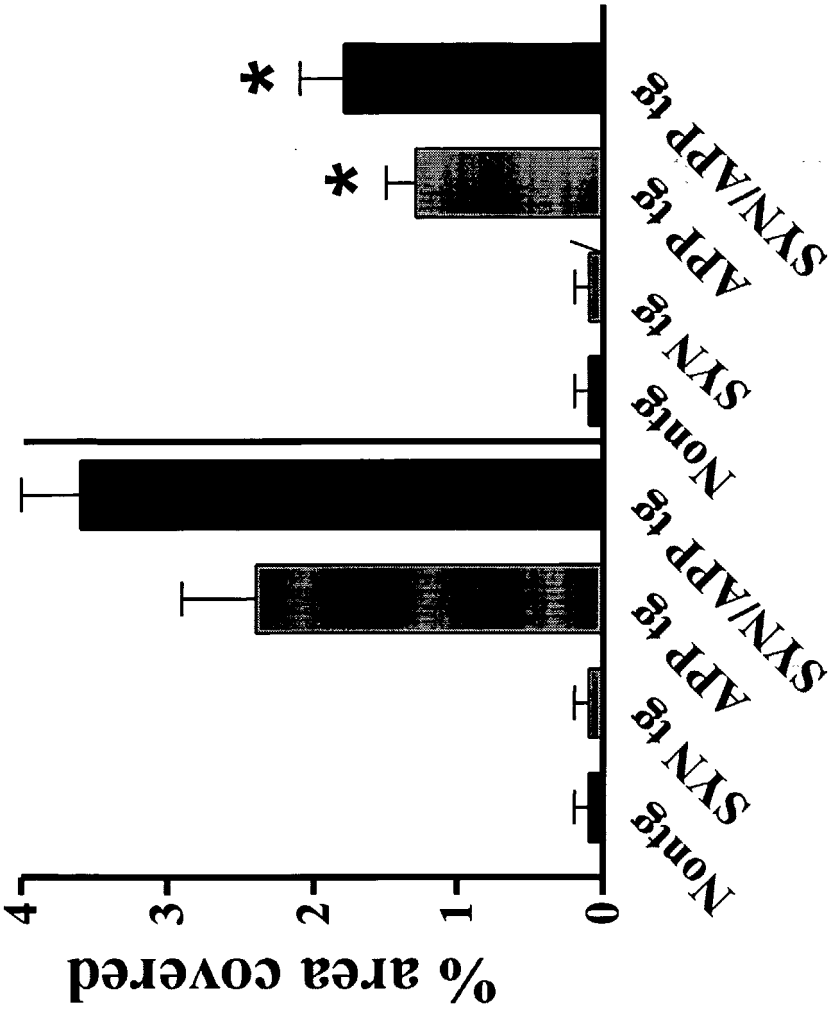
GT1-7 α -syn overexpressing cells were incubated with either anti-mouse α -syn serum or preimmune serum (1: 50) for 48 hrs.

-Result-

1. Cell proliferation was slightly suppressed in the anti-mouse α -syn serum (67-10) treated cells compared to the preimmune serum treated cells (not shown).
2. In the anti-mouse α -syn serum treated cells, the immuno-reactivity of α -syn was decreased in the particulate fraction.

Fig. 4

Amyloid β -Protein



CFA

A β 1-42

Fig. 5

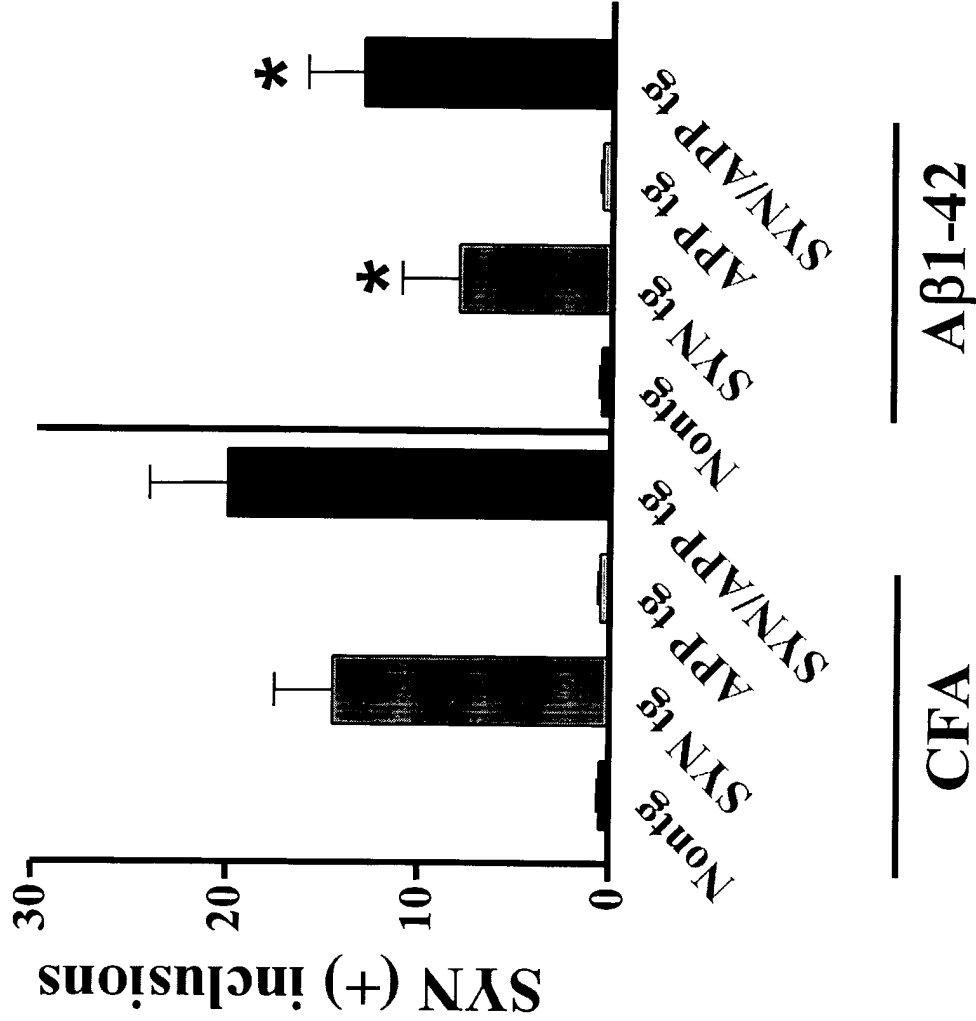


Fig. 6

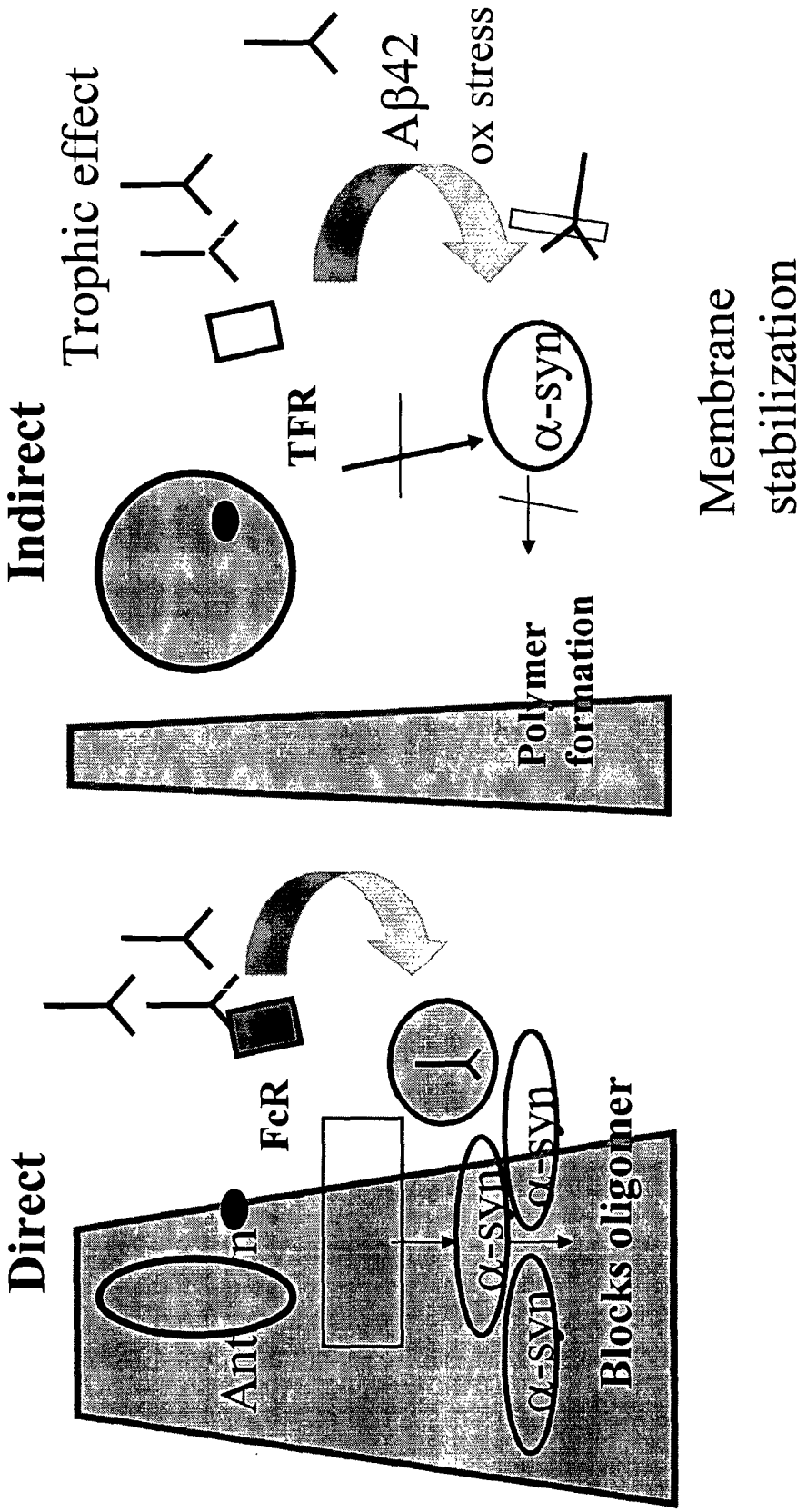


Fig. 7

专利名称(译)	预防和治疗突触核蛋白病		
公开(公告)号	EP1578253A2	公开(公告)日	2005-09-28
申请号	EP2003783083	申请日	2003-10-31
[标]申请(专利权)人(译)	伊兰制药公司 加利福尼亚大学董事会		
申请(专利权)人(译)	ELAN制药公司. 加利福尼亚大学董事会		
当前申请(专利权)人(译)	ELAN制药公司. 加利福尼亚大学董事会		
[标]发明人	SCHENK DALE B MASLIAH ELIEZER		
发明人	SCHENK, DALE, B. MASLIAH, ELIEZER		
IPC分类号	A61K38/17 A61B A61B1/00 A61K39/00 A61K39/395 A61K45/06 A61K47/48 A61K51/10 A61P25/16 A61P25/28 C12Q1/00 C12Q1/02 G01N33/53		
CPC分类号	A61K38/1709 A61K39/0007 A61K45/06 A61K51/1078 A61K2039/55566 A61P25/00 A61P25/16 A61P25/28		
代理机构(译)	MERCER , CHRISTOPHER PAUL		
优先权	60/423012 2002-11-01 US		
其他公开文献	EP1578253B1 EP1578253A4		
外部链接	Espacenet		

摘要(译)

本发明提供了用于治疗与突触核蛋白病相关的疾病的改进的药剂和方法，所述疾病包括患者脑中 α -突触核蛋白的路易体。这些方法需要施用诱导针对路易体的有益免疫原性应答的药剂。该方法特别适用于帕金森病的预防和治疗。