



(11) **EP 3 470 081 A1**

(12) **EUROPEAN PATENT APPLICATION**

(43) Date of publication:
17.04.2019 Bulletin 2019/16

(51) Int Cl.:
A61K 39/395 ^(2006.01) **A61K 39/00** ^(2006.01)
G01N 33/53 ^(2006.01) **C12Q 1/68** ^(2018.01)
C07K 16/28 ^(2006.01)

(21) Application number: **18210199.8**

(22) Date of filing: **03.09.2014**

(84) Designated Contracting States:
AL AT BE BG CH CY CZ DE DK EE ES FI FR GB GR HR HU IE IS IT LI LT LU LV MC MK MT NL NO PL PT RO RS SE SI SK SM TR

(30) Priority: **01.10.2013 US 201361885218 P**

(62) Document number(s) of the earlier application(s) in accordance with Art. 76 EPC:
14850189.3 / 3 052 131

(71) Applicant: **Mayo Foundation for Medical Education and Research**
Rochester, MN 55905 (US)

(72) Inventors:
• **DONG, Haidong**
Rochester, MN 55902-2533 (US)

- **HARRINGTON, Susan M.**
Rochester, MN 55901 (US)
- **KWON, Eugene D.**
Rochester, MN 55902 (US)
- **KRCO, Christopher J.**
Rochester, MN 55901 (US)
- **LIU, Xin**
Rochester, MN 55901 (US)

(74) Representative: **Kunz, Herbert**
Fish & Richardson P.C.
Highlight Business Towers
Mies-van-der-Rohe-Straße 8
80807 München (DE)

Remarks:

This application was filed on 04.12.2018 as a divisional application to the application mentioned under INID code 62.

(54) **METHODS FOR TREATING CANCER IN PATIENTS WITH ELEVATED LEVELS OF BIM**

(57) Materials and methods for treating cancer, including materials and methods for treating cancer in patients identified as having elevated levels of Bim.

EP 3 470 081 A1

Description**CROSS-REFERENCE TO RELATED APPLICATIONS**

5 [0001] This application claims benefit of priority from U.S. Provisional Application Serial No. 61/885,218, filed on October 1, 2013.

TECHNICAL FIELD

10 [0002] This document relates to materials and methods for treating cancer, and more particularly to materials and methods for treating cancer in patients identified as having elevated levels of Bim.

BACKGROUND

15 [0003] The metastatic spread of tumor cells is the primary cause of cancer related mortality, indicating a need for therapeutic approaches capable of controlling or preventing metastasis (Gibbons et al. (2012) *Oncolimmunology* 1(7):1061-1073; and Grivennikov et al. (2010) *Cell* 140:883-899). The presence of tumor-infiltrating effector and memory T cells is correlated with decreased metastatic spread, consistent with a role for T cells in preventing metastasis of primary tumors.

20 [0004] B7-H1 (also referred to as PD-L1) is a polypeptide expressed by a variety of tumor cells. It also is constitutively expressed by macrophages and dendritic cells, and its expression is up-regulated upon cell activation. PD-1 is expressed on the surface of activated T cells, B cells, and macrophages, and is a receptor for B7-H1. CD80 is found on activated B cells and monocytes, and provides a costimulatory signal necessary for T cell activation and survival; CD80 also binds B7-H1.

25

SUMMARY

[0005] This document provides, *inter alia*, a method for determining whether PD-1 on T cells has engaged its ligand, B7-H1. The method is based in part on the discovery that engagement of PD-1 by B7-H1 results in up-regulation of Bim, a pro-apoptotic molecule, and is correlated with B7-H1-mediated T cell death. This discovery suggests that intracellular levels of Bim among PD-1 positive cells is a barometer of the extent to which PD-1 has been triggered by B7-H1, with lower levels of Bim identifying activated PD-1 positive T cells whose PD-1 molecules have not yet been extensively engaged, and higher levels of Bim reflecting chronic engagement of PD-1 with B7-H1. Stratifying Bim levels among PD-1 positive CD8 T cells may be a biomarker for gauging (1) whether PD-1 molecules on CD8 T cells have been engaged by B7-H1 tumor associated ligands; and (2) the efficacy of an anti-PD-1 or anti-B7-H1 blockade regimen in reducing PD-1 engagement. Thus, using Bim as a signaling biomarker for PD-1 function, it may be possible to select patients more likely to benefit from checkpoint blockade therapy and to identify optimal therapeutic timing and dosing schedules.

30 [0006] In one aspect, this document features a method for treating a mammal having cancer, wherein said method comprises: (a) identifying said mammal as containing an elevated level of Bim, and (b) administering to said mammal an anti-B7-H1 antibody, an anti-PD-1 antibody, an anti-CD80 antibody, a fusion protein comprising a portion of PD-1 linked to an immunoglobulin Fc sequence, or a fusion protein comprising a portion of CD80 linked to an Ig Fc sequence, under conditions wherein the interaction of naturally-occurring B7-H1 with PD-1 or CD80 in said mammal is reduced after said administering. The mammal can be a human. The elevated level of Bim can be based on Bim protein levels, or on *Bcl211* mRNA levels. The cancer can be a melanoma cancer, a breast cancer, a lung cancer, a renal cell carcinoma cancer, a pancreas cancer, a prostate cancer, a colon cancer, a brain cancer, a liver cancer, or an ovarian cancer.

35 [0007] In another aspect, this document features a method for treating cancer, wherein said method comprises administering an anti-B7-H1 antibody, an anti-PD-1 antibody, an anti-CD80 antibody, a fusion protein comprising a portion of PD-1 linked to an immunoglobulin Fc sequence, or a fusion protein comprising a portion of CD80 linked to an immunoglobulin Fc sequence to a mammal identified as containing an elevated level of Bim, wherein said antibody or fusion protein is administered under conditions wherein the interaction of naturally-occurring B7-H1 with PD-1 or CD80 in said mammal is reduced after said administering. The mammal can be a human. The elevated level of Bim can be based on Bim protein levels, or on *Bcl211* mRNA levels. The cancer can be a melanoma cancer, a breast cancer, a lung cancer, a renal cell carcinoma cancer, a pancreas cancer, a prostate cancer, a colon cancer, a brain cancer, a liver cancer, or an ovarian cancer.

40 [0008] Unless otherwise defined, all technical and scientific terms used herein have the same meaning as commonly understood by one of ordinary skill in the art to which this invention pertains. Although methods and materials similar or equivalent to those described herein can be used to practice the invention, suitable methods and materials are described below. All publications, patent applications, patents, and other references mentioned herein are incorporated by reference

55

in their entirety. In case of conflict, the present specification, including definitions, will control. In addition, the materials, methods, and examples are illustrative only and not intended to be limiting.

[0009] The details of one or more embodiments of the invention are set forth in the accompanying drawings and the description below. Other features, objects, and advantages of the invention will be apparent from the description and drawings, and from the claims.

DESCRIPTION OF DRAWINGS

[0010]

FIG. 1 contains a pair of graphs plotting the kinetics of CD8+ T-cell responses to antigen stimulation. Wild type (WT) and B7-H1-deficient (KO) mice were immunized (i.p.) with OVA plus poly I:C, and K^b/OVA tetramer was used to identify antigen-specific CD8+ T cells in spleen (top panel) and liver (bottom panel) at the indicated times after immunization. Data show the percentage of tetramer+ CD8+ T cells (mean \pm SD of three mice per time point). One of two independent experiments is shown. *p < 0.05 compared with WT mice.

FIGS. 2A-2D contain a series of FACS scans and graphs showing enhanced memory CD8+ T-cell population in the absence of B7-H1. Mice were immunized with OVA plus poly I:C, and were re-stimulated with OVA on day 40 after immunization. On day 4 after re-stimulation, spleen cells were isolated from naive or immunized WT and B7-H1-deficient mice for analysis. FIG. 2A, FACS scans showing the percentage of OVA-specific tetramer+ CD8+ T cells; *p < 0.05 compared with WT mice. FIG. 2B graph plotting the absolute number of OVA-specific tetramer+ CD8+ T cells (mean \pm SD, n = 3). FIG. 2C, FACS analysis of intracellular production of cytokines in CD8+ T cells from immunized mice (mean \pm SD, n = 3). FIG. 2D, graphs plotting *in vivo* cytolytic activity in immunized mice. OVA-peptide or control-peptide pulsed target cells (syngeneic splenocytes) were labeled with high or low dose CFSE (5 μ M for OVA-peptide pulsed cells; 0.5 μ M for control-peptide pulsed cells) and mixed (1:1, 2.5 \times 10⁶ of each) and injected i.v. into WT or B7-H1-deficient mice. Histogram plots (left) show the percentage of remaining target cells in the spleen 4 hours after target cell transfer. Bar graph (right) shows percentage of specific lysis in the spleen (mean \pm SD, n = 3).

FIGS. 3A and 3B contain FACS scans and graphs showing enhanced memory CD8+ T-cell recall responses and improved antitumor immunity in the lung in the absence of B7-H1. On day 35 after immunization, immunized or naive WT and B7-H1-deficient mice were injected (i.v.) with 5 \times 10⁵ B16-OVA tumor cells. FIG. 3A, percentage and absolute numbers of IFN γ + CD8+ T cells in the lung of immunized mice (mean \pm SD, n = 3) on day 4 after tumor injection. *p < 0.01 compared with WT mice. FIG. 3B, metastatic tumor foci in the lung tissue were identified and counted on day 20 after tumor injection (mean \pm SD, n = 5). N.S.: not significant.

FIGS. 4A-4D contain a series of FACS scans and a graph showing that CD11a^{high} CD8+ T cells represent antigen-primed effector T cells. Spleen cells from naive or immunized WT and B7-H1-deficient mice were analyzed by co-staining with anti-CD11a and K^b/OVA tetramer or functional markers. FIG. 4A, FACS scans showing the percentage of CD11a^{high} CD8+ T cells from WT and B7-H1-deficient immunized mice. FIG. 4B, graph plotting average percentage of CD11a^{high} CD8+ T cells from WT and B7-H1-deficient immunized mice (mean \pm SD, n = 4). FIG. 4C, FACS scans showing the percentage of antigen-specific tetramer+ (K^b/OVA-tet) cells in CD11a^{high} and CD11a^{low} CD8+ T-cell population. FIG. 4D, FACS scans showing CTL functional assay of CD11a^{high} and CD11a^{low} CD8+ T cells after a brief re-stimulation *in vitro*. Degranulation of CTLs was analyzed by CD107a mobilization, followed by intracellular staining for IFN γ . Numbers indicate percentages of gated areas.

FIGS. 5A-5D contain a series of FACS scans and a graph showing fewer apoptotic antigen-primed CD8+ T cells in B7-H1-deficient mice. On day 7 after immunization, spleen cells were analyzed for proliferation and apoptosis. FIGS. 5A and 5B, FACS scans showing Ki67 expression and BrdU incorporation, respectively, analyzed in CD11a^{high} or CD11a^{low} CD8+ T cells. Numbers are percentages of gated area in total CD8+ T cells. FIG. 5C, FACS scans of TMRE^{low} Annexin V+ apoptotic cells measured in CD11a^{high} and CD11a^{low} CD8+ T cells. FIG. 5D, graph plotting the percentage of apoptotic cells (TMRE^{low} Annexin V+) in CD11a^{high} CD8+ T cells (mean \pm SD, n = 4).

FIGS. 6A-6D contain a series of histograms and a graph showing lower Bim levels in antigen-primed CD8+ T cells in B7-H1-deficient mice. FIG. 6A, flow cytometry assay of the intracellular expression of Bim, Bcl-2 and Bcl-xL in gated CD11a^{high} CD8+ T cells in the spleen of WT (red) and B7-H1-deficient (blue) mice on day 7 after immunization. Numbers are mean fluorescence intensity (MFI) of Bim expression. FIG. 6B, graph showing average MFI of Bim expressed by CD11a^{high} CD8+ T cells (mean \pm SD, n = 9). FIG. 6C, intracellular expression of Bim in CD11a^{high} CD8+ T cells in the liver of immunized mice. Numbers are MFI. FIG. 6D, Bim expression in total CD8+ T cells in the spleen of naive WT (red) and B7-H1-deficient (blue) mice.

FIG. 7 contains a series of histograms showing the extrinsic role of B7-H1 in regulation of Bim. WT OT-1 CD8+ T cells (Thy1.1+) were transferred in WT (red) or B7-H1-deficient (blue) host mice one day before immunization with OVA plus poly I:C. On day 7 after immunization, the OT-1 CD8+ T cells in the spleen and liver were identified by

the Thy1.1 marker and analyzed for intracellular expression of Bim. Numbers are MFI.

FIGS. 8A-8F show that B7-H1 co-stimulation induces upregulation of Bim protein levels in activated T cells. Pre-activated CD8⁺ T cells were incubated with platebound B7-H1 or control fusion protein (Fc) for 48 hours in the presence of anti-CD3. FIG. 8A, Western blot showing Bim isoform expression in CD8⁺ T cells. FIG. 8B, histogram showing expression of total Bim in CD8⁺ T cells co-stimulated with B7-H1 (blue) or control protein (red). Numbers are MFI. FIG. 8C, graph plotting average MFI of Bim expressed by activated CD8⁺ T cells (mean \pm SD, n = 5). FIG. 8D, graph plotting the percentage of live (trypan blue exclusive) CD8⁺ T cells in culture (mean \pm SD, n = 5). FIG. 8E, FACS scans indicating apoptosis of CD8⁺ T cells isolated from WT, Bim-deficient, and Bcl-2 transgenic (Tg) mice. Numbers show percentage of TMRE^{low} Annexin V⁺ apoptotic T cells in total CD8⁺ T cells. FIG. 8F, graph plotting average MFI of Bim expressed by CD8⁺ T cells in culture with anti-B7-H1 Ab (10B5, blocking B7-H1 binding to both PD-1 and CD80; 43H12, blocking B7-H1 binding to CD80 only), anti-PD-1 Ab (G4), or control Ab (10 μ g/mL of each) (mean \pm SD, n = 3).

FIGS. 9A-9C contain a series of plots showing that B7-H1 co-stimulation inhibits activation of Akt. Pre-activated CD8⁺ T cells were stimulated with plate-bound B7-H1 or control fusion protein (Fc). After 24 hours of stimulation, CD8⁺ T cells were harvested and used for analysis. FIG. 9A, graph plotting analysis of *Bcl2l1* transcript levels by real-time qPCR using the comparative CT method. GAPDH served as the internal control gene. Graph shows fold change (mean \pm SD, n = 4). FIG. 9B, histograms plotting phosphorylation of Akt (left) and mTOR (right), analyzed by intracellular staining of CD8⁺ T cells with anti-phospho-Akt and anti-phospho-mTOR Abs. Numbers show percentage of positive stained cells. FIG. 9C, bar graph plotting average MFI of phospho-Akt and phospho-mTOR expression (mean \pm SD, n = 3). N.S.: not significant.

FIG. 10 contains representative nucleic acid (top) and amino acid (bottom) sequences for human B7-H1 (SEQ ID NOS:1 and 2, respectively).

FIG. 11 contains representative nucleic acid (top) and amino acid (bottom) sequences for human PD-1 (SEQ ID NOS:3 and 4, respectively).

FIGS. 12A and 12B contain representative nucleic acid (12A) and amino acid (12B) sequences for human CD80 (SEQ ID NOS:5 and 6, respectively).

FIG. 13 contains a plot (left) showing the identification of CD8⁺ T cells based on their expression of CD11a^{high} and PD-1⁺ (left panel). Lymphocytes were stained with CD8, CD11a and PD-1, followed by intracellular staining for Bim. FIG. 13 also contains a histogram plotting expression of Bim by subsets of CD8⁺ T cells (Tn: T naive cells; PD-1⁻, PD-1 negative primed cells; PD-1⁺, PD-1 positive primed cells). Only the PD-1⁺ primed cells CD8⁺ T cells expressed high levels of Bim.

FIG. 14 is a pair of graphs plotting the level of Bim expression in tumor-reactive PD-1⁺ CD11a^{high} CD8⁺ T cells in the peripheral blood of 26 melanoma patients as compared to 11 normal, healthy controls (left panel, P=0.007 by unpaired Student T test), and in tumor-reactive PD-1⁺ CD11a^{high} CD8⁺ T cells in the peripheral blood of 11 prostate cancer patients as compared to 11 normal, healthy controls (right panel, P=0.001 by unpaired Student T test).

FIG. 15 is a pair of graphs plotting Bim expression in PD-1 negative (PD-1⁻) and PD-1 positive (PD-1⁺) CD11a^{high} CD8⁺ T cells from melanoma patients (left) and healthy controls (right). Bim was significantly increased in the PD-1⁺ populations (p=0.0081) in melanoma patients.

FIG. 16 is a pair of graphs plotting the level of Bim expression in tumor-reactive PD-1⁺ CD11a^{high} CD8⁺ T cells in the peripheral blood of 26 melanoma patients as compared to 11 normal, healthy controls (left panel, indicating "Bim low" and "Bim high" samples), and plotting the survival rate for "Bim low" vs. "Bim high" patients (right panel).

FIG. 17A is a pair of graphs showing that B7-H1 protein induced expression of Bim in human pre-activated CD8⁺ T cells. FIG. 17B is a picture of a Western blot showing Bim levels in the cells.

FIG. 18 is a pair of graphs showing that an anti-PD-1 antibody significantly blocked B7-H1-induced Bim up-regulation in a dose dependent fashion (left panel), and that the blocking effects of the anti-PD-1 antibody were inversely correlated with the higher levels of Bim induced by B7-H1 (right panel).

FIG. 19 is a pair of graphs showing that the frequency of Bim⁺PD-1⁺CD8⁺ T cells was significantly higher in the peripheral blood of melanoma patients before treatment than in a healthy control group (left panel), and that after anti-PD-1 antibody therapy, about 67% of the melanoma patients demonstrated a significant reduction in the frequency of Bim⁺PD-1⁺CD8⁺ T cells (right panel).

FIG. 20 is a pair of graphs showing that B7-H1 expressed by tumor cells induced Bim up-regulation in human pre-activated CD8⁺ T cells.

FIG. 21 is a pair of photographs (left) and a graph (right) showing that Bim expression was associated with B7-H1 expression in human renal cell carcinoma (RCC). In particular, the graph in the right panel shows that Bim⁺ tumor infiltrating lymphocytes (TILs) were increased in B7-H1 positive tumor tissues. Bim reactivity scores: 0, absence; 1, focal; 2, moderate; 3, marked. Contingency analysis using Fisher's exact test (p<0.01).

FIG. 22 is a pair of graphs showing that Bim expression was correlated with Granzyme B and T-bet (a transcription factor of effector T cells) expressed by cancer-related PD-1⁺CD11a^{high} CD8⁺ T cells, suggesting that Bim expression

is associated with effector CD8+ T cell differentiation.

FIG. 23 is a pair of graphs showing that Bim expression declined in PD-1+ CD11a^{high} CD8 T cells following radiotherapy in some melanoma (left panel) and prostate (right panel) cancer patients.

5 DETAILED DESCRIPTION

[0011] This document provides materials and methods for identifying patients as being more likely to benefit from checkpoint blockade therapy, materials and methods for determining optimal therapeutic timing and dosing schedules, and methods and materials for treating cancer. For example, this document provides methods and materials for identifying a mammal (e.g., a human) as having an elevated level of Bim, and treating the mammal with a molecule that can interfere with the interaction between B7-H1 and PD-1, and/or the interaction between B7-H1 and CD80 (e.g., an antibody against B7-H1, PD-1, or CD80, or with a fusion protein containing a portion of PD-1 or a portion of CD80 fused to an immunoglobulin (Ig) Fc domain). As described herein, elevated levels of Bim can be related to increased apoptosis of antigen-primed CD8+ T cells, but inhibiting the interaction of B7-H1 with PD-1 or CD80 can lead to reduced levels of Bim and reduced T cell apoptosis.

[0012] The term "elevated level" as used herein with respect to a level of Bim refers to a level that is greater (e.g., 50% greater, 2-fold greater, 3-fold greater, or more than 3-fold greater) than a reference level of Bim. The term "reference level" as used herein with respect to Bim refers to the level of Bim typically observed in healthy mammals without cancer. For example, a reference level of Bim can be the average level of Bim present in samples obtained from a random sampling of 50 humans free of cancer.

[0013] The presence of an elevated level of Bim can be determined by measuring, for example, protein levels or nucleic acid levels. For example, the level of Bim protein can be measured in a sample of blood (e.g., a peripheral blood sample) or another bodily fluid from a mammal with cancer or from a control mammal, using cell staining, western blotting, or other immunological techniques. The level of Bim expression also can be measured at the nucleic acid level, using Northern blotting, or any other method suitable for determining mRNA levels of *Bcl211*, which encodes the Bim protein. In some cases, Bim protein or nucleic acid levels can be measured in tumor tissue samples, ascites samples, or lymphoid organ samples. It will be appreciated that levels from comparable samples are used when determining whether or not a particular level is an elevated level.

[0014] A representative example of a human B7-H1 nucleic acid has the sequence set forth in GENBANK® Accession No. AF177937 (GI No. 6708118) (SEQ ID NO:1;

[0015] Figure 10), and a representative human B7-H1 polypeptide has the sequence set forth in GENBANK® Accession No. AAF25807 (GI No. 6708119) (SEQ ID NO:2; Figure 10).

[0016] A representative example of a human PD-1 nucleic acid can have the sequence set forth in GENBANK® Accession No. BC074740.2 (GI No. 50960296) (SEQ ID NO:3; Figure 11), and representative example of a human PD-1 polypeptide has the sequence set forth in GENBANK® Accession No. AAH74740.1 (GI No. 49902307) (SEQ ID NO:4; Figure 11).

[0017] A representative example of a human CD80 nucleic acid has the sequence set forth in NCBI Reference No. NM_005191.3 (GI No. 113722122) (SEQ ID NO:5; Figure 12A), and a representative example of a human CD80 polypeptide has the sequence set forth in NCBI Reference No. NP_005182.1 (GI No. 4885123) (SEQ ID NO:6; Figure 12B).

[0018] Once the level of Bim within a sample from a mammal is determined, the level can be compared to a reference level and used to classify the mammal as having or lacking an elevated level of Bim.

[0019] Once a mammal has been identified as having an elevated level of Bim as described herein, the mammal can be administered a molecule that inhibits the interaction between B7-H1 and PD-1 and/or the interaction between B7-H1 and CD80. Examples of such molecules include, without limitation, antibodies (e.g., anti-B7-H1 antibodies, anti-PD-1 antibodies, or anti-CD80 antibodies), and fusion proteins (e.g., PD-1 fusion proteins or CD80 fusion proteins). Such fusion proteins can contain, for example, the extracellular domain of PD-1 fused to an IgG Fc domain, or the extracellular domain of CD80 fused to an IgG Fc domain. After administration, the antibody/ies or fusion protein(s) can bind B7-H1, thus reducing or blocking B7-H1's action in inducing Bim up regulation.

[0020] The term "antibody" includes monoclonal antibodies, polyclonal antibodies, recombinant antibodies, humanized antibodies (Jones et al. (1986) *Nature* 321:522-525; Riechmann et al. (1988) *Nature* 332:323-329; and Presta (1992) *Curr. Op. Struct. Biol.* 2:593-596), chimeric antibodies (Morrison et al. (1984) *Proc. Natl. Acad. Sci. USA* 81:6851-6855), multispecific antibodies (e.g., bispecific antibodies) formed from at least two antibodies, and antibody fragments. The term "antibody fragment" comprises any portion of the afore-mentioned antibodies, such as their antigen binding or variable regions. Examples of antibody fragments include Fab fragments, Fab' fragments, F(ab')₂ fragments, Fv fragments, diabodies (Hollinger et al. (1993) *Proc. Natl. Acad. Sci. USA* 90:6444-6448), single chain antibody molecules (Plückthun in: *The Pharmacology of Monoclonal Antibodies* 113, Rosenberg and Moore, eds., Springer Verlag, N.Y. (1994), 269-315) and other fragments as long as they exhibit the desired capability of binding to B7-H1, PD-1, or CD80.

[0021] Examples of anti-human B7-H1 antibodies include, without limitation, anti-human B7-H1 antibodies commer-

cially available from Biolegend (e.g., Catalog No. 329701 or 329702; San Diego, CA) or eBioscience (e.g., Catalog No. 14-5983-80 or 14-5983-82).

[0022] Examples of anti-human PD-1 antibodies include, without limitation, anti-human PD-1 antibodies commercially available from Biolegend (e.g., Catalog No. 329904 or 329905) or eBioscience (Catalog No. 12-2799-42; San Diego, CA).

[0023] Examples of anti-human CD80 antibodies include, without limitation, anti-human CD8 antibodies commercially available from Biolegend (e.g., Catalog No. 305201 or 305202) or eBioscience (e.g., Catalog No. 14-0809-80 or 14-0809-82).

[0024] The term "antibody," as used herein, also includes antibody-like molecules that contain engineered sub-domains of antibodies or naturally occurring antibody variants. These antibody-like molecules may be single-domain antibodies such as V_H -only or V_L -only domains derived either from natural sources such as camelids (Muyldermans et al. (2001) Rev. Mol. Biotechnol. 74:277-302) or through *in vitro* display of libraries from humans, camelids or other species (Holt et al. (2003) Trends Biotechnol. 21:484-90). In certain embodiments, the polypeptide structure of the antigen binding proteins can be based on antibodies, including, but not limited to, minibodies, synthetic antibodies (sometimes referred to as "antibody mimetics"), human antibodies, antibody fusions (sometimes referred to as "antibody conjugates"), and fragments thereof, respectively.

[0025] An "Fv fragment" is the minimum antibody fragment that contains a complete antigen-recognition and -binding site. This region consists of a dimer of one heavy chain variable domain and one light chain variable domain in tight, non-covalent association. It is in this configuration that the three CDR's of each variable domain interact to define an antigen-binding site on the surface of the VH-VL dimer. Collectively, the six CDR's confer antigen-binding specificity to the antibody. However, even a single variable domain (or half of an Fv comprising only three CDR's specific for an antigen) has the ability to recognize and bind the antigen, although usually at a lower affinity than the entire binding site. The "Fab fragment" also contains the constant domain of the light chain and the first constant domain (C_{H1}) of the heavy chain. The "Fab fragment" differs from the "Fab' fragment" by the addition of a few residues at the carboxy terminus of the heavy chain C_{H1} domain, including one or more cysteines from the antibody hinge region. The "F(ab')₂ fragment" originally is produced as a pair of "Fab' fragments" which have hinge cysteines between them. Methods of preparing such antibody fragments, such as papain or pepsin digestion, are known to those skilled in the art.

[0026] An antibody can be of the IgA-, IgD-, IgE, IgG- or IgM-type, including IgG- or IgM-types such as, without limitation, IgG1-, IgG2-, IgG3-, IgG4-, IgM1- and IgM2-types. For example, in some cases, the antibody is of the IgG1-, IgG2- or IgG4- type.

[0027] In some embodiments, antibodies as used in the methods described herein can be fully human or humanized antibodies. Human antibodies can avoid certain problems associated with xenogeneic antibodies, such as antibodies that possess murine or rat variable and/or constant regions. First, because the effector portion is human, it can interact better with other parts of the human immune system, e.g., to destroy target cells more efficiently by complement-dependent cytotoxicity or antibody-dependent cellular cytotoxicity. Second, the human immune system should not recognize the antibody as foreign. Third, half-life in human circulation will be similar to naturally occurring human antibodies, allowing smaller and less frequent doses to be given. Methods for preparing human antibodies are known in the art.

[0028] In addition to human antibodies, "humanized" antibodies can have many advantages. Humanized antibodies generally are chimeric or mutant monoclonal antibodies from mouse, rat, hamster, rabbit or other species, bearing human constant and/or variable region domains or specific changes. Techniques for generating humanized antibodies are well known to those of skill in the art. For example, controlled rearrangement of antibody domains joined through protein disulfide bonds to form new, artificial protein molecules or "chimeric" antibodies can be utilized (Konieczny et al. (1981) Haematologia (Budap.) 14:95). Recombinant DNA technology can be used to construct gene fusions between DNA sequences encoding mouse antibody variable light and heavy chain domains and human antibody light and heavy chain constant domains (Morrison et al. (1984) Proc. Natl. Acad. Sci. USA 81:6851).

[0029] DNA sequences encoding antigen binding portions or complementarity determining regions (CDR's) of murine monoclonal antibodies can be grafted by molecular means into DNA sequences encoding frameworks of human antibody heavy and light chains (Jones et al. (1986) Nature 321:522; Riechmann et al. (1988) Nature 332:323). Expressed recombinant products are called "reshaped" or humanized antibodies, and comprise the framework of a human antibody light or heavy chain and antigen recognition portions, CDR's, of a murine monoclonal antibody.

[0030] Other methods for designing heavy and light chains and for producing humanized antibodies are described in, for example, U.S. Patent Nos. 5,530,101; 5,565,332; 5,585,089; 5,639,641; 5,693,761; 5,693,762; and 5,733,743. Yet additional methods for humanizing antibodies are described in U.S. Patent Nos. 4,816,567; 4,935,496; 5,502,167; 5,558,864; 5,693,493; 5,698,417; 5,705,154; 5,750,078; and 5,770,403, for example.

[0031] Molecules that interfere with the interaction between B7-H1 and PD-1, and/or the interaction between B7-H1 and CD80, as described herein (e.g., antibodies against B7-H1, PD-1, and CD80, as well as fusion proteins containing portions of PD-1 or CD80 linked to an Ig Fc domain), can be incorporated into pharmaceutical compositions for treatment of cancer. Thus, this document also provides the use of such molecules in the manufacture of medicaments for treating cancer. The compositions can further include one or more pharmaceutically acceptable carriers, diluents and/or adju-

vants. The potency of the pharmaceutical compositions provided herein typically is based on the binding of the antibody or fusion protein to B7-H1.

[0032] A "pharmaceutically acceptable carrier" (also referred to as an "excipient" or a "carrier") is a pharmaceutically acceptable solvent, suspending agent, stabilizing agent, or any other pharmacologically inert vehicle for delivering one or more therapeutic compounds to a subject, which is nontoxic to the cell or mammal being exposed thereto at the dosages and concentrations employed. Pharmaceutically acceptable carriers can be liquid or solid, and can be selected with the planned manner of administration in mind so as to provide for the desired bulk, consistency, and other pertinent transport and chemical properties, when combined with one or more of therapeutic compounds and any other components of a given pharmaceutical composition. Typical pharmaceutically acceptable carriers that do not deleteriously react with amino acids include, by way of example and not limitation: water, saline solution, binding agents (e.g., polyvinylpyrrolidone or hydroxypropyl methylcellulose), fillers (e.g., lactose and other sugars, gelatin, or calcium sulfate), lubricants (e.g., starch, polyethylene glycol, or sodium acetate), disintegrates (e.g., starch or sodium starch glycolate), and wetting agents (e.g., sodium lauryl sulfate). Pharmaceutically acceptable carriers also include aqueous pH buffered solutions or liposomes (small vesicles composed of various types of lipids, phospholipids and/or surfactants which are useful for delivery of a drug to a mammal). Further examples of pharmaceutically acceptable carriers include buffers such as phosphate, citrate, and other organic acids, antioxidants such as ascorbic acid, low molecular weight (less than about 10 residues) polypeptides, proteins such as serum albumin, gelatin, or immunoglobulins, hydrophilic polymers such as polyvinylpyrrolidone, amino acids such as glycine, glutamine, asparagine, arginine or lysine, monosaccharides, disaccharides, and other carbohydrates including glucose, mannose or dextrans, chelating agents such as EDTA, sugar alcohols such as mannitol or sorbitol, salt-forming counterions such as sodium, and/or nonionic surfactants such as TWEEN™, polyethylene glycol (PEG), and PLURONICS™.

[0033] Pharmaceutical compositions can be formulated by mixing one or more active agents with one or more physiologically acceptable carriers, diluents, and/or adjuvants, and optionally other agents that are usually incorporated into formulations to provide improved transfer, delivery, tolerance, and the like. A pharmaceutical composition can be formulated, e.g., in lyophilized formulations, aqueous solutions, dispersions, or solid preparations, such as tablets, dragees or capsules. A multitude of appropriate formulations can be found in the formulary known to all pharmaceutical chemists: Remington's Pharmaceutical Sciences (18th ed, Mack Publishing Company, Easton, PA (1990)), particularly Chapter 87 by Block, Lawrence, therein. These formulations include, for example, powders, pastes, ointments, jellies, waxes, oils, lipids, lipid (cationic or anionic) containing vesicles (such as LIPOFECTIN™), DNA conjugates, anhydrous absorption pastes, oil-in-water and water-in-oil emulsions, emulsions carbowax (polyethylene glycols of various molecular weights), semi-solid gels, and semi-solid mixtures containing carbowax. Any of the foregoing mixtures may be appropriate in treatments and therapies as described herein, provided that the active agent in the formulation is not inactivated by the formulation and the formulation is physiologically compatible and tolerable with the route of administration. See, also, Baldrick (2000) Regul. Toxicol. Pharmacol. 32:210-218; Wang (2000) Int. J. Pharm. 203:1-60; Charman (2000) J. Pharm. Sci. 89:967-978; and Powell et al. (1998) PDA J. Pharm. Sci. Technol. 52:238-311), and the citations therein for additional information related to formulations, excipients and carriers well known to pharmaceutical chemists.

[0034] Pharmaceutical compositions include, without limitation, solutions, emulsions, aqueous suspensions, and liposome-containing formulations. These compositions can be generated from a variety of components that include, for example, preformed liquids, self-emulsifying solids and self-emulsifying semisolids. Emulsions are often biphasic systems comprising of two immiscible liquid phases intimately mixed and dispersed with each other; in general, emulsions are either of the water-in-oil (w/o) or oil-in-water (o/w) variety. Emulsion formulations have been widely used for oral delivery of therapeutics due to their ease of formulation and efficacy of solubilization, absorption, and bioavailability.

[0035] Compositions and formulations can include sterile aqueous solutions, which also can contain buffers, diluents and other suitable additives (e.g., penetration enhancers, carrier compounds and other pharmaceutically acceptable carriers). Compositions additionally can contain other adjunct components conventionally found in pharmaceutical compositions. Thus, the compositions also can include compatible, pharmaceutically active materials such as, for example, antipruritics, astringents, local anesthetics or anti-inflammatory agents, or additional materials useful in physically formulating various dosage forms of the compositions provided herein, such as dyes, flavoring agents, preservatives, antioxidants, opacifiers, thickening agents and stabilizers. Furthermore, the composition can be mixed with auxiliary agents, e.g., lubricants, preservatives, stabilizers, wetting agents, emulsifiers, salts for influencing osmotic pressure, buffers, colorings, flavorings, and aromatic substances. When added, however, such materials should not unduly interfere with the biological activities of the polypeptide components within the compositions provided herein. The formulations can be sterilized if desired.

[0036] In some embodiments, a composition containing an antibody or fusion protein as provided herein (e.g., an anti-B7-H7, anti-PD-1, or anti-CD80 antibody, or a PD-1 FC or CD80 Fc fusion protein) can be in the form of a solution or powder with or without a diluent to make an injectable suspension. The composition may contain additional ingredients including, without limitation, pharmaceutically acceptable vehicles, such as saline, water, lactic acid, mannitol, or combinations thereof, for example.

[0037] Any appropriate method can be used to administer a molecule as described herein to a mammal. Administration can be, for example, parenteral (e.g., by subcutaneous, intrathecal, intraventricular, intramuscular, or intraperitoneal injection, or by intravenous drip). Administration can be rapid (e.g., by injection) or can occur over a period of time (e.g., by slow infusion or administration of slow release formulations). In some embodiments, administration can be topical (e.g., transdermal, sublingual, ophthalmic, or intranasal), pulmonary (e.g., by inhalation or insufflation of powders or aerosols), or oral. In addition, a composition containing an antibody or fusion protein as described herein can be administered prior to, after, or in lieu of surgical resection of a tumor.

[0038] A composition containing an antibody (e.g., an anti-B7-H1 antibody, anti-PD-1 antibody, or anti-CD80 antibody) or a fusion protein (e.g., a PD-1 Fc fusion or a CD80 Fc fusion) can be administered to a mammal in any appropriate amount, at any appropriate frequency, and for any appropriate duration effective to achieve a desired outcome (e.g., to increase progression-free survival). In some cases, a composition containing an antibody or fusion protein as described herein can be administered to a mammal having cancer to reduce the progression rate of the cancer by 5, 10, 25, 50, 75, 100, or more percent. For example, the progression rate can be reduced such that no additional cancer progression is detected. Any appropriate method can be used to determine whether or not the progression rate of cancer is reduced. For skin cancer (e.g., melanoma), for example, the progression rate can be assessed by imaging tissue at different time points and determining the amount of cancer cells present. The amounts of cancer cells determined within tissue at different times can be compared to determine the progression rate. After treatment as described herein, the progression rate can be determined again over another time interval. In some cases, the stage of cancer after treatment can be determined and compared to the stage before treatment to determine whether or not the progression rate has been reduced.

[0039] In some cases, a composition containing an antibody or a fusion protein as described herein can be administered to a mammal having cancer under conditions where progression-free survival is increased (e.g., by 5, 10, 25, 50, 75, 100, or more percent) as compared to the median progression-free survival of corresponding mammals having untreated cancer or the median progression-free survival of corresponding mammals having cancer and treated with other therapies (e.g., chemotherapeutic agents). Progression-free survival can be measured over any length of time (e.g., one month, two months, three months, four months, five months, six months, or longer).

[0040] Administration to a mammal of a molecule as set forth herein can result in increased numbers of naturally-occurring tumor-reactive CD8+ T cells, which can exert anti-cancer effects against cancer cells present within the mammal.

[0041] An effective amount of a composition containing a molecule as provided herein can be any amount that reduces the progression rate of cancer, increases the progression-free survival rate, or increases the median time to progression without producing significant toxicity to the mammal. Optimum dosages can vary depending on the relative potency of individual polypeptides (e.g., antibodies and fusion proteins), and can generally be estimated based on EC₅₀ found to be effective in in vitro and in vivo animal models. Typically, dosage is from 0.01 µg to 100 g per kg of body weight. For example, an effective amount of an antibody or fusion protein can be from about 1 mg/kg to about 100 mg/kg (e.g., about 5 mg/kg, about 10 mg/kg, about 20 mg/kg, about 50 mg/kg, or about 75 mg/kg). If a particular mammal fails to respond to a particular amount, then the amount of the antibody or fusion protein can be increased by, for example, two fold. After receiving this higher concentration, the mammal can be monitored for both responsiveness to the treatment and toxicity symptoms, and adjustments made accordingly. The effective amount can remain constant or can be adjusted as a sliding scale or variable dose depending on the mammal's response to treatment. Various factors can influence the actual effective amount used for a particular application. For example, the frequency of administration, duration of treatment, use of multiple treatment agents, route of administration, and severity of the cancer may require an increase or decrease in the actual effective amount administered.

[0042] The frequency of administration can be any frequency that reduces the progression rate of cancer, increases the progression-free survival rate, or increases the median time to progression without producing significant toxicity to the mammal. For example, the frequency of administration can be once or more daily, biweekly, weekly, monthly, or even less. The frequency of administration can remain constant or can be variable during the duration of treatment. A course of treatment can include rest periods. For example, a composition containing an antibody or fusion protein as provided herein can be administered over a two week period followed by a two week rest period, and such a regimen can be repeated multiple times. As with the effective amount, various factors can influence the actual frequency of administration used for a particular application. For example, the effective amount, duration of treatment, use of multiple treatment agents, route of administration, and severity of the cancer may require an increase or decrease in administration frequency.

[0043] An effective duration for administering a composition provided herein can be any duration that reduces the progression rate of cancer, increases the progression-free survival rate, or increases the median time to progression without producing significant toxicity to the mammal. Thus, the effective duration can vary from several days to several weeks, months, or years. In general, the effective duration for the treatment of cancer can range in duration from several weeks to several months. In some cases, an effective duration can be for as long as an individual mammal is alive.

Multiple factors can influence the actual effective duration used for a particular treatment. For example, an effective duration can vary with the frequency of administration, effective amount, use of multiple treatment agents, route of administration, and severity of the cancer.

[0044] After administering a composition provided herein to a mammal, the mammal can be monitored to determine whether or not the cancer was treated. For example, a mammal can be assessed after treatment to determine whether or not the progression rate of the cancer has been reduced (e.g., stopped). Any method, including those that are standard in the art, can be used to assess progression and survival rates.

[0045] The invention will be further described in the following examples, which do not limit the scope of the invention described in the claims.

EXAMPLES

Example 1 - Materials and Methods

[0046] *Mice, cell lines and reagents:* Female CD45.2+ C57BL/6 mice were purchased from Taconic Farms and CD45.1+ congenic C57BL/6-Ly5.1 mice were purchased from National Cancer Institute. OT-1 TCR (Thy 1.1+) transgenic mice were provided by T. Tian (Harvard University, Boston, MA). B7-H1-deficient C57BL/6 mice were provided by L. Chen (Yale University, New Haven, CT; Dong et al., *Immunity* 20:327-336, 2004). *Bcl211*^{-/-} mice and *Cd80*^{-/-} mice were purchased from Jackson Laboratory. *Cd80*^{-/-} mice were crossbred into WT OT-1 mice and produced *Cd80*^{-/-} OT-1 mice. *Bcl-2* transgenic mice were provided by V. Shapiro (Mayo Clinic, Rochester). Mice were maintained under pathogen-free conditions and used at 8-12 weeks of age. B16-OVA murine melanoma cells were provided by R. Vile (Mayo Clinic, Rochester, MN), and were cultured in RPMI 1640 medium (Cellgro) with 10% FBS (Life Technologies), 1 U/mL penicillin, 1 μg/mL streptomycin and 20 mM HEPES buffer (all from Mediatech). Hamster anti-mouse B7-H1 mAb (10B5) and PD-1 (G4) was obtained from hybridoma cells provided by L. Chen. Hamster anti-mouse B7-H1 mAb (43H12) was provided by K. Tamada (John Hopkins University).

[0047] *Flow cytometry analysis:* Class I MHC (K^bOVA peptide SIINFEKL; SEQ ID NO:1) tetramer and negative control tetramer were purchased from Beckman Coulter. Fluorochrome-conjugated Abs against CD8, CD11a, Fas (CD95), Fas ligand, CD90.1 (Thy 1.1), CD90.2 (Thy 1.2), CD107a, IFN_γ, IL-2 and TNF_α were purchased from BD Biosciences, BioLegend, or eBiosciences. To detect intracellular cytokine levels, cells were incubated with GolgiPlug (BD Biosciences) for 4 hours prior to analysis. Cells were stained for surface antigens, and then incubated in Fixation Buffer (BioLegend) for 20 minutes at room temperature, followed by permeabilization in Permeabilization Wash Buffer (BioLegend). Fixed and permeabilized cells were then stained with Abs for 20 minutes at room temperature. Abs to Akt, Bcl-xL, Bcl-2, Bim and mTOR and fluorochrome-conjugated secondary Abs were purchased from Cell Signaling (Danvers, MA). To detect intracellular levels of Akt, Bcl-xL, Bcl-2, Bim and mTOR, T cells were first stained for surface antigens, then fixed with 2% paraformaldehyde for 10 minutes at 37°C, followed by permeabilization with ice-cold methanol for 30 minutes. After blocking with 15% rat serum for 15 minutes, cells were stained with Abs for 1 hour at room temperature. After staining, cells were washed three times with incubation buffer before analysis. At least 100,000 viable cells were live gated on FACScan or FACSCalibur (BD Biosciences) instrumentation. Flow cytometry analysis was performed using FlowJo software (Tree Star).

[0048] *T-cell immunization, activation, apoptosis assay and proliferation assay:* Mice were immunized by i.p. injection of 0.5 mg ovalbumin (OVA, from Sigma-Aldrich) and 50 μg poly (I:C) (Sigma Aldrich). For *in vitro* T-cell activation and apoptosis assay, purified CD8+ T cells were labeled with CFSE (Invitrogen-Molecular Probes) and incubated with OVA peptide₂₅₇₋₂₆₄ (Mayo Clinic Core Facilities) at 0.2 μg/mL for 72 hours. Apoptosis of CD8+ T cells was analyzed by staining using Annexin V (BD Biosciences) and TMRE (tetramethylrhodamine ethyl ester, Invitrogen/Molecular Probes T-669). Proliferation was also measured by detection of BrdU incorporation and Ki67 staining. Immunized mice were injected i.p. with 0.8 mg/mL BrdU (BD Biosciences) on days 4 through 6 following immunization. On day 7 after immunization BrdU incorporation was determined by intra-nuclear staining with anti-BrdU (B9285, Sigma-Aldrich) and anti-Ki67 (556027, BD Biosciences).

[0049] *In vivo CTL assay.* For the *in vivo* CTL assay, OVA₂₅₇₋₂₆₄ peptide-pulsed or control peptide-pulsed spleen cells (as target cells) from syngeneic mice were labeled with a high dose of CFSE (5 μM) or low dose of CFSE (0.5 μM), mixed at 1:1 (2.5 × 10⁶ of each) before injection. Target cells were i.v. injected into immunized mice on day 4 after re-challenge with cognate antigen protein. The CTL activity was determined 4 hours after target cell transfer. Specific lysis is calculated using the following formulas: ratio = (% CFSE^{high}/% CFSE^{low}), % specific lysis = [1 - (ratio primed/ratio unprimed)] × 100%.

[0050] *Tumor studies:* Mice were inoculated i.v. with 5 × 10⁵ B16-OVA tumor cells on day 25 after immunization. On day 21-post tumor injection, mice were sacrificed and the lung tissue was perfused with PBS. The number of tumor foci on the lung tissue was counted.

[0051] *T-cell transfer experiments:* Purified CD8+ T cells (1 × 10⁶) from Thy1.1+OT-1 transgenic mice were i.v. injected

into Thy 1.2+ WT or B7-H1-deficient recipient mice, followed by immunization with OVA plus poly I:C. On day 7 after immunization, transferred CD8+ T cells were identified by their expression of Thy1.1 and used for detection of intracellular expression of Bim, Bcl-2 and Bcl-xL. Equal numbers of Cd80-/- (CD45.2+) and WT OT-1 (Thy1.1+, CD45.2+) CD8+ T cells (10^6 of each) were i.v. injected into CD45.1+ mice followed with immunization of OVA and poly I:C. The transferred OT-1 CD8+ T cells in the spleen were identified by flow cytometry.

[0052] *In vitro T-cell activation and culturing with fusion proteins:* Spleen cells were harvested from naive mice and pre-activated with ConA (5 μ g/mL, L7647, Sigma-Aldrich) for 48 hours. Following activation, CD8+ T cells were purified (EasySep CD8+ T-cell negative selection kit, Stem Cell Technologies) and incubated with plate-bound anti-CD3 (BD Biosciences) and B7-H1 Fc fusion protein or control Fc protein (R&D Systems). Cultures were maintained for indicated time periods, and then cells were harvested for analysis.

[0053] *Western blotting:* Cells were lysed with NETN buffer (0.5% NP40, 150 mM NaCl, 50 mM Tris and 1 mM EDTA). Cell lysates were boiled and run on SDS-PAGE gels (BioRad), transferred to nitrocellulose membrane (Millipore), and blotted using standard procedures.

[0054] *Quantitative RT-PCR:* Total RNA was isolated from purified CD8+ T cells (RNeasy Kit, Qiagen), and reverse transcribed (iScriptcDNA synthesis kit, BioRad). Samples were analyzed for Bim transcript levels using Bcl211 primers (Qiagen) and QuantiFast SYBR Green PCR Master Mix (Qiagen) on an iCycler (BioRad). GAPDH levels were used to normalize data by the comparative CT method.

[0055] *Statistical analysis:* A two-sided, unpaired or paired Student's t-test was used to assess statistical differences in experimental groups. A p value < 0.05 was considered statistically significant.

Example 2 - More memory T cells are generated in the absence of B7-H1

[0056] The kinetics of CD8+ T-cell responses in the spleen and liver of WT and B7-H1-deficient C57BL/6 mice were compared following immunization with ovalbumin (OVA) protein and polyinosinic:polycytidylic acid (poly (I:C)) as adjuvant. An increased number of CD8+ T cells was observed at the peak of the immune response (day 7-post immunization) in the spleen and liver of B7-H1-deficient mice as compared with WT mice. During the contraction phase (days 7 to 14 post-immunization), there was a significant delay in the reduction of antigen-specific CD8+ T cells in the spleen and liver of B7-H1-deficient mice as compared with WT mice. On day 40 following immunization, more antigen-specific memory CD8+ T cells were detected in B7-H1-deficient mice as compared with WT mice (FIG. 1). These data suggested that host B7-H1 may regulate the extent of expansion and contraction of effector CD8+ T cells, thus influencing the size of the memory CD8+ T-cell pool in both lymphoid and non-lymphoid tissues.

[0057] Studies were conducted to examine the extent to which B7-H1 regulates the generation of memory CD8+ T cells in immunized mice, using K^bOVA₂₅₇₋₂₆₄ tetramer (K^bOVA-tet) to detect antigen-primed memory CD8+ T cells in the spleen on day 4 after *in vivo* restimulation (OVA protein, administered on day 40 after primary immunization). Day 4 was selected for analysis because at this time point it is possible to distinguish a recall response from the primary response (which takes 7 days to establish). Thus, naive mice did not show a significant increase of antigen-specific CD8+ T cells on day 4 after immunization (FIG. 2A). The frequency of K^bOVA-tet+ CD8+ T cells increased more than 2-fold in immunized B7-H1-deficient mice (0.38%) as compared with WT mice (0.16%; p < 0.05; FIG. 2A). This increase was reflected in the absolute cell numbers (p = 0.001; FIG. 2B). In addition to having increased numbers of memory CD8+ T cells, an increased percentage of memory CD8+ T cells capable of producing multiple cytokines was detected in the spleens of B7-H1-deficient mice (0.73% IFN γ +/TNF α +, 0.17% IFN γ +/IL-2+) as compared with WT mice (0.24% IFN γ +/TNF α +, 0.07% IFN γ +/IL-2+; p < 0.05; FIG. 2C). An *in vivo* CTL assay to measure cytolytic activity of the memory CD8+ T cells also was performed. On day 4 after *in vivo* re-stimulation, OVA peptide- or control peptide-pulsed target cells (syngeneic splenocytes labeled with either high or low CFSE) were injected into immunized WT and B7-H1-deficient mice. Four hours following cell injection, the remaining CFSE positive cells in the spleen were analyzed. Memory CD8+ T cells in the B7-H1-deficient mice lysed more OVA-peptide pulsed target cells (33.5%) than those in WT mice (9.3%, p < 0.01; FIG. 2D). Collectively, these data suggest that B7-H1 negatively regulates the generation of memory CD8+ T cells in immunized mice.

[0058] A hallmark of memory CD8+ T cells is their rapid recall response to cognate antigens, so studies were conducted to determine whether the increased memory pool in B7-H1-deficient mice would lead to a more protective recall response. B16-OVA melanoma tumor cells (engineered to express OVA) were injected into immunized WT and B7-H1-deficient mice. Intravenously injected B16-OVA tumor cells form metastases in the lung, and antitumor immunity can be monitored by counting the number of tumor foci. On day 4 following intravenous injection of 5×10^5 B16-OVA tumor cells, the frequency of functional memory CD8+ T cells in the lungs of WT and B7-H1-deficient mice was determined by intracellular staining for IFN γ . About 4 to 5-fold more IFN γ + CD8+ T cells were detected in the lungs of B7-H1-deficient mice as compared with WT mice (p < 0.01; FIG. 3A). On day 21-post tumor injection, the number of tumor metastases in the lungs of naive B7-H1-deficient mice was comparable to that of naive WT mice (p = 0.43; FIG. 3B). Fewer tumor metastases formed in the lungs of immunized WT mice as compared with naive WT mice (p = 0.001). Significantly, tumor metastases

were completely rejected in the lungs of immunized B7-H1-deficient mice (FIG. 3B), suggesting that a more efficient CD8+ T-cell memory population is established in the absence of B7-H1.

Example 3 - Bim expression is reduced in antigen-primed CD8+ T cells in the absence of B7-H1

5

[0059] Studies were conducted to determine which mechanisms could be responsible for the increased population of memory CD8+ T cells in B7-H1-deficient mice by examining the proliferation and apoptosis of antigen-primed CD8+ T cells following immunization. CD11a was used as a surrogate activation marker. An advantage of this method is that CD11a^{high} CD8+ T cells represent antigen-primed CD8+ T cells that are responsive to undefined antigen epitopes not recognized by tetramers. CD11a^{high} CD8+ T cells were detected at low levels in the spleens of naive WT and B7-H1-deficient mice (FIG. 4A). On day 7 after immunization, the percentage of CD11a^{high} CD8+ T cells increased more than 2-fold in the spleens of B7-H1-deficient mice (41.5%) as compared with immunized WT mice (17.2%; $p < 0.01$; FIGS. 4A and 4B), consistent with the results obtained by tetramer staining (FIG. 1). Seven to 15% of CD11a^{high} CD8+ T cells from WT and B7-H1-deficient mice were specific for the known H-2K^b-restricted OVA₂₅₇₋₂₆₄ epitope based on tetramer staining, and CD11a^{low} CD8+ T cells did not contain tetramer+ cells (FIG. 4C), suggesting that all antigen-specific CD8+ T cells are found in the CD11a^{high} CD8+ T-cell population. In addition, the CD11a^{high} CD8+ population from both WT and B7-H1-deficient mice, but not the CD11a^{low} CD8+ T-cell population, produced IFN γ and underwent degranulation (indicated by CD107a surface expression) following *ex vivo* restimulation (FIG. 4D). As T-cell responses against diverse epitopes are coordinately regulated, these data further support the concept that the CD11a^{high} CD8+ T-cell population represents true OVA-specific CD8+ T cells. Nearly 80-90% of OVA-induced CD11a^{high} CD8+ T cells were reactive against undefined antigen epitopes of the OVA protein (FIG. 4C). Therefore, the CD11a^{high} CD8+ T-cell population could be used to represent a majority of the antigen-primed CD8+ T cells during primary T-cell responses. In the following studies, CD11a^{high} was used as a marker to track antigen-specific CD8+ T cells.

10

15

20

25

30

35

40

45

50

55

[0060] The proliferation of effector CD8+ T cells following immunization was examined by staining cells for Ki67, a nuclear protein associated with cell proliferation (Gerdes et al. (1984) J. Immunol. 133:1710-1715). The percent of Ki67+ cells increased in CD11a^{high} CD8+ T cells from B7-H1-deficient mice (9.32%) as compared with WT mice (7.5%), but this increase was not statistically significant (FIG. 5A). Proliferation also was monitored by performing a BrdU incorporation assay to measure the ongoing proliferation of CD8+ T cells following immunization. In this assay, the percentage of BrdU+ CD11a^{high} CD8+ T cells also was similar between WT (6.05%) and B7-H1-deficient mice (5.59%; FIG. 5B). Ki67+ or BrdU+ cells were mainly detected in the CD11a^{high} CD8+ T cells but not in CD11a^{low} CD8+ T cells, suggesting that CD11a^{high} CD8+ T cells are proliferating following antigen-stimulation (FIGS. 5A and 5B). These results suggested that the observed increased population of antigen-primed CD8+ T cells in B7-H1-deficient mice is not due to an increased proliferation of this cell compartment, as compared with WT mice.

[0061] Studies were then conducted to evaluate whether decreased apoptosis of antigen-primed CD8+ T cells could contribute to the observed increased population of antigen-primed CD8+ T cells in immunized B7-H1-deficient mice. As discussed above, the Fas/Fas ligand death receptor pathway is implicated in regulation of T-cell contraction, so the surface expression levels of Fas and Fas ligand on effector CD8+ T cells were measured on day 7 after immunization. Expression of Fas and Fas ligand was detected at similar levels in WT and B7-H1-deficient mice. These results suggest that the observed increased population of effector CD8+ T cells is not due to a change in Fas-induced apoptosis in B7-H1-deficient mice. The mitochondrial pathway for apoptosis was investigated by analyzing levels of Annexin V and tetramethylrhodamine ethyl ester (TMRE) staining. TMRE is a fluorescent marker that is incorporated into intact mitochondria, and cells undergoing apoptosis show reduced TMRE staining as compared with live cells (Jayaraman, J. Immunol. Methods 306:68-79, 2005). These studies revealed that fewer antigen-primed CD11a^{high} CD8+ T cells were undergoing apoptosis (TMRE^{low} Annexin V+) in B7-H1-deficient mice (3.4%) as compared with WT mice (6.7%, $p < 0.05$; FIGS. 5C and 5D). These results suggested that decreased levels of mitochondrial apoptosis may contribute to the observed increased population of antigen-primed CD8+ T cells in B7-H1-deficient mice.

[0062] Experiments were conducted to look for alterations in the expression of apoptosis-regulating molecules in effector CD8+ T cells. Intracellular levels of the pro-apoptotic molecule Bim and the anti-apoptotic molecules Bcl-2 and Bcl-x_L were measured in CD11a^{high} CD8+ T cells freshly isolated from the spleen on day 7 after immunization of naive mice. Lower intracellular expression levels of Bim were observed in CD11a^{high} CD8+ T cells from B7-H1-deficient mice than in the same cells obtained from WT mice ($p < 0.001$; FIGS. 6A and 6B), while the expression levels of Bcl-2 and Bcl-x_L were comparable in WT and B7-H1-deficient mice (FIG. 6A). The expression of Bim, Bcl-2 and Bcl-x_L were comparable in CD11a^{low} CD8+ T cells from B7-H1-deficient and WT mice (FIG. 6A). Intracellular expression levels of Bim also were analyzed in CD11a^{high} CD8+ T cells isolated from the liver on day 7 after immunization of naive mice. Again, lower intracellular expression levels of Bim were observed in CD11a^{high} CD8+ T cells from B7-H1-deficient mice as compared with WT mice (FIG. 6C). Finally, intracellular expression levels of these proteins were examined in CD11a^{high} CD8+ T cells isolated from the spleen of naive mice, and no significant differences were observed in B7-H1-deficient vs. WT mice in the expression levels of Bim (FIG. 6D), Bcl-2 or Bcl-x_L. These data suggested that the downregulation

of the pro-apoptotic molecule Bim may contribute to the observed increased population of antigen-primed effector CD8+ T cells in B7-H1-deficient mice.

[0063] To exclude the possibility that the downregulation of Bim in B7-H1-deficient mice would be due to an intrinsic change in B7-H1-deficient T cells, transfer experiments were performed in which naive OT-1 CD8+ T cells (Thy1.1+) were injected into WT or B7-H1-deficient mice (Thy1.2+). Following transfer of the OT-1 CD8+ T cells, host mice were immunized with OVA plus poly I:C. On day 7 after immunization, the intracellular levels of Bim, Bcl-2, and Bcl-x_L were measured in transferred OT-1 CD8+ T cells freshly isolated from spleen and liver. OT-1 CD8+ T cells transferred into B7-H1-deficient hosts expressed lower levels of Bim in both the spleen and liver as compared with the OT-1 CD8+ T cells transferred into WT hosts (FIG. 7). The expression of Bcl-2 and Bcl-x_L in OT-1 CD8+ T cells transferred into WT or B7-H1-deficient mice was comparable (FIG. 7). These data suggested that the downregulation of Bim in B7-H1-deficient mice is not due to an intrinsic change in B7-H1-deficient T cells, but rather to host B7-H1 interacting with one of its binding partners on CD8+ T cells.

[0064] Next, antibodies that block the interaction between B7-H1 and PD-1 or between B7-H1 and CD80 were used to examine if blocking either of these pathways would impact Bim expression levels. On days 1 and 3 after immunization of WT mice with OVA plus poly I:C, an anti-PD-1 antibody (G4) that only blocks PD-1 binding to B7-H1 (Hirano et al. (2005) Cancer Res. 65:1089-1096) or an anti-B7-H1 antibody (43H12) that only blocks B7-H1 binding to CD80 (Park et al. (2010) Blood 116:1291-1298) was injected. On day 7 after immunization, Bim expression levels in CD11a^{high} CD8+ T cells were compared between groups with or without antibody blockade. Antibodies blocking the interaction between B7-H1 and PD-1 or between B7-H1 and CD80 both reduced the expression of Bim in primed CD8+ T cells as compared with control antibodies, whereas the expression of Bcl-2 and Bcl-x_L remained unaffected. These results suggested that the downregulation of Bim in B7-H1-deficient mice might be due to a lack of interaction between B7-H1 and its binding partners, PD-1 and CD80.

[0065] After an acute viral infection, more central memory T cells accumulate in the lymphoid organs of PD-1-deficient mice as compared with WT mice, indicating that PD-1 signaling negatively regulates memory T-cell generation (Allie et al. (2011) J. Immunol. 186:6280-6286). The relevance of CD80 signaling in the regulation of memory generation was addressed by transferring equal numbers of CD80-deficient OT-1 and WT OT-1 naive CD8+ T cells into CD45.1+ mice. One day after T-cell transfer, host mice were immunized with OVA plus poly I:C. On day 21 after immunization, the frequency and phenotype of the transferred CD80-deficient and WT OT-1 CD8+ T cells was analyzed. On day 21 after immunization, a 2-fold increased percentage of CD80-deficient OT-1 CD8+ T cells as compared with WT OT-1 CD8+ T cells was detected in the spleen, indicating that the transferred CD80-deficient OT-1 CD8+ T cells generated more memory T cells as compared with WT OT-1 CD8+ T cells. Surface staining confirmed that these cells had a central memory phenotype (CD44^{hi} CD62L^{hi}). The recall response of the memory population generated from transferred cells was investigated by injecting the hosts with OVA plus poly I:C on day 30 after the initial immunization, and 3 days later the frequency and phenotype of the transferred cells was analyzed. An increased percentage of CD80-deficient OT-1 CD8+ T cells as compared with WT OT-1 CD8+ T cells was detected in the spleen ($p = 0.013$). Surface staining confirmed that these cells had an effector memory phenotype (CD44^{hi} CD620^{lo}). Taken together, these data demonstrated that *Cd80*^{-/-} OT-1 CD8+ T cells generated more memory T cells as compared their WT counterparts, indicating that CD80 expressed by CD8+ T cells may negatively regulate memory T-cell generation.

Example 4 - B7-H1 enhances Bim expression in activated CD8+ T cells

[0066] Studies were conducted to investigate how B7-H1 might regulate Bim levels in activated CD8+ T cells. Pre-activated WT CD8+ T cells were incubated with platebound B7-H1 fusion protein for 48 hours in the presence of TCR stimulation (anti-CD3 antibody). Bim expression was analyzed by western blotting, and increased expression levels were observed in CD8+ T cells cultured in the presence of B7-H1 fusion protein, as compared with a control fusion protein (FIG. 8A). Bim expression also was analyzed by intracellular flow cytometry, revealing that the B7-H1 fusion protein dramatically increased the levels of Bim protein in CD8+ T cells compared with a control fusion protein ($p < 0.02$; FIGS. 8B and 8C). In the absence of anti-CD3 antibodies, Bim levels did not increase upon incubation with B7-H1 fusion protein, suggesting that B7-H1 provides a co-stimulatory signal for Bim upregulation. Accordingly, the absolute number of live cells was also reduced in CD8+ T cells cultured in the presence of B7-H1 fusion protein compared with a control protein ($p < 0.01$; FIG. 8D). Increased levels of cells undergoing apoptosis (TMRE^{low} Annexin V+) were observed in cultures of activated CD8+ T cells exposed to the B7-H1 fusion protein and anti-CD3 (12.4%) as compared with cells cultured with control fusion protein and anti-CD3 (4.1%, FIG. 8E). The induction of apoptosis by B7-H1 fusion protein was lost in CD8+ T cells isolated from Bim-deficient and Bcl-2 transgenic mice (FIG. 8E), suggesting that B7-H1-induced T-cell apoptosis may be dependent on the Bim-mediated mitochondrial pathway of apoptosis.

[0067] To examine which receptor of B7-H1 is involved in mediating Bim upregulation, pre-activated WT CD8+ T cells were incubated with plate-bound B7-H1 fusion protein pre-blocked with anti-B7-H1 (10B5 or 43H12) or anti-PDI (G4) antibodies. The 10B5 antibody blocks the interaction of B7-H1 with both PD-1 and CD80. Both 10B5 and G4 antibodies

completely blocked Bim upregulation induced by B7-H1 fusion protein, while 43H12 only partially, but significantly, did so (FIG. 8F). None of the antibodies used in this experiment had effects on Bim expression levels in cells cultured with control fusion protein, indicating that their effect on Bim expression levels is due to blocking the interaction between B7-H1/PD-1 or B7-H1/CD80, and not due to a non-specific effect. These results suggest that B7-H1 may use PD-1 or CD80

5 on CD8+ T cells to deliver co-stimulatory signals for the upregulation of Bim.
[0068] The mechanism by which B7-H1 regulates Bim expression levels was then examined. mRNA levels of *Bcl211*, which encodes the Bim protein, were examined by quantitative real-time PCR analysis using mRNA isolated from pre-activated CD8+ T cells that were exposed to B7-H1 fusion protein or to a control fusion protein and anti-CD3 for 24 hours. Incubation of pre-activated CD8+ T cells with B7-H1 fusion protein did not increase the levels of *Bcl211* (FIG. 9A), indicating that the B7-H1-mediated upregulation of Bim does not result from transcriptional regulation. The degradation of Bim is tightly regulated, at least in part via the activation of Akt followed by Akt-mediated Bim phosphorylation and degradation (Qi et al. (2006) *J. Biol. Chem.* 281:813-823). The level of Akt activation in CD8+ T cells after B7-H1 engagement was measured by intracellular flow cytometry for phosphorylated-Akt (Ser473). CD8+ T cells cultured with B7-H1 fusion protein exhibited decreased levels of phosphorylated Akt as compared with CD8+ T cells cultured with a control fusion protein ($p < 0.01$; FIGS. 9B and 9C). As phosphorylation of Akt at Ser473 is regulated by activation of mTOR (Sarbasov et al. (2005) *Science* 307:1098-1101; and Jacinto et al. (2006) *Cell* 127:125-137), studies were conducted to examine whether B7-H1 regulates phosphorylation of mTOR *in vitro*. Unexpectedly, there was no difference in levels of phospho-mTOR in CD8+ T cells cultured with B7-H1 fusion protein and cells cultured with control fusion protein (FIGS. 9B and 9C). These results suggested that CD8+ T-cell engagement with B7-H1 inhibits the activation of Akt, resulting in decreased degradation of Bim.

Example 5 - Bim is increased in tumor-reactive CD8+ T cells in peripheral blood of melanoma and prostate cancer patients

25 **[0069]** Peripheral blood lymphocytes were isolated from 26 patients with stage IV (advanced) melanoma, and from 11 healthy blood donors. Lymphocytes were stained with CD8, CD11a and PD-1 followed with intracellular staining for Bim. High expression of CD11a by CD8 T cells was used to identify antigen-primed T cells. Tumor-reactive CD8+ T cells were defined by their expression of CD11a^{high} and PD-1+ (FIG. 13, left panel). The histograms shown in the right panel of FIG. 13 indicate expression of Bim by subsets of CD8+ T cells (Tn: T naive cells; PD-1-, PD-1 negative primed cells; PD-1+, PD-1 positive primed cells). Of note, only PD-1+ primed cells (tumor-reactive) CD8+ T cells expressed high levels of Bim. Bim expression was increased in tumor-reactive CD8+ T cells in peripheral blood of melanoma patients as compared to the healthy controls, and also was increased in tumor-reactive CD8+ T cells in peripheral blood of prostate cancer patients as compared to healthy controls (FIG. 14). The Bim upregulation in melanoma patients was PD-1 dependent, as depicted in FIG. 15. When levels of Bim were compared between PD-1 negative (PD-1-) and PD-1 positive (PD-1+) CD11a^{high} CD8+ T cells, Bim was found to be significantly increased in the PD-1+ populations ($p=0.0081$) in melanoma patients. In contrast, Bim expression was not increased in PD-1+ T cells in healthy donors, suggesting that Bim upregulation is dependent on PD-1 expression and is cancer-related.

30 **[0070]** Further, when melanoma patients were broken into "Bim low" vs. "Bim high" categories based on the level of Bim expression in tumor-reactive PD-1+CD11a^{high} CD8+ T cells in the peripheral blood (FIG. 16, left panel), the survival rate for patients with Bim^{high} PD-1+CD8+ T cells was reduced as compared to the survival rate for patients with Bim^{low} PD-1+CD8+ T cells (FIG. 16, right panel).

Example 6 - B7-H1 protein induces high expression of Bim in human pre-activated CD8+ T cells

45 **[0071]** Since Bim up-regulation is a consequence of interaction between B7-H1 and PD-1, experiments were conducted to test whether an anti-PD-1 blocking antibody can reduce B7-H1-induced Bim up-regulation in T cells. An *in vitro* system was established in which pre-activated human primary CD8+ T cells were incubated with a B7-H1/PD-L1 fusion protein to induce Bim up-regulation. As shown in FIG. 17A (right panel), a significant up-regulation of Bim (presented as MFI) was induced the B7-H1/PD-L1 fusion ($P<0.05$, $n=6$). The increased Bim expression is further demonstrated by a flow cytometry histogram (FIG. 17A, left panel) and a Western blotting assay (FIG. 17B).

50 **[0072]** Using this system, several commercially available anti-human PD-1 antibodies were screened for their blocking effects, and one anti-PD-1 antibody (clone MIH4) was identified that significantly blocked B7-H1-induced Bim up-regulation in a dose dependent fashion (FIG. 18, left panel). Since B7-H1 induced different degrees of Bim up-regulation in individual healthy donors, experiments were conducted to examine whether different degrees of Bim up-regulation would affect the blocking effects of the anti-PD-1 antibody. Interestingly, it was observed that higher levels of Bim induced by B7-H1 had a negative correlation with Bim reduction by anti-PD-1 blocking antibody (FIG. 18, right panel; Pearson $R = -0.71$, $n = 12$, $P < 0.05$). These results suggested that pre-existing Bim levels in CD8+ T cells might affect the efficiency of anti-PD-1 blockade. Thus, measuring Bim levels before treatment could help to determine the degree to which an anti-PD-1 antibody might block the impact of PD-1 signals on antitumor T cell responses.

Example 7 - Anti-PD-1 treatment reduced the frequency of Bim+ PD-1+tumor-reactive CD8 T cells

[0073] Next, studies were conducted to evaluate the impact of the anti-PD-1 antibody on Bim expression by tumor-reactive CD8 T cells in cancer patients. Peripheral blood lymphocytes were collected from patients with advanced melanoma (Stage IV) before and 12 weeks post anti-PD-1 treatment. Tumor-reactive CD8 T cells were identified by their high expression of CD11a and expression of PD-1. Bim expression was analyzed by intracellular staining. The percentage of Bim+PD-1+in CD11a^{high} CD8+ T cells was compared between healthy people and melanoma patients, and between melanoma patients before and after treatment with anti-PD-1 antibody. As shown in FIG. 19, the frequency of Bim+PD-1+CD8 T cells in the peripheral blood of melanoma patients (before treatment, n = 29) was significantly higher than in the healthy control group ($p = 0.0012$, n = 14), suggesting that more PD-1+CD8 T cells are under the influence of the PD-1/B7-H1 interaction that leads to up-regulation of Bim. Importantly, twelve weeks after anti-PD-1 antibody therapy (2 mg/kg, one cycle), about 67% (6/9) of the melanoma patients demonstrated a significant reduction in the frequency of Bim+PD-1+CD8 T cells ($p = 0.023$, n=6). These results indicated that measurement of Bim expressed by PD-1+CD8 T cells could be used to monitor the responses of cancer patients to anti-PD-1 therapy, which may block B7-H1-induced Bim up-regulation. A reduced frequency or level of Bim expressed by PD-1+ CD8 T cells in cancer patients after anti-PD-1 therapy may be used to assess which patients are responsive to the therapy.

Example 8 - B7-H1 expressed by tumor cells induces Bim up-regulation in human pre-activated CD8 T cells

[0074] Since most human solid tumor cells express elevated levels of B7-H1, the function of tumor cell-expressed B7-H1 in T cell Bim expression was examined. Pre-activated human primary CD8 T cells were incubated with cells from a human melanoma line (624mel) that were transfected with B7-H1 cDNA or with control mock cDNA, for 24 hours. As shown in FIG. 20, intracellular expression of Bim was dramatically increased in CD8 T cells cultured with B7-H1/624mel cells, as compared to mock/624mel cells ($p < 0.01$). This result suggested that B7-H1 expressed by human tumor cells has the potential to up-regulate Bim in pre-activated CD8 T cells.

Example 9 - Bim expression is associated with B7-H1 expression in human RCC

[0075] The ability of B7-H1 to up-regulate Bim in pre-activated, but not newly activated, CD8+ T cells, implied that reactivation of tumor-reactive CD8+ T cells at tumor sites could be dampened through this mechanism by B7-H1 positive tumor cells. To test this possibility, human cancer tissues stained for B7-H1 and Bim were evaluated. The hypothesis was that B7-H1 positive human cancer tissues would be associated with more Bim positive tumor-infiltrating lymphocytes (TILs). As shown in FIG. 21 (left panel), human renal cell carcinoma tissues were stained with anti-B7-H1 and anti-Bim antibodies in immunohistochemistry assays. B7-H1 reactivity was identified on the surface of cancer cells, while Bim positive staining was identified on cancer cells and also on TILs (FIG. 21, left panel). Bim reactivity was determined by an arbitrary scoring system: 0 (absence), 1(focal), 2 (moderate), and 3 (marked). The association between B7-H1 positive or negative tumors and the frequency of Bim reactivity at different levels is demonstrated in the right panel of FIG. 21, and was analyzed using Fisher's exact test. B7-H1 positive tumors were found in general to have a higher degree (2-3 scores) of Bim positive TILs than B7-H1 negative tumors (Fisher's exact test, $p < 0.01$). These results suggest that B7-H1 positive tumors can induce more death in tumor-reactive T cells at tumor sites via up-regulation of Bim when these T cells are re-activated with tumor antigen stimulation.

Example 10 - Bim expression is correlated with Granzyme B and T-bet expressed by cancer-related PD-1+ CD11a^{high} CD8+ T cells

[0076] To examine whether up-regulation of Bim is associated with effector T cells, the levels of Granzyme B (an executive molecule of cytotoxic T lymphocytes, CTL) and T-bet (a transcription factor of CTL) were measured in PD-1+ CD11a^{high} CD8 T cells from the blood of melanoma patients, and their correlation to Bim levels was analyzed. As shown in FIG. 22, positive correlations between levels of Bim and Granzyme B (left panel; $r = 0.51$, $p < 0.05$) and between levels of Bim and T-bet (right panel; $r = 0.62$, $p < 0.01$) were observed. These results suggested that higher levels of Bim expression are associated with effector T cell differentiation or function. These data also imply that up-regulation of Bim may be used by B7-H1 positive tumor cells to induce apoptosis of tumor-reactive CD8 T cells, especially of CD8 T cells with effector function.

Example 11 - Bim expression declines in PD-1+ CD11a^{high} CD8 T cells following radiotherapy in some cancer patients

[0077] To observe how the levels of Bim in tumor-reactive CD8 T cells respond to therapy, Bim levels were measured in PD-1+ CD11a^{high} CD8 T cells from the peripheral blood of patients with melanoma and prostate cancers before and

post radiotherapy. As shown in FIG. 23 (left panel), decreased levels of Bim were observed in melanoma patients post radiotherapy. In contrast, increased levels of Bim were observed in prostate cancer patients post radiotherapy (right panel). Due to the limited numbers of patients in this study, these changes did not reach statistical significance. However, these changes in Bim levels after tumor cytotoxic therapy suggested that destruction of tumor tissues could alter the antigen stimulation and B7-H1 expression that would result in alterations in Bim expression, which is dependent on both antigen stimulation and B7-H1 engagement with PD-1 on CD8 T cells. Taken together, these studies indicate that measurement of Bim levels in tumor-reactive PD-1 + CD8 T cells could be used as a biomarker to monitor T cell responses to antigens and PD-1 ligands (e.g., B7-H1) expressed by human tumor cells.

Embodiments

[0078] Although the present invention is defined in the attached claims, it should be understood that the present invention can also (alternatively) be defined in accordance with the following embodiments:

1. A method for treating a mammal having cancer, wherein said method comprises:

- (a) identifying said mammal as containing an elevated level of Bim, and
- (b) administering to said mammal an anti-B7-H1 antibody, an anti-PD-1 antibody, an anti-CD80 antibody, a fusion protein comprising a portion of PD-1 linked to an immunoglobulin Fc sequence, or a fusion protein comprising a portion of CD80 linked to an Ig Fc sequence, under conditions wherein the interaction of naturally-occurring B7-H1 with PD-1 or CD80 in said mammal is reduced after said administering.

2. The method of embodiment 1, wherein said mammal is a human.

3. The method of embodiment 1, wherein said elevated level of Bim is based on Bim protein levels.

4. The method of embodiment 1, wherein said elevated level of Bim is based on *Bcl211* mRNA levels.

5. The method of embodiment 1, wherein said cancer is a melanoma cancer, a breast cancer, a lung cancer, a renal cell carcinoma cancer, a pancreas cancer, a prostate cancer, a colon cancer, a brain cancer, a liver cancer, or an ovarian cancer.

6. A method for treating cancer, wherein said method comprises administering an anti-B7-H1 antibody, an anti-PD-1 antibody, an anti-CD80 antibody, a fusion protein comprising a portion of PD-1 linked to an immunoglobulin Fc sequence, or a fusion protein comprising a portion of CD80 linked to an immunoglobulin Fc sequence to a mammal identified as containing an elevated level of Bim, wherein said antibody or fusion protein is administered under conditions wherein the interaction of naturally-occurring B7-H1 with PD-1 or CD80 in said mammal is reduced after said administering.

7. The method of embodiment 6, wherein said mammal is a human.

8. The method of embodiment 6, wherein said elevated level of Bim is based on Bim protein levels.

9. The method of embodiment 6, wherein said elevated level of Bim is based on *Bcl211* mRNA levels.

10. The method of embodiment 6, wherein said cancer is a melanoma cancer, a breast cancer, a lung cancer, a renal cell carcinoma cancer, a pancreas cancer, a prostate cancer, a colon cancer, a brain cancer, a liver cancer, or an ovarian cancer

EP 3 470 081 A1

SEQUENCE LISTING

<110> Mayo Foundation for Medical Education and Research

5 <120> METHODS FOR TREATING CANCER IN PATIENTS
WITH ELEVATED LEVELS OF BIM

<130> 07039-1283EP2

10 <150> US 61/885,218
<151> 2013-10-01

<160> 6

15 <170> FastSEQ for Windows Version 4.0

<210> 1
<211> 873
<212> DNA
20 <213> Homo sapiens

<400> 1
atgaggatata ttgctgtctt tatattcatg acctactggc atttgctgaa cgcatttact 60
gtcacgggttc ccaaggacct atatgtggta gagtatggta gcaatatgac aattgaatgc 120
aaattcccag tagaaaaaca attagacctg gctgcactaa ttgtctattg ggaaatggag 180
25 gataagaaca ttattcaatt tgtgcatgga gaggaagacc tgaaggttca gcatagtagc 240
tacagacaga gggcccggct gttgaaggac cagctctccc tgggaaatgc tgcacttcag 300
atcacagatg tgaattgca ggatgcaggg gtgtaccgct gcatgatcag ctatgggtgg 360
gccgactaca agcgaattac tgtgaaagtc aatgccccat acaacaaaat caaccaaaaga 420
atgttggttg tggatccagt cacctctgaa catgaactga catgtcaggc tgagggttac 480
30 cccaaggccg aagtcactctg gacaagcagt gaccatcaag tcctgagtgg taagaccacc 540
accaccaatt ccaagagaga ggagaagctt ttcaatgtga ccagcacact gagaatcaac 600
acaacaacta atgagatatt ctactgcact tttaggagat tagatcctga ggaaaaccat 660
acagctgaat tggatcatccc agaactacct ctggcacatc ctccaaatga aaggactcac 720
ttggtaattc tgggagccat cttattatgc cttgggtgtag cactgacatt catcttccgt 780
35 ttaagaaaag ggagaatgat ggatgtgaaa aaatgtggca tccaagatac aaactcaaag 840
aagcaaagtg atacacattt ggaggagacg taa 873

<210> 2
<211> 290
<212> PRT
40 <213> Homo sapiens

<400> 2
Met Arg Ile Phe Ala Val Phe Ile Phe Met Thr Tyr Trp His Leu Leu
1 5 10 15
Asn Ala Phe Thr Val Thr Val Pro Lys Asp Leu Tyr Val Val Glu Tyr
20 25 30
45 Gly Ser Asn Met Thr Ile Glu Cys Lys Phe Pro Val Glu Lys Gln Leu
35 40 45
Asp Leu Ala Ala Leu Ile Val Tyr Trp Glu Met Glu Asp Lys Asn Ile
50 55 60
Ile Gln Phe Val His Gly Glu Glu Asp Leu Lys Val Gln His Ser Ser
65 70 75 80
Tyr Arg Gln Arg Ala Arg Leu Leu Lys Asp Gln Leu Ser Leu Gly Asn
85 90 95
Ala Ala Leu Gln Ile Thr Asp Val Lys Leu Gln Asp Ala Gly Val Tyr
100 105 110
55 Arg Cys Met Ile Ser Tyr Gly Gly Ala Asp Tyr Lys Arg Ile Thr Val
115 120 125
Lys Val Asn Ala Pro Tyr Asn Lys Ile Asn Gln Arg Ile Leu Val Val

EP 3 470 081 A1

130 135 140
 Asp Pro Val Thr Ser Glu His Glu Leu Thr Cys Gln Ala Glu Gly Tyr
 145 150 155 160
 Pro Lys Ala Glu Val Ile Trp Thr Ser Ser Asp His Gln Val Leu Ser
 5 Gly Lys Thr Thr Thr Thr Asn Ser Lys Arg Glu Glu Lys Leu Phe Asn
 165 170 175
 Val Thr Ser Thr Leu Arg Ile Asn Thr Thr Thr Asn Glu Ile Phe Tyr
 180 185 190
 195 200 205
 10 Cys Thr Phe Arg Arg Leu Asp Pro Glu Glu Asn His Thr Ala Glu Leu
 210 215 220
 Val Ile Pro Glu Leu Pro Leu Ala His Pro Pro Asn Glu Arg Thr His
 225 230 235 240
 Leu Val Ile Leu Gly Ala Ile Leu Leu Cys Leu Gly Val Ala Leu Thr
 245 250 255
 15 Phe Ile Phe Arg Leu Arg Lys Gly Arg Met Met Asp Val Lys Lys Cys
 260 265 270
 Gly Ile Gln Asp Thr Asn Ser Lys Lys Gln Ser Asp Thr His Leu Glu
 275 280 285
 Glu Thr
 290

20

<210> 3
 <211> 948
 <212> DNA
 <213> Homo sapiens

25

<400> 3
 gcctgagcag tggagaaggc ggcactctgg tggggctgct ccaggcatgc agatcccaca 60
 ggcgccctgg ccagtcgtct gggcgggtgct acaactgggc tggcggccag gatggttctt 120
 agactcccca gacaggccct ggaaccccc caccttctcc ccagccctgc tcgtggtgac 180
 30 cgaaggggac aacgccacct tcacctgcag cttctccaac acatcggaga gcttcgtgct 240
 aaactggtac cgcatgagcc ccagcaacca gacggacaag ctggccgctt tccccgagga 300
 ccgcagccag cccggccagg actgcccgtt ccgtgtcaca caactgcca acggggcgtga 360
 cttccacatg agcgtggtca gggcccggcg caatgacagc ggcacctacc tctgtggggc 420
 catctccctg gcccccaagg cgcagatcaa agagagcctg cgggcagagc tcagggtgac 480
 agagagaagg gcagaagtgc ccacagccca ccccagcccc tcaccagggc cagccggcca 540
 35 gttccaaacc ctggtggttg gtgtcgtggg cggcctgctg ggcagcctgg tgctgctagt 600
 ctgggtcctg gccgtcatct gctcccgggc cgcacgaggg acaataggag ccaggcgcac 660
 cggccagccc ctgaaggagg acccctcagc cgtgcctgtg ttctctgtgg actatgggga 720
 gctggatttc cagtggcgag agaagacccc ggagcccccc gtgccctgtg tccctgagca 780
 gacggagtat gccaccattg tctttcctag cggaatgggc acctcatccc ccgcccgcag 840
 40 gggctcagcc gacggccctc ggagtgccca gccactgagg cctgaggatg gacactgctc 900
 ttggcccctc tgaccggctt ccttggccac cagtgttctg cagaccct 948

40

<210> 4
 <211> 288
 <212> PRT
 <213> Homo sapiens

45

<400> 4
 Met Gln Ile Pro Gln Ala Pro Trp Pro Val Val Trp Ala Val Leu Gln
 1 5 10 15
 Leu Gly Trp Arg Pro Gly Trp Phe Leu Asp Ser Pro Asp Arg Pro Trp
 20 25 30
 50 Asn Pro Pro Thr Phe Ser Pro Ala Leu Leu Val Val Thr Glu Gly Asp
 35 40 45
 Asn Ala Thr Phe Thr Cys Ser Phe Ser Asn Thr Ser Glu Ser Phe Val
 50 55 60
 55 Leu Asn Trp Tyr Arg Met Ser Pro Ser Asn Gln Thr Asp Lys Leu Ala
 65 70 75 80
 Ala Phe Pro Glu Asp Arg Ser Gln Pro Gly Gln Asp Cys Arg Phe Arg

55

EP 3 470 081 A1

				85					90				95			
	Val	Thr	Gln	Leu	Pro	Asn	Gly	Arg	Asp	Phe	His	Met	Ser	Val	Val	Arg
				100					105					110		
5	Ala	Arg	Arg	Asn	Asp	Ser	Gly	Thr	Tyr	Leu	Cys	Gly	Ala	Ile	Ser	Leu
			115					120					125			
	Ala	Pro	Lys	Ala	Gln	Ile	Lys	Glu	Ser	Leu	Arg	Ala	Glu	Leu	Arg	Val
		130					135					140				
	Thr	Glu	Arg	Arg	Ala	Glu	Val	Pro	Thr	Ala	His	Pro	Ser	Pro	Ser	Pro
	145					150					155					160
10	Arg	Pro	Ala	Gly	Gln	Phe	Gln	Thr	Leu	Val	Val	Gly	Val	Val	Gly	Gly
				165						170					175	
	Leu	Leu	Gly	Ser	Leu	Val	Leu	Leu	Val	Trp	Val	Leu	Ala	Val	Ile	Cys
				180					185				190			
	Ser	Arg	Ala	Ala	Arg	Gly	Thr	Ile	Gly	Ala	Arg	Arg	Thr	Gly	Gln	Pro
				195				200					205			
15	Leu	Lys	Glu	Asp	Pro	Ser	Ala	Val	Pro	Val	Phe	Ser	Val	Asp	Tyr	Gly
		210					215					220				
	Glu	Leu	Asp	Phe	Gln	Trp	Arg	Glu	Lys	Thr	Pro	Glu	Pro	Pro	Val	Pro
	225					230					235					240
	Cys	Val	Pro	Glu	Gln	Thr	Glu	Tyr	Ala	Thr	Ile	Val	Phe	Pro	Ser	Gly
				245						250					255	
20	Met	Gly	Thr	Ser	Ser	Pro	Ala	Arg	Arg	Gly	Ser	Ala	Asp	Gly	Pro	Arg
				260					265					270		
	Ser	Ala	Gln	Pro	Leu	Arg	Pro	Glu	Asp	Gly	His	Cys	Ser	Trp	Pro	Leu
			275					280					285			
25	<210> 5															
	<211> 2757															
	<212> DNA															
	<213> Homo sapiens															
30	<400> 5															
	gacaag	tact	gagtga	aactc	aaaccct	ctctg	taaagta	aaca	gaagtt	tagaa	ggg	gaaat	gt	60		
	cgctct	ctctg	aagatt	accc	aaagaaa	aag	tgattt	gtca	ttgctt	tata	gactgt	taaga	120			
	agaga	acac	tcaga	agtgg	agctt	accc	tgaaat	caaa	ggattt	aaag	aaaag	tgga	180			
	at	tttct	ctc	agca	agctgt	gaaact	aaat	ccaca	acctt	tgga	gaccca	ggaac	accct	240		
	ccaat	ctctg	tgtgt	ttt	gt	aaacat	cact	ggagg	gtctt	ctac	gtgagc	aattg	gattg	300		
35	tcat	cagcc	tcct	gtttt	gcacct	ggga	agtgc	ctgg	tctt	actt	gtg	gtcc	aaatt	360		
	ttgg	cttt	ca	ctttg	accc	taag	catctg	aagcc	atggg	ccac	acac	agg	caggg	420		
	catc	accat	c	caagt	gtcca	tacct	caatt	tcttt	cagct	ctt	ggtg	cttt	480			
	ctcact	ttctg	gttt	atcc	acgtg	ccaag	gaagt	gaaag	aatg	gcaac	gctgt	540				
	cctgt	gggtca	caatg	tttct	gttga	agagc	tggc	acaa	ac	tcg	catct	ac	600			
	aga	gaaa	aat	ggtg	ctgact	atgat	gtctg	ggg	acatg	aa	tatat	ggcc	660			
40	accg	gaccat	ctttg	atc	acta	ataacc	tctoc	attgt	gatc	ctgg	ct	gcgccc	720			
	ctgac	gagg	cacata	cagag	tgtgt	gttc	tgaag	atga	aaaag	acgct	ttca	agcgg	780			
	aacac	ctggc	tgaag	tgacg	ttat	cagtca	aagct	gactt	ccct	acac	ct	atata	840			
	acttt	gaaat	tcca	acttct	aatatt	tagaa	ggata	attt	ctca	acctct	ggag	gtttt	900			
	cagag	cctca	cctct	cctgg	ttgga	aaatg	gaga	agaatt	aatg	ccatc	aac	acaac	960			
45	tttcc	caaga	tcctg	aaact	gagct	ctatg	ctgtt	tagcag	caaact	ggat	ttca	aatat	1020			
	caacca	acca	cagctt	catg	tgtct	catca	agtat	ggaca	ttta	agagt	aatc	cagac	1080			
	tcaact	ggaa	taca	accaag	caag	gcatt	ttcct	gataa	cctg	ctcca	tctg	gggcca	1140			
	ttacct	taat	ctcag	taaat	ggaat	ttttg	tgat	atgctg	cctg	acctac	tgctt	tgccc	1200			
	caag	atgcag	agag	agaag	agga	atgaga	gattg	agaag	ggaa	agtgt	cgcc	ctgat	1260			
	aacag	gtcc	gcaga	agcaa	ggg	ctgaaa	agat	ctgaag	gtcc	cacctc	cat	ttgca	1320			
50	tgac	ctctc	tggg	aacttc	ctcag	atgga	caag	attacc	ccac	cttgcc	cttt	acgtat	1380			
	ctgct	cttag	gtgct	ttctc	actt	cagttg	cttt	gcagga	agt	gtctaga	gga	atat	1440			
	ggg	cacag	aa	gtag	ctctg	tgacct	tgat	caag	gtgtt	tgaa	atgcag	aatt	1500			
	ttct	ggaag	gact	tttag	aat	accagt	ttatta	atga	caa	aggcact	gagg	cccag	1560			
	gag	tgacc	gaatt	tataa	ggc	agcgc	aga	accaga	ttt	ctaact	ctgg	tctct	1620			
	ttcc	ctttat	cag	tttgact	gtg	gcctgtt	aact	ggtata	taca	tata	tgtc	agg	1680			
55	agt	gctgctg	gaag	tagaat	ttgt	ccaata	acag	gtcaac	ttcag	agact	atct	gattt	1740			
	cta	atgtcag	ag	tagaat	ttt	atgctgc	tg	tttaca	aa	agcc	aatgt	aatg	1800			

EP 3 470 081 A1

aagtatggca tgaacatctt taggagacta atggaaatat tattggtggt taccagat 1860
 tccatttttt tcattgtggt ctctattgct gctctctcac tccccatga ggtacagcag 1920
 aaaggagaac tatccaaaac taatttcttc tgacatgtaa gacgaatgat ttaggtacgt 1980
 5 caaagcagta gtcaaggagg aaagggatag tccaaagact taactgggtc atattggact 2040
 gataatctct ttaaattggct ttatgctagt ttgacctcat ttgtaaaata tttatgagaa 2100
 agttctcatt taaaatgaga tcggtgttta cagtgtatgt actaagcagt aagctatctt 2160
 caaatgtcta aggtagtaac tttccatagg gcctccttag atccctaaga tggctttttc 2220
 tccttggtat ttctgggtct ttctgacatc agcagagaac tggaaaagaca tagccaactg 2280
 ctgttcatgt tactcatgac tcctttctct aaaactgcct tccacaattc actagaccag 2340
 10 aagtggacgc aacttaagct gggataatca cattatcatc tgaaaatctg gagttgaaca 2400
 gcaaaagaag acaacatttc tcaaatgcac atctcatggc agctaagcca catggctggg 2460
 atttaaagcc tttagagcca gcccatggct ttagctacct cactatgctg cttcacaac 2520
 cttgctcctg tgtaaaacta tattctcagt gtagggcaga gaggtctaac accaacataa 2580
 ggtactagca gtgtttcccg tattgacagg aatacttaac tcaataattc ttttcttttc 2640
 15 catttagtaa cagttgtgat gactatgttt ctattctaag taattcctgt attctacagc 2700
 agatactttg tcagcaatac taaggaaga aacaaagttg aaccgtttct ttaataa 2757

<210> 6
 <211> 288
 <212> PRT
 20 <213> Homo sapiens

<400> 6
 Met Gly His Thr Arg Arg Gln Gly Thr Ser Pro Ser Lys Cys Pro Tyr
 1 5 10 15
 25 Leu Asn Phe Phe Gln Leu Leu Val Leu Ala Gly Leu Ser His Phe Cys
 20 25 30
 Ser Gly Val Ile His Val Thr Lys Glu Val Lys Glu Val Ala Thr Leu
 35 35 40 45
 Ser Cys Gly His Asn Val Ser Val Glu Glu Leu Ala Gln Thr Arg Ile
 50 55 60
 30 Tyr Trp Gln Lys Glu Lys Lys Met Val Leu Thr Met Met Ser Gly Asp
 65 70 75 80
 Met Asn Ile Trp Pro Glu Tyr Lys Asn Arg Thr Ile Phe Asp Ile Thr
 85 90 95
 35 Asn Asn Leu Ser Ile Val Ile Leu Ala Leu Arg Pro Ser Asp Glu Gly
 100 105 110
 Thr Tyr Glu Cys Val Val Leu Lys Tyr Glu Lys Asp Ala Phe Lys Arg
 115 120 125
 Glu His Leu Ala Glu Val Thr Leu Ser Val Lys Ala Asp Phe Pro Thr
 130 135 140
 40 Pro Ser Ile Ser Asp Phe Glu Ile Pro Thr Ser Asn Ile Arg Arg Ile
 145 150 155 160
 Ile Cys Ser Thr Ser Gly Gly Phe Pro Glu Pro His Leu Ser Trp Leu
 165 170 175
 Glu Asn Gly Glu Glu Leu Asn Ala Ile Asn Thr Thr Val Ser Gln Asp
 180 185 190
 45 Pro Glu Thr Glu Leu Tyr Ala Val Ser Ser Lys Leu Asp Phe Asn Met
 195 200 205
 Thr Thr Asn His Ser Phe Met Cys Leu Ile Lys Tyr Gly His Leu Arg
 210 215 220
 Val Asn Gln Thr Phe Asn Trp Asn Thr Thr Lys Gln Glu His Phe Pro
 225 230 235 240
 50 Asp Asn Leu Leu Pro Ser Trp Ala Ile Thr Leu Ile Ser Val Asn Gly
 245 250 255
 Ile Phe Val Ile Cys Cys Leu Thr Tyr Cys Phe Ala Pro Arg Cys Arg
 260 265 270
 55 Glu Arg Arg Arg Asn Glu Arg Leu Arg Arg Glu Ser Val Arg Pro Val
 275 280 285

Claims

1. A composition comprising an anti-PD-1 antibody for use in a method of treating cancer, wherein said method comprises:
5 administering said composition to a mammal identified as containing an elevated level of Bim and as having a tumor that expresses B7-H1, and thus identified as likely to benefit from checkpoint blockade therapy, under conditions wherein the interaction of naturally-occurring B7-H1 with PD-1 in said mammal is reduced after administering said composition to said mammal.
- 10 2. The composition for the use according to claim 1, wherein said mammal is a human.
3. The composition for the use according to claim 1, wherein said cancer is a melanoma cancer, a breast cancer, a lung cancer, a renal cell carcinoma cancer, a pancreas cancer, a prostate cancer, a colon cancer, a brain cancer, a liver cancer, or an ovarian cancer.
- 15 4. The composition for the use according to claim 1, wherein said elevated level of Bim is based on Bim protein levels.
5. The composition for the use according to claim 1, wherein said elevated level of Bim is based on the level of mRNA encoding Bim.
- 20 6. The composition for the use according to claim 1, further comprising identifying said mammal as containing an elevated level of Bim.
7. The composition for the use according to claim 1, wherein said elevated level of Bim refers to a level that is at least 50% greater than a reference level of Bim, wherein said reference level of Bim refers to the level of Bim typically
25 observed in healthy corresponding mammals without cancer
8. The composition for the use according to claim 1, further comprising determining the level of Bim in a peripheral
30 blood sample from said mammal.

5
10
15
20
25
30
35
40
45
50
55

FIGURE 1

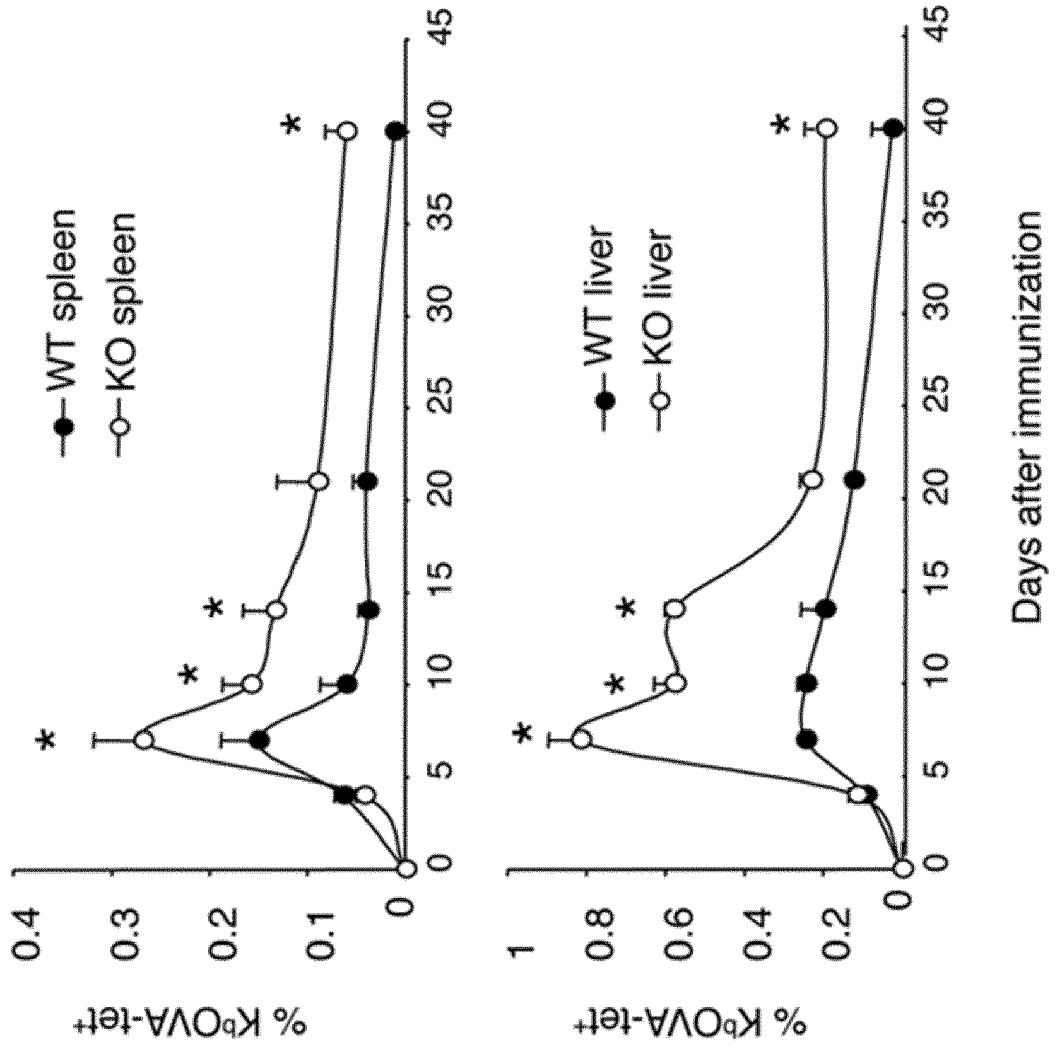


FIGURE 2

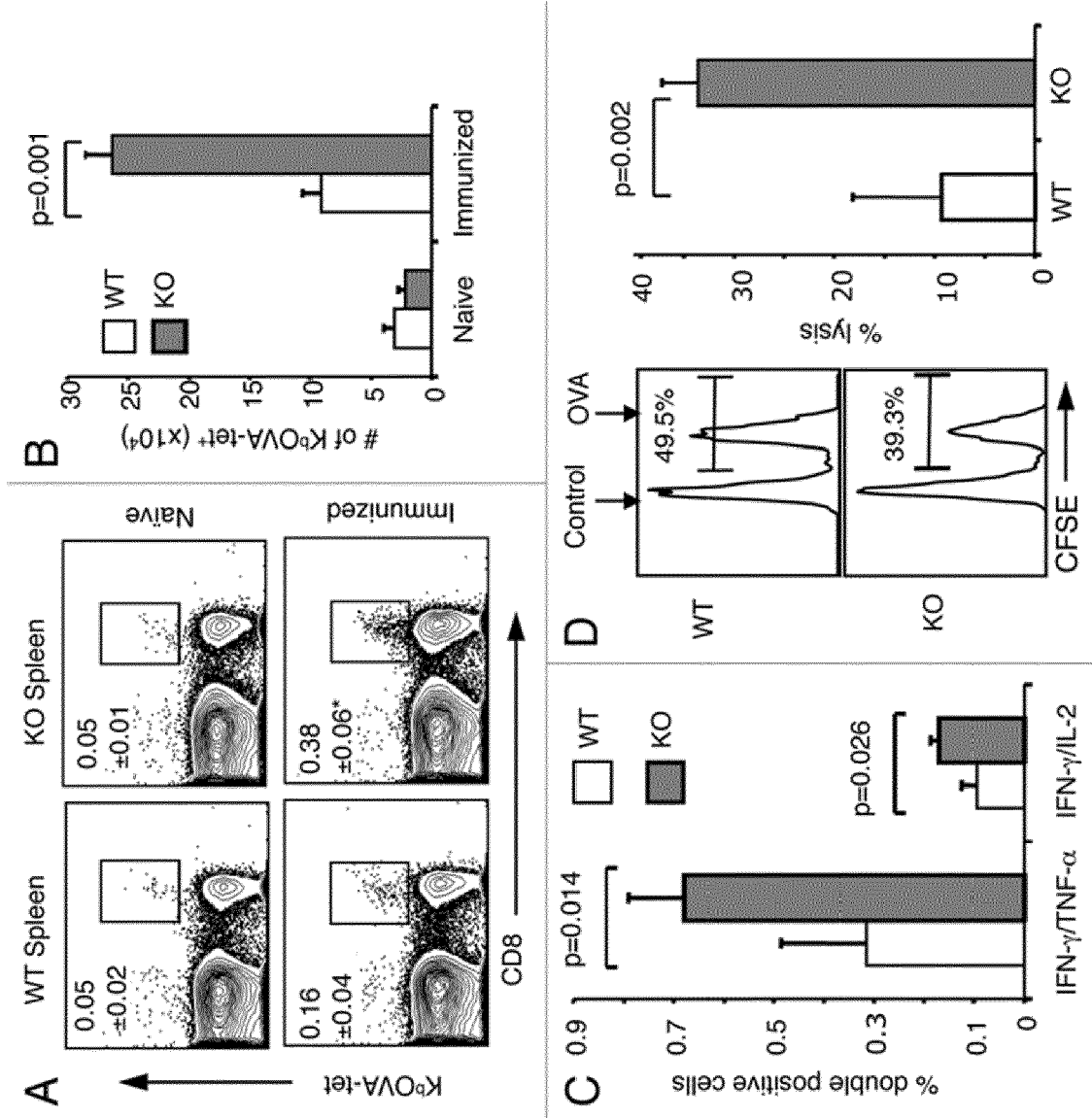


FIGURE 3

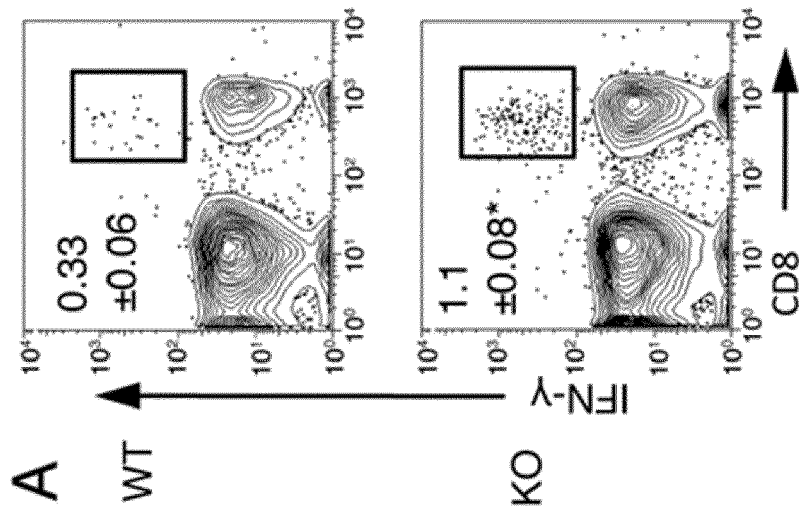
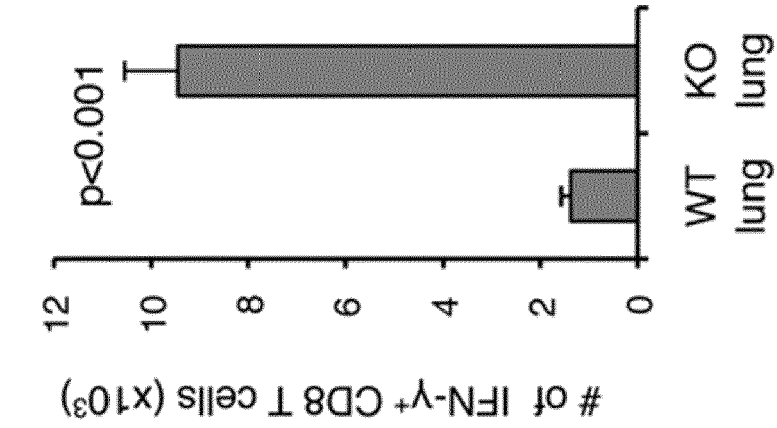
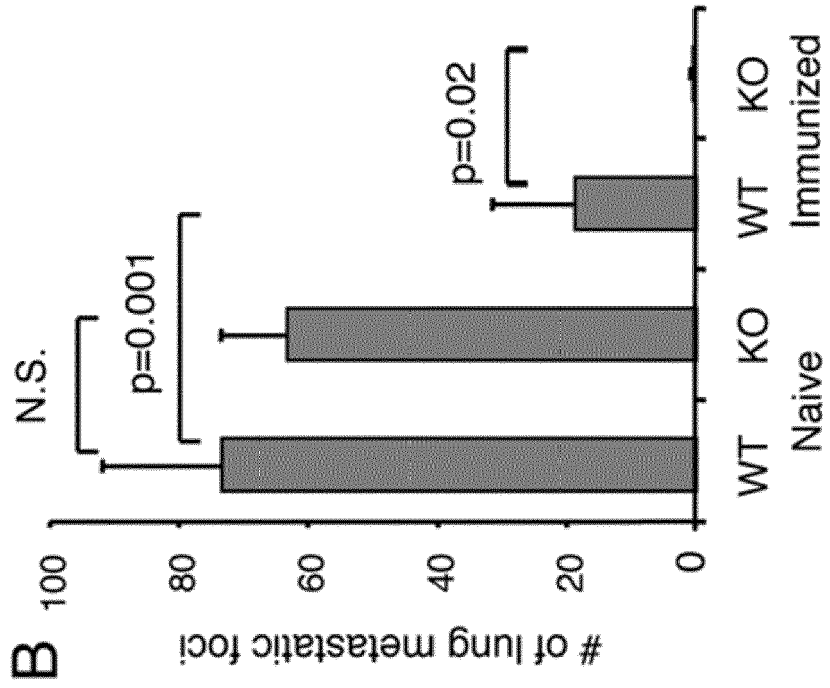
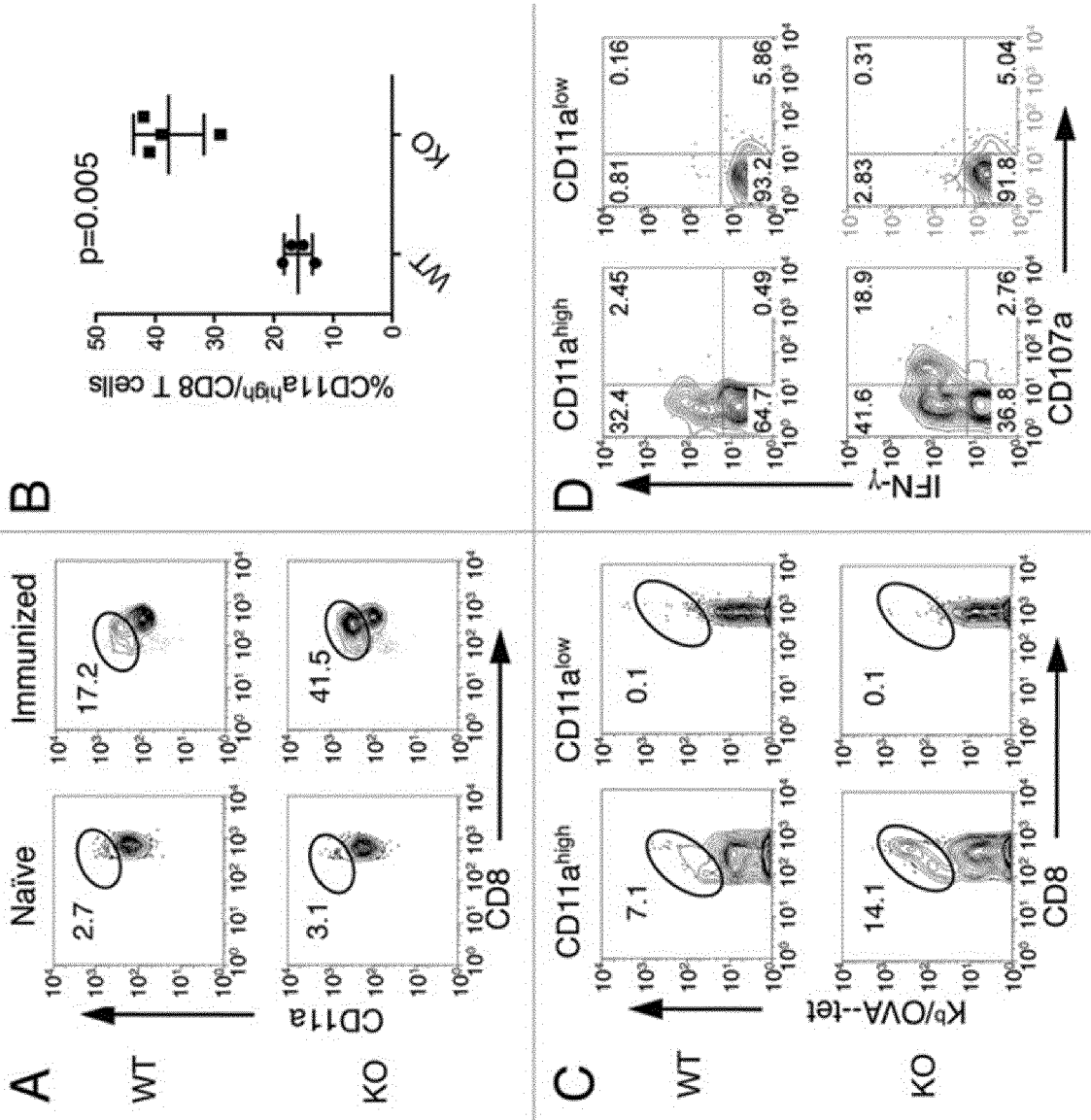


FIGURE 4



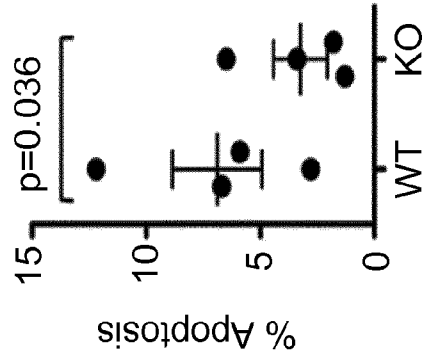
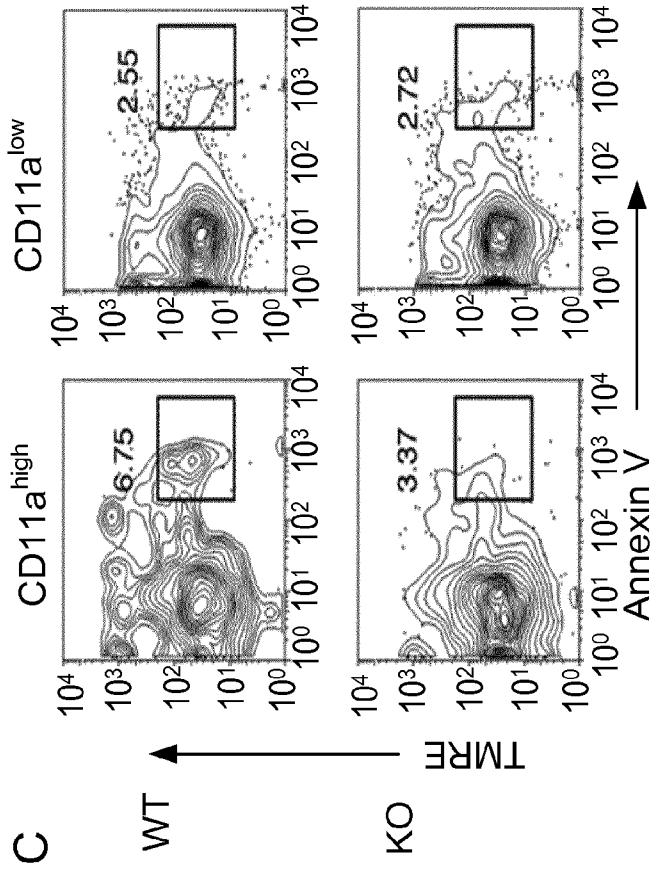
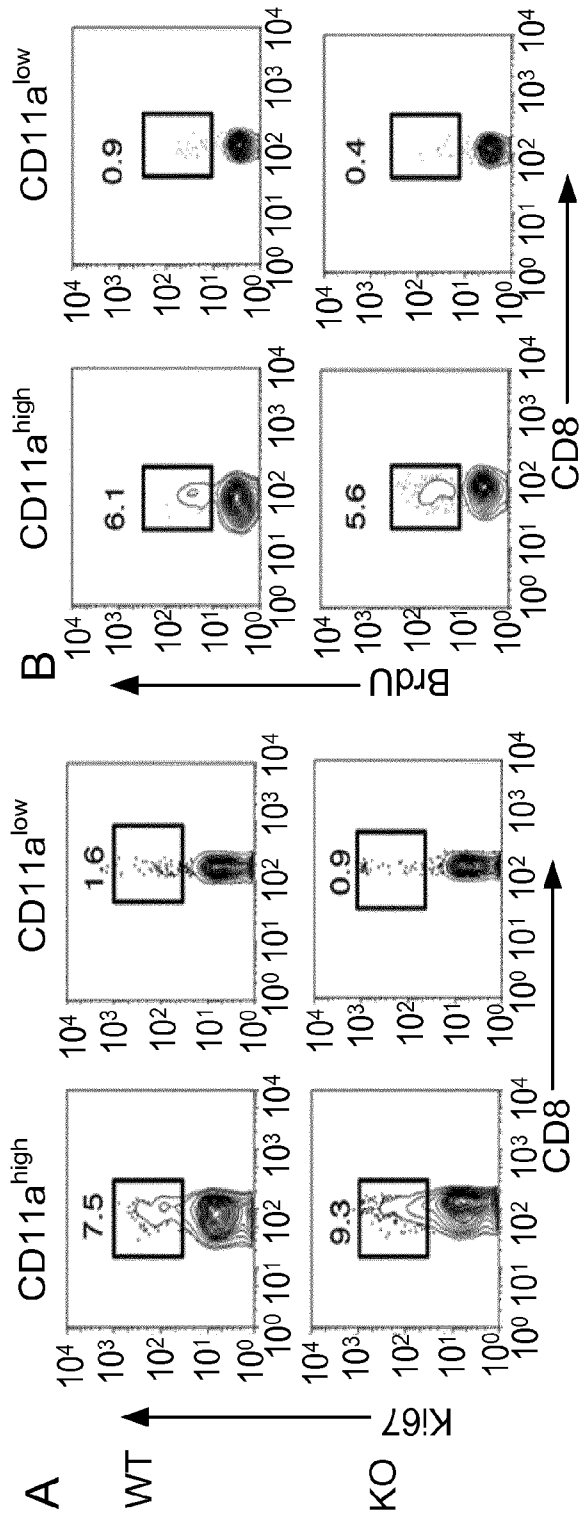


FIG. 5

FIGURE 6

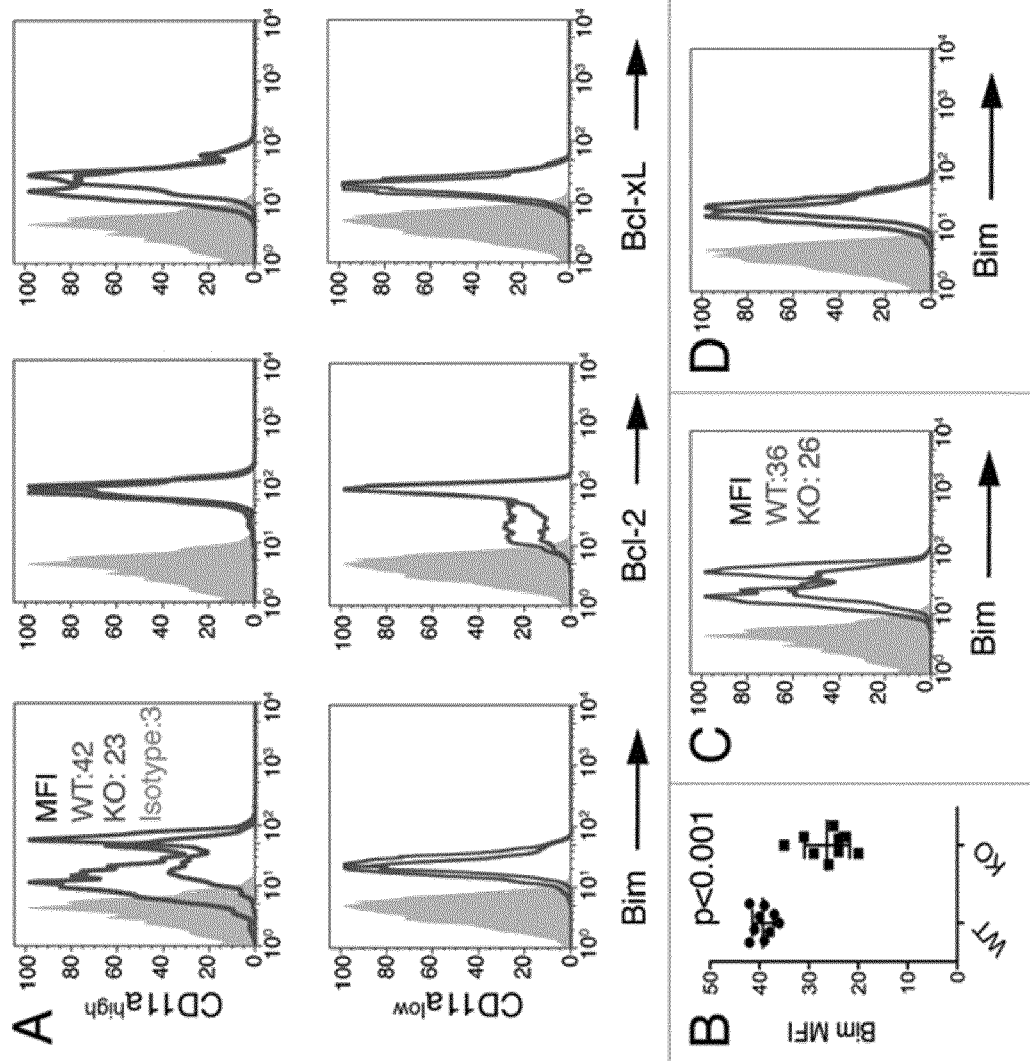


FIGURE 7

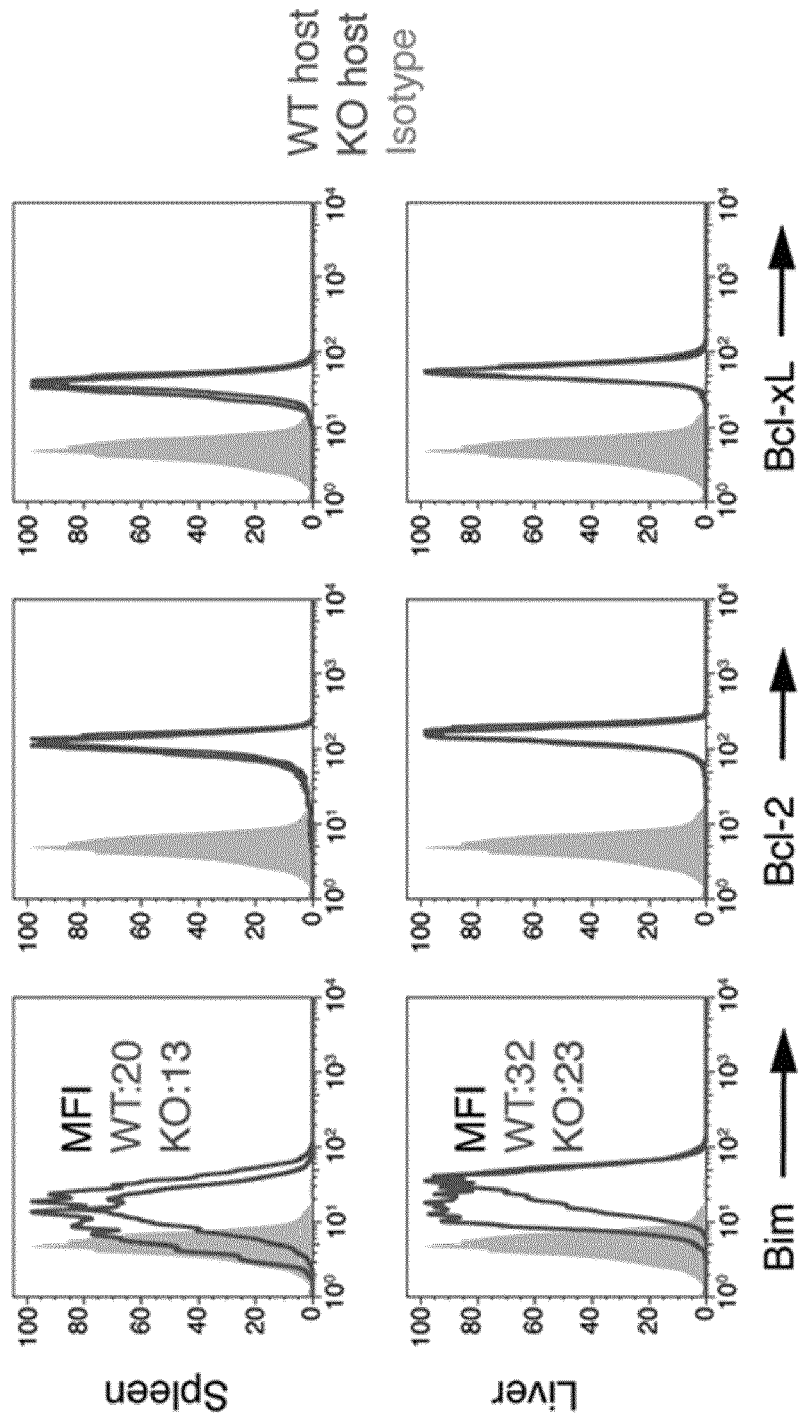


FIGURE 8

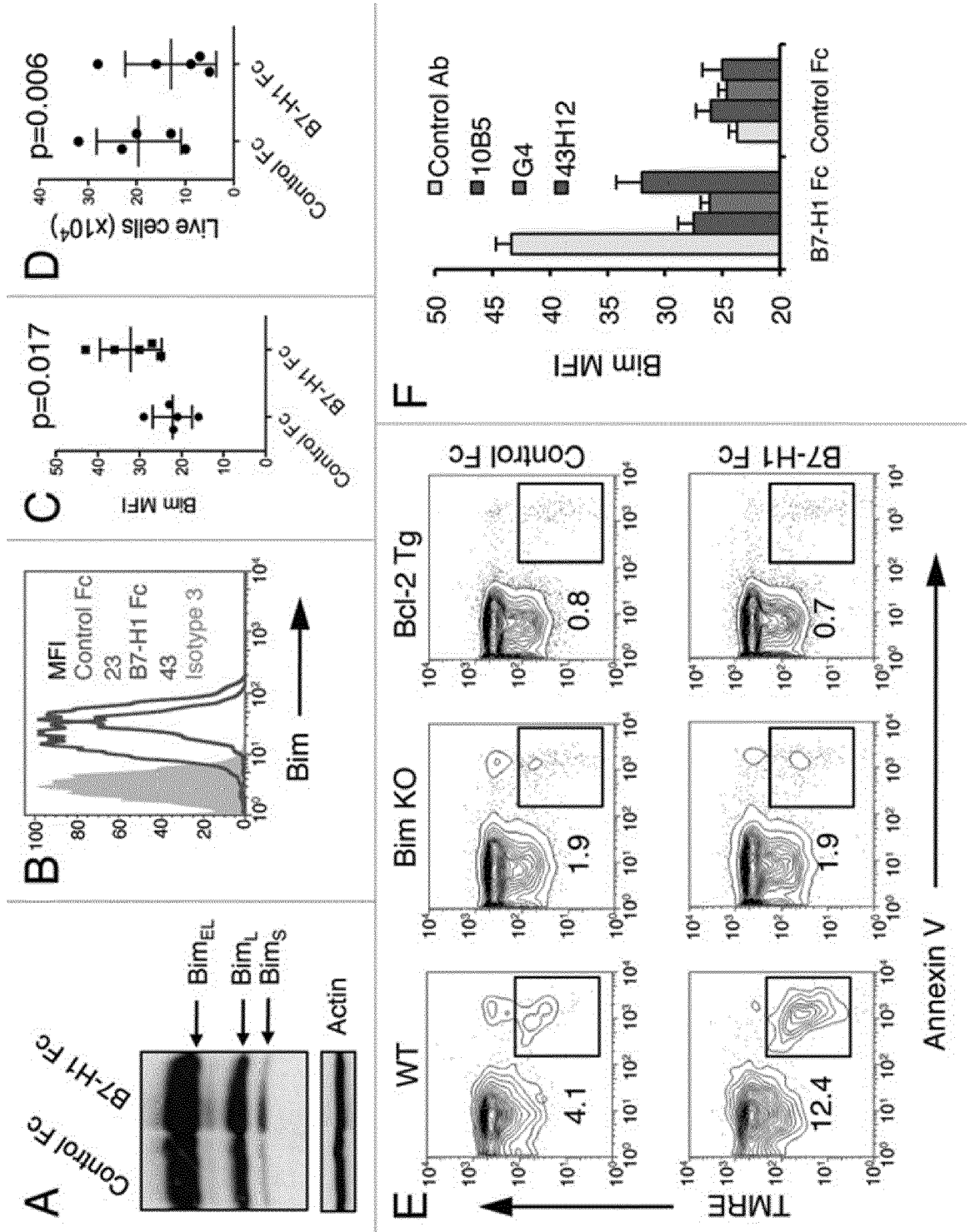


FIGURE 9

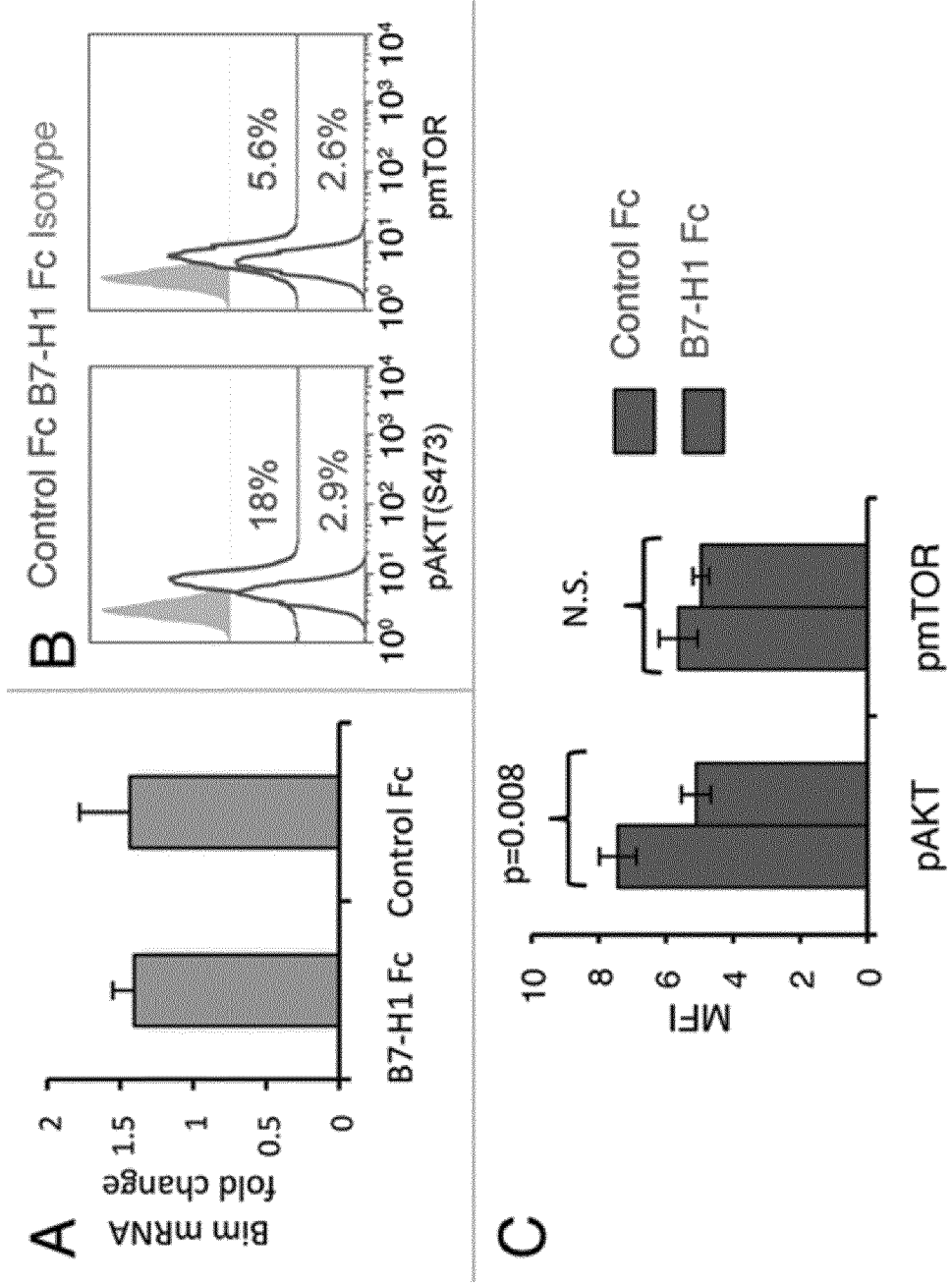


FIGURE 10

```

1 atgaggataat ttgctgtctt tatattcatg acctactggc atttgctgaa cgcatttact
61 gtcacgggtc ccaaggacct atatgtggtgta gagtatggta gcaatatgac aattgaaatgc
121 aaattcccag tagaaaaaca attagacctg gctgcactaa ttgtctattg ggaatggag
181 gataagaaca ttattcaatt tgtgcatgga gaggaagacc tgaagggttca gcatagtagc
241 tacagacaga gggcccggtt gttgaaggac cagctctccc tgggaaatgc tgcacttcag
301 atcacagatg tgaattgca ggatgcaggg gtgtaccgct gcatgcatcag ctatggtggt
361 gccgactaca agcgaattac tgtgaaagtc aatgccccat acaacaaaat caacaaaaga
421 atttgggtg tggatccagt cacctctgaa catgaaactga catgtcagggc tgagggctac
481 ccaaggccg aagtcactctg gacaagcagt gaccatcaag tcctgagtgg taagaccacc
541 accaccaat ccaagagaga ggagaagcct ttcaatgta ccagcacact gagaatcaac
601 acaacaacta atgagatttt ctactgcact tttaggagat tagatcctga ggaaccat
661 acagctgaat tggatcctccc agaactacct ctggcacatc ctccaaatga aaggactcac
721 ttggtaatc tgggagccat cttattatgc cttggtgtag cactgacatt catcttccgt
781 ttaagaaaaa ggagaatgat ggatgtgaaa aaatgtggca tccaagatc aaactcaaag
841 aagcaaatg atacacattt ggaggagacg taa (SEQ ID NO:1)

1 MRIFAVFIFM TYWHLINAFY VIVPKDLYVV EYGSNMTIEC KFPVEKQLDL AALIVYWEME
61 DKNIIQFVHG EEDLKVQHSS YRQRARLLKD QLSLGNAAALQ ITDVKLQDAG VYRCMISYGG
121 ADYKRITVKV NAPYNKINQR ILVVDPVVSE HELTCAEGY PKAEVIWTSS DHQVLSGKTT
181 TTNSKREKL FNVSTLRLIN TTTNEIFYCT FRRLDPEENH TAEIVIPHELP LAHPPNERH
241 LVILGAILLC LGVALTFIFR LRKGRMMDVK KCGIQDTSNK KQSDTHLEET (SEQ ID NO:2)

```

FIGURE 11

```

1 gcctgagcag tggagaaggc ggcactctgg tggggctgct ccaggcatgc agatcccaca
61 ggcgccctgg ccagtcgtct gggcgggtgct acaactgggc tggcggcccag gatggttctt
121 agactcccca gacaggccct ggaacccccc caccttctec ccagccctgc tcgtggtgac
181 cgaaggggac aacgccacct tcacctgcag cttctccaac acatcggaga gcttcctgct
241 aaactggtac cgcattgacc ccagaaacca gacggacaag ctggccgctt tccccgagga
301 ccgcagcccag cccggcccagg actgcccgtt ccgtgtcaca caactgcccc acgggcgtga
361 cttccacatg agcgtggtca gggcccggcg caatgacagc ggcacctacc tctgtggggc
421 catctccctg gcccccaagg gcagatcaa agagagcctg cgggcagagc tcagggtgac
481 agagagaagg gcagaaagtgc ccacagccc cccagcccc tcaccaggc cagccggcca
541 gttccaaaacc ctggtggttg gtgtcgtggg cggcctgctg ggcagcctgg tgctgctagt
601 ctgggtcctg gccgtcatct gctcccgggc cgcacgaggg acaataggag ccaggcgcac
661 cggccagccc ctgaaggagg acccctcagc cgtgcctgtg ttctctgtgg actatgggga
721 gctggatttc cagtggcgag agaagacccc ggagccccc gtgcccctgtg tccctgagca
781 gacggagtat gccaccattg tctttcctag cggaaatgggc acctcatccc ccgcccgcag
841 gggctcagcc gacggcccctc ggagtgcccc gccactgagg cctgaggatg gacactgctc
901 ttggcccctc tgaccggcctt ccttggccac cagtgttctg cagaccct (SEQ ID NO:3)

1 MQIPQAPWPV VMAVLIQLGWR PGWFLDSPDR PWNPTTFSPA LLVVTEGDNA TFTCSFSNTS
61 ESFVLNWYRM SPSNQTDKLA AFPEDRSQPG QDCRFRVTQL PNGRDFHMSV VRARRNDSGT
121 YLCGAISLAP KAIKESLRA ELRVERRAE VPTAHPSPSP RPAGQFQTLV VGVVGGLLGS
181 LVLLVWVLAV ICSRAARGTI GARRTGQPLK EDPSAVPVFS VDYGELDFQW REKTPEFPVP
241 CVPEQTEYAT IVFPSGMGTS SPARRGSADG PRSAQPLRPE DGHCSWPL (SEQ ID NO:4)

```

FIGURE 12A

1 gacaagtaact gagtgaactc aaaccctctg taaagtaaca gaagttagaa ggggaaatgt cgcctctctg aagattacc
 81 aaagaaaaag tgatltgtca ttgctttata gactgttaaga agagaacatc tcagaagtgg agtcttacc lgaatatcaaa
 161 ggatttaaaag aaaaagtgga atttttcttc agcaagctgt gaaactaaat ccacaacctt tggagaccca ggaacacct
 241 ccaatctctg tgtgttttgt aaacatcact ggagggtctt ctacgtgagc aattggattg tcatcagccc tgcctgtttt
 321 gcacctggga agtgccctgg tcttacttgg gtccaaattg ttggctttca tacctcaatt tctttcagct taagcatctg aagccatggg
 401 ccacacacgg aggcaggga catcaccatc caagtgtcca taacctcaatt tctttcagct ctltgtgctg gctggctctt
 481 ctcaacttctg ttcaagtggt atccacgtga ccaaggaagt gaaagaaagt gcaacgctgt cctgtggtca caatgtttct
 561 gttgaagagc tggcacaaaac tgcctctac tggcaaaaagg agaagaaaat ggtgctgact atgatgtctg gggacatgaa
 641 tatatggccc gagtacaaga accggacctt ctttgatc actaataacc tctccattgt gatcctggct ctgcgccc
 721 ctgacgaggg cacatlcgag tgtgttgttc tgaagatga aaaaagcgtc ttcaagcggg aacacctggc tgaagtgcg
 801 ttatcagtc aagctgactt cctacacct agtatatctg actttgaaat tccaaacttct aatattagaa ggataatttg
 881 ctcaacctct ggaggttttc cagagcctca cctctcctgg ttggaaaatg gagaagaatt aatgccatc aacacaacag
 961 tttcccaaga tcctgaaact gagctctatg ctgcttagcag caaactggat ttcaatatga caaccaacca cagcttcatg
 1041 tgtctcatca agtatggaca tttaagagt aatcagacct tcaactggaa tacaaccaag caagagcatt tctctgataa
 1121 cctgctccca tctgtggcca ttacctaat ctcaagtaaat ggaatttttg tgatatgctg cctgacctac tgccttgccc
 1201 caagatgcag agagagaagg agaatgaga gattgagaag ggaagtgtga cgcctgtat aacagtgctc gcagaagcaa
 1281 ggggctgaaa agatctgaag gtcccacct ctttgcaat tgacctcttc tgggaacttc ctccagatgga caagattacc
 1361 ccaccttgcc cttacgtat ctgctcttag gtgcttcttc acttcagttg ctttgaggga agtgtctaga ggaatatggt
 1441 gggcacagaa gtagctctgg tgaccttgat caagtggttt tgaatgcag aattcttgag ttctggaagg gacttttagag
 1521 aataccagtg ttatlaatga caaaggcact gaggcccagg gaggtgacct gaattataaa gcccagcggc agaaccaga
 1601 tttcctaact ctggtgctct tcccctttat cagtttgact gtggcctgtt aactggtata tacatatata tgtcaggcaa
 1681 agtgcctgct gaagtagaat ttgtccaata acaggtcaac ttcagagact atctgalttc ctaatgtcag agtagaagat
 1761 tttatgctgc tgtttacaaa agcccactgt aatgcatagg aagtatggca tgaacatctt taggagacta atggaaatat
 1841 tattggtgtt taccagtat tccattttt tccattgtgtt ctctattgct gctctctcac tccccatga ggtacagcag
 1921 aaaggagaac tatccaaaac taatttctc tgacatgtaa gacgaatgat ttaggtactg caaagcagta gtcaaggagg
 2001 aaaggatag tccaaagact taactggctc atattggact gataatctct tlaaatggct ttatgctagt ttgacctcat
 2081 ttgtaaaaata ttatgagaa agttctcatt taaaatgaga tctgtttta cagtgatgt actaagcagt aagctatctt
 2161 caaatgtcta agtagtaac ttccatagg gcctccttag atccctaaga tggctttttc tccttggtat tctgggtct
 2241 ttctgacatc agcagagaac tggaaaagaca tagccaactg ctgttcatgt tactcatgac tcttttctct aaaactgcct
 2321 tccacaallic actagaccag aagtgaccg aactlaagct gggalaalca cattatcaltc tgaaaatctg gagltgaaca
 2401 gcaaaagaag acaacatttc tcaaatgca atctcatggc agctaagcca catggctggg atttaaaagc ttttagagcca
 2481 gcccctggct ttagctacct cactatgctg cttcacaaaac cttgctcctg tgtaaaaacta tattctcagt gtagggcaga
 2561 gaggctaac accaacataa ggtactagca gtgtttcccg tattgacagg aataactaac tcaataattc ttttctttc
 2641 catttagtaa cagttgtgat gactatggtt ctattctaag taattcctgt attctacagc agatactttg tcagcaatac
 2721 taagggaaga acaaaagtgt accggtttct ttaataa (SEQ ID NO:5)

FIGURE 12B

1 MGHTRRQGTSPSKCPYLNFFQLLVLAGLSHFCSGVIHVTKEVKEVATLSCGHNVSVEELA
 61 QTRIWQKEK KMLTMMMSGD MNIWPEYKNR TIFDITNNLS IVILALRPSD EGTYESVVLK
 121 YEKDAFKREH LAEVTLSVKA DFPTPSISDF EIPTSNIRRI ICSTSGGFPE PHLSWLENGE
 181 ELNAINTVS QDPETELEYAV SSKLDFNMTT NBSFMCLIKY GHLRVNQTFN WNTTKQEHFP
 241 DNLLPSWAIT LISVNGIFVI CCLTYCFAPR CRERRNERL RRESVRPV (SEQ ID NO:6)

FIGURE 13

CD8⁺ T cells

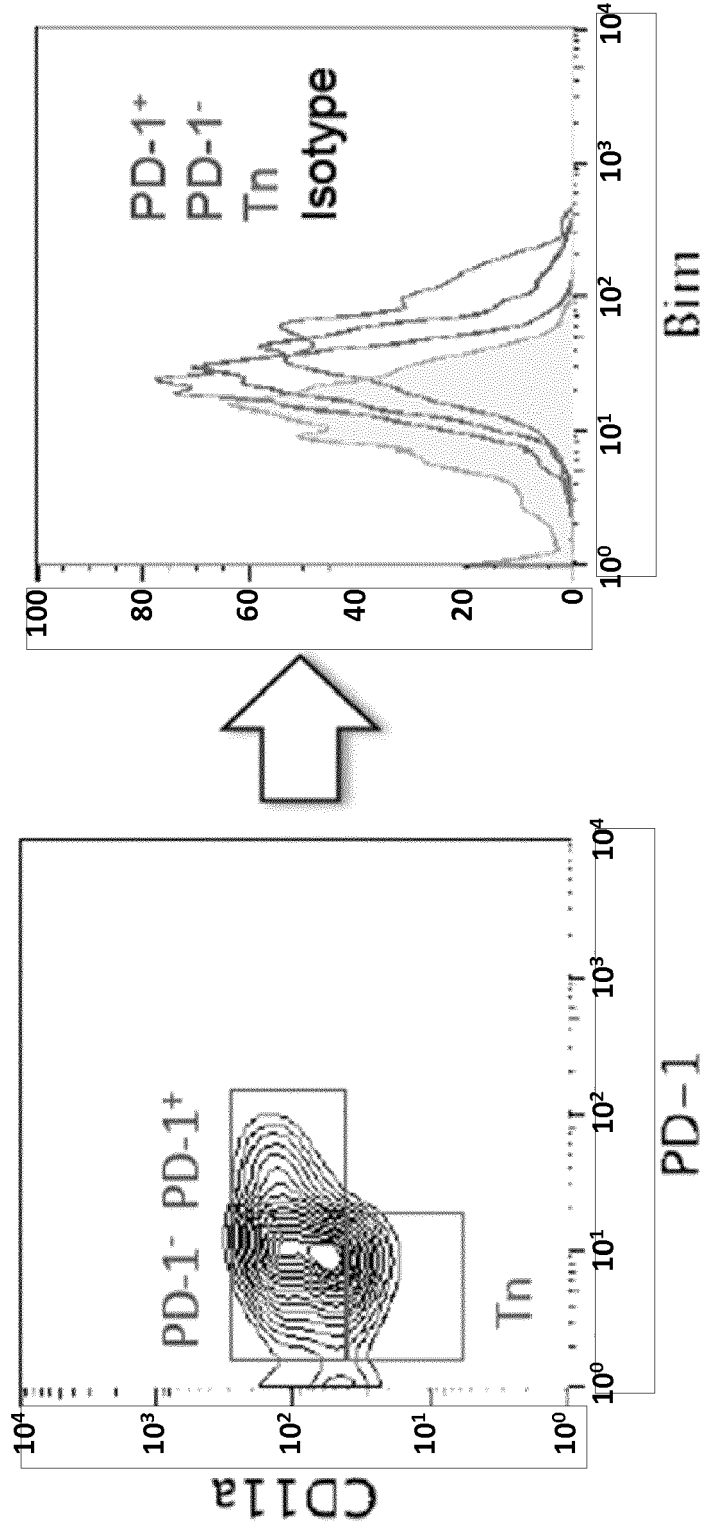


FIGURE 14

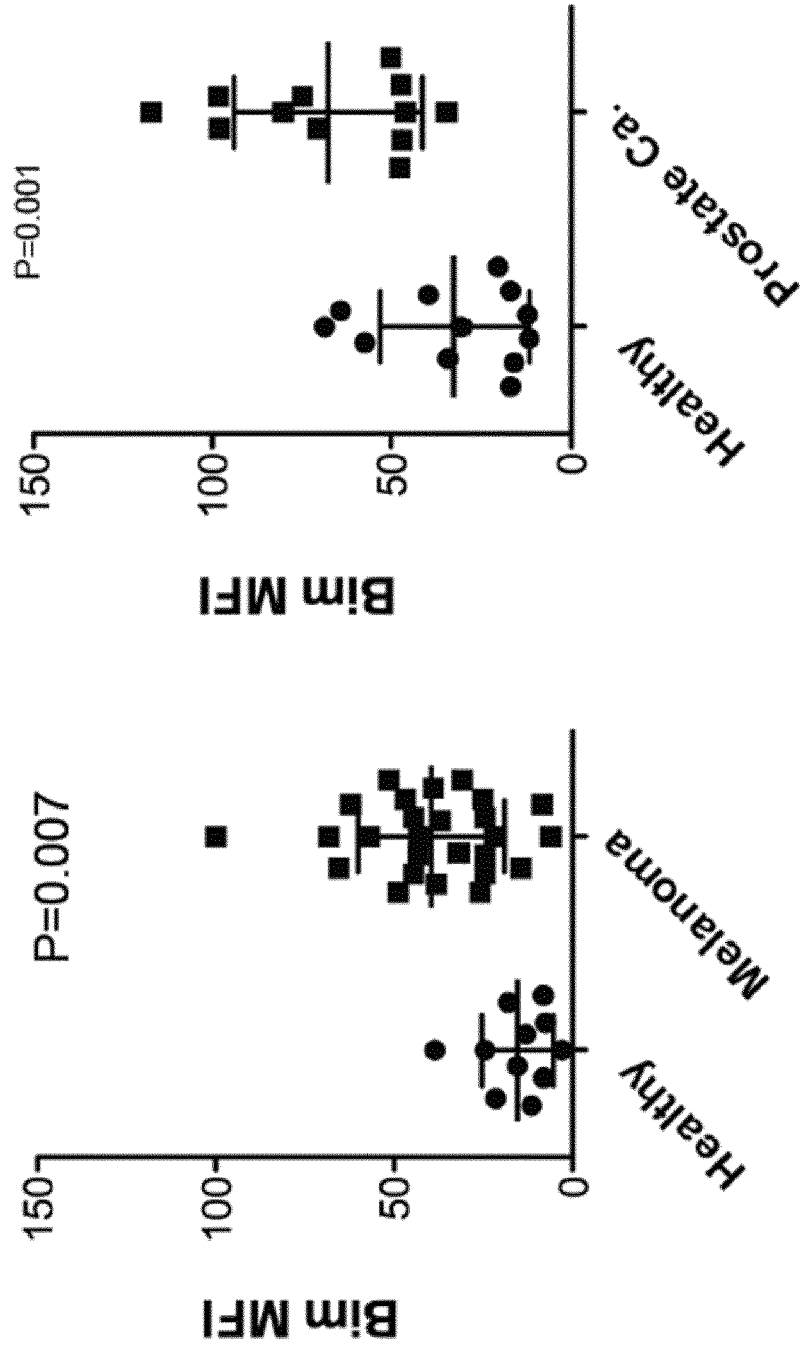


FIGURE 16

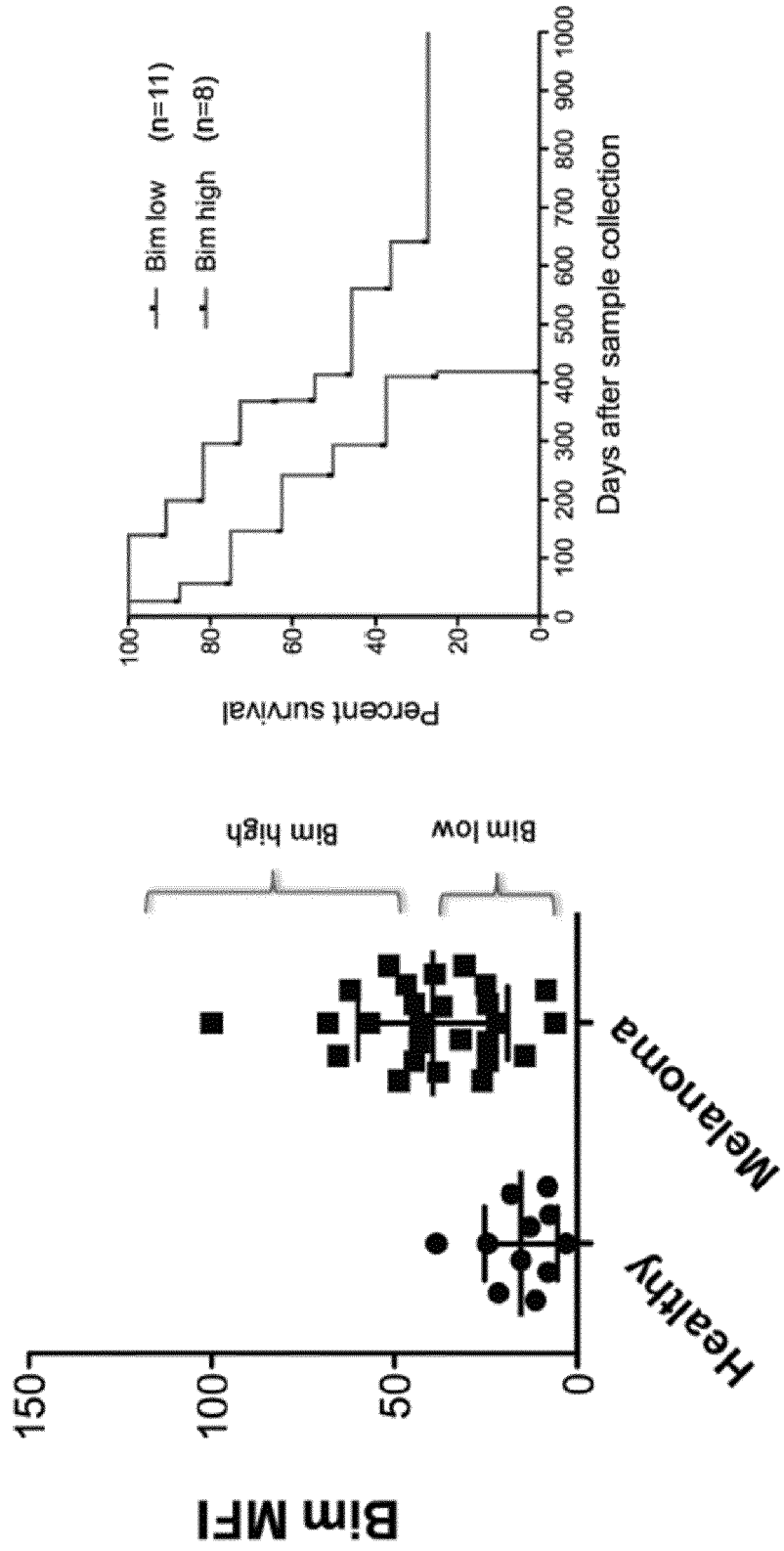


FIGURE 17A

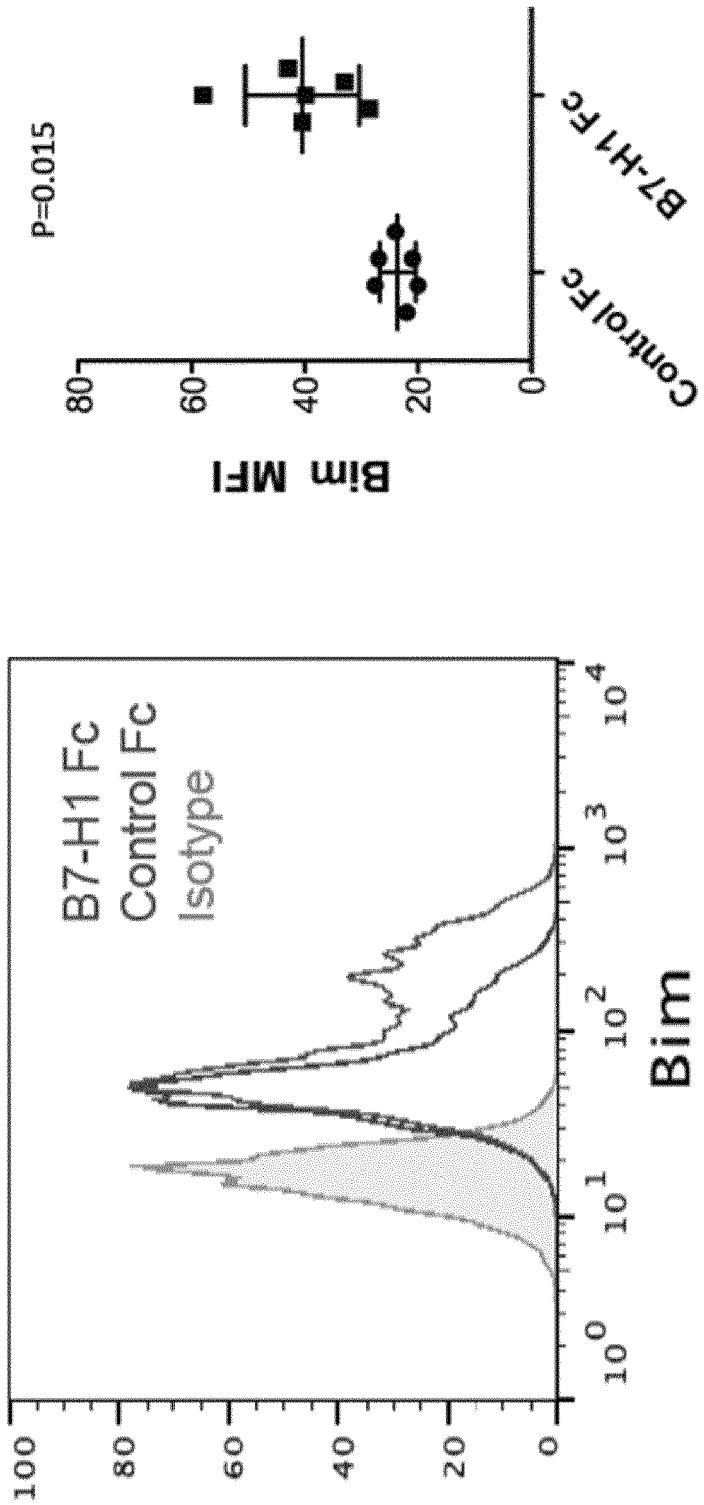


FIGURE 17B

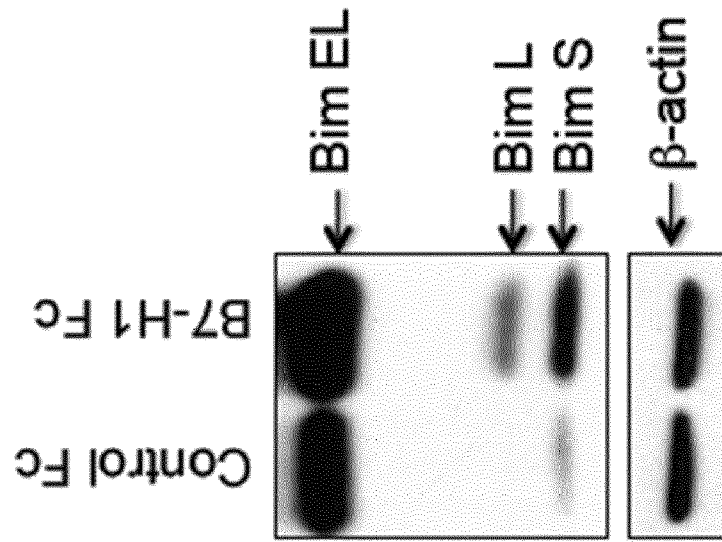


FIGURE 18

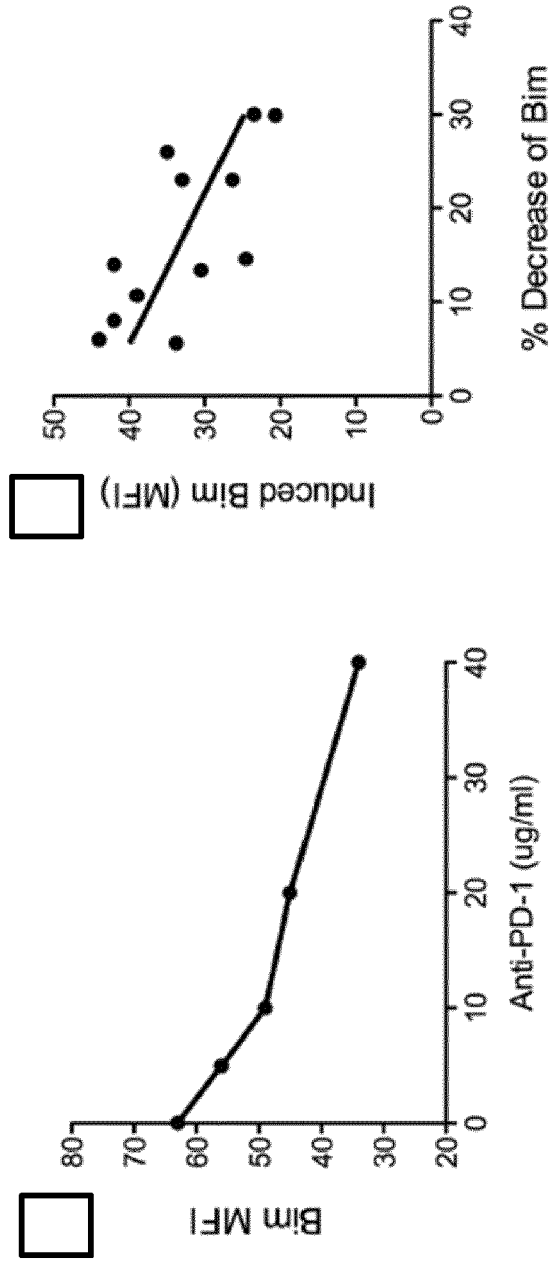


FIGURE 19

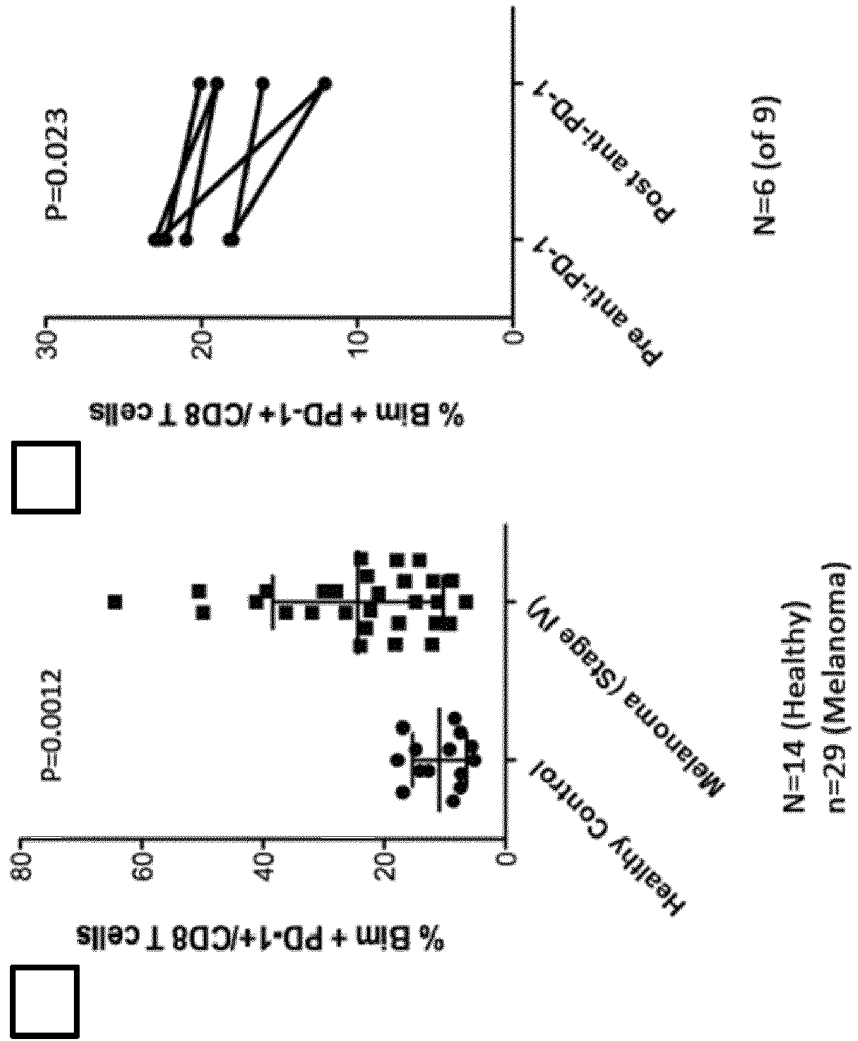


FIGURE 20

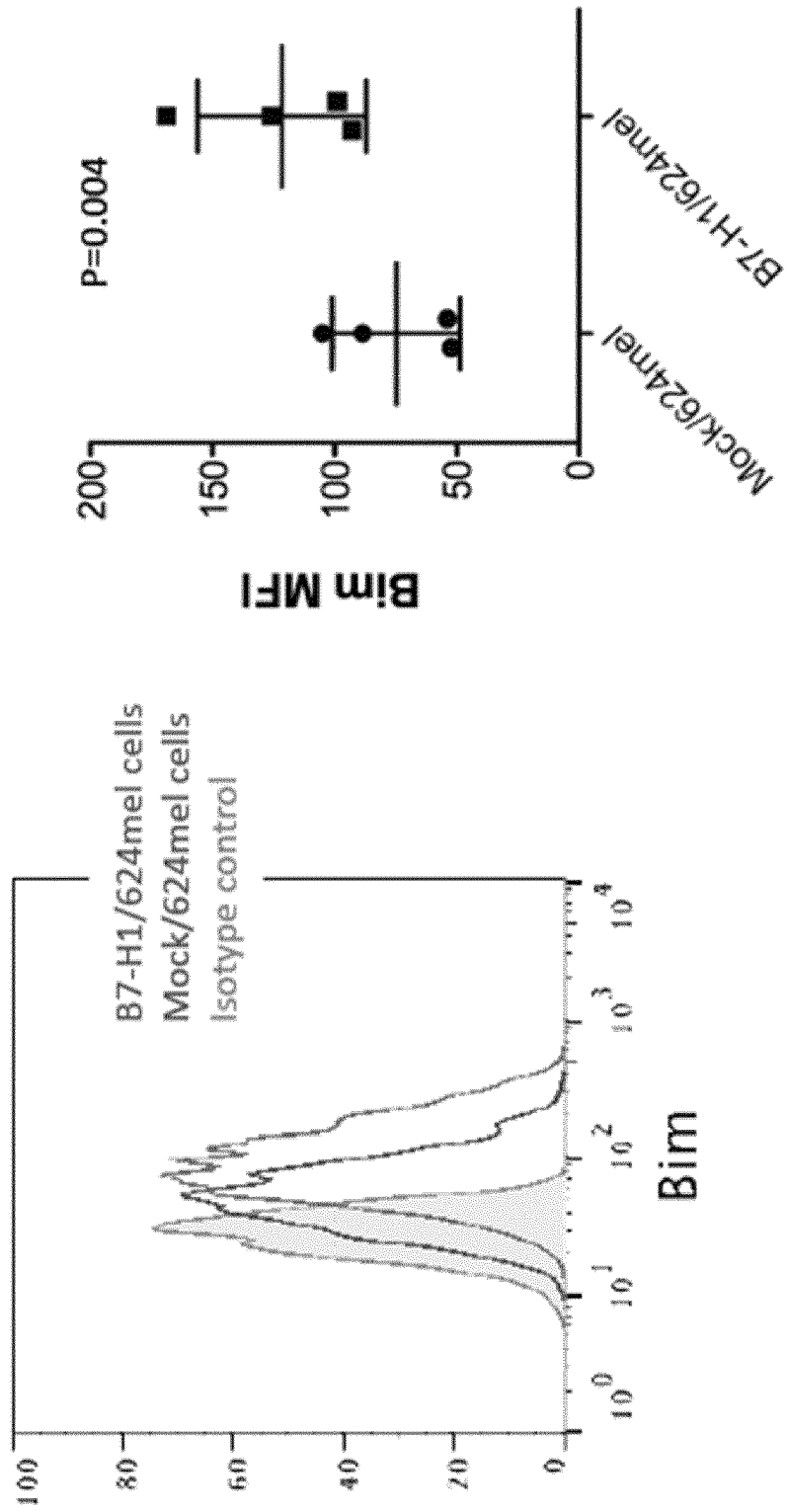


FIGURE 21

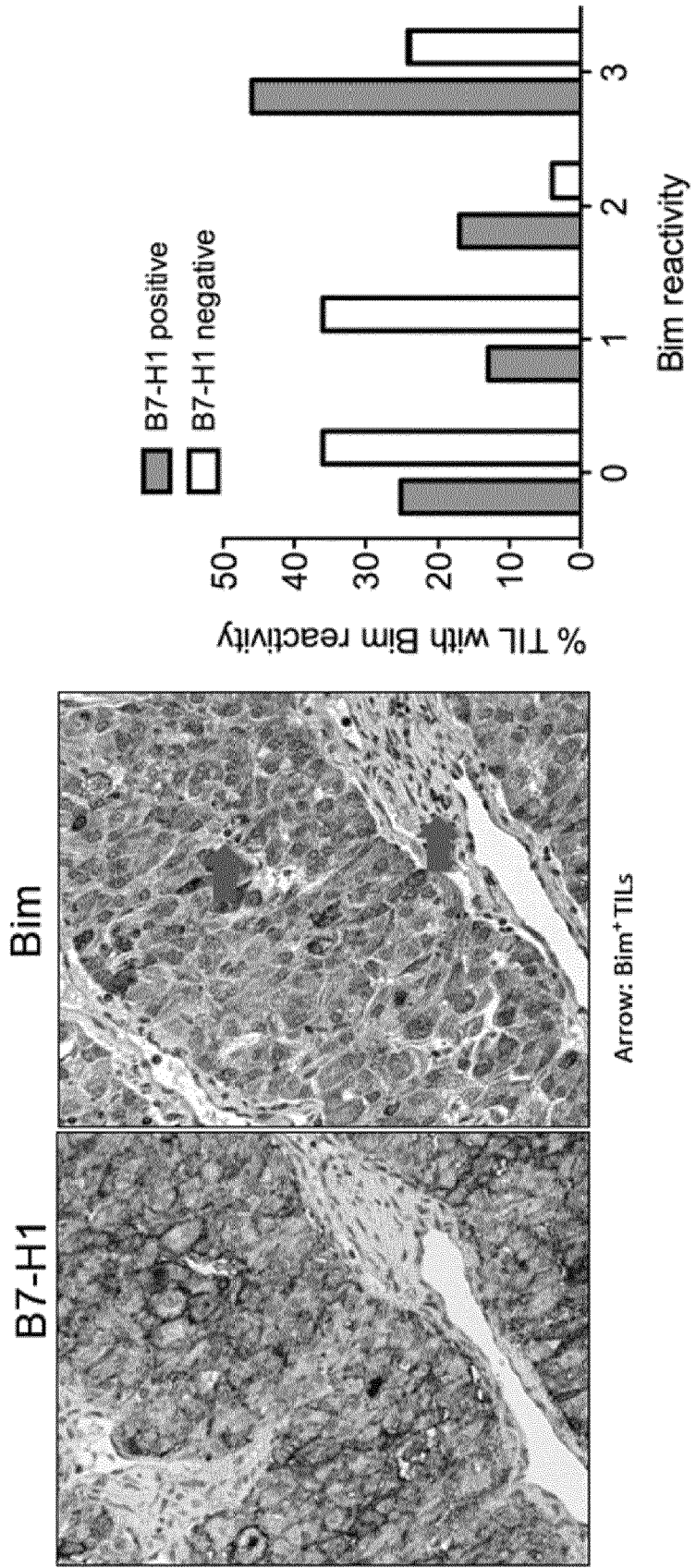


FIGURE 22

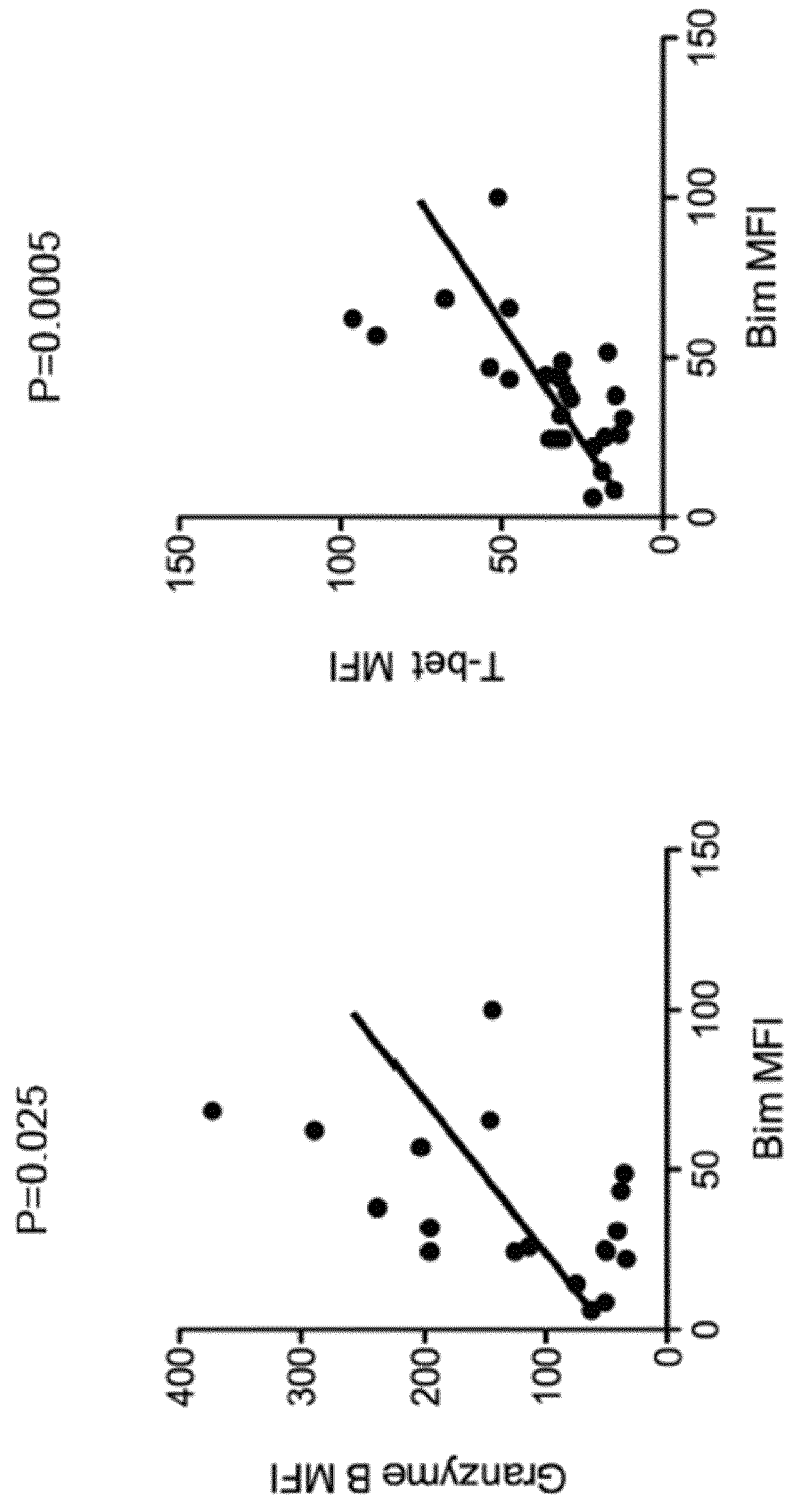
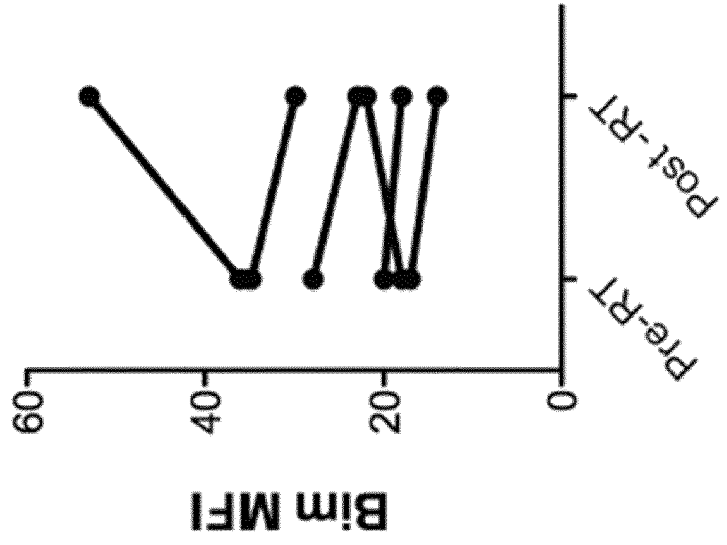
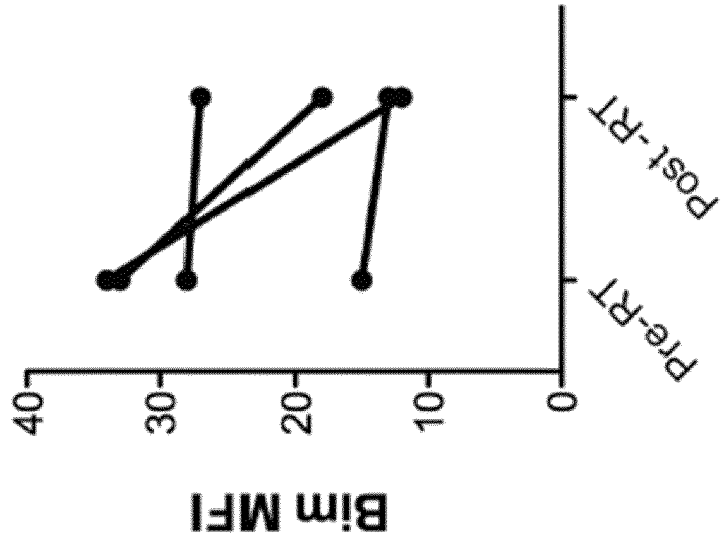


FIGURE 23

Prostate Cancer (Bone metastasis, n=6)



Melanoma (Stage IV, n=4)





EUROPEAN SEARCH REPORT

Application Number
EP 18 21 0199

5

10

15

20

25

30

35

40

45

50

55

DOCUMENTS CONSIDERED TO BE RELEVANT			
Category	Citation of document with indication, where appropriate, of relevant passages	Relevant to claim	CLASSIFICATION OF THE APPLICATION (IPC)
X	<p>TOPALIAN SUZANNE L ET AL: "Safety, activity, and immune correlates of anti-PD-1 antibody in cancer.", THE NEW ENGLAND JOURNAL OF MEDICINE 28 JUN 2012, vol. 366, no. 26, 28 June 2012 (2012-06-28), pages 2443-2454, XP002767416, ISSN: 1533-4406 * page 2452; figure B *</p>	1-6,8	<p>INV. A61K39/395 A61K39/00 G01N33/53 C12Q1/68 C07K16/28</p>
A	<p>WO 2013/090552 A1 (UNIV YALE [US]) 20 June 2013 (2013-06-20) * page 54, line 5 *</p>	1-8	<p>TECHNICAL FIELDS SEARCHED (IPC)</p> <p>C07K A61K A61P</p>
A	<p>BERRIEN-ELLIOTT MELISSA M ET AL: "Durable adoptive immunotherapy for leukemia produced by manipulation of multiple regulatory pathways of CD8+ T-cell tolerance.", CANCER RESEARCH 15 JAN 2013, vol. 73, no. 2, 15 January 2013 (2013-01-15), pages 605-616, XP002767417, ISSN: 1538-7445 * page 606, left-hand column * * page 608, right-hand column *</p>	1-8	
A	<p>RACHEL M GIBBONS ET AL: "B7-H1 limits the entry of effector CD8 + T cells to the memory pool by upregulating Bim", ONCOIMMUNOLOGY, vol. 1, no. 7, 1 October 2012 (2012-10-01), pages 1061-1073, XP055332328, DOI: 10.4161/onci.20850 * abstract *</p>	1-8	
The present search report has been drawn up for all claims			
Place of search The Hague		Date of completion of the search 21 January 2019	Examiner Bumb, Peter
<p>CATEGORY OF CITED DOCUMENTS</p> <p>X : particularly relevant if taken alone Y : particularly relevant if combined with another document of the same category A : technological background O : non-written disclosure P : intermediate document</p>		<p>T : theory or principle underlying the invention E : earlier patent document, but published on, or after the filing date D : document cited in the application L : document cited for other reasons & : member of the same patent family, corresponding document</p>	

EPO FORM 1503 03.82 (P04C01)



EUROPEAN SEARCH REPORT

Application Number
EP 18 21 0199

5

10

15

20

25

30

35

40

45

50

55

DOCUMENTS CONSIDERED TO BE RELEVANT			
Category	Citation of document with indication, where appropriate, of relevant passages	Relevant to claim	CLASSIFICATION OF THE APPLICATION (IPC)
T	DRONCA ROXANA S ET AL: "T cell Bim levels reflect responses to anti-PD-1 cancer therapy.", JCI INSIGHT 05 MAY 2016, vol. 1, no. 6, 5 May 2016 (2016-05-05), XP002788154, ISSN: 2379-3708 -----		
T	DRONCA ROXANA S ET AL: "BCL-2-interacting mediator of cell death (Bim) is a novel biomarker for response to anti-PD-1 therapy in patients with advanced melanoma.", IMMUNOTHERAPY 12 2016, vol. 8, no. 12, December 2016 (2016-12), pages 1351-1353, XP002788155, ISSN: 1750-7448 -----		
The present search report has been drawn up for all claims			TECHNICAL FIELDS SEARCHED (IPC)
Place of search The Hague		Date of completion of the search 21 January 2019	Examiner Bumb, Peter
CATEGORY OF CITED DOCUMENTS X : particularly relevant if taken alone Y : particularly relevant if combined with another document of the same category A : technological background O : non-written disclosure P : intermediate document		T : theory or principle underlying the invention E : earlier patent document, but published on, or after the filing date D : document cited in the application L : document cited for other reasons & : member of the same patent family, corresponding document	

EPO FORM 1503 03.02 (P04C01)

**ANNEX TO THE EUROPEAN SEARCH REPORT
ON EUROPEAN PATENT APPLICATION NO.**

EP 18 21 0199

5 This annex lists the patent family members relating to the patent documents cited in the above-mentioned European search report.
The members are as contained in the European Patent Office EDP file on
The European Patent Office is in no way liable for these particulars which are merely given for the purpose of information.

21-01-2019

Patent document cited in search report	Publication date	Patent family member(s)	Publication date
WO 2013090552 A1	20-06-2013	US 2015004175 A1 WO 2013090552 A1	01-01-2015 20-06-2013

EPO FORM P0459

For more details about this annex : see Official Journal of the European Patent Office, No. 12/82

REFERENCES CITED IN THE DESCRIPTION

This list of references cited by the applicant is for the reader's convenience only. It does not form part of the European patent document. Even though great care has been taken in compiling the references, errors or omissions cannot be excluded and the EPO disclaims all liability in this regard.

Patent documents cited in the description

- US 61885218 A [0001]
- US 5530101 A [0030]
- US 5565332 A [0030]
- US 5585089 A [0030]
- US 5639641 A [0030]
- US 5693761 A [0030]
- US 5693762 A [0030]
- US 5733743 A [0030]
- US 4816567 A [0030]
- US 4935496 A [0030]
- US 5502167 A [0030]
- US 5558864 A [0030]
- US 5693493 A [0030]
- US 5698417 A [0030]
- US 5705154 A [0030]
- US 5750078 A [0030]
- US 5770403 A [0030]

Non-patent literature cited in the description

- **GIBBONS et al.** *Oncolmmunology*, 2012, vol. 1 (7), 1061-1073 [0003]
- **GRIVENNIKOV et al.** *Cell*, 2010, vol. 140, 883-899 [0003]
- **JONES et al.** *Nature*, 1986, vol. 321, 522-525 [0020]
- **RIECHMANN et al.** *Nature*, 1988, vol. 332, 323-329 [0020]
- **PRESTA.** *Curr. Op. Struct. Biol.*, 1992, vol. 2, 593-596 [0020]
- **MORRISON et al.** *Proc. Natl. Acad. Sci. USA*, 1984, vol. 81, 6851-6855 [0020]
- **HOLLINGER et al.** *Proc. Natl. Acad. Sci. USA*, 1993, vol. 90, 6444-6448 [0020]
- **PLÜCKTHUN.** *The Pharmacology of Monoclonal Antibodies.* Springer Verlag, 1994, vol. 113, 269-315 [0020]
- **MUYLDERMANS et al.** *Rev. Mol. Biotechnol.*, 2001, vol. 74, 277-302 [0024]
- **HOLT et al.** *Trends Biotechnol.*, 2003, vol. 21, 484-90 [0024]
- **KONIECZNY et al.** *Haematologia (Budap.)*, 1981, vol. 14, 95 [0028]
- **MORRISON et al.** *Proc. Natl. Acad. Sci. USA*, 1984, vol. 81, 6851 [0028]
- **JONES et al.** *Nature*, 1986, vol. 321, 522 [0029]
- **RIECHMANN et al.** *Nature*, 1988, vol. 332, 323 [0029]
- Remington's Pharmaceutical Sciences. Mack Publishing Company, 1990 [0033]
- **BALDRICK.** *Regul. Toxicol. Pharmacol.*, 2000, vol. 32, 210-218 [0033]
- **WANG.** *Int. J. Pharm.*, 2000, vol. 203, 1-60 [0033]
- **CHARMAN.** *J. Pharm. Sci.*, 2000, vol. 89, 967-978 [0033]
- **POWELL et al.** *PDA J. Pharm. Sci. Technol.*, 1998, vol. 52, 238-311 [0033]
- **DONG et al.** *Immunity*, 2004, vol. 20, 327-336 [0046]
- **GERDES et al.** *J. Immunol.*, 1984, vol. 133, 1710-1715 [0060]
- **JAYARAMAN.** *J. Immunol. Methods*, 2005, vol. 306, 68-79 [0061]
- **HIRANO et al.** *Cancer Res.*, 2005, vol. 65, 1089-1096 [0064]
- **PARK et al.** *Blood*, 2010, vol. 116, 1291-1298 [0064]
- **ALLIE et al.** *J. Immunol.*, 2011, vol. 186, 6280-6286 [0065]
- **QI et al.** *J. Biol. Chem.*, 2006, vol. 281, 813-823 [0068]
- **SARBASSOV et al.** *Science*, 2005, vol. 307, 1098-1101 [0068]
- **JACINTO et al.** *Cell*, 2006, vol. 127, 125-137 [0068]

专利名称(译)	治疗BIM水平升高的患者的癌症的方法		
公开(公告)号	EP3470081A1	公开(公告)日	2019-04-17
申请号	EP2018210199	申请日	2014-09-03
[标]申请(专利权)人(译)	梅约医学教育与研究基金会		
申请(专利权)人(译)	梅奥基金会的医学教育和研究		
当前申请(专利权)人(译)	梅奥基金会的医学教育和研究		
[标]发明人	DONG HAIDONG HARRINGTON SUSAN M KWON EUGENE D KRCO CHRISTOPHER J LIU XIN		
发明人	DONG, HAIDONG HARRINGTON, SUSAN M. KWON, EUGENE D. KRCO, CHRISTOPHER J. LIU, XIN		
IPC分类号	A61K39/395 A61K39/00 G01N33/53 C12Q1/68 C07K16/28		
CPC分类号	A61K2039/505 A61P35/00 C07K16/2818 C07K16/2827 C07K2317/76 C12Q1/6886 C12Q2600/106 C12Q2600/158 G01N33/57407 G01N33/57484 G01N2333/70532 G01N2800/52 G01N2333/47		
代理机构(译)	KUNZ , HERBERT		
优先权	61/885218 2013-10-01 US PCT/US2014/053870 2014-09-03 WO		
外部链接	Espacenet		

摘要(译)

用于治疗癌症的材料和方法，包括用于治疗被鉴定为具有升高的Bim水平的患者的癌症的材料和方法。

```

SEQUENCE LISTING
<110> Mayo Foundation for Medical Education and Research
<120> METHODS FOR TREATING CANCER IN PATIENTS
      WITH ELEVATED LEVELS OF BIM
<130> 07039-1283EP2
<150> US 61/885,218
<151> 2013-10-01
<160> 6
<170> FastSEQ for Windows Version 4.0
<210> 1
<211> 873
<212> DNA
<213> Homo sapiens
<400> 1
atgaggatatt ttgctgtctt tatatctcatg acctactggc atttctgtgaa cgcatttact 60
gtccacttc ccaggacct atctgtggtt ggtctggtt gcaatctgc acttgaatg 120
aaattccacg tagaaaaaca attagacctg gctgcaactaa ttgctattg ggaatggag 180
gataagaca ttattcaatt tctctatgga gaggagacc tgaagttca gcaactagc 240
tcagacacga gggcccggct gttgaaggac cagctctccc tgggaatgc tgcacttcag 300
atcacagatg tgaattgga gctgagagg gctaccctg gctgatatg ctatggtgt 360
gctgactaca aggaattac tgtgaaagt aatgcccact caaacaaaat caaccaaaga 420
attttgtgtg tggatccgt cactctgga catctactg catgtcagg tgaagttct 480
cccaggctgg aagtcacttg gacagcagt gccatcaag tccctgagtg taagaccacc 540
accctcaatt ccagagaga gacagcagt tccactgga cccgcaact ggaactcaac 600
acacaaacta atgagatttt ctactgcaat tttagagat tagatcctga ggaaacacct 660
acagtgat ttgctctccc agactacct ctggcactc ctccaaatga aagactcac 720
ttgtaatic tggagccat ctcttatgc ctgtgtgtag cactgcaat catctccgt 780
taagaaag gcaatgat gctgtgaa aaatctgga tccaaatc aaatcaaa 840
aagcaaatg atacacattt ggaaggagc taa
<210> 2
<211> 290
<212> PRT
<213> Homo sapiens
<400> 2
Met Arg Ile Phe Ala Val Phe Ile Phe Met Thr Tyr Trp His Leu Leu
1  3  5  7  9 11 13 15 17 19 21 23 25 27 29 31 33 35
Asn Ala Phe Thr Val Thr Val Pro Lys Asp Leu Tyr Val Val Glu Tyr
37 39 41 43 45 47 49 51 53 55 57 59 61 63 65 67 69 71 73 75
Gly Ser Asn Met Thr Ile Glu Cys Lys Phe Pro Val Glu Lys Gln Leu
77 79 81 83 85 87 89 91 93 95 97 99 101 103 105 107 109 111 113 115
Asp Leu Ala Ala Leu Ile Val Tyr Trp Glu Met Glu Asp Lys Asn Ile
117 119 121 123 125 127 129 131 133 135 137 139 141 143 145 147 149 151 153 155
Ile Gln Phe Val His Gly Glu Glu Asp Leu Lys Val Gln His Ser Ser
157 159 161 163 165 167 169 171 173 175 177 179 181 183 185 187 189 191 193 195
Tyr Arg Gln Arg Ala Arg Leu Leu Lys Asp Gln Leu Ser Leu Gly Asn
197 199 201 203 205 207 209 211 213 215 217 219 221 223 225 227 229 231 233 235
Ala Ala Leu Gln Ile Thr Asp Val Lys Leu Gln Asp Ala Gly Val Tyr
237 239 241 243 245 247 249 251 253 255 257 259 261 263 265 267 269 271 273 275
Arg Cys Met Ile Ser Tyr Gly Ala Asp Tyr Lys Arg Ile Thr Tyr
277 279 281 283 285 287 289 291 293 295 297 299 301 303 305 307 309 311 313 315
Lys Val Asn Ala Pro Tyr Asn Lys Ile Asn Gln Arg Ile Leu Val Val

```