



(11)

**EP 2 812 697 B1**

(12) **EUROPEAN PATENT SPECIFICATION**

(45) Date of publication and mention of the grant of the patent:  
**22.03.2017 Bulletin 2017/12**

(21) Application number: **13746979.7**

(22) Date of filing: **06.02.2013**

(51) Int Cl.:  
**G01N 33/68 (2006.01)**

(86) International application number:  
**PCT/US2013/024941**

(87) International publication number:  
**WO 2013/119673 (15.08.2013 Gazette 2013/33)**

(54) **INNATE IMMUNE PROTEINS AS BIOMARKERS FOR CNS INJURY**

ANGEBORENE IMMUNPROTEINE ALS BIOMARKER FÜR LÄSIONEN DES ZENTRALEN NERVENSYSTEMS

PROTÉINES IMMUNITAIRES INNÉES COMME BIOMARQUEURS POUR UNE LÉSION DU SNC

(84) Designated Contracting States:  
**AL AT BE BG CH CY CZ DE DK EE ES FI FR GB GR HR HU IE IS IT LI LT LU LV MC MK MT NL NO PL PT RO RS SE SI SK SM TR**

(30) Priority: **06.02.2012 US 201261595254 P**

(43) Date of publication of application:  
**17.12.2014 Bulletin 2014/51**

(73) Proprietor: **University of Miami  
Miami, Florida 33136 (US)**

(72) Inventors:  
• **KEANE, Robert, W.**  
Miami, FL 33156 (US)  
• **DIETRICH, W., Dalton**  
Miami, FL 33138 (US)  
• **VACCARI, Juan, Pablo De Rivero**  
Miami, FL 33175 (US)  
• **ADAMCZAK, Stephanie**  
Gainesville, FL 32608 (US)  
• **BULLOCK, M., Ross**  
Miami Beach, FL 33139 (US)  
• **LEVI, Allan**  
Key Biscayne, FL 33149 (US)  
• **WANG, Michael, Y.**  
North Miami, FL 33181 (US)

(74) Representative: **Stephen, Robert John**  
**Olswang LLP**  
90 High Holborn  
London WC1V 6XX (GB)

(56) References cited:  
**US-A1- 2009 104 200 US-A1- 2010 178 347**  
**US-A1- 2011 082 203 US-B2- 7 991 477**

- **MEJIA RENE O SANCHEZ ET AL: "Minocycline reduces traumatic brain injury-mediated caspase-1 activation, tissue damage, and neurological dysfunction", NEUROSURGERY, WILLIAMS & WILKINS, BALTIMORE, MD, US, vol. 48, no. 6, 1 June 2001 (2001-06-01), pages 1393-1401, XP009185069, ISSN: 0148-396X**
- **LOANE D J ET AL: "Neuroprotection for traumatic brain injury: translational challenges and emerging therapeutic strategies", TRENDS IN PHARMACOLOGICAL SCIENCES, ELSEVIER, HAYWARTH, GB, vol. 31, no. 12, 1 December 2010 (2010-12-01), pages 596-604, XP027502933, ISSN: 0165-6147, DOI: 10.1016/J.TIPS.2010.09.005 [retrieved on 2010-10-29]**
- **VINK R ET AL: "Multifunctional Drugs for Head Injury", NEUROTHERAPEUTICS, ELSEVIER INC, US, vol. 6, no. 1, 1 January 2009 (2009-01-01), pages 28-42, XP025818090, ISSN: 1933-7213, DOI: 10.1016/J.NURT.2008.10.036 [retrieved on 2008-12-22]**
- **DE RIVERO VACCARI ET AL.: 'Therapeutic neutralization of the NLRP1 inflammasome reduces the innate immune response and improves histopathology after traumatic brain injury.' JOURNAL OF CEREBRAL BLOOD FLOW & METABOLISM. vol. 29, no. 7, July 2009, pages 1251 - 1261, XP055159610**

Note: Within nine months of the publication of the mention of the grant of the European patent in the European Patent Bulletin, any person may give notice to the European Patent Office of opposition to that patent, in accordance with the Implementing Regulations. Notice of opposition shall not be deemed to have been filed until the opposition fee has been paid. (Art. 99(1) European Patent Convention).

**EP 2 812 697 B1**

- **ONOSE ET AL.: 'A review of published reports on neuroprotection in spinal cord injury.'** SPINAL CORD. vol. 47, no. 10, October 2009, pages 716 - 726, XP055159597
- **HAYASHI ET AL. APOPTOSIS OF MOTOR NEURONS WITH INDUCTION OF CASPASES IN THE SPINAL CORD AFTER ISCHEMIA.** vol. 29, no. 5, May 1998, pages 1007 - 1013, XP055159598
- **WILSON ET AL.: 'Structured interviews for the Glasgow Outcome Scale and the Extended Glasgow Outcome Scale: Guidelines for their Use.'** JOURNAL OF NEUROTRAUMA. vol. 15, no. 8, 1998, pages 573 - 585, XP055159604

Remarks:

The file contains technical information submitted after the application was filed and not included in this specification

**Description**

## FIELD OF THE INVENTION

5 **[0001]** The present invention relates generally to the fields of neurology, immunology, and diagnostics. In particular, the present invention relates to the identification of biomarkers in biological samples which can predict the severity of neuronal injury, such as spinal cord and traumatic brain injury, in patients. The identified biomarkers may also be used in determining prognosis, directing therapeutic and rehabilitation efforts, and monitoring response to treatment for patients with a central nervous system injury.

## BACKGROUND OF THE INVENTION

10 **[0002]** Nucleotide-binding oligomerization domain (NOD)-containing protein-like receptors (NLRs) are a recently discovered class of innate immune receptors that play a crucial role in initiating inflammatory responses following tissue injury in the central nervous system (CNS) (Abulafia *et al.*, 2009, Silverman *et al.*, 2009). Previous work shows that NLRP1 (also known as NAcHt leucine-rich-repeat protein 1 (NALP-1)) forms an inflammasome complex comprising NLRP1, the adaptor protein apoptosis-associated speck-like protein containing a caspase recruitment domain (ASC) and the caspase-1 enzyme that orchestrate the early inflammatory processes after spinal cord injury (SCI) and traumatic brain injury (TBI) via IL-1 $\beta$  activation (de Rivero Vaccari *et al.*, 2008; 2009). The formation of inflammasomes is induced by physical damage to the plasma membrane, and by certain endogenous ligands referred to as danger associated molecular patterns (DAMPs) or exogenous ligands known as pathogen associated molecular patterns (PAMPs) (Bianchi, 2007, Wakefield *et al.*, 2010). However, the full IL-1 $\beta$  response also depends on the activation of Toll-like receptors (TLRs) and/or purinergic ATP-gated receptors, which induce the transcription of pro-IL-1 $\beta$ .

20 **[0003]** Hyperinflammatory responses associated with tissue damage can promote pathogenesis of SCI and TBI via overproduction of IL-1 $\beta$  and other potentially neurotoxic products. Inflammasome-mediated IL-1 $\beta$  overproduction is involved in the pathogenesis of type 2 diabetes, liver damage and muscular dystrophy (Kufer and Sansonetti, 2011). Moreover, increasing genetic evidence suggests that inflammasome activation could also drive adaptive immunity in types of dermatitis, skin related allergies and asthma (Kufer and Sansonetti, 2011). In addition, inflammasome components may be secreted into the extracellular milieu via a mechanism involving the exosome pathway (Bianchi, 2007). The inflammasome therefore has a complex connection with the control of adaptive immune responses that has become the subject of intense investigation. Whether inflammasomes are associated with tissue destructive inflammatory processes after SCI and TBI in humans has not been investigated.

25 **[0004]** TBI affects an estimated 1.5 million people each year and causes one-third of injury-related deaths. Approximately 5.3 million Americans are living today with a permanent TBI-related disability. Predicting the severity and outcome of TBI and well as SCI is difficult, given the lack of objective, laboratory-based biomarkers. Currently, the Glasgow Coma Scale (GCS) score (Teasdale *et al.*, 1974) is the best available clinical predictor of injury severity; however, its value is limited in patients undergoing pharmacological paralysis for intubation, as a motor score cannot be obtained (Brain Trauma Foundation, American Association of Neurological Surgeons, 2000). Predicting outcome is further complicated by the heterogeneity of pathology in patients with a similar GCS score. Therefore, the identification of diagnostic and prognostic biomarkers that directly reflect injury to CNS cells is imperative. Such biomarkers of TBI and SCI will enable clinicians to assess the degree of damage to the brain or spinal cord, relay prognostic information to the patient's family members, and target acute and chronic treatments to specific CNS damage mechanisms. Therefore, an early, accurate diagnostic test designed to target neuroprotective strategies would be a most desirable prognostic tool.

30 **[0005]** Although, significant progress has been made regarding the verification and testing of various biomarkers after stroke and TBI, limited data are available regarding what biomarkers are appropriate for SCI. The biomarkers S-100 $\beta$ , neuron-specific enolase, neurofilament light chain and glial fibrillary acidic protein are significantly increased in cases of SCI in experimental animals studies (Skouen *et al.*, 1999, Ma *et al.*, 2001, Nagy *et al.*, 2002, Corneford *et al.*, 2004, Loy *et al.*, 2005, Cao *et al.*, 2008, Pouw *et al.*, 2009). Although some biomarkers show promising results, these do not yet provide a sensitive prognostic tool. Quantitative standards for determining the extent of SCI and TBI during the acute phase must be developed and validated.

35 **[0006]** A new approach for evaluating the primary cord and brain damage in the acute phase is the assessment of biomarkers in the cerebrospinal fluid (CSF). Since CSF surrounds the spinal cord and brain, damage to the cord or brain may lead to the release of proteins and molecules from central nervous system cells into the CSF that may serve as biomarkers for SCI and TBI in the CSF. Several studies have been conducted concerning S-100 $\beta$ , neuron-specific enolase, neurofilament light chain, and glial fibrillary acidic protein (GFAP) in CSF and serum of animal models of SCI (Pouw *et al.*, 2009). However, only one study has investigated neurofilament protein and GFAP in CSF after SCI in humans (Guez *et al.*, 2003). Thus, there is a need in the art to identify biomarkers of neuronal damage following central nervous system injury in humans that can be used to ascertain the severity of the injury and facilitate the selection of

an appropriate therapeutic strategy to maximize recovery.

[0007] Sanchez Mejia et al. conducted immunohistochemical analysis of brain tissue from mice subjected to traumatic brain injury and reported that activated caspase-1 and caspase-3 are present in neurons 24 hours after injury, localising specifically within neurons. Intraperitoneal administration of minocycline was found to reduce tissue injury and neurological defects resulting from experimental TBI, suggested to be through a caspase-1-dependent mechanism. (Sanchez Mejia et al., *Neurosurgery* 48:1393-14012001.)

[0008] Loane and Faden reviewed experimental animal models and therapies in development for traumatic brain injury. They identified a number of effective neuroprotective agents including anti-inflammatory treatments such as minocycline. (Loane & Faden, *Trends in Pharmacological Sciences* 31(12):596-604 2010.)

[0009] Vink and Nimmo also reviewed drugs for treating traumatic brain injury, including statins, progesterone and minocycline. (Vink & Nimmo, *Neurotherapeutics* 6:28-42 2009.)

[0010] Onose et al. reviewed published reports on neuroprotection in spinal cord injury, describing the types of injury that may occur to the brain and spinal cord and attempted to categorise the variety of therapeutic approaches, including established treatments and new therapies in development. (Onose et al., *Spinal Cord* 47(10):716-726 2009.)

[0011] US2009/104200 (Keane et al.) discussed the role of the inflammasome in the pathogenesis of TBI and SCI and described compounds, including neutralising antibodies, for binding and inhibiting components of the inflammasome to treat such injuries.

[0012] US2011/0082203 (Wang & Hayes) described methods of diagnosing and treating brain injury by assaying biological samples such as cerebrospinal fluid or serum to determine the presence of one or more biomarkers.

## SUMMARY OF THE INVENTION

[0013] The present invention is based, in part, on the discovery that NLRP1 (NALP-1) inflammasome components are secreted into the cerebrospinal fluid (CSF) acutely after SCI and traumatic brain injury (TBI) in humans. Elevated inflammasome protein levels in the CSF following central nervous system (CNS) injury represent the degree of neuroinflammation in CNS tissue and reflect the extent of inflammatory-induced damage. The CSF levels of inflammasome protein following injury correlate with the degree of functional recovery in patients and thus, can be used as acute biomarkers to predict patient prognosis and direct therapeutic interventions. Accordingly, the present invention provides a method of assessing the severity of a CNS injury in a patient.

[0014] In one embodiment, the invention provides a method of evaluating a patient suspected of having a CNS injury, as set out in appended claim 1.

Described are diagnostic methods that further comprise administering a neuroprotective treatment to the patient based on the measured level of one or more inflammasome proteins, and following changes in the level of one or more inflammasome proteins as a mechanism to monitor response to treatment.

[0015] In some embodiments, the levels of one or more inflammasome proteins in the patient's sample can be used to prepare an inflammasome protein profile associated with CNS injury. The levels of inflammasome proteins in the profile may be determined relative to levels of the proteins in control samples or pre-determined reference values or ranges of reference values. The inflammasome protein profiles are, in some embodiments, indicative of the presence or severity of CNS injury in a patient. When such protein profiles are prepared from samples obtained from patients following administration of a neuroprotective treatment, the inflammasome protein profiles are indicative of therapeutic efficacy of the neuroprotective treatment in the patient.

[0016] The present invention also provides a method of determining a prognosis for a patient with a central nervous system injury, as set out in appended claim 8. In particular embodiments, an elevated level of at least one inflammasome protein relative to a pre-determined reference value or range of reference values is indicative of a poorer prognosis or unfavorable patient outcome. For, example elevated inflammasome protein levels are predictive of the patient having a Glasgow Outcome Scale (GOS) score of 1 to 3 upon follow-up assessment. In other embodiments, a reduced level of at least one inflammasome protein relative to a pre-determined reference value or range of reference values is predictive of a favorable patient outcome (e.g. GOS score of 4 or 5 upon follow-up assessment). In certain embodiments, the method provides a prognosis for a patient with a spinal cord or traumatic brain injury.

[0017] Also described are kits for preparing an inflammasome protein profile associated with CNS injury. A kit may comprise a labeled-binding partner, such as labeled-antibody or fragment thereof, that specifically binds to one or more inflammasome proteins, wherein said one or more inflammasome proteins are selected from the group consisting of NLRP1, ASC, caspase-1, and combinations thereof.

## BRIEF DESCRIPTION OF DRAWINGS

[0018]

**Figure 1. NLRP1, ASC, and Caspase-1 are biomarkers that predict outcome after SCI.** CSF samples were immunoblotted with antibodies against NLRP1, caspase-1 and ASC. CSF samples from uninjured patients were used as controls. Immunoblot analysis of 6 different cases of patients with SCI indicates that patients (2, 3 and 4) who express low levels of caspase-1 acutely after SCI have a better prognosis than subjects (1, 5 and 6) who have elevated levels of this protein in CSF.

**Figure 2. NLRP1 inflammasome proteins are expressed in cells of the CNS.** Spinal cord sections were obtained from decedents that had injury to the spinal cord. Immunohistochemical analysis combined with light microscopy indicates that NLRP1 is expressed in neurons of the ventral horn (black arrows) myelinated axons (black arrow heads) and oligodendrocytes (yellow arrows) (top panel). Caspase-1 is expressed in swollen axons (spheroids, blue arrows), motor neurons (black arrows) and in oligodendrocytes (yellow arrows) (central panel). ASC is present in neurons in the ventral horn (black arrows), white matter oligodendrocytes (yellow arrow) and macrophages/microglia (blue arrow heads) (bottom panel).

**Figure 3. Scatter plots of expression of inflammasome proteins in controls and patients with TBI.** Samples were immunoblotted for ASC (A), caspase-1 (B), and NALP-1 (C). The p values in the upper left corner represent results of a Mann-Whitney U-test. Densitometric analysis revealed a significant increase in expression of ASC, caspase-1 (p20), and NALP-1 in the CSF of patients with TBI compared with nontrauma controls. Solid lines denote mean values for each group. Different shapes correspond to patient outcomes at 5 months postinjury. Representative immunoblots are shown. Samples were run on the same gel but were noncontiguous. N = the number of TBI samples analyzed; ★ = GOS Score 5; ■ = GOS Score 4; ● = GOS Score 3; ▽ = GOS Score 1.

**Figure 4. Box plots of expression of inflammasome proteins sorted by outcome category.** The ends of the whiskers represent the lowest datum within 1.5 interquartile range of the lower quartile and the highest datum within 1.5 interquartile range of the upper quartile. The asterisks represent the outliers. Mann-Whitney U-tests indicate higher expression of ASC (A), caspase-1 (p20) (B), and NALP-1 (C) are significantly associated with an unfavorable outcome 5 months after injury ( $p < 0.0001$ ). Representative immunoblots for each protein are shown. Samples were run on the same gel but were noncontiguous.

**Figure 5. Scatter plots and estimated linear regression of ASC (A), caspase-1 (p20) (B), and NALP-1 (C) expression in the CSF with GOS score.** Probability values of the linear regression are shown in the top left of each graph. Expression of each protein correlated significantly with GOS score at 5 months post-injury. The p values on the x axis represent post hoc comparisons of a Kruskal-Wallis test. Representative immunoblots are shown. Samples were run on the same gel but were noncontiguous.

**Figure 6. Caspase-1 levels in CSF one, two, and three days following TBI in pediatric patients receiving hypothermia treatment or no treatment (normothermia).**

## DETAILED DESCRIPTION OF THE INVENTION

**[0019]** The present invention is based, in part, on the discovery that NLRP1 inflammasomes play an important role in inflammatory responses after SCI and TBI in humans. In particular, the present inventors have surprisingly found that nucleotide-binding leucine-rich repeat pyrin domain containing protein 1 (NLRP1), the adaptor protein apoptosis-associated speck-like protein containing a caspase recruitment domain (ASC), and caspase-1 are secreted into the cerebrospinal fluid (CSF) of human patients following SCI and TBI. Thus, these inflammasome proteins represent sensitive biomarkers of the severity of central nervous system injury in human patients. Accordingly, the present invention provides a method of assessing the severity of a central nervous system injury in a patient by measuring the level of at least one inflammasome protein in a biological sample obtained from the patient, wherein the measured level of said at least one inflammasome protein is indicative of the severity of the central nervous system injury in the patient.

**[0020]** As used herein, the term "inflammasome" refers to a multi-protein complex that activates caspase-1 activity, which in turn regulates IL-1 $\beta$ , IL-18 and IL-33 processing and activation. See Arend *et al.* 2008; Li *et al.* 2008; and Martinon *et al.* 2002. An "inflammasome protein" is a protein component of inflammasome complexes and can include, but is not limited to, an nucleotide binding domain, leucine-rich repeat containing (NLR) family member (*e.g.* NLRP1), ASC, caspase-1, caspase-11, X-linked inhibitor of apoptosis protein (XIAP), and pannexin-1. NLRP1 is also known as NAcHT leucine-rich-repeat protein 1 (NALP-1). Thus, the terms "NLRP1" and "NALP-1" are used interchangeably throughout the disclosure. In certain embodiments, the method comprises measuring an inflammasome protein selected from the group consisting of NLRP1 (NALP-1), ASC, caspase-1, or combinations thereof. In one embodiment, the p20 subunit of active caspase-1 is measured.

**[0021]** The terms "patient" or "subject" are used interchangeably herein, and is meant a mammalian subject to be treated, with human patients being preferred. In certain embodiments, the patient is a pediatric patient. Pediatric patients include newborns (birth to 1 month of age), infants (1 month to 2 years of age), children (2 to 12 years of age), and

adolescents (12-21 years of age). In some cases, the methods of the invention find use in experimental animals, in veterinary application, and in the development of animal models for disease, including, but not limited to, rodents including mice, rats, and hamsters, and primates.

**[0022]** In certain embodiments, the present invention provides a method of evaluating a patient suspected of having a central nervous system (CNS) injury, as set out in appended claim 1.

**[0023]** A patient may be suspected of having a CNS injury on the basis of neurologic symptoms (motor, sensory, cognitive) and/or radiological evaluation (MRI, CT scan, X-ray) consistent with a CNS injury, e.g., after a physician's exam. In some embodiments, a patient suspected of having a CNS injury, particularly a spinal cord injury, may have a rating of A or B on the American Spinal Cord Injury Association (ASIA) Impairment Scale. The ASIA Impairment Scale is a standard diagnostic tool that assesses a patient's motor and sensory function. The classification ratings and accompanying descriptions of the ASIA Impairment Scale are as follows:

Classification/Rating	Description
<b>A</b>	Complete: no motor or sensory function is preserved below the level of injury, including the sacral segments S4-S5
<b>B</b>	Incomplete: sensory, but not motor, function is preserved below the neurologic level and some sensation in the sacral segments S4-S5
<b>C</b>	Incomplete: motor function is preserved below the neurologic level, however, more than half of key muscles below the neurologic level have a muscle grade less than 3 (i.e., not strong enough to move against gravity)
<b>D</b>	Incomplete: motor function is preserved below the neurologic level, and at least half of key muscles below the neurologic level have a muscle grade of 3 or more (i.e., joints can be moved against gravity)
<b>E</b>	Normal: motor and sensory functions are normal

Thus, a patient presenting with a classification rating of A or B on the ASIA Impairment Scale has no motor function below the level of the injury.

**[0024]** In other embodiments, a patient suspected of having a CNS injury may have a score of  $\leq 12$  (e.g. 3 to 12) on the Glasgow Coma Scale (GCS). In still other embodiments, the patient may have a GCS score of  $\leq 8$  (e.g. 3 to 8). The GCS is a neurological scale commonly used to assess the level of consciousness of patients after injury or trauma. The scale is composed of three tests (eye, verbal and motor responses), each of which is assigned a value on a scale up to 6. The three values separately as well as their sum are considered. The lowest possible GCS score (the sum) is 3 (deep coma or death), while the highest is 15 (fully awake person). A GCS score  $< 9$  is indicative of severe brain injury whereas a GCS score  $\geq 13$  is indicative of minor brain injury. A GCS score between 9-12 is generally indicative of a moderate brain injury.

**[0025]** A patient suspected of having a CNS injury may have one or more signs and symptoms of CNS injury, such as temporary loss of consciousness, confusion, disorientation, memory or concentration problems, headache, dizziness, loss of balance, nausea or vomiting, sensory disruptions (e.g. blurred vision, ringing in the ears, bad taste in the mouth, loss of sensation in limbs), loss of motor function, sensitivity to light or sound, mood changes or mood swings, depression or anxiety, fatigue, drowsiness, and sleep disturbances.

**[0026]** In some embodiments, the level, concentration, or abundance of one or more inflammasome proteins is measured in a biological sample obtained from a patient (e.g. a patient suspected of having or suffering from a CNS injury). In particular embodiments, the levels, concentrations, or abundance of one or more inflammasome proteins is indicative of the severity of CNS injury in the patient. A CNS injury includes, but is not limited to, a traumatic brain injury, a stroke-related injury, a cerebral aneurism-related injury, a spinal cord injury (e.g. contusions, compressions, lacerations), concussion-related injury (including post-concussion syndrome), cerebral ischemia, injury resulting from neurodegenerative diseases (including Parkinson's disease, Dementia Pugilistica, Huntington's disease, Alzheimer's disease, Creutzfeldt-Jakob disease), seizure-related injuries, multiple sclerosis, amyotrophic lateral sclerosis, and other CNS traumas. In certain embodiments, the levels, concentrations, or abundance of one or more inflammasome proteins is indicative of the severity of traumatic brain injury or spinal cord injury in the patient.

**[0027]** As used herein, "biological sample" refers to any bodily fluid or tissue obtained from a patient or subject. A biological sample can include, but is not limited to, whole blood, red blood cells, plasma, serum, peripheral blood mononuclear cells (PBMCs), urine, saliva, tears, buccal swabs, CSF, CNS microdialysate, and nerve tissue. In one embodiment, the biological sample is CSF, serum or plasma. In certain embodiments, the biological sample is CSF.

**[0028]** In some embodiments, the measured level, concentration, or abundance of one or more inflammasome proteins

in the biological sample is used to prepare an inflammasome protein profile, wherein the profile is indicative of the severity of a CNS injury in the patient or the patient's prognosis or recovery potential from a CNS injury. The inflammasome protein profile may comprise the level, abundance, or concentration of one or more inflammasome proteins measured in the patient's sample optionally in relation to a pre-determined value or range of reference values as described herein.

5 The inflammasome proteins in the profile include NLRP1 (NALP-1), ASC, and/or caspase-1 (e.g. p20 subunit of caspase-1). In one particular embodiment, the inflammasome protein profile comprises the level, abundance, or concentration of each of NLRP1 (NALP-1), ASC, and caspase-1 (e.g. p20 subunit of caspase-1).

**[0029]** In one aspect of the invention, the method of evaluating a patient suspected of having a CNS injury comprises determining the presence or absence of a protein signature associated with a CNS injury or a more severe CNS injury based on the measured level, abundance, or concentration of one or more inflammasome proteins in the patient sample or on the inflammasome protein profile prepared from the patient's sample. In certain embodiments, the protein signature comprises an elevated level of at least one inflammasome protein. The level of said at least one inflammasome protein in the protein signature may be enhanced relative to the level of the protein in a control sample or relative to a pre-determined reference value or range of reference values as further described herein. The protein signature may, in certain embodiments, comprise an elevated level for each of caspase-1 (e.g. p20 subunit of caspase-1), NLRP1, and ASC. Patients who exhibit the protein signature may be selected or identified as having a CNS injury or a more severe CNS injury.

**[0030]** The level or concentration of at least one inflammasome protein can be assessed at a single time point (e.g. after a potential CNS injury) and compared to a pre-determined reference value or range of reference values or can be assessed at multiple time points (e.g. two, three, four, five or more) after a potential CNS injury and compared to a pre-determined reference value or to previously assessed values. For instance, a biological sample for measuring levels or concentrations of inflammasome proteins can be obtained from a patient within one hour of a potential CNS injury to two weeks following a potential CNS injury. In some embodiments, the biological sample is obtained within one day, two days, three days, four days, five days, six days, seven days, ten days, or twelve days of a CNS injury or potential injury.

**[0031]** As used herein, "pre-determined reference value" refers to a pre-determined value of the level or concentration of an inflammasome protein ascertained from a known sample. For instance, the pre-determined reference value can reflect the level or concentration of an inflammasome protein in a sample obtained from a control subject (*i.e.*, an uninjured, healthy subject). The control subject may, in some embodiments, be age-matched to the patients being evaluated. Thus, in particular embodiments, the measured level or concentration of at least one inflammasome protein is compared or determined relative to the level or concentration of said at least one inflammasome protein in a control sample (*i.e.* obtained from an uninjured subject).

**[0032]** In other embodiments, the pre-determined reference value or range of reference values can reflect the level or concentration of an inflammasome protein in a sample obtained from a patient with a known severity of CNS injury as assessed by clinical measures or post mortem analysis. A pre-determined reference value can also be a known amount or concentration of an inflammasome protein. Such a known amount or concentration of an inflammasome protein may correlate with an average level or concentration of the inflammasome protein from a population of control subjects or a population of patients with known levels of injury. In another embodiment, the pre-determined reference value can be a range of values, which, for instance, can represent a mean plus or minus a standard deviation or confidence interval. A range of reference values can also refer to individual reference values for a particular inflammasome protein across various levels of CNS injury severity. In certain embodiments, an increase in the level of one or more inflammasome proteins (e.g., NLRP1 (NALP-1), ASC, or caspase-1) relative to a pre-determined reference value or range of reference values is indicative of a more severe central nervous system injury.

**[0033]** In some embodiments, the method of assessing the severity of a CNS injury further comprises measuring the level or concentration of one or more proteins described in U.S. Patent Publication No. 2011/0177974, in addition to measuring the level or concentration of one or more inflammasome proteins. For instance, in certain embodiments, the method further comprises measuring the level or concentration of one or more proteins selected from ubiquitin C-terminal hydrolase L1; vesicular membrane protein p-24; synuclein; microtubule-associated protein; synaptophysin; Vimentin; Synaptotagmin; Synaptotagmin-2; Synapsin2; CRMP1, 2; Amphiphysin-1; PSD95; PSD-93; Calmodulin dependent protein kinase II (CAMPK)-alpha, beta, gamma; Myelin basic protein (MBP); Myelin proteolipid protein (PLP); Myelin Oligodendrocyte specific protein (MOSP); Myelin Oligodendrocyte glycoprotein (MOG); myelin associated protein (MAG); NF-H; NF-L; NF-M; BIII-tubulin-1 or combinations thereof in the biological sample obtained from the patient in addition to measuring the level or concentration of one or more inflammasome proteins. Thus, the protein signature may comprise an elevated level of one or more of these proteins in addition to the elevated level of one or more inflammasome proteins. In other embodiments, the method further comprises measuring the level or concentration of one or more proteins selected from S-100 $\beta$ , neuron-specific enolase, neurofilament light chain, glial fibrillary acidic protein (GFAP) or combinations thereof in the biological sample obtained from the patient in addition to measuring the level or concentration of one or more inflammasome proteins. In one embodiment, the protein signature associated with a CNS injury or a more severe CNS injury comprises an elevated level of one or more proteins selected from S-100 $\beta$ , neuron-specific enolase, neurofilament

light chain, glial fibrillary acidic protein (GFAP) in addition to an elevated level of one or more inflammasome proteins (e.g. NLRP1 (NALP-1), ASC, or caspase-1).

**[0034]** Methods of assessing the severity of a CNS injury in a patient or evaluating a patient suspected of having a CNS injury may further comprise administering a neuroprotective treatment to the patient based on the measured level of said at least one inflammasome protein or when a protein signature associated with a CNS injury or a more severe CNS injury is identified. Such neuroprotective treatments include drugs that reduce excitotoxicity, oxidative stress, and inflammation. Thus, suitable neuroprotective treatments include, but are not limited to, methylprednisolone, 17 $\alpha$ -estradiol, 17 $\beta$ -estradiol, ginsenoside, progesterone, simvastatin, deprenyl, minocycline, resveratrol, and other glutamate receptor antagonists (e.g. NMDA receptor antagonists) and antioxidants. In some embodiments, neuroprotective treatments are neutralizing antibodies against an inflammasome protein or binding fragments thereof, such as those described in U.S. Patent Publication No. 2009/0104200. For instance, in one embodiment, the neuroprotective treatment is an anti-ASC antibody or fragment thereof. Anti-ASC antibodies include antibodies that specifically bind to amino acid residues 178-193 of rat ASC (accession number BAC43754), e.g., amino acid sequence ALRQTQPYLVTDLQES (SEQ ID NO:1), or antibodies that specifically bind to the amino acid sequence RESQSYLVEDLERS (SEQ ID NO:2) of human ASC. In another embodiment, the neuroprotective treatment is an anti-NLRP1 antibody or fragment thereof. Suitable neutralizing anti-NLRP1 antibodies or fragments thereof include antibodies that specifically bind to the amino acid sequence CEYYTEIREREREKSEKGR (SEQ ID NO:3) of human NLRP1 or the amino acid sequence MEESQSKEESNTEG (SEQ ID NO: 4) of rat NLRP1. The neutralizing antibodies or antibody fragments may be polyclonal antibodies, monoclonal antibodies, chimeric antibodies, humanized antibodies, single-chain variable fragments (scFvs) and the like. Aptamers that specifically bind to an inflammasome protein or epitope thereof (e.g., SEQ ID NOs: 1-4) may also be suitable neuroprotective treatments. Neuroprotective treatments also encompass therapeutic regimens or rehabilitative procedures, such as hypothermia treatment.

**[0035]** The success of, or response to, treatment can also be monitored by measuring the levels of at least one inflammasome protein. Accordingly, in some embodiments, the methods of evaluating a patient further comprise measuring the level of at least one inflammasome protein in a biological sample obtained from the patient following neuroprotective treatment, preparing a treatment protein signature associated with a positive response to the neuroprotective treatment, wherein the treatment protein signature comprises a reduced level of at least one inflammasome protein, and identifying patients exhibiting the presence of the treatment protein signature as responding positively to the neuroprotective treatment. A reduction in the level, abundance, or concentration of one or more inflammasome proteins (e.g. NLRP1, ASC, and caspase-1) is indicative of the efficacy of the neuroprotective treatment in the patient. The one or more inflammasome proteins measured in the sample obtained following treatment may be the same as or different than the inflammasome proteins measured in the sample obtained prior to treatment. The inflammasome protein levels may also be used to adjust dosage or frequency of a neuroprotective treatment.

**[0036]** The present invention also provides a method of determining a prognosis for a patient with a central nervous system injury, as set out in appended claim 8. In certain preferred embodiments, the biological sample is obtained from the patient within five days, or within three days of injury. In some embodiments, an increase in the level of one or more inflammasome proteins (e.g., NLRP1, ASC, caspase-1, or combinations thereof) relative to a pre-determined reference value or range of reference values is indicative of a poorer prognosis. For instance, an increase of about 20% to about 300% in the level of one or more inflammasome proteins relative to a pre-determined reference value or range of reference values is indicative of a poorer prognosis. In one embodiment, increased levels of caspase-1, particularly the p20 subunit of active caspase-1, relative to a pre-determined reference value or range of reference values acutely after injury (i.e. within a week of injury) is indicative of a poorer prognosis.

**[0037]** In particular embodiments, an elevated level of at least one inflammasome protein relative to a pre-determined reference value or range of reference values is predictive of the patient's recovery potential or long-term outcome as assessed by the Glasgow Outcome Scale (GOS). The GOS is a scale that allows for the objective assessment of a patient's recovery following brain injury. The scale is comprised of scores ranging from 1 to 5 with the following descriptions:

Score/Category	Description
1-Death	Severe injury or death without recovery of consciousness
2-Persistent Vegetative State	Severe damage with prolonged state of unresponsiveness and a lack of higher mental functions
3-Severe Disability	Severe injury with permanent need for help with daily living
4-Moderate Disability	No need for assistance in everyday life, employment is possible but may require special equipment

(continued)

Score/Category	Description
5-Low Disability	Light damage with minor neurological and psychological deficits.

In one embodiment, an elevated level of at least one inflammasome protein relative to a pre-determined reference value or range of reference values is predictive of the patient having a GOS score of 1 to 3 upon follow-up assessment (*i.e.* the patient having an unfavorable outcome, such as death or severe disability). In another embodiment, a reduced level of at least one inflammasome protein relative to a pre-determined reference value or range of reference values is predictive of the patient having a GOS score of 4 or 5 upon follow-up assessment (*i.e.* the patient having a favorable outcome, such as moderate to low disability). The inventors have found that the CSF levels of one or more inflammasome proteins within three days following a CNS injury are useful for predicting the long-term outcome or recovery potential of the patient. Elevated inflammasome proteins levels correlate with unfavorable outcomes for the patient, whereas reduced or low inflammasome protein levels correlate with favorable outcomes for the patient (Example 3).

**[0038]** The inflammasome proteins of the invention and other marker proteins can be measured in a biological sample by various methods known to those skilled in the art. For instance, proteins can be measured by methods including, but not limited to, liquid chromatography, gas chromatography, mass spectrometry, radioimmunoassays, immunofluorescent assays, FRET-based assays, immunoblot, ELISAs, or liquid chromatography followed by mass spectrometry (*e.g.*, MALDI MS). One of skill in the art can ascertain other suitable methods for measuring and quantitating any particular biomarker protein of the invention.

**[0039]** Also described are kits for preparing an inflammasome protein profile associated with CNS injury, such as spinal cord injury or traumatic brain injury. The kits may include a reagent for measuring at least one inflammasome protein and instructions for measuring said at least one inflammasome protein for assessing the severity of a central nervous system injury in a patient. As used herein, a "reagent" refers to the components necessary for detecting or quantitating one or more proteins by any one of the methods described herein. For instance, in some embodiments, kits for measuring one or more inflammasome proteins can include reagents for performing liquid or gas chromatography, mass spectrometry, immunoassays, immunoblots, or electrophoresis to detect one or more inflammasome proteins as described herein. In some embodiments, the kit includes reagents for measuring one or more inflammasome proteins selected from NLRP1, ASC, caspase-1, or combinations thereof.

**[0040]** In one embodiment, the kit comprises a labeled-binding partner that specifically binds to one or more inflammasome proteins, wherein said one or more inflammasome proteins are selected from the group consisting of NLRP1, ASC, caspase-1, and combinations thereof. Suitable binding partners for specifically binding to inflammasome proteins include, but are not limited to, antibodies and fragments thereof, aptamers, peptides, and the like. In certain embodiments, the binding partners for detecting NLRP1 are antibodies or fragments thereof, aptamers, or peptides that specifically bind to the amino acid sequence of SEQ ID NO: 3 or SEQ ID NO: 4 of human NLRP1 and rat NLRP1, respectively. In other embodiments, the binding partners for detecting ASC are antibodies or fragments thereof, aptamers, or peptides that specifically bind to the amino acid sequence of SEQ ID NO: 1 or SEQ ID NO: 2 of rat ASC and human ASC, respectively. Labels that can be conjugated to the binding partner include metal nanoparticles (*e.g.*, gold, silver, copper, platinum, cadmium, and composite nanoparticles), fluorescent labels (*e.g.*, fluorescein, Texas-Red, green fluorescent protein, yellow fluorescent protein, cyan fluorescent protein, Alexa dye molecules, *etc.*), and enzyme labels (*e.g.*, alkaline phosphatase, horseradish peroxidase, beta-galactosidase, beta-lactamase, galactose oxidase, lactoperoxidase, luciferase, myeloperoxidase, and amylase).

**[0041]** In some embodiments, the kit can include reagents for measuring one or more inflammasome proteins in CSF samples. In other embodiments, the kits can include reagents for measuring one or more inflammasome proteins in other patient samples including nerve tissue, CNS microdialysate, blood, saliva, serum, plasma, or urine. In still other embodiments, the kits further comprise a set of reference values to which the measured level of one or more inflammasome proteins can be compared.

## EXAMPLES

### Example 1. Inflammasome Proteins are Secreted into Cerebrospinal Fluid after Spinal Cord Injury

**[0042]** To determine whether NLRP1 inflammasome proteins were present in cerebrospinal fluid (CSF) following spinal cord injury (SCI), CSF samples from seven patients with SCI or control patients were analyzed for levels of nucleotide-binding leucine-rich repeat pyrin domain containing protein 1 (NLRP1; also known as NAcHT leucine-rich-repeat protein 1 (NALP-1)), apoptosis-associated speck-like protein containing a caspase recruitment domain (ASC), and caspase-1. The American Spinal Cord Injury Association (ASIA) scale of the SCI patients at admission to the emergency department

ranged from AIS A to B. Information regarding the diagnosis, procedures and outcomes of the patients is shown in Table 1. None of the patients had any complications. CSF from uninjured individuals was obtained as a control from three males and two females ranging from 67 to 91 years old.

**[0043]** For detection of inflammasome proteins, CSF samples were prepared with Laemali buffer. Immunoblot analysis was carried with the Criterion system (Bio-Rad) as described previously (de Rivero Vaccari *et al.*, 2008) using antibodies (1:1000 dilution) to NLRP1 (Bethyl Laboratories), Caspase-1 (Imgenex) and ASC (Santa Cruz). Proteins were resolved in 14-20% TGX Criterion precasted gels (Bio-Rad), transferred to polyvinylidene difluoride (PVDF) transfer membranes (Tropifluor - Applied Biosystems) and placed in blocking buffer (PBS, 0.1% Tween-20, 0.4% I-Block (Applied Biosystems) and then incubated for one hour with primary antibodies. Membranes were then incubated for one hour with anti-mouse, anti-rat or anti-rabbit horseradish peroxidase (HRP)-linked antibodies. Signal visualization was performed by enhanced chemiluminescence.

**[0044]** Immunoblot analysis of control CSF samples (n=5) revealed very low levels of NLRP1 inflammasome proteins (Figure 1). In contrast, immunoblot analysis of samples from 6 different SCI patients showed an increase in the levels of NLRP1, caspase-1 and ASC in the CSF when compared to CSF from control subjects. It should be noted that patients 2, 3 and 4 (Figure 1) did not show increased levels of caspase-1 acutely (day 0 through day 2) after SCI. Interestingly, these patients demonstrated stark motor improvement at 2 days after SCI. Patients 1, 5, and 6 showed increased levels of caspase-1, ASC and NLRP1 inflammasome proteins acutely after SCI and these individuals had a poor prognosis and did not show motor improvements. Thus, it appears that individuals that present with low levels of caspase-1 in CSF acutely after SCI may have a better prognosis than those individuals who show increased levels of this biomarker.

**[0045]** The results from these experiments show that protein levels of NLRP1, ASC, and caspase-1 in CSF are increased following injury to the central nervous system and suggest that levels of these inflammasome proteins can serve as biomarkers of the severity of neuronal damage following injury thereby directing treatment and rehabilitation efforts, monitoring response to treatment, and aiding in the determination of prognosis of recovery in injured patients.

## **Example 2. Immunohistochemical Expression of NLRP1 Inflammasome Proteins in Spinal Cords After Injury**

**[0046]** Spinal cord sections were obtained from nine decedents (8 males and 1 female with ages ranging from 20 to 77 years) who had injury to the spinal cord due to vertebral fractures. The spinal cord injury was assessed microscopically, using bright field optics, by examining one H&E or H&E/DAB-stained section from the lesion center of each case or from cervical, thoracic and lumbar sections from control cases. The spinal cord injuries were classified on the basis of their histological appearance as "contusion/cyst," massive compression, or laceration (Fleming *et al.*, 2006). Contusional injuries were characterized by an intact pia and relative preservation of the anatomical relations of various elements of the spinal cord, and variable degrees of injury ranging from involvement of the entire cross-sectional area to large usually asymmetric areas of tissue damage. Massive compression injuries were characterized by disruption of the pia and severe distortion and disruption of spinal cord parenchyma. Laceration injuries, which by definition were perforating or penetrating injuries caused by weapons or projectiles, were associated with breaching of the pia and linear tearing of the cord tissue.

**[0047]** All tissue samples had been removed within 24 h of death and fixed in neutral buffered formalin. Blocks from the spinal cords were dehydrated, embedded in paraffin wax, cut into 6  $\mu$ m thick sections and placed on positively charged glass slides. One set of sections was stained with hematoxylin-eosin (H&E) and the remaining sets were used for immunohistochemistry. Paraffin-embedded sections were stained with anti-NLRP1 (Bethyl Laboratories as described in de Rivero Vaccari *et al.* 2008), anti-caspase-1 (Upstate), and anti-ASC (Chemicon) using diaminobenzidine (DAB) as the chromophore and hematoxylin. Negative controls included sections in which the primary antibody was omitted and sections incubated with isotype-matched antibodies (1:100-1:10,000 IgG). These positive and negative controls were processed with every batch of immunohistochemical slides.

**[0048]** In all cases, tissue samples from the center of injury and at various distances above and below the injury were obtained. The data from tissue from the center of the lesion were used to compare the inflammatory responses between cases whereas those from the remote, uninjured segments of the spinal cord served as within-case controls. Between-case comparison of the remote samples was not possible because, for different cases, the distance of these samples from the lesion center was variable.

**[0049]** Immunohistochemical analysis combined with light microscopy indicated that NLRP1 is expressed in neurons of the ventral horn (black arrows), myelinated axons (arrow heads) and oligodendrocytes (yellow arrows) in injured spinal cords (Figure 2). Moreover, NLRP1 immunoreactivity in areas of the penumbra (C7) was higher than in areas distant to the epicenter (L2).

**[0050]** DAB immunoreactivity for caspase-1 was detected in swollen axons (spheroids, blue arrows) (Figure 2), and arterioles (not shown). At areas of the penumbra, caspase-1 staining is present in motor neurons (black arrows) of the ventral horn, and in the white matter in oligodendrocytes (yellow arrows). Caspase-1 immunoreactivity in oligodendrocytes (yellow arrows) was the same at all levels of the spinal cords examined, regardless of proximity to the epicenter. At

areas distant to the epicenter (T12), caspase-1 was also present in motor neurons (black arrows) but with decreased immunoreactivity than the penumbra (C7). This finding indicates that caspase-1 immunoreactivity in neurons decreases as the distance to the epicenter increases, similarly to NLRP1.

**[0051]** At areas of the penumbra (C7) and distant to the epicenter (L2), neurons in the ventral horn (black arrows) and white matter oligodendrocytes (yellow arrow) showed ASC immunoreactivity. In addition, ASC was also present in macrophages/microglia at the epicenter (blue arrow heads). Moreover, ASC immunoreactivity was also detected in the substantia gelatinosa (dorsal horn) at C7 and L2 (not shown).

**[0052]** Neuroinflammation has been considered to play a critical role in the pathogenesis of SCI and TBI, but the role of the innate immune response has not been examined directly. The innate immune system senses microbial and viral pathogen-associated molecular patterns and danger signals released from damaged or stressed cells to trigger conserved intracellular signaling pathways that drive proinflammatory responses that are critical for productive innate and adaptive immunity. Excessive inflammatory responses become deleterious leading to tissue destruction. The results of this experiment provide evidence demonstrating that the NLRP1 inflammasome signaling system is activated in the innate immune response in damaged human spinal cord and brain tissue after trauma. These findings support the idea that activation of the NLRP1 inflammasome signaling system is an early event in spinal cord and brain pathology and that these proteins may serve as biomarkers for SCI and TBI in humans.

### Example 3. Inflammasome Proteins in Cerebrospinal Fluid of Brain-Injured Patients are Biomarkers of Functional Outcome

**[0053]** To determine whether inflammasome proteins may serve as biomarkers for other types of central nervous system injury, a total of 45 CSF samples were collected from 23 traumatic brain injury (TBI) patients on the day of injury and up to three days after the injury and analyzed by immunoblot for levels of NALP-1 (also known as NLRP1), ASC, and caspase-1. Each of the patients presented with the following inclusion criteria: severe or moderate head trauma (Glasgow Coma Scale (GCS) score  $\leq$  12), age 1 month to 65 years, and ventriculostomy. Twenty-two of the patients suffered severe brain trauma (GCS score  $\leq$  8) and 1 suffered moderate brain trauma (moderate TBI GCS score range 9-12). Nine patients (5 men and 4 women) with a mean age of 66.3 years (range 29-91 years) served as controls. Control patients required a ventriculostomy for nontraumatic pathology. Patients with acute meningitis, cerebral vasculitis, or other recent CNS infection were excluded. Information regarding patient demographics, intracranial pathology, GCS score at presentation, and Glasgow Outcome Scale (GOS) score at 5 months post-injury is shown in Table 2.

**[0054]** Cerebrospinal fluid samples were collected within 12 hours of injury and up to 72 hours after injury. Samples were centrifuged at 2000g for 10 minutes at 4°C to pellet cellular bodies and debris. Supernatants were resolved by gel electrophoresis and immunoblotted as previously described (de Rivero Vaccari *et al.*, 2008). Quantification of band density was performed with UNSCAN-IT gel digitizing software (Silk Scientific). Due to the low volume of sample available, NALP-1 was analyzed in 6 of the 9 controls, caspase-1 was analyzed in 43 of the 45 TBI samples, and NALP-1 was analyzed in 42 of the 45 TBI samples. Immunoblot analysis shows that the inflammasome proteins ASC, caspase-1 (p20), and NALP-1 are present in the CSF of patients with TBI and nontrauma controls. Quantitative data from a densitometric analysis are shown in Figure 3. Expression of the 22-kD isoform of ASC (Fig. 3A), the p20 subunit of cleaved caspase-1 (Fig. 3B), and NALP-1 (Fig. 3C) is significantly elevated in the CSF of TBI patients compared with nontrauma controls ( $p < 0.0001$ ,  $p = 0.0029$ , and  $p = 0.0202$ , respectively).

**[0055]** To determine if the levels of inflammasome components correlate with outcome, we grouped study participants by outcome category (GOS Scores 1 and 3, unfavorable outcome; GOS Scores 4 and 5, favorable outcome). At 5 months postinjury, 3 patients had a GOS score of 1 (death), 11 patients had a GOS score of 3 (severe disability), 6 patients had a GOS score of 4 (moderate disability), and 3 patients had a GOS score of 5 (good recovery). Within the sample of patients with TBI, no patient remained with a GOS score of 2 (persistent vegetative state). We detected significantly higher levels of ASC (Fig. 4A), caspase-1 (p20) (Fig. 4B), and NALP-1 (Fig. 4C) in the CSF of TBI patients with unfavorable outcomes, including death and severe disability with complete dependence on others for activities of daily living ( $p < 0.0001$ ).

**[0056]** To further understand the relationship between outcome and inflammasome proteins, we constructed modified scatter plots of expression levels of ASC, caspase-1 (p20), and NALP-1 and GOS (Figure 5). A calculated linear regression line is shown for each plot. Linear regression analysis shows that expression of ASC (Fig. 5A;  $p < 0.05$ ), caspase-1 (p20) (Fig. 5B;  $p < 0.01$ ), and NALP-1 (Fig. 5C;  $p < 0.05$ ) correlate significantly with outcome at 5 months. Post hoc, the Dunn multiple comparison tests following a Kruskal-Wallis test showed that the levels of ASC are significantly higher in patients with severe disability (GOS Score 3) compared with patients with moderate disability (GOS Score 4) ( $p < 0.001$ ) and patients with mild to no disability (GOS Score 5) ( $p < 0.05$ ). Similarly, expression levels of caspase-1 (p20) and NALP-1 are significantly higher in patients with severe disability (GOS Score 3) than in those with moderate disability (GOS Score 4) ( $p < 0.001$ ).

**[0057]** The results of this study show that inflammasome proteins (e.g. ASC, NALP-1, and caspase-1) are acutely

5 elevated (e.g. within 72 hours) in the CSF of patients with TBI as compared with nontrauma controls. Elevation of these proteins likely reflects the extent of neuroinflammation, suggesting that inflammasome proteins can serve as acute biomarkers of CNS injury. These findings are clinically relevant, as CSF biomarkers are more specific indicators of neuropathology than serum biomarkers. Cerebrospinal fluid directly bathes the brain, closely reflecting the extracellular milieu and biochemical changes that are specific to the CNS. Sampling the CSF eliminates influences of multiorgan trauma or other systemic pathology represented in the serum, which is significant as patients with TBI often present with trauma to other organ systems.

10 **[0058]** The results also demonstrate that levels of inflammasome proteins are significantly higher in the CSF of patients who have died and those with severe disability than in patients with moderate to no disability, suggesting that inflammasome activation produces chronic neuroinflammation, contributing to secondary injury and poor outcome 5 months after TBI. The extent of acute elevation of these proteins can predict an unfavorable versus favorable outcome. Such markers could also direct treatment and rehabilitation efforts. The clinician would target therapies to patients identified as having a greater risk of inflammation-mediated secondary injury.

15 **[0059]** Response to treatment could be monitored by following the levels of ASC, active caspase-1, and NALP-1 in the CSF. One such treatment, therapeutic hypothermia, attenuates the endogenous inflammatory response of the CNS to TBI by decreasing cytokine production and reducing activation of astrocytes and microglia (Aibiki *et al.*, 1999; Goss *et al.*, 1995; Kumar *et al.*, 1997; Truettner *et al.*, 2005), and cortical neurons exposed to moderate hypothermia in culture show a decrease in activation of the inflammasome (Tomura *et al.*, in press). Thus, ASC, active caspase-1, and NALP-1 can serve as objective, biochemical indicators of treatment efficacy for patients with CNS injury.

#### 20 **Example 4. Hypothermia Decreases Caspase-1 Activation after Traumatic Brain Injury in Pediatric Patients**

25 **[0060]** To evaluate whether inflammasome proteins, such as caspase-1, can also be used to monitor treatment efficacy in TBI patients, CSF caspase-1 levels obtained from pediatric patients who received hypothermia treatment following TBI were compared to those obtained from pediatric patients who did not receive treatment following TBI. Cerebrospinal fluid of pediatric patients (ages 0.1 to 16 years) was obtained at different times after traumatic brain injury (day 1, 2 and 3). Patients were divided into those that received hypothermia treatment and those who did not (normothermia). As shown in Figure 6, the data indicate that within 24 hours after injury the levels of caspase-1 were lower in the hypothermia group when compared to the normothermia group. Thus post-traumatic therapeutic hypothermia lowers the levels of caspase-1 activation after brain injury, consistent with findings that those patients that receive hypothermia treatment present better outcomes when compared to those patients who do not get the hypothermia treatment.

Table 1. Spinal Cord Injury Subjects

Patient	Age	Gender	Race	Mechanism of Injury	Spinal Injury	AIS Grade	Level	Surgery	Hypothermia	Other injuries	Exam at Rehab D/C
1	43	M	Black	Auto vs. Pedestrian	C7/T1 bilateral jumped facets	A	C7	C4-T2 Laminectomy w/instrumented fusion	Yes	None	C7 ASIA A
2	38	M	Hispanic	Fall from height	T3&T4 Burst fractures	B	T3	T1-6 Laminectomy w/instrumented fusion	No	None	T3 ASIA D
3	21	M	White	Driving accident	C5/6 Fracture dislocation	A	C5	C5/6 Anterior disectomy & fusion	Yes	None	C5 ASIA C
4	19	M	Black	Motor vehicle accident	C4/5 Bilateral jumped facets	B	C4	C4/5 Anterior disectomy & fusion	No	None	C4 ASIA D
5	22	M	White	Rugby accident	C5/6 Bilateral jumped facets	A	C5	C5/6 Anterior disectomy & fusion	Yes	None	C6 ASIA A
6	48	M	Hispanic	Motorcycle vs. Pedestrian	T1/2 Fracture dislocation	A	T3	C5-T2 Laminectomy w/instrumented fusion	No	Degloving injury and fractures of face	T3 ASIA B

EP 2 812 697 B1

Table 2. Summary of demographic data in patients with TBI\*

Case No.	Age (yrs), Sex	Race	Mechanism of Injury	GCS Score†	GOS Score‡	Intracranial Pathology
1	26, M	White	MVA	3	4	bilat temporal cortical contusions, SAH, SDH
2	22, M	Hispanic	motorcycle accident	3	4	SDH, diffuse SAH
3	19, F	Hispanic	MVA	7	3	fronto- & temporoparietal & basal ganglia hemorrhagic contusions, frontoparietal SAH
4	30, F	Hispanic	MVA	8	4	scattered SAH, diffuse cerebral edema
5	21, M	Hispanic	motorcycle accident	5	3	frontal SDH & SAH
6	17, F	Hispanic	MVA	4	3	diffuse extraaxial & intraparenchymal hemorrhage
7	26, M	Hispanic	MVA	8	3	diffuse SAH, IVH, & parenchymal hemorrhagic contusions
8	36, M	White	ATV accident	3	5	SDH, SAH, & diffuse cerebral edema
9	16, M	Hispanic	MVA	7	5	frontotemporal SDH, frontal lobe contusion, cerebral edema
10	22, M	Hispanic	MVA	3	3	SDH
11	36, M	Black	Gunshot wound	3	1	SDH, bullet fragments in frontal lobe
12	54, M	Hispanic	Fall	3	3	frontal hemorrhagic contusions, parietooccipital
						hemorrhagic contusion, SDH, brain edema
13	62, M	Black	MVA	8	3	diffuse frontoparietal hemorrhage, frontal & parietal lobe hemorrhagic contusions
14	49, F	White	Assault	8	3	temporal & frontal lobe hemorrhagic contusions, frontotemporal SAH, frontal dural hematoma
15	20, M	Hispanic	Motorcycle accident	6	4	bone fragments in frontoparietal brain parenchyma, scattered frontoparietal SAH, hemorrhagic contusions
16	28, M	Hispanic	Motorcycle accident	4	3	SDH
17	21, M	Black	MVA	5	4	mild cerebral edema
18	45, M	Hispanic	Gunshot wound	8	3	bullet fragments in occipital lobe, occipital SDH, minimal parietal & occipital pneumocephalus
19	21, M	White	MVA	3	3	diffuse axonal injury, scattered SAH, parietal SDH, mild hydrocephalus
20	17, M	Hispanic	Sports injury	4	4	SDH, SAH, diffuse cerebral edema
21	19, F	Hispanic	MVA	11	5	bone fragments in frontal lobe parenchyma, frontal lobe contusion, edema, pneumocephalus

EP 2 812 697 B1

(continued)

Case No.	Age (yrs), Sex	Race	Mechanism of Injury	GCS Score†	GOS Score‡	Intracranial Pathology
22	65, M	White	MVA	7	1	parietal SDH, SAH, parietal hemorrhagic contusion, uncal herniation
23	18, M	White	MVA	3	1	diffuse axonal injury, scattered hemorrhagic contusions in frontal, temporal, parietal lobes & corpus callosum, IVH

\* IVH = intraventricular hemorrhage; SAH = subarachnoid hemorrhage; SDH = subdural hematoma, MVA = motor vehicle accident; ATV = all terrain vehicle  
 † Obtained on admission.  
 ‡ Assessed at 5 months postinjury.

REFERENCES

[0061]

Abulafia DP, de Rivero Vaccari JP, Lozano JD, Lotocki G, Keane RW, Dietrich WD. Inhibition of the inflammasome complex reduces the inflammatory response after thromboembolic stroke in mice. *J Cereb Blood Flow Metab* 29:534-544, 2009.

Aibiki M, Maekawa S, Ogura S, Kinoshita Y, Kawai N, Yokono S: Effect of moderate hypothermia on systemic and internal jugular plasma IL-6 levels after traumatic brain injury in humans. *J Neurotrauma* 16:225-232, 1999.

Arend WP, Palmer G, Gabay C. IL-1, IL-18, and IL-33 families of cytokines. *Immunol Rev* 223:20-38,2008.

Bianchi ME. DAMPs, PAMPs and alarmins: all we need to know about danger. *J Leukoc Biol* 81:1-5,2007.

Brain Trauma Foundation, American Association of Neurological Surgeons, Joint Section on Neurotrauma and Critical Care: Initial management. *J Neurotrauma* 17:463-469, 2000.

Cao F, Yang XF, Liu WG, Hu WW, Li G, Zheng XJ, Shen F, Zhao XQ, Lv ST. Elevation of neuron-specific enolase and S-100beta protein level in experimental acute spinal cord injury. *J Clin Neurosci* 15:541-544, 2008.

Cornefjord M, Nyberg F, Rosengren L, Brisby H. Cerebrospinal fluid biomarkers in experimental spinal nerve root injury. *Spine (Phila Pa 1976)* 29:1862-1868, 2004.

de Rivero Vaccari JP, Lotocki G, Alonso OF, Bramlett HM, Dietrich WD, Keane RW. Therapeutic neutralization of the NLRP1 inflammasome reduces the innate immune response and improves histopathology after traumatic brain injury. *J Cereb Blood Flow Metab* 29:1251-1261,2009.

de Rivero Vaccari JP, Lotocki G, Marcillo AE, Dietrich WD, Keane RW. A molecular platform in neurons regulates inflammation after spinal cord injury. *J Neurosci* 28:3404-3414, 2008.

Goss JR, Styren SD, Miller PD, Kochanek PM, Palmer AM, Marion DW, et al: Hypothermia attenuates the normal increase in interleukin 1 beta RNA and nerve growth factor following traumatic brain injury in the rat. *J Neurotrauma* 12: 159-167, 1995.

Guez M, Hildingsson C, Rosengren L, Karlsson K, Toolanen G. Nervous tissue damage markers in cerebrospinal fluid after cervical spine injuries and whiplash trauma. *J Neurotrauma* 20:853-858,2003.

Kufer TA, Sansonetti PJ. NLR functions beyond pathogen recognition. *Nat Immunol* 12:121-128,2011.

Kumar K, Wu X, Evans AT: GFAP-immunoreactivity following hypothermic forebrain ischemia. *Metab Brain Dis*

12:21-27, 1997.

Li H, Willingham SB, Ting JP, Re F. Cutting edge: inflammasome activation by alum and alum's adjuvant effect are mediated by NLRP3. *J Immunol* 181:17-21, 2008.

Loy DN, Sroufe AE, Pelt JL, Burke DA, Cao QL, Talbott JF, Whittemore SR. Serum biomarkers for experimental acute spinal cord injury: rapid elevation of neuron-specific enolase and S-100beta. *Neurosurgery* 56:391-397; discussion 391-397, 2005.

Ma J, Novikov LN, Karlsson K, Kellerth JO, Wiberg M. Plexus avulsion and spinal cord injury increase the serum concentration of S-100 protein: an experimental study in rats. *Scand J Plast Reconstr Surg Hand Surg* 35:355-359, 2001.

Martinon F, Burns K, Tschopp J. The inflammasome: a molecular platform triggering activation of inflammatory caspases and processing of proIL-beta. *Mol Cell* 10:417-426, 2002.

Nagy G, Dzsinih C, Selmei L, Sepa G, Dzsinih M, Kekesi V, Juhasz-Nagy A. Biochemical alterations in cerebrospinal fluid during thoracoabdominal aortic cross-clamping in dogs. *Ann Vasc Surg* 16:436-441, 2002.

Pouw MH, Hosman AJ, van Middendorp JJ, Verbeek MM, Vos PE, van de Meent H. Biomarkers in spinal cord injury. *Spinal Cord* 47:519-525, 2009.

Qu Y, Franchi L, Nunez G, Dubyak GR. Nonclassical IL-1 beta secretion stimulated by P2X7 receptors is dependent on inflammasome activation and correlated with exosome release in murine macrophages. *J Immunol* 179:1913-1925, 2007.

Silverman WR, de Rivero Vaccari JP, Locovei S, Qiu F, Carlsson SK, Scemes E, Keane RW, Dahl G. The pannexin 1 channel activates the inflammasome in neurons and astrocytes. *J Biol Chem* 284:18143-18151, 2009.

Skouen JS, Brisby H, Otani K, Olmarker K, Rosengren L, Rydevik B. Protein markers in cerebrospinal fluid in experimental nerve root injury. A study of slow-onset chronic compression effects or the biochemical effects of nucleus pulposus on sacral nerve roots. *Spine (Phila Pa 1976)* 24:2195-2200, 1999.

Teasdale G, Jennett B. Assessment of coma and impaired consciousness. A practical scale. *Lancet* 2:81-84, 1974.

Tomura S, de Rivero Vaccari JP, Keane RW, Bramlett HM, Dietrich WD: Effects of therapeutic hypothermia on inflammasome signaling after traumatic brain injury. *J Cereb Blood Flow Metab* [in press], 2012.

Truettner JS, Suzuki T, Dietrich WD: The effect of therapeutic hypothermia on the expression of inflammatory response genes following moderate traumatic brain injury in the rat. *Brain Res Mol Brain Res* 138:124-134, 2005.

**[0062]** Described are also:

A. A method of evaluating a patient suspected of having a central nervous system (CNS) injury comprising: providing a biological sample from a patient presenting with clinical symptoms consistent with a CNS injury; measuring the level of at least one inflammasome protein in the biological sample; determining the presence or absence of a protein signature associated with a CNS injury or a more severe CNS injury, wherein the protein signature comprises an elevated level of said at least one inflammasome protein; and selecting patients exhibiting the presence of the protein signature as having a CNS injury or a more severe CNS injury.

B. The method of statement A, wherein the level of said at least one inflammasome protein in the protein signature is enhanced relative to the level of said at least one inflammasome protein in a control sample.

C. The method of statement A, wherein the level of said at least one inflammasome protein in the protein signature is enhanced relative to a pre-determined reference value or range of reference values.

D. The method of statement A, wherein the CNS injury is a spinal cord injury or traumatic brain injury.

## EP 2 812 697 B1

E. The method of statement A, wherein said at least one inflammasome protein is nucleotide-binding leucine-rich repeat pyrin domain containing protein 1 (NLRP1), apoptosis-associated speck-like protein containing a caspase recruitment domain (ASC), caspase-1, or combinations thereof.

5 F. The method of statement F, wherein the protein signature comprises an elevated level for each of caspase-1, NLRP1, and ASC.

G. The method of statement F, wherein the protein signature comprises an elevated level for the p20 subunit of caspase-1.

10 H. The method of statement A, wherein said biological sample is obtained within one week of the suspected injury.

I. The method of statement A, wherein said biological sample is obtained within five days of the suspected injury.

15 J. The method of statement A, wherein said biological sample is obtained within three days of the suspected injury.

K. The method of statement A, wherein said biological sample is cerebrospinal fluid (CSF), CNS microdialysate, saliva, serum, plasma, or urine.

20 L. The method of statement A, wherein the patient has an A or B rating on the American Spinal Cord Injury Association (ASIA) Impairment Scale.

M. The method of statement A, wherein the patient has a Glasgow Coma Scale (GCS) score of 3 to 12.

25 N. The method of statement M, wherein the patient has a GCS score of 3 to 8.

O. The method of statement A, wherein the patient is a pediatric patient.

30 P. The method of statement A, wherein the level of said at least one inflammasome protein is measured by immunoblot or ELISA.

Q. The method of statement A further comprising administering a neuroprotective treatment to the patient when said protein signature is identified.

35 R. The method of statement Q, where in the neuroprotective treatment is hypothermia, methylprednisolone, 17 $\alpha$ -estradiol, 17 $\beta$ -estradiol, ginsenoside, progesterone, simvastatin, deprenyl, minocycline, and resveratrol.

40 S. The method of statement Q, further comprising: measuring the level of said at least one inflammasome protein in a biological sample obtained from the patient following neuroprotective treatment; preparing a treatment protein signature associated with a positive response to the neuroprotective treatment, wherein the treatment protein signature comprises a reduced level of at least one inflammasome protein; and identifying patients exhibiting the presence of the treatment protein signature as responding positively to the neuroprotective treatment.

45 T. A kit for preparing an inflammasome protein profile associated with CNS injury comprising a labeled-binding partner that specifically binds to one or more inflammasome proteins, wherein said one or more inflammasome proteins are selected from the group consisting of NLRP1, ASC, caspase-1, and combinations thereof.

50 U. The kit of statement T, wherein the kit comprises labeled-binding partners that specifically binding to each of NLRP1, ASC, and caspase-1.

V. The kit of statement T, wherein the labeled-binding partner is a labeled-antibody or fragment thereof, aptamer, or peptide.

55 W. The kit of statement T, wherein the binding partner is labeled with metal nanoparticles, a fluorescent label, or an enzyme label.

X. A method of determining a prognosis for a patient with a CNS injury comprising:

providing a biological sample obtained from the patient within a week of injury; and measuring the level of at least one inflammasome protein in the biological sample to prepare an inflammasome protein profile, wherein the inflammasome protein profile is indicative of the prognosis of the patient.

5 Y. The method of statement X, wherein an elevated level of at least one inflammasome protein relative to a pre-determined reference value or range of reference values is predictive of the patient having a Glasgow Outcome Scale (GOS) score of 1 to 3 upon follow-up assessment.

10 Z. The method of statement X, wherein said at least one inflammasome protein is NLRP1, ASC, caspase-1, or combinations thereof.

AA. The method of statement Z, wherein said at least one inflammasome protein is the p20 subunit of caspase-1.

15 AB. The method of statement X, wherein the CNS injury is a spinal cord injury or traumatic brain injury.

AC. The method of statement X, wherein a reduced level of at least one inflammasome protein relative to a pre-determined reference value or range of reference values is predictive of the patient having a GOS score of 4 or 5 upon follow-up assessment.

20 AD. The method of statement X, wherein said biological sample is CSF, CNS microdialysate, saliva, serum, plasma, or urine.

25 AE. The method of statement X, wherein the level of said at least one inflammasome protein is measured by immunoblot or ELISA.

AF. The method of statement X, wherein the patient is a pediatric patient.

### Claims

- 30
1. A method of evaluating a patient suspected of having a central nervous system (CNS) injury comprising:
    - 35 measuring the level of at least one inflammasome protein in a biological sample obtained from a patient presenting with clinical symptoms consistent with a CNS injury, wherein the biological sample is cerebrospinal fluid (CSF), blood, serum, or plasma, and wherein the at least one inflammasome protein is nucleotide-binding leucine-rich repeat pyrin domain containing protein 1 (NLRP1), apoptosis-associated speck-like protein containing a caspase recruitment domain (ASC), caspase-1, or the p20 subunit of caspase-1;
    - 40 determining the presence or absence of an elevated level of the at least one inflammasome protein relative to (i) the level of the at least one inflammasome protein in a control sample or (ii) a pre-determined reference value or range of reference values; and
    - selecting the patient if the patient exhibits the presence of the elevated level of the at least one inflammasome protein as having the CNS injury or a more severe CNS injury,

optionally wherein the biological sample is obtained within one week, five days or three days of the suspected injury.
  - 45 2. The method of claim 1, wherein the patient has an A or B rating on the American Spinal Cord Injury Association (ASIA) Impairment Scale or a Glasgow Coma Scale (GCS) score of 3 to 12.
  3. The method of claim 1, wherein the patient is selected for neuroprotective treatment when the protein signature is identified.
  - 50 4. The method of claim 3, wherein the neuroprotective treatment is hypothermia, methylprednisolone, 17 $\alpha$ -estradiol, 17 $\beta$ -estradiol, ginsenoside, progesterone, simvastatin, deprenyl, minocycline, or resveratrol.
  - 55 5. A composition comprising a neuroprotective treatment for use in a method of treating the CNS injury or the more severe CNS injury in the patient exhibiting the presence of an elevated level of at least one inflammasome protein, wherein the method comprises selecting the patient according to the method of claim 1 and administering the composition comprising the neuroprotective treatment to the patient.

6. A composition for use according to claim 5, where in the neuroprotective treatment is methylprednisolone, 17 $\alpha$ -estradiol, 17 $\beta$ -estradiol, ginsenoside, progesterone, simvastatin, deprenyl, minocycline, or resveratrol.

5 7. A composition for use according to claim 5, wherein the method of treating the CNS injury or the more severe CNS injury further comprises:

measuring the level of the at least one inflammasome protein in a biological sample obtained from the patient following neuroprotective treatment, wherein the biological sample is cerebrospinal fluid (CSF), blood, serum, or plasma;

10 and

identifying patients exhibiting the presence of a reduced level of the at least one inflammasome protein as responding positively to the neuroprotective treatment.

15 8. A method of determining a prognosis for a patient with a CNS injury comprising:

measuring the level of at least one inflammasome protein in a biological sample obtained from the patient within a week of the CNS injury, wherein the level of the at least one inflammasome protein is indicative of the prognosis of the patient, wherein the biological sample is cerebrospinal fluid (CSF), blood, serum, or plasma, and wherein the at least one inflammasome protein is nucleotide-binding leucine-rich repeat pyrin domain containing protein 1 (NLRP1), apoptosis-associated speck-like protein containing a caspase recruitment domain (ASC), caspase-1, or the p20 subunit of caspase-1.

20 9. The method of claim 8, wherein an elevated level of at least one inflammasome protein relative to a pre-determined reference value or range of reference values is predictive of the patient having a Glasgow Outcome Scale (GOS) score of 1 to 3 upon follow-up assessment.

25 10. The method of claim 1 or 8, wherein the CNS injury is a spinal cord injury or traumatic brain injury.

30 11. The method of claim 8, wherein a reduced level of the at least one inflammasome protein relative to a pre-determined reference value or range of reference values is predictive of the patient having a GOS score of 4 or 5 upon follow-up assessment.

35 12. The method of claim 1 or 8, wherein the level of the at least one inflammasome protein is measured by immunoblot or ELISA.

13. The method of claim 1 or 8, wherein the patient is a pediatric patient.

40 14. The method of any of claims 1 to 4 or 8 to 13, wherein the biological sample is CSF.

## Patentansprüche

45 1. Verfahren zur Beurteilung eines Patienten mit Verdacht auf eine Verletzung des zentralen Nervensystems (ZNS), welches Folgendes umfasst:

Messen des Spiegels von mindestens einem Inflammasom-Protein in einer biologischen Probe, welche von einem Patienten gewonnen wurde, der klinische Symptome aufweist, die mit einer Verletzung des ZNS in Einklang stehen, wobei es sich bei der biologischen Probe um Cerebrospinalflüssigkeit (CSF), Blut, Serum oder Plasma handelt, und wobei es sich bei dem mindestens einen Inflammasom-Protein um nukleotidbindende, leucinreiche, repetitive Pyrimidindomäne enthaltendes Protein 1 (NLRP1), apoptose-assoziiertes, Speck-ähnliches, eine Caspase-Rekrutierungs-Domäne enthaltendes Protein (ASC), Caspase-1, oder die p20-Subeinheit von Caspase-1 handelt;

50 Bestimmen des Vorliegens oder Fehlens eines erhöhten Spiegels des mindestens einen Inflammasom-Proteins in Bezug auf (i) den Spiegel des mindestens einen Inflammasom-Proteins in einer Kontrollprobe, oder (ii) einen vorbestimmten Referenzwert oder Bereich an Referenzwerten; und

55 Auswählen des Patienten, wenn der Patient das Vorliegen des erhöhten Spiegels des mindestens einen Inflammasom-Proteins zeigt, als die Verletzung des ZNS oder eine schwerere Verletzung des ZNS besitzend, wobei die biologische Probe gegebenenfalls innerhalb einer Woche, fünf Tagen oder drei Tagen nach der

mutmaßlichen Verletzung gewonnen wird.

2. Verfahren nach Anspruch 1, wobei der Patient auf der Impairment-Skala der American Spinal Cord Injury Association (ASIA) eine Einstufung A oder B oder einen Glasgow Coma Scale (GCS)-Wert von 3 bis 12 besitzt.
3. Verfahren nach Anspruch 1, wobei der Patient für neuroprotektive Therapie ausgewählt wird, wenn die Proteinsignatur identifiziert ist.
4. Verfahren nach Anspruch 3, wobei es sich bei der neuroprotektiven Therapie um Hypothermie, Methylprednisolon, 17 $\alpha$ -Estradiol, 17 $\beta$ -Estradiol, Ginsenosid, Progesteron, Simvastatin, Deprenyl, Minocyclin oder Resveratrol handelt.
5. Zusammensetzung, welche eine neuroprotektive Therapie umfasst, zur Verwendung in einem Verfahren zur Behandlung der Verletzung des ZNS oder der schwereren Verletzung des ZNS bei dem Patienten, welcher das Vorliegen eines erhöhten Spiegels mindestens eines Inflammasom-Proteins zeigt, wobei das Verfahren das Auswählen des Patienten gemäß dem Verfahren nach Anspruch 1 und Verabreichen an den Patienten der Zusammensetzung umfasst, welche die neuroprotektive Therapie umfasst.
6. Zusammensetzung zur Verwendung nach Anspruch 5, wobei es sich bei der neuroprotektiven Therapie um Methylprednisolon, 17 $\alpha$ -Estradiol, 17 $\beta$ -Estradiol, Ginsenosid, Progesteron, Simvastatin, Deprenyl, Minocyclin oder Resveratrol handelt.
7. Zusammensetzung zur Verwendung nach Anspruch 5, wobei das Verfahren zur Behandlung der Verletzung des ZNS oder der schwereren Verletzung des ZNS des Weiteren Folgendes umfasst:
  - 25 Messen des Spiegels des mindestens einen Inflammasom-Proteins in einer biologischen Probe, welche nach neuroprotektiver Therapie von dem Patienten gewonnen wurde, wobei es sich bei der biologischen Probe um Cerebrospinalflüssigkeit (CSF), Blut, Serum oder Plasma handelt;  
und
  - 30 Identifizieren von Patienten, welche das Vorliegen eines reduzierten Spiegels des mindestens einen Inflammasom-Proteins zeigen, als positiv auf die neuroprotektive Therapie ansprechend.
8. Verfahren zum Bestimmen einer Prognose für einen Patienten mit einer Verletzung des ZNS, welches Folgendes umfasst:
  - 35 Messen des Spiegels von mindestens einem Inflammasom-Protein in einer biologischen Probe, welche innerhalb einer Woche nach der Verletzung des ZNS von dem Patienten gewonnen wurde, wobei der Spiegel des mindestens einen Inflammasom-Proteins auf die Prognose des Patienten hindeutet, wobei es sich bei der biologischen Probe um Cerebrospinalflüssigkeit (CSF), Blut, Serum oder Plasma handelt, und wobei es sich bei dem mindestens einen Inflammasom-Protein um nukleotidbindende, leucinreiche, repetitive Pyrimidinomäne enthaltendes Protein 1 (NLRP1), apoptose-assoziiertes, Speck-ähnliches, eine Caspase-Rekrutierungs-Domäne enthaltendes Protein (ASC), Caspase-1, oder die p20-Subeinheit von Caspase-1 handelt.
9. Verfahren nach Anspruch 8, wobei ein erhöhter Spiegel von mindestens einem Inflammasom-Protein in Bezug auf einen vorbestimmten Referenzwert oder Bereich an Referenzwerten voraussagt, dass der Patient bei der Folgebeurteilung einen Glasgow Outcome Scale (GOS)-Wert von 1 bis 3 besitzt.
10. Verfahren nach Anspruch 1 oder 8, wobei es sich bei der Verletzung des ZNS um eine Verletzung des Rückenmarks oder eine traumatische Verletzung des Gehirns handelt.
11. Verfahren nach Anspruch 8, wobei ein reduzierter Spiegel des mindestens einen Inflammasom-Proteins in Bezug auf einen vorbestimmten Referenzwert oder Bereich an Referenzwerten voraussagt, dass der Patient bei der Folgebeurteilung einen GOS-Wert von 4 oder 5 besitzt.
12. Verfahren nach Anspruch 1 oder 8, wobei der Spiegel des mindestens einen Inflammasom-Proteins mittels Immunoblot oder ELISA gemessen wird.
13. Verfahren nach Anspruch 1 oder 8, wobei es sich bei dem Patienten um einen pädiatrischen Patienten handelt.

14. Verfahren nach einem der Ansprüche 1 bis 4 oder 8 bis 13, wobei es sich bei der biologischen Probe um CSF handelt.

## Revendications

5

1. Procédé d'évaluation d'un patient suspecté d'avoir une lésion au système nerveux central (SNC), comprenant :

10

la mesure du niveau d'au moins une protéine inflammasome dans un échantillon biologique obtenu auprès d'un patient présentant des symptômes cliniques compatibles avec une lésion du SNC, dans lequel l'échantillon biologique est du fluide cérébrospinal (CSF), du sang, du sérum ou du plasma et dans lequel la au moins une protéine inflammasome est une protéine 1 contenant des domaines pyrine à séquences répétées riches en leucine fixatrice de nucléotides (NLRP1), une protéine mouchetée associée à l'apoptose contenant un domaine de recrutement de caspase (ASC), la caspase-1 ou la sous-unité p20 de la caspase-1 ;

15

la détermination de la présence ou de l'absence d'un niveau élevé de la au moins une protéine inflammasome par rapport (i) au niveau de la au moins une protéine inflammasome dans un échantillon témoin ou (ii) à une valeur de référence ou à une plage de valeurs de référence prédéterminée ; et

20

la sélection du patient si le patient montre la présence du niveau élevé de la au moins une protéine inflammasome comme ayant la lésion du SNC ou une lésion plus sévère du SNC, éventuellement dans lequel l'échantillon biologique est obtenu à une semaine, cinq jours ou trois jours du traumatisme suspecté.

2. Procédé selon la revendication 1, dans lequel le patient a une évaluation A ou B à l'échelle de déficit de l'American Spinal Cord Injury Association (ASIA) ou un score à la Glasgow Coma Scale (GCS) de 3 à 12.

25

3. Procédé selon la revendication 1, dans lequel le patient est choisi pour un traitement neuroprotecteur lorsque la signature de la protéine est identifiée.

30

4. Procédé selon la revendication 3, dans lequel le traitement neuroprotecteur est l'hypothermie, le méthylprednisolone, le 17 $\alpha$ -estradiol, le 17-estradiol, le ginsénoside, la progestérone, le simvastatine, la déprénylène, la minocycline ou le resvératrol.

35

5. Composition comprenant un traitement neuroprotecteur pour utilisation dans un procédé de traitement de la lésion du SNC ou de la lésion plus sévère du SNC chez le patient montrant la présence d'un niveau élevé d'au moins une protéine inflammasome, dans laquelle le procédé comprend la sélection du patient selon le procédé de la revendication 1 et l'administration de la composition comprenant le traitement neuroprotecteur au patient.

40

6. Composition pour utilisation selon la revendication 5, dans laquelle le traitement neuroprotecteur est le méthylprednisolone, le 17 $\alpha$ -estradiol, le 17-estradiol, le ginsénoside, la progestérone, le simvastatine, la déprénylène, la minocycline ou le resvératrol.

45

7. Composition pour utilisation selon la revendication 5, dans laquelle le procédé de traitement de la lésion du SNC ou de la lésion plus sévère du SNC comprend en outre :

la mesure du niveau de la au moins une protéine inflammasome dans un échantillon biologique obtenu auprès du patient à la suite d'un traitement neuroprotecteur, dans laquelle l'échantillon biologique est du fluide cérébrospinal (CSF), du sang, du sérum ou du plasma ;

et

l'identification de patients montrant la présence d'un niveau réduit de la au moins une protéine inflammasome comme répondant positivement au traitement neuroprotecteur.

50

8. Procédé de détermination d'un pronostic pour un patient atteint d'une lésion au SNC, comprenant :

55

la mesure du niveau d'au moins une protéine inflammasome dans un échantillon biologique obtenu auprès du patient en l'espace d'une semaine depuis la lésion du SNC, dans lequel le niveau de la au moins une protéine inflammasome est indicative du pronostic du patient, dans lequel l'échantillon biologique est du fluide cérébrospinal (CSF), du sang, du sérum ou du plasma et dans lequel la au moins une protéine inflammasome est une protéine 1 contenant des domaines pyrine à séquences répétées riches en leucine fixatrice de nucléotides (NLRP1), une protéine mouchetée associée à l'apoptose contenant un domaine de recrutement de caspase

## EP 2 812 697 B1

(ASC), la caspase-1 ou la sous-unité p20 de la caspase-1.

- 5
9. Procédé selon la revendication 8, dans lequel un niveau élevé d'au moins une protéine inflammasome par rapport à une valeur de référence ou à une plage de valeurs de référence prédéterminée est prédictif du patient ayant un score à la Glasgow Outcome Scale (GOS) de 1 à 3 lors de l'évaluation du suivi.
10. Procédé selon la revendication 1 ou 8, dans lequel la lésion du SNC est une lésion de la moelle épinière ou une lésion cérébrale traumatique.
- 10
11. Procédé selon la revendication 8, dans lequel un niveau réduit de la au moins une protéine inflammasome par rapport à une valeur de référence ou une plage de valeurs de référence prédéterminée est prédictif du patient ayant un score GOS de 4 ou 5 lors de l'évaluation du suivi.
- 15
12. Procédé selon la revendication 1 ou 8, dans lequel le niveau de la au moins une protéine inflammasome est mesuré par immunotransfert ou ELISA.
13. Procédé selon la revendication 1 ou 8, dans lequel le patient est un patient pédiatrique.
- 20
14. Procédé selon l'une quelconque des revendications 1 à 4 ou 8 à 13, dans lequel l'échantillon biologique est le fluide céphalo-rachidien (CSF).

25

30

35

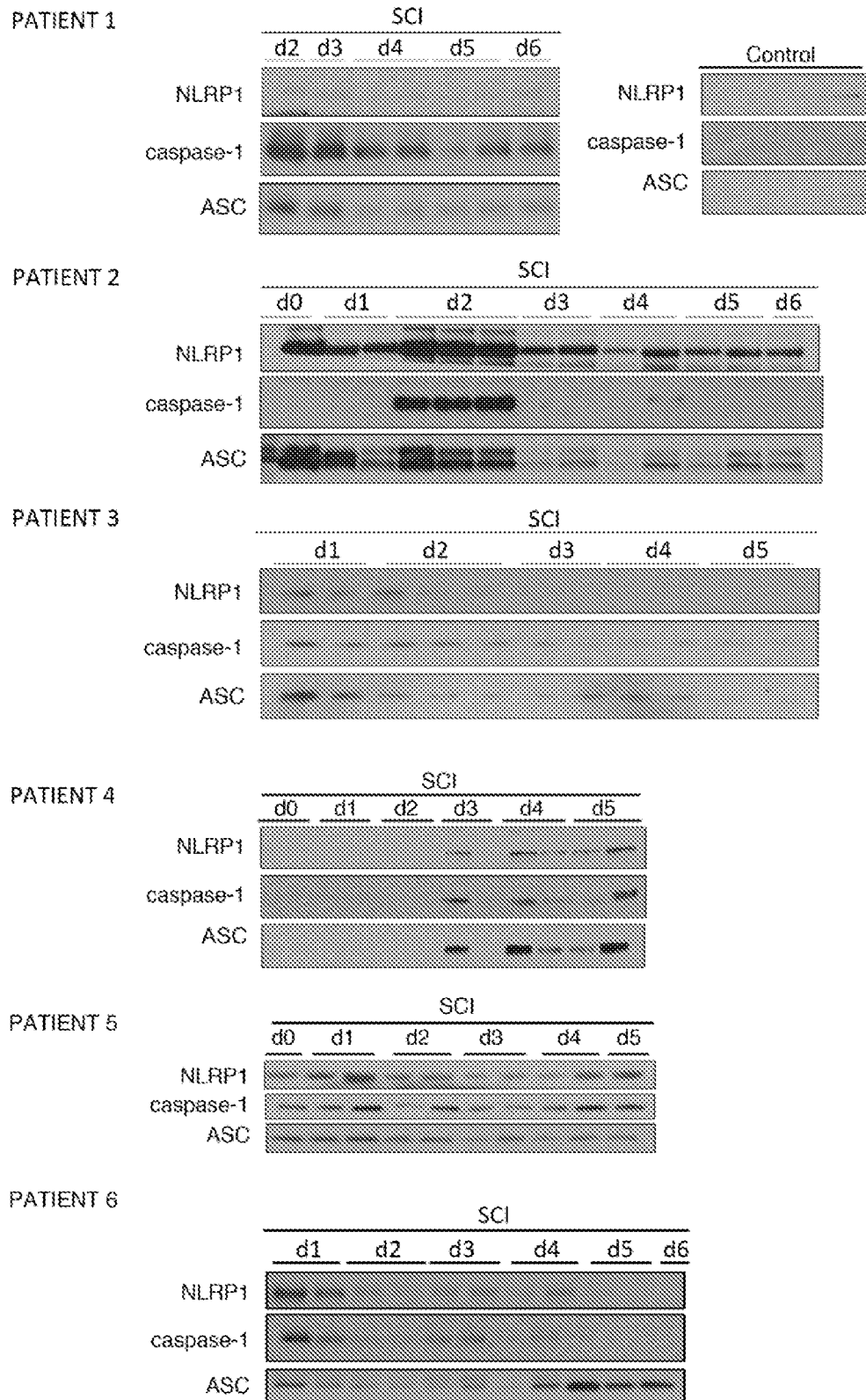
40

45

50

55

FIGURE 1



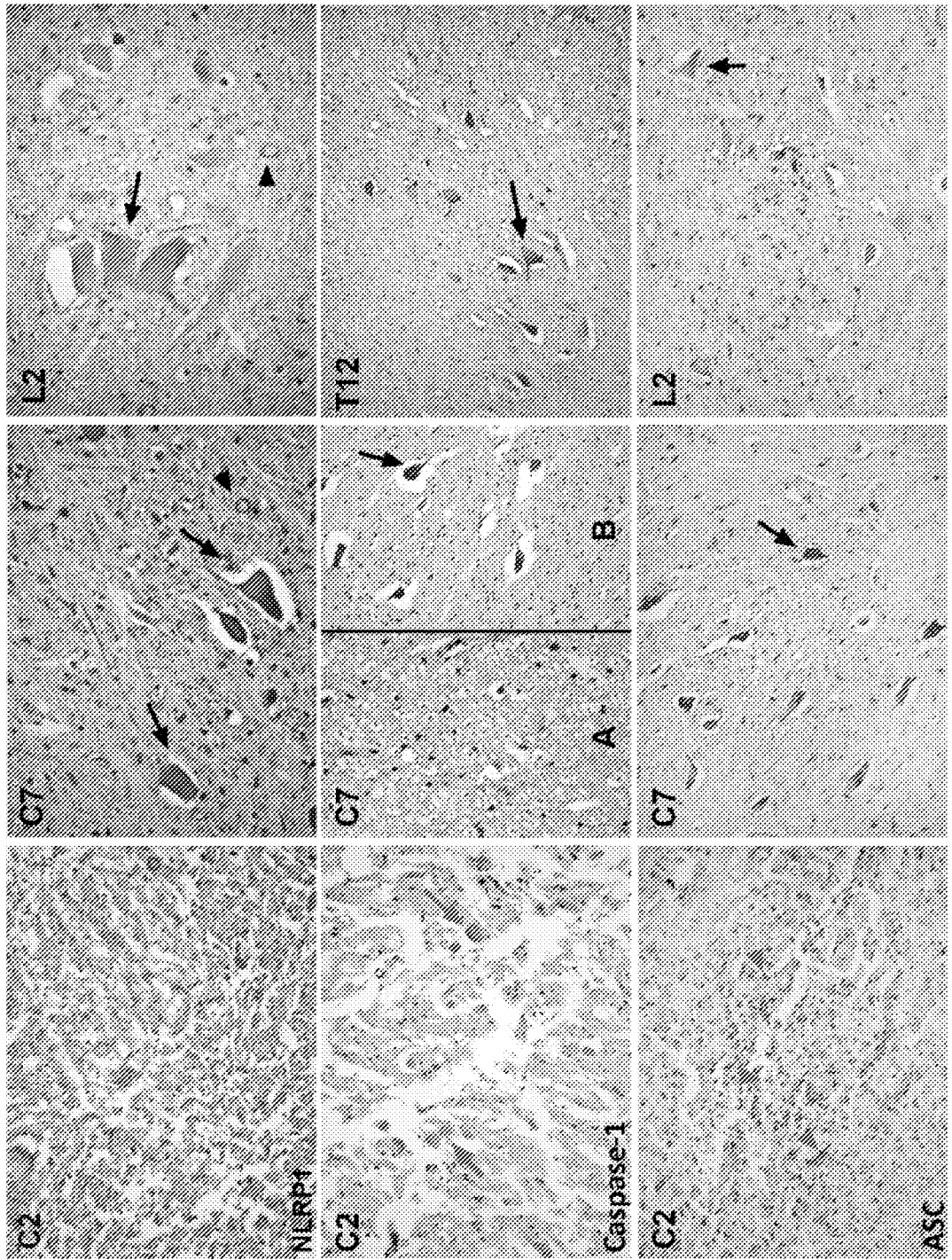


FIGURE 2

FIGURE 3

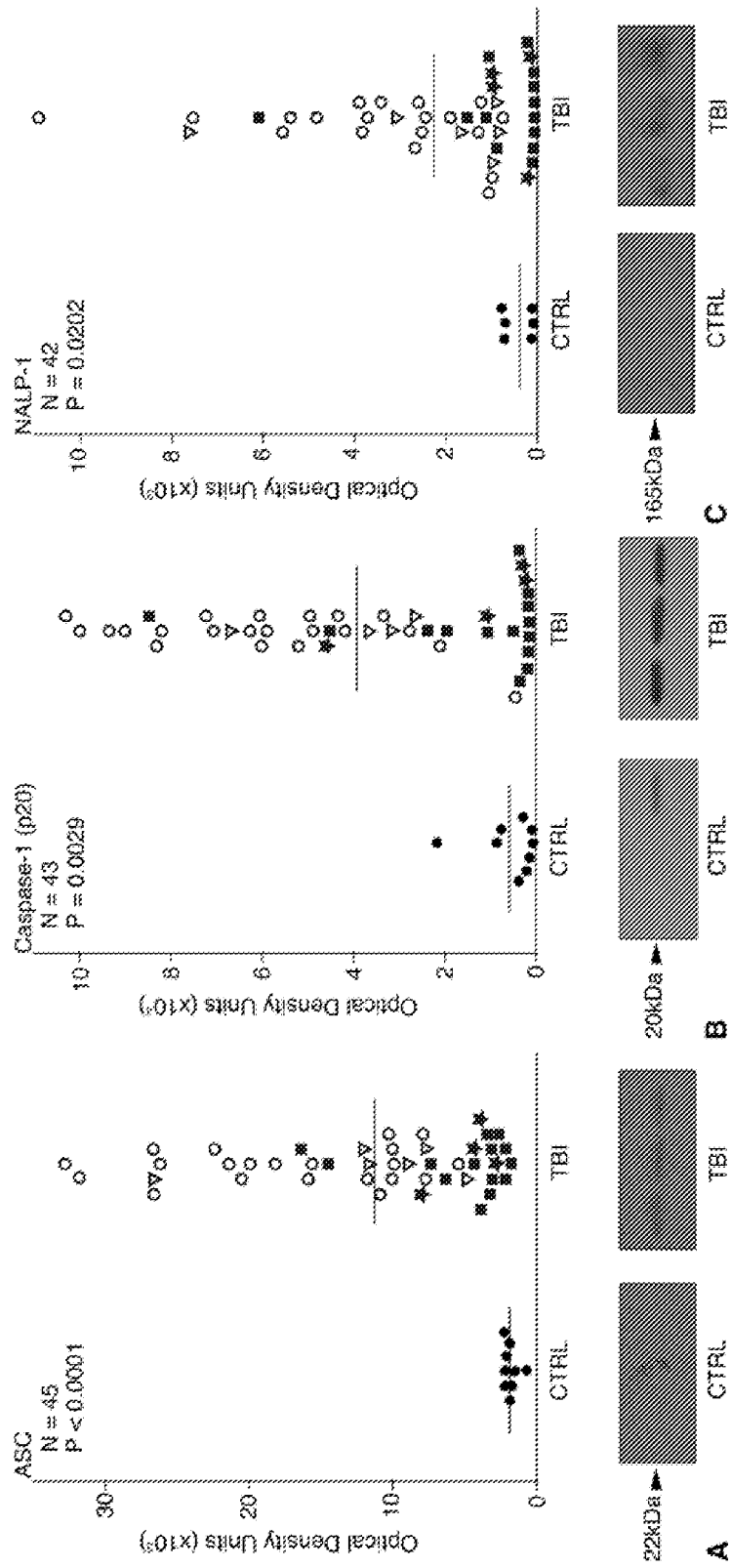


FIGURE 4

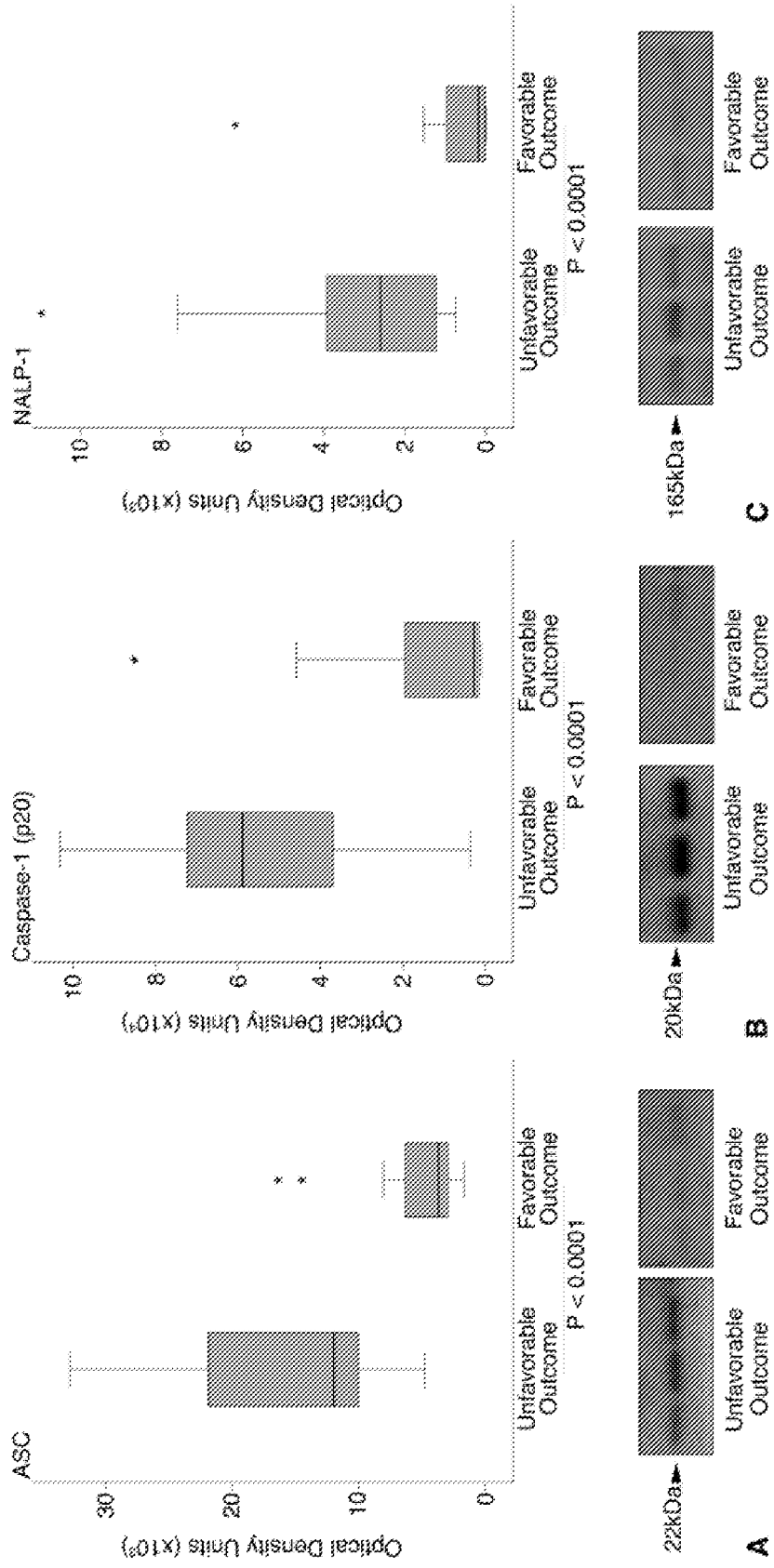


FIGURE 5

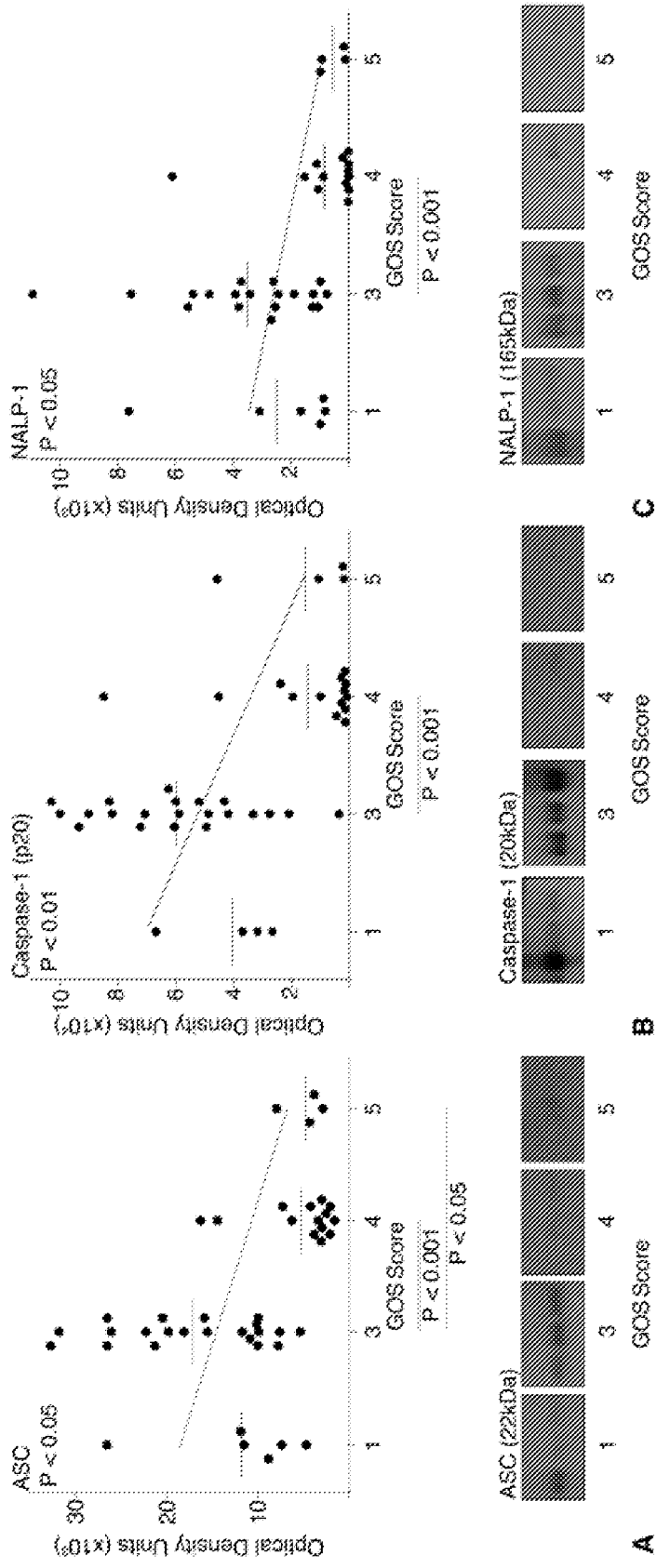
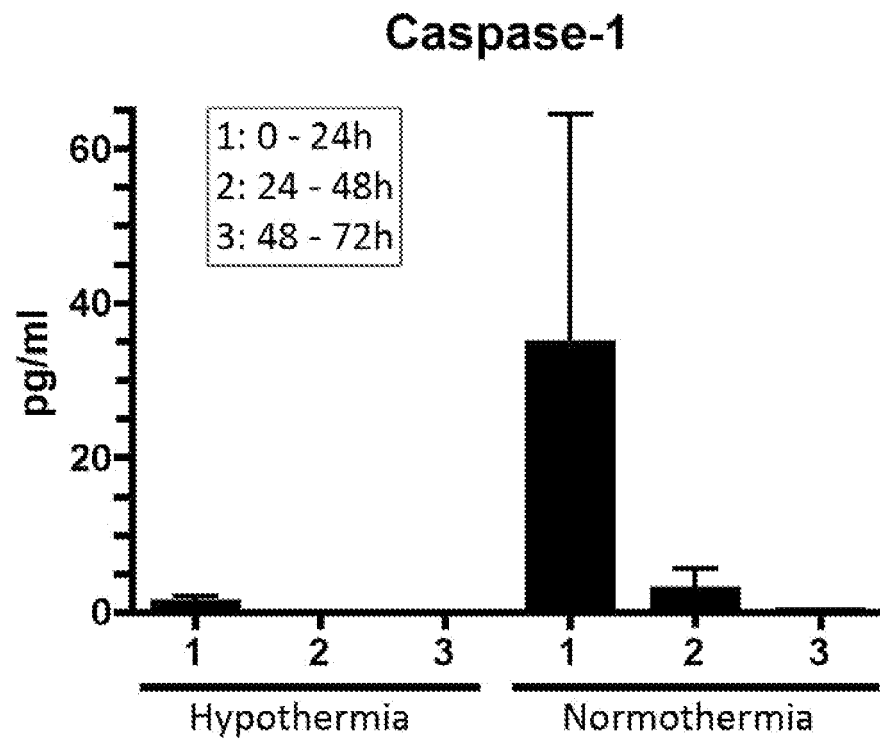


FIGURE 6



## REFERENCES CITED IN THE DESCRIPTION

This list of references cited by the applicant is for the reader's convenience only. It does not form part of the European patent document. Even though great care has been taken in compiling the references, errors or omissions cannot be excluded and the EPO disclaims all liability in this regard.

## Patent documents cited in the description

- US 2009104200 A, Keane [0011]
- US 20110082203 A, Wang & Hayes [0012]
- US 20110177974 A [0033]
- US 20090104200 A [0034]

## Non-patent literature cited in the description

- **SANCHEZ MEJIA et al.** *Neurosurgery*, vol. 48, 1393-14012001 [0007]
- **LOANE ; FADEN.** *Trends in Pharmacological Sciences*, 2010, vol. 31 (12), 596-604 [0008]
- **VINK ; NIMMO.** *Neurotherapeutics*, 2009, vol. 6, 28-42 [0009]
- **ONOSE et al.** *Spinal Cord*, 2009, vol. 47 (10), 716-726 [0010]
- **ABULAFIA DP ; DE RIVERO VACCARI JP ; LOZANO JD ; LOTOCKI G ; KEANE RW ; DIETRICH WD.** Inhibition of the inflammasome complex reduces the inflammatory response after thromboembolic stroke in mice. *J Cereb Blood Flow Metab*, 2009, vol. 29, 534-544 [0061]
- **AIBIKI M ; MAEKAWA S ; OGURA S ; KINOSHITA Y ; KAWAI N ; YOKONO S.** Effect of moderate hypothermia on systemic and internal jugular plasma IL-6 levels after traumatic brain injury in humans. *J Neurotrauma*, 1999, vol. 16, 225-232 [0061]
- **AREND WP ; PALMER G ; GABAY C.** IL-1, IL-18, and IL-33 families of cytokines. *Immunol Rev*, 2008, vol. 223, 20-38 [0061]
- **BIANCHI ME.** DAMPs, PAMPs and alarmins: all we need to know about danger. *J Leukoc Biol*, 2007, vol. 81, 1-5 [0061]
- Joint Section on Neurotrauma and Critical Care: Initial management. *J Neurotrauma*. American Association of Neurological Surgeons, 2000, vol. 17, 463-469 [0061]
- **CAO F ; YANG XF ; LIU WG ; HU WW ; LI G ; ZHENG XJ ; SHEN F ; ZHAO XQ.** Lv ST. Elevation of neuron-specific enolase and S-100beta protein level in experimental acute spinal cord injury. *J Clin Neurosci*, 2008, vol. 15, 541-544 [0061]
- **CORNEFJORD M ; NYBERG F ; ROSENGREN L ; BRISBY H.** Cerebrospinal fluid biomarkers in experimental spinal nerve root injury. *Spine*, 1976, vol. 29, 1862-1868 [0061]
- **DE RIVERO VACCARI JP ; LOTOCKI G ; ALONSO OF ; BRAMLETT HM ; DIETRICH WD ; KEANE RW.** Therapeutic neutralization of the NLRP1 inflammasome reduces the innate immune response and improves histopathology after traumatic brain injury. *J Cereb Blood Flow Metab*, 2009, vol. 29, 1251-1261 [0061]
- **DE RIVERO VACCARI JP ; LOTOCKI G ; MARCILLO AE ; DIETRICH WD ; KEANE RW.** A molecular platform in neurons regulates inflammation after spinal cord injury. *J Neurosci*, 2008, vol. 28, 3404-3414 [0061]
- **GOSS JR ; STYREN SD ; MILLER PD ; KOCHANNEK PM ; PALMER AM ; MARION DW et al.** Hypothermia attenuates the normal increase in interleukin 1 beta RNA and nerve growth factor following traumatic brain injury in the rat. *J Neurotrauma*, 1995, vol. 12, 159-167 [0061]
- **GUEZ M ; HILDINGSSON C ; ROSENGREN L ; KARLSSON K ; TOOLANEN G.** Nervous tissue damage markers in cerebrospinal fluid after cervical spine injuries and whiplash trauma. *J Neurotrauma*, 2003, vol. 20, 853-858 [0061]
- **KUFER TA ; SANSONETTI PJ.** NLR functions beyond pathogen recognition. *Nat Immunol*, 2011, vol. 12, 121-128 [0061]
- **KUMAR K ; WU X ; EVANS AT.** GFAP-immunoreactivity following hypothermic forebrain ischemia. *Metab Brain Dis*, 1997, vol. 12, 21-27 [0061]
- **LI H ; WILLINGHAM SB ; TING JP ; RE F.** Cutting edge: inflammasome activation by alum and alum's adjuvant effect are mediated by NLRP3. *J Immunol*, 2008, vol. 181, 17-21 [0061]
- **LOY DN ; SROUFE AE ; PELT JL ; BURKE DA ; CAO QL ; TALBOTT JF.** Whitemore SR. Serum biomarkers for experimental acute spinal cord injury: rapid elevation of neuron-specific enolase and S-100beta. *Neurosurgery*, 2005, vol. 56, 391-397 [0061]

- **MA J ; NOVIKOV LN ; KARLSSON K ; KELLERTH JO ; WIBERG M.** Plexus avulsion and spinal cord injury increase the serum concentration of S-100 protein: an experimental study in rats. *Scand J Plast Reconstr Surg Hand Surg*, 2001, vol. 35, 355-359 [0061]
- **MARTINON F ; BURNSK ; TSCHOPP J.** The inflammasome: a molecular platform triggering activation of inflammatory caspases and processing of proIL-beta. *Mol Cell*, 2002, vol. 10, 417-426 [0061]
- **NAGY G ; DZSINICH C ; SELMECI L ; SEPA G ; DZSINICH M ; KEKESI V ; JUHASZ-NAGY A.** Biochemical alterations in cerebrospinal fluid during thoracoabdominal aortic cross-clamping in dogs. *Ann Vasc Surg*, 2002, vol. 16, 436-441 [0061]
- **POUW MH ; HOSMAN AJ ; VAN MIDDENDORP JJ ; VERBEEK MM ; VOS PE ; VAN DE MEENT H.** Biomarkers in spinal cord injury. *Spinal Cord*, 2009, vol. 47, 519-525 [0061]
- **QU Y ; FRANCHI L ; NUNEZ G ; DUBYAK GR.** Non-classical IL-1 beta secretion stimulated by P2X7 receptors is dependent on inflammasome activation and correlated with exosome release in murine macrophages. *J Immunol*, 2007, vol. 179, 1913-1925 [0061]
- **SILVERMAN WR ; DE RIVERO VACCARI JP ; LO-COVEI S ; QIU F ; CARLSSON SK ; SCEMES E ; KEANE RW ; DAHL G.** The pannexin 1 channel activates the inflammasome in neurons and astrocytes. *J Biol Chem*, 2009, vol. 284, 18143-18151 [0061]
- **SKOUEN JS ; BRISBY H ; OTANI K ; OLMARKER K ; ROSENGREN L ; RYDEVIK B.** Protein markers in cerebrospinal fluid in experimental nerve root injury. A study of slow-onset chronic compression effects or the biochemical effects of nucleus pulposus on sacral nerve roots. *Spine*, 1976, vol. 24, 2195-2200 [0061]
- **TEASDALE G ; JENNETT B.** Assessment of coma and impaired consciousness. *A practical scale. Lancet*, 1974, vol. 2, 81-84 [0061]
- **TOMURA S ; DE RIVERO VACCARI JP ; KEANE RW ; BRAMLETT HM ; DIETRICH WD.** Effects of therapeutic hypothermia on inflammasome signaling after traumatic brain injury. *J Cereb Blood Flow Metab*, 2012 [0061]
- **TRUETTNER JS ; SUZUKI T ; DIETRICH WD.** The effect of therapeutic hypothermia on the expression of inflammatory response genes following moderate traumatic brain injury in the rat. *Brain Res Mol Brain Res*, 2005, vol. 138, 124-134 [0061]

专利名称(译)	先天免疫蛋白作为CNS损伤的生物标志物		
公开(公告)号	<a href="#">EP2812697A4</a>	公开(公告)日	2015-08-26
申请号	EP2013746979	申请日	2013-02-06
[标]申请(专利权)人(译)	迈阿密大学		
申请(专利权)人(译)	迈阿密大学		
当前申请(专利权)人(译)	迈阿密大学		
[标]发明人	KEANE ROBERT W DIETRICH W DALTON VACCARI JUAN PABLO DE RIVERO ADAMCZAK STEPHANIE BULLOCK M ROSS LEVI ALLAN WANG MICHAEL Y		
发明人	KEANE, ROBERT, W. DIETRICH, W., DALTON VACCARI, JUAN, PABLO DE RIVERO ADAMCZAK, STEPHANIE BULLOCK, M., ROSS LEVI, ALLAN WANG, MICHAEL, Y.		
IPC分类号	G01N33/53 G01N33/68		
CPC分类号	G01N33/6896 A61F7/00 G01N2800/28 G01N2800/52 G01N2800/7095		
代理机构(译)	斯蒂芬 , ROBERT JOHN		
优先权	61/595254 2012-02-06 US		
其他公开文献	EP2812697A1 EP2812697B1		
外部链接	<a href="#">Espacenet</a>		

#### 摘要(译)

本发明提供了患者中枢神经系统损伤 ( 例如脊髓损伤或创伤性脑损伤 ) 严重性的新标记。特别地，公开了可用于评估患者中枢神经系统损伤严重性的脑脊液中炎性体的蛋白质组分。还描述了使用这种蛋白质生物标志物来确定预后，直接治疗和康复努力以及监测对中枢神经系统损伤患者的治疗反应的方法。