



(12) **EUROPEAN PATENT APPLICATION**

(43) Date of publication:
24.09.2008 Bulletin 2008/39

(51) Int Cl.:
G01N 33/574 (2006.01)

(21) Application number: **08006160.9**

(22) Date of filing: **28.12.2002**

(84) Designated Contracting States:
**AT BE BG CH CY CZ DE DK EE ES FI FR GB GR
IE IT LI LU MC NL PT SE SI SK TR**

- **Sohn, Hosung**
Tae-jeon-si 305-506 (KR)
- **Oh, Sejeong**
Seoul 158-774 (KR)
- **Lee, Jeong Hwa**
Seoul 137-796 (KR)
- **Lee, Sang Chul**
Taejeon-si 305-335 (KR)
- **Yoo, Jong-Shin**
Taejeon-si 305-755 (KR)
- **Lee, Dae-Sil**
Taejeon-si 305-761 (KR)

(30) Priority: **29.12.2001 KR 20010088090**

(62) Document number(s) of the earlier application(s) in accordance with Art. 76 EPC:
02793548.5 / 1 466 179

(71) Applicant: **Korea Research Institute of Bioscience and Biotechnology**
Yusung-ku
Taejeon-si 305-333 (KR)

(74) Representative: **Senior, Janet et al**
Abel & Imray
20 Red Lion Street
London WC1R 4PQ (GB)

(72) Inventors:
• **Ko, Jeong Heon**
Taejeon-si 305-761 (KR)
• **Hwang, Soo Young**
Seosan-si,
Choongchungnamdo 356-983 (KR)

Remarks:

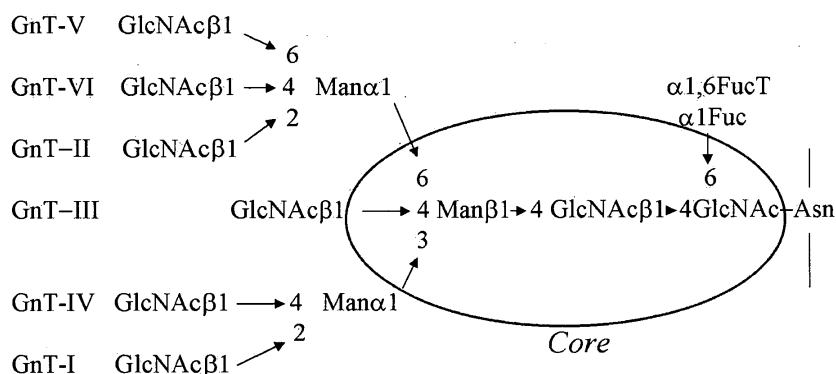
This application was filed on 28-03-2008 as a divisional application to the application mentioned under INID code 62.

(54) **Method for the diagnosis of cancers by measuring the changes of glycosylation of TIMP-1 related to tumorigenesis and metastasis, and kit for diagnosis of cancers using the same**

(57) The present invention relates to a method for diagnosing cancers by measuring proteins associated with tumorigenesis and metastasis, and more particularly provides a method for diagnosing cancers by measuring the changes of glycosylation of tissue inhibitor of matrix

metalloproteinase-1 (TIMP-1), and a kit for diagnosis of cancers using the said method. The method and kit of the present invention can effectively be used for the sensitive diagnosis of cancers comprising colon cancer, stomach cancer, lung cancer and liver cancer.

FIG. 1



DescriptionFIELD OF THE INVENTION

5 **[0001]** The present invention relates to a method for diagnosing cancers by measuring proteins associated with tumorigenesis and metastasis and a diagnostic kit using the same, more particularly, relates to a method for diagnosing cancers by measuring the changes of glycosylation of proteins, especially, the changes of N-linked sugar chains of proteins associated with tumorigenesis and metastasis and a diagnostic kit using the same.

10 BACKGROUND ART OF THE INVENTION

[0002] In order to analyze the functions of proteins, two-dimensional electrophoresis has long been used. But recently, proteomics, a post-genome functional analyzing method, took the place of it, which was led by the development of mass spectrometer like MALDI-TOF and the establishment of easy methods for determining N-terminal amino acid sequences. The proteomics, though, is limited in use for the research of cancer caused by the result of highly complicated signal transduction, because proteomics is selectively available for the analysis of functions at the one point of time although human body is in dynamic motion. In order to detect a cancer, it is more important to investigate the increased expression or post-translational modification that are resulted from signal transduction than to observe the appearance of new spots by staining. The amounts of proteins that can be detected on the two-dimensional electrophoresis are too small to analyze by simple staining. Observing glycosylation of proteins can help overcome the above problem and correct the errors of analysis based on post-translational modification. When patients group with cancer was compared with control group, it was difficult to find out the difference of spots between the two groups by general electrophoresis, in the meantime, it was possible to draw a clear line between the two groups by analyzing the changes of glycosylation with lectin. It is now called glycomics that is an upgraded analyzing method overcoming difficulties in analysis with proteomics and is characterized by tracing the changes of glycosylation of proteins while post-translational modification is undergoing.

25 **[0003]** From observing cellular biological changes during tumorigenesis and metastasis process, it is concluded that various kinds of glycoproteins or glycolipids on the surface of cell membrane are induced to go through "aberrant glycosylation" by the specific signal from oncogene, resulted in the changes of sugar chain that consecutively causes the changes of intercellular adhesion and recognition, resulted in tumorigenesis and metastasis in the event (Hakomori and Kannagi, 1983, J. Natl. Cancer Inst., 71:231-251; Feizi, 1985, Nature, 314:53-571). When external stimuli come in, signals are transmitted via oncogene ras, transcription factor ets-1 to stimulate the expression of N-acetylglucosaminyl-transferase V (GnT-V). The GnT-V is an enzyme catalyzing such reaction that N-acetylglucosamine is attached onto the β 1,6 site of the basic sugar chain of a glycoprotein and is known to be directly associated with cancer invasion and metastasis (Dennis, et al., 1987, Science, 236:582-5853). As for glycoproteins, basic sugar chain is formed in endoplasmic reticulum (ER) after protein is synthesized, which moves to Golgi apparatus. Then, sugars are added thereto by various glycotransferases resulted from various vital phenomena of cells. Primary sugar chains are formed by catalyzing of six N-acetylglucosaminyltransferases (I-VI) and especially GnT-V forming β 1,6-N-acetylglucosamine sugar chain has been believed to be deeply associated with tumorigenesis and metastasis. GnT-V is located in Golgi apparatus. This enzyme makes target proteins be secreted to or out of the cell surface by causing the changes of sugar chains. At this time, glycoproteins recognize surface proteins of target cells and then adhere thereto, causing a cancer.

35 **[0004]** GnT-V was first noticed by the report of Dennis *et al.* in 1987 that the β 1,6 branches were remarkably represented as cancer tissues were growing or during metastasis (Dennis, et al., 1987, Science, 236:582-5853). A cell surface protein gp130 is one of major target proteins of GnT-V and shows highly metastasis activity when β 1,6 N-acetylglucosamine is added. GnT-V knockout mice were established in which GnT-V was deficient in their embryonic stem (ES) cells and to which polyomavirus middle T antigen (referred "PyMT" hereinafter) viral oncogene was introduced in order to induce a cancer. Resultingly, the growth of cancer and metastasis induced by PyMT were remarkably inhibited in GnT-V knockout mice comparing with another normal mice group in which only PyMT was over-expressed (Granovsky, et al., 2000, Nature Med., 6:306-312), and the growth of β 1,6 branch caused high metastasis especially in mice with breast cancer. Recent studies support that the GnT-V activity to 33 types of hepatocellular carcinoma (HCC) tissues is fifty times as high as it's activity to normal tissues and four times as high as to cancer surrounding tissues (Yao, et al., 1998, J Cancer Res. Clin. Oncol., 124:27-307). And high metastatic activity was also confirmed when large intestine cancer cell line WiDr in which GnT-V was over-expressed was introduced into immunodeficient mice in order to induce large intestine cancer or when angiogenesis was investigated by CAM analysis using fertilized eggs (Miyoshi, et al., 2001, unpublished results). Thus, GnT-V is believed to be associated with metastasis and have high metastatic activity regardless of types of tissues. GnT-V enzyme was purified from human lung cancer cells and a mouse kidney, and cDNA cloning and analysis of genomic structure and promoter of the enzyme have been made (Gu, et al., 1993, J Biochem, 113:614-619; Soreibah, et al., 1993, J Biol. Chem., 268:15381-15385; Kang, et al., 1996, J. Biol. Chem., 271:26706-26712). The present inventors also reported in a recent study that transcription factor ets-1 was deeply associated with the expression

of GnT-V (Ko, et al., 1999, J. Biol. Chem., 274(33):22941-22948). As for large intestine cancer, it now takes the 4th highest incidence in both men and women owing to the changes of dietary life into western and the development of the cancer increases continuously. However, there is no way to diagnose colon cancer accurately except large intestine endoscopy, so far.

5 [0005] Thus, the present inventors detected β 1,6-N-acetylglucosamine in which sugars were attached by GnT-V in cancer-induced cells and found out a novel glycoprotein showing the changes of sugar chains by analyzing amino acid sequences with a mass spectrometer. And the present inventors completed this invention by developing a method for diagnosing cancers by measuring the changes of sugar chains of the above protein in test samples and a diagnostic kit for cancers using the same.

10 DETAILED DESCRIPTION OF THE INVENTION

[0006] It is an object of the present invention to provide a method for diagnosing cancers by measuring the changes of sugar chains of proteins related to tumorigenesis and metastasis and a diagnostic kit using the same.

15 [0007] To achieve the above object, the present invention provides a method for diagnosing cancers by measuring the changes of sugar chains of proteins related to tumorigenesis and metastasis.

[0008] The present invention also provides a diagnostic kit for cancers using the above method.

[0009] Further features of the present invention will appear hereinafter.

20 [0010] To achieve the above object, the present invention provides a method for diagnosing cancers by measuring the changes of sugar chains of proteins related to tumorigenesis and metastasis.

[0011] Cancers stated above can be selected from a group consisting of colon cancer, gastric cancer, lung cancer, liver cancer, uterine cancer, breast cancer and pancreas cancer, but are not limited thereto.

25 [0012] The present invention provides a method for measuring the changes of sugar chain branches of proteins in cancer cells and metastatic cells representing the changes of β 1,6 N-acetylglucosamine, that is the changes of N-linked sugar chains, by comparing them with those in normal cells. GnT-V forming sugar chains of β 1,6 N-acetylglucosamine is associated with tumorigenesis and metastasis regardless of types of tissues, and the sugar chains of β 1,6-N-acetylglucosamine can be detected with lectin phytohaemagglutinin-L4 (referred "L4-PHA" hereinafter).

30 [0013] Metastasis is caused by intercellular recognition and adhesion. Glycoproteins associated with intercellular recognition and adhesion, are on the cell surface or secreted therefrom. Thus, cancers can be diagnosed by detecting primary markers from body fluids like blood or urine. In the preferred embodiments of the present invention, a colon cancer cell line WiDr, in which GnT-V expression was comparatively low, was used in order to identify specific markers of large intestine cancer, and glycomics was performed using GnT-V/WiDr, a cell line over-expressing GnT-V, as a model system of colon cancer. In this invention, metastatic cancer cell culture solution was analyzed by 2-dimensional electrophoresis. As a result, 2 sheets of gel were obtained. One sheet of gel was stained with Coomassie brilliant blue and the other sheet was treated with lectin blotting. Finally, proteins in which sugar chains were changed in cancer cells and metastatic cells rather than in normal cells were separated (see FIG. 5 and FIG. 6). Some regions having strong dark spots were detected in cancer cells by lectin blot recognizing β 1,6 N-acetylglucosamine branch. The proteins corresponding to the spots were confirmed to be associated with tumorigenesis and metastasis and show the changes of sugar chains.

35 [0014] The present inventors cut the spots off, and then cleaved proteins again. Determined amino acid sequence of the peptide using Electrospray Ionization (ESI)/Quadruple Time of Flight (Q-TOF) mass spectrometer, resulting in the confirmation of peptide sequences represented by SEQ. ID. Nos 1-15. Identified the peptide sequences with precise names by comparing that with already established protein database and further analyzed each sequence, molecular weight and isoelectric point (see Table 1).

40 [0015] The above protein was confirmed based on the fact that N-linked sugar chain is located on the Asn in the sequence of Asn-Xaa-Thr/Ser (Varki, et al., 1999, Essentials of glycobiology, Cold Spring Harbor Laboratory, New York, USA, pp85-100).

45 [0016] The peptide sequences analyzed above, which are represented by SEQ. ID. No 1 and No 2, are the parts of PDF (prostate-derived factor). In the meantime, PDF is known as one of BMPs (Bone morphogenetic proteins) that is a member of TGF- β (transforming growth factor beta) family and is associated with bone development and regeneration by inducing cartilage formation (Paralkar, V.M. et al., 1998, J Biol. Chem, 273:13760-13767). And the peptide has 2 well-reserved N-linked sugar chain sites. The above proteins have been found by many research groups in the name of PDF, MIC-1 (macrophage inhibitory cytokine-1), PLAB (placental bone morphogenetic protein), GDF-15 (growth/ differentiation factor 15), etc.

50 [0017] The peptide sequences analyzed above, which are represented by SEQ. ID. No 3, No 4 and No 5, are known as T cell cyclophilin and also called peptidyl-prolyl cis-trans isomerase. The reserved N-linked sugar chain can be found on 3 sites on the sequence that is also well known as a constituent for anti-oxidant system.

55 [0018] The peptide sequences analyzed above, which are represented by SEQ. ID. Nos 6-11, were confirmed to be

a new protein by comparing that up with the entire established database. The protein has Asn-Xaa-Ser sequence in its 4th peptide, suggesting it probably contains N-linked sugar chain.

[0019] The peptide sequences analyzed above, which are represented by SEQ. ID. No 12 and No 13, are known in many names of galectin binding protein, L3 antigen, Mac-2-binding protein, serum protein 90K, tumor associated antigen 90K, etc, and are detected from the blood of cancer or AIDS patients. The result of Northern blot was that the protein was expressed much in primary cancer tissues and tumor-associated cell lines, though the expression varied with disease types. The protein was proved to have 7 reserved N-linked sugar chain sites (Ullich, A. et al., 1994, J Biol. Chem., 269:18401-18407).

[0020] The peptide sequences analyzed above, which are represented by SEQ. ID. No 14 and No 15, are known as TIMP-1 (tissue inhibitor of matrix metalloproteinase-1) and 4 TIMPs (1-4) have been found so far. As a low molecular protein, the molecular weights of the proteins are 22K-30K and the proteins have 40-50% homology. TIMP-1 takes the form of train by glycosylation, because of which the molecular weight of TIMP-1 seems to be high (see FIG. 7). And N-terminal is attached to MMPs, resulting in the inhibition of the activity of matrix metalloproteinase. This protein has N-linked sugar chains on two sites (Gomls-Reuth, F. et al., 1997, Nature, 389:77-81).

[0021] Even though two of the above five proteins, galectin binding protein (tumor associated antigen 90K) and TIMP-1, have been known to be directly related to tumorigenesis and metastasis, clear reports on the changes of sugar chain branches of β 1,6 N-acetylglucosamine induced by cancer and the above two proteins have not been presented yet.

[0022] The proteins detected out above that reflect the changes of sugar chains in connection with tumorigenesis and metastasis are glycoproteins, and they are on the surface of cells or secreted therefrom, so that cancer can be diagnosed by measuring the expression and the changes of N-linked sugar chains of the proteins in body fluids like blood or urine.

[0023] A method for diagnosing cancers using the proteins related to tumorigenesis and metastasis comprises following two steps: Taking samples from patients (Step 1); and Measuring the changes of N-linked sugar chains and the expression of proteins related to tumorigenesis and metastasis with the above samples (Step 2).

[0024] The sample of the above Step 1 can be taken from blood or urine, and preferably prepared by the general separation method of serum.

[0025] As for the measuring method of the above Step 2, every analyzing methods based on the principle of antigen-antibody reaction can be used. Especially, ELISA (enzyme-linked immunosorbent assay) and immunoblot, the most common methods for analyzing antigen-antibody reaction, are preferably used.

[0026] The present inventors provide a method for measuring the changes of N-linked sugar chains and the expression of proteins related to tumorigenesis and metastasis after producing antibodies to the proteins in order to diagnose cancers.

[0027] A method for measuring the changes of N-linked sugar chains and the expression of the proteins by ELISA comprises the following steps:

- 1) Adhering antibody against the protein related to tumorigenesis and metastasis to matrix;
- 2) Adding serum of a sample to the above matrix to induce reaction, and then washing thereof;
- 3) Adding marked the same antibody or marked L4-PHA for further reaction;
- 4) After washing the above matrix, adding the secondary antibody conjugated with coloring enzyme or fluorescent substance thereto for further reaction; and
- 5) After coloring thereof using coloring substrate solution, measuring optical density with ELISA reader.

[0028] The matrix of the Step 1 can be selected from a group consisting of nitrocellulose membrane, 96 well plate synthesized with polyvinyl resin, 96 well plate synthesized with polystyrene and slide glass, and 96 well plate was chosen for this invention.

[0029] For a mark of the above Step 3, a chemical compound (or its derivatives) like biotin can be used. The expression of proteins related to tumorigenesis and metastasis can be analyzed using biotin-labeled the same antibody and the changes of β 1,6 N-acetylglucosamine sugar chain branches, the changes of N-linked sugar chains, can be measured using biotin-labeled L4-PHA.

[0030] Peroxidase or alkaline phosphatase can be used as a coloring enzyme conjugated with antibody of the Step 4, and FITC or RITC can be used as a fluorescent substance. Particularly, peroxydase conjugated antibody was used in this invention.

[0031] ABTS [2, 2'-Azino-bis (3-ethylbenzothiazoline-6-sulfonic acid)], OPD (o-Phenylenediamine) and TMB (Tetramethyl Benzidine) can be used as a coloring substrate solution of the Step 5, and particularly, OPD that was colored by peroxidase was used in this invention.

[0032] The method for diagnosing cancers of the present invention is available for mass-analysis of samples using biological microchip and automatic microarray system.

[0033] The present invention also provides a kit for diagnosing cancers by measuring the changes of sugar chains and the expression of proteins associated with tumorigenesis and metastasis.

[0034] Cancers mentioned above include large intestine cancer, stomach cancer, lung cancer, liver cancer, uterine

cancer, breast cancer and pancreas cancer, but are not limited thereto, that is, any kind of cancer can be a target of this invention.

[0035] The protein associated with tumorigenesis and metastasis is selected from a group consisting of PDF, peptidyl-prolyl cis-trans isomerase, galectin binding protein, L3 antigen, Mac-2-binding protein, serum protein 90K, tumor associated antigen 90K, TIMP-1 and proteins containing peptide sequences represented by SEQ. ID. Nos 6-11.

[0036] The diagnostic kit of the present invention is available for qualitative analysis or quantitative analysis of the expression of the above proteins and for measuring the changes of N-linked sugar chain, exactly the changes of β 1,6-N-acetylglucosamine sugar chain branches, for which ELISA can be used. For instance, the diagnostic kit can be provided for the ELISA using 96 well microtiter plate coated with antibody against the above proteins.

[0037] The diagnostic kit of the present invention can include antibody against the above proteins, matrix, buffer solution, coloring enzyme or fluorescent substance-labeled secondary antibody, coloring substrate, and especially, L4-PHA to measure the changes of β 1,6-N-acetylglucosamine sugar chain branches.

[0038] As for the matrix, nitrocellulose membrane, 96 well plate synthesized with polyvinyl resin, 96 well plate synthesized with polystyrene resin, and slide glass can be used. As for the coloring enzyme, peroxidase and alkaline phosphatase can be used. As for the fluorescent substance, FITC and RITC can be used and as for the coloring substrate solution, ABTS (2, 2'-Azino-bis (3-ethylbenzothiazoline-6-sulfonic acid)), OPD (o-Phenylenediamine), or TMB (Tetramethyl Benzidine) can be used.

[0039] In order to diagnose cancers with the diagnostic kit of the present invention, automatic analyzing method using biological microchip can be used. For example, the diagnostic kit can be composed to prepare a protein chip by fixing the proteins in which sugar chains are changed by being associated with tumorigenesis and metastasis onto the surface of glass slide and to measure the changes of those sugar chains of the proteins simultaneously. This diagnostic kit also includes the proteins, buffer solution and L4-PHA, etc.

BRIEF DESCRIPTION OF THE DRAWINGS

[0040]

FIG. 1 is a diagram showing sugar chains obtained by the action of 6 glycotransferases related to N-linked sugar chain,

FIG. 2 is a set of diagrams showing the adding process of β 1,6 N-acetylglucosamine (GlcNAc β 1) to sugar chain by glycotransferase GnT-V,

FIG. 3 is a set of photographs showing the results of staining gels obtained by 2-dimensional electrophoresis of three cell lines (Mock/WiDr, ets-1/WiDr, GnT-V/WiDr) with Coomassie brilliant blue,

FIG. 4 is a set of photographs showing the results of lectin blotting with gels obtained by 2-dimensional electrophoresis of three cell lines,

FIG. 5 is a set of photographs showing the results of staining serum-free media derived from three cell lines with Coomassie brilliant blue after 2-dimensional electrophoresis,

FIG. 6 is a set of photographs showing the results of lectin blotting on serum-free media derived from three cell lines with L4-PHA after 2-dimensional electrophoresis,

FIG. 7 is a graph showing the result of analysis of timp-1 amino acid sequence by ESI/Q-TOF.

EXAMPLES

[0041] Practical and presently preferred embodiments of the present invention are illustrative as shown in the following Examples.

[0042] However, it will be appreciated that those skilled in the art, on consideration of this disclosure, may make modifications and improvements within the spirit and scope of the present invention.

Example 1: Two-dimensional electrophoresis and lectin blotting of cell lines

[0043] The present inventors performed proteomics with GnT-V/WiDr cell line, considering that cell line as a model system of large intestine cancer. Particularly, cultured cells first, and then searched out a specific protein group evoking aggravation of cancer by being associated with the enzyme among intracellular and extracellular secreted proteins.

Cultured Mock/WiDr, a control group cell line, ets-1/WiDr, a cell line over-expressing ets-1, and GnT-V/WiDr, a cell line over-expressing GnT-V, in RPMI medium (Gibco BRL) supplemented with 10% FCS. For the preparation of an over-expressing cell line, introduced eukaryotic over-expression plasmid (Ko, et al., 1999, J. Biol. Chem., 274(33): 22941-22948), transcription factor ets-1 and glycotransferase GnT-V into the large intestine cancer cell line WiDr (provided by American Type Tissue Culture; ATCC, USA). Treated the cells with G418 (350 µg/ml) to correspond to neomycin resistant gene. As colonies were formed, detected ets-1 with Western blot using antibody and GnT-V with Northern blot using cDNA. 2-3 days later, when cells covered 90% of the bottom of culture plate (confluent) in a CO₂ incubator, the cells were washed with PBS (phosphate buffered saline) more than twice to remove remaining serum. Collected the cells with a scraper and washed with PBS. Suspended the cells in 1 ml of PBS and then sonicated thereof with a ultrasonicator (three times, 1 minute each time). Added acetone containing TCA (trichloroacetic acid) to the above crushed cells (final conc. 10%) to precipitate proteins only. Washed thereof with acetone more than three times to remove remaining TCA and then dried. Dissolved thereof by adding gel loading buffer solution (8 M Urea, 2% Triton X-100, 20 mM DTT, 0.5% carrier ampholyte, Bromophenol Blue dye) and performed 1-dimensional electrophoresis (18 cm drystrip pH 3-10) using Multiphor-II (Pharmacia).

[0044] After equilibrating the obtained 1-dimensional electrophoresis gel with equilibrium buffer solution containing SDS and 2-mercaptoethanol, performed 2-dimensional electrophoresis on 12% polyacrylamide using Protean II (Bio-Rad). Obtained 2 sheets of gel: One was stained with Coomassie brilliant blue using biosafe staining solution (Bio-Rad) and the other was transferred to PVDF (polyvinylidene difluoride) membrane using semi-dry transfer (Bio-Rad). Adhered biotin-labeled L-PHA recognizing β 1,6 N-acetylglucosamine branch to glycoprotein having the branch, and then attached HRP-labeled streptavidin thereto. Exposed thereof to film by ECL fluorescent reaction.

[0045] In order to compare with a control group (Mock/WiDr), carried out the experiments with the same condition, that is, performed 1-dimensional electrophoresis (separation of isoelectric point) first and then stained with Coomassie brilliant blue (FIG. 3), transferred the proteins of gel to PVDF membrane, followed by performing lectin blotting using GnT-V-specific L4-PHA (FIG. 4). Performed 2-dimensional electrophoresis more than three times and analyzed the changes of the expression of intracellular protein using computer software (PDQUEST, Bio-Rad). As a result, no protein that showed more than 4-times difference in the expression profile of protein was detected and no significant change was seen in lectin blot (FIG. 4), either.

Example 2: Two-dimensional electrophoresis and lectin blotting of serum-free media

[0046] The present inventors cultured cell lines in serum-free media, through which investigated the changes of sugar chains. Particularly, cultured Mock/WiDr cell line, ets-1/WiDr cell line and GnT-V/WiDr cell line in RPMI (Gibco BRL) media containing 10% FCS. 2-3 days later, when cells covered around 80% of the bottom of culture plate in a CO₂ incubator washed with PBS more than twice to remove remaining serum. Then, put RPMI medium without serum, further cultured for 48 hours, and obtained culture solution. After concentrating the medium, added acetone (final conc. 10%) containing TCA (trichloro acetic acid), resulting in the precipitation of proteins. Washed thereof with acetone more than 3 times to remove remaining TCA, and then dried. Dissolved thereof by adding gel loading buffer solution (8 M Urea, 2% Triton X-100, 20 mM DTT, 0.5% carrier ampholyte, Bromophenol Blue dye) thereto. Performed 1-dimensional electrophoresis and 2-dimensional electrophoresis with the same method as the above Example 1.

[0047] After completing 2-dimensional electrophoresis, small amounts of FCS were detected and wide changes of PIM (post translational modification) were expected, so that the expression could hardly be compared with limited software. In the mean time, it was confirmed from the result of L-PHA lectin blot that darker spots were detected in ets-1 over-expressing cell line, comparing with the control group, and the darkest spots were observed in GnT-V over-expressing cell line (FIG. 5 and FIG. 6). Cut 12 spots off among all the above spots and identified 5 spots of them.

Example 3: Sequence analysis of proteins with an ESI/Q-TOF mass spectrometer

[0048] In order to identify proteins located in the above 5 spots, the present inventors stained PVDF membrane (lectin blot) that was already exposed to X-ray film with Coomassie brilliant blue and then adhered thereof onto exposed film again to confirm the exact locations of spots, followed by cutting spots off corresponding to those of a gel stained with Coomassie brilliant blue. After destaining thereof using 30% methanol and 100% acetonitrile, added 10 U of trypsin (Promega) and then cut peptides at 37°C for overnight. Extracted the peptides using acetonitrile, freeze-dried thereof with a centrifugal freezing drier, and then determined amino acid sequences using ESI/Q-TOF (Electrospray Ionization/Quadruple Time of Flight) mass spectrometer. Each peptide could be separated by ESI and sequence analysis could be possible by tandem mass.

[0049] As a result, peptide sequences represented by SEQ. ID. Nos 1-15 were determined by ESI/Q-TOF and identified after being compared with protein database. Each sequence, molecular weight (MW) and isoelectric point (pI) were presented below (Table 1).

<Table 1>

No	Sequence	Name	Function	M.W	pI	N-linked glycosylation
a	SEQ.ID. No 1 SEQ.ID. No 2	GDF-15	PLAB/TFG- β family	34168.6	9.79	Y
b	SEQ.ID. No 3 SEQ.ID. No 4 SEQ.ID. No 5	Cyclophilin	Peptidyl-prolyl cis-trans isomerase A	18012.7	7.86	Y
c	SEQ.ID. No 6 SEQ.ID. No 7 SEQ.ID. No 8 SEQ.ID. No 9 SEQ.ID. No 10 SEQ.ID. No 11	Not identified	Not identified	About 20K	About 5.5	Y
d	SEQ.ID. No 12 SEQ.ID. No 13	Galectin 3 binding protein	Galectin binding serum protein	65331.6	5.13	Y
e	SEQ.ID. No 14 SEQ.ID. No 15	TIMP-1	Tissue inhibitor of matrix metallopro- teinase	23171.1	8.46	Y

[0050] Their characteristics are explained below. The above proteins were confirmed based on the fact that N-linked sugar chain is located on the Asn in the sequence of Asn-Xaa-Thr/Ser (Varki, et al., 1999, Essentials of glycobiology, Cold Spring Harbor Laboratory, New York, USA, pp85-100).

A of the above Table 1 containing peptide sequences represented by SEQ. ID. No 1 and No 2, that is PDF (prostate-derived factor), is one of BMP proteins (Bone morphogenetic proteins) of TGF (transforming growth factor)- β family and has two preserved N-linked sugar chain sites. This protein has been searched in many names of not only PDF but also MIC-1 (macrophage inhibitory cytokine-1), PLAB (placental bone morphogenic protein), GDF-15, PTGFP, etc by many research groups.

B known as T cell cyclophilin containing peptide sequences represented by SEQ. ID. No 3, No 4 and No 5 is also called peptidyl-prolyl cis-trans isomerase. It has three preserved N-linked sugar chain sites.

C containing peptide sequences represented by SEQ. ID. Nos 6-11 is proved to be a new protein by comparing it with the established databases. It is also believed to have N-linked sugar chain since it has the sequence of Asn-Xaa-Ser in its forth peptide.

D containing peptide sequences represented by SEQ. ID. No 12 and No 13 has been known in many names such as galectin binding protein, L3 antigen, Mac-2-binding protein, serum protein 90K, tumor associated antigen 90K, etc, and has seven preserved N-linked sugar chain sites.

E containing peptide sequences represented by SEQ. ID. No 14 and No 15 is known as TIMP-1 (tissue inhibitor of matrix metalloproteinase-1) and is an example of the above timp-1 identified by ESI/Q-TOF (FIG. 7). As shown in FIG. 7, TIMP-1 is shaped as a train formed by glycosylation, by which its molecular weight seems high. TIMP-1 also has two N-linked sugar chain sites.

Example 4: Measurement of the changes of sugar chain branches or the expression of proteins

[0051] In order to diagnose cancers by measuring the changes of sugar chains or the expression of proteins identified above, the present inventors measured the changes of sugar chains and the expression of the proteins using ELISA.

[0052] First, obtained cDNA of target protein, which was then cloned into the eukaryotic gene expression vector. Cloned thereof into WiDr cell line. Purified the protein (1 mg each) from the above culture solution. Mixed thereof with adjuvant, which was injected hypodermically into rabbits, resulting in the preparation of polyclonal antibodies. Adhered the required amount of the antibody to two 96 well plates respectively. Precisely, coated protein A originated from bacteria to 96 well plate (Maxisorb, Nunc) by 1 μ g per well under the condition of containing 100 μ l of 0.1 M sodium carbonate (pH 9.6). Washed thereof with TBS-T (Tris-buffered saline-Tween, 0.2 M Tris-Cl, 0.4 M NaCl, 0.05% Tween-20) and adhered the above prepared antibody thereto. Washed with TBS-T again and then blocked parts that were not adhered,

resulting in the preparation of a stable antibody system. Consecutive dilution was performed after adding blood or other test samples to the plate for the reproducibility and statistical handling, and then washed thereof with TBS-T three times. At that time, the target protein would be adhered to its specific antibody. The expression of the protein was confirmed by the same antibody labeled with biotin, and the changes of sugar chains of β 1,6 N-acetylglucosamine were confirmed by lectin, in which biotin-labeled L-PHA was used. In order to prepare biotin-labeled antibody, dialyzed antibody (5-10 mg/M ℓ) in 250 M ℓ of SBRB (succinimidyl-biotin reaction buffer) at 23°C for 6 hours. Adjusted the concentration of NHS-biotin (N-hydroxysuccinimidyl-biotin) or NHS-LC-biotin (long chain sulfosuccinimidyl 6-(biotinamido) hexanoate derivative biotin) to 2-4 mg/M ℓ in DMSO (dimethylsulfoxide) and mixed the antibody and the biotin solution in the ratio of 1:30 (Ab:biotin), followed by stirring at 37°C. Left thereof for 1 hour to bind biotin and antibody. Prepared biotin-labeled antibody after dialyzing thereof in BBS (Borate buffered saline). For the lectin, commercial biotin-labeled L-PHA was used. Detected biotin-labeled antibody and lectin by using commercial avidine-peroxidase kit. Precisely, added H₂O₂ and O-phenylamine, a substrate for peroxidase, and measured optical density at 490 nm. Measured the expression of protein and the changes of glycosylation of β 1,6 N-acetylglucosamine in the blood samples of patients with cancer and then compared them with those in normal control group.

[0053] As a result, the glycosylation extent of β 1,6 N-acetylglucosamine in the blood of cancer patients was confirmed to increase 10-20 times as much as that in normal blood.

INDUSTRIAL APPLICABILITY

[0054] As described hereinbefore, a method for diagnosing cancers by measuring the changes of sugar chains of proteins associated with tumorigenesis and metastasis, and diagnostic kit using the same of the present invention can be effectively used for diagnosing cancers including large intestine cancer.

The following numbered paragraphs also form part of the description

[0055]

1. A method for diagnosing cancers comprising the following steps:

- i) Taking samples from patients; and
- ii) Measuring the changes of N-linked sugar chains of proteins related to tumorigenesis and metastasis with the above samples.

2. The method as set forth in claim 1, wherein the sample is taken from blood or urine.

3. The method as set forth in claim 1, wherein the cancer is selected from a group consisting of large intestine cancer, stomach cancer, lung cancer, liver cancer, uterine cancer, breast cancer and pancreas cancer.

4. The method as set forth in claim 1, wherein the changes of sugar chains are the changes of sugar chain branches of N-linked β 1,6 N-acetylglucosamine.

5. The method as set forth in claim 1, wherein the protein is selected from a group consisting of PDF, peptidyl-prolyl cis-trans isomerase, galectin binding protein, L3 antigen, Mac-2-binding protein, serum protein 90K, tumor associated antigen 90K, TIMP-1 and proteins containing peptide sequences represented by SEQ. ID. Nos 6-11.

6. The method as set forth in claim 1, wherein the measuring method is ELISA or the method using antigen-antibody binding response including immunoblotting.

7. A kit for diagnosing cancers by measuring the changes of sugar chains and the expression of the above proteins composed of antibody against protein associated with tumorigenesis and metastasis, matrix, buffer solution, coloring enzyme or fluorescent substance-labeled secondary antibody, coloring substrate and labeled antibody or labeled L4-PHA.

8. The kit as set forth in claim 7, wherein the cancer is selected from a group consisting of large intestine cancer, stomach cancer, lung cancer, liver cancer, uterine cancer, breast cancer and pancreas cancer.

9. The kit as set forth in claim 8, wherein the cancer is large intestine cancer.

10. The kit as set forth in claim 7, wherein the changes of sugar chains are the changes of sugar chain branches of N-linked β 1,6 N-acetylglucosamine.

11. The kit as set forth in claim 7, wherein the protein is selected from a group consisting of PDF, peptidyl-prolyl cis-trans isomerase, galectin binding protein, L3 antigen, Mac-2-binding protein, serum protein 90K, tumor associated antigen 90K, TIMP-1 and proteins containing peptide sequences represented by SEQ. ID. Nos 6-11.

12. The kit as set forth in claim 7, wherein the matrix is selected from a group consisting of nitrocellulose membrane, 96 well plate synthesized by polyvinyl resin, 96 well plate synthesized by polystyrene resin and slide glass.

13. The kit as set forth in claim 7, wherein the coloring enzyme is selected from a group consisting of peroxidase

EP 1 972 939 A1

and alkaline phosphatase, and the coloring substrate solution is selected from a group consisting of ABTS[2, 2'-Azino-bis (3-ethylbenzothiazoline-6-sulfonic acid)], OPD (o-Phenylenediamine) and TMB (Tetramethyl Benzidine). 14. The kit as set forth in claim 7, wherein the labeled antibody is biotin(or its derivatives)-labeled antibody, and the labeled L4-PHA is biotin(or its derivatives)-labeled L4-PHA.

5

SEQUENCE LISTING

10 <110> Korea Research Institute of Bioscience and Biotechnology

<120> Method for the diagnosis of cancers by measuring the changes of Glycosylation of proteins related to tumorigenesis and metastasis and kit for diagnosis of cancers using the same

15

<130> 2fpo-12-01

<150> KR2001-88090

20

<151> 2001-12-29

<160> 1

25

<170> KopatentIn 1.71

<210> 1

<211> 14

<212> PRT

30

<213> Homo sapiens

<400> 1

Gly Val Ser Ser Leu Gln Thr Tyr Asp Asp Leu Leu Ala Lys

35

1 5 10

<210> 2

<211> 13

40

<212> PRT

<213> Homo sapiens

<400> 2

Glu Asp Leu Gly Trp Ala Asp Trp Val Leu Ser Pro Arg

45

1 5 10

<210> 3

50

<211> 9

<212> PRT

<213> Homo sapiens

55

<400> 3

Val Ser Phe Glu Leu Phe Ala Asp Lys

1 5

EP 1 972 939 A1

5 <210> 4
 <211> 9
 <212> PRT
 <213> Homo sapiens

 <400> 4
 Phe Glu Asp Glu Asn Phe Ile Leu Lys
 1 5

 15 <210> 5
 <211> 19
 <212> PRT
 <213> Homo sapiens

 20 <400> 5
 Asn Val Asn Pro Thr Val Phe Phe Asp Leu Ala Val Asp Gly Glu Pro
 1 5 10 15

 25 Leu Gly Arg

 30 <210> 6
 <211> 8
 <212> PRT
 <213> Homo sapiens

 35 <400> 6
 Phe Thr Gly Gly His Glu Val Lys
 1 5

 40 <210> 7
 <211> 12
 <212> PRT
 45 <213> Homo sapiens

 <400> 7
 Gly Leu Gly Ala Ser Asp Ser Thr Leu Thr Tyr Arg
 50 1 5 10

 55 <210> 8
 <211> 13
 <212> PRT

EP 1 972 939 A1

<213> Homo sapiens
<400> 8
5 Asp Asn Asn Leu Gly Gln Ala Phe Gln Phe Glu Asp Arg
1 5 10

<210> 9
<211> 11
<212> PRT
<213> Homo sapiens
15 <400> 9
Glu Phe Gly Leu Gly Ala Thr Ser Asp Ser Tyr
1 5 10

<210> 10
<211> 10
<212> PRT
25 <213> Homo sapiens
<400> 10
30 Val Gly Asp Asn Xaa Leu Gly Ala Asn Ser
1 5 10

<210> 11
35 <211> 6
<212> PRT
<213> Homo sapiens
<400> 11
40 Ser Gly Ala Tyr Thr Tyr
1 5

<210> 12
<211> 13
<212> PRT
45 <213> Homo sapiens
50 <400> 12
Gln Thr Pro Gln His Pro Ser Phe Leu Phe Gln Asp Lys
1 5 10
55

5 <210> 13
 <211> 20
 <212> PRT
 <213> Homo sapiens

 <400> 13
 Tyr Tyr Pro Tyr Gln Ser Phe Gln Thr Pro Gln His Pro Ser Phe Leu
 10 1 5 10 15

 Phe Gln Asp Lys
 20 20
 15

 <210> 14
 <211> 9
 <212> PRT
 <213> Homo sapiens
 20

 <400> 14
 Ser Glu Glu Phe Leu Leu Ala Gly Lys
 25 1 5

 <210> 15
 <211> 6
 <212> PRT
 <213> Homo sapiens
 30

 <400> 15
 Gln Ala Leu Gly Asp Ala
 35 1 5
 40

Claims

- 45 1. A method for diagnosing a cancer comprising measuring the changes of N-linked sugar chains of TIMP-1 (tissue inhibitor of matrix metalloproteinase-1), which are related to tumorigenesis and metastasis, by comparing the N-linked sugar chains of the TIMP-1 in a sample taken from a patient with those in normal cells.
- 50 2. The method as set forth in claim 1, wherein the sample is taken from blood or urine.
3. The method as set forth in claim 1, wherein the cancer is selected from a group consisting of large intestine cancer, stomach cancer, lung cancer, liver cancer, uterine cancer, breast cancer and pancreas cancer.
- 55 4. The method as set forth in claim 1, wherein the changes of sugar chains are the changes of sugar chain branches of N-linked β 1,6 N-acetylglucosamine.
5. The method as set forth in claim 1, wherein the measuring method is ELISA or the method using antigen-antibody binding response including immunoblotting.

EP 1 972 939 A1

6. A kit for diagnosing cancers by measuring the changes of sugar chains and the expression of TIMP-1 composed of antibody against protein associated with tumorigenesis and metastasis, matrix, buffer solution, coloring enzyme or fluorescent substance-labeled secondary antibody, coloring substrate and labeled antibody or labeled L4-PH4.

5 7. A kit as set forth in claim 6, wherein the cancer is selected from a group consisting of large intestine cancer, stomach cancer, lung cancer, liver cancer, uterine cancer, breast cancer and pancreas cancer.

8. A kit as set forth in claim 7, wherein the cancer is large intestine cancer.

10 9. A kit as set forth in claim 6, wherein the changes of sugar chains are the changes of sugar chain branches of N-linked β 1,6 N-acetylglucosamine.

10. A kit as set forth in claim 6, wherein the matrix is selected from a group consisting of nitrocellulose membrane, 96 well plate synthesized by polyvinyl resin, 96 well plate synthesized by polystyrene resin and slide glass.

15

20

25

30

35

40

45

50

55

FIG. 2

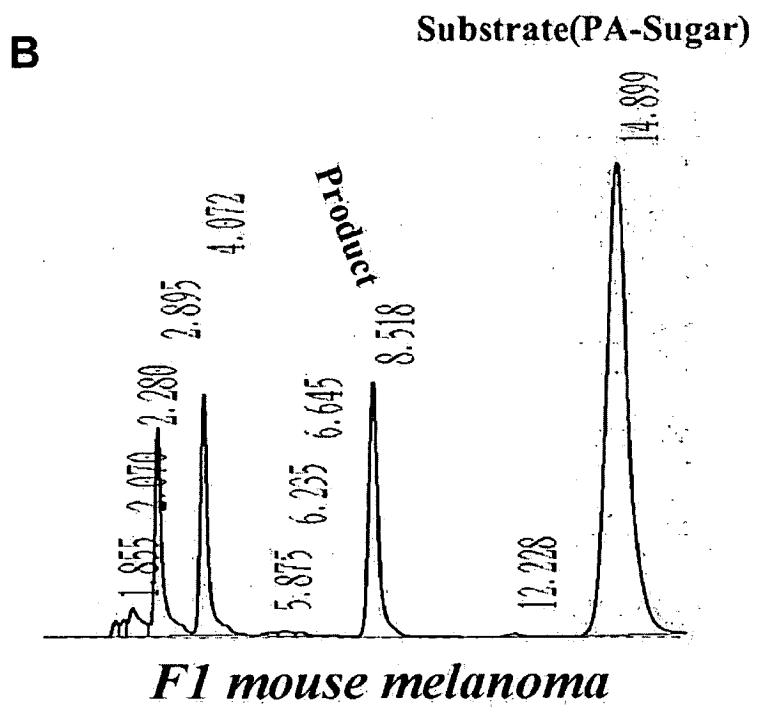
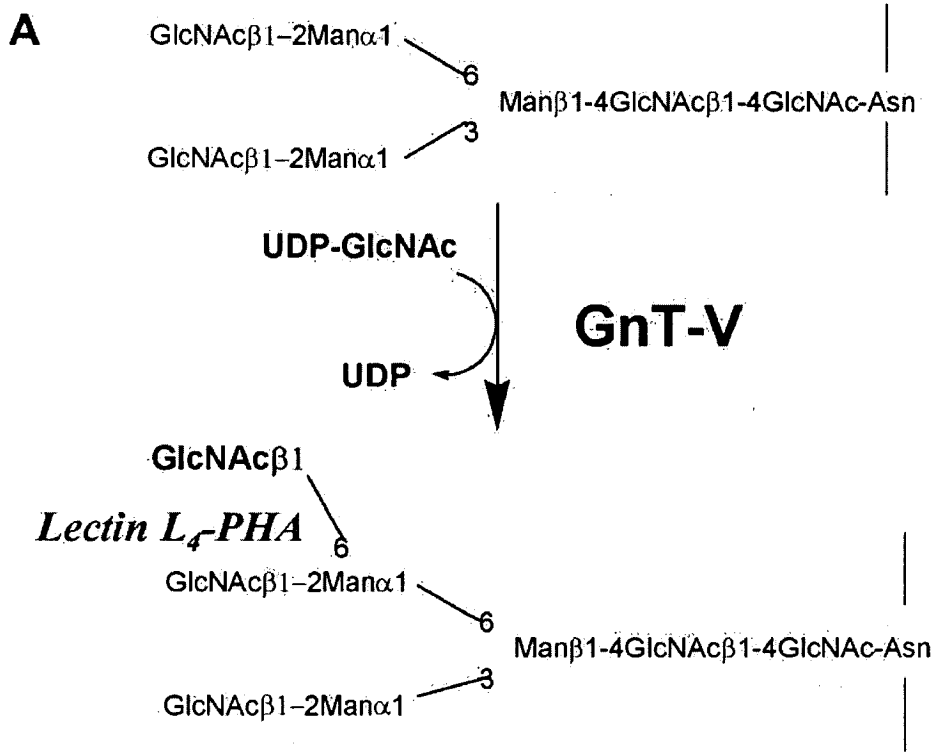


FIG. 3

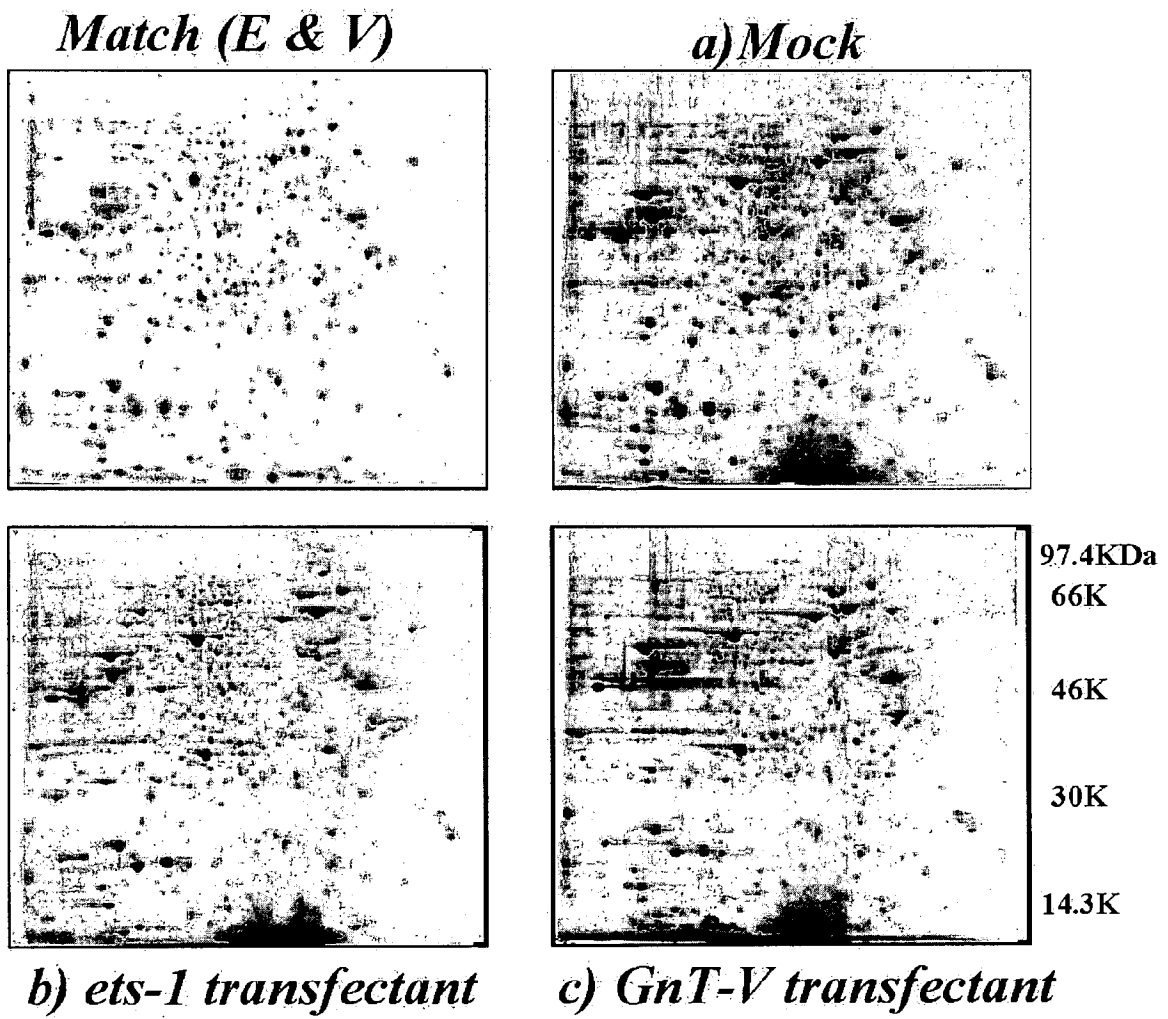


FIG. 4

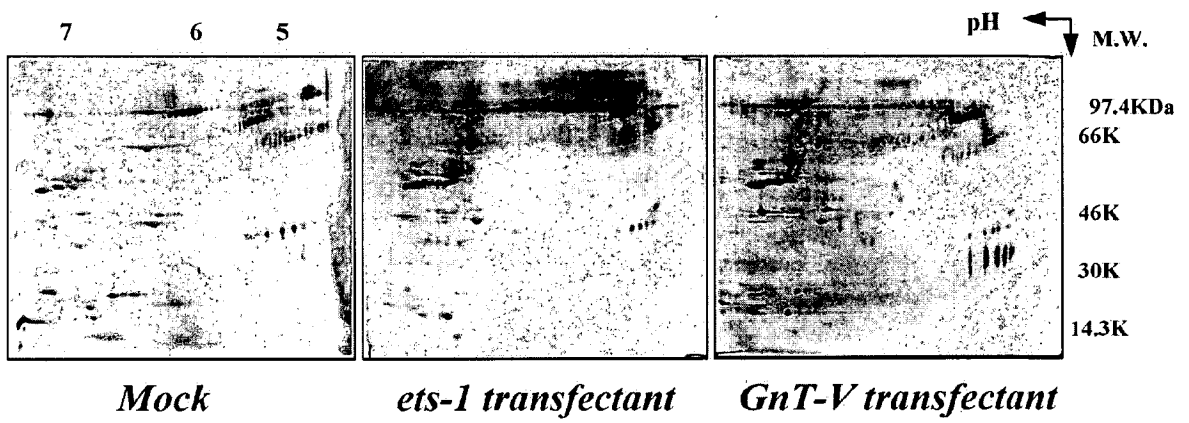


FIG. 5

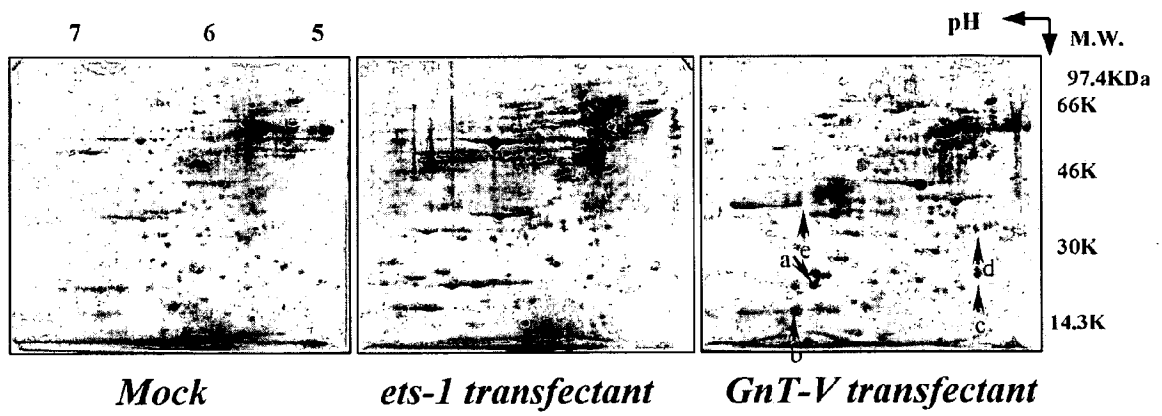


FIG. 6

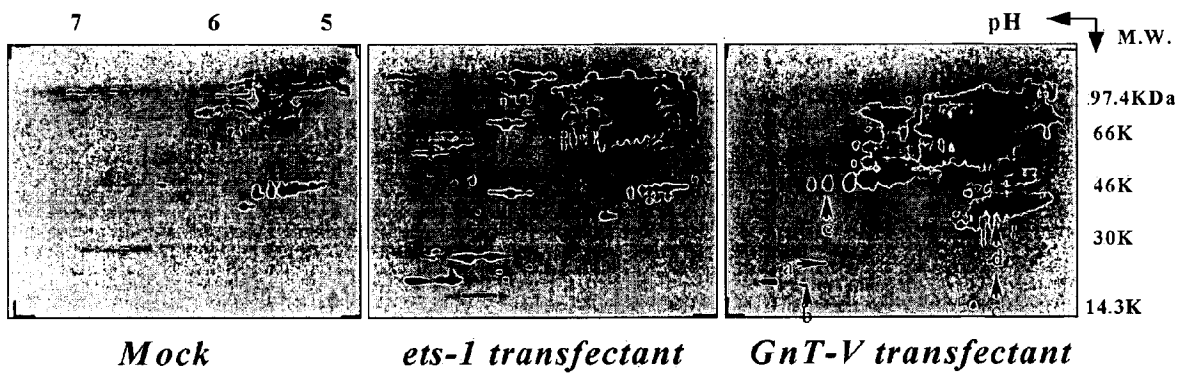
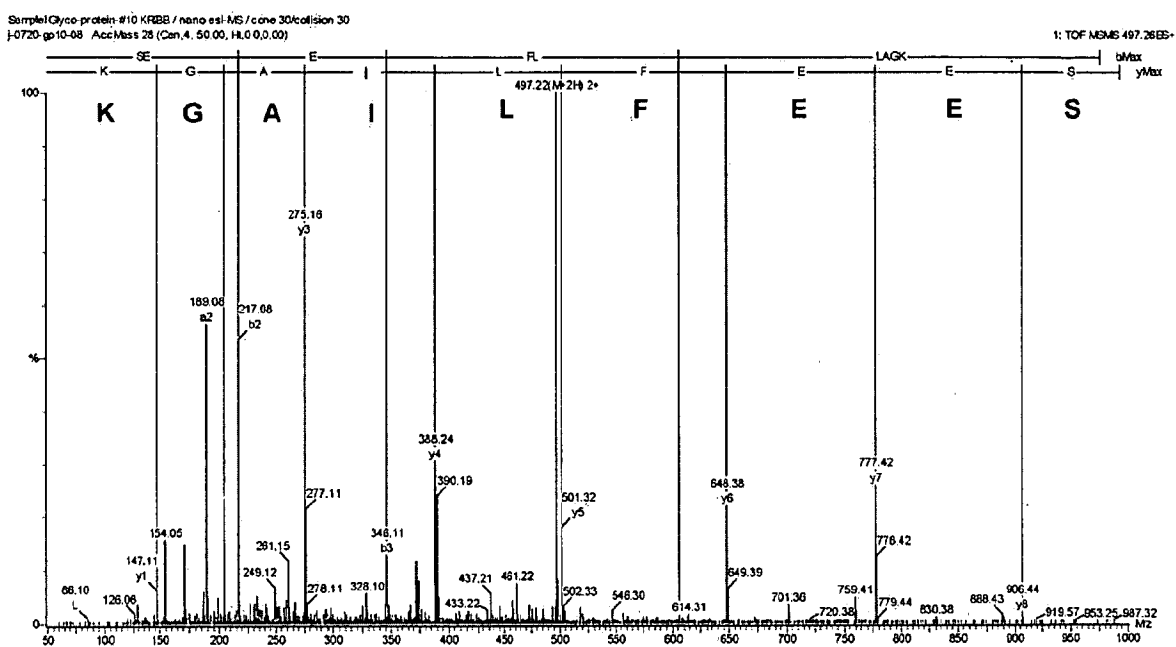


FIG. 7

MS/MS Spectrum of Spot 'e'
SEEFLIAGK (M+H=993.5)





DOCUMENTS CONSIDERED TO BE RELEVANT

Category	Citation of document with indication, where appropriate, of relevant passages	Relevant to claim	CLASSIFICATION OF THE APPLICATION (IPC)
X	HOLTEN-ANDERSEN M N ET AL: "Quantitation of TIMP-1 in plasma of healthy blood donors and patients with advanced cancer" BRITISH JOURNAL OF CANCER, LONDON, GB, vol. 80, no. 3-4, 1 May 1999 (1999-05-01), pages 495-503, XP002383066 ISSN: 0007-0920 * page 496, paragraph "TIMP-1 ELISA" * -----	6-10	INV. G01N33/574
X	CATERINA N C M ET AL: "Glycosylation and NH2-terminal domain mutants of the tissue inhibitor of metalloproteinases-1 (TIMP-1)" BIOCHIMICA ET BIOPHYSICA ACTA - PROTEIN STRUCTURE AND MOLECULAR ENZYMOLOGIE, ELSEVIER SCIENCE BV, AMSTERDAM, NL, vol. 1388, no. 1, 14 October 1998 (1998-10-14), pages 21-34, XP004278509 ISSN: 0167-4838 * paragraph [02.7] * -----	6-10	TECHNICAL FIELDS SEARCHED (IPC)
A	US 5 427 914 A (DENNIS ET AL) 27 June 1995 (1995-06-27) * the whole document * -----		G01N
A	DURKAN G C ET AL: "Prognostic Significance of Matrix Metalloproteinase-1 and Tissue Inhibitor of Metalloproteinase-1 in Voided Urine Samples from Patients with Transitional Cell Carcinoma of the Bladder" CLINICAL CANCER RESEARCH, THE AMERICAN ASSOCIATION FOR CANCER RESEARCH, vol. 7, 1 November 2001 (2001-11-01), pages 3450-3456, XP002268767 ISSN: 1078-0432 * the whole document * ----- -/--		
The present search report has been drawn up for all claims			
Place of search The Hague		Date of completion of the search 15 August 2008	Examiner Adida, Anne
CATEGORY OF CITED DOCUMENTS X : particularly relevant if taken alone Y : particularly relevant if combined with another document of the same category A : technological background O : non-written disclosure P : intermediate document		T : theory or principle underlying the invention E : earlier patent document, but published on, or after the filing date D : document cited in the application L : document cited for other reasons & : member of the same patent family, corresponding document	

6
EPO FORM 1503 03.02 (P04C01)



DOCUMENTS CONSIDERED TO BE RELEVANT			
Category	Citation of document with indication, where appropriate, of relevant passages	Relevant to claim	CLASSIFICATION OF THE APPLICATION (IPC)
A	MURATA K ET AL: "Expression of N-acetylglucosaminyltransferase V in colorectal cancer correlates with metastasis and poor prognosis" CLINICAL CANCER RESEARCH, THE AMERICAN ASSOCIATION FOR CANCER RESEARCH, vol. 6, no. 5, 1 May 2000 (2000-05-01), pages 1772-1777, XP002967642 ISSN: 1078-0432 * the whole document * -----		
A	DENNIS J W ET AL: "Glycoprotein glycosylation and cancer progression" BIOCHIMICA ET BIOPHYSICA ACTA - GENERAL SUBJECTS, ELSEVIER SCIENCE PUBLISHERS, NL, vol. 1473, no. 1, 17 December 1999 (1999-12-17), pages 21-34, XP004276499 ISSN: 0304-4165 * the whole document * -----		
T	KIM YONG-SAM ET AL: "Functional proteomics study reveals that N-acetylglucosaminyltransferase V reinforces the Invasive/Metastatic potential of colon cancer through aberrant glycosylation on tissue inhibitor of metalloproteinase-1" MOLECULAR & CELLULAR PROTEOMICS, vol. 7, no. 1, January 2008 (2008-01), pages 1-14, XP008095347 ISSN: 1535-9476 * the whole document * -----		TECHNICAL FIELDS SEARCHED (IPC)
The present search report has been drawn up for all claims			
Place of search The Hague		Date of completion of the search 15 August 2008	Examiner Adida, Anne
CATEGORY OF CITED DOCUMENTS X : particularly relevant if taken alone Y : particularly relevant if combined with another document of the same category A : technological background O : non-written disclosure P : intermediate document		T : theory or principle underlying the invention E : earlier patent document, but published on, or after the filing date D : document cited in the application L : document cited for other reasons & : member of the same patent family, corresponding document	

6
EPO FORM 1503 03.02 (P04C01)

**ANNEX TO THE EUROPEAN SEARCH REPORT
ON EUROPEAN PATENT APPLICATION NO.**

EP 08 00 6160

This annex lists the patent family members relating to the patent documents cited in the above-mentioned European search report. The members are as contained in the European Patent Office EDP file on
The European Patent Office is in no way liable for these particulars which are merely given for the purpose of information.

15-08-2008

Patent document cited in search report	Publication date	Patent family member(s)	Publication date
US 5427914 A	27-06-1995	CA 1313496 C	09-02-1993

EPO FORM P0459

For more details about this annex : see Official Journal of the European Patent Office, No. 12/82

REFERENCES CITED IN THE DESCRIPTION

This list of references cited by the applicant is for the reader's convenience only. It does not form part of the European patent document. Even though great care has been taken in compiling the references, errors or omissions cannot be excluded and the EPO disclaims all liability in this regard.

Non-patent literature cited in the description

- **HAKOMORI ; KANNAGI.** *J. Natl. Cancer Inst*, 1983, vol. 71, 231-251 [0003]
- **FEIZI.** *Nature*, 1985, vol. 314, 53-571 [0003]
- **DENNIS et al.** *Science*, 1987, vol. 236, 582-5853 [0003] [0004]
- **GRANOVSKY et al.** *Nature Med*, 2000, vol. 6, 306-312 [0004]
- **YAO et al.** *J Cancer Res. Clin. Oncol*, 1998, vol. 124, 27-307 [0004]
- **GU et al.** *J Biochem*, 1993, vol. 113, 614-619 [0004]
- **SOREIBAH et al.** *J Biol. Chem.*, 1993, vol. 268, 15381-15385 [0004]
- **KANG et al.** *J. Biol. Chem.*, 1996, vol. 271, 26706-26712 [0004]
- **KO et al.** *J. Biol. Chem.*, 1999, vol. 274 (33), 22941-22948 [0004] [0043]
- **VARKI et al.** *Essentials of glycobiology.* Cold Spring Harbor Laboratory, 1999, 85-100 [0015] [0050]
- **PARALKAR, V.M. et al.** *J Biol. Chem*, 1998, vol. 273, 13760-13767 [0016]
- **ULLICH, A. et al.** *J Biol. Chem.*, 1994, vol. 269, 18401-18407 [0019]
- **GOMLS-REUTH, F. et al.** *Nature*, 1997, vol. 389, 77-81 [0020]

专利名称(译)	通过测量与肿瘤发生和转移相关的TIMP-1的糖基化变化来诊断癌症的方法，以及使用该方法诊断癌症的试剂盒		
公开(公告)号	EP1972939A1	公开(公告)日	2008-09-24
申请号	EP2008006160	申请日	2002-12-28
[标]申请(专利权)人(译)	韩国生命工学研究院		
申请(专利权)人(译)	韩国研究学院生物科学与生物		
当前申请(专利权)人(译)	韩国研究学院生物科学与生物		
[标]发明人	KO JEONG HEON HWANG SOO YOUNG SOHN HOSUNG OH SEJEONG LEE JEONG HWA LEE SANG CHUL YOO JONG SHIN LEE DAE SIL		
发明人	KO, JEONG HEON HWANG, SOO YOUNG SOHN, HOSUNG OH, SEJEONG LEE, JEONG HWA LEE, SANG CHUL YOO, JONG-SHIN LEE, DAE-SIL		
IPC分类号	G01N33/574 C07K7/06 C07K7/08 G01N21/78 G01N33/53 G01N33/543		
CPC分类号	G01N33/57469		
优先权	1020010088090 2001-12-29 KR		
其他公开文献	EP1972939B1		
外部链接	Espacenet		

摘要(译)

本发明涉及通过测量与肿瘤发生和转移相关的蛋白质来诊断癌症的方法，更具体地说，提供了通过测量基质金属蛋白酶-1 (TIMP-1) 组织抑制剂的糖基化变化来诊断癌症的方法，以及使用所述方法诊断癌症的试剂盒。本发明的方法和试剂盒可有效地用于包括结肠癌，胃癌，肺癌和肝癌的癌症的敏感诊断。

FIG. 1

