

(19) World Intellectual Property Organization  
International Bureau



(43) International Publication Date  
30 October 2003 (30.10.2003)

PCT

(10) International Publication Number  
WO 03/089935 A1

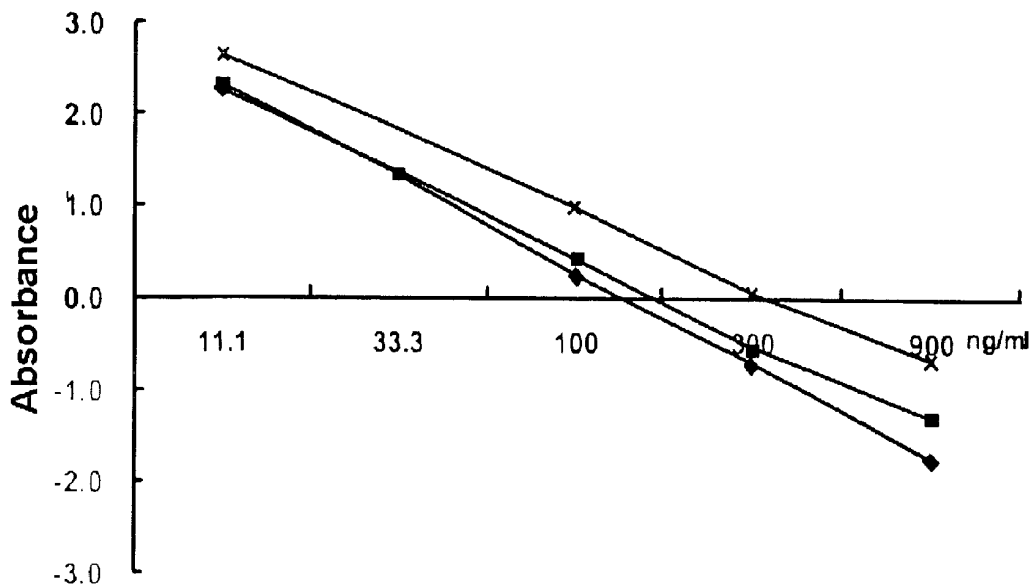
- (51) International Patent Classification<sup>7</sup>: G01N 33/68
- (21) International Application Number: PCT/KR02/01975
- (22) International Filing Date: 22 October 2002 (22.10.2002)
- (25) Filing Language: Korean
- (26) Publication Language: English
- (30) Priority Data:  
2002/21488 19 April 2002 (19.04.2002) KR
- (71) Applicant (for all designated States except US): **REGEN BIOTECH, INC.** [KR/KR]; C9231 KIST, 39-1 Hawolgok-dong, Sungbuk-ku, Seoul 136-791 (KR).
- (74) Agent: **LEE, Won-Hee**; 8th Fl., Sung-ji Heights II, 642-16, Yoksam-dong, Kangnam-ku, Seoul 135-080 (KR).
- (81) Designated States (national): AE, AG, AL, AM, AT, AU, AZ, BA, BB, BG, BR, BY, BZ, CA, CH, CN, CO, CR, CU, CZ, DE, DK, DM, DZ, EC, EE, ES, FI, GB, GD, GE, GH, GM, HR, HU, ID, IL, IN, IS, JP, KE, KG, KP, KZ, LC, LK, LR, LS, LT, LU, LV, MA, MD, MG, MK, MN, MW, MX, MZ, NO, NZ, OM, PH, PL, PT, RO, RU, SD, SE, SG, SI, SK, SL, TJ, TM, TN, TR, TT, TZ, UA, UG, US, UZ, VC, VN, YU, ZA, ZM, ZW.
- (84) Designated States (regional): ARIPO patent (GH, GM, KE, LS, MW, MZ, SD, SL, SZ, TZ, UG, ZM, ZW), Eurasian patent (AM, AZ, BY, KG, KZ, MD, RU, TJ, TM), European patent (AT, BE, BG, CH, CY, CZ, DE, DK, EE, ES, FI, FR, GB, GR, IE, IT, LU, MC, NL, PT, SE, SK, TR), OAPI patent (BF, BJ, CF, CG, CI, CM, GA, GN, GQ, GW, ML, MR, NE, SN, TD, TG).

- (72) Inventors; and
- (75) Inventors/Applicants (for US only): **KIM, In-San** [KR/KR]; #106-908 Dongsu Town, 1040 Maeho-dong, Soosung-ku, Taegu 706-140 (KR). **BAE, Jong-Sub** [KR/KR]; #1940-2 Songhyeon 1-dong, Dalseo-ku, Taegu 704-824 (KR).

Published:  
— with international search report

For two-letter codes and other abbreviations, refer to the "Guidance Notes on Codes and Abbreviations" appearing at the beginning of each regular issue of the PCT Gazette.

(54) Title: THE METHOD FOR MEASURING THE AMOUNT OF  $\beta$ ig-h3 PROTEIN AND DIAGNOSTIC KIT USING THE SAME



(57) Abstract: The present invention relates to the method for measuring the amount of  $\beta$  ig-h3 protein and diagnostic kit using the same. Particularly, it relates to the method for measuring the amount of  $\beta$  ig-h3 protein in the body fluids by specific binding reaction between  $\beta$  ig-h3 protein or recombinant proteins of fas-1 domain in the  $\beta$  ig-h3 protein (including their fragments or their derivatives) and their ligands and relates to diagnostic kit for the renal diseases, hepatic diseases, rheumatoid arthritis or cardiovascular diseases comprising  $\beta$  ig-h3 protein or recombinant proteins of fas-1 domain in the  $\beta$  ig-h3 protein (including their fragments or their derivatives) and their ligands. The method and kit of the present invention can be effectively used as sensitive diagnostic method for the extent of damage or progress of the renal diseases, hepatic diseases, rheumatoid arthritis or cardiovascular diseases.

WO 03/089935 A1

**THE METHOD FOR MEASURING THE AMOUNT OF  $\beta$  ig-h3  
PROTEIN AND DIAGNOSTIC KIT USING THE SAME**

FIELD OF THE INVENTION

5           The present invention relates to a method for measuring the amount of  $\beta$  ig-h3 protein and diagnostic kit using the same. Particularly, it relates to a method for measuring the amount of  $\beta$  ig-h3 protein in the body fluids by specific binding reaction between  $\beta$  ig-h3 protein or recombinant proteins of fas-1 domain  
10 in the  $\beta$  ig-h3 protein (including their fragments or their derivatives) and their ligands and relates to diagnostic kit for the renal diseases, hepatic diseases, rheumatoid arthritis or cardiovascular diseases  
15 comprising  $\beta$  ig-h3 protein or recombinant proteins of fas-1 domain in the  $\beta$  ig-h3 protein (including their fragments or their derivatives) and their ligands.

BACKGROUND ART OF THE INVENTION

20            $\beta$  ig-h3 is an extracellular matrix protein induced by TGF- $\beta$  in many kinds of cells including human melanoma cells, mammary epithelial cells, keratinocytes and lung fibroblasts. TGF- $\beta$  (transforming growth factor- $\beta$ ) is involved in the

growth and differentiation of many kinds of cells and the mammals have three kinds of TGF- $\beta$  (TGF- $\beta$  1, TGF- $\beta$  2 and TGF- $\beta$  3). The TGF- $\beta$  has been known to have many sophisticated functions such as growth control, immune response regulation, stimulating bone-formation, inducing cartilage specific macromolecule, stimulating the wounding healing, etc (Bennett, N.T. et al., *Am. J. Surg.* 1993, 165, 728). TGF- $\beta$  is expressed in epithelial cells during wound-healing, probably in order to stimulate the expression of integrin in keratinocytes during the regeneration of epithelial cells. Recent studies on TGF- $\beta$  expression disclosed that TGF- $\beta$  3 mRNA is expressed both in epithelia of normal skin and in epithelia under recovery from acute or chronic wounds while TGF- $\beta$  1 mRNA is expressed only in regenerated epithelia from acute wounds and TGF- $\beta$  2 mRNA is not expressed at all (Schmid, P. et al., *J. Pathol.*, 1993, 171, 191). Though the concrete theory on the mechanism of the above has not been established yet, TGF- $\beta$  is believed to play a key role in regeneration of epithelia.

$\beta$  ig-h3, a TGF- $\beta$  induced gene h3, was first found by Stonier et al. Precisely, the  $\beta$  ig-h3 was found during the search of cDNA library differential screening data from A549 cell line, a human lung

adenocarcinoma cell line treated with TGF- $\beta$  1 and it was reported that  $\beta$  ig-h3 was 20-fold increased 2 days after TGF- $\beta$  1 treatment (Stonier, J. et al., *DNA cell Biol.*, 1992, 11, 511). It was also confirmed by DNA sequencing that  $\beta$  ig-h3 is composed of 683 amino acids represented by SEQ. ID. No 1 having amino-terminal secretory sequence and carboxy-terminal Arg-Gly-Asp(RGD) enabling ligand recognition against some integrins.

10  $\beta$  ig-h3 contains 4 homogeneous internal repeated domains along with RGD motif, which are observed in membrane proteins or secretory proteins of mammals, insects, sea urchin, plants, yeasts and bacteria, etc in a state of well-preserved sequence. Proteins such as periostin, fasciclin I, sea urchin HLC-2, algal-CAM and mycobacterium MPB70 also contain the above preservative sequence (Kawamoto, T. et al., *Biochem. Biophys. Acta.*, 1998, 1395, 288). The homogeneous domain (referred as "fas-1 domain" hereinafter) preserved well in those proteins is composed of 110 - 140 amino acids containing two very preservative branches (H1 and H2) composed of 10 amino acids each.  $\beta$  ig-h3, periostin and fasciclin I have 4 fas-1 domains, HCL-2 has 2 and MPB70 has only 1 fas-1 domain. Some of those proteins, as cell adhesion molecules, are known to intermediate the attachment and the detachment of

cells although the biological functions of those proteins are not been fully explained yet. For example,  $\beta$  ig-h3, periostin and fasciclin I intervene the attachment of fibroblasts, osteoblasts and nerve cells, respectively and algal-CAM is confirmed to be a cell adhesion molecule residing in embryos of volvox (LeBaron, R. G. et al., *J. Invest. Dermatol.*, 104, 844, 1995; Horiuchi, K. et al., *J. Bone Miner. Res.*, 1999, 14, 1239; Huber, O. et al., *EMBO J.*, 1994, 13, 4212).

10

A purified  $\beta$  ig-h3 protein stimulates adhesion and spread of fibroblasts of skin but obstructs adhesion of A549, HeLa and WI-38 cells in serum-free medium. Especially, the  $\beta$  ig-h3 obstructs tumor cell growth, colony formation and appearance. In fact, tumor cell growth in nude mouse prepared by transfecting Chinese hamster ovary cells with  $\beta$  ig-h3 expression vector was remarkably decreased, which was clearly stated in US patent #5,714,588 and #5,599,788. In addition, a method for stimulating spread and adhesion of fibroblasts around the wounded area by contacting required amount of  $\beta$  ig-h3 with the wound was also stated in those patents. Therefore, as a cell adhesion molecule highly induced by TGF- $\beta$  in many cells,  $\beta$  ig-h3 plays an important role in cell growth, cell differentiation, wound healing, morphogenesis and cell

25

adhesion.

Although  $\beta$  ig-h3 is an effective useful material, it is not fully supplied since only the minimum  $\beta$  ig-h3 is generated in human body. In order to solve this problem, a method to prepare  $\beta$  ig-h3 by expressing it in eukaryotic cell system using genetic engineering was developed. In that case, though, the growth of cells producing  $\beta$  ig-h3 was much slower than that of other cells, resulting in difficulty in obtaining enough amount of  $\beta$  ig-h3 producing cells. Therefore, the present inventors established a purification method with which mass-expression of recombinant proteins containing whole  $\beta$  ig-h3 protein or some of its domains was possible using *E.coli* as a host, confirmed that those recombinant proteins supported cell adhesion and spread, and applied for a patent (Korea patent Application #2000-25664).

Cell adhesion activity of  $\beta$  ig-h3, a cell adhesion molecule, was first reported in human dermal fibroblasts and then disclosed in chondrocytes, peritoneal fibroblasts and human MRC5 fibroblasts as well. Cell adhesion activity of  $\beta$  ig-h3 was thought to be mediated by RGD motif residing in carboxyl terminal of  $\beta$  ig-h3 in the early days. But it was reported

later that RGD motif was not required for stimulating the spread of chondrocytes and a mature  $\beta$  ig-h3 in which RGD motif was deficient by carboxyl-terminus processing could hinder cell adhesion. Resultingly, it was confirmed that RGD motif was not an indispensable mediator for cell adhesion activity of  $\beta$  ig-h3. Recent studies have further confirmed that  $\beta$  ig-h3 stimulates cell adhesion and spread, especially the spread of fibroblasts, by working with integrin  $\alpha 1\beta 1$  independently while RGD motif of  $\beta$  ig-h3 is not required for cell spread mediated by  $\beta$  ig-h3 (Ohno, S., et al., *Biochim. Biophys. Acta*, 1999, 1451, 196). Besides, H1 and H2 peptides stored in  $\beta$  ig-h3 have been confirmed not to affect  $\beta$  ig-h3-mediated cell adhesion, suggesting that certain amino acid required for cell adhesion locates not in H1 and H2 but in other sites in  $\beta$  ig-h3. In order to support the above, the homology between repeated fas-1 domain of  $\beta$  ig-h3 and fas-1 domains of other proteins was analyzed by computer, resulting in the confirmation of the fact that there were many other preservative amino acids except H1 and H2 in  $\beta$  ig-h3 that participated in cell adhesion.

Therefore, the present inventors tried to find out a preservative motif participating in cell adhesion and detachment activity, and to prepare a peptide containing thereof. As a result, the present inventors

have prepared peptides NKDIL, EPDIM and their derivatives mediating cell adhesion and detachment by working with a  $\alpha 3\beta 1$  integrin using the second and the forth domains of  $\beta$  ig-h3 which is known as a cell adhesion molecule and have disclosed that two very preservative amino acids, aspartic acid (Asp) and isoleucine (Ile) which are located near H2 region in the second and the forth domains of  $\beta$  ig-h3, are required amino acids for cell adhesion and detachment activity, leading to the application for a patent (Korea Patent Application #2000-25665).

As of today, there was no report that  $\beta$  ig-h3 directly relates to diseases but  $\beta$  ig-h3 seems to be related with some human cancers. The relation of  $\beta$  ig-h3 expression with the progress of renal diseases, hepatic diseases, rheumatoid arthritis and cardiovascular diseases has not been explained yet and the possibility to take advantage of  $\beta$  ig-h3 protein for a diagnosis of the diseases by measuring the amount of  $\beta$  ig-h3 protein in body fluids has not been reported either.

Thus, the present inventors developed a method to measure the amount of  $\beta$  ig-h3 using the recombinant protein prepared by linking many  $\beta$  ig-h3 or the forth

fas-1 domain of  $\beta$  ig-h3 together as a standard protein  
and a diagnostic kit using the same. The present  
inventors completed this invention by confirming that  
the method and the kit of the present invention can be  
5 effectively used as sensitive diagnostic method for the  
extent of damage or progress of the renal diseases,  
hepatic diseases, rheumatoid arthritis or  
cardiovascular diseases.

10

SUMMARY OF THE INVENTION

It is an object of the present invention to  
provide a method to measure the amount of  $\beta$  ig-h3  
protein using the  $\beta$  ig-h3 protein or recombinant  
proteins including fas-1 domains of  $\beta$  ig-h3 and a  
15 diagnostic kit using the same.

BRIEF DESCRIPTION OF THE DRAWINGS

FIG. 1 is a diagram showing the structure of  $\beta$  ig-  
h3 recombinant protein,

20

I, II, III and IV: each domain,

▨ and ▩ : base sequence preservative area

A ;  $\beta$  ig-h3, B ; human  $\beta$  ig-h3, C ; mouse  $\beta$  ig-h3

FIG. 2 is a diagram showing the geometrical



× ; 1 : 1600,    ※ ; 1 : 2000,    ● ; 1 : 3200

FIG. 8 is a graph showing the quantitative ratios of the secondary antibody,

- 5        A ; fixed primary antibody at 1:1600,
- B ; fixed primary antibody at 1:2000,
- ◆ ; diluted secondary antibody at 1:1000,
- ; diluted secondary antibody at 1:2000,
- ; diluted secondary antibody at 1:3000

10

FIG. 9 is a graph showing the coating concentration of human  $\beta$  ig-h3 protein,

- ◆ ; 0.5  $\mu\text{g/ml}$ ,
- ; 1.0  $\mu\text{g/ml}$

15

FIG. 10 is a graph showing that both human  $\beta$  ig-h3 protein and mouse  $\beta$  ig-h3 protein can be used as standard proteins, which was confirmed by cross-test,

- 20        ◆ ; human  $\beta$  ig-h3 protein coating concentration 0.5  $\mu\text{g/ml}$ , primary anti-human  $\beta$  ig-h3 antibody 1:2000, secondary antibody 1:2000,

- ; human  $\beta$  ig-h3 protein coating concentration 0.5  $\mu\text{g/ml}$ , primary anti-mouse  $\beta$  ig-h3 antibody 1:2000, secondary antibody 1:2000,

- 25        ▲ ; mouse  $\beta$  ig-h3 protein coating concentration 0.5  $\mu\text{g/ml}$ , primary anti-human  $\beta$  ig-h3 antibody 1:2000, secondary antibody 1:2000,

× ; mouse  $\beta$  ig-h3 protein coating concentration  
0.5  $\mu\text{g}/\text{ml}$ , primary anti-mouse  $\beta$  ig-h3 antibody 1:2000,  
secondary antibody 1:2000

5 FIG. 11 is a graph showing that recombinant  $\beta$  ig-  
h3 D-IV(1x) protein and recombinant  $\beta$  ig-h3 D-IV(4x)  
protein can be used as standard proteins, which was  
confirmed by cross-test,

◆ of A ;  $\beta$  ig-h3 D-IV(1x) coating concentration  
10 0.5  $\mu\text{g}/\text{ml}$ , primary anti-human  $\beta$  ig-h3 antibody 1:2000,  
secondary antibody 1:2000,

■ of A ;  $\beta$  ig-h3 D-IV(4x) coating concentration  
0.5  $\mu\text{g}/\text{ml}$ , primary anti-human  $\beta$  ig-h3 antibody 1:2000,  
secondary antibody 1:2000,

15 ◆ of B ;  $\beta$  ig-h3 D-IV(1x) coating concentration  
0.5  $\mu\text{g}/\text{ml}$ , primary anti-mouse  $\beta$  ig-h3 antibody 1:2000,  
secondary antibody 1:2000,

■ of B ;  $\beta$  ig-h3 D-IV(4x) coating concentration  
0.5  $\mu\text{g}/\text{ml}$ , primary anti-mouse  $\beta$  ig-h3 antibody 1:2000,  
20 secondary antibody 1:2000

FIG. 12 is a photograph of an  
immunohistochemical-staining showing the expression  
pattern of  $\beta$  ig-h3 in renal tissue,

25 ► of A ; expression pattern at basal membrane of  
S3 proximal tubular cell,

▶ of B ; expression pattern at basal membrane of Bowman's capsule of glomerulus,

→ of B ; expression pattern at basal membrane of cortical thick ascending limb cell

5

FIG. 13 is a graph showing the levels of  $\beta$  ig-h3 in urine of diabetes-induced rats,

■ ; control group,

□ ; diabetes-induced rats by treatment of streptozotocin

10

FIG. 14 is a graph showing the individual level of  $\beta$  ig-h3 in urine of diabetes-induced rats of FIG. 13,

15

FIG. 15 is a graph showing the level of  $\beta$  ig-h3 in urine obtained from each a normal rat, a rat with nephron underdose, a rat with chronic rejection, a rat with recurrent GN and a rat showed CyA toxicity,

20

FIG. 16 is a graph showing the different concentrations of  $\beta$  ig-h3 protein by the day that were measured with urine samples of patients who have been under the treatment of plasmapheresis since focal segmental glomerulosclerosis (FSGS) was re-developed after kidney transplantation,

25

FIG. 17 is a graph showing the concentrations of  $\beta$  ig-h3 protein in urine taken from a living donor, cadaver donor, a patient with underdose and rejection that were measured before and after kidney  
5 transplantation,

FIG. 18 is a photograph of an immunohistochemical-staining showing the expression pattern of  $\beta$  ig-h3 protein in the injured blood vessels  
10 of diabetes-induced mouse,

A ; normal blood vessels,

B ; injured blood vessels,      L ; lumen

FIG. 19 is a graph showing the expression pattern  
15 of  $\beta$  ig-h3 protein in the culture of vascular smooth muscle cells,

\* ;  $p < 0.05$ ,

\*\* ;  $p < 0.01$

#### DETAILED DESCRIPTION OF THE INVENTION

20 To achieve the above object, the present invention provides a method for measuring the amount of  $\beta$  ig-h3 protein.

The present invention also provides a diagnostic kit for the renal diseases, hepatic diseases,  
25 rheumatoid arthritis or cardiovascular diseases using

the same.

Further features of the present invention will appear hereinafter.

5 The method for measuring the amount of  $\beta$  ig-h3 of the present invention consists of following steps:

1) Preparing  $\beta$  ig-h3 protein or recombinant proteins containing  $\beta$  ig-h3 fas-1 domain, their fragments or derivatives;

10 2) Preparing specific ligands against the above recombinant proteins, their fragments or derivatives of the above step 1; and

15 3) Measuring the amount of  $\beta$  ig-h3 protein of samples with the method using binding reaction of ligands of the above step 2 with the recombinant proteins, their fragments or derivatives of the above step 1.

In the step 1,  $\beta$  ig-h3 protein is either a human  
20  $\beta$  ig-h3 protein having amino acid sequence represented by SEQ. ID. No 3 or a mouse  $\beta$  ig-h3 protein having amino acid sequence represented by SEQ. ID. No 5. The structural elements of human and mouse  $\beta$  ig-h3 proteins are shown in FIG. 1. Hatched region and cross-hatched  
25 region of FIG. 1 show very well preserved sequences of repeated fas-1 domain I, II, III and IV and blank

region represents RGD motif.

$\beta$  ig-h3 protein has 4 fas-1 domains. For the  $\beta$  ig-h3 fas-1 domain of the above step 1, it is preferable to select one or more than two out of the first through the 4<sup>th</sup> fas-1 domain of  $\beta$  ig-h3 protein and is more preferable to use the 4<sup>th</sup> fas-1 domain. The 4<sup>th</sup> fas-1 domain could be used either individually or as a recombinant protein in which many fas-1 domains are repeatedly linked. For the recombinant protein, 1 to 10 fas-1 domains are required to be combined and using 1 to 4 fas-1 domains is more preferred. In the preferred embodiments of the present invention, the present inventors provided examples of using the 4<sup>th</sup> fas-1 domain only and recombinant proteins prepared by linking two, three and 4 forth fas-1 domains of  $\beta$  ig-h3 respectively.

The present inventors prepared proteins each represented by SEQ. ID. No 7, No 8, No 9 and No 10 having one of the 4<sup>th</sup> fas-1 domains containing 502<sup>nd</sup> - 632<sup>nd</sup> amino acids of  $\beta$  ig-h3, two, three and four of those respectively and named them " $\beta$  ig-h3 D-IV(1x)", " $\beta$  ig-h3 D-IV(2x)", " $\beta$  ig-h3 D-IV(3x)" and " $\beta$  ig-h3 D-IV(4x)" (see FIG. 4).

Epitope of  $\beta$  ig-h3 protein at which specific binding reaction with ligand is occurring and any other part of the protein containing peptides hydrolyzed by

protease can be used as fragments of the recombinant protein. Derivatives of the recombinant protein of the present invention can be prepared by covalent bond including phosphorylation or glycosylation, and non-  
5 covalent bond including ionic bond, coordinate bond, hydrogen bond, hydrophobic bond or van der Waals' bond. If fragments of the derivatives of the above recombinant proteins could be specifically bound to ligands, they would be included in the category of the  
10 proteins of the present invention.

For the preparation of the standard protein of the present invention, the construction of expression vector and the transformation could be performed by the conventional method.

15

In the step 2, ligands that are specifically binding to  $\beta$  ig-h3,  $\beta$  ig-h3 fas-1 domain, fragments or derivatives thereof can be confirmed by observing the binding reaction of ligands with the protein or  
20 recombinant protein of the step 1. There are many kinds of ligands such as antibody, RNA, DNA, organic compounds including lipid, protein or organic salts, or inorganic compounds including metal ions or inorganic salts, and preferable ligand is a primary antibody  
25 against  $\beta$  ig-h3 or  $\beta$  ig-h3 fas-1 domain of the step 2 made by using the protein or the recombinant protein

(fragments or derivatives included) of the step 1 as an antigen. The primary antibody can be prepared by the conventional method and monoclonal antibody or polyclonal antibody can be used.

5

In the step 3, the amount of  $\beta$  ig-h3 protein included in sample was measured using the specific binding reaction of ligand with  $\beta$  ig-h3 protein, its fragments or derivatives. Where ligand-binding reaction is occurring, even pieces of those fragments or derivatives can be used. Quantification assay using antigen-antibody binding reaction in which  $\beta$  ig-h3 protein is used as an antigen is preferably used. It is more preferable to select one way from a group consisting of immunoblotting (*Current Protocols in Molecular Biology*, vol 2, chapter 10.8; David et al., *Cells (a Laboratory manual)*, vol 1, chapter 73), immunoprecipitation (*Current Protocols in Molecular Biology*, vol 2, chapter 10.16; *Cells(a Laboratory manual)*, vol 1, chapter 72), ELISA (*Current Protocols in Molecular Biology*, vol 2, chapter 11.2; *ELISA Theory and Practice*, John R. Crowther; *The ELISA Guidebook*, John R. Crowther), RIA (Radioimmuno assay) (Nuklearmedizin 1986 Aug ;25(4):125-127, Tumor markers as target substances in the radioimmunologic detection of malignancies. von Kleist S; Mariani G. *Ann*

10

15

20

25

*Oncol* 1999 ;10 Suppl 4:37-40), protein chip (Daniel Figeys *et.al*, *Electrophoresis* 2001, 22, 208-216; Albala JS. *Expert Rev Mol Diagn* 2001 Jul;1 (2):145-152), rapid assay (Kasahara Y and Ashihara Y, *Clinica Chimica Acta* 267 (1997), 87-102; Korea Patent Application #2000-46639) or microarray (Vivian G. cheung *et al*, *Nature genetics* 1999, 21, 15-19; Robert J. Lipshutz *et al*, *Nature genetics* 1999, 21, 20-24; Christine Debouck and Peter N. Goodfellow, *Nature genetics* 1999, 21, 48-50; DNA Microarrays, M. Schena), and ELISA is the most preferable method. Mass-analysis of samples is also possible using biological microchip and automatic microarray system along with ELISA, and simple self-diagnostic method using urine can be developed therefrom.

According to the preferable embodiments of the present invention, the method for measuring the amount of  $\beta$  ig-h3 protein with competition assay using ELISA comprises the following steps;

1) Coating  $\beta$  ig-h3 protein or recombinant protein containing  $\beta$  ig-h3 fas-1 domain, its fragments or derivatives to matrix;

2) Reacting antibody against the protein of the above step 1, its fragments or derivatives with sample;

3) Adding the reactant of the above step 2 to the

coated protein of step 1 and waiting for reaction, and then washing thereof; and

4) Adding the secondary antibody to the reactant of the above step 3 for further reaction, and then  
5 measuring OD.

All kinds of matrix commonly used are good for the matrix of the above step 1 and especially, nitrocellulose membrane, polyvinyl plate (for example;  
10 96 well plate), polystyrene plate and glass slide can be used as a matrix.

The secondary antibody of the above step 4 is labeled with coloring enzymes, fluorescent materials, luminous materials, radioisotopes or metal chelates.  
15 Every commonly used labeling materials are available for this invention and peroxidase, alkaline phosphatase,  $\beta$ -D-galactosidase, malate dehydrogenase, staphylococcus nuclease, horseradish peroxidase, catalase and acetylcholine esterase are preferable  
20 coloring enzymes. As for fluorescent materials, fluorescein isothiocyanate, phycobilin protein, rhodamine, phycoerythrin, phycocyanin, orthophthalic aldehyde, etc are preferably used.

As another labeling materials for the secondary  
25 antibody in addition to coloring enzymes or fluorescent materials, luminous materials such as isoluminol,

lucigenin, luminol, acridiniumester, imidasol, acridine salt, luciferin, luciferase and aequorin or radioisotopes such as  $^{125}\text{I}$ ,  $^{127}\text{I}$ ,  $^{131}\text{I}$ ,  $^{14}\text{C}$ ,  $^3\text{H}$ ,  $^{32}\text{P}$  and  $^{35}\text{S}$  are preferably used. Besides, micromolecular heptenes like biotine, dinitrophenyl, pyridoxil or fluoresamine can be also conjugated with antibody.

In the case of using coloring enzymes in step 4, coloring substrates should be used to measure the activity of the enzyme and every material that are able to develop color of the enzyme bound to the secondary antibody can be used as a coloring substrate. 4-chloro-1-naphtol (4CN), Diaminobenzidine (DAB), Aminoethyl carbazole (AEC), 2,2'-Azino-bis(3-ethylbenzothiazoline-6-sulfonic acid) (ABTS), o-Phenylenediamine (OPD) and Tetramethyl Benzidine (TMB) are preferably used as coloring substrates.

As for the samples of the above step 2, all kinds of body fluids of patients suffering from  $\beta$  ig-h3 related diseases can be used. Especially, urines, bloods or synovial fluids of patients suffering from renal diseases, hepatic diseases, rheumatoid arthritis or cardiovascular diseases are preferable.

In order to confirm whether the method for measuring the amount of  $\beta$  ig-h3 protein of the present invention is correct, the present inventors used

recombinant protein containing mouse  $\beta$  ig-h3 or the 4<sup>th</sup> fas-1 domain of  $\beta$  ig-h3 as a standard protein and compared the result with that from using human  $\beta$  ig-h3 as a standard protein.

5           The optimum coating concentration of human  $\beta$  ig-h3 protein and the quantitative ratio of antibody were determined for the method for measuring  $\beta$  ig-h3 of the present invention. The best quantitative ratio of the primary anti-human  $\beta$  ig-h3 antibody was 1:1600 and  
10 1:2000 (see FIG. 7), and the best quantitative ratio of the secondary antibody was 1:2000 (see FIG. 8). The proper concentration of human  $\beta$  ig-h3 protein was 1.0  $\mu$ g/ml and 0.5  $\mu$ g/ml, but 0.5  $\mu$ g/ml was more preferable as coating concentration (see FIG. 9).

15           Therefore, the present inventors decided the optimum coating concentration of human  $\beta$  ig-h3 standard protein to be 0.5  $\mu$ g/ml and the best diluting ratio of the primary anti-human  $\beta$  ig-h3 antibody and the secondary antibody to be 1:2000, respectively.

20           The present inventors also determined protein concentration and the quantitative ratio of the primary antibody and the secondary antibody using mouse  $\beta$  ig-h3, recombinant  $\beta$  ig-h3 D-IV(1x), ig-h3 D-IV(2x), ig-h3 D-IV(3x) and  $\beta$  ig-h3 D-IV(4x). Precisely, made coating  
25 concentration of each protein at 0.5  $\mu$ g/ml, diluted the

primary anti-human  $\beta$  ig-h3 antibody and the secondary antibody at 1:2000 respectively and performed quantitative assay. Diluted the primary anti-mouse  $\beta$  ig-h3 antibody and the secondary antibody at 1:2000, and performed quantitative assay as well.

As a result, graphs with straight line were made for all the cases, suggesting the ratios were the best and the measuring range of them was between 11 ng/ml - 900 ng/ml, meaning there was not much difference in the measuring range among them all (see FIG. 11 and FIG. 12).

From the above results, it was confirmed that standard protein could be any of human  $\beta$  ig-h3, mouse  $\beta$  ig-h3, recombinant  $\beta$  ig-h3 D-IV(1x), ig-h3 D-IV(2x), ig-h3 D-IV(3x) and  $\beta$  ig-h3 D-IV(4x), and either anti-human  $\beta$  ig-h3 antibody or anti-mouse  $\beta$  ig-h3 antibody could be used as the primary antibody.

In this invention, the preferable coating concentration of standard protein is 0.1 - 2.0  $\mu$ g/ml and 0.5 - 1.0  $\mu$ g/ml is more preferable. The preferable diluting ratio of the primary and the secondary antibody is 1:400 - 1:3200 and 1:2000 is more preferable.

The present invention provides a diagnostic kit for renal diseases, hepatic diseases, rheumatoid

arthritis or cardiovascular diseases, with which the diseases are diagnosed by measuring the amount of  $\beta$  ig-h3 protein in the body fluids of patients.

The diagnostic kit of the present invention includes  $\beta$  ig-h3 protein or recombinant proteins of fas-1 domain in the  $\beta$  ig-h3 protein (including their fragments or their derivatives) and their ligands. At this time, as preferable specific ligands, antibodies against  $\beta$  ig-h3 protein or  $\beta$  ig-h3 fas-1 domains are used. The kit can additionally include buffer solution, secondary antibody, washing solution or coloring substrate.

The diagnostic kit of the present invention is available for the diagnosis of various diseases such as renal diseases, hepatic diseases, rheumatoid arthritis or cardiovascular diseases by measuring the amount of  $\beta$  ig-h3 protein in the body fluids.

It is possible to diagnose renal diseases by measuring the amount of  $\beta$  ig-h3 protein on the basis of the fact that  $\beta$  ig-h3 expression is induced by TGF- $\beta$  that plays an important role in the development of renal diseases. For the confirmation of the above, measured the amount of  $\beta$  ig-h3 in urine of diabetic patients. As a result, the amount of  $\beta$  ig-h3 in urine of patients with diabetic renal diseases including

microalbuminuria was about five-fold higher than that of normal person. Some diabetic patients without renal diseases also showed higher  $\beta$  ig-h3 amount than normal. Considering the above result,  $\beta$  ig-h3 level in urine  
5 seems to reflect the extent of renal damage and high  $\beta$  ig-h3 level of some diabetic patients without renal diseases suggests that their kidneys are already damaged to some degree, though not showing any clinical troubles yet. Therefore, measuring the amount of  $\beta$  ig-h3  
10 h3 in patients' urine is a highly sensitive and important diagnostic method that can reflect the damage of kidneys in the early stage.

In order to confirm whether the  $\beta$  ig-h3 concentration in a diabetic patient's urine can reflect  
15 the damage of a kidney in the early stage, measured the  $\beta$  ig-h3 concentration of a diabetic animal. As a result, the  $\beta$  ig-h3 concentration was 4-fold increased 5 days after inducing diabetes (see FIG. 13). Observed the changes of  $\beta$  ig-h3 concentration in each individual  
20 after inducing diabetes, resulting in the great increase of  $\beta$  ig-h3 concentration in urine after inducing diabetes (see FIG. 14). On the 5<sup>th</sup> day after inducing diabetes, blood urea and creatine were normal and kidney tissues seemed normal. Thus, the great  
25 increase of  $\beta$  ig-h3 amount in urine on the fifth day suggests that there was the minimum damage in kidney

already, which could not be detected by the traditional test methods.

The present inventors further confirmed the relation between kidney damage and  $\beta$  ig-h3 concentration by measuring  $\beta$  ig-h3 amount in urine of preoperative and postoperative patients with kidney transplantation. As a result, the high  $\beta$  ig-h3 concentration of a preoperative patient dropped gradually after successful operation. But in the case of No. 5 patient whose kidney function was not recovered even after operation, the  $\beta$  ig-h3 concentration was still great (see FIG. 2). Considering all the above results, it is for sure that the  $\beta$  ig-h3 concentration sensitively reflects the extent of kidney damage.

The present inventors also measured the  $\beta$  ig-h3 concentration in urine of renal failure patients. As a result, all of those renal failure patients showed great  $\beta$  ig-h3 concentration in their urine. Thus, it was confirmed again that  $\beta$  ig-h3 amount in urine reflects kidney damage sensitively even in the early stage, so that measuring the  $\beta$  ig-h3 amount is very important diagnostic method for various renal diseases (see Table 3).

25

Determining if a chronic hepatitis patient is

developing to a hepatocirrhosis patient is very important but there is no way to catch that so far. The most crucial factor for the development of hepatocirrhosis is TGF- $\beta$ . Thus,  $\beta$  ig-h3 whose expression is induced by TGF- $\beta$  could be possibly increased in blood as hepatocirrhosis goes on. If so, the amount of  $\beta$  ig-h3 can also reflect the extent of hepatocirrhosis. In fact,  $\beta$  ig-h3 expression was confirmed to be greater as hepatocirrhosis became serious by immunohistological test with liver tissues of hepatitis patients. The present inventors subdivided patient's condition into several grades and stages based on the biopsy results of chronic hepatitis patients and investigated blood  $\beta$  ig-h3 concentration of each stage and grade. Chronic hepatitis patients showed higher blood  $\beta$  ig-h3 concentration than normal people.  $\beta$  ig-h3 concentration of lower stage and grade was confirmed to be higher than that of higher stage and grade (see Table 5). Condition of a patient in grade 3 and stage 3 is that hepatocirrhosis has been developed seriously and its activity went through the peak already. Meanwhile, a patient in grade 1 and 2 and stage 1 and 2 shows the condition that inflammatory reaction is developing very actively. Thus,  $\beta$  ig-h3 concentration implies the activity of hepatocirrhosis, so that the development of hepatocirrhosis can be

observed by measuring blood  $\beta$  ig-h3 concentration regularly.

$\beta$  ig-h3 concentration in synovial fluid of  
5 rheumatoid arthritis patients and osteoarthritis  
patients was also measured. As a result, two-fold  
higher  $\beta$  ig-h3 concentration in synovial fluid of  
rheumatoid arthritis patients was observed, suggesting  
that measuring  $\beta$  ig-h3 concentration in synovial fluid  
10 can be an effective way to diagnose osteoarthritis and  
rheumatoid arthritis (see Table 6).

In addition, the expression patterns of  $\beta$  ig-h3 in  
normal and damaged blood vessels of diabetic mice were  
15 investigated by immunohistochemical methods in order to  
confirm the relation between the expression of  $\beta$  ig-h3  
and vascular diseases. As a result,  $\beta$  ig-h3 protein  
was expressed much greatly in damaged blood vessels of  
diabetic mice than in normal blood vessels (see FIG.  
20 18). Based on that  $\beta$  ig-h3 expression is induced by  
TGF- $\beta$  that plays an important role in the development  
of vascular diseases, TGF- $\beta$  1 inducing  $\beta$  ig-h3  
expression in vascular smooth muscle cells forming  
blood vessels was investigated. As a result, it was  
25 confirmed that  $\beta$  ig-h3 expression increases as the  
amount of TGF- $\beta$  1 increases (see FIG. 19).

The expression of  $\beta$  ig-h3 in blood and tissues reflects the damage of them. Thus, it was confirmed that the method for measuring the amount of  $\beta$  ig-h3 protein of the present invention can be effectively  
5 used for the diagnosis of various vascular diseases.

Therefore, the diagnostic kit measuring the amount of  $\beta$  ig-h3 protein of the present invention is very effective in use since it reflects the extent of  
10 damage and progress of renal diseases, hepatic diseases, rheumatoid arthritis or cardiovascular diseases.

#### EXAMPLES

Practical and presently preferred embodiments of  
15 the present invention are illustrative as shown in the following Examples.

However, it will be appreciated that those skilled in the art, on consideration of this disclosure, may make modifications and improvements within the  
20 spirit and scope of the present invention.

#### Example 1: Preparation of standard proteins and primary antibodies

<1-1> Separation of human  $\beta$  ig-h3 and mouse  $\beta$  ig-h3

25 The present inventors have prepared human and

mouse  $\beta$  ig-h3 proteins. The structural elements of human and mouse  $\beta$  ig-h3 proteins are shown in FIG. 1. Hatched region and cross-hatched region of FIG. 1 show very well preserved sequences of repeated fas-1 domain I, II, III and IV and blank region represents RGD motif.

$\beta$  ig-h3 cDNA (pBS  $\beta$  ig-h3; obtained by cloning cDNA of human skin papilloma cells) having a base sequence represented by SEQ. ID. No 2 cloned in pBluescript SK (-) vector was digested with *Nde* I and *Bgl* II, resulting in the preparation of DNA fragments having blunt ends. The above DNA fragments were subcloned into *EcoR* V and *EcoR* I sites of pET-29 $\beta$  vector (purchased from Novagen). The protein having a amino acid sequence of 69 - 653 amino acids of  $\beta$  ig-h3 represented by SEQ. ID. No 3 was separated and named human  $\beta$  ig-h3.

Next,  $\beta$  ig-h3 cDNA was digested with *BamH* I and *Xho* I, resulting in the preparation of DNA fragments having a base sequence represented by SEQ. ID. No 4. The above DNA fragments were subcloned into *BamH* I and *Xho* I sites of pET-29 $\beta$  vector. The protein having a amino acid sequence of 23 - 641 amino acids of  $\beta$  ig-h3 represented by SEQ. ID. No 5 was separated and named mouse  $\beta$  ig-h3.

In order to express the above human and mouse  $\beta$  ig-h3 proteins, *E.coli* BL21(DE3) cells were transformed. The transformants were cultured in LB medium containing kanamicine (50  $\mu\text{g}/\text{ml}$ ) at 37°C until their OD<sub>595</sub> was reached to 0.5 - 0.6. During the culture, the expression of  $\beta$  ig-h3 protein was induced by treating 1 mM isopropyl- $\beta$ -D-(-)thiogalactopyranoside (IPTG) at 37°C for 3 hours.

10 Pellets of *E.coli* cells were resuspended in cell lysis buffer (50 mM Tris-HCl, pH 8.0, 100 mM NaCl, 1 mM EDTA, 1% Triton X-100, 1 mM phenylmethane sulfonyl fluoride (referred as "PMSF" hereinafter) and 0.5 mM DTT), and then crushed by ultrasonification. The procedure was repeated 5 times.

15 The above solution was centrifuged and the insoluble inclusion bodies containing  $\beta$  ig-h3 were dissolved in 20 mM Tris-HCl buffer solution containing 0.5 M NaCl, 5 mM imidazol and 8 M urea. The proteins were purified by using Ni-NTA resin (Qiagen). The proteins were dialyzed one after another in 20 mM Tris-Cl buffer solution containing 50 mM NaCl with urea starting from high concentration to low concentration for the purification and the results were confirmed by SDS-PAGE.

25 As a result, it was confirmed that the human  $\beta$  ig-

h3 and the mouse  $\beta$  ig-h3 proteins of the present invention were purified (FIG. 2).

<1-2> Construction and separation of  $\beta$  ig-h3 D-IV(1x)  
5 and  $\beta$  ig-h3 D-IV(4x)

The DNA fragment represented by SEQ. ID. No 6 encoding the 4<sup>th</sup> domain that corresponds to 498<sup>th</sup> - 637<sup>th</sup> amino acids of human  $\beta$  ig-h3 represented by SEQ. ID. No 1 was amplified by PCR. The PCR product was  
10 cloned into pET-29 $\beta$  vector to construct the expression vector of the 4<sup>th</sup> domain. The present inventors named the expression vector of the 4<sup>th</sup> domain " $\beta$  ig-h3 D-IV".

Base sequence that corresponds to the 4<sup>th</sup> domain  
15 was synthesized by PCR, and the 3' end of the PCR product was blunted by using klenow fragment. This PCR product was inserted into *EcoR* V site of the above expression vector p $\beta$  ig-h3 D-IV, and named p $\beta$  ig-h3 D-IV(2x). Inserted fragment of p $\beta$  ig-h3 D-IV(2x) was  
20 digested with *EcoR* V and *Xho* I, and the 3' end of the fragment was blunted by using klenow fragment. This fragment was inserted into *EcoR* V site of p $\beta$  ig-h3 D-IV, and named p $\beta$  ig-h3 D-IV(3x). The fragment having blunted 3' end was also inserted into *EcoR* V site of  
25 p $\beta$  ig-h3 D-IV(2x), and named p $\beta$  ig-h3 D-IV(4x) (FIG. 3). His-tag was made by linking 6 histidine residues to

carboxyl terminal of the DNA fragment to purify proteins with Ni-NTA resin (Qiagen).

*E.coli* BS21(DE3) cells were transformed with the expression vectors. The transformants were cultured in LB medium containing kanamidine (50  $\mu\text{g}/\text{ml}$ ). Pellets of *E.coli* cells were resuspended in cell lysis buffer (50 mM Tris-HCl, pH 8.0, 100 mM NaCl, 1 mM EDTA, 1% Triton X-100, 1 mM phenylmethane sulfonyl fluoride (referred as "PMSF" hereinafter) and 0.5 mM DTT), and then crushed by ultrasonification. The procedure was repeated 5 times. The above solution was centrifuged to obtain supernatants. The proteins were purified by using Ni-NTA resin (Qiagen) from the supernatants, and confirmed with SDS-PAGE.

As a result, it was confirmed that  $\beta$  ig-h3 D-IV(1x) having an amino acid sequence represented by SEQ. ID. No 7,  $\beta$  ig-h3 D-IV(2x) having an amino acid sequence represented by SEQ. ID. No 8,  $\beta$  ig-h3 D-IV(3x) having an amino acid sequence represented by SEQ. ID. No 9 and  $\beta$  ig-h3 D-IV(4x) having an amino acid sequence represented by SEQ. ID. No 10 proteins were expressed. All the above proteins contained the 4<sup>th</sup> domain of human  $\beta$  ig-h3 (FIG. 4).

25

<1-3> Preparation and separation of primary antibody

The primary antibody was prepared by using human  $\beta$  ig-h3 and mouse  $\beta$  ig-h3 proteins separated in Example <1-1> as an antigen. The proteins were subcutaneously injected on the back of rabbits. For the first injection, 200  $\mu$ g of proteins were mixed with complete Freund's adjuvant and then injected. For the 2<sup>nd</sup> to 5<sup>th</sup> injection, 100  $\mu$ g of proteins were mixed with incomplete Freund's adjuvant and then injected at 3-week intervals. Venous blood was collected and left at room temperature for 2 hours. Following centrifugation (10,000  $\times$  g, 10 minutes), the supernatants containing the primary antibody were obtained. The supernatants were kept at -20°C for further usage (FIG. 5).

15 Example 2 Determination of coating concentration of human  $\beta$  ig-h3 protein and quantitative ratio of antibody

<2-1> Determination of quantitative ratio of the primary antibody

20 In order to determine the quantitative ratio of the primary antibody to human  $\beta$  ig-h3 protein, the human  $\beta$  ig-h3 was diluted (0.5  $\mu$ g/ml) with 20 mM carbonate-bicarbonate solution (pH 9.6, 0.02% sodium azide contained). The  $\beta$  ig-h3 solution was added in each well of 96-well plate (200  $\mu$ l/well) and coated

25

thereof at 4°C for overnight. The primary anti-human  $\beta$  ig-h3 antibody was serially diluted with diluting solution (saline-phosphate buffer solution/Tween 80) at 1:200, 1:400, 1:800, 1:1600, 1:2000 and 1:3200, and added into the coated 96-well plate. The secondary antibody (1:5000) was also added thereto and reacted thereof at room temperature for 1 and half hours. Substrate solution (prepared by dissolving o-phenyldiamine in methanol (10 mg/ml), diluting with distilled water at 1:100, and mixing with 10  $\mu$ l of 30% hydrogen peroxide solution) was also added thereto and reacted thereof at room temperature for 1 hour. The reaction was terminated by adding 50  $\mu$ l of 8 N sulfuric acid solution, and ELISA was performed (O.D 492 nm).

As a result, it was confirmed that the best quantitative ratio of the primary anti-human  $\beta$  ig-h3 antibody was 1:1600 and 1:2000 (FIG. 7)

<2-2> Determination of quantitative ratio of secondary antibody

In order to determine the quantitative ratio of the secondary antibody, the human  $\beta$  ig-h3 protein was coated on the plate (0.5  $\mu$ g/ml). Added the primary anti-human  $\beta$  ig-h3 antibody thereto (1:1600 and 1:2000). Added the secondary antibody thereto (1:1000, 1:2000 and 1:3000 respectively) and reacted thereof. ELISA was

performed with the same method as the above Example <2-1>.

As a result, it was confirmed that the best quantitative ratio of the secondary antibody was 1:2000 (FIG. 8).

<2-3> Determination of coating concentration of human  $\beta$  ig-h3 protein

In order to determine the coating concentration of human  $\beta$  ig-h3 protein, the primary anti-human  $\beta$  ig-h3 antibody was diluted at 1:2000, the secondary antibody was diluted at 1:2000, the human  $\beta$  ig-h3 protein was coated on the plate at 0.5  $\mu\text{g}/\text{ml}$  and 1.0  $\mu\text{g}/\text{ml}$  respectively, and then ELISA was performed.

As a result, it was confirmed that the proper concentration of human  $\beta$  ig-h3 protein was both 1.0  $\mu\text{g}/\text{ml}$  and 0.5  $\mu\text{g}/\text{ml}$ , but 0.5  $\mu\text{g}/\text{ml}$  was more preferable as coating concentration since  $R^2$  value approaches 1 best with that concentration (FIG. 9).

From the above results, the present inventors decided the optimum coating concentration of human  $\beta$  ig-h3 standard protein to be 0.5  $\mu\text{g}/\text{ml}$  and the best diluting ratio of the primary anti-human  $\beta$  ig-h3 antibody and the secondary antibody to be 1:2000, respectively.

The values obtained from the above result were

log transformed by Robard formula (Robard, 1971) represented by the below <Mathematical Formula 1>. Resultingly, a line was formed from 11 ng/ml to 900 ng/ml, which was the possible range in measurement. It was also confirmed that measurement was possible even to the range of 10 ng/ml with the above reaction condition (FIG. 10).

<Mathematical Formula 1>

$$\log b = \log e^{b/(100-b)}$$

In the above formula, b represents the percentage to OD of the well that does not include any antigen in each concentration.

Example 3: Measurement of quantitative range of mouse  $\beta$  ig-h3, recombinant  $\beta$  ig-h3 D-IV(1x) and  $\beta$  ig-h3 D-IV(4x) by cross-test

The present inventors also determined protein concentration and the quantitative ratio of the primary and the secondary antibody using mouse  $\beta$  ig-h3, recombinant  $\beta$  ig-h3 D-IV(1x) and  $\beta$  ig-h3 D-IV(4x). Particularly, made coating concentration of each protein 0.5  $\mu$ g/ml and the quantitative ratio of the primary anti-human  $\beta$  ig-h3 antibody and the secondary antibody to be 1:2000 for the experiments. Regulated

the quantitative ratio of the primary anti-mouse  $\beta$  ig-h3 antibody and the secondary antibody to be 1:2000 as well.

As a result, graphs with straight line were made  
5 for all the cases, suggesting the ratio was the best and the ranges of them were between 11 ng/ml and 900 ng/ml, meaning there were not much differences in the range of measurement (FIG. 11 and FIG. 12).

From the above results, it was confirmed that  
10 standard protein could be any of human  $\beta$  ig-h3, mouse  $\beta$  ig-h3, recombinant  $\beta$  ig-h3 D-IV(1x) and  $\beta$  ig-h3 D-IV(4x), and either anti-human  $\beta$  ig-h3 antibody or anti-mouse  $\beta$  ig-h3 antibody could be used as the primary antibody.

15 Example 4: Relationship between renal diseases and  $\beta$  ig-h3 expression

<4-1> Measurement of  $\beta$  ig-h3 in diabetics

The present inventors have confirmed the  
relationship between renal diseases and  $\beta$  ig-h3  
20 expression on the basis of the fact that  $\beta$  ig-h3 expression is induced by TGF- $\beta$  that plays an important role in the development of renal diseases. For the confirmation, measured the amount of  $\beta$  ig-h3 in urine of diabetics. Particularly, mixed 110  $\mu$ l of urine of  
25 diabetic and 110  $\mu$ l of the primary antibody (1:1000) in

a round-bottomed plate, and cultured thereof at 37°C for 1 hour. Added 200  $\mu$ l of the above mixture to  $\beta$  ig-h3-coated plate and reacted thereof at room temperature for 30 minutes. Stopped the reaction by adding secondary antibody-substrate stop solution, and performed ELISA (O.D 492 nm).

<Table 1>

Concentration of  $\beta$  ig-h3 in diabetics' urine

Samples	$\beta$ ig-h3 (ng/ml)
Normal	31.0 (n=93, $\pm$ 8.6)
Type II DM	101.9 (n=51, $\pm$ 17.1)
Type II DM + microalbuminuria	127.4 (n=30, $\pm$ 27.7)
Type II DM + overt proteinuria	105.4 (n=19, $\pm$ 14.9)
Type II DM + CRF	153.6 (n=93, $\pm$ 28.1)

10

As a result, the amount of  $\beta$  ig-h3 in urine of diabetic renal disease patients including microalbuminuria was about five-fold higher than that of normal. Some diabetic patients without renal diseases also showed higher  $\beta$  ig-h3 amount than normal. Considering the above results,  $\beta$  ig-h3 level in urine seems to reflect the extent of renal damage and high  $\beta$  ig-h3 level of some diabetic patients without renal diseases suggests that their kidneys have already been damaged to some degree, though not showing any clinical

20

troubles yet. Therefore, measuring the amount of  $\beta$  ig-h3 in patients' urine is a highly sensitive and important diagnostic method that can reflect the damage of kidneys in the early stage.

5

<4-2> Measurement of  $\beta$  ig-h3 in diabetic animal model

In order to confirm whether the  $\beta$  ig-h3 concentration in diabetic's urine can reflect the renal damage in the early stage, the present inventors measured the  $\beta$  ig-h3 amount of diabetic animals.

10

Diabetes was induced in Sprague-Dawley (SD) rats by injecting streptozotosin (60 mg/kg), a kind of diabetes-inducing drug, into the peritoneal cavity of the rats. Confirmed that diabetes was induced by measuring the blood-glucose of the rats. Taken urines from the rats on the fifth day after inducing diabetes, and measured the  $\beta$  ig-h3 amount with the same method of Example <4-1>

15

As a result, the  $\beta$  ig-h3 amount was 4-fold increased 5 days after inducing diabetes ( $56.9 \pm 6.4$  ng/creatinine mg :  $230.4 \pm 131.8$  ng/creatinine mg, FIG. 13). Observed the change of  $\beta$  ig-h3 amount in each individual after inducing diabetes, resulting in the great increase of  $\beta$  ig-h3 amount in urine after inducing diabetes (FIG. 14). On the fifth day after

20

25

inducing diabetes, blood urea and creatine were normal and renal tissues seemed normal. Thus, the great increase of  $\beta$  ig-h3 amount in urine on the fifth day after inducing diabetes suggested that there was the minimum damage in kidney already, which could not be detected by the conventional methods.

<4-3> Measurement of  $\beta$  ig-h3 in patients operated on kidney transplantation

The present inventors confirmed the correlation between renal damage and  $\beta$  ig-h3 amount by measuring  $\beta$  ig-h3 amount in urines of patients before and after kidney transplantation. The results were presented in Table 2.

15

<Table 2>

Changes of  $\beta$  ig-h3 concentration in patients before and after kidney transplantation

Day / Patients	-6	-5	-4	-3	-2	-1	0	1	2	3	4	5	6	Success or not
1				376.9	199.2	105.6	59.1	67.6	84.5	63.1	61.2	39.7	9.9	O
2		149.2	147.3	133.5	159.5	148.3	147.3	96.0	74.0	40.7	20.3	27.9	26.4	O
3	107.8	95.8	101.4	102.3	102.2	106.1	106.6	125.5	83.5	49.4	36.5	33.3	23.2	O
4							298.8	208.1	140.5	169.9	188.4	76.3	24.4	O
5							188.6	160.7	469.3	290.9	494.7	324.4	-	X

20

As a result, the high  $\beta$  ig-h3 amount of pre-operative patients dropped gradually after successful operation. But in the case of No 5 patient whose renal function was not recovered even after kidney transplantation, the  $\beta$  ig-h3 amount was still great. Considering all the above results, it is for sure that the amount of  $\beta$  ig-h3 sensitively reflects the extent of kidney damage.

10 <4-4> Measurement of  $\beta$  ig-h3 in patients with renal failure

The present inventors measured the  $\beta$  ig-h3 amount in urines of patients with renal failure. As a result, all of those patients showed great  $\beta$  ig-h3 amount in their urines (Table 3).

<Table 3>

Concentrations of  $\beta$  ig-h3 in urines of patients with renal failure

20

Samples	$\beta$ ig-h3 (ng/mg)
Normal	31.0 (n=93, $\pm$ 8.6)
Chronic renal failure	335.4 (n=9, $\pm$ 56.0)

<4-5> Measurement of  $\beta$  ig-h3 in patients with kidney related diseases

In order to investigate whether  $\beta$  ig-h3 was differently expressed in patients with renal diseases, the present inventors measured the  $\beta$  ig-h3 concentration in urines taken from patients who showed normal signs after kidney transplantation, patients whose transplanted kidney was smaller, patients who showed chronic rejection, patients with re-developed pyelitis and patients who had cyclosporine toxicity with the same method of Example <4-1>.

10

As a result, patients with normal signs after kidney transplantation showed 39.4 ng/creatinine mg of  $\beta$  ig-h3 concentration at average while patients with chronic rejection, re-developed pyelitis and cyclosporine toxicity showed greatly increased  $\beta$  ig-h3 concentration (140.8, 175.4 and 90.9 ng/creatinine mg, respectively) (FIG. 15, Table 4).

15

<Table 4>

20

$\beta$ ig-h3	Normal after kidney transplantation (n=47)	Transplanted with small kidney (n=16)	Chronic rejection (n=15)	Pyelitis re-developed (n=6)	Cyclosporine toxicity (n=6)
---------------	--	---------------------------------------	--------------------------	-----------------------------	-----------------------------

Average	39.4± 18.2	54.7± 23.0	140.8± 81.1	175.4± 65.8	90.9± 22.4
Minimum	9.4	17.9	48.8	83.2	64.6
Maximum	84.7	100.0	374.4	249.8	119.4

The present inventors also investigated if the increased  $\beta$  ig-h3 concentration in patients with re-developed renal diseases was decreased again as treatment worked. As a result, urine  $\beta$  ig-h3 concentration of patients who had blood plasma exchange to treat re-developed pyelitis after kidney transplantation was gradually decreased, suggesting urine  $\beta$  ig-h3 concentration decreased while treatment was working. Thus,  $\beta$  ig-h3 concentration could be used as a marker of treatment reaction (FIG. 16).

<4-6> Analysis of effects of kidney transplantation on  $\beta$  ig-h3 concentration

In order to investigate the changes of urine  $\beta$  ig-h3 concentration after kidney transplantation, the present inventors measured urine  $\beta$  ig-h3 concentration of patients who had kidney transplantation everyday.

As a result, urine  $\beta$  ig-h3 concentration of patients who had kidney transplantation successfully, regardless the kidney was given from a living person or

a brain death person, was decreased gradually. Precisely, as for receiving kidney from a living person, urine  $\beta$  ig-h3 concentration came back to normal level within 4-5 days after transplantation and as for  
5 receiving kidney from a brain death person,  $\beta$  ig-h3 concentration came back to normal level within 6-7 days (FIG. 17).

Besides, urine  $\beta$  ig-h3 concentration of patients who received small kidney came back to normal level  
10 after transplantation though their blood creatine values were still high, suggesting that the transplanted kidney worked normal although it could not filtrate waste products well enough because of its small size. Anyway,  $\beta$  ig-h3 concentration reflecting  
15 the damage of kidney was back to normal (FIG. 17). Meanwhile, urine  $\beta$  ig-h3 concentration of patients who had unsuccessful kidney transplantation fluctuated seriously.

Based on those results, urine  $\beta$  ig-h3  
20 concentration could be used as an effective marker for diagnosis of renal diseases in the early stages, for detecting progression of renal diseases and for determination of treatment effect since  $\beta$  ig-h3 concentration reflects the damage of kidney well.

25 Resultingly, the present inventors confirmed that urine  $\beta$  ig-h3 concentration reflects the damage of

kidney in the early stages sensitively and is important and useful for diagnosis of various renal diseases.

Example 5: Relationship between hepatic diseases and  $\beta$  ig-h3 expression

Determining if a chronic hepatitis patient is developing to a hepatocirrhosis patient is very important but there is no way to catch that so far. The most crucial factor for the development of hepatocirrhosis is TGF- $\beta$ . Thus,  $\beta$  ig-h3 whose expression is induced by TGF- $\beta$  could be possibly increased in blood as hepatocirrhosis goes on. If so, the amount of  $\beta$  ig-h3 can also reflect the extent of hepatocirrhosis. In fact,  $\beta$  ig-h3 expression was confirmed to be greater as hepatocirrhosis became serious by immunohistologic test with liver tissues of hepatitis patients. The present inventors subdivided patient's condition into several grades and stages based on the biopsy results of chronic hepatitis patients and investigated blood  $\beta$  ig-h3 concentration of each stage and grade. Particularly, the present inventors collected blood from chronic hepatitis patients and measured the amount of  $\beta$  ig-h3 with the same method of Example <4-1>. The results were presented in Table 5.

<Table 5>

Concentrations of  $\beta$  ig-h3 in blood of chronic hepatitis patients

5

Grade	$\beta$ ig-h3 (ng/mg)	Stage	$\beta$ ig-h3 (ng/mg)
0 (Normal)	146.2 (n=172, $\pm$ 28.5)	0 (Normal)	146.2 (n=172, $\pm$ 28.5)
1	196.6 (n=16, $\pm$ 30.6)	1	193.4 (n=20, $\pm$ 30.2)
2	190.0 (n=43, $\pm$ 72.8)	2	192.2 (n=36, $\pm$ 79.1)
3	167.5 (n=7, $\pm$ 21.9)	3	172.5 (n=10, $\pm$ 21.9)

As a result, chronic hepatitis patients showed higher blood  $\beta$  ig-h3 concentration than normal people and  $\beta$  ig-h3 concentration of lower stage and grade (1 and 2) was confirmed to be higher than that of higher stage and grade (3). Condition of a patient in grade 3 and stage 3 is that hepatocirrhosis has been developed seriously and its activity went through the peak already. Meanwhile, a patient in grade 1 and 2 and stage 1 and 2 shows the condition that inflammatory reaction is developing very actively. Thus,  $\beta$  ig-h3 concentration implies the activity of hepatocirrhosis, so that the development of hepatocirrhosis can be observed by measuring blood  $\beta$  ig-h3 concentration

10

15

regularly.

Example 6: Relationship between rheumatoid arthritis and  $\beta$  ig-h3 expression

5           The present inventors confirmed the correlation between rheumatoid arthritis and  $\beta$  ig-h3 expression by measuring  $\beta$  ig-h3 amount in synovial fluids of patients with osteoarthritis and rheumatoid arthritis with the same method of Example <4-1> (Table 6).

10

<Table 6>

Concentrations of  $\beta$  ig-h3 in synovial fluids

	$\beta$ ig-h3 (ng/mg)
Osteoarthritis	11.0 (n=29, $\pm$ 0.3)
Rheumatoid arthritis	21.0 (n=20, $\pm$ 2.5)

15           As a result, two-fold higher  $\beta$  ig-h3 concentration in synovial fluid of rheumatoid arthritis patients was observed, suggesting that measuring  $\beta$  ig-h3 concentration in synovial fluid can be an effective way to diagnose osteoarthritis and rheumatoid arthritis.

20

Example 7: Relationship between cardiovascular diseases  
and  $\beta$  ig-h3 expression

<7-1> Measurement of  $\beta$  ig-h3 in damaged blood vessels  
of diabetes-induced mice

5           The present inventors investigated the expression  
patterns of  $\beta$  ig-h3 in normal and damaged blood vessels  
of diabetic mice by immunohistochemical methods in  
order to confirm the relation between the expression of  
 $\beta$  ig-h3 and cardiovascular diseases.

10

As a result,  $\beta$  ig-h3 protein was expressed much  
greatly in damaged blood vessels of diabetic mice than  
in normal blood vessels (FIG. 18).

15       <7-2> Measurement of  $\beta$  ig-h3 expression induced by TGF-  
 $\beta$  in vascular smooth muscle cells

Based on that  $\beta$  ig-h3 expression is induced by  
TGF- $\beta$  that plays an important role in the development  
of vascular diseases, the present inventors tried to  
20       confirm the correlation  $\beta$  ig-h3 expression and  
cardiovascular diseases. Particularly, the present  
inventors measured the expression pattern of  $\beta$  ig-h3  
induced by TGF- $\beta$  1 in vascular smooth muscle cells  
forming blood vessels with the same method of Example  
25       <4-1>.

As a result, it was confirmed that  $\beta$  ig-h3 expression increases as the amount of TGF- $\beta$  1 increases (FIG. 19).

5 From the above results, it was confirmed that the expression of  $\beta$  ig-h3 in blood and tissues reflects the damage of them. Therefore, the method for measuring the amount of  $\beta$  ig-h3 protein of the present invention can be effectively used for the diagnosis of various  
10 cardiovascular diseases.

#### INDUSTRIAL APPLICABILITY

As described hereinbefore, the method for measuring the amount of  $\beta$  ig-h3 protein of the present  
15 invention in which human  $\beta$  ig-h3, mouse  $\beta$  ig-h3,  $\beta$  ig-h3 D-IV(1x) or  $\beta$  ig-h3 D-IV(4x) are used as a standard protein is inexpensive and very accurate in measuring  $\beta$  ig-h3 concentration in various body fluids. The amount of  $\beta$  ig-h3 sensitively reflects TGF- $\beta$  related  
20 diseases such as renal diseases, hepatic diseases, rheumatoid arthritis and cardiovascular diseases in the early stages, so that the method of the present invention can be effectively used for the examination of the damage and the progress of those diseases and  
25 for the diagnosis thereof.

## What is Claimed is

1. A method for measuring the amount of  $\beta$  ig-h3 protein comprises the following steps:

- 5           1) Preparing recombinant proteins of  $\beta$  ig-h3 or  $\beta$  ig-h3 fas-1 domain, their fragments or derivatives;
- 2) Preparing specific ligands against the above recombinant proteins, their fragments or derivatives of the above step 1; and
- 10           3) Measuring the amount of  $\beta$  ig-h3 protein of samples with the method using binding reaction of ligands of the above step 2 with the recombinant proteins, their fragments or derivatives of the above step 1.
- 15

2. The method for measuring the amount of  $\beta$  ig-h3 protein as set forth in claim 1, wherein the ligands of step 1) are selected from a group consisting of antibodies, RNA, DNA, lipids, proteins, organic compounds and inorganic compounds.

20

3. The method for measuring the amount of  $\beta$  ig-h3 protein as set forth in claim 1, wherein the specific binding reaction of step 3) is antigen-

25

antibody reaction.

4. The method for measuring the amount of  $\beta$  ig-h3 protein as set forth in claim 3, wherein the antigen-antibody reaction is performed by a method selected from a group consisting of immunoblotting, immunoprecipitation, ELISA, RIA, protein chip, rapid assay and microarray.
5. The method for measuring the amount of  $\beta$  ig-h3 protein as set forth in claim 3, wherein the antigen-antibody reaction of step 3) comprises the following steps:
- 1) Coating recombinant protein prepared from  $\beta$  ig-h3 protein or  $\beta$  ig-h3 fas-1 domain, its fragments or derivatives to matrix;
  - 2) Reacting antibody against the protein of the above step 1, its fragments or derivatives with sample;
  - 3) Adding the reactant of the above step 2 to the coated protein of step 1 and waiting for reaction, and then washing thereof; and
  - 4) Adding the secondary antibody to the reactant of the above step 3 for further reaction, and then measuring OD.

6. The method for measuring the amount of  $\beta$  ig-h3 protein as set forth in anyone of claim 1-5, wherein the  $\beta$  ig-h3 protein is human  $\beta$  ig-h3 protein having amino acid sequence represented by SEQ. ID. NO 3 or mouse  $\beta$  ig-h3 protein having amino acid sequence represented by SEQ. ID. No 5.
7. The method for measuring the amount of  $\beta$  ig-h3 protein as set forth in anyone of claim 1-5, wherein 1 or 2-10 4<sup>th</sup> fas-1 domains of  $\beta$  ig-h3 protein are repeatedly linked.
8. The method for measuring the amount of  $\beta$  ig-h3 protein as set forth in claim 7, wherein the fas-1 domain of  $\beta$  ig-h3 is selected from a group consisting of sequences represented by SEQ. ID. No 7, No 8, No 9 and No 10.
9. The method for measuring the amount of  $\beta$  ig-h3 protein as set forth in claim 1, wherein the sample can be any body fluid including urine, blood or synovial fluid.
10. A diagnostic kit for the renal diseases, hepatic diseases, rheumatoid arthritis or cardiovascular diseases comprising  $\beta$  ig-h3 protein or recombinant

proteins of fas-1 domain in the  $\beta$  ig-h3 protein (including their fragments or their derivatives) and their ligands.

5 11.The diagnostic kit as set forth in claim 10,  
wherein the ligand is selected from a group  
consisting of antibody specifically binding to  $\beta$   
ig-h3 protein, fas-1 domain of  $\beta$  ig-h3, their  
fragments or derivatives, RNA, DNA, lipids,  
10 proteins, organic compounds and inorganic  
compounds.

12.The diagnostic kit as set forth in claim 11,  
wherein the ligand is antibody.

15 13.The diagnostic kit as set forth in claim 12,  
wherein the kit additionally includes buffer  
solution, secondary antibody, washing solution,  
stop solution or coloring substrate.

20 14.The diagnostic kit as set forth in claim 10,  
wherein the  $\beta$  ig-h3 protein is human  $\beta$  ig-h3  
protein having amino acid sequence represented by  
SEQ. ID. No 3 or mouse  $\beta$  ig-h3 protein having  
25 amino acid sequence represented by SEQ. ID. No 5.

15.The diagnostic kit as set forth in claim 10,  
wherein 1 or 2-10 4<sup>th</sup> fas-1 domains of  $\beta$  ig-h3  
protein are repeatedly linked.

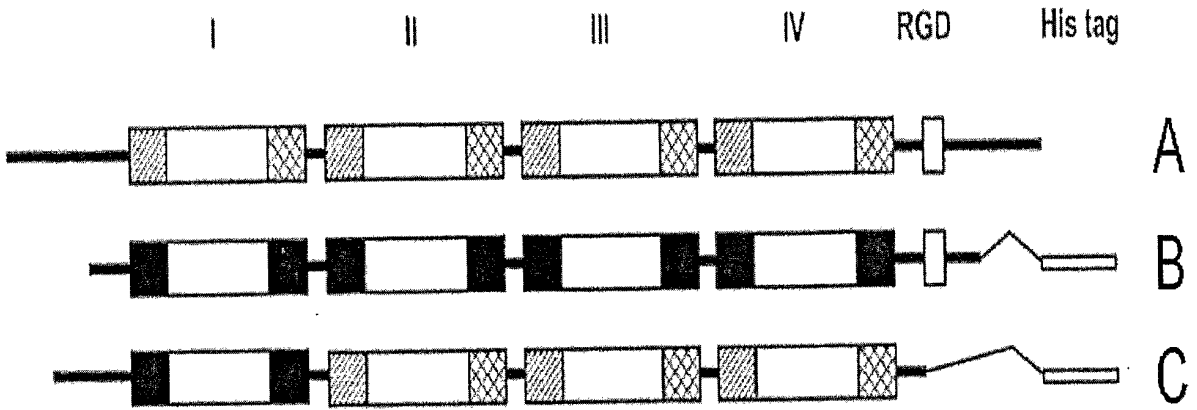
5 16.The diagnostic kit as set forth in claim 15,  
wherein the fas-1 domain of  $\beta$  ig-h3 is selected  
from a group consisting of sequences represented  
by SEQ. ID. No 7, No 8, No 9 and No 10.

10

1/19

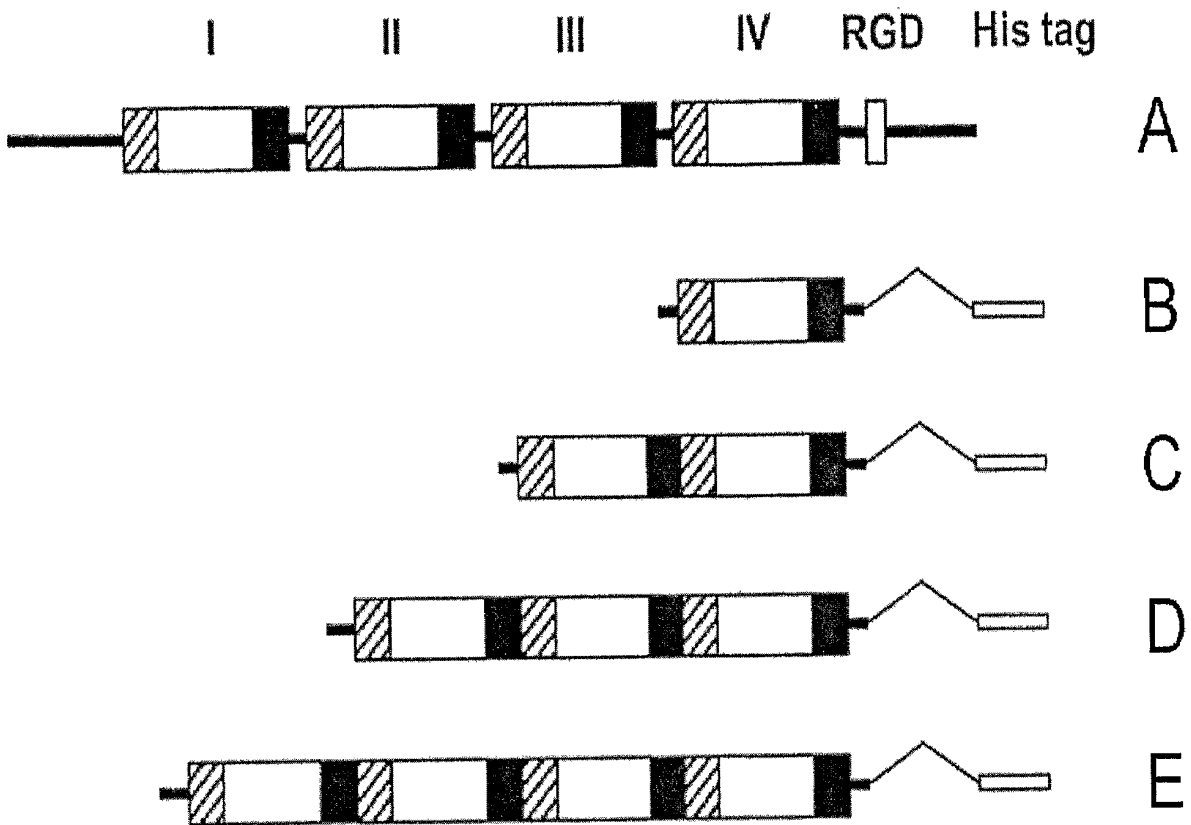
FIGURES

FIG. 1



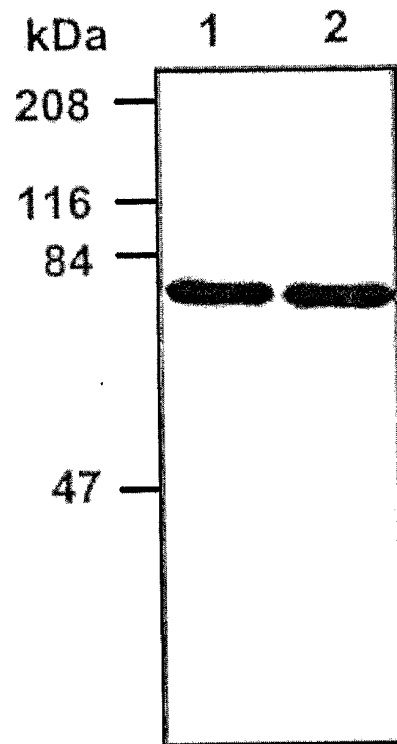
2/19

FIG. 2



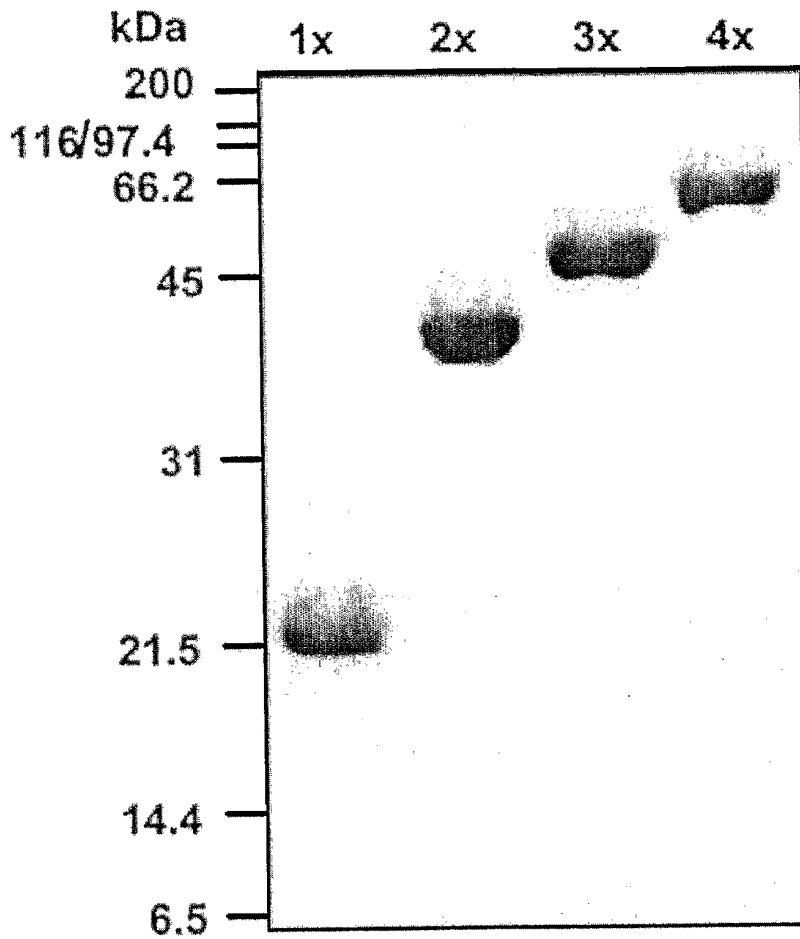
3/19

FIG. 3



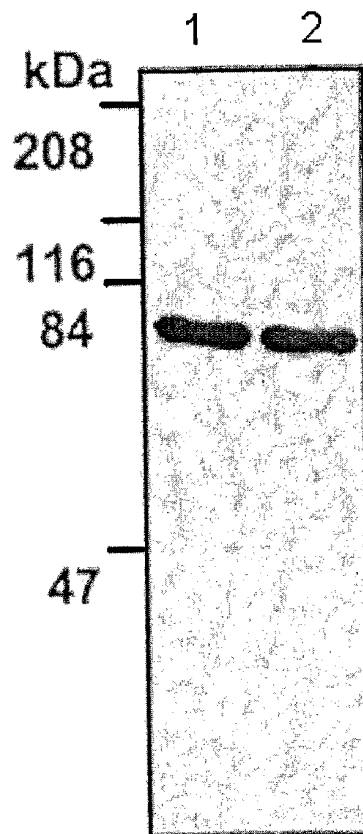
4/19

FIG. 4



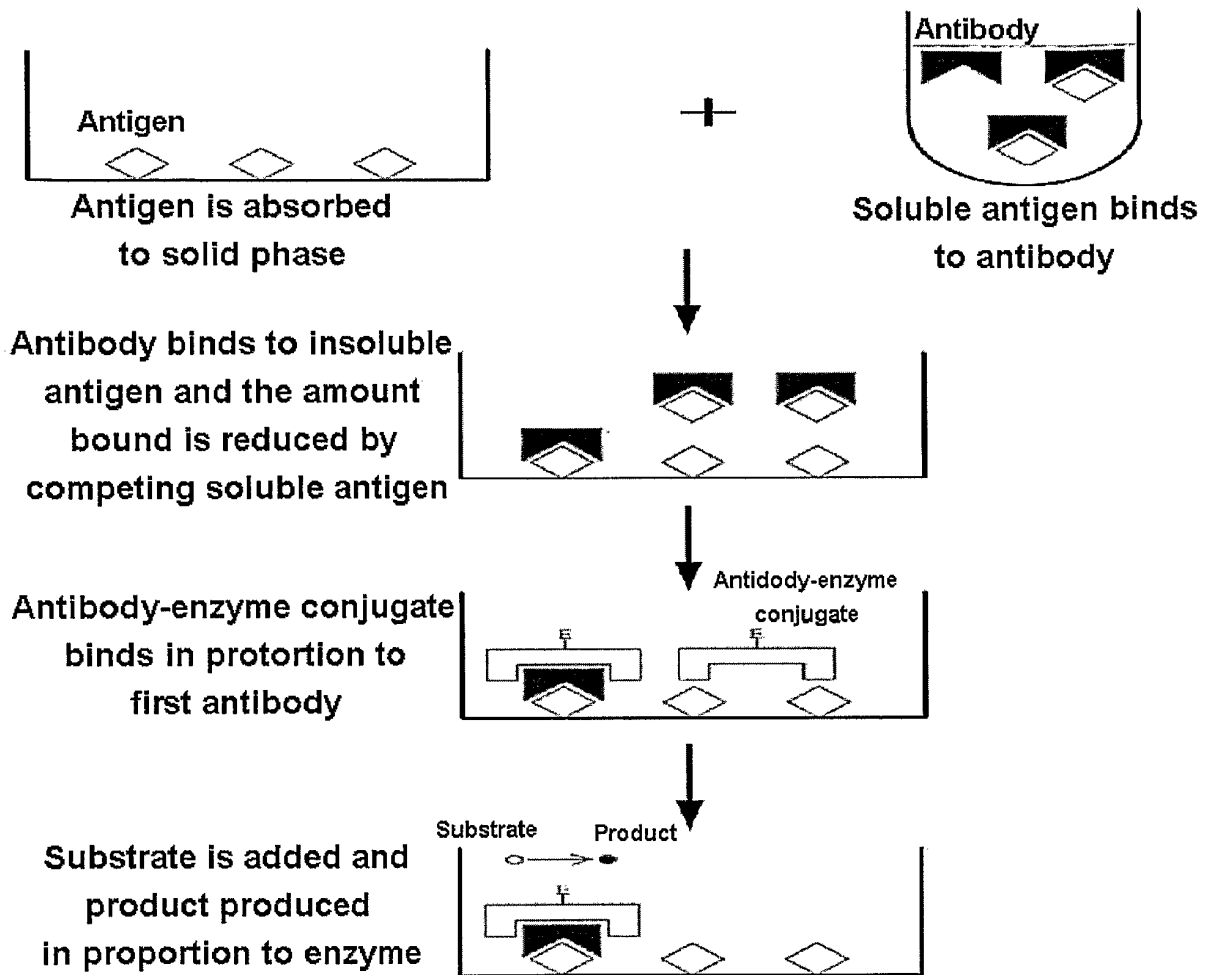
5/19

FIG. 5



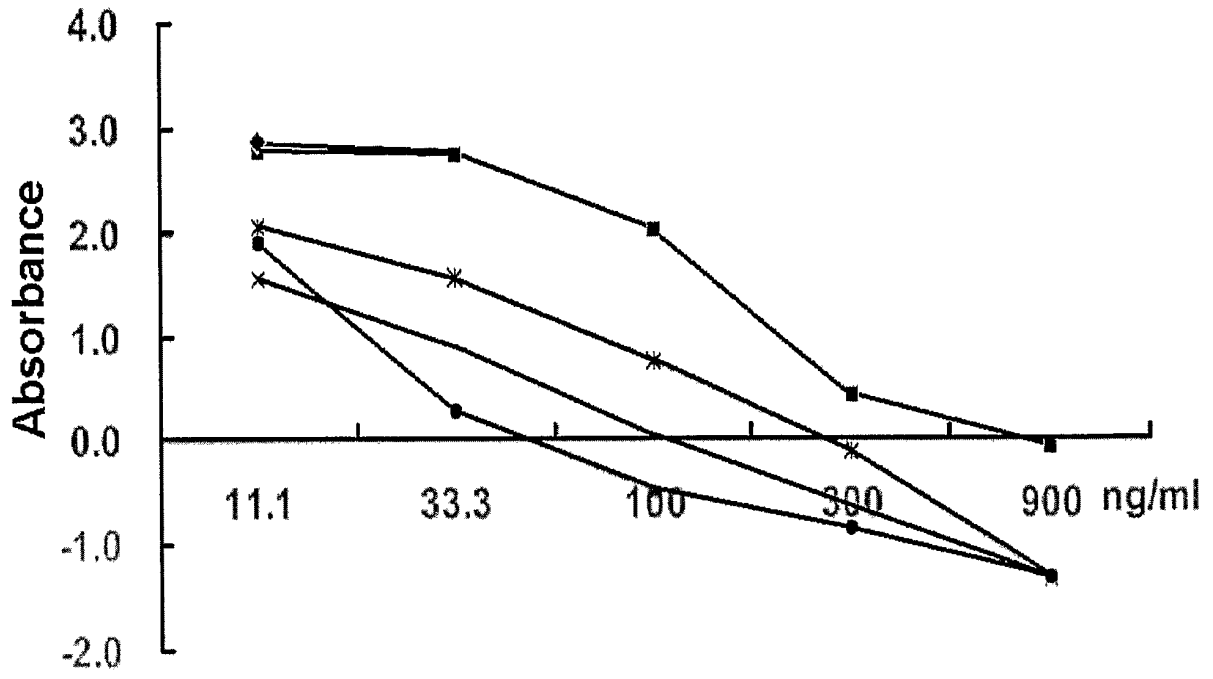
6/19~

FIG. 6



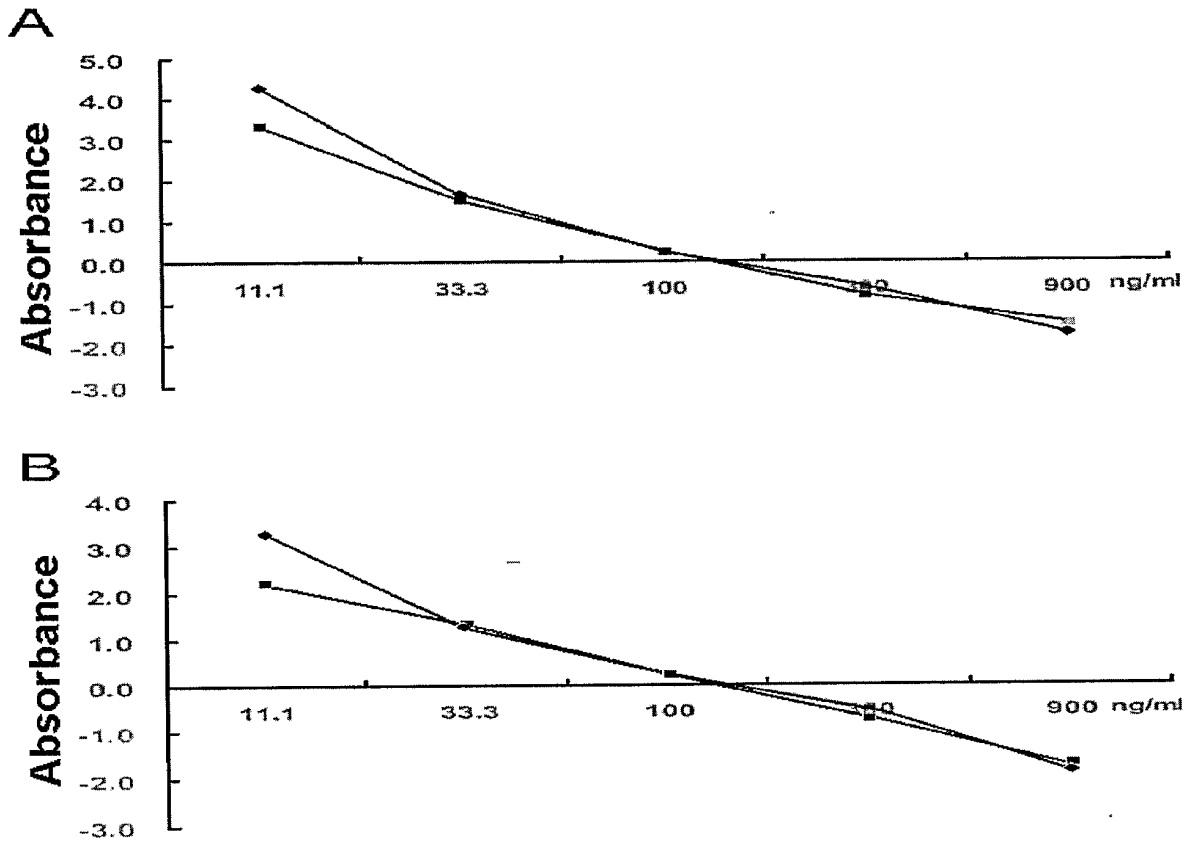
7/19

FIG. 7



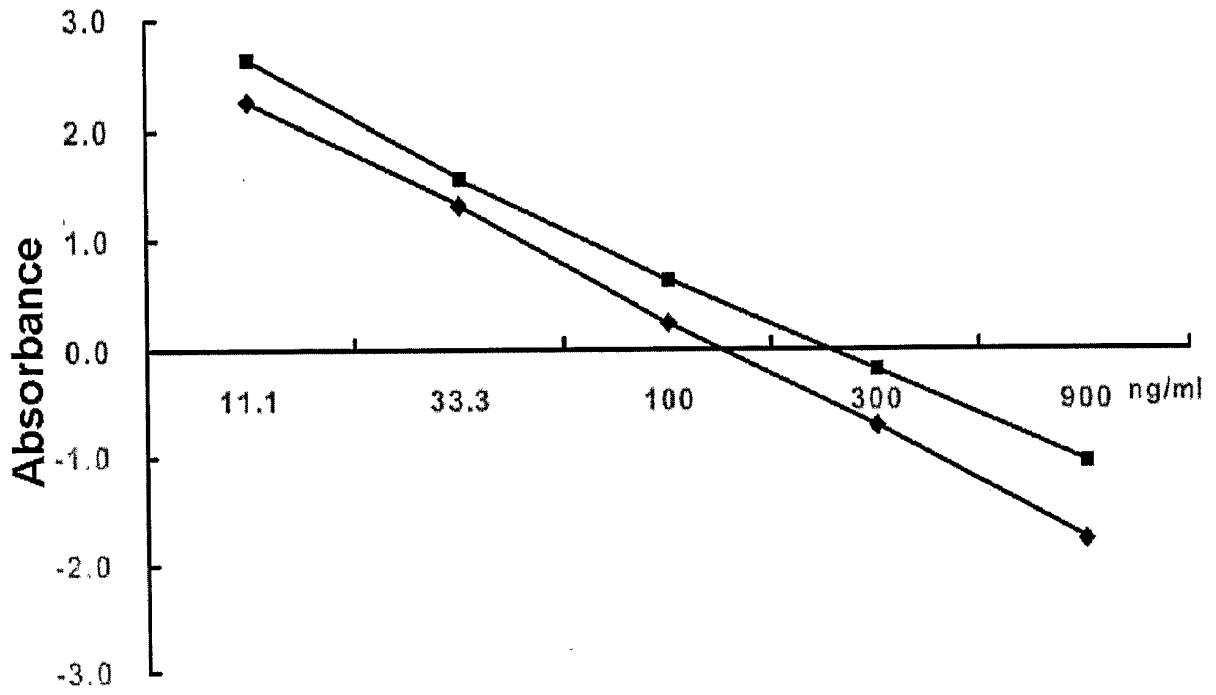
8/19

FIG. 8



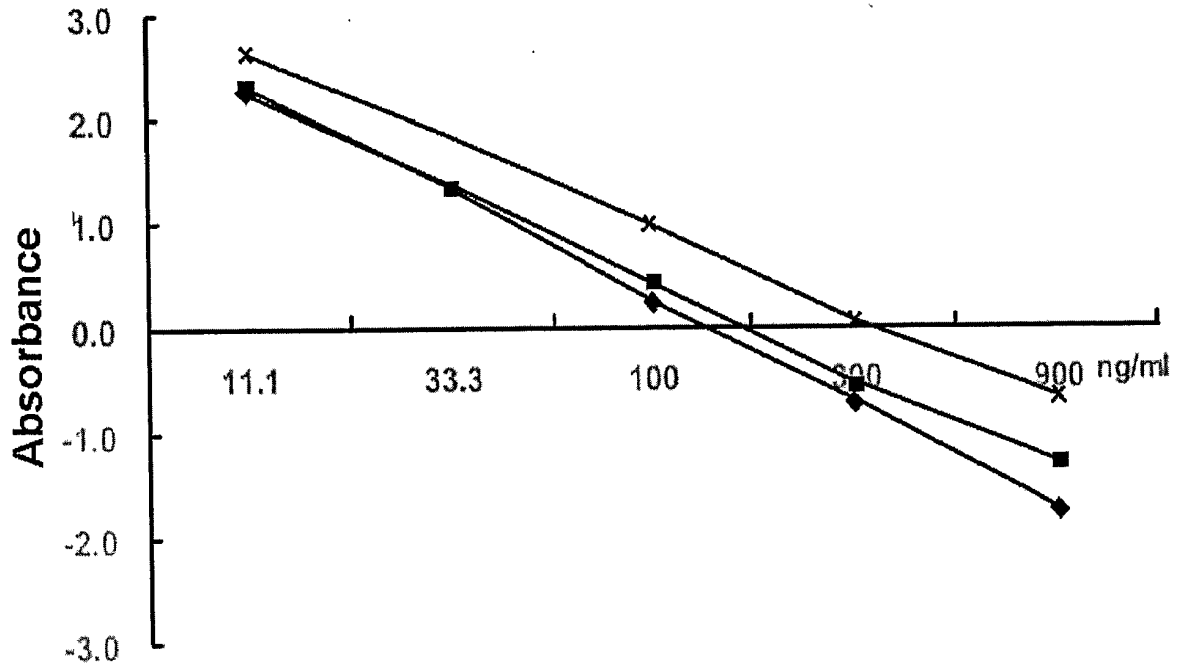
9/19

FIG. 9



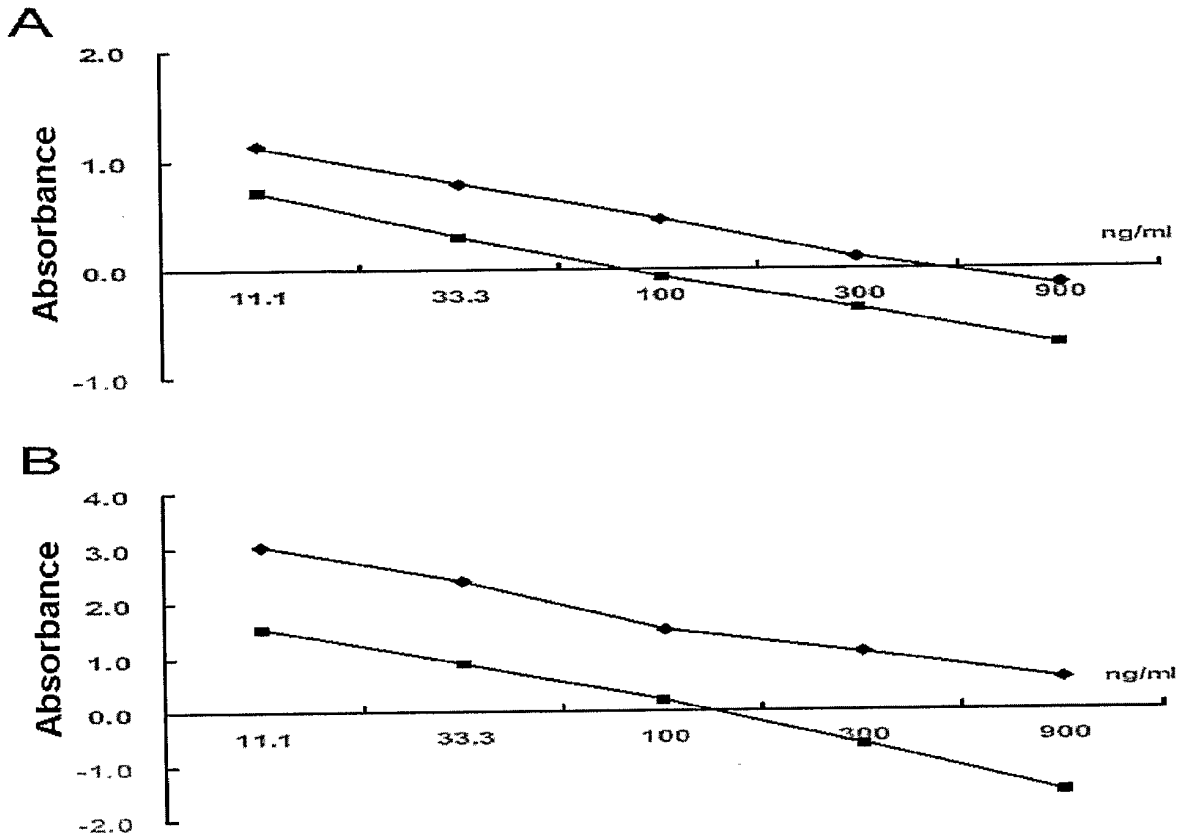
10/19

FIG. 10



11/19

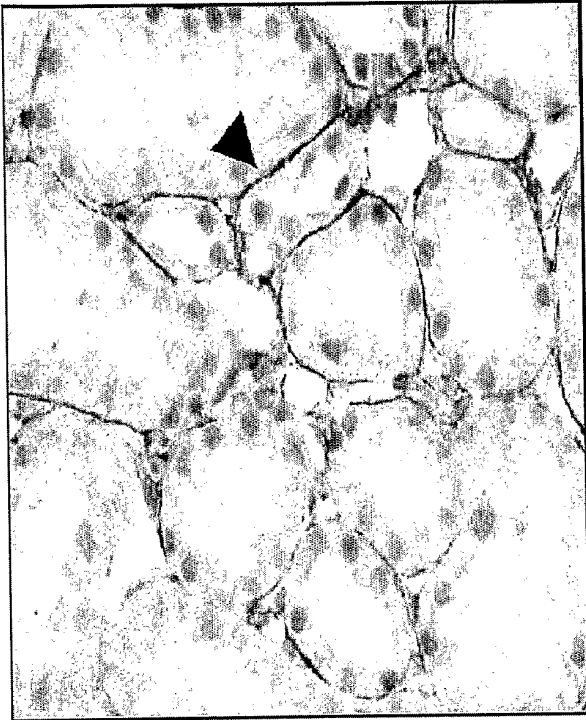
FIG. 11



12/19

FIG. 12

**A**

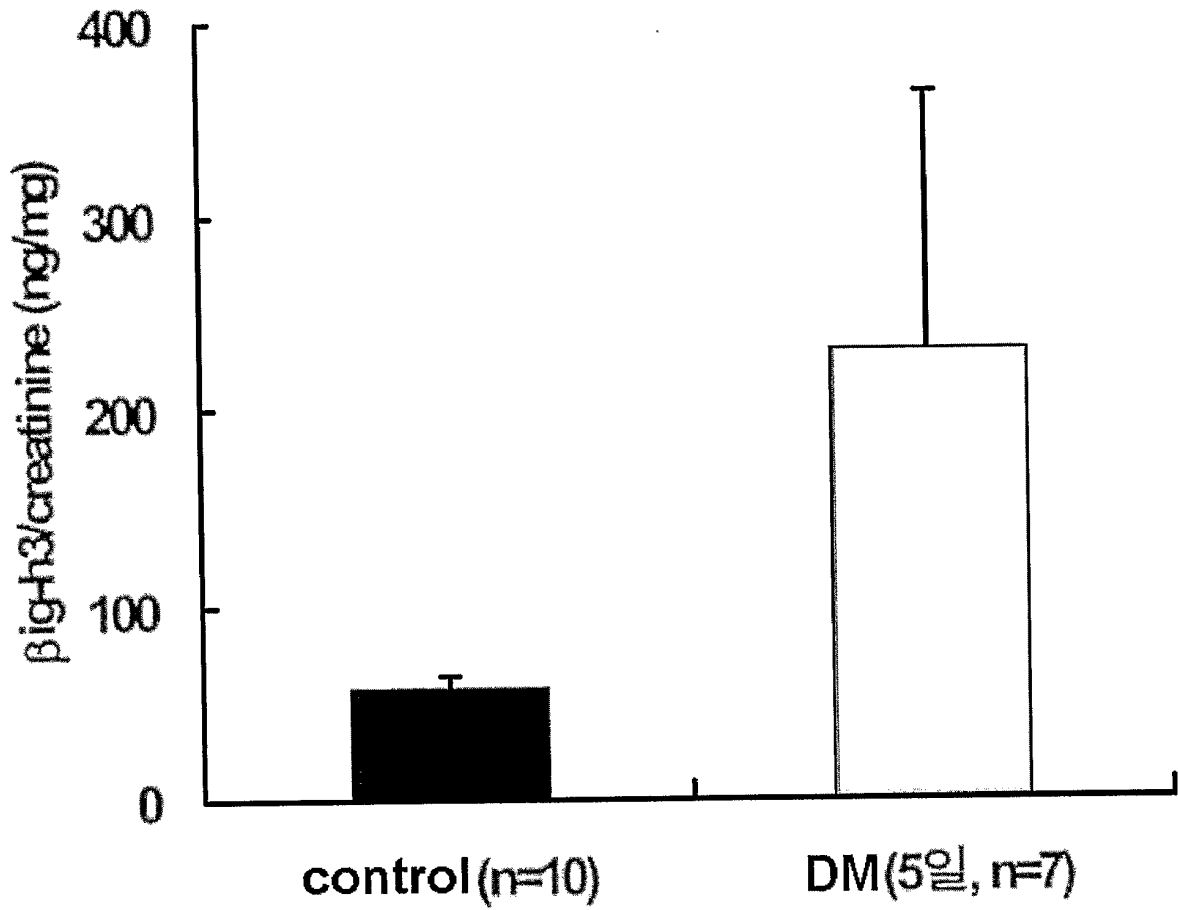


**B**



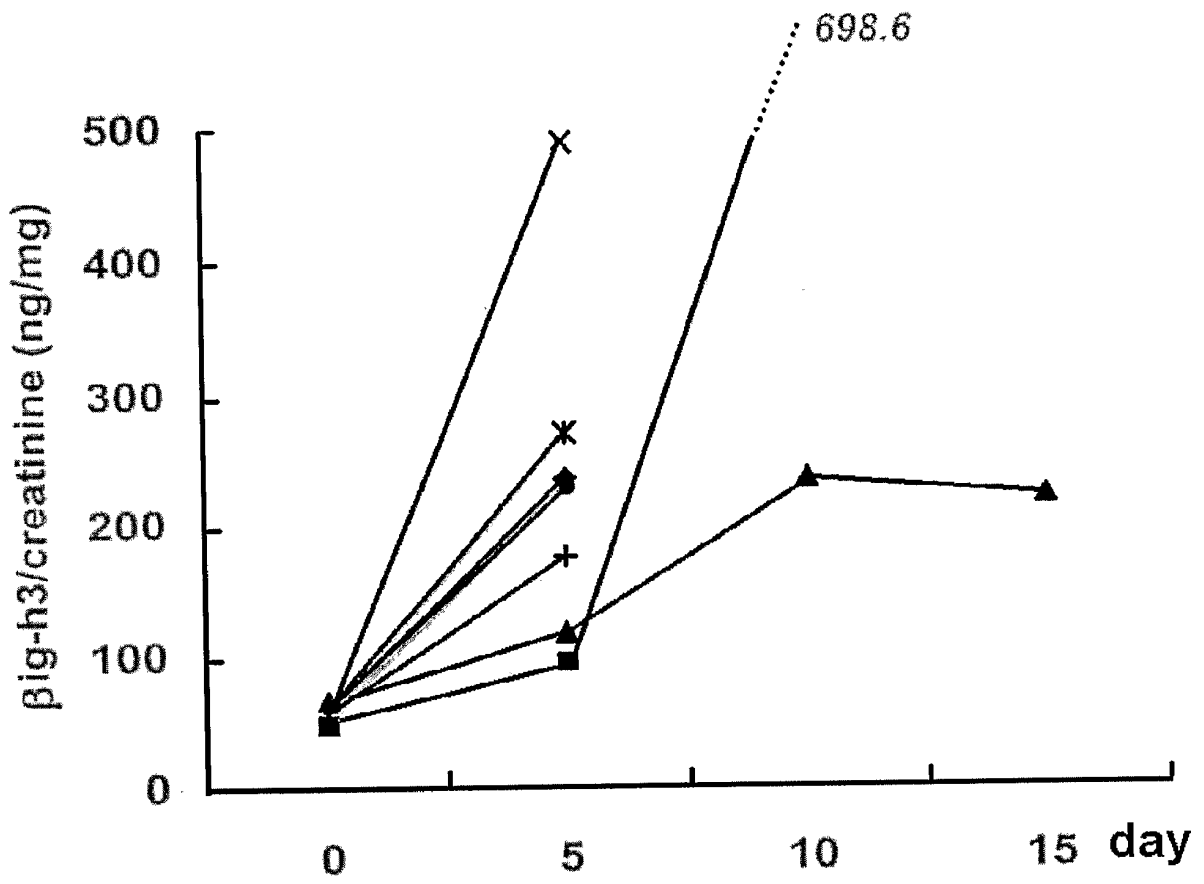
13/19

FIG. 13



14/19

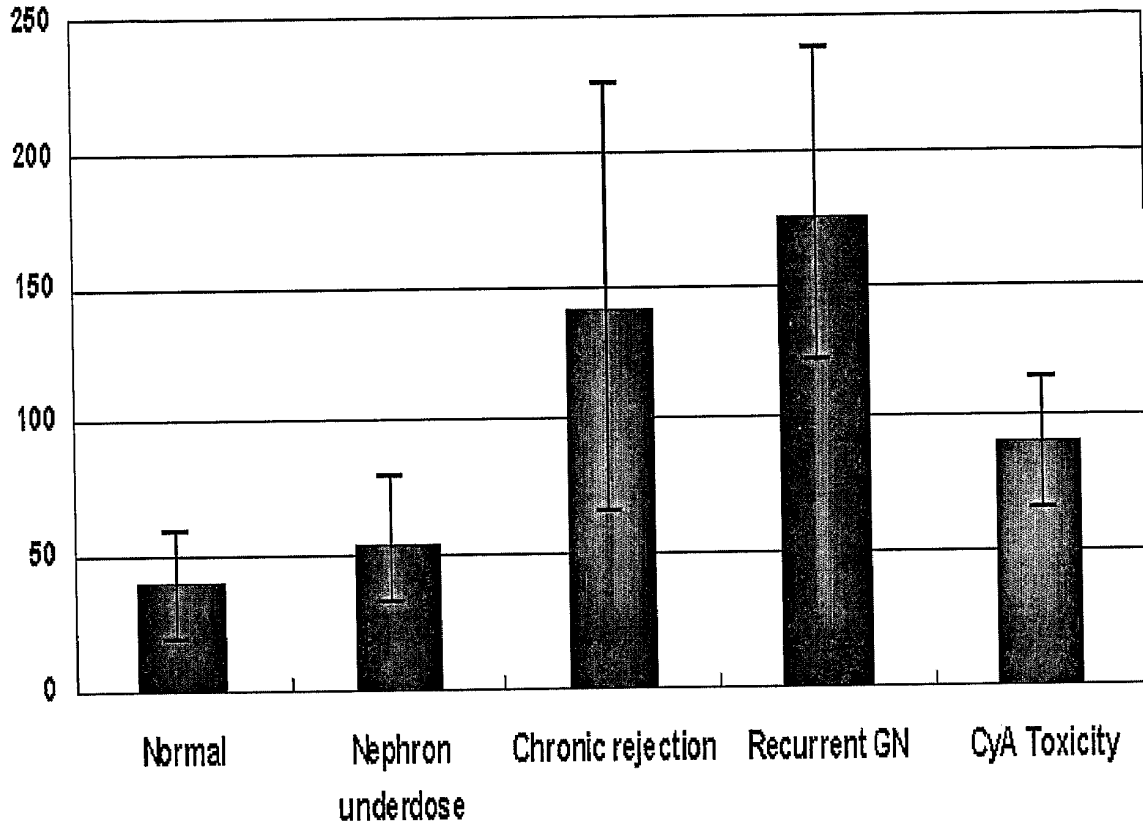
FIG. 14



15/19

FIG. 15

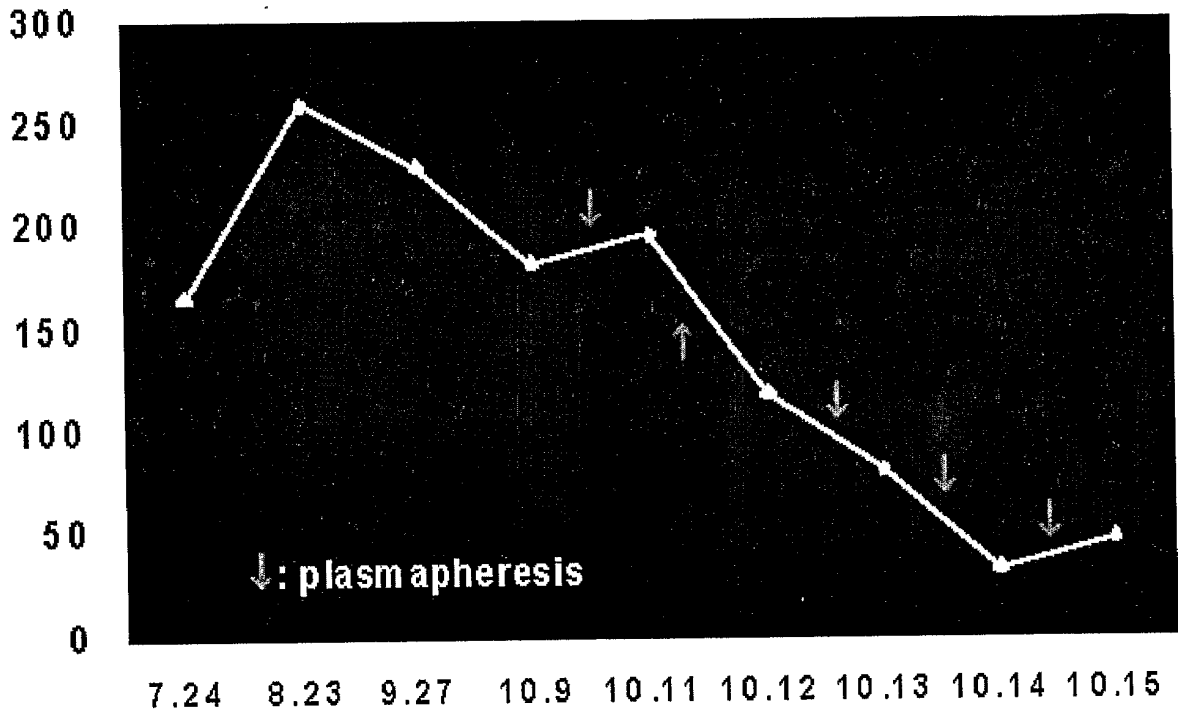
$\beta$ ig-h3 (ng/mg creatinine)



16/19

FIG. 16

$\beta$ ig-h3 (ng/mg creatinine)

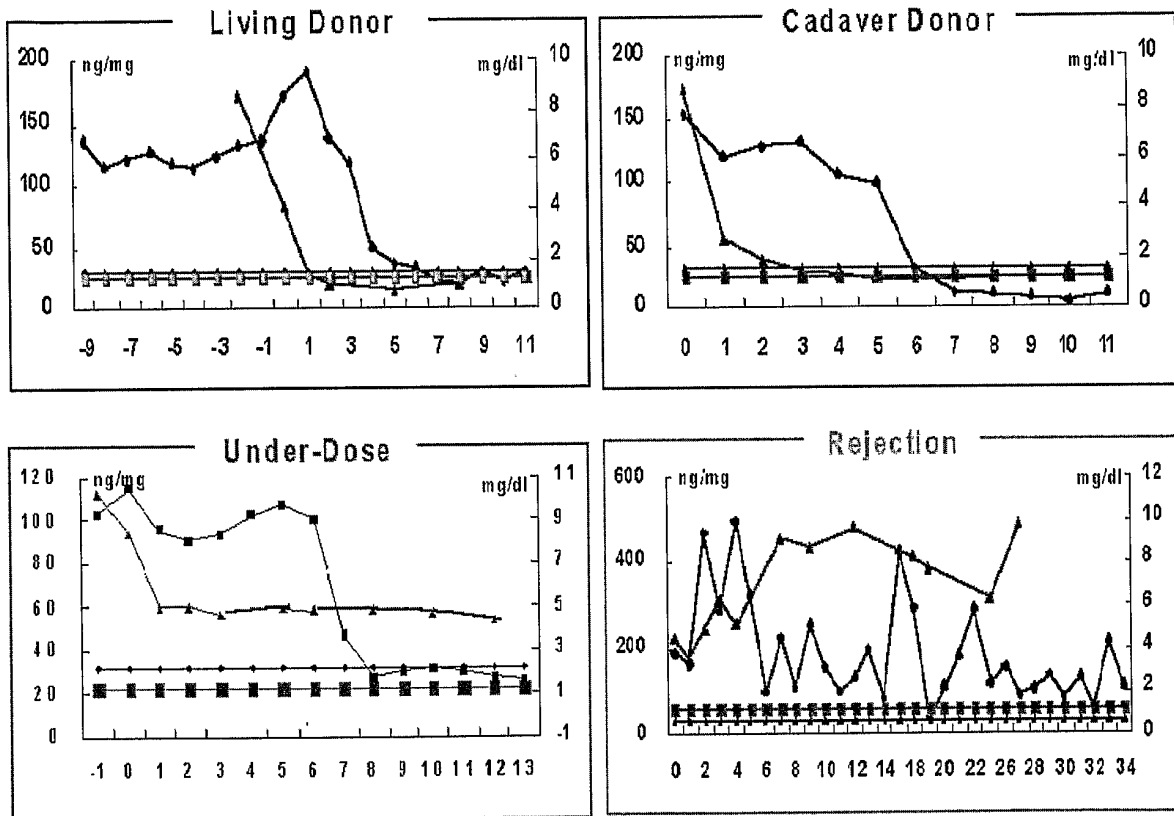


17/19

FIG. 17

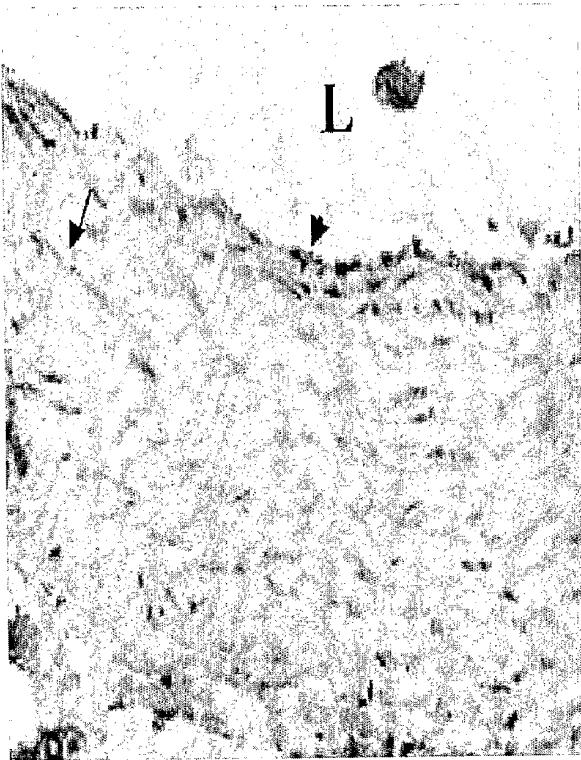
# Kidney Transplantation

- $\beta$ ig-h3
- Normal  $\beta$ ig-h3
- S.creatinine
- Normal S.creatinine

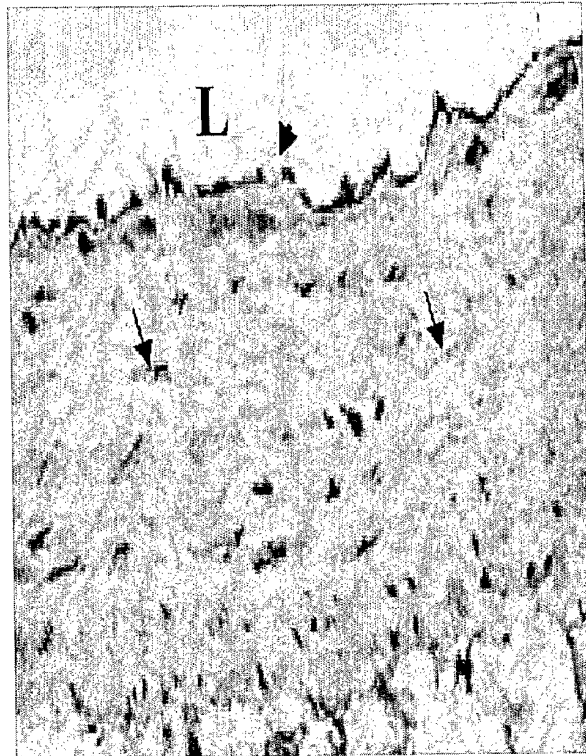


18/19

FIG. 18



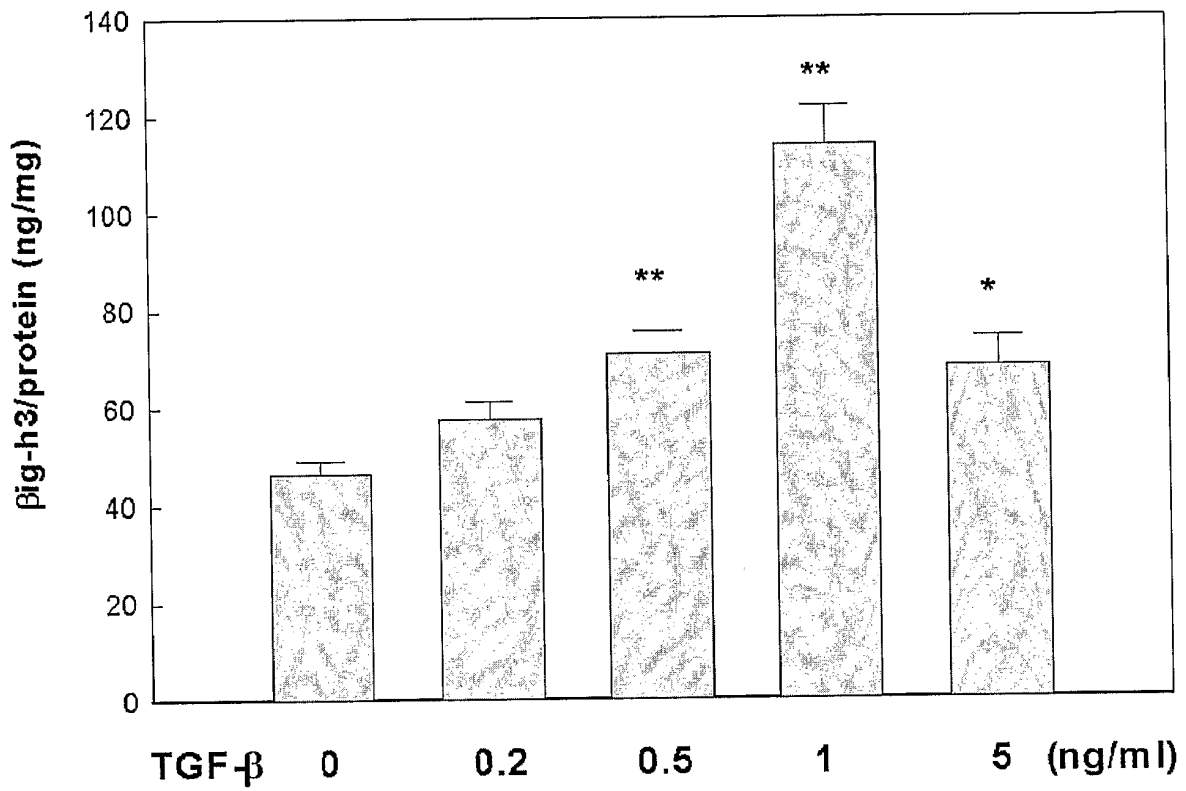
**A. Normal tissue (x200)**



**B. Damaged tissue (x200)**

19/19

FIG. 19



SEQUENCE LISTING

<110> REGEN Biotech. Inc.

<120> The method for measuring the amount of  $\beta$  i g- h 3 protein and diagnostic kit using the same

<130> 2fpo-10-14

<160> 10

<170> KopatentIn 1.71

<210> 1

<211> 683

<212> PRT

<213> Homo sapiens

<400> 1

Met Ala Leu Phe Val Arg Leu Leu Ala Leu Ala Leu Ala Leu Ala Leu  
 1 5 10 15

Gly Pro Ala Ala Thr Leu Ala Gly Pro Ala Lys Ser Pro Tyr Gln Leu  
 20 25 30

Val Leu Gln His Ser Arg Leu Arg Gly Arg Gln His Gly Pro Asn Val  
 35 40 45

Cys Ala Val Gln Lys Val Ile Gly Thr Asn Arg Lys Tyr Phe Thr Asn  
 50 55 60

Cys Lys Gln Trp Tyr Gln Arg Lys Ile Cys Gly Lys Ser Thr Val Ile  
 65 70 75 80

Ser Tyr Glu Cys Cys Pro Gly Tyr Glu Lys Val Pro Gly Glu Lys Gly  
 85 90 95

Cys Pro Ala Ala Leu Pro Leu Ser Asn Leu Tyr Glu Thr Leu Gly Val  
 100 105 110

Val Gly Ser Thr Thr Thr Gln Leu Tyr Thr Asp Arg Thr Glu Lys Leu  
 115 120 125

Arg Pro Glu Met Glu Gly Pro Gly Ser Phe Thr Ile Phe Ala Pro Ser  
 130 135 140

Asn Glu Ala Trp Ala Ser Leu Pro Ala Glu Val Leu Asp Ser Leu Val

145                      150                      155                      160  
 Ser Asn Val Asn Ile Glu Leu Leu Asn Ala Leu Arg Tyr His Met Val  
                                  165                                   170                                   175  
 Gly Arg Arg Val Leu Thr Asp Glu Leu Lys His Gly Met Thr Leu Thr  
                                  180                                   185                                   190  
 Ser Met Tyr Gln Asn Ser Asn Ile Gln Ile His His Tyr Pro Asn Gly  
                                  195                                   200                                   205  
 Ile Val Thr Val Asn Cys Ala Arg Leu Leu Lys Ala Asp His His Ala  
                                  210                                   215                                   220  
 Thr Asn Gly Val Val His Leu Ile Asp Lys Val Ile Ser Thr Ile Thr  
                                  225                                   230                                   235                                   240  
 Asn Asn Ile Gln Gln Ile Ile Glu Ile Glu Asp Thr Phe Glu Thr Leu  
                                  245                                   250                                   255  
 Arg Ala Ala Val Ala Ala Ser Gly Leu Asn Thr Met Leu Glu Gly Asn  
                                  260                                   265                                   270  
 Gly Gln Tyr Thr Leu Leu Ala Pro Thr Asn Glu Ala Phe Glu Lys Ile  
                                  275                                   280                                   285  
 Pro Ser Glu Thr Leu Asn Arg Ile Leu Gly Asp Pro Glu Ala Leu Arg  
                                  290                                   295                                   300  
 Asp Leu Leu Asn Asn His Ile Leu Lys Ser Ala Met Cys Ala Glu Ala  
                                  305                                   310                                   315                                   320  
 Ile Val Ala Gly Leu Ser Val Glu Thr Leu Glu Gly Thr Thr Leu Glu  
                                  325                                   330                                   335  
 Val Gly Cys Ser Gly Asp Met Leu Thr Ile Asn Gly Lys Ala Ile Ile  
                                  340                                   345                                   350  
 Ser Asn Lys Asp Ile Leu Ala Thr Asn Gly Val Ile His Tyr Ile Asp  
                                  355                                   360                                   365  
 Glu Leu Leu Ile Pro Asp Ser Ala Lys Thr Leu Phe Glu Leu Ala Ala  
                                  370                                   375                                   380  
 Glu Ser Asp Val Ser Thr Ala Ile Asp Leu Phe Arg Gln Ala Gly Leu  
                                  385                                   390                                   395                                   400

Gly Asn His Leu Ser Gly Ser Glu Arg Leu Thr Leu Leu Ala Pro Leu  
 405 410 415

Asn Ser Val Phe Lys Asp Gly Thr Pro Pro Ile Asp Ala His Thr Arg  
 420 425 430

Asn Leu Leu Arg Asn His Ile Ile Lys Asp Gln Leu Ala Ser Lys Tyr  
 435 440 445

Leu Tyr His Gly Gln Thr Leu Glu Thr Leu Gly Gly Lys Lys Leu Arg  
 450 455 460

Val Phe Val Tyr Arg Asn Ser Leu Cys Ile Glu Asn Ser Cys Ile Ala  
 465 470 475 480

Ala His Asp Lys Arg Gly Arg Tyr Gly Thr Leu Phe Thr Met Asp Arg  
 485 490 495

Val Leu Thr Pro Pro Met Gly Thr Val Met Asp Val Leu Lys Gly Asp  
 500 505 510

Asn Arg Phe Ser Met Leu Val Ala Ala Ile Gln Ser Ala Gly Leu Thr  
 515 520 525

Glu Thr Leu Asn Arg Glu Gly Val Tyr Thr Val Phe Ala Pro Thr Asn  
 530 535 540

Glu Ala Phe Arg Ala Leu Pro Pro Arg Glu Arg Ser Arg Leu Leu Gly  
 545 550 555 560

Asp Ala Lys Glu Leu Ala Asn Ile Leu Lys Tyr His Ile Gly Asp Glu  
 565 570 575

Ile Leu Val Ser Gly Gly Ile Gly Ala Leu Val Arg Leu Lys Ser Leu  
 580 585 590

Gln Gly Asp Lys Leu Glu Val Ser Leu Lys Asn Asn Val Val Ser Val  
 595 600 605

Asn Lys Glu Pro Val Ala Glu Pro Asp Ile Met Ala Thr Asn Gly Val  
 610 615 620

Val His Val Ile Thr Asn Val Leu Gln Pro Pro Ala Asn Arg Pro Gln  
 625 630 635 640

Glu Arg Gly Asp Glu Leu Ala Asp Ser Ala Leu Glu Ile Phe Lys Gln  
 645 650 655

Ala Ser Ala Phe Ser Arg Ala Ser Gln Arg Ser Val Arg Leu Ala Pro  
 660 665 670

Val Tyr Gln Lys Leu Leu Glu Arg Met Lys His  
 675 680

<210> 2  
 <211> 2691  
 <212> DNA  
 <213> Homo sapiens

<400> 2  
 gcttgcccgt cggtcgctag ctcgctcggg gcgctcgtc ccgctccatg gcgctcttcg 60  
 tgcggctgct ggctctcgcc ctggctctgg ccctgggccc cgcccgacc ctggcgggctc 120  
 ccgccaagtc gccctaccag ctggtgctgc agcacagcag gctccggggc cgccagcacg 180  
 gccccaacgt gtgtgctgtg cagaaggtta ttggcactaa taggaagtac ttcaccaact 240  
 gcaagcagtg gtaccaaagg aaaatctgtg gcaaatcaac agtcatcagc tacgagtgtc 300  
 gtcttgata tgaaaaggtc cctggggaga agggctgtcc agcagcccta ccaactctca 360  
 acctttacga gaccctggga gtcgttggat ccaccaccac tcagctgtac acggaccgca 420  
 cggagaagct gaggcctgag atggaggggc cggcagctt caccatcttc gccctagca 480  
 acgaggcctg ggcctccttg ccagctgaag tgctggactc cctggtcagc aatgtcaaca 540  
 ttgagctgct caatgcctc cgctaccata tggggggcag gcgagtcctg actgatgagc 600  
 tgaaacacgg catgaccctc acctctatgt accagaattc caacatccag atccaccact 660  
 atcctaattg gattgtaact gtgaactgtg cccggctcct gaaagccgac caccatgcaa 720  
 ccaacggggg ggtgcacctc atcgataagg tcctctccac catcaccaac aacatccagc 780  
 agatcattga gatcgaggac acctttgaga cccttcgggc tgctgtggct gcatcagggc 840  
 tcaacacgat gcttgaaggt aacggccagt acacgctttt ggccccgacc aatgaggcct 900  
 tcgagaagat ccctagttag actttgaacc gtatcctggg cgaccagaa gccctgagag 960  
 acctgctgaa caaccacatc ttgaagtcag ctatgtgtgc tgaagccatc gttgcggggc 1020

tgtctgtaga gaccctggag ggcacgacac tggaggtggg ctgcagcggg gacatgctca	1080
ctatcaacgg gaaggcgatc atctccaata aagacatcct agccaccaac ggggtgatcc	1140
actacattga tgagctactc atcccagact cagccaagac actatttgaa ttggctgcag	1200
agtctgatgt gtccacagcc attgaccttt tcagacaagc cggcctcggc aatcatctct	1260
ctggaagtga gcggttgacc ctctggctc ccctgaattc tgtattcaaa gatggaacct	1320
ctccaattga tgccataca aggaatttgc ttcggaacca cataattaaa gaccagctgg	1380
cctctaagta tctgtacat ggacagacc tggaaactct gggcggcaaa aaactgagag	1440
ttttgttta tcgtaatagc ctctgcattg agaacagctg catcgcggcc cacgacaaga	1500
gggggaggta cgggaccctg ttcacgatgg accgggtgct gacccccca atggggactg	1560
tcatggatgt cctgaagga gacaatcgct ttagcatgct ggtagctgcc atccagtctg	1620
caggactgac ggagaccctc aaccgggaag gagtctacac agtctttgct cccacaaatg	1680
aagccttccg agccctgcca ccaagagaac ggagcagact cttgggagat gccaaaggaac	1740
ttgccaacat cctgaaatac cacattggtg atgaaatcct ggtagcggga ggcatcgggg	1800
ccctggtgcg gctaaagtct ctccaaggtg acaagctgga agtcagcttg aaaaacaatg	1860
tggtgagtgt caacaaggag cctggtgccc agcctgacat catggccaca aatggcgtgg	1920
tccatgtcat caccaatggt ctgcagctc cagccaacag acctcaggaa agaggggatg	1980
aacttgcaga ctctgcgctt gagatcttca aacaagcatc agcgttttcc agggcttccc	2040
agaggtctgt gcgactagcc cctgtctatc aaaagttatt agagaggatg aagcattagc	2100
ttgaagcact acaggaggaa tgcaccacgg cagctctccg ccaatttctc tcagatttcc	2160
acagagactg tttgaatggt ttcaaaacca agtatcacac tttaatgtac atgggccgca	2220
ccataatgag atgtgagcct tgtgcatgtg ggggaggagg gagagagatg tactttttaa	2280
atcatgttcc ccctaaacat ggctgttaac ccactgcatg cagaaacttg gatgtcactg	2340
cctgacattc acttccagag aggacctatc ccaaagtgg aattgactgc ctatgccaag	2400

tccctggaaa aggagcttca gtattgtggg gtcataaaa catgaatcaa gcaatccagc 2460  
 ctcatgggaa gtcctggcac agtttttgta aagcccttgc acagctggag aaatggcatc 2520  
 attataagct atgagttgaa atgttctgtc aaatgtgtct cacatctaca cgtggcttgg 2580  
 aggcttttat ggggccctgt ccaggtagaa aagaaatggt atgtagagct tagatttccc 2640  
 tattgtgaca gagccatggt gtgtttgtaa taataaaacc aaagaaacat a 2691

<210> 3  
 <211> 585  
 <212> PRT  
 <213> Homo sapiens

<220>  
 <221> PEPTIDE  
 <222> (1)..(585)  
 <223> 69 to 653 amino acid sequence of human ID No.1

<400> 3  
 Tyr Gln Arg Lys Ile Cys Gly Lys Ser Thr Val Ile Ser Tyr Glu Cys  
 1 5 10 15  
 Cys Pro Gly Tyr Glu Lys Val Pro Gly Glu Lys Gly Cys Pro Ala Ala  
 20 25 30  
 Leu Pro Leu Ser Asn Leu Tyr Glu Thr Leu Gly Val Val Gly Ser Thr  
 35 40 45  
 Thr Thr Gln Leu Tyr Thr Asp Arg Thr Glu Lys Leu Arg Pro Glu Met  
 50 55 60  
 Glu Gly Pro Gly Ser Phe Thr Ile Phe Ala Pro Ser Asn Glu Ala Trp  
 65 70 75 80  
 Ala Ser Leu Pro Ala Glu Val Leu Asp Ser Leu Val Ser Asn Val Asn  
 85 90 95  
 Ile Glu Leu Leu Asn Ala Leu Arg Tyr His Met Val Gly Arg Arg Val  
 100 105 110  
 Leu Thr Asp Glu Leu Lys His Gly Met Thr Leu Thr Ser Met Tyr Gln  
 115 120 125

Asn Ser Asn Ile Gln Ile His His Tyr Pro Asn Gly Ile Val Thr Val  
 130 135 140

Asn Cys Ala Arg Leu Leu Lys Ala Asp His His Ala Thr Asn Gly Val  
 145 150 155 160

Val His Leu Ile Asp Lys Val Ile Ser Thr Ile Thr Asn Asn Ile Gln  
 165 170 175

Gln Ile Ile Glu Ile Glu Asp Thr Phe Glu Thr Leu Arg Ala Ala Val  
 180 185 190

Ala Ala Ser Gly Leu Asn Thr Met Leu Glu Gly Asn Gly Gln Tyr Thr  
 195 200 205

Leu Leu Ala Pro Thr Asn Glu Ala Phe Glu Lys Ile Pro Ser Glu Thr  
 210 215 220

Leu Asn Arg Ile Leu Gly Asp Pro Glu Ala Leu Arg Asp Leu Leu Asn  
 225 230 235 240

Asn His Ile Leu Lys Ser Ala Met Cys Ala Glu Ala Ile Val Ala Gly  
 245 250 255

Leu Ser Val Glu Thr Leu Glu Gly Thr Thr Leu Glu Val Gly Cys Ser  
 260 265 270

Gly Asp Met Leu Thr Ile Asn Gly Lys Ala Ile Ile Ser Asn Lys Asp  
 275 280 285

Ile Leu Ala Thr Asn Gly Val Ile His Tyr Ile Asp Glu Leu Leu Ile  
 290 295 300

Pro Asp Ser Ala Lys Thr Leu Phe Glu Leu Ala Ala Glu Ser Asp Val  
 305 310 315 320

Ser Thr Ala Ile Asp Leu Phe Arg Gln Ala Gly Leu Gly Asn His Leu  
 325 330 335

Ser Gly Ser Glu Arg Leu Thr Leu Leu Ala Pro Leu Asn Ser Val Phe  
 340 345 350

Lys Asp Gly Thr Pro Pro Ile Asp Ala His Thr Arg Asn Leu Leu Arg  
 355 360 365

Asn His Ile Ile Lys Asp Gln Leu Ala Ser Lys Tyr Leu Tyr His Gly  
 370 375 380

Gln Thr Leu Glu Thr Leu Gly Gly Lys Lys Leu Arg Val Phe Val Tyr  
 385 390 395 400

Arg Asn Ser Leu Cys Ile Glu Asn Ser Cys Ile Ala Ala His Asp Lys  
 405 410 415

Arg Gly Arg Tyr Gly Thr Leu Phe Thr Met Asp Arg Val Leu Thr Pro  
 420 425 430

Pro Met Gly Thr Val Met Asp Val Leu Lys Gly Asp Asn Arg Phe Ser  
 435 440 445

Met Leu Val Ala Ala Ile Gln Ser Ala Gly Leu Thr Glu Thr Leu Asn  
 450 455 460

Arg Glu Gly Val Tyr Thr Val Phe Ala Pro Thr Asn Glu Ala Phe Arg  
 465 470 475 480

Ala Leu Pro Pro Arg Glu Arg Ser Arg Leu Leu Gly Asp Ala Lys Glu  
 485 490 495

Leu Ala Asn Ile Leu Lys Tyr His Ile Gly Asp Glu Ile Leu Val Ser  
 500 505 510

Gly Gly Ile Gly Ala Leu Val Arg Leu Lys Ser Leu Gln Gly Asp Lys  
 515 520 525

Leu Glu Val Ser Leu Lys Asn Asn Val Val Ser Val Asn Lys Glu Pro  
 530 535 540

Val Ala Glu Pro Asp Ile Met Ala Thr Asn Gly Val Val His Val Ile  
 545 550 555 560

Thr Asn Val Leu Gln Pro Pro Ala Asn Arg Pro Gln Glu Arg Gly Asp  
 565 570 575

Glu Leu Ala Asp Ser Ala Leu Glu Ile  
 580 585

- <210> 4
- <211> 1857
- <212> DNA
- <213> Mouse Intracisternal A-particle
- <400> 4

gcaggtcccc ccaagtcacc ctaccagctg gtgctgcagc atagccggct ccggggctgc 60

cagcacggcc ccaatgtatg tgctgtgcag aaggctattg gcaccaacaa gaaatacttc 120

accaactgca agcagtggtg ccagaggaag atctgoggca agtcgacagt catcagttat 180

gagtgtctgc ctggatatga aaaggctcca ggagagaaag gttgcccagc agctcttccg 240

ctctcaaate tgtatgagac catgggagtt gtgggatoga ccaccacaca gctgtataca 300

gaccgcacag aaaagctgag gcctgagatg gagggaccgc gaagcttcac catctttgct 360

cctagcaatg aggctggctc ttccttgctt gcggaagtgc tggactccct ggtgagcaac 420

gtcaacatcg aactgctcaa tgctctccgc taccacatgg tggacaggcg ggtcctgacc 480

gatgagctca agcacggcat gaccctcacc tccatgtacc agaattcaa catccagatc 540

catcactatc ccaatgggat tgtaactggt aactgtgccc ggctgctgaa ggctgaccac 600

catgcgacca acggcgtggt gcatctcatt gacaaggctc tttccaccat caccaacaac 660

atccagcaga tcattgaaat cgaggacacc tttgagacac ttcgggccgc cgtggctgca 720

tcaggactca ataccgtgct ggagggcgac ggccagttca cactcttggc cccaaccaac 780

gaggcctttg agaagatccc tgccgagacc ttgaaccgca tcctgggtga cccagaggca 840

ctgagagacc tgctaaacaa ccacatcctg aagtcagcca tgtgtgctga ggccattgta 900

gctggaatgt ccatggagac cctggggggc accacactgg aggtgggctg cagtggggac 960

aagctcacca tcaacgggaa ggctgtcatc tccaacaaag acatcctggc caccaacggt 1020

gtcattcatt tcattgatga gctgcttatc ccagattcag ccaagacact gcttgagctg 1080

gctggggaat ctgacgtctc cactgccatt gacatcctca aacaagctgg cctcgatact 1140

catctctctg ggaaagaaca gttgaccttc ctggccccc tgaattctgt gttcaaagat 1200

ggtgtccctc gcatcgacgc ccagatgaag actttgcttc tgaaccacat ggtcaaagaa 1260

cagttggcct ccaagtatct gtactctgga cagacactgg acacgctggg tggcaaaaag 1320

ctgcgagtct ttgtttatcg aaatagcctc tgcattgaaa acagctgcat tgctgcccac 1380

gataagaggg gacggtttgg gaccctgttc accatggacc ggatggtgac acccccaatg 1440

gggacagtta tggatgtcct gaagggagac aatcgtttta gcatgctggt ggccgccatc 1500  
 cagtctgcag gactcatgga gatcctcaac cggaagggg tctacactgt ttttgctccc 1560  
 accaatgaag cgttccaagc catgcctcca gaagaactga acaaactctt ggcaaatgcc 1620  
 aaggaactta ccaacatcct gaagtaccac attggtgatg aaatcctggt tagcggaggc 1680  
 atcggggccc tgggtgcggct gaagtctctc caaggggaca aactggaagt cagctcgaaa 1740  
 aacaatgtag tgagtgtcaa taaggagcct gttgccgaaa ccgacatcat ggccacaaac 1800  
 ggtgtggtot atgccatcaa cactgttctg cagccgccag ccaaccgacc acaagaa 1857

<210> 5  
 <211> 609  
 <212> PRT  
 <213> Mouse Intracisternal A-particle

<220>  
 <221> PEPTIDE  
 <222> (1)..(609)  
 <223> 23 to 641 amino acid sequence of mouse

<400> 5  
 Ala Gly Pro Ala Lys Ser Pro Tyr Gln Leu Val Leu Gln His Ser Arg  
 1 5 10 15  
 Leu Arg Gly Arg Gln His Gly Pro Asn Val Cys Ala Val Gln Lys Val  
 20 25 30  
 Ile Gly Thr Asn Arg Lys Tyr Phe Thr Asn Cys Lys Gln Trp Tyr Gln  
 35 40 45  
 Arg Lys Ile Cys Gly Lys Ser Thr Val Ile Ser Tyr Glu Cys Cys Pro  
 50 55 60  
 Gly Tyr Glu Lys Val Pro Gly Glu Lys Gly Cys Pro Ala Ala Leu Pro  
 65 70 75 80  
 Leu Ser Asn Leu Tyr Glu Thr Leu Gly Val Val Gly Ser Thr Thr Thr  
 85 90 95  
 Gln Leu Tyr Thr Asp Arg Thr Glu Lys Leu Arg Pro Glu Met Glu Gly



Ser Ala Lys Thr Leu Phe Glu Leu Ala Ala Glu Ser Asp Val Ser Thr  
 355 360 365

Ala Ile Asp Leu Phe Arg Gln Ala Gly Leu Gly Asn His Leu Ser Gly  
 370 375 380

Ser Glu Arg Leu Thr Leu Leu Ala Pro Leu Asn Ser Val Phe Lys Asp  
 385 390 395 400

Gly Thr Pro Pro Ile Asp Ala His Thr Arg Asn Leu Leu Arg Asn His  
 405 410 415

Ile Ile Lys Asp Gln Leu Ala Ser Lys Tyr Leu Tyr His Gly Gln Thr  
 420 425 430

Leu Glu Thr Leu Gly Gly Lys Lys Leu Arg Val Phe Val Tyr Arg Asn  
 435 440 445

Ser Leu Cys Ile Glu Asn Ser Cys Ile Ala Ala His Asp Lys Arg Gly  
 450 455 460

Arg Tyr Gly Thr Leu Phe Thr Met Asp Arg Val Leu Thr Pro Pro Met  
 465 470 475 480

Gly Thr Val Met Asp Val Leu Lys Gly Asp Asn Arg Phe Ser Met Leu  
 485 490 495

Val Ala Ala Ile Gln Ser Ala Gly Leu Thr Glu Thr Leu Asn Arg Glu  
 500 505 510

Gly Val Tyr Thr Val Phe Ala Pro Thr Asn Glu Ala Phe Arg Ala Leu  
 515 520 525

Pro Pro Arg Glu Arg Ser Arg Leu Leu Gly Asp Ala Lys Glu Leu Ala  
 530 535 540

Asn Ile Leu Lys Tyr His Ile Gly Asp Glu Ile Leu Val Ser Gly Gly  
 545 550 555 560

Ile Gly Ala Leu Val Arg Leu Lys Ser Leu Gln Gly Asp Lys Leu Glu  
 565 570 575

Val Ser Leu Lys Asn Asn Val Val Ser Val Asn Lys Glu Pro Val Ala  
 580 585 590

Glu Pro Asp Ile Met Ala Thr Asn Gly Val Val His Val Ile Thr Asn  
 595 600 605

Val

<210> 6  
 <211> 391  
 <212> DNA  
 <213> Artificial Sequence

<220>  
 <223>  $\beta$  ig-h3 D-IV

<400> 6  
 gtttgggacc ctgttcacca tggaccggat gttgacaccc ccaatgggga cagttatgga 60  
 tgtcctgaag ggagacaatc gttttagcat gctggtggcc gccatccagt ctgcaggact 120  
 catggagatc ctcaaccggg aaggggtcta cactgttttt gctcccacca atgaagcgtt 180  
 ccaagccatg cctccagaag aactgaacaa actcctggca aatgccaagg aacttaccaa 240  
 catcctgaag taccacattg gtgatgaaat cctggttagc ggaggcatcg gggccctggt 300  
 gcggtgaag tctctccaag gggacaaaact ggaagtcagc tcgaaaaaca atgtagtgag 360  
 tgtcaataag gagcctgttg ccgaaaccga c 391

<210> 7  
 <211> 140  
 <212> PRT  
 <213> Artificial Sequence

<220>  
 <223>  $\beta$  ig-h3 D-IV(1X) amino acid sequence

<400> 7  
 Leu Thr Pro Pro Met Gly Thr Val Met Asp Val Leu Lys Gly Asp Asn  
 1 5 10 15  
 Arg Phe Ser Met Leu Val Ala Ala Ile Gln Ser Ala Gly Leu Thr Glu  
 20 25 30  
 Thr Leu Asn Arg Glu Gly Val Tyr Thr Val Phe Ala Pro Thr Asn Glu

35 40 45  
 Ala Phe Arg Ala Leu Pro Pro Arg Glu Arg Ser Arg Leu Leu Gly Asp  
 50 55 60  
 Ala Lys Glu Leu Ala Asn Ile Leu Lys Tyr His Ile Gly Asp Glu Ile  
 65 70 75 80  
 Leu Val Ser Gly Gly Ile Gly Ala Leu Val Arg Leu Lys Ser Leu Gln  
 85 90 95  
 Gly Asp Lys Leu Glu Val Ser Leu Lys Asn Asn Val Val Ser Val Asn  
 100 105 110  
 Lys Glu Pro Val Ala Glu Pro Asp Ile Met Ala Thr Asn Gly Val Val  
 115 120 125  
 His Val Ile Thr Asn Val Leu Gln Pro Pro Ala Asn  
 130 135 140

<210> 8  
 <211> 280  
 <212> PRT  
 <213> Artificial Sequence  
 <220>  
 <223>  $\beta$  ig-h3 D-IV(2X) amino acid sequence

<400> 8  
 Leu Thr Pro Pro Met Gly Thr Val Met Asp Val Leu Lys Gly Asp Asn  
 1 5 10 15  
 Arg Phe Ser Met Leu Val Ala Ala Ile Gln Ser Ala Gly Leu Thr Glu  
 20 25 30  
 Thr Leu Asn Arg Glu Gly Val Tyr Thr Val Phe Ala Pro Thr Asn Glu  
 35 40 45  
 Ala Phe Arg Ala Leu Pro Pro Arg Glu Arg Ser Arg Leu Leu Gly Asp  
 50 55 60  
 Ala Lys Glu Leu Ala Asn Ile Leu Lys Tyr His Ile Gly Asp Glu Ile  
 65 70 75 80  
 Leu Val Ser Gly Gly Ile Gly Ala Leu Val Arg Leu Lys Ser Leu Gln

	85		90		95
Gly Asp Lys Leu Glu Val Ser Leu Lys Asn Asn Val Val Ser Val Asn					
	100		105		110
Lys Glu Pro Val Ala Glu Pro Asp Ile Met Ala Thr Asn Gly Val Val					
	115		120		125
His Val Ile Thr Asn Val Leu Gln Pro Pro Ala Asn Leu Thr Pro Pro					
	130		135		140
Met Gly Thr Val Met Asp Val Leu Lys Gly Asp Asn Arg Phe Ser Met					
	145		150		155
Leu Val Ala Ala Ile Gln Ser Ala Gly Leu Thr Glu Thr Leu Asn Arg					
	165		170		175
Glu Gly Val Tyr Thr Val Phe Ala Pro Thr Asn Glu Ala Phe Arg Ala					
	180		185		190
Leu Pro Pro Arg Glu Arg Ser Arg Leu Leu Gly Asp Ala Lys Glu Leu					
	195		200		205
Ala Asn Ile Leu Lys Tyr His Ile Gly Asp Glu Ile Leu Val Ser Gly					
	210		215		220
Gly Ile Gly Ala Leu Val Arg Leu Lys Ser Leu Gln Gly Asp Lys Leu					
	225		230		235
Glu Val Ser Leu Lys Asn Asn Val Val Ser Val Asn Lys Glu Pro Val					
	245		250		255
Ala Glu Pro Asp Ile Met Ala Thr Asn Gly Val Val His Val Ile Thr					
	260		265		270
Asn Val Leu Gln Pro Pro Ala Asn					
	275		280		
<210>	9				
<211>	420				
<212>	PRT				
<213>	Artificial Sequence				
<220>					
<223>	β ig-h3 D-IV(3X) amino acid sequence				

<400> 9  
 Leu Thr Pro Pro Met Gly Thr Val Met Asp Val Leu Lys Gly Asp Asn  
 1 5 10 15  
 Arg Phe Ser Met Leu Val Ala Ala Ile Gln Ser Ala Gly Leu Thr Glu  
 20 25 30  
 Thr Leu Asn Arg Glu Gly Val Tyr Thr Val Phe Ala Pro Thr Asn Glu  
 35 40 45  
 Ala Phe Arg Ala Leu Pro Pro Arg Glu Arg Ser Arg Leu Leu Gly Asp  
 50 55 60  
 Ala Lys Glu Leu Ala Asn Ile Leu Lys Tyr His Ile Gly Asp Glu Ile  
 65 70 75 80  
 Leu Val Ser Gly Gly Ile Gly Ala Leu Val Arg Leu Lys Ser Leu Gln  
 85 90 95  
 Gly Asp Lys Leu Glu Val Ser Leu Lys Asn Asn Val Val Ser Val Asn  
 100 105 110  
 Lys Glu Pro Val Ala Glu Pro Asp Ile Met Ala Thr Asn Gly Val Val  
 115 120 125  
 His Val Ile Thr Asn Val Leu Gln Pro Pro Ala Asn Leu Thr Pro Pro  
 130 135 140  
 Met Gly Thr Val Met Asp Val Leu Lys Gly Asp Asn Arg Phe Ser Met  
 145 150 155 160  
 Leu Val Ala Ala Ile Gln Ser Ala Gly Leu Thr Glu Thr Leu Asn Arg  
 165 170 175  
 Glu Gly Val Tyr Thr Val Phe Ala Pro Thr Asn Glu Ala Phe Arg Ala  
 180 185 190  
 Leu Pro Pro Arg Glu Arg Ser Arg Leu Leu Gly Asp Ala Lys Glu Leu  
 195 200 205  
 Ala Asn Ile Leu Lys Tyr His Ile Gly Asp Glu Ile Leu Val Ser Gly  
 210 215 220  
 Gly Ile Gly Ala Leu Val Arg Leu Lys Ser Leu Gln Gly Asp Lys Leu  
 225 230 235 240

Glu Val Ser Leu Lys Asn Asn Val Val Ser Val Asn Lys Glu Pro Val  
 245 250 255

Ala Glu Pro Asp Ile Met Ala Thr Asn Gly Val Val His Val Ile Thr  
 260 265 270

Asn Val Leu Gln Pro Pro Ala Asn Leu Thr Pro Pro Met Gly Thr Val  
 275 280 285

Met Asp Val Leu Lys Gly Asp Asn Arg Phe Ser Met Leu Val Ala Ala  
 290 295 300

Ile Gln Ser Ala Gly Leu Thr Glu Thr Leu Asn Arg Glu Gly Val Tyr  
 305 310 315 320

Thr Val Phe Ala Pro Thr Asn Glu Ala Phe Arg Ala Leu Pro Pro Arg  
 325 330 335

Glu Arg Ser Arg Leu Leu Gly Asp Ala Lys Glu Leu Ala Asn Ile Leu  
 340 345 350

Lys Tyr His Ile Gly Asp Glu Ile Leu Val Ser Gly Gly Ile Gly Ala  
 355 360 365

Leu Val Arg Leu Lys Ser Leu Gln Gly Asp Lys Leu Glu Val Ser Leu  
 370 375 380

Lys Asn Asn Val Val Ser Val Asn Lys Glu Pro Val Ala Glu Pro Asp  
 385 390 395 400

Ile Met Ala Thr Asn Gly Val Val His Val Ile Thr Asn Val Leu Gln  
 405 410 415

Pro Pro Ala Asn  
 420

<210> 10

<211> 560

<212> PRT

<213> Artificial Sequence

<220>

<223>  $\beta$  ig-h3 D-IV(4X) amino acid sequence

<400> 10

Leu Thr Pro Pro Met Gly Thr Val Met Asp Val Leu Lys Gly Asp Asn  
 1 5 10 15

Arg Phe Ser Met Leu Val Ala Ala Ile Gln Ser Ala Gly Leu Thr Glu  
 20 25 30

Thr Leu Asn Arg Glu Gly Val Tyr Thr Val Phe Ala Pro Thr Asn Glu  
 35 40 45

Ala Phe Arg Ala Leu Pro Pro Arg Glu Arg Ser Arg Leu Leu Gly Asp  
 50 55 60

Ala Lys Glu Leu Ala Asn Ile Leu Lys Tyr His Ile Gly Asp Glu Ile  
 65 70 75 80

Leu Val Ser Gly Gly Ile Gly Ala Leu Val Arg Leu Lys Ser Leu Gln  
 85 90 95

Gly Asp Lys Leu Glu Val Ser Leu Lys Asn Asn Val Val Ser Val Asn  
 100 105 110

Lys Glu Pro Val Ala Glu Pro Asp Ile Met Ala Thr Asn Gly Val Val  
 115 120 125

His Val Ile Thr Asn Val Leu Gln Pro Pro Ala Asn Leu Thr Pro Pro  
 130 135 140

Met Gly Thr Val Met Asp Val Leu Lys Gly Asp Asn Arg Phe Ser Met  
 145 150 155 160

Leu Val Ala Ala Ile Gln Ser Ala Gly Leu Thr Glu Thr Leu Asn Arg  
 165 170 175

Glu Gly Val Tyr Thr Val Phe Ala Pro Thr Asn Glu Ala Phe Arg Ala  
 180 185 190

Leu Pro Pro Arg Glu Arg Ser Arg Leu Leu Gly Asp Ala Lys Glu Leu  
 195 200 205

Ala Asn Ile Leu Lys Tyr His Ile Gly Asp Glu Ile Leu Val Ser Gly  
 210 215 220

Gly Ile Gly Ala Leu Val Arg Leu Lys Ser Leu Gln Gly Asp Lys Leu  
 225 230 235 240

Glu Val Ser Leu Lys Asn Asn Val Val Ser Val Asn Lys Glu Pro Val  
 245 250 255

Ala Glu Pro Asp Ile Met Ala Thr Asn Gly Val Val His Val Ile Thr  
 260 265 270

Asn Val Leu Gln Pro Pro Ala Asn Leu Thr Pro Pro Met Gly Thr Val  
 275 280 285

Met Asp Val Leu Lys Gly Asp Asn Arg Phe Ser Met Leu Val Ala Ala  
 290 295 300

Ile Gln Ser Ala Gly Leu Thr Glu Thr Leu Asn Arg Glu Gly Val Tyr  
 305 310 315 320

Thr Val Phe Ala Pro Thr Asn Glu Ala Phe Arg Ala Leu Pro Pro Arg  
 325 330 335

Glu Arg Ser Arg Leu Leu Gly Asp Ala Lys Glu Leu Ala Asn Ile Leu  
 340 345 350

Lys Tyr His Ile Gly Asp Glu Ile Leu Val Ser Gly Gly Ile Gly Ala  
 355 360 365

Leu Val Arg Leu Lys Ser Leu Gln Gly Asp Lys Leu Glu Val Ser Leu  
 370 375 380

Lys Asn Asn Val Val Ser Val Asn Lys Glu Pro Val Ala Glu Pro Asp  
 385 390 395 400

Ile Met Ala Thr Asn Gly Val Val His Val Ile Thr Asn Val Leu Gln  
 405 410 415

Pro Pro Ala Asn Leu Thr Pro Pro Met Gly Thr Val Met Asp Val Leu  
 420 425 430

Lys Gly Asp Asn Arg Phe Ser Met Leu Val Ala Ala Ile Gln Ser Ala  
 435 440 445

Gly Leu Thr Glu Thr Leu Asn Arg Glu Gly Val Tyr Thr Val Phe Ala  
 450 455 460

Pro Thr Asn Glu Ala Phe Arg Ala Leu Pro Pro Arg Glu Arg Ser Arg  
 465 470 475 480

Leu Leu Gly Asp Ala Lys Glu Leu Ala Asn Ile Leu Lys Tyr His Ile  
 485 490 495

Gly Asp Glu Ile Leu Val Ser Gly Gly Ile Gly Ala Leu Val Arg Leu

500                      505                      510

Lys Ser Leu Gln Gly Asp Lys Leu Glu Val Ser Leu Lys Asn Asn Val  
515                      520                      525

Val Ser Val Asn Lys Glu Pro Val Ala Glu Pro Asp Ile Met Ala Thr  
530                      535                      540

Asn Gly Val Val His Val Ile Thr Asn Val Leu Gln Pro Pro Ala Asn  
545                      550                      555                      560

# INTERNATIONAL SEARCH REPORT

International application No.  
PCT/KR02/01975

**A. CLASSIFICATION OF SUBJECT MATTER**

**IPC7 G01N 33/68**

According to International Patent Classification (IPC) or to both national classification and IPC

**B. FIELDS SEARCHED**

Minimum documentation searched (classification system followed by classification symbols)

IPC7 G01N 33/53, C07K 15/00, C12N 15/09, A61K 9/06

Documentation searched other than minimum documentation to the extent that such documents are included in the fields searched

Korean Patents and applications for inventions since 1975, Korean Utility models and application for Utility models since 1975.  
Japanese Utility models and applications for Utility models since 1975.

Electronic data base consulted during the international search (name of data base and, where practicable, search terms used)

NCBI, MEDLINE, eKIPASS

**C. DOCUMENTS CONSIDERED TO BE RELEVANT**

Category*	Citation of document, with indication, where appropriate, of the relevant passages	Relevant to claim No.
Y	WO 96/01102 A (Advanced Tissue Sciences) 18. 01. 1996 - see the whole document -	1-16
Y	EP 555,989 A (Purchio, Anthony F) 18. 08.1993 - example 1, 2	1-16
Y	US 5,714,588 A (Advanced Tissue Sciences) 03. 02. 1998 - see the whole document -	1-16
Y	US 5,444,164 A ( Bristol-Myers Squibb Company) 22.88. 1995 - see the abstract, example -	1-16
Y	US 5,599,788 A (Advanced Tissue Sciences) 04. 02. 1997 -see the whole document -	1-16

Further documents are listed in the continuation of Box C.

See patent family annex.

\* Special categories of cited documents:

"A" document defining the general state of the art which is not considered to be of particular relevance  
"E" earlier application or patent but published on or after the international filing date  
"L" document which may throw doubts on priority claim(s) or which is cited to establish the publication date of citation or other special reason (as specified)  
"O" document referring to an oral disclosure, use, exhibition or other means  
"P" document published prior to the international filing date but later than the priority date claimed

"T" later document published after the international filing date or priority date and not in conflict with the application but cited to understand the principle or theory underlying the invention  
"X" document of particular relevance; the claimed invention cannot be considered novel or cannot be considered to involve an inventive step when the document is taken alone  
"Y" document of particular relevance; the claimed invention cannot be considered to involve an inventive step when the document is combined with one or more other such documents, such combination being obvious to a person skilled in the art  
"&" document member of the same patent family

Date of the actual completion of the international search

27 FEBRUARY 2003 (27.02.2003)

Date of mailing of the international search report

27 FEBRUARY 2003 (27.02.2003)

Name and mailing address of the ISA/KR



Korean Intellectual Property Office  
920 Dunsan-dong, Seo-gu, Daejeon 302-701,  
Republic of Korea

Facsimile No. 82-42-472-7140

Authorized officer

JOO, Young Sik

Telephone No. 82-42-481-5995



专利名称(译)	使用相同的方法测量 $\beta$ ( b ) iG-H3蛋白和诊断试剂盒的数量的方法		
公开(公告)号	<a href="#">EP1502114A4</a>	公开(公告)日	2006-06-07
申请号	EP2002781971	申请日	2002-10-22
申请(专利权)人(译)	REGEN BIOTECH , INC.		
当前申请(专利权)人(译)	REGEN BIOTECH , INC.		
[标]发明人	KIM IN SAN BAE JONG SUB		
发明人	KIM, IN-SAN BAE, JONG-SUB		
IPC分类号	G01N33/53 C07K14/705 C12N15/09 G01N33/566 G01N33/68 G01N37/00		
CPC分类号	G01N33/6887 G01N2333/78		
优先权	1020020021488 2002-04-19 KR		
其他公开文献	EP1502114A1		
外部链接	<a href="#">Espacenet</a>		

摘要(译)

本发明涉及 $\beta$ -ig-h3蛋白量的测定方法和使用该方法的诊断试剂盒。特别地，本发明涉及通过betaig-h3蛋白或betaig-h3蛋白中fas-1结构域的重组蛋白（包括其片段或衍生物）之间的特异性结合反应来测量体液中betaig-h3蛋白的量的方法。）及其配体，并涉及用于肾脏疾病，肝病，类风湿性关节炎或心血管疾病的诊断试剂盒，其中包含betaig-h3蛋白或betaig-h3蛋白中fas-1域的重组蛋白（包括其片段或衍生物），以及他们的配体。本发明的方法和试剂盒可以有效地用作对肾脏疾病，肝病，类风湿性关节炎或心血管疾病的损害或进展程度的灵敏诊断方法。

