



(11) **EP 2 416 159 A1**

(12) **EUROPEAN PATENT APPLICATION**
published in accordance with Art. 153(4) EPC

(43) Date of publication:
08.02.2012 Bulletin 2012/06

(51) Int Cl.:
G01N 33/569 ^(2006.01) **G01N 33/53** ^(2006.01)
C07K 14/03 ^(2006.01)

(21) Application number: **10758800.6**

(86) International application number:
PCT/JP2010/055884

(22) Date of filing: **31.03.2010**

(87) International publication number:
WO 2010/114029 (07.10.2010 Gazette 2010/40)

(84) Designated Contracting States:
**AT BE BG CH CY CZ DE DK EE ES FI FR GB GR
HR HU IE IS IT LI LT LU LV MC MK MT NL NO PL
PT RO SE SI SK SM TR**

(30) Priority: **31.03.2009 JP 2009087816**

(71) Applicants:
• **Japan Tobacco, Inc.**
Tokyo 105-8422 (JP)
• **Virus Ikagaku Kenkyusho Inc.**
Osaka 560-0082 (JP)

(72) Inventors:
• **TAKAKURA, Yoshimitsu**
Iwata-shi
Shizuoka 438-0802 (JP)

• **OKA, Naomi**
Iwata-shi
Shizuoka 438-0802 (JP)
• **KONDO, Kazuhiro**
Tokyo 105-8461 (JP)
• **KOBAYASHI, Nobuyuki**
Tokyo 110-0004 (JP)

(74) Representative: **Isarpatent**
Patent- und Rechtsanwälte
Friedrichstrasse 31
80801 München (DE)

(54) **METHOD FOR DETECTING ANTIBODY AGAINST SITH-1 IN BIOLOGICAL SAMPLE**

(57) The present invention provides a method for detecting an antibody against a small protein encoded by the intermediate stage transcript of HHV-6 (SITH-1) in a biological sample.

The method of the present invention comprises:

1) providing the SITH-1 protein;

2) binding the SITH-1 protein provided in step 1) to a carrier; and

3) contacting the biological sample with the SITH-1 protein-bound carrier prepared in step 2) to detect the SITH-1 protein antibody.

EP 2 416 159 A1

Description

TECHNICAL FIELD

5 **[0001]** The present invention relates to a method for qualitatively and/or quantitatively detecting an antibody against a small protein encoded by the intermediate stage transcript of HHV-6 (SITH-1) in a biological sample. The method of the present invention enables detection of an antibody against the SITH-1 protein which is present in a trace amount in a biological sample and which cannot be readily detected by a conventional process.

10 BACKGROUND ART

[0002] In a virus of the family Herpesviridae, a core protein is surrounded by double-stranded DNA with molecular masses of $80\text{-}150 \times 10^6$ Daltons which is enclosed in an icosahedral capsid with a diameter of about 100 nm which consists of 162 capsomers to form a nucleocapsid which is surrounded by an envelope to have an overall size of ca. 150-200 nm. Herpes viruses have been found in almost all mammals and amphibians and, in particular, viruses of the family Herpesviridae which have host specificity for humans are named human herpesviruses (HHVs). HHVs are classified into subfamilies alpha-herpesvirinae (e.g., herpes simplex virus and varicella zoster herpes virus), beta-herpesvirinae (e.g., cytomegalovirus), and gamma-herpesvirinae (e.g., EB virus).

20 **[0003]** Such herpes viruses are characterized by "latent infection". The "latent infection" refers to an infection state in which viruses exist without production of infectious virus particles in host cells. In the latent infection, the virus gene and the gene product assisting the existence of the virus gene are retained in the host cells. It is known that herpes viruses under the latent infection are reactivated by any factor of the host, for example, increasing age or deconditioning (e.g. fatigue), so that a large number of viruses are duplicated through restart of production of virus particles (reactivation).

25 **[0004]** Accordingly, herpes viruses have unique properties; although they continue latent infection as long as the host is normal, they are reactivated to seek any other host if they scent the crisis of the host due to disturbance in the body of the host.

[0005] Comprehension on the latent infection and reactivation of viruses are essential for investigation of ecology of viruses of the family Herpesviridae. Unfortunately, sufficient knowledge is given to only the EB virus of the family gamma-herpesvirinae among the herpes viruses, and other viruses remains still unclear.

30 **[0006]** In particular, no additional information other than knowledge which was previously presented by some of the present inventors is disclosed on factors of beta-herpes viruses which involve latent infection. For example, Non-Patent Literature 1 discloses HHV-6 which is in a state of latent infection in macrophages exhibiting relatively high differentiation in peripheral blood, and also discloses the site of the latent infection with HHV-6 in the host. Non-Patent Literature 2 discloses high-rate transfer of HHV-6 into brain at the initial infection, which causes persistent infection or latent infection. Non-Patent Literature 3 discloses a gene expressed by the latent infection with HHV-6 (latent infection gene) and suggests that the gene controls the latent infection and reactivation of the viruses.

35 **[0007]** Non-Patent literature 4 shows that the state of latent infection with HHV-6 involves an intermediate stage which is comparatively stable and allows for active gene expression, with a result that a latent infection gene and a protein encoded by this gene (the latent infection gene protein) are expressed abundantly. Furthermore, Non-Patent Literature 5 shows that patients with chronic fatigue syndrome have in their serum antibodies against latent infection gene proteins the expression of which is enhanced at the intermediate stage.

CITATION LIST

45 Non-Patent Literature

[0008]

50 Non-Patent Literature 1: Kondo. K et al. Latent human herpesvirus 6 infection of human monocytes /macrophages, J Gen Virol 72:1401-1408, 1991

Non-patent Literature 2: Kondo. K et al. Association of human herpesvirus 6 infection of the central nervous system with recurrence of febrile convulsions. J Infect Dis 167:1197-1200, 1993

Non-patent Literature 3: Kondo. K et al. Identification of human herpesvirus 6 latency-associated transcripts., J Virol. 76: 4145-4151, 2002

55 Non-patent Literature 4: Kondo K et al. Recognition of a Novel Stage of Beta-Herpesvirus Latency in Human Herpesvirus 6., J Virol. 77: 2258-2264, 2003

Non-patent Literature 5: Kondo Kazuhiro, "Herpes viruses kansen to hiroh (Infection with herpes viruses and fatigue)", Virus, Vol. 55 No. 1, pp. 9-18, 2005.

SUMMARY OF INVENTION

TECHNICAL PROBLEM

5 **[0009]** Some of the present inventors identified a novel gene expressed in the intermediate stage in which specific genes to latent infection with HHV-6 are actively expressed and a novel small protein encoded by the intermediate transcript of HHV-6 (SITH-1). Through functional analysis of these genes and the protein SITH-1 encoded by the genes, the inventors have found new facts, that is, (i) the SITH-1 protein has a function that increases the concentration of the intracellular calcium, and (ii) an antibody against the SITH-1 protein is significantly detected from patients with mood disorder while it is not substantially detected from healthy subjects, and applied for patents (PCT/JP2008/67300).

10 **[0010]** As described above, detection of an antibody against the SITH-1 protein contained in biological samples from humans can be used for diagnosis of mental disorder and other diseases.

15 **[0011]** The serum antibody titer against the SITH-1 protein was determined by a conventional fluorescent antibody technique using 293T cells as antigens in which SITH-1 proteins are expressed. The inventors have continued the study and have discovered that the fluorescent antibody technique requires cumbersome processes such as fabrication of mammalian cells in which SITH-1 is expressed and production of preparation; the detection operation needs skill due to a low antibody titer in the human serum against the SITH-1 protein; and the SITH-1 protein requires careful handling due to its instability. Furthermore, the fluorescent antibody technique, which involves visual observation of fluorescence under the microscope after the reaction with a blood sample, is cumbersome and thus is unsuitable for simultaneous measurement of a large number of samples. In addition, some blood samples cannot be often measured due to non-specific binding.

20 **[0012]** In view of such new knowledge by the inventors, an object of the present invention is to provide a simple and easy method for qualitatively and/or quantitatively detecting an antibody against a SITH-1 protein in a biological sample.

25 **[0013]** A particular object of the present invention is to provide a simple and easy method for qualitatively and/or quantitatively detecting and determining an antibody against a SITH-1 protein in a biological sample under a suppressed background signal level.

SOLUTION TO PROBLEM

30 **[0014]** The inventors have discovered that a system of a SITH-1 protein bound to a carrier is useful for detection of antibodies and have conceived the present invention.

35 **[0015]** In particular, in order to detect a trace amount of SITH-1 protein in a biological sample in this system, counter measure was employed to reduce the background signal level. More specifically, nonspecific binding was reduced by addition of a cell homogenate extract to a biological sample. In a system of a SITH-1 protein immobilized on a carrier through binding between biotin and a biotin-binding protein, addition of a biotin binding protein as well as a cell homogenate extract to a biological sample exhibited a further outstanding reduction in nonspecific binding. Instead of addition of the biotin binding protein, substantially the same effect was achieved from addition of a cell homogenate extract prepared from cells genetically engineered to express a biotin-binding protein.

40 **[0016]** Based on the knowledge described above, the present invention provides a high-sensitive method for detecting an antibody against a SITH-1 protein with a reduced amount of nonspecific binding in a system of a SITH-1 protein immobilized on a carrier.

[0017] The present invention includes the following nonlimiting embodiments.

[Embodiment 1]

45 **[0018]** A method for detecting an antibody against a small protein encoded by the intermediate stage transcript of HHV-6 (SITH-1) in a biological sample, which comprises:

- 1) providing the SITH-1 protein;
- 50 2) binding the SITH-1 protein provided in step 1) to a carrier;
- 3) contacting the biological sample with the SITH-1 protein-bound carrier provided in step 2) to detect the SITH-1 protein antibody.

[Embodiment 2]

55 **[0019]** The method according to Embodiment 1, wherein the SITH-1 protein is selected from the group consisting of:

- (a) a protein which has an amino acid sequence of SEQ ID NO: 1;

EP 2 416 159 A1

(b) a protein which has an amino acid sequence comprising deletion, substitution, insertion, and/or addition of one or more amino acids in the amino acid sequence of SEQ ID NO: 1 and which has the ability to increase the intracellular calcium concentration;

(c) a protein which has an amino acid sequence sharing an identity of at least 80% with the amino acid sequence of SEQ ID NO: 1 and which has the ability to increase the intracellular calcium concentration;

(d) a protein which has an amino acid sequence encoded by a nucleic acid consisting of the nucleotide sequence of SEQ ID NO: 2;

(e) a protein which has an amino acid sequence encoded by a nucleic acid consisting of a nucleotide sequence comprising deletion, substitution, insertion and/or addition of one or more nucleotides in the nucleotide sequence of SEQ ID NO: 2 and which has the ability to increase the intracellular calcium concentration;

(f) a protein which has an amino acid sequence encoded by a nucleic acid consisting of a nucleotide sequence sharing an identity of 80% or more with the nucleotide sequence of SEQ ID NO: 2 and which has the ability to increase the intracellular calcium concentration; and

(g) a protein which is encoded by a nucleic acid hybridizable under stringent hybridization conditions with a nucleic acid consisting of a nucleotide sequence complementary to the nucleotide sequence of SEQ ID NO: 2 and which has the ability to increase the intracellular calcium concentration.

[Embodiment 3]

[0020] The method according to Embodiment 1 or 2, wherein step 3) in Embodiment 1 comprises adding a mixture of:

(a) the biological sample, and

(b) a cell homogenate extract prepared from cells of the same species as that of host cells used to express the SITH-1 protein in step 1)

to the SITH-1 protein-bound carrier prepared in step 2).

[Embodiment 4]

[0021] The method according to any one of Embodiments 1 to 3, wherein step 2) in Embodiment 1 comprising binding the SITH-1 protein to the carrier through binding between biotin and a biotin-binding protein.

[Embodiment 5]

[0022] The method according to Embodiment 4, wherein step 3) in Embodiment 1 comprises adding a mixture of:

(a) the biological sample, and

(b-i) a cell homogenate extract prepared from cells of the same species as that of host cells used to express the SITH-1 protein, a biotinylated SITH-1 protein and/or a biotin-binding protein in step 1) or 2), in combination with a biotin-binding protein; or

(b-ii) a cell homogenate extract prepared from cells genetically engineered to express a biotin-binding protein, wherein the cells are of the same species as that of host cells used to express the SITH-1 protein, a biotinylated SITH-1 protein and/or a biotin-binding protein in step 1) or 2)

to the SITH-1 protein-bound carrier prepared in step 2).

[Embodiment 6]

[0023] The method according to any one of Embodiments 3 to 5, wherein, step 3(b) in Embodiment 3 or step 3(b-i) in Embodiment 5 comprises adding, as the cell homogenate extract, a cell homogenate extract extracted from cells comprising any vector.

[Embodiment 7]

[0024] The method according to any one of Embodiments 4 to 6, wherein the biotin-binding protein is tamavidin or a mutant thereof.

[Embodiment 8]

5 [0025] The method according to any one of Embodiments 1 to 7, wherein the biological sample is selected from the group consisting of blood, serum, cerebrospinal fluid, saliva, throat swab, sweat, urine, tear, lymph, semen, peritoneal fluid, and mother's milk.

[Embodiment 9]

10 [0026] A carrier for detecting an antibody against a small protein encoded by the intermediate stage transcript of HHV-6 (SITH-1) in a biological sample, wherein the carrier comprises the SITH-1 protein bound thereto.

[Embodiment 10]

15 [0027] The carrier according to Embodiment 9, wherein the SITH-1 protein and the carrier are bound to each other through binding between biotin and a biotin-binding protein.

[Embodiment 11]

20 [0028] A kit for detecting an antibody against a small protein encoded by the intermediate stage transcript of HHV-6 (SITH-1) in a biological sample, which comprises:

- A) a carrier comprising the SITH-1 protein bound thereto; and
- B) an agent for diluting the biological sample, which comprises a cell homogenate extract prepared from cells of the same species as that of host cells used to express the SITH-1 protein in A).

25 [Embodiment 12]

30 [0029] The kit according to Embodiment 11, wherein the carrier in A) is a carrier comprising the SITH-1 protein bound thereto through binding between biotin and a biotin-binding protein, and wherein the agent in B) is an agent for diluting the biological sample, which comprises:

- i) a cell homogenate extract prepared from cells of the same species as that of host cells used to express the SITH-1 protein, a biotinylated SITH-1 protein and/or a biotin-binding protein, in combination with a biotin-binding protein in A); or
- 35 ii) a cell homogenate extract prepared from cells genetically engineered to express a biotin-binding protein, wherein the cells are of the same species as that of host cells used to express the SITH-1 protein, the biotinylated SITH-1 protein and/or the biotin-binding protein in A).

40 [Embodiment 13]

[0030] A kit for detecting an antibody against a small protein encoded by the intermediate stage transcript of HHV-6 (SITH-1) in a biological sample, which comprises:

- A) the SITH-1 protein;
- 45 B) a carrier for immobilizing the SITH-1 protein in A); and
- C) an agent for diluting a biological sample, which comprises a cell homogenate extract prepared from cells of the same species as that of host cells used to express the SITH-1 protein in A).

50 [Embodiment 14]

[0031] The kit according to Embodiment 13, wherein the SITH-1 protein in A) is biotinylated, wherein the carrier in B) is directly or indirectly bound to a biotin-binding protein, and wherein the agent in C) is an agent for diluting the biological sample, which comprises:

- 55 i) a cell homogenate extract prepared from cells of the same species as that of host cells used to express the SITH-1 protein, a biotinylated SITH-1 protein and/or a biotin-binding protein, in combination with a biotin-binding protein in A) or B); or
- ii) a cell homogenate extract prepared from cells genetically engineered to express a biotin-binding protein, wherein

the cells are of the same species as that of host cells used to express the SITH-1 protein, the biotinylated SITH-1 protein and/or the biotin-binding protein in A) or B).

ADVANTAGEOUS EFFECTS OF INVENTION

[0032] The method of the present invention enables high-sensitivity and stable detection, with a reduced background signal level, of an SITH-1 protein antibody in a biological sample. In particular, the method of the present invention enables detection and determination of an SITH-1 protein antibody which is present in a trace amount in a biological sample and cannot be readily detected by conventional methods.

BRIEF DESCRIPTION OF DRAWINGS

[0033] [Fig. 1] Fig. 1 illustrates expression of a BioEase tagged (biotin tagged) fusion SITH-1 protein; Fig. 1A illustrates the result of Western blotting for the detection of the SITH-1 protein; and Fig. 1B illustrates the result of activity staining for the detection of a biotinylated protein.

[0034] *E. coli* BL21 (DE3) expressing a BioEase tagged fusion SITH-1 protein was sonicated, and the resulting crude *E. coli* extract fraction was developed onto SDS-PAGE (15% acrylamide gel) so as to give 20 µg total protein/lane, and then was transferred onto a PVDF film.

[0035] In further detail, in Fig. 1A, after the reaction of an anti-SITH-1 antibody (1/1000 dilution), alkaline phosphatase (AP) labeled anti-rabbit IgG antibody (1/1000 dilution) was reacted followed by AP staining. Fig. 1B is a stained image after the reaction of streptavidin-horseradish peroxidase (HRP) (1/1000 dilution). In Figs. 1A and 1B, "Control" represents an extract sample derived from *E. coli* having only an expression vector. The arrow indicates the position of the BioEase tagged fusion SITH-1 protein.

[0036] The Streptavidin-HRP staining chromatogram in Fig. 1B shows two broad bands. The lower band, which is not detected in the anti-SITH-1 antibody chromatogram in Fig. 1A, seems to be a BioEase tagged protein of which part of the SITH-1 site is decomposed.

[Fig.2] Fig. 2 is a graph illustrating the effect of various diluents for sera on nonspecific binding. Open squares tied by broken lines indicate a sample of the serum diluted in PBS; Open squares tied by solid lines indicates a sample diluted in PBS containing purified tamavidin 2 (TM2); Asterisks tied by broken lines indicate a sample diluted in a broken *E. coli* extract having only an expression vector; Asterisks tied by solid line indicate a sample diluted in a broken *E. coli* extract having only an expression vector and containing purified TM2; and Closed circles tied by solid lines indicate a sample diluted in a TM2 expressing broken *E. coli* extract. The longitudinal axis (luminescence) of each graph represents the amount of the detected anti-SITH-1 antibody while the lateral axis represents the dilution ratio of the anti-SITH-1 antibody which is gradually diluted.

[Fig.3] Fig. 3 is a graph of the S/N ratio at various dilution ratios of the anti-SITH-1 antibody, the ratio being calculated from the results shown in Fig. 2.

[0037] Open squares tied by broken lines indicate a sample of the serum diluted in PBS; Open squares tied by solid lines indicates a sample diluted in PBS containing purified tamavidin 2 (TM2); Asterisks tied by broken lines indicate a sample diluted in a broken *E. coli* extract having only an expression vector; Asterisks tied by solid line indicate a sample diluted in a broken *E. coli* extract having only an expression vector and containing purified TM2; and Closed circles tied by solid lines indicate a sample diluted in a TM2 expressing broken *E. coli* extract.

[Fig.4] Fig. 4 is a graph illustrating the observed anti-SITH-1 antibody titer in human sera in the case of the use of a TM2 plate with a biotinylated SITH-1 bound thereto. A solution of each human serum diluted in a TBS-T (tris-buffered saline, 0.1% Tween 20) containing 1% casein was exposed to the TM2 plate.

[Fig.5] Fig. 5 is a graph illustrating the observed anti-SITH-1 antibody titer in human sera in the case of the use of a TM2 plate comprising a biotinylated SITH-1 bound thereto. A solution of each human serum diluted in a crude *E. coli* extract was exposed to the TM2 plate.

[Fig.6] Fig. 6 is a graph illustrating the observed anti-SITH-1 antibody titer in human sera in the case of the use of a TM2 plate comprising a biotinylated SITH-1 bound thereto. A solution of each human serum diluted in a TM2 expressing *E. coli* extract containing 5 mg total protein/ml was exposed to the TM2 plate.

[Fig.7] Fig. 7 is a graph illustrating the observed anti-SITH-1 antibody titer in an anti-SITH-1 rabbit serum in the case of the use of a nickel plate comprising a His-tagged fusion SITH-1 protein bound thereto. A solution of the anti-SITH-1 rabbit serum 100-fold diluted in PBS(-) containing 0.2% BSA was added. Non-expressing *E. coli* and His-tagged EGFP were used as controls.

[Fig. 8] Fig. 8 is a graph illustrating the observed anti-SITH-1 antibody titer in an anti-SITH-1 rabbit serum in the case of the use of a nickel plate comprising a His-tagged fusion SITH-1 protein bound thereto. A solution of the anti-SITH-1 rabbit serum 500-fold diluted in PBS(-) containing 0.2% BSA was added. Non-expressing *E. coli* and His-tagged EGFP were used as controls.

[Fig.9] Fig. 9 is a graph illustrating the observed anti-SITH-1 antibody titer in human sera in the case of the use of a nickel plate comprising a His-tagged fusion SITH-1 protein bound thereto. A 100-fold diluted solution of each human serum was added. His-tagged EGFP was used as a control. The serum dilution solution used was 1% BSA or a crude *E. coli* extract.

5 [Fig.10] Fig. 10 is a graph illustrating the observed anti-SITH-1 antibody titer in human sera in the case of the use of a nickel plate comprising a His-tagged fusion SITH-1 protein bound thereto. A 500-fold diluted solution of each human serum was added. His-tagged EGFP was used as a control. The serum dilution solution used was 1% BSA or a crude *E. coli* extract.

10 EMBODIMENTS OF INVENTION

1. Method for Detecting Antibody against SITH-1 in Biological Sample

[0038] The present invention provides a method for detecting an antibody against a small protein encoded by the intermediate stage transcript of HHV-6 (SITH-1) in a biological sample.

[0039] The method of detection according to the present invention includes:

- 1) providing a SITH-1 protein;
- 2) binding the SITH-1 protein prepared in step 1) to a carrier;
- 3) contacting a biological sample with the SITH-1 protein-bound carrier provided in step 2) to detect the SITH-1 protein antibody.

1. Biological Sample

[0040] The present invention relates to a method for detecting an antibody against a SITH-1 protein in a biological sample.

[0041] The biological samples usable in the present invention are derived from humans, laboratory animals infected with HHV-6 or laboratory animals introduced with SITH-1 gene, and contain a SITH-1 protein antibody to be detected. Such samples can be used without limitation. Examples of the sample include cells collected from humans, laboratory animals infected with HHV-6 such as monkey, or laboratory animals introduced with SITH-1 gene such as mouse, samples containing tissues or fragments thereof, for example, humor, preferably, blood, serum, cerebrospinal fluid, saliva, throat swab, sweat, urine, tear, lymph fluid, semen, peritoneal fluid, and mother's milk.

[0042] These humors may be used after dilution as needed. The dilution ratio is, but not limited to, generally in the range of about 10 to about 10000 fold, preferably about 100 to 1000 fold. The diluent may be any buffer solution, which may contain any proper blocking agent. Preferred blocking agents have high inhibitory effect on nonspecific binding, and can be selected from well known blocking agents to persons skilled in the art, such as BSA and casein.

[0043] The method of the present invention enables detection and accurate quantitative determination of the SITH-1 protein antibody from, for example, samples which are derived from patients with autoimmune disorders and contain a large amount of nonspecific binding precluding detection of the target antibody in conventional methods, or samples which are derived from healthy subjects and have high background levels caused by, for example, autologous antibodies. The SITH-1 protein antibody, which exhibits a low antibody titer, requires suppression of dilution ratio of the serum. As a result, nonspecific binding derived from serum components inevitably increases. Thus, no known method enables detection or determination of quantity for the antibody. In contrast, the method of the present invention can readily detect and accurately determine quantity of the antibody.

2. SITH-1 Protein

[0044] The SITH-1 protein in the present invention refers to a small protein encoded by the intermediate transcript of HHV-6 and mutants thereof.

SITH-1 based on Description in PCT/JP2008/67300

(1) SITH-1 Protein and Nucleic Acid

[0045] The structures and functions of the SITH-1 protein and a nucleic acid are disclosed in PCT/JP2008/67300, and the entity thereof is incorporated therein.

The SITH-1 is a factor involving latent infection with herpes viruses, and more particularly, a protein specifically expressed during latent infection with herpes viruses. The term "specifically expressed during latent infection with herpes viruses"

therein refers to specific expression of genes or gene products derived from herpes viruses during latent infection (not productive infection) with herpes viruses in hosts infected with herpes viruses.

The SITH-1 protein is preferably selected from the group consisting of:

[0046]

- (a) a protein which has an amino acid sequence of SEQ ID NO: 1;
- (b) a protein which has an amino acid sequence comprising deletion, substitution, insertion, and/or addition of one or more amino acids in the amino acid sequence of SEQ ID NO: 1 and which has the ability to increase the intracellular calcium concentration;
- (c) a protein which has an amino acid sequence sharing an identity of at least 80% with the amino acid sequence of SEQ ID NO: 1 and which has the ability to increase the intracellular calcium concentration;
- (d) a protein which has an amino acid sequence encoded by a nucleic acid consisting of the nucleotide sequence of SEQ ID NO: 2;
- (e) a protein which has an amino acid sequence encoded by a nucleic acid consisting of a nucleotide sequence comprising deletion, substitution, insertion and/or addition of one or more nucleotides in the nucleotide sequence of SEQ ID NO: 2 and which has the ability to increase the intracellular calcium concentration;
- (f) a protein which has an amino acid sequence encoded by a nucleic acid consisting of a nucleotide sequence sharing an identity of 80% or more with the nucleotide sequence of SEQ ID NO: 2 and which has the ability to increase the intracellular calcium concentration; and
- (g) a protein which is encoded by a nucleic acid hybridizable under stringent hybridization conditions with a nucleic acid consisting of a nucleotide sequence complementary to the nucleotide sequence of SEQ ID NO: 2 and which has the ability to increase the intracellular calcium concentration.

[0047] The SITH-1 protein typically has an amino acid sequence of SEQ ID NO: 1. The amino acid sequence of SEQ ID NO: 1 is preferably encoded by a nucleic acid consisting of the nucleotide sequence of SEQ ID NO: 2.

[0048] The SITH-1 protein having the amino acid sequence of SEQ ID NO: 1, as described in Reference Example below, was isolated and identified as a protein which is specifically expressed during latent infection with human herpes viruses 6 (HHV-6). The SITH-1 protein is a protein having the amino acid sequence of SEQ ID NO: 2, composed of 159 amino acids, and having a molecular mass of about 17.5 kDa.

[0049] The SITH-1 protein is encoded by the nucleic acid of the SITH-1 gene. The cDNA of this SITH-1 gene, as shown in SEQ ID NO: 3, has a size of 1795 base pairs (about 1.79 kbp), the nucleotide sequence from the 954-th to 956-th being the initiation codon (Kozak ATG), while the nucleotide sequence from 1431-st to 1433-rd being the termination codon (TAA). Accordingly, the SITH-1 nucleic acid has a nucleotide sequence from 954-th to 1430-th as an open reading frame (ORF) among the nucleotide sequence of SEQ ID NO: 3, the ORF having a size of 477 base pairs (about 0.48 kbp). Among the cDNA of the SITH-1, the nucleotide sequence representing the ORF region is shown in SEQ ID NO:3. The nucleotide sequence of SEQ ID NO: 2 includes three bases of the stop codon.

[0050] The SITH-1 nucleic acid is always expressed in the cytoplasm of a cell latent-infected with HHV-6, but not in a productively infected cell. The nucleic acid encoding the SITH-1 protein is encoded by a DNA which is a complementary strand of the HHV-6 latent infection specific gene (H6LT), which has been reported to date, and its expression is enhanced in the intermediate stage of the latent infection with HHV-6. These facts demonstrate that the SITH-1 protein is a protein which is specifically expressed during latent infection with HHV-6.

[0051] The SITH-1 protein binds to a host protein, CAML (calcium-modulating cyclophilin ligand, Accession #; U18242) to increase the calcium concentration in the glial cells. The CAML is a protein which is known to be abundantly present in the brain and lymphocyte in the host living organism and increase the intracellular calcium concentration. Probably, an increase in intracellular calcium concentration due to expression of the SITH-1 protein leads to activation of overall signaling in the latent-infected cells, and thus contributes to effective reactivation of HHV-6.

[0052] It is known that the glial cells in the brain are latent-infected with HHV-6. When HHV-6 during the latent infection or at the intermediate stage which is a latent infection state with high activity expresses the SITH-1, the calcium concentration seems to increase in the glial cells. It is believed that an increase in intracellular calcium concentration in the brain is wedded to psychiatric disorders such as mood disorders (Riken Annual Report 2003).

[0053] The SITH-1 protein has a function that maintains activity to bind to the host protein, CAML to increase the intracellular calcium concentration. Furthermore, expression of the SITH-1 protein in the glial cells (in which this protein seems to be most strongly expressed) in the brain can induce psychiatric disorders. Accordingly, the SITH-1 protein is believed to be expressed during the latent infection with herpes viruses or at the initial stage of reactivation of the herpes viruses to cause the host to have any psychiatric disorder.

[0054] (b) An exemplary mutant of the SITH-1 protein may be a protein which has an amino acid sequence comprising

deletion, substitution, insertion, and/or addition of one or more amino acids in the amino acid sequence of SEQ ID NO: 1 and which has the ability to increase the intracellular calcium concentration, like the SITH-1 protein.

[0055] More particularly, the protein has an amino acid sequence comprising deletion, substitution, insertion, and/or addition of one or more amino acids (preferably one or several amino acids, e.g., 1 to 40, 1 to 30, 1 to 20, 1 to 15, more preferably 10, 9, 8, 7, 6, 5, 4, 3, 2 or 1 amino acid) in the amino acid sequence of SEQ ID NO: 1, and has the aforementioned ability of the present invention. The term "an amino acid sequence comprising deletion, substitution, insertion, and/or addition" herein refers to the presence of deletion, substitution, insertion, and/or addition at any one or more sites in the same amino acid sequence. Although two or more of the deletion, substitution, insertion, and addition may occur at the same time, it is generally preferred that the number of deletions, substitutions, insertions, and additions are as small as possible.

[0056] The substitution described above is preferably conservative substitution. The conservative substitution refers to replacement of a specific amino acid residue with any residue having similar physicochemical features. Any substituent may be employed that the feature on the structure of the original sequence is not substantially varied. Nonlimiting examples of the conservative substitution include substitutions between amino acid residues containing aliphatic groups, such as mutual substitution between Ile, Val, Leu, and Ala; and substitutions between polar residues, such as mutual substitution between Lys and Arg, between Glu and Asp, and between Gln and Asn.

[0057] In the non-conservative substitution, any one member of these types may be replaced with one of the other members, preferably in view of the hydrophobic index of the amino acid (hydrophobic amino acid index) (Kyte et al, J. Mol. Biol., 157:105-131 (1982)) in order to maintain the biological function of the protein of the present invention. In the non-conservative substitution, amino acids may be replaced based on hydrophilicity.

[0058] The protein having an amino acid sequence comprising deletion, substitution, insertion, or addition of one or more amino acids in the amino acid sequence of SEQ ID NO: 1 can be prepared by a technique such as site-specific mutagenesis described in, for example, "Molecular Cloning, A Laboratory Manual 3rd ed." (Cold Spring Harbor Press (2001)). The term "one or more amino acids" herein refers to amino acid which can be deleted, substituted, inserted, and/or added by site-specific mutagenesis.

[0059] Examples of the techniques, other than the site-specific mutagenesis, of introducing the deletion, substitution, or addition of one or more amino acids into the amino acid sequence of the protein while its ability is maintained include treatment of the gene in a mutagen and linking after deletion, substitution, or addition of a nucleotide which is selected by selective cleavage of the gene.

[0060] (c) Another mutant of the SITH-1 protein of the present invention may be a protein which has an amino acid sequence sharing an identity of at least 80% with the amino acid sequence of SEQ ID NO: 1 and which has the ability to increase the intracellular calcium concentration.

[0061] The identity of the amino acid sequence is preferably at least 85%, 90%, 95%, 96%, 97%, 98%, or 99%, more preferably 99.3%.

[0062] The percent identity between two amino acid sequences can be determined by visual inspection and mathematical calculation. Alternatively, the percent identity between two protein sequences can be determined through comparison of sequence information using a GAP computer program available from the University of Wisconsin Genetics Computer Group (UWGCG) based on the algorithm by Needleman, S. B. and Wunsch, C. D. (J. Mol. Biol., 48: 443-453, 1970). Preferred default parameters of the GAP program include: (1) scoring matrix: blosum62 described in Henikoff, S. and Henikoff, J. G. (Proc. Natl. Acad. Sci. USA, 89: 10915-10919, 1992); (2) 12 gap weights; (3) 4 gap length weights; and (4) no penalty for terminal gaps.

[0063] Any other program used by persons skilled in the art can also be used for comparison of the sequences. The percent identity can be determined by, for example, comparison with the sequence information using a BLAST program described in Altschul et. al., (Nucl. Acids. Res., 25, p.3389-3402, 1997). This program can be available from the websites of National Center for Biotechnology Information (NCBI) or DNA Data Bank of Japan (DDBJ) on the Internet. The conditions (parameters) for identity search by the BLAST program is described in detail on these sites. Although these parameters can be partly modified if necessary, search is generally carried out using the default values. Alternatively, the percent identity between two amino acid sequences may be determined using a program such as genetic information processing software GENETYX Ver. 7 (available from GENETYX CORPORATION) or FASTA algorithm, wherein search may be carried out using the default values.

[0064] (e) Another mutant of the SITH-1 protein of the present invention may be a protein which has an amino acid sequence encoded by a nucleic acid consisting of a nucleotide sequence comprising deletion, substitution, insertion and/or addition of one or more nucleotides in the nucleotide sequence of SEQ ID NO: 2 and which has the ability to increase the intracellular calcium concentration.

[0065] More particularly, a nucleic acid which has a nucleotide sequence comprising deletion, substitution, insertion, and/or addition of one or more nucleotides (preferably one or several nucleotides, e.g., 1 to 120, 1 to 90, 1 to 60, 1 to 30, 1 to 20, 1 to 15, more preferably 10, 9, 8, 7, 6, 5, 4, 3, 2, or 1 nucleotide) in the nucleotide sequence of SEQ ID NO: 2, and which has nucleotide sequence encoding the protein having the aforementioned ability of the present invention.

The term "nucleotide sequence comprising deletion, substitution, insertion, and/or addition of one or more nucleotides" herein refers to the presence of deletion, substitution, and/or addition at any one or more sites in the same nucleotide sequence. Although two or more of the deletions, substitutions, insertions, and additions may occur at the same time, it is generally preferred that the number of deletions, substitutions, insertions, and additions be as small as possible.

5 [0066] (f) Another mutant of the SITH-1 protein of the present invention may be a protein which has an amino acid sequence encoded by a nucleic acid consisting of a nucleotide sequence sharing an identity of 80% or more with the nucleotide sequence of SEQ ID NO: 2 and which has the ability to increase the intracellular calcium concentration.

[0067] The identity of the nucleotide sequence is preferably at least 85%, 90%, 95%, 96%, 97%, 98%, or 99%, more preferably 99.3%.

10 [0068] The percent identity between two nucleotide sequences can be determined by visual inspection and mathematical calculation. Preferably, such comparison can be carried out through comparison of sequence information using a computer program. A particularly preferred computer program is a version 10.0 program "GAP", Wisconsin package of Genetics Computer Group (GCG, Madison, Wisconsin) (Devereux, et al., 1984, Nucl. Acids Res., 12: 387). The use of the "GAP" program enables comparison between two amino acid sequences and comparison between a nucleotide sequence and an amino acid sequence, in addition to comparison of two nucleotide sequences.

15 [0069] (g) Another mutant of the SITH-1 protein may be a protein which is encoded by a nucleic acid hybridizable under stringent hybridization conditions with a nucleic acid consisting of a nucleotide sequence complementary to the nucleotide sequence of SEQ ID NO: 2 and which has the ability to increase the intracellular calcium concentration.

[0070] The stringency of hybridization conditions are primarily determined by the hybridization conditions itself, more preferably by the hybridization conditions and washing conditions. The term "stringent conditions" includes moderately or highly stringent conditions.

20 [0071] More particularly, examples of moderately stringent conditions include hybridization conditions of 1×SSC to 6×SSC at 42°C to 55°C, more preferably 1×SSC to 3×SSC at 45°C to 50°C, most preferably 2×SSC at 50°C. In the case of a hybridization solution containing about 50% formamide, a temperature which is 5 to 15°C lower than the aforementioned temperature is employed. Examples of washing condition include 0.5×SSC to 6×SSC at 40°C to 60°C. For hybridization and washing, generally 0.05% to 0.2%, preferably about 0.1% SDS may be added.

25 [0072] Highly stringent (high stringent) conditions involve hybridization and/or washing at a higher temperature and/or a lower salt content than the moderately stringent conditions. Examples of hybridization conditions include 0.1×SSC to 2×SSC at 55°C to 65°C, more preferably 0.1×SSC to 1×SSC at 60°C to 65°C, most preferably 0.2×SSC at 63°C. Examples of washing conditions include 0.2×SSC to 2×SSC at 50°C to 68°C, more preferably 0.2×SSC at 60 to 65°C.

30 [0073] A nonlimiting example of the hybridization condition is as follows: prehybridization is carried out in 5×SSC, 1% SDS, 50-mM Tris-HCl (pH 7.5) and 50% formamide at 42°C, a probe is added, the system is maintained at 42°C overnight to form hybrid, and then the sample is washed three times in 0.2×SSC and 0.1% SDS at 65°C for 20 minutes.

35 (2) Antibody against SITH-1

[0074] The antibody against the SITH-1 can be prepared as a polyclonal antibody or a monoclonal antibody from the SITH-1 protein, its mutant, or their partial peptides as antigen by a known process. Examples of the known process are described in documents such as Harlow et al. "Antibodies: A laboratory manual (Cold Spring Harbor Laboratory, New York (1988))" and Iwasaki et. al. "Monoclonal Antibody: Hybridoma and ELISA, Kodansha (1991)". The resulting antibody can be used for detection and determination of the SITH-1 protein.

40 [0075] The term "antibody" refers to immunoglobulins (IgA, IgD, IgE, IgG, IgM, and Fab fragment, F(ab')₂ fragment, and Fc fragment thereof). Examples of the immunoglobulins include, but not limited to, polyclonal antibodies, monoclonal antibodies, single-stranded antibodies, antiidiotype antibodies, and humanized antibodies.

45 [0076] The term "antibody recognizing the SITH-1 protein" includes complete molecules and antibody fragments specifically attachable to the SITH-1 protein (for example, Fab and F(ab')₂ fragment). Fab, F(ab')₂, and other fragments of the SITH-1 antibody can be used according to the method disclosed in the present specification or any known method. Such fragments can be typically produced by cleavage by proteolysis using an enzyme e.g., papain (yielding a Fab fragment) or pepsin (yielding a F(ab')₂ fragment).

50 [0077] It is believed that patients having mood disorders and individuals having potential mood disorders exhibit increased expression levels of the SITH-1 protein and thus increased SITH-1 antibody titers. In one embodiment of the present invention, detection of the SITH-1 antibody in a biological sample enables identification of patients having mood disorders and individuals having potential mood disorders.

55 3. SITH- Protein-Bound Carrier

[0078] The method of the present invention includes:

- 1) providing the SITH-1 protein;
- 2) binding the SITH-1 protein provided in step 1) to a carrier;

and uses the SITH-1 protein-bound carrier.

5

Providing SITH-1 Protein

[0079] The SITH-1 protein for detecting the SITH-1 antibody can be provided by any known process for preparation of proteins. It can be prepared, for example, by the following nonlimiting procedures.

10 **[0080]** The SITH-1 protein can be expressed in a desired host cell by integration of a gene encoding the SITH-1 protein into an expression vector. Nonlimiting examples of host cells include mammalian cells (e.g., cells derived from primates, such as human and monkey; rodents such as mouse, rat, Chinese hamster, and canine), insect cells (expression systems utilizing baculovirus and *Drosophila* system), yeast, *E. coli*, plants, and *Bacillus subtilis*. Preferred is *E. coli*. In addition, established culture cell systems can be preferably used, for example, HEK293, HeLa, HepG2, and 293T for human cells; CHO, NIH3T3, and PC12 for rodent cells; COS-1, COS-7, MDCK, and Vero for other mammalian cells; and Sf9 and S2 for insect cells. Alternatively, the protein can be expressed using cell-free expression systems such as wheat germ extract and insect cell extract.

[0081] Persons skilled in the art can appropriately select expression vectors suitable for host cells used.

20 **[0082]** The expressed SITH-1 protein may be purified. In the case where it is immobilized on a carrier by a strong bond such as an avidin-biotin bond, a carrier comprising avidin or biotin bound thereto may be directly reacted with the SITH-1 protein expressing cell extract without preliminary purification; this process achieves purification and immobilization at the same time.

25 **[0083]** The SITH-1 protein can be purified by any method well known to persons skilled in the art, for example, a combination of chromatographic processes, such as ordinary ionexchange chromatography, hydrophobic chromatography, and gel-permeation chromatography or use of a tag sequence for purification. In such a case, the SITH-1 protein may be expressed in any host cell such as *E. coli* cells and mammalian cells as fusion proteins with, for example, glutathione-S-transferase, maltose-binding proteins, cellulose-binding proteins, chitin-binding proteins, and thioredoxin-binding proteins, and the resulting proteins may be purified by affinity with glutathione, maltose, cellulose, chitin, and thioredoxin, respectively (for example, using a glutathione-fixed column).

30 **[0084]** Preliminary introduction of the recognition site of the protease into the fusion site with the SITH-1 protein enables removal of the tag sequence by treating the protease after purification. Any protease well known to persons skilled in the art such as enterokinase and Factor Xa can be used. Alternatively, the protein can be purified by a combination of HisTag, FlagTag, or Strep(II)-Tag with ionized nickel, anti-Flag antibody, or a Strep-Tactin column. In order to enhance the purity, multiple tags may be fused to the SITH-1 protein so that the protein is purified by a combined process. For example, the terminal of the SITH-1 protein may be fused with a biotinylated sequence such as HisTag and BioEASE™, expressed as a recombination protein in a host, purified through a nickel column, and then further purified through a low affinity avidin or low affinity streptavidin (e.g., SA mutein, Roche) column.

35

Carrier

40

[0085] Examples of materials for solid carrier include, but not limited to, cellulose, Teflon (registered trademark), nitrocellulose, agarose, highly cross-linked spherical agarose, dextran, chitosan, polystyrene, polyacrylamide, polyesters, polycarbonates, polyamides, polypropylene, nylons, polyvinylidene difluoride, latex, polystyrene latex, silica, glass, glass fiber, gold, platinum, silver, copper, iron, stainless steel, ferrite, silicon wafer, polyethylene, polyethyleneimine, poly(lactic acid), resin, polysaccharides, proteins such as albumin, carbon, and combination thereof. Preferred materials have a certain level of strength, a stable composition, and reduced nonspecific binding.

45

[0086] Examples of the form of the solid carrier include, but not limited to, microbeads, magnetic beads, thin films, capillary tubes, filters, plates, microplates, carbon nanotubes, and sensor chips. Flat solid carriers such as thin films and plates may be provided with pits, grooves, or filter bottoms, as is known in the art.

50

[0087] In an embodiment of the invention, microbeads may have a spherical diameter in the range of about 25 nm to about 1 mm. In a preferred embodiment, the beads have a diameter in the range of about 50 nm to about 10 μm. Without any limitation, for example, in the case that high sensitivity for detection is desired, beads as described above can preferably be used as the solid carrier in the view point that the beads provide high contacting frequency between the target substance to be detected and the substance which specifically binds to the target substance, and that cleaning operation thereof is easy.

55

Method for binding SITH-1 Protein to Carrier

[0088] Binding SITH-1 Protein provided in Step 1) to carrier.

Binding the SITH-1 protein to the carrier may be carried out by any method for binding a protein to a carrier. Nonlimiting examples of such a method include use of hydrophobic bond, covalent bond, and various tags, and use of binding between biotin and a biotin-binding protein. In the case of the use of hydrophobic bond or covalent bond, preferably the SITH-1 protein is preliminarily purified.

[0089] In the case of the use of the hydrophobic bond, binding is achieved by interaction of the hydrophobic surface of a carrier with the hydrophobic moiety of the SITH-1 protein. For example, a SITH-1 protein solution is put into direct contact with a carrier surface such as a microplate (e.g., Nunc-Immuno™ Plate (Nunc), or SpectraPlate-96 HB(Perkin Elmer) or Reacti-Bind™ 96-Well Plates Corner Notch (PIERCE)), and is allowed to stand for a predetermined time, so that the SITH-1 protein is bound and immobilized on the carrier by the interaction of the hydrophobic moiety of the SITH-1 protein and the hydrophobic portion of the carrier.

[0090] On the other hand, in the case of the covalent bond, functional groups are provided on the surface of a carrier so as to be bound to the functional groups in the SITH-1 protein. For such binding, a variety of carriers provided with various surface functional groups are commercially available and can be preferably used in the invention. Nonlimiting examples of such plates include microplates provided with surface functional groups, such as maleic anhydride plates, e.g., Reacti-Bind (trademark) Maleic Anhydride Activated Polystyrene 96-Well Plates (PIERCE); activated amino group plates, e.g., Immobilizer (trademark)-Amino Modules/Plates (Nunc); and carboxyl group plates, e.g., a ELISA plate MS-8796F (96 wells, type C, flat bottom, Carobo) (Sumitomo Bakelite Co., Ltd). Binding of the SITH-1 protein with the solid carrier may be carried out according to the instruction bound to the carrier. More specifically, coupling technology known to persons skilled in the art of the protein with the solid carrier can be used, but any other method can also be used. For example, the protein and the solid carrier can be coupled through a coupling reaction of surface carboxyl groups of a modified solid carrier with amino groups of the protein in the presence of a cross-linking agent, i.e., 1-ethyl-3-(3-dimethylaminopropyl)carbodiimide (EDC). Alternatively, the protein may be mixed with a solid carrier of which the surface is actively esterified with N-hydroxysuccinimide (NHS) in a buffer solution (pH: 6.5 to 9) containing no primary amine groups to bind the carboxy groups on the solid carrier to the amino groups of the protein. Alternatively, amino groups on the solid carrier may be coupled to amino groups of the protein in the presence of a cross-linking agent BS3 (bis[sulfosuccinimidyl] suberate) or DSS (disuccinimidyl suberate), or coupled to thiol groups of the protein in the presence of a cross-linking agent SPDS (N-succinimidyl 3-[2-pyridyldithio] propionate) or GMBS (N-(4-maleimido butyryloxy) succinimide).

[0091] In another embodiment, the SITH-1 and an immobilization tag may be genetically fused. Examples of the immobilization tags include a tag using avidin-biotin binding described below, HisTag, HaloTag (trade mark), and Flag. In the case of HisTag, the surface of a nickel-ionized carrier may be reacted with SITH-1 fused with a plurality of histidine molecules (generally five to ten molecules) to immobilize the protein by the affinity of HisTag to nickel ions.

Binding of SITH-1 Protein to Carrier by binding between Biotin and Biotin-binding Protein

[0092] In the present invention, the SITH-1 protein may be favorably bound to the carrier by any method. The most preferred method, however, utilizes binding between biotin and a biotin-binding protein. In the present invention, "binding between biotin and a biotin-binding protein" may be referred to as "avidin-biotin binding" in some cases.

[0093] Examples of methods for binding of the SITH-1 protein to the carrier by binding between biotin and a biotin-binding protein include A) binding of a biotinylated SITH-1 protein to a carrier comprising a biotin-binding protein bound thereto, B) binding of a biotin-binding protein to a carrier comprising biotin bound thereto, and then binding of a biotinylated SITH-1 protein to the carrier, since most of the biotin-binding proteins are tetramers, and C) binding of a fusion protein of a biotin-binding protein - SITH-1 to a carrier comprising biotin bound thereto.

[0094] Detailed explanation will be provided as follows.

Biotin

[0095] "Biotin" is a generic name of D-[(+)-cis-hexahydro-2-oxo-1H-thieno-(3,4)-imidazole-4-valeric acid]. It is one of water-soluble vitamins categorized into a vitamin B group, and is also referred to as vitamin B₇, vitamin H, or coenzyme R. Biotin strongly binds to avidin, one of the glycoprotein contained in albumen, so that its absorption in human organism is precluded. Thus, large dose of uncooked albumen may cause biotin deficiency disease in some cases.

[0096] The term "biotin" throughout the specification includes iminobiotin (Hofmann et al. (1980) Proc Natl Acad Sci USA 77:4666-4668), desthiobiotin (Hirsch et al. (2002) Anal Biochem 308: 343-357, and biotin analogs such as biocytin and biotin sulfoxide, in addition to the biotin described above.

[0097] Systems using biotin-avidin (biotin-binding protein) complexes are widely used in the fields of biochemistry, molecular biology, tissue immunology, DNA analysis, and clinical assay. One of the methods of binding the SITH-1

protein to the carrier in the present invention involves use of avidin-biotin binding.

Biotin-binding Protein

5 **[0098]** Examples of the biotin-binding proteins preferably used in the present invention include proteins which forms strong bonds with biotin, such as avidin, streptavidin, neutravidin, AVR protein (Biochem. J.,(2002), 363: 609-617), bradavidin (J. Biol. Chem.,(2005), 280: 13250-13255), rhizavidin (Biochem. J., (2007),405:397-405), tamavidin (WO02/072817), and mutants thereof. The dissociation constant (KD) with biotin is preferably 10^{-8} M or less, more preferably 10^{-10} M or less, more preferably 10^{-12} M or less. However, this is not always true for the biotin-binding protein which is added to a test sample, and for the biotin-binding protein which is used for blocking a carrier.

10 **[0099]** Particularly preferred biotin-binding proteins are tamavidin and mutants thereof, which can be highly expressed in *E. coli*. Tamavidin is a biotin-binding protein discovered in an edible mushroom, *Pleurotus cornucopiae* (WO02/072817, Takakura et al. (2009) FEBS J 276: 1383-1397). An example of the mutants of tamavidin is tamavidin exhibiting high binding capability and low nonspecific binding characteristics (PCT/JP2009/64302).

15 **[0100]** The term "tamavidin" in the present invention refers to tamavidin 1 (TM1), tamavidin 2 (TM2), or a mutant thereof. Specifically, tamavidin of the present invention may be typically a protein having the amino acid sequence of SEQ ID NO: 5 or SEQ ID NO: 7, or a protein encoded by a nucleic acid consisting of the nucleotide sequence of SEQ ID NO: 4 or SEQ ID NO: 6.

20 **[0101]** Alternatively, tamavidin of the present invention may be a protein which is a mutant of a protein consisting of the amino acid sequence of SEQ ID NO: 5 or SEQ ID NO: 7 or a protein encoded by a nucleic acid consisting of the nucleotide sequence of SEQ ID NO: 4 or SEQ ID NO: 6 and having biotin binding capability similar to that of tamavidin 1 or 2 or high binding and low nonspecific binding characteristics. Throughout the specification, tamavidin 1, tamavidin 2, and mutants thereof may be referred to as collectively tamavidin.

25 **[0102]** The mutant of tamavidin 1 or 2 may be a protein having an amino acid sequence comprising one or more deletion, substitution, insertion, and/or addition of one or more amino acids in the amino acid sequence of SEQ ID NO: 5 or 7 and having biotin binding capability similar to that of tamavidin 1 or 2.

[0103] The definition of "deletion, substitution, insertion, and/or addition of one ore more amino acids" is described in the section "SITH-1 protein".

30 **[0104]** The mutant of tamavidin 1 or 2 may also be a protein having an amino acid sequence sharing an identity of 60% or more, preferably 65% or more, 70% or more, 75% or more, 80% or more, 85% or more, 90% or more, 95% or more, 96% or more, 97% or more, 98% or more or 99% or more, more preferably 99.3% or more with that of SEQ ID NO: 7 or SEQ ID NO: 5 and having biotin binding capability similar to that of tamavidin 1 or 2 or high binding and low nonspecific binding characteristics.

[0105] The definition of "percent identity of the amino acid sequence" is described in the section "SITH-1 protein".

35 **[0106]** Mutants of tamavidin of the present invention further include the following proteins:

(i) A protein which has an amino acid sequence encoded by a nucleic acid consisting of a nucleotide sequence comprising deletion, substitution, insertion, and/or addition of one or more amino acids in the nucleotide sequence of SEQ ID NO: 4 or SEQ ID NO: 6 and which has biotin binding capability similar to that of tamavidin 1 or 2 or high binding and low nonspecific binding characteristics;

40 (ii) A protein which has an amino acid sequence encoded by a nucleic acid consisting of a nucleotide sequence sharing an identity of 80% or more with the nucleotide sequence of SEQ ID NO: 4 or SEQ ID NO: 6 and which has biotin binding capability similar to that of tamavidin 1 or 2 or high binding and low nonspecific binding characteristics; and

45 (iii) A protein which is encoded by a nucleic acid hybridizable under stringent hybridization conditions with a nucleic acid consisting of a nucleotide sequence complementary to the nucleotide sequence of SEQ ID NO: 4 or SEQ ID NO: 6 and which has biotin binding capability similar to that of tamavidin 1 or 2 or high binding and low nonspecific binding characteristics.

50 The definition of the terms "deletion, substitution, insertion, and/or addition of one or more nucleotide", "an identity of at least 80%" of the nucleotide sequence, "stringent hybridization conditions" are described in the section "SITH-1 protein".

[0107] In addition, when the SITH-1 protein is bound to a carrier by use of the binding between biotin and biotin-binding protein, it is preferable that the "biotin-binding protein" to be used has the biotin-binding activity. Accordingly, without any limitation, it is preferable that the biotin-binding activity of said variants of tamavidin 1 and tamavidin 2 is not significantly reduced compared to the case when the fusion protein is prepared by using the wild types.

55 **[0108]** Consequently, without any limitation, it is preferable that the variant of tamavidin 1 do not have any modifications in N14, S18, Y34, S36, S78, W82, W98, W110 and D118 in the amino acid sequence of SEQ ID NO:5. The above signatures, "Y34", examples means the tyrosine residue at 34th amino acid residue in the amino acid sequence of SEQ

ID NO:5. Alternatively, if these amino acid residues are to be modified, they are desirably modified to amino acids having similar properties or structures, in an exemplary case of asparagine (N14), a variant is desirably formed by modifying it to glutamine (Q) or aspartic acid (D), preferably to aspartic acid; in the case of serine (S18, S36, or S78), a variant is desirably formed by modifying it to threonine (T) or tyrosine (Y), preferably to threonine; in the case of tyrosine (Y34), a variant is desirably formed by modifying it to serine (S), threonine (T) or phenylalanine (F), preferably to phenylalanine; in the case of tryptophan (W82, W98, W110), a variant is desirably formed by modifying it to phenylalanine (F), in the case of aspartic acid (D 118), a variant is desirably formed by modifying it to glutamic acid (E) or asparagine (N), preferably to asparagine.

[0109] Further, s preferable that the variant of tamavidin 2 do not have any modifications in our tryptophan residues (W69, W80, W96, and W108) in the amino acid sequence of SEQ ID NO:7. Alternatively, if these residues are to be modified, they are preferably modified to an amino acid residue having a similar property or structure which is similar to those of tryptophan, e.g., phenylalanine (F). In addition, the amino acid residues in TM2 that are considered to interact directly with biotin (N14, S18, Y34, S36, S76, T78, and D116) are also desirably unmodified. Alternatively, if these amino acid residues are to be modified, they are desirably modified to amino acids having similar properties or structures so that binding to biotin can be maintained; in an exemplary case of asparagine (N14), a variant is desirably formed by modifying it to glutamine (Q) or aspartic acid (D), preferably to aspartic acid; in the case of aspartic acid (D40), a variant is desirably formed by modifying it to asparagine (N); in the case of serine (S18, S36, or S76), a variant is desirably formed by modifying it to threonine (T) or tyrosine (Y), preferably to threonine; in the case of tyrosine (Y34), a variant is desirably formed by modifying it to serine (S), threonine (T) or phenylalanine (F), preferably to phenylalanine; in the case of threonine (T78), a variant is desirably formed by modifying it to serine (S) or tyrosine (Y), preferably to serine; in the case of aspartic acid (D 116), a variant is desirably formed by modifying it to glutamic acid (E) or asparagine (N), preferably to asparagine.

[0110] Preferred mutants of tamavidin in the present invention include the following modified biotin-binding proteins (PCT/JP2009/64302).

[0111] a modified biotin-binding protein which has the amino acid sequence of SEQ ID NO: 7, or an amino acid sequence comprising one to several amino acid mutations in this sequence or having an identity of at least 80% with this sequence and having biotin binding capability, wherein one or more residues selected from the group consisting of:

- 1) the arginine residue at the 104th site of SEQ ID NO: 7;
- 2) the lysine residue at the 141st site of SEQ ID NO: 7;
- 3) the lysine residue at the 26th site of SEQ ID NO: 7; and
- 4) the lysine residue at the 73rd site of SEQ ID NO: 7;

are replaced with acidic or neutral amino acid residues.

[0112] More preferably, the modified biotin-binding protein is selected from the group consisting of:

- a modified biotin-binding protein (R104E-K141E) in which the arginine residue at the 104th site is replaced with a glutamic acid residue, and the lysine residue at the 141st site is replaced with a glutamic acid residue, in SEQ ID NO: 7;
- a modified biotin-binding protein (D40N-R104E) in which the aspartic acid residue at the 40th site is replaced with a asparagine residue, and the arginine residue at the 104th site is replaced with a glutamic acid residue, in SEQ ID NO: 7;
- a modified biotin-binding protein (D40N-K141E) in which the aspartic acid residue at the 40th site is replaced with a asparagine residue, and the lysine residue at the 141 st site is replaced with a glutamic acid residue, in SEQ ID NO: 7; and
- a modified biotin-binding protein (D40N-R104E-K141E) in which the aspartic acid residue at the 40th site is replaced with a asparagine residue, the arginine residue at the 104th site is replaced with a glutamic acid residue, and the lysine residue at the 141st site is replaced with a glutamic acid residue, in SEQ ID NO: 7.

Carrier comprising Biotin-Binding Protein bound thereto

[0113] Examples of methods for binding the SITH-1 protein to a carrier through binding biotin between a biotin-binding protein include A) binding of a biotinylated SITH-1 protein to a carrier comprising a biotin-binding protein bound thereto, B) binding of a biotin-binding protein to a carrier comprising biotin bound thereto and then binding of a biotinylated SITH-1 protein to the carrier, since most of the biotin-binding proteins are tetramers and C) binding of a fusion protein of a biotin-binding protein - SITH-1 to a carrier comprising biotin bound thereto.

[0114] The carrier comprising a biotin-binding protein bound thereto may be fabricated by direct binding of the biotin-binding protein to the carrier (Embodiment A). Alternatively, a carrier to which a biotin-binding protein is preliminary fixed may be commercially available (Embodiment A). Alternatively, a biotin-binding protein may be bound to a biotinylated

carrier through binding between biotin and a biotin-binding protein (Embodiment B). Alternatively, a fusion protein of a biotin-binding protein-SITH-1 may be bound to a carrier comprising biotin bound thereto through binding between biotin and a biotin-binding protein (Embodiment C).

[0115] Direct binding of the biotin-binding protein can be carried out, for example, using hydrophobic bond or covalent bond, as described in detail in the method for binding the SITH-1 protein to the carrier. Alternatively, the biotin-binding protein may be directly bound and fixed to a microplate such as NEW ELISA Plate kit (Sumitomo Bakelite Co., Ltd.) according to the instruction attached to the kit. Avidin and streptavidin are commercially available from SIGMA and other companies.

[0116] Examples of commercially available carriers comprising biotin-binding proteins bound thereto include, but not limited to, microplates such as Reacti-Bind™ Streptavidin Coated Plates (PIERCE) and Nunc Streptavidin Coated 96 Micro Well™ Plates (Nalge Nunc); and magnetic beads such as Dynabeads M-280 Streptavidin (Dyna) and MagnaBind™ Streptavidin Beads (PIERCE).

[0117] Alternatively, the biotin-binding protein may be bound to a carrier which is preliminarily biotinylated, through binding between biotin and a biotin-binding protein.

[0118] An exemplary method of biotinylation of the carrier involves use of a biotinylation reagent. Examples of the commercially available biotinylation reagent include, but not limited to, EZ-Link (registered trademark) Sulfo-NHS-Biotin (the length of the linker: 13.5 angstroms, the reactive group: primary amine, hereinafter the same order), EZ-Link (registered trademark) Sulfo-NHS-LC-Biotin (22.4 angstroms, primary amine), EZ-Link (registered trademark) Sulfo-NHS-LCLC-Biotin (30.5 angstroms, primary amine), EZ-Link (registered trademark) PFP-Biotin (9.6 angstroms, amine), EZ-Link (registered trademark) Maleimide-PEO₂-Biotin (29.1 angstroms, thiol group), EZ-Link (registered trademark) Biotin-PEO₂ Amine (20.4 angstroms, carboxyl group), EZ-Link (registered trademark) Biotin-PEO₃-LC Amine (22.9 angstroms, carboxyl group), EZ-Link (registered trademark) Biotin-Hydrazide (15.7 angstroms, aldehyde group), EZ-Link (registered trademark) Biotin-LC-Hydrazide (24.7 angstroms, aldehyde group), and EZ-Link (registered trademark) NHS-Iminobiotin (13.5 angstroms, primary amine), which are commercially available from PIERCE.

[0119] Using one of these biotinylation reagent, biotin can be bound to a desired carrier such a microplate, microbeads, or a sensor chip by any known process. For example, various carriers having functional groups, such as amino, carboxyl, thiol, tosyl, epoxy, and maleimide groups, and activated ester (for example, magnetic beads, Sepharose beads, agarose beads, latex beads, and microtiter plates) can be used. For example, in the case of the use of a biotinylation reagent containing NHS ester, the reagent may be dissolved in an organic solvent such as dimethyl sulfoxide (DMSO) or phosphate buffer of pH 7 to 9, and then may be added to an immobilization carrier having amino groups to bind biotin thereto. In the case of the use of a biotinylation reagent containing amino groups, the carboxyl groups on the fixing carrier may be converted to activation ester using carbodiimide such as 1-ethyl-3-(3-dimethylaminopropyl) carbodiimide hydrochloride (EDC), followed by addition of a biotinylation reagent solved in buffer solution (pH: about 5) to bind biotin to the carrier. The biotinylated immobilization carrier is preferably blocked with BSA after inactivation of unreacted functional groups.

[0120] Commercially available biotinylated carriers can also be used. Typical examples of the biotinylated microplates used include, but not limited to, Reacti-Bind™ Biotin Coated Polystyrene Plates (PIERCE). Examples of the biotinylated microbeads include, but not limited to, magnetic beads, such as BioMag Biotin (available from Polysciences), magnetic nanobeads, such as nanomag (registered trademark)-D biotin and nanomag (registered trademark)-silica biotin available from Corefront, polystyrene microbeads, such as Beadlyte (registered trademark) Biotin Beads (available from Upstate), agarose, such as Biotin Agarose and 2-iminobiotin-Agarose available from Sigma, and highly cross-linked agarose, such as Biotin-Sepharose (available from Biosearch Technologies, Inc.).

[0121] The length of the linker binding the carrier to biotin is preferably at least 5 angstroms, more preferably at least 13.5 angstroms.

Biotinylated SITH-1 protein

[0122] In the present invention, biotin may be bound to the SITH-1 protein to prepare a biotinylated SITH-1 protein which is bound to a carrier comprising a biotin-binding protein bound thereto through binding between biotin and a biotin-binding protein.

[0123] The carrier comprising a biotin-binding protein bound thereto may be prepared by direct binding of the biotin-binding protein to a carrier as described above, or a carrier to which a biotin-binding protein is preliminary fixed may be commercially available (Embodiment A). Alternatively, a biotin-binding protein may be bound to a biotinylated carrier through binding between biotin and a biotin-binding protein (Embodiment B).

[0124] Fabrication of the biotinylated SITH-1 protein is not limited in the present invention. For example, biotin may be bound to the SITH-1 protein using a biotin-labeled kit (for example, EZ-Link (registered trademark) NHS-Lc-Biotin (PIERCE) or Biotin Labeling Kit-NH₂ (DOJINDO MOLECULAR TECHNOLOGIES INC.)). Alternatively, a biotinylated SITH-1 may be fabricated as follows: The SITH-1 gene is fused with DNA which encodes peptide comprising a biotinylated

sequence to form a vector expressing the fused gene and the gene is expressed as a fused protein with a biotinylated sequence in any host (Schwarz et al., (1988). J. Biol. Chem. 263: 9640-9645).

[0125] Nonlimiting examples of such vectors include vectors comprising BioEase (trademark) tags available from Invitrogen. Among them, a pcDNA (trademark) 6 vector is used for mammalian cell expression, a pET 104 vector for *E. coli* expression, and a pMT/BioEase vector for *Drosophila* expression.

[0126] Preferably, the method used in the biotinylation of the carrier described above also can be used for biotinylation of the SITH-1 protein. Thus, any biotinylation reagent can be used. Examples of the commercially available biotinylation reagent include, but not limited to, EZ-Link (registered trademark) Sulfo-NHS-Biotin (the length of the linker: 13.5 angstroms, the reactive group: primary amine, hereinafter the same order), EZ-Link (registered trademark) Sulfo-NHS-LC-Biotin (22.4 angstroms, primary amine), EZ-Link (registered trademark) Sulfo-NHS-LCLC-Biotin (30.5 angstroms, primary amine), EZ-Link (registered trademark) PFP-Biotin (9.6 angstroms, amine), EZ-Link (registered trademark) Maleimide-PEO₂-Biotin (29.1 angstroms, thiol group), EZ-Link (registered trademark) Biotin-PEO₂ Amine (20.4 angstroms, carboxyl group), EZ-Link (registered trademark) Biotin-PEO₃-LC Amine (22.9 angstroms, carboxyl group), EZ-Link (registered trademark) Biotin-Hydrazide (15.7 angstroms, aldehyde group), EZ-Link (registered trademark) Biotin-LC-Hydrazide (24.7 angstroms, aldehyde group), and EZ-Link (registered trademark) NHS-Iminobiotin (13.5 angstroms, primary amine), which are commercially available from PIERCE.

[0127] Using such a biotinylation reagent, biotin can be bound to the SITH-1 protein through any known process. For example, in the case of the use of a biotinylation reagent containing NHS ester, biotin is dissolved in an organic solvent such as dimethyl sulfoxide (DMSO) or phosphate buffer (pH: 7 to 9) and then may be added to the SITH-1 protein to be bound to biotin. Alternatively, in the case of the use of a biotinylation reagent containing amino groups, the carboxyl group of the SITH-1 protein is converted into activated ester with carbodiimide such as EDC (1-ethyl-3-(3-dimethylaminopropyl)carbodiimide hydroxychloride), followed by addition of a biotinylation reagent in buffer solution (pH: about 5) to bind biotin to the SITH-1 protein.

[0128] Before preparation of the biotinylated SITH-1 protein using such a biotinylation reagent, the SITH-1 protein is preferably purified in advance, as described above.

Binding of Biotinylated SITH-1 Protein to Carrier

[0129] In the present invention, a carrier comprising a biotin-binding protein bound thereto and a biotinylated SITH-1 protein are prepared and are contacted with each other in order to bind the SITH-1 protein to the carrier by binding between biotin and a biotin-binding protein.

[0130] The binding of the biotinylated SITH-1 protein to a carrier can be carried out, but not limited to, through the following procedure. A crude cell homogenate extract containing a biotinylated SITH-1 protein is prepared in a total protein content in the range of 0.1 mg/ml to 5 mg/ml, preferably 0.2 mg/ml to 2 mg/ml. This extract is put into contact with a carrier comprising a biotin-binding protein bound thereto at 4°C to 40°C, preferably 15°C to 30°C, for 5 minutes to 2 hours, preferably 30 minutes to 1 hour. During this procedure, the biotinylated SITH-1 protein is immobilized on the carrier comprising the biotin-binding protein bound thereto. Then, the excess crude cell homogenate extract is preferably cleaned off in a buffer solution such as PBS or TBS containing 0.05% to 1%, preferably 0.1% to 0.3% surfactant such as Tween 20.

[0131] The binding process by contact of the biotinylated SITH-1 protein with the crude cell homogenate extract virtually involves simultaneous purification and immobilization. Thus, this process does not require any further purification procedure.

[0132] Alternatively, a purified biotinylated SITH-1 protein having a concentration of in the range of 0.1 µg/ml to 5 µg/ml may be put into contact with a carrier comprising a biotin-binding protein bound thereto.

4. Contact of Biological Sample with SITH-1 Protein-bound Carrier

[0133] The method of the present invention enables detection of an SITH-1 protein antibody through step 2) of providing a SITH-1 protein-bound carrier, and then step 3) of contacting a biological sample with the SITH-1 protein-bound carrier provided in step 2).

[0134] Any approach to contact of the biological sample with the carrier can be employed without limitation. Generally known approaches using a carrier in order to reduce nonspecific binding which causes background signals are, for example, addition of an extract of a bacterium component to a reagent for detection (Japanese Unexamined Patent Application Publication No. 59-99257); addition of a culture component of host cells to a sample, where a vector of the same species as that used in production of a recombinant protein capable of specifically binding to a substance to be detected and containing no gene encoding the protein (Japanese Unexamined Patent Application Publication No. 8-43392); heat treatment of an aqueous extract from cells of the same species as that producing a recombinant protein capable of specifically binding to a substance to be detected and not containing this protein, and addition of its water-

soluble fraction to a sample (Japanese Unexamined Patent Application Publication No. 2004-301646).

Addition of Cell Extract

5 **[0135]** In conventional procedures, the SITH-1 protein antibody cannot readily be detected in samples from patients having autoimmune diseases or healthy subjects having high background factors such as autoantibodies, due to high non-specific binding.

[0136] The inventors have found, through extensive study, that the use of the cell homogenate extract on the contact of the biological sample with a carrier allows the SITH-1 protein antibody to be detected even in samples derived from
10 such subjects.

[0137] Accordingly, in a preferred embodiment of the present invention, in step 3), a mixture of

(a) a biological sample, and

15 (b) a cell homogenate extract prepared from cells of the same species as that of host cells used to express the SITH-1 protein in step 1)

is added to the SITH-1 protein-bound carrier prepared in step 2).

[0138] In particular, more remarkably advantageous effects can be achieved in a system of a SITH-1 protein bound to a carrier through binding between biotin and a biotin-binding protein by the following process.

20 **[0139]** In step 3), a mixture of:

(a) a biological sample, and

25 (b) a cell homogenate extract prepared from a cell of the same species as the host cell used to express the SITH-1 protein, a biotinylated SITH-1 protein, and/or a biotin-binding protein in step 1) or 2)

are added to the SITH-1 protein-bound carrier prepared in step 2).

[0140] Cells from which cell homogenate extracts are derived, such as *E. coli* cells, yeast cells, mammalian cells, insect cells, and plant cells, can be used without limitation. Preferred cells are the same species as that of host cells used to express a SITH-1 protein, a biotinylated SITH-1 protein, and/or a biotin-binding protein. For example, in the
30 case of preparation of a SITH-1 protein, a biotinylated SITH-1 protein, and/or a biotin-binding protein using *E. coli*, it is preferred that the cell homogenate extract be also prepared using *E. coli*. In the case of expression of a SITH-1 protein, a biotinylated SITH-1 protein, and/or a biotin-binding protein in a cell-free system, the cell homogenate extract used can be used as it is or as a suspension in a desired buffer solution.

[0141] The SITH-1 protein, and/or biotin-binding protein may be extracted and purified from cells originally having these proteins, instead of those being genetically expressed. For example, for the use of tamavidin as a biotin-binding protein, a cell homogenate extract of *Pleurotus cornucopiae* can be used. Accordingly, the cell extract of the present invention includes a cell homogenate extract that originally contains a biotin-binding protein and/or an SITH-1 protein.

[0142] The cell used for preparation of the cell homogenate extract may contain any vector, preferably an empty vector. The empty vector is of the same species as that of the vector used in expression of a SITH-1 protein, a biotinylated
40 SITH-1 protein, and/or biotin-binding protein and does not contain a gene which encodes these proteins. The empty vector may further contain any nucleic acid. Alternatively, the empty vector may be different from a vector used in expression of the SITH-1 protein, the biotinylated SITH-1 protein, and/or the biotin-binding protein.

[0143] Any cell homogenate extract derived from cells can be used without limitation. For example, protein components, carbohydrate components, and lipid components of cells, and mixture thereof may be used. Preferably, soluble extracts
45 of cells can be used.

[0144] The cell homogenate extract can be prepared by a variety of processes without limitation. In general, cells cultured in a proper culture medium are homogenized or solubilized by a physical means such as ultrasonic application, a chemical means using a surfactant, or enzyme treatment, and then a soluble component is isolated by centrifugal separation or filtration. In order to prolong the storage life, preferably the clear liquid prepared by centrifugal separation
50 or filtration is mixed with, for example, a protease inhibitor, or is heated in an autoclave to deactivate various enzymes derived from cells or to suppress their activity. The concentration of the cell homogenate extract can be varied depending on the extent of the occurring nonspecific reaction and may be set in a range sufficient to absorb the nonspecific reaction.

[0145] An exemplary method of preparation of the cell homogenate extract, for example, from *E. coli* cells (which may contain a vector which may contain a gene encoding a biotin-binding protein), involves, but not limited to, inoculation of
55 the cells into an LB culture medium containing an antibiotic, shake culture at 25°C to 37°C until the absorbance at OD 600 reaches 0.1 to 1, preferably 0.3 to 0.8, addition of 0.01 mM to 5 mM, preferably 0.1 mM to 1 mM IPTG, and then shake culture at 4°C to 37°C, preferably 15°C to 37°C, more preferably 25°C to 37°C for 2 hr to 48 hr, preferably 4 hr to 24 hr. The bacterial cells are recovered by centrifugal separation from the culture solution, are suspended in a desired

buffer solution, and are homogenized. The supernatant liquid after centrifugal separation of the homogenized solution is recovered as a crude *E. coli* extract.

[0146] In the case of mixing a crude cell homogenate extract to a biological sample, for example, the sample may be reacted with a crude cell homogenate extract of which the total protein content is controlled to 0.05 mg/ml to 5 mg/ml, preferably 0.5 mg/ml to 5 mg/ml with a desired buffer solution (which may contain BSA, casein, or a commercially available blocking agent) at 4°C to 37°C, preferably 15°C to 30°C for 1 min to 24 hr, preferably 10 min to 4 hr, more preferably 30 min to 2 hr. For a serum biological sample, the serum is generally used after dilution in a cell homogenate extract into 10 to 10000 fold, preferably 100 to 1000 fold, more preferably 100 to 500 fold.

10 Addition of Biotin-binding Protein

[0147] The inventors have found that the biological sample is preferably put into contact with a carrier in the presence of a biotin-binding protein, in addition to a cell homogenate extract.

[0148] Accordingly, in one preferred embodiment of the present invention, in step 3), a mixture of:

15 (a) a biological sample, and

(b-i) a cell homogenate extract prepared from cells of the same species as that of host cells used to express the SITH-1 protein, a biotinylated SITH-1 protein and/or a biotin-binding protein in step 1) or 2), in combination with a biotin-binding protein; or

20 (b-ii) a cell homogenate extract prepared from cells genetically engineered to express a biotin-binding protein, wherein the cells are of the same species as that of host cells used to express the SITH-1 protein, a biotinylated SITH-1 protein and/or a biotin-binding protein in step 1) or 2) is added to the SITH-1 protein-bound carrier prepared in step 2).

25 [0149] In the present invention, addition of a biotin-binding protein to the biological sample can effectively reduce background signal levels.

[0150] Such a biotin-binding protein may be any one of the biotin-binding proteins described above, which can be used without limitation. Either the wild type or variants may be used. The biotin-binding activity of the variants may be equivalent, higher or lower compared to that of the wild type. In an embodiment, powder of a biotin-binding protein (which may be a naturally occurring protein or may be expressed by genetic engineering) may be added to the sample directly or after its dissolution in a proper solvent. In an alternative embodiment, a mixture of a sample and a cell homogenate extract may be treated with a carrier to which the biotin-binding protein is fixed (for example, the mixture is passed through a column) (step b-i), instead of direct addition of the biotin-binding protein to the sample.

35 [0151] In the case of addition of the biotin-binding protein to a crude cell homogenate extract, the final concentration of the added biotin-binding protein is, but not limited to, 1 µg/ml to 500 µg/ml, preferably 10 µg/ml to 100 µg/ml. The concentration of the biotin-binding protein which is genetically engineered to be expressed in the cells may also substantially be the same as above, but any other concentration is acceptable.

[0152] Alternatively, a cell extract containing a biotin-binding protein may be used which is prepared as follows: a gene encoding a biotin-binding protein is expressed by being introduced into host cells and the host cells are homogenized (step b-ii). In this case, the biotin-binding protein can be expressed in a desired host by a well known process to persons skilled in the art. Preferably, the SITH-1 protein, the biotinylated SITH-1 protein, and/or the biotin-binding protein in step 1) or 2) is genetically engineered to be expressed using the same species as that of the host. In the case where the host of the biotin-binding protein differs from the host which expresses the SITH-1 protein or the biotinylated SITH-1 protein by genetic engineering, the cell extract to be mixed and reacted with the biological sample may be derived from both hosts.

45 [0153] In the case of the host being *E. coli*, a gene encoding the biotin-binding protein is incorporated into an expression vector and is introduced into *E. coli*, and *E. coli* is cultivated while expression of protein is induced. Conditions for induction, such as an expression vector and host *E. coli* strains, culture medium component, IPTG concentration, and cultivation temperature can be appropriately determined.

50 Addition of Biological Sample and Other Components to Carrier

[0154] The biological sample, cell homogenate extract, and biotin-binding protein can be added to a carrier by any method. The biological sample, however, must come into contact with the cell homogenate extract and the biotin-binding protein during or before the contact of the biological sample with the carrier. In other words, the biological sample may be put into sufficient contact with the cell homogenate extract during or before the contact with the carrier, and a component derived from the cell homogenate extract, together with the biological sample, is not always added to the carrier finally. For example, a carrier to which the cell homogenate extract component is bound may be prepared, and

a biological sample may be added thereto, and then the treated biological sample was used. In an embodiment, before contact of the biological sample with the carrier, the sample is passed through a column to which the cell homogenate extract component has been bound.

[0155] After addition of the component, the biological sample and the cell homogenate extract are reacted with the carrier, for example, at 10°C to 30°C, preferably 20°C to 30°C, for 10 min to 4 hr, preferably 30 min to 2 hr.

5. Detection of SITH-1 Protein Antibody

[0156] In the method of the present invention, the SITH-1 protein antibody is detected in step 3).

[0157] Persons skilled in the art can appropriately select the method for detecting the SITH-1 protein antibody. Preferred examples of such methods include immunoassays such as enzyme-linked immuno-sorbent assay (ELISA) and radio-immunoassay (RIA); and other assays such as surface plasmon resonance. After the biological sample is reacted with the immobilized SITH-1 protein by binding between biotin and the biotin-binding protein, the SITH-1 protein antibody is detected.

[0158] In the immunoassay, the SITH-1 protein being an antigen is immobilized and is reacted with the SITH-1 protein antibody present in a biological sample, and the reaction product is detected by any method well known to persons skilled in the art. For example, a SITH-1 protein antibody bound to the SITH-1 protein can be detected by using an anti-human antibody, which can recognize and be bound to a human antibody as a secondary antibody. In this procedure, the anti-human antibody is labeled with a fluorescence material, enzyme, or radioisotope, and the fluorescence intensity, enzyme activity, or radiation dose is finally measured to determine the amount of the antibody indirectly.

[0159] Any labeling well known to persons skilled in the art may be employed. Alternatively, commercially available fluorescence- or enzyme-labeled anti-human antibodies may be used. Examples of fluorescence labeling include labeling using, for example, fluorescein or rhodamine, and labeling using a fluorescent protein such as a green fluorescent protein (GFP). Enzymes used for enzyme labeling are, but not limited to, peroxidase, alkaline phosphatase, luciferase, and glucose oxidase. Substrates for measurement using these enzymes are commercially available. For example, TBA and substrates for chemiluminescence can be used for peroxidase. Examples of radioisotopes include iodine (¹²⁵I and ¹²¹I), carbon (¹⁴C), sulfur (³⁵S), and tritium (³H), and phosphorus (³²P) for nucleic acids.

[0160] The amount of the antibody present in the biological sample can be readily calculated by comparison with the amount present in a standard preparation, e.g., a standard sample of a healthy subject or a typical patient in the case of clinical samples, using a linear regression computer algorithm. Such assay for detecting an antibody, for example, ELISA is disclosed in Iacobelli et al, Breast Cancer Research and Treatment 11: 19-30 (1988).

[0161] In case that the SITH-1 has a low antibody titer or that effect of background signals is significant due to nonspecific binding, the amount of antibody can be more precisely determined by subtracting the observed value of a sample in which the antigen is not immobilized. For example, in case that SITH-1 antibody in a biological sample is low (the antibody titer is low), or in case that non-specific binding of the biological sample (e.g., serum) per se is high, the effect of the background signal due to non-specific binding would be high. Accordingly, the background signal may be appropriately subtracted from the measured value, and the target substance for detection can be determined more precisely. Those skilled in the art can appropriately determine the specific background signal to be subtracted depending on each experimental system.

[0162] For example, as described in Examples 2-4, embodiments would be effective wherein the measured value obtained by using a carrier immobilized with the SITH-1 antigen is subtracted by the measured value of the section using the carrier without the immobilized SITH-1 antigen (however, in the section, blocking with BSA or the like has been operated, and the serum containing the anti-SITH-1 antibody (biological sample) has been added).

Alternatively, preferably, the subtraction of the measured value of the section in which any protein to which human has no antibody is immobilized (a non-limiting example is GFP) can lead more precise measurement. The method of immobilization is not limited, and preferably a target protein is biotinylated and is immobilized on a carrier comprising a biotin-binding protein bound thereto, through binding between biotin and a biotin-binding protein.

The detecting method of the present invention enables specific detection of a SITH-1 protein antibody having a low antibody titer in a serum.

II. Carrier comprising SITH-1 Protein bound thereto

[0163] The present invention also provides a carrier for detecting the SITH-1 protein antibody in a biological sample.

[0164] The carrier of the present invention is a SITH-1 protein-bound carrier. The SITH-1 protein can be bound in various manners, as described above, for example, by utilizing hydrophobic bond, covalent bond, and avidin-biotin binding, and utilizing various tags.

[0165] The carrier of the present invention is characterized by being bound to the SITH-1 protein through binding between biotin and a biotin-binding protein. The carrier of the present invention is preferably prepared by:

- 1) providing a carrier comprising a biotin-binding protein bound thereto and providing a biotinylated SITH-1 protein; and
2) binding the carrier provided in step 1) to the biotinylated SITH-1 protein through binding between biotin and a biotin-binding protein. The biotin-binding protein in 1) may be bound to the carrier directly or through biotin.

III. Kit

[0166] The present invention also provides a kit for detecting a SITH-1 protein antibody in a biological sample. The kit of the present invention comprises:

- A) a carrier comprising the SITH-1 protein bound thereto; and
B) an agent for diluting the biological sample, which comprises a cell homogenate extract prepared from cells of the same species as that of host cells used to express the SITH-1 protein in A).

[0167] The term "a carrier comprising the SITH-1 protein bound thereto" is as defined above.

[0168] The agent for diluting the biological sample may be a cell homogenate extract (and a biotin-binding protein) itself, or a diluent for further diluting the cell homogenate extract and the biological sample, for example, a proper buffer solution, a commercially available cell diluent, or a serum diluent.

[0169] In the kit of the present invention, preferably the carrier in A) is a carrier comprising the SITH-1 protein bound thereto through binding between biotin and a biotin-binding protein, and the agent in B) comprises:

- i) a cell homogenate extract prepared from cells of the same species as that of host cells used to express the SITH-1 protein, a biotinylated SITH-1 protein and/or a biotin-binding protein in A), in combination with a biotin-binding protein; or
ii) a cell homogenate extract prepared from cells genetically engineered to express a biotin-binding protein, wherein the cells are of the same species as that of host cells used to express the SITH-1 protein, the biotinylated SITH-1 protein and/or the biotin-binding protein in A).

[0170] The term "a carrier comprising a SITH-1 protein bound thereto through binding between biotin and a biotin-binding protein" is as defined above.

[0171] The terms "a cell homogenate extract prepared from a cell of the same species as the host cell used to express the SITH-1 protein, a biotinylated SITH-1 protein, and/or a biotin-binding protein in A)", "a biotin-binding protein", "a cell homogenate extract prepared from cells genetically engineered to express a biotin-binding protein, wherein the cells are of the same species as that of host cells used to express the SITH-1 protein, a biotinylated SITH-1 protein, and/or a biotin-binding protein" are also as defined above.

[0172] Alternatively, the kit of the present invention comprises:

- A) the SITH-1 protein;
B) a carrier for immobilizing the SITH-1 protein in A); and
C) an agent for diluting a biological sample, which comprises a cell homogenate extract prepared from cells of the same species as that of host cells used to express the SITH-1 protein in A).

[0173] "The SITH-1 protein" is preferably purified before binding to the carrier by means of hydrophobic bond or covalent bond. In the case of using various tags and binding between biotin and a biotin-binding protein, a SITH-1 protein to which the tag or biotin is bound is preferred, as described above.

[0174] "The carrier for immobilizing the SITH-1 protein in A)" may be the carrier described above, and is preferably a carrier which is treated for being bound to "the SITH-1 protein".

[0175] The terms "cell homogenate extract prepared from cells of the same species as that of host cells used to express the SITH-1 protein in A)" and "agent for diluting a biological sample" are also as defined above.

[0176] In a preferred embodiment of the kit of the present invention, the SITH-1 protein in A) is biotinylated, the carrier in B) is directly or indirectly bound to a biotin-binding protein, and the agent in C) is an agent for diluting the biological sample, which comprises:

- i) a cell homogenate extract prepared from cells of the same species as that of host cells used to express the SITH-1 protein, a biotinylated SITH-1 protein and/or a biotin-binding protein in A) or B), in combination with a biotin-binding protein; or

ii) a cell homogenate extract prepared from cells genetically engineered to express a biotin-binding protein, wherein the cells are of the same species as that of host cells used to express the SITH-1 protein, a biotinylated SITH-1 protein and/or a biotin-binding protein in A) or B).

5 **[0177]** The method of biotinylation of the SITH-1 protein and the carrier directly or indirectly bound to a biotin-binding protein are as defined above.

[0178] "A cell homogenate extract prepared from a cell of the same species as that of host cells used to express the SITH-1 protein, a biotinylated SITH-1 protein and/or a biotin-binding protein in A) or B)", "a biotin-binding protein", "a cell homogenate extract prepared from cells genetically engineered to express a biotin-binding protein, wherein the cells are of the same species as that of host cells used to express the SITH-1 protein, a biotinylated SITH-1 protein and/or a biotin-binding protein in A) or B)", and "an agent for diluting a biological sample" are also defined as above.

EXAMPLES

15 **[0179]** The present invention will now be described in more detail by way of the following examples, which are not intended to limit the technical scope of the invention. Based on the detailed description, modifications and changes will be apparent to those skilled in the art, and such modifications and changes fall within the technical scope of the invention.

[0180] In the examples 1-3 described below, a fusion protein between a human herpes virus 6 (HHV-6)-derived SITH-1 protein and a biotinylation sequence (BioEase tag, Invitrogen) was expressed in *E. coli* cells, and an *E. coli* crude extract obtained from these cells was directly reacted with a microplate, on which tamavidin 2 (hereinafter referred to as "TM2") was immobilized, to thereby bind the fusion protein to the microplate through tamavidin-biotin binding.

20 **[0181]** The SITH-1 protein-bound plate thus obtained was reacted with human serum diluted with an *E. coli* crude extract (supplemented with rabbit anti-SITH-1 antibody; since commercially available human sera are free from anti-SITH-1 antibody, those supplemented with serial dilutions of rabbit anti-SITH-1 antibody (antiserum) were used as analytes in this test) to measure the titer of anti-SITH-1 antibody contained in the human serum.

Example 1: Vector construction for expression of fusion protein between SITH-1 and biotinylation sequence (BioEase tag)

30 **[0182]** A gene was designed to encode a fusion protein having a BioEase tag located at the N-terminal end of the SITH-1 protein. This BioEase tag is a peptide tag containing a sequence to be biotinylated *in vivo* (i.e., within *E. coli* cells in this case) by the action of an endogenous biotinylation enzyme. The amino acid sequence of the BioEase-SITH-1 fusion protein is shown in SEQ ID NO: 8 and the nucleotide sequence encoding the same is shown in SEQ ID NO: 9.

35 1-1. Primer design

[0183] To construct a BioEase-SITH-1 fusion gene, primers for amplification of the SITH-1 gene were first designed. Namely, the following two primers were designed: a primer consisting of a DNA sequence encoding an N-terminal region of the SITH-1 protein (SITH1NtermGW-F) and a primer consisting of a DNA sequence encoding a C-terminal region of the SITH-1 protein in the reverse direction (SITH1CtermGW-R).

40 **[0184]** The primers for construction of a fusion gene between SITH-1 and BioEase tag are summarized in Table 1.

[0185]

[Table 1]

45

| SITH-1 gene amplification primers | | |
|-----------------------------------|-----------------------|--------|
| Name | Sequence | Length |
| SITH1NtermGW-F | GGATATGAAGAAAAAGTGTC | 20 mer |
| SITH1CtermGW-R | TTACACATTCATTTTCAGTTT | 20 mer |

50 (SEQ ID NOs: 10 and 11)

1-2. PCR

55 **[0186]** The DNA of an expression vector carrying the SITH-1 gene (ORF) (SEQ ID NO: 2) with the FLAG-tag (PCT/JP2008/67300) was used as a template to amplify a SITH-1 region by PCR with the primers SITH1NtermGW-F and SITH1CtermGW-R. PCR was accomplished by using a GeneAmp PCR System 9600 (PERKIN ELMER) in 20 µl

EP 2 416 159 A1

reaction solution containing template DNA (500 ng), 10 x ExTaq buffer (2 μ l, TaKaRa), 2.5 mM dNTP (1.6 μ l), primers (20 pmoles each) and 5U/ μ l ExTaq (0.1 μ l) under reaction conditions: 96°C for 3 minutes, (95°C for 1 minute, 60°C for 1 minute, 72°C for 2 minutes) x 20 cycles, and 72°C for 6 minutes. As a result, a PCR product of 477 bp was obtained.

5 1-3. Cloning

[0187] The SITH-1 gene obtained by PCR was cloned into vector pCR8/GW/TOPO (Invitrogen). Ligation reaction was performed according to the manufacturer's instructions bound to the vector kit. The DNA was introduced into *E. coli* TB1 by electroporation and the plasmid DNA was extracted in a routine manner (Sambrook et al. 1989, Molecular Cloning, A laboratory manual, 2nd edition). Each plasmid for which the presence of an insert was confirmed was analyzed with M13 primers (TaKaRa) and an ABI PRISM fluorescent sequencer (Model 310 Genetic Analyzer, Perkin Elmer) to determine its nucleotide sequence, which was then confirmed to have no mutation in comparison with the sequence of the designed gene.

10 [0188] The plasmid carrying the SITH-1 gene was used as an entry clone and subjected to recombination reaction with pET104.1 destination vector (Invitrogen), which is an expression vector for a BioEase tag-fused protein, using a Gateway System. The recombinant product was transformed into *E. coli* TB1 and the plasmid DNA was extracted. This plasmid was further transformed into *E. coli* BL21(DE3). The resulting *E. coli* colonies were each used as a template to amplify an insert gene region by PCR with SITH1NtermGW-F and SITH1CtermGW-R to thereby confirm the presence or absence of the insert gene.

15 [0189] In the manner described above, a vector for BioEase tag-fused SITH-1 protein expression, BioEase-SITH1/pET104.1 was completed.

20 1-4. *E. coli* expression

25 [0190] *E. coli* BL21(DE3) carrying BioEase-SITH1/pET104.1 or *E. coli* BL21 carrying pTrc99A alone (as a control) was inoculated into LB medium (50 ml) containing the antibiotic ampicillin (final concentration: 100 μ g/ml) and cultured with shaking at 30°C until the absorbance at OD600 reached 0.5. Then, 1 mM IPTG was added and the *E. coli* cells were cultured with shaking at 30°C for an additional 5 hours. The cultured solution (50 ml) was centrifuged to collect the cells. The cells were suspended in 3 ml of 0.1M HEPES/KOH (pH 7.4) and then homogenized by ultrasonication. The homogenate was centrifuged (15,000 rpm), and the resulting supernatant was used as an *E. coli* crude extract.

30 [0191] To confirm the expression of the BioEase tag-fused SITH-1 protein, proteins contained in each crude extract were fractionated by SDS-PAGE and analyzed by Western blotting. In Western blotting for detection of BioEase tag-fused SITH-1, rabbit anti-SITH-1 antibody (unpublished) and alkaline phosphatase-labeled anti-rabbit IgG antibody (BIO RAD) were used.

35 [0192] The results obtained are shown in Figure 1A. A band of approximately 30 kDa, which was not found in the control, was detected from the BioEase tag-fused SITH-1-expressing *E. coli* cells. This size was substantially equal to the molecular weight (28.6 kDa) of BioEase tag-fused SITH-1.

40 [0193] Further, horseradish peroxidase-labeled streptavidin was used in place of anti-SITH-1 antibody to detect signals. The results obtained are shown in Figure 1B. In the control, almost no signal was detected, whereas two thick bands originating from proteins that react with streptavidin (i.e., appear to be biotinylated) were detected from the BioEase tag-fused SITH-1-expressing *E. coli* crude extract. Among them, the upper band was further found to have substantially the same size as the band detected above by Western blotting. These results indicated that the expression of biotinylated SITH-1 was successful.

45 [0194] In addition to the above extracts, for use in the subsequent ELISA experiment, additional *E. coli* crude extracts were prepared in the same manner from *E. coli* BL21 carrying pTrc99A or TM2/pTrc99A (WO 02/072817) after being cultured in the presence of IPTG.

Example 2: ELISA detection of anti-SITH-1 antibody in human serum

50 [0195] Purified TM2 was immobilized on a microplate using a New ELISA plate kit (Sumitomo Bakelite Co., Ltd., Japan). Immobilization was accomplished according to the manufacturer's instructions attached to the kit.

[0196] The BioEase tag-fused SITH-1 protein-expressing *E. coli* crude extract obtained in Example 1 was adjusted to have a total protein concentration of 2 mg/ml with 0.1M HEPES/KOH (pH 7.4), 100 μ l of which was then added to the TM2-immobilized plate (Sumitomo Bakelite Co., Ltd., Japan, New ELISA). The plate was allowed to stand at room temperature for 1 hour to thereby bind the BioEase tag-fused SITH-1 protein onto the TM2-immobilized plate through tamavidin-biotin binding. Then, each well in the plate was washed three times with 0.1% Tween 20-containing TBS buffer (TBST), followed by addition of a 5 μ g/ml BSA/TBST solution in a volume of 250 μ l per well. The plate was allowed to stand at room temperature for 1 hour to block each well. Then, each well was washed three times with TBST.

[0197] Next, human serum (Human Serum pool, Cosmo-Bio, Inc.) was diluted 100-fold with PBS or with the 1 mg total soluble protein/ml pTrc99A-carrying *E. coli* crude extract or the 1 mg total soluble protein/ml TM2/pTrc99A-carrying *E. coli* crude extract prepared in (1-4) of Example 1. To the resulting solution, rabbit anti-SITH-1 antibody was added in serial dilution to give a volume ratio of 1/500, 1/1000, 1/2000, 1/4000 or 1/8000. These human serum dilutions (containing anti-SITH-1 antibody) were added in 100 μ l volumes to the plate on which the BioEase tag-fused SITH-1 protein was immobilized through biotin-tamavidin 2 binding, followed by incubation for 1 hour at room temperature.

It is expected that the antibody titer in serum of the rabbit anti-SITH-1 antibody (anti-serum) is about 50 times higher compared to the SITH-1 antibody titer in serum of a patient with a typical depression (mood disorder). Accordingly, pseudo sample for serum of a patient with a typical depression can be prepared by mixing 1/50 volume of rabbit anti-SITH-1 antibody (anti-serum) to a commercially available human serum (of a healthy person). Accordingly, the dilution rates of the antibody as discussed above provide samples similar to those when serum of depression patients are used after about 10 to 80 folds dilutions.

Further, to confirm the effect of TM2 in the *E. coli* crude extracts used for serum dilution, a solution was prepared to contain purified TM2 at a final concentration of 50 μ g/ml in PBS or in the above pTrc99A-carrying *E. coli* crude extract. Human serum was diluted 100-fold with this solution, and to the resulting solution, rabbit anti-SITH-1 antibody was added in serial dilution to give a volume ratio of 1/500, 1/1000, 1/2000, 1/4000 or 1/8000, as in the case mentioned above. These dilutions were added in 100 μ l volumes to the plate on which BioEase tag-fused SITH-1 was immobilized, followed by incubation for 1 hour at room temperature. On the other hand, as a control, a TM2-immobilized plate onto which nothing was bound was also blocked as described above. Human serum was diluted 100-fold with the same PBS solution or the same pTrc99A-carrying or TM2/pTrc99A-carrying *E. coli* crude extract (1 mg total soluble protein/ml) as used above, or alternatively, with the purified TM2-supplemented PBS or with the purified TM2-supplemented pTrc99A-carrying *E. coli* crude extract, followed by addition of serially diluted rabbit anti-SITH-1 antibody. The resulting dilutions were added in 100 μ l volumes to the control plate and incubated at room temperature for 1 hour.

[0198] The thus prepared human serum samples, which were diluted with various diluents and supplemented with serially diluted rabbit anti-SITH-1 antibody, were each reacted with the BioEase tag-fused SITH-1 protein immobilized on the carrier, followed by washing three times with TBST. Then, to detect each of the rabbit anti-SITH-1 antibody bound to SITH-1 and the human IgG in serum which is presumed to be bound non-specifically in each well, a mixture of horseradish peroxidase-labeled goat anti-rabbit IgG antibody and peroxidase-labeled goat anti-human IgG antibody, each of which was diluted 5000-fold with TBST, was added in a volume of 100 μ l per well, followed by incubation for 1 hour at room temperature. Then, each well was washed three times with TBST and peroxidase activity was detected. The activity was measured as follows: To each well, SuperSignal ELISA Pico Chemiluminescent Substrate (PIERCE) was added in a volume of 100 μ l and allowed to stand for 5 minutes at room temperature, followed by measuring the luminescence intensity with a plate reader Infinite M200 (TECAN). It should be noted that the data also include a luminescence intensity value measured at each concentration of rabbit anti-SITH-1 antibody for the control section sample (i.e., the region wherein the TM2 plate on which BioEase tag-fused SITH-1 was not immobilized, but which was blocked and treated with human serum containing anti-SITH-1 antibody at each concentration). The value of the control section was subtracted from the luminescence intensity value of each BioEase tag-fused SITH-1-immobilized section. The resulting value was defined as the detected amount of anti-SITH-1 antibody contained in the serum. Further, the S/N ratio was calculated by the equation shown below to compare the effect of each serum dilution.

$$\text{S/N ratio} = \frac{\text{Detected amount of anti-SITH-1 antibody in a sample containing anti-SITH-1 antibody at each concentration}}{\text{Detected amount of anti-SITH-1 antibody in a sample free from anti-SITH-1 antibody}}$$

[0199] The equation shows that the detection sensitivity is higher when S/N ratio is larger.

[0200] The results obtained are shown in Figures 2 and 3. The anti-SITH-1 antibody contained in the serum showed non-specific binding in most of the serum sections diluted with PBS, and a high level of luminescence intensity was also detected in the sections free from anti-SITH-1 antibody. Moreover, this non-specific binding was not improved in the presence of 50 μ g/ml TM2. In contrast, in the serum sections diluted with the pTrc99A-carrying *E. coli* crude extract or with the TM2/pTrc99A-carrying *E. coli* crude extract, or in the serum sections diluted with the pTrc99A-carrying *E. coli* crude extract supplemented with 50 μ g/ml TM2, luminescence intensity was significantly low in sections without addition of the SITH-1 antibody, and non-specific binding was dramatically reduced (Figure 2).

[0201] As shown in Figure 3, the S/N ratio was particularly high in the samples diluted with the pTrc99A-carrying *E. coli* crude extract supplemented with 50 μ g/ml TM2 and in the samples diluted with the TM2/pTrc99A-carrying *E. coli* crude extract.

[0202] These results indicated that in the measurement system using a TM2 plate on which BioEase tag-fused SITH-1 was immobilized, dilution of human serum with a TM2-containing *E. coli* crude extract allowed a reduction of non-specific binding originating from the human serum, thereby enabling the sensitive and quantitative detection of anti-SITH-1 antibody even at a very low concentration.

Example 3: ELISA analysis with patient-derived serum analytes

3-1. Measurement of anti-SITH-1 antibody titers in human serum using TM2 plate and biotinylated SITH-1

[0203] Six patient sera found to have SITH-1 antibody (obtained from two patients with chronic fatigue syndrome, three patients with depression and one patient with Crohn's disease) and six sera from normal subjects who were difficult to diagnose by the fluorescent antibody method due to high background arising from autoantibodies were used and measured for their serum antibody titers. It should be noted that the patient sera and the control sera from normal subjects were collected and tested under approval by the ethical committee of Jikei University School of Medicine (Japan), Osaka University Graduate School of Medicine (Japan) or Osaka City University Graduate School of Medicine (Japan).

[0204] For measurement of anti-SITH-1 antibody titers in patients, the samples diluted 40-to 160-fold were used in the fluorescent antibody method. The control sera from normal subjects used in this study were six analytes which had 40- to 80-fold anti-nuclear antibody or anti-cytoplasm antibody and whose SITH-1 antibody titers were difficult to measure by the fluorescent antibody method.

[0205] The fluorescent antibody method was performed as follows. The antigen used in the fluorescent antibody method was prepared as follows: 293T cells cultured on 8-chamber slides (Lab-Tek) were transfected with an expression vector for SITH-1 (pEGFP-N1 vector (Clontech) whose EGFP region had been replaced by the open reading frame of SITH-1) and, after 24 hours, were then fixed with cold acetone for 5 minutes. On the other hand, each human serum was serially diluted in two-fold increments (i.e., 20-fold, 40-fold, 80-fold or 160-fold) with PBS(-: free from calcium and magnesium) containing 0.2% BSA and 0.2% Tween 20 and used as a primary antibody. The primary antibody and the antigen were reacted at 37°C for 1 hour and then washed three times with PBS(-) containing 0.2% Tween 20 for 30 minutes. As a secondary antibody, Alexa Fluor® 488 anti-human IgG (Invitrogen) was diluted 500-fold and reacted at 37°C for 1 hour. After washing with PBS(-) containing 0.2% Tween 20 for 30 minutes, each sample was observed under a fluorescent microscope. The maximum dilution factor of the primary antibody which gave a stained image unique to SITH-1 was defined as an antibody titer, as measured by the fluorescent antibody method.

[0206] ELISA analysis using a TM2 NEW plate was performed according to the procedures described in Example 2. A BioEase tag-fused SITH-1-expressing *E. coli* crude extract was diluted to 2 mg total protein/ml with 0.1M HEPES/KOH (pH 7.4) and added to a TM2 New ELISA plate in a volume of 100 µl per well. The plate was allowed to stand at room temperature for 1 hour to thereby bind the BioEase tag-fused SITH-1 protein onto the plate through tamavidin-biotin binding. Then, each well in the plate was washed three times with 0.1% Tween 20-containing TBS buffer (TBST). In this way, a recombinant SITH-1 protein-immobilized plate was prepared.

[0207] Next, the above patient-derived human sera were diluted 100-fold with any one of the following solutions 1) to 3):
[0208]

- 1) a solution containing 1% casein in TBS-T (Tris-buffered saline, containing 0.1% Tween 20);
- 2) an *E. coli* crude extract, i.e., the supernatant of an *E. coli* (BL21) lysate (without IPTG induction), which was treated with BugBuster Protein Extraction Reagent (Novagen) in a volume of 5 ml per gram of *E. coli* pellet and centrifuged at 3,000 g for 10 minutes; or
- 3) a 5 mg total protein/ml TM2-expressing *E. coli* crude extract (with IPTG induction), which was prepared as described in Example 1.

These serum samples were added in 100 µl volumes to the BioEase tag-fused SITH-1 protein-bound plate, followed by incubation for 1 hour at room temperature and further washing three times with TBST.

[0209] As a control, serum-free PB S, a serum-free *E. coli* crude extract, or a serum-free TM2-expressing *E. coli* crude extract was added in 100 µl volumes, followed by incubation for 1 hour at room temperature and further washing three times with TBST.

[0210] Then, as a secondary antibody, anti-human IgG-HRP antibody (Jackson Immuno Research) was diluted 5000-fold with TBST and added in 100 µl volumes, followed by incubation for 1 hour at room temperature. Then, the plate was washed three times with TBST and color-developed with TMB1 Component HRP Microwell Substrate (BioFX laboratories) to detect peroxidase activity. It should be noted that the absorbance of wells s containing the developer TMB1 alone was subtracted from the absorbance of each test sample.

[0211] The absorbance values observed are shown in Figures 4 to 6. As shown in Figure 4, in the case of the serum samples diluted (pre-treated) with casein-containing TBS-T before being provided for ELISA, the absorbance was 3.56 ± 0.12 in patients and 3.65 ± 0.19 in normal subjects, thus indicating that there was no great difference between patients and normal subjects. In contrast, as shown in Figure 5, in the case of the serum samples diluted with the *E. coli* crude extract, the absorbance was 1.84 ± 1.14 in patients and 1.26 ± 0.14 in normal subjects, thus indicating that the patients tended to show larger values. Moreover, as shown in Figure 6, in the case of the serum samples diluted with the TM2-

expressing *E. coli* crude extract, the absorbance was 1.05 ± 0.27 in patients and 0.43 ± 0.09 in normal subjects, thus indicating that there was a significant difference (statistical significance at 0.1% significance level) between patients and normal subjects.

[0212] In this study, a sufficient difference was observed between patients and normal subjects although serum samples which were difficult to diagnose by the fluorescent antibody method were used. This suggested that ELISA analysis using the TM2 plate and biotinylated SITH-1, particularly in combination with the TM2-expressing *E. coli* crude extract as a serum diluent, was a practical method.

3-2. Measurement of anti-SITH-1 antibody titers in human serum using nickel plate and His tag-fused SITH-1 protein

[0213] In this example, a QIAGEN nickel plate commercially available as an ELISA plate was used in combination with a histidine tag (His tag)-bound SITH-1 protein to perform ELISA for antibody measurement.

[0214] The His-tagged SITH-1 protein was expressed as a fusion protein with Trx-Tag (Thioredoxin) composed of 109 amino acids obtained from pET-32a-ru(+) DNA, for the purpose of preventing the SITH-1 protein from forming an insoluble inclusion body within *E. coli* cells.

[0215] Into an *E. coli* cold-shock vector pCold I (TaKaRa Bio), Trx (Thioredoxin) composed of 109 amino acids obtained from pET-32a(+) DNA was inserted in-frame with a His tag. Further, SITH-1 or EGFP was inserted in-frame downstream of Trx. In this way, His tag-Trx-SITH-1 or His tag-Trx-EGFP was constructed. The plasmid thus completed was introduced into *E. coli* (BL21) cells. These *E. coli* cells were cultured with shaking in LB liquid medium (supplemented with IPTG at a final concentration of 1.0 mM) at 15°C for 24 hours to induce protein expression. The *E. coli* pellet was collected by centrifugation and then treated with BugBuster Protein Extraction Reagent (Novagen) in a volume of 5 ml per gram of *E. coli* pellet to extract *E. coli* proteins. This extract was centrifuged at 3,000 g for 10 minutes, and the resulting supernatant was used as a His tag-SITH-1 protein-expressing *E. coli* crude extract.

[0216] ELISA analysis using a nickel plate was performed as follows. Ni-NTA HisSorb Strips (QIAGEN) were reacted with the above His tag-SITH-1-expressing *E. coli* crude extract at room temperature for 1 hour. After washing three times with PBS(-) containing 0.5% Tween 20, anti-SITH-1 rabbit serum or the above patient-derived human serum was added and reacted at room temperature for 1 hour. After washing three times with PBS(-) containing 0.5% Tween 20, anti-rabbit IgG-HRP antibody (Roche, diluted 5,000-fold) or anti-human IgG-HRP antibody (Jackson Immuno Research, diluted 5,000-fold) was used as a secondary antibody. Color development was performed using TMB1 Component HRP Microwell Substrate (BioFX laboratories).

[0217] First, to confirm the usefulness of the nickel plate and the His-tagged SITH-1 I protein, ELISA for antibody measurement was performed with anti-SITH-1 rabbit serum.

[0218] The rabbit serum was diluted 100- or 500-fold for use in ELISA. The results obtained with these dilutions are shown in Figures 7 and 8, respectively. The results indicated that in the case of using the rabbit serum, the nickel plate and the His-tagged SITH-1 protein could be used for antibody measurement.

[0219] Next, the same human sera as used in 3-1 above (6 patient sera and 6 control sera from normal subjects) were used for antibody measurement using the nickel plate and the His-tagged SITH-1 protein. As a protein control to confirm non-specific binding, a His-tagged EGFP protein was used.

[0220] Each serum was studied in both 100-fold and 500-fold dilution. The diluents used were 1% bovine serum albumin (BSA) and the same *E. coli* crude extract as used in (3-1) above. It should be noted that the buffer used for serum reaction was PBS(-) and blocking was performed with 0.2% BSA-containing PBS. Likewise, washing was performed with 0.05% Tween 20-containing PBS(-).

[0221] The results obtained are shown in Figures 9 and 10. In the serum samples diluted 100-fold, 1% BSA and the *E. coli* crude extract each showed no great difference in antibody titers between patients and normal subjects. In contrast, in the serum samples diluted 500-fold, 1% BSA and the *E. coli* crude extract each tended to show higher antibody titers in patients than in normal subjects, although the difference in antibody titers was smaller than that observed with the method described in (3-1).

Example 4: ELISA detection of anti-SITH-1 antibody in human serum using magnetic beads

[0222] In this example, various serum diluents were studied for their effect on the detection of SITH-1 antibody at very low concentrations in the system using biotinylated magnetic beads on which TM2-fused SITH-1 was immobilized.

4-1. Primer design

[0223] To construct a SITH1-TM2 fusion gene, primers for fusing the SITH-1 and TM2 genes via a linker (5xlinker: GGGGSGGGGSGGGGSGGGGSGGGG) (SEQ ID NO: 12) were first designed.

[0224] Namely, the following two primers were designed: a primer consisting of a DNA sequence encoding a C-terminal

EP 2 416 159 A1

region of SITH-1 on the 5' side, the linker in the middle, and an N-terminal region of TM2 on the 3' side (SITH1C-Sxlink-TM2N-F) (SEQ ID NO: 13); and a primer consisting of a DNA sequence encoding the N-terminal region of TM2 on the 5' side, the linker in the middle, and the C-terminal region of SITH-1 on the 3' side, each of these elements being encoded in the reverse direction (SITH1C-5xlink-TM2N-R) (SEQ ID NO: 14).

[0225] Next, the following two primers were designed: a primer consisting of a 5' region including an N-terminal region of SITH-1 and an EcoRI restriction enzyme cleavage site (CCATGG) located upstream thereof (SITH1 5' EcoRI-F) (SEQ ID NO: 15); and a primer consisting of a sequence encoding a 3' region of the TM2 gene and a BamHI restriction enzyme cleavage site (GGATCC) located downstream thereof (TM2CtermBam) (SEQ ID NO: 16). The primers for construction of a fusion gene between SITH-1 and TM2 are summarized in Table 2.

[0226]

[Table 2] Primers for construction of a fusion gene between SITH-1 and TM2

| Name | Sequence | Length |
|----------------------|--|---------|
| SITH1 5' EcoRI-F | AAAGA <u>ATTC</u> GGATATGAAGAAAAAGTGTC | 29 mer |
| SITH1C-Sxlink-TM2N-F | CCGAAA <u>ACTG</u> AAATGAATGTGggtggcggtggc agcggtggcggtggcagcggtggcggtggcagcggtggcg gtggcagcggtggcggtggcagcTCAGACGTTCAATCTTCACTC | 117 mer |
| SITH1C-5xlink-TM2N-R | GAGTGAAGATTGAACGTCTGAgctgccaccgcca ccgctgccaccgccaccgctgccaccgccaccgctgccacc gccaccgctgccaccgccaccCACATTCATTTTCAGTTTTTCGG | 117 mer |
| TM2CtermBam | TTTGGAT <u>CCTT</u> ACTTCAACCTCGGTGCG | 28 mer |

The restriction enzyme recognition sites are underlined. The linker sequences are indicated in small letters.

4-2. PCR

[0227] To construct a SITH1-TM2 fusion gene, PCR was performed in two steps.

[0228] In the first step of PCR, a plasmid obtained by integrating the SITH-1 gene (ORF) (SEQ ID NO: 2) into FLAG Expression Vector (SIGMA) was used as a template to amplify a SITH-1 region with the primers SITH1 5' EcoRI-F and SITH1C-5xlink-TM2N-R, and a plasmid obtained by integrating the TM2 gene into vector pTrc99A (WO02/072817) was used as a template to amplify a TM2 region with the primers SITH1C-5xlink-TM2N-F and TM2CtermBam.

[0229] PCR was accomplished in the same manner as shown in Example 1-2 above. As a result, a PCR product of 579 bp was obtained for the SITH-1 region, while a PCR product of 528 bp was obtained for the TM2 region. These PCR products were each used as a template to perform the second step of PCR with the primers SITH1 5' EcoRI-F and TM2CtermBam. As a result, a PCR product of 990 bp was obtained.

4-3. Cloning

[0230] The SITH1-TM2 fusion gene obtained by PCR was cloned into vector pCR4Blunt TOPO (Invitrogen) in the same manner as shown in Example 1-3 above. The plasmid carrying the fusion gene was further double-digested with EcoRI and BamHI to collect a DNA fragment containing the fusion gene. This fragment was cloned into *E. coli* expression vector pTrc99A (Pharmacia) which had been digested with EcoRI and BamHI. In the manner described above, a vector for SITH-1-TM2 fusion protein expression, SITH1-TM2/pTrc99A, was completed. The nucleotide sequence encoding SITH1-TM2 in the expression vector SITH1-TM2/pTrc99A is shown in SEQ ID NO: 17, and the amino acid sequence encoded thereby is shown in SEQ ID NO: 18.

[0231] In the 5' side of SITH1-TM2, two amino acid residues are added downstream of the translation initiation methionine (nucleotides 4-9 in SEQ ID NO: 17, amino acid residues 2-3 in SEQ ID NO: 18) because the EcoRI site was used for integration into pTrc99A. These amino acid residues are followed by the SITH-1 sequence (nucleotides 10-483 in SEQ ID NO: 17, amino acid residues 4-161 in SEQ ID NO: 18), 5xlinker (nucleotides 484-558 in SEQ ID NO: 17, amino acid residues 162-186 in SEQ ID NO: 18), and the TM2 sequence (excluding Met) (nucleotides 559-981 in SEQ

ID NO: 17, amino acid residues 187-326 in SEQ ID NO: 18).

4-4. *E. coli* expression

5 **[0232]** *E. coli* BL21 carrying SITH1-TM2/pTrc99A was cultured in the same manner as shown in Example 1-4 above. The cultured solution (50 ml) was centrifuged to collect the cells. The cells were suspended in 3 ml of 0.1 M HEPES/KOH (pH 7.4) and then homogenized by ultrasonication. The homogenate was centrifuged (15,000 rpm), and the resulting supernatant was used as an *E. coli* crude extract. Expression of the TM2-fused SITH-1 protein was confirmed by Western blotting.

10 **[0233]** For detection of SITH-1, rabbit anti-SITH-1 antibody (i.e., anti-SITH-1 antibody (antiserum) prepared from rabbits immunized with a purified product of SITH-1 expressed in *E. coli* cells) and alkaline phosphatase-labeled anti-rabbit IgG antibody (BIO RAD) were each diluted 1000-fold and used. As a result, a band of approximately 35 kDa was detected from the TM2-fused SITH-1-expressing *E. coli* cells. This size was substantially equal to the molecular weight (34.8 kDa) of TM2-fused SITH-1. It should be noted that *E. coli* crude extracts were also prepared in the same manner as shown above from *E. coli* BL21 carrying pTrc99A or TM2/pTrc99A (Takakura et al. (2009) FEBS J. 276:1383-1397) after being cultured in the presence of IPTG.

4-5. Preparation of TM2-fused SITH-1-immobilized magnetic beads

20 **[0234]** To 1 mL (30 mg beads/mL) of magnetic beads (Dynabeads M-270 Amine, DYNALBIOTECH), 1 mL of 10 mM NHS-Lc-Lc-Biotin (PIERCE) was added. By mixing end-over-end at room temperature for 30 minutes, biotin was covalently bonded to the magnetic beads through reaction between amino groups and NHS active ester groups. Then, the magnetic beads were washed twice with a 0.1% BSA/0.01% Tween 20/PBS solution, and finally suspended in PBS buffer. The resulting magnetic beads (30 mg beads/mL PBS) were used as biotinylated magnetic beads.

25 **[0235]** TM2-fused SITH-1 was expressed in *E. coli* cells in the same manner as shown in Example 4-4 above, and the *E. coli* crude extract thus prepared was diluted with 0.1 M HEPES/KOH (pH 7.4) to give a total soluble protein concentration of 5 mg/ml, to which the biotinylated magnetic beads were then added. By mixing end-over-end at room temperature for 1 hour, TM2-fused SITH-1 was immobilized on the magnetic beads through streptavidin-biotin binding. Then, the magnetic beads were washed three times with 0.2% Tween 20-containing TBS buffer (TTBS).

30 **[0236]** In addition, a crude extract of TM2-expressing *E. coli* cells (Takakura et al. (2009) FEBS J 276: 1383-1397) was diluted with 0.1 M HEPES/KOH (pH 7.4) to give a total soluble protein concentration of 5 mg/ml, to which the biotinylated magnetic beads were then added. By mixing end-over-end at room temperature for 1 hour, TM2 was immobilized through streptavidin-biotin binding. After washing in the same manner as shown above, the TM2-immobilized magnetic beads thus completed (30 mg beads/mL PBS) were used for subtraction of non-specific binding inherent to serum samples.

4-6. ELISA analysis using magnetic beads

40 **[0237]** To commercially available human serum (Human Serum pool, Cosmo-Bio), the same rabbit anti-SITH-1 antibody as used in Example 2 was added in a 1/50 volume to prepare SITH-1 antibody-containing human serum. On the other hand, human serum free from SITH-1 antibody was used as a control.

45 **[0238]** The human serum or rabbit SITH-1 antibody-containing human serum was diluted 1000-fold with PBS or with the pTrc99A vector product-expressing *E. coli* crude extract or the TM2-expressing *E. coli* crude extract, each of which had been adjusted with 0.1 M HEPES/KOH (pH 7.4) to give a total soluble protein concentration of 5 mg/ml. To the resulting solution, BSA was further added at a final concentration of 2% (w/v). In Example 2 described above, human serum was diluted 100-fold and rabbit anti-SITH-1 antibody was then added at a volume ratio of 0.00025 to 0.002 relative to the diluted serum. However, in this Example 4-6, rabbit anti-SITH-1 antibody was added in a 1/50 volume (at a volume ratio of 0.02) to human serum and then diluted 1000-fold. Thus, the dilution factor of the rabbit SITH-1 antibody is 1/50000, which is the same as that of depression patient's serum diluted about 1000-fold.

50 **[0239]** To the serum dilutions thus prepared (1 mL each), the TM2-fused SITH-1-immobilized magnetic beads or the TM2-immobilized magnetic beads were added in 10 μ l volumes and reacted by mixing end-over-end for 1 hour at room temperature, followed by washing three times with TBST. Horseradish peroxidase-labeled goat anti-rabbit IgG antibody (for detection of the rabbit anti-SITH-1 antibody bound to the SITH-1 antigen immobilized on the magnetic beads) and peroxidase-labeled goat anti-human IgG antibody (for detection of human IgG bound non-specifically to the magnetic beads) were each diluted 5000-fold with 2% BSA-containing TBST and then mixed. This peroxidase-labeled secondary antibody mixture was added in 1000 μ l volumes to the magnetic beads and mixed end-over-end for 1 hour at room temperature. Then, the beads were further washed three times with TBST, and 100 μ l detection reagent (1 step ELISA ultraTMB, PIERCE) was added and reacted at room temperature for 1 minute. 100 μ l of 2 M sulfuric acid was added to

EP 2 416 159 A1

stop the reaction, and the degree of color development (absorbance at 450 nm wavelength, A450) was measured with a plate reader Infinite M200 (TECAN). The measurement was performed in duplicate for each sample to determine a mean value.

[0240] For use as data, the A450 value measured for each serum diluent (PBS, the pTrc99A vector product-expressing *E. coli* crude extract, or the TM2-expressing *E. coli* crude extract) in the TM2-fused SITH-1-immobilized magnetic beads was processed by subtraction of the A450 value measured for the corresponding serum diluent in the TM2-immobilized magnetic beads. The results obtained are shown in Table 3.

[0241]

[Table 3]

Table 3. Effect of serum diluents on SITH-1 antibody detection in human serum

| Serum diluent | A450 | | S/N ratio |
|---|--------------------------------------|-------------------------------------|-----------|
| | Serum containing SITH-1 antibody (S) | Serum free from SITH-1 antibody (N) | |
| PBS | 0.64 | 0.25 | 2.6 |
| pTrc99A-carrying BL21 crude extract | 0.14 | 0.04 | 3.5 |
| TM2/pTrc99A-carrying BL21 crude extract | 0.22 | 0.02 | 11.0 |

[0242] As shown in Table 3, the A450 value of SITH-1 antibody in human serum (S) was highest in the case of using PBS as a serum diluent, while the A450 value in serum free from SITH-1 antibody (N) was also very high, thus indicating that the S/N ratio (i.e., the ratio of the degree of color development in human serum containing rabbit anti-SITH-1 antibody to the degree of color development in serum free from rabbit anti-SITH-1 antibody) was lowest in PBS.

[0243] In contrast, when the pTrc99A vector product-expressing *E. coli* crude extract or the TM2-expressing *E. coli* crude extract was used as a serum diluent, the A450 value in serum free from SITH-1 antibody was much lower than that obtained for PBS, and hence non-specific binding could be greatly suppressed. This indicated that when human serum was mixed with the pTrc99A vector product-expressing *E. coli* crude extract or with the TM2-expressing *E. coli* crude extract, it was possible to reduce non-specific binding and detect anti-SITH-1 antibody with the use of the TM2-fused SITH-1-immobilized magnetic beads.

SEQUENCE LISTING FREE TEXT

- [0244]** SEQ ID NO: 1: amino acid sequence of SITH-1
- [0245]** SEQ ID NO: 2: nucleotide sequence of SITH-1 ORF
- [0246]** SEQ ID NO: 3: nucleotide sequence of SITH-1 cDNA
- [0247]** SEQ ID NO: 4: nucleotide sequence of tamavidin 1
- [0248]** SEQ ID NO: 5: amino acid sequence of tamavidin 1
- [0249]** SEQ ID NO: 6: nucleotide sequence of tamavidin 2
- [0250]** SEQ ID NO: 7: amino acid sequence of tamavidin 2
- [0251]** SEQ ID NO: 8: amino acid sequence of BioEase-SITH-1 fusion protein
- [0252]** SEQ ID NO: 9: nucleotide sequence encoding BioEase-SITH-1 fusion protein
- [0253]** SEQ ID NO: 10: PCR primer SITH1NtermGW-F
- [0254]** SEQ ID NO: 11: PCR primer SITH1NtermGW-R
- [0255]** SEQ ID NO: 12: 5 x linker
- [0256]** SEQ ID NO: 13: PCR primer SITH1C-5xlink-TM2N-F
- [0257]** SEQ ID NO: 14: PCR primer SITH1C-5xlink-TM2N-R
- [0258]** SEQ ID NO: 15: PCR primer SITH1C- 5' EcoRI-F
- [0259]** SEQ ID NO: 16: PCR primer TM2CtermBam
- [0260]** SEQ ID NO: 17: nucleotide sequence of SITH-1-TM2
- [0261]** SEQ ID NO: 18: amino acid sequence of SITH-1-TM2

EP 2 416 159 A1

SEQUENCE LISTING

5 <110> Virus Ikagaku kenkyusho Inc.
Japan Tobacco Inc.

<120> Method for detecting SITH-1 antibody in a biological sample

<130> FA0392-09155

10 <150> JP 2009-087816
<151> 2009-03-31

<160> 18
<170> PatentIn version 3.1

15 <210> 1
<211> 159
<212> PRT
<213> Human herpesvirus 6

<400> 1

20 Met Gly Tyr Glu Glu Lys Val Ser Ala Thr Gly Lys Thr Arg Leu Lys
1 5 10 15

Ile Leu Ala Cys Leu Ile Val Leu Ile Leu Ala Ala Ala Ile Thr Met
20 25 30

25 Leu Thr Leu Glu Ile Ile Ser Asn Gln Lys Arg Thr Thr Thr Asp Leu
35 40 45

Glu Ala Val Thr Val Ala Leu Lys His Val Ser Thr Ser Leu Ala Ser
50 55 60

30 Cys Thr Glu Ser Thr Thr Ser Val His Thr Asp Ser Val Thr Ser Gln
65 70 75 80

Pro Thr Lys Asn Lys Glu Ser Arg Lys Lys Ile Glu Gly Lys Ser Pro
85 90 95

35 Ser Trp Val Gln Ala Leu Thr Thr Ala Ser Gly Ile Ile Leu Leu Phe
100 105 110

Cys Ile Met Met Ile Phe Ile Thr Cys Ser Trp Thr Thr Glu Lys Asp
115 120 125

40 Thr Glu Lys Ser Glu Val Gln Ser Tyr Ala Ser Ser Val Glu Thr Leu
130 135 140

Asp Ser Leu Asn Glu Ala Ile Ile Pro Lys Thr Glu Met Asn Val
145 150 155

45 <210> 2
<211> 480
<212> DNA
<213> Human herpesvirus 6

50 <400> 2
atgggatatg aagaaaaagt gtcagctact ggaaagactc gtttaaagat actggcatgt 60
ctgatcgttt taatactagc tgcggcaata actatgtaa cgctggaaat tatatcgaac 120
caaaaacgta cactactga tctcgaagct gtgactgtgg cgctgaagca tgtaagcaca 180
tctcttgcca gctgactga atccactact tctgtacata ccgattctgt gacgagccaa 240
cccacgaaaa acaaagaatc gagggaaaaa attgaagga aatctccaag ttgggttcag 300
55 gctttaacta cagcatctgg aattatccta ctgttttgta taatgatgat attcattaca 360

EP 2 416 159 A1

```

tgttcctgga ccacagaaaa agatacagag aagagtgaag tgcaatctta tgcttcttca 420
gtagagactt tagactcttt aaatgaggct attataccga aaactgaaat gaatgtgtaa 480

5
<210> 3
<211> 1795
<212> DNA
<213> Human herpesvirus 6

10
<400> 3
aggctctgct ggaggctctg ctggaggcct tgctgaaggc tctgctggag gccctgctgg 60
aggtcttgct ggaggctctg ctggaggctc tgctggaggc tctgctggag gctctgctgg 120
aggctctgct ggaggctctg ctggaggctc tgtcagagac ctcggtgaaa gttttactca 180
gaggtttatc agagttttcg ccattagttt ggttagaagt ttcagattta ttttcgggtg 240
aactgcagtt aggtttcatg tcagtacatt catcaccggt agaagtgcta ttcattggtgc 300
tgttgccact gttggatttg ttaaaagcag taaatgagct aggattggaa tgactccgaa 360
15
tagctaataa atttgagcat tttcttcgaa tggatcataa tcagagggat agccatctaa 420
tttaaagact tccattttat cactgttgca atcacttcta atggagatc tggatacatt 480
ttttctacat ctttttcac cctccaaca tggatctgtg cagcgttaat aagccagcgg 540
agttaattaa atcgtcttcc atgtagaca gttctgttt catggcagcc ttcactgatg 600
caccaatact ttggatgcaa gtgccaacgg actgagctag gatgtaaaag aagatattct 660
aattttgaat tcttcagatg ctctctctc cacattactg gaataggaca cattcttgga 720
20
agcgatgtcg ttggaagact ctgggatgaa aagatcacag gcttcagtt ctggaaaaag 780
caggctttca aaggacacat cacacttgag actctcttcc aatatttctt tgatggattc 840
ttccaccact ggatcgggat ggtagctata tatactatat aaggagatta ccaccacc 900
ctctttcttt gcagagatta ttctctgctt gaaaatctgt aacactgatc atgatgggat 960
atgaagaaaa agtgcagct actggaaga ctcgtttaa gatactggca tgtctgatcg 1020
25
ttttaatact agctcggca ataactatgt taacgctgga aattatatcg aaccaaaaac 1080
gtaccactac tgatctcgaa gctgtgactg tggcgtgaa gcatgtaagc acatctcttg 1140
ccagctgcac tgaatccact acttctgtac ataccgattc tgtgacgagc caaccacga 1200
aaaaaaaaga atcgagaaa aaaattgaag ggaaatctcc aagttgggtt caggctttaa 1260
ctacagcatc tgaattatc ctactgtttt gtataatgat gatattcatt acatgtccct 1320
ggaccacaga aaaagataca gagaagagtg aagtgcattc ttatgctcct tcagtagaga 1380
30
ctttagacc tttaaatgag gctattatac cgaaaactga aatgaatgtg taatgtctgt 1440
atttttcttt acagagatgt acggagagt ttatattggg gaaaatacct gactgtctg 1500
cctatatgcg aatgttaaag tatgtataat ataaattctt accttttaag agtgattcaa 1560
ggtggagggt tctttggaga ttgattccag gtggtggtt cgggtgcaat caatctttct 1620
tctgggctgg aagaaaatcc agcaatcaa taattgatgg gatgtaatca atgtcacaaa 1680
tctgtaagat taaatgtgaa cagtataaat tcttctgtgc ttatcaaatt acaattatgc 1740
35
gcatgaaaat atcattaaat tgttttaaac attcttaaaa aaaaaaaaaa aaaaa 1795

<210> 4
<211> 432
<212> DNA
<213> Pleurotus cornucopiae

40
<220>
<221> CDS
<222> (1)..(432)
<223>

45
<400> 4
atg aaa gac gtc caa tct ctc ctc acc gga acc tgg tac aat gaa ctc 48
Met Lys Asp Val Gln Ser Leu Leu Thr Gly Thr Trp Tyr Asn Glu Leu
1 5 10 15

50
ggc tca aca atg aat ttg act gca aat aaa gac ggt tcg ctc acc gga 96
Gly Ser Thr Met Asn Leu Thr Ala Asn Lys Asp Gly Ser Leu Thr Gly
20 25 30

acg tac cac tcc aac gtc ggc gag gtt ccc cca act tat cac ctt tct 144
Thr Tyr His Ser Asn Val Gly Glu Val Pro Pro Thr Tyr His Leu Ser
35 40 45

55
ggc cgg tac aac ctc cag ccc ccc tcg ggt caa ggc gtt act ctg gga 192

```

EP 2 416 159 A1

Gly Arg Tyr Asn Leu Gln Pro Pro Ser Gly Gln Gly Val Thr Leu Gly
 50 55 60
 5 tgg gcg gtg tct ttc gaa aac act agt gcg aat gtt cat tct gtc tca 240
 Trp Ala Val Ser Phe Glu Asn Thr Ser Ala Asn Val His Ser Val Ser
 65 70 75 80
 aca tgg agc ggg cag tac ttc tct gaa ccc gcc gag gtg atc ctc acc 288
 Thr Trp Ser Gly Gln Tyr Phe Ser Glu Pro Ala Glu Val Ile Leu Thr
 85 90 95
 10 cag tgg ctg ttg tca agg agc tct gag cgc gaa gat ttg tgg cag tcc 336
 Gln Trp Leu Leu Ser Arg Ser Ser Glu Arg Glu Asp Leu Trp Gln Ser
 100 105 110
 acc cat gtg ggg cat gat gag ttc agc aag aca aag cca acc aag gag 384
 Thr His Val Gly His Asp Glu Phe Ser Lys Thr Lys Pro Thr Lys Glu
 115 120 125
 15 aag att gcc cag gct caa ctc ctt cgt cgc ggg ttg aag ttc gag tga 432
 Lys Ile Ala Gln Ala Gln Leu Leu Arg Arg Gly Leu Lys Phe Glu
 130 135 140
 20
 <210> 5
 <211> 143
 <212> PRT
 <213> Pleurotus cornucopiae
 25
 <400> 5
 Met Lys Asp Val Gln Ser Leu Leu Thr Gly Thr Trp Tyr Asn Glu Leu
 1 5 10 15
 30 Gly Ser Thr Met Asn Leu Thr Ala Asn Lys Asp Gly Ser Leu Thr Gly
 20 25 30
 Thr Tyr His Ser Asn Val Gly Glu Val Pro Pro Thr Tyr His Leu Ser
 35 40 45
 35 Gly Arg Tyr Asn Leu Gln Pro Pro Ser Gly Gln Gly Val Thr Leu Gly
 50 55 60
 Trp Ala Val Ser Phe Glu Asn Thr Ser Ala Asn Val His Ser Val Ser
 65 70 75 80
 40 Thr Trp Ser Gly Gln Tyr Phe Ser Glu Pro Ala Glu Val Ile Leu Thr
 85 90 95
 Gln Trp Leu Leu Ser Arg Ser Ser Glu Arg Glu Asp Leu Trp Gln Ser
 100 105 110
 45 Thr His Val Gly His Asp Glu Phe Ser Lys Thr Lys Pro Thr Lys Glu
 115 120 125
 Lys Ile Ala Gln Ala Gln Leu Leu Arg Arg Gly Leu Lys Phe Glu
 130 135 140
 50
 <210> 6
 <211> 426
 <212> DNA
 <213> Pleurotus cornucopiae
 <220>
 <221> CDS
 <222> (1)..(426)
 55

EP 2 416 159 A1

<223>

<400> 6
 5 atg tca gac gtt caa tct tca ctc acc gga acc tgg tac aat gaa ctc 48
 Met Ser Asp Val Gln Ser Ser Leu Thr Gly Thr Trp Tyr Asn Glu Leu
 1 5 10 15

aac tcc aag atg gaa ttg act gca aac aaa gac ggt act ctc act gga 96
 Asn Ser Lys Met Glu Leu Thr Ala Asn Lys Asp Gly Thr Leu Thr Gly
 20 25 30

10 aag tac ctc tcc aaa gtt ggg gat gtc tac gtg ccc tac cca ctc tct 144
 Lys Tyr Leu Ser Lys Val Gly Asp Val Tyr Val Pro Tyr Pro Leu Ser
 35 40 45

15 ggt cgc tat aac ctc caa ccc ccc gcg gga caa ggc gtc gct ctt ggg 192
 Gly Arg Tyr Asn Leu Gln Pro Pro Ala Gly Gln Gly Val Ala Leu Gly
 50 55 60

20 tgg gcg gta tcc tgg gag aac agt aaa att cat tcc gct acg aca tgg 240
 Trp Ala Val Ser Trp Glu Asn Ser Lys Ile His Ser Ala Thr Thr Trp
 65 70 75 80

agc gga cag ttc ttc tct gag tcg tct cca gtg att ctt act cag tgg 288
 Ser Gly Gln Phe Phe Ser Glu Ser Ser Pro Val Ile Leu Thr Gln Trp
 85 90 95

25 ttg ttg tca tcg agc act gcg cgt ggg gac gta tgg gaa tcc aca ctt 336
 Leu Leu Ser Ser Thr Ala Arg Gly Asp Val Trp Glu Ser Thr Leu
 100 105 110

30 gtg ggg aat gat tcg ttt aca aag acg gcg ccg act gag cag cag atc 384
 Val Gly Asn Asp Ser Phe Thr Lys Thr Ala Pro Thr Glu Gln Gln Ile
 115 120 125

gct cat gct caa ctc cat tgt cgc gca ccg agg ttg aag taa 426
 Ala His Ala Gln Leu His Cys Arg Ala Pro Arg Leu Lys
 130 135 140

35 <210> 7
 <211> 141
 <212> PRT
 <213> Pleurotus cornucopiae

40 <400> 7
 Met Ser Asp Val Gln Ser Ser Leu Thr Gly Thr Trp Tyr Asn Glu Leu
 1 5 10 15

Asn Ser Lys Met Glu Leu Thr Ala Asn Lys Asp Gly Thr Leu Thr Gly
 20 25 30

45 Lys Tyr Leu Ser Lys Val Gly Asp Val Tyr Val Pro Tyr Pro Leu Ser
 35 40 45

Gly Arg Tyr Asn Leu Gln Pro Pro Ala Gly Gln Gly Val Ala Leu Gly
 50 55 60

50 Trp Ala Val Ser Trp Glu Asn Ser Lys Ile His Ser Ala Thr Thr Trp
 65 70 75 80

Ser Gly Gln Phe Phe Ser Glu Ser Ser Pro Val Ile Leu Thr Gln Trp
 85 90 95

55 Leu Leu Ser Ser Ser Thr Ala Arg Gly Asp Val Trp Glu Ser Thr Leu

EP 2 416 159 A1

100 105 110

Val Gly Asn Asp Ser Phe Thr Lys Thr Ala Pro Thr Glu Gln Gln Ile
 115 120 125

5

Ala His Ala Gln Leu His Cys Arg Ala Pro Arg Leu Lys
 130 135 140

<210> 8
 <211> 271
 <212> PRT
 <213> Artificial Sequence

10

<220>
 <223> Fusion protein BioEase Tag-SITH-1

15

<400> 8
 Met Ala Ser Met Thr Gly Gly Gln Gln Met Gly Ile Met Gly Ala Gly
 1 5 10 15
 Thr Pro Val Thr Ala Pro Leu Ala Gly Thr Ile Trp Lys Val Leu Ala
 20 25 30
 Ser Glu Gly Gln Thr Val Ala Ala Gly Glu Val Leu Leu Ile Leu Glu
 35 40 45
 Ala Met Lys Met Glu Thr Glu Ile Arg Ala Ala Gln Ala Gly Thr Val
 50 55 60
 Arg Gly Ile Ala Val Lys Ala Gly Asp Ala Val Ala Val Gly Asp Thr
 65 70 75 80
 Leu Met Thr Leu Ala Gly Ser Gly Ser Asp Leu Tyr Asp Asp Asp
 85 90 95
 Lys Gly Ile Ile Thr Ser Leu Tyr Lys Lys Ala Gly Ser Glu Phe Ala
 100 105 110
 Leu Gly Tyr Glu Glu Lys Val Ser Ala Thr Gly Lys Thr Arg Leu Lys
 115 120 125
 Ile Leu Ala Cys Leu Ile Val Leu Ile Leu Ala Ala Ile Thr Met
 130 135 140
 Leu Thr Leu Glu Ile Ile Ser Asn Gln Lys Arg Thr Thr Thr Asp Leu
 145 150 155 160
 Glu Ala Val Thr Val Ala Leu Lys His Val Ser Thr Ser Leu Ala Ser
 165 170 175
 Cys Thr Glu Ser Thr Thr Ser Val His Thr Asp Ser Val Thr Ser Gln
 180 185 190
 Pro Thr Lys Asn Lys Glu Ser Arg Lys Lys Ile Glu Gly Lys Ser Pro
 195 200 205
 Ser Trp Val Gln Ala Leu Thr Thr Ala Ser Gly Ile Ile Leu Leu Phe
 210 215 220
 Cys Ile Met Met Ile Phe Ile Thr Cys Ser Trp Thr Thr Glu Lys Asp
 225 230 235 240
 Thr Glu Lys Ser Glu Val Gln Ser Tyr Ala Ser Ser Val Glu Thr Leu
 245 250 255
 Asp Ser Leu Asn Glu Ala Ile Ile Pro Lys Thr Glu Met Asn Val
 260 265 270 271

20

25

30

35

40

45

<210> 9
 <211> 816
 <212> DNA
 <213> Artificial Sequence

50

<220>
 <223> DNA encoding fusion protein BioEase Tag-SITH-1

55

<400> 9
 atggctagca tgactgggtg acagcaaatg ggtattatgg gcgccggcac cccggtgacc 60
 gccccgctgg cgggcactat ctggaagtg ctggccagcg aaggccagac ggtggccgca 120
 ggcgaggtgc tgetgattct ggaagccatg aagatggaaa cegaaatccg cgccgcgcag 180
 gccgggaccg tgcgcggtat cgcggtgaaa gccggcgacg cggtggcggt cggcgacacc 240

EP 2 416 159 A1

5
 ctgatgacc tggcgggctc tggatccgat ctgtacgacg atgacgataa gggaattatc 300
 acaagtttgt acaaaaaagc aggtcccga ttcgcccttg gatatgaaga aaaagtgtca 360
 gctactggaa agactcgttt aaagatactg gcatgtctga tcgttttaat actagctgcg 420
 gcaataacta tgtaacgct ggaaattata tcgaaccaa aacgtaccac tactgatctc 480
 gaagctgtga ctgtggcgct gaagcatgta agcacatctc ttgccagctg cactgaatcc 540
 actacttctg tacataccga ttctgtgacg agccaacca cgaaaaaca agaatcgagg 600
 aaaaaaattg aagggaaatc tccaagttgg gttcaggctt taactacagc atctggaatt 660
 atcctactgt tttgtataat gatgatattc attacatggt cctggaccac agaaaaagat 720
 acagagaaga gtgaagtgca atcttatgct tcttcagtag agactttaga ctctttaaat 780
 10 gaggctatta taccgaaaac tgaaatgaat gtgtaa 816

15
 <210> 10
 <211> 20
 <212> DNA
 <213> Artificial Sequence

<220>
 <223> primer SITH1NtermGW-F

20
 <400> 10
 ggatatgaag aaaaagtgtc 20

25
 <210> 11
 <211> 20
 <212> DNA
 <213> Artificial Sequence

<220>
 <223> primer SITH1CtermGW-R

30
 <400> 11
 ttacacattc atttcagttt 20

35
 <210> 12
 <211> 25
 <212> PRT
 <213> Artificial Sequence

<220>
 <223> Peptide linker

40
 <400> 12
 Gly Gly Gly Gly Ser Gly Gly Gly Gly Ser Gly Gly Gly Gly Ser Gly
 1 5 10 15
 Gly Gly Gly Ser Gly Gly Gly Gly Ser
 20 25

45
 <210> 13
 <211> 117
 <212> DNA
 <213> Artificial Sequence

50
 <220>
 <223> primer SITH1C-5xlink-TM2N-F

<400> 13
 ccgaaaactg aatgaatgt ggggtggcggg ggcagcgggt gcgggtggcag cgggtggcggg 60
 ggcagcgggt gcgggtggcag cgggtggcggg ggcagctcag acgttcaatc ttcactc 117

55
 <210> 14

EP 2 416 159 A1

<211> 117
 <212> DNA
 <213> Artificial Sequence
 5
 <220>
 <223> primer SITH1C-5xlink-TM2N-R
 <400> 14
 gagtgaagat tgaacgtctg agctgccacc gccaccgctg ccaccgccac cgctgccacc 60
 10 gccaccgctg ccaccgccac cgctgccacc gccaccaca ttcatttcag ttttcgg 117
 <210> 15
 <211> 29
 <212> DNA
 15 <213> Artificial Sequence
 <220>
 <223> primer SITH1C-5' EcoRI-F
 <400> 15
 20 aaagaattcg gatatgaaga aaaagtgtc 29
 <210> 16
 <211> 28
 <212> DNA
 25 <213> Artificial Sequence
 <220>
 <223> primer TM2CtermBam
 <400> 16
 30 tttggatcct tacttcaacc tcggtgcg 28
 <210> 17
 <211> 981
 <212> DNA
 35 <213> Artificial Sequence
 <220>
 <223> DNA encoding fusion protein SITH-1-TM2
 <400> 17
 40 atg gaa ttc gga tat gaa gaa aaa gtg tca gct act gga aag act cgt 48
 Met Glu Phe Gly Tyr Glu Glu Lys Val Ser Ala Thr Gly Lys Thr Arg
 1 5 10 15
 tta aag ata ctg gca tgt ctg atc gtt tta ata cta gct gcg gca ata 96
 45 Leu Lys Ile Leu Ala Cys Leu Ile Val Leu Ile Leu Ala Ala Ala Ile
 20 25 30
 act atg tta acg ctg gaa att ata tcg aac caa aaa cgt acc act act 144
 Thr Met Leu Thr Leu Glu Ile Ile Ser Asn Gln Lys Arg Thr Thr Thr
 35 40 45
 50 gat ctc gaa gct gtg act gtg gcg ctg aag cat gta agc aca tct ctt 192
 Asp Leu Glu Ala Val Thr Val Ala Leu Lys His Val Ser Thr Ser Leu
 50 55 60
 gcc agc tgc act gaa tcc act act tct gta cat acc gat tct gtg acg 240
 55 Ala Ser Cys Thr Glu Ser Thr Thr Ser Val His Thr Asp Ser Val Thr
 65 70 75 80

EP 2 416 159 A1

| | | |
|----|---|-----|
| | agc caa ccc acg aaa aac aaa gaa tcg agg aaa aaa att gaa ggg aaa | 288 |
| | Ser Gln Pro Thr Lys Asn Lys Glu Ser Arg Lys Lys Ile Glu Gly Lys | |
| | 85 90 95 | |
| 5 | tct cca agt tgg gtt cag gct tta act aca gca tct gga att atc cta | 336 |
| | Ser Pro Ser Trp Val Gln Ala Leu Thr Thr Ala Ser Gly Ile Ile Leu | |
| | 100 105 110 | |
| 10 | ctg ttt tgt ata atg atg ata ttc att aca tgt tcc tgg acc aca gaa | 384 |
| | Leu Phe Cys Ile Met Met Ile Phe Ile Thr Cys Ser Trp Thr Thr Glu | |
| | 115 120 125 | |
| 15 | aaa gat aca gag aag agt gaa gtg caa tct tat gct tct tca gta gag | 432 |
| | Lys Asp Thr Glu Lys Ser Glu Val Gln Ser Tyr Ala Ser Ser Val Glu | |
| | 130 135 140 | |
| 20 | act tta gac tct tta aat gag gct att ata ccg aaa act gaa atg aat | 480 |
| | Thr Leu Asp Ser Leu Asn Glu Ala Ile Ile Pro Lys Thr Glu Met Asn | |
| | 145 150 155 160 | |
| 25 | gtg ggt ggc ggt ggc agc ggt ggc ggt ggc agc ggt ggc ggt ggc agc | 528 |
| | Val Gly Gly Gly Gly Ser Gly Gly Gly Gly Ser Gly Gly Gly Gly Ser | |
| | 165 170 175 | |
| 30 | ggt ggc ggt ggc agc ggt ggc ggt ggc agc tca gac gtt caa tct tca | 576 |
| | Gly Gly Gly Gly Ser Gly Gly Gly Gly Ser Ser Asp Val Gln Ser Ser | |
| | 180 185 190 | |
| 35 | ctc acc gga acc tgg tac aat gaa ctc aac tcc aag atg gaa ttg act | 624 |
| | Leu Thr Gly Thr Trp Tyr Asn Glu Leu Asn Ser Lys Met Glu Leu Thr | |
| | 195 200 205 | |
| 40 | gca aac aaa gac ggt act ctc act gga aag tac ctc tcc aaa gtt ggg | 672 |
| | Ala Asn Lys Asp Gly Thr Leu Thr Gly Lys Tyr Leu Ser Lys Val Gly | |
| | 210 215 220 | |
| 45 | gat gtc tac gtg ccc tac cca ctc tct ggt cgc tat aac ctc caa ccc | 720 |
| | Asp Val Tyr Val Pro Tyr Pro Leu Ser Gly Arg Tyr Asn Leu Gln Pro | |
| | 225 230 235 240 | |
| 50 | ccc gcg gga caa ggc gtc gct ctt ggg tgg gcg gta tcc tgg gag aac | 768 |
| | Pro Ala Gly Gln Gly Val Ala Leu Gly Trp Ala Val Ser Trp Glu Asn | |
| | 245 250 255 | |
| 55 | agt aaa att cat tcc gct acg aca tgg agc gga cag ttc ttc tct gag | 816 |
| | Ser Lys Ile His Ser Ala Thr Thr Trp Ser Gly Gln Phe Phe Ser Glu | |
| | 260 265 270 | |
| 60 | tcg tct cca gtg att ctt act cag tgg ttg ttg tca tcg agc act gcg | 864 |
| | Ser Ser Pro Val Ile Leu Thr Gln Trp Leu Leu Ser Ser Ser Thr Ala | |
| | 275 280 285 | |
| 65 | cgt ggg gac gta tgg gaa tcc aca ctt gtg ggg aat gat tcg ttt aca | 912 |
| | Arg Gly Asp Val Trp Glu Ser Thr Leu Val Gly Asn Asp Ser Phe Thr | |
| | 290 295 300 | |
| 70 | aag acg gcg ccg act gag cag cag atc gct cat gct caa ctc cat tgt | 960 |
| | Lys Thr Ala Pro Thr Glu Gln Gln Ile Ala His Ala Gln Leu His Cys | |
| | 305 310 315 320 | |
| 75 | cgc gca ccg agg ttg aag taa | 981 |
| | Arg Ala Pro Arg Leu Lys | |
| | 325 | |
| 80 | <210> 18 | |

<211> 326
 <212> PRT
 <213> Artificial Sequence

<220>
 <223> Fusion protein SITH-1-TM2

<400> 18

10 Met Glu Phe Gly Tyr Glu Glu Lys Val Ser Ala Thr Gly Lys Thr Arg
 1 5 10 15
 Leu Lys Ile Leu Ala Cys Leu Ile Val Leu Ile Leu Ala Ala Ala Ile
 20 25 30
 Thr Met Leu Thr Leu Glu Ile Ile Ser Asn Gln Lys Arg Thr Thr Thr
 15 35 40 45
 Asp Leu Glu Ala Val Thr Val Ala Leu Lys His Val Ser Thr Ser Leu
 50 55 60
 Ala Ser Cys Thr Glu Ser Thr Thr Ser Val His Thr Asp Ser Val Thr
 65 70 75 80
 20 Ser Gln Pro Thr Lys Asn Lys Glu Ser Arg Lys Lys Ile Glu Gly Lys
 85 90 95
 Ser Pro Ser Trp Val Gln Ala Leu Thr Thr Ala Ser Gly Ile Ile Leu
 100 105 110
 Leu Phe Cys Ile Met Met Ile Phe Ile Thr Cys Ser Trp Thr Thr Glu
 115 120 125
 25 Lys Asp Thr Glu Lys Ser Glu Val Gln Ser Tyr Ala Ser Ser Val Glu
 130 135 140
 Thr Leu Asp Ser Leu Asn Glu Ala Ile Ile Pro Lys Thr Glu Met Asn
 145 150 155 160
 Val Gly Gly Gly Gly Ser Gly Gly Gly Gly Ser Gly Gly Gly Gly Ser
 30 165 170 175
 Gly Gly Gly Gly Ser Gly Gly Gly Gly Ser Ser Asp Val Gln Ser Ser
 180 185 190
 Leu Thr Gly Thr Trp Tyr Asn Glu Leu Asn Ser Lys Met Glu Leu Thr
 195 200 205
 35 Ala Asn Lys Asp Gly Thr Leu Thr Gly Lys Tyr Leu Ser Lys Val Gly
 210 215 220
 Asp Val Tyr Val Pro Tyr Pro Leu Ser Gly Arg Tyr Asn Leu Gln Pro
 225 230 235 240
 Pro Ala Gly Gln Gly Val Ala Leu Gly Trp Ala Val Ser Trp Glu Asn
 245 250 255
 40 Ser Lys Ile His Ser Ala Thr Thr Trp Ser Gly Gln Phe Phe Ser Glu
 260 265 270
 Ser Ser Pro Val Ile Leu Thr Gln Trp Leu Leu Ser Ser Ser Thr Ala
 275 280 285
 45 Arg Gly Asp Val Trp Glu Ser Thr Leu Val Gly Asn Asp Ser Phe Thr
 290 295 300
 Lys Thr Ala Pro Thr Glu Gln Gln Ile Ala His Ala Gln Leu His Cys
 305 310 315 320
 Arg Ala Pro Arg Leu Lys
 325

Claims

55 1. A method for detecting an antibody against a small protein encoded by the intermediate stage transcript of HHV-6 (SITH-1) in a biological sample, which comprises:

1) providing the SITH-1 protein;

EP 2 416 159 A1

- 2) binding the SITH-1 protein provided in step 1) to a carrier; and
- 3) contacting the biological sample with the SITH-1 protein-bound carrier prepared in step 2) to detect the SITH-1 protein antibody.

- 5 **2.** The method according to claim 1, wherein the SITH-1 protein is selected from the group consisting of:
- (a) a protein which has the amino acid sequence of SEQ ID NO: 1;
 - (b) a protein which has an amino acid sequence comprising deletion, substitution, insertion and/or addition of one or more amino acids in the amino acid sequence of SEQ ID NO: 1 and which has the ability to increase the intracellular calcium concentration;
 - 10 (c) a protein which has an amino acid sequence sharing an identity of at least 80% with the amino acid sequence of SEQ ID NO: 1 and which has the ability to increase the intracellular calcium concentration;
 - (d) a protein which has an amino acid sequence encoded by a nucleic acid consisting of the nucleotide sequence of SEQ ID NO: 2;
 - 15 (e) a protein which has an amino acid sequence encoded by a nucleic acid consisting of a nucleotide sequence comprising deletion, substitution, insertion and/or addition of one or more nucleotides in the nucleotide sequence of SEQ ID NO: 2 and which has the ability to increase the intracellular calcium concentration;
 - (f) a protein which has an amino acid sequence encoded by a nucleic acid consisting of a nucleotide sequence sharing an identity of 80% or more with the nucleotide sequence of SEQ ID NO: 2 and which has the ability to increase the intracellular calcium concentration; and
 - 20 (g) a protein which is encoded by a nucleic acid hybridizable under stringent hybridization conditions with a nucleic acid consisting of a nucleotide sequence complementary to the nucleotide sequence of SEQ ID NO: 2 and which has the ability to increase the intracellular calcium concentration.
- 25 **3.** The method according to claim 1 or 2, wherein step 3) in claim 1 comprises adding a mixture of:
- (a) the biological sample; and
 - (b) a cell homogenate extract prepared from cells of the same species as that of host cells used to express the SITH-1 protein in step 1)
- 30 to the SITH-1 protein-bound carrier prepared in step 2).
- 4.** The method according to any one of claims 1 to 3, wherein step 2) in claim 1 comprises binding the SITH-1 protein to the carrier through binding between biotin and biotin-binding protein.
- 35 **5.** The method according to claim 4, wherein step 3) in claim 1 comprises adding a mixture of:
- (a) the biological sample; and
 - (b-i) a cell homogenate extract prepared from cells of the same species as that of host cells used to express the SITH-1 protein, a biotinylated SITH-1 protein and/or a biotin-binding protein in step 1) or 2), in combination with a biotin-binding protein; or
 - (b-ii) a cell homogenate extract prepared from cells genetically engineered to express a biotin-binding protein, wherein said cells are of the same species as that of host cells used to express the SITH-1 protein, biotinylated SITH-1 protein and/or a biotin-binding protein in step 1) or 2)
- 45 to the SITH-1 protein-bound carrier prepared in step 2).
- 6.** The method according to any one of claims 3 to 5, wherein step 3(b) in claim 3 or step 3(b-i) in claim 5 comprises adding, as the cell homogenate extract, a cell homogenate extract extracted from cells comprising any vector.
- 50 **7.** The method according to any one of claims 4 to 6, wherein the biotin-binding protein is tamavidin or a mutant thereof.
- 8.** The method according to any one of claims 1 to 7, wherein the biological sample is selected from the group consisting of blood, serum, cerebrospinal fluid, saliva, throat swab, sweat, urine, tear, lymph, semen, peritoneal fluid, and mother's milk.
- 55 **9.** A carrier for detecting an antibody against a small protein encoded by the intermediate stage transcript of HHV-6 (SITH-1) in a biological sample, wherein the carrier comprises the SITH-1 protein bound thereto.

10. The carrier according to claim 9, wherein the SITH-1 protein and the carrier are bound to each other through binding between biotin and a biotin-binding protein.

5 11. A kit for detecting an antibody against a small protein encoded by the intermediate stage transcript of HHV-6 (SITH-1) in a biological sample, which comprises:

- A) a carrier comprising the SITH-1 protein bound thereto; and
- B) an agent for diluting the biological sample, which comprises a cell homogenate extract prepared from cells of the same species as that of host cells used to express the SITH-1 protein in A).

10 12. The kit according to claim 11, wherein the carrier in A) is a carrier comprising the SITH-1 protein bound thereto through binding between biotin and biotin-binding protein, and wherein the agent in B) is an agent for diluting the biological sample, which comprises:

- 15 i) a cell homogenate extract prepared from cells of the same species as that of host cells used to express the SITH-1 protein, biotinylated SITH-1 protein and/or a biotin-binding protein in A), in combination with a biotin-binding protein; or
- 20 ii) a cell homogenate extract prepared from cells genetically engineered to express a biotin-binding protein, wherein said cells are of the same species as that of host cells used to express the SITH-1 protein, biotinylated SITH-1 protein and/or a biotin-binding protein in A).

13. A kit for detecting an antibody against a small protein encoded by the intermediate stage transcript of HHV-6 (SITH-1) in a biological sample, which comprises:

- 25 A) the SITH-1 protein;
- B) a carrier for immobilizing the SITH-1 protein in A); and
- C) an agent for diluting the biological sample, which comprises a cell homogenate extract prepared from cells of the same species as that of host cells used to express the SITH-1 protein in A).

30 14. The kit according to claim 13, wherein the SITH-1 protein in A) is biotinylated, wherein the carrier in B) is directly or indirectly bound to a biotin-binding protein, and wherein the agent in C) is an agent for diluting the biological sample, which comprises:

- 35 i) a cell homogenate extract prepared from cells of the same species as that of host cells used to express the SITH-1 protein, biotinylated SITH-1 protein and/or a biotin-binding protein in A) or B), in combination with a biotin-binding protein; or
- 40 ii) a cell homogenate extract prepared from cells genetically engineered to express a biotin-binding protein, wherein said cells are of the same species as that of host cells used to express the SITH-1 protein, biotinylated SITH-1 protein and/or a biotin-binding protein in A) or B).

Fig. 1

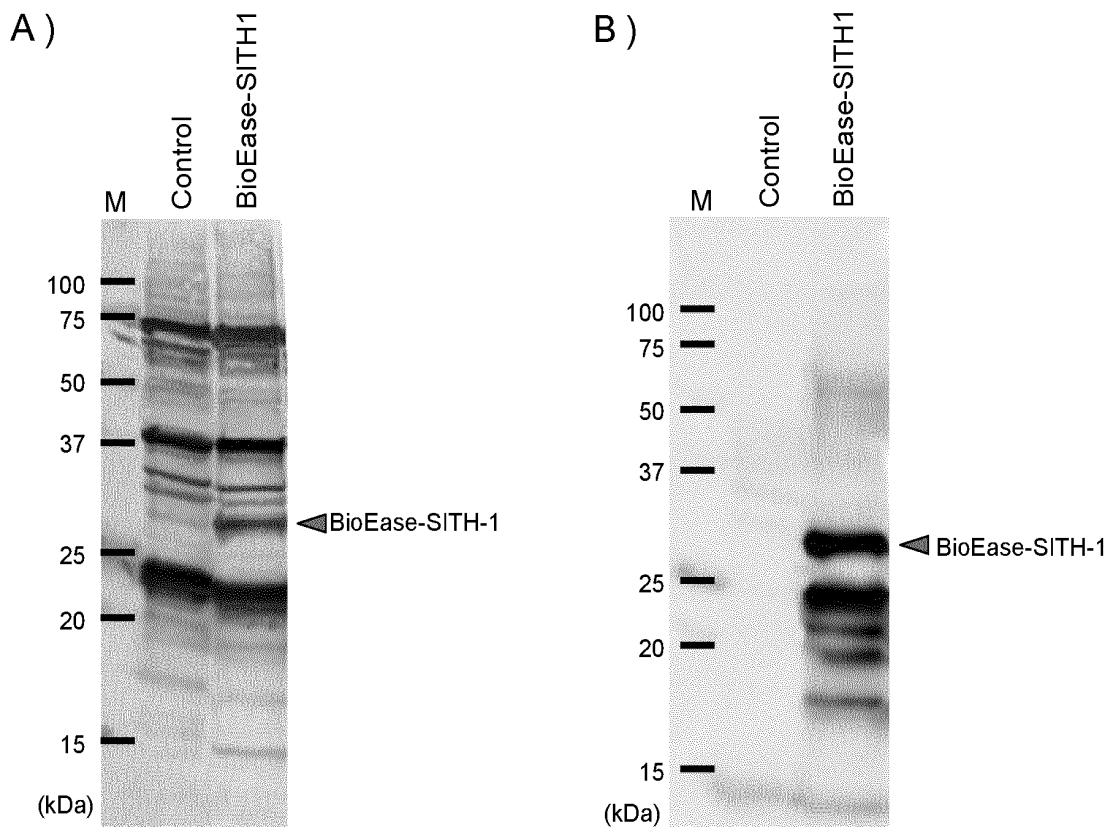


Fig. 2

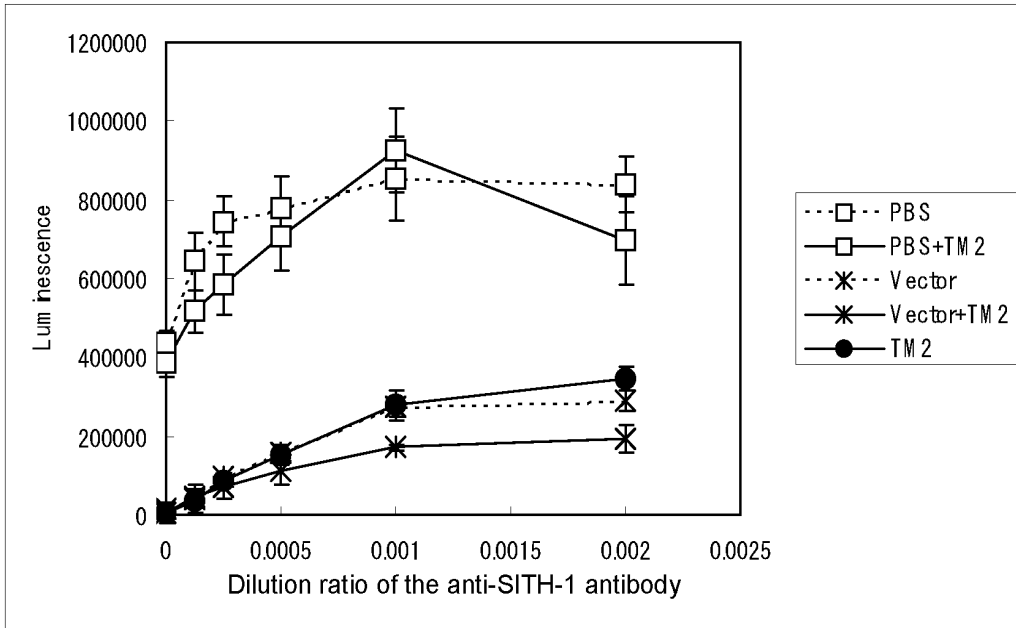


Fig. 3

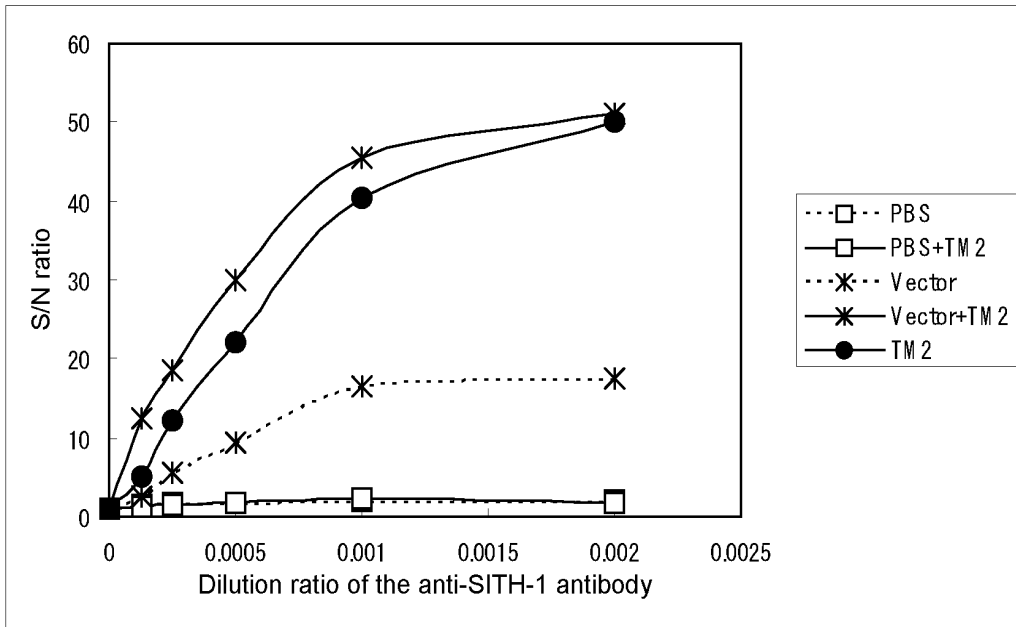


Fig. 4

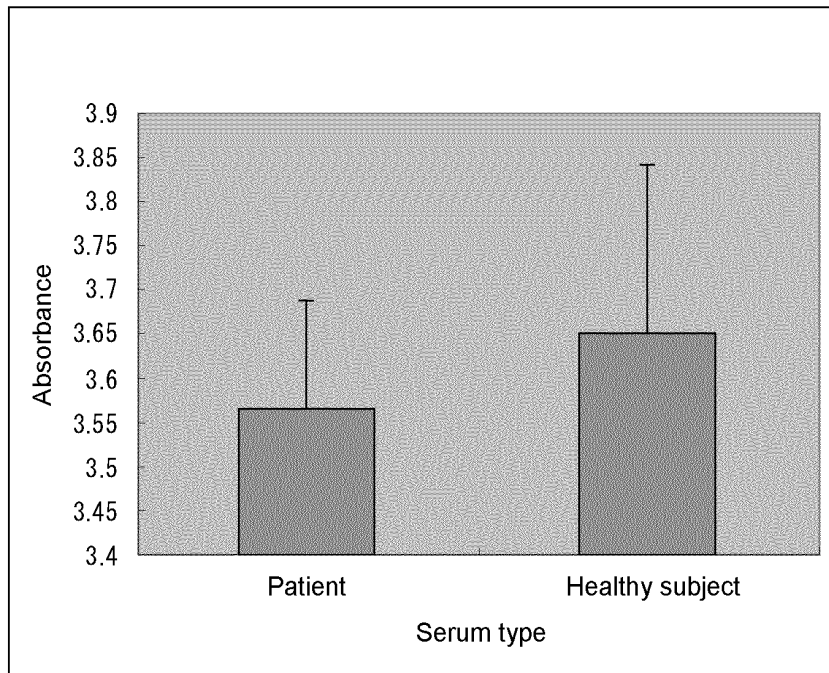


Fig. 5

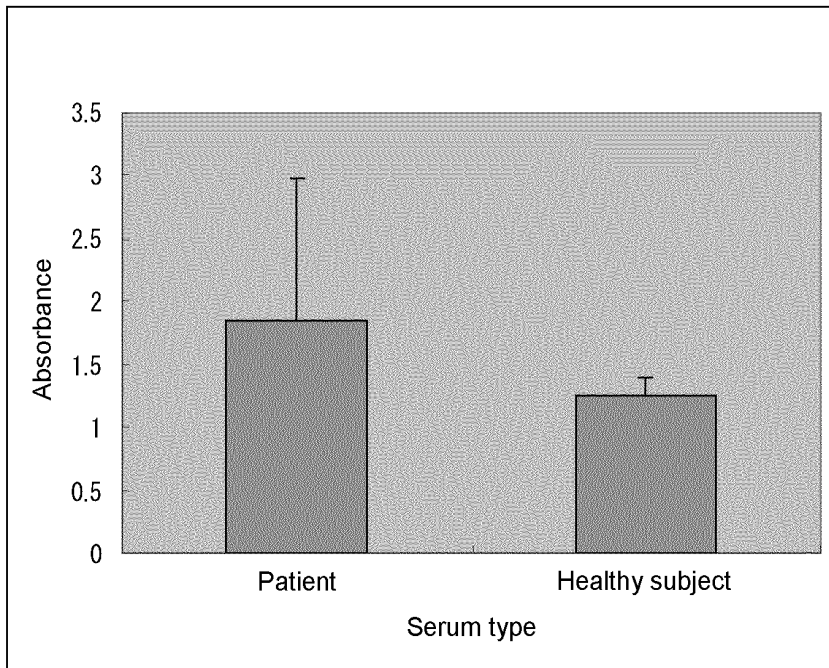


Fig. 6

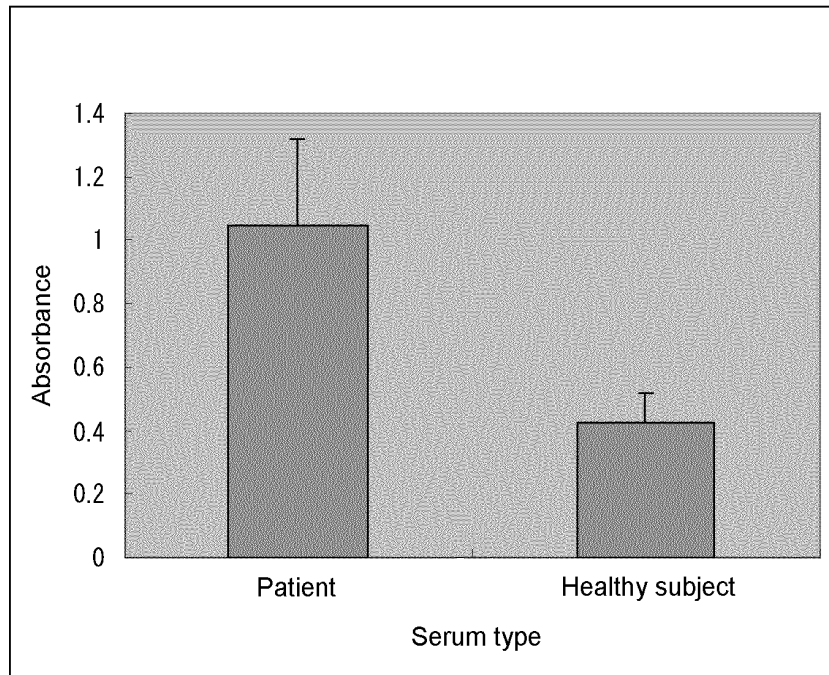


Fig. 7

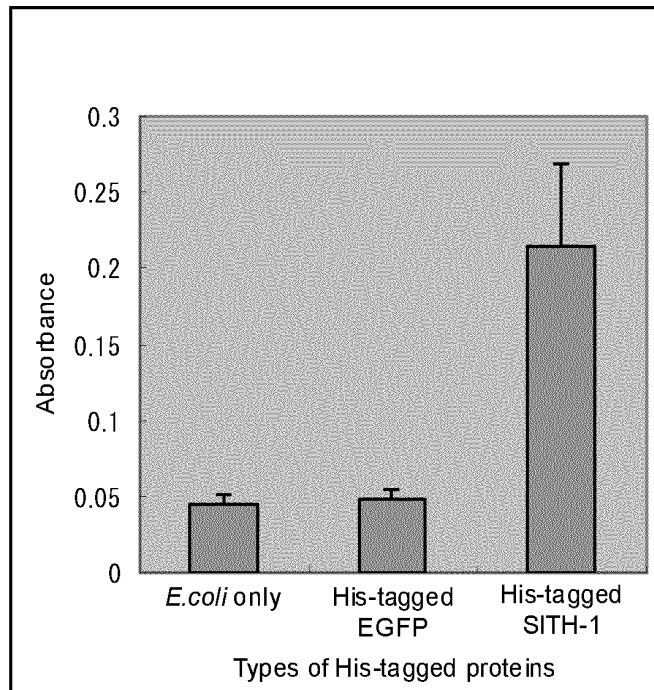


Fig. 8

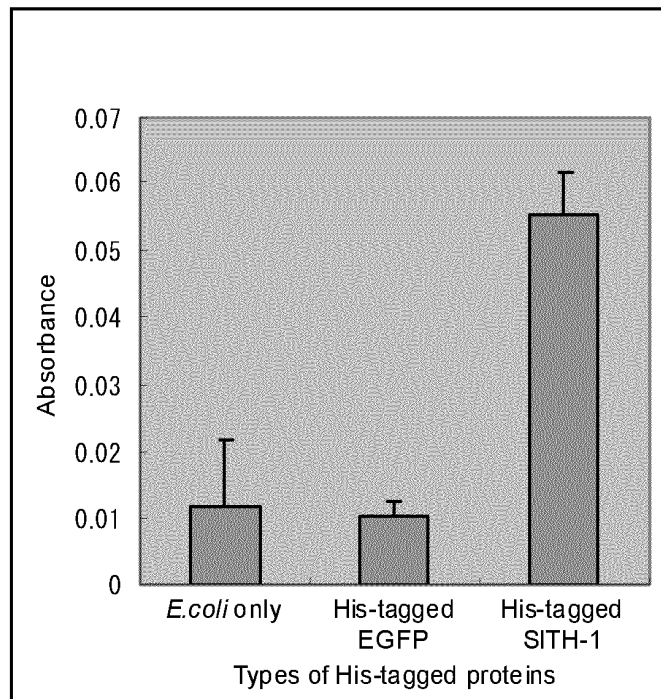


Fig. 9

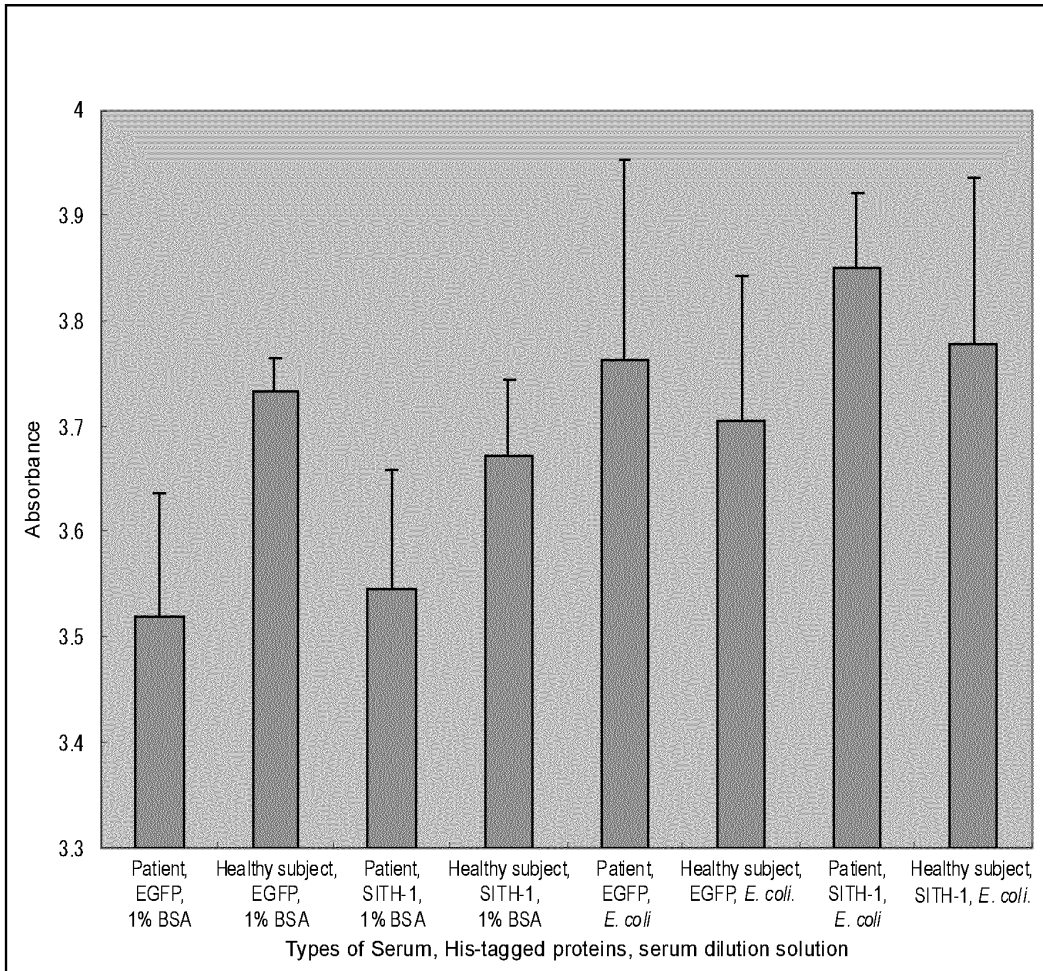
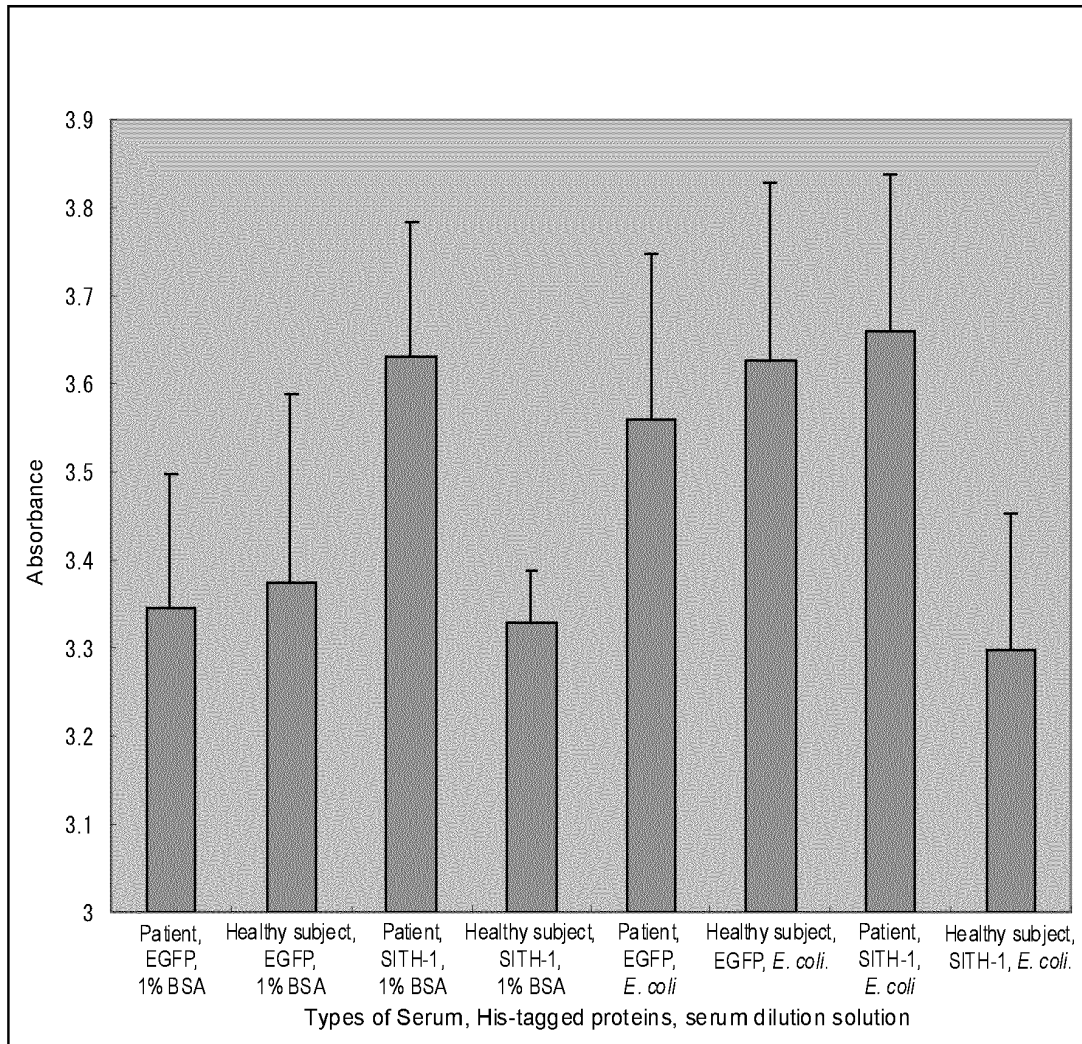


Fig. 10



INTERNATIONAL SEARCH REPORT

International application No.

PCT/JP2010/055884

| A. CLASSIFICATION OF SUBJECT MATTER G01N33/569(2006.01)i, G01N33/53(2006.01)i, C07K14/03(2006.01)n | | |
|---|---|-----------------------------|
| According to International Patent Classification (IPC) or to both national classification and IPC | | |
| B. FIELDS SEARCHED | | |
| Minimum documentation searched (classification system followed by classification symbols) G01N33/569, G01N33/53, C07K14/03 | | |
| Documentation searched other than minimum documentation to the extent that such documents are included in the fields searched Jitsuyo Shinan Koho 1922-1996 Jitsuyo Shinan Toroku Koho 1996-2010 Kokai Jitsuyo Shinan Koho 1971-2010 Toroku Jitsuyo Shinan Koho 1994-2010 | | |
| Electronic data base consulted during the international search (name of data base and, where practicable, search terms used) BIOSIS (STN), JSTPlus (JDreamII) | | |
| C. DOCUMENTS CONSIDERED TO BE RELEVANT | | |
| Category* | Citation of document, with indication, where appropriate, of the relevant passages | Relevant to claim No. |
| Y/A | KOBAYASHI et al., "Human Herpesviruses (HHV)-6 Senpuku Kansen Chukan Jotai Tokuiteki Tanpaku ni yoru Kibun Shogai no Hassho Kijo", Dai 56 Kai The Japanese Society of Virology Gakujutsu Shukai Program Shorokushu, 01 October 2008 (01.10.2008), page 120, 1WSF5 | 1-4, 6-11, 13/ 5, 12, 14 |
| Y/A | JP 2008-261841 A (Sysmex Corp.), 30 October 2008 (30.10.2008), claims & US 2008/0227111 A1 & EP 1978365 A1 | 1-4, 6-11, 13/ 5, 12, 14 |
| Y/A | JP 2-233697 A (Boehringer Mannheim GmbH), 17 September 1990 (17.09.1990), claims & US 5001049 A & EP 379949 A2 & DE 3901857 A | 1-4, 6-11, 13/ 5, 12, 14 |
| <input checked="" type="checkbox"/> Further documents are listed in the continuation of Box C. <input type="checkbox"/> See patent family annex. | | |
| * Special categories of cited documents: | | |
| "A" document defining the general state of the art which is not considered to be of particular relevance | "T" later document published after the international filing date or priority date and not in conflict with the application but cited to understand the principle or theory underlying the invention | |
| "E" earlier application or patent but published on or after the international filing date | "X" document of particular relevance; the claimed invention cannot be considered novel or cannot be considered to involve an inventive step when the document is taken alone | |
| "L" document which may throw doubts on priority claim(s) or which is cited to establish the publication date of another citation or other special reason (as specified) | "Y" document of particular relevance; the claimed invention cannot be considered to involve an inventive step when the document is combined with one or more other such documents, such combination being obvious to a person skilled in the art | |
| "O" document referring to an oral disclosure, use, exhibition or other means | "&" document member of the same patent family | |
| "P" document published prior to the international filing date but later than the priority date claimed | | |
| Date of the actual completion of the international search 14 June, 2010 (14.06.10) | Date of mailing of the international search report 29 June, 2010 (29.06.10) | |
| Name and mailing address of the ISA/ Japanese Patent Office | Authorized officer | |
| Facsimile No. | Telephone No. | |

Form PCT/ISA/210 (second sheet) (July 2009)

INTERNATIONAL SEARCH REPORT

International application No.

PCT/JP2010/055884

| C (Continuation). DOCUMENTS CONSIDERED TO BE RELEVANT | | |
|---|---|-----------------------------|
| Category* | Citation of document, with indication, where appropriate, of the relevant passages | Relevant to claim No. |
| Y/A | WO 2009/028625 A1 (Japan Tobacco Inc.), 05 March 2009 (05.03.2009), claims; paragraphs [0011], [0027], [0046], [0047], [0055] (Family: none) | 1-4, 6-11, 13/ 5, 12, 14 |
| Y | KONDO, "Human Herpesvirus Latency and Fatigue", Virus, 2005, vol.55, no.1, pages 9 to 18 | 2 |
| Y | KONDO et al., Identification of Human Herpesvirus 6 Latency-Associated Transcripts, JOURNAL OF VIROLOGY, 2002, Vol.76, No.8, p.4145-4151 | 2 |
| Y | KONDO et al., Detection of Gene Cluster That Is Dispensable for Human Herpesvirus 6 Replication and Latency, JOURNAL OF VIROLOGY, Vol.77, No.19, 2003, p.10719-10724 | 2 |
| Y | JP 8-43392 A (Fujirebio Inc.), 16 February 1996 (16.02.1996), claims (Family: none) | 3, 6, 11, 13 |
| Y | JP 2004-301646 A (Sysmex Corp.), 28 October 2004 (28.10.2004), claims (Family: none) | 3, 6, 11, 13 |
| A | DOMINGUEZ et al., Human Herpesvirus 6B Genome Sequence: Coding Content and Comparison with Human Herpesvirus 6A, JOURNAL OF VIROLOGY, 1999, Vol.73, No.10, p.8040-8052 | 1-14 |
| P,A | WO 2009/041501 A1 (Virus Ikagaku Kenkyusho Inc.), 02 April 2009 (02.04.2009), (Family: none) | 1-14 |

Form PCT/ISA/210 (continuation of second sheet) (July 2009)

REFERENCES CITED IN THE DESCRIPTION

This list of references cited by the applicant is for the reader's convenience only. It does not form part of the European patent document. Even though great care has been taken in compiling the references, errors or omissions cannot be excluded and the EPO disclaims all liability in this regard.

Patent documents cited in the description

- JP 2008067300 W [0009] [0045] [0186]
- WO 02072817 A [0098] [0099] [0194] [0228]
- JP 2009064302 W [0099] [0110]
- JP 59099257 A [0134]
- JP 8043392 A [0134]
- JP 2004301646 A [0134]

Non-patent literature cited in the description

- **Kondo. K e.** Latent human herpesvirus 6 infection of human monocytes /macrophages. *J Gen Virol*, 1991, 1401-1408 [0008]
- **Kondo. K et al.** Association of human herpesvirus 6 infection of the central nervous system with recurrence of febrile convulsions. *J Infect Dis*, 1993, vol. 167, 1197-1200 [0008]
- **Kondo. K et al.** Identification of human herpesvirus 6 latency-associated transcripts. *J Virol.*, 2002, vol. 76, 4145-4151 [0008]
- **Kondo K et al.** Recognition of a Novel Stage of Beta-Herpesvirus Latency in Human Herpesvirus 6. *J Virol.*, 2003, vol. 7, 2258-2264 [0008]
- **Kondo Kazuhiro.** Herpes viruses kansen to hirou (Infection with herpes viruses and fatigue). *Virus*, 2005, vol. 55 (1), 9-18 [0008]
- **Kyte et al.** *J. Mol. Biol.*, 1982, vol. 157, 105-131 [0057]
- Molecular Cloning, A Laboratory Manual 3rd ed. Cold Spring Harbor Press, 2001 [0058]
- **Needleman, S. B. ; Wunsch, C. D.** *J. Mol. Biol.*, 1970, vol. 48, 443-453 [0062]
- **Henikoff, S. ; Henikoff, J. G.** *Proc. Natl. Acad. Sci. USA*, 1992, vol. 89, 10915-10919 [0062]
- **Altschul.** *Nucl. Acids. Res.*, 1997, vol. 25, 3389-3402 [0063]
- **Harlow et al.** Antibodies: A laboratory manual. Cold Spring Harbor Laboratory, 1988 [0074]
- **Iwasaki.** Monoclonal Antibody: Hybridoma and ELISA. Kodansha, 1991 [0074]
- **Hofmann et al.** *Proc Natl Acad Sci USA*, 1980, vol. 77, 4666-4668 [0096]
- **Hirsch et al.** *Anal Biochem*, 2002, vol. 308, 343-357 [0096]
- *Biochem. J.*, 2002, vol. 363, 609-617 [0098]
- *J. Biol. Chem.*, 2005, vol. 280, 13250-13255 [0098]
- *Biochem. J.*, 2007, vol. 405, 397-405 [0098]
- **Takakura et al.** *FEBS J*, 2009, vol. 276, 1383-1397 [0099] [0236]
- **Schwarz et al.** *J. Biol. Chem.*, 1988, vol. 263, 9640-9645 [0124]
- **Iacobelli et al.** *Breast Cancer Research and Treatment*, 1988, vol. 11, 19-30 [0160]
- **Sambrook et al.** Molecular Cloning, A laboratory manual. 1989 [0187]
- **Takakura et al.** *FEBS J*, 2009, vol. 276, 1383-1397 [0233]

| | | | |
|----------------|--|---------|------------|
| 专利名称(译) | 检测生物样品中抗SITH-1抗体的方法 | | |
| 公开(公告)号 | EP2416159A4 | 公开(公告)日 | 2012-05-30 |
| 申请号 | EP2010758800 | 申请日 | 2010-03-31 |
| [标]申请(专利权)人(译) | 日本烟草产业株式会社 | | |
| 申请(专利权)人(译) | 日本烟草, INC. 病毒IKAGAKU KENKYUSHO INC. | | |
| 当前申请(专利权)人(译) | 日本烟草, INC. 病毒IKAGAKU KENKYUSHO INC. | | |
| [标]发明人 | TAKAKURA YOSHIMITSU OKA NAOMI KONDO KAZUHIRO KOBAYASHI NOBUYUKI | | |
| 发明人 | TAKAKURA, YOSHIMITSU OKA, NAOMI KONDO, KAZUHIRO KOBAYASHI, NOBUYUKI | | |
| IPC分类号 | G01N33/569 G01N33/53 C07K14/03 G01N33/68 | | |
| CPC分类号 | C07K14/005 C07K2319/70 C12N2710/16522 G01N33/56994 G01N33/6854 G01N2333/03 G01N2469/20 | | |
| 优先权 | 2009087816 2009-03-31 JP | | |
| 其他公开文献 | EP2416159A1 | | |
| 外部链接 | Espacenet | | |

摘要(译)

本发明提供了一种检测生物样品中针对由HHV-6 (SITH-1) 的中间转录物编码的小蛋白质的抗体的方法。本发明的方法包括：1) 提供SITH-1蛋白质；2) 将步骤1) 中提供的SITH-1蛋白与载体结合；3) 使生物样品与步骤2) 中制备的SITH-1蛋白结合的载体接触，以检测SITH-1蛋白抗体。

