



(51) International Patent Classification:

A61P 29/00 (2006.01) C08K 5/09 (2006.01)
C07C 57/03 (2006.01) G01N 33/538 (2006.01)
C08K 5/01 (2006.01) G01N 33/543 (2006.01)

(21) International Application Number:

PCT/US2018/015287

(22) International Filing Date:

25 January 2018 (25.01.2018)

(25) Filing Language:

English

(26) Publication Language:

English

(30) Priority Data:

62/452,533 31 January 2017 (31.01.2017) US

(71) Applicant: THE BRIGHAM AND WOMEN'S HOSPITAL, INC. [US/US]; 75 Francis Street, Boston, MA 02115 (US).

(72) Inventors: LEVY, Bruce; 110 Anawan Avenue, West Roxbury, MA 02132 (US). SERHAN, Charles, N.; 23 Smith Street, Needham, MA 02492 (US).

(74) Agent: BAKER, Jean, C.; Quarles & Brady LLP, 411 E Wisconsin Avenue, Milwaukee, WI 53202 (US).

(81) Designated States (unless otherwise indicated, for every kind of national protection available): AE, AG, AL, AM, AO, AT, AU, AZ, BA, BB, BG, BH, BN, BR, BW, BY, BZ, CA, CH, CL, CN, CO, CR, CU, CZ, DE, DJ, DK, DM, DO, DZ, EC, EE, EG, ES, FI, GB, GD, GE, GH, GM, GT, HN, HR, HU, ID, IL, IN, IR, IS, JO, JP, KE, KG, KH, KN, KP, KR, KW, KZ, LA, LC, LK, LR, LS, LU, LY, MA, MD, ME, MG, MK, MN, MW, MX, MY, MZ, NA, NG, NI, NO, NZ, OM, PA, PE, PG, PH, PL, PT, QA, RO, RS, RU, RW, SA,

SC, SD, SE, SG, SK, SL, SM, ST, SV, SY, TH, TJ, TM, TN, TR, TT, TZ, UA, UG, US, UZ, VC, VN, ZA, ZM, ZW.

(84) Designated States (unless otherwise indicated, for every kind of regional protection available): ARIPO (BW, GH, GM, KE, LR, LS, MW, MZ, NA, RW, SD, SL, ST, SZ, TZ, UG, ZM, ZW), Eurasian (AM, AZ, BY, KG, KZ, RU, TJ, TM), European (AL, AT, BE, BG, CH, CY, CZ, DE, DK, EE, ES, FI, FR, GB, GR, HR, HU, IE, IS, IT, LT, LU, LV, MC, MK, MT, NL, NO, PL, PT, RO, RS, SE, SI, SK, SM, TR), OAPI (BF, BJ, CF, CG, CI, CM, GA, GN, GQ, GW, KM, ML, MR, NE, SN, TD, TG).

Published:

— with international search report (Art. 21(3))

(54) Title: ALX RECEPTOR LIGANDS DEFINE A BIOCHEMICAL ENDOTYPE FOR INFLAMMATION-BASED DISEASES

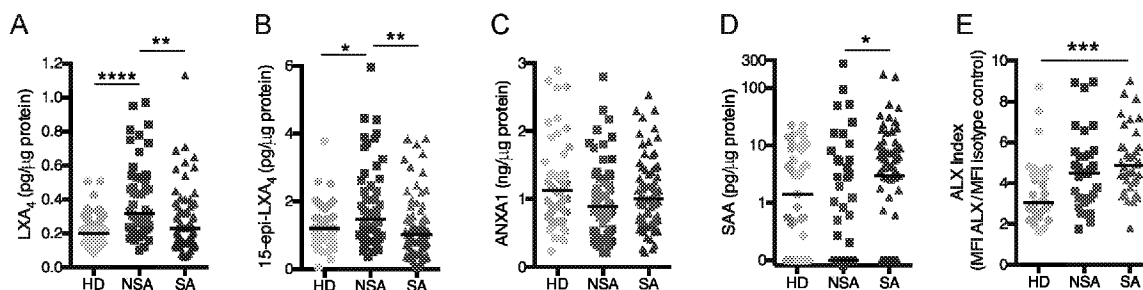


FIG. 1A-E

(57) Abstract: A method to determine the severity of a disease of chronic inflammation in a patient, comprising the steps of (1) collection or preparation of a bodily fluid, tissue or lavage and (2) measurement of ALX receptor ligands or ALX receptor expression in the fluid, tissue, or lavage, wherein the level of ALX receptor ligands predicts a clinical outcome or choice of treatment modality, is disclosed.

ALX Receptor Ligands Define a Biochemical Endotype for Inflammation-based DiseasesCROSS-REFERENCE TO RELATED APPLICATIONS

[0001] This application claims priority to US Provisional application 62/452,533, filed January 31, 2017, incorporated by reference as if fully set forth below.

STATEMENT REGARDING FEDERALLY SPONSORED RESEARCH

[0002] This invention was made with government support under HL109172 awarded by the National Institutes of Health. The government has certain rights in the invention.

BACKGROUND

[0003] Asthma is the most common disease of chronic lung inflammation, affecting nearly 1 in 13 Americans (1). The current clinical criteria for the diagnosis of asthma include a broad spectrum of patients with heterogeneous disease processes and distinct responses to medications (2). Approximately 10-15% of asthmatic patients have severe asthma (SA) with daily symptoms and inadequate asthma control despite asthma-targeted controller medication use. These patients with SA have increased morbidity with significant adverse outcomes, including frequent outpatient visits, admissions to the hospital, and even life threatening exacerbations (3). Cluster analyses utilizing patient clinical characteristics have identified at least 5 distinct clusters of asthmatic individuals (4, 5). Identifying disease mechanisms in asthma pathogenesis is critical to move the field from clinical phenotyping to molecular endotyping of patients to enable precision medicine approaches for improved asthma management (6). While Type 2 “high” inflammation accounts for approximately 50% of asthma pathobiology (7), disease mechanisms for the remaining 50% of asthmatic subjects remain to be determined. A more detailed understanding of mechanisms underlying non-Type 2 inflammation in asthma is needed.

[0004] In health, the resolution of inflammation is an active process governed by specific cellular events regulated by specialized pro-resolving mediators (SPMs) derived from essential fatty acids (8). LXA₄ and 15-epi-LXA₄ are endogenous arachidonic acid-derived SPMs that potently regulate acute inflammation, yet are under-produced in many inflammatory diseases, including SA (9). Lipoxins and their stable analogs are protective in murine models of allergic lung inflammation, and display cell type-specific actions for human leukocytes to inhibit pro-

inflammatory interleukin-13 production by group 2 innate lymphoid cells, halt granulocyte trafficking and activation, decrease T cell cytokine production, enhance natural killer cell functions and stimulate macrophage CD206 expression and efferocytosis to resolve tissue inflammation (Reviewed in (9)). Lipoxins also inhibit leukotriene mediated pro-inflammatory actions, including in vivo in asthma (10), and decrease cytokine-induced human airway contractile responses (11). In peripheral blood, exhaled breath condensates, sputum, and BALF, LXA₄ levels are decreased in SA relative to non-severe asthma (NSA) (12-15), suggesting a link between defective resolution mechanisms and persistent airway inflammation in some asthma patients.

[0005] LXA₄ and 15-epi-LXA₄ interact with specific receptors to exert their pro-resolving actions. Their high affinity cognate receptors are ALX/FPR₂ receptors (ALX) with a KD of approximately 1 nM (16). Of interest, ALX was the first receptor described to engage both lipid and peptide ligands (16) and subsequently several lipid and peptide ligands for ALX have been identified. Ligand recognition sites differ in the extracellular domains of ALX receptors and trigger distinct downstream events that dramatically change the signaling properties of the receptor depending on the engaging ligand (17). In sharp contrast to LXA₄'s counter-regulatory signaling, SAA engages the same ALX receptors to promote inflammation (18, 19). SAA is generated as an acute phase protein in COPD exacerbations in amounts that are 2-3 log orders higher than LXA₄ that overwhelms SPM signaling via ALX (18). Another ALX ligand of potential interest in severe asthma is annexin A1 (ANXA1), a corticosteroid-inducible protein that can interact with ALX receptors to transduce pro-resolving actions similar to LXA₄ (20). Of interest, when apparently healthy individuals are challenged with a skin irritant, they segregate into fast and slow resolvers of the dermal wound based on lipoxin production and expression of ALX receptors (21). Thus, relative levels of these lipid and peptide ALX ligands could serve as a rheostat for inflammatory host responses in airway disease, as lipoxins can allosterically inhibit SAA interactions with ALX (18). Together, the relative abundance and actions of these pro-inflammatory versus pro-resolving ALX ligands may biochemically regulate airway inflammatory tone and contribute to unresolved inflammation in SA.

[0006] In the Examples below, we analyzed BALF samples collected from subjects participating in NHLBI SARP – 3 and have identified a new asthma biochemical endotype related to levels of the ALX receptor ligands LXA₄ and SAA that was associated with neutrophilic inflammation,

increased asthma symptoms and decreased lung function in SA. This endotype will be useful in diagnosis and treatment of other inflammation-based diseases.

SUMMARY OF THE INVENTION

[0007] In one embodiment, the present invention is a method to determine the severity of a disease of chronic inflammation in a patient comprising the steps of (a) collection or preparation of a bodily fluid, tissue or lavage, and (b) measurement of ALX receptor ligands or ALX receptor expression in the fluid, tissue, or lavage, wherein the level of ALX receptor ligands predicts a clinical outcome or choice of treatment modality. Preferably, the ALX receptor ligands are selected from the group consisting of LXA₄, 15-epi-LXA₄ and SAA. In some embodiments, the measurement results in a ratio.

[0008] In one embodiment of the invention, the disease of chronic inflammation is selected from the group consisting of pathologic lung inflammation, arthritis, inflammatory bowel disease atherosclerosis and psoriasis. In some embodiments, the disease of lung inflammation is cystic fibrosis or asthma. In other embodiments, the disease of lung inflammation is selected from the group consisting of COPD, bronchiectasis, bronchiolitis, interstitial lung disease, transplant rejection, pneumonitis, lung abscess, pulmonary vascular disease, pulmonary emboli, and ARDS. In some embodiments the levels of lipoxinA₄ and serum amyloid A are measured and the ratio predicts a severe disease clinical outcome including increased lung inflammation, increased asthma symptomology, lower lung function and an increased risk for asthma co-morbidities.

[0009] In some embodiments, the fluid or lavage is bronchoalveolar lavage. In some embodiments the fluid, tissue, or lavage is selected from the group consisting of blood, serum, plasma, urine, nasal lavage, sputum, exhaled breath condensate, tears, breast milk, semen, pleural fluid, pericardial fluid, and joint fluid.

[0010] In one embodiment of the invention, the expression of the ALX/FPR2 receptor by macrophages in said tissue, fluid, or lavage predicts a severe disease clinical outcome including increased lung inflammation, increased asthma symptomology, lower lung function and an increased risk for asthma co-morbidities.

[0011] In one embodiment, the present invention is a method of measuring ALX receptor ligands or ALX receptor expression in a fluid, tissue, or lavage, wherein the method comprises the steps of (a) obtaining a patient tissue, fluid or lavage and (b) determining the amount of ALX receptor

ligands or ALX receptor expression in the fluid, tissue, or lavage. In some embodiments, the fluid, tissue, or lavage is bronchoalveolar lavage or may be selected from the group consisting of blood, serum, plasma, urine, nasal lavage, sputum, exhaled breath condensate, tears, breast milk, semen, pleural fluid, pericardial fluid, and joint fluid.

DESCRIPTION OF FIGURES

[0012] Figure 1 A - E. Relative abundance of BALF ALX ligands and ALX receptor expression differs in asthma. BALF was obtained from subjects with asthma (n=120) and healthy donors (n=47, grey circles). Asthmatic subjects were assigned to NSA (n=51, blue squares) and SA (n=69, red triangles) cohorts by SARP criteria. **(A)** LXA₄ and **(B)** 15-epi-LXA₄ were extracted from BALF and quantitated by ELISA (see Methods). **(C)** ANXA1 and **(D)** SAA levels were determined by ELISA. Scatter plots show individual data points for each subject normalized to protein levels with the median value noted by the horizontal line **(E)** Flow cytometry was performed on viable BAL macrophages in n=32 HD, n=33 NSA, and n=38 SA subjects to measure surface ALX expression. Data are expressed as the ALX Index (MFI ALX divided by MFI isotype control). *p<0.05, **p<0.01, ***p<0.005, ****p<0.001 by Kruskal-Wallis test, followed by Dunn's test for multiple comparisons. BALF, bronchoalveolar lavage fluid; ALX, airway lipoxin A₄ receptor; HD, healthy donors; NSA, non-severe asthma; SA, severe asthma; SARP, severe asthma research program; LXA₄, lipoxin A₄; 15-epi-LXA₄, 15-epimer lipoxin A₄; ELISA, enzyme-linked immunosorbent assay; ANXA1, annexin A1; SAA, serum amyloid A; MFI, median fluorescence intensity.

[0013] Figure 2. Relationship between ALX ligands, lung inflammation, asthma symptoms and lung function in asthma. The relationships between BALF ALX ligand levels, BAL leukocytes, asthma symptom score, and measures of lung function, were determined by Pearson correlation matrix (see Methods) for n=51 NSA and n=69 SA subjects. Positive correlations are noted in blue and negative correlation in red. The color intensity is proportional to Pearson's correlation coefficient with deeper colors denoting stronger associations. *p<0.05, **p<0.01 by Pearson correlation analysis. BALF, bronchoalveolar lavage fluid; ALX, airway lipoxin A₄ receptor; NSA, non-severe asthma; SA, severe asthma; LXA₄, lipoxin A₄; 15-epi-LXA₄, 15-epimer lipoxin A₄; ANXA1, annexin A1; SAA, serum amyloid A; ACQ, asthma control questionnaire; ACT,

asthma control test; FEV1, forced expiratory volume in 1 second; FVC, forced vital capacity; FeNO, fractional exhaled nitric oxide; PC 20, provocation challenge causing a 20% fall in FEV1.

[0014] Figure 3 A - H. BAL neutrophils are increased in severe asthma and differentially related to BALF LXA₄ and SAA levels. BAL samples were obtained from NSA and SA subjects and leukocyte subsets were enumerated. **(A)** Pie charts express the mean percentage of BAL neutrophils, lymphocytes, eosinophils and macrophages in n=47 HD, n=51 NSA, and n=69 SA subjects. **(B-D)** Scatter plots show individual subject data points with mean \pm SEM for BAL **(B)** neutrophils, **(C)** lymphocytes, and **(D)** eosinophils in the HD (gray circles), NSA (blue squares), and SA (red triangles) cohorts. **p<0.01 by 2-tailed Student's t-test. **(E-F)** The relationship between BALF neutrophils and LXA₄ was determined for **(E)** all asthma subjects and **(F)** for the SA cohort only. **(G-H)** The relationship between BALF neutrophils and SAA was determined for **(G)** all asthma subjects and **(H)** for the SA cohort only. SAA levels that were undetectable were assigned a value of 0 pg/ μ g protein and were included in the correlation analysis. Pearson correlation r-value and significance are noted and regression lines are shown. HD, healthy donors; NSA, non-severe asthma; SA, severe asthma; LXA₄, lipoxin A₄; SAA, serum amyloid A.

[0015] Figure 4 A - L. SAA and macrophage ALX expression are associated with increased symptoms in severe asthma. Asthma subjects were categorized into subgroups based on "low" or "high" BALF levels of SAA **(A-D)**, LXA₄ **(E-H)** and macrophage ALX expression **(I-L)**. The median value for each variable was used to define the cutoff between the "low" and "high" subgroups (SAA cutoff = 1.22 pg/ μ g protein, LXA₄ cutoff = 0.25 pg/ μ g protein, ALX Index cutoff = 4.6). Cutoff values are delineated by the grey vertical line. A histogram shows the distribution of subjects based on BALF **(A)** SAA level, **(E)** LXA₄ level, and **(I)** BAL macrophage ALX Index. **(B, F, J)** Validated measures of asthma symptoms (ACQ and ACT scores) were compared between low (open circles) and high (closed circles) subgroups for SAA, LXA₄, and ALX index. **(C, G, K)** The distributions of SAA, LXA₄ and ALX index among NSA (blue) and SA (red) subjects are shown in violin plots. **(D, H, L)** ACQ and ACT scores were compared in SA subjects for low (open triangles) and high (closed triangles) subgroups for SAA, LXA₄ and ALX index. Scatter plots show individual subject data with mean \pm SEM. n=51 NSA and n=69 SA subjects. *p<0.05, **p<0.01 by Mann-Whitney test or 2-tailed Student's t-test. SAA, serum amyloid A; ACQ, asthma control questionnaire; ACT, asthma control test; NSA, non-severe asthma; SA, severe asthma; LXA₄, lipoxin A₄; ALX, airway lipoxin A₄ receptor.

[0016] Figure 5 A- F. BALF SAA and LXA₄ levels are distinct in clinically severe and non-severe asthma. **(A)** The number and percentages of asthma subjects with BALF levels of LXA₄ and SAA that were below (“low”) or above (“high”) the median value were identified and subjects were grouped into 4 phenotypes based on LXA₄ and SAA levels. Noted are subjects in the LXA₄^{high}SAA^{low} group (beige quadrant), and LXA₄^{low}SAA^{high} (purple quadrant). The relationship between individual subject levels of LXA₄ and SAA was determined for all asthma subjects. **(B)** The four groups of subjects based on BALF SAA and LXA₄ low and high cohorts were determined for subjects and stratified by asthma severity; NSA (left), SA (right). **(C)** The relationship between the SAA/LXA₄ ratio and BAL neutrophils (%) was determined in n=120 asthma subjects. Pearson correlation r-value and significance are noted and regression line is shown. **(D-F)** Scatter plots show comparisons of subjects in the LXA₄^{high}SAA^{low} group (beige) to subjects in the LXA₄^{low}SAA^{high} group (purple) for measures of **(D)** inflammation (BALF neutrophils (%)), **(E)** asthma symptoms (ACQ, ACT scores) and **(F)** lung function (% predicted FEV1 and FVC). **(G)** Subjects in the LXA₄^{high}SAA^{low} and LXA₄^{low}SAA^{high} groups were assigned to clinical clusters as defined in SARP-1 (5) and the percent of subjects assigned to NSA and SA clusters is indicated. n=51 NSA and n=69 SA subjects. *p<0.05, **p<0.01 by 2-tailed Student’s *t*-test. LXA₄, lipoxin A₄; SAA, serum amyloid A; NSA, non-severe asthma; SA, severe asthma; ACQ, asthma control questionnaire; ACT, asthma control test; FEV1, forced expiratory volume in 1 second; FVC, forced vital capacity; SARP, severe asthma research program.

[0017] Figure 6 A - D. SAA and 15-epi-LXA₄ signaling via ALX receptors regulates production of the neutrophil chemoattractant IL-8 A549 human epithelial cells expressing human ALX receptors (A549^{hALX}) were exposed to BALF from HD, NSA, or SA subjects (24h, 37°C, 5% CO₂) and IL-8 levels were measured in the cell-free supernatant by ELISA (see Methods). **(A)** Mean levels of LXA₄, 15-epi-LXA₄ and SAA in BALF from n=15 subjects used for A549^{hALX} cell incubations are shown in stacked bar graphs and the relative proportions are noted in pie charts. **(B)** IL-8 production by A549^{hALX} cells was measured after incubation with saline control or SAA (2.5 ng/ml or 10ng/ml) for 24 hours. **(C)** IL-8 production by A549^{hALX} cells was measured after 24 hours of exposure to BALF from HD (n=3), NSA (n=6) or SA (n=5) and is expressed as an increase relative to saline controls. Incubations with BALF without an increase in IL-8 production relative to saline control were assigned a value of zero. **(D)** A549^{hALX} epithelial cells were exposed to BALF from subjects with endogenous levels that were

LXA₄^{high}SAA^{low} (n=5) or LXA₄^{low}SAA^{high} (n=6) followed by exposure to exogenous 15-epi-LXA₄ (100nM). % Inhibition of IL-8 production after 15-epi-LXA₄ exposure was calculated. *p<0.05, ****p<0.001 by **(B)** one- way ANOVA **(C)** Kruskal-Wallis test and **(D)** Mann-Whitney test. ALX, airway lipoxin A₄ receptor; LXA₄, lipoxin A₄; 15-epi-LXA₄, 15-epimer lipoxin A₄; SAA, serum amyloid A; HD, healthy donors; NSA, non-severe asthma; SA, severe asthma; IL-8, interleukin-8; BALF, bronchoalveolar lavage fluid.

DETAILED DESCRIPTION OF THE INVENTION

[0018] In general

[0019] In the study of patient health, inflammation resolution is known as an active process governed by specialized pro-resolving mediators and receptors. ALX/FPR2 receptors (ALX) are targeted by both pro-resolving and pro-inflammatory ligands for opposing signaling events, which suggest to Applicants pivotal roles for ALX in the fate of inflammatory responses.

[0020] In the Examples below, Applicants investigated whether ALX expression and ligands were linked to severe asthma (SA). ALX expression and levels of pro-resolving ligands (Lipoxin A₄ (LXA₄), 15-epi-LXA₄ and Annexin A1 (ANXA1)), and a pro-inflammatory ligand (Serum Amyloid A (SAA)) were measured in bronchoscopy samples collected in Severe Asthma Research Program-3 (SA (n=69), non-severe asthma (NSA, n=51) or healthy donors (HD, n=47)).

[0021] In brief, we found that bronchoalveolar lavage (BAL) fluid LXA₄ and 15-epi-LXA₄ were decreased and SAA was increased in SA relative to NSA (median SAA: 11.35 pg/μg protein in SA compared with 0 pg/μg protein in NSA). BAL macrophage ALX expression was increased in SA (BAL macrophage ALX index (MFI) ~5 in SA compared with ~3 in healthy donor). Subjects with LXA₄^{low}/SAA^{high} levels had increased BAL neutrophils, more asthma symptoms, lower lung function, and increased relative risk for asthma exacerbation, sinusitis and gastroesophageal reflux disease and were assigned more frequently to SA clinical clusters. SAA and aliquots of LXA₄^{low}/SAA^{high} BALF induced interleukin-8 production by lung epithelial cells expressing ALX receptors, which was inhibited by co-incubation with 15-epi-LXA₄.

[0022] Applicants conclude that these findings have established an association between select ALX receptor ligands and severity of chronic inflammatory diseases, such as asthma, that define

a new biochemical endotype for inflammatory disease and support a pivotal functional role for ALX signaling in the fate of tissue inflammation.

[0023] Present Invention

a. Diagnostic Method

[0024] In one embodiment, the present invention is a method of determining the severity of (and/or treatment for) a disease of chronic inflammation in a patient comprising: (1) collection or preparation of a bodily tissue, fluid, or lavage and (2) measurement of levels of ALX receptor ligands in the fluid, tissue, or lavage. The level of ALX receptor ligands or the ratio of the ligands predicts a clinical outcome or choice of treatment modality.

[0025] By "ALX receptor ligands" we mean to specifically include Lipoxin A₄ (LXA₄) and 15-epi-LXA₄ to levels of HD control or below to represent an inadequate counter-regulatory response to asthmatic inflammation and likely consistent with a diagnosis of SA relative to NSA.

[0026] Preferably, one would also measure the ALX receptor ligand serum amyloid A (SAA). In some patients, the levels of SAA increase with airway inflammation in SA. We would correlate an increase in BALF SAA to 1 pg/μg protein or more to be associated with SA. Examined together, the levels of lipoxinA₄ (low) and serum amyloid A (high) predict a severe disease clinical outcome, including more lung inflammation, more asthma symptomology, lower lung function and an increased risk for asthma co-morbidities.

[0027] For example, severe immunological diseases, such as severe asthma, would have at least a 3-fold and preferably at least a 5-fold or greater increase in the ratio (SAA/LXA₄) relative to non-severe asthma. For more information regarding the ratio, one is directed to Figure 5 in JCI Insight, 2017:2[4] e93534, Ricklefs, et al, ALX receptor ligands define a biochemical endotype for severe asthma, incorporated by reference herein.

[0028] Controls for the method of the present invention might be either milder/reversible forms of the same disease (as here with NSA) or potentially healthy subjects. Tissue would be a preferred standard for the measurements.

[0029] In one embodiment of the invention, the disease of chronic inflammation disease is lung inflammation and may be severe asthma (SA) or cystic fibrosis. In another embodiment, the lung inflammation is part of COPD, bronchiectasis, bronchiolitis, interstitial lung disease, transplant

rejection, pneumonitis, lung abscess, pulmonary vascular disease, pulmonary emboli, or ARDS (acute respiratory distress syndrome).

[0030] In another embodiment of the invention, the chronic inflammation disease is selected from the group consisting of lung inflammation, arthritis, inflammatory bowel disease, atherosclerosis and psoriasis.

[0031] If one were to diagnose a non-SA inflammatory disease, the biomarkers and ranges the expected to be similar if not the same. One would most preferably use afflicted tissue, which would be specific to each indication.

[0032] In the present invention, one must first examine patient tissue, fluid or lavage. In some embodiments of the invention, especially those involved with SA diagnosis, the fluid or lavage is bronchoalveolar lavage. In other embodiments, the tissue or fluid is selected from the group consisting of blood, serum, plasma, urine, nasal lavage, sputum, exhaled breath condensate, tears, breast milk, semen, pleural fluid, pericardial fluid, and joint fluid.

[0033] In another embodiment of the invention, one would use the information obtained above to determine a treatment regimen. An evaluation of the markers listed above would allow one to determine that the patient has an inflammatory disease, such as SA, and a pro-resolving mediator would be indicated.

[0034] Most important is that the pro-resolving mediator serve as a ligand for the ALX/FPR₂ receptor. 15-epi-LXA₄ is such a ligand. It serves as an allosteric inhibitor of the pro-inflammatory signaling serum amyloid A at the same receptor and also mediates pro-resolving actions via interactions with the same ALX/FPR₂ receptor. In addition to 15-epi-LXA₄, other pro-resolving ligands for ALX/FPR₂ include lipoxin A₄, lipoxin A₄ bioactive analogs and mimetics, 17-epi-resolvin D1, and resolvin D1 and resolvin D1 bioactive analogs and mimetics. For example, one may examine US patents 7,906,678 and 6,831,186 for exemplary Lipoxin A₄ analogs. Other exemplary analogs are disclosed in US patent 7,700,650, PCT/US02/06404, PCT/US02/35860, and PCT/US00/06582.

[0035] In another embodiment, one would examine tissue, fluid or lavage for the expression of the ALX/FPR₂ receptor by macrophages (in the tissue, fluid or lavage). An increase compared to control samples predicts a severe disease clinical outcome, including more lung inflammation, more asthma symptomology, lower lung function and an increased risk for asthma co-

morbidities. The Example below discloses a preferred embodiment where the increase in receptor expression predicted SA.

[0036] In this embodiment of the invention, one would be evaluating the increase in the following manner: An increase of preferably at least 5 would indicate an increased likelihood of a diagnosis of SA rather than NSA.

a. Measurement of Biomarkers

[0037] In another embodiment, the present invention is a method of examining a patient tissue, fluid, or lavage and measuring or examining the levels of specific ALX receptor ligands, such as Lipoxin A₄ (LXA₄), 15-epi-LXA₄, and serum amyloid A (SAA). In one preferred embodiment, one would measure all three markers. In another embodiment, one would measure LXA₄ and 15-epi-LXA₄ or LXA₄ along with SAA. In a preferred version of the invention, one would measure the markers and determine the ratio of LXA₄ and SAA.

[0038] In some embodiments of the invention, especially those involved with SA diagnosis, the fluid or lavage is bronchoalveolar lavage. In other embodiments, the tissue or fluid is selected from the group consisting of blood, serum, plasma, urine, nasal lavage, sputum, exhaled breath condensate, tears, breast milk, semen, pleural fluid, pericardial fluid, and joint fluid..

[0039] The markers are typically measured by methods currently known in the art. For example, one might use the ELISA methods described below and in standard references. One could obtain useful antibodies at a custom research products organization, such as Cayman Chemical (Ann Arbor, MI). Other methods might include physical methods of detection such as lipidomics and proteomics.

Examples

[0040] Subject characteristics

[0041] Subjects with SA and NSA, and non-asthmatic HD were recruited to participate in SARP-3 at seven research centers across the United States. Relative to NSA, subjects with SA had increased symptoms as manifested by lower Asthma Control Test (ACT) and higher Asthma Control Questionnaire (ACQ) scores. Spirometric measures of lung function were lower in SA than NSA and HD despite the SA cohort's use of more asthma-targeted medications (Table 1). A subset of subjects agreed to bronchoscopy with bronchoalveolar lavage (BAL) as part of their baseline phenotyping. SA subjects had more lung inflammation with increased BAL neutrophils (Table 1).

[0042] Severe asthma subjects have decreased lipoxins and increased SAA and macrophage ALX receptor expression.

[0043] The fate of innate inflammatory responses is dictated in part by ALX receptor signaling (16, 21), so the presence of BAL fluid (BALF) ALX ligands with pro-inflammatory (*i.e.*, SAA) or pro-resolving properties (*i.e.*, LXA₄, 15-epi-LXA₄ and ANXA1) and BAL cell surface ALX receptor expression were determined. SA subjects had significantly less BALF LXA₄ (median: 0.23 pg/μg protein, mean: 0.28 pg/μg protein) and 15-epi-LXA₄ (median: 1.02 pg/μg protein, mean: 1.24 pg/μg protein) than NSA subjects (LXA₄: median 0.32 pg/μg protein, mean 0.40 pg/μg protein; 15-epi-LXA₄: median 1.47 pg/μg protein, mean 1.88 pg/μg protein) (Figure 1A-B). BALF lipoxins were significantly increased in NSA relative to HD, without significant differences between SA and HD cohorts (Figure 1A-B), consistent with the findings in an earlier SARP cohort (14). No significant differences in immunoreactive ANXA1 levels were identified between the cohorts (Figure 1C). In contrast, SAA levels were increased in SA (median: 3.03 pg/μg protein, mean 11.35 pg/μg protein) relative to NSA (median: 0 pg/μg protein, mean 11.21 pg/μg protein) (Figure 1D). Of note, BALF SAA levels were below the limit of detection in 51 of the 120 asthma subjects and these samples were arbitrarily assigned a value of 0 pg/μg protein for analysis. Differences in BALF ALX ligand levels were also present when BALF was not corrected for protein. BAL macrophage surface ALX receptor expression was determined by flow cytometry with data expressed as a normalized index for ALX (MFI of ALX divided by MFI of isotype control) (see Methods). A step-wise increase in the BAL macrophage ALX index from HD to NSA to SA was detected (Figure 1E).

[0044] ALX ligands differentially correlate with asthma inflammation, symptoms, and lung function.

[0045] To screen for relationships between the BALF ALX ligand levels and asthma clinical parameters, a Pearson correlation matrix was constructed using measures of disease activity from all asthma subjects (NSA and SA; n= 120) (Figure 2). LXA₄ levels correlated positively with 15-epi-LXA₄ and inversely with SAA. The ALX ligands were also compared to clinical parameters of lung inflammation, asthma symptoms and measures of lung function. Notably, the percentage of BALF neutrophils was inversely correlated with LXA₄ and 15-epi-LXA₄ and positively correlated with SAA. As expected, the ACQ and ACT scores were inversely correlated and

significantly related to lung function. BALF levels of LXA₄ were inversely correlated with asthma symptoms (*i.e.*, high ACQ, low ACT scores). LXA₄ and 15-epi-LXA₄ were also positively associated with lung function. SAA was not significantly related to asthma symptoms or lung function parameters. There were no significant correlations between BALF ALX ligand levels and FeNO, methacholine PC₂₀ or lung function reversibility with albuterol. Because of limited sample size, this analysis was not corrected for multiple comparison testing, yet it strongly suggested relationships between select ALX ligands and major characteristics of clinical asthma, namely lung inflammation, asthma symptoms, and lung function.

[0046] BAL neutrophilia in severe asthma is associated with decreased LXA₄ and increased SAA levels.

[0047] BAL leukocyte subsets were determined in NSA and SA subjects and HD. As expected, macrophages were the most numerous BAL cell type accounting for 88-92% of BAL leukocytes (Figure 3A). SA subjects had significantly higher percentages of BAL neutrophils than NSA subjects (mean +/- SEM; 3.32 +/- 0.59% SA versus 1.38 +/- 0.19% NSA; Figure 3B). There were also trends for increased BAL lymphocytes and eosinophils in SA relative to NSA and HD (Figure 3C-D). BALF LXA₄ levels inversely correlated with BAL neutrophil percentage in the total asthma cohort or when the SA cohort was analyzed independently (Figure 3E-F). In contrast, SAA levels were positively correlated with BAL neutrophil percentage in the complete asthma cohort as well as when SA was analyzed separately (Figure 3G-H). LXA₄ levels were also positively correlated with lung function (*i.e.* FEV1 and FVC (% predicted values)), but there was no correlation between SAA levels and lung function in this cohort.

[0048] ALX receptor ligands and expression are associated with asthma symptoms.

[0049] To further investigate relationships between the ALX signaling pathway and measures of asthma symptoms, the continuous variables for BAL ALX ligands were converted to categorical high and low subgroups using the median value to define a cutoff between the subgroups. Using the median BALF SAA value (1.22 pg/μg protein; Figure 4A), the relationships between “SAA^{high}” and “SAA^{low}” subjects and measures of asthma symptoms were determined. Subjects defined as SAA^{high} had significantly increased ACQ and decreased ACT scores relative to SAA^{low} subjects (Figure 4B), consistent with increased asthma symptoms in the SAA^{high} group. When stratified by asthma severity, there were more NSA subjects that were SAA^{low} and more SA subjects that were SAA^{high} (Figure 4C). ACQ scores were significantly different between SAA^{low}

and SAA^{high} subjects when considering only those subjects with SA (Figure 4D). Of note, significant differences between the SAA^{high} and SAA^{low} cohorts for ACQ and ACT scores were not apparent in the NSA cohort.

[0050] Because BALF LXA₄ levels were inversely related to SAA levels and asthma symptoms by Pearson correlation (Figure 2), the difference between LXA₄^{high} and LXA₄^{low} groups of subjects and asthma symptoms was determined. The median LXA₄ level was used as a cutoff between groups (0.23 pg/μg protein; Figure 4E). LXA₄^{low} subjects had higher ACQ scores and significantly lower ACT scores compared to LXA₄^{high} subjects consistent with more symptoms in the LXA₄^{low} group (Figure 4F). When stratified by severity, NSA subjects were more numerous in the LXA₄^{high} group and approximately 70% of the LXA₄^{low} cohort were subjects with SA (Figure 4G). In contrast to our findings with SAA, the low LXA₄ levels were not significantly related to symptom scores in the SA cohort (Figure 4H); however, amongst NSA subjects, the LXA₄^{high} group did have significantly fewer symptoms as evidenced by higher ACT scores (Supplemental Figure 3B). Of note, administration of a single dose of intramuscular triamcinolone did not result in discernible changes in either LXA₄ or SAA levels after 3 to 6 weeks in either SA or NSA subjects.

[0051] With opposing relationships for asthma symptoms for the ALX ligands SAA and LXA₄, we next performed similar analyses for the BAL macrophage ALX index. Asthma subjects were categorized into ALX^{high} and ALX^{low} cohorts using the median ALX Index to define the cutoff between subgroups (median= 4.61; Figure 4I). ALX^{high} asthma subjects had higher ACQ scores and significantly lower ACT scores, consistent with increased asthma symptoms (Figure 4J). After stratification by asthma severity (Figure 4K), ALX^{high} subjects had significantly increased symptoms by both measures (*i.e.*, ACQ and ACT) in the SA cohort (Figure 4L). The ALX index was not significantly linked to symptom score in the NSA cohort (Supplemental Figure 3C). Of added interest, the BAL macrophage ALX index correlated with macrophage indices of MHC class 2 and CD206 expression in asthma subjects.

[0052] SAA and LXA₄ levels together represent a biochemical endotype that distinguishes SA from NSA.

[0053] Individually, SAA and LXA₄ levels were both associated with asthma severity. More SA subjects had SAA^{high} and LXA₄^{low} levels and more NSA subjects had SAA^{low} and LXA₄^{high} levels (Figure 4). In SA, macrophage ALX expression was increased (Figure 1) and associated with increased asthma symptoms (Figure 4), so we next determined if BALF levels for the combination

of the ALX ligands was linked to SA. Asthma subjects were divided into 4 groups based on BALF LXA₄ and SAA levels (Figure 5A). The approach of categorical grouping of high and low (based on median values) was chosen because the relationship between an individual's BALF LXA₄ and SAA levels suggested that these ALX ligands were independently regulated (Figure 5A). When subjects were stratified by clinical severity, it was striking that more than half of NSA but fewer than a quarter of SA were LXA₄^{high}SAA^{low} (beige, Figure 5B). In contrast, 41% of SA subjects were LXA₄^{low}SAA^{high} compared to 22% of NSA subjects (purple, Figure 5B). Of note, for asthmatic subjects, the relative ratio of BALF SAA to LXA₄ levels was strongly correlated with BAL neutrophilia (Figure 5C), more so than the level of either ALX ligand independently (Figure 3E and 3G). When comparing asthmatic subjects in these two distinct groups, the LXA₄^{low}SAA^{high} group had significantly higher BAL neutrophils and asthma symptoms (*i.e.*, higher ACQ, lower ACT) and lower lung function (*i.e.*, % predicted FEV₁ and FVC) than the LXA₄^{high}SAA^{low} group (Figure 5D-F). The total BAL white blood count and percentage of lymphocytes and eosinophils did not differ between the two groups. The percent of subjects with an ACQ score >1.5 was higher in the LXA₄^{low}SAA^{high} cohort, representing another measure of the increased symptoms in this group.

[0054] Cluster analyses from SARP-1 used clinical parameters to identify five asthma subtypes (mild allergic asthma, mild-moderate allergic asthma, more severe older onset asthma, severe variable allergic asthma, and severe fixed airflow asthma) (5). Using this classification here with SAA and LXA₄ as biochemical markers of ALX receptor signaling, it was notable that 71% of the LXA₄^{high}SAA^{low} group were assigned to one of the NSA clusters and 64% of the LXA₄^{low}SAA^{high} subjects were assigned to one of the SA clusters (Figure 5G).Figure 6E).

[0055] SAA is an acute phase protein and with the relationship for the LXA₄^{low}SAA^{high} endotype to asthma severity and neutrophilic lung inflammation, we next determined if there was a relationship for LXA₄ and SAA to exacerbations and common asthma comorbidities. Both high SAA and low LXA₄ levels were significantly related to sinusitis, gastroesophageal reflux disease (GERD) and obesity (BMI > 30) and low LXA₄ was also related to history of more frequent acute exacerbation over the prior year (Table 2). Together, the combination of low LXA₄ levels and high SAA levels (*i.e.* the LXA₄^{low}SAA^{high} endotype) was even more closely associated with these asthma comorbidities (Table 2).

[0056] SAA and 15-epi-LXA₄ signaling via ALX receptors regulates production of the neutrophil chemoattractant IL-8.

[0057] To determine the functional relationship for these ALX receptor ligands, we next turned to an ALX-dependent *in vitro* reporter assay that we have previously qualified in chronic obstructive pulmonary disease (18). A549 lung epithelial cells were stably transfected to express the human ALX/FPR2 receptor (hALX). BALF samples were selected from HD, NSA, and SA subjects with representative levels of ALX ligands (Figure 6A). SAA gave a concentration-dependent (0 – 10 ng/ml) increase in IL-8 production by A549^{hALX} cells (Figure 6B). When the A549^{hALX} cells were exposed to BALF (see Methods), several of the representative SA BALFs substantially increased IL-8 production (Figure 6C), reflective of the relative amounts of BALF SAA and LXA₄. The addition of exogenous 15-epi-LXA₄ inhibited A549^{hALX} cell IL-8 production by cells conditioned with BALF (Figure 6D). Of note, maximal inhibition of IL-8 production by 15-epi-LXA₄ was for A549^{hALX} cells that had been conditioned with BALF from LXA₄^{low}SAA^{high} subjects (Figure 6D).

[0058] Discussion

[0059] Here, in SARP-3, we measured the abundance of four ligands for ALX receptors, namely LXA₄, 15-epi-LXA₄, ANXA1 and SAA, with the potential for opposing effects on asthmatic airway responses. In SA, BAL macrophage ALX receptor expression was increased and BALF ligands for ALX were selectively regulated. BALF levels of pro-resolving lipoxins were decreased and levels of pro-inflammatory SAA were increased in SA. Levels of lipoxins inversely correlated to SAA, BAL neutrophils and asthma symptoms and lipoxins were positively correlated to measures of lung function. SAA^{high} and ALX^{high} subjects more commonly had SA with increased ACQ and decreased ACT scores. When LXA₄ and SAA levels were considered together in a combined endotype, a stronger association with asthma symptoms, lung function, and airway neutrophilia was noted than when either mediator was considered individually. LXA₄^{low}SAA^{high} subjects had more lung inflammation and asthma symptoms and lower lung function relative to LXA₄^{high}SAA^{low} subjects. LXA₄^{low}SAA^{high} and LXA₄^{high}SAA^{low} subjects segregated to SA and NSA clinical clusters, respectively. Importantly, LXA₄^{low}SAA^{high} subjects had significantly increased likelihood for asthma exacerbation in the past year and for the asthma comorbidities of sinusitis, GERD and obesity. Exposure to SAA or BALF from SA subjects increased production of the neutrophil chemoattractant IL-8 by ALX-expressing human lung epithelial cells *in vitro*. This SAA-driven IL-8 production by epithelial cells was mitigated by exposure to 15-epi-LXA₄ at

pharmacological doses, supporting a functional interaction between the ALX ligands relevant to the neutrophilic inflammation in SA. Together, these findings support a mechanistic role for ALX receptor signaling by SAA and LXA₄ in lung inflammation in SA that defines a new biochemical endotype for patient stratification in asthma.

[0060] ALX receptors are intriguing targets for regulating the fate of inflammatory responses. LXA₄ and SAA interact with ALX receptors to exert opposing effects on inflammation (18). ALX receptors are seven-membrane-spanning, G-protein coupled receptors that are present on several lung cell types relevant to asthma pathogenesis, including neutrophils (22), eosinophils (23), group 2 innate lymphoid cells (24), natural killer cells (24), lymphocytes (25), monocytes (26), dendritic cells (27, 28), macrophages (29) and airway structural cells (30). LXA₄ is a high affinity ligand for ALX that signals for anti-inflammatory and pro-resolving cellular responses (16). SAA binds with lower affinity, yet this acute phase reactant is substantially more abundant than LXA₄ during infection and the upstroke of acute inflammation (18). Also relevant in SA patients with comorbidities, corticosteroids can enhance SAA production, especially in conjunction with LPS (18). Distinct from LXA₄'s interaction with the seventh transmembrane domain and adjacent regions (31, 32), SAA interacts with the first and second extracellular loop domains (33), resulting in a marked shift in receptor conformation and dimerization that changes the receptor's pro-resolving signaling to pro-inflammatory signaling (17). Here in SA, ALX expression was increased on BAL macrophages and associated with increased asthma symptoms. Macrophage ALX expression correlated with surface CD206 expression, which marks "M2" macrophages that participate in endogenous pathways of inflammation resolution (34, 35). Together with the increased SAA and decreased lipoxins in SA BALF, the increase in ALX expression on BAL macrophages likely reflects SAA-driven outcomes, including the increased lung inflammation (*i.e.*, BAL neutrophilia) despite higher doses of corticosteroids. With the presence of SAA and LXA₄ in proximity to ALX receptors in the lung and their divergent influences on inflammatory responses, ALX receptors are poised to serve as a pivotal signaling nexus for acute inflammation or its resolution.

[0061] Lipoxins are products of arachidonic acid metabolism that are structurally and functionally distinct from leukotrienes and prostaglandins. Lipoxin A₄ was first detected in humans in BALF from patients with lung disease, including asthma (36). Lipoxins are the lead members of a new genus of endogenous chemical signals termed specialized pro-resolving mediators (SPMs), which

are partially defined by their ability to inhibit granulocyte recruitment and activation in inflamed tissues as well as to promote macrophage-mediated clearance of dead cells, microbes and debris in catabasis (8). Distinct from increased leukotriene production by some asthmatic patients, lipoxin levels are decreased in uncontrolled and severe asthma (13). Current anti-leukotriene drugs would not be expected to increase lipoxins in asthma. There are likely multiple factors responsible for the defective lipoxin production in severe asthma; however, the increased oxidative stress in SA airways was recently determined to be a major cause for reduced lipoxin generation (11). In human studies, inhaled LXA₄ dampens bronchoprovocation in asthma (10) and lipoxins regulate cytokine mediated increases in bronchial constriction to methacholine, histamine and thromboxane (11). Recently, a stable LXA₄ analog was shown to markedly decrease allergic inflammation and symptoms in patients with juvenile eczema (37). Preclinical studies have established that LXA₄ analogs that resist metabolic inactivation can prevent and potently reduce allergen-driven airway hyper-responsiveness to methacholine, airway mucus metaplasia and Type 2 inflammation (38, 39). Transgenic expression of hALX receptors also display decreased inflammatory responses to allergen, supporting a role for endogenous ALX ligands in anti-inflammation and pro-resolution (23). In addition to ALX, lipoxins can interact with additional receptors, including cysLT1 – the pharmacological target of one of the classes of anti-leukotriene drugs (40). Together, these findings point to pivotal pro-resolving roles for lipoxins in health to control airway pathologic responses and promote their resolution. Here, the diminished BALF levels of lipoxins in SA would be predicted from prior publications to disable a major endogenous regulatory pathway for airway inflammation, mucus and hyper-reactivity and our results show a strong and consistent correlation between low LXA₄ and increased lung inflammation, asthma symptoms and comorbidities, and lower lung function in SA.

[0062] In contrast to lipoxins, there are several peptide ligands for ALX receptors that engage these receptors to promote inflammatory responses. The acute phase reactant SAA is one of the ALX peptide ligands and can induce neutrophil chemotaxis and activation via ALX (41, 42). SAA is increased in severe allergic asthma (43) and can prevent dendritic cell apoptosis to induce glucocorticoid resistance for CD4⁺ T cells (44). Here, BALF SAA levels were increased in SA and strongly associated with BAL neutrophils. SAA^{high} subjects had increased asthma symptoms and a higher relative risk of sinusitis, GERD and obesity. If subjects had both low LXA₄ levels and high SAA levels (i.e., LXA₄^{low}SAA^{high}) then their relative risk for BAL neutrophils, asthma

symptoms, and lower lung function were all increased. Recently, some subjects with SA with non-Type 2 inflammation were identified as IL-6^{high} (45). IL-6 induces SAA expression (46) and may conspire with this acute phase protein to activate neutrophils and non-Type-2 lung inflammation in SA, in particular in those with systemic metabolic alterations associated with obesity. With A549^{hALX} epithelial cells, BALF from LXA₄^{low}SAA^{high} subjects increased production of the neutrophil chemoattractant IL-8, which was inhibitable by 15-epi-LXA₄. At ALX receptors, 15-epi-LXA₄ inhibition of SAA is allosteric in nature (18), and when given at pharmacological doses, 15-epi-LXA₄ can decrease SAA-driven IL-8 production by human airway epithelial cells *in vitro* and SAA-mediated acute inflammation *in vivo* in mice (18). Of interest for SA, SAA production is increased by corticosteroids and its expression is synergistically increased by the combination of steroids and LPS (18). Additional soluble mediators acting via distinct or synergistic pathways with SAA also are likely to contribute to epithelial cell IL-8 production and neutrophil chemoattraction in severe asthma. Subjects enrolled in SARP-3 were clinically characterized before and after intramuscular triamcinolone and adult subjects with SA continued to manifest lower FEV₁ and worse asthma control as compared to NSA after the systemic corticosteroids (47). Of note, BALF levels of LXA₄, 15-epi LXA₄, and SAA were not significantly altered by a single dose of intramuscular triamcinolone when measured 3 to 6 weeks after steroid administration. Unlike 15-epi-LXA₄, corticosteroids do not inhibit SAA-mediated lung inflammation (18), suggesting that for some subjects with SA their chronic neutrophilic lung inflammation could be perpetuated by corticosteroids and that SAA levels could inform more precise asthma management by helping to identify subjects at risk for this unintended consequence of corticosteroids.

[0063] Biochemical analyses here have linked ALX receptor signaling to the pathophysiology of SA. Using clinical and statistical approaches, five phenotypes of adult asthma have been defined (5), but there remains a need to connect these phenotypes to distinct molecular mechanisms for SA pathogenesis (6). We chose a candidate pathway approach based on preclinical evidence that linked ALX signaling to SA and BAL LXA₄ and SAA levels segregated subjects into discrete clinical clusters, suggesting that this biochemical pathway could convey additional value for patient stratification as an asthma endotype. Findings here suggest that these ALX ligands should be included in future studies designed to comprehensively model genetic, metabolic, and environmental influences and clinical characteristics for patient endotyping in SA.

[0064] Here, we have identified significant associations for BALF LXA₄^{low}SAA^{high} levels with neutrophilic lung inflammation and poorly controlled asthma; however, there are several potential limitations to consider. While it was advantageous for biochemical analyses to have a relatively large number of BAL samples from this carefully phenotyped group of asthma subjects, it would not be practical to routinely perform bronchoscopy in a clinical (or clinical trial) setting. It will be important in future studies to obtain and analyze respiratory samples collected by less invasive means (*i.e.*, sputum, exhaled breath condensate) to determine the influence of anatomic compartment on the relationships uncovered here with bronchoscopy specimens. The cross-sectional nature of the analyses here does not address the stability of this endotype, a question best addressed with samples obtained by less invasive means. Regarding additional ALX ligands, the ELISA used here for ANXA1 does not distinguish between intact and cleaved protein, so the absence of a relationship here does not preclude its potential existence when more specific experimental tools become available. There are also several additional peptide and lipid ligands for ALX receptors that might further enhance the discriminatory power of ALX signaling for identification of asthma endotypes.

[0065] In summary, ALX receptor expression was increased in asthmatic BAL macrophages and we have identified a cassette of ALX receptor ligands that are selectively regulated in BALF in asthma. Levels of lipoxins and SAA correlated with lung inflammation and clinical parameters of asthma control. In particular, subjects with LXA₄^{low}SAA^{high} BALF were more likely to have SA with increased BAL neutrophils, asthma symptoms and asthma comorbidities and decreased lung function. At pharmacological levels, 15-*epi*-LXA₄ functionally opposed SAA signaling at ALX receptors to inhibit production of the neutrophil chemoattractant IL-8. BALF LXA₄^{low}SAA^{high} subjects were assigned to discrete clinical clusters from LXA₄^{high}SAA^{low} subjects, suggesting that these biochemical mediators could identify subgroups of asthma subjects and serve as a new asthma biochemical endotype for non-Type 2, steroid resistant inflammation in SA.

[0066] Materials and Methods

[0067] Study Design

[0068] SARP-3 is an NHLBI-funded study designed to characterize molecular, cellular and physiological phenotypes in subjects with SA and NSA (NCT01606826). Asthmatic and healthy subjects were recruited and completed baseline characterization with some subjects agreeing to

bronchoscopy. Details regarding SARP methods, subject enrollment, and study procedures can be found in reference (45).

[0069] Participants and sample collection

[0070] Subjects 13 years of age and older with asthma and healthy control subjects were recruited between November 2012 and February 2015 by seven geographically dispersed, research centers in the USA. European Respiratory Society/American Thoracic Society guidelines were used to categorize subjects as SA or NSA (48). Control subjects were individuals who reported general health and were non-smokers with no history of lung disease, atopic disease or allergic rhinitis. BAL was performed with three 50 mL aliquots of warm saline, and BALF were recovered by hand suction. Subjects received intramuscular triamcinolone (1 mg/kg up to a maximum dose of 40 mg) and some subjects agreed to undergo a second bronchoscopy 3 to 6 weeks later and BAL samples were collected in the same manner. BAL cells were enumerated and differential leukocyte counts determined. Cell-free BALF supernatant was divided into several aliquots. One aliquot of BALF (1ml) was directly mixed with iced methanol (2 ml, for 1:2, vol/vol) before storing at -80°C. The other aliquots were directly stored at -80°C. The stored aliquots were later shipped to Brigham and Women's Hospital for analyses.

[0071] Lipid extraction

[0072] Aliquots of BALF with methanol (1:2, vol:vol) were brought to dryness *in vacuo* using a BÜCHI Rotavapor R-200/205. The samples were resuspended with methanol (500µl) and distilled/deionized water (10 ml) followed by extraction using C18 SepPak cartridges (Waters, Milford, MA) as in (13). The methyl formate fraction was brought to dryness under a gentle stream of nitrogen and each sample was resuspended in 1ml of methanol and stored at -80°C until LXA₄ and 15-epi-LXA₄ ELISAs were performed.

[0073] Protein Assay

[0074] Pierce BCA Protein Assay Kit (Thermo Fisher) was used for BALF protein determination. Samples with less than 25µg of protein were excluded from further analysis (n=3; 1 NSA, 2 SA).

[0075] ELISA

[0076] LXA₄ and 15-epi-LXA₄ levels in the BALF were measured by ELISA (Neogen, Lexington, KY). Extracted BALF samples stored in methanol were brought to dryness under a gentle stream of nitrogen and resuspended in ELISA buffer. SAA and ANXA1 levels were measured by ELISA in aliquots of BALF stored in the absence of methanol (SAA: Abazyme, Needham, MA; ANXA1:

Cloud-Clone, Houston, TX). LXA₄, 15-epi-LXA₄, SAA and ANXA1 levels were normalized to the total protein content of the BALF. Some subjects had an SAA level below the limit of detection and these samples were assigned a value of 0 pg/μg protein for analysis. The median value for LXA₄ and SAA were used to segregate subjects into “high” and “low” subgroups.

[0077] Flow cytometry

[0078] BAL cell pellets were available from a subgroup of subjects. For *ex vivo* staining, BALF cells were blocked with mouse serum (Sigma, St. Louis, MO) in PBS for 30 minutes at 4°C. The cells were then incubated with Viability Dye eFluorR660 (eBioscience, San Diego, CA) as per manufacturer’s instructions followed by 30 minutes of incubation with the following antibodies to human proteins: anti-ALX (clone 304405, R&D Systems, Minneapolis, MN)-PerCP, anti-HLA-DR (major histocompatibility complex class II, L243)-allophycocyanin-Cy7 (APC-Cy7) (BD Biosciences, San Jose, CA) and anti-CD206 (macrophage mannose receptor, 19.2)-phycoerythrin (PE) (eBioscience) or with directly conjugated unrelated antibodies of the same isotype (BD Biosciences) at 4°C. Data were acquired on a Canto II flow cytometer (Becton Dickinson) and analyzed using FlowJo software version 10.1 (TreeStar, Ashland, OR). Macrophages were identified as single cells (by doublet exclusion), viable (Viability Dye eFluorR660 negative), CD206⁺ cells. The MFI of ALX, MHC class II and CD206 was assessed on macrophages and normalized with the MFI of the isotype control antibody (MFI cell surface marker/MFI isotype control = MFI index).

[0079] *In vitro* A549 cell culture

[0080] A549 transfected to stably express the human ALX receptor were used (as in (18)). A549^{hALX} cells were seeded into a 48-well plate (5 x 10⁴ cells/well) and cultured in RPMI 1640 (Lonza) supplemented with 2mM L-glutamine, 10% heat-inactivated fetal calf serum (Gibco), penicillin (100 IU/mL) and streptomycin (100μg/mL) at 37°C in 5% CO₂ until confluent. When confluent, A549^{hALX} cells were cultured with serum free media for 16 hours and then exposed to BALF (100μl) and serum-free RPMI media (100μl, 1:1 vol:vol) for 24 hours (37°C, 5% CO₂). In select experiments, recombinant human SAA (0 – 10 ng/ml, Peprotech), 15-epi-LXA₄ (100nM, Cayman Chemical) or vehicle control was added. At the end of the incubations, supernatants were collected on ice and stored at -80°C. IL-8 levels in the supernatants were measured by ELISA

(R&D). If there was no increase in IL-8 production after exposure to BALF, the samples were assigned a value of zero (Figure 6C).

[0081] Statistical analysis

[0082] In figures, data are expressed either individually with indication of the median value or as mean \pm SEM; in tables, data are expressed as mean \pm SD. For violin plots in Figure 4, bin sizes and widths were determined for each variable automatically in SPSS based on the underlying data distribution. Statistical significance of differences was assessed by two-tailed Student's t test, one-way ANOVA, Kruskal-Wallis test (when normality assumptions were not met), or chi-square test as noted using SPSS version 23.0 (IBM). Post hoc Tukey's test (for ANOVA analyses) and Dunn's test (for Kruskal-Wallis analyses) were used to correct for multiple comparisons. Correlations were evaluated by Pearson's correlation coefficient (r) and linear or non-linear (for graphs with log axes) regression lines are shown. Correlation analyses included samples with a value of 0 for statistical analysis, but data points with value of 0 were excluded for regression line analyses of detectable ALX ligands. A p-value of <0.05 was considered significant and the reported p values were adjusted for multiple comparisons.

Table 1. Clinical characteristics and bronchoalveolar lavage leukocytes for subjects undergoing bronchoscopy[#]

	Healthy Donors (HD)	Non-Severe Asthma (NSA)	Severe Asthma (SA)	NSA vs SA	HD vs. NSA	HD vs. SA
No. of subjects	47	51	69			
Clinical data						
Age	40.1 ± 12.9 (20-62)	36.9 ± 12.4 (18-61)	42.4 ± 13.6 (14-67)	ns	ns	ns
% Male	19 (40%)	17 (33%)	24 (35%)	ns	ns	ns
% African American	11 (23%)	14 (27%)	22 (32%)	ns	ns	ns
% White	31 (66%)	37 (74%)	45 (65%)	ns	ns	ns
BMI	27.6 ± 5.7 (20-44)	30.0 ± 9.2 (18-61)	31.4 ± 8.2 (19-67)	ns	ns	*
Symptom control						
% Uncontrolled [§]	n.a.	32 (63%)	68 (98%)	****		
ACQ	n.a.	1.08 ± 0.9 (0-3)	1.93 ± 1.1 (0-5)	****		
ACT	y n.a. ()	19.61 ± 34.0 7-23 ()	14.48 ± 4.5 5-23 ()	****		
Lung function						
FEV1 % predicted	102.4 ± 12.5 (78.46-139.2)	89.8 ± 16.3 (42-124)	75.0 ± 19.1 (35-116)	****	***	****
FVC % predicted	104.7 ± 14.2 (84.12-137.2)	102.6 ± 17.2 (64-145)	89.4 ± 17.6 (52-133)	****	ns	****
FEV1/FVC	97.7 ± 5.6 (85.4-109.6)	87.5 ± 9.0 (61-109)	82.8 ± 9.0 (62-106)	*	****	****
Medications						
Inhaled corticosteroids	0 (0%)	35 (69%)	67 (97%)	****		
High dose of inhaled corticosteroids	0 (0%)	4 (8%)	66 (96%)	****		
Oral steroids	0 (0%)	0 (0%)	16 (23%)	****		
Long acting beta agonists	0 (0%)	21 (37%)	64 (93%)	****		
Long acting anticholinergic medication	0 (0%)	0 (0%)	3 (4%)	p = 0.13		
Leukotriene receptor antagonists	0 (0%)	11 (22%)	24 (35%)	p = 0.12		
Omalizumab	0 (0%)	1 (2%)	8 (13%)	*		
BAL leukocyte differentials						
Total cell count (millions)	4.9 ± 4.6 (0-25)	4.0 ± 2.7 (0-12)	6.4 ± 13.2 (0-107)	ns	ns	ns
Macrophages (%)	91.7 ± 5.8 (73-99)	92.2 ± 5.1 (79-99)	87.7 ± 10.1 (53-99)	**	ns	*
Neutrophils (%)	1.6 ± 1.9 (0-10)	1.4 ± 1.4 (0-7)	3.3 ± 4.9 (0-24)	**	ns	*
Eosinophils (%)	0.3 ± 0.4 (0-2)	1.1 ± 2.8 (0-17)	1.8 ± 5.0 (0-35)	ns	ns	ns
Lymphocytes (%)	6.5 ± 5.0 (0-22)	5.3 ± 4.5 (0-19)	7.3 ± 5.9 (0-34)	ns	ns	ns

[#]Values represent the mean ± SD (range).[§]Uncontrolled symptoms were defined as the occurrence of one of the following: ≥2 steroid bursts, hospitalization, intensive care unit admission, use of a ventilator, FEV1 % predicted < 80%, ACT < 20, or self reported worsening with tapering steroids. Definition of abbreviations: BMI = body mass index, ACQ = asthma control questionnaire, ACT = asthma control test, FEV1 = forced expiratory volume in one second, FVC = forced vital capacity. n.a. = not applicable *P<0.05, **P<0.01, ***P<0.001, ns = not significant. Comparison between three groups was performed by One-way-ANOVA followed by Tukey-test to adjust for multiple comparisons and Chi-squared test. Comparison between two groups was performed by Student's t-test.

Table 2. Asthma exacerbations and comorbidities are associated with high SAA and low LXA₄.[#]

	SAA low (n=60)	SAA high (n=60)	p-value (Chi-Squared)	p-value (Chi-Squared with Bonferroni correction)
>1 AE	21 (35%)	24 (40%)	n.s.	n.s.
Sinusitis	12 (20%)	24 (40%)	0.01	0.04
GERD	18 (30%)	28 (47%)	0.04	n.s.
BMI > 30	19 (32%)	32 (53%)	0.01	0.04

	LXA₄ low (n=60)	LXA₄ high (n=60)	p-value (Chi-Squared)	p-value (Chi-Squared with Bonferroni correction)
>1 AE	29 (48%)	16 (27%)	0.01	0.04
Sinusitis	24 (40%)	12 (20%)	0.02	n.s.
GERD	29 (48%)	17 (28%)	0.01	0.04
BMI > 30	34 (57%)	17 (28%)	0.002	0.008

	SAA low LXA₄ high (n=40)	SAA high LXA₄ low (n=39)	p-value (Chi-Squared)	p-value (Chi-Squared with Bonferroni correction)
>1 AE	10 (25%)	18 (46%)	<0.05	n.s.
Sinusitis	6 (15%)	18 (46%)	0.003	0.01
GERD	11 (28%)	22 (56%)	0.009	0.04
BMI > 30	11 (41%)	26 (74%)	<0.001	<0.005

[#] Results are expressed as number of patients (percentage). Definition of abbreviations: AE = acute exacerbation, GERD = gastroesophageal reflux, BMI = body mass index; n.s. = not significant.

References

1. National Current Asthma Prevalence (2014).
https://www.cdc.gov/asthma/most_recent_data.htm.
2. Levy BD, Noel PJ, Freemer MM, Cloutier MM, Georas SN, Jarjour NN, et al. Future Research Directions in Asthma. An NHLBI Working Group Report. *Am J Respir Crit Care Med*. 2015;192(11):1366-72.
3. Ray A, Raundhal M, Oriss TB, Ray P, and Wenzel SE. Current concepts of severe asthma. *The Journal of clinical investigation*. 2016;126(7):2394-403.
4. Modena BD, Bleecker ER, Busse WW, Erzurum SC, Gaston BM, Jarjour NN, et al. Gene Expression Correlated to Severe Asthma Characteristics Reveals Heterogeneous Mechanisms of Severe Disease. *American journal of respiratory and critical care medicine*. 2016.
5. Moore WC, Meyers DA, Wenzel SE, Teague WG, Li H, Li X, et al. Identification of asthma phenotypes using cluster analysis in the Severe Asthma Research Program. *Am J Respir Crit Care Med*. 2010;181(4):315-23.
6. Wenzel SE. Asthma phenotypes: the evolution from clinical to molecular approaches. *Nat Med*. 2012;18(5):716-25.
7. Fahy JV. Type 2 inflammation in asthma--present in most, absent in many. *Nat Rev Immunol*. 2015;15(1):57-65.
8. Serhan CN. Pro-resolving lipid mediators are leads for resolution physiology. *Nature*. 2014;510(7503):92-101.
9. Levy BD, and Serhan CN. Resolution of acute inflammation in the lung. *Annual review of physiology*. 2014;76:467-92.
10. Christie PE, Spur BW, and Lee TH. The effects of lipoxin A4 on airway responses in asthmatic subjects. *Am Rev Respir Dis*. 1992;145(6):1281-4.
11. Ono E, Dutile S, Kazani S, Wechsler ME, Yang J, Hammock BD, et al. Lipoxin generation is related to soluble epoxide hydrolase activity in severe asthma. *American journal of respiratory and critical care medicine*. 2014;190(8):886-97.

12. Kazani S, Planaguma A, Ono E, Bonini M, Zahid M, Marigowda G, et al. Exhaled breath condensate eicosanoid levels associate with asthma and its severity. *J Allergy Clin Immunol.* 2013;132(3):547-53.
13. Levy BD, Bonnans C, Silverman ES, Palmer LJ, Marigowda G, Israel E, et al. Diminished lipoxin biosynthesis in severe asthma. *Am J Respir Crit Care Med.* 2005;172(7):824-30.
14. Planaguma A, Kazani S, Marigowda G, Haworth O, Mariani TJ, Israel E, et al. Airway lipoxin A4 generation and lipoxin A4 receptor expression are decreased in severe asthma. *Am J Respir Crit Care Med.* 2008;178(6):574-82.
15. Vachier I, Bonnans C, Chavis C, Farce M, Godard P, Bousquet J, et al. Severe asthma is associated with a loss of LX4, an endogenous anti-inflammatory compound. *The Journal of allergy and clinical immunology.* 2005;115(1):55-60.
16. Chiang N, Serhan CN, Dahlen SE, Drazen JM, Hay DW, Rovati GE, et al. The lipoxin receptor ALX: potent ligand-specific and stereoselective actions in vivo. *Pharmacological reviews.* 2006;58(3):463-87.
17. Cooray SN, Gobbetti T, Montero-Melendez T, McArthur S, Thompson D, Clark AJ, et al. Ligand-specific conformational change of the G-protein-coupled receptor ALX/FPR2 determines proresolving functional responses. *Proc Natl Acad Sci U S A.* 2013;110(45):18232-7.
18. Bozinovski S, Uddin M, Vlahos R, Thompson M, McQualter JL, Merritt AS, et al. Serum amyloid A opposes lipoxin A(4) to mediate glucocorticoid refractory lung inflammation in chronic obstructive pulmonary disease. *Proceedings of the National Academy of Sciences of the United States of America.* 2012;109(3):935-40fff.
19. He R, Sang H, and Ye RD. Serum amyloid A induces IL-8 secretion through a G protein-coupled receptor, FPRL1/LXA4R. *Blood.* 2003;101(4):1572-81.
20. Perretti M, Chiang N, La M, Fierro IM, Marullo S, Getting SJ, et al. Endogenous lipid- and peptide-derived anti-inflammatory pathways generated with glucocorticoid and aspirin treatment activate the lipoxin A4 receptor. *Nature medicine.* 2002;8(11):1296-302.

21. Morris T, Stables M, Colville-Nash P, Newson J, Bellingan G, de Souza PM, et al. Dichotomy in duration and severity of acute inflammatory responses in humans arising from differentially expressed proresolution pathways. *Proceedings of the National Academy of Sciences of the United States of America*. 2010;107(19):8842-7.
22. Fiore S, Maddox JF, Perez HD, and Serhan CN. Identification of a human cDNA encoding a functional high affinity lipoxin A4 receptor. *The Journal of experimental medicine*. 1994;180(1):253-60.
23. Levy BD, De Sanctis GT, Devchand PR, Kim E, Ackerman K, Schmidt BA, et al. Multi-pronged inhibition of airway hyper-responsiveness and inflammation by lipoxin A(4). *Nat Med*. 2002;8(9):1018-23.
24. Barnig C, Cernadas M, Dutile S, Liu X, Perrella MA, Kazani S, et al. Lipoxin A4 regulates natural killer cell and type 2 innate lymphoid cell activation in asthma. *Sci Transl Med*. 2013;5(174):174ra26.
25. Ariel A, Chiang N, Arita M, Petasis NA, and Serhan CN. Aspirin-triggered lipoxin A4 and B4 analogs block extracellular signal-regulated kinase-dependent TNF-alpha secretion from human T cells. *J Immunol*. 2003;170(12):6266-72.
26. Romano M, Maddox JF, and Serhan CN. Activation of human monocytes and the acute monocytic leukemia cell line (THP-1) by lipoxins involves unique signaling pathways for lipoxin A4 versus lipoxin B4: evidence for differential Ca²⁺ mobilization. *J Immunol*. 1996;157(5):2149-54.
27. Aliberti J, Hieny S, Reis e Sousa C, Serhan CN, and Sher A. Lipoxin-mediated inhibition of IL-12 production by DCs: a mechanism for regulation of microbial immunity. *Nature immunology*. 2002;3(1):76-82.
28. Yang D, Chen Q, Le Y, Wang JM, and Oppenheim JJ. Differential regulation of formyl peptide receptor-like 1 expression during the differentiation of monocytes to dendritic cells and macrophages. *J Immunol*. 2001;166(6):4092-8.
29. Maderna P, Cottell DC, Toivonen T, Dufton N, Dalli J, Perretti M, et al. FPR2/ALX receptor expression and internalization are critical for lipoxin A4 and annexin-derived peptide-stimulated phagocytosis. *FASEB journal : official publication of the Federation of American Societies for Experimental Biology*. 2010;24(11):4240-9.

30. Bonnans C, Fukunaga K, Levy MA, and Levy BD. Lipoxin A(4) regulates bronchial epithelial cell responses to acid injury. *The American journal of pathology*. 2006;168(4):1064-72.
31. Chiang N, Fierro IM, Gronert K, and Serhan CN. Activation of lipoxin A(4) receptors by aspirin-triggered lipoxins and select peptides evokes ligand-specific responses in inflammation. *The Journal of experimental medicine*. 2000;191(7):1197-208.
32. Chiang N, Gronert K, Clish CB, O'Brien JA, Freeman MW, and Serhan CN. Leukotriene B4 receptor transgenic mice reveal novel protective roles for lipoxins and aspirin-triggered lipoxins in reperfusion. *The Journal of clinical investigation*. 1999;104(3):309-16.
33. Bena S, Brancaleone V, Wang JM, Perretti M, and Flower RJ. Annexin A1 interaction with the FPR2/ALX receptor: identification of distinct domains and downstream associated signaling. *The Journal of biological chemistry*. 2012;287(29):24690-7.
34. Chiang N, Dalli J, Colas RA, and Serhan CN. Identification of resolvin D2 receptor mediating resolution of infections and organ protection. *The Journal of experimental medicine*. 2015;212(8):1203-17.
35. Dakin SG, Martinez FO, Yapp C, Wells G, Oppermann U, Dean BJ, et al. Inflammation activation and resolution in human tendon disease. *Science translational medicine*. 2015;7(311):311ra173.
36. Lee TH, Crea AE, Gant V, Spur BW, Marron BE, Nicolaou KC, et al. Identification of lipoxin A4 and its relationship to the sulfidopeptide leukotrienes C4, D4, and E4 in the bronchoalveolar lavage fluids obtained from patients with selected pulmonary diseases. *The American review of respiratory disease*. 1990;141(6):1453-8.
37. Wu SH, Chen XQ, Liu B, Wu HJ, and Dong L. Efficacy and safety of 15(R/S)-methyl-lipoxin A(4) in topical treatment of infantile eczema. *Br J Dermatol*. 2013;168(1):172-8.
38. Haworth O, Cernadas M, Yang R, Serhan CN, and Levy BD. Resolvin E1 regulates interleukin 23, interferon-gamma and lipoxin A4 to promote the resolution of allergic airway inflammation. *Nat Immunol*. 2008;9(8):873-9.

39. Levy BD, Lukacs NW, Berlin AA, Schmidt B, Guilford WJ, Serhan CN, et al. Lipoxin A4 stable analogs reduce allergic airway responses via mechanisms distinct from CysLT1 receptor antagonism. *FASEB journal : official publication of the Federation of American Societies for Experimental Biology*. 2007;21(14):3877-84.
40. Gronert K, Martinsson-Niskanen T, Ravasi S, Chiang N, and Serhan CN. Selectivity of recombinant human leukotriene D(4), leukotriene B(4), and lipoxin A(4) receptors with aspirin-triggered 15-epi-LXA(4) and regulation of vascular and inflammatory responses. *The American journal of pathology*. 2001;158(1):3-9.
41. Su SB, Gong W, Gao JL, Shen W, Murphy PM, Oppenheim JJ, et al. A seven-transmembrane, G protein-coupled receptor, FPRL1, mediates the chemotactic activity of serum amyloid A for human phagocytic cells. *The Journal of experimental medicine*. 1999;189(2):395-402.
42. El Kebir D, Jozsef L, Khreiss T, Pan W, Petasis NA, Serhan CN, et al. Aspirin-triggered lipoxins override the apoptosis-delaying action of serum amyloid A in human neutrophils: a novel mechanism for resolution of inflammation. *J Immunol*. 2007;179(1):616-22.
43. Buyukozturk S, Gelincik AA, Genc S, Kocak H, Oneriyidogan Y, Erden S, et al. Acute phase reactants in allergic airway disease. *The Tohoku journal of experimental medicine*. 2004;204(3):209-13.
44. Ather JL, Fortner KA, Budd RC, Anathy V, and Poynter ME. Serum amyloid A inhibits dendritic cell apoptosis to induce glucocorticoid resistance in CD4(+) T cells. *Cell death & disease*. 2013;4:e786.
45. Peters MC, McGrath KW, Hawkins GA, Hastie AT, Levy BD, Israel E, et al. Plasma interleukin-6 concentrations, metabolic dysfunction, and asthma severity: a cross-sectional analysis of two cohorts. *Lancet Respir Med*. 2016;4(7):574-84.
46. Hagihara K, Nishikawa T, Sugamata Y, Song J, Isobe T, Taga T, et al. Essential role of STAT3 in cytokine-driven NF-kappaB-mediated serum amyloid A gene expression. *Genes to cells : devoted to molecular & cellular mechanisms*. 2005;10(11):1051-63.

47. Phipatanakul W, Mauger DT, Sorkness RL, Gaffin JM, Holguin F, Woodruff PG, et al. Effects of Age and Disease Severity on Systemic Corticosteroid Responses in Asthma. *Am J Respir Crit Care Med.* 2016.
48. Chung KF, Wenzel SE, Brozek JL, Bush A, Castro M, Sterk PJ, et al. International ERS/ATS guidelines on definition, evaluation and treatment of severe asthma. *Eur Respir J.* 2014;43(2):343-73.

CLAIMS

We claim:

1. A method to determine the severity of a disease of chronic inflammation in a patient comprising the steps of:
 - (a) collection or preparation of a bodily fluid, tissue or lavage, and
 - (b) measurement of ALX receptor ligands or ALX receptor expression in the fluid, tissue, or lavage, wherein the level of ALX receptor ligands predicts a clinical outcome or choice of treatment modality.
2. The method of claim 1 wherein the ALX receptor ligands are selected from the group consisting of LXA₄, 15-epi-LXA₄ and SAA.
3. The method of claim 1 wherein the measurement results in a ratio.
4. The method of claim 1 wherein the disease of chronic inflammation is selected from the group consisting of pathologic lung inflammation, arthritis, inflammatory bowel disease atherosclerosis and psoriasis.
5. The method of claim 4 wherein the disease of lung inflammation is cystic fibrosis.
6. The method of claim 4 wherein the disease of lung inflammation is asthma.
7. The method of claim 4 wherein the disease of lung inflammation is selected from the group consisting of COPD, bronchiectasis, bronchiolitis, interstitial lung disease, transplant rejection, pneumonitis, lung abscess, pulmonary vascular disease, pulmonary emboli, and ARDS.
8. The method of claims 4 - 6 wherein the fluid or lavage is bronchoalveolar lavage.
9. The method of claims 1 - 3 wherein the fluid, tissue, or lavage is selected from the group consisting of blood, serum, plasma, urine, nasal lavage, sputum, exhaled breath condensate, tears, breast milk, semen, pleural fluid, pericardial fluid, and joint fluid.

10. The method of claim 2 wherein levels of lipoxinA₄ and serum amyloid A are measured and the ratio predicts a severe disease clinical outcome including increased lung inflammation, increased asthma symptomology, lower lung function and an increased risk for asthma co-morbidities.
11. The method of claim 1 wherein the expression of the ALX/FPR2 receptor by macrophages in said tissue, fluid, or lavage predicts a severe disease clinical outcome including increased lung inflammation, increased asthma symptomology, lower lung function and an increased risk for asthma co-morbidities.
12. A method of measuring ALX receptor ligands or ALX receptor expression in a fluid, tissue, or lavage, wherein the method comprises the steps of:
 - (a) obtaining a patient tissue, fluid or lavage and
 - (b) determining the amount of ALX receptor ligands or ALX receptor expression in the fluid, tissue, or lavage.
13. The method of claim 12, wherein the fluid, tissue, or lavage is broncholalveolar lavage.
14. The method of claim 12 wherein the fluid, tissue, or lavage is selected from the group consisting of blood, serum, plasma, urine, nasal lavage, sputum, exhaled breath condensate, tears, breast milk, semen, pleural fluid, pericardial fluid, and joint fluid.
15. The method of claim 13 or 14 wherein the measurement is of at least one of LXA₄, 15-epi-LXA₄ and SAA.
16. The method of claim 13 or 14 wherein the measurement is of at least two of LXA₄, 15-epi-LXA₄ and SAA.
17. The method of claim 12 wherein the measurement is via ELISA.

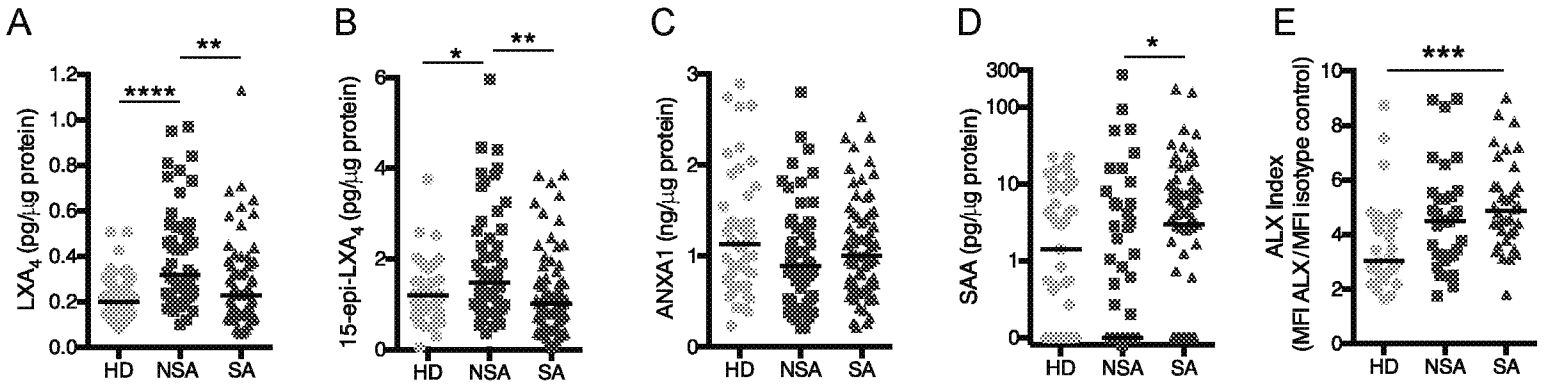


FIG. 1A-E

FIG. 2

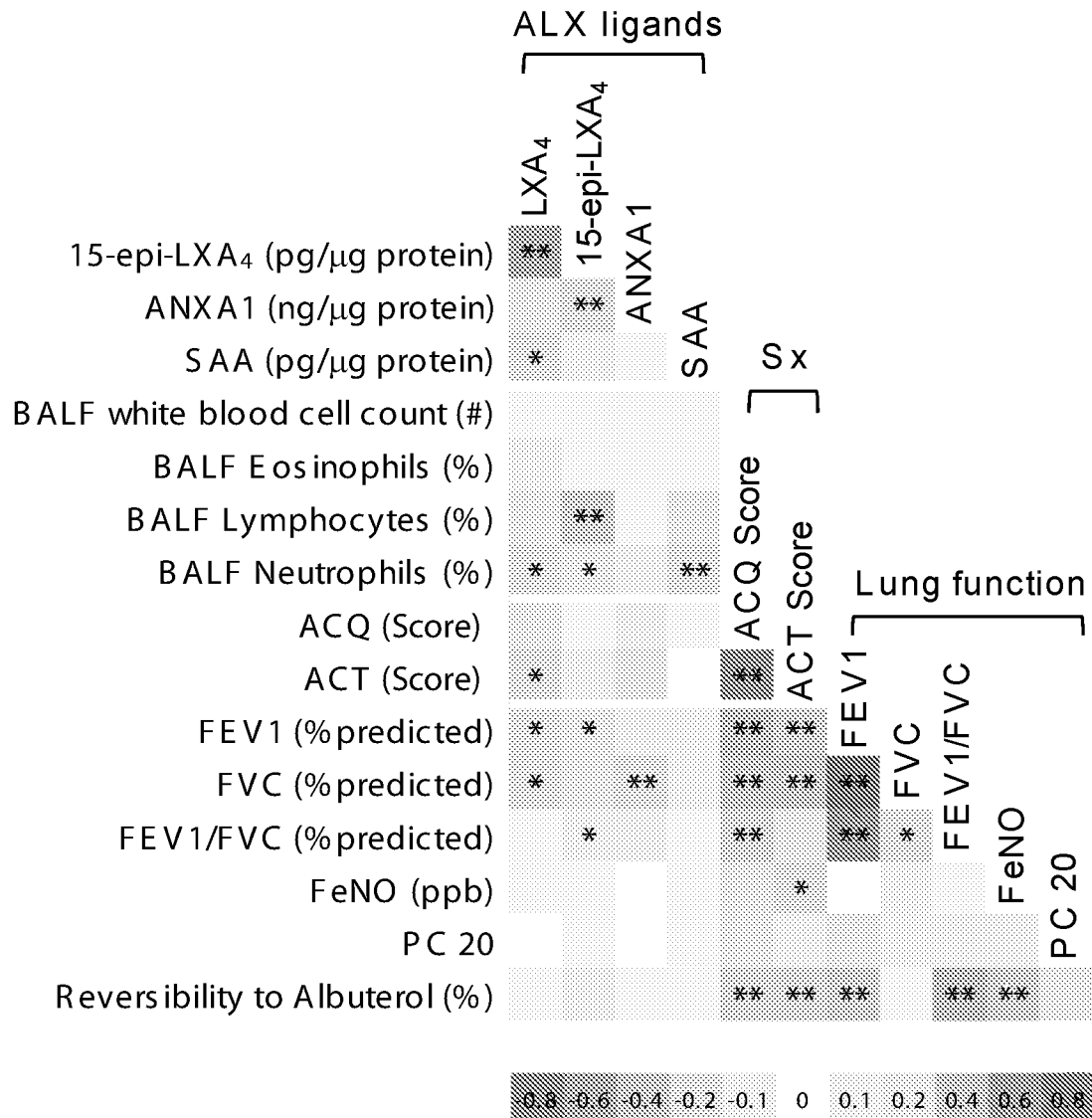


FIG. 3A-H

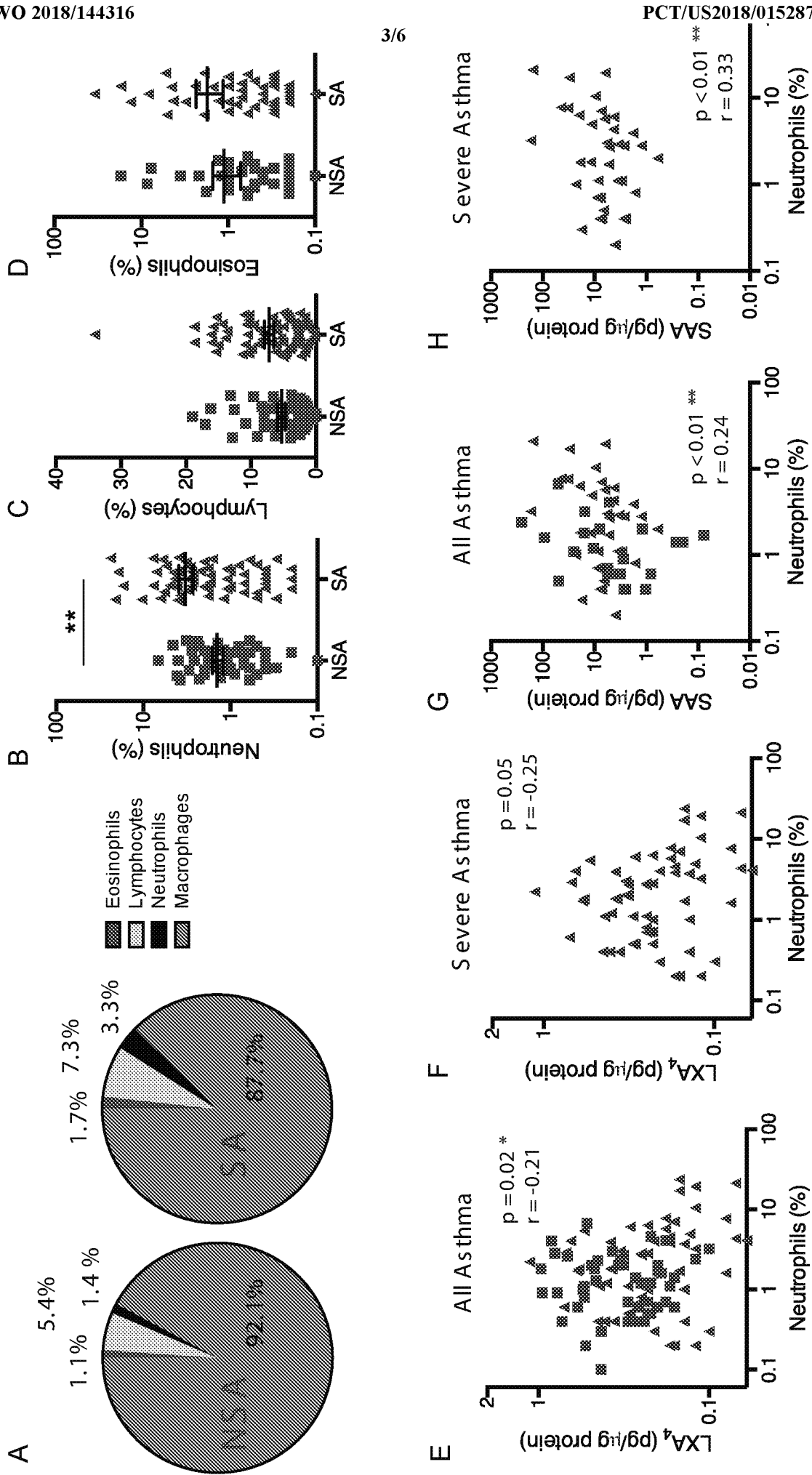
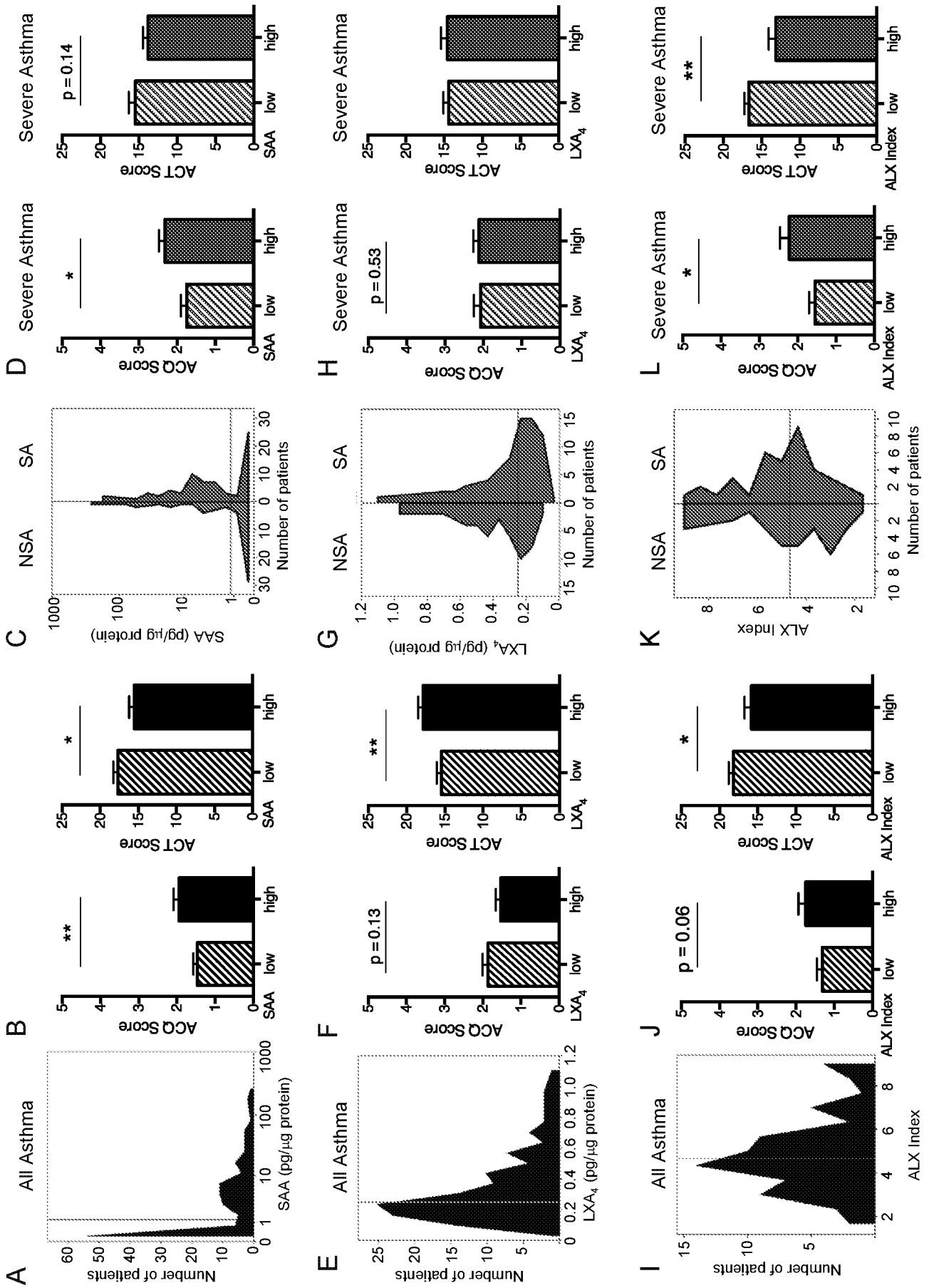


FIG. 4A-L



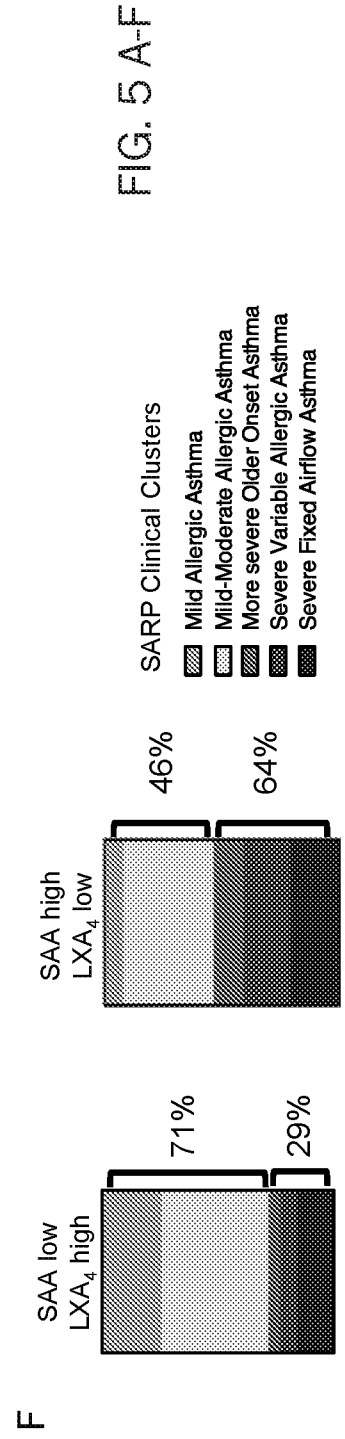
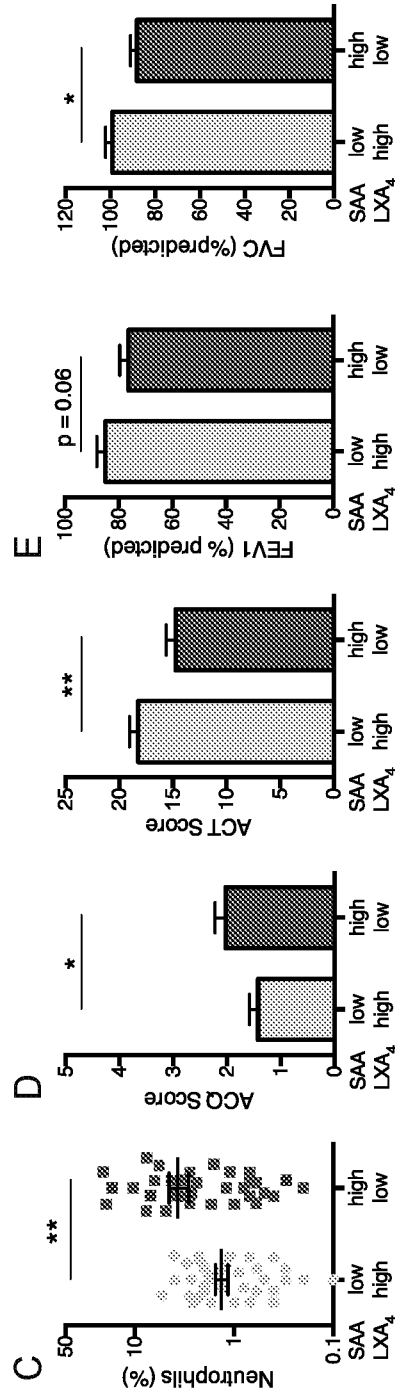
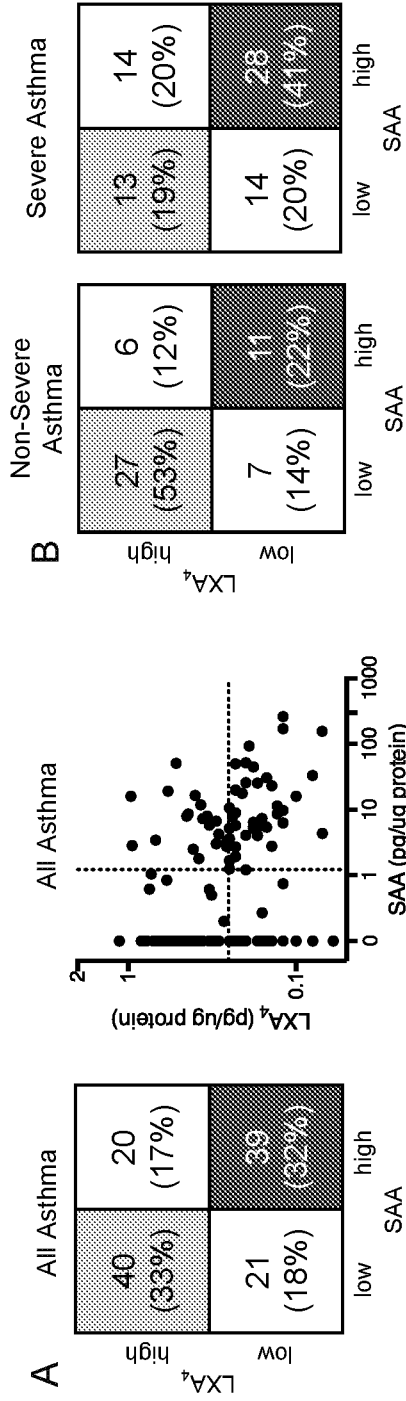


FIG. 5 A-F

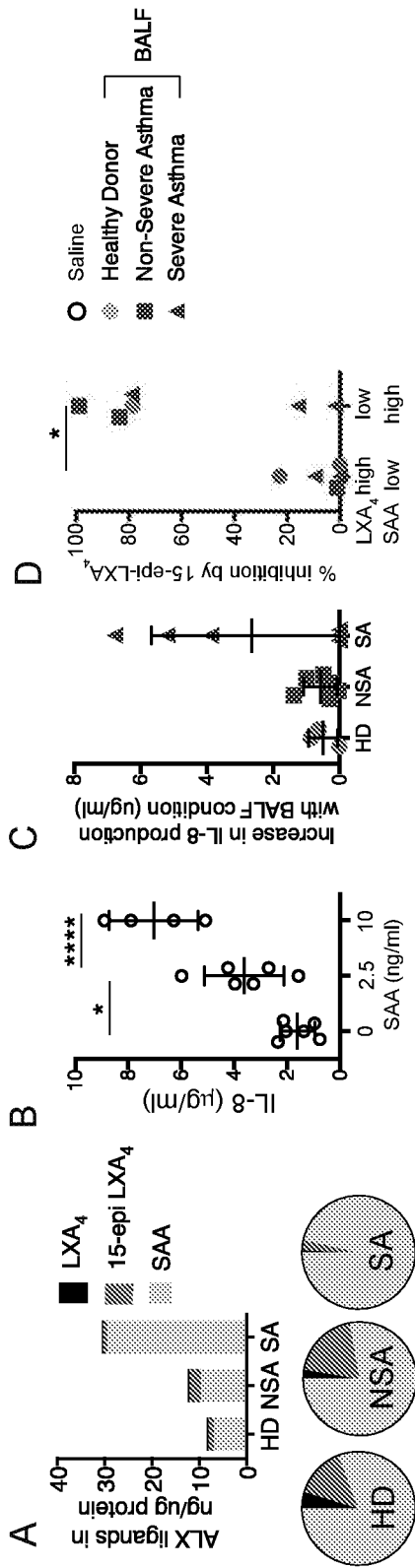


FIG. 6A-D

INTERNATIONAL SEARCH REPORT

International application No.

PCT/US18/15287

A. CLASSIFICATION OF SUBJECT MATTER

IPC - A61P 29/00; C07C 57/03; C08K 5/01, 5/09; G01N 33/538, 33/543 (2018.01)

CPC - A61P 29/00; C07C 57/03; C08K 5/01, 5/09; G01N 33/538, 33/54366

According to International Patent Classification (IPC) or to both national classification and IPC

B. FIELDS SEARCHED

Minimum documentation searched (classification system followed by classification symbols)

See Search History document

Documentation searched other than minimum documentation to the extent that such documents are included in the fields searched

See Search History document

Electronic data base consulted during the international search (name of data base and, where practicable, search terms used)

See Search History document

C. DOCUMENTS CONSIDERED TO BE RELEVANT

Category*	Citation of document, with indication, where appropriate, of the relevant passages	Relevant to claim No.
X — Y	(CHIANG, N et al.) Aspirin-Triggered 15-epi-Lipoxin A4 (ATL) Generation by Human Leukocytes and Murine Peritonitis Exudates: Development of a Specific 15-epi-LXA4 ELISA. THE JOURNAL OF PHARMACOLOGY AND EXPERIMENTAL THERAPEUTICS. 1 November 1998, Vol. 287, Issue 2, pages 779-790; abstract; page 780, 2nd column, 1st paragraph; page 784, 1st column, 2nd-3rd paragraphs; page 786, 2nd column, 3rd paragraph; page 788, 2nd column, 3rd-4th paragraphs; Figure 3	1-2, 4, 6, 9/1-2, 12, 14, 15/14, 17 — 3, 5, 7, 8/4-6, 9/3, 11, 13, 15/13, 16/13-14
Y	(KEBIR, DE et al.) 15-Epi-lipoxin A4 Inhibits Myeloperoxidase Signaling and Enhances Resolution of Acute Lung Injury. American Journal of Respiratory and Critical Care Medicine. 29 May 2009, Vol. 180, pages 311-319; page 317, 2nd column, 3rd paragraph; Figure 4A; DOI: 10.1164/rccm.200810-1601OC	8/4-6, 13, 15/13
Y	(BOZINOVSKI, S et al.) Serum amyloid A opposes lipoxin A4 to mediate glucocorticoid refractory lung inflammation in chronic obstructive pulmonary disease. PNAS. 17 January 2012, Vol. 109, No. 3, pages 935-940; abstract; page 936, 2nd column, 3rd paragraph; Figures 3, S3; DOI: 10.1073/pnas.1109382109	3, 9/3, 16/13-14
Y	(CHIANG, N et al.) The Lipoxin Receptor ALX: Potent Ligand-Specific and Stereoselective Actions in Vivo. Pharmacological Reviews. 1 September 2006, Vol., 58, No. 3, pages 463-487; page 476, 2nd column, 1st paragraph; Table 6; DOI: 10.1124/pr.58.3.4	5, 8/5
Y	(SERHAN, CN et al.) The Resolution Code of Acute Inflammation: Novel Pro-Resolving Lipid Mediators in Resolution. Seminal Immunology. 7 April 2015, Vol. 27, Issue 3, pages 200-215; page 14, 3rd paragraph; DOI: 10.1016/j.smim.2015.03.004	7

 Further documents are listed in the continuation of Box C. See patent family annex.

* Special categories of cited documents:

"A" document defining the general state of the art which is not considered to be of particular relevance

"E" earlier application or patent but published on or after the international filing date

"L" document which may throw doubts on priority claim(s) or which is cited to establish the publication date of another citation or other special reason (as specified)

"O" document referring to an oral disclosure, use, exhibition or other means

"P" document published prior to the international filing date but later than the priority date claimed

"T" later document published after the international filing date or priority date and not in conflict with the application but cited to understand the principle or theory underlying the invention

"X" document of particular relevance; the claimed invention cannot be considered novel or cannot be considered to involve an inventive step when the document is taken alone

"Y" document of particular relevance; the claimed invention cannot be considered to involve an inventive step when the document is combined with one or more other such documents, such combination being obvious to a person skilled in the art

"&" document member of the same patent family

Date of the actual completion of the international search

9 March 2018 (09.03.2018)

Date of mailing of the international search report

26 MAR 2018

Name and mailing address of the ISA/

Mail Stop PCT, Attn: ISA/US, Commissioner for Patents

P.O. Box 1450, Alexandria, Virginia 22313-1450

Facsimile No. 571-273-8300

Authorized officer

Shane Thomas

PCT Helpdesk: 571-272-4300
PCT OSP: 571-272-7774

INTERNATIONAL SEARCH REPORT

International application No.

PCT/US18/15287

C (Continuation). DOCUMENTS CONSIDERED TO BE RELEVANT

Category*	Citation of document, with indication, where appropriate, of the relevant passages	Relevant to claim No.
Y	(PLANAGUMA, A et al.) Airway Lipoxin A4 Generation and Lipoxin A4 Receptor Expression Are Decreased in Severe Asthma. American Journal of Respiratory and Critical Care Medicine. 26 June 2008, Vol. 178, pages 574-582; page 577, 2nd column, 3rd paragraph – page 578, 1st column, 2nd paragraph; Tables 1-2; Figure 5C; DOI: 10.1164/rccm.200801-061OC	11
Y	(LEDFORD, DK et al.) Asthma and comorbidities. Current Opinion in Allergy and Clinical Immunology. February 2013, Vol. 13, No. 1, pages 78-86; page 78, 1st column, 1st paragraph; page 80, 1st column, 3rd paragraph; DOI: 10.1097/ACI.0b013e32835c16b6	11
A	(KEBIR, DE et al.) Aspirin-Triggered Lipoxins Override the Apoptosis-Delaying Action of Serum Amyloid A in Human Neutrophils: A Novel Mechanism for Resolution of Inflammation. The Journal of Immunology. 1 July 2007, Vol. 179, No. 1, pages 616-622; title; abstract; DOI: 10.4049/jimmunol.179.1.616	10
A	(SODIN-SEMRL, S et al.) LIPOXIN A AND SERUM AMYLOID A DIFFERENTIALLY MODULATE PHOSPHOLIPASE D IN HUMAN FIBROBLAST-LIKE SYNOVIOCYTES. EUROPEAN JOURNAL OF INFLAMMATION. 1 January 2009, Vol. 7, No. 1, pages 9-17; abstract; page 1, 2nd column, 2nd paragraph; table1; DOI:	10
P, X	(RICKLEFS, I et al.) ALX receptor ligands define a biochemical endotype for severe asthma. JCI Insight. 20 July 2017, Vol. 2, No. 14, e93534; DOI: 10.1172/jci.insight.93534	1-7, 8/4-6, 9/1-3, 10-14, 15/13-14, 16/13-14, 17

专利名称(译)	alx受体配体，用于定义炎症性疾病的生物化学内型		
公开(公告)号	EP3576843A1	公开(公告)日	2019-12-11
申请号	EP2018747349	申请日	2018-01-25
[标]申请(专利权)人(译)	布赖汉姆妇女医院		
申请(专利权)人(译)	布里格姆妇女医院，INC.		
当前申请(专利权)人(译)	布里格姆妇女医院，INC.		
[标]发明人	LEVY BRUCE SERHAN CHARLES N		
发明人	LEVY, BRUCE SERHAN, CHARLES, N.		
IPC分类号	A61P29/00 C07C57/03 C08K5/01 C08K5/09 G01N33/538 G01N33/543		
CPC分类号	A61P29/00 G01N33/566 G01N2800/12 G01N2800/122 G01N2800/127 G01N2800/245 G01N2800/382 G01N2800/50 G01N2800/56		
优先权	62/452533 2017-01-31 US		
外部链接	Espacenet		

摘要(译)

一种确定患者慢性炎症疾病严重程度度的方法，包括步骤（1）收集或制备体液，组织或灌洗液和（2）测量液体中ALX受体配体或ALX受体表达的步骤本发明公开了一种组织或灌洗，其中ALX受体配体的水平预测临床结果或治疗方式的选择。