

(19)



(11)

EP 2 977 387 A1

(12)

EUROPEAN PATENT APPLICATION
published in accordance with Art. 153(4) EPC

(43) Date of publication:

27.01.2016 Bulletin 2016/04

(51) Int Cl.:

C07K 16/42 <small>(2006.01)</small>	C12N 1/15 <small>(2006.01)</small>
C12N 1/19 <small>(2006.01)</small>	C12N 1/21 <small>(2006.01)</small>
C12N 5/10 <small>(2006.01)</small>	C12N 15/09 <small>(2006.01)</small>
C12P 21/08 <small>(2006.01)</small>	G01N 33/53 <small>(2006.01)</small>

(21) Application number: **14769566.2**

(22) Date of filing: **17.03.2014**

(86) International application number:

PCT/JP2014/057190

(87) International publication number:

WO 2014/148444 (25.09.2014 Gazette 2014/39)

(84) Designated Contracting States:

AL AT BE BG CH CY CZ DE DK EE ES FI FR GB GR HR HU IE IS IT LI LT LU LV MC MK MT NL NO PL PT RO RS SE SI SK SM TR

Designated Extension States:

BA ME

(30) Priority: **19.03.2013 JP 2013057015**

(71) Applicants:

- **Kazusa DNA Research Institute**
Kisarazu-shi, Chiba 292-0818 (JP)
- **Animal Allergy Clinical Laboratories Inc.**
Sagamihara-shi
Kanagawa 252-0131 (JP)
- **Nippon Zenyaku Kogyo Co., Ltd.**
Asaka-machi, Koriyama-shi
Fukushima 963-0196 (JP)

- **NAGASE, Takahiro**
Kisarazu-shi
Chiba 292-0818 (JP)
- **YAMAGUCHI, Yoshihiro**
Kisarazu-shi
Chiba 292-0818 (JP)
- **OHARA, Reiko**
Kisarazu-shi
Chiba 292-0801 (JP)
- **MASUDA, Kenichi**
Sagamihara-shi
Kanagawa 252-0131 (JP)
- **TSUKUI, Toshihiro**
Koriyama-shi
Fukushima 963-0196 (JP)

(72) Inventors:

- **OHARA, Osamu**
Kisarazu-shi
Chiba 292-0818 (JP)

(74) Representative: **Denison, Christopher Marcus et al**

Mewburn Ellis LLP
City Tower
40 Basinghall Street
London EC2V 5DE (GB)

(54) **ANTI-DOG IGE MONOCLONAL ANTIBODY, AND LIGHT-CHAIN VARIABLE REGION AND HEAVY-CHAIN VARIABLE REGION OF ANTI-DOG IGE MONOCLONAL ANTIBODY**

(57) Problem to be Solved: The present invention is intended to provide a polynucleotide encoding the light-chain variable region and the heavy-chain variable region of an anti-dog IgE antibody; and an anti-dog IgE antibody containing these variable regions.

Solution: The present invention is DNA encoding a heavy-chain variable region consisting of the amino acid

sequence represented by SEQ ID NO: 2 or 6 and DNA encoding a light-chain variable region consisting of the amino acid sequence represented by SEQ ID NO: 4 or 8, and an anti-dog IgE monoclonal antibody which binds to dog IgE, containing these variable regions or a functional fragment thereof which binds to dog IgE.

EP 2 977 387 A1

Description

Technical Field

5 **[0001]** The present invention relates to a heavy-chain variable region or a light-chain variable region of an antibody specifically binding to dog IgE and polynucleotides encoding these regions. The present invention further relates to a monoclonal antibody containing the heavy-chain variable region and the light-chain variable region.

Background Art

10 **[0002]** IgE is responsible for allergy, particularly type I allergy. In recent years, allergic diseases have increased in dogs raised as pet animals, like humans.

[0003] Probable methods for treating type I allergy include the use of a compound which binds to IgE in serum and suppressing the binding of IgE to mast cells, and examples thereof suggested include the use of an antibody which
15 binds to the Fc region of IgE (see Patent Literature 1).

Citation List

Patent Literature

20 **[0004]** Patent Literature 1: JP Patent Publication (Kokai) No. 2006-151880

Summary of Invention

25 Technical Problem

[0005] An object of the present invention is to provide a heavy-chain variable region or a light-chain variable region of an anti-dog IgE antibody and polynucleotides encoding these regions. Another object of the present invention is to provide an anti-dog IgE antibody containing these variable regions.
30

Solution to Problem

[0006] The present inventors have conducted intensive studies on a method for preparing a dog IgE monoclonal antibody, and obtained a hybridoma producing a monoclonal antibody recognizing and binding to dog IgE. In addition,
35 the inventors have cloned DNA encoding a heavy-chain variable region of an anti-dog IgE antibody and DNA encoding a light-chain variable region thereof from the hybridoma. Then, the inventors have succeeded in linking the cloned DNA encoding a heavy-chain variable region and the cloned DNA encoding a light-chain variable region to DNA encoding a heavy-chain constant region and DNA encoding a light-chain constant region, respectively, inserting the resultant into a vector, transforming a host cell or a host insect therewith, and producing a recombinant anti-dog IgE antibody, thereby
40 accomplishing the present invention.

[0007] Thus, the present invention is as follows.

[1] An anti-dog IgE monoclonal antibody which binds to dog IgE, comprising a heavy-chain variable region consisting of the amino acid sequence represented by SEQ ID NO: 2 and a light-chain variable region consisting of the amino acid sequence represented by SEQ ID NO: 4, or a functional fragment thereof which binds to dog IgE.
45

[2] An anti-dog IgE monoclonal antibody which binds to dog IgE, comprising a heavy-chain variable region consisting of the amino acid sequence represented by SEQ ID NO: 6 and a light-chain variable region consisting of the amino acid sequence represented by SEQ ID NO: 8, or a functional fragment thereof which binds to dog IgE.

[3] The anti-dog IgE monoclonal antibody which binds to dog IgE or a functional fragment thereof which binds to dog IgE according to [1] or [2], wherein the class of the antibody is IgG, IgA, IgE, or IgM.
50

[4] The anti-dog IgE monoclonal antibody which binds to dog IgE or a functional fragment thereof which binds to dog IgE according to [3], wherein the subclass of the antibody is IgG1, IgG2, IgG3, or IgG4.

[5] The anti-dog IgE monoclonal antibody which binds to dog IgE or a functional fragment thereof which binds to dog IgE according to any one of [1] to [4], wherein the functional fragment is a peptide fragment selected from the group consisting of Fab, Fab', F(ab')₂, disulfide-stabilized Fv (dsFv), dimerized V region (diabody), single chain Fv (scFv), and CDR.
55

[6] A polypeptide which is a heavy-chain variable region of an anti-dog IgE antibody, consisting of the amino acid sequence represented by SEQ ID NO: 2 or 6.

[7] A polypeptide which is a light-chain variable region of an anti-dog IgE antibody, consisting of the amino acid sequence represented by SEQ ID NO: 4 or 8.

[8] A polynucleotide encoding a heavy-chain variable region of an anti-dog IgE antibody, consisting of the DNA sequence represented by SEQ ID NO: 1 or 5.

5 [9] A polynucleotide encoding a light-chain variable region of an anti-dog IgE antibody, consisting of the DNA sequence represented by SEQ ID NO: 3 or 7.

[10] A vector comprising the polynucleotide according to [8], the polynucleotide according to [9], or the polynucleotide according to [8], and the polynucleotide according to [9].

[11] A cell comprising the vector according to [10].

10 [12] A silkworm comprising the vector according to [10].

[13] A method for producing an anti-dog IgE antibody, comprising: linking DNA encoding a heavy-chain variable region of an anti-dog IgE antibody, consisting of the DNA sequence represented by SEQ ID NO: 1 to DNA encoding a heavy-chain constant region of the antibody; linking DNA encoding a light-chain variable region of an anti-dog IgE antibody, consisting of the DNA sequence represented by SEQ ID NO: 3 to DNA encoding a light-chain constant region of the antibody; inserting the resultant DNA constructs into an expression vector, transforming a host cell or a host animal with the vector, and producing an antibody using the host cell or the host animal.

15 [14] A method for producing an anti-dog IgE antibody, comprising: linking DNA encoding a heavy-chain variable region of an anti-dog IgE antibody, consisting of the DNA sequence represented by SEQ ID NO: 5 to DNA encoding a heavy-chain constant region of the antibody; linking DNA encoding a light-chain variable region of an anti-dog IgE antibody, consisting of the DNA sequence represented by SEQ ID NO: 7 to DNA encoding a light-chain constant region of the antibody; inserting the resultant DNA constructs into an expression vector, transforming a host cell or a host animal with the vector, and producing an antibody using the host cell or the host animal.

20 [15] The method according to [14], wherein the DNA encoding a heavy-chain constant region of the antibody consists of the DNA sequence represented by SEQ ID NO: 9 and the DNA encoding a light-chain constant region of the antibody consists of the DNA sequence represented by SEQ ID NO: 11.

[16] The method for producing an anti-dog IgE antibody according to [13] or [14], wherein the host animal is a silkworm.

[17] A reagent for detecting a dog allergic disease, comprising the anti-dog IgE monoclonal antibody which binds to dog IgE or a functional fragment thereof which binds to dog IgE according to any one of [1] to [5].

25 [18] A method for detecting a dog allergic disease, comprising measuring IgE antibody in the blood, serum, or plasma collected from a dog using the anti-dog IgE monoclonal antibody which binds to dog IgE or a functional fragment thereof which binds to dog IgE according to any one of [1] to [5].

[19] A reagent for detecting a dog allergic disease, comprising the polypeptide according to [6] or [7].

30 [20] A method for detecting a dog allergic disease, comprising measuring IgE antibody in the blood, serum, or plasma collected from a dog using the polypeptide according to [6] or [7].

35 **[0008]** The present specification encompasses the contents of the specification and/or drawings of Japanese Patent Application No. 2013-057015 on which the priority of the present application is based.

Advantageous Effects of Invention

40 **[0009]** The monoclonal antibody comprising a heavy-chain variable region and a light-chain variable region of an anti-dog IgE antibody according to the present invention can bind with high affinity to dog IgE and can be suitably used, for example, for treating a dog allergic disease. The polynucleotide encoding the heavy-chain variable region and the polynucleotide encoding light-chain variable region according to the present invention can be used to efficiently and repeatedly prepare an anti-dog IgE monoclonal antibody.

Brief Description of Drawings

[0010]

50 [Figure 1] Figure 1 is a diagram showing the schematic of cloning of the heavy-chain and light-chain variable regions of monoclonal antibodies (mouse-derived H5 and rat-derived X1).

[Figure 2] Figure 2 is a series of diagrams showing the schematic of linkage of heavy chain H5_VR and heavy chain X1_VR to the rat IgG2b constant region.

55 [Figure 3] Figure 3 is a series of diagrams showing the schematic of linkage of light chain H5_VR and light chain X1_VR to the rat Ig κ constant region (CR).

[Figure 4] Figure 4 is a diagram showing a structure of an antibody produced using FreeStyle 293F cells.

[Figure 5] Figure 5 is a photograph showing the results of Western blot analysis of antibody production using an

anti-HisTag antibody for the antibody produced using FreeStyle 293F cells.

[Figure 6] Figure 6 is a photograph showing the results of concentration (expression level) prediction by dot blot using an anti-HisTag antibody for the antibody produced using FreeStyle 293F cells.

[Figure 7] Figure 7 is a photograph showing the results of confirmation of the reactivity of a produced antibody to dog, mouse, and human IgE proteins by dot blot for the antibody produced using FreeStyle 293F cells.

[Figure 8] Figure 8 is a diagram showing a structure of BM030 vector used for the expression of a recombinant type anti-dog IgE antibody in a silkworm.

[Figure 9] Figure 9 is a pair of diagrams showing structures of DNAs used for cloning a recombinant type anti-dog IgE antibody into pBM030 vector.

[Figure 10] Figure 10 is a pair of photographs showing the expression level of a recombinant type anti-dog IgE antibody in the BmN cell supernatant and the silkworm body fluid.

[Figure 11] Figure 11 is a pair of photographs showing the results of Western blot analysis of the amount of antibodies contained in the silkworm body fluid for H5ratCR-His and X1ratCR-His.

[Figure 12] Figure 12 is a drawing showing the results of ELISA measurement of a recombinant type anti-dog IgE antibody in a BmN cell supernatant and a silkworm body fluid.

[Figure 13] Figure 13 is a graph showing the reactivity of an anti-IgE antibody expressed in the silkworm body fluid to dog IgE.

[Figure 14] Figure 14 is a photograph showing the results of silver staining of an anti-dog IgE recombinant antibody purified from the silkworm body fluid.

[Figure 15] Figure 15 is a graph showing the results of the reactivity test of an anti-dog IgE recombinant antibody purified from a silkworm body fluid by an ELISA method.

[Figure 16] Figure 16 is a photograph showing the results of silver staining of an anti-dog IgE recombinant antibody purified from a silkworm body fluid.

[Figure 17-1] Figure 17-1 is a graph showing the results of the reactivity test of an anti-dog IgE recombinant antibody purified from a silkworm body fluid by an ELISA method, and shows the results of examining the silkworm body fluid, the HisTag eluate, and the ion-exchanged antibody (dilution 5-fold to 50-fold).

[Figure 17-2] Figure 17-2 is a graph showing the results of the reactivity test of an anti-dog IgE recombinant antibody purified from a silkworm body fluid by an ELISA method, and shows the results of examining a ion-exchanged purified product by further proceeding with the dilution (20- to 1,000-fold dilution).

[Figure 18] Figure 18 is a graph showing the influence of freezing and thawing on the reactivity of an anti-dog IgE recombinant antibody.

[Figure 19] Figure 19 is a list showing the sequences of primers.

Description of Embodiments

[0011] The present invention will be described below in detail.

[0012] The present invention is a heavy-chain variable region or a light-chain variable region of an anti-dog IgE antibody which specifically binds to animal IgE, and polynucleotides encoding the variable regions. In addition, the present invention is an anti-dog IgE monoclonal antibody comprising the heavy-chain variable region and the light-chain variable region, which specifically binds to animal IgE. The anti-dog IgE antibody of the present invention can recognize and bind to dog IgE and the IgE of other mammals such as mice. The antibody of the present invention encompasses a functional fragment of the antibody or a modified product thereof. For example, the functional fragment of the antibody is a fragment of the antibody, which specifically binds to the antigen. Examples of the functional fragment include Fab, F(ab')₂, Fv, Fab/c having one Fab and complete Fc, and single-chain Fv (scFv) in which an H chain or an L chain is linked through a suitable linker. The polynucleotide encompasses DNA and RNA.

[0013] The nucleotide sequence of DNA encoding the heavy-chain variable region of the anti-dog IgE antibody of the present invention consists of the sequence represented by SEQ ID NO: 1 or 5, and the amino acid sequence of the heavy-chain variable region consists of the sequence represented by SEQ ID NO: 2 or 6. The amino acid sequence represented by SEQ ID NO: 2 is encoded by the nucleotide sequence represented by SEQ ID NO: 1, and the amino acid sequence represented by SEQ ID NO: 6 is encoded by the nucleotide sequence represented by SEQ ID NO: 5. The heavy-chain variable regions represented by SEQ ID NOS: 1 and 2 are derived from a mouse anti-dog IgE monoclonal antibody, and the heavy-chain variable regions represented by SEQ ID NOS: 5 and 6 are derived from a rat anti-dog IgE monoclonal antibody. The nucleotide sequence of DNA encoding the light-chain variable region of the anti-dog IgE antibody of the present invention consists of the sequence represented by SEQ ID NO: 3 or 7, and the amino acid sequence of the light-chain variable region consists of the sequence represented by SEQ ID NO: 4 or 8. The amino acid sequence represented by SEQ ID NO: 4 is encoded by the nucleotide sequence represented by SEQ ID NO: 3, and the amino acid sequence represented by SEQ ID NO: 8 is encoded by the nucleotide sequence represented by SEQ ID NO: 7. The light-chain variable regions represented by SEQ ID NOS: 3 and 4 are derived from a mouse anti-dog IgE

monoclonal antibody, and the light-chain variable regions represented by SEQ ID NOS: 7 and 8 are derived from a rat anti-dog IgE monoclonal antibody. In other words, the heavy-chain variable region of the present invention is a polypeptide consisting of the amino acid sequence represented by SEQ ID NO: 2 or 6, and the light-chain variable region of the present invention is a polypeptide consisting of the amino acid sequence represented by SEQ ID NO: 4 or 8.

5 **[0014]** The anti-dog IgE antibody of the present invention is an antibody comprising the above heavy-chain variable region or an antibody comprising the above light-chain variable region. Preferably, it is an antibody comprising both of the heavy-chain variable region and the light-chain variable region or a functional fragment thereof. The anti-dog IgE antibody of the present invention is, for example, an antibody comprising a heavy-chain variable region consisting of the amino acid sequence represented by SEQ ID NO: 2 and a light-chain variable region consisting of the amino acid sequence represented by SEQ ID NO: 4, or an antibody comprising a heavy-chain variable region consisting of the amino acid sequence represented by SEQ ID NO: 6 and a light-chain variable region consisting of the amino acid sequence represented by SEQ ID NO: 8.

10 **[0015]** The heavy-chain variable region and the light-chain variable region according to the present invention are polypeptides contained in the antigen recognition site of an antibody recognizing and binding to dog IgE or a fragment of the antibody.

15 **[0016]** The heavy-chain variable region or the light-chain variable region of the anti-dog IgE antibody which specifically binds to animal IgE according to the present invention can be obtained by using dog IgE as an immunogen, acquiring an anti-IgE antibody-producing hybridoma by a well-known method using mouse or rat cells, isolating DNA encoding a heavy-chain variable region or DNA encoding a light-chain variable region from the hybridoma, and expressing the DNA.

20 **[0017]** The anti-dog IgE monoclonal antibody which specifically binds to animal IgE, comprising the heavy-chain variable region and the light-chain variable region is composed of the heavy-chain variable region and the heavy-chain constant region and the light-chain variable region and the light-chain constant region. The heavy-chain constant region is composed of 3 domains, i.e., C_H1, C_H2, and C_H3. The heavy-chain constant region may be the constant region of IgG1, IgG2, IgG3, IgG4, IgA, IgM, or IgD; however, the most preferred is the constant region of IgG1 or IgG4. The light-chain constant region is composed of one domain, i.e., C_L. The light-chain constant region is a κ or λ constant region.

25 **[0018]** The DNA encoding an antibody can be obtained as DNA encoding a heavy chain and DNA encoding a light chain by linking DNA encoding a heavy-chain variable region to DNA encoding a heavy-chain constant region and further linking DNA encoding a light-chain variable region to DNA encoding a light-chain constant region. The organism species from which the variable region is derived may be different from the animal species from which the constant region is derived; the anti-dog IgE antibody of the present invention includes a chimeric antibody in which the organism species from which the variable region is derived is different from the organism species from which the constant region is derived. For example, although the heavy-chain variable region encoded by the DNA represented by SEQ ID NO: 1 and the light-chain variable region encoded by the DNA represented by SEQ ID NO: 3 are mouse-derived, these DNAs can be linked to DNAs encoding the constant regions of a rat-derived antibody to prepare a chimeric antibody containing the mouse-derived variable regions and the rat-derived constant regions. Examples of the constant region of the rat-derived antibody include the heavy-chain constant region of IgG2b antibody, consisting of the amino acid sequence represented by SEQ ID NO: 10 and the light-chain constant region of an Ig κ chain, consisting of the amino acid sequence represented by SEQ ID NO: 12. The DNA nucleotide sequence encoding the amino acid sequence represented by SEQ ID NO: 10 is represented by SEQ ID NO: 9, and the DNA nucleotide sequence encoding the amino acid sequence represented by SEQ ID NO: 12 is represented by SEQ ID NO: 11.

30 **[0019]** The anti-dog IgE antibody further encompasses a chimeric antibody having the constant region of a human antibody.

35 **[0020]** The antibody of the present invention is, for example, a heterotetrameric protein which comprises a heavy chain in which the heavy-chain variable region consisting of the amino acid sequence represented by SEQ ID NO: 2 is linked to the heavy-chain constant region consisting of the amino acid sequence represented by SEQ ID NO: 10 and a light chain in which the light-chain variable region consisting of the amino acid sequence represented by SEQ ID NO: 4 is linked to the light-chain constant region consisting of the amino acid sequence represented by SEQ ID NO: 12, and is composed of 2 heavy chains and 2 light chains. The antibody of the present invention is also, for example, a heterotetrameric protein which comprises a heavy chain in which the heavy-chain variable region consisting of the amino acid sequence represented by SEQ ID NO: 6 is linked to the heavy-chain constant region consisting of the amino acid sequence represented by SEQ ID NO: 10 and a light chain in which the light-chain variable region consisting of the amino acid sequence represented by SEQ ID NO: 8 is linked to the light-chain constant region consisting of the amino acid sequence represented by SEQ ID NO: 12, and is composed of 2 heavy chains and 2 light chains. The nucleotide sequence of the heavy-chain variable region of mouse H5 monoclonal antibody linked to the rat IgG2b constant region is shown in SEQ ID NO: 13, and the nucleotide sequence of the heavy-chain variable region of a rat X1 monoclonal antibody linked to the rat IgG2b constant region is shown in SEQ ID NO: 15. The nucleotide sequence of the light-chain variable region of the mouse H5 monoclonal antibody linked to the rat Ig κ constant region is shown in SEQ ID NO: 14, and the nucleotide sequence of the light-chain variable region of the rat X1 monoclonal antibody linked to the rat Ig κ

constant region is shown in SEQ ID NO: 16. The sequences represented by SEQ ID NOS: 13 to 16 each comprise a sequence encoding a His-tag consisting of 6 histidine (His) residues 3' thereto.

5 [0021] The heavy-chain variable region includes not only the heavy-chain variable region consisting of the amino acid sequence represented by SEQ ID NO: 2 or 6 but also a heavy-chain variable region consisting of a protein having the activity of the heavy-chain variable region of the antibody, consisting of an amino acid sequence in which 1 or several, e.g., 1 to 10, preferably 1 to 5, more preferably 1 or 2, still more preferably 1, amino acids are deleted, substituted, or added in the amino acid sequence. The light-chain variable region includes not only the light-chain variable region consisting of the amino acid sequence represented by SEQ ID NO: 4 or 8 but also a light-chain variable region consisting of a protein having the activity of the light-chain variable region of the antibody, consisting of an amino acid sequence in which 1 or several, e.g., 1 to 10, preferably 1 to 5, more preferably 1 or 2, still more preferably 1, amino acids are deleted, substituted, or added in the amino acid sequence. The heavy-chain constant region includes not only the heavy-chain variable region consisting of the amino acid sequence represented by SEQ ID NO: 10 but also a heavy-chain constant region consisting of a protein having the activity of the heavy-chain constant region of the antibody, consisting of an amino acid sequence in which 1 or several, e.g., 1 to 10, preferably 1 to 5, more preferably 1 or 2, still more preferably 1, amino acids are deleted, substituted, or added in the amino acid sequence. The light-chain constant region includes not only the light-chain variable region consisting of the amino acid sequence represented by SEQ ID NO: 12 but also a light-chain constant region consisting of a protein having the activity of the light-chain constant region of the antibody, consisting of an amino acid sequence in which 1 or several, e.g., 1 to 10, preferably 1 to 5, more preferably 1 or 2, still more preferably 1, amino acids are deleted, substituted, or added in the amino acid sequence.

20 [0022] Examples of the amino acid sequence in which 1 or several amino acids are deleted, substituted, or added in the amino acid sequence of SEQ ID NO: 2, 6, 4, 8, 10, or 12 include an amino acid sequence having at least 85% or more sequence identity with the amino acid sequence of SEQ ID NO: 2, 6, 4, 8, 10, or 12, preferably 90% or more, more preferably 95% or more, particularly preferably 97% or more, when calculated, for example, using BLAST (Basic Local Alignment Search Tool at the National Center for Biological Information) (e.g., default, or initial parameters).

25 [0023] The protein having an amino acid sequence in which 1 or several amino acids are deleted, substituted, or added in the amino acid sequence of SEQ ID NO: 2, 6, 4, 8, 10, or 12 is substantially identical to the protein having the amino acid sequence of SEQ ID NO: 2, 6, 4, 8, 10, or 12.

30 [0024] The DNA encoding the heavy-chain variable region, the light-chain variable region, the heavy-chain constant region, or the light-chain constant region of the antibody of the present invention also includes DNA encoding a protein having the activity of the heavy-chain variable region, the light-chain variable region, the heavy-chain constant region, or the light-chain constant region of the antibody, having at least 85% or more sequence identity with the nucleotide sequence consisting of the sequence represented by SEQ ID NO: 1, 3, 5, 7, 9, or 11, preferably 90% or more, more preferably 95% or more, particularly preferably 97% or more, when calculated, for example, using BLAST (Basic Local Alignment Search Tool at the National Center for Biological Information) (e.g., default, or initial parameter).

35 [0025] The DNA encoding the heavy-chain variable region, the light-chain variable region, the heavy-chain constant region, or the light-chain constant region of the antibody according to the present invention also includes DNA encoding a protein having the activity of the heavy-chain variable region, the light-chain variable region, the heavy-chain constant region, or the light-chain constant region of the antibody, capable of being hybridized to DNA consisting of a sequence complementary to DNA consisting of the sequence represented by SEQ ID NO: 1, 3, 5, 7, 9, or 11 under the following stringent conditions. Specifically, the conditions refer to conditions enabling identification by performing hybridization at 40 68°C in the presence of 0.7 to 1.0 M NaCl using a DNA-immobilized filter, followed by washing at 68°C using an SSC solution with a 0.1 to 2 times higher concentration (an SSC solution with a 1 time concentration consists of 150 mM NaCl and 15 mM sodium citrate). Alternatively, the DNA is DNA capable of forming a hybrid by transferring the DNA to a nitrocellulose membrane by a Southern blotting method for immobilization, followed by reaction at 42°C overnight in a hybridization buffer solution [50% formamide, 4 × SSC, 50 mM HEPES (pH 7.0), 10 × Denhardt's solution, 100 μg/ml salmon sperm DNA]

45 [0026] The heavy-chain variable region or the light-chain variable region of the present invention can be produced in cells by inserting DNA encoding the heavy-chain variable region or DNA encoding the light-chain variable region into an expression vector, transforming a host cell for expression with the vector, and culturing the host cell.

50 [0027] The anti-dog IgE monoclonal antibody of the present invention can be produced by inserting DNA encoding the heavy chain and DNA encoding the light chain into an expression vector, transforming a host cell with the vector, and culturing the host cell. Here, the DNA encoding the heavy chain and the DNA encoding the light chain may be inserted into the same vector, followed by transforming a host cell with the vector, or the DNA encoding the heavy chain and the DNA encoding the light chain may be inserted into separate vectors, followed by transforming a host cell with the 2 vectors. Here, the DNAs encoding the heavy-chain variable region and the light-chain variable region may be inserted into a vector into which DNAs encoding the heavy-chain constant region and the light-chain constant region of a particular isotype are inserted in advance. The vector may contain DNA encoding a signal peptide for promoting the secretion of an antibody from a host cell, where the DNA encoding the signal peptide is linked in-frame to the DNA

encoding the antibody. After the production of the antibody, the signal peptide can be removed to provide the antibody as a mature protein.

5 [0028] Here, the DNA encoding the heavy-chain variable region, the DNA encoding the light-chain variable region, the DNA in which the DNA encoding the heavy-chain variable region is linked to the DNA encoding the heavy-chain constant region, or the DNA in which the DNA encoding the light-chain variable region is linked to the DNA encoding the light-chain constant region may be functionally linked to elements such as a promoter, an enhancer, and a polyadenylation signal. "Functionally linked" as used here refers to that these elements are linked thereto so that they can fulfill their functions.

10 [0029] The promoter and the enhancer used may be a promoter and an enhancer derived from cytomegalovirus (CMV), simian virus 40 (SV40), or adenovirus.

15 [0030] The vector for inserting a gene according to the present invention is not particularly limited provided that it can be replicated in a host, such as bacteria, yeast, or animal cells; examples thereof include plasmids and phages. The vector used for constructing the expression vector may be a well-known one. Examples thereof include Flexi (R) vector (Promega Corporation), pUC19, pTV118 N (Takara Shuzo Co., Ltd.), pUEX2 (Amersham plc), pGEX-4T, pKK233-2 (Pharmacia Corporation), and pMAM-neo (Clontech Laboratories, Inc.). When the variable region or the antibody is produced using a silkworm, pBM030, pBM034, or the like as a silkworm cloning vector may be used.

[0031] The expression vector can be introduced into a host cell by a well-known method to transform the host cell. Examples of the method include an electroporation method, a calcium phosphate precipitation method, and a DEAE-dextran transfection method.

20 [0032] The host cell may be prokaryotic cells, such as *Escherichia coli* or *Bacillus subtilis*, as well as eukaryotic cells, such as yeast or animal cells; however, eukaryotic cells are preferably used. Examples of the yeast include *Saccharomyces cerevisiae*, and examples of the animal cells include 293 cells as a human fetal kidney cell line, Chinese hamster ovary (CHO) cells, Sf 21 cells, Sf 9 cells, and TN5 cells as cells of a lepidopteran insect, such as silkworm, simian COS cells, and mouse fibroblasts. The variable region or the antibody of the present invention can also be produced using a silkworm body. The production using a silkworm body can be carried out by a well-known method.

25 [0033] The expressed or produced antibody may be purified using separation and purification methods used for common proteins. For example, the antibody can be separated and purified by properly selecting and combining chromatography, such as affinity chromatography, filter, ultrafiltration, salting-out, and dialysis (Antibodies A Laboratory Manual. Ed Harlow, David Lane, Cold Spring Harbor Laboratory, 1988). The anti-dog IgE antibody can also be produced in an affinity-tagged state and then purified by affinity chromatography using the affinity tag. Examples of the affinity tag sequence include a polyhistidine sequence consisting of 2 to 12, preferably 4 or more, more preferably 4 to 7, still more preferably 5 or 6 histidine residues. Here, the synthetic protein can be purified using nickel chelate column chromatography using nickel as a ligand. It can also be purified by affinity chromatography using a column on which an antibody to the polyhistidine is immobilized as a ligand. In addition, HAT-tag, HN-tag, or the like consisting of a histidine-containing sequence can also be used. Further, other affinity tags include, for example, V5-tag, Xpress-tag, AU1-tag, T7-tag, VSV-G-tag, DDDDK-tag, S-tag, CruzTag09, CruzTag22, CruzTag41, Glu-Glu-tag, Ha.11-tag, and KT3-tag. The present invention encompasses anti-dog IgE antibodies to which these tags bind.

30 [0034] The anti-dog IgE antibody which specifically binds to animal IgE and a functional fragment thereof which binds to dog IgE according to the present invention recognize and bind to dog IgE. The antibody comprising the heavy-chain variable region consisting of the amino acid sequence represented by SEQ ID NO: 6 and the light-chain variable region consisting of the amino acid sequence represented by SEQ ID NO: 8 and a functional fragment thereof which binds to dog IgE recognize and bind to dog IgE and mouse IgE.

35 [0035] The anti-dog IgE antibody or a functional fragment thereof which binds to dog IgE according to the present invention can be used as an agent for treating an allergic disease in dogs and other animals. The allergic disease is an IgE-mediated type I allergic disease, and examples of the IgE-mediated allergic disease include atopic dermatitis, pollinosis, food allergy, allergic rhinitis, asthma, allergic conjunctivitis, mite allergic disease, urticaria, anaphylactic shock, and PIE (pulmonary infiltration with eosinophilia) syndrome. The anti-IgE antibody which specifically binds to animal IgE can prevent or treat an IgE-mediated allergic disease in the animal by preventing IgE from binding to mast cells or basophils.

40 [0036] The anti-dog IgE antibody or a functional fragment thereof which binds to dog IgE according to the present invention can also be used as a DNA vaccine for preventing or treating an allergic disease.

45 [0037] The prevention or treatment agent of the present invention may be in the form of sterile, aqueous or nonaqueous solutions, suspensions, or emulsions. In addition, the agent may contain a pharmaceutically acceptable diluent, such as salt, buffer, or adjuvant, an auxiliary agent, a carrier, and the like. The prevention or treatment agent can be administered through routes, such as oral, nasal, transmucosal, intramuscular or subcutaneous, intranasal, intratracheal, dermal, transdermal, and intradermal routes.

50 [0038] The dose of the prevention or treatment agent of the present invention can vary depending on the animal species receiving administration; however, the dose is a few tens of ng to a few mg per administration. The agent may

be administered in single dose, or may be administered on several occasions at 2-day to 8-week intervals.

[0039] In addition, the anti-dog IgE antibody of the present invention can be used for detecting an allergic disease in dogs and the like. The present invention encompasses a detection reagent for detecting an allergic disease, comprising the anti-dog IgE antibody of the present invention, or the heavy-chain variable region or the light-chain variable region thereof. For example, an allergic disease can be detected by collecting a blood, serum, or plasma sample from a dog and detecting IgE antibody in the sample.

[0040] The antibody comprising the heavy-chain variable region consisting of the amino acid sequence represented by SEQ ID NO: 6 derived from rat X1 antibody and the light-chain variable region consisting of the amino acid sequence represented by SEQ ID NO: 8 binds to not only dog IgE but also mouse IgE. Thus, in taking preclinical data on a treatment agent for dogs, the immune reaction in dogs can be known by examining the immune reaction in mice using the antibody, enabling the development of a treatment agent for dogs without using dogs as test subjects.

Examples

[0041] The present invention is described below in detail, based on Examples. However, the present invention is not intended to be limited by these Examples.

[Example 1] Preparation of Recombinant-type Anti-dog IgE Antibody (H5 (CCH3-5), X1)

[0042]

1. Cloning of Heavy-chain/Light-chain Variable Region of Monoclonal Antibody (Mouse-derived H5 and Rat-derived X1)

1) Total RNAs were extracted from hybridoma cells secreting H5 (CCH3-5) and X1 monoclonal antibodies as anti-dog IgE monoclonal antibodies (H5 cell RNA: 115 ng/ μ L, X1 cell RNA: 225 ng/ μ L).

2) 5'-RACE-Ready cDNAs were synthesized using SMARTer(TM) RACE cDNA Amplification Kit (Cat. No. 634293) from Clontech Laboratories, Inc. As templates, H5 monoclonal antibody-producing hybridoma RNA and X1 monoclonal antibody-producing hybridoma RNA were used in amounts of 316 ng and 618 ng, respectively; reaction was carried out as prescribed in the manual. After synthesis, the resultants were each diluted by adding 100 μ L of TE, and preserved at -30°C.

3) It is known that the H5 monoclonal antibody is an antibody molecule consisting of a combination of mouse IgG1 and κ with the X1 monoclonal antibody being an antibody molecule consisting of a combination of rat IgG2b and κ ; thus, a reverse primer specific for each constant region (hereinafter, abbreviated as CR) was designed. Using this and Universal Primer (contained in the kit, hereinafter abbreviated as UPM) for a consensus sequence present at the 5' terminal of 5'-RACE-Ready cDNA, PCR reaction was carried out to increase the variable region (hereinafter, abbreviated as VR).

Figure 1 shows the schematic of a method for cloning the heavy-chain and light-chain variable regions of monoclonal antibodies (mouse-derived H5 and rat-derived X1).

The following primers were used.

UPM

Long 5'-CTAATACGACTCACTATAGGGCAAGCAGTGGTATCAACGCAGAGT-3' (SEQ ID NO: 17)

Short 5'-CTAATACGACTCACTATAGGGC-3' (SEQ ID NO: 18)

D2: Cgamma1 (common to IgG1 and 2b in mice and rats)

5'-AGGGAAATARCCCTTGACCAG-3' (SEQ ID NO: 19)

D2: CkapPa1 (IGKC1 and 2 in mice and rats contains only an internal 1-2 nucleotide mismatch)

5'-GCACCTCCAGATGTAACTG-3' (SEQ ID NO: 20)

4) Expected sizes of PCR products were electrophoretically obtained for both of the H5 monoclonal antibody and the X1 monoclonal antibody; thus, each cDNA fragment was excised and purified using Wizard SV Gel and PCR Clean-up System (#A9282) from Promega Corporation.

5) The purified fragments were each cloned into pTA2 vector using Target Clone(TM)-Plus- (No. TAK-201) from Toyobo Co., Ltd.

6) The fragments cloned in 5) were each subjected to sequence analysis, and the resultant sequence was searched using IMGT/V-QUEST (http://www.imgt.org/IMGT_vquest) from IMGT (Immuno Gene Tics). The results are shown in Table 1. H5_HVR denotes the heavy-chain variable region of mouse-derived H5 monoclonal antibody; H5_KVR, the light-chain (κ chain) variable region of mouse-derived H5 monoclonal antibody; X1_HVR, the heavy-chain variable region of rat-derived X1 monoclonal antibody; and X1_KVR, the light-chain (κ chain) variable region of rat-derived X1 monoclonal antibody. The nucleotide sequence for the heavy-chain variable region of mouse-derived H5 monoclonal antibody is shown in SEQ ID NO: 1, and the amino acid sequence thereof is shown in SEQ ID NO: 2. The nucleotide sequence for the light-chain (κ chain) variable region of mouse-derived H5 monoclonal antibody is shown

EP 2 977 387 A1

in SEQ ID NO: 3, and the amino acid sequence thereof is shown in SEQ ID NO: 4. The nucleotide sequence for the heavy-chain variable region of rat-derived X1 monoclonal antibody is shown in SEQ ID NO: 5, and the amino acid sequence thereof is shown in SEQ ID NO: 6. In addition, the nucleotide sequence for the light-chain (κ chain) variable region of rat-derived X1 monoclonal antibody is shown in SEQ ID NO: 7, and the amino acid sequence thereof is shown in SEQ ID NO: 8.

[Table 1]

Species	Clone	Functionality (Functionality)	V-GENE and Allele
Mouse	IGH_H5(H5_HVR)	Productive	Musmus IGHV1S135*01
Mouse	IGK_H5(H5_KVR)	Productive	Musmus IGKV1-110*01
Rat	IGH_X1(X1_HVR)	Productive	IGHV8S11*01
Rat	IGK_X1(X1_KVR)	Productive	IGKV1S14*01

2. Linkage of Each of Heavy-chain H5_VR (Variable Region) and Heavy-chain X1_VR (Variable Region) to Rat IgG2b Constant Region (Hereinafter, Abbreviated as CR)

Figure 2 shows the schematic of a method for linking each of heavy-chain H5_VR and heavy-chain X1_VR to the rat IgG2b constant region.

1) Using the above-described 5'-RACE-Ready cDNA synthesized from X1 monoclonal antibody RNA as a template, CR of the X1 heavy chain was amplified such that the CR overlapped with the CR portion contained in VR region cloning. Primers were designed with reference to the rat CR sequence, which is known (The sequence of the primers is shown in Figure 19. The amplified cDNA fragment was purified as described above, cloned in pTA2 vector, and then subjected to sequence analysis to confirm that the sequence is the known rat IgG 2b sequence (X1 HCR clone) (Figure 2A).

2) cDNA fragments were amplified from an X1 VR clone and an X1 CR clone using primers 3 and 4 and primers 1 and 5, respectively, followed by purification; a mixture thereof was further subjected to PCR reaction using primers 3 and 5 as templates to provide a full-length rat X1 IHC fragment (Figure 2B).

3) For cloning into an expression vector and expression confirmation analysis, a fragment obtained by adding the SgfI site 5' to the IHC fragment and His Tag 3' thereto was amplified using primers 6 and 7 (Figure 2C).

4) From a H5 VR clone, a H5 HVR cDNA fragment in which a rat CR sequence is added to the VR region using primers 8 and 9 was obtained. A rat IgG2b CR fragment was also obtained from the full-length X1 IHC fragment obtained in 2) using primers 10 and 5 (Figure 2D).

5) A mixture of the mouse H5 HVR cDNA fragment and the rat IgG2b CR cDNA fragment obtained in 4) was used as a template to subject a recombinant IHC fragment of mouse H5 HVR-rat IgG2b CR to PCR amplification using primers 8 and 5 (Figure 2E).

6) A fragment obtained by adding the SgfI site 5' to the fragment and His Tag 3' thereto was amplified using primers 11 and 7 as in 3) (Figure 2F).

7) As a vector into which the fragment is to be incorporated, pF4A CMV Flexi Vector (Promega Corporation, #C8481) was digested with SgfI/PmeI and purified (the resultant vector enables the insertion of the PCR fragment into the SgfI/blunt end, and TOYOBO KOD Plus-ver. 2 (#KOD-211, no addition of -A) was used for a series of PCR reactions, enabling the insertion into the SgfI/blunt end).

8) The cDNA fragments obtained in 3) and 6) were each digested with sgfI enzyme, ligated to the vector provided in 7), and transformed into One Shot Max Efficiency DH10B T1 Phage Resistant Competent Cell (Life Technologies, #12331-013).

9) A clone positive in colony PCR was screened, and after plasmid purification, sequence confirmation was carried out by sequence analysis. The nucleotide sequence for the heavy-chain variable region of the mouse H5 monoclonal antibody linked to the rat IgG2b constant region is shown in SEQ ID NO: 13, and the nucleotide sequence for the heavy-chain variable region of the rat X1 monoclonal antibody linked to the rat IgG2b constant region is shown in SEQ ID NO: 15. The nucleotide sequence for the rat IgG2b constant region is shown in SEQ ID NO: 9, and the amino acid sequence thereof is shown in SEQ ID NO: 10.

3. Linkage of Each of Light-chain H5_VR (Variable Region) and Light-chain X1_VR (Variable Region) to Rat Ig κ Constant Region (CR)

Figure 3 shows the schematic of a method for linking each of Light-chain H5_VR and Light-chain X1_VR to the rat Ig κ constant region (CR).

1) The 5'-RACE-Ready cDNA synthesized from X1 RNA was used as a template like the heavy-chain to subject the X1 light-chain CR cDNA fragment to PCR amplification using primers 12 and 13, and the cDNA fragment was purified, cloned into pTA2 vector, and subjected to sequence analysis as in 2. above to confirm that the sequence is the known rat Ig κ sequence (X1 KCR clone) (Figure 3A).

2) From H5 KVR clone and X1 KVR clone, H5 KVR cDNA and 1 KVR cDNA fragments in each of which the rat KCR sequence was added to the VR region were obtained using primers 14 and 15 and primers 16 and 17, respectively. From the X1 KCR clone obtained in 1), a rat IgK CR fragment was obtained using primers 18 and 19 (Figure 3B).

3) The H5 KVR cDNA and X1 KVR cDNA fragments obtained in 2) were each mixed with a rat IgK CR cDNA fragment, and these mixtures were used as templates to perform PCR reaction using primers 14 and 19 and primers 16 and 19 to amplify a recombinant IKC of mouse H5 KVR-rat IgK CR and a full-length rat X1 IKC (Figure 3C).

4) Like the heavy chain, the sgf I site and His Tag were added 5' and 3', respectively to mouse H5 recombinant IKC and a full-length rat X1 IKC using primers 20 and 21 and primers 22 and 21 (Figure 3D).

5) Hereinafter, like the heavy chain, SgfI digestion, ligation, transformation, and sequence analysis were carried out to provide the clones. The nucleotide sequence for the light-chain variable region of the mouse H5 monoclonal antibody linked to the rat Ig κ constant region is shown in SEQ ID NO: 14, and the nucleotide sequence for the light-chain variable region of the rat X1 monoclonal antibody linked to the rat Ig κ constant region is shown in SEQ ID NO: 16. The nucleotide sequence for the rat Ig κ constant region is shown in SEQ ID NO: 11, and the amino acid sequence thereof is shown in SEQ ID NO: 12.

4. Expression and analysis in FreeStyle 293F Cell

1) Plasmids for the mouse H5_HVR-rat IgG2b_CR, the mouse H5_KVR-rat IgKCR, the rat X1_IHC, and the rat X1_IKC were each purified and adjusted to 1 $\mu\text{g}/\mu\text{L}$.

2) Using FreeStyle 293 Expression System (Life Technologies), the recombinant H5 monoclonal antibody and X1 monoclonal antibody were each expressed and secreted in 3 mL of the culture system, and 2 days after transfection, the culture supernatant was recovered. The samples used are shown in Table 2. In Table 2, H5_ratCR as a sample name indicates the variable region of the mouse H5 monoclonal antibody linked to the constant region of the rat antibody; H5_HC as a plasmid name indicates the heavy-chain variable region of the mouse H5 monoclonal antibody linked to the rat IgG2b constant region; and H5_KC indicates the light-chain variable region of the mouse H5 monoclonal antibody linked to the rat Ig κ constant region. X1_ratCR as a sample name indicates the variable region of the rat X1 monoclonal antibody linked to the constant region of the rat antibody, and X1_HC as a plasmid name indicates the heavy-chain variable region of the rat X1 monoclonal antibody linked to the rat IgG2b constant region, and X1_KC indicates the light-chain variable region of the rat X1 monoclonal antibody linked to the rat Ig κ constant region. The antibody represented by H5_ratCR is an antibody having the variable region of the mouse H5 monoclonal antibody and the constant region of the rat antibody, and the antibody represented by X1_ratCR is an antibody having the variable region of the rat X1 monoclonal antibody and the constant region of the rat antibody.

[Table 2]

Sample Name	Plasmid Name	Vector	Tag	Transfection (1 $\mu\text{g}/\mu\text{L}$ Plasmid)
H5_ratCR	H5_HC	pF4A	His	1.6 μL
	H5_KC	pF4A	His	1.4 μL
X1_ratCR	X1_HC	pF4A	His	1.6 μL
	X1_KC	pF4A	His	1.4 μL

3) The secreted antibody was subjected to characterization. The characterization was performed for concentration prediction by Western blot analysis using an anti-HisTag antibody and dot-blotting using the anti-HisTag antibody and on reactivity to dog, mouse and human IgE proteins using dot-blotting.

[0043] The structure of the produced antibody is shown in Figure 4 (the circle indicates sugar modification).

[0044] The results of Western blot analysis of antibody production using an anti-HisTag antibody are shown in Figure 5. The results of concentration (expression level) prediction by dot-blotting using an anti-HisTag antibody are shown in Figure 6. The results of confirmation of reactivity of the produced antibody to dog, mouse and human IgE proteins using dot-blotting are shown in Figure 7. The left panel in Figure 7 shows the results of amplifying the signal. The amount of the antibody produced was lower for the antibody having the variable region of H5 than for the antibody having the variable region of X1, and 0.04 $\mu\text{g}/\text{mL}$ for the antibody having the variable region of H5 and 0.2 $\mu\text{g}/\text{mL}$ for the antibody having the variable region of X1 when converted using the control protein as an index. However, reactivity to dog IgE antigen was observed only for the antibody having the variable region of H5.

[Example 2] Expression of Recombinant-type Dog IgE Antibody (H5 (CCH3-5), X1) in Silkworm

[0045]

5 1. Cloning of Recombinant-type Anti-dog IgE Antibody into pBM030 Vector

1) For expression in a silkworm, the recombinant-type anti-dog IgE antibody was cloned into pBM030 vector. In order to introduce each of H5 HVR-rat IgG2b CR, X1 HVR-rat IgG2b CR, H5 KVR-rat IgK CR, and X1 KVR-rat IgK CR between the EcoRI and XbaI recognition sites of the vector, the DNA fragments were each amplified using primers containing the recognition sequence for EcoRI or XbaI (combination of 23/24, 25/24, 26/24, or 27/24), excised with EcoRI and XbaI, phoresed on an agarose gel, and purified using Wizard SV Gel and PCR Clean-up System (#A9282) from Promega Corporation, and used for ligation (Figure 9A). Takara PrimeSTAR with a low mutation introduction rate was used for PCR reaction. Since the pBM030 vector is as large as 11 kb or more, TaKaRa DNA Ligation Kit LONG (#6024) was used for ligation reaction, and host *Escherichia coli* HST08 Premium effective on long-chain plasmid DNA was used for transformation. The structure of the pBM030 vector used is shown in Figure 8.

2) Assuming a case where the expression and secretion of each recombinant antibody in a silkworm was poor, a recombinant antibody expression vector containing DNA coding a signal peptide of polyhedron was prepared. Using a signal peptide DNA-containing pBM030 vector (Signal) prepared by Nippon Zenyaku Co., Ltd. as the vector, the DNA fragment of the recombinant antibody from which its signal peptide was excluded was amplified between EcoRI and XbaI by PCR (primers: a combination of 28/24, 29/24, 30/24, or 31/24) for cloning (Figure 9B).

Figure 9 shows the structure of DNAs used for cloning recombinant-type anti-dog IgE antibodies into the pBM030 vector.

25 2. Comparison of Expression Level of Recombinant-type Anti-dog IgE antibody in BmN Cell Supernatant and Silkworm Body Fluid and Evaluation of Antibody Activity

1) To examine the expression level of recombinant-type anti-dog IgE H5ratCR-His antibody, a silkworm body fluid and culture supernatants of FreeStyle 293F cells and BmN cells diluted to suitable amounts were subjected to separation by SDS-PAGE, and the anti-dog IgE H5ratCR-His recombinant antibody was subjected to Western blot analysis using an anti-6x His (HRP) antibody to perform the rough quantitation of the antibody. To facilitate quantitation, phoresis in a reduced state was also carried out for the silkworm body fluid; however, since the FreeStyle cell culture supernatant is stingy and the BmN cell culture supernatant could not be detected for the band of H-chain due to contaminants, the quantitative comparison of the antibody in these solutions was performed using the intensity of the signal of the native-type antibody in a non-reduced state. The native-type having 2 H and K chains will have 4 His tags. The H5ratCR-His antibody found in the silkworm body fluid and the BmN cell supernatant has excessively expressed K-chains; however, the rough amount of the antibody is about 20 $\mu\text{g}/\text{ml}$ for the silkworm body fluid, about 0.1 $\mu\text{g}/\text{ml}$ for the BmN cell supernatant, and about 0.02 $\mu\text{g}/\text{ml}$ for the FreeStyle supernatant, as an antibody concentration. The results of measuring the antibody expression level are shown in Figure 10.

The results of similarly analyzing the amount of the antibody contained in the silkworm body fluid for H5ratCR-His and X1ratCR-His by Western blotting are shown in Figure 11. As shown in Figure 11, H5ratCR-His and X1ratCR-His were expressed in a comparable level. Expression could not be confirmed in the BmN cell culture supernatant for H5ratCR-His and X1ratCR-His with the signal peptides of polyhedrin.

2) To evaluate the recombinant antibody activity against dog IgE, suitable amounts of the silkworm body fluid and the FreeStyle 293F cell and BmN cell culture supernatants serially diluted were used to perform an ELISA experiment for H5ratCR-His and X1ratCR-His against dog IgE. As control, another ELISA experiment was simultaneously performed using a goat anti-dog IgE antibody from Bethyl Laboratories, Inc., serially diluted. The results are shown in Figure 12. As shown in Figure 12, with H5ratCR-His, comparable color development was observed at 2,000-fold dilution for the silkworm body fluid, at 2-fold dilution for the FreeStyle culture supernatant, and at 20-fold dilution for the BmN cell supernatant. X1ratCR-His was observed to result in color development only for the silkworm body fluid at 2-fold dilution and was 100 times or more weaker in activity than H5ratCR-His. The recombinant antibody was analyzed using anti-6X His (HRP) with the anti-dog IgE antibody activity analyzed using anti-goat IgG (HRP), not enabling direct comparison; however, H5ratCR-His in the silkworm body fluid diluted 200-fold, and the anti-dog IgE antibody at a concentration of 0.1 $\text{ng}/\mu\text{L}$ resulted in comparable color development, and both of them had a concentration of 0.1 $\text{ng}/\mu\text{L}$.

3) To confirm the reactivity of the anti-IgE antibody expressed in the silkworm body fluid to dog IgE, an ELISA experiment was carried out using a plate on which dog IgE from Bethyl Laboratories, Inc., serially diluted from

EP 2 977 387 A1

50 ng/well (50 μ L) to 24 pg/well was immobilized. The results are shown in Figure 13. As shown in Figure 13, H5ratCR-His exhibited reactivity depending on the antigen level; however, X1ratCR-His had a high background value in a well containing no antigen. Nonspecific adsorption due to the influence of contaminating protein was probably present for a sample of the silkworm body fluid at 2-fold dilution; however, in any case, the affinity of X1ratCR-His to dog IgE was lower than that of H5ratCR-His.

[Example 3] Purification of Anti-dog IgE Recombinant Antibody (H5_ratFc-HisTag) from Silkworm Body Fluid (1)

(1) Purification of Anti-dog IgE Recombinant Antibody Using HisTag and Ion-Exchange Column

[0046] As a pilot test for recombinant antibody purification, HisTag purification by batch adsorption of TALON resin was carried out using 1 ml of the silkworm body fluid. The silkworm body fluid was used by 10-fold dilution with PBS because of having high viscosity and reacted with 50 μ l (column volume) of TALON resin. Washing was carried out 3 times with a 10 column volume (500 μ l) of PBST, and elution was carried out 8 times using PBST containing 4 column volume (200 μ l) of 250 mM imidazole.

[0047] The elution fraction (about 1.6 ml) was pooled, and when the recovery rate was estimated by Western blotting, nearly 80% of the input was recovered. When purity was confirmed by silver staining, the antibody and contaminating proteins having lower molecular weights than that were confirmed. The contaminating proteins were confirmed at the same places by electrophoresis under reduced conditions and thus were probably not degradation products but contaminants derived from the silkworm body fluid as a material.

[0048] First, to remove these contaminating proteins, purification using Protein G agarose was studied. However, as the Fc region of the anti-dog IgE recombinant antibody, that of rat IgG2b was used, and thus its binding property to Protein G was not so high. Protein G has a high binding property to rat IgG2b compared to Protein A. However, as a result, the recombinant antibody remaining in an unbound fraction was abundantly observed, and the recovery rate of the antibody was roughly 25% of the HisTag purified product. Purification using Protein G was probably not suited to practical use in terms of the recovery rate, and there was also concern that the purification adversely affected the antibody activity because of using an acid for its elution.

[0049] From the above, the HisTag-purified recombinant antibody was further subjected to purification using an ion-exchange column to examine an improvement in purity. A HiTrap CM sepharose (1 ml) column was used for purification. Roughly 1 ml of the elution fraction obtained by HisTag purification was added to the ion-exchange column. Elution was carried out with a concentration gradient from 100 mM to 1 M NaCl using 100 mM Na-PO₄ buffer (pH 6.0). Using absorption at 280 nm as an index, a fraction containing protein was identified, and purity was confirmed by electrophoresis and silver staining. The protein solution obtained was also pooled (about 2.5 ml). In addition, it was concentrated 10-fold (250 μ l) by utilizing HisTag, and purity was confirmed by silver staining.

[0050] The results are shown in Figure 14. Figure 14 shows the results of subjecting the silkworm body fluid diluted 1,000-fold (1 μ l), the HisTag-purified product (1.2 μ l), the ion-exchange purified product (2 μ l), and the HisTag re-concentration fraction (2 μ l) to electrophoresis under non-reduced and reduced conditions, followed by silver staining. In Figure 14, the arrow indicates the recombinant antibody, and * indicates its heavy chain and light chain. As shown in Figure 14, in the concentrated sample, contaminating proteins were slightly observed in the low molecular region of around 30 kDa; however, the sample could be purified to an extent almost comparable to the antibody from Bethyl Laboratories, Inc., phoresed as a control. When the protein content was quantitated by Western blotting, roughly 25 μ g of the antibody was recovered after ion-exchange column purification from 1 ml of the silkworm body fluid (about 30 mg of protein). From this, it is estimated that purification using the remaining total amount (about 45 ml) of the silkworm body fluid supplied by Nippon Zenyaku Co., Ltd. enables the recovery of the antibody on the order of 1 mg.

(2) Activity Evaluation of Purified Anti-dog IgE Recombinant Antibody

[0051] The reactivity of the purified recombinant antibody to dog IgE was examined. A 10-fold and 20-fold diluted sample before addition to an ion-exchange column and a 2- to 20-fold serially diluted (4.8 to 0.48 μ g/ml) elution fraction from the ion-exchange column were each added in an amount of 100 μ l to 50 ng of dog IgE (Bethyl Laboratories, Inc.) or BSA bound to an ELISA plate. As a control, an anti-dog IgE antibody from Bethyl Laboratories, Inc. was added to 0.5 to 0.01 μ g/ml. Detection was carried out by 1,000-fold diluting anti-rat IgG-HRP or anti-goat IgG-HRP antibody with PBST/casein and using TMBZ as a substrate. To confirm non-specific reaction by the secondary antibody, a sample containing no primary antibody was also analyzed. The results are shown in Figure 15. Figure 15 shows the results of confirming reactivity with the recombinant antibody after adding 50 ng of dog IgE or BSA as an antigen to an ELISA plate for immobilization. As shown in Figure 15, the specific binding of the recombinant antibody to dog IgE was confirmed. The ion-exchange purified recombinant antibody was on the order of roughly 1/3 in activity in the ELISA compared to the antibody from Bethyl Laboratories, Inc. although the secondary antibody was different. When the diluted silkworm

body fluid was used, the activity in the ELISA was also on the order of 1/3 compared to that for the antibody from Bethyl Laboratories, Inc.; thus, it is probable that the risk of activity loss during purification process remains minimal. It was also confirmed that no non-specific binding of the secondary antibody was observed.

5 Conclusion

[0052] The combination of purifications with HisTag and ion-exchange column enabled the purification of the anti-dog IgE recombinant antibody (H5_ratFc-HisTag) to an extent comparable to that of the commercial antibody. From 1 ml of the silkworm body fluid, on the order of 25 μg of the antibody purified to high purity was recovered as a final product.

10 **[0053]** The antibody was also estimated to be on the order of 1/3 in activity compared to that for the antibody from Bethyl Laboratories, Inc.

[Example 4] Purification of Anti-dog IgE Recombinant Antibody (H5_ratFc-HisTag) from Silkworm Body Fluid (2)

15 (1) Purification of Anti-dog IgE Recombinant Antibody Using HisTag and Ion-Exchange Column

[0054] A large amount of the anti-dog IgE recombinant antibody from the silkworm body fluid was prepared in reference to the method by which the purification of the antibody was studied in the pilot test. The silkworm body fluid diluted 10-fold (about 500 ml) was reacted with 2.5 ml of TALON resin by batch adsorption and then poured into a polypropylene column to recover the resin. The recovered resin was washed 3 times with PBST (20 ml), and elution was performed 20 10 times with 4 ml of PBST containing 250 mM imidazole. The recovered protein was subjected to SDS-PAGE, and the band thereof was confirmed by silver staining; as a result, the majority was eluted at the first elution (Fr. 1) as in the above.

[0055] Fr. 1 in which the majority of the recombinant antibody was recovered was subjected to Western blotting, and its concentration was estimated based on the signal intensity of a control protein; as a result, the concentration was 25 estimated to be on the order of roughly 200 $\mu\text{g}/\text{ml}$ and the amount recovered was estimated to be about 800 μg per 4 ml.

[0056] The protein (Fr. 1) obtained by HisTag purification was further purified by ion-exchange chromatography using a CM-sepharose column. Purification was carried out by connecting HiTrap CM sepharose (1 ml: General Electric Company) to an AKTA prime chromatography system. Since the addition of a sample to the column was performed using a 2-ml sample loop, 1.8 ml as about half of the amount of Fr. 1 was used for one purification, and the purification 30 was carried out 2 times. The remaining about 400 μL was subjected to chilled storage for subsequent evaluation. As buffer, 100 mM Na- PO_4 buffer (pH 6.0) was used, and elution was carried out with a concentration gradient from 100 mM to 1 M NaCl. Electrophoresis was performed using absorption at 280 nm as an index, and purity was confirmed by silver staining.

[0057] The results are shown in Figure 16. Figure 16 shows the results of subjecting the silkworm body fluid diluted 35 2,000-fold (1.5 μl), the HisTag-purified product (1.5 μl), and the ion-exchange purified product (3 μl) to electrophoresis under non-reduced and reduced conditions, followed by silver staining. In Figure 16, the arrow indicates the recombinant antibody, and * indicates its heavy chain and light chain. In the concentrated sample, contaminating proteins were slightly observed in the low molecular region of around 30 kDa; however, the recombinant antibody could be purified to a purity comparable to that obtained in the pilot test (Figure 16). SDS-PAGE was performed, followed by estimating the concentration by Western blotting based on the signal intensity of the control protein; as a result, the concentration was estimated 40 to be roughly 80 $\mu\text{g}/\text{ml}$, and on the order of 560 μg was recovered as a whole (about 7 ml).

(2) Binding Evaluation of Purified Anti-dog IgE Recombinant Antibody by ELISA Assay

[0058] 50 ng of Dog IgE (Bethyl Laboratories, Inc.) or BSA was added to an ELISA plate and bound thereto at 4°C overnight. After removing the supernatant, washing was carried out one time with 200 μL of PBST, and 200 μl of PBST containing 1 \times casein (Vector laboratories, Inc.) was added, followed by blocking at 37°C for 1 hour. The resultant was washed 3 times with 200 μl of PBST, followed by adding 100 μl of the silkworm body fluid (diluted 50-fold or 100-fold), the HisTag purified product (diluted 10-fold or 20-fold), or the ion-exchange purified product (diluted 5-fold, 10-fold, 20-fold, or 50-fold). As a control, the anti-dog IgE antibody from Bethyl Laboratories, Inc. was adjusted to 0.5 μg to 10 ng/ml and added in an amount of 100 μl . After reaction at 37°C for 90 minutes, the resultant was washed 3 times with 200 μl of PBST, followed by 1,000-fold diluting an HRP-labeled anti-rat or anti-goat secondary antibody and adding 100 μl thereof. After reaction at 37°C for 90 minutes, the resultant was washed 3 times with 200 μl of PBST, followed by adding 100 μl of a citrate buffer solution using TMBZ as a substrate. After reaction at room temperature for 10 to 15 minutes, 50 μl of 2N sulfuric acid was added to stop the reaction. A SpectraMax M2 plate reader from Molecular Devices, LLC. 55 was used for measuring absorption at 450 nm.

[0059] The results are shown in Figures 17-1 and 17-2. Figure 17-1 shows the results of examining the silkworm body fluid, the HisTag eluate, and the ion-exchanged product (5- to 50-fold dilution). The reaction with TMBZ was conducted

for 15 minutes. Figure 17-2 shows the results of studying the ion-exchanged purified product by further proceeding with dilution (20- to 1,000-fold dilution). The reaction with TMBZ was conducted for 10 minutes. The prepared recombinant antibody exhibited a high binding activity even at 50-fold dilution. Thus, as a result of performing ELISA assay by further proceeding with dilution, a significant signal was confirmed even at 1,000-fold dilution. As a result of ELISA assay using a comparable amount of protein from the HisTag purified product and the ion-exchanged sample, no difference was observed in the absorption value at 450 nm; thus, activity loss during the purification process probably minimally occurred.

(3) Study on Storage Method

[0060] Effects of the freezing and thawing of the antibody solution on reactivity with the antigen were studied. The antibody solution was frozen in a small amount at -80°C overnight, thawed on the following day, diluted 20 times or 50 times, and subjected to ELISA assay using 50 ng of dog IgE or BSA. As a control, the antibody solution stored at 4°C was used. Detection was carried out using an HRP-labeled rat IgG secondary antibody and TMBZ as a substrate. Two sets of ELISA assays were performed for each dilution, and reaction with TMBZ was conducted for 10 minutes. The results are shown in Figure 18. Figure 18 shows the average value of the 2 sets of experiments. As shown in Figure 18, the reactivity of the antibody subjected one time to freezing and thawing exhibited no significant reduction compared to that of the antibody subjected to chilled storage.

Conclusion

[0061] As a result of performing purification using HisTag and ion-exchange column from about 50 ml of the silkworm body fluid, 7 ml of a 80 µg/ml antibody solution was finally prepared, and about 560 µg of the recombinant antibody could be obtained. The binding activity of the purified antibody to dog IgE was evaluated by ELISA assay; as a result, a significant signal was confirmed even when the antibody diluted about 1,000-fold was used. As a result of examining the reactivity of the antibody subjected to freezing and thawing to the antigen, freezing and thawing did not greatly damage the binding activity.

Industrial Applicability

[0062] The use of the DNAs encoding the heavy-chain variable region and the light-chain variable region of the anti-dog IgE antibody according to the present invention enables the preparation of an anti-dog IgE antibody as a complete antibody. The resultant anti-dog IgE antibody can be used, for example, for treating an allergic disease in dogs.

Sequence Listing Free Text

[0063]

SEQ ID NOS: 13 to 16 Synthesis

SEQ ID NOS: 17 to 51 Primers

All publications, patents, and patent applications cited in the present specification are intended to be incorporated herein by reference in their entirety.

EP 2 977 387 A1

SEQUENCE LISTING

5 <110> Kazusa DNA Research Institute
ANIMAL ALLERGY CLINICAL LABORATORIES INC.
NIPPON ZENYAKU KOGYO CO., LTD.

<120> An anti canine IgE monoclonal antibody, and heavy chain variable region and light chain variable region of the antibody

10 <130> PH-5810-PCT

<150> JP 2013-057015
<151> 2013-03-19

<160> 51

15 <170> PatentIn version 3.5

<210> 1
<211> 411
<212> DNA
20 <213> Mus musculus

<400> 1
atggaatgga gctggatctt tctcttcctc ctgtcaggaa ctacaggtgt ccactctgag 60
atccagctgc agcagtctgg acctgagctg gtgaagcctg gggcttcagt gaaggtttcc 120
25 tgcaaggctt ctggttactc attcactgac taccacatat actgggtgag gcagagccat 180
gaaaagagcc tagagtggat tggatatatt gatccttaca aaggtggtac tacctacaac 240
cataatttca agggcaaggc ctcaattgact gttgacaagt cctccagcac agccttcatg 300
30 catctcaaca gcctaacatc tgatgactct gcagtctatt actgtgagag agaggctggc 360
tataggtacg acaattactg gggccaaggg actctggtca ctgtctctgc a 411

35 <210> 2
<211> 137
<212> PRT
<213> Mus musculus

40 <400> 2

Met Glu Trp Ser Trp Ile Phe Leu Phe Leu Leu Ser Gly Thr Thr Gly
1 5 10 15
45 Val His Ser Glu Ile Gln Leu Gln Gln Ser Gly Pro Glu Leu Val Lys
20 25 30
50 Pro Gly Ala Ser Val Lys Val Ser Cys Lys Ala Ser Gly Tyr Ser Phe
35 40 45
55 Thr Asp Tyr His Ile Tyr Trp Val Arg Gln Ser His Glu Lys Ser Leu
50 55 60
Glu Trp Ile Gly Tyr Ile Asp Pro Tyr Lys Gly Gly Thr Thr Tyr Asn

EP 2 977 387 A1

Gly Gln Ser Pro Lys Leu Leu Ile Tyr Lys Val Ser Asn Arg Phe Ser
65 70 75 80

5 Gly Val Pro Asp Arg Phe Ser Gly Ser Gly Ser Gly Thr Asp Phe Thr
85 90 95

10 Leu Lys Ile Ser Arg Val Glu Ala Glu Asp Leu Gly Val Tyr Phe Cys
100 105 110

15 Ser Gln Ser Thr His Val Pro Trp Thr Phe Gly Gly Gly Thr Lys Leu
115 120 125

20 Glu Ile Lys
130

<210> 5
<211> 405
<212> DNA
<213> Rattus norvegicus

25 <400> 5
atggacaggc ttacttcctc attcctactg ctgattgtcc ctgcatatgt cctgtctcag 60
gttactctga aagagtctgg ccctgggata ttgcagccct cccagaccct cagtctgact 120
tgcactttct ctgggttttc actgagcact tatggtatgg gtgtgggctg gattcgtcag 180
30 ccttcaggggagggtctgga gtggctggca aacatttggg gggatgatga taagtactac 240
aatccatctc tgaaaaaccg gctcacaatc tccaaggaca cctccaacaa ccaagcattc 300
ctcaagatca ccaatgtgga cactgcagat actgccacat actactgtgc tcggccttct 360
35 gcgtgggggtt actggggcca aggagtcatg gtcacagtct cctca 405

40 <210> 6
<211> 135
<212> PRT
<213> Rattus norvegicus

45 <400> 6
Met Asp Arg Leu Thr Ser Ser Phe Leu Leu Leu Ile Val Pro Ala Tyr
1 5 10 15

50 Val Leu Ser Gln Val Thr Leu Lys Glu Ser Gly Pro Gly Ile Leu Gln
20 25 30

55 Pro Ser Gln Thr Leu Ser Leu Thr Cys Thr Phe Ser Gly Phe Ser Leu
35 40 45

Ser Thr Tyr Gly Met Gly Val Gly Trp Ile Arg Gln Pro Ser Gly Lys
50 55 60

EP 2 977 387 A1

Gly Leu Glu Trp Leu Ala Asn Ile Trp Trp Asp Asp Asp Lys Tyr Tyr
 65 70 75 80
 5 Asn Pro Ser Leu Lys Asn Arg Leu Thr Ile Ser Lys Asp Thr Ser Asn
 85 90 95
 Asn Gln Ala Phe Leu Lys Ile Thr Asn Val Asp Thr Ala Asp Thr Ala
 10 100 105 110
 Thr Tyr Tyr Cys Ala Arg Pro Ser Ala Trp Gly Tyr Trp Gly Gln Gly
 115 120 125
 15 Val Met Val Thr Val Ser Ser
 130 135
 <210> 7
 <211> 396
 <212> DNA
 <213> Rattus norvegicus
 <400> 7
 25 atgatgattc ctgccagtt cctgtctctg ctaatgctct ggatccagga agccggcgga 60
 gatgttgtga tgaccagac accaccgtct ttgtcggttg ccattggaca atcagtctcc 120
 atctcttgca agtcaagtca gagcctcgta tatagtgatg gaaagacata tttgcattgg 180
 30 ttattacaga gttctggccg gtctccgaag cgcctaactc atcaggtgtc taatctggac 240
 tctggagtcc ctgacagggt cagtggcact ggatcacaga aagattttac acttaaaatc 300
 agcagagtag aggctaagga tttgggagtt tattactgcg cgcaaactac acattttcct 360
 35 ccgacgttcg gtggaggcac caagctggaa ttgaaa 396
 <210> 8
 <211> 132
 <212> PRT
 <213> Rattus norvegicus
 <400> 8
 45 Met Met Ile Pro Ala Gln Phe Leu Ser Leu Leu Met Leu Trp Ile Gln
 1 5 10 15
 Glu Ala Gly Gly Asp Val Val Met Thr Gln Thr Pro Pro Ser Leu Ser
 20 25 30
 50 Val Ala Ile Gly Gln Ser Val Ser Ile Ser Cys Lys Ser Ser Gln Ser
 35 40 45
 55 Leu Val Tyr Ser Asp Gly Lys Thr Tyr Leu His Trp Leu Leu Gln Ser
 50 55 60

EP 2 977 387 A1

Ser Gly Arg Ser Pro Lys Arg Leu Ile Tyr Gln Val Ser Asn Leu Asp
65 70 75 80

5 Ser Gly Val Pro Asp Arg Phe Ser Gly Thr Gly Ser Gln Lys Asp Phe
85 90 95

10 Thr Leu Lys Ile Ser Arg Val Glu Ala Lys Asp Leu Gly Val Tyr Tyr
100 105 110

Cys Ala Gln Thr Thr His Phe Pro Pro Thr Phe Gly Gly Gly Thr Lys
115 120 125

15 Leu Glu Leu Lys
130

20 <210> 9
<211> 999
<212> DNA
<213> Rattus norvegicus

25 <400> 9
gccccaaacaa cagccccatc tgtctatcca ctggctcctg gatgtggtga tacaaccagc 60
tccacggtga ctctgggatg cctgggtcaag ggctatttcc ctgagccagt caccgtgacc 120
30 tggaaactctg gagccctgtc cagcgatgtg cacacctttc cagctgtcct gcagtctggg 180
ctctacactc tcaccagctc agtgacctcc agcacctggc ccagccagac cgtcacctgc 240
aacgtagccc acccggccag cagcaccaag gtggacaaga aagttgagcg cagaaatggc 300
35 ggcatggac acaaatgccc tacatgccct acatgtcaca aatgcccagt tcctgaactc 360
ttgggtggac catctgtctt catcttcccg ccaaagccca aggacatcct cttgatctcc 420
cagaacgcc aagtcacgtg tgtggtggtg gatgtgagcg aggaggagcc ggacgtccag 480
40 ttcagctggt ttgtgaacaa cgtagaagta cacacagctc agacacaacc ccgtgaggag 540
cagtacaaca gcaccttcag agtggtcagt gccctcccca tccagcacca ggactggatg 600
agcggcaagg agttcaaatg caaggtcaac aacaaagccc tccaagccc catcgagaaa 660
accatctcaa aaccctaaagg gctagtcaga aaaccacagg tatacgtcat ggggtccaccg 720
acagagcagt tgactgagca aacggtcagt ttgacctgct tgacctcagg cttcctccct 780
50 aacgacatcg gtgtggagtg gaccagcaac gggcatatag aaaagaacta caagaacacc 840
gagccagtga tggactctga cggttctttc ttcattgtaca gcaagctcaa tgtggaaagg 900
agcaggtggg atagcagagc gcccttcgtc tgctccgtgg tccacgaggg tctgcacaat 960
55 caccacgtgg agaagagcat ctcccggcct ccgggtaaa 999

EP 2 977 387 A1

<210> 10
 <211> 333
 <212> PRT
 <213> Rattus norvegicus

5

<400> 10

Ala Gln Thr Thr Ala Pro Ser Val Tyr Pro Leu Ala Pro Gly Cys Gly
 1 5 10 15

10

Asp Thr Thr Ser Ser Thr Val Thr Leu Gly Cys Leu Val Lys Gly Tyr
 20 25 30

15

Phe Pro Glu Pro Val Thr Val Thr Trp Asn Ser Gly Ala Leu Ser Ser
 35 40 45

20

Asp Val His Thr Phe Pro Ala Val Leu Gln Ser Gly Leu Tyr Thr Leu
 50 55 60

25

Thr Ser Ser Val Thr Ser Ser Thr Trp Pro Ser Gln Thr Val Thr Cys
 65 70 75 80

Asn Val Ala His Pro Ala Ser Ser Thr Lys Val Asp Lys Lys Val Glu
 85 90 95

30

Arg Arg Asn Gly Gly Ile Gly His Lys Cys Pro Thr Cys Pro Thr Cys
 100 105 110

35

His Lys Cys Pro Val Pro Glu Leu Leu Gly Gly Pro Ser Val Phe Ile
 115 120 125

Phe Pro Pro Lys Pro Lys Asp Ile Leu Leu Ile Ser Gln Asn Ala Lys
 130 135 140

40

Val Thr Cys Val Val Val Asp Val Ser Glu Glu Glu Pro Asp Val Gln
 145 150 155 160

45

Phe Ser Trp Phe Val Asn Asn Val Glu Val His Thr Ala Gln Thr Gln
 165 170 175

Pro Arg Glu Glu Gln Tyr Asn Ser Thr Phe Arg Val Val Ser Ala Leu
 180 185 190

50

Pro Ile Gln His Gln Asp Trp Met Ser Gly Lys Glu Phe Lys Cys Lys
 195 200 205

55

Val Asn Asn Lys Ala Leu Pro Ser Pro Ile Glu Lys Thr Ile Ser Lys
 210 215 220

EP 2 977 387 A1

Pro Lys Gly Leu Val Arg Lys Pro Gln Val Tyr Val Met Gly Pro Pro
 225 230 235 240

5 Thr Glu Gln Leu Thr Glu Gln Thr Val Ser Leu Thr Cys Leu Thr Ser
 245 250 255

10 Gly Phe Leu Pro Asn Asp Ile Gly Val Glu Trp Thr Ser Asn Gly His
 260 265 270

15 Ile Glu Lys Asn Tyr Lys Asn Thr Glu Pro Val Met Asp Ser Asp Gly
 275 280 285

20 Ser Phe Phe Met Tyr Ser Lys Leu Asn Val Glu Arg Ser Arg Trp Asp
 290 295 300

Ser Arg Ala Pro Phe Val Cys Ser Val Val His Glu Gly Leu His Asn
 305 310 315 320

25 His His Val Glu Lys Ser Ile Ser Arg Pro Pro Gly Lys
 325 330

<210> 11
 <211> 321
 <212> DNA
 <213> Rattus norvegicus

30 <400> 11
 cgggctgatg ctgcaccaac tgtatccatc ttcccacat ccatggaaca gttaacatct 60
 ggaggtgcca cagtcgtgtg ctctgtgaac aacttctatc ccagagacat cagtgtaag 120
 35 tggagattg atggcagtga acaacgagat ggtgtcctgg acagtgttac tgatcaggac 180
 agcaaagaca gcacgtacag catgagcagc accctctcgt tgaccaaggt tgaatatgaa 240
 aggcataacc tctatacctg tgaggttggt cataagacat catcctcacc cgtcgtcaag 300
 40 agcttcaaca ggaatgagtg t 321

<210> 12
 <211> 107
 <212> PRT
 <213> Rattus norvegicus

45 <400> 12

50 Arg Ala Asp Ala Ala Pro Thr Val Ser Ile Phe Pro Pro Ser Met Glu
 1 5 10 15

Gln Leu Thr Ser Gly Gly Ala Thr Val Val Cys Phe Val Asn Asn Phe
 20 25 30

55 Tyr Pro Arg Asp Ile Ser Val Lys Trp Lys Ile Asp Gly Ser Glu Gln

EP 2 977 387 A1

	35		40		45	
5	Arg Asp Gly Val Leu Asp Ser Val Thr Asp Gln Asp Ser Lys Asp Ser	50	55	60		
	Thr Tyr Ser Met Ser Ser Thr Leu Ser Leu Thr Lys Val Glu Tyr Glu	65	70	75	80	
10	Arg His Asn Leu Tyr Thr Cys Glu Val Val His Lys Thr Ser Ser Ser	85	90	95		
15	Pro Val Val Lys Ser Phe Asn Arg Asn Glu Cys	100	105			
20	<210> 13					
	<211> 1431					
	<212> DNA					
	<213> Artificial					
	<220>					
	<223> Synthetic					
25	<400> 13					
	atggaatgga gctggatctt tctcttcctc ctgtcaggaa ctacaggtgt ccaactctgag				60	
	atccagctgc agcagctctgg acctgagctg gtgaagcctg gggcttcagt gaagggttcc				120	
30	tgcaaggctt ctggttactc attcactgac taccacatat actgggtgag gcagagccat				180	
	gaaaagagcc tagagtggat tggatatatt gatccttaca aaggtggtac tacctacaac				240	
	cataatttca agggcaaggc ctcattgact gttgacaagt cctccagcac agccttcatg				300	
35	catctcaaca gcctaacatc tgatgactct gcagctctatt actgtgcgag agaggctggc				360	
	tataggtacg acaattactg gggccaaggg actctggtca ctgtctctgc agcccaaaca				420	
	acagcccat ctgtctatcc actggctcct ggatgtggtg atacaaccag ctccacggtg				480	
40	actctgggat gcctggtcaa gggctatttc cctgagccag tcaccgtgac ctggaactct				540	
	ggagccctgt ccagcgatgt gcacaccttt ccagctgtcc tgcagtctgg gctctacact				600	
	ctcaccagct cagtgcctc cagcacctgg cccagccaga ccgtcacctg caacgtagcc				660	
45	cacccggcca gcagaccaa ggtggacaag aaagttgagc gcagaaatgg cggcattgga				720	
	cacaaatgcc ctacatgccc tacatgtcac aaatgccag ttcctgaact cttgggtgga				780	
50	ccatctgtct tcatcttccc gccaaagccc aaggacatcc tcttgatctc ccagaacgcc				840	
	aaggtcacgt gtgtggtggt ggatgtgagc gaggaggagc cggacgtcca gttcagctgg				900	
	tttgtgaaca acgtagaagt acacacagct cagacacaac cccgtgagga gcagtacaac				960	
55	agcaccttca gagtggtcag tgccctcccc atccagcacc aggactggat gagcggcaag				1020	
	gagttcaaat gcaaggtcaa caacaaagcc ctccaagcc ccatcgagaa aaccatctca				1080	

EP 2 977 387 A1

aaacccaaag ggctagtcag aaaaccacag gtatacgtca tgggtccacc gacagagcag 1140
 ttgactgagc aaacggtcag tttgacctgc ttgacctcag gcttcctccc taacgacatc 1200
 5 ggtgtggagt ggaccagcaa cgggcatata gaaaagaact acaagaacac cgagccagtg 1260
 atggactctg acggttcttt cttcatgtac agcaagctca atgtggaaag gagcaggtgg 1320
 gatagcagag cgcccttcgt ctgctccgtg gtccacgagg gtctgcacaa tcaccacgtg 1380
 10 gagaagagca tctcccggcc tccgggtaaa catcaccatc accatcatta g 1431

<210> 14
 <211> 735
 15 <212> DNA
 <213> Artificial

<220>
 <223> Synthetic

20 <400> 14
 atgaagttgc ctgtaggct gttgggtgctg atgttctgga ttctgcttc cagcagtgat 60
 gttgtgatga cccaaactcc actctccctg cctgtcagtc ttggagatca agcctccatt 120
 25 tcttgcagat ctagtacagag ccttgtacac agtaatggaa acacctattt acattggtac 180
 ctgcagaagg caggccagtc tccaaagctc ctgatctaca aagtttccaa ccgattttct 240
 ggggtcccag acaggttcag tggcagtgga tcaggacag atttcacact caagatcagc 300
 30 agagtggagg ctgaggatct gggagtttat ttctgctctc aaagtacaca tgttccgtgg 360
 acgttcgggtg gaggcaccaa gctggaaatc aaacgggctg atgctgcacc aactgtatcc 420
 atcttcccac catccatgga acagttaaca tctggagggtg ccacagtcgt gtgcttcgtg 480
 35 aacaacttct atcccagaga catcagtgtc aagtggaaga ttgatggcag tgaacaacga 540
 gatgggtgtcc tggacagtgt tactgatcag gacagcaaag acagcacgta cagcatgagc 600
 40 agcaccctct cgttgaccaa ggttgaatat gaaaggcata acctctatac ctgtgaggtt 660
 gttcataaga catcatcctc acccgtcgtc aagagcttca acaggaatga gtgtcatcac 720
 catcaccatc attag 735

45 <210> 15
 <211> 1425
 <212> DNA
 <213> Artificial

50 <220>
 <223> Synthetic

<400> 15
 55 atggacaggc ttacttctc attcctactg ctgattgtcc ctgcatatgt cctgtctcag 60
 gttactctga aagagtctgg ccctgggata ttgcagccct ccagaccct cagtctgact 120

EP 2 977 387 A1

tgcactttct ctgggttttc actgagcact tatggtatgg gtgtgggctg gattcgtcag 180
 ccttcaggggagggtctgga gtggctggca aacatttggg gggatgatga taagtactac 240
 5 aatccatctc tgaaaaaccg gctcacaatc tccaaggaca cctccaacaa ccaagcattc 300
 ctcaagatca ccaatgtgga cactgcagat actgccacat actactgtgc tcggccttct 360
 gcgtgggggtt actggggcca aggagtcagtg gtcacagtct cctcagccca aacaacagcc 420
 10 ccatctgtct atccactggc tcoctggatgt ggtgatacaa ccagctccac ggtgactctg 480
 ggatgcctgg tcaagggcta tttccctgag ccagtcaccg tgacctggaa ctctggagcc 540
 ctgtccagcg atgtgcacac ctttccagct gtccctgcagt ctgggctcta cactctcacc 600
 15 agctcagtga cctccagcac ctggcccagc cagaccgtca cctgcaacgt agcccacccg 660
 gccagcagca ccaaggtgga caagaaagtt gagcgcagaa atggcggcat tggacacaaa 720
 tgccctacat gccctacatg tcacaaatgc ccagttcctg aactcttggg tggaccatct 780
 20 gtcttcatct tcccgccaaa gcccaaggac atcctcttga tctcccagaa cgccaaggtc 840
 acgtgtgtgg tggatggatgt gagcagggag gagccggacg tccagttcag ctggtttgtg 900
 25 aacaacgtag aagtacacac agctcagaca caaccccggtg aggagcagta caacagcacc 960
 ttcagagtgg tcagtgccct ccccatccag caccaggact ggatgagcgg caaggagtcc 1020
 aatgcaagg tcaacaacaa agccctccca agcccatcg agaaaacat ctcaaaaccc 1080
 30 aaagggttag tcagaaaacc acaggtatac gtcattgggtc caccgacaga gcagttgact 1140
 gagcaaacgg tcagtttgac ctgcttgacc tcaggcttcc tccctaacga catcgggtgtg 1200
 gagtggacca gcaacgggca tatagaaaag aactacaaga acaccgagcc agtcatggac 1260
 35 tctgacgggt ctttcttcat gtacagcaag ctcaatgtgg aaaggagcag gtgggatagc 1320
 agagcgcctc tcgtctgctc cgtgggtccac gagggctctgc acaatcacca cgtggagaag 1380
 agcatctccc ggcctccggg taaacatcac catcaccatc attag 1425
 40
 <210> 16
 <211> 738
 <212> DNA
 <213> Artificial
 45
 <220>
 <223> Synthetic
 50
 <400> 16
 atgatgattc ctgcccagtt cctgtctctg ctaatgctct ggatccagga agccggcgga 60
 gatgttgtga tgaccagac accaccgtct ttgtcgggtg ccattggaca atcagtctcc 120
 atctcttgca agtcaagtca gagcctcgta tatagtgatg gaaagacata tttgcattgg 180
 55 ttattacaga gttctggccg gtctccgaag cgcctaactc atcaggtgtc taatctggac 240
 tctggagtcc ctgacaggtt cagtggcact ggatcacaga aagattttac acttaaaatc 300

EP 2 977 387 A1

agcagagtag aggctaagga tttgggagtt tattactgcg cgcaaactac acattttcct 360
 ccgacgttcg gtggaggcac caagctggaa ttgaaacggg ctgatgctgc accaactgta 420
 5 tccatcttcc caccatccat ggaacagtta acatctggag gtgccacagt cgtgtgcttc 480
 gtgaacaact tctatcccag agacatcagt gtcaagtgga agattgatgg cagtgaacaa 540
 cgagatggtg tcctggacag tgttactgat caggacagca aagacagcac gtacagcatg 600
 10 agcagcacc cctcgttgac caaggttgaa tatgaaaggc ataacctcta tacctgtgag 660
 gttgttcata agacatcatc ctcaccgctc gtcaagagct tcaacaggaa tgagtgtcat 720
 caccatcacc atcattag 738
 15
 <210> 17
 <211> 45
 <212> DNA
 <213> Artificial
 20
 <220>
 <223> primer
 <400> 17
 25 ctaatacgcac tcactatagg gcaagcagtg gtatcaacgc agagt 45
 <210> 18
 <211> 22
 <212> DNA
 <213> Artificial
 30
 <220>
 <223> primer
 <400> 18
 35 ctaatacgcac tcactatagg gc 22
 <210> 19
 <211> 21
 <212> DNA
 <213> Artificial
 40
 <220>
 <223> primer
 45
 <400> 19
 agggaaatar cccttgacca g 21
 <210> 20
 <211> 20
 <212> DNA
 <213> Artificial
 50
 <220>
 <223> primer
 55
 <400> 20

	gcacctccag atgttaactg	20
5	<210> 21 <211> 25 <212> DNA <213> Artificial	
10	<220> <223> primer	
	<400> 21 tcctggatgt ggtgatacaa ccagc	25
15	<210> 22 <211> 26 <212> DNA <213> Artificial	
20	<220> <223> primer	
	<400> 22 gggtgcttta ttacacaag ggaagg	26
25	<210> 23 <211> 21 <212> DNA <213> Artificial	
30	<220> <223> primer	
35	<400> 23 atggacaggc ttacttcctc a	21
40	<210> 24 <211> 20 <212> DNA <213> Artificial	
	<220> <223> primer	
45	<400> 24 ggttgatca ccacatccag	20
50	<210> 25 <211> 19 <212> DNA <213> Artificial	
	<220> <223> primer	
55	<400> 25 tttaccggga ggccgggag	19

EP 2 977 387 A1

<210> 26
 <211> 34
 <212> DNA
 <213> Artificial
 5
 <220>
 <223> primer
 <400> 26
 10 ataacgcgat cgcatggaca ggcttacttc ctca 34
 <210> 27
 <211> 40
 <212> DNA
 15 <213> Artificial
 <220>
 <223> primer
 <400> 27
 20 ctaatgatgg tgatggtgat gtttaccgg aggccgggag 40
 <210> 28
 <211> 22
 <212> DNA
 25 <213> Artificial
 <220>
 <223> primer
 30 <400> 28
 atggaatgga gctggatctt tc 22
 <210> 29
 <211> 36
 <212> DNA
 35 <213> Artificial
 <220>
 <223> primer
 40 <400> 29
 gggctgttgt ttgggctgca gagacagtga ccagag 36
 <210> 30
 <211> 20
 <212> DNA
 45 <213> Artificial
 <220>
 <223> primer
 50 <400> 30
 gcccaaaaa cagccccatc 20
 <210> 31
 <211> 35
 <212> DNA
 55

<213> Artificial
 <220>
 <223> primer
 5 <400> 31
 ataacgcgat cgcatggaat ggagctggat ctttc 35
 <210> 32
 10 <211> 25
 <212> DNA
 <213> Artificial
 <220>
 15 <223> primer
 <400> 32
 aggcaccaag ctggaattga aacgg 25
 <210> 33
 20 <211> 25
 <212> DNA
 <213> Artificial
 <220>
 25 <223> primer
 <400> 33
 gcaggtggca cctcaggacc tttgg 25
 <210> 34
 30 <211> 21
 <212> DNA
 <213> Artificial
 <220>
 35 <223> primer
 <400> 34
 atgaagttgc ctgttaggct g 21
 <210> 35
 40 <211> 36
 <212> DNA
 <213> Artificial
 <220>
 45 <223> primer
 <400> 35
 50 gtgcagcatc agcccgtttg atttccagct tgggtgc 36
 <210> 36
 <211> 21
 <212> DNA
 55 <213> Artificial
 <220>

EP 2 977 387 A1

<223> primer
 <400> 36
 atgatgattc ctgcccagtt c 21
 5
 <210> 37
 <211> 35
 <212> DNA
 <213> Artificial
 10
 <220>
 <223> primer
 <400> 37
 gtgcagcatc agcccgtttc aattccagct tggtg 35
 15
 <210> 38
 <211> 20
 <212> DNA
 <213> Artificial
 20
 <220>
 <223> primer
 <400> 38
 cgggctgatg ctgcaccaac 20
 25
 <210> 39
 <211> 21
 <212> DNA
 <213> Artificial
 30
 <220>
 <223> primer
 <400> 39
 acactcattc ctgttgaagc t 21
 35
 <210> 40
 <211> 34
 <212> DNA
 <213> Artificial
 40
 <220>
 <223> primer
 <400> 40
 ataacgcgat cgcatgaagt tgccctgtag gctg 34
 45
 <210> 41
 <211> 42
 <212> DNA
 <213> Artificial
 50
 <220>
 <223> primer
 <400> 41
 55

ctaatgatgg tgatggtgat gacactcatt cctgttgaag ct 42

5 <210> 42
 <211> 34
 <212> DNA
 <213> Artificial

10 <220>
 <223> primer

<400> 42
 ataacgcgat cgcgatgatga ttctgcca gttc 34

15 <210> 43
 <211> 33
 <212> DNA
 <213> Artificial

20 <220>
 <223> primer

<400> 43
 ccccgattc accatggaat ggagctggat ctt 33

25 <210> 44
 <211> 30
 <212> DNA
 <213> Artificial

30 <220>
 <223> primer

<400> 44
 cccctctaga ctaatgatgg tgatggtgat 30

35 <210> 45
 <211> 33
 <212> DNA
 <213> Artificial

40 <220>
 <223> primer

<400> 45
 ccccgattc accatgaagt tgcctgtag gct 33

45 <210> 46
 <211> 33
 <212> DNA
 <213> Artificial

50 <220>
 <223> primer

55 <400> 46
 ccccgattc accatggaca ggcttacttc ctc 33

EP 2 977 387 A1

5 <210> 47
 <211> 33
 <212> DNA
 <213> Artificial

 <220>
 <223> primer

 10 <400> 47
 ccccgaattc accatgatga ttctgccca gtt 33

 15 <210> 48
 <211> 30
 <212> DNA
 <213> Artificial

 <220>
 <223> primer

 20 <400> 48
 ccccgaattc gagatccagc tgcagcagtc 30

 25 <210> 49
 <211> 30
 <212> DNA
 <213> Artificial

 <220>
 <223> primer

 30 <400> 49
 ccccgaattc gatggtgtga tgacccaaac 30

 35 <210> 50
 <211> 30
 <212> DNA
 <213> Artificial

 40 <220>
 <223> primer

 <400> 50
 ccccgaattc caggttactc tgaagagtc 30

 45 <210> 51
 <211> 30
 <212> DNA
 <213> Artificial

 50 <220>
 <223> primer

 55 <400> 51
 ccccgaattc gatggtgtga tgaccagac 30

Claims

- 5 1. An anti-dog IgE monoclonal antibody which binds to dog IgE, comprising a heavy-chain variable region consisting of the amino acid sequence represented by SEQ ID NO: 2 and a light-chain variable region consisting of the amino acid sequence represented by SEQ ID NO: 4, or a functional fragment thereof which binds to dog IgE.
- 10 2. An anti-dog IgE monoclonal antibody which binds to dog IgE, comprising a heavy-chain variable region consisting of the amino acid sequence represented by SEQ ID NO: 6 and a light-chain variable region consisting of the amino acid sequence represented by SEQ ID NO: 8, or a functional fragment thereof which binds to dog IgE.
- 15 3. The anti-dog IgE monoclonal antibody which binds to dog IgE or a functional fragment thereof which binds to dog IgE according to claim 1 or 2, wherein the class of the antibody is IgG, IgA, IgE, or IgM.
- 20 4. The anti-dog IgE monoclonal antibody which binds to dog IgE or a functional fragment thereof which binds to dog IgE according to claim 3, wherein the subclass of the antibody is IgG1, IgG2, IgG3, or IgG4.
- 25 5. The anti-dog IgE monoclonal antibody which binds to dog IgE or a functional fragment thereof which binds to dog IgE according to any one of claims 1 to 4, wherein the functional fragment is a peptide fragment selected from the group consisting of Fab, Fab', F(ab')₂, disulfide-stabilized Fv (dsFv), dimerized V region (diabody), single chain Fv (scFv), and CDR.
- 30 6. A polypeptide which is a heavy-chain variable region of an anti-dog IgE antibody, consisting of the amino acid sequence represented by SEQ ID NO: 2 or 6.
- 35 7. A polypeptide which is a light-chain variable region of an anti-dog IgE antibody, consisting of the amino acid sequence represented by SEQ ID NO: 4 or 8.
- 40 8. A polynucleotide encoding a heavy-chain variable region of an anti-dog IgE antibody, consisting of the DNA sequence represented by SEQ ID NO: 1 or 5.
- 45 9. A polynucleotide encoding a light-chain variable region of an anti-dog IgE antibody, consisting of the DNA sequence represented by SEQ ID NO: 3 or 7.
- 50 10. A vector comprising the polynucleotide according to claim 8, the polynucleotide according to claim 9 or the polynucleotide according to claim 8, and the polynucleotide according to claim 9.
- 55 11. A cell comprising the vector according to claim 10.
12. A silkworm comprising the vector according to claim 10.
13. A method for producing an anti-dog IgE antibody, comprising: linking DNA encoding a heavy-chain variable region of an anti-dog IgE antibody, consisting of the DNA sequence represented by SEQ ID NO: 1 to DNA encoding a heavy-chain constant region of the antibody; linking DNA encoding a light-chain variable region of an anti-dog IgE antibody, consisting of the DNA sequence represented by SEQ ID NO: 3 to DNA encoding a light-chain constant region of the antibody; inserting the resultant DNA constructs into an expression vector, transforming a host cell or a host animal with the vector, and producing an antibody using the host cell or the host animal.
14. A method for producing an anti-dog IgE antibody, comprising: linking DNA encoding a heavy-chain variable region of an anti-dog IgE antibody, consisting of the DNA sequence represented by SEQ ID NO: 5 to DNA encoding a heavy-chain constant region of the antibody; linking DNA encoding a light-chain variable region of an anti-dog IgE antibody, consisting of the DNA sequence represented by SEQ ID NO: 7 to DNA encoding a light-chain constant region of the antibody; inserting the resultant DNA constructs into an expression vector, transforming a host cell or a host animal with the vector, and producing an antibody using the host cell or the host animal.
15. The method according to claim 14, wherein the DNA encoding a heavy-chain constant region of the antibody consists of the DNA sequence represented by SEQ ID NO: 9 and the DNA encoding a light-chain constant region of the antibody consists of the DNA sequence represented by SEQ ID NO: 11.

EP 2 977 387 A1

16. The method for producing an anti-dog IgE antibody according to claim 13 or 14, wherein the host animal is a silkworm.

17. A reagent for detecting a dog allergic disease, comprising the anti-dog IgE monoclonal antibody which binds to dog IgE or a functional fragment thereof which binds to dog IgE according to any one of claims 1 to 5.

5

18. A method for detecting a dog allergic disease, comprising measuring IgE antibody in the blood, serum, or plasma collected from a dog using the anti-dog IgE monoclonal antibody which binds to dog IgE or a functional fragment thereof which binds to dog IgE according to any one of claims 1 to 5.

10

19. A reagent for detecting a dog allergic disease, comprising the polypeptide according to claim 6 or 7.

20. A method for detecting a dog allergic disease, comprising measuring IgE antibody in the blood, serum, or plasma collected from a dog using the polypeptide according to claim 6 or 7.

15

20

25

30

35

40

45

50

55

Fig. 1

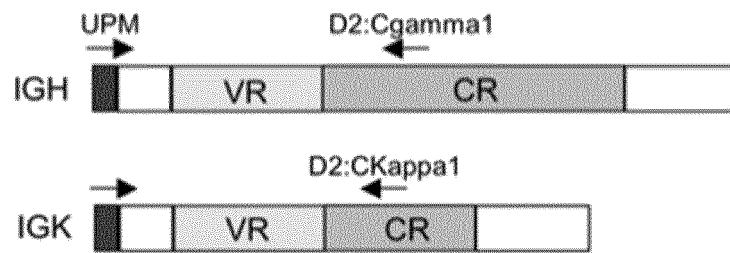


Fig. 2

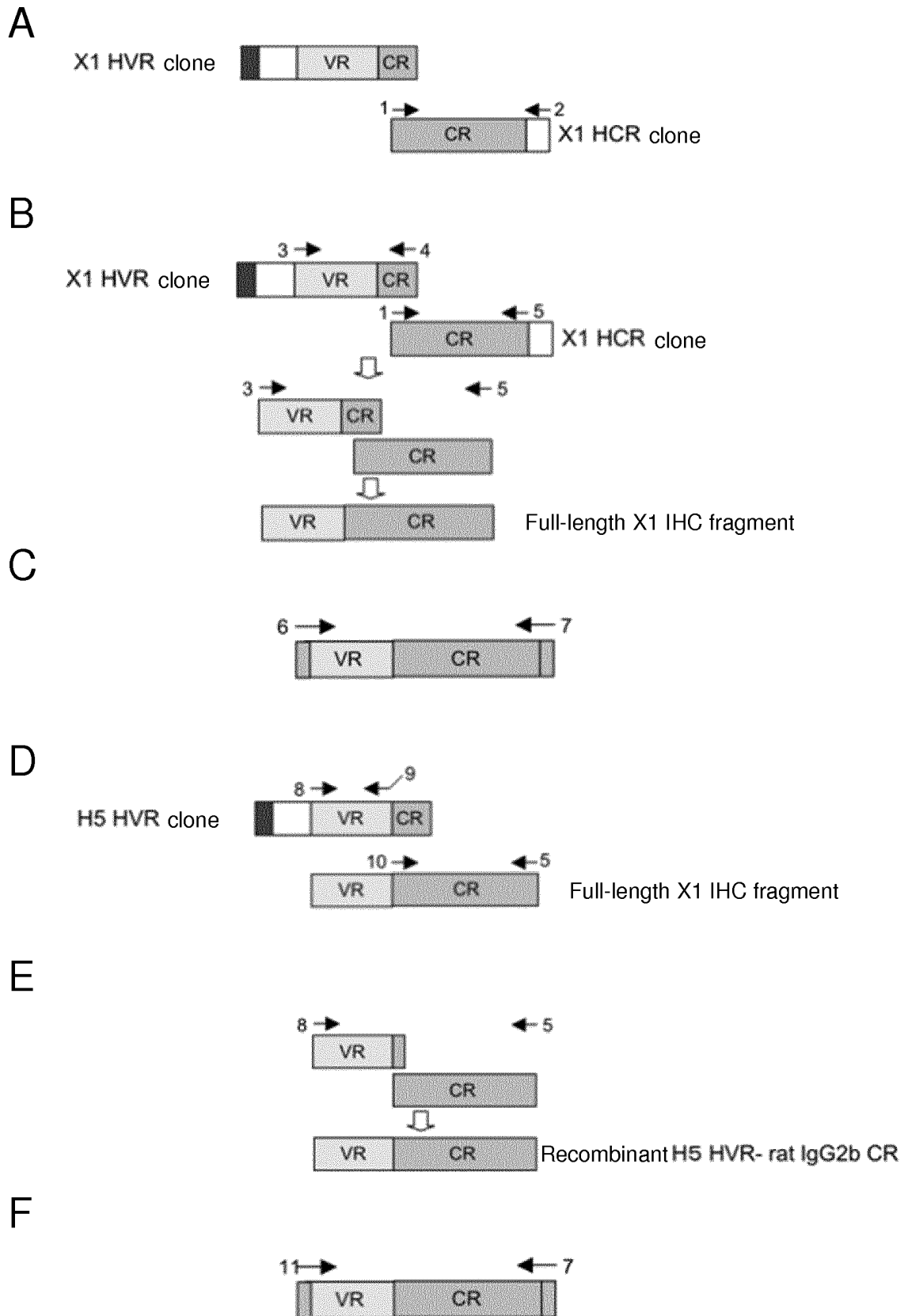
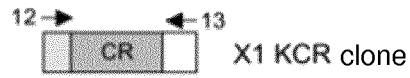
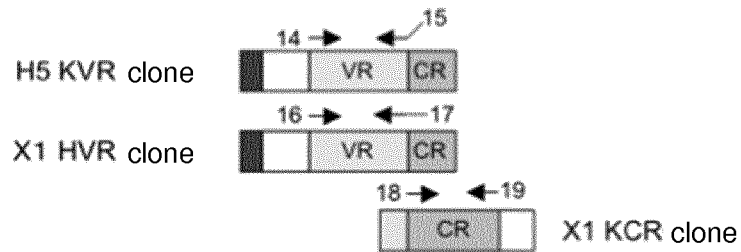


Fig. 3

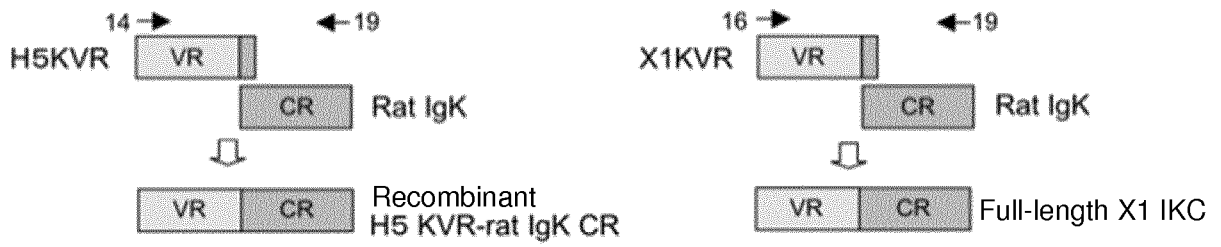
A



B



C



D

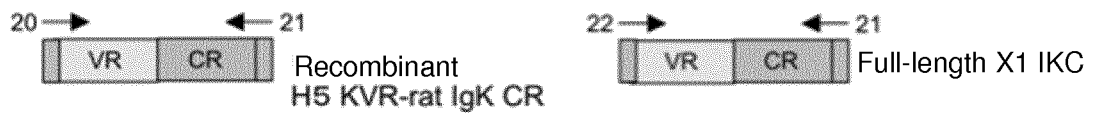


Fig. 4

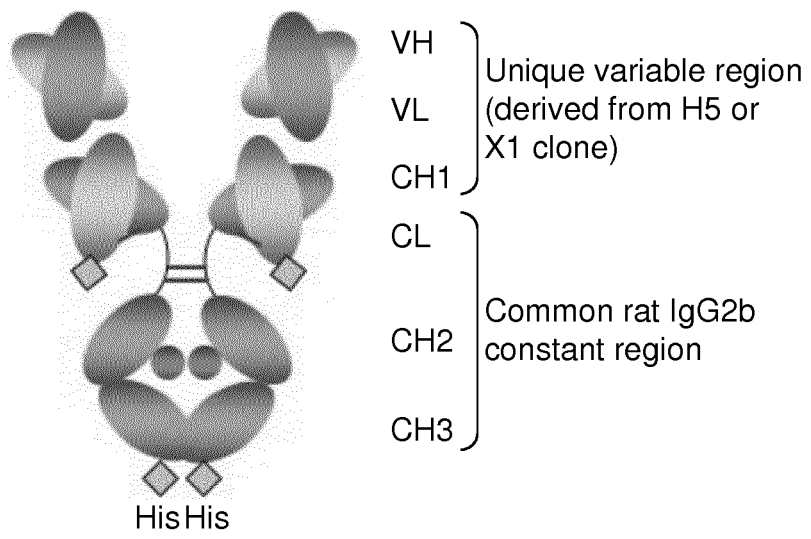


Fig. 5

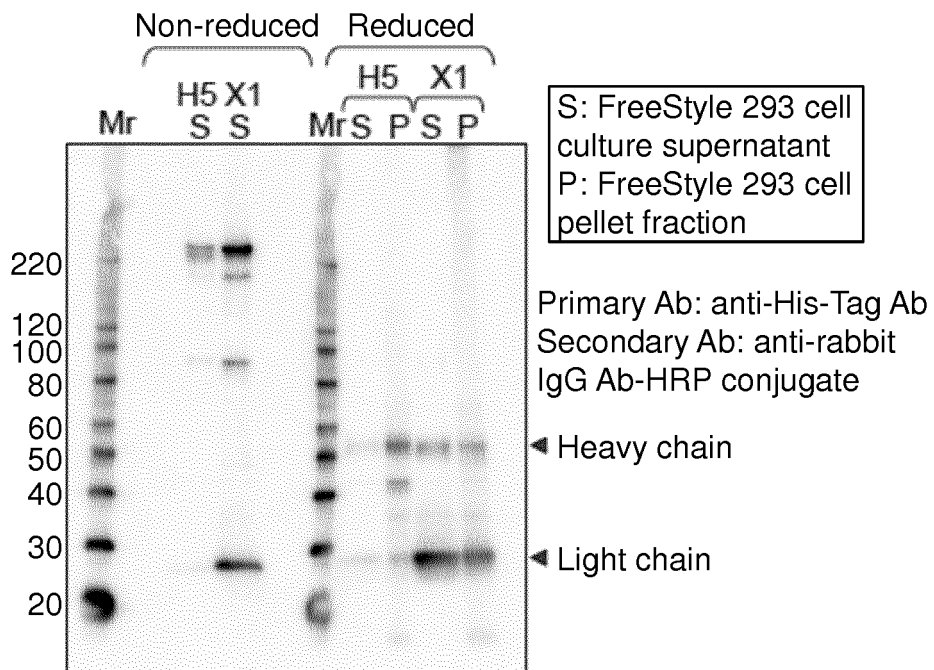


Fig. 6

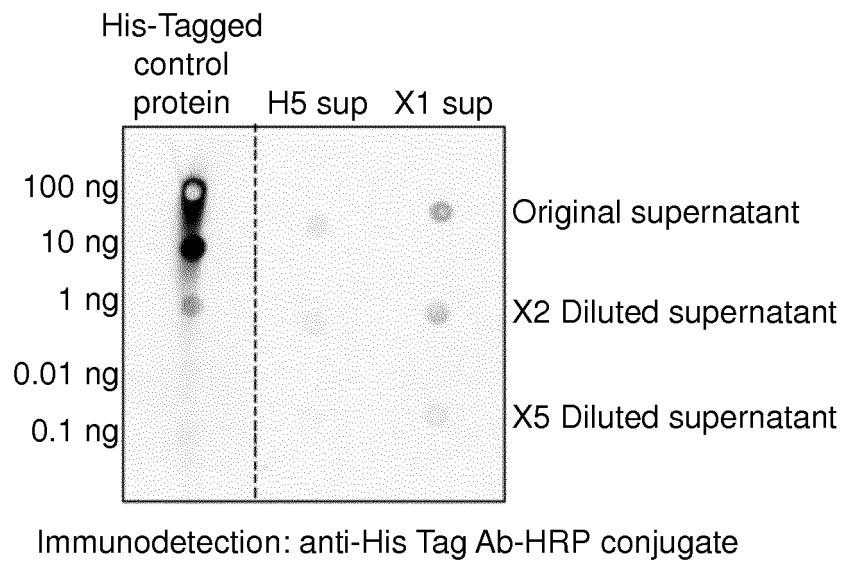
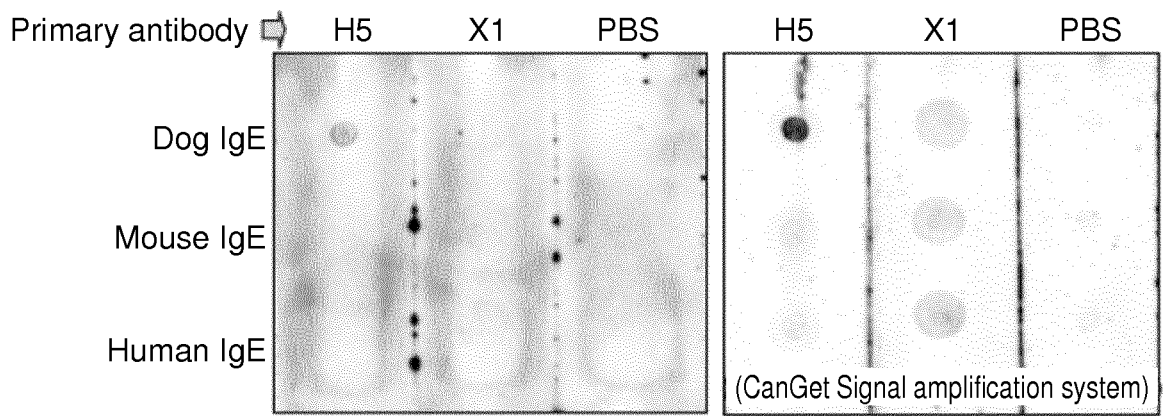


Fig. 7



Secondary antibody: anti-His Tag Ab-HRP conjugate

Fig. 8

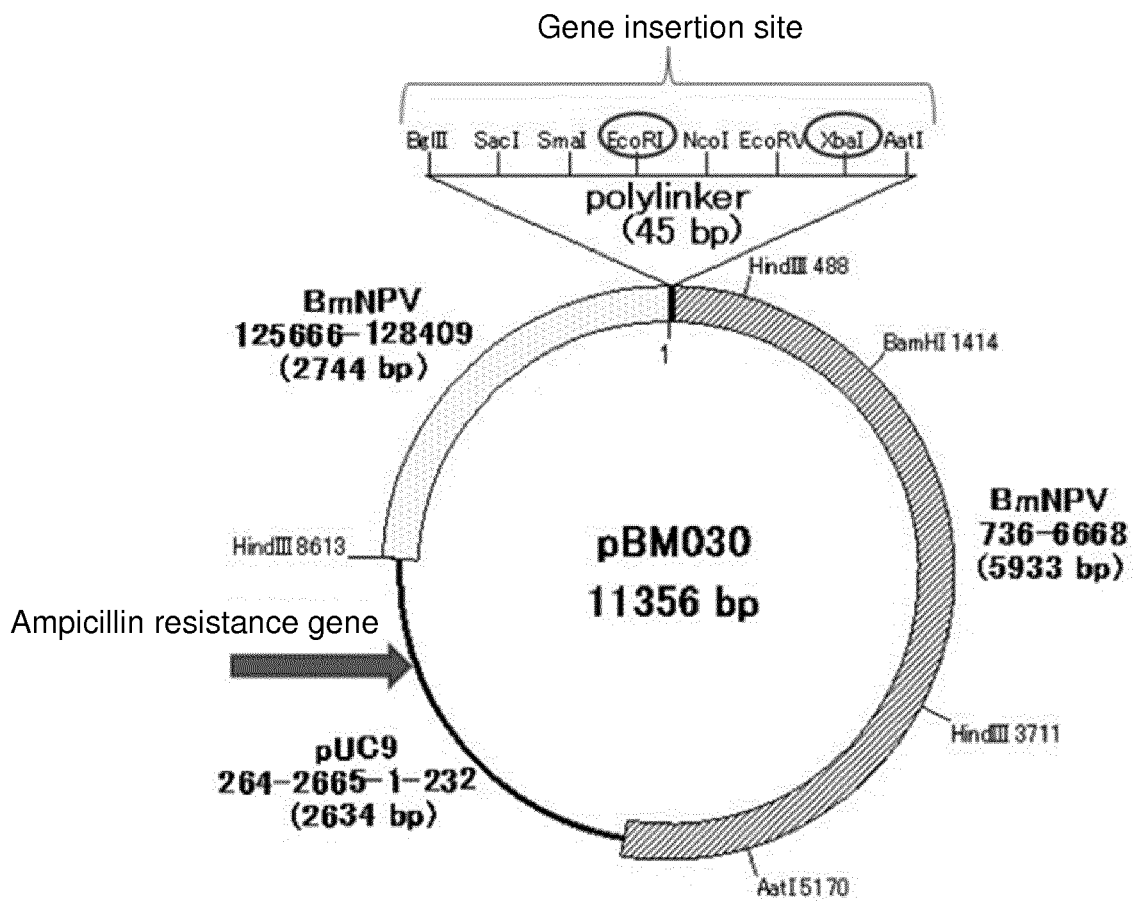
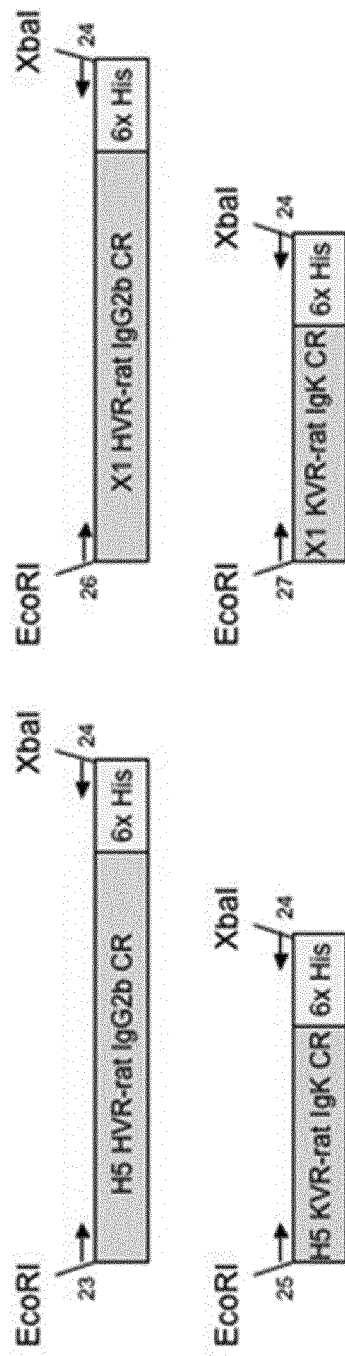


Fig. 9

A



B

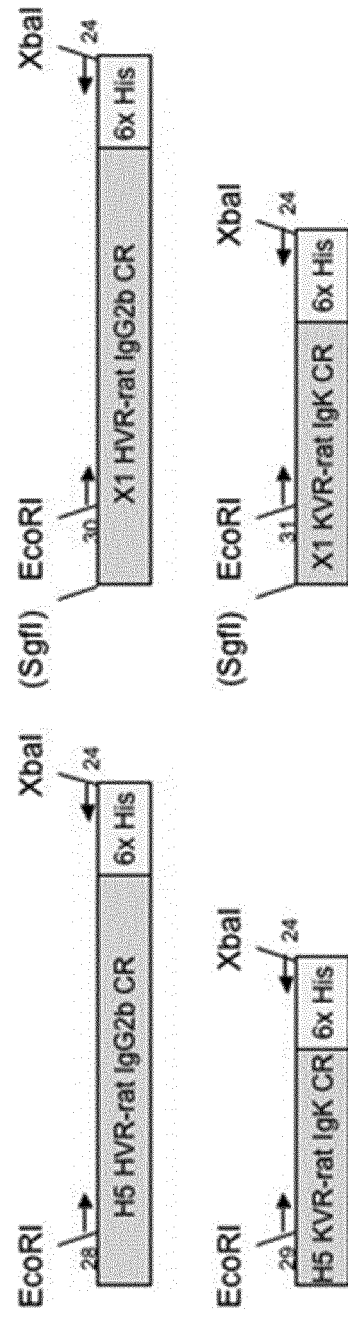


Fig. 10

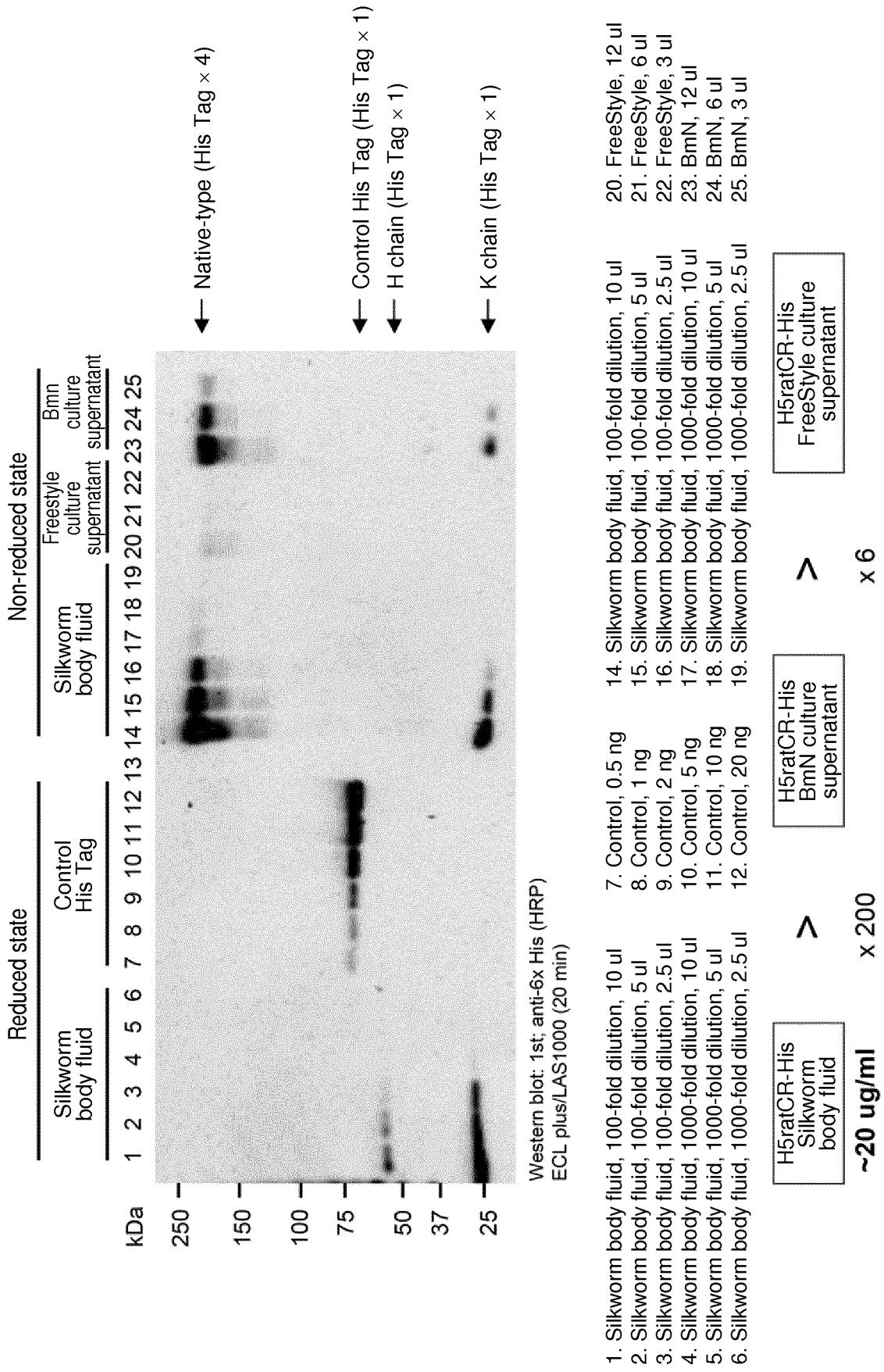
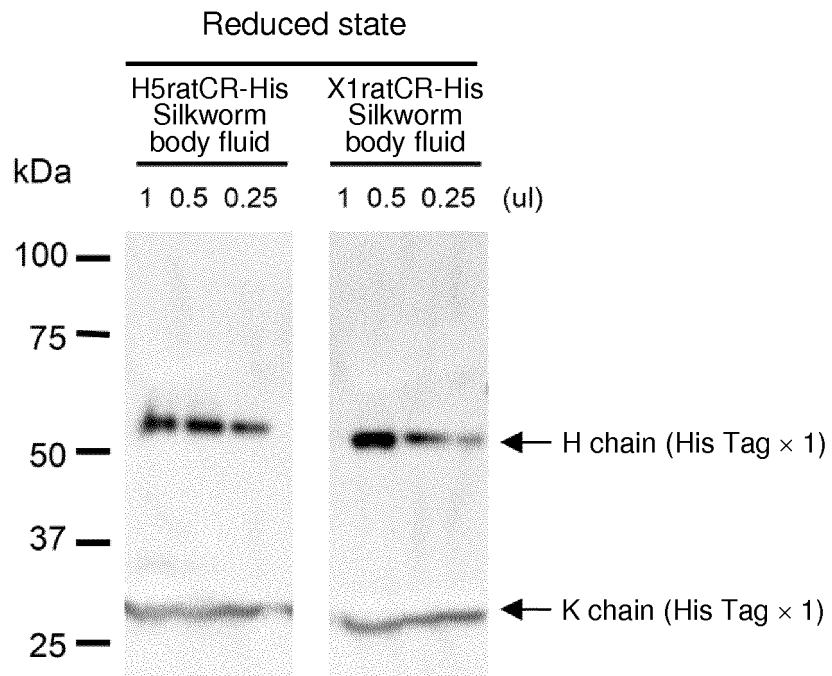
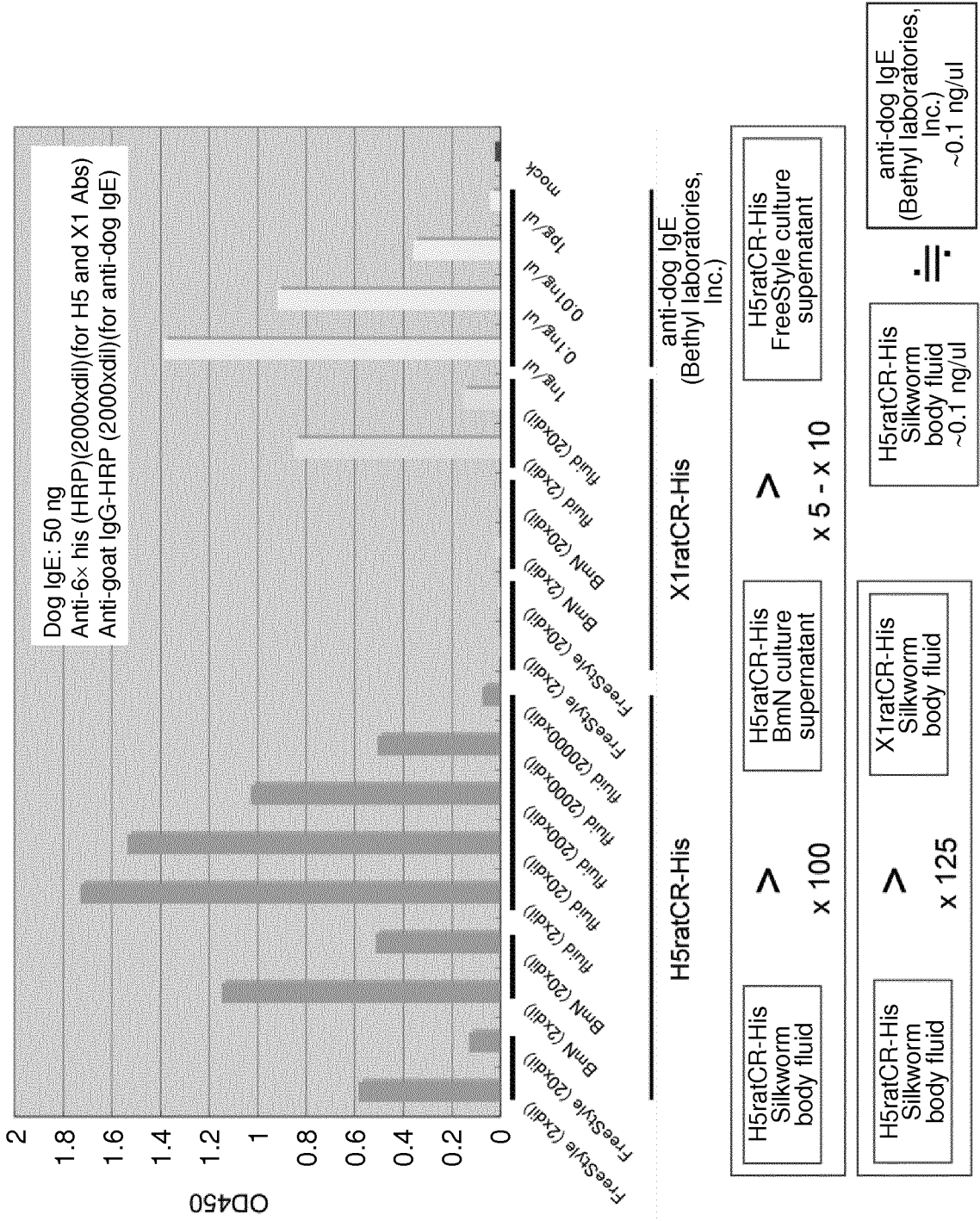


Fig. 11



Western blot: 1st; anti-6× His (HRP)
ECL plus/LAS1000 (30 min)

Fig. 12



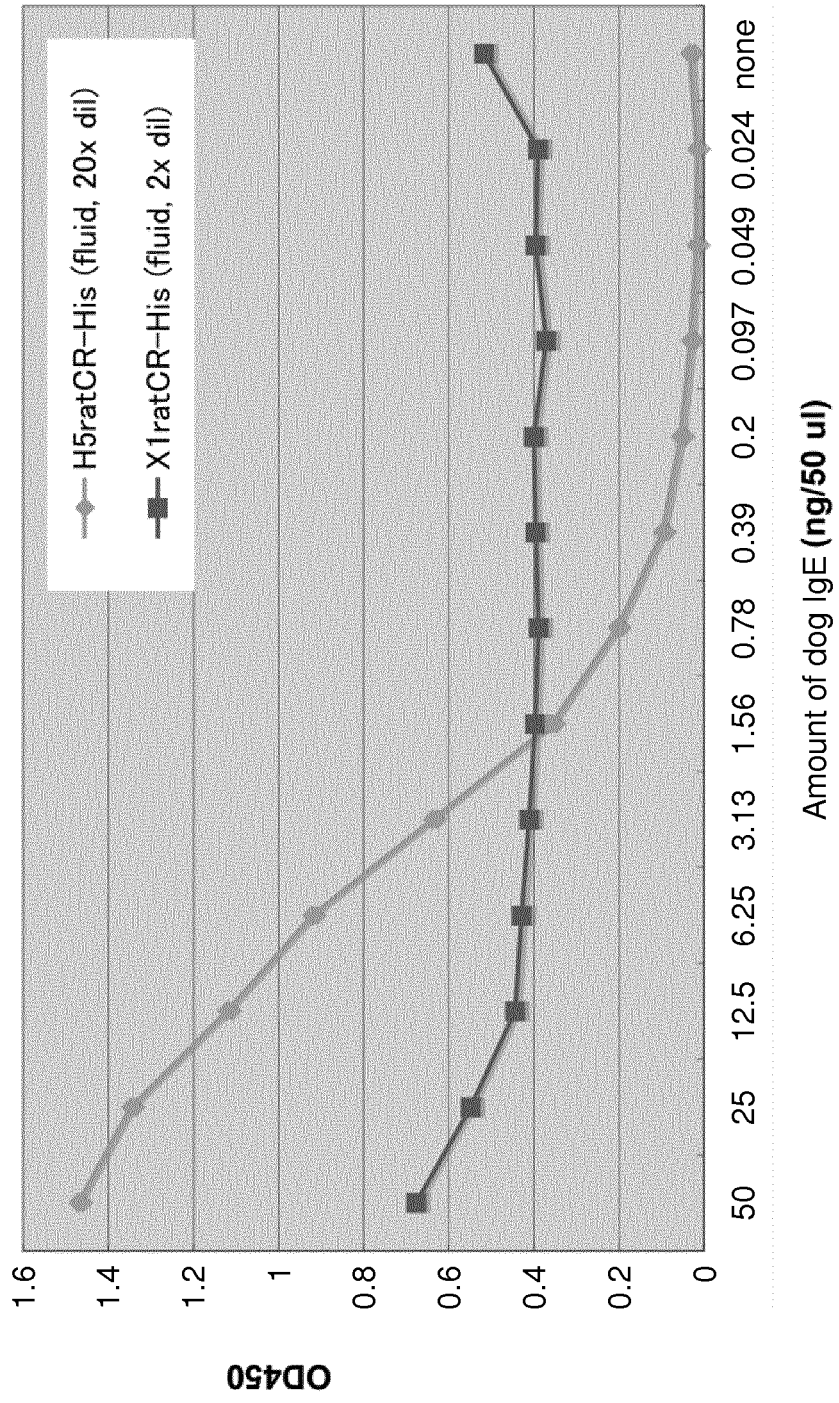


Fig. 13

Fig. 14

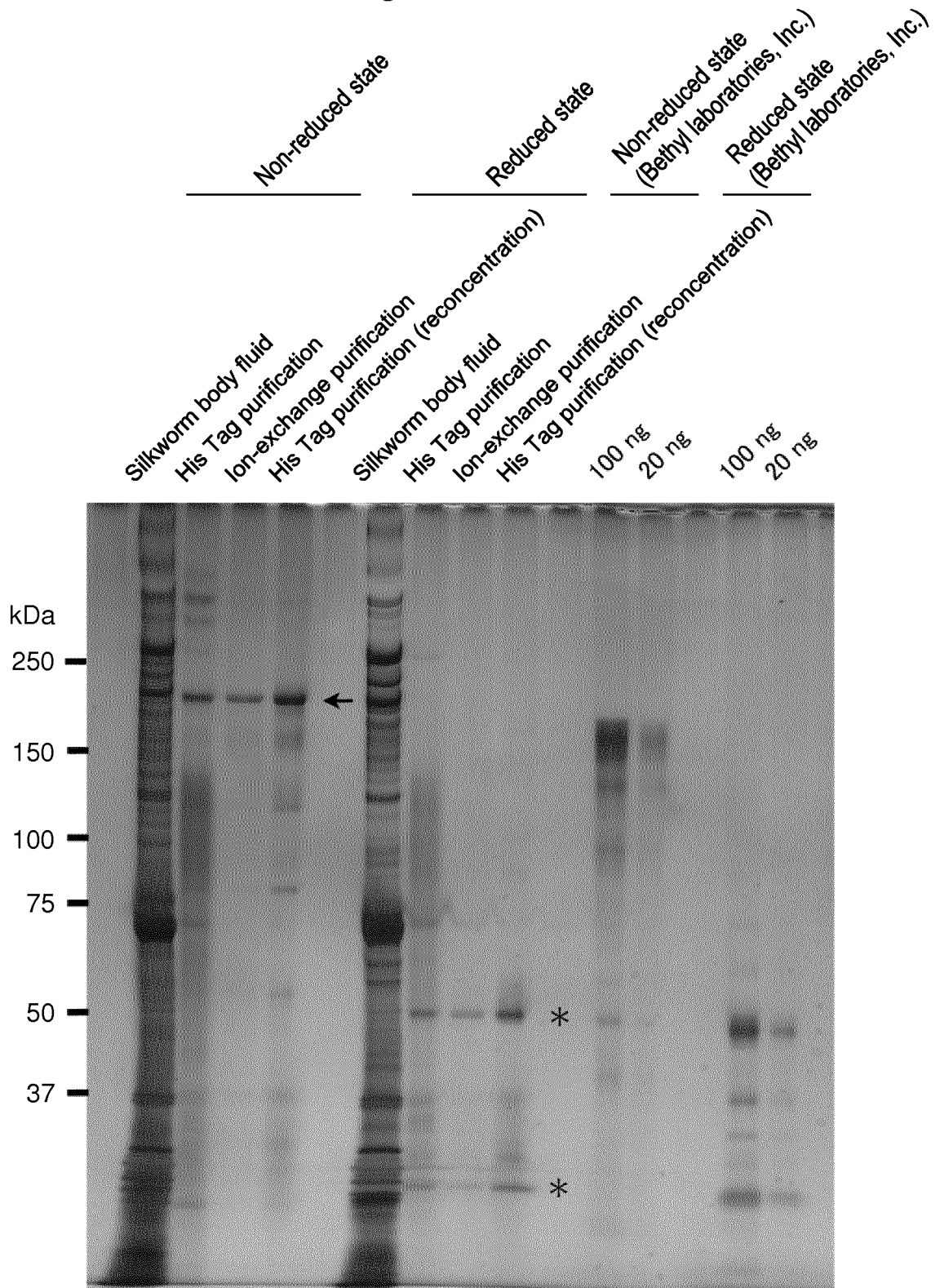


Fig. 15

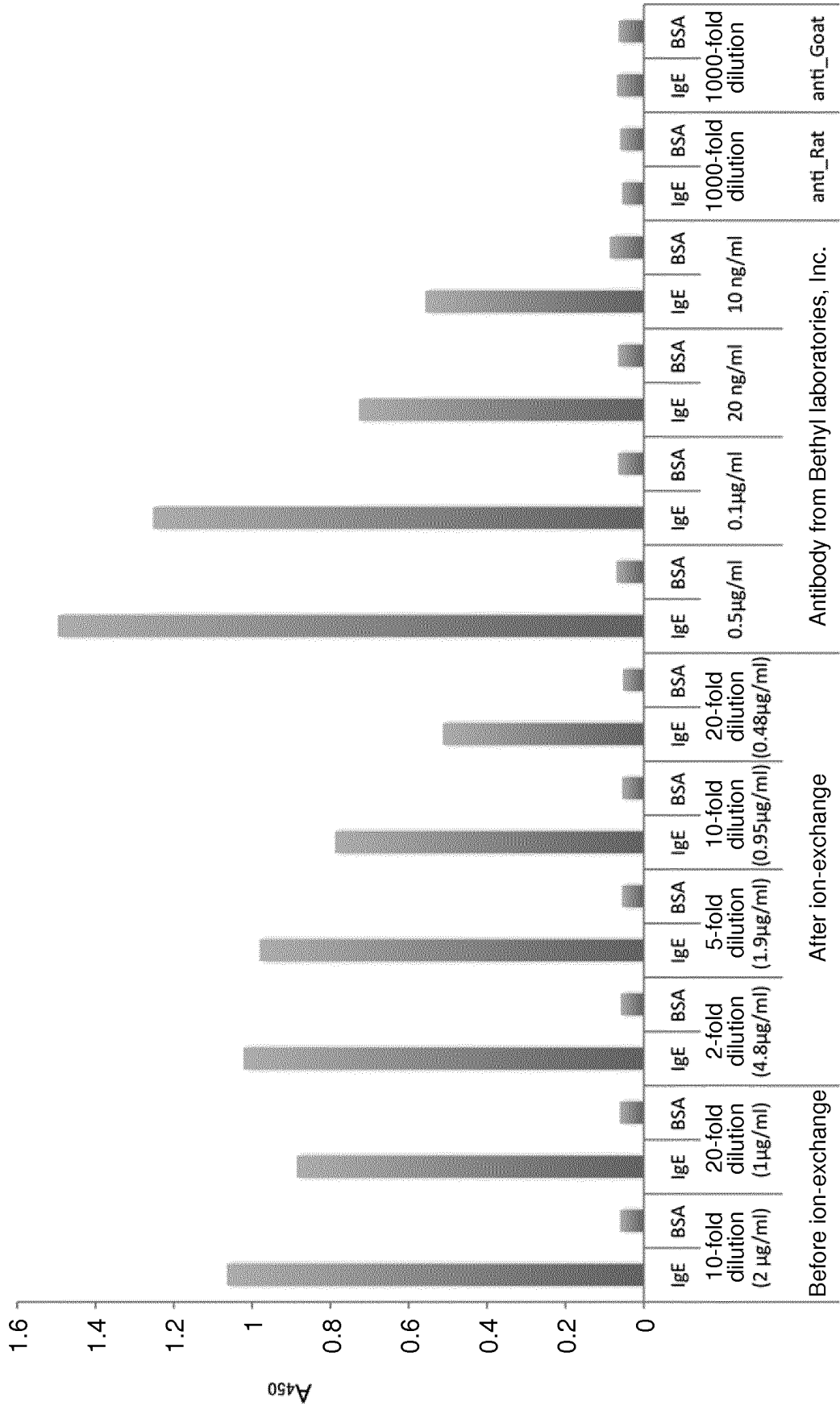


Fig. 16

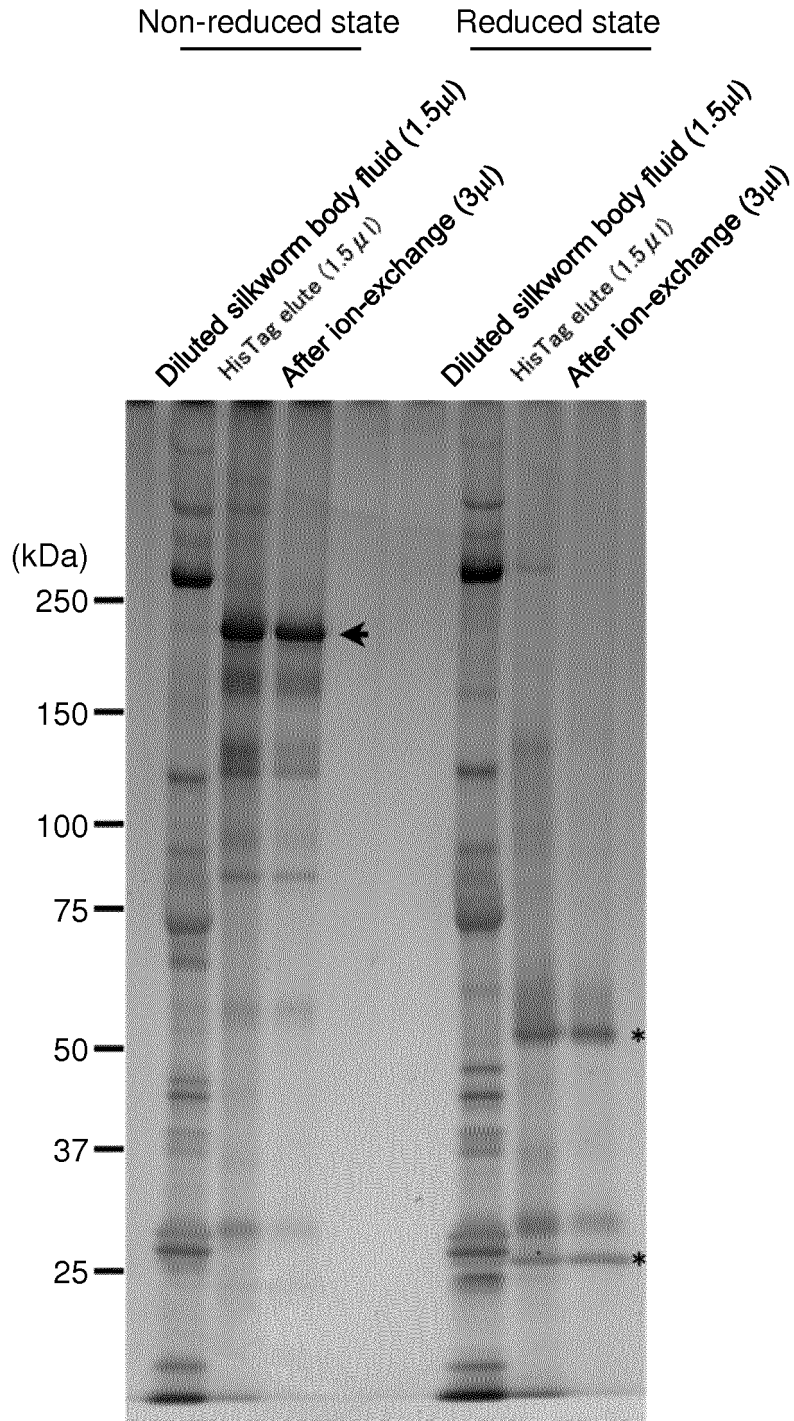


Fig. 17-1

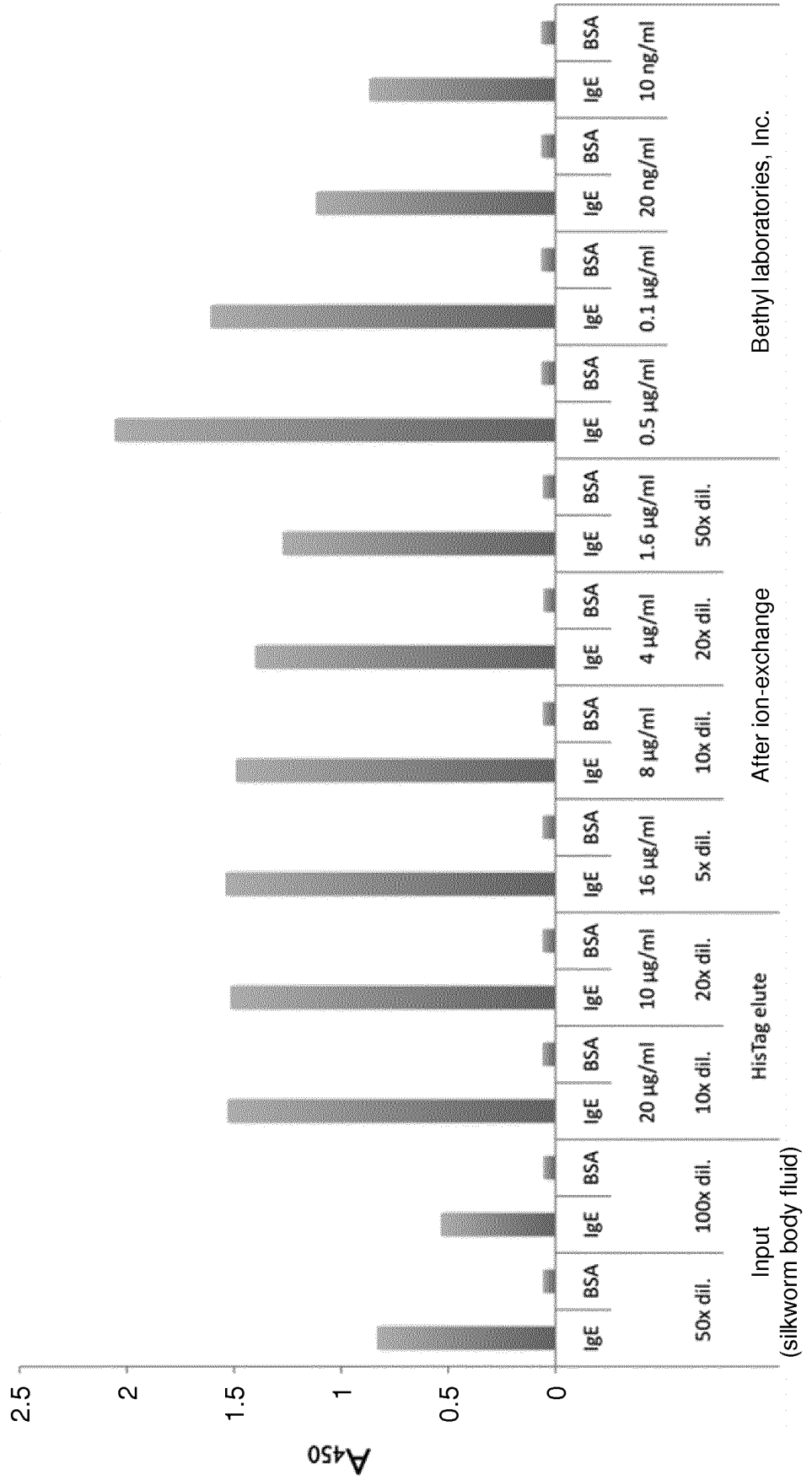


Fig. 17-2

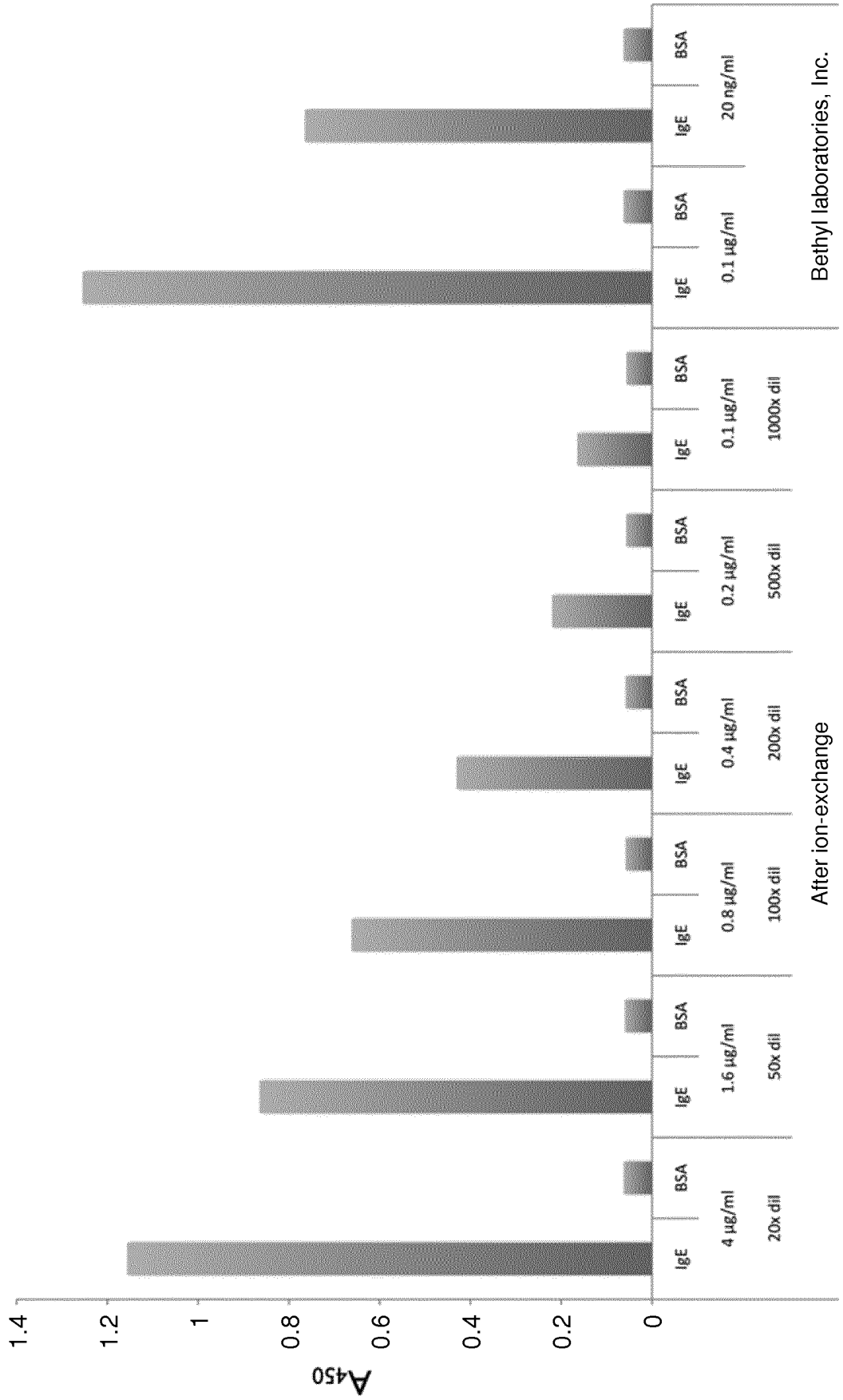


Fig. 18

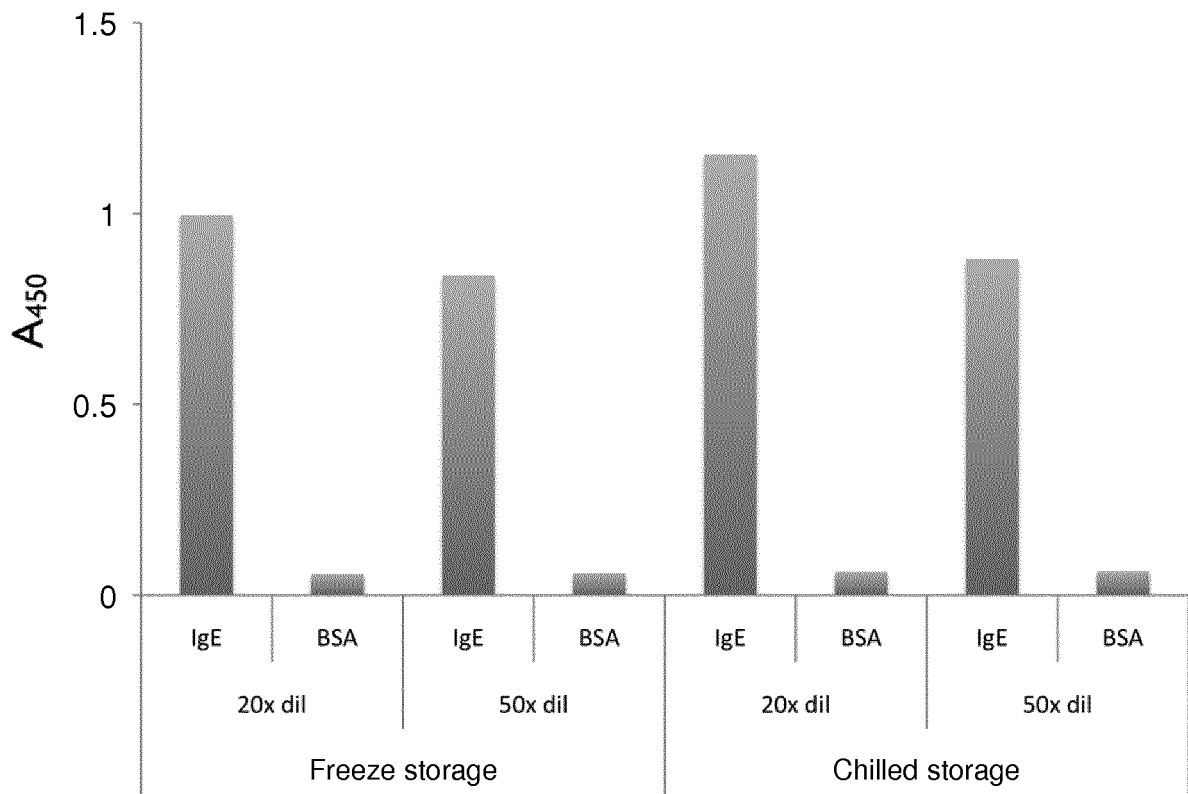


Fig. 19

Primer No.	Primer name	Sequence	SEQ ID NO:	Nucleotide length
Primer 1	X1_IGH2ver2_F	TCCTGGATGGTGGATACACCAGC	SEQ ID NO:21	25
Primer 2	X1_IGH2ver2_R	GGGTGCTTTATTACACAAGGGAAGG	SEQ ID NO:22	26
Primer 3	ratIGH_X1_5'	ATGGACAGGCTTACTTCCTCA	SEQ ID NO:23	21
Primer 4	X1_IgG2CH1_Rev	GGTTGTATCACACATCCAG	SEQ ID NO:24	20
Primer 5	X1_IgG2CH3end_Rev	TTTACCCGGAGGCCGGGAG	SEQ ID NO:25	19
Primer 6	ratIGH_X1_5' Tag	ATAACGGGATCGCATGGACAGGCTTACTTCCTCA	SEQ ID NO:26	34
Primer 7	X1_IgG2CH3end_RevTag	CTAATGATGGTGAATGGTGGTTCACCCGGAGGCCGGGAG	SEQ ID NO:27	40
Primer 8	muIGH_H5_5'	ATGGAATGGAGCTGGAATCTTC	SEQ ID NO:28	22
Primer 9	H5_IgHVend_ratCH1Tag	GGGCTGTTGTTGGGCTGCAGAGACAGTGACCAGAG	SEQ ID NO:29	36
Primer 10	X1_IgG2CH1_Fw	GCCCAACAACAGCCCCATC	SEQ ID NO:30	20
Primer 11	muIGH_H5_5' Tag	ATAACGGGATCGCATGGAATGGAGCTGGATCTTTC	SEQ ID NO:31	35
Primer 12	X1_IGK2ver2_F	AGGCACCAAGCTGGAATTGAACGG	SEQ ID NO:32	25
Primer 13	X1_IGK2ver2_R	GCAGGTGGCACCTCAGGACCTTTGG	SEQ ID NO:33	25
Primer 14	muIGK_H5_5'	ATGAAGTTGCCGTTAGGCTG	SEQ ID NO:34	21
Primer 15	H5_IgKVend_ratCH1Tag	GTCAGCAATCAGCCCCGTTTGGATTCACGCTTGGTGC	SEQ ID NO:35	36
Primer 16	ratIGK_X1_5'	ATGATGATTCCTGCCAGTTC	SEQ ID NO:36	21
Primer 17	X1_IgKVend_CH1Tag	GTCAGCAATCAGCCCCGTTTCAATTCACGCTTGGTG	SEQ ID NO:37	35
Primer 18	X1_IgKCH_Fw	CGGGCTGATGCTGCACCAAC	SEQ ID NO:38	20
Primer 19	X1_IgKCH_Rev	ACACTCATTCCCTGTTGAAGCT	SEQ ID NO:39	21
Primer 20	muIGK_H5_5' Tag	ATAACGGGATCGCAIGAAGTTGCCGTTAGGCTG	SEQ ID NO:40	34
Primer 21	X1_IgKCH_RevTag	CTAATGATGGTGAATGGTGGTTCACACTCATTCTGTGAAAGCT	SEQ ID NO:41	42
Primer 22	ratIGK_X1_5' Tag	ATAACGGGATCGCATGATGATCCTGCCAGTTC	SEQ ID NO:42	34
Primer 23	RatCRHC5_BM030	CCCCGAAATCACCATGGAATGGAGCTGGATCTT	SEQ ID NO:43	33
Primer 24	RatCR_rev	CCCCCTAGACTAATGATGGTGGTGGAT	SEQ ID NO:44	30
Primer 25	RatCRKCH5_BM030	CCCCGAAATTCACCATGAAGTTGCCTGTTAGGCT	SEQ ID NO:45	33
Primer 26	RatCRHCX1_BM030	CCCCGAAATTCACCATGGACAGGCTTACTTCCTC	SEQ ID NO:46	33
Primer 27	RatCRKCH5_BM030	CCCCGAAATTCACCATGATGATCCTGCCAGTT	SEQ ID NO:47	33
Primer 28	RatCRHC5dsp_BM030	CCCCGAAATTCAGATCCAGCTGCAGGCAGTCC	SEQ ID NO:48	30
Primer 29	RatCRKCH5dsp_BM030	CCCCGAAATTCAGATGTTGTGATGACCCCAAC	SEQ ID NO:49	30
Primer 30	RatCRHCX1dsp_BM030	CCCCGAAATTCAGGTTACTCTGAAAGAGTCC	SEQ ID NO:50	30
Primer 31	RatCRKCH5dsp_BM030	CCCCGAAATTCAGATGTTGTGATGACCCAGAC	SEQ ID NO:51	30

INTERNATIONAL SEARCH REPORT

International application No.

PCT/JP2014/057190

A. CLASSIFICATION OF SUBJECT MATTER

C07K16/42(2006.01)i, C12N1/15(2006.01)i, C12N1/19(2006.01)i, C12N1/21(2006.01)i, C12N5/10(2006.01)i, C12N15/09(2006.01)i, C12P21/08(2006.01)i, G01N33/53(2006.01)i

According to International Patent Classification (IPC) or to both national classification and IPC

B. FIELDS SEARCHED

Minimum documentation searched (classification system followed by classification symbols)

C07K16/00-16/46, C12N1/15, C12N1/19, C12N1/21, C12N5/10, C12N15/09, C12P21/08, G01N33/53

Documentation searched other than minimum documentation to the extent that such documents are included in the fields searched

Jitsuyo Shinan Koho 1922-1996 Jitsuyo Shinan Toroku Koho 1996-2014
Kokai Jitsuyo Shinan Koho 1971-2014 Toroku Jitsuyo Shinan Koho 1994-2014

Electronic data base consulted during the international search (name of data base and, where practicable, search terms used)

UniProt/GeneSeq

C. DOCUMENTS CONSIDERED TO BE RELEVANT

Category*	Citation of document, with indication, where appropriate, of the relevant passages	Relevant to claim No.
Y	JP 2006-151880 A (Asahi Breweries, Ltd.), 15 June 2006 (15.06.2006), claims; paragraph [0008]; examples (Family: none)	1-20
Y	WO 2009/139378 A1 (Riken, Japan), 19 November 2009 (19.11.2009), claims; paragraphs [0022], [0023], [0025]; examples & US 2011/0111529 A1 & AU 2009247267 A	1-20
Y	DERER et al., "Inu no Allergy Shindan ni Okeru Ko IgE Monoclonal Kotai", Veterinary dermatology : a international journal, 1998, vol.9, no.3, pages 215 to 221	1-20

Further documents are listed in the continuation of Box C.

See patent family annex.

* Special categories of cited documents:

"A" document defining the general state of the art which is not considered to be of particular relevance

"E" earlier application or patent but published on or after the international filing date

"L" document which may throw doubts on priority claim(s) or which is cited to establish the publication date of another citation or other special reason (as specified)

"O" document referring to an oral disclosure, use, exhibition or other means

"P" document published prior to the international filing date but later than the priority date claimed

"T" later document published after the international filing date or priority date and not in conflict with the application but cited to understand the principle or theory underlying the invention

"X" document of particular relevance; the claimed invention cannot be considered novel or cannot be considered to involve an inventive step when the document is taken alone

"Y" document of particular relevance; the claimed invention cannot be considered to involve an inventive step when the document is combined with one or more other such documents, such combination being obvious to a person skilled in the art

"&" document member of the same patent family

Date of the actual completion of the international search
04 June, 2014 (04.06.14)

Date of mailing of the international search report
17 June, 2014 (17.06.14)

Name and mailing address of the ISA/
Japanese Patent Office

Authorized officer

Facsimile No.

Telephone No.

Form PCT/ISA/210 (second sheet) (July 2009)

INTERNATIONAL SEARCH REPORT

International application No.
PCT/JP2014/057190

C (Continuation). DOCUMENTS CONSIDERED TO BE RELEVANT

5
10
15
20
25
30
35
40
45
50
55

Category*	Citation of document, with indication, where appropriate, of the relevant passages	Relevant to claim No.
Y	DEBOER et al., Production and characterization of mouse monoclonal antibodies directed against canine IgE and IgG, Veterinary Immunology and Immunopathology, 1993, Vol. 37, pp.183-199	1-20

REFERENCES CITED IN THE DESCRIPTION

This list of references cited by the applicant is for the reader's convenience only. It does not form part of the European patent document. Even though great care has been taken in compiling the references, errors or omissions cannot be excluded and the EPO disclaims all liability in this regard.

Patent documents cited in the description

- JP 2006151880 A [0004]
- JP 2013057015 A [0008]

Non-patent literature cited in the description

- **ED HARLOW ; DAVID LANE.** Antibodies A Laboratory Manual. Cold Spring Harbor Laboratory, 1988 [0033]

专利名称(译)	抗狗ige单克隆抗体，抗狗ige单克隆抗体的轻链可变区和重链可变区		
公开(公告)号	EP2977387A4	公开(公告)日	2017-03-29
申请号	EP2014769566	申请日	2014-03-17
[标]申请(专利权)人(译)	动物过敏症的临床实验		
申请(专利权)人(译)	上总DNA研究所 动物过敏症临床实验室INC. NIPPON ZENYAKU KOGYO CO. , LTD.		
当前申请(专利权)人(译)	Kazusa DNA研究所 动物过敏临床实验室 日本Zenyaku工业株式会社		
[标]发明人	OHARA OSAMU NAGASE TAKAHIRO YAMAGUCHI YOSHIHIRO OHARA REIKO MASUDA KENICHI TSUKUI TOSHIHIRO		
发明人	OHARA, OSAMU NAGASE, TAKAHIRO YAMAGUCHI, YOSHIHIRO OHARA, REIKO MASUDA, KENICHI TSUKUI, TOSHIHIRO		
IPC分类号	C07K16/42 C12N1/15 C12N1/19 C12N1/21 C12N5/10 C12N15/09 C12P21/08 G01N33/53		
CPC分类号	C07K16/4291 A01K2217/052 A01K2227/706 A01K2267/01 C07K2317/14 C07K2317/52 C07K2317/54 C07K2317/55 C07K2317/56 C07K2317/565 C07K2317/622 C07K2317/624 C07K2317/626 C07K2319 /21 C12N15/8509 C12N2015/8518 G01N33/577 G01N33/6854		
优先权	2013057015 2013-03-19 JP		
其他公开文献	EP2977387A1		
外部链接	Espacenet		

摘要(译)

要解决的问题：本发明旨在提供编码抗狗IgE抗体的轻链可变区和重链可变区的多核苷酸;和含有这些可变区的抗狗IgE抗体。解决方案：本发明是编码由SEQ ID NO：2或6代表的氨基酸序列组成的重链可变区的DNA和编码由SEQ ID NO：1代表的氨基酸序列组成的轻链可变区的DNA。4或8，和与狗IgE结合的抗狗IgE单克隆抗体，含有这些可变区或与狗IgE结合的功能片段。