

(19)



(11)

EP 2 431 740 A1

(12)

EUROPEAN PATENT APPLICATION
published in accordance with Art. 153(4) EPC

(43) Date of publication:

21.03.2012 Bulletin 2012/12

(51) Int Cl.:

G01N 33/53 (2006.01)

(21) Application number: **10774917.8**

(86) International application number:

PCT/JP2010/057974

(22) Date of filing: **11.05.2010**

(87) International publication number:

WO 2010/131660 (18.11.2010 Gazette 2010/46)

(84) Designated Contracting States:

**AL AT BE BG CH CY CZ DE DK EE ES FI FR GB
GR HR HU IE IS IT LI LT LU LV MC MK MT NL NO
PL PT RO SE SI SK SM TR**

- **SHINDOME, Kumiko**
Otawara-shi
Tochigi 324-0036 (JP)
- **ABE, Katsushi**
Otawara-shi
Tochigi 324-0036 (JP)
- **OKUMA, Hiroshi**
Otawara-shi
Tochigi 324-0036 (JP)
- **ANDO, Chieko**
Osaka-shi
Osaka 541-0045 (JP)
- **ABIRU, Yasuhiro**
Osaka-shi
Osaka 541-0045 (JP)

(30) Priority: **11.05.2009 JP 2009114572**

(71) Applicants:

- **Eiken Kagaku Kabushiki Kaisha**
Taito-ku
Tokyo 110-8408 (JP)
- **Otsuka Pharmaceutical Co., Ltd.**
Tokyo 101-8535 (JP)

(74) Representative: **HOFFMANN EITLÉ**

Patent- und Rechtsanwälte
Arabellastraße 4
81925 München (DE)

(72) Inventors:

- **MINEKAWA, Takayuki**
Otawara-shi
Tochigi 324-0036 (JP)

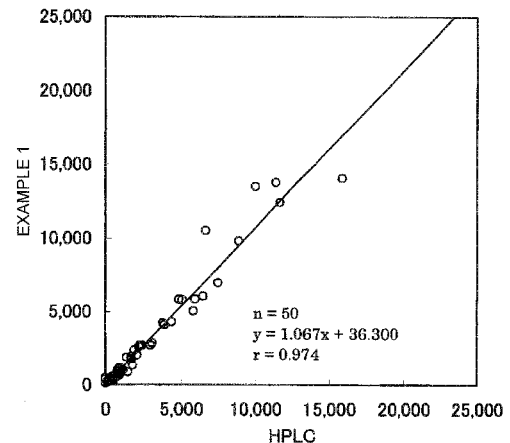
(54) **METHOD FOR MEASUREMENT OF EQUOL IN BIOLOGICAL SAMPLE BY IMMUNOASSAY, KIT FOR THE MEASUREMENT, AND METHOD FOR DETERMINATION OF EQUOL PRODUCTION ABILITY OF SUBJECT**

(57) An object of the present invention is to provide a method for measuring equal in a biological sample by an immunological method, a kit for the measurement, and a method for determining equol-producing ability of a subject.

The measurement method of the present invention is **characterized in that** S-equol is used as at least one antigen selected from the group consisting of a standard antigen used for the preparation of a standard curve and a labeled antigen that competes with equol in a biological sample. The kit of the present invention is **characterized in** including S-equol as at least one antigen selected from the group consisting of the standard antigen and the labeled antigen. The determination method of the present invention includes steps of measuring equal in a biological sample derived from a subject who has ingested soybean isoflavane by an immunological method using S-equol as at least one antigen selected from the group consisting of the standard antigen and the labeled anti-

gen, and determining an equol-producing ability of the subject based on the measured value of equol obtained in the above step.

Fig. 1



EP 2 431 740 A1

Description

Technical Field

5 **[0001]** The present invention relates to a method for measuring equol in a biological sample by an immunological method, a kit for the measurement, and a method for determining equol-producing ability of a subject.

Background Art

10 **[0002]** Isoflavones contained in soybeans are widely known to have the effect (the anti-estrogenic effect) of preventing breast cancer, prostate cancer, and the like; as well as the effect (the estrogen-like effect) of ameliorating menopause symptoms, postmenopausal diseases such as osteoporosis, hyperlipidemia, hypertension, and the like.

15 **[0003]** In addition to the direct clinical effects of soybean isoflavones, recent reports suggest that equol, which is an active metabolite of the soybean isoflavones, is the key to effectiveness in clinical applications, instead of the soybean isoflavones. Specifically, various reports state that equol is effective against breast cancer, prostate cancer, menopause symptoms, and postmenopausal osteoporosis.

20 **[0004]** Further, it has been reported that because equol is produced by intestinal bacteria, the amount of production is different depending on intestinal flora, and thus varies among different individuals. Accordingly, it is undeniable that there are some individuals who cannot experience a desired anti-estrogenic effect and estrogen-like effect, even if they ingest soybean processed products.

25 **[0005]** Some time later, lactic acid bacteria that efficiently produce equol were isolated and identified (Patent Literature 1). An efficient intake of equol into the body is expected to be achieved by orally ingesting a lactic acid bacteria preparation, and allowing the lactic acid bacteria to reach or colonize in the intestine. At this time, it is possible to confirm whether the lactic acid bacteria have reached or colonized in the intestine by measuring equol in, for example, urine, blood, feces, etc.

30 **[0006]** The following methodes are known as methods to measure equol: a method using a liquid chromatograph-mass spectrometer or a gas chromatograph-mass spectrometer in the case of blood samples, and a method using instrumental analysis such as high-performance liquid chromatography (HPLC), etc. in the case of urine samples. However, a simpler measurement method is demanded.

35 **[0007]** Further, as for the methods for measuring equol by immunoassay, Labmaster TR-FIA Research Reagents for the Measurement of Equol, which uses time-resolved fluoroimmunoassay, is commercially available (NPL 1).

[0008] Meanwhile, the presence of two types of diastereoisomers of equol, i.e., S-equol and R-equol, is known. Between them, S-equol is the only metabolite produced from daidzein (a precursor of equol) by intestinal bacteria. Further, S-equol binds with an estrogen-receptor much more strongly (NPL 2).

[0009] Specifically, S-equol is the equol that indicates its presence *in vivo*, and that is contained in blood samples and urine samples; it is thus useful to specifically measure S-equol.

Citation List

40 Patent Literature

[0010]

[PTL 1] Japanese Unexamined Patent Publication No. 2006-296434 Non-Patent Literatures

45

[0011]

[NPL 1] E. Brouwers, et al. Journal of Steroid Biochemistry & Molecular Biology, 2003, Vol. 84, pp. 577-588

[NPL 2] K. D. R. Setchell, et al. The American Journal of Clinical Nutrition, 2005, Vol. 81, pp. 1072-1079

50

Summary of Invention

Technical Problem

55 **[0012]** An object of the present invention is to develop a method for specifically and accurately measuring S-equol, in a method for measuring equol by an immunological method, i.e., immunoassay. Another object of the present invention is to develop a kit capable of specifically and accurately measuring S-equol when measuring the concentration of equol by an immunological method. Still another object of the present invention is to develop a method for determining an

equol-producing ability of a subject.

Technical Solution

5 **[0013]** Factors that greatly affect the performance of immunoassay include the identity or similarity between a target substance in a sample and a standard substance used for determining the concentration from a reaction of the target substance with its binding partner; or between a target substance in a sample and a competitive substance used in a competition reaction.

10 **[0014]** Accordingly, S-equol was used as a standard substance for preparing a standard curve to obtain measured values. As a result, the accuracy of the measured values was improved.

[0015] Further, labeled S-equol was used as a competing reactant in immunoassay that uses competitive immunoreaction. As a result, nonspecific reactions were suppressed, and the range of accurate measurement was expanded, compared to when a mixture of S-equol and R-equol was used.

15 **[0016]** The present invention is accomplished as a result of further studies based on the above findings.

[0017] Specifically, the present invention comprises the following:

Item 1. A method for measuring equol in a biological sample by an immunological method, comprising using S-equol as at least one antigen selected from the group consisting of a standard antigen used for the preparation of a standard curve and a labeled antigen that competes with equol in a biological sample.

20 Item 2. The method according to Item 1 comprising using, as a primary antibody, an anti-equol antibody whose cross-reactivity with daidzein is 10% or less; cross-reactivity with genistein is 10% or less; cross-reactivity with glycitein is 10% or less; cross-reactivity with dihydrodaidzein is 20% or less; and cross-reactivity with dehydroequol is 20% or less, when the cross-reactivity with S-equol is assumed to be 100%.

25 Item 3. The method according to Item 1, wherein a labeling substance in the labeled antigen is at least one member selected from the group consisting of enzymes, radioisotopes, dyes, fluorescent materials, latexes, and metal colloids.

30 Item 4 The method according to Item 1, wherein the immunological method is at least one type selected from the group consisting of ELISA, radioimmunoassay, and immunochromatographic assay.

35 Item 5. The method according to Item 1, wherein the biological sample is at least one member selected from the group consisting of urine and blood.

Item 6. The method according to Item 1, wherein an equol conjugate in the biological sample is measured without being deconjugated.

40 Item 7. A kit for measuring equol in a biological sample by an immunological method, comprising S-equol as at least one antigen selected from the group consisting of a standard antigen used for the preparation of a standard curve and a labeled antigen that competes with equol in a sample.

45 Item 8. The kit according to Item 7 further comprising, as a primary antibody, an anti-equol antibody whose cross-reactivity with daidzein is 10% or less; cross-reactivity with genistein is 10% or less; cross-reactivity with glycitein is 10% or less; cross-reactivity with dihydrodaidzein is 20% or less; and cross-reactivity with dehydroequol is 20% or less, when the cross-reactivity with S-equol is assumed to be 100%.

50 Item 9. The kit according to Item 7, wherein the immunological method is at least one type selected from the group consisting of ELISA, radioimmunoassay, and immunochromatographic assay.

Item 10. The kit according to Item 7, wherein the biological sample is at least one member selected from the group consisting of urine and blood.

55 Item 11. A method for determining an equol-producing ability of a subject, comprising the steps of

(1) measuring equol in a biological sample derived from a subject who has ingested soybean isoflavone, by an immunological method using S-equol as at least one antigen selected from the group consisting of a standard antigen used for preparation of a standard curve, and a labeled antigen that competes with equol in the biological

sample; and

(2) determining an equol-producing ability of the subject based on the measured value of equol obtained in step (1).

5 Item 12. The determination method according to Item 11, wherein, in step (1), an equol conjugate in the biological sample is measured without being deconjugated.

Advantageous Effects of Invention

10 **[0018]** With the implementation of the measurement method of the present invention, it is possible to suppress non-specific reactions and obtain accurate measurement results in a method for measuring equol in a biological sample by immunoassay. Additionally, the method can further be simply implemented with the use of the kit of the present invention. Moreover, whether a subject has an equol-producing ability can be accurately and simply determined according to the determination method of the present invention.

15 **[0019]** Additionally, the concentration of equol measured by the present invention indicates high correlation with the concentration of equol measured by HPLC. Further, the present invention takes only about 3 hours to detect the concentration, and can quickly measure the concentration of equol, compared to HPLC, which takes 72 hours, or about 2 weeks in the case of commission work. Additionally, the kit of the present invention costs much less than HPLC, yet can provide the same level of detection sensitivity as HPLC.

20 **[0020]** Further, according to the present invention, the presence and the level of the equol-producing ability of a subject can be accurately, simply, and quickly determined with high specificity. Therefore, based on the measurement results and the determination results, it is possible to understand the possible onset of diseases and the level of symptoms of the diseases (for example, breast cancer, prostate cancer, and menopause symptoms; as well as postmenopausal osteoporosis, hyperlipidemia, hypertension, etc.) associated with the lack of the equol-producing ability. Consequently,
25 these diseases can be appropriately prevented and ameliorated.

Brief Description of Drawings

[0021]

30 [Fig. 1] Fig. 1 is a correlation diagram showing the results measured by HPLC and in Example 1. In the diagram, the vertical axis indicates values obtained by ELISA, and the horizontal axis indicates values obtained by HPLC. The unit is ng/mL in each case.

35 [Fig. 2] Fig. 2 is a correlation diagram of results measured by HPLC and in Example 2. In the diagram, the vertical axis indicates values obtained by ELISA, and the horizontal axis indicates values obtained by HPLC. The unit is ng/mL in each case.

[Fig. 3] Fig. 3 is a correlation diagram of results measured by HPLC and in Example 3. In the diagram, the vertical axis indicates values obtained by ELISA, and the horizontal axis indicates values obtained by HPLC. The unit is ng/mL in each case.

40 [Fig. 4] Fig. 4 is a correlation diagram of results measured by HPLC and in the Comparative Example. In the diagram, the vertical axis indicates values obtained by ELISA, and the horizontal axis indicates values obtained by HPLC. The unit is ng/mL in each case.

[Fig. 5] Fig. 5 is a model diagram of competitive ELISA.

45 [Fig. 6] Fig. 6 is a correlation diagram of results regarding the concentration of equol measured by LC/MS/MS, and by an immunoassay of the present invention described in Test Example 3.

[Fig. 7] Fig. 7 shows the concentration of daidzein in urine measured using HPLC.

[Fig. 8] Fig. 8 shows plots of EQL ELISA versus Log E/D ratio.

Description of Embodiments

50 **[0022]** The present invention is described below.

1. Method for Measuring Equol in Biological Sample by Immunological Method

55 **[0023]** The method of the present invention for measuring equol in a biological sample by an immunological method (hereinafter sometimes referred to as "immunoassay") comprises using S-equol as at least one antigen selected from the group consisting of a standard antigen used for the preparation of a standard curve, and a labeled antigen that competes with equol in a biological sample. The immunoassay of the present invention is described below.

Immunizing Antigen to Prepare Antibody Against S-Equol

[0024] Equol, i.e., the target substance of the present invention, is a low-molecular-weight hapten. Therefore, equol alone does not possess immunogenicity. Accordingly, in order to obtain an antibody used for immunoassay, it is preferable to prepare an immunizing antigen by synthesizing a complex in which equol is bound to an antigen carrier.

[0025] Although the antigen carrier is not limited to any type insofar as the immunizing antigen can be prepared, a polymeric material (having a molecular weight of 10,000 or more, preferably 50,000 to 1,000,000) is preferable, with protein being particularly preferable. Preferable examples of proteins include, but are not limited to, antibodies, bovine serum albumin (BSA), casein, gelatin, ferritin, etc.

[0026] Further, the method for binding the hapten to the antigen carrier is not limited, insofar as the hapten and the antigen carrier can be bound together. A preferable method is a covalent bonding.

[0027] In the case of a covalent bonding, for example, when a protein is used as the antigen carrier, a succinimide group that has been introduced into the hapten is reacted with the protein or an amino group of the glycoprotein by the N-hydroxysuccinimide-activated ester method; and the hapten can thereby be bound to the antigen carrier. In this case, glutaric dialdehyde method and the like are exemplified as other methods.

[0028] Further, in the bonding between the hapten and the antigen carrier, a spacer compound is introduced into the hapten before bonding the hapten to the antigen carrier, in order to expand the distance between the hapten and the antigen carrier. In this way, it is possible to alter the affinity with the antibody, and the specificity of the antibody.

[0029] Any spacer compound can be used insofar as the hapten and the antigen carrier can be bound via the spacer compound, and the affinity with the antibody and the specificity of the antibody can be altered by the spacer compound. Examples thereof include carboxymethyl ether (CME), carboxypropyl ether (CPE), carboxybutyl ether (CBE), carboxyphenyl ether (CPhE), and the like, with CME being preferable.

[0030] Examples of bindings between the hapten and the antigen carrier via a spacer compound include the later-described equol-CME-protein, equol-CPE-protein, equol-CBE-protein, equol-CPhE-protein, and the like. The equol-CME-protein is prepared in the manner described in a later-described Example. Other immunizing antigens having a spacer compound can be suitably prepared by a person skilled in the art according to the type of the spacer compound used.

Labeled Hapten

[0031] A labeled hapten for detecting the presence of an antibody can be prepared in the same manner described above, by using a labeling substance instead of the antigen carrier. The affinity with the antibody to be detected can be adjusted by introducing a spacer compound between the hapten and the labeling substance.

[0032] Any known labeling substance can be used as the labeling substance insofar as it does not inhibit an antigen-antibody reaction. Examples of labeling substances include enzymes, radioisotopes, dyes, fluorescent materials, latexes, metal colloids, europium, acridinium, and the like. A preferable labeling substance is selected from the group consisting of enzymes, radioisotopes, dyes, fluorescent materials, latexes, and metal colloids. Further, examples of enzymes include peroxidases, alkaline phosphatase, luciferase, and the like; examples of radioisotopes include ^{125}I and the like; examples of dyes include cyanine-based dyes and the like; examples of fluorescent materials include FITC, cy3, cy5, and the like; examples of latexes include polystyrene latexes, magnetic latexes, and the like; and examples of metal colloids include gold, silver, platinum, and the like. Of these labeling substances, preferable examples include enzymes, further preferable examples include peroxidases, and particularly preferable examples include horseradish peroxidase, because of the advantage that they can simplify a highly sensitive detection.

[0033] Further, examples of spacer compounds used to bind the hapten to the labeling substance include carboxymethyl ether (CME), carboxypropyl ether (CPE), carboxybutyl ether (CBE), carboxyphenyl ether (CPhE), and the like, with CPE being preferable.

Antibody: Primary Antibody

[0034] The primary antibody used in the present invention is not limited to any type insofar as it can specifically bind to equol. Either polyclonal or monoclonal antibodies may be used. Further, a fragment of the antibody may be used as the primary antibody insofar as it maintains the specificity to equol. Additionally, an antiserum may also be used as the primary antibody.

[0035] The primary antibody used for immunoassay can be prepared by carrying out a known method. For example, the primary antibody can be prepared by the method described below; however, the preparation method is not limited to the following example.

[0036] Specifically, a polyclonal antibody can be prepared in the following manner: an immunizing antigen in which equol is bound to an antigen carrier is mixed with Freund's complete adjuvant to prepare an immunizing agent; the

prepared immunizing agent is regularly injected subcutaneously and/or intradermally several times into animals such as rabbits, goats, horses, sheep, guinea pigs, chickens, etc., thereby obtaining an antiserum; and the antiserum is purified, diluted, or the like. Examples of immunizing antigens include those described above; and the use of an adjuvant is desirable, although not essential. The antiserum can be collected according to a heretofore known method for preparation. The primary antibody used in the present invention is preferably a rabbit antiserum.

[0037] A monoclonal antibody can be prepared in the following manner: an immunizing antigen in which equol is bound to an antigen carrier is mixed with Freund's complete adjuvant to prepare an immunizing agent; the prepared immunizing agent is regularly injected subcutaneously and/or intradermally several times into animals such as mice, rats, etc.; the immunizing antigen alone is then injected intravenously or intraperitoneally; spleen cells prepared from the spleen removed several days later are fused with myeloma cells; and the fused cells are selectively cultured.

[0038] The grown fused cells are cultured to produce clones, and a cell line that produces IgG antibodies that specifically bind to equol is selected. Culture supernatant obtained by cultivation of the selected cell line is purified, diluted, or the like. Thereby, a monoclonal antibody to be used for the measurement can be prepared. As in the case of a polyclonal antibody, examples of immunizing antigens include those described above; and the use of an adjuvant is desirable, although not essential.

[0039] The primary antibody used in the present invention desirably has a high specificity to S-equol, and a low cross-reactivity with other isoflavone having a similar structure. In particular, because daidzein, dihydrodaidzein, and dehydroequol are factors that lead to erroneous detection of equol in a biological sample, it is desirable to use a primary antibody having a low cross-reactivity with these compounds. Specifically, when the cross-reactivity of the primary antibody used in the present invention with S-equol is assumed to be 100%, the cross-reactivity thereof with daidzein, genistein, glycitein, dihydrodaidzein, and dehydroequol desirably falls in the following ranges:

the cross-reactivity with daidzein: 10% or less, preferably 1% or less, further preferably 0.1% or less;

the cross-reactivity with genistein: 10% or less, preferably 1% or less, further preferably 0.1% or less;

the cross-reactivity with glycitein: 10% or less, preferably 1% or less, further preferably 0.1% or less;

the cross-reactivity with dihydrodaidzein: 20% or less, preferably 5% or less, further preferably 1.1% or less; and

the cross-reactivity with dehydroequol: 20% or less, preferably 5% or less, further preferably 1% or less.

[0040] The above cross-reactivity can be explained as follows. Specifically, the above cross-reactivity indicates a ratio (%) of the concentration (IC_{20}) of unlabeled S-equol at which the binding reaction of labeled S-equol to the anti-equol antibody can be inhibited by 20%, to the concentration (IC_{20}) of each isoflavone and the like at which the binding reaction of labeled S-equol to the anti-equol antibody can be inhibited by 20%. More specifically, in the competitive reaction between labeled S-equol and unlabeled S-equol, the concentration of unlabeled S-equol at which the binding of labeled S-equol to the antibody is 80 is determined, assuming that the binding of labeled S-equol alone to the antibody is 100. Similarly, each unlabeled isoflavone and the like are competitively reacted with labeled S-equol, and the concentration of each isoflavone and the like at which binding of labeled S-equol to the antibody is 80 is determined.

[0041] The thus-determined ratio (expressed in percentage) between the concentration (IC_{20}) of the unlabeled S-equol and the concentration (IC_{20}) of each isoflavone and the like is referred to as the cross-reactivity. This is represented by the following formula:

$$\text{Cross-reactivity (\%)} = (\text{IC}_{20} \text{ of S-equol} / \text{IC}_{20} \text{ of each isoflavone, etc.}) \times 100$$

[0042] Herein, the cross-reactivity rate is determined by competitive ELISA, using S-equol as the standard antigen used for the preparation of a standard curve, as well as the labeled antigen that competes with equol in a biological sample.

[0043] Further, the concentration of labeled S-equol used for the determination of the cross-reactivity rate may be suitably adjusted to the conditions under which the antigen can be measured at high sensitivity by competitive ELISA. Examples of labeling substances include the above-mentioned enzymes.

[0044] More specifically, for example, the cross-reactivity rate is determined according to the same procedure as in the later-described Test Example 2.

[0045] It is possible to detect equol in a biological sample at higher sensitivity by using a primary antibody having the above-described specificity, and using S-equol as the standard antigen and/or the labeled antigen that competes with equol in the biological sample.

Antibody: Secondary Antibody

[0046] A secondary antibody used in the present invention is an antibody that specifically binds to the primary antibody. The secondary antibody can be prepared according to a known method.

[0047] When a rabbit antibody or a rabbit antiserum is used as the primary antibody, a goat anti-rabbit IgG antibody can be preferably used as the secondary antibody.

[0048] Further, biotin-avidin/streptavidin binding may be used. In this case, for example, a biotinylated primary antibody may be prepared so as to bind the biotin to avidin/streptavidin immobilized onto a solid phase.

Standard Antigen, and Labeled Antigen That Competes with Equol in Biological Sample

[0049] Further, in the present invention, when equol in the biological sample is measured using an antibody prepared by the above-described method, it is possible to obtain an accurate measured value by using S-equol as the standard antigen used for the preparation of a standard curve and/or the labeled antigen that competes with equol in the sample. Specifically, although S-equol is used in the present invention as at least one of the standard antigen used for the preparation of a standard curve and the labeled antigen that competes with equol in the sample, it is desirable to use S-equol as both the standard antigen used for the preparation of a standard curve and the labeled antigen that competes with equol in the sample, in view of increasing the accuracy of measurement of equol in a biological sample.

[0050] Any heretofore known labeling substance can be used as the labeling substance in the above labeled antigen, insofar as it does not inhibit an antigen-antibody reaction. Examples of labeling substances include enzymes, radioisotopes, dyes, fluorescent materials, latexes, metal colloids, europium, acridinium, and the like. A preferable labeling substance is selected from the group consisting of enzymes, radioisotopes, dyes, fluorescent materials, latexes, and metal colloids. Further, examples of enzymes include peroxidases, alkaline phosphatase, luciferase, and the like; examples of radioisotopes include ^{125}I and the like; examples of dyes include cyanine-based dyes and the like; examples of fluorescent materials include FITC, cy3, cy5, and the like; examples of latexes include polystyrene latexes, magnetic latexes, and the like; and examples of metal colloids include gold, silver, platinum, and the like. Of these labeling substances, preferable examples include enzymes, further preferable examples include peroxidases, and particularly preferable examples include horseradish peroxidase, because they can advantageously simplify a highly sensitive detection.

[0051] For the purposes of binding the antigen to the labeling substance, and adjusting the affinity and the like between the antigen and the antibody, a spacer compound may be introduced between the antigen and the labeling substance. Examples of spacer compounds used to bind the antigen (S-equol) to the labeling substance include carboxymethyl ether (CME), carboxypropyl ether (CPE), carboxybutyl ether (CBE), carboxyphenyl ether (CPhE), and the like, with CPE being preferable.

Biological Sample

[0052] The biological sample for the measurement of equol is not particularly limited to any type, insofar as it is a sample that is derived from living organisms including animals and plants, and from which equol can be measured. Examples thereof include urine, blood (for example, serum and blood plasma), feces, tissue extracts, cell extracts, foodstuffs, etc. The biological samples are preferably derived from a human; and are further preferably urine and blood, and particularly preferably urine derived from a human.

[0053] Further, the biological sample used for the measurement of equol may be diluted, if necessary.

Enzyme for Pretreatment (Deconjugation) of Biological Sample

[0054] Equol contained in the biological sample is usually present in the conjugate form. Accordingly, the biological sample may be subjected to a pretreatment for deconjugation of equol before being used in an antigen-antibody reaction.

[0055] The deconjugation process can be performed using enzymes such as β -glucuronidase (containing glucuronidase and sulfatase), glucuronidase, sulfatase, etc. More specifically, preferable examples of enzyme solutions used for the deconjugation process include a composition mainly comprising 6% β -glucuronidase and 0.1 M acetic acid buffer (pH 5.5).

[0056] Further, the deconjugation process may be performed prior to or simultaneously with the antigen-antibody reaction. Although the reaction conditions of the deconjugation process are suitably adjusted according to the types of the enzyme, the biological sample used and the like, the deconjugation process is usually performed at 25°C to 56°C for 5 minutes to 24 hours.

Diluent for Biological Sample and/or Standard Antigen

[0057] A diluent used for dilution of the biological sample and the standard antigen is not limited to any type, insofar as it does not adversely affect the measurement. A diluent used in a general immunological method can be used. Preferable examples of diluents used in the present invention include a mixed solution of sodium chloride and phosphate buffer (pH 7.5) containing bovine serum albumin, 100% charcoal-treated human serum, etc. More specific examples of diluents include a mixed solution of 150 mM sodium chloride and 0.1 M phosphate buffer (pH 7.5) containing 1.0% bovine serum albumin.

Immunological Method for Measuring the Concentration of Equol

[0058] Next, specific examples of immunological methods for measuring equol are described below. However, the nature of the present invention is not limited to these examples.

[0059] In the present invention, an immunological method for measuring equol is not limited to any type, insofar as it can measure the concentration of equol in a biological sample by an antigen-antibody reaction in which the antigen and the antibody are used. Examples thereof include ELISA, radioimmunoassay, immunochromatographic assay, etc.

[0060] When ELISA, (Enzyme-Linked Immunosorbent Assay) is used as the immunological method, equol in a biological sample may be measured according to a heretofore known ELISA technique, which may be any of competitive ELISA, sandwich ELISA, and direct ELISA. Competitive ELISA is preferred as a type of ELISA.

As a reference, a model of competitive ELISA is shown in Fig. 5.

[0061] For example, when competitive ELISA is used, the measurement of equol in a biological sample by ELISA is performed, for example, as follows: a biological sample, an enzyme-labeled antigen (labeled antigen), and a primary antibody are added to wells of a microplate to which a secondary antibody has been immobilized in advance, and the reaction is carried out so as to form a secondary antibody-primary antibody-equol complex. The primary antibody may be simultaneously or separately added to the biological sample and the labeled antigen. After the reaction, the wells are washed with a washing solution, and a substrate for the enzyme is added for the reaction. Subsequently, the reaction is stopped by a reaction stop solution or the like, and the absorbance is measured. Then, the concentration of equol in the sample is calculated from a standard curve generated by measuring the standard antigen in the same manner.

[0062] In this case, a heretofore known microplate can be used, and the size and shape of the wells are not limited insofar as the above reaction can be performed. Further, the secondary antibody can be immobilized onto the wells by a heretofore known method. Similarly, a heretofore known substrate that is suitable for the enzyme may be used as the substrate.

[0063] Further, in the competitive ELISA, the adding amounts of primary antibody, secondary antibody, and labeled antigen are not limited, insofar as equol in the biological sample can be accurately measured by the relevant method; and are suitably adjusted according to the general conditions of ELISA. Additionally, in the case of an immunological method other than ELISA, the adding amounts of primary antibody, secondary antibody, and labeled antigen are similarly suitably adjusted according to heretofore known conditions.

[0064] Each reaction in ELISA may be carried out according to heretofore known conditions, and is suitably adjusted according to the type of biological samples and the method of ELISA. For example, in the case of competitive ELISA, an antigen-antibody reaction to form a secondary antibody-primary antibody-equol complex is usually carried out at 4°C to 37°C for 5 minutes to 24 hours.

[0065] More specifically, for the measurement of equol in urine by ELISA (competitive ELISA), a diluent is added to a urine sample to prepare a diluted urine sample; the prepared diluted urine sample, horseradish peroxidase-labeled equol, and diluted anti-equol rabbit antiserum (primary antibody) are added to the wells of a microplate to which a goat anti-rabbit IgG antibody (secondary antibody) has been immobilized in advance; and the reaction is carried out for a certain period of time. After the reaction, the wells are washed, and a colorimetric substrate solution is added to allow the reaction for a certain period of time. After the certain period of time, the reaction is stopped, and the absorbance is measured. Then, the concentration of equol in the sample is calculated from a standard curve generated by measuring the standard antigen in the same manner.

[0066] The buffer (antiserum dilution buffer) for diluting antisera is not limited to any type, insofar as it can suitably dilute the antisera and does not adversely affect the measurement. Preferable examples of antiserum dilution buffers used in the present invention include a mixed solution containing sodium chloride, bovine serum albumin, phosphate buffer (pH 7.5) containing Tween 20, etc. More specifically, examples of antiserum dilution buffers include a mixed solution of 150 mM sodium chloride, 0.5% bovine serum albumin, and 0.01% 0.1 M phosphate buffer (pH 7.5) containing Tween 20. The antiserum dilution buffer can be used not only in competitive ELISA, but also in different types of ELISA other than competitive ELISA, as well as in various immunological methods. Note that Tween is a registered trademark.

[0067] Measurement of equol in a biological sample by RIA (radioimmunoassay) may also be carried out according to a heretofore known method. The measurement can be performed in the same manner as in ELISA, except that a

radioisotope is used as the labeling substance. The following is an example of RIA in which urine is used as the biological sample and ^{125}I is used as the radioisotope.

5 [0068] A diluent is added to a urine sample to prepare a diluted urine sample; the prepared diluted urine sample, ^{125}I -labeled S-equal, and diluted anti-equal antibody-producing cell culture supernatant are added to the wells of a microplate to which a goat anti-rabbit IgG antibody has been immobilized in advance; and the reaction is carried out for a certain period of time. After the reaction, the wells are washed; the radioactivity in the wells of the microplate is measured; and the concentration of equal in the sample is calculated from a standard curve generated by measuring the standard antigen in the same manner.

10 [0069] The measurement of equal in a biological sample by an immunochromatographic assay (immunochromatography) may also be carried out according to a heretofore known method. The following is an example technique of an immunochromatographic assay in which urine is used as the biological sample, and gold colloid is used as the radioisotope. Specifically, a gold colloid-labeled anti-equal mouse monoclonal antibody is added to a urine sample to prepare a diluted urine sample, and the diluted urine sample is added dropwise to a sample pad of an immunochromatographic strip to allow the reaction for a certain period of time. After the reaction, coloration caused by the gold colloid labeling substance in a capture area onto which equal is immobilized is measured, and the concentration of equal in the sample is calculated from a standard curve generated by measuring the standard antigen in the same manner.

15 [0070] Further, a method for measuring equal in a biological sample by using a labeled antibody is as follows: equal or its analog bound to an antigen carrier is immobilized to a solid phase, and mixed with an anti-equal rabbit polyclonal antibody labeled with a fluorescent material and a biological sample; the fluorescent material thereby competed with the target substance in the biological sample and bound to the solid phase is washed; the measurement is subsequently carried out; and the concentration of equal in the sample is calculated from a standard curve generated by measuring the standard antigen in the same manner.

20 [0071] Further, open-sandwich ELISA is known as a method for measuring equal in a biological sample by using a labeled antibody fragment. In this measurement method, equal in a sample can be measured, for example, by using a light-chain antigen-binding fragment and a heavy-chain antigen-binding fragment of an anti-equal mouse monoclonal antibody; and forming a polymer into which equal in the biological sample is inserted.

25 [0072] Specifically, the light-chain antigen-binding fragment is immobilized onto a solid phase, and mixed with an alkaline phosphatase-labeled heavy-chain antigen-binding fragment and a biological sample; after washing, the activity of alkaline phosphatase that is bound to the solid phase via equal in the biological sample is measured; and the concentration of equal in the sample is calculated from a standard curve generated by measuring the standard antigen in the same manner.

30 [0073] Alternatively, the light-chain antigen-binding fragment and the heavy-chain antigen-binding fragment may be labeled with different fluorescent materials so as to measure the fluorescence resonance energy transfer phenomenon caused by the formation of a complex via equal in a biological sample; and the concentration of equal in the sample can be calculated from a standard curve generated by measuring the standard antigen in the same manner.

35 [0074] A preferable embodiment of the present invention is ELISA as the immunological method; a further preferable embodiment thereof is competitive ELISA; and a particularly preferable embodiment thereof is competitive ELISA that uses S-equal as both the standard antigen used for the preparation of a standard curve and the labeled antigen that competes with equal in a sample.

40 2. Kit for Measuring the Concentration of Equal in Biological Sample by Immunological Method

[0075] The kit of the present invention for measuring the concentration of equal in a biological sample by an immunological method is **characterized in that** the kit includes S-equal as at least one antigen selected from the group consisting of a standard antigen used for the preparation of a standard curve, and a labeled antigen that competes with equal in the sample. The kit of the present invention may further include a primary antibody that specifically binds to S-equal.

45 [0076] Further, the kit of the present invention may include, if necessary, at least one member selected from the group consisting of a diluent for a biological sample and/or standard antigen, an enzyme solution for deconjugation of an S-equal conjugate in the sample, a plate to which a secondary antibody is immobilized, and a washing solution.

50 [0077] The kit of the present invention may further include a reagent additionally required according to the type of the immunological method employed. For example, when the kit is used in competitive ELISA, the kit may further include at least one member selected from the group consisting of a substrate for a labeling substance in the labeled antigen, a reaction stop solution for stopping the reaction between the labeling substance and the substrate, and a solvent for dissolving the substrate.

55 [0078] Further, when antisera are used in the kit of the present invention, the kit may include an antiserum dilution buffer to be used to dilute the antisera.

[0079] Each reagent that may be included in the kit of the present invention is described below.

Standard Antigen

5 [0080] The above-described standard antigen can be similarly used. The standard antigen may be included in the form of a solution in the kit. For example, when S-equal is used as the standard antigen, S-equal may be in the form of a standard equal solution containing S-equal, sodium chloride, and phosphate buffer (pH 7.5) containing bovine serum albumin. Examples of standard equal solutions include a mixture containing 810 ng/mL S-equal, 150 mM sodium chloride, and 0.01 M phosphate buffer (pH 7.5) containing 0.1% bovine serum albumin. Further, examples of different types of standard equal solutions include a mixed solution of S-equal and 100% charcoal-treated human serum, and the like.

10 Labeled Antigen

[0081] The above-described labeled antigen can be similarly used. A preferable example is peroxidase-labeled S-equal, and a particularly preferable example is horseradish peroxidase-labeled S-equal.

15 Substrate for Labeling Substance

20 [0082] A heretofore known substrate can be used as the substrate for the labeling substance, and the substance is used in a combination with a heretofore known labeling substance. For example, in the case of horseradish peroxidase, examples of the substrate include hydrogen peroxide. The substrate is preferably used after being dissolved in the later-mentioned solvent.

Solvent

25 [0083] A solvent is used in order to dissolve the substance, if necessary. Any heretofore known buffer can be used as the solvent, insofar as it can suitably dissolve the substance and does not adversely affect the measurement. Examples thereof include a citrate buffer, acetic acid buffer, and the like. The solvent can be provided in a form that contains the substrate in advance.

30 [0084] When the substrate is the above-described hydrogen peroxide, a solution obtained by dissolving OPD (o-phenylenediamine dihydrochloride) in the solvent is used as the substrate solution. A suitable embodiment is a substrate solution containing 0.05% hydrogen peroxide solution and 50 mM citrate buffer (pH 5.5) containing 2.2 mg/mL OPD (o-phenylenediamine dihydrochloride).

Antibody: Primary Antibody

35 [0085] The above-described primary antibody can be similarly used. Preferably, an antiserum is used; and further preferably, a rabbit antiserum is used. The antiserum is used after being diluted with the later-described antiserum dissolution buffer, if necessary. The antiserum may be included in the kit in the state of being diluted with the antiserum dilution buffer.

40 Antibody: Secondary Antibody

45 [0086] The above-described secondary antibody can be similarly used. When a rabbit antibody or a rabbit antiserum is used as the primary antibody, a goat anti-rabbit IgG antibody is preferably used as the secondary antibody. Further, when competitive ELISA is employed, the secondary antibody is preferably immobilized to wells of a microplate. A heretofore known microplate can be used as the microplate, and the immobilization may be carried out according to a heretofore known method.

Antiserum Dilution Buffer

50 [0087] The antiserum dilution buffer is used in order to dilute the above-described antiserum, if necessary. The antiserum dilution buffer is not limited to any type, insofar as it can suitably dilute the antiserum and does not adversely affect the measurement. The above-described antiserum dilution can be similarly used. The antiserum dilution buffer may be included in the kit in the state in which antiserum is diluted.

55 Enzyme Solution for Pretreatment (Deconjugation) of Biological Sample

[0088] The above-described enzyme solution can be similarly used for the pretreatment (deconjugation) of the biological sample.

Diluent for Biological Sample and/or Standard Antigen

[0089] The above-described diluent, which is used for the biological sample and the standard antigen, can be similarly used.

Reaction Stop Solution to Stop Reaction Between Labeling Substance and Substrate

[0090] The reaction stop solution to stop the reaction between the labeling substance and the substrate is not limited to any type, insofar as it can stop the reaction therebetween and does not affect measurement results. A heretofore known reaction stop solution can be used. Examples of reaction stop solutions include sulfuric acid, hydrochloric acid, nitric acid, etc.

Washing Solution

[0091] The washing solution is used in order to remove excess biological samples, antibodies, etc. from the wells or the like after the antigen-antibody reaction is finished, and before the substrate is dispensed. The washing solution is not limited to any type, insofar as it can suitably wash and does not adversely affect the measurement. A heretofore known washing solution may be used as is, or by being diluted with purified water or the like. Examples of washing solutions include purified water, solutions in which a surfactant is diluted with a buffer, and the like.

[0092] Additionally, the kit of the present invention may also include a handbook that describes protocols for using the kit, a plate for dilution, plate-sealing tape, and the like. Further, a dye for coloration may be added to the above-described solution included in the kit.

[0093] Examples of biological samples to be determined by the kit of the present invention include those described above. Further, examples of immunological methods performed using the kit also include the above-described methods, with ELISA being preferable, and competitive ELISA being particularly preferable.

[0094] The amounts of the antibody, antigen, solution, and the like contained in the kit are not limited insofar as the concentration of equol in a biological sample can be measured. As described above, the amounts are suitably adjusted according to the general conditions of ELISA and other immunological methods.

3. Method for Determining Equol-Producing Ability of Subject

[0095] The method of the present invention for determining the equol-producing ability of a subject (hereinbelow, sometimes referred to as "determination method") comprises the steps of (1) measuring equol in a biological sample derived from a subject who ingested soybean isoflavones, by an immunological method using S-equol as at least one antigen selected from the group consisting of a standard antigen used for the preparation of a standard curve and a labeled antigen that competes with equol in a biological sample, and (2) determining the equol-producing ability of the subject based on the measured value of equol, which is obtained in Step (1). Each step of the determination method of the present invention is described below.

Step (1)

[0096] In Step (1), equol in a biological sample derived from a subject who ingested soybean isoflavone is measured by an immunological method using S-equol as at least one antigen selected from the group consisting of a standard antigen used for the preparation of a standard curve, and a labeled antigen that competes with equol in a biological sample.

[0097] The biological sample used in Step (1) is a biological sample derived from a subject who ingested soybean isoflavone. Equol is an active metabolite of soybean isoflavone. Therefore, in the case of a subject who has not ingested soybean isoflavone, equol will not be detected; or the measured value of equol will be very low, regardless of the presence of the equol-producing ability of the subject. Accordingly, the subject is required to ingest soybean isoflavone in advance. The amount of soybean isoflavone to be ingested by the subject is not particularly limited. The total amount of soybean isoflavone is, for example, 20 to 70 mg, preferably about 25 to 50 mg. Further, the period of time in which soybean isoflavone is ingested is also not particularly limited. For example, soybean isoflavone is ingested every day for 3 days before collecting biological samples, or 6 to 24 hours before collecting biological samples, preferably 8 to 12 hours before collecting biological samples. Usable soybean isoflavone to be ingested by the subject is in the form of soybean products such as soymilk, soybean isoflavone tablets, soybean bars, fermented soybean paste, soybean curd, boiled soybeans, green soybeans, black beans, tempeh, etc.

[0098] The biological sample used in Step (1) may be any of urine, blood (serum, blood plasma), feces, and the like, with urine and blood being preferable, and urine being further preferable.

[0099] The measurement of equol by the immunological method in Step (1) is performed according to the above-

described section entitled "1. Method for Measuring Equol in Biological Sample by Immunological Method".

Step (2)

5 **[0100]** In Step 2, the equol-producing ability of a subject is determined based on the measured value of equol, which is obtained in Step (1).

[0101] In Step (2), a subject in which equol is detected in his or her biological sample in Step (1) is determined as having the equol-producing ability, and a subject in which equol is not detected in his or her biological sample in Step (1) is determined as not having the equol-producing ability.

10 **[0102]** Note that, in Step (2), it is preferable to determine whether the measured concentration of equol is less than a cutoff value in order to suppress erroneous determination when determining the presence of the equol-producing ability. Specifically, when the measured concentration of equol in a biological sample is less than the cutoff value, a subject of the biological sample is determined as not having the equol-producing ability; and when the measured concentration of equol in a biological sample is equal to or greater than the cutoff value, a subject of the biological sample is determined as having the equol-producing ability. The cutoff value can be set as follows:

1. The concentration of equol in a biological sample is measured by the above-described immunological method.
2. The concentration of daidzein in the same biological sample is measured. The measurement is performed using an existing measurement method (HPLC, GC-MS, or the like).
- 20 3. The log-ratio of the concentration of equol to the concentration of daidzein is calculated for each biological sample. Because equol is a metabolite of daidzein, it is possible to know about how much equol is produced *in vivo* by calculating the logarithm value.
4. The concentration of S-equol and the concentration of daidzein in the biological sample are measured by HPLC.
5. The log-ratio of the concentration of equol to the concentration of daidzein is calculated for each biological sample based on the measured value in 4 above.
- 25 6. The log-ratios obtained in 3 above are compared with the reference value determined by the log-ratios obtained in 5 above, and the results obtained in 3 above are divided into equol production and non-equol production groups. Based on this, the concentration of equol at which the rate of erroneous determination between non-equol producers and equol producers is the lowest is determined, and this concentration is set as the cutoff value.

30 **[0103]** In regard to 6 above, specifically, in case where when the log-ratios calculated by HPLC, for example, are less than -1.75, the subjects are determined to be non-equol producers and when the ratios are -1.75 or greater, the subjects are determined to be equol producers, this value (-1.75) is used as the reference value (for example, see Setchell and Co, 2006). Then, the log-ratios obtained in 3 above are checked against the reference value, and the subjects are similarly divided into non-equol producers (if the value is less than -1.75) and equol producers (if the value is -1.75 or greater). Subsequently, each concentration of equol measured in 1 above is checked against the classification. Using the above classification as the criteria, the concentration of equol at which the rate of erroneous determination between non-equol producers and equol producers is the lowest is determined; and this concentration is set as the cutoff value.

35 **[0104]** Further, in Step (2), a subject in which a high concentration of equol is detected from his or her biological sample in Step (1) can be determined as having a high equol-producing ability, and a subject in which a low concentration of equol is detected from his or her biological sample in Step (1) can be determined as having a low equol-producing ability.

Examples

45 **[0105]** The presence of two different diastereoisomers of equol, i.e., S-equol and R-equol, is known. The former, i.e., S-equol, is the only type that is present *in vivo*. Therefore, the measurement method is required to specifically and accurately measure S-equol. Accordingly, a standard antigen and a labeled antigen that affect the measurement by competitive immunoassay were examined.

50 **[0106]** The measurement methods evaluated and the results thereof are described below.

<Test Example 1>

Example 1

5 Measurement by Measurement Kit Using S-Equol as Both Labeled Antigen and Standard Antigen

1. Biological Sample

10 **[0107]** Urine was used as a biological sample. The number of biological samples was 5.

2. Preparation of Solution of Anti-equol Rabbit Antiserum (Primary Antibody)

Synthesis of Immunizing Antigen

15 **[0108]** Equol (100 mg) was dissolved in DMSO (400 μ L), and methyl bromoacetate (58 μ L) and K_2CO_3 (140 mg) were added for the reaction at 25°C for 4 hours. After completion of the reaction, the mixture was adjusted to acidity using hydrochloric acid, extracted using ethyl acetate, dehydrated, and then evaporated to dryness.

20 **[0109]** Subsequently, the mixture was developed and separated on a thin-layer chromatography (1.05717, Merck, Japan) using chloroform:methanol (19:1) as a developing solvent, and only a fraction where one molecule of CME (carboxymethylether)-methylester was introduced into one molecule of equol was collected.

[0110] 8N sodium hydroxide was added to the collected equol-CME-methylester, and the mixture was heated at 50°C for 20 minutes. After heating, the mixture was adjusted to acidity using hydrochloric acid, extracted using ethyl acetate, and evaporated to dryness, thereby obtaining equol-CME-acid.

25 **[0111]** N-hydroxysuccinimide (NHS) (1.5 mg) and water-soluble carbodiimide (WSC) (1.5 mg) were added to the thus-obtained equol-CME-acid (2 mg). The mixture was dissolved in DMSO (20 μ L) and allowed to react at 25°C for 1 hour, thus obtaining equol-CME-NHS.

30 **[0112]** Equol-CME-NHS (10 mg/mL DMF solution) (10 μ L) was added to 20 mg/mL BSA solution (250 μ L, in which bovine serum albumin (20 mg) is dissolved in 50 mM carbonic acid buffer (pH 9.7, 1 mL)) for the reaction at 25°C for 30 minutes. After completion of the reaction, an unreacted substance was removed by gel filtration, and the resulting solution was used as a stock solution of equol-CME-BSA antigen.

Preparation of Antiserum

35 **[0113]** The synthesized immunizing antigen equol-CME-BSA (2.5 mg/mL) and Freund's complete adjuvant were mixed in equal amounts to prepare an immunizing agent. The immunizing agent was subcutaneously injected (1 mL per shot, every 3 weeks) into several sites on the back of rabbits. Blood collection was started 12 weeks after the start of immunization, and blood was collected every 3 weeks. After blood was partially collected 5 times, whole blood was collected. Table 1 shows antibody titers of the collected antisera. The antisera obtained by whole blood collection were suitably diluted with an antiserum dilution buffer, and used in the following tests.

40 **[0114]** Note that, herein, the maximum dilution factor of the individual antiserum in which antibodies can be detected by a heretofore known method was regarded as the antibody titer. The dilution was performed using the later-described antiserum dilution buffer.

[0115]

[Table 1]

Antibody Titer of Antiserum from Each Blood Collection						
Anliserum	Blood Collection 1	Blood Collection 2	Blood Collection 3	Blood Collection 4	Blood Collection 5	Blood Collection 6 (Whole Blood Collection)
No. 11	49,000	80,000	130,000	160,000	200, 00	280,000

55 3. Preparation of Goat Anti-Rabbit IgG Antibody (Secondary Antibody) and Antibody Solid-Phase Plate

[0116] 10 μ g/mL goat anti-rabbit IgG antibody solution (100 μ L) was added to each well of a 96-well microplate. After the microplate was left to stand at 4°C for 2 nights, the goat anti-rabbit IgG antibody solution was removed by suction.

EP 2 431 740 A1

[0117] 0.5 mg/mL bovine serum albumin solution (300 μ L) was added to each well of the 96-well microplate from which the solution was removed by suction. After the microplate was left to stand at 4°C for 18 hours, the bovine serum albumin solution was removed by suction, and the goat anti-rabbit IgG antibody was immobilized to the plate by vacuum-drying.

5

4. Preparation of Horseradish Peroxidase-Labeled S-Equol (Labeled Antigen that Competes with Equol in Biological Sample)

[0118] S-equol (100 mg) was dissolved in DMSO (400 μ L), and 4-bromo-n-butylic acid (58 μ L) and K_2CO_3 (140 mg) were added for the reaction at 25°C for 4 hours. After completion of the reaction, the mixture was adjusted to acidity using hydrochloric acid, extracted using ethyl acetate, dehydrated, and then evaporated to dryness.

10

[0119] Subsequently, the mixture was developed and separated by thin-layer chromatography (1.05717, Merck, Japan) using chloroform:methanol (19: 1) as a developing solvent; and only a fraction where one molecule of CPE (carboxypropylether)-methylester was introduced into one molecule of S-equol was collected.

15

[0120] 8N sodium hydroxide was added to the collected S-equol-CPE-methylester, and the mixture was heated at 50°C for 20 minutes. After heating, the mixture was adjusted to acidity using hydrochloric acid, extracted using ethyl acetate, and evaporated to dryness, thereby obtaining S-equol-CPE-acid.

15

[0121] N-hydroxysuccinimide (NHS) (1.5 mg) and water-soluble carbodiimide (WSC) (1.5 mg) were added to the thus-obtained S-equol-CPE-acid (2 mg). The mixture was dissolved in DMSO (20 μ L) and allowed to react at 25°C for 1 hour, thus obtaining S-equol-CPE-NHS.

20

[0122] S-equol-CPE-NHS (10 mg/mL DMF solution) (10 μ L) was added to 20 mg/mL HRP solution (250 μ L, in which horseradish peroxidase (20 mg) is dissolved in 50 mM carbonic acid buffer (pH 9.7, 1 mL)) for the reaction at 25°C for 30 minutes. After completion of the reaction, an unreacted substance was removed by gel filtration, and the resulting solution was used as a stock solution (labeled antigen solution) of horseradish peroxidase-labeled S-equol solution.

25

5. Standard Antigen

[0123] S-equol was used as a standard antigen. Note that a standard equol solution in the form of a mixed solution of S-equol (0, 30, 90, 270, or 810 ng/mL) and 100% charcoal-treated human serum was used.

30

6. Biological Sample Diluent and Standard Antigen Diluent

[0124] 100% charcoal-treated human serum (Seracon II: CD Intergen) was used as a diluent for the biological sample (sample) and the standard antigen.

35

7. Composition of Antiserum Dilution Buffer

[0125] 0.1 M phosphate buffer (pH 7.5) containing 150 mM sodium chloride, 0.5% bovine serum albumin, and 0.01% Tween 20 was used as the antiserum dilution buffer. Note that Tween is a registered trademark.

40

8. Composition of Washing Solution

[0126] 0.3 mM phosphate buffer (pH 7.5) containing 100 mM sodium chloride and 0.025% Tween 20 was used as a washing solution.

45

9. Composition of Enzyme Solution

[0127] 0.1 M acetic acid buffer (pH 5.5) containing 6% β -glutafase (Nippon Biotest Laboratories) was used as an enzyme solution.

50

10. Substrate

[0128] 50 mM citrate buffer (pH 5.5) containing 0.05% hydrogen peroxide solution and 2.2 mg/mL OPD (o-phenylenediamine dihydrochloride) was used as a substrate (substrate solution).

55

11. Reaction Stop Solution

[0129] 3N sulfuric acid was used as a reaction stop solution.

EP 2 431 740 A1

12. Measurement of Equol Using Biological Sample

5 **[0130]** A diluent (200 μL) was added to a urine sample (20 μL) to prepare an 11-fold diluted urine sample. A mixed solution (50 μL) of the 11-fold diluted urine sample (20 μL), enzyme, and labeled antigen (the ratio of enzyme solution to labeled antigen solution is 10:1) was added to the plate wells containing immobilized anti-rabbit IgG goat antibody. The plate was stirred, and then left to stand at 25°C for 30 minutes. Subsequently, the anti-equol rabbit antiserum solution (50 μL) was added thereto, and the mixture was stirred and then left to stand at 25°C for 1 hour.

10 **[0131]** After the reaction solution was removed from the plate wells containing immobilized goat anti-rabbit IgG antibody, the wells were washed 3 times using the washing solution. After washing, the substrate (100 μL) was added to the plate wells containing immobilized goat anti-rabbit IgG antibody, and the plate was left to stand at 25°C for 30 minutes. Subsequently, the reaction stop solution (100 μL) was added to the plate wells containing immobilized goat anti-rabbit IgG antibody, and the absorption at the wavelength of 490 nm was measured. Then, the concentration of equol in the sample was calculated from a standard curve generated from a dilution series (prepared using a standard diluent) of the standard antigen, which was measured in the same manner.

15 Example 2

Measurement by Measurement Kit Using S-Equol as Labeled

20 Antigen

[0132] Example 2 was conducted in the same manner as in Example 1, except that the "standard antigen" in Example 1 was changed from S-equol to equol (a mixture of S-equol and R-equol).

25 Example 3

Measurement by Measurement Kit Using S-Equol as Standard

30 Antigen

[0133] Example 3 was conducted in the same manner as in Example 1, except that the S-equol in the "preparation of horseradish peroxidase-labeled S-equol" in Example 1 was changed to equol (a mixture of S-equol and R-equol), as described below.

35 Preparation of Horseradish Peroxidase-Labeled Equol

[0134] Equol (100 mg) was dissolved in DMSO (400 μL), and 4-bromo-n-butylic acid (58 μL) and K_2CO_3 (140 mg) were added for the reaction at 25°C for 4 hours. After completion of the reaction, the mixture was adjusted to acidity using hydrochloric acid, extracted using ethyl acetate, dehydrated, and then evaporated to dryness.

40 **[0135]** Subsequently, the mixture was developed and separated on a thin-layer chromatography (1.05717, Merck, Japan) using chloroform:methanol (19:1) as a developing solvent; and only a fraction where one molecule of CPE (carboxypropylether)-methylester was introduced into one molecule of equol was collected.

[0136] 8N sodium hydroxide was added to the collected equol-CPE-methylester, and the mixture was heated at 50°C for 20 minutes. After heating, the mixture was adjusted to acidity using hydrochloric acid, extracted using ethyl acetate, and evaporated to dryness, thereby obtaining equol-CPE-acid.

45 **[0137]** N-hydroxysuccinimide (NHS) (1.5 mg) and water-soluble carbodiimide (WSC) (1.5 mg) were added to the thus-obtained equol-CPE-acid (2 mg). The mixture was dissolved in DMSO (20 μL) and allowed to react at 25°C for 1 hour, thus obtaining equol-CPE-NHS.

50 **[0138]** Equol-CPE-NHS (10 mg/mL DMF solution) (10 μL) was added to 20 mg/mL HRP solution (250 μL , in which horseradish peroxidase (20 mg) is dissolved in 50 mM carbonic acid buffer (pH 9.7, 1 mL)) for the reaction at 25 °C for 30 minutes. After completion of the reaction, an unreacted substance was removed by gel filtration, and the resulting solution was used as a stock solution of horseradish peroxidase-labeled equol solution.

55 Comparative Example

Measurement by Measurement Kit Using Equol as Both Labeled Antigen and Standard Antigen

[0139] Comparative Example was conducted in the same manner as in Example 1, except that the S-equol as the

EP 2 431 740 A1

"standard antigen" in Example 1 was changed to the equol described in Example 2; and the S-equol in the "preparation of horseradish peroxidase-labeled S-equol" was changed to the equol described in Example 3.

Example 4

Comparison of Measured Values Against HPLC (Panel Sample)

[0140] Five urine samples in which the concentration of equol is known by HPLC were measured according to Example 1, Example 2, Example 3, and the Comparative Example. Table 2 shows the results thereof. Table 3 shows the ratio of each measured value, assuming that the measured value by HPLC is 100%.

[0141]

[Table 2]

Measured Values of 5 Urine Samples (ng/mL)					
	HPLC	Example 1	Example 2	Example 3	Comparative Example
Urine Sample A	507	541	659	808	418
Urine Sample B	1,775	1,703	2,175	1,844	906
Urine Sample C	4,008	3,961	5,044	5,353	2,385
Urine Sample D	8,360	7,436	9,332	7,691	3,251
Urine Sample E	12,540	11,447	13,230	12,315	4,877

[0142]

[Table 3]

Ratio (%) of Measured Values of 5 Urine Samples to Measured Values by HPLC				
	Example 1	Example 2	Example 3	Comparative Example
Urine Sample A	107	130	159	82
Urine Sample B	96	123	104	51
Urine Sample C	99	126	134	60
Urine Sample D	89	112	92	39
Urine Sample E	91	106	98	39

[0143] While the ratio of the measurement results from the Comparative Example to the measurement results from HPLC is in the range from 39% to 82%, the ratios obtained from Examples 1, 2, and 3 are in the ranges of from 89% to 107%, 106% to 130%, and 92% to 159%, respectively. The use of S-equol as the standard antigen and/or the labeled antigen narrowed the discrepancy between the measured values obtained with and without HPLC.

Example 5

Correlation with HPLC (Measured Value)

[0144] Fifty urine samples in which the concentration of equol is known by HPLC were measured in the same manner described in Example 1, Example 2, Example 3, and the Comparative Example. Correlations between the results from these Examples and the measurement results from HPLC are respectively shown in Fig. 1, Fig. 2, Fig. 3, and Fig. 4. A subject was required to ingest soybean isoflavone (26 mg of isoflavone aglycone) the day before the measurement, and the first urine excreted in the morning was used as the urine sample.

Although the measurement results from the Comparative Example show a high correlation (correlation coefficient $r = 0.973$), the slope of the regression equation is 0.664, i.e., almost half of the measured value obtained by HPLC.

[0145] On the other hand, the measurement result from Example 1 shows a high correlation (correlation coefficient $r = 0.974$), and the slope of the regression equation is 1.067, i.e., comparable to the measured value obtained by HPLC.

EP 2 431 740 A1

Therefore, it was determined that the accuracy was increased more in Example 1 than in the Comparative Example.

[0146] Note that the measurement results from Example 2 show a high correlation (correlation coefficient $r = 0.987$); and that the slope of the regression equation is 1.594, i.e., higher than the measured value obtained by HPLC.

[0147] Note that the measurement results from Example 3 show a high correlation (correlation coefficient $r = 0.973$); and that the slope of the regression equation is 1.712, i.e., higher than the measured value obtained by HPLC. The graph (Fig. 3) shows a large variation in the measurement results. A discrepancy in the measured values was observed, especially in the measured values in the high range.

<Test Example 2>

Cross-Reactivity

[0148] In this Test Example, the cross-reactivity of the primary antibody was examined for the case where competitive EEISA was employed and S-equol was used as both the standard antigen and the labeled antigen. Specifically, the cross-reactivity was examined as follows.

1. Sample

[0149] Each of the isoflavones and the like shown in the later-described Table 4 was dissolved in 100% charcoal-treated human serum, and the resulting solution was used as a sample.

2. Primary Antibody

[0150] An anti-equol-rabbit antiserum was used as the primary antibody, as in Example 1. The antiserum was suitably diluted with the later-described antiserum dilution buffer, and used in the test.

3. Secondary Antibody

[0151] A goat anti-rabbit IgG antibody was used as a secondary antibody, as in Example 1. The antibody was immobilized to a solid phase as in Example 1, thus preparing a plate containing immobilized goat anti-rabbit IgG antibody.

4. Labeled Antigen that Competes with Equol in Biological

Sample

[0152] Horseradish peroxidase-labeled S-equol was used as a labeled antigen, as in Example 1.

5. Standard Antigen

[0153] S-equol was used as a standard antigen, as in Example 1. Note that a standard equol solution in the form of a mixed solution of S-equol (0, 30, 90, 270, or 810 ng/mL) and 100% charcoal-treated human serum was used.

6. Diluent for Sample and Standard Antigen

[0154] 100% charcoal-treated human serum (Seracon II: CD Intergen) was used as a diluent for the sample and the standard antigen.

7. Antiserum Dilution Buffer

[0155] 0.1 M phosphate buffer (pH 7.5) containing 150 mM sodium chloride, 0.5% bovine serum albumin, and 0.01% Tween 20 was used as an antiserum dilution buffer.

8. Washing Solution

[0156] 0.3 mM phosphate buffer (pH 7.5) containing 100 mM sodium chloride and 0.025% Tween 20 was used as a washing solution.

EP 2 431 740 A1

9. Enzyme Solution

[0157] 0.1 M acetic acid buffer (pH 5.5) containing 6% β -glufatase (Nippon Biotest Laboratories) was used as an enzyme solution.

10. Substrate

[0158] 50 mM citrate buffer (pH 5.5) containing 0.05% hydrogen peroxide solution and 2.2 mg/mL OPD (o-phenylene-diamine dihydrochloride) was used as a substrate (substrate solution).

11. Reaction Stop Solution

[0159] 3N sulfuric acid was used as a reaction stop solution.

12. Procedure to Examine Cross-Reactivity

[0160] A concentration dilution series was prepared for each of the isoflavones and the like, and for unlabeled S-euol. The adsorption by each of the isoflavones and the like, and the adsorption by unlabeled S-euol in the competitive reaction were measured from when the concentrations of these substances were 0 to when the concentrations of these substances were added in excess amounts. Each of the thus-obtained measured values was checked against a standard curve obtained from the dilution series of the standard antigen (S-euol), so as to compare the inhibition of the reaction based on each calculated value. Thereby, the concentration (IC_{20}) of each of the isoflavones and the like, as well as the concentration (IC_{20}) of unlabeled S-euol, at which the binding reaction of labeled S-euol to the anti-euol antibody is inhibited by 20%, were determined.

[0161] The competitive reaction was performed using competitive ELISA by a procedure similar to that in Example 1. Further, horseradish peroxidase was used as a labeling substance.

[0162] The ratio (expressed in percentage) of the thus-obtained concentration of each of the isoflavones and the like to the thus-obtained concentration of unlabeled S-euol was regarded as the cross-reactivity. This is represented by the following formula: Cross-reactivity (%) = (IC_{20} of S-euol / IC_{20} of each isoflavone, etc.) \times 100

[0163] Table 4 shows the results.

[0164]

[Table 4]

Isoflavones and the Like	Cross-reactivity Rate
S-Euol	100.00%
R-Euol	13.24%
Daidzein	0.08%
Genistein	0.05%
Glycitein	0.03%
Glycitin	0.02%
Estradiol	0.01%.
Daidzin	0,06%
Genistin	0.06%
Biochanin A	0.11%
Formononetin	0.21%
Dihydrodaizein	1.03%%
Apigenin	0.00%
Luteolin	0.00%
Dehydroeuol	0.33%

5 [0165] According to the results, when the cross-reactivity of the primary antibody with S-equol is assumed to be 100%, the cross-reactivity thereof with R-equol is 13.24%, the cross-reactivity thereof with daidzein before being metabolized is 0.08%, the cross-reactivity thereof with dihydrodaidzein is 1.03%, the cross-reactivity thereof with dehydroequol is 0.33%, and the cross-reactivity thereof with daidzin is 0.06%. The results show that the primary antibody also has a significantly low cross-reactivity with various other substances. This means that S-equol can be specifically detected and measured by the method of the present invention, and further by the kit of the present invention.

10 [0166] Further, for example, when Labmaster Equol TR-FIA, which is a heretofore known kit manufactured by Labmaster, is used, the cross-reactivity rate with daidzein is 0.8% (see <http://labmaster.fi/products/tr-fia-kitS-equol-tr-fia.htm>), and the cross-reactivity of the kit is 10 times as high as that of the present kit. Furthermore, when Labmaster Equol TR-FIA is used, the cross-reactivity rate with dehydroequol is 42.3%, and the cross-reactivity rate with dihydrodaidzein is 4.0%. Thus, the present kit is considered to exhibit significantly higher specificity, compared to a heretofore known kit.

15 [0167] Further, in the past, an article (Duncan C.S. Talbot, et al. Clinical Chemistry 53: 748-756, 2007) that discusses research that uses a monoclonal antibody reported that the cross-reactivity rate with daidzein was <0.04%. This indicates that although the present invention uses an antiserum as the primary antibody, it exhibits specificity that is equivalent to that of the monoclonal antibody.

<Test Example 3>

20 Correlation with Liquid Chromatography/Tandem Mass Spectrometer (LC/MS/MS)

[0168] In this Test Example, the correlation with an LC/MS/MS method was examined for the case where competitive ELISA was employed, and where S-equol was used as both the standard antigen and the labeled antigen. Specifically, the correlation was examined as follows.

25 1. Biological Samples

[0169] Sera of 10 males before and after they ingested isoflavone were used as biological samples.

30 2. Primary Antibody

[0170] The same anti-equol rabbit antiserum as that used in Example 1 was used a primary antibody. The antiserum was suitably diluted with the later-described antiserum dilution buffer, and used in the test.

35 3. Secondary Antibody

[0171] The same goat anti-rabbit IgG antibody as that used in Example 1 was used as a secondary antibody. The antibody was immobilized to a solid phase as in Example 1, thus preparing a plate containing immobilized goat anti-rabbit IgG antibody.

40 4. Labeled Antigen that Competes with Equol in Biological

Sample

45 [0172] The same labeled antigen solution of horseradish peroxidase-labeled S-equol as that used in Example 1 was used as the labeled antigen.

5. Standard Antigen

50 [0173] S-equol was used as a standard antigen as in Example 1. Note that 810 ng/mL S-equol was suitably diluted with the standard antigen diluent, and the resulting solution was used as a standard equol solution.

6. Standard Antigen Diluent

55 [0174] 100% charcoal-treated human serum was used as a diluent for the standard antigen.

7. Antiserum Dilution Buffer

[0175] 0.1 M phosphate buffer (pH 7.5) containing 150 mM sodium chloride, 0.5% bovine serum albumin, and 0.01%

EP 2 431 740 A1

Tween 20 was used as an antiserum dilution buffer.

8. Washing Solution

5 **[0176]** 0.3 mM phosphate buffer (pH 7.5) containing 100 mM sodium chloride and 0.025% Tween 20 was used as a washing solution.

9. Enzyme Solution

10 **[0177]** 0.1 M acetic acid buffer (pH 5.5) containing 6% β -glufatase (Nippon Biotest Laboratories) was used as an enzyme solution.

10. Substrate

15 **[0178]** 50 mM citrate buffer (pH 5.5) containing 0.05% hydrogen peroxide solution and 2.2 mg/mL OPD (o-phenylenediamine dihydrochloride) was used as a substrate (substrate solution).

11. Reaction Stop Solution

20 **[0179]** 3N sulfuric acid was used as the reaction stop solution.

12. Procedure to Measure the Concentration of Equol

25 **[0180]** A mixed solution (50 μ L) of serum sample (20 μ L), enzyme, and labeled antigen (the ratio of enzyme solution to labeled antigen solution is 10:1) was added to the plate wells containing immobilized goat anti-rabbit IgG antibody, and the plate was stirred and then left to stand at 25°C for 30 minutes. Subsequently, the anti-equol rabbit antiserum solution (50 μ L) was added thereto, and the mixture was stirred and then left to stand at 25°C for 1 hour.

30 **[0181]** After the reaction solution was removed from the plate wells containing immobilized goat anti-rabbit IgG antibody, the wells were washed 3 times using the washing solution. After washing, the substrate (100 μ L) was added to the plate wells containing immobilized goat anti-rabbit IgG antibody, and the plate was left to stand at 25°C for 30 minutes. Subsequently, the reaction stop solution (100 μ L) was added to the plate wells containing immobilized goat anti-rabbit IgG antibody, and the absorption at the wavelength of 490 nm was measured. Then, the concentration of equol in the sample was calculated from a standard curve generated from a dilution series (prepared using a standard diluent) of the standard antigen, which was measured in the same manner.

35 **[0182]** Further, the concentration of equol in the same biological sample was measured using a liquid chromatography/tandem mass spectrometer (LC/MS/MS). The thus-obtained results were compared. Table 5 and Fig. 6 show the correlations of the results.

[0183]

40

[Table 5]

	LCMSMS (ng/mL)	ELISA (ng/mL)
Serum Sample 1	3.5	1.0
Serum Sample 2	2.8	2.0
45 Serum Sample 3	21.0	7.8
Serum Sample 4	35.6	17.9
Serum Sample 5	50.9	19.0
50 Serum Sample 6	49.5	22.8
Serum Sample 7	63.9	24.9
Serum Sample 8	55.9	19.2
serum Sample 9	78.7	30.2
55 Serum Sample 10	121.9	56.3
Correlation Coefficient		0.984

EP 2 431 740 A1

[0184] Table 5 shows that the absolute values of the measurement results of the serum samples obtained in Example 4 are lower (less than half) than those obtained by LC/MS/MS. However, Table 5 shows a high correlation coefficient (0.984).

5 <Test Example 4>

Determination 1 of S-Equol Producer/Non-S-Equol Producer (Cutoff Value Setting)

[0185] In the present test example, the cutoff value was set in the following manner.

10 [0186] A subject was required to ingest soybean isoflavone (about 25 mg of isoflavone aglycone) during the evening meal the day before the measurement, and the first urine excreted in the morning at least 6 hours after the ingestion was used as the urine sample. The number of subjects was 244 (76 males and 168 females), and the number of biological samples was 432.

15 [0187] Fig. 7 shows the measurement results regarding the concentration of daidzein (DZN). The concentration of DZN was measured using HPLC. A sufficient amount of DZN was detected in the first urine excreted in the morning by the ingestion of isoflavone the day before the measurement. Accordingly, it was decided that it is possible to determine S-equol producers and non-S-equol producers.

20 [0188] Next, the concentration (EQL ELISA) of equol (EQL) in the urine was measured by ELISA. The detection limit was 330 ng/ml. At the same time, the log-ratio (Log E/D ratio) of the concentration of EQL to the concentration of DZN was calculated based on the results from HPLC. Fig. 8 shows plots between the EQL ELISA and the Log E/D ratio. Note that with the Log E/D ratio, a value of -1.75 (Kenneth D.R. Stechell and Sindy J. cole, J. Nutr. 136: 2188-2193, August 2006) was used as the reference value, and the subjects with a value of -1.75 or greater were determined to be equol producers; the subjects with a value less than -1.75 were determined to be non-equol producers.

25 [0189] Based on the above, the concentration of equol at which the rate of erroneous determination between non-equol producers and equol producers is lowest, i.e., the cutoff value, was examined. Table 6 shows the results of the examination. Note that, according to HPLC, the number of biological samples determined to be the producers was 377, and the number of biological samples determined to be the non-producers was 55.

[0190]

30

[Table 6]

Cutoff Value (ng/mL)	(1) Erroneous Determination in Which Non-Equol Producers are Determined to be Equol Producers The Number of Samples Without Equol-Producing Ability:55		(2) Erroneous Determination in Which Equol Producers are Determined to be Non-Equol Producers The Number of Samples With Equo-Producing Ability: 377		Total Erroneous Determination Total Number of Samples 432	
	The Number of Samples	Erroneous Determination Rate (%)	The Number of Samples	Erroneous Determination Rate (%)	The Number of Samples	Total Erroneous Determination Rate(%)
330	23	41.8	2	0.5	25	42.3
400	16	29.1	4	1.1	20	30.2
450	14	25.5	5	1.3	19	26.8
500	11	20.0	8	2.1	19	22.1
550	9	16.4	11	2.9	20	19.3
600	8	14.5	15	4.0	23	18.5
650	5	9.1	17	4.5	22	13.6
700	4	7.3	20	5.3	24	12.6
750	3	5.5	25	6.6	28	12.1
800	2	3.6	29	7.7	31	11.3
850	2	3.6	31	8.2	33	11.9

45

50

55

EP 2 431 740 A1

(continued)

Cutoff Value (ng/mL)	(1) Erroneous Determination in Which Non-Equol Producers are Determined to be Equol Producers The Number of Samples Without Equol-Producing Ability: 55		(2) Erroneous Determination in Which Equol Producers are Determined to be Non-Equol Producers The Number of Samples With Equo-Producing Ability: 377		Total Erroneous Determination Total Number of Samples 432	
	The Number of Samples	Erroneous Determination Rate (%)	The Number of Samples	Erroneous Determination Rate (%)	The Number of Samples	Total Erroneous Determination Rate(%)
900	2	3.6	35	9.3	37	12.9
950	1	1.8	39	10.3	40	12.2
1000	0	0.0	45	11.9	45	11.9

[0191] According to Table 6, the rate of erroneous determination between equol producers and non-equol producers was lowest when the concentration of equol was 800 ng/ml. Accordingly, in this case, the cutoff value was set to 800 ng/ml.

<Test Example 5>

Determination 2 of S-Equol Producer/Non-S-Equol Producer (Cutoff Value Setting)

[0192] The cutoff value as the criterion for determining S-equol producers and non-S-equol producers was set in the same manner as in Test Example 4.

[0193] Note that the number of biological samples in the immunoassay was 713. Further, undetectable values were treated as "0". Table 7 shows the results of the examination.

[0194]

[Table 7]

Cutoff Value (ng/mL)	(1) Erroneous Determination in Which Non-Equol Producers are Determined to be Equol Producers The Number of Samples Without Equol-Producing Ability: 337		(2) Erroneous Determination in Which Equol Producers are Determined to be Non-Equol Producers The Number of Samples With Equol-Producing Ability: 376		Total Erroneous Determination Total Number of Samples 713	
	The Number of Samples	Erroneous Determination Rate (%)	The Number of Samples	Erroneous Determination Rate (%)	The Number of Samples	Total Erroneous Determination Rate (%)
330	63	18.9	1	0.3	64	19.2
400	45	13.6	3	0.8	48	14.4
450	35	10.7	4	1.1	39	11.7
500	29	8.6	7	1.9	36	10.4
550	22	6.5	10	2.7	32	9.2
600	18	5.3	14	3.7	32	9.0
650	13	3.8	16	4.3	29	8.1
700	11	3.3	19	5.1	30	8.3
750	9	2.7	24	6.4	33	9.0

EP 2 431 740 A1

(continued)

Cutoff Value (ng/mL)	(1) Erroneous Determination in Which Non-Equol Producers are Determined to be Equol Producers The Number of Samples Without Equol-Producing Ability: 337		(2) Erroneous Determination in Which Equol Producers are Determined to be Non-Equol Producers The Number of Samples With Equol-Producing Ability: 376		Total Erroneous Determination Total Number of Samples 713	
	The Number of Samples	Erroneous Determination Rate (%)	The Number of Samples	Erroneous Determination Rate (%)	The Number of Samples	Total Erroneous Determination Rate (%)
800	6	1.8	28	7.4	34	9.2
850	5	1.5	30	8.0	35	9.5
900	4	1.2	34	9.0	38	10.2
950	3	0.9	38	10.1	41	11.0
1000	1	0.3	44	11.7	45	12.0
1050	1	0.3	47	12.5	48	12.8
1100	1	0.3	50	13.3	51	13.6
1150	1	0.3	50	13.3	51	13.6
1200	1	0.3	53	14.1	54	14.4
1250	1	0.0	54	14.4	55	14.4

[0195] According to Table 7, the rate of erroneous determination between equol producers and non-equol producers was lowest when the concentration of equol was 650 ng/ml. Accordingly, in this case, the cutoff value was set to 650 ng/ml.

<Test Example 6>

Determination 3 of S-Equol Producer/Non-S-Equol Producer

[0196] The cutoff value as the criterion for determining between S-equol producers and non-S-equol producers was set in the same manner as in Test Example 4.

[0197] Note that the number of biological samples in the immunoassay was 118. Table 8 shows the results of the examination.

[0198]

[Table 8]

Cutoff Value (ng/mL)	(1) Erroneous Determination in Which Non-Equol Producers are Determined to be Equol Producers The Number of Samples Without Equol Producing Ability: 55		(2) Erroneous Determination in Which Equol Producers are Determined to be Non-Equol Producers The Number of Samples With Equol-Producing Ability: 63		Total Erroneous Determination Total Number of Samples 118	
	The Number of Samples	Erroneous Determination Rate (%)	The Number of Samples	Erroneous Determination Rate (%)	The Number of Samples	Total Erroneous Determination Rate (%)
330	23	41.8	1	1.6	24	43.4
400	16	29.1	1	1.6	17	30.7

EP 2 431 740 A1

(continued)

Cutoff Value (ng/mL)	(1) Erroneous Determination in Which Non-Equol Producers are Determined to be Equol Producers The Number of Samples Without Equol Producing Ability: 55		(2) Erroneous Determination in Which Equol Producers are Determined to be Non-Equol Producers The Number of Samples With Equol-Producing Ability: 63		Total Erroneous Determination Total Number of Samples 118	
	The Number of Samples	Erroneous Determination Rate (%)	The Number of Samples	Erroneous Determination Rate (%)	The Number of Samples	Total Erroneous Determination Rate (%)
450	14	25.5	2	3.2	16	28.6
500	11	20.0	3	4.8	14	24.8
550	9	16.4	3	4.8	12	21.1
600	8	14.5	3	4.8	11	19.3
650	5	9.1	3	4.8	8	13.9
700	4	7.3	3	4.8	7	12.0
750	3	5.5	3	4.8	6	10.2
800	2	3.6	3	4.8	5	8.4
850	2	3.6	3	4.8	5	8.4
900	2	3.6	4	6.3	6	10.0
950	1	1.8	4	6.3	5	8.2
1000	0	0.0	4	6.3	4	6.3

[0199] According to Table 8, the rate of erroneous determination between equol producers and non-equol producers was the lowest when the concentration of equol was 1,000 ng/ml. Accordingly, in this case, the cutoff value was set to 1,000 ng/ml.

Industrial Applicability

[0200] When soybean processed products are ingested with expectations for the anti-estrogenic effect and the estrogen-like effect, the presence of these effects is determined by measuring the concentration of equol in urine or blood. However, a method using instrumental analysis such as HPLC and the like to accurately measure equol takes time and effort to process multiple samples, and thus is not suitable for daily measurements.

[0201] However, according to the present invention, equol in urine and blood can be quickly and accurately measured, and it is possible to infer the effects of the ingestion of soybean processed products, including determining the effect of administration of safe Lactobacillus preparations that produce equol. the number of biological samples determined to be the producers was 377, and the number of biological samples determined to be the non-producers was 55.

[Table 6]

Cutoff Value (ng/mL)	(1)		(2)		(3)	
	The Number of Samples	Erroneous Determination Rate (%)	The Number of Samples	Erroneous Determination Rate (%)	The Number of Samples	Total Erroneous Determination Rate (%)
330	23	41.8	2	0.5	25	42.3
400	16	29.1	4	1.1	20	30.2

EP 2 431 740 A1

(continued)

Cutoff Value (ng/mL)	(1)		(2)		(3)	
	The Number of Samples	Erroneous Determination Rate (%)	The Number of Samples	Erroneous Determination Rate (%)	The Number of Samples	Total Erroneous Determ. Rate (%)
450	14	25.5	5	1.3	19	26.8
500	11	20.0	8	2.1	19	22.1
550	9	16.4	11	2.9	20	19.3
600	8	14.5	15	4.0	23	18.5
650	5	9.1	17	4.5	22	13.6
700	4	7.3	20	5.3	24	12.6
750	3	5.5	25	6.6	28	12.1
800	2	3.6	29	7.7	31	11.3
850	2	3.6	31	8.2	33	11.9
900	2	3.6	35	9.3	37	12.9
950	1	1.8	39	10.3	40	12.2
1000	0	0.0	45	11.9	45	11.9
<p>(1) Erroneous Determination in Which Non-Equol Producers are Determined to be Equol Producers The Number of Samples Without Equal-Producing Ability: 55</p> <p>(2) Erroneous Determination in Which Equol Producers are Determined to be Non-Equol Producers The Number of Samples With Equal-Producing Ability: 377</p> <p>(3) Total Erroneous Determination Total Number of Samples: 432</p>						

[0202] According to Table 6, the rate of erroneous determination between equol producers and non-equol producers was lowest when the concentration of equol was 800 ng/ml. Accordingly, in this case, the cutoff value was set to 800 ng/ml.

<Test Example 5>

Determination 2 of S-Equol Producer/Non-S-Equol Producer (Cutoff Value Setting)

[0203] The cutoff value as the criterion for determining S-equol producers and non-S-equol producers was set in the same manner as in Test Example 4.

[0204] Note that the number of biological samples in the immunoassay was 713. Further, undetectable values were treated as "0". Table 7 shows the results of the examination.

[Table 7]

Cutoff Value (ng/mL)	(1)		(2)		(3)	
	The Number of Samples	Erroneous Determination Rate (%)	The Number of Samples	Erroneous Determination Rate (%)	The Number of Samples	Total Erroneous Determ. Rate (%)
330	63	18.9	1	0.3	64	19.2
400	45	13.6	3	0.8	48	14.4
450	35	10.7	4	1.1	39	11.7
500	29	8.6	7	1.9	36	10.4

EP 2 431 740 A1

(continued)

Cutoff Value (ng/mL)	(1)		(2)		(3)	
	The Number of Samples	Erroneous Determination Rate (%)	The Number of Samples	Erroneous Determination Rate (%)	The Number of Samples	Total Erroneous Determ. Rate (%)
550	22	6.5	10	2.7	32	9.2
600	18	5.3	14	3.7	32	9.0
650	13	3.8	16	4.3	29	8.1
700	11	3.3	19	5.1	30	8.3
750	9	2.7	24	6.4	33	9.0
800	6	1.8	28	7.4	34	9.2
850	5	1.5	30	8.0	35	9.5
900	4	1.2	34	9.0	38	10.2
950	3	0.9	38	10.1	41	11.0
1000	1	0.3	44	11.7	45	12.0
1050	1	0.3	47	12.5	48	12.8
1100	1	0.3	50	13.3	51	13.6
1150	1	0.3	50	13.3	51	13.6
1200	1	0.3	53	14.1	54	14.4
1250	1	0.0	54	14.4	55	14.4
<p>(1) <i>Erroneous Determination in Which Non-Equol Producers are Determined to be Equol Producers</i> <i>The Number of Samples Without Equol-Producing Ability: 337</i></p> <p>(2) <i>Erroneous Determination in Which Equol Producers are Determined to be Non-Equol Producers</i> <i>The Number of Samples With Equol-Producing Ability: 376</i></p> <p>(3) <i>Total Erroneous Determination</i> <i>Total Number of Samples: 713</i></p>						

[0205] According to Table 7, the rate of erroneous determination between equol producers and non-equol producers was lowest when the concentration of equol was 650 ng/ml. Accordingly, in this case, the cutoff value was set to 650 ng/ml.

<Test Example 6>

Determination 3 of S-Equol Producer/Non-S-Equol Producer

[0206] The cutoff value as the criterion for determining between S-equol producers and non-S-equol producers was set in the same manner as in Test Example 4.

[0207] Note that the number of biological samples in the immunoassay was 118. Table 8 shows the results of the examination.

[Table 8]

Cutoff Value (ng/mL)	(1)		(2)		(3)	
	The Number of Samples	Erroneous Determination Rate (%)	The Number of Samples	Erroneous Determination Rate (%)	The Number of Samples	Total Erroneous Determ. Rate (%)
330	23	41.8	1	1.6	24	43.4

EP 2 431 740 A1

(continued)

Cutoff Value (ng/mL)	(1)		(2)		(3)	
	The Number of Samples	Erroneous Determination Rate (%)	The Number of Samples	Erroneous Determination Rate (%)	The Number of Samples	Total Erroneous Determ. Rate (%)
400	16	29.1	1	1.6	17	30.7
450	14	25.5	2	3.2	16	28.6
500	11	20.0	3	4.8	14	24.8
550	9	16.4	3	4.8	12	21.1
600	8	14.5	3	4.8	11	19.3
650	5	9.1	3	4.8	8	13.9
700	4	7.3	3	4.8	7	12.0
750	3	5.5	3	4.8	6	10.2
800	2	3.6	3	4.8	5	8.4
850	2	3.6	3	4.8	5	8.4
900	2	3.6	4	6.3	6	10.0
950	1	1.8	4	6.3	5	8.2
1000	0	0.0	4	6.3	4	6.3
<p>(1) <i>Erroneous Determination in Which Non-Equol Producers are Determined to be Equol Producers</i> <i>The Number of Samples Without Equol-Producing Ability: 55</i></p> <p>(2) <i>Erroneous Determination in Which Equol Producers are Determined to be Non-Equol Producers</i> <i>The Number of Samples With Equol-Producing Ability: 63</i></p> <p>(3) <i>Total Erroneous Determination</i> <i>Total Number of Samples: 118</i></p>						

[0208] According to Table 8, the rate of erroneous determination between equol producers and non-equol producers was the lowest when the concentration of equol was 1, 000 ng/ml. Accordingly, in this case, the cutoff value was set to 1,000 ng/ml.

Industrial Applicability

[0209] When soybean processed products are ingested with expectations for the anti-estrogenic effect and the estrogen-like effect, the presence of these effects is determined by measuring the concentration of equol in urine or blood. However, a method using instrumental analysis such as HPLC and the like to accurately measure equol takes time and effort to process multiple samples, and thus is not suitable for daily measurements.

[0210] However, according to the present invention, equol in urine and blood can be quickly and accurately measured, and it is possible to infer the effects of the ingestion of soybean processed products, including determining the effect of administration of safe Lactobacillus preparations that produce equol.

Claims

1. A method for measuring equol in a biological sample by an immunological method, comprising using S-equol as at least one antigen selected from the group consisting of a standard antigen used for the preparation of a standard curve and a labeled antigen that competes with equol in a biological sample.
2. The method according to claim 1 comprising using, as a primary antibody, an anti-equol antibody whose cross-reactivity with daidzein is 10% or less; cross-reactivity with genistein is 10% or less; cross-reactivity with glycitein is 10% or less; cross-reactivity with dihydrodaidzein is 20% or less; and cross-reactivity with dehydroequol is 20%

or less, when the cross-reactivity with S-equol is assumed to be 100%.

- 5
3. The method according to claim 1, wherein a labeling substance in the labeled antigen is at least one member selected from the group consisting of enzymes, radioisotopes, dyes, fluorescent materials, latexes, and metal colloids.
- 10
4. The method according to claim 1, wherein the immunological method is at least one type selected from the group consisting of ELISA, radioimmunoassay, and immunochromatographic assay.
- 15
5. The method according to claim 1, wherein the biological sample is at least one member selected from the group consisting of urine and blood.
- 20
6. The method according to claim 1, wherein an equol conjugate in the biological sample is measured without being deconjugated.
- 25
7. A kit for measuring equal in a biological sample by an immunological method, comprising S-equol as at least one antigen selected from the group consisting of a standard antigen used for the preparation of a standard curve and a labeled antigen that competes with equol in a sample.
- 30
8. The kit according to claim 7 further comprising, as a primary antibody, an anti-equol antibody whose cross-reactivity with daidzein is 10% or less; cross-reactivity with genistein is 10% or less; cross-reactivity with glycitein is 10% or less; cross-reactivity with dihydrodaidzein is 20% or less; and cross-reactivity with dehydroequol is 20% or less, when the cross-reactivity with S-equol is assumed to be 100%.
- 35
9. The kit according to claim 7, wherein the immunological method is at least one type selected from the group consisting of ELISA, radioimmunoassay, and immunochromatographic assay.
- 40
10. The kit according to claim 7, wherein the biological sample is at least one member selected from the group consisting of urine and blood.
- 45
11. A method for determining an equol-producing ability of a subject, comprising steps of
- (1) measuring equol in a biological sample derived from a subject who has ingested soybean isoflavone, by an immunological method using S-equol as at least one antigen selected from the group consisting of a standard antigen used for preparation of a standard curve, and a labeled antigen that competes with equol in the biological sample; and
- (2) determining an equol-producing ability of the subject based on the measured value of equol obtained in step (1).
- 50
12. The determination method according to claim 11, wherein, in step (1), an equol conjugate in the biological sample is measured without being deconjugated.
- 55

Fig. 1

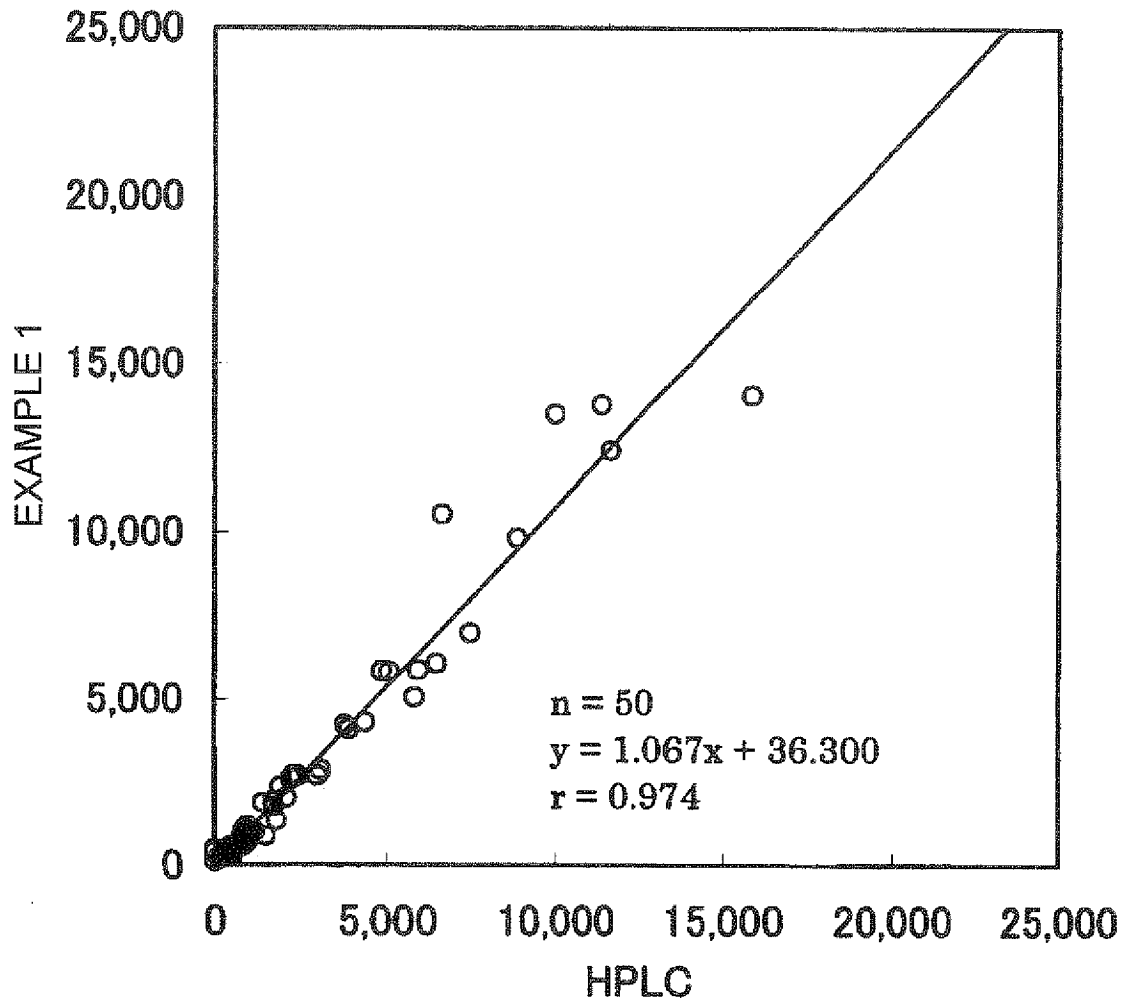


Fig. 2

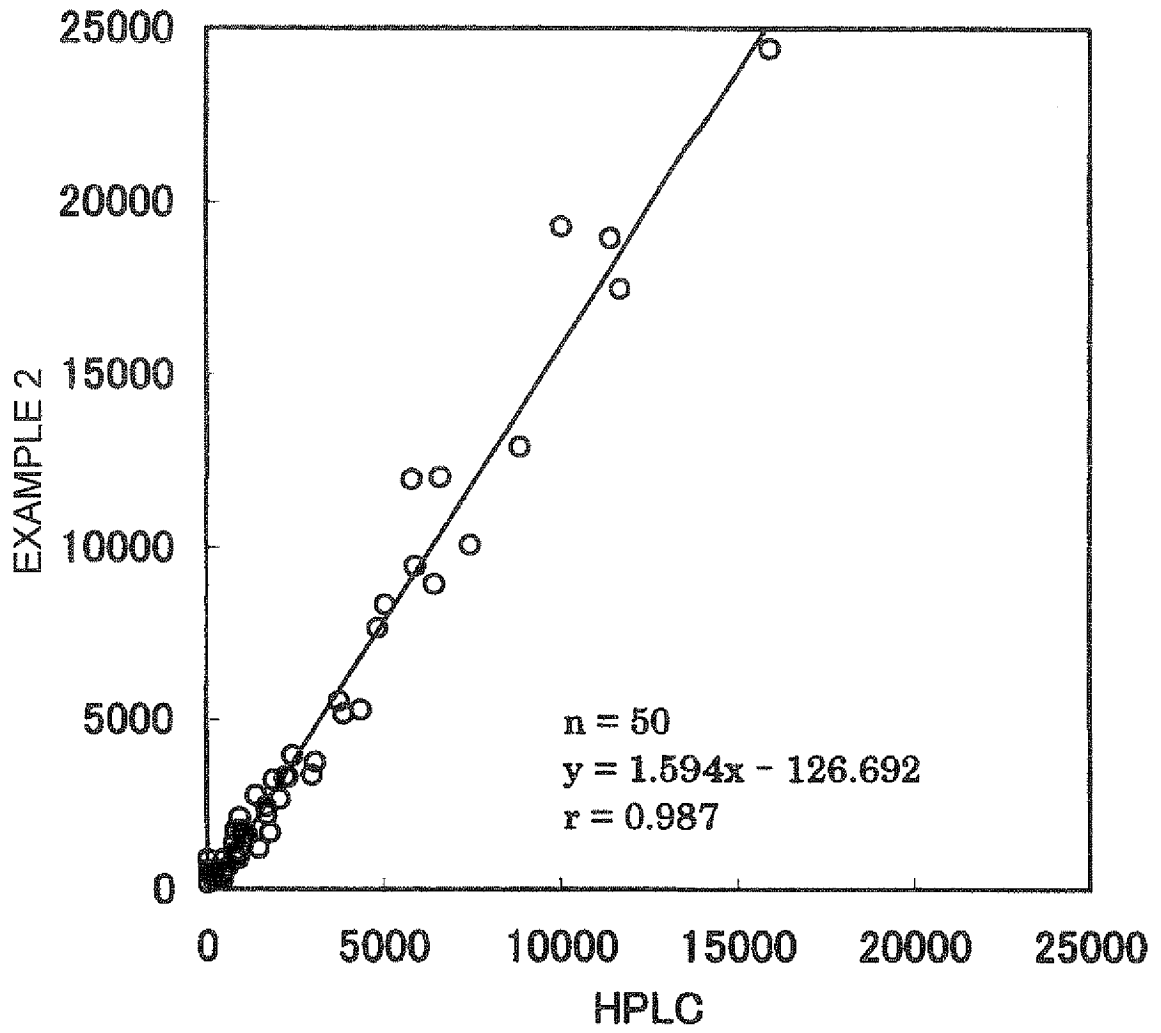


Fig. 3

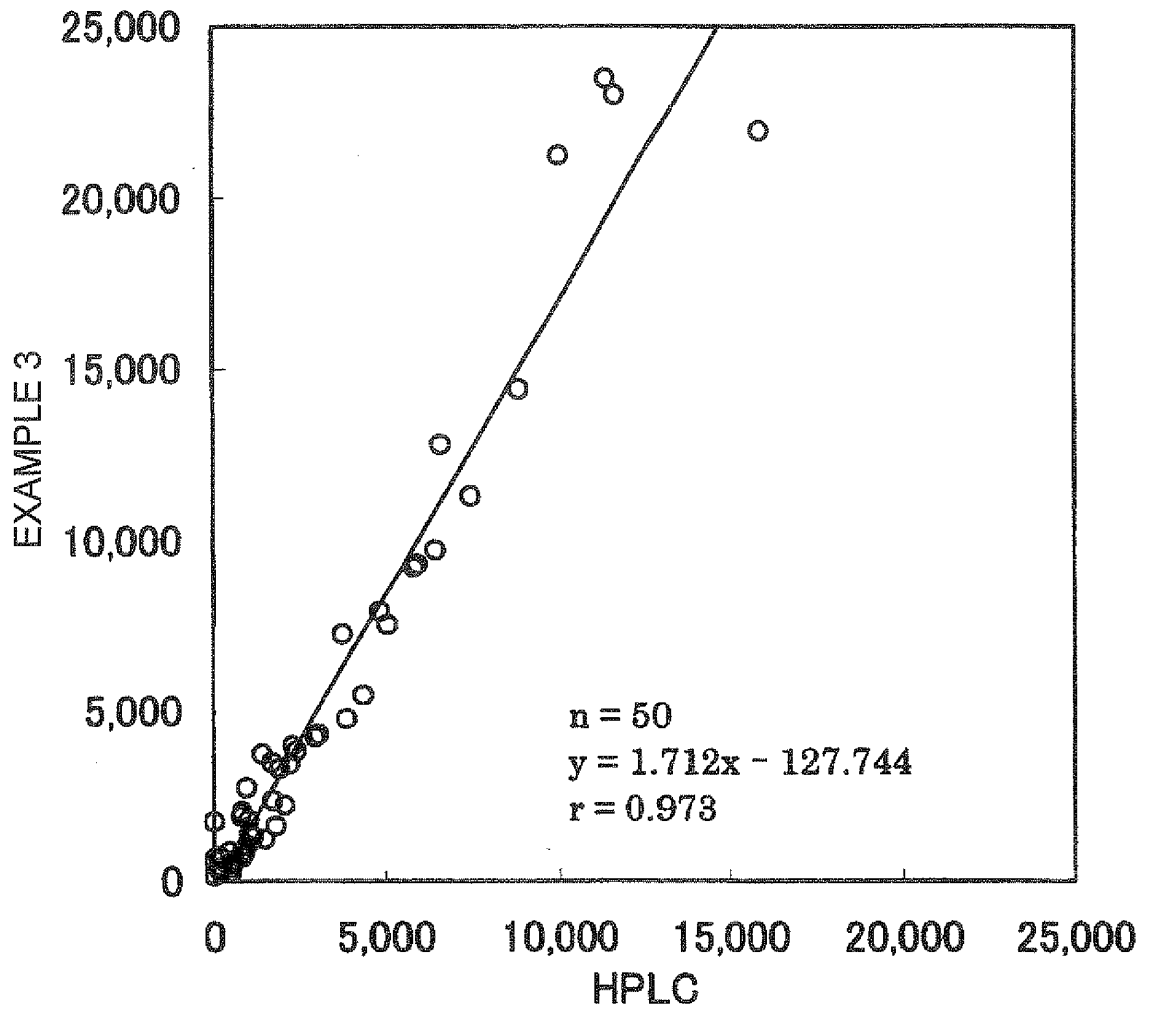


Fig. 4

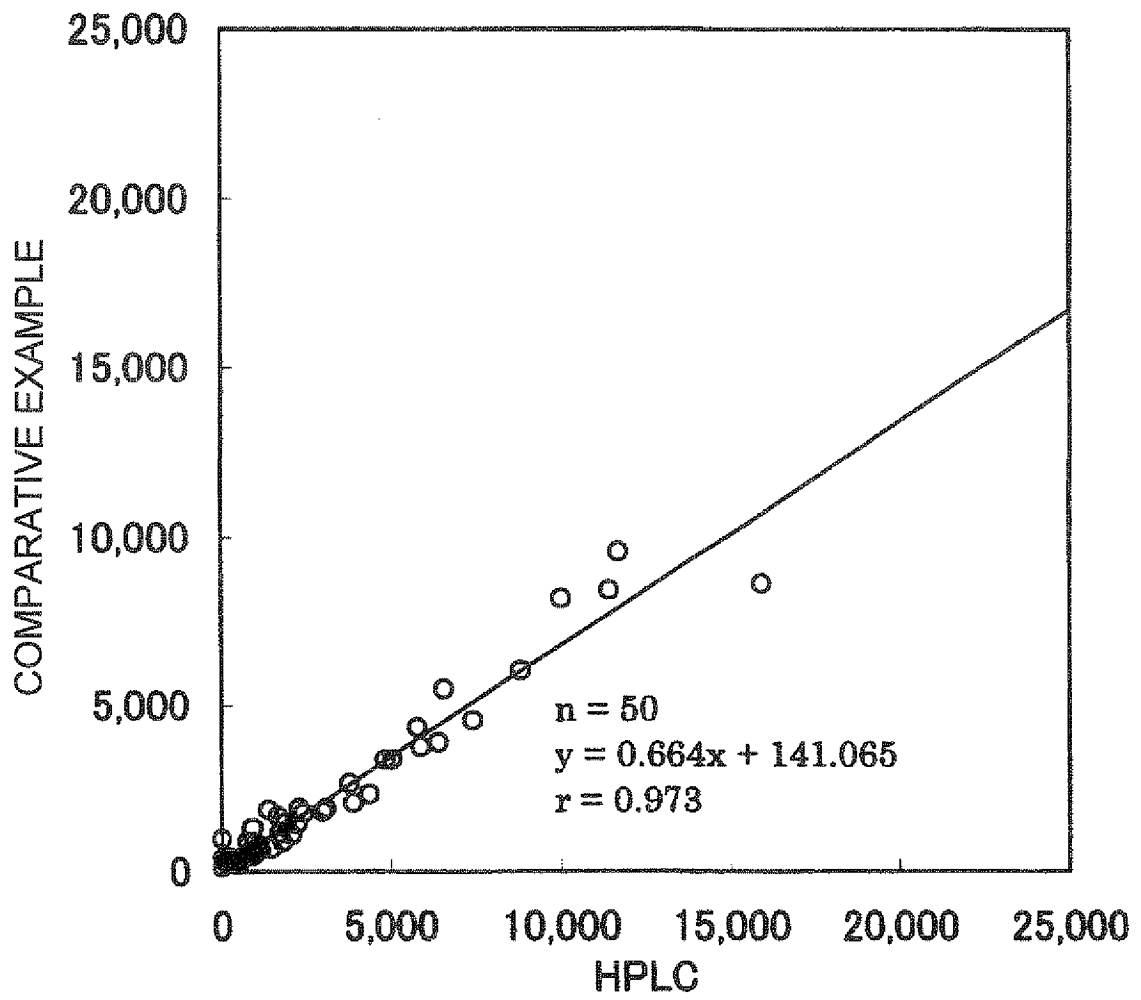


Fig. 5

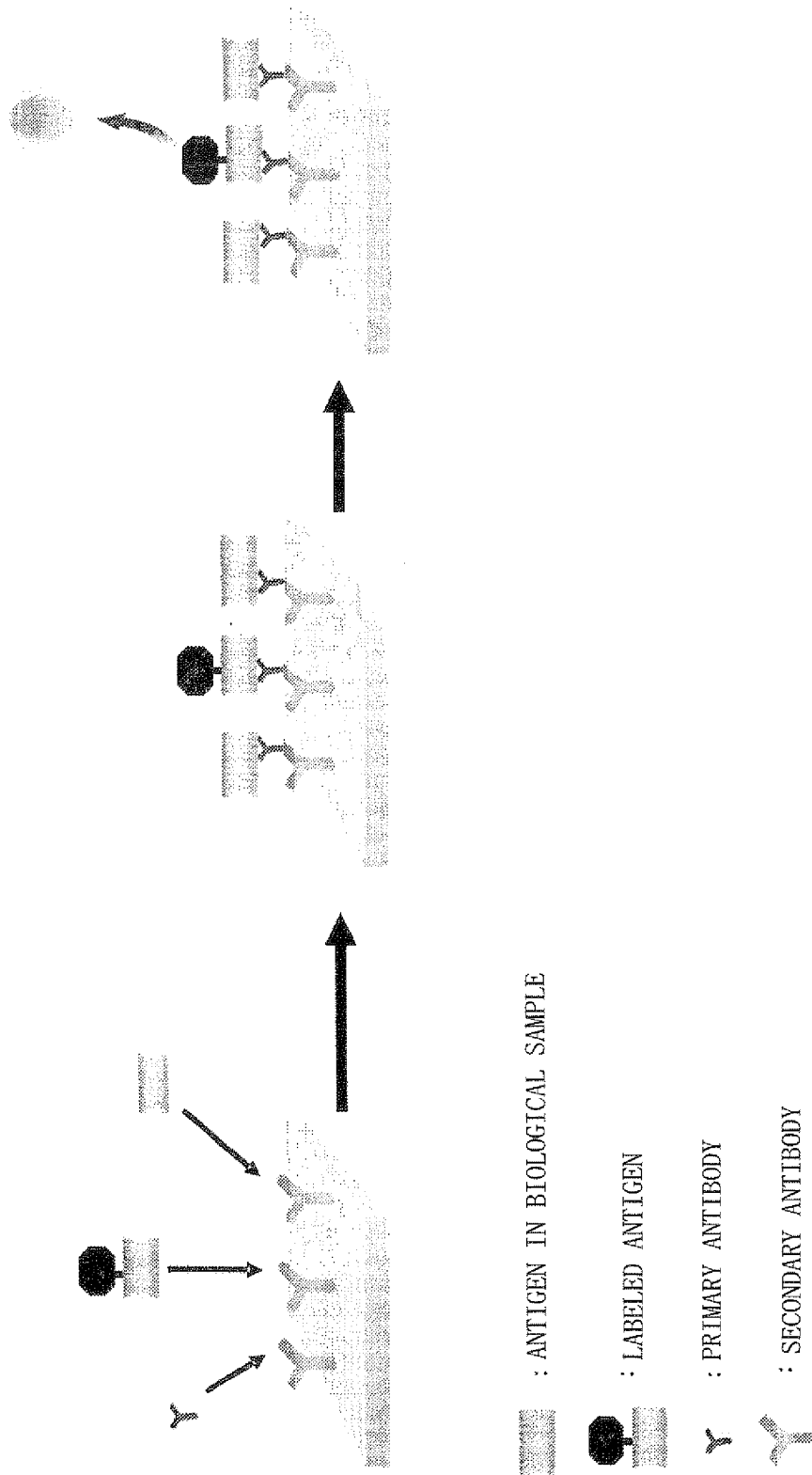


Fig. 6

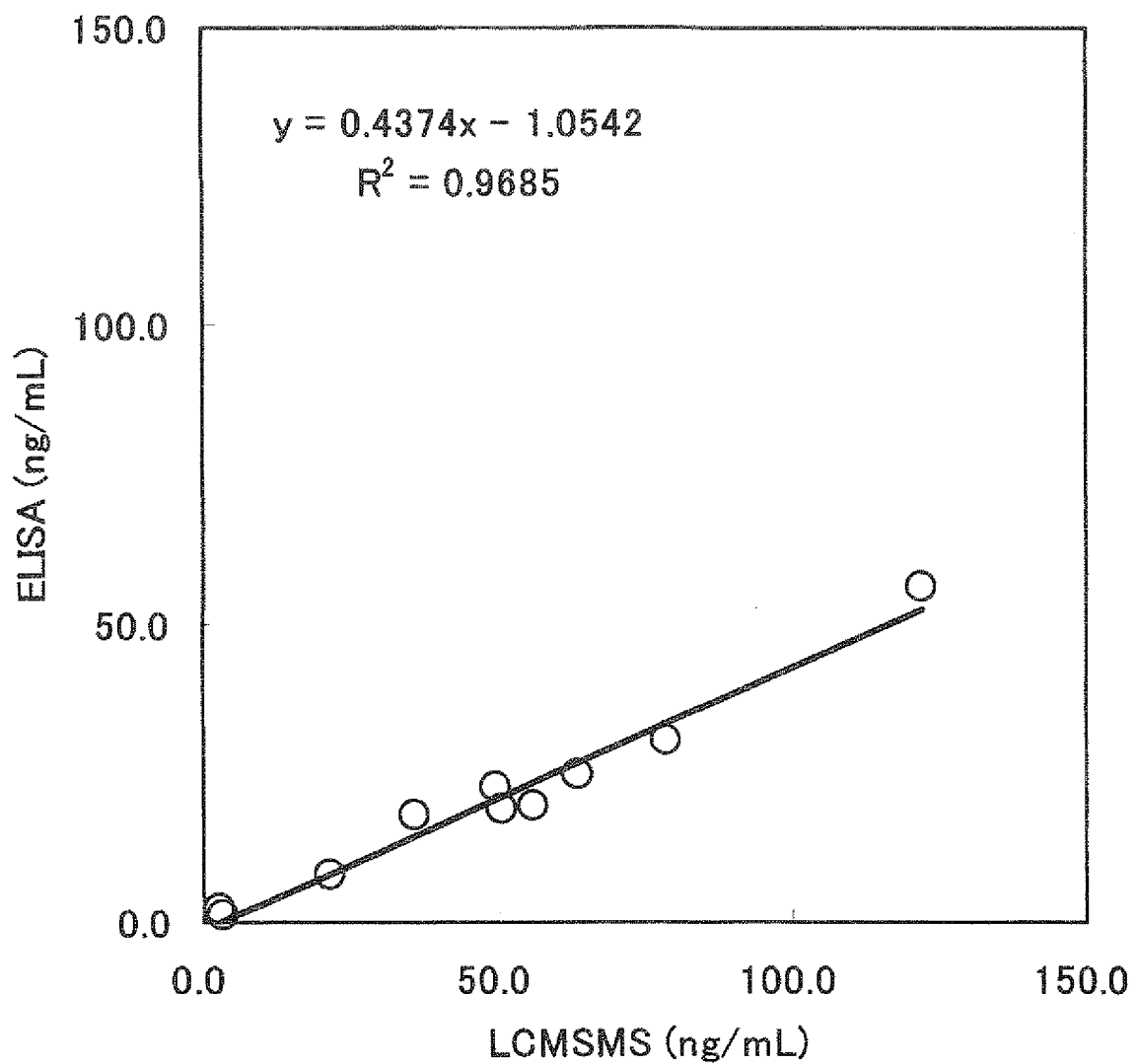


Fig. 7

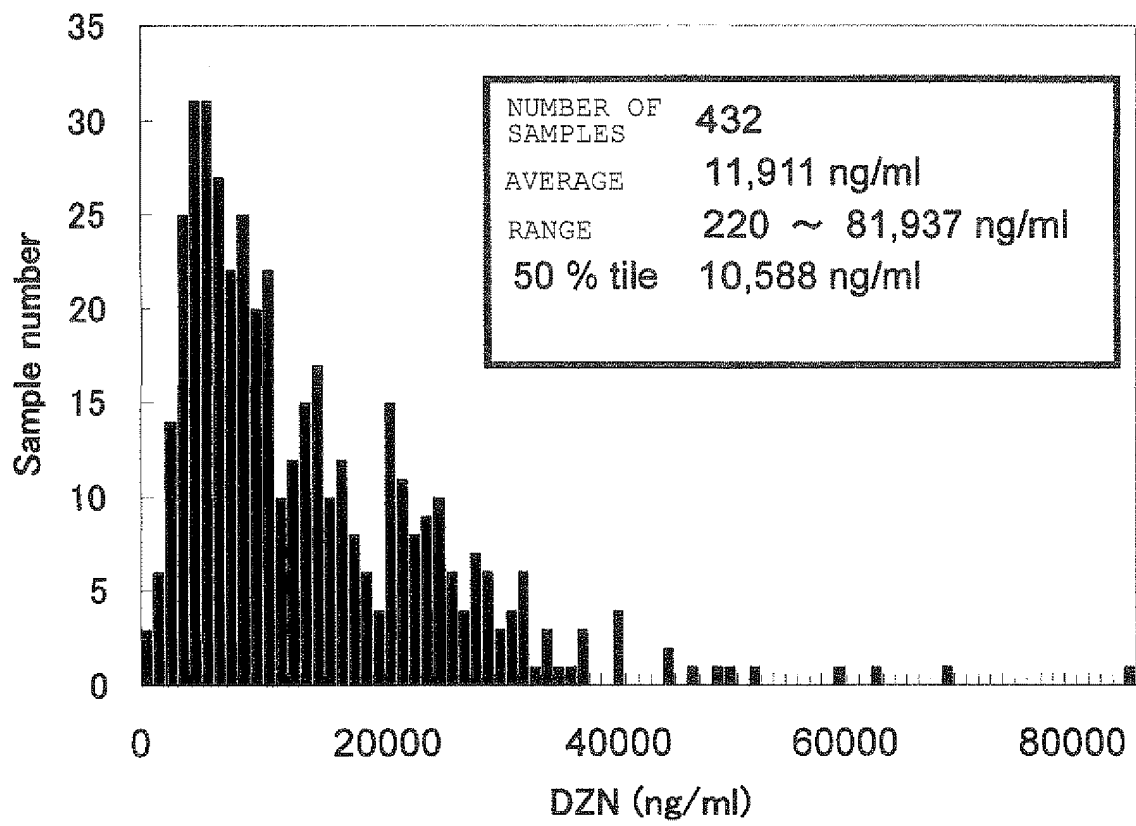
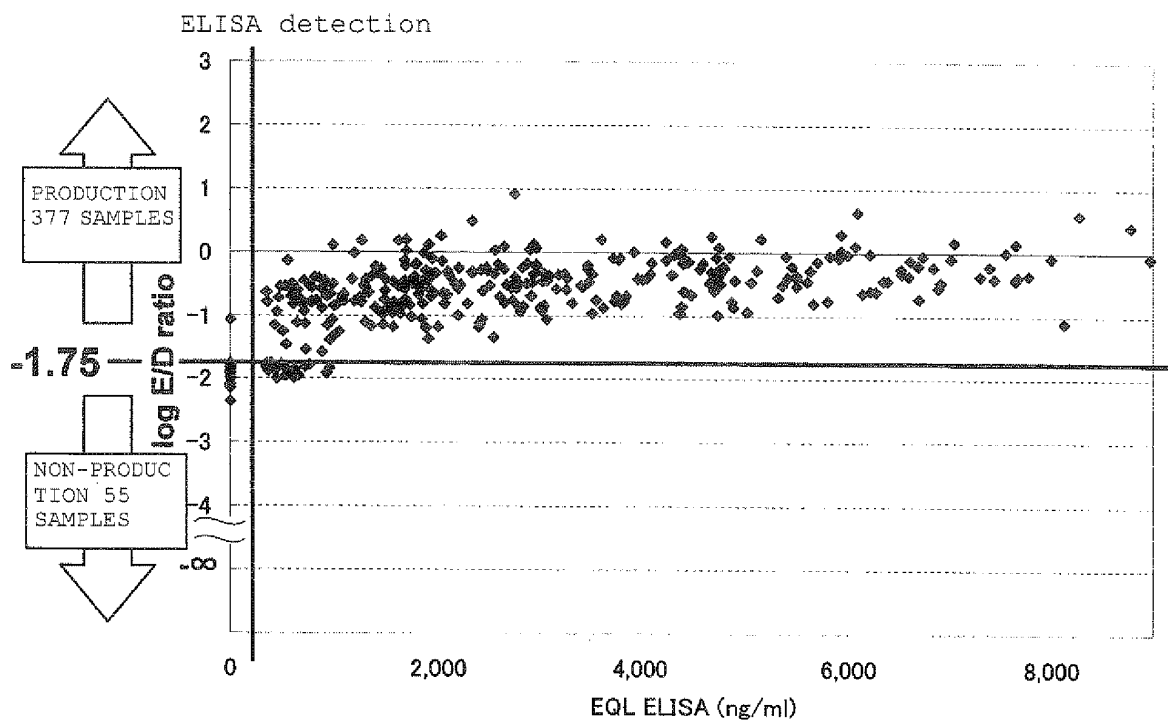


Fig. 8



INTERNATIONAL SEARCH REPORT

International application No.

PCT/JP2010/057974

A. CLASSIFICATION OF SUBJECT MATTER G01N33/53 (2006.01) i		
According to International Patent Classification (IPC) or to both national classification and IPC		
B. FIELDS SEARCHED		
Minimum documentation searched (classification system followed by classification symbols) G01N33/53		
Documentation searched other than minimum documentation to the extent that such documents are included in the fields searched Jitsuyo Shinan Koho 1922-1996 Jitsuyo Shinan Toroku Koho 1996-2010 Kokai Jitsuyo Shinan Koho 1971-2010 Toroku Jitsuyo Shinan Koho 1994-2010		
Electronic data base consulted during the international search (name of data base and, where practicable, search terms used) JSTPlus/JMEDPlus/JST7580 (JDreamII)		
C. DOCUMENTS CONSIDERED TO BE RELEVANT		
Category*	Citation of document, with indication, where appropriate, of the relevant passages	Relevant to claim No.
Y	Elke Brouwers et al., "Time-resolved fluoroimmunoassay for equol in plasma and urine", The Journal of Steroid Biochemistry and Molecular Biology, 2003, Volume 84, Issue 5, pp. 577-588	1-10
Y	Duncan C.S. Talbot et al., "Monoclonal Antibody-Based Time-Resolved Fluorescence Immunoassays for Daidzein, Genistein, and Equol in Blood and Urine: Application to the Isoheart Intervention Study", Clinical Chemistry, 2007, Vol. 53, pp. 748-756	1-10
<input checked="" type="checkbox"/> Further documents are listed in the continuation of Box C. <input checked="" type="checkbox"/> See patent family annex.		
* Special categories of cited documents: "A" document defining the general state of the art which is not considered to be of particular relevance "E" earlier application or patent but published on or after the international filing date "L" document which may throw doubts on priority claim(s) or which is cited to establish the publication date of another citation or other special reason (as specified) "O" document referring to an oral disclosure, use, exhibition or other means "P" document published prior to the international filing date but later than the priority date claimed "T" later document published after the international filing date or priority date and not in conflict with the application but cited to understand the principle or theory underlying the invention "X" document of particular relevance; the claimed invention cannot be considered novel or cannot be considered to involve an inventive step when the document is taken alone "Y" document of particular relevance; the claimed invention cannot be considered to involve an inventive step when the document is combined with one or more other such documents, such combination being obvious to a person skilled in the art "&" document member of the same patent family		
Date of the actual completion of the international search 01 June, 2010 (01.06.10)		Date of mailing of the international search report 15 June, 2010 (15.06.10)
Name and mailing address of the ISA/ Japanese Patent Office		Authorized officer
Facsimile No.		Telephone No.

Form PCT/ISA/210 (second sheet) (July 2009)

INTERNATIONAL SEARCH REPORT

International application No.

PCT/JP2010/057974

C (Continuation). DOCUMENTS CONSIDERED TO BE RELEVANT		
Category*	Citation of document, with indication, where appropriate, of the relevant passages	Relevant to claim No.
Y	SUZUKI, "Ranso Tekishutsu Rat ni Okeru S-tai Equol no Estrogen-yo Sayo", Dai 61 Kai The Japanese Society of Nutrition and Food science Taikai Koen Yoshishu, 2007, pages 250, 4K-6P	1-10
A	JP 2006-242602 A (Gifu Prefecture), 14 September 2006 (14.09.2006), entire text; all drawings	1-10
A	JP 2006-504409 A (Children's Hospital Medical Center), 09 February 2006 (09.02.2006), entire text; all drawings	1-10

Form PCT/ISA/210 (continuation of second sheet) (July 2009)

EP 2 431 740 A1**INTERNATIONAL SEARCH REPORT**
Information on patent family members

International application No.

PCT/JP2010/057974

JP 2006-242602 A	2006.09.14	(Family: none)		
JP 2006-504409 A	2006.02.09	AU 2003259220 A1		2004.02.09
		AU 2003259220 B2		2009.01.08
		AU 2003286781 A1		2004.05.25
		AU 2003286781 B2		2009.05.21
		AU 2005239984 A1		2005.11.17
		BR 0313182 A		2007.07.24
		CA 2492754 A1		2004.01.29
		CA 2504682 A1		2004.05.13
		CA 2564399 A1		2005.11.17
		CN 1681386 A		2005.10.12
		EP 1545206 A2		2005.06.29
		EP 1569636 A2		2005.09.07
		EP 1569636 A4		2007.07.04
		EP 1740191 A1		2007.01.10
		EP 1740191 A4		2008.07.30
		JP 2006-508942 A		2006.03.16
		JP 2007-534751 A		2007.11.29
		US 2004/235758 A1		2004.11.25
		US 7396855 B2		2008.07.08
		US 2004/147594 A1		2004.07.29
		US 2005/245492 A1		2005.11.03
		US 2006/122262 A1		2006.06.08
		US 2007/043108 A1		2007.02.22
		US 2009/018185 A1		2009.01.15
		US 2010/076071 A1		2010.03.25
		US 2010/087519 A1		2010.04.08
		US 2010/120705 A1		2010.05.13
		WO 2004/009035 A2		2004.01.29
		WO 2004/039327 A2		2004.05.13
		WO 2005/107770 A1		2005.11.17

INTERNATIONAL SEARCH REPORT

International application No.

PCT/JP2010/057974

Box No. II Observations where certain claims were found unsearchable (Continuation of item 2 of first sheet)

This international search report has not been established in respect of certain claims under Article 17(2)(a) for the following reasons:

1. Claims Nos.: 11, 12
because they relate to subject matter not required to be searched by this Authority, namely:
The "step of determining the equal production ability of a subject" in the inventions of claims 11 and 12 involves a step of determining the health condition of a human body or the like. Therefore, the inventions of claims 11 and 12 pertain to a method for the diagnosis of a human body.
2. Claims Nos.:
because they relate to parts of the international application that do not comply with the prescribed requirements to such an extent that no meaningful international search can be carried out, specifically:
3. Claims Nos.:
because they are dependent claims and are not drafted in accordance with the second and third sentences of Rule 6.4(a).

Box No. III Observations where unity of invention is lacking (Continuation of item 3 of first sheet)

This International Searching Authority found multiple inventions in this international application, as follows:

1. As all required additional search fees were timely paid by the applicant, this international search report covers all searchable claims.
2. As all searchable claims could be searched without effort justifying additional fees, this Authority did not invite payment of additional fees.
3. As only some of the required additional search fees were timely paid by the applicant, this international search report covers only those claims for which fees were paid, specifically claims Nos.:
4. No required additional search fees were timely paid by the applicant. Consequently, this international search report is restricted to the invention first mentioned in the claims; it is covered by claims Nos.:

Remark on Protest

- The additional search fees were accompanied by the applicant's protest and, where applicable, the payment of a protest fee.
- The additional search fees were accompanied by the applicant's protest but the applicable protest fee was not paid within the time limit specified in the invitation.
- No protest accompanied the payment of additional search fees.

Form PCT/ISA/210 (continuation of first sheet (2)) (July 2009)

REFERENCES CITED IN THE DESCRIPTION

This list of references cited by the applicant is for the reader's convenience only. It does not form part of the European patent document. Even though great care has been taken in compiling the references, errors or omissions cannot be excluded and the EPO disclaims all liability in this regard.

Patent documents cited in the description

- JP 2006296434 A [0010]

Non-patent literature cited in the description

- **E. Brouwers et al.** *Journal of Steroid Biochemistry & Molecular Biology*, 2003, vol. 84, 577-588 [0011]
- **K. D. R. Setchell et al.** *The American Journal of Clinical Nutrition*, 2005, vol. 81, 1072-1079 [0011]
- **Duncan C.S. Talbot et al.** *Clinical Chemistry*, 2007, vol. 53, 748-756 [0167]
- **Kenneth D.R. Stechell ; Sindy J. cole.** *J. Nutr.*, August 2006, vol. 136, 2188-2193 [0188]

专利名称(译)	免疫测定法测定生物样品中雌马酚的方法，测定试剂盒及测定受试者雌马酚生产能力的方法		
公开(公告)号	EP2431740A4	公开(公告)日	2012-10-31
申请号	EP2010774917	申请日	2010-05-11
[标]申请(专利权)人(译)	荣研化学株式会社		
申请(专利权)人(译)	EIKEN KAGAKU KABUSHIKI KAISHA 大冢PHARMACEUTICAL CO. , LTD.		
当前申请(专利权)人(译)	EIKEN KAGAKU KABUSHIKI KAISHA 大冢PHARMACEUTICAL CO. , LTD.		
[标]发明人	MINEKAWA TAKAYUKI SHINDOME KUMIKO ABE KATSUSHI OKUMA HIROSHI ANDO CHIEKO ABIRU YASUHIRO		
发明人	MINEKAWA, TAKAYUKI SHINDOME, KUMIKO ABE, KATSUSHI OKUMA, HIROSHI ANDO, CHIEKO ABIRU, YASUHIRO		
IPC分类号	G01N33/53		
CPC分类号	G01N33/5308 C07K16/44		
优先权	2009114572 2009-05-11 JP		
其他公开文献	EP2431740A1 EP2431740B1		
外部链接	Espacenet		

摘要(译)

本发明的一个目的是提供一种通过免疫学方法测量生物样品中的相等性的方法，一种用于测量的试剂盒，以及一种用于确定受试者的雌马酚产生能力的方法。本发明的测量方法的特征在于使用S-牛尿酚作为至少一种选自用于制备标准曲线的标准抗原和在生物样品中与雌马酚竞争的标记抗原的抗原。本发明的试剂盒的特征在于包括S-牛尿酚作为至少一种选自标准抗原和标记抗原的抗原。本发明的测定方法包括以下步骤：使用S-牛尿酚作为选自标准抗原和标记的至少一种抗原，通过免疫学方法测量来源于摄取大豆异黄酮的受试者的生物样品中的相等性。抗原，并基于在上述步骤中获得的雌马酚的测量值确定受试者的雌马酚产生能力。

