

(19)



(11)

**EP 3 258 265 A1**

(12)

**EUROPEAN PATENT APPLICATION**  
published in accordance with Art. 153(4) EPC

(43) Date of publication:

**20.12.2017 Bulletin 2017/51**

(51) Int Cl.:

**G01N 33/53** <sup>(2006.01)</sup> **G01N 33/569** <sup>(2006.01)</sup>  
**G01N 33/543** <sup>(2006.01)</sup>

(21) Application number: **16748586.1**

(86) International application number:

**PCT/CN2016/072094**

(22) Date of filing: **26.01.2016**

(87) International publication number:

**WO 2016/127785 (18.08.2016 Gazette 2016/33)**

(84) Designated Contracting States:

**AL AT BE BG CH CY CZ DE DK EE ES FI FR GB  
GR HR HU IE IS IT LI LT LU LV MC MK MT NL NO  
PL PT RO RS SE SI SK SM TR**

Designated Extension States:

**BA ME**

Designated Validation States:

**MA MD**

- **LI, Jinjie**  
**Xiamen**  
**Fujian 361102 (CN)**

- **HUANG, Xi**  
**Xiamen**  
**Fujian 361102 (CN)**

- **LI, Tingdong**  
**Xiamen**  
**Fujian 361102 (CN)**

- **ZHANG, Jun**  
**Xiamen**  
**Fujian 361102 (CN)**

- **XIA, Ningshao**  
**Xiamen**  
**Fujian 361102 (CN)**

(30) Priority: **09.02.2015 CN 201510067190**

(71) Applicant: **Xiamen University**  
**Xiamen, Fujian 361005 (CN)**

(72) Inventors:

- **GE, Shengxiang**  
**Xiamen**  
**Fujian 361102 (CN)**

(74) Representative: **Lavoix**  
**Bayerstrasse 83**  
**80335 München (DE)**

(54) **METHOD FOR ASSESSING RISK OF HUMAN CYTOMEGALOVIRUS ACTIVE INFECTION IN BODY AND RELATED KIT**

(57) The invention belongs to the fields of medicine and immunology, particularly, the field of immunological diagnosis. In particular, the invention discloses a method for assessing whether a subject is at risk of developing human cytomegalovirus (HCMV) active infection and a kit therefor. The method comprises the steps of: (1) determining the level of an antibody against a HCMV protein in a body fluid sample from the subject; and (2) comparing

the level with a predetermined reference value, wherein if the level is below the predetermined reference value, the subject is determined to be at risk of developing HCMV active infection. In addition, the invention also discloses a method for screening a candidate drug which is capable of improving the ability of a subject to resist human cytomegalovirus (HCMV) active infection, and a kit therefor.

**EP 3 258 265 A1**

**Description**

## Technical Field

5 **[0001]** The invention belongs to the fields of medicine and immunology, particularly, the field of immunological diagnosis. In particular, the invention discloses a method for assessing whether a subject is at risk of developing human cytomegalovirus (HCMV) active infection and a kit therefor. The method comprises the steps of: (1) determining the level of an antibody against a HCMV protein in a body fluid sample from the subject; and (2) comparing the level with a predetermined reference value, wherein if the level is below the predetermined reference value, the subject is determined to be at risk of developing HCMV active infection. In addition, the invention also discloses a method for screening a candidate drug which is capable of improving the ability of a subject to resist human cytomegalovirus (HCMV) active infection, and a kit therefor.

## Background Art

15 **[0002]** Human Cytomegalovirus (HCMV), a DNA virus, is a human pathogen belonging to the family of Herpesviridae. Cytomegalovirus infection is widely present worldwide. Once infected by HCMV, human body will carry a latent virus for a lifetime, and the latent virus may be activated occasionally.

20 **[0003]** Most of HCMV infections are inapparent infections, but would result in serious or even lethal diseases in fetuses and immunocompromised populations. For example, if congenital CMV infection occurs in fetus (i.e., CMV passes through blood-placenta barrier and infects intrauterine fetus), it will result in serious clinical hazards, including fetal death, abortion, birth defects, and the like <sup>[1,2]</sup> (Dollard SC, Grosse SD, Ross DS. New estimates of the prevalence of neurological and sensory sequelae and mortality associated with congenital cytomegalovirus infection. *Rev Med Virol*. 2007, 17: 355-363; Jiang Yi. Congenital cytomegalovirus infection: transmission from mother to infant and diagnosis. *CHINESE JOURNAL OF NEONATOLOGY*. 2009, 24:261-265). Most of studies show that CMV is a congenital infectious pathogen in neonate, which is the most common and the most harmful pathogen in the world, and the most important cause for sensorineural hearing loss and neural development retardation in children. In immunocompromised populations, such as organ transplant patients and AIDS patients, HCMV will activate infection and cause systemic complication.

25 **[0004]** Therefore, it is necessary to screen pregnant women susceptible to congenital CMV infection or immunosuppressed patients susceptible to human cytomegalovirus (HCMV) active infection, in order to employ intervention measures prior to occurrence of harmfulness.

30 **[0005]** Researchers believed in the past that antibody-negative pregnant mothers were susceptible to primary cytomegalovirus infection in pregnancy, and therefore it was quite possible to result in congenital infection in fetus <sup>[3,4]</sup> (Fowler KB, Stagno S, PassRF, et al. The outcome of congenital cytomegalovirus infection in relation to maternal antibody status. *N Engl J Med*, 1992, 326: 663-667.2; Kenneson A, CannonMJ. Review and meta - analysis of the epidemiology of congenital cytomegalovirus infection. *Rev Med Virol*, 2007, 17: 253-276); the newborns delivered by antibody-positive pregnant mothers rarely had serious clinical outcomes. However, in recent years, the results of the systemic researches conducted in some developing countries where CMV is highly prevalent have gradually reversed this erroneous cognition. The results of these systemic researches demonstrates that most of the children with hearing disorder in developing countries are resulted from transmission from CMV antibody-positive mother to infant <sup>[5-7]</sup> (Manicklal S, Emery VC, Lazzarotto T, Boppana SB, Gupta RK. The "silent" global burden of congenital cytomegalovirus. *Clin Microbiol Rev*. 2013, 26: 86-102; Mussi-Pinhata MM, Yamamoto AY, Moura Brito RM, de Lima Isaac M, de Carvalho e Oliveira PF, Boppana S, Britt WJ. Birth prevalence and natural history of congenital cytomegalovirus infection in a highly seroimmune population. *Clin Infect Dis*. 2009, 49:522-528; Yamamoto AY, Mussi-Pinhata MM, Isaac Mde L, Amaral FR, Carvalheiro CG, Aragon DC, Manfredi AK, Boppana SB, Britt WJ. Congenital cytomegalovirus infection as a cause of sensorineural hearing loss in a highly immune population. *Pediatr Infect Dis J*. 2011, 30:1043-1046). Some studies show that intrauterine infection in the fetus of pregnant women who are seropositive for CMV prior to pregnancy is associated with maternal recurrent infection (also called "reactivation" or "reinfection") by CMV during pregnancy <sup>[8,9]</sup> (Boppana SB, Rivera LB, Fowler KB, Mach M, Britt WJ. Intrauterine transmission of cytomegalovirus to infants of women with preconceptional immunity. *N Engl J Med*. 2001, 344: 1366-1371; Ross SA, Arora N, Novak Z, Fowler KB, Britt WJ, Boppana SB. Cytomegalovirus reinfections in healthy seroimmune women. *J Infect Dis*. 2010, 201: 386-389). Now, CMV-IgM and IgG antibody assays are commonly used in various countries to determine prenatal CMV active infection in pregnant women. IgM and IgG antibody assays are of certain value for diagnosis of primary infection in antibody-negative pregnant women prior to pregnancy. However, when IgM and IgG antibody assays are used to diagnose reinfection in antibody-positive pregnant women prior to pregnancy, both the sensitivity and specificity have been questioned a lot <sup>[10,11]</sup> (He Xiaozhou, Wang Xiaofang, Wang Shiwen; Research Progress in Congenital Cytomegalovirus Infection and Detection Method thereof. *Chinese Journal of Virology*. 2012, 28:73-77; Ross SA, Novak Z, Pati S, Boppana SB. Overview of the diagnosis of cytomegalovirus infection. *Infect Disord Drug Targets*. 2011, 11:466-474).

**[0006]** Therefore, there is need in this field to develop new methods with high sensitivity and specificity so as to accurately and effectively assess whether a subject is at risk of developing human cytomegalovirus (HCMV) active infection.

5 Contents of Invention

**[0007]** In the invention, unless otherwise specified, the scientific and technical terms used herein have the meanings as generally understood by a person skilled in the art. Moreover, the laboratory operations of cell culture, molecular genetics, nucleic acid chemistry and immunology used herein are the routine operations widely used in the corresponding fields. Meanwhile, in order to better understand the invention, the definitions and explanations of the relevant terms are provided as follows.

10 **[0008]** As used herein, the term "cytomegalovirus active infection" refers to primary infection with CMV in a subject that has never been infected with CMV; and recurrent infection with CMV or activation of a latent CMV virus (also called "reinfection" or "reactivation") in a subject that has been infected with CMV before (who generally carries a latent virus, and is generally positive in serological examination result). Typical manifestation of cytomegalovirus active infection is the generation of a significant immune response to the infected cytomegalovirus (for the first time or again) in a subject, resulting in a significantly increased level of an antibody against a CMV protein in the subject. Therefore, cytomegalovirus active infection is also called a virus event. In general, if the level of an antibody against a CMV protein in a subject increases by 4 folds or more, it can be determined that the subject has cytomegalovirus active infection (or, a virus event).

15 **[0009]** As used herein, the term "pp150" or "pp150 protein" refers to a phosphorylated protein in CMV virus envelope layer, also called UL32 protein. pp150 protein is one of the high-abundant CMV proteins, is closely associated with assembly and secretion of virus, is conservative among various CMV strains, and has good immunoreactivity with CMV-infected serum <sup>[12]</sup> (Jahn G, Scholl BC, Traupe B, Fleckenstein B. The two major structural phosphoproteins (pp65 and pp150) of human cytomegalovirus and their antigenic properties. *J Gen Virol.* 1987, 68:1327-1337). Since pp150 has good conservatism and immunoreactivity, it has been used in the detection of CMV-IgG antibodies now <sup>[13]</sup> (Plachter B, Wiczorek L, Scholl BC, Ziegelmaier R, Jahn G. Detection of cytomegalovirus antibodies by an enzyme-linked immunosorbent assay using recombinant polypeptides of the large phosphorylated tegument protein pp150. *J Clin Microbiol.* 1992, 30:201-206). Positive result in serologic test (i.e., an antibody against pp150 is present in serum) indicates that the individual has been infected by CMV, and an immune response to pp150 has been generated. However, the correlation between the level of an antibody against pp150 with the probability of developing cytomegalovirus active infection in a subject has never been taught or suggested.

20 **[0010]** The amino acid sequence of pp150 protein is well known by a person skilled in the art, and its typical example can be found in, for example, GenBank Accession No. ACL51112. As used herein, when the amino acid sequence of pp150 protein is mentioned, it is described by the sequence set forth in SEQ ID NO: 1. For example, the expression "aa 861-1048 of pp150" or "amino acids from positions 861 to 1048 of pp150" refers to the amino acid residues from positions 861 to 1048 of the polypeptide set forth in SEQ ID NO: 1. However, a person skilled in the art understands that in the amino acid sequence of pp150, mutation or variation (including, but not limited to, substitution, deletion and/or addition, for example, pp150 from different isolated strains of CMV virus) may occur naturally or be introduced artificially, without affecting the biological function thereof. Therefore, in the invention, the term "pp150" should include all such sequences, including, for example, the sequence set forth in SEQ ID NO: 1 and its natural or artificial variants. Moreover, when a sequence fragment of pp150 is described, it includes not only a sequence fragment of SEQ ID NO: 1, but also the corresponding sequence fragment of its natural or artificial variants. For example, the expression "aa 861-1048 of pp150" or "the amino acid residues from positions 861 to 1048 of pp150" includes the amino acid residues from positions 861 to 1048 of SEQ ID NO: 1, and the corresponding fragment of its variants (natural or artificial).

25 **[0011]** As used herein, the term "pp28" or "pp28 protein" refers to a phosphorylated protein in CMV virus envelope layer, also called UL99 protein (Gambarino S, Callea S, Rizzo G, Montanari P, Loiacono E, Bergallo M. Evaluation of UL99 transcript as a target for antiviral treatment efficacy. *J Virol Methods.* 2014, 207:104-9; John Paul Tomtishen III. Human cytomegalovirus tegument proteins (pp65, pp71, pp150, pp28). *Virol J.* 2012, 9:22).

30 **[0012]** The amino acid sequence of pp28 protein is well known by a person skilled in the art, and its typical example may be found in, for example, GenBank Accession No. ACL51167.1. As used herein, when the amino acid sequence of pp28 protein is mentioned, it is described by the sequence set forth in SEQ ID NO: 3. For example, the expression "aa 1-190 of pp28" or "the amino acid residues from positions 1 to 190 of pp28" refers to the amino acid residues from positions 1 to 190 of the polypeptide set forth in SEQ ID NO: 3. However, a person skilled in the art understands that in the amino acid sequence of pp28, mutation or variation (including, but not limited to, substitution, deletion and/or addition, for example, pp28 from different isolated strains of CMV virus) may occur naturally or be introduced artificially, without affecting the biological function thereof. Therefore, in the invention, the term "pp28" should include all such sequences, including, for example, the sequence set forth in SEQ ID NO: 3 and its natural or artificial variants. Moreover, when a sequence fragment of pp28 is described, it includes not only a sequence fragment of SEQ ID NO: 3, but also the

corresponding sequence fragment of its natural or artificial variants. For example, the expression "aa 1-190 of pp28" or "the amino acid residues from positions 1 to 190 of pp28" includes the amino acid residues from positions 1 to 190 of SEQ ID NO: 3, and the corresponding fragment of its variants (natural or artificial).

5 **[0013]** As used herein, the term "pp65" or "pp65 protein" refers to a phosphorylated protein in CMV virus envelope layer, also called UL83 protein (Jahn G, Scholl BC, Traupe B, Fleckenstein B. The two major structural phosphoproteins (pp65 and pp150) of human cytomegalovirus and their antigenic properties. *J Gen Virol.* 1987, 68:1327-1337; John Paul Tomtishen III. Human cytomegalovirus tegument proteins (pp65, pp71, pp150, pp28). *Virology.* 2012,9:22).

10 **[0014]** The amino acid sequence of pp65 protein is well known by a person skilled in the art, and its typical example may be found in, for example, GenBank Accession No. ACL51152.1. As used herein, when the amino acid sequence of pp65 protein is mentioned, it is described by the sequence set forth in SEQ ID NO: 4. For example, the expression "aa 1-561 of pp65" or "the amino acid residues from positions 1 to 561 of pp65" refers to the amino acid residues from positions 1 to 561 of the polypeptide set forth in SEQ ID NO: 4. However, a person skilled in the art understands that in the amino acid sequence of pp65, mutation or variation (including, but not limited to, substitution, deletion and/or addition, for example, pp65 from different isolated strains of CMV virus) may occur naturally or be introduced artificially, without affecting the biological function thereof. Therefore, in the invention, the term "pp65" should include all such sequences, including, for example, the sequence set forth in SEQ ID NO: 4 and its natural or artificial variants. Moreover, when a sequence fragment of pp65 is described, it includes not only a sequence fragment of SEQ ID NO: 4, but also the corresponding sequence fragment of its natural or artificial variants. For example, the expression "aa 1-561 of pp65" or "the amino acid residues from positions 1 to 561 of pp65" includes the amino acid residues from positions 1 to 561 of SEQ ID NO: 4, and the corresponding fragment of its variants (natural or artificial).

20 **[0015]** As used herein, the term "gp52" or "gp52 protein" refers to a phosphorylated protein in CMV virus envelope layer, also called UL44 protein (Strang B L, Boulant S, Chang L, et al. Human cytomegalovirus UL44 concentrates at the periphery of replication compartments, the site of viral DNA synthesis[J]. *Journal of virology*, 2012, 86: 2089-2095; Sinigalia E, Alvisi G, Segré C V, et al. The human cytomegalovirus DNA polymerase processivity factor UL44 is modified by SUMO in a DNA-dependent manner[J]. *PLoS One*, 2012, 7(11): e49630).

25 **[0016]** The amino acid sequence of gp52 protein is well known by a person skilled in the art, and its typical example can be found in, for example, GenBank Accession No. ACL51123.1. As used herein, when the amino acid sequence of gp52 protein, it is described by the sequence set forth in SEQ ID NO: 5. For example, the expression "aa 1-433 of gp52" or "the amino acid residues from positions 1 to 433 of gp52" refers to the amino acid residues from positions 1 to 433 of the polypeptide set forth in SEQ ID NO: 5. However, a person skilled in the art understands that in the amino acid sequence of gp52, mutation or variation (including, but not limited to, substitution, deletion and/or addition, for example, gp52 from different isolated strains of CMV virus) may occur naturally or be introduced artificially, without affecting the biological function thereof. Therefore, in the invention, the term "gp52" should include all such sequences, including, for example, the sequence set forth in SEQ ID NO: 5 and its natural or artificial variants. Moreover, when a sequence fragment of gp52 is described, it includes not only a sequence fragment of SEQ ID NO: 5, but also the corresponding sequence fragment of its natural or artificial variants. For example, the expression "aa 1-433 of gp52" or "the amino acid residues from positions 1 to 433 of gp52" includes the amino acid residues from positions 1 to 433 of SEQ ID NO: 5, and the corresponding fragment of its variants (natural or artificial).

30 **[0017]** As used herein, the term "pp38" or "pp38 protein" refers to a phosphorylated protein in CMV virus envelope layer, also called UL80.5 protein (Loveland A N, Nguyen N L, Brignole E J, et al. The amino-conserved domain of human cytomegalovirus UL80a proteins is required for key interactions during early stages of capsid formation and virus production. *Journal of virology*, 2007, 81:620-628; Wood L J, Baxter M K, Plafker S M, et al. Human cytomegalovirus capsid assembly protein precursor (pUL80.5) interacts with itself and with the major capsid protein (pUL86) through two different domains. *Journal of virology*, 1997, 71: 179-190).

35 **[0018]** The amino acid sequence of pp38 protein is well known by a person skilled in the art, and its typical example can be found in, for example, GenBank Accession No. ACL51150.1. As used herein, when the amino acid sequence of pp38 protein is mentioned, it is described by the sequence set forth in SEQ ID NO: 6. For example, the expression "aa 1-373 of pp38" or "the amino acid residues from positions 1 to 373 of pp38" refers to the amino acid residues from positions 1 to 373 of the polypeptide set forth in SEQ ID NO: 6. However, a person skilled in the art understands that in the amino acid sequence of pp38, mutation or variation (including, but not limited to, substitution, deletion and/or addition, for example, pp38 from different isolated strains of CMV virus) may occur naturally or be introduced artificially, without affecting the biological function thereof. Therefore, in the invention, the term "pp38" should include all such sequences, including, for example, the sequence set forth in SEQ ID NO: 6 and its natural or artificial variants. Moreover, when a sequence fragment of pp38 is described, it includes not only a sequence fragment of SEQ ID NO: 6, but also the corresponding sequence fragment of its natural or artificial variants. For example, the expression "aa 1-373 of pp38" or "the amino acid residues from positions 1 to 373 of pp38" includes the amino acid residues from positions 1 to 373 of SEQ ID NO: 6, and the corresponding fragment of its variants (natural or artificial).

40 **[0019]** As used herein, the term "UL48a" or "UL48a protein" refers to a capsid protein of CMV virus (Baldick C J, Shenk

T. Proteins associated with purified human cytomegalovirus particles. *Journal of virology*, 1996, 70: 6097-6105).

**[0020]** The amino acid sequence of UL48a protein is well known by a person skilled in the art, and its typical example can be found in, for example, GenBank Accession No. ACL51128.1. As used herein, when the amino acid sequence of UL48a protein, it is described by the sequence set forth in SEQ ID NO: 7. For example, the expression "aa 1-75 of UL48a" or "the amino acid residues from positions 1 to 75 of UL48a" refers to the amino acid residues from positions 1 to 75 of the polypeptide set forth in SEQ ID NO: 7. However, a person skilled in the art understands that in the amino acid sequence of UL48a, mutation or variation (including, but not limited to, substitution, deletion and/or addition, for example, UL48a from different isolated strains of CMV virus) may occur naturally or be introduced artificially, without affecting the biological function thereof. Therefore, in the invention, the term "UL48a" should include all such sequences, including, for example, the sequence set forth in SEQ ID NO: 7 and its natural or artificial variants. Moreover, when a sequence fragment of UL48a is described, it includes not only a sequence fragment of SEQ ID NO: 7, but also the corresponding sequence fragment of its natural or artificial variants. For example, the expression "aa 1-75 of UL48a" or "the amino acid residues from positions 1 to 75 of UL48a" includes the amino acid residues from positions 1 to 75 of SEQ ID NO: 7, and the corresponding fragment of its variants (natural or artificial).

**[0021]** As used herein, the term "IE1 protein" refers to an immediate early protein of CMV virus (Torres L, Tang Q. Immediate-Early (IE) gene regulation of cytomegalovirus: IE1-and pp71-mediated viral strategies against cellular defenses[J]. *Virologica Sinica*, 2014, 29: 343-352; McVoy M A. Cytomegalovirus vaccines. *Clinical infectious diseases*, 2013, 57: S196-S199).

**[0022]** The amino acid sequence of IE1 protein is well known by a person skilled in the art, and its typical example may be found in, for example, GenBank Accession No. ACL51183.1.

**[0023]** According to the invention, the expression "a corresponding sequence fragment" or "a corresponding fragment" refers to a fragment located at an equivalent position in the sequences for alignment, when the sequences are subjected to optimal alignment (i.e., the sequences are aligned to obtain the highest percent identity).

**[0024]** As used herein, the term "identity" refers to the match degree between two polypeptides or between two nucleic acids. When two sequences for comparison have the same base or amino acid monomer sub-unit at a certain site (e.g., each of two DNA molecules has an adenine at a certain site, or each of two polypeptides has a lysine at a certain site), the two molecules are identical at the site. The percent identity between two sequences is a function of the number of identical sites shared by the two sequences over the total number of sites for comparison x 100. For example, if 6 of 10 sites of two sequences are matched, these two sequences have an identity of 60%. For example, DNA sequences: CTGACT and CAGGTT share an identity of 50% (3 of 6 sites are matched). Generally, the comparison of two sequences is conducted in a manner to produce maximum identity. Such alignment can be conducted by, for example, using a computer program such as Align program (DNASTar, Inc.) which is based on the method of Needleman, et al. (*J. Mol. Biol.* 48:443-453, 1970). The percent identity between two amino acid sequences can be determined using the algorithm of E. Meyers and W. Miller (*Comput. Appl. Biosci.*, 4:11-17 (1988)) which has been incorporated into the ALIGN program (version 2.0), using a PAM120 weight residue table, a gap length penalty of 12 and a gap penalty of 4. In addition, the percentage of identity between two amino acid sequences can be determined by the algorithm of Needleman and Wunsch (*J. Mol. Biol.* 48:444-453 (1970)) which has been incorporated into the GAP program in the GCG software package (available at <http://www.gcg.com>), using either a Blossum 62 matrix or a PAM250 matrix, and a gap weight of 16, 14, 12, 10, 8, 6, or 4 and a length weight of 1, 2, 3, 4, 5, or 6.

**[0025]** As used herein, the term "conservative substitution" refers to amino acid substitutions which would not disadvantageously affect or change the essential properties of a protein/polypeptide comprising an amino acid sequence. For example, a conservative substitution may be introduced by standard techniques known in the art such as site-directed mutagenesis and PCR-mediated mutagenesis. Conservative amino acid substitutions include substitutions wherein an amino acid residue is substituted with another amino acid residue having a similar side chain, for example, a residue physically or functionally similar (such as, having similar size, shape, charge, chemical property including the capability of forming covalent bond or hydrogen bond, etc.) to the corresponding amino acid residue. The families of amino acid residues having similar side chains have been defined in the art. These families include amino acids having alkaline side chains (for example, lysine, arginine and histidine), amino acids having acidic side chains (for example, aspartic acid and glutamic acid), amino acids having uncharged polar side chains (for example, glycine, asparagine, glutamine, serine, threonine, tyrosine, cysteine, tryptophan), amino acids having nonpolar side chains (for example, alanine, valine, leucine, isoleucine, proline, phenylalanine, methionine), amino acids having  $\beta$ -branched side chains (such as threonine, valine, isoleucine) and amino acids having aromatic side chains (for example, tyrosine, phenylalanine, tryptophan, histidine). Therefore, a corresponding amino acid residue is preferably substituted with another amino acid residue from the same side-chain family. Methods for identifying amino acid conservative substitutions are well known in the art (see, for example, Brummell et al., *Biochem.* 32: 1180-1187 (1993); Kobayashi et al., *Protein Eng.* 12(10): 879-884 (1999); and Burks et al., *Proc. Natl. Acad. Sci. USA* 94: 412-417 (1997), which are incorporated herein by reference).

**[0026]** As used herein, the term "antibody" generally refers to an immunoglobulin molecule consisting of two pairs of polypeptide chains (each has a light (L) chain and a heavy (H) chain). Light chains of an antibody may be classified into

$\kappa$  and  $\lambda$  light chain. Heavy chains may be classified into  $\mu$ ,  $\delta$ ,  $\gamma$ ,  $\alpha$  and  $\epsilon$ , which define isotypes of an antibody as IgM, IgD, IgG, IgA and IgE, respectively. In a light chain and a heavy chain, a variable region is linked to a constant region via a "J" region of about 12 or more amino acids, and a heavy chain further comprises a "D" region of about 3 or more amino acids. Each heavy chain consists of a heavy chain variable region ( $V_H$ ) and a heavy chain constant region ( $C_H$ ).  
 5 A heavy chain constant region consists of 3 domains ( $C_{H1}$ ,  $C_{H2}$  and  $C_{H3}$ ). Each light chain consists of a light chain variable region ( $V_L$ ) and a light chain constant region ( $C_L$ ). A light chain constant region consists of a domain  $C_L$ . The constant region of an antibody can mediate the binding of an immunoglobulin to a host tissue or factor, including various cells (e.g., effector cells) of an immune system and the first component ( $C1q$ ) of classical complement system.  $V_H$  and  $V_L$  region can also be divided into hypervariable regions (called complementary determining regions (CDR)), which are interspaced by relatively conservative regions (called framework region (FR)). Each  $V_H$  and  $V_L$  consists of 3 CDRs and 4 FRs in the following order: FR1, CDR1, FR2, CDR2, FR3, CDR3, FR4 from N-terminal to C-terminal. The variable region ( $V_H$  and  $V_L$ ) of each heavy/light chain pair forms an antigen binding site, respectively. Distribution of amino acids in various regions or domains follows the definition in Kabat Sequences of Proteins of Immunological Interest (National Institutes of Health, Bethesda, Md. (1987 and 1991)), or Chothia & Lesk (1987) J. Mol. Biol. 196:901-917; Chothia et al., (1989) Nature 342:878-883. The term "antibody" is not restricted by any specific method for producing antibodies. For example, antibodies include particularly, recombinant antibodies, monoclonal antibodies and polyclonal antibodies. Antibodies may be of different antibody isotypes, for example, IgG (e.g., IgG1, IgG2, IgG3 or IgG4 subtype), IgA1, IgA2, IgD, IgE or IgM antibody.

**[0027]** As used herein, the term "level of an antibody" refers to the amount of an antibody capable of reacting with human cytomegalovirus protein (for example, pp150 / pp28), which, for example, may be determined by any relative or absolute quantitative means (including, but not limited to any detection means capable of obtaining the level of an antibody, such as ELISA, colloidal gold method or chemiluminescence method), and for example, may be expressed as strength of antibody-antigen reaction, an antibody titer, an antibody quantitative detection value (for example, an antibody absolute quantity).

**[0028]** As used herein, the term "antibody titer" refers to the minimum concentration (also called the maximum dilution degree) of an antibody-containing sample (for example, serum, an antibody solution) needed for recognizing an antigen (or an antigenic fragment thereof, for example, an antigen epitope) that is specifically bound by the antibody; which is generally expressed as the maximum dilution degree that can still result in a positive result. Methods for determining the antibody titer of a certain sample are well known by a person skilled in the art, for example, the antibody titer of a sample can be determined by ELISA method generally. The ELISA method, for example, can comprise the following steps of: (1) coating a microwell plate with an antigen protein (or an antigenic fragment thereof) that is specifically bound by an antibody, as a coating antigen; (2) subjecting an antibody-containing sample (for example, serum) to serial dilution; (3) adding the diluted samples to the wells in the microwell plate coated in step (1); and (4) determining the presence of the antibody binding to the coating antigen in the microwell plate (for example, using an antibody against the antibody, or a labelled antigen protein, etc.), and therefore determining the maximum dilution degree of the sample that can still result in a positive result (i.e., the antibody titer of the sample).

**[0029]** As used herein, the term "absolute quantity of an antibody" refers to the quantity of an antibody expressed by a biological activity of the antibody, which is generally expressed as international unit IU/ml or its variant form (for example, IU/L, mIU/ml, etc.). Methods for determining the absolute quantity of an antibody in a certain sample are well known by a person skilled in the art. For example, the antibody reactivity of an antibody-containing sample (for example, serum) is compared with the antibody reactivity of a standard sample comprising an antibody in a known amount, so as to determine the absolute quantity of the antibody in the sample. For example, the method can comprise the following steps of: (1) determining the antibody reactivity of the serial diluents of a standard sample by ELISA, and plotting an antibody content-antibody reactivity standard curve; (2) determining the antibody reactivity of an antibody-containing sample (or its diluent); and (3) converting the antibody reactivity of the sample (or its diluent) into the absolute quantity of the antibody contained in the sample by using the standard curve.

**[0030]** As used herein, the term "antibody reactivity" refers to the ability of an antibody to specifically recognize an antigen, which can be easily determined by immunologic assay (for example, ELISA). For example, antibody reactivity can be expressed as OD value obtained by the ELISA assay for determining antigen-antibody binding.

**[0031]** As used herein, the term "antigenic fragment" refers to a fragment of an antigen protein that retains the ability of specifically binding to an antibody that specifically recognizes the antigen protein. A person skilled in the art can obtain such antigenic fragments by conventional technical means. For example, the method can comprise the following steps of: (1) preparing various fragments of an antigen protein (for example, by genetic engineering technology, chemical synthetic technology, enzymolysis of antigen protein, etc.); and (2) determining whether the prepared fragments retain the ability of specifically binding to an antibody that specifically recognizes the antigen protein, by immunologic assay (for example, ELISA), thereby screening the antigenic fragments of the antigen protein.

**[0032]** As used herein, the term "immunologic assay" refers to an assay utilizing the specific interaction/binding affinity between an antigen and an antibody, which is generally used to determine the presence or level of a specific antigen

or antibody in a sample. Such an immunologic assay is well known for a person skilled in the art, including, but not limited to ELISA assay, Western blot, surface plasmon resonance, Elispot assay, and the like.

5 [0033] As used herein, the term "specific binding" refers to a non-random binding reaction between two molecules, such as the reaction between an antibody and an antigen that the antibody is directed to. In some embodiments, an antibody specifically binding to a certain antigen (or an antibody having specificity for a certain antigen) refers to an antibody binding to the antigen with an affinity ( $K_D$ ) of below about  $10^{-5}$  M, for example, below about  $10^{-6}$  M,  $10^{-7}$  M,  $10^{-8}$  M,  $10^{-9}$  M or  $10^{-10}$  M or less.

10 [0034] As used herein, the term " $K_D$ " refers to a dissociation equilibrium constant of a specific antibody-antigen interaction, which is used to describe the binding affinity between an antibody and an antigen. The lower the dissociation equilibrium constant is, the tighter the antibody-antigen binding is, and the higher the affinity between the antibody and the antigen is. In general, an antibody binds to an antigen with a dissociation equilibrium constant ( $K_D$ ) of below about  $10^{-5}$  M, for example, below about  $10^{-6}$  M,  $10^{-7}$  M,  $10^{-8}$  M,  $10^{-9}$  M or  $10^{-10}$  M or less, for example, determined by surface plasmon resonance (SPR) in BIACORE instrument.

15 [0035] As used herein, the term "subject" includes, but is not limited to, various animal, particularly mammal, for example, human.

20 [0036] As used herein, the term "body fluid sample" refers to a sample comprising the body fluid or a fraction thereof obtained from a subject. A body fluid sample may comprise or be a body fluid (or a fraction thereof) directly obtained from a subject, or may comprise or be a treated body fluid (for example, an isolated body fluid fraction), and optionally comprise other components, such as a buffer, an anticoagulant, and a diluent. A variety of body fluids or fractions thereof obtained from a subject are well known by a person skilled in the art, including, but not limited to, blood, serum, plasma, urine, saliva, etc.

25 [0037] As used herein, the term "a reagent capable of determining the level of an antibody against a HCMV protein" refers to a reagent capable of quantitatively and semi-quantitatively determining the level of an antibody against a HCMV protein in a sample. In general, it is particularly preferred that the reagent can determine the level of an antibody against a HCMV protein in a sample by immunologic assay. The employment of immunologic assay is particularly favorable, because it utilizes the specific interaction/binding affinity between an antigen and an antibody. Therefore, as long as a reagent retains its antigenicity of reacting with an antibody (for example, an antibody against a HCMV protein), the reagent can determine the level of an antibody against a HCMV protein in a sample by immunologic assay (that is, the reagent can be used as a reagent capable of determining the level of an antibody against a HCMV protein). Various reagents that retain the antigenicity of reacting with an antibody (for example, an antibody against a HCMV protein) can be readily envisaged and obtained by a person skilled in the art, including, but not limited to, an antigen protein itself (in the present application, a HCMV protein) or an antigenic fragment thereof, a fusion protein comprising the antigen protein (in the present application, a HCMV protein) or an antigenic fragment thereof, and any combination thereof.

30 [0038] As used herein, the term "test animal" refers to an animal for use in experiment, which is generally a non-human mammal, such as a model animal (for example, mouse, rat, rabbit, primate). A person skilled in the art can select a variety of suitable test animals depending on the practical need in experiment.

35 [0039] As used herein, the term "relative risk (RR)", also called risk ratio, refers to the ratio of the probability of developing a disease (in the invention, HCMV active infection) in a subject having a certain parameter or index (in the invention, an antibody level, for example, the level of an antibody against pp150 or pp28) below the reference value, to the probability of developing a disease in a subject having the parameter or index above the reference value. Relative risk is an index reflecting the correlation strength between a parameter/index and development of a disease. It is generally believed that when RR is 1.0-1.1, there is no correlation between the parameter/index and the disease; when RR is 1.2-1.4, there is a weak correlation between the parameter/index and the disease; when RR is 1.5-2.9, there is a moderate correlation between the parameter/index and the disease; when RR is 3.0-9.9, there is a strong correlation between the parameter/index and the disease; when RR is greater than 10, there is a very strong correlation between the parameter/index and the disease.

40 [0040] As used herein, the term "Youden index" refers to an index for evaluating validity of a screening test/diagnostic test. When the false negative rate (omission diagnose rate) and false positive rate (mistake diagnose rate) of a screening /diagnostic test are of equal significance, a Youden index is the sum of sensitivity and specificity of the test minus 1. Youden index represents the total ability of a screening/diagnostic test to identify true patients and non-patients. A larger Youden index value indicates a better effect of a screening/diagnostic test and a higher validity.

45 [0041] One technical problem to be solved by the invention is to provide a method for accurately and effectively assessing the probability of developing cytomegalovirus active infection in a subject (such as a pregnant woman, an organ transplant patient, and a HIV-infected person), which can provide support for employing intervention measures in order to reduce the probability of congenital cytomegalovirus infection; and can direct clinical medication to prevent complications in patients.

50 [0042] For this purpose, the inventor expressed and purified the test proteins commonly used in the research on diagnosis of cytomegalovirus [14] (Plachter B, Wiczorek L, Scholl BC, Ziegelmaier R, Jahn G. Detection of cytomega-

lovirus antibodies by an enzyme-linked immunosorbent assay using recombinant polypeptides of the large phosphorylated tegument protein pp150. J Clin Microbiol. 1992, 30:201-206.), i.e., pp150 (UL32), pp28 (UL99), pp38 (UL80.5), UL48a, gp52 (UL44) and pp65 (UL83); and then tried to use the antigens to establish methods and platforms for assessing the probability of developing cytomegalovirus active infection in a subject. After a series of studies and experiments, the inventor found that the level of an antibody against pp150 (UL32) and/or pp28 (UL99) in serum from a subject (which may be, for example, determined by ELISA using pp150 (UL32) and/or pp28 (UL99) as coating antigen) can effectively and reliably reflect the probability of developing cytomegalovirus active infection in the subject. Therefore, the inventor, based on the detection of the level of an antibody against pp150 (UL32) and/or pp28 (UL99), has successfully established methods and platforms for assessing the probability of developing cytomegalovirus active infection in a subject.

**[0043]** Therefore, in one aspect, the invention provides a method for assessing whether a subject is at risk of developing human cytomegalovirus (HCMV) active infection, comprising the following steps of:

- (1) determining the level of an antibody against a HCMV protein in a body fluid sample from the subject; and
- (2) comparing the level with a predetermined reference value;

wherein, if the level is below the reference value, the subject is determined to be at risk of developing HCMV active infection.

**[0044]** In a preferred embodiment, the subject is a mammal, such as human. In a preferred embodiment, the body fluid sample is selected from blood, serum, plasma, urine and saliva.

**[0045]** In a preferred embodiment, the active infection is a primary infection by HCMV in a subject that has not been infected by HCMV, or, a re-infection by HCMV or activation of latent HCMV in a subject that has been infected by HCMV.

**[0046]** In a preferred embodiment, the HCMV protein is selected from pp150 and/or pp28.

**[0047]** In a preferred embodiment, the level of an antibody against a HCMV protein in the body fluid sample is determined by immunologic assay. In a further preferred embodiment, the immunologic assay is selected from ELISA assay, Western Blot, surface plasmon resonance, and Elispot assay.

**[0048]** In a preferred embodiment, the level refers to an antibody titer (for example, an antibody titer determined by ELISA), and the reference value is a predetermined antibody titer; or, the level refers to an antibody absolute quantity (for example, an absolute quantity expressed by IU/ml) and the reference value refers to a predetermined antibody absolute quantity (for example, an absolute quantity expressed by IU/ml).

**[0049]** In a preferred embodiment, in the step (1), the antibody titer of the antibody against pp150 and/or pp28 in the body fluid sample is determined by ELISA. In a preferred embodiment, the reference value is an antibody titer in a range of 40-320. In a preferred embodiment, the reference value is an antibody titer in a range of 40-160. For example, the reference value is an antibody titer of 40, 80 or 160. In a preferred embodiment, the reference value is an antibody titer of 80.

**[0050]** As shown in the invention, when the reference value is between 40 and 320, a subject with an antibody titer below the reference value, has a relative risk of greater than 10 for developing HCMV active infection, and the lower limit of 95% CI is greater than 7. This indicates that there is a strong correlation or a very strong correlation between the parameter (antibody titer) and HCMV active infection.

**[0051]** Therefore, in a preferred embodiment, the reference value is 40, and if the antibody titer of the antibody against pp150 is below or equal to 40, the subject is determined to have a relative risk of 11.2 for developing HCMV active infection, and 95% CI is 8.7-14.6. In some preferred embodiments, the reference value is set as an antibody titer of 40, and the method for predicting HCMV active infection has a sensitivity of 57.3%, a specificity of 94.7%, and a Youden index of 0.52.

**[0052]** In another preferred embodiment, the reference value is 80, and if the antibody titer of the antibody against pp150 is below or equal to 80, the subject is determined to have a relative risk of 10.6 for developing HCMV active infection, and 95% CI is 7.7-14.6. In some preferred embodiments, the reference value is set as an antibody titer of 80, and the method for predicting HCMV active infection has a sensitivity of 73.1%, a specificity of 85.7%, and a Youden index of 0.59.

**[0053]** In another preferred embodiment, the reference value is 160, and if the antibody titer of the antibody against pp150 is below or equal to 160, the subject is determined to have a relative risk of 14.8 for developing HCMV active infection, and 95% CI is 9.0-24.6. In some preferred embodiments, the reference value is set as an antibody titer of 160, and the method for predicting HCMV active infection has a sensitivity of 90.6%, a specificity of 66.4%, and a Youden index of 0.57.

**[0054]** In another preferred embodiment, the reference value is 320, and if the antibody titer of the antibody against pp150 is below or equal to 320, the subject is determined to have a relative risk of 23.7 for developing HCMV active infection, and 95% CI is 8.8-63.4. In some preferred embodiments, the reference value is set as an antibody titer of 320, and the method for predicting HCMV active infection has a sensitivity of 97.7%, a specificity of 40.1%, and a Youden index of 0.37.

**[0055]** From another point of view, a high or low antibody titer level also indicates a high or low risk of developing

HCMV active infection in a subject directly. As shown in the invention, if the antibody titer of an antibody against pp150 is below or equal to 40, the risk of developing HCMV active infection in the subject can be up to 55.37%; if the antibody titer of the antibody against pp150 is below or equal to 80, the risk of developing HCMV active infection in the subject can be up to 36.98%; if the antibody titer of the antibody against pp150 is below or equal to 160, the risk of developing HCMV active infection in the subject can be up to 23.66%; if the antibody titer of the antibody against pp150 is below or equal to 320, the risk of developing HCMV active infection in the subject can be up to 15.77%. The data is obtained from a population including 1659 subjects. Although the calculated data may be slightly varied in a larger population, it can be determined unambiguously that there is a strong negative correlation between the antibody titer of an antibody against pp150 and HCMV active infection, and the antibody titer can be used to determine the risk of developing HCMV active infection in a subject.

**[0056]** Therefore, in a preferred embodiment, the reference value is 40, and if the antibody titer of the antibody against pp150 is below or equal to 40, the subject is determined to have a probability of 55.37% for developing HCMV active infection. In another preferred embodiment, the reference value is 80, and if the antibody titer of the antibody against pp150 is below or equal to 80, the subject is determined to have a probability of 36.98% for developing HCMV active infection. In another preferred embodiment, the reference value is 160, and if the antibody titer of the antibody against pp150 is below or equal to 160, the subject is determined to have a probability of 23.66% for developing HCMV active infection. In another preferred embodiment, the reference value is 320, and if the antibody titer of the antibody against pp150 is below or equal to 320, the subject is determined to have a probability of 15.77% for developing HCMV active infection.

**[0057]** In a preferred embodiment, pp150 and/or an antigenic fragment thereof (for example, a fragment comprising aa 861-1048 of pp150) is used to determine the antibody titer of an antibody against pp150 in the body fluid sample by ELISA; and/or, pp28 and/or an antigenic fragment thereof is used to determine the antibody titer of an antibody against pp28 in the body fluid sample by ELISA.

**[0058]** In a preferred embodiment, pp150 has an amino acid sequence set forth in SEQ ID NO: 1; and/or, the antigenic fragment of pp150 has an amino acid sequence set forth in SEQ ID NO: 2; and/or, pp28 has an amino acid sequence set forth in SEQ ID NO: 3.

**[0059]** In another preferred embodiment, in the step (1), the absolute quantity of the antibody against pp150 and/or pp28 in the body fluid sample (for example, an absolute quantity expressed by IU/ml) is determined.

**[0060]** In a preferred embodiment, the absolute quantity of the antibody against pp150 and/or pp28 in the body fluid sample is determined by comparing the reactivity of the antibody against pp150 and/or pp28 in the body fluid sample with the antibody reactivity of a standard sample with a known antibody content. In a preferred embodiment, the reference value is an antibody absolute quantity in a range of 0.8-6.4 IU/ml. In a preferred embodiment, the reference value is an antibody absolute quantity in a range of 0.8-3.2 IU/ml. For example, the reference value is an antibody absolute quantity of 0.8, 1.6, or 3.2 IU/ml. In a preferred embodiment, the reference value is an antibody absolute quantity of 3.2 IU/ml.

**[0061]** As shown in the invention, when reference value is between 0.8 and 6.4 IU/ml, the subject has an antibody absolute quantity below the reference value has a relative risk of greater than 11 for developing HCMV active infection, and the lower limit of 95% CI is greater than 7. This indicates that there is a strong correlation or a very strong correlation between the parameter (an antibody absolute quantity) and HCMV active infection.

**[0062]** Therefore, in a preferred embodiment, the reference value is 0.8 IU/ml, and if the absolute quantity of the antibody against pp150 is below or equal to 0.8 IU/ml, the subject is determined to have a relative risk of 11.6 for developing HCMV active infection, and 95% CI is 7.8-17.2. In some preferred embodiments, the reference value is 0.8 IU/ml, and the method for predicting HCMV active infection has a sensitivity of 46.15%, a specificity of 96.97%, and a Youden index of 0.43.

**[0063]** In another preferred embodiment, the reference value is 1.6 IU/ml, and if the absolute quantity of the antibody against pp150 is below or equal to 1.6 IU/ml, the subject is determined to have a relative risk of 15.2 for developing HCMV active infection, and 95% CI is 9.5-24.3. In some preferred embodiments, the reference value is 1.6 IU/ml, and the method for predicting HCMV active infection has a sensitivity of 67.69%, a specificity of 93.34%, and a Youden index of 0.61.

**[0064]** In another preferred embodiment, the reference value is 3.2 IU/ml, and if the absolute quantity of the antibody against pp150 is below or equal to 3.2 IU/ml, the subject is determined to have a relative risk of 19.0 for developing HCMV active infection, and 95% CI is 9.6-37.7. In some preferred embodiments, the reference value is 3.2 IU/ml, and the method for predicting HCMV active infection has a sensitivity of 86.15%, a specificity of 81.39%, and a Youden index of 0.68.

**[0065]** In another preferred embodiment, the reference value is 6.4 IU/ml, and if the antibody absolute quantity of the antibody against pp150 is below or equal to 6.4 IU/ml, the subject is determined to have a relative risk of 25.2 for developing HCMV active infection, and 95% CI is 8.0-79.6. In some preferred embodiments, the reference value is 6.4 IU/ml, and the method for predicting HCMV active infection has a sensitivity of 95.38%, a specificity of 59.91%, and a Youden index of 0.55.

**[0066]** From another point of view, a high or low antibody absolute quantity also indicates a high or low risk of developing HCMV active infection in a subject directly. As shown in the invention, if the antibody absolute quantity of the antibody against pp150 is below or equal to 0.8 IU/ml, the risk of developing HCMV active infection in the subject can be up to 60.0%; if the antibody absolute quantity of the antibody against pp150 is below or equal to 1.6 IU/ml, the risk of developing HCMV active infection in the subject can be up to 50.0%; if the antibody absolute quantity of the antibody against pp150 is below or equal to 3.2 IU/ml, the risk of developing HCMV active infection in the subject can be up to 31.3%; if the antibody absolute quantity of the antibody against pp150 is below or equal to 6.4 IU/ml, the risk of developing HCMV active infection in the subject can be up to 19.0%. The data is obtained from a population including 726 subjects. Although the calculated data may be slightly varied in a larger population, it can be determined unambiguously that there is a strong negative correlation between the antibody absolute quantity of the antibody against pp150 and HCMV active infection, and the antibody titer can be used to determine the risk of developing HCMV active infection in the subject.

**[0067]** Therefore, in a preferred embodiment, the reference value is 0.8 IU/ml, and if the absolute quantity of the antibody against pp150 is below or equal to 0.8 IU/ml, the subject is determined to have a probability of 60.0% for developing HCMV active infection. In a preferred embodiment, the reference value is 1.6 IU/ml, and if the absolute quantity of the antibody against pp150 is below or equal to 1.6 IU/ml, the subject is determined to have a probability of 50.0% for developing HCMV active infection. In a preferred embodiment, the reference value is 3.2 IU/ml, and if the absolute quantity of the antibody against pp150 is below or equal to 3.2 IU/ml, the subject is determined to have a probability of 31.3% for developing HCMV active infection. In a preferred embodiment, the reference value is 6.4 IU/ml, and if the antibody absolute quantity of the antibody against pp150 is below or equal to 6.4 IU/ml, the subject is determined to have a probability of 19.0% for developing HCMV active infection.

**[0068]** In a preferred embodiment, the method according to the invention further comprises:

before the step (1), providing a body fluid sample from the subject; and/or  
after the step (2), administering a vaccine or antibody against HCMV to the subject that is determined to be at risk of developing HCMV active infection, so as to reduce the risk of developing HCMV active infection in the subject.

**[0069]** In one aspect, the invention provides use of a reagent capable of determining the level of an antibody against a HCMV protein in the manufacture of a kit for assessing whether a subject is at risk of developing human cytomegalovirus (HCMV) active infection by determining the level of an antibody against a HCMV protein in a body fluid sample from the subject.

**[0070]** In a preferred embodiment, the reagent is capable of determining the level of an antibody against a HCMV protein by immunologic assay. In a further preferred embodiment, the immunologic assay is selected from ELISA assay, Western Blot, surface plasmon resonance, and Elispot assay.

**[0071]** In a preferred embodiment, the reagent is selected from: HCMV protein or an antigenic fragment thereof, a fusion protein comprising the HCMV protein or an antigenic fragment thereof, and any combination thereof.

**[0072]** In a preferred embodiment, the HCMV protein is selected from pp150 and/or pp28.

**[0073]** In a preferred embodiment, the HCMV protein is pp150, and the reagent is pp150 and/or an antigenic fragment thereof (for example, a fragment comprising aa 861-1048 of pp150); or, the HCMV protein is pp28, and the reagent is pp28 and/or an antigenic fragment thereof; or, the HCMV protein is pp150 and pp28, and the reagent comprises: pp150 and/or an antigenic fragment thereof (for example, a fragment comprising aa 861-1048 of pp150) as a first component, and pp28 and/or an antigenic fragment thereof as a second component.

**[0074]** In a preferred embodiment, pp150 has an amino acid sequence set forth in SEQ ID NO: 1; and/or, the antigenic fragment of pp150 has an amino acid sequence set forth in SEQ ID NO: 2; and/or, pp28 has an amino acid sequence set forth in SEQ ID NO: 3;

**[0075]** In a preferred embodiment, the subject is a mammal, such as human.

**[0076]** In a preferred embodiment, the body fluid sample is selected from blood, serum, plasma, urine and saliva.

**[0077]** In a preferred embodiment, the active infection is a primary infection by HCMV in a subject that has not been infected by HCMV, or, a re-infection by HCMV or activation of latent HCMV in a subject that has been infected by HCMV.

**[0078]** In a preferred embodiment, the kit further comprises:

- (i) a device for collecting or storing the body fluid sample from the subject;
- (ii) additional reagents necessary for the assay (for example, a buffer, a diluent, a blocking solution, a labelled anti-antibody, and/or a standard sample); and/or,
- (iii) a vaccine or antibody against HCMV.

**[0079]** In a preferred embodiment, the kit assesses whether a subject is at risk of developing human cytomegalovirus (HCMV) active infection by a method comprising the following steps of:

## EP 3 258 265 A1

- (1) using the reagent to determine the level of an antibody against a HCMV protein in a body fluid sample from the subject; and,
- (2) comparing the level with a predetermined reference value;

5 wherein, if the level is below the reference value, the subject is determined to be at risk of developing HCMV active infection.

**[0080]** In a further preferred embodiment, in the method, the level refers to an antibody titer (for example, an antibody titer determined by ELISA), and the reference value refers to a predetermined antibody titer; or, the level refers to an antibody absolute quantity (for example, an absolute quantity expressed by IU/ml), and the reference value refers to a

10 predetermined antibody absolute quantity (for example, an absolute quantity expressed by IU/ml).

**[0081]** In a further preferred embodiment, in the method, in the step (1), the antibody titer of the antibody against pp150 and/or pp28 in the body fluid sample is determined by ELISA. In a preferred embodiment, pp150 and/or an antigenic fragment thereof (for example, a fragment comprising aa 861-1048 of pp150) is used to determine the antibody titer of the antibody against pp150 in the body fluid sample by ELISA; and/or, pp28 and/or an antigenic fragment thereof

15 is used to determine the antibody titer of the antibody against pp28 in the body fluid sample by ELISA. In a preferred embodiment, the reference value is an antibody titer in a range of 40-320. In a preferred embodiment, the reference value is an antibody titer in a range of 40-160. For example, the reference value is an antibody titer of 40, 80 or 160. In a preferred embodiment, the reference value is an antibody titer of 80.

**[0082]** In a preferred embodiment, the reference value is 40, and if the antibody titer of the antibody against pp150 is below or equal to 40, the subject is determined to have a relative risk of 11.2 for developing HCMV active infection, and 95% CI is 8.7-14.6. In a preferred embodiment, the reference value is 40, and if the antibody titer of the antibody against pp150 is below or equal to 40, the subject is determined to have a probability of 55.37% for developing HCMV active infection. In some preferred embodiments, the reference value is set as an antibody titer of 40, and the method for predicting HCMV active infection has a sensitivity of 57.3%, a specificity of 94.7%, and a Youden index of 0.52.

20

**[0083]** In another preferred embodiment, the reference value is 80, and if the antibody titer of the antibody against pp150 is below or equal to 80, the subject is determined to have a relative risk of 10.6 for developing HCMV active infection, and 95% CI is 7.7-14.6. In another preferred embodiment, the reference value is 80, and if the antibody titer of the antibody against pp150 is below or equal to 80, the subject is determined to have a probability of 36.98% for developing HCMV active infection. In some preferred embodiments, the reference value is set as an antibody titer of

25 30 80, and the method for predicting HCMV active infection has a sensitivity of 73.1%, a specificity of 85.7%, and a Youden index of 0.59.

**[0084]** In another preferred embodiment, the reference value is 160, and if the antibody titer of the antibody against pp150 is below or equal to 160, the subject is determined to have a relative risk of 14.8 for developing HCMV active infection, and 95% CI is 9.0-24.6. In another preferred embodiment, the reference value is 160, and if the antibody titer of the antibody against pp150 is below or equal to 160, the subject is determined to have a probability of 23.66% for developing HCMV active infection. In some preferred embodiments, the reference value is set as an antibody titer of

35 160, and the method for predicting HCMV active infection has a sensitivity of 90.6%, a specificity of 66.4%, and a Youden index of 0.57.

**[0085]** In another preferred embodiment, the reference value is 320, and if the antibody titer of the antibody against pp150 is below or equal to 320, the subject is determined to have a relative risk of 23.7 for developing HCMV active infection, and 95% CI is 8.8-63.4. In another preferred embodiment, the reference value is 320, and if the antibody titer of the antibody against pp150 is below or equal to 320, the subject is determined to have a probability of 15.77% for developing HCMV active infection. In some preferred embodiments, the reference value is set as an antibody titer of

40 45 320, and the method for predicting HCMV active infection has a sensitivity of 97.7%, a specificity of 40.1%, and a Youden index of 0.37.

**[0086]** In another preferred embodiment, in the method, in the step (1), the absolute quantity of the antibody against pp150 and/or pp28 in the body fluid sample (for example, an absolute quantity expressed by IU/ml) is determined. In a preferred embodiment, the absolute quantity of the antibody against pp150 and/or pp28 in the body fluid sample is determined by comparing the reactivity of the antibody against pp150 and/or pp28 in the body fluid sample with the antibody reactivity of a standard sample with a known antibody content. In a preferred embodiment, the reference value is an antibody absolute quantity in a range of 0.8-6.4 IU/ml. In a preferred embodiment, the reference value is an antibody absolute quantity in a range of 0.8-3.2 IU/ml. For example, the reference value is an antibody absolute quantity of 0.8, 1.6, or 3.2 IU/ml. In a preferred embodiment, the reference value is an antibody absolute quantity of 3.2 IU/ml.

50

**[0087]** In a preferred embodiment, the reference value is 0.8 IU/ml, and if the absolute quantity of the antibody against pp150 is below or equal to 0.8 IU/ml, the subject is determined to have a relative risk of 11.6 for developing HCMV active infection, and 95% CI is 7.8-17.2. In a preferred embodiment, the reference value is 0.8 IU/ml, and if the absolute quantity of the antibody against pp150 is below or equal to 0.8 IU/ml, the subject is determined to have a probability of 60.0% for developing HCMV active infection. In some preferred embodiments, the reference value is 0.8 IU/ml, and the method

55

for predicting HCMV active infection has a sensitivity of 46.15%, a specificity of 96.97%, and a Youden index of 0.43.

**[0088]** In another preferred embodiment, the reference value is 1.6 IU/ml, and if the absolute quantity of the antibody against pp150 is below or equal to 1.6 IU/ml, the subject is determined to have a relative risk of 15.2 for developing HCMV active infection, and 95% CI is 9.5-24.3. In a preferred embodiment, the reference value is 1.6 IU/ml, and if the absolute quantity of the antibody against pp150 is below or equal to 1.6 IU/ml, the subject is determined to have a probability of 50.0% for developing HCMV active infection. In some preferred embodiments, the reference value is 1.6 IU/ml, and the method for predicting HCMV active infection has a sensitivity of 67.69%, a specificity of 93.34%, and a Youden index of 0.61.

**[0089]** In another preferred embodiment, the reference value is 3.2 IU/ml, and if the absolute quantity of the antibody against pp150 is below or equal to 3.2 IU/ml, the subject is determined to have a relative risk of 19.0 for developing HCMV active infection, and 95% CI is 9.6-37.7. In a preferred embodiment, the reference value is 3.2 IU/ml, and if the absolute quantity of the antibody against pp150 is below or equal to 3.2 IU/ml, the subject is determined to have a probability of 31.3% for developing HCMV active infection. In some preferred embodiments, the reference value is 3.2 IU/ml, and the method for predicting HCMV active infection has a sensitivity of 86.15%, a specificity of 81.39%, and a Youden index of 0.68.

**[0090]** In another preferred embodiment, the reference value is 6.4 IU/ml, and if the antibody absolute quantity of the antibody against pp150 is below or equal to 6.4 IU/ml, the subject is determined to have a relative risk of 25.2 for developing HCMV active infection, and 95% CI is 8.0-79.6. In a preferred embodiment, the reference value is 6.4 IU/ml, and if the antibody absolute quantity of the antibody against pp150 is below or equal to 6.4 IU/ml, the subject is determined to have a probability of for 19.0% developing HCMV active infection. In some preferred embodiments, the reference value is 6.4 IU/ml, and the method for predicting HCMV active infection has a sensitivity of 95.38%, a specificity of 59.91%, and a Youden index of 0.55.

**[0091]** In one aspect, the invention provides a kit for assessing whether a subject is at risk of developing human cytomegalovirus (HCMV) active infection, comprising a reagent capable of determining the level of an antibody against a HCMV protein, and optionally, instructions of using the reagent to determine the level of an antibody against a HCMV protein in a body fluid sample from the subject so as to assess whether the subject is at risk of developing human cytomegalovirus (HCMV) active infection.

**[0092]** In a preferred embodiment, the reagent is capable of determining the level of an antibody against a HCMV protein by immunologic assay. In a further preferred embodiment, the immunologic assay is selected from ELISA assay, Western Blot, surface plasmon resonance, and Elispot assay.

**[0093]** In a preferred embodiment, the reagent is selected from: HCMV protein or an antigenic fragment thereof, a fusion protein comprising the HCMV protein or an antigenic fragment thereof, and any combination thereof. In a preferred embodiment, the HCMV protein is selected from pp150 and/or pp28.

**[0094]** In a preferred embodiment, the HCMV protein is pp150, and the reagent is pp150 and/or an antigenic fragment thereof (for example, a fragment comprising aa 861-1048 of pp150); or, the HCMV protein is pp28, and the reagent is pp28 and/or an antigenic fragment thereof; or, the HCMV protein is pp150 and pp28, and the reagent comprises: pp150 and/or an antigenic fragment thereof (for example, a fragment comprising aa 861-1048 of pp150) as a first component, and pp28 and/or an antigenic fragment thereof as a second component.

**[0095]** In a preferred embodiment, pp150 has an amino acid sequence set forth in SEQ ID NO: 1; and/or, the antigenic fragment of pp150 has an amino acid sequence set forth in SEQ ID NO: 2; and/or, pp28 has an amino acid sequence set forth in SEQ ID NO: 3;

**[0096]** In a preferred embodiment, the subject is a mammal, such as human. In a preferred embodiment, the body fluid sample is selected from blood, serum, plasma, urine and saliva.

**[0097]** In a preferred embodiment, the active infection is a primary infection by HCMV in a subject that has not been infected by HCMV, or, a re-infection by HCMV or activation of latent HCMV in a subject that has been infected by HCMV.

**[0098]** In a preferred embodiment, the kit further comprises:

- (i) a device for collecting or storing the body fluid sample from the subject;
- (ii) additional reagents necessary for the assay (for example, a buffer, a diluent, a blocking solution, a labelled anti-antibody, and/or a standard sample); and/or,
- (iii) a vaccine or antibody against HCMV.

**[0099]** In a preferred embodiment, the kit assesses whether a subject is at risk of developing human cytomegalovirus (HCMV) active infection by a method comprising the following steps of:

- (1) using the reagent to determine the level of an antibody against a HCMV protein in a body fluid sample from the subject; and,
- (2) comparing the level with a predetermined reference value;

wherein, if the level is below the reference value, the subject is determined to be at risk of developing HCMV active infection.

**[0100]** In a further preferred embodiment, in the method, the level refers to an antibody titer (for example, an antibody titer determined by ELISA), and the reference value refers to a predetermined antibody titer; or, the level refers to an antibody absolute quantity (for example, an absolute quantity expressed by IU/ml), and the reference value refers to a predetermined antibody absolute quantity (for example, an absolute quantity expressed by IU/ml).

**[0101]** In a further preferred embodiment, in the method, in the step (1), the antibody titer of the antibody against pp150 and/or pp28 in the body fluid sample is determined by ELISA; In a preferred embodiment, pp150 and/or an antigenic fragment thereof (for example, a fragment comprising aa 861-1048 of pp150) is used to determine the antibody titer of the antibody against pp150 in the body fluid sample by ELISA; and/or, pp28 and/or an antigenic fragment thereof is used to determine the antibody titer of the antibody against pp28 in the body fluid sample by ELISA. In a preferred embodiment, the reference value is an antibody titer in a range of 40-320. In a preferred embodiment, the reference value is an antibody titer in a range of 40-160. For example, the reference value is an antibody titer of 40, 80 or 160. In a preferred embodiment, the reference value is an antibody titer of 80.

**[0102]** In a preferred embodiment, the reference value is 40, and if the antibody titer of the antibody against pp150 is below or equal to 40, the subject is determined to have a relative risk of 11.2 for developing HCMV active infection, and 95% CI is 8.7-14.6. In a preferred embodiment, the reference value is 40, and if the antibody titer of the antibody against pp150 is below or equal to 40, the subject is determined to have a probability of 55.37% for developing HCMV active infection. In some preferred embodiments, the reference value is set as an antibody titer of 40, and the method for predicting HCMV active infection has a sensitivity of 57.3%, a specificity of 94.7%, and a Youden index of 0.52.

**[0103]** In another preferred embodiment, the reference value is 80, and if the antibody titer of the antibody against pp150 is below or equal to 80, the subject is determined to have a relative risk of 10.6 for developing HCMV active infection, and 95% CI is 7.7-14.6. In another preferred embodiment, the reference value is 80, and if the antibody titer of the antibody against pp150 is below or equal to 80, the subject is determined to have a probability of 36.98% for developing HCMV active infection. In some preferred embodiments, the reference value is set as an antibody titer of 80, and the method for predicting HCMV active infection has a sensitivity of 73.1%, a specificity of 85.7%, and a Youden index of 0.59.

**[0104]** In another preferred embodiment, the reference value is 160, and if the antibody titer of the antibody against pp150 is below or equal to 160, the subject is determined to have a relative risk of 14.8 for developing HCMV active infection, and 95% CI is 9.0-24.6. In another preferred embodiment, the reference value is 160, and if the antibody titer of the antibody against pp150 is below or equal to 160, the subject is determined to have a probability of 23.66% for developing HCMV active infection. In some preferred embodiments, the reference value is set as an antibody titer of 160, and the method for predicting HCMV active infection has a sensitivity of 90.6%, a specificity of 66.4%, and a Youden index of 0.57.

**[0105]** In another preferred embodiment, the reference value is 320, and if the antibody titer of the antibody against pp150 is below or equal to 320, the subject is determined to have a relative risk of 23.7 for developing HCMV active infection, and 95% CI is 8.8-63.4. In another preferred embodiment, the reference value is 320, and if the antibody titer of the antibody against pp150 is below or equal to 320, the subject is determined to have a probability of 15.77% for developing HCMV active infection. In some preferred embodiments, the reference value is set as an antibody titer of 320, and the method for predicting HCMV active infection has a sensitivity of 97.7%, a specificity of 40.1%, and a Youden index of 0.37.

**[0106]** In another preferred embodiment, in the method, in the step (1), the absolute quantity of the antibody against pp150 and/or pp28 in the body fluid sample (for example, an absolute quantity expressed by IU/ml). In a preferred embodiment, the absolute quantity of the antibody against pp150 and/or pp28 in the body fluid sample is determined by comparing the reactivity of the antibody against pp150 and/or pp28 in the body fluid sample with the antibody reactivity of a standard sample with a known antibody content. In a preferred embodiment, the reference value is an antibody absolute quantity in a range of 0.8-6.4 IU/ml. In a preferred embodiment, the reference value is an antibody absolute quantity in a range of 0.8-3.2 IU/ml. For example, the reference value is an antibody absolute quantity of 0.8, 1.6, or 3.2 IU/ml. In a preferred embodiment, the reference value is an antibody absolute quantity of 3.2 IU/ml.

**[0107]** In a preferred embodiment, the reference value is 0.8 IU/ml, and if the absolute quantity of the antibody against pp150 is below or equal to 0.8 IU/ml, the subject is determined to have a relative risk of 11.6 for developing HCMV active infection, and 95% CI is 7.8-17.2. In a preferred embodiment, the reference value is 0.8 IU/ml, and if the absolute quantity of the antibody against pp150 is below or equal to 0.8 IU/ml, the subject is determined to have a probability of 60.0% for developing HCMV active infection. In some preferred embodiments, the reference value is 0.8 IU/ml, and the method for predicting HCMV active infection has a sensitivity of 46.15%, a specificity of 96.97%, and a Youden index of 0.43. In another preferred embodiment, the reference value is 1.6 IU/ml, and if the absolute quantity of the antibody against pp150 is below or equal to 1.6 IU/ml, the subject is determined to have a relative risk of 15.2 for developing HCMV active infection, and 95% CI is 9.5-24.3. In a preferred embodiment, the reference value is 1.6 IU/ml, and if the absolute quantity

of the antibody against pp150 is below or equal to 1.6 IU/ml, the subject is determined to have a probability of 50.0% for developing HCMV active infection. In some preferred embodiments, the reference value is 1.6 IU/ml, and the method for predicting HCMV active infection has a sensitivity of 67.69%, a specificity of 93.34%, and a Youden index of 0.61.

**[0108]** In another preferred embodiment, the reference value is 3.2 IU/ml, and if the absolute quantity of the antibody against pp150 is below or equal to 3.2 IU/ml, the subject is determined to have a relative risk of 19.0 for developing HCMV active infection, and 95% CI is 9.6-37.7. In a preferred embodiment, the reference value is 3.2 IU/ml, and if the absolute quantity of the antibody against pp150 is below or equal to 3.2 IU/ml, the subject is determined to have a probability of 31.3% for developing HCMV active infection. In some preferred embodiments, the reference value is 3.2 IU/ml, and the method for predicting HCMV active infection has a sensitivity of 86.15%, a specificity of 81.39%, and a Youden index of 0.68.

**[0109]** In another preferred embodiment, the reference value is 6.4 IU/ml, and if the antibody absolute quantity of the antibody against pp150 is below or equal to 6.4 IU/ml, the subject is determined to have a relative risk of 25.2 for developing HCMV active infection, and 95% CI is 8.0-79.6. In a preferred embodiment, the reference value is 6.4 IU/ml, and if the antibody absolute quantity of the antibody against pp150 is below or equal to 6.4 IU/ml, the subject is determined to have a probability of 19.0% for developing HCMV active infection. In some preferred embodiments, the reference value is 6.4 IU/ml, and the method for predicting HCMV active infection has a sensitivity of 95.38%, a specificity of 59.91%, and a Youden index of 0.55.

**[0110]** The method of the invention can determine the level of an antibody against a HCMV protein in a body fluid sample from a subject, and therefore reliably and effectively assessing whether the subject is at risk of developing human cytomegalovirus (HCMV) active infection. Based on this, if after the administration of a certain candidate drug, a subject has the level of an antibody against a HCMV protein increased (compared to the level before the administration of the candidate drug) in a body fluid sample therefrom, it indicates that after the administration of the candidate drug, the subject has the risk of developing human cytomegalovirus (HCMV) active infection reduced. Therefore, it can be reasonably determined that the candidate drug used can improve the ability of a subject to resist human cytomegalovirus (HCMV) active infection, and reduce the risk of developing human cytomegalovirus (HCMV) active infection in a subject.

**[0111]** Therefore, in another aspect, the invention provides a method for screening a candidate drug capable of improving the ability of a subject to resist human cytomegalovirus (HCMV) active infection or reducing the risk of developing human cytomegalovirus (HCMV) active infection in a subject, comprising the following steps of:

- (1) before administering a candidate drug to a test animal, determining a first level of an antibody against a HCMV protein in a body fluid sample from the test animal;
- (2) administering the candidate drug to the test animal;
- (3) after administering the candidate drug to the test animal, determining a second level of the antibody against a HCMV protein in the body fluid sample from the test animal;
- (4) comparing the first level with the second level, wherein, if the first level is below the second level, the candidate drug is determined to be capable of improving the ability of a subject to resist human cytomegalovirus (HCMV) active infection or reducing the risk of developing human cytomegalovirus (HCMV) active infection.

**[0112]** In a preferred embodiment, the test animal is a non-human mammal, such as a model animal (for example, mouse, rat, rabbit, primate). In a preferred embodiment, the body fluid sample is selected from blood, serum, plasma, urine and saliva.

**[0113]** In a preferred embodiment, the subject is a mammal, such as human.

**[0114]** In a preferred embodiment, the active infection is a primary infection by HCMV in a subject that has not been infected by HCMV, or, a re-infection by HCMV or activation of latent HCMV in a subject that has been infected by HCMV.

**[0115]** In a preferred embodiment, the HCMV protein is selected from pp150 and/or pp28.

**[0116]** In a preferred embodiment, the level of an antibody against a HCMV protein in the body fluid sample is determined by immunologic assay. In a further preferred embodiment, the immunologic assay is selected from ELISA assay, Western Blot, surface plasmon resonance, and Elispot assay.

**[0117]** In a preferred embodiment, the first level and the second level refer to an antibody titer (for example, an antibody titer determined by ELISA); or, the first level and the second level refer to an antibody absolute quantity (for example, an absolute quantity expressed by IU/ml).

**[0118]** In a preferred embodiment, in the steps (1) and (3), the first level and the second level of an antibody against pp150 and/or pp28 in the body fluid sample are determined by ELISA. In a preferred embodiment, pp150 and/or an antigenic fragment thereof (for example, a fragment comprising aa 861-1048 of pp150) is used to determine the first level and the second level of an antibody against pp150 in the body fluid sample by ELISA; and/or, pp28 and/or an antigenic fragment thereof is used to determine the first level and the second level of an antibody against pp28 in the body fluid sample by ELISA.

**[0119]** In a preferred embodiment, pp150 has an amino acid sequence set forth in SEQ ID NO: 1; and/or, the antigenic

fragment of pp150 has an amino acid sequence set forth in SEQ ID NO: 2; and/or, pp28 has an amino acid sequence set forth in SEQ ID NO: 3.

**[0120]** In a preferred embodiment, the first level and the second level of an antibody against pp150 and/or pp28 in the body fluid sample are determined by comparing the reactivity of the antibody against pp150 and/or pp28 in the body fluid sample with the antibody reactivity of a standard sample with a known antibody content.

**[0121]** In another aspect, the invention provides use of a reagent capable of determining the level of an antibody against a HCMV protein in the manufacture of a kit for screening a candidate drug capable of improving the ability of a subject to resist human cytomegalovirus (HCMV) active infection or reducing the risk of developing human cytomegalovirus (HCMV) active infection in a subject.

**[0122]** In a preferred embodiment, the reagent is capable of determining the level of an antibody against a HCMV protein by immunologic assay. In a further preferred embodiment, the immunologic assay is selected from ELISA assay, Western Blot, surface plasmon resonance, and Elispot assay.

**[0123]** In a preferred embodiment, the reagent is selected from: HCMV protein or an antigenic fragment thereof, a fusion protein comprising the HCMV protein or an antigenic fragment thereof, and any combination thereof. In a preferred embodiment, the HCMV protein is selected from pp150 and/or pp28.

**[0124]** In a preferred embodiment, the HCMV protein is pp150, and the reagent is pp150 and/or an antigenic fragment thereof (for example, a fragment comprising aa 861-1048 of pp150); or, the HCMV protein is pp28, and the reagent is pp28 and/or an antigenic fragment thereof; or, the HCMV protein is pp150 and pp28, and the reagent comprises: pp150 and/or an antigenic fragment thereof (for example, a fragment comprising aa 861-1048 of pp150) as a first component, and pp28 and/or an antigenic fragment thereof as a second component.

**[0125]** In a preferred embodiment, pp150 has an amino acid sequence set forth in SEQ ID NO: 1; and/or, the antigenic fragment of pp150 has an amino acid sequence set forth in SEQ ID NO: 2; and/or, pp28 has an amino acid sequence set forth in SEQ ID NO: 3.

**[0126]** In a preferred embodiment, the subject is a mammal, such as human.

**[0127]** In a preferred embodiment, the active infection is a primary infection by HCMV in a subject that has not been infected by HCMV, or, a re-infection by HCMV or activation of latent HCMV in a subject that has been infected by HCMV.

**[0128]** In a preferred embodiment, the kit screens a candidate drug capable of improving the ability of a subject to resist human cytomegalovirus (HCMV) active infection or reducing the risk of developing human cytomegalovirus (HCMV) active infection in a subject by a method comprising the following steps of:

- (1) before administering a candidate drug to a test animal, determining a first level of an antibody against a HCMV protein in a body fluid sample from the test animal;
- (2) administering the candidate drug to the test animal;
- (3) after administering the candidate drug to the test animal, determining a second level of the antibody against a HCMV protein in the body fluid sample from the test animal; and
- (4) comparing the first level with the second level,

wherein, if the first level is below the second level, the candidate drug is determined to be capable of improving the ability of a subject to resist human cytomegalovirus (HCMV) active infection or reducing the risk of developing human cytomegalovirus (HCMV) active infection.

**[0129]** In a preferred embodiment, the test animal is a non-human mammal, such as a model animal (for example, mouse, rat, rabbit, primate).

**[0130]** In a preferred embodiment, the body fluid sample is selected from blood, serum, plasma, urine and saliva.

**[0131]** In a preferred embodiment, the kit further comprises:

- (i) a device for collecting or storing the body fluid sample from the test animal; and/or
- (ii) additional reagents necessary for determining the first level and the second level (for example, a buffer, a diluent, a blocking solution, a labelled anti-antibody, and/or a standard sample).

**[0132]** In a preferred embodiment, the first level and the second level refer to an antibody titer (for example, an antibody titer determined by ELISA); or, the first level and the second level refer to an antibody absolute quantity (for example, an absolute quantity expressed by IU/ml).

**[0133]** In a preferred embodiment, in the method, in the steps (1) and (3), the first level and the second level of the antibody against pp150 and/or pp28 in the body fluid sample are determined by ELISA. In a preferred embodiment, pp150 and/or an antigenic fragment thereof (for example, a fragment comprising aa 861-1048 of pp150) is used to determine the first level and the second level of an antibody against pp150 in the body fluid sample by ELISA; and/or, pp28 and/or an antigenic fragment thereof is used to determine the first level and the second level of an antibody against pp28 in the body fluid sample by ELISA.

**[0134]** In a preferred embodiment, pp150 has an amino acid sequence set forth in SEQ ID NO: 1; and/or, the antigenic fragment of pp150 has an amino acid sequence set forth in SEQ ID NO: 2; and/or, pp28 has an amino acid sequence set forth in SEQ ID NO: 3.

**[0135]** In a preferred embodiment, the first level and the second level of the antibody against pp150 and/or pp28 in the body fluid sample are determined by comparing the reactivity of the antibody against pp150 and/or pp28 in the body fluid sample with the antibody reactivity of a standard sample with a known antibody content.

**[0136]** In another aspect, the invention provides a kit for screening a candidate drug capable of improving the ability of a subject to resist human cytomegalovirus (HCMV) active infection or reducing the risk of developing human cytomegalovirus (HCMV) active infection in a subject, comprising a reagent capable of determining the level of an antibody against a HCMV protein, and optionally, instructions of using the reagent to screen a candidate drug capable of improving the ability of a subject to resist human cytomegalovirus (HCMV) active infection or reducing the risk of developing human cytomegalovirus (HCMV) active infection in a subject.

**[0137]** In a preferred embodiment, the reagent is capable of determining the level of an antibody against a HCMV protein by immunologic assay. In a further preferred embodiment, the immunologic assay is selected from ELISA assay, Western Blot, surface plasmon resonance, and Elispot assay;

**[0138]** In a preferred embodiment, the reagent is selected from: HCMV protein or an antigenic fragment thereof, a fusion protein comprising the HCMV protein or an antigenic fragment thereof, and any combination thereof. In a preferred embodiment, the HCMV protein is selected from pp150 and/or pp28.

**[0139]** In a preferred embodiment, the HCMV protein is pp150, and the reagent is pp150 and/or an antigenic fragment thereof (for example, a fragment comprising aa 861-1048 of pp150); or, the HCMV protein is pp28, and the reagent is pp28 and/or an antigenic fragment thereof; or, the HCMV protein is pp150 and pp28, and the reagent comprises: pp150 and/or an antigenic fragment thereof (for example, a fragment comprising aa 861-1048 of pp150) as a first component, and pp28 and/or an antigenic fragment thereof as a second component.

**[0140]** In a preferred embodiment, pp150 has an amino acid sequence set forth in SEQ ID NO: 1; and/or, the antigenic fragment of pp150 has an amino acid sequence set forth in SEQ ID NO: 2; and/or, pp28 has an amino acid sequence set forth in SEQ ID NO: 3.

**[0141]** In a preferred embodiment, the subject is a mammal, such as human.

**[0142]** In a preferred embodiment, the active infection is a primary infection by HCMV in a subject that has not been infected by HCMV, or, a re-infection by HCMV or activation of latent HCMV in a subject that has been infected by HCMV.

**[0143]** In a preferred embodiment, the kit screens a candidate drug capable of improving the ability of a subject to resist human cytomegalovirus (HCMV) active infection or reducing the risk of developing human cytomegalovirus (HCMV) active infection in a subject by a method comprising the following steps of:

- (1) before administering a candidate drug to a test animal, determining a first level of an antibody against a HCMV protein in a body fluid sample from the test animal;
- (2) administering the candidate drug to the test animal;
- (3) after administering the candidate drug to the test animal, determining a second level of the antibody against a HCMV protein in the body fluid sample from the test animal; and
- (4) comparing the first level with the second level;

wherein, if the first level is below the second level, the candidate drug is determined to be capable of improving the ability of a subject to resist human cytomegalovirus (HCMV) active infection or reducing the risk of developing human cytomegalovirus (HCMV) active infection.

**[0144]** In a preferred embodiment, the test animal is a non-human mammal, such as a model animal (for example, mouse, rat, rabbit, primate). In a preferred embodiment, the body fluid sample is selected from blood, serum, plasma, urine and saliva.

**[0145]** In a preferred embodiment, the kit further comprises:

- (i) a device for collecting or storing the body fluid sample from the test animal; and/or
- (ii) additional reagents necessary for determining the first level and the second level (for example, a buffer, a diluent, a blocking solution, a labelled anti-antibody, and/or a standard sample).

**[0146]** In a preferred embodiment, the first level and the second level refer to an antibody titer (for example, an antibody titer determined by ELISA); or, the first level and the second level refer to an antibody absolute quantity (for example, an absolute quantity expressed by IU/ml). In a preferred embodiment, in the method, in the steps (1) and (3), the first level and the second level of the antibody against pp150 and/or pp28 in the body fluid sample are determined by ELISA. In a preferred embodiment, pp150 and/or an antigenic fragment thereof (for example, a fragment comprising aa 861-1048 of pp150) is used to determine the first level and the second level of an antibody against pp150 in the body fluid sample

by ELISA; and/or, pp28 and/or an antigenic fragment thereof is used to determine the first level and the second level of an antibody against pp28 in the body fluid sample by ELISA.

**[0147]** In a preferred embodiment, pp150 has an amino acid sequence set forth in SEQ ID NO: 1; and/or, the antigenic fragment of pp150 has an amino acid sequence set forth in SEQ ID NO: 2; and/or, pp28 has an amino acid sequence set forth in SEQ ID NO: 3.

**[0148]** In a preferred embodiment, the first level and the second level of the antibody against pp150 and/or pp28 in the body fluid sample are determined by comparing the reactivity of the antibody against pp150 and/or pp28 in the body fluid sample with the antibody reactivity of a standard sample with a known antibody content.

**Beneficial effects of the invention**

**[0149]** As compared with the prior art, the technical solutions of the invention have the following beneficial effects.

(1) The invention demonstrates for the first time the significant correlation between the level of an antibody against a HCMV protein (for example, pp150/pp28) and the risk of developing human cytomegalovirus (HCMV) active infection. In particular, the invention demonstrates for the first time that when the antibody titer of an antibody against pp150 in a body fluid sample from a subject is below or equal to 40, the subject has a probability of 55.37% for developing HCMV active infection, the relative risk is 11.2, and 95% CI is 8.7-14.6; when the antibody titer of an antibody against pp150 in a body fluid sample from a subject is below or equal to 80, the subject has a probability of 36.98% for developing HCMV active infection, the relative risk is 10.6, and 95% CI is 7.7-14.6; when the antibody titer of an antibody against pp150 in a body fluid sample from a subject is below or equal to 160, the subject has a probability of 23.66% for developing HCMV active infection, the relative risk is 14.8, and 95% CI is 9.0-24.6; when the antibody titer of an antibody against pp150 in a body fluid sample from a subject is below or equal to 320, the subject has a probability of 15.77% for developing HCMV active infection, the relative risk is 23.7, and 95% CI is 8.8-63.4. In addition, the invention also demonstrates for the first time that when the content of an antibody against pp150 in a body fluid sample from a subject is below 0.8 IU/ml, the subject has a probability of 60.0% for developing HCMV active infection, the relative risk is 11.6, and 95% CI is 7.8-17.2; when the content of an antibody against pp150 in a body fluid sample from a subject is below 1.6 IU/ml, the subject has a probability of 50.0% for developing HCMV active infection, the relative risk is 15.2, and 95% CI is 9.5-24.3; when the content of an antibody against pp150 in a body fluid sample from a subject is below 3.2 IU/ml, the subject has a probability of 31.3% for developing HCMV active infection, the relative risk is 19.0, and 95% CI is 9.6-37.7; when the content of an antibody against pp150 in a body fluid sample from a subject is below 6.4 IU/ml, the subject has a probability of 19.0% for developing HCMV active infection, the relative risk is 25.2, and 95% CI is 8.0-79.6. These solve the technical problem urgent to be solved in the art, i.e., to provide a highly sensitive and specific method capable of assessing the risk of developing human cytomegalovirus (HCMV) active infection in a subject accurately, reliably and effectively.

(2) The level of an antibody against a HCMV protein (for example, pp150/pp28) can be used as an index for predicting the risk of developing human cytomegalovirus (HCMV) active infection (for example, the risk of re-developing HCMV infection in a seropositive population); and, the methods according to the invention can be used to screen individuals (i.e., high-risk individuals) susceptible to human cytomegalovirus (HCMV) active infection from a natural population or a population in a high risk HCMV active infection area. Therefore, the methods according to the invention can provide support for employing intervention measures, and can direct clinical medication to prevent complications in patients. For example, the methods according to the invention may be applied to pregnant women to screen high-risk individuals, and can reduce the probability of neonatal congenital CMV infection; or, the methods according to the invention can be applied to immunocompromised patients such as organ transplant patients, to screen high-risk individuals, and reduce the probability of complications in patients by employing intervention measures and clinical medication in the individuals.

(3) The methods according to the invention can be used to screen a candidate drug capable of improving the ability of a subject to resist human cytomegalovirus (HCMV) active infection or reducing the risk of developing human cytomegalovirus (HCMV) active infection in a subject. Therefore, the methods according to the invention provides new concept and solution for developing new drugs for preventing and/or treating HCMV infection.

**[0150]** The embodiments of the invention are described in detail by reference to the drawings and examples. However, a person skilled in the art would understand that the following drawings and examples are intended for illustrating the invention only, rather than defining the scope of the invention. According to the detailed description of the following drawings and preferred embodiments, various purposes and advantages of the invention are apparent for a person skilled in the art.

Description of the drawings**[0151]**

5 Figs. 1A and 1B show that the ELISA assay platform (based on pp150 & pp150-2) established in Example 2 can be used to determine the level of an antibody against a CMV protein (an antibody against pp150), and further to determine whether a serum sample is positive or negative. Fig. 1A shows the correlation analysis of the detection results of 288 serum samples by the ELISA assay using pp150 and pp150-2 as coating antigens (abscissa) and the ELISA assay using purified virus as coating antigen (ordinate). The results show that the results determined by the two ELISA assays are highly identical, the coincidence rate of them is 99.3%, and the correlation of response intensity is significant (correlation coefficient  $r=0.85$ ). Fig. 1B shows the comparison of the detection results of 36 serum samples by the ELISA assay using pp150 and pp150-2 as coating antigens and the ELISA assay using a commercially available CMV-IgG reagent (Diasorin-IgG) as coating antigen. The results show that the reactivity of the pp150 & pp150-2-based ELISA assay according to the invention is significantly stronger than the reactivity of Diasorin-based ELISA assay, and the reactivity of the latter to positive serums is substantially at a relatively low level. The results in Figs. 1A and 1B show that the ELISA assay platform established in Example 2 can be used to determine the level of an antibody against a CMV protein (an antibody against pp150) in a serum sample accurately, reliably and effectively.

20 Fig. 2 shows the correlation between HCMV infection dose and Elispot detection value, in the IE1 protein-based Elispot assay platform established in Example 3. The results show that there is a significant linear relationship ( $R^2=0.9988$ ) between HCMV infection dose and Elispot detection value in the Elispot assay platform. This indicates that the Elispot assay platform established in Example 3 can be used to determine the level of an antibody against a CMV protein (an antibody against IE1 protein) in a serum sample accurately, reliably and effectively.

25 Fig. 3 shows the comparison of the detection results (Elispot NT50) of 61 serum samples by the IE1 protein-based Elispot assay platform established in Example 3 and the detection results by a commercially available HCMV IgG antibody assay kit (Diasorin IgG reagent), wherein, 31 serum samples, which were detected to be positive by the kit, were also detected to be positive in the detection results by the Elispot assay platform; 30 serum samples, which were detected to be negative by the kit, were also detected to be negative in the detection results by the Elispot assay platform; their results are completely consistent with each other. This indicates the accuracy and reliability of the Elispot assay platform established in Example 3.

30 Fig. 4 shows the correlation between the detection results (Elispot NT50) of 61 serum samples by the IE1 protein-based Elispot assay platform established in Example 3 and the detection results by a commercially available HCMV IRD neutralization assay platform (IRD NT50). The results show that there is a significant correlation ( $R^2=0.8960$ ) between the detection results (Elispot NT50) by the Elispot assay platform and the detection results by the IRD neutralization assay platform (IRD NT50). This indicates the accuracy and reliability of the Elispot assay platform established in Example 3.

35 Fig. 5 shows the detection results of 61 serum samples with known background by 6 ELISA assay platforms (which are based on pp150 & pp150-2, HCMV pp65 (UL83), HCMV gp52 (UL44), HCMV pp38 (UL80a), HCMV pp28 (UL99), and UL48a, respectively) established in Example 2, wherein pp150 refers to the ELISA assay platform based on a mixture of pp150 and pp150-2. The results show that the ELISA assay platforms established in Example 2 (in particular, the pp150 & pp150-2-based ELISA assay platform and the pp28-based ELISA assay platform) can determine the level of an antibody against a CMV protein in a serum sample accurately, reliably and effectively, and determine whether a serum sample is negative or positive.

40 Fig. 6A-C shows the ROC curve analysis by the pp150 & pp150-2-based ELISA assay platform (called pp150 assay platform for short) under different criteria for a virus event in Example 6, wherein abscissa represents (100% - the detection specificity% of the assay platform), and the ordinate represents the detection sensitivity% of the assay platform; and,

45 Fig. 6A shows the analysis of sensitivity and specificity of the pp150 assay platform for assessing the occurrence of a virus event (HCMV active infection), when the occurrence of a virus event (HCMV active infection) is defined by the circumstance where the detection results of the other assay platforms are double positive or more.

50 Fig. 6B shows the analysis of sensitivity and specificity of the pp150 assay platform for assessing the occurrence of a virus event (HCMV active infection), when the occurrence of a virus event (HCMV active infection) is defined by the circumstance where the detection results of the other assay platforms are triple positive or more.

55 Fig. 6C shows the analysis of sensitivity and specificity of the pp150 assay platform for assessing the occurrence of a virus event (HCMV active infection), when the occurrence of a virus event (HCMV active infection) is defined by the circumstance where the detection results of the other assay platforms are quadruple positive or more.

**[0152]** The results in Fig. 6A-C show that under all the three circumstances, the pp150 assay platform has an accuracy

of above 80% for predicting the occurrence of a virus event (HCMV active infection), and therefore can be used to assess the risk of developing human cytomegalovirus (HCMV) active infection in a subject accurately, reliably and effectively.

**[0153]** Fig. 7A-C shows the ROC curve analysis of the pp28-based ELISA assay platform (called pp28 assay platform for short) under different criteria for a virus event in Example 6, wherein abscissa represents (100% - the detection specificity% of the assay platform), and the ordinate represents the detection sensitivity% of the assay platform; and,

**[0154]** Fig. 7A shows the analysis of sensitivity and specificity of the pp28 assay platform for assessing the occurrence of a virus event (HCMV active infection), when the occurrence of a virus event (HCMV active infection) is defined by the circumstance where the detection results of the other assay platforms are double positive or more.

**[0155]** Fig. 7B shows the analysis of sensitivity and specificity of the pp28 assay platform for assessing the occurrence of a virus event (HCMV active infection), when the occurrence of a virus event (HCMV active infection) is defined by the circumstance where the detection results of the other assay platforms are triple positive or more.

**[0156]** Fig. 7C shows the analysis of sensitivity and specificity of the pp28 assay platform for assessing the occurrence of a virus event (HCMV active infection), when the occurrence of a virus event (HCMV active infection) is defined by the circumstance where the detection results of the other assay platforms are quadruple positive or more.

**[0157]** The results in Fig. 7A-C show that under all the three circumstances, the pp28 assay platform has an accuracy of above 78% for predicting the occurrence of a virus event (HCMV active infection), and therefore can be used to assess the risk of developing human cytomegalovirus (HCMV) active infection in a subject accurately, reliably and effectively.

**[0158]** Fig. 8 shows the change in the antibody titer of an antibody against pp150 in a certain natural population as described in Example 7 over 12 months (one year), wherein, abscissa represents a baseline antibody level (antibody titer), ordinate represents the probability that the antibody level increases or decreases by 4 folds one year later. The results show that individuals with a higher baseline antibody level, have a lower probability that the level of an antibody against pp150 increases by 4 folds or more (i.e., developing HCMV active infection) one year later; while, individuals with a lower baseline antibody level of an individual, have a higher probability that the level of an antibody against pp150 increases by 4 folds or more (i.e., developing HCMV active infection) one year later. The risk of developing HCMV active infection in an individual is negatively correlated with the baseline antibody level.

**[0159]** Fig. 9 shows the correlation between the baseline level of an antibody against pp150 and the risk of developing HCMV active infection in a certain natural population as described in Example 7, wherein, abscissa represents the baseline level of an antibody against pp150 (antibody titer), and ordinate represents the risk of developing HCMV active infection (ratio). The results show that individuals with a lower baseline antibody level, have a higher risk of developing HCMV active infection (i.e., the level of an antibody against pp150 increases by 4 folds or more) later. The risk of HCMV active infection is negatively correlated with the baseline antibody level. When the baseline antibody level (antibody titer) is lower than 10, the risk of developing HCMV active infection is up to 82.6%; and when the baseline antibody level (antibody titer) is no more than 160, the risk of developing HCMV active infection is up to 23.66%.

**[0160]** Fig. 10 shows an antibody content-antibody reactivity standard curve plotted using a standard sample (Paul-Ehrlich-Institut, Referenz-CMV-IgG, Juli 1996, 110IU/ml) comprising an antibody in a known amount, wherein, abscissa represents an antibody content (expressed as IU/ml); and ordinate represents antibody reactivity (expressed by the OD value obtained by ELISA). The results show that there is a significant linear relationship between the antibody content and antibody reactivity ( $R^2=0.9984$ ), and the linearity range is more than an order of magnitude. Therefore, the antibody content-antibody reactivity standard curve plotted using a standard sample can be used to accurately quantify the antibody content (expressed as IU/ml) in a sample.

**[0161]** Fig. 11 shows the change in the content of an antibody against pp150 in a certain natural population as described in Example 8 over 12 months (one year), wherein, abscissa represents a baseline antibody level (antibody content), and ordinate represents the probability that the antibody level increases or decreases by 4 folds one year later. The results show that individuals with a lower baseline antibody level, have a higher probability that the level of an antibody against pp150 increases by 4 folds or more one year later (i.e., the antibody level obtained by the second detection is at least 4 folds higher than the antibody level obtained by the first detection, indicating that the individual has HCMV active infection within the interval of 12 months); while, individuals with a higher baseline antibody level, has a lower probability that the level of an antibody against pp150 increases by 4 folds or more one year later (i.e., developing HCMV active infection). The risk of developing HCMV active infection in an individual is negatively correlated with the baseline antibody level in serum.

**[0162]** Fig. 12 shows ROC curve analytic results of the method described in Example 8, wherein, the method predicts HCMV active infection based on the content/absolute quantity of an antibody against pp150 in serum, wherein abscissa represents (100% - specificity% of the method), and ordinate represents the sensitivity% of the method. The results in Fig. 12 show that the method of the invention can be used to assess the risk of developing human cytomegalovirus (HCMV) active infection in a subject accurately, reliably and effectively.

Sequence information

[0163] The information of the sequences involved in the invention are provided in the following Table 1.

5

Table 1: Sequence information

SEQ ID NO	Name	Sequence information 5'-3'
1	HCMV pp150	MSLQFIGLQRRDVVALVNFLRHILTQKPDVDLEAHPKILKKCGEKRLHRRTV LFNELMLWLGYYRELRFHNPDLSSVLEEFVRCVAVARRGYTYPFGDRGK ARDHLAVLDRTEFDTDVRHDAEIVERALVSAVILAKMSVRETLVTAIGQTE PIAFVHLKDTEVQRIEENLEGVRRNMFCVKPLDLNLDRHANTALVNAVNK LVYTGRIMNVRRSWEELERKCLARIQERCKLLVKELRMCLSFDSNYCRNI LKHAVENGDSADTLELLIEDFDIYVDSFPQSAHTFLGARSPSLEFDDANL LSLGGGSAFSSVPKKHVPTQPLDGWSWIASPWKGHKPFRFEAHGSLAPAAE AHAARSAAVGYDYDEEEKRRERQKRVDDEVVQREKQQLKAWEEERQQNLQ QRQQQPPPPARKPSASRRLFGSSADEDDDDDDDEKNIFTPIKKPGTSGKGAA SGGGVSSIFSGLLSSGSQKPTSGPLNIPQQQQRHAAFSVSPQVTKASPGRVR RDSAWDVRPLTETRGDLFGSDESDSSDGYPNRQDPRFTDTLVDITDTETS AKPPVTTAYKFEQPTLTFGAGVNVPAAGAGAILTPTVNPSTAPAPAPTPTF AGTQTPVNGNSPWAPTAPLPGDMNPANWPRERAWALKNPHLAYNPFMRP TTSTASQNTVSTTPRRPSTPRAAVTQTASRDAADEVWALRDQTAESPVEDS EEEDDDSSDTGSVVS LGHTTPSSDYNNDVISPPSQTPEQSTPSRIRKAKLSSP MTTTSTSQKPVLGKRVATPHASARAQTVTSTPVQGRLEKQVSGTPSTVPAT LLQPQPASSKTTSSRNVTSGAGTSSASSARQPSASASVLSPTEDDVVSPATSP LSMLSSASPSAKSAPSPVKGRGSRVGVPSLKPTLGGKAVVGRPPSPVPSG SAPGRLSGSSRAASTTPTYPAVTTVYPPSSTAKSSVSNAPPVASPSILKPGAS AALQSRRTGTAAVGSVPVKSTTGKMTVAFDLSSPQKSGTGPGQPGSAGMGG AKTPSDAVQNILQKIEKIKNTEE
2	HCMV pp150-2	DDVVSPATSPMLSSASPSAKSAPSPVKGRGSRVGVPSLKPTLGGKAVV GRPPSPVPSGAPGRLSGSSRAASTTPTYPAVTTVYPPSSTAKSSVSNAPPVA SPSILKPGASAALQSRRTGTAAVGSVPVKSTTGKMTVAFDLSSPQKSGTGPGQ PGSAGMGGAKTPSDAVQNILQKIEKIKNTEE
3	HCMV pp28	MGAELCKRICCEFGTTPGEPLKDALGRQVSLRSYDNIPPTSSSDEGEDDDDDG EDDDNEERQQLRLCGSGCGGNDSSSGSHREATHDGSKKNAVRSTFREDK APKPSKQSKKKKKPSKHHHHQSSIMQETDDLDEEDTSIYLSPPPVPVQVV AKRLPRPDTPRTPRQKISQRPTPGTKKPAASLPF
4	HCMV pp65	MESRGRRCPEMISVLGPISGHVLKAVFSRGGDTPVLPHETRLLQTGIHVRVSQ PSLILVSQYTPDSTPCHRGDNQLVQHTYFTGSEVENVSVNVHNPTGRSICP SQEPMSIYVYALPLKMLNIP SINVHHYPSAAERKHRHLPVADAVIHASGKQ MWQARLTVSGLAWTRQQNQWKEPDVYYTSAFVFPTKDV ALRHVVC AHE LVCSMENTRATKMQVIGDQYVKVYLESFCEDVPSGKLFMHVTLGSDVEED LTMTRNPQPFMRPHERNGFTVLCPKNMIKPGKISHIMLDVAFTSHEHFGLL CPKSIPGLSISGNLLMNGQQIFLEVQAI RETVELRQYDPVAALFFFDIDLLLQ RGPQYSEHPTFTS QYRIQ GKLEYRHTWDRHDEGAAQGD DDVWTS GSDSDE ELVTTERKTPRV TGGGAMAGASTSAGRKRKSASSATACTSGVMTRGRLKA ESTVAPEEDTDEDSDNEIHNP AVFTWPPWQAGILARNL VPMVATVQGQNL KYQEFFWDANDIYRIFAELEGVWQPA AQP KRRRHRQDALPGPCIASTPKKH RG

55

(continued)

SEQ ID NO	Name	Sequence information 5'-3'
5	HCMV gp52	MDRKTRLSEPPTLALRLKPYKTAIQQLRSVIRALKENTTVTFLPTPSLILQTV RSHCVSKITFNSSCLYITDKSFQPKTINNSTPLLGNFMYLTSSKDLTKFYVQD ISDLSAKISMCAPDFNMEFSSACVHGQDIVRESENSAVHVDLDFGVVADLL KWIGPHTRVKNRVKKAPCPTGTVQILVHAGPPAIKFILTNNGSELEFTSNNRV SFHGVKNMRINVQLKNFYQTLNCAVTKLPCTLRIVTEHDTLLYVASRNLG FAVENFLTEEPFQRGDPFDKNYVGNVSGKSRGGGGGGGSLSSLANAGGLHD DGPGLDNDLMNEPMGLGGLGGGGGGGKKHDRGGGGGSGTRKMSSGGG GGDHDHGLSSKEKYEQHKITSYLTSGGGSGGGGGGGGLDRNSGNYFN DAKEESDSEDSVTFEFVPNTKKQKCG
6	HCMV pp38	MSHPLSAAVPAATAPPGATVAGASPAVSSLAWPHDGVYLPKDAFFSLLGA SRSAPVPMYPGAVAAPPSASPAPLPLPSYPASYGAPVVGVDQLAARHFAD YVDPHYPGWGRRYEPAPSLHPSYPVPPPPSPAYYRRRDSPPGMDEPPSGWE RYDGGHRGQSQKQHRHGGSGGHNRKETAASSSSSDEDLSFPGEAEHG RARKRLKSHVNSDGGSGGHAGSNQQQQRYDELDAIHELKRDIFAARQS STLLSAAALPSAASSSPTTTTCTPTGELTSGGGGETPTALLSGGAKVAERAQA GVVNASCRLATASGSEAATAGPSTAGSSSCPASVVLAAAAAQAASQSP KDMVDLNRRIFFVAALNKLE
7	UL48a	MSNTAPGPTVANKRDEKHRHVNVVLELPTSEATHPVLATMLSKYTRM SSLFNDKCAFKLDLLRMVAVSRTRR
8	primer	GGATCCATGAGTTTGCAGTTTATCGGT
9	primer	GCTAGCTTCCTCCGTGTTCTTAATCTT
10	primer	GGATCCATGGAGTCGCGCGGTGCGCGT
11	primer	GCTAGCACCTCGGTGCTTTTTGGGCGT
12	primer	GGATCCATGGATCGCAAGACGCGCCTC
13	primer	GCTAGCGCCGCACTTTTGCTTCTTGGT
14	primer	GAATTCATGTCGCACCCTCTGAGTGCT
15	primer	GCTAGCCTCGAGCTTATTGAGCGCAGC
16	primer	GGATCCATGGGTGCCGAACCTGCAAA
17	primer	GAATTCAAAGGGCAAGGAGGCGGCGGG
18	primer	GGATCCATGTCTAACACCGCGCCGGA
19	primer	GAATTCGCGCCGGGTGCGGACAC

45 Specific modes for carrying out the invention

[0164] The present invention is illustrated by reference to the following examples (which are not intended to limit the protection scope of the present invention).

50 [0165] Unless indicated otherwise, the molecular biological experimental methods and immunological assays used in the present invention are carried out substantially in accordance with the methods as described in J. Sambrook et al., Molecular Cloning: A Laboratory Manual (Second Edition), Cold Spring Harbor Laboratory Press, 1989, and F. M. Ausubel et al., Short Protocols in Molecular Biology, 3rd Edition, John Wiley & Sons, Inc., 1995; restriction enzymes are used under the conditions recommended by manufacturers of the products. Those skilled in the art understand that the examples are used for illustrating the present invention, but not intended to limit the protection scope of the present invention.

55

## EP 3 258 265 A1

### Example 1. Cloning and expression of proteins

**[0166]** In the Example, the inventor obtained 7 proteins by recombinant expression, i.e., HCMV pp150 (UL32), HCMV pp150-2 (a truncated protein of pp150), HCMV pp65 (UL83), HCMV gp52 (UL44), HCMV pp38 (UL80a), HCMV pp28 (UL99) and UL48a. The information of the proteins for recombinant expression is shown in Table 2. The primers for use in PCR amplification of the genes encoding the target proteins are listed in Table 3.

Table 2: Information of 7 proteins for recombinant expression

Protein name	Sequence information	Sequence accession No.	Vector	Bacterial strain
HCMV pp150	SEQ ID NO: 1	ACL51112	B11	BL21
HCMV pp150-2	SEQ ID NO: 2	ACL51112	B11	BL21
HCMV pp28	SEQ ID NO: 3	ACL51167.1	Pet-GST	er competent
HCMV pp65	SEQ ID NO: 4	ACL51152.1	B6	er competent
HCMV gp52	SEQ ID NO: 5	ACL51123.1	B6	er competent
HCMV pp38	SEQ ID NO: 6	ACL51150.1	Pet-GST	er competent
UL48a	SEQ ID NO: 7	ACL51128.1	Pet-GST	er competent

Table 3: Information of the primers for use in PCR amplification of the genes encoding the target proteins

SEQ ID NO:	Target protein	Primer	Sequence information 5'-3'
8	pp150 (UL32)	upstream	GGATCCATGAGTTTGCAGTTTATCGGT
9		downstream	GCTAGCTTCCTCCGTGTTCTTAATCTT
10	pp65 (UL83)	upstream	GGATCCATGGAGTCGCGCGGTGCGCCGT
11		downstream	GCTAGCACCTCGGTGCTTTTTGGGCGT
12	gp52 (UL44)	upstream	GGATCCATGGATCGCAAGACGCGCCTC
13		downstream	GCTAGCGCCGCACTTTTGCTTCTTGGT
14	pp38 (UL80a)	upstream	GAATTCATGTTCGCACCCTCTGAGTGCT
15		downstream	GCTAGCCTCGAGCTTATTGAGCGCAGC
16	pp28 (UL99)	upstream	GGATCCATGGGTGCCGA ACTCTGCAAA
17		downstream	GAATTC AAAGGGCAAGGAGGCGGCGGG
18	UL48a	upstream	GGATCCATGTCTAACACCGCGCCGGGA
19		downstream	GAATTCGCGCCGGGTGCGCGACAC

### Example 2. Establishment of an antigen protein-based ELISA assay platform for detecting an antibody

**[0167]** In the Example, based on HCMV pp150 & pp150-2 (as a combination coating antigen), HCMV pp65 (UL83), HCMV gp52 (UL44), HCMV pp38 (UL80a), HCMV pp28 (UL99) or UL48a, respectively, the inventor established the ELISA assay platforms for detecting an antibody against pp150, an antibody against pp65, an antibody against gp52, an antibody against pp38, an antibody against pp28 and an antibody against UL48a, respectively (called pp150 assay platform, pp65 assay platform, gp52 assay platform, pp38 assay platform, pp28 assay platform, and UL48a assay platform for short, respectively), each comprising: a microwell plate coated with an antigen protein (i.e., a coating antigen), a coating buffer, a blocking solution, a washing solution, an enzyme-labelled anti-human IgG antibody, an enzyme-labelled antibody diluent, negative/positive control, a chromogenic solution and a stop solution.

Coating antigen: HCMV pp150 and pp150-2, HCMV pp65 (UL83), HCMV gp52 (UL44), HCMV pp38 (UL80a), HCMV pp28 (UL99) or UL48a.

Sample diluent: Tris-Base buffer (pH 7.8-8.3), comprising 1-5% (mass/volume ratio) of bovine serum albumin, 5-10%

(mass/volume ratio) of sucrose and 2-7% (mass/volume ratio) of casein; and 7-12% (volume/volume ratio) of fetal bovine serum.

Concentrated washing solution: comprising a phosphate buffer (pH 7-7.6) and a surfactant Tween20.

Enzyme-labelled anti-human IgG antibody: Horseradish peroxidase (HRP)-labelled mouse anti-human IgG monoclonal antibody.

Diluent for enzyme-labelled antibody: a phosphate buffer (pH 6.8-7.3), wherein each 1000 ml phosphate buffer comprises 0.1-1 M NaCl and 0.3-1% (mass/volume ratio) of casein, 0.1-0.4% (mass/volume ratio) of TritonX-100, 7-12% (volume/volume ratio) of fetal bovine serum, and 0.2-0.5% (mass/volume ratio) of Gelatin.

Chromogenic solution: A solution comprising trisodium citrate, citric acid, sodium acetate, glacial acetic acid and hydrogen peroxide; and, B solution comprising absolute ethyl alcohol, ethylene glycol, dimethyl formamide, and 3, 3', 5, 5'-tetramethylbenzidine.

Stop solution: 0.1-1 M sulphuric acid.

**[0168]** The pp150 antibody assay platform was used as an example below to show the effect of the ELISA assay platform established in the Example. The pp150 & pp150-2-based ELISA assay platform and purified virus-based ELISA assay platform were used to determine 288 randomly selected serums in parallel. The results are shown in Fig. 1A. The results show that the results determined by the two ELISA assay platforms are highly identical, the coincidence rate of them is 99.3%, and the correlation of response intensity is good (correlation coefficient  $r=0.85$ ). In addition, the pp150 & pp150-2-based ELISA assay platform and a commercially available CMV-IgG reagent (Diasorin-IgG)-based ELISA assay platform were used to determine 36 randomly selected serums in parallel. The results are shown in Fig. 1B. The results show that the reactivity of the pp150 & pp150-2-based ELISA assay platform is significantly stronger than the reactivity of the Diasorin-based ELISA assay platform, wherein the latter has a relatively low level of reactivity for most of the positive serums. The results in Fig. 1A and 1B show that the ELISA assay platforms established in the Example can be used to determine the level of an antibody against a CMV protein (an antibody against pp150) in a serum sample accurately, reliably and effectively.

Example 3. Detection of an anti-HCMV-IE1 antibody by Elispot assay platform

**[0169]** In the Example, the inventor established an IE1 protein-based Elispot assay platform for detecting an anti-HCMV-IE1 antibody.

**[0170]** IE1 is a HCMV immediate early protein that is present in the nucleus of an infected cell one hour after the infection. The Elispot assay established in the Example is a method for quickly determining cytomegalovirus titer that was established based on a traditional enzyme-linked immunospot assay in combination with Elispot automated spot counter. Compared with the traditional method for detecting TCID<sub>50</sub>, the Elispot assay established in the Example obtains the experimental results by the specific binding between a monoclonal antibody and a virus immediate early protein, rather than obtaining the experimental results by cytopathogenic counting or plaque formation. Therefore, since the cells infected by a virus can be detected in the Elispot assay before cytopathogeny, it greatly shortens the time for detection (20h). In addition, in the Elispot assay, the results are read by automated image collection and spot counting program of the Elispot assay instrument, which greatly improve the stability and accuracy of the detection.

**[0171]** Fig. 2 shows the correlation between the HCMV infection dose and the Elispot detection value, in the IE1 protein-based Elispot assay platform as established in the Example. The results show that there is a significant linear relationship ( $R^2=0.9988$ ) between the HCMV infection dose and the Elispot detection value in the Elispot assay platform. This indicates that the Elispot assay platform established in the Example can be used to determine the level of an antibody against a CMV protein (an antibody against IE1 protein) in a serum sample accurately, reliably and effectively.

**[0172]** Furthermore, the results obtained by the Elispot assay platform established in the Example were compared with the results obtained by the commercially available HCMV IgG antibody assay kit (Diasorin-IgG agent, DIASORIN, P002033). The results are shown in Fig. 3. The results show that among the 61 serum samples detected in parallel, the 31 serum samples, which were determined by the kit to be positive, were also positive in the results determined by the Elispot assay platform; and the 30 serum samples, which were determined by the kit to be negative, were also negative in the results determined by the Elispot assay platform; their results were completely identical to each other. This indicates the accuracy and reliability of the Elispot assay platform established in the Example.

**[0173]** Furthermore, the results determined by the Elispot assay platform established in the Example were compared with the results determined by HCMV IRD neutralization assay platform as established by Aimin Tang et al. (Aimin Tang, Fengsheng Li, Daniel C. Freed, Adam C. Finnefrock, Danilo R. Casimiro, Dai Wang, Tong-Ming Fu. A novel high-throughput neutralization assay for supporting clinical evaluations of human cytomegalovirus vaccines. *Vaccine*. 2011 Oct 26; 29(46): 8350-6). The results are shown in Fig. 4. The results show that the results determined by the Elispot assay platform (Elispot NT50) are in a good correlation ( $R^2=0.8960$ ) with the results determined by the IRD neutralization assay platform (IRD NT50). This indicates the accuracy and reliability of the Elispot assay platform established in the

Example.

Example 4. Detection of serum with a known background by ELISA assay platform

5 **[0174]** In the Example, the inventor used the ELISA assay platform established in Example 2 to detect the antibodies in 61 serums with known background, so as to confirm the reliability and effectiveness of the ELISA assay platform, wherein the backgrounds of the serum samples had been determined by the commercially available HCMV IRD assay reagent (Aimin Tang, Fengsheng Li, Daniel C. Freed, Adam C. Finnefrock, Danilo R. Casimiro, Dai Wang, Tong-Ming Fu. A novel high-throughput neutralization assay for supporting clinical evaluations of human cytomegalovirus vaccines. Vaccine. 2011, 29:8350-6) and the commercially available HCMV IgG antibody assay kit (Diasorin-IgG agent, DIASORIN, P002033). The detection method comprised the following steps:

step 1: collecting a sample  
the serum to be tested was centrifuged for 5-10 min (10000rpm/ min), for use in detection;

15 step 2: loading a sample for detection  
the ingredients in the kit were equilibrated to room temperature; to the sample well of the coated microwell plate in the ELISA assay platform established in Example 2, a sample diluent (90ul) and the serum to be tested (10ul) were added; and meanwhile, a negative control and a positive control were set in the microwell plate, wherein to each of the negative control wells, serum with a negative background (10ul) and a sample diluent (90ul) were added; to

20 each of the positive control wells, serum with a positive background (10ul) and a sample diluent (90ul) were added; the plate was then shaken to mix the solutions homogeneously on a plate vibrator; the plate was then covered with a sealing film, and the reaction was carried out in a 37°C incubator/thermostat water bath for 1 h;

step 3: after the reaction, the sealing film was removed, and the wells were washed with a washing solution for 5 times, and dried upside down;

25 step 4: to each of the wells, an enzyme-labelled anti-human IgG antibody solution (100ul) was added, and the plate was covered with a sealing film; the reaction was then carried out in a 37°C incubator/thermostat water bath for 30 min;

step 5: after the reaction, the sealing film was removed, and the wells were washed with a washing solution for 5 times, and dried upside down;

30 step 6: to each of the wells, a substrate solution A (50ul) and a substrate solution B (50ul) were added, and mixed homogeneously; and the reaction was then carried out in a 37°C incubator/thermostat water bath for 15 min; and

step 7: to each well, a stop solution (50ul) was added, and the plate was then read by a Microplate Reader at OD450, thereby obtaining the OD values for the antibody reactions in the wells. The results are shown in Fig. 5.

35 **[0175]** Fig. 5 shows the results of 61 serum samples with known backgrounds as determined by six ELISA assay platforms (which are based on pp150 & pp150-2, HCMV pp65 (UL83), HCMV gp52 (UL44), HCMV pp38 (UL80a), HCMV pp28 (UL99), and UL48a, respectively) as established in Example 2, wherein pp150 refers to the ELISA assay platform based on a mixture of pp150 and pp150-2. The results show that the ELISA assay platforms established in Example 2 (in particular, the pp150 & pp150-2-based ELISA assay platform and the pp28-based ELISA assay platform) can determine the level of an antibody against a CMV protein in a serum sample and determine whether the serum sample is negative or positive, accurately, reliably and effectively.

40

Example 5. Detection of the antibody titer in a sample by ELISA assay platform

45 **[0176]** In the Example, the inventor used the ELISA assay platforms established in Example 2 to determine the antibody titer in a serum sample, so as to confirm the reliability and effectiveness of the ELISA assay platforms.

**[0177]** In brief, in the Example, pp150 was used as an example, and the pp150 & pp150-2-based ELISA assay platform was used to detect HCMV IgG antibody (an antibody against pp150) in parallel in the serial dilution samples of two serums (Serum 1 and Serum 2) (two repeated experimentations were performed for each sample), to determine the antibody titer of an antibody against pp150 in the two serums. During the detection, negative control wells and positive control wells were set, and the detection method comprised the following steps:

50

step 1: collecting a sample  
the serum to be tested was centrifuged for 5-10 min (10000rpm/ min), for use in detection;

55 step 2: loading a sample for detection  
the ingredients in the kit were equilibrated to room temperature; to the first sample well of the coated microwell plate, a sample diluent (180ul) was added, and to the second to the tenth sample wells, a sample diluent (100ul per well) was added; to the first sample well, the serum to be test (20ul) was then added, and the plate was shaken for 30s-60s to mix the solution homogeneously on a plate vibrator; and then, 100 ul solution was drawn from the first sample

## EP 3 258 265 A1

well and added to the second sample well, and the solution was mixed homogeneously under shaking; 100 ul solution was drawn from the second well and added to the third well, and the solution was mixed homogeneously under shaking; the serial dilution was performed until the tenth well; 100 ul solution was drawn from the tenth well and discarded; the process was repeated to each of the two serums;

meanwhile, negative control wells, positive control wells, and blank control wells were set in the microwell plate, wherein to each of the negative control wells, serum with a negative background (10ul) and a sample diluent (90ul) were added; to each of the positive control wells, serum with a positive background (10ul) and a sample diluent (90ul) were added; and to each of the blank control wells, a sample diluent (100ul) was added;

the plate was then covered with a sealing film, and the reaction was carried out in a 37°C incubator/thermostat water bath for 1 h;

step 3: after the reaction, the sealing film was removed, and the wells were washed with a washing solution for 5 times, and dried upside down;

step 4: to each of the wells, an anti-human IgG antibody solution (100ul) was added, and the plate was covered with a sealing film; the reaction was then carried out in a 37°C incubator/thermostat water bath for 30 min;

step 5: after the reaction, the sealing film was removed, and the wells were washed with a washing solution for 5 times, and dried upside down;

step 6: to each of the wells, a substrate solution A (50ul) and a substrate solution B (50ul) were added, and mixed homogeneously; and then the reaction was carried out in a 37°C incubator/thermostat water bath for 15 min; and

step 7: to each well, a stop solution (50ul) was added, and the plate was then read by a Microplate Reader at OD450, thereby obtaining the OD values for the antibody reactions in the wells. The results are shown in Table 4.

**[0178]** In Table 4, Serum 1 and Serum 2 are two independent serum samples, and Group 1 and Group 2 represent two repeated experimentations, and the antibody titer is defined as the maximum dilution fold of serum when OD450 reaches above 0.2. The detection results show that the antibody titer of HCMV IgG (i.e., an antibody against pp150) is 80 in Serum 1, and the antibody titer is 320 in Serum 2.

Table 4: Determination of antibody titers in samples by ELISA assay platform

Sample	OD values determined at different dilution folds								Antibody titer
	10	20	40	80	160	320	640	1280	
Serum 1 (Group 1)	1.46	0.886	0.379	0.21	0.024	0.014	0.01	0.011	80
Serum 1 (Group 2)	1.38	0.768	0.367	0.186	0.063	0.032	0.025	0.021	160
Serum 2 (Group 1)	3.288	2.289	1.533	0.783	0.406	0.201	0.087	0.042	320
Serum 2 (Group 2)	3.926	2.656	1.773	1.043	0.525	0.239	0.102	0.062	320
Positive control	3.589	2.503	1.614	0.918	0.441	0.163	0.061	0.02	320
Negative control	0.016	0.015	0.013	0.009	0.012	0.002	0.02	0.009	<10
Blank control	0.001	0.001	0.001	0.001	0.001	0.001	0.001	0.001	-

**[0179]** The results in Table 4 show that the ELISA assay platform established in Example 2 (for example, pp150 & pp150-2-based ELISA assay platform) can determine the antibody titer of an antibody against a CMV protein (for example, an antibody against pp150) in a sample accurately, reliably and effectively.

Example 6. Evaluation of the risk of developing HCMV active infection by ELISA assay platform

**[0180]** The proteins used in the Example were the proteins obtained in Example 1, and the detection method used was the method described in Example 5.

**[0181]** In brief, in the Example, the ELISA assay platform established in Example 2 (including, pp150 & pp150-2-based ELISA assay platform (called pp150 assay platform for short, the same below), pp28 assay platform, pp38 assay platform, UL48a assay platform, gp52 assay platform, pp65 assay platform) and IE1 antibody assay platform (i.e., the Elispot assay platform for detecting an anti-HCMV-IE1 antibody as described in Example 3) were used to detect the 202 pairs of serums collected from a certain natural population of Guangxi over an interval of 12 months (1 year), which were well preserved.

**[0182]** For each pair of serums, if compared with the serum collected first, the serum collected later has the antibody titer increased by 4 folds or more, it is defined that the detection result of the pair of serums (which are from the same

EP 3 258 265 A1

individual, and therefore are regarded as one sample) was "positive".

[0183] As defined above, among the 202 pairs of serum samples, the number of the samples determined to be positive by IE1 antibody assay platform, pp150 assay platform, pp28 assay platform, pp38 assay platform, UL48a assay platform, gp52 assay platform and pp65 assay platform (i.e., the number of the samples in which the antibody titer in the latter collected serum increased by 4 folds or more) was 8, 77, 21, 29, 30, 24, and 9, respectively.

[0184] Furthermore, in order to evaluate the efficacy of pp150 assay platform for assessing the risk of developing HCMV active infection, the results determined by 6 other assay platforms are used to define an individual having a virus event (i.e., developing HCMV active infection). In brief, the criterion for indicating that an individual has a virus event (i.e., developing HCMV active infection) is that among the 6 detection results of the serum in the individual as obtained by the 6 other assay platforms, at least 2, at least 3 or at least 4 detection results are positive simultaneously.

Table 5 shows the statistical information of the results determined by other 6 assay platforms.

	Detection results	Number of samples
	at least 5 results being positive simultaneously (pentuple positive and more)	5
	at least 4 results being positive simultaneously (quadruple positive and more)	11
	at least 3 results being positive simultaneously (triple positive or more)	19
	at least 2 results being positive simultaneously (double positive or more)	33
	at least 1 result being positive simultaneously (single positive or more)	54
	all the 6 results being positive	148

[0185] Table 6a shows the results of AUC curve parameter analysis of the pp150 assay platform under different criteria for defining a virus event. Table 6b shows the results of LOGISTIC regression analysis of the pp150 assay platform under different criteria for defining a virus event.

Table 6a: AUC curve parameter of the pp150 assay platform under different criteria for defining a virus event

	Criterion for a virus event	AUC	lower limit	upper limit
Baseline level of pp150 antibody	double positive or more	0.792	0.702	0.882
	triple positive or more	0.849	0.768	0.929
	quadruple positive or more	0.890	0.830	0.951

Table 6b. LOGISTIC regression analysis of the pp150 assay platform under different criteria for defining a virus event

	Criterion for a virus event	B	sig.	Predictivity (%)
Baseline level of pp150 antibody	double positive or more	-0.001	0.003	83.7
	triple positive or more	-0.006	0.006	90.6
	quadruple positive or more	-0.016	0.014	94.6

[0186] The ROC curve analysis of the pp150 assay platform under different criteria for defining a virus event is also shown in Fig. 6A-C, wherein,

Fig. 6A show the analysis on sensitivity and specificity of the pp150 assay platform for assessing the occurrence of a virus event (HCMV active infection), when the circumstance where the results determined by other assay platforms are double positive or more is defined as the occurrence of a virus event (HCMV active infection);

Fig. 6B show the analysis on sensitivity and specificity of the pp150 assay platform for assessing the occurrence of a virus event (HCMV active infection), when the circumstance where the results determined by other assay platforms are triple positive or more is defined as the occurrence of a virus event (HCMV active infection); and

Fig. 6C show the analysis on sensitivity and specificity of the pp150 assay platform for assessing the occurrence of a virus event (HCMV active infection), when the circumstance where the results determined by other assay platforms are quadruple positive or more is defined as the occurrence of a virus event (HCMV active infection).

[0187] The results in Table 6a-6b and Fig. 6A-C show that under all the three circumstances, the accuracy of pp150 assay platform for predicting the occurrence of a virus event (HCMV active infection) is above 80%, and therefore can

be used to assess the risk of developing human cytomegalovirus (HCMV) active infection in a subject accurately, reliably and effectively.

**[0188]** Table 7a shows the results of AUC curve parameter analysis of the pp28 assay platform under different criteria for defining a virus event. Table 7b shows the results of LOGISTIC regression analysis of the pp28 assay platform under different criteria for defining a virus event.

Table 7a: AUC curve parameter of the pp28 assay platform under different criteria for defining a virus event

	Criterion for a virus event	AUC	lower limit	Upper limit
Baseline level of pp28 antibody	double positive or more	0.823	0.751	0.895
	triple positive or more	0.860	0.796	0.924
	quadruple positive or more	0.831	0.740	0.923

Table 7b. LOGISTIC regression analysis of the pp28 assay platform under different criteria for defining a virus event

	Criterion for a virus event	B	sig.	Predictability (%)
Baseline level of pp28 antibody	double positive or more	-3.258	0.000	78.2
	triple positive or more	-7.787	0.000	87.1
	quadruple positive or more	-7.753	0.002	92.6

**[0189]** ROC curve analysis of the pp28 assay platform under different criteria for defining a virus event is also shown in Figs. 7A-C, wherein,

**[0190]** Fig. 7A show the analysis on sensitivity and specificity of the pp28 assay platform for assessing the occurrence of a virus event (HCMV active infection), when the circumstance where the results determined by other assay platforms are double positive or more is defined as the occurrence of a virus event (HCMV active infection);

**[0191]** Fig. 7B show the analysis on sensitivity and specificity of the pp28 assay platform for assessing the occurrence of a virus event (HCMV active infection), when the circumstance where the results determined by other assay platforms are triple positive or more is defined as the occurrence of a virus event (HCMV active infection); and

**[0192]** Fig. 7C show the analysis on sensitivity and specificity of the pp28 assay platform for assessing the occurrence of a virus event (HCMV active infection), when the circumstance where the results determined by other assay platforms are quadruple positive or more is defined as the occurrence of a virus event (HCMV active infection).

**[0193]** The results in Table 7a-7b and Fig. 7A-C show that under all the three circumstances, the pp28 assay platform has an accuracy of above 78% for predicting a virus event (HCMV active infection), and therefore can be used to assess the risk of developing human cytomegalovirus (HCMV) active infection in a subject accurately, reliably and effectively.

Example 7. Detection results of a certain natural population of Guangxi by the pp150 assay platform

**[0194]** In the Example, the inventor employed the ELISA assay platform (pp150 assay platform) established in Example 2 to assess the risk of developing HCMV active infection in a certain natural population of Guangxi. The detection method and the method for calculating an antibody titer were as described in Example 5.

**[0195]** In brief, the inventor used the pp150 assay platform to detect the two serums obtained from each individual of a certain natural population of Guangxi (1659 persons) before and after an interval of 12 months (1 year). The results show that in the population, the antibody positive rate was 98.7% and 98.9%, and the average antibody titer was 1:269 and 1:260, respectively, for the two detections before and after the interval. This indicates that most of the individuals in the population have been infected with HCMV. The inventor further compared the results of the population obtained by the two detections before and after the interval. The comparative results are shown in Fig. 8-9 and Tables 8a-8b.

**[0196]** In particular, Fig. 8 shows the change in the antibody titer of an antibody against pp150 in the certain natural population over 12 months (one year). The results show that individuals with a higher baseline antibody level (i.e., the antibody titer obtained by the first detection), has a lower probability that the level of an antibody against pp150 increases by 4 folds or more one year later (i.e., the antibody level obtained by the second detection is at least 4 folds higher than the antibody level obtained by the first detection, indicating that the individual has HCMV active infection within the interval of 12 months); while, individuals with a lower baseline antibody level, have a higher probability that the level of an antibody against pp150 increases by 4 folds or more one year later. The results show again that the risk of developing

HCMV active infection in an individual is negatively correlated with the baseline antibody level. The lower the level of an antibody against a CMV protein (for example, the titer of an antibody against pp150) is, the higher the risk of infecting CMV in the individual is higher.

[0197] Fig. 9 shows the correlation between the baseline level of an antibody against pp150 and the risk of developing HCMV active infection in the natural population, wherein, abscissa represents the baseline level of an antibody against pp150 (antibody titer), and ordinate represents the risk of developing HCMV active infection (ratio). The results show that individuals with a lower baseline antibody level, have a higher risk of developing HCMV active infection later (i.e., the level of an antibody against pp150 increases by 4 folds or more). The risk of HCMV active infection is negatively correlated with the baseline antibody level. When the baseline antibody level (antibody titer) is lower than 10, the risk of developing HCMV active infection is up to 82.6%; and when the baseline antibody level (antibody titer) is no more than 160, the risk of developing HCMV active infection is up to 23.66%. The results in Fig. 9 are also specifically described in Tables 8a-8b.

Table 8a. Statistical analysis of the results determined before and after an interval of 12 months in a certain natural population of Guangxi (one year) (I)

Baseline antibody level	Number of individuals	Number of individuals having a virus event during the period	Infection ratio (%)	relative risk (95% CI)
<10	23	19	82.6	1.0
10	26	18	69.2	0.838 (0.610-1.151)
20	42	22	52.4	0.634 (0.450-0.894)
40	86	39	45.3	0.549 (0.407-0.740)
80	161	27	16.8	0.203 (0.137-0.300)
160	317	30	9.5	0.115 (0.078-0.169)
320	404	12	3.0	0.034 (0.020-0.064)
640	359	3	0.8	0.010 (0.003-0.032)
1280	170	1	0.6	0.007 (0.001-0.051)
>2560	71	0	0.0	0.0
total	1659	171	10.3	

Table 8b. Statistical analysis of the results determined before and after an interval of 12 months (one year) in a certain natural population of Guangxi (II)

Baseline antibody level	Number of individuals	Number of individuals having a virus event during the period	Infection ratio (%)	relative risk (95% CI)	Sensitivity	Specificity	Youden index
≤40	177	98	55.37	11.2	57.3%	94.7%	0.52
>40	1482	73	4.93	(8.7-14.6)			
≤80	338	125	36.98	10.6	73.1%	85.7%	0.59
>80	1321	46	3.48	(7.7-14.6)			
≤160	655	155	23.66	14.8	90.6%	66.4%	0.57
>160	1004	16	1.59	(9.0-24.6)			
≤320	1059	167	15.77	23.7	97.7%	40.1%	0.37
>320	600	4	0.67	(8.8-63.4)			

[0198] The results in Table 8a-8b and Fig. 9 also show: (1) for individuals having negative base antibody level (antibody titer<10), the percentage of developing HCMV active infection (primary infection) is up to 82.6% (19/23); while, for individuals having the base antibody level (antibody titer)≥1:2560, the percentage of developing HCMV active infection (recurrent infection) is 0% (0/71) (p<0.0001); (2) the HCMV active infection ratio is in significantly negative correlation with the base antibody level: the higher the base antibody level is, the lower the HCMV active infection ratio is. For the individuals having an antibody titer>1:80 (accounting for about 80%), the virus active infection ratio is 3.48% within 1 year, while for the individuals having an antibody titer≤1:80 (accounting for about 20%), the virus active infection ratio

is 36.98% within 1 year. Similarly, for individuals having an antibody titer $>1:40$ , the virus active infection ratio is 4.93% within 1 year, while for individuals having an antibody titer $\leq 1:40$ , the virus active infection ratio is 55.37% within 1 year. For individuals having an antibody titer $> 1:160$ , the virus active infection ratio is 1.59% within 1 year, while for individuals having an antibody titer $\leq 1:160$ , the virus active infection ratio is 23.66% within 1 year.

**[0199]** The results in Table 8b also show: the methods of the invention can be used to determine the relative risk of infection in a subject, wherein, the reference value of the base antibody level (i.e., antibody titer) for determining the relative risk can be set as an antibody titer in a range of 40-320, for example, 40, 80, 160 or an antibody titer of 320. If the antibody titer determined in a sample from a subject is below or equal to the reference value, the subject can be determined to have a high relative risk of developing HCMV active infection. It can be seen from Table 8b that when the reference value is between 40 and 320, the subjects having an antibody titer below the reference value, have a relative risk of more than 10 for developing HCMV active infection, and the lower limit of 95% CI is more than 7. This indicates that there is a strong or a very strong correlation between the parameter (antibody titer) and HCMV active infection.

**[0200]** For example, if the antibody titer determined in a sample from a subject is below or equal to 40, the subject has a relative risk of 11.2 for developing HCMV active infection, and 95% CI is 8.7-14.6 (that is, the risk of developing HCMV active infection is significantly enhanced), compared to a subject having an antibody titer above 40. If the antibody titer determined in a sample from a subject is below or equal to 80, the subject has a relative risk of 10.6 for developing HCMV active infection, and 95% CI is 7.7-14.6, compared to a subject having an antibody titer above 80. If the antibody titer determined in a sample from a subject is below or equal to 160, the subject has a relative risk of 14.8 for developing HCMV active infection, and 95% CI is 9.0-24.6, compared to a subject having an antibody titer above 160. If the antibody titer determined in a sample from a subject is below or equal to 320, the subject has a relative risk of 23.7 for developing HCMV active infection, and 95% CI is 8.8-63.4, compared to a subject having an antibody titer above 320.

**[0201]** In addition, Table 8b also shows that the sensitivity, specificity and Youden index of the methods of the invention for predicting HCMV active infection. It can be seen from Table 8b that when the reference value is set as an antibody titer of 40, the methods of the invention for predicting HCMV active infection have a sensitivity of 57.3%, a specificity of 94.7%, and a Youden index of 0.52; when the reference value is set as an antibody titer of 80, the methods of the invention for predicting HCMV active infection have a sensitivity of 73.1%, a specificity of 85.7%, and a Youden index of 0.59; when the reference value is set as an antibody titer of 160, the methods of the invention for predicting HCMV active infection have a sensitivity of 90.6%, a specificity of 66.4%, and a Youden index of 0.57; when the reference value is set as an antibody titer of 320, the methods of the invention for predicting HCMV active infection have a sensitivity of 97.7%, a specificity of 40.1%, and a Youden index of 0.37. These results show that when the reference value is set as an antibody titer of 80, the methods of the invention have the best predictive effect (i.e, the highest Youden index, which is 0.59); and when the reference value is set as an antibody titer of 160 and 40, the methods of the invention have a good predictive effect (i.e., the Youden index is higher than 0.5).

**[0202]** The multi-factor analysis of the natural population also show that the HCMV active infection rate is independent of gender, age, occupation, degree of education, health habit, etc.

#### Example 8. Calibration of an antibody content in serum

**[0203]** In the Example, the inventor utilized a standard sample to calibrate the antibody content in a serum sample. The standard sample used was a CMV IgG standard sample (Paul-Ehrlich-Institut, Referenz-CMV-IgG, Juli 1996, 110IU/ml), and the target antibody to be calibrated was an antibody against pp150.

**[0204]** For this purpose, the inventor subjected the serial diluents of the standard sample to ELISA assay (the ELISA assay used was as described in Example 5), and plotted the antibody content-antibody reactivity standard curve according to the results determined by ELISA. The standard curve is shown in Fig. 10; wherein, abscissa represents an antibody content (expressed as IU/ml); and ordinate represents antibody reactivity (expressed by the OD value obtained by ELISA). The results show that in a range of 0.06-0.7 IU/ml, there is a significant linear relationship between the antibody content and antibody reactivity ( $y=3.163*x-0.073$ ,  $R^2=0.9984$ ), and the linearity range is more than an order of magnitude. Therefore, the absolute quantification of the antibody content in a serum sample can be carried out by the following solution: (1) subjecting a serum sample to 10-fold gradient dilution; (2) subjecting each diluted serum sample to ELISA assay; and (3) selecting the detection results falling into the linear range, and calculating the antibody content of the initial serum sample according to the linear curve and the dilution fold.

**[0205]** According to the solution above, two serums, collected from each individual of a certain natural population (726 persons) of Guangxi before and after an interval of 12 months (1 year), were subjected to the assay. The detection results show that in the population, the antibody positive rate was 100% as determined before and after an interval of 12 months (1 year), and the average antibody titer was 6.19 IU/ml and 5.08 IU/ml, respectively. The inventor further compared the results determined before and after the interval. The comparative results are shown in Fig. 11 and Table 9.

**[0206]** In particular, Fig. 11 shows the change in the content of an antibody against pp150 in the natural population over 12 months (one year). The results are substantively identical to the results in Fig. 8. Individuals with a lower baseline

antibody level, have a higher probability that the level of an antibody against pp150 increases by 4 folds or more one year later (i.e., the antibody level obtained by the second detection is at least 4 folds higher than the antibody level obtained by the first detection, indicating that the individuals have HCMV active infection within the interval of 12 months); while, individuals with a higher baseline antibody level, have a lower probability that the level of an antibody against pp150 increases by 4 folds or more one year later (i.e., developing HCMV active infection). The results show again that the risk of developing HCMV active infection in an individual is negatively correlated with the baseline antibody level in serum. The lower the level of an antibody against HCMV protein (such as the content of an antibody against pp150) in serum is, the higher the risk of infecting HCMV in an individual is.

**[0207]** The results in Tables 9a-9b also show that in the natural population, individuals with a lower baseline antibody level, have a higher risk of developing HCMV active infection later (i.e., the level of an antibody against pp150 increases by 4 folds or more); the baseline level of an antibody against pp150 is in a negative correlation with the risk of HCMV active infection, wherein, an individual, in which the base antibody level is not more than 0.2 IU/ml, has a risk/infection rate of up to 80% for developing HCMV active infection within one year; an individual, in which the base antibody level is not more than 0.8 IU/ml, has a risk/infection rate of up to 60.0% for developing HCMV active infection within one year; an individual, in which the base antibody level is not more than 1.6 IU/ml, has a risk/infection rate of up to 50.0% for developing HCMV active infection within one year; an individual, in which the base antibody level is not more than 3.2 IU/ml, has a risk/infection rate of up to 31.3% for developing HCMV active infection within one year; an individual, in which the base antibody level is not more than 6.4 IU/ml, has a risk/infection rate of up to 19.0% for developing HCMV active infection within one year. In contrast, an individual, in which the base antibody level is above 0.8 IU/ml, has a risk/infection rate of 5.2% for developing HCMV active infection; an individual, in which the base antibody level is above 1.6 IU/ml, has a risk/infection rate of 3.3% for developing HCMV active infection; an individual, in which the base antibody level is above 3.2 IU/ml, has a risk/infection rate of 1.6% for developing HCMV active infection; an individual, in which the base antibody level is higher than 6.4 IU/ml, has a risk/infection rate of 0.8% for developing HCMV active infection; and an individual, in which the base antibody level is above 25.6 IU/ml, has a risk/infection rate of 0 for developing HCMV active infection.

Table 9a. Statistical analysis of the results determined before and after an interval of 12 months in a certain natural population of Guangxi (one year) (I)

Baseline antibody content (IU/ml)	Number of individuals	Number of individuals having a virus event during the period	Infection ratio	Relative risk (95% CI)
<=0.2	15	12	80%	100%
0.2-0.4	7	5	71%	89.3% (52.4%-152.1%)
0.4-0.8	28	13	46%	58.0% (36.2%-93.0%)
0.8-1.6	38	14	37%	46.1%(28.3%-75.0%)
1.6-3.2	91	12	13%	16.5%(9.2%-29.6%)
3.2-6.4	148	6	4%	5.1%(2.2%-11.6%)
6.4-12.8	186	2	1%	1.3% (0.3%-5.5%)
12.8-25.6	136	1	1%	0.9% (0.1%-6.6%)
25.6-51.2	77	0	0%	0.8%(0.05%-13.2%)
Total	726	65	9%	

Table 9b. Statistical analysis of the results determined before and after an interval of 12 months in a certain natural population of Guangxi (one year) (II)

Baseline antibody content (IU/ml)	Number of individuals	Number of individuals having a virus event during the period	Infection ratio	relative risk (95% CI)	Sensitivity	Specificity	Youden index
<=0.8	50	30	60.0%	11.6	46.15%	96.97%	0.43
>0.8	676	35	5.2%	(7.8-17.2)			
<=1.6	88	44	50.0%	15.2	67.69%	93.34%	0.61
>1.6	638	21	3.3%	(9.5-24.3)			
<=3.2	179	56	31.3%	19.0	86.15%	81.39%	0.68
>3.2	547	9	1.6%	(9.6-37.7)			
<=6.4	327	62	19.0%	25.2	95.38%	59.91%	0.55
>6.4	399	3	0.8%	(8.0-79.6)			

**[0208]** The results in Table 9b also show: the methods of the invention can be used to determine the relative risk of infection in a subject, wherein, the reference value of the baseline antibody level (i.e., an antibody content/an antibody absolute quantity) for determining the relative risk can be set as an antibody absolute quantity in a range of 0.8-6.4 IU/ml, for example, an antibody absolute quantity of 0.8, 1.6, 3.2 or 6.4 IU/ml. If the antibody content determined in a sample from a subject is below or equal to the reference value, the subject can be regarded as having a high relative risk of developing HCMV active infection. It can be seen from Table 9b that when the reference value is between 0.8 and 6.4 IU/ml, the subjects with an antibody content is below the reference value, all have a relative risk of above 11 for developing HCMV active infection exceeding 11, and the lower limit of 95% CI exceeds 7. These indicate that there is a strong correlation or a very strong correlation between the parameter (an antibody content/an antibody absolute quantity) and HCMV active infection.

**[0209]** For example, if the antibody content determined in a sample from a subject is below or equal to 0.8 IU/ml, the subject has a relative risk of 11.6 for developing HCMV active infection, and 95% CI is 7.8-17.2 (that is, the risk of developing HCMV active infection is significantly enhanced), compared to a subject with an antibody content above 0.8 IU/ml. If the antibody content determined in a sample from a subject is below or equal to 1.6 IU/ml, the subject has a relative risk of 15.2 for developing HCMV active infection, and 95% CI is 9.5-24.3, compared to a subject with an antibody content above 1.6 IU/ml. If the antibody content determined in a sample from a subject is below or equal to 3.2 IU/ml, the subject has a relative risk of 19.0 for developing HCMV active infection, and 95% CI is 9.6-37.7, compared to a subject with an antibody content above 3.2 IU/ml. If the antibody content determined in a sample from a subject is below or equal to 6.4 IU/ml, the subject has a relative risk of 25.2 for developing HCMV active infection, and 95% CI is 8.0-79.6, compared to a subject with an antibody content above 6.4 IU/ml.

**[0210]** In addition, Table 9b also shows the sensitivity, specificity and Youden index of the methods of the invention for predicting HCMV active infection when the reference value is set as an antibody content in a range of 0.8-6.4 IU/ml. It can be seen from Table 9b that when the reference value is set as an antibody absolute quantity of 0.8 IU/ml, the methods of the invention for predicting HCMV active infection have a sensitivity of 46.15%, a specificity of 96.97%, and a Youden index of 0.43; when reference value is set as an antibody absolute quantity of 1.6 IU/ml, the methods of the invention for predicting HCMV active infection have a sensitivity of 67.69%, a specificity of 93.34%, and a Youden index of 0.61; when the reference value is set as an antibody absolute quantity of 3.2 IU/ml, the methods of the invention for predicting HCMV active infection have a sensitivity of 86.15%, a specificity of 81.39%, and a Youden index of 0.68; when the reference value is set as an antibody absolute quantity of 6.4 IU/ml, the methods of the invention for predicting HCMV active infection have a sensitivity of 95.38%, a specificity of 59.91%, and a Youden index of 0.55. The results show that when the reference value is set as an antibody absolute quantity of 3.2 IU/ml, the methods of the invention have the best predictive effect (i.e., the highest Youden index, which is 0.68); and, when the reference value is set as an antibody absolute quantity of 0.8, 1.6 and 6.4 IU/ml, the methods of the invention also have good predictive effect (i.e., the Youden index is close to or above 0.5).

**[0211]** In addition, the results in Table 9b also show that with the increase in the set reference value, the methods of the invention for predicting HCMV active infection have the sensitivity increased gradually (increased from 46.15% to 95.38%), but have the specificity decreased gradually (decreased from 99.97% to 59.91%). It is substantively identical to the result of ROC curve analysis. The ROC curve analytic results of the methods are shown in Fig. 12, wherein, the area under the curve is 0.913. It can be seen from Fig. 12 that with the increase in sensitivity, the specificity of the methods of the invention for predicting HCMV active infection decreases gradually. Moreover, the results in Fig. 12 show

that the methods of the invention can be used to assess the risk of developing human cytomegalovirus (HCMV) active infection in a subject accurately, reliably and effectively.

**[0212]** Although the embodiments of the invention have been described in detail, a person skilled in the art would understand that according to all the disclosed teachings, details can be amended and modified, and these alterations all fall into the protection scope of the invention. The whole scope of the invention is defined by the attached claims and any equivalent thereof.

Reference documents:

**[0213]**

Dollard SC, Grosse SD, Ross DS; New estimates of the prevalence of neurological and sensory sequelae and mortality associated with congenital cytomegalovirus infection. *Rev Med Virol.* 2007, 17:355-363.

Jiang Yi; Congenital cytomegalovirus infection: transmission from mother to infant and diagnosis. *CHINESE JOURNAL OF NEONATOLOGY.* 2009, 24:261-265.

Fowler KB, Stagno S, PassRF, et al; The outcome of congenital cytomegalovirus infection in relation to maternal antibody status. *N Engl J Med,* 1992, 326: 663-667.2

Kenneson A, Cannon MJ.; Review and meta-analysis of the epidemiology of congenital cytomegalovirus infection. *Rev Med Virol,* 2007,17: 253 ~ 276.

Manicklal S, Emery VC, Lazzarotto T, Boppana SB, Gupta RK. The "silent" global burden of congenital cytomegalovirus. *Clin Microbiol Rev.* 2013, 26:86-102.

Mussi-Pinhata MM, Yamamoto AY, Moura Brito RM, de Lima Isaac M, de Carvalho e Oliveira PF, Boppana S, Britt WJ. Birth prevalence and natural history of congenital cytomegalovirus infection in a highly seroimmune population. *Clin Infect Dis.* 2009, 49:522-528.

Yamamoto AY, Mussi-Pinhata MM, Isaac Mde L, Amaral FR, Carvalheiro CG, Aragon DC, Manfredi AK, Boppana SB, Britt WJ. Congenital cytomegalovirus infection as a cause of sensorineural hearing loss in a highly immune population. *Pediatr Infect Dis J.* 2011, 30:1043-1046.

Boppana SB, Rivera LB, Fowler KB, Mach M, Britt WJ. Intrauterine transmission of cytomegalovirus to infants of women with preconceptional immunity. *N Engl J Med.* 2001, 344: 1366-1371.

Ross SA, Arora N, Novak Z, Fowler KB, Britt WJ, Boppana SB. Cytomegalovirus reinfections in healthy seroimmune women. *J Infect Dis.* 2010, 201:386-389.

He Xiaozhou, Wang Xiaofang, Wang Shiwen; Research Progress in Congenital Cytomegalovirus Infection and Detection Method thereof. *Chinese Journal of Virology.* 2012, 28:73-77.

Ross SA, Novak Z, Pati S, Boppana SB. Overview of the diagnosis of cytomegalovirus infection. *Infect Disord Drug Targets.* 2011, 11:466-474.

Bernard Weber, Annemarie Berger, Holger Rabenau, Bernard Weber. Human cytomegalovirus infection: diagnostic potential of recombinant antigens for cytomegalovirus antibody detection. *Journal of Virological Methods* 96 (2001) 157-170.

Jahn G, Scholl BC, Traupe B, Fleckenstein B. The two major structural phosphoproteins (pp65 and pp150) of human cytomegalovirus and their antigenic properties. *J Gen Virol.* 1987, 68:1327-1337.

Plachter B, Wiczorek L, Scholl BC, Ziegelmaier R, Jahn G. Detection of cytomegalovirus antibodies by an enzyme-linked immunosorbent assay using recombinant polypeptides of the large phosphorylated tegument protein pp150. *J Clin Microbiol.* 1992, 30: 201-206.

Aimin Tang, Fengsheng Li, Daniel C. Freed, Adam C. Finnefrock, Danilo R. Casimiro, Dai Wang, Tong-Ming Fu. A novel high-throughput neutralization assay for supporting clinical evaluations of human cytomegalovirus vaccines. *Vaccine.* 2011, 29:8350-6.

EP 3 258 265 A1

Sequence Listing

<110> Xiamen University

5 <120> Method for assessing risk of active infection by human cytomegalovirus in body and related kit

<130> IEC150012PCT

10 <150> CN 201510067190.3

<151> 2015-02-09

<160> 19

15 <170> PatentIn version 3.5

<210> 1

<211> 1048

<212> PRT

<213> Human cytomegalovirus

20 <400> 1

Met Ser Leu Gln Phe Ile Gly Leu Gln Arg Arg Asp Val Val Ala Leu  
1 5 10 15

25 Val Asn Phe Leu Arg His Leu Thr Gln Lys Pro Asp Val Asp Leu Glu  
20 25 30

30 Ala His Pro Lys Ile Leu Lys Lys Cys Gly Glu Lys Arg Leu His Arg  
35 40 45

35 Arg Thr Val Leu Phe Asn Glu Leu Met Leu Trp Leu Gly Tyr Tyr Arg  
50 55 60

Glu Leu Arg Phe His Asn Pro Asp Leu Ser Ser Val Leu Glu Glu Phe  
65 70 75 80

40 Glu Val Arg Cys Val Ala Val Ala Arg Arg Gly Tyr Thr Tyr Pro Phe  
85 90 95

45 Gly Asp Arg Gly Lys Ala Arg Asp His Leu Ala Val Leu Asp Arg Thr  
100 105 110

Glu Phe Asp Thr Asp Val Arg His Asp Ala Glu Ile Val Glu Arg Ala  
115 120 125

50 Leu Val Ser Ala Val Ile Leu Ala Lys Met Ser Val Arg Glu Thr Leu  
130 135 140

55 Val Thr Ala Ile Gly Gln Thr Glu Pro Ile Ala Phe Val His Leu Lys  
145 150 155 160

EP 3 258 265 A1

Asp Thr Glu Val Gln Arg Ile Glu Glu Asn Leu Glu Gly Val Arg Arg  
 165 170 175  
 5 Asn Met Phe Cys Val Lys Pro Leu Asp Leu Asn Leu Asp Arg His Ala  
 180 185 190  
 10 Asn Thr Ala Leu Val Asn Ala Val Asn Lys Leu Val Tyr Thr Gly Arg  
 195 200 205  
 Leu Ile Met Asn Val Arg Arg Ser Trp Glu Glu Leu Glu Arg Lys Cys  
 210 215 220  
 15 Leu Ala Arg Ile Gln Glu Arg Cys Lys Leu Leu Val Lys Glu Leu Arg  
 225 230 235 240  
 20 Met Cys Leu Ser Phe Asp Ser Asn Tyr Cys Arg Asn Ile Leu Lys His  
 245 250 255  
 25 Ala Val Glu Asn Gly Asp Ser Ala Asp Thr Leu Leu Glu Leu Leu Ile  
 260 265 270  
 Glu Asp Phe Asp Ile Tyr Val Asp Ser Phe Pro Gln Ser Ala His Thr  
 275 280 285  
 30 Phe Leu Gly Ala Arg Ser Pro Ser Leu Glu Phe Asp Asp Ala Asn  
 290 295 300  
 35 Leu Leu Ser Leu Gly Gly Gly Ser Ala Phe Ser Ser Val Pro Lys Lys  
 305 310 315 320  
 His Val Pro Thr Gln Pro Leu Asp Gly Trp Ser Trp Ile Ala Ser Pro  
 325 330 335  
 40 Trp Lys Gly His Lys Pro Phe Arg Phe Glu Ala His Gly Ser Leu Ala  
 340 345 350  
 45 Pro Ala Ala Glu Ala His Ala Ala Arg Ser Ala Ala Val Gly Tyr Tyr  
 355 360 365  
 50 Asp Glu Glu Glu Lys Arg Arg Glu Arg Gln Lys Arg Val Asp Asp Glu  
 370 375 380  
 Val Val Gln Arg Glu Lys Gln Gln Leu Lys Ala Trp Glu Glu Arg Gln  
 385 390 395 400  
 55 Gln Asn Leu Gln Gln Arg Gln Gln Gln Pro Pro Pro Pro Ala Arg Lys  
 405 410 415

EP 3 258 265 A1

Pro Ser Ala Ser Arg Arg Leu Phe Gly Ser Ser Ala Asp Glu Asp Asp  
 420 425 430

5
   
 Asp Asp Asp Asp Asp Glu Lys Asn Ile Phe Thr Pro Ile Lys Lys Pro  
 435 440 445

10
   
 Gly Thr Ser Gly Lys Gly Ala Ala Ser Gly Gly Gly Val Ser Ser Ile  
 450 455 460

15
   
 Phe Ser Gly Leu Leu Ser Ser Gly Ser Gln Lys Pro Thr Ser Gly Pro  
 465 470 475 480

20
   
 Leu Asn Ile Pro Gln Gln Gln Gln Arg His Ala Ala Phe Ser Leu Val  
 485 490 495

25
   
 Ser Pro Gln Val Thr Lys Ala Ser Pro Gly Arg Val Arg Arg Asp Ser  
 500 505 510

30
   
 Ala Trp Asp Val Arg Pro Leu Thr Glu Thr Arg Gly Asp Leu Phe Ser  
 515 520 525

35
   
 Gly Asp Glu Asp Ser Asp Ser Ser Asp Gly Tyr Pro Pro Asn Arg Gln  
 530 535 540

40
   
 Asp Pro Arg Phe Thr Asp Thr Leu Val Asp Ile Thr Asp Thr Glu Thr  
 545 550 555 560

45
   
 Ser Ala Lys Pro Pro Val Thr Thr Ala Tyr Lys Phe Glu Gln Pro Thr  
 565 570 575

50
   
 Leu Thr Phe Gly Ala Gly Val Asn Val Pro Ala Gly Ala Gly Ala Ala  
 580 585 590

55
   
 Ile Leu Thr Pro Thr Pro Val Asn Pro Ser Thr Ala Pro Ala Pro Ala  
 595 600 605

60
   
 Pro Thr Pro Thr Phe Ala Gly Thr Gln Thr Pro Val Asn Gly Asn Ser  
 610 615 620

65
   
 Pro Trp Ala Pro Thr Ala Pro Leu Pro Gly Asp Met Asn Pro Ala Asn  
 625 630 635 640

70
   
 Trp Pro Arg Glu Arg Ala Trp Ala Leu Lys Asn Pro His Leu Ala Tyr  
 645 650 655

75
   
 Asn Pro Phe Arg Met Pro Thr Thr Ser Thr Ala Ser Gln Asn Thr Val  
 660 665 670

EP 3 258 265 A1

Ser Thr Thr Pro Arg Arg Pro Ser Thr Pro Arg Ala Ala Val Thr Gln  
 675 680 685  
 5 Thr Ala Ser Arg Asp Ala Ala Asp Glu Val Trp Ala Leu Arg Asp Gln  
 690 695 700  
 10 Thr Ala Glu Ser Pro Val Glu Asp Ser Glu Glu Glu Asp Asp Asp Ser  
 705 710 715 720  
 15 Ser Asp Thr Gly Ser Val Val Ser Leu Gly His Thr Thr Pro Ser Ser  
 725 730 735  
 20 Asp Tyr Asn Asn Asp Val Ile Ser Pro Pro Ser Gln Thr Pro Glu Gln  
 740 745 750  
 25 Thr Thr Ser Thr Ser Gln Lys Pro Val Leu Gly Lys Arg Val Ala Thr  
 770 775 780  
 30 Pro His Ala Ser Ala Arg Ala Gln Thr Val Thr Ser Thr Pro Val Gln  
 785 790 795 800  
 35 Thr Leu Leu Gln Pro Gln Pro Ala Ser Ser Lys Thr Thr Ser Ser Arg  
 820 825 830  
 40 Asn Val Thr Ser Gly Ala Gly Thr Ser Ser Ala Ser Ser Ala Arg Gln  
 835 840 845  
 45 Pro Ser Ala Ser Ala Ser Val Leu Ser Pro Thr Glu Asp Asp Val Val  
 850 855 860  
 50 Ser Pro Ala Thr Ser Pro Leu Ser Met Leu Ser Ser Ala Ser Pro Ser  
 865 870 875 880  
 55 Pro Ala Lys Ser Ala Pro Pro Ser Pro Val Lys Gly Arg Gly Ser Arg  
 885 890 895  
 Val Gly Val Pro Ser Leu Lys Pro Thr Leu Gly Gly Lys Ala Val Val  
 900 905 910  
 Gly Arg Pro Pro Ser Val Pro Val Ser Gly Ser Ala Pro Gly Arg Leu



EP 3 258 265 A1

					85					90					95	
5	Ser	Val	Ser	Asn	Ala	Pro	Pro	Val	Ala	Ser	Pro	Ser	Ile	Leu	Lys	Pro
				100					105					110		
10	Gly	Ala	Ser	Ala	Ala	Leu	Gln	Ser	Arg	Arg	Ser	Thr	Gly	Thr	Ala	Ala
			115					120					125			
15	Val	Gly	Ser	Pro	Val	Lys	Ser	Thr	Thr	Gly	Met	Lys	Thr	Val	Ala	Phe
		130					135					140				
20	Asp	Leu	Ser	Ser	Pro	Gln	Lys	Ser	Gly	Thr	Gly	Pro	Gln	Pro	Gly	Ser
	145					150					155					160
25	Ala	Gly	Met	Gly	Gly	Ala	Lys	Thr	Pro	Ser	Asp	Ala	Val	Gln	Asn	Ile
				165						170					175	
30	Leu	Gln	Lys	Ile	Glu	Lys	Ile	Lys	Asn	Thr	Glu	Glu				
				180					185							
35	<210>	3														
	<211>	190														
	<212>	PRT														
	<213>	Human cytomegalovirus														
40	<400>	3														
45	Met	Gly	Ala	Glu	Leu	Cys	Lys	Arg	Ile	Cys	Cys	Glu	Phe	Gly	Thr	Thr
	1			5						10					15	
50	Pro	Gly	Glu	Pro	Leu	Lys	Asp	Ala	Leu	Gly	Arg	Gln	Val	Ser	Leu	Arg
			20						25					30		
55	Ser	Tyr	Asp	Asn	Ile	Pro	Pro	Thr	Ser	Ser	Ser	Asp	Glu	Gly	Glu	Asp
			35					40					45			
60	Asp	Asp	Asp	Gly	Glu	Asp	Asp	Asp	Asn	Glu	Glu	Arg	Gln	Gln	Lys	Leu
	50						55					60				
65	Arg	Leu	Cys	Gly	Ser	Gly	Cys	Gly	Gly	Asn	Asp	Ser	Ser	Ser	Gly	Ser
	65					70					75				80	
70	His	Arg	Glu	Ala	Thr	His	Asp	Gly	Ser	Lys	Lys	Asn	Ala	Val	Arg	Ser
					85					90					95	
75	Thr	Phe	Arg	Glu	Asp	Lys	Ala	Pro	Lys	Pro	Ser	Lys	Gln	Ser	Lys	Lys
			100						105					110		
80	Lys	Lys	Lys	Pro	Ser	Lys	His	His	His	His	Gln	Gln	Ser	Ser	Ile	Met

EP 3 258 265 A1

		115						120						125			
5	Gln	Glu	Thr	Asp	Asp	Leu	Asp	Glu	Glu	Asp	Thr	Ser	Ile	Tyr	Leu	Ser	
		130					135					140					
10	Pro	Pro	Pro	Val	Pro	Pro	Val	Gln	Val	Val	Ala	Lys	Arg	Leu	Pro	Arg	
	145					150					155					160	
15	Pro	Asp	Thr	Pro	Arg	Thr	Pro	Arg	Gln	Lys	Lys	Ile	Ser	Gln	Arg	Pro	
					165					170					175		
20	Pro	Thr	Pro	Gly	Thr	Lys	Lys	Pro	Ala	Ala	Ser	Leu	Pro	Phe			
				180					185					190			
	<210>	4															
	<211>	561															
	<212>	PRT															
	<213>	Human cytomegalovirus															
	<400>	4															
25	Met	Glu	Ser	Arg	Gly	Arg	Arg	Cys	Pro	Glu	Met	Ile	Ser	Val	Leu	Gly	
	1				5					10					15		
30	Pro	Ile	Ser	Gly	His	Val	Leu	Lys	Ala	Val	Phe	Ser	Arg	Gly	Asp	Thr	
				20					25					30			
35	Pro	Val	Leu	Pro	His	Glu	Thr	Arg	Leu	Leu	Gln	Thr	Gly	Ile	His	Val	
			35					40					45				
40	Arg	Val	Ser	Gln	Pro	Ser	Leu	Ile	Leu	Val	Ser	Gln	Tyr	Thr	Pro	Asp	
	50						55					60					
45	Ser	Thr	Pro	Cys	His	Arg	Gly	Asp	Asn	Gln	Leu	Gln	Val	Gln	His	Thr	
	65					70					75					80	
50	Tyr	Phe	Thr	Gly	Ser	Glu	Val	Glu	Asn	Val	Ser	Val	Asn	Val	His	Asn	
					85					90					95		
55	Pro	Thr	Gly	Arg	Ser	Ile	Cys	Pro	Ser	Gln	Glu	Pro	Met	Ser	Ile	Tyr	
				100					105					110			
60	Val	Tyr	Ala	Leu	Pro	Leu	Lys	Met	Leu	Asn	Ile	Pro	Ser	Ile	Asn	Val	
			115					120					125				
65	His	His	Tyr	Pro	Ser	Ala	Ala	Glu	Arg	Lys	His	Arg	His	Leu	Pro	Val	
	130						135					140					
70	Ala	Asp	Ala	Val	Ile	His	Ala	Ser	Gly	Lys	Gln	Met	Trp	Gln	Ala	Arg	

EP 3 258 265 A1

	145					150						155				160
5	Leu	Thr	Val	Ser	Gly	Leu	Ala	Trp	Thr	Arg	Gln	Gln	Asn	Gln	Trp	Lys
					165					170					175	
10	Glu	Pro	Asp	Val	Tyr	Tyr	Thr	Ser	Ala	Phe	Val	Phe	Pro	Thr	Lys	Asp
				180					185					190		
15	Val	Ala	Leu	Arg	His	Val	Val	Cys	Ala	His	Glu	Leu	Val	Cys	Ser	Met
			195					200					205			
20	Glu	Asn	Thr	Arg	Ala	Thr	Lys	Met	Gln	Val	Ile	Gly	Asp	Gln	Tyr	Val
		210					215					220				
25	Lys	Val	Tyr	Leu	Glu	Ser	Phe	Cys	Glu	Asp	Val	Pro	Ser	Gly	Lys	Leu
	225					230					235					240
30	Phe	Met	His	Val	Thr	Leu	Gly	Ser	Asp	Val	Glu	Glu	Asp	Leu	Thr	Met
				245						250					255	
35	Thr	Arg	Asn	Pro	Gln	Pro	Phe	Met	Arg	Pro	His	Glu	Arg	Asn	Gly	Phe
			260						265					270		
40	Thr	Val	Leu	Cys	Pro	Lys	Asn	Met	Ile	Ile	Lys	Pro	Gly	Lys	Ile	Ser
		275					280						285			
45	His	Ile	Met	Leu	Asp	Val	Ala	Phe	Thr	Ser	His	Glu	His	Phe	Gly	Leu
		290					295					300				
50	Leu	Cys	Pro	Lys	Ser	Ile	Pro	Gly	Leu	Ser	Ile	Ser	Gly	Asn	Leu	Leu
	305					310					315					320
55	Met	Asn	Gly	Gln	Gln	Ile	Phe	Leu	Glu	Val	Gln	Ala	Ile	Arg	Glu	Thr
				325						330					335	
60	Val	Glu	Leu	Arg	Gln	Tyr	Asp	Pro	Val	Ala	Ala	Leu	Phe	Phe	Phe	Asp
			340						345					350		
65	Ile	Asp	Leu	Leu	Leu	Gln	Arg	Gly	Pro	Gln	Tyr	Ser	Glu	His	Pro	Thr
			355					360					365			
70	Phe	Thr	Ser	Gln	Tyr	Arg	Ile	Gln	Gly	Lys	Leu	Glu	Tyr	Arg	His	Thr
		370					375					380				
75	Trp	Asp	Arg	His	Asp	Glu	Gly	Ala	Ala	Gln	Gly	Asp	Asp	Asp	Val	Trp
	385					390					395					400

EP 3 258 265 A1

Thr Ser Gly Ser Asp Ser Asp Glu Glu Leu Val Thr Thr Glu Arg Lys  
 405 410 415  
 5 Thr Pro Arg Val Thr Gly Gly Gly Ala Met Ala Gly Ala Ser Thr Ser  
 420 425 430  
 10 Ala Gly Arg Lys Arg Lys Ser Ala Ser Ser Ala Thr Ala Cys Thr Ser  
 435 440 445  
 15 Gly Val Met Thr Arg Gly Arg Leu Lys Ala Glu Ser Thr Val Ala Pro  
 450 455 460  
 20 Glu Glu Asp Thr Asp Glu Asp Ser Asp Asn Glu Ile His Asn Pro Ala  
 465 470 475 480  
 25 Val Phe Thr Trp Pro Pro Trp Gln Ala Gly Ile Leu Ala Arg Asn Leu  
 485 490 495  
 30 Val Pro Met Val Ala Thr Val Gln Gly Gln Asn Leu Lys Tyr Gln Glu  
 500 505 510  
 35 Phe Phe Trp Asp Ala Asn Asp Ile Tyr Arg Ile Phe Ala Glu Leu Glu  
 515 520 525  
 40 Gly Val Trp Gln Pro Ala Ala Gln Pro Lys Arg Arg Arg His Arg Gln  
 530 535 540  
 45 Asp Ala Leu Pro Gly Pro Cys Ile Ala Ser Thr Pro Lys Lys His Arg  
 545 550 555 560  
 Gly  
 50 <210> 5  
 <211> 433  
 <212> PRT  
 <213> Human cytomegalovirus  
 <400> 5  
 55 Met Asp Arg Lys Thr Arg Leu Ser Glu Pro Pro Thr Leu Ala Leu Arg  
 1 5 10 15  
 Leu Lys Pro Tyr Lys Thr Ala Ile Gln Gln Leu Arg Ser Val Ile Arg  
 20 25 30  
 60 Ala Leu Lys Glu Asn Thr Thr Val Thr Phe Leu Pro Thr Pro Ser Leu  
 35 40 45

EP 3 258 265 A1

Ile Leu Gln Thr Val Arg Ser His Cys Val Ser Lys Ile Thr Phe Asn  
50 55 60

5 Ser Ser Cys Leu Tyr Ile Thr Asp Lys Ser Phe Gln Pro Lys Thr Ile  
65 70 75 80

10 Asn Asn Ser Thr Pro Leu Leu Gly Asn Phe Met Tyr Leu Thr Ser Ser  
85 90 95

Lys Asp Leu Thr Lys Phe Tyr Val Gln Asp Ile Ser Asp Leu Ser Ala  
100 105 110

15 Lys Ile Ser Met Cys Ala Pro Asp Phe Asn Met Glu Phe Ser Ser Ala  
115 120 125

20 Cys Val His Gly Gln Asp Ile Val Arg Glu Ser Glu Asn Ser Ala Val  
130 135 140

25 His Val Asp Leu Asp Phe Gly Val Val Ala Asp Leu Leu Lys Trp Ile  
145 150 155 160

Gly Pro His Thr Arg Val Lys Arg Asn Val Lys Lys Ala Pro Cys Pro  
165 170 175

30 Thr Gly Thr Val Gln Ile Leu Val His Ala Gly Pro Pro Ala Ile Lys  
180 185 190

35 Phe Ile Leu Thr Asn Gly Ser Glu Leu Glu Phe Thr Ser Asn Asn Arg  
195 200 205

40 Val Ser Phe His Gly Val Lys Asn Met Arg Ile Asn Val Gln Leu Lys  
210 215 220

45 Asn Phe Tyr Gln Thr Leu Leu Asn Cys Ala Val Thr Lys Leu Pro Cys  
225 230 235 240

Thr Leu Arg Ile Val Thr Glu His Asp Thr Leu Leu Tyr Val Ala Ser  
245 250 255

50 Arg Asn Gly Leu Phe Ala Val Glu Asn Phe Leu Thr Glu Glu Pro Phe  
260 265 270

Gln Arg Gly Asp Pro Phe Asp Lys Asn Tyr Val Gly Asn Ser Gly Lys  
275 280 285

55 Ser Arg Gly Gly Gly Gly Gly Gly Gly Ser Leu Ser Ser Leu Ala Asn  
290 295 300

EP 3 258 265 A1

Ala Gly Gly Leu His Asp Asp Gly Pro Gly Leu Asp Asn Asp Leu Met  
 305 310 315 320

5 Asn Glu Pro Met Gly Leu Gly Gly Leu Gly Gly Gly Gly Gly Gly  
 325 330 335

10 Gly Lys Lys His Asp Arg Gly Gly Gly Gly Gly Ser Gly Thr Arg Lys  
 340 345 350

15 Met Ser Ser Gly Gly Gly Gly Gly Asp His Asp His Gly Leu Ser Ser  
 355 360 365

Lys Glu Lys Tyr Glu Gln His Lys Ile Thr Ser Tyr Leu Thr Ser Lys  
 370 375 380

20 Gly Gly Ser Gly Gly Gly Gly Gly Gly Gly Gly Gly Gly Gly Leu Asp Arg  
 385 390 395 400

25 Asn Ser Gly Asn Tyr Phe Asn Asp Ala Lys Glu Glu Ser Asp Ser Glu  
 405 410 415

30 Asp Ser Val Thr Phe Glu Phe Val Pro Asn Thr Lys Lys Gln Lys Cys  
 420 425 430

Gly

35 <210> 6  
 <211> 373  
 <212> PRT  
 <213> Human cytomegalovirus

40 <400> 6

Met Ser His Pro Leu Ser Ala Ala Val Pro Ala Ala Thr Ala Pro Pro  
 1 5 10 15

45 Gly Ala Thr Val Ala Gly Ala Ser Pro Ala Val Ser Ser Leu Ala Trp  
 20 25 30

50 Pro His Asp Gly Val Tyr Leu Pro Lys Asp Ala Phe Phe Ser Leu Leu  
 35 40 45

Gly Ala Ser Arg Ser Ala Val Pro Val Met Tyr Pro Gly Ala Val Ala  
 50 55 60

55 Ala Pro Pro Ser Ala Ser Pro Ala Pro Leu Pro Leu Pro Ser Tyr Pro  
 65 70 75 80

EP 3 258 265 A1

Ala Ser Tyr Gly Ala Pro Val Val Gly Tyr Asp Gln Leu Ala Ala Arg  
85 90 95

5 His Phe Ala Asp Tyr Val Asp Pro His Tyr Pro Gly Trp Gly Arg Arg  
100 105 110

10 Tyr Glu Pro Ala Pro Ser Leu His Pro Ser Tyr Pro Val Pro Pro Pro  
115 120 125

Pro Ser Pro Ala Tyr Tyr Arg Arg Arg Asp Ser Pro Gly Gly Met Asp  
130 135 140

15 Glu Pro Pro Ser Gly Trp Glu Arg Tyr Asp Gly Gly His Arg Gly Gln  
145 150 155 160

20 Ser Gln Lys Gln His Arg His Gly Gly Ser Gly Gly His Asn Lys Arg  
165 170 175

25 Arg Lys Glu Thr Ala Ala Ala Ser Ser Ser Ser Ser Asp Glu Asp Leu  
180 185 190

Ser Phe Pro Gly Glu Ala Glu His Gly Arg Ala Arg Lys Arg Leu Lys  
195 200 205

30 Ser His Val Asn Ser Asp Gly Gly Ser Gly Gly His Ala Gly Ser Asn  
210 215 220

35 Gln Gln Gln Gln Gln Arg Tyr Asp Glu Leu Arg Asp Ala Ile His Glu  
225 230 235 240

Leu Lys Arg Asp Leu Phe Ala Ala Arg Gln Ser Ser Thr Leu Leu Ser  
245 250 255

40 Ala Ala Leu Pro Ser Ala Ala Ser Ser Ser Pro Thr Thr Thr Thr Val  
260 265 270

45 Cys Thr Pro Thr Gly Glu Leu Thr Ser Gly Gly Gly Glu Thr Pro Thr  
275 280 285

Ala Leu Leu Ser Gly Gly Ala Lys Val Ala Glu Arg Ala Gln Ala Gly  
290 295 300

50 Val Val Asn Ala Ser Cys Arg Leu Ala Thr Ala Ser Gly Ser Glu Ala  
305 310 315 320

55 Ala Thr Ala Gly Pro Ser Thr Ala Gly Ser Ser Ser Cys Pro Ala Ser  
325 330 335

EP 3 258 265 A1

Val Val Leu Ala Ala Ala Ala Ala Gln Ala Ala Ala Ala Ser Gln Ser  
 340 345 350

5 Pro Pro Lys Asp Met Val Asp Leu Asn Arg Arg Ile Phe Val Ala Ala  
 355 360 365

10 Leu Asn Lys Leu Glu  
 370

<210> 7  
 <211> 75  
 <212> PRT  
 15 <213> Human cytomegalovirus

<400> 7

20 Met Ser Asn Thr Ala Pro Gly Pro Thr Val Ala Asn Lys Arg Asp Glu  
 1 5 10 15

Lys His Arg His Val Val Asn Val Val Leu Glu Leu Pro Thr Glu Ile  
 20 25 30

25 Ser Glu Ala Thr His Pro Val Leu Ala Thr Met Leu Ser Lys Tyr Thr  
 35 40 45

30 Arg Met Ser Ser Leu Phe Asn Asp Lys Cys Ala Phe Lys Leu Asp Leu  
 50 55 60

35 Leu Arg Met Val Ala Val Ser Arg Thr Arg Arg  
 65 70 75

<210> 8  
 <211> 27  
 <212> DNA  
 40 <213> artificial

<220>  
 <223> primer

45 <400> 8  
 ggatccatga gtttgcagtt tatcgg

27

<210> 9  
 <211> 27  
 <212> DNA  
 50 <213> artificial

<220>  
 <223> primer

55 <400> 9  
 gctagcttcc tccgtgttct taatctt

27

<210> 10  
 <211> 27  
 <212> DNA  
 <213> artificial  
 5  
 <220>  
 <223> primer  
 <400> 10  
 10 ggatccatgg agtcgcgcgg tcgccgt 27  
 <210> 11  
 <211> 27  
 <212> DNA  
 15 <213> artificial  
 <220>  
 <223> primer  
 20 <400> 11  
 gctagcacct cggcgctttt tgggcgt 27  
 <210> 12  
 <211> 27  
 25 <212> DNA  
 <213> artificial  
 <220>  
 <223> primer  
 30 <400> 12  
 ggatccatgg atcgcaagac ggcctc 27  
 <210> 13  
 <211> 27  
 35 <212> DNA  
 <213> artificial  
 <220>  
 <223> primer  
 40 <400> 13  
 gctagcgccg cacttttgct tcttggt 27  
 <210> 14  
 <211> 27  
 45 <212> DNA  
 <213> artificial  
 <220>  
 <223> primer  
 50 <400> 14  
 gaattcatgt cgcaccctct gaggct 27  
 55 <210> 15

<211> 27  
 <212> DNA  
 <213> artificial

5  
 <220>  
 <223> primer

<400> 15  
 gctagcctcg agcttattga ggcgagc 27

10  
 <210> 16  
 <211> 27  
 <212> DNA  
 <213> artificial

15  
 <220>  
 <223> primer

<400> 16  
 ggatccatgg gtgccgaact ctgcaaa 27

20  
 <210> 17  
 <211> 27  
 <212> DNA  
 <213> artificial

25  
 <220>  
 <223> primer

<400> 17  
 gaattcaaag ggcaaggagg cggcggg 27

30  
 <210> 18  
 <211> 27  
 <212> DNA  
 <213> artificial

35  
 <220>  
 <223> primer

<400> 18  
 ggatccatgt ctaacaccgc gccggga 27

40  
 <210> 19  
 <211> 24  
 <212> DNA  
 <213> artificial

45  
 <220>  
 <223> primer

<400> 19  
 gaattcgcgc cgggtgcgcg acac 24

50  
 <210> 19  
 <211> 24  
 <212> DNA  
 <213> artificial

55  
 <220>  
 <223> primer

**Claims**

1. A method for assessing whether a subject is at risk of developing human cytomegalovirus (HCMV) active infection, comprising the following steps of:

(1) determining the level of an antibody against a HCMV protein in a body fluid sample from the subject; and  
 (2) comparing the level with a predetermined reference value;

wherein, the HCMV protein is selected from pp150 and/or pp28; and if the level is below the reference value, the subject is determined to be at risk of developing HCMV active infection;

preferably, the subject is a mammal, such as human;

preferably, the body fluid sample is selected from blood, serum, plasma, urine and saliva; preferably, the active infection is a primary infection by HCMV in a subject that has not been infected by HCMV, or, a re-infection by HCMV or activation of latent HCMV in a subject that has been infected by HCMV;

preferably, the level of the antibody against the HCMV protein in the body fluid sample is determined by immunologic assay; more preferably, the immunologic assay is selected from ELISA assay, Western Blot, surface plasmon resonance, and Elispot assay;

preferably, the level refers to an antibody titer (for example, an antibody titer determined by ELISA), and the reference value refers to a predetermined antibody titer; or the level is an antibody absolute quantity (for example, an absolute quantity expressed by IU/ml) and the reference value refers to a predetermined antibody absolute quantity (for example, an absolute quantity expressed by IU/ml).

2. The method according to claim 1, wherein in the step (1), the antibody titer of the antibody against pp150 and/or pp28 in the body fluid sample is determined by ELISA;

preferably, the reference value is an antibody titer in a range of 40-320; more preferably, the reference value is an antibody titer in a range of 40-160; for example, the reference value is an antibody titer of 40, 80 or 160;

preferably, the reference value is 40, and if the antibody titer of the antibody against pp150 is below or equal to 40, the subject is determined to have a relative risk of 11.2 for developing HCMV active infection, with 95% CI of 8.7-14.6;

and/or, the subject is determined to have a probability of 55.37% for developing HCMV active infection; or, the reference value is 80, and if the antibody titer of the antibody against pp150 is below or equal to 80, the subject is determined to have a relative risk of 10.6 for developing HCMV active infection, with 95% CI of 7.7-14.6, and/or,

the subject is determined to have a probability of 36.98% for developing HCMV active infection; or, the reference value is 160, and if the antibody titer of the antibody against pp150 is below or equal to 160, the subject is determined to have a relative risk of 14.8 for developing HCMV active infection, with 95% CI of 9.0-24.6; and/or, the subject is determined to have a probability of 23.66% for developing HCMV active infection; preferably, the reference value is an antibody titer of 80;

preferably, pp150 and/or an antigenic fragment thereof (for example, a fragment comprising aa 861-1048 of pp150) is used to determine the antibody titer of the antibody against pp150 in the body fluid sample by ELISA; and/or, pp28 and/or an antigenic fragment thereof is used to determine the antibody titer of the antibody against pp28 in the body fluid sample by ELISA; preferably, pp150 has an amino acid sequence set forth in SEQ ID NO: 1; and/or, the antigenic fragment of pp150 has an amino acid sequence set forth in SEQ ID NO: 2; and/or pp28 has an amino acid sequence set forth in SEQ ID NO: 3.

3. The method according to claim 1, wherein, in the step (1), the absolute quantity of (for example, an absolute quantity expressed by IU/ml) the antibody against pp150 and/or pp28 in the body fluid sample is determined;

preferably, the absolute quantity of the antibody against pp150 and/or pp28 in the body fluid sample is determined by comparing the reactivity of the antibody against pp150 and/or pp28 in the body fluid sample with the antibody reactivity of a standard sample with a known antibody content; preferably, the reference value is an antibody absolute quantity in a range of 0.8-6.4 IU/ml; more preferably, the reference value is an antibody absolute quantity in a range of 0.8-3.2 IU/ml; for example, the reference value is an antibody absolute quantity of 0.8, 1.6, or 3.2 IU/ml;

preferably, the reference value is 0.8 IU/ml, and if the absolute quantity of the antibody against pp150 is below or equal to 0.8 IU/ml, the subject is determined to have a relative risk of 11.6 for developing HCMV active infection, with 95% CI of 7.8-17.2; and/or, the subject is determined to have a probability of 60.0% for developing HCMV active infection; or, the reference value is 1.6 IU/ml, and if the absolute quantity of the antibody against pp150 is below or equal to 1.6 IU/ml, the subject is determined to have a relative risk of 15.2 for developing HCMV active infection, with 95% CI of 9.5-24.3; and/or, the subject is determined to have a probability of 50.0% for developing HCMV active infection; or, the reference value is 3.2 IU/ml, and if the absolute quantity of the antibody against pp150 is below or equal to 3.2 IU/ml, the subject is determined to have a relative risk of 19.0 for developing HCMV active infection,

with 95% CI of 9.6-37.7, and/or, the subject is determined to have a probability of 31.3% for developing HCMV active infection; preferably, the reference value is an antibody absolute quantity of 3.2 IU/ml.

4. The method according to any one of claims 1-3, further comprising:

before the step (1), providing a body fluid sample from the subject; and/or  
after the step (2), administering a vaccine or antibody against HCMV to the subject that is determined to be at risk of developing HCMV active infection, so as to reduce the risk of developing HCMV active infection in the subject.

5. Use of a reagent capable of determining the level of an antibody against a HCMV protein in the manufacture of a kit for assessing whether a subject is at risk of developing human cytomegalovirus (HCMV) active infection by determining the level of the antibody against the HCMV protein in a body fluid sample from the subject; wherein the HCMV protein is selected from pp150 and/or pp28;

preferably, the reagent is capable of determining the level of an antibody against a HCMV protein by immunologic assay; more preferably, the immunologic assay is selected from ELISA assay, Western Blot, surface plasmon resonance, and Elispot assay;

preferably, the reagent is selected from: the HCMV protein or an antigenic fragment thereof, a fusion protein comprising the HCMV protein or an antigenic fragment thereof, and any combination thereof;

preferably, the HCMV protein is pp150, and the reagent is pp150 and/or an antigenic fragment thereof (for example, a fragment comprising aa 861-1048 of pp150); or, the HCMV protein is pp28, and the reagent is pp28 and/or an antigenic fragment thereof; or, the HCMV protein is pp150 and pp28, and the reagent comprises: pp150 and/or an antigenic fragment thereof (for example, a fragment comprising aa 861-1048 of pp150) as a first component, and pp28 and/or an antigenic fragment thereof as a second component; preferably, pp150 has an amino acid sequence set forth in SEQ ID NO: 1; and/or, the antigenic fragment of pp150 has an amino acid sequence set forth in SEQ ID NO: 2; and/or, pp28 has an amino acid sequence set forth in SEQ ID NO: 3;

preferably, the subject is a mammal, such as human;

preferably, the body fluid sample is selected from blood, serum, plasma, urine and saliva; preferably, the active infection is a primary infection by HCMV in a subject that has not been infected by HCMV, or a re-infection by HCMV or activation of latent HCMV in a subject that has been infected by HCMV;

preferably, the kit further comprises: (i) a device for collecting or storing the body fluid sample from the subject; (ii) additional reagents necessary for the assay (for example, a buffer, a diluent, a blocking solution, a labelled anti-antibody, and/or a standard sample); and/or, (iii) a vaccine or antibody against HCMV;

preferably, the kit is used to assess whether a subject is at risk of developing human cytomegalovirus (HCMV) active infection via a method comprising the following steps of: (1) using the reagent to determine the level of the antibody against the HCMV protein in a body fluid sample from the subject; and (2) comparing the level with a predetermined reference value; wherein, if the level is below the reference value, the subject is determined to be at risk of developing HCMV active infection;

more preferably, in the method, the level refers to an antibody titer (for example, an antibody titer determined by ELISA), and the reference value refers to a predetermined antibody titer; or, the level refers to an antibody absolute quantity (for example, an absolute quantity expressed by IU/ml), and the reference value refers to a predetermined antibody absolute quantity (for example, an absolute quantity expressed by IU/ml);

preferably, in the method, in the step (1), the antibody titer of an antibody against pp150 and/or pp28 in the body fluid sample is determined by ELISA; preferably, pp150 and/or an antigenic fragment thereof (for example, a fragment comprising aa 861-1048 of pp150) is used to determine the antibody titer of the antibody against pp150 in the body fluid sample by ELISA; and/or, pp28 and/or an antigenic fragment thereof is used to determine the antibody titer of the antibody against pp28 in the body fluid sample by ELISA; preferably, the reference value is an antibody titer in a range of 40-320; more preferably, the reference value is an antibody titer in a range of 40-160; for example, the reference value is an antibody titer of 40, 80 or 160;

more preferably, the reference value is 40, and if the antibody titer of the antibody against pp150 is below or equal to 40, the subject is determined to have a relative risk of 11.2 for developing HCMV active infection, with 95% CI of 8.7-14.6; and/or, the subject is determined to have a probability of 55.37% for developing HCMV active infection; or, the reference value is 80, and if the antibody titer of the antibody against pp150 is below or equal to 80, the subject is determined to have a relative risk of 10.6 for developing HCMV active infection, with 95% CI of 7.7-14.6, and/or, the subject is determined to have a probability of 36.98% for developing HCMV active infection; or, the reference value is 160, and if the antibody titer of the antibody against pp150 is below or equal to 160, the subject is determined to have a relative risk of 14.8 for developing HCMV active infection, with 95% CI of 9.0-24.6; and/or, the subject is determined to have a probability of 23.66% for developing HCMV active infection; preferably, the

reference value is an antibody titer of 80;

preferably, in the method, in the step (1), the absolute quantity of the antibody against pp150 and/or pp28 in the body fluid sample (for example, an absolute quantity expressed by IU/ml) is determined; preferably, the absolute quantity of the antibody against pp150 and/or pp28 in the body fluid sample is determined by comparing the reactivity of the antibody against pp150 and/or pp28 in the body fluid sample with the antibody reactivity of a standard sample with a known antibody content; preferably, the reference value is an antibody absolute quantity in a range of 0.8-6.4 IU/ml; more preferably, the reference value is an antibody absolute quantity in a range of 0.8-3.2 IU/ml; for example, the reference value is an antibody absolute quantity of 0.8, 1.6, or 3.2 IU/ml;

more preferably, the reference value is 0.8 IU/ml, and if the absolute quantity of the antibody against pp150 is below or equal to 0.8 IU/ml, the subject is determined to have a relative risk of 11.6 for developing HCMV active infection, with 95% CI of 7.8-17.2, and/or, the subject is determined to have a probability of 60.0% for developing HCMV active infection; or, the reference value is 1.6 IU/ml, and if the absolute quantity of the antibody against pp150 is below or equal to 1.6 IU/ml, the subject is determined to have a relative risk of 15.2 for developing HCMV active infection, with 95% CI of 9.5-24.3, and/or, the subject is determined to have a probability of 50.0% for developing HCMV active infection; or, the reference value is 3.2 IU/ml, and if the absolute quantity of the antibody against pp150 is below or equal to 3.2 IU/ml, the subject is determined to have a relative risk of 19.0 for developing HCMV active infection, with 95% CI of 9.6-37.7, and/or, the subject is determined to have a probability of 31.3% for developing HCMV active infection; preferably, the reference value is an antibody absolute quantity of 3.2 IU/ml.

6. A kit for assessing whether a subject is at risk of developing human cytomegalovirus (HCMV) active infection, comprising a reagent capable of determining the level of an antibody against a HCMV protein, and optionally, instructions of using the reagent to determine the level of an antibody against a HCMV protein in a body fluid sample from the subject so as to assess whether the subject is at risk of developing human cytomegalovirus (HCMV) active infection; wherein the HCMV protein is selected from pp150 and/or pp28;

preferably, the reagent is capable of determining the level of an antibody against a HCMV protein by immunologic assay; more preferably, the immunologic assay is selected from ELISA assay, Western Blot, surface plasmon resonance, and Elispot assay;

preferably, the reagent is selected from: the HCMV protein or an antigenic fragment thereof, a fusion protein comprising the HCMV protein or an antigenic fragment thereof, and any combination thereof;

preferably, the HCMV protein is pp150, and the reagent is pp150 and/or an antigenic fragment thereof (for example, a fragment comprising aa 861-1048 of pp150); or, the HCMV protein is pp28, and the reagent is pp28 and/or an antigenic fragment thereof; or, the HCMV protein is pp150 and pp28, and the reagent comprises: pp150 and/or an antigenic fragment thereof (for example, a fragment comprising aa 861-1048 of pp150) as a first component, and pp28 and/or an antigenic fragment thereof as a second component; preferably, pp150 has an amino acid sequence set forth in SEQ ID NO: 1; and/or, the antigenic fragment of pp150 has an amino acid sequence set forth in SEQ ID NO: 2; and/or, pp28 has an amino acid sequence set forth in SEQ ID NO: 3;

preferably, the subject is a mammal, such as human;

preferably, the body fluid sample is selected from blood, serum, plasma, urine and saliva; preferably, the active infection is a primary infection by HCMV in a subject that has not been infected by HCMV, or, a re-infection by HCMV or activation of latent HCMV in a subject that has been infected by HCMV;

preferably, the kit further comprises: (i) a device for collecting or storing the body fluid sample from the subject; (ii) additional reagents necessary for the assay (for example, a buffer, a diluent, a blocking solution, a labelled anti-antibody, and/or a standard sample); and/or, (iii) a vaccine or antibody against HCMV;

preferably, the kit is used to assess whether a subject is at risk of developing human cytomegalovirus (HCMV) active infection via a method comprising the following steps of: (1) using the reagent to determine the level of the antibody against the HCMV protein in a body fluid sample from the subject; and (2) comparing the level with a predetermined reference value; wherein, if the level is below the reference value, the subject is determined to be at risk of developing HCMV active infection;

more preferably, in the method, the level refers to an antibody titer (for example, an antibody titer determined by ELISA), and the reference value refers to a predetermined antibody titer; or, the level refers to an antibody absolute quantity (for example, an absolute quantity expressed by IU/ml), and the reference value refers to a predetermined antibody absolute quantity (for example, an absolute quantity expressed by IU/ml);

preferably, in the method, in the step (1), the antibody titer of the antibody against pp150 and/or pp28 in the body fluid sample is determined by ELISA; preferably, pp150 and/or an antigenic fragment thereof (for example, a fragment comprising aa 861-1048 of pp150) is used to determine the antibody titer of the antibody against pp150 in the body fluid sample by ELISA; and/or, pp28 and/or an antigenic fragment thereof is used to determine the antibody titer of the antibody against pp28 in the body fluid sample by ELISA; preferably, the reference value is an antibody titer in a range of 40-320; more preferably, the reference value is an antibody titer in a range of 40-160; for example, the

reference value is an antibody titer of 40, 80 or 160;

more preferably, the reference value is 40, and if the antibody titer of the antibody against pp150 is below or equal to 40, the subject is determined to have a relative risk of 11.2 for developing HCMV active infection, with 95% CI of 8.7-14.6, and/or, the subject is determined to have a probability of 55.37% for developing HCMV active infection; or, the reference value is 80, and if the antibody titer of the antibody against pp150 is below or equal to 80, the subject is determined to have a relative risk of 10.6 for developing HCMV active infection, with 95% CI of 7.7-14.6, and/or, the subject is determined to have a probability of 36.98% for developing HCMV active infection; or, the reference value is 160, and if the antibody titer of the antibody against pp150 is below or equal to 160, the subject is determined to have a relative risk of 14.8 for developing HCMV active infection, with 95% CI of 9.0-24.6, and/or, the subject is determined to have a probability of 23.66% for developing HCMV active infection; preferably, the reference value is an antibody titer of 80;

preferably, in the method, in the step (1), the absolute quantity of the antibody against pp150 and/or pp28 in the body fluid sample (for example, an absolute quantity expressed by IU/ml) is determined; preferably, the absolute quantity of the antibody against pp150 and/or pp28 in the body fluid sample is determined by comparing the reactivity of the antibody against pp150 and/or pp28 in the body fluid sample with the antibody reactivity of a standard sample with a known antibody content; preferably, the reference value is an antibody absolute quantity in a range of 0.8-6.4 IU/ml; more preferably, the reference value is an antibody absolute quantity in a range of 0.8-3.2 IU/ml; for example, the reference value is an antibody absolute quantity of 0.8, 1.6, or 3.2 IU/ml;

more preferably, the reference value is 0.8 IU/ml, and if the absolute quantity of the antibody against pp150 is below or equal to 0.8 IU/ml, the subject is determined to have a relative risk of 11.6 for developing HCMV active infection, with 95% CI of 7.8-17.2, and/or, the subject is determined to have a probability of 60.0% for developing HCMV active infection; or, the reference value is 1.6 IU/ml, and if the absolute quantity of the antibody against pp150 is below or equal to 1.6 IU/ml, the subject is determined to have a relative risk of 15.2 for developing HCMV active infection, with 95% CI of 9.5-24.3, and/or, the subject is determined to have a probability of 50.0% for developing HCMV active infection; or, the reference value is 3.2 IU/ml, and if the absolute quantity of the antibody against pp150 is below or equal to 3.2 IU/ml, the subject is determined to have a relative risk of 19.0 for developing HCMV active infection, with 95% CI of 9.6-37.7, and/or, the subject is determined to have a probability of 31.3% for developing HCMV active infection; preferably, the reference value is an antibody absolute quantity of 3.2 IU/ml.

7. A method for screening a candidate drug capable of improving the ability of a subject to resist human cytomegalovirus (HCMV) active infection or reducing the risk of developing human cytomegalovirus (HCMV) active infection in a subject, comprising the following steps:

- (1) before administering a candidate drug to a test animal, determining a first level of an antibody against a HCMV protein in a body fluid sample from the test animal;
- (2) administering the candidate drug to the test animal;
- (3) after administering the candidate drug to the test animal, determining a second level of the antibody against the HCMV protein in the body fluid sample from the test animal;
- (4) comparing the first level with the second level, wherein, if the first level is below the second level, the candidate drug is determined to be capable of improving the ability of a subject to resist human cytomegalovirus (HCMV) active infection or reducing the risk of developing human cytomegalovirus (HCMV) active infection in a subject;

wherein the HCMV protein is selected from pp150 and/or pp28; preferably, the test animal is a non-human mammal, for example, a model animal (for example, mouse, rat, rabbit, primate);

preferably, the body fluid sample is selected from blood, serum, plasma, urine and saliva; preferably, the subject is a mammal, such as human;

preferably, the active infection is a primary infection by HCMV in a subject that has not been infected by HCMV, or, a re-infection by HCMV or activation of latent HCMV in a subject that has been infected by HCMV;

preferably, the level of an antibody against a HCMV protein in the body fluid sample is determined by immunologic assay; more preferably, the immunologic assay is selected from ELISA assay, Western Blot, surface plasmon resonance, and Elispot assay;

preferably, the first level and the second level refer to an antibody titer (for example, an antibody titer determined by ELISA); or, the first level and the second level refer to an antibody absolute quantity (for example, an absolute quantity expressed by IU/ml);

preferably, in the steps (1) and (3), the first level and the second level of the antibody against pp150 and/or pp28 in the body fluid sample are determined by ELISA; preferably, pp150 and/or an antigenic fragment thereof (for example, a fragment comprising aa 861-1048 of pp150) is used to determine the first level and the second level of

the antibody against pp150 in the body fluid sample by ELISA; and/or, pp28 and/or an antigenic fragment thereof is used to determine the first level and the second level of the antibody against pp28 in the body fluid sample by ELISA; preferably, pp150 has an amino acid sequence set forth in SEQ ID NO: 1; and/or, the antigenic fragment of pp150 has an amino acid sequence set forth in SEQ ID NO: 2; and/or, pp28 has an amino acid sequence set forth in SEQ ID NO: 3;

preferably, the first level and the second level of the antibody against pp150 and/or pp28 in the body fluid sample is determined by comparing the reactivity of the antibody against pp150 and/or pp28 in the body fluid sample with the antibody reactivity of a standard sample with a known antibody content.

8. Use of a reagent capable of determining the level of an antibody against a HCMV protein in the manufacture of a kit for screening a candidate drug capable of improving the ability of a subject to resist human cytomegalovirus (HCMV) active infection or reducing the risk of developing human cytomegalovirus (HCMV) active infection in a subject; wherein the HCMV protein is selected from pp150 and/or pp28;

preferably, the reagent is capable of determining the level of an antibody against a HCMV protein by immunologic assay; more preferably, the immunologic assay is selected from ELISA assay, Western Blot, surface plasmon resonance, and ELISPOT assay;

preferably, the reagent is selected from: the HCMV protein or an antigenic fragment thereof, a fusion protein comprising the HCMV protein or an antigenic fragment thereof, and any combination thereof;

preferably, the HCMV protein is pp150, and the reagent is pp150 and/or an antigenic fragment thereof (for example, a fragment comprising aa 861-1048 of pp150); or, the HCMV protein is pp28, and the reagent is pp28 and/or an antigenic fragment thereof; or, the HCMV protein is pp150 and pp28, and the reagent comprises: pp150 and/or an antigenic fragment thereof (for example, a fragment comprising aa 861-1048 of pp150) as a first component, and pp28 and/or an antigenic fragment thereof as a second component; preferably, pp150 has an amino acid sequence set forth in SEQ ID NO: 1; and/or, the antigenic fragment of pp150 has an amino acid sequence set forth in SEQ ID NO: 2; and/or, pp28 has an amino acid sequence set forth in SEQ ID NO: 3;

preferably, the subject is a mammal, such as human;

preferably, the active infection is a primary infection by HCMV in a subject that has not been infected by HCMV, or, a re-infection by HCMV or activation of latent HCMV in a subject that has been infected by HCMV;

preferably, the kit is used to screen a candidate drug capable of improving the ability of a subject to resist human cytomegalovirus (HCMV) active infection or reducing the risk of developing human cytomegalovirus (HCMV) active infection in a subject via the method comprising the following steps of: (1) before administering a candidate drug to a test animal, determining a first level of an antibody against a HCMV protein in a body fluid sample from the test animal; (2) administering the candidate drug to the test animal; (3) after administering the candidate drug to the test animal, determining a second level of the antibody against the HCMV protein in the body fluid sample from the test animal; and (4) comparing the first level with the second level, wherein, if the first level is below the second level, the candidate drug is determined to be capable of improving the ability of a subject to resist human cytomegalovirus (HCMV) active infection or reducing the risk of developing human cytomegalovirus (HCMV) active infection in the subject;

preferably, the test animal is a non-human mammal, such as a model animal (for example, mouse, rat, rabbit, primate);

preferably, the body fluid sample is selected from blood, serum, plasma, urine and saliva; preferably, the kit further comprises: (i) a device for collecting or storing the body fluid sample from the test animal; and/or (ii) additional reagents necessary for determining the first level and the second level (for example, a buffer, a diluent, a blocking solution, a labelled anti-antibody, and/or a standard sample);

preferably, the first level and the second level refer to an antibody titer (for example, an antibody titer determined by ELISA); or, the first level and the second level refer to an antibody absolute quantity (for example, an absolute quantity expressed by IU/ml);

preferably, in the method, in the steps (1) and (3), the first level and the second level of the antibody against pp150 and/or pp28 in the body fluid sample are determined by ELISA; preferably, pp150 and/or an antigenic fragment thereof (for example, a fragment comprising aa 861-1048 of pp150) is used to determine the first level and the second level of the antibody against pp150 in the body fluid sample by ELISA; and/or, pp28 and/or an antigenic fragment thereof is used to determine the first level and the second level of the antibody against pp28 in the body fluid sample by ELISA; preferably, pp150 has an amino acid sequence set forth in SEQ ID NO: 1; and/or, the antigenic fragment of pp150 has an amino acid sequence set forth in SEQ ID NO: 2; and/or, pp28 has an amino acid sequence set forth in SEQ ID NO: 3;

preferably, the first level and the second level of the antibody against pp150 and/or pp28 in the body fluid sample are determined by comparing the reactivity of the antibody against pp150 and/or pp28 in the body fluid sample with the antibody reactivity of a standard sample with a known antibody content.

9. A kit for screening a candidate drug capable of improving the ability of a subject to resist human cytomegalovirus (HCMV) active infection or reducing the risk of developing human cytomegalovirus (HCMV) active infection in a subject, comprising a reagent capable of determining the level of an antibody against a HCMV protein, and optionally, instructions of using the reagent to screen a candidate drug capable of improving the ability of a subject to resist human cytomegalovirus (HCMV) active infection or reducing the risk of developing human cytomegalovirus (HCMV) active infection in a subject; wherein the HCMV protein is selected from pp150 and/or pp28; preferably, the reagent is capable of determining the level of an antibody against a HCMV protein by immunologic assay; more preferably, the immunologic assay is selected from ELISA assay, Western Blot, surface plasmon resonance, and Elispot assay; preferably, the reagent is selected from: the HCMV protein or an antigenic fragment thereof, a fusion protein comprising the HCMV protein or an antigenic fragment thereof, and any combination thereof; preferably, the HCMV protein is pp150, and the reagent is pp150 and/or an antigenic fragment thereof (for example, a fragment comprising aa 861-1048 of pp150); or, the HCMV protein is pp28, and the reagent is pp28 and/or an antigenic fragment thereof; or, the HCMV protein is pp150 and pp28, and the reagent comprises: pp150 and/or an antigenic fragment thereof (for example, a fragment comprising aa 861-1048 of pp150) as a first component, and pp28 and/or an antigenic fragment thereof as a second component; preferably, pp150 has an amino acid sequence set forth in SEQ ID NO: 1; and/or, the antigenic fragment of pp150 has an amino acid sequence set forth in SEQ ID NO: 2; and/or, pp28 has an amino acid sequence set forth in SEQ ID NO: 3; preferably, the subject is a mammal, such as human; preferably, the active infection is a primary infection by HCMV in a subject that has not been infected by HCMV, or, a re-infection by HCMV or activation of latent HCMV in a subject that has been infected by HCMV; preferably, the kit is used to screen a candidate drug capable of improving the ability of a subject to resist human cytomegalovirus (HCMV) active infection or reducing the risk of developing human cytomegalovirus (HCMV) active infection in a subject via the method comprising the following steps of: (1) before administering a candidate drug to a test animal, determining a first level of the antibody against the HCMV protein in a body fluid sample from the test animal; (2) administering the candidate drug to the test animal; (3) after administering the candidate drug to the test animal, determining a second level of the antibody against the HCMV protein in the body fluid sample from the test animal; (4) comparing the first level with the second level, wherein, if the first level is below the second level, the candidate drug is determined to be capable of improving the ability of a subject to resist human cytomegalovirus (HCMV) active infection or reducing the risk of developing human cytomegalovirus (HCMV) active infection in the subject; preferably, the test animal is a non-human mammal, such as a model animal (for example, mouse, rat, rabbit, primate); preferably, the body fluid sample is selected from blood, serum, plasma, urine and saliva; preferably, the kit further comprises: (i) a device for collecting or storing the body fluid sample from the test animal; and/or (ii) additional reagents necessary for determining the first level and the second level (for example, a buffer, a diluent, a blocking solution, a labelled anti-antibody, and/or a standard sample); preferably, the first level and the second level refer to an antibody titer (for example, an antibody titer determined by ELISA); or, the first level and the second level refer to an antibody absolute quantity (for example, an absolute quantity expressed by IU/ml); preferably, in the method, in the steps (1) and (3), the first level and the second level of the antibody against pp150 and/or pp28 in the body fluid sample are determined by ELISA; preferably, pp150 and/or an antigenic fragment thereof (for example, a fragment comprising aa 861-1048 of pp150) is used to determine the first level and the second level of the antibody against pp150 in the body fluid sample by ELISA; and/or, pp28 and/or an antigenic fragment thereof is used to determine the first level and the second level of the antibody against pp28 in the body fluid sample by ELISA; preferably, pp150 has an amino acid sequence set forth in SEQ ID NO: 1; and/or, the antigenic fragment of pp150 has an amino acid sequence set forth in SEQ ID NO: 2; and/or, pp28 has an amino acid sequence set forth in SEQ ID NO: 3; preferably, the first level and the second level of the antibody against pp150 and/or pp28 in the body fluid sample is determined by comparing the reactivity of the antibody against pp150 and/or pp28 in the body fluid sample with the antibody reactivity of a standard sample with a known antibody content.

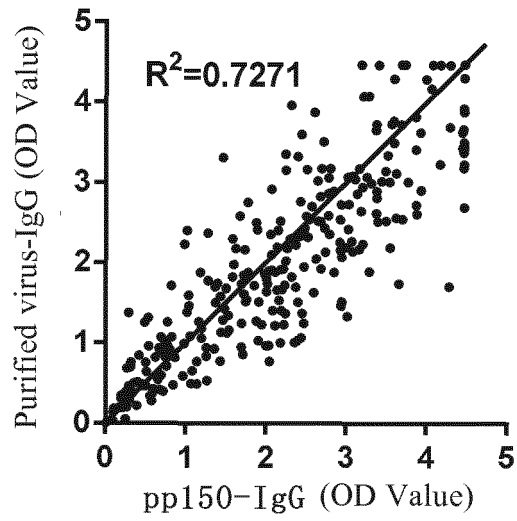


Fig. 1A

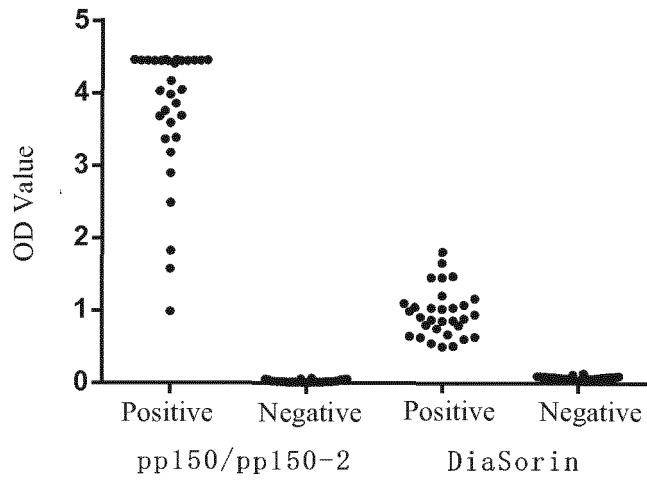


Fig. 1B

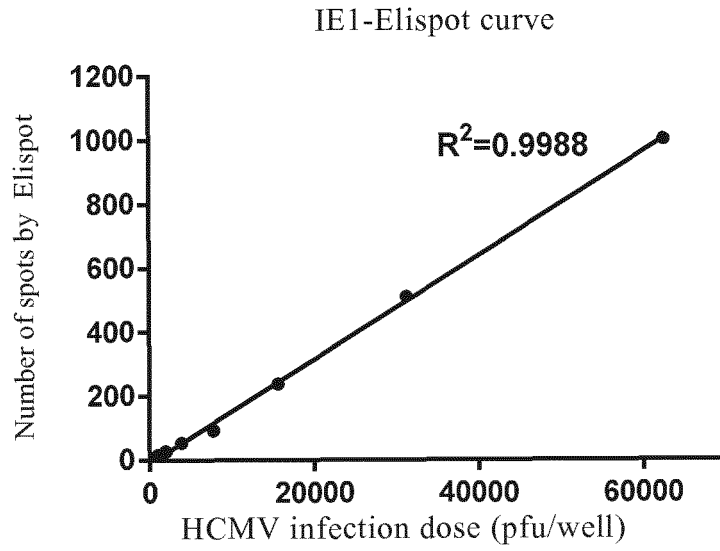


Fig. 2

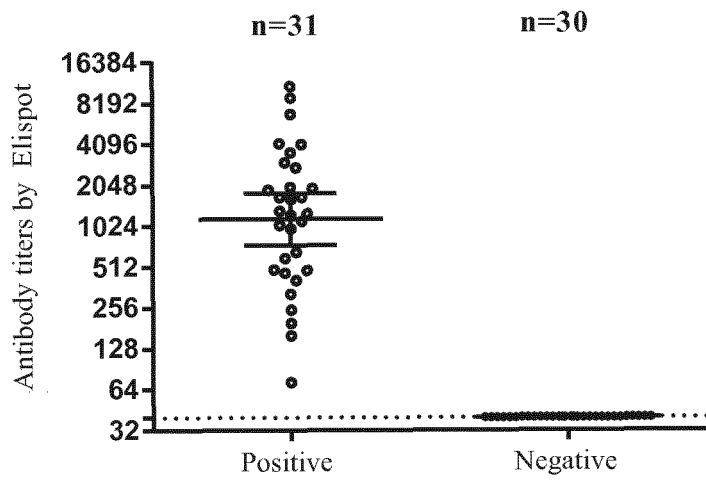


Fig. 3

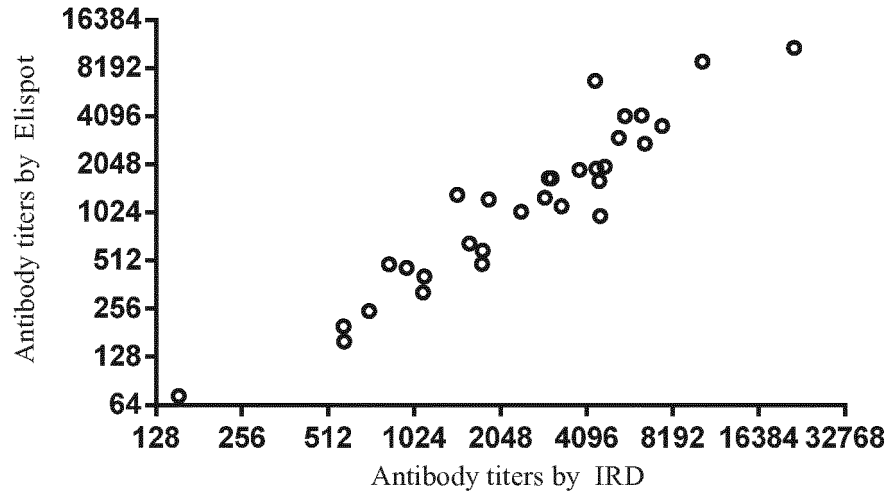


Fig. 4

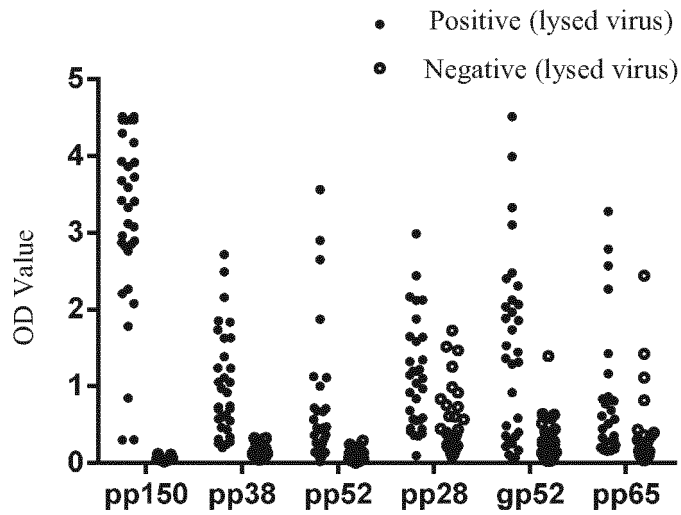


Fig. 5

EP 3 258 265 A1

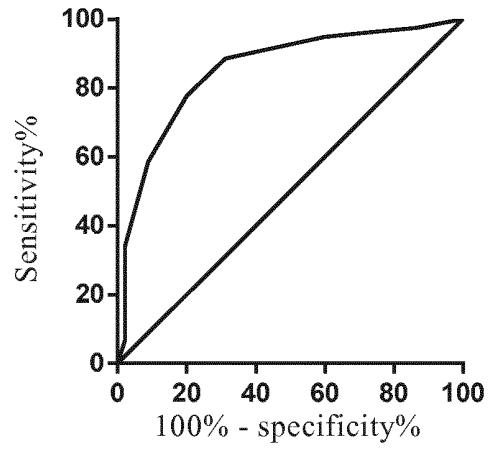


Fig. 6A

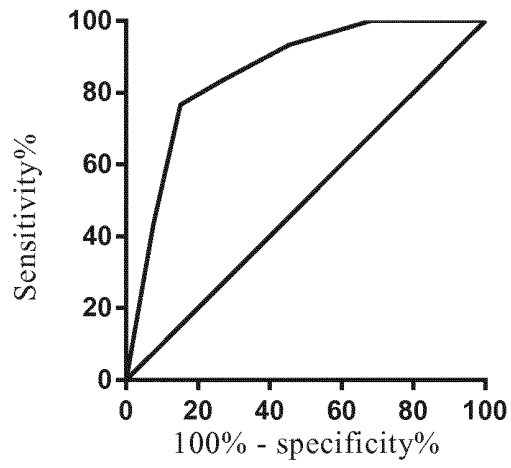


Fig. 6B

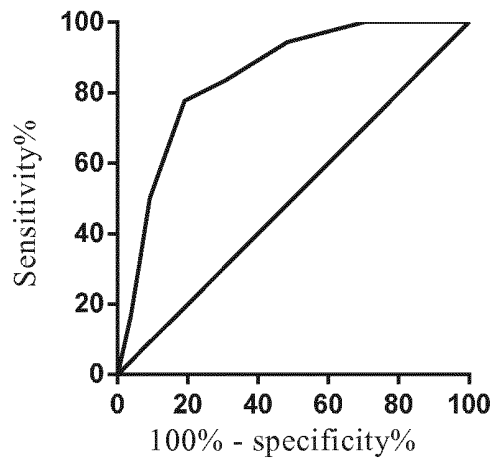


Fig. 6C

EP 3 258 265 A1

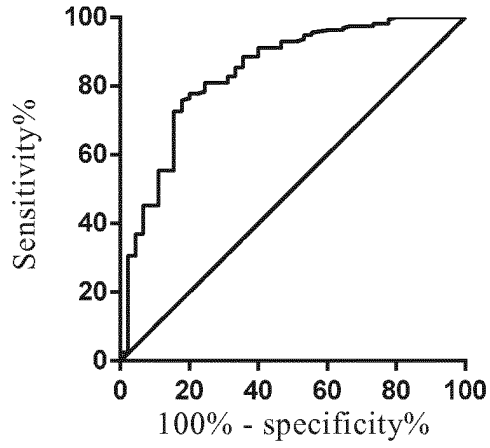


Fig. 7A

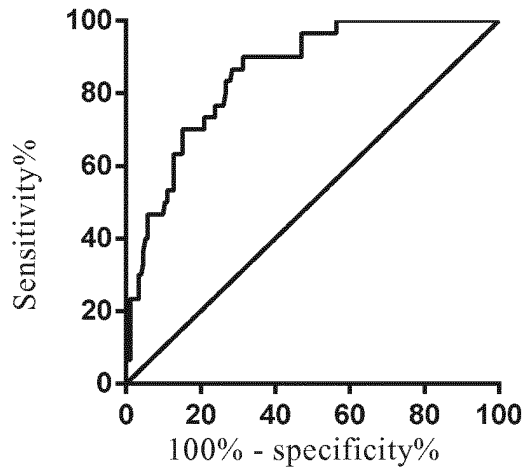


Fig. 7B

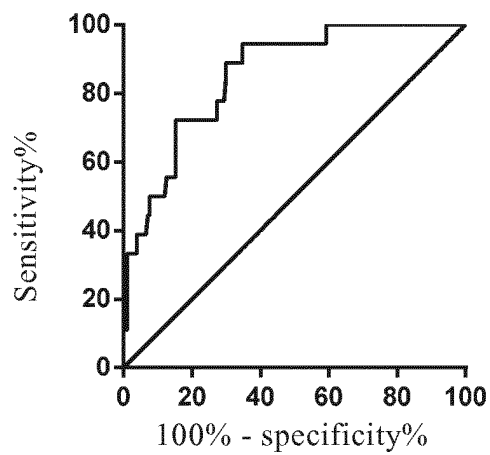


Fig. 7C

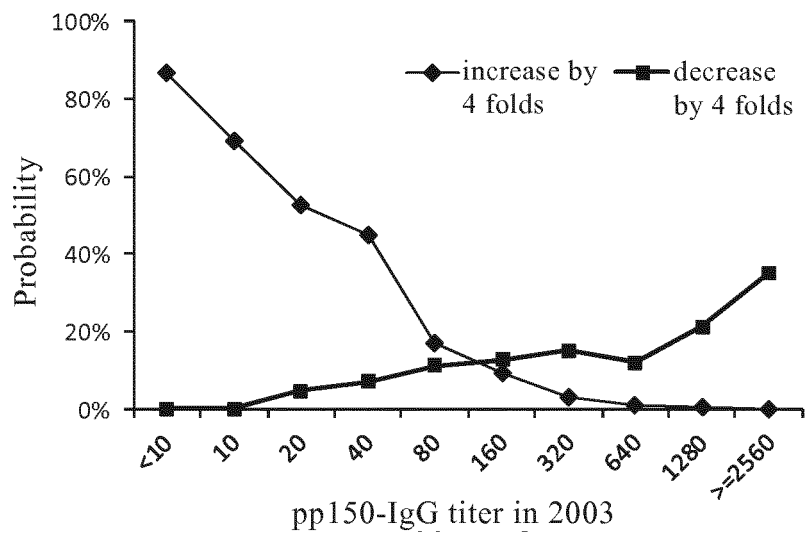
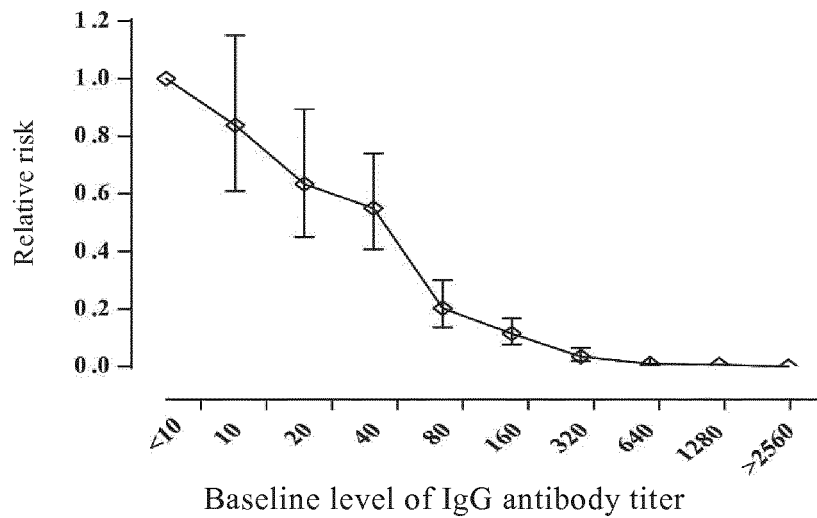


Fig. 8



Total No.	23	26	42	86	161	317	404	359	170	71
No. of infection	19	18	22	39	27	30	12	3	1	0
Infection ratio	82.6	69.2	52.4	45.3	16.8	9.5	3.0	0.8	0.6	0.0

Fig. 9

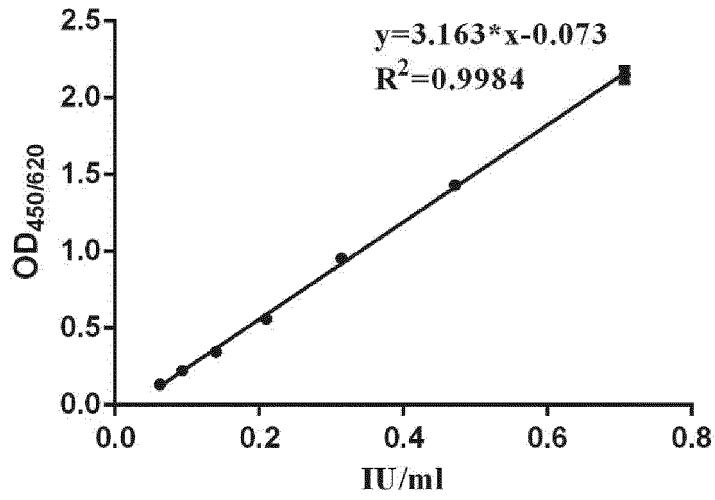


Fig. 10

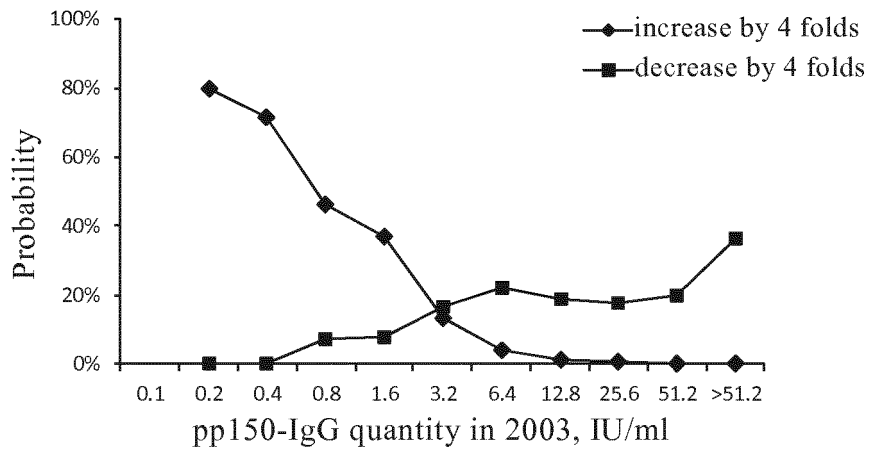


Fig. 11

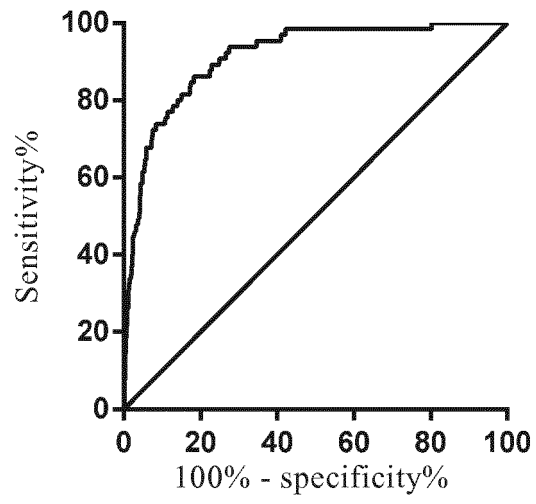


Fig. 12

## INTERNATIONAL SEARCH REPORT

International application No.  
PCT/CN2016/072094

A. CLASSIFICATION OF SUBJECT MATTER	
G01N 33/53 (2006.01) i; G01N 33/569 (2006.01) i; G01N 33/543 (2006.01) i According to International Patent Classification (IPC) or to both national classification and IPC	
B. FIELDS SEARCHED	
Minimum documentation searched (classification system followed by classification symbols) IPC: G01N 33	
Documentation searched other than minimum documentation to the extent that such documents are included in the fields searched	
Electronic data base consulted during the international search (name of data base and, where practicable, search terms used) CNTXT, VEN: CMV, cytomegalovirus, active infection, pp28, UL32, UL99, pp150	
C. DOCUMENTS CONSIDERED TO BE RELEVANT	
Category*	Citation of document, with indication, where appropriate, of the relevant passages
Y	CN 103003694 A (FUJI REBIO KK) 27 March 2013 (27.03.2013) see description, paragraphs [0025]-[0026] and figure 1
Y	CN 102353777 A (SHENZHEN WEIWU GUANGMING BIOLOGICAL PRODUCT) 15 February 2012 (15.02.2012) see description, paragraphs [0029]-[0036]
A	CN 103760347 A (SHANXI MEDICAL UNIVERSITY) 30 April 2014 (30.04.2014) the whole document
A	EP 1304574 A2 (MARCHISIO EDOARDO) 23 April 2003 (23.04.2003) the whole document
<input checked="" type="checkbox"/> Further documents are listed in the continuation of Box C. <input checked="" type="checkbox"/> See patent family annex.	
* Special categories of cited documents:	"T" later document published after the international filing date or priority date and not in conflict with the application but cited to understand the principle or theory underlying the invention
"A" document defining the general state of the art which is not considered to be of particular relevance	"X" document of particular relevance; the claimed invention cannot be considered novel or cannot be considered to involve an inventive step when the document is taken alone
"E" earlier application or patent but published on or after the international filing date	"Y" document of particular relevance; the claimed invention cannot be considered to involve an inventive step when the document is combined with one or more other such documents, such combination being obvious to a person skilled in the art
"L" document which may throw doubts on priority claim(s) or which is cited to establish the publication date of another citation or other special reason (as specified)	"&" document member of the same patent family
"O" document referring to an oral disclosure, use, exhibition or other means	
"P" document published prior to the international filing date but later than the priority date claimed	
Date of the actual completion of the international search 21 April 2016	Date of mailing of the international search report 28 April 2016
Name and mailing address of the ISA State Intellectual Property Office of the P. R. China No. 6, Xitucheng Road, Jimenqiao Haidian District, Beijing 100088, China Facsimile No. (86-10) 62019451	Authorized officer WANG, Lihua Telephone No. (86-10) 62085676

Form PCT/ISA /210 (second sheet) (July 2009)

## INTERNATIONAL SEARCH REPORT

International application No.  
PCT/CN2016/072094

C (Continuation). DOCUMENTS CONSIDERED TO BE RELEVANT		
Category*	Citation of document, with indication, where appropriate, of the relevant passages	Relevant to claim No.
A	US 6074817 A (ABBOTT LAB) 13 June 2000 (13.06.2000) the whole document	1-9
X	ZHANG, Meng et al., Establishment and application of novel method for detecting specific cytomegalovirus IgG antibody, Chinese Journal of Reproductive Health, 31 December 2009 (31.12.2009), no.3, vol. 20, see sections of introduction, material and method, result	1-9
Y	ZHANG, Meng et al., Establishment and application of novel method for detecting specific cytomegalovirus IgG antibody, Chinese Journal of Reproductive Health, 31 December 2009 (31.12.2009), no.3, vol.20, see sections of introduction, material and method, result	1-9
Y	Astrid E. Greijer et al., Molecular fine-specificity analysis of antibody response to human cytomegalovirus and design of novel synthetic-peptide-based serodiagnostic assays, Journal of clinical microbiology, 31 January 1999 (31.01.1999), no.1, vol.37, see page 187, left column, the last paragraph but one	1-9
Y	Rolf Vornhagen et al., Early serodiagnosis of acute human cytomegalovirus infection by enzyme-linked immunosorbent assay using recombinant antigens, Journal of clinical microbiology, 30 April 1994 (30.04.1994), no. 4, vol. 32, see the section of discussion	1-9
Y	Qin, Yiqiu et al., Establishment and evaluation of an indirect enzyme-linked immunosorbent assay based on synthetic peptides for the detection of specific antibodies to Human cytomegalovirus, Laboratory Medicine, 30 November 2008 (30.11.2008), no. 6, vol. 23, see sections of material and method, discussion	1-9

Form PCT/ISA/210 (continuation of second sheet) (July 2009)

**INTERNATIONAL SEARCH REPORT**  
Information on patent family members

International application No.  
PCT/CN2016/072094

Patent Documents referred in the Report	Publication Date	Patent Family	Publication Date
CN 103003694 A	27 March 2013	WO 2012005238 A1	12 January 2012
		EP 2592419 A1	15 May 2013
		US 2013109010 A1	02 May 2013
		EP 2592419 A4	05 March 2014
		JP 5712513 B2	07 May 2015
		JP 2012018051 A	26 January 2012
		KR 20130088845 A	08 August 2013
		CN 102353777 A	02 July 2014
		CN 103760347 A	27 January 2016
		EP 1304574 A2	14 February 2007
US 6074817 A	13 June 2000	ITMI 20012160 A1	18 April 2003
		DE 60218098 D1	29 March 2007
		AT 354093 T	15 March 2007
		EP 1304574 A3	17 December 2003
		JPH 10502253 A	03 March 1998
		ES 2232821 T3	01 June 2005
		ITTO 940543 A1	02 January 1996
		EP 0769057 A1	23 April 1997
		WO 9601321 A1	18 January 1996
		AU 2418895 A	25 January 1996
DE 69533442 D1	07 October 2004	AT 275201 T	15 September 2004
		IT 1266740 B1	14 January 1997
		EP 0769057 B1	01 September 2004
		ITTO 940543 D0	01 July 1994
		JP 3907204 B2	18 April 2007
		DE 69533442 T2	22 September 2005

## REFERENCES CITED IN THE DESCRIPTION

This list of references cited by the applicant is for the reader's convenience only. It does not form part of the European patent document. Even though great care has been taken in compiling the references, errors or omissions cannot be excluded and the EPO disclaims all liability in this regard.

## Non-patent literature cited in the description

- *Rev Med Virol*, 2007, vol. 17, 355-363 [0003]
- **JIANG YI**. Congenital cytomegalovirus infection: transmission from mother to infant and diagnosis. *CHINESE JOURNAL OF NEONATOLOGY*, 2009, vol. 24, 261-265 [0003] [0213]
- **FOWLER KB ; STAGNO S ; PASSRF et al.** The outcome of congenital cytomegalovirus infection in relation to maternal antibody status. *N Engl J Med*, 1992, vol. 326, 663-667.2 [0005]
- **KENNESON A**. CannonMJ. Review and meta - analysis of the epidemiology of congenital cytomegalovirus infection. *Rev Med Virol*, 2007, vol. 17, 253-276 [0005]
- **MANICKLAL S ; EMERY VC ; LAZZAROTTO T ; BOPPANA SB ; GUPTA RK**. The "silent" global burden of congenital cytomegalovirus. *Clin Microbiol Rev*, 2013, vol. 26, 86-102 [0005] [0213]
- **MUSSI-PINHATA MM ; YAMAMOTO AY ; MOURA BRITO RM ; DE LIMA ISAAC M ; DE CARVALHO E OLIVEIRA PF ; BOPPANA S ; BRITT WJ**. Birth prevalence and natural history of congenital cytomegalovirus infection in a highly seroimmune population. *Clin Infect Dis*, 2009, vol. 49, 522-528 [0005]
- **YAMAMOTO AY ; MUSSI-PINHATA MM ; ISAAC MDE L ; AMARAL FR ; CARVALHEIRO CG ; ARAGON DC ; MANFREDI AK ; BOPPANA SB ; BRITT WJ**. Congenital cytomegalovirus infection as a cause of sensorineural hearing loss in a highly immune population. *Pediatr Infect Dis J*, 2011, vol. 30, 1043-1046 [0005]
- **BOPPANA SB ; RIVERA LB ; FOWLER KB ; MACH M ; BRITT WJ**. Intrauterine transmission of cytomegalovirus to infants of women with preconceptional immunity. *N Engl J Med*, 2001, vol. 344, 1366-1371 [0005] [0213]
- **ROSS SA ; ARORA N ; NOVAK Z ; FOWLER KB ; BRITT WJ ; BOPPANA SB**. Cytomegalovirus reinfections in healthy seroimmune women. *J Infect Dis*, 2010, vol. 201, 386-389 [0005] [0213]
- **HE XIAOZHOU ; WANG XIAOFANG ; WANG SHIWEN**. Research Progress in Congenital Cytomegalovirus Infection and Detection Method thereof. *Chinese Journal of Virology*, 2012, vol. 28, 73-77 [0005] [0213]
- **ROSS SA ; NOVAK Z ; PATI S ; BOPPANA SB**. Overview of the diagnosis of cytomegalovirus infection. *Infect Disord Drug Targets*, 2011, vol. 11, 466-474 [0005] [0213]
- **JAHN G ; SCHOLL BC ; TRAUPE B ; FLECKENSTEIN B**. The two major structural phosphoproteins (pp65 and pp150) of human cytomegalovirus and their antigenic properties. *J Gen Virol*, 1987, vol. 68, 1327-1337 [0009] [0213]
- **PLACHTER B ; WIECZOREK L ; SCHOLL BC ; ZIEGELMAIER R ; JAHN G**. Detection of cytomegalovirus antibodies by an enzyme-linked immunosorbent assay using recombinant polypeptides of the large phosphorylated tegument protein pp150. *J Clin Microbiol*, 1992, vol. 30, 201-206 [0009] [0042] [0213]
- **GAMBARINO S ; CALLEA S ; RIZZO G ; MONTANARI P ; LOIACONO E ; BERGALLO M**. Evaluation of UL99 transcript as a target for antiviral treatment efficacy. *J Virol Methods*, 2014, vol. 207, 104-9 [0011]
- **JOHN PAUL TOMTISHEN III**. *Human cytomegalovirus tegument proteins*, 65, , 71, , 150, , 28 [0011]
- *Virol J.*, 2012, vol. 9, 22 [0011]
- *J Gen Virol*, 1987, vol. 68, 1327-1337 [0013]
- **JOHN PAUL ; TOMTISHEN III**. *Human cytomegalovirus tegument proteins*, 65, , 71, , 150, , 28 [0013]
- *Virol J*, 2012, vol. 9, 22 [0013]
- **STRANG B L ; BOULANT S ; CHANG L et al.** Human cytomegalovirus UL44 concentrates at the periphery of replication compartments, the site of viral DNA synthesis[J. *Journal of virology*, 2012, vol. 86, 2089-2095 [0015]
- **SINIGALIA E ; ALVISI G ; SEGRÉ C V et al.** The human cytomegalovirus DNA polymerase processivity factor UL44 is modified by SUMO in a DNA-dependent manner[J. *PLoS One*, 2012, vol. 7 (11), e49630 [0015]
- **LOVELAND A N ; NGUYEN N L ; BRIGNOLE E J et al.** The amino-conserved domain of human cytomegalovirus UL80a proteins is required for key interactions during early stages of capsid formation and virus production. *Journal of virology*, 2007, vol. 81, 620-628 [0017]
- **WOOD L J ; BAXTER M K ; PLAFKER S M et al.** Human cytomegalovirus capsid assembly protein precursor (pUL80. 5) interacts with itself and with the major capsid protein (pUL86) through two different domains. *Journal of virology*, 1997, vol. 71, 179-190 [0017]
- **BALDICK C J ; SHENK T**. Proteins associated with purified human cytomegalovirus particles. *Journal of virology*, 1996, vol. 70, 6097-6105 [0019]

- **TORRES L ; TANG Q.** Immediate-Early (IE) gene regulation of cytomegalovirus: IE1-and pp71-mediated viral strategies against cellular defenses[J. *Virologica Sinica*, 2014, vol. 29, 343-352 **[0021]**
- **McVoy M A.** Cytomegalovirus vaccines. *Clinical infectious diseases*, 2013, vol. 57, S196-S199 **[0021]**
- **NEEDLEMAN et al.** *J. Mol. Biol.*, 1970, vol. 48, 443-453 **[0024]**
- **E. MEYERS ; W. MILLER.** *Comput. Appl. Biosci.*, 1988, vol. 4, 11-17 **[0024]**
- the algorithm of Needleman and Wunsch. *J. Mol. Biol.*, 1970, vol. 48, 444-453 **[0024]**
- **BRUMMELL et al.** *Biochem.*, 1993, vol. 32, 1180-1187 **[0025]**
- **KOBAYASHI et al.** *Protein Eng*, 1999, vol. 12 (10), 879-884 **[0025]**
- **BURKS et al.** *Proc. Natl. Acad. Sci. USA*, 1997, vol. 94, 412-417 **[0025]**
- Kabat Sequences of Proteins of Immunological Interest. National Institutes of Health, 1987 **[0026]**
- **CHOTHIA ; LESK.** *J. Mol. Biol.*, 1987, vol. 196, 901-917 **[0026]**
- **CHOTHIA et al.** *Nature*, 1989, vol. 342, 878-883 **[0026]**
- **J. SAMBROOK et al.** *Molecular Cloning: A Laboratory Manual.* Cold Spring Harbor Laboratory Press, 1989 **[0165]**
- **F. M. AUSUBEL et al.** *Short Protocols in Molecular Biology.* John Wiley & Sons, Inc, 1995 **[0165]**
- **AIMIN TANG ; AIMIN TANG ; FENGSHENG LI ; DANIEL C. FREED ; ADAM C. FINNEFROCK ; DANILO R. CASIMIRO ; DAI WANG ; TONG-MING FU et al.** A novel high-throughput neutralization assay for supporting clinical evaluations of human cytomegalovirus vaccines. *Vaccine*, 26 October 2011, vol. 29 (46), 8350-6 **[0173]**
- **AIMIN TANG ; FENGSHENG LI ; DANIEL C. FREED ; ADAM C. FINNEFROCK ; DANILO R. CASIMIRO ; DAI WANG ; TONG-MING FU.** A novel high-throughput neutralization assay for supporting clinical evaluations of human cytomegalovirus vaccines. *Vaccine*, 2011, vol. 29, 8350-6 **[0174] [0213]**
- **DOLLARD SC ; GROSSE SD ; ROSS DS.** New estimates of the prevalence of neurological and sensory sequelae and mortality associated with congenital cytomegalovirus infection. *Rev Med Virol*, 2007, vol. 17, 355-363 **[0213]**
- **FOWLER KB ; STAGNO S ; PASSRF et al.** The outcome of congenital cytomegalovirus infection in relation to maternal antibody status. *N Engl J Med*, 1992, vol. 326, 663-667.2 **[0213]**
- **KENNESON A ; CANNON MJ.** Review and meta-analysis of the epidemiology of congenital cytomegalovirus infection. *Rev Med Virol*, 2007, vol. 17, 253-276 **[0213]**
- **MUSSI-PINHATA MM ; YAMAMOTO AY ; MOURABRITO RM ; DE LIMA ISAAC M ; DE CARVALHO E OLIVEIRA PF ; BOPPANAS ; BRITT WJ.** Birth prevalence and natural history of congenital cytomegalovirus infection in a highly seroimmune population. *Clin Infect Dis*, 2009, vol. 49, 522-528 **[0213]**
- **YAMAMOTO AY ; MUSSI-PINHATA MM ; ISAAC MDE L ; AMARAL FR ; CARVALHEIRO CG ; ARAGON DC ; MANFREDI AK ; BOPPANASB ; BRITT WJ.** Congenital cytomegalovirus infection as a cause of sensorineural hearing loss in a highly immune population. *Pediatr Infect Dis J.*, 2011, vol. 30, 1043-1046 **[0213]**
- **BERNARD WEBER ; ANNEMARIE BERGER ; HOLGER RABENAU ; BERNARD WEBER.** Human cytomegalovirus infection: diagnostic potential of recombinant antigens for cytomegalovirus antibody detection. *Journal of Virological Methods*, 2001, vol. 96, 157-170 **[0213]**

专利名称(译)	评估人体巨细胞病毒活动性感染风险的方法和相关试剂盒		
公开(公告)号	<a href="#">EP3258265A4</a>	公开(公告)日	2018-10-31
申请号	EP2016748586	申请日	2016-01-26
[标]申请(专利权)人(译)	厦门大学		
申请(专利权)人(译)	厦门大学		
当前申请(专利权)人(译)	厦门大学		
[标]发明人	GE SHENGXIANG LI JINJIE HUANG XI LI TINGDONG ZHANG JUN XIA NINGSHAO		
发明人	GE, SHENGXIANG LI, JINJIE HUANG, XI LI, TINGDONG ZHANG, JUN XIA, NINGSHAO		
IPC分类号	G01N33/53 G01N33/569 G01N33/543		
CPC分类号	G01N33/56983 A61K39/42 G01N33/53 G01N33/543 G01N33/569 G01N33/56994 G01N2333/045 G01N2469/20 G01N2800/50 G01N2800/52		
代理机构(译)	LAVOIX		
优先权	201510067190.3 2015-02-09 CN		
其他公开文献	EP3258265A1		
外部链接	<a href="#">Espacenet</a>		

#### 摘要(译)

本发明属于医学和免疫学领域，特别是免疫学诊断领域。特别地，本发明公开了一种用于评估受试者是否具有发展人巨细胞病毒（HCMV）活性感染风险的方法及其试剂盒。该方法包括以下步骤：（1）测定来自受试者的体液样品中抗HCMV蛋白的抗体水平；（2）将水平与预定参考值进行比较，其中如果水平低于预定参考值，则确定受试者处于发生HCMV活动性感染的风险中。此外，本发明还公开了筛选候选药物的方法及其试剂盒，所述候选药物能够提高受试者抵抗人巨细胞病毒（HCMV）活性感染的能力。