



(11)

**EP 2 660 600 B1**

(12) **EUROPEAN PATENT SPECIFICATION**

(45) Date of publication and mention  
of the grant of the patent:  
**08.08.2018 Bulletin 2018/32**

(51) Int Cl.:  
**G01N 33/53** (2006.01) **G01N 33/15** (2006.01)  
**G01N 33/50** (2006.01) **C07K 16/18** (2006.01)  
**C12N 15/09** (2006.01)

(21) Application number: **11853134.2**

(86) International application number:  
**PCT/JP2011/080517**

(22) Date of filing: **28.12.2011**

(87) International publication number:  
**WO 2012/091138 (05.07.2012 Gazette 2012/27)**

(54) **DIAGNOSTIC DRUG AND DIAGNOSTIC METHOD FOR ALZHEIMER'S DISEASE**

DIAGNOSTIKUM UND DIAGNOSEVERFAHREN FÜR MORBUS ALZHEIMER

MÉDICAMENT DE DIAGNOSTIC ET PROCÉDÉ DE DIAGNOSTIC POUR LA MALADIE  
D'ALZHEIMER

(84) Designated Contracting States:  
**AL AT BE BG CH CY CZ DE DK EE ES FI FR GB  
GR HR HU IE IS IT LI LT LU LV MC MK MT NL NO  
PL PT RO RS SE SI SK SM TR**

(56) References cited:  
**WO-A1-2006/128902 WO-A1-2006/128906  
WO-A1-2008/090717 WO-A1-2010/140694  
WO-A2-2009/048747 JP-A- 2008 545 424**

(30) Priority: **28.12.2010 JP 2010293891**

(43) Date of publication of application:  
**06.11.2013 Bulletin 2013/45**

(73) Proprietor: **Sumitomo Dainippon Pharma Co., Ltd.  
Osaka-shi  
Osaka 541-8524 (JP)**

(72) Inventors:  
• **HASHIMOTO, Masakazu  
Suita-shi  
Osaka 564-0053 (JP)**  
• **NAKAGAWA, Hiroyuki  
Osaka-shi  
Osaka 554-0022 (JP)**  
• **AOKI, Mikio  
Osaka-shi  
Osaka 541-8524 (JP)**  
• **TJERNBERG, Lars O.  
SE-141 57 Huddinge (SE)**  
• **WINBLAD, Bengt  
SE-141 57 Huddinge (SE)**

- **DOUNGJAI BUNTUP ET AL: "[beta]-Amyloid 25-35 Peptide Reduces the Expression of Glutamine Transporter SAT1 in Cultured Cortical Neurons", NEUROCHEMICAL RESEARCH, KLUWER ACADEMIC PUBLISHERS-PLENUM PUBLISHERS, NE, vol. 33, no. 2, 1 November 2007 (2007-11-01), pages 248-256, XP019579141, ISSN: 1573-6903**
- **MACKENZIE B ET AL: "Sodium-coupled neutral amino acid (System N/A) transporters of the SLC38 gene family", PFLUEGERS ARCHIV: EUROPEAN JOURNAL OF PHYSIOLOGY, SPRINGER VERLAG, BERLIN, DE, vol. 447, no. 5, 1 February 2004 (2004-02-01), pages 784-795, XP002345200, ISSN: 0031-6768, DOI: 10.1007/S00424-003-1117-9**
- **F. PONTÉN ET AL: "The Human Protein Atlas as a proteomic resource for biomarker discovery", JOURNAL OF INTERNAL MEDICINE, vol. 270, no. 5, 3 August 2011 (2011-08-03), pages 428-446, XP055057305, ISSN: 0954-6820, DOI: 10.1111/j.1365-2796.2011.02427.x**

(74) Representative: **Vossius & Partner  
Patentanwälte Rechtsanwälte mbB  
Siebertstrasse 3  
81675 München (DE)**

Note: Within nine months of the publication of the mention of the grant of the European patent in the European Patent Bulletin, any person may give notice to the European Patent Office of opposition to that patent, in accordance with the Implementing Regulations. Notice of opposition shall not be deemed to have been filed until the opposition fee has been paid. (Art. 99(1) European Patent Convention).

**EP 2 660 600 B1**

- DAVID E. SLEAT ET AL: "The human brain mannose 6-phosphate glycoproteome: A complex mixture composed of multiple isoforms of many soluble lysosomal proteins", **PROTEOMICS**, vol. 5, no. 6, 1 April 2005 (2005-04-01), pages 1520-1532, XP055176630, ISSN: 1615-9853, DOI: 10.1002/pmic.200401054
- A. DAHLIN ET AL: "Expression Profiling of the Solute Carrier Gene Family in the Mouse Brain", **JOURNAL OF PHARMACOLOGY AND EXPERIMENTAL THERAPEUTICS**, vol. 329, no. 2, 29 January 2009 (2009-01-29), pages 558-570, XP055176860, ISSN: 0022-3565, DOI: 10.1124/jpet.108.149831
- M. MELONE: "Localization of the Glutamine Transporter SNAT1 in Rat Cerebral Cortex and Neighboring Structures, With a Note on its Localization in Human Cortex", **CEREBRAL CORTEX**, vol. 14, no. 5, 28 March 2004 (2004-03-28) , pages 562-574, XP055178039, DOI: 10.1093/cercor/bhh018
- SUNDBERG BJORN E ET AL.: 'The evolutionary history and tissue mapping of amino acid transporters belonging to solute carrier families SLC32, SLC36, and SLC38' **JOURNAL OF MOLECULAR NEUROSCIENCE** vol. 35, no. 2, 2008, pages 179 - 193, XP055073391
- JAMIESON SARRA E. ET AL.: 'Candidate gene association study of solute carrier family IIa members 1 (SLC11A1) and 2 (SLC11A2) genes in Alzheimer's disease' **NEUROSCIENCE LETTERS** vol. 374, no. 2, 2005, pages 124 - 128, XP027653385
- ZHENG WEI ET AL.: 'Divalent metal transporter 1 is involved in amyloid precursor protein processing and Abeta generation' **THE FASEB JOURNAL** vol. 23, no. 12, 2009, pages 4207 - 4217, XP055073393
- LATERZA, OMAR F. ET AL.: 'Identification of novel brain biomarkers' **CLINICAL CHEMISTRY** vol. 52, no. 9, 2006, pages 1713 - 1721, XP002617928
- NAKAMURA, TOSHIYUKI ET AL.: 'Apolipoprotein E4 (1-272) fragment is associated with mitochondrial proteins and affects mitochondrial function in neuronal cells' **MOLECULAR NEURODEGENERATION** vol. 4, no. 35, 2009, XP021060227

**Description**

## Technical Field

5 **[0001]** The present invention is defined by the claims. It relates to the use of an anti-S38AA antibody in determining Alzheimer's disease, a method of determining Alzheimer's disease in an animal, comprising detecting an S38AA fragment in a sample collected from said animal, and a method of searching for a substance capable of treating or preventing Alzheimer's disease, as defined by the claims.

## 10 Background Art

**[0002]** Alzheimer's disease is a progressive dementia that starts with decrease of short term memory and mild learning disability, develops higher brain dysfunction, particularly visuospatial agnosia, ideational apraxia, constructive apraxia and the like, and finally reaches movement disorder and so-called personality destruction, for which a method of radical treatment has not been found to date. There are predicted to be 2.4 million patients with Alzheimer's disease in the world in 2040, and the importance of a radical treatment method therefor or an early diagnosis thereof is increasing. The progression thereof is different from angiopathic dementia often found in Japan and is considered to continue over several years to ten years or more. In the case of a familial Alzheimer's disease caused by abnormal gene mutation, which is one of the Alzheimer's diseases, the condition of many of the patients rapidly worsens in several years, and the disease is characterized by an early onset since the age at onset is in their 30's - 40's. Age, family history, genotype, hypertension, diabetes, smoking and the like are known as the risk factors of Alzheimer's disease other than the gene mutation, of which the relation with APOE genotype is clear. In particular, ApoE4 allele has already been reported as a risk factor of Alzheimer's disease (non-patent document 1).

25 **[0003]** As pathological changes characteristic in Alzheimer's disease, extracellular accumulation of amyloid plaque containing amyloid beta as a main constituent component, and accumulation of highly phosphorylated tau protein in nerve cells are widely known to occur. As for spatial and temporal pathological changes in brain, since accumulation of phosphorylated tau in the pyramidal cells in the hippocampus, particularly the region called CA1, is already observed in patients with early-onset Alzheimer's disease, the pyramidal cells in this region are considered to be spatially and temporally exposed to the strong influence of Alzheimer's disease in early stages, namely show fragility (non-patent document 2). On the other hand, since the movement disorder emerges almost at the final stage of Alzheimer's disease as mentioned above, the purkinje cell in the cerebellum is considered to be most resistant to Alzheimer's disease.

30 **[0004]** The incidence rate of Alzheimer's disease is considered to rapidly increase after 75 years old, and early detection and the start of an early treatment are important for suppressing the pathological progression by a symptomatic drug therapy.

35 **[0005]** Due to the absence of a radical cure for Alzheimer's disease at present, a diagnostic marker for early detection of Alzheimer's disease is energetically searched for, and the measurement of amyloid beta (A $\beta$ 40, A $\beta$ 42) and phosphorylated tau protein in blood or cerebrospinal fluid is considered to be the most promising. However, it is still difficult to clearly find acquisition of Alzheimer's disease in the future, that is, potential patients with Alzheimer's disease, even when these markers are used alone or in combination (for example, ratio of A $\beta$ 40 and A $\beta$ 42).

40 [Document List]

[non-patent documents]

45 **[0006]**

non-patent document 1: Science. (1993) 261:921-3

non-patent document 2: Exp Gerontol. (2000) 35:851-64

## 50 SUMMARY OF THE INVENTION

## Problems to be Solved by the Invention

55 **[0007]** The problem of the present invention is to provide an agent for determining Alzheimer's disease, a method of determining Alzheimer's disease, and a method of screening for a substance for the treatment or prevention of Alzheimer's disease.

Means of Solving the Problems

**[0008]** The present inventors have conducted intensive studies and found that the amount of S38AA fragment increases in the cerebrospinal fluid and plasma of patients with Alzheimer's disease as compared to normal person, and this S38AA fragment is a polypeptide containing the extra-membranous domain of S38AA isoform 1.

**[0009]** Furthermore, the present inventors have measured the amount of the S38AA fragment in the cerebrospinal fluid of non-Alzheimer's disease (normal person), and patients with suspected Alzheimer's disease (potential Alzheimer's disease) and severe Alzheimer's disease, and found that the amount of the S38AA fragment increases with the worsening pathology (progression) of Alzheimer's disease and, since this pathology-dependent increase in the amount of the S38AA fragment in Alzheimer's disease shows a positive correlation with ApoE4 carrier and a negative correlation with ApoE2 carrier, the S38AA fragment has high reliability as an index for the determination of Alzheimer's disease.

**[0010]** Based on these findings, the present inventors have been convinced that an anti-S38AA antibody is useful as a determining agent for Alzheimer's disease and Alzheimer's disease can be detected by measuring the S38AA fragment, which resulted in the completion of the present invention.

**[0011]** Accordingly, the present invention relates to the following.

[1] Use of an anti-S38AA antibody in determining Alzheimer's disease in vitro or ex vivo.

[2] A method of determining Alzheimer's disease in an animal, comprising detecting an S38AA fragment in a sample collected from said animal.

[3] The method according to [2], wherein the animal is a human.

[4] The method according to [2] or [3], wherein the S38AA fragment is a fragment derived from S38AA isoform 1.

[5] The method according to claim [2] or [3], wherein the S38AA fragment is a polypeptide comprising an amino acid sequence shown by SEQ ID NO: 3.

[6] The method according to any one of claims [2] to [5], wherein the sample is blood, cerebrospinal fluid or urine.

[7] The method according to any one of claims [2] to [5], wherein the sample is cerebrospinal fluid.

[8] The method according to any one of claims [2] to [5], wherein the sample is blood.

[9] The method according to any one of claims [2] to [5], wherein the sample is plasma.

[10] The method according to any one of claims [2] to [9], further comprising detecting one or more other diagnostic markers for Alzheimer's disease.

[11] A method of searching for a candidate substance for treating or preventing Alzheimer's disease, comprising the following steps:

(1) contacting a test substance with a cell permitting measurement of production of a S38AA fragment;

(2) measuring the production amount of the S38AA fragment in the cell contacted with the test substance, and comparing the production amount with that of the S38AA fragment in a control cell free of contact with the test substance; and

(3) selecting a test substance that down-regulates the production amount of the S38AA fragment as a candidate substance for treating or preventing Alzheimer's disease, based on the comparison results of the above-mentioned (2).

[12] The method according to [4], wherein the S38AA isoform 1 is a polypeptide of the following (a) or (b):

(a) a polypeptide comprising an amino acid sequence shown by SEQ ID NO: 2, or

(b) a polypeptide comprising the amino acid sequence that has at least 95% identity with the amino acid sequence shown by SEQ ID NO: 2.

[13] The method according to [5], wherein the S38AA fragment is a polypeptide comprising the 505 - 1014th amino acid sequence shown by SEQ ID NO: 2.

Effect

**[0012]** Also described herein are an agent for determining Alzheimer's disease and a method of determining Alzheimer's disease.

**[0013]** In addition, according to the screening method described herein, an agent capable of treating or preventing Alzheimer's disease can be provided.

## Brief Description of the Drawings

**[0014]**

- 5 Fig. 1 shows an immunostaining image of a representative hippocampus CA1 region of a normal example. The intensely-stained parts (arrows) in the nerve cell of Fig. 1 show strong expression of S38AA. The lower right panel is an enlarged view of the part enclosed with a broken line. The scale bar shows 20  $\mu$ m.
- Fig. 2 shows an immunostaining image of a representative hippocampus CA1 region of an example of definite Alzheimer's disease. The lower right panel is an enlarged view of the part enclosed with a broken line. The scale bar shows 20  $\mu$ m.
- 10 Fig. 3 shows a predicted extra-membrane region of the amino acid sequence of S38AA isoform 1 in the box. The immunoprecipitated S38AA fragment was analyzed by shotgun proteome, and the identified peptide fragment sequence and the position thereof are underlined.
- Fig. 4 shows an example of Western blot analysis of S38AA in the cerebrospinal fluid and the results of molecular weight analysis of the detected S38AA fragment.
- 15 Fig. 5 shows the quantification results of S38AA fragments in the cerebrospinal fluid of non-Alzheimer's disease patients, patients with suspected Alzheimer's disease and patients with definite Alzheimer's disease, by Western blot method. The Y-axis shows the signal intensity of each group, which is standardized by the standard cerebrospinal fluid.
- 20 Fig. 6 shows the amount of an S38AA fragment in the cerebrospinal fluid of respective groups of all patients divided according to the APOE genotype (divided into 4 kinds of genotypes of ApoE2/3, ApoE3/3, ApoE3/4, ApoE4/4).
- Fig. 7 shows the relationship between the amount of S38AA fragment and APOE genotype of 11 patients with non-Alzheimer's disease. The Y-axis shows the signal intensity of each group, which is standardized by the standard cerebrospinal fluid.
- 25 Fig. 8 shows the results of the molecular weight analysis of S38AA fragment specifically separated by an immunoprecipitation method using an anti-S38AA antibody (HPA021374, HPA023161).
- Fig. 9 shows an example of Western blot analysis of S38AA fragment in human plasma and the results of molecular weight analysis of the determined S38AA fragment.

## 30 Description of Embodiments

**[0015]** Accordingly, described herein is the following.

35 1. Agent for determining Alzheimer's disease

**[0016]** The present inventors have found that (1) the amount of S38AA fragment increases in the cerebrospinal fluid and plasma of patients with Alzheimer's disease as compared to normal person, (2) the amount of the S38AA fragment is found to increase even in patients with suspected Alzheimer's disease more than in normal person, and the amount of the S38AA fragment increases with the worsening pathology (progression) of Alzheimer's disease, and (3) since this pathology-dependent increase in the amount of the S38AA fragment in Alzheimer's disease shows a positive correlation with ApoE4 carrier and a negative correlation with ApoE2 carrier, the S38AA fragment has high reliability as an index for the determination of Alzheimer's disease.

**[0017]** Accordingly, described herein is an agent for determining Alzheimer's disease, comprising an anti-S38AA antibody.

45 **[0018]** The determining agent described herein can determine not only whether a person is affected with Alzheimer's disease but also whether a person is suspected of being affected with Alzheimer's disease, that is, whether the person has a high possibility of being affected with the disease in the near future, though the person is not yet suffering from the disease.

**[0019]** Therefore, the "determination" of Alzheimer's disease in the present invention is used to mean not only determination of whether a person is already affected with Alzheimer's disease, but encompass judgment of whether a person has a high possibility of being affected in the near future, though the person is not yet suffering from the disease.

**[0020]** In the present specification, "suspected Alzheimer's disease" refers to a condition associated with a high possibility of being affected (definitely diagnosed) in the future, though a definite diagnosis of Alzheimer's disease has not been made. Specific examples thereof include the condition to be classified into mild or moderate level by the severity classification in diagnosis according to amyloid imaging, MRI, CT, SPET or clinical symptom, the state of mild cognitive impairment and the like.

55 **[0021]** As S38AA, for example, amino acid sequences such as human S38AA isoform 1 (UniProtKB/Swiss-Prot number: Q9HBR0-1, SEQ ID NO: 2), rat S38AA isoform 1 (NCBI Reference Sequence number: XP\_002727892.1), mouse S38AA

isoform 1 (NCBI Reference Sequence number: NP\_077211.4), human S38AA isoform 2 (UniProtKB/Swiss-Prot number: Q9HBR0-2) and the like are known.

**[0022]** In addition, as the sequence of a nucleic acid encoding S38AA (hereinafter to be referred to as "S38AA gene"), for example, human S38AA isoform 1 cDNA sequence (NCBI Reference Sequence number: NM\_001037984.1, SEQ ID NO: 1) is known.

**[0023]** S38AA is predicted to be a ten-transmembrane protein according to UniProtKB/Swiss-Prot database, and the amino acid sequence from the 399th inclusive (to the 1119th in isoform 1, and to the 780th in isoform 2) is assumed to be the extra-membrane region.

**[0024]** "S38AA" in the present specification encompasses not only "protein" or "(poly) peptide" shown by these known sequences, but also, for example, equivalents thereof (homologs and splice variants), variants, derivatives, mature forms, amino acid-modified forms and the like as long as they have biological functions equivalent to those of a particular amino acid sequence showing human S38AA isoform 1 (SEQ ID NO: 2). Here, examples of the homolog include proteins of other biological species such as mouse, rat and the like, which correspond to human protein. They can be deductively identified from the base sequence of a gene identified by HomoloGene (<http://www.ncbi.nlm.nih.gov/HomoloGene/>). Examples of the splice variant include human S38AA isoform 2 (the 689-780th amino acid sequence is different from isoform 1, and the 781-1119th amino acid sequence is deleted). In addition, the variant encompasses naturally-occurring allelic variants (polymorphism), variants not present in nature, and variants having amino acid sequences artificially altered by deleting, substituting, adding or inserting. Examples of the above-mentioned variant include those having at least 70%, preferably 80%, more preferably 95%, further more preferably 97%, identity with a mutation-free protein or (poly) peptide. Examples of the naturally-occurring allelic variant (polymorphism) include, a variant of SEQ ID NO: 2 wherein the 559th Lys is substituted for Arg (dbSNP: rs35546507) and a variant wherein the 831st Ala is substituted for Gly (dbSNP: rs2725405). In addition, the amino acid-modified form encompasses naturally-occurring amino acid-modified forms and amino acid-modified forms not present in nature, and specifically, amino acid-phosphorylated forms (e.g., phosphorylated form of SEQ ID NO: 2 wherein the 889th Ser is phosphorylated) can be included.

**[0025]** The extra-membranous domain and transmembrane region and the like of a protein can be easily assumed using, for example, prediction data described in UniProtKB/Swiss-Prot database, and a known prediction tool and software such as TMHMM (<http://www.cbs.dtu.dk/services/TMHMM>) and the like.

**[0026]** The "S38AA fragment" in the present specification only needs to be a (poly) peptide containing the S38AA extra-membranous domain. The "S38AA extra-membranous domain" here means a peptide region containing the whole or partial extra-membrane region on the C-terminal side of any of the above-mentioned S38AAs, or the whole or partial extra-membrane region on the C-terminal side of S38AA in the cell organelle such as Golgi and the like. In addition, the "S38AA fragment" in the present specification is characterized in that it is recognized by anti-S38AA antibody HPA024631 (Atlas Antibodies; produced using a peptide consisting of the 402-491st amino acid sequence of SEQ ID NO: 2 as immunogen).

**[0027]** Preferably, the S38AA fragment contains the amino acid sequence shown by SEQ ID NO: 3. The amino acid sequence shown by SEQ ID NO: 3 corresponds to the 761-770th partial amino acid sequence of human S38AA isoform 1 (in isoform 2, the amino acid sequence from the 689th inclusive is different due to alternative splicing). Therefore, while the S38AA fragment is preferably a fragment derived from S38AA isoform 1, since the cleavage site of S38AA is predicted, from the apparent molecular weight of S38AA fragment by SDS-PAGE, to be in the amino acid sequence (up to the 688th amino acid of SEQ ID NO: 2) common to the two isoforms, if the cleavage reaction occurs upon recognition of only the amino acid sequence in the cleavage site, a fragment derived from isoform 2 can also be included in the S38AA fragment described herein.

**[0028]** While the molecular weight of the S38AA fragment is not limited, it is preferably about 76 - about 102 kDa in the apparent molecular weight by SDS-PAGE. Therefore, a fragment cleaved after the 161st amino acid of the amino acid sequence shown by SEQ ID NO: 2 is more preferable (molecular weight (Calculated) of the fragment consisting of the 161-1119th amino acid sequence is about 102 kDa). In addition, from the results of the pull-down assay and shotgun MS analysis mentioned below, the S38AA fragment described herein is more preferably a fragment containing the 505-1014th amino acid sequence of the amino acid sequence shown by SEQ ID NO: 2.

**[0029]** The "anti-S38AA antibody" to be used in the present invention is an antibody that recognizes the S38AA extra-membranous domain, with preference given to an antibody that recognizes the extra-membranous domain of S38AA isoform 1. Said extra-membranous domain may be in the amino acid region specific to isoform 1 (in SEQ ID NO: 2, the 689-1119th amino acid region), in the amino acid region common with isoform 2 (the 399-688th amino acid region) or go across the both regions. In addition, the extra-membranous domain may be a continuous partial amino acid sequence in the S38AA extra-membrane region or a conformation formed by two or more separate and subsequent partial amino acid sequences.

**[0030]** The anti-S38AA antibody may also be, for example, polyclonal or monoclonal antibody produced by using a known method, such as commercially available anti-S38AA antibodies (e.g., HPA024631, HPA023161, HPA021374 (each manufactured by Atlas Antibodies)) and the like, or fragments thereof (e.g., Fab, F(ab')<sub>2</sub>, ScFv, minibody etc.).

**[0031]** As the anti-S38AA antibody to be used in the present invention, a monoclonal antibody and a polyclonal antibody derived from mammals are preferable.

**[0032]** Examples of the monoclonal antibody and polyclonal antibody derived from mammals include those produced in the blood of animal, those produced by hybridomas, and those produced by a host transformed with an expression vector containing an antibody gene by a genetic engineering means, those produced in large amounts in a CHO cell factory by the gene of an optimal antibody screened for from an enormous clone library consisting of 1,000,000,000,000 molecules by phage display, or human antibody directly produced using transgenic mouse that produces human antibody, and the like.

**[0033]** Monoclonal antibody and polyclonal antibody can be produced by a known method to those of ordinary skill in the art.

#### (1) Production of monoclonal antibody

**[0034]** S38AA is administered alone or together with a carrier and a diluent to a site where an antibody can be produced by administration to a mammal. To increase antibody producibility by administration, a complete Freund's adjuvant or incomplete Freund's adjuvant may also be administered. The administration is generally performed once every 2 - 6 weeks, and about 2 - 10 times in total. Examples of the mammal to be used include monkey, rabbit, dog, guinea pig, mouse, rat, sheep and goat, with preference given to mouse and rat.

**[0035]** For the production of monoclonal antibody-producing cells, from mammals, for example, mice immunized with an antigen, individuals found to show an antibody titer are selected, the spleen or lymph node is collected 2 - 5 days after the final immunization, the antibody-producing cells contained therein are fused with myeloma cells, whereby a monoclonal antibody-producing hybridoma can be prepared. The antibody titer in antiserum can be measured by, for example, reacting the below-mentioned labeled S38AA with antiserum, and measuring the activity of a label bound to the antibody. A fusion operation can be performed by a known method, for example, the method of Kohler and Milstein [Nature, 256, 495 (1975)]. As the fusion Stimulant, for example, polyethylene glycol (PEG), Sendai virus and the like can be mentioned, and PEG is preferably used.

**[0036]** As the myeloma cell, for example, NS-1, P3U1, SP2/0 and the like can be mentioned, and P3U1 is preferably used. A preferable ratio of the numbers of the antibody-producing cells (spleen cells) and myeloma cells to be used is about 1:1 - 20:1, PEG (preferably PEG 1000-PEG 6000) is added at a concentration of about 10-80%, and the cell fusion can be efficiently performed by incubating at about 20-40°C, preferably about 30 - 37°C, for about 1 - 10 min.

**[0037]** For screening for a monoclonal antibody-producing hybridoma, various methods can be used. Examples thereof include a method comprising adding a hybridoma culture supernatant to a solid phase (e.g., microplate) adsorbed with an antigen such as a protein-and the like directly or together with a carrier, adding an anti-immunoglobulin antibody labeled with a radioactive substance, an enzyme or the like (when the cell used for cell fusion is from a mouse, an anti-mouse immunoglobulin antibody is used) or protein A, and detecting a monoclonal antibody bound to the solid phase, a method comprising adding a hybridoma culture supernatant to a solid phase adsorbed with an anti-immunoglobulin antibody or protein A, adding a protein labeled with a radioactive substance, an enzyme etc., and the like, and detecting a monoclonal antibody bound to the solid phase, and the like.

**[0038]** The monoclonal antibody can be selected by a method known per se or a method analogous thereto, and can be generally selected using a medium for animal cells which is added with HAT (hypoxanthine, aminopterin, thymidine), and the like. As the medium for selection and growth, any medium can be used as long as hybridomas can grow. For example, RPMI 1640 medium containing 1 - 20%, preferably 10 - 20%, of fetal bovine serum, GIT medium containing 1 - 10% of fetal bovine serum (Wako Pure Chemical Industries, Ltd.), a serum-free medium for hybridoma culture (SFM-101, Nissui Pharmaceutical Co., Ltd.) and the like can be used. The culture temperature is generally 20 - 40°C, preferably about 37°C. The culture time is generally 5 days - 3 weeks, preferably 1 week - 2 weeks. Culture can be generally performed in 5% carbon dioxide gas. The antibody titer of the hybridoma culture supernatant can be measured in the same manner as in the above-mentioned measurement of the antibody titer of the antiserum.

**[0039]** The monoclonal antibody can be separated and purified according to a separation and purification method of immunoglobulin, in the same manner as in general separation and purification of polyclonal antibody [e.g., salting out method, alcohol precipitation method, isoelectric point precipitation method, electrophoresis, adsorption and desorption method by ion exchanger (e.g., DEAE), ultracentrifugation method, gel filtration method, specific purification method including collecting only an antibody by an active adsorbent such as antigen-bound solid phase, protein A, protein G or the like, and dissociating the bond to give the antibody].

#### (2) Production of polyclonal antibody

**[0040]** Polyclonal antibody to S38AA can be produced by a method known per se or a method analogous thereto. For example, a polyclonal antibody can be produced by producing a complex of an immunizing antigen (antigen such as

protein and the like) and a carrier protein, immunizing a mammal in the same manner as in the above-mentioned production method of the monoclonal antibody or chicken, collecting a substance containing an antibody to S38AA from the immunized animal, and separating and purifying the antibody.

**[0041]** As for the complex of an immunizing antigen and a carrier protein to be used for immunizing a mammal or chicken, the kind of the carrier protein and the mixing ratio of the carrier and hapten may be any and any ratio as long as the antibody can be efficiently produced against hapten used for immunization by crosslinking with the carrier. For example, a method including coupling bovine serum albumin, bovine thyroglobulin, keyhole limpet hemocyanin and the like at a weight ratio of about 0.1 - 20, preferably about 1 - 5, to hapten of 1 is used.

**[0042]** While various condensing agents can be used for coupling hapten with a carrier, an activated ester reagent containing glutaraldehyde, carbodiimide, maleimide activated ester, a thiol group and a dithiopyridyl group, and the like can be used.

**[0043]** The condensation product is administered to a mammal or chicken alone or together with a carrier and a diluent to a site where an antibody can be produced. To increase antibody producibility by administration, a complete Freund's adjuvant or incomplete Freund's adjuvant may also be administered. The administration is generally performed once every 2 - 6 weeks, and about 3 - 10 times in total.

**[0044]** The polyclonal antibody can be collected from the blood, ascites, mother's milk and the like of the mammal immunized by the above-mentioned method, preferably from the blood, and in the case of chicken, it can be collected from the blood and egg-yolk.

**[0045]** The titer of the polyclonal antibody in the antiserum can be measured in the same manner as in the above-mentioned measurement of the antibody titer of the antiserum. The polyclonal antibody can be separated and purified according to a separation and purification method of immunoglobulin, in the same manner as in the above-mentioned separation and purification of monoclonal antibody.

## 2. Kit for determining Alzheimer's disease

**[0046]** Also described herein is a kit for determining Alzheimer's disease. The kit described herein contains a reagent for measuring the amount of the S38AA fragment. By measuring the amount of the S38AA fragment using the kit described herein, Alzheimer's disease can be determined.

**[0047]** The kit described herein specifically contains an anti-S38AA antibody that recognizes S38AA. Examples of the anti-S38AA antibody include the anti-S38AA antibody described in detail in the aforementioned "1. Agent for determining Alzheimer's disease". The antibody may be a fluorescence-labeled antibody, enzyme-labeled antibody, streptavidin-labeled antibody, biotin-labeled antibody or radioactive-labeled antibody.

**[0048]** The anti-S38AA antibody is generally contained in the kit described herein in the form of an aqueous solution thereof dissolved in water or a suitable buffer (e.g., TE buffer, PBS etc.) at a suitable concentration or a freeze-dried product.

**[0049]** The kit described herein may further contain, in its constitution, other components necessary for performing the method, according to the measurement method of S38AA fragment. For example, for measurement by Western blot, the kit described herein can further contain a blotting buffer, a labeling reagent, a blotting membrane and the like, a determination reagent, a standard solution and the like. Examples of the "standard solution" here include an aqueous solution obtained by dissolving a purified standard product of the above-mentioned "S38AA fragment" in water or a suitable buffer (e.g., TE buffer, PBS and the like) at a particular concentration.

**[0050]** For measurement by sandwich ELISA, the kit described herein can further contain, in addition to the above, an immobilized antibody measurement plate, a washing solution and the like. For measurement by an agglutination method including latex agglutination method, an antibody-coated latex, gelatin or the like can be contained. For measurement by a chemical fluorescence method or a chemical fluorescence electron method, antibody-conjugated magnetic particles and a suitable buffer can be contained. For detection of S38AA by using LC/MS, LC-MS/MS or an immunochromatography method, an antibody-coated column or micro column, and a macro chip can be contained as a part of the detection instrument. Furthermore, in a time-resolved fluorescence measurement method or a fluorescence measurement method similar thereto, a plurality of labeled anti-S38AA antibodies and other necessary components may be contained in the constitution.

## 3. Method for determining Alzheimer's disease

**[0051]** The present inventors have found that (1) the amount of S38AA fragment increases in the cerebrospinal fluid and plasma of patients with Alzheimer's disease as compared to normal person, (2) the amount of the S38AA fragment is found to increase even in patients with mild Alzheimer's disease more than in normal person, and the amount of the S38AA fragment increases with the worsening pathology (progression) of Alzheimer's disease, and (3) since this pathology-dependent increase in the amount of the S38AA fragment in Alzheimer's disease shows a positive correlation

with ApoE4 carrier and a negative correlation with ApoE2 carrier, the S38AA fragment has high reliability as an index for the determination of Alzheimer's disease.

**[0052]** Thus, the present invention provides a method for determining Alzheimer's disease comprising detecting an S38AA fragment in a sample collected from an animal.

**[0053]** The determination method of the present invention can determine not only whether a person is affected with Alzheimer's disease but also whether the person has a high possibility of being affected with the disease in the near future, though the person is not yet suffering from the disease.

**[0054]** The detection method of the present invention contains a step of detecting an S38AA fragment in a test sample collected from an animal, and a step of determining Alzheimer's disease based on the positive correlation between the amount of the S38AA fragment and Alzheimer's disease.

**[0055]** While the animal that can be a test subject for the determination method of the present invention is not particularly limited as long as it produces S38AA, for example, mammals (e.g., human, monkey, bovine, swine, horse, dog, cat, sheep, goat, rabbit, hamster, guinea pig, mouse, rat etc.), birds (e.g., chicken etc.) and the like can be mentioned. Preferred is a mammal, and more preferred is a human.

**[0056]** While a biological sample derived from a test animal to be the sample is not particularly limited, for example, blood, serum, plasma, saliva, urine, cerebrospinal fluid and the like can be mentioned. More preferred is plasma or cerebrospinal fluid.

**[0057]** Serum and plasma can be prepared by collecting blood from a test animal according to a conventional method, and separating the liquid component. The cerebrospinal fluid can be collected by a known means such as spinal tap and the like.

**[0058]** An S38AA fragment in a sample can be detected by a known method. It can be detected by subjecting to, for example, Western blot, gel electrophoresis (e.g., SDS-PAGE, two-dimensional gel electrophoresis and the like), various separation and purification methods (e.g., ion exchange chromatography, hydrophobic chromatography, gel filtration chromatography, affinity chromatography, reversed-phase chromatography, isoelectric point chromatography, capillary electrophoresis and the like), ionization method (e.g., electron impact ionization method, field desorption method, secondary ionization method, fast atom bombardment, matrix assisted laser desorption/ionization (MALDI) method, electrospray ionization method and the like), mass spectrometer (e.g., double-focusing mass spectrometer, quadrupole mass spectrometer, time-of-flight mass spectrometer, Fourier-transform mass spectrometer, ion cyclotron mass spectrometer and the like) and the like.

**[0059]** In addition, the S38AA fragment can be detected according to a known immunochemical method (nephelometry, competitive method, immunometric method, chemical fluorescence method, chemical fluorescence electron method, sandwich method etc.). As for these immunochemical methods, reference can be made to, for example, "Radioimmunoassay" edited by Hiroshi Irie (Kodansha, published in 1974), "radioimmunoassay (sequel)" edited by Hiroshi Irie (Kodansha, published in 1979), "Enzyme Immunoassay" edited by Eiji Ishikawa et al. (the 3rd edition, Igaku-Shoin, published in 1987), "Methods in ENZYMOLOGY" Vol. 121 (Immunochemical Techniques (Part I: Hybridoma Technology and Monoclonal Antibodies)) (published by Academic Press) and the like.

**[0060]** Examples of the anti-S38AA antibody capable of specifically detecting S38AA include the anti-S38AA antibody described in detail in "1. Agent for determining Alzheimer's disease".

**[0061]** Then, based on the concentration of the detected S38AA fragment, Alzheimer's disease can be detected. As shown in the below-mentioned Example 2, the concentration of the S38AA fragment in the cerebrospinal fluid of patients with Alzheimer's disease and patients with suspected Alzheimer's disease is higher than that of normal person, and the concentration of the S38AA fragment in the plasma is also higher in patients with Alzheimer's disease than in normal person. Based on the positive correlation between the concentration of the S38AA fragment and Alzheimer's disease therefore, a diagnosis of Alzheimer's disease can be made when the concentration of the S38AA fragment in the sample is high.

**[0062]** Furthermore, even for normal persons, an ApoE4 carrier group, which is an Alzheimer's disease sensitive allele (Alzheimer's disease high risk group), shows a high concentration of the S38AA fragment in the cerebrospinal fluid as compared to a homo ApoE3 genotype group. Conversely, an ApoE2 carrier group, which is an Alzheimer's disease resistant allele, shows a low concentration of the S38AA fragment in the cerebrospinal fluid as compared to the homo ApoE3 genotype group. Therefore, a high concentration of the S38AA fragment in the sample can be judged to show a high possibility of being affected Alzheimer's disease in the future.

**[0063]** The determination method of the present invention can determine Alzheimer's disease with higher precision by measuring, in addition to the S38AA fragment, alteration of other diagnostic markers for Alzheimer's disease. Examples of other diagnostic markers for Alzheimer's disease include known markers such as amyloid beta (A $\beta$ 40, A $\beta$ 42), phosphorylated tau protein and the like. These can be detected according to a conventional well-known detection method.

#### 4. Method for searching for substance capable of treating or preventing Alzheimer's disease

**[0064]** The present invention also provides a method for searching for a substance that treats or prevents Alzheimer's disease as defined by the claims, which comprises evaluating whether a test substance suppresses production of an S38AA fragment, and a substance obtainable by said method. In the search method of the present invention, a substance that down-regulates the production of an S38AA fragment is selected as a substance that treats or prevents Alzheimer's disease.

**[0065]** The test substance to be subjected to the search method of the present invention may be any known or novel compound. Examples thereof include nucleic acid, carbohydrate, lipid, protein, peptide, organic low-molecular-weight compound, compound library produced using a combinatorial chemistry technique, random peptide library, natural component derived from microorganism, animals and plants, marine organism etc., and the like.

**[0066]** The search method of the present invention comprises the following steps:

- (1) contacting a test substance with a cell permitting measurement of production of a S38AA fragment;
- (2) measuring the production amount of the S38AA fragment in the cell contacted with the test substance, and comparing the production amount with that of the S38AA fragment in a control cell free of contact with the test substance; and
- (3) selecting a test substance that down-regulates the production amount of the S38AA fragment as a substance capable of treating or preventing Alzheimer's disease, based on the comparison results of the above-mentioned (2).

**[0067]** The "cell" to be used for the search method of the present invention means a cell permitting evaluation of the production level of the measurement target, an S38AA fragment. Examples of the cell include a cell capable of naturally producing the S38AA fragment of the measurement target, an S38AA-expressing cell capable of producing an S38AA fragment by stimulation, and a genetically engineered cell to be able to produce an S38AA fragment.

**[0068]** The measurement target, that is, the cell capable of naturally producing an S38AA fragment, is not particularly limited and, as such cell, a primary cultured cell of a mammal (for example, human, mouse etc.), a cell line induced from said primary cultured cell and the like can be used.

**[0069]** S38AA is known to be expressed in U251 cell and SHSY-5Y cell, and is also expressed in BE(2)-C cell and SK-N-MC cell. In addition, a genetically engineered cell overexpressing S38AA or labeled S38AA with FLAG tag etc., and the like can also be produced using a known technique. By culture, S38AA is cleaved from the S38AA expressing cell and the produced S38AA fragment is liberated. When the amount of the produced S38AA fragment is small, the production of the S38AA fragment can be measured by cultivating, as appropriate, under conditions easily causing the cleavage of S38AA.

**[0070]** Examples of the conditions easily causing the cleavage of S38AA include cultivating in a glucose depletion medium or a medium containing a substance known to physiologically stimulate the brain. Specific examples of such substance include cytokines such as TNF $\alpha$ , interferon- $\gamma$ , interleukin-1, interleukin-6 and the like, amyloid beta or aggregate thereof and the like.

**[0071]** The test substance and the cell permitting measurement of the production of an S38AA fragment are contacted in a culture medium. The culture medium is appropriately selected according to the cell permitting measurement of the production of an S38AA fragment. Examples thereof include minimum essential medium (MEM), Dulbecco's modified Eagle medium (DMEM), containing about 5 - 20% of fetal bovine serum, and the like. The culture conditions are appropriately determined in the same manner. For example, the pH of the medium is about 6 - about 8, the culture temperature is generally about 30 - about 40°C, and the culture time is about 0.1 - about 72 hr.

**[0072]** The production amount of the S38AA fragment can be measured by measuring the amount of the S38AA fragment liberated in the cell culture supernatant according to the method described in the item of (3. Method for determining Alzheimer's disease).

**[0073]** The production amount can be preferably compared based on the presence or absence of a significant difference. The production amount of an S38AA fragment in the control cell free of contact with the test substance may be measured before or simultaneously with the measurement of the production amount of the S38AA fragment in the cell contacted with the test substance.

**[0074]** Hence, a substance obtained by comparison that down-regulates the production amount of the S38AA fragment, is selected as an agent capable of treating or preventing Alzheimer's disease.

**[0075]** The compound obtained by the search method of the present invention is useful as a candidate substance for the development of a new therapeutic or preventive agent for Alzheimer's disease.

#### Examples

**[0076]** The present invention is explained in the following by referring to the Examples, which do not limit the present

invention in any manner.

Reference Example 1 Study of S38AA expression amount in brain tissue

5 **[0077]** A brain section preserved in the Swedish brain bank (Brain Power), use of which was permitted by the Ethical Committee of the Karolinska Institute, was used. A hippocampus section (5 micrometers thick) was sliced from a brain tissue block fixed with formalin and embedded in paraffin, and adhered to a slide glass. After a deparaffinization and hydrophilic treatment with xylene-alcohol, the antigen was retrieved by heating at 121°C for 25 min in Diva Decloaker (BIOCARE MEDICAL). After cooling, a non-specific reaction was blocked with 3% goat whole serum diluted with Tris buffered saline (pH 7.6), and thereafter an anti-38AA antibody (catalog number: HPA024631, Atlas Antibodies) diluted 200-fold with Tris buffered saline was incubated overnight with the specimen at 4°C. After washing with Tris buffered saline, the specimen was incubated with a biotinylated goat anti-rabbit IgG antibody diluted 300-fold, at room temperature for 1 hr. Thereafter, for color development, the specimen was treated with Vectastain Elite ABC kit (Vector Laboratories) for 30 min and further with 3-3-diaminobenzidine-4 HCl (DAB/H<sub>2</sub>O<sub>2</sub>) for color development. For counter staining, hematoxylin was used.

10 **[0078]** Fig. 1 shows an immunostaining image of a representative hippocampus CA1 region of a normal example, and Fig. 2 shows an immunostaining image of a representative hippocampus CA1 region of a case with definite Alzheimer's disease. The length of the bar in the Figure corresponds to 200 μm. As shown with the arrows in Fig. 1, the deeply-stained parts in the cell show strong expression of S38AA. In the case of severe Alzheimer's disease, staining is scarcely found in nerve cells. Since the recognition site of the anti-38AA antibody used is the extra-membranous domain of S38AA isoform 1 and S38AA isoform 2, the results show a decrease in the S38AA extra-membranous domain in the hippocampus CA1 region in a case of Alzheimer's disease with definite diagnosis. From these results, it is clear that the S38AA expression amount drastically decreases in the case of severe Alzheimer's disease.

25 Reference Example 2 Quantitative mass spectrometry of S38AA protein in hippocampus CA1 pyramidal cell by heavy oxygen labeling method

**[0079]** After obtaining use permission from the Ethical Committee of the Karolinska Institute, a frozen section was prepared from the patients-postmortem brain preserved in the Swedish brain bank (Brain Power), and the hippocampus CA1 pyramidal cells were recovered by a laser capture method according to the method of Aoki et al. already reported (Neuroreport (2008) 19:1085-9).

30 **[0080]** Hippocampus CA1 pyramidal cells (each 12,000 cells) were separated and collected from a patient with definite Alzheimer's disease and a non-Alzheimer's disease patient. The cells recovered in a tube were lysed with 1 μL of 0.5% RapiGest SF (Waters) solution, and incubated at 95°C for 90 min. Thereafter, the solvent was removed by a centrifugal vacuum system, 2 μL of 4 mM calcium chloride, 1% RapiGest SF, 360 mM sodium hydrogen carbonate mixed solution and 5 μL of distilled water were further added, and the mixture was subjected to a sonication treatment for 5 min. For limited trypsinolysis of a protein derived from the nerve cell, 3 μL of 0.1 mg/mL trypsin was further added, and the mixture was incubated at 37°C for 24 hr. Thereafter, a sample (1 μL) was collected and electrophoresed on 4-12% gradient SDS-PAGE gel, subjected to silver staining, and the completion of the limited degradation was confirmed. The limited degradation sample derived from the patient with definite Alzheimer's disease was labeled with heavy oxygen. The detail of the method is as described below.

35 **[0081]** After limited trypsinolysis, concentrated hydrochloric acid (3 μL) was added to chemically degrade RapiGest SF. The resulting degradation product was precipitated by centrifugation at 13,000 rpm for 10 min, and the supernatant was separated. The obtained supernatant was adsorbed to ZipTipC<sub>18</sub> (Millipore) column, washed three times with 0.3% formic acid solution, and purified by eluting with 80% acetonitrile/0.3% formic acid solution. The solvent in the purified sample was removed by a centrifugal vacuum system, and the residue was re-dissolved in 0.3 M sodium acetate deuterium solution (pH 5.2, 1.7 μL), 50 mM calcium chloride (1 μL) and heavy oxygen water (47.3 μL). Thereto was added 0.5 mg/mL trypsin (Trypsin Gold, Promega, 1 μL) and the mixture was incubated at 37°C for 48 hr. To quench the labeling reaction, 5% formic acid solution (8 μL) diluted with heavy oxygen water was added and the mixture was incubated at 95°C for 90 min. The final sample was preserved at -80°C. While the sample derived from the non-Alzheimer's disease patient was treated in the same manner as the sample derived from the patient with definite Alzheimer's disease, distilled water was used instead of heavy oxygen water. Immediately before conducting mass spectrometry, an equal amount of 20 μL each of the heavy oxygenated sample derived from the patient with definite Alzheimer's disease and the sample derived from the non-Alzheimer's disease patient were mixed, and injected to an analysis column (Zorbax 300SB, 0.1 × 150 mm, Agilent Technologies Inc.). As the mobile phase for analysis, used were 0.1% acetic acid (mobile phase A) and 0.1% acetic acid-methanol (mobile phase B), wherein a gradient program of increasing the concentration of mobile phase B linearly from 5% to 75% for 90 min, and thereafter maintaining same in 95% mobile phase B for 10 min was used. As mass spectrometer, Thermo Fisher, LTQ-Orbitrap system was used. The mass measurement range

was set to 400 - 2000 m/z. Using the obtained data, the peptide was identified by Mascot software version 2.2 and Swiss-Prot database (release 55), and further, quantitatively analyzed by Xome software (Mitsui Knowledge Industry Co., Ltd.). The analysis parameter on the Mascot software is as follows. The monoisotopic mass was used for the analysis, the peptide mass tolerance was set to 10 ppm and the fragment ion MS/MS tolerance was set to 0.8 Da. As a digestive enzyme, trypsin was specified, and the missed cleavage number was set to 1 at maximum. The analysis target was C-terminal double-label alone, and methionine oxidation was allowed.

**[0082]** According to the above-mentioned proteome analysis, S38AA was successfully identified. Furthermore, the difference in the S38AA expression amount was studied between Alzheimer's disease patients (AD) and non-Alzheimer's disease patients (control) (Table 1). The identified sequence by MASCOT peptide search corresponds to the extra-membranous domain of S38AA isoform 1 (the 761-770th amino acid region of the amino acid sequence shown by SEQ ID NO: 2), and the peptide identification was statistically significant.

**[0083]** The amount of the S38AA extra-membranous domain in the pyramidal cells decreased to 1/20 in Alzheimer's disease patients as compared to non-Alzheimer's disease control. The recognition site of the antibody used in the immunohistological study was an extra-membranous domain, and since the expression amount also decreased even in that case, the results matched with those of the immunohistological study. That is, it is clear that at least the S38AA extra-membranous domain decreases in the nerve cells of the hippocampus CA1 region in Alzheimer's disease.

Table 1

Alzheimer's disease patient/non-Alzheimer's disease patient expression amount ratio	identified peptide sequence	significance level of identification
0.053	GQEAPGKAR (SEQ ID NO: 3)	0.032

#### Example 1 Detection and molecular weight prediction of S38AA fragment in cerebrospinal fluid

**[0084]** The cerebrospinal fluids of patients diagnosed with definite Alzheimer's disease (10 cases, pathological score 9 - 12: pathological score in the Swedish brain bank), suspected Alzheimer's disease (6 cases, pathological score 3 - 7) and normal (11 cases, pathological score 0 - 4) were used. The scoring was performed according to the evaluation method of Alafuzoff et al. (Acta Neuropathol (Berl) (1987) 74: 209-225). The pathology determination was performed taking into consideration the pathological score and antemortem examination by clinicians. SDS sample was prepared by adding 1 volume of an LDS sample buffer (Invitrogen) relative to 3 volumes of cerebrospinal fluid and heating the mixture at 70°C for 10 min. Using the prepared sample (10 µL), S38AA was separated on 4-12% gradient SDS-PAGE gel. Thereafter, using Mini Trans-Blot system (Bio-Rad Laboratories), the separated total protein was transferred to PVDF membrane, and applied to the step of antibody staining. Prior to the detection of S38AA with the antibody, the PVDF membrane was blocked from non-specific reactions with 5% skim milk-containing phosphate buffered saline (pH 7.4) at room temperature for 1 hr. The primary antibody (catalog number: HPA024631, Atlas Antibodies) was diluted 1000-fold with phosphate buffered saline and incubated at 4°C overnight. Thereafter, the membrane was incubated with 50000-fold diluted HRP-conjugated goat anti-rabbit IgG antibody (GE healthcare) at room temperature for 1 hr, sufficiently washed and treated with SuperSignal (registered trade mark) West Dura (Thermo Fisher Scientific) to allow color development.

**[0085]** A signal derived from S38AA fragment in the cerebrospinal fluid could be detected by Western blot, and it was found the intensity thereof tended to increase in Alzheimer's disease (Fig. 4). The detected molecular weight was 76-102 kDa, corresponding to the full-length of S38AA isoform 2. However, isoform 2 is a ten-transmembrane protein having a considerably low possibility of the full-length protein being secreted in the cerebrospinal fluid. Hence, the possibility of partial cleavage and secretion of S38AA was examined.

**[0086]** The amino acid sequence of S38AA isoform 1 was obtained from the registered information of UniProtKB database. The extra-membrane region was predicted using TMHMM software, and the obtained predicted extra-membrane region is shown in a box (Fig. 3). The extra-membrane region consisted of 721 amino acids from the 399th to the 1119th and the molecular weight was calculated to be about 76 kDa. On the other hand, the molecular weight of S38AA in the cerebrospinal fluid was estimated to be about 76 - 102 kDa by Western blot (Fig. 4), which almost matched with the assumed molecular weight size of the extra-membrane region. From the aspect of the molecular weight, the S38AA detected in the cerebrospinal fluid was suggested to be a (poly) peptide (S38AA fragment) containing the extra-membranous domain of isoform 1.

Example 2 Patient background, quantitative analysis of S38AA fragment in cerebrospinal fluid and correlation with APOE allele

**[0087]** For quantitative analysis, cerebrospinal fluids of several cases were mixed in advance, and used as the standard cerebrospinal fluid for all analyses. All samples were treated in the same manner, and a standard curve was drawn for each SDS-PAGE gel. Western blot for quantitative analysis of the S38AA fragment was performed in the same manner as in Example 1. The signal intensity derived from S38AA antibody was image analyzed by LAS3000 image analyzer (Fujifilm Corp.) and quantified using MultiGauge V3.0 software (Fujifilm Corp.). Each signal intensity was normalized by the standard curve prepared from the standard cerebrospinal fluid transferred simultaneously onto each membrane.

**[0088]** As for the patients' background, specific patient numbers were accorded in the present test from the aspect of protection of personal information, which did not match with the reference numbers used by the Swedish brain bank. APOE genotype was analyzed according to the standard procedure manual of the Swedish brain bank. The genotype was known for the patients of 27 cases (Table 2) and the analysis was performed using the same.

Table 2

Alzheimer's disease severity classification	patient No.	diagnosis	score	ApoE alle
normal	1	non-Alzheimer's disease	01	3/3
	2	non-Alzheimer's disease	04	2/3
	3	non-Alzheimer's disease	02	2/3
	4	non-Alzheimer's disease	00	3/4
	5	non-Alzheimer's disease	00	3/3
	6	non-Alzheimer's disease	01	3/3
	7	non-Alzheimer's disease	04	3/4
	8	non-Alzheimer's disease	02	3/3
	9	non-Alzheimer's disease	00	2/3
	10	non-Alzheimer's disease	00	2/3
	11	non-Alzheimer's disease	00	3/3
mild or moderate	12	suspected Alzheimer's disease	06	3/4
	13	suspected Alzheimer's disease	03	3/3
	14	suspected Alzheimer's disease	07	3/4
	15	suspected Alzheimer's disease	07	3/4
	16	suspected Alzheimer's disease	07	3/3
	17	suspected Alzheimer's disease	N.D.	3/3
	severe	18	definite Alzheimer's disease	10
19		definite Alzheimer's disease	10	3/4
20		definite Alzheimer's disease	12	3/4
21		definite Alzheimer's disease	11	3/4
22		definite Alzheimer's disease	10	3/4
23		definite Alzheimer's disease	11	4/4
24		definite Alzheimer's disease	09	4/4
25		definite Alzheimer's disease	09	3/4
26		definite Alzheimer's disease	10	3/4
27		definite Alzheimer's disease	N.D.	4/4

N.D.: not determined

score: evaluation method of Alafuzoff et al. (Acta Neuropathol (1987) 74: 209-225).

**[0089]** As shown in Fig. 5, it is clear that the amount of the S38AA fragment in the cerebrospinal fluid increases in Alzheimer's disease, and the amount of the S38AA fragment tends to increase even in patients with suspected Alzheimer's disease. This shows that the S38AA fragment increases from the early or preclinical stages of Alzheimer's disease, and a clear increase is observed in patients with definite Alzheimer's disease.

**[0090]** The whole patients were classified by APOE genotype (4 kinds of ApoE2/3, ApoE3/3, ApoE3/4, ApoE4/4; see Table 2), and the amount of S38AA in the cerebrospinal fluid of each group is shown in a graph (Fig. 6). The amount of

the S38AA fragment remarkably increased particularly in the homozygous patients (ApoE4/4) having ApoE4. ApoE4 is an onset risk gene of Alzheimer's disease, and ApoE2 is considered to be a resistance factor of the onset of Alzheimer's disease. That is, Fig. 6 shows that the onset risk factors of Alzheimer's disease of APOE genotype and the amount of the S38AA fragment in the cerebrospinal fluid are correlated.

**[0091]** As for the relationship between the amount of the S38AA fragment in 11 non-Alzheimer's disease patients and the APOE genotype, the amount of the S38AA fragment in the cerebrospinal fluid increased in the order of ApoE2/3, ApoE3/3 and ApoE3/4, as shown in Fig. 7.

**[0092]** These correlations indicate that S38AA in the cerebrospinal fluid is correlated with the risk of the onset of Alzheimer's disease in the future, and further suggests that S38AA has a possibility of becoming a biomarker for estimating the risk of the onset of Alzheimer's disease in the future even in patients with preclinical Alzheimer's disease. Although early detection and the start of an early treatment are considered to be important in Alzheimer's disease, a diagnostic marker capable of early detection of Alzheimer's disease has not been found. Therefore, detection of the suspected Alzheimer's disease is extremely useful.

### Example 3 Confirmation that S38AA fragment in cerebrospinal fluid contains S38AA extra-membrane region

#### (1) Confirmation of S38AA fragment based on antibody used for immunoprecipitation

**[0093]** An anti-S38AA antibody (HPA023161 or HPA021374, Atlas Antibodies, 2  $\mu$ L) for immunoprecipitation was added to the cerebrospinal fluid (500  $\mu$ L) derived from patient with Alzheimer's disease and the mixture was incubated for 20 hr at 4°C, and thereafter incubated together with ProteinG Mag Sepharose (GE healthcare) for 1 hr at 4°C, whereby an S38AA fragment was immunoprecipitated. Thereafter, LDS sample buffer (Invitrogen, 10  $\mu$ L) was added to magnetic beads to give a sample for SDS-PAGE (ProteinG Mag Sepharose bound fraction). In addition, 9  $\mu$ L of the supernatant fraction free of precipitation by ProteinG Mag Sepharose was taken, and the LDS sample buffer (3  $\mu$ L) was added to give a sample of an unbound fraction (ProteinG Mag Sepharose unbound fraction).

**[0094]** After performing SDS-PAGE in the same manner as in Example 1, Western blot was performed using HPA024631 as a primary antibody.

**[0095]** As a result, in both HPA023161 and HPA021374 used for immunoprecipitation, an immunoprecipitate having a molecular weight similar to that found in the cerebrospinal fluid could be detected by Western blot (Fig. 8: bound lane). On the other hand, S38AA fragment was not detected in the supernatant of the immunoprecipitate (Fig. 8: unbound lane).

**[0096]** Since the amino acid sequences of the peptides used for producing the antibodies of HPA023161 and HPA021374 are MKPKQVSRDLGLAADLPGGAEGAAAQPQAVLRQPELRLVISDGEQGGQGGHRLDHGGHLEMRKA (SEQ ID NO: 4; corresponding to the 926-988th amino acid region in SEQ ID NO: 2) and PVPKDKVVVDEGQDREVPEENKPPSRHAGGKAPGVQGMAPPDPDSEREKQEPEQGEVGRPG QAQALEE-AGDLPEDPQKVPEADGQPA (SEQ ID NO: 5; corresponding to the 500-588th amino acid region in SEQ ID NO: 2), respectively, it has been shown that at least the S38AA fragment in the cerebrospinal cord contains an amino acid sequence which is a part of these S38AA extra-membranous domain sequences.

#### (2) Confirmation of S38AA fragment by shotgun MS analysis

**[0097]** To show that the immunoprecipitation sample of Example 3(1) contains the S38AA extra-membranous domain, MilliQ water (90  $\mu$ E), 1 M Tris buffer (pH 8, 5  $\mu$ L), urea (48 mg) and 0.5 M dithiothreitol (1  $\mu$ L) were added to the two kinds of immunoprecipitation samples, and the mixtures were incubated at 30°C for 2 hr. Thereafter, 0.5 M iodoacetamide (2  $\mu$ L) was added, and the mixture was treated at room temperature for 1 hr to alkylate the thiol residue. Thereafter, 50 mM ammonium carbonate (750  $\mu$ L) was added, trypsin (Promega, 2  $\mu$ g) was added, and the mixture was incubated at 37°C overnight to give a tryptic digest. The obtained tryptic digest was treated with trifluoroacetic acid to decrease the pH to 1 - 2, and purified by TopTip200 column (Glygen Corp.) according to the operation manual.

**[0098]** The tryptic digest immunoprecipitated by HPA023161 or HPA021374 was dissolved in 0.1% trifluoroacetic acid solution (20  $\mu$ L), and 5  $\mu$ L thereof was injected into an analysis column (Zorbax 300SB, 0.1 $\times$ 150 mm, Agilent Technologies). For the mobile phase of the analysis, 0.1% formic acid (mobile phase A) and 0.1% formic acid-methanol (mobile phase B) were used. A gradient program of increasing the concentration of mobile phase B linearly from 5% to 75% over 30 min, and thereafter to 98% mobile phase B (31 min), and maintaining for 5 min (36 min) was used. The mass spectrometer used was Thermo Fisher, LTQ velos system. The mass measurement range was set to 400 - 1400 m/z. Using the obtained data, peptide was identified using Mascot software version 2.2 and Swiss-Prot database (20110804).

**[0099]** The analysis parameter conditions on Mascot software are as follows.

monoisotopic mass was selected  
peptide mass tolerance:15 Da

fragment ion MS/MS tolerance: 0.8 Da  
digestive enzyme: trypsin was specified  
missed cleavage number: 1 at maximum  
methionine oxidation: allowed

5

**[0100]** As a result of the shotgun MS analysis of the immunoprecipitates by HPA023161 and HPA021374, a total of 6 peptide sequences derived from the S38AA extra-membranous domain could be identified (Fig. 3, underlined part, SEQ ID NOs: 6 - 11). Therefore, it has been shown that the immunoprecipitates certainly contain the S38AA extra-membranous domain.

10

#### Example 4 Detection and molecular weight prediction of S38AA fragment in plasma

**[0101]** Whether or not the S38AA fragment can be detected also in human plasma was studied. Heparin plasma was separated from patients with Alzheimer's disease and non-Alzheimer's disease patients. PureProteome albumin removal magnetic beads (Millipore, 500  $\mu$ L) and ProteinG Mag Sepharose (GE healthcare, 60  $\mu$ L) were placed in an Eppendorf tube, and washed with phosphate buffered saline. Thereafter, plasma (20  $\mu$ L) and phosphate buffered saline (60  $\mu$ L) were added to the mixed magnetic beads, and the mixture was incubated at 4°C for 2 hr. The obtained plasma was confirmed by SDS-PAGE to be free of albumin and immunoglobulin. To this sample (60  $\mu$ L) was added LDS sample buffer (Invitrogen, 20  $\mu$ L) to give a sample for SDS-PAGE, which was analyzed by Western blot using HPA024631 as a primary antibody in the same manner as in the above-mentioned Example 3.

15

20

**[0102]** As a result, a band considered to have the same molecular weight as that of the cerebrospinal fluid was found as shown in Fig. 9, and the amount of the corresponding band increased in patients with Alzheimer's disease.

**[0103]** Therefore, the S38AA fragment is also present in human plasma, and the amount of the S38AA fragment in plasma was clarified to increase in patients with Alzheimer's disease as compared to normal person.

25

#### Example 5 Detection example 1 of S38AA fragment produced in supernatant of cultured cell

**[0104]** BE(2)-C cell, SK-N-MC cell, SHSY-5Y cell and SHSY-5Y. (APP) cell (cell line obtained by introducing human APP gene into SHSY-5Y cell) were cultured in D-MEM (Invitrogen) containing 10% fetal bovine serum for 2 days, and thereafter, the medium was recovered. Rat fetal primary nerve cell was cultured in Neurobasal medium (Invitrogen) containing B27 for 7 days, and the medium was recovered. HPA021374 antibody was added to each recovered medium (1 mL), and the mixture was incubated at 4°C for 20 hr. Thereafter, ProteinG Mag Sepharose (30  $\mu$ L) was added and the mixture was incubated at 4°C for 2 hr. The magnetic beads were washed with PBS(-), and 4-fold diluted LDS sample buffer (20  $\mu$ L) was added to give a sample for SDS-PAGE. In the same manner as in the above-mentioned Example 3,

30

35

the sample was analyzed by Western blot using HPA024631 as a primary antibody.  
**[0105]** As a result, a band considered to have the same molecular weight as that of the cerebrospinal fluid and plasma was observed. Therefore, it has been clarified that the cleavage of S38AA, namely, production and secretion of S38AA fragment, can be detected also in cultured cells and rat primary cultured cells, similar to human nerve cell.

40

#### Example 6 Detection example 2 of S38AA fragment produced in supernatant of cultured cell

**[0106]** An expression vector containing a DNA sequence added with Flag-Tag (DYKDDDDK; SEQ ID NO: 12) to the C-terminal of S38AA was constructed, and introduced into SHSY-5Y cell. After 48 hr, the medium (75  $\mu$ L) was recovered, and LDS sample buffer (25  $\mu$ L) was added to give a sample for SDS-PAGE. This time, the sample was analyzed by Western blot using an anti-Flag M2 monoclonal antibody (Sigma-Aldrich Corp.) as a primary antibody.

45

**[0107]** As a result, a band considered having the same molecular weight as that of the cerebrospinal fluid and plasma could be detected without immunoprecipitation, unlike Example 5. Therefore, it has been clarified that the gene introduction enables easier detection of S38AA fragment even in the culture supernatant of cultured cells.

50

#### Industrial Applicability

**[0108]** According to the present invention, a determination method of Alzheimer's disease, which can determine not only patients affected with Alzheimer's disease but also patients having a high risk of developing Alzheimer's disease in the future, can be provided.

55

**[0109]** Furthermore, according to the present invention, a method of screening for a substance that treats or prevents Alzheimer's disease can be provided.

SEQUENCE LISTING

[0110]

5           <110> Dainippon Sumitomo Pharma Co., Ltd.  
  
            <120> Diagnostic reagent and diagnostic method of Alzheimer's disease  
  
            <130> 091796  
10  
  
            <150> JP 2010-293891  
            <151> 2010-12-28  
  
            <160> 12  
15  
  
            <170> PatentIn version 3.5  
  
            <210> 1  
            <211> 4303  
20           <212> DNA  
            <213> Homo sapiens  
  
            <220>  
            <221> CDS  
25           <222> (376)..(3735)  
  
            <400> 1  
  
30  
  
35  
  
40  
  
45  
  
50  
  
55

EP 2 660 600 B1

	cgccgcgggcg gcagctgagt tgggctgagg tgtccctagc tggctctgcg gctcttcagg	60
	gtctgggctc ggagattcac aggcggcccg cgaggccgag cgagggacgc atggccctga	120
5	ggcggccgca gggcttggcg gggctcggag gttgacctcg cccccgcagc cggccttcga	180
	ggctgcctcc tccaggcagc ctctggggcc cgcgcccgcg cctgctcagg ctcccgtgtt	240
	caggctgccc atcccctccc caccggcgtc ccggacgttg ggacctgtga ccgtggcctc	300
10	gggctgggct tccaaagccg gccgcagccc ggcgaccccc gaggcctctc gcccccgggcc	360
	cctagacctc tcaact atg acc gcg gcc gcc gcc tcc aac tgg ggg ctg atc	411
	Met Thr Ala Ala Ala Ala Ser Asn Trp Gly Leu Ile	
15	1 5 10	
	acg aac atc gtg aac agc atc gta ggg gtc agt gtc ctc acc atg ccc	459
	Thr Asn Ile Val Asn Ser Ile Val Gly Val Ser Val Leu Thr Met Pro	
	15 20 25	
20	ttc tgc ttc aaa cag tgc ggc atc gtc ctg ggg gcg ctg ctc ttg gtc	507
	Phe Cys Phe Lys Gln Cys Gly Ile Val Leu Gly Ala Leu Leu Leu Val	
	30 35 40	
	ttc tgc tca tgg atg acg cac cag tcg tgc atg ttc ttg gtg aag tcg	555
25	Phe Cys Ser Trp Met Thr His Gln Ser Cys Met Phe Leu Val Lys Ser	
	45 50 55 60	
	gcc agc ctg agc aag cgg agg acc tac gcc ggc ctg gca ttc cac gcc	603
	Ala Ser Leu Ser Lys Arg Arg Thr Tyr Ala Gly Leu Ala Phe His Ala	
30	65 70 75	
	tac ggg aag gca ggc aag atg ctg gtg gag acc agc atg atc ggg ctg	651
	Tyr Gly Lys Ala Gly Lys Met Leu Val Glu Thr Ser Met Ile Gly Leu	
	80 85 90	
35	atg ctg ggc acc tgc atc gcc ttc tac gtc gtg atc ggc gac ttg ggg	699

40

45

50

55

EP 2 660 600 B1

	Met	Leu	Gly	Thr	Cys	Ile	Ala	Phe	Tyr	Val	Val	Ile	Gly	Asp	Leu	Gly	
			95					100					105				
5	tcc	aac	ttc	ttt	gcc	cgg	ctg	ttc	ggg	ttt	cag	gtg	ggc	ggc	acc	ttc	747
	Ser	Asn	Phe	Phe	Ala	Arg	Leu	Phe	Gly	Phe	Gln	Val	Gly	Gly	Thr	Phe	
		110					115					120					
10	cgc	atg	ttc	ctg	ctg	ttc	gcc	gtg	tgg	ctg	tgc	atc	gtg	ctc	ccg	ctc	795
	Arg	Met	Phe	Leu	Leu	Phe	Ala	Val	Ser	Leu	Cys	Ile	Val	Leu	Pro	Leu	
	125					130					135					140	
15	agc	ctg	cag	cgg	aac	atg	atg	gcc	tcc	atc	cag	tcc	ttc	agc	gcc	atg	843
	Ser	Leu	Gln	Arg	Asn	Met	Met	Ala	Ser	Ile	Gln	Ser	Phe	Ser	Ala	Met	
					145					150					155		
20	gcc	ctc	ctc	ttc	tac	acc	gtg	ttc	atg	ttc	gtg	atc	gtg	ctc	tcc	tct	891
	Ala	Leu	Leu	Phe	Tyr	Thr	Val	Phe	Met	Phe	Val	Ile	Val	Leu	Ser	Ser	
				160					165					170			
25	ctc	aag	cac	ggc	ctc	ttc	agt	ggg	cag	tgg	ctg	cgg	cgg	gtc	agc	tac	939
	Leu	Lys	His	Gly	Leu	Phe	Ser	Gly	Gln	Trp	Leu	Arg	Arg	Val	Ser	Tyr	
			175					180					185				
30	gtc	cgc	tgg	gag	ggc	gtc	ttc	cgc	tgc	atc	ccc	atc	ttc	ggc	atg	tcc	987
	Val	Arg	Trp	Glu	Gly	Val	Phe	Arg	Cys	Ile	Pro	Ile	Phe	Gly	Met	Ser	
		190					195					200					
35	ttc	gcc	tgc	cag	tcc	cag	gtg	ctg	ccc	acc	tac	gac	agc	ctg	gat	gag	1035
	Phe	Ala	Cys	Gln	Ser	Gln	Val	Leu	Pro	Thr	Tyr	Asp	Ser	Leu	Asp	Glu	
	205					210					215				220		
40	ccg	tca	gtg	aaa	acc	atg	agc	tcc	ata	ttt	gct	tcc	tcc	ctt	aat	gtg	1083
	Pro	Ser	Val	Lys	Thr	Met	Ser	Ser	Ile	Phe	Ala	Ser	Ser	Leu	Asn	Val	
					225					230					235		
45	gtc	acc	acc	ttc	tac	gtc	atg	gtg	ggg	ttt	ttc	ggc	tac	gtc	agc	ttc	1131
	Val	Thr	Thr	Phe	Tyr	Val	Met	Val	Gly	Phe	Phe	Gly	Tyr	Val	Ser	Phe	
				240					245				250				
50	acc	gag	gcc	acg	gcc	ggc	aac	gtg	ctc	atg	cac	ttt	ccc	tcc	aac	ctg	1179
	Thr	Glu	Ala	Thr	Ala	Gly	Asn	Val	Leu	Met	His	Phe	Pro	Ser	Asn	Leu	
			255					260					265				
55	gtg	acg	gag	atg	ctc	cgt	gtg	ggc	ttc	atg	atg	tca	gtg	gct	gtg	ggc	1227
	Val	Thr	Glu	Met	Leu	Arg	Val	Gly	Phe	Met	Met	Ser	Val	Ala	Val	Gly	
			270				275					280					
60	ttc	ccc	atg	atg	atc	ctg	cca	tgc	agg	cag	gcc	ctg	agc	acg	ctg	ctg	1275
	Phe	Pro	Met	Met	Ile	Leu	Pro	Cys	Arg	Gln	Ala	Leu	Ser	Thr	Leu	Leu	
	285					290					295				300		
65	tgt	gag	cag	cag	caa	aaa	gat	ggc	acc	ttt	gca	gca	ggg	ggc	tac	atg	1323
	Cys	Glu	Gln	Gln	Gln	Lys	Asp	Gly	Thr	Phe	Ala	Ala	Gly	Gly	Tyr	Met	
					305					310					315		
70	ccc	cct	ctc	cgg	ttt	aaa	gca	ctt	acc	ctc	tct	gtg	gtg	ttt	gga	acc	1371
	Pro	Pro	Leu	Arg	Phe	Lys	Ala	Leu	Thr	Leu	Ser	Val	Val	Phe	Gly	Thr	
				320					325					330			
75	atg	gtt	ggt	ggc	atc	ctt	atc	ccc	aac	gtg	gag	acc	atc	ctg	ggc	ctc	1419
	Met	Val	Gly	Gly	Ile	Leu	Ile	Pro	Asn	Val	Glu	Thr	Ile	Leu	Gly	Leu	
			335					340					345				

EP 2 660 600 B1

	aca gga gcg acc atg gga agc ctc atc tgc ttc atc tgc ccg gcg ctg	1467
	Thr Gly Ala Thr Met Gly Ser Leu Ile Cys Phe Ile Cys Pro Ala Leu	
	350 355 360	
5	atc tac aag aaa atc cac aag aac gca ctt tcc tcc cag gtg gtg ctg	1515
	Ile Tyr Lys Lys Ile His Lys Asn Ala Leu Ser Ser Gln Val Val Leu	
	365 370 375 380	
10	tgg gtc ggc ctg ggc gtc ctg gtg gtg agc act gtc acc aca ctg tct	1563
	Trp Val Gly Leu Gly Val Leu Val Val Ser Thr Val Thr Thr Leu Ser	
	385 390 395	
15	gtg agc gag gag gtc ccc gag gac ttg gca gag gaa gcc cct ggc ggc	1611
	Val Ser Glu Glu Val Pro Glu Asp Leu Ala Glu Glu Ala Pro Gly Gly	
	400 405 410	
20	cgg ctt gga gag gcc gag ggt ttg atg aag gtg gag gca gcg cgg ctc	1659
	Arg Leu Gly Glu Ala Glu Gly Leu Met Lys Val Glu Ala Ala Arg Leu	
	415 420 425	
25	tca gcc cag gat ccg gtt gtg gcc gtg gct gag gat ggc cgg gag aag	1707
	Ser Ala Gln Asp Pro Val Val Ala Val Ala Glu Asp Gly Arg Glu Lys	
	430 435 440	
30	ccg aag ctg ccg aag gag aga gag gag ctg gag cag gcc cag atc aag	1755
	Pro Lys Leu Pro Lys Glu Arg Glu Glu Leu Glu Gln Ala Gln Ile Lys	
	445 450 455 460	
35	ggg ccc gtg gat gtg cct gga cgg gaa gat ggc aag gag gca ccg gag	1803
	Gly Pro Val Asp Val Pro Gly Arg Glu Asp Gly Lys Glu Ala Pro Glu	
	465 470 475	
40	gag gca cag ctc gat cgc cct ggg caa ggg att gct gtg cct gtg ggc	1851
	Glu Ala Gln Leu Asp Arg Pro Gly Gln Gly Ile Ala Val Pro Val Gly	
	480 485 490	
45	gag gcc cac cgc cac gag cct cct gtt cct cac gac aag gtg gtg gta	1899
	Glu Ala His Arg His Glu Pro Pro Val Pro His Asp Lys Val Val Val	
	495 500 505	
50	gat gaa ggc caa gac cga gag gtg cca gaa gag aac aaa cct cca tcc	1947
	Asp Glu Gly Gln Asp Arg Glu Val Pro Glu Glu Asn Lys Pro Pro Ser	
	510 515 520	
55	aga cac gcg ggc gga aag gct cca ggg gtc cag ggc cag atg gcg ccg	1995
	Arg His Ala Gly Gly Lys Ala Pro Gly Val Gln Gly Gln Met Ala Pro	
	525 530 535 540	
60	cct ctg ccc gac tca gaa aga gag aaa caa gag ccg gag cag gga gag	2043
	Pro Leu Pro Asp Ser Glu Arg Glu Lys Gln Glu Pro Glu Gln Gly Glu	
	545 550 555	
65	gtt ggg aag agg cct gga cag gcc cag gcc ttg gag gag gcg ggt gat	2091
	Val Gly Lys Arg Pro Gly Gln Ala Gln Ala Leu Glu Glu Ala Gly Asp	
	560 565 570	
70	ctt cct gaa gat ccc cag aaa gtt cca gaa gca gat ggt cag cca gct	2139
	Leu Pro Glu Asp Pro Gln Lys Val Pro Glu Ala Asp Gly Gln Pro Ala	
	575 580 585	
75	gtc cag cct gca aag gag gac ctg ggg cca gga gac agg ggc ctg cat	2187
	Val Gln Pro Ala Lys Glu Asp Leu Gly Pro Gly Asp Arg Gly Leu His	
	590 595 600	

EP 2 660 600 B1

	cct	cg	ccc	cag	gca	gtg	ctg	tct	gag	cag	cag	aac	ggc	ctg	gcg	gtg	2235
	Pro	Arg	Pro	Gln	Ala	Val	Leu	Ser	Glu	Gln	Gln	Asn	Gly	Leu	Ala	Val	
	605					610					615					620	
5	gg	gga	ggg	gaa	aag	gcc	aag	ggg	gga	ccg	ccg	cca	ggc	aac	gcc	gcc	2283
	Gly	Gly	Gly	Glu	Lys	Ala	Lys	Gly	Gly	Pro	Pro	Pro	Gly	Asn	Ala	Ala	
					625					630						635	
10	ggg	gac	aca	ggg	cag	ccc	gca	gag	gac	agc	gac	cac	ggt	ggg	aag	cct	2331
	Gly	Asp	Thr	Gly	Gln	Pro	Ala	Glu	Asp	Ser	Asp	His	Gly	Gly	Lys	Pro	
				640						645						650	
15	ccc	ctc	cca	gcg	gag	aag	ccg	gct	cca	ggg	cct	ggg	ctg	ccg	ccc	gag	2379
	Pro	Leu	Pro	Ala	Glu	Lys	Pro	Ala	Pro	Gly	Pro	Gly	Leu	Pro	Pro	Glu	
			655						660							665	
20	cct	cg	gag	cag	agg	gac	gtg	gag	cga	gcg	ggt	gga	aac	cag	gcg	gcc	2427
	Pro	Arg	Glu	Gln	Arg	Asp	Val	Glu	Arg	Ala	Gly	Gly	Asn	Gln	Ala	Ala	
			670				675									680	
25	agc	cag	ctg	gag	gaa	gct	ggc	agg	gcg	gag	atg	ctg	gac	cac	gcc	gtc	2475
	Ser	Gln	Leu	Glu	Glu	Ala	Gly	Arg	Ala	Glu	Met	Leu	Asp	His	Ala	Val	
						690										700	
30	ctg	ctt	cag	gtg	atc	aaa	gaa	cag	cag	gtg	cag	caa	aag	cg	ttg	ctg	2523
	Leu	Leu	Gln	Val	Ile	Lys	Glu	Gln	Gln	Val	Gln	Gln	Lys	Arg	Leu	Leu	
					705						710					715	
35	gac	cag	cag	gag	aag	ctg	ctg	gcg	gtg	atc	gag	gag	cag	cac	aag	gag	2571
	Asp	Gln	Gln	Glu	Lys	Leu	Leu	Ala	Val	Ile	Glu	Glu	Gln	His	Lys	Glu	
				720						725						730	
40	atc	cac	cag	cag	agg	cag	gag	gac	gag	gag	gat	aaa	ccc	agg	cag	gtg	2619
	Ile	His	Gln	Gln	Arg	Gln	Glu	Asp	Glu	Glu	Asp	Lys	Pro	Arg	Gln	Val	
				735						740						745	
45	gag	gtg	cat	caa	gag	ccc	ggg	gca	gcg	gtg	ccc	aga	ggc	cag	gag	gcc	2667
	Glu	Val	His	Gln	Glu	Pro	Gly	Ala	Ala	Val	Pro	Arg	Gly	Gln	Glu	Ala	
			750							755						760	
50	cct	gaa	ggc	aag	gcc	agg	gag	acg	gtg	gag	aat	ctg	cct	ccc	ctg	cct	2715
	Pro	Glu	Gly	Lys	Ala	Arg	Glu	Thr	Val	Glu	Asn	Leu	Pro	Pro	Leu	Pro	
						770										780	
55	ttg	gac	cct	gtc	ctc	aga	gct	cct	ggg	ggc	cg	cct	gct	cca	tcc	cag	2763
	Leu	Asp	Pro	Val	Leu	Arg	Ala	Pro	Gly	Gly	Arg	Pro	Ala	Pro	Ser	Gln	
					785											795	
60	gac	ctt	aac	cag	cg	tcc	ctg	gag	cac	tct	gag	ggg	cct	gtg	ggc	aga	2811
	Asp	Leu	Asn	Gln	Arg	Ser	Leu	Glu	His	Ser	Glu	Gly	Pro	Val	Gly	Arg	
				800							805					810	
65	gac	cct	gct	ggc	cct	cct	gac	ggc	ggc	cct	gac	aca	gag	cct	cg	gca	2859
	Asp	Pro	Ala	Gly	Pro	Pro	Asp	Gly	Gly	Pro	Asp	Thr	Glu	Pro	Arg	Ala	
				815												825	
70	gcc	cag	gcc	aag	ctg	aga	gat	ggc	cag	aag	gat	gcc	gcc	ccc	agg	gca	2907
	Ala	Gln	Ala	Lys	Leu	Arg	Asp	Gly	Gln	Lys	Asp	Ala	Ala	Pro	Arg	Ala	
				830												840	
75	gct	ggc	act	gtg	aag	gag	ctc	ccc	aag	ggc	ccg	gag	cag	gtg	ccc	gtg	2955
	Ala	Gly	Thr	Val	Lys	Glu	Leu	Pro	Lys	Gly	Pro	Glu	Gln	Val	Pro	Val	

EP 2 660 600 B1

	845		850		855		860	
	cca gac ccc gcc agg gaa gcc ggg ggc cca gag gag cgc ctc gca gag							3003
5	Pro Asp Pro Ala Arg		Glu Ala Gly Gly		Pro Glu Glu Arg		Leu Ala Glu	
			865		870		875	
	gaa ttc cct ggg caa agt cag gac gtt act ggc ggt tcc caa gac agg							3051
	Glu Phe Pro Gly Gln Ser Gln Asp Val Thr Gly Gly Ser Gln Asp Arg							
			880		885		890	
10	aaa aaa cct ggg aag gag gtg gca gcc act ggc acc agc att ctg aag							3099
	Lys Lys Pro Gly Lys Glu Val Ala Thr Gly Thr Ser Ile Leu Lys							
			895		900		905	
15	gaa gcc aac tgg ctc gtg gca ggg cca gga gca gag acg ggg gac cct							3147
	Glu Ala Asn Trp Leu Val Ala Gly Pro Gly Ala Glu Thr Gly Asp Pro							
			910		915		920	
20	cgc atg aag ccc aag caa gtg agc cga gac ctg ggc ctt gca gcg gac							3195
	Arg Met Lys Pro Lys Gln Val Ser Arg Asp Leu Gly Leu Ala Ala Asp							
			925		930		935	940
25	ctg ccc ggt ggg gcg gaa gga gca gct gca cag ccc cag gct gtg tta							3243
	Leu Pro Gly Gly Ala Glu Gly Ala Ala Ala Gln Pro Gln Ala Val Leu							
			945		950		955	
30	cgc cag ccg gaa ctg cgg gtc atc tct gat ggc gag cag ggt gga cag							3291
	Arg Gln Pro Glu Leu Arg Val Ile Ser Asp Gly Glu Gln Gly Gly Gln							
			960		965		970	
35	cag ggc cac cgg ctg gac cat ggc ggt cac ctg gag atg aga aag gcc							3339
	Gln Gly His Arg Leu Asp His Gly Gly His Leu Glu Met Arg Lys Ala							
			975		980		985	
40	cgc ggg ggg gac cat gtg cct gtg tcc cac gag cag ccg aga ggc ggg							3387
	Arg Gly Gly Asp His Val Pro Val Ser His Glu Gln Pro Arg Gly Gly							
			990		995		1000	
45	gag gac gct gct gtc cag gag ccc agg cag agg cca gag cca gag							3432
	Glu Asp Ala Ala Val Gln Glu Pro Arg Gln Arg Pro Glu Pro Glu							
			1005		1010		1015	
50	ctg ggg ctc aaa cga gct gtc ccg ggg ggc cag agg ccg gac aat							3477
	Leu Gly Leu Lys Arg Ala Val Pro Gly Gly Gln Arg Pro Asp Asn							
			1020		1025		1030	
55	gcc aag ccc aac cgg gac ctg aaa ctg cag gct ggc tcc gac ctc							3522
	Ala Lys Pro Asn Arg Asp Leu Lys Leu Gln Ala Gly Ser Asp Leu							
			1035		1040		1045	
60	cgg agg cga cgg cgg gac ctt ggc cct cat gca gag ggt cag ctg							3567
	Arg Arg Arg Arg Arg Asp Leu Gly Pro His Ala Glu Gly Gln Leu							
			1050		1055		1060	
65	gcc ccg agg gat ggg gtc atc att ggc ctt aac ccc ctg cct gat							3612
	Ala Pro Arg Asp Gly Val Ile Ile Gly Leu Asn Pro Leu Pro Asp							
			1065		1070		1075	
70	gtc cag gtg aac gac ctc cgt ggc gcc ctg gat gcc cag ctc cgc							3657
	Val Gln Val Asn Asp Leu Arg Gly Ala Leu Asp Ala Gln Leu Arg							
			1080		1085		1090	
75	cag gct gcg ggg gga gct ctg cag gtg gtc cac agc cgg cag ctt							3702

EP 2 660 600 B1

Gln Ala Ala Gly Gly Ala Leu Gln Val Val His Ser Arg Gln Leu  
 1095 1100 1105

5 aga cag gcg cct ggg cct cca gag gag tcc tag cacctgctgg 3745  
 Arg Gln Ala Pro Gly Pro Pro Glu Glu Ser  
 1110 1115

ccatgagggc cacgccagcc actgccctcc tcggccagca gcaggtctgt ctcagccgca 3805

10 tcccagccaa actctggagg tcacactcgc ctctccccag ggtttcatgt ctgaggccct 3865

caccaagtgt gagtgacagt ataaaagatt cactgtggca tcgtttccag aatgttcttg 3925

ctgtcgttct gttgcagctc ttagtctgag gtctctgac ctctagactc tgagctcact 3985

15 ccagcctgtg aggagaaacg gcctccgctg cgagctggct ggtgcactcc caggctcagg 4045

ctggggagct gctgcgtctg tggtcaggcc tcctgctcct gccagggagc acgcgtggtc 4105

20 ttcgggttga gctcggccgt gcgtggaggt gcgcatggct gctcatggtc ccaacacagg 4165

ctactgtgag agccagcatc caaccccacg cttgcagtga ctcagaatga taattattat 4225

gactgtttat cgatgcttcc cacagtgtgg tagaaagtct tgaataaaca cttttgcctt 4285

25 caccagaaa aaaaaaaaa 4303

<210> 2

<211> 1119

<212> PRT

30 <213> Homo sapiens

<400> 2

35 Met Thr Ala Ala Ala Ala Ser Asn Trp Gly Leu Ile Thr Asn Ile Val  
 1 5 10 15

Asn Ser Ile Val Gly Val Ser Val Leu Thr Met Pro Phe Cys Phe Lys  
 20 25 30

40 Gln Cys Gly Ile Val Leu Gly Ala Leu Leu Leu Val Phe Cys Ser Trp  
 35 40 45

45 Met Thr His Gln Ser Cys Met Phe Leu Val Lys Ser Ala Ser Leu Ser  
 50 55 60

50 Lys Arg Arg Thr Tyr Ala Gly Leu Ala Phe His Ala Tyr Gly Lys Ala  
 65 70 75 80

Gly Lys Met Leu Val Glu Thr Ser Met Ile Gly Leu Met Leu Gly Thr  
 85 90 95

55 Cys Ile Ala Phe Tyr Val Val Ile Gly Asp Leu Gly Ser Asn Phe Phe  
 100 105 110

EP 2 660 600 B1

Ala Arg Leu Phe Gly Phe Gln Val Gly Gly Thr Phe Arg Met Phe Leu  
115 120 125

5 Leu Phe Ala Val Ser Leu Cys Ile Val Leu Pro Leu Ser Leu Gln Arg  
130 135 140

Asn Met Met Ala Ser Ile Gln Ser Phe Ser Ala Met Ala Leu Leu Phe  
10 145 150 155 160

Tyr Thr Val Phe Met Phe Val Ile Val Leu Ser Ser Leu Lys His Gly  
15 165 170 175

Leu Phe Ser Gly Gln Trp Leu Arg Arg Val Ser Tyr Val Arg Trp Glu  
180 185 190

20 Gly Val Phe Arg Cys Ile Pro Ile Phe Gly Met Ser Phe Ala Cys Gln  
195 200 205

Ser Gln Val Leu Pro Thr Tyr Asp Ser Leu Asp Glu Pro Ser Val Lys  
25 210 215 220

Thr Met Ser Ser Ile Phe Ala Ser Ser Leu Asn Val Val Thr Thr Phe  
225 230 235 240

30 Tyr Val Met Val Gly Phe Phe Gly Tyr Val Ser Phe Thr Glu Ala Thr  
245 250 255

Ala Gly Asn Val Leu Met His Phe Pro Ser Asn Leu Val Thr Glu Met  
35 260 265 270

Leu Arg Val Gly Phe Met Met Ser Val Ala Val Gly Phe Pro Met Met  
40 275 280 285

Ile Leu Pro Cys Arg Gln Ala Leu Ser Thr Leu Leu Cys Glu Gln Gln  
290 295 300

45 Gln Lys Asp Gly Thr Phe Ala Ala Gly Gly Tyr Met Pro Pro Leu Arg  
305 310 315 320

Phe Lys Ala Leu Thr Leu Ser Val Val Phe Gly Thr Met Val Gly Gly  
50 325 330 335

Ile Leu Ile Pro Asn Val Glu Thr Ile Leu Gly Leu Thr Gly Ala Thr  
340 345 350

55 Met Gly Ser Leu Ile Cys Phe Ile Cys Pro Ala Leu Ile Tyr Lys Lys  
355 360 365

EP 2 660 600 B1

	Ile	His	Lys	Asn	Ala	Leu	Ser	Ser	Gln	Val	Val	Leu	Trp	Val	Gly	Leu
	370						375					380				
5	Gly	Val	Leu	Val	Val	Ser	Thr	Val	Thr	Thr	Leu	Ser	Val	Ser	Glu	Glu
	385					390					395					400
10	Val	Pro	Glu	Asp	Leu	Ala	Glu	Glu	Ala	Pro	Gly	Gly	Arg	Leu	Gly	Glu
					405					410					415	
15	Ala	Glu	Gly	Leu	Met	Lys	Val	Glu	Ala	Ala	Arg	Leu	Ser	Ala	Gln	Asp
				420					425					430		
20	Pro	Val	Val	Ala	Val	Ala	Glu	Asp	Gly	Arg	Glu	Lys	Pro	Lys	Leu	Pro
			435					440					445			
25	Lys	Glu	Arg	Glu	Glu	Leu	Glu	Gln	Ala	Gln	Ile	Lys	Gly	Pro	Val	Asp
	450						455					460				
30	Val	Pro	Gly	Arg	Glu	Asp	Gly	Lys	Glu	Ala	Pro	Glu	Glu	Ala	Gln	Leu
	465					470					475					480
35	Asp	Arg	Pro	Gly	Gln	Gly	Ile	Ala	Val	Pro	Val	Gly	Glu	Ala	His	Arg
					485					490					495	
40	His	Glu	Pro	Pro	Val	Pro	His	Asp	Lys	Val	Val	Val	Asp	Glu	Gly	Gln
				500					505					510		
45	Asp	Arg	Glu	Val	Pro	Glu	Glu	Asn	Lys	Pro	Pro	Ser	Arg	His	Ala	Gly
			515					520					525			
50	Gly	Lys	Ala	Pro	Gly	Val	Gln	Gly	Gln	Met	Ala	Pro	Pro	Leu	Pro	Asp
	530						535					540				
55	Ser	Glu	Arg	Glu	Lys	Gln	Glu	Pro	Glu	Gln	Gly	Glu	Val	Gly	Lys	Arg
	545					550					555					560
60	Pro	Gly	Gln	Ala	Gln	Ala	Leu	Glu	Glu	Ala	Gly	Asp	Leu	Pro	Glu	Asp
					565					570					575	
65	Pro	Gln	Lys	Val	Pro	Glu	Ala	Asp	Gly	Gln	Pro	Ala	Val	Gln	Pro	Ala
				580					585					590		
70	Lys	Glu	Asp	Leu	Gly	Pro	Gly	Asp	Arg	Gly	Leu	His	Pro	Arg	Pro	Gln
			595					600					605			
75	Ala	Val	Leu	Ser	Glu	Gln	Gln	Asn	Gly	Leu	Ala	Val	Gly	Gly	Gly	Glu
	610						615					620				

EP 2 660 600 B1

Lys Ala Lys Gly Gly Pro Pro Pro Gly Asn Ala Ala Gly Asp Thr Gly  
 625 630 635 640  
 5 Gln Pro Ala Glu Asp Ser Asp His Gly Gly Lys Pro Pro Leu Pro Ala  
 645 650 655  
 10 Glu Lys Pro Ala Pro Gly Pro Gly Leu Pro Pro Glu Pro Arg Glu Gln  
 660 665 670  
 15 Arg Asp Val Glu Arg Ala Gly Gly Asn Gln Ala Ala Ser Gln Leu Glu  
 675 680 685  
 20 Glu Ala Gly Arg Ala Glu Met Leu Asp His Ala Val Leu Leu Gln Val  
 690 695 700  
 25 Ile Lys Glu Gln Gln Val Gln Gln Lys Arg Leu Leu Asp Gln Gln Glu  
 705 710 715 720  
 30 Lys Leu Leu Ala Val Ile Glu Glu Gln His Lys Glu Ile His Gln Gln  
 725 730 735  
 35 Arg Gln Glu Asp Glu Glu Asp Lys Pro Arg Gln Val Glu Val His Gln  
 740 745 750  
 40 Glu Pro Gly Ala Ala Val Pro Arg Gly Gln Glu Ala Pro Glu Gly Lys  
 755 760 765  
 45 Ala Arg Glu Thr Val Glu Asn Leu Pro Pro Leu Pro Leu Asp Pro Val  
 770 775 780  
 50 Leu Arg Ala Pro Gly Gly Arg Pro Ala Pro Ser Gln Asp Leu Asn Gln  
 785 790 795 800  
 55 Arg Ser Leu Glu His Ser Glu Gly Pro Val Gly Arg Asp Pro Ala Gly  
 805 810 815  
 60 Pro Pro Asp Gly Gly Pro Asp Thr Glu Pro Arg Ala Ala Gln Ala Lys  
 820 825 830  
 65 Leu Arg Asp Gly Gln Lys Asp Ala Ala Pro Arg Ala Ala Gly Thr Val  
 835 840 845  
 70 Lys Glu Leu Pro Lys Gly Pro Glu Gln Val Pro Val Pro Asp Pro Ala  
 850 855 860  
 75 Arg Glu Ala Gly Gly Pro Glu Glu Arg Leu Ala Glu Glu Phe Pro Gly



EP 2 660 600 B1

Gly Pro Pro Glu Glu Ser  
1115

5 <210> 3  
<211> 10  
<212> PRT  
<213> Homo sapiens

10 <400> 3

Gly Gln Glu Ala Pro Glu Gly Lys Ala Arg  
1 5 10

15 <210> 4  
<211> 63  
<212> PRT  
<213> Homo sapiens

20 <400> 4

Met Lys Pro Lys Gln Val Ser Arg Asp Leu Gly Leu Ala Ala Asp Leu  
1 5 10 15

25 Pro Gly Gly Ala Glu Gly Ala Ala Ala Gln Pro Gln Ala Val Leu Arg  
20 25 30

30 Gln Pro Glu Leu Arg Val Ile Ser Asp Gly Glu Gln Gly Gly Gln Gln  
35 40 45

35 Gly His Arg Leu Asp His Gly Gly His Leu Glu Met Arg Lys Ala  
50 55 60

<210> 5  
<211> 89  
<212> PRT  
40 <213> Homo sapiens

<400> 5

45

50

55

EP 2 660 600 B1

1 Pro Val Pro His Asp Lys Val Val Val Asp Glu Gly Gln Asp Arg Glu  
 5 Val Pro Glu Glu Asn Lys Pro Pro Ser Arg His Ala Gly Gly Lys Ala  
 10 Pro Gly Val Gln Gly Gln Met Ala Pro Pro Leu Pro Asp Ser Glu Arg  
 15 Glu Lys Gln Glu Pro Glu Gln Gly Glu Val Gly Lys Arg Pro Gly Gln  
 20 Ala Gln Ala Leu Glu Glu Ala Gly Asp Leu Pro Glu Asp Pro Gln Lys

25 Val Pro Glu Ala Asp Gly Gln Pro Ala  
 30 Lys Val Val Val Asp Glu Gly Gln Asp Arg Glu

35 <210> 6  
 <211> 11  
 <212> PRT  
 <213> Homo sapiens  
 <400> 6

40 Lys Leu Leu Ala Val Ile Glu Glu Gln His Lys Glu

45 <210> 7  
 <211> 12  
 <212> PRT  
 <213> Homo sapiens  
 <400> 7

50 Arg Ser Leu Glu His Ser Glu Gly Pro Val Gly Arg Asp

55 <210> 8  
 <211> 13  
 <212> PRT  
 <213> Homo sapiens  
 <400> 8

60 <210> 9  
 <211> 16  
 <212> PRT  
 <213> Homo sapiens  
 <400> 9

EP 2 660 600 B1

Leu Pro Lys Gly Pro Glu Gln Val Pro Val Pro Asp Pro Ala Arg Glu  
1 5 10 15

5 <210> 10  
<211> 15  
<212> PRT  
<213> Homo sapiens

10 <400> 10

Arg Leu Asp His Gly Gly His Leu Glu Met Arg Lys Ala Arg Gly  
1 5 10 15

15 <210> 11  
<211> 13  
<212> PRT  
<213> Homo sapiens

20 <400> 11

Arg Gly Gly Glu Asp Ala Ala Val Gln Glu Pro Arg Gln  
1 5 10

25 <210> 12  
<211> 8  
<212> PRT  
<213> Homo sapiens

30 <400> 12

Asp Tyr Lys Asp Asp Asp Asp Lys  
1 5

35 **Claims**

1. Use of an anti-S38AA antibody in determining Alzheimer's disease *in vitro* or *ex vivo*.
2. A method of determining Alzheimer's disease in an animal, comprising detecting an S38AA fragment in a sample  
40 collected from said animal.
3. The method according to claim 2, wherein the animal is a human.
4. The method according to claim 2 or 3, wherein the S38AA fragment is a fragment derived from S38AA isoform 1.  
45
5. The method according to claim 2 or 3, wherein the S38AA fragment is a polypeptide comprising an amino acid  
sequence shown by SEQ ID NO: 3.
6. The method according to any one of claims 2 to 5, wherein the sample is blood, cerebrospinal fluid or urine.  
50
7. The method according to any one of claims 2 to 5, wherein the sample is cerebrospinal fluid.
8. The method according to any one of claims 2 to 5, wherein the sample is blood.
- 55 9. The method according to any one of claims 2 to 5, wherein the sample is plasma.
10. The method according to any one of claims 2 to 9, further comprising detecting one or more other diagnostic markers  
for Alzheimer's disease.

11. A method of searching for a candidate substance for treating or preventing Alzheimer's disease, comprising the following steps:

- 5 (1) contacting a test substance with a cell permitting measurement of production of a S38AA fragment;  
(2) measuring the production amount of the S38AA fragment in the cell contacted with the test substance, and comparing the production amount with that of the S38AA fragment in a control cell free of contact with the test substance; and  
10 (3) selecting a test substance that down-regulates the production amount of the S38AA fragment as a candidate substance for treating or preventing Alzheimer's disease, based on the comparison results of the above-mentioned (2).

12. The method according to claim 4, wherein the S38AA isoform 1 is a polypeptide of the following (a) or (b):

- 15 (a) a polypeptide comprising an amino acid sequence shown by SEQ ID NO: 2, or  
(b) a polypeptide comprising the amino acid sequence that has at least 95% identity with the amino acid sequence shown by SEQ ID NO: 2.

13. The method according to claim 5, wherein the S38AA fragment is a polypeptide comprising the 505 - 1014th amino acid sequence shown by SEQ ID NO: 2.

### Patentansprüche

- 25 1. Verwendung eines anti-S38AA-Antikörpers zum Nachweis von Alzheimer-Krankheit *in vitro* oder *ex vivo*.  
2. Verfahren zum Nachweis von Alzheimer-Krankheit in einem Tier, das den Nachweis eines S38AA-Fragments in einer von diesem Tier gewonnenen Probe umfasst.  
30 3. Verfahren nach Anspruch 2, wobei das Tier ein Mensch ist.  
4. Verfahren nach Anspruch 2 oder 3, wobei das S38AA-Fragment ein Fragment ist, das von der S38AA-Isoform 1 abgeleitet ist.  
35 5. Verfahren nach Anspruch 2 oder 3, wobei das S38AA-Fragment ein Polypeptid ist, das die in der SEQ ID Nr.: 3 gezeigte Aminosäuresequenz umfasst.  
6. Verfahren nach einem der Ansprüche 2 bis 5, wobei die Probe Blut, Zerebrospinalflüssigkeit oder Urin ist.  
7. Verfahren nach einem der Ansprüche 2 bis 5, wobei die Probe Zerebrospinalflüssigkeit ist.  
40 8. Verfahren nach einem der Ansprüche 2 bis 5, wobei die Probe Blut ist.  
9. Verfahren nach einem der Ansprüche 2 bis 5, wobei die Probe Plasma ist.  
45 10. Verfahren nach einem der Ansprüche 2 bis 9, das weiterhin den Nachweis eines oder mehrerer diagnostischen/r Marker(s) der Alzheimer-Krankheit umfasst.  
50 11. Verfahren zur Suche einer Kandidatensubstanz zur Behandlung oder Prävention von Alzheimer-Krankheit, das die folgenden Schritte umfasst:  
(1) In-Kontakt-bringen einer Kandidatensubstanz mit einer Zelle, um die Messung der Produktion eines S38AA-Fragments zu ermöglichen;  
(2) Messung der produzierten Menge des S38AA-Fragments in der mit der Kandidatensubstanz in Kontakt gebrachten Zelle und Vergleich der produzierten Menge mit der des S38AA-Fragments in einer Kontrollzelle, die nicht mit der Kandidatensubstanz kontaktiert wurde; und  
55 (3) Auswählen einer Kandidatensubstanz, die die produzierte Menge des S38AA-Fragments herunterreguliert als eine Kandidatensubstanz, um Alzheimer-Krankheit zu behandeln oder vorzubeugen, basierend auf den Ergebnissen des oben genannten Vergleichs (2).

## EP 2 660 600 B1

12. Verfahren nach Anspruch 4, wobei die S38AA-Isoform 1 eines der folgenden Polypeptide (a) oder (b) ist:

- (a) ein Polypeptid, das eine in der in SEQ ID Nr.: 2 gezeigte Aminosäuresequenz umfasst, oder  
(b) ein Polypeptid, das die Aminosäuresequenz umfasst, die mindestens zu 95% identisch mit der in der SEQ ID Nr.: 2 gezeigten Aminosäuresequenz ist.

13. Verfahren nach Anspruch 5, wobei das S38AA-Fragment ein Polypeptid ist, das die 505. - 1014. in der SEQ ID Nr.: 2 gezeigte Aminosäuresequenz umfasst.

### Revendications

1. Utilisation d'un anticorps anti-S38AA dans la détermination de la maladie d'Alzheimer *in vitro* ou *ex vivo*.

2. Méthode de détermination de la maladie d'Alzheimer chez un animal, comprenant la détection d'un fragment de S38AA dans un échantillon prélevé chez ledit animal.

3. Méthode selon la revendication 2, dans laquelle l'animal est un être humain.

4. Méthode selon la revendication 2 ou 3, dans laquelle le fragment de S38AA est un fragment dérivé de l'isoforme 1 de S38AA.

5. Méthode selon la revendication 2 ou 3, dans laquelle le fragment de S38AA est un polypeptide comprenant une séquence d'acides aminés représentée par SEQ ID NO : 3.

6. Méthode selon l'une quelconque des revendications 2 à 5, dans laquelle l'échantillon est du sang, du liquide céphalo-rachidien ou de l'urine.

7. Méthode selon l'une quelconque des revendications 2 à 5, dans laquelle l'échantillon est du liquide céphalo-rachidien.

8. Méthode selon l'une quelconque des revendications 2 à 5, dans laquelle l'échantillon est du sang.

9. Méthode selon l'une quelconque des revendications 2 à 5, dans laquelle l'échantillon est du plasma.

10. Méthode selon l'une quelconque des revendications 2 à 9, comprenant en outre la détection d'un ou de plusieurs autres marqueurs de diagnostic pour la maladie d'Alzheimer.

11. Méthode de recherche d'une substance candidate pour le traitement ou la prévention de la maladie d'Alzheimer, comprenant les étapes suivantes :

(1) la mise en contact d'une substance à tester avec une cellule permettant la mesure de la production d'un fragment de S38AA;

(2) la mesure de la quantité de production du fragment de S38AA dans la cellule mise en contact avec la substance à tester, et la comparaison de la quantité de production à celle du fragment de S38AA dans une cellule témoin dépourvue de contact avec la substance à tester; et

(3) la sélection d'une substance à tester qui régule négativement la quantité de production du fragment de S38AA en tant que substance candidate pour le traitement ou la prévention de la maladie d'Alzheimer, en se basant sur les résultats de la comparaison des susmentionnés en (2).

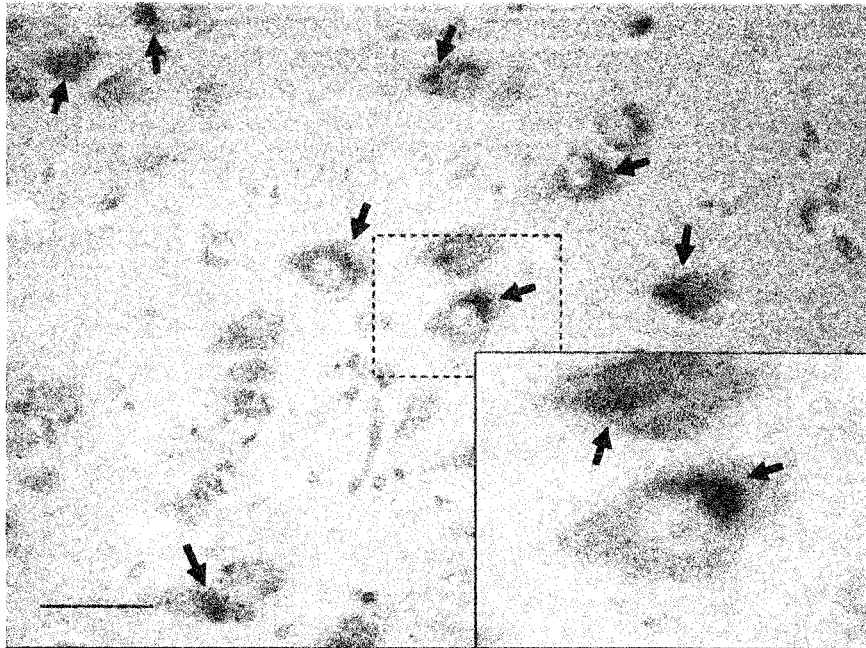
12. Méthode selon la revendication 4, dans laquelle l'isoforme 1 de S38AA est un polypeptide de (a) ou (b) suivant :

(a) un polypeptide comprenant une séquence d'acides aminés représentée par SEQ ID NO : 2, ou

(b) un polypeptide comprenant la séquence d'acides aminés qui présente au moins 95 % d'identité avec la séquence d'acides aminés représentée par SEQ ID NO : 2.

13. Méthode selon la revendication 5, dans laquelle le fragment de S38AA est un polypeptide comprenant la séquence du 505ème au 1014ème acide aminé représentée par SEQ ID NO : 2.

**Fig. 1**



**Fig. 2**

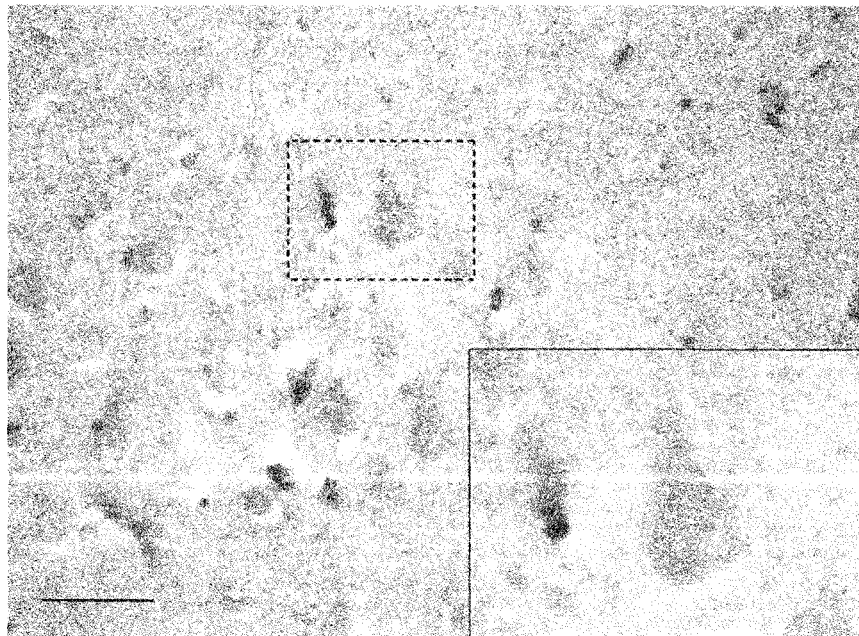


Fig. 3

	10	20	30	40	50	60
mtaaaasnwg	litnivnsiv	gvsvltmpfc	fkqcgivlga	lllvfcswmt	hqscmflvks	
70	80	90	100	110	120	
aslskrtya	glafhaygka	gkmlvetsmi	gimlgtciaf	yvvigdlgsn	ffarlfqfv	
130	140	150	160	170	180	
ggtfrmllf	avslcivlpl	slqrnmmasi	qsfsamallf	ytvfmfvivl	sslkhgflsg	
190	200	210	220	230	240	
qwlrrvsyvr	wegvfrcipi	fgmsfacqsq	vlptydslde	psvktmssif	asslnvttf	
250	260	270	280	290	300	
yvmvgffgyv	sftteatagnv	lmhfpsnlvt	emlrvgfms	vavgfpmil	pcrqalstll	
310	320	330	340	350	360	
ceqqqkdgtf	aaggypplr	fkaltlsvvf	gtmvggilip	nvetilgltg	atngslicfi	
370	380	390	400	410	420	
cpaliykkih	knalssqvl	wvglgvlvvs	tvttlsvs	ee vpedlaeeap	ggrlgeaegl	
430	440	450	460	470	480	
mkveaarlsa	qdpvvavaed	grekpkpkpe	reeleqaqik	gpvdpvgred	gkeapeeaql	
490	500	510	520	530	540	
drpgqgiavp	vgeahrhepp	vphdkvvvde	gqdrevepen	kppsrhaggk	apgvqgqmap	
550	560	570	580	590	600	
plpdserekq	epeqgevgkr	pgqaqaleea	gdllpedpdkv	peadgqpavq	pakedlpgpd	
610	620	630	640	650	660	
rglhrpqav	lseqqnglav	gggekakggp	ppgnaagdtg	qpaedsdhgg	kpplpaekpa	
670	680	690	700	710	720	
pgpglppepr	eqrdveragg	nqaasqleea	graemldhav	llqvikeqqv	qqkrildqqe	
730	740	750	760	770	780	
<u>kllavieeqh</u>	<u>keihqqrqed</u>	eedkprqev	hqepgaavpr	gqeapegkar	etvenlpplp	
790	800	810	820	830	840	
ldpvlrapgg	rpapsqdlng	rslehsegpv	grdpagppdg	gpdtepraaq	aklrdgqkda	
850	860	870	880	890	900	
apraagtvke	lpkgpegvpy	pdpareaggp	eerlaeefpg	qsqdvttggsq	drkkpgkeva	
910	920	930	940	950	960	
atgtsilkea	nwlvagpgae	tgdprmkpkq	vsrdlglaad	lpggaegaaa	qpqavlrqpe	
970	980	990	1000	1010	1020	
lrvisdgeqg	gqqghrldhg	ghlemrkarg	gdhvpvsheq	prggedaavq	eprgrpepel	
1030	1040	1050	1060	1070	1080	
glkravpggq	rpdnakpnrd	lklqagsdlr	rrrrdlgha	egqlaprdgv	iiglnlpldv	
1090	1100	1110				
qvndlrgald	aqlrqaagga	lqvvhsrcqlr	qapgppees			

Fig. 4

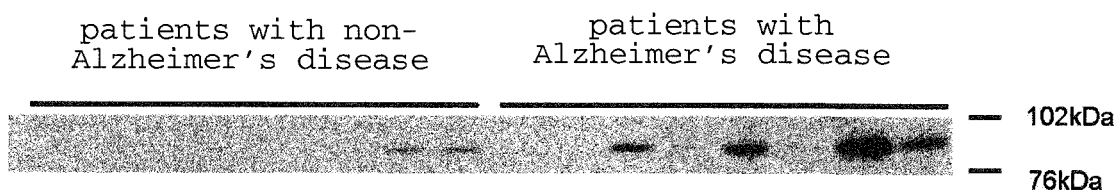


Fig. 5

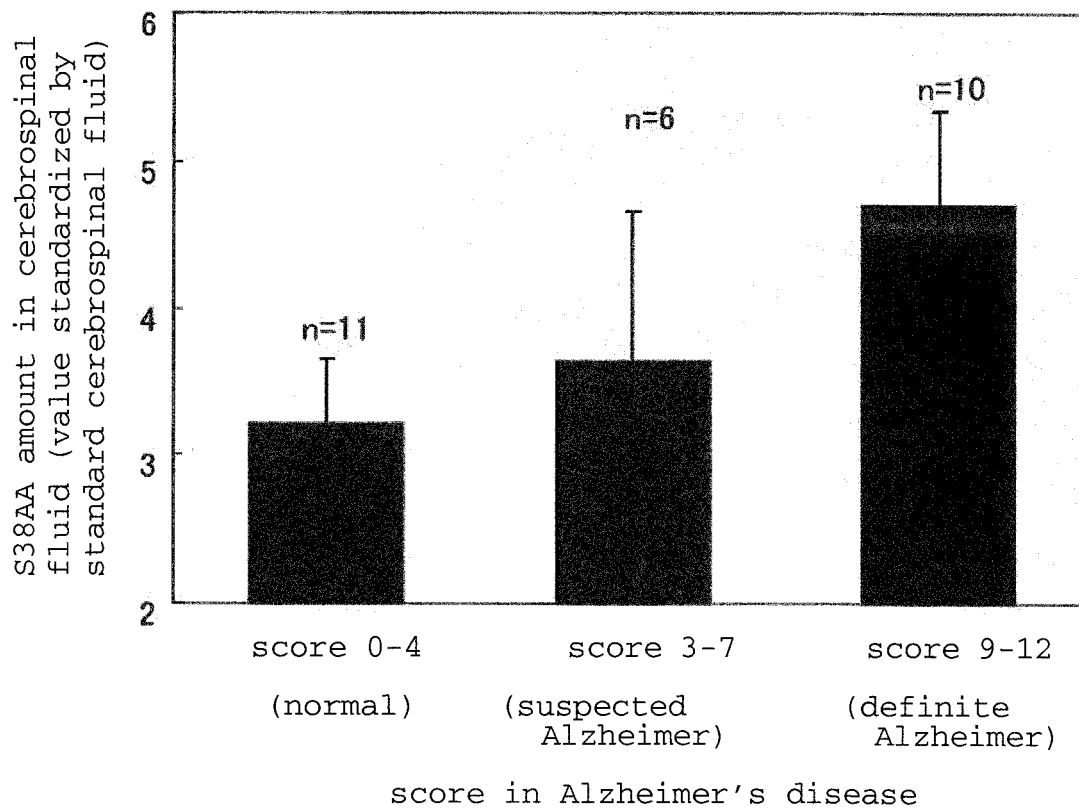


Fig. 6

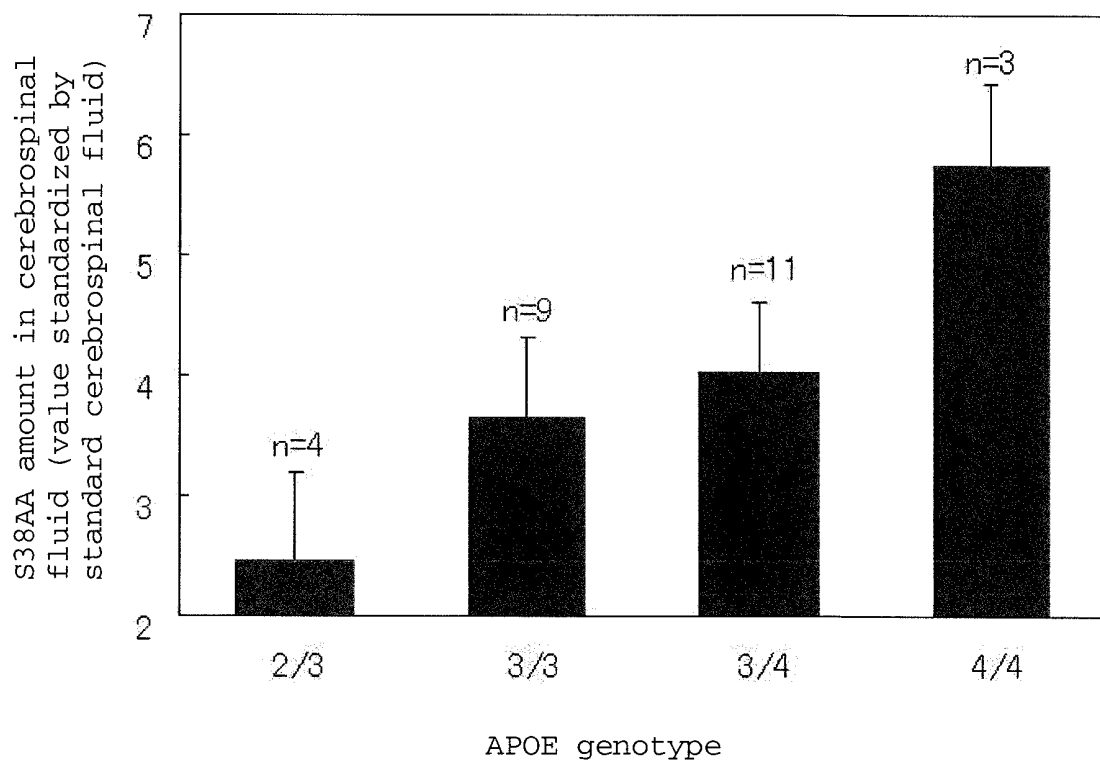


Fig. 7

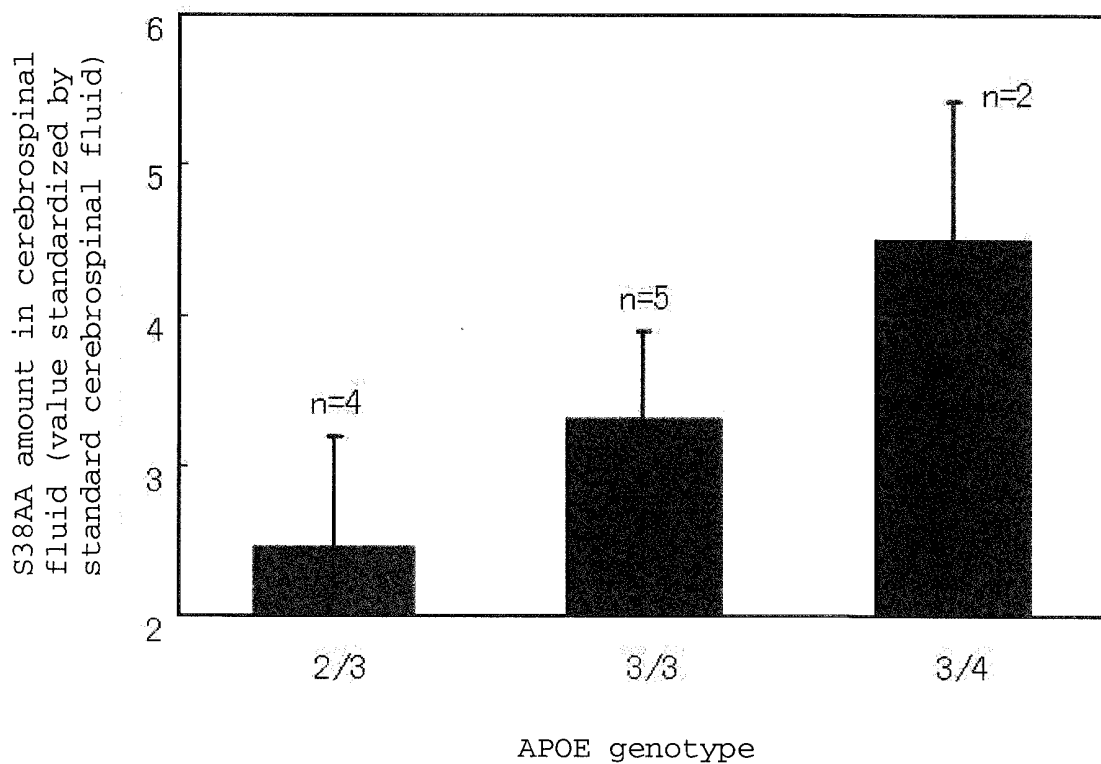


Fig. 8

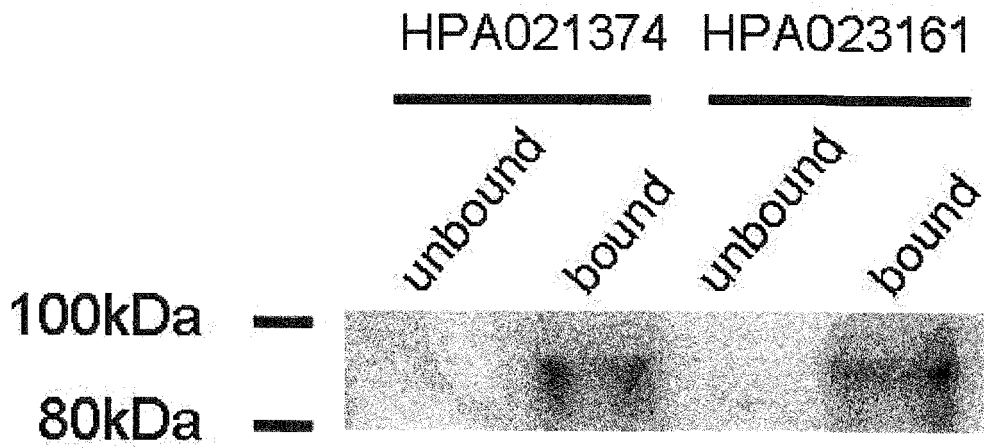
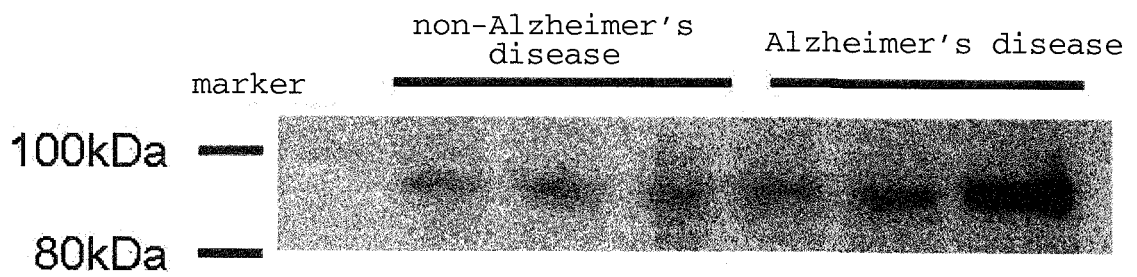


Fig. 9



**REFERENCES CITED IN THE DESCRIPTION**

*This list of references cited by the applicant is for the reader's convenience only. It does not form part of the European patent document. Even though great care has been taken in compiling the references, errors or omissions cannot be excluded and the EPO disclaims all liability in this regard.*

**Patent documents cited in the description**

- JP 2010293891 A [0110]

**Non-patent literature cited in the description**

- *Science*, 1993, vol. 261, 921-3 [0006]
- *Exp Gerontol*, 2000, vol. 35, 851-64 [0006]
- **KOHLER ; MILSTEIN**. *Nature*, 1975, vol. 256, 495 [0035]
- Radioimmunoassay. Kodansha, 1974 [0059]
- radioimmunoassay (sequel). Kodansha, 1979 [0059]
- Enzyme Immunoassay. Igaku-Shoin, 1987 [0059]
- Methods in ENZYMOLOGY. Immunochemical Techniques (Part I: Hybridoma Technology and Monoclonal Antibodies). Academic Press, vol. 121 [0059]
- **AOKI et al.** *Neuroreport*, 2008, vol. 19, 1085-9 [0079]
- **ALAFUZZOFF et al.** *Acta Neuropathol (Berl)*, 1987, vol. 74, 209-225 [0084]
- **ALAFUZZOFF et al.** *Acta Neuropathol*, 1987, vol. 74, 209-225 [0088]

专利名称(译)	阿尔茨海默病的诊断药物和诊断方法		
公开(公告)号	<a href="#">EP2660600B1</a>	公开(公告)日	2018-08-08
申请号	EP2011853134	申请日	2011-12-28
申请(专利权)人(译)	大日本住友制药股份有限公司.		
当前申请(专利权)人(译)	住友DAINIPPON PHARMA CO., LTD.		
[标]发明人	HASHIMOTO MASAKAZU NAKAGAWA HIROYUKI AOKI MIKIO TJERNBERG LARS O WINBLAD BENGT		
发明人	HASHIMOTO, MASAKAZU NAKAGAWA, HIROYUKI AOKI, MIKIO TJERNBERG, LARS O. WINBLAD, BENGT		
IPC分类号	G01N33/53 G01N33/15 G01N33/50 C07K16/18 C12N15/09		
CPC分类号	G01N33/6896 G01N2800/2821 C07K16/18		
优先权	2010293891 2010-12-28 JP		
其他公开文献	EP2660600A1 EP2660600A4		
外部链接	<a href="#">Espacenet</a>		

摘要(译)	<p>本发明提供一种用于确定阿尔茨海默病的药剂，其包含抗S38AA抗体，在测试动物中测定阿尔茨海默病的方法，包括检测从所述动物收集的样品中的S38AA片段，以及筛选物质的方法治疗或预防阿尔茨海默病的方法，包括使测试物质与允许测量S38AA片段产生的细胞接触，测量细胞中S38AA片段的产生量，并将产生量与对照中S38AA片段的产量进行比较根据比较结果，细胞不与测试物质接触，并选择下调作为能够治疗或预防阿尔茨海默病的物质的S38AA片段的产生量的测试物质。</p>	<pre> cgccggcggc gcagctgagt tgggctgagg tgtccctagc tggctctgcg gctcttccgg      60 gtctgggctc ggagattcac aggcggcccg cgaggccgag cgagggagcg atggccctga      120 ggcggccgca gggcttggcg gggctcggag gttgacctcg ccccccagc cggccttcca      180 ggctgctcc tccaggcagc ctctggggcc cgcccccggc cctgctcagg ctccogtgtt      240 caggctgccc atccctccc caccggcgtc cgggacgttg ggacctgta cctggtccctc      300 gggctgggct tccaaagccc gccgcagccc ggcgaccccc gaggcctctc gccccggggc      360 cctagacctc tcaact atg acc gcg gcc gcc gcc tcc aac tgg ggg ctg atc      411 Met Thr Ala Ala Ala Ala Ser Asn Trp Gly Leu Ile 1 5 10 acg aac atc gtg aac agc atc gta ggg gtc agt gtc ctc acc atg ccc      459 Thr Asn Ile Val Asn Ser Ile Val Gly Val Ser Val Leu Thr Met Pro 15 20 25 ttc tgc ttc aaa cag tgc ggc atc gtc ctg ggg gcg ctg ctc ttg gtc      507 Phe Cys Phe Lys Gln Cys Gly Ile Val Leu Gly Ala Leu Leu Leu Val 30 35 40 ttc tgc tca tgg atg acg cac cag tgg tgc atg ttc ttg gtg aag tgg      555 Phe Cys Ser Trp Met Thr His Gln Ser Cys Met Phe Leu Val Lys Ser 45 50 55 gcc agc ctg agc aag cgg agg acc tac gcc ggc ctg gca ttc cac gcc      603 Ala Ser Leu Ser Lys Arg Arg Thr Tyr Ala Gly Leu Ala Phe His Ala 65 70 75 tac ggg aag gca gcc aag atg ctg gtg gag acc agc atg atc ggg ctg      651 Tyr Gly Lys Ala Gly Lys Met Leu Val Glu Thr Ser Met Ile Gly Leu 80 85 90 atg ctg ggc acc tgc atc gcc ttc tac gtc gtc atc ggc gac ttg ggg      699 </pre>
-------	--	---