



(11) **EP 3 381 940 A1**

(12) **EUROPEAN PATENT APPLICATION**

(43) Date of publication:  
**03.10.2018 Bulletin 2018/40**

(51) Int Cl.:  
**C07K 16/22** (2006.01) **A61K 38/18** (2006.01)  
**A61K 39/395** (2006.01) **A61P 9/14** (2006.01)  
**G01N 33/53** (2006.01)

(21) Application number: **18172370.1**

(22) Date of filing: **29.07.2014**

(84) Designated Contracting States:  
**AL AT BE BG CH CY CZ DE DK EE ES FI FR GB GR HR HU IE IS IT LI LT LU LV MC MK MT NL NO PL PT RO RS SE SI SK SM TR**

- **Oh, Seung Ja**  
Seoul (KR)
- **Lee, Hyo Seon**  
Hwaseong-si (KR)
- **Han, Sang Yeul**  
Yongin-si (KR)

(30) Priority: **29.07.2013 KR 20130089281**  
**05.09.2013 KR 20130106749**

(74) Representative: **Grünecker Patent- und Rechtsanwälte PartG mbB**  
**Leopoldstraße 4**  
**80802 München (DE)**

(62) Document number(s) of the earlier application(s) in accordance with Art. 76 EPC:  
**14178844.8 / 2 832 746**

(71) Applicant: **Samsung Electronics Co., Ltd.**  
**Suwon-si, Gyeonggi-do 443-742 (KR)**

Remarks:

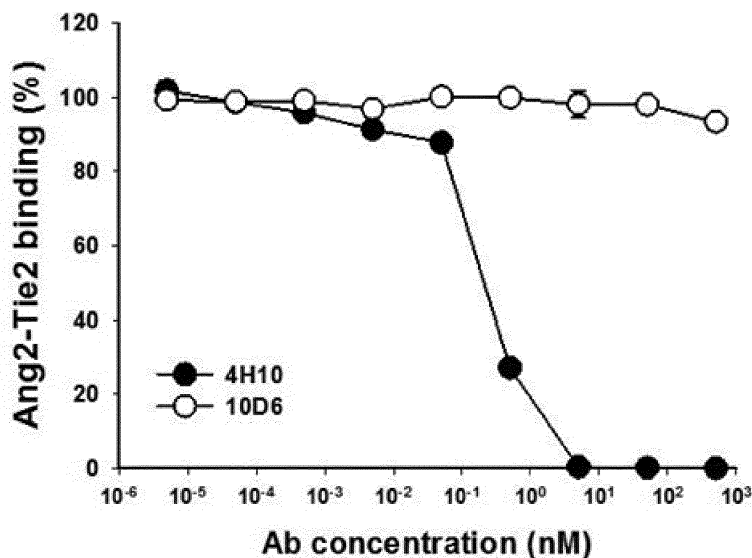
This application was filed on 15-05-2018 as a divisional application to the application mentioned under INID code 62.

(72) Inventors:  
• **Kim, Kyung Eun**  
**446-712 Yongin-si (KR)**

(54) **ANTI-ANG2 ANTIBODY**

(57) An anti-Ang2 antibody or an antigen-binding fragment thereof that specifically binds to an angiogenesis-inducing factor Angiopoietin-2 (Ang2) and complexes with a Tie2 receptor and Ang2, and related methods and compositions.

FIG. 1



**EP 3 381 940 A1**

**Description****BACKGROUND**5 **1. Field**

[0001] An anti-Ang2 antibody or an antigen-binding fragment thereof that specifically binds to an angiogenesis-inducing factor Angiopoietin-2 (Ang2) and complexes with a Tie2 receptor while bound to Ang2, and uses thereof, are provided.

10 **2. Description of the Related Art**

[0002] Angiopoietin-2 (Ang2) is an antagonistic ligand of a receptor Tie2 present at vascular endothelial cells. It is believed to suppress signaling by Tie2 by competing with Angiopoietin-1 (Ang1), which is an agonist of Tie2, to bind to Tie2. Ang1, which is a ligand activating the Tie2 receptor, functions as a key regulator of maintaining the stabilization of blood vessels by maintaining the barrier function of vascular endothelial cells. The vascular endothelial cells are activated, demonstrated by the overexpression of VEGF or inflammation, and vascular permeability is increased. It is thought that Ang1 induces the stabilization of vascular endothelial cells and reduces vascular permeability by accelerating the junctional integrity of the vascular endothelial cells whereas Ang2 which is increased in the activated vascular endothelial cells serves to suppress the stabilization of the vascular endothelial cells by Ang1 by competing with Ang1. Therefore, Ang2 inhibits Ang1-Tie2 binding, which maintains the stability of the vascular endothelial cells and signaling thereby, thus ultimately accelerating angiogenesis via the dynamic rearrangement of blood vessels.

[0003] As angiogenesis is an important element for the growth of cancer, preventing the additional growth of cancer by inhibiting the function of Tie2-dependent Ang2 to suppress angiogenesis has been known by the research of several preclinical models and in fact, various attempts to prevent the progress of cancer using anti-Ang2 antibodies are ongoing.

[0004] The overexpression of Ang2 in a variety of solid cancers and blood cancers has been reported, and Ang2 expression in a serum often serves as a biomarker of poor prognosis. The overexpression of Ang2 has been reported not only in cancers but also in various other diseases including sepsis, bacterial infection, lung injury and kidney injury. Its correlation with vascular leakage has been vigorously studied. Due to the correlation with such pathological conditions, Ang2 has been considered to be an important target in therapeutic intervention. Currently, a variety of drugs being developed are in their clinical or preclinical stages, and they have a variety of forms including a peptibody, bispecific antibody, monoclonal antibody, etc.

[0005] However, most of the Ang2-target drugs have mechanisms of suppressing the activation of a Tie2 receptor and its downstream signaling by inhibiting Ang2 from binding to the Tie2 receptor.

35 **SUMMARY**

[0006] One embodiment provides an anti-Ang2 antibody or an antigen-binding fragment thereof, that specifically binds to an angiogenesis-inducing factor Ang2 (Angiopoietin-2) and complexes with a Tie2 receptor while bound to Ang2 to induce the activation of the Tie2 receptor.

[0007] Another embodiment provides a hybridoma cell line producing a monoclonal antibody of the anti-Ang2 antibody.

[0008] Another embodiment provides a pharmaceutical composition including the anti-Ang2 antibody or an antigen-binding fragment thereof.

[0009] Another embodiment provides a pharmaceutical composition for inhibiting angiogenesis including the anti-Ang2 antibody or an antigen-binding fragment thereof as an active ingredient.

[0010] Another embodiment provides a method of inhibiting angiogenesis including administering the anti-Ang2 antibody or an antigen-binding fragment thereof to a subject.

[0011] Another embodiment provides a use of the anti-Ang2 antibody or an antigen-binding fragment thereof for inhibiting angiogenesis.

[0012] Another embodiment provides a use of the anti-Ang2 antibody or an antigen-binding fragment thereof for decreasing vascular permeability or for preparing a medicament for decreasing vascular permeability.

[0013] Another embodiment provides a pharmaceutical composition for inducing normal blood vessel formation including the anti-Ang2 antibody or an antigen-binding fragment thereof as an active ingredient.

[0014] Another embodiment provides a method of inducing normal blood vessel formation including administering the anti-Ang2 antibody or an antigen-binding fragment thereof to a subject.

[0015] Another embodiment provides a use of the anti-Ang2 antibody or an antigen-binding fragment thereof for inducing normal blood vessel formation or preparing a medicament for inducing normal blood vessel formation.

[0016] Another embodiment provides a pharmaceutical composition for preventing and/or treating a disease related to angiogenesis, vascular permeability increase, and/or normal blood vessel formation decrease, including the anti-Ang2

antibody or an antigen-binding fragment thereof as an active ingredient.

[0017] Another embodiment provides a method of preventing and/or treating a disease related to angiogenesis, vascular permeability increase, and/or normal blood vessel formation decrease including administering the anti-Ang2 antibody or an antigen-binding fragment thereof to a subject.

[0018] Another embodiment provides a use of the anti-Ang2 antibody or an antigen-binding fragment thereof for preventing and/or treating a disease related to angiogenesis, vascular permeability increase, and/or normal blood vessel formation decrease, or for preparing a medicament for preventing and/or treating a disease related to angiogenesis, vascular permeability increase, and/or normal blood vessel formation decrease.

[0019] Another embodiment provides a pharmaceutical composition for inhibiting Ang2 and/or activating a Tie2 receptor including the anti-Ang2 antibody or an antigen-binding fragment thereof as an active ingredient.

[0020] Another embodiment provides a method of inhibiting Ang2 and/or activating a Tie2 receptor including administering the anti-Ang2 antibody or an antigen-binding fragment thereof to a subject.

[0021] Another embodiment provides a use the anti-Ang2 antibody or an antigen-binding fragment thereof for inhibiting Ang2 and/or activating a Tie2 receptor or for preparing a medicament for inhibiting Ang2 and/or activating a Tie2 receptor.

[0022] Another embodiment provides a composition for diagnosing a disease related to the overexpression of Ang2 including the anti-Ang2 antibody or an antigen-binding fragment thereof.

[0023] Another embodiment provides a method of diagnosing a disease related to the overexpression of Ang2 using the anti-Ang2 antibody or an antigen-binding fragment thereof.

[0024] Another embodiment provides a use of composition the anti-Ang2 antibody or an antigen-binding fragment thereof for diagnosing a disease related to the overexpression of Ang2.

[0025] Another embodiment provides a conjugate of Ang2 and an anti-Ang2 antibody including the anti-Ang2 antibody or an antigen-binding fragment thereof and Ang2, wherein the anti-Ang2 antibody or an antigen-binding fragment thereof and Ang2 are bound to each other.

[0026] Another embodiment provides a composition for activating a Tie2 receptor including the conjugate of Ang2 and an anti-Ang2 antibody as an active ingredient.

[0027] Another embodiment provides a method of activating a Tie2 receptor including administering the conjugate of Ang2 and an anti-Ang2 antibody to a subject.

[0028] Another embodiment provides a use of the conjugate of Ang2 and an anti-Ang2 antibody for activating a Tie2 receptor or for preparing a medicament for activating a Tie2 receptor.

[0029] Still another embodiment provides a complex in which the anti-Ang2 antibody and the antigen-binding fragment thereof, Ang2, and a Tie2 receptor are bound to one another.

## BRIEF DESCRIPTION OF THE DRAWINGS

[0030]

FIG. 1 is a graph of the Ang2-Tie2 competition ELISA results showing the suppression of binding between Tie2 receptor and Ang2 according to the treatment concentration of an anti-Ang2 antibody.

FIG. 2A is an annotated gel photograph of the immunoblotting results showing a change in the levels of a Tie2 receptor and a phosphorylated Tie2 receptor according to the treatment concentration of an anti-Ang2 antibody.

FIG. 2B is an annotated photograph of the immunoblotting results showing the level of Tie2 receptor and a phosphorylated Tie2 receptor according to the concentration of an anti-Ang2 antibody compared to that of a control antibody (RG).

FIG. 2C is a graph showing a ratio of phosphorylated Tyr in Tie2 receptor.

FIG. 3A is an annotated gel photograph of the immunoblotting results showing the phosphorylation of proteins involved in the downstream signaling of a Tie2 receptor when treated with an anti-Ang2 antibody according to one embodiment.

FIG. 3B is an annotated photograph of the immunoblotting results showing the phosphorylation of Tie2 receptor and a protein (Akt) involved in the downstream signaling of a Tie2 receptor by an anti-Ang2 antibody .

FIG. 3C is a graph showing the results of 3B as numerical values.

FIG. 4 is a graph of the ELISA results showing the formation of a complex by the binding of an anti-Ang2 antibody with Ang2 and Tie2.

FIG. 5 is an annotated gel photograph of the immunoblotting results showing the phosphorylation of a Tie2 receptor of a monomeric anti-Ang2 antibody and proteins involved in the downstream signaling of the Tie2 receptor.

FIGS. 6A and 6B provide a series of fluorescent images of the immune cell dye results showing the intracellular internalization of a Tie2 receptor similar to Ang1 and anti-Ang2 antibody.

FIG. 7 is a graph of the results showing the influence of an anti-Ang2 antibody on the proliferation of vascular and lymphatic endothelial cells.

FIG. 8 is a graph of the results showing the influence of an anti-Ang2 antibody on the migration of lymphatic endothelial cells.

FIG. 9 is a graph of the results showing cell permeability inhibition to be induced by TNF or LPS when treated with Ang1 or Ang2 antibody.

FIG. 10 is a graph of the results showing the mRNA expression of inflammation-related cell adhesion substances (ICAM-1, E-selectin) to be induced by LPS stimulation when treated with Ang1 or Ang2 antibody.

FIG. 11 is a graph showing the strengths of fluorescence obtained from inflammatory cells when treated with an anti-Ang2 antibody as relative folds, which shows the number of the inflammatory cells adhered to vascular endothelial cells.

FIG. 12 is a graph showing the efficacy of an anti-Ang2 antibody in a Colo205 tumor model.

## DETAILED DESCRIPTION

**[0031]** The inventors have verified that an antibody which specifically binds to Ang2 but does not inhibit binding between Ang2 and a Tie2 receptor and forms a complex (antibody/Ang2/Tie2) together with Ang2 and the Tie2 receptor has a characteristic of inducing the dimerization of the antibody. Through this, it can induce the activation of the Tie2 receptor and its downstream signaling by effectively clustering the Tie2 receptor in the complex. The antibody having this mechanism of action inhibits Ang2 functions by binding to Ang2 to induce the intracellular internalization and degradation thereof and, thus, lowers the level of circulating Ang2. At the same time, it induces Tie2 downstream signaling by binding to a Tie2 receptor together with Ang2 to activate the Tie2 receptor, like Ang1, and induces the stabilization of vascular endothelial cells, thereby having dual functions.

**[0032]** Provided is a therapeutic antibody having an angiogenesis-inducing factor Ang2 as a target and particularly, an anti-Ang2 antibody which not only inhibits the functions of Ang2 by specifically binding to Ang2 but also induces the activation of Tie2 by allowing Ang2 to bind Tie2 receptor. The anti-Ang2 antibody may bind Ang2 in such a way that Ang2 may still bind with Tie2. The anti-Ang2 antibody may not directly bind to Tie2 receptor, but it can form a complex with Tie2 by binding Ang2 which, in turn, binds Tie2 receptor. The anti-Ang2 antibody has the effects of treating diseases by binding to a Tie2 receptor together with Ang2 to activate the Tie2 receptor and thus induce the structural/functional normalization of blood vessels, along with the down-regulation of Ang2 in diseases related to the dysfunction and the abnormal activation of blood vessels including cancer, sepsis, and eye disorders.

**[0033]** One embodiment provides an anti-Ang2 antibody or an antigen-binding fragment thereof, specifically binding to (recognizing) an angiogenesis-inducing factor Ang2 (Angiopoietin-2) and binding to a Tie2 receptor together with Ang2 (e.g., via Ang2). Thus, the anti-Ang2 antibody or an antigen-binding fragment thereof may specifically recognize and/or bind to Ang2 and bind to Tie2 receptor via Ang2. Also, the anti-Ang2 antibody or an antigen-binding fragment thereof may induce the activation of the Tie2 receptor. Such activation of Tie2 receptor may be induced by an increase in the phosphorylation of Tie2 receptor and/or the phosphorylation of proteins related to the downstream signal pathway thereof, for example, at least one selected from the group consisting of Akt (NM\_005163), eNOS (NM\_000603), 42/44 (NM\_002745), etc. Also, the anti-Ang2 antibody or an antigen-binding fragment thereof may induce the intracellular internalization of a Tie2 receptor. In other words, the anti-Ang2 antibody or an antigen-binding fragment thereof may bind to Ang2 and the Tie2 receptor via Ang2 to form a complex and induce the activation of the Tie2 receptor, by not inhibiting binding between Ang2 and the Tie2 receptor while specifically binding to Ang2, unlike the pre-existing anti-Ang2 antibodies. Therefore, the anti-Ang2 antibody or an antigen-binding fragment thereof may increase the phosphorylation of a protein related to the downstream signal pathway of Tie2 receptor, such as at least one selected from the group consisting of Akt, eNOS, and 42/44, compared to the case using (treating) no antibody or any anti-Ang2 antibody inhibiting the binding between Ang2 and Tie2 receptor, such as antibody 4H10 (SEQ ID NOs: 12 & 13), RG antibody (Regeneron Co.), etc.

**[0034]** The Ang2 protein which functions as an antigen against the antibody provided is closely related to angiogenesis, and as a soluble ligand present in blood, it is widely involved in angiogenesis, metastasis, cancer cell invasion, etc. The Ang2 may be derived from mammals including primates such as humans and monkeys and rodents such as rats and mice and for example, it may be human Ang2 (e.g., NCBI Accession No. 015123, etc.), monkey Ang2 (e.g., NCBI Accession No. Q8MIK6, etc.), mouse Ang2 (e.g., NCBI Accession No. 035608, etc.), and rat Ang2 (e.g., NCBI Accession No. 035462, etc.), but is not limited thereto.

**[0035]** The Tie2 receptor (TEK tyrosine kinase), which is an Angiopoietin-1 receptor, is expressed in vascular endothelial cells in various mammals such as mouse (NM\_013690; NP\_038718), rat, and human (NM\_000459; NP\_000450), and is involved in various downstream signaling.

**[0036]** As explained above, the anti-Ang2 antibody or an antigen-binding fragment thereof is characterized in that the antibody which specifically binds to Ang2 but does not inhibit binding between Ang2 and Tie2 receptor and forms a complex (antibody/Ang2/Tie2) together with Ang2 and the Tie2 receptor, has a characteristic of inducing the dimerization of the antibody, and through this, it can induce the activation of the Tie2 receptor and its downstream signaling by

effectively clustering the Tie2 receptor which constitutes the complex. By virtue of such an action mechanism, the antibody and the antigen-binding fragment thereof inhibits Ang2 functions by binding to Ang2 to induce the intracellular internalization and degradation thereof and thus lowers the level of circulating Ang2 and at the same time, it induces Tie2 downstream signaling by binding to the Tie2 receptor together with Ang2 to activate the Tie2 receptor, like Ang1 and induces the stabilization of vascular endothelial cells. By having such dual functions, the antibody and the antigen-binding fragment thereof can be usefully employed to treat not only symptoms (disorders) due to the overexpression of Ang2 but also symptoms (disorders) due to the decrease in the stabilization of vascular endothelial cells, that is, the increase of vascular penetration.

**[0037]** The anti-Ang2 antibody or an antigen-binding fragment thereof may recognize all or part (for example, at least one amino acid selected from the group consisting of the amino acid residue site exposed to the outside of loop) of loop 1 (of SEQ ID NO: 11, a site from 417<sup>th</sup> amino acid to 434<sup>th</sup> amino acid) of human Ang2 (hAng2; SEQ ID NO: 11; Accession # 015123) or an amino acid sequence site including 2 to 20, 2 to 15, 2 to 10, or 2 to 5 contiguous amino acids including at least one amino acid residue exposed to the outside of loop 1 of SEQ ID NO: 11 as an epitope, or specifically bind to this site.

Ang2 (SEQ ID NO: 11)

MWQIVFFTLS CDLVLAAYN NFRKSMDSIG KKQYQVQHGS CSYTFLPEM  
 DNCRSSSSPY VSNAVQRDAP LEYDDSVQRL QVLENIMENN TQWLMKLENY  
 IQDNMKKEMV EIQQNAVQNNQ TAVMIEIGTN LLNQTAEQTR KLTDVEAQVL  
 NQTTRLELQL LEHSLSTNKL EKQILDQTSE INKLQDKNSF LEKKVLAMED  
 KHIIQLQSIK EEKQDLQVLV SKQNSIIEEL EKKIVTATVN NSVLQKQQHD  
 LMETVNNLLT MMSTSNSAKD PTVAKEEQIS FRDCAEVFKS GHTTNGIYTL  
 TFPNSTEEIK AYCDMEAGGG GWTIQRRED GSVDFQRTWK EYKVGFGNPS  
 GEYWLGNEFV SQLTNQQRVY LKIHLKDWEG NEAYSLYEHF YLSSEELNYR  
 IHLKGLTGTA GKISSISQPG NDFSTKGDGN DKCICKCSQM LTGGWWFDAC

GPSNLNGMYYPQRQNTNKFNGIKWYYWKGS GYSLKATTMM IRPADF

**[0038]** For example, the anti-Ang2 antibody may recognize Q418, P419, a combination of Q418 and P419 positioned at loop 1 of SEQ ID NO: 11, or an amino acid sequence site including 2 to 20, 2 to 15, 2 to 10, or 2 to 5 contiguous amino acids including the amino acid residue of Q418, P419, or combination of Q418 and P419 of SEQ ID NO: 11 as an epitope, or specifically bind to this site. In one embodiment, the anti-Ang2 antibody may recognize the amino acid residues of Q418 and P419 of SEQ ID NO: 11 as an epitope, or specifically bind to this portion.

**[0039]** Q418, P419, or an amino acid site including them, to which the anti-Ang2 antibody specifically binds, is an exposed amino acid residue positioned at loop 1 of the three dimensional structure of Ang2, and it is considered to directly participate in binding between Ang2 and Tie2 receptor or to be a site regulating it.

**[0040]** In Q418, P419, or an amino acid site including them, to which the anti-Ang2 antibody specifically binds, the term "contiguous amino acid" may refer to amino acids which are adjacent to one another on the primary, secondary, or tertiary structure of a protein.

**[0041]** As not only the anti-Ang2 antibody recognizing and/or specifically binding to the above site but also an antibody or an antigen-binding fragment thereof which competes with the anti-Ang2 antibody for binding can inhibit Ang2 and at the same time, form a complex with Ang2 and Tie2 receptor (i.e., by binding of antibody-Ang2 to the Tie2 receptor) to activate Tie2. This competitively-binding antibody may be an antibody recognizing a site adjacent to the aforementioned site on its three dimensional structure as an epitope and/or a specific binding site. The competitively-binding antibody may have a binding affinity with Ang2 of 0.1 pM to 50 nM, particularly 1 pM to 30 nM, 2 pM to 20 nM or 1 nM to 10 nM.

**[0042]** Therefore, the anti-Ang2 antibody or an antigen-binding fragment thereof may be at least one selected from the group consisting of an antibody or an antigen-binding fragment thereof recognizing the aforementioned site as an epitope or specifically binding thereto.

[0043] In a specific embodiment, the anti-Ang2 antibody or an antigen-binding fragment thereof may comprise or consist essentially of:

at least one heavy chain complementarity determining region (CDR) selected from the group consisting of a polypeptide (CDR-H1) including the amino acid sequence of SEQ ID NO: 1, a polypeptide (CDR-H2) including the amino acid sequence of SEQ ID NO: 2, and a polypeptide (CDR-H3) including the amino acid sequence of SEQ ID NO: 3, or a heavy chain variable region including the at least one heavy chain complementarity determining region; at least one light chain complementarity determining region selected from the group consisting of a polypeptide (CDR-L1) including the amino acid sequence of SEQ ID NO: 4, a polypeptide (CDR-L2) including the amino acid sequence of SEQ ID NO: 5, and a polypeptide (CDR-L3) including the amino acid sequence of SEQ ID NO: 6, or a light chain variable region including the at least one light chain complementarity determining region; a combination of said at least one heavy chain complementarity determining region and said at least one light chain complementarity determining region; or a combination of the heavy chain variable region and the light chain variable region.

[0044] More particularly, the anti-Ang2 antibody or an antigen-binding fragment thereof may comprise or consist essentially of:

a heavy chain complementarity determining region including a polypeptide (CDR-H1) including the amino acid sequence of SEQ ID NO: 1, a polypeptide (CDR-H2) including the amino acid sequence of SEQ ID NO: 2, and a polypeptide (CDR-H3) including the amino acid sequence of SEQ ID NO: 3, or a heavy chain variable region including the at least one heavy chain complementarity determining region; and a light chain complementarity determining region including a polypeptide (CDR-L1) including the amino acid sequence of SEQ ID NO: 4, a polypeptide (CDR-L2) including the amino acid sequence of SEQ ID NO: 5, and a polypeptide (CDR-L3) including the amino acid sequence of SEQ ID NO: 6, or a light chain variable region including the at least one light chain complementarity determining region.

[0045] Specifically, the heavy chain complementarity determining region of the anti-Ang2 antibody or an antigen-binding fragment thereof may have amino acid sequences, for example, as set forth in the following Table 1.

Table 1

Heavy Chain CDR Amino Acid Sequences		
CDRH1-KABAT	CDRH2-KABAT	CDRH3-KABAT
SDYAWN (SEQ ID NO: 1)	YINYSGNTDYNPSLKS (SEQ ID NO: 2)	GNFEGAMDY (SEQ ID NO: 3)

[0046] Likewise, the light chain complementarity determining region of the anti-Ang2 antibody or an antigen-binding fragment thereof may have amino acid sequences, for example, as set forth in the following Table 2.

Table 2

Light Chain CDR Amino Acid Sequences		
CDRL1-KABAT	CDRL2-KABAT	CDRL3-KABAT
KASQSVSNDVA (SEQ ID NO: 4)	YASNRYP (SEQ ID NO: 5)	QQDYSSPWT (SEQ ID NO: 6)

[0047] In one embodiment, the heavy chain variable region of the antibody or the antigen-binding fragment thereof may include the amino acid sequence of SEQ ID NO: 7:

DVQLQESGPGPLVKPSQSLSLTCTVTGYSIT**SDYAWN**WIRQFPGNKLEWMGYI  
**N**YSGNTDYN**P**SL**K**SRSSITRDTSKNQFFLQLNSVTTGDTATYYCARG**N**FE**G**AM**D**Y**W**G  
 QGTSVTVSS (SEQ ID NO: 7)

[0048] (In SEQ ID NO: 7 above, the underlined bold letters are CDRH1, CDRH2, and CDRH3 in sequence.)

**[0049]** The light chain of the antibody according to one embodiment may include the amino acid sequence of SEQ ID NO: 9:

5                   SIVMTQTPKFLLVSAGDRVITITCKASQSVSNDVAWYQQKPGQSPKLLIYYASN  
RYPGVPDRFTGSGYGTDFFTISTVQAEDLAVYFCQQDYSSPWFFGGGTKLEIK (SEQ  
 ID NO: 9)

10 **[0050]** (In SEQ ID NO: 9 above, the underlined bold letters are CDRL1, CDRL2, and CDRL3 in sequence.)

**[0051]** In this regard, the anti-Ang2 antibody or an antigen-binding fragment thereof may include a heavy chain variable region including the amino acid sequence of SEQ ID NO: 7, a light chain variable region including the amino acid sequence of SEQ ID NO: 9, or a combination of the heavy chain variable region and the light chain variable region.

15 **[0052]** For example, the anti-Ang2 antibody or an antigen-binding fragment thereof may include a heavy chain variable region including the amino acid sequence of SEQ ID NO: 7 and a light chain variable region including the amino acid sequence of SEQ ID NO: 9.

20 **[0053]** In one embodiment, the anti-Ang-2 antibody or the antigen-binding fragment thereof may not consist merely of at least one amino acid sequence selected from the group consisting of SEQ ID NO: 1, SEQ ID NO: 3, SEQ ID NO: 4, and SEQ ID NO: 5.

**[0054]** In another aspect, a method is provided for screening a candidate agent (anti-Ang2 antibody) for diagnosing, preventing, and/or treating a disease related to Ang2 overexpression, angiogenesis, increase in vascular permeability, and/or a decrease in normal blood vessel formation using the above epitope, for example, a method for screening an anti-Ang2 antibody. The screening method may comprise or consist essentially of the following steps:

25                   (a) contacting a candidate compound to the three dimensional structure epitope of the aforementioned Angiopoietin-2; and

                    (b) measuring binding between the epitope and the candidate compound, for example, in the presence of a Tie2 receptor.

30 **[0055]** The screening method may further include (c) a step of identifying binding between Ang2 and Tie2 receptor. The (c) step is to identify whether the candidate compound inhibits binding between Ang2 and Tie2 receptor and it may be performed before or after the (b) step, or simultaneously with it. Through the step (c), an anti-Ang2 antibody which binds to Ang2 but does not inhibit binding between Ang2 and Tie2 receptor, i.e., having a characteristic of inducing binding between Ang2 and Tie2 receptor can be screened.

35 **[0056]** In the antibody screening method, when the binding between the epitope and the candidate compound is detected, the candidate compound may be determined as a candidate agent (anti-Ang2 antibody). Therefore, the antibody screening method may further comprise, after step (b) or (c), a step of determining the candidate compound as a candidate agent (anti-Ang2 antibody) when the binding between the epitope and the candidate compound is detected.

40 **[0057]** Furthermore, the screening method may further include (d) a step of identifying the inhibition of Ang2 and/or the activation of Tie2 receptor, and they can be included in any order. Through the step (d), an anti-Ang2 antibody which binds to Ang2 to inhibit the activity thereof but binds to Ang2 to induce binding between Ang2 and Tie2 receptor and exhibits Tie2 receptor activation effects, like Ang1, can be screened. In the above screening method, when the epitope and the candidate compound show binding affinity (kd) in the range of not greater than 10 nM, for example, 0.1 pM to 10 nM, or 10 pM to 10 nM, or 100 pM to 10 nM, or when binding between Ang2 and Tie2 receptor is identified (i.e., in case that the candidate compound does not inhibit binding between Ang2 and Tie2 receptor) while the epitope and the candidate compound still show such binding affinity, the candidate compound can be determined to be a candidate agent for diagnosing, preventing, and/or treating a disease related to Ang2 overexpression, angiogenesis, vascular permeability enhancement, and/or normal blood vessel formation decrease, for example, an anti-Ang2 antibody candidate.

45 **[0058]** The epitope may be all or part (for example, at least one selected from the group consisting of the amino acid residue site exposed to the outside of loop 1) of loop 1 (of SEQ ID NO: 11, a site from 417<sup>th</sup> amino acid to 434<sup>th</sup> amino acid) of human Ang-2 (hAng-2; SEQ ID NO: 11; Accession # 015123) or an amino acid sequence site including continuous or non-continuous 2 to 20, 2 to 15, or 2 to 10 amino acids including at least one amino acid residue exposed to the outside of loop 1 of SEQ ID NO: 11 and for example, it may be at least one selected from the group consisting of Q418, P419, a combination of Q418 and P419 positioned at loop 1 of SEQ ID NO: 11, or an amino acid sequence site including 2 to 20, 2 to 15, 2 to 10, or 2 to 5 contiguous amino acids including the same.

50 **[0059]** The candidate compounds may be one or more selected from the group consisting of various artificially-syn-

thesized or natural compounds, polypeptides, oligopeptides, peptide or protein scaffolds (for example, antibody, peptibody, nanobody, etc.), polynucleotides, oligonucleotides, antisense-RNA, shRNA (short hairpin RNA), siRNA (small interference RNA), aptamers, natural product extracts and so on.

**[0060]** The step of measuring the binding affinity between the epitope and the candidate compound may be carried out using various methods known in the art. For example, the binding affinity may be measured using a Biacore machine. In general, the range within which the binding affinity is considered as a therapeutic drug may be defined to have a binding constant  $K_D$  value of not greater than 10 nM. For instance, in case that the binding affinity between the epitope of Angiopoietin-2 and a specimen to be analyzed (for example, antibody) is 0.1 pM to 50 nM, particularly 0.5 pM to 35 nM, more particularly 1 pM to 10 nM when measured using surface plasmon resonance methods such as a Biacore machine, the specimen (for example, antibody) can be determined to be a candidate for diagnosing, preventing, and/or treating a disease related to Ang2 overexpression, angiogenesis, vascular permeability enhancement, and/or normal blood vessel formation decrease.

**[0061]** The identification of the presence of binding between Ang2 and Tie2 and the identification of Ang2 inhibition and the activation of Tie2 receptor will be described later.

**[0062]** In another aspect, a polypeptide molecule is provided including the heavy chain complementarity determining region, the light chain complementarity determining region or the combination thereof; or the heavy chain variable region, the light chain variable region or the combination thereof of the anti-Ang2 antibody as described above. The polypeptide molecule may function as a precursor or a component of an antagonist against Ang2 as well as for manufacturing an antibody or an antigen-binding fragment thereof. For example, the polypeptide molecule may function as an Ang2 antigen binding site, and can be included as a component of a protein scaffold (e.g., peptibody, nanobody, etc.), a bispecific antibody, and a multi-specific antibody having a similar structure to an antibody.

**[0063]** The term "antagonist" as used herein is interpreted to encompass all molecules that partially or entirely block, suppress or neutralize at least one biological activity of its target (e.g., Ang2).

**[0064]** The term "peptibody (peptide + antibody)" used herein refers to a fusion protein including a peptide and all or part of the constant region of an antibody such as an Fc portion wherein the peptide serves as an antigen binding site (heavy chain and/or light chain CDR or variable regions) thereby to render a protein having similar framework and functions to an antibody

**[0065]** The term "nanobody" used herein is called a single-domain antibody, refers to an antibody fragment including a single variable domain of an antibody as a monomer form, and has characteristics of selectively binding to a specific antigen similarly to an antibody having an intact structure. The molecular weight of the nanobody is generally about 12 kDa to about 15 kDa, which is very little when compared to the normal molecular weight (about 150 kDa or about 160 kDa) of an intact antibody (including two heavy chains and two light chains) and in some cases it is smaller than an Fab fragment or scFv fragment.

**[0066]** The term "bispecific antibody" or "multi-specific antibody" used herein refers to an antibody recognizing and/or binding to two (bispecific antibody) or more (multi-specific antibody) different antigens, or recognizing and/or binding to different sites of the same antigen, and one antigen binding site of the bispecific antibody or multi-specific antibody may include the polypeptide described above.

**[0067]** In a specific embodiment, the polypeptide molecule may comprise or consist essentially of:

at least one selected from the group consisting of a polypeptide including the amino acid sequence of SEQ ID NO: 1, a polypeptide including the amino acid sequence of SEQ ID NO: 2, and a polypeptide including the amino acid sequence of SEQ ID NO: 3;

at least one selected from the group consisting of a polypeptide including the amino acid sequence of SEQ ID NO: 4, a polypeptide including the amino acid sequence of SEQ ID NO: 5, and a polypeptide including the amino acid sequence of SEQ ID NO: 6; or

a combination thereof.

**[0068]** In a specific embodiment, the polypeptide molecule may comprise or consist essentially of the amino acid sequence of SEQ ID NO: 8, the amino acid sequence of SEQ ID NO: 9, or a combination thereof.

**[0069]** In one embodiment, the polypeptide molecule may not consist merely of at least one amino acid sequence selected from the group consisting of SEQ ID NO: 1, SEQ ID NO: 3, SEQ ID NO: 4, and SEQ ID NO: 5.

**[0070]** As described above, the above bispecific antibody or multi-specific antibody is referred to as an antibody including each antigen binding site to different two or more kinds of antigens and recognizing and/or binding to the two or more kinds of antigens at the same time, wherein one of the antigen binding sites may include the aforementioned polypeptide molecule. In particular, the polypeptide molecule serving as Ang2 antigen binding site may form a dimer or multimer together with an antigen binding site to another antigen to constitute a bi-specific antibody or a multi-specific antibody. Accordingly, in one embodiment, there is provided a bi-specific antibody or a multi-specific antibody including the polypeptide molecule as an Ang2 antigen binding site.

**[0071]** In another aspect, there is provided a protein scaffold including at least one (e.g., 1 to 5, particularly 2 to 4) peptide complex including one or more of the aforementioned polypeptide molecules or a repeat where the polypeptide molecules are repeatedly linked by a linker (hereafter, 'first peptide'), and a polypeptide having a structural function (hereafter, 'second peptide'; e.g., a heavy chain or light chain constant region of an antibody (IgG (IgG1, IgG2, IgG3, or IgG4), IgA, IgE, IgD, IgM, etc.), or an Fc fragment of an antibody) wherein said at least one peptide complex is bound to at the second peptide (e.g., Fc fragment) to form a multimer structure.

**[0072]** Another embodiment provides a polynucleotide encoding the polypeptide molecule, a recombinant vector (expression vector) comprising the polynucleotide, and a recombinant cell comprising (transfected with) the recombinant vector.

**[0073]** The term "vector" used herein refers to a means for expressing a target gene in a host cell. For example, it includes a plasmid vector, a cosmid vector, and a virus vector such as a bacteriophage vector, an adenovirus vector, a retrovirus vector and an adeno-associated virus vector. Suitable recombinant vectors may be constructed by manipulating plasmids often used in the art (for example, pSC101, pGV1106, pACYC177, ColE1, pKT230, pME290, pBR322, pUC8/9, pUC6, pBD9, pHC79, pIJ61, pLAFR1, pHV14, pGEX series, pET series, and pUC19), a phage (for example,  $\lambda$ gt4 $\lambda$ B,  $\lambda$ -Charon,  $\lambda$  $\Delta$ z1, and M13), or a virus (for example, SV40).

**[0074]** The recombinant vector may include the polynucleotides encoding the protein complex and an expression regulating factor (sequence) such as promoter, which are operatively linked to each other. The term "operatively linked" used herein refers to a functional linkage between a nucleotide expression regulating sequence (for example, a promoter sequence) and other nucleotide sequences. Thus, the expression regulating sequence may regulate the transcription and/or translation of the other nucleotide sequences by being operatively linked.

**[0075]** The recombinant vector may be constructed typically for either cloning or expression. The expression vector may be any ordinary vectors known in the pertinent art for expressing an exogenous protein in plants, animals, or microorganisms. The recombinant vector may be constructed using various methods known in the art.

**[0076]** The recombinant vector may be constructed using a prokaryotic cell or a eukaryotic cell as a host. For example, when a prokaryotic cell is used as a host cell, the expression vector used generally includes a strong promoter capable of initiating transcription (for example, pL <sup>$\lambda$</sup>  promoter, CMV promoter, *trp* promoter, *lac* promoter, *tac* promoter, T7 promoter, etc.), a ribosome binding site for initiating translation, and a transcription/translation termination sequence. When a eukaryotic cell is used as a host cell, the vector used generally includes the origin of replication acting in the eukaryotic cell, for example, a f1 replication origin, a SV40 replication origin, a pMB1 replication origin, an adeno replication origin, an AAV replication origin, or a BBV replication origin, but is not limited thereto. A promoter in an expression vector for a eukaryotic host cell may be a promoter derived from the genomes of mammalian cells (for example, a metallothionein promoter) or a promoter derived from mammalian viruses (for example, an adenovirus late promoter, a vaccinia virus 7.5K promoter, a SV40 promoter, a cytomegalovirus promoter, and a tk promoter of HSV). A transcription termination sequence in an expression vector for a eukaryotic host cell may be, in general, a polyadenylation sequence.

**[0077]** The recombinant cell may be those obtained by transfecting the recombinant vector into a suitable host cell. Any host cells known in the pertinent art to enable stable and continuous cloning or expression of the recombinant vector may be used as the host cell. Suitable prokaryotic host cells may include *E. coli* JM109, *E. coli* BL21, *E. coli* RR1, *E. coli* LE392, *E. coli* B, *E. coli* X 1776, *E. coli* W3110, Bacillus species strains such as *Bacillus subtilis* or *Bacillus thuringiensis*, intestinal bacteria and strains such as *Salmonella typhimurum*, *Serratia marcescens*, and various Pseudomonas species. Suitable eukaryotic host cells to be transformed may include yeasts, such as *Saccharomyces cerevisiae*, insect cells, plant cells, and animal cells, for example, Sp2/0, Chinese hamster ovary (CHO) K1, CHO, CHO-s, HEK293, HEK293f, DG44, PER.C6, W138, BHK, COS-7, 293, HepG2, Huh7, 3T3, RIN, and MDCK cell lines, but are not limited thereto.

**[0078]** The polynucleotide or the recombinant vector including the same may be transferred (transfected) into a host cell by using known transfer methods. Suitable transfer methods for prokaryotic host cells may include a method using CaCl<sub>2</sub> and electroporation. Suitable transfer methods for eukaryotic host cells may include microinjection, calcium phosphate precipitation, electroporation, liposome-mediated transfection, and gene bombardment, but are not limited thereto.

**[0079]** A transformed host cell may be selected using a phenotype expressed by a selected marker by any methods known in the art. For example, if the selected marker is a gene that is resistant to a specific antibiotic, a transformant may be easily selected by being cultured in a medium including the antibiotic.

**[0080]** The antibody includes any animal-derived antibodies, chimeric antibodies, humanized antibodies and human antibodies. An animal-derived antibody which is produced by immunizing an animal with a desired antigen may generally trigger an immune rejection response when administered to humans for treatment purpose, and a chimeric antibody has been developed to suppress such immune rejection response. A chimeric antibody is formed by replacing the constant region of an animal-derived antibody, which is a cause of anti-isotype response, with the constant region of a human antibody using genetic engineering methods. The chimeric antibody has considerably improved anti-isotype response in comparison with animal-derived antibodies, but animal-derived amino acids are still present in its variable regions and thus it still contains potential side effects resulting from an anti-idiotypic response. It is a humanized antibody that

has been thus developed to improve such side effects. This is manufactured by grafting CDR (complementarity determining regions) which, of the variable regions of a chimeric antibody, has an important role in antigen binding into a human antibody framework.

**[0081]** An important aspect of CDR grafting technology for manufacturing a humanized antibody is to select an optimized human antibody which can receive best the CDR of an animal-derived antibody and for this, utilization of antibody database, analysis of crystal structure, molecule modeling technology, etc. are employed. However, although the CDR of an animal-derived antibody is grafted into an optimized human antibody framework, there are a considerable number of cases where antigen binding affinity is not preserved because there are amino acids which affect antigen binding while being positioned at the framework of the animal-derived antibody. In this regard, it may be essential to apply an additional antibody engineering technology for restoring antigen binding affinity.

**[0082]** According to one embodiment, the antibody may be a mouse-derived antibody, a mouse-human chimeric antibody, a humanized antibody, or a human antibody. The antibody or an antigen-binding fragment thereof may be isolated from a living body or non-naturally occurring. The antibody or an antigen-binding fragment thereof may be recombinant or synthetic.

**[0083]** Antibodies have been widely used for treating diseases. As antibodies are very stable in vivo as well as in vitro and have a long half-life, they are favorable for mass expression and production. Also, since an antibody has intrinsically a dimer structure, it has a fairly high avidity.

**[0084]** An intact antibody has a structure with two full-length light chains and two full-length heavy chains, and each light chain is linked to each heavy chain via a disulfide bond. The constant region of an antibody is divided into a heavy chain constant region and a light chain constant region, and the heavy chain constant region has gamma ( $\gamma$ ), mu ( $\mu$ ), alpha ( $\alpha$ ), delta ( $\delta$ ) and epsilon ( $\epsilon$ ) types, and has gamma1 ( $\gamma$ 1), gamma2 ( $\gamma$ 2), gamma3 ( $\gamma$ 3), gamma4 ( $\gamma$ 4), alpha1 ( $\alpha$ 1) and alpha2 ( $\alpha$ 2) as its subclass. The light chain constant region has kappa ( $\kappa$ ) and lambda ( $\lambda$ ) types.

**[0085]** The term "heavy chain" is understood to include a full-length heavy chain and fragments thereof, the full-length heavy chain including a variable region domain  $V_H$  including an amino acid sequence having sufficient variable region sequences that contribute the specificity for antigen binding and three constant region domains  $C_{H1}$ ,  $C_{H2}$  and  $C_{H3}$  domains and a hinge. The term "light chain" is understood to include a full-length light chain and fragments thereof, the full-length light chain including a variable region domain  $V_L$  including an amino acid sequence having sufficient variable region sequences that contribute to the specificity for antigen binding and a constant region domain  $C_L$ .

**[0086]** The term "CDR (complementarity determining region)" refers to an amino acid sequence found in the hyper-variable region of a heavy chain and a light chain of an immunoglobulin. The heavy and light chain may each include three CDRs (CDRH1, CDRH2, CDRH3, and CDRL1, CDRL2, CDRL3). The CDRs of an antibody can provide an essential contact residue for binding to an antigen or an epitope. Throughout the specification, the terms "specifically binding" or "specifically recognizing" has the same meaning as generally known to an ordinary person in the art, indicating that an antigen and an antibody specifically interact with each other to lead to an immunological response.

**[0087]** The antigen binding site of an antibody may be a fragment including at least one complementarity determining region.

**[0088]** The term "antigen-binding fragment," which is a fragment of the full structure of an immunoglobulin, refers to some of a polypeptide including a portion to which an antigen can bind. For example, it may be an scFv, an (scFv)<sub>2</sub>, an scFv-Fc, an Fab, an Fab' or an F(ab')<sub>2</sub>, but is not limited thereto.

**[0089]** Among the above antigen-binding fragments, an Fab, which is a structure having the light chain and heavy chain variable regions, the light chain constant region, and the heavy chain first constant region ( $C_{H1}$ ), has one antigen binding site. An Fab' differs from the Fab in that the Fab' has a hinge region including at least one cysteine residue at the C-terminal of the heavy chain  $C_{H1}$  domain. An F(ab')<sub>2</sub> is produced when cysteine residues at the hinge region of Fab' are joined by a disulfide bond. An Fv is a minimal antibody fragment, having only heavy chain variable regions and light chain variable regions, and a recombinant technique for producing the Fv fragment is well known in the art. In a two-chain Fv fragment, the heavy chain variable domains are associated with the light chain variable domains via a non-covalent bond. A single-chain Fv fragment has a structure in which a heavy chain variable domain and a light chain variable domain are covalently joined to each other via a covalent bond or directly at the C-terminus, so that it can form a dimer as in a two-chain Fv fragment. In this context, the heavy chain variable region and the light chain variable region may be connected with each other through a linker, e. g., a peptide linker, or directly. The peptide linker may be composed of 1 to 100 amino acid residues, or 2 to 50 amino acid residues, with no limitations imposed on the kind of the amino acid residues. For example, the peptide linker may include Gly, Asn and/or Ser, and may also include neutral amino acids such as Thr and/or Ala. Amino acid sequences suitable for use in the peptide linker may be those well known in the art. So long as it has no negative influence on the function of the antigen-binding fragment, the length of the peptide linker may be appropriately adjusted. For example, the peptide linker may be an amino sequence composed of 1 to 100, 2 to 50, or 5 to 25 amino acid residues selected from among Gly, Asn, Ser, Thr, Ala, and a combination thereof. By way of example, the peptide linker may be (G4S)<sub>n</sub> (wherein n represents the repeating number of (G4S) and may be an integer of 1 to 10, e.g., 2 to 5).

**[0090]** The antigen-binding fragment may be obtained using a protease (for example, a whole antibody can be digested with papain to obtain Fab fragments, or can be digested with pepsin to obtain F(ab')<sub>2</sub> fragments), or may be prepared by a genetic recombinant technique.

5 **[0091]** The term "hinge region" refers to a region included in the heavy chains of an antibody, which is present between the CH1 and CH2 regions, and provides flexibility to the antigen binding site in the antibody. For example, the hinge may be derived from a human antibody and particularly, it may be derived from IgA, IgE, IgD, IgM, or IgG, for example, IgG1, IgG2, IgG 3, or IgG4.

10 **[0092]** When an animal-derived antibody goes through a chimerization process, an animal-derived IgG1 hinge is replaced with a human IgG1 hinge, but a length of the animal-derived IgG1 hinge is shorter than the human IgG1 hinge, and disulfide bonds between two heavy chains are reduced from 3 to 2. Thus, rigidity of the hinges may have different effects. Therefore, modification of a hinge region can increase an antigen binding efficiency of a humanized antibody. Methods of deleting, inserting, or substituting an amino acid for modifying amino acid sequences of the hinge region are well known in the art.

15 **[0093]** Portions (e.g., constant regions) except the CDRs or variable regions of the anti-Ang2 antibody may be derived from a human antibody and particularly, they may be derived from IgA, IgD, IgE, IgD, IgM, or IgG, for example, IgG1, IgG2, IgG 3, or IgG4.

20 **[0094]** The anti-Ang2 antibody may be a monoclonal antibody. The monoclonal antibody may be prepared by methods well known in the art. For example, it may be prepared using a phage display technique. Alternately, the Ang2 antibody may be prepared into a mouse-derived monoclonal antibody by methods set forth in the paper written by Schwaber, et al (Schwaber, J and Cohen, E. P., "Human x Mouse Somatic Cell Hybrid Clones Secreting Immunoglobulins of Both Parental Types," Nature, 244 (1973), 444-447).

25 **[0095]** Meanwhile, individual monoclonal antibodies may be screened using a typical ELISA (Enzyme-Linked ImmunoSorbent Assay) format, based on the binding potential with Ang2. Inhibitory activities can be verified through functional analysis such as competitive ELISA for verifying the molecular interaction of binding assemblies or functional analysis such as a cell-based assay. Then, with regard to monoclonal antibody members selected on the basis of their strong inhibitory activities, their affinities (Kd values) to Ang2 may be each verified.

30 **[0096]** The rest portions except the antigen binding portions of the finally selected antibodies may be prepared as not only human immunoglobulin antibodies but also humanized antibodies. Preparation of humanized antibodies is well known in the art (Almagro, J. C. and Fransson, J., "Humanization of antibodies," Frontiers in Bioscience, 13(2008), 1619-1633).

**[0097]** Another embodiment provides a hybridoma cell line which produces a monoclonal antibody of the anti-Ang2 antibody. The hybridoma cell line may be a cell line having accession number (KCLRF-BP-00295).

35 **[0098]** As described above, the anti-Ang2 antibody or an antigen-binding fragment thereof is characterized by binding to Ang2 while not inhibiting Ang2 from binding to Tie2 receptor and inducing binding between Ang2 and Tie2. Also, a conjugate formed from binding of the anti-Ang2 antibody or an antigen-binding fragment thereof and Ang2 is characterized by binding to a Tie2 receptor (an Ang2 portion of the conjugate participating in binding), just like Ang1, to activate the Tie2 receptor.

40 **[0099]** Hence, another aspect provides a conjugate of Ang2 and an anti-Ang2 antibody in which the anti-Ang2 antibody or an antigen-binding fragment thereof and Ang2 are bound to each other. Another embodiment provides a composition for inducing binding of Ang2 with a Tie2 receptor, including the conjugate of Ang2 and an anti-Ang2 antibody as an active ingredient. Another embodiment provides a method for inducing binding of Ang2 with a Tie2 receptor, including administering the conjugate of Ang2 and an anti-Ang2 antibody to a subject. The subject may be in need of binding between Ang2 and Tie2 receptor. The method for inducing binding of Ang2 with Tie2 receptor may further include a step of identifying a subject who is in need of binding between Ang2 and Tie2 receptor, prior to the administration step. Still  
45 another aspect provides a composition for activating a Tie2 receptor including the conjugate of Ang2 and an anti-Ang2 antibody as an active ingredient. Still another aspect provides a method for activating a Tie2 receptor including administering the conjugate of Ang2 and an anti-Ang2 antibody to a subject. The subject may be in need of activating the Tie2 receptor. The Tie2 receptor activation method may further include a step of identifying a subject who is in need of activating the Tie2 receptor, prior to the administration step. The subject may be mammals including primates such as  
50 humans and monkeys or rodents such as rats and mice, or cells, tissues, or body fluids (e.g., blood, serum, etc.) isolated there from or artificially cultured. Another embodiment provides a use of the conjugate of Ang2 and an anti-Ang2 antibody for activating a Tie2 receptor.

55 **[0100]** As described above, since the anti-Ang2 antibody or an antigen-binding fragment thereof has a function of inhibiting abnormal angiogenesis by inhibiting the functions of Ang2, it is applicable to prevent, alleviate, improve, and/or treat various diseases (e.g., cancer) related to abnormal angiogenesis (see Example 13). Moreover, since the anti-Ang2 antibody or an antigen-binding fragment thereof does not inhibit binding between Ang2 and Tie2 (see Example 3 and FIG. 1), it can activate a Tie2 signaling (see Example 6 and FIG. 3) by activating Tie2 (see Example 6 and FIG. 3), and it accelerates the formation of vascular endothelium or lymphatic endothelium and increases mobility (see Example 10)

to suppress vascular permeability increase (see Example 11), whereby it is applicable to prevent, alleviate, improve, and/or treat various diseases related to vascular permeability (for example, sepsis, eye disorders, etc.). Also, as described above, since the anti-Ang2 antibody or an antigen-binding fragment thereof accelerates the formation of vascular endothelium or lymphatic endothelium to increase the formation of healthy blood vessels and normalize the blood vessels, it is also applicable to prevent, alleviate, improve, and/or treat various diseases or symptoms requiring the formation of healthy blood vessels such as wound healing or ischemic disorders, and it reduces cancer growth and metastasis possibility by changing the abnormally formed cancer blood vessels into structurally and functionally normal forms. Moreover, the anti-Ang2 antibody or an antigen-binding fragment thereof has an effect of suppressing inflammatory response (see Example 12), whereby it is applicable to prevent, alleviate, improve, and/or treat various inflammatory disorders.

**[0101]** Another embodiment provides a pharmaceutical composition for inhibiting angiogenesis including the anti-Ang2 antibody or an antigen-binding fragment thereof as an active ingredient. Another embodiment provides a method for inhibiting angiogenesis including administering a pharmaceutically effective amount of the anti-Ang2 antibody or an antigen-binding fragment thereof to a subject. The subject may be in need of inhibiting angiogenesis. The angiogenesis inhibition method may further include a step of identifying a subject who is in need of the inhibition of angiogenesis, prior to the administration step.

**[0102]** Another embodiment provides a pharmaceutical composition for reducing vascular permeability including the anti-Ang2 antibody or an antigen-binding fragment thereof as an active ingredient. Another embodiment provides a method for reducing vascular permeability including administering a pharmaceutically effective amount of the anti-Ang2 antibody or an antigen-binding fragment thereof to a subject. The subject may be in need of the reduction of vascular permeability. The vascular permeability reduction method may further include a step of identifying a subject who is in need of the reduction of vascular permeability, prior to the administration step.

**[0103]** Another embodiment provides a pharmaceutical composition for preventing and/or treating a disease related to Ang2 overexpression, angiogenesis, and/or vascular permeability increase including the anti-Ang2 antibody or an antigen-binding fragment thereof as an active ingredient. Another embodiment provides a method for preventing and/or treating a disease related to Ang2 overexpression, angiogenesis, and/or vascular permeability increase including administering a pharmaceutically effective amount of the anti-Ang2 antibody or an antigen-binding fragment thereof to a subject. The subject may be in need of preventing and/or treating the disease related to Ang2 overexpression, angiogenesis, and/or vascular permeability increase. The prevention and/or treatment method may further include a step of identifying a subject who is in need of preventing and/or treating a disease related to Ang2 overexpression, angiogenesis, and/or vascular permeability increase, prior to the administration step.

**[0104]** Another embodiment provides a pharmaceutical composition for inducing normal blood vessel formation including the anti-Ang2 antibody or an antigen-binding fragment thereof as an active ingredient. Another embodiment provides a method for inducing normal blood vessel formation, including administering a pharmaceutically effective amount of the anti-Ang2 antibody or an antigen-binding fragment thereof to a subject. The subject may be in need of inducing normal blood vessel formation. The normal blood vessel formation induction method may further include a step of identifying a subject who is in need of inducing normal blood vessel formation, prior to the administration step.

**[0105]** Another embodiment provides a pharmaceutical composition for preventing and/or treating a disease related to normal blood vessel formation decrease including the anti-Ang2 antibody or an antigen-binding fragment thereof as an active ingredient. Another embodiment provides a method for preventing and/or treating a disease related to normal blood vessel formation decrease including administering a pharmaceutically effective amount of the anti-Ang2 antibody or an antigen-binding fragment thereof to a subject. The subject may be in need of preventing and/or treating the disease related to normal blood vessel formation decrease. The prevention and/or treatment method may further include a step of identifying a subject who is in need of preventing and/or treating a disease related to normal blood vessel formation decrease, prior to the administration step.

**[0106]** Another embodiment provides a pharmaceutical composition for tissue regeneration and/or wound healing including the anti-Ang2 antibody or an antigen-binding fragment thereof as an active ingredient. Another embodiment provides a method for tissue regeneration and/or wound healing including administering a pharmaceutically effective amount of the anti-Ang2 antibody or an antigen-binding fragment thereof to a subject. The subject may be in need of tissue regeneration and/or wound healing. The method may further include a step of identifying a subject who is in need of tissue regeneration and/or wound healing, prior to the administration step. A subject to whom the active ingredient is administered may be a subject who has a skin tissue or organ tissue damage or has received a skin transplant.

**[0107]** Another embodiment provides a pharmaceutical composition for inhibiting Ang2 and/or activating a Tie2 receptor including the anti-Ang2 antibody or an antigen-binding fragment thereof as an active ingredient. Another embodiment provides a method for inhibiting Ang2 and/or activating a Tie2 receptor including administering a pharmaceutically effective amount of the anti-Ang2 antibody or an antigen-binding fragment thereof to a subject. The subject may be in need of Ang2 inhibition and/or Tie2 receptor activation. The Ang2 inhibition and/or Tie2 receptor activation method may further include a step of identifying a subject who is in need of Ang2 inhibition and/or Tie2 receptor activation, prior to

the administration step. The anti-Ang2 antibody or an antigen-binding fragment thereof may be in a form of being bound to an antigen Ang2.

**[0108]** As the function of the anti-Ang2 antibody or an antigen-binding fragment thereof, which is an active ingredient of the above pharmaceutical compositions, is activated by the binding with Ang2, the pharmaceutical compositions may further include Ang2 to enhance the function of the antibody or the antigen-binding fragment thereof. Thus, the above methods may further include a step of administering a pharmaceutically effective amount of Ang2 to a subject. The Ang2 may be administered together with the anti-Ang2 antibody or an antigen-binding fragment thereof simultaneously or sequentially in any order.

**[0109]** Another embodiment provides a composition for detecting Ang2, including the anti-Ang2 antibody or an antigen-binding fragment thereof. Another embodiment provides a method of detecting Ang2, including treating a biological sample with the anti-Ang2 antibody or an antigen-binding fragment thereof, and detecting an antigen-antibody reaction. In this method, when the antigen-antibody reaction detected in the biological sample, the sample may be determined as having Ang2. Another embodiment provides a use of the anti-Ang2 antibody or an antigen-binding fragment thereof for detecting Ang2.

**[0110]** Another embodiment provides a composition for diagnosing a disease related to angiogenesis, and/or vascular permeability increase and/or normal blood vessel formation decrease, including the anti-Ang2 antibody or an antigen-binding fragment thereof. Another embodiment provides a method of diagnosing a disease related to angiogenesis, and/or vascular permeability increase and/or normal blood vessel formation decrease, including treating a biological sample derived from a patient with the anti-Ang2 antibody or an antigen-binding fragment thereof, and measuring a level of an antigen-antibody reaction. In this method, when the level of the antigen-antibody reaction in the biological sample is higher than that of a normal sample, the patient from which the biological sample is derived may be determined as having diagnosing a disease related to angiogenesis, and/or vascular permeability increase and/or normal blood vessel formation decrease. Therefore, the method may further include treating a normal sample with the anti-Ang2 antibody or an antigen-binding fragment thereof, and measuring a level of an antigen-antibody reaction. Another embodiment provides a use of the anti-Ang2 antibody or an antigen-binding fragment thereof for diagnosing a disease related to angiogenesis, and/or vascular permeability increase and/or normal blood vessel formation decrease.

**[0111]** The biological sample may be at least one selected from the group consisting of a cell, a tissue, fluid (e.g., blood, serum, and the like) and the like, derived from a patient to be diagnosed. The biological sample may be separated from a living body. The normal sample may be at least one selected from the group consisting of a cell, a tissue, fluid (e.g., blood, serum, and the like) and the like, derived from a patient having no disease related to angiogenesis, and/or vascular permeability increase and/or normal blood vessel formation decrease. The normal sample may be separated from a living body. The patient may be selected from mammal including primates such as a human, a monkey, and the like, and rodents such as a mouse, a rat, and the like.

**[0112]** The pharmaceutical compositions may further include a pharmaceutically acceptable carrier, and the carrier may be those commonly used in the formulation of drugs, which may be one or more selected from the group consisting of lactose, dextrose, sucrose, sorbitol, mannitol, starch, gum acacia, calcium phosphate, alginates, gelatin, calcium silicate, micro-crystalline cellulose, polyvinylpyrrolidone, cellulose, water, syrup, methyl cellulose, methylhydroxy benzoate, propylhydroxy benzoate, talc, magnesium stearate, and mineral oil, but is not limited thereto. The pharmaceutical compositions may further include one or more selected from the group consisting of a diluent, an excipient, a lubricant, a wetting agent, a sweetener, a flavor enhancer, an emulsifying agent, a suspension agent, and a preservative.

**[0113]** Pharmaceutically effective amounts of the pharmaceutical compositions, or the antibody or the antigen-binding fragment thereof may be administered orally or parenterally. The parenteral administration may include intravenous injection, subcutaneous injection, muscular injection, intraperitoneal injection, endothelial administration, local administration, intranasal administration, intrapulmonary administration, and rectal administration. Since oral administration leads to digestion of proteins or peptides, an active ingredient in the compositions for oral administration must be coated or formulated to prevent digestion in stomach. In addition, the composition may be administered using an optional device that enables an active substance to be delivered to target cells.

**[0114]** The content of the anti-Ang2 antibody or an antigen-binding fragment thereof in the pharmaceutical compositions may be prescribed in a variety of ways, depending on factors such as formulation methods, administration methods, age of subjects, body weight, gender, pathologic conditions, diets, administration time, administration interval, administration route, excretion speed, and reaction sensitivity. For example, a daily dosage of the anti-Ang2 antibody or an antigen-binding fragment thereof may be within the range of 0.001 to 1000mg/kg, particularly 0.01 to 100mg/kg, and more particularly 0.1 to 50mg/kg, but is not limited thereto. The daily dosage may be formulated into a single formulation in a unit dosage form or formulated in suitably divided dosage forms, or it may be manufactured to be contained in a multiple dosage container. The term "pharmaceutically effective amount" as used herein refers to a content or dose of an active ingredient capable of showing desirable pharmacological effects and it may be determined in a variety of ways, depending on factors such as formulation methods, administration methods, age of subjects, body weight, gender, pathologic conditions, diets, administration time, administration interval, administration route, excretion speed, and re-

action sensitivity.

**[0115]** The pharmaceutical compositions may be formulated into a form of a solution in oil or an aqueous medium, a suspension, syrup, an emulsifying solution, an extract, powder, granules, a tablet, or a capsule, and may further include a dispersing or a stabilizing agent for the formulation.

**[0116]** In particular, the pharmaceutical compositions including the anti-Ang2 antibody or an antigen-binding fragment thereof may be formulated into an immunoliposome since it contains an antibody or an antigen-binding fragment. A liposome containing an antibody may be prepared using any methods widely known in the art. The immunoliposome may be a lipid composition including phosphatidylcholine, cholesterol, and polyethyleneglycol-derivatized phosphatidylethanolamine, and may be prepared by a reverse phase evaporation method. For example, Fab' fragments of an antibody may be conjugated to the liposome through a disulfide-exchange reaction.

**[0117]** Meanwhile, as the anti-Ang2 antibody or an antigen-binding fragment thereof specifically binds to Ang2, this can be used to detect Ang2, and the presence of the overexpression of Ang2 can be verified through it. Accordingly, another embodiment provides a composition for detecting Ang2 and a composition for diagnosing a disease related to Ang2 overexpression including the anti-Ang2 antibody or an antigen-binding fragment thereof.

**[0118]** In another aspect, a method is provided for detecting Ang2 including treating a living specimen obtained (or isolated) from a subject with the anti-Ang2 antibody or an antigen-binding fragment thereof; and identifying the presence of an antigen-antibody reaction. Also, there is provided a method of providing information for diagnosis of a disease related to Ang2 overexpression, including treating a living specimen obtained from a subject with the anti-Ang2 antibody or an antigen-binding fragment thereof; and identifying the presence of an antigen-antibody reaction. The method of providing information for the diagnosis may determine a subject to have Ang2 overexpression symptoms, or have Ang2 overexpression related diseases when an antigen-antibody reaction is detected in the step of identifying the presence of an antigen-antibody reaction. The living specimen may be selected from the group consisting of cells, tissues and body fluids (e.g., blood, serum, etc.) obtained (isolated) from a subject.

**[0119]** The step of identifying the presence of the antigen-antibody reaction may be performed using various methods known in the art. For example, it may be measured through an ordinary enzyme reaction, fluorescence, luminescence, and/or radioactivity detection and particularly, it may be measured by a method selected from the group consisting of immunochromatography, immunohistochemistry, enzyme linked immunosorbent assay (ELISA), radioimmunoassay (RIA), enzyme immunoassay (EIA), fluorescence immunoassay (FIA), luminescence immunoassay (LIA), western blotting, etc., but is not limited thereto.

**[0120]** The subjects which the pharmaceutical composition or the antibody or the antigen-binding fragment thereof is administered to or is aimed to diagnose may be mammals including primates such as humans and monkeys, or rodents such as rats and mice, or cells, tissues and body fluids (e.g., blood, serum, etc.) isolated there from or artificially cultured.

**[0121]** The diseases related to angiogenesis and/or vascular permeability increase and/or Ang2 overexpression may be cancer; cancer metastasis; ocular blood vessel disorders such as retinopathy of prematurity, macular degeneration (e.g., age-related macular degeneration), diabetic retinopathy, neovascular glaucoma, etc.; inflammatory disorders such as psoriasis, asthma, rheumatoid arthritis, pneumonia, chronic inflammation, etc.; infectious disorders (infection); cardiovascular disorders such as hypertension, arteriosclerosis, etc.; renal disease; sepsis; asthma; edema; hereditary hemorrhagic telangiectasia (HHT), etc. The cancer may be those overexpressing Ang2, it may be a solid cancer or a blood cancer, and it may be, but not limited to, selected from the group consisting of squamous cell carcinoma, small-cell lung cancer, non-small-cell lung cancer, adenocarcinoma of the lung, squamous cell carcinoma of the lung, peritoneal carcinoma, skin cancer, melanoma in the skin or eyeball, rectal cancer, cancer near the anus, esophagus cancer, small intestinal tumor, endocrine gland cancer, parathyroid cancer, adrenal cancer, soft-tissue sarcoma, urethral cancer, chronic or acute leukemia, lymphocytic lymphoma, hepatocellular cancer, gastric cancer, pancreatic cancer, glioblastoma, cervical cancer, ovarian cancer, liver cancer, bladder cancer, hepatoma, breast cancer, colon cancer, large intestine cancer, endometrial carcinoma or uterine carcinoma, salivary gland tumor, kidney cancer, prostate cancer, vulvar cancer, thyroid cancer, head or neck cancer, brain cancer, osteosarcoma, etc.

**[0122]** The diseases related to normal blood vessel formation decrease are diseases that require the induction of normal blood vessel formation and may be selected from the group consisting of ischemic disorders such as myocardial infarction, angina, cerebral infarction, stroke (ischemic stroke), etc., Buerger' disease (thromboangiitis obliterans), avascular necrosis, foot ulcer (e.g., diabetic foot ulcer), erectile dysfunction and so on.

**[0123]** Another embodiment provides a complex in which the anti-Ang2 antibody or an antigen-binding fragment thereof, Ang2, and Tie2 receptor are bound (e.g., a complex including anti-Ang2 antibody or an antigen-binding fragment thereof, Ang2, and Tie2 receptor, wherein the anti-Ang2 antibody or an antigen-binding fragment thereof is specifically bound to Ang2, the Ang2 is bound to the Tie2 receptor, and the anti-Ang2 antibody or an antigen-binding fragment thereof is bound to the Tie2 receptor via Ang2).

**[0124]** The complex may be present inside the body or present in a cell isolated from the body. Also, the antibody in the complex may form a dimer with another antibody in an adjacent complex, thereby clustering two or more complexes, to form a cluster including two or more complexes (see Example 8). Such action is related to the Tie2 receptor activation

function of the anti-Ang2 antibody. The complex can be used to monitor the action of the anti-Ang2 antibody, i.e., the presence of Ang2 inhibition and/or Tie2 receptor activation, or simply used to inhibit Ang2 and/or to activate Tie2 receptor.

**[0125]** Another embodiment provides a method for screening a candidate drug for preventing and/or treating a disease related to Ang2 overexpression, angiogenesis, vascular permeability enhancement, and/or a decrease in normal blood vessel formation by identifying the complex formation, and/or the presence of Ang2 inhibition and/or Tie2 receptor activation.

**[0126]** In one embodiment, the screening method may comprise or consist essentially of the following steps:

contacting a candidate compound to a specimen containing Ang2 and a Tie2 receptor; and  
identifying the formation of a complex in which the candidate compound, Ang2, and the Tie2 receptor are bound.

**[0127]** The step of identifying the formation of a complex in which the candidate compound, Ang2, and the Tie2 receptor are bound may be performed by identifying the presence of a complex in which the candidate compound, Ang2, and the Tie2 receptor are bound, or identifying the presence of binding between the candidate compound and Ang2 and the presence of binding between Ang2 and the Tie2 receptor. The screening method may further include a step of identifying Ang2 inhibition and/or Tie2 receptor activation, before or after the step of identifying the formation of a complex in which the candidate compound, Ang2, and the Tie2 receptor are bound, or simultaneously therewith.

**[0128]** In the above screening method, when the formation of a complex in which the candidate compound, Ang2, and the Tie2 receptor are bound is identified, in other words, in case that the presence of a complex in which the candidate compound, Ang2, and the Tie2 receptor are bound is identified, or in case that binding between the candidate compound and Ang2 and binding between Ang2 and the Tie2 receptor are identified, the candidate compound can be determined to be a candidate for preventing and/or treating a disease related to Ang2 overexpression, angiogenesis, vascular permeability enhancement, and/or normal blood vessel formation decrease.

**[0129]** In another aspect, the screening method may comprise or consist essentially of the following steps:

contacting a candidate compound to a specimen containing Ang2 and a Tie2 receptor; and  
identifying Ang2 inhibition and/or Tie2 receptor activation (i.e., Ang2 inhibition, Tie2 receptor activation, or a combination thereof). In this screening method, when Ang2 inhibition and/or Tie2 receptor activation is identified, the candidate compound can be determined to be a candidate for preventing and/or treating a disease related to Ang2 overexpression, angiogenesis, vascular permeability enhancement, and/or normal blood vessel formation decrease. The inhibition (degradation) of Ang2 may be identified by measuring the levels of Ang2 before/after the same specimen is treated with Ang2, or measuring the levels of Ang2 after the same specimen is divided into a treatment group and a non-treatment group, and then comparing the levels of Ang2 before/after the treatment of the candidate compound or in the treatment group and the non-treatment group. When the level of Ang2 after the treatment of the candidate compound or in the treatment group is decreased, in comparison with the pre-treatment or the non-treatment group of the candidate compound, Ang2 may be determined to be inhibited. Also, the activation of Tie2 receptor may be identified by measuring the phosphorylation degrees of the Tie2 receptor and/or the phosphorylation degree of at least one protein involved in the downstream signaling of the Tie2 receptor (for example, Akt, eNOS, 42/44, etc.) before/after the same specimen is treated with the candidate compound, or measuring them after the same specimen is divided into a treatment group and a non-treatment group, and then comparing the phosphorylation degrees of the proteins before/after the treatment of the candidate compound or in the treatment group and the non-treatment group. When the phosphorylation degree after the treatment of the candidate compound or in the treatment group is increased, in comparison with the pre-treatment of the candidate compound or the non-treatment group, the Tie2 receptor may be determined to be activated. Also, the activation of the Tie2 receptor may be determined by identifying the presence of the intracellular internalization of the Tie2 receptor.

**[0130]** In another aspect, the screening method may comprise or consist essentially of the following steps:

contacting a candidate compound to a specimen containing Ang2 and a Tie2 receptor; and  
identifying i) the formation of the complex in which the candidate compound, Ang2, and the Tie2 receptor are bound, ii) Tie2 receptor activation, or both of Ang2 inhibition and Tie2 receptor activation, or iii) both of i) and ii). A detailed matter of the formation of a complex, Ang2 inhibition, and Tie2 receptor are described above. In the screening method, identification of (i) or (ii), or both, may indicate that the candidate compound is a candidate drug for preventing or treating a disease related to Ang2 overexpression, angiogenesis, vascular permeability enhancement, or a decrease in normal blood vessel formation. Therefore, the screening method may further comprise, after the step of identifying, a step of determining the candidate compound as a candidate for preventing and/or treating a disease related to Ang2 overexpression, angiogenesis, vascular permeability enhancement and/or a decrease in normal blood vessel formation when i) the formation of the complex in which the candidate compound, Ang2, and the Tie2

receptor are bound, ii) Tie2 receptor activation, or both of Ang2 inhibition and Tie2 receptor activation, or iii) both of i) and ii) is identified (confirmed).

5 [0131] The identification of the complex formation, the measurement of Ang2 level, the measurement of Tie2 phosphorylation degree, the measurement of the phosphorylation degree of the proteins involved in downstream signaling. and/or the identification of the intracellular internalization of Tie2 receptor may be performed using various methods known in the art and for example, they may be measured through an ordinary enzyme reaction, fluorescence, luminescence, and/or radioactivity detection and particularly, they may be measured by a method selected from the group consisting of immunochromatography, immunohistochemistry, enzyme linked immunosorbent assay (ELISA), radioimmunoassay (RIA), enzyme immunoassay (EIA), fluorescence immunoassay (FIA), luminescence immunoassay (LIA), western blotting, etc., but is not limited thereto.

10 [0132] The candidate compounds may be one or more selected from the group consisting of various artificially-synthesized or natural compounds, polypeptides, oligopeptides, peptide or protein scaffolds (for example, antibody, peptidobody, nanobody, etc.), polynucleotides, oligonucleotides, antisense-RNA, shRNA (short hairpin RNA), siRNA (small interference RNA), aptamers, natural product extracts and so on.

15 [0133] The specimen containing Ang2 and Tie2 receptor may be cells or tissues isolated from a living body (e.g., a mammal including human) or artificially cultured, and they may intrinsically contain (express) Ang2 and the Tie2 receptor, may be treated with Ang2 and/or the Tie2 receptor, or may be manipulated to express Ang2 and/or the Tie2 receptor. Previously, there were attempts to inhibit angiogenesis by Ang2 by inhibiting binding between Ang2 and its receptor. 20 Tie2, but an antibody which specifically binds to Ang2 to induce the intracellular internalization and degradation of Ang2 and at the same time, maintains a binding ability with Ang2 and Tie2 receptor to form an antibody-Ang2-Tie2 receptor complex, thereby activating the Tie2 receptor has not been known so far. Under such circumstances, the invention proposes a novel method capable of inhibiting angiogenesis by Ang2 and reducing vascular permeability by suggesting an antibody which inhibits Ang2 and at the same time activates the Tie2 receptor to accelerate its downstream signaling. 25 Also, the antibody proposed in the invention is anticipated to be applicable to diagnose and treat abnormal blood vessel formation-related disorders other than cancer and/or disorders caused by vascular permeability increase. The antibody can be utilized for combination therapy with chemical medicines and other anticancer drugs, and is expected to be employed for antibody fragments, bi- or multi-specific antibodies, protein scaffolds, etc. using Ang2 specific recognition activity.

30 [0134] Hereafter, examples will be described in detail. They are intended merely to illustrate the invention and are not construed to restrict the invention. It will be obvious to those skilled in the pertinent art that the following examples may be modified within the scope of not deviating from the essential gist of the invention.

#### 35 Example 1: Preparation of Anti-Ang2 Antibody

[0135] A human Ang2 protein (R&D systems; 623-AN-025/CF) was administered to 5 week-old BALB/c mice along with an adjuvant to induce an immune response and then, hybridomas that produce an individual anti-Ang2 antibody were prepared according to the known methods described in the paper written by Schwaber, et al (Schwaber, J and Cohen, E. P., "Human x Mouse Somatic Cell Hybrid Clones Secreting Immunoglobulins of Both Parental Types," Nature, 40 244 (1973), 444-447).

[0136] More specifically, to obtain immunized mice necessary for developing hybridoma cell lines, 100  $\mu\text{g}$  of human Ang2 protein (R&D Systems) mixed with the same amount of a complete Freund's adjuvant was administered via an intraperitoneal injection to each of five 4--6 week-old BALB/c mice (Japan SLC, Inc.). After two weeks, the antigen (half the previously injected amount) mixed with an incomplete Freund's adjuvant using the same method as described above 45 was administered to each mouse via an intraperitoneal injection. After one additional week, a final boosting was performed and three days later, blood was collected from the tail of each mouse to obtain serum, which was then diluted at 1/1000 with PBS and subjected to an ELISA to verify that the titer of an antibody recognizing Ang2 was increased. From the results, mice in which a sufficient amount of the antibody was obtained were selected, and a cell fusion process was performed on the selected mice.

50 [0137] Three days before the cell fusion experiment, a mixture of 50  $\mu\text{g}$  of PBS and 100  $\mu\text{g}$  of human Ang2 protein (R&D systems) was administered via an intraperitoneal injection to BALB/c mice (Japan SLC, Inc.), and after each immunized mouse was anesthetized, its spleen located on the left side of the body was extracted. The extracted spleen was ground with a mesh to isolate cells, which were mixed with a culture medium (DMEM, Hyclon) to prepare a spleen cell suspension. The suspension was centrifuged to collect a cell layer. The obtained  $1 \times 10^8$  spleen cells were mixed 55 with  $1 \times 10^7$  myeloma cells (Sp2/0), and the mixture was centrifuged to precipitate the cells. The centrifuged precipitate was slowly dispersed, treated with 1 ml of 45% polyethylene glycol (PEG 1500) contained in a culture medium (DMEM), and maintained at 37°C for one minute before adding 1 ml of a culture medium (DMEM). Subsequently, 10 ml of the culture medium (DMEM) was added for 1 minute to the resultant, which was incubated in a water bath at 37°C for 5

minutes and then re-centrifuged after the total volume was adjusted to 50 ml. The resulting cell precipitate was re-suspended in an isolation medium (HAT medium) at a concentration of  $1-2 \times 10^5$ /ml, and the resultant suspension was distributed at 0.1 ml to the each well of a 96-well plate, which was then incubated in a carbon dioxide incubator at 37°C to prepare the hybridoma cell groups.

## Example 2: Manufacture of Anti-Ang2 Antibody

### 2.1. Selection of Anti-Ang2 Antibody Producing Clone and Purification of Antibody

**[0138]** The above obtained individual antibody producing hybridomas were screened using a typical ELISA format to select hybridomas which produce 95 anti-Ang2 monoclonal antibodies among the hybridomas differentiated from their mother hybridomas, based on their binding potential with Ang2.

**[0139]** More specifically, to select the hybridoma cells that specifically react only to Ang2 protein among the hybridoma cell groups prepared in Example 1 above, an ELISA assay method using a human Ang2 protein as an antigen was used for screening.

**[0140]** Human Ang-2 protein was added at 100 ng per well to a microtiter plate to be adhered to the surface of the plate, and unreacted antigens were removed by washing. 50  $\mu$ l of the hybridoma cell culture obtained in Example 1 above was added to each well to react for 1 hour and then, the wells were sufficiently washed with phosphate buffered saline-TWEEN 20 (PBST) solution to remove unreacted culture solution. Goat anti-mouse IgG-horseradish peroxidase (goat anti-mouse IgG-HRP) was added thereto, a reaction was allowed to occur at a room temperature for 1 hour and then, washing was sufficiently performed with the TBST solution. Subsequently, substrate solution (OPD) of peroxidase was added to each well to react, and the reaction degree was measured by the absorption at 450 nm using an ELISA reader to repeatedly select hybridoma cell lines that secret antibodies having specifically high binding affinity only to human Ang2 protein. A limiting dilution was performed on the hybridoma cell lines obtained through repetitive selection to obtain final 58 clones of hybridoma cell lines producing monoclonal antibodies. The thus prepared hybridomas were deposited in the Korean Cell Line Bank located at Yongon-dong, Chongno-gu, Seoul, South Korea, as of April 23, 2013 and received accession number KCLRF-BP-00295.

**[0141]** Each hybridoma obtained above was cultured in DMEM (Dulbecco's Modified Eagle's Medium) and then, the culture solutions were collected and subjected to Protein G-affinity chromatography method to purify anti-Ang2 monoclonal antibodies produced from each hybridoma.

**[0142]** First, the hybridoma cells cultured in 50 ml of culture medium (DMEM) containing 10% (v/v) FBS were centrifuged to obtain a cell precipitate, which was washed at least twice with 20 ml of PBS to remove the FBS. The cell precipitate was re-suspended in 50 ml of the culture medium (DMEM) and then incubated in a carbon dioxide incubator at 37°C for 3 days. Subsequently, the cell culture was centrifuged to remove the antibody-producing cells, and the culture medium including the secreted antibodies was isolated and then, stored at 4°C or used directly. Antibodies were purified from 50 to 300 ml of the culture medium using an AKTA purification device (GE Healthcare) equipped with an affinity column (protein G agarose column; Pharmacia, USA). The purified antibodies were stored for subsequent use after replacing the supernatant with PBS using a filter for protein aggregation (Amicon). One of the antibodies obtained from each hybridoma above was named 10D6.

**[0143]** The binding affinity of the above antibody to human Ang-2 protein was measured by an SPR method using a BIAcore T100 (GE Healthcare). The SPR method uses refractive index change of light which passes a sensor chip according to the state of materials coated onto the sensor chip, and if an antigen or an antibody is flowed onto a chip coated with the antigen or antibody, it causes changes in refractive index due to their binding and Kd values are thus calculated from the measured values.

**[0144]** First, anti-His antibody was immobilized on a CM5 sensor chip (GE healthcare) up to 8,000 RU levels using a pH 5.0 acetate solution and an amine coupling kit (GE Healthcare). 6  $\mu$ g/ml of a recombinant hAng-2 (C-His, R&D Systems) protein was flowed onto the chip to be captured at 100 to 200 RU levels. The antibody obtained in Example 2 above was diluted serially to twice each time starting from 100 nM concentration and it was each flowed onto the chip to allow it to be bound to (on), dissociated from (off), and regenerated (using 10 mM NaOH solution) from the antigen captured on the sensor chip, thereby to measure antigen-antibody affinity. With regard to hAng2, such experiments were conducted, and the results are as shown in the following Table 3.

Table 3

Antibody Name	hAng2 (Kd)
SAIT-ANG2-AB-m10D6	8.0 nM

2.2. Gene Cloning of Anti-Ang2 Antibody

[0145] A whole RNA was obtained using RNeasy mini kit (Qiagen) from the antibody-producing hybridoma (2x10<sup>6</sup> cells) obtained from Example 2.1 above. Then, by using this as a template, only the gene sequence of the heavy chain and light chain variable regions of the monoclonal antibody to be produced in the hybridoma was amplified using a OneStep RT-PCR kit (Qiagen), a Mouse Ig-Primer Set (Novagen), and a thermocycler (GeneAmp PCR System 9700, Applied Biosystem) under the following conditions: 5 min at 94°C; [30 min at 50°C, 15 min at 95°C], [1 min at 94°C, 1 min at 50°C, 2 min at 72°C] x 35 cycles; 6 min at 72°C; cooling to 4°C.

[0146] The PCR products obtained from each reaction were subjected to a direct DNA sequencing to obtain the CDR, heavy chain variable regions and light chain variable regions of the antibody, and nucleotide sequences encoding them, and the obtained results are set forth in the following Tables 4 to 7.

Table 4

Antibody Name	Heavy Chain CDR Sequence		
	CDRH1-KABAT	CDRH2-KABAT	CDRH3-KABAT
SAIT-ANG2-AB-m10D6	SDYAWN (SEQ ID NO:1)	YINYSGNTDYNPSLKS (SEQ ID NO: 2)	GNFEGAMDY (SEQ ID NO:3)

Table 5

Antibody Name	Light Chain CDR Amino Acid Sequence		
	CDRL1-KABAT	CDRL2-KABAT	CDRL3-KABAT
SAIT-ANG2-AB-m10D6	KASQSVSNDVA (SEQ ID NO: 4)	YASNRYP (SEQ ID NO: 5)	QQDYSSPWT (SEQ ID NO: 6)

Table 6

Antibody Name	Heavy Chain Variable Region Sequence
SAIT-ANG2-AB-m10D6	DVQLQESGPGPLVKPSQSLSLTCTVTGYSIT <b>SDYAWN</b> WIRQFPGNK LEWMGY <b>YINYSGNTDYNPSLKS</b> RSSITRDTSKNQFFLQLNSVTTGD TATYYCARG <b>GNFEGAMDY</b> WGQGTSVTVSS (SEQ ID NO: 7)
	GATGTGCAGCTTCAGGAGTCGGGACCTGACCTGGTGAAACCTT CTCAGTCTCTGTCCCTCACCTGCACTGTCACTGGCTACTCAATC ACCACTGGAGTGGATGGGCTACATAAACTACAGTGGTAACAC TGACTACAACCCATCTCTCAAAGTCGAAGCTCTATCACTCGAG ACACATCCAAGAACCAGTTCTTCTGTCAGTTGAATTCTGTGACT ACTGGGGACACAGCCACATATTACTGTGCAAGAGGTAACCTCG AAGGTGCTATGGACTACTGGGGTCAAGGAACCTCAGTCACCGT CTCCTCA (SEQ ID NO: 8)

Table 7

Antibody Name	Light Chain Variable Region Sequence
SAIT-ANG2-AB-m10D6	SIVMTQTPKFLVLSAGDRVITIT <b>KASQSVSNDVA</b> WYQQKPGQSP KLLIY <b>YASNRYP</b> GVPDRFTGSGYGTDFFTISTVQAEDLAVYFC <b>QQ</b> <b>DYSSPWT</b> FGGGTKLEIK (SEQ ID NO: 9)

EP 3 381 940 A1

(continued)

Antibody Name	Light Chain Variable Region Sequence
	<p>agtattgtgatgaccagactcccaaattcctgcttgatcagcaggagacagggttaccataa  cctgcaaggccagtcagagtgtgagtaatgatgtagcttggtaccaacagaagccagggca  gtctcctaaactgctgatatactatgcatccaatcgctaccctggagtcctgatcgcttactgg  cagtggatatgggacggatttcactttcaccatcagcactgtgcaggctgaagacctggcagtt  tattctgtcagcaggattatagctctccgtggacgttcggtggaggcaccaagctggaatca  aa (SEQ ID NO: 10)</p>

[0147] (In above Tables 6 and 7, underlined bold letters are CDR1, CDR2, and CDR3 in sequence)

**Example 3: Competition ELISA Assay of 10D6 Antibody against Ang2-Tie2 Binding**

[0148] Ang2-Tie2 binding competition ELISA was conducted using the antibody binding to Ang-2 prepared in Example 2-1 above.

[0149] More specifically, MaxiSorp™ flat-bottom plate (Nunc) of 96-well was coated with hTie2-Fc (R&D Systems) which is a protein bound with 4 μg (microgram)/ml of Fc of human IgG1. After that, the plate was washed five times with 0.05% (v/v) Tween-20-containing PBS (phosphate buffer saline) and then blocked with 1% (v/v) BSA (bovine serum albumin; Sigma)-containing PBS at a room temperature for 2 hour.

[0150] For Ang2:Tie2 competition ELISA, each anti-Ang2 antibody obtained in Example 2 was placed at various concentrations of 400 nM~0.001 nM into each well coated with the hTie2-Fc fusion protein along with 1 % (v/v) BSA and 400 ng/ml of a FLAG-tagged hAng-2 and then, the plate was allowed to react at a room temperature for 2 hours and washed five times with PBST. After that, an anti-FLAG antibody (Sigma) conjugated with HRP diluted in 1 % (v/v) BSA-containing PBS at a ratio of 1:5,000 (v/v) was added in an amount of 100 μl to each well to react at a room temperature for 1 hour and then, the plate was washed five times with PBST. Lastly, 100 μl (microliter) of TMB substrate (Cell Signaling) was added to each well of the plate to induce color development for 3 min. and then, the reaction was ceased by the addition of 100 μl of Stop solution (Cell Signaling) and OD450 values were measured on a plate reader (Molecular Devices).

[0151] For comparison, the same test was carried out using 4H10 which is an anti-Ang2 antibody inhibiting Ang2-Tie2 binding. The 4H10 is an antibody having the following heavy chain variable region and light chain variable region.

[0152] Heavy chain variable region (SEQ ID NO: 12):

EVQLLESGGGLVQPGGSLRLSCAASGFTFSS**SYDMSWVRQAPGKGLEWVSLIS**  
**PDSSSIYYADSVKGRFTISRDN**SKNTLYLQMNSLRAEDTAVYYC**AKDLISFWRGGFDY**  
WGQGTLVTVSS

[0153] Light chain variable region (SEQ ID NO: 13)

QSVLTQPPSASGTPGQRVTISCS**GSSSNIGSNYVNWYQQLPGTAPKLLIYADS**  
**NRPSGVPDRFSGSKSGTSASLAISGLRSEDEADYYCGSWDYSLSGYVFGGGTKLTVL**  
G

[0154] An inhibitory degree (%) against Ang2-Tie2 binding is shown in FIG. 1. As seen in FIG. 1, unlike 4H10 which is an anti-Ang2 antibody inhibiting Ang2-Tie2 binding, the 10D6 antibody did not inhibit binding between Ang2-Tie2 receptor.

**Example 4: Verification of Antigen Recognizing Site (Epitope) of Ang2 Antibody**

[0155] To verify the epitope (or specific binding site) of the anti-Ang2 antibody prepared in Example 2, an ELISA was performed using a recombinant protein where a receptor binding domain (RBD) of Ang2 protein in the form of being tagged with Flag was mutated by artificial means.

## EP 3 381 940 A1

**[0156]** Each well of a 96-well MaxiSorp™ flat-bottom plate (Nunc) was coated with 50 μl (microliter) of 1000 nM antibody. Then, the plate was washed five times with 0.05% (v/v) Tween-20-containing PBS (PBST) and blocked with 1% (v/v) BSA-containing PBS at a room temperature for 2 hours. 250 ng of each mutant Ang2 protein obtained by substituting S417, Q418, P419, N421, I434, D448, A449, P452, Y460, N467, K468, or F469 residue of Ang2 protein tagged with a FLAG sequence (DYKDDDDK, Sigma) at its N-terminal with alanine was added to each well of the plate, which was then allowed to react at a room temperature for 2 hours.

**[0157]** The plate was washed five times with 0.05% (v/v) Tween-20 containing PBS, reacted with an anti-FLAG antibody (SIGMA) conjugated with HRP which was diluted in 1% (v/v) BSA-containing PBS at a ratio of 1:5,000 (v/v) at a room temperature for 1 hour, and washed five times with 0.1% (v/v) Tween-20-containing PBS.

**[0158]** Finally, 50 μl of TMB substrates (Cell signaling) was added to each well of the plate to induce color development at a room temperature for 3 min. and the reaction was ceased by the addition of 50 μl of Stop solution (Cell signaling) and then, OD450 values were measured on a plate reader (Molecular Devices). By comparing binding affinities with mutated Ang2 to those of unmutated Ang2, each epitope of Ang2 antibodies was identified. The thus obtained measurement results of the binding affinities (%) with mutant Ang2 against the binding affinity with the native Ang2 are shown in the following Table 8.

Table 8

	Loop 1					Loop 2			Loop 3			Loop4
	17	18	19	21	34	48	49	52	60	67	68	69
OD6	01.17	<b>8.94</b>	<b>1.08</b>	09.09	09.49	04.55	7.86	02.15	03.15	06.84	10.27	08.79

### Example 5: Phosphorylation Induction of Tie2 Receptor by 10D6 Antibody

**[0159]** As Ang2 induces a change in vascular endothelial cells by binding to a Tie-2 receptor expressed in the vascular endothelial cells to induce the phosphorylation of the receptor and activate it, a test for analyzing an influence of the anti-Ang2 antibody on Tie2 phosphorylation was conducted using a cell-based assay.

**[0160]** For this, HUVEC (ATCC) cells ( $1 \times 10^6$ ) were cultured in a 100 mm culture dish using EGM-2 (Lonza) media at 37°C and when they reached 80-90% confluency, the media were replaced with serum-free media and cultured at 37°C for 6 to 16 hours. The dish was washed once with PBS and after the replacement with 1 nM sodium orthovanadate (Sigma)-mixed serum free media (Lonza), they were further cultured for 10 min. After washed once again with PBS, the cultured cells were treated with a mixture prepared by mixing the anti-Ang2 antibody (10D6) having various concentrations (600-0.06 nM) with 40 nM of Ang2 protein (R&D systems) and letting them stand for 20 min and further cultured for 10 min. The cells were washed using PBS, treated with 400 μl of a lysis buffer (Roche), collected to a tube to be dissolved at 4°C for 30 min and then centrifuged at 13,000 rpm for 15 min to measure a supernatant using Nanodrop.

**[0161]** 1 μg of Tie2 antibody (R&D system) was added to 0.8 mg of a cell lysate, which was then overnight reacted at 4°C and then subjected to immunoprecipitation by the addition of protein A bead (GE Healthcare) thereto. The thus obtained reactant was centrifuged at 13,000 rpm for 15 min to obtain a pellet, which was washed two to three times with a lysis buffer (Roche), added to a sample buffer (Invitrogen) mixed with a reducing agent, and boiled at 95°C for 5 min and then applied to NuPAGE Novex 4-12% Bis-Tris gel (Invitrogen) and transferred onto Nitrocellulose membrane (Invitrogen).

**[0162]** To see the presence of the phosphorylation of Tie2, the membranes were blocked with PBST mixed with 3% (v/v) skim milk (Sigma) for 30 min. and identified using an HRP-conjugated anti-phospho tyrosine antibody (Millipore). For Tie2 identification, the blots were reacted in a stripping buffer (Thermo) for 15 min, then blocked again and identified using a Tie2 antibody (Santa cruz).

**[0163]** The thus obtained results are shown in FIG. 2A. As shown in FIG. 2A, when 10D6 antibody was added together with Ang2, the phosphorylation of Tie2 was more strongly induced at every antibody concentration range tested than the case in which Ang2 was treated alone.

**[0164]** In addition, referring to the above method, when 60 nM of antibody 10D6 and Ang2 were treated, the phosphorylation level of Tie2 was measured and compared with the case of treating a control antibody (anti-Ang2 antibody (Regeneron) which has MOA of inhibiting binding between Ang2 and Tie2; represented as 'RG antibody'). The obtained immunoblotting results are shown in FIG 2B. After treating with the antibody (10D6 or RG), the blot band density of pTyr and Tie2 was measured using ImageJ software and pTyr/Tie2 ratio was calculated. The obtained result is demonstrated in FIG. 2C.

**[0165]** In FIGS 2B and 2C, "NC" represents Tie2 phosphorylation results in a group which is not treated with antibody nor Ang2. As shown in FIGS. 2B and 2C, when treated with antibody 10D6, Tie2 phosphorylation level is increased by 180% compared to the case that Ang2 is treated only without treating antibody; whereas, when treated with control

antibody RG, Tie2 phosphorylation level is decreased by 67% compared to the case that Ang2 is treated only without treating antibody, indicating that antibody 10D6 has about 8.6-fold higher Tie2 phosphorylation effect than control antibody.

#### 5 **Example 6: Activation Induction of Tie2 Signaling by 10D6 Antibody**

[0166] To see whether 10D6 antibody induces the activation of the downstream signaling of a Tie2 receptor as well as the activation of the Tie2 receptor itself, the phosphorylation degrees of proteins participating in the downstream signaling when Ang2 alone or Ang2 and 10D6 antibody was treated were tested using immune blotting. To compare the activation degrees of the downstream signaling, the same test was conducted with regard to a group in which Ang1 (R&D systems), and Ang2 (R&D systems) and an anti-Ang2 antibody (RG antibody; control antibody having MOA inhibiting Ang2-Tie2 binding, Regeneron Co.) were treated together.

[0167] Specifically, HUVEC (ATCC) cells ( $1 \times 10^6$ ) were cultured in a 6-well culture dish using EGM-2 (Lonza) media at 37°C and when they reached 80-90% confluency, the media were replaced with serum-free media (Lonza) and cultured at 37°C for 6 to 16 hours. The dish was washed once with PBS, and the cultured cells were treated with a mixture prepared by mixing 60 nM of the Ang2 antibody (10D6) with 40 nM of Ang2 protein (R&D systems) and letting them stand for 20 min and further cultured for 30 min. For comparison, groups in which Ang1 (R&D systems) 4 nM, Ang2 (R&D systems) 40 nM, and Ang2 (R&D systems) 40nM + anti-Ang2 antibody (Regeneron) 60 nM were treated respectively were prepared.

[0168] The cells were washed using PBS, treated with a lysis buffer (Roche), collected to a tube to be dissolved at 4°C for 30 min. and then, centrifuged at 13,000 rpm for 15 min to measure a supernatant. A sample buffer (Invitrogen) mixed with a reducing agent was added to 25  $\mu$ g of a cell lysate, which was boiled at 95°C for 5 min., and then, applied to NuPAGE Novex 4-12% Bis-Tris gel (Invitrogen) and transferred onto Nitrocellulose membrane (Invitrogen).

[0169] To see the presence of the phosphorylation of Akt, eNOS and 42/44 involved in the downstream signaling, the blots were blocked with PBST mixed with 3% (v/v) skim milk (Sigma) for 30 min and then treated with an anti-pAkt antibody, anti-p-eNOS antibody, and anti-p-42/44 antibody (all of them; cell signaling). The blots were reacted in a stripping buffer (Thermo) for 15 min. and then blocked again to identify Akt, eNOS, and 42/44 using an anti-Akt antibody, anti-eNOS antibody, and anti-42/44 antibody (all of them; cell signaling).

[0170] The thus obtained results are shown in FIG. 3A. As seen in FIG. 3A, in the Ang1 sole-treatment group and the Ang2 and 10D6 co-treatment group, downstream signaling was strongly induced in comparison with the Ang2 sole-treatment group and the Ang2 and RG antibody co-treatment group, and the effects in the Ang2 and 10D6 antibody co-treatment group was at least equal to those in the Ang1 sole-treatment group.

[0171] In addition, the phosphorylation of Tie2 receptor and a protein (Akt) which participates in downstream signaling of Tie2 by treating anti-Ang2 antibody was measured in animal model (in vivo). More particularly, 5 mg/kg of antibody was injected alone or together with 20  $\mu$ g of Ang2 into tail vein of 7-8 week old C57BL6 mouse, and 1 hour after, lung tissue was removed. The obtained lung tissue was subjected to homogenization lysis using lysis buffer (Roche) and FastPrep kit (MP biomedical). Activities of Tie2 and Akt in the obtained tissue lysate were measured by the above-described method.

[0172] The obtained results are demonstrated in FIGS. 3B and 3C. In FIGS. 3B and 3C, "REGN" or "RG" represents a control antibody (anti-Ang2 antibody of Regeneron). As shown in FIGS. 3B and 3C, even in vivo experimentation, antibody 10D6 exhibits considerable effect of phosphorylating Tie2 and a protein, Akt, participating in downstream signaling of Tie2.

#### 45 **Example 7: ELISA Assay for Identifying Formation of 10D6-Ang2-Tie2 Complex**

[0173] As it was confirmed that 10D6 anti-Ang2 antibody activates Tie2 signaling without inhibiting Ang2-Tie2 binding, an ELISA was conducted to see whether a complex between the antibody and Ang2:Tie2 receptor is formed.

[0174] A 96-well MaxiSorp™ flat-bottom plate (Nunc) was coated with 4  $\mu$ g/ml of Tie2-Fc (R&D systems) or BSA (Sigma). Then, the plate was washed five times with 0.05% (v/v) Tween-20-containing PBS (Phosphate Buffer Saline) and blocked with 1% (v/v) BSA (Bovine serum albumin; Sigma)-containing PBS at a room temperature for 2 hours. 0.25  $\mu$ g/ml of Ang2 and 2  $\mu$ g/ml of 10D6 antibody were added to each well of the plate, which was allowed to react at a room temperature for 2 hours and then washed five times with PBST. After that, an anti-mouse IgG antibody (Sigma) conjugated with HRP diluted in 1% (v/v) BSA-containing PBS at a ratio of 1:5,000 (v/v) was added in an amount of 100  $\mu$ l to each well to react at a room temperature for 1 hour and then, the plate was washed five times with PBST. Lastly, 100  $\mu$ l (microliter) of TMB substrate (Cell Signaling) was added to each well of the plate to induce color development for 3 min and then, the reaction was ceased by the addition of 100  $\mu$ l of Stop solution (Cell Signaling) and OD450 values were measured on a plate reader (Molecular Devices).

[0175] The thus obtained results are shown in FIG. 4. As seen in FIG. 4, it was confirmed that 10D6 antibody formed

a complex by binding to Ang2 which was bound to Tie2.

#### Example 8: Activation Induction via Tie2 Receptor Clustering by 10D6 Antibody Dimerization

5 [0176] To see whether the activation of a Tie2 receptor is resulted from the dimerization of 10D6 antibody, Fab fragments of the 10D6 antibody were purified and then used for this experiment. The Fab fragments were obtained from the 10D6 antibody using an Fab Preparation Kit (Pierce). As a digestion buffer, PBS containing 20 mM EDTA and 20 mM L-Cysteine was used, and the antibody was separated into Fab and Fc by the treatment with an immobilized papain at a room temperature for 2 hours. The Fc fragments were removed from the reaction solution using MabSelectSuRe column (GE Healthcare) to isolate and purify pure Fab fragments only.

10 [0177] HUVEC (ATCC) cells ( $1 \times 10^6$ ) were cultured in a 100 mm culture dish using EGM-2 (Lonza) media at 37°C and when they reached 80-90% confluency, the media were replaced with serum-free media (Lonza) and cultured at 37°C for 6 to 16 hours. The dish was washed once with PBS and after the replacement with 1 nM sodium orthovanadate (Sigma)-mixed serum free media (Lonza), they were further cultured for 10 min. After washed once with PBS, the cultured cells were treated with a mixture prepared by mixing 60 nM of 10D6 Ang2 antibody or 10D6 Fab with 40 nM of Ang2 protein (R&D systems) and letting them stand for 20 min and further cultured for 10 min. The cells were washed using PBS, treated with 400  $\mu$ l of a lysis buffer (Roche), collected to a tube to be dissolved at 4°C for 30 min and then centrifuged at 13,000 rpm for 15 min. to measure a supernatant using Nanodrop.

15 [0178] 1  $\mu$ g of Tie2 antibody (R&D system) was added to 0.8 mg of a cell lysate, which was then overnight reacted at 4°C and then subjected to immunoprecipitation by the addition of protein A bead (GE Healthcare) thereto. The thus obtained reactant was centrifuged at 13,000 rpm for 15 min to obtain a pellet, which was washed two to three times with a lysis buffer (Roche), added to a sample buffer (Invitrogen) mixed with a reducing agent, and boiled at 95°C for 5 min., and then, applied to NuPAGE Novex 4-12% Bis-Tris gel (Invitrogen) and transferred onto Nitrocellulose membrane (Invitrogen).

20 [0179] To see the presence of the phosphorylation of Tie2, the membranes were blocked with PBST mixed with 3% (v/v) skim milk (Sigma) for 30 min and identified using an HRP-conjugated anti-phospho tyrosine antibody (Millipore). For Tie2 identification, the blots were reacted in a stripping buffer (Thermo) for 15 min, then blocked again and identified using a Tie2 antibody (Santa cruz).

25 [0180] To see the presence of the phosphorylation of Akt, eNOS and 42/44 involved in the downstream signaling, the blots were blocked with PBST mixed with 3% (v/v) skim milk (Sigma) for 30 min and then treated with an anti-pAkt antibody, anti-p-eNOS antibody, and anti-p-42/44 antibody (all of them; cell signaling). The blots were reacted in a stripping buffer (Thermo) for 15 min and then blocked again to identify Akt, and 42/44 using an anti-Akt antibody, and anti-42/44 antibody (all of them; cell signaling).

30 [0181] The thus obtained results are shown in FIG. 5. As seen in FIG. 5, when the 10D6 antibody was added together with Ang2, the phosphorylation of Tie2 and Akt and 42/44 occurred whereas when the 10D6 Fab was treated, activation was not observed. Therefore, it was confirmed that the Tie2 receptor was clustered by the dimerization of the 10D6 antibodies and strongly phosphorylated.

#### Example 9: Internalization of Tie2 Receptor by 10D6 Antibody

40 [0182] HUVEC (ATCC) cells ( $1 \times 10^6$ ) were cultured in m-slide 8 wells (#80826, ibidi) for 24 hours and then subjected to serum starvation in serum-free EBM-2 media (Lonza) for 3 hours. 200 ng/ml of Ang1 (R&D systems) or 2  $\mu$ g/ml of Ang2 (R&D systems) and 10  $\mu$ g/ml of 10D6 antibody were each diluted in EBM-2 media and then, the cells were treated with them and incubated according to time specified in the picture. The cells fixed with 4% formaldehyde (Sigma) was dyed first with an anti-Tie2 antibody (R&D systems) and then subjected to a secondary dye with an anti-goat Alexa 555 antibody (red, Life technology) and an anti-mouse Alexa 488 antibody (green, Life technology). The dyed cells were treated with Vectashield mounting medium with DAPI (Vector labs) and then observed using a confocal laser scanning microscopy (Carl Zeiss).

45 [0183] The results are shown in FIG. 6A and 6B. As seen in FIG. 6A, when Ang2 and 10D6 antibody were treated, the internalization of the Tie2 receptor started from 30 min, like Tie2 endocytosis occurring when treated with Ang1 (dots in the expanded pictures). Also, it was confirmed that the internalized Tie2 and 10D6 antibody were located in an early endosome which is an intracellular organelle, indicated by anti-EEA1 antibody (Cell Signaling) dye in FIG. 6B.

#### Example 10: Cell Growth and Mobility Increase by 10D6 Antibody

55 [0184] The measurement assay of the proliferation of vascular and lymphatic endothelial cells was conducted using a BrdU assay kit (Roche) Cell. Vascular endothelial cells of P3-P8 (HUVEC, ATCC) or lymphatic endothelial cells (Lonza) were placed in a collagen-coated 96-well plate (BD Bioscience) at 3000-5000 cells/well and cultured in EGM-2 media

(Lonza) for 16~24 hours. A mixture of 2  $\mu\text{g/ml}$  of Ang2 (R&D systems) and 10  $\mu\text{g/ml}$  of 10D6 antibody in 2% EBM media was added to the 96-well plate washed with PBS, which was then cultured for 3 days.

[0185] For efficiency comparison, an anti-Ang2 antibody (MedImmune Co.) was used. For a BrdU assay, 10  $\mu\text{l}$  of BrdU solution diluted at 1:1,000 was added to each well of the plate to label the cells. The cells were cultured for 1 hour and after the removal of the culture solution, 100  $\mu\text{l}$  of Fixation/Denaturation solution (Roche) was added to each well and then, removed after 30-min wait. An anti-BrdU antibody (Roche) conjugated with peroxidase was diluted in a dilution buffer (Roche) at 1:100, added to each well to react for 1 hour and then, washed four times using a washing buffer (Roche). 100  $\mu\text{l}$  of a TMB substrate was added thereto to react and then, absorption was measured at 450 nm using a Microplate reader (Perkin Elmer).

[0186] The thus obtained results are shown in FIG. 7. As seen in FIG. 7, the growth of cells was increased in the group in which Ang2 was added together with 10D6 antibody in both vascular endothelial cells and lymphatic endothelial cells, and in the case of MEDI antibody, the growth of the cells by Ang2 was decreased.

[0187] Also, the measurement of the mobility of lymphatic endothelial cells was conducted using xCelligence RTCA (Realtime cell analyzer; GE Healthcare). The RTCA is a non-invasive cell monitoring system by measuring impedance in realtime to identify the change of a cell. To perform a cell migration assay, a CIM-plate 16 (GE Healthcare) with a lower chamber and an upper chamber was used wherein microelectrodes for measuring impedance are arranged in the upper chamber and if the cells seeded into the chamber migrate through fine holes, the migration degree of the cells can be identified through their adhesion to the microelectrodes, and it was referred to as migration index. The lymphatic endothelial cells (P5-7; Lonza) which grew up in EGM-2 media (Lonza) were cultured in 1% FBS-added EBM media for 6 hours. 2  $\mu\text{g/ml}$  of Ang2 and 10D6 antibody in 2% FBS-added EBM media were added to each well of the lower chamber of the CIM-plate 16, which was assembled with the upper chamber coated with fibronectin (Sigma). For efficiency comparison, an anti-Ang2 antibody (MedImmune Co.) was used. 30  $\mu\text{l}$  of serum-free EBM media was each added to the upper chamber and then, for equilibration between the plate and media, while being placed in an incubator for 1 hour, the CIM-plate was installed on a device station in the incubator and then, background values were measured. The lymphatic endothelial cells re-suspended with serum-free media were seeded in an amount of 60,000 cells/well, allowed to settle down for 15 min and then installed on the device to measure cell migration in real time. The cell migration degree was shown as slope (1/hr).

[0188] The thus obtained results are shown in FIG. 8. As seen in FIG. 8, while the migration of the lymphatic endothelial cells to which Ang2 was added together with 10D6 antibody was increased, the migration of the cells by Ang2 was inhibited in the case of MEDI antibody.

#### Example 11: Cell Permeability Suppression by 10D6 Antibody

[0189] To see the cell permeability suppression effects of 10D6 antibody, in vitro vascular permeability assay kit (Millipore) was employed. HUVEC (ATCC) cells ( $5 \times 10^4$ ) were added to a collagen-coated transwell and cultured for 2 days to prepare a confluent monolayer. It was treated with 200 ng/ml of Ang2 or 200 ng/ml of Ang1 (R&D systems) alone, or 200 ng/ml of Ang2 and 1  $\mu\text{g/ml}$  of 10D6 antibody, pre-incubated for 30 min and then treated with 100 ng/ml of LPS (Lipopolysaccharide; Sigma) or 100 ng/ml TNF- $\alpha$  (R&D systems) to induce the permeability of HUVEC monolayer. LPS or TNF- $\alpha$  weaken binding between HUVEC cells to form a gap there between, thereby increasing the migration of materials in the HUVEC monolayer. After 6-hour incubation for the LPS treatment group and 22-hour incubation for the TNF- $\alpha$  group, the upper chamber was treated with FITC-dextran (Millipore) and incubated for 18 min. The fluorescence of FITC-dextran migrated to the lower chamber was measured at 485 / 535 nm (Ex /Em) setting using an Envision 2104 multilabel Reader (PerkinElmer).

[0190] The thus obtained results are shown in FIG. 9. FIG. 9 is a graph showing the strength of fluorescence measured above as relative folds, referring to the vascular permeability induced by LPS or TNF- $\alpha$ . Through the results, it was confirmed that the vascular permeability increased by LPS or TNF- $\alpha$  was decreased to the control level in the Ang1 sole-treatment group and in the Ang2 and 10D6 co-treatment group.

#### Example 12: Anti-Inflammatory Effect by 10D6 Antibody

[0191] To see anti-inflammatory effects by 10D6 antibody, HUVEC (ATCC) cells ( $4 \times 10^5$ ) were treated with Ang2 alone or Ang2 together with 10D6 antibody, and a group in which Ang1 and Ang2 (R&D systems) and Regeneron Co. antibody (RG antibody) were co-treated was included as a control group. HUVEC cells were treated with 0.2  $\mu\text{g/ml}$  of Ang1, 0.1  $\mu\text{g/ml}$  of Ang2, or 0.1  $\mu\text{g/ml}$  of Ang2 and 0.5  $\mu\text{g/ml}$  of antibody, respectively and after 30 min pre-incubation, they were treated with 100 ng/ml of LPS (Sigma) to induce inflammatory response and incubated for 5 hours.

[0192] The degree of the inflammatory response was identified by measuring the mRNA expression degree of an inflammatory adhesion substance (ICAM-1, E-selectin). The cells were washed using PBS, RNA was extracted using RNeasy Mini kit (Qiagen), and among them, 2  $\mu\text{g}$  of RNA was synthesized into cDNA using Transcriptor First Strand

cDNA synthesis kit (Roche). qPCR reaction was performed using RT2 SYBR™ Green Mastermix (Qiagen) and Light-Cycler™ 480 Real-Time PCR System (Roche). As an internal control for calibrating the amount of RNA in a sample, *HPRT1* was used, and qPCR complied with the following procedures with regard to all the primers.

[0193] Step 1: 95°C, 10 min; Step 2 (45 cycles): Step 2-1: 95°C, 15 sec; Step 2-2: 60°C, 1 min; Step 3: 65°C, 15 sec; Step 4: 95°C, continuous (every 20°C); Step 6: 40°C, 10 sec.

[0194] The primer sequences used in qPCR are set forth in the following Table 9.

[0195] Step1: 95°C, 10 min; Step2 (45 cycles): Step 2-1: 95°C, 15 sec; Step 2-2: 60°C, 1 min; Step3: 65°C, 15 sec; Step4: 95°C, continuous (every 20°C); Step6: 40°C, 10 sec.

[0196] The primer sequences used in qPCR are summarized in Table 9 as follows:

Table 9

Representative Public ID	Gene Symbol	PCR primer sequence (5' -> 3')	
		sense	antisense
NM_000201.2	ECAM-1	ccttcctcaccgtgtactgg	aacctcagcctcgctatgg
NM_000450.2	E-selectin	accagcccaggttgaatg	gggtggacaaggctgtgc
NM_000194.2	HPRT1	tgacctgattatattgcatacc	cgagcaagacgttcagtcct

[0197] The relative expression amounts of ICAM-1 and E-selectin measured above are shown in FIG. 10. As seen in FIG. 10, the expression of ICAM-1 and E-selectin induced by LPS were remarkably suppressed in the Ang1 sole-treatment group and in the Ang2 and 10D6 antibody co-treatment group.

[0198] Meanwhile, if the expression of inflammatory adhesion substances (ICAM-1, E-selectin, etc.) of vascular endothelial cells is increased, binding between the inflammatory cells and the vascular endothelial cells are accelerated and inflammatory response is thus induced. To confirm this, an experiment for measuring binding between inflammatory cells HL-60 (ATCC) and HUVEC was conducted.

[0199] HUVEC cells (4x10<sup>5</sup>) were cultured in a 24-mutiwell plate and treated with 0.1 μg/ml of Ang2 alone or 0.1 μg/ml of Ang2 together with 0.5 μg/ml of 10D6 antibody, and a group in which 0.2 μg/ml of Ang1, and 0.1 μg/ml of Ang2 (R&D systems) and 0.5 μg/ml of Regeneron Co. antibody (RG antibody) were co-treated was included as a control group. As above, the HUVEC cells were treated with Angiopoietin and antibody and after 30 min pre-incubation, they were treated with 1 ng/ml of TNF-a (eBioscience) to induce inflammatory response and incubated for 2 hours and 30 min.

[0200] After the HUVEC cells were washed with complete media (Lonza), HL-60 cells dyed with Calcein-AM (BD bioscience) solution were added at the amount of 2.5x10<sup>5</sup> cells to each well and incubated for 1 hour. To remove the HL-60 cells not bound to the HUVEC cells, the cells were washed three times using PBS and treated with a lysis buffer (0.1% SDS, 50 mM Tris.HCl, pH 8.0). The obtained lysate was transported to a 96-well plate, and fluorescence strengths derived from the HL-60 cells were measured at 485 / 535 nm (Ex /Em) setting using an Envision 2104 multilabel Reader (Perkin Elmer).

[0201] The thus obtained results are shown in FIG. 11. The graph of FIG. 11 illustrates the strengths of fluorescence measured above as relative folds and it is proportional to the number of the HL-60 cells adhered to the HUVEC cells. Through the results, binding between HUVEC cells and HL-60 cells induced by TNF-a was remarkably suppressed in the Ang1 sole-treatment group and in the Ang2 and 10D6 antibody co-treatment group.

**Example 13: Colo205 Tumor Growth Inhibitory Effect of Anti-Ang-2 Antibody**

[0202] To see the tumor growth inhibitory effects of Ang-2 antibody, a colorectal cancer xenograft model using a human colorectal cancer cell line Colo205 (ATCC) was employed.

[0203] The Colo205 cell line was cultured using 10% FBS (Gibco)-added RPMI-1640 (Gibco) media. 5x10<sup>5</sup> of Colo205 cell line were re-suspended in 100 μl of serum-free media and then injected into anesthetic 4~5 week-old BALB/c nude mice (Shanghai SLAC Laboratory Animal Co. Ltd.) via a subcutaneous injection using 1-2% isoflurane. When the size of tumors reached 100~200 mm<sup>3</sup>, anti-Ang-2 antibody (10D6) was injected at the concentration of 10 mg/kg via an intraperitoneal injection twice a week and the size of the tumors was measured.

[0204] The size of tumor (V) was calculated using the following formula:

$$V = (\text{length} \times \text{width}^2)/2$$

[0205] The thus obtained results are shown in FIG. 12. The X-axis of FIG. 12 indicates days on which the antibody

was treated, as days after grouping. As in FIG. 12, the 10D6 antibody inhibited the growth of colorectal cancer.

**[0206]** The use of the terms "a" and "an" and "the" and "at least one" and similar referents in the context of describing the invention (especially in the context of the following claims) are to be construed to cover both the singular and the plural, unless otherwise indicated herein or clearly contradicted by context. The use of the term "at least one" followed by a list of one or more items (for example, "at least one of A and B") is to be construed to mean one item selected from the listed items (A or B) or any combination of two or more of the listed items (A and B), unless otherwise indicated herein or clearly contradicted by context. The terms "comprising", "having", "including" and "containing" are to be construed as open-ended terms (i.e., meaning "including, but not limited to") unless otherwise noted. Recitation of ranges of values herein are merely intended to serve as a shorthand method of referring individually to each separate value falling within the range, unless otherwise indicated herein, and each separate value is incorporated into the specification as if it were individually recited herein. All methods described herein can be performed in any suitable order unless otherwise indicated herein or otherwise clearly contradicted by context. The use of any and all examples, or exemplary language (e.g., "such as") provided herein, is intended merely to better illuminate the invention and does not pose a limitation on the scope of the invention unless otherwise claimed. No language in the specification should be construed as indicating any non-claimed element as essential to the practice of the invention.

**[0207]** Preferred embodiments of this invention are described herein, including the best mode known to the inventors for carrying out the invention. Variations of those preferred embodiments may become apparent to those of ordinary skill in the art upon reading the foregoing description. The inventors expect skilled artisans to employ such variations as appropriate, and the inventors intend for the invention to be practiced otherwise than as specifically described herein. Accordingly, this invention includes all modifications and equivalents of the subject matter recited in the claims appended hereto as permitted by applicable law. Moreover, any combination of the above-described elements in all possible variations thereof is encompassed by the invention unless otherwise indicated herein or otherwise clearly contradicted by context.

EP 3 381 940 A1

<110> SAMSUNG ELECTRONICS CO., LTD.  
 <120> Anti-Ang2 antibody  
 5 <130> EP95082IFZMGpau  
 <140> not yet assigned  
 <141> 2014-07-29  
 10 <150> EP14178844.8  
 <151> 2014-07-29  
 <150> KR 10-2013-0089281  
 <151> 2013-07-29  
 15 <150> KR 10-2013-0106749  
 <151> 2013-09-05  
 <160> 13  
 20 <170> KopatentIn 1.71  
 <210> 1  
 <211> 6  
 <212> PRT  
 <213> Artificial Sequence  
 25 <220>  
 <223> CDR-H1 of anti-Ang2 antibody  
 30 <400> 1  
 Ser Asp Tyr Ala Trp Asn  
 1 5  
 35 <210> 2  
 <211> 16  
 <212> PRT  
 <213> Artificial Sequence  
 40 <220>  
 <223> CDR-H2 of anti-Ang2 antibody  
 45 <400> 2  
 Tyr Ile Asn Tyr Ser Gly Asn Thr Asp Tyr Asn Pro Ser Leu Lys Ser  
 1 5 10 15  
 50 <210> 3  
 <211> 9  
 <212> PRT  
 <213> Artificial Sequence  
 55 <220>  
 <223> CDR-H3 of anti-Ang2 antibody  
 <400> 3  
 Gly Asn Phe Glu Gly Ala Met Asp Tyr  
 1 5

EP 3 381 940 A1

<210> 4  
 <211> 11  
 <212> PRT  
 <213> Artificial Sequence  
 5  
 <220>  
 <223> CDR-L1 of anti-Ang2 antibody  
 10  
 <400> 4  
 Lys Ala Ser Gln Ser Val Ser Asn Asp Val Ala  
 1 5 10  
 15  
 <210> 5  
 <211> 7  
 <212> PRT  
 <213> Artificial Sequence  
 20  
 <220>  
 <223> CDR-L2 of anti-Ang2 antibody  
 25  
 <400> 5  
 Tyr Ala Ser Asn Arg Tyr Pro  
 1 5  
 30  
 <210> 6  
 <211> 9  
 <212> PRT  
 <213> Artificial Sequence  
 35  
 <220>  
 <223> CDR-L3 of anti-Ang2 antibody  
 40  
 <400> 6  
 Gln Gln Asp Tyr Ser Ser Pro Trp Thr  
 1 5  
 45  
 <210> 7  
 <211> 118  
 <212> PRT  
 <213> Artificial Sequence  
 50  
 <220>  
 <223> Heavy chain variable region of an anti-Ang2 antibody  
 55  
 <400> 7  
 Asp Val Gln Leu Gln Glu Ser Gly Pro Gly Leu Val Lys Pro Ser Gln  
 1 5 10 15  
 Ser Leu Ser Leu Thr Cys Thr Val Thr Gly Tyr Ser Ile Thr Ser Asp  
 20 25 30  
 Tyr Ala Trp Asn Trp Ile Arg Gln Phe Pro Gly Asn Lys Leu Glu Trp  
 35 40 45  
 Met Gly Tyr Ile Asn Tyr Ser Gly Asn Thr Asp Tyr Asn Pro Ser Leu

EP 3 381 940 A1

	50		55		60														
	Lys	Ser	Arg	Ser	Ser	Ile	Thr	Arg	Asp	Thr	Ser	Lys	Asn	Gln	Phe	Phe			
	65					70					75					80			
5	Leu	Gln	Leu	Asn	Ser	Val	Thr	Thr	Gly	Asp	Thr	Ala	Thr	Tyr	Tyr	Cys			
				85						90						95			
	Ala	Arg	Gly	Asn	Phe	Glu	Gly	Ala	Met	Asp	Tyr	Trp	Gly	Gln	Gly	Thr			
10				100					105					110					
	Ser	Val	Thr	Val	Ser	Ser													
				115															
15	<210>	8																	
	<211>	354																	
	<212>	DNA																	
	<213>	Artificial Sequence																	
20	<220>																		
	<223>	Coding DNA of heavy chain variable region of anti-Ang2 antibody																	
	<400>	8																	
	gatgtgcagc	ttcaggagtc	gggacctgac	ctggtgaaac	cttctcagtc	tctgtccctc													60
25	acctgcactg	tcactggcta	ctcaatcacc	agtgattatg	cctggaactg	gatccggcag													120
	tttccaggaa	acaaactgga	gtggatgggc	tacataaact	acagtggtaa	cactgactac													180
30	aaccatctc	tcaaaagtcg	aagctctatc	actcgagaca	catccaagaa	ccagttcttc													240
	ctgcagttga	attctgtgac	tactggggac	acagccacat	attactgtgc	aagaggtaac													300
	ttcgaaggtg	ctatggacta	ctgggggtcaa	ggaacctcag	tcaccgtctc	ctca													354
35	<210>	9																	
	<211>	107																	
	<212>	PRT																	
	<213>	Artificial Sequence																	
40	<220>																		
	<223>	Light chain variable region of anti-Ang2 antibody																	
	<400>	9																	
45	Ser	Ile	Val	Met	Thr	Gln	Thr	Pro	Lys	Phe	Leu	Leu	Val	Ser	Ala	Gly			
	1				5					10					15				
	Asp	Arg	Val	Thr	Ile	Thr	Cys	Lys	Ala	Ser	Gln	Ser	Val	Ser	Asn	Asp			
				20					25						30				
50	Val	Ala	Trp	Tyr	Gln	Gln	Lys	Pro	Gly	Gln	Ser	Pro	Lys	Leu	Leu	Ile			
				35				40					45						
	Tyr	Tyr	Ala	Ser	Asn	Arg	Tyr	Pro	Gly	Val	Pro	Asp	Arg	Phe	Thr	Gly			
				50			55					60							
55	Ser	Gly	Tyr	Gly	Thr	Asp	Phe	Thr	Phe	Thr	Ile	Ser	Thr	Val	Gln	Ala			
	65					70					75					80			

EP 3 381 940 A1

Glu Asp Leu Ala Val Tyr Phe Cys Gln Gln Asp Tyr Ser Ser Pro Trp  
 85 90 95

Thr Phe Gly Gly Gly Thr Lys Leu Glu Ile Lys  
 100 105

5

<210> 10  
 <211> 321  
 <212> DNA  
 <213> Artificial Sequence

10

<220>  
 <223> Coding DNA of light chain variable region of anti-Ang2 antibody

15

<400> 10  
 agtattgtga tgaccagac tcccaaattc ctgcttgat cagcaggaga cagggttacc 60  
 ataacctgca aggccagtca gagtgtgagt aatgatgtag cttggtacca acagaagcca 120  
 gggcagtctc ctaaactgct gatatactat gcatccaatc gctaccctgg agtccctgat 180  
 cgcttcaactg gcagtggata tgggacggat ttcactttca ccatcagcac tgtgcaggct 240  
 gaagacctgg cagtttattt ctgtcagcag gattatagct ctccgtggac gttcgggtgga 300  
 ggcaccaagc tggaaatcaa a 321

25

<210> 11  
 <211> 496  
 <212> PRT  
 <213> Artificial Sequence

30

<220>  
 <223> amino acid sequence of Ang2

35

<400> 11  
 Met Trp Gln Ile Val Phe Phe Thr Leu Ser Cys Asp Leu Val Leu Ala  
 1 5 10 15  
 Ala Ala Tyr Asn Asn Phe Arg Lys Ser Met Asp Ser Ile Gly Lys Lys  
 20 25 30  
 Gln Tyr Gln Val Gln His Gly Ser Cys Ser Tyr Thr Phe Leu Leu Pro  
 35 40 45  
 Glu Met Asp Asn Cys Arg Ser Ser Ser Ser Pro Tyr Val Ser Asn Ala  
 50 55 60  
 Val Gln Arg Asp Ala Pro Leu Glu Tyr Asp Asp Ser Val Gln Arg Leu  
 65 70 75 80  
 Gln Val Leu Glu Asn Ile Met Glu Asn Asn Thr Gln Trp Leu Met Lys  
 85 90 95  
 Leu Glu Asn Tyr Ile Gln Asp Asn Met Lys Lys Glu Met Val Glu Ile  
 100 105 110  
 Gln Gln Asn Ala Val Gln Asn Gln Thr Ala Val Met Ile Glu Ile Gly  
 115 120 125

50

55

EP 3 381 940 A1

	Thr	Asn	Leu	Leu	Asn	Gln	Thr	Ala	Glu	Gln	Thr	Arg	Lys	Leu	Thr	Asp
	130						135					140				
5	Val	Glu	Ala	Gln	Val	Leu	Asn	Gln	Thr	Thr	Arg	Leu	Glu	Leu	Gln	Leu
	145					150					155					160
	Leu	Glu	His	Ser	Leu	Ser	Thr	Asn	Lys	Leu	Glu	Lys	Gln	Ile	Leu	Asp
					165					170					175	
10	Gln	Thr	Ser	Glu	Ile	Asn	Lys	Leu	Gln	Asp	Lys	Asn	Ser	Phe	Leu	Glu
				180					185					190		
	Lys	Lys	Val	Leu	Ala	Met	Glu	Asp	Lys	His	Ile	Ile	Gln	Leu	Gln	Ser
			195					200					205			
15	Ile	Lys	Glu	Glu	Lys	Asp	Gln	Leu	Gln	Val	Leu	Val	Ser	Lys	Gln	Asn
	210						215					220				
	Ser	Ile	Ile	Glu	Glu	Leu	Glu	Lys	Lys	Ile	Val	Thr	Ala	Thr	Val	Asn
	225					230					235					240
20	Asn	Ser	Val	Leu	Gln	Lys	Gln	Gln	His	Asp	Leu	Met	Glu	Thr	Val	Asn
					245					250					255	
	Asn	Leu	Leu	Thr	Met	Met	Ser	Thr	Ser	Asn	Ser	Ala	Lys	Asp	Pro	Thr
				260					265					270		
25	Val	Ala	Lys	Glu	Glu	Gln	Ile	Ser	Phe	Arg	Asp	Cys	Ala	Glu	Val	Phe
			275					280					285			
	Lys	Ser	Gly	His	Thr	Thr	Asn	Gly	Ile	Tyr	Thr	Leu	Thr	Phe	Pro	Asn
		290					295					300				
30	Ser	Thr	Glu	Glu	Ile	Lys	Ala	Tyr	Cys	Asp	Met	Glu	Ala	Gly	Gly	Gly
	305					310					315					320
	Gly	Trp	Thr	Ile	Ile	Gln	Arg	Arg	Glu	Asp	Gly	Ser	Val	Asp	Phe	Gln
				325						330					335	
35	Arg	Thr	Trp	Lys	Glu	Tyr	Lys	Val	Gly	Phe	Gly	Asn	Pro	Ser	Gly	Glu
				340					345					350		
	Tyr	Trp	Leu	Gly	Asn	Glu	Phe	Val	Ser	Gln	Leu	Thr	Asn	Gln	Gln	Arg
			355					360					365			
	Tyr	Val	Leu	Lys	Ile	His	Leu	Lys	Asp	Trp	Glu	Gly	Asn	Glu	Ala	Tyr
		370					375					380				
45	Ser	Leu	Tyr	Glu	His	Phe	Tyr	Leu	Ser	Ser	Glu	Glu	Leu	Asn	Tyr	Arg
	385					390					395					400
	Ile	His	Leu	Lys	Gly	Leu	Thr	Gly	Thr	Ala	Gly	Lys	Ile	Ser	Ser	Ile
					405					410					415	
50	Ser	Gln	Pro	Gly	Asn	Asp	Phe	Ser	Thr	Lys	Asp	Gly	Asp	Asn	Asp	Lys
				420					425					430		
	Cys	Ile	Cys	Lys	Cys	Ser	Gln	Met	Leu	Thr	Gly	Gly	Trp	Trp	Phe	Asp
			435					440					445			
55	Ala	Cys	Gly	Pro	Ser	Asn	Leu	Asn	Gly	Met	Tyr	Tyr	Pro	Gln	Arg	Gln
		450					455					460				

EP 3 381 940 A1

Asn Thr Asn Lys Phe Asn Gly Ile Lys Trp Tyr Tyr Trp Lys Gly Ser  
 465 470 475 480

Gly Tyr Ser Leu Lys Ala Thr Thr Met Met Ile Arg Pro Ala Asp Phe  
 5 485 490 495

<210> 12  
 <211> 121  
 <212> PRT  
 <213> Artificial Sequence

<220>  
 <223> heavy chain variable region of 4H10

15

<400> 12  
 Glu Val Gln Leu Leu Glu Ser Gly Gly Gly Leu Val Gln Pro Gly Gly  
 1 5 10 15

20 Ser Leu Arg Leu Ser Cys Ala Ala Ser Gly Phe Thr Phe Ser Ser Tyr  
 20 20 25 30

Asp Met Ser Trp Val Arg Gln Ala Pro Gly Lys Gly Leu Glu Trp Val  
 35 40 45

25 Ser Leu Ile Ser Pro Asp Ser Ser Ser Ile Tyr Tyr Ala Asp Ser Val  
 50 55 60

Lys Gly Arg Phe Thr Ile Ser Arg Asp Asn Ser Lys Asn Thr Leu Tyr  
 65 70 75 80

30 Leu Gln Met Asn Ser Leu Arg Ala Glu Asp Thr Ala Val Tyr Tyr Cys  
 85 90 95

Ala Lys Asp Leu Ile Ser Phe Trp Arg Gly Gly Phe Asp Tyr Trp Gly  
 100 105 110

35 Gln Gly Thr Leu Val Thr Val Ser Ser  
 115 120

40

<210> 13  
 <211> 111  
 <212> PRT  
 <213> Artificial Sequence

<220>  
 <223> light chain variable region of 4H10

45

<400> 13  
 Gln Ser Val Leu Thr Gln Pro Pro Ser Ala Ser Gly Thr Pro Gly Gln  
 1 5 10 15

50 Arg Val Thr Ile Ser Cys Ser Gly Ser Ser Ser Asn Ile Gly Ser Asn  
 20 25 30

Tyr Val Asn Trp Tyr Gln Gln Leu Pro Gly Thr Ala Pro Lys Leu Leu  
 35 40 45

55 Ile Tyr Ala Asp Ser Asn Arg Pro Ser Gly Val Pro Asp Arg Phe Ser



or an antigen-binding fragment thereof according to any one of claims 1 to 5; preferably wherein the disease related to Ang2 overexpression, angiogenesis, or increase in vascular permeability is cancer, cancer metastasis, inflammatory disorder, infection, cardiovascular disorder, renal disease, hereditary hemorrhagic telangiectasia, asthma, edema, myocardial infarction, angina, cerebral infarction, stroke, Buerger' disease, avascular necrosis, foot ulcer, or erectile dysfunction.

8. A pharmaceutical composition for tissue regeneration or wound healing, comprising the anti-Ang2 antibody or the antigen-binding fragment thereof according to any one of claims 1 to 5.

9. The pharmaceutical composition according to claim 7 or 8, further comprising Ang2.

10. A complex comprising the anti-Ang2 antibody or the antigen-binding fragment thereof according to any one of claims 1 to 5, Ang2, and a Tie2 receptor.

11. A method for screening a candidate drug for preventing or treating a disease related to Ang2 overexpression, angiogenesis, increase in vascular permeability, or decrease in normal blood vessel formation, comprising the following steps:

- a) contacting a candidate compound to a specimen containing Ang2 and a Tie2 receptor; and
- b) identifying i) the formation of the complex in which the candidate compound, Ang2, and the Tie2 receptor are bound or ii) Tie2 receptor activation, or both of Ang2 inhibition and Tie2 receptor activation, or iii) both of i) and ii);

wherein identification of (i) or (ii), or both, indicates that the candidate compound is a candidate drug for preventing or treating a disease related to Ang2 overexpression, angiogenesis, increase in vascular permeability, or decrease in normal blood vessel formation.

12. The method according to claim 11, wherein the step of identifying the formation of the complex in which the candidate compound, Ang2, and the Tie2 receptor are bound is performed by identifying the presence of binding between the candidate compound and Ang2 and binding between Ang2 and the Tie2 receptor.

13. A method for screening for anti-Ang2 antibodies comprising the following steps:

- contacting a candidate compound to an epitope of Ang2 having the amino acid sequence of SEQ ID NO: 11 in the presence of a Tie2 receptor;
- measuring binding affinity between the epitope and the candidate compound; and
- identifying binding between Ang2 and a Tie2 receptor;
- wherein the epitope of Ang2 is Q418, P419, a combination of Q418 and P419, or 2 to 20 amino acid residues comprising Q418, P419 or the combination of Q418 and P419, in Ang2 of SEQ ID NO: 11;
- and wherein the candidate compound is identified as an anti-Ang2 antibody when binding between the epitope and the candidate compound is detected.

14. A conjugate comprising the anti-Ang2 antibody or the antigen-binding fragment thereof according to any one of claims 1 to 5 bound to Ang2.

15. A polypeptide molecule selected from the following:

(i) a polypeptide molecule comprising:

- at least one selected from the group consisting of a polypeptide comprising the amino acid sequence of SEQ ID NO: 1, a polypeptide comprising the amino acid sequence of SEQ ID NO: 2, and a polypeptide comprising the amino acid sequence of SEQ ID NO: 3; or
- at least one selected from the group consisting of a polypeptide comprising the amino acid sequence of SEQ ID NO: 4, a polypeptide comprising the amino acid sequence of SEQ ID NO: 5, and a polypeptide comprising the amino acid sequence of SEQ ID NO: 6; or
- a combination thereof; and

(ii) a polypeptide molecule comprising the amino acid sequence of SEQ ID NO: 7, or the amino acid sequence

of SEQ ID NO: 8, or a combination thereof.

5

10

15

20

25

30

35

40

45

50

55

FIG. 1

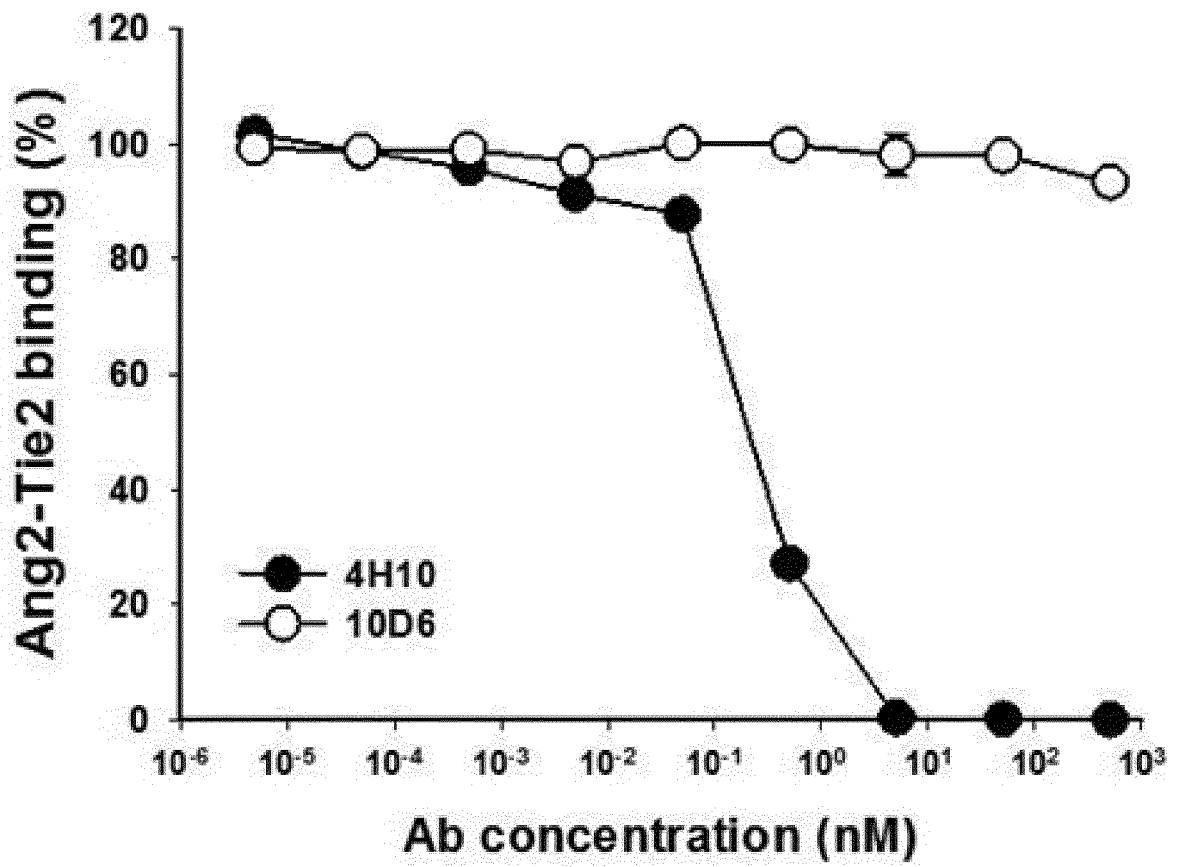


FIG. 2A

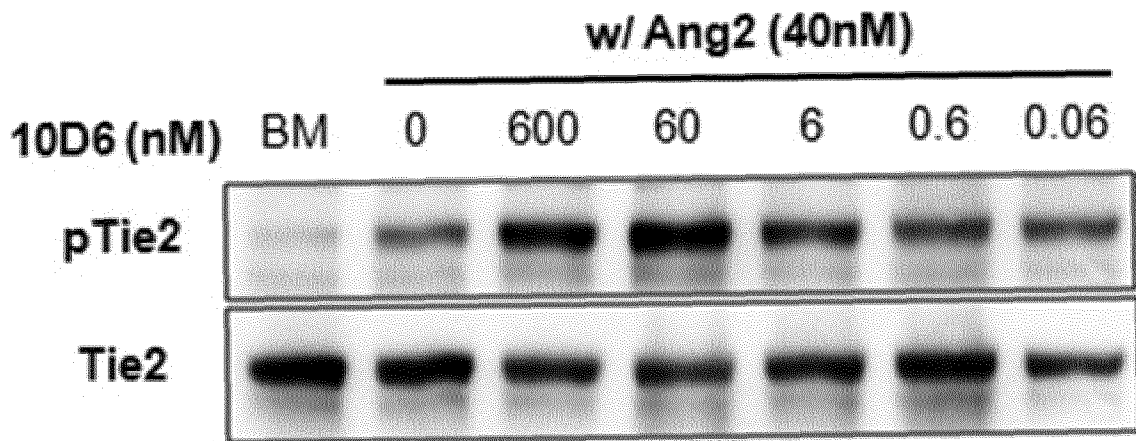


FIG. 2B

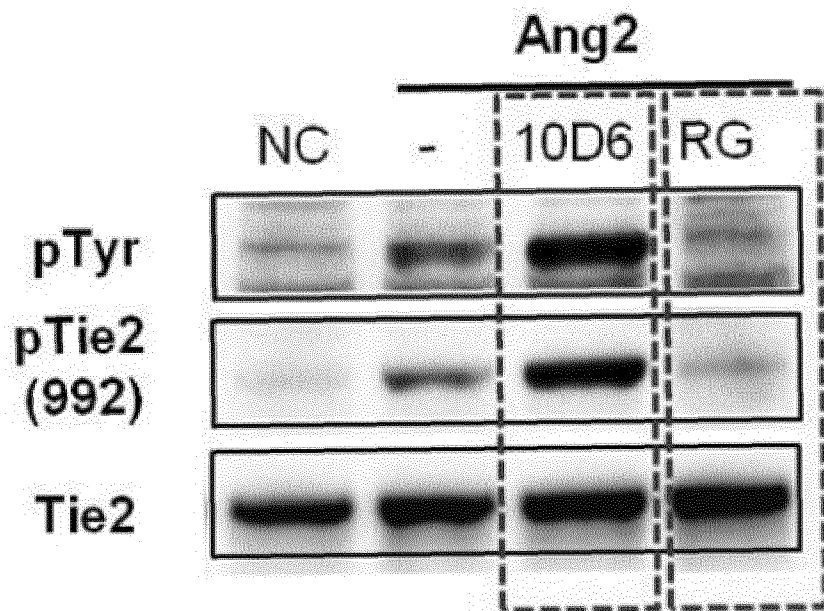


FIG. 2C

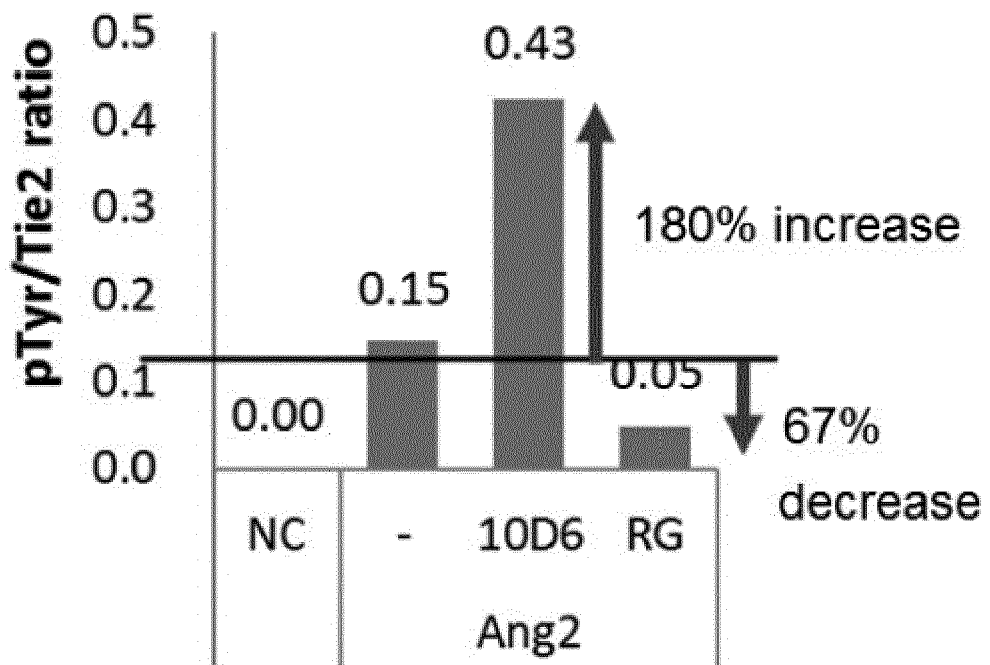
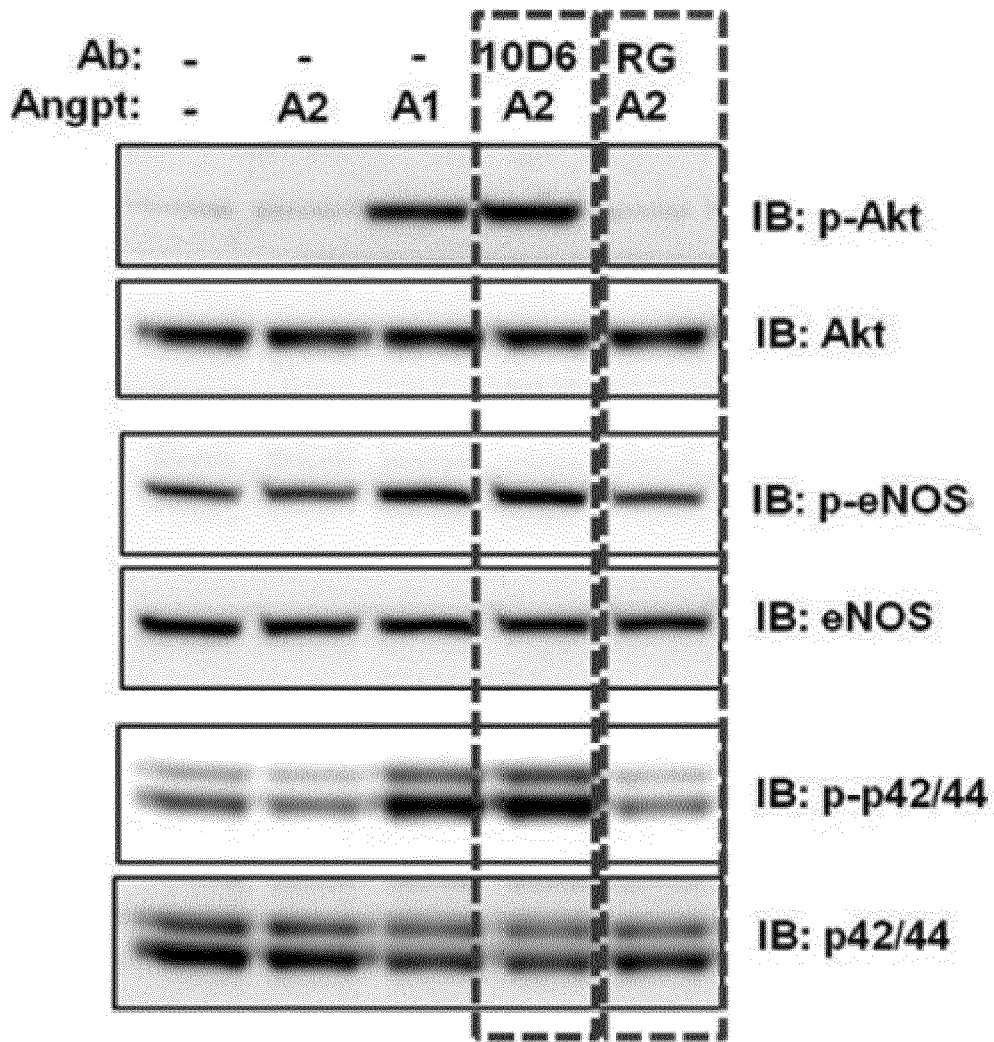


FIG. 3A



	10D6	RG
p-Akt	14-fold	1.3-fold
p-eNOS	1.7-fold	1.1-fold
p-Erk	3-fold	1-fold

FIG. 3B

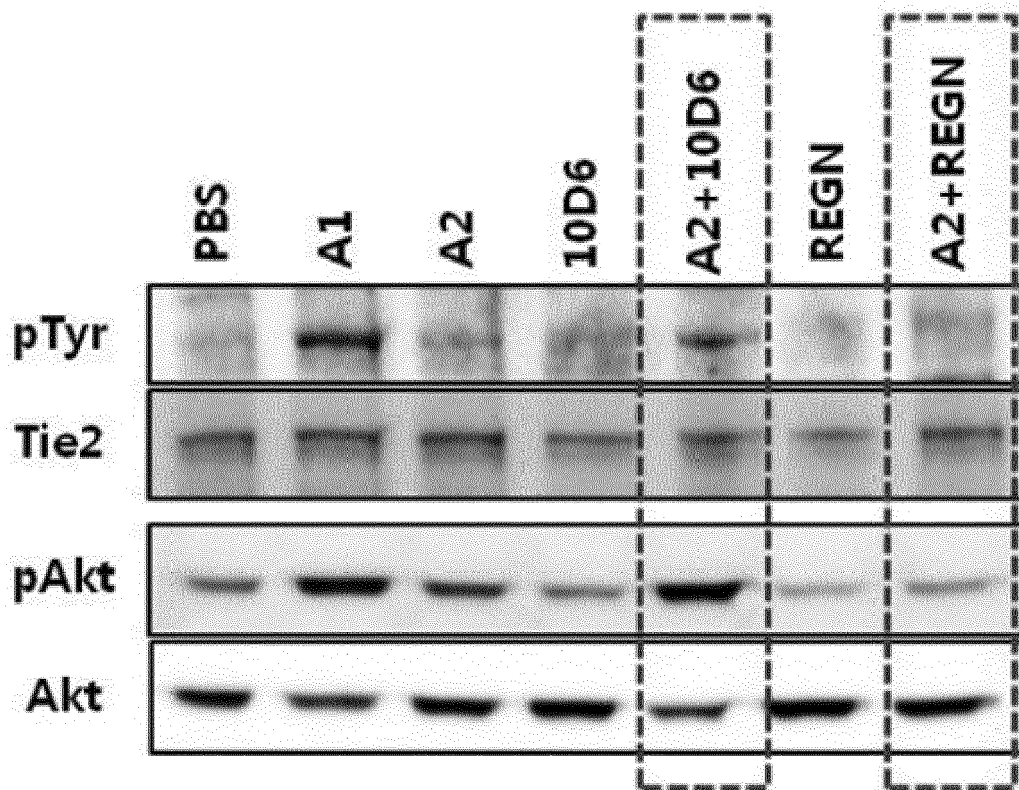


FIG. 3C

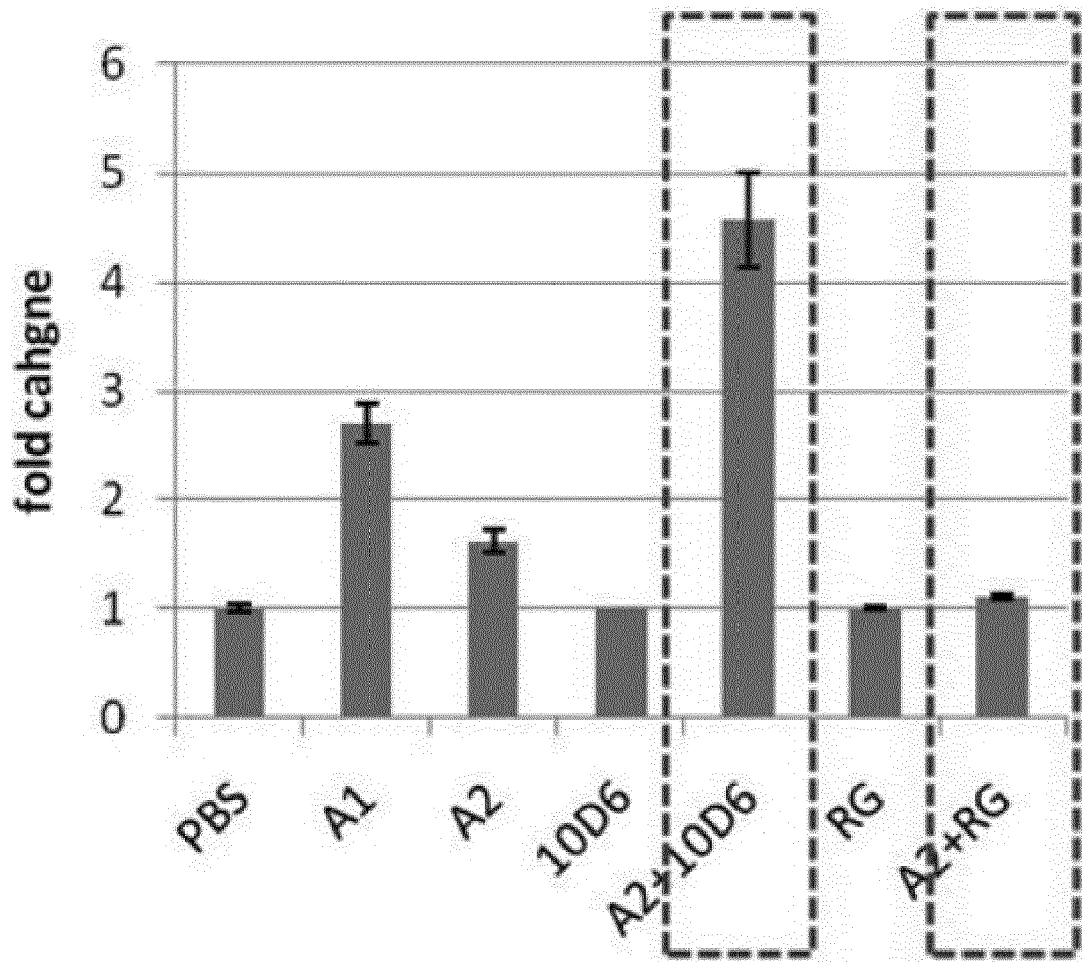


FIG. 4

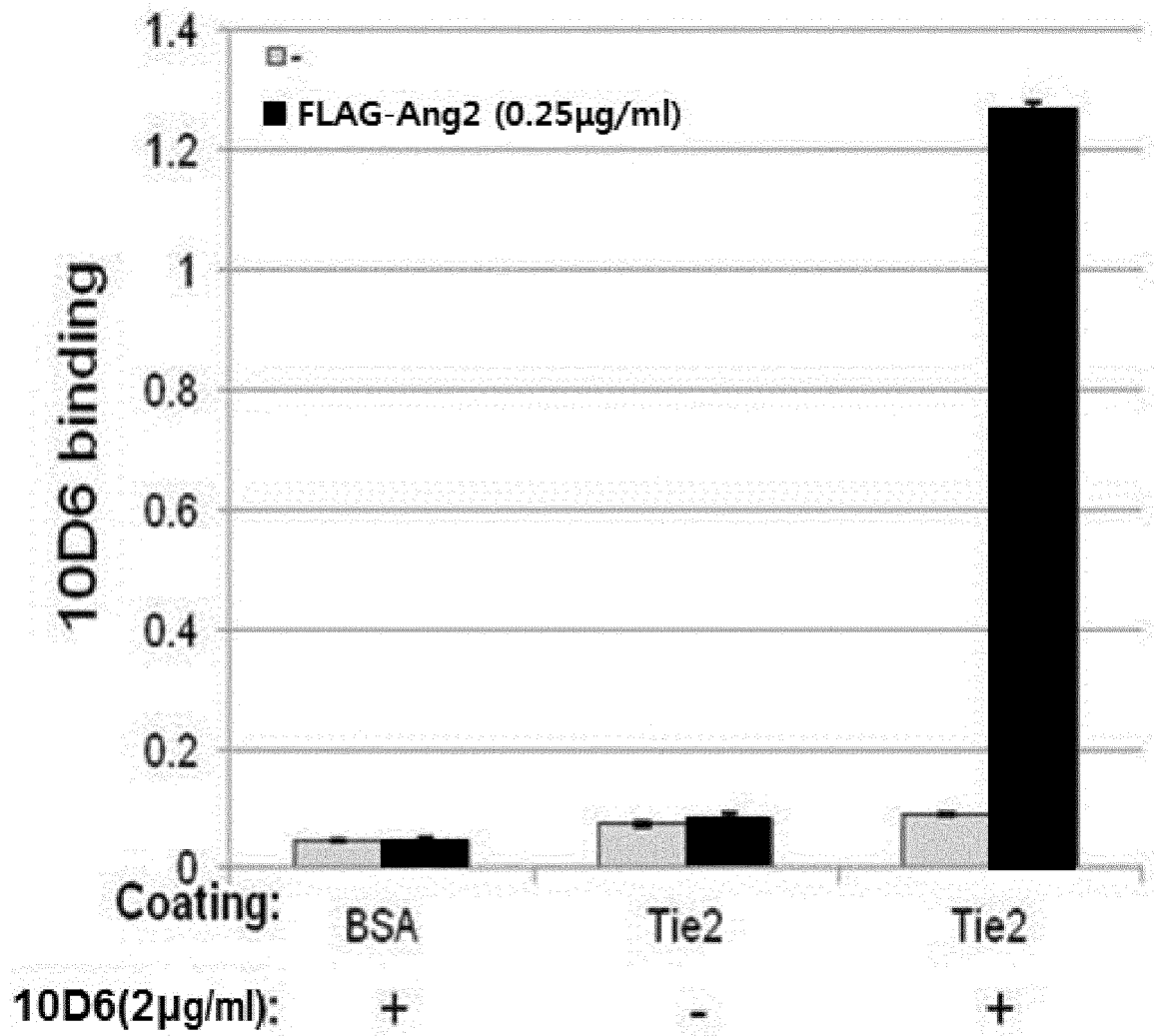
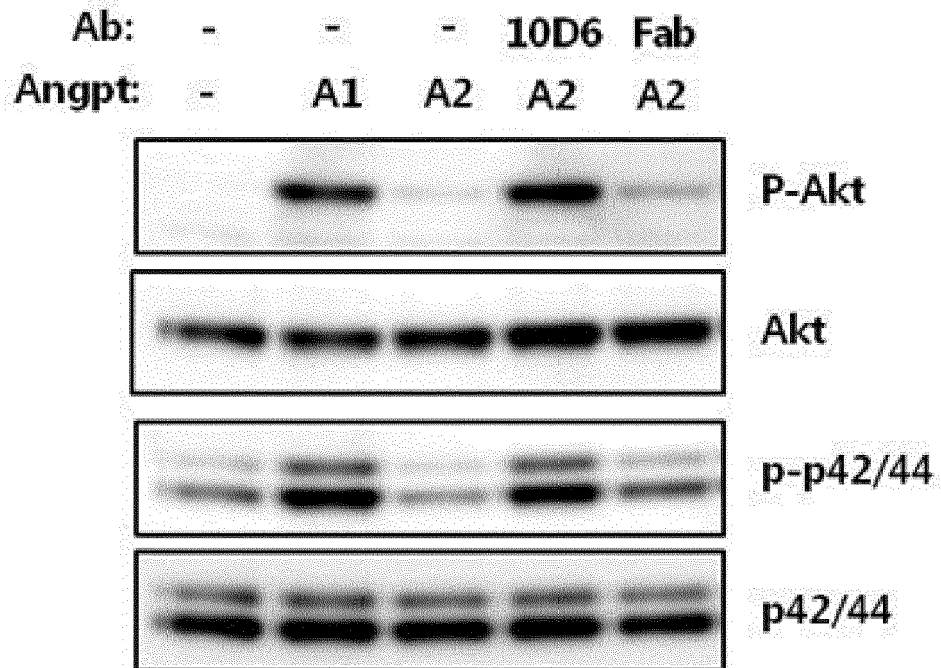
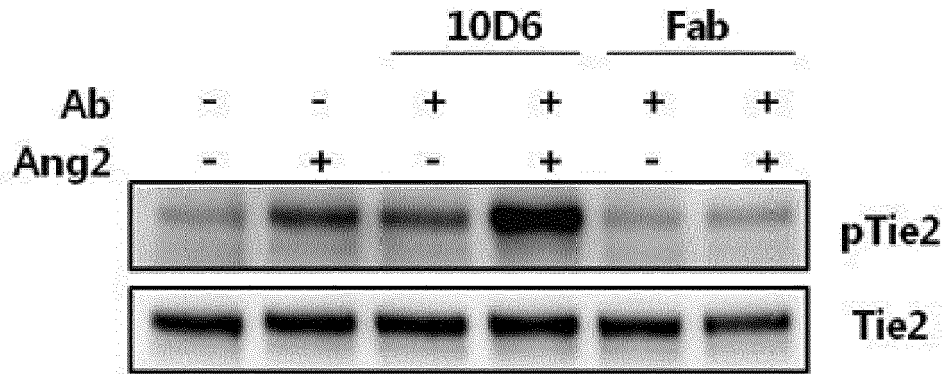
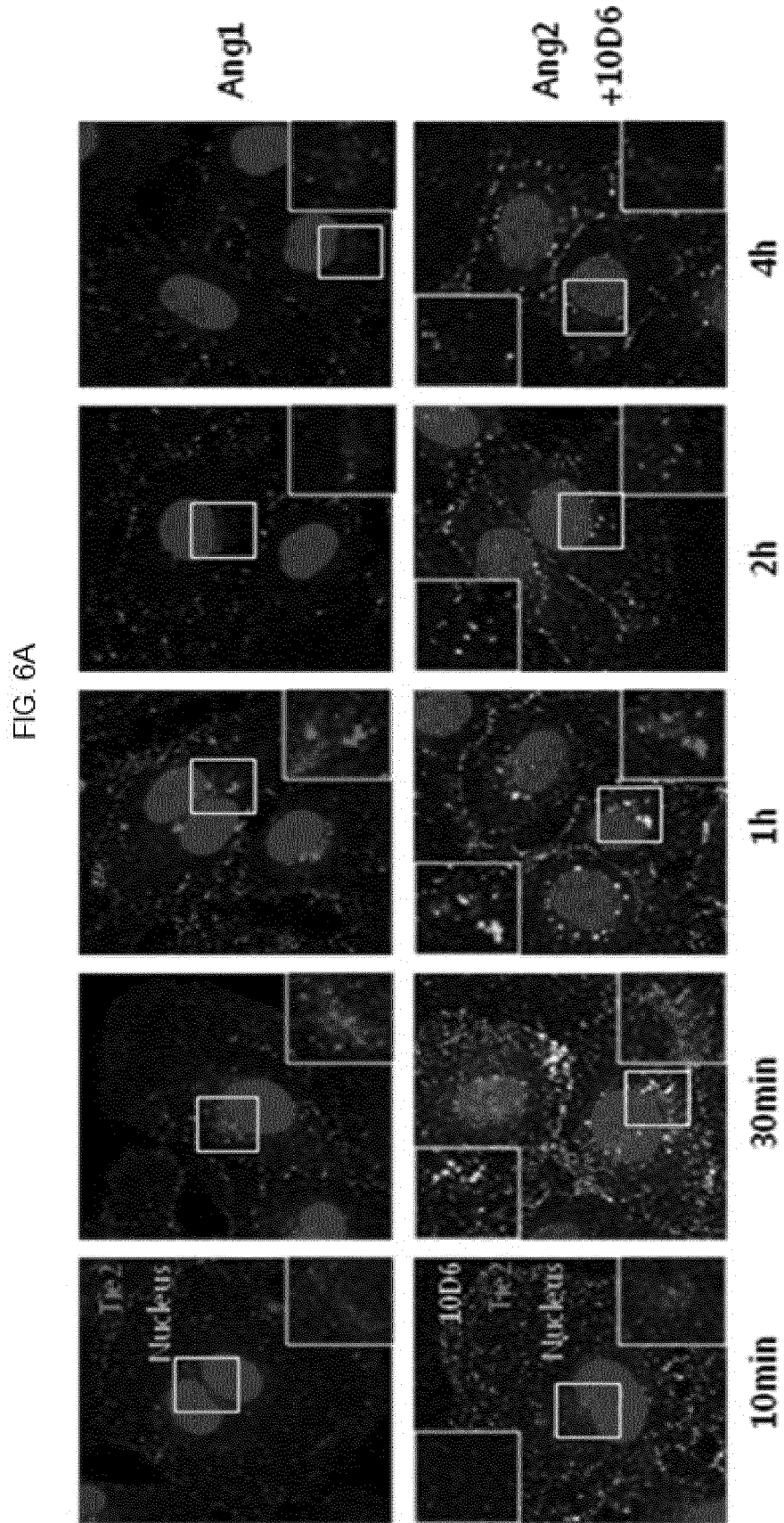


FIG. 5





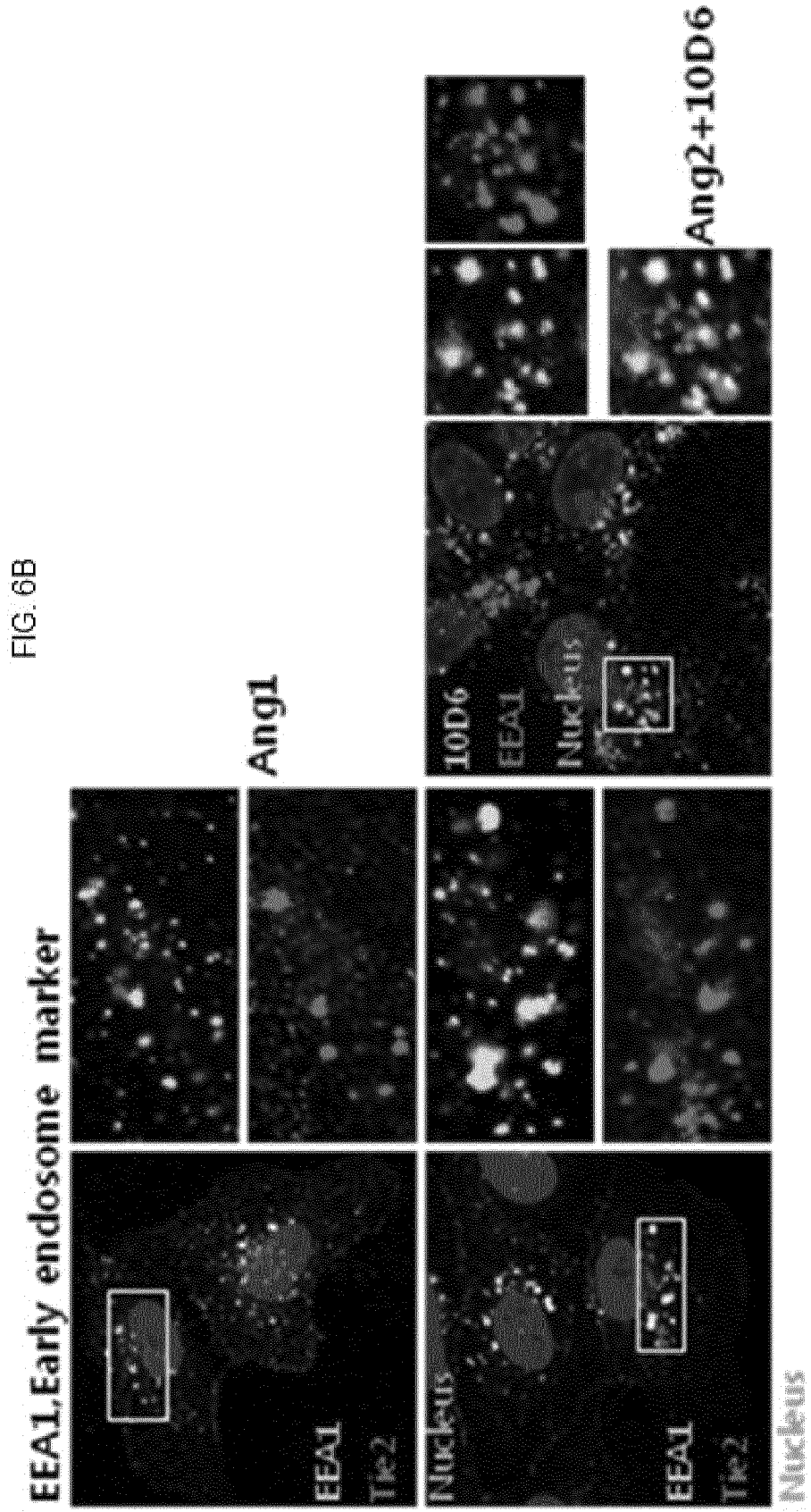


FIG. 7

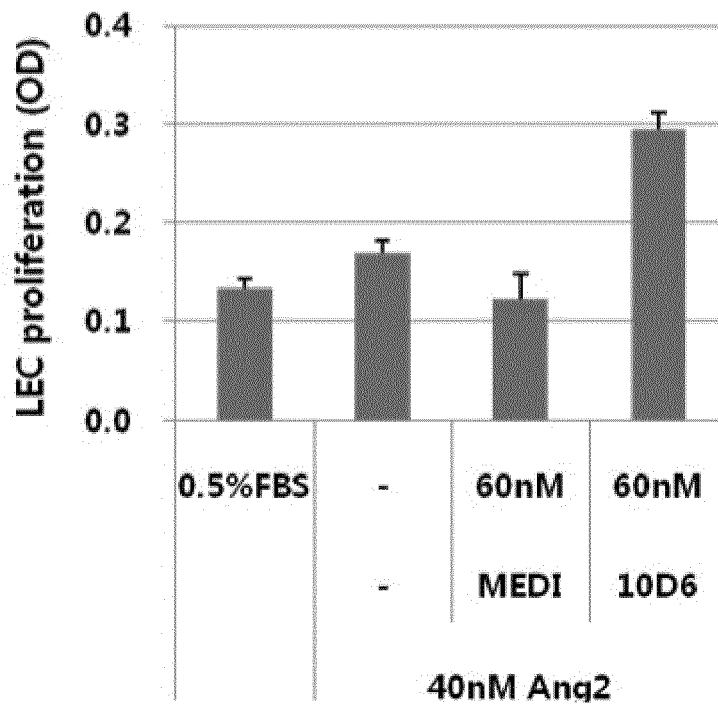
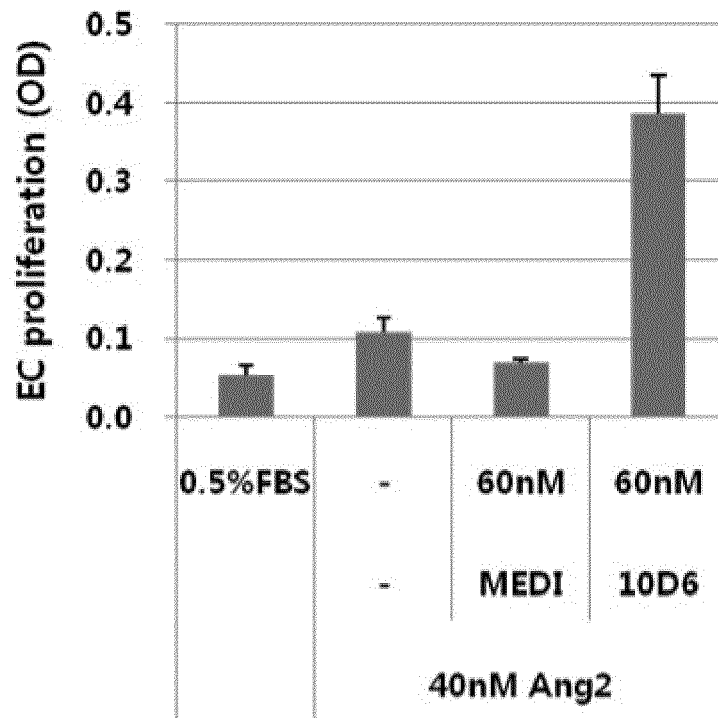


FIG. 8

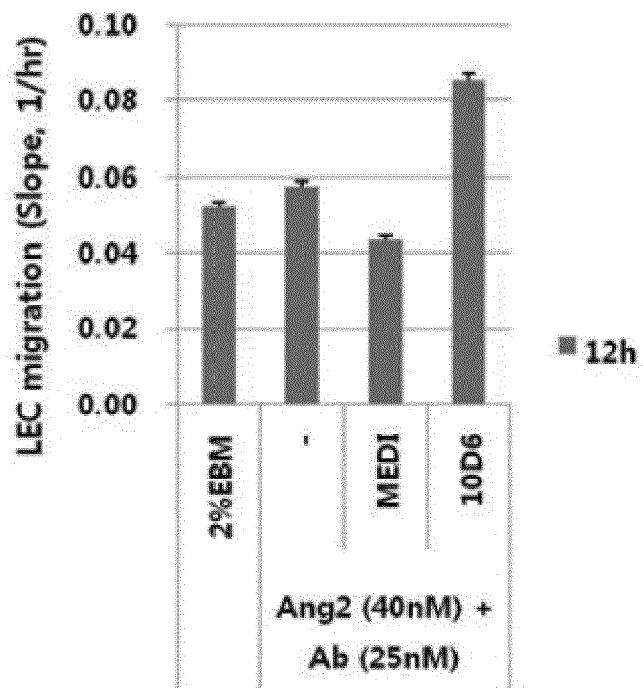
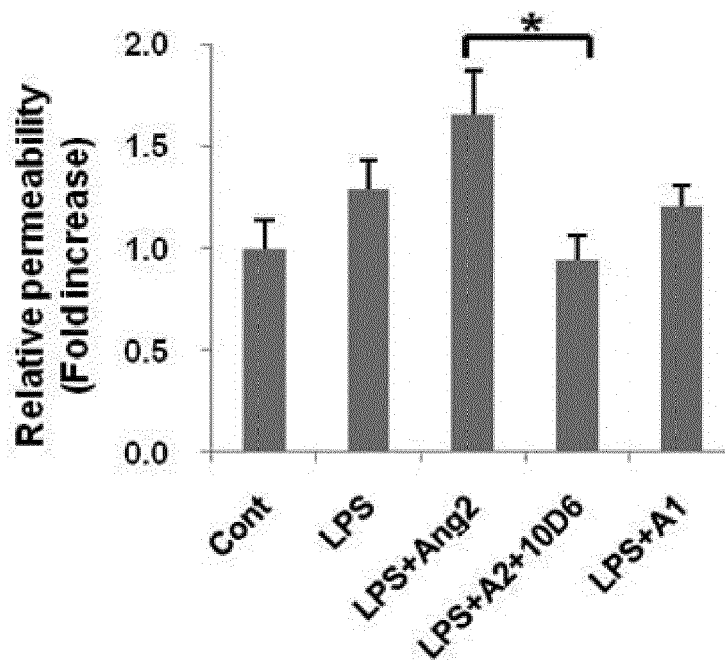
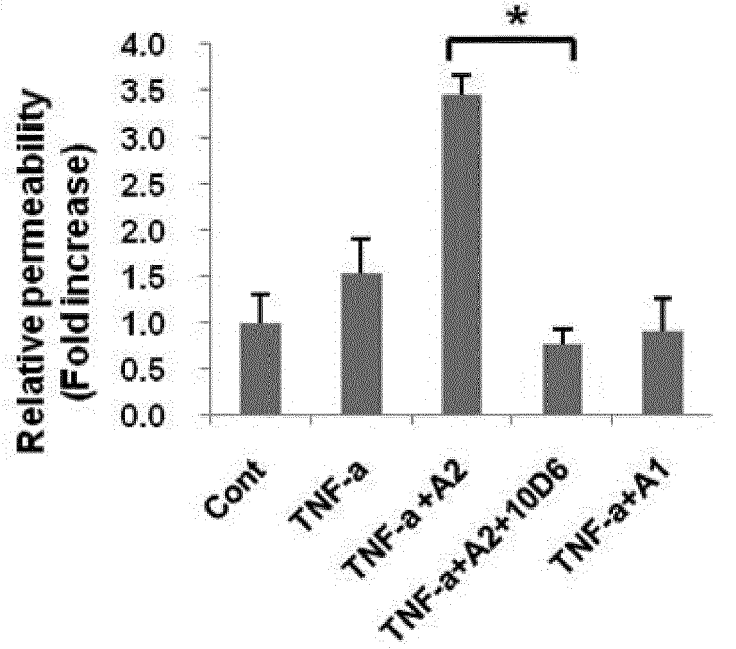


FIG. 9



\* Indicates P < 0.01

FIG. 10

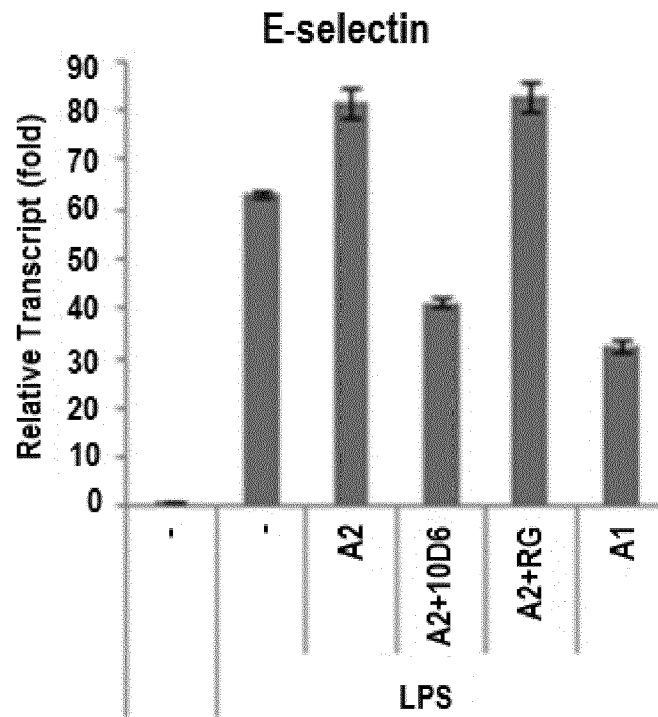
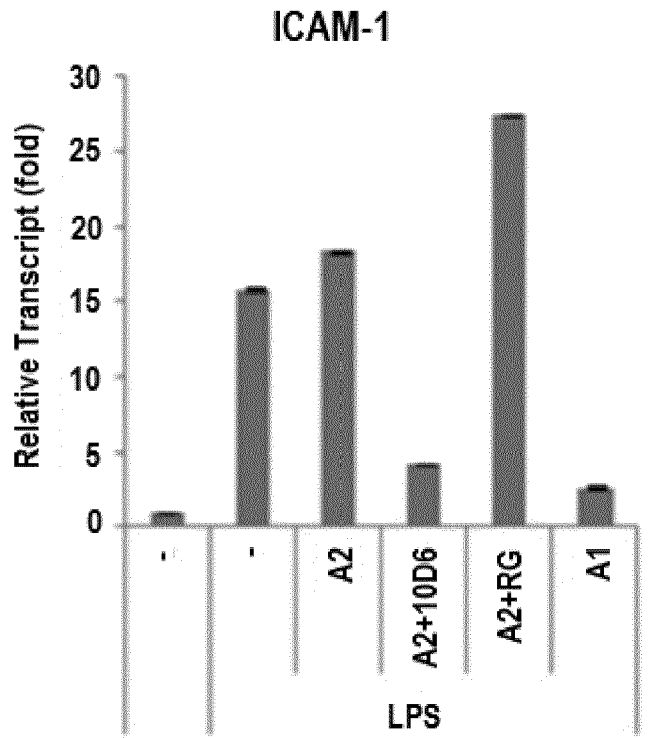


FIG. 11

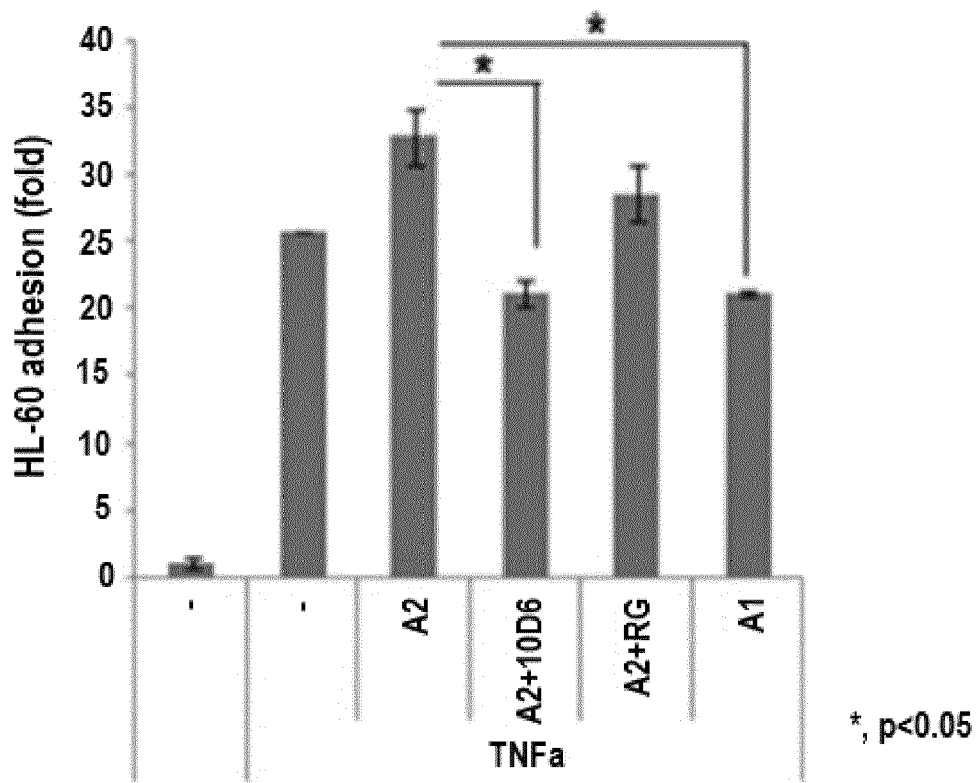
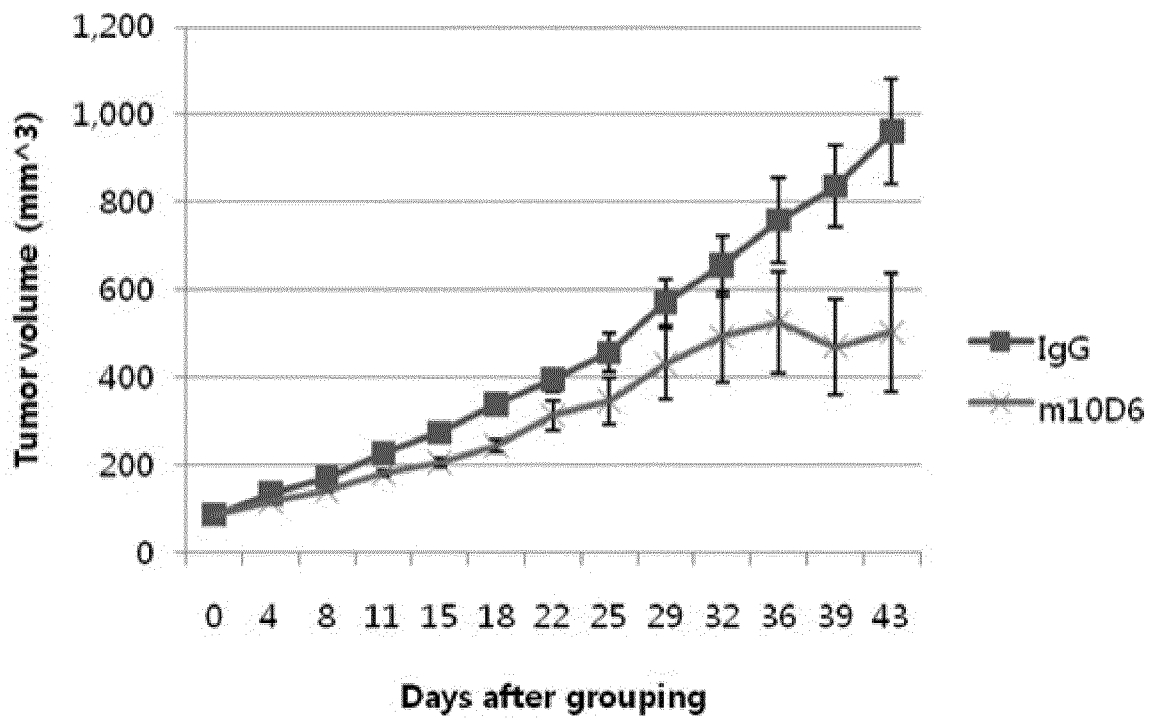


FIG. 12

# Colo205





EUROPEAN SEARCH REPORT

Application Number  
EP 18 17 2370

5

10

15

20

25

30

35

40

45

50

55

DOCUMENTS CONSIDERED TO BE RELEVANT			
Category	Citation of document with indication, where appropriate, of relevant passages	Relevant to claim	CLASSIFICATION OF THE APPLICATION (IPC)
X	WO 2006/045049 A1 (AMGEN INC [US]; OLINER JONATHON DANIEL [US]; GRAHAM KEVIN [US]) 27 April 2006 (2006-04-27) * page 104 * * example 5 *	1,2	INV. C07K16/22 A61K38/18 A61K39/395 A61P9/14 G01N33/53
X	WO 2006/068953 A2 (ABGENIX INC [US]; ASTRAZENECA AB [SE]; GREEN LARRY L [US]; ZHOU QING []) 29 June 2006 (2006-06-29) * example 15 * * paragraph [0199] *	1,3-5,9,10,14	
T	BARTON WILLIAM A ET AL: "Crystal structures of the Tie2 receptor ectodomain and the angiopoietin-2-Tie2 complex", NATURE STRUCTURAL & MOLECULAR BIO, NATURE PUBLISHING GROUP, US, vol. 13, no. 6, 1 June 2006 (2006-06-01), pages 524-532, XP009140199, ISSN: 1545-9985, DOI: 10.1097/AC0.0B013E328332A473 * page 524, right-hand column * * figure 1b *	1-15	
A	SANTA CRUZ BIOTECHNOLOGY ET AL: "Ang-2 (F-1): sc-74403", INTERNET CITATION, 22 March 2013 (2013-03-22), page 1, XP002732470, Retrieved from the Internet: URL:http://datasheets.scbt.com/sc-74403.pdf [retrieved on 2014-11-13] * the whole document *	1-15	
The present search report has been drawn up for all claims			TECHNICAL FIELDS SEARCHED (IPC) C07K A61K A61P G01N
Place of search The Hague		Date of completion of the search 31 May 2018	Examiner Bumb, Peter
CATEGORY OF CITED DOCUMENTS X : particularly relevant if taken alone Y : particularly relevant if combined with another document of the same category A : technological background O : non-written disclosure P : intermediate document		T : theory or principle underlying the invention E : earlier patent document, but published on, or after the filing date D : document cited in the application L : document cited for other reasons & : member of the same patent family, corresponding document	

EPO FORM 1503 03.02 (P04C01)



EUROPEAN SEARCH REPORT

Application Number  
EP 18 17 2370

5

10

15

20

25

30

35

40

45

50

55

DOCUMENTS CONSIDERED TO BE RELEVANT			
Category	Citation of document with indication, where appropriate, of relevant passages	Relevant to claim	CLASSIFICATION OF THE APPLICATION (IPC)
A,P	<p>ABCAM: "Anti-Angiopoietin 2 antibody ab8452", INTERNET CITATION, 13 November 2014 (2014-11-13), pages 1-3, XP002732471, Retrieved from the Internet: URL:http://www.abcam.com/angiopoietin-2-antibody-ab8452.html [retrieved on 2014-11-13] * the whole document *</p>	1-15	
X	<p>----- SRIRAJASKANTHAN R ET AL: "Circulating angiopoietin-2 is elevated in patients with neuroendocrine tumours and correlates with disease burden and prognosis", ENDOCRINE - RELATED CANCER, BIOSCIENTIFICA LTD, GB , vol. 16, no. 3 1 September 2009 (2009-09-01), pages 967-976, XP002732472, ISSN: 1351-0088, DOI: 10.1677/ERC-09-0089 Retrieved from the Internet: URL:http://erc.endocrinology-journals.org/content/16/3/967 [retrieved on 2009-06-05] * page 969, right-hand column *</p> <p>----- -/--</p>	1,5,8	
The present search report has been drawn up for all claims			TECHNICAL FIELDS SEARCHED (IPC)
Place of search The Hague		Date of completion of the search 31 May 2018	Examiner Bumb, Peter
<p>CATEGORY OF CITED DOCUMENTS</p> <p>X : particularly relevant if taken alone Y : particularly relevant if combined with another document of the same category A : technological background O : non-written disclosure P : intermediate document</p>		<p>T : theory or principle underlying the invention E : earlier patent document, but published on, or after the filing date D : document cited in the application L : document cited for other reasons ----- &amp; : member of the same patent family, corresponding document</p>	

EPO FORM 1503 03.02 (P04C01)



EUROPEAN SEARCH REPORT

Application Number  
EP 18 17 2370

5

10

15

20

25

30

35

40

45

50

55

DOCUMENTS CONSIDERED TO BE RELEVANT			
Category	Citation of document with indication, where appropriate, of relevant passages	Relevant to claim	CLASSIFICATION OF THE APPLICATION (IPC)
X	YAO D ET AL: "High glucose increases angiopoietin-2 transcription in microvascular endothelial cells through methylglyoxal modification of mSin3A", JOURNAL OF BIOLOGICAL CHEMISTRY, AMERICAN SOCIETY FOR BIOCHEMISTRY AND MOLECULAR BIOLOGY, US, vol. 282, no. 42, 19 October 2007 (2007-10-19), pages 31038-31045, XP002732473, ISSN: 0021-9258, DOI: 10.1074/JBC.M704703200 [retrieved on 2007-08-01] * page 31039, left-hand column *	1,8	TECHNICAL FIELDS SEARCHED (IPC)
A,P	TILMAN ZIEGLER ET AL: "Angiopoietin 2 mediates microvascular and hemodynamic alterations in sepsis", JOURNAL OF CLINICAL INVESTIGATION, AMERICAN SOCIETY FOR CLINICAL INVESTIGATION, US, vol. 123, no. 8, 1 August 2013 (2013-08-01), pages 3436-3445, XP002732474, ISSN: 0021-9738, DOI: 10.1172/JCI66549 Retrieved from the Internet: URL:http://www.jci.org/articles/view/66549 * the whole document *	7	
X	WO 2006/118350 A1 (MOCHIDA PHARM CO LTD [JP]; TAKAYAMA HIROSHI [JP]; SHIRAKAWA KAMON [JP]) 9 November 2006 (2006-11-09) * sequence 231 *	15	
The present search report has been drawn up for all claims			
Place of search The Hague		Date of completion of the search 31 May 2018	Examiner Bumb, Peter
CATEGORY OF CITED DOCUMENTS X : particularly relevant if taken alone Y : particularly relevant if combined with another document of the same category A : technological background O : non-written disclosure P : intermediate document		T : theory or principle underlying the invention E : earlier patent document, but published on, or after the filing date D : document cited in the application L : document cited for other reasons & : member of the same patent family, corresponding document	

EPO FORM 1503 03.02 (P04C01)



EUROPEAN SEARCH REPORT

Application Number  
EP 18 17 2370

5

10

15

20

25

30

35

40

45

50

55

DOCUMENTS CONSIDERED TO BE RELEVANT			
Category	Citation of document with indication, where appropriate, of relevant passages	Relevant to claim	CLASSIFICATION OF THE APPLICATION (IPC)
A	METHENY-BARLOW LINDA J ET AL: "The enigmatic role of angiopoietin-1 in tumor angiogenesis.", CELL RESEARCH OCT 2003, vol. 13, no. 5, October 2003 (2003-10), pages 309-317, XP002781521, ISSN: 1001-0602 * the whole document * -----	1-15	
			TECHNICAL FIELDS SEARCHED (IPC)
The present search report has been drawn up for all claims			
Place of search The Hague		Date of completion of the search 31 May 2018	Examiner Bumb, Peter
CATEGORY OF CITED DOCUMENTS X : particularly relevant if taken alone Y : particularly relevant if combined with another document of the same category A : technological background O : non-written disclosure P : intermediate document		T : theory or principle underlying the invention E : earlier patent document, but published on, or after the filing date D : document cited in the application L : document cited for other reasons ..... & : member of the same patent family, corresponding document	

1  
EPO FORM 1503 03.02 (P04C01)

ANNEX TO THE EUROPEAN SEARCH REPORT  
ON EUROPEAN PATENT APPLICATION NO.

EP 18 17 2370

5 This annex lists the patent family members relating to the patent documents cited in the above-mentioned European search report.  
The members are as contained in the European Patent Office EDP file on  
The European Patent Office is in no way liable for these particulars which are merely given for the purpose of information.

31-05-2018

Patent document cited in search report	Publication date	Patent family member(s)	Publication date
WO 2006045049 A1	27-04-2006	AU 2005295260 A1	27-04-2006
		CA 2583910 A1	27-04-2006
		EP 1805219 A1	11-07-2007
		JP 2014040428 A	06-03-2014
		KR 20070085408 A	27-08-2007
		US 2006018909 A1	26-01-2006
		US 2009191212 A1	30-07-2009
		US 2011311546 A1	22-12-2011
		US 2013142799 A1	06-06-2013
		WO 2006045049 A1	27-04-2006
		WO 2006068953 A2	29-06-2006
AT 521638 T	15-09-2011		
AU 2005319382 A1	29-06-2006		
BR P10519596 A2	24-03-2009		
CA 2595610 A1	29-06-2006		
CN 101128483 A	20-02-2008		
CN 105085678 A	25-11-2015		
CY 1112909 T1	13-04-2016		
DK 1838733 T3	28-11-2011		
EP 1838733 A2	03-10-2007		
EP 2284194 A1	16-02-2011		
ES 2371083 T3	27-12-2011		
HK 1109409 A1	15-06-2012		
HK 1217713 A1	20-01-2017		
HR P20110859 T1	31-12-2011		
JP 4884395 B2	29-02-2012		
JP 5642042 B2	17-12-2014		
JP 2008523841 A	10-07-2008		
JP 2012050455 A	15-03-2012		
KR 20070116217 A	07-12-2007		
NZ 556029 A	30-04-2010		
PL 1838733 T3	29-02-2012		
PT 1838733 E	13-12-2011		
RS 52036 B	30-04-2012		
SI 1838733 T1	30-12-2011		
TW 200634027 A	01-10-2006		
US 2006246071 A1	02-11-2006		
US 2008267971 A1	30-10-2008		
US 2012052073 A1	01-03-2012		
US 2013171160 A1	04-07-2013		
US 2015125455 A1	07-05-2015		
UY 29288 A1	31-07-2006		
WO 2006068953 A2	29-06-2006		
ZA 200705695 B	25-02-2009		

EPO FORM P0459

For more details about this annex : see Official Journal of the European Patent Office, No. 12/82

55

**ANNEX TO THE EUROPEAN SEARCH REPORT  
ON EUROPEAN PATENT APPLICATION NO.**

EP 18 17 2370

5 This annex lists the patent family members relating to the patent documents cited in the above-mentioned European search report.  
The members are as contained in the European Patent Office EDP file on  
The European Patent Office is in no way liable for these particulars which are merely given for the purpose of information.

31-05-2018

10

Patent document cited in search report	Publication date	Patent family member(s)	Publication date
WO 2006118350	A1	CA 2606450 A1	09-11-2006
		EP 1876240 A1	09-01-2008
		WO 2006118350 A1	09-11-2006
-----			

15

20

25

30

35

40

45

50

EPO FORM P0459

55 For more details about this annex : see Official Journal of the European Patent Office, No. 12/82

**REFERENCES CITED IN THE DESCRIPTION**

*This list of references cited by the applicant is for the reader's convenience only. It does not form part of the European patent document. Even though great care has been taken in compiling the references, errors or omissions cannot be excluded and the EPO disclaims all liability in this regard.*

**Non-patent literature cited in the description**

- **SCHWABER, J ; COHEN, E. P.** Human x Mouse Somatic Cell Hybrid Clones Secreting Immunoglobulins of Both Parental Types. *Nature*, 1973, vol. 244, 444-447 [0094] [0135]
- **ALMAGRO, J. C. ; FRANSSON, J.** Humanization of antibodies. *Frontiers in Bioscience*, 2008, vol. 13, 1619-1633 [0096]

专利名称(译)	抗ANG2抗体		
公开(公告)号	<a href="#">EP3381940A1</a>	公开(公告)日	2018-10-03
申请号	EP2018172370	申请日	2014-07-29
[标]申请(专利权)人(译)	三星电子株式会社		
申请(专利权)人(译)	SAMSUNG ELECTRONICS CO. , LTD.		
当前申请(专利权)人(译)	SAMSUNG ELECTRONICS CO. , LTD.		
[标]发明人	KIM KYUNG EUN OH SEUNG JA LEE HYO SEON HAN SANG YEUL		
发明人	KIM, KYUNG EUN OH, SEUNG JA LEE, HYO SEON HAN, SANG YEUL		
IPC分类号	C07K16/22 A61K38/18 A61K39/395 A61P9/14 G01N33/53		
CPC分类号	A61K38/1891 A61K39/395 A61K2039/505 C07K16/22 C07K2317/34 C07K2317/55 C07K2317/74 C07K2317/75 C07K2317/76 C07K2317/77 C07K2317/92 A61K39/3955 C07K2317/565 G01N33/74 G01N2333/515 G01N2333/71 G01N2500/02		
优先权	1020130089281 2013-07-29 KR 1020130106749 2013-09-05 KR		
外部链接	<a href="#">Espacenet</a>		

摘要(译)	<p>抗血管生成诱导因子血管生成素-2 ( Ang2 ) 特异性结合的抗Ang2抗体或其抗原结合片段, 以及与Tie2受体和Ang2的复合物, 以及相关的方法和组合物。</p>	<p>Ang2 (SEQ ID NO: 11)</p> <pre> MWQIVFFTLS CDLVLAAAYN NFRKSMSDIG KKQYVQVHGS CSYTFLLPEM DNCRSSSSPY VSNVQRDAP LEYDDSVQRL QVLENIMENN TQWLMKLENY IQDNMCKEMV EIQQNAVQVQ TAVMIEIGTN LLNQTAEQTR KLTQVEAQVL NQTRLELQL LEHSLSTNKL EKQILDQTSE INKLQDKNSF LEKKVLAMED KHIIQLQSIK EEKQQLQVLV SKQNSIEEL EKKIVTATVN NSVLQKQQHD LMETVNNLLT MMSTNSAKD PTVAKEEQIS FRDCAEVFKS GHTTNGIYTL TFPNSTEEIK AYCDMEAGGG GWTIIQRRED GSVDQRTWK EYKVGFGNPS GEYWLGNFV SQLTNQQRVYV LKIHLDWEG NEAYSLEYHF YLSSEELNYR IHLKGLTGTA GKISSISQPG NDFSTKGDND DKCICKCSQM LTGGWWFDAC </pre>
-------	--	---