



(11) **EP 1 466 179 B1**

(12) **EUROPEAN PATENT SPECIFICATION**

(45) Date of publication and mention of the grant of the patent:
08.10.2008 Bulletin 2008/41

(21) Application number: **02793548.5**

(22) Date of filing: **28.12.2002**

(51) Int Cl.:
G01N 33/574 (2006.01)

(86) International application number:
PCT/KR2002/002469

(87) International publication number:
WO 2003/060522 (24.07.2003 Gazette 2003/30)

(54) **METHOD FOR THE DIAGNOSIS OF CANCERS BY MEASURING THE CHANGES OF GLYCOSYLATION OF PROSTATE-DERIVED FACTOR (PDF) RELATED TO TUMORIGENESIS AND METASTASIS.**

VERFAHREN ZUR DIAGNOSE VON KREBSERKRANKUNGEN DURCH MESSUNG DER MIT DER TUMORBILDUNG UND METASTASE IN ZUSAMMENHANG STEHENDEN ÄNDERUNGEN DER GLYKOSYLIERUNG VON PROSTATE-DERIVED FACTOR (PDF).

PROCEDE PERMETTANT DE DIAGNOSTIQUER DES CANCERS EN MESURANT DES MODIFICATIONS DANS LA GLYCOSILATION DE LA PROTEINE PROSTATE-DERIVED FACTOR (PDF) LIEES A LA TUMORIGENESE ET AUX METASTASES.

(84) Designated Contracting States:
**AT BE BG CH CY CZ DE DK EE ES FI FR GB GR
IE IT LI LU MC NL PT SE SI SK TR**

(30) Priority: **29.12.2001 KR 2001088090**

(43) Date of publication of application:
13.10.2004 Bulletin 2004/42

(60) Divisional application:
08006160.9 / 1 972 939

(73) Proprietor: **Korea Research Institute of Bioscience and Biotechnology
Daejeon 305-333 (KR)**

(72) Inventors:
• **KO, Jeong Heon
Taejeon-si 305-761 (KR)**
• **HWANG, Soo Young
Choongchungnamdo 356-983 (KR)**
• **SOHN, Hosung
Taejeon-si 305-506 (KR)**
• **OH, Sejeong
Yangchun-ku,
Seoul 158-774 (KR)**
• **LEE, Jeong Hwa
Seoul 137-796 (KR)**
• **LEE, Sang Chul
Taejeon-si 305-335 (KR)**

• **YOO, Jong-Shin
Taejeon-si 305-755 (KR)**
• **LEE, Dae-Sil
Taejeon-si 305-761 (KR)**

(74) Representative: **Brady, Paul Andrew
Abel & Imray
20 Red Lion Street
London WC1R 4PQ (GB)**

(56) References cited:
WO-A-01/81928 KR-A- 19990 055 111
KR-A- 19990 069 637 US-A- 4 994 374
US-A- 5 427 914 US-A- 5 605 807
US-A1- 2001 010 908

• **LAFERTE S ET AL: "Monoclonal antibodies specific for human tumor-associated antigen 90K/Mac-2 Binding Protein:Tools to Examine Protein Conformation and Function" JOURNAL OF CELLULAR BIOCHEMISTRY, WILEY-LISS INC, US, vol. 77, no. 4, April 2000 (2000-04), pages 540-559, XP002975310 ISSN: 0730-2312**

Note: Within nine months of the publication of the mention of the grant of the European patent in the European Patent Bulletin, any person may give notice to the European Patent Office of opposition to that patent, in accordance with the Implementing Regulations. Notice of opposition shall not be deemed to have been filed until the opposition fee has been paid. (Art. 99(1) European Patent Convention).

EP 1 466 179 B1

- LAFERTE S ET AL: "CHARACTERIZATION OF A FAMILY OF STRUCTURALLY RELATED GLYCOPROTEINS EXPRESSING BETA1-6-BRANCHED ASPARAGINE-LINKED OLIGOSACCHARIDES IN HUMAN COLON CARCINOMA CELLS" BIOCHEMICAL JOURNAL, PORTLAND PRESS, LONDON, GB, vol. 283, no. 1, 1992, pages 193-201, XP009004873 ISSN: 0264-6021
- BAUSKIN A R ET AL: "THE PROPEPTIDE OF MACROPHAGE INHIBITORY CYTOKINE (MIC-1), A TGF-BETA SUPERFAMILY MEMBER, ACTS AS A QUALITY CONTROL DETERMINANT FOR CORRECTLY FOLDED MIC-1" EMBO JOURNAL, OXFORD UNIVERSITY PRESS, SURREY, GB, vol. 19, no. 10, 2000, pages 2212-2220, XP001148765 ISSN: 0261-4189
- DENNIS J W ET AL: "BETA1-6 BRANCHING OF ASN-LINKED OLIGOSACCHARIDES IS DIRECTLY ASSOCIATED WITH METASTASIS" SCIENCE, AMERICAN ASSOCIATION FOR THE ADVANCEMENT OF SCIENCE, US, vol. 236, 3 April 1987 (1987-04-03), pages 582-585, XP002905214 ISSN: 0036-8075
- EKUNI ET AL. FREE RADIC. RES. vol. 36, August 2002, pages 827 - 833, XP008072032
- DATABASE UniProt [Online] EMBL-EBI; Protein Sequence and annotations 16 November 2001 (2001-11-16), -: "GDFF_HUMAN" retrieved from EMBL-EBI accession no. Q99988 Database accession no. Q99988

DescriptionFIELD OF THE INVENTION

5 **[0001]** The present invention relates to a method for diagnosing cancers by measuring proteins associated with tumorigenesis and metastasis and, more particularly, relates to a method for diagnosing cancers by measuring the changes of glycosylation of proteins, especially, the changes of N-linked sugar chains of proteins associated with tumorigenesis and metastasis.

10 BACKGROUND ART OF THE INVENTION

[0002] In order to analyze the functions of proteins, two-dimensional electrophoresis has long been used. But recently, proteomics, a post-genome functional analyzing method, took the place of it, which was led by the development of mass spectrometer like MALDI-TOF and the establishment of easy methods for determining N-terminal amino acid sequences. The proteomics, though, is limited in use for the research of cancer caused by the result of highly complicated signal transduction, because proteomics is selectively available for the analysis of functions at the one point of time although human body is in dynamic motion. In order to detect a cancer, it is more important to investigate the increased expression or post-translational modification that are resulted from signal transduction than to observe the appearance of new spots by staining. The amounts of proteins that can be detected on the two-dimensional electrophoresis are too small to analyze by simple staining. Observing glycosylation of proteins can help overcome the above problem and correct the errors of analysis based on post-translational modification. When patients group with cancer was compared with control group, it was difficult to find out the difference of spots between the two groups by general electrophoresis, in the meantime, it was possible to draw a clear line between the two groups by analyzing the changes of glycosylation with lectin. It is now called glycomics that is an upgraded analyzing method overcoming difficulties in analysis with proteomics and is characterized by tracing the changes of glycosylation of proteins while post-translational modification is undergoing.

25 **[0003]** From observing cellular biological changes during tumorigenesis and metastasis process, it is concluded that various kinds of glycoproteins or glycolipids on the surface of cell membrane are induced to go through "aberrant glycosylation" by the specific signal from oncogene, resulted in the changes of sugar chain that consecutively causes the changes of intercellular adhesion and recognition, resulted in tumorigenesis and metastasis in the event (Hakomori and Kannagi, 1983, J. Natl. Cancer Inst., 71:231-251; Feizi, 1985, Nature, 314:53-571). When external stimuli come in, signals are transmitted via oncogene ras, transcription factor ets-1 to stimulate the expression of N-acetylglucosaminyl-transferase V (GnT-V). The GnT-V is an enzyme catalyzing such reaction that N-acetylglucosamine is attached onto the β 1,6 site of the basic sugar chain of a glycoprotein and is known to be directly associated with cancer invasion and metastasis (Dennis, et al., 1987, Science, 236:582-5853). As for glycoproteins, basic sugar chain is formed in endoplasmic reticulum (ER) after protein is synthesized, which moves to Golgi apparatus. Then, sugars are added thereto by various glycotransferases resulted from various vital phenomena of cells. Primary sugar chains are formed by catalyzing of six N-acetylglucosaminyltransferases (I-VI) and especially GnT-V forming β 1,6-N-acetylglucosamine sugar chain has been believed to be deeply associated with tumorigenesis and metastasis. GnT-V is located in Golgi apparatus. This enzyme makes target proteins be secreted to or out of the cell surface by causing the changes of sugar chains. At this time, glycoproteins recognize surface proteins of target cells and then adhere thereto, causing a cancer.

35 **[0004]** GnT-V was first noticed by the report of Dennis *et al.* in 1987 that the β 1,6 branches were remarkably represented as cancer tissues were growing or during metastasis (Dennis, et al., 1987, Science, 236:582-5853). A cell surface protein gp130 is one of major target proteins of GnT-V and shows highly metastasis activity when β 1,6 N-acetylglucosamine is added. GnT-V knockout mice were established in which GnT-V was deficient in their embryonic stem (ES) cells and to which polyomavirus middle T antigen (referred "PyMT" hereinafter) viral oncogene was introduced in order to induce a cancer. Resultingly, the growth of cancer and metastasis induced by PyMT were remarkably inhibited in GnT-V knockout mice comparing with another normal mice group in which only PyMT was over-expressed (Granovsky, et al., 2000, Nature Med., 6:306-312), and the growth of β 1,6 branch caused high metastasis especially in mice with breast cancer. Recent studies support that the GnT-V activity to 33 types of hepatocellular carcinoma (HCC) tissues is fifty times as high as it's activity to normal tissues and four times as high as to cancer surrounding tissues (Yao, et al., 1998, J Cancer Res. Clin. Oncol., 124:27-307). And high metastatic activity was also confirmed when large intestine cancer cell line WiDr in which GnT-V was over-expressed was introduced into immunodeficient mice in order to induce large intestine cancer or when angiogenesis was investigated by CAM analysis using fertilized eggs (Miyoshi, *et al.*, 2001, unpublished results). Thus, GnT-V is believed to be associated with metastasis and have high metastatic activity regardless of types of tissues. GnT-V enzyme was purified from human lung cancer cells and a mouse kidney, and cDNA cloning and analysis of genomic structure and promoter of the enzyme have been made (Gu, et al., 1993, J Biochem, 113:614-619; Soreibah, et al., 1993, J Biol. Chem., 268:15381-15385; Kang, et al., 1996, J. Biol. Chem., 271:26706-26712). The present inventors also reported in a recent study that transcription factor ets-1 was deeply associated with the expression

of GnT-V (Ko, et al., 1999, J. Biol. Chem., 274(33):22941-22948). As for large intestine cancer, it now takes the 4th highest incidence in both men and women owing to the changes of dietary life into western and the development of the cancer increases continuously. However, there is no way to diagnose colon cancer accurately except large intestine endoscopy, so far.

5 [0005] Thus, the present inventors detected β 1,6-N-acetylglucosamine in which sugars were attached by GnT-V in cancer-induced cells and found out a novel glycoprotein showing the changes of sugar chains by analyzing amino acid sequences with a mass spectrometer. And the present inventors completed this invention by developing a method for diagnosing cancers by measuring the changes of sugar chains of the above protein in test samples.

10 [0006] WO 01/81928. A discloses methods for diagnosing risk of miscarriage and/or premature birth, foetal abnormalities.

DETAILED DESCRIPTION OF THE INVENTION

15 [0007] It is an object of the present invention to provide a method for diagnosing cancers by measuring the changes of sugar chains of proteins related to tumorigenesis and metastasis cancer (e.g. prostate cancer) and inflammatory disease (e.g. rheumatoid arthritis) comprising determining abnormal levels of a macrophage inhibitory cytokine-1 (MIC-1) in a body sample or, otherwise, determining the presence of a MIC-1 variant protein.

20 [0008] To achieve the above object, the present invention provides a method for diagnosing a cancer comprising measuring the changes of N-linked β -1,6-N-acetylglucosamine sugar chain branches of PDF (prostate-derived factor), which is related to tumorigenesis and metastasis, by comparing the N-linked β -1,6-N-acetylglucosamine sugar chain branches of PDF in a sample taken from a patient with those in normal cells, wherein an increase of N-linked β -1,6-N-acetylglucosamine sugar chain branches of PDF is diagnostic of cancer.

25 [0009] The present invention also provides the use of an antibody specific to PDF (prostate-derived factor) and a L4-PHA (lectin phytohaemagglutinin-L4) for diagnosing cancer by detecting an increase of N-linked β -1,6-N-acetylglucosamine sugar chain branches of the PDF using the antibody specific to PDF and the L4-PHA.

[0010] Cancers stated above can be selected from a group consisting of colon cancer, gastric cancer, lung cancer, liver cancer, uterine cancer, breast cancer and pancreas cancer, but are not limited thereto.

30 [0011] The present invention utilises the measurement of changes of sugar chain branches of proteins in cancer cells and metastatic cells representing the changes of β -1,6-N-acetylglucosamine, that is the changes of N-linked sugar chains, by comparing them with those in normal cells. GnT-V forming β -1,6-N-acetylglucosamine sugar chains is associated with tumorigenesis and metastasis regardless of the type of tissue, and the β -1,6-N-acetylglucosamine sugar chains can be detected with lectin phytohaemagglutinin-L4 (referred to as "L4-PHA" hereinafter).

35 [0012] Metastasis is caused by intercellular recognition and adhesion. Glycoproteins associated with intercellular recognition and adhesion are on the cell surface or secreted therefrom. Thus, cancers can be diagnosed by detecting primary markers from body fluids like blood or urine.

40 [0013] A colon cancer cell line WiDr, in which GnT-V expression was comparatively low, was used in order to identify specific markers of large intestine cancer, and glycomics was performed using GnT-V/WiDr, a cell line over-expressing GnT-V, as a model system of colon cancer. Metastatic cancer cell culture solution was analyzed by 2-dimensional electrophoresis. As a result, 2 sheets of gel were obtained. One sheet of gel was stained with Coomassie brilliant blue and the other sheet was treated with lectin blotting. Finally, proteins in which sugar chains were changed in cancer cells and metastatic cells rather than in normal cells were separated (see FIG. 5 and FIG. 6). Some regions having strong dark spots were detected in cancer cells by lectin blot recognizing β 1,6 N-acetylglucosamine branch. The proteins corresponding to the spots were confirmed to be associated with tumorigenesis and metastasis and show the changes of sugar chains.

45 [0014] The present inventors cut the spots off, and then cleaved proteins again. Determined amino acid sequence of the peptide using Electrospray Ionization (ESI)/Quadrupole Time of Flight (Q-TOF) mass spectrometer, resulting in the confirmation of peptide sequences represented by SEQ. ID. Nos 1-15. Identified the peptide sequences with precise names by comparing that with already established protein database and further analyzed each sequence, molecular weight and isoelectric point (see Table 1).

50 [0015] The above protein was confirmed based on the fact that N-linked sugar chain is located on the Asn in the sequence of Asn-Xaa-Thr/Ser (Varki, et al., 1999, Essentials of glycobiology, Cold Spring Harbor Laboratory, New York, USA, pp85-100).

55 [0016] The peptide sequences analyzed above, which are represented by SEQ. ID. No 1 and No 2, are the parts of PDF (prostate-derived factor). In the meantime, PDF is known as one of BMPs (Bone morphogenetic proteins) that is a member of TGF- β (transforming growth factor beta) family and is associated with bone development and regeneration by inducing cartilage formation (Paralkar, V.M. et al., 1998, J Biol. Chem, 273: 13760-13767). And the peptide has one well-reserved N-linked sugar chain site Bauskin A.R. et al., 2000, The EMBO Journal, 19:2212-2220. The above proteins have been found by many research groups in the name of PDF, MIC-1 (macrophage inhibitory cytokine-1), PLAB

(placental bone morphogenic protein), GDF-15 (growth/differentiation factor 15), etc.

[0017] The peptide sequences analyzed above, which are represented by SEQ. ID. No 3, No 4 and No 5, are known as T cell cyclophilin and also called peptidyl-prolyl cis-trans isomerase. The reserved N-linked sugar chain can be found on 3 sites on the sequence that is also well known as a constituent for anti-oxidant system.

[0018] The peptide sequences analyzed above, which are represented by SEQ. ID. Nos 6-11, were confirmed to be a new protein by comparing that up with the entire established database. The protein has Asn-Xaa-Ser sequence in its 4th peptide, suggesting it probably contains N-linked sugar chain.

[0019] The peptide sequences analyzed above, which are represented by SEQ. ID. No 12 and No 13, are known in many names of galectin binding protein, L3 antigen, Mac-2-binding protein, serum protein 90K, tumor associated antigen 90K, etc, and are detected from the blood of cancer or AIDS patients. The result of Northern blot was that the protein was expressed much in primary cancer tissues and tumor-associated cell lines, though the expression varied with disease types. The protein was proved to have 7 reserved N-linked sugar chain sites (Ullich, A. et al., 1994, J Biol. Chem., 269:18401-18407).

[0020] The peptide sequences analyzed above, which are represented by SEQ. ID. No 14 and No 15, are known as TIMP-1 (tissue inhibitor of matrix metalloproteinase-1) and 4 TIMPs (1-4) have been found so far. As a low molecular protein, the molecular weights of the proteins are 22K-30K and the proteins have 40-50% homology. TIMP-1 takes the form of train by glycosylation, because of which the molecular weight of TIMP-1 seems to be high (see FIG. 7). And N-terminal is attached to MMPs, resulting in the inhibition of the activity of matrix metalloproteinase. This protein has N-linked sugar chains on two sites (Gomls-Reuth, F. et al., 1997, Nature, 389:77-81).

[0021] Even though two of the above five proteins, galectin binding protein (tumor associated antigen 90K) and TIMP-1, have been known to be directly related to tumorigenesis and metastasis, clear reports on the changes of β -1,6-N-acetylglucosamine sugar chain branches induced by cancer and the above two proteins have not been presented yet.

[0022] The proteins detected out above that reflect the changes of sugars chains in connection with tumorigenesis and metastasis are glycoproteins, and they are on the surface of cells or secreted therefrom, so that cancer can be diagnosed by measuring the expression and the changes of N-linked sugar chains of the proteins in body fluids like blood or urine.

[0023] A method for diagnosing cancers using the proteins related to tumorigenesis and metastasis comprises following two steps: Taking samples from patients (Step 1); and Measuring the changes of N-linked sugar chains and the expression of proteins related to tumorigenesis and metastasis with the above samples (Step 2).

[0024] The sample of the above Step 1 can be taken from blood or urine, and preferably prepared by the general separation method of serum.

[0025] As for the measuring method of the above Step 2, every analyzing methods based on the principle of antigen-antibody reaction can be used. Especially, ELISA (enzyme-linked immunosorbent assay) and immunoblot, the most common methods for analyzing antigen-antibody reaction, are preferably used.

[0026] The present inventors describe a method for measuring the changes of N-linked sugar chains and the expression of proteins related to tumorigenesis and metastasis after producing antibodies to the proteins in order to diagnose cancers.

[0027] A method for measuring the changes of N-linked sugar chains and the expression of the proteins by ELISA comprises the following steps:

- 1) Adhering antibody against the protein related to tumorigenesis and metastasis to matrix;
- 2) Adding serum of a sample to the above matrix to induce reaction, and then washing thereof;
- 3) Adding marked the same antibody or marked L4-PHA for further reaction;
- 4) After washing the above matrix, adding the secondary antibody conjugated with coloring enzyme or fluorescent substance thereto for further reaction; and
- 5) After coloring thereof using coloring substrate solution, measuring optical density with ELISA reader.

[0028] The matrix of the Step 1 can be selected from a group consisting of nitrocellulose membrane, 96 well plate synthesized with polyvinyl resin, 96 well plate synthesized with polystyrene and slide glass, and 96 well plate was chosen for this example.

[0029] For a mark of the above Step 3, a chemical compound (or its derivatives) like biotin can be used. The expression of proteins related to tumorigenesis and metastasis can be analyzed using biotin-labeled the same antibody and the changes of β 1,6 N-acetylglucosamine sugar chain branches, the changes of N-linked sugar chains, can be measured using biotin-labeled L4-PHA.

[0030] Peroxidase or alkaline phosphatase can be used as a coloring enzyme conjugated with antibody of the Step 4, and FITC or RITC can be used as a fluorescent substance. Particularly, peroxydase conjugated antibody was used in this example.

[0031] ABTS [2,2'-Azino-bis (3-ethylbenzothiazoline-6-sulfonic acid)], OPD (o-Phenylenediamine) and TMB (Tetramethyl Benzidine) can be used as a coloring substrate solution of the Step 5, and particularly, OPD that was colored by

peroxidase was used in this example.

[0032] The method for diagnosing cancers of the present invention is available for mass-analysis of samples using biological microchip and automatic microarray system.

[0033] The present invention may whlise a kit for diagnosing cancers by measuring the changes of sugar chains and the expression of proteins associated with tumorigenesis and metastasis.

[0034] Cancers mentioned above include large intestine cancer, stomach cancer, lung cancer, liver cancer, uterine cancer, breast cancer and pancreas cancer, but are not limited thereto, that is, any kind of cancer can be a target of this kit.

[0035] The protein associated with tumorigenesis and metastasis is selected from a group consisting of PDF, peptidyl-prolyl cis-trans isomerase, galectin binding protein, L3 antigen, Mac-2-binding protein, serum protein 90K, tumor associated antigen 90K, TIMP-1 and proteins containing peptide sequences represented by SEQ. ID. Nos 6-11.

[0036] The diagnostic kit is available for qualitative analysis or quantitative analysis of the expression of the above proteins and for measuring the changes of N-linked sugar chain, exactly the changes of β 1,6-N-acetylglucosamine sugar chain branches, for which ELISA can be used. For instance, the diagnostic kit can be provided for the ELISA using 96 well microtiter plate coated with antibody against the above proteins.

[0037] The diagnostic kit can include antibody against the above proteins, matrix, buffer solution, coloring enzyme or fluorescent substance-labeled secondary antibody, coloring substrate, and especially, L4-PHA to measure the changes of β 1,6-N-acetylglucosamine sugar chain branches.

[0038] As for the matrix, nitrocellulose membrane, 96 well plate synthesized with polyvinyl resin, 96 well plate synthesized with polystyrene resin, and slide glass can be used. As for the coloring enzyme, peroxidase and alkaline phosphatase can be used. As for the fluorescent substance, FITC and RITC can be used and as for the coloring substrate solution, ABTS (2, 2'-Azino-bis (3-ethylbenzothiazoline-6-sulfonic acid)), OPD (o-Phenylenediamine), or TMB (Tetramethyl Benzidine) can be used.

[0039] In order to diagnose cancers with the diagnostic kit, automatic analyzing method using biological microchip can be used. For example, the diagnostic kit can be composed to prepare a protein chip by fixing the proteins in which sugar chains are changed by being associated with tumorigenesis and metastasis onto the surface of glass slide and to measure the changes of those sugar chains of the proteins simultaneously. This diagnostic kit also includes the proteins, buffer solution and L4-PHA, etc.

BRIEF DESCRIPTION OF THE DRAWINGS

[0040]

FIG. 1 is a diagram showing sugar chains obtained by the action of 6 glycotransferases related to N-linked sugar chain,

FIG. 2 is a set of diagrams showing the adding process of β 1,6 N-acetylglucosamine (GlcNAc β 1) to sugar chain by glycotransferase GnT-V,

FIG. 3 is a set of photographs showing the results of staining gels obtained by 2-dimensional electrophoresis of three cell lines (Mock/WiDr, ets-1/WiDr, GnT-V/WiDr) with Coomassie brilliant blue,

FIG. 4 is a set of photographs showing the results of lectin blotting with gels obtained by 2-dimensional electrophoresis of three cell lines,

FIG. 5 is a set of photographs showing the results of staining serum-free media derived from three cell lines with Coomassie brilliant blue after 2-dimensional electrophoresis,

FIG. 6 is a set of photographs showing the results of lectin blotting on serum-free media derived from three cell lines with L4-PHA after 2-dimensional electrophoresis,

FIG. 7 is a graph showing the result of analysis of timp-1 amino acid sequence by ESI/Q-TOF.

EXAMPLES

[0041] Practical and presently preferred embodiments of the present invention are illustrative as shown in the following Examples.

Example 1: Two-dimensional electrophoresis and lectin blotting of cell lines

[0042] The present inventors performed proteomics with GnT-V/WiDr cell line, considering that cell line as a model system of large intestine cancer. Particularly, cultured cells first, and then searched out a specific protein group evoking aggravation of cancer by being associated with the enzyme among intracellular and extracellular secreted proteins. Cultured Mock/WiDr, a control group cell line, ets-1/WiDr, a cell line over-expressing ets-1, and GnT-V/WiDr, a cell line over-expressing GnT-V, in RPMI medium (Gibco BRL) supplemented with 10% FCS. For the preparation of an over-expressing cell line, introduced eukaryotic over-expression plasmid (Ko, et al., 1999, J. Biol. Chem., 274(33): 22941-22948), transcription factor ets-1 and glycotransferase GnT-V into the large intestine cancer cell line WiDr (provided by American Type Tissue Culture; ATCC, USA). Treated the cells with G418 (350 μ g/ml) to correspond to neomycin resistant gene. As colonies were formed, detected ets-1 with Western blot using antibody and GnT-V with Northern blot using cDNA. 2-3 days later, when cells covered 90% of the bottom of culture plate (confluent) in a CO₂ incubator, the cells were washed with PBS (phosphate buffered saline) more than twice to remove remaining serum. Collected the cells with a scraper and washed with PBS. Suspended the cells in 1 ml of PBS and then sonicated thereof with an ultrasonicator (three times, 1 minute each time). Added acetone containing TCA (trichloroacetic acid) to the above crushed cells (final conc. 10%) to precipitate proteins only. Washed thereof with acetone more than three times to remove remaining TCA and then dried. Dissolved thereof by adding gel loading buffer solution (8 M Urea, 2% Triton X-100, 20 mM DTT, 0.5% carrier ampholyte, Bromophenol Blue dye) and performed 1-dimensional electrophoresis (18 cm drystrip pH 3-10) using Multiphor-II (Pharmacia).

[0043] After equilibrating the obtained 1-dimensional electrophoresis gel with equilibrium buffer solution containing SDS and 2-mercaptoethanol, performed 2-dimensional electrophoresis on 12% polyacrylamide using Protean II (Bio-Rad). Obtained 2 sheets of gel: One was stained with Coomassie brilliant blue using biosafe staining solution (Bio-Rad) and the other was transferred to PVDF (polyvinylidene difluoride) membrane using semi-dry transfer (Bio-Rad). Adhered biotin-labeled L-PHA recognizing β 1,6 N-acetylglucosamine branch to glycoprotein having the branch, and then attached HRP-labeled streptavidin thereto. Exposed thereof to film by ECL fluorescent reaction.

[0044] In order to compare with a control group (Mock/WiDr), carried out the experiments with the same condition, that is, performed 1-dimensional electrophoresis (separation of isoelectric point) first and then stained with Coomassie brilliant blue (FIG. 3), transferred the proteins of gel to PVDF membrane, followed by performing lectin blotting using GnT-V-specific L4-PHA (FIG. 4). Performed 2-dimensional electrophoresis more than three times and analyzed the changes of the expression of intracellular protein using computer software (PDQUEST, Bio-Rad). As a result, no protein that showed more than 4-times difference in the expression profile of protein was detected and no significant change was seen in lectin blot (FIG. 4), either.

Example 2: Two-dimensional electrophoresis and lectin blotting of serum-free media

[0045] The present inventors cultured cell lines in serum-free media, through which investigated the changes of sugar chains. Particularly, cultured Mock/WiDr cell line, ets-1/WiDr cell line and GnT-V/WiDr cell line in RPMI (Gibco BRL) media containing 10% FCS. 2-3 days later, when cells covered around 80% of the bottom of culture plate in a CO₂ incubator washed with PBS more than twice to remove remaining serum. Then, put RPMI medium without serum, further cultured for 48 hours, and obtained culture solution. After concentrating the medium, added acetone (final conc. 10%) containing TCA (trichloro acetic acid), resulting in the precipitation of proteins. Washed thereof with acetone more than 3 times to remove remaining TCA, and then dried. Dissolved thereof by adding gel loading buffer solution (8 M Urea, 2% Triton X-100, 20 mM DTT, 0.5% carrier ampholyte, Bromophenol Blue dye) thereto. Performed 1-dimensional electrophoresis and 2-dimensional electrophoresis with the same method as the above Example 1.

[0046] After completing 2-dimensional electrophoresis, small amounts of FCS were detected and wide changes of PIM (post translational modification) were expected, so that the expression could hardly be compared with limited software. In the mean time, it was confirmed from the result of L-PHA lectin blot that darker spots were detected in ets-1 over-expressing cell line, comparing with the control group, and the darkest spots were observed in GnT-V over-expressing cell line (FIG. 5 and FIG. 6). Cut 12 spots off among all the above spots and identified 5 spots of them.

Example 3: Sequence analysis of proteins with an ESI/Q-TOF mass spectrometer

[0047] In order to identify proteins located in the above 5 spots, the present inventors stained PVDF membrane (lectin blot) that was already exposed to X-ray film with Coomassie brilliant blue and then adhered thereof onto exposed film again to confirm the exact locations of spots, followed by cutting spots off corresponding to those of a gel stained with Coomassie brilliant blue. After destaining thereof using 30% methanol and 100% acetonitrile, added 10 U of trypsin (Promega) and then cut peptides at 37°C for overnight. Extracted the peptides using acetonitrile, freeze-dried thereof with a centrifugal freezing drier, and then determined amino acid sequences using ESI/Q-TOF (Electrospray Ionization/

EP 1 466 179 B1

Quadruple Time of Flight) mass spectrometer. Each peptide could be separated by ESI and sequence analysis could be possible by tandem mass.

[0048] As a result, peptide sequences represented by SEQ. ID. Nos 1-15 were determined by ESI/Q-TOF and identified after being compared with protein database. Each sequence, molecular weight (MW) and isoelectric point (pI) were presented below (Table 1).

<Table 1>

No	Sequence	Name	Function	M.W	pI	N-linked glycosylation
a	SEQ.ID. No 1 SEQ.ID. No 2	GDF-15	PLAB/TFG- β family	34168.6	9.79	Y
b	SEQ.ID. No 3 SEQ.ID. No 4 SEQ.ID. No 5	Cyclophilin	Peptidylprolyl cis-trans isomerase A	18012.7	7.86	Y
c	SEQ.ID. No 6 SEQ.ID. No 7 SEQ.ID. No 8 SEQ.ID. No 9 SEQ.ID. No 10 SEQ.ID. No 11	Not identified	Not identified	About 20K	About 5.5	Y
d	SEQ.ID. No 12 SEQ.ID. No 13	Galectin 3 binding protein	Galectin binding serum protein	65331.6	5.13	Y
e	SEQ.ID. No 14 SEQ.ID. No 15	TIMP-1	Tissue inhibitor of matrix metalloproteinase	23171.1	8.46	Y

[0049] Their characteristics are explained below. The above proteins were confirmed based on the fact that N-linked sugar chain is located on the Asn in the sequence of Asn-Xaa-Thr/Ser (Varki, et al., 1999, Essentials of glycobiology, Cold Spring Harbor Laboratory, New York, USA, pp85-100).

[0050] A of the above Table 1 containing peptide sequences represented by SEQ. ID. No 1 and No 2, that is PDF (prostate-derived factor), is one of BMP proteins (Bone morphogenetic proteins) of TGF (transforming growth factor) - β family and has one preserved N-linked sugar chain site. This protein has been searched in many names of not only PDF but also MIC-1 (macrophage inhibitory cytokine-1), PLAB (placental bone morphogenic protein), GDF-15, PTGFP, etc by many research groups.

[0051] B known as T cell cyclophilin containing peptide sequences represented by SEQ. ID. No 3, No 4 and No 5 is also called peptidyl-prolyl cis-trans isomerase. It has three preserved N-linked sugar chain sites.

[0052] C containing peptide sequences represented by SEQ. ID. Nos 6-11 is proved to be a new protein by comparing it with the established databases. It is also believed to have N-linked sugar chain since it has the sequence of Asn-Xaa-Ser in its forth peptide.

[0053] D containing peptide sequences represented by SEQ. ID. No 12 and No 13 has been known in many names such as galectin binding protein, L3 antigen, Mac-2-binding protein, serum protein 90K, tumor associated antigen 90K, etc, and has seven preserved N-linked sugar chain sites.

[0054] E containing peptide sequences represented by SEQ. ID. No 14 and No 15 is known as TIMP-1 (tissue inhibitor of matrix metalloproteinase-1) and is an example of the above timp-1 identified by ESI/Q-TOF (FIG. 7). As shown in FIG. 7, TIMP-1 is shaped as a train formed by glycosylation, by which its molecular weight seems high. TIMP-1 also has two N-linked sugar chain sites.

Example 4: Measurement of the changes of sugar chain branches or the expression of proteins

[0055] In order to diagnose cancers by measuring the changes of sugar chains or the expression of proteins identified above, the present inventors measured the changes of sugar chains and the expression of the proteins using ELISA.

[0056] First, obtained cDNA of target protein, which was then cloned into the eukaryotic gene expression vector. Cloned thereof into WiDr cell line. Purified the protein (1 mg each) from the above culture solution. Mixed thereof with adjuvant, which was injected hypodermically into rabbits, resulting in the preparation of polyclonal antibodies. Adhered

EP 1 466 179 B1

the required amount of the antibody to two 96 well plates respectively. Precisely, coated protein A originated from bacteria to 96 well plate (Maxisorb, Nunc) by 1 μg per well under the condition of containing 100 $\mu\ell$ of 0.1 M sodium carbonate (pH 9.6). Washed thereof with TBS-T (Tris-buffered saline-Tween, 0.2 M Tris-Cl, 0.4 M NaCl, 0.05% Tween-20) and adhered the above prepared antibody thereto. Washed with TBS-T again and then blocked parts that were not adhered, resulting in the preparation of a stable antibody system. Consecutive dilution was performed after adding blood or other test samples to the plate for the reproducibility and statistical handling, and then washed thereof with TBS-T three times. At that time, the target protein would be adhered to its specific antibody. The expression of the protein was confirmed by the same antibody labeled with biotin, and the changes of β -1,6-N-acetylglucosamine sugar chain branches were confirmed by lectin, in which biotin-labeled L-PHA was used. In order to prepare biotin-labeled antibody, dialyzed antibody (5-10 mg/ml) in 250 ml of SBRB (succinimidyl-biotin reaction buffer) at 23°C for 6 hours. Adjusted the concentration of NHS-biotin (N-hydroxysuccinimidyl-biotin) or NHS-LC-biotin (long chain sulfosuccinimidyl 6-(biotinamido) hexanoate derivative biotin) to 2-4 mg/ml in DMSO (dimethylsulfoxide) and mixed the antibody and the biotin solution in the ratio of 1:30 (Ab:biotin), followed by stirring at 37°C. Left thereof for 1 hour to bind biotin and antibody. Prepared biotin-labeled antibody after dialyzing thereof in BBS (Borate buffered saline). For the lectin, commercial biotin-labeled L-PHA was used. Detected biotin-labeled antibody and lectin by using commercial avidine-peroxidase kit. Precisely, added H_2O_2 and O-phenylamine, a substrate for peroxidase, and measured optical density at 490 nm. Measured the expression of protein and the changes of glycosylation of β 1,6 N-acetylglucosamine in the blood samples of patients with cancer and then compared them with those in normal control group.

[0057] As a result, the glycosylation extent of β 1,6 N-acetylglucosamine in the blood of cancer patients was confirmed to increase 10-20 times as much as that in normal blood.

INDUSTRIAL APPLICABILITY

[0058] As described hereinbefore, a method for diagnosing cancers by measuring the changes of sugar chains of proteins associated with tumorigenesis and metastasis, can be effectively used for diagnosing cancers including large intestine cancer.

SEQUENCE LISTING

[0059]

<110> Korea Research Institute of Bioscience and Biotechnology

<120> Method for the diagnosis of cancers by measuring the changes of Glycosylation of proteins related to tumorigenesis and metastasis and kit for diagnosis of cancers using the same

<130> 2fpo-12-01

<150> KR2001-88090

<151> 2001-12-29

<160> 1

<170> KopatentIn 1.71

<210> 1

<211> 14

<212> PRT

<213> Homo sapiens

<400> 1

Gly Val Ser Ser Leu Gln Thr Tyr Asp Asp Leu Leu Ala Lys
1 5 10

<210> 2

<211> 13

EP 1 466 179 B1

<212> PRT
<213> Homo sapiens

<400> 2

5

Glu Asp Leu Gly Trp Ala Asp Trp Val Leu Ser Pro Arg
1 5 10

10

<210> 3
<211> 9
<212> PRT
<213> Homo sapiens

15

<400> 3

Val Ser Phe Glu Leu Phe Ala Asp Lys
1 5

20

<210> 4
<211> 9
<212> PRT
<213> Homo sapiens

25

<400> 4

30

Phe Glu Asp Glu Asn Phe Ile Leu Lys
1 5

35

<210> 5
<211> 19
<212> PRT
<213> Homo sapiens

<400> 5

40

Asn Val Asn Pro Thr Val Phe Phe Asp Leu Ala Val Asp Gly Glu Pro
1 5 10 15

45

Leu Gly Arg

<210> 6
<211> 8
<212> PRT
<213> Homo sapiens

50

<400> 6

55

Phe Thr Gly Gly His Glu Val Lys
1 5

EP 1 466 179 B1

<210> 7
 <211> 12
 <212> PRT
 <213> Homo sapiens

5

<400> 7

Gly Leu Gly Ala Ser Asp Ser Thr Leu Thr Tyr Arg
 1 5 10

10

<210> 8
 <211> 13
 <212> PRT
 <213> Homo sapiens

15

<400> 8

Asp Asn Asn Leu Gly Gln Ala Phe Gln Phe Glu Asp Arg
 1 5 10

20

<210> 9
 <211> 11
 <212> PRT
 <213> Homo sapiens

25

<400> 9

Glu Phe Gly Leu Gly Ala Thr Ser Asp Ser Tyr
 1 5 10

30

<210> 10
 <211> 10
 <212> PRT
 <213> Homo sapiens

35

<400> 10

40

Val Gly Asp Asn Xaa Leu Gly Ala Asn Ser
 1 5 10

45

<210> 11
 <211> 6
 <212> PRT
 <213> Homo sapiens

50

<400> 11

Ser Gly Ala Tyr Thr Tyr
 1 5

55

<210> 12
 <211> 13
 <212> PRT

EP 1 466 179 B1

<213> Homo sapiens

<400> 12

5

Gln Thr Pro Gln His Pro Ser Phe Leu Phe Gln Asp Lys

10

1

5

10

<210> 13

<211> 20

<212> PRT

15

<213> Homo sapiens

<400> 13

20

Tyr Tyr Pro Tyr Gln Ser Phe Gln Thr Pro Gln His Pro Ser Phe Leu

1

5

10

15

Phe Gln Asp Lys

25

20

<210> 14

<211> 9

30

<212> PRT

<213> Homo sapiens

<400> 14

35

Ser Glu Glu Phe Leu Leu Ala Gly Lys

1

5

<210> 15

40

<211> 6

<212> PRT

<213> Homo sapiens

<400> 15

45

Gln Ala Leu Gly Asp Ala

1

5

50

Claims

55

1. A method for diagnosing a cancer comprising measuring the changes of N-linked β -1,6-N-acetylglucosamine sugar chain branches of PDF (prostate-derived factor), which is related to tumorigenesis and metastasis, by comparing the N-linked β -1,6-N-acetylglucosamine sugar chain branches of PDF in a sample taken from a patient with those in normal cells, wherein an increase of N-linked β -1,6-N-acetylglucosamine sugar chain branches of PDF is diagnostic of cancer.

2. The method as set forth in claim 1, wherein the sample is taken from blood or urine.
3. The method as set forth in claim 1, wherein the cancer is selected from a group consisting of large intestine cancer, stomach cancer, lung cancer, liver cancer, uterine cancer, breast cancer and pancreas cancer.
- 5 4. The method as set forth in claim 1, wherein the changes of N-linked β -1,6-N-acetylglucosamine sugar chain branches are 10-20 fold increase of the N-linked β -1,6-N-acetylglucosamine sugar chain branches, provided the sample is taken from blood.
- 10 5. The method as set forth in claim 1, wherein the measuring method is ELISA or the method using antigen-antibody binding response including immunoblotting.
6. Use of an antibody specific to PDF (prostate-derived factor) and a L4-PHA (lectin phytohaemagglutinin-L4) for diagnosing cancer by detecting an increase of N-linked β -1,6-N-acetylglucosamine sugar chain branches of the PDF using the antibody specific to PDF and the L4-PHA.
- 15 7. The use as set forth in claim 6, wherein the cancer is selected from a group consisting of large intestine cancer, stomach cancer, lung cancer, liver cancer, uterine cancer, breast cancer and pancreas cancer.
- 20 8. The use as set forth in claim 7, wherein the cancer is large intestine cancer.
9. The use as set forth in claim 6, wherein the increase is 10-20 fold, provided the sample is taken from blood.
- 25 10. The use as set forth in claim 6, wherein a matrix selected from a group consisting of nitrocellulose membrane, 96 well plate synthesised with polyvinyl resin, 96 well plate synthesised with polystyrene resin and slide glass is also used.

Patentansprüche

- 30 1. Verfahren zum Diagnostizieren von Krebs, das umfasst: Messen der Veränderungen der N-gebundenen β -1,6-N-Acetylglucosamin-Zuckerkettenverzweigungen vom PDF (prostate-derived faktor), das mit der Tumorgenese und Metastasen zusammenhängt, wobei die N-gebundenen β -1,6-N-Acetylglucosamin-Zuckerkettenverzweigungen von PDF in einer von einem Patienten genommenen Probe mit denen in normalen Zellen verglichen wird, wobei ein Anstieg von N-gebundenen β -1,6-N-Acetylglucosamin-Zuckerkettenverzweigungen von PDF zur Diagnose von Krebs dient.
- 35 2. Verfahren nach Anspruch 1, wobei die Probe von Blut oder Urin genommen wird.
3. Verfahren nach Anspruch 1, wobei der Krebs aus einer Gruppe ausgewählt ist, die aus Dickdarmkrebs, Magenkrebs, Lungenkrebs, Leberkrebs, Gebärmutterkrebs, Brustkrebs und Bauchspeicheldrüsenkrebs besteht.
- 40 4. Verfahren nach Anspruch 1, wobei die Veränderungen der N-gebundenen β -1,6-N-Acetylglucosamin-Zuckerkettenverzweigungen ein 10-20-facher Anstieg der N-gebundenen β -1,6-N-Acetylglucosamin-Zuckerkettenverzweigungen sind, vorausgesetzt, die Probe wurde von Blut genommen.
- 45 5. Verfahren nach Anspruch 1, wobei das Messverfahren ELISA ist oder das Verfahren, das eine Antigen-Antikörper-Bindungsantwort umfassend Immunblotting verwendet.
6. Verwendung eines für PDF (prostate-derived faktor) spezifischen Antikörpers und L4-PHA (Lectin-Phytohaemagglutinin-L4) zur Diagnose von Krebs, wobei ein Anstieg von N-gebundenen β -1,6-N-Acetylglucosamin-Zuckerkettenverzweigungen von PDF unter Verwendung des für PDF spezifischen Antikörpers und L4-PHA bestimmt wird.
- 50 7. Verwendung nach Anspruch 6, wobei der Krebs aus der Gruppe ausgewählt ist, die aus Dickdarmkrebs, Magenkrebs, Lungenkrebs, Leberkrebs, Gebärmutterkrebs, Brustkrebs und Bauchspeicheldrüsenkrebs besteht.
- 55 8. Verwendung nach Anspruch 7, wobei der Krebs Dickdarmkrebs ist.
9. Verwendung nach Anspruch 6, wobei der Anstieg das 10-20-Fache beträgt, vorausgesetzt, die Probe wird von Blut

genommen.

- 5 10. Verwendung nach Anspruch 6, wobei ferner eine Matrix verwendet wird, die aus der Gruppe ausgewählt ist, die aus Nitrocellulosemembran, eine 96-Wellplatte, die mit Polyvinylharz synthetisiert ist, einer 96-Wellplatte, die mit Polystyrolharz synthetisiert ist und Objektglas besteht.

Revendications

- 10 1. Procédé pour diagnostiquer un cancer comprenant la mesure des changements de ramifications de chaînes de sucre de β -1,6-N-acétylglucosamine N-liée de PDF (facteur dérivé de la prostate), qui est en rapport avec la tumorigenèse et la métastase, en comparant les ramifications de chaînes de sucre de β -1,6-N-acétylglucosamine N-liée de PDF dans un échantillon prélevé sur un patient avec celles des cellules normales, une augmentation des ramifications de chaînes de sucre de β -1,6-N-acétylglucosamine N-liée de PDF constituant un diagnostic du cancer.
- 15 2. Procédé décrit dans la revendication 1, dans lequel l'échantillon est prélevé dans le sang ou l'urine.
- 20 3. Procédé décrit dans la revendication 1, dans lequel le cancer est choisi dans un groupe constitué de cancer du gros intestin, cancer de l'estomac, cancer du poumon, cancer du foie, cancer de l'utérus, cancer du sein et cancer du pancréas.
- 25 4. Procédé décrit dans la revendication 1, dans lequel les changements de ramifications de chaînes de sucre de β -1,6-N-acétylglucosamine N-liée sont une augmentation de 10-20 fois des ramifications de chaînes de sucre de β -1,6-N-acétylglucosamine N-liée, à condition que l'échantillon soit prélevé dans le sang.
- 30 5. Procédé décrit dans la revendication 1, dans lequel le procédé de mesure est un test ELISA ou le procédé employant une réponse de liaison antigène-anticorps comprenant un immunotransfert.
- 35 6. Utilisation d'un anticorps spécifique du PDF (facteur dérivé de la prostate) et une L4-PHA (lectine phytohéماغglutinine-L4) pour diagnostiquer un cancer en détectant une augmentation des ramifications de chaînes de sucre de β -1,6-N-acétylglucosamine N-liée du PDF en employant l'anticorps spécifique du PDF et la L4-PHA.
- 40 7. Utilisation décrite dans la revendication 6, dans laquelle le cancer est choisi dans un groupe constitué de cancer du gros intestin, cancer de l'estomac, cancer du poumon, cancer du foie, cancer de l'utérus, cancer du sein et cancer du pancréas.
- 45 8. Utilisation décrite dans la revendication 7, dans laquelle le cancer est un cancer du gros intestin.
- 50 9. Utilisation décrite dans la revendication 6, dans laquelle l'augmentation est de 10-20 fois, à condition que l'échantillon soit prélevé dans le sang.
- 55 10. Utilisation décrite dans la revendication 6, dans laquelle une matrice, choisie dans un groupe constitué de membrane de nitrocellulose, plaque à 96 puits synthétisée en résine polyvinylique, plaque à 96 puits synthétisée en résine de polystyrène et lame de verre, est également utilisée.

FIG. 1

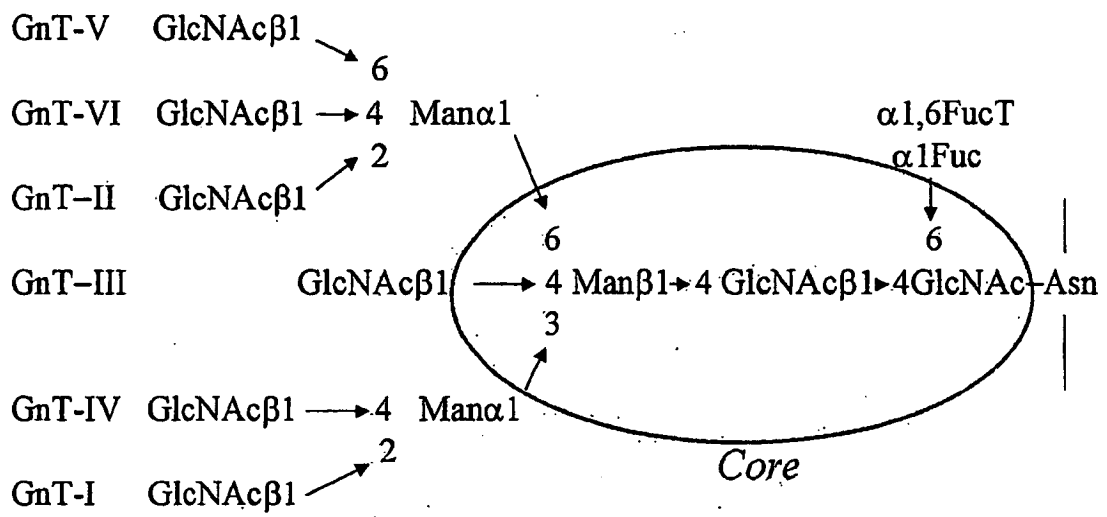


FIG. 2

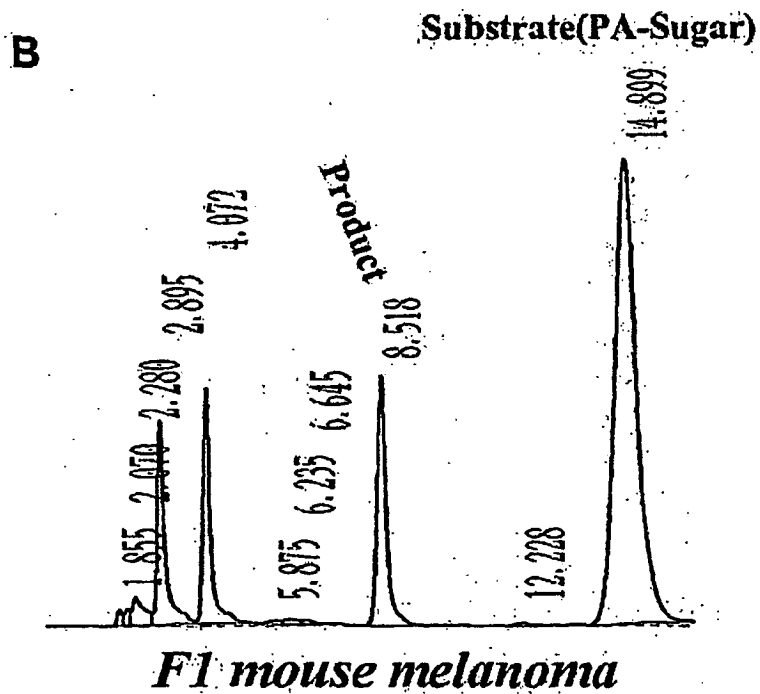
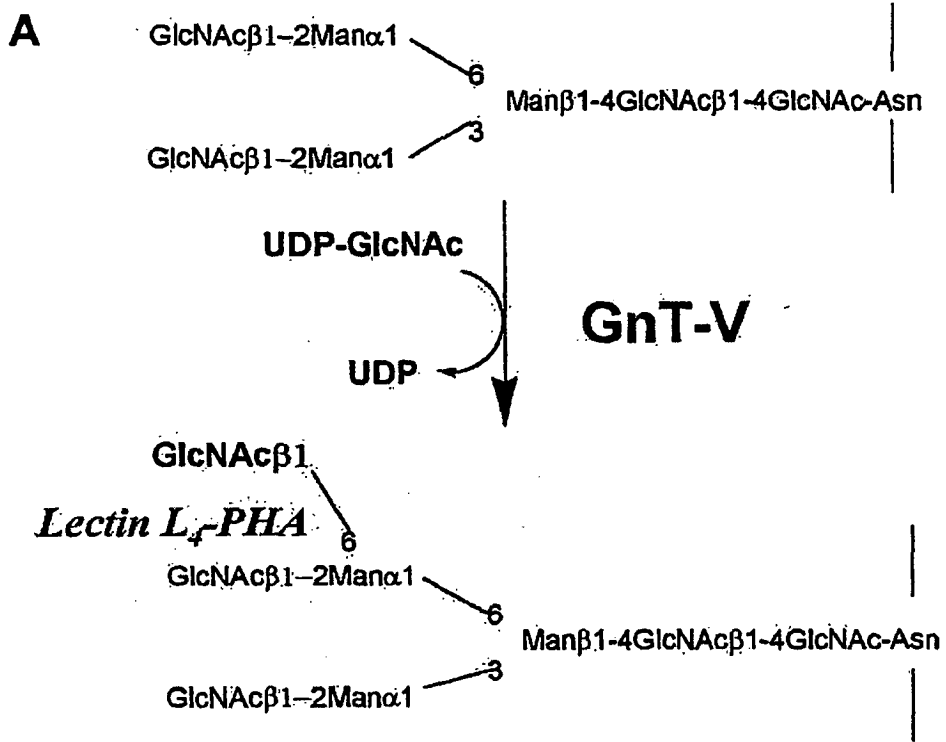


FIG. 3

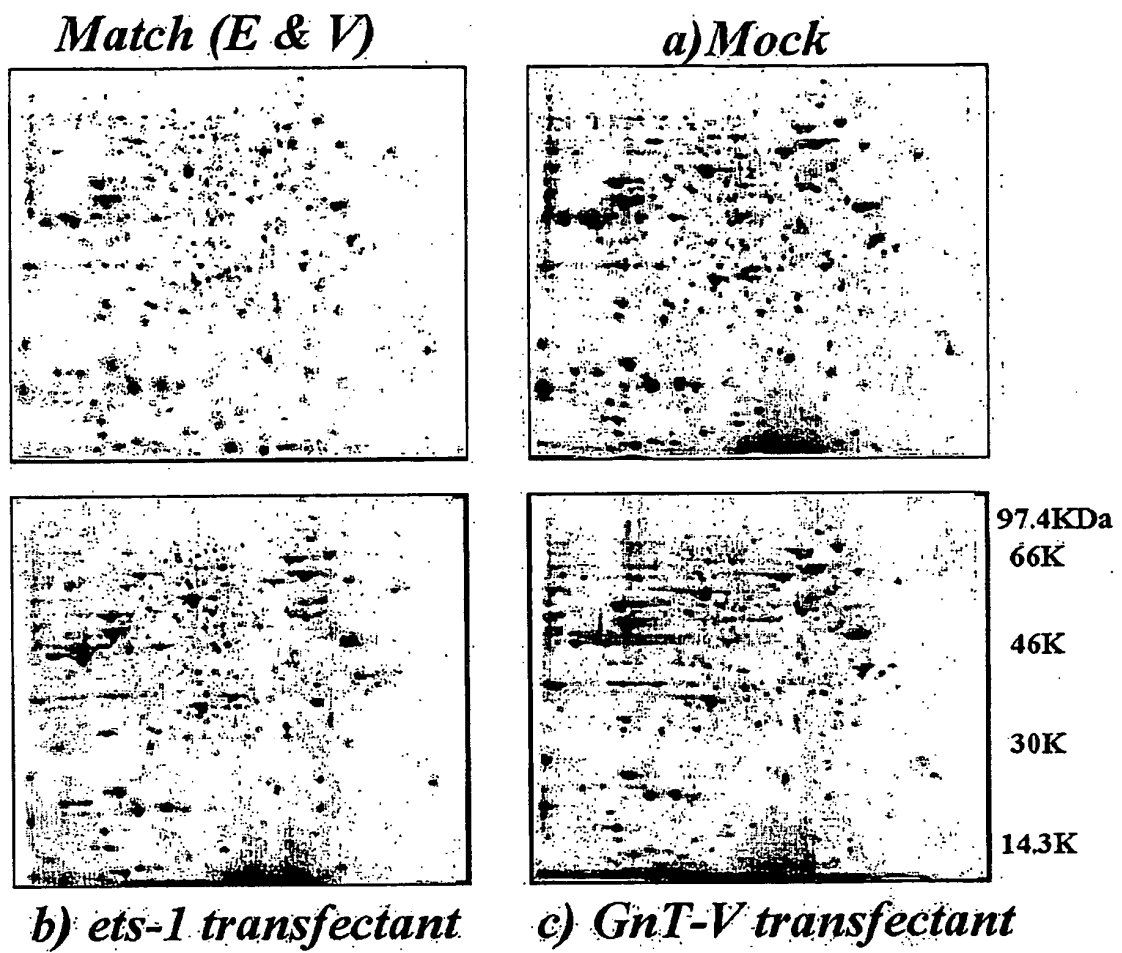


FIG. 4

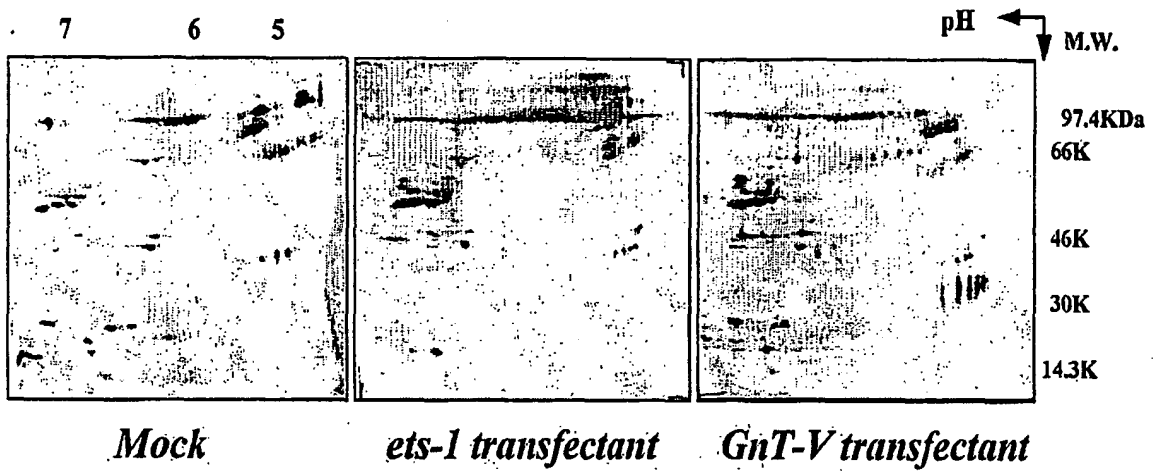


FIG. 5

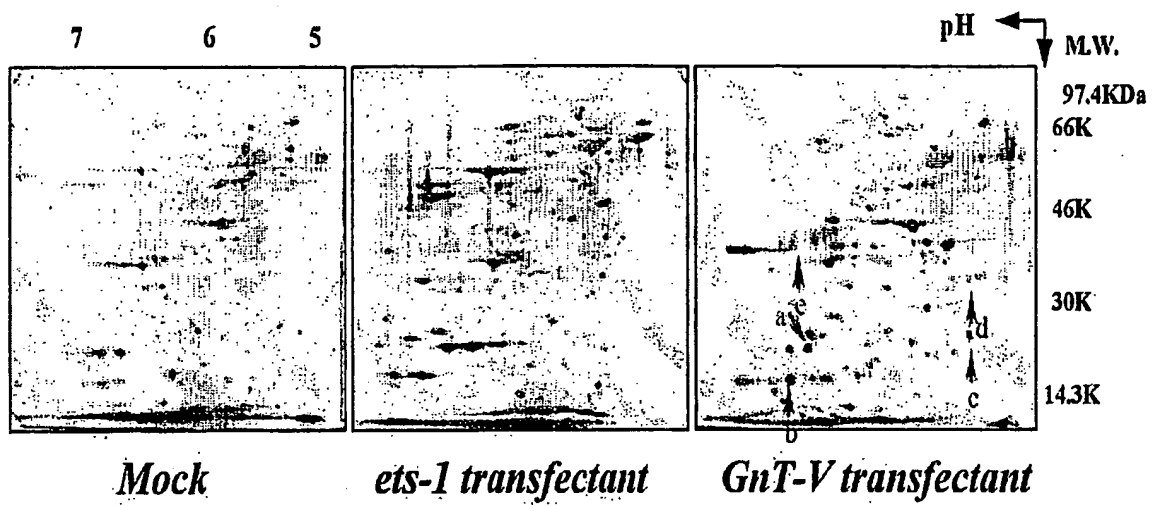


FIG. 6

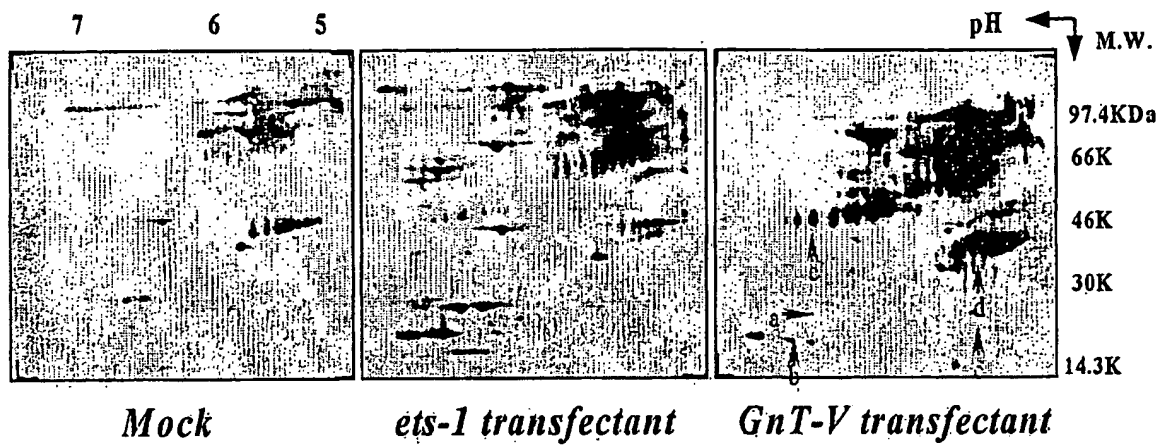
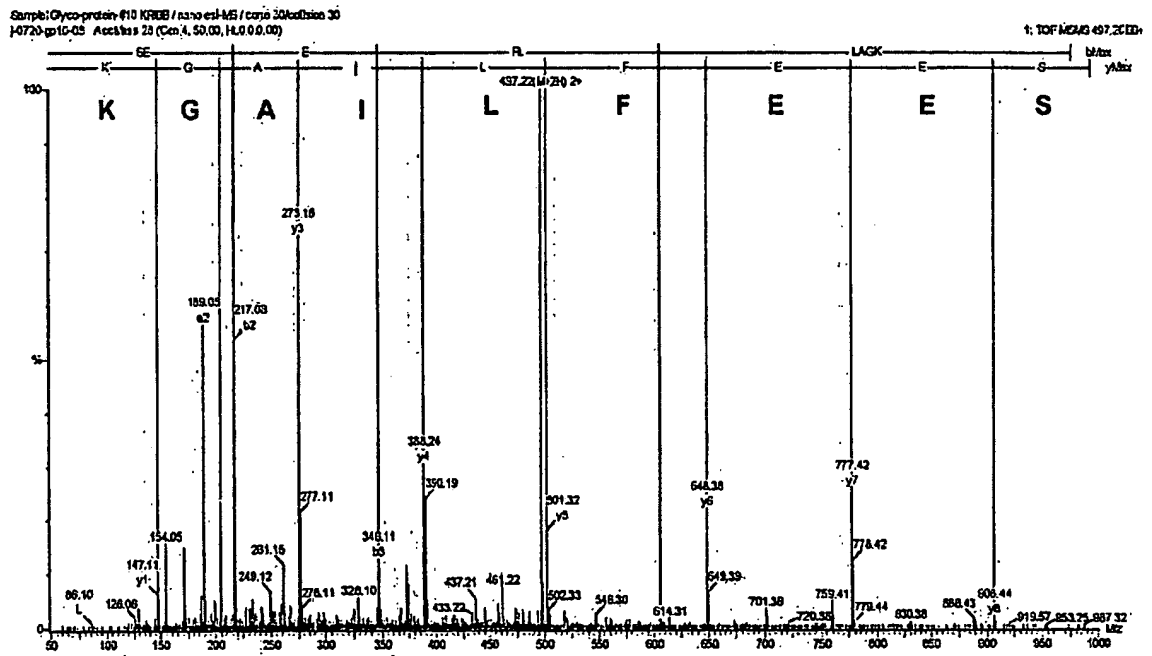


FIG. 7

MS/MS Spectrum of Spot 'e'
SEEFLIAGK (M+H=993.5)



REFERENCES CITED IN THE DESCRIPTION

This list of references cited by the applicant is for the reader's convenience only. It does not form part of the European patent document. Even though great care has been taken in compiling the references, errors or omissions cannot be excluded and the EPO disclaims all liability in this regard.

Patent documents cited in the description

- WO 0181928 A [0006]
- KR 200188090 [0059]

Non-patent literature cited in the description

- **HAKOMORI ; KANNAGI.** *J. Natl. Cancer Inst.*, 1983, vol. 71, 231-251 [0003]
- **FEIZI.** *Nature*, 1985, vol. 314, 53-571 [0003]
- **DENNIS et al.** *Science*, 1987, vol. 236, 582-5853 [0003] [0004]
- **GRANOVSKY et al.** *Nature Med.*, 2000, vol. 6, 306-312 [0004]
- **YAO et al.** *J Cancer Res. Clin. Oncol.*, 1998, vol. 124, 27-307 [0004]
- **GU et al.** *J Biochem*, 1993, vol. 113, 614-619 [0004]
- **SOREIBAH et al.** *J Biol. Chem.*, 1993, vol. 268, 15381-15385 [0004]
- **KANG et al.** *J. Biol. Chem.*, 1996, vol. 271, 26706-26712 [0004]
- **KO et al.** *J. Biol. Chem.*, 1999, vol. 274 (33), 22941-22948 [0004] [0042]
- **VARKI et al.** *Essentials of glycobiology.* Cold Spring Harbor Laboratory, 1999, 85-100 [0015] [0049]
- **PARALKAR, V.M. et al.** *J Biol. Chem*, 1998, vol. 273, 13760-13767 [0016]
- **BAUSKIN A.R. et al.** *The EMBO Journal*, 2000, vol. 19, 2212-2220 [0016]
- **ULLICH,A. et al.** *J Biol. Chem.*, 1994, vol. 269, 18401-18407 [0019]
- **GOMLS-REUTH, F. et al.** *Nature*, 1997, vol. 389, 77-81 [0020]

