

(19) World Intellectual Property Organization
International Bureau



(43) International Publication Date
29 November 2007 (29.11.2007)

PCT

(10) International Publication Number
WO 2007/137072 A2

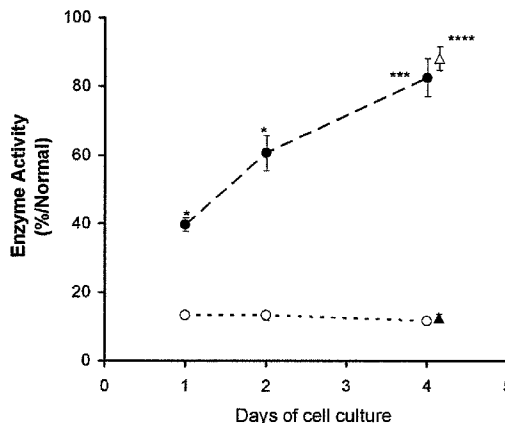
- (51) International Patent Classification:
G01N 33/53 (2006.01)
- (21) International Application Number:
PCT/US2007/069046
- (22) International Filing Date: 16 May 2007 (16.05.2007)
- (25) Filing Language: English
- (26) Publication Language: English
- (30) Priority Data:
60/801,089 16 May 2006 (16.05.2006) US
60/853,631 23 October 2006 (23.10.2006) US
- (71) Applicants (for all designated States except US): **AM-ICUS THERAPEUTICS, INC.** [US/US]; 6 Cedar Brook Drive, Cranbury, NJ 08512 (US). **NATIONAL INSTITUTES OF HEALTH** [US/US]; 10 Center Drive, Bethesda, MD 20892-1260 (US).
- (72) Inventors; and
- (75) Inventors/Applicants (for US only): **KANESKI, Christine** [US/US]; 15517 Quince Ridge Lane, North Potomac, MD 20878 (US). **SHIN, Sang-hoon** [US/US]; 5225 Pooks Hill Road, #1803S, Bethesda, MD 20814 (US). **MURRAY, Gary** [US/US]; 10 Center Drive, Bethesda, MD 20892-1260 (US). **LUDWIG, Karin** [US/US]; 6 Cedar Brook Drive, Cranbury, NJ 08512 (US). **LOCKHART, David**

- [US/US]; 6 Cedar Brook Drive, Cranbury, NJ 08512 (US). **CASTELLI, Jeff** [US/US]; 6 Cedar Brook Drive, Cranbury, NJ 08512 (US).
- (74) Agents: **FEHLNER, Paul, F.** et al.; Baker Botts L.L.P., 30 Rockefeller Plaza, New York, NY 10112-4498 (US).
- (81) Designated States (unless otherwise indicated, for every kind of national protection available): AE, AG, AL, AM, AT, AU, AZ, BA, BB, BG, BH, BR, BW, BY, BZ, CA, CH, CN, CO, CR, CU, CZ, DE, DK, DM, DZ, EC, EE, EG, ES, FI, GB, GD, GE, GH, GM, GT, HN, HR, HU, ID, IL, IN, IS, JP, KE, KG, KM, KN, KP, KR, KZ, LA, LC, LK, LR, LS, LT, LU, LY, MA, MD, ME, MG, MK, MN, MW, MX, MY, MZ, NA, NG, NI, NO, NZ, OM, PG, PH, PL, PT, RO, RS, RU, SC, SD, SE, SG, SK, SL, SM, SV, SY, TJ, TM, TN, TR, TT, TZ, UA, UG, US, UZ, VC, VN, ZA, ZM, ZW.
- (84) Designated States (unless otherwise indicated, for every kind of regional protection available): ARIPO (BW, GH, GM, KE, LS, MW, MZ, NA, SD, SL, SZ, TZ, UG, ZM, ZW), Eurasian (AM, AZ, BY, KG, KZ, MD, RU, TJ, TM), European (AT, BE, BG, CH, CY, CZ, DE, DK, EE, ES, FI, FR, GB, GR, HU, IE, IS, IT, LT, LU, LV, MC, MT, NL, PL, PT, RO, SE, SI, SK, TR), OAPI (BF, BJ, CF, CG, CI, CM, GA, GN, GQ, GW, ML, MR, NE, SN, TD, TG).

Published:
— without international search report and to be republished upon receipt of that report

[Continued on next page]

(54) Title: ASSAYS FOR DIAGNOSING AND EVALUATING TREATMENT OPTIONS FOR FABRY DISEASE



(57) Abstract: Provided are *in vitro* and *in vivo* methods for determining whether a patient with Fabry disease will respond to treatment with a specific pharmacological chaperone.

WO 2007/137072 A2



For two-letter codes and other abbreviations, refer to the "Guidance Notes on Codes and Abbreviations" appearing at the beginning of each regular issue of the PCT Gazette.

**ASSAYS FOR DIAGNOSING AND EVALUATING
TREATMENT OPTIONS FOR FABRY DISEASE**

CROSS REFERENCE TO RELATED APPLICATIONS

5 This application claims priority from U.S. provisional patent application serial number 60/801,089, filed on May 16, 2006, and from U.S. provisional patent application serial number 60/853,631, filed on October 23, 2006.

FIELD OF THE INVENTION

10 The present invention provides methods to determine whether a patient with Fabry disease will benefit from treatment with a specific pharmacological chaperone. The present invention exemplifies two methods, one *in vitro* and one *in vivo*, for determining α -galactosidase A responsiveness to a pharmacological chaperone such as 1-deoxygalactonojirimycin in patient cells. The invention also
15 provides a method for diagnosing Fabry disease in patients suspected of having Fabry disease.

BACKGROUND

 Fabry disease is a glycosphingolipid (GSL) lysosomal storage disorder
20 resulting from an X-linked inherited deficiency of lysosomal α -galactosidase A (α -GAL), an enzyme responsible for the hydrolysis of terminal α -galactosyl residues from glycosphingolipids (Brady et al. *N Engl J Med.* 1967; 276: 1163-7). A deficiency in the enzyme activity results in a progressive deposition of neutral glycosphingolipids, predominantly globotriaosylceramide (ceramide trihexoside,
25 CTH, GL-3), in cell of Fabry patients. Symptoms can be severe and debilitating, including kidney failure and increased risk of heart attack and stroke. Certain of the mutations cause changes in the amino acid sequence of α -GAL that may result in the production of α -GAL with reduced stability that does not fold into its correct three-dimensional shape. Although α -GAL produced in patient cells often retains the
30 potential for some level of biological activity, the cell's quality control mechanisms recognize and retain misfolded α -GAL in the endoplasmic reticulum, or ER, until it is ultimately moved to another part of the cell for degradation and elimination. Consequently, little or no α -GAL moves to the lysosome, where it normally hydrolyzes GL-3. This leads to accumulation of GL-3 in cells, which is believed to be

the cause of the symptoms of Fabry disease. In addition, accumulation of the misfolded α -GAL enzyme in the ER may lead to stress on cells and inflammatory-like responses, which may contribute to cellular dysfunction and disease.

Fabry disease is classified by clinical manifestations into three groups:
5 a classic form with generalized vasculopathy, an atypical variant form with clinical manifestations limited to cardiac tissue, and later-onset disease, which includes female carriers with mild to severe forms of the disease.

The frequency of the classical form of disease is estimated to be about 1:40,000 to 1:60,000 in males, and is reported throughout the world within different
10 ethnic groups. Classically affected males have little or no detectable α -GAL levels and are the most severely affected. The clinical manifestations include angiokeratoma (small, raised reddish-purple blemishes on the skin), acroparesthesias (burning in hands and feet), hypohidrosis (decreased ability to sweat), and characteristic corneal and lenticular opacities (*The Metabolic and Molecular Bases of Inherited Disease*, 8th
15 Edition 2001, Scriver et al., ed., pp. 3733-3774, McGraw-Hill, New York). Lipid storage may lead to impaired arterial circulation and increased risk of heart attack or stroke. The heart may also become enlarged and the kidneys may become progressively involved. Other symptoms include fever and gastrointestinal difficulties, particularly after eating. The affected male's life expectancy is reduced,
20 and death usually occurs in the fourth or fifth decade as a result of vascular disease of the heart, brain, and/or kidneys.

Individuals with later-onset Fabry disease can be male or female. Late-onset Fabry disease presents as the atypical variant form, and growing evidence indicates there may be a significant number of "atypical variants" which are
25 unaccounted for in the world. Females, who inherit an X chromosome containing an α -GAL mutation, may exhibit symptoms later in life, significantly increasing the prevalence of this disease. These patients typically first experience disease symptoms in adulthood, and often have disease symptoms focused on a single organ. For example, many males and females with later-onset Fabry disease have enlargement of
30 the left ventricle of the heart. Later-onset Fabry disease may also present in the form of strokes of unknown cause. As the patients advance in age, the cardiac complications of the disease progress, and can lead to death.

In contrast, patients with the milder "cardiac variant" of Fabry disease normally have 5-15% of normal α -GAL activity, and present with left

ventricular hypertrophy or a cardiomyopathy. These cardiac variant patients remain essentially asymptomatic when their classically affected counterparts are severely compromised. Cardiac variants were found in 11% of adult male patients with unexplained left ventricular hypertrophic cardiomyopathy, suggesting that Fabry disease may be more frequent than previously estimated (Nakao et al., *N. Engl. J. Med.* 1995; 333: 288-293).

The α -GAL gene has been mapped to Xq22 (Bishop et al., *Am. J. Hum. Genet.* 1985; 37: A144), and the full-length cDNA and entire 12-kb genomic sequences encoding α -GAL have been reported (Calhoun et al., *Proc. Natl. Acad. Sci. USA.* 1985; 82: 7364-7368; Bishop et al., *Proc. Natl. Acad. Sci. USA.* 1986; 83: 4859-4863; Tsuji et al., *Eur. J. Biochem.* 1987; 165: 275-280; and Kornreich et al., *Nucleic Acids Res.* 1989; 17: 3301-3302). There is a marked genetic heterogeneity of mutations that cause Fabry disease (*The Metabolic and Molecular Bases of Inherited Disease*, 8th Edition 2001, Scriver et al., ed., pp. 3733-3774, McGraw-Hill, New York; Eng et al., *Am. J. Hum. Genet.* 1993; 53: 1186-1197; Eng et al., *Mol. Med.* 1997; 3: 174-182; and Davies et al., *Eur. J. Hum. Genet.* 1996; 4: 219-224). To date, a variety of missense, nonsense, and splicing mutations, in addition to small deletions and insertions, and larger gene rearrangements, have been reported, although the majority of mutations are missense mutations.

Fabry disease is heterogeneous and it is often difficult to correlate genotype with phenotype. People with the same genotype often exhibit different clinical symptoms and disease pathology. However, there appears to be a correlation between residual enzyme activity and disease severity, with the lower the α -GAL activity resulting in the greatest severity of disease. Although the vast majority of α -GAL mutations are missense mutations, with most being outside the catalytic site, it difficult to predict which mutations result in an unstable enzyme that could be "rescued" by a specific pharmacological chaperone (SPC) which stabilizes the enzyme, and which ones cannot be stabilized using a SPC.

30 **Diagnosis of Fabry Disease**

Because Fabry disease is rare, involves multiple organs, has a wide age range of onset, and is heterogeneous, proper diagnosis is a challenge. Awareness is low among health care professionals and misdiagnoses are frequent. Some examples of diagnoses seriously considered in patients who were eventually diagnosed with

Fabry's disease include: mitral valve prolapse, glomerulonephritis, idiopathic proteinuria, systemic lupus erythematosus, Whipple's disease, acute abdomen, ulcerative colitis, acute intermittent porphyrias, and occult malignancies. Thus, even for classically affected males, diagnosis typically takes from about 5-7 years or even longer. This is a concern because the longer a person has Fabry disease, the more damage is likely to occur in the affected organs and tissues and the more serious the person's condition may become. Diagnosis of Fabry disease is most often confirmed on the basis of decreased α -GAL activity in plasma or peripheral leukocytes (WBCs) once a patient is symptomatic, coupled with mutational analysis. In females, diagnosis is even more challenging since the enzymatic identification of carrier females is less reliable due to random X-chromosomal inactivation in some cells of carriers. For example, some obligate carriers (daughters of classically affected males) have α -GAL enzyme activities ranging from normal to very low activities. Since carriers can have normal α -GAL enzyme activity in leukocytes, only the identification of an α -GAL mutation by genetic testing provides precise carrier identification and/or diagnosis.

Treatment of Fabry Disease

The only approved therapy for treating Fabry disease diseases is enzyme replacement therapy, which typically involves intravenous, infusion of a purified form of the corresponding wild-type protein (Fabrazyme®, Genzyme Corp.). One of the main complications with protein replacement therapy is attainment and maintenance of therapeutically effective amounts of protein *in vivo* due to rapid degradation of the infused protein. The current approach to overcome this problem is to perform numerous costly high dose infusions.

Protein replacement therapy has several additional caveats, such as difficulties with large-scale generation, purification, and storage of properly folded protein; obtaining glycosylated native protein; generation of an anti-protein immune response; and inability of protein to cross the blood-brain barrier to mitigate central nervous system pathologies (*i.e.*, low bioavailability). In addition, replacement enzyme cannot penetrate the heart or kidney in sufficient amounts to reduce substrate accumulation in the renal podocytes or cardiac myocytes, which figure prominently in Fabry pathology.

Gene therapy using recombinant vectors containing nucleic acid sequences that encode a functional protein, or using genetically modified human cells that express a functional protein, is also being evaluated to treat protein deficiencies and other disorders that benefit from protein replacement. Although promising, this approach is also limited by technical difficulties such as the inability of vectors to infect or transduce dividing cells, low expression of the target gene, and regulation of expression once the gene is delivered.

A third, relatively recent approach to treating some enzyme deficiencies involves the use of small molecule inhibitors to reduce production of the natural substrate of deficient enzyme proteins, thereby ameliorating the pathology. This "substrate reduction" approach has been specifically described for a class of about 40 related enzyme disorders called lysosomal storage disorders that include glycosphingolipid storage disorders. The small molecule inhibitors proposed for use as therapy are specific for inhibiting the enzymes involved in synthesis of glycolipids, reducing the amount of cellular glycolipid that needs to be broken down by the deficient enzyme. This approach is also limited in that glycolipids are necessary for biological function, especially neurological function, and excessive deprivation may cause adverse effects.

It has previously been shown that the binding of small molecule inhibitors of enzymes associated with LSDs can increase the stability of both mutant enzyme and the corresponding wild-type enzyme (see U.S. Patent Nos. 6,274,597; 6,583,158; 6,589,964; 6,599,919; 6,916,829, and 7,141,582 all incorporated herein by reference). In particular, it was discovered that administration of small molecule derivatives of glucose and galactose, which are specific, selective competitive inhibitors for several target lysosomal enzymes, effectively *increased* the stability of the enzymes in cells *in vitro* and, thus, increased trafficking of the enzymes to the lysosome. Thus, by increasing the amount of enzyme in the lysosome, hydrolysis of the enzyme substrates is expected to increase. The original theory behind this strategy was as follows: since the mutant enzyme protein is unstable in the ER (Ishii et al., *Biochem. Biophys. Res. Comm.* 1996; 220: 812-815), the enzyme protein is retarded in the normal transport pathway (ER → Golgi apparatus → endosomes → lysosome) and prematurely degraded. Therefore, a compound which binds to and increases the stability of a mutant enzyme, may serve as a "chaperone" for the enzyme and increase the amount that can exit the ER and move to the lysosomes. In addition, because the

folding and trafficking of some wild-type proteins is incomplete, with up to 70% of some wild-type proteins being degraded in some instances prior to reaching their final cellular location, the chaperones can be used to stabilize wild-type enzymes and increase the amount of enzyme which can exit the ER and be trafficked to lysosomes.

5 This strategy has been shown to increase several lysosomal enzymes *in vitro* and *in vivo*, including β -glucocerebrosidase and α -glucosidase, deficiencies of which are associated with Gaucher and Pompe disease, respectively.

10 However, as indicated above, successful candidates for SPC therapy must have a mutation which results in the production of an enzyme that has the potential to be stabilized and folded into a conformation that permits trafficking out of the ER. Mutations which severely truncate the enzyme, such as nonsense mutations, or mutations in the catalytic domain which prevent binding of the chaperone, will not likely be “rescuable” or “enhanceable” using SPC therapy. While missense mutations outside the catalytic site are more likely to be rescuable using SPCs, there is no
15 guarantee, necessitating screening for responsive mutations. This means that, even when Fabry disease is diagnosed by detecting deficient α -GAL activity in WBCs, it is very difficult, if not impossible, to predict whether a particular Fabry patient will respond to treatment with an SPC. Moreover, since WBCs only survive for a short period of time in culture (*in vitro*), screening for SPC enhancement of α -GAL is
20 difficult.

In order to apply SPC therapy effectively, a broadly applicable, fast and efficient method for screening patients for responsiveness to SPC therapy needs to be adopted prior to initiation of treatment. Thus, there remains in the art a need for relatively non-invasive methods to rapidly assess enzyme enhancement with potential
25 therapies prior to making treatment decisions, for both cost and emotional benefits to the patient.

SUMMARY OF THE INVENTION

30 The present invention provides two methods for determining whether a patient will be a candidate for SPC therapy. Specifically, the present invention provides *in vitro* and *in vivo* assays to evaluate α -GAL activity in blood cells derived from patients with Fabry disease in the presence or absence of an SPC. The present invention also includes the basis for evaluation of SPC as a treatment option for any number of other protein abnormalities and/or enzyme deficiencies. The present

invention also provides for diagnostic kits containing the components required to perform the assay. The present invention further provides an improved method of diagnosing Fabry disease by determining α -GAL activity in T cells from patients suspected of having Fabry disease.

5

BRIEF DESCRIPTION OF THE DRAWINGS

Figure 1. Time course for enhancement for A97V. T-cells bearing the A97V mutation in α -Gal A were cultured in the absence (open circles) or presence (filled circles) of 20 μ M DGJ for one to four days then assayed for α -GAL activity. Changing media after 2 days and replacing with fresh media with (open triangle) or without DGJ (filled triangle) had no effect on the observed enzyme activity.

Figure 2A-C. Concentration Dependence of DGJ in T-cells from normal control and Fabry patients. T-cells from normal individuals (2A) were incubated for 3 days with DGJ from 2 nM to 200 μ M then assayed for α -GAL activity. The results of three experiments on different days are shown. T cells from Fabry patients with the A97V (2B), R112H (2C), or R301Q (2C) mutations, respectively, were cultured with DGJ from 2 nM to 200 μ M then assayed for α -GAL activity. Three independent sets of DGJ dosage experiments, each of which were performed with triplicate sets are shown.

Figure 3. T-cells from various Fabry patients were cultured in the absence of or in the presence of 20 μ M DGJ for three days then assayed for α -GAL activity. Percent of the average normal of specific activity of the α -GAL were graphed to show the effect of DGJ rescue on the different genotypes of Fabry patients. The lower panel shows the Western blot results for each mutation, probed with polyclonal rabbit antibody specific for α -GAL. This demonstrates increased protein stability for enhanceable mutations A97V and R301Q and no increase in protein amount for the mutations R356W, G132R and A143P.

Figure 4. Graphical representation of *in vivo* enhancement of α -GAL activity in WBC of Fabry patients following treatment with DGJ.

Figure 5. Graphical representation comparing *in vitro* and *in vivo* enhancement of α -GAL activity for 10 genotypes.

DETAILED DESCRIPTION

The present invention provides two assays to allow the accurate determination of whether an SPC enhances enzyme activity from cells derived from patients with Fabry disease. These assays permit a determination of whether the patient will be a candidate for SPC therapy. The new *in vitro* assay is extremely sensitive and can be performed on isolated T cells which do not need to be extensively cultured and maintained *in vivo*, which speeds up the time required to perform the assay (as compared to when fibroblasts are used). This assay also can be used as a diagnostic assay for patients suspected of having Fabry disease, especially females, since it is more sensitive than the WBC assay typically used for detecting α -GAL activity. The new *in vivo* assay is similarly non-invasive and provides a very reliable method for determining whether a SPC therapy will be effective in a particular patient. In addition, in conjunction with genotyping, both assays provide a method for determining whether newly discovered α -GAL mutations (such as spontaneous mutations) cause the α -GAL to misfold and, thus potentially would be “rescuable” using SPCs.

Definitions

The terms used in this specification generally have their ordinary meanings in the art, within the context of this invention and in the specific context where each term is used. Certain terms are discussed below, or elsewhere in the specification, to provide additional guidance to the practitioner in describing the compositions and methods of the invention and how to make and use them.

The term “Fabry disease” refers to an X-linked inborn error of glycosphingolipid catabolism due to deficient lysosomal α -galactosidase A activity. This defect causes accumulation of globotriaosylceramide (ceramide trihexoside) and related glycosphingolipids in vascular endothelial lysosomes of the heart, kidneys, skin, and other tissues.

The term “atypical Fabry disease” refers to patients with primarily cardiac manifestations of the α -GAL deficiency, namely progressive globotriaosylceramide (GL-3) accumulation in myocardial cells that leads to significant enlargement of the heart, particularly the left ventricle.

A “carrier” is a female who has one X chromosome with a defective α -GAL gene and one X chromosome with the normal gene and in whom X chromosome

inactivation of the normal allele is present in one or more cell types. A carrier is often afflicted with Fabry disease.

A “patient” refers to a subject who has been diagnosed with a particular disease. The patient may be human or animal. A “Fabry disease patient” refers to an individual who has been diagnosed with Fabry disease and has a mutated α -GAL as defined further below. Characteristic markers of Fabry disease can occur in male hemizygotes and female carriers with the same prevalence, although females typically are less severely affected.

Human α -galactosidase A (α -GAL) refers to an enzyme encoded by the human *Gla* gene. The human α -GAL enzyme consists of 429 amino acids and is in GenBank Accession No. U78027.

As used herein in one embodiment, the term “mutant α -GAL” includes an α -GAL which has a mutation in the gene encoding α -GAL which results in the inability of the enzyme to achieve a stable conformation under the conditions normally present in the ER. The failure to achieve a stable conformation results in a substantial amount of the enzyme being degraded, rather than being transported to the lysosome. Such a mutation is sometimes called a “conformational mutant.”

Non-limiting, exemplary α -GAL mutations associated with Fabry disease which result in unstable α -GAL include L32P; N34S; T41I; M51K; E59K; E66Q; I91T; A97V; R100K; R112C; R112H; F113L; T141L; A143T; G144V; S148N; A156V; L166V; D170V; C172Y; G183D; P205T; Y207C; Y207S; N215S; A228P; S235C; D244N; P259R; N263S; N264A; G272S; S276G; Q279E; Q279K; Q279H; M284T; W287C; I289F; M296I; M296V; L300P; R301Q; V316E; N320Y; G325D; G328A; R342Q; E358A; E358K; R363C; R363H; G370S; and P409A.

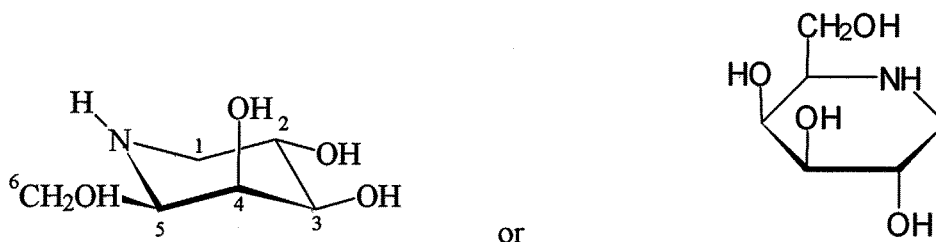
As used herein, the term “specific pharmacological chaperone” (“SPC”) or “pharmacological chaperone” refers to any molecule including a small molecule, protein, peptide, nucleic acid, carbohydrate, etc. that specifically binds to a protein and has one or more of the following effects: (i) enhances the formation of a stable molecular conformation of the protein; (ii) induces trafficking of the protein from the ER to another cellular location, preferably a native cellular location, *i.e.*, prevents ER-associated degradation of the protein; (iii) prevents aggregation of misfolded proteins; and/or (iv) restores or enhances at least partial wild-type function and/or activity to the protein. A compound that specifically binds to *e.g.*, α -GAL, means that it binds to and exerts a chaperone effect on α -GAL and not a generic group

of related or unrelated enzymes. More specifically, this term does not refer to endogenous chaperones, such as BiP, or to non-specific agents which have demonstrated non-specific chaperone activity against various proteins, such as glycerol, DMSO or deuterated water, *i.e.*, chemical chaperones (*see* Welch et al., *Cell Stress and Chaperones* 1996; 1(2):109-115; Welch et al., *Journal of Bioenergetics and Biomembranes* 1997; 29(5):491-502; U.S. Patent No. 5,900,360; U.S. Patent No. 6,270,954; and U.S. Patent No. 6,541,195). In the present invention, the SPC may be a reversible competitive inhibitor.

A "competitive inhibitor" of an enzyme can refer to a compound which structurally resembles the chemical structure and molecular geometry of the enzyme substrate to bind the enzyme in approximately the same location as the substrate. Thus, the inhibitor competes for the same active site as the substrate molecule, thus increasing the K_m . Competitive inhibition is usually reversible if sufficient substrate molecules are available to displace the inhibitor, *i.e.*, competitive inhibitors can bind reversibly. Therefore, the amount of enzyme inhibition depends upon the inhibitor concentration, substrate concentration, and the relative affinities of the inhibitor and substrate for the active site.

Following is a description of some specific pharmacological chaperones contemplated by this invention:

1-deoxygalactonojirimycin refers to a compound having the following structures:



This term includes both the free base and any salt forms. The hydrochloride salt of DGJ is known as migalastat hydrochloride (Migalastat).

Still other SPCs for α -GAL are described in U.S. Patents 6,274,597, 6,774,135, and 6,599,919 to Fan et al., and include α -3,4-di-epi-homonojirimycin, 4-epi-fagomine, and α -allo-homonojirimycin, N-methyl-deoxygalactonojirimycin, β -1-C-butyl-deoxygalactonojirimycin, and α -galacto-homonojirimycin, calystegine A₃,

calystegine B₂, calystegine B₃, N-methyl-calystegine A₃, N-methyl-calystegine B₂ and N-methyl-calystegine B₃.

As used herein, the term “specifically binds” refers to the interaction of a pharmacological chaperone with a protein such as α -GAL, specifically, an interaction with amino acid residues of the protein that directly participate in contacting the pharmacological chaperone. A pharmacological chaperone specifically binds a target protein, *e.g.*, α -GAL, to exert a chaperone effect on α -GAL and not a generic group of related or unrelated proteins. The amino acid residues of a protein that interact with any given pharmacological chaperone may or may not be within the protein’s “active site.” Specific binding can be evaluated through routine binding assays or through structural studies, *e.g.*, co-crystallization, NMR, and the like. The active site for α -GAL is the substrate binding site.

“Deficient α -GAL activity” refers to α -GAL activity in cells from a patient which is below the normal range as compared (using the same methods) to the activity in normal individuals not having or suspected of having Fabry or any other disease (especially a blood disease).

As used herein, the terms “enhance α -GAL activity” or “increase α -GAL activity” refer to increasing the amount of α -GAL that adopts a stable conformation in a cell contacted with a pharmacological chaperone specific for the α -GAL, relative to the amount in a cell (preferably of the same cell-type or the same cell, *e.g.*, at an earlier time) not contacted with the pharmacological chaperone specific for the α -GAL. This term also refers to increasing the trafficking of α -GAL to the lysosome in a cell contacted with a pharmacological chaperone specific for the α -GAL, relative to the trafficking of α -GAL not contacted with the pharmacological chaperone specific for the protein. These terms refer to both wild-type and mutant α -GAL. In one embodiment, the increase in the amount of α -GAL in the cell is measured by measuring the hydrolysis of an artificial substrate in lysates from cells that have been treated with the SPC. An increase in hydrolysis is indicative of increased α -GAL activity.

The term “ α -GAL activity” refers to the normal physiological function of a wild-type α -GAL in a cell. For example, α -GAL activity includes hydrolysis of GL-3.

A “responder” is an individual (diagnosed with or suspected of having Fabry disease) whose cells exhibit sufficiently increased α -GAL activity, and/or

amelioration of symptoms or improvement in surrogate markers, in response to contact with an SPC. Non-limiting examples of improvements in surrogate markers for Fabry disease include increases in α -GAL levels or activity in cells (e.g., fibroblasts) and tissue; reductions in of GL-3 accumulation; decreased plasma concentrations of homocysteine and vascular cell adhesion molecule-1 (VCAM-1);
5 decreased GL-3 accumulation within myocardial cells and valvular fibrocytes; reduction in cardiac hypertrophy (especially of the left ventricle), amelioration of valvular insufficiency, and arrhythmias; amelioration of proteinuria; decreased urinary concentrations of lipids such as CTH, lactosylceramide, ceramide, and
10 increased urinary concentrations of glucosylceramide and sphingomyelin (Fuller et al., *Clinical Chemistry*. 2005; 51: 688-694); the absence of laminated inclusion bodies (Zebra bodies) in glomerular epithelial cells; improvements in renal function; mitigation of hypohidrosis; the absence of angiokeratomas; and improvements hearing abnormalities such as high frequency sensorineural hearing loss progressive
15 hearing loss, sudden deafness, or tinnitus. Improvements in neurological symptoms include prevention of transient ischemic attack (TIA) or stroke; and amelioration of neuropathic pain manifesting itself as acroparaesthesia (burning or tingling in extremities).

The dose that achieves one or more of the aforementioned responses is
20 a "therapeutically effective dose."

The phrase "pharmaceutically acceptable" refers to molecular entities and compositions that are physiologically tolerable and do not typically produce untoward reactions when administered to a human. Preferably, as used herein, the term "pharmaceutically acceptable" means approved by a regulatory agency of the
25 Federal or a state government or listed in the U.S. Pharmacopoeia or other generally recognized pharmacopoeia for use in animals, and more particularly in humans. The term "carrier" refers to a diluent, adjuvant, excipient, or vehicle with which the compound is administered. Such pharmaceutical carriers can be sterile liquids, such as water and oils. Water or aqueous solution saline solutions and aqueous dextrose
30 and glycerol solutions are preferably employed as carriers, particularly for injectable solutions. Suitable pharmaceutical carriers are described in "Remington's Pharmaceutical Sciences" by E.W. Martin, 18th Edition, or other editions.

As used herein, the term "isolated" means that the referenced material is removed from the environment in which it is normally found. Thus, an isolated

biological material can be free of cellular components, *i.e.*, components of the cells in which the material is found or produced. In the case of nucleic acid molecules, an isolated nucleic acid includes a PCR product, an mRNA band on a gel, a cDNA, or a restriction fragment. In another embodiment, an isolated nucleic acid is preferably excised from the chromosome in which it may be found, and more preferably is no longer joined to non-regulatory, non-coding regions, or to other genes, located upstream or downstream of the gene contained by the isolated nucleic acid molecule when found in the chromosome. In yet another embodiment, the isolated nucleic acid lacks one or more introns. Isolated nucleic acids include sequences inserted into plasmids, cosmids, artificial chromosomes, and the like. Thus, in a specific embodiment, a recombinant nucleic acid is an isolated nucleic acid. An isolated protein may be associated with other proteins or nucleic acids, or both, with which it associates in the cell, or with cellular membranes if it is a membrane-associated protein. An isolated organelle, cell, or tissue is removed from the anatomical site in which it is found in an organism. An isolated material may be, but need not be, purified.

The terms “about” and “approximately” shall generally mean an acceptable degree of error for the quantity measured given the nature or precision of the measurements. Typical, exemplary degrees of error are within 20 percent (%), preferably within 10%, and more preferably within 5% of a given value or range of values. Alternatively, and particularly in biological systems, the terms “about” and “approximately” may mean values that are within an order of magnitude, preferably within 10- or 5-fold, and more preferably within 2-fold of a given value. Numerical quantities given herein are approximate unless stated otherwise, meaning that the term “about” or “approximately” can be inferred when not expressly stated.

Method

To easily determine whether SPC therapy will be a viable treatment for Fabry patients, including female carriers, simple, non-invasive DGJ rescue assay of α -GAL activity in WBCs, or subsets of WBCs, from Fabry patients was developed.

I. In vitro assay

In one embodiment, the diagnostic method of the present invention involves purifying T cells and establishing T cell cultures from blood specimens from

Fabry patients (or patients suspected of having Fabry disease). T cell cultures are then treated with or without an SPC, *e.g.*, DGJ, for a sufficient time period to demonstrate enhancement (*i.e.*, increase) of α -GAL activity. The T cells are then lysed, and the lysate is used in an assay to determine enzyme activity. A sufficient
5 increase in α -GAL activity in the lysates from cells treated with the SPC over the activity in the lysates from untreated cells indicates that the patient will likely respond to SPC therapy (*i.e.*, the patient will be a “responder”).

This embodiment can be carried out as follows.

10

White Blood Cell Separation

The WBCs are prepared using standard techniques, *e.g.*, collection, centrifugation, separation, and washing. More specifically, they can be prepared according to the following steps:

1. A blood sample is drawn from a Fabry patient. In specific embodiments,
15 approximately 8 to 10 mL are drawn into an appropriate container such as a CPT tube from Becton-Dickenson (containing an anti-coagulant and a separation medium).
2. The blood sample is centrifuged to separate red blood cells from white
20 blood cells and plasma. Typically, this step can be performed at room temperature (18-25°C) at about 1800 x g with a tabletop centrifuge for about 20-30 minutes, or until the red blood cells are separated from plasma and white blood cells (WBCs). However, other known white blood cell separation techniques may also be used, *e.g.*, Ficoll-Hypaque, Percoll or other similar density gradients. In an alternative embodiment, T cells are
25 enriched from WBCs using antibody-mediated or magnetic separation using negative selection to remove other cell types in order to obtain unbound T cells. Any known technique for enriching for T cells can be used, although the more expedient, least expensive methods are preferred.
3. Half of the plasma layer is discarded (without disturbing the white blood
30 cell layer) and remaining fluid containing white blood cells is transferred to a centrifuge tube.
4. The WBCs are then pelleted and washed for two or more times by re-suspending the pelleted cells in an appropriate isotonic buffer, *e.g.*, PBS, followed by centrifugation for about 15-20 minutes at about 320 x g.

5. The pellet is then re-suspended with a small volume of appropriate isotonic buffer, *e.g.*, PBS. Half of the pellet is transferred to a labeled cryovial for freezing. The other half is used for establishing T cell cultures as described below. The sample that is to be frozen is centrifuged and then resuspended in a small volume of appropriate isotonic buffer, *e.g.*, RPMI 1640 plus DMSO, prior to freezing.

T-cell cultures

In one embodiment, T-cell cultures are established by stimulating the T cells present in the WBC preparation, for example, according to the following procedure.

1. The washed cells from above are re-suspended in an appropriate cell culture medium, such as RPMI supplemented with T cell stimulatory cytokines and/or mitogens. Suggested stimulatory cytokines include IL-2, IL-12, IL-15 phytohemagglutinin (PHA), concanavalin A (con A), and pokeweed mitogen. In a particular embodiment, the WBCs are re-suspended in an appropriate volume of RPMI 1640 medium supplemented with FBS, IL-2 and a stimulatory concentration of PHA. They can then be transferred to an appropriate culture vessel and incubated for sufficient time to expand, *e.g.*, about 2-3 days.
2. After the T cells are expanded, they may be frozen, *e.g.*, at about 3×10^6 cells/vial using RPMI 1640 medium supplemented for cryopreservation, *e.g.*, containing FCS and DMSO. This is sufficient to thaw 5 mL of culture at 5×10^5 viable cells/mL.

It is noted that one of ordinary skill in the art will be able to ascertain appropriate amounts of T cell stimulatory cytokines or mitogens, although typically such agents are added at amounts from between about 1 ng/ml and about 25 ng/ml (or about 100 U/ml) for cytokines. For mitogens, concentrations range from about 10 ng/ml to about 10 μ g/ml for mitogens with most being effective in the low μ g/ml range.

Enzyme Activity/Enhancement Assay

Typically, T cells isolated above (*e.g.*, approximately 2.5×10^6) are grown in culture medium (preceded by thawing if they are frozen), in an appropriate culture vessel in the absence or presence of the SPC, *e.g.*, DGJ, for enough time to evaluate the change in α -GAL activity, *e.g.*, 2 or 3 days. Doses of DGJ expected to enhance α -GAL are in a range from about 2 nM to about 150 μ M, preferably about 1 μ M to 100 μ M, and more preferably about 5 μ M to 50 μ M. In one specific embodiment, DGJ is added at about 20 μ M. Cells can be harvested by centrifugation and washed twice with PBS. Pellets can be stored frozen at -80°C until assayed for enzyme activity.

Cells are then lysed by the addition of lysis buffer (or deionized water) and physical disruption (pipetting, vortexing and/or agitation, and/or sonication) at room temperature or on ice, followed by pooling of the lysates on ice, then splitting the pooled lysate into small aliquots and freezing.

The lysates can be thawed immediately prior to the assay and should be suspended by use of a vortex mixer and sonicated prior to addition to appropriate wells *e.g.*, in a microplate. N-acetylgalactosamine (GalNAc) is then added to each well (to inhibit α -galactosidase B), followed by a short incubation. 4-methylumbelliferyl- α -D-galactopyranoside (4-MU Gal), or other appropriate labeled DGJ substrate, is then added and the plate is gently mixed for a brief period of time, covered, and incubated at 37°C for a sufficient time for substrate hydrolysis, usually about 1 hour. To stop the reaction, NaOH-glycine buffer, pH 10.7, is added to each well and the plate is read on a fluorescent plate reader (*e.g.* Wallac 1420 Victor3™ or similar instrument). Excitation and emission wavelengths were customarily set at 355 nm and 460 nm, respectively. One unit of enzyme activity is defined as the amount of enzyme that catalyzes the hydrolysis of 1 nmole of 4-methylumbelliferone per hour. For each patient sample at least three normal samples should be tested concurrently.

Various modifications of this assay will be readily ascertainable to one of ordinary skill in the art. Examples of artificial substrates that can be used to detect α -GAL activity include but are not limited to p-nitrophenyl- α -D-galactopyranoside and 4-MU GAL. Obviously, only substrates that can be cleaved by human α -GAL are suitable for use. It is noted that while use of a fluorogenic substrate is preferred, other methods of determining α -GAL activity are contemplated for use in the method, including using chromogenic substrates or immunoquantification techniques.

Diagnosis and Prognosis. The T cell assay can be easily modified for use as a diagnostic assay to diagnose Fabry disease by simply eliminating the step of culturing the T cells in the presence of DGJ prior to performing the enhancement assay. The activity of α -GAL in T cells established from an individual suspected of having Fabry disease can instead be quantitated using T cells from a normal individual as a control. Moreover, both α -GAL activity and SPC enhancement assays can be performed almost simultaneously using the same T cells derived from one patient sample. Since T cells may express more α -GAL (α -GAL in normal T cells as compared with WBCs is much higher), it will be easier to confirm with more certainty whether a patient has α -GAL activity below the normal range because the margin of error will be smaller. Accordingly, use of the T cell assay could potentially prevent misdiagnoses.

In addition, the modified assay also can be used to periodically monitor the progress of patients in whom SPC therapy was initiated to confirm that α -GAL activity remains increased relative to prior to treatment initiation.

II. In vivo assay

In a second embodiment, WBCs are evaluated for α -GAL enhancement by an SPC *in vivo*. In this embodiment, α -GAL activity in WBCs derived from patients is assessed prior to SPC administration, in order to obtain a baseline value. Patients are then administered DGJ daily (*e.g.*, 150 mg/day) for a sufficient time period, *e.g.*, about 10 days to about 2 weeks, followed by extraction of blood and determination of changes in α -GAL activity from the baseline value. Culturing the cells either prior to or following administration is not required.

The dose and dosing regimen of DGJ administration during the *in vivo* evaluation period may vary depending on the patient since there is so much heterogeneity among mutations, and depending on the patient's residual α -GAL activity. As non-limiting examples, the following doses and regimens are expected to be sufficient to increase α -GAL in most "rescuable" individuals: 25 mg b.i.d; 50 mg once a day; 50 mg b.i.d.; 50 mg once every other day, 75 mg once a day; 75 mg b.i.d.; 100 mg once a day; 100 mg b.i.d.; 150 mg once a day; 150 mg b.i.d., 150 mg once every other day; 250 mg once a day; 250 mg b.i.d. and 250 mg once every other day. In specific embodiments, the doses are 50 mg once a day; 50 mg once every other day; 150 mg once a day; 150 mg once every other day.

Administration of DGJ according to the present invention may be in a formulation suitable for any route of administration, but is preferably administered per os in an oral dosage form such as a tablet, capsule or solution. As one example, the patient is orally administered capsules each containing 25 mg, 50 mg, 75 mg or 100 mg or combinations thereof. For this assay, in the case of oral administration, it is preferred that the patient be administered the DGJ without food (*e.g.*, no food 2 hours before and for 2 hours after dosing) since bioavailability may be lower if taken with food, thereby risking inaccurate results.

Patients who have been on other therapies, such as ERT, should cease treatment for at least about 28 days prior to the *in vivo* assay to ensure the most accurate results.

White Blood Cell Separation

WBCs are isolated and separated as described above for the T cell *in vitro* assay. However, no RPMI media or DMSO is to be added to the pellets prior to freezing (as per step 5 above).

Enzyme Activity/Enhancement Assay

Pellets are thawed on ice and cells are then lysed by the addition of lysis buffer and physical disruption (such as by use of a vortex mixer and agitation, and/or sonication at room temperature) for a sufficient time, followed by pooling of the lysates in a polypropylene tube on ice, then splitting of the pooled lysate into aliquots for freezing.

The WBC lysates are then thawed on ice and mixed (again, by sonication and/or vortexing). Samples of each lysate, as well as standards and negative controls, are then added to appropriate wells in *e.g.*, a 24 or 96 well microplate. Equal amounts of GalNAc are added to each well in *e.g.*, citrate/phosphate buffer, pH 4.6, followed by addition of a labeled substrate, such as 4-MU Gal (also in citrate/phosphate buffer, pH 4.6) to all wells, and incubation for a short time at ambient temperature. The plate is then mixed briefly and incubated at 37°C for a sufficient time period to permit substrate hydrolysis, *e.g.*, about 1 hour. After the sufficient time period, the reaction is stopped by the addition of stop buffer and the plate is read on a fluorescent plate reader (*e.g.*, Wallac 1420 Victor3™) to determine enzyme activity per well.

Various modifications of this assay will be readily ascertainable to one of ordinary skill in the art. Examples of artificial substrates that can be used to detect α -GAL activity include but are not limited to p-nitrophenyl- α -D-galactopyranoside and 4-MU Gal. Obviously, only substrates that can be cleaved by human α -GAL are suitable for use. It is noted that while use of a fluorogenic substrate is preferred, other methods of determining α -GAL activity are contemplated for use in the method, including using chromogenic substrates or immunoquantification techniques.

Eligibility Determination Criteria

The criteria for determining eligibility for SPC therapy depends on the patient's residual enzyme activity at baseline, *i.e.*, the activity determined in the untreated T cells in the *in vitro* assay, or the activity in the WBCs prior to SPC administration in the *in vivo* assay. The lower the residual activity, the greater enhancement necessary in order for a patient to be considered a likely responder to treatment.

In one embodiment, the criteria for determining eligibility for the *in vitro* assay are as follows:

- If residual α -Gal A activity in lymphocytes is less than 1% of normal, then α -GAL activity after incubation with DGJ must be at least 2% of normal;
- If residual α -GAL activity in lymphocytes is between 1% of normal and <3% of normal, then α -GAL activity after incubation with DGJ must be at least 2x the baseline level;
- If residual α -GAL activity in lymphocytes is between 3% of normal and <10% of normal, then α -GAL activity after incubation with DGJ must be at least 3% of normal higher than the baseline level; and
- If residual α -GAL activity in lymphocytes is 10% of normal or more, then α -GAL activity after incubation with DGJ must be at least 1.3x the baseline level.

In an alternative embodiment, patients with Fabry disease could be categorized as eligible for SPC therapy if their α -GAL activity in T cells in the presence of an SPC such as DGJ is at least about 35-40 nmol/hr/mg protein, which is about 58% of normal. According to the present invention, the average specific was

too variable to report as a global mean. Accordingly patient T-cell samples were compared in activity to at least three normal controls collected within 48 h of the collection date for the patient specimen and grown under identical conditions (see Example 1). As a comparison, α -GAL activity in T cells from Fabry patients with the
5 A97V, R301Q, and R111H at baseline was 8 nmole/hr/mg protein, 4 nmol/hr/mg and 1.8 nmol/hr/mg. T cells express higher levels of α -GAL compared with other WBCs, so it is expected that α -GAL activity in a culture enriched for T cells will be significantly higher than what is considered normal in total WBCs (21 nmol/h/mg of protein to about 50 nmol/h/mg of protein; Desnick et al., *The Metabolic and*
10 *Molecular Bases of Inherited Diseases*. 8th Edition 2001, Scriver et al., ed., pp. 3733-3774, McGraw-Hill, New York). For a comparison, three Fabry patients having the mutations R220X, R356W, and G132R had WBC α -GAL activity of 0.22, 0.18, and 0.26 nmol/hr/mg protein, respectively.

In one embodiment, for the *in vivo* assay, the following criteria are
15 used to determine eligibility criteria:

- If baseline α -GAL is less than 1% of normal, then Day 15 α -GAL activity after treatment with DGJ must be at least 2% of normal;
- If baseline α -GAL is between 1% of normal and <5% of normal, then α -GAL activity must be at least 2 \times the baseline level following the
20 treatment period;
- If baseline α -GAL is between 5% of normal and <10% of normal, then α -GAL activity must be at least 5% of normal higher than the baseline level following the treatment period; and
- If baseline α -GAL is 10% of normal or more, then α -GAL activity
25 must
be at least 1.5 \times the baseline level following the treatment period.

In an alternative embodiment, an increase in activity of at least about 20% in the cells cultured with SPC over the activity in the cells not cultured with
30 SPC, in either the *in vitro* or *in vivo* assay, may be indicative that the patient will have a clinically relevant (therapeutically effective) response to SPC therapy.

This discovery provides a method for improving the diagnosis of and facilitating clinical treatment decisions for Fabry disease in particular, and lysosomal storage disease in general. Moreover, this method can be extended to a wide range of

genetically defined diseases in appropriate cell types. This class of disease includes the other lysosomal storage disorders, Cystic Fibrosis (CFTR) (respiratory or sweat gland epithelial cells), familial hypercholesterolemia (LDL receptor; LPL-adipocytes or vascular endothelial cells), cancer (p53; PTEN-tumor cells), and amyloidoses (transthyretin) among others.

Kits

The present invention also provides for a commercial diagnostic test kit in order to make therapeutic treatment decisions. The kit provides all materials discussed above and more particularly in the Examples below, for preparing and running each assay in one convenient package, with the obvious exception of patient blood, optionally including instructions and an analytic guide.

As one non-limiting example, a kit for evaluating α -GAL activity may contain, at a minimum:

- a. at least one T cell stimulatory agent;
- b. a specific pharmacological chaperone;
- c. a chromogenic or fluorogenic substrate for the enzyme assay (including an appropriate standard); and
- d. GalNAc.

The kit may also contain instructions for optimally performing the protein enhancement assay. In another embodiment, the kit will contain the appropriate tubes, buffers (*e.g.*, lysis buffer), and microplates.

In one embodiment, the SPC is supplied in dry form, and will be re-constituted prior to addition.

In another embodiment, the invention provides a kit for the diagnosis of Fabry disease. In this embodiment, the SPC is not included in the kit and the instructions are tailored specifically to diagnosis.

Patients that test positive for enzyme enhancement with an SPC can then be treated with that agent, whereas patients who do not display enzyme enhancement with a specific agent can avoid treatment which will save money and prevent the emotional toll of not responding to a treatment modality.

EXAMPLES

The present invention is further described by means of the examples, presented below. The use of such examples is illustrative only and in no way limits
5 the scope and meaning of the invention or of any exemplified term. Likewise, the invention is not limited to any particular preferred embodiments described herein. Indeed, many modifications and variations of the invention will be apparent to those skilled in the art upon reading this specification. The invention is therefore to be limited only by the terms of the appended claims along with the full scope of
10 equivalents to which the claims are entitled.

EXAMPLE 1: In Vitro Method for Evaluating Effects of an SPC on α -GAL Activity

The present Example provides the *in vitro* diagnostic assay to
15 determine a Fabry patient's responsiveness to a specific pharmacological chaperone.

A. Preparation of Human WBC Pellets for growth of T lymphocytes

1. Materials:

- CPT tube: Becton-Dickenson (BD Vacutainer® CPT™ Cell Preparation Tube with Sodium Citrate, cat # 362761).
- 20 • Human IL-2 (recombinant), PreProTECH, cat # 200-02
- Phytohemagglutinin (M Form) (PHA), liquid, Invitrogen, cat # 10576-015
- RPMI-1640 medium, Mediatech Inc., cat # 10-040-CV
- Fetal Bovine Serum, Mediatech Inc., cat # 35-010-CV
- 25 • Citric acid, monohydrate, ACS, Mallinckrodt, cat # 0627
- Sodium phosphate dibasic (Na₂HPO₄), ACS, Mallinckrodt cat # 7917
- Sodium hydroxide, volumetric solution 10N, Mallinckrodt cat # H385
- Phosphoric acid, ACS, Mallinckrodt cat # PX0995-3
- 4-MU α -D-galactopyranoside (4-MU-Gal), Sigma cat # M-7633
- 30 • N-Acetyl-D-galactosamine (GalNAc), Sigma cat # A-2795
- 4-methylumbelliferone (4-MU), Sigma cat # M-1381
- Glycine, tissue culture grade, Fisher cat # BP381
- Double deionized water
- Dulbecco's Phosphate Buffered Saline, PBS, (without Ca, without
35 Mg), Mediatech Inc. cat # 21-031-CV
- Micro BCA Protein Assay Kit , Pierce cat # 23235
- 96-well microtiter plates, Costar black polystyrene 96 well round bottom, cat # 3792
- 40 • Costar 24-well tissue culture treated microplates, Corning Life Sciences, cat # 3526

- 15 mL polypropylene Falcon tube, Becton Dickinson, cat # 352097
- Sterile Cryovials
- Humidified 5% CO₂, 37°C incubator
- 37°C water bath
- 5 • Fluorescence plate reader

2. WBC Separation:

- Patient blood was drawn into an 8 mL CPT tube, which has been
10 stored at 18-25°C.
- Immediately after collecting blood, it was mixed by inverting the tube
8-10 times.
- The tube was centrifuged at room temperature (18-25°C) for 30
15 minutes at 1800 x g using a tabletop centrifuge equipped with
swinging buckets. Universal precautions for handling blood specimens
were taken, including the use of a closed canister type bucket for
centrifugation.
- Following centrifugation, several layers of the blood composition
20 become distinguishable which represented separation of the red blood
cells from the plasma and white cells. If this does not occur, warm in
hands for 5 minutes and centrifuge again.

3. Washing of WBC's

- Half of the plasma layer was aspirated by vacuum and discarded
25 without disturbing the white cell layer. All of the remaining fluid,
including the cell layer, was transferred with a Pasteur pipette to a 15
mL conical screw-cap Falcon centrifuge tube.
- PBS was added to bring the volume up to 14 mL and the tube was
mixed by inversion.
- The tube was centrifuged at room temperature for 20-30 minutes at
30 1300 rpm (approximately 320 x g).
- Immediately after centrifugation, as much supernatant as possible was
aspirated by vacuum and discarded without disturbing the cell pellet.

4. Optional Wash

- The cell pellet was re-suspended in the remaining liquid by tapping against the bottom of the tube.
- 10 mL of PBS was added to the re-suspended cells, and centrifuged at room temperature for 20 minutes at 1300 rpm.
- 5 • Immediately after centrifugation, as much supernatant as possible was aspirated by vacuum and discarded without disturbing the cell pellet.

5. Optional: Freezing WBC Pellet

- The cell pellet was mixed in the remaining liquid by tapping a finger against the bottom of the tube.
- 10 • 0.5 to 1 mL of PBS was added to the re-suspended cells and one half of the pellet was transferred (using a sterile tip on a micropipette) to a labeled 1.8 mL cryovial.
- The cryovial was centrifuged at room temperature for 5 minutes at 5000 rpm (approximately 2250g) in a microcentrifuge.
- 15 • All of the supernatant liquid was discarded using a Pasteur pipette without disturbing the cell pellet.
- 0.5 to 1 ml of RPMI 1640 containing 10% FBS and 5 % DMSO was then added to the tube and mixed a pipette and frozen overnight at -80C prior to transferring to a liquid nitrogen cell storage freezer.

20

B. Establishment of T-cell Cultures from Blood Specimens

1. The washed cells were re-suspended in 3.0 ml of RPMI 1640 medium with 10% Cosmic Calf Serum (CCS, Hyclone Laboratories, Logan, UT), about 25 ng/ml IL-2 (PreProTECH, Rocky Hill, NJ) and the
25 manufacturer's recommended concentration of PHA (Life Technology, Gaithersburg, MD). The cells were then transferred to an upright an upright 25 cm³ culture flask and incubated for 3-4 days at 37°C, 5% CO₂.
2. The cell culture was diluted to 5 ml with growth medium (RPMI-1640,
30 10% FBS, 25 ng/ml IL-2). The cell concentration was then adjusted to about 5 x 10⁵ cells/ml in the flask.
3. The growth of the cells was monitored daily. Cells were maintained between 5 x 10⁵ and 1.5 x 10⁶ cells in an upright flask. The depth of the

medium in the flask did not exceed 1 cm (about 7 mLs in a T25 and 20 mLs in a T75). Cultures can be maintained for approximately 21 days with a doubling time of about 24 hrs. Senescence of the culture will be apparent by a dramatic reduction in growth rate. Culture time may possibly be extended by re-stimulation with PHA.

5

4. Optional-Freezing T-lymphocytes: T-lymphocytes may be frozen at 3×10^6 cells/vial using RPMI1640 medium containing 20% FCS and 7.5 % DMSO. On day 5, 6, or 7 cryopreserve as many vials as possible at 3×10^6 cells/vial. This is sufficient to thaw 5 mLs of culture at 5×10^5 viable cells/ml.

10

When establishing T-cell cultures, the following should be noted.

- Fresh blood specimens should be collected in heparinized tubes (or tubes containing an appropriate anti-coagulant) and used the same day. ACD tubes should be used if specimens cannot be processed within 24 hours. (*Clin Chem* 1988 Jan;34(1):110-3; *Clin Diagn Lab Immunol*. 1998 Nov;5(6):804-7).
- Eight-10 mLs of blood is usually sufficient to establish 20 million cells by day 5.
- T lymphocytes are the specific targets of the HIV virus. Use extreme care if the HIV status of the patient is unknown.
- Each new lot of IL-2 should be tested to determine the optimal concentration. The lot from PreProTECH used for these experiments was been found to be optimal at 25 ng/ml with only a slight reduction in cell growth at concentrations up to 50 ng/ml.
- Each lot of mitogen, *e.g.*, phytohemagglutinin A (PHA), is assayed by the supplier (Invitrogen) and should be used at the recommended dilution.
- All cultures are maintained in a water saturated atmosphere at 37 C, 5% CO₂.
- Mononuclear cells and lymphocytes may also be collected using either (lymphocyte separation medium (Ficoll-Hypaque) or Lymphoprep tubes following the manufacturer's standard procedure.

15

20

25

30

When analyzed by fluorescent activated cell sorting, the regimen of IL-2 and PHA stimulation results in 99% CD3-positive cells (which stains all T cell

subsets), with equal numbers of CD4-positive and CD4-negative cells (data not shown).

C. Chaperone Treatment

5 The density of the T cells was adjusted to 1×10^6 per 3 ml of culture medium (RPMI-1640, 10% FBS, 25 ng/ml IL-2). 3 ml ($\sim 1 \times 10^6$ cells) are then pipetted into each of 6 wells of a labeled 6-well culture plate and incubated overnight at 37°C, 5% CO₂. 3 ml of additional medium was then added to 3 wells to give a final volume of 6 ml/well. To the three remaining wells, 3 ml of medium containing DGJ
10 (Cambridge Major Laboratories, Inc., Germantown, WI) at a concentration of about 40 μM (2x; final concentration is 20 μM), for 4-5 days. Cells were harvested by centrifugation (400 x g for about 10 minutes) and washed 1x in 10 ml PBS. The resulting pellets were re-suspended in 1 ml PBS and transferred to a 1.7 ml microfuge tube and centrifuged in a refrigerated microfuge at 3000 rpm for 5 minutes. The
15 supernatant was aspirated and the pellets were stored frozen at -80°C until assayed for enzyme activity.

Note that prior to conducting the enhancement assay, the optimum concentration of DGJ was determined using a range from 2 nM-200 μM. It was determined that 20 μM was optimal.

20

D. Preparation of Fibroblasts

For a comparison, fibroblast cultures were prepared as described previously (*e.g.*, U.S. 6,274,597). Briefly, fibroblast cultures were derived from skin biopsies of patients and grown in DMEM with 10% FBS until established (3-4
25 weeks).

E. Activity Assay

Prior to assay, the T cells were thawed on ice and sonicated for 2 minutes, and all other assay reagents were thawed at room temperature. Fluorometric
30 assay of α-GAL activity was performed essentially as described previously (Kusiak et al., *J Biol Chem.* 1978; 253(1), 184-190). The cells were lysed in 0.2 ml deionized water combined with vigorous pipetting and vortexing. The supernatant obtained after centrifugation at 13000 rpm for 2 min at 4°C was put into a fresh tube and used as the source of α-GAL. α-GAL activity was determined by incubating 50 μl aliquots of the

supernatant (containing comparable quantities of protein as determined using 20 μ l in a standard protein quantitation assay) in a 24-well microplate at 37°C with 3.75 mM 4-methylumbelliferyl- α -D-galactopyranoside (4-MU Gal) (Research Products International, Mount Prospect, IL) in the citric acid/phosphate buffer (27 mM citrate/46 mM phosphate buffer pH 4.6) without taurocholate and with BSA (3 mg/ml). The percentage of α -GAL was determined by comparing total activity with activity observed in the presence of 117 mM N-acetylgalactosamine (GalNAc) Sigma Chemical Co., St. Louis, MO), a specific inhibitor of N-acetylgalactosaminidase. A Wallac 1420 Victor3™ Fluorescence detection reader (Perkin Elmer, CA) was used to measure the released 4-MU at excitation and emission wavelengths of 355 nm and 460 nm, respectively. Appropriate wells for fluorescent standards, and negative (no substrate or no lysate) also were employed. For each patient sample at least three normal samples were tested concurrently.

Incubations were typically 30 minute duration but longer or shorter periods may be employed with similar results.

Enzyme activity (nmol/hr/mg of protein) was calculated according to the following:

$$\frac{\text{Fluorescence of sample}}{\text{Fluorescence of Standard}} * \frac{60 \text{ mins}}{\text{Incubation time (mins)}} * \frac{1000 \mu\text{L}}{\text{Volume assayed } (\mu\text{L})} * \frac{1}{\text{Protein value (mg/mL)}}$$

One unit of enzyme activity is defined as the amount of enzyme that catalyzes the hydrolysis of 1 nmole of 4-methylumbelliferone per hour. The baseline “noise” in the fluorescence output was obtained by evaluating the average of blank six times. If the activity following SPC treatment was at least 2 standard deviations above the baseline, it was considered responsive and not noise.

For the comparative fibroblast enhancement assay, fibroblasts ($\sim 1.5 \times 10^6$) were grown in 12 ml culture medium in a T75 tissue culture flask in the absence or presence of DGJ at 20 μ M for 3 days. At the end of the incubation period, cells were removed from the flask by treatment with trypsin-EDTA solution, collected by centrifugation and washed 3 times with phosphate-buffered saline. Cell pellets were frozen at -80 C until assayed for α -GAL activity. All steps for processing the cell

pellet for assay, including the extraction buffer, the time of sonication and the volumes used are the same as used for the T-cells assayed above.

F. Western Blots

5 The level of α -GAL protein measured by Western blot. Protein was determined using a Micro BCA Protein Assay kit (Pierce, Rockford, IL) with bovine serum albumin (BSA) as a standard. Absorbance at 562nm was measured using the Molecular Devices VersaMax absorbance reader in a 96-well format. For gel electrophoresis prior to western blotting, proteins were separated using Novex Tris-glycine native or SDS-PAGE in 8-16% gradient gels (Invitrogen). Western blots were developed using rabbit polyclonal antibody against α -GAL was performed as described previously (Park et al., *Proc Natl Acad Sci USA*. 2003; 100: 3450-54).

Results

15 This method described above using T cells is fast and effective when compared with fibroblast-based α -GAL assays conducted substantially similarly to the T cell assay (except that about 1.5×10^6 fibroblasts were plated in each well instead of 2.5×10^6 T cells).

 Using this method, T cells from Fabry patients were incubated without and with 20 μ M of DGJ for 1, 2, and 4 days, respectively and the α -GAL activity was measured in cell homogenates and compared to normal control values. When the media was refreshed after 2 days and the cells incubated for 2 additional days, α -GAL activity of A97V was 13% of the normal control (**Figure 1**, open circles). However, when 20 μ M DGJ was added to the medium of the T cells, the α -GAL activity increased to about 40% of normal after only 1 day of incubation and continued to 80% of normal after 4 days of incubation (**Figure 1**, filled circles). Addition of fresh DGJ and media after 2 days and incubation for an additional 2 days did not result in any change in the profile from that observed with a single addition of DGJ. The observed increase in activity after 3 days to a level clearly distinguishable from the α -GAL activity without DGJ led to the adoption of a standard time of measurement after 3 days of incubation with 20 μ M of DGJ in subsequent experiments. The use of a three day time course avoids the necessity to provide fresh media and/or splitting the cells after 3 days in culture.

To determine the dosage effect of DGJ in T-cells from normal controls, α -GAL activity was measured in patient cells using a range of DGJ from 2 nM to 200 μ M (**Figure 2A**) and compared to untreated normal control values assayed on the same day. α -GAL activity increased between 2 nM and 20 μ M of DGJ. At 200 μ M, DGJ inhibited normal α -GAL activity to approximately 40% of the average of untreated normal controls. The optimal enhancement of mutated α -GAL activity within this same concentration range of DGJ was determined for the A97V mutation and compared with normal controls (**Figure 2B**). Three separate experiments were carried out for the dosage effects on A97V. DGJ in concentrations from 2 nM to 20 μ M increased the α -GAL activity of A97V in a dose-dependent manner. However, at DGJ concentrations of 200 μ M, there was a decrease in α -GAL activity when compared to its highest level when cells were grown in 20 μ M DGJ. In all three experiments the optimal enhancement of activity of the A97V mutation was observed at 20 μ M DGJ with slightly lower activity at 2 and 200 μ M. When the mutations R112H and R301Q were tested in the same concentration range, a similar pattern emerged with the highest level of enhanced activity observed at 20 μ M DGJ (**Figures 2C**). The results showed various mutations had similar dosage response profiles but different levels of enhancements. Among three α -GAL mutant genotypes tested for the dosage effects, the 20 μ M DGJ resulted in an increase in α -GAL to at least 50% of the normal control.

The rescue effect of mutant α -GAL from patients with Fabry disease with at least 11 distinct genotypes has been observed using a pharmacological chaperone using this T cell-based α -GAL assay. Results, presented in **Table 1**, below, showed that DGJ enhanced the activity of at least five distinct mutant forms of α -GAL in T cells (T) and fibroblasts (F). However, the pharmacological chaperone did not enhance activity of four distinct mutant α -GAL forms. One classical Fabry patient's α -GAL activity was enhanced by DGJ at the intermediate level. The importance of this assay lies in the fact that it can be used to screen for patients who might benefit from pharmacological chaperone administration, thus avoiding the expense and frustration of unnecessary therapy and tissue biopsies.

Table 1

Specimen Number	Patient/ Normal	Sex	Mutation	Number of Replicates (n=)	Activity (%Normal)		Enhanc ement ratio	Group
					(- DGJ)	(+ DGJ)		
1	PT	M	T41I	3	48	147	3	E
2	PT	M	T41I	4	61	175	2.9	E
3	PT	M	M51K	2	6	29	4.6	E
4	PT	M	A97V	3	14	75	5.5	E
5	PT	M	R112C	1	10	36	3.8	E
6	PT	M	R112C	3	8	49	6.3	E
7	PT	M	R112H	2	3	51	15.9	E
8	PT	M	R112H	2	8	73	9.4	E
9	PT	M	R112H	3	3	60	20	E
10	PT	M	A143T	4	31	69	2.2	E
11	PT	M	A143T	5	49	62	1.3	E
12	PT	M	S201F	1	9	82	9.6	E
13	PT	M	P205T	1	37	108	2.9	E
14	PT	M	N215S	2	15	79	5.2	E
15	PT	M	P259R	1	9	297	32.6	E
16	PT	M	P259R	3	3	138	47.4	E
17	PT	M	F295C	3	1	29	32.3	E
18	PT	M	L300P	5	2	72	36.1	E
19	PT	M	R301Q	1	7	91	12.3	E
20	PT	M	R301Q	3	22	204	9.1	E
21	PT	M	R301Q	4	7	80	12.1	E
22	PT	M	G328A	4	2	54	24.6	E
23	PT	M	R49C	9	3	11	4.3	I
24	PT	M	Y207S	3	4	15	3.5	I
25	PT	M	S276G	1	0	9		I
26	PT	M	S276G	3	1	12	9.8	I
27	PT	M	C94S	2	2	2	NE	NE
28	PT	M	G128E	1	2	4	NE	NE
29	PT	M	G128E	5	2	2	NE	NE
30	PT	M	G132R	3	1	2	NE	NE
31	PT	M	A143P	2	2	1	NE	NE
32	PT	M	A143P	2	1	1	NE	NE
33	PT	M	R220X	3	0	1	NE	NE
34	PT	M	R227Q	3	4	3	NE	NE
35	PT	M	W236R	3	1	2	NE	NE
36	PT	M	G261D	1	0	1	NE	NE
37	PT	M	G271C	1	2	3	NE	NE
38	PT	M	G271C	3	1	2	NE	NE
39	PT	M	N272K	1	0	0	NE	NE
40	PT	M	W287C	1	1	1	NE	NE
41	PT	M	W287C	1	1	2	NE	NE
42	PT	M	R356W	1	1	1	NE	NE
43	PT	M	R356W	4	0	0	NE	NE
44	PT	M	dE358	3	2	4	NE	NE
45	PT	M	L415P	1	0	3	NE	NE
46	PT	M	unknown	1	1	2	NE	NE
47	PT	M	unknown	2	0	1	NE	NE
48	PT	M	1042insG	3	1	1	NE	NE
49	PT	M	256del1	1	0	0	NE	NE

50	PT	M	30delG	6	2	2	NE	NE
51	PT	M	82insG	2	1	0	NE	NE
52	PT	M	del26bp21	1	0	1	NE	NE
53	PT	M	del26bp21	1	0	0	NE	NE
54	PT	M	ivs4-1g/a	2	0	0	NE	NE
55	PT	M	Q119X	1	2	1	NE	NE
56	PT	M	R220X	3	0	1	NE	NE
57	PT	M	R301X	4	0	7	NE	NE
All NL	NL	M or F		162	101	128	1.3	
All NL								
Male	NL	M		115	101	124	1.2	
All NL								
Female	NL	F		47	84	117	1.4	
58	NL	F		8	120	161	1.3	
59	NL	F		3	88	100	1.1	
60	NL	F		1	95	120	1.3	
61	NL	F		9	85	104	1.2	
62	NL	F		8	103	150	1.5	
63	NL	F		3	107	165	1.5	
64	NL	F		15	106	145	1.4	
65	NL	M		8	100	97	1	
66	NL	M		4	80	141	1.8	
67	NL	M		1	172	198	1.1	
68	NL	M		1	271	315	1.2	
69	NL	M		1	110	140	1.3	
70	NL	M		1	101	145	1.4	
71	NL	M		19	106	138	1.3	
72	NL	M		11	90	131	1.4	
73	NL	M		4	75	99	1.3	
74	NL	M		10	105	126	1.2	
75	NL	M		3	97	100	1	
76	NL	M		2	93	108	1.2	
77	NL	M		3	85	116	1.4	
78	NL	M		3	89	118	1.3	
79	NL	M		1	127	107	0.8	
80	NL	M		42	100	117	1.2	
81	NL	M		1	102	111	1.1	

Abbreviations used: PT: patient; NL: normal individual; E: enhanceable; I: enhanceable (intermediate); NE: not enhanceable;

5 It was determined the optimal enhancement of mutated α -GAL activity in the *in vitro* assay was achieved using about 20 μ M DGJ. Among three α -GAL mutant genotypes tested for the dosage effects, the 20 μ M DGJ resulted in an increase in α -GAL to at least 50% of the normal control for each (**Figure 3**).

10 In Table 1, the enhanceable group included patients whose α -GAL activity was at least 50 % of normal controls when cultured in the presence of DGJ (*e.g.*, R112H was enhanced to 60 % of normal control activity). Included in the

enhanceable group are the mutations A97V, R301Q, R112H and L300P. For example, the activity of the A97V mutation increased from 14 to 75 % of normal in the presence of DGJ, a 6-fold increase. Similarly R301Q increased from 7 to 80 % of normal with 12-fold, and R112H increased from 3 to 60 %, nearly a 20-fold change.

5 In addition, activity in the L300P mutation was increased from 2 % to 72 % of normal, a 37-fold increase, which was the highest among the enhanceable mutations examined. L300P was unusual in that some of the activity without DGJ was below the minimum threshold for detection. These results demonstrate mutation-dependent enhancement levels and ratios.

10 The Western blots showed that the band intensity was considerably increased by treatment with DGJ in normal control cells and those with the A97V and the R301Q mutation, while no increase was seen for R356W, G132R, and A143P (**Figure 3**). The protein appears to have shifted to a lower apparent molecular weight indicating maturation of the enzyme by passage from the endoplasmic reticulum, through the Golgi apparatus to the lysosome. The Western blots show that

15 enhancement of α -GAL activity by DGJ is correlated with an increased amount of α -GAL protein. An instance where increased protein levels as measured by Western blots did not result in higher enzyme activity has not yet been observed.

20

Discussion

The use of T cells in a test system for enhancement of enzymes by SPCs offers significant advantages in the speed of assay and convenience over other culture systems. A critical step in determining which patients may benefit from SPC therapy was the development of a rapid and reliable method for screening of patient-

25 derived cells for enhancement of α -GAL activity by DGJ. The results demonstrate a method for quickly generating a short-lived cell culture that permits the testing of the enhancement and also provides a useful system for future studies on the mechanism of action or for screening of additional chaperone molecules. Leukocytes traditionally used for the diagnosis of affected and carrier status do not survive long enough to

30 permit repeat assays if necessary.

Although Epstein-Barr virus transformed B lymphoblasts (Fan et al., *Nat Med.* 1999; 5(1), 112-115) and primary fibroblast cultures (Fan, *supra*; Mayes et al., *Clin Chim Acta.* 1981; 112(2), 247-251) have been tested, these are not convenient to use on a large scale for screening of patients for clinical studies.

Primary fibroblast cultures require an invasive skin punch biopsy and generally take at least three to four weeks to grow enough cells for the assay. B cell lymphoblasts require Epstein Barr viral transfection and selection process, which is time and labor consuming, in addition to having unknown effects on enzymatic activity.

5 The present invention provides a method for establishing T cell cultures from fresh blood of normal control individuals and patients with Fabry disease. These cultures can be grown for use in an enhancement assay for α -GAL in 7 to 10 days. These data also show that the effectiveness of DGJ enhancement was evident after about 3 days in the T cell growth media. The data generated are a
10 reproducible measure of the degree of enhanced enzyme activity by a SPC for a specific genotype.

 This method can be used for other SPC-based enhancement assays of other genetic diseases including glycosphingolipidoses, mucopolysaccharidoses, and glycogen storage disease (Pompe) and can be extended as a research and clinical
15 protocol in a wide range of genetically defined diseases, such as Cystic Fibrosis (CFTR) and cancer (p53, PTEN), and others.

EXAMPLE 2: *In Vivo* Method for Evaluating Effects of an SPC on α -GAL Activity

20 This example describes results from an open label Phase II study of DGJ in Fabry patients (n = 11) with 10 different α -GAL mutations and supports the use of the *in vivo* assay. The patients were selected for the Phase II study based on the increase in α -GAL activity in the T-cell assay described above. The genotypes
25 were as follows: T41L (2 patients); A143T; A97V; M51K; S276G; L300P; G328A; P205T; N215S; and L415P.

 Some patients (8) were administered DGJ according to the following dosing schedule: 25 mg b.i.d. two weeks; 100 mg b.i.d. weeks 2-4; 250 mg b.i.d. weeks 4-6; and 25 mg b.i.d. weeks 6-12. Three patients received 150 mg of DGJ
30 every other day throughout the entire study. Blood was draw into an 8 mL Vacutainer CPT tube at the end of each dosing period and treated as described below.

A. Preparation of Human WBC Pellets for Assay

 WBCs were prepared substantially as described in Example 1, with the
35 exception that no FBS/DMSO is added to the pellet prior to freezing.

The preliminary data is summarized in the following table.

B. Preparation of Human WBC Lysates for Assay

- 5 • To the microtubes containing the WBC pellet, 0.6 ml of lysis buffer (26 mM citrate/46 mM phosphate, pH 5.5) were added
- Tubes were vortexed until the cells were re-suspended
- Tubes were incubated at room temperature for about 15 minutes, but agitate the suspension by vortexing every couple of minutes
- 10 • Tubes were sonicated for 2 minutes, then vortexed for about 10 seconds
- Lysates were incubated on ice until chilled, and then pooled into a pre-chilled polypropylene container (on ice)
- Container was vortexed and pooled lysates were divided into 0.100 mL aliquots in pre-chilled labeled 0.5 mL screw-cap polypropylene
- 15 microcentrifuge tubes. Pooled lysates were mixed while aliquoting by vortexing between every 10-20 aliquots.
- Aliquots were stored at -80°C until use.

C. Human WBC Assay

- 20 • Each tube containing lysate was thawed on ice, sonicated for 2 minutes, then vortexed for 1 minute.
- 50 µl of each standard, control, or clinical sample was added into appropriate wells of a black polystyrene microplate (use 50 µl of 0.5% BSA in WBC lysis buffer for a standard)
- 25 • 50 µl of 117 mM GalNAc was added to all wells, and the plate was incubated for 5 minutes at ambient temperature;
- 50 µl of 5 mM 4-MU Gal substrate was added to to all wells and the wells were mixed on a plate shaker for 30 seconds
- The plate was covered and incubated for about 1 hour at 37°C
- 30 • 100 µl of 0.2M NaOH/Glycine buffer, pH 10.7 was added to each well to stop the reaction
- The plate was read using a fluorescent plate reader as described in Example 1

Results

The available data from the first eleven patients treated with DGJ for at least 12 weeks suggest that treatment with DGJ leads to an increase in the activity of the enzyme deficient in Fabry disease in 10 of the 11 patients (**Figure 4**). The patient with the L415P genotype did not show an increase following DGJ (at 6 weeks) (**Figure 5**). For purposes of calculating the percentage of normal in the table, the level of α -GAL that is normal was derived by using the average of the levels of α -GAL in white blood cells of 15 healthy volunteers from the multiple-dose Phase I study. The 11 patients represented 10 different genetic mutations and had baseline levels of α -GAL that ranged from zero to 30% of normal.

The data show an average 2-fold increase in α -GAL activity, and up to 10-fold and 15-fold in some patients as measured in white blood cells. Activity remained elevated from from 6-24 weeks and counting when the dose was reduced back to 25 mg b.i.d (data not shown).

Discussion

Based on these results, it appeared possible to screen candidate patients for eligibility for chaperone using an *in vivo* assay or an *in vitro* assay using T cells as described in Example 1, since 10 out of 11 patients who demonstrated a significant increase in α -GAL activity in the T cell assay demonstrated an increase following a 2 week treatment with DGJ. Performing an *in vivo* screen may allow for a more accurate evaluation of the *in vivo* response to DGJ and other chaperone treatment, since the *in vitro* assay may not be fully predictive of an *in vivo* response due to systemic interactions, and may be especially useful to determine appropriate dosing. This dramatic increase in activity appeared after 2 weeks at a low dose of only 50 mg/day (25 mg b.i.d.) (although different dosing regimens are contemplated by the present invention).

These methods can be used for chaperone based enhancement assays for other genetic diseases including glycosphingolipidoses, mucopolysaccharidoses and other lysosomal storage disorders in addition to other genetically based diseases, such as cystic fibrosis where maturation of the protein occurs in the ER.

* * *

5 The present invention is not to be limited in scope by the specific
embodiments described herein. Indeed, various modifications of the invention in
addition to those described herein will become apparent to those skilled in the art
from the foregoing description and the accompanying figures. Such modifications are
intended to fall within the scope of the appended claims.

10 Patents, patent applications, publications, product descriptions,
GenBank Accession Numbers, and protocols are cited throughout this application, the
disclosures of which are incorporated herein by reference in their entireties for all
purpose.

WHAT IS CLAIMED IS:

1. A method for determining whether a patient having a deficiency in activity of a protein will respond to treatment with a specific pharmacological chaperone for the protein, which method comprises
 - 5 a. contacting cells in or from a patient with a pharmacological chaperone specific for the protein; and
 - b. comparing protein activity in cells not contacted with specific pharmacological chaperone, with protein activity in cells contacted with the specific pharmacological chaperone
- 10 wherein a sufficient increase in protein activity in cells contacted with the specific pharmacological chaperone over activity in cells not contacted with the specific pharmacological chaperone indicates that the individual will respond to treatment with the specific pharmacological chaperone.
- 15 2. The method of claim 1, wherein the deficiency of activity is caused by a missense mutation in a gene encoding the protein.
3. The method of claim 1, wherein the protein is an enzyme.
- 20 4. The method of claim 3, wherein the enzyme is a lysosomal enzyme.
5. The method of claim 4, wherein the patient has been diagnosed with a lysosomal storage disorder.
- 25 6. The method of claim 5, wherein the lysosomal enzyme is α -GAL and the lysosomal storage disorder is Fabry disease.
7. The method of claim 5, wherein the specific pharmacological chaperone is 1-deoxygalactonojirimycin.
- 30 8. The method of claim 7, wherein the cells are white blood cells and the contact with the specific pharmacological chaperone occurs *in vivo*.

9. The method of claim 8, wherein the white blood cells are T lymphocytes and the contact with the specific pharmacological chaperone occurs *in vitro*.
10. The method of claim 9, wherein the T lymphocytes are obtained by
- 5
- a. separating white blood cells from a blood sample obtained from the patient;
 - b. washing white blood cells; and
 - c. establishing a cell culture enriched with T lymphocytes.
- 10
11. The method of claim 10, wherein the T lymphocytes cultured in the absence or in the presence of the specific pharmacological chaperone 1-deoxygalactonojirimycin for about 1-3 days.
- 15
12. The method of claim 11, wherein the culturing in the absence or presence of 1-deoxygalactonojirimycin is for about 3 days.
13. The method of claim 12, wherein α -GAL activity is determined using a fluorometric assay that quantifies hydrolysis of substrate in lysates from the T
- 20 lymphocytes.
14. The method of claim 12 wherein the sufficient increase in activity in the lysates in the presence of the 1-deoxygalactonojirimycin which indicates whether the patient will respond is measured according to the following
- 25 criteria:
- i) If baseline activity is less than 1% of normal, the activity following culture or following treatment with SPC must be at least 2% of normal;
 - ii) If baseline activity is between 1% but less than 3% of

30 normal then the activity following culture or treatment with SPC must be at least 2 times the baseline level; - iii) If baseline activity is between 3% but less than 10% of normal, then the activity following culture or treatment

with SPC must be at least 3% of normal higher the baseline level of normal;

- iv) If baseline activity is 10% of normal or more, then activity following culture or treatment with SPC must be at least 1.3x the baseline level.

5

15. The method of claim 12, wherein the sufficient increase in activity the presence of the 1-deoxygalactonojirimycin which indicates whether the patient will respond is between about 2-fold and 25-fold over the activity in the absence of the 1-deoxygalactonojirimycin.

10

16. The method of claim 15, wherein the sufficient increase in activity the presence of the 1-deoxygalactonojirimycin which indicates whether the patient will respond is at least 20% over the activity in the cells not cultured with 1-deoxygalactonojirimycin.

15

17. The method of claim 8, wherein the patient is administered 1-deoxygalactonojirimycin daily for about 2 weeks.

20

18. The method of claim 17, wherein the administration is oral.

19. The method of claim 17, wherein the 1-deoxygalactonojirimycin is administered at a dose of about 50-500 mg/day.

25

20. The method of claim 19, wherein the dose is about 100-250 mg/day.

21. The method of claim 20, wherein the dose is about 150 mg/day.

30

22. The method of claim 19, wherein the 1-deoxygalactonojirimycin is administered once a day.

23. The method of claim 17, further comprising collecting a blood sample at the end of two weeks and separating the white blood cells.

24. The method of claim 17 wherein α -GAL activity is determined using a fluorometric assay that quantifies hydrolysis of substrate in lysates from the white blood cells.
- 5 25. The method of claim 24 wherein the sufficient increase in activity in the lysates in the presence of the 1-deoxygalactonojirimycin which indicates whether the patient will respond is measured according to the following criteria:
- 10 i) If baseline activity is less than 1% of normal, the activity following culture or following treatment with SPC must be at least 2% of normal;
- ii) If baseline activity is between 1% but less than 5% of normal then the activity following culture or treatment
- 15 with SPC must be at least 2 times the baseline level;
- iii) If baseline activity is between 5% but less than 10% of normal, then the activity following culture or treatment with SPC must be at least 5% of normal higher the baseline level of normal;
- 20 iv) If baseline activity is 10% of normal or more, then activity following culture or treatment with SPC must be at least 1.5x the baseline level.
26. A kit comprising:
- 25 a. at least one T cell stimulatory agent;
- b. a specific pharmacological chaperone;
- c. a labeled substrate for the chaperone;
- d. GalNAc; and
- e. instructions for performing a protein enhancement assay.
- 30 27. The kit of claim 26, wherein the T-cell stimulatory agent is a mitogen.
28. The kit of claim 27, wherein the mitogen is PHA.

29. The kit of claim 26, wherein the stimulatory agent is a cytokine.
30. The kit of claim 29, wherein the cytokine is IL-2.
- 5 31. The kit of claim 26, wherein the pharmacological chaperone is 1-deoxygalactonojirimycin.
32. The kit of claim 26, further comprising one or more a blood collection tubes, centrifuge tubes, and cryotubes.
- 10 33. The kit of claim 26, wherein the protein is an enzyme.
34. The kit of claim 33, wherein the enzyme is α -galactosidase A.

Figure 1

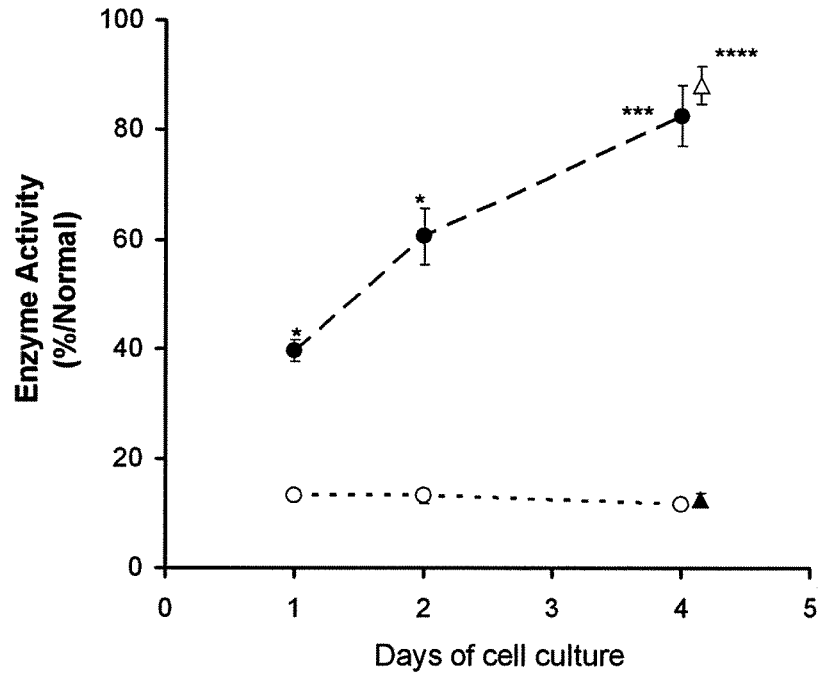
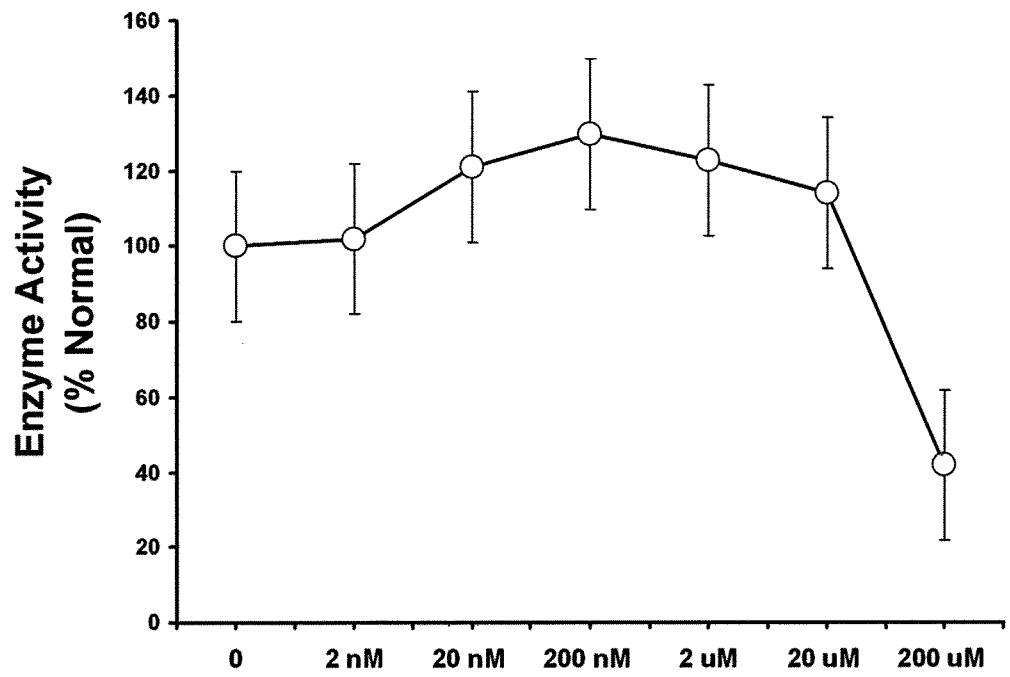


Figure 2A



5

Figure 2B

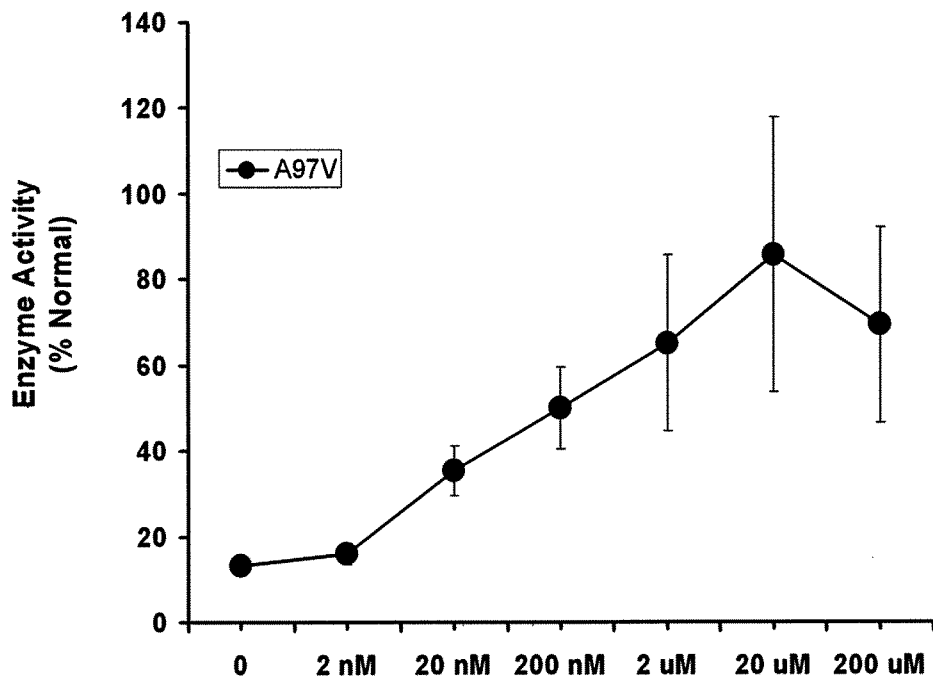
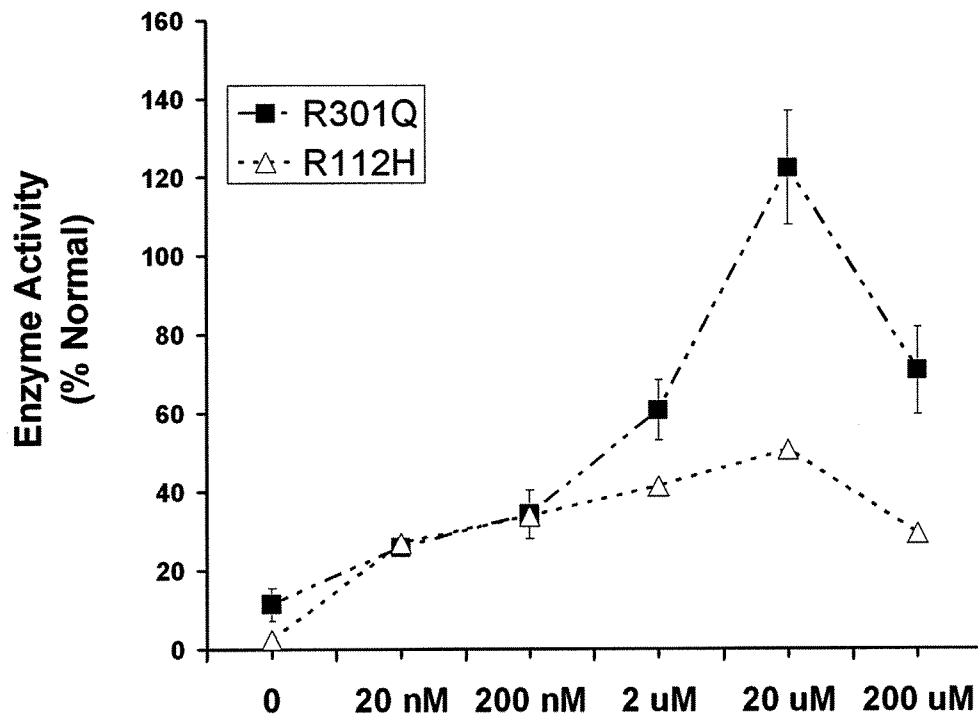
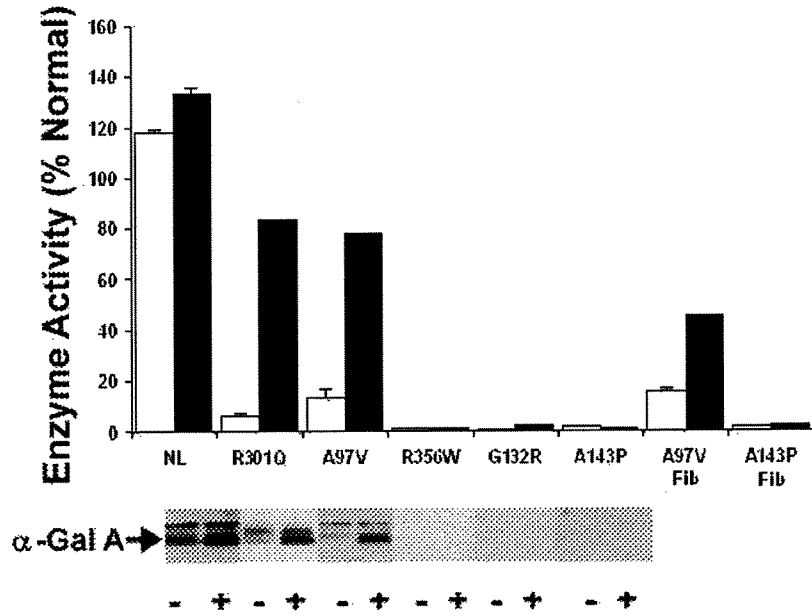


Figure 2C



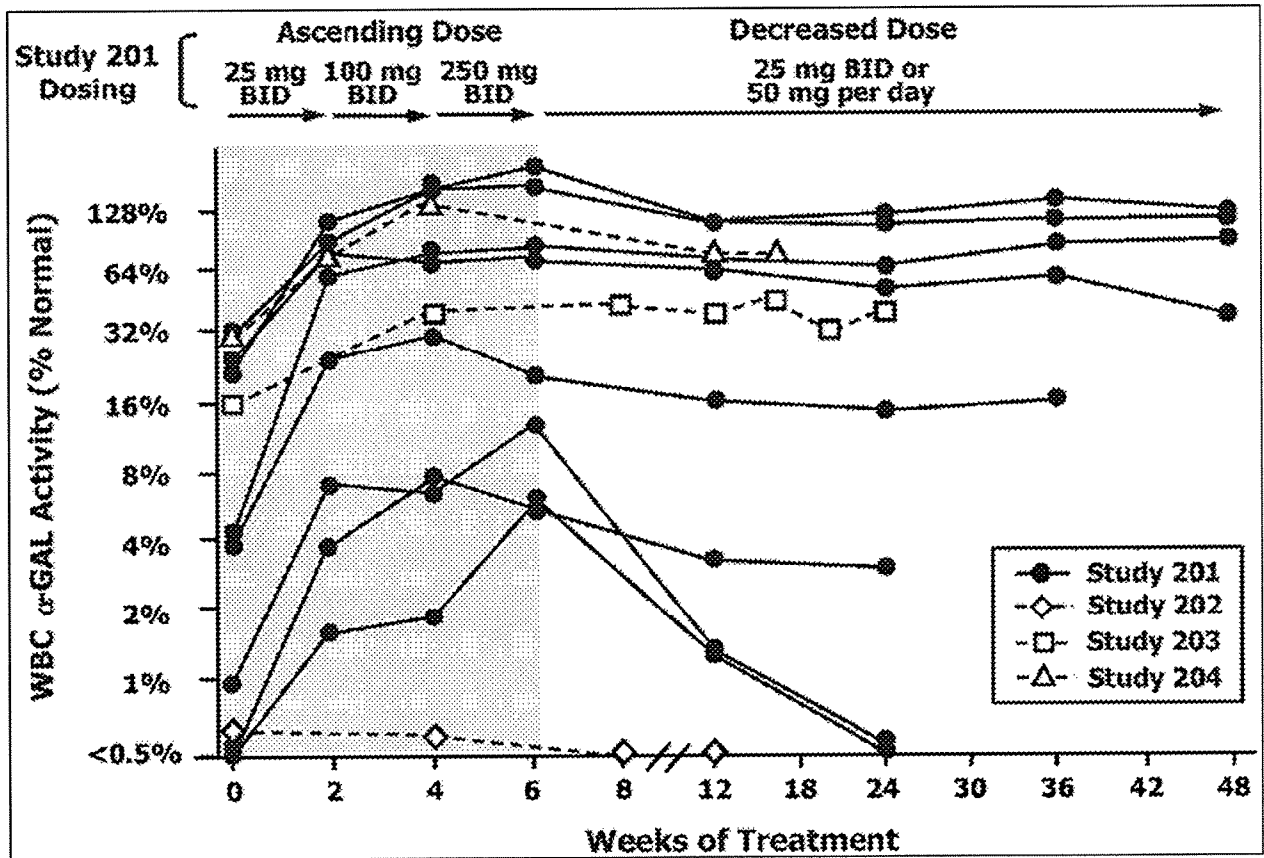
5

Figure 3



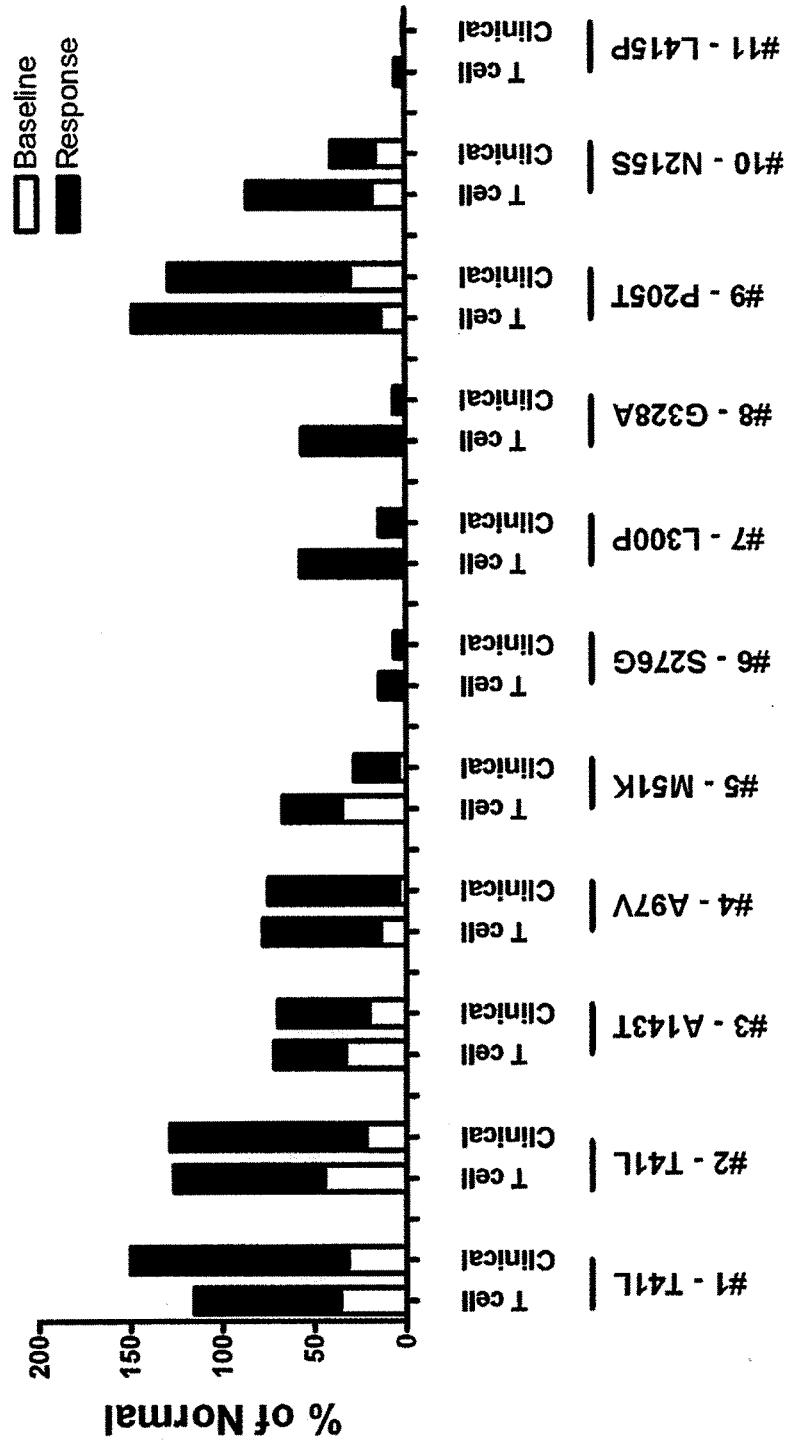
5

Figure 4



5

Figure 5



专利名称(译)	用于诊断和评估法布里病的治疗方案的分析		
公开(公告)号	EP2024745A2	公开(公告)日	2009-02-18
申请号	EP2007797506	申请日	2007-05-16
[标]申请(专利权)人(译)	阿米库斯治疗学公司 财团法人国家卫生研究院		
申请(专利权)人(译)	AMICUS THERAPEUTICS , INC. 国家卫生研究院		
当前申请(专利权)人(译)	AMICUS THERAPEUTICS , INC. 国家卫生研究院		
[标]发明人	KANESKI CHRISTINE SHIN SANG HOON MURRAY GARY LUDWIG KARIN LOCKHART DAVID CASTELLI JEFF		
发明人	KANESKI, CHRISTINE SHIN, SANG-HOON MURRAY, GARY LUDWIG, KARIN LOCKHART, DAVID CASTELLI, JEFF		
IPC分类号	G01N33/53 G01N33/567 G01N33/573		
CPC分类号	A61K31/445 A61K31/45 A61K45/06 A61P3/00 A61P9/00 A61P9/10 A61P13/12 A61P43/00 C07D211/46 G01N33/5094 G01N2333/924 G01N2333/94 G01N2800/04 G01N2800/52 A61K2300/00 A61K9/0053 A61K9/48		
优先权	60/801089 2006-05-16 US 60/853631 2006-10-23 US		
其他公开文献	EP2024745A4 EP2024745B1		
外部链接	Espacenet		

摘要(译)

提供了体外和体内方法，用于确定患有法布里病的患者是否对特定药理学伴侣的治疗有反应。

