

(19) World Intellectual Property Organization
International Bureau



(43) International Publication Date
25 January 2007 (25.01.2007)

PCT

(10) International Publication Number
WO 2007/009816 A2

- (51) **International Patent Classification:**
C07K 14/705 (2006.01) G01N 33/53 (2006.01)
C07K 16/28 (2006.01) A61K 39/00 (2006.01)
C12Q 1/68 (2006.01)
- (21) **International Application Number:**
PCT/EP2006/007241
- (22) **International Filing Date:** 20 July 2006 (20.07.2006)
- (25) **Filing Language:** English
- (26) **Publication Language:** English
- (30) **Priority Data:**
05076675.7 21 July 2005 (21.07.2005) EP
- (71) **Applicant (for all designated States except US):** STICHTING KATHOLIEKE UNIVERSITEIT [NL/NL]; Geert Groteplein 10, NL-6525 GA Nijmegen (NL).
- (72) **Inventors; and**
- (75) **Inventors/Applicants (for US only):** LEENDERS, Wilhelmus, Petrus, Johannes [NL/NL]; Meeuwse Acker 17-14, NL-6546 DV Nijmegen (NL). ROODINK, Ilse [NL/NL]; Hoofdweg 79, NL-7371 AG Loenen (NL). RAATS, Jozef, Maria, Hendrik [NL/NL]; Schoutstraat 58, NL-6525 XV Nijmegen (NL).
- (74) **Agent:** VAN SOMEREN, Petronella, Francisca, Hendrika, Maria; Arnold & Siedsma, Sweelinckplein 1, NL-2517 GK The Hague (NL).
- (81) **Designated States (unless otherwise indicated, for every kind of national protection available):** AE, AG, AL, AM, AT, AU, AZ, BA, BB, BG, BR, BW, BY, BZ, CA, CH, CN, CO, CR, CU, CZ, DE, DK, DM, DZ, EC, EE, EG, ES, FI, GB, GD, GE, GH, GM, HN, HR, HU, ID, IL, IN, IS, JP, KE, KG, KM, KN, KP, KR, KZ, LA, LC, LK, LR, LS, LT, LU, LV, LY, MA, MD, MG, MK, MN, MW, MX, MZ, NA, NG, NI, NO, NZ, OM, PG, PH, PL, PT, RO, RS, RU, SC, SD, SE, SG, SK, SL, SM, SY, TJ, TM, TN, TR, TT, TZ, UA, UG, US, UZ, VC, VN, ZA, ZM, ZW.
- (84) **Designated States (unless otherwise indicated, for every kind of regional protection available):** ARIPO (BW, GH, GM, KE, LS, MW, MZ, NA, SD, SL, SZ, TZ, UG, ZM, ZW), Eurasian (AM, AZ, BY, KG, KZ, MD, RU, TJ, TM), European (AT, BE, BG, CH, CY, CZ, DE, DK, EE, ES, FI, FR, GB, GR, HU, IE, IS, IT, LT, LU, LV, MC, NL, PL, PT, RO, SE, SI, SK, TR), OAPI (BF, BJ, CF, CG, CI, CM, GA, GN, GQ, GW, ML, MR, NE, SN, TD, TG).

Published:
— without international search report and to be republished upon receipt of that report

For two-letter codes and other abbreviations, refer to the "Guidance Notes on Codes and Abbreviations" appearing at the beginning of each regular issue of the PCT Gazette.



WO 2007/009816 A2

(54) **Title:** PLEXIN D1 AS A TARGET FOR TUMOR DIAGNOSIS AND THERAPY

(57) **Abstract:** The present invention relates to plexin D1 for use as a targetable protein in the treatment or diagnosis of disorders that involve expression of plexin D1. Diagnosis is suitably effected by detecting the presence of plexin D1 in the body or a bodily tissue or fluid, whereas treatment is effected by targeting plexin D1 for delivery of therapeutics to the site where treatment is needed. The invention further relates to the use of molecules that bind plexin D1, a nucleic acid encoding plexine D1 or a ligand of plexin D1 for the preparation of a therapeutical composition for the treatment or diagnosis of disorders that involve expression of plexin D1. The disorders comprise disorders in which plexin D1 is expressed on tumor cells, tumor blood vessels or activated macrophages.

PLEXIN D1 AS A TARGET FOR TUMOR DIAGNOSIS AND THERAPY

FIELD OF THE INVENTION

The present invention relates to the identification
5 of a novel targetable protein that can be used in the
treatment and diagnosis of tumors, in particular solid
tumors, and disorders that involve inflammation, in
particular rheumatoid arthritis, atherosclerosis and multiple
sclerosis.

10

BACKGROUND OF THE INVENTION

To grow beyond a size of 2-3 mm³, tumors have to
recruit a neovasculature via angiogenesis. Tumors accomplish
this via expression of Vascular Endothelial Growth Factor-A
15 (VEGF-A), either induced by hypoxia in the tumor centre or as
a result of malfunctioning tumor suppressor gene products or
activated proto-oncogenes. A number of compounds that target
the VEGF-A signaling pathway has been developed with the aim
to inhibit angiogenesis and, consequently, tumor growth.
20 Although such anti-angiogenic therapies have been effective
in animal tumor models, translation to the clinical level has
so far proven to be less successful (Eichhorn, ME et al.,
Drug Resist Update 7:125-138 (2004)).

For this, there is a number of possible explanations.
25 In clinically relevant situations, tumors may have been
growing for months or even years at the time of diagnosis,
and a significant proportion of the vasculature may be more
or less mature and thus insensitive to angiogenesis
inhibition. This situation is in sharp contrast to that in
30 most animal models in which, as a rule, aggressive,
fast-growing tumors are studied. Furthermore, patients that
are candidates for anti-angiogenic therapy are typically
patients with disseminated, uncontrollable cancer and growth

of metastases may not always be strictly dependent on angiogenesis. Because most metastases are blood-borne, they grow out in organs with intrinsically high vessel densities like liver, lung and brain where they can grow in an
5 angiogenesis-independent fashion by co-option of pre-existent vessels.

Indeed, an angiogenesis inhibitor that very effectively inhibits tumor growth in a number of subcutaneous tumor models (Wedge, SR et al., Cancer Res 62:4645-4655
10 (2002)) does not inhibit growth of infiltrative tumors in mouse brain. Moreover, upon treatment of mice carrying highly angiogenic brain tumors, angiogenesis inhibition did not result in a halt of further tumor progression, but rather in a progression after a phenotypic shift towards co-option and
15 infiltration (Leenders, WP et al., Clin Cancer Res 10:6222-6230 (2004)). These results imply that anti-angiogenic therapy should be supplemented by vascular targeting therapies in which the existing tumor vascular bed is attacked, resulting in secondary tumor cell death due to
20 disruption of the tumor's blood supply.

To accomplish effective vascular targeting therapy, markers have to be identified that have specificity for tumor vasculature. Much effort has already been put in this, but with varying success. Effective vascular tumor targeting has
25 been accomplished using single chain antibodies, directed against the fibronectin ED-B domain, which is selectively expressed and deposited in the extracellular matrix of newly formed vessels in angiogenic tumors (Santimaria, M et al., Clin Cancer Res 9:571-579 (2003)). Targeting of $\alpha_v\beta_3$ -integrin
30 (the expression of which is restricted to immature vessels) using RGD peptides or Vitaxin yielded disappointing result whereas endoglin-expression was not specific for tumor blood vessels (Posey, JA et al., Cancer Biother Radiopharm

16:125-132 (2001); Balza, E et al., Int J Cancer 94:579-585 (2001)).

In inflammatory diseases such as rheumatoid arthritis (RA) or atherosclerosis, angiogenesis and activation of the vasculature is also often part of the pathology. The vasculature here paves the way for inflammatory cells to extravasate and exert their destructive action. Such diseases can thus also benefit from targeting to blood vessels.

10 SUMMARY OF THE INVENTION

It is therefore the object of the present invention to provide a new targetable protein that can be used in the treatment and diagnosis of cancer and inflammatory diseases or diseases that involve inflammation.

15 In the research that led to the present invention it was found that plexin D1 is expressed on the luminal side of endothelial cells in tumor blood vessels, on the tumor cells themselves and on activated macrophages that are found in tumors, in inflammation and in atherosclerotic plaques.

20 The invention thus relates to plexin D1 for use as a targetable protein in the treatment or diagnosis of disorders that involve expression of plexin D1.

The plexin family of receptors consists of four classes (PLXNA-D) and nine members in mammals. Plexins comprise a family of large, single-pass membrane proteins with homology to scatter factor receptors, encoded by the MET gene family. Members of the plexin family share Sema domains, Met-related sequences (MRS), a transmembrane region and intracellular motifs that are predictive of Rac/Rho-GTPase signalling (**Figure 1**).

30 Since signalling via GTPases results in cytoskeletal rearrangements, events that are critically involved in formation of filopodia and lamellipodia and cellular

migration, plexins can be regarded as regulators of migration.

Plexins are receptors for the semaphorins, a family of secreted, GPI-anchored or transmembrane proteins which is subdivided in seven subclasses. Each plexin has its own (set of) semaphorin binding partners, and each plexin-semaphorin combination results in a specific response. Class 3 semaphorins are potent axon repellants and are as such involved in morphogenesis of the nervous system (for review, see (Pasterkamp, RJ et al., *Curr Opin Neurobiol* 13:79-89 (2003); Fujisawa, H, *J Neurobiol* 59:24-33 (2004)). For activation of plexins by the semaphorins, additional plexin binding partners may be required. These binding partners, neuropilin-1 and -2 (NP-1 and NP-2) have no signalling motifs in the intracellular domain and are thought of as a passive coreceptors, enabling the interaction between semaphorins and plexins.

Some plexins form yet larger membrane complexes with and activate signalling receptors as Off Track (Otk) and the scatter factor receptors Met and Ron. A direct interaction between plexinA1 and the angiogenic Vascular Endothelial Growth Factor-receptor-2 (VEGFR2) has also been demonstrated (Toyofuku, T et al., E-publication in *Genes Dev* 18:435-447 (2004)). Because NP-1 binds to plexin family members but also to VEGFR2, it is conceivable that multicomponent membrane protein complexes exist that encompass VEGFR2, NP-1 and plexins, establishing a link between plexins and angiogenesis (see also Weinstein, BM, *Cell*, 120:299-302 (2005)).

Neuropilins are also co-receptors for the potent angiogenic factor Vascular Endothelial Growth Factor-A (VEGF-A165) and enhance its affinity for VEGFR2. Interestingly, the VEGF-A165 binding site on NP-1 overlaps with that for semaphorin 3A (Miao, H Q et al., *J Cell Biol*

146:233-242 (1999)). It has been postulated that VEGF-A binding to NP-1 promotes migration of endothelial cells by competing for binding of class 3 semaphorins, which is generally followed by F-actin depolymerization and repulsion of cell extensions (Bachelder, RE, Cancer Res 63:5230-5233 (2003)). Similar antagonistic behaviour of VEGF-A and class 3 semaphorins have been described in a neuronal progenitor cell line (Bagnard, D et al., J Neurosci 21:3332-3341 (2001)) and tumor cells (Bachelder (2003), supra). Since antagonistic effects were observed in tumor cells that are devoid of VEGF receptors, it is conceivable that the underlying mechanism involves members of the plexin family, establishing a further link between plexins and VEGF-A signaling.

The present inventors have previously found that the family member plexin D1 (*plxnd1*) is not only expressed in neuronal cells, but also in endothelial cells of the vasculature during early stages of development (van der Zwaag, B et al., Dev Dyn 225:336-343 (2002)), an observation that was confirmed by two other groups (Gitler, AD et al., Dev Cell 7:107-116 (2004); Torres-Vazquez, J et al., Dev Cell 7:117-123 (2004)). In adult vasculature, *plxnd1* is absent. *Plxnd1*-knockout mice and zebrafish carrying mutations in the *plxnd1* gene are characterized by maldevelopment of the cardiovascular system (Gitler, AD et al. (2004), supra; Torres-Vazquez, J et al., (2004), supra). Neuropilin-1 (NP-1) and NP-1/Neuropilin-2 (NP-2) double knock-out mice also suffer from lethal defects in vascularization and aortic arch malformations during embryonic development (Kawasaki, T et al., Development 126:4895-4902 (1999); Takashima, S et al., Proc Natl Acad Sci USA 99:3657-3662 (2002); Gu, C et al., Dev Cell 5:45-57 (2003)).

Furthermore, morpholino-mediated knock-down of NP-1 in zebrafish leads to maldevelopment of intersegmental

vessels, and in this model system a clear link between NP-1 and VEGF-A165 has been established (Lee, P et al., Proc Natl Acad Sci USA 99:10470-10475 (2002)). The resemblance of the phenotypes of *plxnd1*, *neuropilin-1* and *semaphorin 3C* knock-out mice (Feiner, L et al., Development 128:3061-3070 (2001)) is consistent with the finding that Plexin D1 is a neuropilin-1-dependent receptor for semaphorin 3C (Gitler, AD et al. (2004), supra). However, PlxnD1 is also a receptor for semaphorin 3E, and this interaction does not require neuropilins for Semaphorin 3E-mediated signalling (Gu, C et al., Science 307:265-268 (2005)).

According to the invention it was now found that plexin D1 is also involved in angiogenesis during tumor growth and is expressed on the luminal side of endothelial cells in tumor blood vessels. Plexin D1 was furthermore found to be expressed by activated macrophages. Plexin D1 was also found to be expressed on tumour cells in a wide variety of tumor types.

The present invention thus relates to plexin D1 for use as a targetable protein in the treatment or diagnosis of disorders that involve expression of plexin D1.

Diagnosis is effected by detecting the presence of plexin D1 or a plexin D1 encoding nucleic acid in the body or a bodily tissue or fluid.

Treatment is effected by targeting plexin D1 for delivery of therapeutics to the site where treatment is needed, by interfering in the interaction between plexin D1 and its ligands, by interfering in the expression of the plexin D1 gene or by capturing plexin D1 ligands to inhibit interaction with plexin D1.

The invention thus furthermore relates to the use of molecules that bind plexin D1, a nucleic acid encoding plexine D1 or a ligand of plexin D1 for the preparation of a

therapeutical composition for the treatment or diagnosis of disorders that involve expression of plexin D1. All these molecules will be identified herein as "binding molecules" or "binding entities".

5 The disorders comprise in particular disorders in which plexin D1 is expressed on tumor cells, tumor blood vessels or activated macrophages.

 The tumor cells on which plexin D1 is expressed comprise brain tumors, in particular astrocytomas,
10 oligodendrogliomas and hemangioblastomas, colon carcinomas, in particular ductal carcinomas of the colon, prostate carcinomas, renal cell carcinomas, in particular renal clear cell carcinomas, mamma carcinomas, in particular ductal
15 carcinomas, melanomas, lung carcinomas, in particular small-cell lung carcinomas and non-small cell lung carcinomas, soft tissue sarcomas etc.

 When the disorders that are treated according to the invention are inflammatory diseases, they are in particular
20 autoimmune disease, more in particular rheumatoid arthritis, or they are atherosclerosis or multiple sclerosis.

 Molecules that bind plexin D1 are for example selected from antibodies, antibody fragments, proteins, protein domains, peptides, small molecules. These molecules
25 can be used to target plexin.

 Molecules that bind the nucleic acid encoding plexin D1 are for example oligonucleotides, such as RNA or DNA aptamers, for example selected from siRNA, antisense RNA, antisense phosphothio-oligonucleotides. These molecules can
30 be used to interfere with the expression of plexin D1.

 Molecules that bind a plexin D1 ligand are for example selected from antibodies against ligands, the soluble ectodomain of plexin D1 or small molecules, such as peptides,

that bind plexin D1 ligands. These molecules can be used to capture circulating plexin D1 ligand, prevent binding of the ligand to plexin D1 on tumor vessel cells, tumor cells or activated macrophages and interfere with the function of plexin D1 on these cells.

For diagnosis, the binding molecule is suitably labelled with a detectable marker. Such a detectable marker is for example selected from a radioactive label, paramagnetic label, a fluorescent label, a chemiluminescent label. Diagnosis can be performed in a sample of a bodily fluid or tissue *in vivo*, *in situ* or *ex vivo*. Examples of diagnostic techniques are *in situ* hybridization of for example plexin D1 mRNA or immunohistochemistry on biopsies or tumor cells.

For treatment, the binding molecule is for example provided with an entity that damages or kills the tumor cell and/or the tumor endothelial cell, in particular a cytotoxic entity, such as a radionuclide, a toxin, boron for Boron Neutron Capture Therapy (BNCT), or a prodrug that is coupled to the binding entity via a cleavable linker, which is activated in response to cleavage of that linker, or apoptosis-inducing peptides, an example of which is the (KLAKLAK)₂ sequence. Such peptides are added to the binding entity by molecular genetic engineering techniques.

The entities described above may be directly conjugated to the binding entity, or they may be present in nanodevices, such as liposomes or polymersomes, that are conjugated to the binding entity.

Boron Neutron Capture Therapy (BNCT) comprises irradiation of a diseased area, such as a tumor or an inflammation, in which boron has accumulated after intravenous injection of the liposomal conjugate, with

neutrons, after which boron atoms will decay to lithium under emission of destructive alpha particles.

Alternatively, therapy may be effected by inducing local thrombosis in the tumor vessels to block the blood supply to the tumor and induce cell death. An example of such
5 molecule is Tissue Factor (TF).

Advantageously, plexin D1 can be targeted with specific binding molecules upon intravenous administration since plexin D1 is expressed on the luminal side of
10 endothelial cells in tumor blood vessels. Therapeutic compounds for damaging or killing tumor cells that are coupled to the binding molecule can reach the tumor from within and compounds that induce thrombosis are easily delivered to their site of action.

Interference with plexin D1 function represents a way
15 to inhibit angiogenesis, to inhibit tumor cell migration, and to inhibit macrophage migration. Thus, the invention provides methods of treating or suppressing disorders in which plexin D1 is involved, by using the specific presence of plexin D1
20 to deliver therapeutics locally to diseased tissues, and/or by interference in the function of plexin D1 or in the interaction between plexin D1 and its ligands.

DETAILED DESCRIPTION OF THE INVENTION

The invention is thus based on the fact that plexin
25 D1 can be used as a targetable marker on tumor blood vessels, as a targetable protein involved in tumor angiogenesis, as a targetable marker on tumor cells and as a targetable protein involved in cellular migration.

The invention thus also relates to the use of
30 molecules which bind to plexin D1, its gene or mRNA or its ligands in diagnosis and therapy. All kinds of specific binding molecules, and derivatives thereof can be used in the

invention, in particular proteinaceous compounds, such as, but not limited to, antibodies, antibody fragments, single domain antibody fragments, other proteinaceous binding domains, such as, but not limited to, lipocalins, and small molecules that specifically bind plexin D1 or its ligands. For binding to the plexin D1 gene or the mRNA transcribed from the plexin D1 gene nucleic acid molecules, such as DNA or RNA aptamers can be used.

In a first embodiment of the invention plexin D1 or plexin D1 ligand binding molecules are antibodies, in particular monoclonal antibodies, more in particular human or humanized antibodies in which the constant regions of the original antibody are substituted with the constant regions of human antibodies, or fragments thereof which still bind to plexin D1 or its ligand.

The antibody is preferably a human IgG1 antibody. However, other human antibody isotypes are also encompassed by the invention, including IgG2, IgG3, IgG4, IgM, IgA1, IgA2, IgAsec, IgD and IgE. Also all animal-derived antibodies of various isotypes can be used in the invention.

The antibodies can be full-size antibodies or antigen-binding fragments of antibodies, including Fab, F(ab')₂, single chain Fv fragments, or single domain VHH, VH or VL single domains.

Preferably, antibodies against plexin D1 are human monoclonal antibodies produced by a hybridoma cell which includes a B cell obtained from an immunized transgenic animal having a genome comprising a human heavy chain transgene and a human light chain transgene, fused to an immortalized cell, or an animal-derived antibody or antibody fragment produced by a hybridoma cell which includes a B cell obtained from an immunized animal, fused to an immortalized cell, or human and animal antibodies, produced by a

eukaryotic cell transfected with the cDNA or genomic DNA encoding said antibody or antibody fragment.

In a preferred embodiment of the present invention, single domain (VHH) Llama antibodies with affinity to plexin
5 D1 are provided, more specifically Llama single domain antibodies A12 (**SEQ ID NO:1**) and F8 (**SEQ ID NO:2**), either or not displayed on M13 bacteriophages, also known to those with skill in the art as phage-display VHH antibodies.

A preferred single chain antibody is derived from
10 antibody 11F5H6 and 17E9C12. The sequence of the single chain antibody is shown in **SEQ ID NO:3** and **SEQ ID NO:4**.

The antibodies for use according to the invention may be high affinity antibodies which are evoked in non-transgenic laboratory animals, or in a transgenic animal
15 in which the endogenous globulin locus has been substituted for the human globulin locus, thus allowing production of human antibodies in such animals (Jakobovits, A. Curr Opin Biotechnol 6:561-566 (1995)).

The invention further relates to a method of
20 producing the antibodies of the invention, comprising immunizing an animal with plexin D1, or a cell expressing plexin D1, or a nucleic acid encoding plexin D1, or parts of the extracellular domain of plexin D1, such that antibodies against plexin D1 are produced by the B cells of the animal,
25 isolating the B cells from the animal and fusing the B cells to a myeloma cell line to obtain immortalized cells that secrete the antibody. The animal is preferably a transgenic animal having a genome comprising a human heavy chain transgene and a human light chain transgene so that the
30 resulting antibody is humanized.

In one embodiment, the method includes immunizing a laboratory animal with a synthetic peptide, chosen from the plexin D1 extracellular domain, for example peptide 47-63

corresponding to the amino terminus of the mature plexin D1 amino acid sequence. Immunizations are however preferably done with recombinant extracellular domains, preferably a region with low similarity to other family members of the plexins, for example a region comprising amino acids 47-546, lacking the Met-Related-Sequences. Said recombinant plexin D1 extracellular domains can be produced in *E.coli* cells by inserting the coding nucleic acids in a suitable prokaryotic expression vector, for instance under control of the β -galactosidase promoter, transformation of *E.coli* cells with said vector, and isolation of the recombinant proteins from purified inclusion bodies. It is preferred however that antibodies are evoked by immunization with said recombinant plexin D1 extracellular domain which is produced by eukaryotic cells, therefore containing posttranslational modifications which are most similar to those present in native plexin D1, for example by chinese hamster ovary (CHO) cells after transfection with a vector, containing the coding nucleic acids for said extracellular domains under the control of a cytomegalovirus promoter. Recombinant extracellular plexin D1 fragments may or may not be fused to tags facilitating purification, e.g. a VSV tag or a constant region of a heavy chain of an immunoglobulin.

The method of producing the antibody may also comprise cloning the antibody coding regions from said plexin D1 specific B-cells into an expression vector and expressing the coding sequence. In a preferred embodiment the expression vector is pHENIXHISVSV, enabling expression by *E.coli* host cells of the antibody, flanked at the carboxyterminal end by a Vesicular Stomatitis Virus (VSV-tag) and a His*8 tag. The VSV tag is meant to facilitate immunohistochemical detection, using specific antibodies. The His*8 tag is meant to facilitate purification based on Nickel affinity

chromatography. Other expression vectors can likewise be used.

More specifically the invention provides an isolated single domain antibody A12, having a dissociation constant of less than 2×10^{-8} M, which binds to the amino terminus of plexin D1 and which detects plexin D1 in immunohistochemical stainings and homes to plexin D1-expressing tumor blood vessels, and also to an isolated single domain antibody F8, having a dissociation constant of less than 3×10^{-8} M, which binds to the amino terminus of plexin D1 and which detects plexin D1 in immunohistochemical stainings and homes to plexin D1-expressing tumor blood vessels. Both isolated single domain antibody may be fused to the constant region of a human IgG1 heavy chain or the constant region of a mouse IgG1 heavy chain.

Preferably fully human antibodies are used within the scope of the invention. In another embodiment, humanised or laboratory animal-derived antibodies may be used.

The invention further provides bispecific antibodies that have a binding specificity for plexin D1, and a binding specificity for a human antigen presenting cell, or for an Fc receptor, wherein the Fc receptor is a Fc(gamma)R1 or a human Fc(alpha) receptor.

The invention provides also nucleic acid molecules encoding the preferred antibodies, or antigen-binding portions. Recombinant expression vectors which include nucleic acids which encode the antibodies of the invention, as well as host cells transfected with such vectors, are also encompassed in the invention.

Other binding molecules for use in the invention are small molecules that specifically bind to Plexin D1. The term "small molecule" refers often to molecules with molecular weights of 500 or below. The term is commonly used these days

and thus clear to the skilled person. Moreover, small molecule libraries are already available or are being developed. An example of such library is the NIH Molecular Libraries Small Molecule Repository (MLSMR). Such libraries are subjected to High Throughput Screening (HTS) to identify molecules that bind to plexin D1. The invention also relates to the small molecules that result from a screen of such libraries.

Other compounds that can be used according to the invention comprise peptides or aptamers (Ulrich, Med. Chem. 1(2):199-208 (2005)) that bind to extracellular domains of plexin D1 and thereby interfere with binding of plexin D1 ligands to plexin D1. Conversely, such peptides or aptamers may also bind to the plexin D1 binding sites of the plexin D1 ligands and thereby interfere with ligand binding to plexin D1.

For interfering with the expression of the plexin D1 gene another type of binding molecule is used, in particular siRNA, antisense RNA or antisense phosphothio-nucleotides. Small interfering RNA (siRNA) comprises small strands of RNA that interfere with the translation of messenger RNA. siRNA binds to the complementary portion of the target messenger RNA and tag it for degradation thus inhibiting gene expression. This is commonly known as gene "silencing". siRNA is usually 21 to 23 nucleotides long. Antisense RNA is an RNA molecule transcribed from the coding, rather than the template, strand of DNA, so that it is complementary to the sense mRNA. Formation of a duplex between the sense and antisense RNA molecules blocks translation and may also subject both molecules to double strand-specific nucleases thus inhibiting expression of the gene. Inhibition of expression of the gene can be used to block angiogenesis and migration of tumor cells and macrophages.

Preferably, the above described binding molecules bind to plexin D1, its gene or its ligand in eukaryotic cells. Said molecules specifically accumulate in tumors upon intravenous injection or specifically accumulate in tumor
5 blood vessels upon intravenous injection.

The antibodies, fragments thereof, small molecules and other proteinaceous compounds that all bind plexin D1 can be used in various ways.

In one embodiment, the invention relates to compounds
10 that bind to the extracellular part of plexin D1 and which binding results in interference of plexin D1 function. Alternatively, the invention relates to compounds that bind to the intracellular domain of plexin D1 and which prevent signalling by plexin D1.

15 In a specific embodiment such binding molecules bind to plexin D1 to interfere with the formation of multicomponent membrane complexes by inhibiting binding of plexin D1 ligands, in particular neuropilin-1, neuropilin-2, semaphorin 3C, semaphorin 3E, VEGF-receptor 1,
20 VEGF-receptor-2 or VEGF-A, to plexin D1. Such binding molecules lead to inhibition of ligand-induced GTPase signalling by plexin D1 or to inhibition of migration of cells expressing plexin D1, in particular tumor-associated endothelial cells, tumor cells or macrophages.

25 According to another aspect thereof the invention relates to a method of inducing lysis of a cell expressing plexin D1, comprising contacting a cell expressing plexin D1 with the binding molecules, in particular the antibodies, of the invention in the presence of human effector cells, such
30 that lysis of the cell expressing plexin D1 occurs.

In a still further embodiment the binding molecule is combined with or coupled to an effector compound that can

detect the presence of plexin D1 for diagnostic purposes or that can perform an effect on the cell expressing plexin D1. The diagnostic or therapeutic effector compound can be directly coupled to the binding molecule or can be present in a transport vehicle, such as a nanodevice, in particular a liposome or polymersome, that is coupled to the binding molecule. Alternatively, the binding molecule can be a bispecific antibody that binds both plexin D1 and the effector compound thus targeting the effector compound to a site or cell where plexin D1 is expressed.

The invention thus provides in a particular embodiment thereof the use of such binding molecules in a method of diagnosing a disease mediated by expression of plexin D1, which method comprises intravenous delivery of the proteinaceous, aptameric or small molecule plexin D1 binding molecules, conjugated to an effector compound allowing *in vivo* detection of the binding molecules.

Diagnostic effector compounds are for example radioisotopes or contrast agents for Magnetic Resonance Imaging (MRI), such as gadolinium-DTPA, or fluorescent dyes.

Examples of radioactive substance comprise, but are not limited to technetium^{99m} (^{99m}Tc), iodine-123 (¹²³I), iodine-131 (¹³¹I), rhenium-186 or -188 (^{186/188}Re), gallium-67 (⁶⁷Ga) the beta-radiation emitting substances yttrium-90 (⁹⁰Y) or lutetium-177 (¹⁷⁷Lu), the positron emitting isotopes Fluorine-18 (¹⁸F) and Carbon-11 (¹¹C). Such radioisotopes can be used to either detect or damage or kill cells expressing plexin D1. Usually different isotopes are used for diagnosis and therapy. The skilled person is well aware of which isotope to use for which tissue and for which type of use.

In another embodiment, the proteinaceous, aptameric and small molecular binding molecules for use in the invention can be combined with or coupled to a toxic agent,

such as chemotherapeutic agent either directly or in a transport vehicle, in particular a nanodevice, such as a liposome or polymersome.

In another embodiment, a plexin D1 binding entity of
5 the invention is coupled to one or more chemotherapeutic agents selected from the group consisting of nitrogen mustards (e.g., cyclophosphamide and ifosfamide), aziridines (e.g., thiotepa), alkyl sulfonates (e.g., busulfan), nitrosoureas (e.g., carmustine and streptozocin), platinum
10 complexes (e.g., carboplatin and cisplatin), non-classical alkylating agents (e.g., dacarbazine and temozolamide), folate analogs (e.g., methotrexate), purine analogs (e.g., fludarabine and mercaptopurine), adenosine analogs (e.g., cladribine and pentostatin), pyrimidine analogs (e.g.,
15 fluorouracil (alone or in combination with leucovorin) and gemcitabine), substituted ureas (e.g., hydroxyurea), antitumor antibiotics (e.g., bleomycin and doxorubicin), epipodophyllotoxins (e.g., etoposide and teniposide), microtubule agents (e.g., docetaxel and paclitaxel),
20 camptothecin analogs (e.g., irinotecan and topotecan), enzymes (e.g., asparaginase), cytokines (e.g., interleukin-2 and interferon-[alpha]), monoclonal antibodies (e.g., trastuzumab and bevacizumab), recombinant toxins and immunotoxins (e.g., recombinant cholera toxin-B and TP-38),
25 cancer gene therapies, and cancer vaccines (e.g., vaccine against telomerase).

Chemotherapeutic agents are preferably selected from the group consisting of doxorubicin, cisplatin, bleomycin sulfate, carmustine, chlorambucil and cyclophosphamide
30 hydroxyurea. Other compounds are known to the person skilled in the art.

A tumor can also be treated by blocking its blood supply by inducing local thrombosis in the tumor vasculature.

The binding molecules of the invention can in this embodiment be used to target thrombosis inducing molecules, such as the blood coagulation co-factor TF (Tissue Factor), a radioactive entity or a toxin, such as ricin to the site of the tumor.

5 Effector compounds can be coupled to the binding molecule, in particular a plexin D1 binding molecule, or can be present in a nanodevice, such as a liposome or polymersome, that is coupled to the plexin D1 binding molecule.

An alternative method of treating cancer or an
10 inflammatory disorder according to the invention is with boron. The binding molecules of the invention can be conjugated to transport vehicles, in particular nanodevices, such as liposomes or polymersomes, that are filled with boron to obtain a therapeutic composition. After delivery and
15 accumulation of this composition in the diseased area, this area is irradiated with neutrons, resulting in emission of radioactive and cytotoxic alpha-particles that damage or kill the tumor endothelial cells, tumor cells and/or activated macrophages.

20 It is desirable that for tumor blood vessel targeting antibodies have high affinities towards plexin D1, for example higher than 10^{-8} , preferably higher than 10^{-9} , more preferably higher than 10^{-10} M. High affinity and the high molecular weight of antibodies will however restrict
25 penetration into tumor tissue. Therefore, the nucleic acids that encode said monoclonal antibodies, obtained via RT-PCR cloning, can be used to generate antibody derivatives, for example antibodies that lack the constant region and are monovalent, or antibody fragments that are adapted to optimal
30 affinities for blood vessel targeting or tumor penetration by mutagenic procedures. These antibody derivatives will have lower affinities and lower molecular weight and will have improved tumor cell targeting properties.

Different binding molecules of the invention can be combined in a mixture. In a specific embodiment the members of the mixture have a varying affinity. An example of such a combination is a mixture of monoclonal antibodies and/or
5 antibody fragments or a mixture of antibodies with small molecules. The monoclonal antibodies having high affinity can be used for targeting vessels, whereas the smaller fragments having a lower affinity are better able to penetrate and reach the tumor cells. Alternatively, a mixture of plexin D1
10 binding molecules can be used together with plexin D1 ligand binding molecules and/or with molecules that bind nucleic acids encoding plexin D1. Or plexin D1 ligand binding molecules can be combined with molecules that bind nucleic acids encoding plexin D1.

15 The plexin D1 binding molecules of the invention can be used in a method of treating a disease mediated by expression of plexin D1, comprising intravenous delivery of the binding molecules of the invention at a dose, effective in treating that disease.

20 The binding molecules can also be used in a method of diagnosing a disease mediated by expression of plexin D1, comprising intravenous delivery of conjugates of plexine D1 binding molecules with a paramagnetic, fluorescent or radioactive tracer followed by magnetic resonance imaging,
25 optical imaging, SPECT or PET.

The binding molecules can further be used in a method of treating or suppressing a disease mediated by expression of plexin D1, comprising intravenous delivery of the proteinaceous and small molecular binding molecules of the
30 invention or a composition of proteinaceous and small molecular binding molecules.

The disease to be treated or diagnosed can be cancer, an inflammatory disease, in particular an autoimmune disease,

such as rheumatoid arthritis, or atherosclerosis, or multiple sclerosis.

Diagnosis can be performed *in vivo* and *in vitro*. An *in vivo* method is described above and can be performed with magnetic resonance imaging (MRI) or with SPECT or PET cameras after accumulation of the radioactively labelled binding molecule in the diseased tissue.

Another diagnostic method comprises detecting the presence of plexin D1 in a sample *in vitro* or *ex vivo*. Such method comprises contacting the sample with binding molecules of plexine D1, or nucleic acids that bind the plexin D1 gene or its mRNA or a copy DNA derived from this mRNA, all bound to a detectable marker, under conditions that a complex between the antibody and plexin D1 forms, and detecting the formation of the complex. The complex can be detected by visualising the detectable marker. Samples can be bodily fluids, such as blood, serum, plasma, saliva, urine, semen, faeces, or tissues, such as biopsies of tumor cells.

The invention further relates to an expression vector, comprising the coding sequence for Llama antibody F8 or A12, or for the single chain antibody derived from antibody 11F5H6 and suitable regulatory sequences. The invention also relates to a cell transfected with the said expression vector. The invention further relates to the recombinant protein obtainable by expressing the expression vector.

Another aspect of the invention relates to an expression vector, comprising the coding sequence for the extracellular domain of plexin D1, optionally fused to a constant region of a human heavy chain and suitable regulatory sequences. The invention also relates to a cell transfected with the said expression vector. The invention

further relates to the recombinant protein obtainable by expressing the expression vector.

The recombinant protein comprises the extracellular domain of plexin D1, which binds to plexin D1 ligands and thus prevents binding of the ligands to cell associated plexin D1. Preferably, the coding sequence codes for a recombinant protein comprising amino acids 47-506 of the extracellular domain of plexin D1, which binds to plexin D1 ligands and thus prevents binding of the ligands to cell-associated plexin D1, or amino acids 507-1274 of the extracellular domain of plexin D1, which binds to plexin D1 ligands and thus prevents binding of the ligands to cell associated plexin D1. Such recombinant protein may carry mutations that increase the affinity for plexin D1 ligands and thereby having increased potency as decoy receptor. Such mutations are usually induced by making changes in the coding sequence used for producing the recombinant protein.

The invention further relates to the use of the binding molecules of the invention in a method of treating or suppressing a disease mediated by plexin D1, comprising intravenous or intratumoral delivery of decoy plexin D1 extracellular domains as described above, or in a method of treating or suppressing a disease mediated by plexin D1, comprising intravenous delivery of adenoviruses or lentiviruses, containing the coding nucleotides for the recombinant extracellular domains of plexin D1 or parts thereof as described above.

These antagonistic decoy plexin D1 receptors interfere with the interaction between plexin D1 and its ligands, in particular neuropilin-1, semaphorin 3C and semaphorin 3E, and thereby interfere with plexin D1 function.

Preferably, the decoy plexin D1 receptors have increased affinity towards plexin D1 ligands, as compared to

plexin D1. Such increased affinity may be obtained by creating a library of plexin D1 extracellular domains, carrying at random introduced mutations, and selecting decoy receptors with most potent antagonistic behaviour in cell migration assays.

In order to produce said proteinaceous molecules (including peptides, polypeptides and glycosylated polypeptides or polypeptides having other post- or peritranslational modifications) it is desirable to insert the recombinant nucleic acid which encodes fragments of the extracellular domain of plexin D1 that comprise the binding sites for semaphorin 3C, semaphorin 3E and NP-1 into expression vectors. The antagonists according to the invention are preferably produced from a nucleic acid or an expression vector according to the invention, preferably in a host cell.

The molecules of the invention may also be used in a combination of treatment methods as described above and/or with conventional therapies or anti-angiogenic therapy for further preventing the formation of a tumor neovasculature, or radiotherapy and/or adjuvant chemotherapy.

The invention further relates to a method of identifying molecules that are capable of binding to plexin D1, which method comprises contacting a collection of molecules with plexin D1 and selecting the molecules from the collection that show binding to plexin D1 as plexin D1 binding molecules. The collection of molecules can for example be present in small molecule libraries, on a protein array, etc. The techniques for screening collections of molecules are in itself known. The invention resides in the identification of the target that is to be bound, which is plexin D1.

In this application the term "binding molecule" is used for all types of binding molecules, i.e. the ones that bind plexin D1, the ones that bind a nucleic acid encoding the plexin D1 gene and the ones that bind plexin D1 ligands.

5 All these types of molecules can be coupled to effector compounds as described above.

DESCRIPTION OF THE FIGURES

The present invention will be further illustrated in the Examples that follow and that are in no way intended to limit the invention. In the Examples reference is made to the following figures:

Figure 1: Structural domains of plexin family members: four subfamilies have been identified, named plexin A-D. Horizontally hatched boxes indicate Sema domains, diagonally hatched boxes indicate Met-related sequences (MRS) motifs, and the clear box indicates the atypical MRS motif of PLXND1. Plexin B subfamily members have a potential furin-like proteolytic site, marked by a grey ribbon. The transmembrane region is marked by a shaded box and is followed by two conserved intracellular domains, together comprising the SP-domain, marked by two ovals.

Figure 2: A) *In situ* hybridization analysis of cerebral Mel57- VEGF-A₁₆₅ lesions using a digoxigenin-labelled mouse-specific *plxnd1* RNA probe. Tumor vessels are strongly positive (arrows) whereas brain capillaries, distant from the lesions, are negative (compare the ISH profile with the CD34 staining in **Figure 2B**).

Figure 3: Human PLXND1-specific ISH analyses of glioblastoma multiforme (A) brain metastases of sarcoma (B), melanoma (C) and mammary carcinoma (D). Insets show CD31 stainings of serial sections. Control ISH using sense probes were negative (not shown). Note that in these tumors *PLXND1*

expression is not confined to the blood vessels: also in tumor cells high levels of the *PLXND1* transcript are found. t=tumor, V=vessel.

Figure 4: ISH analysis using a human specific digoxigenin-labelled RNA probe (A) and immunohistochemical staining with CD31 (B) of normal brain. Note that vessels are abundantly present but these do not express the plexin D1 transcript.

Figure 5: Specificity of phages (A) and corresponding single domain antibodies (sdabs) (B) A12 and F8 for peptide $\text{H}_2\text{N-ALEIQRRFSPPTPTNC-CONH}_2$. In A, 10^{10} phages were allowed to bind to PLXND1-peptide, BSA, human IgG or irrelevant peptide as described in the text. After rigorous washing, bound phages were detected using an anti-M13 antibody. In B, similar incubations were performed but now with soluble sdabs. After washing, bound sdabs were detected and semi-quantified via the VSV-G-tag.

Figure 6: The dissociation constants (kd's) of the binding between single domain antibodies A12 and F8 were determined using the Biacore 2000 (Uppsala, Sweden) biosensor. The sensor chip and protein coupling chemicals were purchased from Biacore AB. PLXND1-peptide-KLH conjugate (27 $\mu\text{g/ml}$ in Na-Acetate, pH 4.0) or BSA (1 $\mu\text{g/ml}$ in Na-Acetate, pH 5.0) was coupled to activated CM5 surfaces using *N*-ethyl-*N'*-(dimethylaminopropyl) carbodiimide, *N*-hydroxysuccinimide, under conditions recommended by the manufacturer. Unreacted groups were inactivated by 1 M ethanolamine, pH 8.5.

Kinetic measurements were performed at 25°C with a flow rate of 10 ml/min in HBS-EP buffer (10 mM Hepes, pH 7.4, 150 mM NaCl, 3 mM EDTA, 0.005% surfactant P20). Six concentrations of Ni-affinity-purified sdabs (in the range of 1 mM to 50 μM) were used to determine the dissociation

constants (Kds) of the interaction with the PLXND1-peptide. After each experiment, regeneration of the sensor surface was performed with 10 mM NaOH.

Specific binding, defined by binding to a
5 PLXND1-surface minus binding to a control BSA-surface, was analyzed using the BIAevaluation 4.1 software and a 1:1 Langmuir binding model. Affinities of single domain antibodies A12 and F8 were 2.1×10^{-8} M and 3.5×10^{-8} M.

Figure 7: Evaluation of plexin D1 specificity of
10 single domain antibodies. Figure A shows immunohistochemical staining of the growth plate of trabecular bone of a mouse embryo (E16.5) with single domain antibody A12, utilizing the VSV-G tag for detection of the antibody. The inset shows an *in situ* hybridization of a similar embryonic structure using
15 a mouse specific digoxigenin-labelled plexin D1 probe. Note the overlap of plexin D1 *in situ* hybridization and immunostaining. **Figure 7B** is a representative example of a Mel57- VEGF-A165 lesion in brain of a nude mouse. The vasculature which is also positive in plexin D1 ISH (see also
20 **figure 2**) is immunopositive with single domain antibody F8.

Figure 8: Immunostainings with single domain antibody A12 on a selection of human brain tumors. Tumors shown are A) glioblastoma multiforme, metastases of B) melanoma C) mammary carcinoma and D) renal cell carcinoma. The insets in A
25 and B consist of control stainings with anti-VSV antibody only, and show that the tumor staining is specific. Note that vessels and tumor cells are highly reactive with the antibody.

Figure 9: Immunostainings with single domain antibody
30 A12 on a progression serie of melanoma. Immunostainings were performed on a nevus, a dysplastic nevus and horizontal and vertical growth phases of melanoma. Note that only the neoplastic cells express plexin D1.

Figure 10: Immunostainings with single domain antibody A12 on sections of Mel57-VEGF-A brain tumors in mice, treated with ZD6474. In untreated or placebo-treated mice, tumorvessels stain positive with this antibody.

5 However, in ZD6474-treated mice, there is a dose-dependent decrease of plexin D1 expression. ZD6474 was given orally, once daily, in the dosage as indicated.

Figure 11: Double immunostainings with the macrophage marker CD68 (stained blue) and single domain antibody A12 (stained red) on mammacarcinoma. A subpopulation of
10 macrophages express plexin D1 as revealed by purple staining protein.

Figure 12: *In vivo* homing of phage A12, F8 or an irrelevant phage to Mel57-VEGF₁₆₅ brain lesions. Tumor-bearing
15 mice were injected with 10¹² phages in the tail vein and after 5 minutes mice were anesthetized and subjected to cardiac perfusion with 15 ml of phosphate buffered saline. Mice were sacrificed, brains removed and frozen sections were analyzed for phage content and distribution. A) M13 staining of a
20 frozen section of brain Mel57-VEGF₁₆₅ lesions. Phages are clearly vessel-associated, as evidenced by the anti-CD34 immunostaining on a serial section, shown in B). The arrows point at a CD34-positive vessel, distant from the lesion, which is not highlighted by anti-M13 staining. The inset in
25 (A) shows a control experiment where an irrelevant phage was injected. C) Distribution of sdab F8 after intravenous injection in tumor bearing mice. Sdabs are visualized by immunohistochemistry using an anti-VSV antibody. Note that the sdab is detected in tumor vessels but not in normal brain
30 capillaries. The inset shows the control experiment where an irrelevant sdab was injected. An interstitial localization was observed, consistent with the leaky nature of the vessels in these tumors. D) Quantification of phage homing. Tumor

tissue was dissected from 10 μm frozen sections using laser capture dissection microscopy. Number of colony-forming phages (cfp) were counted after infection of TG1 cells. Twenty-fold more F8 phages were eluted from tumors than from
5 comparable areas of unaffected brain tissue.

Figure 13: Single domain antibody homes to tumor vessels that are not per se newly formed. Nude mice were inoculated with a cell suspension of $1,5 \times 10^5$ cells of the human glioma xenograft E98, which was obtained from a
10 subcutaneous E98 tumor. After 3 weeks, phages carrying single domain antibody F8 were injected in the tail vein, and after 5 minutes mice were anesthetized and subjected to cardiac perfusion using 15 ml of phosphate buffered saline. Mice were then sacrificed, brains removed and fixed in formalin. Serial
15 sections were stained with antibodies against M13 p8 protein (A), the endothelial marker CD34 (B) and glut-1 (C, a marker for pre-existent brain capillaries). Comparison of A, B and C reveals that not only newly formed tumor vessels accumulate phage F8, but also non-dilated brain vessels that express
20 glut-1 and that therefore are considered pre-existent brain vessels that had been incorporated in the tumor.

Figure 14: Effects of extracellular domains of plexin D1 on the development of tumor vasculature. Double transfectants of the human melanoma cell line Mel57,
25 expressing VEGF-A₁₆₅ and the extracellular domain of plexin D1 comprising amino acids 1-850, were injected in the right internal carotid artery of nude mice. After three weeks the mice were subjected to Gadolinium-DTPA enhanced magnetic resonance imaging. **Figure 14A** shows MR images of two control
30 mice carrying Mel57 brain tumors that express VEGF-A₁₆₅ only, **Figure 14B** shows MR images of brains of two mice carrying the double transfectant. Vascular leakage, as assayed by Gd-DTPA extravasation, tends to be less in the double transfectants,

suggesting that VEGF-A-induced vascular leakage is counteracted by the plexin D1 ectodomain. More importantly, blood vessels in the double transfected tumors are activated, as indicated by upregulation of CD34, yet they express
5 glut-1, strongly suggesting that these vessels are pre-existent vessels that are incorporated in the tumor by the phenomenon of co-option. Note that the blood vessels in the tumors expressing VEGF-A165 only, are negative for glut-1 and therefore can be considered to be newly formed.

10 **Figure 15:** Western blots were generated with recombinant plexin D1 ectodomains, expressed in *E.coli* and encompassing amino acids 47-506 (lanes 1) or 225-388 (lanes 2). Serum of mouse 25 was tested before (panel A) and after (panel B) immunization with plexin D1 region 47-506. As shown
15 in **figure 15B**, the mouse immune serum specifically recognized *E.coli* recombinant protein 47-506 (52 kDa, lane 1) and the protein encompassing plexin D1 residues 225-388 (a 18 kDa protein which lies completely within the sequence that was used for immunization, lane 2). The pre-immune serum did not
20 show such a reactivity (panel A). When tested in immunohistochemical stainings on a brain metastasis of an alveolar soft tissue sarcoma, the mouse immune serum (panel D), but not the pre-immune serum (panel C), showed positivity towards blood vessels and tumor cells, a staining pattern
25 which was similar to that of single domain antibody A12.

Figure 16: Immunohistochemistry with monoclonal IgM antibodies, obtained from B-lymphocytes from mouse 25. Antibodies 11F5H6 and 17E9C12 were selected based on reactivity against protein 47-506 in ELISA, and were analysed
30 for their potential to detect plexin D1 in frozen sections of human tumours. These antibodies showed strong positivity in brain metastases of sarcoma and melanoma, as illustrated in the figure. Of note, the insets in panels C-F represent

control stainings in which the primary antibody was omitted. Panels A and B show that these antibodies do not notably recognize vessel structures in normal brain tissue.

Figure 17: Tumor homing of antibody 11F5H6

5 To further evaluate whether monoclonal antibody 11F5H6 is able to recognize tumour blood vessels, angiogenic Mel57-VEGF-A tumours were grown in brains of nude mice, essentially as described in example 10. Antibody 11F5H6 (1 mg) was injected in a lateral tail vein and allowed to
10 circulate for 15 minutes. After this period, the mice were anaesthetized with 1.3% isoflurane and the chest was opened, upon which a cardiac perfusion was performed with 20 ml phosphate buffered saline. After this procedure, mice were decapitated, and brains removed and snap-frozen or fixed in
15 formalin. Frozen sections of 4 μm were stained with anti-IgM antibody. In **figure 17A** it is shown that antibody 11F5H6 homes to and accumulates in tumour vessels but not in normal vessels (compare anti-IgM staining in **figure 17A** with the anti-endothelial CD31 staining in **figure 17B**). Such staining
20 is not seen when performing anti-IgM staining on non-injected mice. Thus, 11F5H6 is a promising antibody which allows tumour targeting.

Figure 18: Expression of Plexin D1 in macrophages in a mouse model of rheumatoid arthritis. Stainings were
25 performed with single domain antibody A12

Figure 19: expression of Plexin D1 in atherosclerosis. A subset of macrophages in human atherosclerotic plaques expresses plexin D1. Stainings were performed with single domain antibody A12. A double staining
30 was performed, displaying plexin D1 in red and the macrophage marker CD68 in blue. A purple color indicates co-expression.

The tables show the following:

Table I: Analysis of different pathologies for plexin D1 expression.

Table II: Plexin D1 expression in melanocytic lesions
5 increases from benign to malignant lesions

EXAMPLES

EXAMPLE 1

Specific expression of plexin D1 on tumor-associated blood
10 vessels

Plexin D1 is expressed on neurons but also endothelial cells in angiogenic vessels during embryogenesis. The present invention demonstrates that plexin D1 is expressed on tumor-associated blood vessels but not on normal
15 blood vessels. This has been shown by *in situ* hybridization of mouse brains, containing angiogenic human melanoma lesions (**Figure 2**). The animal tumor model is described in (Kusters, B et al., Cancer Res 63:5408-5413 (2003)). In short, tumor cells are injected via a microsurgical procedure in the right
20 carotid artery, resulting in tumor growth in the parenchyma of the right brain hemisphere. After three weeks, at the onset of neurological symptoms, mice are sacrificed and brains removed and fixed in formalin.

Sections of 4 μm were subjected to *in situ*
25 hybridization with digoxigenin-labeled sense and antisense RNA fragments. RNA probes were generated by transcription using T3 and T7 RNA polymerase, respectively, from a PCR product, encompassing 600 bases in the 3'-untranslated region, and which was flanked by T7 and T3 promoters (Van der
30 Zwaag et al. (2002), supra).

In situ hybridizations using antisense RNA probes and sense RNA probes as negative controls, were performed using standard protocols. Sections were deparaffinated by melting

paraffin at 60°C and subsequent treatments with xylene and ethanol. After rehydration in phosphate buffered saline (PBS) a proteinase K digestion was performed (10 µg/ml PBS in 20 mM Tris-HCl pH7.4/5 mM EDTA) for 15 minutes at 37°C. Sections
5 were postfixed in 4% buffered formaldehyde for 10 minutes, and acetylated in 0.1 M acetic acid anhydrid. Slides were washed subsequently in 2xSSC (sodium Citrate/sodium chloride) and milliQ. After drying, slides were hybridized with digoxigenin-labeled RNA probes overnight at 65°C in 50%
10 formamide/2xSSC.

High levels of plexin D1 RNA were observed in vessels of angiogenic Mel57 tumors (**Figure 2**) using a mouse-specific plexin D1 RNA probe. Tumor cells were also positive for the transcript. The non-perfect homology between mouse and human
15 plexin D1 results in a weaker signal in the human tumor cells using the mouse probe.

EXAMPLE 2

20 Expression of plexin D1 in tumors

To investigate plexin D1 RNA expression in human tumor samples, we performed *in situ* hybridizations with a human-specific plexin D1 RNA probe. High plexin D1 RNA expression levels were found in a number of human tumors, of
25 which (glioblastoma multiforme, brain metastases of sarcoma, renal cell carcinoma, adenocarcinoma of the colon and of the breast), both in tumor vasculature and tumor cells. A summary of plexin D1-expressing tumor types is given in **Table 1**.

Figure 3 shows some examples of *in situ* hybridizations, e.g.
30 a glioblastoma, a brain metastasis of melanoma and a brain metastasis of colon carcinoma. Plexin D1 RNA was found not only on the tumor vasculature, but also excessively on the tumor cells themselves. Importantly as in **figure 4A**, no

plexin D1 RNA expression is observed in normal brain vasculature. In **figure 4B** a CD31 staining is shown, demonstrating that abundant vessels are present in these sections.

5

EXAMPLE 3Preparation of antibodies against plexin D1

To detect plexin D1 protein, antibodies were selected with affinity towards plexin D1. To this end, a M13 pHENIX
10 phage library was constructed expressing Llama single domain V-H antibodies, constructed by RT-PCR from Llama B-lymphocytes as described (van Koningsbruggen, S et al., J Immunol Methods 279:149-161 (2003)). The population of
15 resulting cDNAs encoding V-H-single domain antibody (sdab) fragments was ligated into phagemid vector pHENIXHis8VSV (results not shown), resulting in a fusion product with a 8*His-tag and a VSV-G-tag at the C-terminus. After electroporation in *E. coli* TG1 cells, ampicillin-resistant colonies were collected and pooled.

20 The resulting library had a complexity of 8×10^8 clones. Eighty percent of plasmids contained full-length sdab insert as determined by PCR analysis and immunological dot-blot-detection of the VSV-G-tag in sdabs (see below). The phage library was propagated as phagemids in *E. coli* TG1
25 bacteria. Phage particles were rescued by infection with trypsin sensitive helper phage M13K07 (50). Phages were purified and concentrated from the culture supernatant by precipitation with 20% Polyethyleneglycol/2.5 M NaCl via standard methodology.

30 To select for phages, displaying antibodies with affinity towards plexin D1, immunotubes (Nunc, Roskilde, Denmark) were coated overnight at 4°C with 5 µg/ml KLH-conjugated peptide (H_2N -ALEIQRRFPSPTPTNC- $CONH_2$,

corresponding to amino acids 1-16 of the mature human PLXND1 protein (accession no. AY116661) in 50 mM NaHCO₃ (pH 9.6). Of note, the glutamic acid on position 3 in this peptide is a lysine in the mouse sequence, the remaining amino acids are
5 homologous to mouse plxnd1.

After rigorous washing with PBS/0.05% Tween 20 (PBST), non-specific binding sites were blocked with 5% marvel in PBST (MPBST, 1 hr at room temperature (RT)) and 10¹³ phage particles from the library stock were incubated with
10 the immobilized peptide for 90 min at RT. After rigorous washing with PBST and PBS, bound phages were eluted by trypsin treatment (10 mg/ml, 30 min RT).

After trypsin inactivation with 1% newborn calf serum, the eluate was used to infect log-phase TG1 cells to
15 amplify PLXND1-binding phages and calculate number of binders.

To enrich for binding phages, four rounds of selection were performed. From the second round on, selections were performed against unconjugated peptides,
20 immobilized on DNA-binding plates (Costar) to prevent selection of KLH-binders.

Individual PLXND1-binding phages with PCR-confirmed full-length sdab inserts were tested for specificity towards plexin D1. Wells of DNA-binding plates or immunoplates (Nunc)
25 were coated overnight at 4°C with PLXND1-peptide or an irrelevant peptide (1 µg/well in PBS/0.5 M NaCl pH 9.0), Bovine serum albumin (1 µg/well in 50 mM NaHCO₃ pH 9.6) or human Immunoglobulin G (1 µg/well in 50 mM NaHCO₃ pH 9.6). After blocking non-specific binding sites with MPBST, wells
30 were incubated with phages in MPBST for 1 hr at RT and non-bound phages removed by rigorous washing. Bound phages were detected using HRP-conjugated anti-M13 (Amersham Pharmacia Biotech, Piscataway, NJ, USA) and

tetramethylbenzidine (TMB; bioMérieux B.V., Netherlands). The reaction was terminated with 2M H₂SO₄ and enzymatic activity quantified by measuring absorbance at 450 nm using an ELISA reader.

5 Using this selection procedure, phages displaying V-H single domain antibodies A12 and F8 on their surfaces were identified as specific binders. **Figure 5A** shows that M13 phage associated antibodies A12 and F8 bind specifically to plexin D1 peptide, but not to bovine serum albumin,
10 immunoglobulins or an irrelevant peptide.

 Expression of soluble single domain antibodies was induced in log-phase *E.coli* TG1 cells by culturing at 30°C in 2xTYA medium/1 mM IPTG. Sdabs were collected by osmotic lysis using ice-cold TES buffer (200mM TrisHCl, 0.5 mM EDTA, 500 mM
15 sucrose) containing a protease inhibitor cocktail (Roche, Basel, Switzerland). Sdab concentrations were estimated via dot-blot analysis using the mouse monoclonal anti-VSV-G P5D4, alkaline phosphatase-conjugated rabbit anti-mouse
immunoglobulin (Dako, Denmark) and NBT/BCIP staining. Sdabs
20 were tested in ELISA for PLXND1-peptide specificity. Single domain antibodies A12 and F8 did not bind to irrelevant peptide, not to bovine serum albumin, and not to human immunoglobulin G (**Figure 5B**). The dissociation constants (kd's) of the binding between single domain antibodies A12 and F8
25 were determined using the Biacore 2000 (Uppsala, Sweden) biosensor. The sensor chip and protein coupling chemicals were purchased from Biacore AB. PLXND1-peptide-KLH conjugate (27 µg/ml in Na-Acetate, pH 4.0) or BSA (1 µg/ml in Na-Acetate, pH 5.0) was coupled to activated CM5 surfaces
30 using *N*-ethyl-*N'*-(dimethylaminopropyl) carbodiimide, *N*-hydroxysuccinimide, under conditions recommended by the manufacturer. Unreacted groups were inactivated by 1 M ethanolamine, pH 8.5.

Kinetic measurements were performed at 25°C with a flow rate of 10 ml/min in HBS-EP buffer (10 mM HEPES, pH 7.4, 150 mM NaCl, 3 mM EDTA, 0.005% surfactant P20).

Six concentrations of Ni-affinity-purified sdabs (in the range of 1 mM to 50µM) were used to determine the dissociation constants (K_d) of the interaction with the PLXND1-peptide. After each experiment, regeneration of the sensor surface was performed with 10 mM NaOH. Specific binding, defined by binding to a PLXND1-surface minus binding to a control BSA-surface, was analyzed using the BIAevaluation 4.1 software and a 1:1 Langmuir binding model.

Affinities of single domain antibodies A12 and F8 were 2.1×10^{-8} M and 3.5×10^{-8} M, respectively (**Figure 6**).

EXAMPLE 4

Immunohistochemical stainings with single domain antibodies A12 and F8

The single domain antibodies are tagged at the carboxyterminal end with a VSV-His-tag, enabling immunohistochemical stainings using an anti-VSV antibody. The following protocol was followed for immunohistochemical stainings with single domain antibodies A12 and F8. Following deparaffinization, endogenous peroxidase activity was blocked by incubation with 0.03% H₂O₂. Antigen retrieval was performed by treatment with pronase according to standard protocols. Subsequently, slides were pre-incubated with normal horse or goat serum (to block non-specific binding sites in sections of human and mouse tissues, respectively), followed by incubation with sdabs for 1 hr. Sdabs were detected by sequential 1 hr incubations with a mouse or rabbit anti-VSV-G antiserum (Sigma-Aldrich Chemie B.V., Zwijndrecht, The Netherlands), biotinylated anti-mouse or anti-rabbit antibody

as appropriate (Vector, Burlingame, CA), and avidin-biotin peroxidase complex (Vector, Burlingame, CA). Finally, peroxidase was visualized by the 3-amino-9-ethylcarbazole (ScyTek, Utah, USA) peroxidase reaction with haematoxylin as counterstain. All steps were performed at RT.

The specificity of the antibody A12 and F8 for plexin D1 in immunohistochemical stainings was first examined by staining mouse embryos in which expression patterns of plexin D1 on the RNA level were well characterized (Van der Zwaag et al. (2002), supra), and comparing profiles with immunostainings with anti-endothelial antibody anti-CD31 (DAKO, Glostrup, Denmark). In growth plate of trabecular bone of mice embryos at E16.5, immunostaining was observed on CD31-positive blood vessels. The staining profile correlated well to *in situ* hybridization for the plexin D1 transcript (**figure 7A**). The blood vessel origin of PLXND1 expression was further confirmed by performing stainings on serial sections with sdabs and anti-human anti-CD31 antibody (anti-human CD31).

20

EXAMPLE 5

Staining of tumor cells with F8

Four μm sections cerebral mouse xenografts of the human melanoma cell line Mel57-VEGF-A (Kusters et al. (2003), supra) were stained with single domain antibody F8, according to the protocol exemplified in **Example 4**. The antibody clearly recognized plexin D1 on tumor blood vessels (**Figure 7B**). To further investigate plexin D1 protein expression on tumors, archival paraffin-embedded or tumor tissue of different origin (glioblastoma multiforme (**Figure 8A**), brain metastases of melanoma (**Figure 8B**) colon carcinoma (**Figure 8C**) and renal cell carcinoma (**Figure 8D**) were immunostained with anti-*PLXND1* sdabs. Immunohistochemistry using antibody

30

A12 and comparison with anti-human CD31 stainings on serial sections, showed expression on all tumors examined and confirmed plexin D1 expression on the protein level in tumor cells and in tumor blood vessels.

5

EXAMPLE 6Timing of plexin expression on malignant cells

To investigate whether expression of plexin D1 occurs on premalignant cells, we stained a progression series of melanoma, consisting of benign nevi, dysplastic nevi, radial growth phase melanoma, invasive melanoma and disseminated melanoma. Melanocytes in benign nevi and dysplastic nevi do not express the protein, whereas malignantly transformed cells, both in radially growth phase and vertical growth phase tumors are positive for the protein (**Figure 9** and **Table II**).

15

EXAMPLE 7Activation state of plexin D1 expressing cells

Plexin D1 expression is related to the activation state of the endothelial cells in tumor blood vessels. Treatment with ZD6474, an inhibitor of VEGFR2 and EGFR, was previously shown to block angiogenesis in a mouse brain tumor model, resulting in a phenotypic shift from an angiogenic to a non-angiogenic, vessel co-opting phenotype (43). Treatment with ZD6474 resulted in a decrease of plexin D1 expression on tumor-associated blood vessels in a dose dependent manner (**Figure 10**). Thus, plexin D1 expression is a characteristic of activated endothelial cells.

25

30

EXAMPLE 8Immunohistochemistry with A12 on normal tissues

Expression of plexin D1 in normal brain, heart, skin, kidney, spleen, intestine, endometrium was examined by immunohistochemistry using antibody A12. Vessels in proliferative myometrium expressed plexin D1, showing that plexin D1 is associated not only with pathological angiogenesis, but also with physiological angiogenesis (not shown).

10 In some instances, co-immunostainings were performed with the CD68 macrophage marker. These stainings revealed that a subpopulation of macrophages expressed the protein (**figure 11**). Also fibroblasts in skin and some proliferating intestinal epithelial cells were found to express plexin D1
15 (not shown).

EXAMPLE 9Staining of macrophages in inflammatory diseases

To further examine the involvement of plexin D1 in diseases with prominent macrophage involvement, immunohistochemical stainings were performed on atherosclerotic plaques, multiple sclerosis and rheumatoid arthritis. Macrophages express plexin D1.

EXAMPLE 10

10 Access to plexin D1 in tumor vessels via intravenous injection

The expression of plexin D1 protein on tumor blood vessels suggests that plexin D1 is accessible via intravenous injection. To test this, 2×10^5 stably transfected Mel57 cells expressing the VEGF-A₁₆₅ isoform were microsurgically injected into the right internal carotid artery of BALB/C nude mice. After 18 days, when animals showed neurological symptoms (Kusters et al., (2003), supra), 10^{12} PLXND1-binding phages of clones A12, F8 or non-relevant phages were injected in the tail vein of nude mice, carrying established Mel57-VEGF-A₁₆₅ brain metastases (n=2 for A12, n=4 for F8, n=3 for control phage).

In two other groups of mice, we intravenously injected 30 μ g sdab F8 or a control sdab (n=2 for each group). After 5 minutes, mice were anaesthetized using isoflurane, the chests were opened, and non-bound phages were washed from the system by cardiac perfusion with 15 ml of phosphate buffered saline (PBS). Then, mice were sacrificed by cervical dislocation, and parts of brains, hearts, lungs, livers, spleens and kidneys were snap frozen in liquid nitrogen.

Other parts were fixed in formalin to be paraffin-embedded. After short hematoxylin staining, tumors

were dissected from 10 μm brain sections using laser capture dissection microscopy (Leica laser dissection microscope). Equivalent areas were dissected from unaffected brain, contralateral to the tumor.

5 Subsequently, phages were eluted from dissected tissue samples using trypsin treatment and used to infect TG1 cells. Numbers of colony-forming phages were counted and used as a measure of tumor homing. To qualitatively assess tumor homing by phages or sdabs, 4 μm sections, serial to the
10 sections used for laser dissection, were stained with anti-M13 p8 antibody (Abcam Limited, Cambridge, UK) to detect bound phages, or anti-VSV-G antibodies (Sigma-Aldrich) to detect single domain antibodies.

Intravenous injection of M13 phages displaying
15 anti-*PLXND1* single domain antibody F8, but not phages carrying irrelevant single domain antibodies, in mice carrying angiogenic melanoma lesions resulted in accumulation of phages in tumor vessels but not to detectable specific presence of phages in normal brain vessels, nor blood vessels
20 in liver, spleen, kidney (**Figure 12A,D** and not shown). This indicates that plexin D1 is expressed at the luminal side of the endothelial cell specifically in tumor blood vessels and thus can be used as a targetable marker.

Injection of the partially purified single domain
25 antibody accordingly led to preferential tumor localization (**Figure 12C**). In the latter situation it must be considered that the small molecular weight of 20 kDa of the single domain antibodies enable extravasation from the highly permeable tumor vessels and accumulation in the tumor
30 interstitium. This latter effect is non-specific and is also observed with non-relevant single domain antibodies. It is envisioned that antibodies of small molecular weight and relatively low affinities have higher penetrability through

tumors and are more suitable for targeting the tumor cell compartment.

EXAMPLE 11

5 Accumulation of F8 in tumor blood vessels

Mice were injected transcranially with E98, a glioma xenograft line. E98 tumors are maintained as subcutaneous tumors. A Balbc/c nu/nu athymic mouse carrying a subcutaneous E98 tumor was killed and the tumor removed. The tumor was
10 minced with a sterile scalpel and the homogenate was passed through a sterile 70 μm mesh nylon filter. Twenty μl of the resulting cell suspension, containing 150,000 cells, was injected transcranially in the brain of nude mice. After 3 weeks, M13 phages displaying single domain antibody F8 were
15 injected intravenously, and after five minutes the mouse was subjected to cardiac perfusion with 15 ml of phosphate buffered saline.

The mice were killed, brains removed and fixed in formalin. Four μm sections were subjected to
20 immunohistochemistry with anti-M13 antibody, and serial sections were stained immunohistochemically with antibodies against CD34 (endothelial marker) and glut-1 (a marker for pre-existent brain endothelial cells (Kusters, B et al., Cancer Res 62:341-345 (2002))).

25 Phages carrying anti-plexin D1 single domain antibodies accumulated specifically in tumor associated blood vessels, but not in normal vessels (**Figure 13**). Importantly, phages also accumulated in tumor blood vessels that were positive for glut-1, and which therefore can be considered as
30 pre-existent blood vessels, rather than newly formed blood vessels. This indicates that not only angiogenic blood vessels are subject to targeting with anti-plexin D1

antibodies, but also non-angiogenic, yet activated blood vessels in tumors.

EXAMPLE 12

5 Recombinant plexin D1 ectodomains inhibit angiogenesis

Human melanoma Mel57 cells were transfected with the VEGF-A₁₆₅ coding sequence in vector pIRESHyg. Stably transfected cells were selected by culturing in 200 µg/ml hygromycin in Dulbecco's Modified Eagle medium (DMEM) 10 supplemented with 10% fetal calf serum (FCS) and penicillin/streptomycin. Because expression of the hygromycin resistance gene is linked to that of the VEGF-A cDNA via the internal ribosomal entry site (IRES), all hygromycin-resistant cells will produce the VEGF-A protein also. Stably 15 transfected Mel57-VEGF cells were subsequently transfected with pIRESneo-PlexinD1 ED. The vector contains the cDNA encoding the extracellular domain from nucleotides 1-2745, linked via the IRES to expression of the neomycin resistance gene.

20 Double transfectants were injected in the right carotid artery of nude mice, and tumors were allowed to develop. At the onset of neurological symptoms (approximately 18 days) mice were subjected to Gadolinium-DTPA enhanced magnetic resonance imaging. Subsequently, mice were 25 sacrificed, brains fixed in formalin and subjected to immunohistochemical stainings to examine the tumor vasculature.

When compared to controls, consisting of tumors expressing VEGF-A only, Gd-DTPA enhancement in T1-weighted 30 magnetic resonance imaging (MRI) was less (compare **Figure 14A**, representing two examples of Mel57- VEGF-A₁₆₅ tumors, with **14B** representing two examples of Mel57- VEGF-A₁₆₅/PLEXIND1-ED tumors. In the tumors expressing VEGF-A₁₆₅ and Plexin D1 ectodomain, vasculature shows

upregulation of the endothelial marker CD34, (a hallmark of endothelial activation by VEGF-A₁₆₅). The vasculature in tumors expressing VEGF-A₁₆₅ only, is negative for the brain endothelial cell marker glut-1, which is consistent with the fact that these vessels are newly made and therefore lack brain-endothelial cell specific markers. As can be seen in **figure 12B**, the vessels that are associated with tumors that express the plexin D1 ectodomain too, do express glut-1. This is a strong indication that these vessels are actually pre-existent. Thus, the plexin D1 ectodomain does not prevent activation of endothelial cells by VEGF-A₁₆₅, but it does prevent the formation of neovasculature.

EXAMPLE 13

15 High affinity antibodies against plexin D1

A protein sequence, corresponding to amino acids 47-506 (the 459 most amino terminal amino acids of the mature protein), was expressed in *E.coli* M15 pREP4 cells, using the expression vector pQE16 (Qiagen). The recombinant protein, which was produced in the bacterial cells as inclusion bodies, was dissolved in denaturing buffer, containing 4M urea and 1 mM dithiothreitol (DTT) and afterwards gradually dialysed against PBS. The protein was used to immunize BALB c/c mouse 25 according to standard procedures.

Figure 15 shows the characteristics of the mouse serum. As shown in **Figure 15B**, the mouse immune serum specifically recognized *E.coli* recombinant protein 47-506 (52 kDa, lane 1), and a second recombinant plexin D1 sequence of 18 kDa, comprising amino acids 225-388 (thus lying completely within the sequence that was used for immunization, lane 2). The pre-immune serum did not show such a reactivity (panel A).

When tested in immunohistochemical stainings on a brain metastasis of an alveolar soft tissue sarcoma, the mouse immune serum (panel D), but not the pre-immune serum

(panel C), showed positivity towards blood vessels and tumor cells, a staining pattern which was similar to that of single domain antibody A12. Thus, the B-lymphocytes of this mouse were considered suitable to generate hybridomas of spleen
5 B-lymphocytes with myeloma cell line SP2/0.

From these hybridomas a number of antibody-producing cell lines were selected based on reactivity against protein 47-506 in ELISA, and were analysed for their potential to detect plexin D1 in frozen sections of human tumours. Of
10 these, 11F5H6 and 17E9C12, both antibodies of the IgM subtype, showed strong positivity in brain metastases of sarcoma and melanoma, as illustrated in **Figure 16**. The insets in panels C-F represent control stainings in which the primary antibody was omitted. Panels A and B show that these
15 antibodies do not notably recognize vessel structures in normal brain tissue.

EXAMPLE 14

Monoclonal antibody 11F5H6 is able to recognize tumour blood
20 vessels

To further evaluate whether monoclonal antibody 11F5H6 is able to recognize tumour blood vessels, angiogenic Mel57-VEGF-A tumours were grown in brains of nude mice, essentially as described in **Example 10**. Antibody 11F5H6
25 (1 mg) was injected in a lateral tail vein and allowed to circulate for 15 minutes. After this period, the mice were anaesthetized with 1.3% isoflurane and the chest was opened, upon which a cardiac perfusion was performed with 20 ml phosphate buffered saline.

30 After this procedure mice were decapitated, and brains removed and snap-frozen or fixed in formalin. Frozen sections of 4 μm were stained with anti-IgM antibody. In **Figure 17A** it is shown that antibody 11F5H6 homes to and accumulates in tumour vessels but not in normal vessels

(compare anti-IgM staining in **Figure 17A** with the anti-endothelial CD31 staining in **Figure 17B**). Such staining is not seen when performing anti-IgM staining on non-injected mice. Thus, 11F5H6 is a promising antibody which allows
5 tumour targeting.

EXAMPLE 15

Plexin D1 expression in rheumatoid arthritis

Plexin D1 is expressed in macrophages in mouse models
10 of rheumatoid arthritis (**Figure 18**). A subset of macrophages in human atherosclerotic plaques also expresses plexin D1 (**Figure 19**). Stainings were performed with single domain antibody A12. In **Figure 19**, a double staining was performed, displaying plexin D1 in red and the macrophage marker CD68 in
15 blue. A purple color indicates co-expression.

SEQUENCES

A12 (SEQ ID NO:1):

ATGAAATACCTATTGCCTACGGCAGCCGCTGGATTGTTATTACTCGCGGCCAGCCGGCC
20 ATGGCCCAGGTGCAGCTGCAGGAGTCTGGGGGAGGCTTGGTGCAGCCTGGGGGTCTCTG
AGACTCTCCTGTGCAGCCTCTGGAAGCAGTATCAGTATCAATAACTGGGGCTGGTACCGC
CAGGCTCCAGGAAAACAGCGCGAGCGGGTCGCAGCTATATCTGGTGGTGGTAAAACAGTC
TATGCGGACTCCGTGAAGGGCCGATTCACCATCTCCAGAGACAACGCCAAGAACACGGTG
TATCTGCAAATGAACAGCCTGAAACCTGAGGATACGGCCGTCTATTACTGTAGAGCAGTC
25 CGGAAAAGTACGGGTTGGCTTAGGGGGCTTGACGTCTGGGGCCAGGGGACCCAGGTCACC
GTCTCCGCAGAACCCAAGACACCAAAACCACAACCAGCGGCCGCACATCATCACCATCAT
CACCATCATTATACAGACATAGAGATGAACCGACTTGGAAGGGGGCCGCATAG

MKYLPTAAAGLLLLLAAQPA
30 MAQVQLQESGGGLVQPGGSL
RLSCAASGSSISINNWGWYR
QAPGKQRERVA AISGGGKTV
YADSVKGRFTISRDNKNTV
YLQMNSLKPEDTAVYYCRAV

RKSTGWLRLGLDVWGQGTQVT
VSAEPKTPKPQPAAAHHHHH
HHHYTDIEMNRLGKGAA@

5 **F8 (SEQ ID NO:2) :**

ATGAAATACCTATTGCCTACGGCAGCCGCTGGATTGTTATTACTCGCGGCCAGCCGGCC
ATGGCCCAGGTGCAGCTGCAGGAGTCTGGGGGAGGATTGGTGCAGGCTGGAGACTCTCTG
AGACTCTCCTGTGCAGCCTCTGGACGCACCTTCAGTACTTTGATTATGGCCTGGTTCCGC
CAGGCTCCAGGGAAGGAGCGTGAATTTGTAGCGGCGATTAGCCGGGGTGGCGGTAGCACA
10 AGCTATGCAGACTCCGTGAAGGGCCGATTCACCATCTCCAGAGACAATTCCAAGAACGCG
GTGTATCTACAAATGAACAGCCTGAAACCTGATGACACGGCCGTCTATTACTGTAATGCC
CGGTACGGTAGCCGAATTTACTGGGGCCAGGGGACCCAGGTCACCGTCTCCTCAGAACC
AAGACACCAAACCACAACCAGCGGCCGCACATCATCACCATCATCACCATCATTATACA
GACATAGAGATGAACCGACTTGAAAGGGGGCCGCATAG

15

MKYLLPTAAAGLLLLLAAQPA
MAQVQLQESGGGLVQAGDSL
RLSCAASGRTFSTLIMAWFR
QAPGKEREVAAISRGGGST
20 SYADSVKGRFTISRDNKNA
VYLQMNSLKPDDTAVYYCNA
RYGSRIYWGQGTQVTVSSEP
KTPKPQPAAAHHHHHHHHYT
DIEMNRLGKGAA@

Sequence single chain antibody, derived from antibody 11F5H6
(SEQ ID NO:3)

MKYLLPTAAAGLLLLLAAQPAMADYKDIVMTQTPLSLPVSLGDQASISCRSSQSIVHSNGNT
YLEWYLQKPGQSPKLLIYKVFNRLSGVPDRFSGSGSGTDFTLKI SRVEAEDLGVYYCFQGS
HVPLTFGAGTKLELKRGGGGSGGGGSGGGGRAPGGGGSEVQLQQSGPELVKPGASMKISCK
ASGYSFTGYTMNWVKQSHGKNLEWIGLINPYNGGTSYNQKFKGKATLTVDKSSSTAYMELL
SLTSEDSAVYYCARAITTDGWFAYWGQGLVTVSAAAAHHHHHHHHHYTDIEMNRLGKGAA

Sequence single chain antibody, derived from antibody 17E9C12
(SEQ ID NO:4)

MKYLLPTAAAGLLLLAAQPAMADYKDIQMTQTPSSLAVSAGEKVTMSCKSSQSVLYSSNQK
NYLAWYQQKPGQSPKLLIYWASTRESGVPDRFTGSGSGTDFTLTISVQAEDLAVYYCHQY
LSSWTFGGGTKLEIKRGGGGSGGGSGGGSGGGGSQVQLQQSGAELVKPGASVKLSCTAS
GFNIKDTYMHVVKQRPEQGLEWIGRIDPANGNTKYDPKFQ GKATITADTSSNTAYLQLSSL
TSED TAVYYCAMDYWGQGTSVTVSSAAHHHHHHHHYTDIEMNRLGKGA

Table 1

PLXND1 expression in human tissues

Tissue	PLXND1 expression
Malignant	
Adenocarcinoma of oesophagus (n=1)	Tumor vessels and tumor cells
Adenocarcinoma of rectum (n=5)	Tumor vessels, tumor cells and macrophages
Adenocarcinoma of prostate (n=1)	Tumor vessels and tumor cells
Alveolar soft part sarcoma of femur (n=1)	Tumor vessels and tumor cells
Astrocytoma (n=1)	Tumor vessels
Carcinoid tumor of lung (n=1)	Tumor vessels, tumor cells and macrophages
Ductal carcinoma in situ of mamma (n=5)	Tumor vessel, tumor cells, macrophages, fibroblasts
Follicular lymphoma (n=8)	Tumor vessels
Glioblastoma Multiforme (n=3)	Tumor vessels and tumor cells
Brain metastasis of adenocarcinoma (n=4) (mamma, lung, rectum)	Tumor vessels and tumor cells
Brain metastasis of alveolar soft part sarcoma (n=1)	Tumor vessels and tumor cells
Brain metastasis of renal cell carcinoma (n=1)	Tumor vessels and tumor cells
Liver metastasis of adenocarcinoma colon (n=2)	Tumor vessels and tumor cells
Lobular carcinoma in situ of mamma (n=3)	Tumor vessels, tumor cells and macrophages
Lymph node metastasis ductal mamma carcinoma (n=1)	Tumor vessels and tumor cells weakly positive, macrophages and fibroblasts
Ovary metastasis of adenocarcinoma colon (n=1)	Tumor cells and some tumor vessels
Renal cell carcinoma (n=1)	Tumor cells and myofibroblasts
Urothelial cell carcinoma of prostate (n=2)	Tumor vasculature and tumor cells
	Tumor vessel, tumor cells and macrophages
Non-malignant	
Bladder (n=1)	Macrophages
Blood vessel, atherosclerosis (n=6)	Macrophages
Bone marrow (n=2)	Some neurons perinuclear
Brain cortex (n=1)	
Brain, Alzheimer + CAA (n=1)	
Endometrium	
Proliferation phase (n=5)	Macrophages
Secretion phase (n=4)	Macrophages
Secretion/menstruation phase (n=1)	Macrophages
Endometriosis interna (n=1)	Macrophages
Heart (n=1)	Some muscle cells perinuclear
Large intestine (n=1)	Some luminal staining of epithelium, macrophages, fibroblasts
Liver (n=1)	Liver cells perinuclear granular, macrophages
Lung (n=2)	Macrophages
Mamma (n=2)	Some epithelial cells perinuclear
Mamma, ductal hyperplasia (n=1)	Focal epithelial cells perinuclear, macrophages
Oesophagus (n=1)	Macrophages
Small intestine (n=1)	Some luminal staining of epithelium, macrophages, fibroblasts
Spleen (n=1)	Macrophages

Table 2

PLXND1 expression in melanoma progression series

	Absent	Moderate	Abundant
Naevocellular naevi (n=18)	18		
Atypical naevi (n=14)	14		
Melanomas in situ (n=5)	5		
Primary melanomas (n=26)	4	2	20
Melanoma metastases			
Lymph node (n=9)	1	2	6
Skin (n=5)	1	1	3
Brain (n=5)			5
Lung (n=1)			1

CLAIMS

1. Plexin D1 for use as a targetable protein in the treatment or diagnosis of disorders that involve expression of plexin D1.

2. Plexin D1 as claimed in claim 1, wherein the
5 diagnosis is effected by detecting the presence of plexin D1 in the body or a bodily tissue or fluid.

3. Plexine D1 as claimed in claim 1, wherein the treatment is effected by targeting plexin D1 for delivery of therapeutics to the site where treatment is needed.

10 4. Plexine D1 as claimed in claim 1, wherein the treatment is effected by interfering in the interaction of plexin D1 and its ligands.

5. Plexine D1 as claimed in claim 1, wherein the treatment is effected by interfering in the function of
15 plexin D1.

6. Plexine D1 as claimed in claim 1, wherein the treatment is effected by interfering in the expression of the gene encoding plexin D1.

7. Use of molecules that bind plexin D1, a nucleic
20 acid encoding plexine D1 or a ligand of plexin D1 for the preparation of a therapeutical composition for the treatment or diagnosis of disorders that involve expression of plexin D1.

8. Use as claimed in claim 7, wherein the disorders
25 comprise disorders in which plexin D1 is expressed on tumor cells, tumor blood vessels or activated macrophages.

9. Use as claimed in claim 7 or 8, wherein the disorders are selected from brain tumors, in particular astrocytomas, oligodendrogliomas and hemangioblastomas, colon
30 carcinomas, in particular ductal carcinomas of the colon, prostate carcinomas, renal cell carcinomas, in particular renal clear cell carcinomas, mamma carcinomas, in particular

ductal carcinomas of the breast, ovary carcinomas, squamous cell carcinomas, melanomas, lung carcinomas, in particular small-cell lung carcinomas and non-small cell lung carcinomas, soft tissue sarcomas.

5 10. Use as claimed in claim 7 or 8, wherein the disorders are inflammatory diseases.

 11. Use as claimed in claim 10, wherein the inflammatory disease is an autoimmune disease.

10 12. Use as claimed in claim 11, wherein the autoimmune disease is rheumatoid arthritis.

 13. Use as claimed in claim 10, wherein the inflammatory disease is atherosclerosis or multiple sclerosis.

15 14. Use as claimed in claim 7, wherein molecules that bind plexin D1 are selected from antibodies, antibody fragments, protein domains, peptides, small molecules, DNA or RNA aptamers.

20 15. Use as claimed in claim 7, wherein molecules that bind the nucleic acid encoding plexin D1 are selected from siRNA, antisense RNA, antisense phosphothio oligonucleotides.

 16. Use as claimed in claim 7, wherein molecules that bind a plexin D1 ligand are selected from antibodies against the ligand, the soluble ectodomain of plexin D1, peptides with affinity for the plexin D1 binding site.

25 17. Use as claimed in any one of the claims 7-16, wherein the binding molecule is labelled with a detectable marker.

 18. Use as claimed in claim 12, wherein the detectable marker is selected from a radioactive label, a paramagnetic label, fluorescent label, a chemiluminescent label.

 19. Use as claimed in any one of the claims 7-18, wherein the binding molecule is provided with an effector compound or a nanodevice comprising an effector compound.

20. Use as claimed in claim 19, wherein the effector compound is a toxin, a thrombosis-inducing compound, a chemotherapeutic agent, a radioactive moiety, an apoptosis-inducing peptide, in particular (KLAKLAK)₂.

5 21. Use as claimed in claim 20, wherein the toxin damages or kills endothelial cells to induce thrombosis, and is in particular ricin.

22. Use as claimed in claim 20, wherein the thrombosis-inducing compound is truncated tissue factor.

10 23. Use as claimed in claim 20, wherein the chemotherapeutic agent is selected from doxorubicin, cisplatin, bleomycin sulfate, carmustine, chlorambucil and cyclophosphamide hydroxyurea.

15 24. Use as claimed in claim 20, wherein the radioactive entity is selected from : technetium 99m, iodine-123, iodine-131, rhenium-186 or -188, gallium-67, yttrium-90, lutetium-177.

20 25. Use as claimed in claim 19, wherein the nanodevices are liposomes, polymersomes, in particular polymersomes composed of block copolymers.

26. Plexin D1 binding molecules.

25 27. Plexin D1 binding molecules as claimed in claim 26, comprising the plexin D1 binding part of A12 (**SEQ ID NO:1**), F8 (**SEQ ID NO:2**), 11F5H6 (**SEQ ID NO:3**) or 17E9C12 (**SEQ ID NO:4**).

29. Plexin binding molecules as claimed in claim 26 or 27, coupled to a detectable marker as claimed in claim 18.

30 30. Plexin binding molecules as claimed in claim 26 or 27, coupled to an effector molecule or a nanodevice comprising an effector compound, wherein the effector compound is as defined in any one of the claims 20-24.

31. Plexin binding molecules as claimed in claim 26 or 27, wherein the nanodevice is as defined in claim 25.

32. Diagnostic composition comprising a plexin binding molecule as claimed in claim 29.

33. Therapeutical composition comprising a plexin binding molecule as claimed in any one of the claims 30-32.

5 34. Single chain antibody A12 (**SEQ ID NO:1**).

35. Single chain antibody F8 (**SEQ ID NO:2**).

36. Single chain antibody 11F5H6 (**SEQ ID NO:3**).

37. Single chain antibody 17E9C12 (**SEQ ID NO:4**).

10 38. Method of identifying molecules that are capable of binding to plexin D1, which method comprises contacting a collection of molecules with plexin D1 and selecting the molecules from the collection that show binding to plexin D1 as plexin D1 binding molecules.

Figure 1

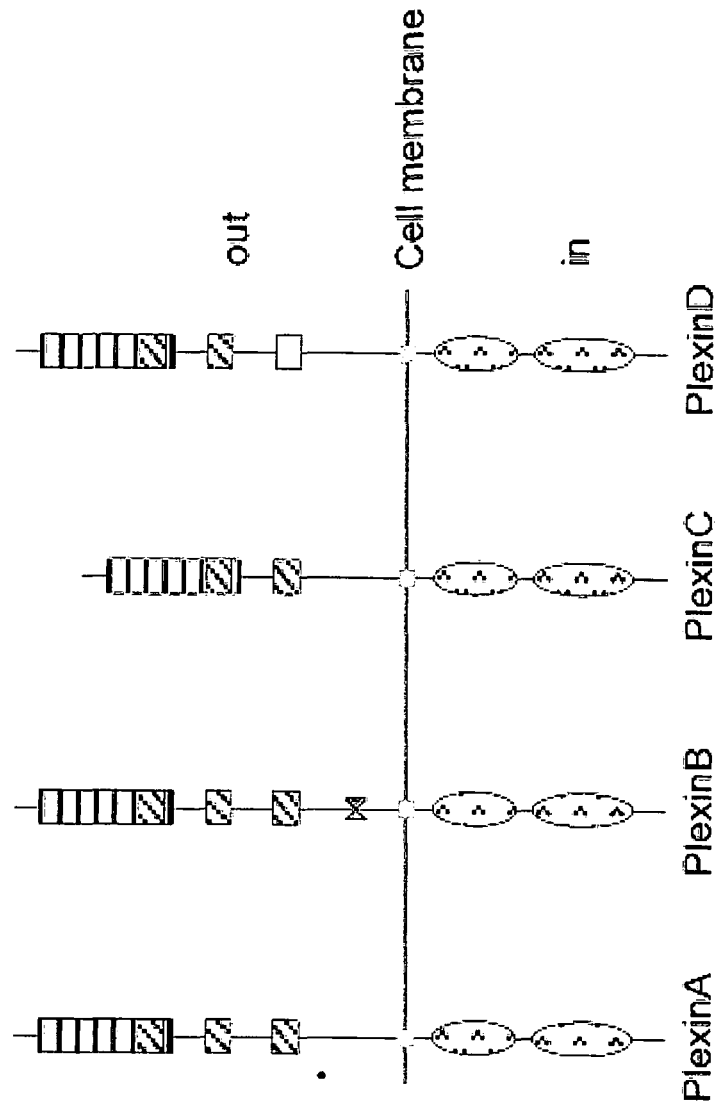


Figure 2

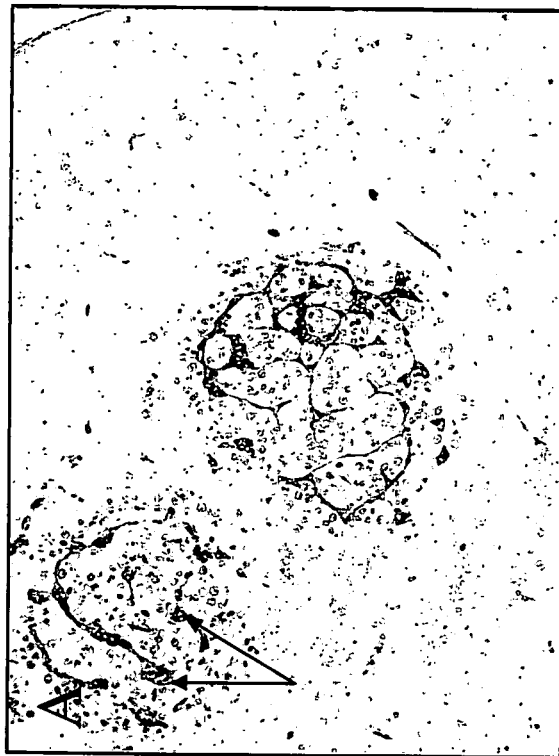


Figure 3

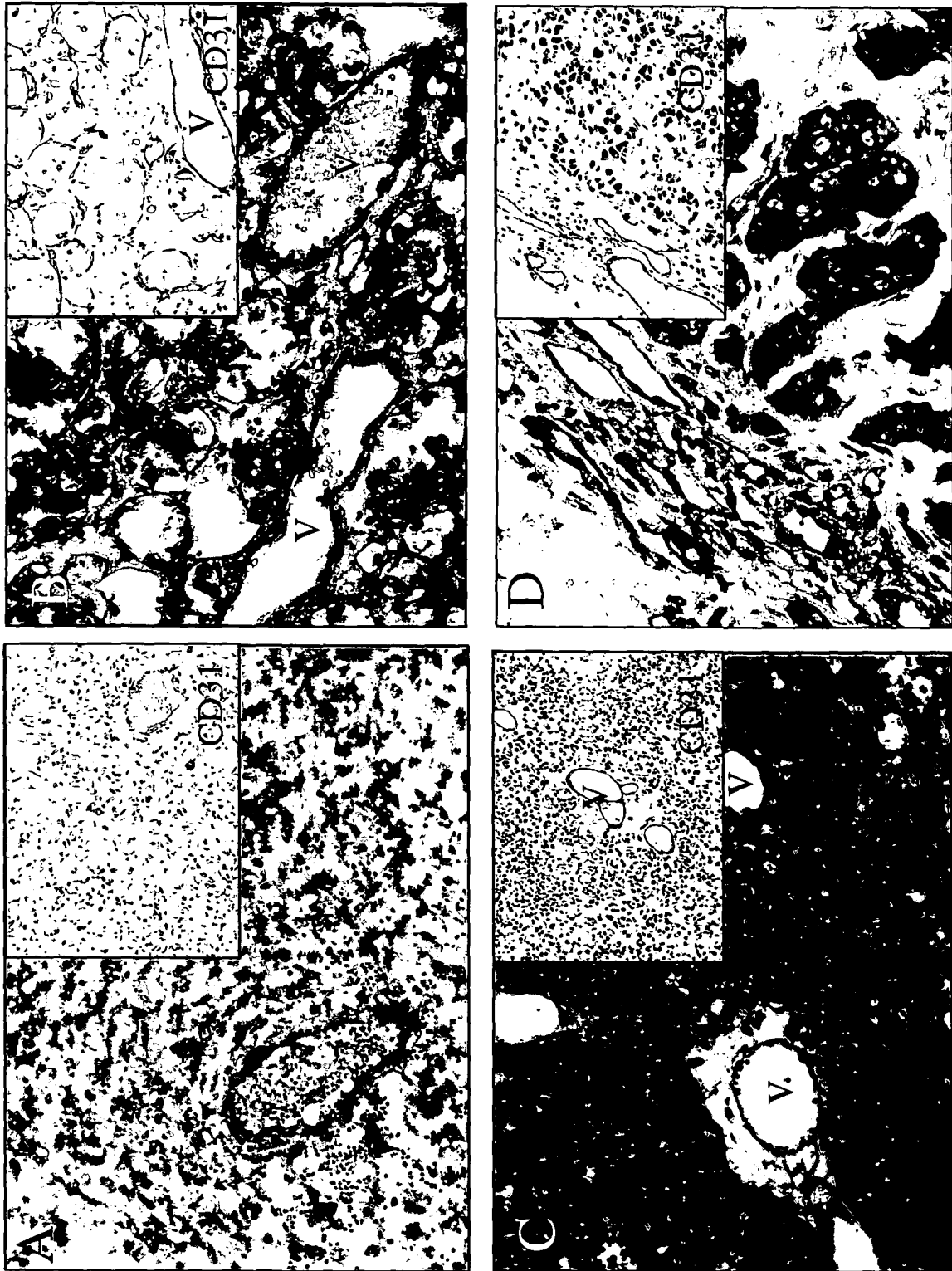


Figure 4

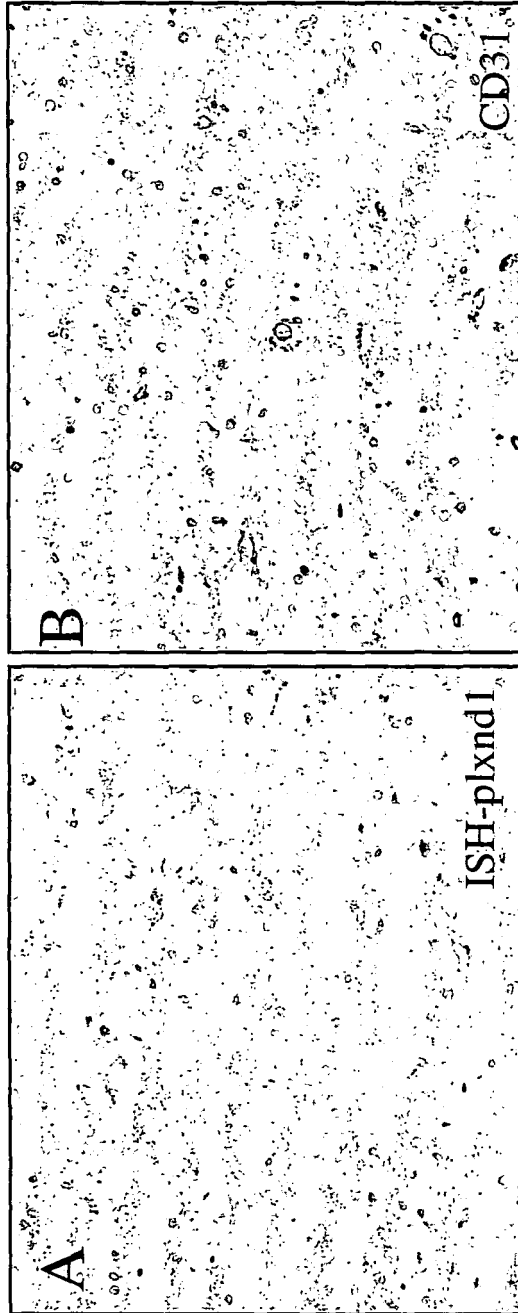


Figure 5

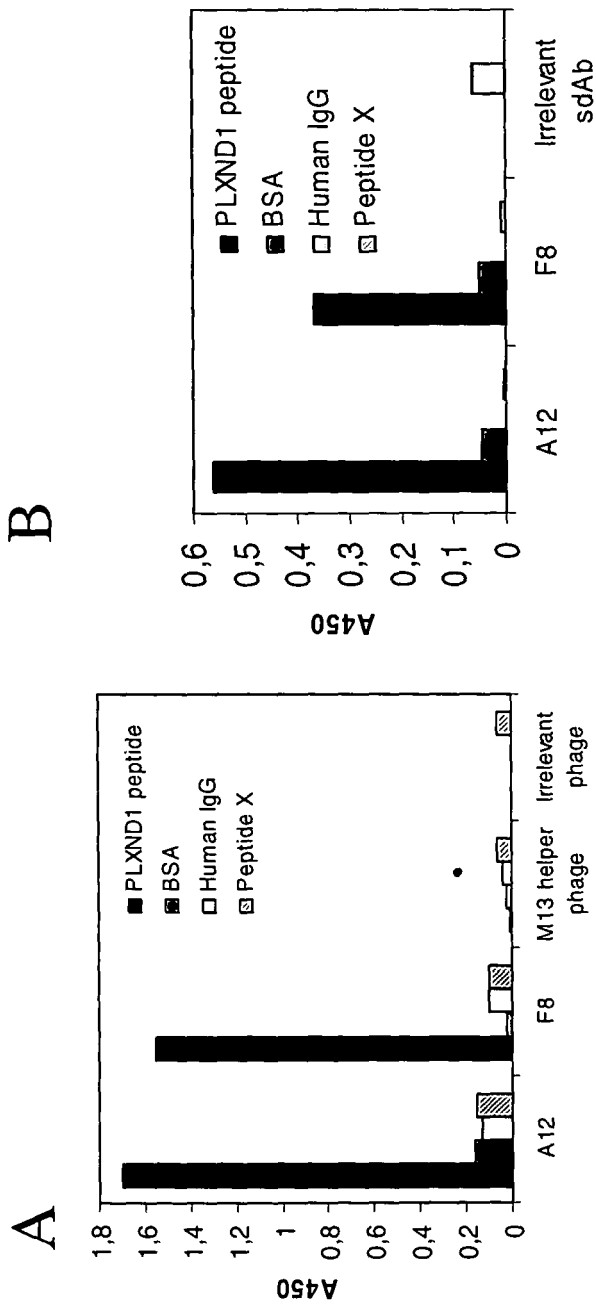


Figure 6

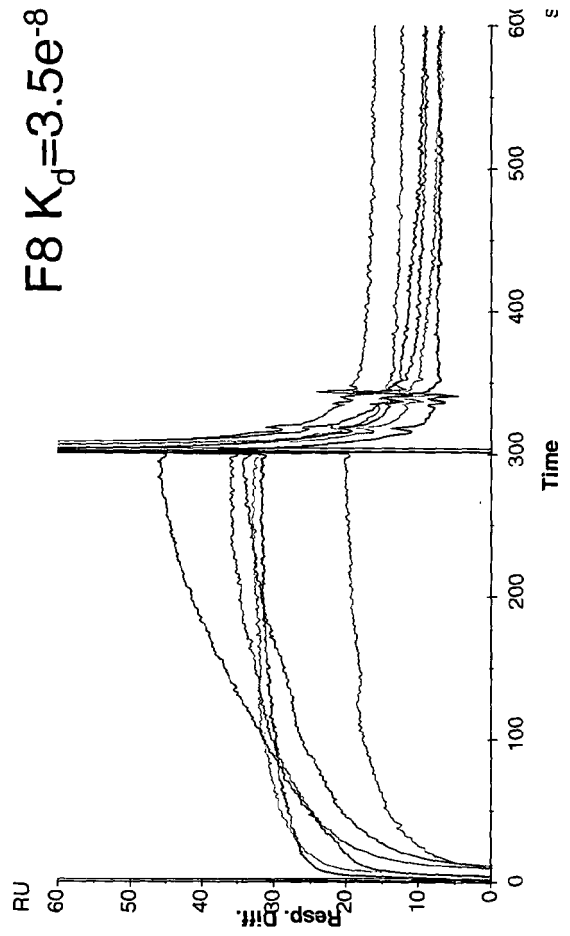
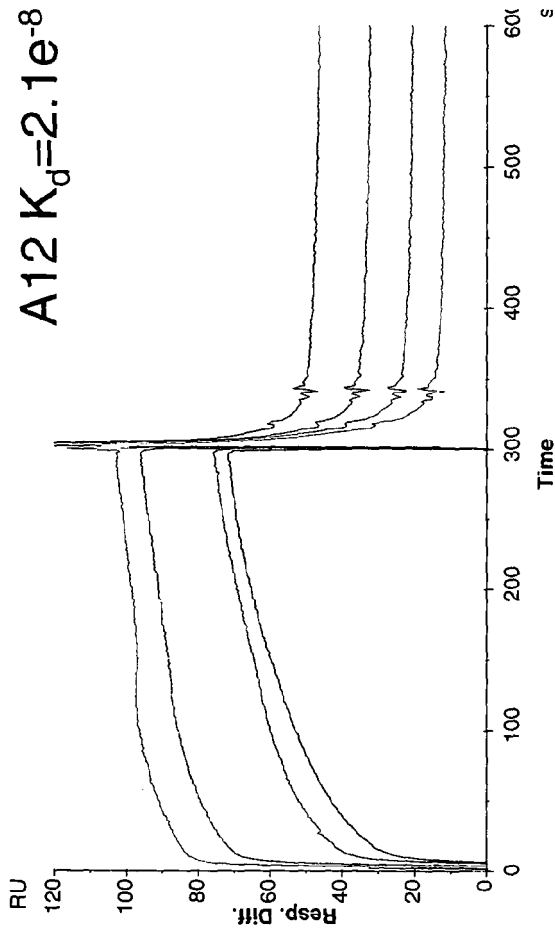


Figure 7

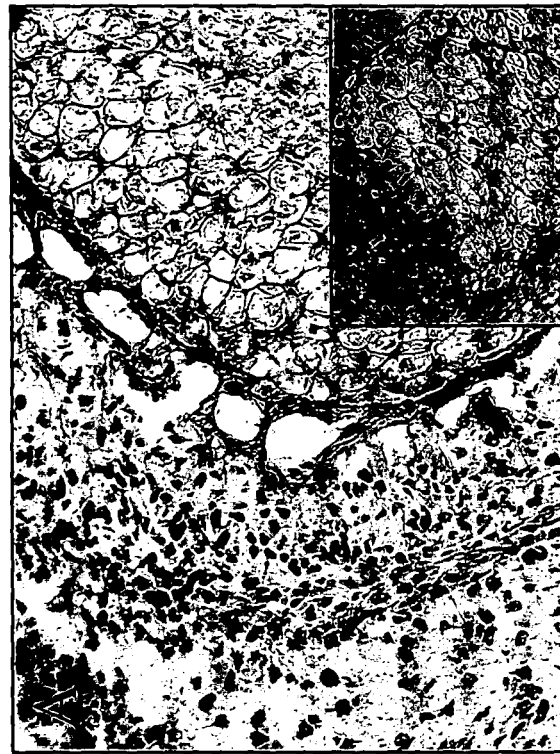
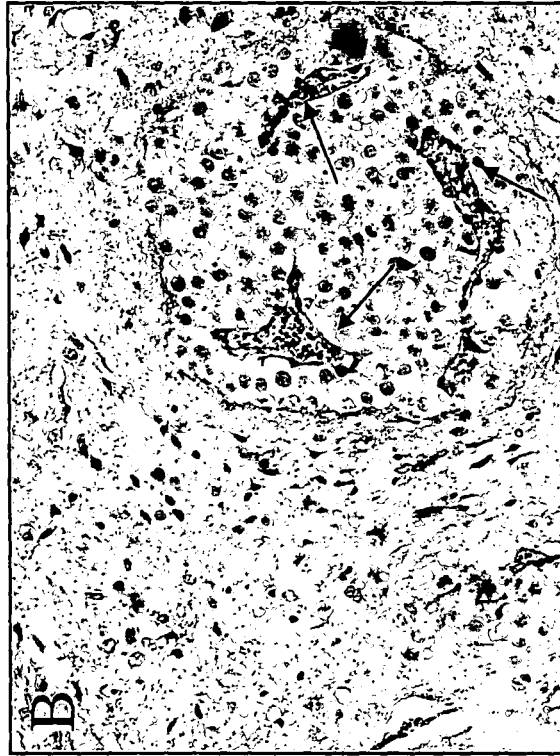


Figure 8

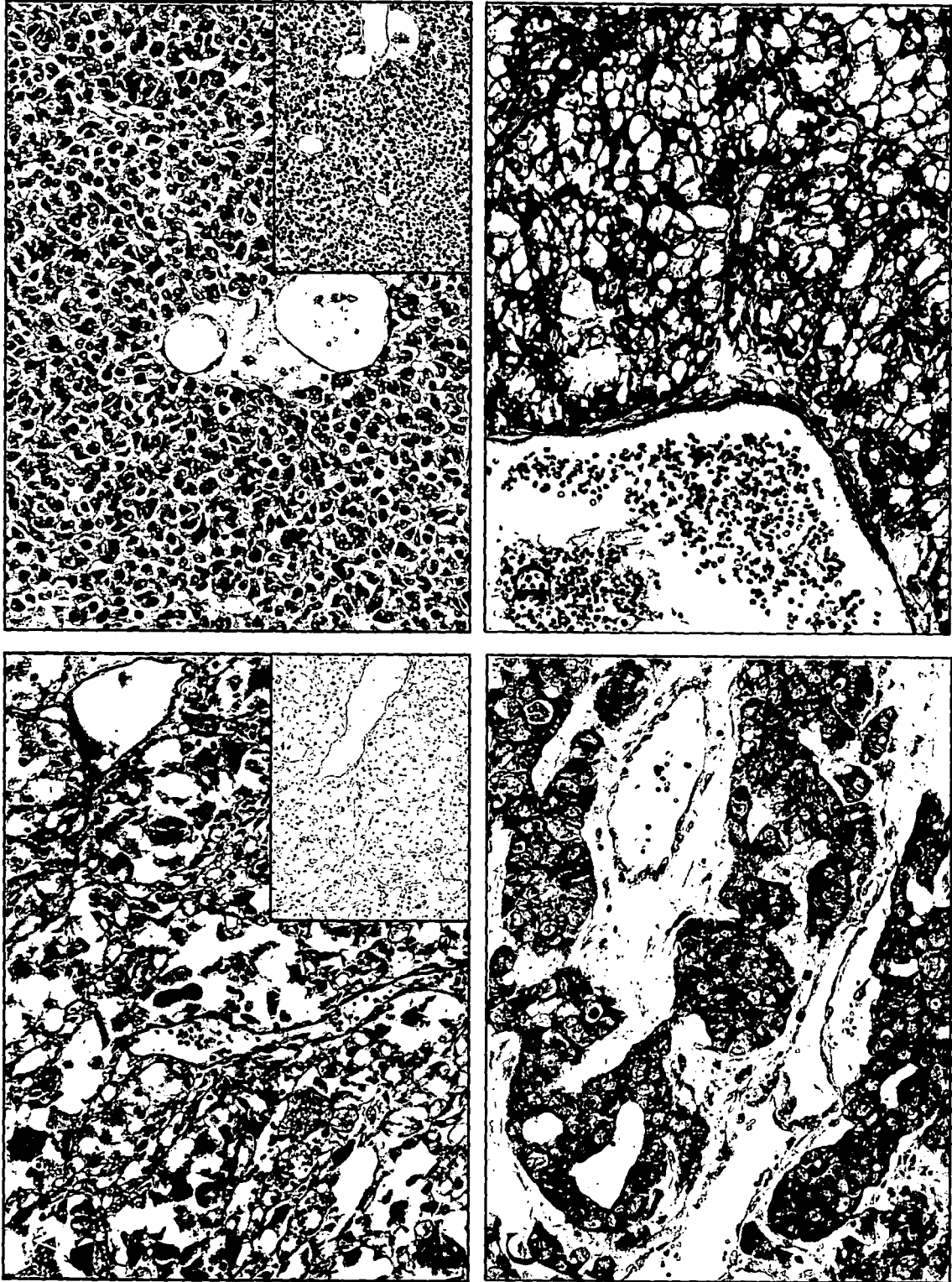


Figure 9

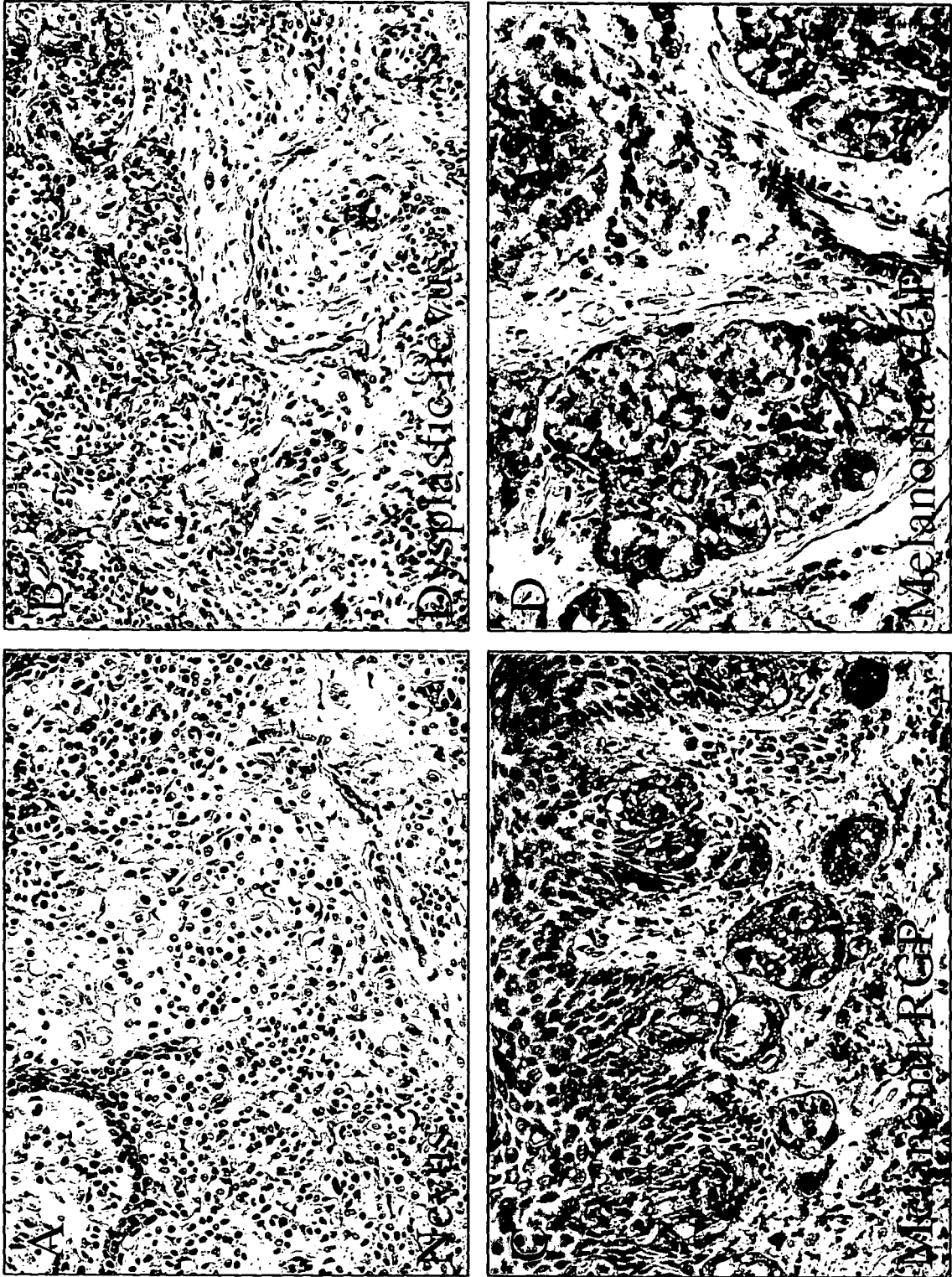
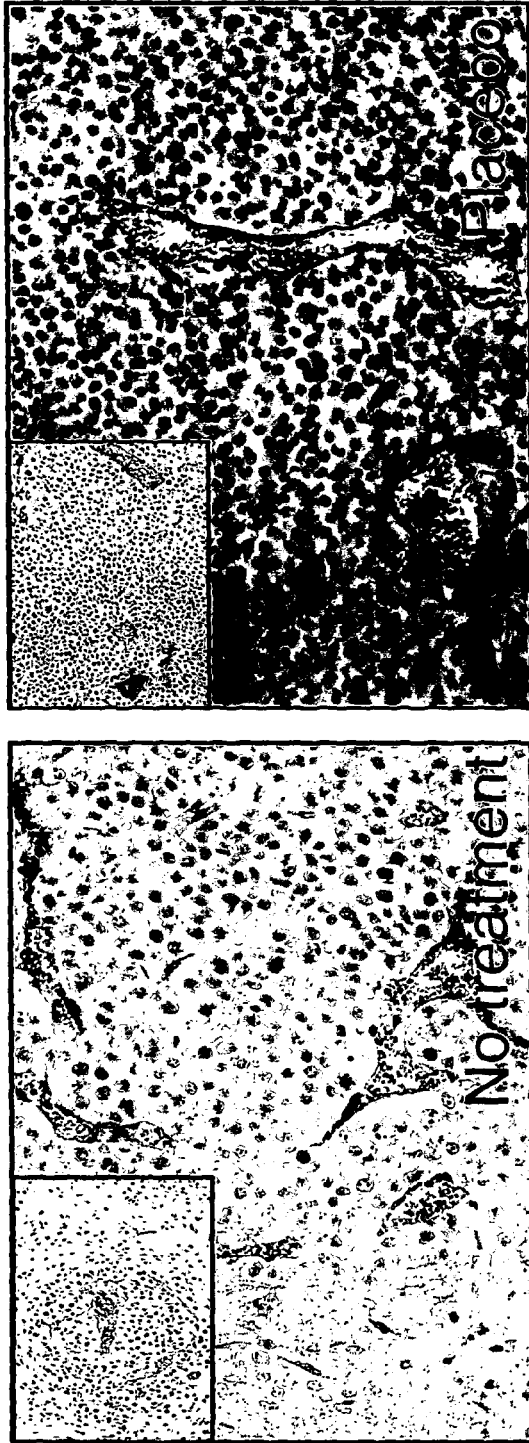


Figure 10



sdAb Plex F8 on Me157VEGF165wt, 20X

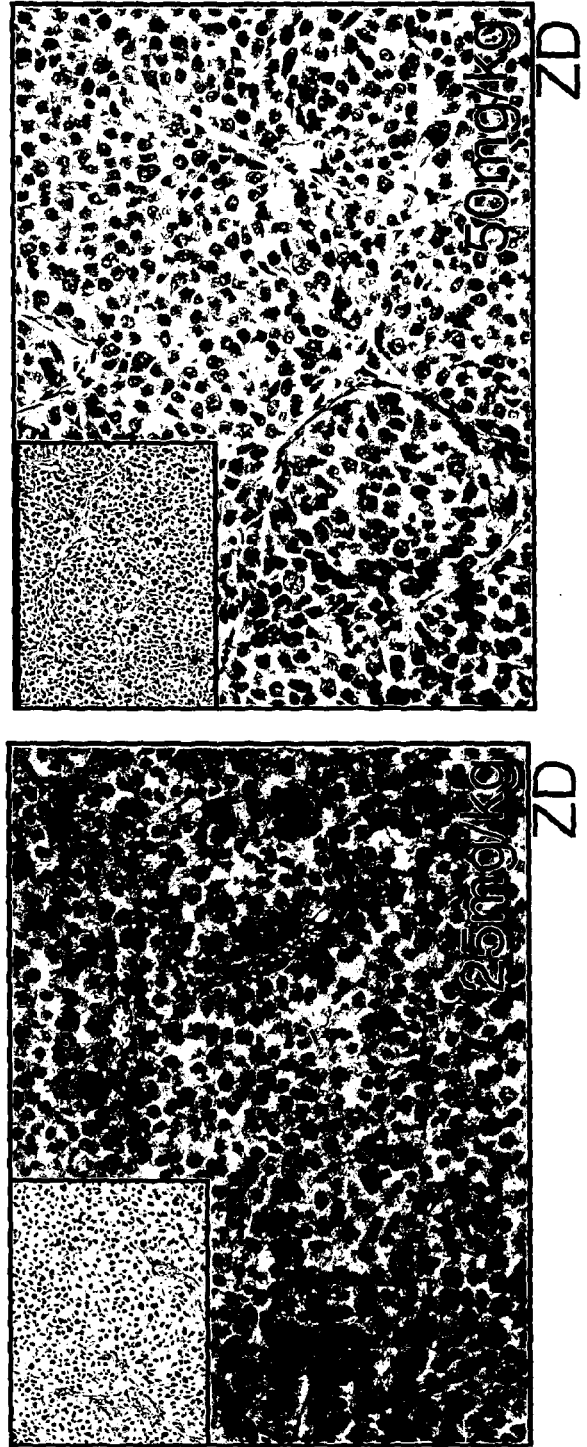


Figure 11

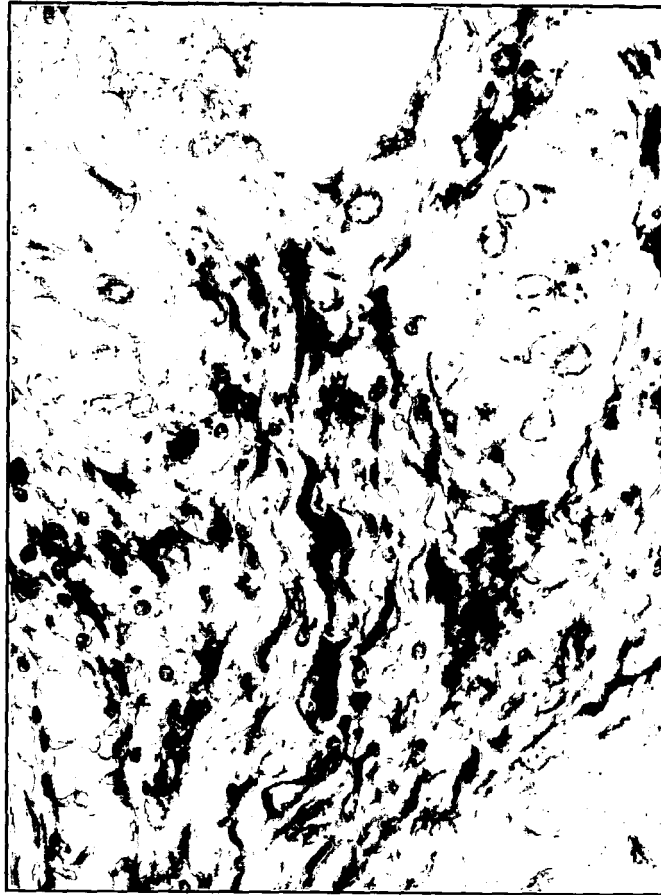


Figure 12

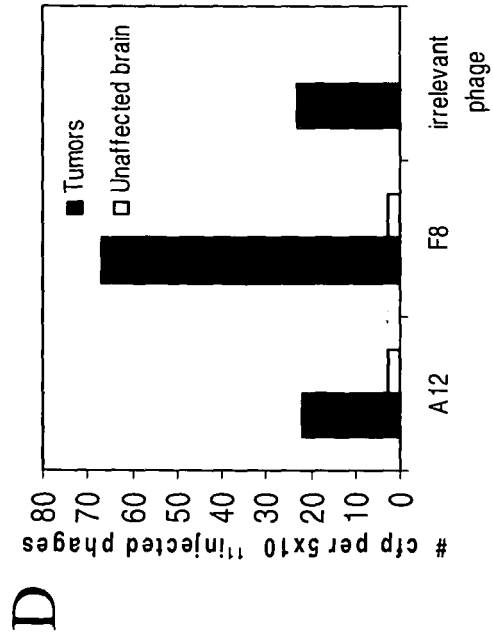
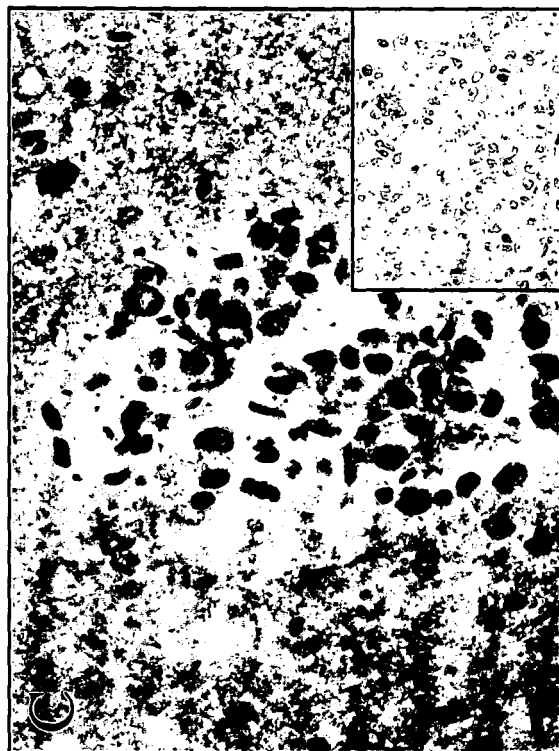
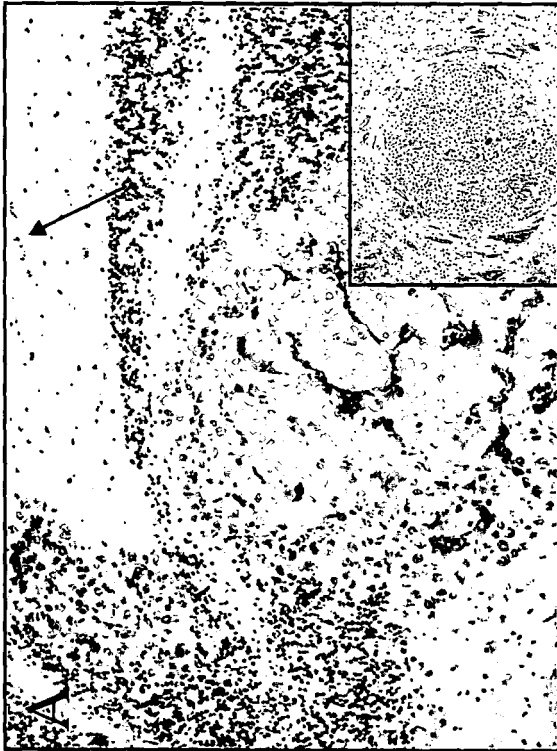


Figure 13

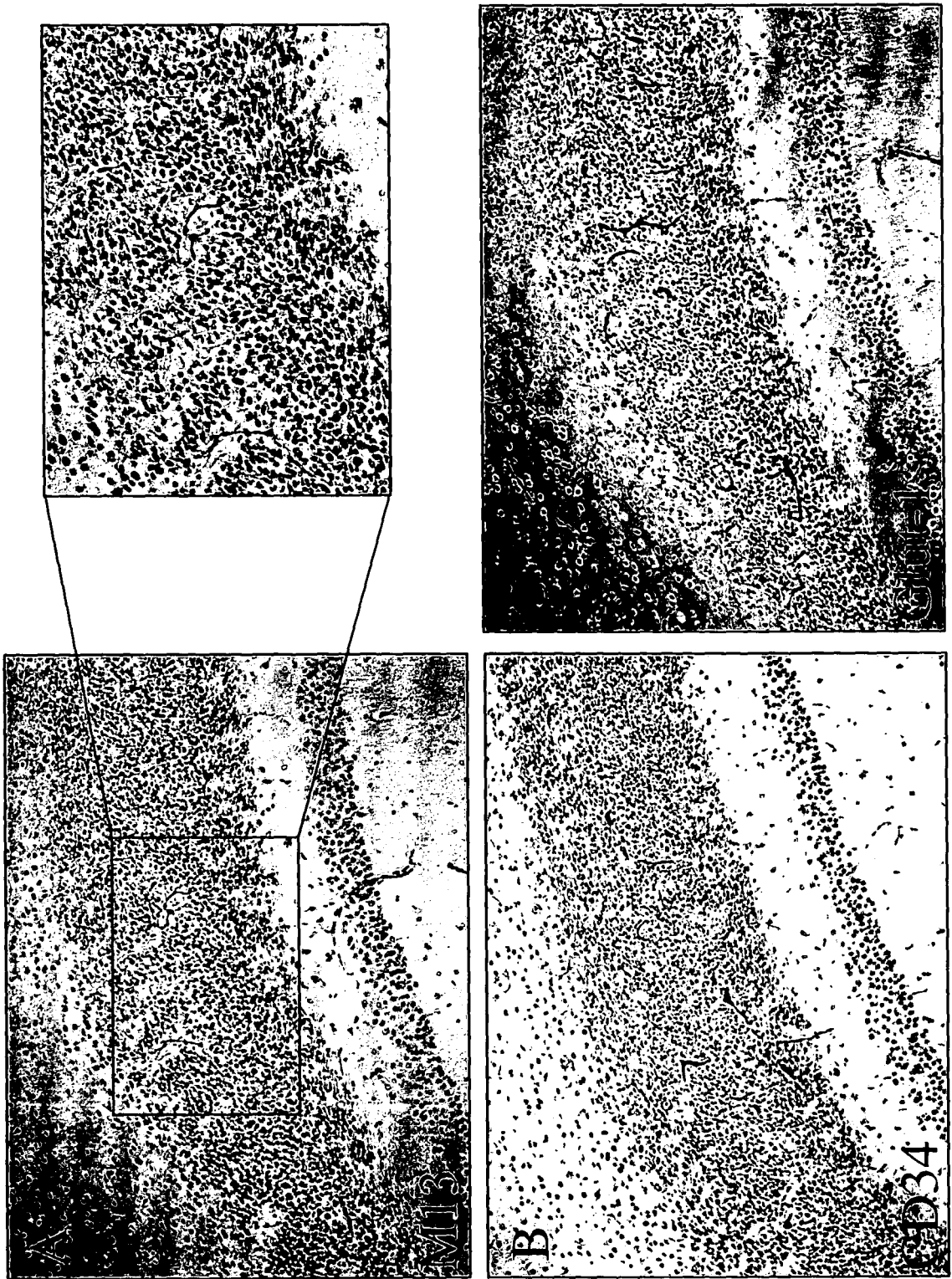


Figure 14

Me157-VEGF-A165 Me157-VEGF-A165/PLEXIN D1-ED

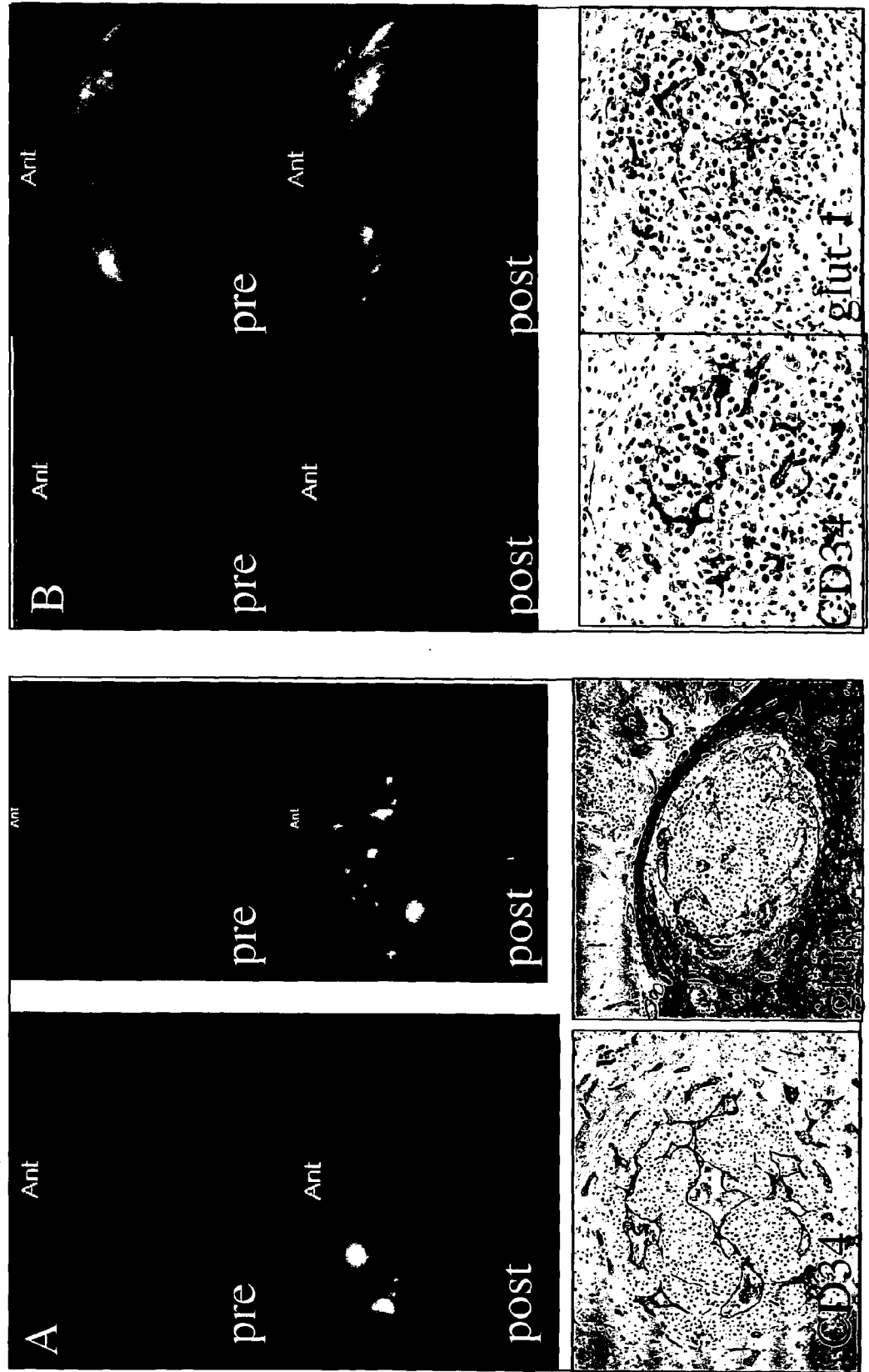


Figure 15

Serum mouse 25:
immunized with 50 kD
recombinant PLXND1
(aa 47-506)

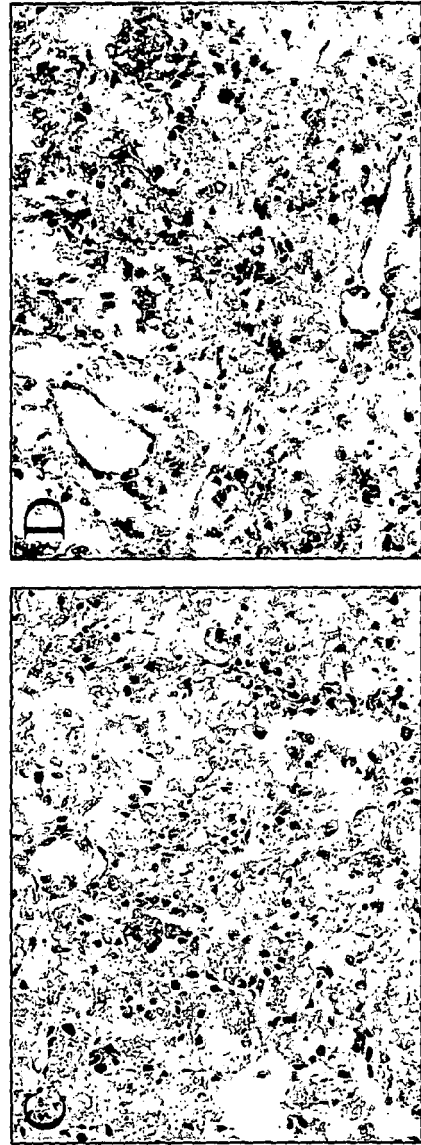
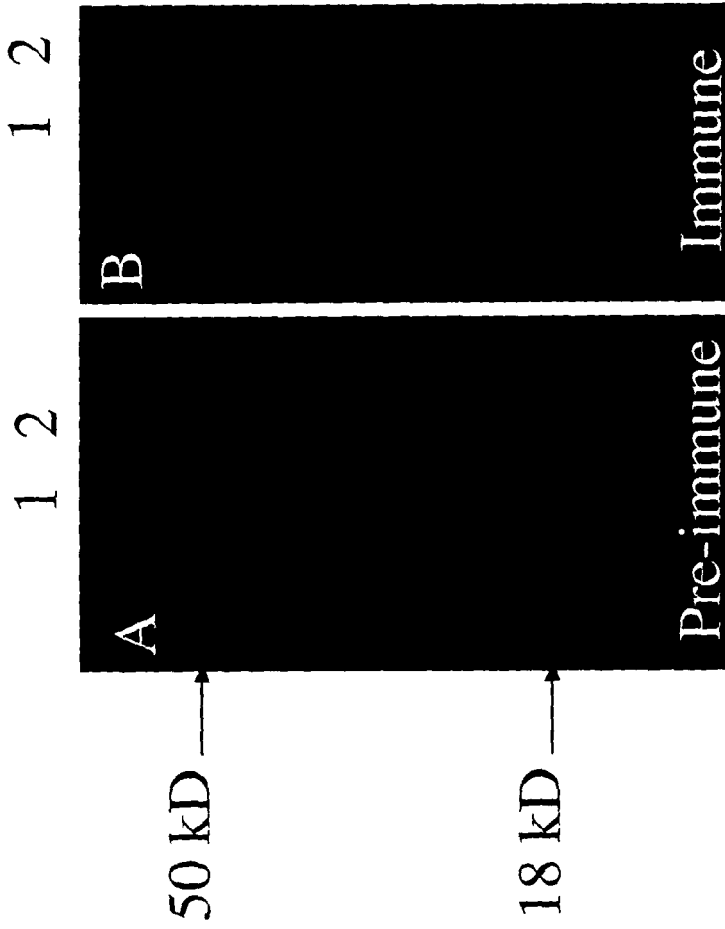
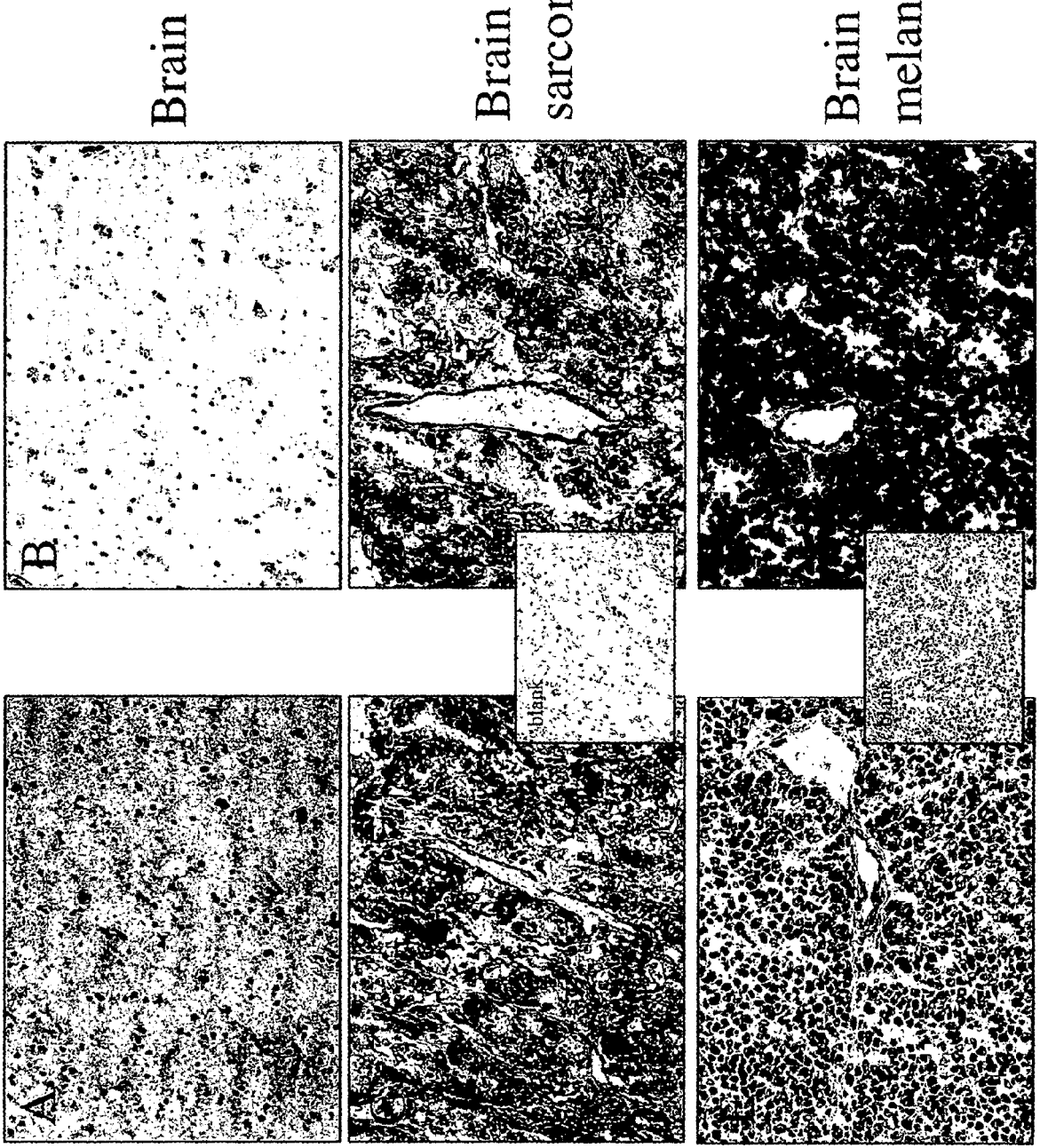


Figure 16

17E9C12

11F5H6



Brain

Brain metastasis of
sarcoma

Brain metastasis of
melanoma

Figure 17

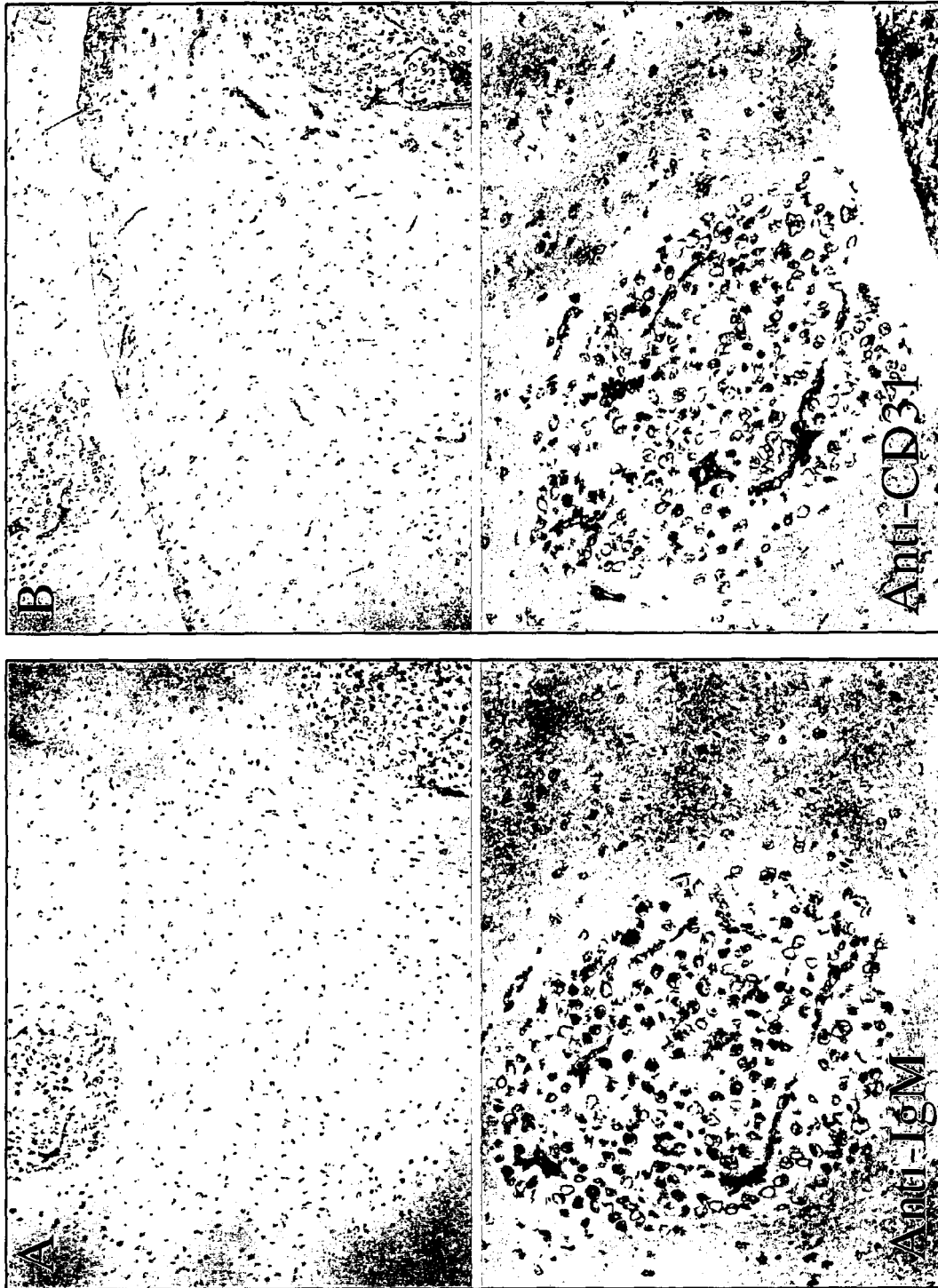


Figure 18

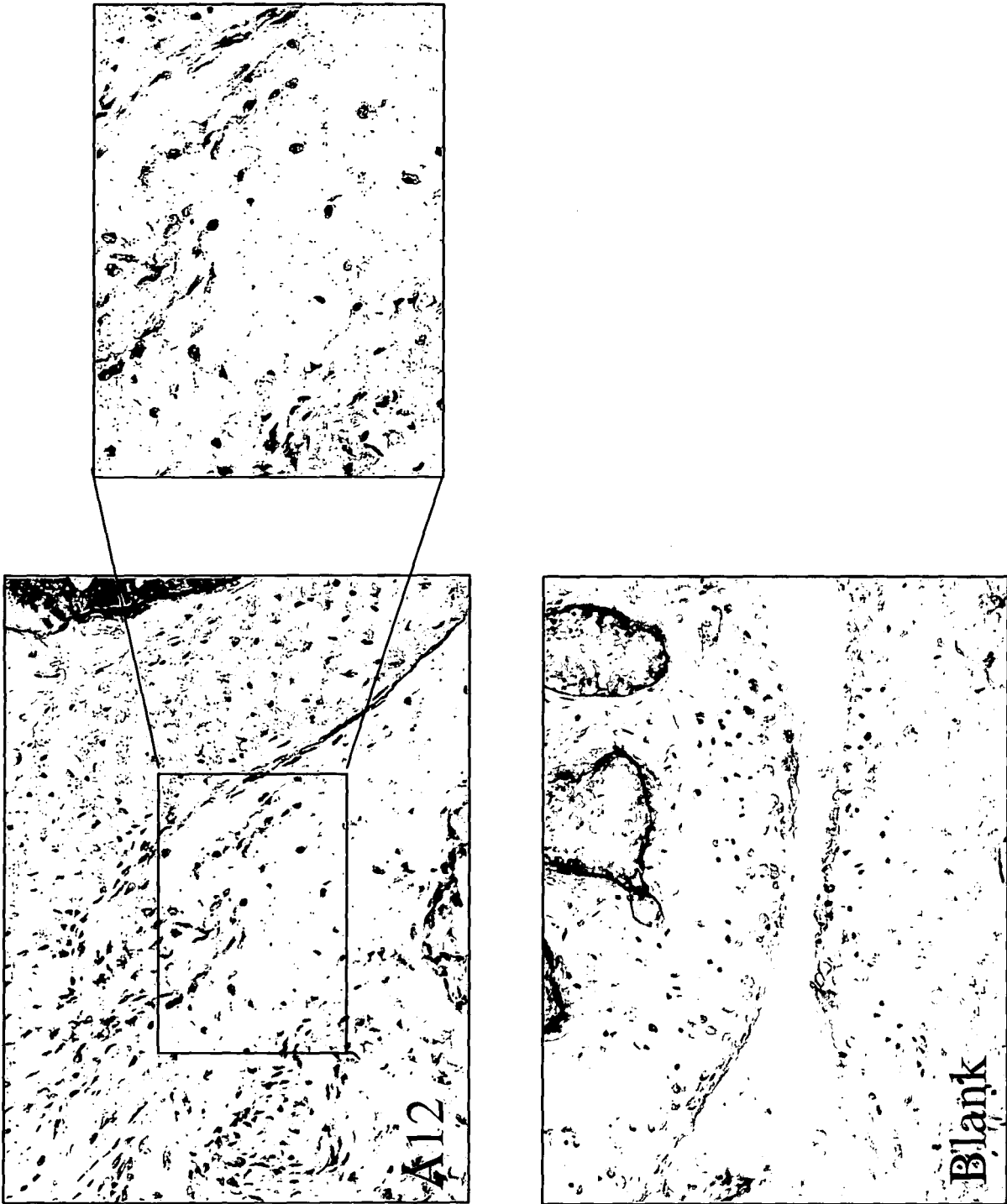
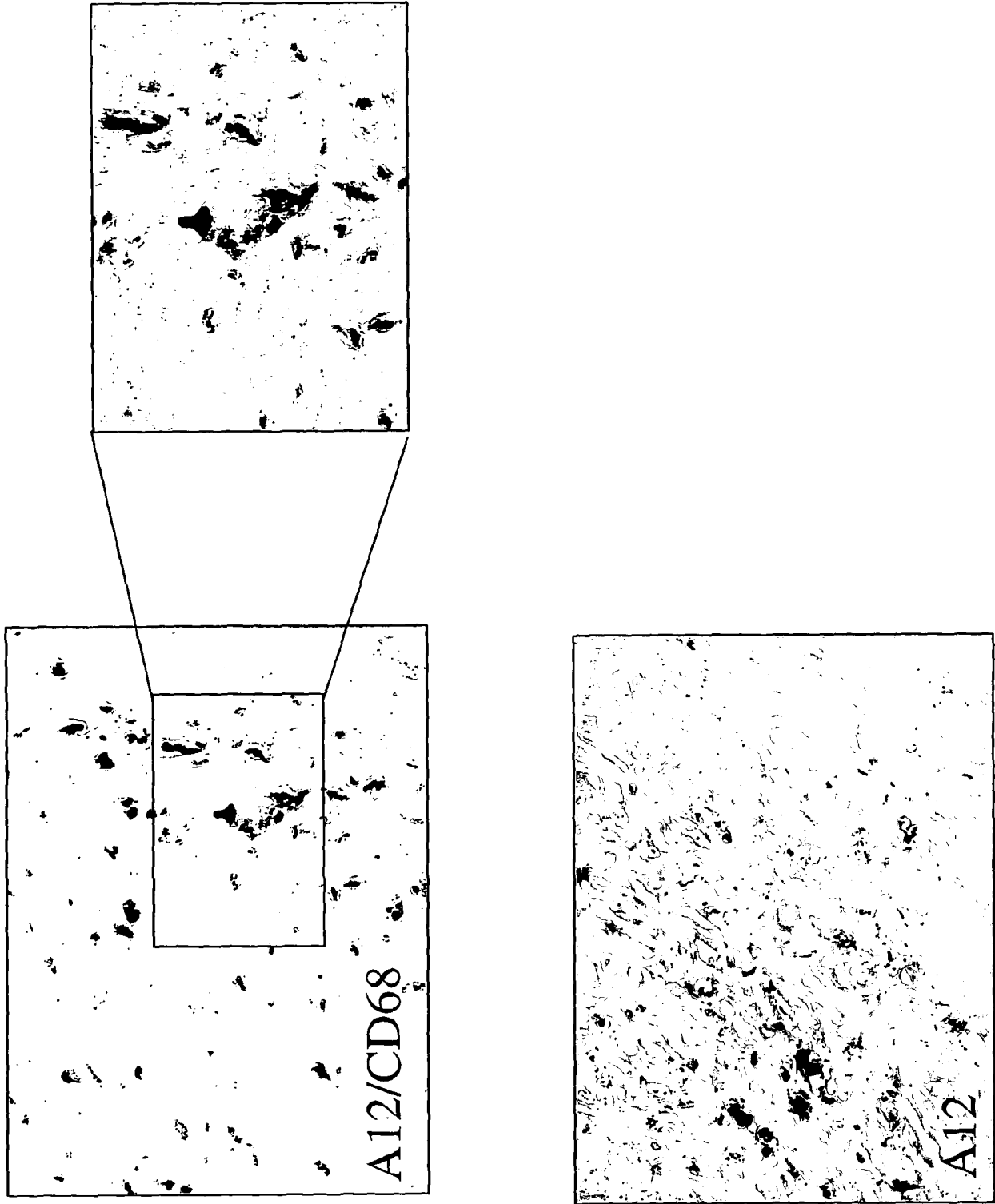


Figure 19



专利名称(译)	Plexin d1作为肿瘤诊断和治疗的靶点		
公开(公告)号	EP1907420A2	公开(公告)日	2008-04-09
申请号	EP2006776353	申请日	2006-07-20
[标]申请(专利权)人(译)	天主教大学基金会		
申请(专利权)人(译)	STICHTING天主教大学		
当前申请(专利权)人(译)	STICHTING天主教大学		
[标]发明人	LEENDERS WILHELMUS PETRUS JOHANNES ROODINK ILSE RAATS JOZEF MARIA HENDRIK		
发明人	LEENDERS, WILHELMUS, PETRUS, JOHANNES ROODINK, ILSE RAATS, JOZEF, MARIA, HENDRIK		
IPC分类号	C07K14/705 C07K16/28 C12Q1/68 G01N33/53 A61K39/00 A61K39/395		
CPC分类号	A61P25/00 A61P25/28 A61P29/00 A61K47/6803 A61K47/6817 A61K47/6849 C07K14/705 C07K16/28 C07K2317/22 C07K2317/569 A61K9/0019 A61K39/39558 A61K51/1018		
优先权	2005076675 2005-07-21 EP		
其他公开文献	EP1907420B1		
外部链接	Espacenet		

摘要(译)

本发明涉及用作可靶向蛋白质的丛蛋白D1，其用于治疗或诊断涉及丛蛋白D1表达的病症。通过检测体内或身体组织或体液中的丛蛋白D1的存在来适当地进行诊断，而通过靶向丛蛋白D1进行治疗以将治疗剂递送至需要治疗的部位。本发明还涉及结合丛蛋白D1的分子，编码丛蛋白D1的核酸或丛蛋白D1的配体在制备治疗组合物中的用途，所述治疗组合物用于治疗或诊断涉及丛蛋白D1表达的病症。所述病症包括其中丛蛋白D1在肿瘤细胞，肿瘤血管或活化的巨噬细胞上表达的病症。