



(51) International Patent Classification:

A61K 31/593 (2006.01) G01N 33/532 (2006.01)
C07C 401/00 (2006.01) G01N 33/543 (2006.01)
G01N 33/53 (2006.01) G01N 33/558 (2006.01)

(21) International Application Number:

PCT/US2017/014620

(22) International Filing Date:

23 January 2017 (23.01.2017)

(25) Filing Language:

English

(26) Publication Language:

English

(30) Priority Data:

62/286,297 22 January 2016 (22.01.2016) US

(71) Applicant: AFFIMEDIX, INC. [US/US]; 510 Myrtle Avenue, Suite #101, South San Francisco, California 94080 (US).

(72) Inventor: WANG, Kevin, C.; 1725 24th Avenue, San Francisco, CA 94122 (US).

(74) Agents: STRONCEK, Jacqueline et al.; Wilson Sonsini Goodrich & Rosati, 650 Page Mill Road, Palo Alto, CA 94304-1050 (US).

(81) Designated States (unless otherwise indicated, for every kind of national protection available): AE, AG, AL, AM, AO, AT, AU, AZ, BA, BB, BG, BH, BN, BR, BW, BY, BZ, CA, CH, CL, CN, CO, CR, CU, CZ, DE, DJ, DK, DM, DO, DZ, EC, EE, EG, ES, FI, GB, GD, GE, GH, GM, GT, HN, HR, HU, ID, IL, IN, IR, IS, JP, KE, KG, KH, KN, KP, KR, KW, KZ, LA, LC, LK, LR, LS, LU, LY, MA, MD, ME, MG, MK, MN, MW, MX, MY, MZ, NA, NG, NI, NO, NZ, OM, PA, PE, PG, PH, PL, PT, QA, RO, RS, RU, RW, SA, SC, SD, SE, SG, SK, SL, SM, ST, SV, SY, TH, TJ, TM, TN, TR, TT, TZ, UA, UG, US, UZ, VC, VN, ZA, ZM, ZW.

(84) Designated States (unless otherwise indicated, for every kind of regional protection available): ARIPO (BW, GH, GM, KE, LR, LS, MW, MZ, NA, RW, SD, SL, ST, SZ, TZ, UG, ZM, ZW), Eurasian (AM, AZ, BY, KG, KZ, RU, TJ, TM), European (AL, AT, BE, BG, CH, CY, CZ, DE, DK, EE, ES, FI, FR, GB, GR, HR, HU, IE, IS, IT, LT, LU, LV, MC, MK, MT, NL, NO, PL, PT, RO, RS, SE, SI, SK, SM, TR), OAPI (BF, BJ, CF, CG, CI, CM, GA, GN, GQ, GW, KM, ML, MR, NE, SN, TD, TG).

Published:

— with international search report (Art. 21(3))

(54) Title: DEVICE FOR DETECTION OF VITAMIN D METABOLITES

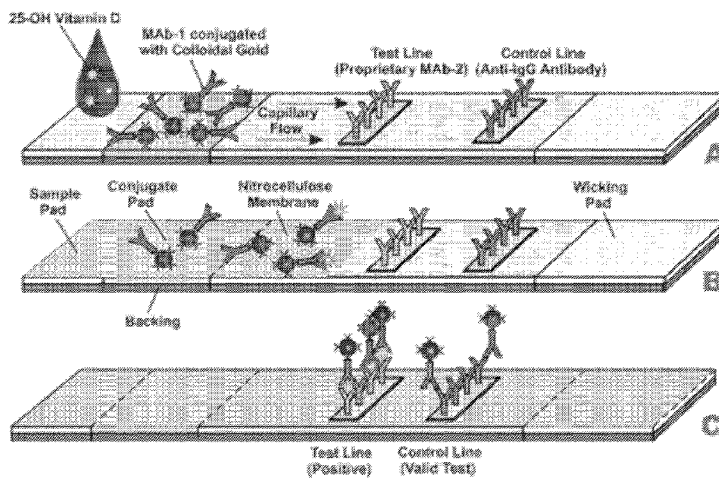
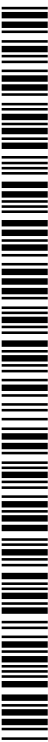


Fig. 1C

(57) Abstract: The present invention provides methods, devices, and compositions to rapidly detect analytes, including small analytes, using a lateral flow device. Described herein is such a lateral flow device that can detect and quantify vitamin D in a whole blood, serum, or plasma sample by employing a sandwich-based immunoassay.



DEVICE FOR DETECTION OF VITAMIN D METABOLITES

CROSS-REFERENCE

[0001] This application claims the benefit of U.S. Provisional Application No. 62/286,297, filed January 22, 2016 (attorney docket no. 49821-701.101), which is incorporated by reference in its entirety.

BACKGROUND OF THE INVENTION

[0002] Vitamin D refers to group of steroid hormones responsible for enhancing intestinal absorption of calcium and the regulation of its homeostasis. Two common forms of vitamin D are vitamin D₂ and vitamin D₃. Vitamin D₃ is naturally produced in the human skin through the exposure to ultraviolet light, whereas Vitamin D₂ is mainly obtained from foods and supplements. Vitamin D₂ and vitamin D₃ are biologically inactive; activation requires the transport of vitamin D₂ and vitamin D₃ to the liver where they can be metabolized by hydroxylation to an active form, referred to herein as 25-hydroxy vitamin D (“25-(OH)D”). Vitamin D binding protein DBP is the predominant serum transport protein for all vitamin D metabolites. DBP transports 95–99% of the total 25-OHD with only 1–5% carried by albumin and lipoproteins. Vitamin D deficiency has been linked to many diseases including osteoporosis, osteopenia, rickets, cancers, autoimmune diseases, cardiovascular diseases, and infectious diseases, and it is also associated with increased risk of mortality.

[0003] Unfortunately, vitamin D deficiency is a significant worldwide health concern and has become a global epidemic. An estimated 1 billion people globally do not have adequate vitamin D levels. Furthermore, it is estimated that 64% of Americans do not have enough vitamin D sub-optimal vitamin D levels. The major cause of vitamin D deficiency is the lack of moderate sun exposure, which is the major source of vitamin D for most humans.

[0004] A 25-(OH)D blood test can be used to determine the circulating vitamin D concentration in a subject. The blood concentration of 25-(OH)D, including 25-OH(D₂) and 25-OH(D₃), is considered the best indicator of vitamin D status. The past decade has seen a world-wide increase in demand for the analysis of 25-(OH)D levels in patient populations.

[0005] Vitamin D is a challenging analyte to measure accurately, due to its highly lipophilic nature and high-affinity binding to vitamin D binding protein DBP. Current measurements are largely performed in specialist laboratories employing time-consuming methods, such as liquid chromatography-tandem mass spectrometry (LC-MS/MS) assay, radioimmunoassay

(RIAs), enzyme-linked competitive immunosorbent assays (ELISAs), and competitive protein-binding assays (CPBA).

[0006] There exists a need for improved methods to detect and quantify vitamin D metabolites. Provided herein are methods, compositions, and devices to detect and quantify vitamin D metabolites by a simplified, rapid and accurate assay.

SUMMARY OF THE INVENTION

[0007] There exists a considerable need for alternative devices, methods, and kits for detecting and measuring one or more vitamin D molecules. The present invention addresses this need and provides additional advantages. In one aspect, the present invention provides for a test device for detecting one or more vitamin D molecules comprising: (a) a housing, contained therein: (i) a sample application pad configured to absorb a biological sample and transport the biological sample to a conjugate pad; (ii) the conjugate pad comprising a vitamin D binding agent that specifically binds to one or more vitamin D molecules; and (iii) a detection zone comprising a first region immobilized therein a detection antibody that specifically binds an epitope that is generated by complexing the vitamin D binding agent with the one or more vitamin D molecules.

[0008] In some embodiments provided herein, the one or more vitamin D molecules are selected from the group consisting of 25-hydroxyvitamin D₂, 25-hydroxyvitamin D₃, 25-hydroxyvitamin D₄, 25-hydroxyvitamin D₅, and 1,25-hydroxyvitamin D₃. In some embodiments provided herein, the one or more vitamin D molecules are selected from the group consisting of 25-hydroxyvitamin D₂ and 25-hydroxyvitamin D₃. In some embodiments provided herein, the one or more vitamin D molecules are 25-hydroxyvitamin D₂ and 25-hydroxyvitamin D₃. In some embodiments provided herein, the one or more vitamin D molecules consist of 25-hydroxyvitamin D₂. In some embodiments provided herein, the one or more vitamin D molecules consist of 25-hydroxyvitamin D₃.

[0009] In some embodiments provided herein, the detection zone further comprises a second region immobilized therein a third antibody that is capable of binding to the vitamin D binding agent whether or not the vitamin D binding agent is bound to the one or more vitamin D molecules. In some embodiments provided herein, the vitamin D binding agent is conjugated to a detection reagent. In some embodiments provided herein, the detection reagent is selected from the group consisting of gold particle, latex particle, carbon nanoparticle, selenium nanoparticle, silver nanoparticle, quantum dot, fluorescent compound, dye, enzyme and liposome. In some embodiments provided herein, the detection reagent is

the gold particle. In some embodiments provided herein, the detection reagent is the latex particle.

[0010] In some embodiments provided herein, the sample application pad, the conjugate pad, and the detection zone are aligned from upstream to downstream along a fluid path through which the biological sample travels. In some embodiments provided herein, the test device further comprises a filtering component between the sample application pad and the conjugate pad configured to separate particulate portion of the biological sample from aqueous portion of the biological sample.

[0011] In one aspect, the present invention provides a method, comprising: applying a biological sample to the sample application pad of any one of the test devices disclosed herein; applying a chase buffer to the sample application pad; and detecting the one or more vitamin D molecules. In some embodiments provided herein, the method further comprises quantifying the one or more vitamin D molecules in the sample. In some embodiments provided herein, the quantifying classifies the blood sample as having a sufficient, an insufficient, or a deficient level of the one or more vitamin D molecules. In some embodiments provided herein, the sufficient level is at least 30 ng/mL. In some embodiments provided herein, the insufficient level is at least 10 ng/mL and less than 30 ng/mL. In some embodiments provided herein, the deficient level is less than 10 ng/mL. In some embodiments provided herein, the quantifying further comprises using an imaging device to provide an image of the detection membrane and software on a programmed computer configured to quantify the one or more vitamin D molecules in the sample based on the image of the detection membrane. In some embodiments provided herein, the imaging device and the programmed computer are a single device.

[0012] In some embodiments provided herein, the chase buffer comprises reagents to dissociate the one or more vitamin D molecules from vitamin D binding protein. In some embodiments provided herein, the biological sample is selected from the group consisting of whole blood, serum, plasma, urine, saliva, ocular fluid, spinal fluid, and perspiration.

[0013] In some embodiments, the detection antibody comprises a light chain and a heavy chain, wherein the light chain comprises a sequence selected from the group consisting of SEQ ID NOs 1-5 and 16-20; and wherein the heavy chain comprises a sequence selected from the group consisting of SEQ ID NOs 5-15. In some embodiments, the detection antibody exhibits a higher binding affinity to the immunocomplex than the vitamin D binding agent. In some embodiments, the detection antibody comprises a scFv, VH, Fab, or (Fab)₂ binding unit.

[0014] In some embodiments, the detection antibody comprises a light chain and a heavy chain, wherein the light chain a sequence sharing at least 80% sequence homology to a sequence selected from the group consisting of SEQ ID NOs 1-5, and 16-20, and wherein the heavy chain comprises a sequence having least 80% sequence homology to a sequence selected from the group consisting of SEQ ID NOs 6-15.

[0015] In yet another aspect, the present disclosure provides for a method for detecting one or more vitamin D levels in a biological sample with a test device configured to perform a binding assay, comprising: (a) contacting the biological sample to the test device; (b) subjecting the biological sample to the binding assay that utilizes a reaction mixture comprising a complex formed by (1) a vitamin D binding agent and (2) one or more vitamin D molecules; (c) further exposing the complex to a detection agent that binds to an epitope that is formed by complexing the vitamin D binding agent with the one or more vitamin D binding molecules, wherein the binding assay has a sensitivity of detection in the biological sample that is comparable to that of liquid chromatography-tandem mass spectrometry. In some embodiments, the biological sample is selected from the group consisting of whole blood, serum, plasma, urine, saliva, ocular fluid, spinal fluid, and perspiration.

[0016] In some embodiments the detection agent comprises a light chain and a heavy chain, wherein the light chain comprises a sequence selected from the group consisting of SEQ ID NOs 1-5 and 16-20, and wherein the heavy chain comprises a sequence selected from the group consisting of SEQ ID NOs 6-15. In some embodiments, the detection agent exhibits a higher binding affinity to the complex than the vitamin D binding agent. In some embodiments, the detection agent comprises a scFv, VH, Fab, or (Fab)₂ binding unit.

[0017] In some embodiments, the detection agent comprises a light chain and a heavy chain, wherein the light chain comprises a sequence sharing at least 80% sequence homology to a sequence selected from the group consisting of SEQ ID NOs 1-5, and 16-20, and wherein the heavy chain comprises a sequence having least 80% sequence homology to a sequence selected from the group consisting of SEQ ID NOs 6-15.

[0018] In some embodiments, the biological sample is selected from the group consisting of whole blood, serum, plasma, urine, saliva, ocular fluid, spinal fluid, and perspiration.

[0019] In one aspect, the present invention provides a kit, comprising: any one of the test device disclosed herein; and written instructions for use of the kit. In some embodiments provided herein, the kit further comprises one or more components selected from the group consisting of a sterilization agent; a device to puncture skin; gauze; chase buffer; and a micropipette. In some embodiments provided herein, the sterilization agent is an alcohol

wipe. In some embodiments provided herein, the device to puncture skin is selected from the group consisting of a lancet, a needle, and a syringe.

[0020] In some embodiments provided herein, the chase buffer is configured to dissociate one or more vitamin D molecules from vitamin D binding protein in a blood sample. In some embodiments provided herein, the kit further comprises a color chart relating signal strength to a quantity of the one or more vitamin D molecules in the sample.

INCORPORATION BY REFERENCE

[0021] All publications, patents, and patent applications mentioned in this specification are herein incorporated by reference to the same extent as if each individual publication, patent, or patent application was specifically and individually indicated to be incorporated by reference.

BRIEF DESCRIPTION OF THE DRAWINGS

[0022] The novel features of the invention are set forth with particularity in the appended claims. A better understanding of the features and advantages of the present invention will be obtained by reference to the following detailed description that sets forth illustrative embodiments, in which the principles of the invention are utilized, and the accompanying drawings of which:

[0023] **FIGs. 1A-B** provide an exemplary lateral flow device for detecting vitamin D metabolite levels. **FIG. 1A** displays band densities related to the level of vitamin D metabolites in the subject. **FIG. 1B** displays a color chart relating the band density to a quantitative range of vitamin metabolite concentration in the blood sample. **FIG. 1C** provides a schematic of an exemplary lateral flow device for detecting vitamin D.

[0024] **FIG. 2** illustrates the results of an enzyme-linked immunosorbent assay (ELISA) to test the binding of mouse antibody clones to the 25-(OH)D₃:AF10 antibody immunocomplex.

[0025] **FIG. 3** illustrates the results of an ELISA testing the binding of synthetic antibody clones to the immunocomplex of 25-(OH)D₃:AF10 antibody.

[0026] **FIG. 4.** illustrates a linear relationship between serum vitamin D levels and the signal of a sandwich ELISA using an antibody that specifically binds the immunocomplex of 25-(OH)D:AF10 antibody.

[0027] **FIG. 5** displays the results of using an exemplary lateral flow device to test 25-(OH)D levels in subject blood and serum, showing a linear correlation between signal strength and 25-(OH)D levels ranging from 10 ng/ml to 80 ng/ml.

[0028] FIG. 6 illustrates the results of a comparison between vitamin D levels in as measured using (i) an exemplary lateral flow device to measure vitamin D levels of capillary blood as measured by a smartphone-based reader and (ii) an ELISA-based serum and or blood test.

[0029] FIG. 7 shows an exemplary computer system that can be used for the analysis of images of the detection zone of the test device disclosed herein.

[0030] FIG. 8 shows an exemplary vitamin D measurement procedure using a portable lateral flow assay reader.

[0031] FIG. 9 shows a correlation between test results generated from a lateral flow assay and a liquid chromatography-tandem mass spectrometry assay.

DETAILED DESCRIPTION OF THE INVENTION

[0032] The systems and methods of this disclosure as described herein may employ, unless otherwise indicated, conventional techniques and descriptions of molecular biology (including recombinant techniques), cell biology, biochemistry, microarray and sequencing technology, which are within the skill of those who practice in the art. Such conventional techniques include polymer array synthesis, hybridization and ligation of oligonucleotides, sequencing of oligonucleotides, and detection of hybridization using a label. Specific illustrations of suitable techniques can be had by reference to the examples herein. However, equivalent conventional procedures can, of course, also be used. Such conventional techniques and descriptions can be found in standard laboratory manuals such as Green, et al., Eds., *Genome Analysis: A Laboratory Manual Series (Vols. I-IV)* (1999); Weiner, et al., Eds., *Genetic Variation: A Laboratory Manual* (2007); Dieffenbach, Dveksler, Eds., *PCR Primer: A Laboratory Manual* (2003); Bowtell and Sambrook, *DNA Microarrays: A Molecular Cloning Manual* (2003); Mount, *Bioinformatics: Sequence and Genome Analysis* (2004); Sambrook and Russell, *Condensed Protocols from Molecular Cloning: A Laboratory Manual* (2006); and Sambrook and Russell, *Molecular Cloning: A Laboratory Manual* (2002) (all from Cold Spring Harbor Laboratory Press); Stryer, L., *Biochemistry* (4th Ed.) W.H. Freeman, N.Y. (1995); Gait, "Oligonucleotide Synthesis: A Practical Approach" IRL Press, London (1984); Nelson and Cox, *Lehninger, Principles of Biochemistry*, 3rd Ed., W.H. Freeman Pub., New York (2000); and Berg et al., *Biochemistry*, 5th Ed., W.H. Freeman Pub., New York (2002), all of which are herein incorporated by reference in their entirety for all purposes.

[0033] It is to be understood that this disclosure is not limited to the specific systems and methods, compositions, targets and uses described, as such may, of course, vary. It is also to

be understood that the terminology used herein is for the purpose of describing particular aspects only and is not intended to limit the scope of the present disclosure, which will be limited only by appended claims.

[0034] The term “about” or “approximately” means within an acceptable error range for the particular value as determined by one of ordinary skill in the art, which will depend in part on how the value is measured or determined, i.e., the limitations of the measurement system. For example, “about” can mean within 1 or more than 1 standard deviation, per the practice in the art. Alternatively, “about” can mean a range of up to 20%, up to 10%, up to 5%, or up to 1% of a given value. Alternatively, particularly with respect to biological systems or processes, the term can mean within an order of magnitude, preferably within 5-fold, and more preferably within 2-fold, of a value. Where particular values are described in the application and claims, unless otherwise stated the term “about” meaning within an acceptable error range for the particular value should be assumed.

[0035] The terms “polynucleotide,” “nucleic acid,” and “oligonucleotide” are used interchangeably. As used herein, they generally refer to a polymeric form of nucleotides of any length, either deoxyribonucleotides or ribonucleotides, or analogs thereof.

Polynucleotides may have any three dimensional structure, and may perform any function, known or unknown. Non-limiting examples of polynucleotides are coding or non-coding regions of a gene or gene fragment, intergenic DNA, loci (locus) defined from linkage analysis, exons, introns, messenger RNA (mRNA), transfer RNA, ribosomal RNA, short interfering RNA (siRNA), short-hairpin RNA (shRNA), micro-RNA (miRNA), small nucleolar RNA, ribozymes, cDNA, recombinant polynucleotides, branched polynucleotides, plasmids, vectors, isolated DNA of any sequence, isolated RNA of any sequence, nucleic acid probes, adapters, and primers. A polynucleotide may comprise modified nucleotides, such as methylated nucleotides and nucleotide analogs. If present, modifications to the nucleotide structure may be imparted before or after assembly of the polymer. The sequence of nucleotides may be interrupted by non-nucleotide components. A polynucleotide may be further modified after polymerization, such as by conjugation with a labeling component.

[0036] The terms “polypeptide”, “peptide” and “protein” are used interchangeably herein to refer to polymers of amino acids of any length. The polymer may be linear or branched, it may comprise modified amino acids, and it may be interrupted by non amino acids. The terms also encompass an amino acid polymer that has been modified; for example, disulfide bond formation, glycosylation, lipidation, acetylation, phosphorylation, or any other manipulation, such as conjugation with a labeling component. As used herein the term

“amino acid” includes natural and/or unnatural or synthetic amino acids, including glycine and both the D or L optical isomers, and amino acid analogs and peptidomimetics.

[0037] A “control” is an alternative subject or sample used in an experiment for comparison purpose.

[0038] The terms “subject,” “individual,” and “patient” are used interchangeably herein to refer to a vertebrate, preferably a mammal, more preferably a human. Mammals include, but are not limited to, murines, simians, humans, farm animals, sport animals, and pets. Tissues, cells, and their progeny of a biological entity obtained in vivo or cultured in vitro are also encompassed.

[0039] The terms “determining”, “measuring”, “evaluating”, “assessing,” “assaying,” “detecting”, and “analyzing” can be used interchangeably herein to refer to any form of measurement, and include determining if an element is present or not (for example, detection). These terms can include both quantitative and/or qualitative determinations. Assessing may be relative or absolute. “Detecting the presence of” can include determining the amount of something present, as well as determining whether it is present or absent.

[0040] “Antibody” is an immunoglobulin, or derivative or fragment or active fragment thereof, having an area on the surface or in a cavity which specifically binds to and is thereby defined as complementary with a particular spatial and polar organization of another molecule. The antibody can be monoclonal or polyclonal and can be prepared by techniques that are well known in the art such as, for example, immunization of a host and collection of sera or hybrid cell line technology.

Test Devices

[0041] In one aspect, the present disclosure provides for a test device for detecting one or more vitamin D molecules, comprising (a) a housing, contained therein: (i) a sample application unit configured to absorb a biological sample and transport said biological sample to a conjugate pad; (ii) said conjugate pad comprising a first antibody that specifically binds to one or more vitamin D molecules; (iii) a detection zone comprising a first region immobilized therein a second antibody that specifically binds to an immunocomplex, said immunocomplex comprising (a) said first antibody and (b) said one or more vitamin D molecules, or an epitope that is generated by complexing said first antibody and said one or more vitamin D molecules.

[0042] “One or more vitamin D molecules” refers to members of the group of fat-soluble secosteroids responsible for enhancing intestinal absorption of calcium, iron, magnesium, phosphate, and zinc. Exemplary members of this group are vitamin D₁, vitamin D₂, vitamin

D₃, vitamin D₄, and hydroxylated versions thereof. Exemplary hydroxylated vitamin D molecules are 25-hydroxyvitamin D₂ (25-OHD₂ or 25-(OH)D₂) and 25-hydroxyvitamin D₃ (25-OHD₃ or 25-(OH)D₃). One or more vitamin D molecules can include vitamin D compounds with an additional hydroxy group attached at the 1- α position, such as 1,25-hydroxyvitamin D₃ (1,25-OHD₃, or 1,25-(OH)D₃).

[0043] The test device can be a lateral flow test device. A lateral flow device can comprise a housing, enclosed therein a test strip. A test strip can comprise a sample application unit, a conjugate pad, and/or a detection unit. A test strip can include one or more materials. If a test strip comprises more than one material, the one or more materials are preferably in fluid communication. One material of a test strip may be overlaid on another material of the test strip, such as for example, filter paper overlaid on nitrocellulose. Alternatively or in addition, a test strip may include a region comprising one or more materials followed by a region comprising one or more different materials. In this case, the regions are in fluid communication and may or may not partially overlap one another. Suitable materials for test strips include, but are not limited to, materials derived from cellulose, such as filter paper, chromatographic paper, nitrocellulose, and cellulose acetate, as well as materials made of glass fibers, nylon, polyethylene terephthalate, polyvinyl chloride, polyacrylamide, cross-linked dextran, agarose, polyacrylate, ceramic materials, and the like. The material or materials of the test strip may optionally be treated to modify their capillary flow characteristics or the characteristics of the applied sample. For example, the sample application region of the test strip may be treated with buffers to correct the pH or specific gravity of an applied urine sample, to ensure optimal test conditions.

[0044] The test strip material or materials can be a single structure such as a sheet cut into strips or it can be several strips or particulate material bound to a support or solid surface such as found, for example, in thin-layer chromatography and may have an absorbent pad either as an integral part or in liquid contact. The material can also be a sheet having lanes thereon, capable of spotting to induce lane formation, wherein a separate assay can be conducted in each lane. The material can have a rectangular, circular, oval, triangular or other shape provided that there is at least one direction of traversal of a test solution by capillary migration. Other directions of traversal may occur such as in an oval or circular piece contacted in the center with the test solution. However, the main consideration is that there be at least one direction of flow to a predetermined site. In the following discussion strips will be described by way of illustration and not limitation.

[0045] The support for the test strip, where a support is desired or necessary, will generally be water insoluble, frequently non-porous and rigid but may be elastic, usually hydrophobic, and porous and usually will be of the same length and width as the strip but may be larger or smaller. The support material can be transparent, and, when a test device of the present invention is assembled, a transparent support material can be on the side of the test strip that can be viewed by the user, such that the transparent support material forms a protective layer over the test strip where it may be exposed to the external environment, such as by an aperture in the front of a test device. A wide variety of non-mobilizable and non-mobilizable materials, both natural and synthetic, and combinations thereof, may be employed provided only that the support does not interfere with the capillary action of the material or materials, or non-specifically bind assay components, or interfere with the signal producing system. Illustrative polymers include polyethylene, polypropylene, poly(4-methylbutene), polystyrene, polymethacrylate, poly(ethylene terephthalate), nylon, poly(vinyl butyrate), glass, ceramics, metals, and the like. Elastic supports may be made of polyurethane, neoprene, latex, silicone rubber and the like.

[0046] The test device can comprise a sample application aperture leading to the sample application unit. In some cases, "sample application aperture" can refer to the portion of a test device or test strip where an opening in the test device provides access to the sample application unit of the test strip. In one embodiment of the present invention, a sample application aperture is created by an open-ended channel at the proximal end of the test device. Preferably, a test strip is engaged in the open-ended channel such that sample contacted with the sample application aperture is thereby applied to the test strip. In an alternate embodiment, a sample application aperture is formed by an opening in the front of a test device, such that the sample application unit of the test strip is in fluid communication with the exterior of the test device.

[0047] "Sample application unit" can be the portion of a test strip where sample can be applied. The sample application zone of a test strip of the present invention preferably occurs at the sample application aperture of a test device of the present invention, and is in fluid communication with the sample application aperture. In some cases, the sample application unit comprises a filtering component configured to remove particulate portions of a biological fluid, leaving only the aqueous component. Components for filtering out blood cells, for example, are described in WO2003014726 and WO2009069017, which are hereby incorporated by reference in their entirety.

[0048] “Conjugate pad” refers to a region of a test strip where reagent is provided, which can be referred to as a reagent zone. The conjugate pad can be a separate segment of bibulous or non-bibulous material included on the test strip, or it can be a region of a bibulous or non-bibulous material of a test strip that also includes other zones, such as an analyte detection zone. The reagent zone can carry a detection reagent, which may be a direct or indirect label. Preferably the detection reagent is provided in a form that is immobile in the dry state and mobile in the moist state. A reagent can be a specific binding member (e.g., an antibody), an analyte or analyte analog, an enzyme, a substrate, indicators, components of a signal producing system, chemicals or compounds such as buffering agents, reducing agents, chelators, surfactants, etc., that contribute to the function of the test strip assay.

[0049] In some cases, a label may be any molecule attached to a specific binding member that can produce a detectable signal. In the present invention, the label may be inert and provide a signal by concentrating in the detection zone, or it may serve solely as a binding site for a member of the signal producing system, or it may spontaneously produce a detectable signal or may produce a detectable signal in conjunction with a signal producing system. A label can be selected from the group consisting of gold particle, latex particle, carbon nanoparticles, selenium nanoparticles, silver nanoparticles, quantum dots, fluorescent compound, textile dyes, enzymes, and liposomes. The label can be gold particle. The label can be latex particle.

[0050] “Specific binding member” is one of two different molecules having an area on the surface or in a cavity which specifically binds to and is thereby defined as complementary with a particular spatial and polar organization of the other molecule. Specific binding members can be members of an immunological pair such as antigen-antibody, although other specific binding pairs such as ligand-carrier protein, biotin-avidin, hormone-hormone receptor, nucleic acid duplexes, IgG-protein A, DNA-DNA, DNA-RNA, and the like are not immunological pairs but are included in the definition. A specific binding member can be a binding agent.

[0051] A binding agent can be a molecule that complementarily binds one or more molecules. A binding agent can be a protein, a nucleic acid, a ligand, a receptor, or the like.

[0052] Exemplary proteins that are binding agents can include hemagglutinins, small molecule binding proteins, active or inactive enzymes or fragmented antibodies.

Hemagglutinins can comprise antibodies or lectins. Antibodies can be of one or more classes of immunoglobulins (Ig). For instance, an antibody can be an IgA, IgD, IgE, IgG1, IgG2, IgG3, IgG4, IgM, IgW, or a modified variation thereof. Antibodies can be monoclonal or

polyclonal. An antibody can be a humanized antibody, a chimeric antibody, or a bispecific antibody. Antibodies can comprise various types of binding regions. For instance, an antibody can have scFv, VH, Fab, or (Fab)₂ binding regions. An antibody can comprise various modifications. For example, an antibody can be modified with one or more detection reagents. An antibody may be conjugated to another binding agent, oligonucleotide or protein.

[0053] A binding agent can be a fusion protein that incorporates various combinations of protein subunits. The combinations of protein subunits can be non-naturally occurring or naturally occurring. As a non-limiting example, a fusion protein can incorporate aspects of an antibody (e.g., an Fc region) and one or more receptor domains. A fusion protein can comprise two or more subunits. For example, a fusion protein can be a dimer, trimer, tetramer, or pentamer.

[0054] In one aspect of the present invention, one or more binding agents can be used to detect one or more vitamin D molecules. In an embodiment, a vitamin D binding agent specifically binds to one or more vitamin D molecules. A vitamin D binding agent can be a specific binding member. A vitamin D binding agent can be a specific binding member that is capable of binding to one or more vitamin D molecules. A vitamin D binding agent can be a first antibody, as referred to herein.

[0055] A detection agent can be used and may bind to a complex of the vitamin D binding agent and one or more vitamin D molecules. A detection agent can be used to detect one or more vitamin D molecules complexed with a vitamin D binding agent or a first antibody. The detection agent can be a detection antibody that specifically binds to a first complex of vitamin D binding agent and a vitamin D molecule. A detection agent can be a second antibody or a detection antibody, as referred to herein.

[0056] A third binding agent can be used that is capable of binding to a vitamin D binding agent whether or not the vitamin D binding agent is bound to the one or more vitamin D molecules.

[0057] A binding agent may comprise any of the amino acid sequences listed in Table 1 (SEQ ID Nos 1-20), or a combination thereof.

[0058] In some embodiments, a conjugate pad comprises a detection reagent, wherein the detection reagent is a first antibody that specifically binds to one or more vitamin D molecules. Vitamin D antibodies are known in the art. An exemplary vitamin D antibody, AF10, was produced as described in Example 1. Other antibodies capable of binding one or

more vitamin D molecules are known in the art, such as those described in US20130059825, which is hereby incorporated by reference in its entirety.

[0059] A “detection zone” is a region of the test strip in which a dye as described above can be observed to shift location, appear, change color, or optionally to disappear. Detection or observation of the detection zone can be performed by any convenient means, depending upon the choice of detectable label. For example, detection or observation can be performed visually, fluorescently, by reflectance, radiographically, or any other means known to one of ordinary skill in the art.

[0060] A detection zone can comprise a first region, immobilized therein a detection agent or second antibody that specifically binds to an immunocomplex comprising (a) the first antibody (e.g., AF10) that specifically binds one or more vitamin D molecules and (b) one or more vitamin D molecules. In some cases, the detection agent or second antibody binds an epitope created when the complex of the vitamin D binding agent or first antibody and one or more vitamin D molecules is formed. For example, a second antibody can bind the junction between the one or more vitamin D molecules and the first antibody. In some cases, the binding of a vitamin D binding agent or first antibody to the one or more vitamin D molecules can cause the formation of an epitope on the vitamin D binding agent or the first antibody that is recognized by the detection agent or second antibody. In some cases the epitope formed upon the binding of one or more vitamin D molecules is not the binding site of the one or more vitamin D molecules, but an epitope at another site of the first antibody. In some cases, the second antibody can recognize the one or more vitamin D molecules when bound to the first antibody. The first region of the detection zone can provide a detectable signal indicating the presence of the analyte. The first region of the detection zone can include an immobilized binding reagent specific for an analyte (“specific binding member”), and/or an enzyme that reacts with the analyte. Other substances that may allow or enhance detection of the analyte, such as substrates, buffers, salts, may also be provided in the detection zone. One or more members of a signal producing system may be bound directly or indirectly to the detection zone. A detection zone can optionally include a second region comprising one or more control zones that provide indication that the test has been performed properly.

[0061] In some instances, the detection zone can further comprise a second region. This region can be a control region, immobilized therein a specific binding member that binds the first antibody whether or not it is bound to one or more vitamin D molecules. For example, the specific binding member can be a third antibody can bind the constant region of the first

antibody. The third antibody can bind an epitope on the first antibody that is unchanged whether the one or more vitamin D molecules are bound or not. In some cases, the second region can be a control region, and the specific binding member immobilized therein can be protein A. In some cases, the conjugate pad comprises an additional antibody derived from a different species than the first antibody, wherein the additional antibody does not bind the first antibody, vitamin D, or vitamin D binding protein. In some cases, the second region is a control region, and the third antibody recognizes the additional antibody, but does not recognize the first antibody or second antibody. For example, if the first and second antibody are derived from mouse and rat, respectively, the additional antibody can be derived from chicken, and the third antibody can be goat anti-chicken, rat anti-chicken, etc.

[0062] Signal appearing in the second region can be used to indicate that the first antibody can be detected and that the test strip is functioning properly. The second region can be a region of a test strip in which a detectable label can be observed to shift location, appear, change color, or optionally to disappear. Detection or observation of the second region may be done by any convenient means, depending upon the particular choice of dye, especially, for example but not limited to, visually, fluorescently, by reflectance, radiographically, by a lateral flow reader and the like.

[0063] A biological sample is any material to be tested for the presence or amount of an analyte. Preferably, a biological sample is a fluid sample, preferably a liquid sample. Examples of liquid samples that may be tested using a test device of the present invention include bodily fluids including blood, serum, plasma, saliva, urine, ocular fluid, semen, perspiration, and spinal fluid. The biological sample can be blood or plasma. Viscous liquid, semi-solid, or solid specimens may be used to create liquid solutions, eluates, suspensions, or extracts that can be samples. For example, throat or genital swabs may be suspended in a liquid solution to make a sample.

[0064] An exemplary lateral flow assay is provided in **FIG. 1C**. The exemplary lateral flow assay comprises a sample application pad, conjugate pad, and said detection zone aligned from upstream to downstream along a fluid path along which said biological sample travels. A sample may be applied to the sample application pad or sample pad. Application of a sample may be followed by a chase buffer. From the blood sample, vitamin D (e.g., 25-(OH)D) may flow to a conjugate pad comprising a first antibody (Mab-1) that specifically binds to one or more vitamin D molecules to generate an immunocomplex. A first antibody may be conjugated with a detection reagent, such as colloidal gold. Immunocomplexed and uncomplexed antibody may flow to the detection zone. A detection zone may comprise a

control line and a test line. The test line may comprise a second antibody (Mab-2) that specifically binds to an epitope generated by complexing the Mab-1 with one or more 25-(OH)D molecules. Immunocomplexed and non-complexed Mab-1 may laterally flow to a control line comprising a third antibody that is capable of binding to Mab-1 whether or not Mab-1 is bound to one or more vitamin D molecules (Anti-IgG antibody). The uncomplexed and/or immunocomplexed Mab-1 antibody can be detected at the control line. The Mab-2 bound immunocomplexed Mab-1 antibody can be detected at the test line. A level of detection at the test line can be indicative of a level of vitamin D.

Methods

[0065] In one aspect, the present disclosure provides methods capable of detecting levels of one or more vitamin D molecules using test devices disclosed herein. The methods can comprise applying a biological sample to the sample application unit of a test device disclosed herein; applying a chase buffer to the sample application unit, and detecting levels of the one or more vitamin D molecules. Such detection can occur by visualizing signal appearing in the second region of the test device, such as by concentration of a labeled first antibody in a detection zone by a specific binding agent.

[0066] In some cases, methods further comprise quantifying the one or more vitamin D molecules in the sample. Quantification can be performed by determining a relationship between signal strength in the first region of the detection zone and the amount of analyte present in biological sample. It will be appreciated that the relationship between signal strength and the amount of analyte present in the biological sample may be determined for each batch or each test strip by the application of standards containing known amounts of one or more vitamin D molecules.

[0067] In some instances, the quantification will be semi-quantitative, such as by classifying a subject as having sufficient levels, insufficient levels, or deficient levels of one or more vitamin D molecules in the biological sample. Sufficient levels of vitamin D can be at least 10 ng/mL, at least 15 ng/mL, at least 20 ng/mL, at least 25 ng/mL, at least 30 ng/mL, at least 35 ng/mL, at least 40 ng/mL, or at least 50 ng/mL. Insufficient levels of vitamin D can be at least 5 ng/mL and at most 45 ng/mL, at least 5 ng/mL and at most 40 ng/mL, at least 5 ng/mL and at most 35 ng/mL, at least 5 ng/mL and at most 30 ng/mL, at least 5 ng/mL and at most 25 ng/mL, at least 5 ng/mL and at most 20 ng/mL, at least 5 ng/mL and at most 15 ng/mL, at least 5 ng/mL and at most 10 ng/mL, at least 10 ng/mL and at most 45 ng/mL, at least 10 ng/mL and at most 40 ng/mL, at least 10 ng/mL and at most 35 ng/mL, at least 10 ng/mL and at most 30 ng/mL, at least 10 ng/mL and at most 25 ng/mL, at least 10 ng/mL and at most 20

ng/mL, at least 10 ng/mL and at most 15 ng/mL, at least 15 ng/mL and at most 45 ng/mL, at least 15 ng/mL and at most 40 ng/mL, at least 15 ng/mL and at most 35 ng/mL, at least 15 ng/mL and at most 30 ng/mL, at least 15 ng/mL and at most 25 ng/mL, at least 15 ng/mL and at most 20 ng/mL, at least 20 ng/mL and at most 45 ng/mL, at least 20 ng/mL and at most 40 ng/mL, at least 20 ng/mL and at most 35 ng/mL, at least 20 ng/mL and at most 30 ng/mL, at least 20 ng/mL and at most 25 ng/mL, at least 25 ng/mL and at most 45 ng/mL, at least 25 ng/mL and at most 40 ng/mL, at least 25 ng/mL and at most 35 ng/mL, at least 25 ng/mL and at most 30 ng/mL, at least 30 ng/mL and at most 45 ng/mL, at least 30 ng/mL and at most 40 ng/mL, at least 30 ng/mL and at most 35 ng/mL, at least 35 ng/mL and at most 45 ng/mL, at least 35 ng/mL and at most 40 ng/mL, at least 40 ng/mL and at most 45 ng/mL. Deficient levels of vitamin D can be at most 10 ng/mL, at most 15 ng/mL, at most 20 ng/mL, at least 25 ng/mL, at most 30 ng/mL, at most 35 ng/mL, at most 40 ng/mL, or at most 50 ng/mL. For example, the subject may have greater than 30 ng/mL of one or more vitamin D molecules and be classified as having sufficient levels of one or more vitamin D molecules. For example, the subject may have between 10 - 30 ng/mL of one or more vitamin D molecules and be classified as having insufficient levels of one or more vitamin D molecules. For example, the subject may have less than 10 ng/mL of one or more vitamin D molecules and be classified as having deficient levels of one or more vitamin D molecules.

[0068] In some instances, quantifying further comprised using an imaging device to produce an image of the detection zone and software on a programmed computer configured to quantify the one or more vitamin D molecules in the biological sample based on the image of the detection zone. The image can be analyzed for signal strength. In some cases, signal strength is compared against the signal strength of the control region to normalize the image for variables such as light intensity, light quality, and variation between imaging devices.

[0069] FIG. 7 shows a computer system 701 that is programmed or otherwise configured to implement methods of the present disclosure. The computer system 701 can be integral to implementing methods provided herein, which would be otherwise extremely difficult to perform in the absence of the computer system 701. The computer system 701 can regulate various aspects of methods of the present disclosure, such as, for example, methods that quantify one or more vitamin D molecules in a biological samples based on an image of a detection zone. The computer system 701 can be an electronic device of a user or a computer system that is remotely located with respect to the electronic device. The electronic device can be a mobile electronic device. As an alternative, the computer system 701 can be a computer server.

[0070] The computer system 701 includes a central processing unit (CPU, also “processor” and “computer processor” herein) 705, which can be a single core or multi core processor, or a plurality of processors for parallel processing. The computer system 701 also includes memory or memory location 710 (e.g., random-access memory, read-only memory, flash memory), electronic storage unit 715 (e.g., hard disk), communication interface 720 (e.g., network adapter) for communicating with one or more other systems, and peripheral devices 725, such as cache, other memory, data storage and/or electronic display adapters. The memory 710, storage unit 715, interface 720 and peripheral devices 725 are in communication with the CPU 705 through a communication bus (solid lines), such as a motherboard. The storage unit 715 can be a data storage unit (or data repository) for storing data. The computer system 701 can be operatively coupled to a computer network (“network”) 730 with the aid of the communication interface 720. The network 730 can be the Internet, an internet and/or extranet, or an intranet and/or extranet that is in communication with the Internet. The network 730 in some cases is a telecommunication and/or data network. The network 730 can include one or more computer servers, which can enable distributed computing, such as cloud computing. The network 730, in some cases with the aid of the computer system 701, can implement a peer-to-peer network, which may enable devices coupled to the computer system 701 to behave as a client or a server.

[0071] The CPU 705 can execute a sequence of machine-readable instructions, which can be embodied in a program or software. The instructions may be stored in a memory location, such as the memory 710. The instructions can be directed to the CPU 705, which can subsequently program or otherwise configure the CPU 705 to implement methods of the present disclosure. Examples of operations performed by the CPU 705 can include fetch, decode, execute, and writeback.

[0072] The CPU 705 can be part of a circuit, such as an integrated circuit. One or more other components of the system 701 can be included in the circuit. In some cases, the circuit is an application specific integrated circuit (ASIC).

[0073] The storage unit 715 can store files, such as drivers, libraries and saved programs. The storage unit 715 can store user data, e.g., user preferences and user programs. The computer system 701 in some cases can include one or more additional data storage units that are external to the computer system 701, such as located on a remote server that is in communication with the computer system 701 through an intranet or the Internet.

[0074] The computer system 701 can communicate with one or more remote computer systems through the network 730. For instance, the computer system 701 can communicate

with a remote computer system of a user (e.g., patient, healthcare provider, or service provider). Examples of remote computer systems include personal computers (e.g., portable PC), slate or tablet PC's (e.g., Apple® iPad, Samsung® Galaxy Tab), telephones, Smart phones (e.g., Apple® iPhone, Android-enabled device, Blackberry®), or personal digital assistants. The user can access the computer system 701 via the network 730.

[0075] Methods as described herein can be implemented by way of machine (e.g., computer processor) executable code stored on an electronic storage location of the computer system 701, such as, for example, on the memory 710 or electronic storage unit 715. The memory 710 can be part of a database. The machine executable or machine readable code can be provided in the form of software. During use, the code can be executed by the processor 705. In some cases, the code can be retrieved from the storage unit 715 and stored on the memory 710 for ready access by the processor 705. In some situations, the electronic storage unit 715 can be precluded, and machine-executable instructions are stored on memory 710.

[0076] The code can be pre-compiled and configured for use with a machine having a processor adapted to execute the code, or can be compiled during runtime. The code can be supplied in a programming language that can be selected to enable the code to execute in a pre-compiled or as-compiled fashion.

[0077] Aspects of the systems and methods provided herein, such as the computer system 701, can be embodied in programming. Various aspects of the technology may be thought of as “products” or “articles of manufacture” typically in the form of machine (or processor) executable code and/or associated data that is carried on or embodied in a type of machine readable medium. Machine-executable code can be stored on an electronic storage unit, such as memory (e.g., read-only memory, random-access memory, flash memory) or a hard disk. “Storage” type media can include any or all of the tangible memory of the computers, processors or the like, or associated modules thereof, such as various semiconductor memories, tape drives, disk drives and the like, which may provide non-transitory storage at any time for the software programming. All or portions of the software may at times be communicated through the Internet or various other telecommunication networks. Such communications, for example, may enable loading of the software from one computer or processor into another, for example, from a management server or host computer into the computer platform of an application server. Thus, another type of media that may bear the software elements includes optical, electrical and electromagnetic waves, such as used across physical interfaces between local devices, through wired and optical landline networks and over various air-links. The physical elements that carry such waves, such as wired or

wireless links, optical links or the like, also may be considered as media bearing the software. As used herein, unless restricted to non-transitory, tangible “storage” media, terms such as computer or machine “readable medium” refer to any medium that participates in providing instructions to a processor for execution.

[0078] Hence, a machine readable medium, such as computer-executable code, may take many forms, including but not limited to, a tangible storage medium, a carrier wave medium or physical transmission medium. Non-volatile storage media include, for example, optical or magnetic disks, such as any of the storage devices in any computer(s) or the like, such as may be used to implement the databases, etc. shown in the drawings. Volatile storage media include dynamic memory, such as main memory of such a computer platform. Tangible transmission media include coaxial cables; copper wire and fiber optics, including the wires that comprise a bus within a computer system. Carrier-wave transmission media may take the form of electric or electromagnetic signals, or acoustic or light waves such as those generated during radio frequency (RF) and infrared (IR) data communications. Common forms of computer-readable media therefore include for example: a floppy disk, a flexible disk, hard disk, magnetic tape, any other magnetic medium, a CD-ROM, DVD or DVD-ROM, any other optical medium, punch cards paper tape, any other physical storage medium with patterns of holes, a RAM, a ROM, a PROM and EPROM, a FLASH-EPROM, any other memory chip or cartridge, a carrier wave transporting data or instructions, cables or links transporting such a carrier wave, or any other medium from which a computer may read programming code and/or data. Many of these forms of computer readable media may be involved in carrying one or more sequences of one or more instructions to a processor for execution.

[0079] The computer system 701 can include or be in communication with an electronic display 735 that comprises a user interface (UI) 740 for providing, for example, genetic information, such as an identification of disease-causing alleles in single individuals or groups of individuals. Examples of UI's include, without limitation, a graphical user interface (GUI) and web-based user interface (or web interface).

[0080] A chase buffer may be used to detect one or more vitamin D molecules. The chase buffer can be configured comprise reagents to dissociate the one or more vitamin D molecules from vitamin D binding protein and/or albumin. Non-limiting examples of reagents to dissociate the one or more vitamin D molecules are acidic solution, alkaline solution, 8-anilino-1-naphthalenesulfonic acid, 3-(acetonylbenzyl)-4-hydroxycoumarin, alkyl amino fluoro surfactants, perfluorhexanoic acid, perfluorooctanoic acid, proteinase K, urea,

and guanidine hydrochloride. For example, the chase buffer can be an acidic solution or an alkaline solution, as described in WO2004063704, which is hereby incorporated by reference in its entirety. In another, the chase buffer can rely on the competitive displacement of Vitamin D from endogenous binding proteins using 8-anilino-1-naphthalenesulfonic acid and/or 3-(acetylbenzyl)-4-hydroxycoumarin, as described in US Pat. No. 7,482,162, which is hereby incorporated by reference in its entirety..

[0081] Chase buffer can, for example, be a reagent with a pH from 3.8 to 4.8 and 5-30% DMSO, a liquid organic amide and optionally 0.5-5% of a short chain alcohol, such as described in WO2007039194, which is hereby incorporated by reference in its entirety. Chase buffer can comprise stabilizing agents and capture ligands, including alkyl amino fluoro surfactants as described in WO2008039266, which is hereby incorporated by reference in its entirety.

Kits

[0082] In one aspect, the present disclosure provides kits capable of detecting levels of one or more vitamin D molecules comprising test devices disclosed herein and written instructions for the use of the kit. In some instances, kits can further comprise one or more components selected from the group consisting of a sterilization agent, a device to puncture skin, gauze, chase buffer, and a micropipette.

[0083] A sterilization agent can be, for example, an alcohol wipe capable of disinfecting human skin.

[0084] A device to puncture the skin can be a small, sharp object capable of penetrating the skin of the subject to produce a small volume of blood. The device to puncture the skin can be selected from the group consisting of a lancet, a needle, and a syringe. The lancet can, for example, be spring-powered.

[0085] Chase buffer can comprise reagents for dissociating one or more vitamin D molecules from vitamin D binding protein, as described previously.

[0086] A micropipette can provide a known volume of biological sample to the device.

[0087] The kit can further comprise a color chart relating signal strength to a quantity of said one or more vitamin D molecules in a sample. Due to potential batch-to-batch variability, the color chart can be generated empirically for each batch of test devices by running standards containing known amounts of one or more vitamin D molecules and determining the colors corresponding to different ranges of amounts of one or more vitamin D molecules in the biological sample.

Examples

[0088] Example 1: Generation of monoclonal antibody to 25-(OH)D.

[0089] Monoclonal antibodies against 25-(OH)D were prepared by a modified method of Kohler and Milstein (G. Kohler and C. Milstein Nature, 1975, 256, 495). Mice were immunized by subcutaneous injection of 25-(OH)D conjugated at its 3-position to carrier protein KHL. The complete Freund's adjuvant was injected with the antigen. The incomplete Freund's adjuvant was used for antigen boosts. The immune response was monitored by ELISA against 25-(OH)D₃. After four to five antigen boosts, the spleen cells were harvested and fused with myeloma cells in the presence of polyethylene glycol (PEG). The fused cells were seeded in 96-well plates and grown in the presence of selective hypoxanthine, aminopterin and thymidine (HAT) medium. The supernatants from the fused cells were tested by ELISA for binding activity to 25-(OH)D₃ and 25-(OH)D₂. The clone AF10, which has a high affinity for binding both 25-(OH)D₃ and 25-(OH)D₂, was selected for large scale of antibody production and purification.

[0090] Example 2: Generation of a monoclonal antibody against an immunocomplex of 25-(OH)D and mAb from immunized mice.

[0091] Mice were immunized by subcutaneous injection of 25-(OH)D conjugated at its 26-position to carrier protein keyhole limpet hemocyanin (KLH). The complete Freund's adjuvant was injected with antigen. KLH conjugate and the incomplete Freund's adjuvant was used for the first and third boosts, and the immunocomplex of 25-(OH)D:antibody AF10 was used for the second and fourth boosts. The immune response was monitored by ELISA assay to the immunocomplex of 25-(OH)D:antibody AF10. After 4 boosts, the spleen cells were harvested. The RNA from the spleen cells was then isolated and variable gene amplification was performed.

[0092] The mRNA was isolated by using Dynabeads® mRNA Purification Kit (ThermoFisher) according to the manufacturer's protocol. Subsequently, first strand cDNA was generated using Superscript II reverse transcriptase (Invitrogen, Carlsbad, CA). From the cDNA, heavy and light chain variable genes were amplified separately by PCR using primer sets for mouse VH, VK and Vλ as described according to Phage Display: A Laboratory Manual (Cold Spring Harbor Laboratory Press). Heavy and light chain variable region genes were further amplified by PCR to add partial sequence of (GS3)₄ linker to the 3' VH and 5' VL. In the third PCR reaction, an equal amount of second round amplified VH and VL DNA was mixed for single-chain variable fragment (scFv) assembly. The final scFv DNA was

purified with Qiagen PCR purification column (QIAGEN Inc., Germany). The purified scFv DNA and PCANTAB5 vector DNA were digested with restriction enzymes NcoI and NotI (New England Lab) and then size-selected by 1% agarose gel. Excised bands were purified with the QIAquick Gel Extraction Kit. Digested scFv, vector DNA and T4 ligase (New England Lab) were mixed for overnight ligation at 16 °C. 20 µg of ligated DNA was purified and transformed into E coli TG1 competent cells by electroporation. After transformation, TG1 cells were suspended into SOC medium and incubated for 1 h at 37°C and 250 rpm shaking. The TG1 cells were plated on 2YT-agar plates containing 100 µg/ml of carbenicillin and 2% glucose. Following overnight 30 °C incubation, the TG1 transformants were harvested into 2YT containing 15% glycerol, 100 µg/ml of carbenicillin and 2% glucose, and the library aliquots were kept at -80 °C for storage. This procedure resulted in a library size of 1.2×10^9 colonies.

[0093] Phage displayed library was prepared as follows. 200 mL 2YT medium (with 100 µg/ml of carbenicillin and 2% glucose) was inoculated with library TG1 cells at starting OD 0.1. After 3-4 hours of incubation at 37°C with 250 rpm shaking, KO7 helper phage was added at a 1:10 ratio of cells to phage, and the culture was incubated at 37°C for 1 hour without shaking. The TG1 cells were centrifuged and the cell pellet was re-suspended into 2 L of 2YT with 100 µg/ml carbenicillin and 35 µg/ml Kanamycin, followed by overnight incubation at 30 °C with 250 rpm shaking. TG1 cells were then centrifuged for 30 minutes at 6000 x g at 4 °C. The library phage particles were purified by PEG-precipitation from culture supernatant, resuspended into phosphate-buffered saline (PBS) and titered by OD268 measurement. The phage display antibody library was stored at -80 °C in PBS with 20% glycerol.

[0094] Immunocomplex-specific antibodies were selected from the above mouse scFv phage display library by the following selection procedure. The microtiter well was coated with 1 µg of mAb AF10 overnight at 4°C. After 2 hour blocking with 1x chemiblocker (EMD Millipore), 1 µg of 25-(OH)D₃ was added to each well for overnight incubation at 4°C. The well was washed 3 times with PBS and blocked with 1x chemiblocker for 1 hour at room temperature. Prior to performing affinity selection against the immunocomplex of 25-(OH)D:antibody AF10, 400 µl of the phage library solution (a total of 1,012 phage particles) was pre-incubated in a well containing antibody AF10 without vitamin D for 2 hours at room temperature, after which the unbound phages were transferred into 4 wells with the immunocomplex of 25-(OH)D:antibody AF10 for 2 hour incubation at room temperature. The unbound phages were removed and the well was washed 10 times with PBS-Tween.

Bound phages were eluted with 100 μ l of 100 mM HCl for 10 minutes, and eluted phages were harvested and neutralized with 10% 1 M Tris-HCl. The eluted phages were then added to 10 mL of fresh TG1 cells ($OD_{600} \approx 0.8$) for 1 hour incubation at 37 °C. Infected TG1 cells were plated on two 2YT plates with carbenicillin and glucose for overnight growth, and overnight cells were harvested for first round phage preparation as described above. The affinity selection procedure was performed on these second round phages as just described. A total of three rounds of affinity selection were performed.

[0095] The infected TG1 colonies from the third round of affinity selection were picked for expression of scFv-p3 fusion and confirmation of binding activity. Briefly, isolated TG colonies were picked into 96 well plates (5 plates and a total of 480 colonies) with 100 μ l of 2YT/carbenicillin and glucose, and incubated overnight at 30°C. The second day, 10 μ l of culture per well was transferred into a corresponding well in a 96-well deep plate containing 500 μ l per well 2YT medium containing carbenicillin and 0.1% Glucose. The deep-well plates were incubated in a 37 °C shaker incubator shaking at 250 rpm until the cultures reach OD_{600} of 0.8 – 1. 100 μ l of 2YT containing 6 mM IPTG was then added to each well and the expression plate was incubated overnight at 30°C shaking at 250 rpm. 160 μ L of lysis buffer containing 2.5 mg/mL lysozyme and 5 mM EDTA were then added to each well of the expression plate, and the cultures were shaken for 1 h at room temperature. The culture supernatant was mixed with 140 μ l 2x ChemiBlocker per well and incubated for an additional 30 min while shaking at 250 rpm. The culture supernatants were centrifuged and prepared for binding assay as below.

[0096] To screen for the clones capable of binding the immunocomplex of 25-(OH)D:antibody AF10, two 96-well assay plates were prepared for each expression plate, one plate coated with AF10 antibody only, the other coated with the immunocomplex of 25-(OH)D:antibody AF10. The assay plates were blocked with 1x ChemiBlocker for 2 hours at room temperature. The culture supernatants from the expression plate were transferred to the corresponding well of the assay plate. After 1 hour incubation at room temperature and three PBS-Tween washes, 100 μ L of mouse anti-M13 p3 antibody (New England Lab) was added to each well for 1 hour incubation at room temperature. The samples were washed three times with PBS-Tween, and 100 μ L of horse radish peroxidase (HRP)-conjugated goat anti-mouse IgG was added to each well for 1 hour incubation. The samples were washed three times with PBS-Tween, and 100 μ L of substrate 3,3',5,5'-Tetramethylbenzidine (TMB) was added to each well. The OD_{630} was measured after 10-30 minutes development. The clones that bound to the immunocomplex of 25-(OH)D:antibody AF10, but not AF10 antibody alone,

were selected for confirmation. The positive culture supernatants were serially diluted in a 1:3 ratio and were assayed again following the above procedure. **FIG. 2** shows six clones with binding activity to the immunocomplex of 25-(OH)D₃:antibody AF10. The unique sequences of the heavy chain variable regions (SEQ ID NOs 6-15) and light chain variable regions (SEQ ID NOs 1-5 and 16-20) are listed in TABLE 1.

[0097] A light chain can comprise a sequence selected from the group consisting of SEQ ID NOs 1-5, and 16-20. A heavy chain can comprise a sequence selected from the group consisting of SEQ ID NOs 6-15. In some instances, the light chain can comprise a sequence sharing at least 80% sequence homology to a sequence selected from the group consisting of SEQ ID NOs 1-5, and 16-20. In some instances, the heavy chain can comprise a sequence having least 80% sequence homology to a sequence selected from the group consisting of SEQ ID NOs 6-15.

[0098] An antibody may comprise light chain CDR and said heavy chain CDR with any of the following amino acid sequences: a heavy chain of SEQ ID NO 6 and a light chain of SEQ ID NO 1, a heavy chain of SEQ ID NO 6 and a light chain of SEQ ID NO 2, a heavy chain of SEQ ID NO 6 and a light chain of SEQ ID NO 3, a heavy chain of SEQ ID NO 6 and a light chain of SEQ ID NO 4, a heavy chain of SEQ ID NO 6 and a light chain of SEQ ID NO 5, a heavy chain of SEQ ID NO 6 and a light chain of SEQ ID NO 16, a heavy chain of SEQ ID NO 6 and a light chain of SEQ ID NO 17, a heavy chain of SEQ ID NO 6 and a light chain of SEQ ID NO 18, a heavy chain of SEQ ID NO 6 and a light chain of SEQ ID NO 19, a heavy chain of SEQ ID NO 6 and a light chain of SEQ ID NO 20.

[0099] An antibody may comprise light chain CDR and said heavy chain CDR with any of the following amino acid sequences a heavy chain of SEQ ID NO 7 and a light chain of SEQ ID NO 1, a heavy chain of SEQ ID NO 7 and a light chain of SEQ ID NO 2, a heavy chain of SEQ ID NO 7 and a light chain of SEQ ID NO 3, a heavy chain of SEQ ID NO 7 and a light chain of SEQ ID NO 4, a heavy chain of SEQ ID NO 7 and a light chain of SEQ ID NO 5, a heavy chain of SEQ ID NO 7 and a light chain of SEQ ID NO 16, a heavy chain of SEQ ID NO 7 and a light chain of SEQ ID NO 17, a heavy chain of SEQ ID NO 7 and a light chain of SEQ ID NO 18, a heavy chain of SEQ ID NO 7 and a light chain of SEQ ID NO 19, a heavy chain of SEQ ID NO 7 and a light chain of SEQ ID NO 20.

[0100] An antibody may comprise light chain CDR and said heavy chain CDR with any of the following amino acid sequences: a heavy chain of SEQ ID NO 8 and a light chain of SEQ ID NO 1, a heavy chain of SEQ ID NO 8 and a light chain of SEQ ID NO 2, a heavy chain of SEQ ID NO 8 and a light chain of SEQ ID NO 3, a heavy chain of SEQ ID NO 8 and a light

chain of SEQ ID NO 4, a heavy chain of SEQ ID NO 8 and a light chain of SEQ ID NO 5, a heavy chain of SEQ ID NO 8 and a light chain of SEQ ID NO 16, a heavy chain of SEQ ID NO 8 and a light chain of SEQ ID NO 17, a heavy chain of SEQ ID NO 8 and a light chain of SEQ ID NO 18, a heavy chain of SEQ ID NO 8 and a light chain of SEQ ID NO 19, a heavy chain of SEQ ID NO 8 and a light chain of SEQ ID NO 20.

[0101] An antibody may comprise light chain CDR and said heavy chain CDR with any of the following amino acid sequences: a heavy chain of SEQ ID NO 9 and a light chain of SEQ ID NO 1, a heavy chain of SEQ ID NO 9 and a light chain of SEQ ID NO 2, a heavy chain of SEQ ID NO 9 and a light chain of SEQ ID NO 3, a heavy chain of SEQ ID NO 9 and a light chain of SEQ ID NO 4, a heavy chain of SEQ ID NO 9 and a light chain of SEQ ID NO 5, a heavy chain of SEQ ID NO 9 and a light chain of SEQ ID NO 16, a heavy chain of SEQ ID NO 9 and a light chain of SEQ ID NO 17, a heavy chain of SEQ ID NO 9 and a light chain of SEQ ID NO 18, a heavy chain of SEQ ID NO 9 and a light chain of SEQ ID NO 19, a heavy chain of SEQ ID NO 9 and a light chain of SEQ ID NO 20.

[0102] An antibody may comprise light chain CDR and said heavy chain CDR with any of the following amino acid sequences: a heavy chain of SEQ ID NO 10 and a light chain of SEQ ID NO 1, a heavy chain of SEQ ID NO 10 and a light chain of SEQ ID NO 2, a heavy chain of SEQ ID NO 10 and a light chain of SEQ ID NO 3, a heavy chain of SEQ ID NO 10 and a light chain of SEQ ID NO 4, a heavy chain of SEQ ID NO 10 and a light chain of SEQ ID NO 5, a heavy chain of SEQ ID NO 10 and a light chain of SEQ ID NO 16, a heavy chain of SEQ ID NO 10 and a light chain of SEQ ID NO 17, a heavy chain of SEQ ID NO 10 and a light chain of SEQ ID NO 18, a heavy chain of SEQ ID NO 10 and a light chain of SEQ ID NO 19, a heavy chain of SEQ ID NO 10 and a light chain of SEQ ID NO 20.

[0103] An antibody may comprise light chain CDR and said heavy chain CDR with any of the following amino acid sequences: a heavy chain of SEQ ID NO 11 and a light chain of SEQ ID NO 1, a heavy chain of SEQ ID NO 11 and a light chain of SEQ ID NO 2, a heavy chain of SEQ ID NO 11 and a light chain of SEQ ID NO 3, a heavy chain of SEQ ID NO 11 and a light chain of SEQ ID NO 4, a heavy chain of SEQ ID NO 11 and a light chain of SEQ ID NO 5, a heavy chain of SEQ ID NO 11 and a light chain of SEQ ID NO 16, a heavy chain of SEQ ID NO 11 and a light chain of SEQ ID NO 17, a heavy chain of SEQ ID NO 11 and a light chain of SEQ ID NO 18, a heavy chain of SEQ ID NO 11 and a light chain of SEQ ID NO 19, a heavy chain of SEQ ID NO 11 and a light chain of SEQ ID NO 20.

[0104] An antibody may comprise light chain CDR and said heavy chain CDR with any of the following amino acid sequences: a heavy chain of SEQ ID NO 12 and a light chain of

SEQ ID NO 1, a heavy chain of SEQ ID NO 12 and a light chain of SEQ ID NO 2, a heavy chain of SEQ ID NO 12 and a light chain of SEQ ID NO 3, a heavy chain of SEQ ID NO 12 and a light chain of SEQ ID NO 4, a heavy chain of SEQ ID NO 12 and a light chain of SEQ ID NO 5, a heavy chain of SEQ ID NO 12 and a light chain of SEQ ID NO 16, a heavy chain of SEQ ID NO 12 and a light chain of SEQ ID NO 17, a heavy chain of SEQ ID NO 12 and a light chain of SEQ ID NO 18, a heavy chain of SEQ ID NO 12 and a light chain of SEQ ID NO 19, a heavy chain of SEQ ID NO 12 and a light chain of SEQ ID NO 20.

[0105] An antibody may comprise light chain CDR and said heavy chain CDR with any of the following amino acid sequences: a heavy chain of SEQ ID NO 13 and a light chain of SEQ ID NO 1, a heavy chain of SEQ ID NO 13 and a light chain of SEQ ID NO 2, a heavy chain of SEQ ID NO 13 and a light chain of SEQ ID NO 3, a heavy chain of SEQ ID NO 13 and a light chain of SEQ ID NO 4, a heavy chain of SEQ ID NO 13 and a light chain of SEQ ID NO 5, a heavy chain of SEQ ID NO 13 and a light chain of SEQ ID NO 16, a heavy chain of SEQ ID NO 13 and a light chain of SEQ ID NO 17, a heavy chain of SEQ ID NO 13 and a light chain of SEQ ID NO 18, a heavy chain of SEQ ID NO 13 and a light chain of SEQ ID NO 19, a heavy chain of SEQ ID NO 13 and a light chain of SEQ ID NO 20.

[0106] An antibody may comprise light chain CDR and said heavy chain CDR with any of the following amino acid sequences: a heavy chain of SEQ ID NO 14 and a light chain of SEQ ID NO 1, a heavy chain of SEQ ID NO 14 and a light chain of SEQ ID NO 2, a heavy chain of SEQ ID NO 14 and a light chain of SEQ ID NO 3, a heavy chain of SEQ ID NO 14 and a light chain of SEQ ID NO 4, a heavy chain of SEQ ID NO 14 and a light chain of SEQ ID NO 5, a heavy chain of SEQ ID NO 14 and a light chain of SEQ ID NO 16, a heavy chain of SEQ ID NO 14 and a light chain of SEQ ID NO 17, a heavy chain of SEQ ID NO 14 and a light chain of SEQ ID NO 18, a heavy chain of SEQ ID NO 14 and a light chain of SEQ ID NO 19, a heavy chain of SEQ ID NO 14 and a light chain of SEQ ID NO 20.

[0107] An antibody may comprise light chain CDR and said heavy chain CDR with any of the following amino acid sequences: a heavy chain of SEQ ID NO 15 and a light chain of SEQ ID NO 1, a heavy chain of SEQ ID NO 15 and a light chain of SEQ ID NO 2, a heavy chain of SEQ ID NO 15 and a light chain of SEQ ID NO 3, a heavy chain of SEQ ID NO 15 and a light chain of SEQ ID NO 4, a heavy chain of SEQ ID NO 15 and a light chain of SEQ ID NO 5, a heavy chain of SEQ ID NO 15 and a light chain of SEQ ID NO 16, a heavy chain of SEQ ID NO 15 and a light chain of SEQ ID NO 17, a heavy chain of SEQ ID NO 15 and a light chain of SEQ ID NO 18, a heavy chain of SEQ ID NO 15 and a light chain of SEQ ID NO 19, a heavy chain of SEQ ID NO 15 and a light chain of SEQ ID NO 20.

TABLE 1: Exemplary heavy and light chain variable regions

Sequence No.	Amino acid sequences
1	DIQMTQSPAIMASAPGEEKVTITCSASSSVSYMHWYQQKSGTSPK LWIYSTSNLASGVPARFSGSGSGTSYSLTISSMEAEDAATYYCQQ RSSYPYTFGGGKLEIK
2	DIVLTQSQKFMSTSVGDRVSVTCKASQNVGTNVAWYQQKPGQS PKALIYSASYRYSQVDPDRFTGSGSGTDFTLTISNVQSEDLAEYFC QQHYSTPYTFGGGKLEIK
3	DIVLTQSPASLAVSLGQRATISCRASKSVSTSGYSYMHWYQQKP GQPPKLLIYLASNLESGVPARFSGSGSGTDFTLNHPVEEEDAAT YYCQQSNEDPFTFGSGTKLELK
4	DIVLTQSPSSLSASLGERVSLTCRASQDIGSSLNWLQQEPDGTIKR LIYATSSLDGVPKRFSGSRSGSDYSLTISSLESEDFVDYYCQQHG ESPLTFGAGTKLEIK
5	DIVMTQSHKFMSTSVGDRVSITCKASQDVGTAVAWYQQKPGQS PKLLIYWASTRHTGVPDRFTGSGSGTDFTLTISNVQSEDLADYFC QQYASSPYTFGGGKLEIK
6	EVQLQQSGAELAKPGASVKMSCKASGYTFTSYWMHWVKQRPG QGLEWIGYINPSTGYTEYNQKFKDKATLTADKSSSTAYMQLSSL TSEDSVYYCARQDGYVGYFDYWGQGTTTLTVSS
7	EVELQESGAELVRPGASVKLSCKASGYSFTNYWMNWVRQRPG QGFEWIGEINPSNGDTFYNQKFKGKATLIVDKSSSTAYMELLSLT SEDSAVYYCARIGGYFDYWGQGTTTLTVSS
8	EVNIVESGAELVKPGASVRLSCTTSGFNIEDSYIHWVKQRPEQG LEWIGRIDPANGNIKSDPKFQGKATISADTSSNTAYLQLSSLTSED TAVYYCLYYYDSSDYWGQGTTTLTVSS
9	EVKLVESGPELEKPGASVKISCKASGYSFTGYNMNWVKQSNGK SLEWIGNIDPYYGGTSYNQKFKGKATLTVDKSSSTAYMQLKSLT SEDSAVYYCARWSYYGNYVYWFYFDVWGAGTTTLTVSS
10	EVQLQQSGAELVRSGASVKLSCTASGFNIKDYMHWVKQRPEQ GLEWIGRIDPANGNTKYDPKFQGKATITADTSSNTAYLQLSSLTS EDTAVYYCARSYYFDYWGQGTTTLTVSS

11	EVQLLESGGGLVQPGGSLRLSCAASGFTFSSYTVNWVRQAPGK GLEWLSVISGDGSNTYYADSVKGRFTISRDN SKNTLYLQMNSLR AEDTAVYYCAKALNAGWGF DYWGQGLTVTVSS
12	QVQLLESGGGLVKPGGSLRLSCAASGFTFSGSAMHWVRQAPGK GMEWVSAISGSGGSTYYADSMKGRFTISRDN SKNTLYLQMNSL RAEDTAVYYCARNGYTDGYGMDYWGQGLTVTVSS
13	EVQLLESGGGLVQPGGSLRLSCAASGFTFSDSSVNWVRQAPGK GLEWLAVISGDGGSTYYADSVKGRVTISRDN SKNTLYLQMNSL RAEDTAVYYCARAIFPSYMDVWGQGLTVTVSS
14	EVQLVQSGPEVKKPGTSVKV SCKASGFTFTSSAVDWVRQARGQ RLEWIGWIVVGSNTSYAQKFQERV TITRDMSTSTAYMELSSLR SEDTAVYYCAKSVTYYYMDHWGQGLTVTVSS
15	QVQLVQSGAEVKKPGSSVKV SCKASGGTFNSY AISWVRQAPGQ GLEWMGVIIIGIFGTATYAQSVQGRVTITADESTSTAYMELSSLRS EDTAVYYCARSGRYSRSFDVWGQGLTVTVSS
16	EIVLTQSPGTL SLSLSPGERATLSCRANRLVSSSMLAWYQQKPGQA PRLIGASKRATGIPDRFSGSGSGTDFTLTISRLEPEDFAVYYCAQ YDGSSYTFGQGTKLEIKR
17	QSVLTQPPSVSGSPGQRVTISCTGNNLSGYYVSWYQQLPGTAPK LLIYGNSNRPSGV PDRFSGSKSGTSASLAITGLQAMDEADYYCA AYYSGTYVFGQGTKLTVLGQ
18	SYELTQPLSVSVSLGQTARITCWDNVGGYNVHWYQQKPGQSPV LVIYRDSERPSGIPERFSGSNSGNTATLTISR AQAGDEADYYCSSY YQSTVLFGGGTKLTVLGQ
19	DIQMTQSPSSLSASVGDRVTITCQASNVGGNYLNWYQQKPGKA PKLLIYDASNLETGVPSRFSGSGSGTDFTFTISSLQPEDIATYYCS AYHQSTYTFGQGTKVEIKR
20	DIQMTQSPSSLSASVGDRVTITCRASKVGS SYVNWYQQKPGKAP KLLIYAASSLESGVPSRFSGSGSGTDFTLTISSLQPEDFATYYCAS YYSTSTFGGGTKVEIKR

[0108] Example 3: Generation of a monoclonal antibody to the immunocomplex of 25-(OH)D:mAB from a synthetic library.

[0109] The synthetic antibody library was designed based on the natural VH/VL pairing frequency (described in Protein Engineering, Design & Selection pp. 1 – 7, 2012 doi:10.1093/protein/gzs043), the frameworks of frequently paired human VH1, VH3, VK1, VK3, V λ 1, V λ 2 and V λ 3 were selected as master genes for gene synthesis. The selected master genes were synthesized by PCR assembly of overlapping oligos. The length of oligos was between 60 and 80 bases, and the oligos for all CDRs were degenerate oligos using the nucleotides NNS and/or MVS to randomize amino acid residues. After the first round of PCR assembly, 5 light chain master genes were assembled with a light chain constant region by PCR. The resulting full-length light chain genes were digested with restriction enzymes HindIII and NcoI (New England Lab) and size-selected on a 1% agarose gel. The size-selected fragments were purified and extracted with the QIAquick Gel Extraction Kit. Digested light chain genes, pAXD20 vector DNA, and T4 ligase (New England Lab) were mixed and ligation was allowed to proceed overnight at 16 °C. For each light chain gene construct, 20 μ g of ligated DNA was purified and transformed into E coli TOP10 competent cells by electroporation. Transformants were then grown on 100 2YT-agar plates containing 100 μ g/ml of carbenicillin and 2% glucose. After overnight 30 °C incubation, library transformants were harvested and suspended in 2YT with 15% glycerol. Half of the stock was stored as library aliquots at -80 °C, and the rest was processed by Qiagen Maxiprep kit. The resulted library size is listed in Table 2. The DNA of AFK1 and AFk3 were combined, and AFL1, AFL2 and AFL3 were also combined for the next step of heavy chain cloning.

Table 2: Characteristics of light chain libraries

Library	Library size
AFK1	1.1×10^9
AFK3	1.2×10^9
AFL1	8.5×10^8
AFL2	7.6×10^8
AFL3	8×10^8

[0110] PCR assembled VH1 and VH3 master genes were further assembled with CH1 constant region by PCR, the resulting Fd genes were digested with restriction enzymes NcoI and SalI (New England BioLab) and size-selected by 1% agarose gel. The size-selected fragment was purified and extracted with the QIAquick Gel Extraction Kit. Digested Fd

genes, light chain library DNA and T4 ligase (New England Lab) were mixed and ligation was allowed to proceed overnight at 16 °C. For each Fd chain gene library, 40 µg of ligated DNA was purified and transformed into E. coli TG1 competent cells by electroporation. Transformants were then grown on 400 2YT-agar plates containing 100 µg/ml of carbenicillin and 2% glucose. After overnight 30 °C incubation, library transformants were harvested and suspended in 2YT with 15% glycerol. Library aliquots were prepared and stored at -80 °C. The resulting library sizes are listed in Table 3.

Table 3: Characteristics of phage display libraries

Library	Library size
AFH1K	3.6×10^9
AFH3K	3.3×10^9
AFH1L	3.5×10^9
AFH3L	3.2×10^9
Total	1.4×10^{10}

[0111] Phage display libraries were prepared in the following manner. A 500 2YT (with 100 µg/ml of carbenicillin and 2% glucose) culture was inoculated with library TG1 cells at a starting OD of 0.1. After 3-4 hours incubation at 37°C with 250 rpm shaking, KO7 helper phage was added in a 1:10 ratio. The culture was then incubated at 37°C for 1 hour without shaking. The TG1 cells were centrifuged and the cell pellet was re-suspended into 2 L of 2YT containing 100 µg/ml carbenicillin and 35 µg/ml Kanamycin for overnight incubation at 30°C with 250 rpm shaking. TG1 cells were then centrifuged for 30 min at 6000 x g at 4°C. The library phage particles were purified by PEG-precipitation from culture supernatants, resuspended into PBS and titered by OD268 measurement. The phage display antibody library was stored at -80°C in PBS with 20% glycerol. Each library was prepared separately and kept separately.

[0112] The procedure to select immunocomplex-specific antibodies is similar to the description in the Example 2. Briefly, two kinds of microtiter wells were prepared, one coated with AF10 antibody only, and the second with the immunocomplex of 25-(OH)D₃:AF10. Before affinity selection, the individual library was pre-incubated in AF10-only wells for to deplete for phages that bind AF10 alone. The supernatant is then transferred to the microtiter wells coated with the immunocomplex of 25-(OH)D₃:AF10. In the first

round affinity selection, a total of eight wells were used, and each library phage was added to two wells. In the second round of affinity selection, the phages from first round were mixed and 4 wells were used for incubation. A total of three rounds of affinity selection were performed.

[0113] The colonies from the third round of affinity selection were picked for expression of p3 fusion and confirmation of binding activity. The procedure is similar to that described in Example 2. Briefly, five 96-well plates and a total of 480 colonies were picked to make master plates. During the second day, 10 μ l of culture per well was transferred into a corresponding well in a 96-well deep-well expression plate. The deep-well plates were incubated in a 37°C shaker incubator with shaking at 250 rpm until the cultures reach OD_{600nm} of 0.8 – 1. 100 μ l of 2YT containing 6 mM IPTG was added to each well, and the expression plate was incubated overnight at 30°C while shaking at 250 rpm. 160 μ l of lysis buffer containing 2.5 mg/ml lysozyme and 5 mM EDTA was added to each well of the expression plate, and the plate was incubated with shaking for 1 hour at room temperature. The culture supernatant was mixed with 140 μ l 2x ChemiBlocker per well and incubated for an additional 30 min at 250 rpm. The culture supernatants were centrifuged and prepared for binding assay as below.

[0114] The ELISA screening procedure was similar to that described in Example 2. Briefly, for each expression plate, two 96-well assay plates were prepared, one plate coated with AF10 antibody only, and the second with the immunocomplex of 25-(OH)D₃:AF10. The culture supernatants from the expression plate were transferred to the corresponding well of the assay plate. After 1 hour incubation at room temperature, the samples were washed three times with PBS-Tween. 100 μ l of HRP-conjugated anti-Fab antibody (Jackson ImmunoResearch Lab, USA) were added to each well for 1 hour incubation at room temperature. After 3 times wash with PBS-Tween, 100 μ l of substrate TMB was added to each well for 10-30 min development, and 50 μ l of stop solution was added. OD₄₅₀ was then measured. The clones that bound to the immunocomplex of 25-(OH)D₃:AF10 but not AF10 antibody alone were selected for confirmation. 1:3 serial dilutions of the positive culture supernatants were assayed following above procedure. **FIG. 3** shows the binding activity of five clones to the immunocomplex of 25-(OH)D₃:AF10, with variable region sequences listed in Table 1.

[0115] Example 4: Recombinant antibody expression and purification

[0116] For recombinant Fab expression, VH and VL gens were cloned into E. coli expression vector pEx. For each individual clone, 20 ml overnight cultures were prepared in 2YT with

2% glucose and 100 µg/ml Carbenicillin and incubated in a 37 °C shaker incubator. The next day, 700 mL of 2YT containing 0.1% glucose and 100µg/mL Carbenicillin was inoculated in a 2L Ultra yield flask (Thomson Instrument Company) by transferring 7 ml of the overnight culture. The cultures were grown at 35 °C with 280 rpm shaking for approximately 2 - 3 hours until OD600 was ~0.8. Then 350 µl of 1M IPTG was added to the culture for overnight induction at 22 °C with 280 rpm shaking. The cells pellets were collected by centrifugation at 7500 x g for 20 minutes, and resuspended into lysis buffer containing 1 mg/ml lysozyme and 5 mM EDTA for 1 hour incubation at room temperature. The supernatant with soluble Fab was collected by centrifuging twice at 15,000 rpm 25000 x g at 4 °C . The supernatant was then loaded onto a 5 ml protein-G column (GE healthcare) for Fab binding and washed wash with 50 ml PBS. Fab protein was then eluted with 0.3M acetic acid, pH3 buffer. The eluted fractions were collected, and neutralized with 0.5 volumes of 1M Tris-HCl, pH8.5 buffer. The Fab samples were buffer-exchanged to PBS, and concentrated to a concentration of 3 – 5 mg/ml. The Fab samples were stored at -80 °C.

[0117] For IgG expression, the heavy chain variable domains and light chain variable domains were cloned into a cytomegalovirus promoter-based mammalian expression vectors PMX30 and pMX31, respectively. The heavy chain and light chain vector DNA was mixed in a ratio of 1:3 and transiently transfected into a 30 ml suspension HEK293 cells in serum-free medium. After 20 hours, cells were sampled to determine viability and viable cell count, and titer was measured (Octet QKe, ForteBio). The cultures were harvested at day 5, and an additional sample for each was measured to determine cell density, viability, and titer. The conditioned media containing IgG was harvested and clarified from the transient transfection production by centrifugation and filtration. The supernatant was run over a Protein A column and eluted with a low pH buffer (pH = 3). Filtration using a 0.2 µm membrane filter was performed before aliquoting. After purification and filtration, the protein concentration was calculated based on the OD280 and the extinction coefficient. Generally, 1-5 mg of IgG was generated from this procedure.

[0118] Example 5: Sandwich ELISA assay for serum 25-(OH)D measurement

[0119] A monoclonal antibody to the immunocomplex of 25-(OH)D:AF10 were used to prepare a sandwich based ELISA assay. Free 25-(OH)D₃ was used for the assay. Briefly, 100 µL/well of AF10 antibody (3 µg/ml in PBS) was used to coat the microtiter plate overnight at 4 °C.

[0120] The assay plates were washed with PBS and blocked with 1x ChemiBlocker for 2 hours at room temperature. 5 µL/well of 25-(OH)D₃ at concentration of 0.5 - 50 ng/ml was

added to the plate, and 200 μ L of anti-immunocomplex antibody at 3 μ g/ml was added thereafter. After 1 hour incubation at room temperature, the plate was washed 3 times with PBS-Tween, and 100 μ l of HRP-conjugated goat anti-mouse antibody (Jackson ImmunoResearch Lab, USA) was added to each well for a 30-minutes incubation at room temperature. After washing three times with PBS-Tween, 100 μ l of substrate TMB was added to each well for a 30-minute development. 50 μ L of stop solution was added, and OD450 was measured. This data showed a dose-dependent response and served as proof -of-concept for a sandwich ELISA for 25-(OH)D detection. To further confirm the utility of the assay for clinical sample detection, patient serum samples with 25-(OH)D values (as determined by ADVIA Centaur VitaminD Total assay, Siemens) were measured using the sandwich ELISA assay. The assay was performed as for the free 25-(OH)D₃, except that to each well 200 μ L of CalBiotech release buffer (Calbiotech, California, USA) containing 3 μ g/ml of the monoclonal antibody to the immunocomplex of 25-(OH)D:AF10 was added, followed by 5 μ l of the serum sample. After mixing, the plate was incubated at room temperature for 1.5 hours. FIG. 4 shows a successful sandwich ELISA detection of serum 25-(OH)D, demonstrating a linear relationship between the two methods of measuring vitamin D concentration.

[0121] Example 6: Lateral flow assay for 25-(OH)D measurement

[0122] An exemplary lateral flow device comprises a sample application unit (e.g., from Ahlstrom or Millipore) for sample transportation, a conjugate pad comprising labeled antibody and a detection zone comprising immobilized capture reagents and an absorbent pad (e.g., from Ahlstrom or Millipore).

[0123] Dry conjugate pad was prepared as follows. A 0.04% colloidal solution was prepared by reducing gold chloride with sodium citrate at boiling temperature. 25 μ g of anti-25-(OH)D antibody was added to 1 ml of 0.04% colloidal solution and incubated at room temperature for 30 minutes. The conjugate was then centrifuged for 20 min at 10000 rpm. The supernatant was then decanted, and the pellet suspended in 1 mL of 15 mM phosphate buffer, pH 7.4. A similar procedure was performed to prepare the conjugate of colloidal gold-anti-chicken IgG antibody used for the positive control. The anti-25-(OH)D conjugate and the anti-chicken IgG conjugate were mixed with conjugate pad base in a 1:10 ratio. 10 ml of the conjugate pad base mixture was applied to a piece of 8 cm x 8 cm fiberglass sheet, and vacuum dried at room temperature for 4 hours. The pad was stored with desiccant in a dry room.

[0124] To prepare the detection membrane, the monoclonal antibody to the immunocomplex of 25-(OH)D:AF10 was prepared in 15 mM phosphate buffer at pH 7.4 at the range of concentration of 0.2 – 1.5 mg/ml as the test line solution. The test line solution was dispensed on to nitrocellulose membrane (Millipore 125 or GE AE99) at an amount between 0.6 – 1.0 $\mu\text{L}/\text{cm}$. Similarly, the control line solution with anti-chicken IgG was dispensed onto the nitrocellulose membrane at the control line position. The membrane was then allowed to air-dry in an environment with less than 30% humidity for one hour, and then stored with desiccant in a dry room.

[0125] In order to construct the test device, the detection membrane, conjugate pad, and sample wicking materials were aligned and the assembled strip was placed into plastic housing.

[0126] The device was evaluated by using serum or blood samples with known 25-(OH)D concentrations. 5 μL of serum or 10 μL of capillary blood was applied to the sample pad, followed by 3 drops (100 μL) of sample chase buffer. The test line and control line were read after 15 min. The results, shown in **FIG. 5**, indicate that the density of signal on the test line increased in samples with higher serum vitamin D concentrations. The test device indicates that a subject has sufficient, insufficient, or deficient vitamin D (**FIG. 1A**). Furthermore, the test device demonstrated a linear relationship between signal intensity and 25-(OH)D levels in samples ranging from 10 ng/ml to 80 ng/ml. Additional samples were tested for vitamin D levels as measured using a semi-quantitative color chart (**FIG. 1B**). The data were compared with the vitamin D levels determined by ADVIA Centaur VitD Assay. As shown in **TABLE 4**, the results of the lateral flow test device were consistent with the test from ADVIA Centaur VitD assay. The tests were reproduced with the devices from different production lot.

TABLE 4: Comparison of measurements using lateral flow test device and ADVIA Centaur VitD Assay

		ADVIA Centaur VitD Assay	Lateral flow test results (Semi-Quantitative)	
Patient #	Patient ID	25-(OH)D ng/mL	25-(OH)D ng/mL	VitD Sufficiency
1	03928913	4.2	< 10	Deficient
2	03928920	4.2	< 10	Deficient
3	1023110935	9	\leq 10	Deficient
4	1023110936	10	10	Deficient

5	1023110968	10	10	Deficient
6	1023110755	10	10	Deficient
7	1023110768	10	≤ 10	Deficient
8	1022110849	11	10	Deficient
9	1023110943	11	10	Deficient
10	1023110949	11	10	Deficient
11	1023110957	19.4	≤ 20	Insufficient
12	1023110763	20	20	Insufficient
13	1023110788	20	≥ 20	Insufficient
14	1023110831	20	20	Insufficient
15	1023110866	20	≤ 20	Insufficient
16	1023110876	20	20	Insufficient
17	1023110958	20	20	Insufficient
18	1023110743	21	20	Insufficient
19	1022110782	29	30	Sufficient
20	1022110783	29	30	Sufficient
21	1022110784	30	≥ 30	Sufficient
22	1022110863	30	30	Sufficient
23	1023110910	30	30	Sufficient
24	1023110813	29.1	30	Sufficient
25	10411110254	32.7	30	Sufficient
26	10411110267	33.5	≥ 30	Sufficient
27	10052015WK	42	> 30	Sufficient
28	10052015JA	41	> 30	Sufficient
29	1120834	67	$\gg 30$	Sufficient
30	1124761	80	$\gg 30$	Sufficient
31	1123647	97	$\gg 30$	Sufficient

[0127] Furthermore, a smartphone-based reader was used for quantitative detection of vitamin D levels in capillary blood samples. 10 μ l of capillary blood was applied to the sample pad, followed by 3 drops (100 μ l) of sample chase buffer. The test lines were read after 15 minutes. The serum samples of corresponding individuals were collected and subjected to an ELISA test. **FIG. 6** shows the comparison between the capillary blood test using the lateral flow test device and an ELISA-based serum test. The data shows a positive linear correlation with a correlation coefficient, R, of 0.91.

[0128] Example 7: Lateral flow assay for 25-(OH)D measurement using Cube-Reader

[0129] The Cube-Reader (from opTricon GmbH, Germany) was used for fully quantitative measurement of 25-OH vitamin D. Cube-Reader is a portable lateral flow assay reader, with a cube-shape at an edge length of approximate 41 mm and weigh of 40 g. The measurement procedure is shown in **FIG. 8**.

[0130] Total 20 human serum samples with 25-OH Vitamin D values determined by Liquid Chromatography Mass Spectrometry (LC-MS/MS) assay were applied to lateral flow test. The measurement procedure is described in the Example 6. The results listed in Table 5 show that the 25-OH vitamin D values from lateral flow test are very close to the true values generated from LC-MS/MS assay (a “gold” standard method for 25-OH vitamin D measurement).

Table 5. Test Results from Lateral Flow Test and Liquid Chromatography Mass Spectrometry Test

Sample ID	25-OH Vitamin D (ng/ml)	25-OH Vitamin D (ng/ml)
	LC-MS/MS test	Lateral flow test
S-1	14.3	14.4
S-2	14.0	16.0
S-3	18.9	19.9
S-4	19.8	19.1
S-5	20.0	22.4
S-6	26.4	22.1
S-7	29.3	31.0
S-8	40.1	37.2
S-9	40.3	47.4
S-10	45.9	51.8
S-11	46.4	39.2
S-12	49.0	42.6
S-13	56.3	57.4
S-14	60.3	72.7
S-15	63.1	67.8
S-16	75.5	71.2

S-17	87.4	85.9
S-18	92.3	97.9
S-19	92.4	94.4
S-20	103.9	93.1
Average	49.8	50.2

The comparison of 25-OH vitamin D values between lateral flow test and LC-MS/MS assay yield a linear regression $Y = 0.98X + 1.49$, with correlation coefficient of 0.98. The comparison result is illustrated in the **FIG. 9**.

[0131] While preferred embodiments of the present invention have been shown and described herein, it will be obvious to those skilled in the art that such embodiments are provided by way of example only. Numerous variations, changes, and substitutions will now occur to those skilled in the art without departing from the invention. It should be understood that various alternatives to the embodiments of the invention described herein may be employed in practicing the invention. It is intended that the following claims define the scope of the invention and that methods and structures within the scope of these claims and their equivalents be covered thereby.

CLAIMS

WHAT IS CLAIMED IS:

1. A test device for detecting one or more vitamin D molecules comprising:
 - (a) a housing, contained therein;
 - (i) a sample application pad configured to absorb a biological sample and transport said biological sample to a conjugate pad;
 - (ii) said conjugate pad comprising a vitamin D binding agent that specifically binds to one or more vitamin D molecules; and
 - (iii) a detection zone comprising a first region immobilized therein a detection antibody that specifically binds an epitope that is generated by complexing said vitamin D binding agent with said one or more vitamin D molecules.
2. The test device of claim 1, wherein said one or more vitamin D molecules are selected from the group consisting of 25-hydroxyvitamin D₂, 25-hydroxyvitamin D₃, 25-hydroxyvitamin D₄, 25-hydroxyvitamin D₅, and 1,25-hydroxyvitamin D₃.
3. The test device of claim 2, wherein said one or more vitamin D molecules are selected from the group consisting of 25-hydroxyvitamin D₂ and 25-hydroxyvitamin D₃.
4. The test device of claim 2, wherein said one or more vitamin D molecules are 25-hydroxyvitamin D₂ and 25-hydroxyvitamin D₃.
5. The test device of claim 2, wherein said one or more vitamin D molecules consist of 25-hydroxyvitamin D₂.
6. The test device of claim 2, wherein said one or more vitamin D molecules consist of 25-hydroxyvitamin D₃.
7. The test device of claim 1, wherein said detection zone further comprises a second region immobilized therein a third antibody that is capable of binding to said vitamin D binding agent whether or not said vitamin D binding agent is bound to said one or more vitamin D molecules.
8. The test device of claim 1, wherein said vitamin D binding agent is conjugated to a detection reagent.
9. The test device of claim 8, wherein the detection reagent is selected from the group consisting of gold particle, latex particle, carbon nanoparticle, selenium nanoparticle, silver nanoparticle, quantum dot, fluorescent compound, dye, enzyme and liposome.
10. The test device of claim 9, wherein the detection reagent is said gold particle.
11. The test device of claim 9, wherein the detection reagent is said latex particle.

12. The test device of claim 1, wherein said sample application pad, said conjugate pad, and said detection zone are aligned from upstream to downstream along a fluid path through which said biological sample travels.
13. The test device of claim 1, further comprising a filtering component between said sample application pad and said conjugate pad configured to separate particulate portion of said biological sample from aqueous portion of said biological sample.
14. The test device of any of the preceding claims, wherein said detection antibody comprises a light chain and a heavy chain, wherein said light chain comprises a sequence selected from the group consisting of SEQ ID NOs 1-5 and 16-20; and wherein said heavy chain comprises a sequence selected from the group consisting of SEQ ID NOs 6-15.
15. The test device of any of the preceding claims, wherein said detection antibody exhibits a higher binding affinity to said epitope than said vitamin D binding agent.
16. The test device of any of the preceding claims, wherein said detection antibody comprises a scFv, VH, Fab, or (Fab)₂ binding unit.
17. The test device of any of the preceding claims, wherein said detection antibody comprises a light chain and a heavy chain, wherein said light chain comprises a sequence sharing at least 80% sequence homology to a sequence selected from the group consisting of SEQ ID NOs 1-5, and 16-20, and wherein said heavy chain comprises a sequence having least 80% sequence homology to a sequence selected from the group consisting of SEQ ID NOs 6-15.
18. A method, comprising:
 - (a) applying a biological sample to said sample application pad of said test device of any one of the preceding claims;
 - (b) applying a chase buffer to said sample application pad; and
 - (c) detecting said one or more vitamin D molecules.
19. The method of claim 18, further comprising quantifying said one or more vitamin D molecules in said sample.
20. The method of sample 19, wherein said quantifying classifies said blood sample as having a sufficient, an insufficient, or a deficient level of said one or more vitamin D molecules.
21. The method of claim 18, wherein said sufficient level is at least 30 ng/mL.
22. The method of claim 18, wherein said insufficient level is at least 10 ng/mL and less than 30 ng/mL.
23. The method of claim 18, wherein said deficient level is less than 10 ng/mL.

24. The method of claim 18, wherein said quantifying further comprises using an imaging device to provide an image of said detection membrane and software on a programmed computer configured to quantify said one or more vitamin D molecules in said sample based on said image of said detection membrane.

25. The method of claim 24, wherein said imaging device and said programmed computer are a single device.

26. The method of claim 18, wherein said chase buffer comprises reagents to dissociate said one or more vitamin D molecules from vitamin D binding protein.

27. The method of claim 14, wherein said biological sample is selected from the group consisting of whole blood, serum, plasma, urine, saliva, ocular fluid, spinal fluid, and perspiration.

28. A method for detecting one or more vitamin D levels in a biological sample with a test device configured to perform a binding assay, comprising:

(a) contacting said biological sample to the test device;

(b) subjecting said biological sample to said binding assay that utilizes a reaction mixture comprising a complex formed by (1) a vitamin D binding agent and (2) one or more vitamin D molecules;

(c) further exposing said complex to a detection agent that binds to an epitope that is formed by complexing said vitamin D binding agent with the one or more vitamin D binding molecules, wherein said binding assay has a sensitivity of detection in said biological sample that is comparable to that of liquid chromatography-tandem mass spectrometry.

29. The method of claim 28, wherein said detection agent comprises a light chain and a heavy chain, wherein said light chain comprises a sequence selected from the group consisting of SEQ ID NOs 1-5 and 16-20, and wherein said heavy chain comprises a sequence selected from the group consisting of SEQ ID NOs 6-15.

30. The method of claim 28, wherein said detection agent exhibits a higher binding affinity to said complex than said vitamin D binding agent.

31. The method of claim 28, wherein said detection agent comprises a scFv, VH, Fab, or (Fab)₂ binding unit.

32. The method of claim 28, wherein said detection agent comprises a light chain and a heavy chain, wherein said light chain comprises a sequence sharing at least 80% sequence homology to a sequence selected from the group consisting of SEQ ID NOs 1-5, and 16-20, and wherein said heavy chain comprises a sequence having least 80% sequence homology to a sequence selected from the group consisting of SEQ ID NOs 6-15.

33. The method of claim 28, wherein said biological sample is selected from the group consisting of whole blood, serum, plasma, urine, saliva, ocular fluid, spinal fluid, and perspiration.

34. A kit, comprising:

(a) said test device of any one of claims 1-17 and

(b) written instructions for use of said kit.

35. The kit of claim 34, further comprising one or more components selected from the group consisting of a sterilization agent; a device to puncture skin; gauze; chase buffer; and a micropipette.

36. The kit of claim 34, wherein said sterilization agent is an alcohol wipe.

37. The kit of claim 34, wherein said device to puncture skin is selected from the group consisting of a lancet, a needle, and a syringe.

38. The kit of claim 34, wherein said chase buffer is configured to dissociate one or more vitamin D molecules from vitamin D binding protein in a blood sample.

39. The kit of claim 34, further comprising a color chart relating signal strength to a quantity of said one or more vitamin D molecules in said sample.

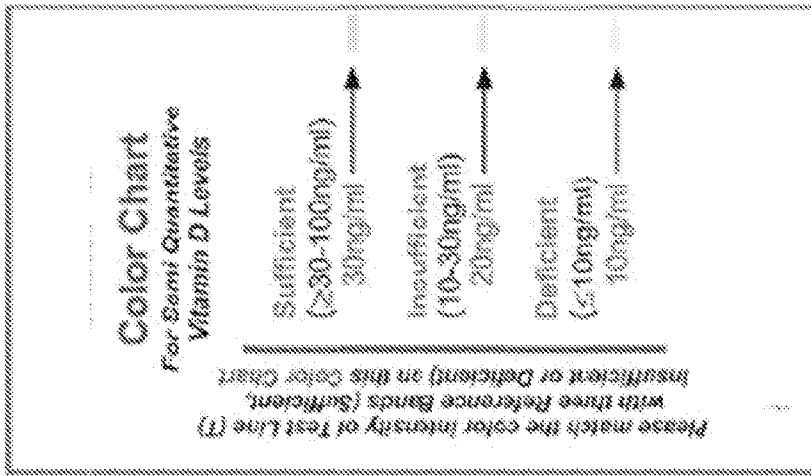


Fig. 1B

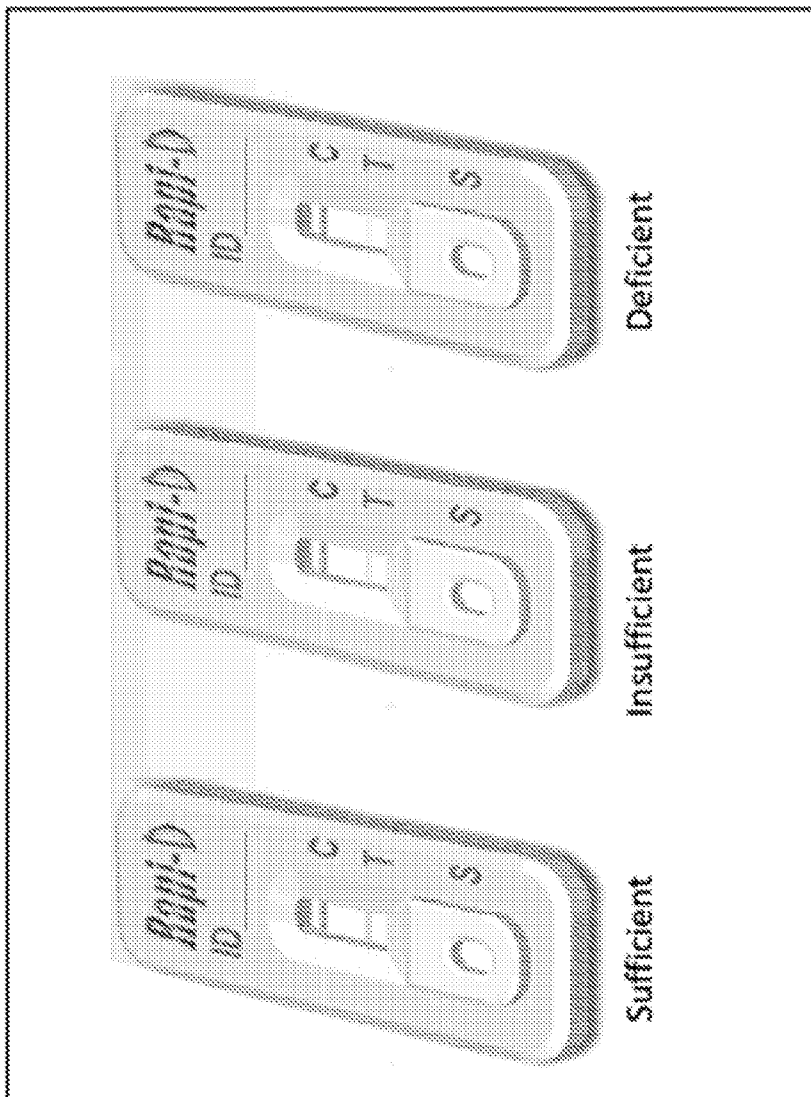


Fig. 1A

Fig. 1

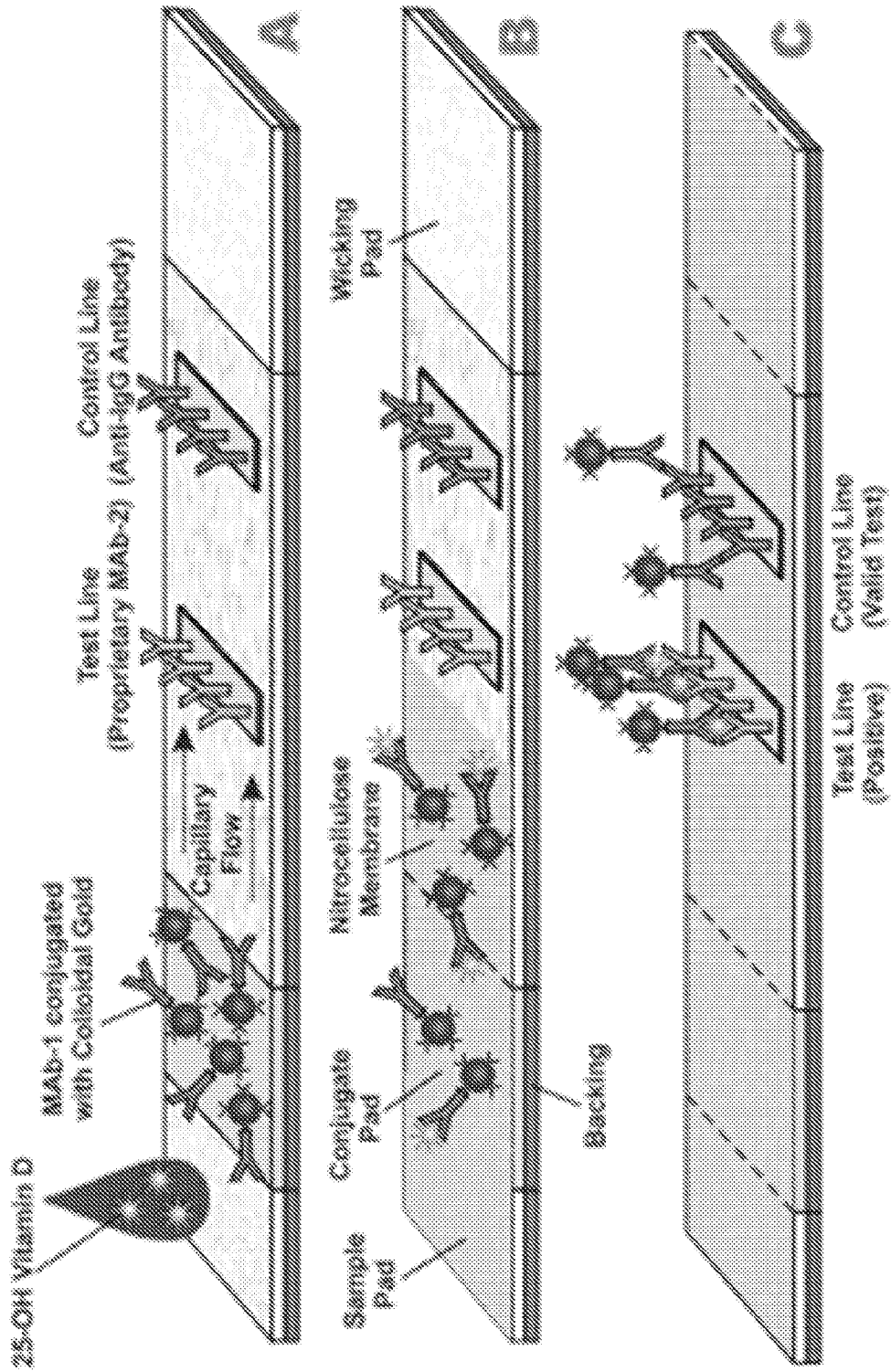


Fig. 1C

Fig. 1 (cont'd)

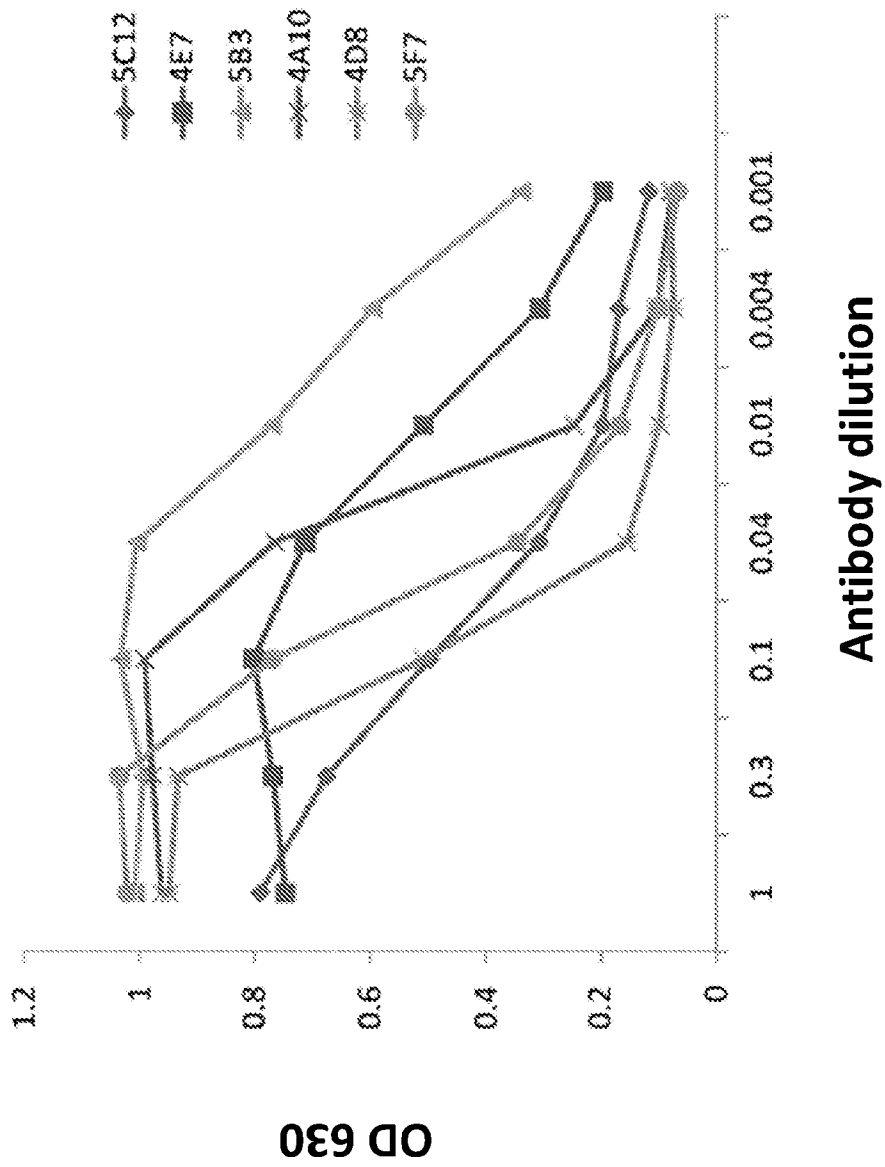


Fig. 2

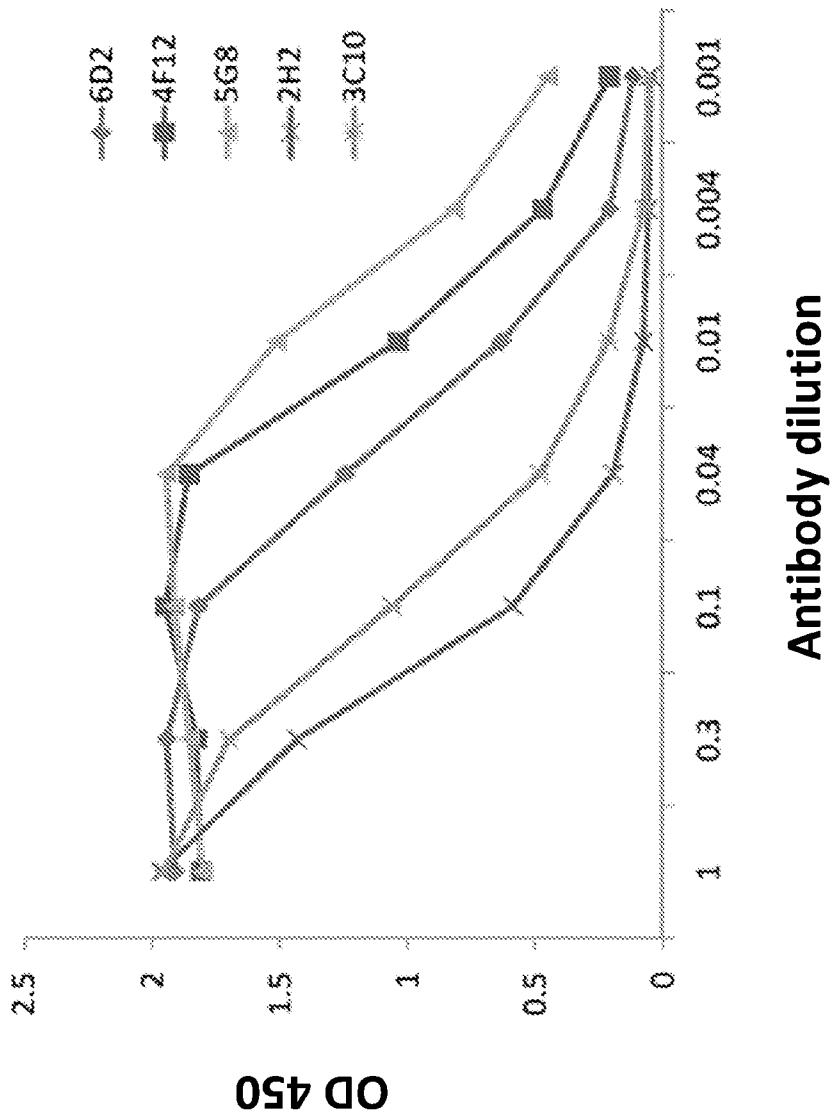


Fig. 3

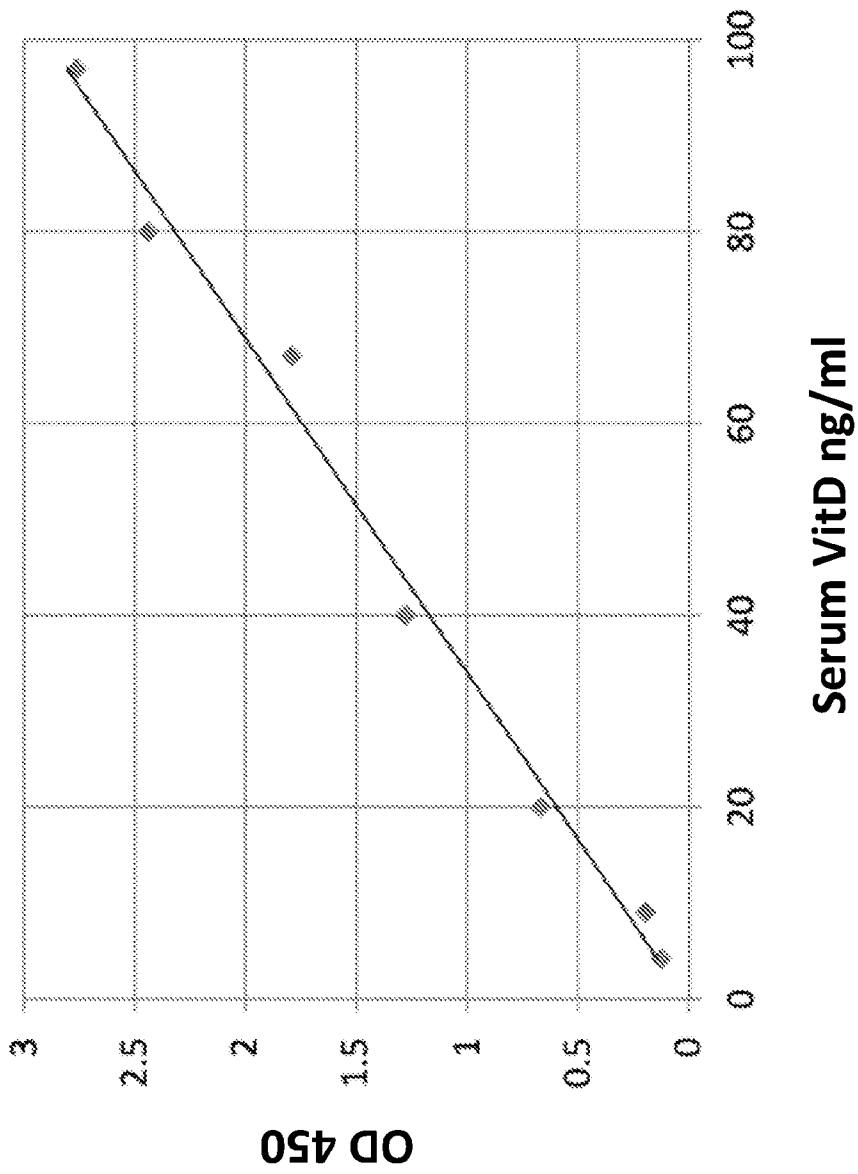
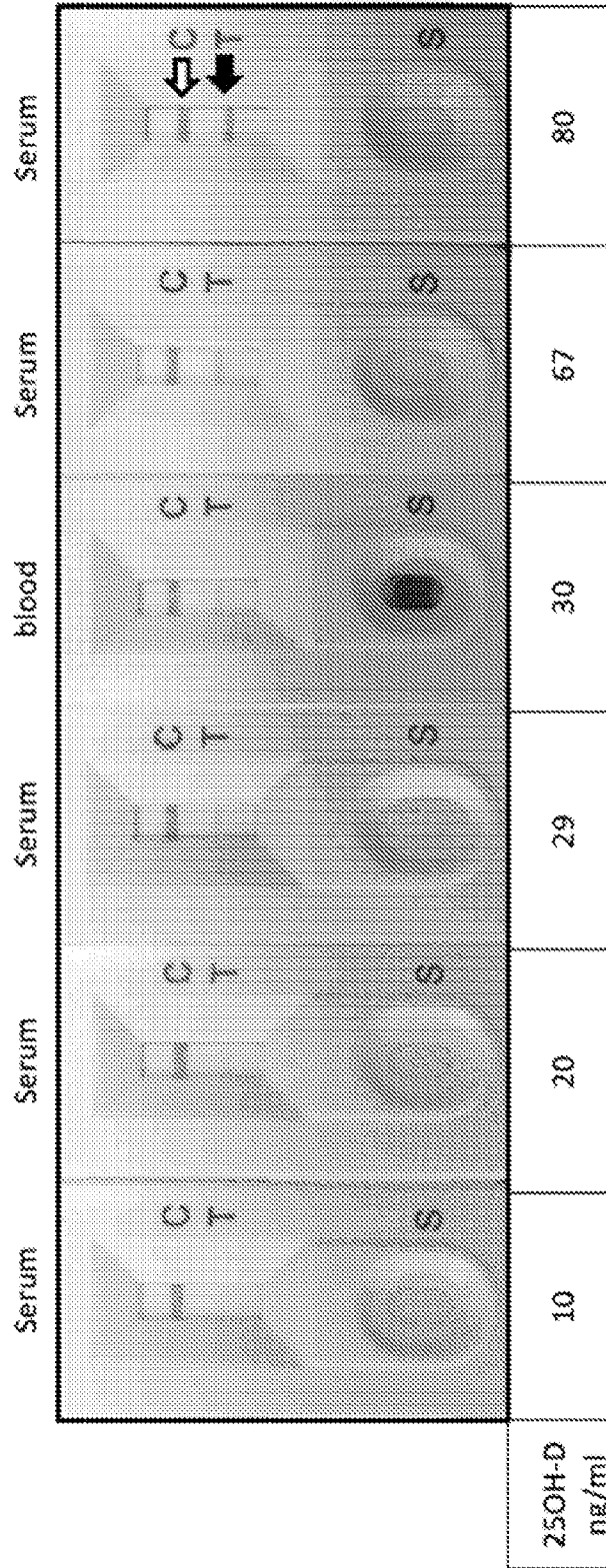


Fig. 4



⇐ Control line; ⇨ Test line

Fig. 5

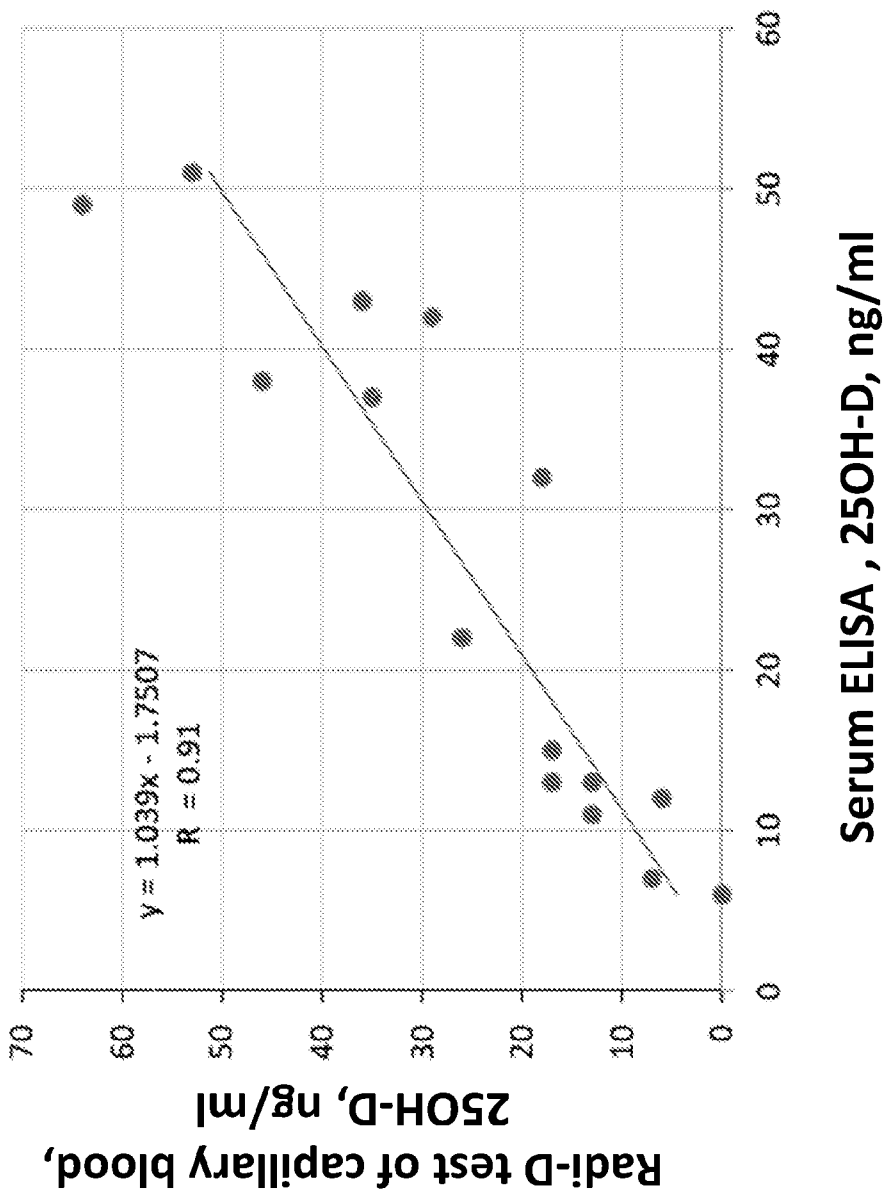


Fig. 6

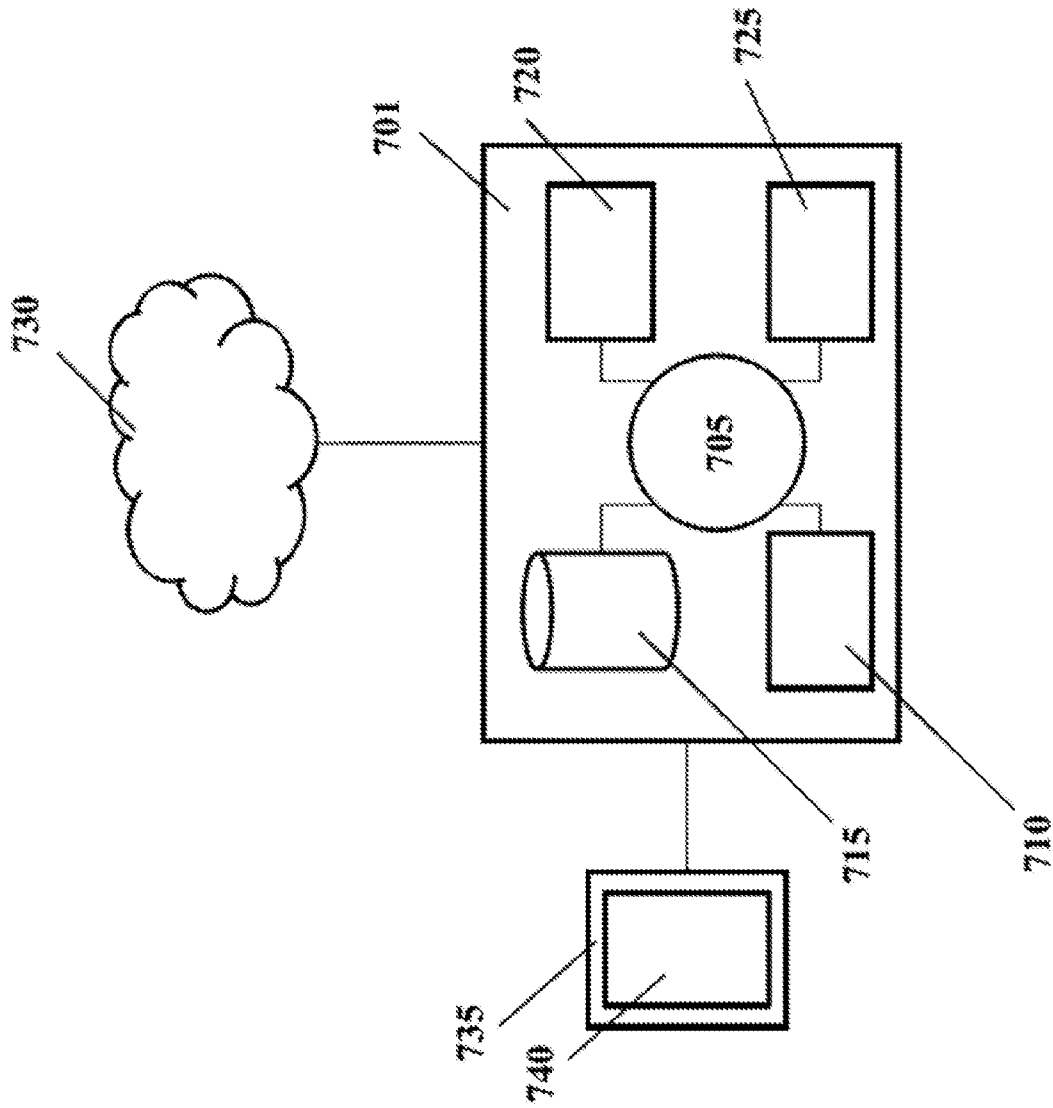


Fig. 7

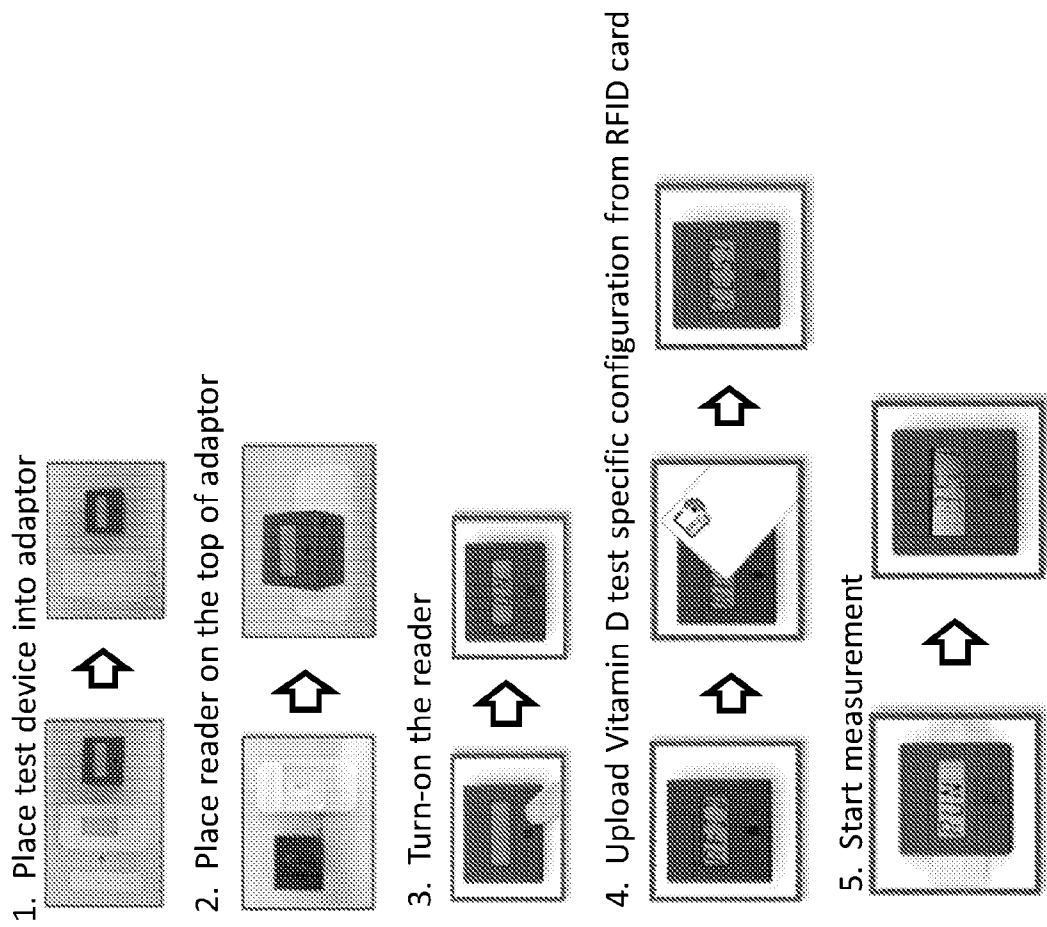
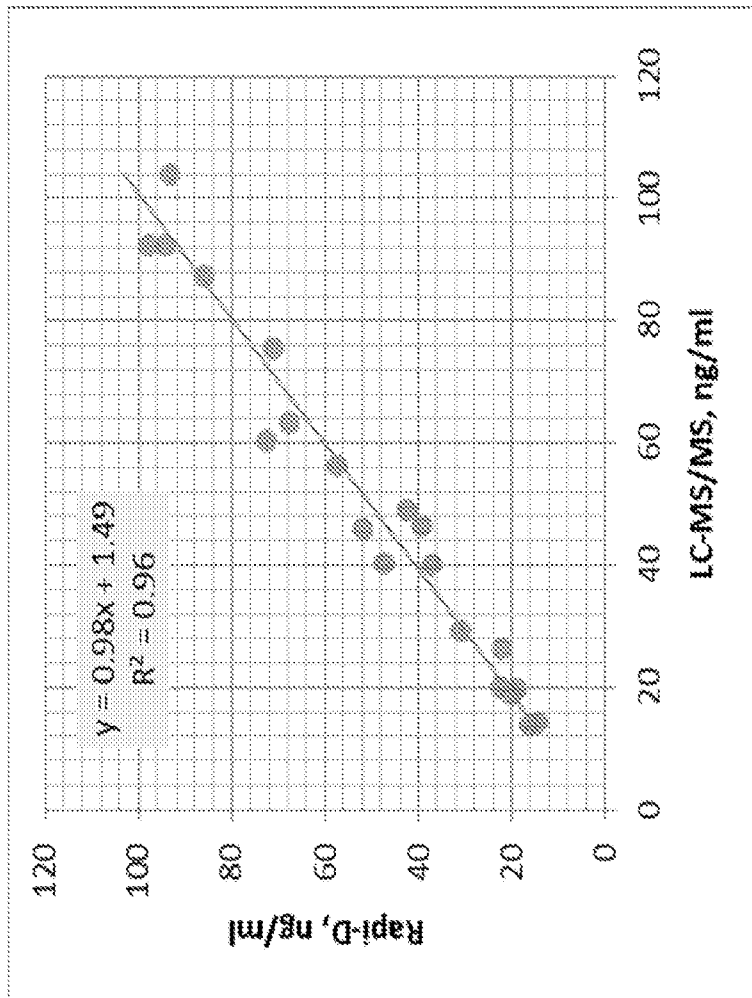


Fig. 8



Correlation Coefficient (r) = 0.98

Fig. 9

INTERNATIONAL SEARCH REPORT

International application No.

PCT/US2017/014620

A. CLASSIFICATION OF SUBJECT MATTER

IPC(8) - A61K 31/593; C07C 401/00; G01N 33/53; G01N 33/532; G01N 33/543; G01N 33/558 (2017.01)
 CPC - C07C 401/00; G01N 33/53; G01N 33/532; G01N 33/558; G01N 33/6857; G01N 33/82 (2017.02)

According to International Patent Classification (IPC) or to both national classification and IPC

B. FIELDS SEARCHED

Minimum documentation searched (classification system followed by classification symbols)

See Search History document

Documentation searched other than minimum documentation to the extent that such documents are included in the fields searched

USPC - 422/69; 435/29; 435/7.92; 436/501 (keyword delimited)

Electronic data base consulted during the international search (name of data base and, where practicable, search terms used)

See Search History document

C. DOCUMENTS CONSIDERED TO BE RELEVANT

Category*	Citation of document, with indication, where appropriate, of the relevant passages	Relevant to claim No.
X - Y	US 2014/0370616 A1 (GUPTA et al) 18 December 2014 (18.12.2014) entire document	1-13, 27, 28, 30, 33 ----- 31, 32
Y	WO 2012/162165 A2 (SIEMENS HEALTHCARE DIAGNOSTICS, INC. et al) 29 November 2012 (29.11.2012) entire document	31, 32
A	LEE et al. "A smartphone platform for the quantification of vitamin D levels," Lab on a Chip, 21 April 2014 (21.04.2014), Vol. 14, No. 8, Pgs. 1437-1442. entire document	1-14, 27-33
A	CN 104062440 A (YA-JUN HAN) 24 September 2014 (24.09.2014) entire document; see machine translation	1-14, 27-33
A	VALCOUR et al. "A novel, fully-automated, chemiluminescent assay for the detection of 1,25-dihydroxyvitamin D in biological samples," The Journal of Steroid Biochemistry and Molecular Biology, 21 August 2015 (21.08.2015), Vol. 164, Pgs. 120-126. entire document	1-14, 27-33
A	WO 2014/114780 A1 (DIASORIN S.P.A.) 31 July 2014 (31.07.2014) entire document	1-14, 27-33
P, A	WO 2016/091755 A1 (F. HOFFMANN-LA ROCHE AG et al) 16 June 2016 (16.06.2016) entire document	1-14, 27-33

 Further documents are listed in the continuation of Box C. See patent family annex.

* Special categories of cited documents:

"A" document defining the general state of the art which is not considered to be of particular relevance

"I" later document published after the international filing date or priority date and not in conflict with the application but cited to understand the principle or theory underlying the invention

"E" earlier application or patent but published on or after the international filing date

"X" document of particular relevance; the claimed invention cannot be considered novel or cannot be considered to involve an inventive step when the document is taken alone

"L" document which may throw doubts on priority claim(s) or which is cited to establish the publication date of another citation or other special reason (as specified)

"Y" document of particular relevance; the claimed invention cannot be considered to involve an inventive step when the document is combined with one or more other such documents, such combination being obvious to a person skilled in the art

"O" document referring to an oral disclosure, use, exhibition or other means

"P" document published prior to the international filing date but later than the priority date claimed

"&" document member of the same patent family

Date of the actual completion of the international search

27 March 2017

Date of mailing of the international search report

14 APR 2017

Name and mailing address of the ISA/US

Mail Stop PCT, Attn: ISA/US, Commissioner for Patents
 P.O. Box 1450, Alexandria, VA 22313-1450
 Facsimile No. 571-273-8300

Authorized officer

Blaine R. Copenheaver

PCT Helpdesk: 571-272-4300
 PCT OSP: 571-272-7774

INTERNATIONAL SEARCH REPORT

International application No.

PCT/US2017/014620

Box No. II Observations where certain claims were found unsearchable (Continuation of item 2 of first sheet)

This international search report has not been established in respect of certain claims under Article 17(2)(a) for the following reasons:

1. Claims Nos.:
because they relate to subject matter not required to be searched by this Authority, namely:

2. Claims Nos.:
because they relate to parts of the international application that do not comply with the prescribed requirements to such an extent that no meaningful international search can be carried out, specifically:

3. Claims Nos.: 15-26, 34-39
because they are dependent claims and are not drafted in accordance with the second and third sentences of Rule 6.4(a).

Box No. III Observations where unity of invention is lacking (Continuation of item 3 of first sheet)

This International Searching Authority found multiple inventions in this international application, as follows:

1. As all required additional search fees were timely paid by the applicant, this international search report covers all searchable claims.
2. As all searchable claims could be searched without effort justifying additional fees, this Authority did not invite payment of additional fees.
3. As only some of the required additional search fees were timely paid by the applicant, this international search report covers only those claims for which fees were paid, specifically claims Nos.:

4. No required additional search fees were timely paid by the applicant. Consequently, this international search report is restricted to the invention first mentioned in the claims; it is covered by claims Nos.:

Remark on Protest

- The additional search fees were accompanied by the applicant's protest and, where applicable, the payment of a protest fee.
- The additional search fees were accompanied by the applicant's protest but the applicable protest fee was not paid within the time limit specified in the invitation.
- No protest accompanied the payment of additional search fees.

专利名称(译)	检测维生素D代谢物的装置		
公开(公告)号	EP3405198A1	公开(公告)日	2018-11-28
申请号	EP2017742126	申请日	2017-01-23
[标]发明人	WANG KEVIN C		
发明人	WANG, KEVIN, C.		
IPC分类号	A61K31/593 C07C401/00 G01N33/53 G01N33/532 G01N33/543 G01N33/558		
CPC分类号	G01N33/82 C07C401/00 G01N33/543 G01N33/54306 G01N33/558		
优先权	62/286297 2016-01-22 US		
其他公开文献	EP3405198A4		
外部链接	Espacenet		

摘要(译)

本发明提供了使用侧向流动装置快速检测分析物（包括小分析物）的方法，装置和组合物。本文描述了这样的侧向流动装置，其可以通过采用基于夹心的免疫测定来检测和定量全血，血清或血浆样品中的维生素D.