

(19)



(11)

**EP 3 262 422 B1**

(12)

**EUROPEAN PATENT SPECIFICATION**

(45) Date of publication and mention of the grant of the patent:  
**18.03.2020 Bulletin 2020/12**

(51) Int Cl.:  
**G01N 33/53** (2006.01)      **G01N 33/80** (2006.01)  
**C07K 16/34** (2006.01)      **B01D 15/38** (2006.01)  
**G01N 33/50** (2006.01)

(21) Application number: **16706602.6**

(86) International application number:  
**PCT/EP2016/053989**

(22) Date of filing: **25.02.2016**

(87) International publication number:  
**WO 2016/135246 (01.09.2016 Gazette 2016/35)**

**(54) ANTIBODY DETECTION METHOD AND SYSTEM**

VERFAHREN UND SYSTEM FÜR ANTIKÖRPERNACHWEIS  
PROCÉDÉ ET SYSTÈME DE DÉTECTION D'ANTICORPS

(84) Designated Contracting States:  
**AL AT BE BG CH CY CZ DE DK EE ES FI FR GB GR HR HU IE IS IT LI LT LU LV MC MK MT NL NO PL PT RO RS SE SI SK SM TR**

(72) Inventors:  
• **BÖNIG, Halvard**  
**60437 Frankfurt (DE)**  
• **GEISEN, Christof**  
**50935 Köln (DE)**  
• **WIERCINSKA, Eliza Justyna**  
**64673 Zwingenberg (DE)**  
• **RYSCHKA, Nikolas**  
**60389 Frankfurt am Main (DE)**

(30) Priority: **25.02.2015 EP 15156590**

(43) Date of publication of application:  
**03.01.2018 Bulletin 2018/01**

(74) Representative: **Kuttenkeuler, David**  
**Boehmert & Boehmert**  
**Anwaltpartnerschaft mbB**  
**Pettenkoferstrasse 22**  
**80336 München (DE)**

(73) Proprietors:  
• **DRK-Blutspendedienst**  
**Baden-Württemberg-Hessen gGmbH**  
**60528 Frankfurt am Main (DE)**  
• **Johann Wolfgang Goethe-Universität**  
**Frankfurt am Main**  
**60323 Frankfurt am Main (DE)**

(56) References cited:  
**EP-A1- 2 362 222**      **US-A- 5 773 222**  
**US-A1- 2007 161 056**

**EP 3 262 422 B1**

Note: Within nine months of the publication of the mention of the grant of the European patent in the European Patent Bulletin, any person may give notice to the European Patent Office of opposition to that patent, in accordance with the Implementing Regulations. Notice of opposition shall not be deemed to have been filed until the opposition fee has been paid. (Art. 99(1) European Patent Convention).

**Description**

## FIELD OF THE INVENTION

**[0001]** The present invention provides a cellular system for the detection of the presence of one or more human antibody species in sample, preferably a serum or plasma sample. The method is in particular useful for the analysis of patients who have been sensitized against blood group antigens expressed on erythrocytes, platelets or granulocytes. The system uses fluorescence labeled non-human cells specific for each antigen and hence, for each antibody species. Provided are the methods, system and diagnostic kits for performing the methods of the invention. In addition, the present invention discloses a method for removing antibodies from a sample such as a serum sample. Such a method is useful for absorbing antibodies from poly-agglutinating sera.

## DESCRIPTION

**[0002]** Secondary to sensitization (transfusion, pregnancy, etc.), antibodies against blood group antigens on erythrocytes (RBCs), platelets and granulocytes can be induced. As they may trigger adverse reactions in case of re-challenge, sensitive diagnostic tests are used for their detection.

**[0003]** Antigen-negative blood products are then used for transfusion. The detection of these antibodies hinges classically on the use of cell panels, each of which expresses the entire range of antigen specificities, albeit in random combination. Thereby, analyses of reaction strength with certain panel cells but not others is interpreted as reactivity against certain antigens (those that these individual panel cells share or have in common). Inversely, absence of reactivity with cells homozygously carrying a certain antigen is interpreted as non-reactivity with this antigen. There are today over 400 known RBC blood group antigens in 30 blood group systems and approximately a dozen granulocyte and platelet blood group antigens each. Being a natural cell (RBC, platelet or granulocyte from a donor), each panel cell obviously carries a host of antigens, typically at least one antigen from each group of antigens, or blood group system. For RBCs, tests for possible anti-RBC antigens are performed prior to every transfusion, of which there are more than 4 million per year in Germany alone. For granulocytes and platelets, transfusion of which is already significantly less frequent, because of lack of robust, rapid and affordable tests, antibody diagnostic is initiated only for patients with adverse reactions or refractoriness to transfusion.

**[0004]** In case of RBCs, many simple and highly effective routine tests are available, most of which hinging on panel reactivity as above-described. In some situations, these tests fail: When panagglutinating antibodies are present, no negative panel cells are present which could be used to rule out tolerance to certain antigens. In pa-

tients with auto-reactive antibodies, with a mix of antibodies against several antigens or with antibodies against high-frequency antigens, the tests similarly fail to allow identification of tolerable antigens. Thus antibody differentiation will be hampered or (combinations of) specific antibodies will be falsely interpreted as panagglutination, which typically is clinically irrelevant. Panels typically fail to identify antigens against rare antigens, because none of the cells in the panel will happen to express them; thus potentially serious antibodies may be missed. Thus standard diagnostics are available and most often yielding, but in specific situations fail. Some alternative tests exist, where blood group antigens are immobilized on fluorescent latex particles, but these are not suitable for the typical RBC antigens which are membrane proteins of very complex protein structure. By contrast, similar tests with platelets and granulocytes are less well standardized and significantly complicated by the short shelf life of platelet or granulocyte test panels.

**[0005]** US2007/161056 A1 discloses methods for detecting antibody in a sample, where the antibody targets an antigen expressed by red blood cells or red blood cell ghosts. Specifically the method involves generating fluorescently encoded red blood cells or red blood cell ghosts with known antigen presentation and using them to detect the presence of antibody in serum/plasma with a fluorescent sandwich type immunoassay.

**[0006]** In view of the aforementioned problems associated with state of the art blood group antigen antibody detection systems, the present invention seeks to provide an improved simpler methodology for determining blood groups in a sample from a subject.

**[0007]** In addition the present invention seeks to solve the problems associated with polyagglutinating sera which contain antibodies against a multitude of blood group antigens. Such sera might be conducive to conventional diagnostics after selective removal of one or more human antibody species. Thus, another problem the invention seeks to solve is to simplify removal or depletion of blood group antigen antibodies from a serum sample.

**[0008]** The above first problem is solved in a first aspect by a method for the detection of one or more human antibody species in a sample, the method comprising

a. Contacting a sample suspected to contain the one or more human antibody species with one or more non-human probing cell species and an antibody binding agent,

i. wherein the antibody binding agent is coupled to a first detectable label and is capable of binding human antibodies, and

ii. wherein a probing cell of the non-human probing cell species expresses, or is capable to express, a second detectable label and an antigenic protein, the anti-genic protein comprising an antigenic portion that is capable of binding,

or is capable to be bound by, an antibody of the one or more human antibody species to be detected; and

b. Detecting the presence of a signal from the first detectable label and the second detectable label for each probing cell, wherein the presence of a signal from the first detectable label and the presence of a signal from the second detectable label indicates the presence of the one or more human antibody species in the sample.

**[0009]** The above first problem is solved in an alternative aspect by a method for the detection of one or more human antibody species in a sample, the method comprising

a. Contacting a sample suspected to contain the one or more human antibody species with one or more non-human probing cell species and an antibody binding agent,

i. wherein the antibody binding agent is coupled to a first detectable label and is capable of binding human antibodies, and

ii. wherein a probing cell of a non-human probing cell species is immobilized at a predetermined location on a solid substrate, and wherein the probing cell expresses, or is capable to express, an antigenic protein, the antigenic protein comprising an antigenic portion that is capable of binding, or is capable to be bound by, an antibody of the one or more human antibody species to be detected; and

b. Detecting the presence of a signal from the first detectable label for each probing cell immobilized on the solid substrate, wherein the presence of a signal from the first detectable label at a predetermined location on the solid substrate indicates the presence of the one or more human antibody species in the sample.

**[0010]** In this aspect multiple non-human probing cell species may be immobilized on one solid substrate at predetermined locations including positive and negative controls. The detection of the presence of the one or more human antibody species in the sample is achieved by scanning the solid substrate for the signal of the first detectable label. Only the presence of the signal at the predetermined locations where a probing cell expressing the respective antigenic protein was immobilized is then indicative for the presence of the one or more human antibody species in the sample.

**[0011]** The solid substrate or chip in this aspect may be a glass or plastic slide, or any other suitable carrier that allows for the immobilization of non-human probing cell species. Detection of the one or more human anti-

body species in the sample (for example for the detection of blood group antigen-specific antibodies) is achieved by using the antibody binding agent as described above. Suitable labels for the antibody binding agent will be described herein below. Identification of the presence or absence of the human antibody species to be detected is in this embodiment based on the predetermined physical location of the non-human probing cell species on the solid substrate (Chip) exactly in the same manner as if identification was by detection of the cell's fluorescent label and the second label on the anti-human Ig-antibody which must coincide to declare an antibody specificity.

**[0012]** The inventors here propose a novel method for blood group antigen detection on RBCs, platelets and granulocytes which is based on expression of only one antigen per cells (xenogeneic cell, any species) and co-expressing one or several detectable markers. A mix of cells is prepared containing cells with surface expression of different antigens (all antigens of interest), each identified by a different fluorochrome. The cell mix is incubated with serum or plasma from the patient. Antibody against one of the cells is recognized by incubation of the cells in anti-human IgG conjugated to a discriminating fluorochrome not contained in the cell mix (e.g. APC). The cell mix is then analyzed by flow cytometry. The APC-positive (i.e. anti-body-decorated) cell population is analyzed for its endogenous fluorescence, e.g. RFP. This indicates that the patient serum contained antibody against the single blood group antigen expressed by the RFP+ cell. Cell mixes will be generated containing cells together expressing groups of certain antigens, such as common antigens, rare antigens, high-frequency antigens, etc. to supplement the current armamentarium of RBC antibody diagnostics. Similarly, the cells expressing a common antigen obscuring diagnostics with standard technology can be depleted from sera. There for, patient serum containing, for instance, antibody against the antigen "e" from the Rh blood group system, a very frequent pseudo-specificity of auto-reactive, clinically irrelevant but diagnostics-obscuring antibodies, is incubated with cells expressing, in this case, the blood group antigen "e". The cells will catch the antibody, be sedimented by centrifugation. The thusly anti-"e"-depleted serum can be subjected to routine diagnostics (detection of additional specific antibodies using standard or novel diagnostic tests). The same technology will be applied to express platelet or granulocyte antigens on cells, as described above, in order to detect with an anti-IgG-fluorochrome conjugated secondary antibody antibodies against HPA or HNA in patient sera. Even though less frequently required as a diagnostic test, it is expected that the much greater simplicity of this test compared to currently available technology will allow this test to become the routine diagnostic for anti-platelet and anti-granulocyte antibody.

**[0013]** By contacting the non-human probing cell species and the antigen binding agent with the sample that is suspected to comprise one or more antibodies of the

human antibody species to be detected, in the event such an antibody is present, a complex of the probing cell species, the antibody to be detected and the antibody binding agent is formed. The complex is formed via the specific interaction of the antigenic protein in the probing cell and the complementary antibody to be detected, as well as the binding of the antibody binding agent to the antibody to be detected. Therefore, when observing the presence of the first and second (or more) detectable labels for one non-human probing cell, the presence of both signals is indicative for the presence of the formed complex. In the event that the candidate human antibody to be detected is not present, the complex is not formed, and no probing cell species has the first and the second detectable label.

**[0014]** The term "antibody binding agent" in context of the invention shall refer to any molecule having the capability to bind antibodies. In particular preferred are immunoglobulin proteins such as antibodies or TCR constructs. Most preferred for the herein disclosed matter is that the antibody binding agent is an antibody specific for the candidate antibody's organism type (species).

**[0015]** A "sample" in context of the present invention is preferably a biological sample. The term "biological sample" in context of the herein described invention preferably refers to a liquid sample such as a blood sample, serum sample, or plasma sample. As used hereinafter, the term "blood sample" is a biological sample which is derived from blood, preferably peripheral (or circulating) blood. A blood sample may be, for example, whole blood, plasma or serum.

**[0016]** In preferred embodiment the methods of the herein disclosed invention are performed *in vitro* method or *ex vivo*.

**[0017]** In some embodiments of the invention it is preferred that the step of acquiring the sample to be tested from a subject, such as a patient, is excluded from the described methods.

**[0018]** The antigenic protein is preferably a cell surface antigen, and may preferably comprise a transmembrane domain or a trans-membrane anchor. The term "cell surface antigen" refers to a biological molecule that is expressed and targeted to the cellular surface, i.e. the cellular membrane. Although the use of cell surface antigen is preferred to perform the methods of the present invention, also any other antigens that are expressed to be exclusively located in or on the probing cell species may be used. For allowing a binding between the antigenic protein with the candidate antibody species of the invention a non-human probing cell can also be fixed and permeabilized to allow a candidate human antibody species to enter the probing cell. Thus, most preferred is that the antigenic protein is not a secreted protein.

**[0019]** The one or more antibody species to be detected with the methods of the invention is a human antibody, and wherein the antibody binding agent is an anti-human antibody. The term "anti-body" as used herein includes antibody from a monoclonal or polyclonal source which is produced in response to an antigen, as well as frag-

ments, chimeric forms, altered forms and derivatives of such antibody, as well as chemically and recombinantly produced forms thereof. The term "anti-human antibody" as used herein refers to an antibody which recognizes and binds to human immunoglobulin.

**[0020]** In some embodiments the probing cell species is a cell that does not endogenously express the antigenic protein nor any other protein that could be bound by the one or more human anti-body species to be detected, preferably, wherein the probing cell species is not a human cell, such as a mouse cell, or alternatively not a mammalian cell, most preferably an invertebrate cell, such as an insect cell. Although the method also works in an isogenic scenario such as detecting a human antibody species by using the herein described methods comprising a human cell as a probing cell species, it is nevertheless a preferred embodiment to use a cell that cannot express the antigenic protein, nor a protein that is closely related to the antigenic protein used in the methods of the present invention. It is advantageous for the methods of the invention to reduce the possibility of unspecific binding of the candidate antibody species with other components expressed in or on the probing cell species. The easiest approach used in context of the invention is to select a probing cell species which is derived from a different organism than the antibody species to be detected. For example, if the antibody species to be detected is a human antibody, it would be preferably to use a probing cell species derived from a non-human cell line, such as a mouse or rat cell.

**[0021]** In order to provide the probing cell species of the invention, an antigenic protein as described above and a detectable label have to be expressed therein. This is preferably achieved by recombinant expression of the antigenic protein and/or detectable label. Therefore it is preferred that in context of the invention the non-human probing cell species comprises a first genetic construct encoding the antigenic protein, and a second genetic construct encoding the second detectable label, or wherein the antigenic protein and the second detectable label are encoded on one genetic construct.

**[0022]** As used herein, the term "genetic construct" refers to the DNA or RNA molecules that comprise a nucleotide sequence, which encodes an antigenic protein or a detectable label. The coding sequence includes initiation and termination signals operably linked to regulatory elements including a promoter and polyadenylation signal capable of directing expression in the probing cell species used for the performance of the method of the invention.

**[0023]** As used herein, the term "expressible form" refers to gene constructs which contain the necessary regulatory elements operable linked to a coding sequence that encodes a detectable label or antigenic protein, such that when present in the cell species, the coding sequence will be expressed.

**[0024]** A "detectable label" in context of the present invention is a detectable marker that can produce a signal

that is detectable by visual or instrumental means, e.g., a fluorescent protein, a protein with the incorporation of a radiolabeled amino acid or attachment to a polypeptide of biotinyl moieties that can be detected by marked avidin or streptavidin (e.g., streptavidin containing a fluorescent marker or enzymatic activity that can be detected by optical or colorimetric methods). Examples of labels for polypeptides include, but are not limited to, the following: radioisotopes or radionuclides (e.g.,  $^3\text{H}$ ,  $^{14}\text{C}$ ,  $^{35}\text{S}$ ,  $^{90}\text{Y}$ ,  $^{99}\text{Tc}$ ,  $^{111}\text{In}$ ,  $^{125}\text{I}$ ,  $^{131}\text{I}$ ,  $^{177}\text{Lu}$ ,  $^{166}\text{Ho}$ , or  $^{153}\text{Sm}$ ), chromogens, fluorescent labels (e.g., FITC, rhodamine, lanthanide phosphors), enzymatic labels (e.g., horseradish peroxidase, luciferase, alkaline phosphatase), chemiluminescent markers, biotinyl groups, predetermined polypeptide epitopes recognized by a secondary reporter (e.g., leucine zipper pair sequences, binding sites for secondary antibodies, metal binding domains, epitope tags), and magnetic agents (e.g., gadolinium chelates). Representative examples of labels commonly employed for immunoassays include moieties that produce light, e.g., acridinium compounds, and moieties that produce fluorescence, e.g., fluorescein. A detectable label of the invention may be directly expressed or alternatively coupled to a component that is intended to get detectably labeled - for example the antibody binding agent of the invention.

**[0025]** Preferably said first detectable label and second detectable label produce signals that are distinguishable, such as fluorescent proteins producing light signals with different wave lengths.

**[0026]** A fluorescent label refers to a protein that when excited with the necessary wave length is able to fluoresce or produce light. For the purpose of the present invention a fluorescent protein is a protein that when excited with an appropriate wave length results in emission of a light signal that may be detected. In a preferred embodiment the emission spectrum from the fluorescent protein according to the invention is between 445-660 nm, between 550-660 nm and most preferably between 550-660 nm.

**[0027]** Fluorescent proteins when used as labels in context of the invention may be selected from a. green fluorescent protein selected from the group of EGFP, AcGFP, TurboGFP, Emerald, Azani Green and ZsGreen, b. blue fluorescent protein selected from the group of EBFP, Sapphire and T-Sapphire, c. cyan fluorescent protein selected from the group of ECFP, mCFP, Cerulean, CyPet, AmCyan1, Midori-Ishi Cyan and mTFPI (Teal), d. yellow fluorescent protein selected from the group of EYFP, Topaz, Venus, mCitrine, Ypet, PhiYFP, ZsYellow1 and mBanana, e. orange and red fluorescent proteins selected from Kusabira Orange, mOrange, dTomato, dTomato-Tandem, DsRed, DsRed2, DsRed-Express (T1), DSRed-Monomer, mTangerine, mStrawberry, AsRed2, mRFP1, Jred, mCherry, HcRed1, mRaspberry, HcRed-Tandem, mPlum and AQ143. The sequences and methods for their detection of the aforementioned fluorescent labels are well known to the person of skill in

the art.

**[0028]** In some embodiments of the invention the presence of a signal from the first detectable label and the second detectable label for each probing cell is performed cytometrically or microscopically. As described above, the present disclosure provides cytometric methods for the detection of probing cells. The term "cytometric methods" is used herein to describe flow cytometric methods and/or imaging cytometric methods. Accordingly, "cytometric assay" may refer to a flow cytometric assay and/or imaging cytometric assay, and "cytometer" may refer to a flow cytometer and/or imaging cytometer.

**[0029]** Alternatively the presence of the first and the second detectable label may be analyzed using a fluorescent microscope.

**[0030]** Although the method is in principle applicable for the detection of any antibody in a sample, in certain preferred embodiments the human antibody species of the invention is a human antibody species specific for a blood group antigen, and wherein the antigenic protein is the corresponding blood group antigen. The term "blood group antigen" is intended to mean any antigen of the ABO system with the A antigen, the B antigen, the A and B antigens expressed simultaneously or the H antigen, of the Rh system with the D, E, e, Cw, and C or c antigens, of the Kell system with the K or k antigen, of the Duffy system (Fya, Fyb), of the Kidd system (Jka, Jkb) system or else of other systems that are less commonly investigated in practice but that also exist, such as MNS, Lewis, etc. Furthermore included under this term are platelet antigens (HPA) and neutrophil antigens (HNA)

**[0031]** In this embodiment the method of the invention may be for use in the detection of a blood group antigen in a sample obtained from a subject, wherein said sample obtained from a subject is the biological sample.

**[0032]** The above described method of the invention comprises the detection of one human antibody species in sample. More preferred is however to use the method in the detection of a plurality of distinct candidate antibody species that could be present in the sample. In this aspect for each of the human antibody species to be detected, a distinct corresponding non-human probing cell species with the corresponding antigenic protein (which is capable of binding the candidate antibody species) and a distinct detectable label is provided. During step (a) of the disclosed method, the sample is brought into contact with all the non-human probing cell species and the antibody binding agent. Complexes of different human antibodies and non-human probing cell species - if they are formed depending on the presence or absence of the plurality of candidate human antibody species to be detected - can then be distinguished from another on basis of the second detectable labels used in the non-human probing cell species. Depending on the combination of first and second detectable label observed for a non-human probing cell, one can deduce the presence or absence of the human antibody species. Therefore for this embodiment

it is detrimental that the first and second or further detectable labels are all distinguishable from one another.

**[0033]** One exemplary embodiment pertains to a method for the detection of any of at least two or more human antibody species in a sample, the method comprising:

a. Contacting a sample suspected to contain any of the two or more human anti-body species with two or more non-human probing cell species and an antibody binding agent,

i. wherein the antibody binding agent is coupled to a first detectable label and is capable of binding human antibodies, and

ii. wherein a first non-human probing cell species expresses, or is capable to express, a second detectable label and a first antigenic protein, the first antigenic protein comprising an antigenic portion that is capable of binding, or is capable to be bound by, a first human antibody species to be detected; and

iii. wherein a second probing cell species expresses, or is capable to express, a third detectable label and a second antigenic protein, the second antigenic protein comprising an antigenic portion that is capable of binding, or is capable to be bound by, a second human antibody species to be detected; and

b. Detecting the presence of a signal from the first detectable label, the second detectable label and the third detectable label for each probing cell,

wherein in a non-human probing cell the presence of a signal from the first detectable label and the presence of a signal from the second detectable label indicates the presence of the first human antibody species in the sample, and/or wherein in a probing cell the presence of a signal from the first detectable label and the presence of a signal from the third detectable label indicates the presence of the second human antibody species in the sample.

**[0034]** The above method may be further expanded by adding non-human probing cell species (iv, v, vi etc.) having respective fourth, fifth, sixth, etc. detectable labels in order to provide a method that is capable to detect three, four, five or more human antibody species to be detected. In this case, as also explained above, all the first to fifth or more detectable labels should be distinguishable.

**[0035]** Another aspect of the invention then pertains to a human antibody detection system, comprising one or more non-human probing cell species and an antibody binding agent, characterized in that the antibody binding agent is coupled to a first detectable label and is capable of binding human antibodies, and each of the one or more non-human probing cell species expresses or is able to express a distinct antigenic protein, wherein said distinct antigenic protein comprises a distinct antigenic portion

that can bind to, or is bound by, a distinct human antibody species to be detected, and a second detectable label, wherein the second detectable label is different to (i.e. distinguishable from) any other detectable labels of other non-human probing cell species in the system, and wherein a signal of a second detectable label species in the system indicates the presence of the corresponding antigenic protein in the probing cell.

**[0036]** In a preferred embodiment the antibody detection system according to the invention is provided having fluorescent labels as described herein elsewhere as the first and/or second detectable labels.

**[0037]** Corresponding to the afore described method of the invention, also the antibody detection system may in preferred embodiments be expanded for providing an expanded system that is capable of detecting a plurality of human antibody species (two, three, four, five to ten, or more). In order to expand the system further non-human probing cell species are included which are similar to the other non-human probing cell species but have distinct specificities to the further human antibody species to be detected and further distinct detectable labels (third, fourth, etc), which are preferably distinguishable from any of the other detectable labels in the system.

**[0038]** In this regard an antibody detection system is preferred wherein the system comprises two, three, four, five, ten or more non-human probing cell species, and wherein each non-human probing cell species does not endogenously express any of the antigenic proteins of any of the probing cell species in the system.

**[0039]** The advantages of a method and system for the detection of a plurality of distinct human anti-body species in a sample is that using the method or system of the invention enables the analysis of the presence of a plurality of human antibody species at the same time.

**[0040]** Another aspect of the invention then pertains to a diagnostic kit, comprising the antibody detection system as described herein before. The diagnostic kit of the invention is preferably for use in a method as described herein before.

**[0041]** Another aspect of the invention then pertains to a use of the method, the human antibody detection system or diagnostic kit according to the various embodiments and aspects of the invention, in the diagnosis of a clinical status, condition or disease which is characterized by the presence of one or more human anti-body species in a biological sample from a subject to be diagnosed. The use is preferably an *in vitro* or *ex vivo* use.

**[0042]** The above second problem of the invention is solved in a first aspect by a method for removing an human antibody species from a sample, comprising

a. contacting a sample suspected to contain the antibody species with a non-human trapping cell species under conditions which allow the antibody species to bind to the trapping cell species and to form a trapping cell antibody complex species, and wherein the trapping cell species expresses, or is capable

to express, an antigenic protein having an antigenic portion which binds to or can be bound by, the antibody species, and

b. subsequently, removing the trapping cell antibody complex species from the sample to obtain a purified sample.

c. *optionally*, re-probing the trapping cell species with a detectable label allowing detection of antibody bound to the surface of the trapping cell species.

**[0043]** The definition of the term "sample" in this aspect is similar as the definition of sample provided herein above for the other aspects of the invention.

**[0044]** In some embodiments the antibody species and the trapping cell species are derived from different organisms, for example, when the antibody species to be removed is human, the trapping cell species is selected from a non-human species, for example mouse. With this embodiment it is intended to avoid cross reactivities of the trapping cell species with antibodies that might be present in the sample to be purified.

**[0045]** Alternatively the above method includes that the trapping cell species does not endogenously express the antigenic protein.

**[0046]** In some embodiments removing the trapping cell antibody complex species is performed by centrifugation or filtering and separating the cell free supernatant. How to separate cellular material from liquids is well known in the art. Preferably the method of separation does not harm or destroy the trapping cell species.

**[0047]** In some embodiments the method comprises further:

d. testing the purified sample for the presence of antibodies of the human anti-body species, wherein in the case of a presence of residual antibodies of the human antibody species to be removed, method steps (a) to (b), and optionally (c), are repeated until the purified sample is devoid of any residual antibodies of the human antibody species.

**[0048]** For example in some preferred embodiments step (d) comprises a method of detecting antibodies as described herein before, or a conventional antibody screening assay.

**[0049]** Similarly to the above aspects relating to antibody detection, also in this aspect of antibody removal the human antibody species to be removed is preferably an antibody binding a blood group antigen, and wherein the sample is a serum sample. For more or more specific examples of such antigens, please see the above disclosure.

**[0050]** Preferably the method is an *ex vivo* or *in vitro* method.

**[0051]** Also comprised in further aspects of the invention is a human antibody removal system for use in the above method, the system comprising one or more non-human trapping cell species, wherein the trapping cell species expresses, or is capable to express, an antigenic protein having an antigenic portion which binds to or can

be bound by, a human antibody species to be removed from a sample.

**[0052]** The present invention will now be further described in the following examples with reference to the accompanying figures and sequences, nevertheless, without being limited thereto. For the purposes of the present invention, all references as cited herein are in their entireties. In the Figures:

10 **Figure 1:** Principle of the novel blood group antibody identification test. Details are provided in the example section.

15 **Figure 2:** Representative example, illustrating proof-of-principle of the proposed invention: Cells expressing no antigen and no fluorochrome (negative control) are depicted in blue, cells co-expressing "antigen A" and red fluorescence are shown as dark grey and cells co-expressing "antigen B" and green fluorescence are shown as light grey. Mean APC fluorescence in the left three panels is the same, indicating absence of anti-"antigen A" and anti-"antigen B" antibodies in the tested serum from a random donor. In the right three panels, APC fluorescence is right-shifted (positive) in the middle panel, indicating that the tested serum contains antibody against "antigen A". In this example, "antigen A" is the antigen Fy(a) from the Duffy blood group system, "antigen B" is its counter-antigen, Fy(b). Anti-Fy(a) is a relatively common allo-antibody in poly-transfused patients.

25 **Figure 3:** Principle of absorption method of specific antibody specificities from polyagglutinating sera according to the invention.

30 **Figure 4:** Representative example, illustrating proof-of-principle of the proposed invention with respect to selective antibody depletion from polyagglutinating serum while qualitatively and quantitatively retaining antibodies against the other specificities.

## EXAMPLES

### Materials and Methods

35 **[0053]** MRNAs for blood group antigens are isolated from total RNA isolated from immature hematopoietic blood cells from bone marrow, cord blood or mobilized peripheral blood. cDNA is generated using specific, random or poly-A oligonucleotides. The oligonucleotides may contain restriction sites for insertion into the vector of choice. The blood group antigen encoded by the cDNA is analyzed by sequencing. Either the blood group anti-

gen of choice is primarily isolated, or it may be generated by site-specific mutagenesis. cDNAs may be codon-optimized if so desired. Blood group antigen cDNA is inserted into expression vectors comprising fluorescent reporter genes, expression vectors are amplified, confirmed in identity by full-length sequencing, transduced into target cells. Target cells are immortalized cells continuously growing in cell culture of xenogeneic origin or of human origin but not expressing any blood group antigens.

**[0054]** Cells are transduced, sorted by flow cytometry based on fluorochrome expression, then expanded. Antigen expression is assessed (confirmed) by analysis of DNA (sequencing), mRNA (sequencing), indirect or direct fluorescence by flow cytometric analysis of cells stained with anti-blood group antigen specific antibody, directly or indirectly conjugated to fluorochromes. Resorting of cells is considered if the population is not homogeneous with respect to blood group antigen and fluorochrome expression. The highest expressors will be sorted, if applicable.

**[0055]** A cell mix is typically (but not necessarily) generated with equal frequencies of cells expressing each of the different antigens supposed to be represented in the panel. Reasonable antigen combinations would be high-frequency or low-frequency antigens, antigen pairs, antigens against which antibodies are frequently directed, routine panel(s) representing guidelines-mandated antigens, but any other combination is similarly feasible. Specific panels will represent only granulocyte (HNA) antigens or platelet (HPA) antigens; the entire panel of currently known antigens will be represented in each of the panels. Thus diagnostic kits will be generated containing mixed cells representing defined panels of antigens as well as fluorochrome-conjugated secondary antibody and necessary buffers. For antigens frequently observed as obscuring antibody identification, specifically antigens like Rh "D", Rh "e", Kell "k", etc., specific absorption panels will similarly be generated as described above.

**[0056]** Serum with known antibody specificities (during generation of the cells, panels and mixes, as well as during formal validation) or serum from patients suspected of having antibodies against blood group antigens are incubated with the cell mix. Cells are incubated at room temperature or higher (as high as 37 °C) or colder (as low as 4 °C) temperature. Cell-serum mix is washed at least once, subsequently incubated with anti-human IgG-fluorescence coupled, and/or anti-human IgM fluorescence coupled. Thus far, anti-human IgG-APC was used, but any other fluorochrome so long as it does not conflict with that of the individual cells in the cell mix and any other anti-human immunoglobulin can be used. Different anti-human isotype antibodies will be able to determine the isotype of the patient's antibody and hence, its hemolytic potential. Cells are again washed at least once, then subjected to flow cytometry. The additional fluorescence color(s) of the APC-positive cells is assessed. If, for instance, a shift in APC-positivity is observed in cells ex-

pressing a red fluorochrome, then serum contained an antibody against the blood group antigen expressed in the red fluorescent cells ("antigen A" in our example, Figg. 1+2). The serum could contain antibody against several specificities, so that cells of several fluorescence colors could be right-shifted. Serum can be substituted by plasma.

### Example 1: Antibody Detection

**[0057]** Figure 1 illustrates an example test system in accordance with the herein disclosed invention. Using bi- or tri-cistronic vectors, carrying a blood group antigen expression cassette in the first and at least one fluorochrome expression cassette in the second and/or third cloning site, a blood group antigen of choice will be co-expressed with one or more fluorochromes. Transduction of the expression cassettes will be performed with viral or non-viral vectors; instead of bi- or tri-cistronic vectors, concurrent transduction of blood group antigen- and fluorochrome-expressing vectors can be performed alternatively to using multi-cistronic vectors. In this manner, cells expressing "antigen A" as sole blood group antigen will be recognized by their red fluorescence, cells expressing "antigen B" as green, etc. A large panel of fluorochromes which can be combined in all possible combinations, is available allowing for generation of mixed cell populations with an in principle infinite number of different antigens to be tested in a single reaction.

**[0058]** As illustrated in figure 1, patient sera containing, among all other IgG specificities anti-"antigen A" antibody will be incubated with the cell mix (containing here, for the sake of the example, only cells expressing no antigen and no fluorochrome (background/negative control), cells co-expressing "antigen A" and red fluorescence and cells co-expressing "antigen B" and green fluorescence). The "antigen A" expressing, red-fluorescing cell will bind the anti-"antigen A" antibody from the serum. A secondary anti-human IgG antibody with APC fluorescence label is next incubated with the cell mix. Only the anti-"antigen A" decorated (red fluorescence-containing) cell will bind the secondary antibody. APC fluorescence will be measured by flow cytometry. Only the red fluorescence-expressing cell population (carrying "antigen A") will be APC-positive.

**[0059]** The results are depicted in figure 2. Mean APC fluorescence in the left three panels is the same, indicating absence of anti-"antigen A" and anti-"antigen B" antibodies in the tested serum from a random donor. In the right three panels, APC fluorescence is right-shifted (positive) in the middle panel, indicating that the tested serum contains antibody against "antigen A". In this example, "antigen A" is the antigen Fy(a) from the Duffy blood group system, "antigen B" is its counter-antigen, Fy(b). Anti-Fy(a) is a relatively common allo-antibody in poly-transfused patients.

## Example 2: Selective Antibody Absorption

**[0060]** Patient sera may contain more than one antibody specificity against blood group antigens; in the given example as illustrated in figure 3, antibodies against blood group antigens A and X. The presence of anti-A may obscure the presence of antibodies against other blood group antigens, or too few test RBCs not negative for antigen A (and thus "reactive" and therefore non-contributory) may stand in the way of excluding the full panel of guidelines-required blood group antigen reactivities. In such a situation, absorption of one specificity may be useful.

**[0061]** Poly-agglutinating patient sera (in this example, containing anti-A and anti-X), therefore, will be incubated with cells expressing a single antigen, in this case antigen A. The residual serum will be recovered and subjected to conventional blood group antibody testing. The expectation is, that RBCs expressing antigen A (but not antigen X) will become non-reactive, while RBCs expressing antigen X will remain reactive. The assay does not make use of the co-expressed fluorescent protein, although incubation of the recovered antigen A expressing cells with anti-IgG-APC and subsequent flow cytometric analysis for confirmation could be entertained.

**[0062]** The results are depicted in figure 4. In this example, a patient's serum contained antibodies against two blood group specificities, Fy(a) and K (antigen Kell (KEL1) from the Kell blood group system). Reactivity against Fy(a) homozygous, K-negative test RBCs is shown in the top panel in the left gel column. The subtle positive reaction in the right gel column is directed against Fy(b) homozygous (i.e., Fy(a) negative), Kell heterozygous (Kk) RBCs. Incubation of Fy(a) expressing murine cells (the invention) in the patient serum, followed by precipitation of cells and incubation of the supernatant with the same test RBCs shows the absence of reactivity in the left column (anti-Fy(a) has been completely removed) but the same reaction strength with the cells in the right column. Thus the low-titer anti-K antibody was quantitatively retained. As a second line demonstrating the specificity of the absorption exercise, the same serum was incubated with Fy(b) expressing cells; both antibody specificities were preserved.

### Claims

1. An *in vitro* method for the detection of one or more human antibody species in a sample, the method comprising
  - a. Contacting a sample suspected to contain the one or more human antibody species with one or more non-human probing cell species and an antibody binding agent,
    - i. wherein the antibody binding agent is cou-

pled to a first detectable label and is capable of binding human antibodies, and

- ii. wherein a probing cell of the non-human probing cell species expresses, or is capable to express, a second detectable label and an antigenic protein, the antigenic protein comprising an antigenic portion that is capable of binding, or is capable to be bound by, an antibody of the one or more human antibody species to be detected; and

- b. Detecting the presence of a signal from the first detectable label and the second detectable label for each probing cell, wherein the presence of a signal from the first detectable label and the presence of a signal from the second detectable label indicates the presence of the one or more human antibody species in the sample.

2. An *in vitro* method for the detection of one or more human antibody species in a sample, the method comprising

- a. Contacting a sample suspected to contain the one or more human antibody species with one or more non-human probing cell species and an antibody binding agent,

- i. wherein the antibody binding agent is coupled to a first detectable label and is capable of binding human antibodies, and
- ii. wherein a probing cell of a non-human probing cell species is immobilized at a predetermined location on a solid substrate, and wherein the probing cell expresses, or is capable to express, an antigenic protein, the antigenic protein comprising an antigenic portion that is capable of binding, or is capable to be bound by, an antibody of the one or more human antibody species to be detected; and

- b. Detecting the presence of a signal from the first detectable label for each probing cell immobilized on the solid substrate, wherein the presence of a signal from the first detectable label at a predetermined location on the solid substrate indicates the presence of the one or more human antibody species in the sample.

3. The method according to claim 1 or 2, wherein the probing cell species is a cell that does not endogenously express the antigenic protein nor any other protein that could be bound by the one or more antibody species to be detected, such as a mouse cell, or alternatively not a mammalian cell, most preferably an invertebrate cell, such as an insect cell.

4. The method according to any of claims 1 to 3, wherein said first detectable label and second detectable label produce signals that are distinguishable.
5. The method according to any one of claims 1 to 4, wherein said one or more human antibody species is a human antibody species specific for a blood group antigen, and wherein the antigenic protein is the corresponding blood group antigen.
6. An human antibody detection system, comprising one or more non-human probing cell species and an antibody binding agent, **characterized in that**
- the antibody binding agent is coupled to a first detectable label and is capable of binding human antibodies, and each of the one or more non-human probing cell species expresses or is able to express a distinct antigenic protein, wherein said distinct antigenic protein comprises a distinct antigenic portion that can bind to, or is bound by, a distinct human antibody species to be detected, and a second detectable label, wherein the second detectable label is different to (i.e. distinguishable from) any other detectable labels of other non-human probing cell species in the system, and wherein a signal of a second detectable label species in the system indicates the presence of the corresponding antigenic protein in the probing cell.
7. The antibody detection system according to claim 6, wherein the system comprises two, three, four, five or more non-human probing cell species, and wherein each non-human probing cell species does not endogenously express any of the antigenic proteins of any of the probing cell species in the system.
8. A diagnostic kit, comprising the antibody detection system according to any one of claims 6 or 7.
9. The diagnostic kit according to claim 8, for use in a method according to any one of claims 1 to 5.
10. An *in vitro* use of the method according to any of claims 1 to 5, or the antibody detections system of any one of claims 6 or 7, or a diagnostic kit according to claim 8 or 9, in the diagnosis of a disease which is **characterized by** the presence of one or more human antibody species in a biological sample from a subject to be diagnosed.
11. An *in vitro* method for removing a human antibody species from a sample, comprising
- a. contacting a sample suspected to contain the antibody species with a non-human trapping cell species under conditions which allow the anti-

body species to bind to the trapping cell species and to form a trapping cell antibody complex species, and wherein the trapping cell species expresses, or is capable to express, an antigenic protein having an antigenic portion which binds to or can be bound by the antibody species, and b. subsequently, removing the trapping cell antibody complex species from the sample to obtain a purified sample.

12. The method according to claim 11, wherein the trapping cell species is mouse, or wherein the trapping cell species does not endogenously express the antigenic protein.
13. The method according to any of claims 11 or 12, wherein the method comprises further:
- c. testing the purified sample for the presence of antibodies of the human antibody species, wherein in the case of a presence of residual antibodies of the human antibody species to be removed, method steps (a) to (b), and optionally (c), are repeated until the purified sample is devoid of any residual antibodies of the human antibody species.
14. The method according to claim 13, wherein step (c) comprises a method according to any of claims 1 to 6, or a conventional antibody screening assay.
15. The method according to any of claims 11 to 14, wherein the human antibody species to be removed is an antibody binding a blood group antigen, and wherein the sample is a serum sample.

#### Patentansprüche

1. Ein *in vitro* Verfahren zum Nachweis einer oder mehrerer humaner Antikörperspezies in einer Probe, wobei das Verfahren umfasst
- a. Kontaktieren einer Probe, die vermutlich die eine oder mehrere humane Antikörperspezies enthält, mit einer oder mehreren nicht-humanen Sonden-Zellspezies und einem Antikörper-Binder,
- i. wobei der Antikörper-Binder an ein erstes nachweisbares Label gekoppelt ist und in der Lage ist, humane Antikörper zu binden, und
- ii. wobei eine Sonden-Zelle der nicht-humanen Sonden-Zellspezies ein zweites nachweisbares Label und ein antigenes Protein exprimiert oder in der Lage ist, zu exprimieren, wobei das antigene Protein einen antigenen Teil umfasst, der in der Lage ist, ei-

- nen Antikörper der einen oder mehreren nachzuweisenden humanen Antikörperspezies zu binden oder durch diesen gebunden zu werden; und
- b. Nachweis des Vorhandenseins eines Signals von dem ersten nachweisbaren Label und dem zweiten nachweisbaren Label für jede Sonden-Zelle, wobei das Vorhandensein eines Signals von dem ersten nachweisbaren Label und das Vorhandensein eines Signals von dem zweiten nachweisbaren Label das Vorhandensein der einen oder mehreren humanen Antikörperspezies in der Probe anzeigt.
2. Ein *in vitro* Verfahren zum Nachweis einer oder mehrerer humaner Antikörperspezies in einer Probe, wobei das Verfahren umfasst
- a. Kontaktieren einer Probe, die vermutlich die eine oder mehrere humane Antikörperspezies enthält, mit einer oder mehreren nicht-humanen Sonden-Zellspezies und einem Antikörper-Binder,
- i. wobei der Antikörper-Binder an ein erstes nachweisbares Label gekoppelt ist und in der Lage ist, humane Antikörper zu binden, und
- ii. wobei eine Sonden-Zelle einer nicht-humanen Sonden-Zellspezies an einer vorbestimmten Stelle auf einem festen Substrat immobilisiert ist, und wobei die Sonden-Zelle ein antigenes Protein exprimiert oder in der Lage ist, zu exprimieren, wobei das antigene Protein einen antigenen Teil umfasst, der in der Lage ist, einen Antikörper der einen oder mehreren nachzuweisenden humanen Antikörperspezies zu binden oder durch diesen gebunden zu werden; und
- b. Nachweis des Vorhandenseins eines Signals von dem ersten nachweisbaren Label für jede auf dem festen Substrat immobilisierte Sonden-Zelle, wobei das Vorhandensein eines Signals von dem ersten nachweisbaren Label an einer vorbestimmten Stelle auf dem festen Substrat das Vorhandensein der einen oder mehreren humanen Antikörperspezies in der Probe anzeigt.
3. Das Verfahren nach Anspruch 1 oder 2, wobei die Sonden-Zellspezies eine Zelle ist, die weder das antigene Protein noch irgendein anderes Protein endogen exprimiert, das von der einen oder mehreren nachzuweisenden Antikörperspezies gebunden werden könnte, wie z.B. eine Mauszelle, oder alternativ keine Säugerzelle, am meisten bevorzugt eine Invertebratenzelle, wie z.B. eine Insektenzelle.
4. Das Verfahren nach einem der Ansprüche 1 bis 3, wobei das erste nachweisbare Label und zweite nachweisbare Label Signale erzeugen, die unterscheidbar sind.
5. Das Verfahren nach einem der Ansprüche 1 bis 4, wobei die eine oder mehrere humane Antikörperspezies eine humane Antikörperspezies ist, die für ein Blutgruppenantigen spezifisch ist, und wobei das antigene Protein das entsprechende Blutgruppenantigen ist.
6. Ein humanes Antikörper-Nachweissystem, umfassend eine oder mehrere nicht-humane Sonden-Zellspezies und einen Antikörper-Binder, **dadurch gekennzeichnet, dass** der Antikörper-Binder an ein erstes nachweisbares Label gekoppelt ist und in der Lage ist, humane Antikörper zu binden, und jede der einen oder mehreren nicht-humanen Sonden-Zellspezies ein bestimmtes antigenes Protein exprimiert oder in der Lage ist, zu exprimieren, wobei das bestimmte antigene Protein einen bestimmten antigenen Teil umfasst, der an eine bestimmte nachzuweisende humane Antikörperspezies, binden kann oder von dieser gebunden wird, und ein zweites nachweisbares Label, wobei das zweite nachweisbare Label unterschiedlich zu (d.h. unterscheidbar von) allen anderen nachweisbaren Labeln von den anderer nicht-humaner Sonden-Zellspezies in dem System ist, und wobei ein Signal einer zweiten nachweisbaren Label-Spezies in dem System das Vorhandensein des entsprechenden antigenen Proteins in der Sonden-Zelle anzeigt.
7. Das Antikörper-Nachweissystem nach Anspruch 6, wobei das System zwei, drei, vier, fünf oder mehr nicht-humane Sonden-Zellspezies umfasst, und wobei jede nicht-humane Sonden-Zellspezies kein antigenes Protein einer der Sonden-Zellspezies in dem System endogen exprimiert.
8. Ein diagnostisches Kit, umfassend das Antikörper-Nachweissystem nach einem der Ansprüche 6 oder 7.
9. Das diagnostische Kit nach Anspruch 8, zur Verwendung in einem Verfahren nach einem der Ansprüche 1 bis 5.
10. Eine *in vitro* Verwendung des Verfahrens nach einem der Ansprüche 1 bis 5, oder des Antikörper-Nachweissystems nach einem der Ansprüche 6 oder

7, oder eines diagnostischen Kits nach Anspruch 8 oder 9, bei der Diagnose einer Krankheit, die durch das Vorhandensein einer oder mehrerer humaner Antikörperspezies in einer biologischen Probe eines zu diagnostizierenden Subjekts gekennzeichnet ist.

11. Ein *in vitro* Verfahren zur Entfernung einer humanen Antikörperspezies aus einer Probe, umfassend

a. Kontaktieren einer Probe, die vermutlich die Antikörperspezies enthält, mit einer nicht-humanen Fang-Zellspezies unter Bedingungen, die es der Antikörperspezies erlauben, an die Fang-Zellspezies zu binden und eine Fang-Zell-Antikörper-Komplex-Spezies zu bilden, und wobei die Fang-Zellspezies ein antigenes Protein mit einem antigenen Teil exprimiert oder in der Lage ist, zu exprimieren, der an die Antikörperspezies bindet oder durch diese gebunden zu werden, und

b. anschließend, Entfernen der Fang-Zell-Antikörper-Komplex-Spezies aus der Probe, um eine gereinigte Probe zu erhalten.

12. Das Verfahren nach Anspruch 11, wobei die Fang-Zellspezies Maus ist, oder wobei die Fang-Zellspezies das antigene Protein nicht endogen exprimiert.

13. Das Verfahren nach einem der Ansprüche 11 oder 12, wobei das Verfahren ferner umfasst:

c. Testen der gereinigten Probe auf das Vorhandensein von Antikörpern der humanen Antikörperspezies, wobei im Falle des Vorhandenseins von restlichen Antikörpern der zu entfernenden humanen Antikörperspezies die Verfahrensschritte (a) bis (b) und gegebenenfalls (c) wiederholt werden, bis die gereinigte Probe frei von jeglichen restlichen Antikörpern der humanen Antikörperspezies ist.

14. Das Verfahren nach Anspruch 13, wobei Schritt (c) ein Verfahren nach einem der Ansprüche 1 bis 6, oder einen konventionellen Antikörper-Screening-Assay umfasst.

15. Das Verfahren nach einem der Ansprüche 11 bis 14, wobei die zu entfernende humane Antikörperspezies ein Antikörper ist, der ein Blutgruppenantigen bindet, und wobei die Probe eine Serumprobe ist.

## Revendications

1. Procédé *in vitro* pour la détection d'une ou de plusieurs espèces d'anticorps humains dans un échantillon, le procédé comprenant

a. la mise en contact d'un échantillon suspecté

de contenir une ou plusieurs espèces d'anticorps humains avec une ou plusieurs espèces de cellules de vérification non humaines et un agent se liant aux anticorps,

i. l'agent se liant aux anticorps étant couplé à un premier marqueur détectable et étant capable de se lier aux anticorps humains, et  
ii. une cellule de vérification de l'espèce de cellule de vérification non humaine exprimant, ou étant capable d'exprimer, un second marqueur détectable et une protéine antigénique, la protéine antigénique comprenant une partie antigénique qui est capable de se lier à, ou est capable d'être liée par, un anticorps d'une ou de plusieurs espèces d'anticorps humains à détecter ; et

b. la détection de la présence d'un signal du premier marqueur détectable et du second marqueur détectable pour chaque cellule de vérification, la présence d'un signal du premier marqueur détectable et la présence d'un signal du second marqueur détectable indiquant la présence d'une ou plusieurs espèces d'anticorps humains dans l'échantillon.

2. Procédé *in vitro* pour la détection d'une ou de plusieurs espèces d'anticorps humains dans un échantillon, le procédé comprenant

a. la mise en contact d'un échantillon suspecté de contenir une ou plusieurs espèces d'anticorps humains avec une ou plusieurs espèces de cellules de vérification non humaines et un agent se liant aux anticorps,

i. l'agent se liant aux anticorps étant couplé à un premier marqueur détectable et étant capable de se lier aux anticorps humains, et  
ii. une cellule de vérification d'une espèce de cellule de vérification non humaine étant immobilisée à un emplacement prédéterminé sur un substrat solide, et la cellule de vérification exprimant, ou étant capable d'exprimer une protéine antigénique, la protéine antigénique comprenant une partie antigénique qui est capable de se lier à, ou est capable d'être liée par un anticorps d'une ou de plusieurs espèces d'anticorps humains à détecter ; et

b. la détection de la présence d'un signal du premier marqueur détectable pour chaque cellule de vérification immobilisée sur le substrat solide, dans lequel la présence d'un signal du premier marqueur détectable à un emplacement prédéterminé sur le substrat solide indique la présen-

- ce d'une ou de plusieurs espèces d'anticorps humains dans l'échantillon.
3. Procédé selon la revendication 1 ou 2, dans lequel l'espèce de cellule de vérification est une cellule qui n'exprime pas de manière endogène la protéine antigénique ni aucune autre protéine qui pourrait être liée par une ou plusieurs espèces d'anticorps à détecter, comme une cellule de souris, ou bien pas une cellule de mammifère, de manière préférée entre toutes une cellule d'invertébré, telle qu'une cellule d'insecte. 5
  4. Procédé selon l'une quelconque des revendications 1 à 3, dans lequel ledit premier marqueur détectable et le second marqueur détectable produisent des signaux reconnaissables. 10
  5. Procédé selon l'une quelconque des revendications 1 à 4, dans lequel ladite une ou plusieurs espèces d'anticorps humains est une espèce d'anticorps humains spécifique à un antigène de groupe sanguin, et dans lequel la protéine antigénique est l'antigène de groupe sanguin correspondant. 15
  6. Système de détection d'anticorps humains, comprenant une ou plusieurs espèces de cellules de vérification non humaines et un agent se liant aux anticorps, **caractérisé en ce que** l'agent se liant aux anticorps est couplé à un premier marqueur détectable et est capable de se lier aux anticorps humains, et chacune des une ou plusieurs espèces de cellules de vérification non humaines expriment ou sont capables d'exprimer une protéine antigénique distincte, dans lequel ladite protéine antigénique distincte comprend une partie antigénique distincte qui peut se lier à, ou est liée par, une espèce distincte d'anticorps humains à détecter, et un second marqueur détectable, dans lequel le second marqueur détectable est différent (c'est-à-dire se distingue de) de tout autre marqueur détectable d'autres espèces de cellules de vérification non humaines dans le système, et dans lequel un signal d'une seconde espèce de marqueur détectable dans le système indique la présence de la protéine antigénique correspondante dans la cellule de vérification. 20  
25  
30  
35  
40  
45
  7. Système de détection d'anticorps selon la revendication 6, dans lequel le système comprend deux, trois, quatre, cinq espèces de cellules de vérification non humaines ou plus, et dans lequel chaque espèce de cellule de vérification non humaine n'exprime de manière endogène aucune des protéines antigéniques de l'une quelconque des espèces de cellules de vérification dans le système. 50
  8. Kit de diagnostic, comprenant le système de détection d'anticorps selon l'une quelconque des revendications 6 ou 7. 55
  9. Kit de diagnostic selon la revendication 8, destiné à être utilisé dans un procédé selon l'une quelconque des revendications 1 à 5.
  10. Utilisation *in vitro* du procédé selon l'une quelconque des revendications 1 à 5, ou du système de détection d'anticorps selon l'une quelconque ou des revendications 6 ou 7, ou d'un kit de diagnostic selon la revendication 8 ou 9, dans le diagnostic d'une maladie qui est **caractérisée par** la présence d'une ou de plusieurs espèces d'anticorps humains dans un échantillon biologique d'un sujet à diagnostiquer.
  11. Procédé *in vitro* pour éliminer une espèce d'anticorps humains d'un échantillon, comprenant
    - a. la mise en contact d'un échantillon suspecté de contenir l'espèce d'anticorps avec une espèce de cellule à piégeage non humaine dans des conditions qui permettent à l'espèce d'anticorps de se lier à l'espèce de cellule à piégeage et de former une espèce complexe d'anticorps de cellule à piégeage, et dans lequel l'espèce de cellule à piégeage exprime, ou est capable d'exprimer, une protéine antigénique ayant une partie antigénique qui se lie à l'espèce d'anticorps ou peut être liée par celle-ci, et
    - b. par la suite, l'élimination de l'espèce complexe d'anticorps de cellule à piégeage de l'échantillon pour obtenir un échantillon purifié.
  12. Procédé selon la revendication 11, dans lequel l'espèce de cellule à piégeage est la souris, ou dans lequel l'espèce de cellule à piégeage n'exprime pas de manière endogène la protéine antigénique.
  13. Procédé selon l'une quelconque des revendications 11 ou 12, dans lequel le procédé comporte en outre :
    - c. le test de l'échantillon purifié pour la présence d'anticorps de l'espèce humaine, dans lequel, en cas de présence d'anticorps résiduels de l'espèce d'anticorps humains à éliminer, les étapes de procédé (a) à (b), et éventuellement (c), sont répétées jusqu'à ce que l'échantillon purifié soit dépourvu de tout anticorps résiduel de l'espèce d'anticorps humains.
  14. Procédé selon la revendication 13, dans lequel l'étape (c) comprend un procédé selon l'une quelconque des revendications 1 à 6, ou un test de dépistage d'anticorps conventionnel.
  15. Procédé selon l'une quelconque des revendications 11 à 14, dans lequel l'espèce d'anticorps humains à éliminer est un anticorps se liant à un antigène de groupe sanguin, et dans lequel l'échantillon est un

échantillon de sérum.

5

10

15

20

25

30

35

40

45

50

55

Figure 1:

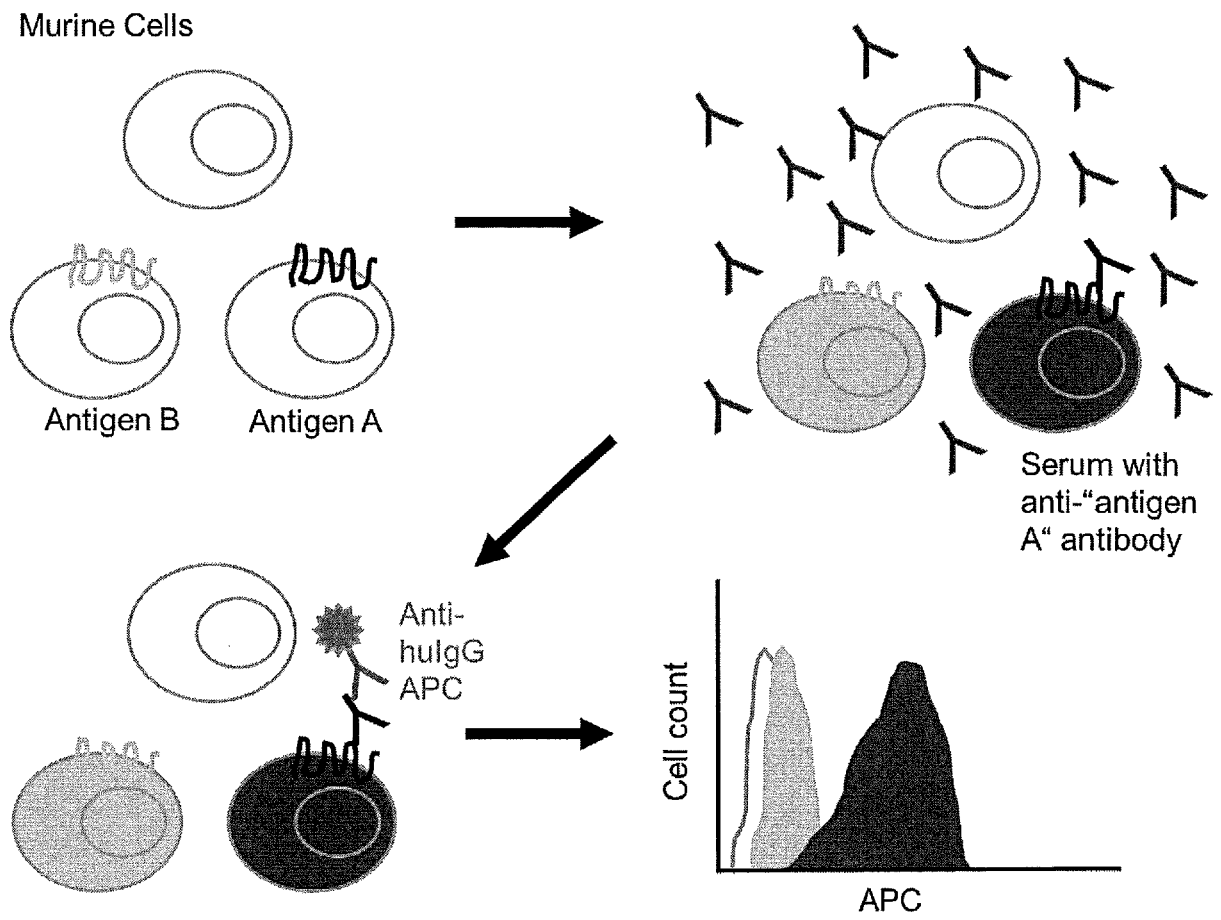
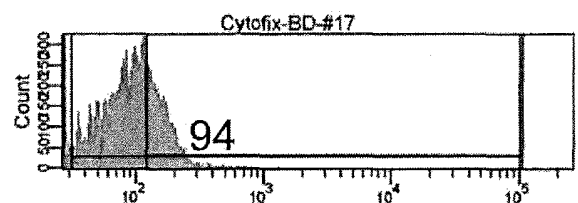
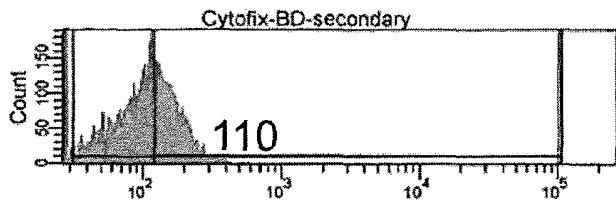
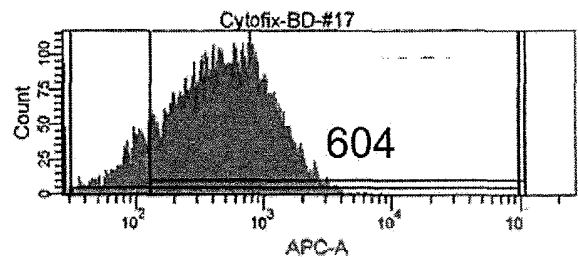
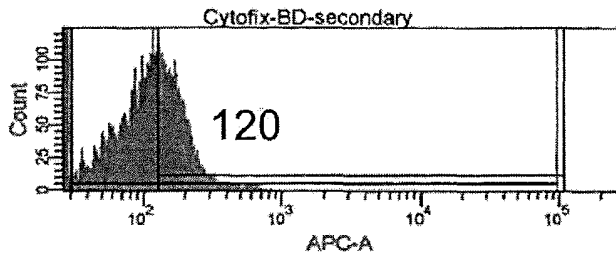
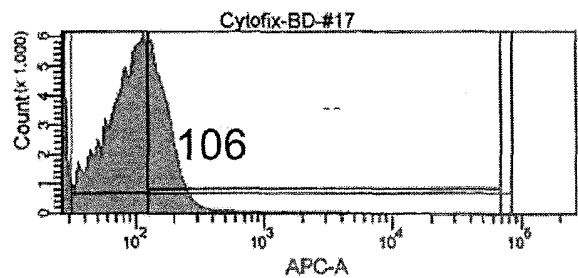
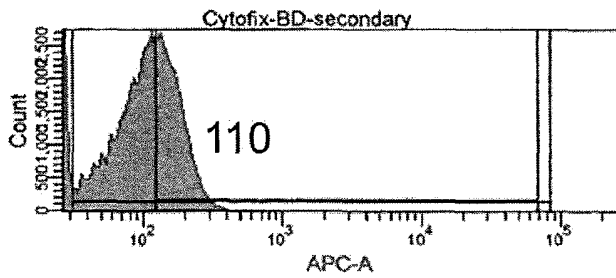


Figure 2:

Random blood donor serum (no anti-  
"antigen A" antibody), APC Mean

Serum from a patient with  
anti-"antigen A" antibody; APC Mean



Antigen A: Fy(a) from the Duffy blood group system

Figure 3:

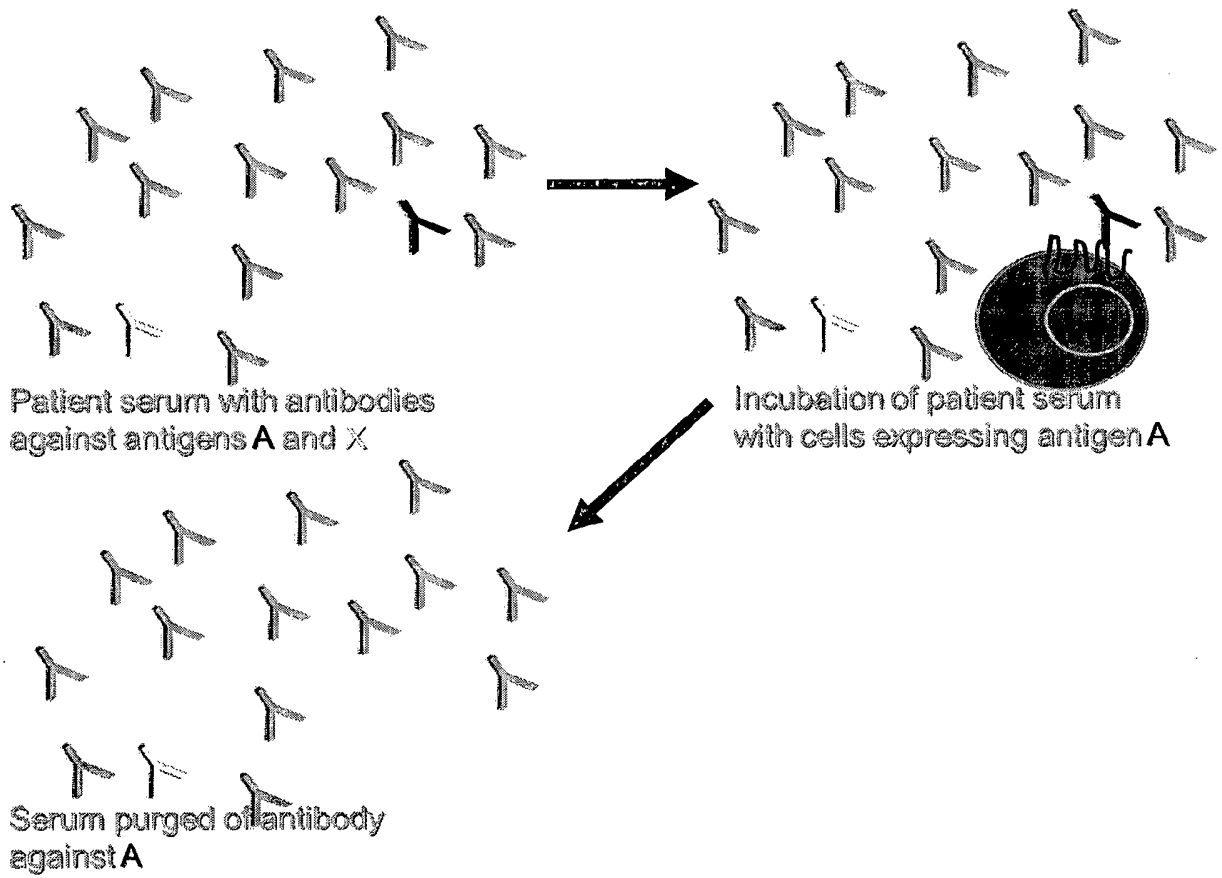
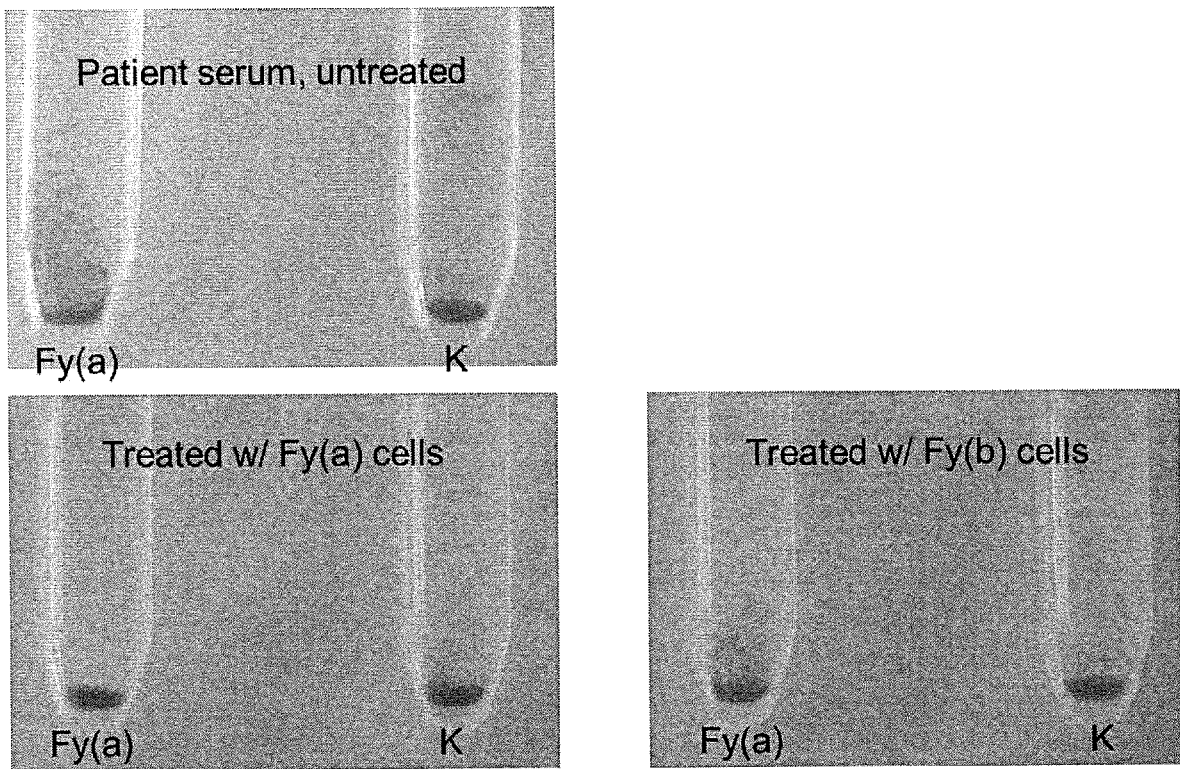


Figure 4:



**REFERENCES CITED IN THE DESCRIPTION**

*This list of references cited by the applicant is for the reader's convenience only. It does not form part of the European patent document. Even though great care has been taken in compiling the references, errors or omissions cannot be excluded and the EPO disclaims all liability in this regard.*

**Patent documents cited in the description**

- US 2007161056 A1 [0005]

专利名称(译)	抗体检测的方法和系统		
公开(公告)号	<a href="#">EP3262422B1</a>	公开(公告)日	2020-03-18
申请号	EP2016706602	申请日	2016-02-25
[标]申请(专利权)人(译)	DRK BLUTSPENDEDIENST巴符州HESSEN公益有限责任公司		
申请(专利权)人(译)	DRK-BLUTSPENDEDIENST巴登 - 符腾堡州 , HESSEN公益有限责任公司 约翰·沃尔夫冈·歌德法兰克福大学AM MAIN		
当前申请(专利权)人(译)	DRK-BLUTSPENDEDIENST巴登 - 符腾堡州 , HESSEN公益有限责任公司 约翰·沃尔夫冈·歌德法兰克福大学AM MAIN		
[标]发明人	BONIG HALVARD GEISEN CHRISTOF WIERCINSKA ELIZA JUSTYNA RYSCHKA NIKOLAS		
发明人	BÖNIG, HALVARD GEISEN, CHRISTOF WIERCINSKA, ELIZA JUSTYNA RYSCHKA, NIKOLAS		
IPC分类号	G01N33/53 G01N33/80 C07K16/34 B01D15/38 G01N33/50		
CPC分类号	B01D15/3809 C07K16/34 C07K2317/21 G01N33/5094 G01N33/80 G01N33/53		
优先权	2015156590 2015-02-25 EP		
其他公开文献	EP3262422A2		
外部链接	<a href="#">Espacenet</a>		

摘要(译)

本发明提供了一种用于检测样品，优选血清或血浆样品中一种或多种抗体种类的存在的方法。该方法对分析对红细胞，血小板或粒细胞表达的血型抗原敏感的患者特别有用。该系统使用对每种抗原（因此对每种抗体物种）具有特异性的荧光标记细胞。提供用于执行本发明的方法的方法，系统和诊断试剂盒。另外，本发明公开了从样品如血清样品中去除抗体的方法。这种方法可用于从多凝集血清中吸收抗体。

Figure 1:

