



(11) **EP 2 734 307 B1**

(12) **EUROPEAN PATENT SPECIFICATION**

(45) Date of publication and mention of the grant of the patent:  
**25.03.2020 Bulletin 2020/13**

(21) Application number: **12740854.0**

(22) Date of filing: **20.07.2012**

(51) Int Cl.:  
**B03C 1/01 (2006.01) G01N 33/49 (2006.01)**  
**G01N 33/53 (2006.01) G01N 33/58 (2006.01)**  
**B03C 1/28 (2006.01) G01N 33/574 (2006.01)**

(86) International application number:  
**PCT/US2012/047747**

(87) International publication number:  
**WO 2013/013222 (24.01.2013 Gazette 2013/04)**

(54) **ASSAY TO CAPTURE AND DETECT CIRCULATING MULTIPLE MYELOMA CELLS FROM BLOOD**

ASSAY ZUR ERFASSUNG UND ERKENNUNG EINER VIELZAHL ZIRKULIERENDER MYELOMZELLEN AUS BLUT

ESSAI POUR CAPTURER ET DÉTECTER DES CELLULES DE MYÉLOME MULTIPLE CIRCULANTES À PARTIR DE SANG

(84) Designated Contracting States:  
**AL AT BE BG CH CY CZ DE DK EE ES FI FR GB GR HR HU IE IS IT LI LT LU LV MC MK MT NL NO PL PT RO RS SE SI SK SM TR**

(30) Priority: **21.07.2011 US 201161510170 P**

(43) Date of publication of application:  
**28.05.2014 Bulletin 2014/22**

(73) Proprietor: **Menarini Silicon Biosystems S.p.A.**  
**40013 Castel Maggiore (BO) (IT)**

(72) Inventors:  
• **GROSS, Steven**  
**Ambler, PA 19002 (US)**  
• **CONNELLY, Mark, Carle**  
**Doylestown, PA 18902 (US)**  
• **RAO, Galla, Chandra**  
**Princeton Junction, NJ 08550 (US)**  
• **MATA, Marielena**  
**Philadelphia, PA 19143 (US)**  
• **MORANO, Carrie**  
**Huntingdon Valley, PA 19006 (US)**

(74) Representative: **Carpmaels & Ransford LLP**  
**One Southampton Row**  
**London WC1B 5HA (GB)**

(56) References cited:  
**WO-A1-99/41613 WO-A1-2008/031064**  
**WO-A2-2008/029290 US-A- 5 840 502**

**US-A1- 2011 269 638**

- **WITZIG T E ET AL: "T cell depletion using anti-CD2 coated magnetic beads simplifies the detection of peripheral blood plasma cells", JOURNAL OF IMMUNOLOGICAL METHODS, ELSEVIER SCIENCE PUBLISHERS B.V.,AMSTERDAM, NL, vol. 144, no. 2, 22 November 1991 (1991-11-22), pages 253-256, XP023992217, ISSN: 0022-1759, DOI: 10.1016/0022-1759(91)90093-U [retrieved on 1991-11-22]**
- **GUILLERM G ET AL: "P16INK4A AND P15INK4B GENES METHYLATION IN CD138 SELECTED PLASMA CELL FROM MONOCLONAL GAMMOPATHY OF UNDETERMINED SIGNIFICANCE", BLOOD, AMERICAN SOCIETY OF HEMATOLOGY, US, vol. 96, no. 11, PART 01, 16 November 2000 (2000-11-16), page 471A, XP009010439, ISSN: 0006-4971**
- **KUMAR S ET AL: "Immunophenotyping in multiple myeloma and related plasma cell disorders", BEST PRACTICE & RESEARCH CLINICAL HAEMATOLOGY, BAILLI GBP ERE TINDALL, AMSTERDAM, NL, vol. 23, no. 3, 1 September 2010 (2010-09-01), pages 433-451, XP027521905, ISSN: 1521-6926 [retrieved on 2010-09-01]**

Note: Within nine months of the publication of the mention of the grant of the European patent in the European Patent Bulletin, any person may give notice to the European Patent Office of opposition to that patent, in accordance with the Implementing Regulations. Notice of opposition shall not be deemed to have been filed until the opposition fee has been paid. (Art. 99(1) European Patent Convention).

**EP 2 734 307 B1**

- "CD138 expression on circulating myeloma cells: disease activity correlation", , 16 October 2009 (2009-10-16), XP055255880, Retrieved from the Internet:  
URL:[https://www.ibms.org/includes/act\\_download.php?download=pdf/Nov09-CD138.pdf](https://www.ibms.org/includes/act_download.php?download=pdf/Nov09-CD138.pdf) [retrieved on 2016-03-07]
- Régis Bataille ET AL: "The phenotype of normal, reactive and malignant plasma cells. Identification of many and multiple myelomas and of new targets for myeloma therapy", *Haematologica*, 1 January 2006 (2006-01-01), pages 1234-1240, XP055255938, Retrieved from the Internet:  
URL:<http://citeseerx.ist.psu.edu/viewdoc/download?doi=10.1.1.321.5570&rep=rep1&type=pdf> [retrieved on 2016-03-07]
- Ismail O Kara ET AL: "lasma", , 25 July 2004 (2004-07-25), XP055255966, Retrieved from the Internet:  
URL:<http://smj.org.sa/index.php/smj/article/viewFile/5035/2809> [retrieved on 2016-03-07]
- D KIM ET AL:  
"CD19-CD45low/-CD38high/CD138+ plasma cells enrich for human tumorigenic myeloma cells", *LEUKEMIA*, vol. 26, no. 12, 26 June 2012 (2012-06-26) , pages 2530-2537, XP055255964, US ISSN: 0887-6924, DOI: 10.1038/leu.2012.140

**Description****Related Applications**

- 5 **[0001]** This non-provisional filing claims priority to a provisional patent application, U.S. Patent Application Serial No. 61/510,170, filed on July 21, 2011.

**Background of the Invention**

10 **[0002]** Multiple Myeloma (also known as myeloma or plasma cell myeloma) is a progressive hematologic cancer of the plasma cell. The condition is characterized by excessive numbers of plasma cells in the bone marrow and overproduction of intact monoclonal immunoglobulin or free monoclonal light chains.

15 **[0003]** Clinically, the disease is diagnosed, staged, and treated based on a variety of parameters which include the myeloma tumor cell mass on the basis of the amount of monoclonal (or myeloma) protein (M protein) in the serum and/or urine, along with hemoglobin and serum calcium concentrations, the number of lytic bone lesions based on a skeletal survey, and the presence or absence of renal failure. Additional approaches to characterizing the condition include the detection of greater than ten percent (10%) of plasma cells on a bone marrow examination, the presence of soft tissue plasmacytomas and the detection of free kappa and lambda serum immunoglobulin light chain. Bone marrow examination is done using standard histology and immunohistochemistry techniques. Additional cytogenetics of bone marrow samples  
20 may be conducted to determine prognosis. Follow-up surveillance consists of chemistry and bone marrow evaluations, if clinically indicated due to its invasive nature.

**[0004]** Currently, flow cytometric analysis of bone marrow is being evaluated as a tool for disease characterization and to distinguish between neoplastic plasma cell disorders from normal plasma cells, and to detect minimal residual disease. Nonetheless, this approach continues to rely on an invasive procedure. There is significant need to develop  
25 less invasive techniques to detect, monitor and characterize the disease throughout its history and the presence of these cells in the blood may provide that opportunity.

**[0005]** In addition, more sensitive tools need to be developed for more accurate assessment of risk and monitoring for progression of disease in earlier stages of disease including monoclonal gammopathy of undetermined significance (MGUS) and Smoldering Multiple Myeloma. Some research data suggest that circulating plasma cells can be detected  
30 in earlier stages of disease and may correlate with prognosis, supporting the use of a standardized methodology to capture, enumerate and characterize these cells in earlier stages of disease.

**[0006]** The general consensus within the literature (Report of the European Myeloma Network on Multiparametric Flow Cytometry in Multiple Myeloma and Related Disorders. Andy C. Rawstron et al. Haematologica, 2008; 93 (3)) for the identification of abnormal plasma cells, particularly by flow cytometry, has included several key biomarkers consisting  
35 primarily of CD138, CD38 and CD45. Additional biomarkers such as CD19 and CD56 have also demonstrated utility in diagnosis.

**[0007]** The instant invention investigates circulating myeloma cells to evaluate whether these particular biomarkers either alone or in combination with one or more additional biomarkers or with FISH can be used for both the capture and detection of abnormal circulating plasma cells including detection of minimal residual disease. FISH can be used  
40 to detect numerous cytogenetic abnormalities that have been described in multiple myeloma. Translocations at the IGH locus, t(4;14), and deletions at the p53 locus, del(17p), have been shown to have prognostic value for event free and overall survival in multiple myeloma. (Genetic Abnormalities and Survival in Multiple Myeloma: The Experience of the InterGroupe Francophone du Myelome. Herve Avet-Loiseau et al. Blood, 2007; 109: 3489-3495). These probes and several other multiple myeloma markers are available in the Poseidon catalog and could be adapted for use with the  
45 CellTracks® platform.

**[0008]** Commercially there exist immunomagnetic selection kits using CD138 magnetic particles. Stem Cell Technologies has an EasySep® Human CD138 Positive Selection Kit which can select CD138 positive cells from bone marrow and peripheral blood mononuclear cells (PBMC) and Miltenyi Biotec has CD138 Microbeads for the selection of CD138  
50 positive cells from bone marrow, PBMC and whole blood. Analysis of collected samples is typically performed using flow cytometry.

WO 99/41613 A1 relates to methods for rapid and efficient isolation of circulating cancer cells.

**Summary of Invention**

- 55 **[0009]** The invention provides a method of capturing, isolating and analyzing circulating multiple myeloma cells in a sample of blood obtained from a test subject comprising: (a) contacting said sample with colloidal magnetic particles that are conjugated to a first ligand, which is anti-CD138, and a second ligand, which is anti CD-38; (b) subjecting the sample of step (a) to a magnetic field to produce a separated faction of magnetic particle-bound circulating multiple

myeloma cells; (c) treating the sample of step (b) with a first additional marker; and (d) analyzing circulating multiple myeloma cells.

**[0010]** The invention also provides a method of determining if a patient is a likely candidate for therapeutic intervention for diseases associated with abnormal plasma cells comprising: (a) processing said patient's blood to determine how many CMMC are in the sample, wherein processing comprises the method of the invention; and (b) determining by counting if the number of CMMCs present in said sample, is equal to or greater than or equal to the normal range.

**[0011]** The invention also provides a method of determining whether a patient undergoing therapeutic intervention is reducing the number of CMMCs, or for determining whether a patient who had a disease of abnormal plasma cells and has been successfully treated for such disease, remains in remission; the method comprising: (a) processing said patient's blood to determine how many CMMC are in sample at a first point in time, wherein processing comprises the method of the invention; (b) determining by counting if the number of CMMCs present in said sample, is equal to or greater than or equal to the normal range; (c) processing said patient's blood to determine how many CMMC are in sample at a second point in time, wherein processing comprises the method of the invention; and (d) determining by counting if the number of CMMCs present in said sample, is equal to or greater than or equal to the normal range; (e) comparing the numbers in steps (b) and (d).

**[0012]** The invention also provides a reagent for capturing circulating multiple myeloma cells comprising colloidal magnetic particles and at least two ligands, wherein the at least two ligands comprise anti-CD-138 and anti-CD-38.

**[0013]** Disclosed herein is a method for the capture and detection of circulating plasma cells (CPC) and abnormal plasma cells or Multiple Myeloma cells ("CMMC") including the detection of minimal residual disease from peripheral blood. Disclosed herein is a non-invasive means of detecting very low numbers of CMMCs in milliliter volumes of blood sample to detect, monitor and characterize the disease throughout its history, as well as provides the more sensitive tools for more accurate assessment of risk, and monitoring for progression of disease in earlier stages of disease including detecting circulating plasma cells in earlier stages of disease including monoclonal gammopathy of undetermined significance (MGUS) and Smoldering Multiple Myeloma. The capture and characterization of these circulating plasma cells from peripheral blood may provide novel biomarkers for the management of Multiple Myeloma patients.

**[0014]** Blood is collected in CellSave tubes which contains a preservative allowing for blood transport and storage while minimizing cell degradation. Cells are captured using colloidal magnetic particles conjugated to Syndecan-1 or CD138, a cell surface marker present on plasma cells. Once captured the cells are labeled with the additional cell markers CD38-PE (Phycoerythrin), CD19 and CD45-APC (allophycocyanin), and CD56-FITC (fluorescein isothiocyanate) in order to differentiate the Multiple Myeloma cells from background contaminating leukocytes (white blood cells). The ferrofluid and cell marker reagents are all part of a new CellSearch® CMMC service kit. The kit consists of 7 components of which 4 are identical to the reagents found in the Cellsearch® Epithelial Cell kit. These 4 common reagents are Capture Enhancement Reagent, Perm Reagent, Nucleic Acid Dye, and CellFix. The 3 new reagents consist of the CD138 Ferrofluid, a Staining Reagent consisting of CD38-PE, CD19 and CD45-APC and a separate marker staining reagent consisting of CD56-FITC.

### Brief Description of the Figures

#### [0015]

Figure 1 illustrates the reactivity of CD 138 antibodies with certain cell lines.

Figure 2 illustrates the reactivity of CD 38 antibodies with certain cell lines.

Figure 3 illustrates the reactivity of different CD19 APC antibodies testing on PBMC.

Figure 4 illustrates staining of CD 19 APC at various dilutions.

Figure 5 illustrates staining of CD 56 antibodies on PBMC.

Figure 6 illustrates staining of CD 56 staining on various cell lines.

Figure 7 illustrates staining without CD56.

Figure 8 illustrates CD 56 FITC staining of a cell line at a dilution.

Figure 9 illustrates CD 56 FITC staining of a cell line at a dilution.

Figure 10 illustrates CD 56 FITC staining of a cell line at a dilution.

Figure 11 illustrates representative images from MM 1S cells.

5 Figure 12 illustrates representative images from H929 cells.

Figure 13 illustrates representative images of carry-over white blood cells.

10 Figure 14 illustrates images of a patient sample.

Figure 15 illustrates images of a patient sample.

Figure 16 illustrates images of a patient sample.

15 Figure 17 illustrates images of a patient sample.

Figure 18 illustrates images from normal donors.

### Detailed Description

20 **[0016]** The invention includes a method of capturing, isolating and analyzing circulating multiple myeloma cells in a sample of blood obtained from a test subject comprising

25 (a) contacting said sample with colloidal magnetic particles that are conjugated to a first ligand, which is anti-CD138, and a second ligand, which is anti-CD38;

(b) subjecting the sample of step (a) to a magnetic field to produce a separated fraction of magnetic particle-bound circulating multiple myeloma cells

30 (c) treating the sample of step (b) with a first additional marker; and

(e) analyzing circulating multiple myeloma cells.

35 **[0017]** As used herein the term "sample" refers to an amount of blood, preferably expressed as a volumetric measurement. The preferred volume of a blood sample is about 2 mL to 10 mL, more preferably 3-7.5 mL, most preferably 4mL. The term "colloidal magnetic particles" refers to particles that are metallic or organometallic. Examples of such particles are disclosed in U.S. Pat. Nos. 5,597,531; 5,698,271; 5,698,271; 6,365,662, particularly for its description of such colloidal magnetic particles. They may be optionally coated with a polymer, preferably a polymer of biological origin such as bovine serum albumin and casein.

40 **[0018]** The term "ligand" refers to proteins that bind to cell associated markers of CMMCs. The preferred proteins are antibodies. The ligands are anti CD 138 and anti-CD 38. Such ligands may be conjugated to colloidal magnetic particles by methods that are substantially similar to the methods disclosed 6,365,662. Two or more ligands may be used in step (a) of the invention.

45 **[0019]** The term "magnetic field" may be produced by any of a number of methods, particularly by two magnetic separators substantially as described in U.S. Pat. No 7,901,950. The term "additional marker" means a cell associated protein that is specific for CMMC or excludes CMMCs. Such proteins include but are not limited to antibodies selected from the group consisting of anti CD19, and anti CD45, anti CD 56, anti lambda, anti kappa anti CD 200, anti Ki67. Such antibodies may be labeled with indicators such as phycoerythrin, fluorescein isothiocyanate, and allophycocyanin and it is preferable that they are labeled with one or more markers. Additional marker may include nucleic acid dyes such as DAPI. The preferred additional marker is selected from the group consisting of anti CD19 and anti CD45. Two or more additional markers may be used in step (c) of the invention and it is preferred that at least two additional markers are used, more preferably, three additional markers, most preferably four additional markers.

50 **[0020]** The term "analyzing" means evaluating the magnetically captured sample to determine one or more of the following: whether the sample contains CMMCs. Such identification may be conducted by visually or electronically to determine the degree of fluorescence of a magnetically captured samples. Such analysis methods are disclosed in U.S. Pat. No. 7,011,794. Particularly, magnetically captured samples that are positive for CD38 and negative for CD19 and CD45 are identified as CMMCs.

55 **[0021]** The invention includes a method of determining if a patient is a likely candidate for therapeutic intervention for

diseases associated with abnormal plasma cells comprising

(a) processing said patient's blood to determine how many CMMC are in the sample, wherein processing comprising the method of the invention; and

(b) determining by counting if the number of CMMC cells present in said sample, is equal to or greater than or equal to the normal range.

**[0022]** As used herein the terms sample has its aforementioned meaning and preferred range. The term "processing" means treating a sample of patient's blood by the methods described herein to isolate and identify CMMCs.

**[0023]** The term "therapeutic intervention" means seeking or obtaining any medical intervention for treating diseases associated with abnormal plasma levels. Such diseases include but are not limited to Multiply Myeloma, MGUS, and Smoldering Multiple Myeloma. Such therapeutic intervention includes but is not limited to visiting a physician, obtaining therapeutic treatment such as radiation, and treatment with of drugs that treat any of the diseases associated with abnormal plasma levels, and monitoring the effect of such therapeutic treatments. For example, if a patient is being treated with a drug, the patient's levels of CMMC may be assessed during the course of treatment to determine if the drug is working. Such drugs include, but are not limited to, Dexamethasone, cyclophosphamide, Vincristine, Bortezomib, Melphalan, Zometa, Aloxi, Lenalidomide, Doxorubicin, and the like.

**[0024]** The term "normal range" means the number of CMMC cells present in a sample population that does not have diseases associated with abnormal plasma cells. Preferably the normal range is less than 7 CMMCs in a blood sample of about 2 mL to about 10 mL. Preferably the normal range is less than 7 CMMCs in a blood sample of about 3 mL to about 7.5 mL. The term "greater than the normal range" is a number of CMMCs in excess of the normal range. The higher this number, the more likely it is that the patient either has one of the diseases associated with abnormal plasma cells. If a patient has between 8 and 20 CMMCs in a sample of blood such patient has a higher probability of having one of the diseases associated with abnormal plasma cells. If a patient has between 21 and 49 CMMCs the patient has an elevated level and is more likely to have one of the diseases associated with abnormal plasma cells, if a patient has between 50 and tens of thousands of CMMCs that patient has a highly elevated level and even more likely to have one of such diseases.

**[0025]** Yet still further, the invention includes a method of determining whether a patient undergoing therapeutic intervention is reducing the number of CMMCs, or for determining whether a patient who had a disease of abnormal plasma cells and has been successfully treated for such disease, remains in remission; the method comprising

(a) processing said patient's blood to determine how many CMMC are in sample at a first point in time, wherein processing comprises the method of the invention;

(b) determining by counting if the number of CMMCs present in said sample, is equal to or greater than or equal to the normal range;

(c) processing said patient's blood to determine how many CMMC are in sample at a second point in time, wherein processing comprises the method of the invention;

(d) determining by counting if the number of CMMCs present in said sample, is equal to or greater than or equal to the normal range; and

(e) comparing the numbers in steps (b) and (d).

**[0026]** All of the afore-defined terms have their same meaning and preferred range.

**[0027]** Still even further the invention includes a reagent for capturing circulating multiple myeloma cells comprising colloidal magnetic particles and at least two ligands, wherein the at least two ligands comprise anti-CD138 and anti-CD38.

**[0028]** All of the afore-defined terms have their same meaning and preferred ranges.

**[0029]** Circulating Multiple Myeloma Cells (CMMC), a form of abnormal plasma cells, captured from blood have been captured and analyzed using the CellTracks® AutoPrep® and CellTracks Analyzer II® System. In this procedure, a combination of capture reagent (ferrofluid) and fluorescent biomarkers (such as anti-CD38-Phycoerythrin (PE) antibody) and dyes (such as the nucleic acid dye DAPI) are used to identify abnormal plasma cells and to distinguish them from contaminating leukocytes and debris. CD138 or Syndecan-1 is a cell surface marker found on mature plasma cells and on plasma cell malignancies such as multiple myeloma but not on other normal peripheral blood leukocytes. For this reason anti-CD138 was coupled to ferrofluid, magnetic nanoparticles, which are used to magnetically select circulating plasma cells from a sample of peripheral blood. In order to detect the abnormal plasma cells from contaminating leukocytes

## EP 2 734 307 B1

several fluorescent biomarkers are used. Anti-CD38 is conjugated to phycoerythrin (PE) and is used as a positive marker for the detection of plasma cells. However since CD38 is also found on some types of leukocytes (activated T and B cells) the assay also uses allophycocyanine (APC) conjugated anti-CD45 and anti-CD19 conjugated to allophycocyanin (APC) as a negative marker. CD45 is a pan-leukocyte marker found on peripheral blood leukocytes and CD19 is a specific B cell marker. Myeloma cells are functionally differentiated B cells which do not express either CD45 or CD19. A final marker in this assay is anti-CD56 conjugated to fluorescein isothiocyanate (FITC). CD56 can be found on some peripheral leukocyte subsets such as NK cells but is also expressed on 75% of myeloma cells and is often associated with poorer patient prognosis. So while CD56 is neither a positive or negative marker for multiple myeloma its expression levels on cells can be monitored during patient drug therapy.

**[0030]** The assay was initially developed using cell lines such as RPMI 8226, H929 and MM.1S to evaluate different antibodies to the markers determined to be present on Multiple Myeloma cells which include CD138, CD38 and CD56. Since these cells lines were negative for CD45 and CD19, PBMC were used instead to evaluate those antibodies.

**[0031]** The enriched and stained cells were transferred to a CellTracks® cartridge and MagNest® for magnetic mounting. The cartridge was scanned using the CellTracks Analyzer II®. Individual images of cells were presented to the operator for review, and scored as CMMCs, based on fluorescence and cell morphology. In a model spike-in system the assay consistently recovered ~60% of the cells from the Multiple Myeloma cell line H929 spiked into 4.0mL of blood from healthy donors. The assay was linear over the tested range of from 0 to 2000 spiked H929 cells (r2 0.98, slope 0.50, intercept 10). The assay was validated using blood from age matched healthy donors (n=22) and patients with Multiple Myeloma (n=66) and MGUS (n=7). In 4.0mL blood from normal donors, 0 CPC were detected in 12/22 (55%) and low numbers (1-6 CPC) were detected in 10/22 (45%) samples. Interestingly, one CD56 positive CPC was found in a normal donor. CMMC in Multiple Myeloma patients ranged from 0 - 17,000 /4.0mL blood. One or more CMMC were detected in 91% of the patients, ≥ 5 in 68%, ≥ 10 in 58% and ≥ 100 in 35%. Expression of CD56 was highly variable in the patient population. CMMC in MGUS patients ranged from 0 - 112 /4.0mL blood. One or more CMMC were detected in 6/7 of the patients, > 5 in 4/6, > 10 in 2/6 and > 100 in 1/6.

**[0032]** To further characterize CMMC, and differentiate CPC from CMMC, an interphase fluorescent in situ hybridization (FISH) assay was developed to be used with the capture and detection system described above. A four color FISH probe was used to simultaneously detect high risk mutations. The following examples illustrate the invention

### Examples

#### Abbreviations

#### **[0033]**

PE-Phycoerythrin  
FITC-Fluorescein isothiocyanate  
APC-Allophycocyanin  
PBMC-peripheral blood mononuclear cell

#### Antibody Sources-

#### **[0034]** CD138:

Gen-Probe Diaclone SAS  
1 Bd A Fleming, BP 1985  
F-25020 Besancon Cedex, France  
CD38 and CD19  
R&D Systems  
614 McKinley Place N.E.  
Minneapolis, MN 55413

#### Example 1 Capture targets

**[0035]** Figure 1 shows that of the anti-CD138 antibodies tested for reactivity with the cell lines RPMI 8226, H929, and MM.1S, the best performing antibody was clone B-A38. The cell lines were first labeled with the different antibodies, which were all mouse anti-human antibodies, then subsequently labeled with an anti-mouse PE conjugate and analyzed by flow cytometry. Clone B-A38 gave the highest fluorescent staining on all the Multiple Myeloma cell lines.

**Example 2 Detection targets**

[0036] Figure 2 shows that of the anti-CD38 antibodies tested for reactivity with the cell lines RPMI 8226, H929, and MM.1S the best performing antibody was clone 240742. The cell lines were initially tested using a direct anti-CD38-FITC conjugate but the FITC conjugate was later found to be not sufficiently suitable for detection on the CellTracks® platform. A PE conjugate of this antibody was subsequently prepared and tested and found to be suitable for detection.

**Example 3 Dilution Determination**

[0037] Anti CD19 and anti-CD45, both as APC conjugates, were chosen as negative detection markers as the absence of both is indicative of abnormal plasma cells. Anti-CD45APC is already a component of the CellSearch® CTC staining reagent so no further optimization was necessary. And since none of the myeloma cell lines under evaluation expressed CD19, PBMC were used to evaluate the different anti-CD19APC clones. Results of anti-CD19 testing on PBMC can be seen in Figure 3. Staining was conducted according to the manufacturer's recommended protocols on PBMC collected from EDTA and CellSave tubes. Clone SJ25C1 was chosen as the best performing conjugate. The conjugate was then tested at various dilutions in the same reaction volumes used on AutoPrep®, Figure 4. A dilution of 1:5 was chosen as the final dilution for staining.

**Example 4 Staining CD56 and PBMC**

[0038] Anti-CD56 was chosen as a FITC marker reagent as it is expressed on 75% of myeloma cases with abnormal expression. Testing was conducted on cell lines (Figure 6) and PBMC (Figure 5) according to the manufacturer's recommended protocol. NCAM 16.2 was chosen as the best performing conjugate.

**Example 5 CD 56 FITC Dilutions**

[0039] The anti-CD56 FITC conjugate NCAM 16.2 was tested at various dilutions with H929 cells on AutoPrep®, see Figure 7-10. No clear dilution tested was best on the cell line. A dilution of 1:4 was chosen as the final dilution for staining until patient samples could be tested to help determine the optimum concentration.

**Example 6 Images**

[0040] A CMMC prototype kit was then constructed consisting of anti-CD138 ferrofluid, staining reagent consisting of anti-CD38 PE, anti-CD45 APC and anti-CD19 APC, and an anti-CD56 FITC marker reagent. The remaining components of the kit were Capture Enhancement Reagent (PN 7037), Permeabilization Reagent (PN 7038), Nucleic Acid Dye (PN 7041), and CellFix (PN 7042). The first round of testing used anti-CD138 ferrofluid at different concentrations. The final anti-CD38 PE concentration was set at 1µg/ml (staining reagent concentration of 5.7µg/ml) based on the previous flow data. Final anti-CD45 APC concentration was approximately 2µg/ml (staining reagent concentration of 13µg/ml - same as in the CellSearch® CTC Kit) and the stock anti-CD19 APC conjugate was diluted 1:5 in the staining reagent. Anti-CD56 FITC was used at a concentration of 1:4 in the marker reagent vial. H929 cells were spiked into 7.5mls of CellSave blood and processed on AutoPrep® at ferrofluid concentrations of 135, 185, 220, and 270µg/ml. Samples were then analyzed on the CellTracks Analyzer II® and the recovery of H929 cells reached a plateau of 55-60% at around 220µg/ml.

[0041] It was therefore decided that the final ferrofluid concentration in the kit would be 220µg/ml per 7.5ml blood sample which is similar to concentrations used in many other CellSearch® kits.

[0042] CellTracks® images of recovered H929 and MM.1S cells can be seen in Figures 11 and 12 respectively. Note the greater CD56 staining of H929 cells compared to the MM.1S cells. Carryover white blood cells (CD38+/CD45+) can be seen in Figure 13.

**Example 7 Patient Samples**

[0043] A total of 66 Multiple Myeloma patient samples were tested for CMMC. These samples were acquired from Conversant and originally 7.5 mLs of blood was tested using the CellTracks® CMMC service kit but as it became apparent that many samples had high numbers of CMMC a decision was made to reduce the volume of blood tested to 4mLs. Samples were processed on the CellTracks® AutoPrep® and then scanned on the CellTracks Analyzer II®. Figure 10 is a table of data generated from the patient blood samples. CMMC in Multiple Myeloma patients ranged from 0 - 17,000 /4.0mL blood. One or more CMMC were detected in 91% of the patients, ≥ 5 in 68%, ≥ 10 in 58% and ≥ 100 in 35%. Expression of CD56 was highly variable in the patient population. CMMC in MGUS patients ranged from 0 - 112 /4.0mL blood. One or more CMMC were detected in 6/7 of the patients, > 5 in 4/6, > 10 in 2/6 and > 100 in 1/6. Figures 14-17

## EP 2 734 307 B1

shows some representative CellTracks® images from patient samples.

Legend Table 1

- 5 **[0044]**  
Stage: A diagnostic classification of the extent and characteristics of myeloma cells comprising Stages I, II, and III. The number of cancers cells progresses from relatively few to moderate to relatively large as the Stages progress. Additional symptoms such as M protein, anemia, and serum calcium also increase as the Stages progress.  
Treatment status: Reflects the disease status and approach to treatment. Treatment type: Drug or radiation therapy.
- 10 Volume: Volume of peripheral blood processed on the CellSearch® System.  
Total events: Total number of CellTracks® browser images presented to the user for a manual classification of Multiple Myeloma cells.  
Total MM Cells (CD38+, CD19/45-): Total number of images from the total events that the user has determined to meet the criteria of a Multiple Myeloma (MM) cell. These cells are CD38 positive and CD19/45 negative.
- 15 CD38+, CD19/45-, CD56+: The number of Multiple Myeloma cells that were CD56 positive.  
CD38+, CD19/45-, CD56-: The number of Multiple Myeloma cells that were CD56 negative.  
Unassigned events: The total events minus the total MM cells, which were events the user classified as Multiple Myeloma cells. Unassigned events are a combination of white blood cells, computer noise, or other debris not classified as MM cells.

20

25

30

35

40

45

50

55

Table 1: Table of CMMC Multiple Myeloma Patient Samples

Sample	Gender/Age	Treatment Status	Treatment Type	Stage	Volume (mLs)	Total Events	Total MM Cells CD38+, CD45/19-	CD38+, CD45/19- CD56+	CD38+, CD45/19- CD56-	Unassigned Events
1	M/78	Active	Revlimid, Decadron	II	7.5	5491	1	1	0	5490
2	M/66	Active	Velcade, Doxil, Decadron	III	7.5	2118	4	3	1	2114
3	F/78	Refractory	Post Velcade, Doxil, Dexametha sone, Revlimid	III	7.5	3179	16	15	1	3163
4	M/61	Active	Revlimid, Doxil	III	7.5	33090	20681	19399	1282	12409
5	M/54	Pre	N/A	I	7.5	4387	6	0	6	4381
6	F/62	Active	Dexametha sone, Doxil, Velcade	II	7.5	6500	1931	1515	416	4569
7	F/63	Post	NA		4	20383	16814			3569
8	M/56	Active	Decadron	II	7.5	21091	17779	0	17779	3312
9	M/57	Active	Radiation		4	42388	16447	0	16447	25941
10	F/67	Active	Velcade	I	7.5	3879	11	10	1	3868
11	M/48	Active	Velcade, Decadron, Doxil	III	7.5	8664	2	1	1	8662
12	F/53	Active	Velcade	II	7.5	1102	3	2	1	1099
13	F/77	Active	Velcade, Dexametha sone	I	4	5104	23	8	15	5081
14	M/79	Active	Revalmid, Dexametha sone	III	4	2893	0	0	0	2893
15	F/68	Active	Cytosan	III	4	960	3	0	3	957
16	F/40	Active	Velcade	II	4	6937	5092	2213	2879	1845
17	F/41	Post	NA		4	760	0			760
18	M/76	Active	Velcade	II	4	1818	6	4	2	1812
19	M/53	Active	Dexametha sone	I	4	6966	3	0	3	6963
20	F/76	Active	Velcade	III	4	1630	26	4	22	1604

5  
10  
15  
20  
25  
30  
35  
40  
45  
50  
55

(continued)

Sample	Gender/Age	Treatment Status	Treatment Type	Stage	Volume (mLs)	Total Events	Total MM Cells CD38+, CD45/19-	CD38+, CD45/19- CD56+	CD38+, CD45/19- CD56-	Unassigned Events
21	F/79	Recurrent	NA	III	4	12834	5428	2451	2977	7406
22	F/80	Post	In between		4	9472	4	1	3	9468
23	F/80	Pre	NA		4	2408	145			2263
24	F/80	Pre	NA		4	1197	249			948
25	M/79	Active	Velcade	II	4	6792	788	68	720	6004
26	M/79	Active	Aloxi, Doxil, Vincristin		4	17128	103	18	85	17025
27	M/73	Post	NA		4	552	48	34	14	504
28	M/74	Post	NA		4	584	22	5	17	562
29	M/74	Post	NA		4	5293	13			5280
30	M/59	Active	Velcade, Doxil		4	2302	3	1	2	2299
31	F/60	Post	NA		4	1237	148	110	38	1089
32	F/60	Post	NA		4	4436	89	81	8	4347
33	F/61	Between	NA		4	1804	27			1778
34	F/61	Pre	NA		4	3941	99	27	72	3842
35	F/61	Active	Velcade		4	2126	14			2112
36	F/61	Active	Bortezomib		4	1289	7			1282
37	M/69	Active	Revlimid		4	934	38	26	12	896
38	F/69	Active	Cytoxan		4	890	12	0	12	878
39	F/72	Active	Doxil, Velcade		4	669	0	0	0	669
40	F/59	Active	Doxil, Velcade		4	4921	335	100	235	4586
41	F/59	Active	Doxil, Velcade		4	3098	221	37	184	2877
42	F/60	Active	Velcade		4	272	0	0	0	272
43	F/60	Active	Bortezomib		4	277	1			276
44	F/61	Active	Doxil, Velcade		4	2511	253	171	82	2258

5  
10  
15  
20  
25  
30  
35  
40  
45  
50  
55

(continued)

Sample	Gender/Age	Treatment Status	Treatment Type	Stage	Volume (mLs)	Total Events	Total MM Cells CD38+, CD45/19-	CD38+, CD45/19- CD56+	CD38+, CD45/19- CD56-	Unassigned Events
45	F/61	Active	Doxil, Velcade		4	933	215	46	169	718
46	F/61	Pre	NA		4	2264	95			2169
47	M/70	Active	Doxil, Melphalan		4	1300	0	0	0	1300
48	M/75	Active	Velcade		4	4658	2	0	2	4656
49	M/63	Post	NA		4	14448	1	0	1	14447
50	M/76	Post	Zometa		4	25095	2	1	1	25093
51	F/68	Post	Zometa		4	5099	5	0	5	5094
52	M/71	Active	Aloxi, Doxil, Vincristin		4	18684	49	9	40	18635
53	F/45	Active	Decadron and Revlimid		4	3285	0	0	0	3285
54	M/78	Post	NA		4	2182	16	0	16	2166
55	F/62	Active	Velcade		4	1481	15	11	4	1466
56	F/63	Pre	NA		4	5681	581			5100
57	F/63	Pre	NA		4	1530	389			1141
58	M/75	Pre	NA		4	14232	199	4	195	14033
59	F/63	Post	NA		4	9610	1	0	1	9609
60	M/79	Active	Radiation		4	4121	4121	0	4121	0
61	M/62	Post	NA		4	1494	8			1486
62	F/59	Active	Bortezomib		4	1956	398			1558
63	M/50	Active	Lenalidomide		4	1276	7			1269
64	M/62	Active	Doxirubicin		4	9470	1842			7628
65	M/60	Post	NA		4	1055	2	0	2	1053
66	M/53	Active	Bortezomib		4	813	376	131	244	437

**Example 8 Normal Subjects**

**[0045]** Twenty two age-matched normals were then tested as well. These samples were also acquired from Conversant and 4mls of blood was tested using the CellTracks® CMMC service kit. Samples were processed on the CellTracks® AutoPrep® and then scanned on the CellTracks Analyzer II®. Table 2 is a table of data generated from the 4ml blood samples. In 4.0mL blood from normal donors, 0 CPC were detected in 12/22 (55%) and low numbers (1-6 CPC) were detected in 10/22 (45%) samples. Interestingly, one CD56 positive CPC was found in a normal donor. See Figure 18. The average number of total browser events was approximately 1500.

**[0046]** To further characterize CMMC, and differentiate CPC from CMMC, an interphase fluorescent *in situ hybridization* (FISH) assay was developed to be used with the capture and detection system described above. A four color FISH probe was used to simultaneously detect high risk mutations including two recurrent translocations of the IgH locus (t(4;14)(p16;q32) and t(14;16)(q32;q23)) as well as deletion of the TP53 locus ( $\Delta$ 17p13). The FISH assay was verified on cell lines H929, MM1s, and U266, which showed mutations at t(4;14), t(14;16) and  $\Delta$ 17p13, respectively. The FISH assay was tested on 9 CMMC patient samples and 8 samples yielded evaluable results. Two samples showed t(4;14) fusions, 3 patients showed aberrant FISH signal patterns indicating aneuploidy of chromosome 4 or 14 and the remaining patients showed normal FISH patterns.

**Table 2: Table of CMMC from 4mls Age-Matched Normal Blood Donors**

Sample	Gender/Age	Volume (mLs)	Total Events	CD38+, CD45/19-CD56+	CD38+, CD45/19-CD56-	Unassigned Events
1	F/43	4	3281	0	1	2538
2	M/71	4	1939	0	0	759
3	F/54	4	3584	0	1	2794
4	F/61	4	399	0	0	102
5	F/70	4	645	0	0	114
6	F/60	4	526	0	0	273
7	F/49	4	273	0	0	80
8	F/55	4	2502	1	2	1559
9	M/47	4	811	0	1	209
10	F/55	4	1512	0	2	940
11	M/42	4	1032	0	0	485
12	F/54	4	576	0	0	287
13	M/44	4	6211	0	1	4742
14	F/55	4	1891	0	0	1182
15	M/43	4	1233	0	0	745
16	M/50	4	816	0	0	524
17	F/50	4	661	0	1	362
18	F/55	4	668	0	1	367
19	M/60	4	1621	0	0	696
20	F/58	4	414	0	0	249
21	F/60	4	2221	0	1	2220
22	M/51	4	762	0	6	756

**Example 9 Capture Using Anti-CD 38 and Anti CD 138 Patient Samples**

**[0047]** Anti CD138, the cell surface marker conjugated to colloidal magnetic particles used to capture myeloma cells in the present invention can be shed from the myeloma cell surface over time. CD38, a surface marker also present on

**EP 2 734 307 B1**

myeloma cells, does not undergo shedding from the cell surface. A magnetic nanoparticle was developed that was coupled to both anti-CD138 and anti-CD38 and tested with both patient samples and normal donors for the ability to capture myeloma cells. Anti-CD38 and anti CD 138 both conjugated to phycoerythrin (PE), and both recognizing a different epitopes than the anti CD38 and anti-CD 138 used in making the magnetic nanoparticle, was used for detection along with anti- CD45 and anti-CD19 conjugated to allophycocyanin (APC).

**[0048]** A total of 22 Multiple Myeloma patient samples were tested for CMMC using the alternate capture reagent. These samples were acquired from Conversant and 4mls were processed on the CellTracks® AutoPrep® and then scanned on the CellTracks Analyzer II®. Table 3 is a table generated from the patient samples. CMMC in Multiple Myeloma patients ranged from 0-2244/4.0mL blood. One or more CMMC were detected in 82% of patients, ≥ 5 in 64%, ≥ 10 in 59%, and ≥ 100 in 23%.

Table 3: of CMMC from Multiple Myeloma Patients

Sample	Total Events	CD38+, CD 138+CD19/45-Cells	Unassigned Events
1	19065	737	18328
2	5420	433	4987
3	6098	12	6086
4	7680	22	7658
5	26561	2244	24317
6	7682	52	7630
7	18621	63	18558
8	14889	111	14778
9	7039	13	7026
10	12608	15	12593
11	9708	2	9706
12	34273	5	34268
13	21771	182	21589
14	7097	0	7097
15	2988	3	2985
16	7936	1	7935
17	10879	69	10810
18	4990	0	4990
19	6153	12	6141
20	4248	0	4248
21	13757	0	13757
22	3334	1	3333

**Example 9 Capture Using Anti-CD 38 and Anti CD 138 Normal Samples**

**[0049]** Twelve normal donors were then tested as well, using the same kit configuration as Example 8. These samples were in house donors and 4mLs of blood was processed on the CellTracks® AutoPrep® and then scanned on the CellTracks Analyzer II®. Table 4 is a table generated from the 4mL blood samples. In 4.0mL blood from normal donors, 0 CPC were detected in 5/12 (42%) and low numbers (1-3 CPC) were detected in 7/12 (58%) of samples.

Table 4 of CPC from Normal Donors

Sample	Total Events	CD38+CD 138+, CD19/45- Cells	Unassigned Events
1	7120	2	7118

## EP 2 734 307 B1

(continued)

Sample	Total Events	CD38+CD 138+, CD19/45- Cells	Unassigned Events
2	13075	3	13072
3	9208	3	9205
4	29057	3	29054
5	20525	1	20526
6	19619	2	19617
7	6004	1	6003
8	14456	0	14456
9	8528	0	8528
10	7966	0	7966
11	17311	0	17311
12	5924	0	5924

### Claims

1. A method of capturing, isolating and analyzing circulating multiple myeloma cells in a sample of blood obtained from a test subject comprising

(a) contacting said sample with colloidal magnetic particles that are conjugated to a first ligand, which is anti-CD138, and a second ligand, which is anti-CD38;

(b) subjecting the sample of step (a) to a magnetic field to produce a separated faction of magnetic particle-bound circulating multiple myeloma cells;

(c) treating the sample of step (b) with a first additional marker; and

(d) analyzing circulating multiple myeloma cells.

2. The method of claim 1 wherein the sample has a volume of about 2 mL to about 10 mL, of about 3 mL to about 7.5 mL, or of about 4 mL.

3. The method of claim 1 wherein said colloidal magnetic particles are conjugated to more than two ligands, optionally wherein one of the ligands is anti-CD56.

4. The method of claim 1 wherein said first additional marker is selected from the group consisting of DAPI, anti-CD38, anti-CD19, and anti-CD45 anti-CD138, anti-CD56, anti-lambda, anti-kappa anti-CD200, anti-Ki67.

5. The method of claim 1 further comprising contacting the sample of step (b) with a second additional marker, optionally (i) wherein said second additional marker is selected from the group consisting of anti-CD19, anti-CD45, and DAPI.

6. The method of claim 5 further comprising contacting the sample of step (b) with a third additional marker, optionally wherein said third additional marker is selected from the group consisting of anti-CD19, anti-CD45, and DAPI.

7. The method of claim 6 further comprising contacting the sample of step (b) with a fourth additional marker, optionally wherein the fourth additional marker is anti-CD45.

8. The method of claim 1 further comprising contacting the sample of step (b) with four or more additional markers.

9. A method of determining if a patient is a likely candidate for therapeutic intervention for diseases associated with abnormal plasma cells comprising

(a) processing said patient's blood to determine how many CMMC are in the sample, wherein processing comprises the method of any of claims 1-8; and

(b) determining by counting if the number of CMMCs present in said sample, is equal to or greater than or equal to the normal range.

5 10. The method of claim 9 wherein the normal range of CMMCs in a patient sample is less than 7 CMMCs in about 2 mL to 10 mL of blood.

11. The method of claim 9 further comprising recommending therapeutic intervention if the number of CMMCs is greater than 8 in about 2 mL to about 10 mL of blood.

10 12. A method of determining whether a patient undergoing therapeutic intervention is reducing the number of CMMCs, or for determining whether a patient who had a disease of abnormal plasma cells and has been successfully treated for such disease, remains in remission; the method comprising

15 (a) processing said patient's blood to determine how many CMMC are in sample at a first point in time, wherein processing comprises the method of any of claims 1-8;

(b) determining by counting if the number of CMMCs present in said sample, is equal to or greater than or equal to the normal range;

(c) processing said patient's blood to determine how many CMMC are in sample at a second point in time, wherein processing comprises the method of any of claims 1-8; and

20 (d) determining by counting if the number of CMMCs present in said sample, is equal to or greater than or equal to the normal range;

(e) comparing the numbers in steps (b) and (d).

25 13. A reagent for capturing circulating multiple myeloma cells comprising colloidal magnetic particles and at least two ligands, wherein the at least two ligands comprise anti-CD138 and anti-CD38.

#### Patentansprüche

30 1. Verfahren zum Einfangen, Isolieren und Analysieren von zirkulierenden Multiples-Myelom-Zellen in einer Probe von Blut, die aus einer Testsubjekt erhalten wurde, umfassend

35 (a) Inkontaktbringen der Probe mit kolloidalen Magnetpartikeln, die an einen ersten Liganden, bei dem es sich um Anti-CD138 handelt, und einen zweiten Liganden, bei dem es sich um Anti-CD38 handelt, konjugiert sind;

(b) Aussetzen der Probe von Schritt (a) an ein Magnetfeld, um eine getrennte Fraktion von Magnetpartikelgebundenen zirkulierenden Multiples-Myelom-Zellen herzustellen;

(c) Behandeln der Probe von Schritt (b) mit einem ersten zusätzlichen Marker; und

(d) Analysieren von zirkulierenden Multiples-Myelom-Zellen.

40 2. Verfahren nach Anspruch 1, wobei die Probe ein Volumen von etwa 2 ml bis etwa 10 ml, von etwa 3 ml bis etwa 7,5 ml oder von etwa 4 ml aufweist.

45 3. Verfahren nach Anspruch 1, wobei die genannten kolloidalen Magnetpartikel an mehr als zwei Liganden konjugiert sind, wobei optional einer der Liganden Anti-CD56 ist.

4. Verfahren nach Anspruch 1, wobei der erste zusätzliche Marker aus der Gruppe bestehend aus DAPI, Anti-CD38, Anti-CD19 und Anti-CD45, Anti-CD138, Anti-CD56, Anti-Lambda, Anti-Kappa, Anti-CD200, Anti-Ki67 ausgewählt ist.

50 5. Verfahren nach Anspruch 1, ferner umfassend das Inkontaktbringen der Probe von Schritt (b) mit einem zweiten zusätzlichen Marker, wobei (i) der zweite zusätzliche Marker optional aus der Gruppe bestehend aus Anti-CD19, Anti-CD45 und DAPI ausgewählt ist.

55 6. Verfahren nach Anspruch 5, ferner umfassend das Inkontaktbringen der Probe von Schritt (b) mit einem dritten zusätzlichen Marker, wobei der dritte zusätzliche Marker optional aus der Gruppe bestehend aus Anti-CD19, Anti-CD45 und DAPI ausgewählt ist.

7. Verfahren nach Anspruch 6, ferner umfassend das Inkontaktbringen der Probe von Schritt (b) mit einem vierten zusätzlichen Marker, wobei der vierte zusätzliche Marker optional Anti-CD45 ist.

## EP 2 734 307 B1

8. Verfahren nach Anspruch 1, ferner umfassend das Inkontaktbringen der Probe von Schritt (b) mit vier oder mehr zusätzlichen Markern.
- 5 9. Verfahren zum Bestimmen, ob ein Patient ein wahrscheinlicher Kandidat für eine therapeutische Intervention bei Krankheiten ist, die mit abnormalen Plasmazellen assoziiert sind, umfassend
- 10 (a) Verarbeiten des Patientenbluts, um zu bestimmen, wie viele CMMC in der Probe sind, wobei das Verarbeiten das Verfahren nach beliebigen der Ansprüche 1-8 umfasst; und  
(b) Bestimmen durch Zählen, ob die Anzahl der in der Probe vorhandenen CMMCs gleich oder größer oder gleich dem normalen Bereich ist.
- 15 10. Verfahren nach Anspruch 9, wobei der normale Bereich von CMMCs in einer Patientenprobe weniger als 7 CMMCs in etwa 2 ml bis 10 ml Blut beträgt.
- 15 11. Verfahren nach Anspruch 9, ferner umfassend das Empfehlen einer therapeutischen Intervention, wenn die Anzahl an CMMCs in etwa 2 ml bis etwa 10 ml Blut größer als 8 ist.
- 20 12. Verfahren zum Bestimmen, ob bei einem Patienten, der sich einer therapeutischen Intervention unterzieht, die Anzahl von CMMCs verringert wird, oder zum Bestimmen, ob ein Patient, der eine Krankheit abnormaler Plasmazellen hatte und erfolgreich wegen einer solchen Krankheit behandelt wurde, in Remission bleibt; wobei das Verfahren Folgendes umfasst
- 25 (a) Verarbeiten des Patientenbluts, um zu bestimmen, wie viele CMMC zu einem ersten Zeitpunkt in der Probe sind, wobei das Verarbeiten das Verfahren nach beliebigen der Ansprüche 1 bis 8 umfasst;  
(b) Bestimmen durch Zählen, ob die Anzahl der in der Probe vorhandenen CMMCs gleich oder größer oder gleich dem normalen Bereich ist;  
(c) Verarbeiten des Patientenbluts, um zu bestimmen, wie viele CMMC zu einem zweiten Zeitpunkt in der Probe sind, wobei das Verarbeiten das Verfahren nach beliebigen der Ansprüche 1 bis 8 umfasst; und  
(d) Bestimmen durch Zählen, ob die Anzahl der in der Probe vorhandenen CMMCs gleich oder größer oder  
30 gleich dem normalen Bereich ist;  
(e) Vergleichen der Zahlen in den Schritten (b) und (d).
- 35 13. Reagenz zum Einfangen von zirkulierenden Multiples-Myelom-Zellen, umfassend kolloidale Magnetpartikel und mindestens zwei Liganden, wobei die mindestens zwei Liganden Anti-CD138 und Anti-CD38 umfassen.

### Revendications

- 40 1. Méthode de capture, d'isolement et d'analyse de cellules de myélome multiple circulantes, dans un échantillon de sang obtenu auprès d'un sujet à tester, comprenant les étapes consistant à
- 45 (a) mettre en contact ledit échantillon avec des particules magnétiques colloïdales qui sont conjuguées à un premier ligand, qui est un anti-CD138, et un deuxième ligand, qui est un anti-CD38 ;  
(b) soumettre l'échantillon de l'étape (a) à un champ magnétique afin de produire une fraction séparée de cellules de myélome multiple circulantes, liées aux particules magnétiques ;  
(c) traiter l'échantillon de l'étape (b) par un premier marqueur supplémentaire ; et  
(d) analyser les cellules de myélome multiple circulantes.
- 50 2. Méthode selon la revendication 1, dans laquelle l'échantillon possède un volume allant d'environ 2 ml à environ 10 ml, d'environ 3 ml à environ 7,5 ml, ou d'environ 4 ml.
3. Méthode selon la revendication 1, dans laquelle lesdites particules magnétiques colloïdales sont conjuguées à plus de deux ligands, éventuellement où l'un des ligands est un anti-CD56.
- 55 4. Méthode selon la revendication 1, dans laquelle ledit premier marqueur supplémentaire est choisi dans le groupe constitué par le DAPI, un anti-CD38, un anti-CD19, et un anti-CD45, un anti-CD138, un anti-CD56, un anti-lambda, un anti-kappa, un anti-CD200, un anti-Ki67.

## EP 2 734 307 B1

5. Méthode selon la revendication 1, comprenant en outre la mise en contact de l'échantillon de l'étape (b) avec un deuxième marqueur supplémentaire, éventuellement (i) où ledit deuxième marqueur supplémentaire est choisi dans le groupe constitué par un anti-CD19, un anti-CD45, et le DAPI.
- 5 6. Méthode selon la revendication 5, comprenant en outre la mise en contact de l'échantillon de l'étape (b) avec un troisième marqueur supplémentaire, éventuellement où ledit troisième marqueur supplémentaire est choisi dans le groupe constitué par un anti-CD19, un anti-CD45, et le DAPI.
- 10 7. Méthode selon la revendication 6, comprenant en outre la mise en contact de l'échantillon de l'étape (b) avec un quatrième marqueur supplémentaire, éventuellement où le quatrième marqueur supplémentaire est un anti-CD45.
8. Méthode selon la revendication 1, comprenant en outre la mise en contact de l'échantillon de l'étape (b) avec quatre, ou plus, marqueurs supplémentaires.
- 15 9. Méthode de détermination si un patient est un candidat potentiel pour une intervention thérapeutique dans le cas de maladies associées à des cellules plasmatiques anormales, comprenant les étapes consistant à
- (a) traiter le sang dudit patient afin de déterminer combien de CMMC se trouvent dans l'échantillon, où le traitement comprend la méthode selon l'une quelconque des revendications 1-8 ; et
- 20 (b) déterminer par comptage si le nombre de CMMC présentes dans ledit échantillon est égal, ou supérieur ou égal, à la plage normale.
10. Méthode selon la revendication 9, dans laquelle la plage normale de CMMC dans un échantillon issu d'un patient est inférieure à 7 CMMC dans environ 2 ml à 10 ml de sang.
- 25 11. Méthode selon la revendication 9, comprenant en outre la recommandation d'une intervention thérapeutique si le nombre de CMMC est supérieur à 8 dans environ 2 ml à environ 10 ml de sang.
- 30 12. Méthode consistant à déterminer si un patient subissant une intervention thérapeutique voit son nombre de CMMC se réduire, ou à déterminer si un patient qui a souffert d'une maladie à cellules plasmatiques anormales et qui a été traité avec succès contre une telle maladie, reste en rémission ; la méthode comprenant les étapes consistant à
- (a) traiter le sang dudit patient afin de déterminer combien de CMMC se trouvent dans l'échantillon au niveau d'un premier point dans le temps, où le traitement comprend la méthode selon l'une quelconque des revendications 1-8 ;
- 35 (b) déterminer par comptage si le nombre de CMMC présentes dans ledit échantillon est égal, ou supérieur ou égal, à la plage normale ;
- (c) traiter le sang dudit patient afin de déterminer combien de CMMC se trouvent dans l'échantillon au niveau d'un deuxième point dans le temps, où le traitement comprend la méthode selon l'une quelconque des revendications 1-8 ; et
- 40 (d) déterminer par comptage si le nombre de CMMC présentes dans ledit échantillon est égal, ou supérieur ou égal, à la plage normale ;
- (e) comparer les nombres dans les étapes (b) et (d).
- 45 13. Réactif de capture de cellules de myélome multiple circulantes comprenant des particules magnétiques colloïdales et au moins deux ligands, dans lequel les au moins deux ligands comprennent un anti-CD138 et un anti-CD38.
- 50
- 55

Figure 1: CD138 Staining on Cell Lines H929, MM.1S and RPMI 8226

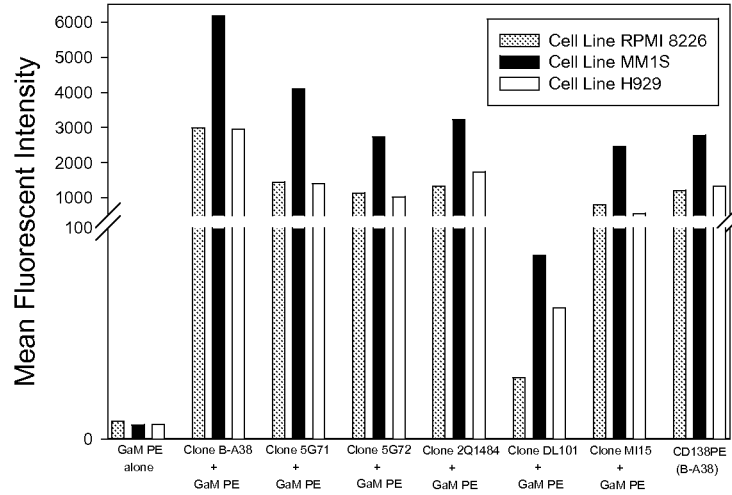


Figure 2: CD38 FITC and PE Staining on Cell Lines RPMI 8226, H929, and MM.1S

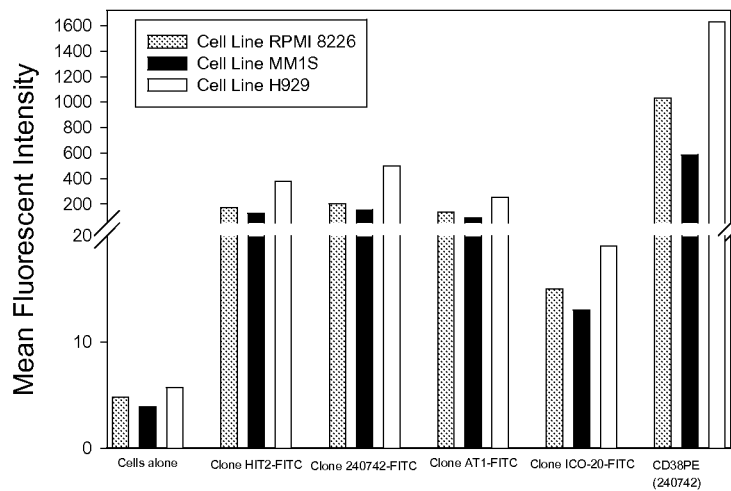
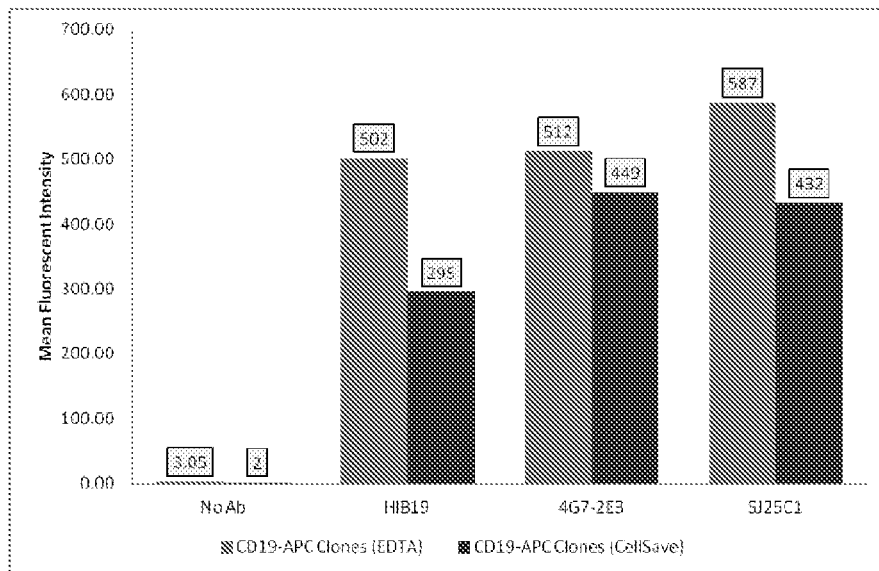
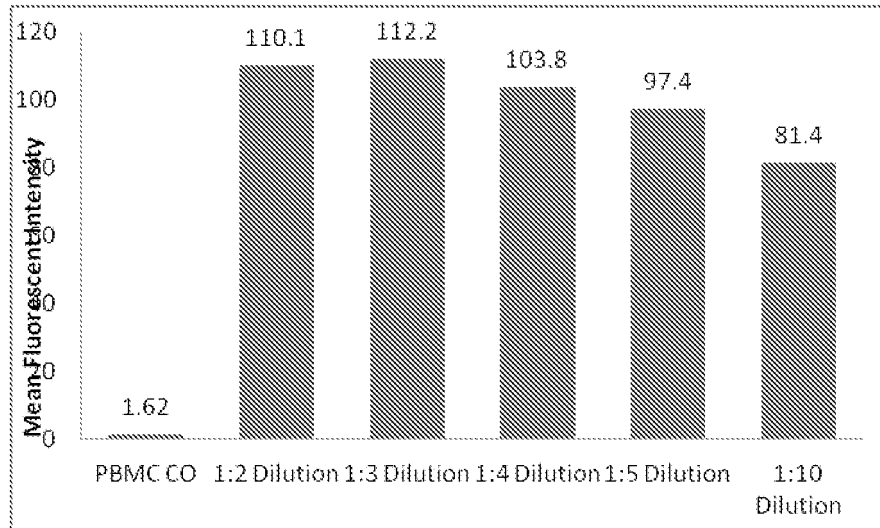


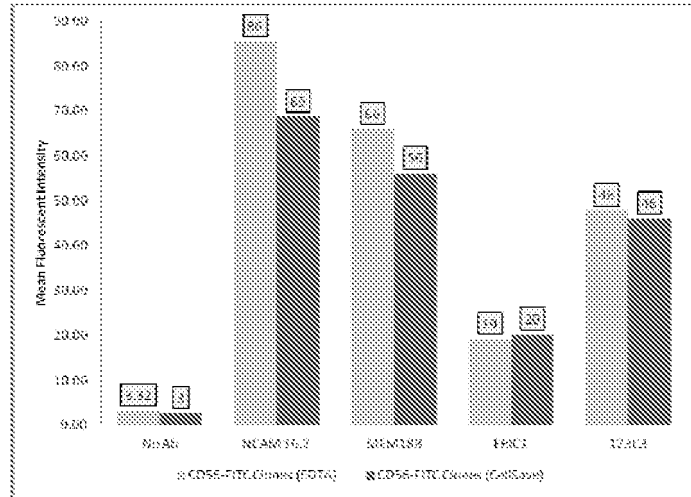
Figure 3: CD19 APC Staining on PBMC



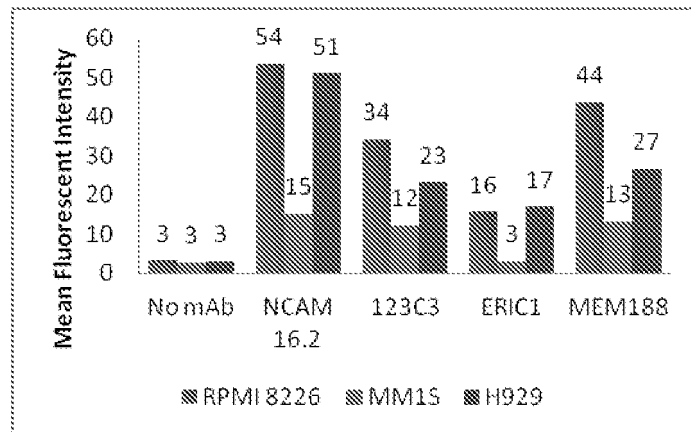
**Figure 4: CD19 APC Staining of PBMC at Various Dilutions**



**Figure 5: CD56 FITC Staining on PBMC**

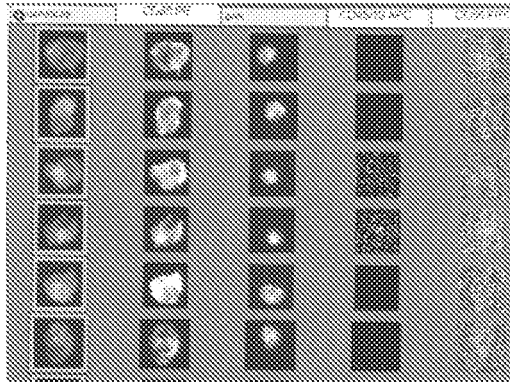


**Figure 6: CD56 FITC Staining on Cell Lines**



**Figure 7 CD56 FITC Staining of H929 Cells at Various Dilutions**

**No CD56 FITC**



**Figure 8**

**1:5 Dilution of CD56 FITC**

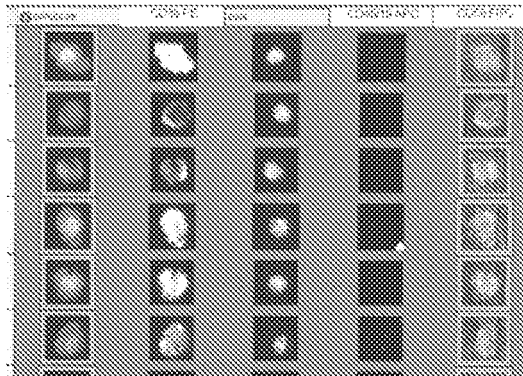


Figure 9

1:4 Dilution of CD56 FITC

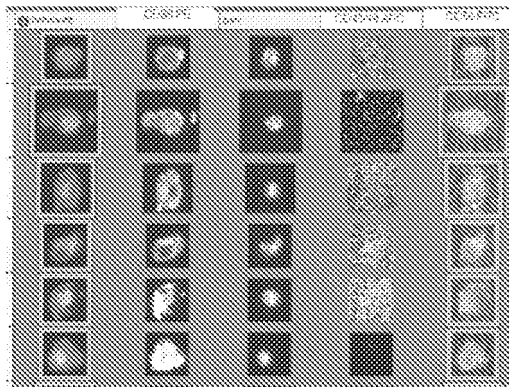


Figure 10

1:3 Dilution of CD56 FITC

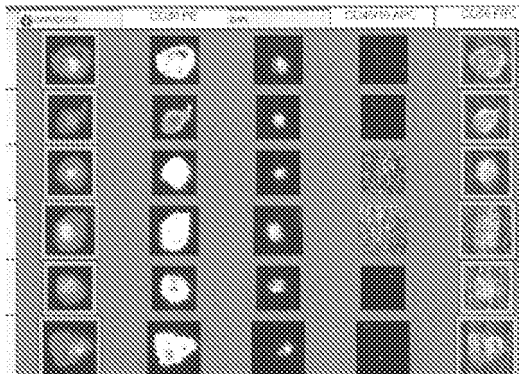


Figure 11: CellTracks® Images of Cell Lines H929 and MM.1S Recovered from CellSave Blood

MM.1S Cells

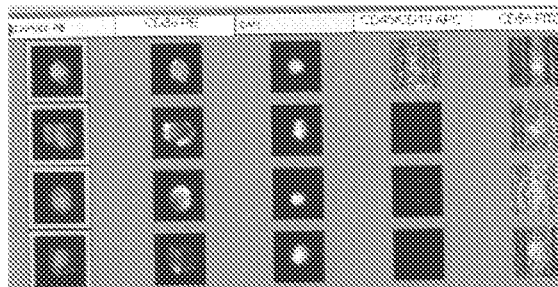
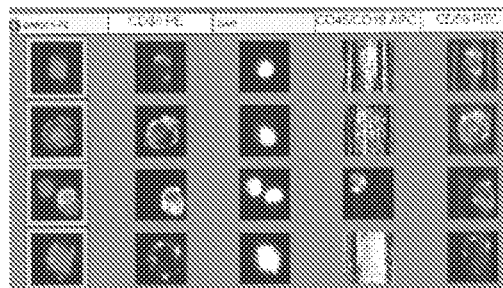


Figure 12

H929 cells



**Figure 13: CellTracks® Images of Carry-Over White Blood Cells from CellSave Blood**

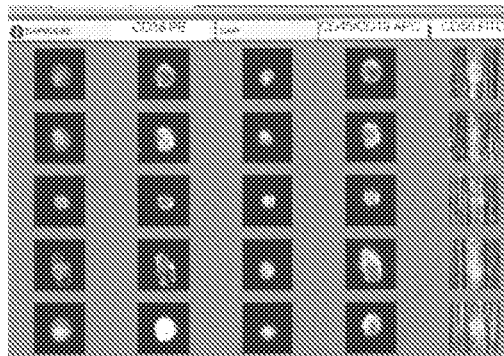


Figure 14: CellTracks® Images of Multiple Myeloma Patient Samples

Sample Number: 7

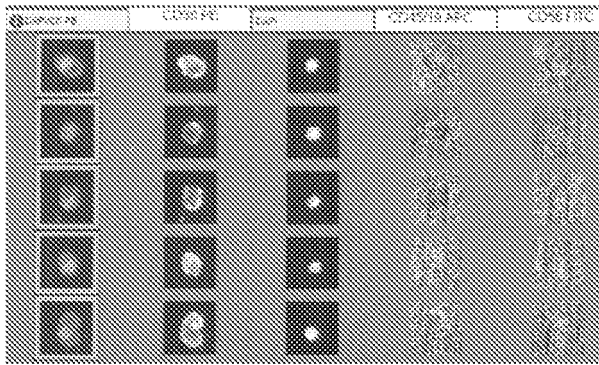


Figure 15

Sample Number: 8

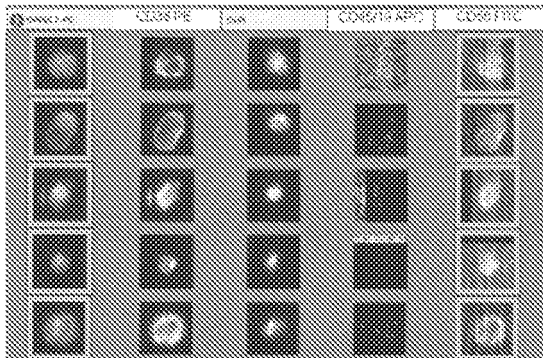


Figure 16:

Sample Number: 4

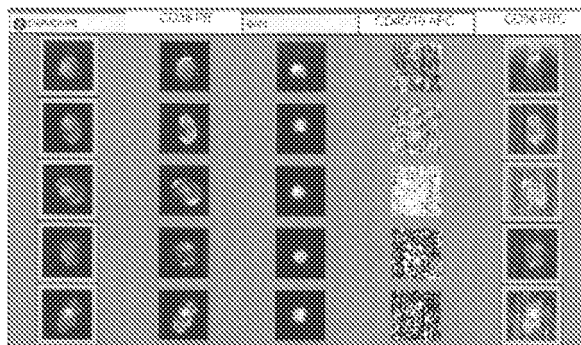


Figure 17

Sample Number: 6

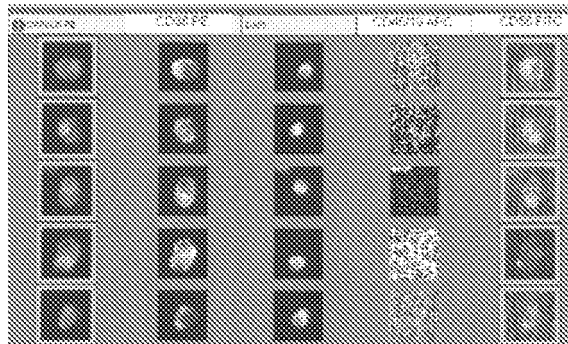
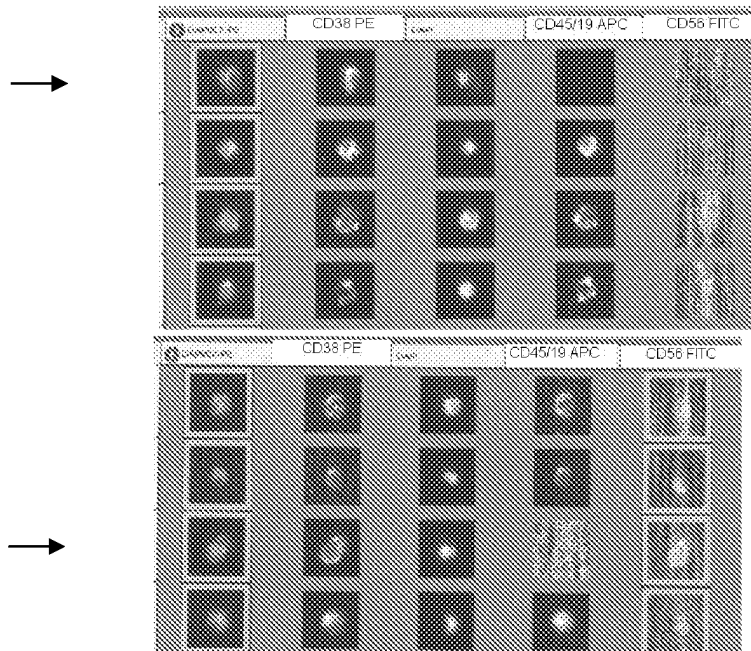


Figure 18: CellTracks® Images (Arrows) of CD38+, CD45/19- Cells from Normals



**REFERENCES CITED IN THE DESCRIPTION**

*This list of references cited by the applicant is for the reader's convenience only. It does not form part of the European patent document. Even though great care has been taken in compiling the references, errors or omissions cannot be excluded and the EPO disclaims all liability in this regard.*

**Patent documents cited in the description**

- US 61510170 [0001]
- WO 9941613 A1 [0008]
- US 5597531 A [0017]
- US 5698271 A [0017]
- US 6365662 B [0017]
- US 7901950 B [0019]
- US 7011794 B [0020]

**Non-patent literature cited in the description**

- **ANDY C. RAWSTRON et al.** Report of the European Myeloma Network on Multiparametric Flow Cytometry in Multiple Myeloma and Related Disorders. *Hæmatologica*, 2008, vol. 93 (3 [0006]
- **HERVE AVET-LOISEAU et al.** Genetic Abnormalities and Survival in Multiple Myeloma: The Experience of the InterGroupe Francophone du Myelome. *Blood*, 2007, vol. 109, 3489-3495 [0007]

专利名称(译)	检测和检测血液中多种循环骨髓细胞的实验		
公开(公告)号	<a href="#">EP2734307B1</a>	公开(公告)日	2020-03-25
申请号	EP2012740854	申请日	2012-07-20
[标]申请(专利权)人(译)	詹森诊断器材有限责任公司		
申请(专利权)人(译)	JANSSEN诊断, LLC		
当前申请(专利权)人(译)	MENARINI硅BIOSYSTEMS S.P.A.		
[标]发明人	GROSS STEVEN CONNELLY MARK CARLE RAO GALLA CHANDRA MATA MARIELENA MORANO CARRIE		
发明人	GROSS, STEVEN CONNELLY, MARK, CARLE RAO, GALLA, CHANDRA MATA, MARIELENA MORANO, CARRIE		
IPC分类号	B03C1/01 G01N33/49 G01N33/53 G01N33/58 B03C1/28 G01N33/574		
CPC分类号	B03C1/01 B03C1/28 B03C2201/26 G01N33/57426 G01N33/57492		
优先权	61/510170 2011-07-21 US		
其他公开文献	EP2734307A1		
外部链接	<a href="#">Espacenet</a>		

摘要(译)

本发明包括分离循环的多发性骨髓瘤细胞的方法以及治疗怀疑患有异常浆细胞疾病的患者的方法。

Figure 1: CD138 Staining on Cell Lines H929, MM.1S and RPMI 8226

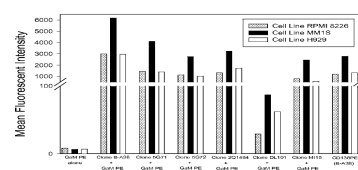


Figure 2: CD38 FITC and PE Staining on Cell Lines RPMI 8226, H929, and MM.1S

