



(11) **EP 1 511 859 B1**

(12) **EUROPEAN PATENT SPECIFICATION**

(45) Date of publication and mention of the grant of the patent:  
**10.10.2007 Bulletin 2007/41**

(21) Application number: **03725431.5**

(22) Date of filing: **22.05.2003**

(51) Int Cl.:  
**C12Q 1/68** (2006.01) **C07K 16/28** (2006.01)  
**G01N 33/53** (2006.01) **A61K 39/395** (2006.01)  
**A61P 7/00** (2006.01)

(86) International application number:  
**PCT/GB2003/002208**

(87) International publication number:  
**WO 2003/097875 (27.11.2003 Gazette 2003/48)**

(54) **DIAGNOSIS OF ABNORMAL BLOOD CONDITIONS BASED ON POLYMORPHISMS IN THE GLYCOPROTEIN VI GENE**

DIAGNOSE ABNORMALER BLUTZUSTÄNDE BASIEREND AUF POLYMORPHISMEN DES GLYCOPROTEIN VI GENS

DIAGNOSTIC DE CONDITIONS SANGUINES ANORMALES FONDE SUR DES POLYMORPHISMES DANS LE GENE DE LA GLYCOPROTEINE VI

(84) Designated Contracting States:  
**AT BE BG CH CY CZ DE DK EE ES FI FR GB GR HU IE IT LI LU MC NL PT RO SE SI SK TR**

(30) Priority: **22.05.2002 GB 0211750**

(43) Date of publication of application:  
**09.03.2005 Bulletin 2005/10**

(73) Proprietor: **Ouwehand, Willem**  
**Cambridge CB2 2PT (GB)**

(72) Inventors:  
• **Ouwehand, Willem**  
**Department of Haematology**  
**Cambridge CB2 2PT (GB)**  
• **Smethurst, Peter, Alexander**  
**Cambridge CB3 8SD (GB)**  
• **Farnsdale, Richard, Willam**  
**Cambridge CB2 5DU (GB)**

(74) Representative: **Thornton, Neil**  
**Reddie & Grose,**  
**16 Theobalds Road**  
**London WC1X 8PL (GB)**

(56) References cited:  
**WO-A-99/50281** **US-B1- 6 383 779**

- **FURIHATA K ET AL: "Variation in human platelet glycoprotein VI content modulates glycoprotein VI-specific prothrombinase activity" ARTERIOSCLER THROMB VASC BIOL, vol. 21, no. 11, November 2001 (2001-11), pages 1857-63, XP002249921 cited in the application**
- **KUNICKI TJ: "The influence of platelet collagen receptor polymorphisms in hemostasis and thrombotic disease" ARTERIOSCLER THROMB VASC BIOL, vol. 22, no. 1, January 2002 (2002-01), pages 14-20, XP002249922**
- **CROFT S ET AL: "Novel platelet membrane glycoprotein VI dimorphism is a risk factor for myocardial infarction" CIRCULATION, vol. 104, no. 13, September 2001 (2001-09), pages 1459-63, XP002249923**
- **JOUTSI-KORHONEN L ET AL: "The low-frequency allele of the platelet collagen signaling receptor glycoprotein VI is associated with reduced functional responses and expression" BLOOD, vol. 101, no. 11, June 2003 (2003-06), pages 4372-79, XP002249924**

Note: Within nine months from the publication of the mention of the grant of the European patent, any person may give notice to the European Patent Office of opposition to the European patent granted. Notice of opposition shall be filed in a written reasoned statement. It shall not be deemed to have been filed until the opposition fee has been paid. (Art. 99(1) European Patent Convention).

**EP 1 511 859 B1**

## Description

**[0001]** This invention relates to the diagnosis of abnormal blood conditions, in particular to diagnosis of an increased risk of bleeding.

**[0002]** Glycoprotein VI (GPVI) plays a crucial role in platelet activation and aggregation. Deficiency of GPVI is associated with a mild bleeding phenotype and a major reduction in the response to collagen on platelets (Moroi *et al*, 1989). GPVI is a 63 kDa type I transmembrane platelet glycoprotein and is the major signalling receptor for collagen on platelets (Watson *et al*, 2001). The mature GPVI protein consists of 319 amino acids, the first 185 encoding two immunoglobulin (Ig)-like C2 type folds, a highly glycosylated stem of 64 amino acids, an arginine containing 19 amino acid transmembrane domain and a 51 amino acid cytoplasmic domain (Clemetson *et al*, 1999). Collagen binds GPVI via the two tandem Ig-like domains and clustering of GPVI upon interaction with collagen results in signalling via the  $\gamma$  chain of the Fc $\epsilon$ R.

**[0003]** The GPVI gene has multiple alleles, but two of these are frequently used in Caucasians: GPVI<sup>a</sup> and GPVI<sup>b</sup>. The cDNA sequences of these alleles are shown in Figure 8, and the cDNA sequence and translation of the GPVI<sup>a</sup> allele is shown in Figure 7. The proteins encoded by the GPVI<sup>a</sup> and GPVI<sup>b</sup> alleles differ by five amino acids. Three of these are in the stem (S219P, K237E, T249A), and two are in the cytoplasmic domain (Q317L and H322N). Croft *et al*, 2001, have reported that homozygosity for the 'b' allele encoding P219 (referred to as T13254C by Croft *et al*, 2001) is associated with an increased risk of myocardial infarction, particularly in older female individuals.

**[0004]** Collagen related peptide (CRP, a triple-helical peptide containing a glycine-proline-hydroxyproline repeat motif) acts specifically via GPVI to activate platelets, and results in a signalling cascade very similar to that evoked by native collagen (Kehrel *et al*, 1998; Knight *et al*, 1999). We observed a significant inter-individual variation in the platelet aggregation response to CRP, and measurement of the GPVI expression in 89 Caucasoids with a recombinant human antibody showed a three-fold variation. We postulated that these differences may be associated with the presence of different GPVI alleles. To address this question we performed a high resolution single nucleotide polymorphism (SNP) map of the GPVI gene from 188 chromosomes. This confirmed the presence of two frequently used alleles with frequencies of 0.85 (allele 'a', wild-type allele) and 0.13 (allele b, low frequency allele) (recent studies have found the frequencies to be 0.79 and 0.18, respectively), together with a number of rare alleles which most likely arose by conversion and crossing-over. Genotyping of 1153 Caucasians for all 5 amino acid replacement mutations resulted in the identification of 28 normal donors homozygous for the low frequency allele.

**[0005]** We compared GPVI expression between donors homozygous for these two alleles and observed that the most common allele, encoding SKTQH (n=7 matched donors homozygous for the minor allele PEALN), showed a significantly higher GPVI expression. The difference in GPVI expression was associated with an approximately ten-fold difference in the dose-response to CRP. This difference although less prominent was confirmed when collagen type I (ethicon) was used to induce aggregation and in thrombin generation assays. Not surprisingly the difference was reflected in several events downstream of GPVI activation, including  $\alpha$  granule release as measured by expression of P selectin, and binding of fibrinogen and annexin V.

**[0006]** The observation that the GPVI<sup>bb</sup> genotype is associated with less responsive platelets is surprising in the light of the work by Croft *et al* (2001) reporting a link between this allele and myocardial infarction.

**[0007]** According to the invention there is provided a method of diagnosing whether a subject has, or is at risk of, an abnormal blood condition associated with an increased risk of bleeding which comprises determining the GPVI allelotype of the subject to determine whether the subject is homozygous or heterozygous for the GPVI<sup>b</sup> allele.

**[0008]** Platelets of subjects who are homozygous for the GPVI<sup>b</sup> allele have a reduced ability to respond to CRP and to induce thrombin generation. Such individuals are thought to have an increased risk of bleeding. It is also possible that subjects who are heterozygous for the GPVI<sup>b</sup> allele have an increased risk of bleeding.

**[0009]** The GPVI allelotype of the subject may be determined by any suitable method. In a preferred method, one or more single nucleotide polymorphisms (SNPs) which are distinctive of a GPVI allele are detected for (suitably by genotyping of nucleic acid, preferably DNA, encoding GPVI) in order to determine the GPVI allelotype. Preferably the or each SNP which is detected for is selected from the five SNPs which give rise to amino acid differences between the protein expression products of the GPVI<sup>a</sup> and GPVI<sup>b</sup> alleles (there are other SNPs of the GPVI gene which are not associated with amino acid changes). The five SNPs are at positions 655, 709, 745, 950, and 964 of the GPVI cDNA sequence (these correspond to positions 13010, 19570, 22524, 23246, and 23260 of the GPVI genomic sequence, respectively, and positions 199, 217, 229, 297, and 302 of the amino acid sequence, respectively (see Table 4), or positions 219, 237, 249, 317, and 322 of the amino acid sequence, respectively, if the signal peptide is included (see Figure 7)). Figure 7 shows the wild-type GPVI (GPVI<sup>a</sup>) cDNA sequence and translation - the SNPs that encode amino acid substitutions are marked. The cDNA sequences of the GPVI<sup>a</sup> and GPVI<sup>b</sup> alleles are shown in Figure 8. The GPVI<sup>a</sup> allele contains T at 655, A at 709, A at 745, A at 950, and C at 964. The GPVI<sup>b</sup> allele contains C at 655, G at 709, G at 745, T at 950, and A at 964. The amino acids encoded by the SNPs at positions 655, 709, 745, 950, and 964 of the GPVI cDNA sequence are at positions 219, 237, 249, 317, and 322 of the GPVI amino acid sequence (see Figure 7). The GPVI<sup>a</sup> allele protein expression product contains S at 219, K at 237, T at 249, Q at 317, and H at 322. The GPVI<sup>b</sup>

allele protein expression product contains P at 219, E at 237, A at 249, L at 317, and N at 322.

**[0010]** From the study reported in the Example 1 below, the distribution of GPVI allelotypes in Caucasians was calculated to be 65% (755/1153) GPVI<sup>aa</sup>, 25% (288/1153) GPVI<sup>ab</sup>, 2% (23/1153) GPVI<sup>bb</sup>, and 7% (80/1153) rare alleles (shown schematically in Figure 11). The rare alleles are thought to have arisen from conversion or crossing over. The existence of rare alleles means that a test in which a single SNP distinctive of the GPVI<sup>a</sup> or GPVI<sup>b</sup> alleles is detected for to determine whether the subject has a GPVI<sup>aa</sup>, GPVI<sup>ab</sup>, or GPVI<sup>bb</sup> allelotype would give a false result for a subject with a rare allelotype. Because the frequency of rare alleles was found to be 7% in the Caucasoid population examined, the accuracy of such a test may be considered to be unacceptably low for clinical use. In order to increase the accuracy of the test, it is necessary to test for more than one SNP. Most preferably, all five SNPs which give rise to amino acid differences between the protein expression products of the GPVI<sup>a</sup> and GPVI<sup>b</sup> alleles are detected for.

**[0011]** In the study reported in Example 2 below, an additional 183 individuals (1127 Caucasians, 63 Koreans, 40 South African blacks, 40 Ethiopians and 40 Curacao) were investigated to fully characterise variation in GPVI. Based on the typing of the core panel of 1,127 Caucasoid it was concluded that for a reliable assignment of a GPVI core haplotype of 5 non-synonymous SNPs, testing on at least two SNPs is required. An over 99.5% reliability of haplotype assignment can be achieved when testing is performed at position T13010C (S199P) and at position A23246T (Q297L). Thus, where the subject is a Caucasian, preferably at least two SNPs which are distinctive of the GPVI<sup>b</sup> allele are detected for. Preferably the SNPs are at positions 13010 and 23246 of the genomic sequence.

**[0012]** There is a high level of haplotype diversity in several non-Caucasoid populations. SNP typing at preferably all 5 replacement mutations is required for a reliable assignment of the haplotype in many of these other populations, i.e. South African blacks, Ethiopian blacks, Dutch Antilles and several Far Eastern populations. Thus, where the subject is non-Caucasian, preferably all 5 SNPs which are distinctive of the GPVI<sup>b</sup> allele and give rise to amino acid differences between the protein expression products of the GPVI<sup>a</sup> and GPVI<sup>b</sup> alleles are detected for.

**[0013]** We have also observed that there is in Caucasians a poor correlation between the SNP at position C-154T (Promoter mutation) and the core haplotype as defined by T13010C (S199P) and A23246T (Q297L). The former (C-154T) should not, therefore, be used to reliably predict expression levels of GPVI.

**[0014]** Detection for the, or each SNP may be carried out using any suitable method. Suitable *in vitro* methods of SNP detection known to those of ordinary skill in the art include real-time PCR, fluorimetric analysis, restriction enzyme analysis, restriction fragment length polymorphism (RFLP), single strand conformation polymorphism (SSCP), or use of a probe (preferably a labelled probe) which hybridises specifically to a region of nucleic acid which includes an SNP, use of a micro array comprising a probe which hybridises specifically to a region of nucleic acid which includes an SNP, and sequencing of nucleic acid.

**[0015]** SNPs may be detected for in genomic DNA, RNA (for example platelet mRNA or total RNA), cDNA, or nucleic acid amplified from genomic DNA, RNA, or cDNA. Nucleic acid amplification may be carried out using any suitable method, for example the PCR, ligase chain reaction, or 3SR methods.

**[0016]** In other methods for determining GPVI allelotype, the presence of a protein product encoded by a GPVI allele may be detected for. This may be achieved by use of an antibody, or fragment or derivative thereof, specific for the protein expression product. An antibody, or fragment or derivative, is specific for a protein expression product of a GPVI allele if it can be used to distinguish one GPVI allele expression product from another. Preferably the antibody, or fragment or derivative thereof, is able to distinguish the GPVI<sup>a</sup> and GPVI<sup>b</sup> allele protein expression products.

**[0017]** Specific antibodies may be obtained by use of a polypeptide with an amino acid sequence corresponding to the sequence of a region of a GPVI allele protein expression product which includes an amino acid residue encoded by an SNP distinctive of the GPVI allele. Preferably the polypeptide includes an amino acid sequence corresponding to a region which includes any of the following positions of the GPVI<sup>a</sup> or GPVI<sup>b</sup> allele protein expression product: 219, 237, 249, 317 and 322. Preferably the polypeptide is 4-100, more preferably 7-50 amino acids in length.

**[0018]** In other methods, the presence of the protein expression product of a GPVI allele may be detected for on the basis of its molecular weight, for example by using comparative electrophoretic mobility or mass spectrometry, or using isoelectric focusing. It is possible that the molecular weight of the two allele protein expression products may vary due to differences in glycosylation, in particular the GPVI<sup>a</sup> allele product may be heavier than the GPVI<sup>b</sup> allele product as a result of two potential extra O-glycosylation sites present in the GPVI<sup>a</sup> allele product. The allele protein expression products also differ in charge, because of the polymorphism at position 217.

**[0019]** In further methods, the GPVI allelotype of the subject may be determined by measuring the total expression of GPVI in platelets of the subject. The level of expression of the GPVI<sup>b</sup> allele is much lower than the GPVI<sup>a</sup> allele. Expression could be measured, for example by Western blotting using the antibodies 10B12 and 1C3 (described in Example 3 below) as described in Joutsi-Korhonen et al (Blood, Jan 30, 2003). An advantage of such methods is that specific antibodies able to distinguish the GPVI<sup>a</sup> and GPVI<sup>b</sup> allele protein expression products are not required.

**[0020]** According to the invention there is also provided an antibody specific for a protein expression product of a GPVI<sup>a</sup> allele, or fragment or derivative thereof. There is also provided an antibody specific for a protein expression product of a GPVI<sup>b</sup> allele, or fragment or derivative thereof. Such antibodies can be used in a method of the invention

for diagnosing whether a subject has, or is at risk of, an abnormal blood condition associated with an increased risk of bleeding.

**[0021]** There is also provided according to the invention an abnormal blood condition diagnosis kit which comprises means for determining the GPVI allelotype of a subject to determine whether the subject is homozygous or heterozygous for the GPVI<sup>b</sup> allele, wherein the abnormal blood condition is associated with an increased risk of bleeding.

**[0022]** The invention also provides a kit for diagnosing whether a subject has, or is at risk of, an abnormal blood condition associated with an increased risk of bleeding, which comprises means for determining the GPVI allelotype of the subject to determine whether the subject is homozygous or heterozygous for the GPVI<sup>b</sup> allele, wherein the determining means allow detection of two or more SNPs, or amino acids encoded by two or more SNPs, which are distinctive of the GPVI<sup>b</sup> allele. The kit may further comprise determining means for detection of two or more SNPs, or amino acids encoded by two or more SNPs of the GPVI<sup>a</sup> allele. Preferably the determining means allow detection of SNPs at positions 655, 709, 745, 950, and 964 of the cDNA sequence (or positions 13010, 19570, 22524, 23246, and 23260 of the genomic sequence).

**[0023]** The invention also provides a corresponding method for diagnosing whether a subject has, or is at risk of, an abnormal blood condition associated with an increased risk of bleeding, which comprises determining the GPVI allelotype of the subject to determine whether the subject is homozygous or heterozygous for the GPVI<sup>b</sup> allele, wherein two or more SNPs, or amino acids encoded by two or more SNPs, which are distinctive of the GPVI<sup>b</sup> allele are detected for.

**[0024]** Where a kit or method of the invention is for diagnosing a Caucasian, preferably the determining means is for detection of SNPs at genomic nucleotides 13010 and 23246. Where a kit or method of the invention is for diagnosing a non-Caucasian, preferably the determining means is for detection of SNPs at genomic nucleotides 13010, 19570, 22524, 23246, and 23260.

**[0025]** The determining means may include a probe capable of hybridising specifically to a region of GPVI nucleic acid which includes an SNP distinctive of a GPVI allele. The probe preferably comprises nucleic acid consisting of 8-50 nucleotides. The probe preferably hybridises under stringent conditions. Stringent conditions are defined herein as 0.1x SSC, 0.1%SDS at 65 degrees C. The determining means may include an antibody, or fragment or derivative thereof, which is specific to the protein expression product of a GPVI allele. The determining means may include probes and primers required for detection of the SNPs by real-time PCR.

**[0026]** The kits may be provided with all the reagents necessary for the determination of the GPVI allelotype. For example, the kits may include oligonucleotide primers for amplification of nucleic acid which includes an SNP to be detected for, labels for detection of bound antibodies, or probes, reagents for isolating or obtaining genomic DNA, mRNA or cDNA from a biological sample obtained from the subject.

**[0027]** The kits may be provided with instructions for the use thereof as a test to diagnose whether a subject has, or is at risk of, an abnormal blood condition associated with an increased risk of bleeding.

**[0028]** There is further provided according to the invention use of a probe capable of binding specifically to a region of GPVI nucleic acid which includes an SNP distinctive of a GPVI allele for the diagnosis of an abnormal blood condition.

**[0029]** Subjects who are homozygous for the GPVI<sup>b</sup> allele are termed herein easy bruisers (EBs). Such individuals may be normal healthy individuals, but the EB phenotype may be of major clinical significance if normal haemostasis is challenged. EB identification is also expected to be of clinical use in certain categories of patients.

**[0030]** Identification of GPVI allelotype is expected to be of value for the following categories of individuals:

- i) Patients with a low platelet count (i.e.  $<50 \times 10^9/L$ ) because of reduced generation of platelets by the bone marrow (i.e. cancer patients because of bone marrow infiltration or iatrogenic), increased destruction of platelets (i.e. patients with antibody-mediated thrombocytopenia's), or increased consumption (i.e. patients with disseminated intravascular coagulation) or hypersplenism;
- ii) Patients undergoing major surgical procedures known for a high risk of significant blood loss (i.e. cardio-thoracic surgery; orthopedic surgery, certainly the category of redo's; organ transplantation, especially liver, heart and lung, but possibly kidney; surgery of trauma patients; brain surgery inclusive invasive imaging; vessel surgery);
- iii) Patients with an inherited bleeding disorder such as haemophilia A or B, Von Willebrands' disease and other rarer forms (i.e. Glanzmann thrombasthenia) or with acquired coagulopathies (i.e. liver disease, viral hepatitis);
- iv) Patients receiving blood thinning drugs (anti-coagulants, anti-platelet drugs, thrombolytic drugs) to reduce the risk of venous and/or arterial thrombosis. One of the major unwanted side effects of these drugs is bleeding. Cerebral bleeds or bleeds in other vital organs can cause life-long disability or even death;
- v) Donors who give blood by routine donation or blood derivatives by apheresis technology. One of the most frequent complaints of donors is serious bruising post-donation at the site of venepuncture.

**[0031]** If a patient is an EB, special precautions can be taken. Some examples are:

- i) In surgery: increase availability of donor blood, consider additional drugs (i.e. DDAVP, Tranexamic Acid) to reduce

the risk of excess bleeding;

ii) In patients with low platelets because of low endogenous production. Increase platelet transfusion trigger. Currently, donor platelets are generally given when the platelet count is  $< 10 \times 10^9/L$  (higher if patient is unstable). However, in an EB a more conservative level of  $20 \times 10^9/L$  could be used. This may reduce the chance of serious bleeding without causing an unacceptable increase in platelet demand. Similarly, platelet levels required to cover invasive procedures could be tailored better to the patient depending on the GPVI genotype;

iii) In patients with low platelets because of antibody-mediated destruction of platelets. Treatment for autoantibody mediated thrombocytopenia is based on a combination of the platelet count and clinical signs of bleeding. However, in patients with very low platelet counts ( $20 \times 10^9/L$ ) treatment is given to reduce the risk of serious bleeding, even in the absence of bleeding. In these patients expensive therapies or therapies with major side effects are prescribed to reduce the relatively small risk of bleeding. Stratifying of these therapies on basis of the GPVI genotype may be possible;

iv) The prophylactic treatment regime in Haemophilia patients may be better tailored to the patient. In addition lifestyle advice could be modified depending on the GPVI genotype;

v) Patients on blood thinning drugs (these include anti-coagulants, anti-platelet drugs or thrombolytic drugs, or inhibitors of collagen-mediated platelet activation, such as a drugs directed to: GPVI (such as antibodies 10B12 and 1C3, described below); proteins associated directly with the intracellular domains of GpVI (for example src family kinases such as fyn); proteins that associate with FcR gamma (tyrosine kinase: p72syk; adaptors: LAT or SLP-76); or proteins downstream from them in GPVI-mediated signalling (PI3-kinase, phospholipase C gamma 2) (Watson S.P. Collagen receptor signaling in platelets and megakaryocytes, Thrombosis and Haemostasis 1999, vol 82 pp 365-376)). Patients with an EB genotype may require reduced dosing with these drugs. There are no effective antidotes for several of these drugs (i.e. Clopidogrel, GPIIb/IIIa antagonists, Tissue plasminogen activator, Streptokinase). Overdosing is an issue of serious concern and the therapeutic range of several of the drugs is relatively narrow. Dosing schedules may be adjusted on the basis of the GPVI genotype. Moreover, many novel 'blood thinning' drugs are being trialled or are under development. Whether these novel drugs will enter the market will depend on their clinical effectiveness and more importantly on the incidence and severity of side effects (bleeding being the most important). Pharmaceutical industries will therefore have an interest to identify those patients at risk of bleeding. The GPVI genetic marker may be one of these.

vi) In donors. Blood services may more carefully manage donors with an EB genotype. In addition platelets from donors with an EB genotype may be less effective in preventing bleeding in the recipient when compared with platelets from 'normal' donors. GPVI *bb* donors may be barred from giving platelets.

**[0032]** According to the invention there is also provided a method of determining the GPVI allelotype of a subject which comprises detecting for at least one single nucleotide polymorphism (SNP) which is distinctive of a GPVI allele. The SNP or SNPs may be selected from any, or any combination, of the SNPs identified in Table 4. In a preferred method, nucleic acid (preferably DNA) encoding GPVI is genotyped for the, or each SNP.

**[0033]** Embodiments of the invention are now described, by way of example only, with reference to the accompanying drawings in which:

Figure 1 shows GPVI expression on platelets in 89 random donors. Anti-GPVI specific scFv 1C3 was used in flow cytometry. The GPVI level is presented as median fluorescence intensity, the mean being 13.09 (SD 3.49, CI95% 12.4-13.8). Samples (all but one) were genotyped for GPVI: 58 were homozygous for the 'a' allele (SKTQH), one was homozygous for the 'b' allele (PEALN) and 22 were heterozygous. The GPVI expression levels of the 'aa' donors (mean 13.5, SD 3.5, CI95% 12.6-14.5) were non-significantly higher than the 'ab' donors (mean 11.9, SD 3.1, CI95% 10.5-13.2; Mann-Whitney U test  $p=0.084$ ).

Figure 2 shows the platelet GPVI and GPIIa expression levels in 'aa' and 'bb' donors. GPVI specific scFv 1C3 (A.) and scFv 10B12 (B.) and GPIIa specific antibody NBS-P16 (C.) were used in flow cytometry. The levels are presented as median fluorescence intensity related to the negative antibody control, 9E10, of each sample. The GPVI levels differed significantly between the 'aa' (n=8) and the 'bb' (n=7) donors, studied both with scFv 1C3 (Mann-Whitney U test,  $p=0.014$ ) and 10B12 ( $p=0.006$ ). With scFv 1C3, for the 'aa' and the 'bb' donors the mean relative fluorescence intensities were 8.9 (SD 1.7, CI95% 7.5-10.3) and 6.1 (SD 1.4, CI95% 4.8-7.4), respectively. With scFv 10B12, for the 'aa' and the 'bb' donors the mean relative fluorescence intensities were 7.6 (SD 1.2, CI95% 6.6-8.6) and 5.4 (SD 0.9, CI95% 4.5-6.2), respectively. There was no difference between the 'aa' and 'bb' donors in GPIIa expression.

Figure 3 shows a comparison of GPVI and GPIIa platelet expression levels on genotyped samples. The binding of GPIIa levels (n=15, mean FL1 32.2, SD 10.4, CI95% 27.5-39.0) varied more than the GPVI levels (n=15, mean FL1 7.5, SD 2.0, CI95% 6.4-8.5). There was no obvious correlation between GPIIa and GPVI levels (Spearman correlation,  $R=0.37$ ).

Figure 4 shows platelet aggregation with GPVI genotyped 'aa' and 'bb' donors. The platelet aggregation was induced by CRP(A.), collagen type I, Ethicon (B.) or ADP (C.). All 7 'b' homozygotes require a near <sup>1</sup>log more CRP to induce maximum aggregation compared to the 'aa' homozygotes (n=12). The difference was also observed with platelet aggregation responses stimulated with collagen type I (B.). As expected there was no significant difference in the response to ADP (C).

Figure 5 shows platelet activation in whole blood induced by CRP studied with flow cytometry. CRP was added to whole blood at 4 different concentrations and the activation markers were tested on CD61 positive events. For all three markers there was a clear dose-response relation (A, B, C). The platelets from 'aa' individuals (n=7) bound more fibrinogen (A) and more annexin V (C) after stimulation with CRP (at 0.05 µg/ml and 0.5 µg/ml, respectively) than those from 'bb' donors (Mann-Whitney U test, for fibrinogen, p=0.0061; for annexin V, p=0.0010). Platelet degranulation as measured by the binding of the CD62P moAb after CRP stimulation at 0.05 µg/ml was also significantly different between the two groups (Mann-Whitney U test, p=0.0028; B).

Figure 6 shows platelet activation in whole blood induced by CRP studied with flow cytometry using annexin V as activation marker. The annexin V positive platelet population comprised a distinct population of cells, increasing dose-dependently: 0 (white), 0, 0.05, 1.0 and 10 µg/ml of CRP. The first, white histogram is without CRP or annexin V. Figure 7 shows the wild-type GPVI (the GPVI<sup>a</sup> allele) cDNA sequence (SEQ ID NO: 1) and translation (SEQ ID NO: 2). The SNPs that encode amino acid substitutions are marked;

Figure 8 shows the cDNA sequence of the GPVI<sup>a</sup> allele with L103 (SEQ ID NO: 1), the GPVI<sup>a'</sup> allele (SEQ ID NO: 4), and the GPVI<sup>b</sup> allele (SEQ ID NO: 3).

Figure 9 shows the GPVI types for 94 sequenced donors;

Figure 10 shows eight different GPVI variant genotypes;

Figure 11 shows the distribution of the GPVI genotypes in 1153 Caucasian donors; and

Figure 12 shows the distribution of SNPs throughout the GPVI sequence.

**[0034]** Further evidence in support of the invention is provided in Joutsu-Korhonen *et al*, Blood 2003: "The low frequency allele of the platelet collagen signalling receptor glycoprotein VI is associated with reduced functional responses and expression".

### Example 1

**[0035]** Collagen is a major extracellular matrix protein exposed after arterial vessel wall injury. Interaction of platelets with collagen is a multi-step process with tethering over glycoprotein (GP)Ib/IX/V via von Willebrand factor, adhesion by interaction with the  $\alpha 2\beta 1$  integrin and signalling via GPVI. We have chosen to use collagen related peptide (CRP, triple helical peptide containing glycine-proline-hydroxyproline repeat motifs, generated in our laboratory), which acts specifically via GPVI to activate platelets, and results in a signalling cascade very similar to that evoked by native collagen. Here, we observed significant inter-individual variability in the response to CRP. The GPVI gene has two frequent alleles and genotyping of 1153 Caucasoid showed allele frequencies of 0.85 and 0.13. The two isoforms of GPVI differ by three replacements in the extracellular region proposed to form a glycosylation stem and two in the cytoplasmic domain, by a total of five amino acid replacements. Clustering of GPVI has been postulated to be important for ligand binding and signalling, and various mechanisms may account for the observed signalling differences. For instance, the reduced O-glycosylation which may result from the substitution of S219 or T249, as well as alterations in the main chain of the protein by replacement of S219 with proline. In addition, the Q317L cytoplasmic mutation is thought to be located adjacent to a proposed docking site of the SH3 kinases. Therefore, we investigated allele specific differences in GPVI expression, CRP and collagen mediated aggregation and thrombus formation in whole blood perfusion. We observed a near 10-fold difference in the response to CRP when comparing platelets from 8 high frequency allele homozygotes with 8 low frequency ones. This difference was correlated to, but not dependent on, a difference in GPVI expression as measured with two monoclonal GPVI antibodies and was reflected in all downstream signalling events as measured by the expression of P selectin and the binding of fibrinogen and annexin V.

## **Results**

### **SNPs in GPVI, GPIa and GPIb $\alpha$ genes**

**[0036]** Of 1153 healthy individuals tested, 65.4% (n=755) were homozygous for the high frequency allele ('aa') and 28 (2.4%) homozygous for the low frequency allele ('bb'). Nineteen individuals were selected for functional studies, 12 of the 'aa' and 7 of the 'bb'. They were also tested for other SNPs: GPVI T-154C, GPIa C-52T GPIa and GPIb $\alpha$  T-5C (Table I).

### Interindividual variation in GPVI expression

**[0037]** The binding of the GPVI specific scFv 1C3 to isolated platelets from 89 random healthy individuals was assessed by flow cytometry. This showed an approximately three-fold variation in binding (mean FL1 13.1, SD 3.5, CI95% 12.4-13.8, range 7.11-21.4), suggesting a fairly tight regulation of GPVI expression between different individuals (Fig 1). All but 8 of the samples (88 of 89 could be tested) were positive for the 'a' allele and the GPVI expression on the single 'b' homozygote was 8.6. The GPVI expression levels of the 'aa' donors (n=58, mean 13.5, SD 3.5, CI95% 12.6-14.5) were non-significantly higher than the 'ab' donors (n=22, mean 11.9, SD 3.1, CI95% 10.5-13.2; Mann-Whitney U test p=0.084).

### Expression of GPVI on 'bb' platelets is lower than on 'aa' ones

**[0038]** Because of the observed inter-individual differences in scFv 1C3 binding and the low binding to the single 'bb' sample we extended these studies, but included more 'bb' donors. Seven paired 'a' and 'b' homozygous samples were stained with GPVI specific scFvs 1C3 and 10B12 (which recognise non-overlapping GPVI epitopes) and with moAb NBS-P16 (anti-GPIIa); Fig 2). An additional 'aa' sample was included in each run to determine intra-assay variation.

**[0039]** Binding of both scFvs was significantly different between the two groups (Mann-Whitney U test, for 1C3 p=0.014, for 10B12, p=0.006; Fig 2). With scFv 1C3, for the 'aa' and the 'bb' donors the mean relative fluorescence intensities were 8.9 (SD 1.7, CI95% 7.5-10.3) and 6.1 (SD 1.4, CI95% 4.8-7.4), respectively. With scFv 10B12, for the 'aa' and the 'bb' donors the mean relative fluorescence intensities were 7.6 (SD 1.2, CI95% 6.6-8.6) and 5.4 (SD 0.9, CI95% 4.5-6.2), respectively. The difference remained significant independent whether non-corrected fluorescence intensities were used or ones corrected for the negative control (moAb 9E10), or ones corrected for intra-assay variation.

**[0040]** The binding of moAb GPIIa levels (n=15, mean FL1 32.2, SD 10.4, CI95% 27.5-39.0) varied more than the GPVI levels (n=15, mean FL1 7.5, SD 2.0, CI95% 6.4-8.5). There was no obvious correlation between GPIIa and GPVI levels (Spearman correlation, R=0.37) or between GPIIa levels and the C-52T SNP of the GPIa gene (Fig 3).

### CRP-induced platelet aggregation

**[0041]** The synthetic collagen-derived triple-helical peptide CRP causes platelet activation by selectively activating GPVI. In contrast, ADP activates platelets via G-coupled proteins (Gachet et al, 2001). Inter-individual variation in the response to both agonists has been previously observed in our laboratory, but without an obvious genetic linkage. We determined the dose-response for CRP in platelet aggregation with 19 donors ('aa', n=12; 'bb', n=7). Without exception all 'b' homozygotes require a near 1log more CRP to induce maximum aggregation compared to the 'aa' homozygotes. Moreover, the differences between the two groups remained statistically significant at three CRP concentrations tested, i.e. 0.05, 0.10 and 0.20 µg/ml (Fig 4A). For instance, at a CRP concentration of 0.10 µg/ml the mean aggregation for 'aa' platelets was 71% (n=12, SD 31%, range 10-110%, 95%CI 51.6-91.0%) whereas for 'bb' ones 4.6% (n=7, SD 4%, range 1.3-7.8%, 95%CI 1.0-11.0%; Mann Whitney U test p=0.0006).

**[0042]** This pronounced difference was also observed with platelet aggregation responses stimulated with collagen type I (Ethicon; 5 'aa' donors and 1 'bb' donor studied; Fig 4B). As expected there was no significant difference in the response to ADP (8 'aa' and 7 'bb' donors studied, Fig. 4C).

### Differences between the two alleles were confirmed in events downstream of GPVI

**[0043]** We investigated whether the profound difference in CRP responsiveness could also be observed in whole blood, by measuring the binding of fibrinogen and annexin V and the release of  $\alpha$  granules as indicators of platelet activation. CRP was added to whole blood at 4 different concentrations and the activation markers were tested on CD61 positive events. For all three markers there was a clear dose-response relation (Fig 5). The platelets from 'aa' individuals (n=7) bound more fibrinogen and more annexin V after stimulation with CRP (at 0.05 µg/ml and 0.5 µg/ml, respectively) than those from 'bb' donors (Mann-Whitney U test, for fibrinogen, p=0.0061; for annexin V, p=0.0010). Platelet degranulation as measured by the binding of the CD62P moAb after CRP stimulation at 0.05 µg/ml was also significantly different between the two groups (Mann-Whitney U test, p=0.0028). At CRP levels which gave maximal aggregation (10 µg/ml), only up to 10-30% of platelets bound annexinV, where as 70-90% of platelets were CD62P positive (Fig 5). The annexin V positive platelet population comprised a distinct population of cells, increasing dose-dependently (Fig 6).

**[0044]** The baseline levels for activation as determined by the three markers did not differ between the two groups (data not shown). The response to ADP was dose-dependent with all the activation markers, but there were no significant differences between the 'aa' and 'bb' samples (data not shown).

## Materials and methods

### Samples

5 **[0045]** Samples were obtained from the static clinic of our blood centre which consists of donors who are regularly apheresed for procurement of platelet concentrates as well as whole blood donors. The apheresis donors are selected on ABO groups (mainly A and O) and on platelet counts (over  $250 \times 10^9/l$ ). The study group consisted of 19 healthy blood donors (14 male, 5 female). For this study, 1153 donors were genotyped for the five replacement SNPs in the GPVI gene in order to identify adequate numbers of donors homozygous for each allele and to exclude individuals with rare GPVI alleles. Homozygotes for the high frequency allele (encoding SKTQH) are labelled 'aa' and for the low frequency allele (encoding PEALN) 'bb'. All experiments were performed on freshly drawn samples and when possible on paired ('aa' versus 'bb') samples. Samples of the 'aa' type were used as controls for calibration of the flow cytometry and platelet aggregation studies. In addition, 89 random blood donors were studied for the GPVI expression levels. The project has an approval from the local regional ethics committee, and is in accordance with the National Blood Service guidance for the use of donor blood for research. All the donors have consented. None of the volunteers had used aspirin in the 5 days preceding donation and sampling was by venepuncture of the antecubital vein with a 19 gauge needle.

### Antibodies and other reagents

20 **[0046]** The following monoclonal antibodies (moAb) were used for measuring GPVI and GPIIb/IIIa expression: Single chain variable domain antibody fragments (scFvs) 1C3 and 10B12 against GPVI, scFv 2D4 (anti-HLA-A2, Watkins et al, personal communications), scFv Fog-1 (anti-D) and the murine moAbs NBS-P16 (CD49, anti-GPIIb/IIIa), 9E10 (anti-myc tag). The binding of scFvs was as previously described in a three-step assay using moAb 9E10 and fluorescein isothiocyanate (FITC)-conjugated goat anti-mouse IgG (Dako, Cambridge, UK; Watkins et al, 2000) and the binding of the murine moAbs was by the classic two-step assay (von dem Borne et al, 1978). Expression of P selectin (CD62P) and phosphatidyl serine and the binding of fibrinogen was determined with FITC conjugated antibodies: anti-CD62P (Pharmingen, Becton Dickinson, San Diego, CA), annexin V (Molecular Probes, Eugene, OR) and rabbit anti-human fibrinogen (Dako A/S, Denmark). Phycoerythrin (PE) labelled anti-CD61 (Pharmingen, Becton Dickinson, San Diego, CA) was used to gate for platelets. Collagen-related peptide (CRP), collagen as native type I fibers from bovine tendon (Ethicon Inc., Somerville, NJ), adenosine diphosphate (ADP, Sigma, St. Louis, MO) as well as GPRP peptide (Gly-Pro-Arg-Pro, inhibitor of fibrin polymerization, Sigma Chemical Co, St Louis, MO, USA) were used. All the buffers for the flow cytometry were  $0.22 \mu\text{m}$  filtered.

### Allele discrimination for GPVI, GPIIb/IIIa ( $\alpha 2$ C-52T) and GPIIb ( $\alpha$ C-5T) polymorphisms with TaqMan

35 **[0047]** Allele discrimination for GPVI in 1153 donors will be described in detail by Watkins et al (manuscript in preparation). Genomic primers and probes for allelic discrimination by Taqman were designed using Primer Express (Perkin Elmer). Details of the primers and probes at which the assays were performed are as follows:

#### Taqman primers

Variant	Sense (5' -3') (SEQ ID NO:)	Antisense (SEQ ID NO:)
GpVI T655C (S219P)	TCCCAGGAACCTCTGTGACC (5)	CTCATACGCTGTGCACCAGAA (13)
GpVI A709G (K237E)	CTCAGAAGCCACCGCTGAA(6)	CTGAGCATGAAATGCCTGGTT (14)
GpVI A745G (T249A)	TTTCACACTTAGCCTTTGTTTGGTT (7)	CCAGCTGGAGAGTCTGACTCC-IT (15)
GpVI A950T (Q317L)	AAGCGCCTGCGGCAC (8)	ACATAACCCGCGGCTGTG (16)
GpVI C964A (H322N)	AGGAAGCGCCRGCGG (9)	TCCCATGCCATGATCCCT (17)
GpVI -C154T	TCCTTGGAGCTTGTGTGCAA (10)	CGGCCTTCTAATTGAGACTCAT (18)
GpIb $\alpha$ -T5C	GGATCCACTCAAGGCTCCCT (11)	GGAGCAGCAAGAGGAGGAGA (19)
GpIa-C52T	CCGGTGTTCGCGGAATCA (12)	CCGGTGAGAGCAGGGAAAA (20)

55

## EP 1 511 859 B1

### Taqman probes

Variant	FAM Probe (5' ---3') (SEQ ID NO:)	VICProbe (5'---3') (SEQ ID NO:)
GpVI T655C	AGAACCACCTTCC <sup>u</sup> TCGGTAGCAGGTAG (21)	ACCACCTTCC <sup>u</sup> CGGTAGCAGGT (29)
GpVI A709G	TCACAAAC <sup>u</sup> AAGTCTT (22)	CACAAAC <sup>u</sup> GAAGTCT (30)
GpVI A745G	TTCTAGGAGTATCACC <sup>u</sup> CCAGT (23)	CTAGGAGTATCACC <sup>u</sup> GCCAGT (31)
GpVI A950T	CCTCCCGC <sup>u</sup> GACCCGGAAA (24)	CCTCCCGC <sup>u</sup> TGACCCGGAAA (32)
GpVI C964A	CTGACCCCGT <sup>u</sup> GTGATTTCCG (25)	TCCTGACCCCGT <sup>u</sup> ITGATTTCC (33)
GpVI-C154T	CGTAGCC <sup>u</sup> GGCTCCT (26)	CCGTAGCCAGCTCC (34)
GpIb $\alpha$ -T5C	CACAGG <sup>u</sup> TCTCATGCC (27)	ACAGG <sup>u</sup> CCTCATGCC (35)
GpIa -C52T	CCGCC <sup>u</sup> CGCCCG (28)	CGGCC <sup>u</sup> AGCCCGC (36)

**[0048]** A total of 8 assays were developed, 3 using standard probes and 5 using MGB probes. Probes specific for the wild-type allele (A2) were labelled with FAM and the mutant allele (A1) with VIC.

**[0049]** DNA samples of the 1153 donors were genotyped for all GPVI SNPs. Allelic discrimination assays were performed in a total volume of 15  $\mu$ l with 900 nM each primer, 200 nM each probe and 5  $\mu$ l of genomic DNA. Amplification reactions were performed following standard conditions with an annealing temperatures of 60° C. Allelic discrimination was determined using a post-PCR plate reader on a PE 7700 (Perkin Elmer) and the alleles were assigned using the autocalling software. The raw data and allele assignments were exported as an Excel spreadsheet.

### Flow cytometry for GPVI platelet surface expression

**[0050]** Samples were tested for platelet surface expression level of GPVI by the platelet immunofluorescence test (von dem Borne et al, 1978). In short, platelet rich plasma (PRP) was prepared from EDTA-anticoagulated blood (stored at 4°C overnight) by centrifugation at 1400 rpm for 10 min. The PRP was washed twice in PBS/EDTA/BSA buffer (phosphate-buffered saline, PBS with 10 mM EDTA, pH 6.8 and supplemented with 0.25% bovine serum albumin, BSA) by centrifugation at 3000 g for 6 min. Platelet count was adjusted to 1 x 10<sup>7</sup>/ml (counted by Sysmex K1000, Milton Keynes, UK), and PRP containing 5 x 10<sup>5</sup> platelets was transferred into polystyrene tubes (for the flow cytometry, LIP Ltd) containing 150  $\mu$ l purified monoclonal scFv or antibody. When studying 89 donor samples separately, the assay was performed using 96-well microtiter plates (Dynex Technologies, Chantilly, VA). The antibodies were used at saturating concentrations: scFv 1C3 at 10 (or 20)  $\mu$ g/ml, scFv 10B12 at 50  $\mu$ g/ml, scFv 2D4 at 20  $\mu$ g/ml and moAb NBS-P16 at 1  $\mu$ g/ml, moAb 9E10 at 30  $\mu$ g/ml. After incubation for 1 h at room temperature (RT), the platelets were washed with 3 ml buffer, and resuspended in 100  $\mu$ l 9E10 moAb (at 30  $\mu$ g/ml) and incubated for 1 h at RT. The platelets were then washed once, resuspended in 50  $\mu$ l of a 1:20 dilution of FITC-conjugated goat anti-mouse IgG (Dako, Cambridge, UK) and incubated for 30 min at RT in the dark. After a final wash, platelets were resuspended in 200  $\mu$ l buffer and the fluorescence intensities of 10,000 events were analysed using a flow cytometer (Coulter XL, Luton, UK). The median fluorescence intensity (FL) for green fluorescence, FL1, was recorded on a logarithmic scale from 0.1 to 1000. The relative FL for each sample was obtained by dividing the median FL by that of the negative control (9E10) of each sample.

### Platelet aggregation

**[0051]** PRP was obtained from fresh citrated (final concentration 0.38 tri-sodium citrate) whole blood by centrifuging at 1200 rpm for 12 minutes. Platelet-poor plasma (PPP) was prepared from PRP by centrifugation at 7000 rpm for 10 minutes. The platelet count was then adjusted to 200 x 10<sup>9</sup>/l with PPP. To determine platelet aggregation, light transmission in PRP (250  $\mu$ l) was measured and recorded on a PAP-4 four channel aggregometer (Bio/Data Corporation, Horsham, PA, USA) at 37°C over 10 min. The results were expressed as arbitrary units with 100% transmission (corresponding to 100% aggregation) set using PPP. Platelet aggregation was induced by addition of either CRP at concentrations between 0.05 and 2.0  $\mu$ g/ml, collagen as native type I fibers from bovine tendon at 0.1 to 10.0  $\mu$ g/ml and ADP at 1.0 to 20  $\mu$ M.

### Platelet activation in whole blood using flow cytometry

**[0052]** Whole blood flow cytometry was used to detect platelet activation by CRP and ADP. Citrate-anticoagulated whole blood (5  $\mu$ l) was added to HEPES buffered saline (HBS buffer, 0.145M NaCl, 5 mM KCl, 1 mM MgSO<sub>4</sub>, 10 mM

Hepes at pH 7.4, final volume 70  $\mu$ l) containing PE-labelled anti-CD61, agonist (CRP or ADP) and FITC-labelled activation marker. CRP was tested at concentrations between 0.05 to 10  $\mu$ g/ml and ADP at 1, 10 and 100  $\mu$ M. We used the following activation markers: anti-fibrinogen (2  $\mu$ l/test), anti-CD62P (P-selectin, 10  $\mu$ l/test) and annexin V (5  $\mu$ l/test). After the incubation for 20 min at RT, the cells were fixed with 200  $\mu$ l of 0.2% formaldehyde (37-41% formaldehyde solution, BDH Laboratory Supplies, Poole, UK) in 0.9% NaCl for 10 min. When using annexin V as the activation marker, the HBS contained 1 mM CaCl<sub>2</sub> and GPRP and the samples were not fixed. The samples were freshly analysed with a flow cytometer (Coulter XL, Luton, UK) using a "live platelet gate" set on the basis of forward and side light scatter profiles. In the analysis, only FL2 positive events (i.e. CD61 positive ones) were analysed for an FL1 signal, and data from 5000 - 10000 events per sample was collected. The median FL1 of each activation marker for unstimulated platelets was recorded in order to compare the baseline activation level between different donors. Furthermore, the analysis was carried out with software Expo32 (Applied Cytometry Systems, Sheffield, UK). The threshold for positive events was set by adjusting a marker on non-stimulated platelets stained with the activation marker, so that less than 1% were above the level on the FL1 histogram. Since bound fibrinogen, P-selectin and annexin V are present at low levels on non-stimulated platelets, the data were expressed as the % FL1 positive platelets.

### Statistical analysis

**[0053]** Arithmetic mean, median, standard deviation (SD), range and 95% confidence interval (CI 95%) were calculated, for the most variables. The statistical analysis was performed using GraphPad Prism version 3.0a (GraphPad Software, San Diego, CA).

### Discussion

**[0054]** Collagen mediated signalling of platelets is via GPVI, the absence of which is associated with a mild bleeding phenotype and a strongly reduced response to collagen and no response to CRP *in vitro* (Moroi et al, 1989). CRP binding to GPVI is dependent on the presence of the GPO repeat motif (Knight et al, 1999), and activation of platelets evokes tyrosine phosphorylation of an immunoreceptor tyrosine-based activation motif (ITAM) by a Src family kinase (Watson et al, 2001).

**[0055]** We observed significant inter-individual variation in the response of human platelets to CRP in aggregation and in whole blood platelet activation assays. We observed significant differences in thrombin generation. There are two major GPVI alleles which differ by five amino acid replacements, three in the stem (S219P, K237E, T249A) and two in the cytoplasmic domain (Q317L and H322N). We hypothesised that functional differences may be related to the presence of these different GPVI alleles. There are several reasons why this might be the case. First, when testing the binding of our anti-GPVI scFv 1C3 to platelets from 89 random donors we observed a relative low level of expression on the platelets of the single sample which was homozygous for the low frequency allele (Fig 1A). Second, we observed a trend for lower 1C3 binding in the 'ab' donors when compared with 'aa' homozygotes (Fig 1B). Third, one of the two mutation in the proline rich cytoplasmic domain (RPLPPLPPLPQT) replaces a neutral Q297 with a positive charged lysine. The PLPPLPPLP motif is a target of that for the SH3 domain of the Src family kinases (Rickles et al, 1994) indicating that such signalling proteins may dock in this region of GPVI (Watson et al, 2001). Finally, it is likely that GPVI dimerisation occurs upon ligand binding and the kinetics of this process may depend on the sequence of the stem and possibly the cytoplasmic domain. To test our hypothesis we genotyped 1153 volunteers for the 5 relevant GPVI SNPs. The resulted in the identification of 745 (65.4% homozygotes for the high frequency allele, 28 (2%) for the low frequency one, 290 heterozygotes and the remainder 80 were examples of 'rare' hybrid alleles. We used the platelets of 12 and 8 'a' and 'b' homozygotes for functional studies.

**[0056]** We showed significantly higher binding of both GPVI specific scFvs to the platelets of the 'aa' homozygotes when compared with the 'bb' group. It is highly unlikely that the observed difference in binding is the result of linked mutations in the GPVI gene segment encoding the antibody binding sites. Both antibodies 1C3 and 10B12 bind to the C2-like ectodomains (residues 1-185) and no replacement mutations were observed in these domains in the donors used for this study. Binding studies of monoclonal GPVI antibodies to human platelets of different individuals has only been performed by one other group (Chen et al, 2002). Using the platelets from 20 individuals they estimated an average copy number to approximately 1200 molecules per platelet with a tightly regulated expression and that was independent of GPIIb/IIIa density. It is unlikely that an individual homozygous for the low frequency 'bb' allele was part of the study. Others used the lectin-like snake venom convulxin (CVX) as a semi-quantitative molecular probe to study total platelet GPVI content and to study the relation between GPVI content and function (Furihata et al, 2001). In a limited sample size of 23 individuals, they showed a positive correlation between CVX-induced platelet procoagulant activity and total GPVI content. No differences were found in CVX-induced platelet aggregation or platelet adhesion to CVX. Their study suggests a five-fold variation in GPVI content which was associated with the expression level of GPIIb/IIIa. With our GPVI antibody we only observed a 2-3 fold difference of membrane expression of GPVI. There are several reasons for the

discrepancies between the two studies. First, the sample size was too small to include homozygotes for the 'low frequency 'b' allele and no significant difference between 'aa' and 'ab' was observed. Second, the relation between surface and total expression of GPVI is not known. Thirdly, the possible limited specificity of CVX may also influence the results of the functional studies. Finally, only a limited analysis was performed on the genetic variability in the GPVI gene of the 23 individuals.

**[0057]** The dose-response studies with CRP show a significant split between the individuals homozygous for the 'a' or 'b' allele. This difference was also observed with collagen type I (ethicon) in aggregation indicating that the co-operation of GPIIb/IIIa and GPVI did not grossly alter the magnitude of aggregation. A careful analysis of the aggregation responses on ethicon in the homozygous 'a' donors either on basis of the C-52T SNP in the GPIIa gene or on basis of moAb NBS-P16 binding did not reveal an independent effect. It is unclear why we were unable to observe an effect of the GPIIa SNP which was initially reported by Kunicki et al (1993) in aggregation studies and confirmed by us in whole blood flow studies at high shear rate (Roest et al, 2000). There are several possible explanations for this observation. First, the effect of the GPVI SNPs is so profound that the more modest effect of the GPIIa SNP is not obvious. Moreover, in our series the link between the GPIIa SNP and level of expression was less clear (Fig 3). We considered whether the poor correlation between the GPIIa alleles and expression was resulting from us having used another CD49b moAb but the seems unlikely as the variation of GPIIb/IIIa expression observed is not dissimilar to that observed by others. Second the GPIIa and GPVI SNPs may be in linkage disequilibrium. We tested this on the data obtained from 600+ DNA samples and were unable to obtain evidence for such a linkage (data not shown). The absence of linkage is not surprising as the GPIIa and GPVI genes are on chromosomes 5 and 19, respectively. Third, it may be the type of collagen used and its purity and composition differed. Finally, our donors were selected on basis of their GPVI allele status, and in this group there was only one donor homozygous - 52TT for the GPIIa, SNP linked to low expression (Table I). A close inspection of published results revealed that the functional difference between the two GPIIa genotypes is rather small, especially when using collagen type I or III (also they used genotyping according to the GPIIa C807T polymorphism site, and combined the data on C vs T allele). We therefore assume that the latter together with the dramatic effect of the GPVI alleles are most likely, although not proven, explanation for the non-penetrance of the GPIIa-SNP.

**[0058]** Interestingly, within the group of 'aa' donors there is a reasonably wide variation in GPVI antibody binding. With the platelets of two of the eight 'aa' donors, the mean fluorescence values were obtained within the average + 1 SD of the group of 'bb' platelets. Despite their reduced surface expression, these two donors demonstrated a typical 'aa' phenotype, showing significant difference to 'bb' group. This led us to conclude that the observed difference in CRP response is not solely determined by a difference in membrane expression of GPVI. It is likely, that the difference is the result of i) an altered kinetics of dimerisation of GPVI, ii) a reduced ability of GPVI of the 'b' type to accrue the required cytosolic molecular complex for signalling, possibly because of the replacement of the non-charged glutamine by the positively charged lysine. Of course, GPVI membrane density may also contribute to the former.

**[0059]** As expected, the difference between the two groups in their reactivity towards CRP was confirmed when events downstream of GPVI mediated signalling were measured. In these experiments activation of platelets was achieved by adding CRP to whole blood and the binding of fibrinogen and of annexin V and the extent of  $\alpha$  granule release were measured after minimal manipulation of the sample. As reported, there is a clear uncoupling between the  $\alpha$  granule release and annexin V binding (Dale et al, 2002). Here, we showed that at CRP levels of 10  $\mu$ g/ml, renders 70-90% of platelets positive for CD62P whereas only 10-30% of platelets are positive with annexin V, the marker for exposure of anionic phospholipids (i.e. loss of membrane asymmetry) and prerequisite for procoagulant activity of platelets. The question whether the change in the phospholipid composition of the membrane was the direct or indirect consequence of GPVI signalling is not answered by our study. The time course measurement of the generation of thrombin showed a strong linkage between the time of first thrombin generation and the GPVI genotype.

**[0060]** Croft et al (2001) found that the 'bb' type (homozygous for 219PP) to be a risk factor for cardiovascular disease, only after sub-grouping the patient population. However, it is interesting that they stated the 'bb' type being the risk factor for arterial thrombosis, although we find that to be the less-responsive, i.e. EB or bleeder phenotype. We found with CRP-induced platelet aggregation and activation, clear differences between the two groups. No differences were seen with other agonists, such as ADP, indicating that the functional differences seen are GPVI-mediated. Whether the possible GPVI expression variation between individuals and the observed *in vitro* functional differences in platelet activation are of pathological significance is not yet known.

**[0061]** The data presented in Example 1, and shown in Figures 9-12 has been further expanded upon, and is presented in Example 2.

## References

**[0062]**

Chen H, Locke D, Liu Y, Liu C, Kahn M. The platelet receptor GPVI mediates both adhesion and signaling responses

to collagen in a receptor density-dependent fashion. *J Biol Chem.* 2002;277:3011.

5 Clemetson JM, Polgar J, Magnenat E, Wells TN, Clemetson KJ. The platelet collagen receptor glycoprotein VI is a member of the immunoglobulin superfamily closely related to Fc $\alpha$ R and the natural killer receptors. *J Biol Chem.* 1999;274:29019-24.

Croft SA, Samani NJ, Teare MD et al. Novel platelet membrane glycoprotein VI dimorphism is a risk factor for myocardial infarction. *Circulation.* 2001;104:1459.

10 Dale GL, Friese P, Batar P et al. Stimulated platelets use serotonin to enhance their retention of procoagulant proteins on the cell surface. *Nature* 2002;415:175-9.

Di Paola J, Federici AB, Mannucci PM et al. Low platelet  $\alpha$ 2b1 levels in type I von Willebrand disease correlate with impaired platelet function in a high shear stress system. *Blood.* 1999;93:3578.

15 Furihata K, Clemetson KJ, Deguchi H, Kunicki TJ. Variation in human platelet glycoprotein VI content modulates glycoprotein VI-specific prothrombinase activity. *Arterioscler Thromb Vasc Biol.* 2001;21:1857.

Gachet C. ADP receptors of platelets and their inhibition. *Thromb Haemost* 2001;86:222-32.

20 Goodall AH. Platelet activation during preparation and storage of concentrates: detection by flow cytometry. *Blood Coagulation and Fibrinolysis.* 1991;2:377.

25 Kehrel B, Wierwille S, Clemetson KJ et al. Glycoprotein VI is a major collagen receptor for platelet activation: it recognizes the platelet-activating quaternary structure of collagen, whereas CD36, glycoprotein IIb/IIIa, and von Willebrand factor do not. *Blood.* 1998;91:491-9.

30 Knight CG, Morton LF, Onley DJ, Peachey AR, Ichinohe T, Okuma M, Farndale RW, Barnes MJ. Collagen-platelet interaction: Gly-Pro-Hyp is uniquely specific for platelet Gp VI and mediates platelet activation by collagen. *Cardio-vasc Res.* 1999 ;41:450-7.

Kritzik M, Savage B, Nugent DJ, Santoso S, Ruggeri ZM, Kunicki TJ. Nucleotide polymorphisms in the  $\alpha$ 2 gene define multiple alleles that are associated with differences in platelet  $\alpha$ 2b1 density. *Blood.* 1998;92:2382.

35 Kunicki TJ, Orchekowski R, Annis DS, Honda Y. Variability of integrin  $\alpha$ 2 beta 1 activity on human platelets. *Blood.* 1993;82:2693.

40 Kunicki TJ, Kritzik M, Annis DS, Nugent DJ. Hereditary variation in platelet integrin  $\alpha$ 2 $\beta$ 1 density is associated with two silent polymorphisms in the  $\alpha$ 2 gene coding sequence. *Blood.* 1997;89:1939.

Jacquelin B, Rozenshteyn D, Kanaji S, Koziol JA, Nurden AT, Kunicki TJ. Characterization of inherited differences in transcription of the human integrin  $\alpha$ 2 gene. *J Biol Chem.* 2001;276:23518.

45 Jacquelin B, Tarantino MD, Kritzik M et al. Allele-dependent transcriptional regulation of the human integrin  $\alpha$ 2 gene. *Blood.* 2001;97:1721.

50 Metcalfe P, Williamson LM, Reutelingsperger CPM, Swann I, Ouwehand WH, Goodall AH. Activation during preparation of therapeutic platelets affects deterioration during storage: a comparative flow cytometric study of different production methods. *Br J Haematol.* 1997;98:86.

Moroi M, Jung SM, Okuma M, Shinmyozu K. A patient with platelets deficient in glycoprotein VI that lack both collagen-induced aggregation and adhesion. *J Clin Invest.* 1989;84:1440.

55 Rickles RJ, Botfield MC, Weng Z et al. Identification of Src, Fyn, Lyn, PI3K and Abl SH3 domain ligands using phage display libraries. *EMBO J* 1994;13:5598-604.

Roest M, Sixma JJ, Wu Y-P et al. Platelet adhesion to collagen in healthy volunteers is influenced by variation of both  $\alpha$ 2 $\beta$ 1 density and von Willebrand factor. *Blood.* 2000;96:1433.

## EP 1 511 859 B1

Santoso S, Kunicki TJ, Kroll H, Haberbosch W, Gardemann A. Association of the platelet glycoprotein Ia C807T gene polymorphism with nonfatal myocardial infarction in younger patients. *Blood*. 1999;93:2449.

von dem Borne AE, Verheugt FW, Oosterhof F, von Riesz E, de la Riviere AB, Engelfriet CP. A simple immunofluorescence test for the detection of platelet antibodies. *Br J Haematol*. 1978;39:195-207.

Watkins NA, Brown C, Hurd C, Navarrete C, Ouwehand WH. The isolation and characterisation of human monoclonal HLA-A2 antibodies from an immune V gene phage display library. *Tissue Antigens* 2000;55:219-28.

Watson SP, Asazuma N, Atkinson B et al. The role of ITAM- and ITIM-coupled receptors in platelet activation by collagen. *Thromb Haemost* 2001;86;276-88.

**Table I.** Twelve 'aa' (SS219, KK237, TT249, QQ317, HH322) and 7 'bb' (219PP, 237EE, 249AA, 317LL, 322NN) donors were tested for three other single nucleotide polymorphisms.

Donor	GPVI		GPIb $\alpha$	GPIa
	219,237,249,317,322	T-154C	T-5C	C-52T
1	SKTQH	CT	TT	CT
2	SKTQH	TT	TT	CC
3	SKTQH	TT	TT	CC
4	SKTQH	CT	TT	CT
5	SKTQH	CT	TT	CT
6	SKTQH	CC	TT	CT
7	SKTQH	CT	TC	CC
8	SKTQH	CT	TT	CC
9	SKTQH	CT	TT	CC
10	SKTQH	TT	TT	CT
11	SKTQH	CT	TC	CC
12	SKTQH	TT	TT	CT
13	PEALN	CC	TT	CT
14	PEALN	CC	CC	CC
15	PEALN	CC	TT	CC
16	PEALN	CC	TC	TT
17	PEALN	CC	TT	CT
18	PEALN	CC	TC	CT
19	PEALN	CC	TT	CT

### Example 2

#### **Sequence polymorphisms at the human glycoprotein VI gene reveals conserved immunoglobulin domains, but highly polymorphic stem and cytoplasmic domains**

**[0063]** The promoter, exons and flanking intron sequences of human GP6 gene were re-sequenced in a "core" panel of 94 Caucasians. Eighteen variable sites were identified that segregated as 37 haplotypes with frequencies between 0.195 to 0.003. All the variable sites were single nucleotide polymorphisms (SNPs), six of which encoded amino acid substitutions in GP6. However, only one of these (C307G), encoding a Leu83Val substitution with a frequency of 0.005, was in the immunoglobulin-like, ligand binding domains of GP6. A high-resolution SNP map of GP6 by exon re-sequencing in 188 Caucasoid chromosomes (94 individuals) identified a total of 18 SNPs, 6 of which encoded for amino acid substitutions. Analysis revealed that the 18 variable sites segregated into 37 haplotypes and that none of them deviated significantly from the Hardy-Weinberg equilibrium. When analysed in the absence of the C307G SNP, the non-synonymous SNPs segregated into 5 haplotypes, with the two most common haplotypes having frequencies of 0.79 and 0.18 in the core panel. Differences in GP6 specific responses to CRP or collagen of individuals homozygous for these two haplotypes have been observed and genetic variation at the GP6 locus has been linked to myocardial infarction. We

therefore extended our study to an additional 1310 individuals (1127 Caucasians, 63 Koreans, 40 South African blacks, 40 Ethiopians and 40 Curaco) to fully characterise variation in GP6. All 5 sites were polymorphic in the populations studied and a total of 12 GP6 haplotypes were identified in the combined population. The Ethiopian and South African Black samples showed the most haplotype diversity.

**[0064]** The frequencies of the 5 common non-synonymous SNPs, which were in significant linkage disequilibrium (LD), were then determined in a panel 1127 Caucasians to fully characterise the GP6 isoforms present in the Caucasian population. This typing revealed that the 5 non-synonymous SNPs segregated into 8 haplotypes in Caucasians. In addition, despite the significant LD between the 5 SNPs, in 6.9 % of individuals the complete GP6 genotype was not predicted by genotyping at a single variable site.

**[0065]** The study was then extended to samples from individuals of different ethnic origin. We genotyped for the 5 non-synonymous SNPs in samples from 63 Koreans, 40 South African blacks, 40 Ethiopians and 40 Curcoa. This genotyping revealed the presence of 4 additional GP6 haplotypes.

## Materials and Methods

### Population samples

**[0066]** Two panels of Caucasoid donor DNA were established for this work. The sequencing panel (SP), consisting of DNA from 94 apheresis donors, was used to identify polymorphisms in the GP6 exons (plus flanking intron sequences) by direct sequencing of PCR products. Panel 1 was composed of 1127 DNA samples from donors and was used to determine the frequency of the 6 non-synonymous SNPs found at the GP6 locus. The only selection criterion for both panels was a platelet count > 150 x 10<sup>9</sup>/L. All samples were obtained with informed consent and with the approval of the National Blood Service internal review panel. Ethnic DNA samples were a kind gift from Dr Peter Forster (Department of Archaeology, University of Cambridge) and Dr Ellen van der Schoot (University of Amserdam).

### Isolation of genomic DNA (gDNA)

**[0067]** gDNA was prepared from EDTA-anticoagulated blood samples using the Promega Wizard Genomic DNA isolation kit following the manufacturers' instructions (Promega, Southampton, UK). All gDNA samples were stored at -40 °C in distilled water. For genotyping and PCR, aliquots of gDNA (4 ng/μl) were dispensed into 96 well master plates and stored at 4°C.

### Amplification of GP6 exons

**[0068]** Oligonucleotides were designed to amplify exons 1 to 8 of GP6 in a total of 6 fragments as (Table 2). The primers were designed to be at least 50 to 100 bp from the end of the exons to allow the identification splice donor and acceptor site variants. Amplification reactions contained 25 mM MgCl<sub>2</sub>, 20 mM each primer, 2 mM dNTPs, 0.6 U Hot-Start Taq polymerase (Qiagen, Crawley UK) and 20 ng of gDNA in a total volume of 30 μl. Amplification was performed over 40 cycles consisting of 1 min at 95 °C, 1 min annealing and 1 min at 72 °C using a "touchdown" program. This consisted of 15 cycles during which the annealing temperature was reduced by 1 °C per cycle from 70 °C to 55 °C followed by 25 cycles with an annealing temperature of 55° C. All PCR reactions were performed on a GeneAmp 9700 PCR machine (Applied Biosystems, Warrington, UK).

**[0069]** After amplification, the products were purified using a QiaQuick PCR clean up kit following the manufacturers' instructions (Qiagen). Purified PCR products were eluted into 25 μl of distilled water and 1 μl analysed on a 1.5 % agarose gel containing 1 % (w/v) ethidium bromide. DNA quantification was performed by comparing the intensity of the purified sample with one of known concentration. The purified PCR products were then diluted to a concentration of 10 μg/ml for sequencing which was performed using BigDye v1.0 (Applied Biosystems) and an ABI373XL genetic analyser (Applied Biosystems).

### Taqman Allelic Discrimination Assay

**[0070]** A total of 18 SNPs were identified following the sequencing of GP6 in the 94 samples. Taqman allelic discrimination assays were then designed for 9 of these 18 using Primer Express (Applied Biosystems). For three SNPs standard probes were used and for the remaining 5 MGB probes were used (Table 3). Allelic discrimination assays were performed in a total volume of 15 μl with 900 nM each primer, 200 nM each probe and 20 ng of gDNA. Amplification reactions were performed following standard conditions with annealing temperatures as detailed in Table 3. Where possible, control samples consisting of gDNA from homozygous and heterozygous donors was used. Allelic discrimination was determined using a post-PCR plate read on a PE 7700 (Perkin Elmer). The raw data and allele assignments were merged into the

donor database for analysis.

### Confirmatory genotyping by Restriction Fragment Length Polymorphism (RFLP)

5 [0071] Confirmation of the presence of the novel SNP encoding for a Leu83Val substitution in GP6 identified in the heterozygous state in a single Panel 1 sample was obtained by developing a restriction fragment length polymorphism (RFLP) assay. The C307G (C6080G) SNP introduces a BstN1 restriction site into the low frequency 307G allele (Val encoding). A 279 bp fragment containing the C307G polymorphism was obtained by PCR amplification of gDNA using the oligonucleotide primers 5'- GGCCATGAAGAGAAGTCTGG -3' (SEQ ID NO: 37) and 5'- AGCAAGACCCTGTGTC-  
10 CAAA -3' (SEQ ID NO: 38). Amplification was performed in a total volume of 50  $\mu$ l containing 5  $\mu$ l genomic DNA (4 ng/ $\mu$ l), 7.5  $\mu$ l 10 x PCR buffer, 1.5  $\mu$ l MgCl<sub>2</sub>, 15 mM each dNTPs, 12  $\mu$ M each primer and 0.3 U of Taq DNA polymerase. Thermocycling conditions were as for amplification of GP6 exons. 20  $\mu$ l of the PCR product was then digested with 1 U BstN1 (New England BioLabs) for 120 minutes at 60 °C and then analyzed on a 2% agarose gel containing 1 % (w/v) ethidium bromide.

15

### Haplotype Inference and Statistical analysis

[0072] Haplotypes in the genotyped samples were determined by using either Clarks algorithm (Clark, 1990) or the EM algorithm implemented using Arlequin. The parameter FST was used to measure variation between populations.

20

## Results

### Polymorphic variation identified at GP6 by re-sequencing

25 [0073] A complete analysis of the sequences of the PCR products obtained from the 94 samples identified 18 SNPs in the GP6 exon and promoter sequence analysed (Table 4). These 18 included the 9 SNPs already present in GenBank and 9 novel SNPs. In general, the SNPs were distributed evenly throughout the GP6 cDNA sequence, but, with the exception of the C307G polymorphism, only silent mutations were found in the Ig-like domains of GP6 (Figure 12). Eight of the novel SNPs were silent and one (C307G) encoded an amino acid replacement of Leucine for Valine at position  
30 83 in the first Ig-like domain of GP6. The C307G polymorphism was confirmed by RFLP in all positive samples (Data not shown).

[0074] Taqman allelic discrimination assays were developed for 9 of the SNPs as described (Table 3) and these were used to genotype the sequencing panel samples. We observed complete concordance between the genotypes as determined by gDNA sequencing and by Taqman (Data not shown). The 9 Taqman assays were next used to genotype  
35 the 1 127 panel 1 samples (Table 4). In all instances, no significant differences between the allele frequencies in the two panels was observed for any SNP (Table 4). None of the variant sites showed deviation from the Hardy-Weinberg equilibrium in either the sequencing panel or Panel 1 (Data not shown).

### Haplotype variation and linkage disequilibrium in GP6 in the sequencing panel

40

[0075] Sequence haplotype relationships amongst the 18 SNPs in the sequencing panel were determined using Clarks and the EM algorithms. In total, 37 haplotypes were observed in the 188 chromosomes identified in the GP6 gene (Table 5). Analysis of linkage between the 18 SNPs in the sequencing panel revealed that the 5 common non-synonymous SNPs (T655C, A709G, A745G, A950T and C964A) are in significant LD with the C-154T promoter polymorphism (Table  
45 6). For the silent polymorphisms, those in exon 3 (C97T, C219T and G237A) were generally not in LD with the remaining polymorphisms.

### Frequencies of non-synonymous SNPs in population samples

50 [0076] The frequencies of the 5 common non-synonymous SNPs (T655C, A709G, A745G, A950T and G964A encoding S199P, K217E, T229A, Q297L, and H302N respectively) were determined in samples from individuals of different ethnic background to determine the extent of variation in the GP6 protein. These samples included a larger panel of Caucasians (n = 1127), Koreans (n = 63), South African blacks (n = 40), Ethiopians (n=36) and Curaco (n = 40). All sites tested were polymorphic in each population and significant differences in genotype frequency were observed between the populations tested (Table 7). Deviation from the Hardy-Weinberg equilibrium was observed in the Korean sample for the A709G and  
55 A745G polymorphisms, in both cases there was a deficiency of heterozygotes.

## GP6 protein variants

**[0077]** The population genotyping data was used to infer the GP6 haplotypes that encoded different protein variants. This analysis identified 12 different GP6 haplotypes (Table 8). Identical results were obtained when the data was either analysed as a complete data set or as individual populations. The analysis revealed the presence of both shared and population specific GP6 haplotypes and that, in general, more haplotypes were observed in individuals of African origin.

## Discussion

**[0078]** Glycoprotein VI (GP6) is found exclusively on platelets and brings about their activation following binding to collagen, thus playing a central role in platelet activation following exposure of the subendothelial matrix. The signaling cascade that is induced following ligation of GP6 by collagen has been studied in detail using the GP6 specific ligand CRP. Two GP6 alleles were identified following a study of 21 individuals. These alleles differ at 9 dimorphisms which encode for 5 amino acid substitutions in the mature form of the GP6 protein (Table 4). Using the dimorphisms encoding a Serine to Proline substitution at position 199 in the mature form of GP6 as a marker, Croft *et al* have shown an association between GP6 haplotype and the risk of myocardial infarction in a restricted patient group. We have demonstrated a functional difference between platelets from individuals who are homozygous for the 'a' and 'b' GP6 alleles. Using the GP6 specific ligand CRP we observed a significant reduction in the response to CRP in individuals homozygous for the GP6 'b' allele relative to those homozygous for the 'a' allele. This difference in reactivity prompted us to generate a high-resolution map of genetic variation at the GP6 locus. Exon re-sequencing of 188 chromosomes revealed 18 dimorphisms, 6 of which encoded amino acid substitutions in GP6 (Table 4). Taqman genotyping for 9 of these dimorphisms showed complete concordance with sequencing data. No significant differences in individual allele frequencies were observed between the core sequencing panel and a larger panel containing samples from 1 127 donors (Table 4).

**[0079]** Interestingly, whilst the distribution of SNPs was fairly even throughout the GP6 exons (Figure 12), the substitution encoding mutations were largely restricted to the stem and cytoplasmic tail. Of the eight SNPs identified in the 2 Ig-like domains of GP6, only 1 encoded for an amino acid substitution, whereas, 3 of 3 SNPs in the stem and 2 of 3 SNPs in the cytoplasmic tail encoded amino acid substitutions (Figure 12 and Table 4). The single, substitution encoding SNP identified in the 2 Ig-like, ligand-binding domains of GP6, C6080G, encoded for a conservative Leu to Val substitution at position 83 in GP6. These observations suggest that the amino acid sequence of the ligand binding domains of the GP6 have been conserved, whereas a greater level of amino acid variation has developed in the stem and cytoplasmic domains. It is possible that amino acid replacements in the 2 Ig-like domains of GP6 lead to an unacceptable reduction in collagen binding, however, work in our laboratory suggests that some point mutations have relatively little effect on the affinity of GP6 monomers for CRP and for collagen. Alternatively, the 2 Ig-like domains of GP6 may be involved in an oligomerisation process upon ligand binding and small changes in structure may affect oligomerisation leading to life-threatening pro-thrombotic or bleeding events. Genotyping for polymorphisms that have been reported to affect the expression levels of GPIb $\alpha$  and  $\alpha$ 2 integrin, 2 receptors involved in platelet adhesion to collagen, showed no significant association with the GP6 haplotype (Data not shown).

**[0080]** The 18 SNPs segregated into 37 haplotypes and significant LD was observed between all the non-synonymous SNPs and the previously described promoter polymorphism at position - 154. We next genotyped the 5 common non-synonymous SNPs in a panel of samples from different ethnic backgrounds. The 5 sites were polymorphic in all populations studied with the allele frequencies differing significantly between populations (Table 7).

**[0081]** The genotyping data was used to determine GP6 protein haplotypes, each of which would encode a unique form of GP6 with potentially unique signalling responses. A total of 12 GP6 protein haplotypes were identified (Table 8), 8 of which were shared between populations and 4 were population specific. The haplotypes were numbered according to their prevalence in the study group. Interestingly, a third common GP6 haplotype was observed in all populations studied with a frequency between 0.13 and 0.02.

**[0082]** In the panel of Caucasians, 6.9 % of individuals had GP6 genotypes that could not be predicted from typing at a single SNP position. This observation is of importance for genotyping studies that have been performed to determine whether GP6 is a risk factor for cardiovascular disease. In Caucasians, we observed that genotyping at 2 SNP positions (T655C and A950T) identified individuals with variant GP6 types in 99.9 % of cases. For non-Caucasian populations, genotyping for more than two SNPs is required to identify variant GP6 types with the same degree of certainty. Previously, the T655C polymorphism has been shown to be a risk factor for myocardial infarction in a restricted patient group. However, by genotyping for additional SNPs in the GP6 gene we have shown that the T655C genotype does not agree with the complete GP6 genotype in 6.9 % of Caucasians, information that guards against the use of a single SNP for determining GP6 genotypes.

**[0083]** Our study has clearly identified that the GP6 locus is highly polymorphic with 37 haplotypes. The SNPs in GP6 encode for 6 amino acid substitutions that are present in all populations studied with significantly different frequencies between populations. The 6 SNPs encode for 12 GP6 protein variants, the most common of which differ in their response

## EP 1 511 859 B1

to GP6 specific ligands. It is currently not known whether or not single or multiple amino acid substitutions contribute to this difference. The panel of GP6 variants that we have identified will be invaluable in elucidating the molecular mechanism of allele specific GP6 signalling.

5

**Table 2: Amplication and sequencing primers**

Target exons	Primer Name	Primer Sequence (SEQ ID NO:)
Exon1		5' - CAGGGAGTTTATGGGAGCAC - 3' (39) 5'-CCAGCCATGAATACACTGGAA-3' (40)
Exon2+3	GP6for1	5'-AATGTCCATAAAAAGCGAGTCC-3' (41)
	GP6rev1	5'-CCGTATTTGTGTCCTGAACG-3' (42)
Exon 4	GP6for2	5' -AAAAAGCTCCCCAGCTCTTAG-3' (43)
	GP6rev2	5' -ATGGCCATCAGGACCTATAAA-3' (44)
Exon 5	GP6for3	5' -TATTTGTTTCAGGACCCACAGC-3' (45)
	GP6rev3	5' -AAGGGGTCCGTGTACCTCATA- 3' (46)
Exon 6	GP6for4	5' -CTCAAAGGGGAATGGAGATA- 3' (47)
	GP6rev4	5'-AAGAGAGAGCTCCGTCCTCAC-3' (48)
Exon 7+8	GP6for5	5' - GGAGTAGGCACAGTGACAGG- 3' (49)
	GP6rev5	5'-GTTTCCACAGCTGTAGCCTCT-3' (50)
	GP6rev6	5'-GAGTTGGCTTTGGTGAAGAGA-3' (51)
	GP6for7	5'-CTGGAGGTGGGCTCTTTC-3' (52)

25

30

35

40

45

50

55

Table 3: Primers and probes for allelic discrimination assay

SNP	Primers (SEQ ID NO:)	Probes (SEQ ID NO:)	Label	T <sub>m</sub> (°C)	Type
C307G	5'-GACGCTACCGCTGCTCCTAC-3' (53)	5'-CGACCAGCTGGAG-3' (69)	Fam	55	MGB
	5'-TCCGATCCCCCTTCCCTTAC-3' (54)	5'-CGACCAGGTGGAGC-3' (70)	Vic		
C484A	5'-GGGACCCCTGCGCCCTAC-3' (55)	5'-TAGCCCTGTACCATCTC-3' (71)	Fam	60	MGB
	5'-GGCGGTACCCGTGATGAT-3' (56)	5'-TAGCCCGGTACCATCT-3' (72)	Vic		
T655C	5'-TCCCAGGAACCTCTGTGACC-3' (57)	5'-AGAACCCACCTTCC <sup>1</sup> CGGTAGCAGGTAG-3' (73)	Fam	60	STD
	5'-CTCATACGCTGTGCACCCAGAA-3' (58)	5'-ACCACTTCC <sup>2</sup> CGGTAGCAGGT-3' (74)	Vic		
A709G	5'-CTCAGAAGCCACCGCTGAA-3' (59)	5'-TCACAAAC <sup>3</sup> AAAGTCTT-3' (75)	Fam	55	MGB
	5'-CTGAGCATGAAATGCCCTGGTT-3' (60)	5'-CACAAACGGAAGTCT-3' (76)	Vic		
A745G	5'-TTTACACTTAGCCTTTGTTGGTT-3' (61)	5'-TTC <sup>4</sup> TAGGAGTATCACCAACCAGT-3' (77)	Fam	60	MGB
	5'-CCAGCTGGAGAGTCTGACTCCTT-3' (62)	5'-CTAGGAGTATCACCC <sup>5</sup> CAGT-3' (78)	Vic		
G936C	5'-TGGCACAGCCGGAGGAA-3' (63)	5'-TTCCGCC <sup>6</sup> CTGCCG-3' (79)	Fam	55	MGB
	5'-ACATCCTGTGGCCTCCAT-3' (64)	5'-TTCCGCC <sup>7</sup> CTCCG-3' (80)	Vic		
A950T	5'-AAGCGCCTGCGGCAC-3' (65)	5'-CC <sup>8</sup> TCCCGCAGACCCGGAAA-3' (81)	Fam	60	STD
	5'-ACATAACCCCGCGCTGTG-3' (66)	5'-CC <sup>9</sup> TCCCGCTGACCCGGAAA-3' (82)	Vic		
C964A	5'-AGGAAGCGCCTGCGG-3' (67)	5'-CTGACCC <sup>10</sup> CGTGTGATTTCCG-3' (83)	Fam	60	STD
	5'-TCCCATGCCATGATCCCT-3' (68)	5'-TCCTGACCC <sup>11</sup> CGTTTGATTTCC-3' (84)	Vic		

EP 1 511 859 B1

Table 4: Frequencies of SNPs identified in GP6

	Mature GP6 codon	cDNA	Genomic nucleotide	Croft <i>et al</i>	dbSNP ID	Nucleotide Variation	Protein residue	Sequencing panel frequency	Panel 1 frequency
5		-222				G	NA	0.995	nt
						A		0.005	
10		-154				C	NA	0.489	
						T		0.511	
		-143				C	NA	0.995	nt
						T		0.005	
15		15				G	Pro	0.995	nt
						A	Pro	0.005	
	13	97	5870			C	Leu	0.979	nt
						T	Leu	0.021	
	53	219	5992			C	Leu	0.936	nt
						T	Leu	0.064	
20	59	237	6010			G	Lys	0.904	nt
						A	Lys	0.096	
	83	307	6080			C	Leu	0.995	0.995
						G	Val	0.005	0.005
25	142	484	10533	10781	rs892090	C	Arg	0.819	0.840
						A	Arg	0.181	0.160
	145	495	10544		rs892089	C	Phe	0.793	nt
						T	Phe	0.207	
30	149	507	10556	10804		G	Thr	0.767	nt
						A	Thr	0.233	
	172	576	10625	10873	rs1654425	G	Ser	0.824	nt
						A	Ser	0.176	
	199	655	13010	13254	rs1613662	T	Ser	0.814	0.842
						C	Pro	0.186	0.158
35	217	709	19570	19871	rs1654416	A	Lys	0.809	0.825
						G	Glu	0.191	0.175
	229	745	22524	21908	rs2304167	A	Thr	0.798	0.821
						G	Ala	0.202	0.179
40	292	936	23232	22616		G	Leu	0.697	0.654
						C	Leu	0.303	0.346
	297	950	23246	22630		A	Gln	0.793	0.820
						T	Leu	0.207	0.180
45	302	964	23260	22644		C	His	0.814	0.843
						A	Asn	0.186	0.157

[0084] Where possible, the dbSNP reference ID is given. nt = not tested

50

55

Table 5: Sequence haplotypes observed in GP6

Sequence Haplotype No.	Variant Site												Observed						
	-2	-1	-1	1	2	2	3	3	4	4	5	5		6	7	7	9	9	9
H3	.	.	.	.	.	.	.	.	.	.	.	.	.	.	.	.	.	.	27
H8	.	.	.	.	.	.	.	.	.	.	.	.	.	.	.	.	.	.	7
H15	.	.	.	.	.	.	.	.	.	.	.	.	.	G	G	T	A	1	
H16	.	.	.	.	.	.	.	.	.	.	.	.	C	G	T	A	1	1	
H17	.	.	.	.	.	.	.	.	.	A	.	.	.	.	.	.	.	1	
H18	.	.	.	.	.	.	.	.	.	T	.	.	.	.	.	.	.	1	
H19	.	.	.	.	.	.	.	.	.	T	.	.	.	.	G	T	.	1	
H20	.	.	.	.	.	.	.	.	.	T	.	.	.	.	.	.	.	1	
H6	.	.	.	.	.	.	.	.	A	T	.	.	A	C	G	.	.	9	
H5	.	.	.	.	.	.	.	.	A	T	.	.	A	C	G	C	A	13	
H21	.	.	.	.	.	.	.	.	.	.	G	.	.	.	.	.	.	1	
H7	.	.	.	.	.	.	.	.	.	.	.	.	.	.	.	.	.	8	
H22	.	.	.	.	.	.	.	.	.	A	.	.	.	.	.	.	.	1	
H10	.	.	.	.	.	.	.	.	.	A	.	.	.	.	.	.	.	2	
H11	.	.	.	.	.	.	.	.	.	A	.	.	A	C	.	.	.	2	
H23	.	.	.	.	.	.	.	.	.	A	.	.	A	C	G	T	A	1	
H9	.	.	.	.	.	.	.	.	.	.	.	.	.	.	.	.	.	6	
H24	.	.	.	.	.	.	.	.	.	T	.	.	.	.	.	.	.	1	
H12	.	.	.	.	.	.	.	.	.	T	.	.	A	C	C	T	A	2	
H13	.	.	.	.	.	.	.	.	.	T	.	.	.	.	.	.	.	2	
H25	.	.	.	.	.	.	.	.	.	.	.	.	.	.	.	.	.	1	
H26	.	.	.	.	.	.	.	.	.	T	.	.	A	C	C	.	.	1	
H2	.	.	T	.	.	.	.	.	.	.	.	.	.	.	.	.	.	30	
H4	.	.	T	.	.	.	.	.	.	.	.	.	.	.	.	.	.	16	
H27	.	.	T	.	.	.	.	.	.	.	.	.	.	G	.	T	A	1	
H1	.	.	T	.	.	.	.	.	.	.	.	.	.	.	.	.	.	37	
H28	.	.	T	.	.	.	.	.	.	.	.	.	.	G	.	T	.	1	
H14	.	.	T	.	.	.	.	.	.	.	.	.	.	G	G	T	.	2	



**Table 6: Linkage Disequilibrium between the 18 SNPs in GP6 in the sequencing panel**

5

10

15

20

25

30

	G -2	C -1	C -1	G 1	C 9	C 2	G 2	C 3	C 4	C 4	G 5	G 5	T 6	A 7	A 7	G 9	A 9	C 9
	2	5	4	1	9	1	3	0	8	9	0	7	5	0	4	3	5	6
	2	4	3	5	7	9	7	7	4	5	7	6	5	9	5	6	0	4
	A	T	T	A	T	T	A	G	A	T	A	A	C	G	G	C	T	A
G-222A		+	+	+	+			+										
C-154T	+		+	+					+	+	+	+	+	+	+		+	+
C-143T	+	+		+				+										
G15A	+	+	+					+										
C97T	+																+	
C219T																		
G237A																		
C307G	+		+	+														
C484A		+								+		+	+	+	+	+	+	+
C495T		+							+			+	+	+	+	+	+	+
G507A		+													+	+	+	
G576A		+								+	+		+	+	+	+	+	+
T655C		+								+	+	+		+	+	+	+	+
A709G		+								+	+	+	+		+	+	+	+
A745G		+								+	+	+	+	+		+	+	+
G936C					+					+	+	+	+	+	+		+	+
A950T		+								+	+	+	+	+	+	+		+
G964A		+								+	+	+	+	+	+	+	+	

'+' denotes LD ( $p < 0.04$ , Fishers Exact Test), non-synonymous SNPs are shaded in grey

35

**Table 7: Frequency of GP6 "b" allele in population study.**

Figures in brackets relate to the number of individuals tested for each genotype

40

45

Nucleotide	T655C	A709G	A745G	A950T	G964A
Amino acid	S199P	K217E	T229A	Q297L	H302N
Koreans (63)	0.024	0.169 (62)	0.185 (62)	0.183	0.041 (49)
SA Blacks (40)	0.325	0.475	0.613	0.551 (39)	0.474 (39)
Curaco (40)	0.288	0.423 (39)	0.488	0.462 (39)	0.363
Ethiopians (36)	0.242 (31)	0.290 (31)	0.403	0.310 (29)	0.368 (34)
Panel 1 (1127)	0.159	0.165	0.167	0.167	0.160
Sequencing panel (94)	0.186	0.197	0.202	0.202	0.181

50

**Table 8: GP6 protein variants**

55

GP6 Protein No.	6	7	7	9	9	1	2	2	2	3	P1	Kor	SAB	Eth	Cur
	T	A	A	A	C	9	7	9	7	2					
a	•	•	•	•	•	S	K	T	Q	H	1833	87	28	36	41
b	C	G	G	T	A	P	E	A	L	N	642	2	26	13	21

(continued)

	6	7	7	9	9											
	GP6	5	0	4	5	6	1	2	2	2	3					
5	Protein	5	9	5	0	4	9	1	2	9	0	P1	Kor	SAB	Eth	Cur
	No.	T	A	A	A	C	9	7	9	7	2					
	c	•	G	G	T	•	S	E	A	L	H	51	6	10	1	7
	d	•	•	G	T	A	S	K	A	L	N	8		7	1	3
	e	C	•	•	•	•	P	K	T	Q	H	15			1	
10	f	•	G	G	T	A	S	E	A	L	N	2			2	5
	g	•	•	G	•	•	S	K	A	Q	H	1		1		1
	h	•	•	G	•	A	S	K	A	Q	N			2	1	
	i	•	•	•	T	A	S	K	T	L	N	2				
15	j	•	G	G	•	A	S	E	A	Q	N			2		
	k	C	•	G	•	A	P	K	A	Q	N				1	
	l	C	G	G	•	A	P	E	A	Q	N		1			

**Example 3****Introduction**

**[0085]** Damage to blood vessels exposes circulating platelets to the extracellular matrix. Here, collagen supports adhesion and stimulates platelet activation by acting as a ligand for a number of platelet receptors. Platelets are first tethered by the interaction of glycoprotein (GP) Ib $\alpha$  with the A1 domain of von Willebrand Factor (vWF), a plasma protein that binds to exposed collagen. Firm platelet adhesion results from the concerted action of the collagen receptor GPIIb/IIIa (integrin  $\alpha$ 2 $\beta$ 1) and the fibrinogen receptor GPIIb/IIIa ( $\alpha$ IIb $\beta$ 3) which also binds immobilised vWF. Collagen mediated activation of platelets is dependent upon the engagement and clustering of GPVI, an immunoglobulin (Ig) superfamily member with homology to killer-cell Ig-like receptors (KIRs) and the Fc $\alpha$ RI. We and others have recently described the ligand binding sites of  $\alpha$ 2 integrin and GPIb $\alpha$  at the structural level.

**[0086]** Glycoprotein (GP) VI is the major receptor responsible for platelet activation by collagen, but the collagen-binding surface of GPVI is unknown. Recent work has demonstrated the key role played by GPVI in arterial thrombus formation in mice and provides a clear basis for the development of potentially therapeutic GPVI inhibitors. Indeed, blockade of GPVI is attractive for several reasons. Firstly, the expression of GPVI is restricted to platelets and megakaryocytes. Secondly, collagen is required for prothrombotic 'COAT' platelet formation, for which blockade of GPVI may provide a specific control point. Thirdly, patients with congenital or acquired autoantibody mediated GPVI deficiency have only a mild bleeding disorder, despite having a significantly reduced platelet response to collagen. These observations have been recently confirmed in mice.

**[0087]** The GPVI gene is part of the human leukocyte receptor cluster (LRC) on chromosome 19q13.4<sup>15</sup>. GPVI has two extracellular C2-type Ig-like domains (D1 and D2). These Ig-like domains are connected by a glycosylated stem of ~60 amino acids to a transmembrane sequence within which an arginine residue forms a salt-bridge with a transmembrane aspartate in the FcR $\gamma$  chain. GPVI signalling is dependent upon its' interaction with the  $\gamma$  chain. The 51 residue cytoplasmic domain of human GPVI has binding sites for various signalling proteins. Two modes of ligand binding for LRC members have been described. The KIRs bind to HLA via a surface that contains the interdomain linker, whereas Fc $\alpha$ RI binds IgA via its' N-terminal Ig-like domain. Previous studies have shown that GPVI recognises glycine-proline-hydroxyproline (GPO) repeat motifs in the triple helical structure of collagen. It was also shown that collagen related peptide (CRP), which contains 10 GPO motifs and spontaneously forms helices under physiological conditions is a powerful and specific agonist for GPVI. GPVI specifically recognises CRP but not a peptide of similar structure (GPP10) lacking hydroxyproline. Studies with GPVI-deficient murine platelets and the inhibitory monoclonal antibody JAQ-1 are suggestive of the existence of two collagen binding sites on GPVI, the primary one being the binding site for CRP.

**[0088]** Here, we describe experiments which reveal the primary collagen-binding site to a particular surface of GPVI using the aforementioned peptides. By homology modelling of the Ig-like domains of human and murine GPVI on basis of the KIR coordinates, residues of possible relevance to CRP binding were identified. On that basis, twelve D1D2 molecules (wild type human and mouse and ten mutants of human) were recombinantly expressed and their relative binding affinities for CRP determined. The wild type hD1D2 was used as a bait to select inhibitory (clone 10B12) and non-inhibitory phage antibodies (clone 1C3) specific for GPVI. Results of epitope mapping of the former and the modelling of interface of antibody 10B12 and GPVI combined with the results obtained with the mutant D1D2 molecules allowed

the identification of the primary collagen-binding surface on GPVI.

### Selection of phage antibodies binding to hD1D2

5 **[0089]** Human single chain variable domain antibody fragments (scFv) can be selected from repertoires of human antibodies displayed on the surface of filamentous phage. Antibodies specific for antigen can be obtained from such libraries by rounds of phage affinity selection followed by expansion of selected and antigen specific phage. Once antigen-specific 'phage antibodies' have been obtained the genes encoding the Variable domains of Heavy (VH) and Light (VL) chains of the antibody can be rescued. Using such an approach we selected from two human V gene phage display libraries, Marks (Marks et al, Biotechnology NY, 1993;11:1145-9) and CAT (Vaughan et al, Nat. Biotechnol. 1996;14: 10 309-14), scFvs specific for GPVI. For both libraries, an identical protocol was used for the first round of selection. Briefly, phage were mixed with hD1D2 in solution and complexes were then captured via the CaM tag onto the surface of BSA-N9A coated immunotubes. After extensive washing, the phage antibody-hD1D2 complexes were eluted by chelating calcium with 10 mM EDTA and then propagated in *E. coli* as previously described (Watkins et al, Tissue Antigens, 2000; 15 55:219-28). For the Marks library, this protocol was repeated twice and clones from the third round of selection screened for binding to hD1D2 by ELISA. For the CAT library, the second round of selection was designed to enrich for scFvs that specifically blocked the CRP-D1D2 interaction. In detail, pre-formed, immobilised hD1D2-CRP complexes were obtained by incubating CaM tagged hD1D2 in wells coated with CRP. Regrown phage particles from the first round were added to these wells and allowed to compete with CRP for binding to hD1D2, thus releasing phage-hD1D2 complexes into solution. These complexes were captured via the CaM tag, washed and eluted with EDTA as before. Clones from 20 this second round of selection were extensively screened for specificity.

**[0090]** In this manner two clones 10B12 and 1C3 were selected and the antibodies thus obtained characterised.

**[0091]** The VH and VL genes of both clones were sequenced as previously described (Watkins et al, Tissue Antigens, 2000;55:219-28) and nucleotide sequences compared with germline V-gene sequences in the V-base directory (Cook 25 et al, Immunology Today, 1995;16:237-42). The scFv gene cassettes of both clones were subcloned into the pUC119-Sfi/Not-His6 vector and scFv expressed as described previously described (Watkins et al, Tissue Antigens, 2000;55: 219-28) and purified as above. The specificity of selected scFvs 10B12 and 1C3 was investigated:

- by ELISA with a panel of proteins either captured via the CaM tag to BSA-N9A coated plates in the presence of 30  $Ca^{2+}$ , or coated directly onto the microplate wells.
- by measuring the binding of the scFvs to blood cells by flow cytometry with positive binding to platelets and no binding to other blood cells
- By showing the ability of soluble recombinant GPVI (residues 1-186) to inhibit the binding of both scFvs to platelets

35 **[0092]** In platelet aggregometry, it was observed that scFv 10B12 but not scFv 1C3 was able to inhibit the aggregation of platelets induced by either collagen type I fibres (Ethicon, Somerville, New Jersey, USA) or collagen related peptide. The inhibitory antibody 10B12 did not abrogate platelet aggregation induced by other platelet agonists which do activate platelets via alternative signalling pathways then GPVI, such as adenosine 5'-diphosphate (ADP; Sigma), U46619 (Sigma), thrombin receptor activating peptide (TRAP; Sigma) or epinephrine (EPI; Sigma). ScFv 10B12 was also able to 40 inhibit the formation of thrombi in flowing whole blood over a surface coated with collagen. Perfusion flow assays were performed as previously described (Roest et al, Blood, 2000;96:1433-7). In sharp contrast scFv 1C3 had no ability to inhibit the aggregation of platelets induced by collagen or CRP or reduce the thrombus formation in whole blood.

**[0093]** Measurement of real-time interactions between recombinant GPVI proteins and the two scFvs was used to show that the two antibodies 10B12 and 1C3 (inhibitor and non-inhibitor) were against different epitopes on GPVI. 45 Studies with 12 GPVI recombinant proteins (residue 1-186, human and murine forms and 10 human mutants) were used to obtain information on the epitope recognised by the inhibitory antibody 10B12. Surprisingly only one mutant Lysine59Glutamate showed reduced reactivity with scFv10B12. The same mutant showed a grossly reduced reactivity with CRP.

**[0094]** Modelling of the 10B12-GPVI interface using information on wild type human GPVI and the K59E mutant provided insight into the epitope recognised by scFv 10B12. The highly acidic H3 loop of the VH domain of 10B12 forms 50 part of a negatively charged region in the antigen-binding surface of the antibody. This surface has both charge and shape complementarity with a basic multi-lobed patch on the apical surface of human GPVI. The modelling supports the notion that this lobed patch is at the centre of the 10B12 epitope. The basic patch on human GPVI appears to be formed by residues R38, K41, R46, K59 and R60. The K59E mutation reduces the basic nature of the patch whilst the surrounding features are preserved explaining the reduced binding of 10B12 to the K59E mutant of human GPVI. The model generated is compatible with a footprint of the antibody which would cover the interdomain linker and extend to 55 the apical surface of the second domain.

**[0095]** The availability of two recombinant antibodies against different but non polymorphic epitopes on GPVI allows

## EP 1 511 859 B1

the development of simple immunoassays for the measurement of human GPVI levels. This can be applied to determine i.e. the overall level of GPVI in platelets, the amount of GPVI displayed on the platelet membrane and the levels of soluble GPVI in plasma. Such measurements provide an alternative method to determine the GPVI alleles present in a certain individual as the amount of GPVI is linked to the haplotype of the GPVI gene. Measuring GPVI levels may be of

5 relevance to determine the extent of platelet activation in certain clinical conditions (i.e. arterial thrombus formation, thrombocytopenic thrombotic purpura, heparin induced thrombocytopenia and thrombosis, disseminated intravascular coagulation). Alternatively measurement of GPVI levels may be used to determine the appropriate levels of a GPVI inhibitory drug to be administered, or may lead to the adjustment of the dosing of other anti-thrombotics.

10 **[0096]** To conclude, using site-directed mutagenesis of the GPVI protein and human antibodies against GPVI converging evidence has been obtained to localise the collagen related peptide/primary collagen binding surface of GPVI to the area where the first domain meets the interdomain linker.

**[0097]** Human antibodies against human GPVI, including 10B12 and 1C3, are also the subject of International patent application No. PCT/GB01/005755.

### 15 SEQUENCE LISTING

#### **[0098]**

20 <110> Ouwehand, Willem

<120> Abnormal Blood Conditions

<130> 44637.wo01

25 <140> PCT/GB2003/002208

<141> 2003-05-22

<150> GB 0211750.5

<151> 2002-05-22

30 <160> 84

<170> PatentIn version 3.1

35 <210> 1

<211> 1089

<212> DNA

<213> Homo sapiens

40 <400> 1

45

50

55

EP 1 511 859 B1

	atgtctccat ccccgaccgc cctcttctgt cttgggctgt gtctggggcg tgtgccagcg	60
	cagagtggac cgctcccaa gccctccctc caggctctgc ccagctccct ggtgccctg	120
5	gagaagccag tgaccctccg gtgccaggga cctccggcg tggacctgta ccgctggag	180
	aagctgagtt ccagcaggta ccaggatcag gcagtcctct tcatcccggc catgaagaga	240
	agtctggctg gacgctaccg ctgctcctac cagaacggaa gcctctggtc cctgcccagc	300
10	gaccagctgg agctcgttgc cacgggagtt tttgccaaac cctcgtctc agcccagccc	360
	ggcccggcgg tgtcgtcagg aggggacgta accctacagt gtcagactcg gtatggcttt	420
	gaccaatttg ctctgtacaa ggaaggggac cctgcgccct acaagaatcc cgagagatgg	480
	taccgggcta gtttccccat catcacggtg accgccgccc acagcggaac ctaccgatgc	540
15	tacagcttct ccagcaggga cccatacctg tggtcggccc ccagcgacc cctggagctt	600
	gtggtcacag gaacctctgt gacccccagc cggttaccaa cagaaccacc ttcctcgga	660
	gcagaattct cagaagccac cgctgaactg accgtctcat tcacaaaca agtcttcaca	720
20	actgagactt ctaggagtat caccaccagt ccaaggagt cagactctcc agctggctct	780
	gcccgccagt actacaccaa gggcaacctg gtccggatat gcctcggggc tgtgatccta	840
25	ataatcctgg cggggtttct ggcagaggac tggcacagcc ggaggaagcg cctgcggcac	900
	aggggcaggg ctgtgcagag gccgcttccg cccctgccgc cctcccga gacccgaaa	960
	tcacacgggg gtcaggatgg aggccgacag gatgttcaca gccgcgggtt atgttcatga	1020
	ccgctgaacc ccaggcacgg tcgtatccaa gggagggatc atggcatggg aggcgactca	1080
30	tgagggcac	1089

35 <210> 2  
 <211> 339  
 <212> PRT  
 <213> Homo sapiens

40 <400> 2

40

45

50

55

EP 1 511 859 B1

1 Met Ser Pro Ser Pro Thr Ala Leu Phe Cys Leu Gly Leu Cys Leu Gly  
 5 Arg Val Pro Ala Gln Ser Gly Pro Leu Pro Lys Pro Ser Leu Gln Ala  
 10 Leu Pro Ser Ser Leu Val Pro Leu Glu Lys Pro Val Thr Leu Arg Cys  
 15 Ser Arg Tyr Gln Asp Gln Ala Val Leu Phe Ile Pro Ala Met Lys Arg  
 20 Ser Leu Ala Gly Arg Tyr Arg Cys Ser Tyr Gln Asn Gly Ser Leu Trp  
 25 Lys Pro Ser Leu Ser Ala Gln Pro Gly Pro Ala Val Ser Ser Gly Gly  
 30 Asp Val Thr Leu Gln Cys Gln Thr Arg Tyr Gly Phe Asp Gln Phe Ala  
 35 Thr Tyr Arg Cys Tyr Ser Phe Ser Ser Arg Asp Pro Tyr Leu Trp Ser  
 40 Ala Pro Ser Asp Pro Leu Glu Leu Val Val Thr Gly Thr Ser Val Thr  
 45  
 50  
 55

EP 1 511 859 B1

Pro Ser Arg Leu Pro Thr Glu Pro Pro Ser Ser Val Ala Glu Phe Ser  
 210 215 220

5 Glu Ala Thr Ala Glu Leu Thr Val Ser Phe Thr Asn Lys Val Phe Thr  
 225 230 235 240

Thr Glu Thr Ser Arg Ser Ile Thr Thr Ser Pro Lys Glu Ser Asp Ser  
 245 250 255

10 Pro Ala Gly Pro Ala Arg Gln Tyr Tyr Thr Lys Gly Asn Leu Val Arg  
 260 265 270

15 Ile Cys Leu Gly Ala Val Ile Leu Ile Ile Leu Ala Gly Phe Leu Ala  
 275 280 285

Glu Asp Trp His Ser Arg Arg Lys Arg Leu Arg His Arg Gly Arg Ala  
 290 295 300

20 Val Gln Arg Pro Leu Pro Pro Leu Pro Pro Leu Pro Gln Thr Arg Lys  
 305 310 315 320

Ser His Gly Gly Gln Asp Gly Gly Arg Gln Asp Val His Ser Arg Gly  
 325 330 335

25 Leu Cys Ser

<210> 3  
 <211> 1089  
 <212> DNA  
 <213> Homo sapiens

<400> 3

35 atgtctccat ccccgaccgc cctcttctgt cttgggctgt gtctggggcg tgtgccagcg 60  
 cagagtggac cgctcccaaa gccctccctc caggctctgc ccagctccct ggtgccctg 120  
 gagaagccag tgaccctccg gtgccaggga cctccgggcg tggacctgta ccgcctggag 180  
 40 aagctgagtt ccagcaggta ccaggatcag gcagtcctct tcatcccggc catgaagaga 240  
 agtctggctg gacgctaccg ctgctcctac cagaacggaa gcctctggtc cctgcccagc 300  
 gaccagctgg agctcgttgc cacgggagtt tttgcaaac cctcgctctc agcccagccc 360  
 45 ggcccggcgg tgtcgtcagg aggggacgta accctacagt gtcagactcg gtatggcttt 420  
 gaccaatttg ctctgtacaa ggaaggggac cctgcgccct acaagaatcc cgagagatgg 480  
 taccgggcta gtttcccat catcacggtg accgccgcc acagcggaac ctaccgatgc 540  
 tacagcttct ccagcaggga cccatacctg tggtcggccc ccagcgaccc cctggagctt 600  
 50 gtggtcacag gaacctctgt gacccccagc cggttaccaa cagaaccacc ttccttgta 660  
 gcagaattct cagaagccac cgctgaactg accgtctcat tcacaaacga agtcttcaca 720  
 actgagactt ctaggagtat caccgccagt ccaaaggagt cagactctcc agctggtcct 780  
 55 gcccgccagt actacaccaa gggcaacctg gtccggatat gcctcggggc tgtgatccta 840

EP 1 511 859 B1

ataatcctgg cggggtttct ggcagaggac tggcacagcc ggaggaagcg cctgcggcac 900  
 aggggcaggg ctgtgcagag gccgcttccg cccctgccgc ccctcccgct gacccggaaa 960  
 5 tcaaacgggg gtcaggatgg aggccgacag gatgttcaca gccgcggggt atgttcatga 1020  
 ccgctgaacc ccaggcacgg tcgtatccaa gggagggatc atggcatggg aggcgactca 1080  
 tgagggcac 1089

10 <210> 4  
 <211> 951  
 <212> DNA  
 <213> Homo sapiens

15 <400> 4

atgtctccat ccccgaccgc cctcttctgt cttgggctgt gtctggggcg tgtgccagcg 60  
 20 cagagtggac cgctcccaa gccctccctc caggctctgc ccagctccct ggtgcccctg 120  
 gagaagccag tgaccctccg gtgccaggga cctccgggcg tggacctgta ccgcctggag 180  
 aagctgagtt ccagcaggtta ccaggatcag gcagtcctct tcatcccggc catgaagaga 240  
 agtctggctg gacgctaccg ctgctcctac cagaacggaa gcctctggtc cctgcccagc 300  
 25 gaccaggtgg agctcgttgc cacgggagtt tttgccaaac cctcgtctc agcccagccc 360  
 ggcccggcgg tgtcgtcagg aggggacgta accctacagt gtcagactcg gtatggcttt 420  
 gaccaatttg ctctgtacaa ggaaggggac cctgcgccct acaagaatcc cgagagatgg 480  
 30 taccgggcta gtttcccat catcacggtg accgccgcc acagcggaac ctaccgatgc 540  
 tacagcttct ccagcaggga cccatacctg tggctcggcc ccagcgacc cctggagctt 600  
 gtggtcacag gaacctctgt gacccccagc cggttaccaa cagaaccacc ttcctcggtta 660  
 35 gcagaattct cagaagccac cgctgaactg accgtctcat tcacaaaca agtcttcaca 720  
 actgagactt ctaggagtat caccaccagt ccaaaggagt cagactctcc agctggtcct 780  
 gcccgccagt actacaccaa gggcaacctg gtccggatat gcctcggggc tgtgatccta 840  
 ataatcctgg cggggtttct ggcagaggac tggcacagcc ggaggaagcg cctgcggcac 900  
 40 aggggcaggg ctgtgcagag gccgcttccg cccctgccgc ccctcccgca g 951

45 <210> 5  
 <211> 20  
 <212> DNA  
 <213> Artificial sequence

<220>  
 <223> Taqman primer

50 <400> 5  
 tcccaggaac ctctgtgacc 20

55 <210> 6  
 <211> 19  
 <212> DNA  
 <213> Artificial sequence

EP 1 511 859 B1

<220>  
<223> Taqman primer

<400> 6  
5 ctcagaagcc accgctgaa 19

<210> 7  
<211> 25  
<212> DNA  
10 <213> Artificial sequence

<220>  
<223> Taqman primer

<400> 7  
15 tttcacactt agccttggtt 25

<210> 8  
<211> 15  
20 <212> DNA  
<213> Artificial sequence

<220>  
<223> Taqman primer

<400> 8  
25 aagcgctgc ggcac 15

<210> 9  
30 <211> 15  
<212> DNA  
<213> Artificial sequence

<220>  
<223> Taqman primer

<400> 9 15  
35 aggaagcgcc tgcgg 15

<210> 10  
40 <211> 20  
<212> DNA  
<213> Artificial sequence

<220>  
<223> Taqman primer

<400> 10  
45 tccttgagc ttgtgcaa 20

<210> 11  
50 <211> 20  
<212> DNA  
<213> Artificial sequence

<220>  
<223> Taqman primer

55

EP 1 511 859 B1

<400> 11  
 ggatccactc aaggctcct 20  
  
 5 <210> 12  
 <211> 18  
 <212> DNA  
 <213> Artificial sequence  
  
 10 <220>  
 <223> Taqman primer  
  
 <400> 12  
 ccggtgttg cggaatca 18  
  
 15 <210> 13  
 <211> 21  
 <212> DNA  
 <213> Artificial sequence  
  
 20 <220>  
 <223> Taqman primer  
  
 <400> 13  
 ctcatcgcgct gtcaccaga a 21  
 25  
 <210> 14  
 <211> 21  
 <212> DNA  
 <213> Artificial sequence  
 30  
 <220>  
 <223> Taqman primer  
  
 <400> 14  
 ctgagcatga aatgcctggt t 21  
 35  
 <210> 15  
 <211> 23  
 <212> DNA  
 <213> Artificial sequence  
 40  
 <220>  
 <223> Taqman primer  
  
 45 <400> 15 23  
 ccagctggag agtctgactc ctt 23  
  
 <210> 16  
 <211> 18  
 50 <212> DNA  
 <213> Artificial sequence  
  
 <220>  
 <223> Taqman primer  
 55  
 <400> 16 18  
 acataaccg cggtgtg 18

EP 1 511 859 B1

<210> 17  
<211> 18  
<212> DNA  
<213> Artificial sequence  
5  
  
<220>  
<223> Taqman primer  
  
<400> 17 18  
10 tcccatgcca tgatccct 18  
  
<210> 18  
<211> 23  
<212> DNA  
15 <213> Artificial sequence  
  
<220>  
<223> Taqman primer  
  
20 <400> 18 23  
cggccttct aattgagact cat 23  
  
<210> 19  
<211> 20  
25 <212> DNA  
<213> Artificial sequence  
  
<220>  
<223> Taqman primer  
30  
  
<400> 19 20  
ggagcagcaa gaggaggaga 20  
  
<210> 20  
35 <211> 19  
<212> DNA  
<213> Artificial sequence  
  
<220>  
40 <223> Taqman primer  
  
<400> 20 19  
ccggtgagag cagggaaaa 19  
  
45 <210> 21  
<211> 27  
<212> DNA  
<213> Artificial sequence  
  
50 <220>  
<223> Taqman probe  
  
<400> 21  
55 agaaccacct tctcggtag caggtag 27  
  
<210> 22  
<211> 16  
<212> DNA

EP 1 511 859 B1

<213> Artificial sequence

<220>  
<223> Taqman probe

5

<400> 22  
tcacaaaca agtctt 16

<210> 23  
<211> 22  
<212> DNA  
<213> Artificial sequence

10

<220>  
<223> Taqman probe

15

<400> 23  
ttctaggagt atcaccacca gt 22

20

<210> 24  
<211> 19  
<212> DNA  
<213> Artificial sequence

25

<220>  
<223> Taqman probe

<400> 24  
cctcccgcag acccgaaa 19

30

<210> 25  
<211> 21  
<212> DNA  
<213> Artificial sequence

35

<220>  
<223> Taqman probe

<400> 25  
ctgacccccg tgtgattcc g 21

40

<210> 26  
<211> 14  
<212> DNA  
<213> Artificial sequence

45

<220>  
<223> Taqman probe

<400> 26  
cgtagccggc tcct 14

50

<210> 27  
<211> 16  
<212> DNA  
<213> Artificial sequence

55

<220>

EP 1 511 859 B1

<223> Taqman probe

<400> 27  
cacaggtcct catgcc 16

5

<210> 28  
<211> 13  
<212> DNA  
<213> Artificial sequence

10

<220>  
<223> Taqman probe

<400> 28  
ccgccccggc ccg 13

15

<210> 29  
<211> 22  
<212> DNA  
<213> Artificial sequence

20

<220>  
<223> Taqman probe

25

<400> 29  
accacctcc ccggtagcag gt 22

<210> 30  
<211> 14  
<212> DNA  
<213> Artificial sequence

30

<220>  
<223> Taqman probe

35

<400> 30  
cacaaacgaa gtct 14

<210> 31  
<211> 20  
<212> DNA  
<213> Artificial sequence

40

<220>  
<223> Taqman probe

45

<400> 31 2  
ctaggagtat caccgccagt 20

50

<210> 32  
<211> 19  
<212> DNA  
<213> Artificial sequence

55

<220>  
<223> Taqman probe

<400> 32

EP 1 511 859 B1

cctcccgctg acccgaaa 19

<210> 33  
<211> 22  
5 <212> DNA  
<213> Artificial sequence

<220>  
<223> Taqman probe  
10

<400> 33  
tcctgacccc cgtttgattt cc 22

<210> 34  
15 <211> 14  
<212> DNA  
<213> Artificial sequence

<220>  
20 <223> Taqman probe

<400> 34  
ccgtagccag ctcc 14

25 <210> 35  
<211> 15  
<212> DNA  
<213> Artificial sequence

30 <220>  
<223> Taqman probe

<400> 35  
35 acaggccctc atgcc 15

<210> 36  
<211> 13  
<212> DNA  
<213> Artificial sequence  
40

<220>  
<223> Taqman probe

<400> 36  
45 cgccccagcc cgc 13

<210> 37  
<211> 20  
<212> DNA  
50 <213> Artificial sequence

<220>  
<223> PCR primer

55 <400> 37  
ggccatgaag agaagtctgg 20

<210> 38

EP 1 511 859 B1

<211> 20  
<212> DNA  
<213> Artificial sequence

5 <220>  
<223> PCR primer

<400> 38  
agcaagaccc tgtgtccaaa 20

10 <210> 39  
<211> 20  
<212> DNA  
<213> Artificial sequence

15 <220>  
<223> PCR primer

<400> 39  
caggagttt atgggagcac 20

20 <210> 40  
<211> 21  
<212> DNA  
<213> Artificial sequence

25 <220>  
<223> PCR primer

<400> 40  
ccagccatga atacctgga a 21

30 <210> 41  
<211> 21  
<212> DNA  
<213> Artificial sequence

35 <220>  
<223> PCR primer

<400> 41  
aatgtccata aaagcgagtc c 21

40 <210> 42  
<211> 20  
<212> DNA  
<213> Artificial sequence

45 <220>  
<223> PCR primer

<400> 42  
ccgtattgt gtctgaacg 20

50 <210> 43  
<211> 21  
<212> DNA  
<213> Artificial sequence

55

EP 1 511 859 B1

<220>  
<223> PCR primer

5 <400> 43  
aaaaagctcc ccagctctta g 21

<210> 44  
<211> 21  
<212> DNA  
10 <213> Artificial sequence

<220>  
<223> PCR primer

15 <400> 44  
atggccatca ggacctataa a 21

<210> 45  
<211> 21  
20 <212> DNA  
<213> Artificial sequence

<220>  
<223> PCR primer

25 <400> 45  
tattgttca ggaccacag c 21

<210> 46  
<211> 21  
30 <212> DNA  
<213> Artificial sequence

<220>  
<223> PCR primer

35 <400> 46  
aaggggtccg tgtacctat a 21

<210> 47  
<211> 21  
40 <212> DNA  
<213> Artificial sequence

<220>  
<223> PCR primer

45 <400> 47  
ctcaaagg gaaatggagat a 21

50 <210> 48  
<211> 21  
<212> DNA  
<213> Artificial sequence

55 <220>  
<223> PCR primer

EP 1 511 859 B1

<400> 48  
aagagagagc tccgtcctca c 21

5 <210> 49  
<211> 20  
<212> DNA  
<213> Artificial sequence

10 <220>  
<223> PCR primer

<400> 49  
ggagtaggca cagtgacagg 20

15 <210> 50  
<211> 21  
<212> DNA  
<213> Artificial sequence

20 <220>  
<223> PCR primer

<400> 50  
gtttcacag ctgtagcctc t 21

25 <210> 51  
<211> 21  
<212> DNA  
<213> Artificial sequence

30 <220>  
<223> PCR primer

<400> 51  
gagttggctt tgggaagag a 21

35 <210> 52  
<211> 18  
<212> DNA  
<213> Artificial sequence

40 <220>  
<223> PCR primer

45 <400> 52  
ctggaggtgg gctcttc 18

<210> 53  
<211> 20  
<212> DNA  
<213> Artificial sequence

50 <220>  
<223> PCR primer

55 <400> 53  
gacgctaccg ctgctcctac 20

EP 1 511 859 B1

<210> 54  
<211> 20  
<212> DNA  
<213> Artificial sequence  
5  
<220>  
<223> PCR primer  
<400> 54  
10 tccgatcccc ctcctttac 20  
<210> 55  
<211> 17  
<212> DNA  
15 <213> Artificial sequence  
<220>  
<223> PCR primer  
20 <400> 55  
gggaccctgc gcctac 17  
<210> 56  
<211> 18  
25 <212> DNA  
<213> Artificial sequence  
<220>  
<223> PCR primer  
30 <400> 56  
ggcggtcacc gtgatgat 18  
<210> 57  
35 <211> 20  
<212> DNA  
<213> Artificial sequence  
<220>  
40 <223> PCR primer  
<400> 57  
tcccaggaac ctctgtgacc 20  
45 <210> 58  
<211> 21  
<212> DNA  
<213> Artificial sequence  
50 <220>  
<223> PCR primer  
<400> 58  
55 ctcatacgct gtcaccaga a 21  
<210> 59  
<211> 19  
<212> DNA

EP 1 511 859 B1

<213> Artificial sequence

<220>  
<223> PCR primer

5

<400> 59  
ctcagaagcc accgctgaa 19

<210> 60  
<211> 21  
<212> DNA  
<213> Artificial sequence

10

<220>  
<223> PCR primer

15

<400> 60  
ctgagcatga aatgcctggt t 21

20

<210> 61  
<211> 25  
<212> DNA  
<213> Artificial sequence

25

<220>  
<223> PCR primer

30

<400> 61  
tttcacactt agccttgggt tgggt 25

35

<210> 62  
<211> 23  
<212> DNA  
<213> Artificial sequence

40

<220>  
<223> PCR primer

45

<400> 62  
ccagctggag agtctgactc ctt 23

<210> 63  
<211> 17  
<212> DNA  
<213> Artificial sequence

50

<220>  
<223> PCR primer

55

<400> 63  
tggcacagcc ggaggaa 17

<210> 64  
<211> 19  
<212> DNA  
<213> Artificial sequence

<220>

EP 1 511 859 B1

<223> PCR primer

<400> 64  
5 acatcctgtc ggcctccat 19

<210> 65  
<211> 15  
<212> DNA  
10 <213> Artificial sequence

<220>  
<223> PCR primer

<400> 65  
15 aagcgctgc ggcac 15

<210> 66  
<211> 18  
<212> DNA  
20 <213> Artificial sequence

<220>  
<223> PCR primer

<400> 66  
25 acataacccg cggctgtg 18

<210> 67  
<211> 15  
<212> DNA  
30 <213> Artificial sequence

<220>  
<223> PCR primer

<400> 67  
35 aggaagcgcc tgcgg 15

<210> 68  
<211> 18  
<212> DNA  
40 <213> Artificial sequence

<220>  
<223> PCR primer

<400> 68  
45 tccatgcca tgatcct 18

<210> 69  
<211> 13  
<212> DNA  
50 <213> Artificial sequence

<220>  
<223> MGB probe

<400> 69

EP 1 511 859 B1

cgaccagctg gag 13

<210> 70  
<211> 14  
5 <212> DNA  
<213> Artificial sequence

<220>  
10 <223> MGB probe

<400> 70  
cgaccagtg gagc 14

<210> 71  
15 <211> 17  
<212> DNA  
<213> Artificial sequence

<220>  
20 <223> MGB probe

<400> 71  
tagccctgta ccatctc 17

25 <210> 72  
<211> 16  
<212> DNA  
<213> Artificial sequence

30 <220>  
<223> MGB probe

<400> 72  
35 tagcccggta ccatct 16

<210> 73  
<211> 27  
<212> DNA  
<213> Artificial sequence

40 <220>  
<223> Standard probe

<400> 73  
45 agaaccacct tctcggtag caggtag 27

<210> 74  
<211> 22  
<212> DNA  
50 <213> Artificial sequence

<220>  
<223> standard probe

55 <400> 74  
accacctcc ccggtagcag gt 22

<210> 75

EP 1 511 859 B1

<211> 16  
<212> DNA  
<213> Artificial sequence

5 <220>  
<223> MGB probe

<400> 75  
tcacaaaca agtctt 16

10 <210> 76  
<211> 14  
<212> DNA  
<213> Artificial sequence

15 <220>  
<223> MGB probe

<400> 76  
20 caaaaacgaa gtct 14

<210> 77  
<211> 22  
<212> DNA  
25 <213> Artificial sequence

<220>  
<223> MGB probe

30 <400> 77  
ttctaggagt atcaccacca gt 22

<210> 78  
<211> 20  
35 <212> DNA  
<213> Artificial sequence

<220>  
<223> MGB probe

40 <400> 78  
ctaggagtat caccgccagt 20

<210> 79  
<211> 14  
45 <212> DNA  
<213> Artificial sequence

<220>  
<223> MGB probe

50 <400> 79  
ttccgccct gccg 14

55 <210> 80  
<211> 14  
<212> DNA  
<213> Artificial sequence

<220>  
 <223> MGB probe  
  
 <400> 80  
 5     ttccgccct cccg         14  
  
 <210> 81  
 <211> 19  
 <212> DNA  
 10     <213> Artificial sequence  
  
 <220>  
 <223> Standard probe  
  
 <400> 81  
 15     cctccgcag acccgaaa         19  
  
 <210> 82  
 <211> 19  
 20     <212> DNA  
        <213> Artificial sequence  
  
 <220>  
 <223> standard probe  
 25  
 <400> 82  
        cctccgctg acccgaaa         19  
  
 <210> 83  
 <211> 21  
 <212> DNA  
 30     <213> Artificial sequence  
  
 <220>  
 <223> standard probe  
 35  
 <400> 83  
        ctgacccccg tgtgattcc g         21  
  
 <210> 84  
 <211> 22  
 <212> DNA  
 40     <213> Artificial sequence  
  
 <220>  
 <223> standard probe  
 45  
 <400> 84  
 50     tcctgacccc cgtttgatt cc         22

**Claims**

1. A method of diagnosing whether a subject has, or is at risk of, an abnormal blood condition associated with an increased risk of bleeding which comprises determining the GPVI allelotype of the subject to determine whether the subject is homozygous or heterozygous for the GPVI<sup>b</sup> allele.
2. A method according to claim 1 wherein the GPVI allelotype is determined by detecting for one or more single

## EP 1 511 859 B1

nucleotide polymorphisms (SNPs) which are distinctive of a GPVI allele.

3. A method according to claim 2 wherein the allele is the GPVI<sup>b</sup> allele.
- 5 4. A method according to claim 2 or 3, wherein the subject is a Caucasian, and SNPs at genomic nucleotide positions 13010 and 23246 corresponding respectively to position 655 and 709 as illustrated in figure 7 are detected for.
- 10 5. A method according to claim 3 or 4 wherein all five SNPs identified herein (at genomic nucleotide positions 13010, 19570, 22524, 23246, and 23260 corresponding respectively to positions 655, 709, 745, 950 and 964 as illustrated in figure 7.) as being distinctive of the GPVI<sup>b</sup> allele are detected for.
- 15 6. A method according to claim 2 or 3, wherein the subject is non-Caucasian, and SNPs at more than two, preferably all five SNPs identified herein (at genomic nucleotide positions 13010, 19570, 22524, 23246, and 23260 corresponding respectively to positions 655, 709, 745, 950 and 964 as illustrated in figure 7) as being distinctive of the GPVI<sup>b</sup> allele are detected for.
- 20 7. A method according to any of claims 2 to 6 which includes the step of amplifying nucleic acid obtained or derived from the subject.
- 25 8. A method according to any of claims 2 to 7 wherein the presence of the, or each SNP is detected for using real-time PCR or fluorimetric analysis.
- 30 9. A method according to claim 1 or 2 wherein the GPVI allelotype is determined by detecting for a protein expression product encoded by a GPVI allele.
- 35 10. A method according to claim 9 wherein the GPVI allelotype is determined using an antibody, or fragment or derivative thereof, specific for the protein expression product.
- 40 11. A method according to claim 10 wherein the protein expression product is detected for on the basis of its molecular weight, or using isoelectric focusing.
- 45 12. A method according to claim 1 or 2 wherein the GPVI allelotype is determined using restriction enzyme analysis.
- 50 13. An abnormal blood condition diagnosis kit which comprises means for determining the GPVI allelotype of a subject to determine whether the subject is homozygous or heterozygous for the GPVI<sup>b</sup> allele, wherein the abnormal blood condition is associated with an increased risk of bleeding.
- 55 14. A kit according to claim 13, wherein the determining means allow detection of two or more SNPs, or amino acids encoded by two or more SNPs, which are distinctive of the GPVI<sup>b</sup> allele.
15. A kit according to claim 14 for diagnosing a Caucasian, wherein the determining means are for detection of SNPs at genomic nucleotide positions 13010 and 23246 corresponding respectively to position 655 and 709 as illustrated in figure 7;
16. A kit according to claim 15, wherein the determining means are for detection of SNPs at genomic nucleotide positions 13010, 19570, 22524, 23246, and 23260 corresponding respectively to positions 655, 709, 745, 950 and 964 as illustrated in figure 7.
17. A kit according to claim 14 for diagnosing a non-Caucasian, wherein the determining means are for detection of SNPs at more than two, preferably all five of genomic nucleotide positions 13010, 19570, 22524, 23246, and 23260, corresponding respectively to positions 655, 709, 745, 950 and 964 as illustrated in figure 7.
18. Use of a probe capable of binding specifically to a region of GPVI nucleic acid, or use of a primer capable of amplifying GPVI nucleic acid, wherein the region of GP VI nucleic acid or the GPVI nucleic acid includes an SNP distinctive of a GPVI allele for the diagnosis of an abnormal blood condition associated with an increased risk of bleeding.
19. A GPVI<sup>a</sup> specific antibody, or fragment or derivative thereof specific for GPVI<sup>a</sup>.

## EP 1 511 859 B1

20. A GPVI<sup>b</sup> specific antibody, or fragment or derivative thereof specific for GPVI<sup>b</sup>.
21. Use of an anti-GPVI antibody, fragment, or derivative for the diagnosis of an abnormal blood condition associated with an increased risk of bleeding.
22. Use according to claim 21, wherein the anti-GPVI antibody, fragment, or derivative is an antibody, fragment or derivative according to claim 19 or 20.
23. Use of a method according to any of claims 1 to 12, or a kit according to any of claims 13 to 17, to determine the GPVI allelotype of:
- a blood donor;
  - a subject in need of surgery;
  - a subject with a low platelet count;
  - a subject with an inherited or an acquired bleeding disorder;
  - a subject being administered, or in need of, a blood thinning drug, i.e. anti-thrombotics, thrombolytics, or other drugs which reduce risk of thrombus formation; or a subject participating in a clinical trial to assess a blood thinning drug candidate, i.e. anti-thrombotics, thrombolytics, or other drugs which reduce risk of thrombus formation.
24. Use according to claim 23 to determine the GPVI allelotype of a subject in need of surgery, which further comprises administering a drug and/or increasing the dosage of a drug to reduce the risk of bleeding during surgery, and/or increasing the availability of donor blood if the GPVI allelotype of the subject is determined to be homozygous or heterozygous for the GPVI<sup>b</sup> allele.
25. Use according to claim 23 to determine the GPVI allelotype of a subject with a low platelet count, wherein the low platelet count is due to low endogenous platelet production, or increased destruction or consumption of platelets.
26. Use according to claim 23 to determine the GPVI allelotype of a subject with a low platelet count, which further comprises increasing the platelet transfusion trigger for the subject if the GPVI allelotype of the subject is determined to be homozygous or heterozygous for the GPVI<sup>b</sup> allele.
27. Use according to claim 23 to determine the GPVI allelotype of a subject with an inherited or an acquired bleeding disorder, wherein the inherited bleeding disorder is Haemophilia A or B, Von Willebrands' disease, or rare bleeding disorders, such as Glanzmann thrombasthenia.
28. Use according to claim 23 to determine the GPVI allelotype of a subject being administered, or in need of, a blood thinning drug, i.e. anti-thrombotics, thrombolytics, or other drugs which reduce risk of thrombus formation, which further comprises reducing the dosage of the blood thinning drug if the GPVI allelotype of the subject is determined to be homozygous or heterozygous for the GPVI<sup>b</sup> allele.
29. Use according to claim 23 to determine the GPVI allelotype of a subject being administered, or in need of, a blood thinning drug, i.e. anti-thrombotics, thrombolytics, or other drugs which reduce risk of thrombus formation, or use according to claim 28, wherein the blood thinning drug is an inhibitor of collagen-mediated platelet activation, such as a drug directed to: GPVI (such as antibodies 10B12); proteins associated directly with the intracellular domains of GPVI (for example src family kinases such as fyn); proteins that associate with FcR gamma (tyrosine kinase: p72syk; adaptors: LAT or SLP-76); or proteins downstream from them in GPVI-mediated signalling (such as PI3-kinase, phospholipase C gamma 2).
30. Use according to claim 23 to determine the GPVI allelotype of a blood donor, which further comprises preventing the donor from giving platelets if the GPVI allelotype of the subject is determined to be homozygous for the GPVI<sup>b</sup> allele.

### Patentansprüche

1. Verfahren zum Diagnostizieren, ob eine Person einen anormalen Blutzustand in Verbindung mit einem erhöhten Blutungsrisiko hat oder dafür gefährdet ist, das die Bestimmung des GPVI-Allelotyps der Person beinhaltet, um zu

## EP 1 511 859 B1

ermitteln, ob die Person homozygot oder heterozygot für das GPVI<sup>b</sup>-Allel ist.

2. Verfahren nach Anspruch 1, wobei der GPVI-Allelotyp durch Nachweisen eines oder mehrerer Einzel-Nucleotid-Polymorphismen (SNPs) bestimmt wird, die für ein GPVI-Allel charakteristisch sind.
- 5 3. Verfahren nach Anspruch 2, wobei das Allel das GPVI<sup>b</sup>-Allel ist.
4. Verfahren nach Anspruch 2 oder 3, wobei die Person ein Kaukasier ist und der SNP-Nachweis an den genomischen Nucleotidpositionen 13010 und 23246 erfolgt, die jeweils den Positionen 655 und 709 wie in Fig. 7 illustriert entsprechen.
- 10 5. Verfahren nach Anspruch 3 oder 4, wobei der Nachweis aller fünf hierin als für das GPVI<sup>b</sup>-Allel charakteristisch identifizierten SNPs (an den genomischen Nucleotidpositionen 13010, 19570, 22524, 23246 und 23260, die jeweils den Positionen 655, 709, 745, 950 und 964 wie in Fig. 7 illustriert entsprechen) erfolgt.
- 15 6. Verfahren nach Anspruch 2 oder 3, wobei die Person kein Kaukasier ist und der Nachweis von mehr als zwei SNPs, vorzugsweise aller fünf hierin als für das GPVI<sup>b</sup>-Allel charakteristisch identifizierten SNPs (an den genomischen Nucleotidpositionen 13010, 19570, 22524, 23246 und 23260, die jeweils den Positionen 655, 709, 745, 950 und 964 wie in Fig. 7 illustriert entsprechen) erfolgt.
- 20 7. Verfahren nach einem der Ansprüche 2 bis 6, das den Schritt des Amplifizierens von Nucleinsäure beinhaltet, die von der Person gewonnen oder abgeleitet wird.
8. Verfahren nach einem der Ansprüche 2 bis 7, wobei der Nachweis der Anwesenheit des oder jedes SNP unter Anwendung von Echtzeit-PCR oder Fluorimetrieanalyse erfolgt.
- 25 9. Verfahren nach Anspruch 1 oder 2, wobei der GPVI-Allelotyp durch Nachweisen eines Proteinexpressionsprodukts bestimmt wird, das durch ein GPVI-Allel kodiert ist.
- 30 10. Verfahren nach Anspruch 9, wobei der GPVI-Allelotyp unter Verwendung eines Antikörpers oder Fragments oder Derivats davon bestimmt wird, der/das für das Proteinexpressionsprodukt spezifisch ist.
11. Verfahren nach Anspruch 10, wobei der Nachweis des Proteinexpressionsprodukts auf der Basis seiner relativen Molekülmasse oder unter Anwendung von isoelektrischer Fokussierung erfolgt.
- 35 12. Verfahren nach Anspruch 1 oder 2, wobei der GPVI-Allelotyp mit einer Restriktionsenzymanalyse bestimmt wird.
13. Kit zum Diagnostizieren eines anormalen Blutzustands, der ein Mittel zum Bestimmen des GPVI-Allelotyps einer Person umfasst, um zu ermitteln, ob die Person homozygot oder heterozygot für das GPVI<sup>b</sup>-Allel ist, wobei der anormale Blutzustand mit einem erhöhten Blutungsrisiko assoziiert ist.
- 40 14. Kit nach Anspruch 13, wobei das Bestimmungsmittel den Nachweis von zwei oder mehr SNPs oder Aminosäuren, die durch zwei oder mehr SNPs kodiert sind, ermöglicht, die für das GPVI<sup>b</sup>-Allel charakteristisch sind.
- 45 15. Kit nach Anspruch 14 zum Stellen einer Diagnose bei einem Kaukasier, wobei das Bestimmungsmittel für den Nachweis von SNPs an den genomischen Nucleotidpositionen 13010 und 23246 vorgesehen ist, die jeweils den Positionen 655 und 709 wie in Fig. 7 illustriert entsprechen.
- 50 16. Kit nach Anspruch 15, wobei das Bestimmungsmittel für den Nachweis von SNPs an den genomischen Nucleotidpositionen 13010, 19570, 22524, 23246 und 23260 vorgesehen ist, die jeweils den Positionen 655, 709, 745, 950 und 964 wie in Fig. 7 illustriert entsprechen.
- 55 17. Kit nach Anspruch 14 zum Stellen einer Diagnose bei einem Nicht-Kaukasier, wobei das Bestimmungsmittel für den Nachweis von mehr als zwei SNPs, vorzugsweise von allen fünf genomischen Nucleotidpositionen 13010, 19570, 22524, 23246 und 23260 vorgesehen ist, die jeweils den Positionen 655, 709, 745, 950 und 964 wie in Fig. 7 illustriert entsprechen.
18. Verwendung einer Sonde, die sich spezifisch an eine Region von GPVI-Nucleinsäure binden kann, oder Verwendung

## EP 1 511 859 B1

eines Primers, der GPVI-Nucleinsäure amplifizieren kann, wobei die Region von GPVI-Nucleinsäure oder die GPVI-Nucleinsäure einen für ein GPVI-Allel charakteristischen SNP beinhaltet, zur Diagnose eines anormalen Blutzustands, der mit einem erhöhten Blutungsrisiko assoziiert ist.

- 5     **19.** GPVI<sup>a</sup>-spezifischer Antikörper oder Fragment oder Derivat davon, der/das für GPVI<sup>a</sup> spezifisch ist.
- 20.** GPVI<sup>b</sup>-spezifischer Antikörper oder Fragment oder Derivat davon, der/das für GPVI<sup>b</sup> spezifisch ist.
- 10    **21.** Verwendung eines Anti-GPVI-Antikörpers, Fragments oder Derivats zur Diagnose eines anormalen Blutzustands, der mit einem erhöhten Blutungsrisiko assoziiert ist.
- 22.** Verwendung nach Anspruch 21, wobei der Anti-GPVI-Antikörper, das Fragment oder Derivat ein Antikörper, Fragment oder Derivat nach Anspruch 19 oder 20 ist.
- 15    **23.** Anwendung eines Verfahrens nach einem der Ansprüche 1 bis 12 oder Kit nach einem der Ansprüche 13 bis 17 zum Bestimmen des GPVI-Allelotyps von:
- einem Blutspender,  
      einer Person, die einer Operation bedarf,  
20    einer Person mit geringer Blutplättchenzahl,  
      einer Person mit einer geerbten oder erworbenen Blutungsstörung,  
      einer Person, der ein Blutverdünnungswirkstoff, d.h.
- Antithrombotika, thrombolytische Mittel oder andere Wirkstoffe, die das Risiko einer Thrombusbildung verringern, verabreicht wird oder die dieses benötigt,  
25    oder von einer Person, die an einem klinischen Versuch zur Beurteilung eines in Frage kommenden Blutverdünnungswirkstoffs, d.h. Antithrombotika, thrombolytische Mittel oder andere Wirkstoffe, die das Risiko einer Thrombusbildung verringern, teilnimmt.
- 30    **24.** Anwendung nach Anspruch 23 zum Bestimmen des GPVI-Allelotyps einer Person, die einer Operation bedarf, ferner umfassend das Verabreichen eines Wirkstoffs und/oder das Erhöhen der Dosierung eines Wirkstoffs zum Verringern des Risikos einer Blutung im Laufe einer Operation und/oder das Erhöhen der Verfügbarkeit von Spenderblut, wenn ermittelt wird, dass der GPVI-Allelotyp der Person homozygot oder heterozygot für das GPVI<sup>b</sup>-Allel ist.
- 35    **25.** Anwendung nach Anspruch 23 zum Bestimmen des GPVI-Allelotyps einer Person mit einer geringen Blutplättchenzahl, wobei die geringe Blutplättchenzahl in einer geringen endogenen Blutplättchenproduktion oder einer erhöhten Zerstörung oder einem erhöhten Verbrauch von Blutplättchen begründet ist.
- 40    **26.** Anwendung nach Anspruch 23 zum Bestimmen des GPVI-Allelotyps einer Person mit einer geringen Blutplättchenzahl, ferner umfassend das Erhöhen des Blutplättchentransfusionstriggers für die Person, wenn ermittelt wird, dass der GPVI-Allelotyp der Person homozygot oder heterozygot für das GPVI<sup>b</sup>-Allel ist.
- 45    **27.** Anwendung nach Anspruch 23 zum Bestimmen des GPVI-Allelotyps einer Person mit einer geerbten oder erworbenen Blutungsstörung, wobei die geerbte Blutungsstörung Hämophilie A oder B, die von-Willebrand-Krankheit oder eine seltene Blutungsstörung wie Glanzmann-Thrombasthenie ist.
- 50    **28.** Anwendung nach Anspruch 23 zum Bestimmen des GPVI-Allelotyps einer Person, der ein Blutverdünnungswirkstoff, d.h. Antithrombotika, thrombolytische Mittel oder sonstige Wirkstoffe, die das Risiko einer Thrombusbildung verringern, verabreicht wird oder die ein solches benötigt, ferner umfassend das Reduzieren der Dosierung des Blutverdünnungswirkstoffs, wenn ermittelt wird, dass der GPVI-Allelotyp der Person homozygot oder heterozygot für das GPVI<sup>b</sup>-Allel ist.
- 55    **29.** Anwendung nach Anspruch 23 zum Bestimmen des GPVI-Allelotyps einer Person, der ein Blutverdünnungswirkstoff, d.h. Antithrombotika, thrombolytische Mittel oder sonstige Wirkstoffe, die das Risiko einer Thrombusbildung verringern, verabreicht wird oder die ein solches benötigt, oder Anwendung nach Anspruch 28, wobei der Blutverdünnungswirkstoff ein Inhibitor von Kollagenvermittelter Blutplättchenaktivierung ist, wie z.B. ein auf Folgendes gerichteter Wirkstoff: GPVI (wie Antikörper 10B12); Proteine, die direkt mit den intrazellulären Domänen von GPVI assoziiert sind (zum Beispiel Kinasen der src-Familie wie fyn); Proteine, die sich mit FcR-Gamma assoziieren (Tyrosinkinase:

## EP 1 511 859 B1

p72syk; Adaptoren: LAT oder SLP-76) oder Proteine stromabwärts davon in GPVI-vermittelter Signalisierung (wie P13-Kinase, Phospholipase C-gamma-2).

- 5 30. Anwendung nach Anspruch 23 zum Bestimmen des GPVI-Allelotyps eines Blutspenders, ferner umfassend das Verhindern der Blutplättchenspende durch den Spender, wenn ermittelt wird, dass der GPVI-Allelotyp der Person homozygot für das GPVI<sup>b</sup>-Allel ist.

### Revendications

- 10 1. Méthode destinée à diagnostiquer si un sujet a ou est à risque d'une condition de sang anormal associée à un risque accru de saignement, laquelle comprend déterminer l'allélotype de GPVI du sujet afin de déterminer si le sujet est homozygote ou hétérozygote pour l'allèle GPVI<sup>b</sup>.
- 15 2. Méthode selon la revendication 1, dans laquelle l'allélotype de GPVI est déterminé en détectant un ou plusieurs polymorphismes d'un nucléotide simple (SNP) qui sont distinctifs d'un allèle de GPVI.
3. Méthode selon la revendication 2, dans laquelle l'allèle est l'allèle GPVI<sup>b</sup>.
- 20 4. Méthode selon la revendication 2 ou 3, dans laquelle le sujet est une personne de race blanche et des SNP sont détectés aux positions des nucléotides génomiques 13010 et 23246 correspondant respectivement aux positions 655 et 709 comme il est illustré sur la Figure 7.
- 25 5. Méthode selon la revendication 3 ou 4, dans laquelle tous les cinq SNP identifiés aux présentes (aux positions des nucléotides génomiques 13010, 19570, 22524, 23246 et 23260 correspondant respectivement aux positions 655, 709, 745, 950 et 964 comme il est illustré sur la Figure 7) comme étant distinctifs de l'allèle GPVI<sup>b</sup>, sont détectés.
- 30 6. Méthode selon la revendication 2 ou 3, dans laquelle le sujet n'est pas une personne de race blanche et des SNP à plus de deux, de préférence tous les cinq SNP identifiés aux présentes (aux positions des nucléotides génomiques 13010, 19570, 22524, 23246 et 23260 correspondant respectivement aux positions 655, 709, 745, 950 et 964 comme il est illustré sur la Figure 7) comme étant distinctifs de l'allèle GPVI<sup>b</sup>, sont détectés.
- 35 7. Méthode selon l'une quelconque des revendications 2 à 6, laquelle comprend l'étape d'amplification d'acide nucléique obtenu ou provenant du sujet.
8. Méthode selon l'une quelconque des revendications 2 à 7, dans laquelle la présence du ou de chaque SNP est détectée par PCR en temps réel ou par analyse fluorimétrique.
- 40 9. Méthode selon la revendication 1 ou 2, dans laquelle l'allélotype de GPVI est déterminé en détectant un produit d'expression protéique codé par un allèle de GPVI.
10. Méthode selon la revendication 9, dans laquelle l'allélotype de GPVI est déterminé en utilisant un anticorps, un fragment ou un dérivé du même, spécifique pour le produit d'expression protéique.
- 45 11. Méthode selon la revendication 10, dans laquelle le produit d'expression protéique est détecté sur la base de son poids moléculaire ou par focalisation isoélectrique.
12. Méthode selon la revendication 1 ou 2, dans laquelle l'allélotype de GPVI est déterminé par analyse avec des enzymes de restriction.
- 50 13. Kit de diagnostic de condition de sang anormal qui comprend des moyens pour déterminer l'allélotype de GPVI d'un sujet afin de déterminer si le sujet est homozygote ou hétérozygote pour l'allèle GPVI<sup>b</sup>, où la condition de sang anormal est associée à un risque accru de saignement.
- 55 14. Kit selon la revendication 13, dans lequel les moyens de détermination permettent la détection d'un ou de plusieurs SNP ou d'acides aminés codés par deux ou plusieurs SNP qui sont distinctifs pour l'allèle GPVI<sup>b</sup>.
15. Kit selon la revendication 14 pour diagnostiquer une personne de race blanche, dans lequel les moyens de déter-

## EP 1 511 859 B1

mination sont destinés à la détection de SNP aux positions des nucléotides génomiques 13010 et 23246 correspondant respectivement aux positions 655 et 709 comme il est illustré sur la Figure 7.

- 5
16. Kit selon la revendication 15, dans lequel les moyens de détermination sont destinés à la détection de SNP aux positions des nucléotides génomiques 13010, 19570, 22524, 23246 et 23260 correspondant respectivement aux positions 655, 709, 745, 950 et 964 comme il est illustré sur la Figure 7.
- 10
17. Kit selon la revendication 14 pour diagnostiquer une personne non de race blanche, dans lequel les moyens de détermination sont destinés à la détection de SNP à plus de deux, de préférence à toutes les cinq positions des nucléotides génomiques 13010, 19570, 22524, 23246 et 23260 correspondant respectivement aux positions 655, 709, 745, 950 et 964 comme il est illustré sur la Figure 7.
- 15
18. Utilisation d'une sonde capable de se lier spécifiquement à une région de l'acide nucléique de GPVI, ou utilisation d'une amorce capable d'amplifier l'acide nucléique de GPVI, où la région de l'acide nucléique de GPVI ou l'acide nucléique de GPVI comprend un SNP distinctif d'un allèle de GPVI, dans le diagnostic d'une condition de sang anormal associée à un risque accru de saignement.
- 20
19. Anticorps spécifique pour GPVI<sup>a</sup> ou fragment ou dérivé du même spécifique pour GPVI<sup>a</sup>.
- 20
20. Anticorps spécifique pour GPVI<sup>b</sup> ou fragment ou dérivé du même spécifique pour GPVI<sup>b</sup>.
21. Utilisation d'un anticorps, fragment ou dérivé anti-GPVI dans le diagnostic d'une condition de sang anormal associée à un risque accru de saignement.
- 25
22. Utilisation selon la revendication 21, dans laquelle l'anticorps, fragment ou dérivé anti-GPVI, est un anticorps, fragment ou dérivé selon la revendication 19 ou 20.
- 30
23. Utilisation d'une méthode selon l'une quelconque des revendications 1 à 12, ou d'un kit selon l'une quelconque des revendications 13 à 17, pour déterminer l'allélotype de GPVI chez :
- 30
- un donneur de sang;
  - un sujet nécessitant une intervention chirurgicale;
  - un sujet présentant une faible numération plaquettaire;
  - un sujet présentant un trouble hémorragique hérité ou acquis;
  - 35 un sujet recevant ou nécessitant un médicament fluidifiant le sang, c-à-d. un anti-thrombotique, un thrombolytique ou d'autres médicaments qui réduisent le risque de formation de thrombus;
- 40
- ou chez un sujet participant à un essai clinique destiné à évaluer un médicament fluidifiant le sang candidat, c-à-d. un anti-thrombotique, un thrombolytique ou d'autres médicaments qui réduisent le risque de formation de thrombus.
- 45
24. Utilisation selon la revendication 23, pour déterminer l'allélotype de GPVI chez un sujet nécessitant une intervention chirurgicale, laquelle comprend en outre administrer un médicament et/ou augmenter la dose d'un médicament pour réduire le risque d'hémorragie durant une opération chirurgicale, et/ou augmenter la disponibilité de sang de donneur s'il est déterminé que l'allélotype de GPVI du sujet est homozygote ou hétérozygote pour l'allèle GPVI<sup>b</sup>.
- 50
25. Utilisation selon la revendication 23, pour déterminer l'allélotype de GPVI chez un sujet présentant une faible numération plaquettaire, où la faible numération plaquettaire est due à une faible production de plaquettes endogènes ou à la destruction ou consommation accrue de plaquettes.
- 55
26. Utilisation selon la revendication 23, pour déterminer l'allélotype de GPVI chez un sujet présentant une faible numération plaquettaire, qui comprend en outre augmenter le seuil de transfusion plaquettaire pour le sujet si l'allélotype de GPVI du sujet est déterminé comme étant homozygote ou hétérozygote pour l'allèle GPVI<sup>b</sup>.
27. Utilisation selon la revendication 23, pour déterminer l'allélotype de GPVI chez un sujet présentant un trouble hémorragique hérité ou acquis, où le trouble hémorragique hérité est l'hémophilie A ou B, la maladie de von Willebrand, ou des troubles hémorragiques rares tels que la thrombasthénie de Glanzmann.

## EP 1 511 859 B1

28. Utilisation selon la revendication 23, pour déterminer l'allélotype de GPVI chez un sujet recevant ou nécessitant un médicament fluidifiant le sang, c-à-d. un anti-thrombotique, un thrombolytique ou d'autres médicaments qui réduisent le risque de formation de thrombus, qui comprend en outre réduire la dose de médicament fluidifiant le sang si l'allélotype de GPVI du sujet est déterminé comme étant homozygote ou hétérozygote pour l'allèle GPVI<sup>b</sup>.

5  
29. Utilisation selon la revendication 23, pour déterminer l'allélotype de GPVI chez un sujet recevant ou nécessitant un médicament fluidifiant le sang, c-à-d. un anti-thrombotique, un thrombolytique ou d'autres médicaments qui réduisent le risque de formation de thrombus, ou l'utilisation selon la revendication 28, où le médicament fluidifiant le sang est un inhibiteur de l'activation plaquettaire par la médiation du collagène, un tel médicament visant : la GPVI (comme les anticorps 10B12); des protéines associées directement aux domaines intracellulaires de GPVI (par exemple les kinases de la famille Src telles que fyn); des protéines qui s'associent au récepteur gamma Fc (tyroxine kinase : p72syk; adaptateurs : LAT ou SLP-76); ou des protéines en aval de celles-ci dans la signalisation par la médiation de GPVI (telles que la P13-kinase, la phospholipase C gamma 2).

10  
15  
30. Utilisation selon la revendication 23, pour déterminer l'allélotype de GPVI d'un donneur de sang, qui comprend en outre empêcher le donneur de donner des plaquettes si l'allélotype de GPVI du sujet est déterminé comme étant homozygote pour l'allèle GPVI<sup>b</sup>.

20

25

30

35

40

45

50

55

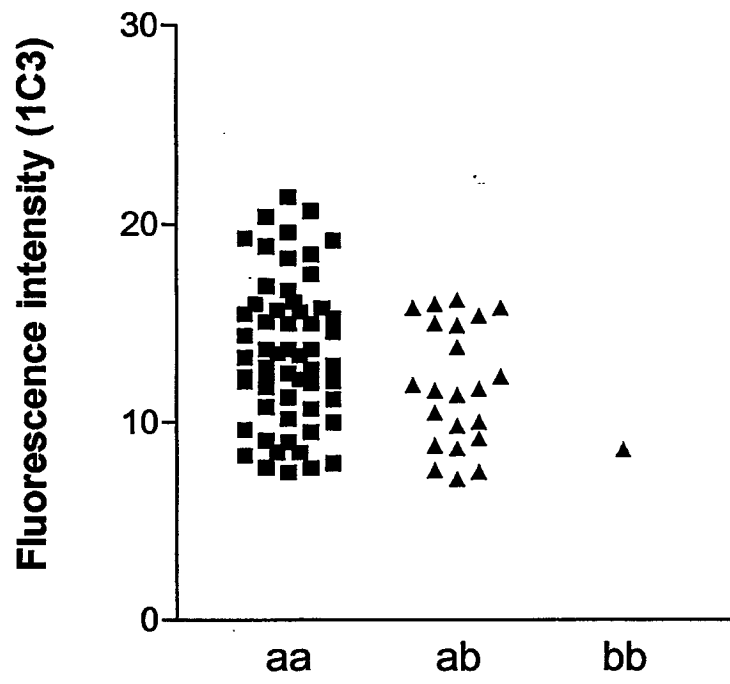


Figure 1.

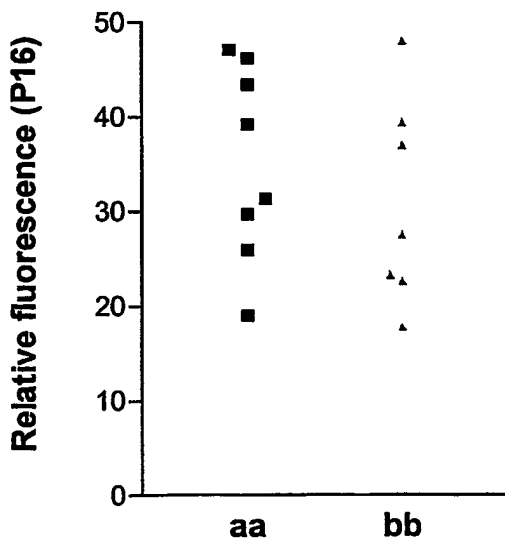
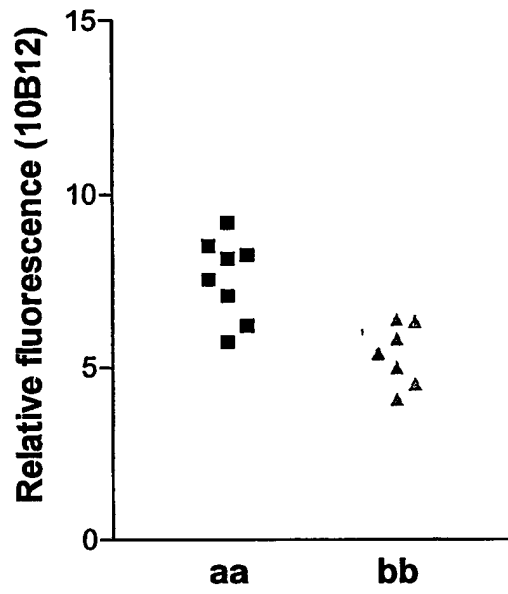
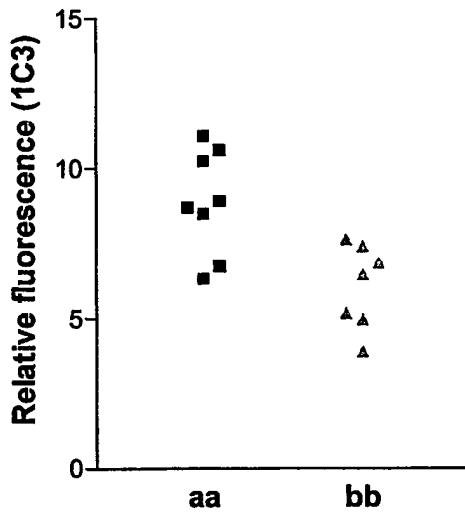


Figure 2A, 2B and 2C.

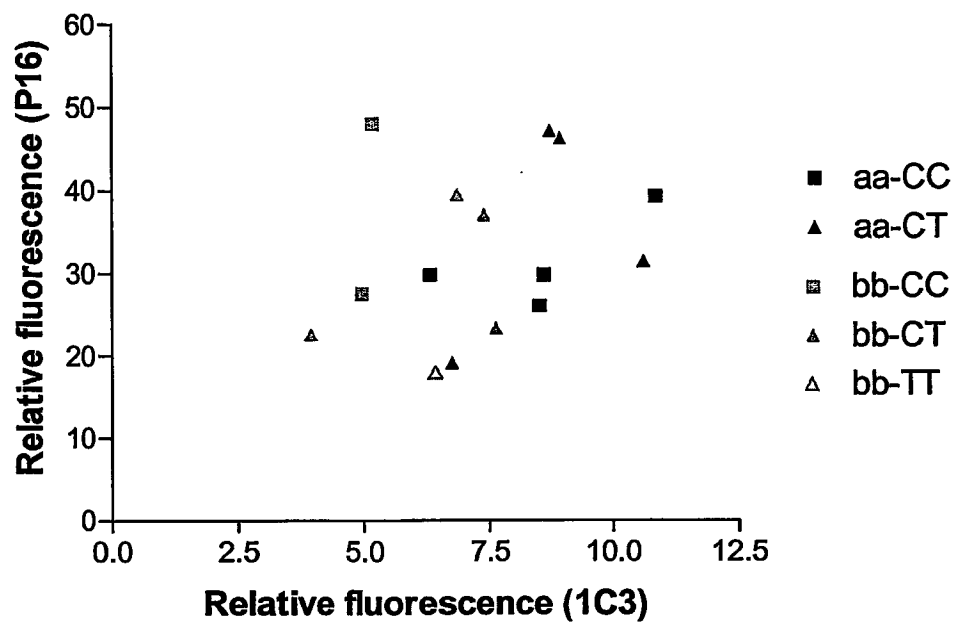


Figure 3.

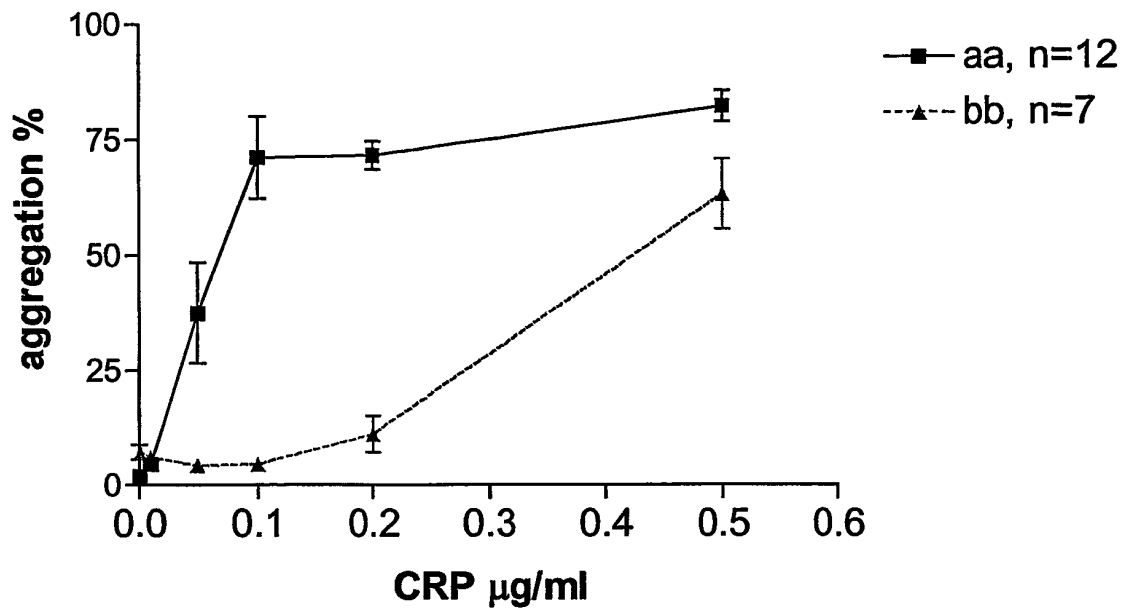


Figure 4 A.

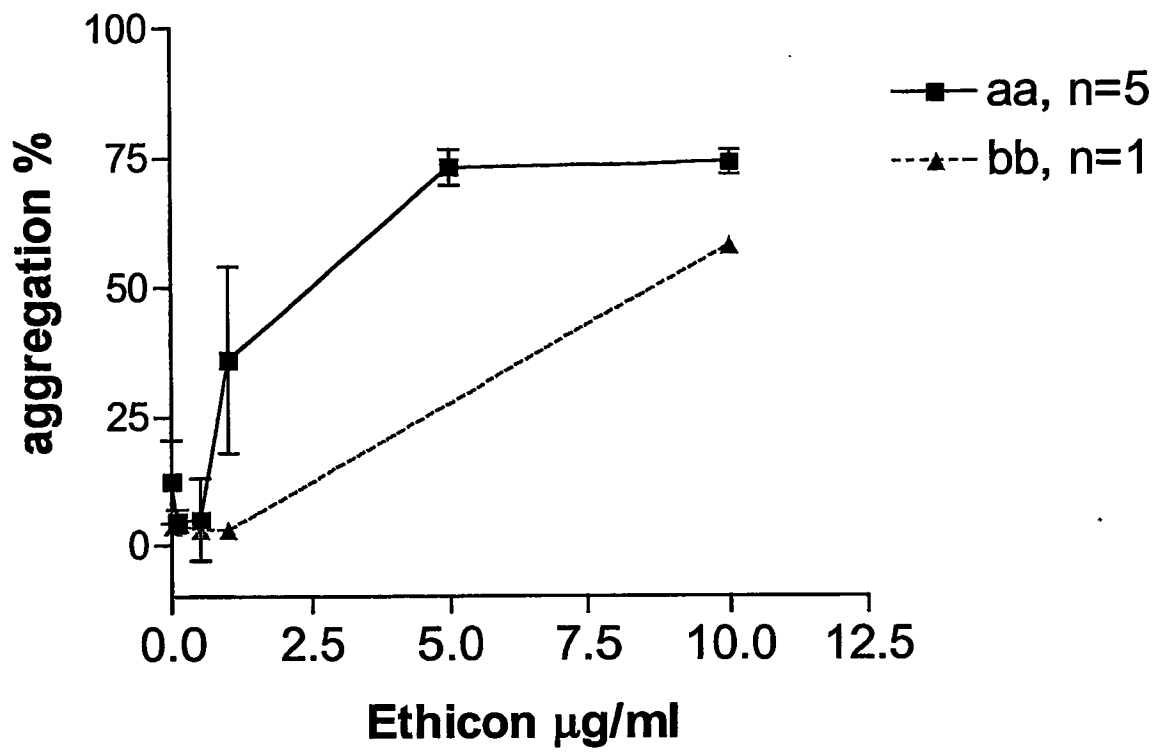


Figure 4B.

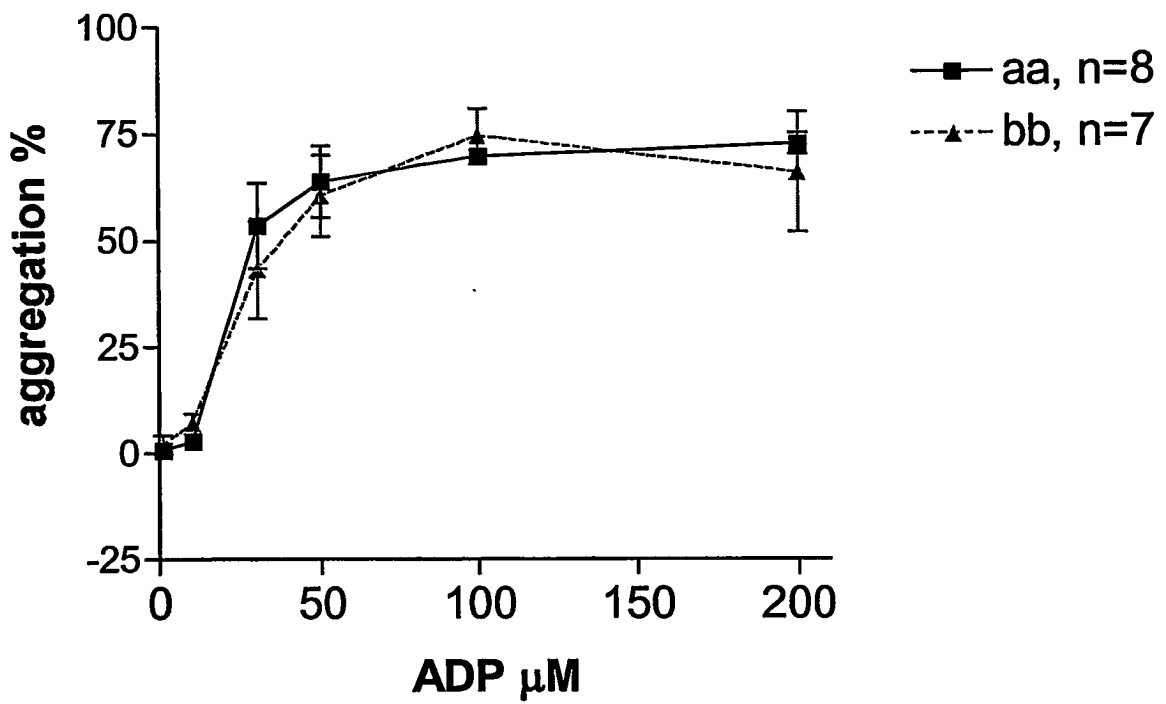


Figure 4C.

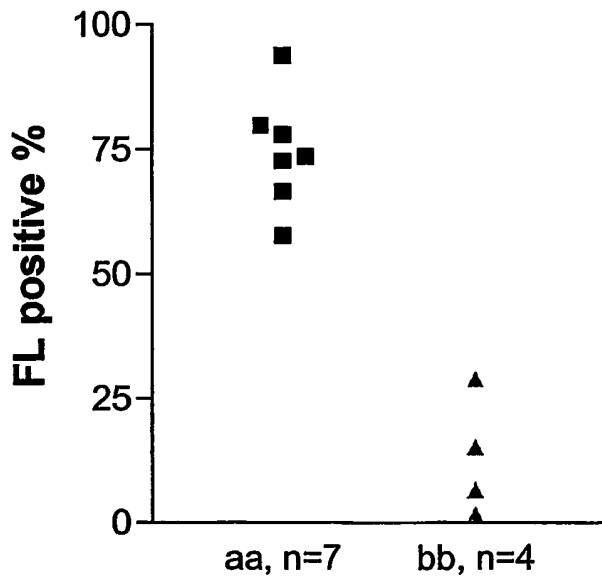
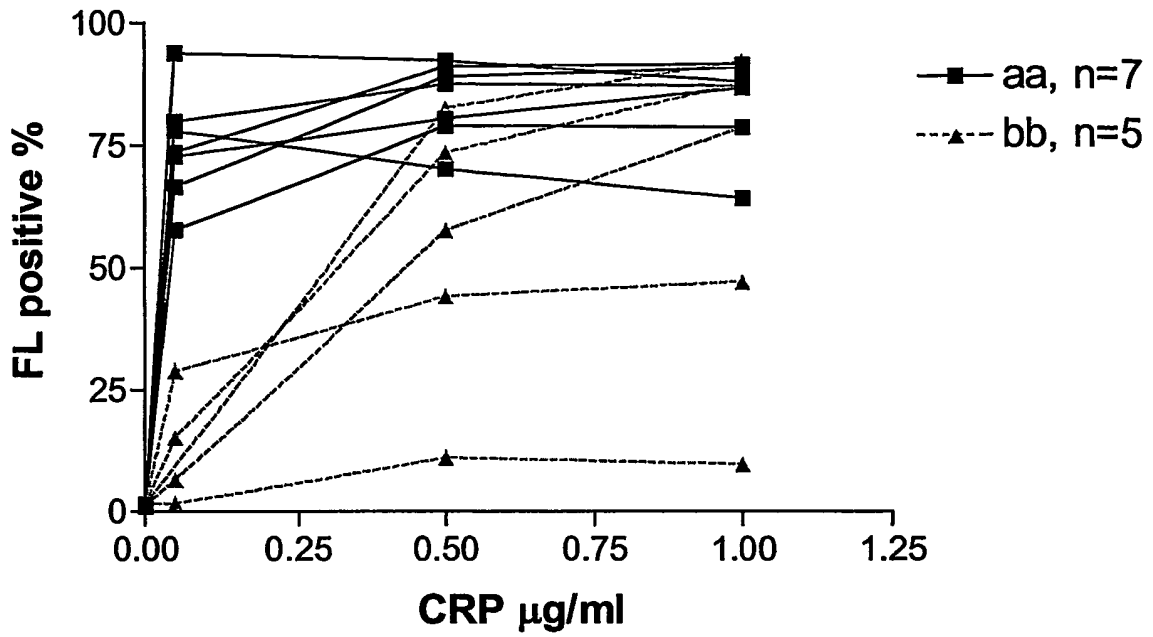


Figure 5A

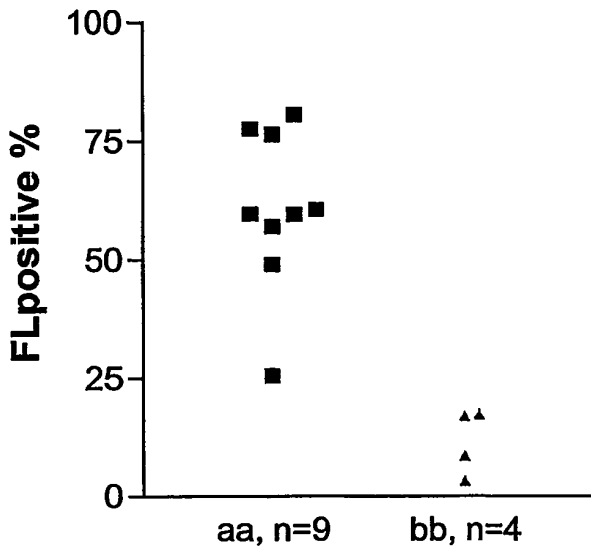
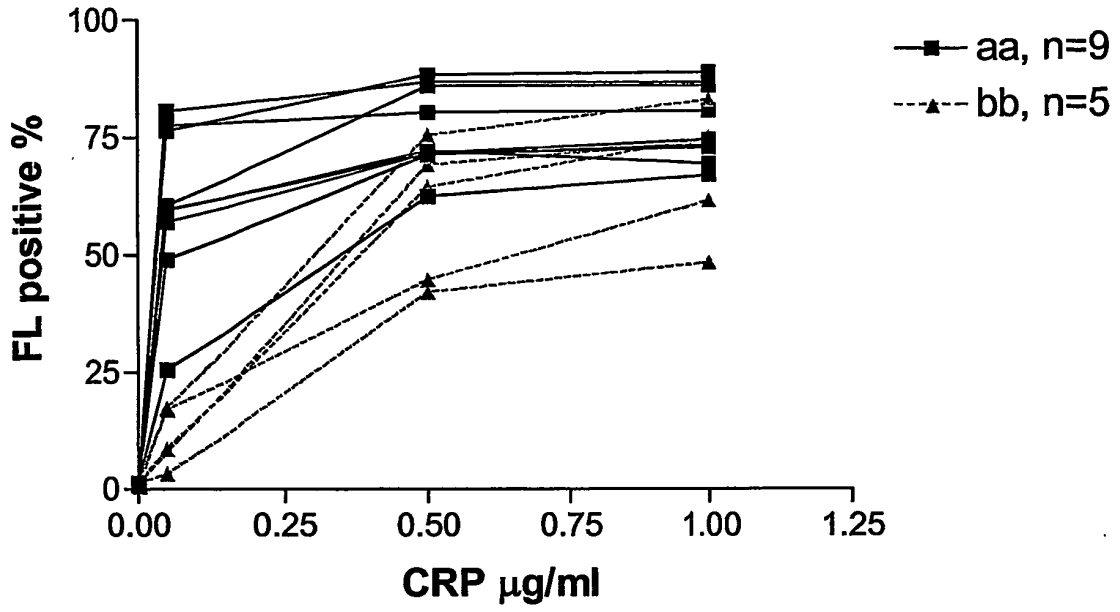


Figure 5B

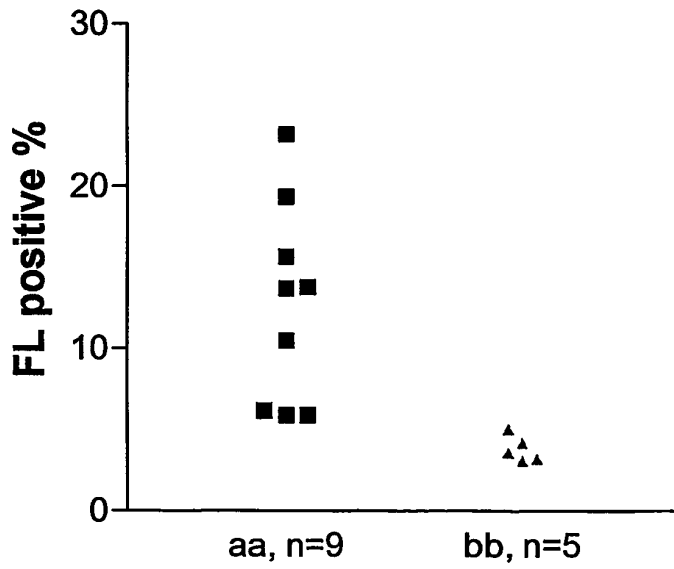
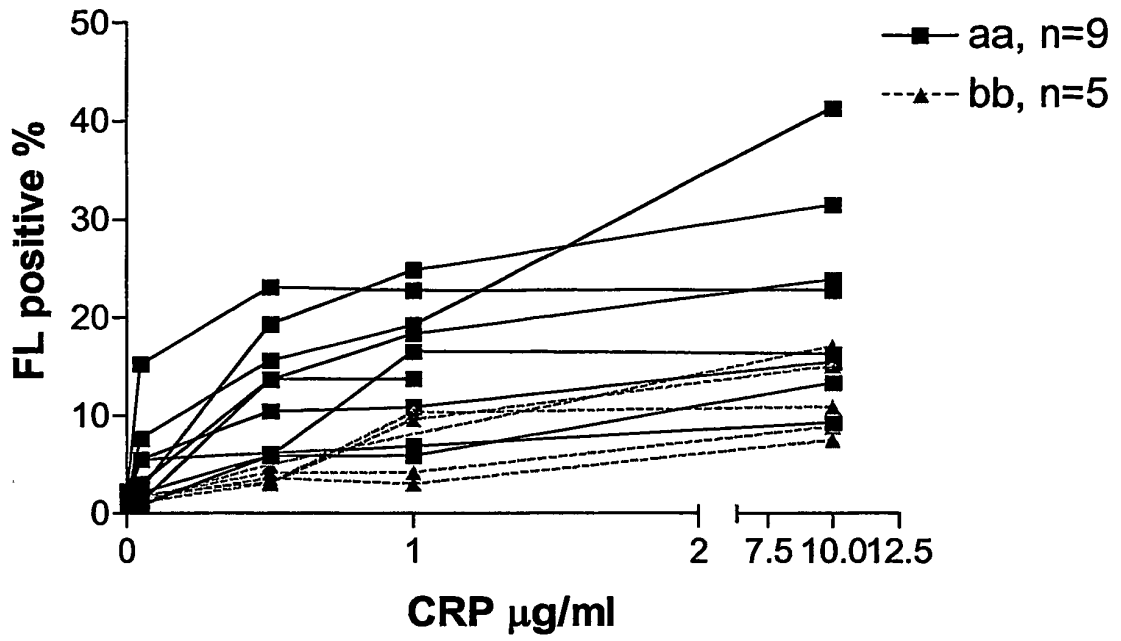


Figure 5C

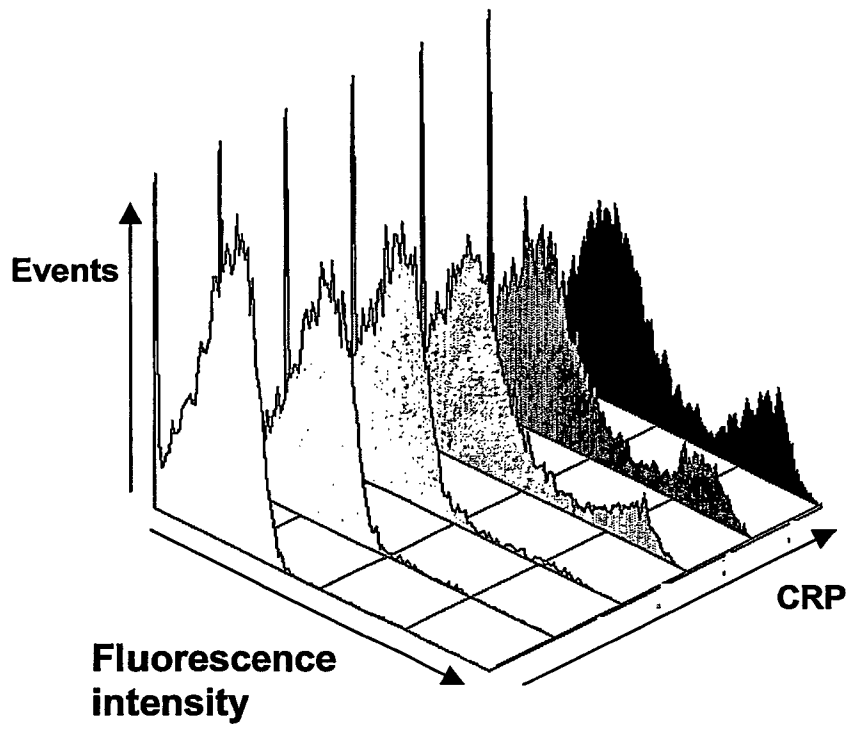


Figure 6.

Figure 7

```

      10      20      30      40
ATGTCTCCATCCCCGACCGCCCTCTTCTGTCTTGGGCTGTGTCTGGGG
TACAGAGGTAGGGGCTGGCGGGAGAAGACAGAACCCGACACAGACCCC
  M S P S P T A L F C L G L C L G >
_____GLYCOPROTEIN VI_____>
_____SIGNAL PEPTIDE_____>

      50      60      70      80      90
CGTGTGCCAGCGCAGAGTGGACCGCTCCCCAAGCCCTCCCTCCAGGCT
GCACACGGTTCGGTCTCACCTGGCGAGGGGTTCCGGGAGGGAGGTCCGA
  R V P A Q S G P L P K P S L Q A >
_____GLYCOPROTEIN VI_____>
_____>_____>

     100     110     120     130     140
CTGCCCAGCTCCCTGGTGCCCTGGAGAAGCCAGTGACCCTCCGGTGC
GACGGGTCGAGGGACCACGGGGACCTCTTCGGTCACTGGGAGGCCACG
  L P S S L V P L E K P V T L R C >
_____GLYCOPROTEIN VI_____>
_____DOMAIN 1_____>

     150     160     170     180     190
CAGGGACCTCCGGGCGTGGACCTGTACCGCTGGAGAAGCTGAGTTCC
GTCCCTGGAGGCCCGCACCTGGACATGGCGGACCTCTTCGACTCAAGG
  Q G P P G V D L Y R L E K L S S >
_____GLYCOPROTEIN VI_____>
_____DOMAIN 1_____>

     200     210     220     230     240
AGCAGGTACCAGGATCAGGCAGTCCTCTTCATCCCGCCATGAAGAGA
TCGTCCATGGTCTTAGTCCGTCAGGAGAAGTAGGGCCGGTACTTCTCT
  S R Y Q D Q A V L F I P A M K R >
_____GLYCOPROTEIN VI_____>
_____DOMAIN 1_____>

     250     260     270     280
AGTCTGGCTGGACGCTACCGCTGCTCCTACCAGAACGGAAGCCTCTGG
TCAGACCGACCTGCGATGGCGACGAGGATGGTCTTGCCTTCGGAGACC
  S L A G R Y R C S Y Q N G S L W >
_____GLYCOPROTEIN VI_____>
_____DOMAIN 1_____>

          >C307G
          |
    290     300     310     320     330
TCCCTGCCAGCGACCGAGCTGGAGCTCGTTGCCACGGGAGTTTTTGCC
AGGGACGGGTCGCTGGTCGACCTCGAGCAACGGTGCCTCAAAAACGG
  S L P S D Q L E L V A T G V F A >
_____GLYCOPROTEIN VI_____>
_____DOMAIN 1_____>

     340     350     360     370     380
AAACCCTCGCTCTCAGCCCAGCCCGGCCCGGGTGTGTCGTCAGGAGGG
TTTGGGAGCGAGAGTCGGGTCGGGCGGGCCGCCACAGCAGTCCTCCC
  K P S L S A Q P G P A V S S G G >
_____GLYCOPROTEIN VI_____>

```





Figure 8

Allele a, encoding LSKTQH

ATGTCTCCATCCCCGACCGCCCTCTTCTGTCTTGGGCTGTGTCTGGGGCGT  
 GTGCCAGCGCAGAGTGGACCGCTCCCCAAGCCCTCCCTCCAGGCTCTGCC  
 CAGCTCCCTGGTGCCCTGGAGAAGCCAGTGACCCTCCGGTGCCAGGGAC  
 CTCCGGGCGTGGACCTGTACCGCCTGGAGAAGCTGAGTTCAGCAGGTAC  
 CAGGATCAGGCAGTCCTCTTCATCCCGGCCATGAAGAGAAGTCTGGCTGG  
 ACGCTACCGCTGCTCCTACCAGAACGGAAGCCTCTGGTCCCTGCCAGCG  
 ACCAGCTGGAGCTCGTTGCCACGGGAGTTTTTGCCAAACCCTCGCTCTCAG  
 CCCAGCCCGGCCCGGCGGTGTCGTCAGGAGGGGACGTAACCCTACAGTGT  
 CAGACTCGGTATGGCTTTGACCAATTTGCTCTGTACAAGGAAGGGGACCC  
 TGCGCCCTACAAGAATCCCGAGAGATGGTACCGGGCTAGTTTCCCATCA  
 TCACGGTGACCGCCGCCACAGCGGAACCTACCGATGCTACAGCTTCTCC  
 AGCAGGGACCCATACCTGTGGTCCGCCCCAGCGACCCCTGGAGCTTGT  
 GGTACAGGAACCTCTGTGACCCCGCCGTTACCAACAGAACCACCTT  
 CCTCGGTAGCAGAATTCTCAGAAGCCACCGCTGAACTGACCGTCTCATTC  
 ACAAACAAAGTCTTCACAACCTGAGACTTCTAGGAGTATCACCACCAGTCC  
 AAAGGAGTCAGACTCTCCAGCTGGTCCCTGCCCGCCAGTACTACACCAAGG  
 GCAACCTGGTCCGGATATGCCTCGGGGCTGTGATCCTAATAATCCTGGCG  
 GGGTTTCTGGCAGAGGACTGGCACAGCCGGAGGAAGCGCCTGCGGCACA  
 GGGGCAGGGCTGTGCAGAGGCCGCTTCCGCCCTGCCGCCCTCCCGCAG  
 ACCCGGAAATCACACGGGGGTCAGGATGGAGGCCGACAGGATGTTACA  
 GCCGCGGGTTATGTTTCATGACCGCTGAACCCAGGCACGGTCGTATCCAA  
 GGGAGGGATCATGGCATGGGAGGCGACTCATGAGGGCAC

Allele a', encoding VSKTQH

ATGTCTCCATCCCCGACCGCCCTCTTCTGTCTTGGGCTGTGTCTGGGGCGT  
 GTGCCAGCGCAGAGTGGACCGCTCCCCAAGCCCTCCCTCCAGGCTCTGCC  
 CAGCTCCCTGGTGCCCTGGAGAAGCCAGTGACCCTCCGGTGCCAGGGAC  
 CTCCGGGCGTGGACCTGTACCGCCTGGAGAAGCTGAGTTCAGCAGGTAC  
 CAGGATCAGGCAGTCCTCTTCATCCCGGCCATGAAGAGAAGTCTGGCTGG  
 ACGCTACCGCTGCTCCTACCAGAACGGAAGCCTCTGGTCCCTGCCAGCG  
 ACCAGGTGGAGCTCGTTGCCACGGGAGTTTTTGCCAAACCCTCGCTCTCAG  
 CCCAGCCCGGCCCGGCGGTGTCGTCAGGAGGGGACGTAACCCTACAGTGT  
 CAGACTCGGTATGGCTTTGACCAATTTGCTCTGTACAAGGAAGGGGACCC  
 TGCGCCCTACAAGAATCCCGAGAGATGGTACCGGGCTAGTTTCCCATCA  
 TCACGGTGACCGCCGCCACAGCGGAACCTACCGATGCTACAGCTTCTCC  
 AGCAGGGACCCATACCTGTGGTCCGCCCCAGCGACCCCTGGAGCTTGT  
 GGTACAGGAACCTCTGTGACCCCGCCGTTACCAACAGAACCACCTT  
 CCTCGGTAGCAGAATTCTCAGAAGCCACCGCTGAACTGACCGTCTCATTC  
 ACAAACAAAGTCTTCACAACCTGAGACTTCTAGGAGTATCACCACCAGTCC  
 AAAGGAGTCAGACTCTCCAGCTGGTCCCTGCCCGCCAGTACTACACCAAGG  
 GCAACCTGGTCCGGATATGCCTCGGGGCTGTGATCCTAATAATCCTGGCG  
 GGGTTTCTGGCAGAGGACTGGCACAGCCGGAGGAAGCGCCTGCGGCACA  
 GGGGCAGGGCTGTGCAGAGGCCGCTTCCGCCCTGCCGCCCTCCCGCAG

ACCCGAAATCACACGGGGGTCAGGATGGAGGCCGACAGGATGTTACA  
GCCGCGGGTTATGTTTCATGACCGCTGAACCCAGGCACGGTCGTATCAA  
GGGAGGGATCATGGCATGGGAGGCGACTCATGAGGGCAC

Allele b, encoding LPEALN

ATGTCTCCATCCCCGACCGCCCTCTTCTGTCTTGGGCTGTGTCTGGGGCGT  
GTGCCAGCGCAGAGTGGACCGCTCCCAAGCCCTCCCTCCAGGCTCTGCC  
CAGCTCCCTGGTGCCCTGGAGAAGCCAGTGACCCTCCGGTGCCAGGGAC  
CTCCGGGCGTGGACCTGTACCGCCTGGAGAAGCTGAGTTCAGCAGGTAC  
CAGGATCAGGCAGTCCTCTTCATCCCGGCCATGAAGAGAAGTCTGGCTGG  
ACGCTACCGCTGCTCCTACCAGAACGGAAGCCTCTGGTCCCTGCCAGCG  
ACCAGCTGGAGCTCGTTGCCACGGGAGTTTTTGCCAAACCCTCGTCTCAG  
CCCAGCCCCGGCCCGGGCGGTGTCGTCAGGAGGGGACGTAACCCTACAGTGT  
CAGACTCGGTATGGCTTTGACCAATTTGCTCTGTACAAGGAAGGGGACCC  
TGCGCCCTACAAGAATCCCGAGAGATGGTACCGGGCTAGTTTCCCATCA  
TCACGGTGACCGCCGCCACAGCGGAACCTACCGATGCTACAGCTTCTCC  
AGCAGGGACCCATACTGTGGTCGGCCCCCAGCGACCCCTGGAGCTTGT  
GGTCACAGGAACCTCTGTGACCCCAAGCCGGTTACCAACAGAACCACCTT  
CCTTGGTAGCAGAATTCTCAGAAGCCACCGCTGAACTGACCGTCTCATTCA  
CAAACGAAGTCTTCACAACCTGAGACTTCTAGGAGTATCACCGCCAGTCCA  
AAGGAGTCAGACTCTCCAGCTGGTCCTGCCCGCCAGTACTACACCAAGGG  
CAACCTGGTCCGGATATGCCTCGGGGCTGTGATCCTAATAATCCTGGCGG  
GGTTTCTGGCAGAGGACTGGCACAGCCGGAGGAAGCGCCTGCGGCACAG  
GGCAGGGCTGTGCAGAGGCCGCTTCCGCCCTGCCGCCCTCCCGCTGA  
CCCGAAATCAAACGGGGGTCAGGATGGAGGCCGACAGGATGTTACAG  
CCGCGGGTTATGTTTCATGACCGCTGAACCCAGGCACGGTCGTATCCAAG  
GGAGGGATCATGGCATGGGAGGCGACTCATGAGGGCAC

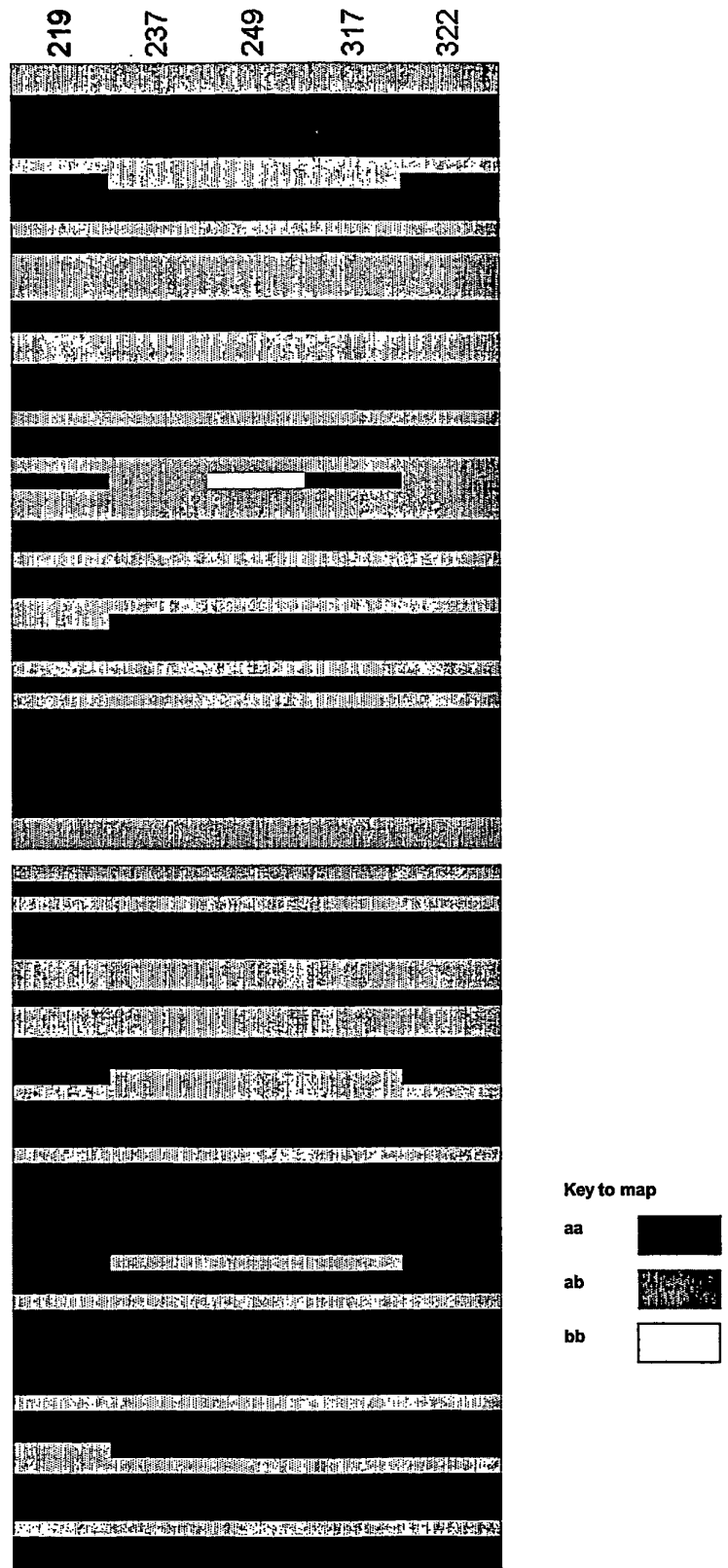


Figure 9

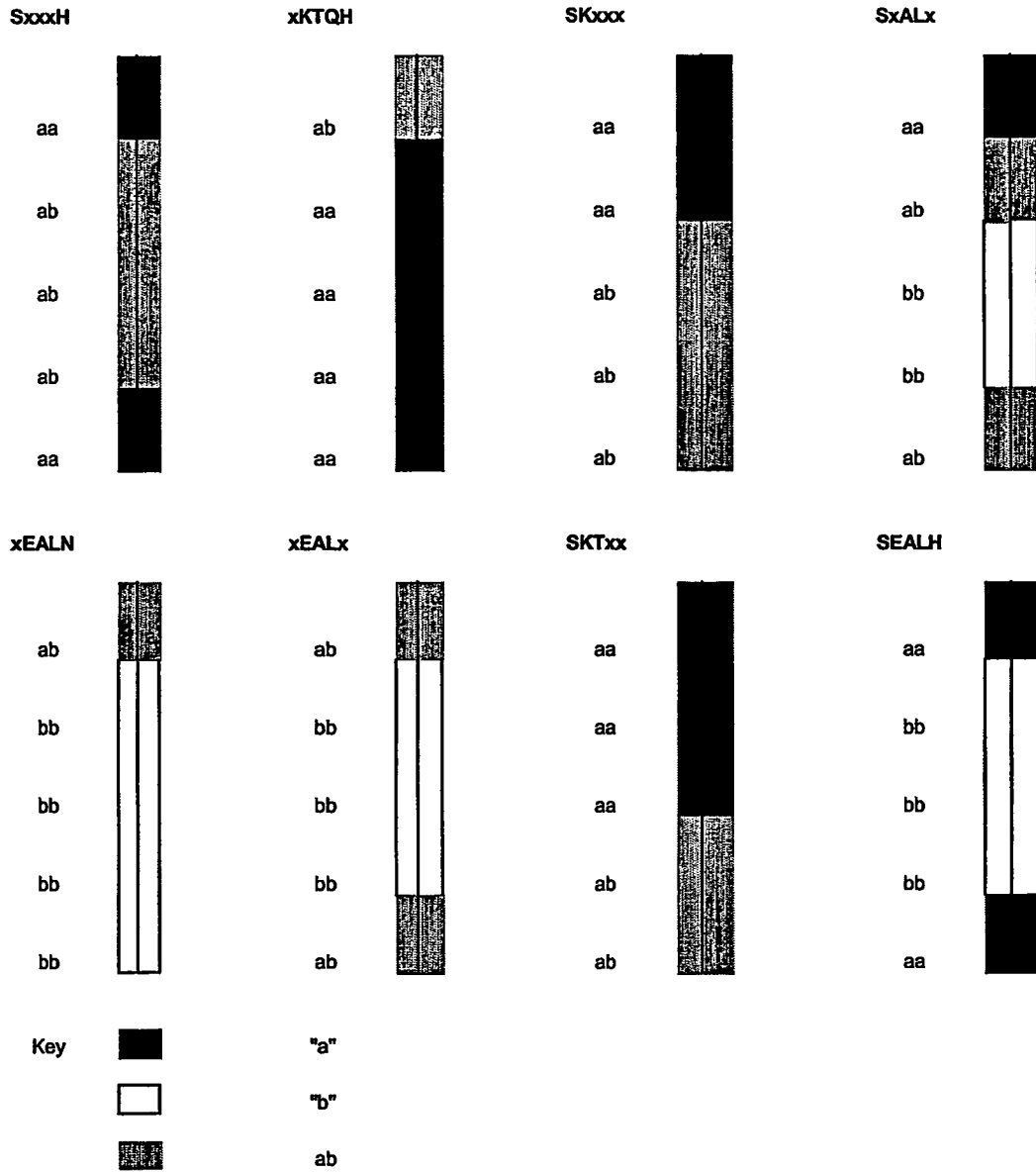


Figure 10

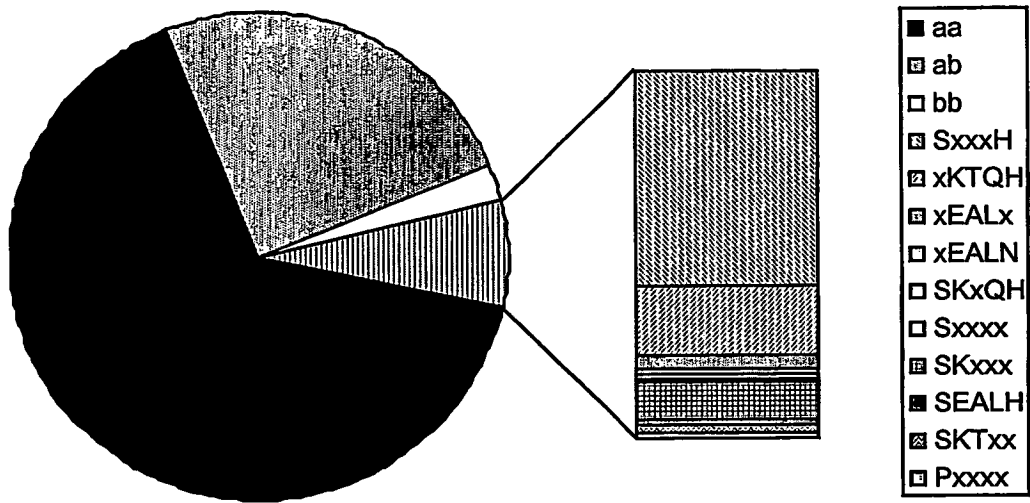


Figure 11

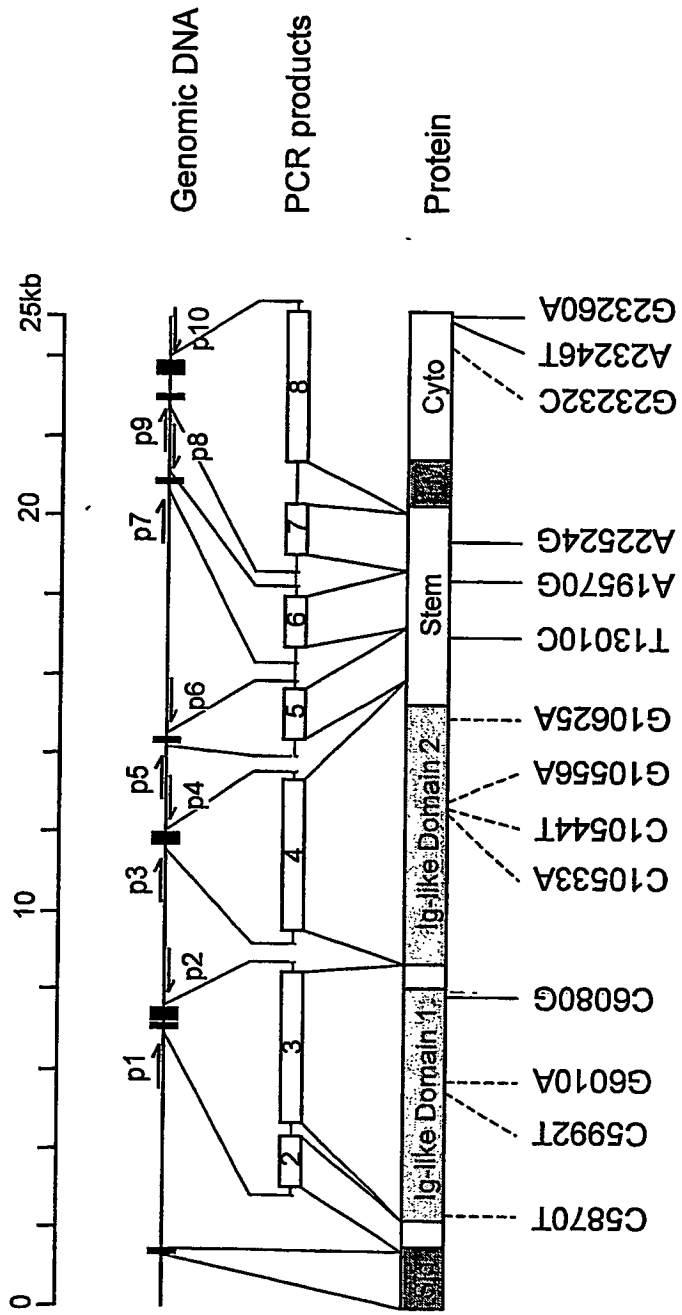


FIGURE 12

## REFERENCES CITED IN THE DESCRIPTION

This list of references cited by the applicant is for the reader's convenience only. It does not form part of the European patent document. Even though great care has been taken in compiling the references, errors or omissions cannot be excluded and the EPO disclaims all liability in this regard.

## Patent documents cited in the description

- GB 01005755 W [0097]
- GB 2003002208 W [0098]
- GB 0211750 A [0098]

## Non-patent literature cited in the description

- **JOUTSI-KORHONEN et al.** *Blood*, 30 January 2003 [0019]
- **WATSON S.P.** *Collagen receptor signaling in platelets and megakaryocytes, Thrombosis and Haemostasis*, 1999, vol. 82, 365-376 [0031]
- **CHEN H ; LOCKE D ; LIU Y ; LIU C ; KAHN M.** The platelet receptor GPVI mediates both adhesion and signaling responses to collagen in a receptor density-dependent fashion. *J Biol Chem.*, 2002, vol. 277, 3011 [0062]
- **CLEMETSON JM ; POLGAR J ; MAGNENAT E ; WELLS TN ; CLEMETSON KJ.** The platelet collagen receptor glycoprotein VI is a member of the immunoglobulin superfamily closely related to Fc $\alpha$ R and the natural killer receptors. *J Biol Chem.*, 1999, vol. 274, 29019-24 [0062]
- **CROFT SA ; SAMANI NJ ; TEARE MD et al.** Novel platelet membrane glycoprotein VI dimorphism is a risk factor for myocardial infarction. *Circulation*, 2001, vol. 104, 1459 [0062]
- **DALE GL ; FRIESE P ; BATAR P et al.** Stimulated platelets use serotonin to enhance their retention of procoagulant proteins on the cell surface. *Nature*, 2002, vol. 415, 175-9 [0062]
- **DI PAOLA J ; FEDERICI AB ; MANNUCCI PM et al.** Low platelet a2b1 levels in type I von Willebrand disease correlate with impaired platelet function in a high shear stress system. *Blood*, 1999, vol. 93, 3578 [0062]
- **FURIHATA K ; CLEMETSON KJ ; DEGUCHI H ; KUNICKI TJ.** Variation in human platelet glycoprotein VI content modulates glycoprotein VI-specific prothrombinase activity. *Arterioscler Thromb Vasc Biol*, 2001, vol. 21, 1857 [0062]
- **GACHET C.** ADP receptors of platelets and their inhibition. *Thromb Haemost*, 2001, vol. 86, 222-32 [0062]
- **GOODALL AH.** Platelet activation during preparation and storage of concentrates: detection by flow cytometry. *Blood Coagulation and Fibrinolysis*, 1991, vol. 2, 377 [0062]
- **KEHREL B ; WIERWILLE S ; CLEMETSON KJ et al.** Glycoprotein VI is a major collagen receptor for platelet activation: it recognizes the platelet-activating quaternary structure of collagen, whereas CD36, glycoprotein IIb/IIIa, and von Willebrand factor do not. *Blood*, 1998, vol. 91, 491-9 [0062]
- **KNIGHT CG ; MORTON LF ; ONLEY DJ ; PEACHEY AR ; ICHINOHE T ; OKUMA M ; FARNDALE RW ; BARNES MJ.** Collagen-platelet interaction: Gly-Pro-Hyp is uniquely specific for platelet Gp VI and mediates platelet activation by collagen. *Cardiovasc Res*, 1999, vol. 41, 450-7 [0062]
- **KRITZIK M ; SAVAGE B ; NUGENT DJ ; SANTOSO S ; RUGGERI ZM ; KUNICKI TJ.** Nucleotide polymorphisms in the a2 gene define multiple alleles that are associated with differences in platelet a2b1 density. *Blood*, 1998, vol. 92, 2382 [0062]
- **KUNICKI TJ ; ORCHEKOWSKI R ; ANNIS DS ; HONDA Y.** Variability of integrin alpha 2 beta 1 activity on human platelets. *Blood*, 1993, vol. 82, 2693 [0062]
- **KUNICKI TJ ; KRITZIK M ; ANNIS DS ; NUGENT DJ.** Hereditary variation in platelet integrin  $\alpha$ 2 $\beta$ 1 density is associated with two silent polymorphisms in the  $\alpha$ 2 gene coding sequence. *Blood*, 1997, vol. 89, 1939 [0062]
- **JACQUELIN B ; ROZENSHTEYN D ; KANAJI S ; KOZIOL JA ; NURDEN AT ; KUNICKI TJ.** Characterization of inherited differences in transcription of the human integrin a2 gene. *J Biol Chem.*, 2001, vol. 276, 23518 [0062]
- **JACQUELIN B ; TARANTINO MD ; KRITZIK M et al.** Allele-dependent transcriptional regulation of the human integrin a2 gene. *Blood*, vol. 97, 1721 [0062]
- **METCALFE P ; WILLIAMSON LM ; REUTELINGSPERGER CPM ; SWANN I ; OUWEHAND WH ; GOODALL AH.** Activation during preparation of therapeutic platelets affects deterioration during storage: a comparative flow cytometric study of different production methods. *Br J Haematol*, 1997, vol. 98, 86 [0062]

- **MOROI M ; JUNG SM ; OKUMA M ; SHINMYOZU K.** A patient with platelets deficient in glycoprotein VI that lack both collagen-induced aggregation and adhesion. *J Clin Invest*, 1989, vol. 84, 1440 [0062]
- **RICKLES RJ ; BOTFIELD MC ; WENG Z et al.** Identification of Src, Fyn, Lyn, PI3K and Abl SH3 domain ligands using phage display libraries. *EMBO J*, 1994, vol. 13, 5598-604 [0062]
- **ROEST M ; SIXMA JJ ; WU Y-P et al.** Platelet adhesion to collagen in healthy volunteers is influenced by variation of both  $\alpha 2\beta 1$  density and von Willebrand factor. *Blood*, 2000, vol. 96, 1433 [0062]
- **SANTOSO S ; KUNICKI TJ ; KROLL H ; HABER-BOSCH W ; GARDEMANN A.** Association of the platelet glycoprotein Ia C807T gene polymorphism with nonfatal myocardial infarction in younger patients. *Blood*, 1999, vol. 93, 2449 [0062]
- **VON DEM BORNE AE ; VERHEUGT FW ; OOSTERHOF F ; VON RIESZ E ; DE LA RIVIERE AB ; ENGELFRIET CP.** A simple immunofluorescence test for the detection of platelet antibodies. *Br J Haematol*, 1978, vol. 39, 195-207 [0062]
- **WATKINS NA ; BROWN C ; HURD C ; NAVARRETE C ; OUWEHAND WH.** The isolation and characterisation of human monoclonal HLA-A2 antibodies from an immune V gene phage display library. *Tissue Antigens*, 2000, vol. 55, 219-28 [0062]
- **WATSON SP ; ASAZUMA N ; ATKINSON B et al.** The role of ITAM- and ITIM-coupled receptors in platelet activation by collagen. *Thromb Haemost*, 2001, vol. 86, 276-88 [0062]
- **MARKS et al.** *Biotechnology*, 1993, vol. 11, 1145-9 [0089]
- **VAUGHAN et al.** *Nat. Biotechnol.*, 1996, vol. 14, 309-14 [0089]
- **WATKINS et al.** *Tissue Antigens*, 2000, vol. 55, 219-28 [0089] [0091] [0091]
- **COOK et al.** *Immunology Today*, 1995, vol. 16, 237-42 [0091]
- **ROEST et al.** *Blood*, 2000, vol. 96, 1433-7 [0092]

专利名称(译)	基于糖蛋白vi基因多态性诊断异常血液病		
公开(公告)号	<a href="#">EP1511859B1</a>	公开(公告)日	2007-10-10
申请号	EP2003725431	申请日	2003-05-22
[标]申请(专利权)人(译)	OUWEHAND WILLEM		
申请(专利权)人(译)	OUWEHAND , WILLEM		
当前申请(专利权)人(译)	OUWEHAND , WILLEM		
[标]发明人	OUWEHAND WILLEM DEPT OF HAEMATOLOGY SMETHURST PETER ALEXANDER FARNDALE RICHARD WILLAM		
发明人	OUWEHAND, WILLEM DEPARTMENT OF HAEMATOLOGY SMETHURST, PETER, ALEXANDER FARNDALE, RICHARD, WILLAM		
IPC分类号	C12Q1/68 C07K16/28 G01N33/53 A61K39/395 A61P7/00 C12Q1/6883		
CPC分类号	C07K16/2803 C07K2317/622 C12Q1/6883 C12Q2600/156 C12Q2600/158 C12Q2600/172		
优先权	2002011750 2002-05-22 GB		
其他公开文献	EP1511859A1		
外部链接	<a href="#">Espacenet</a>		

摘要(译)

描述了诊断与出血风险增加相关的异常血液病症的方法。GPVI 等位基因纯合或杂合的受试者被认为具有增加的出血风险。用于实施诊断方法的试剂盒，以及用于确定需要手术，血小板计数低，获得性出血性疾病，血液稀释药物或献血者的受试者的GPVI等位基因型的方法和试剂盒的用途是也有描述。

Table 6: Linkage Disequilibrium between the 18 SNPs in GP6 in the sequencing panel

	G	C	C	G	C	C	C	G	G	T	A	A	G	A	C		
	-2	-1	-1	G	C	2	2	3	4	4	5	5	6	7	7	9	9
	2	5	4	1	9	1	3	0	8	9	0	7	5	0	4	3	5
	2	4	3	5	7	9	7	7	4	5	7	6	5	9	5	6	0
	A	T	T	A	T	T	A	G	A	T	A	A	C	G	G	C	T
G-222A	■	+	+	+	+												
C-154T	+	■	+	+													
C-143T	+	+	■	+													
G15A	+	+	+	■													
C97T	+			■													
C219T					■												
G237A						■											
C307G	+		+	+		■											
C484A		+					■										
C495T		+						■									
G507A		+							■								
G576A		+								■							
T655C		+									■						
A709G		+										■					
A745G		+											■				
G936C			+											■			
A950T				+											■		
G964A					+											■	

\* '+' denotes LD (p<0.04, Fishers Exact Test), non-synonymous SNPs are shaded in grey