



- (51) **International Patent Classification:**
G01N 33/543 (2006.01) G01N 33/53 (2006.01)
G01N 33/50 (2006.01)
- (21) **International Application Number:**
PCT/US2017/052209
- (22) **International Filing Date:**
19 September 2017 (19.09.2017)
- (25) **Filing Language:** English
- (26) **Publication Language:** English
- (30) **Priority Data:**
15/269,543 19 September 2016 (19.09.2016) US
- (63) **Related by continuation (CON) or continuation-in-part (CIP) to earlier application:**
- US 15/269,543 (CON)
Filed on 19 September 2016 (19.09.2016)
- (71) **Applicant:** MASSACHUSETTS INSTITUTE OF TECHNOLOGY [US/US]; 77 Massachusetts Avenue, Cambridge, MA 02139 (US).
- (72) **Inventors:** SWAGER, Timothy, M.; 18 Copley Street, Newton, MA 02458 (US). ZHANG, Qifan; 357 Windsor St., Apt. 2, Cambridge, MA 02141 (US). SAVAGATRUP, Suchol; 307 Columbia St., Cambridge, MA 02141 (US).
- (74) **Agent:** OYER, Timothy, J.; Wolf, Greenfield & Sacks, P.C., 600 Atlantic Avenue, Boston, MA 02210-2206 (US).
- (81) **Designated States** (unless otherwise indicated, for every kind of national protection available): AE, AG, AL, AM, AO, AT, AU, AZ, BA, BB, BG, BH, BN, BR, BW, BY, BZ, CA, CH, CL, CN, CO, CR, CU, CZ, DE, DJ, DK, DM, DO, DZ, EC, EE, EG, ES, FI, GB, GD, GE, GH, GM, GT, HN,

(54) **Title:** DETECTION OF ANALYTES WITH JANUS DROPLETS

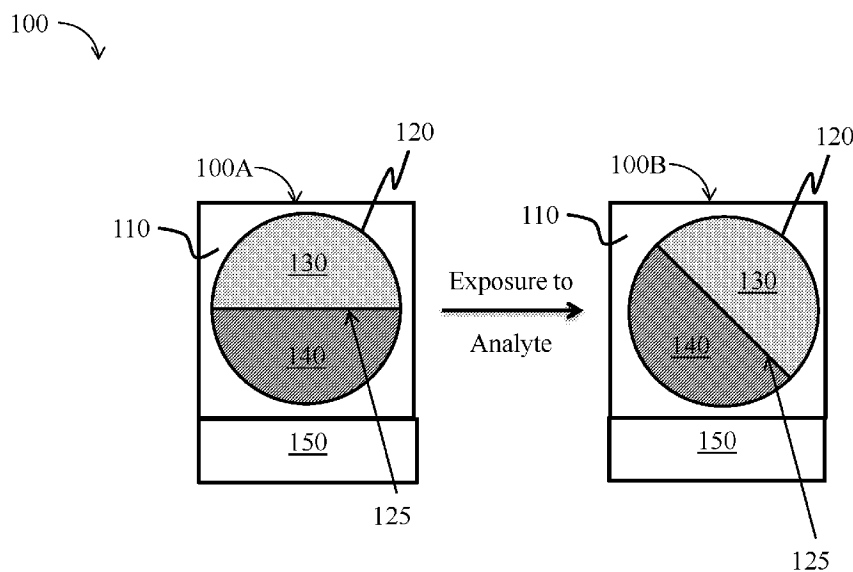


FIG. 1A

(57) **Abstract:** Embodiments described herein may be useful in the detection of analytes. The systems and methods may allow for a relatively simple and rapid way for detecting analytes such as chemical and/or biological analytes and may be useful in numerous applications including sensing, food manufacturing, medical diagnostics, performance materials, dynamic lenses, water monitoring, environmental monitoring, detection of proteins, detection of DNA, among other applications. For example, the systems and methods described herein may be used for determining the presence of a contaminant such as bacteria (e.g., detecting pathogenic bacteria in food and water samples which helps to prevent widespread infection, illness, and even death). Advantageously, the systems and methods described herein may not have the drawbacks in current detection technologies including, for example, relatively high costs, long enrichment steps and analysis times, and/or the need for extensive user training. Another advantageous feature provided by the systems



HR, HU, ID, IL, IN, IR, IS, JO, JP, KE, KG, KH, KN, KP, KR, KW, KZ, LA, LC, LK, LR, LS, LU, LY, MA, MD, ME, MG, MK, MN, MW, MX, MY, MZ, NA, NG, NI, NO, NZ, OM, PA, PE, PG, PH, PL, PT, QA, RO, RS, RU, RW, SA, SC, SD, SE, SG, SK, SL, SM, ST, SV, SY, TH, TJ, TM, TN, TR, TT, TZ, UA, UG, US, UZ, VC, VN, ZA, ZM, ZW.

(84) Designated States (*unless otherwise indicated, for every kind of regional protection available*): ARIPO (BW, GH, GM, KE, LR, LS, MW, MZ, NA, RW, SD, SL, ST, SZ, TZ, UG, ZM, ZW), Eurasian (AM, AZ, BY, KG, KZ, RU, TJ, TM), European (AL, AT, BE, BG, CH, CY, CZ, DE, DK, EE, ES, FI, FR, GB, GR, HR, HU, IE, IS, IT, LT, LU, LV, MC, MK, MT, NL, NO, PL, PT, RO, RS, SE, SI, SK, SM, TR), OAPI (BF, BJ, CF, CG, CI, CM, GA, GN, GQ, GW, KM, ML, MR, NE, SN, TD, TG).

Published:

— *with international search report (Art. 21(3))*

and methods described herein includes fabrication in a relatively large scale. In some embodiments, the systems and methods may be used in conjunction with a detector including handheld detectors incorporated with, for example, smartphones (e.g., for the on-site detection of analytes such as pathogenic bacteria).

- 1 -

DETECTION OF ANALYTES WITH JANUS DROPLETS

RELATED APPLICATIONS

This application is a continuation of U.S. Utility Application No. 15/269,543,
5 filed September 19, 2016, and entitled "SYSTEMS INCLUDING JANUS DROPLETS,"
which is incorporated herein by reference in its entirety for all purposes.

FIELD OF THE INVENTION

The present invention generally relates to systems and methods including Janus
10 droplets.

BACKGROUND

Emulsification is a powerful age-old technique for mixing and dispersing
immiscible components within a continuous liquid phase. Consequently, emulsions are
15 central components of medicine, food, and performance materials. Complex emulsions,
including multiple emulsions and Janus droplets, are of increasing importance in
pharmaceuticals and medical diagnostics, in the fabrication of microdroplets and
capsules for food, in chemical separations, for cosmetics, for dynamic optics, and
chemical separations. However, quantitative detections of analytes with high sensitivity
20 and selectivity using Janus droplets have yet to be realized. Accordingly, improved
systems and methods are needed.

SUMMARY OF THE INVENTION

The present invention provides systems and methods including Janus droplets.
25 In one aspect, systems are provided. In some embodiments, the system
comprises a plurality of Janus droplets associated with binding moieties to an analyte,
the binding moiety and analyte selected such that when the analyte binds to the binding
moiety at least a portion of the plurality of Janus droplets are changed in orientation
sufficient to change electromagnetic radiation interacting with the plurality of Janus
30 droplets in a detectable manner.

In some embodiments, the system comprises a plurality of Janus droplets
associated with a plurality of binding moieties to an analyte and a detector positioned

- 2 -

relative to the plurality of Janus droplets such that when sufficient numbers of the binding moieties bind to analyte at least a portion of the plurality of Janus droplets are changed in orientation sufficient to change electromagnetic radiation interacting with the Janus droplets in a manner determinable by the detector.

5 In certain embodiments, upon binding to the binding moieties, at least a portion of the plurality of Janus droplets agglutinate.

 In certain embodiments, prior to binding to the binding moieties, the plurality of Janus droplets are oriented such that at least a portion of interfaces between a first phase and a second phase within each Janus droplet are aligned parallel with respect to one
10 another.

 In certain embodiments, prior to the analyte binding to the binding moieties, the plurality of Janus droplets are bound to a surface.

 In certain embodiments, upon binding of the analyte to the binding moieties, at least a portion of the plurality of Janus droplets unbind from the surface.

15 In certain embodiments, the system comprises a source of external energy applicable to the composition to generate a determinable signal and a detector positioned to detect the signal.

 In certain embodiments, the signal comprises electromagnetic radiation.

 In certain embodiments, upon exposure of the article to a chemical or biological
20 analyte, the system generates the determinable signal.

 In another aspect, methods are provided. In some embodiments, the method comprises allowing an analyte to bind to binding moieties associated with a plurality of Janus droplets and determining a change in electromagnetic radiation interacting with the plurality of Janus droplets due at least in part to the binding of the analyte to the binding
25 moieties.

 In some embodiments, the method comprises exposing, to an article comprising an outer phase and a plurality of Janus droplets dispersed within the outer phase, a chemical or biological analyte, wherein the chemical or biological analyte, if present, interacts with at least a portion of the article such that at least a portion of the plurality of
30 Janus droplets change orientation thereby producing a detectable change in an optical property of the article and determining the detectable change.

 In some embodiments, the method comprises exposing, to an article comprising an outer phase and a plurality of Janus droplets dispersed within the outer phase, a

- 3 -

chemical or biological analyte, wherein the chemical or biological analyte, if present, interacts with at least a portion of the article such that at least a portion of the plurality of Janus droplets change orientation thereby changing the optical transmission of the article.

5 In certain embodiments, the plurality of Janus droplets comprise one or more amphiphilic compounds including at least one binding moiety.

 In certain embodiments, interacting with at least a portion of the article comprises binding of the chemical or biological analyte to the at least one binding moiety.

10 In certain embodiments, prior to exposing the article to a chemical or biological analyte, at least a portion of the plurality of Janus droplets are oriented such that at least a portion of interfaces between a first phase and a second phase within each Janus droplet are aligned parallel with respect to one another.

 In certain embodiments, substantially all of the interfaces between a first phase and a second phase within each Janus droplet are aligned parallel with respect to one
15 another.

 In certain embodiments, upon exposing the article to a chemical or biological analyte, at least a portion of the plurality of Janus droplets agglutinate.

20 In certain embodiments, upon exposing the article to a chemical or biological analyte, at least a portion of the plurality of Janus droplets are oriented such that at least a portion of interfaces between a first phase and a second phase within each Janus droplet are not aligned parallel with respect to one another.

 In certain embodiments, at least a portion of the plurality of Janus droplets are bound to a surface of the article via the binding moiety.

25 In certain embodiments, upon exposing the article to a chemical or biological analyte, at least a portion of the plurality of Janus droplets unbind from the surface.

 In yet another aspect, articles are provided. In some embodiments, the article comprises an outer phase and a plurality of Janus droplets dispersed within the outer phase, wherein at least a portion of the plurality of Janus droplets comprise an amphiphilic compound including at least one binding moiety.

30 In certain embodiments, the plurality of Janus droplets is oriented such that at least a portion of interfaces between a first phase and a second phase within each Janus droplet are aligned parallel with respect to one another.

- 4 -

In certain embodiments, the at least one binding moiety is capable of binding with a chemical or biological analyte.

In certain embodiments, upon binding of the at least one binding moiety with a chemical or biological analyte, at least a portion of the plurality of Janus droplets change orientation.

In certain embodiments, the plurality of Janus droplets are substantively transmissive to electromagnetic radiation.

In certain embodiments, upon binding of the at least one binding moiety with a chemical or biological analyte, the plurality of Janus droplets decrease in optical transmission.

In some embodiments, the article comprises a surface, an outer phase deposited on at least a portion of the surface, and a plurality of Janus droplets dispersed within the outer phase, wherein at least a portion of the plurality of Janus droplets comprise an amphiphilic compound including at least one binding moiety, and wherein at least a portion of the plurality of Janus droplets are bound to the surface via the binding moiety.

In certain embodiments, at least a portion of the plurality of Janus droplets are oriented such that an interface between a first phase and a second phase within each Janus droplet are not aligned parallel to the surface.

In certain embodiments, upon exposure of the plurality of Janus droplets to a biological or chemical analyte, at least a portion of Janus droplets unbind from the surface.

In certain embodiments, upon exposure of the plurality of Janus droplets to a biological or chemical analyte, at least a portion of Janus droplets change orientation.

In certain embodiments, the article is substantively visible-light transmissive after exposure to the plurality of Janus droplets to the biological or chemical analyte.

In certain embodiments, upon exposure of the plurality of Janus droplets to a chemical or biological analyte, the plurality of Janus droplets increase in optical transmission.

In certain embodiments, each Janus droplet comprises a first phase and a second phase, immiscible with the first phase.

In certain embodiments, the outer phase is an aqueous phase.

- 5 -

In certain embodiments, the first phase comprises a hydrocarbon, a fluorocarbon, a silicone, a liquid crystal, an ionic liquid, a polymer, combinations thereof, or derivatives thereof.

In certain embodiments, the second phase comprises a hydrocarbon, a
5 fluorocarbon, a silicone, a liquid crystal, an ionic liquid, a polymer, combinations thereof, or derivatives thereof, immiscible with the first phase.

In certain embodiments, the amphiphilic compound is selected from the group consisting of: ionic surfactants, non-ionic surfactants, zwitterionic surfactants, polymers, proteins, DNA, RNA, acids, carbohydrates, saccharides, enzymes, chromophores, lipids,
10 graphene oxide, combinations thereof, and derivatives thereof.

In certain embodiments, an interface between the outer phase and the plurality of Janus droplets comprises the amphiphilic compound.

In certain embodiments, the analyte comprises a biological compound, a drug, a macromolecule, a salt, an electrolyte, an enzyme, an acid, a nucleic acid, a carbohydrate,
15 a peptide, a protein, a phosphate, a sulfonate, a virus, a pathogen, an oxidant, a reductant, a toxin, a chemical warfare agent, an explosive, carbon dioxide, or combinations thereof.

In certain embodiments, the analyte is a single analyte.

Other advantages and novel features of the present invention will become apparent from the following detailed description of various non-limiting embodiments of
20 the invention when considered in conjunction with the accompanying figures. In cases where the present specification and a document incorporated by reference include conflicting and/or inconsistent disclosure, the present specification shall control. If two or more documents incorporated by reference include conflicting and/or inconsistent disclosure with respect to each other, then the document having the later effective date
25 shall control.

BRIEF DESCRIPTION OF THE DRAWINGS

FIG. 1A illustrates a system including a Janus droplet, exposed to an analyte, according to one set of embodiments.

30 FIG. 1B illustrates a system including a Janus droplet, exposed to an analyte, according to one set of embodiments.

FIG. 1C illustrates a system including a plurality of Janus droplets, exposed to an analyte, according to one set of embodiments.

- 6 -

FIG. 1D illustrates a system including a plurality of Janus droplets, exposed to an analyte, according to one set of embodiments.

FIG. 2 illustrates a system including a Janus droplet, according to one set of embodiments.

5 FIG. 3 illustrates the formation of Janus droplets, according to one set of embodiments.

FIG. 4A shows an exemplary surfactant for use in a system including Janus droplets, according to one set of embodiments.

10 FIG. 4B shows the agglutination of a plurality of Janus droplets in the presence of analyte, according to one set of embodiments.

FIG. 5A shows a monodispersed plurality of Janus droplets, according to one set of embodiments.

FIG. 5B shows a plurality of Janus droplets with altered orientation, according to one set of embodiments.

15 FIGS. 6A-6B show an exemplary system comprising a plurality of Janus droplets which, upon exposure to an analyte, changes an optical property of the system, according to one set of embodiments.

FIGS. 7A-7F show image processing based of Janus droplets upon exposure to an analyte, according to one set of embodiments.

20 FIGS. 8A-8F show image processing based of Janus droplets upon exposure to an analyte, according to one set of embodiments.

FIG. 9 shows an illustrative embodiment of interaction with an analyte resulting in the change of orientation of a Janus droplet, according to one set of embodiments.

25 Other aspects, embodiments and features of the invention will become apparent from the following detailed description when considered in conjunction with the accompanying drawings. The accompanying figures are schematic and are not intended to be drawn to scale. For purposes of clarity, not every component is labeled in every figure, nor is every component of each embodiment of the invention shown where illustration is not necessary to allow those of ordinary skill in the art to understand the invention. All patent applications and patents incorporated herein by reference are
30 incorporated by reference in their entirety. In case of conflict, the present specification, including definitions, will control.

- 7 -

DETAILED DESCRIPTION

Embodiments described herein may be useful in the detection of analytes. The systems and methods may allow for a relatively simple and rapid way for detecting analytes such as chemical and/or biological analytes and may be useful in numerous applications including sensing, food manufacturing, medical diagnostics, performance materials, dynamic lenses, water monitoring, environmental monitoring, detection of proteins, detection of DNA, among other applications. For example, the systems and methods described herein may be used for determining the presence of a contaminant such as bacteria (e.g., detecting pathogenic bacteria in food and water samples which helps to prevent widespread infection, illness, and even death). Advantageously, the systems and methods described herein may not have the drawbacks in current detection technologies including, for example, relatively high costs, long enrichment steps and analysis times, and/or the need for extensive user training. Another advantageous feature provided by the systems and methods described herein includes fabrication in a relatively large scale. In some embodiments, the systems and methods may be used in conjunction with a detector including handheld detectors incorporated with, for example, smartphones (e.g., for the on-site detection of analytes such as pathogenic bacteria). For example, such systems could be used by the food industry to prevent extensive foodborne illnesses which may result in expensive medical treatment costs, lawsuits, government sanctions, product recalls, and/or tarnished long-term reputations. Articles comprising Janus droplets are also provided.

In some embodiments, the systems and methods comprise a plurality of Janus droplets. Janus droplets generally include two or more phases immiscible with one another and/or having distinct physical and/or chemical properties, within the droplet. In certain embodiments, when equal amounts of the two immiscible phases are present and the interfacial tensions are properly balanced, the Janus droplets will be spherical with each hemisphere of the sphere comprising one of the immiscible phases. In certain embodiments, the plurality of Janus droplets includes a first phase and a second phase immiscible with the first phase. In some embodiments, the plurality of Janus droplets may be dispersed within an outer phase (e.g., an aqueous phase). For example, in some embodiments, the system comprises an aqueous phase and a plurality of Janus droplets comprising a hydrocarbon and a fluorocarbon. In some cases, the plurality of Janus droplets may be associated a binding moiety (e.g., a binding moiety associated with the

- 8 -

Janus droplets and/or a binding moiety present on a surfactant incorporated with the plurality of Janus droplets). In some embodiments, the binding moiety may bind with an analyte (e.g., a biological and/or chemical analyte) such that the orientation of at least a portion of the plurality of Janus droplets is changed. The change in orientation of a Janus droplet may result in a change in the interaction of electromagnetic radiation (e.g., visible light) with the Janus droplet in a detectable manner. In some embodiments, exposing a plurality of Janus droplets to an analyte causes a detectable change in an optical property of the Janus droplets, such that the analyte can be determined and/or quantified.

In certain embodiments, upon exposure to an analyte, at least a portion of the plurality of Janus droplets may agglutinate. For example, in some cases, the analyte may facilitate the agglutination of at least a portion of the plurality of Janus droplets. The agglutination of some Janus droplets may result in a detectable change in the interaction of electromagnetic radiation (e.g., visible light) with the Janus droplets. In some cases, the agglutination of some Janus droplets may result in a change in orientation of each of the Janus droplets (e.g., relative to the orientation of the Janus droplets prior to exposure to the analyte). In other cases, the Janus droplets may be in an agglutinated state prior to exposure to an analyte and the exposure of the system to the analyte will disrupt agglutination and cause a change in the orientation of the Janus droplet.

Advantageously, in some embodiments, the systems described herein may enable highly sensitive detection of analytes including, for example, detection of single analyte interaction events (e.g., binding events, chemical reactions, biological reactions). In an illustrative embodiment, a single analyte (e.g., one protein, one strand of DNA, one strand of RNA) may cause the agglutination of some Janus droplets and changing the orientation of each of the agglutinated Janus droplets, such that a single analyte (e.g., a single protein, a single strand of DNA, etc.) is detected. In some such embodiments, the single analyte may bind to some Janus droplets such that the Janus droplets agglutinate. In another illustrative embodiment, a single analyte may cause the orientation of a single Janus droplet to change (e.g., via enzymatic degradation of a tether bound to the Janus droplet), such that a single analyte is detected. In some embodiments, a plurality of analytes and/or types of analytes may be detected (e.g., via the change in orientation of a plurality of Janus droplets and/or the agglutination of groups of Janus droplets). In certain embodiments, the concentration of an analyte exposed to the system may be

- 9 -

determined by measuring the number of Janus droplets changing orientation upon exposure of the system to the analyte.

As illustrated in FIG. 1A, in some embodiments, system 100 comprises a plurality of Janus droplets such as Janus droplet 120. In certain embodiments, Janus droplet 120 comprises first phase 130 (e.g., comprising a hydrocarbon) and second phase 140 (e.g., comprising a fluorocarbon). As depicted illustratively in FIG. 1A, in some embodiments, first phase 130 and second phase 140 may have relatively the same volume in each Janus droplet. However, those skilled in the art would understand based upon the teaching of this specification that the volume of the first phase and the second phase may not be equal.

In some embodiments, as depicted in FIG. 1A, Janus droplet 120 has a particular orientation, such as orientation 100A. The orientation of a Janus droplet as described herein may be determined by measuring the angle of a planar surface defined by the interface (e.g., interface 125) between the first phase (e.g., first phase 130) and the second phase (e.g., second phase 140). In some embodiments, upon exposure of Janus droplet 120 to an analyte, the Janus droplet may change orientation (e.g., from orientation 100A to orientation 100B). In some such embodiments, the analyte may bind with a binding moiety present on the Janus droplet, resulting in the change in orientation of the Janus droplet. As illustrated in FIG. 1A, the orientation of interface 125 in orientation 100B is different than the orientation of interface 125 in orientation 100A. For example, in some embodiments, the Janus droplet may rotate upon exposure to the analyte (e.g., upon binding of the analyte with a binding moiety associated with the Janus droplet). In some embodiments, the change in orientation of the Janus droplet is determinable (e.g., measurable) such that it indicates the presence of an analyte.

The Janus droplets described herein may be useful in a number of applications. In an exemplary embodiment, the Janus droplets described herein may be used for sensing of an analyte. For example, in some such embodiments, the Janus droplets may change orientation upon exposure to an analyte such that the change in orientation can be detected (e.g., by a change in optical transmission, polarization, birefringence, etc. of the colloid). In another exemplary embodiment, the Janus droplets described herein may be used as tunable lenses. In certain embodiments, measurements of the optical properties (e.g., transmission, absorption, reflection, focal distance, and scattering) of the Janus droplets can be indicative of specific droplet orientations. For example, when a change in

- 10 -

droplet orientation is correlated with an analyte of interest (i.e., enzyme, pollutant, virus, bacteria etc.), then, the Janus droplets can be used as sensors in which an optical measurement serves as a readout mechanism of the presence of the analyte. In certain embodiments, for systems in which there is a change in an analyte of interest over time (e.g., progress of a chemical reaction, such as degradation of a chemical by an enzyme over time), tracking of the changes in optical properties of the Janus droplets over time can be used to, for example, analyze reaction rates or analyte concentrations. In some such embodiments, the orientation of the Janus droplets changes in the presence of an analyte such that the system obtains a transparent state over a particular range of time, or alternatively, obtains a relatively opaque state over a particular range of time.

Those skilled in the art would understand that changing a property of a Janus droplet refers to a property of the Janus droplet immediately before that differs in a substantially measurable way from the property of the Janus droplet at some relatively short time (e.g., seconds, minutes, hours) after exposure to the analyte. Those skilled in the art would also be capable of selecting methods for determining the change in the property of the Janus droplets (e.g., measuring the average birefringence, measuring the optical transmission at one or more wavelength, measuring the density, etc.) based upon the specification and examples below.

For example, as illustrated in FIG. 1B, system 102 comprises a plurality of Janus droplets such as exemplary Janus droplet 120. In some embodiments, electromagnetic radiation 180A interacts with Janus droplet 120. In certain embodiments, upon exposure of system 102 to an analyte (e.g., such that the analyte binds to a binding moiety associated with the Janus droplet), Janus droplet 120 changes orientation (e.g., from orientation 100A to 100B) sufficiently to change the interaction of electromagnetic radiation 180A with the Janus droplets as compared to the interaction of electromagnetic radiation 180A prior to exposure to the analyte. For example, prior to exposure to the analyte, Janus droplet 120 may interact with electromagnetic radiation 180A such that electromagnetic radiation 180B is produced. In some embodiments, electromagnetic radiation 180A and electromagnetic radiation 180B may be substantially the same. For example, Janus droplet 120 may have an orientation 100A such that electromagnetic radiation interacting with (e.g., transmitting perpendicular to interface 125 of Janus droplet 120) is not substantially changed in wavelength and/or amplitude.

- 11 -

For example, in some cases, the plurality of Janus droplets may be orientation such that the system is substantially optically transparent in a direction perpendicular to the surface of the interface between the first phase and the second phase (e.g., interface 125). In some cases, however, electromagnetic radiation 180B may be different than
5 electromagnetic radiation 180A in wavelength and/or amplitude. In some embodiments, upon exposure of system 102 to an analyte, Janus droplet 120 changes orientation from orientation 100A to orientation 100B, such that electromagnetic radiation 180A interacts with Janus droplet 120 and produced electromagnetic radiation 180C, different than electromagnetic radiation 180B.

10 In some embodiments, the plurality of Janus droplets is changed in orientation (e.g., upon exposure to an analyte) sufficient to change electromagnetic radiation interacting with the plurality of Janus droplets in a detectable manner. In certain embodiments, at least a portion of the Janus droplets change orientation thereby changing the optical transmission of the article and/or thereby producing a detectable
15 change in an optical property of the article. In some embodiments, the detectable change includes a change in color, average luminescence in one or more directions, and/or average optical transmission of the Janus droplet (or system comprising the plurality of Janus droplets).

In some embodiments the electromagnetic radiation (e.g., the electromagnetic
20 radiation prior to interacting with the Janus droplet, the electromagnetic radiation after interacting with the Janus droplet) may comprise any suitable wavelength, including but not limited infrared light (e.g., a wavelength between about 700 nm and about 1 cm), visible light (e.g., a wavelength between about 400 nm and about 700 nm), and ultraviolet (UV) light (e.g., a wavelength between about 10 nm and about 400 nm).

25 In certain embodiments, the plurality of Janus droplets (e.g., Janus droplets 120) is dispersed within an outer phase 110, as illustrated in FIGs. 1A-1C. In some embodiments, the outer phase is an aqueous phase (e.g., comprising water). The aqueous phase may also comprise, in some cases, solutes including organic molecules, ions, cells, or biological organisms. In some embodiments, exposing the system to the analyte
30 comprises introducing the analyte into the outer phase. In certain embodiments, the analyte may be added to the outer phase such that the plurality of Janus droplets is exposed to the analyte.

- 12 -

In certain embodiments, the plurality of Janus droplets may be adjacent a surface 150, as illustrated in FIG. 1A. As used herein, when a component (e.g., a Janus droplet) is referred to as being “adjacent” another component (e.g., a surface), it can be directly adjacent to the component, or an intervening component (e.g., a fluid) also may be present. A component that is “directly adjacent” another component means that no intervening component is present (e.g., the component and another component are in contact with one another). Surface 150 may comprise a reflective surface such that exposing the system to an analyte causes a detectable change in an optical property of the Janus droplets such that the reflected electromagnetic radiation from surface 150 is also changed. In an exemplary embodiment, the plurality of Janus droplets is substantially transparent such that surface 150 is visible (e.g., when viewed perpendicular to surface 150) and, upon exposure to an analyte, the plurality of Janus droplets decrease in optical transmission such that at least a portion of surface 150 is obscured. Surface 150 may, in some cases, also be transparent such that light is transmitted through the surface and Janus droplets, such that exposure to an analyte will change the transmission of the light.

In some embodiments, at least a portion of the plurality of Janus droplets are orientated parallel (e.g., as measuring by the angle of a planar surface defined by the interface between the first phase and the second phase of the Janus droplet) to the surface. For example, referring again to FIG. 1A, in some embodiments, interface 125 of Janus droplet 120 (prior to exposure to an analyte) is orientated substantially parallel to surface 150 adjacent Janus droplet 120. In certain embodiments, the plurality of Janus droplets may be orientated substantially parallel to one another (e.g., substantially aligned). In some embodiments, prior to exposure to an analyte, the plurality of Janus droplets is aligned/oriented by the force of gravity (e.g., the first phase or the second phase having a greater density than the other phase) such that at least a portion of the plurality of Janus droplet are oriented substantially parallel with one another. In other embodiments, the forces that cause alignment of Janus droplets may include electrical or magnetic fields. For example, in certain embodiments, the plurality of Janus droplets may include a magnetic phase (e.g., including ferromagnetic particles)

In some embodiments, exposure to an analyte results in the agglutination of a plurality of Janus droplets. For example, as illustrated in FIG. 1C, system 104 comprises a plurality of Janus droplets (e.g., exemplary Janus droplets 120, 122, and 124). In certain embodiments, the plurality of Janus droplets may be orientated (relative to

- 13 -

interfaces 125A, 125B, and 125C) substantially parallel to one another. In some embodiments, the interface between the first phase and the second phase of at least a portion the plurality of Janus droplet is aligned orthogonal to the primary direction of the force of gravity such that the plurality of Janus droplets are oriented substantially parallel to one another. In some embodiments, upon exposure to an analyte, at least a portion of the Janus droplets agglutinate. In certain embodiments, agglutination of the Janus droplets results in a change of orientation of at least a portion of the Janus droplets (e.g., as measured by the change in angle of interfaces 125A, 125B, and 125C).

In certain embodiments, a binding moiety associated with the Janus droplet may bind with the analyte such that the Janus droplets agglutinate. For example, referring again to FIG. 1C, upon exposure to an analyte, the analyte may bind to a binding moiety on two or more Janus droplets (e.g., forming a bound complex 150 between two or more Janus droplets such as between Janus droplet 120 and Janus droplet 122).

In some embodiments, a plurality of binding moieties (e.g., binding moieties associated with one or more Janus droplets) may bind with one or more analytes multivalently. For example, as illustrated in FIG. 1D, analyte 155 binds multivalently with Janus droplet 120, Janus droplet 122, and Janus droplet 124 such that the Janus droplets agglutinate. In some such embodiments, upon exposure and binding to the analyte, the Janus droplets change orientation sufficient to change electromagnetic radiation interacting with the plurality of Janus droplets in a detectable manner.

As illustrated in FIG. 1D,

In certain embodiments, the system may comprise a plurality of Janus droplets tethered (e.g., bound) to a surface. In some embodiments, exposure of the system to an analyte results in the breaking (e.g., cleavage) of the tether such that at least a portion of the Janus droplets change orientation (e.g., sufficient to change electromagnetic radiation interacting with the plurality of Janus droplets in a detectable manner). For example, as illustrated in FIG. 2, system 200 comprises Janus droplet 220 comprising first phase 230 and second phase 240, tethered to surface 260 adjacent Janus droplet 220 via tether 270. In some embodiments, exposure to an analyte results in the breaking of tether 270 such that Janus droplet 220 changes orientation (from orientation 200A prior to exposure to the analyte to orientation 200B upon exposure to the analyte). Those skilled in the art would understand based upon the teachings of this specification that surface 260 need not be planar and could be, for example, curved (e.g., the surface comprises a polymeric

- 14 -

and/or inorganic particle). In some cases the surface may include an assembly of molecules. In certain embodiments, the surface may comprise biological tissue (e.g., comprising skin (e.g., human skin), organ tissues, cells, or the like). In some cases, the surface may be a liquid immiscible with the outer phase and/or one or more phases
5 present within the Janus droplets. In some embodiments, the surface comprises a polymeric material.

In some embodiments, the Janus droplet is tethered to the surface such that the interface between the first phase and the second phase is not parallel to the adjacent substrate and/or is not parallel with at least a portion of the plurality of Janus droplets. In
10 some such embodiments, upon breaking of the tether by the analyte, at least a portion of the Janus droplets change orientation (e.g., such that at least a portion of the Janus droplets are parallel with one another and/or are parallel with an adjacent substrate). In some cases, breaking of the tether by the presence of an analyte resulting in an increase in the optical transmission of the system (e.g., such that a feature on the substrate is
15 visible when viewed perpendicular to the surface). The tether may include, for example, one or more proteins, a polymer, one or more strands of DNA, one or more strands of RNA, or combinations thereof. Other tethers are also possible.

The analyte may break the tether in any suitable manner. For example, in some embodiments, the analyte may cleave the tether (e.g., via enzymatic degradation). In
20 certain embodiments, the analyte may cleave the tether by changing the pH of the outer phase such that the tether breaks. In some embodiments, the analyte may cause the cleavage of the tether such that one or more binding moieties associated with (e.g., integrated within) the plurality of Janus droplets bind to the analyte. In some such embodiments, one or more binding moieties may be bound to the tether such that the
25 Janus droplet is bound to the surface and, upon exposure to the analyte, the binding moiety unbinds from the tether and binds to the analyte.

In some cases, the binding moiety may comprise a biological or a chemical group capable of binding another biological or chemical molecule in a medium (e.g., aqueous phase). For example, the binding moiety may include a functional group, such as a thiol,
30 aldehyde, ester, carboxylic acid, hydroxyl, and the like, wherein the functional group forms a bond with the analyte. In some cases, the binding moiety may be an electron-rich or electron-poor moiety wherein interaction between the analyte and the binding moiety

- 15 -

comprises an electrostatic interaction. In some cases, the interaction between the analyte and the binding moiety includes binding to a metal or metal-containing moiety.

In some embodiment, the binding moiety and analyte interact via a binding event between pairs of biological molecules including proteins, nucleic acids, glycoproteins, carbohydrates, hormones, drugs, and the like. Specific examples include an antibody/peptide pair, an antibody/antigen pair, an antibody fragment/antigen pair, an antibody/antigen fragment pair, an antibody fragment/antigen fragment pair, an antibody/hapten pair, an enzyme/substrate pair, an enzyme/inhibitor pair, an enzyme/cofactor pair, a protein/substrate pair, a nucleic acid/nucleic acid pair, a protein/nucleic acid pair, a peptide/peptide pair, a protein/protein pair, a small molecule/protein pair, a glutathione/GST pair, an anti-GFP/GFP fusion protein pair, a Myc/Max pair, a maltose/maltose binding protein pair, a carbohydrate/protein pair, a carbohydrate derivative/protein pair, a metal binding tag/metal/chelate, a peptide tag/metal ion-metal chelate pair, a peptide/NTA pair, a lectin/carbohydrate pair, a receptor/hormone pair, a receptor/effector pair, a complementary nucleic acid/nucleic acid pair, a ligand/cell surface receptor pair, a virus/ligand pair, a Protein A/antibody pair, a Protein G/antibody pair, a Protein L/antibody pair, an Fc receptor/antibody pair, a biotin/avidin pair, a biotin/streptavidin pair, a drug/target pair, a zinc finger/nucleic acid pair, a small molecule/peptide pair, a small molecule/protein pair, a small molecule/target pair, a carbohydrate/protein pair such as maltose/MBP (maltose binding protein), a small molecule/target pair, or a metal ion/chelating agent pair. Specific non-limiting examples of binding moieties include peptides, proteins, DNA, RNA, PNA. Other binding moieties and binding pairs are also possible.

In some embodiments, the binding moiety and the tether interact via a binding event between pairs of biological molecules including proteins, nucleic acids, glycoproteins, carbohydrates, hormones, and the like.

The analyte may comprise any suitable material (e.g., a vapor analyte, a liquid analyte, a solid analyte) such that the incorporation of the analyte into the system causes at least a portion of the plurality of Janus droplets to change orientation (e.g., via breaking of a tether and/or agglutination of the Janus droplets). Those skilled in the art would be capable of selecting analytes and components suitable for Janus droplets based upon the teaching of the specification and the examples below. Non-limiting examples of analytes include a biological compound, a drug, a macromolecule, a salt, an electrolyte,

- 16 -

an enzyme, a nucleic acid, a carbohydrate, a peptide, a protein, a lipid, a phosphate, a sulfonate, a virus, a pathogen (e.g., bacteria, virus), an oxidant, a reductant, a toxin, a chemical warfare agent, an explosive, carbon dioxide, a surfactant, or combinations thereof. In some embodiments, the tether is a biological compound, a drug, a

5 macromolecule, a salt, an electrolyte, an enzyme, a nucleic acid, a carbohydrate, a peptide, a protein, a lipid, a phosphate, a sulfonate, a virus, a pathogen, an oxidant, a reductant, a toxin, a chemical warfare agent, an explosive, carbon dioxide, a surfactant, or combinations thereof. In an exemplary embodiment, the analyte is a bacterium.

In an exemplary embodiment, an enzyme may be added to the system comprising
10 a plurality of Janus droplets such that the enzyme interacts with one or more of the components, binding moieties, tethers, and/or amphiphilic compounds present in the plurality of Janus droplets. In some such embodiments, the enzyme may interact with the component, binding moiety, tether, and/or amphiphilic compound (e.g., such as a
15 surfactant which is cleaved in the presence of the enzyme) such that at least a portion of the plurality of Janus droplets change orientation as described herein. In certain embodiments, the Janus droplets change orientation at a particular critical concentration of the analyte.

In another exemplary embodiment, one or more Janus droplets may comprise an amphiphilic compound such as a surfactant that is capable of interacting with a
20 biological analyte. In some such embodiments, the Janus droplet may change orientation in the presence of a biological analyte such that the change in orientation can be detected (e.g., by optical transmission).

In some embodiments, the interaction between a binding moiety and the analyte includes a chemical transformation between the binding moiety and the analyte and/or
25 the binding moiety and a tether. Non-limiting examples of chemical transformations include enzymatic degradation, enzymatic synthesis, ionization, cleavage, coupling, hybridization, aggregation, hydrolysis, isomerization, reduction, oxidation, and host-guest interactions of one or more components (or component materials such as a surfactant). Other chemical transformations are also possible.

30 As described herein, in some embodiments, the methods and systems comprise an outer phase and a plurality of Janus droplets dispersed within the outer phase. In certain embodiments, the plurality of Janus droplets comprises two or more phases. The two or more phases (e.g., a first phase and a second phase) may be substantially miscible over a

- 17 -

range of temperatures (e.g., below a critical temperature, above a critical temperature). The two or more phases may also be substantially immiscible over a different range of temperatures (e.g., above the critical temperature, below the critical temperature) than the range of temperatures over which they are miscible. The use of two or more phases
5 with differing miscibility at different temperatures may allow for the one-step formation (e.g., bulk) of such Janus droplets, unconstrained by the limits of previous methods (e.g., low yield of microfluidic devices, multi-step processes, the need for solvent addition and/or extraction, etc.).

Janus droplets described herein may be formed using any suitable method. For
10 example, in some embodiments, an outer phase material, a first phase, and a second phase are mixed and emulsified, forming an outer phase and a plurality of Janus droplets dispersed within the outer phase. Suitable methods for emulsifying the fluid are known in the art and may comprise sonication, high shear mixing, shaking, passing the fluid through a membrane, or injecting the two or more components into the outer phase
15 through a small diameter channel.

Non-limiting examples of methods for forming Janus droplets are described in more detail in commonly-owned U.S. Patent Publication Number 2016/0151753, entitled “Compositions and Methods for Forming Emulsions”, filed October 30, 2015 and in U.S. Patent Publication Number 2016/0151756, entitled “Compositions and Methods for
20 Arranging Colloid Phases”, filed October 30, 2016, each of which is incorporated herein by reference in its entirety.

Immiscible, as used herein, refers to two phases having an interfacial tension of greater than or equal to 0.01 mN/m as determined by an inverted pendant drop goniometer. Conversely, miscible, as used herein, refers to two phases having an
25 interfacial tension of less than 0.01 mN/m as determined by an inverted pendant drop goniometer.

The term phase, as used herein, generally refers to a portion of a droplet or fluid comprising a group of substantially similar molecules, and/or a group of substantially similar compounds. Those skilled in the art would understand that is not intended to refer
30 to single molecules or atoms. In some embodiments, the phase is a liquid phase (e.g., an aqueous phase, a non-aqueous phase) comprising a group of substantially similar compounds and/or molecules and/or polymers. For example, in some cases, each phase may occupy at least about 1 vol%, at least about 2 vol %, at least about 5 vol%, at least

- 18 -

about 10 vol%, at least about 20 vol%, at least about 50 vol%, at least about 70 vol%, at least about 90 vol%, at least about 95 vol%, or at least about 99 vol% of the total volume of the two or more phases.

In some embodiments, at least one of the two or more phases (e.g., the first phase) comprises a hydrocarbon. Non-limiting examples of suitable hydrocarbons include alkanes (e.g., hexane, heptane, decane, dodecane, hexadecane), alkenes, alkynes, aromatics (e.g., benzene, toluene, xylene, benzyl benzoate, diethyl phalate), oils (e.g., natural oils and oil mixtures including vegetable oil, mineral oil, and olive oil), liquid monomers and/or polymers (e.g., hexanediol diacrylate, butanediol diacrylate, polyethylene glycols, trimethylolpropane ethoxylate triacrylate), alcohols (e.g., butanol, octanol, pentanol, ethanol, isopropanol), ethers (e.g., diethyl ether, diethylene glycol, dimethyl ether), dimethyl formamide, acetonitrile, nitromethane, halogenated liquids (e.g., chloroform, dichlorobenzene, methylene chloride, carbon tetrachloride), brominated liquids, iodinated liquids, lactates (e.g., ethyl lactate), acids (e.g., citric acid, acetic acid), liquid crystals (4-cyano-4'-pentylbiphenyl), trimethylamine, liquid crystal hydrocarbons (e.g., 5-cyanobiphenyl), combinations thereof, and derivatives thereof, optionally substituted. In some embodiments, the hydrocarbon comprises a halogen group, sulfur, nitrogen, phosphorous, oxygen, or the like. Other hydrocarbons are also possible.

In some embodiments, at least one of the two or more phases (e.g., the second phase) comprises a fluorocarbon. Non-limiting examples of suitable fluorocarbons include fluorinated compounds such as perfluoroalkanes (e.g., perfluorohexanes, perfluorooctane, perfluorodecalin, perfluoromethylcyclohexane), perfluoroalkenes (e.g., perfluorobenzene), perfluoroalkynes, and branched fluorocarbons (e.g., perfluorotributylamine). Additional non-limiting examples of suitable fluorocarbons include partially fluorinated compounds such as methoxyperfluorobutane, ethyl nonafluorobutyl ether, 2H,3H-perfluoropentane, trifluorotoluene, perfluoriodide, fluorinated or partially fluorinated oligomers, 2,2,3,3,4,4,5,5,6,6,7,7,8,8,9,9-hexadecafluorodecane-1,10-diyl bis(2-methylacrylate), perfluoriodide, and 2-(trifluoromethyl)-3-ethoxydodecafluorohexane. Other fluorocarbons are also possible.

In some embodiments, at least one of the two or more components phases a silicone such as silicone oil. Non-limiting examples of suitable silicone oils include polydimethylsiloxane and cyclosiloxane fluids.

- 19 -

In some embodiments, at least one of the two or more phases comprises water.

In some embodiments, at least one of the two or more phases comprises an ionic liquid (e.g., an electrolyte, a liquid salt). In some embodiments, at least one of the two or more inner phases comprises an ionic liquid (e.g., an electrolyte, a liquid salt, 1-allyl-3-
5 methylimidazolium bromide, 1-allyl-3-methylimidazolium chloride, 1-benzyl-3-methylimidazolium hexafluorophosphate, 1-butyl-1-methylpyrrolidinium hexafluorophosphate). In some embodiments, the outer phase comprises water. In certain embodiments, at least one of the two or more phases comprises a deuterated compound (e.g., a deuterated hydrocarbon).

10 In some embodiments, at least one of the two or more phases comprises a chlorinated solvent (e.g. chloroform, carbon tetrachloride).

In some embodiments, at least one of the two or more phases comprises a combination of the materials described above (e.g., comprising a hydrocarbon, a fluorocarbon, a silicone, or combinations thereof). Non-limiting examples of
15 combinations of phases present in the Janus droplets described herein include hexane and perfluorohexane, carbon tetrachloride and perfluorohexane, chloroform and perfluorohexane, hexane and perfluorodecalin, hexane and perfluoromethylcyclohexane, hexane and perfluorotributylamine, isopropanol and hexadecane, ethyl lactate and heptane, acetic acid and decane, and triethylamine and water. Other combinations and
20 materials are also possible.

Those skilled in the art would be capable of selecting suitable phases based upon the teachings of the specification and the examples below such that the two or more phases are immiscible under a particular range of temperatures and/or conditions, as described above.

25 The outer phase may comprise any suitable material. Generally, the two or more phases comprising the plurality of Janus droplets may be substantially immiscible with the outer phase. In some embodiments, the outer phase is an aqueous phase (e.g., comprising water). The aqueous phase may, in some cases, have ions and/or be mixed with a biological fluid (e.g., sputum, blood, plasma, urine). In certain embodiments, the
30 outer phase is a non-aqueous phase. In some embodiments, the non-aqueous phase comprises a hydrocarbon, a fluorocarbon, a silicone, or the like, as described above in the context of the two or more phases, substantially immiscible with the two or more phases. Those skilled in the art would be capable, based upon the teachings of the specification

- 20 -

and the examples below, of selecting suitable materials for use as an outer phase based upon the miscibility of those materials (e.g., such that the two or more phases are substantially immiscible with the outer phase). The use of a non-aqueous outer phase may be advantageous in certain applications where the emulsion is used in low humidity environments. For example, a plurality of Janus droplets comprising fluorocarbon/hydrocarbon phases can be created in a liquid silicone matrix.

In some embodiments, the Janus droplet comprises an amphiphilic compound. In certain embodiments, the binding moiety is associated with the amphiphilic compound. For example, the binding moiety may be bound to at least a portion of the amphiphilic compound.

In certain embodiments, the amphiphilic compound is miscible in the outer phase. In some embodiments, the amphiphilic compound is miscible in at least one of the two or more phases (e.g., the first phase, the second phase). In certain embodiments, the amphiphilic compound has a greater miscibility in at least one of the two or more phases than a miscibility in the outer phase. In other embodiments the amphiphilic compound is added to the Janus droplet through a dispersion, such as an aqueous micelle structure or dissolution method (e.g., comprising injecting a dispersion of the amphiphilic compound into the solution containing the Janus droplets). In some embodiments, the amphiphilic compound is disposed at the interface between the outer phase and the plurality of Janus droplets. In certain embodiments, the amphiphilic compound is disposed at the interface between at least two of the two or more phases (e.g., the interface between the first phase and the second phase). The amphiphilic compound may preferentially interact with one or more phases or the outer phase. Those skilled in the art would be capable of selecting a suitable amphiphilic compound based upon the teachings of the specification and examples below.

In some embodiments, the amphiphilic compound is a surfactant. Non-limiting examples of suitable surfactants include ionic surfactants, non-ionic surfactants, and zwitterionic surfactants. In some embodiments, the surfactant is a fluorosurfactant (e.g., commercially available fluorosurfactants such as Zonyl® or Capstone®). In certain embodiments, the surfactant is anionic surfactants (e.g., sodium dodecyl sulfate (SDS)), cationic surfactants (e.g., alkyltrimethyl ammonium chloride, alkylmethyl ammonium bromide), non-ionic surfactants (e.g., alkyl poly(ethylene oxide)), zwitterionic surfactants (e.g., alkyl betain, C8-lecitin), polymeric surfactants, gemini surfactants,

- 21 -

particulate surfactants (e.g., graphene oxide, silica particles), and combinations thereof. Other surfactants are also possible. In some embodiments, the amphiphilic compound is a nucleic acid (e.g., DNA, RNA). In certain embodiments the amphiphilic compound comprises an amino acid (e.g., a peptide, a protein). In some embodiments, the
5 amphiphilic compound comprises a biomaterial. Non-limiting examples of suitable biomaterials include carbohydrates or derivatives thereof, saccharides or derivatives thereof (e.g., sialic acid), lipids or derivatives thereof, enzymes, chromophores or the like. Those skilled in the art would be capable of selecting suitable biomaterials based upon the teachings of the specification and the examples below.

10 In some embodiments, the amphiphilic compound comprises a perfluorinated segment. In some embodiments, the amphiphilic compound comprises ethylene glycol.

In some embodiments, the amphiphilic compound is capable of forming metal complexes.

In some embodiments, the one or more phases (e.g., the first phase, the second
15 phase) and/or the outer phase comprises an additional compound dispersed in the one or more phases and/or the outer phase. In certain embodiments, the additional compound is miscible/dispersible in the first phase and immiscible/not dispersible in the second phases. In some cases, at least a portion of the additional compound is dispersible in the first phases and not dispersible in the second phases (e.g., a surfactant). In some
20 embodiments, the additional compound may be dispersible or not dispersible in the outer phase. Non-limiting examples of suitable additional compounds include particles (e.g., magnetic particles/nanoparticles, silica particles), biological molecules (e.g., insulin), pharmaceutical compounds, polymers, surfactants, cells, bacteria, viruses, active pharmaceutical ingredients, and metals or metal particles. Other additional compounds
25 are also possible and those skilled in the art would be capable of selecting such compounds based upon the teachings of this specification.

In some embodiments, the plurality of Janus droplets can be formed by adjusting the temperature of a fluid comprising the outer phase and the two or more immiscible phases such that the two or more phases become substantially miscible with each other,
30 and emulsifying the fluid (e.g., thus forming the plurality of Janus droplets). In certain embodiments, the method comprises adjusting the temperature of the fluid comprising the two phases such that the two or more phases become substantially immiscible. In other embodiments, the method comprises the addition of a solvent that creates a stable

- 22 -

uniform composition prior to emulsification, and the solvent is removed by evaporation or extraction to give phase separation and produce a Janus droplet.

For example, as illustrated in FIG. 3, a fluid 300A comprises first phase 310 (e.g., a hydrocarbon) and second phase 320 (e.g., a fluorocarbon) which are immiscible at a first temperature T_0 . In some embodiments, T_0 is adjusted to a second temperature T_1 (e.g., where T_1 is greater than T_0 , or where T_1 is less than T_0) such that the first component and second component form a miscible mixture 330 in fluid 300B. For example, in some embodiments, the first phase and the second phase, which are initially substantially immiscible, may be heated such that they are miscible. In certain
5
10
15
embodiments, the first phase and the second phase, which are initially substantially immiscible, may be cooled such that they are miscible. Miscible mixture 330 can, in certain embodiments, be emulsified to form emulsion 300C comprising plurality of droplets 332. Plurality of droplets 332 may comprise miscible mixture 330 and be present in an outer phase 340. In some cases, outer phase 340 may be added prior to changing the temperature from T_0 to T_1 . In certain embodiments, outer phase 340 may be added after changing the temperature but prior to emulsification.

In some embodiments, T_1 is adjusted to a temperature T_2 (e.g., where T_2 is greater than T_1 or where T_2 is less than T_1) such that droplet 332 comprises first phase 310, and second phase 320 substantially immiscible with first component 310, forming a
20
Janus droplet.

In some embodiments, T_1 is greater than a critical temperature of the two or more phases (e.g., an upper consolute temperature of the two or more phases). In certain embodiments, T_1 is less than a critical temperature of the two or more phases (e.g., a lower consolute temperature). Those skilled in the art will be capable of selecting
25
suitable methods for determining the critical temperature (e.g., the upper consolute temperature, the lower consolute temperature) of two or more phases.

Suitable methods for emulsifying the fluid are known in the art and may comprise sonication, high shear mixing, shaking, passing the fluid through a membrane, or injecting the two or more components into the outer phase through a small diameter
30
channel.

The plurality of Janus particles may have any suitable average cross-sectional dimension. In some embodiments, the average cross-sectional dimension of the plurality of Janus particles is greater than or equal to 400 nanometers, greater than or equal to 500

- 23 -

nanometers, greater than or equal to 600 nanometers, greater than or equal to 800
nanometers, greater than or equal to 1 micron, greater than or equal to 2 microns, greater
than or equal to 5 microns, greater than or equal to 10 microns, greater than or equal to
20 microns, greater than or equal to 30 microns, greater than or equal to 50 microns,
5 greater than or equal to 60 microns, greater than or equal to 75 microns, greater than or
equal to 100 microns, greater than or equal to 150 microns, greater than or equal to 200
microns, greater than or equal to 300 microns, or greater than or equal to 400 microns. In
certain embodiments, the average cross-sectional dimension of the plurality of Janus
particles may be less than or equal to 500 microns, less than or equal to 400 microns, less
10 than or equal to 300 microns, less than or equal to 200 microns, less than or equal to 150
microns, less than or equal to 100 microns, less than or equal to 75 microns, less than or
equal to 60 microns, less than or equal to 50 microns, less than or equal to 20 microns,
less than or equal to 10 microns, less than or equal to 5 microns, less than or equal to 2
microns, less than or equal to 1 micron, less than or equal to 800 nanometers, less than or
15 equal to 600 nanometers, or less than or equal to 500 nanometers. Combinations of the
above-referenced ranges are possible (e.g., greater than or equal to 400 nanometers and
less than or equal to 500 microns, greater than or equal to 400 nanometers and less than
or equal to 100 microns, greater than or equal to 30 microns and less than or equal to 200
microns). Other ranges are also possible.

20

EXAMPLES

The following examples illustrate embodiments of certain aspects of the
invention. It should be understood that the methods and/or materials described herein
may be modified and/or scaled, as known to those of ordinary skill in the art.

25

The following examples demonstrate the use of systems for the detection of
analytes.

Surfactants specially designed with recognition elements to bind targeting
30 analytes (species/molecules of interest) multivalently were synthesized. The binding
interaction was able to transform a plurality of Janus droplets from an upright position to
a horizontally tilted position against gravity. This transformation generated a distinct
optical signal (scattering of a light beam) in the presence of analytes. The opposite

- 24 -

response was also possible wherein a plurality of Janus droplets were pre-titled by binding to a surface or particle and is initially in a scattering position. In this case, the action of an analyte was to disrupt the linkage between the surface or particle and allow a relaxation to an upright position that allowed for reduced scattering. The optical signal could be recorded via a smartphone by for example using a QR code for binary on/off detection, using low magnification images that are processed computationally to quantify the amount of analytes in the emulsion mixture, and/or the monitoring the transmission of focused light beams through the samples. Such systems could be used in biosensor applications including aqueous liquid phase detection. The emulsions (comprising Janus droplets) with only low molecular weight surfactant molecules were relatively inexpensive to fabricate and stable over multiple weeks with no further precautions. In cases where greater emulsion stability may be required, polymeric surfactant molecules and structures could be employed. Additionally, the Janus droplets were highly selective and sensitive for detection of pathogens as, in some cases, small changes in the concentration and/or the identity of the surfactants lead to significant changes in the orientation of the Janus droplets. Janus droplets were fabricated using either bulk emulsification, which generated polydisperse droplets, or in a microfluidic device, which generated monodisperse droplets. For surfactants soluble in water, a solution containing the functionalized surfactants was used as the continuous phase. Hydrocarbon phase (such as hexane, ortho-dichlorobenzene, phthalate, etc.) and fluorocarbon phase (such as perfluorohexane, ethyl nonafluorobutyl ether, methoxy perfluorobutane) were mixed and heated over the upper critical temperature to generate the single droplet phase. When the droplet phase was dispersed into the continuous (outer) phase containing surfactants, single emulsions were generated; and upon cooling, the hydrocarbon and fluorocarbon phases separated to generate Janus droplets. The composition of each droplet was substantially similar because they were generated from the same single droplet phase. In addition, surfactants were able to be incorporated into the droplet phase. Surfactants that were not soluble in water were dissolved in the hydrocarbon phase or the fluorocarbon phase before mixing. The droplet phase containing surfactants could then be dispersed into the continuous water phase, which may contain additional surfactants and surfactant assemblies to generate the droplets. In both cases, Janus droplets were used as sensing particles with surfaces covered by with functionalized surfactants. The surfactants or

- 25 -

surfactant assemblies could contain polymer surfactant/stabilizers or macromolecules of biological significance, including proteins, enzymes, nucleic acids, DNA, RNA.

Sensing of Pathogenic Bacteria

5 Our approach to detect pathogenic bacteria took advantage of the general affinity that different bacteria exhibit for specific patterns of carbohydrate. One of the targeting analytes, *Escherichia coli* (*E. coli*), is a bacterium that can be easily spread in contaminated food and water. While most strains of *E. coli* are harmless, certain strains that produce toxins could cause serious and fetal illness. To detect the *E. Coli* bacteria, 10 surfactants were carefully designed that interact with the surfaces of the cell via the carbohydrate-lectin interaction. This weak interaction between lectin on the surfaces of *E. coli* and D-mannose typically creates a challenge to detect bacteria with high sensitivity when relying on a single interaction. Thus, a surfactant that functionalizes one phase of the Janus droplets to increase the concentration of the mannose moiety on the 15 surface was designed. The increase in the concentration of the mannose moiety significantly enhanced binding affinity between the bacteria and the droplets, transforming a droplet into a selective sensing particle. The binding between Concanavalin A (ConA), a lectin known to bind D-mannose, was initially investigated using the Janus droplets as a model system. This technology could be relatively easily 20 adapted for other analytes by, for example, changing the active surfactants. A novel surfactant bearing a D-mannose head group (ManC14) was synthesized (FIG. 4A). FIG. 4A shows the scheme for Mannose surfactant (ManC14) synthesis. FIG. 4B shows a schematic illustration of Janus droplets aligning with Concanavalin A (ConA). The denser perfluorohexane phase aligned at the bottom and the hexane on the top of the 25 Janus droplets.

For this particular sensing platform, the Janus droplets were fabricated using the following method. The surfactants ManC14 and Zonyl® FS 300 (a commercially available fluorocarbon surfactant) were dissolved in a HEPES buffer solution (pH = 7.5) 30 as the continuous phase. A mixture of hexane and perfluorohexane (single droplet phase) was dispersed into the surfactant solution and cooled down to generate Janus droplets. The hexane phase on the Janus droplets was functionalized with mannose groups where the surfactant ManC14 aligned preferentially at the hexane/water interface. Without

- 26 -

wishing to be bound by theory, due to gravity and the higher density of perfluorohexane in relative to that of hexane, Janus droplets aligned with perfluorohexane phase in the bottom (FIG. 4B). ConA was dissolved in HEPES buffer solution with final concentration of 0.5 mg mL^{-1} . An increasing amount of this solution (10 μL to 40 μL)
5 was added to the Janus droplets; and after swirling the solution, the two-faced Janus droplets started aligning in a unique tilted configuration. The surfaces that were stabilized by ManC14 surfactant agglutinated together to form droplet complexes (FIG. 4B).

10 Without wishing to be bound by theory, the agglutination phenomenon occurred because ConA has four subunits, each with a binding site for mannose. This four-site binder acted similarly to an antibody that binds multiple particles and joins them together to make agglutinated droplet complexes. When Janus droplets agglutinate, the solution changes from transparent to opaque. This large and easily observable change is
15 particularly powerful because detection events will not generally require, for example, any external power input. The Janus droplet agglutination level could be characterized both qualitatively and quantitatively as described herein.

Tuning the Surface Chemistry

20 Surface recognition is a general phenomenon that can be applied to many different types of methods. The use of a ligand surfactant binding with a multivalent receptor, which can be a protein, cell, or pathogen, was described above. This scheme can be reversed where a receptor is immobilized at the surface of a droplet and then use a multivalent ligand scaffold (natural or synthetic) to bind the Janus droplets and hold
25 them in a tilted (scattering) state relative to the aligned non-scattering state favored by gravity. The ligands can be designed to have a lower affinity than a target analyte and hence exposure to the analyte can result in a displacement that breaks the linkage (e.g., tether) between the polyvalent ligand and the droplet. Similarly, the tether between the droplet and the ligand can be cleaved. This could be affected by an enzyme that cleaves a
30 peptide, such as an ester or a degraded RNA. It could also be affected by catalytic or heavy metal ions or select nucleophiles (sulfides). In some cases, the ligands could be bound to a surface. It is also possible that the ligands reside on another droplet.

- 27 -

Individual droplets that are tilted or alternatively not tilted (aligned by gravity) can be relatively easily quantified. This gives rise to the ability to, in some cases, detect single analytes. For example, it is possible that a single molecule of DNA can be detected if the droplet is anchored to a surface by a DNA duplex. Disruption of this duplex by a
5 complementary target DNA analyte can be observed. One aligned droplet in a sea of other tilted droplets would be readily detected. This scheme has an advantage that, for example, there would be many potential binding sites for the DNA molecule and hence thus the target DNA would not be required to find a rare binding site. Similarly, a cluster of tilted droplets in a sea of aligned droplets can be detected and, in doing so, would be
10 able to detect a single analyte.

Detection of Agglutinated Janus droplets

The solution of Janus droplets generally turns from transparent to opaque when the emulsions are agglutinated. FIG. 5A shows a solution of Janus droplets before
15 exposure to an analyte. FIG. 5B shows a solution of Janus droplets after exposure to the analyte. Such large and easily observable differences may be incorporated into the use of image processing algorithms to analyze the optical micrographs. These optical micrographs are readily taken from, for example, any common smartphone equipped with magnifying lenses to enable low-magnification of 4× and 10× (FIG. 6A).

20 For qualitative purposes, the detection may use the significant changes in the optical transparency between pristine and agglutinated Janus droplets to generate a binary response. For example a transparent analysis chamber containing the Janus droplets was placed on top of a two-dimensional QR code, as shown in FIG. 6B. In the presence of ConA, the chamber became opaque and covered a portion of the QR code.
25 This transformation inhibited a smartphone from reading the QR code.

To quantify the degree of agglutination, an image processing program that calculates the percentage of area covered by agglutinated Janus droplets by two distinct logics was implemented: 1) the amount of overlapping droplets and 2) the difference in optical intensity of the images. FIGs. 7A-7C show the quantification of a plurality of
30 Janus droplets in the absence of a targeted analyte. FIGs. 7D-7F show the quantification of a plurality of Janus droplets exposed to a targeted analyte.

Specifically, the image processing program analyzed the raw optical micrographs (FIG. 7A and FIG. 7D) by mapping out the locations of each Janus droplet and

- 28 -

measuring their radii (FIG. 7B and FIG. 7E). Using this information, the program then sought overlapping emulsions. As described above, during agglutination the Janus droplets joined together to form droplet complexes of agglutinated Janus droplets. The program distinguished each droplet with more than two overlapping neighbors as a part of a droplet complex and rejected any droplet with zero, one, or two overlapping neighbors (FIG. 7C and FIG. 7F). The percentage of area covered by agglutinated Janus droplets were then calculated for both pristine sample (FIG. 7C) and agglutinated sample (FIG. 7F).

10 The area covered by these Janus droplet agglutinations were then further correlated with the analysis of optical intensity within the images. Similar to the qualitative detection, the image analysis can distinguish regions of agglutinated Janus droplets due to the lower optical transparency. The program used an adaptive thresholding algorithm to distinguish areas with higher transparency (pristine Janus droplets) from the opaque regions (agglutinated Janus droplets), FIGs. 8A-8F. The combination of the two distinct logics—identifying the overlapping Janus droplets and analyzing changes in optical intensity—can accurately detect the regions of agglutinated Janus droplets. Furthermore, the whole process can be completed within seconds from capturing the image to final calculation.

20 In some cases, the Janus droplets behave as individual lenses. Such droplets can be interrogated with a scanning light beam or a number of beams simultaneously. In this case (e.g., FIGs. 8A-8F), the light beams transmit through the sample and impinge on an array of light detectors. Signals can be deduced by changes in the intensity that represents the straight path of the light beam and the light that is refracted (e.g., deviating from a straight path). Without wishing to be bound my theory, lower intensity at the point of the straight path and higher intensity of light that is refracted from that path, indicate an increase in the tilt of one or more droplets. Similarly, higher intensity of light in the straight path and lower intensity that has been refracted may indicate a decrease in the tilt of the droplet. Such lensing permits detection of changes in a single droplet. For example, the ability to detect single events that can lead to the detection of single pathogens, cells, catalysts, or molecules.

FIG. 9 details a strategy wherein breaking a single linkage (tether) can potentially generate a sensor response that is visible to the naked eye. In this system, the red phase

- 29 -

of the Janus droplet (CSC) had a higher density, and a gravitational force worked to orient the particles. Disrupting a chemical bond or complementary DNA interaction tether, which has pinned the Janus droplet in a tilted scattering configuration, produced a relaxation to the transmissive equilibrium orientation. An advantage of this method is, for example, that only one droplet in a multitude of droplets need be rotated to be detected. Additionally by tethering to patterned surfaces, arrays of sensors can be produced that can detect multiple types of analytes in a single device.

Formation of Droplets

Materials. For the detection of ConA, hexane and perfluorohexane were chosen as the hydrocarbon and fluorocarbon phases respectively. In other cases, different pairs of hydrocarbon (ortho-dichlorobenzene, phthalate, etc.) and fluorocarbon (ethyl nonafluorobutyl ether, methoxy perfluorobutane, etc.) phases can be substituted to tune the upper critical temperature (T_c) of the mixture and the differences in density for suitable applications. For the continuous water phase, surfactants ManC14 and Zonyl® FS 300 were chosen to stabilize and generate the Janus droplets. The two surfactants were dissolved in HEPES buffer solution (pH = 7.5) separately with concentration of 0.0005% and 0.01% by weight, respectively. In both bulk emulsification and microfluidics method, the final volume ratio between ManC14 solution and Zonyl FS 300 solution was kept at 1.2:1 to generate two-hemisphere Janus droplets. For surfactants that are soluble in water (such as ManC14 and Zonyl® FS 300), a solution containing the functionalized surfactants was used as the continuous phase.

Bulk emulsification for polydispersed Janus droplets. To generate Janus droplets via bulk emulsions, we began by preparing an equal-mixture of hexane and perfluorohexane with a total volume of 1 mL in a 5 mL glass vial. The mixture initially formed an immiscible solution at room temperature. The vial containing the mixture was then heated to above the T_c using a standard heat gun until the mixture was miscible; for hexane-perfluorohexane mixture, the T_c is 20°C. For other combinations of hydrocarbon and fluorocarbon, the T_c may vary depending on the two liquids. In another 5 mL glass vial, 1 mL of the continuous phase containing ManC14 and Zonyl FS 300 (concentrations of both reported in the previous section) was also heated to the same temperature as the vial containing hexane-perfluorohexane mixture. This precaution may mitigate the phase

- 30 -

segregation of hexane and perfluorohexane upon addition before emulsification. 50 μL of heated and miscible hexane-perfluorohexane mixture was then injected into the heated continuous phase via a pipette. The Janus droplets were then generated by shaking the vial using a vortex mixer at 3000 RPM for 5 seconds. The solution of Janus droplets was then cooled down below T_c using an ice bath. This method of bulk emulsification generated polydispersed droplets with diameters ranging from 30 to 200 μm as observed by an optical microscope.

Generation of monodispersed Janus droplets via microfluidics. Both coaxial glass capillary microfluidics and commercial available microfluidic chips were used to generate emulsions. For coaxial glass capillary microfluidics, devices were made from an outer square capillary (OD = 1.5 mm, ID = 1.05 mm, AIT Glass) and inner cylindrical capillary (OD = 1 mm, World Precision Instruments) pulled to a 30 μm tip using a P-1000 Micropipette Puller (Sutter Instrument Company). For commercial microfluidic device, Focused Flow Droplet Generator chip (channel width = 100 μm , channel depth = 20 μm , tip width = 10 μm , glass) from Micronit was used. In both microfluidics system, Harvard Apparatus PHD Ultra syringe pumps were used to inject the outer phase (continuous phase) and inner phase (droplet phase). The flow rates were 50 $\mu\text{L min}^{-1}$ for the continuous phase and 30 $\mu\text{L min}^{-1}$ for the droplet phase. The solution of monodispersed droplets was first collected via 20 mL glass vial and later diluted with both ManC14 solution and Zonyl® solution to achieve a final droplet phase concentration of 6% by volume while maintaining the 1.2 : 1 volume ratio of the two surfactants. The microfluidic setup was heated above the T_c of the inner phase solution using a heat lamp. Janus droplets were then cooled below T_c to induce phase separation. For hexane-perfluorohexane emulsions, the emulsions were chilled on ice prior to imaging and often imaged while immersed in a cool water bath to maintain a temperature below 20°C. The average diameter of the monodispersed droplets generated from this setup were $60 \pm 10 \mu\text{m}$. The composition of each droplet was nearly identical because each droplet was generated from the same single droplet phase.

30

Stability and sample storage. The Janus droplets generated from either method described above were observed to be stable on the order of weeks under room temperature. After emulsification, the Janus droplets were kept within the continuous phase at room

- 31 -

temperature in a closed glass vial without mechanical perturbation. The diameter of the Janus droplets was not observed to change significantly after weeks of storage.

Sensing

5 *Sample preparation for sensing of ConA.* Monodispersed or polydispersed Janus droplets used for sensing experiments were fabricated using methods described above. Janus droplets were loaded into a stainless steel sample holder with a 1 cm deep well and a 1.5 cm diameter viewing window. 0.5 mL of mixed surfactant solution containing 30 μ L of hexane-perfluorohexane droplet phase was loaded into sample holder to create a
10 monolayer of Janus droplet that covered the whole viewing window. The sample holder and solution of the Janus droplets were kept below 20°C, the T_c of hexane-perfluorohexane mixture, during the sensing of ConA and image acquisition.

Model system: Sensing of ConA. ConA was dissolved in HEPES buffer solution with
15 final concentration of 0.5 mg mL⁻¹ and used as the analyte. 10 μ L of ConA solution was added using a micropipette to the sample holder containing Janus droplets. Solution was then swirled gently and agglutination of Janus droplets were observed within seconds. Image were recorded before and after adding ConA solution. An increasing volume (up to 40 μ L) of ConA solution were added afterwards to get a correlation between
20 agglutination level and analyte concentration. Agglutination level were analyzed both qualitatively and quantitatively as described below.

Surface Chemistry

Fabrication of DNA-functionalized surface. Glass substrates were cleaned by sonication
25 in acetone and isopropyl alcohol for 5 min each to remove dust. After drying completely, the glass substrates were immersed in piranha solution (H₂SO₄: H₂O₂, 1:1, v/v) for 1 h, rinsed thoroughly with distilled water, and then dried under N₂. The glass substrates were then immersed and reacted with a toluene solution of trichlorosilane linker terminated with an N-hydroxysuccinimide (NHS) for 1 h to form NHS covalently functionalized
30 glass substrates. Afterwards, a solution of 10 μ M ssDNA dissolved in a sodium tetraborate buffer at pH 9 was reacted to form an amide bond, which attach the ssDNA onto surface of the glass slides. ssDNA was functionalized with alkyl chain to form a surfactant molecule. Janus droplets residing on the surface of ssDNA functionalized

- 32 -

glass substrate were tilted against gravity. A solution of the complementary strand dissolved in 0.25 M NaCl solution was added to Janus droplets to hybridize the DNA strands. Janus droplets were released from the glass substrate to be aligned with gravity at areas where DNA strands were hybridized. X-ray photoelectron spectroscopy was used to analyze the elements on glass substrates to ensure successful functionalization of ssDNA.

Detection

Sample preparation for detection. For both qualitative and quantitative methods of detection, Janus droplets were imaged in a stainless steel sample holder. For qualitative detection, a two-dimensional QR code (1 cm × 1 cm) was placed 1 cm below the viewing window of the analysis chamber. For quantitative detection, a white background was used instead of the QR code to provide contrast. The analysis chamber and the solution of the Janus droplets were kept in an ice bath, well below the T_c of the hexane-perfluorohexane mixture to maintain the morphology of the Janus droplets.

Qualitative analysis using QR code. Qualitative analysis was performed using the QR code from unmagnified images taken from the smartphone. The distance from the phone to the analysis chamber containing the Janus droplets was approximately 10 cm. The exact distance was calibrated by the image processing software by using the known dimension of the QR code (1 cm × 1 cm). The binary response measured was whether the QR code could be read via the software. If the QR code was readable, the Janus droplets were considered not agglutinated, and vice versa.

Image acquisition for quantitative analysis. To acquire the low-magnification images for quantitative analysis, an adaptor with magnifying lenses was adapted onto the smartphone. With this modification, optical micrographs with 4× and 10× magnification were obtained. The working distance from the smartphone to the analysis chamber was 1 cm. The working distance and the dimension of the images were calibrated by the calibrated marking underneath the analysis chamber with 10 μm tick marks. The image processing software then pre-processed the captured images by transforming them into greyscale images and adjusting the brightness and contrast to the reference image of

- 33 -

blank analysis chamber. For each sample, 100 pictures were taken, forming a 10×10 array of images to span the majority of the area of the analysis chamber.

Identification of overlapping Janus droplets. From the pre-processed images with 10×
5 magnification (greyscale images with adjusted brightness and contrast), the image
processing program first estimated the range of diameters of the Janus droplets by using
the calibrated marking underneath the analysis chamber. The program then sought out
and mapped the centers and calculated the diameters of every Janus droplet. This process
was done by a modified method based on the Circle Hough Transform. With the
10 coordinates of the centers and the diameters of the Janus droplets, the program then
evaluated overlapping droplets. Specifically, if the distance between two centers of two
droplets was smaller than the sum of the two radii, the droplets were considered
overlapping. Using this logic, the program could effectively map out the number of
overlapping neighbors for every identified droplet.

15
Identification of droplet complexes. A Janus droplet was considered to be a part of a
droplet complex if the number of its overlapping neighbor exceeded three. This threshold
was set in some cases to prevent over-counting of the droplets at the edges of the droplet
complexes and accidental overlapping of droplets. This measurement was further
20 collaborated by the analysis based on the optical intensity. The area occupied by the
agglutinated droplet complexes was then calculated.

Analysis of changes in optical intensity. Using the pre-processed images of 4×
magnification (greyscale images with adjusted brightness and contrast), the program first
25 applied the adaptive thresholding algorithm to distinguish the darker edges of the Janus
droplets from the droplet complexes with tilted particles. More specifically, the program
ignored the edges of the droplets that have inherent low-light intensity and only sought
the area of droplet complexes. A threshold was set using areas with light intensity of less
than 45% of the brightest regions to be considered part of the droplets complex. From
30 this information, the area occupied by the droplet complexes was then calculated.

While several embodiments of the present invention have been described and
illustrated herein, those of ordinary skill in the art will readily envision a variety of other

- 34 -

means and/or structures for performing the functions and/or obtaining the results and/or one or more of the advantages described herein, and each of such variations and/or modifications is deemed to be within the scope of the present invention. More generally, those skilled in the art will readily appreciate that all parameters, dimensions, materials, and configurations described herein are meant to be exemplary and that the actual
5 parameters, dimensions, materials, and/or configurations will depend upon the specific application or applications for which the teachings of the present invention is/are used. Those skilled in the art will recognize, or be able to ascertain using no more than routine experimentation, many equivalents to the specific embodiments of the invention
10 described herein. It is, therefore, to be understood that the foregoing embodiments are presented by way of example only and that, within the scope of the appended claims and equivalents thereto, the invention may be practiced otherwise than as specifically described and claimed. The present invention is directed to each individual feature, system, article, material, kit, and/or method described herein. In addition, any
15 combination of two or more such features, systems, articles, materials, kits, and/or methods, if such features, systems, articles, materials, kits, and/or methods are not mutually inconsistent, is included within the scope of the present invention.

The indefinite articles “a” and “an,” as used herein in the specification and in the claims, unless clearly indicated to the contrary, should be understood to mean “at least
20 one.”

The phrase “and/or,” as used herein in the specification and in the claims, should be understood to mean “either or both” of the elements so conjoined, i.e., elements that are conjunctively present in some cases and disjunctively present in other cases. Other elements may optionally be present other than the elements specifically identified by the
25 “and/or” clause, whether related or unrelated to those elements specifically identified unless clearly indicated to the contrary. Thus, as a non-limiting example, a reference to “A and/or B,” when used in conjunction with open-ended language such as “comprising” can refer, in one embodiment, to A without B (optionally including elements other than B); in another embodiment, to B without A (optionally including elements other than A);
30 in yet another embodiment, to both A and B (optionally including other elements); etc.

As used herein in the specification and in the claims, “or” should be understood to have the same meaning as “and/or” as defined above. For example, when separating items in a list, “or” or “and/or” shall be interpreted as being inclusive, i.e., the inclusion

- 35 -

of at least one, but also including more than one, of a number or list of elements, and, optionally, additional unlisted items. Only terms clearly indicated to the contrary, such as “only one of” or “exactly one of,” or, when used in the claims, “consisting of,” will refer to the inclusion of exactly one element of a number or list of elements. In general, the
5 term “or” as used herein shall only be interpreted as indicating exclusive alternatives (i.e. “one or the other but not both”) when preceded by terms of exclusivity, such as “either,” “one of,” “only one of,” or “exactly one of.” “Consisting essentially of,” when used in the claims, shall have its ordinary meaning as used in the field of patent law.

As used herein in the specification and in the claims, the phrase “at least one,” in
10 reference to a list of one or more elements, should be understood to mean at least one element selected from any one or more of the elements in the list of elements, but not necessarily including at least one of each and every element specifically listed within the list of elements and not excluding any combinations of elements in the list of elements. This definition also allows that elements may optionally be present other than the
15 elements specifically identified within the list of elements to which the phrase “at least one” refers, whether related or unrelated to those elements specifically identified. Thus, as a non-limiting example, “at least one of A and B” (or, equivalently, “at least one of A or B,” or, equivalently “at least one of A and/or B”) can refer, in one embodiment, to at least one, optionally including more than one, A, with no B present (and optionally
20 including elements other than B); in another embodiment, to at least one, optionally including more than one, B, with no A present (and optionally including elements other than A); in yet another embodiment, to at least one, optionally including more than one, A, and at least one, optionally including more than one, B (and optionally including other elements); etc.

25 In the claims, as well as in the specification above, all transitional phrases such as “comprising,” “including,” “carrying,” “having,” “containing,” “involving,” “holding,” and the like are to be understood to be open-ended, i.e., to mean including but not limited to. Only the transitional phrases “consisting of” and “consisting essentially of” shall be closed or semi-closed transitional phrases, respectively, as set forth in the United States
30 Patent Office Manual of Patent Examining Procedures, Section 2111.03.

Any terms as used herein related to shape, orientation, alignment, and/or geometric relationship of or between, for example, one or more articles, structures, forces, fields, flows, directions/trajectories, and/or subcomponents thereof and/or

- 36 -

combinations thereof and/or any other tangible or intangible elements not listed above amenable to characterization by such terms, unless otherwise defined or indicated, shall be understood to not require absolute conformance to a mathematical definition of such term, but, rather, shall be understood to indicate conformance to the mathematical

5 definition of such term to the extent possible for the subject matter so characterized as would be understood by one skilled in the art most closely related to such subject matter. Examples of such terms related to shape, orientation, and/or geometric relationship include, but are not limited to terms descriptive of: shape - such as, round, square, circular/circle, rectangular/rectangle, triangular/triangle, cylindrical/cylinder,

10 elliptical/ellipse, (n)polygonal/(n)polygon, etc.; angular orientation - such as perpendicular, orthogonal, parallel, vertical, horizontal, collinear, etc.; contour and/or trajectory – such as, plane/planar, coplanar, hemispherical, semi-hemispherical, line/linear, hyperbolic, parabolic, flat, curved, straight, arcuate, sinusoidal, tangent/tangential, etc.; direction – such as, north, south, east, west, etc.; surface and/or

15 bulk material properties and/or spatial/temporal resolution and/or distribution – such as, smooth, reflective, transparent, clear, opaque, rigid, impermeable, uniform(ly), inert, non-wettable, insoluble, steady, invariant, constant, homogeneous, etc.; as well as many others that would be apparent to those skilled in the relevant arts. As one example, a fabricated article that would be described herein as being “square” would not require such

20 article to have faces or sides that are perfectly planar or linear and that intersect at angles of exactly 90 degrees (indeed, such an article can only exist as a mathematical abstraction), but rather, the shape of such article should be interpreted as approximating a “square,” as defined mathematically, to an extent typically achievable and achieved for the recited fabrication technique as would be understood by those skilled in the art or as

25 specifically described. As another example, two or more fabricated articles that would be described herein as being “aligned” would not require such articles to have faces or sides that are perfectly aligned (indeed, such an article can only exist as a mathematical abstraction), but rather, the arrangement of such articles should be interpreted as approximating “aligned,” as defined mathematically, to an extent typically achievable

30 and achieved for the recited fabrication technique as would be understood by those skilled in the art or as specifically described.

- 37 -
CLAIMS

What is claimed is:

1. A system comprising:
a plurality of Janus droplets associated with binding moieties to an analyte, the
5 binding moiety and analyte selected such that when the analyte binds to the binding
moiety at least a portion of the plurality of Janus droplets are changed in orientation
sufficient to change electromagnetic radiation interacting with the plurality of Janus
droplets in a detectable manner.
- 10 2. A system comprising:
a plurality of Janus droplets associated with a plurality of binding moieties to an
analyte; and
a detector positioned relative to the plurality of Janus droplets such that when
sufficient numbers of the binding moieties bind to analyte at least a portion of the
15 plurality of Janus droplets are changed in orientation sufficient to change
electromagnetic radiation interacting with the Janus droplets in a manner determinable
by the detector.
3. A system as in any preceding claim, wherein upon binding to the binding
20 moieties, at least a portion of the plurality of Janus droplets agglutinate.
4. A system as in any preceding claim, wherein, prior to binding to the binding
moieties, the plurality of Janus droplets are oriented such that at least a portion of
interfaces between a first phase and a second phase within each Janus droplet are aligned
25 parallel with respect to one another.
5. A system as in any preceding claim, wherein, prior to the analyte binding to the
binding moieties, the plurality of Janus droplets are bound to a surface.
- 30 6. A system as in claim 5, wherein, upon binding of the analyte to the binding
moieties, at least a portion of the plurality of Janus droplets unbind from the surface.

- 38 -

7. A method comprising:
allowing an analyte to bind to binding moieties associated with a plurality of
Janus droplets; and
determining a change in electromagnetic radiation interacting with the plurality
5 of Janus droplets due at least in part to the binding of the analyte to the binding moieties.
8. A method for determining an analyte, comprising:
exposing, to an article comprising an outer phase and a plurality of Janus droplets
dispersed within the outer phase, a chemical or biological analyte, wherein the chemical
10 or biological analyte, if present, interacts with at least a portion of the article such that at
least a portion of the plurality of Janus droplets change orientation thereby producing a
detectable change in an optical property of the article; and
determining the detectable change.
- 15 9. A method for changing the optical transmission of an article, comprising:
exposing, to an article comprising an outer phase and a plurality of Janus droplets
dispersed within the outer phase, a chemical or biological analyte, wherein the chemical
or biological analyte, if present, interacts with at least a portion of the article such that at
least a portion of the plurality of Janus droplets change orientation thereby changing the
20 optical transmission of the article.
10. A method as in any preceding claim, wherein the plurality of Janus droplets
comprises one or more amphiphilic compounds including at least one binding moiety.
- 25 11. A method as in claim 10, wherein interacting with at least a portion of the article
comprises binding of the chemical or biological analyte to the at least one binding
moiety.
12. A method as in any preceding claim, wherein, prior to exposing the article to a
30 chemical or biological analyte, at least a portion of the plurality of Janus droplets are
oriented such that at least a portion of interfaces between a first phase and a second phase
within each Janus droplet are aligned parallel with respect to one another.

- 39 -

13. A method as in claim 12, wherein substantially all of the interfaces between a first phase and a second phase within each Janus droplet are aligned parallel with respect to one another.

5

14. A method as in any preceding claim, wherein, upon exposing the article to a chemical or biological analyte, at least a portion of the plurality of Janus droplets agglutinate.

10 15. A method as in any preceding claim, wherein, upon exposing the article to a chemical or biological analyte, at least a portion of the plurality of Janus droplets are oriented such that at least a portion of interfaces between a first phase and a second phase within each Janus droplet are not aligned parallel with respect to one another.

15 16. A method as in claim 10, wherein at least a portion of the plurality of Janus droplets are bound to a surface of the article via the binding moiety.

17. A method as in claim 16, wherein, upon exposing the article to a chemical or biological analyte, at least a portion of the plurality of Janus droplets unbind from the
20 surface.

18. An article, comprising:
an outer phase; and
a plurality of Janus droplets dispersed within the outer phase,
25 wherein at least a portion of the plurality of Janus droplets comprise an amphiphilic compound including at least one binding moiety.

19. An article as in claim 18, wherein the plurality of Janus droplets is oriented such that at least a portion of interfaces between a first phase and a second phase within each
30 Janus droplet are aligned parallel with respect to one another.

20. An article as in any preceding claim, wherein the at least one binding moiety is capable of binding with a chemical or biological analyte.

- 40 -

21. An article as in any preceding claim, wherein, upon binding of the at least one binding moiety with a chemical or biological analyte, at least a portion of the plurality of Janus droplets change orientation.

5

22. An article as in any preceding claim, wherein the plurality of Janus droplets are substantively transmissive to electromagnetic radiation.

23. An article as in any preceding claim, wherein, upon binding of the at least one binding moiety with a chemical or biological analyte, the plurality of Janus droplets decrease in optical transmission.

24. An article, comprising:
a surface;
an outer phase deposited on at least a portion of the surface; and
a plurality of Janus droplets dispersed within the outer phase,
wherein at least a portion of the plurality of Janus droplets comprise an amphiphilic compound including at least one binding moiety, and
wherein at least a portion of the plurality of Janus droplets are bound to the surface via the binding moiety.

15
20
25

25. An article as in claim 24, wherein at least a portion of the plurality of Janus droplets are oriented such that an interface between a first phase and a second phase within each Janus droplet are not aligned parallel to the surface.

26. An article as in any one of claims 24-25, wherein, upon exposure of the plurality of Janus droplets to a biological or chemical analyte, at least a portion of Janus droplets unbind from the surface.

30 27. An article as in any one of claims 24-26, wherein, upon exposure of the plurality of Janus droplets to a biological or chemical analyte, at least a portion of Janus droplets change orientation.

- 41 -

28. An article as in claim 26, wherein the article is substantively visible-light transmissive after exposure to the plurality of Janus droplets to the biological or chemical analyte.
- 5 29. An article as in any one of claims 24-28, wherein, upon exposure of the plurality of Janus droplets to a chemical or biological analyte, the plurality of Janus droplets increase in optical transmission.
30. A system, comprising:
10 an article as in any preceding claim;
a source of external energy applicable to the composition to generate a determinable signal; and
a detector positioned to detect the signal.
- 15 31. A system as in claim 30, wherein the signal comprises electromagnetic radiation.
32. A system as in any one of claims 30-31, wherein, upon exposure of the article to a chemical or biological analyte, the system generates the determinable signal.
- 20 33. An article, system, or method as in any preceding claim, wherein each Janus droplet comprises a first phase and a second phase, immiscible with the first phase.
34. An article, system, or method as in any preceding claim, wherein the outer phase is an aqueous phase.
- 25 35. An article, system, or method as in any preceding claim, wherein the first phase comprises a hydrocarbon, a fluorocarbon, a silicone, a liquid crystal, an ionic liquid, a polymer, combinations thereof, or derivatives thereof.
- 30 36. An article, system, or method as in any preceding claim, wherein the second phase comprises a hydrocarbon, a fluorocarbon, a silicone, a liquid crystal, an ionic liquid, a polymer, combinations thereof, or derivatives thereof, immiscible with the first phase.

- 42 -

37. An article, system, or method as in any preceding claim, wherein the amphiphilic compound is selected from the group consisting of: ionic surfactants, non-ionic surfactants, zwitterionic surfactants, polymers, proteins, DNA, RNA, acids,
5 carbohydrates, saccharides, enzymes, chromophores, lipids, graphene oxide, combinations thereof, and derivatives thereof.

38. An article, system, or method as in any preceding claim, wherein an interface
10 between the outer phase and the plurality of Janus droplets comprises the amphiphilic compound.

39. An article, system, or method as in any preceding claim, wherein the analyte comprises a biological compound, a drug, a macromolecule, a salt, an electrolyte, an enzyme, an acid, a nucleic acid, a carbohydrate, a peptide, a protein, a phosphate, a
15 sulfonate, a virus, a pathogen, an oxidant, a reductant, a toxin, a chemical warfare agent, an explosive, carbon dioxide, or combinations thereof.

40. An article, system, or method as in any preceding claim, wherein the analyte is a
20 single analyte.

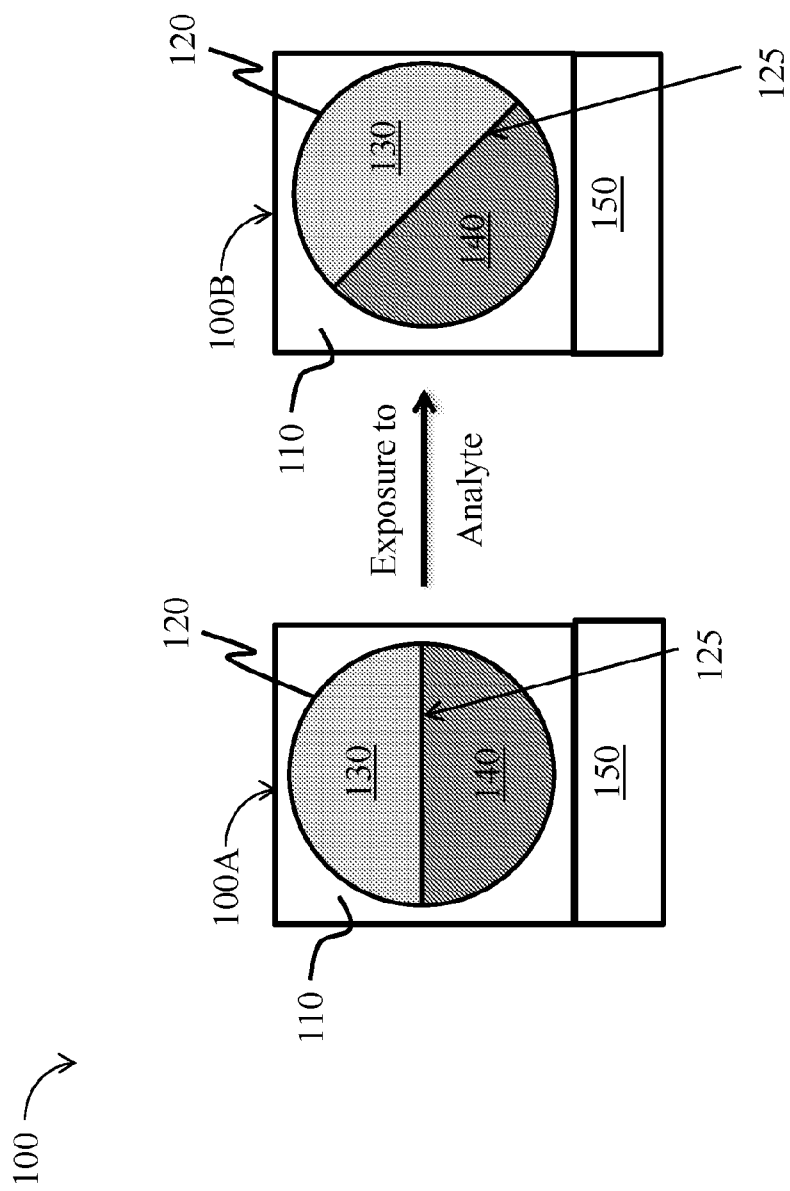


FIG. 1A

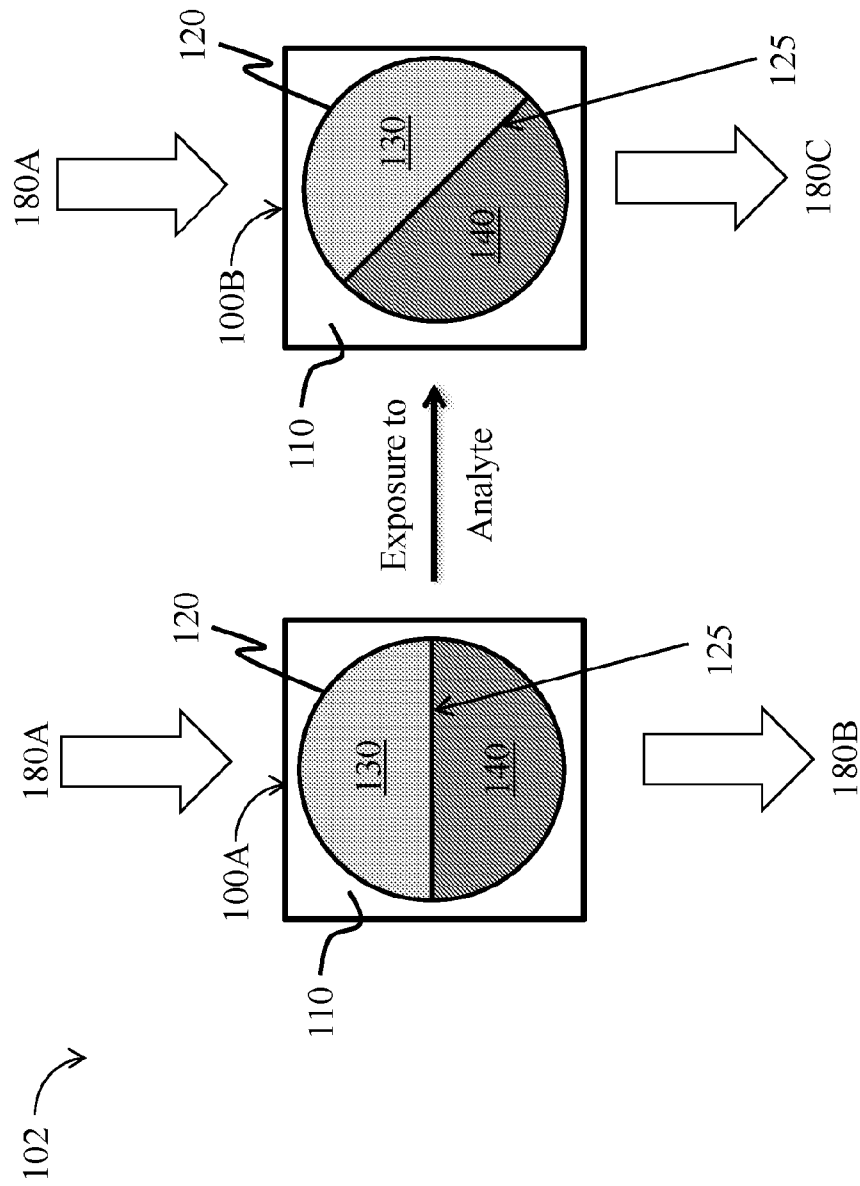


FIG. 1B

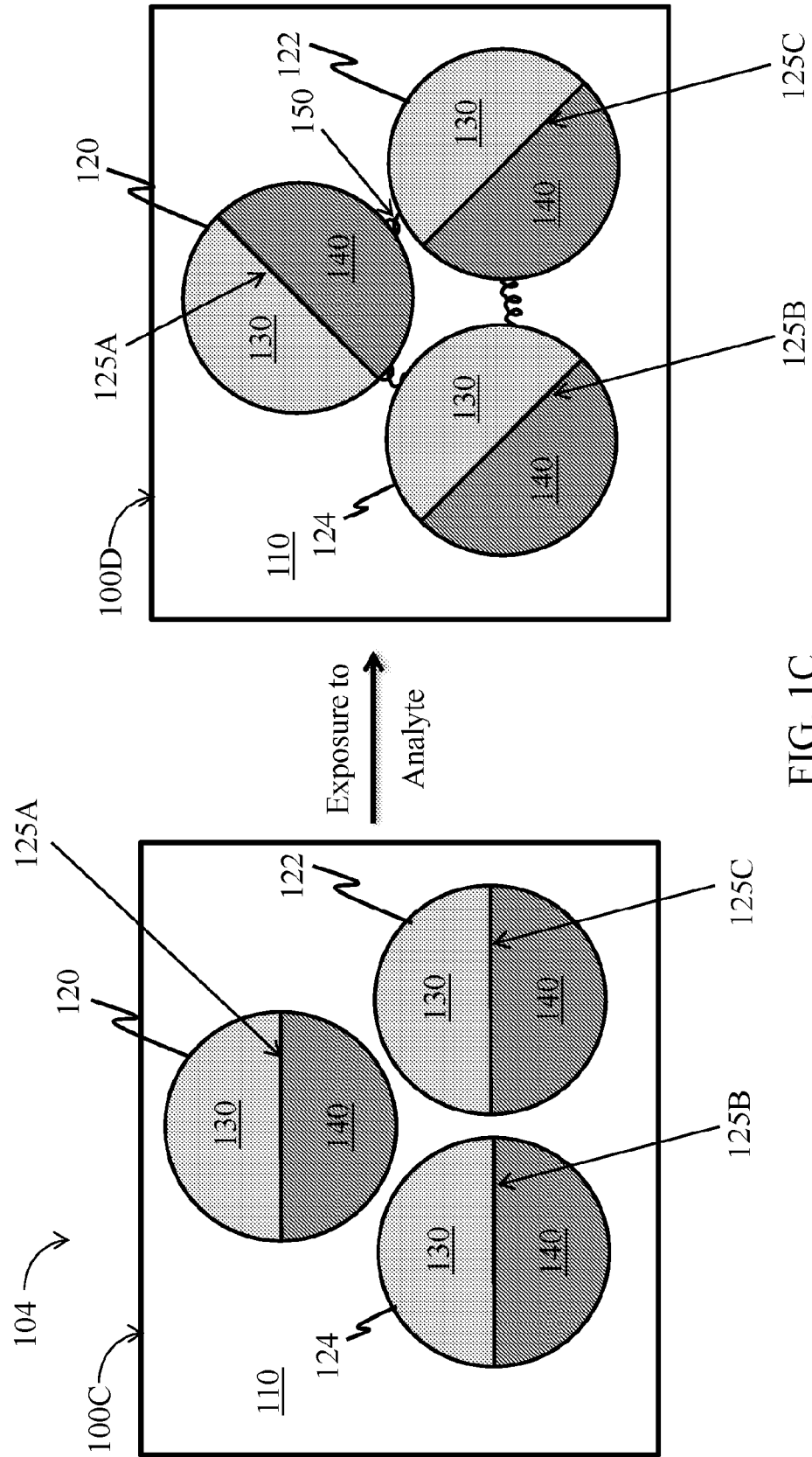


FIG. 1C

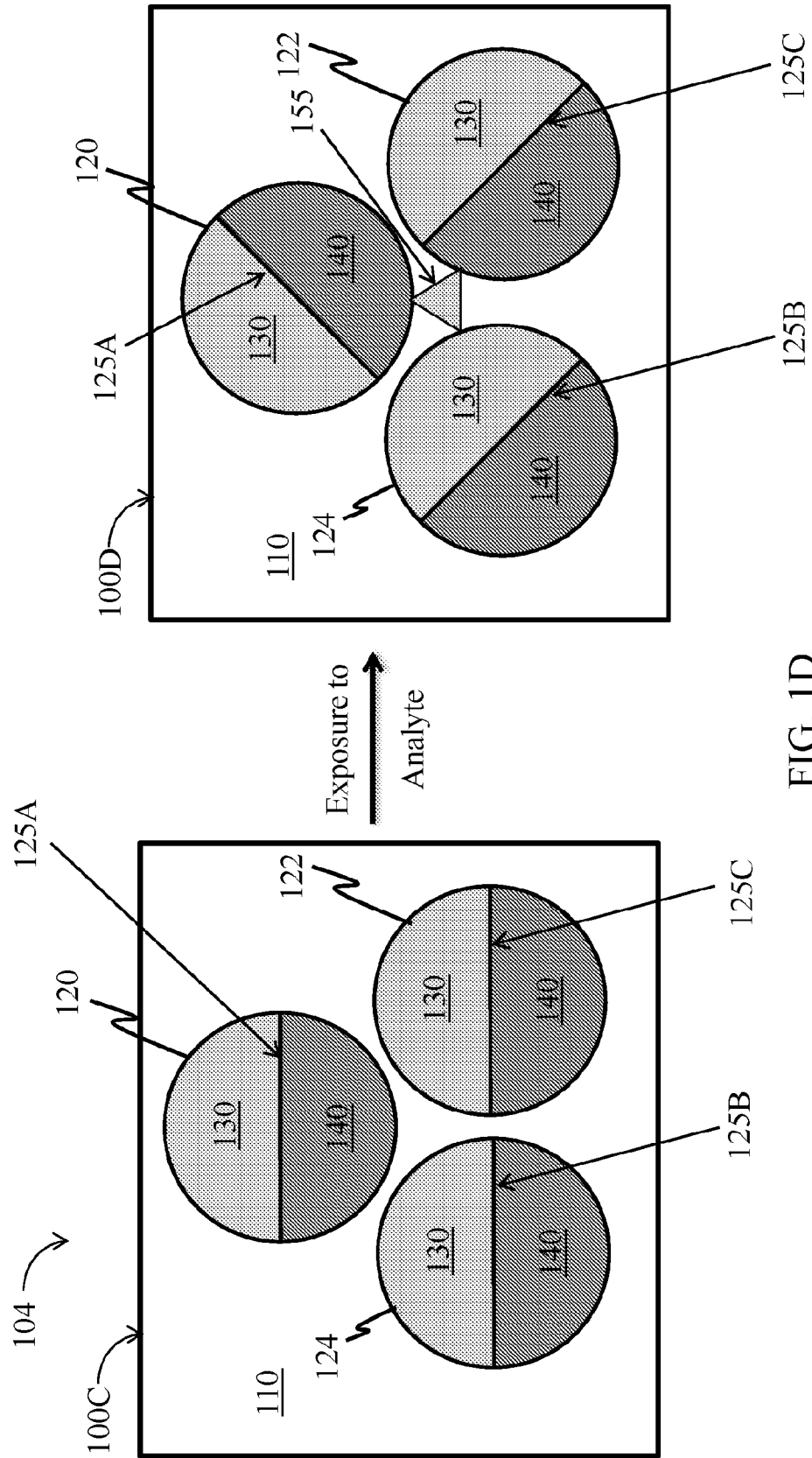


FIG. 1D

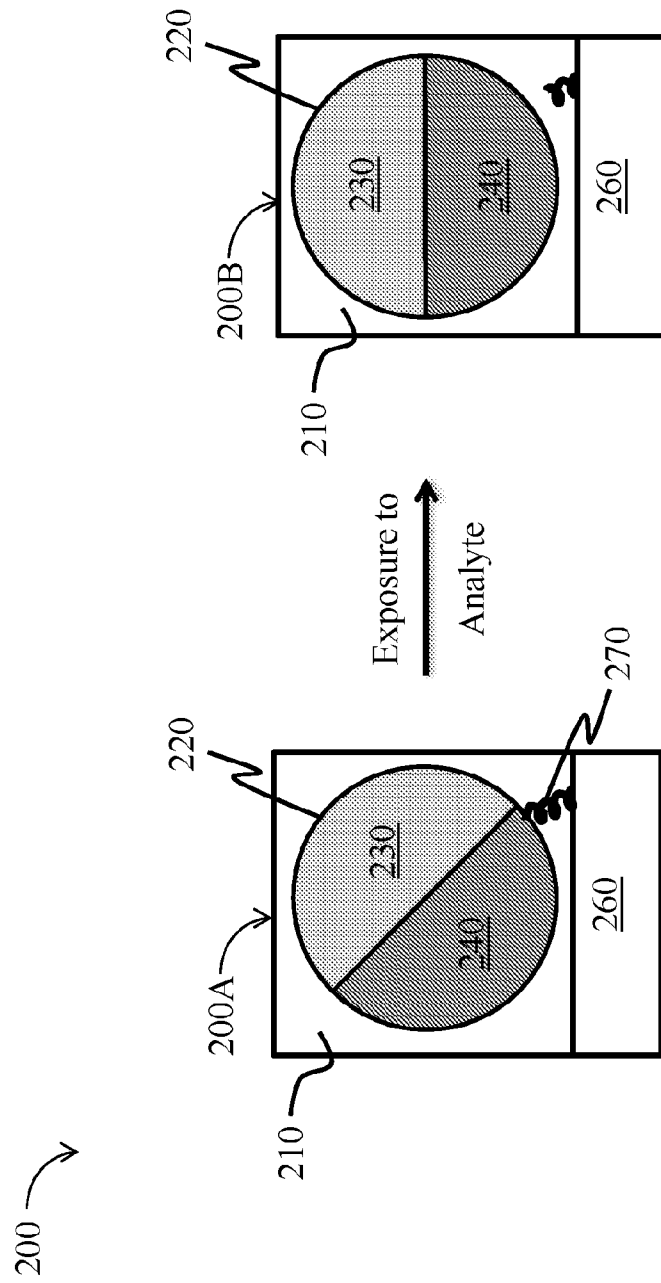


FIG. 2

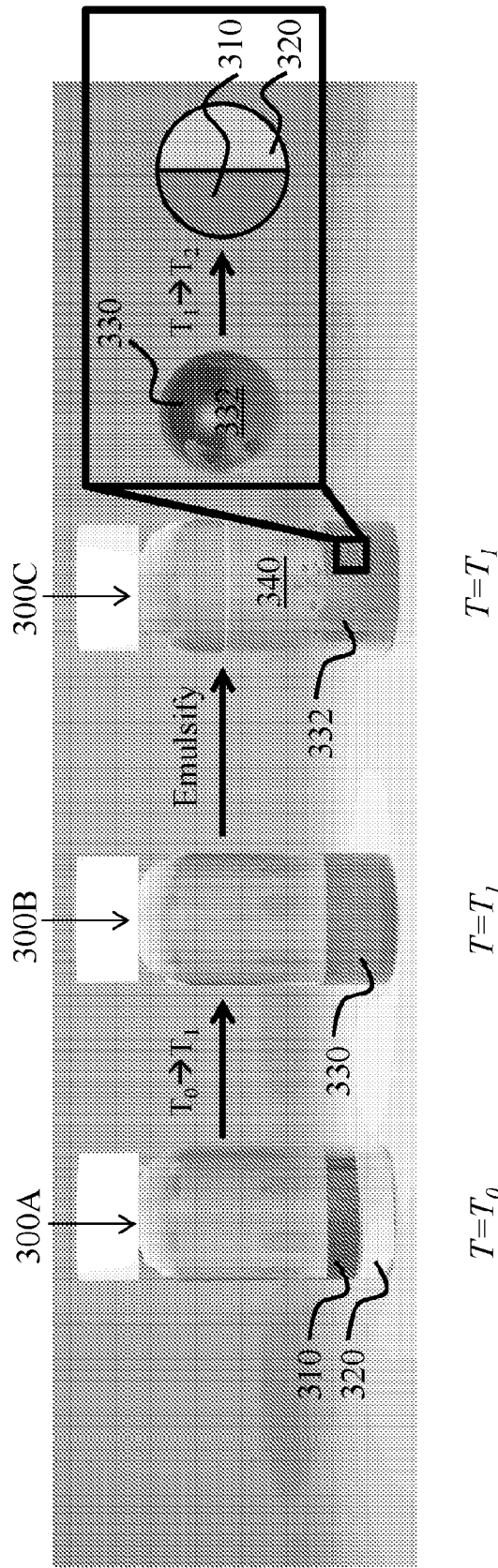


FIG. 3

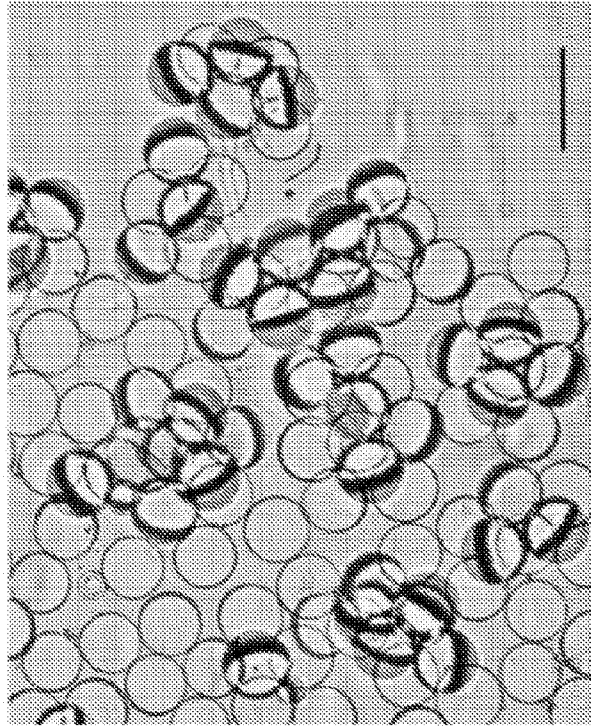


FIG. 5B

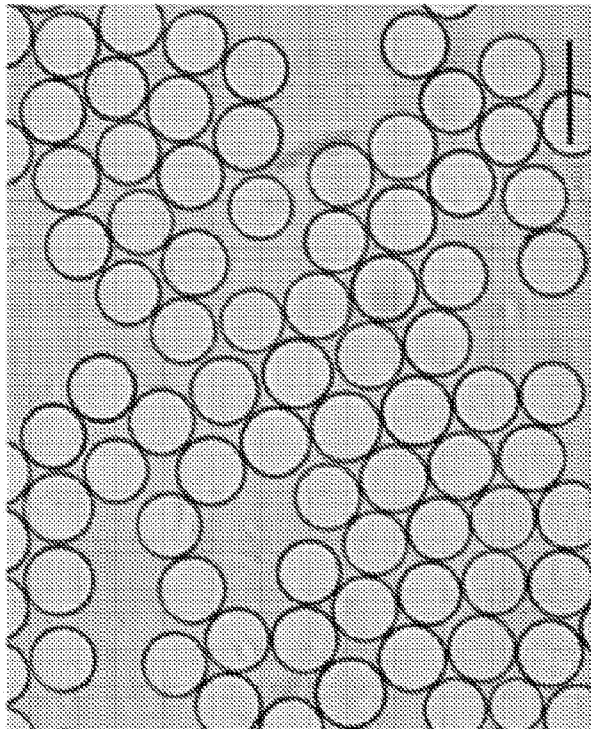


FIG. 5A

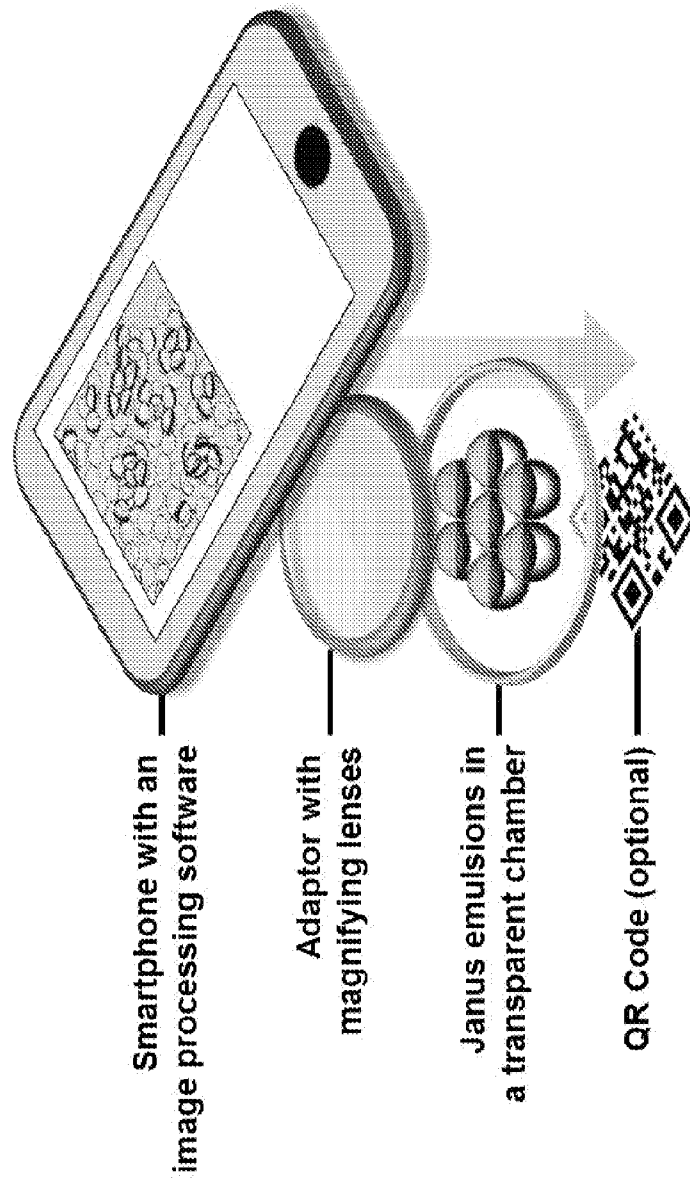
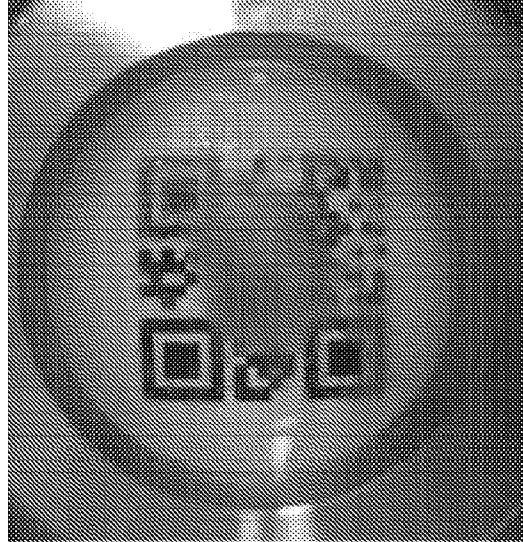
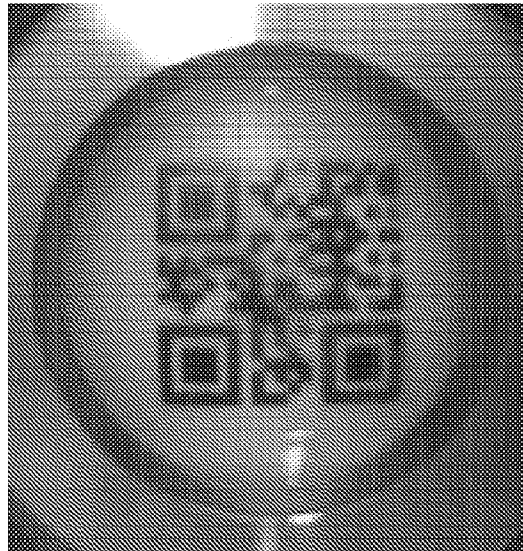


FIG. 6A



Unreadable

ConA



Readable

FIG. 6B

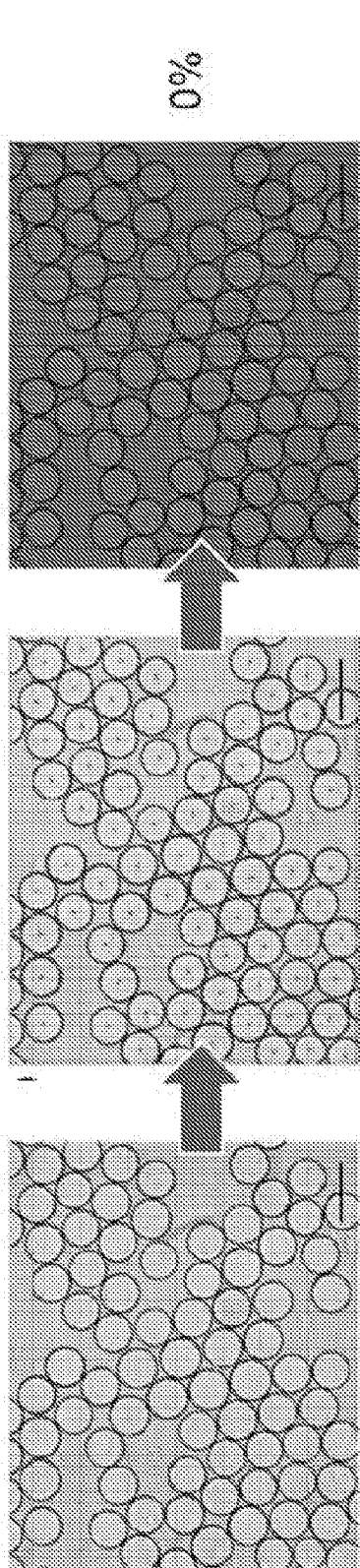


FIG. 7A

FIG. 7B

FIG. 7C

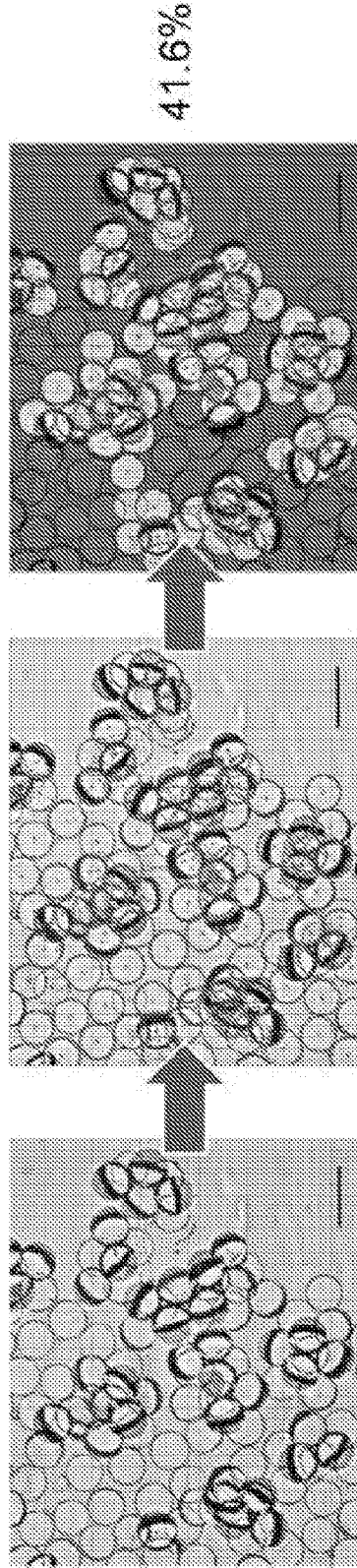


FIG. 7D

FIG. 7E

FIG. 7F

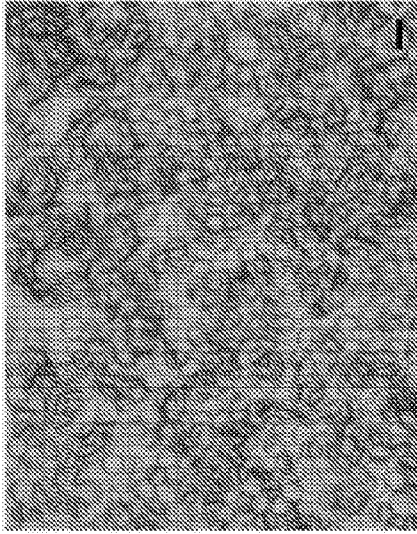


FIG. 8C

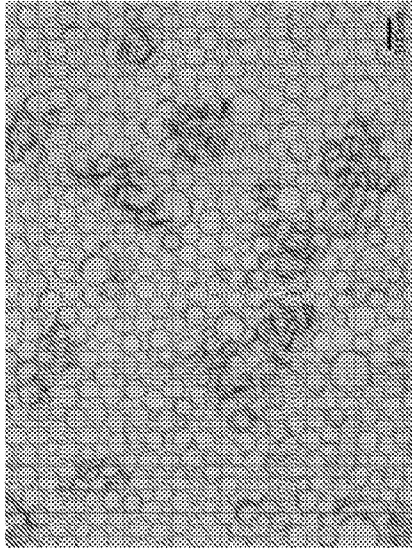


FIG. 8B

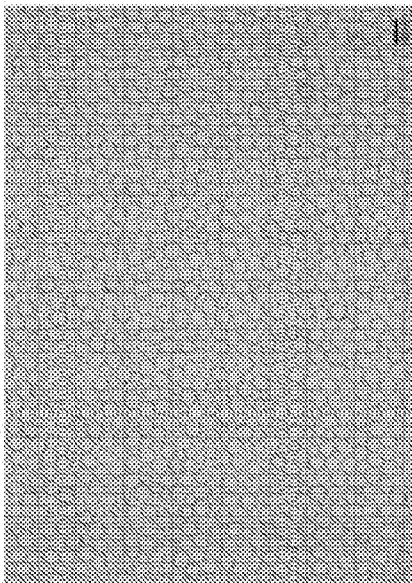


FIG. 8A

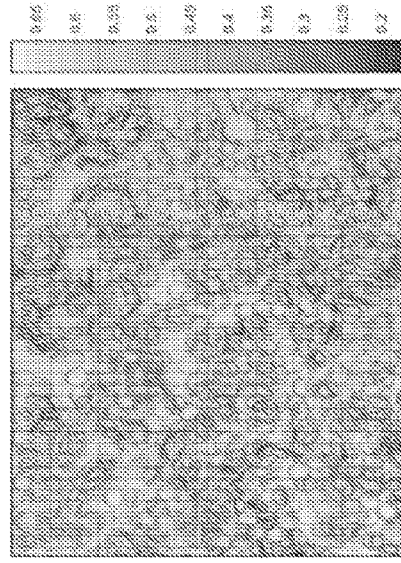


FIG. 8F

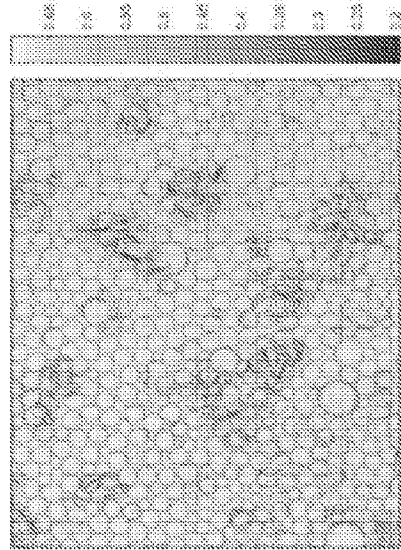


FIG. 8E

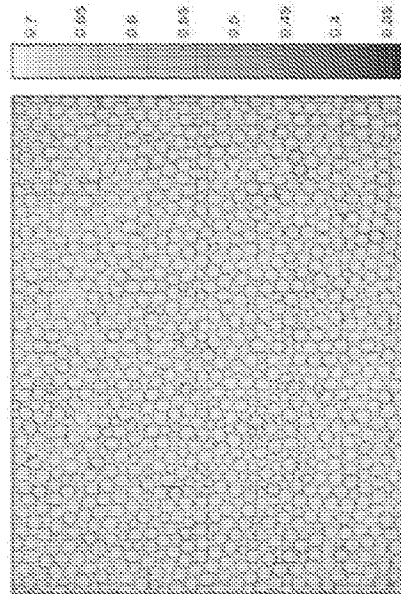


FIG. 8D

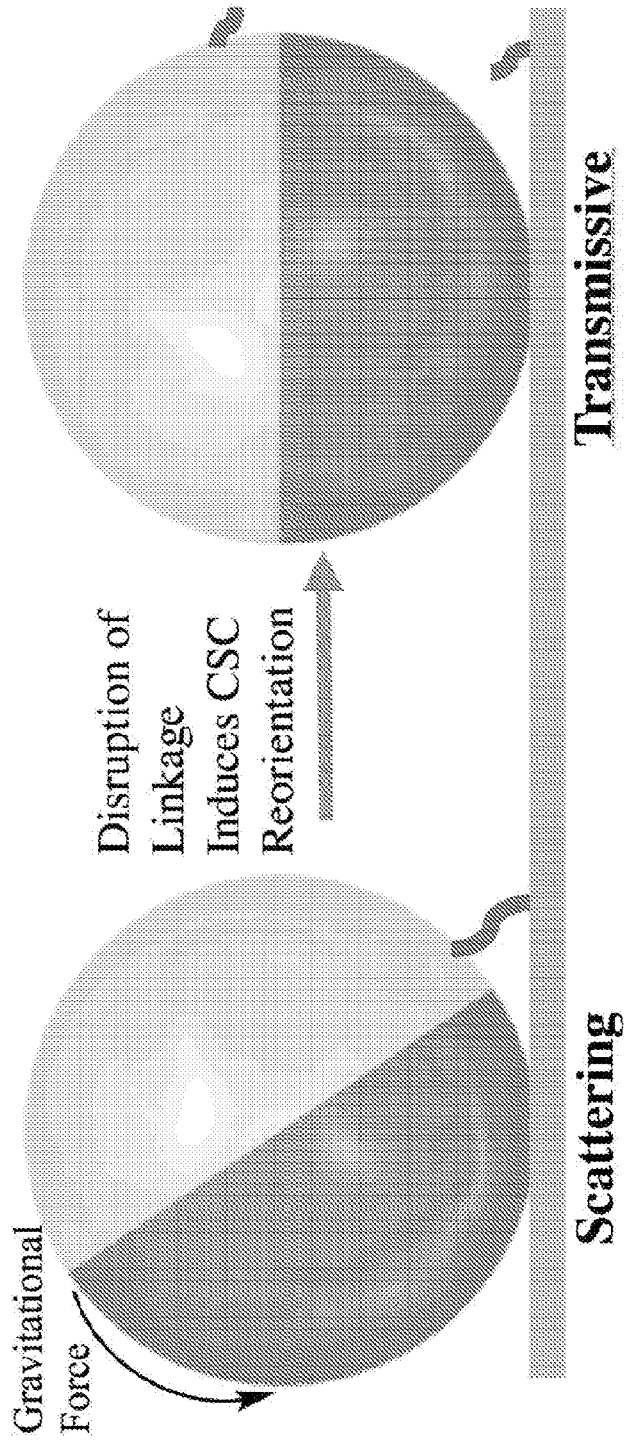


FIG. 9

INTERNATIONAL SEARCH REPORT

International application No
PCT/US2017/052209

A. CLASSIFICATION OF SUBJECT MATTER
INV. G01N33/543 G01N33/50 G01N33/53
ADD.
According to International Patent Classification (IPC) or to both national classification and IPC

B. FIELDS SEARCHED
Minimum documentation searched (classification system followed by classification symbols)
G01N

Documentation searched other than minimum documentation to the extent that such documents are included in the fields searched

Electronic data base consulted during the international search (name of data base and, where practicable, search terms used)
EPO-Internal, WPI Data

C. DOCUMENTS CONSIDERED TO BE RELEVANT

Category*	Citation of document, with indication, where appropriate, of the relevant passages	Relevant to claim No.
X	US 2016/151756 A1 (SWAGER TIMOTHY M [US] ET AL) 2 June 2016 (2016-06-02) cited in the application par. 36-38, 77-79, 86,96, examples 6, 9, Figures	1-40
X	YONG DUK HAN ET AL: "Retroreflective Janus Microparticle as a Nonspectroscopic Optical Immunosensing Probe", ACS APPLIED MATERIALS & INTERFACES, vol. 8, no. 17, 4 May 2016 (2016-05-04), pages 10767-10774, XP055423459, US ISSN: 1944-8244, DOI: 10.1021/acsami.6b02014 the whole document	1-9, 12-21, 30-33, 35-37, 39,40

Further documents are listed in the continuation of Box C.

See patent family annex.

* Special categories of cited documents :

"A" document defining the general state of the art which is not considered to be of particular relevance

"E" earlier application or patent but published on or after the international filing date

"L" document which may throw doubts on priority claim(s) or which is cited to establish the publication date of another citation or other special reason (as specified)

"O" document referring to an oral disclosure, use, exhibition or other means

"P" document published prior to the international filing date but later than the priority date claimed

"T" later document published after the international filing date or priority date and not in conflict with the application but cited to understand the principle or theory underlying the invention

"X" document of particular relevance; the claimed invention cannot be considered novel or cannot be considered to involve an inventive step when the document is taken alone

"Y" document of particular relevance; the claimed invention cannot be considered to involve an inventive step when the document is combined with one or more other such documents, such combination being obvious to a person skilled in the art

"&" document member of the same patent family

Date of the actual completion of the international search 10 November 2017	Date of mailing of the international search report 30/11/2017
---	--

Name and mailing address of the ISA/ European Patent Office, P.B. 5818 Patentlaan 2 NL - 2280 HV Rijswijk Tel. (+31-70) 340-2040, Fax: (+31-70) 340-3016	Authorized officer Diez Schlereth, D
--	---

INTERNATIONAL SEARCH REPORT

International application No
PCT/US2017/052209

C(Continuation). DOCUMENTS CONSIDERED TO BE RELEVANT		
Category*	Citation of document, with indication, where appropriate, of the relevant passages	Relevant to claim No.
X	LIZ Y. WU ET AL: "Bioinspired Nanocorals with Decoupled Cellular Targeting and Sensing Functionality", SMALL, vol. 6, no. 4, 22 February 2010 (2010-02-22), pages 503-507, XP055423923, DE ISSN: 1613-6810, DOI: 10.1002/smll.200901604 the whole document	1,2,7-9, 14, 30-33, 35,37, 39,40
X,P	----- QIFAN ZHANG ET AL: "Janus Emulsions for the Detection of Bacteria", ACS CENTRAL SCIENCE, vol. 3, no. 4, 26 April 2017 (2017-04-26), pages 309-313, XP055423932, ISSN: 2374-7943, DOI: 10.1021/acscentsci.7b00021 the whole document	1-40
A	----- VERA JOANNE ALINO ET AL: "Liquid Crystal Droplets as a Hosting and Sensing Platform for Developing Immunoassays", LANGMUIR, vol. 27, no. 19, 4 October 2011 (2011-10-04), pages 11784-11789, XP055349708, US ISSN: 0743-7463, DOI: 10.1021/la2022215 the whole document	1-40
A	----- XIAOFANG NIU ET AL: "Optical biosensor based on liquid crystal droplets for detection of cholic acid", OPTICS COMMUNICATIONS, vol. 381, 22 July 2016 (2016-07-22), pages 286-291, XP055423936, AMSTERDAM, NL ISSN: 0030-4018, DOI: 10.1016/j.optcom.2016.07.016 the whole document	1-40
A	----- WO 2015/051179 A1 (UNIV CALIFORNIA [US]) 9 April 2015 (2015-04-09) see claims and figures -----	1-40

INTERNATIONAL SEARCH REPORT

Information on patent family members

International application No

PCT/US2017/052209

Patent document cited in search report	Publication date	Patent family member(s)	Publication date
US 2016151756 A1	02-06-2016	US 2016151756 A1	02-06-2016
		WO 2016070027 A1	06-05-2016

WO 2015051179 A1	09-04-2015	US 2016235670 A1	18-08-2016
		WO 2015051179 A1	09-04-2015

专利名称(译)	用janus液滴检测分析物		
公开(公告)号	EP3516393A1	公开(公告)日	2019-07-31
申请号	EP2017784444	申请日	2017-09-19
[标]申请(专利权)人(译)	麻省理工学院		
申请(专利权)人(译)	麻省理工学院		
当前申请(专利权)人(译)	麻省理工学院		
[标]发明人	SWAGER TIMOTHY M ZHANG QIFAN SAVAGATRUP SUCHOL		
发明人	SWAGER, TIMOTHY, M. ZHANG, QIFAN SAVAGATRUP, SUCHOL		
IPC分类号	G01N33/543 G01N33/50 G01N33/53		
CPC分类号	C12Q1/6834 G01N21/59 G01N33/5432 C12Q2563/161 G01N21/77 G01N33/54366 G01N2021/7783		
优先权	15/269543 2016-09-19 US		
外部链接	Espacenet		

摘要(译)

本文描述的实施例可用于分析物的检测。该系统和方法可以允许用于检测分析物如化学和/或生物分析物的相对简单和快速的方式，并且可以用于包括感测，食品制造，医学诊断，性能材料，动态镜头，水监测，环境监测，蛋白质检测，DNA检测以及其他应用。例如，本文描述的系统和方法可以用于确定诸如细菌的污染物的存在（例如，检测有助于防止广泛传染，疾病甚至死亡的食物和水样品中的致病细菌）。有利地，本文描述的系统和方法在当前的检测技术中可能不具有缺陷，包括例如相对高的成本，长的富集步骤和分析时间，和/或需要广泛的用户培训。由此处描述的系统和方法提供的另一有利特征包括相对较大规模的制造。在一些实施例中，系统和方法可以与包括与例如智能手机结合的手持式检测器（例如用于现场检测分析物如致病细菌）的检测器结合使用。