



Europäisches Patentamt
European Patent Office
Office européen des brevets



(11) **EP 1 178 317 B1**

(12) **EUROPEAN PATENT SPECIFICATION**

(45) Date of publication and mention
of the grant of the patent:
10.11.2004 Bulletin 2004/46

(51) Int Cl.⁷: **G01N 33/574**

(21) Application number: **01115042.2**

(22) Date of filing: **21.06.2001**

(54) **Method for detection of prostate specific membrane antigen in serum**

Verfahren zur Detektion von Prostata-spezifischem Membran-Antigen in Serum

Méthode de détection de l'antigène prostatique spécifique membranaire dans le sérum

(84) Designated Contracting States:
**AT BE CH CY DE DK ES FI FR GB GR IE IT LI LU
MC NL PT SE TR**

(74) Representative: **Weber, Roland, Dipl.-Chem. et al
Weber, Seiffert, Lieke
Taunusstrasse 5a
65183 Wiesbaden (DE)**

(30) Priority: **24.07.2000 US 624692
08.05.2001 US 851263**

(56) References cited:

(43) Date of publication of application:
06.02.2002 Bulletin 2002/06

- **LEINONEN, J ET AL: "Double-label time-resolved immunofluorometric assay of prostate-specific antigen and of its complex with alpha-1-antichymotrypsin" CLINICAL CHEMISTRY, vol. 39, no. 10, 1993, pages 2098-2103, XP002061768**
- **MURPHY G.P. ET AL: "Measurement of prostate-specific membrane antigen in the serum with a new antibody" THE PROSTATE, vol. 28, no. 4, 1996, pages 266-271, XP002921673**

(73) Proprietor: **HEALTH RESEARCH, INC.
Buffalo New York 14263 (US)**

(72) Inventors:

- **Kawinski, Elzbieta
Orchard Park, NY 14127 (US)**
- **Chadha, Kailash C.
Williamsville, NY 14221 (US)**

EP 1 178 317 B1

Note: Within nine months from the publication of the mention of the grant of the European patent, any person may give notice to the European Patent Office of opposition to the European patent granted. Notice of opposition shall be filed in a written reasoned statement. It shall not be deemed to have been filed until the opposition fee has been paid. (Art. 99(1) European Patent Convention).

Description

[0001] It is becoming increasingly evident that the monitoring of prostate-specific membrane antigens (PSMA) is desirable for the detection and management of prostate cancer.

[0002] Prostate cancer is the most common cancer in males in the United States. The efficiency of early detection of prostate cancer has increased with a serum test for the prostate-specific antigen (PSA). However, PSA is neither tissue-specific nor disease-specific. Many other conditions of the prostate gland, some of them being benign, can also result in abnormal elevation of PSA level in the serum (Polascik, et al., Prostate-specific antigen: A decade of discovery - what we have learned and where we are going, *J. Urol*, vol 162, pp 293-306, 1999).

[0003] Prostate-specific membrane antigen (PSMA) is a transmembrane glycoprotein with both intra and extracellular domains, and is highly specific for the prostate tissue (Israeli, et al., Molecular cloning of a complementary DNA encoding of prostate-specific membrane antigen, *Cancer Res*, vol 53, pp 227-230, 1993). PSMA is expressed in benign and malignant prostatic epithelium and can be detected immunohistochemically (Horoszewicz, et al. Monoclonal antibodies to a new antigenic marker in epithelial prostatic cells and serum of prostatic cancer patients, *Anticancer Res*, vol 7, pp 927-936, 1987; Silver, et al., Prostate-specific membrane antigen expression in normal and malignant human tissues, *Clin Cancer Res*, vol 3, pp 81-85, 1997; Wright, et al., Expression of prostate-specific membrane antigen (PSMA) in normal, benign, and malignant prostate tissues, *Urol Oncol*, vol 1, pp 18-28, 1995; Bostwick, et al., Prostate-specific membrane antigen expression in prostatic intraepithelial neoplasia and adenocarcinoma: A study of 184 cases, *Cancer*, vol 82, pp 2256-2261, 1998; and Sweat, et al., Prostate-specific membrane antigen expression is greatest in prostate adenocarcinoma and lymph node metastasis, *Urology*, vol 52, pp 637-640, 1998). PSMA serum levels have been proposed to be of prognostic significance in prostate cancer patients with advanced disease, see e.g. Grasso, et al., Combined nested RT-PCR assay for prostate-specific antigen and prostate-specific membrane antigen in prostate cancer patients: correlation with pathological stage, *Cancer Research* vol 58, pp 1456-1459, 1998.

[0004] Attempts to reliably detect PSMA in serum have not been successful and currently, there is no routine methodology available to monitor PSMA levels in the sera of prostate cancer patients.

[0005] PSMA expression in human prostate tissue was documented for the first time by immunohistochemical staining using 7E11.C5-antibody (Horoszewicz, et al, *supra*). The 7E11.C5 monoclonal antibody that was raised against human prostate cancer cells (LNCaP) is known to bind to intracellular epitope of PSMA near the

amino terminus. An isotope conjugated form of 7E11.C5, designated CYT-356, has been utilized for the identification of local and distant prostate cancer metastasis and recurrence. 7E11.C5 antibody is deposited with the American Type Culture Collection at Rockville, Maryland, USA having ATCC access number HB10494. The PSMA immunoreactivity was found to be greater in high-grade prostate tumors as compared to benign prostatic hyperplasia (BPH) and normal cells (Horoszewicz, et al. *supra*; Silver, et al., *supra*; Wright, et al, *supra*; Bostwick, et al, *supra*; and Sweat, et al., *supra*). However, among 33 cell lines tested by Horoszewicz, et al., *supra*, PSMA immunoreactivity was detected only in lymph node carcinoma of prostate (LNCaP) cells. In 1997, the US Food and Drug Administration approved the use of radioimmuno-conjugate form of 7E11.C5 (CYT 356) for the detection of localized prostate cancer.

[0006] Attempts made to measure PSMA in the serum of patients having prostate cancer by Western-blot analysis have not been conclusive, (Troyer, et al., Detection and characterization of the prostate-specific membrane antigen (PSMA) in tissue extracts and body fluids, *Int. J. Cancer*, vol 62, pp 552-558, 1995; Rochon, et al., Western-blot assay for prostate-specific membrane antigen in serum of prostate cancer patients, *Prostate*, vol 25, pp 219-223, 1994; and Beckett, et al., Prostate-specific membrane antigen levels in sera from healthy men and patients with benign prostate hyperplasia or prostate cancer, *Clin Cancer Res*, vol 5, pp 4034-4040, 1999). It has been reported that Western-blot analysis can show an increase in serum PSMA levels in patients with later stage C₁, D₁ and D₂ prostate cancer as compared to normal (Rochon, et al. *supra*). On the other hand, Troyer, et al. *supra* reported that they were unable to detect PSMA in the serum of prostate cancer patients. Beckett, et al. *supra* reported that they were able to detect PSMA in the serum, but they were unable to distinguish between early and late stage of the disease.

[0007] Prior to the present invention, attempts to use the simpler ELISA to detect prostate cancer have not been successful. In "competitive-inhibition" ELISA, PSMA was previously detected in 46% of sera from prostate cancer patients and none in BPH or normal individuals (Horoszewicz, et al. *supra*). This is clearly insufficient reliability for a determinative test.

[0008] In our prior studies, it has been shown that PSA has strong affinity for Thiophilic gels (1S, 2S and 3S) as described in co-pending United States patent application 09/624,692, filed July 24, 2000. Recently, we have made an observation that PSMA also has a strong affinity for T-gels. Briefly, a T-gel slurry is packed in a column (0.5x5cm) and equilibrated with 25 mM Hepes buffer, containing 1M sodium sulfate, pH 7.0. A source of PSMA, e.g. solubilized cell extract from LNCaP cells (5x10⁷ cells/ml) or human serum (400 µl) is reconstituted with column equilibrating buffer and applied to the column. The column is then washed with approximately 10 void volumes of column equilibrating buffer and the

bound proteins are eluted with 25 mM Hepes buffer, pH 7.0. The presence of PSMA in various column fractions is then detected by SDS-PAGE and Western-blot analysis using a monoclonal anti PSMA antibody, such as 7E11.C5.

[0009] As an example, electrophoresis of fractions was carried out under non-reducing conditions in 4-15% gradient polyacrylamide gel. Samples were loaded in equal volumes containing comparable protein levels and ran for 40 min at 200 volts. After electrophoresis, the proteins in the gel were electrophoretically transferred to a polyvinylidene difluoride (PVDF) membrane. The transfer buffer contained 25 mM Tris, 192 mM glycine and 20% methanol at pH 8.3. The transfer was performed at 100 volts for one hour. After the transfer, the membrane was blocked for one hour in a broad function protein based blocker with gentle agitation. Such blockers include albumin, casein or dry milk solution. Such a blocker is commercially available as *NAP-Sure blocker*TM (Geno-Technology, Inc., St. Louis, MO). Immunostaining was carried out using 7E11.C5 antibody or monoclonal antibody to α_1 -antichymotrypsin at 5 μ g/ml concentration diluted in *NAP-Sure blocker*TM (Geno-Technology, Inc., St. Louis, MO), for 1 hr. Secondary antibody, horse radish peroxidase conjugated goat anti-mouse IgG (Jackson Immuno Research Laboratories, Inc., West Grove, PA) at 1:5,000 dilution in 1% albumin/PBS/0.1% Tween 20, was incubated with the membrane for 45 min. The proteins were detected with enhanced luminol (ECL) reagent for horse radish peroxidase. Such a reagent is available under the trademark NEL 102, (NEN, Boston, MA). The complexed protein was then exposed to X-ray film to visualize the positive bands.

BRIEF DESCRIPTION OF THE DRAWINGS

[0010] Figure 1 shows a Western-blot detection of PSMA in LNCaP cell extract and in prostate cancer patient after thiophilic gel chromatography. LNCaP cell extract or patient serum was chromatographed on 3-S-thiophilic gel. The presence of PSMA in column eluates was detected by SDS-PAGE and Western-blot using anti-PSMA antibody, 7E11.C5. "A" shows LNCaP cell extract and "B" shows prostate cancer patient serum (stage T-3). A total of four different preparations of LNCaP cell extracts and ten patient sera at stage T₃ were analyzed. The results in all cases were essentially identical.

[0011] Figure 2 shows a Western-blot analysis indicating that PSMA in patient serum exists in the form of a complex between this antigen and α_1 -antichymotrypsin. Serum from stage T₃ prostate cancer patient was chromatographed on 3S, T-gel, analyzed by Western-blot and immunostained with anti-PSMA antibody, 7E11C5 (lane A) or anti α_1 -antichymotrypsin antibody (lane B). Two bands were detected by anti-ACT antibody; one corresponding α_1 antichymotrypsin (lower

band) and other to PSMA-ACT complex (upper band). The presence of PSMA-ACT complex was detected in 13 additional patients by similar procedure.

[0012] Figure 3 shows a comparison of PSMA-ACT complex detection in sera of prostate cancer patients using sandwich ELISA (A) and Western-blot (B). PSMA was detected in each of the serum samples from T₁, T₂, T₃ and T₄ stage prostate cancer patients, C, controls, P, prostatitis and BPH. The data shown includes 12 representative serum samples at different stages of disease and controls.

[0013] Figure 4 shows a graph of ELISA determination of PSMA-ACT complex in patient sera. A total of 130 serum samples including normal control (20), prostatitis (9), BPH (46) and different stages of prostate cancer (55), were analyzed by sandwich ELISA. The antigen was captured by monoclonal anti-PSMA antibody, 7E11.C5 and detected by polyclonal anti-ACT antibody. The results are expressed as arbitrary units derived from a standard curve included in each microplate. The standard consists of a serial, two-fold dilution of pooled serum from T-3 stage patients spanning the range from one unit (1:160 dilution) to 100 units (1:5 dilution). Each dot represents one serum sample. The graph shows very little overlap at about 10 units with non-prostate cancer samples generally falling below ten and prostate cancer samples falling above 10.

[0014] Figure 5 shows calibration of the ELISA for PSMA-ACT complex. Pooled serum sample from three T-3 stage prostate cancer patients was diluted serially and 50 μ l aliquots added to microtiter plates, in triplicate, coated with anti-PSMA antibody. Anti-ACT antibody was used to detect the presence of PSMA-ACT complex. Normal serum at comparable dilution was used as a control. The standard consists of a serial dilution of pooled serum spanning the range from one unit (1:160 dilution) to 100 units (1:5 dilution). The results shown here represent six independent assays.

[0015] Figure 6 shows detection of PSMA in LNCaP cell lysate by isolation by thiophilic gel chromatography followed by Western-blot analysis using (A) 7E11.C5 antibody and (B) B-6 antibody.

[0016] Figure 7 shows comparison of 7E11.C5 and B-6 antibodies to measure PSMA-ACT complex in the sera of prostate cancer patients by ELISA. A total of 58 serum samples including normal controls (11), BPH (12) and prostate cancer patients (35) were analyzed by sandwich ELISA. The antigen was captured either by monoclonal 7E11.C5 or monoclonal B-6 antibody and detected by polyclonal anti-ACT antibody. The other details are as described before. The results are expressed as arbitrary units.

BRIEF DESCRIPTION OF THE INVENTION

[0017] The invention includes a method for detecting prostate specific membrane antigen (PSMA) in a body fluid sample containing PSMA by immunoassay includ-

ing the steps of capturing PSMA from the sample using a PSMA antibody and detecting the captured PSMA with an anti- α_1 -antichymotrypsin antibody.

[0018] In a preferred embodiment, PSMA is captured using an appropriate dilution of anti-PSMA antibody, coating a surface such as the surface of wells in a microtiter plate, with the resulting solution, blocking non-specific sites on the surface with blocking solution such as albumin, diluting the sample with a blocking buffer such as buffered albumin and applying a diluted sample to the surface to capture PSMA. The body fluid is preferably serum but might be another fluid such as urine.

[0019] A preferred embodiment for detecting captured PSMA, includes the steps of removing non-captured material by washing the surface, applying anti- α_1 -antichymotrypsin antibody diluted in a blocking solution such as albumin solution and detecting bound PSMA using secondary antibody such as peroxidase labeled anti-rabbit IgG and a substrate such as O-phenylenediamine (OPD).

DETAILED DESCRIPTION OF THE INVENTION

[0020] "PSMA" as used herein is an antigen present in prostate tumor and in the membrane of LNCaP cells which complexes with α_1 antichymotrypsin (ACT).

[0021] "Anti α_1 antichymotrypsin antibody" (anti ACT antibody) is an antibody that specifically complexes with α_1 antichymotrypsin.

[0022] "PSMA antibody" as used herein means an antibody that selectively captures PSMA. Examples of PSMA antibodies are 7E11.C5 (ATCC deposit no. HB-10494, U.S. Patent 5,162,504) and B-6 (ATCC deposit no. PTA-3160).

[0023] "Blocking solution" is a solution containing a blocking compound having a wide variety of antigens used to block non-specific binding sites. The most common blocking solution is a solution of albumin, usually bovine serum albumin (BSA). Other blocking compounds such as milk solids, casein or mixed polysaccharides may be used to form a blocking solution.

[0024] "Blocking buffer" is a buffered blocking solution. the most common buffer is a phosphate buffer. Where blocking solutions are used in more than one step for detection by a particular antibody, the same blocking compound is usually present in the blocking solutions.

[0025] Serum samples from 55 prostate cancer patients, 9 samples from patients diagnosed with prostatitis, 46 samples from BPH patients and 20 serum samples from normal donors were processed through thiophilic adsorption chromatography that selectively retains PSMA. Isolated PSMA was analyzed by SDS-PAGE and Western blot using 7E11.C5 antibody.

[0026] It is essential that serum samples be processed through thiophilic gel chromatography prior to PSMA detection in a Western-blot analysis. However, in the case of PSMA determination by ELISA the thiophilic

gel chromatography step is not required. PSMA can be monitored in the serum without any processing.

[0027] Double determinant ELISA was developed using PSMA antibody as a "capture" antibody for PSMA and polyclonal anti- α_1 -antichymotrypsin antibody as a "detection" antibody. ELISA results are expressed in arbitrary units derived from a standard curve based on dilution of pooled sera from three patients with advanced prostate cancer.

[0028] Results: PSMA has strong affinity for Thiophilic gel. Chromatography of patient serum on Thiophilic gel eliminates more than 90% of proteins including albumin, thus permitting the visualization in Western-blot analysis of PSMA as a single band corresponding to ~ 75 to 90 kDa when stained with the PSMA antibody. The staining was more intense with the sera of prostate cancer patients as compared to non-cancerous sera (normal, prostatitis and BPH). PSMA isolated from the prostate cancer cell line, LNCaP and processed identically also showed a single band but with a somewhat higher molecular weight corresponding to 100 to 110 kDa. A direct, sandwich enzyme-linked immunosorbent assay (ELISA) was developed for the determination of serum PSMA. In ELISA, PSMA levels are expressed as arbitrary units and the results correlate well to the stage of the disease.

Preparation of LNCaP cell extract

[0029] LNCaP cells were obtained from the American Type Culture Collection (ATCC deposit number CRL1740, Rockville, MD). These cells were originally isolated and characterized at Roswell Park Cancer Institute, Buffalo, NY. Details regarding the development and characterizations of the cell line have been published by Horoszewicz, et al., LNCaP model of prostatic carcinoma, Cancer Res, vol 43, pp 1809-1818, 1983.

[0030] The LNCaP cells were maintained in complete RPMI 1640 growth medium as published by G. Moore, et al., AMA, V. 199, pp. 519, 1967) supplemented with 10% fetal bovine serum and 1mM L-glutamine. Confluent monolayers of LNCaP cells were trypsinized, washed with PBS, and the cell suspension was frozen at -70°C in the presence of 1 μ g/ml of protease inhibitor (Aprotinin, Sigma Chemical Co., St. Louis, MO). After one additional cycle of freezing and thawing, the cell lysate was centrifuged at 3,000 x g to remove the nuclei and incompletely disrupted cells. The supernatant was reconstituted to contain 0.5% NP40 and placed on the rotary shaker for 30 min at 4°C. The solubilized material was spun at 15,000 x g for 30 min. the supernatant was collected and stored at -70°C until used.

Serum Samples

[0031] Serum samples from 110 patients (prostatitis, BPH and prostatic carcinoma) and 20 healthy donors were used in this study. Among the patients, 37 blood

samples were freshly drawn during routine outpatient visits in the clinic and 18 patient serum samples were obtained as archived serum samples from the Department of Laboratory Medicine at Roswell Park Cancer Institute. The remaining 54 patient serum samples were freshly drawn from patients during routine visits to urology clinics in the Western New York area. All serum samples were kept frozen at -70°C and processed within 72 hours with the exception of archived samples that were analyzed within 90 days of collection. All donors including normal healthy individuals gave written informed consent as per local regulatory requirements. Serum samples were kept frozen at -70°C until used.

Antibody

[0032] 7E11.C5 hybridoma cell line (ATCC - HB-10494) and B-6 hybridoma cell line (ATCC - PTA 3160) are routinely maintained in our laboratory and have been deposited in and are available from the American Type Culture Collection. 7E11.C5 antibody and B-6 antibody were purified from mouse ascites by affinity chromatography using Protein-A coupled to crosslinked agarose beads via chemically stable amide bonds e.g., (Affi-Gel Protein-A MAPS II system, Bio-Rad, laboratories, Hercules, CA) according to published manufacturer's instructions. Monoclonal antibodies 7E11.C5 and B-6 are a murine immunoglobulin (IgG1) generated by immunization with LNCaP cells. These antibodies react with membrane rich fractions of LNCaP cells, but have no reactivity with cytosol or antigenic substances such as prostate-specific antigen (PSA) or Prostatic acid phosphatase (PAP).

PSMA-Quantitation by Double-determinant ELISA

[0033] PSMA quantification in unprocessed serum samples was carried out as follows: Monoclonal antibody 7E11.C5 was diluted to 5 µg/ml in 20 mM phosphate buffer saline, pH 7.0 PBS and used for coating the wells in a microtiter plate overnight at 4°C. The wells were blocked with 2% bovine albumin in PBS blocking buffer for one hour. The blocking and all subsequent steps were carried out at room temperature. Test samples were diluted with blocking buffer and applied to the plate in triplicate (50 µl/well). After one hour of incubation, the plates were washed with PBS and α_1 -antichymotrypsin polyclonal antibody at 1:2000 dilution in 1% albumin in PBS/0.1%/Tween 20 (50 µl/well) was applied. Bound antigen was detected by peroxidase-labeled anti-rabbit IgG and O-phenylenediamine (OPD) substrate. A pooled serum from T₃ stage cancer patients was used as an internal standard, and results are expressed in arbitrary units derived from a standard curve run on each plate.

Results

Detection of PSMA in LNCaP Cell Extract and in Prostate Cancer Patient Serum by Western-blot

[0034] In a separate series of experiments, we have shown that PSMA has strong affinity for 3S-thiophilic gel. LNCaP cell extract (1ml; 5×10^7 cells) or serum (400 µl) from prostate cancer patient was chromatographed on 3S, T-gel as described earlier. Ten microliters of eluted fractions were subjected to SDS PAGE/Western-blot analysis and immunostained with the 7E11.C5 antibody. In case of LNCaP cell extract, it was necessary to concentrate the eluted fractions (6x) prior to SDS-PAGE analysis. Column eluates from thiophilic gel chromatography were analyzed immediately without any freezing. Results of one such experiment are shown in Figure 1. Only one band of immunoreactivity corresponding to 75-90 kDa (serum) or 100-110 kDa (LNCaP cell extract) was seen among various samples. In all cases PSMA recovered from patient serum is always lower in molecular weight in comparison to PSMA in LNCaP cells. However, column eluates of LNCaP cell extract, after a few freeze and thaw cycles often showed a second faint PSMA band corresponding to 180 kDa. This 180 kDa band has been observed by others, e.g. Troyer, et al. *supra*. Thiophilic gel chromatography evidently removes many proteins in the serum that allows PSMA detection, after electrophoretic separation and transfer to PVDF membranes, when stained with anti-PSMA antibody. No immunoreactivity was seen when 7E11.C5 antibody was used to stain Western-blot of patients' serum prior to thiophilic gel chromatography.

[0035] The molecular weight of PSMA varies depending upon its origin: PSMA in LNCaP cell extracts has a molecular weight of 100-110 kDa (Israeli, et al. *supra*; and Troyer, et al. *supra*); PSMA isolated from prostate cancer tumor tissue is 120 kDa (Troyer, et al. *supra*). In our studies, we have observed that PSMA in the sera of different prostate cancer patients has a molecular weight of approximately 75-90 kDa (Fig. 1). The reasons for these differences are not known. PSA is known to complex with different protease inhibitors (Polascik, et al. *supra*) It is conceivable that PSMA also complexes with different proteins/protease inhibitors. In our studies, we have explored such a possibility. Sera from prostate cancer patients, at different stages of the disease, were initially processed through thiophilic gel adsorption chromatography, and analyzed by SDS-PAGE/Western-blot. After electroblotting, membranes were stained with anti-PSMA antibody, 7E11.C5 or with monoclonal antibodies to protease inhibitors such as α_1 -antitrypsin, α_1 -antichymotrypsin and Protein-C inhibitor. Data presented in Figure 2A shows one band of immunoreactivity with 7E11.C5 antibody. No immunoreactivity was seen with antibodies to α_1 -antitrypsin or Protein-C inhibitor. Two bands of immunoreactivity were seen with antibody to α_1 -antichymotrypsin; one corresponding to

PSMA/ α_1 -antichymotrypsin complex and other corresponding to free α_1 -antichymotrypsin, known to be present in the serum (Fig. 2B). In our earlier studies (data not shown) we have documented that free α_1 -antichymotrypsin has an affinity for thiophilic gel.

[0036] This is the first evidence that PSMA in the serum exists as a complex with α_1 -antichymotrypsin (PSMA-ACT). Attempts to make such a complex by incubating PSMA preparations from LNCaP cells with female serum or with commercially available α_1 -antichymotrypsin were unsuccessful.

Detection of PSMA-ACT Complex in Prostate Cancer Patients Serum by Western-blot and ELISA

[0037] Sera from 55 prostate cancer patients at different stages of the disease, along with some normal (20), BPH (46) and prostatitis (9) serum samples were randomized in a blind fashion and analyzed for the presence of PSMA. All serum samples were subjected initially to thiophilic gel chromatography. The column eluates were analyzed for the presence of PSMA by SDS/PAGE/Western-blot analysis and immunostained with 7E11.C5 antibody. Data presented in Figure 3A represents one or each of: control, BPH, prostatitis serum and sera from 8 prostate cancer patients at different stages of the disease (T_1 , T_2 , T_3 , and T_4). In all cases, only one band of immunoreactivity corresponding to 75-90 kDa was seen. The intensity of immunostaining was significantly higher in sera from cancer patients as compared to non-cancerous patients. Similar results are found using anti-PSMA antibody B-6, see Figure 6. We have documented in Figures 2 and 6, that PSMA-ACT complex in patient serum can be identified with PSMA antibody and anti α_1 -antichymotrypsin antibody. This observation, for the first time, provided an opportunity to develop an ELISA assay for monitoring the PSMA in patient serum by using PSMA antibody, e.g., 7E11.C5 or B-6, as a "capture" antibody, and anti- α_1 -antichymotrypsin antibody as a "detection" antibody. All serum samples, as indicated in Figure 3B, were analyzed for the presence of PSMA-ACT complex in sandwich ELISA. The ELISA results as shown in Figure 3A, are expressed as absorbance at 490 nM. As can be seen, the levels of PSMA-ACT in BPH or prostatitis are low as compared to more advanced disease. The levels of PSMA as detected by Western-blot analysis (Fig. 3 at B), correspond to what can be seen in sandwich ELISA (Fig. 3 at A). Since PSMA-ACT complex can be detected in the serum and the fact that there is no serum based PSMA preparation available as yet, we have used a pooled serum from three prostate cancer patients (T_3 Stage) to prepare internal standards to be used for screening of the sera. We obtained a linear dose response curve with serum dilutions ranging from 1:5 to 1:160. (Figure 5) A total of 130 serum samples were assayed for PSMA-ACT complex levels in this newly developed sandwich ELISA and results are presented in Figure 4. PSMA results are ex-

pressed in arbitrary units which were derived from a standard curve run on each plate. PSMA levels in controls, BPH and prostatitis are usually less than 10 units; whereas PSMA levels are higher at different stages of the disease and usually correlate well with disease progression. These results are far superior to the current PSA test where false positives routinely exceed true positives.

[0038] B-6 hybridoma clone was originally isolated from uncloned culture of 7E11 hybridoma cells which is also the parental source of 7E11.C5 cells. B-6 hybridoma cells were expended in RPMI 1640 medium containing 10% heat inactivated fetal bovine serum. B-6 hybridoma cells were cryopreserved.

[0039] The ability of B-6 hybridoma cells to produce antibody that selectively identifies prostate specific membrane antigen was confirmed by three different methods: (a) indirect immunoperoxidase staining; (b) Western-blot and (c) sandwich ELISA. Conditioned medium from B-6 cells containing antibody to PSMA was used for immunostaining of prostate cancer cells. B-6 cells were used to produce ascities in Balb/c mice and purified antibody was used for ELISA and Western-blot analysis.

Monoclonal antibody production and purification:

[0040] Balb/c mice, 6-8 weeks old, were injected intraperitoneally with B-6 cells (5×10^6 cells/mouse in 0.5 ml of PBS). Three weeks later ascites were harvested and monoclonal antibody (B-6) was purified first by precipitation with ammonium sulfate followed by Protein-A agarose column chromatography as per manufacturer's instructions. The purity of IgG was confirmed by SDS/PAGE and Coomassie-blue staining. IgG concentration was measured by BCA assay method (Pierce, Rockford, IL).

Indirect Immunoperoxidase staining:

[0041] For immunostaining, four human prostate cancer cell lines (PC-3, PC-3M, DU-145, LNCaP) and two lines of normal human fibroblast cells (BG-9, MLD), were used. Freshly prepared cytospin smears of cultured cells, unfixed and formalin fixed, were first treated for 1 hour with a blocking solution (1% albumin in PBS) and subsequently incubated for 1 hour with B-6 conditioned medium (1:500 dil in blocking solution) that contains B-6 antibody. After washing the cells three times with PBS, they were exposed to peroxides conjugated goat-anti-mouse IgG (Jackson Immune Research Laboratories) at 1:10,000 dilution for 60 min. The color reaction was developed with 3, 3'-diaminobenzidine (0.05%): H_2O_2 (0.01%) in PBS, pH 7.2. PBS in place of primary antibody and culture fluid from myeloma cell line were included as additional controls. The intensity of immunospecific staining was evaluated using Zeiss microscope (40X objective; 10X ocular).

[0042] None of the unfixed cell lines showed any immunoreactivity to B-6 antibody. Among the cells fixed with formalin, only LNCaP cells showed specific immunoreactivity to B-6 antibody. The intensity of immunoperoxidase staining of LNCaP cells is predominantly in trans-membrane region. No such immunoreactivity was seen with fixed PC-3, PC-3M, DU-145, BG-9 and MLD cells.

Western-blot analysis:

[0043] Cell lysate from LNCaP, PC3 and DU-145 were used for Western-blot analysis using B-6 antibody. Cells were trypsinized, washed with PBS and subjected to two freeze and thaw cycles. The cell lysate was centrifuged at 2,000xg for 10 min and supernatant was incubated for 30 min at 4°C after addition of NP-40 (0.5% final concentration). The solubilized material was spun at 10,000xg for 20 min and supernatant was used for 3S, T-gel chromatography as described earlier. The fractions from the T-gel column containing PSMA were pooled, concentrated (X6) and applied to 4-15% SDS/PAGE under nonreducing conditions. After electrophoretic transfer to PVDF membrane, PSMA antigen was identified by B-6 antibody.

[0044] Cell lysate from DU-145 and PC-3 cells did not show any immunoreactivity with B-6 antibody. However, a single immunoreactive band corresponding to 100-110 kDa was seen in case of LNCaP cell preparation. In a separate experiment LNCaP cell lysate was probed in parallel with both B-6 and 7E11.C5 antibodies. The results are shown in Figure 6. Both antibodies were able to identify PSMA antigen in LNCaP cell lysate.

ELISA:

[0045] B-6 and 7E11.C5 antibodies were used to measure PSMA in the serum of prostate cancer patients by ELISA assay. Sera from normal individuals and patients with BPH were also included. Ninety six well immunoplates were divided in two equal halves; one half for coating with B-6 antibody and the other half for coating with 7E11.C5 antibody. Each half of the plate had its own internal standard for PSMA. The other details of ELISA procedure are similar to those described earlier. The results of this test are shown in Figure 7. For each serum, the index of PSMA antigen is essentially identical with both B-6 and 7E11.C5 antibodies.

[0046] Based upon the results of ELISA and Western-blot analysis, it is clear that both B-6 and 7E11.C5 antibodies can be effectively utilized to detect the presence of PSMA in the sera of prostate cancer patients. The level of PSMA in cancer patients is significantly higher as compared to BPH or Prostatitis.

[0047] We have monitored serum PSMA levels both by ELISA and by Western-blot analysis. For Western-blot analysis, the serum was chromatographed on 3S-thiophilic gel that eliminated a majority of the serum pro-

teins. Serum, after thiophilic gel processing, was analyzed by SDS-PAGE and Western-blot using PSMA antibody. In all cases, a single PSMA-band corresponding to 75 to 90 kDa was seen. A total of 130 serum samples were processed. A representative result including prostate cancer patient sera, BPH, prostatitis and normal sera are shown in Figure 3B. It is worthy of mention that the molecular weight of PSMA present in the serum and in extracts of LNCaP cells are different. Serum PSMA is 75-90 kDa, whereas PSMA from LNCaP cells is 100-110 kDa. The molecular weight of PSMA from LNCaP cells remained the same both, under reducing or non-reducing conditions. However, under reducing conditions, PSMA from the serum is undetectable in Western-blot. Since additional antibodies to PSMA are now available (Liu, et al. *supra*; and Grauer, et al. *supra*), attempts have been made to develop immunoassay to monitor PSMA levels in different body fluids. Sokoloff, et al., have developed a dual-monoclonal sandwich assay for PSMA (Sokoloff, et al., A dual-monoclonal sandwich assay for prostate-specific membrane antigen: Levels in tissues, seminal fluid and urine, Prostate, vol 43, pp 150-157, 2000). They were successful in measuring PSMA levels in tissue extracts, in urine and in seminal fluid. However, their attempts to monitor PSMA levels in the serum were unsuccessful. Our attempts to monitor PSMA levels in the serum were successful. This success was largely due to the recognition, for the first time, that PSMA in the serum exists as a complex, with α_1 -antichymotrypsin (PSMA-ACT). In our sandwich ELISA, we have used a PSMA antibody 7E11.C5 and B-6 as "capture" antibodies and an anti α_1 -antichymotrypsin antibody as the "detection" antibody.

[0048] It is known that PSMA is a transmembrane glycoprotein. It is also known that a PSMA antibody binds only to NH₂-terminus of PSMA. PSMA, as detected in the serum, must be a fragment of this antigen containing epitope for PSMA and when it complexes with ACT, it attains the molecular weight of 75-90 kDa.

[0049] PSMA detection in Western-blot analysis was feasible only after LNCaP cell extracts were processed through thiophilic gel chromatography that effectively eliminated the majority of interfering proteins. Molecular weights of PSMA in extracts of LNCaP cells and in the serum are different. Serum PSMA is 75-90 kDa whereas PSMA in LNCaP cells is 100-110 kDa. For the first time, serum PSMA can be detected by sandwich ELISA. Evidently, a fragment of PSMA containing an epitope for 7E11.C5 or B6 antibody is released into the serum that complexes with α_1 -antichymotrypsin to form a PSMA-ACT complex. This constitutes the basis for the newly developed ELISA test. In our ELISA test the 7E11.C5 or B6 antibody was used to capture PSMA and detection was based upon the use of α_1 -antichymotrypsin antibody. The level of PSMA as detected by ELISA correlates well with the stage of the disease.

Claims

1. A method for detecting prostate specific membrane antigen (PSMA) in a body fluid **characterized in that** the PSMA is detected by immunoassay which comprises the steps of capturing PSMA from a body fluid sample containing PSMA, using a PSMA antibody and detecting the captured PSMA with an anti- α_1 -antichymotrypsin antibody.
2. The method of Claim 1 **characterized in that** PSMA is captured using a PSMA antibody by diluting the PSMA antibody; coating a surface with the resulting solution; blocking non-specific sites on the surface, diluting the sample with a blocking buffer and applying a diluted sample to the wells to capture PSMA.
3. The method of Claim 2 **characterized in that** captured PSMA is detected with anti- α_1 -antichymotrypsin antibody by washing the wells to remove non-captured material; applying anti- α_1 -antichymotrypsin antibody diluted in blocking solution and detecting bound PSMA using peroxidase labeled anti-rabbit IgG and OPD substrate.
4. The method of Claim 1 **characterized in that** the body fluid is serum.
5. The method of Claim 2 **characterized in that** the body fluid is serum.
6. The method of Claim 3 **characterized in that** the body fluid is serum.
7. The method of Claim 1 **characterized in that** the body fluid is urine.
8. The method of Claim 2 **characterized in that** the body fluid is urine.
9. The method of Claim 3 **characterized in that** the body fluid is urine.

Patentansprüche

1. Verfahren zum Feststellen eines prostataspezifischen Membranantigens (PSMA) in einer Körperflüssigkeit, **dadurch gekennzeichnet, daß** das PSMA durch einen Immuntest festgestellt wird, welcher die Stufen umfaßt, bei denen man PSMA aus einer Körperflüssigkeitsprobe, die PSMA enthält, unter Verwendung eines PSMA-Antikörpers einfängt und das eingefangene PSMA mit einem Anti- α_1 -Antichymotrypsin-Antikörper feststellt.
2. Verfahren nach Anspruch 1, **dadurch gekenn-**

zeichnet, daß das PSMA unter Verwendung eines PSMA-Antikörpers eingefangen wird, indem man den PSMA-Antikörper verdünnt, eine Oberfläche mit der resultierenden Lösung beschichtet, unspezifische Stellen auf der Oberfläche blockiert, die Probe mit einem Blockierungspuffer verdünnt und eine verdünnte Probe in die Gefäße zum Einfangen von PSMA einbringt.

3. Verfahren nach Anspruch 2, **dadurch gekennzeichnet, daß** eingefangenes PSMA mit Anti- α_1 -Antichymotrypsin-Antikörper festgestellt wird, indem man die Gefäße zur Entfernung von nicht eingefangenen Material wäscht, in Blockierungslösung verdünnten Anti- α_1 -Antichymotrypsin-Antikörper einbringt und gebundenes PSMA unter Verwendung von Peroxidase, die mit Anti-Kaninchen-IgG und OPD-Substrat markiert ist, feststellt.
4. Verfahren nach Anspruch 1, **dadurch gekennzeichnet, daß** die Körperflüssigkeit Serum ist.
5. Verfahren nach Anspruch 2, **dadurch gekennzeichnet, daß** die Körperflüssigkeit Serum ist.
6. Verfahren nach Anspruch 3, **dadurch gekennzeichnet, daß** die Körperflüssigkeit Serum ist.
7. Verfahren nach Anspruch 1, **dadurch gekennzeichnet, daß** die Körperflüssigkeit Urin ist.
8. Verfahren nach Anspruch 2, **dadurch gekennzeichnet, daß** die Körperflüssigkeit Urin ist.
9. Verfahren nach Anspruch 3, **dadurch gekennzeichnet, daß** die Körperflüssigkeit Urin ist.

Revendications

1. Procédé de détection d'antigène de membrane spécifique de la prostate (PSMA) dans un fluide corporel, **caractérisé en ce que** l'antigène PSMA est détecté par analyse immunologique qui comporte des étapes de capture de l'antigène PSMA d'un échantillon de fluide corporel contenant l'antigène PSMA, à l'aide d'un anticorps d'antigène PSMA, et de détection de l'antigène PSMA capturé avec un anticorps anti- α_1 -antichymotrypsine.
2. Procédé selon la revendication 1, **caractérisé en ce que** l'antigène PSMA est capturé avec un anticorps d'antigène PSMA par dilution de l'anticorps d'antigène PSMA, par revêtement d'une surface de la solution résultante, par blocage des sites non spécifiques à la surface, par dilution de l'échantillon par un tampon de blocage, et par application de l'échantillon dilué aux cellules pour la capture de

l'antigène PSMA.

3. Procédé selon la revendication 2, **caractérisé en ce que** l'antigène PSMA capturé est détecté avec l'anticorps anti- α_1 -antichymotrypsine par lavage des cellules pour l'enlèvement de la matière non capturée, par application d'un anticorps anti- α_1 -antichymotrypsine dilué dans une solution de blocage, et par détection d'antigène PSMA lié à l'aide d'un substrat OPD et d'immunoglobuline G IgG anti-lapin marqué par une peroxydase. 5
10
4. Procédé selon la revendication 1, **caractérisé en ce que** le fluide corporel est le sérum. 15
5. Procédé selon la revendication 2, **caractérisé en ce que** le fluide corporel est le sérum.
6. Procédé selon la revendication 3, **caractérisé en ce que** le fluide corporel est le sérum. 20
7. Procédé selon la revendication 1, **caractérisé en ce que** le fluide corporel est l'urine.
8. Procédé selon la revendication 2, **caractérisé en ce que** le fluide corporel est l'urine. 25
9. Procédé selon la revendication 3, **caractérisé en ce que** le fluide corporel est l'urine. 30

35

40

45

50

55

FIG. 1

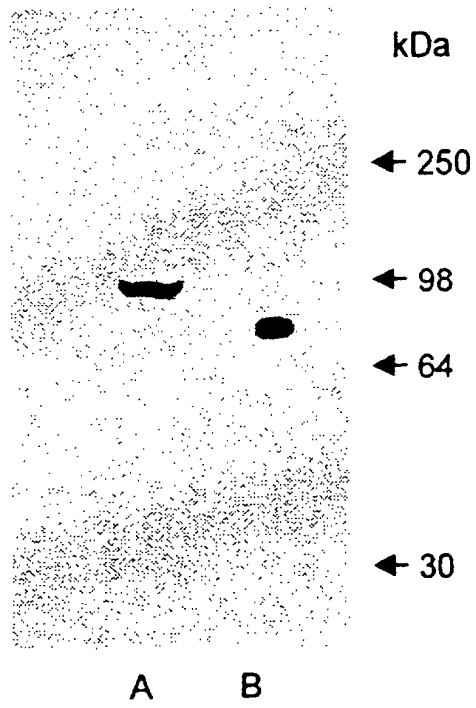


FIG. 2

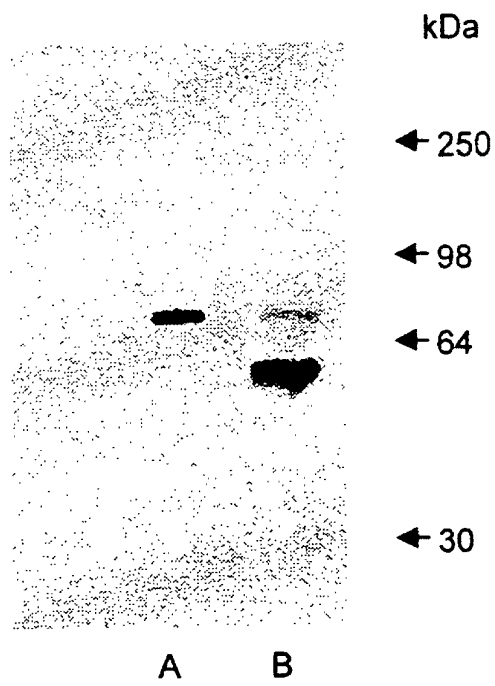


FIG. 3A

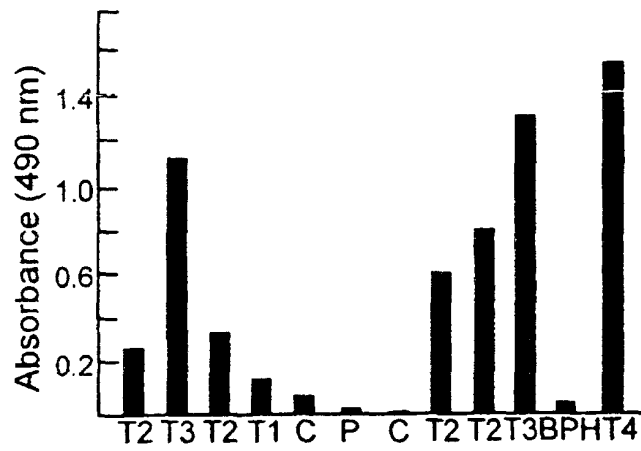


FIG. 3B



FIG. 4

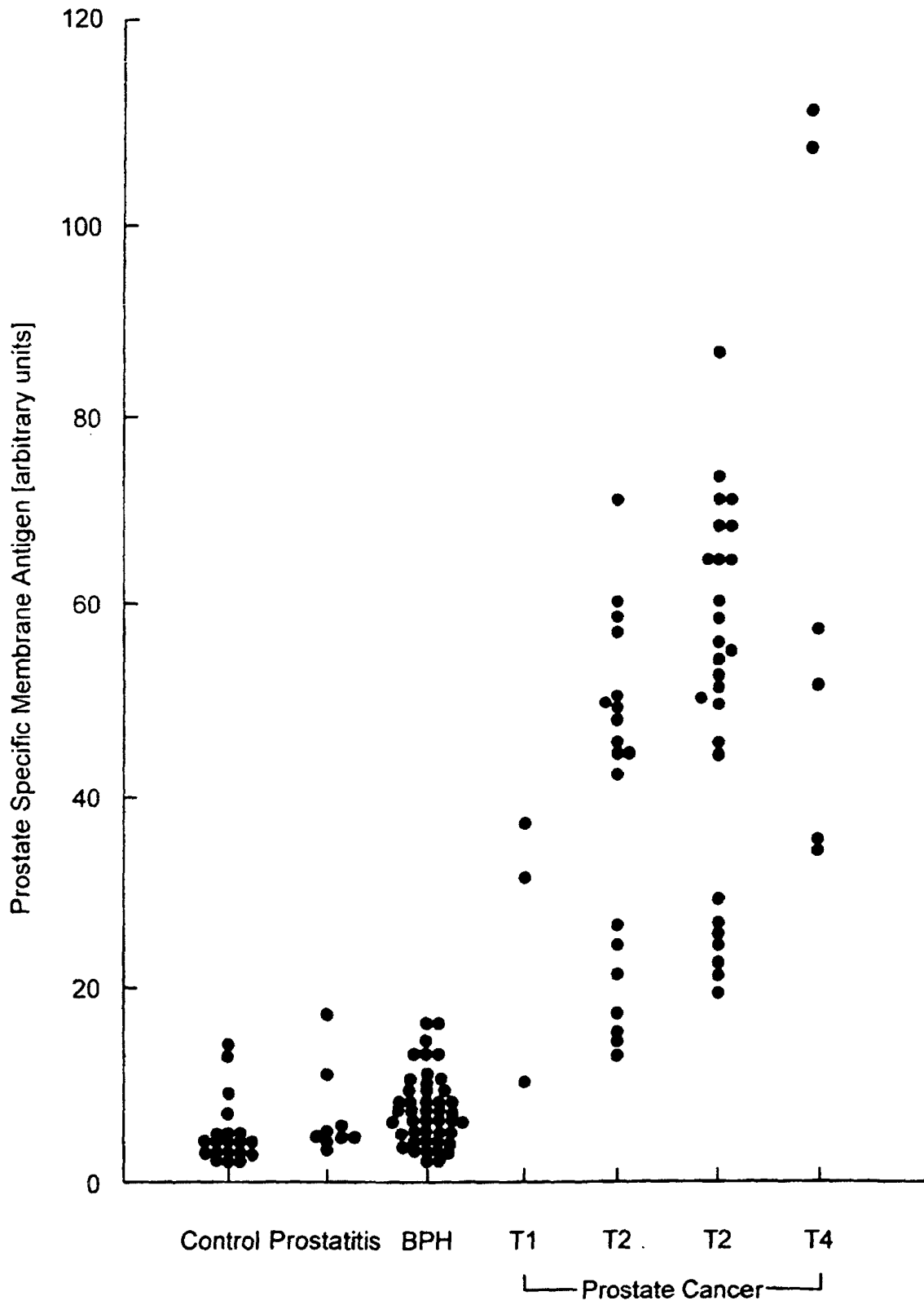


FIG. 5

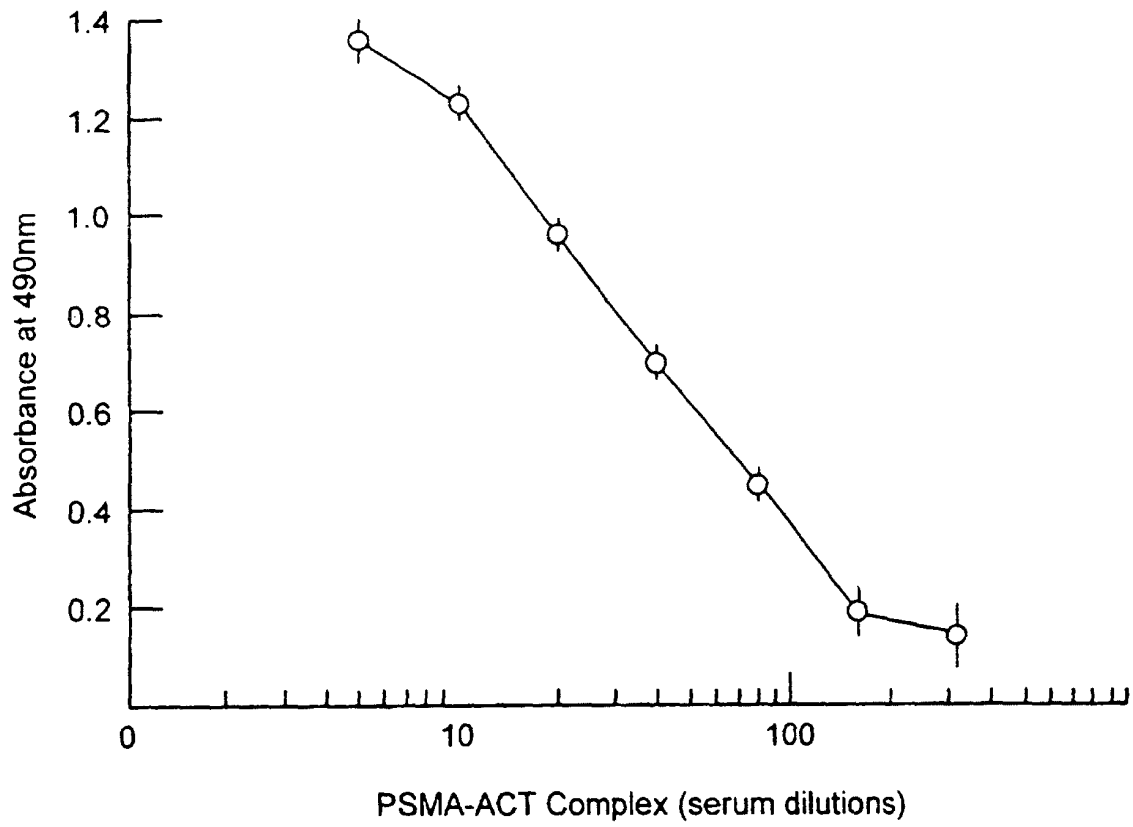


FIG. 6

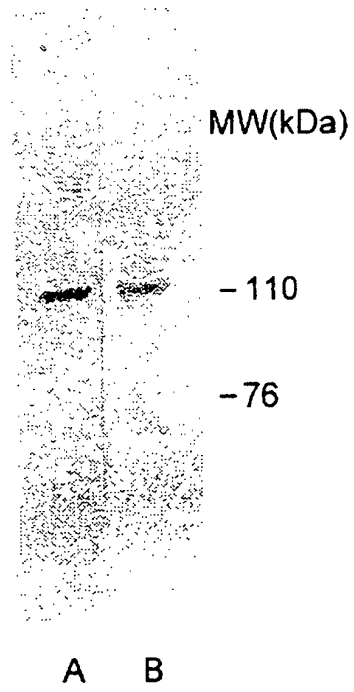
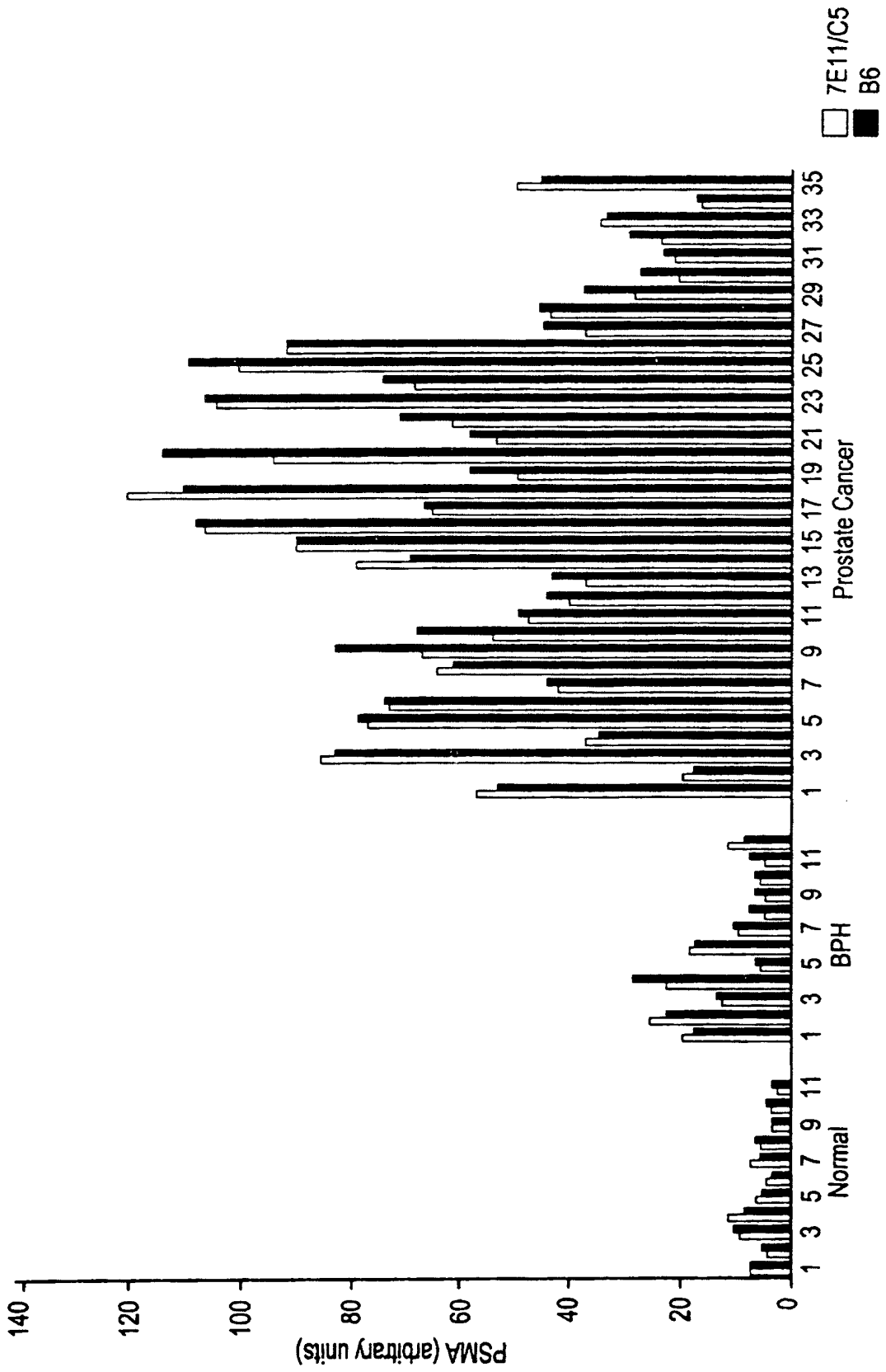


FIG. 7



专利名称(译)	检测血清中前列腺特异性膜抗原的方法		
公开(公告)号	EP1178317B1	公开(公告)日	2004-11-10
申请号	EP2001115042	申请日	2001-06-21
[标]申请(专利权)人(译)	健康研究股份有限公司		
申请(专利权)人(译)	健康研究, INC.		
当前申请(专利权)人(译)	健康研究, INC.		
[标]发明人	KAWINSKI ELZBIETA CHADHA KAILASH C		
发明人	KAWINSKI, ELZBIETA CHADHA, KAILASH C.		
IPC分类号	G01N33/53 G01N33/574		
CPC分类号	G01N33/57434		
优先权	09/851263 2001-05-08 US 09/624692 2000-07-24 US		
其他公开文献	EP1178317A1		
外部链接	Espacenet		

摘要(译)

一种通过免疫测定法检测血清中前列腺特异性膜抗原 (PSMA) 的方法, 包括使用PSMA抗体从血清中捕获PSMA和用抗 α 1-抗胰凝乳蛋白酶抗体检测捕获的PSMA的步骤。在一个优选的实施方案中, 使用PSMA抗体通过稀释PSMA抗体, 用微量滴定板涂覆表面如孔的表面, 用所得溶液捕获PSMA, 用白蛋白阻断表面上的非特异性位点, 稀释用封闭缓冲液清洗血清并将稀释的样品施加到表面以捕获PSMA。用于检测捕获的PSMA的优选实施方案包括以下步骤: 通过洗涤表面除去未捕获的材料, 应用在白蛋白溶液等封闭溶液中稀释的抗 α 1胰凝乳蛋白酶抗体, 并使用过氧化物酶标记的抗兔IgG和OPD底物检测结合的PSMA。

